

**COVERED EMPLOYMENT AND EARNINGS
STATE OF ARKANSAS
FOURTH QUARTER 1999**

**MIKE HUCKABEE, GOVERNOR
STATE OF ARKANSAS**

**ED ROLLE, DIRECTOR
ARKANSAS EMPLOYMENT SECURITY DEPARTMENT**

**PUBLISHED BY
LABOR MARKET INFORMATION SECTION
ARKANSAS EMPLOYMENT SECURITY DEPARTMENT
POST OFFICE BOX 2981
LITTLE ROCK, ARKANSAS 72203-2981**

TELEPHONE: (501) 682-3198

STATE OF ARKANSAS HOME PAGE: <http://www.state.ar.us>

ARKANSAS EMPLOYMENT SECURITY DEPARTMENT HOME PAGE: <http://www.state.ar.us/esd/>

INTERNET SITE FOR THIS PUBLICATION: <http://www.state.ar.us/esd/994ene.htm>

RELEASED: MAY 2000



TABLE OF CONTENTS

	Page
Description of Data	1
Industry Classification	1
Definition of Covered Employment and Earnings	2
Federal Government Employment	2
County Classification	2
Significant Developments During Fourth Quarter 1999	3

LIST OF GRAPHS AND TABLES

Graph 1	Total and Manufacturing Average Covered Employment for Selected Years, Arkansas	7
Graph 2	Total Covered Earnings, by Calendar Quarter for Selected Years, Arkansas	8
Table 1	Quarterly Comparison of Covered Employment and Wages, by Industry	5
Table 2	Total Covered Employment in Arkansas, 1993-1999	6
Table 3	Manufacturing Covered Employment, 1993-1999	6
Table 4	Total Covered Earnings, 1993-1999	9
Table 5	Total Taxable Earnings, 1993-1999	10
Table 6	Covered Earnings in Manufacturing, 1993-1999	11
Table 7	State Summary - Employment and Total Earnings, by Industry, Fourth Quarter 1999	12
Table 8	County Data - Employment and Total Earnings, by Industry, Fourth Quarter 1999	27
Table 9	Federal Government Employment and Earnings in Arkansas, Fourth Quarter 1999	53



**EMPLOYMENT AND EARNINGS
UNDER THE ARKANSAS EMPLOYMENT SECURITY LAW
FOURTH QUARTER 1999**

DESCRIPTION OF DATA

This publication contains covered employment and payroll data by industry and county for the Fourth Quarter 1999. These data are compiled from quarterly contribution and wage reports submitted by employers subject to the Arkansas Employment Security Law. An employing unit is a single physical location where business is conducted, production takes place, or services are provided. Employment data have been tabulated for each month of the quarter by industry under the Revised SIC Classification (see "Industry Classification" below) on a statewide and county basis. Payroll data represent the total wages paid during the quarter and are also shown by industry for the State and by publishable industry groups for each

county. The tabulation of this data is a joint effort in conjunction with the Bureau of Labor Statistics. In addition, there are tables included which set out total covered employment and manufacturing employment by months, quarterly payrolls, and average weekly earnings for the years 1993 through 1999. Data contained in this publication are subject to revision. These revisions will be reflected in the 1999 Annual Covered Employment and Earnings publication. Because of industry code changes between years, there may be substantial employment and wage shifts among industries.

INDUSTRY CLASSIFICATION

Previously published industry data will not be comparable in all instances with currently published data since industry codes have been revised according to the following Manuals: (a) manufacturing industries were coded according to the 1945 Standard Industrial Manual until December 31, 1957, while nonmanufacturing industries were coded under the Social Security Board Industrial Classification Manual (1942); (b) between January 1, 1958 and December 31, 1967, industry codes were assigned under the 1957 Standard Industrial Classification (SIC) Manual; (c) between January 1, 1968

and December 31, 1974, industry codes were assigned under the 1967 Standard Industrial Classification (SIC) Manual; (d) between January 1, 1975 and December 31, 1987, industry codes were assigned under the 1972 Standard Industrial Classification (SIC) Manual; and (e) since January 1, 1988, industry codes have been assigned under the 1987 Standard Industrial Classification (SIC) Manual.

DEFINITION OF COVERED EMPLOYMENT AND EARNINGS

Covered Employment is the number of workers employed by employers subject to the Arkansas Employment Security Law who worked or received pay for the payroll period which includes the 12th of the month. An employer is subject to the law when he has employed one or more employees in each of ten days during the current or preceding calendar year.

Currently excluded from coverage is employment covered by the Railroad Unemployment Insurance Act; some domestic service workers; employees of small agricultural establishments; self-employed and unpaid family workers; insurance and real estate

agents who are on commission only; and employees of churches and religious organizations, except separately incorporated schools. The payroll information in this publication includes all wages and salaries paid to covered employees by their employers including bonuses, commissions, and cash values of remuneration received in any medium other than cash. These wages include both taxable and nontaxable wages. Only the first \$9,000 paid to each worker by an employer in the calendar year is taxable under the Arkansas Employment Security Law.

FEDERAL GOVERNMENT EMPLOYMENT

The table on page 53 lists the total number of civilians employed by the Federal Government in Arkansas during the Fourth Quarter 1999. Employment and wage data are set out by industry divisions. These data are obtained from required reports submitted by various

government agencies having employment in the State. Civilian Federal workers are covered by the Unemployment Compensation for Federal Employees (UCFE) program.

COUNTY CLASSIFICATION

Employment and payroll data by county are classified according to the county where the workers are employed. Employers with operations in more than one county are requested to furnish this agency with a breakdown of employment and wages for at least one quarter of each year by the counties in which they operate. Many such employers submit county data with each regular contribution report. This information is invaluable in the preparation of monthly employment and payroll data by county. Employment and payroll data for multi-area employers who do not furnish county data each

quarter of the year are prorated by county on the basis of one quarter's information.

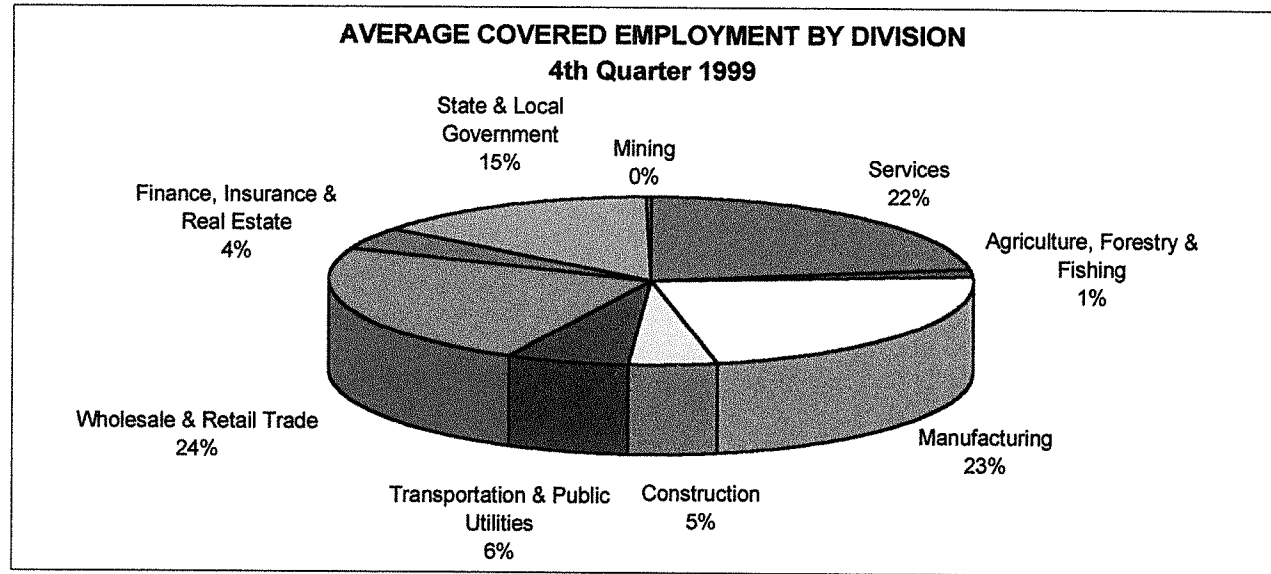
The "rest-of-state" table which appears on page 52 of this publication includes data for firms which did not provide a county breakdown of employment and payrolls. It also includes sales and other type personnel with no permanent place of work, as well as employment of employers with no established place of business in Arkansas.

SIGNIFICANT DEVELOPMENTS DURING FOURTH QUARTER 1999

AVERAGE EMPLOYMENT CHANGES

Covered employment averaged 1,112,534 during the Fourth Quarter 1999, an increase of 28,694 from the previous quarter and 23,262 above the average recorded one year ago. Manufacturing industries experienced an over-the-quarter decrease of 961 while

nonmanufacturing industries recorded an increase of 29,655. Manufacturing industries declined by 74 from the average recorded one year ago while nonmanufacturing industries added 23,336.



EMPLOYMENT CHANGES FROM THIRD QUARTER 1999

Over-the-quarter gains were recorded in seven of the published manufacturing industry groups, while twelve experienced losses. The most significant gains occurred in rubber and miscellaneous plastics products (+527), electronic and other electric equipment (+340), and furniture and fixtures (+173). Notable losses were recorded in food and kindred products (-860), apparel and other textile products (-714), and paper and allied products (-144).

Nonmanufacturing industry groups recording over-the-quarter gains were state and local government (+25,912), wholesale and retail trade (+3,197), transportation and public utilities (+854), services (+853), and finance, insurance and real estate (+141). The most significant losses occurred in construction (-833) and agriculture, forestry, and fishing (-438).

EMPLOYMENT CHANGES FROM FOURTH QUARTER 1998

The most significant over-the-year gains in manufacturing industries occurred in fabricated metal products (+1,111), rubber and miscellaneous plastics products (+568), and printing and publishing (+472). Notable losses were recorded in apparel and other textile products (-1,165), chemicals and allied products (-522), and electronic and other electric equipment (-506).

Significant over-the-year gains in nonmanufacturing industry groups occurred in services (+9,080), wholesale and retail trade (+5,560), state and local government (+2,703), and construction (+2,490).

COVERED WAGES

Wages paid to covered workers totaled \$7,463,729,780, for the Fourth Quarter 1999, for an average weekly wage of \$516.06. Workers in the manufacturing industries earned an average weekly wage of \$583.35. Employees in the chemicals and allied products industry received the highest average weekly wage (\$864.67), while workers in apparel and other textile products earned the lowest

(\$334.99). Workers in nonmanufacturing industries earned an average weekly wage of \$496.34.

Little River County employees recorded the highest average weekly wage (\$670.97) and workers in Newton County the lowest (\$314.81).

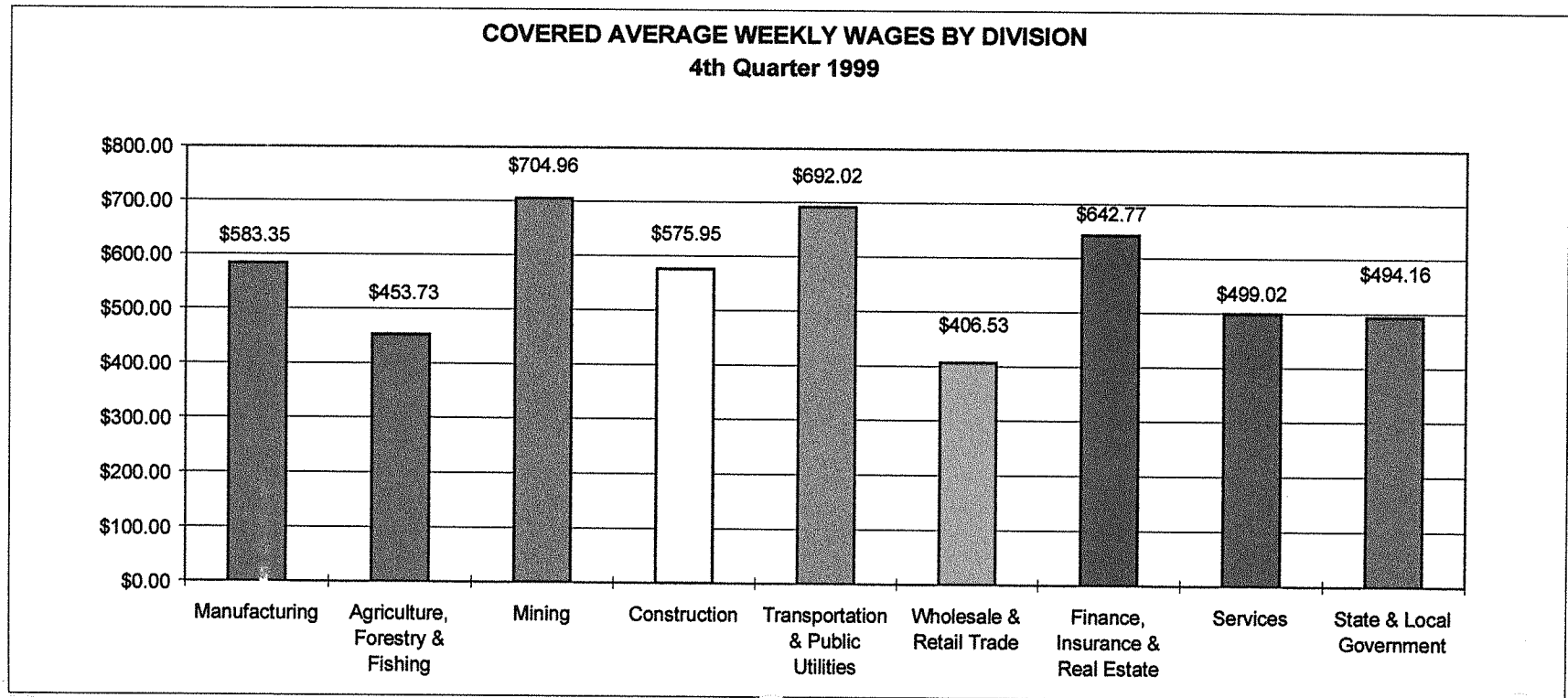


TABLE 1. QUARTERLY COMPARISON OF COVERED EMPLOYMENT AND WAGES, BY INDUSTRY

Industry Group	Number of Employing Units	Average Covered Employment Oct.-Dec. 1999		Net Change From		Total Wages Paid	
		Monthly Average	% of Total	Jul.-Sep. 1999	Oct.-Dec. 1998	Oct.-Dec. 1999	% of Total
Total	71,108	1,112,534	100.0	28,694	23,262	\$7,463,729,780	100.0
Manufacturing	4,374	252,168	22.7	-961	-74	1,912,327,828	25.6
Food and Kindred Products	347	57,291	5.1	-860	-479	356,372,229	4.8
Textile Mill Products	26	4,297	0.4	-86	108	31,555,536	0.4
Apparel & Other Textile Products	135	4,913	0.4	-714	-1,165	21,397,079	0.3
Lumber and Wood Products	1,161	22,989	2.1	-85	1	160,719,408	2.2
Furniture & Fixtures	129	11,321	1.0	173	-116	69,599,929	0.9
Paper and Allied Products	105	14,722	1.3	-144	182	159,561,726	2.1
Printing and Publishing	463	11,491	1.0	-15	472	84,370,257	1.1
Chemicals and Allied Products	120	6,091	0.5	-97	-522	68,470,612	0.9
Petroleum and Coal Products	25	899	0.1	-25	-33	9,911,320	0.1
Rubber and Miscellaneous Plastics Products	204	14,794	1.3	527	568	123,080,888	1.6
Leather and Leather Products	24	2,356	0.2	-26	-362	10,707,994	0.1
Stone, Clay and Glass Products	252	5,614	0.5	-70	-20	44,324,207	0.6
Primary Metal Industries	73	10,151	0.9	133	44	99,902,782	1.3
Fabricated Metal Products	365	20,194	1.8	73	1,111	169,903,605	2.3
Industrial Machinery & Equip.	452	18,716	1.7	-135	-156	146,011,495	2.0
Electronic & Other Elec. Equip.	109	19,284	1.7	340	-506	147,550,100	2.0
Transportation Equipment	181	17,546	1.6	-33	200	140,898,889	1.9
Instruments & Related Products	55	5,393	0.5	9	269	41,813,343	0.6
Miscellaneous Manufacturing Industries	148	4,107	0.4	76	332	26,176,429	0.4
Nonmanufacturing	66,734	860,366	77.3	29,655	23,336	5,551,401,952	74.4
Agriculture, Forestry & Fishing	2,182	16,203	1.5	-438	263	95,573,488	1.3
Mining	304	3,237	0.3	-32	74	29,662,538	0.4
Construction	6,890	51,137	4.6	-833	2,490	382,878,202	5.1
Transportation & Public Utilities	4,198	66,683	6.0	854	1,708	599,899,433	8.0
Wholesale & Retail Trade	21,827	266,736	24.0	3,197	5,560	1,409,660,523	18.9
Finance, Insurance & Real Estate	5,925	44,617	4.0	141	1,456	372,817,534	5.0
Services	22,275	249,768	22.5	853	9,080	1,620,312,214	21.7
State & Local Government	3,133	161,984	14.6	25,912	2,703	1,040,598,020	13.9
Local Government	1,990	105,842	9.5	24,112	1,585	606,980,502	8.1
State Government	1,143	56,142	5.0	1,800	1,118	433,617,518	5.8
Nonclassifiable Establishments	0	0	0.0	0	0	0	0.0

Note: Items do not necessarily add to totals because of rounding. Because of industry code changes between years, there may be substantial employment and wage shifts among industries.

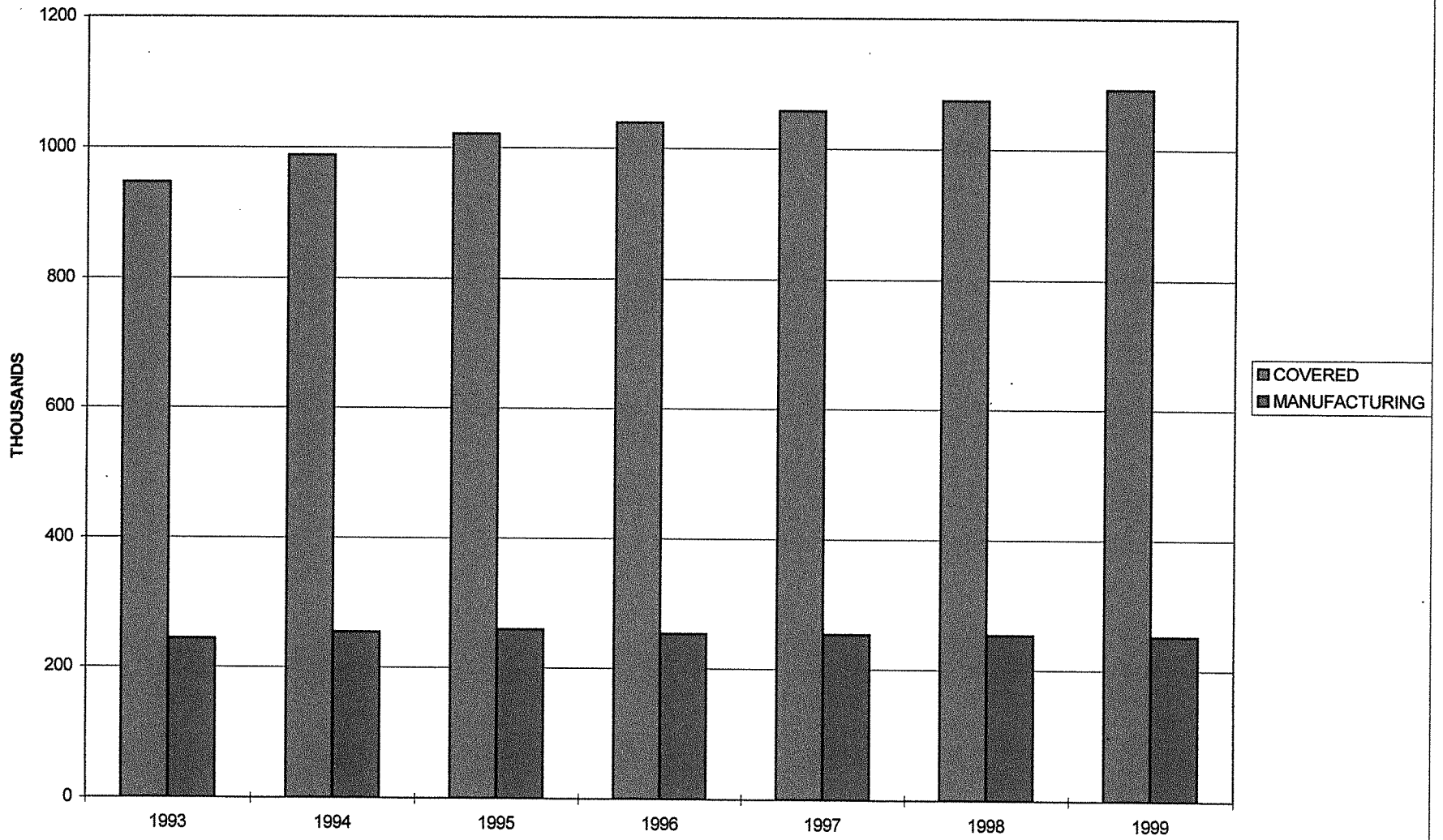
TABLE 2. TOTAL COVERED EMPLOYMENT IN ARKANSAS

Period	1993	1994	1995	1996	1997	1998	1999
Average	947,353	987,634	1,021,440	1,039,357	1,057,350	1,073,732	1,092,448
January	914,402	949,582	994,537	1,017,447	1,025,949	1,050,970	1,066,464
February	923,979	954,796	1,003,997	1,021,306	1,034,361	1,057,593	1,074,752
March	932,968	968,696	1,014,804	1,032,978	1,046,551	1,066,099	1,085,067
April	944,486	982,542	1,019,684	1,038,846	1,057,633	1,074,416	1,093,635
May	951,453	992,205	1,025,143	1,049,419	1,067,078	1,083,133	1,098,641
June	956,517	1,000,327	1,029,990	1,051,282	1,066,728	1,086,125	1,101,689
July	923,648	966,045	992,336	1,009,501	1,028,510	1,046,396	1,062,343
August	938,347	983,551	1,013,715	1,031,586	1,050,656	1,063,680	1,080,985
September	968,086	1,015,514	1,041,492	1,055,695	1,075,759	1,088,772	1,108,193
October	972,089	1,013,272	1,041,045	1,055,507	1,079,093	1,089,836	1,110,327
November	970,765	1,012,367	1,039,808	1,055,247	1,076,715	1,087,855	1,111,842
December	971,500	1,012,712	1,040,728	1,053,474	1,079,166	1,089,913	1,115,432

TABLE 3. MANUFACTURING COVERED EMPLOYMENT

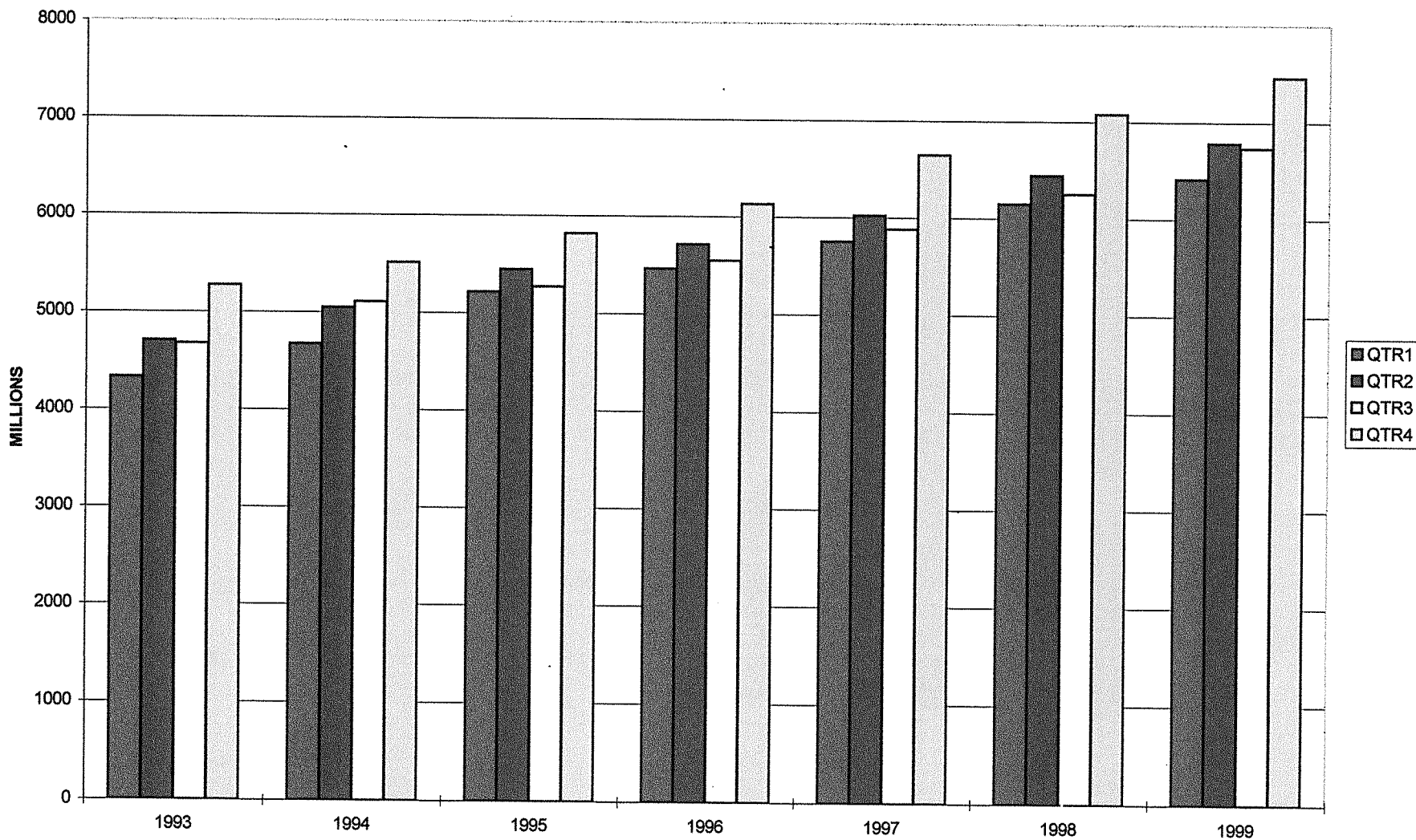
Period	1993	1994	1995	1996	1997	1998	1999
Average	243,729	253,953	258,532	253,407	252,753	253,271	251,911
January	236,739	246,018	257,416	254,998	249,199	251,864	250,160
February	238,222	245,967	258,286	253,319	250,182	252,767	250,471
March	240,301	247,221	258,236	253,815	250,608	252,860	250,512
April	242,917	250,427	258,500	253,344	251,894	253,093	251,207
May	243,389	252,086	257,957	252,605	253,155	253,579	251,720
June	244,700	255,254	259,922	254,470	254,829	255,655	252,965
July	245,514	256,560	258,433	253,333	254,148	254,450	253,037
August	245,932	257,168	259,908	253,960	254,116	254,276	252,996
September	246,212	258,975	259,517	253,023	253,787	254,088	253,354
October	246,362	258,959	258,301	253,014	253,367	252,386	252,031
November	246,958	259,390	258,219	252,785	253,257	251,847	251,993
December	247,506	259,409	257,214	252,214	254,492	252,381	252,480

TOTAL COVERED AND MANUFACTURING EMPLOYMENT



GRAPH ONE

TOTAL COVERED EARNINGS BY CALENDAR QUARTER



GRAPH TWO

TABLE 4. TOTAL COVERED EARNINGS

Period	1993	1994	1995	1996
Total	\$18,972,044,401	\$20,339,457,312	\$21,755,030,337	\$22,858,110,862
Jan.-March	4,326,273,709	4,676,047,400	5,216,754,264	5,464,913,869
Apr.-June	4,705,927,956	5,049,632,485	5,449,448,715	5,714,811,819
July-Sept.	4,673,569,659	5,103,000,944	5,270,916,007	5,548,435,311
Oct.-Dec.	5,266,273,077	5,510,776,483	5,817,911,351	6,129,949,863
Average Weekly Earnings	385.12	396.04	409.58	422.93

TABLE 4. TOTAL COVERED EARNINGS (CONTINUED)

Period	1997	1998	1999
Total	\$24,296,555,335	\$25,914,345,060	\$27,396,315,396
Jan.-March	5,751,056,136	6,145,178,755	6,415,552,832
Apr.-June	6,021,537,518	6,441,129,069	6,786,457,232
July-Sept.	5,877,681,886	6,246,775,598	6,730,575,552
Oct.-Dec.	6,646,279,795	7,081,261,638	7,463,729,780
Average Weekly Earnings	441.90	464.13	482.27

TABLE 5. TOTAL TAXABLE EARNINGS

Period	1993	1994	1995	1996
Total	\$6,707,789,836	\$7,425,105,759	\$7,817,421,753	\$7,993,176,348
Jan.-March	2,985,628,570	3,252,179,748	3,591,833,807	3,726,235,905
Apr.-June	1,888,648,820	2,080,889,209	2,141,221,185	2,176,236,591
July-Sept.	1,058,929,055	1,215,839,115	1,183,562,914	1,189,773,883
Oct.-Dec.	774,583,391	876,197,687	900,803,847	900,929,969

TABLE 5. TOTAL TAXABLE EARNINGS (CONTINUED)

Period	1997	1998	1999
Total	\$8,262,066,213	\$8,554,973,370	\$8,805,762,732
Jan.-March	3,871,667,342	4,063,795,529	4,203,493,834
Apr.-June	2,223,918,770	2,271,303,325	2,325,439,751
July-Sept.	1,208,701,615	1,236,054,184	1,268,314,401
Oct.-Dec.	957,778,486	983,820,332	1,008,514,746

TABLE 6. COVERED EARNINGS IN MANUFACTURING

Period	1993	1994	1995	1996
Total	\$5,454,565,249	\$5,889,443,098	\$6,153,931,784	\$6,287,177,585
Jan.-March	1,242,725,873	1,361,400,241	1,511,433,659	1,541,337,684
Apr.-June	1,342,226,591	1,438,659,873	1,527,368,381	1,554,807,256
July-Sept.	1,375,061,570	1,520,885,717	1,518,447,296	1,548,044,837
Oct.-Dec.	1,494,551,215	1,568,497,267	1,596,682,448	1,642,987,808
Average Weekly Earnings	430.38	445.98	457.76	477.13

TABLE 6. COVERED EARNINGS IN MANUFACTURING (CONTINUED)

Period	1997	1998	1999
Total	\$6,576,855,039	\$6,891,440,822	\$7,125,180,781
Jan.-March	1,580,259,292	1,641,674,535	1,654,419,236
Apr.-June	1,605,319,439	1,695,339,424	1,745,467,895
July-Sept.	1,612,928,955	1,695,313,056	1,812,965,822
Oct.-Dec.	1,778,347,353	1,859,113,807	1,912,327,828
Average Weekly Earnings	500.40	523.26	543.93

TABLE 7. STATE SUMMARY
EMPLOYMENT AND TOTAL EARNINGS, BY INDUSTRY
FOURTH QUARTER 1999

INDUSTRY GROUP		NUMBER OF EMPLOYING UNITS	EMPLOYMENT			TOTAL EARNINGS	AVERAGE WEEKLY EARNINGS
			OCTOBER	NOVEMBER	DECEMBER	OCT.-DEC. 1999	
TOTAL, ALL INDUSTRIES		71,108	1,110,327	1,111,842	1,115,432	\$7,463,729,780	\$516.06
MANUFACTURING		4,374	252,031	251,993	252,480	\$1,912,327,828	\$583.35
20	FOOD AND KINDRED PRODUCTS	347	57,556	57,190	57,126	\$356,372,229	\$478.49
201	Meat Products	104	39,271	39,095	39,028	223,300,112	438.96
202	Dairy Products	14	778	781	766	5,888,737	584.49
203	Preserved Fruits and Vegetables	43	6,763	6,641	6,623	46,793,502	539.20
204	Grain Mill Products	97	3,958	3,838	3,850	31,539,063	624.96
205	Bakery Products	17	2,744	2,747	2,770	19,186,859	535.98
207	Fats and Oils	15	764	760	758	6,105,916	617.47
208	Beverages	15	1,034	1,040	1,078	8,013,785	586.72
	Other Food and Kindred Products	42	2,244	2,288	2,253	15,544,255	528.69
22	TEXTILE MILL PRODUCTS	26	4,308	4,268	4,314	\$31,555,536	\$564.94
23	APPAREL AND OTHER TEXTILE PRODUCTS	135	4,970	4,913	4,857	\$21,397,079	\$334.99
232	Men's and Boys' Furnishings	34	3,425	3,385	3,361	14,886,759	337.76
233	Women's and Misses' Outerwear	9	165	160	153	445,871	215.26
238	Miscellaneous Apparel and Accessories	5	116	118	121	529,966	344.51
239	Misc. Fabricated Textile Products	82	924	909	880	4,260,852	362.43
	Other Apparel and Other Textile Products	5	340	341	342	1,273,631	287.31
24	LUMBER AND WOOD PRODUCTS	1,161	23,028	22,932	23,006	\$160,719,408	\$537.79
241	Logging	634	3,567	3,481	3,488	22,116,240	484.41
242	Sawmills and Planing Mills	235	9,321	9,357	9,411	73,203,921	601.42
243	Millwork, Plywood & Structural Members	116	4,247	4,265	4,304	31,824,070	573.03
249	Miscellaneous Wood Products	101	3,799	3,805	3,796	22,968,721	464.95
	Other Lumber and Wood Products	75	2,094	2,024	2,007	10,606,456	399.62
25	FURNITURE AND FIXTURES	129	11,304	11,334	11,325	\$69,599,929	\$472.91
251	Household Furniture	72	5,007	5,084	5,072	28,962,028	440.78
252	Office Furniture	12	876	898	927	5,824,711	497.65
253	Public Building & Related Furniture	17	2,716	2,748	2,746	17,697,560	497.45
254	Partitions and Fixtures	20	2,370	2,336	2,317	15,084,491	495.66
259	Miscellaneous Furniture and Fixtures	8	335	268	263	2,031,139	541.25

**TABLE 7. STATE SUMMARY
EMPLOYMENT AND TOTAL EARNINGS, BY INDUSTRY
FOURTH QUARTER 1999**

INDUSTRY GROUP	NUMBER OF EMPLOYING UNITS	EMPLOYMENT			TOTAL EARNINGS	AVERAGE WEEKLY EARNINGS	
		OCTOBER	NOVEMBER	DECEMBER	OCT.-DEC. 1999		
26	PAPER AND ALLIED PRODUCTS	105	14,650	14,689	14,827	\$159,561,726	\$833.72
262	Paper Mills	24	5,510	5,541	5,572	75,520,435	1048.41
267	Misc. Converted Paper Products	31	4,594	4,600	4,699	39,205,322	651.22
	Other Paper and Allied Products	50	4,546	4,548	4,556	44,835,969	758.00
27	PRINTING AND PUBLISHING	463	11,529	11,553	11,391	\$84,370,257	\$564.79
271	Newspapers	134	4,017	4,026	4,037	23,830,984	455.25
272	Periodicals	24	175	171	171	1,115,712	498.01
273	Books	23	107	108	108	1,366,317	976.17
274	Miscellaneous Publishing	33	1,084	1,054	1,046	7,681,688	556.75
275	Commercial Printing	225	3,821	3,822	3,835	33,320,880	669.93
	Other Printing and Publishing	24	2,325	2,372	2,194	17,054,676	571.14
28	CHEMICALS AND ALLIED PRODUCTS	120	6,065	6,070	6,139	\$68,470,612	\$864.67
281	Industrial Inorganic Chemicals	18	1,208	1,215	1,244	15,938,716	1003.04
282	Plastics Materials and Synthetics	5	311	318	322	3,883,458	942.36
283	Drugs	7	78	77	83	735,645	713.30
284	Soap, Cleaners, and Toilet Goods	26	1,253	1,253	1,253	12,740,272	782.14
285	Paints and Allied Products	7	360	357	356	3,429,686	737.62
286	Industrial Organic Chemicals	13	1,201	1,189	1,195	14,076,428	906.11
287	Agricultural Chemicals	21	842	851	866	8,506,789	767.14
289	Miscellaneous Chemical Products	23	812	810	820	9,159,618	865.58
29	PETROLEUM AND COAL PRODUCTS	25	901	905	890	\$9,911,320	\$848.38
295	Asphalt Paving and Roofing Materials	16	295	289	283	2,627,162	699.27
	Other Petroleum and Coal Products	9	606	616	607	7,284,158	919.06
30	RUBBER AND MISC. PLASTICS PRODUCTS	204	14,691	14,782	14,910	\$123,080,888	\$639.96
301	Tires and Inner Tubes	4	2,157	2,184	2,231	29,958,705	1051.97
305	Hose & Belting & Gaskets & Packing	10	1,312	1,323	1,331	10,085,771	586.86
306	Fabricated Rubber Products, NEC	23	2,725	2,705	2,718	21,491,927	608.70
308	Miscellaneous Plastics Products, NEC	167	8,497	8,570	8,630	61,544,485	552.69

TABLE 7. STATE SUMMARY
EMPLOYMENT AND TOTAL EARNINGS, BY INDUSTRY
FOURTH QUARTER 1999

INDUSTRY GROUP		NUMBER OF EMPLOYING UNITS	EMPLOYMENT			TOTAL EARNINGS	AVERAGE
			OCTOBER	NOVEMBER	DECEMBER	OCT.-DEC. 1999	WEEKLY EARNINGS
31	LEATHER AND LEATHER PRODUCTS	24	2,360	2,358	2,350	\$10,707,994	\$349.61
314	Footwear, Except Rubber	11	1,839	1,839	1,847	8,206,789	342.78
	Other Leather and Leather Products	13	521	519	503	2,501,205	374.08
32	STONE, CLAY, AND GLASS PRODUCTS	252	5,628	5,620	5,593	\$44,324,207	\$607.37
322	Glass and Glassware, Pressed or Blown	8	547	526	512	3,814,855	555.43
323	Products Of Purchased Glass	14	335	328	300	1,722,506	412.77
325	Structural Clay Products	9	495	499	503	3,702,322	570.73
327	Concrete, Gypsum, and Plaster Products	167	2,935	2,939	2,964	23,413,007	611.34
328	Cut Stone and Stone Products	18	158	154	147	792,157	398.27
329	Misc. Nonmetallic Mineral Products	19	653	667	663	6,473,872	753.39
	Other Stone, Clay, and Glass Products	17	505	507	504	4,405,488	670.61
33	PRIMARY METAL INDUSTRIES	73	10,079	10,141	10,233	\$99,902,782	\$757.05
331	Blast Furnace and Basic Steel Products	21	4,686	4,704	4,729	53,762,214	878.72
332	Iron and Steel Foundries	9	237	241	238	1,653,656	532.98
335	Nonferrous Rolling and Drawing	19	3,095	3,058	3,068	25,960,840	649.71
336	Nonferrous Foundries (Castings)	13	1,659	1,723	1,774	13,921,706	623.10
	Other Primary Metal Industries	11	402	415	424	4,604,366	856.20
34	FABRICATED METAL PRODUCTS	365	20,124	20,219	20,239	\$169,903,605	\$647.20
342	Cutlery, Handtools, and Hardware	32	2,548	2,485	2,469	17,905,166	550.78
343	Plumbing and Heating, Except Electric	5	1,101	1,111	1,105	8,631,958	600.54
344	Fabricated Structural Metal Products	172	6,315	6,351	6,386	59,109,003	715.96
345	Screw Machine Products, Bolts, Etc.	16	518	511	489	4,059,093	617.07
346	Metal Forgings and Stampings	22	2,488	2,514	2,516	18,650,278	572.48
348	Ordnance and Accessories, NEC	14	1,705	1,715	1,707	17,303,196	778.83
349	Misc. Fabricated Metal Products	57	4,211	4,257	4,257	34,433,209	624.45
	Other Fabricated Metal Products	47	1,238	1,275	1,310	9,811,702	592.27

**TABLE 7. STATE SUMMARY
EMPLOYMENT AND TOTAL EARNINGS, BY INDUSTRY
FOURTH QUARTER 1999**

INDUSTRY GROUP	NUMBER OF EMPLOYING UNITS	EMPLOYMENT			TOTAL EARNINGS	AVERAGE	
		OCTOBER	NOVEMBER	DECEMBER	OCT.-DEC. 1999	WEEKLY EARNINGS	
35	INDUSTRIAL MACHINERY AND EQUIPMENT	452	18,605	18,657	18,885	\$146,011,495	\$600.12
353	Construction and Related Machinery	34	2,529	2,543	2,523	20,819,333	632.58
354	Metalworking Machinery	101	3,407	3,422	3,424	27,044,411	608.70
355	Special Industrial Machinery	29	927	921	927	9,109,260	757.53
356	General Industrial Machinery	25	2,275	2,262	2,246	17,855,276	607.47
358	Refrigeration and Service Machinery	40	5,488	5,348	5,327	41,935,670	598.74
359	Industrial Machinery, NEC	179	1,512	1,509	1,524	10,542,491	535.29
	Other Industrial Machinery and Equipment	44	2,467	2,652	2,914	18,705,054	537.35
36	ELECTRONIC & OTHER ELECTRIC EQUIPMENT	109	19,236	19,294	19,321	\$147,550,100	\$588.58
361	Electric Distribution Equipment	8	1,224	1,209	1,220	7,981,123	504.19
362	Electrical Industrial Apparatus	22	6,084	6,186	6,090	50,324,799	632.54
364	Electric Lighting and Wiring Equipment	23	2,531	2,524	2,585	17,729,552	535.53
365	Household Audio and Video Equipment	10	1,098	1,110	1,135	9,292,354	641.46
367	Electronic Components and Accessories	26	1,814	1,838	1,922	13,868,160	574.16
369	Misc. Electrical Equipment & Supplies	10	1,130	1,151	1,151	7,784,529	523.44
	Other Electronic & Other Electric Equipment	10	5,355	5,276	5,218	40,569,583	590.71
37	TRANSPORTATION EQUIPMENT	181	17,482	17,517	17,638	\$140,898,889	\$617.72
371	Motor Vehicles and Equipment	80	9,655	9,658	9,732	69,721,860	553.96
372	Aircraft and Parts	27	4,326	4,339	4,350	47,242,121	837.65
373	Ship and Boat Building And Repairing	38	1,806	1,828	1,855	11,657,749	490.12
379	Miscellaneous Transportation Equipment	26	596	586	594	3,402,596	442.13
	Other Transportation Equipment	10	1,099	1,106	1,107	8,874,563	618.35
38	INSTRUMENTS AND RELATED PRODUCTS	55	5,383	5,433	5,364	\$41,813,343	\$596.37
381	Search and Navigation Equipment	7	343	353	359	3,154,163	689.94
382	Measuring and Controlling Devices	18	1,698	1,737	1,695	11,011,057	495.32
	Other Instruments and Related Products	30	3,342	3,343	3,310	27,648,123	638.35

TABLE 7. STATE SUMMARY
EMPLOYMENT AND TOTAL EARNINGS, BY INDUSTRY
FOURTH QUARTER 1999

INDUSTRY GROUP	NUMBER OF EMPLOYING UNITS	EMPLOYMENT			TOTAL EARNINGS	AVERAGE	
		OCTOBER	NOVEMBER	DECEMBER	OCT.-DEC. 1999	WEEKLY EARNINGS	
39	MISCELLANEOUS MANUFACTURING INDUSTRIES	148	4,132	4,118	4,072	\$26,176,429	\$490.24
393	Musical Instruments	8	840	849	851	5,546,217	503.90
394	Toys and Sporting Goods	44	1,338	1,373	1,406	9,446,147	529.48
395	Pens, Pencils, Office, & Art Supplies	6	34	36	32	157,654	356.68
399	Miscellaneous Manufactures	84	1,895	1,834	1,759	10,555,774	443.87
	Other Miscellaneous Manufacturing Industries	6	25	26	24	470,637	1448.11

**TABLE 7. STATE SUMMARY
EMPLOYMENT AND TOTAL EARNINGS, BY INDUSTRY
FOURTH QUARTER 1999**

INDUSTRY GROUP	NUMBER OF EMPLOYING UNITS	EMPLOYMENT			TOTAL EARNINGS	AVERAGE	
		OCTOBER	NOVEMBER	DECEMBER	OCT.-DEC. 1999	WEEKLY EARNINGS	
NONMANUFACTURING	66,734	858,296	859,849	862,952	\$5,551,401,952	\$496.34	
AGRICULTURE, FORESTRY, AND FISHING	2,182	17,271	15,980	15,358	\$95,573,488	\$453.73	
01	AGRICULTURAL PRODUCTION-CROPS	710	4,289	3,836	3,529	\$22,709,397	\$449.69
011	Cash Grains	380	1,979	1,792	1,610	11,350,793	486.79
013	Field Crops, Except Cash Grains	122	1,049	889	805	5,242,346	441.04
018	Horticultural Specialties	42	268	275	292	1,258,189	347.73
019	General Farms, Primarily Crop	146	901	791	728	4,420,206	421.51
	Other Agricultural Production-Crops	20	92	89	94	437,863	367.44
02	AGRICULTURAL PRODUCTION-LIVESTOCK	224	3,976	3,921	3,920	\$26,121,134	\$510.11
021	Livestock, Except Dairy and Poultry	68	670	683	678	3,961,987	450.17
025	Poultry and Eggs	85	2,641	2,592	2,607	17,954,331	528.48
027	Animal Specialties	58	569	549	535	3,658,012	510.68
	Other Agricultural Production-Livestock	13	96	97	100	546,804	430.67
07	AGRICULTURAL SERVICES	1,127	8,331	7,630	6,740	\$41,799,244	\$424.91
071	Soil Preparation Services	7	24	30	28	218,537	615.02
072	Crop Services	293	2,852	2,318	1,364	14,366,119	507.39
074	Veterinary Services	278	1,668	1,649	1,675	8,121,849	375.46
075	Animal Services, Except Veterinary	132	1,093	1,064	1,086	4,814,392	342.59
076	Farm Labor and Management Services	17	36	34	40	330,352	693.05
078	Landscape and Horticultural Services	400	2,658	2,535	2,547	13,947,995	415.86
08	FORESTRY	111	643	544	1,118	\$4,786,168	\$479.18
085	Forestry Services	78	488	393	960	3,605,397	451.94
	Other Forestry	33	155	151	158	1,180,771	587.25
09	FISHING, HUNTING, AND TRAPPING	10	32	49	51	\$157,545	\$275.43

TABLE 7. STATE SUMMARY
EMPLOYMENT AND TOTAL EARNINGS, BY INDUSTRY
FOURTH QUARTER 1999

INDUSTRY GROUP		NUMBER OF EMPLOYING UNITS	EMPLOYMENT			TOTAL EARNINGS	AVERAGE
			OCTOBER	NOVEMBER	DECEMBER	OCT.-DEC. 1999	WEEKLY EARNINGS
MINING		304	3,259	3,248	3,203	\$29,662,538	\$704.96
13	OIL AND GAS EXTRACTION	213	1,549	1,532	1,539	\$15,367,007	\$767.58
138	Oil and Gas Field Services	126	1,065	1,049	1,068	9,055,783	656.76
	Other Oil and Gas Extraction	87	484	483	471	6,311,224	1012.82
14	NONMETALLIC MINERALS, EXCEPT FUELS	87	1,611	1,614	1,558	\$13,219,336	\$637.80
142	Crushed and Broken Stone	18	325	312	311	2,660,933	647.74
144	Sand and Gravel	49	1,032	1,038	986	8,331,529	629.14
149	Miscellaneous Nonmetallic Minerals, Except Fuels	14	148	156	153	1,074,281	542.47
	Other Nonmetallic Minerals, Except Fuels	6	106	108	108	1,152,593	826.03
	OTHER MINING	4	99	102	106	\$1,076,195	\$808.97
CONSTRUCTION		6,890	51,455	50,830	51,126	\$382,878,202	\$575.95
15	GENERAL BUILDING CONTRACTORS	1,870	12,599	12,569	12,796	\$100,719,308	\$612.24
152	Residential Building Construction	1,262	4,282	4,324	4,303	27,185,623	485.99
153	Operative Builders	22	74	77	85	520,105	508.58
154	Nonresidential Building Construction	586	8,243	8,168	8,408	73,013,580	678.89
16	HEAVY CONSTRUCTION, EX. BUILDING	808	9,473	9,242	9,145	\$73,165,791	\$606.04
161	Highway and Street Construction	169	3,032	2,950	2,855	24,589,223	642.12
162	Heavy Construction, Except Highway	639	6,441	6,292	6,290	48,576,568	589.29
17	SPECIAL TRADE CONTRACTORS	4,212	29,383	29,019	29,185	\$208,993,103	\$550.64
171	Plumbing, Heating, Air-Conditioning	1,043	7,563	7,489	7,611	55,383,254	563.95
172	Painting and Paper Hanging	275	1,533	1,483	1,542	8,478,287	429.25
173	Electrical Work	703	5,426	5,376	5,359	43,804,518	625.50
174	Masonry, Stonework, and Plastering	473	3,514	3,463	3,471	22,743,873	502.35
175	Carpentry and Floor Work	216	897	885	908	5,425,583	465.45
176	Roofing, Siding, and Sheet Metal Work	267	1,912	1,890	1,895	13,523,398	547.79
177	Concrete Work	263	1,859	1,775	1,703	10,512,492	454.55
178	Water Well Drilling	57	343	344	350	2,307,980	513.61
179	Misc. Special Trade Contractors	915	6,336	6,314	6,346	46,813,718	568.71

**TABLE 7. STATE SUMMARY
EMPLOYMENT AND TOTAL EARNINGS, BY INDUSTRY
FOURTH QUARTER 1999**

INDUSTRY GROUP		NUMBER OF EMPLOYING UNITS	EMPLOYMENT			TOTAL EARNINGS	AVERAGE WEEKLY EARNINGS
			OCTOBER	NOVEMBER	DECEMBER	OCT.-DEC. 1999	
TRANSPORTATION AND PUBLIC UTILITIES		4,198	66,277	66,282	67,490	\$599,899,433	\$692.02
41	LOCAL AND INTERURBAN PASSENGER TRANSIT	134	2,020	1,980	1,994	\$9,668,863	\$372.25
411	Local and Suburban Transportation	96	1,355	1,329	1,340	6,888,256	395.03
414	Bus Charter Service	15	154	161	148	680,736	339.29
-	Other Local and Interurban Passenger Transit	23	511	490	506	2,099,871	321.56
42	TRUCKING AND WAREHOUSING	2,419	35,496	35,349	35,430	\$284,564,982	\$617.91
421	Trucking & Courier Services, Ex. Air	2,192	32,825	33,008	33,218	269,260,579	627.32
	Other Trucking and Warehousing	227	2,671	2,341	2,212	15,304,403	488.90
44	WATER TRANSPORTATION	62	768	752	744	\$5,946,086	\$606.08
449	Water Transportation Services	57	677	667	673	5,370,707	614.47
	Other Water Transportation	5	91	85	71	575,379	537.57
45	TRANSPORTATION BY AIR	194	6,561	6,694	7,680	\$53,983,456	\$595.07
451	Air Transportation, Scheduled	65	4,613	4,718	5,676	36,248,582	557.41
	Other Transportation by Air	129	1,948	1,976	2,004	17,734,874	690.40
46	PIPELINES, EXCEPT NATURAL GAS	16	210	213	211	\$2,843,155	\$1,034.88
47	TRANSPORTATION SERVICES	302	2,208	2,221	2,228	\$17,428,256	\$604.16
472	Passenger Transportation Arrangement	113	551	535	534	2,966,324	422.55
473	Freight Transportation Arrangement	142	856	870	870	8,147,791	724.29
	Other Transportation Services	47	801	816	824	6,314,141	596.93
48	COMMUNICATIONS	599	10,339	10,409	10,523	\$116,042,634	\$856.35
481	Telephone Communications	366	7,070	7,142	7,197	90,309,048	973.45
483	Radio and Television Broadcasting	146	2,188	2,184	2,243	15,212,337	530.69
	Other Communications	87	1,081	1,083	1,083	10,521,249	747.76
49	ELECTRIC, GAS, AND SANITARY SERVICES	472	8,675	8,664	8,680	\$109,422,001	\$970.49
492	Gas Production and Distribution	98	1,594	1,578	1,610	18,938,934	913.95
494	Water Supply	154	651	638	633	3,690,220	443.07
	Other Electric, Gas, and Sanitary Services	220	6,430	6,448	6,437	86,792,847	1036.97

TABLE 7. STATE SUMMARY
EMPLOYMENT AND TOTAL EARNINGS, BY INDUSTRY
FOURTH QUARTER 1999

INDUSTRY GROUP		NUMBER OF EMPLOYING UNITS	EMPLOYMENT			TOTAL EARNINGS	AVERAGE
			OCTOBER	NOVEMBER	DECEMBER	OCT.-DEC. 1999	WEEKLY EARNINGS
WHOLESALE AND RETAIL TRADE		21,827	263,710	267,105	269,394	\$1,409,660,523	\$406.53
WHOLESALE TRADE		6,269	51,716	51,550	51,835	\$470,002,630	\$699.30
50	WHOLESALE TRADE-DURABLE GOODS	3,780	26,945	26,976	27,209	\$249,887,027	\$710.79
501	Motor Vehicles, Parts, and Supplies	550	4,577	4,577	4,584	33,463,996	562.12
502	Furniture and Homefurnishings	128	660	663	663	5,832,755	677.75
503	Lumber and Construction Materials	273	2,111	2,101	2,113	18,681,296	681.59
504	Professional & Commercial Equipment	659	3,625	3,592	3,633	42,212,869	897.83
505	Metals and Minerals, Except Petroleum	88	938	953	951	8,721,950	708.22
506	Electrical Goods	318	2,325	2,338	2,354	26,092,408	858.11
507	Hardware, Plumbing & Heating Equipment	310	2,511	2,510	2,535	22,036,273	673.01
508	Machinery, Equipment, and Supplies	1,146	8,450	8,458	8,551	78,336,961	710.07
509	Miscellaneous Durable Goods	308	1,748	1,784	1,825	14,508,519	625.00
51	WHOLESALE TRADE-NONDURABLE GOODS	2,489	24,771	24,574	24,626	\$220,115,603	\$686.70
511	Paper and Paper Products	192	2,208	2,199	2,261	16,504,631	571.20
512	Drugs, Proprietaries, and Sundries	215	2,286	2,286	2,294	27,233,846	915.34
513	Apparel, Piece Goods, and Notions	114	1,038	1,045	1,070	8,788,799	643.26
514	Groceries and Related Products	621	7,704	7,648	7,687	69,181,408	692.95
515	Farm-Product Raw Materials	113	1,550	1,502	1,421	13,163,513	679.13
516	Chemical and Allied Products	211	1,092	1,089	1,101	14,466,617	1017.20
517	Petroleum and Petroleum Products	234	2,061	2,049	2,042	16,085,734	603.40
518	Beer, Wine, and Distilled Beverages	51	1,048	1,059	1,072	10,799,939	783.99
519	Misc. Nondurable Goods	738	5,784	5,697	5,678	43,891,116	590.29
RETAIL TRADE		15,558	211,994	215,555	217,559	\$939,657,893	\$336.14
52	BUILDING MATERIALS & GARDEN SUPPLIES	826	8,923	8,891	8,785	\$51,582,327	\$447.52
521	Lumber and Other Building Materials	289	5,623	5,654	5,599	32,161,856	439.79
523	Paint, Glass, and Wallpaper Stores	125	589	571	566	3,704,460	495.29
525	Hardware Stores	168	1,226	1,225	1,220	6,235,001	391.95
526	Retail Nurseries and Garden Stores	115	607	582	547	2,249,501	299.03
527	Mobile Home Dealers	129	878	859	853	7,231,509	644.33

**TABLE 7. STATE SUMMARY
EMPLOYMENT AND TOTAL EARNINGS, BY INDUSTRY
FOURTH QUARTER 1999**

INDUSTRY GROUP	NUMBER OF EMPLOYING UNITS	EMPLOYMENT			TOTAL EARNINGS	AVERAGE WEEKLY EARNINGS	
		OCTOBER	NOVEMBER	DECEMBER	OCT.-DEC. 1999		
53	GENERAL MERCHANDISE STORES	639	49,610	51,664	52,338	\$314,414,693	\$472.34
531	Department Stores	170	44,872	46,660	47,066	296,424,050	493.55
533	Variety Stores	243	3,013	3,210	3,392	12,562,019	301.50
539	Misc. General Merchandise Stores	226	1,725	1,794	1,880	5,428,624	232.04
54	FOOD STORES	2,076	30,523	30,642	30,963	\$104,475,072	\$261.70
541	Grocery Stores	1,759	28,921	28,957	29,237	99,202,345	262.79
542	Meat and Fish Markets	59	228	253	272	893,542	273.84
544	Candy, Nut, and Confectionery Stores	24	128	137	134	316,848	183.26
546	Retail Bakeries	123	703	706	725	2,204,654	238.41
549	Miscellaneous Food Stores	98	513	536	537	1,717,699	249.93
	Other Food Stores	13	30	53	58	139,984	229.11
55	AUTOMOTIVE DEALERS & SERVICE STATIONS	2,490	23,860	23,791	23,709	\$151,653,868	\$490.43
551	New and Used Car Dealers	310	8,833	8,778	8,803	81,422,191	711.36
552	Used Car Dealers	419	1,577	1,571	1,573	9,930,416	485.41
553	Auto and Home Supply Stores	606	4,114	4,077	4,054	23,103,401	435.41
554	Gasoline Service Stations	986	8,169	8,214	8,133	29,026,235	273.22
555	Boat Dealers	69	365	371	359	2,134,315	449.80
556	Recreational Vehicle Dealers	36	276	262	260	1,842,115	532.71
557	Motorcycle Dealers	52	469	457	462	3,741,573	622.07
559	Automotive Dealers, NEC	12	57	61	65	453,622	572.03
56	APPAREL AND ACCESSORY STORES	1,015	8,041	8,630	9,154	\$24,858,422	\$222.13
561	Men's & Boys' Clothing Stores	55	272	283	325	1,518,298	398.16
562	Women's Clothing Stores	286	1,923	2,027	2,155	6,073,210	229.57
563	Women's Accessory & Specialty Stores	58	295	352	398	898,904	198.51
564	Children's and Infants' Wear Stores	51	246	270	277	673,990	196.14
565	Family Clothing Stores	236	3,494	3,860	4,039	9,317,746	188.73
566	Shoe Stores	219	1,332	1,336	1,442	4,437,872	249.18
569	Misc. Apparel & Accessory Stores	110	479	502	518	1,938,402	298.41
57	FURNITURE AND HOMEFURNISHINGS STORES	1,252	7,966	8,124	8,270	\$44,401,223	\$420.63
571	Furniture and Homefurnishings Stores	748	4,491	4,529	4,581	25,835,482	438.35
572	Household Appliance Stores	111	507	519	535	2,406,559	355.77
573	Radio, Television, & Computer Stores	393	2,968	3,076	3,154	16,159,182	405.42

**TABLE 7. STATE SUMMARY
EMPLOYMENT AND TOTAL EARNINGS, BY INDUSTRY
FOURTH QUARTER 1999**

INDUSTRY GROUP	NUMBER OF EMPLOYING UNITS	EMPLOYMENT			TOTAL EARNINGS	AVERAGE	
		OCTOBER	NOVEMBER	DECEMBER	OCT.-DEC. 1999	WEEKLY EARNINGS	
58	EATING AND DRINKING PLACES	3,889	63,889	64,029	63,906	\$158,991,140	\$191.27
59	MISCELLANEOUS RETAIL	3,371	19,182	19,784	20,434	\$89,281,148	\$346.86
591	Drug Stores and Proprietary Stores	498	4,310	4,269	4,365	25,653,309	457.35
592	Liquor Stores	359	1,495	1,486	1,493	5,202,382	268.34
593	Used Merchandise Stores	345	1,055	1,065	1,065	3,933,735	285.02
594	Miscellaneous Shopping Goods Stores	1,012	6,436	6,824	7,263	25,978,761	292.12
596	Nonstore Retailers	164	1,447	1,501	1,480	8,609,565	448.70
598	Fuel Dealers	168	968	987	985	6,035,605	473.75
599	Retail Stores, NEC	825	3,471	3,652	3,783	13,867,791	293.44
FINANCE, INSURANCE, AND REAL ESTATE		5,925	44,492	44,494	44,865	\$372,817,534	\$642.77
60	DEPOSITORY INSTITUTIONS	1,120	17,653	17,695	17,786	\$125,506,041	\$545.09
602	Commercial Banks	826	14,988	15,007	15,078	108,605,106	556.05
603	Savings Institutions	106	1,562	1,566	1,581	9,944,317	487.33
606	Credit Unions	81	538	537	538	3,479,900	497.86
	Other Depository Institutions	107	565	585	589	3,476,718	461.37
61	NONDEPOSITORY INSTITUTIONS	274	2,096	2,100	2,112	\$19,950,917	\$729.88
611	Federal & Fed.-Sponsored Credit	26	189	191	188	1,743,343	708.29
614	Personal Credit Institutions	45	201	202	199	2,808,872	1076.75
615	Business Credit Institutions	60	324	332	343	3,410,384	787.80
616	Mortgage Bankers and Brokers	143	1,382	1,375	1,382	11,988,318	668.41
62	SECURITY AND COMMODITY BROKERS	370	2,548	2,534	2,546	\$47,160,993	\$1,426.76
621	Security Brokers and Dealers	235	2,212	2,202	2,202	41,986,253	1464.50
	Other Security and Commodity Brokers	135	336	332	344	5,174,740	1180.01
63	INSURANCE CARRIERS	410	5,506	5,504	5,525	\$57,379,653	\$800.81
631	Life Insurance	64	755	765	780	7,786,459	781.25
632	Medical Service and Health Insurance	45	2,235	2,224	2,238	23,614,326	813.72
633	Fire, Marine, and Casualty Insurance	204	1,812	1,819	1,813	19,469,603	825.31
635	Surety Insurance	20	44	43	44	617,694	1088.13
636	Title Insurance	64	604	593	592	3,794,929	489.52
	Other Insurance Carriers	13	56	60	58	2,096,642	2780.69

**TABLE 7. STATE SUMMARY
EMPLOYMENT AND TOTAL EARNINGS, BY INDUSTRY
FOURTH QUARTER 1999**

INDUSTRY GROUP	NUMBER OF EMPLOYING UNITS	EMPLOYMENT			TOTAL EARNINGS	AVERAGE WEEKLY EARNINGS	
		OCTOBER	NOVEMBER	DECEMBER	OCT.-DEC. 1999		
64	INSURANCE AGENTS, BROKERS & SERVICE	1,426	5,425	5,446	5,511	\$46,171,235	\$650.40
65	REAL ESTATE	2,130	10,287	10,232	10,387	\$60,148,310	\$449.12
651	Real Estate Operators and Lessors	692	3,243	3,228	3,301	15,314,897	361.67
653	Real Estate Agents and Managers	1,135	4,793	4,778	4,885	29,233,856	466.68
654	Title Abstract Offices	111	803	798	799	5,533,482	532.07
655	Subdividers and Developers	192	1,448	1,428	1,402	10,066,075	543.00
67	HOLDING AND OTHER INVESTMENT OFFICES	195	977	983	998	\$16,500,385	\$1,287.28
671	Holding Offices	60	542	549	553	12,272,444	1722.69
679	Miscellaneous Investing	84	328	334	340	3,323,171	765.35
	Other Holding and Other Investment Offices	51	107	100	105	904,770	669.21
SERVICES		22,275	250,280	249,676	249,349	\$1,620,312,214	\$499.02
70	HOTELS AND OTHER LODGING PLACES	725	11,003	10,705	10,330	\$32,144,205	\$231.53
701	Hotels and Motels	661	10,720	10,438	10,074	31,331,966	231.51
702	Rooming and Boarding Houses	8	39	36	39	102,169	206.82
703	Camps and Recreational Vehicle Parks	42	185	172	161	482,134	214.79
704	Membership-Basis Organization Hotels	14	59	59	56	227,936	302.30
72	PERSONAL SERVICES	1,558	8,585	8,665	8,842	\$38,889,653	\$343.96
721	Laundry, Cleaning, & Garment Services	453	4,157	4,228	4,232	17,714,744	324.01
722	Photographic Studios, Portrait	152	584	611	640	2,306,239	290.03
723	Beauty Shops	430	1,464	1,462	1,479	5,607,650	293.77
724	Barber Shops	24	47	45	45	220,945	372.17
725	Shoe Repair and Shoeshine Parlors	12	12	12	12	30,646	196.45
726	Funeral Service and Crematories	201	1,579	1,563	1,586	10,623,634	518.53
729	Miscellaneous Personal Services	286	742	744	848	2,385,795	235.89

**TABLE 7. STATE SUMMARY
EMPLOYMENT AND TOTAL EARNINGS, BY INDUSTRY
FOURTH QUARTER 1999**

INDUSTRY GROUP	NUMBER OF EMPLOYING UNITS	EMPLOYMENT			TOTAL EARNINGS	AVERAGE
		OCTOBER	NOVEMBER	DECEMBER	OCT.-DEC. 1999	WEEKLY EARNINGS
73 BUSINESS SERVICES	3,608	61,077	60,949	60,227	\$319,773,082	\$404.90
731 Advertising	184	1,406	1,418	1,441	12,945,779	700.47
732 Credit Reporting and Collection	97	853	842	863	5,325,302	480.42
733 Mailing, Reproduction, Stenographic	189	1,140	1,154	1,138	7,622,977	512.57
734 Services to Buildings	601	6,870	6,870	6,912	23,082,422	257.93
735 Misc. Equipment Rental & Leasing	405	2,616	2,603	2,624	19,541,199	574.97
736 Personnel Supply Services	492	30,232	29,837	28,613	93,958,062	244.50
737 Computer and Data Processing Services	733	7,983	7,990	8,100	110,491,365	1059.20
738 Miscellaneous Business Services	907	9,977	10,235	10,536	46,805,976	351.29
75 AUTO REPAIR, SERVICES, AND PARKING	1,802	8,658	8,638	8,604	\$48,898,868	\$435.69
751 Automotive Rentals, No Drivers	130	1,170	1,181	1,182	7,279,090	475.46
752 Automobile Parking	12	70	73	71	292,576	315.50
753 Automotive Repair Shops	1,374	5,511	5,453	5,484	34,003,653	477.08
754 Automotive Services, Except Repair	286	1,907	1,931	1,867	7,323,549	296.24
76 MISCELLANEOUS REPAIR SERVICES	712	3,493	3,470	3,432	\$27,535,236	\$611.28
762 Electrical Repair Shops	180	1,288	1,286	1,277	12,484,858	748.15
763 Watch, Clock, and Jewelry Repair	7	19	19	21	108,657	424.99
764 Reupholstery and Furniture Repair	42	116	114	114	509,646	341.89
769 Miscellaneous Repair Shops	483	2,070	2,051	2,020	14,432,075	542.33
78 MOTION PICTURES	353	3,228	3,268	3,422	\$11,922,961	\$277.42
783 Motion Picture Theaters	60	773	820	869	1,427,461	133.80
784 Video Tape Rental	229	1,426	1,438	1,494	3,625,955	192.01
Other Motion Pictures	64	1,029	1,010	1,059	6,869,545	511.71
79 AMUSEMENT & RECREATION SERVICES	864	8,351	7,859	7,842	\$27,980,222	\$268.46
791 Dance Studios, Schools, and Halls	42	219	220	235	405,674	138.90
792 Producers, Orchestras, Entertainers	65	883	651	614	3,021,736	324.64
793 Bowling Centers	41	437	445	436	1,316,216	230.46
794 Commercial Sports	70	663	645	736	2,842,191	320.89
799 Misc. Amusement, Recreation Services	646	6,149	5,898	5,821	20,394,405	263.40

**TABLE 7. STATE SUMMARY
EMPLOYMENT AND TOTAL EARNINGS, BY INDUSTRY
FOURTH QUARTER 1999**

INDUSTRY GROUP	NUMBER OF EMPLOYING UNITS	EMPLOYMENT			TOTAL EARNINGS	AVERAGE WEEKLY EARNINGS	
		OCTOBER	NOVEMBER	DECEMBER	OCT.-DEC. 1999		
80	HEALTH SERVICES	4,444	94,187	94,358	94,589	\$777,407,356	\$633.63
801	Offices & Clinics of Medical Doctors	1,829	17,321	17,302	17,474	280,285,843	1241.56
802	Offices And Clinics of Dentists	883	4,994	4,993	5,115	45,812,493	700.05
803	Offices of Osteopathic Physicians	18	83	83	84	890,423	821.93
804	Offices of Other Health Practitioners	894	4,194	4,211	4,216	29,206,746	534.03
805	Nursing and Personal Care Facilities	274	20,340	20,427	20,594	83,366,897	313.53
806	Hospitals	106	39,109	39,187	39,038	285,164,303	560.85
807	Medical and Dental Laboratories	116	985	986	976	8,857,275	693.58
808	Home Health Care Services	130	3,734	3,741	3,690	19,702,542	407.23
809	Health and Allied Services, NEC	194	3,427	3,428	3,402	24,120,834	542.69
81	LEGAL SERVICES	1,371	4,829	4,843	4,900	\$68,942,161	\$1,091.80
82	EDUCATIONAL SERVICES	288	6,794	6,878	6,847	\$35,557,907	\$399.91
821	Elementary and Secondary Schools	80	3,032	3,061	3,066	12,517,820	315.40
822	Colleges and Universities	26	2,924	2,964	2,915	17,956,676	470.73
823	Libraries	9	56	56	57	215,169	293.81
824	Vocational Schools	43	206	209	204	1,194,255	445.23
829	Schools & Educational Services, NEC	130	576	588	605	3,673,987	479.28
83	SOCIAL SERVICES	1,912	22,361	22,295	22,227	\$82,451,256	\$284.49
832	Individual and Family Services	674	7,172	7,196	7,155	28,159,837	301.93
833	Job Training and Related Services	106	2,853	2,822	2,819	11,449,037	311.05
835	Child Day Care Services	799	7,154	7,131	7,050	20,480,904	221.53
836	Residential Care	213	3,471	3,473	3,504	14,423,917	318.59
839	Social Services, NEC	120	1,711	1,673	1,699	7,937,561	360.37
84	MUSEUMS, BOTANICAL, ZOOLOGICAL GARDENS	32	171	167	171	\$638,625	\$289.54
86	MEMBERSHIP ORGANIZATIONS	799	3,916	3,897	3,985	\$17,277,639	\$337.95
861	Business Associations	183	560	550	555	4,248,856	588.89
862	Professional Organizations	43	257	256	257	2,429,867	728.23
863	Labor Organizations	152	774	796	817	2,042,400	197.45
864	Civic and Social Associations	247	1,610	1,589	1,626	4,749,113	227.14
865	Political Organizations	14	20	19	20	150,093	587.07
866	Religious Organizations	32	136	140	145	555,523	304.51
869	Membership Organizations, NEC	128	559	547	565	3,101,787	428.36

TABLE 7. STATE SUMMARY
EMPLOYMENT AND TOTAL EARNINGS, BY INDUSTRY
FOURTH QUARTER 1999

INDUSTRY GROUP	NUMBER OF EMPLOYING UNITS	EMPLOYMENT			TOTAL EARNINGS	AVERAGE	
		OCTOBER	NOVEMBER	DECEMBER	OCT.-DEC. 1999	WEEKLY EARNINGS	
87	ENGINEERING & MANAGEMENT SERVICES	2,354	11,454	11,532	11,787	\$123,089,199	\$816.88
871	Engineering & Architectural Services	558	3,653	3,702	3,758	44,925,263	932.90
872	Accounting, Auditing, & Bookkeeping	815	3,403	3,389	3,505	31,054,204	695.97
873	Research and Testing Services	143	1,433	1,451	1,449	11,790,371	627.94
874	Management and Public Relations	838	2,965	2,990	3,075	35,319,361	902.62
88	PRIVATE HOUSEHOLDS	1,409	1,995	1,975	1,956	\$5,913,882	\$230.30
89	SERVICES, NEC	44	178	177	188	\$1,889,962	\$803.21
	LOCAL GOVERNMENT	1,990	105,463	105,961	106,103	\$606,980,502	\$441.14
	STATE GOVERNMENT	1,143	56,089	56,273	56,064	\$433,617,518	\$594.12
	NONCLASSIFIABLE ESTABLISHMENTS	0	0	0	0	\$0	

**TABLE 8. COUNTY SUMMARY
EMPLOYMENT AND TOTAL EARNINGS, BY INDUSTRY
FOUR QUARTER 1999**

INDUSTRY GROUP	NUMBER OF EMPLOYING UNITS	EMPLOYMENT			TOTAL EARNINGS	AVERAGE WEEKLY EARNINGS
		OCTOBER	NOVEMBER	DECEMBER	OCT.-DEC. 1999	
ARKANSAS COUNTY - TOTAL	658	9,752	9,521	9,506	\$62,620,149	\$502.13
MANUFACTURING	31	3,227	3,097	3,131	23,729,948	579.18
NONMANUFACTURING	627	6,525	6,424	6,375	38,890,201	464.43
AGRICULTURE, FORESTRY, AND FISHING	49	219	206	191	1,412,847	529.29
CONSTRUCTION	55	315	294	296	1,967,986	501.82
TRANSPORTATION AND PUBLIC UTILITIES	67	1,189	1,099	1,065	8,718,993	600.08
WHOLESALE AND RETAIL TRADE	193	2,018	2,009	2,012	12,437,807	475.29
WHOLESALE TRADE	51	557	559	553	6,745,547	932.69
RETAIL TRADE	142	1,461	1,450	1,459	5,692,260	300.59
FINANCE, INSURANCE, AND REAL ESTATE	36	293	299	300	2,361,147	610.85
SERVICES	178	1,287	1,299	1,304	5,765,757	342.05
LOCAL GOVERNMENT	33	992	1,002	997	5,014,420	386.89
STATE GOVERNMENT	16	212	216	210	1,211,244	438.12
ASHLEY COUNTY - TOTAL	592	10,018	9,964	9,915	\$76,577,477	\$591.09
MANUFACTURING	66	3,938	3,936	3,932	41,978,864	820.55
NONMANUFACTURING	526	6,080	6,028	5,983	34,598,613	441.34
CONSTRUCTION	61	1,097	1,073	1,075	8,780,933	624.46
TRANSPORTATION AND PUBLIC UTILITIES	43	389	376	370	2,941,756	598.12
WHOLESALE AND RETAIL TRADE	162	1,511	1,515	1,526	6,155,917	312.08
WHOLESALE TRADE	29	226	222	198	1,885,950	673.71
RETAIL TRADE	133	1,285	1,293	1,328	4,269,967	252.27
FINANCE, INSURANCE, AND REAL ESTATE	39	299	288	296	2,199,569	574.85
SERVICES	135	1,063	1,078	1,104	5,197,084	369.59
LOCAL GOVERNMENT	36	1,065	1,064	1,064	5,308,865	383.69
STATE GOVERNMENT	12	221	221	217	1,124,068	393.63
OTHER NONMANUFACTURING	38	435	413	331	2,890,421	565.75
BAXTER COUNTY - TOTAL	1,114	13,889	13,874	13,811	\$83,883,318	\$465.62
MANUFACTURING	73	3,575	3,575	3,591	25,264,681	542.81
NONMANUFACTURING	1,041	10,314	10,299	10,220	58,618,637	438.73
CONSTRUCTION	122	501	505	509	2,895,870	441.11
TRANSPORTATION AND PUBLIC UTILITIES	51	403	388	391	2,782,893	543.32
WHOLESALE AND RETAIL TRADE	322	3,234	3,221	3,151	11,672,058	280.40
WHOLESALE TRADE	43	347	337	327	1,773,326	404.78
RETAIL TRADE	279	2,887	2,884	2,824	9,898,732	265.77
FINANCE, INSURANCE, AND REAL ESTATE	79	443	444	450	4,644,611	801.67
SERVICES	397	4,111	4,103	4,099	27,901,516	522.93
LOCAL GOVERNMENT	35	1,144	1,169	1,158	6,107,728	406.07
STATE GOVERNMENT	11	276	265	262	1,556,745	447.38
OTHER NONMANUFACTURING	24	202	204	200	1,057,216	402.60

TABLE 8. COUNTY SUMMARY
EMPLOYMENT AND TOTAL EARNINGS, BY INDUSTRY
FOURTH QUARTER 1999

INDUSTRY GROUP	NUMBER OF EMPLOYING UNITS	EMPLOYMENT			TOTAL EARNINGS	AVERAGE WEEKLY EARNINGS
		OCTOBER	NOVEMBER	DECEMBER	OCT.-DEC. 1999	
BENTON COUNTY - TOTAL	3,291	67,515	67,892	67,726	\$524,876,142	\$596.29
MANUFACTURING	226	16,332	16,371	16,400	121,180,003	569.51
NONMANUFACTURING	3,065	51,183	51,521	51,326	403,696,139	604.82
CONSTRUCTION	416	2,652	2,663	2,685	18,836,930	543.37
TRANSPORTATION AND PUBLIC UTILITIES	186	4,122	4,202	4,177	35,803,226	660.93
WHOLESALE AND RETAIL TRADE	968	23,162	23,335	23,340	214,382,592	708.41
WHOLESALE TRADE	263	1,958	1,981	1,998	19,956,294	775.69
RETAIL TRADE	705	21,204	21,354	21,342	194,426,298	702.15
FINANCE, INSURANCE, AND REAL ESTATE	300	2,861	2,859	2,852	21,543,743	579.99
SERVICES	1,022	11,629	11,679	11,515	70,549,590	467.53
LOCAL GOVERNMENT	68	5,040	5,060	5,046	31,219,073	475.66
STATE GOVERNMENT	18	636	647	646	3,829,186	458.09
OTHER NONMANUFACTURING	87	1,081	1,076	1,065	7,531,799	539.45
BOONE COUNTY - TOTAL	987	13,886	14,005	14,054	\$84,905,865	\$467.13
MANUFACTURING	73	3,016	3,052	3,065	22,152,589	559.74
NONMANUFACTURING	914	10,870	10,953	10,989	62,753,276	441.35
CONSTRUCTION	93	682	663	664	4,426,022	508.41
TRANSPORTATION AND PUBLIC UTILITIES	68	1,409	1,418	1,429	12,236,167	663.47
WHOLESALE AND RETAIL TRADE	289	3,831	3,885	3,898	17,423,860	346.21
WHOLESALE TRADE	63	1,106	1,099	1,092	7,137,425	499.57
RETAIL TRADE	226	2,725	2,786	2,806	10,286,435	285.41
FINANCE, INSURANCE, AND REAL ESTATE	72	482	476	483	3,513,226	562.63
SERVICES	321	1,971	1,984	1,999	9,740,918	377.55
LOCAL GOVERNMENT	45	1,889	1,912	1,920	11,201,898	451.85
STATE GOVERNMENT	18	572	579	561	4,078,476	549.76
OTHER NONMANUFACTURING	8	34	36	35	132,709	291.67
BRADLEY COUNTY - TOTAL	347	3,599	3,599	3,708	\$20,407,968	\$431.83
MANUFACTURING	59	1,084	1,048	1,073	8,113,912	584.23
NONMANUFACTURING	288	2,515	2,551	2,635	12,294,056	368.41
CONSTRUCTION	26	80	83	82	414,571	390.49
TRANSPORTATION AND PUBLIC UTILITIES	26	61	60	61	490,436	621.85
WHOLESALE AND RETAIL TRADE	83	738	739	752	2,822,526	292.22
WHOLESALE TRADE	21	196	189	187	974,829	393.29
RETAIL TRADE	62	542	550	565	1,847,697	257.33
FINANCE, INSURANCE, AND REAL ESTATE	24	149	144	144	871,980	460.47
SERVICES	78	681	706	702	3,486,055	385.10
LOCAL GOVERNMENT	17	485	510	509	2,521,239	386.85
STATE GOVERNMENT	11	248	249	247	1,473,591	457.07
OTHER NONMANUFACTURING	23	3	60	138	213,658	181.94

TABLE 8. COUNTY SUMMARY
EMPLOYMENT AND TOTAL EARNINGS, BY INDUSTRY
FOUR QUARTER 1999

INDUSTRY GROUP	NUMBER OF EMPLOYING UNITS	EMPLOYMENT			TOTAL EARNINGS	AVERAGE WEEKLY EARNINGS
		OCTOBER	NOVEMBER	DECEMBER	OCT.-DEC. 1999	
CALHOUN COUNTY - TOTAL	142	2,969	2,998	2,999	\$24,150,268	\$621.59
MANUFACTURING	39	1,929	1,938	1,943	18,198,321	722.82
NONMANUFACTURING	103	1,040	1,060	1,056	5,951,947	435.21
CONSTRUCTION	13	68	62	61	307,327	371.32
TRANSPORTATION AND PUBLIC UTILITIES	19	136	144	145	1,213,539	658.94
WHOLESALE AND RETAIL TRADE	25	94	90	93	269,051	224.15
SERVICES	14	97	103	100	453,901	349.15
LOCAL GOVERNMENT	12	228	235	235	1,060,600	350.65
STATE GOVERNMENT	10	297	306	305	1,796,350	456.54
OTHER NONMANUFACTURING	10	120	120	117	851,179	550.21
CARROLL COUNTY - TOTAL	769	10,147	9,662	9,371	\$46,928,674	\$371.13
AGRICULTURE, FORESTRY, AND FISHING	22	393	361	381	2,070,309	420.94
WHOLESALE AND RETAIL TRADE	277	2,143	2,093	1,942	7,524,654	281.07
WHOLESALE TRADE	27	69	65	71	421,268	474.22
RETAIL TRADE	250	2,074	2,028	1,871	7,103,386	274.44
SERVICES	248	2,128	1,713	1,568	7,873,303	335.91
LOCAL GOVERNMENT	25	875	870	841	4,240,597	378.42
STATE GOVERNMENT	10	90	89	87	500,041	433.81
OTHER	187	4,518	4,536	4,552	24,719,770	419.27
CHICOT COUNTY - TOTAL	360	4,502	4,452	4,466	\$22,783,798	\$391.79
MANUFACTURING	15	1,094	1,082	1,083	4,712,639	333.70
NONMANUFACTURING	345	3,408	3,370	3,383	18,071,159	410.42
CONSTRUCTION	17	172	175	180	1,577,117	690.61
TRANSPORTATION AND PUBLIC UTILITIES	19	119	114	113	1,011,807	674.84
WHOLESALE AND RETAIL TRADE	108	813	814	847	3,355,198	312.97
WHOLESALE TRADE	27	213	214	216	1,433,167	514.36
RETAIL TRADE	81	600	600	631	1,922,031	242.24
FINANCE, INSURANCE, AND REAL ESTATE	27	164	167	168	1,063,714	491.93
SERVICES	91	601	601	594	2,688,859	345.49
LOCAL GOVERNMENT	16	893	886	899	4,422,442	381.09
STATE GOVERNMENT	13	303	306	304	2,112,373	533.92
OTHER NONMANUFACTURING	54	343	307	278	1,839,649	457.47

TABLE 8. COUNTY SUMMARY
EMPLOYMENT AND TOTAL EARNINGS, BY INDUSTRY
FOURTH QUARTER 1999

INDUSTRY GROUP	NUMBER OF EMPLOYING UNITS	EMPLOYMENT			TOTAL EARNINGS	AVERAGE WEEKLY EARNINGS
		OCTOBER	NOVEMBER	DECEMBER	OCT.-DEC. 1999	
CLARK COUNTY - TOTAL	615	10,463	10,390	10,326	\$55,319,770	\$409.45
MANUFACTURING	76	3,350	3,262	3,238	20,631,283	483.36
NONMANUFACTURING	539	7,113	7,128	7,088	34,688,487	375.31
AGRICULTURE, FORESTRY, AND FISHING	6	21	21	21	92,169	337.62
CONSTRUCTION	38	161	162	132	767,464	389.25
TRANSPORTATION AND PUBLIC UTILITIES	34	423	412	424	3,085,674	565.59
WHOLESALE AND RETAIL TRADE	169	2,345	2,406	2,361	8,091,954	262.57
WHOLESALE TRADE	28	182	182	175	1,301,946	557.42
RETAIL TRADE	141	2,163	2,224	2,186	6,790,008	238.39
FINANCE, INSURANCE, AND REAL ESTATE	63	349	349	358	2,122,183	463.76
SERVICES	187	1,841	1,838	1,846	9,052,505	378.11
LOCAL GOVERNMENT	27	888	861	865	4,342,139	383.33
STATE GOVERNMENT	15	1,085	1,079	1,081	7,134,399	507.37
CLAY COUNTY - TOTAL	471	6,346	6,357	6,291	\$29,185,685	\$354.59
MANUFACTURING	29	2,875	2,900	2,846	12,472,841	333.88
NONMANUFACTURING	442	3,471	3,457	3,445	16,712,844	371.81
AGRICULTURE, FORESTRY, AND FISHING	72	261	244	207	1,346,901	436.55
CONSTRUCTION	44	198	190	187	1,271,099	510.14
TRANSPORTATION AND PUBLIC UTILITIES	39	247	225	231	1,702,263	558.79
WHOLESALE AND RETAIL TRADE	124	1,240	1,248	1,257	4,725,035	291.16
WHOLESALE TRADE	39	465	459	477	2,384,137	392.71
RETAIL TRADE	85	775	789	780	2,340,898	230.46
FINANCE, INSURANCE, AND REAL ESTATE	32	150	148	149	964,432	497.90
SERVICES	98	463	472	476	2,134,154	349.04
LOCAL GOVERNMENT	22	832	849	856	4,095,887	372.57
STATE GOVERNMENT	11	80	81	82	473,073	449.26
CLEBURNE COUNTY - TOTAL	605	6,416	6,293	6,259	\$34,465,646	\$419.32
MANUFACTURING	47	1,735	1,707	1,704	11,251,917	504.59
NONMANUFACTURING	558	4,681	4,586	4,555	23,213,729	387.57
CONSTRUCTION	62	262	258	261	1,436,822	424.55
TRANSPORTATION AND PUBLIC UTILITIES	48	388	383	376	3,006,840	604.96
WHOLESALE AND RETAIL TRADE	184	1,623	1,589	1,569	6,592,850	318.22
WHOLESALE TRADE	35	176	170	174	1,753,301	778.09
RETAIL TRADE	149	1,447	1,419	1,395	4,839,549	262.10
FINANCE, INSURANCE, AND REAL ESTATE	51	258	248	250	1,451,921	443.20
SERVICES	167	1,217	1,190	1,187	5,952,042	382.18
LOCAL GOVERNMENT	20	726	728	729	3,628,250	383.55
STATE GOVERNMENT	10	116	114	113	645,275	434.14
OTHER NONMANUFACTURING	16	1	76	70	499,729	486.59

**TABLE 8. COUNTY SUMMARY
EMPLOYMENT AND TOTAL EARNINGS, BY INDUSTRY
FOURTH QUARTER 1999**

INDUSTRY GROUP	NUMBER OF EMPLOYING UNITS	EMPLOYMENT			TOTAL EARNINGS	AVERAGE WEEKLY EARNINGS
		OCTOBER	NOVEMBER	DECEMBER	OCT.-DEC. 1999	
CLEVELAND COUNTY - TOTAL	126	1,151	1,162	1,159	\$5,442,705	\$361.75
MANUFACTURING	24	169	170	164	924,946	424.35
NONMANUFACTURING	102	982	992	995	4,517,759	351.15
CONSTRUCTION	12	90	91	92	292,640	247.37
TRANSPORTATION AND PUBLIC UTILITIES	13	92	93	94	556,783	460.53
WHOLESALE AND RETAIL TRADE	25	175	176	178	654,631	285.57
WHOLESALE TRADE	5	81	79	82	407,693	388.77
RETAIL TRADE	20	94	97	96	246,938	198.56
FINANCE, INSURANCE, AND REAL ESTATE	5	28	28	28	169,223	464.90
LOCAL GOVERNMENT	12	335	343	340	1,585,693	359.46
STATE GOVERNMENT	8	57	58	58	317,967	424.14
OTHER NONMANUFACTURING	27	205	203	205	940,822	354.18
COLUMBIA COUNTY - TOTAL	735	10,116	10,069	10,014	\$64,261,975	\$491.07
MANUFACTURING	60	3,131	3,064	3,009	26,771,441	671.23
NONMANUFACTURING	675	6,985	7,005	7,005	37,490,534	412.08
AGRICULTURE, FORESTRY, AND FISHING	22	160	145	129	891,821	474.20
MINING	35	310	317	322	2,767,554	672.99
CONSTRUCTION	48	245	247	257	1,781,468	548.88
TRANSPORTATION AND PUBLIC UTILITIES	57	543	555	549	4,559,831	638.90
WHOLESALE AND RETAIL TRADE	213	2,124	2,125	2,158	7,533,842	271.36
WHOLESALE TRADE	41	286	283	281	1,771,925	481.07
RETAIL TRADE	172	1,838	1,842	1,877	5,761,917	239.28
FINANCE, INSURANCE, AND REAL ESTATE	42	400	401	414	2,804,123	532.60
SERVICES	212	1,454	1,457	1,440	6,698,850	355.29
LOCAL GOVERNMENT	30	1,235	1,246	1,238	6,751,309	418.93
STATE GOVERNMENT	16	514	512	498	3,701,736	560.53
CONWAY COUNTY - TOTAL	447	6,020	6,053	6,146	\$38,775,027	\$491.14
MANUFACTURING	27	926	873	876	9,129,952	787.63
NONMANUFACTURING	420	5,094	5,180	5,270	29,645,075	440.12
CONSTRUCTION	48	530	521	511	4,682,227	691.75
TRANSPORTATION AND PUBLIC UTILITIES	26	364	374	389	3,028,252	620.08
WHOLESALE AND RETAIL TRADE	144	1,621	1,633	1,629	6,949,353	328.42
WHOLESALE TRADE	35	351	350	353	2,503,772	548.19
RETAIL TRADE	109	1,270	1,283	1,276	4,445,581	267.93
FINANCE, INSURANCE, AND REAL ESTATE	27	151	158	166	908,582	441.42
SERVICES	123	1,119	1,179	1,263	6,841,820	443.38
LOCAL GOVERNMENT	24	841	848	852	4,337,924	393.96
STATE GOVERNMENT	13	343	342	335	1,790,074	404.99
OTHER NONMANUFACTURING	15	125	125	125	1,106,843	681.13

**TABLE 8. COUNTY SUMMARY
EMPLOYMENT AND TOTAL EARNINGS, BY INDUSTRY
FOURTH QUARTER 1999**

INDUSTRY GROUP	NUMBER OF EMPLOYING UNITS	EMPLOYMENT			TOTAL EARNINGS	AVERAGE WEEKLY EARNINGS
		OCTOBER	NOVEMBER	DECEMBER	OCT.-DEC. 1999	
CRAIGHEAD COUNTY - TOTAL	2,387	39,222	39,382	39,454	\$260,410,632	\$509.03
MANUFACTURING	147	8,851	8,853	8,902	70,186,908	608.77
NONMANUFACTURING	2,240	30,371	30,529	30,552	190,223,724	480.01
CONSTRUCTION	236	1,913	1,924	1,923	12,811,240	513.27
TRANSPORTATION AND PUBLIC UTILITIES	152	1,746	1,711	1,730	13,664,884	607.95
WHOLESALE AND RETAIL TRADE	733	9,643	9,884	10,111	42,448,288	330.51
WHOLESALE TRADE	185	1,764	1,739	1,746	12,971,647	570.29
RETAIL TRADE	548	7,879	8,145	8,365	29,476,641	278.91
FINANCE, INSURANCE, AND REAL ESTATE	191	1,192	1,181	1,188	9,804,922	635.40
SERVICES	787	10,065	10,051	9,999	75,160,701	575.95
LOCAL GOVERNMENT	39	3,035	3,062	3,066	16,416,776	413.45
STATE GOVERNMENT	24	2,211	2,203	2,181	17,389,262	608.48
OTHER NONMANUFACTURING	78	566	513	354	2,527,651	407.05
CRAWFORD COUNTY - TOTAL	999	15,885	15,935	15,948	\$99,698,779	\$481.65
MANUFACTURING	73	4,551	4,485	4,498	30,368,300	517.81
NONMANUFACTURING	926	11,334	11,450	11,450	69,330,479	467.35
CONSTRUCTION	152	864	863	887	5,830,971	514.77
TRANSPORTATION AND PUBLIC UTILITIES	70	2,561	2,684	2,634	21,388,090	626.44
WHOLESALE AND RETAIL TRADE	294	3,223	3,226	3,218	13,147,574	313.86
WHOLESALE TRADE	79	572	582	588	3,789,299	501.98
RETAIL TRADE	215	2,651	2,644	2,630	9,358,275	272.50
FINANCE, INSURANCE, AND REAL ESTATE	79	376	373	380	2,661,243	543.96
SERVICES	254	2,058	2,041	2,039	13,210,468	496.67
LOCAL GOVERNMENT	40	1,811	1,820	1,816	10,202,161	432.23
STATE GOVERNMENT	12	151	154	157	1,049,650	524.30
OTHER NONMANUFACTURING	25	290	289	319	1,840,322	472.93
CRITTENDEN COUNTY - TOTAL	1,149	17,277	17,275	17,252	\$103,479,010	\$460.96
MANUFACTURING	54	2,178	2,137	2,121	17,299,343	620.29
NONMANUFACTURING	1,095	15,099	15,138	15,131	86,179,667	438.36
CONSTRUCTION	93	668	640	627	4,371,817	521.39
TRANSPORTATION AND PUBLIC UTILITIES	87	1,798	1,772	1,775	15,921,618	687.41
WHOLESALE AND RETAIL TRADE	346	5,149	5,183	5,304	24,726,795	364.94
WHOLESALE TRADE	85	788	762	791	7,369,498	726.46
RETAIL TRADE	261	4,361	4,421	4,513	17,357,297	301.28
FINANCE, INSURANCE, AND REAL ESTATE	94	480	481	476	3,217,535	516.71
SERVICES	353	3,753	3,805	3,788	19,147,046	389.44
LOCAL GOVERNMENT	40	2,278	2,335	2,361	13,455,866	445.25
STATE GOVERNMENT	19	71	434	412	2,656,266	480.02
OTHER NONMANUFACTURING	63	2	488	388	2,682,724	436.59

**TABLE 8. COUNTY SUMMARY
EMPLOYMENT AND TOTAL EARNINGS, BY INDUSTRY
FOURTH QUARTER 1999**

INDUSTRY GROUP	NUMBER OF EMPLOYING UNITS	EMPLOYMENT			TOTAL EARNINGS	AVERAGE WEEKLY EARNINGS
		OCTOBER	NOVEMBER	DECEMBER	OCT.-DEC. 1999	
CROSS COUNTY - TOTAL	447	5,690	5,624	5,663	\$32,926,356	\$447.57
MANUFACTURING	23	1,379	1,373	1,390	9,277,739	516.90
NONMANUFACTURING	424	4,311	4,251	4,273	23,648,617	425.19
AGRICULTURE, FORESTRY, AND FISHING	37	170	153	136	856,344	430.54
CONSTRUCTION	39	137	132	134	962,432	551.12
TRANSPORTATION AND PUBLIC UTILITIES	47	485	458	453	3,390,400	560.46
WHOLESALE AND RETAIL TRADE	130	1,345	1,340	1,342	6,353,945	364.12
WHOLESALE TRADE	35	324	312	301	2,316,253	570.46
RETAIL TRADE	95	1,021	1,028	1,041	4,037,692	301.55
FINANCE, INSURANCE, AND REAL ESTATE SERVICES	32 107	217 810	222 802	222 825	1,283,194 4,146,990	447.99 392.69
LOCAL GOVERNMENT	19	914	910	931	5,007,693	419.46
STATE GOVERNMENT	13	233	234	230	1,647,619	545.51
DALLAS COUNTY - TOTAL	287	3,420	3,421	3,468	\$19,811,462	\$443.48
MANUFACTURING	69	1,228	1,238	1,222	8,976,759	561.70
NONMANUFACTURING	218	2,192	2,183	2,246	10,834,703	377.63
AGRICULTURE, FORESTRY, AND FISHING	5	25	25	27	114,942	344.48
CONSTRUCTION	21	134	127	133	705,889	413.45
TRANSPORTATION AND PUBLIC UTILITIES	23	95	93	95	617,558	503.58
WHOLESALE AND RETAIL TRADE	77	616	614	652	2,842,855	348.59
WHOLESALE TRADE	13	73	72	72	547,422	582.16
RETAIL TRADE	64	543	542	580	2,295,433	318.15
FINANCE, INSURANCE, AND REAL ESTATE SERVICES	13 54	71 752	71 753	72 763	511,649 3,751,272	551.74 381.69
LOCAL GOVERNMENT	16	437	439	440	1,940,216	340.23
STATE GOVERNMENT	9	62	61	64	350,322	432.32
DESHA COUNTY - TOTAL	458	5,753	5,639	5,512	\$34,444,876	\$470.23
MANUFACTURING	21	1,542	1,541	1,528	13,081,910	654.72
NONMANUFACTURING	437	4,211	4,098	3,984	21,362,966	401.03
CONSTRUCTION	27	199	186	187	1,431,065	577.35
TRANSPORTATION AND PUBLIC UTILITIES	36	338	284	227	1,785,495	485.32
WHOLESALE AND RETAIL TRADE	137	1,212	1,220	1,223	5,138,570	324.44
WHOLESALE TRADE	28	225	226	224	2,108,242	720.77
RETAIL TRADE	109	987	994	999	3,030,328	234.67
FINANCE, INSURANCE, AND REAL ESTATE SERVICES	35 116	244 704	243 692	255 693	1,418,372 3,434,277	441.13 379.38
LOCAL GOVERNMENT	23	936	932	947	4,779,821	391.84
STATE GOVERNMENT	11	183	189	186	1,154,031	477.27
OTHER NONMANUFACTURING	52	395	352	266	2,221,335	506.04

TABLE 8. COUNTY SUMMARY
EMPLOYMENT AND TOTAL EARNINGS, BY INDUSTRY
FOURTH QUARTER 1999

INDUSTRY GROUP	NUMBER OF EMPLOYING UNITS	EMPLOYMENT			TOTAL EARNINGS	AVERAGE WEEKLY EARNINGS
		OCTOBER	NOVEMBER	DECEMBER	OCT.-DEC. 1999	
DREW COUNTY - TOTAL	495	7,548	7,552	7,543	\$42,070,005	\$428.76
MANUFACTURING	47	2,357	2,367	2,364	14,860,810	483.83
NONMANUFACTURING	448	5,191	5,185	5,179	27,209,195	403.67
CONSTRUCTION	27	102	115	118	591,103	407.19
TRANSPORTATION AND PUBLIC UTILITIES	39	186	189	186	1,476,014	607.16
WHOLESALE AND RETAIL TRADE	157	1,786	1,809	1,815	7,750,847	330.62
WHOLESALE TRADE	35	268	268	272	2,729,628	779.60
RETAIL TRADE	122	1,518	1,541	1,543	5,021,219	251.79
FINANCE, INSURANCE, AND REAL ESTATE	37	235	236	238	1,606,341	522.84
SERVICES	123	1,079	1,079	1,083	4,852,427	345.51
LOCAL GOVERNMENT	24	1,070	1,073	1,060	5,711,262	411.48
STATE GOVERNMENT	14	540	538	537	4,052,525	579.07
OTHER NONMANUFACTURING	27	193	146	142	1,168,676	560.70
FAULKNER COUNTY - TOTAL	1,766	33,049	33,174	33,601	\$222,778,295	\$515.01
MANUFACTURING	84	7,528	7,541	7,549	57,481,530	586.48
NONMANUFACTURING	1,682	25,521	25,633	26,052	165,296,765	494.07
CONSTRUCTION	257	2,712	2,720	2,754	19,277,277	543.44
TRANSPORTATION AND PUBLIC UTILITIES	68	677	672	689	5,868,699	664.53
WHOLESALE AND RETAIL TRADE	534	7,200	7,262	7,587	28,083,575	293.93
WHOLESALE TRADE	125	840	850	846	5,322,233	484.31
RETAIL TRADE	409	6,360	6,412	6,741	22,761,342	269.19
FINANCE, INSURANCE, AND REAL ESTATE	160	912	909	924	6,190,463	520.43
SERVICES	574	8,968	8,955	8,996	69,946,374	599.63
LOCAL GOVERNMENT	34	2,471	2,525	2,510	15,177,897	466.64
STATE GOVERNMENT	20	2,375	2,389	2,394	19,600,795	631.92
OTHER NONMANUFACTURING	35	206	201	198	1,151,685	439.29
FRANKLIN COUNTY - TOTAL	290	4,100	4,055	4,157	\$21,524,828	\$403.45
MANUFACTURING	21	1,115	1,055	1,160	6,548,621	453.82
NONMANUFACTURING	269	2,985	3,000	2,997	14,976,207	384.77
CONSTRUCTION	20	162	168	158	1,035,763	489.80
TRANSPORTATION AND PUBLIC UTILITIES	20	341	341	344	2,628,438	591.19
WHOLESALE AND RETAIL TRADE	85	777	773	762	2,326,087	232.18
WHOLESALE TRADE	15	74	73	69	232,422	248.31
RETAIL TRADE	70	703	700	693	2,093,665	230.51
FINANCE, INSURANCE, AND REAL ESTATE	25	142	143	143	616,518	332.41
SERVICES	76	637	638	640	2,874,274	346.37
LOCAL GOVERNMENT	23	721	729	734	3,826,158	404.29
STATE GOVERNMENT	10	36	133	135	857,587	489.86
OTHER NONMANUFACTURING	10	9	75	81	811,382	832.19

**TABLE 8. COUNTY SUMMARY
EMPLOYMENT AND TOTAL EARNINGS, BY INDUSTRY
FOURTH QUARTER 1999**

INDUSTRY GROUP	NUMBER OF EMPLOYING UNITS	EMPLOYMENT			TOTAL EARNINGS	AVERAGE WEEKLY EARNINGS
		OCTOBER	NOVEMBER	DECEMBER	OCT.-DEC. 1999	
FULTON COUNTY - TOTAL	193	1,848	1,813	1,793	\$8,031,068	\$339.81
MANUFACTURING	12	395	367	369	1,434,802	292.76
NONMANUFACTURING	181	1,453	1,446	1,424	6,596,266	352.12
TRANSPORTATION AND PUBLIC UTILITIES	11	101	102	105	848,031	635.39
WHOLESALE AND RETAIL TRADE	66	350	349	339	969,188	215.47
WHOLESALE TRADE	12	55	55	51	165,658	237.45
RETAIL TRADE	54	295	294	288	803,530	211.44
FINANCE, INSURANCE, AND REAL ESTATE	11	76	76	78	386,800	388.09
SERVICES	52	290	279	273	1,208,960	331.34
LOCAL GOVERNMENT	13	470	476	468	2,144,845	350.05
STATE GOVERNMENT	10	77	75	74	411,802	420.49
OTHER NONMANUFACTURING	18	89	89	87	626,640	545.70
GARLAND COUNTY - TOTAL	2,705	33,045	33,370	33,591	\$204,837,654	\$472.67
MANUFACTURING	125	3,906	3,932	3,968	31,524,158	616.20
NONMANUFACTURING	2,580	29,139	29,438	29,623	173,313,496	453.46
AGRICULTURE, FORESTRY, AND FISHING	66	473	451	446	2,429,086	409.17
MINING	14	196	203	196	1,579,458	612.59
CONSTRUCTION	365	2,438	2,452	2,463	14,298,973	448.76
TRANSPORTATION AND PUBLIC UTILITIES	97	981	969	975	8,172,579	644.78
WHOLESALE AND RETAIL TRADE	833	9,619	9,815	9,856	43,340,829	341.47
WHOLESALE TRADE	160	1,382	1,389	1,398	10,948,995	606.07
RETAIL TRADE	673	8,237	8,426	8,458	32,391,834	297.56
FINANCE, INSURANCE, AND REAL ESTATE	256	1,399	1,392	1,413	10,355,201	568.43
SERVICES	892	10,537	10,613	10,684	69,939,004	507.00
LOCAL GOVERNMENT	34	2,619	2,647	2,695	16,941,097	491.08
STATE GOVERNMENT	23	877	896	895	6,257,269	541.22
GRANT COUNTY - TOTAL	283	3,690	3,743	3,743	\$21,873,050	\$451.65
MANUFACTURING	41	1,304	1,317	1,320	9,480,910	555.16
NONMANUFACTURING	242	2,386	2,426	2,423	12,392,140	395.26
CONSTRUCTION	29	174	171	162	1,102,989	502.04
TRANSPORTATION AND PUBLIC UTILITIES	34	113	117	113	895,477	602.47
WHOLESALE AND RETAIL TRADE	79	779	786	787	3,185,914	312.59
WHOLESALE TRADE	20	115	120	118	1,171,114	765.60
RETAIL TRADE	59	664	666	669	2,014,800	232.59
FINANCE, INSURANCE, AND REAL ESTATE	17	92	91	91	567,447	477.92
SERVICES	55	325	338	342	1,660,666	381.32
LOCAL GOVERNMENT	10	763	793	797	4,122,952	404.36
STATE GOVERNMENT	10	64	66	65	380,002	449.71
OTHER NONMANUFACTURING	8	76	64	66	476,693	534.01

**TABLE 8. COUNTY SUMMARY
EMPLOYMENT AND TOTAL EARNINGS, BY INDUSTRY
FOURTH QUARTER 1999**

INDUSTRY GROUP	NUMBER OF EMPLOYING UNITS	EMPLOYMENT			TOTAL EARNINGS	AVERAGE WEEKLY EARNINGS
		OCTOBER	NOVEMBER	DECEMBER	OCT.-DEC. 1999	
GREENE COUNTY - TOTAL	805	14,525	14,739	14,678	\$88,166,037	\$463.02
MANUFACTURING	56	6,391	6,509	6,452	46,418,884	553.54
NONMANUFACTURING	749	8,134	8,230	8,226	41,747,153	391.78
CONSTRUCTION	71	339	339	326	1,994,144	458.35
TRANSPORTATION AND PUBLIC UTILITIES	41	238	233	234	2,164,286	708.44
WHOLESALE AND RETAIL TRADE	273	2,902	3,005	3,019	11,582,541	299.45
WHOLESALE TRADE	57	444	435	434	2,826,439	496.77
RETAIL TRADE	216	2,458	2,570	2,585	8,756,102	265.42
FINANCE, INSURANCE, AND REAL ESTATE	57	335	342	344	2,535,360	573.05
SERVICES	242	2,559	2,541	2,548	13,158,608	397.05
LOCAL GOVERNMENT	31	1,381	1,420	1,420	7,760,938	424.30
STATE GOVERNMENT	11	236	233	232	1,778,353	585.43
OTHER NONMANUFACTURING	23	144	117	103	772,923	490.02
HEMPSTEAD COUNTY - TOTAL	495	9,460	9,480	9,421	\$53,124,037	\$432.26
MANUFACTURING	41	3,971	3,987	3,966	24,630,279	476.68
NONMANUFACTURING	454	5,489	5,493	5,455	28,493,758	400.04
CONSTRUCTION	32	129	127	114	801,455	499.87
TRANSPORTATION AND PUBLIC UTILITIES	32	257	257	254	2,842,300	854.06
WHOLESALE AND RETAIL TRADE	140	1,533	1,540	1,519	5,895,992	296.30
WHOLESALE TRADE	33	237	242	241	1,527,211	489.49
RETAIL TRADE	107	1,296	1,298	1,278	4,368,781	260.38
FINANCE, INSURANCE, AND REAL ESTATE	31	235	234	235	1,424,669	467.00
SERVICES	159	1,633	1,632	1,630	7,758,255	365.75
LOCAL GOVERNMENT	31	1,003	1,005	1,005	5,294,241	405.49
STATE GOVERNMENT	15	488	491	491	3,266,935	512.86
OTHER NONMANUFACTURING	14	211	207	207	1,209,911	446.74
HOT SPRING COUNTY - TOTAL	606	7,593	7,624	7,653	\$46,013,938	\$464.30
MANUFACTURING	82	2,409	2,410	2,406	18,069,419	577.14
NONMANUFACTURING	524	5,184	5,214	5,247	27,944,519	412.19
AGRICULTURE, FORESTRY, AND FISHING	12	98	98	92	485,320	388.88
MINING	4	106	108	115	926,610	649.95
CONSTRUCTION	79	302	296	320	1,542,314	387.71
TRANSPORTATION AND PUBLIC UTILITIES	56	349	340	347	2,847,525	634.29
WHOLESALE AND RETAIL TRADE	155	1,422	1,443	1,455	6,496,953	347.06
WHOLESALE TRADE	28	105	112	115	1,680,784	1168.29
RETAIL TRADE	127	1,317	1,331	1,340	4,816,169	278.69
FINANCE, INSURANCE, AND REAL ESTATE	35	263	262	263	1,706,095	499.64
SERVICES	143	1,262	1,299	1,302	6,171,177	368.66
LOCAL GOVERNMENT	27	1,002	1,073	1,091	6,032,445	428.87
STATE GOVERNMENT	13	260	295	262	1,736,080	467.48

**TABLE 8. COUNTY SUMMARY
EMPLOYMENT AND TOTAL EARNINGS, BY INDUSTRY
FOUR QUARTER 1999**

INDUSTRY GROUP	NUMBER OF EMPLOYING UNITS	EMPLOYMENT			TOTAL EARNINGS	AVERAGE WEEKLY EARNINGS
		OCTOBER	NOVEMBER	DECEMBER	OCT.-DEC. 1999	
HOWARD COUNTY - TOTAL	357	8,246	8,412	8,587	\$45,952,082	\$420.06
MANUFACTURING	42	4,787	4,967	5,135	29,619,642	459.08
NONMANUFACTURING	315	3,459	3,445	3,452	16,332,440	363.95
CONSTRUCTION	22	98	88	75	363,000	320.95
TRANSPORTATION AND PUBLIC UTILITIES	29	327	340	320	2,512,587	587.46
WHOLESALE AND RETAIL TRADE	110	987	980	998	3,479,380	270.80
WHOLESALE TRADE	24	128	129	129	769,134	459.83
RETAIL TRADE	86	859	851	869	2,710,246	242.51
FINANCE, INSURANCE, AND REAL ESTATE	22	130	130	133	724,687	425.54
SERVICES	85	827	825	841	3,508,422	324.76
LOCAL GOVERNMENT	18	629	622	624	3,234,791	398.13
STATE GOVERNMENT	13	184	183	180	1,111,660	468.99
OTHER NONMANUFACTURING	16	277	277	281	1,397,913	386.34
INDEPENDENCE COUNTY - TOTAL	892	16,257	16,143	16,140	\$99,075,486	\$471.03
MANUFACTURING	56	5,784	5,703	5,670	40,351,064	542.74
NONMANUFACTURING	836	10,473	10,440	10,470	58,724,422	431.82
AGRICULTURE, FORESTRY, AND FISHING	14	114	105	112	630,285	439.43
MINING	3	40	36	34	380,953	799.20
CONSTRUCTION	74	495	498	479	2,896,796	454.14
TRANSPORTATION AND PUBLIC UTILITIES	70	1,341	1,322	1,342	11,360,679	654.61
WHOLESALE AND RETAIL TRADE	276	3,129	3,128	3,138	12,443,307	305.64
WHOLESALE TRADE	55	571	557	558	3,562,208	487.57
RETAIL TRADE	221	2,558	2,571	2,580	8,881,099	265.86
FINANCE, INSURANCE, AND REAL ESTATE	77	353	353	360	2,552,265	552.52
SERVICES	269	3,242	3,237	3,244	19,002,892	451.02
LOCAL GOVERNMENT	37	1,338	1,338	1,344	6,456,186	370.62
STATE GOVERNMENT	16	421	423	417	3,001,059	549.21
IZARD COUNTY - TOTAL	254	3,067	3,069	3,109	\$16,862,395	\$420.91
MANUFACTURING	19	640	645	654	4,258,965	506.88
NONMANUFACTURING	235	2,427	2,424	2,455	12,603,430	398.10
CONSTRUCTION	25	75	77	78	372,437	373.68
WHOLESALE AND RETAIL TRADE	80	585	572	578	2,111,073	280.79
WHOLESALE TRADE	13	36	35	32	216,357	484.74
RETAIL TRADE	67	549	537	546	1,894,716	267.92
FINANCE, INSURANCE, AND REAL ESTATE	22	159	158	159	918,803	445.44
SERVICES	59	539	544	555	2,051,410	289.01
LOCAL GOVERNMENT	18	518	522	521	2,311,301	341.69
STATE GOVERNMENT	10	363	372	384	3,370,187	695.03
OTHER NONMANUFACTURING	21	188	179	180	1,468,219	619.41

TABLE 8. COUNTY SUMMARY
EMPLOYMENT AND TOTAL EARNINGS, BY INDUSTRY
FOURTH QUARTER 1999

INDUSTRY GROUP	NUMBER OF EMPLOYING UNITS	EMPLOYMENT			TOTAL EARNINGS	AVERAGE WEEKLY EARNINGS
		OCTOBER	NOVEMBER	DECEMBER	OCT.-DEC. 1999	
JACKSON COUNTY - TOTAL	559	6,030	5,922	5,859	\$34,488,642	\$446.85
MANUFACTURING	34	1,162	1,147	1,092	8,519,623	578.08
NONMANUFACTURING	525	4,868	4,775	4,767	25,969,019	415.88
CONSTRUCTION	33	221	213	203	1,408,189	510.15
TRANSPORTATION AND PUBLIC UTILITIES	28	334	315	305	2,207,485	533.98
WHOLESALE AND RETAIL TRADE	161	1,307	1,302	1,293	5,579,418	329.97
WHOLESALE TRADE	35	239	244	232	1,865,430	602.08
RETAIL TRADE	126	1,068	1,058	1,061	3,713,988	268.93
FINANCE, INSURANCE, AND REAL ESTATE SERVICES	33	171	172	167	1,327,228	600.56
LOCAL GOVERNMENT	178	1,670	1,626	1,657	9,444,229	440.02
STATE GOVERNMENT	34	743	737	746	3,504,307	363.29
OTHER NONMANUFACTURING	12	204	206	206	1,263,011	473.16
	46	218	204	190	1,235,152	465.74
JEFFERSON COUNTY - TOTAL	1,772	33,861	33,892	34,065	\$221,167,227	\$501.27
MANUFACTURING	90	8,346	8,366	8,468	70,130,421	642.73
NONMANUFACTURING	1,682	25,515	25,526	25,597	151,036,806	454.80
AGRICULTURE, FORESTRY, AND FISHING	60	597	510	424	2,940,330	443.20
CONSTRUCTION	119	854	823	935	6,180,855	546.08
TRANSPORTATION AND PUBLIC UTILITIES	85	1,151	1,159	1,150	12,178,705	812.27
WHOLESALE AND RETAIL TRADE	578	7,241	7,340	7,492	32,784,890	342.76
WHOLESALE TRADE	117	1,259	1,254	1,244	9,612,496	590.44
RETAIL TRADE	461	5,982	6,086	6,248	23,172,394	291.96
FINANCE, INSURANCE, AND REAL ESTATE SERVICES	130	1,173	1,171	1,177	8,264,819	541.68
LOCAL GOVERNMENT	638	8,210	8,135	8,133	50,468,695	475.80
STATE GOVERNMENT	42	3,360	3,439	3,385	19,806,263	448.81
	30	2,929	2,949	2,901	18,412,249	483.99
JOHNSON COUNTY - TOTAL	422	7,986	8,002	7,952	\$40,596,244	\$391.33
MANUFACTURING	43	3,214	3,237	3,209	18,211,249	435.05
NONMANUFACTURING	379	4,772	4,765	4,743	22,384,995	361.75
CONSTRUCTION	31	130	141	145	735,409	407.96
TRANSPORTATION AND PUBLIC UTILITIES	12	61	62	61	451,911	566.78
WHOLESALE AND RETAIL TRADE	150	2,072	2,077	2,018	7,984,721	298.79
WHOLESALE TRADE	23	69	68	70	369,242	411.64
RETAIL TRADE	127	2,003	2,009	1,948	7,615,479	294.87
FINANCE, INSURANCE, AND REAL ESTATE SERVICES	36	214	214	216	1,372,035	491.65
LOCAL GOVERNMENT	112	1,170	1,152	1,174	5,763,638	380.45
STATE GOVERNMENT	14	817	816	827	4,168,841	391.07
OTHER NONMANUFACTURING	10	145	143	142	909,961	488.35
	14	3	160	160	998,479	477.06

**TABLE 8. COUNTY SUMMARY
EMPLOYMENT AND TOTAL EARNINGS, BY INDUSTRY
FOURTH QUARTER 1999**

INDUSTRY GROUP	NUMBER OF EMPLOYING UNITS	EMPLOYMENT			TOTAL EARNINGS	AVERAGE WEEKLY EARNINGS
		OCTOBER	NOVEMBER	DECEMBER	OCT.-DEC. 1999	
LAFAYETTE COUNTY - TOTAL	181	1,916	1,893	1,897	\$10,306,313	\$416.82
MANUFACTURING	16	548	499	505	3,263,618	485.27
NONMANUFACTURING	165	1,368	1,394	1,392	7,042,695	391.25
AGRICULTURE, FORESTRY, AND FISHING	11	66	67	62	208,245	246.44
MINING	7	52	53	48	345,461	521.06
CONSTRUCTION	12	73	71	76	797,856	836.91
TRANSPORTATION AND PUBLIC UTILITIES	17	114	113	117	1,062,654	712.87
WHOLESALE AND RETAIL TRADE	41	216	237	232	759,871	255.99
FINANCE, INSURANCE, AND REAL ESTATE	16	88	89	94	619,118	527.21
SERVICES	35	279	276	278	1,008,315	279.34
LOCAL GOVERNMENT	16	393	402	398	1,734,190	335.45
STATE GOVERNMENT	10	87	86	87	506,985	449.99
LAWRENCE COUNTY - TOTAL	447	4,865	4,893	4,895	\$24,196,939	\$381.08
MANUFACTURING	34	1,273	1,269	1,271	7,560,733	457.59
NONMANUFACTURING	413	3,592	3,624	3,624	16,636,206	354.16
AGRICULTURE, FORESTRY, AND FISHING	31	114	110	97	646,319	464.64
TRANSPORTATION AND PUBLIC UTILITIES	52	200	213	216	1,222,895	448.66
WHOLESALE AND RETAIL TRADE	126	1,188	1,208	1,204	4,569,376	292.91
WHOLESALE TRADE	26	243	245	248	1,681,596	527.26
RETAIL TRADE	100	945	963	956	2,887,780	232.69
FINANCE, INSURANCE, AND REAL ESTATE	29	139	140	139	765,907	422.84
SERVICES	102	557	549	551	2,479,953	345.38
LOCAL GOVERNMENT	29	1,078	1,086	1,101	4,895,598	346.02
STATE GOVERNMENT	12	143	144	147	1,027,654	546.43
OTHER NONMANUFACTURING	32	173	174	169	1,028,504	459.97
LEE COUNTY - TOTAL	230	2,596	2,608	2,591	\$14,335,113	\$424.39
AGRICULTURE, FORESTRY, AND FISHING	28	245	212	155	1,026,199	386.95
TRANSPORTATION AND PUBLIC UTILITIES	17	97	99	96	641,209	506.75
WHOLESALE AND RETAIL TRADE	58	420	423	429	1,765,201	320.25
WHOLESALE TRADE	10	54	52	57	414,099	586.27
RETAIL TRADE	48	366	371	372	1,351,102	281.15
SERVICES	68	380	369	360	1,837,918	382.45
LOCAL GOVERNMENT	16	448	450	447	2,067,198	354.68
STATE GOVERNMENT	10	487	483	499	3,279,798	515.23
OTHER	33	519	572	605	3,717,590	505.84

**TABLE 8. COUNTY SUMMARY
EMPLOYMENT AND TOTAL EARNINGS, BY INDUSTRY
FOURTH QUARTER 1999**

INDUSTRY GROUP	NUMBER OF EMPLOYING UNITS	EMPLOYMENT			TOTAL EARNINGS	AVERAGE WEEKLY EARNINGS
		OCTOBER	NOVEMBER	DECEMBER	OCT.-DEC. 1999	
LINCOLN COUNTY - TOTAL	201	3,203	3,229	3,191	\$18,916,646	\$453.64
MANUFACTURING	19	724	721	732	4,311,382	457.02
NONMANUFACTURING	182	2,479	2,508	2,459	14,605,264	452.65
AGRICULTURE, FORESTRY, AND FISHING	25	208	193	156	1,302,064	539.45
CONSTRUCTION	14	68	62	58	276,400	339.28
WHOLESALE AND RETAIL TRADE	46	312	326	326	1,134,851	271.67
WHOLESALE TRADE	7	31	32	28	309,965	786.05
RETAIL TRADE	39	281	294	298	824,886	218.05
FINANCE, INSURANCE, AND REAL ESTATE	17	65	70	72	433,191	482.93
SERVICES	41	364	375	372	1,547,931	321.53
LOCAL AND STATE GOVERNMENT	20	1,278	1,304	1,295	8,461,240	503.64
OTHER NONMANUFACTURING	19	184	178	180	1,449,587	617.20
LITTLE RIVER COUNTY - TOTAL	270	4,472	4,447	4,459	\$38,896,854	\$670.97
MANUFACTURING	26	1,559	1,565	1,604	22,914,926	1118.46
NONMANUFACTURING	244	2,913	2,882	2,855	15,981,928	426.37
TRANSPORTATION AND PUBLIC UTILITIES	29	550	544	528	4,644,477	660.79
WHOLESALE AND RETAIL TRADE	77	615	623	626	2,073,232	256.67
WHOLESALE TRADE	14	53	53	52	345,459	504.57
RETAIL TRADE	63	562	570	574	1,727,773	233.71
FINANCE, INSURANCE, AND REAL ESTATE	19	118	118	120	690,547	447.63
SERVICES	54	308	308	324	1,210,064	297.07
LOCAL GOVERNMENT	20	753	739	721	3,546,509	369.83
STATE GOVERNMENT	13	88	90	90	553,526	476.63
OTHER NONMANUFACTURING	32	481	460	446	3,263,573	542.99
LOGAN COUNTY - TOTAL	397	5,877	5,829	5,850	\$31,896,618	\$419.27
MANUFACTURING	34	2,258	2,229	2,238	14,983,602	514.16
NONMANUFACTURING	363	3,619	3,600	3,612	16,913,016	360.35
CONSTRUCTION	28	91	91	90	509,258	432.06
TRANSPORTATION AND PUBLIC UTILITIES	35	104	101	104	716,495	535.10
WHOLESALE AND RETAIL TRADE	123	1,183	1,160	1,149	3,766,312	248.90
WHOLESALE TRADE	23	96	98	100	445,836	349.95
RETAIL TRADE	100	1,087	1,062	1,049	3,320,476	239.61
FINANCE, INSURANCE, AND REAL ESTATE	38	226	227	227	1,661,864	563.98
SERVICES	92	765	770	787	3,500,043	347.85
LOCAL GOVERNMENT	23	769	775	773	3,884,495	386.89
STATE GOVERNMENT	13	426	423	428	2,482,079	448.54
OTHER NONMANUFACTURING	11	55	53	54	392,470	559.07

**TABLE 8. COUNTY SUMMARY
EMPLOYMENT AND TOTAL EARNINGS, BY INDUSTRY
FOUR QUARTER 1999**

INDUSTRY GROUP	NUMBER OF EMPLOYING UNITS	EMPLOYMENT			TOTAL EARNINGS	AVERAGE WEEKLY EARNINGS
		OCTOBER	NOVEMBER	DECEMBER	OCT.-DEC. 1999	
LONOKE COUNTY - TOTAL	987	10,663	10,630	10,733	\$60,974,783	\$439.37
MANUFACTURING	49	1,750	1,758	1,746	13,865,722	609.02
NONMANUFACTURING	938	8,913	8,872	8,987	47,109,061	406.07
CONSTRUCTION	114	607	592	614	4,119,435	524.35
TRANSPORTATION AND PUBLIC UTILITIES	71	413	404	427	4,134,794	767.03
WHOLESALE AND RETAIL TRADE	293	3,014	3,031	3,049	12,435,543	315.56
WHOLESALE TRADE	72	427	421	425	3,390,118	614.56
RETAIL TRADE	221	2,587	2,610	2,624	9,045,425	266.90
FINANCE, INSURANCE, AND REAL ESTATE	84	438	443	451	3,024,644	524.02
SERVICES	249	1,799	1,814	1,845	8,613,555	364.19
LOCAL GOVERNMENT	27	1,933	1,907	1,943	10,042,680	400.75
STATE GOVERNMENT	15	178	177	176	1,087,694	472.70
OTHER NONMANUFACTURING	85	531	504	482	3,650,716	555.35
MADISON COUNTY - TOTAL	208	2,556	2,551	2,559	\$13,836,208	\$416.51
MANUFACTURING	31	855	859	868	5,561,577	497.07
NONMANUFACTURING	177	1,701	1,692	1,691	8,274,631	375.60
AGRICULTURE, FORESTRY, AND FISHING	5	13	13	13	61,557	364.24
CONSTRUCTION	23	91	91	79	433,656	383.43
TRANSPORTATION AND PUBLIC UTILITIES	17	107	103	102	782,061	578.45
WHOLESALE AND RETAIL TRADE	53	481	493	497	1,736,082	272.36
WHOLESALE TRADE	9	47	49	51	264,159	414.69
RETAIL TRADE	44	434	444	446	1,471,923	256.55
FINANCE, INSURANCE, AND REAL ESTATE	12	91	91	94	661,444	553.05
SERVICES	51	376	361	359	1,834,870	386.34
LOCAL GOVERNMENT	8	490	490	498	2,425,231	378.67
STATE GOVERNMENT	8	52	50	49	339,730	519.20
MARION COUNTY - TOTAL	266	3,892	3,896	3,877	\$19,992,301	\$395.51
MANUFACTURING	32	1,916	1,946	1,920	10,842,269	432.73
NONMANUFACTURING	234	1,976	1,950	1,957	9,150,032	358.92
CONSTRUCTION	19	60	61	62	288,053	363.24
TRANSPORTATION AND PUBLIC UTILITIES	18	92	91	94	997,620	831.12
WHOLESALE AND RETAIL TRADE	64	590	577	588	1,947,046	256.02
WHOLESALE TRADE	6	37	34	35	207,288	451.28
RETAIL TRADE	58	553	543	553	1,739,758	243.47
FINANCE, INSURANCE, AND REAL ESTATE	25	112	114	123	1,000,408	661.50
SERVICES	74	500	483	462	1,678,108	268.00
LOCAL GOVERNMENT	22	490	490	496	2,428,900	379.75
STATE GOVERNMENT	8	98	96	98	650,414	514.03
OTHER NONMANUFACTURING	4	34	38	34	159,483	347.21

TABLE 8. COUNTY SUMMARY
EMPLOYMENT AND TOTAL EARNINGS, BY INDUSTRY
FOURTH QUARTER 1999

INDUSTRY GROUP	NUMBER OF EMPLOYING UNITS	EMPLOYMENT			TOTAL EARNINGS	AVERAGE WEEKLY EARNINGS
		OCTOBER	NOVEMBER	DECEMBER	OCT.-DEC. 1999	
MILLER COUNTY - TOTAL	815	13,463	13,559	13,691	\$89,117,117	\$505.13
MANUFACTURING	45	2,679	2,717	2,787	33,468,441	943.85
NONMANUFACTURING	770	10,784	10,842	10,904	55,648,676	394.77
AGRICULTURE, FORESTRY, AND FISHING	14	76	61	66	296,711	337.30
MINING	5	23	24	23	331,935	1094.29
CONSTRUCTION	84	672	675	678	4,169,939	475.21
TRANSPORTATION AND PUBLIC UTILITIES	58	1,074	1,075	1,073	8,937,750	640.15
WHOLESALE AND RETAIL TRADE	270	3,362	3,402	3,419	14,822,287	335.91
WHOLESALE TRADE	57	760	757	767	5,568,882	562.66
RETAIL TRADE	213	2,602	2,645	2,652	9,253,405	270.34
FINANCE, INSURANCE, AND REAL ESTATE	57	401	400	398	2,878,983	554.11
SERVICES	243	3,133	3,130	3,171	11,832,368	289.44
LOCAL GOVERNMENT	24	1,574	1,609	1,610	9,236,286	444.70
STATE GOVERNMENT	15	469	466	466	3,142,417	517.61
MISSISSIPPI COUNTY - TOTAL	1,257	22,163	21,984	22,295	\$149,721,241	\$520.02
MANUFACTURING	75	8,346	8,401	8,256	77,800,695	718.07
NONMANUFACTURING	1,182	13,817	13,583	14,039	71,920,546	400.52
AGRICULTURE, FORESTRY, AND FISHING	120	1,056	803	583	4,475,000	422.89
CONSTRUCTION	77	403	402	396	3,035,771	583.32
TRANSPORTATION AND PUBLIC UTILITIES	70	668	685	1,444	6,914,056	570.45
WHOLESALE AND RETAIL TRADE	389	4,051	4,058	4,058	17,814,168	337.88
WHOLESALE TRADE	92	823	824	823	6,612,285	617.78
RETAIL TRADE	297	3,228	3,234	3,235	11,201,883	266.58
FINANCE, INSURANCE, AND REAL ESTATE	106	572	575	583	4,726,202	630.44
SERVICES	346	3,914	3,875	3,796	18,053,227	359.61
LOCAL GOVERNMENT	50	2,470	2,491	2,486	13,166,089	407.99
STATE GOVERNMENT	24	683	694	693	3,736,033	416.50
MONROE COUNTY - TOTAL	334	3,059	3,048	3,006	\$15,055,476	\$381.25
MANUFACTURING	16	343	340	318	2,333,901	\$538.05
NONMANUFACTURING	318	2,716	2,708	2,688	12,721,575	361.90
AGRICULTURE, FORESTRY, AND FISHING	32	157	152	126	796,757	422.68
CONSTRUCTION	15	67	68	57	298,201	358.41
TRANSPORTATION AND PUBLIC UTILITIES	31	225	201	196	1,263,058	468.61
WHOLESALE AND RETAIL TRADE	98	926	937	955	3,852,418	315.48
WHOLESALE TRADE	25	232	228	226	1,398,081	470.31
RETAIL TRADE	73	694	709	729	2,454,337	265.66
FINANCE, INSURANCE, AND REAL ESTATE	23	163	169	169	1,470,546	677.36
SERVICES	86	590	589	593	2,165,348	282.00
LOCAL GOVERNMENT	21	70	465	461	2,178,659	362.75
STATE GOVERNMENT	12	8	127	131	696,588	416.45

**TABLE 8. COUNTY SUMMARY
EMPLOYMENT AND TOTAL EARNINGS, BY INDUSTRY
FOURTH QUARTER 1999**

INDUSTRY GROUP	NUMBER OF EMPLOYING UNITS	EMPLOYMENT			TOTAL EARNINGS	AVERAGE WEEKLY EARNINGS
		OCTOBER	NOVEMBER	DECEMBER	OCT.-DEC. 1999	
MONTGOMERY COUNTY - TOTAL	179	1,572	1,535	1,530	\$7,132,055	\$354.94
MANUFACTURING	35	315	317	323	1,320,499	319.09
NONMANUFACTURING	144	1,257	1,218	1,207	5,811,556	364.24
CONSTRUCTION	21	201	179	197	1,290,934	516.30
TRANSPORTATION AND PUBLIC UTILITIES	10	32	34	33	157,767	367.76
WHOLESALE AND RETAIL TRADE	45	223	219	224	885,383	306.79
WHOLESALE TRADE	10	31	30	32	190,677	473.14
RETAIL TRADE	35	192	189	192	694,706	279.78
FINANCE, INSURANCE, AND REAL ESTATE	8	72	72	71	456,222	489.68
SERVICES	40	251	231	187	818,654	282.39
LOCAL GOVERNMENT	9	404	409	424	1,785,341	333.07
STATE GOVERNMENT	8	62	62	61	378,323	471.92
OTHER NONMANUFACTURING	3	12	12	10	38,932	264.24
NEVADA COUNTY - TOTAL	204	2,377	2,357	2,347	\$14,145,740	\$461.01
MANUFACTURING	19	726	718	699	6,305,451	679.00
NONMANUFACTURING	185	1,651	1,639	1,648	7,840,289	366.40
TRANSPORTATION AND PUBLIC UTILITIES	17	171	170	166	1,373,498	625.17
WHOLESALE AND RETAIL TRADE	51	367	361	370	1,467,369	308.40
WHOLESALE TRADE	7	17	15	14	52,100	261.37
RETAIL TRADE	44	350	346	356	1,415,269	310.46
FINANCE, INSURANCE, AND REAL ESTATE	14	43	45	45	279,346	484.70
SERVICES	44	456	467	463	1,782,654	296.81
LOCAL GOVERNMENT	28	480	470	481	2,104,111	339.32
STATE GOVERNMENT	11	81	80	81	521,583	497.38
OTHER NONMANUFACTURING	20	53	46	42	311,728	510.19
NEWTON COUNTY - TOTAL	119	1,054	1,048	1,033	\$4,276,631	\$314.81
MANUFACTURING	25	115	111	114	455,306	309.03
NONMANUFACTURING	94	939	937	919	3,821,325	315.51
CONSTRUCTION	8	15	13	14	33,283	182.87
WHOLESALE AND RETAIL TRADE	20	172	180	172	537,167	236.57
WHOLESALE TRADE	3	16	15	15	70,250	352.42
RETAIL TRADE	17	156	165	157	466,917	225.42
SERVICES	28	202	199	194	656,959	254.80
LOCAL GOVERNMENT	12	393	393	387	1,787,512	351.66
STATE GOVERNMENT	8	93	91	92	489,817	409.55
OTHER NONMANUFACTURING	18	64	61	60	316,587	394.91

TABLE 8. COUNTY SUMMARY
EMPLOYMENT AND TOTAL EARNINGS, BY INDUSTRY
FOURTH QUARTER 1999

INDUSTRY GROUP	NUMBER OF EMPLOYING UNITS	EMPLOYMENT			TOTAL EARNINGS	AVERAGE WEEKLY EARNINGS
		OCTOBER	NOVEMBER	DECEMBER	OCT.-DEC. 1999	
OUACHITA COUNTY - TOTAL	680	8,132	8,174	8,252	\$48,804,982	\$458.62
MANUFACTURING	64	1,675	1,714	1,729	15,202,239	685.46
NONMANUFACTURING	616	6,457	6,460	6,523	33,602,743	398.89
AGRICULTURE, FORESTRY, AND FISHING	13	63	62	67	341,400	410.34
MINING	14	113	112	109	891,456	615.93
CONSTRUCTION	51	224	211	222	1,172,423	411.81
TRANSPORTATION AND PUBLIC UTILITIES	52	398	400	398	3,300,391	636.81
WHOLESALE AND RETAIL TRADE	215	2,076	2,119	2,137	8,927,515	325.36
WHOLESALE TRADE	41	346	345	348	2,967,967	659.21
RETAIL TRADE	174	1,730	1,774	1,789	5,959,548	259.83
FINANCE, INSURANCE, AND REAL ESTATE	49	313	311	317	2,135,390	523.68
SERVICES	178	1,729	1,712	1,727	8,225,465	367.30
LOCAL GOVERNMENT	32	1,263	1,257	1,266	6,582,728	401.24
STATE GOVERNMENT	12	278	276	280	2,025,975	560.59
PERRY COUNTY - TOTAL	136	1,104	1,123	1,108	\$5,202,291	\$359.98
MANUFACTURING	7	96	93	94	504,887	411.70
NONMANUFACTURING	129	1,008	1,030	1,014	4,697,404	355.18
CONSTRUCTION	21	77	81	72	406,858	408.22
TRANSPORTATION AND PUBLIC UTILITIES	7	35	38	37	323,961	679.64
WHOLESALE AND RETAIL TRADE	35	193	200	197	628,522	245.84
WHOLESALE TRADE	6	11	9	9	53,069	422.30
RETAIL TRADE	29	182	191	188	575,453	236.71
SERVICES	32	196	208	206	817,438	309.25
LOCAL GOVERNMENT	12	367	368	363	1,675,379	352.12
STATE GOVERNMENT	8	67	65	66	384,328	447.93
OTHER NONMANUFACTURING	14	73	70	73	460,918	492.43
PHILLIPS COUNTY - TOTAL	669	8,194	8,086	7,960	\$43,866,315	\$417.62
MANUFACTURING	28	1,107	1,127	1,135	8,163,019	559.15
NONMANUFACTURING	641	7,087	6,959	6,825	35,703,296	394.77
AGRICULTURE, FORESTRY, AND FISHING	66	699	582	483	3,195,035	417.98
TRANSPORTATION AND PUBLIC UTILITIES	45	377	368	357	2,888,127	604.80
WHOLESALE AND RETAIL TRADE	209	1,954	1,930	1,941	8,856,785	350.88
WHOLESALE TRADE	41	592	571	571	3,956,603	526.56
RETAIL TRADE	168	1,362	1,359	1,370	4,900,182	276.41
FINANCE, INSURANCE, AND REAL ESTATE	46	295	289	290	1,810,734	478.10
SERVICES	183	1,658	1,663	1,654	7,699,414	357.14
LOCAL GOVERNMENT	33	1,330	1,347	1,345	7,085,733	406.56
STATE GOVERNMENT	15	520	525	524	3,049,071	448.46
OTHER NONMANUFACTURING	44	4	255	231	1,118,397	348.77

**TABLE 8. COUNTY SUMMARY
EMPLOYMENT AND TOTAL EARNINGS, BY INDUSTRY
FOURTH QUARTER 1999**

INDUSTRY GROUP	NUMBER OF EMPLOYING UNITS	EMPLOYMENT			TOTAL EARNINGS	AVERAGE WEEKLY EARNINGS
		OCTOBER	NOVEMBER	DECEMBER	OCT.-DEC. 1999	
PIKE COUNTY - TOTAL	272	3,189	3,146	3,161	\$15,314,383	\$372.17
MANUFACTURING	48	823	821	826	4,375,196	408.77
NONMANUFACTURING	224	2,366	2,325	2,335	10,939,187	359.30
AGRICULTURE, FORESTRY, AND FISHING	7	129	126	126	517,537	313.47
MINING	4	72	69	71	526,643	573.27
CONSTRUCTION	17	114	108	113	708,311	487.93
TRANSPORTATION AND PUBLIC UTILITIES	27	181	182	180	1,363,768	579.59
WHOLESALE AND RETAIL TRADE	89	711	702	717	2,497,838	270.62
WHOLESALE TRADE	18	122	121	118	485,771	310.53
RETAIL TRADE	71	589	581	599	2,012,067	262.48
FINANCE, INSURANCE, AND REAL ESTATE	20	209	206	205	1,265,067	470.87
SERVICES	36	303	289	280	1,051,551	278.29
LOCAL GOVERNMENT	13	509	508	511	2,377,223	359.02
STATE GOVERNMENT	11	138	135	132	631,249	359.69
POINSETT COUNTY - TOTAL	503	6,903	6,753	6,806	\$39,616,742	\$446.80
MANUFACTURING	29	2,295	2,305	2,373	16,180,602	535.49
NONMANUFACTURING	474	4,608	4,448	4,433	23,436,140	400.94
AGRICULTURE, FORESTRY, AND FISHING	49	379	317	273	2,639,064	628.50
TRANSPORTATION AND PUBLIC UTILITIES	45	234	211	207	1,523,266	539.15
WHOLESALE AND RETAIL TRADE	151	1,560	1,509	1,523	6,757,173	339.58
WHOLESALE TRADE	27	463	413	415	3,184,453	569.23
RETAIL TRADE	124	1,097	1,096	1,108	3,572,720	249.76
FINANCE, INSURANCE, AND REAL ESTATE	43	337	342	339	2,391,833	542.20
SERVICES	108	647	628	631	2,735,533	331.21
LOCAL GOVERNMENT	31	1,107	1,110	1,120	5,441,904	376.33
STATE GOVERNMENT	15	193	185	188	1,122,538	457.68
OTHER NONMANUFACTURING	32	151	146	152	824,829	423.93
POLK COUNTY - TOTAL	533	6,855	6,871	6,888	\$34,227,536	\$383.17
MANUFACTURING	63	2,400	2,416	2,398	12,908,250	412.92
NONMANUFACTURING	470	4,455	4,455	4,490	21,319,286	367.15
AGRICULTURE, FORESTRY, AND FISHING	22	211	214	214	1,454,091	525.13
CONSTRUCTION	36	123	116	120	596,945	383.72
TRANSPORTATION AND PUBLIC UTILITIES	59	473	470	483	2,805,988	454.09
WHOLESALE AND RETAIL TRADE	146	1,313	1,326	1,337	4,199,673	243.75
WHOLESALE TRADE	31	118	128	129	552,232	339.84
RETAIL TRADE	115	1,195	1,198	1,208	3,647,441	233.75
FINANCE, INSURANCE, AND REAL ESTATE	36	208	203	205	1,235,260	462.76
SERVICES	135	1,061	1,065	1,065	5,539,270	400.59
LOCAL GOVERNMENT	21	777	767	770	3,866,068	385.55
STATE GOVERNMENT	15	289	294	296	1,621,991	425.83

**TABLE 8. COUNTY SUMMARY
EMPLOYMENT AND TOTAL EARNINGS, BY INDUSTRY
FOURTH QUARTER 1999**

INDUSTRY GROUP	NUMBER OF EMPLOYING UNITS	EMPLOYMENT			TOTAL EARNINGS	AVERAGE WEEKLY EARNINGS
		OCTOBER	NOVEMBER	DECEMBER	OCT.-DEC. 1999	
POPE COUNTY - TOTAL	1,522	24,074	23,820	24,303	\$162,326,347	\$518.86
MANUFACTURING	104	5,124	5,053	5,083	36,378,678	550.14
NONMANUFACTURING	1,418	18,950	18,767	19,220	125,947,669	510.47
CONSTRUCTION	158	1,382	1,227	1,195	9,381,468	569.13
TRANSPORTATION AND PUBLIC UTILITIES	99	2,418	2,534	2,512	35,654,358	1102.35
WHOLESALE AND RETAIL TRADE	488	6,007	5,995	6,032	25,211,221	322.61
WHOLESALE TRADE	114	836	847	850	7,199,477	655.91
RETAIL TRADE	374	5,171	5,148	5,182	18,011,744	268.15
FINANCE, INSURANCE, AND REAL ESTATE	128	628	630	634	4,380,531	534.30
SERVICES	456	5,094	5,057	5,066	29,985,135	454.73
LOCAL GOVERNMENT	40	1,986	1,989	1,971	11,604,922	450.40
STATE GOVERNMENT	15	963	957	971	7,042,015	562.12
OTHER NONMANUFACTURING	34	472	378	839	2,688,019	367.27
PRAIRIE COUNTY - TOTAL	239	1,781	1,774	1,766	\$9,143,046	\$396.53
MANUFACTURING	8	269	265	266	2,029,140	585.33
NONMANUFACTURING	231	1,512	1,509	1,500	7,113,906	363.12
AGRICULTURE, FORESTRY, AND FISHING	28	146	150	150	951,948	492.56
TRANSPORTATION AND PUBLIC UTILITIES	24	111	93	85	707,438	564.90
WHOLESALE AND RETAIL TRADE	70	429	439	437	1,648,640	291.54
WHOLESALE TRADE	12	105	91	89	603,843	488.94
RETAIL TRADE	58	324	348	348	1,044,797	236.38
SERVICES	58	289	282	280	1,011,703	274.35
LOCAL GOVERNMENT	15	371	378	374	1,659,493	341.02
STATE GOVERNMENT	10	59	58	58	371,972	490.51
OTHER NONMANUFACTURING	26	107	109	116	762,712	530.15
PULASKI COUNTY - TOTAL	12,702	235,717	237,636	238,684	\$1,886,356,124	\$611.36
MANUFACTURING	472	21,138	21,234	21,338	189,300,714	685.68
NONMANUFACTURING	12,230	214,579	216,402	217,346	1,697,055,410	604.06
AGRICULTURE, FORESTRY, AND FISHING	180	1,462	1,388	1,368	9,809,891	536.70
MINING	6	351	368	323	3,417,286	756.82
CONSTRUCTION	1,043	10,843	10,689	10,703	101,105,701	723.81
TRANSPORTATION AND PUBLIC UTILITIES	518	18,690	18,772	18,966	188,787,503	772.07
WHOLESALE AND RETAIL TRADE	3,698	57,439	59,029	59,964	353,573,995	462.47
WHOLESALE TRADE	1,245	16,423	16,427	16,573	164,451,095	767.87
RETAIL TRADE	2,453	41,016	42,602	43,391	189,122,900	343.63
FINANCE, INSURANCE, AND REAL ESTATE	1,393	15,870	15,864	15,985	163,528,303	790.82
SERVICES	5,132	72,274	72,620	72,331	567,909,706	603.32
LOCAL GOVERNMENT	101	16,208	16,207	16,247	116,138,543	550.54
STATE GOVERNMENT	159	2,072	21,465	21,459	192,784,482	691.40

**TABLE 8. COUNTY SUMMARY
EMPLOYMENT AND TOTAL EARNINGS, BY INDUSTRY
FOUR QUARTER 1999**

INDUSTRY GROUP	NUMBER OF EMPLOYING UNITS	EMPLOYMENT			TOTAL EARNINGS	AVERAGE WEEKLY EARNINGS
		OCTOBER	NOVEMBER	DECEMBER	OCT.-DEC. 1999	
RANDOLPH COUNTY - TOTAL	388	5,740	5,752	5,744	\$27,492,355	\$368.09
MANUFACTURING	40	1,980	2,008	1,972	10,966,729	424.63
NONMANUFACTURING	348	3,760	3,744	3,772	16,525,626	338.21
AGRICULTURE, FORESTRY, AND FISHING	14	46	41	38	249,180	460.02
CONSTRUCTION	28	114	118	127	637,891	410.04
TRANSPORTATION AND PUBLIC UTILITIES	25	164	167	165	1,266,585	589.29
WHOLESALE AND RETAIL TRADE	117	1,159	1,138	1,156	3,780,749	252.67
WHOLESALE TRADE	22	165	154	155	820,648	399.54
RETAIL TRADE	95	994	984	1,001	2,960,101	229.31
FINANCE, INSURANCE, AND REAL ESTATE	21	182	184	186	1,280,133	535.17
SERVICES	110	1,144	1,166	1,171	4,446,062	294.75
LOCAL GOVERNMENT	22	715	731	739	3,431,984	362.47
STATE GOVERNMENT	11	236	199	190	1,433,042	529.12
SAINT FRANCIS COUNTY - TOTAL	655	9,372	9,382	9,381	\$53,553,278	\$439.26
MANUFACTURING	34	2,278	2,314	2,337	16,582,805	552.29
NONMANUFACTURING	621	7,094	7,068	7,044	36,970,473	402.32
CONSTRUCTION	58	298	299	282	1,752,778	460.17
TRANSPORTATION AND PUBLIC UTILITIES	37	411	394	388	3,617,843	699.82
WHOLESALE AND RETAIL TRADE	212	2,260	2,286	2,323	9,833,522	330.36
WHOLESALE TRADE	41	542	531	529	4,033,878	581.08
RETAIL TRADE	171	1,718	1,755	1,794	5,799,644	254.11
FINANCE, INSURANCE, AND REAL ESTATE	53	267	277	280	1,545,131	432.73
SERVICES	182	1,744	1,724	1,723	7,780,090	345.87
LOCAL GOVERNMENT	31	1,294	1,276	1,291	7,564,361	452.12
STATE GOVERNMENT	15	561	568	578	3,446,653	465.95
OTHER NONMANUFACTURING	33	259	244	179	1,430,095	483.90
SALINE COUNTY - TOTAL	1,382	17,974	18,010	18,007	\$112,865,812	\$482.41
MANUFACTURING	92	2,503	2,518	2,527	22,995,786	703.06
NONMANUFACTURING	1,290	15,471	15,492	15,480	89,870,026	446.55
CONSTRUCTION	217	1,445	1,448	1,463	11,054,488	585.64
TRANSPORTATION AND PUBLIC UTILITIES	68	442	442	458	3,878,530	666.95
WHOLESALE AND RETAIL TRADE	405	5,149	5,154	5,093	25,624,598	384.08
WHOLESALE TRADE	101	520	519	543	4,529,831	660.77
RETAIL TRADE	304	4,629	4,635	4,550	21,094,767	352.40
FINANCE, INSURANCE, AND REAL ESTATE	126	624	622	612	3,926,873	487.73
SERVICES	393	3,797	3,817	3,840	20,674,557	416.54
LOCAL AND STATE GOVERNMENT	49	3,909	3,912	3,915	24,320,042	478.21
OTHER NONMANUFACTURING	32	105	97	99	390,938	299.72

TABLE 8. COUNTY SUMMARY
EMPLOYMENT AND TOTAL EARNINGS, BY INDUSTRY
FOURTH QUARTER 1999

INDUSTRY GROUP	NUMBER OF EMPLOYING UNITS	EMPLOYMENT			TOTAL EARNINGS	AVERAGE WEEKLY EARNINGS
		OCTOBER	NOVEMBER	DECEMBER	OCT.-DEC. 1999	
SCOTT COUNTY - TOTAL	203	3,319	3,318	3,323	\$15,231,791	\$352.91
MANUFACTURING	32	1,616	1,612	1,605	7,819,809	373.39
NONMANUFACTURING	171	1,703	1,706	1,718	7,411,982	333.62
AGRICULTURE, FORESTRY, AND FISHING	10	166	165	167	912,105	422.66
TRANSPORTATION AND PUBLIC UTILITIES	17	108	106	108	622,314	446.00
WHOLESALE AND RETAIL TRADE	64	589	588	591	1,903,409	248.44
WHOLESALE TRADE	10	82	79	87	359,853	334.85
RETAIL TRADE	54	507	509	504	1,543,556	234.35
FINANCE, INSURANCE, AND REAL ESTATE	13	75	76	76	386,989	393.41
SERVICES	42	315	313	315	1,483,455	363.03
LOCAL GOVERNMENT	5	338	340	341	1,601,665	362.72
STATE GOVERNMENT	8	60	61	60	316,001	402.89
OTHER NONMANUFACTURING	12	52	57	60	186,044	254.04
SEARCY COUNTY - TOTAL	149	1,520	1,538	1,607	\$6,600,348	\$326.51
MANUFACTURING	15	236	243	251	1,163,166	367.70
NONMANUFACTURING	134	1,284	1,295	1,356	5,437,182	318.87
TRANSPORTATION AND PUBLIC UTILITIES	11	46	45	46	254,117	428.05
WHOLESALE AND RETAIL TRADE	48	374	377	382	1,108,220	225.72
WHOLESALE TRADE	10	66	68	67	214,689	246.49
RETAIL TRADE	38	308	309	315	893,531	221.24
FINANCE, INSURANCE, AND REAL ESTATE	9	46	47	45	179,831	300.72
SERVICES	31	280	282	287	1,062,143	288.70
LOCAL GOVERNMENT	12	339	334	325	1,617,275	373.97
STATE GOVERNMENT	9	169	172	175	1,034,986	462.87
OTHER NONMANUFACTURING	14	30	38	96	180,610	254.14
SEBASTIAN COUNTY - TOTAL	3,444	75,140	74,602	75,052	\$512,127,987	\$525.74
MANUFACTURING	246	23,806	23,620	23,547	182,096,440	592.09
NONMANUFACTURING	3,198	51,334	50,982	51,505	330,031,547	495.13
AGRICULTURE, FORESTRY, AND FISHING	46	326	316	319	1,720,070	413.05
MINING	51	547	537	535	5,151,137	734.23
CONSTRUCTION	279	2,983	3,025	3,079	22,837,356	579.97
TRANSPORTATION AND PUBLIC UTILITIES	183	3,735	3,733	4,072	32,815,401	656.22
WHOLESALE AND RETAIL TRADE	1,114	15,078	15,299	15,455	74,026,871	372.73
WHOLESALE TRADE	286	2,668	2,658	2,671	22,406,520	646.58
RETAIL TRADE	828	12,410	12,641	12,784	51,620,351	314.85
FINANCE, INSURANCE, AND REAL ESTATE	317	2,363	2,369	2,400	20,255,909	655.42
SERVICES	1,143	21,279	20,610	20,615	139,181,436	513.87
LOCAL GOVERNMENT	43	3,921	3,928	3,921	26,540,856	521.26
STATE GOVERNMENT	22	1,165	1,165	1,109	7,502,511	509.82

TABLE 8. COUNTY SUMMARY
EMPLOYMENT AND TOTAL EARNINGS, BY INDUSTRY
FOUR QUARTER 1999

INDUSTRY GROUP	NUMBER OF EMPLOYING UNITS	EMPLOYMENT			TOTAL EARNINGS	AVERAGE WEEKLY EARNINGS
		OCTOBER	NOVEMBER	DECEMBER	OCT.-DEC. 1999	
SEVIER COUNTY - TOTAL	311	5,417	5,473	5,541	\$28,818,924	\$404.75
MANUFACTURING	25	2,320	2,349	2,417	13,315,114	433.63
NONMANUFACTURING	286	3,097	3,124	3,124	15,503,810	382.86
CONSTRUCTION	25	117	118	118	620,986	405.96
TRANSPORTATION AND PUBLIC UTILITIES	21	106	107	104	805,914	586.69
WHOLESALE AND RETAIL TRADE	87	999	996	999	3,947,794	304.29
WHOLESALE TRADE	21	176	177	179	1,441,674	625.36
RETAIL TRADE	66	823	819	820	2,506,120	234.90
FINANCE, INSURANCE, AND REAL ESTATE	22	143	144	141	1,079,281	581.93
SERVICES	95	758	773	785	3,835,405	382.16
LOCAL GOVERNMENT	11	647	661	652	3,318,522	390.72
STATE GOVERNMENT	10	166	169	167	1,130,038	519.48
OTHER NONMANUFACTURING	15	161	156	158	765,870	372.08
SHARP COUNTY - TOTAL	412	4,291	4,266	4,257	\$18,402,796	\$331.42
MANUFACTURING	21	472	468	471	1,882,883	307.95
NONMANUFACTURING	391	3,819	3,798	3,786	16,519,913	334.32
CONSTRUCTION	40	155	154	152	768,872	384.89
TRANSPORTATION AND PUBLIC UTILITIES	32	402	400	409	3,375,066	643.16
WHOLESALE AND RETAIL TRADE	140	1,217	1,172	1,158	3,218,194	209.38
WHOLESALE TRADE	19	70	62	63	253,714	300.25
RETAIL TRADE	121	1,147	1,110	1,095	2,964,480	204.09
FINANCE, INSURANCE, AND REAL ESTATE	33	208	207	211	1,072,436	395.34
SERVICES	100	949	944	943	4,083,989	332.32
LOCAL GOVERNMENT	29	747	781	774	3,223,219	323.12
STATE GOVERNMENT	10	99	99	100	631,214	488.81
OTHER NONMANUFACTURING	7	42	41	39	146,923	277.91
STONE COUNTY - TOTAL	260	3,089	3,025	2,997	\$14,026,696	\$355.28
MANUFACTURING	28	821	800	809	3,918,069	372.09
NONMANUFACTURING	232	2,268	2,225	2,188	10,108,627	349.16
CONSTRUCTION	20	95	92	93	631,363	520.35
WHOLESALE AND RETAIL TRADE	92	800	778	763	2,962,095	292.00
WHOLESALE TRADE	15	44	43	43	337,969	599.94
RETAIL TRADE	77	756	735	720	2,624,126	273.89
FINANCE, INSURANCE, AND REAL ESTATE	11	83	83	81	610,070	569.98
SERVICES	61	543	523	498	2,073,476	305.94
LOCAL GOVERNMENT	10	392	395	391	1,819,320	356.40
STATE GOVERNMENT	13	243	242	244	1,207,025	382.09
OTHER NONMANUFACTURING	25	112	112	118	805,278	543.37

TABLE 8. COUNTY SUMMARY
EMPLOYMENT AND TOTAL EARNINGS, BY INDUSTRY
FOURTH QUARTER 1999

INDUSTRY GROUP	NUMBER OF EMPLOYING UNITS	EMPLOYMENT			TOTAL EARNINGS	AVERAGE WEEKLY EARNINGS
		OCTOBER	NOVEMBER	DECEMBER	OCT.-DEC. 1999	
UNION COUNTY - TOTAL	1,376	20,902	20,860	21,026	\$141,332,304	\$519.45
MANUFACTURING	89	6,286	6,264	6,328	53,668,339	656.05
NONMANUFACTURING	1,287	14,616	14,596	14,698	87,663,965	460.72
AGRICULTURE , FORESTRY AND FISHING	27	118	113	120	589,664	387.68
MINING	63	378	380	386	4,346,361	876.75
CONSTRUCTION	102	1,410	1,419	1,414	10,983,965	597.40
TRANSPORTATION AND PUBLIC UTILITIES	78	1,365	1,362	1,357	13,084,852	739.37
WHOLESALE AND RETAIL TRADE	418	3,942	3,947	3,999	17,329,635	336.40
WHOLESALE TRADE	105	692	690	695	5,480,734	608.95
RETAIL TRADE	313	3,250	3,257	3,304	11,848,901	278.70
FINANCE, INSURANCE, AND REAL ESTATE	101	696	693	695	4,676,859	517.89
SERVICES	442	4,155	4,145	4,191	22,526,589	416.18
LOCAL GOVERNMENT	38	1,966	1,958	1,955	10,407,436	408.52
STATE GOVERNMENT	18	586	579	581	3,718,604	491.49
VAN BUREN COUNTY - TOTAL	340	3,688	3,664	3,498	\$16,362,518	\$348.02
MANUFACTURING	19	707	716	582	3,812,171	438.77
NONMANUFACTURING	321	2,981	2,948	2,916	12,550,347	327.44
CONSTRUCTION	38	124	121	125	625,670	390.23
TRANSPORTATION AND PUBLIC UTILITIES	37	245	254	248	1,489,955	460.29
WHOLESALE AND RETAIL TRADE	105	881	868	852	2,705,501	240.04
WHOLESALE TRADE	13	54	52	55	343,623	492.53
RETAIL TRADE	92	827	816	797	2,361,878	223.38
FINANCE, INSURANCE, AND REAL ESTATE	25	132	132	138	953,353	547.27
SERVICES	84	800	769	753	3,067,954	304.90
LOCAL GOVERNMENT	13	601	610	595	2,531,109	323.42
STATE GOVERNMENT	8	119	115	121	750,232	487.69
OTHER NONMANUFACTURING	11	79	79	84	426,573	406.78
WASHINGTON COUNTY - TOTAL	4,280	79,073	79,656	80,067	\$532,763,928	\$514.86
MANUFACTURING	218	18,532	18,574	18,774	148,187,358	611.97
NONMANUFACTURING	4,062	60,541	61,082	61,293	384,576,570	485.19
CONSTRUCTION	414	3,505	3,500	3,521	27,717,745	607.68
TRANSPORTATION AND PUBLIC UTILITIES	240	6,072	6,056	6,053	50,022,516	634.93
WHOLESALE AND RETAIL TRADE	1,354	19,923	20,314	20,511	95,546,433	362.96
WHOLESALE TRADE	329	3,589	3,577	3,563	30,926,237	665.19
RETAIL TRADE	1,025	16,334	16,737	16,948	64,620,196	298.13
FINANCE, INSURANCE, AND REAL ESTATE	403	2,758	2,772	2,807	22,482,864	622.33
SERVICES	1,480	16,807	16,924	16,870	108,487,486	494.76
LOCAL AND STATE GOVERNMENT	85	10,559	10,607	10,639	75,143,985	545.23
OTHER NONMANUFACTURING	86	7	909	892	5,175,541	439.42

**TABLE 8. COUNTY SUMMARY
EMPLOYMENT AND TOTAL EARNINGS, BY INDUSTRY
FOUR QUARTER 1999**

INDUSTRY GROUP	NUMBER OF EMPLOYING UNITS	EMPLOYMENT			TOTAL EARNINGS	AVERAGE WEEKLY EARNINGS
		OCTOBER	NOVEMBER	DECEMBER	OCT.-DEC. 1999	
WHITE COUNTY - TOTAL	1,414	23,226	23,444	23,409	\$143,393,762	\$472.19
MANUFACTURING	91	4,847	4,914	4,907	35,527,574	558.95
NONMANUFACTURING	1,323	18,379	18,530	18,502	107,866,188	449.23
CONSTRUCTION	157	1,181	1,156	1,131	9,619,780	640.12
TRANSPORTATION AND PUBLIC UTILITIES	90	1,368	1,372	1,388	10,703,477	598.36
WHOLESALE AND RETAIL TRADE	503	6,833	6,982	6,982	33,097,821	367.26
WHOLESALE TRADE	106	678	679	679	4,509,153	511.09
RETAIL TRADE	397	6,155	6,303	6,303	28,588,668	351.65
FINANCE, INSURANCE, AND REAL ESTATE	109	690	690	688	3,931,528	438.72
SERVICES	363	5,211	5,255	5,240	33,253,146	488.59
LOCAL GOVERNMENT	45	2,264	2,259	2,251	12,392,456	422.17
STATE GOVERNMENT	19	639	634	631	4,000,518	484.87
OTHER NONMANUFACTURING	37	193	182	191	867,462	353.68
WOODRUFF COUNTY - TOTAL	205	2,464	2,408	2,393	\$13,797,451	\$438.27
MANUFACTURING	9	494	489	491	3,331,415	521.57
NONMANUFACTURING	196	1,970	1,919	1,902	10,466,036	417.07
AGRICULTURE, FORESTRY, AND FISHING	22	120	109	82	679,612	504.29
CONSTRUCTION	9	74	69	80	564,113	583.77
TRANSPORTATION AND PUBLIC UTILITIES	18	141	141	131	956,920	534.69
WHOLESALE AND RETAIL TRADE	68	768	740	733	3,981,179	409.97
WHOLESALE TRADE	21	500	480	469	3,174,522	505.58
RETAIL TRADE	47	268	260	264	806,657	235.04
FINANCE, INSURANCE, AND REAL ESTATE	14	72	71	73	498,440	532.52
SERVICES	46	215	221	226	1,104,076	384.87
LOCAL GOVERNMENT	10	512	501	511	2,306,802	349.30
STATE GOVERNMENT	9	68	67	66	374,894	430.42
YELL COUNTY - TOTAL	412	7,102	7,005	6,961	\$35,280,653	\$386.45
MANUFACTURING	40	3,145	3,074	3,018	15,497,076	387.17
NONMANUFACTURING	372	3,957	3,931	3,943	19,783,577	385.89
CONSTRUCTION	52	382	398	372	2,015,744	403.79
TRANSPORTATION AND PUBLIC UTILITIES	25	200	196	204	1,522,379	585.53
WHOLESALE AND RETAIL TRADE	108	959	952	953	3,213,245	258.91
WHOLESALE TRADE	24	95	102	111	481,988	361.13
RETAIL TRADE	84	864	850	842	2,731,257	246.59
FINANCE, INSURANCE, AND REAL ESTATE	26	220	224	228	1,845,723	633.83
SERVICES	101	671	653	679	3,168,601	365.06
LOCAL GOVERNMENT	28	1,106	1,093	1,086	5,567,975	391.15
STATE GOVERNMENT	12	121	120	124	709,466	448.56
OTHER NONMANUFACTURING	20	298	295	297	1,740,444	451.28

TABLE 8. COUNTY SUMMARY
EMPLOYMENT AND TOTAL EARNINGS, BY INDUSTRY
FOURTH QUARTER 1999

INDUSTRY GROUP	NUMBER OF EMPLOYING UNITS	EMPLOYMENT			TOTAL EARNINGS	AVERAGE WEEKLY EARNINGS
		OCTOBER	NOVEMBER	DECEMBER	OCT.-DEC. 1999	
REST-OF-STATE-TOTAL	3,646	13,992	13,992	14,347	\$142,104,806	\$774.69
MINING	25	60	51	50	550,109	788.50
CONSTRUCTION	640	3,808	3,652	3,789	28,040,116	575.23
TRANSPORTATION AND PUBLIC UTILITIES	168	643	656	688	5,448,832	632.82
WHOLESALE AND RETAIL TRADE	1,457	4,428	4,504	4,590	66,249,519	1130.63
- WHOLESALE TRADE	1,359	4,096	4,145	4,220	63,659,932	1178.94
RETAIL TRADE	98	332	359	370	2,589,587	563.24
FINANCE, INSURANCE, AND REAL ESTATE	194	494	498	501	5,078,156	784.92
SERVICES	1,114	3,607	3,672	3,695	28,467,185	598.63
OTHER	48	952	959	1,034	8,270,889	648.10

TABLE 9. FEDERAL GOVERNMENT EMPLOYMENT AND EARNINGS IN ARKANSAS

INDUSTRY	NUMBER OF EMPLOYING UNITS	EMPLOYMENT			TOTAL
		OCT.	NOV.	DEC.	EARNINGS OCT.-DEC. 1999
Manufacturing	2	910	914	919	\$9,733,670
Transportation and Public Utilities	432	7,151	7,419	7,676	71,754,278
Retail Trade	3	323	320	327	1,223,292
Finance, Insurance, and Real Estate	24	204	203	203	2,652,606
Services	40	5,016	5,078	5,087	58,557,496
Public Administration	558	7,379	7,279	7,047	76,748,544
TOTAL	1,059	20,983	21,213	21,259	220,669,886

