

**COVERED EMPLOYMENT AND EARNINGS
STATE OF ARKANSAS
THIRD QUARTER 1999**

**MIKE HUCKABEE, GOVERNOR
STATE OF ARKANSAS**

**ED ROLLE, DIRECTOR
ARKANSAS EMPLOYMENT SECURITY DEPARTMENT**

**PUBLISHED BY
LABOR MARKET INFORMATION SECTION
ARKANSAS EMPLOYMENT SECURITY DEPARTMENT
POST OFFICE BOX 2981
LITTLE ROCK, ARKANSAS 72203-2981**

TELEPHONE: (501) 682-3198

STATE OF ARKANSAS HOME PAGE: <http://www.state.ar.us>

ARKANSAS EMPLOYMENT SECURITY DEPARTMENT HOME PAGE: <http://www.state.ar.us/esd/>

INTERNET SITE FOR THIS PUBLICATION: <http://www.state.ar.us/esd/993ene.htm>

RELEASED: MARCH 2000

TABLE OF CONTENTS

	Page
Description of Data	1
Industry Classification	1
Definition of Covered Employment and Earnings	2
Federal Government Employment	2
County Classification	2
Significant Developments During Third Quarter 1999	3

LIST OF GRAPHS AND TABLES

Graph 1	Total and Manufacturing Average Covered Employment for Selected Years, Arkansas	7
Graph 2	Total Covered Earnings, by Calendar Quarter for Selected Years, Arkansas	8
Table 1	Quarterly Comparison of Covered Employment and Wages, by Industry	5
Table 2	Total Covered Employment in Arkansas, 1993-1999	6
Table 3	Manufacturing Covered Employment, 1993-1999	6
Table 4	Total Covered Earnings, 1993-1999	9
Table 5	Total Taxable Earnings, 1993-1999	10
Table 6	Covered Earnings in Manufacturing, 1993-1999	11
Table 7	State Summary - Employment and Total Earnings, by Industry, Third Quarter 1999	12
Table 8	County Data - Employment and Total Earnings, by Industry, Third Quarter 1999	27
Table 9	Federal Government Employment and Earnings in Arkansas, Third Quarter 1999	53

**EMPLOYMENT AND EARNINGS
UNDER THE ARKANSAS EMPLOYMENT SECURITY LAW
THIRD QUARTER 1999**

DESCRIPTION OF DATA

This publication contains covered employment and payroll data by industry and county for the Third Quarter 1999. These data are compiled from quarterly contribution and wage reports submitted by employers subject to the Arkansas Employment Security Law. An employing unit is a single physical location where business is conducted, production takes place, or services are provided. Employment data have been tabulated for each month of the quarter by industry under the Revised SIC Classification (see "Industry Classification" below) on a statewide and county basis. Payroll data represent the total wages paid during the quarter and are also shown by industry for the State and by publishable industry groups for each

county. The tabulation of this data is a joint effort in conjunction with the Bureau of Labor Statistics. In addition, there are tables included which set out total covered employment and manufacturing employment by months, quarterly payrolls, and average weekly earnings for the years 1993 through 1999. Third Quarter 1999 data contained in this publication are subject to revision. These revisions will be reflected in the 1999 Annual Covered Employment and Earnings publication. Because of industry code changes between years, there may be substantial employment and wage shifts among industries.

INDUSTRY CLASSIFICATION

Previously published industry data will not be comparable in all instances with currently published data since industry codes have been revised according to the following Manuals: (a) manufacturing industries were coded according to the 1945 Standard Industrial Manual until December 31, 1957, while nonmanufacturing industries were coded under the Social Security Board Industrial Classification Manual (1942); (b) between January 1, 1958 and December 31, 1967, industry codes were assigned under the 1957 Standard Industrial Classification (SIC) Manual; (c) between January 1, 1968

and December 31, 1974, industry codes were assigned under the 1967 Standard Industrial Classification (SIC) Manual; (d) between January 1, 1975 and December 31, 1987, industry codes were assigned under the 1972 Standard Industrial Classification (SIC) Manual; and (e) since January 1, 1988, industry codes have been assigned under the 1987 Standard Industrial Classification (SIC) Manual.

DEFINITION OF COVERED EMPLOYMENT AND EARNINGS

Covered Employment is the number of workers employed by employers subject to the Arkansas Employment Security Law who worked or received pay for the payroll period which includes the 12th of the month. An employer is subject to the law when he has employed one or more employees in each of ten days during the current or preceding calendar year.

Currently excluded from coverage is employment covered by the Railroad Unemployment Insurance Act; some domestic service workers; employees of small agricultural establishments; self-employed and unpaid family workers; insurance and real estate

agents who are on commission only; and employees of churches and religious organizations, except separately incorporated schools. The payroll information in this publication includes all wages and salaries paid to covered employees by their employers including bonuses, commissions, and cash values of remuneration received in any medium other than cash. These wages include both taxable and nontaxable wages. Only the first \$9,000 paid to each worker by an employer in the calendar year is taxable under the Arkansas Employment Security Law.

FEDERAL GOVERNMENT EMPLOYMENT

The table on page 53 lists the total number of civilians employed by the Federal Government in Arkansas during the Third Quarter 1999. Employment and wage data are set out by industry divisions. These data are obtained from required reports submitted by various

government agencies having employment in the State. Civilian Federal workers are covered by the Unemployment Compensation for Federal Employees (UCFE) program.

COUNTY CLASSIFICATION

Employment and payroll data by county are classified according to the county where the workers are employed. Employers with operations in more than one county are requested to furnish this agency with a breakdown of employment and wages for at least one quarter of each year by the counties in which they operate. Many such employers submit county data with each regular contribution report. This information is invaluable in the preparation of monthly employment and payroll data by county. Employment and payroll data for multi-area employers who do not furnish county data each

quarter of the year are prorated by county on the basis of one quarter's information.

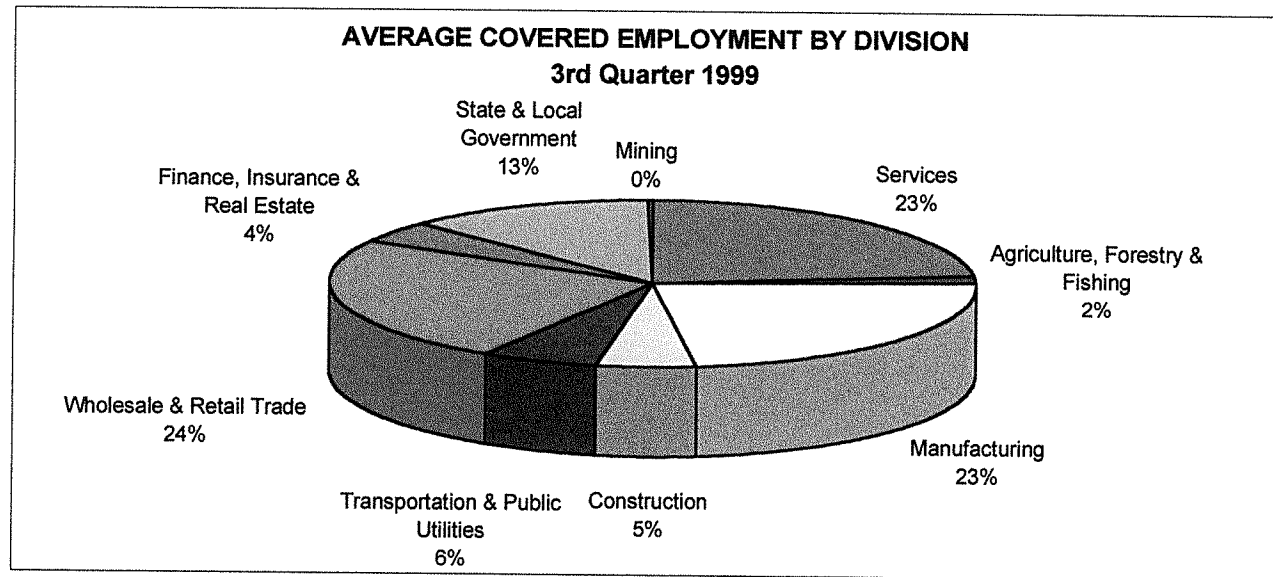
The "rest-of-state" table which appears on page 52 of this publication includes data for firms which did not provide a county breakdown of employment and payrolls. It also includes sales and other type personnel with no permanent place of work, as well as employment of employers with no established place of business in Arkansas.

SIGNIFICANT DEVELOPMENTS DURING THIRD QUARTER 1999

AVERAGE EMPLOYMENT CHANGES

Covered employment averaged 1,083,840 during the Third Quarter 1999, a decrease of 14,148 from the previous quarter and 17,475 above the average recorded one year ago. Manufacturing industries experienced an over-the-quarter increase of 1,165 while

nonmanufacturing industries recorded a decrease of 15,313. Manufacturing industries declined by 1,295 from the average recorded one year ago while nonmanufacturing industries added 18,770.



EMPLOYMENT CHANGES FROM SECOND QUARTER 1999

Over-the-quarter gains were recorded in ten of the published manufacturing industry groups, while nine experienced losses. The most significant gains occurred in food and kindred products (+619), fabricated metal products (+342), and printing and publishing (+276). Notable losses were recorded in furniture and fixtures (-341), industrial machinery and equipment (-260), and apparel and other textile products (-158).

All nonmanufacturing industry groups recorded over-the-quarter gains except state and local government (-23,242). The most significant gains occurred in services (+3,777), wholesale and retail trade (+1,243), construction (+1,182), and transportation and public utilities (+1,170).

EMPLOYMENT CHANGES FROM THIRD QUARTER 1998

The most significant over-the-year gains in manufacturing industries occurred in fabricated metal products (+870), transportation equipment (+489), and printing and publishing (+391). Notable losses were recorded in apparel and other textile products (-1,256), electronic and other electric equipment (-941), industrial machinery and equipment (-675), and chemicals and allied products (-456).

Significant over-the-year gains in nonmanufacturing industry groups occurred in wholesale and retail trade (+5,947), services (+4,776), and construction (+2,295).

COVERED WAGES

Wages paid to covered workers totaled \$6,730,575,552, for the Third Quarter 1999, for an average weekly wage of \$477.69. Workers in the manufacturing industries earned an average weekly wage of \$550.94. Employees in the paper and allied products industry received the highest average weekly wage (\$801.93), while workers in apparel and other textile products earned the lowest

(\$320.41). Workers in nonmanufacturing industries earned an average weekly wage of \$455.37.

Little River County employees recorded the highest average weekly wage (\$631.19) and workers in Newton County the lowest (\$288.22).

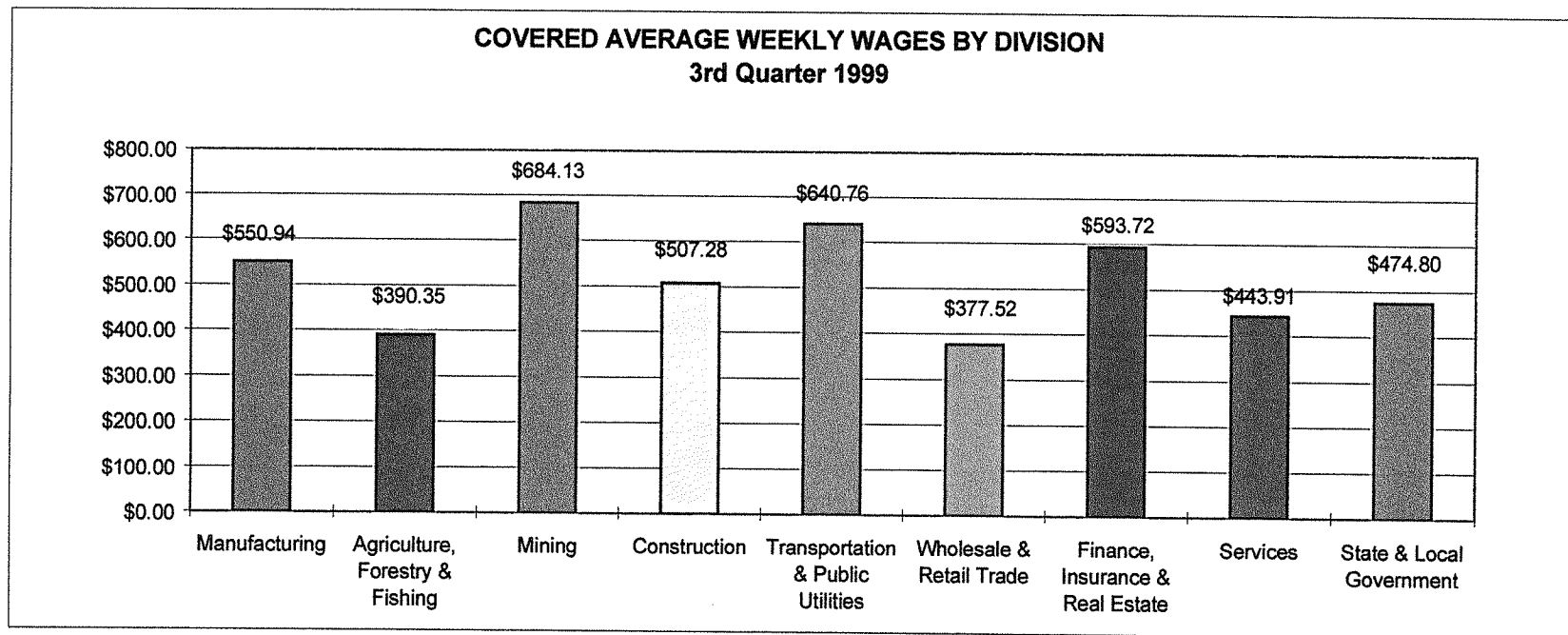


TABLE 1. QUARTERLY COMPARISON OF COVERED EMPLOYMENT AND WAGES, BY INDUSTRY

Industry Group	Number of Employing Units	Average Covered Employment		Net Change From		Total Wages Paid	
		Jul.-Sep. 1999 Monthly Average	% of Total	Apr.-Jun. 1999	Jul.-Sep. 1998	Jul.-Sep. 1999	% of Total
Total	70,965	1,083,840	100.0	-14,148	17,475	\$6,730,575,552	100.0
Manufacturing	4,409	253,129	23.4	1,165	-1,295	1,812,965,822	26.9
Food and Kindred Products	351	58,151	5.4	619	338	359,532,782	5.3
Textile Mill Products	24	4,383	0.4	-12	219	28,401,663	0.4
Apparel & Other Textile Products	140	5,627	0.5	-158	-1,256	23,436,865	0.3
Lumber and Wood Products	1,173	23,074	2.1	274	-35	148,333,133	2.2
Furniture & Fixtures	132	11,148	1.0	-341	-377	66,525,101	1.0
Paper and Allied Products	107	14,866	1.4	156	326	154,979,837	2.3
Printing and Publishing	467	11,506	1.1	276	391	78,877,498	1.2
Chemicals and Allied Products	119	6,188	0.6	-119	-456	62,321,686	0.9
Petroleum and Coal Products	25	924	0.1	-23	-83	8,506,435	0.1
Rubber and Miscellaneous Plastics Products	205	14,267	1.3	-51	42	108,513,479	1.6
Leather and Leather Products	24	2,382	0.2	-98	-372	9,969,746	0.1
Stone, Clay and Glass Products	252	5,684	0.5	147	-146	41,426,539	0.6
Primary Metal Industries	73	10,018	0.9	41	-72	97,549,907	1.4
Fabricated Metal Products	371	20,121	1.9	342	870	155,028,915	2.3
Industrial Machinery & Equip.	451	18,851	1.7	-260	-675	134,016,639	2.0
Electronic & Other Elec. Equip.	106	18,944	1.7	123	-941	139,527,110	2.1
Transportation Equipment	185	17,579	1.6	234	489	136,070,149	2.0
Instruments & Related Products	55	5,384	0.5	99	226	38,028,835	0.6
Miscellaneous Manufacturing Industries	149	4,031	0.4	-85	218	21,919,503	0.3
Nonmanufacturing	66,556	830,711	76.6	-15,313	18,770	4,917,609,730	73.1
Agriculture, Forestry & Fishing	2,162	16,641	1.5	157	743	84,446,143	1.3
Mining	308	3,269	0.3	114	-33	29,073,492	0.4
Construction	6,871	51,970	4.8	1,182	2,295	342,724,100	5.1
Transportation & Public Utilities	4,185	65,829	6.1	1,170	1,690	548,349,063	8.1
Wholesale & Retail Trade	21,868	263,539	24.3	1,243	5,947	1,293,399,640	19.2
Finance, Insurance & Real Estate	5,895	44,476	4.1	286	1,184	343,279,490	5.1
Services	22,132	248,915	23.0	3,777	4,776	1,436,453,227	21.3
State & Local Government	3,135	136,072	12.6	-23,242	2,169	839,884,575	12.5
Local Government	1,994	81,730	7.5	-22,661	1,390	431,053,794	6.4
State Government	1,141	54,342	5.0	-581	779	408,830,781	6.1
Nonclassifiable Establishments	0	0	0.0	0	-2	0	0.0

Note: Items do not necessarily add to totals because of rounding. Because of industry code changes between years, there may be substantial employment and wage shifts among industries.

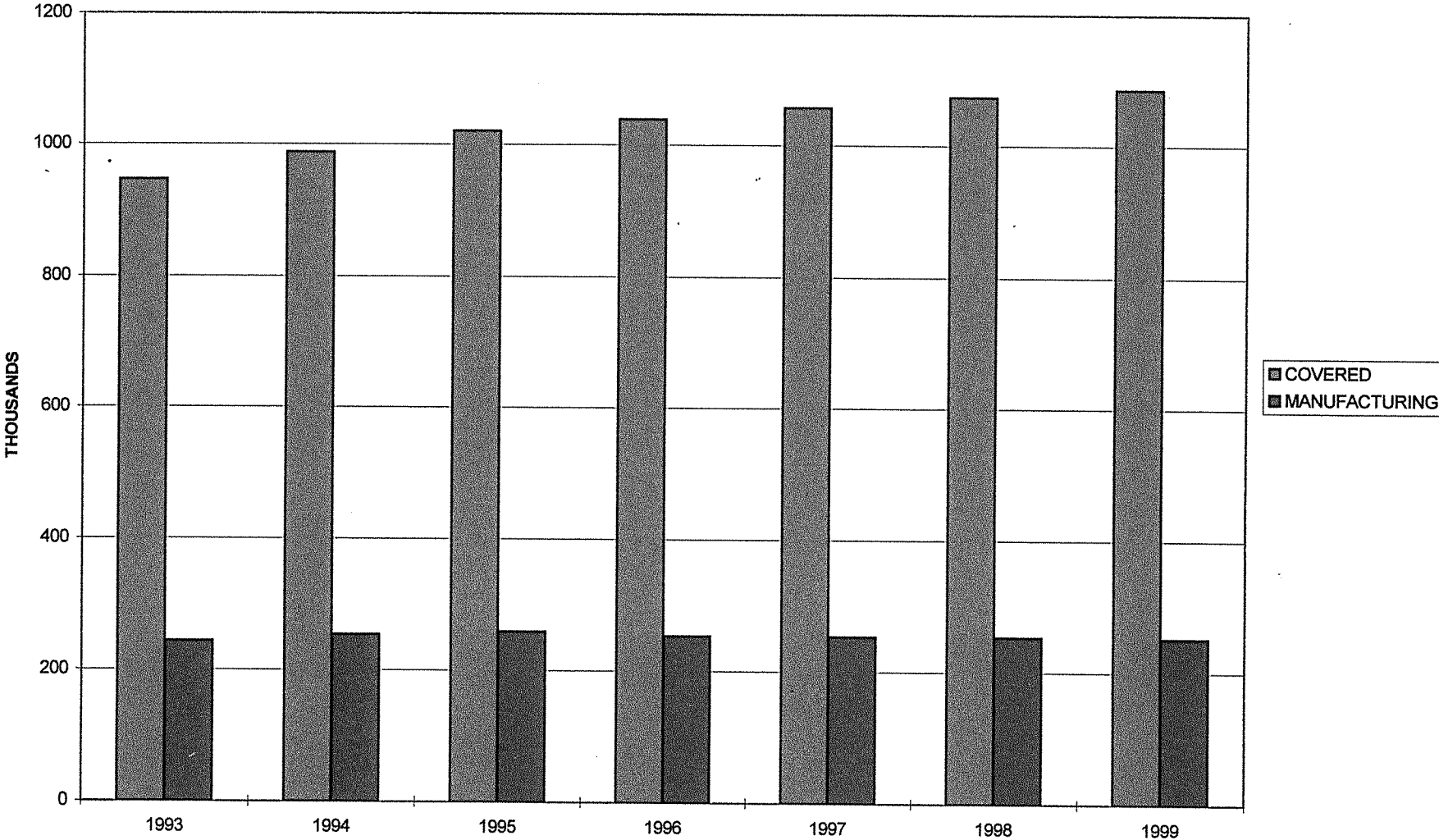
TABLE 2. TOTAL COVERED EMPLOYMENT IN ARKANSAS

Period	1993	1994	1995	1996	1997	1998	1999
Average	947,353	987,634	1,021,440	1,039,357	1,057,350	1,073,732	1,085,752
January	914,402	949,582	994,537	1,017,447	1,025,949	1,050,970	1,066,464
February	923,979	954,796	1,003,997	1,021,306	1,034,361	1,057,593	1,074,752
March	932,968	968,696	1,014,804	1,032,978	1,046,551	1,066,099	1,085,067
April	944,486	982,542	1,019,684	1,038,846	1,057,633	1,074,416	1,093,635
May	951,453	992,205	1,025,143	1,049,419	1,067,078	1,083,133	1,098,641
June	956,517	1,000,327	1,029,990	1,051,282	1,066,728	1,086,125	1,101,689
July	923,648	966,045	992,336	1,009,501	1,028,510	1,046,396	1,062,343
August	938,347	983,551	1,013,715	1,031,586	1,050,656	1,063,680	1,080,985
September	968,086	1,015,514	1,041,492	1,055,695	1,075,759	1,088,772	1,108,193
October	972,089	1,013,272	1,041,045	1,055,507	1,079,093	1,089,836	
November	970,765	1,012,367	1,039,808	1,055,247	1,076,715	1,087,855	
December	971,500	1,012,712	1,040,728	1,053,474	1,079,166	1,089,913	

TABLE 3. MANUFACTURING COVERED EMPLOYMENT

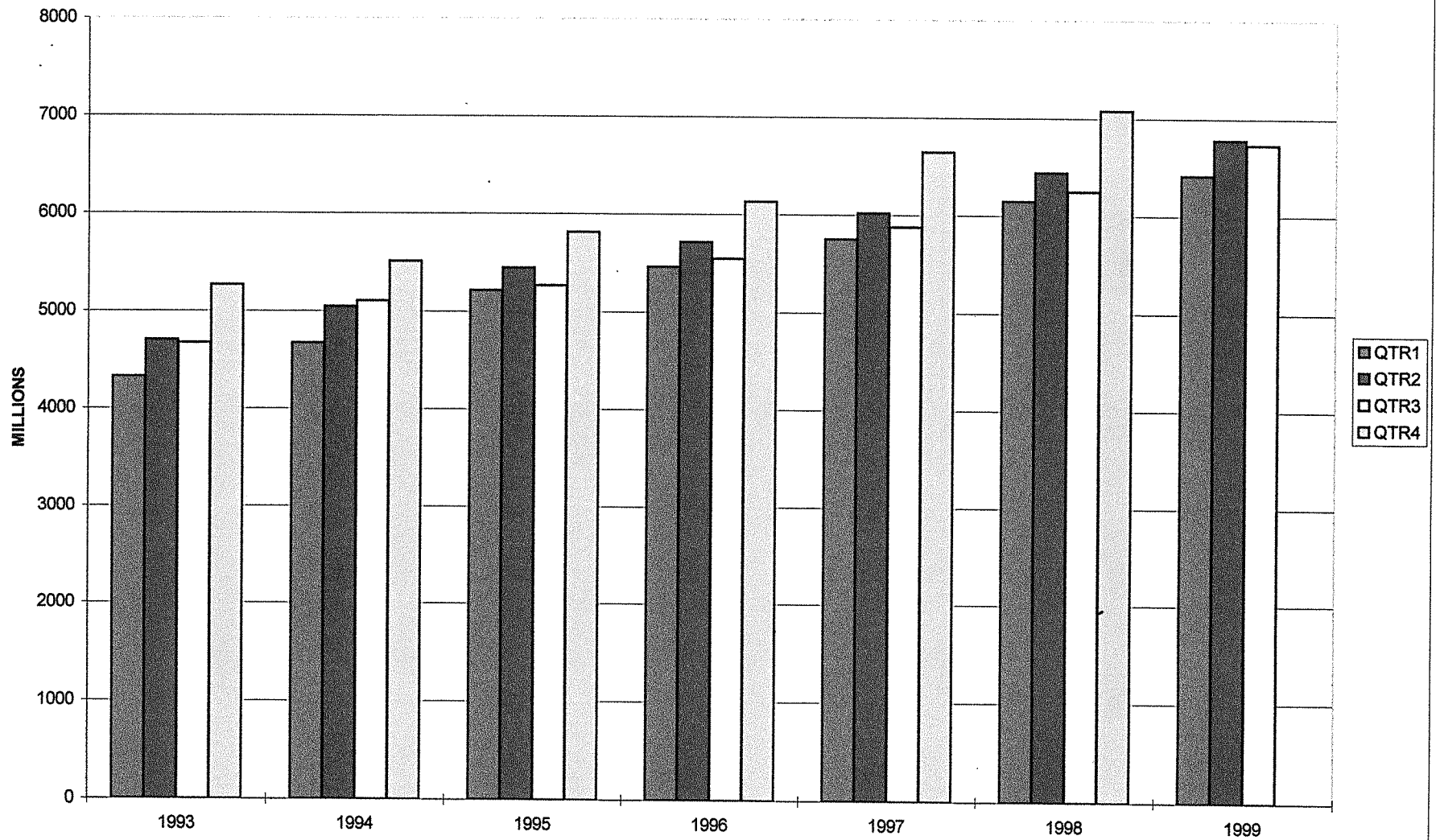
Period	1993	1994	1995	1996	1997	1998	1999
Average	243,729	253,953	258,532	253,407	252,753	253,271	251,825
January	236,739	246,018	257,416	254,998	249,199	251,864	250,160
February	238,222	245,967	258,286	253,319	250,182	252,767	250,471
March	240,301	247,221	258,236	253,815	250,608	252,860	250,512
April	242,917	250,427	258,500	253,344	251,894	253,093	251,207
May	243,389	252,086	257,957	252,605	253,155	253,579	251,720
June	244,700	255,254	259,922	254,470	254,829	255,655	252,965
July	245,514	256,560	258,433	253,333	254,148	254,450	253,037
August	245,932	257,168	259,908	253,960	254,116	254,276	252,996
September	246,212	258,975	259,517	253,023	253,787	254,088	253,354
October	246,362	258,959	258,301	253,014	253,367	252,386	
November	246,958	259,390	258,219	252,785	253,257	251,847	
December	247,506	259,409	257,957	252,214	254,492	252,381	

TOTAL COVERED AND MANUFACTURING EMPLOYMENT



GRAPH ONE

TOTAL COVERED EARNINGS BY CALENDAR QUARTER



GRAPH TWO

TABLE 4. TOTAL COVERED EARNINGS

Period	1993	1994	1995	1996
Total	\$18,972,044,401	\$20,339,457,312	\$21,755,030,337	\$22,858,110,862
Jan.-March	4,326,273,709	4,676,047,400	5,216,754,264	5,464,913,869
Apr.-June	4,705,927,956	5,049,632,485	5,449,448,715	5,714,811,819
July-Sept.	4,673,569,659	5,103,000,944	5,270,916,007	5,548,435,311
Oct.-Dec.	5,266,273,077	5,510,776,483	5,817,911,351	6,129,949,863
 Average Weekly Earnings	 385.12	 396.04	 409.58	 422.93

TABLE 4. TOTAL COVERED EARNINGS (CONTINUED)

Period	1997	1998	1999
Total	\$24,296,555,335	\$25,914,345,060	\$19,932,585,616
Jan.-March	5,751,056,136	6,145,178,755	6,415,552,832
Apr.-June	6,021,537,518	6,441,129,069	6,786,457,232
July-Sept.	5,877,681,886	6,246,775,598	6,730,575,552
Oct.-Dec.	6,646,279,795	7,081,261,638	
 Average Weekly Earnings	 441.90	 464.13	 470.73

TABLE 5. TOTAL TAXABLE EARNINGS

Period	1993	1994	1995	1996
Total	\$6,707,789,836	\$7,425,105,759	\$7,817,421,753	\$7,993,176,348
Jan.-March	2,985,628,570	3,252,179,748	3,591,833,807	3,726,235,905
Apr.-June	1,888,648,820	2,080,889,209	2,141,221,185	2,176,236,591
July-Sept.	1,058,929,055	1,215,839,115	1,183,562,914	1,189,773,883
Oct.-Dec.	774,583,391	876,197,687	900,803,847	900,929,969

TABLE 5. TOTAL TAXABLE EARNINGS (CONTINUED)

Period	1997	1998	1999
Total	\$8,262,066,213	\$8,554,973,370	\$7,797,247,986
Jan.-March	3,871,667,342	4,063,795,529	4,203,493,834
Apr.-June	2,223,918,770	2,271,303,325	2,325,439,751
July-Sept.	1,208,701,615	1,236,054,184	1,268,314,401
Oct.-Dec.	957,778,486	983,820,332	

TABLE 6. COVERED EARNINGS IN MANUFACTURING

Period	1993	1994	1995	1996
Total	\$5,454,565,249	\$5,889,443,098	\$6,153,931,784	\$6,287,177,585
Jan.-March	1,242,725,873	1,361,400,241	1,511,433,659	1,541,337,684
Apr.-June	1,342,226,591	1,438,659,873	1,527,368,381	1,554,807,256
July-Sept.	1,375,061,570	1,520,885,717	1,518,447,296	1,548,044,837
Oct.-Dec.	1,494,551,215	1,568,497,267	1,596,682,448	1,642,987,808
Average Weekly Earnings	430.38	445.98	457.76	477.13

TABLE 6. COVERED EARNINGS IN MANUFACTURING (CONTINUED)

Period	1997	1998	1999
Total	\$6,576,855,039	\$6,891,440,822	\$5,212,852,953
Jan.-March	1,580,259,292	1,641,674,535	1,654,419,236
Apr.-June	1,605,319,439	1,695,339,424	1,745,467,895
July-Sept.	1,612,928,955	1,695,313,056	1,812,965,822
Oct.-Dec.	1,778,347,353	1,859,113,807	
Average Weekly Earnings	500.40	523.26	530.78

**TABLE 7. STATE SUMMARY
EMPLOYMENT AND TOTAL EARNINGS, BY INDUSTRY
THIRD QUARTER 1999**

INDUSTRY GROUP		NUMBER OF EMPLOYING UNITS	EMPLOYMENT			TOTAL EARNINGS	AVERAGE WEEKLY EARNINGS
			JULY	AUGUST	SEPTEMBER	JUL.-SEP. 1999	
TOTAL, ALL INDUSTRIES		70,965	1,062,343	1,080,985	1,108,193	\$6,730,575,552	\$477.69
MANUFACTURING		4,409	253,037	252,996	253,354	\$1,812,965,822	\$550.94
20	FOOD AND KINDRED PRODUCTS	351	58,394	58,053	58,005	\$359,532,782	\$475.60
201	Meat Products	108	40,115	39,879	39,640	229,501,831	442.70
202	Dairy Products	15	797	784	781	5,732,511	560.07
203	Preserved Fruits and Vegetables	42	7,102	6,970	6,911	44,391,321	488.21
204	Grain Mill Products	98	3,815	3,829	3,922	29,515,242	588.90
205	Bakery Products	17	2,692	2,711	2,771	22,173,108	625.99
207	Fats and Oils	15	717	696	738	5,405,019	579.88
208	Beverages	14	1,030	1,042	1,069	7,805,795	573.49
	Other Food and Kindred Products	42	2,126	2,142	2,173	15,007,955	537.71
22	TEXTILE MILL PRODUCTS	24	4,450	4,345	4,355	\$28,401,663	\$498.42
23	APPAREL AND OTHER TEXTILE PRODUCTS	140	5,575	5,670	5,635	\$23,436,865	\$320.41
232	Men's and Boys' Furnishings	33	4,111	4,080	4,047	17,346,318	327.10
233	Women's and Misses' Outerwear	9	122	156	178	422,989	214.06
238	Miscellaneous Apparel and Accessories	5	134	125	117	480,337	294.81
239	Misc. Fabricated Textile Products	86	945	948	944	3,936,849	320.23
	Other Apparel and Other Textile Products	7	263	361	349	1,250,372	296.55
24	LUMBER AND WOOD PRODUCTS	1,173	22,971	23,015	23,237	\$148,333,133	\$494.50
241	Logging	641	3,523	3,565	3,597	21,597,298	466.45
242	Sawmills and Planing Mills	240	9,398	9,387	9,485	67,521,924	551.18
243	Millwork, Plywood & Structural Members	115	4,202	4,213	4,231	28,497,706	520.04
249	Miscellaneous Wood Products	103	3,711	3,720	3,817	20,970,224	430.23
	Other Lumber and Wood Products	74	2,137	2,130	2,107	9,745,981	352.85
25	FURNITURE AND FIXTURES	132	11,251	11,114	11,080	\$66,525,101	\$459.02
251	Household Furniture	73	4,941	4,736	4,825	24,264,074	386.11
252	Office Furniture	12	756	773	830	4,877,353	477.13
253	Public Building & Related Furniture	18	2,737	2,751	2,740	18,150,751	509.07
254	Partitions and Fixtures	20	2,483	2,530	2,366	17,414,559	544.62
259	Miscellaneous Furniture and Fixtures	9	334	324	319	1,818,364	429.50

**TABLE 7. STATE SUMMARY
EMPLOYMENT AND TOTAL EARNINGS, BY INDUSTRY
THIRD QUARTER 1999**

INDUSTRY GROUP	NUMBER OF EMPLOYING UNITS	EMPLOYMENT			TOTAL EARNINGS	AVERAGE WEEKLY EARNINGS	
		JULY	AUGUST	SEPTEMBER	JUL.-SEP. 1999		
26	PAPER AND ALLIED PRODUCTS	107	14,910	14,811	14,877	\$154,979,837	\$801.93
262	Paper Mills	23	5,749	5,695	5,675	72,493,412	977.23
263	Paperboard Mills	5	932	922	893	13,372,569	1123.40
265	Paperboard Containers and Boxes	46	3,708	3,677	3,706	31,444,385	654.26
267	Misc. Converted Paper Products	33	4,521	4,517	4,603	37,669,471	637.27
27	PRINTING AND PUBLISHING	467	11,488	11,469	11,560	\$78,877,498	\$527.35
271	Newspapers	137	3,963	3,911	3,975	22,524,019	438.67
272	Periodicals	24	177	178	178	1,047,067	453.34
273	Books	21	95	94	96	818,669	662.89
274	Miscellaneous Publishing	34	1,097	1,054	1,063	6,930,345	497.61
275	Commercial Printing	227	3,830	3,842	3,899	30,291,214	604.12
	Other Printing and Publishing	24	2,326	2,390	2,349	17,266,184	563.98
28	CHEMICALS AND ALLIED PRODUCTS	119	6,264	6,172	6,129	\$62,321,686	\$774.68
281	Industrial Inorganic Chemicals	18	1,187	1,181	1,197	15,092,566	976.97
282	Plastics Materials and Synthetics	5	326	320	311	3,569,331	860.70
283	Drugs	7	74	76	78	666,165	674.26
284	Soap, Cleaners, and Toilet Goods	24	1,340	1,314	1,301	10,424,240	608.24
285	Paints and Allied Products	7	377	371	359	3,253,970	678.33
286	Industrial Organic Chemicals	13	1,176	1,164	1,176	13,519,028	887.31
287	Agricultural Chemicals	21	944	903	873	7,958,669	675.23
289	Miscellaneous Chemical Products	24	840	843	834	7,837,717	718.60
29	PETROLEUM AND COAL PRODUCTS	25	925	922	925	\$8,506,435	\$708.16
295	Asphalt Paving and Roofing Materials	17	289	291	311	2,702,747	700.01
	Other Petroleum and Coal Products	8	636	631	614	5,803,688	712.02
30	RUBBER AND MISC. PLASTICS PRODUCTS	205	14,014	14,381	14,407	\$108,513,479	\$585.06
301	Tires and Inner Tubes	4	2,049	2,072	2,107	22,742,167	842.68
305	Hose & Belting & Gaskets & Packing	10	1,359	1,351	1,319	10,535,449	603.44
306	Fabricated Rubber Products, NEC	24	2,335	2,623	2,672	19,230,500	581.63
308	Miscellaneous Plastics Products, NEC	167	8,271	8,335	8,309	56,005,363	518.74

**TABLE 7. STATE SUMMARY
EMPLOYMENT AND TOTAL EARNINGS, BY INDUSTRY
THIRD QUARTER 1999**

INDUSTRY GROUP		NUMBER OF EMPLOYING UNITS	EMPLOYMENT			TOTAL EARNINGS	AVERAGE WEEKLY EARNINGS
			JULY	AUGUST	SEPTEMBER	JUL.-SEP. 1999	
31	LEATHER AND LEATHER PRODUCTS	24	2,368	2,381	2,398	\$9,969,746	\$321.91
314	Footwear, Except Rubber	11	1,850	1,864	1,882	7,841,920	323.39
	Other Leather and Leather Products	13	518	517	516	2,127,826	316.59
32	STONE, CLAY, AND GLASS PRODUCTS	252	5,690	5,688	5,673	\$41,426,539	\$560.67
322	Glass and Glassware, Pressed or Blown	8	564	571	583	3,588,662	482.04
323	Products Of Purchased Glass	14	333	363	346	1,576,283	349.10
325	Structural Clay Products	9	477	466	461	3,049,315	501.20
327	Concrete, Gypsum, and Plaster Products	169	2,967	2,962	2,973	22,292,272	577.89
328	Cut Stone and Stone Products	18	162	154	157	715,036	348.85
329	Misc. Nonmetallic Mineral Products	19	683	666	651	6,175,390	712.55
	Other Stone, Clay, and Glass Products	15	504	506	502	4,029,581	615.02
33	PRIMARY METAL INDUSTRIES	73	9,851	10,111	10,093	\$97,549,907	\$749.01
331	Blast Furnace and Basic Steel Products	21	4,355	4,647	4,680	51,915,885	875.65
332	Iron and Steel Foundries	10	246	235	235	1,490,289	480.33
335	Nonferrous Rolling and Drawing	18	3,105	3,101	3,115	26,346,896	652.30
336	Nonferrous Foundries (Castings)	12	1,685	1,672	1,654	13,652,377	628.73
	Other Primary Metal Industries	12	460	456	409	4,144,460	721.82
34	FABRICATED METAL PRODUCTS	371	20,034	20,054	20,275	\$155,028,915	\$592.68
342	Cutlery, Handtools, and Hardware	34	2,492	2,471	2,544	15,679,226	481.99
343	Plumbing and Heating, Except Electric	5	1,124	1,129	1,131	7,981,397	544.29
344	Fabricated Structural Metal Products	176	6,332	6,405	6,470	52,604,383	632.03
345	Screw Machine Products, Bolts, Etc.	16	537	547	537	4,159,650	592.18
346	Metal Forgings and Stampings	22	2,321	2,256	2,387	15,467,829	512.56
348	Ordnance and Accessories, NEC	15	1,789	1,786	1,736	17,664,047	767.52
349	Misc. Fabricated Metal Products	57	4,236	4,262	4,257	32,834,248	594.05
	Other Fabricated Metal Products	46	1,203	1,198	1,213	8,638,135	551.58

**TABLE 7. STATE SUMMARY
EMPLOYMENT AND TOTAL EARNINGS, BY INDUSTRY
THIRD QUARTER 1999**

INDUSTRY GROUP	NUMBER OF EMPLOYING UNITS	EMPLOYMENT			TOTAL EARNINGS	AVERAGE	
		JULY	AUGUST	SEPTEMBER	JUL.-SEP. 1999	WEEKLY EARNINGS	
35	INDUSTRIAL MACHINERY AND EQUIPMENT	451	18,996	18,871	18,686	\$134,016,639	\$546.87
353	Construction and Related Machinery	34	2,522	2,508	2,496	18,856,483	578.20
354	Metalworking Machinery	100	3,462	3,444	3,456	24,277,297	540.67
355	Special Industrial Machinery	29	929	922	918	7,889,890	657.55
356	General Industrial Machinery	25	2,307	2,319	2,296	15,866,122	528.95
358	Refrigeration and Service Machinery	41	5,789	5,676	5,554	44,503,030	603.44
359	Industrial Machinery, NEC	177	1,564	1,557	1,538	9,685,287	479.73
	Other Industrial Machinery and Equipment	45	2,423	2,445	2,428	12,938,530	409.24
36	ELECTRONIC & OTHER ELECTRIC EQUIPMENT	106	18,918	18,925	18,990	\$139,527,110	\$566.55
361	Electric Distribution Equipment	8	1,223	1,225	1,237	7,680,671	480.99
362	Electrical Industrial Apparatus	22	6,233	6,173	6,051	50,716,990	634.12
364	Electric Lighting and Wiring Equipment	23	2,550	2,536	2,508	17,816,730	541.42
365	Household Audio and Video Equipment	9	1,016	1,032	1,108	6,791,270	496.58
367	Electronic Components and Accessories	25	1,782	1,767	1,760	11,417,160	496.28
369	Misc. Electrical Equipment & Supplies	9	1,135	1,155	1,168	7,425,123	495.51
	Other Electronic & Other Electric Equipment	10	4,979	5,037	5,158	37,679,166	573.03
37	TRANSPORTATION EQUIPMENT	185	17,513	17,593	17,630	\$136,070,149	\$595.43
371	Motor Vehicles and Equipment	84	9,835	9,842	9,768	67,897,699	532.13
372	Aircraft and Parts	27	4,429	4,380	4,377	44,651,361	781.45
373	Ship and Boat Building And Repairing	38	1,733	1,737	1,784	11,983,434	526.34
379	Miscellaneous Transportation Equipment	27	597	599	589	3,316,153	428.72
	Other Transportation Equipment	9	919	1,035	1,112	8,221,502	618.81
38	INSTRUMENTS AND RELATED PRODUCTS	55	5,391	5,395	5,365	\$38,028,835	\$543.36
381	Search and Navigation Equipment	7	328	329	333	2,670,944	622.60
382	Measuring and Controlling Devices	18	1,704	1,717	1,673	9,217,803	417.59
385	Ophthalmic Goods	11	310	312	308	1,673,423	415.24
	Other Instruments and Related Products	19	3,049	3,037	3,051	24,466,665	617.94

TABLE 7. STATE SUMMARY
 EMPLOYMENT AND TOTAL EARNINGS, BY INDUSTRY
 THIRD QUARTER 1999

INDUSTRY GROUP	NUMBER OF EMPLOYING UNITS	EMPLOYMENT			TOTAL EARNINGS	AVERAGE WEEKLY EARNINGS
		JULY	AUGUST	SEPTEMBER	JUL.-SEP. 1999	
39 MISCELLANEOUS MANUFACTURING INDUSTRIES	149	4,034	4,026	4,034	\$21,919,503	\$418.25
393 Musical Instruments	8	819	808	807	4,500,012	426.65
394 Toys and Sporting Goods	45	1,303	1,271	1,277	7,666,738	459.43
395 Pens, Pencils, Office, & Art Supplies	6	36	34	34	168,382	373.63
399 Miscellaneous Manufactures	84	1,846	1,886	1,892	9,395,041	385.51
Other Miscellaneous Manufacturing Industries	6	30	27	24	189,330	539.40

**TABLE 7. STATE SUMMARY
EMPLOYMENT AND TOTAL EARNINGS, BY INDUSTRY
THIRD QUARTER 1999**

INDUSTRY GROUP	NUMBER OF EMPLOYING UNITS	EMPLOYMENT			TOTAL EARNINGS	AVERAGE WEEKLY EARNINGS	
		JULY	AUGUST	SEPTEMBER	JUL.-SEP. 1999		
NONMANUFACTURING	66,556	809,306	827,989	854,839	\$4,917,609,730	\$455.37	
AGRICULTURE, FORESTRY, AND FISHING	2,162	16,768	16,105	17,050	\$84,446,143	\$390.35	
01	AGRICULTURAL PRODUCTION-CROPS	691	4,254	4,057	4,165	\$18,133,303	\$335.41
011	Cash Grains	366	1,944	1,912	1,939	8,776,826	349.51
013	Field Crops, Except Cash Grains	120	927	851	923	4,011,240	342.71
018	Horticultural Specialties	42	262	274	269	979,188	280.70
019	General Farms, Primarily Crop	143	863	868	936	3,834,339	331.78
	Other Agricultural Production-Crops	20	258	152	98	531,710	241.54
02	AGRICULTURAL PRODUCTION-LIVESTOCK	223	4,177	4,111	4,041	\$25,240,868	\$472.45
021	Livestock, Except Dairy and Poultry	70	723	703	688	4,246,350	463.54
025	Poultry and Eggs	85	2,710	2,681	2,658	16,972,401	486.61
027	Animal Specialties	55	627	613	582	3,505,971	444.06
	Other Agricultural Production-Livestock	13	117	114	113	516,146	346.25
07	AGRICULTURAL SERVICES	1,130	7,528	7,124	8,129	\$36,392,214	\$368.65
071	Soil Preparation Services	7	28	24	25	187,769	562.74
072	Crop Services	299	1,770	1,519	2,677	12,375,180	478.68
074	Veterinary Services	278	1,705	1,717	1,692	6,572,995	296.61
075	Animal Services, Except Veterinary	135	1,149	1,097	1,061	4,711,137	328.75
076	Farm Labor and Management Services	17	73	53	38	304,662	428.70
078	Landscape and Horticultural Services	394	2,803	2,714	2,636	12,240,471	346.46
08	FORESTRY	108	763	772	673	\$4,542,392	\$474.75
085	Forestry Services	75	613	622	523	3,414,242	448.18
	Other Forestry	33	150	150	150	1,128,150	578.54
09	FISHING, HUNTING, AND TRAPPING	10	46	41	42	\$137,366	\$245.74

TABLE 7. STATE SUMMARY
EMPLOYMENT AND TOTAL EARNINGS, BY INDUSTRY
THIRD QUARTER 1999

INDUSTRY GROUP		NUMBER OF EMPLOYING UNITS	EMPLOYMENT			TOTAL EARNINGS	AVERAGE WEEKLY EARNINGS
			JULY	AUGUST	SEPTEMBER	JUL.-SEP. 1999	
MINING		308	3,275	3,299	3,233	\$29,073,492	\$684.13
13	OIL AND GAS EXTRACTION	218	1,503	1,542	1,497	\$14,415,677	\$732.43
138	Oil and Gas Field Services	130	1,018	1,060	1,011	8,254,274	616.65
	Other Oil and Gas Extraction	88	485	482	486	6,161,403	978.57
14	NONMETALLIC MINERALS, EXCEPT FUELS	85	1,656	1,652	1,630	\$13,548,789	\$633.18
142	Crushed and Broken Stone	18	337	327	325	2,831,663	660.73
144	Sand and Gravel	48	1,061	1,068	1,054	8,723,005	632.42
149	Miscellaneous Nonmetallic Minerals, Except Fuels	13	152	151	150	1,033,811	526.65
	Other Nonmetallic Minerals, Except Fuels	6	106	106	101	960,310	708.02
	OTHER MINING	5	116	105	106	\$1,109,026	\$782.66
CONSTRUCTION		6,871	51,999	52,011	51,899	\$342,724,100	\$507.28
15	GENERAL BUILDING CONTRACTORS	1,876	12,457	12,468	12,419	\$81,225,766	\$501.94
152	Residential Building Construction	1,266	4,458	4,483	4,438	23,915,264	412.51
153	Operative Builders	21	67	62	68	299,140	350.42
154	Nonresidential Building Construction	589	7,932	7,923	7,913	57,011,362	553.54
16	HEAVY CONSTRUCTION, EX. BUILDING	797	9,304	9,373	9,481	\$66,802,014	\$547.48
161	Highway and Street Construction	172	2,961	3,014	3,052	23,039,714	588.99
162	Heavy Construction, Except Highway	625	6,343	6,359	6,429	43,762,300	527.89
17	SPECIAL TRADE CONTRACTORS	4,198	30,238	30,170	29,999	\$194,696,320	\$496.97
171	Plumbing, Heating, Air-Conditioning	1,034	7,897	7,895	7,857	55,867,789	545.16
172	Painting and Paper Hanging	275	1,684	1,699	1,644	8,702,061	399.48
173	Electrical Work	691	5,454	5,411	5,396	38,469,330	545.94
174	Masonry, Stonework, and Plastering	481	3,829	3,776	3,740	20,521,606	417.43
175	Carpentry and Floor Work	217	910	894	895	5,138,367	439.34
176	Roofing, Siding, and Sheet Metal Work	268	1,986	1,974	1,977	11,824,511	459.61
177	Concrete Work	265	1,933	1,959	1,889	10,131,516	404.44
178	Water Well Drilling	55	382	382	359	2,345,087	481.90
179	Misc. Special Trade Contractors	912	6,163	6,180	6,242	41,696,053	517.74

**TABLE 7. STATE SUMMARY
EMPLOYMENT AND TOTAL EARNINGS, BY INDUSTRY
THIRD QUARTER 1999**

INDUSTRY GROUP	NUMBER OF EMPLOYING UNITS	EMPLOYMENT			TOTAL EARNINGS	AVERAGE WEEKLY EARNINGS
		JULY	AUGUST	SEPTEMBER	JUL.-SEP. 1999	
TRANSPORTATION AND PUBLIC UTILITIES	4,185	65,527	65,738	66,223	\$548,349,063	\$640.76
41 LOCAL AND INTERURBAN PASSENGER TRANSIT	139	1,869	1,960	1,981	\$8,926,536	\$354.56
411 Local and Suburban Transportation	100	1,375	1,354	1,325	6,687,161	380.66
414 Bus Charter Service	16	161	159	154	656,827	319.78
Other Local and Interurban Passenger Transit	23	333	447	502	1,582,548	284.87
42 TRUCKING AND WAREHOUSING	2,392	34,926	35,111	35,699	\$269,111,120	\$587.34
421 Trucking & Courier Services, Ex. Air	2,165	32,831	32,939	33,151	255,604,148	596.29
Other Trucking and Warehousing	227	2,095	2,172	2,548	13,506,972	457.37
44 WATER TRANSPORTATION	65	861	867	850	\$5,551,641	\$496.95
449 Water Transportation Services	58	762	766	753	4,978,089	503.63
Other Water Transportation	7	99	101	97	573,552	445.65
45 TRANSPORTATION BY AIR	194	6,410	6,360	6,273	\$43,190,997	\$523.40
451 Air Transportation, Scheduled	66	4,511	4,390	4,306	27,640,891	482.98
Other Transportation by Air	128	1,899	1,970	1,967	15,550,106	614.89
46 PIPELINES, EXCEPT NATURAL GAS	16	217	217	211	\$2,557,989	\$915.20
47 TRANSPORTATION SERVICES	309	2,215	2,219	2,186	\$16,175,018	\$563.85
472 Passenger Transportation Arrangement	117	549	546	536	2,777,196	392.94
473 Freight Transportation Arrangement	146	851	853	861	8,058,123	724.98
Other Transportation Services	46	815	820	789	5,339,699	508.35
48 COMMUNICATIONS	599	10,277	10,245	10,305	\$103,701,028	\$776.30
481 Telephone Communications	363	7,031	7,037	7,061	78,191,292	854.00
483 Radio and Television Broadcasting	145	2,183	2,159	2,188	15,316,177	541.27
Other Communications	91	1,063	1,049	1,056	10,193,559	742.54
49 ELECTRIC, GAS, AND SANITARY SERVICES	471	8,752	8,759	8,718	\$99,134,734	\$872.21
492 Gas Production and Distribution	98	1,605	1,615	1,606	18,396,519	879.68
494 Water Supply	153	663	658	649	3,470,232	406.51
Other Electric, Gas, and Sanitary Services	220	6,484	6,486	6,463	77,267,983	917.57

**TABLE 7. STATE SUMMARY
EMPLOYMENT AND TOTAL EARNINGS, BY INDUSTRY
THIRD QUARTER 1999**

INDUSTRY GROUP		NUMBER OF EMPLOYING UNITS	EMPLOYMENT			TOTAL EARNINGS JUL.-SEP. 1999	AVERAGE WEEKLY EARNINGS
			JULY	AUGUST	SEPTEMBER		
WHOLESALE AND RETAIL TRADE		21,868	262,942	263,760	263,915	\$1,293,399,640	\$377.52
WHOLESALE TRADE		6,287	52,289	52,001	51,867	\$418,704,821	\$618.76
50	WHOLESALE TRADE-DURABLE GOODS	3,794	27,171	27,123	27,039	\$220,870,116	\$626.68
501	Motor Vehicles, Parts, and Supplies	548	4,595	4,626	4,610	30,017,573	500.84
502	Furniture and Homefurnishings	129	644	652	645	5,770,910	686.11
503	Lumber and Construction Materials	268	2,155	2,151	2,142	16,724,859	598.57
504	Professional & Commercial Equipment	667	3,630	3,628	3,620	39,149,443	830.53
505	Metals and Minerals, Except Petroleum	90	954	951	939	8,313,705	674.59
506	Electrical Goods	327	2,264	2,274	2,272	21,247,540	720.01
507	Hardware, Plumbing & Heating Equipment	314	2,525	2,517	2,537	20,121,482	612.67
508	Machinery, Equipment, and Supplies	1,145	8,620	8,570	8,535	68,086,805	610.78
509	Miscellaneous Durable Goods	306	1,784	1,754	1,739	11,437,799	500.19
51	WHOLESALE TRADE-NONDURABLE GOODS	2,493	25,118	24,878	24,828	\$197,834,705	\$610.15
511	Paper and Paper Products	192	2,165	2,242	2,258	16,619,748	575.44
512	Drugs, Proprietaries, and Sundries	218	2,270	2,282	2,246	25,436,045	863.47
513	Apparel, Piece Goods, and Notions	116	1,014	1,008	1,002	7,197,906	549.29
514	Groceries and Related Products	620	7,828	7,691	7,741	64,303,445	637.97
515	Farm-Product Raw Materials	113	1,441	1,505	1,586	7,008,087	356.85
516	Chemical and Allied Products	214	1,058	1,067	1,074	13,314,498	960.48
517	Petroleum and Petroleum Products	234	2,062	2,058	2,061	14,461,708	539.93
518	Beer, Wine, and Distilled Beverages	50	1,081	1,083	1,092	9,884,332	700.55
519	Misc. Nondurable Goods	736	6,199	5,942	5,768	39,608,936	510.39
RETAIL TRADE		15,581	210,653	211,759	212,048	\$874,694,819	\$318.15
52	BUILDING MATERIALS & GARDEN SUPPLIES	839	9,092	8,963	8,888	\$49,096,323	\$420.51
521	Lumber and Other Building Materials	293	5,672	5,603	5,578	30,242,971	414.12
523	Paint, Glass, and Wallpaper Stores	125	576	581	585	3,321,655	440.03
525	Hardware Stores	170	1,237	1,239	1,233	5,547,378	345.15
526	Retail Nurseries and Garden Stores	118	708	642	616	2,429,811	285.21
527	Mobile Home Dealers	133	899	898	876	7,554,508	652.21

**TABLE 7. STATE SUMMARY
EMPLOYMENT AND TOTAL EARNINGS, BY INDUSTRY
THIRD QUARTER 1999**

INDUSTRY GROUP	NUMBER OF EMPLOYING UNITS	EMPLOYMENT			TOTAL EARNINGS	AVERAGE WEEKLY EARNINGS	
		JULY	AUGUST	SEPTEMBER	JUL.-SEP. 1999		
53	GENERAL MERCHANDISE STORES	633	48,484	48,749	48,746	\$290,567,734	\$459.34
531	Department Stores	170	44,124	44,338	44,233	275,614,924	479.32
533	Variety Stores	242	2,757	2,803	2,821	10,370,547	285.55
539	Misc. General Merchandise Stores	221	1,603	1,608	1,692	4,582,263	215.67
54	FOOD STORES	2,072	30,140	30,369	30,366	\$98,266,677	\$249.54
541	Grocery Stores	1,756	28,542	28,741	28,730	93,672,820	251.32
542	Meat and Fish Markets	59	243	237	235	766,811	247.49
544	Candy, Nut, and Confectionery Stores	24	120	122	122	286,066	181.36
546	Retail Bakeries	123	704	717	726	1,933,234	207.79
549	Miscellaneous Food Stores	96	499	512	519	1,494,291	225.38
	Other Food Stores	14	32	40	34	113,455	247.00
55	AUTOMOTIVE DEALERS & SERVICE STATIONS	2,530	24,107	24,174	24,110	\$142,291,573	\$453.60
551	New and Used Car Dealers	312	8,812	8,887	8,901	75,695,907	656.70
552	Used Car Dealers	428	1,594	1,599	1,571	9,287,145	449.87
553	Auto and Home Supply Stores	615	4,207	4,213	4,143	21,682,836	398.29
554	Gasoline Service Stations	1,004	8,258	8,258	8,301	27,265,757	253.54
555	Boat Dealers	72	466	426	399	2,654,602	474.52
556	Recreational Vehicle Dealers	35	260	271	278	2,228,943	635.81
557	Motorcycle Dealers	52	453	461	461	3,103,141	520.81
559	Automotive Dealers, NEC	12	57	59	56	373,242	500.77
56	APPAREL AND ACCESSORY STORES	994	7,453	7,735	7,829	\$21,174,540	\$212.30
561	Men's & Boys' Clothing Stores	55	271	276	276	1,122,664	314.80
562	Women's Clothing Stores	284	1,836	1,872	1,870	5,436,816	224.93
563	Women's Accessory & Specialty Stores	40	271	295	261	770,371	214.97
564	Children's and Infants' Wear Stores	48	253	243	234	632,587	199.97
565	Family Clothing Stores	233	2,844	3,073	3,259	7,299,071	183.57
566	Shoe Stores	222	1,483	1,478	1,418	4,374,461	230.53
569	Misc. Apparel & Accessory Stores	112	495	498	511	1,538,570	236.07
57	FURNITURE AND HOMEFURNISHINGS STORES	1,246	7,739	7,809	7,839	\$40,313,800	\$397.79
571	Furniture and Homefurnishings Stores	747	4,355	4,385	4,374	22,483,646	395.65
572	Household Appliance Stores	112	517	524	526	2,315,403	340.99
573	Radio, Television, & Computer Stores	387	2,867	2,900	2,939	15,514,751	411.25

**TABLE 7. STATE SUMMARY
EMPLOYMENT AND TOTAL EARNINGS, BY INDUSTRY
THIRD QUARTER 1999**

INDUSTRY GROUP	NUMBER OF EMPLOYING UNITS	EMPLOYMENT			TOTAL EARNINGS	AVERAGE WEEKLY EARNINGS	
		JULY	AUGUST	SEPTEMBER	JUL.-SEP. 1999		
58	EATING AND DRINKING PLACES	3,878	65,228	65,317	65,483	\$155,604,592	\$183.18
59	MISCELLANEOUS RETAIL	3,389	18,410	18,643	18,787	\$77,379,580	\$319.79
591	Drug Stores and Proprietary Stores	500	4,205	4,266	4,296	23,512,248	424.99
592	Liquor Stores	358	1,465	1,475	1,470	4,695,634	245.72
593	Used Merchandise Stores	351	1,026	1,056	1,050	3,599,062	265.18
594	Miscellaneous Shopping Goods Stores	1,016	5,926	6,048	6,138	20,874,464	265.97
596	Nonstore Retailers	168	1,461	1,475	1,521	7,101,364	367.69
598	Fuel Dealers	171	942	941	941	5,177,508	423.09
599	Retail Stores, NEC	825	3,385	3,382	3,371	12,419,300	282.70
FINANCE, INSURANCE, AND REAL ESTATE		5,895	44,651	44,521	44,256	\$343,279,490	\$593.72
60	DEPOSITORY INSTITUTIONS	1,107	17,791	17,712	17,581	\$115,850,491	\$503.63
602	Commercial Banks	819	15,154	15,071	14,903	100,270,618	512.75
603	Savings Institutions	106	1,553	1,546	1,566	9,398,817	464.94
606	Credit Unions	82	536	532	542	3,079,886	441.46
	Other Depository Institutions	100	548	563	570	3,101,170	425.73
61	NONDEPOSITORY INSTITUTIONS	273	2,128	2,148	2,107	\$18,224,776	\$658.89
611	Federal & Fed.-Sponsored Credit	25	196	194	190	1,595,153	634.68
614	Personal Credit Institutions	46	211	217	211	2,471,322	892.50
615	Business Credit Institutions	62	327	329	327	3,136,734	736.38
616	Mortgage Bankers and Brokers	140	1,394	1,408	1,379	11,021,567	608.33
62	SECURITY AND COMMODITY BROKERS	362	2,508	2,523	2,383	\$46,930,104	\$1,460.75
621	Security Brokers and Dealers	234	2,182	2,185	2,046	43,314,543	1558.66
	Other Security and Commodity Brokers	128	326	338	337	3,615,561	833.53
63	INSURANCE CARRIERS	413	5,551	5,555	5,524	\$53,007,494	\$735.57
631	Life Insurance	68	763	766	775	7,256,622	726.83
632	Medical Service and Health Insurance	47	2,257	2,248	2,228	22,687,480	777.60
633	Fire, Marine, and Casualty Insurance	201	1,811	1,826	1,817	18,178,861	769.18
635	Surety Insurance	19	44	41	42	601,668	1093.28
636	Title Insurance	64	621	617	605	3,680,669	460.87
	Other Insurance Carriers	14	55	57	57	602,194	822.29

**TABLE 7. STATE SUMMARY
EMPLOYMENT AND TOTAL EARNINGS, BY INDUSTRY
THIRD QUARTER 1999**

INDUSTRY GROUP	NUMBER OF EMPLOYING UNITS	EMPLOYMENT			TOTAL EARNINGS	AVERAGE WEEKLY EARNINGS
		JULY	AUGUST	SEPTEMBER	JUL.-SEP. 1999	
64 INSURANCE AGENTS, BROKERS & SERVICE	1,421	5,313	5,309	5,362	\$39,720,639	\$573.47
65 REAL ESTATE	2,123	10,352	10,293	10,317	\$52,378,641	\$390.39
651 Real Estate Operators and Lessors	705	3,241	3,226	3,253	12,685,603	301.18
653 Real Estate Agents and Managers	1,118	4,820	4,816	4,796	25,303,442	404.60
654 Title Abstract Offices	116	804	799	801	5,024,698	482.34
655 Subdividers and Developers	184	1,487	1,452	1,467	9,364,898	490.50
67 HOLDING AND OTHER INVESTMENT OFFICES	196	1,008	981	982	\$17,167,345	\$1,333.46
671 Holding Offices	60	547	541	538	13,613,527	1932.09
679 Miscellaneous Investing	82	351	334	342	2,663,738	598.55
Other Holding and Other Investment Offices	54	110	106	102	890,080	645.92
SERVICES	22,132	247,855	249,264	249,626	\$1,436,453,227	\$443.91
70 HOTELS AND OTHER LODGING PLACES	712	11,974	11,686	11,168	\$32,878,217	\$217.85
701 Hotels and Motels	650	11,444	11,307	10,878	31,795,062	218.18
702 Rooming and Boarding Houses	8	35	33	31	91,929	214.29
703 Camps and Recreational Vehicle Parks	40	470	304	200	841,161	199.30
704 Membership-Basis Organization Hotels	14	25	42	59	150,065	274.84
72 PERSONAL SERVICES	1,571	8,693	8,628	8,666	\$35,143,735	\$312.08
721 Laundry, Cleaning, & Garment Services	450	4,277	4,263	4,223	16,666,631	301.35
722 Photographic Studios, Portrait	163	484	466	522	1,862,207	291.94
723 Beauty Shops	436	1,446	1,453	1,471	5,462,745	288.47
724 Barber Shops	24	52	53	52	236,673	347.88
725 Shoe Repair and Shoeshine Parlors	12	12	12	12	31,787	203.76
726 Funeral Service and Crematories	199	1,608	1,598	1,592	8,689,154	417.92
729 Miscellaneous Personal Services	287	814	783	794	2,194,538	211.81

**TABLE 7. STATE SUMMARY
EMPLOYMENT AND TOTAL EARNINGS, BY INDUSTRY
THIRD QUARTER 1999**

INDUSTRY GROUP	NUMBER OF EMPLOYING UNITS	EMPLOYMENT			TOTAL EARNINGS	AVERAGE WEEKLY EARNINGS
		JULY	AUGUST	SEPTEMBER	JUL.-SEP. 1999	
73 BUSINESS SERVICES	3,577	57,118	59,055	60,025	\$288,889,046	\$378.36
731 Advertising	180	1,425	1,448	1,440	10,257,404	548.83
732 Credit Reporting and Collection	99	858	855	868	4,685,594	418.94
733 Mailing, Reproduction, Stenographic	188	1,148	1,156	1,151	5,976,733	399.20
734 Services to Buildings	607	6,913	6,930	7,052	21,849,313	241.31
735 Misc. Equipment Rental & Leasing	399	2,614	2,611	2,569	17,723,216	524.76
736 Personnel Supply Services	492	26,386	28,281	29,087	87,056,098	239.87
737 Computer and Data Processing Services	717	8,000	8,033	8,036	99,995,239	958.74
738 Miscellaneous Business Services	895	9,774	9,741	9,822	41,345,449	325.23
75 AUTO REPAIR, SERVICES, AND PARKING	1,818	8,765	8,800	8,780	\$46,548,621	\$407.74
751 Automotive Rentals, No Drivers	130	1,149	1,182	1,175	6,891,819	453.63
752 Automobile Parking	12	76	73	74	291,076	301.22
753 Automotive Repair Shops	1,389	5,622	5,623	5,572	32,345,309	443.85
754 Automotive Services, Except Repair	287	1,918	1,922	1,959	7,020,417	279.38
76 MISCELLANEOUS REPAIR SERVICES	716	3,574	3,536	3,492	\$26,550,466	\$577.91
762 Electrical Repair Shops	181	1,280	1,274	1,269	9,663,447	583.32
763 Watch, Clock, and Jewelry Repair	7	19	17	19	85,752	359.80
764 Reupholstery and Furniture Repair	42	119	124	122	477,963	302.19
769 Miscellaneous Repair Shops	486	2,156	2,121	2,082	16,323,304	592.38
78 MOTION PICTURES	357	3,531	3,496	3,260	\$11,620,965	\$260.69
783 Motion Picture Theaters	60	957	908	835	1,723,750	147.33
784 Video Tape Rental	233	1,451	1,452	1,447	3,249,198	172.37
Other Motion Pictures	64	1,123	1,136	978	6,648,017	473.94
79 AMUSEMENT & RECREATION SERVICES	877	9,819	9,474	8,830	\$28,291,429	\$232.15
791 Dance Studios, Schools, and Halls	43	104	102	201	316,609	179.52
792 Producers, Orchestras, Entertainers	66	819	814	820	2,485,936	233.87
793 Bowling Centers	43	395	424	415	1,018,372	190.44
794 Commercial Sports	69	822	826	719	2,838,281	276.72
799 Misc. Amusement, Recreation Services	656	7,679	7,308	6,675	21,632,231	230.45

**TABLE 7. STATE SUMMARY
EMPLOYMENT AND TOTAL EARNINGS, BY INDUSTRY
THIRD QUARTER 1999**

INDUSTRY GROUP	NUMBER OF EMPLOYING UNITS	EMPLOYMENT			TOTAL EARNINGS	AVERAGE WEEKLY EARNINGS	
		JULY	AUGUST	SEPTEMBER	JUL.-SEP. 1999		
80	HEALTH SERVICES	4,460	94,257	94,231	94,210	\$700,537,565	\$571.86
801	Offices & Clinics of Medical Doctors	1,854	17,245	17,175	17,076	229,498,446	1028.45
802	Offices And Clinics of Dentists	876	5,092	5,079	5,021	38,119,141	579.04
803	Offices of Osteopathic Physicians	19	85	84	84	1,011,414	922.54
804	Offices of Other Health Practitioners	890	4,253	4,272	4,266	26,741,923	482.47
805	Nursing and Personal Care Facilities	275	20,264	20,432	20,551	82,509,089	310.88
806	Hospitals	105	39,073	39,030	39,056	272,057,651	535.87
807	Medical and Dental Laboratories	117	955	971	980	7,195,211	571.38
808	Home Health Care Services	135	3,829	3,710	3,674	20,058,360	412.81
809	Health and Allied Services, NEC	189	3,461	3,478	3,502	23,346,330	516.01
81	LEGAL SERVICES	1,372	4,832	4,836	4,805	\$38,754,016	\$617.93
82	EDUCATIONAL SERVICES	291	6,004	5,941	6,599	\$33,725,163	\$419.69
821	Elementary and Secondary Schools	82	2,474	2,560	2,930	11,026,097	319.50
822	Colleges and Universities	26	2,744	2,589	2,848	17,260,838	486.89
823	Libraries	10	58	59	58	212,117	279.71
824	Vocational Schools	41	171	184	195	975,705	409.39
829	Schools & Educational Services, NEC	132	557	549	568	4,250,406	585.94
83	SOCIAL SERVICES	1,794	20,981	21,732	22,244	\$76,176,352	\$270.63
832	Individual and Family Services	551	7,077	7,126	7,107	26,293,410	284.74
833	Job Training and Related Services	108	2,736	2,740	2,836	10,910,699	302.92
835	Child Day Care Services	796	6,057	6,689	7,103	17,628,820	204.96
836	Residential Care	218	3,422	3,469	3,495	13,814,640	306.95
839	Social Services, NEC	121	1,689	1,708	1,703	7,528,783	340.67
84	MUSEUMS, BOTANICAL, ZOOLOGICAL GARDENS	33	191	177	177	\$606,444	\$256.79
86	MEMBERSHIP ORGANIZATIONS	805	4,618	4,235	4,001	\$17,117,972	\$307.32
861	Business Associations	183	540	541	547	3,997,377	566.63
862	Professional Organizations	43	263	265	264	2,345,390	683.39
863	Labor Organizations	155	782	749	809	1,956,214	192.92
864	Civic and Social Associations	248	2,325	1,973	1,682	5,312,591	205.01
865	Political Organizations	16	16	17	17	114,216	527.15
866	Religious Organizations	34	142	139	135	503,551	279.34
869	Membership Organizations, NEC	126	550	551	547	2,888,633	404.49

**TABLE 7. STATE SUMMARY
EMPLOYMENT AND TOTAL EARNINGS, BY INDUSTRY
THIRD QUARTER 1999**

INDUSTRY GROUP	NUMBER OF EMPLOYING UNITS	EMPLOYMENT			TOTAL EARNINGS	AVERAGE WEEKLY EARNINGS	
		JULY	AUGUST	SEPTEMBER	JUL.-SEP. 1999		
87	ENGINEERING & MANAGEMENT SERVICES	2,309	11,437	11,375	11,324	\$93,006,833	\$628.75
871	Engineering & Architectural Services	549	3,729	3,694	3,638	32,939,817	687.23
872	Accounting, Auditing, & Bookkeeping	812	3,300	3,307	3,308	24,373,218	567.28
873	Research and Testing Services	142	1,440	1,404	1,398	10,345,044	562.78
874	Management and Public Relations	806	2,968	2,970	2,980	25,348,754	655.94
88	PRIVATE HOUSEHOLDS	1,397	1,899	1,892	1,874	\$5,443,394	\$221.74
89	SERVICES, NEC	43	162	170	171	\$1,163,009	\$533.57
	LOCAL GOVERNMENT	1,994	62,924	79,266	103,000	\$431,053,794	\$405.70
	STATE GOVERNMENT	1,141	53,365	54,025	55,637	\$408,830,781	\$578.71
	NONCLASSIFIABLE ESTABLISHMENTS	0	0	0	0	\$0	

**TABLE 8. COUNTY SUMMARY
EMPLOYMENT AND TOTAL EARNINGS, BY INDUSTRY
THIRD QUARTER 1999**

INDUSTRY GROUP	NUMBER OF EMPLOYING UNITS	EMPLOYMENT			TOTAL EARNINGS	AVERAGE WEEKLY EARNINGS
		JULY	AUGUST	SEPTEMBER	JUL.-SEP. 1999	
ARKANSAS COUNTY - TOTAL	663	9,481	9,591	9,816	\$56,894,270	\$454.49
MANUFACTURING	32	3,148	3,164	3,221	22,472,686	544.01
NONMANUFACTURING	631	6,333	6,427	6,595	34,421,584	410.41
AGRICULTURE, FORESTRY, AND FISHING	50	241	237	253	1,691,839	534.10
CONSTRUCTION	56	321	334	323	2,040,548	481.49
TRANSPORTATION AND PUBLIC UTILITIES	68	1,133	1,112	1,176	8,405,443	567.00
WHOLESALE AND RETAIL TRADE	193	2,050	2,024	2,064	9,937,488	373.62
WHOLESALE TRADE	51	637	617	595	4,665,689	582.31
RETAIL TRADE	142	1,413	1,407	1,469	5,271,799	283.65
FINANCE, INSURANCE, AND REAL ESTATE SERVICES	36	293	287	282	1,716,741	459.60
SERVICES	180	1,263	1,290	1,301	5,393,308	322.94
LOCAL GOVERNMENT	33	823	939	985	4,138,350	347.65
STATE GOVERNMENT	15	209	204	211	1,097,867	406.02
ASHLEY COUNTY - TOTAL	583	9,587	9,510	10,056	\$69,471,352	\$549.92
MANUFACTURING	68	4,091	3,998	4,036	40,283,839	766.70
NONMANUFACTURING	515	5,496	5,512	6,020	29,187,513	395.56
CONSTRUCTION	62	1,131	1,104	1,121	7,588,495	521.81
TRANSPORTATION AND PUBLIC UTILITIES	38	382	369	394	2,803,180	564.97
WHOLESALE AND RETAIL TRADE	158	1,502	1,508	1,506	5,585,973	285.45
WHOLESALE TRADE	29	217	211	215	1,453,965	521.82
RETAIL TRADE	129	1,285	1,297	1,291	4,132,008	246.20
FINANCE, INSURANCE, AND REAL ESTATE SERVICES	38	291	292	290	1,499,890	396.48
SERVICES	134	1,122	1,123	1,094	5,207,014	359.87
LOCAL GOVERNMENT	36	531	595	1,036	3,376,273	360.38
STATE GOVERNMENT	12	227	223	218	1,104,814	381.67
OTHER NONMANUFACTURING	37	310	298	361	2,021,874	481.51
BAXTER COUNTY - TOTAL	1,109	13,416	13,754	13,988	\$73,852,841	\$414.09
MANUFACTURING	75	3,593	3,600	3,590	22,259,954	476.39
NONMANUFACTURING	1,034	9,823	10,154	10,398	51,592,887	391.97
CONSTRUCTION	124	524	518	526	2,620,908	385.73
TRANSPORTATION AND PUBLIC UTILITIES	51	436	427	411	2,839,600	514.36
WHOLESALE AND RETAIL TRADE	326	3,325	3,312	3,289	11,519,857	267.82
WHOLESALE TRADE	42	337	337	350	1,703,000	383.79
RETAIL TRADE	284	2,988	2,975	2,939	9,816,857	254.49
FINANCE, INSURANCE, AND REAL ESTATE SERVICES	76	451	462	459	3,343,497	562.37
SERVICES	388	4,117	4,186	4,126	24,584,583	456.46
LOCAL GOVERNMENT	35	539	776	1,128	4,312,407	407.36
STATE GOVERNMENT	12	223	273	263	1,383,769	420.73
OTHER NONMANUFACTURING	22	208	200	196	988,266	377.59

**TABLE 8. COUNTY SUMMARY
EMPLOYMENT AND TOTAL EARNINGS, BY INDUSTRY
THIRD QUARTER 1999**

INDUSTRY GROUP	NUMBER OF EMPLOYING UNITS	EMPLOYMENT			TOTAL EARNINGS	AVERAGE WEEKLY EARNINGS
		JULY	AUGUST	SEPTEMBER	JUL.-SEP. 1999	
BENTON COUNTY - TOTAL	3,282	65,542	66,523	67,290	\$478,039,042	\$553.37
MANUFACTURING	227	16,602	16,507	16,468	119,172,825	554.72
NONMANUFACTURING	3,055	48,940	50,016	50,822	358,866,217	552.92
CONSTRUCTION	428	2,612	2,599	2,604	16,440,050	485.46
TRANSPORTATION AND PUBLIC UTILITIES	189	4,276	4,273	4,278	36,442,937	655.64
WHOLESALE AND RETAIL TRADE	968	23,245	23,269	23,145	187,368,314	620.72
WHOLESALE TRADE	263	1,934	1,930	1,911	16,807,113	671.61
RETAIL TRADE	705	21,311	21,339	21,234	170,561,201	616.12
FINANCE, INSURANCE, AND REAL ESTATE	287	2,776	2,771	2,733	19,635,164	547.25
SERVICES	1,010	11,217	11,409	11,457	63,524,305	430.11
LOCAL GOVERNMENT	68	3,205	4,104	4,947	25,653,467	483.03
STATE GOVERNMENT	18	488	491	594	3,475,969	509.95
OTHER NONMANUFACTURING	87	1,121	1,100	1,064	6,326,011	444.40
BOONE COUNTY - TOTAL	978	13,137	13,273	13,783	\$74,834,738	\$429.67
MANUFACTURING	73	3,057	3,027	2,977	19,005,884	484.05
NONMANUFACTURING	905	10,080	10,246	10,806	55,828,854	413.84
CONSTRUCTION	89	634	665	669	3,938,865	461.87
TRANSPORTATION AND PUBLIC UTILITIES	66	1,361	1,363	1,365	11,588,866	654.04
WHOLESALE AND RETAIL TRADE	284	3,898	3,907	3,865	16,209,597	320.54
WHOLESALE TRADE	61	1,176	1,163	1,141	6,667,983	442.17
RETAIL TRADE	223	2,722	2,744	2,724	9,541,614	268.85
FINANCE, INSURANCE, AND REAL ESTATE	73	484	488	478	3,140,922	499.88
SERVICES	322	1,979	2,000	1,986	8,887,746	343.84
LOCAL GOVERNMENT	45	1,246	1,341	1,842	8,528,486	444.37
STATE GOVERNMENT	18	439	442	566	3,408,193	543.54
OTHER NONMANUFACTURING	8	39	40	35	126,179	255.42
BRADLEY COUNTY - TOTAL	344	3,572	3,341	3,648	\$19,212,596	\$419.82
MANUFACTURING	57	1,019	1,030	1,131	7,807,645	566.59
NONMANUFACTURING	287	2,553	2,311	2,517	11,404,951	356.58
CONSTRUCTION	26	93	92	84	494,986	424.64
TRANSPORTATION AND PUBLIC UTILITIES	26	55	58	70	439,695	554.47
WHOLESALE AND RETAIL TRADE	81	734	722	716	2,503,196	265.96
WHOLESALE TRADE	21	197	188	194	847,355	337.73
RETAIL TRADE	60	537	534	522	1,655,841	239.87
FINANCE, INSURANCE, AND REAL ESTATE	26	150	149	151	797,941	409.20
SERVICES	80	699	704	704	3,502,907	383.66
LOCAL GOVERNMENT	17	224	275	494	1,673,908	389.01
STATE GOVERNMENT	11	51	248	247	1,464,213	452.94
OTHER NONMANUFACTURING	20	7	63	51	528,105	264.36

**TABLE 8. COUNTY SUMMARY
EMPLOYMENT AND TOTAL EARNINGS, BY INDUSTRY
THIRD QUARTER 1999**

INDUSTRY GROUP	NUMBER OF EMPLOYING UNITS	EMPLOYMENT			TOTAL EARNINGS	AVERAGE WEEKLY EARNINGS
		JULY	AUGUST	SEPTEMBER	JUL.-SEP. 1999	
CALHOUN COUNTY - TOTAL	146	2,934	2,954	2,987	\$22,039,987	\$573.09
MANUFACTURING	40	1,969	1,982	1,958	16,622,720	649.18
NONMANUFACTURING	106	965	972	1,029	5,417,267	421.49
CONSTRUCTION	13	79	84	78	359,508	344.25
TRANSPORTATION AND PUBLIC UTILITIES	19	141	144	139	999,709	544.11
WHOLESALE AND RETAIL TRADE	27	106	100	100	282,911	213.36
SERVICES	14	103	98	100	460,644	353.16
LOCAL GOVERNMENT	13	124	159	215	729,095	337.86
STATE GOVERNMENT	10	284	262	277	1,728,000	484.53
OTHER NONMANUFACTURING	10	128	125	120	857,400	530.46
CARROLL COUNTY - TOTAL	775	9,984	10,044	10,231	\$48,534,536	\$370.15
AGRICULTURE, FORESTRY, AND FISHING	22	393	414	404	2,180,482	415.51
WHOLESALE AND RETAIL TRADE	283	2,260	2,220	2,242	7,662,623	263.06
WHOLESALE TRADE	24	68	68	69	362,425	407.98
RETAIL TRADE	259	2,192	2,152	2,173	7,300,198	258.50
SERVICES	246	2,157	2,160	2,129	8,624,036	308.74
LOCAL GOVERNMENT	25	508	579	828	3,329,038	401.17
STATE GOVERNMENT	10	86	84	85	493,216	446.35
OTHER	189	4,580	4,587	4,543	26,245,141	441.76
CHICOT COUNTY - TOTAL	356	4,162	4,384	4,496	\$20,541,557	\$363.47
MANUFACTURING	15	1,057	1,070	1,088	4,137,107	296.96
NONMANUFACTURING	341	3,105	3,314	3,408	16,404,450	385.23
CONSTRUCTION	17	178	177	181	1,211,082	521.42
TRANSPORTATION AND PUBLIC UTILITIES	18	114	120	111	843,368	564.13
WHOLESALE AND RETAIL TRADE	111	869	873	823	3,569,121	321.11
WHOLESALE TRADE	27	230	229	222	1,795,990	608.60
RETAIL TRADE	84	639	644	601	1,773,131	217.19
FINANCE, INSURANCE, AND REAL ESTATE	28	180	166	162	915,648	415.95
SERVICES	85	554	595	607	2,458,018	323.03
LOCAL GOVERNMENT	16	608	774	892	3,537,193	358.96
STATE GOVERNMENT	13	322	318	307	2,093,326	510.11
OTHER NONMANUFACTURING	53	280	291	325	1,776,694	457.60

**TABLE 8. COUNTY SUMMARY
EMPLOYMENT AND TOTAL EARNINGS, BY INDUSTRY
THIRD QUARTER 1999**

INDUSTRY GROUP	NUMBER OF EMPLOYING UNITS	EMPLOYMENT			TOTAL EARNINGS	AVERAGE WEEKLY EARNINGS
		JULY	AUGUST	SEPTEMBER	JUL.-SEP. 1999	
CLARK COUNTY - TOTAL	614	9,408	9,725	10,226	\$50,113,568	\$393.91
MANUFACTURING	77	3,255	3,236	3,234	18,794,606	445.99
NONMANUFACTURING	537	6,153	6,489	6,992	31,318,962	368.11
AGRICULTURE, FORESTRY, AND FISHING	6	22	20	19	85,034	321.69
CONSTRUCTION	39	163	166	168	820,361	380.91
TRANSPORTATION AND PUBLIC UTILITIES	33	406	418	418	3,213,857	597.15
WHOLESALE AND RETAIL TRADE	174	1,994	2,037	2,254	7,412,027	272.15
WHOLESALE TRADE	27	168	181	181	916,319	398.98
RETAIL TRADE	147	1,826	1,856	2,073	6,495,708	260.47
FINANCE, INSURANCE, AND REAL ESTATE	62	366	350	354	1,767,602	381.22
SERVICES	181	1,812	1,804	1,852	8,375,516	353.48
LOCAL GOVERNMENT	27	491	705	831	3,144,877	358.04
STATE GOVERNMENT	15	899	989	1,096	6,499,688	502.66
CLAY COUNTY - TOTAL	465	6,000	6,360	6,339	\$27,613,674	\$340.79
MANUFACTURING	29	2,922	2,973	2,898	13,336,848	350.02
NONMANUFACTURING	436	3,078	3,387	3,441	14,276,826	332.59
AGRICULTURE, FORESTRY, AND FISHING	71	260	260	251	1,102,044	329.85
CONSTRUCTION	43	157	175	174	880,232	401.44
TRANSPORTATION AND PUBLIC UTILITIES	38	253	246	275	1,642,367	489.67
WHOLESALE AND RETAIL TRADE	124	1,229	1,210	1,212	4,489,200	283.75
WHOLESALE TRADE	40	447	434	452	2,228,234	385.75
RETAIL TRADE	84	782	776	760	2,260,966	225.09
FINANCE, INSURANCE, AND REAL ESTATE	32	162	160	155	737,535	356.81
SERVICES	95	431	460	464	1,816,350	309.34
LOCAL GOVERNMENT	22	504	793	828	3,115,844	338.37
STATE GOVERNMENT	11	82	83	82	493,254	460.84
CLEBURNE COUNTY - TOTAL	596	6,230	6,354	6,443	\$33,802,913	\$409.98
MANUFACTURING	49	1,851	1,811	1,756	12,709,186	541.32
NONMANUFACTURING	547	4,379	4,543	4,687	21,093,727	357.69
CONSTRUCTION	61	250	259	257	1,352,377	407.42
TRANSPORTATION AND PUBLIC UTILITIES	49	420	420	406	3,056,623	566.11
WHOLESALE AND RETAIL TRADE	181	1,651	1,667	1,627	6,029,477	281.38
WHOLESALE TRADE	35	167	166	169	1,008,252	463.49
RETAIL TRADE	146	1,484	1,501	1,458	5,021,225	260.80
FINANCE, INSURANCE, AND REAL ESTATE	52	246	246	245	1,296,927	406.09
SERVICES	158	1,295	1,291	1,228	5,781,922	349.84
LOCAL GOVERNMENT	20	271	423	690	2,329,811	388.47
STATE GOVERNMENT	10	6	121	123	647,830	404.05
OTHER NONMANUFACTURING	16	0	116	111	598,760	398.20

**TABLE 8. COUNTY SUMMARY
EMPLOYMENT AND TOTAL EARNINGS, BY INDUSTRY
THIRD QUARTER 1999**

INDUSTRY GROUP	NUMBER OF EMPLOYING UNITS	EMPLOYMENT			TOTAL EARNINGS	AVERAGE WEEKLY EARNINGS
		JULY	AUGUST	SEPTEMBER	JUL.-SEP. 1999	
CLEVELAND COUNTY - TOTAL	126	985	1,116	1,162	\$4,812,791	\$340.38
MANUFACTURING	24	181	182	180	933,118	396.57
NONMANUFACTURING	102	804	934	982	3,879,673	329.16
CONSTRUCTION	12	83	89	82	263,317	239.23
TRANSPORTATION AND PUBLIC UTILITIES	11	90	91	90	506,166	431.02
WHOLESALE AND RETAIL TRADE	28	192	195	185	637,267	257.10
WHOLESALE TRADE	5	87	88	81	377,812	340.58
RETAIL TRADE	23	105	107	104	259,455	189.48
FINANCE, INSURANCE, AND REAL ESTATE	5	32	32	32	145,569	349.93
LOCAL GOVERNMENT	12	137	248	327	1,055,460	342.09
STATE GOVERNMENT	8	57	57	56	290,521	394.37
OTHER NONMANUFACTURING	26	213	222	210	981,373	351.12
COLUMBIA COUNTY - TOTAL	737	9,454	9,737	10,253	\$59,374,821	\$465.35
MANUFACTURING	59	3,146	3,188	3,185	27,094,890	656.86
NONMANUFACTURING	678	6,308	6,549	7,068	32,279,931	373.86
AGRICULTURE, FORESTRY, AND FISHING	22	173	169	160	733,134	337.02
MINING	35	296	301	308	2,288,508	583.55
CONSTRUCTION	47	264	271	272	1,477,025	422.37
TRANSPORTATION AND PUBLIC UTILITIES	57	540	560	552	4,070,514	568.61
WHOLESALE AND RETAIL TRADE	215	2,091	2,099	2,088	7,132,108	262.16
WHOLESALE TRADE	41	291	292	264	1,642,459	447.50
RETAIL TRADE	174	1,800	1,807	1,824	5,489,649	233.26
FINANCE, INSURANCE, AND REAL ESTATE	40	368	387	382	2,339,553	474.84
SERVICES	216	1,385	1,418	1,583	5,552,791	292.16
LOCAL GOVERNMENT	30	699	872	1,198	5,075,929	423.03
STATE GOVERNMENT	16	492	472	525	3,610,369	559.54
CONWAY COUNTY - TOTAL	456	6,254	6,381	6,632	\$39,153,771	\$468.96
MANUFACTURING	26	1,467	1,447	1,447	12,915,796	683.46
NONMANUFACTURING	430	4,787	4,934	5,185	26,237,975	406.21
CONSTRUCTION	50	585	573	558	3,977,355	534.88
TRANSPORTATION AND PUBLIC UTILITIES	26	413	405	401	2,821,121	534.07
WHOLESALE AND RETAIL TRADE	148	1,576	1,595	1,610	6,622,057	319.63
WHOLESALE TRADE	35	352	351	361	2,425,865	526.14
RETAIL TRADE	113	1,224	1,244	1,249	4,196,192	260.52
FINANCE, INSURANCE, AND REAL ESTATE	27	156	161	151	903,889	445.70
SERVICES	126	1,172	1,161	1,183	6,555,657	430.27
LOCAL GOVERNMENT	24	463	595	839	2,825,568	343.73
STATE GOVERNMENT	13	297	320	320	1,580,335	389.21
OTHER NONMANUFACTURING	16	125	124	123	951,993	590.57

**TABLE 8. COUNTY SUMMARY
EMPLOYMENT AND TOTAL EARNINGS, BY INDUSTRY
THIRD QUARTER 1999**

INDUSTRY GROUP	NUMBER OF EMPLOYING UNITS	EMPLOYMENT			TOTAL EARNINGS	AVERAGE WEEKLY EARNINGS
		JULY	AUGUST	SEPTEMBER	JUL.-SEP. 1999	
CRAIGHEAD COUNTY - TOTAL	2,410	37,237	38,259	38,986	\$228,674,090	\$460.95
MANUFACTURING	151	8,796	8,775	8,807	65,296,878	571.25
NONMANUFACTURING	2,259	28,441	29,484	30,179	163,377,212	427.93
CONSTRUCTION	243	1,989	1,984	1,968	12,320,590	478.57
TRANSPORTATION AND PUBLIC UTILITIES	157	1,773	1,752	1,797	12,907,037	559.67
WHOLESALE AND RETAIL TRADE	728	9,397	9,451	9,467	38,256,318	311.79
WHOLESALE TRADE	184	1,745	1,718	1,738	11,486,161	509.64
RETAIL TRADE	544	7,652	7,733	7,729	26,770,157	267.27
FINANCE, INSURANCE, AND REAL ESTATE SERVICES	189	1,179	1,193	1,181	9,235,786	599.87
LOCAL GOVERNMENT	804	9,894	10,051	10,054	61,061,513	469.72
STATE GOVERNMENT	39	1,700	2,445	2,947	12,293,571	400.03
OTHER NONMANUFACTURING	23	2,048	2,186	2,193	15,256,788	547.81
	76	461	422	572	2,045,609	324.44
CRAWFORD COUNTY - TOTAL	988	14,628	15,543	15,782	\$88,715,762	\$445.52
MANUFACTURING	72	4,625	4,585	4,570	28,689,649	480.46
NONMANUFACTURING	916	10,003	10,958	11,212	60,026,113	430.55
CONSTRUCTION	153	851	890	909	5,399,168	470.17
TRANSPORTATION AND PUBLIC UTILITIES	72	2,468	2,524	2,545	18,523,216	567.15
WHOLESALE AND RETAIL TRADE	286	3,183	3,237	3,198	12,388,759	297.25
WHOLESALE TRADE	77	552	569	556	3,457,494	475.78
RETAIL TRADE	209	2,631	2,668	2,642	8,931,265	259.55
FINANCE, INSURANCE, AND REAL ESTATE SERVICES	77	384	380	373	2,330,444	472.99
LOCAL GOVERNMENT	249	2,011	1,986	2,004	11,399,445	438.37
STATE GOVERNMENT	40	678	1,504	1,752	7,410,942	434.73
OTHER NONMANUFACTURING	12	175	173	158	1,040,878	474.71
	27	253	264	273	1,533,261	447.89
CRITTENDEN COUNTY - TOTAL	1,164	16,227	16,158	17,269	\$92,696,523	\$430.81
MANUFACTURING	57	2,191	2,180	2,191	16,865,798	593.13
NONMANUFACTURING	1,107	14,036	13,978	15,078	75,830,725	406.09
CONSTRUCTION	95	682	667	665	3,824,218	438.19
TRANSPORTATION AND PUBLIC UTILITIES	86	1,776	1,784	1,761	14,838,469	643.54
WHOLESALE AND RETAIL TRADE	348	5,219	5,121	5,119	22,357,689	333.75
WHOLESALE TRADE	83	862	776	794	5,838,258	553.98
RETAIL TRADE	265	4,357	4,345	4,325	16,519,431	292.64
FINANCE, INSURANCE, AND REAL ESTATE SERVICES	93	466	471	460	2,876,316	475.14
LOCAL GOVERNMENT	361	3,903	3,839	3,860	18,837,334	374.68
STATE GOVERNMENT	40	1,185	1,306	2,255	8,642,520	420.23
OTHER NONMANUFACTURING	19	1	386	422	2,496,232	480.44
	65	4	404	536	1,957,947	333.70

**TABLE 8. COUNTY SUMMARY
EMPLOYMENT AND TOTAL EARNINGS, BY INDUSTRY
THIRD QUARTER 1999**

INDUSTRY GROUP	NUMBER OF EMPLOYING UNITS	EMPLOYMENT			TOTAL EARNINGS	AVERAGE WEEKLY EARNINGS
		JULY	AUGUST	SEPTEMBER	JUL.-SEP. 1999	
CROSS COUNTY - TOTAL	444	5,481	5,630	5,796	\$29,665,867	\$404.92
MANUFACTURING	23	1,420	1,403	1,414	8,608,379	468.86
NONMANUFACTURING	421	4,061	4,227	4,382	21,057,488	383.54
AGRICULTURE, FORESTRY, AND FISHING	37	196	181	182	999,145	412.47
CONSTRUCTION	38	169	167	155	715,282	336.18
TRANSPORTATION AND PUBLIC UTILITIES	47	451	464	504	3,513,397	571.38
WHOLESALE AND RETAIL TRADE	133	1,409	1,385	1,389	5,950,309	328.27
WHOLESALE TRADE	34	316	314	325	1,960,209	473.67
RETAIL TRADE	99	1,093	1,071	1,064	3,990,100	285.25
FINANCE, INSURANCE, AND REAL ESTATE	32	219	219	218	1,261,784	443.87
SERVICES	102	798	811	820	3,476,257	330.26
LOCAL GOVERNMENT	19	579	767	887	3,681,323	380.45
STATE GOVERNMENT	13	240	233	227	1,459,991	481.32
DALLAS COUNTY - TOTAL	281	3,271	3,236	3,423	\$17,195,820	\$399.62
MANUFACTURING	69	1,257	1,227	1,234	8,244,388	511.71
NONMANUFACTURING	212	2,014	2,009	2,189	8,951,432	332.54
AGRICULTURE, FORESTRY, AND FISHING	5	29	26	26	118,783	338.41
CONSTRUCTION	20	138	141	144	690,767	376.85
TRANSPORTATION AND PUBLIC UTILITIES	23	95	94	96	544,548	440.93
WHOLESALE AND RETAIL TRADE	75	631	626	626	2,501,203	306.53
WHOLESALE TRADE	13	79	75	78	496,810	494.17
RETAIL TRADE	62	552	551	548	2,004,393	280.16
FINANCE, INSURANCE, AND REAL ESTATE	12	74	75	71	344,200	361.05
SERVICES	52	758	731	747	3,218,510	332.17
LOCAL GOVERNMENT	16	224	253	416	1,188,939	307.25
STATE GOVERNMENT	9	65	63	63	344,512	416.24
DESHA COUNTY - TOTAL	454	5,255	5,461	5,790	\$32,133,938	\$449.26
MANUFACTURING	20	1,579	1,594	1,573	13,537,905	658.27
NONMANUFACTURING	434	3,676	3,867	4,217	18,596,033	364.91
CONSTRUCTION	27	217	213	197	1,527,902	562.35
TRANSPORTATION AND PUBLIC UTILITIES	34	173	190	251	1,432,678	538.47
WHOLESALE AND RETAIL TRADE	138	1,253	1,236	1,242	4,829,676	298.72
WHOLESALE TRADE	28	244	237	227	1,795,525	585.24
RETAIL TRADE	110	1,009	999	1,015	3,034,151	231.62
FINANCE, INSURANCE, AND REAL ESTATE	35	253	258	252	1,145,488	346.45
SERVICES	114	752	755	752	3,353,944	342.62
LOCAL GOVERNMENT	23	544	720	930	3,511,706	369.37
STATE GOVERNMENT	11	181	185	183	1,061,998	446.41
OTHER NONMANUFACTURING	52	303	310	410	1,732,641	390.85

**TABLE 8. COUNTY SUMMARY
EMPLOYMENT AND TOTAL EARNINGS, BY INDUSTRY
THIRD QUARTER 1999**

INDUSTRY GROUP	NUMBER OF EMPLOYING UNITS	EMPLOYMENT			TOTAL EARNINGS	AVERAGE WEEKLY EARNINGS
		JULY	AUGUST	SEPTEMBER	JUL.-SEP. 1999	
DREW COUNTY - TOTAL	505	6,899	7,003	7,431	\$37,482,276	\$405.46
MANUFACTURING	48	2,372	2,356	2,366	13,418,988	436.52
NONMANUFACTURING	457	4,527	4,647	5,065	24,063,288	389.99
CONSTRUCTION	29	114	113	109	609,797	418.82
TRANSPORTATION AND PUBLIC UTILITIES	41	193	187	205	1,871,777	738.37
WHOLESALE AND RETAIL TRADE	160	1,716	1,753	1,725	6,292,196	279.56
WHOLESALE TRADE	34	263	262	262	1,814,928	532.18
RETAIL TRADE	126	1,453	1,491	1,463	4,477,268	234.45
FINANCE, INSURANCE, AND REAL ESTATE SERVICES	39	234	234	231	2,576,925	850.75
LOCAL GOVERNMENT	125	1,095	1,079	1,089	4,361,506	308.46
STATE GOVERNMENT	24	589	702	1,025	3,970,610	395.64
OTHER NONMANUFACTURING	14	452	459	536	3,660,728	583.82
	25	134	120	145	719,749	416.28
FAULKNER COUNTY - TOTAL	1,727	31,769	32,118	32,944	\$203,623,771	\$485.28
MANUFACTURING	84	7,697	7,722	7,684	56,898,401	568.34
NONMANUFACTURING	1,643	24,072	24,396	25,260	146,725,370	459.25
CONSTRUCTION	247	2,658	2,622	2,637	16,649,257	485.30
TRANSPORTATION AND PUBLIC UTILITIES	65	683	678	674	5,442,544	617.19
WHOLESALE AND RETAIL TRADE	527	6,995	7,069	7,322	26,392,211	284.79
WHOLESALE TRADE	126	868	872	864	5,047,767	447.34
RETAIL TRADE	401	6,127	6,197	6,458	21,344,444	262.25
FINANCE, INSURANCE, AND REAL ESTATE SERVICES	153	910	895	902	5,695,648	485.55
LOCAL GOVERNMENT	563	8,839	8,823	8,771	64,497,018	563.08
STATE GOVERNMENT	34	1,518	1,800	2,363	9,283,752	377.12
OTHER NONMANUFACTURING	20	2,249	2,279	2,368	17,530,967	586.66
	34	220	230	223	1,233,973	423.12
FRANKLIN COUNTY - TOTAL	297	3,679	4,013	4,116	\$20,194,160	\$394.66
MANUFACTURING	20	1,082	1,086	1,101	6,202,543	437.86
NONMANUFACTURING	277	2,597	2,927	3,015	13,991,617	378.13
CONSTRUCTION	20	164	171	168	1,007,147	462.06
TRANSPORTATION AND PUBLIC UTILITIES	22	344	345	336	2,535,848	570.92
WHOLESALE AND RETAIL TRADE	86	769	775	815	2,397,265	234.51
WHOLESALE TRADE	14	70	71	73	230,291	248.34
RETAIL TRADE	72	699	704	742	2,166,974	233.13
FINANCE, INSURANCE, AND REAL ESTATE SERVICES	26	149	147	142	575,093	303.00
LOCAL GOVERNMENT	79	646	647	649	2,766,546	328.75
STATE GOVERNMENT	23	332	651	697	3,172,381	435.77
OTHER NONMANUFACTURING	10	99	116	136	857,627	533.46
	11	75	75	72	679,710	709.76

**TABLE 8. COUNTY SUMMARY
EMPLOYMENT AND TOTAL EARNINGS, BY INDUSTRY
THIRD QUARTER 1999**

INDUSTRY GROUP	NUMBER OF EMPLOYING UNITS	EMPLOYMENT			TOTAL EARNINGS	AVERAGE WEEKLY EARNINGS
		JULY	AUGUST	SEPTEMBER	JUL.-SEP. 1999	
FULTON COUNTY - TOTAL	195	1,743	1,762	1,898	\$7,259,993	\$310.08
MANUFACTURING	13	405	412	387	1,285,146	246.32
NONMANUFACTURING	182	1,338	1,350	1,511	5,974,847	328.37
TRANSPORTATION AND PUBLIC UTILITIES	10	111	113	98	844,971	605.57
WHOLESALE AND RETAIL TRADE	68	376	370	384	985,164	201.19
WHOLESALE TRADE	12	52	54	55	163,337	234.12
RETAIL TRADE	56	324	316	329	821,827	195.72
FINANCE, INSURANCE, AND REAL ESTATE SERVICES	11	75	74	77	382,436	390.51
LOCAL GOVERNMENT	51	343	344	334	1,379,474	311.79
STATE GOVERNMENT	13	275	290	458	1,538,955	347.16
OTHER NONMANUFACTURING	10	70	73	74	390,912	415.72
	19	88	86	86	452,935	402.01
GARLAND COUNTY - TOTAL	2,703	32,471	32,592	33,327	\$187,994,926	\$440.93
MANUFACTURING	124	3,911	3,911	3,874	28,662,163	565.52
NONMANUFACTURING	2,579	28,560	28,681	29,453	159,332,763	424.13
AGRICULTURE, FORESTRY, AND FISHING	65	471	476	483	2,321,391	374.62
MINING	13	205	200	197	1,540,662	590.59
CONSTRUCTION	365	2,517	2,552	2,542	13,706,133	415.58
TRANSPORTATION AND PUBLIC UTILITIES	97	999	993	1,006	7,675,999	590.86
WHOLESALE AND RETAIL TRADE	842	9,913	9,828	9,758	43,403,830	339.55
WHOLESALE TRADE	163	1,373	1,374	1,375	11,484,597	642.96
RETAIL TRADE	679	8,540	8,454	8,383	31,919,233	290.26
FINANCE, INSURANCE, AND REAL ESTATE SERVICES	248	1,443	1,408	1,403	9,874,245	535.65
LOCAL GOVERNMENT	892	10,733	10,640	10,542	63,483,898	459.04
STATE GOVERNMENT	34	1,482	1,798	2,680	11,540,325	446.84
	23	797	786	842	5,786,280	550.64
GRANT COUNTY - TOTAL	284	3,687	3,730	3,910	\$24,365,501	\$496.41
MANUFACTURING	42	1,585	1,558	1,523	13,225,952	654.12
NONMANUFACTURING	242	2,102	2,172	2,387	11,139,549	385.93
CONSTRUCTION	28	178	188	177	1,295,353	550.51
TRANSPORTATION AND PUBLIC UTILITIES	35	111	114	120	827,852	553.75
WHOLESALE AND RETAIL TRADE	80	784	775	797	2,576,838	252.40
WHOLESALE TRADE	20	120	115	118	654,402	427.81
RETAIL TRADE	60	664	660	679	1,922,436	221.49
FINANCE, INSURANCE, AND REAL ESTATE SERVICES	17	87	96	97	529,216	436.17
LOCAL GOVERNMENT	54	280	299	298	1,322,905	348.10
STATE GOVERNMENT	10	524	557	756	3,366,249	422.88
OTHER NONMANUFACTURING	10	61	63	64	388,992	477.49
	8	77	80	78	832,144	817.16

**TABLE 8. COUNTY SUMMARY
EMPLOYMENT AND TOTAL EARNINGS, BY INDUSTRY
THIRD QUARTER 1999**

INDUSTRY GROUP	NUMBER OF EMPLOYING UNITS	EMPLOYMENT			TOTAL EARNINGS	AVERAGE WEEKLY EARNINGS
		JULY	AUGUST	SEPTEMBER	JUL.-SEP. 1999	
GREENE COUNTY - TOTAL	799	13,860	13,949	14,279	\$79,223,584	\$434.38
MANUFACTURING	54	6,377	6,271	6,253	43,155,765	526.90
NONMANUFACTURING	745	7,483	7,678	8,026	36,067,819	358.97
CONSTRUCTION	72	354	350	340	1,876,934	414.88
TRANSPORTATION AND PUBLIC UTILITIES	43	249	245	244	2,161,747	675.97
WHOLESALE AND RETAIL TRADE	271	2,896	2,923	2,913	10,485,821	277.12
WHOLESALE TRADE	56	459	450	447	2,578,647	438.84
RETAIL TRADE	215	2,437	2,473	2,466	7,907,174	247.39
FINANCE, INSURANCE, AND REAL ESTATE SERVICES	54	322	326	315	1,991,851	477.32
LOCAL GOVERNMENT	240	2,472	2,513	2,508	11,734,384	361.40
STATE GOVERNMENT	31	794	939	1,330	5,507,717	414.96
OTHER NONMANUFACTURING	11	253	248	238	1,583,376	494.44
	23	143	134	138	725,989	403.70
HEMPSTEAD COUNTY - TOTAL	499	8,940	9,071	9,472	\$49,816,017	\$418.30
MANUFACTURING	42	3,963	3,961	3,976	24,800,171	480.93
NONMANUFACTURING	457	4,977	5,110	5,496	25,015,846	370.46
CONSTRUCTION	33	158	153	140	826,329	422.82
TRANSPORTATION AND PUBLIC UTILITIES	30	248	254	251	2,359,930	723.24
WHOLESALE AND RETAIL TRADE	142	1,516	1,546	1,540	5,517,371	276.67
WHOLESALE TRADE	33	216	224	224	1,279,169	444.57
RETAIL TRADE	109	1,300	1,322	1,316	4,238,202	248.36
FINANCE, INSURANCE, AND REAL ESTATE SERVICES	31	235	233	227	1,341,174	445.33
LOCAL GOVERNMENT	161	1,655	1,647	1,674	7,533,020	349.35
STATE GOVERNMENT	31	462	560	951	3,396,384	397.25
OTHER NONMANUFACTURING	15	469	487	482	2,737,778	439.36
	14	234	230	231	1,303,860	432.94
HOT SPRING COUNTY - TOTAL	592	7,003	7,139	7,653	\$42,217,027	\$447.00
MANUFACTURING	82	2,364	2,363	2,372	18,094,241	588.19
NONMANUFACTURING	510	4,639	4,776	5,281	24,122,786	378.80
AGRICULTURE, FORESTRY, AND FISHING	12	108	111	104	467,070	333.70
MINING	4	104	108	105	882,872	642.71
CONSTRUCTION	80	293	313	320	1,609,763	401.17
TRANSPORTATION AND PUBLIC UTILITIES	54	357	355	348	2,675,833	582.55
WHOLESALE AND RETAIL TRADE	147	1,483	1,482	1,482	5,855,108	303.84
WHOLESALE TRADE	26	128	125	127	1,137,929	691.05
RETAIL TRADE	121	1,355	1,357	1,355	4,717,179	267.66
FINANCE, INSURANCE, AND REAL ESTATE SERVICES	35	261	266	263	1,456,199	425.37
LOCAL GOVERNMENT	136	906	918	933	3,842,272	321.61
STATE GOVERNMENT	29	7	960	1,415	5,726,313	408.87
OTHER NONMANUFACTURING	13	0	263	311	1,607,356	439.49

**TABLE 8. COUNTY SUMMARY
EMPLOYMENT AND TOTAL EARNINGS, BY INDUSTRY
THIRD QUARTER 1999**

INDUSTRY GROUP	NUMBER OF EMPLOYING UNITS	EMPLOYMENT			TOTAL EARNINGS	AVERAGE WEEKLY EARNINGS
		JULY	AUGUST	SEPTEMBER	JUL.-SEP. 1999	
HOWARD COUNTY - TOTAL	357	7,806	7,901	8,158	\$41,565,508	\$401.93
MANUFACTURING	41	4,709	4,733	4,768	27,300,259	443.35
NONMANUFACTURING	316	3,097	3,168	3,390	14,265,249	340.96
CONSTRUCTION	22	116	91	99	556,976	420.04
TRANSPORTATION AND PUBLIC UTILITIES	29	329	332	327	2,098,500	490.15
WHOLESALE AND RETAIL TRADE	114	1,008	1,038	1,003	3,393,398	256.84
WHOLESALE TRADE	24	137	138	133	720,831	407.71
RETAIL TRADE	90	871	900	870	2,672,567	233.53
FINANCE, INSURANCE, AND REAL ESTATE	22	141	136	130	660,295	374.39
SERVICES	82	806	794	807	3,183,385	305.20
LOCAL GOVERNMENT	18	275	355	606	2,035,019	379.95
STATE GOVERNMENT	13	179	177	181	1,051,142	451.72
OTHER NONMANUFACTURING	16	243	245	237	1,286,534	409.51
INDEPENDENCE COUNTY - TOTAL	883	15,576	15,929	16,385	\$90,351,980	\$435.38
MANUFACTURING	56	5,732	5,996	5,910	37,753,919	493.96
NONMANUFACTURING	827	9,844	9,933	10,475	52,598,061	401.23
AGRICULTURE, FORESTRY, AND FISHING	14	146	122	115	842,761	507.79
MINING	3	39	38	39	352,063	700.39
CONSTRUCTION	76	502	517	544	2,777,310	410.06
TRANSPORTATION AND PUBLIC UTILITIES	70	1,341	1,336	1,327	10,086,466	581.33
WHOLESALE AND RETAIL TRADE	272	3,142	3,151	3,158	11,558,472	282.23
WHOLESALE TRADE	55	574	570	568	3,187,605	429.67
RETAIL TRADE	217	2,568	2,581	2,590	8,370,867	249.61
FINANCE, INSURANCE, AND REAL ESTATE	76	365	357	353	2,414,897	518.40
SERVICES	263	3,329	3,290	3,235	17,776,979	416.32
LOCAL GOVERNMENT	37	603	745	1,279	4,401,365	386.64
STATE GOVERNMENT	16	377	377	425	2,387,748	467.36
IZARD COUNTY - TOTAL	258	2,828	2,923	3,096	\$15,263,492	\$398.14
MANUFACTURING	20	658	672	672	4,172,721	480.99
NONMANUFACTURING	238	2,170	2,251	2,424	11,090,771	373.91
CONSTRUCTION	23	79	78	73	315,047	316.10
WHOLESALE AND RETAIL TRADE	81	601	613	601	1,869,484	237.70
WHOLESALE TRADE	13	34	35	35	159,376	353.64
RETAIL TRADE	68	567	578	566	1,710,108	230.65
FINANCE, INSURANCE, AND REAL ESTATE	23	165	156	155	718,817	348.49
SERVICES	62	590	572	560	2,258,480	302.66
LOCAL GOVERNMENT	18	252	341	499	1,694,556	358.11
STATE GOVERNMENT	10	303	315	360	3,185,333	751.61
OTHER NONMANUFACTURING	21	180	176	176	1,049,054	455.06

**TABLE 8. COUNTY SUMMARY
EMPLOYMENT AND TOTAL EARNINGS, BY INDUSTRY
THIRD QUARTER 1999**

INDUSTRY GROUP	NUMBER OF EMPLOYING UNITS	EMPLOYMENT			TOTAL EARNINGS	AVERAGE WEEKLY EARNINGS
		JULY	AUGUST	SEPTEMBER	JUL.-SEP. 1999	
JACKSON COUNTY - TOTAL	554	5,635	5,884	6,035	\$31,435,459	\$413.26
MANUFACTURING	34	1,158	1,147	1,158	7,798,936	519.71
NONMANUFACTURING	520	4,477	4,737	4,877	23,636,523	387.10
CONSTRUCTION	33	216	224	220	1,564,516	547.03
TRANSPORTATION AND PUBLIC UTILITIES	30	295	312	350	2,078,872	501.30
WHOLESALE AND RETAIL TRADE	161	1,305	1,309	1,305	5,333,810	314.08
WHOLESALE TRADE	34	244	243	240	1,729,032	548.84
RETAIL TRADE	127	1,061	1,066	1,065	3,604,778	260.61
FINANCE, INSURANCE, AND REAL ESTATE SERVICES	32	173	170	171	960,403	431.19
LOCAL GOVERNMENT	173	1,629	1,645	1,660	8,876,251	415.15
STATE GOVERNMENT	34	455	666	725	2,511,992	314.03
OTHER NONMANUFACTURING	12	180	193	201	1,113,079	447.50
	45	224	218	245	1,197,600	402.28
JEFFERSON COUNTY - TOTAL	1,767	31,866	32,300	33,573	\$195,222,815	\$460.94
MANUFACTURING	90	8,466	8,404	8,488	66,878,732	608.63
NONMANUFACTURING	1,677	23,400	23,896	25,085	128,344,083	409.19
AGRICULTURE, FORESTRY, AND FISHING	60	479	480	593	2,995,420	445.39
CONSTRUCTION	115	909	900	821	5,746,438	504.22
TRANSPORTATION AND PUBLIC UTILITIES	87	1,096	1,106	1,104	9,984,566	696.95
WHOLESALE AND RETAIL TRADE	573	7,089	7,091	7,052	29,488,960	320.51
WHOLESALE TRADE	116	1,255	1,243	1,238	8,130,964	502.24
RETAIL TRADE	457	5,834	5,848	5,814	21,357,996	281.71
FINANCE, INSURANCE, AND REAL ESTATE SERVICES	131	1,177	1,174	1,154	7,851,982	516.97
LOCAL GOVERNMENT	639	8,071	8,097	8,160	42,585,268	403.95
STATE GOVERNMENT	42	1,850	2,297	3,335	12,745,329	393.11
	30	2,729	2,751	2,866	16,946,120	468.56
JOHNSON COUNTY - TOTAL	417	7,554	7,663	7,990	\$39,337,829	\$391.17
MANUFACTURING	43	3,310	3,279	3,294	18,467,703	431.22
NONMANUFACTURING	374	4,244	4,384	4,696	20,870,126	361.47
CONSTRUCTION	30	117	118	117	612,228	401.37
TRANSPORTATION AND PUBLIC UTILITIES	11	59	59	58	420,907	551.89
WHOLESALE AND RETAIL TRADE	148	2,056	2,107	2,093	8,598,363	317.17
WHOLESALE TRADE	25	68	71	72	389,331	425.81
RETAIL TRADE	123	1,988	2,036	2,021	8,209,032	313.38
FINANCE, INSURANCE, AND REAL ESTATE SERVICES	37	226	220	213	1,210,587	423.92
LOCAL GOVERNMENT	110	1,118	1,142	1,156	5,557,931	375.47
STATE GOVERNMENT	14	305	382	756	2,630,288	420.64
OTHER NONMANUFACTURING	10	3	144	141	849,381	457.97
	14	0	212	162	990,441	384.79

**TABLE 8. COUNTY SUMMARY
EMPLOYMENT AND TOTAL EARNINGS, BY INDUSTRY
THIRD QUARTER 1999**

INDUSTRY GROUP	NUMBER OF EMPLOYING UNITS	EMPLOYMENT			TOTAL EARNINGS	AVERAGE WEEKLY EARNINGS
		JULY	AUGUST	SEPTEMBER	JUL.-SEP. 1999	
LAFAYETTE COUNTY - TOTAL	178	1,782	1,836	1,894	\$9,274,594	\$388.30
MANUFACTURING	15	526	529	529	3,234,205	471.18
NONMANUFACTURING	163	1,256	1,307	1,365	6,040,389	354.87
AGRICULTURE, FORESTRY, AND FISHING	11	52	51	74	192,354	250.79
MINING	7	58	56	51	345,726	483.53
CONSTRUCTION	11	77	80	68	474,540	486.71
TRANSPORTATION AND PUBLIC UTILITIES	18	118	116	111	946,971	633.43
WHOLESALE AND RETAIL TRADE	39	225	228	225	830,709	282.75
FINANCE, INSURANCE, AND REAL ESTATE SERVICES	16	87	90	90	516,335	446.27
LOCAL GOVERNMENT	35	265	260	270	966,297	280.49
STATE GOVERNMENT	16	285	335	387	1,273,526	291.85
	10	89	91	89	493,931	423.73
LAWRENCE COUNTY - TOTAL	452	4,493	4,681	4,844	\$22,377,551	\$368.39
MANUFACTURING	35	1,303	1,306	1,309	6,858,889	403.99
NONMANUFACTURING	417	3,190	3,375	3,535	15,518,662	354.58
AGRICULTURE, FORESTRY, AND FISHING	32	143	136	121	718,023	414.24
TRANSPORTATION AND PUBLIC UTILITIES	53	192	193	193	1,118,282	446.48
WHOLESALE AND RETAIL TRADE	128	1,190	1,188	1,175	4,315,439	280.29
WHOLESALE TRADE	26	254	246	237	1,518,481	475.47
RETAIL TRADE	102	936	942	938	2,796,958	229.21
FINANCE, INSURANCE, AND REAL ESTATE SERVICES	31	137	137	133	1,021,848	579.39
LOCAL GOVERNMENT	101	546	536	557	2,424,281	341.34
STATE GOVERNMENT	29	664	873	1,053	3,836,317	341.82
OTHER NONMANUFACTURING	12	148	148	147	1,019,169	530.91
	31	170	164	156	1,065,303	501.71
LEE COUNTY - TOTAL	232	2,275	2,362	2,607	\$12,454,558	\$396.76
AGRICULTURE, FORESTRY, AND FISHING	28	191	198	241	882,475	323.25
TRANSPORTATION AND PUBLIC UTILITIES	18	95	97	105	648,517	503.90
WHOLESALE AND RETAIL TRADE	60	409	407	408	1,528,642	288.21
WHOLESALE TRADE	11	60	51	50	340,793	488.48
RETAIL TRADE	49	349	356	358	1,187,849	257.87
SERVICES	67	395	397	406	1,722,080	331.72
LOCAL GOVERNMENT	16	214	269	448	1,476,429	365.97
STATE GOVERNMENT	10	489	476	480	3,199,149	510.91
OTHER	33	482	518	519	2,997,266	455.35

**TABLE 8. COUNTY SUMMARY
EMPLOYMENT AND TOTAL EARNINGS, BY INDUSTRY
THIRD QUARTER 1999**

INDUSTRY GROUP	NUMBER OF EMPLOYING UNITS	EMPLOYMENT			TOTAL EARNINGS	AVERAGE WEEKLY EARNINGS
		JULY	AUGUST	SEPTEMBER	JUL.-SEP. 1999	
LINCOLN COUNTY - TOTAL	197	2,909	2,966	3,179	\$16,479,939	\$420.04
MANUFACTURING	19	725	716	733	3,836,189	407.21
NONMANUFACTURING	178	2,184	2,250	2,446	12,643,750	424.10
AGRICULTURE, FORESTRY, AND FISHING	24	156	154	191	892,177	410.95
CONSTRUCTION	14	80	78	69	331,246	336.75
WHOLESALE AND RETAIL TRADE	42	315	307	297	959,473	240.93
WHOLESALE TRADE	7	37	34	31	213,649	483.37
RETAIL TRADE	35	278	273	266	745,824	210.66
FINANCE, INSURANCE, AND REAL ESTATE SERVICES	17	66	67	67	329,665	380.38
LOCAL AND STATE GOVERNMENT	42	359	364	374	1,447,546	304.51
OTHER NONMANUFACTURING	20	1,017	1,089	1,264	7,389,031	505.98
	19	191	191	184	1,294,612	527.84
LITTLE RIVER COUNTY - TOTAL	270	4,306	4,338	4,530	\$36,032,681	\$631.19
MANUFACTURING	27	1,614	1,610	1,591	20,649,163	989.66
NONMANUFACTURING	243	2,692	2,728	2,939	15,383,518	424.70
TRANSPORTATION AND PUBLIC UTILITIES	26	490	501	507	4,256,887	655.78
WHOLESALE AND RETAIL TRADE	81	626	626	623	2,121,444	261.10
WHOLESALE TRADE	15	63	64	61	425,319	522.08
RETAIL TRADE	66	563	562	562	1,696,125	232.02
FINANCE, INSURANCE, AND REAL ESTATE SERVICES	19	121	124	121	572,171	360.76
LOCAL GOVERNMENT	53	330	321	314	1,182,899	282.88
STATE GOVERNMENT	20	463	501	724	2,435,660	332.98
OTHER NONMANUFACTURING	13	91	89	90	517,868	442.62
	31	571	566	560	4,296,589	584.28
LOGAN COUNTY - TOTAL	396	5,734	5,875	5,865	\$30,648,227	\$404.75
MANUFACTURING	34	2,316	2,283	2,266	14,999,388	504.21
NONMANUFACTURING	362	3,418	3,592	3,599	15,648,839	340.40
CONSTRUCTION	28	101	102	98	620,631	475.82
TRANSPORTATION AND PUBLIC UTILITIES	35	105	102	104	643,836	477.74
WHOLESALE AND RETAIL TRADE	123	1,199	1,186	1,189	3,762,353	242.93
WHOLESALE TRADE	22	96	97	100	437,003	344.19
RETAIL TRADE	101	1,103	1,089	1,089	3,325,350	233.89
FINANCE, INSURANCE, AND REAL ESTATE SERVICES	39	228	223	221	1,244,219	427.27
LOCAL GOVERNMENT	90	773	783	753	3,412,582	341.06
STATE GOVERNMENT	23	509	705	750	3,107,205	365.10
OTHER NONMANUFACTURING	13	429	429	425	2,506,005	450.75
	11	74	62	59	352,008	416.58

**TABLE 8. COUNTY SUMMARY
EMPLOYMENT AND TOTAL EARNINGS, BY INDUSTRY
THIRD QUARTER 1999**

INDUSTRY GROUP	NUMBER OF EMPLOYING UNITS	EMPLOYMENT			TOTAL EARNINGS	AVERAGE WEEKLY EARNINGS
		JULY	AUGUST	SEPTEMBER	JUL.-SEP. 1999	
LONOKE COUNTY - TOTAL	969	9,855	10,285	10,720	\$54,554,019	\$407.95
MANUFACTURING	50	1,756	1,811	1,790	14,475,290	623.57
NONMANUFACTURING	919	8,099	8,474	8,930	40,078,729	362.66
CONSTRUCTION	113	628	611	611	3,704,861	462.14
TRANSPORTATION AND PUBLIC UTILITIES	64	370	385	428	2,540,056	495.49
WHOLESALE AND RETAIL TRADE	296	3,042	3,014	3,038	11,085,654	281.31
WHOLESALE TRADE	72	435	413	425	3,015,154	546.59
RETAIL TRADE	224	2,607	2,601	2,613	8,070,500	238.13
FINANCE, INSURANCE, AND REAL ESTATE	79	422	436	427	2,430,457	436.48
SERVICES	243	1,859	1,863	1,853	7,890,715	326.62
LOCAL GOVERNMENT	27	1,099	1,491	1,900	7,947,978	408.50
STATE GOVERNMENT	15	183	184	181	1,198,455	504.68
OTHER NONMANUFACTURING	82	496	490	492	3,280,553	512.21
MADISON COUNTY - TOTAL	203	2,300	2,430	2,537	\$11,898,095	\$377.83
MANUFACTURING	30	851	850	856	4,450,361	401.65
NONMANUFACTURING	173	1,449	1,580	1,681	7,447,734	364.91
AGRICULTURE, FORESTRY, AND FISHING	5	15	15	14	57,313	300.59
CONSTRUCTION	22	87	77	85	392,122	363.41
TRANSPORTATION AND PUBLIC UTILITIES	17	106	113	106	768,576	545.73
WHOLESALE AND RETAIL TRADE	52	476	472	478	1,668,788	270.06
WHOLESALE TRADE	9	51	46	47	244,993	392.62
RETAIL TRADE	43	425	426	431	1,423,795	256.29
FINANCE, INSURANCE, AND REAL ESTATE	12	93	88	86	526,160	454.76
SERVICES	49	359	357	378	1,738,435	366.71
LOCAL GOVERNMENT	8	257	401	477	1,962,799	399.08
STATE GOVERNMENT	8	56	57	57	333,541	452.77
MARION COUNTY - TOTAL	265	3,711	3,723	3,897	\$18,786,909	\$382.62
MANUFACTURING	32	1,953	1,938	1,943	11,398,959	450.90
NONMANUFACTURING	233	1,758	1,785	1,954	7,387,950	310.15
CONSTRUCTION	20	62	60	61	270,168	340.69
TRANSPORTATION AND PUBLIC UTILITIES	15	87	86	86	706,525	629.51
WHOLESALE AND RETAIL TRADE	65	607	589	574	1,844,901	240.53
WHOLESALE TRADE	6	40	39	40	199,499	386.88
RETAIL TRADE	59	567	550	534	1,645,402	229.99
FINANCE, INSURANCE, AND REAL ESTATE	25	117	116	115	673,932	446.90
SERVICES	74	530	523	517	1,716,986	252.37
LOCAL GOVERNMENT	22	221	273	467	1,440,772	345.98
STATE GOVERNMENT	8	99	101	100	577,295	444.07
OTHER NONMANUFACTURING	4	35	37	34	157,371	342.61

**TABLE 8. COUNTY SUMMARY
EMPLOYMENT AND TOTAL EARNINGS, BY INDUSTRY
THIRD QUARTER 1999**

INDUSTRY GROUP	NUMBER OF EMPLOYING UNITS	EMPLOYMENT			TOTAL EARNINGS	AVERAGE WEEKLY EARNINGS
		JULY	AUGUST	SEPTEMBER	JUL.-SEP. 1999	
MILLER COUNTY - TOTAL	819	12,722	12,870	13,501	\$75,770,211	\$447.28
MANUFACTURING	47	2,561	2,582	2,619	25,733,237	765.07
NONMANUFACTURING	772	10,161	10,288	10,882	50,036,974	368.55
AGRICULTURE, FORESTRY, AND FISHING	14	89	81	75	374,005	352.28
MINING	6	27	28	26	869,133	2476.16
CONSTRUCTION	83	623	640	654	3,956,427	476.28
TRANSPORTATION AND PUBLIC UTILITIES	60	1,075	1,090	1,081	8,010,007	569.46
WHOLESALE AND RETAIL TRADE	274	3,471	3,459	3,447	14,148,704	314.65
WHOLESALE TRADE	58	782	772	777	4,983,416	493.36
RETAIL TRADE	216	2,689	2,687	2,670	9,165,288	262.87
FINANCE, INSURANCE, AND REAL ESTATE	58	415	401	402	2,478,905	469.67
SERVICES	237	3,309	3,211	3,197	11,255,988	267.32
LOCAL GOVERNMENT	25	686	918	1,542	5,888,518	431.94
STATE GOVERNMENT	15	466	460	458	3,055,287	509.44
MISSISSIPPI COUNTY - TOTAL	1,268	21,336	21,666	22,327	\$138,897,389	\$490.64
MANUFACTURING	78	8,347	8,426	8,397	75,328,407	690.64
NONMANUFACTURING	1,190	12,989	13,240	13,930	63,568,982	365.29
AGRICULTURE, FORESTRY, AND FISHING	119	751	710	1,043	3,369,839	310.57
CONSTRUCTION	83	518	482	513	3,466,684	528.75
TRANSPORTATION AND PUBLIC UTILITIES	67	641	650	660	4,986,749	589.85
WHOLESALE AND RETAIL TRADE	397	4,186	4,193	4,106	18,220,725	336.79
WHOLESALE TRADE	92	887	868	854	7,317,429	647.24
RETAIL TRADE	305	3,299	3,325	3,252	10,903,296	254.77
FINANCE, INSURANCE, AND REAL ESTATE	110	580	578	588	3,940,276	520.79
SERVICES	340	3,794	3,929	3,910	17,362,840	344.43
LOCAL GOVERNMENT	50	1,928	2,109	2,450	8,834,771	314.29
STATE GOVERNMENT	24	591	589	660	3,387,098	424.80
MONROE COUNTY - TOTAL	334	2,875	2,907	3,010	\$13,889,265	\$364.56
MANUFACTURING	17	326	349	361	2,941,556	\$655.23
NONMANUFACTURING	317	2,549	2,558	2,649	10,947,709	325.73
AGRICULTURE, FORESTRY, AND FISHING	33	162	153	154	790,458	388.94
CONSTRUCTION	15	65	63	58	340,760	422.78
TRANSPORTATION AND PUBLIC UTILITIES	31	160	164	190	1,057,548	474.80
WHOLESALE AND RETAIL TRADE	100	981	959	921	3,266,194	263.45
WHOLESALE TRADE	25	246	227	223	1,166,998	386.94
RETAIL TRADE	75	735	732	698	2,099,196	223.76
FINANCE, INSURANCE, AND REAL ESTATE	23	160	155	163	1,032,484	498.46
SERVICES	82	627	637	599	2,202,717	272.85
LOCAL GOVERNMENT	21	58	301	442	1,573,919	359.26
STATE GOVERNMENT	12	6	126	122	683,629	421.82

**TABLE 8. COUNTY SUMMARY
EMPLOYMENT AND TOTAL EARNINGS, BY INDUSTRY
THIRD QUARTER 1999**

INDUSTRY GROUP	NUMBER OF EMPLOYING UNITS	EMPLOYMENT			TOTAL EARNINGS	AVERAGE WEEKLY EARNINGS
		JULY	AUGUST	SEPTEMBER	JUL.-SEP. 1999	
MONTGOMERY COUNTY - TOTAL	175	1,629	1,487	1,570	\$6,471,309	\$318.69
MANUFACTURING	33	325	321	320	1,276,815	305.02
NONMANUFACTURING	142	1,304	1,166	1,250	5,194,494	322.24
CONSTRUCTION	21	172	180	202	1,013,704	422.26
TRANSPORTATION AND PUBLIC UTILITIES	9	32	28	25	130,611	354.60
WHOLESALE AND RETAIL TRADE	46	228	227	216	831,838	286.08
WHOLESALE TRADE	10	35	35	33	140,003	313.67
RETAIL TRADE	36	193	192	183	691,835	281.08
FINANCE, INSURANCE, AND REAL ESTATE	8	70	72	72	359,668	387.85
SERVICES	37	437	291	257	1,087,934	254.88
LOCAL GOVERNMENT	9	282	289	402	1,361,948	323.02
STATE GOVERNMENT	8	66	64	62	363,629	437.05
OTHER NONMANUFACTURING	4	17	15	14	45,162	226.57
NEVADA COUNTY - TOTAL	206	2,179	2,177	2,387	\$12,706,749	\$434.87
MANUFACTURING	20	713	717	719	6,063,025	651.07
NONMANUFACTURING	186	1,466	1,460	1,668	6,643,724	333.73
TRANSPORTATION AND PUBLIC UTILITIES	17	184	167	170	1,285,734	569.50
WHOLESALE AND RETAIL TRADE	53	361	378	387	1,159,736	237.68
WHOLESALE TRADE	7	27	24	19	66,924	220.63
RETAIL TRADE	46	334	354	368	1,092,812	238.81
FINANCE, INSURANCE, AND REAL ESTATE	14	44	43	42	276,584	494.78
SERVICES	43	485	473	473	1,732,171	279.34
LOCAL GOVERNMENT	28	244	260	470	1,353,615	320.71
STATE GOVERNMENT	11	87	81	77	562,915	530.22
OTHER NONMANUFACTURING	20	61	58	49	272,969	374.96
NEWTON COUNTY - TOTAL	122	868	962	1,046	\$3,592,036	\$288.22
MANUFACTURING	26	124	124	126	419,834	259.05
NONMANUFACTURING	96	744	838	920	3,172,202	292.58
CONSTRUCTION	7	13	8	9	28,159	216.61
WHOLESALE AND RETAIL TRADE	21	174	171	169	450,753	202.37
WHOLESALE TRADE	3	17	14	16	61,741	303.15
RETAIL TRADE	18	157	157	153	389,012	192.23
SERVICES	30	201	209	201	580,363	219.20
LOCAL GOVERNMENT	12	190	286	383	1,330,602	357.46
STATE GOVERNMENT	8	96	96	92	470,341	382.18
OTHER NONMANUFACTURING	18	70	68	66	311,984	352.92

**TABLE 8. COUNTY SUMMARY
EMPLOYMENT AND TOTAL EARNINGS, BY INDUSTRY
THIRD QUARTER 1999**

INDUSTRY GROUP	NUMBER OF EMPLOYING UNITS	EMPLOYMENT			TOTAL EARNINGS	AVERAGE WEEKLY EARNINGS
		JULY	AUGUST	SEPTEMBER	JUL.-SEP. 1999	
OUACHITA COUNTY - TOTAL	679	7,514	7,615	8,034	\$43,331,601	\$431.71
MANUFACTURING	67	1,659	1,651	1,651	13,817,796	642.76
NONMANUFACTURING	612	5,855	5,964	6,383	29,513,805	374.18
AGRICULTURE, FORESTRY, AND FISHING	13	64	67	64	392,748	464.79
MINING	14	121	115	116	806,013	528.42
CONSTRUCTION	48	201	224	222	1,088,060	388.08
TRANSPORTATION AND PUBLIC UTILITIES	54	402	392	392	3,063,034	596.00
WHOLESALE AND RETAIL TRADE	211	2,070	2,086	2,070	8,080,051	299.49
WHOLESALE TRADE	39	341	340	346	2,408,620	541.22
RETAIL TRADE	172	1,729	1,746	1,724	5,671,431	251.74
FINANCE, INSURANCE, AND REAL ESTATE	48	314	316	314	2,016,155	492.87
SERVICES	180	1,741	1,745	1,732	8,346,021	369.11
LOCAL GOVERNMENT	32	673	750	1,209	3,938,113	345.29
STATE GOVERNMENT	12	269	269	264	1,783,610	513.22
PERRY COUNTY - TOTAL	139	969	1,036	1,091	\$4,625,330	\$344.76
MANUFACTURING	7	93	85	89	452,703	391.27
NONMANUFACTURING	132	876	951	1,002	4,172,627	340.37
CONSTRUCTION	23	82	86	84	461,973	423.05
TRANSPORTATION AND PUBLIC UTILITIES	7	37	36	35	279,909	598.10
WHOLESALE AND RETAIL TRADE	35	195	192	188	612,334	245.75
WHOLESALE TRADE	6	15	14	14	72,818	390.79
RETAIL TRADE	29	180	178	174	539,516	234.03
SERVICES	33	191	193	189	764,493	307.89
LOCAL GOVERNMENT	12	238	307	370	1,231,753	310.66
STATE GOVERNMENT	8	65	67	64	391,701	461.19
OTHER NONMANUFACTURING	14	68	70	72	430,464	473.04
PHILLIPS COUNTY - TOTAL	662	7,235	7,426	8,098	\$37,398,757	\$379.21
MANUFACTURING	28	1,085	1,096	1,128	7,611,277	530.81
NONMANUFACTURING	634	6,150	6,330	6,970	29,787,480	353.42
AGRICULTURE, FORESTRY, AND FISHING	63	467	466	560	2,084,192	322.15
TRANSPORTATION AND PUBLIC UTILITIES	46	312	313	324	2,550,243	620.15
WHOLESALE AND RETAIL TRADE	206	2,004	2,006	1,981	8,479,767	326.63
WHOLESALE TRADE	42	623	633	618	3,659,878	450.69
RETAIL TRADE	164	1,381	1,373	1,363	4,819,889	270.17
FINANCE, INSURANCE, AND REAL ESTATE	46	304	303	295	1,622,490	415.10
SERVICES	181	1,576	1,627	1,675	7,085,208	335.19
LOCAL GOVERNMENT	33	692	829	1,330	4,040,690	327.07
STATE GOVERNMENT	15	527	526	521	2,657,421	389.61
OTHER NONMANUFACTURING	44	8	260	284	1,267,469	360.21

**TABLE 8. COUNTY SUMMARY
EMPLOYMENT AND TOTAL EARNINGS, BY INDUSTRY
THIRD QUARTER 1999**

INDUSTRY GROUP	NUMBER OF EMPLOYING UNITS	EMPLOYMENT			TOTAL EARNINGS	AVERAGE WEEKLY EARNINGS
		JULY	AUGUST	SEPTEMBER	JUL.-SEP. 1999	
PIKE COUNTY - TOTAL	273	2,981	3,133	3,130	\$13,749,482	\$343.25
MANUFACTURING	45	800	813	814	4,102,636	390.10
NONMANUFACTURING	228	2,181	2,320	2,316	9,646,846	326.57
AGRICULTURE, FORESTRY, AND FISHING	7	135	129	129	567,608	333.30
MINING	4	67	71	71	534,908	590.62
CONSTRUCTION	17	109	112	104	634,949	450.85
TRANSPORTATION AND PUBLIC UTILITIES	27	181	186	180	1,202,183	507.18
WHOLESALE AND RETAIL TRADE	90	694	700	683	2,290,415	254.48
WHOLESALE TRADE	16	114	113	113	461,631	313.32
RETAIL TRADE	74	580	587	570	1,828,784	242.96
FINANCE, INSURANCE, AND REAL ESTATE SERVICES	20	205	211	206	1,035,632	384.23
SERVICES	39	314	311	311	993,563	244.96
LOCAL GOVERNMENT	13	333	455	500	1,735,002	310.86
STATE GOVERNMENT	11	143	145	132	652,586	358.56
POINSETT COUNTY - TOTAL	512	6,135	6,542	6,824	\$32,928,909	\$389.67
MANUFACTURING	30	2,156	2,209	2,260	13,563,200	472.45
NONMANUFACTURING	482	3,979	4,333	4,564	19,365,709	347.08
AGRICULTURE, FORESTRY, AND FISHING	49	291	301	369	1,782,764	428.10
TRANSPORTATION AND PUBLIC UTILITIES	49	215	217	243	1,436,879	491.24
WHOLESALE AND RETAIL TRADE	155	1,565	1,551	1,564	6,308,305	311.06
WHOLESALE TRADE	29	477	459	464	2,943,362	485.17
RETAIL TRADE	126	1,088	1,092	1,100	3,364,943	236.75
FINANCE, INSURANCE, AND REAL ESTATE SERVICES	42	346	344	342	1,695,987	379.25
SERVICES	109	639	647	639	2,502,226	299.97
LOCAL GOVERNMENT	31	588	938	1,068	3,780,170	336.29
STATE GOVERNMENT	15	191	190	186	1,093,701	445.14
OTHER NONMANUFACTURING	32	144	145	153	765,677	399.76
POLK COUNTY - TOTAL	539	6,499	6,654	6,819	\$31,346,322	\$362.20
MANUFACTURING	65	2,433	2,435	2,416	12,344,079	391.08
NONMANUFACTURING	474	4,066	4,219	4,403	19,002,243	345.61
AGRICULTURE, FORESTRY, AND FISHING	22	217	216	213	1,454,501	519.59
CONSTRUCTION	38	133	129	120	610,632	368.89
TRANSPORTATION AND PUBLIC UTILITIES	60	458	447	471	2,552,078	428.01
WHOLESALE AND RETAIL TRADE	147	1,309	1,337	1,334	4,152,676	240.78
WHOLESALE TRADE	31	119	126	124	528,812	330.71
RETAIL TRADE	116	1,190	1,211	1,210	3,623,864	231.59
FINANCE, INSURANCE, AND REAL ESTATE SERVICES	37	216	214	205	1,011,554	367.62
SERVICES	134	1,060	1,075	1,069	4,979,289	358.64
LOCAL GOVERNMENT	21	438	565	721	2,838,110	379.90
STATE GOVERNMENT	15	235	236	270	1,403,403	437.06

**TABLE 8. COUNTY SUMMARY
EMPLOYMENT AND TOTAL EARNINGS, BY INDUSTRY
THIRD QUARTER 1999**

INDUSTRY GROUP	NUMBER OF EMPLOYING UNITS	EMPLOYMENT			TOTAL EARNINGS	AVERAGE WEEKLY EARNINGS
		JULY	AUGUST	SEPTEMBER	JUL.-SEP. 1999	
POPE COUNTY - TOTAL	1,498	23,152	23,546	24,100	\$141,409,875	\$460.93
MANUFACTURING	106	5,245	5,182	5,152	34,119,947	505.41
NONMANUFACTURING	1,392	17,907	18,364	18,948	107,289,928	448.38
CONSTRUCTION	154	1,298	1,338	1,458	8,689,417	489.80
TRANSPORTATION AND PUBLIC UTILITIES	98	2,447	2,437	2,433	28,118,480	886.82
WHOLESALE AND RETAIL TRADE	483	5,852	5,878	5,993	22,690,937	295.46
WHOLESALE TRADE	114	811	822	811	5,778,570	545.63
RETAIL TRADE	369	5,041	5,056	5,182	16,912,367	255.44
FINANCE, INSURANCE, AND REAL ESTATE	127	628	625	624	3,802,487	467.50
SERVICES	441	4,881	5,046	5,008	25,864,230	399.64
LOCAL GOVERNMENT	40	1,355	1,473	1,916	8,314,630	404.46
STATE GOVERNMENT	15	795	922	984	6,562,902	560.72
OTHER NONMANUFACTURING	34	651	645	532	3,246,845	409.89
PRAIRIE COUNTY - TOTAL	236	1,616	1,732	1,774	\$8,259,161	\$372.11
MANUFACTURING	9	240	252	271	1,607,017	486.04
NONMANUFACTURING	227	1,376	1,480	1,503	6,652,144	352.17
AGRICULTURE, FORESTRY, AND FISHING	25	166	152	130	992,744	511.37
TRANSPORTATION AND PUBLIC UTILITIES	25	90	90	131	652,749	484.35
WHOLESALE AND RETAIL TRADE	71	445	430	429	1,647,490	291.56
WHOLESALE TRADE	12	114	100	108	651,541	466.94
RETAIL TRADE	59	331	330	321	995,949	234.05
SERVICES	56	296	297	286	958,946	251.76
LOCAL GOVERNMENT	15	208	337	357	1,333,987	341.29
STATE GOVERNMENT	10	59	59	58	349,140	457.79
OTHER NONMANUFACTURING	25	112	115	112	717,088	488.15
PULASKI COUNTY - TOTAL	12,685	230,014	232,571	234,963	\$1,668,285,805	\$551.92
MANUFACTURING	476	21,350	21,012	21,107	173,371,606	630.37
NONMANUFACTURING	12,209	208,664	211,559	213,856	1,494,914,199	544.07
AGRICULTURE, FORESTRY, AND FISHING	177	1,527	1,514	1,475	7,555,672	386.10
MINING	6	370	376	358	3,472,048	725.76
CONSTRUCTION	1,030	10,876	10,851	10,836	81,573,491	578.10
TRANSPORTATION AND PUBLIC UTILITIES	521	18,298	18,332	18,393	171,429,181	718.98
WHOLESALE AND RETAIL TRADE	3,716	57,120	57,458	57,322	318,815,771	428.00
WHOLESALE TRADE	1,253	16,400	16,463	16,471	145,258,735	679.48
RETAIL TRADE	2,463	40,720	40,995	40,851	173,557,036	326.78
FINANCE, INSURANCE, AND REAL ESTATE	1,397	15,916	15,892	15,861	156,695,119	758.57
SERVICES	5,101	71,670	71,927	72,357	487,195,466	520.62
LOCAL GOVERNMENT	101	1,057	14,188	15,851	81,943,773	450.28
STATE GOVERNMENT	160	2,000	21,021	21,403	186,233,678	678.36

**TABLE 8. COUNTY SUMMARY
EMPLOYMENT AND TOTAL EARNINGS, BY INDUSTRY
THIRD QUARTER 1999**

INDUSTRY GROUP	NUMBER OF EMPLOYING UNITS	EMPLOYMENT			TOTAL EARNINGS	AVERAGE WEEKLY EARNINGS
		JULY	AUGUST	SEPTEMBER	JUL.-SEP. 1999	
RANDOLPH COUNTY - TOTAL	386	5,056	5,187	5,652	\$24,354,231	\$353.58
MANUFACTURING	40	1,890	1,812	1,964	10,002,176	407.38
NONMANUFACTURING	346	3,166	3,375	3,688	14,352,055	323.79
AGRICULTURE, FORESTRY, AND FISHING	13	55	55	53	238,290	337.36
CONSTRUCTION	29	117	125	121	586,137	372.62
TRANSPORTATION AND PUBLIC UTILITIES	24	161	166	161	1,284,647	607.49
WHOLESALE AND RETAIL TRADE	118	1,128	1,143	1,155	3,647,913	245.72
WHOLESALE TRADE	23	160	159	156	726,055	352.74
RETAIL TRADE	95	968	984	999	2,921,858	228.49
FINANCE, INSURANCE, AND REAL ESTATE	21	180	180	183	1,114,315	473.57
SERVICES	108	935	992	1,123	4,104,677	310.57
LOCAL GOVERNMENT	22	425	526	691	2,257,021	317.21
STATE GOVERNMENT	11	165	188	201	1,119,055	466.14
SAINT FRANCIS COUNTY - TOTAL	655	8,608	9,194	9,406	\$47,813,879	\$405.54
MANUFACTURING	36	2,141	2,250	2,318	14,607,152	502.44
NONMANUFACTURING	619	6,467	6,944	7,088	33,206,727	373.83
CONSTRUCTION	56	301	338	311	1,603,618	389.54
TRANSPORTATION AND PUBLIC UTILITIES	36	371	376	422	3,189,606	629.65
WHOLESALE AND RETAIL TRADE	210	2,340	2,319	2,286	9,403,312	312.45
WHOLESALE TRADE	43	568	545	543	3,494,566	486.98
RETAIL TRADE	167	1,772	1,774	1,743	5,908,746	257.81
FINANCE, INSURANCE, AND REAL ESTATE	53	279	271	267	1,602,081	452.52
SERVICES	185	1,768	1,763	1,764	7,428,148	323.74
LOCAL GOVERNMENT	31	654	1,134	1,215	5,507,355	423.22
STATE GOVERNMENT	15	513	511	566	3,282,732	476.45
OTHER NONMANUFACTURING	33	241	232	257	1,189,875	376.15
SALINE COUNTY - TOTAL	1,387	17,330	17,455	17,867	\$102,488,587	\$449.20
MANUFACTURING	92	2,448	2,443	2,449	20,144,662	633.35
NONMANUFACTURING	1,295	14,882	15,012	15,418	82,343,925	419.37
CONSTRUCTION	218	1,510	1,501	1,396	10,649,158	557.64
TRANSPORTATION AND PUBLIC UTILITIES	64	414	414	405	3,168,193	592.96
WHOLESALE AND RETAIL TRADE	407	5,271	5,251	5,242	25,200,633	368.91
WHOLESALE TRADE	102	529	519	530	3,809,757	557.14
RETAIL TRADE	305	4,742	4,732	4,712	21,390,876	347.97
FINANCE, INSURANCE, AND REAL ESTATE	123	593	610	609	3,372,677	429.53
SERVICES	400	3,852	3,835	3,886	19,802,679	394.87
LOCAL AND STATE GOVERNMENT	50	3,123	3,287	3,773	19,719,005	446.88
OTHER NONMANUFACTURING	33	119	114	107	431,580	292.93

**TABLE 8. COUNTY SUMMARY
EMPLOYMENT AND TOTAL EARNINGS, BY INDUSTRY
THIRD QUARTER 1999**

INDUSTRY GROUP	NUMBER OF EMPLOYING UNITS	EMPLOYMENT			TOTAL EARNINGS	AVERAGE WEEKLY EARNINGS
		JULY	AUGUST	SEPTEMBER	JUL.-SEP. 1999	
SCOTT COUNTY - TOTAL	211	3,278	3,281	3,332	\$15,423,582	\$359.85
MANUFACTURING	33	1,654	1,625	1,619	8,811,697	415.16
NONMANUFACTURING	178	1,624	1,656	1,713	6,611,885	305.59
AGRICULTURE, FORESTRY, AND FISHING	11	169	170	163	914,317	420.31
TRANSPORTATION AND PUBLIC UTILITIES	18	103	103	100	569,121	429.20
WHOLESALE AND RETAIL TRADE	68	577	585	611	1,743,512	226.93
WHOLESALE TRADE	10	76	77	91	384,581	363.73
RETAIL TRADE	58	501	508	520	1,358,931	205.10
FINANCE, INSURANCE, AND REAL ESTATE SERVICES	13	79	78	74	327,444	327.12
LOCAL GOVERNMENT	42	328	331	328	1,376,693	321.88
STATE GOVERNMENT	5	270	289	321	1,201,802	315.16
OTHER NONMANUFACTURING	8	58	60	63	310,486	395.86
	13	40	40	53	168,510	292.38
SEARCY COUNTY - TOTAL	144	1,312	1,413	1,497	\$5,454,690	\$298.15
MANUFACTURING	15	244	248	243	936,578	294.06
NONMANUFACTURING	129	1,068	1,165	1,254	4,518,112	299.01
TRANSPORTATION AND PUBLIC UTILITIES	11	45	45	45	212,992	364.09
WHOLESALE AND RETAIL TRADE	45	376	381	371	982,193	200.94
WHOLESALE TRADE	10	68	71	70	208,447	230.16
RETAIL TRADE	35	308	310	301	773,746	194.29
FINANCE, INSURANCE, AND REAL ESTATE SERVICES	9	47	47	46	181,774	299.63
LOCAL GOVERNMENT	30	293	300	285	1,010,672	265.64
STATE GOVERNMENT	12	136	216	321	1,139,465	390.72
OTHER NONMANUFACTURING	9	141	147	159	851,420	439.56
	13	30	29	27	139,596	374.59
SEBASTIAN COUNTY - TOTAL	3,438	73,012	74,009	74,766	\$465,385,141	\$484.23
MANUFACTURING	251	23,804	23,773	23,745	172,774,677	559.03
NONMANUFACTURING	3,187	49,208	50,236	51,021	292,610,464	448.78
AGRICULTURE, FORESTRY, AND FISHING	46	375	365	352	1,760,588	372.06
MINING	52	536	570	519	4,764,942	676.68
CONSTRUCTION	281	2,978	2,960	2,952	19,214,383	498.77
TRANSPORTATION AND PUBLIC UTILITIES	177	3,779	3,780	3,748	30,670,428	625.97
WHOLESALE AND RETAIL TRADE	1,092	14,966	15,110	15,095	69,821,556	356.70
WHOLESALE TRADE	282	2,694	2,676	2,687	20,511,184	587.48
RETAIL TRADE	810	12,272	12,434	12,408	49,310,372	306.60
FINANCE, INSURANCE, AND REAL ESTATE SERVICES	312	2,370	2,368	2,381	17,015,856	551.59
LOCAL GOVERNMENT	1,162	21,160	21,394	21,055	124,524,969	451.77
STATE GOVERNMENT	43	2,775	2,771	3,831	18,302,959	485.10
OTHER NONMANUFACTURING	22	918	918	1,088	6,534,783	512.06

**TABLE 8. COUNTY SUMMARY
EMPLOYMENT AND TOTAL EARNINGS, BY INDUSTRY
THIRD QUARTER 1999**

INDUSTRY GROUP	NUMBER OF EMPLOYING UNITS	EMPLOYMENT			TOTAL EARNINGS	AVERAGE WEEKLY EARNINGS
		JULY	AUGUST	SEPTEMBER	JUL.-SEP. 1999	
SEVIER COUNTY - TOTAL	311	5,189	5,331	5,439	\$26,790,580	\$387.40
MANUFACTURING	25	2,338	2,333	2,291	12,428,012	411.95
NONMANUFACTURING	286	2,851	2,998	3,148	14,362,568	368.39
CONSTRUCTION	26	123	128	117	644,847	404.38
TRANSPORTATION AND PUBLIC UTILITIES	21	106	109	111	780,322	552.38
WHOLESALE AND RETAIL TRADE	90	978	1,024	1,054	4,079,701	308.07
WHOLESALE TRADE	21	179	183	183	1,547,330	655.19
RETAIL TRADE	69	799	841	871	2,532,371	232.73
FINANCE, INSURANCE, AND REAL ESTATE SERVICES	22	145	144	140	877,378	471.96
LOCAL GOVERNMENT	93	761	750	777	3,588,538	361.94
STATE GOVERNMENT	11	440	550	640	2,709,208	383.56
OTHER NONMANUFACTURING	10	137	131	151	960,603	529.06
	13	161	162	158	721,971	346.38
SHARP COUNTY - TOTAL	421	4,119	4,128	4,263	\$17,536,690	\$323.50
MANUFACTURING	22	472	474	477	1,866,499	302.69
NONMANUFACTURING	399	3,647	3,654	3,786	15,670,191	326.17
CONSTRUCTION	39	176	173	149	759,900	352.13
TRANSPORTATION AND PUBLIC UTILITIES	31	413	417	405	3,247,121	606.75
WHOLESALE AND RETAIL TRADE	141	1,220	1,238	1,219	3,329,575	208.96
WHOLESALE TRADE	19	72	74	75	246,861	257.77
RETAIL TRADE	122	1,148	1,164	1,144	3,082,714	205.84
FINANCE, INSURANCE, AND REAL ESTATE SERVICES	36	209	211	217	1,111,326	402.61
LOCAL GOVERNMENT	105	1,001	937	929	3,971,042	319.64
STATE GOVERNMENT	29	485	540	728	2,501,748	329.34
OTHER NONMANUFACTURING	10	95	94	96	598,075	484.27
	8	48	44	43	151,404	258.81
STONE COUNTY - TOTAL	262	2,919	3,128	3,109	\$12,388,783	\$312.25
MANUFACTURING	30	767	787	818	3,356,942	326.59
NONMANUFACTURING	232	2,152	2,341	2,291	9,031,841	307.23
CONSTRUCTION	20	103	104	95	446,423	341.13
WHOLESALE AND RETAIL TRADE	93	822	813	816	2,597,630	244.57
WHOLESALE TRADE	15	42	41	43	134,422	246.19
RETAIL TRADE	78	780	772	773	2,463,208	244.49
FINANCE, INSURANCE, AND REAL ESTATE SERVICES	11	80	81	73	393,765	388.33
LOCAL GOVERNMENT	62	577	592	561	2,254,360	300.71
STATE GOVERNMENT	10	180	391	386	1,383,927	333.72
OTHER NONMANUFACTURING	13	248	245	241	1,208,013	379.80
	23	142	115	119	747,723	458.91

**TABLE 8. COUNTY SUMMARY
EMPLOYMENT AND TOTAL EARNINGS, BY INDUSTRY
THIRD QUARTER 1999**

INDUSTRY GROUP	NUMBER OF EMPLOYING UNITS	EMPLOYMENT			TOTAL EARNINGS	AVERAGE WEEKLY EARNINGS
		JULY	AUGUST	SEPTEMBER	JUL.-SEP. 1999	
UNION COUNTY - TOTAL	1,369	19,848	20,267	20,853	\$129,150,931	\$488.85
MANUFACTURING	90	6,281	6,208	6,236	50,299,641	619.90
NONMANUFACTURING	1,279	13,567	14,059	14,617	78,851,290	430.76
AGRICULTURE , FORESTRY AND FISHING	28	123	116	121	549,618	352.32
MINING	63	370	366	366	4,114,959	861.71
CONSTRUCTION	100	1,421	1,426	1,515	11,482,010	607.45
TRANSPORTATION AND PUBLIC UTILITIES	77	1,316	1,321	1,336	12,222,290	709.92
WHOLESALE AND RETAIL TRADE	417	3,956	3,971	3,950	17,006,278	330.43
WHOLESALE TRADE	103	685	678	685	5,236,331	590.03
RETAIL TRADE	314	3,271	3,293	3,265	11,769,947	276.34
FINANCE, INSURANCE, AND REAL ESTATE SERVICES	100	694	699	702	4,513,096	497.13
LOCAL GOVERNMENT	438	4,167	4,134	4,128	18,716,184	347.50
STATE GOVERNMENT	38	995	1,484	1,923	6,835,220	358.33
STATE GOVERNMENT	18	525	542	576	3,411,635	479.18
VAN BUREN COUNTY - TOTAL	336	3,427	3,505	3,724	\$15,136,875	\$327.81
MANUFACTURING	21	718	713	712	3,732,035	401.88
NONMANUFACTURING	315	2,709	2,792	3,012	11,404,840	309.16
CONSTRUCTION	36	119	125	138	594,876	359.37
TRANSPORTATION AND PUBLIC UTILITIES	39	218	229	244	1,284,756	429.06
WHOLESALE AND RETAIL TRADE	104	924	907	896	2,789,152	236.03
WHOLESALE TRADE	13	57	55	55	253,425	350.20
RETAIL TRADE	91	867	852	841	2,535,727	228.58
FINANCE, INSURANCE, AND REAL ESTATE SERVICES	24	136	135	129	832,095	480.05
LOCAL GOVERNMENT	80	849	858	824	3,209,123	292.60
LOCAL GOVERNMENT	13	244	321	569	1,527,260	310.80
STATE GOVERNMENT	8	129	127	125	762,195	461.66
OTHER NONMANUFACTURING	11	90	90	87	405,383	350.37
WASHINGTON COUNTY - TOTAL	4,232	75,048	76,142	78,452	\$483,566,105	\$485.94
MANUFACTURING	212	18,148	18,305	18,517	135,640,975	569.43
NONMANUFACTURING	4,020	56,900	57,837	59,935	347,925,130	459.66
CONSTRUCTION	409	3,620	3,588	3,578	27,053,838	578.82
TRANSPORTATION AND PUBLIC UTILITIES	243	6,264	6,269	6,266	48,617,623	596.81
WHOLESALE AND RETAIL TRADE	1,346	19,360	19,514	19,748	89,172,843	351.03
WHOLESALE TRADE	331	3,749	3,764	3,650	29,803,050	616.11
RETAIL TRADE	1,015	15,611	15,750	16,098	59,369,793	288.69
FINANCE, INSURANCE, AND REAL ESTATE SERVICES	399	2,778	2,762	2,743	21,052,751	586.54
LOCAL AND STATE GOVERNMENT	1,455	15,910	16,165	16,393	94,134,345	448.20
LOCAL AND STATE GOVERNMENT	83	7,885	8,570	10,260	62,525,300	540.11
OTHER NONMANUFACTURING	85	3	969	947	5,368,430	413.09

**TABLE 8. COUNTY SUMMARY
EMPLOYMENT AND TOTAL EARNINGS, BY INDUSTRY
THIRD QUARTER 1999**

INDUSTRY GROUP	NUMBER OF EMPLOYING UNITS	EMPLOYMENT			TOTAL EARNINGS	AVERAGE WEEKLY EARNINGS
		JULY	AUGUST	SEPTEMBER	JUL.-SEP. 1999	
WHITE COUNTY - TOTAL	1,411	21,953	22,808	23,182	\$131,629,977	\$447.08
MANUFACTURING	90	4,660	4,905	4,838	33,797,456	541.51
NONMANUFACTURING	1,321	17,293	17,903	18,344	97,832,521	421.68
CONSTRUCTION	157	1,199	1,207	1,187	7,832,574	503.07
TRANSPORTATION AND PUBLIC UTILITIES	88	1,388	1,375	1,394	9,809,722	544.57
WHOLESALE AND RETAIL TRADE	509	6,748	6,775	6,872	31,894,137	360.88
WHOLESALE TRADE	103	708	680	682	4,095,467	456.57
RETAIL TRADE	406	6,040	6,095	6,190	27,798,670	350.07
FINANCE, INSURANCE, AND REAL ESTATE	108	683	677	673	3,811,189	432.61
SERVICES	360	5,114	5,125	5,220	30,922,440	461.60
LOCAL GOVERNMENT	45	1,411	1,995	2,190	9,138,942	376.87
STATE GOVERNMENT	19	556	568	636	3,566,132	467.59
OTHER NONMANUFACTURING	35	194	181	172	857,385	361.71
WOODRUFF COUNTY - TOTAL	204	2,305	2,449	2,456	\$12,668,552	\$405.48
MANUFACTURING	9	523	520	496	3,172,106	475.65
NONMANUFACTURING	195	1,782	1,929	1,960	9,496,446	386.44
AGRICULTURE, FORESTRY, AND FISHING	23	138	128	133	592,161	342.49
CONSTRUCTION	9	95	87	88	502,834	429.77
TRANSPORTATION AND PUBLIC UTILITIES	18	125	136	128	909,608	539.61
WHOLESALE AND RETAIL TRADE	68	775	786	783	3,922,846	386.21
WHOLESALE TRADE	21	514	519	514	3,121,775	465.68
RETAIL TRADE	47	261	267	269	801,071	231.95
FINANCE, INSURANCE, AND REAL ESTATE	15	74	75	73	345,072	358.70
SERVICES	43	203	202	210	962,661	361.22
LOCAL GOVERNMENT	10	303	448	481	1,898,478	355.61
STATE GOVERNMENT	9	69	67	64	362,786	418.60
YELL COUNTY - TOTAL	405	6,624	6,722	7,020	\$32,854,468	\$372.28
MANUFACTURING	40	3,184	3,165	3,148	16,525,675	401.56
NONMANUFACTURING	365	3,440	3,557	3,872	16,328,793	346.69
CONSTRUCTION	53	318	332	352	1,733,352	399.21
TRANSPORTATION AND PUBLIC UTILITIES	27	205	212	197	1,372,913	516.00
WHOLESALE AND RETAIL TRADE	106	933	927	935	2,972,516	245.43
WHOLESALE TRADE	23	101	92	94	396,207	318.58
RETAIL TRADE	83	832	835	841	2,576,309	237.05
FINANCE, INSURANCE, AND REAL ESTATE	23	218	219	218	1,286,815	453.37
SERVICES	96	710	693	682	2,717,159	300.74
LOCAL GOVERNMENT	28	615	728	1,048	3,882,157	374.69
STATE GOVERNMENT	12	133	129	122	755,262	453.88
OTHER NONMANUFACTURING	20	308	317	318	1,608,619	393.66

TABLE 8. COUNTY SUMMARY
 EMPLOYMENT AND TOTAL EARNINGS, BY INDUSTRY
 THIRD QUARTER 1999

INDUSTRY GROUP	NUMBER OF EMPLOYING UNITS	EMPLOYMENT			TOTAL EARNINGS	AVERAGE WEEKLY EARNINGS
		JULY	AUGUST	SEPTEMBER	JUL.-SEP. 1999	
REST-OF-STATE-TOTAL	3,676	13,665	13,835	13,765	\$130,034,912	\$727.20
MINING	28	60	60	59	585,800	755.22
CONSTRUCTION	632	3,750	3,699	3,651	25,658,319	533.44
TRANSPORTATION AND PUBLIC UTILITIES	167	641	690	706	5,318,538	602.53
WHOLESALE AND RETAIL TRADE	1,482	4,361	4,350	4,350	58,169,283	1027.77
WHOLESALE TRADE	1,385	4,058	4,057	4,055	56,123,378	1064.22
RETAIL TRADE	97	303	293	295	2,045,905	529.89
FINANCE, INSURANCE, AND REAL ESTATE	207	537	514	522	5,182,751	760.34
SERVICES	1,112	3,524	3,709	3,575	28,467,185	607.82
OTHER	48	792	813	902	6,653,036	612.41

TABLE 9. FEDERAL GOVERNMENT EMPLOYMENT AND EARNINGS IN ARKANSAS

INDUSTRY	NUMBER OF EMPLOYING UNITS	EMPLOYMENT			TOTAL
		JUL	AUGUST	SEPTEMBER	EARNINGS JUL.-SEP. 1999
Manufacturing	2	935	918	915	\$10,087,935
Transportation and Public Utilities	426	7,184	7,187	7,188	58,637,324
Retail Trade	3	311	317	315	1,239,022
Finance, Insurance, and Real Estate	24	204	202	202	2,561,409
Services	39	5,101	5,114	5,027	57,368,987
Public Administration	549	6,982	7,014	6,971	75,713,829
TOTAL	1,043	20,717	20,752	20,618	205,608,506

