

**COVERED EMPLOYMENT AND EARNINGS
STATE OF ARKANSAS
1997**

**MIKE HUCKABEE, GOVERNOR
STATE OF ARKANSAS**

**ED ROLLE, DIRECTOR
ARKANSAS EMPLOYMENT SECURITY DEPARTMENT**

**PUBLISHED BY
LABOR MARKET INFORMATION SECTION
ARKANSAS EMPLOYMENT SECURITY DEPARTMENT
POST OFFICE BOX 2981
LITTLE ROCK, ARKANSAS 72203-2981**

TELEPHONE: (501) 682-3198

STATE OF ARKANSAS HOME PAGE: <http://www.state.ar.us>

ARKANSAS EMPLOYMENT SECURITY DEPARTMENT HOME PAGE: <http://www.state.ar.us/esd/index.html>

INTERNET SITE FOR THIS PUBLICATION: <http://www.state.ar.us/esd/97anene.html>

RELEASED: JUNE 1998



TABLE OF CONTENTS

| | Page |
|-------------------------------------------------------------------------|------|
| Description of Data | 1 |
| Industry Classification | 1 |
| Definition of Covered Employment, Earnings, and Average Weekly Earnings | 2 |
| County Classification | 2 |
| Significant Developments During Calendar Year 1997 | 3 |

LIST OF GRAPHS AND TABLES

| | | |
|---------|---------------------------------------------------------------------------------|----|
| Graph 1 | Total and Manufacturing Average Covered Employment for Selected Years, Arkansas | 6 |
| Graph 2 | Total Covered Earnings, by Calendar Quarter for Selected Years, Arkansas | 8 |
| Table 1 | Average Covered Employment and Average Weekly Earnings, by Industry, 1997 | 5 |
| Table 2 | Total Covered Employment in Arkansas, 1991-1997 | 7 |
| Table 3 | Manufacturing Covered Employment, 1991-1997 | 7 |
| Table 4 | Total Covered Earnings, 1991-1997 | 9 |
| Table 5 | Total Taxable Earnings, 1991-1997 | 10 |
| Table 6 | Covered Earnings in Manufacturing, 1991-1997 | 11 |
| Table 7 | State Summary - Employment and Total Earnings, by Industry, Calendar Year 1997 | 12 |
| Table 8 | County Summary - Employment and Total Earnings, by Industry, Calendar Year 1997 | 27 |
| Table 9 | Federal Government Employment and Earnings in Arkansas, 1997 | 53 |



ARKANSAS AVERAGE COVERED EMPLOYMENT AND EARNINGS BY COUNTY AND INDUSTRY, 1997

DESCRIPTION OF DATA

Tables contained in this report represent average monthly employment, total payroll data, and average weekly earnings by industry and county for the calendar year 1997. These data were compiled from quarterly contribution and wage reports submitted by employers subject to the Arkansas Employment Security Law. An employing unit is a single physical location where business is conducted, production takes place, or services are provided. Employment data represents a monthly average for the year by industry on a statewide and county basis. Payroll data represents the total earnings paid during the year and are also shown by industry for the state and in publishable groups in each county. Average weekly earnings data are computed from total earnings reported by all

establishments subject to the Arkansas Employment Security Law and are not to be confused with wage rates prevailing in various industries. Neither are these earnings to be confused with the monthly series of average weekly earnings of production workers that appear in the Arkansas Labor Market Trends and in other labor area releases. In addition, there are tables included which give total covered employment and manufacturing employment by months, quarterly payrolls, and average weekly earnings for the years 1991 through 1997. Data contained in this publication are subject to revision. Annual average data may not equal the sum of previously published quarterly data due to revisions that occur throughout the year.

INDUSTRY CLASSIFICATION

Previously published industry data will not be comparable in all instances with currently published data since industry codes have been revised according to the following Manuals: (a) manufacturing industries were coded according to the 1945 Standard Industrial Manual until December 31, 1957, while nonmanufacturing industries were coded under the Social Security Board Industrial Classification Manual (1942); (b) between January 1, 1958 and December 31, 1967, industry codes were assigned under the 1957 Standard

Industrial Classification (SIC) Manual; (c) between January 1, 1968 and December 31, 1974, industry codes were assigned under the 1967 Standard Industrial Classification (SIC) Manual; (d) between January 1, 1975 and December 31, 1987, industry codes were assigned under the 1972 Standard Industrial Classification (SIC) Manual; and (e) since January 1, 1988, industry codes have been assigned under the 1987 Standard Industrial Classification (SIC) Manual.

DEFINITION OF COVERED EMPLOYMENT, EARNINGS, AND AVERAGE WEEKLY EARNINGS

Covered employment is the number of workers employed by employers subject to the Arkansas Employment Security Law during the pay period which includes the 12th of the month. An employer is subject to the law when he has employed one or more employees in each of ten days during the current or preceding calendar year.

Currently excluded from coverage is employment covered by the Railroad Unemployment Insurance Act; some domestic service workers; employees of small agricultural establishments; self-employed and unpaid family workers; insurance and real estate agents who are on commission only; and employees of churches and religious organizations, except separately incorporated schools. The payroll information in this publication includes all wages and salaries paid to covered employees by their employers including bonuses, commissions, and cash values of remuneration received in any

FEDERAL GOVERNMENT EMPLOYMENT

The table on page 53 lists the average number of civilians employed by the Federal Government in Arkansas during 1997. Employment and wage data are set out by industry divisions. These data are obtained from required reports submitted by various government

COUNTY CLASSIFICATION

Employment and payroll data by county are classified according to the county where the workers are employed. Employers with operations in more than one county are requested to furnish this agency with a breakdown of employment and wages for at least one quarter of each year by the counties in which they operate. This information is invaluable in the preparation of monthly employment, payroll, and average weekly earnings figures by county. Employment, payroll, and average weekly earnings data for multi-area employers

medium other than cash. These wages include both taxable and nontaxable wages. Only the first \$9,000 paid to each worker by an employer in the calendar year is taxable under the Arkansas Employment Security Law.

The average covered employment and average weekly earnings data, included in tables in this publication, were computed in the following manner: Employment data for the twelve months were totaled and divided by 12 to secure the average employment for the year. Total earnings for the year were divided by the average employment to secure the average annual earnings per employee. The average annual earnings per employee were then divided by 52 (number of weeks in a year) to secure the average weekly earnings per employee for the year.

agencies having employment in the State. Civilian Federal workers are covered by the Unemployment Compensation for Federal Employees (UCFE) program.

who do not furnish county data each quarter of the year are pro-rated by county on the basis of one quarter's information.

The "rest-of-state" data includes firms which did not provide a county breakdown of employment and payrolls. It also includes sales and other type personnel with no permanent place of work, as well as employment of employers with no established place of business in Arkansas.

SIGNIFICANT DEVELOPMENTS DURING CALENDAR YEAR 1997

AVERAGE COVERED EMPLOYMENT

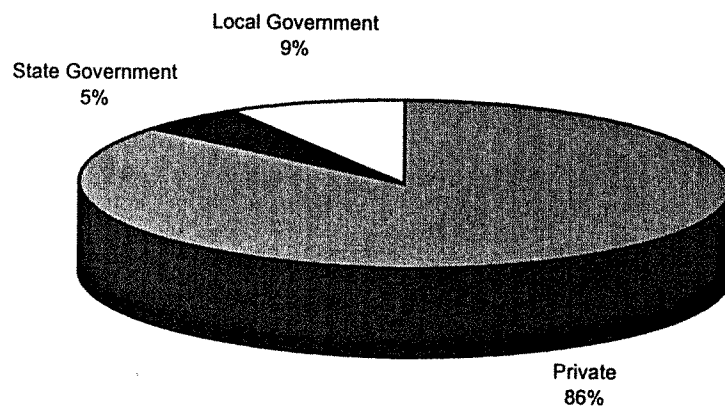
Covered employment in Arkansas averaged 1,057,570 in 1997. This represented an increase of 18,213, or 1.8 percent, from the level of 1,039,357 recorded in 1996. Manufacturing industries experienced an over-the-year decrease while nonmanufacturing industries recorded an increase. The manufacturing sector decreased 631 to an average of 252,776, while nonmanufacturing industries rose 18,844 to average 804,794.

Wholesale and retail trade posted a gain of 5,138 and led all nonmanufacturing industries with an average of 252,726. Services ranked second with an average of 231,905 and experienced a gain of 7,629. State and local government increased 3,566 to rank third with an average of 149,667.

Electronic and other electrical equipment posted the largest loss (-1,002) among the manufacturing industry groups to average 20,296. Other manufacturing industries with significant decreases were apparel and other textile products (-908) and leather and leather products (-373). The most significant gain occurred in transportation equipment (+821).

Pulaski ranked first among the counties in covered employment, averaging 228,705 during 1997. Second ranked Washington County averaged 72,694, followed by Sebastian County with 70,752. Benton and Craighead Counties averaged 61,519 and 35,891, respectively, to make the top five among the counties.

AVERAGE COVERED EMPLOYMENT BY OWNERSHIP



AVERAGE WEEKLY EARNINGS

Average weekly earnings paid to covered workers amounted to \$441.73 during 1997. This represented an increase of \$18.80, or 4.4 percent, from the level of \$422.93 recorded in 1996. Employees in the paper and allied products industry led all published industry groups with average weekly earnings of \$745.13. Workers in chemicals and allied products ranked second averaging \$720.12, followed by petroleum and coal products employees (\$696.91) and primary metal industries workers (\$671.24). Apparel and other textile

products employees (\$290.65) and leather and leather products workers (\$315.81) posted the lowest averages.

Little River County employees ranked first averaging \$604.35. Calhoun County employees (\$521.89) ranked second followed by employees in Ashley County (\$519.58), Pulaski County (\$518.46) and Benton County (\$490.73). Employees in Searcy County ranked last among the counties with an average of \$271.14.

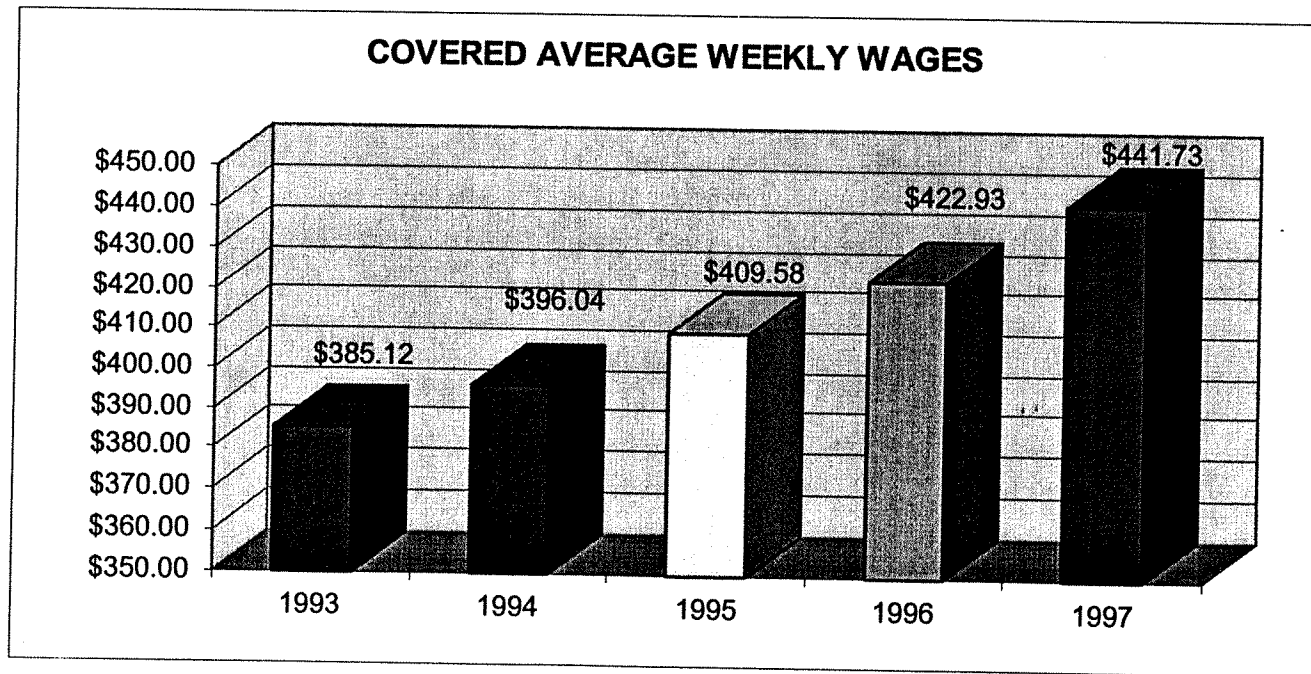
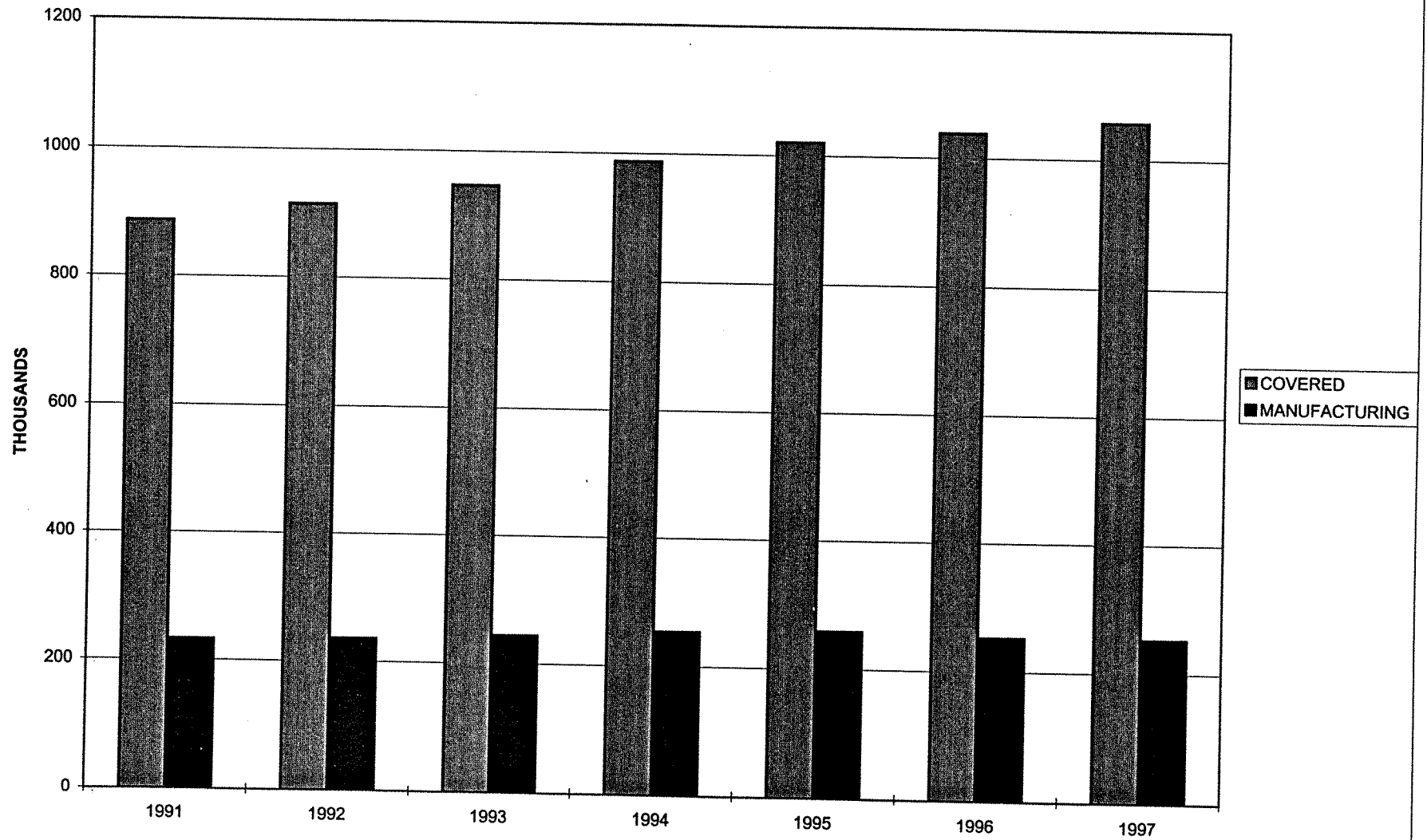


TABLE 1. AVERAGE COVERED EMPLOYMENT AND AVERAGE WEEKLY EARNINGS, BY INDUSTRY, 1997

| Industry Group | Average Covered Employment | % of Total | Net Change From 1996 to 1997 | Average Weekly Earnings |
|--------------------------------------------|----------------------------|--------------|------------------------------|-------------------------|
| Total | 1,057,570 | 100.0 | 18,213 | \$441.73 |
| Manufacturing | 252,776 | 23.9 | -631 | 500.34 |
| Food and Kindred Products | 57,090 | 5.4 | 551 | 419.72 |
| Textile Mill Products | 3,906 | 0.4 | -176 | 437.45 |
| Apparel & Other Textile Products | 8,233 | 0.8 | -908 | 290.65 |
| Lumber and Wood Products | 22,446 | 2.1 | -119 | 453.18 |
| Furniture & Fixtures | 10,717 | 1.0 | 451 | 412.63 |
| Paper and Allied Products | 14,747 | 1.4 | -197 | 745.13 |
| Printing and Publishing | 10,839 | 1.0 | -113 | 483.41 |
| Chemicals and Allied Products | 6,645 | 0.6 | -41 | 720.12 |
| Petroleum and Coal Products | 1,006 | 0.1 | -15 | 696.91 |
| Rubber and Miscellaneous Plastics Products | 14,009 | 1.3 | 137 | 545.83 |
| Leather and Leather Products | 3,102 | 0.3 | -373 | 315.81 |
| Stone, Clay and Glass Products | 5,556 | 0.5 | -95 | 516.79 |
| Primary Metal Industries | 10,708 | 1.0 | 179 | 671.24 |
| Fabricated Metal Products | 18,598 | 1.8 | 230 | 548.43 |
| Industrial Machinery & Equip. | 19,226 | 1.8 | 293 | 511.85 |
| Electronic & Other Elec. Equip. | 20,296 | 1.9 | -1,002 | 519.51 |
| Transportation Equipment | 16,866 | 1.6 | 821 | 515.94 |
| Instruments & Related Products | 5,047 | 0.5 | -27 | 539.25 |
| Miscellaneous Manufacturing Industries | 3,740 | 0.4 | -227 | 376.56 |
| Nonmanufacturing | 804,794 | 76.1 | 18,844 | 423.32 |
| Agriculture, Forestry & Fishing | 15,701 | 1.5 | 191 | 364.42 |
| Mining | 3,502 | 0.3 | 64 | 617.01 |
| Construction | 47,498 | 4.5 | 403 | 464.08 |
| Transportation & Public Utilities | 61,612 | 5.8 | 904 | 597.71 |
| Wholesale & Retail Trade | 252,726 | 23.9 | 5,138 | 338.34 |
| Finance, Insurance & Real Estate | 42,182 | 4.0 | 972 | 573.36 |
| Services | 231,905 | 21.9 | 7,629 | 413.90 |
| State & Local Government | 149,667 | 14.2 | 3,566 | 456.04 |
| Local Government | 96,231 | 9.1 | 2,549 | 413.91 |
| State Government | 53,436 | 5.1 | 1,017 | 531.90 |
| Nonclassifiable Establishments | 0 | 0.0 | -26 | 0.00 |

Note: Items do not necessarily add to totals because of rounding.

TOTAL COVERED AND MANUFACTURING EMPLOYMENT



GRAPH ONE

TABLE 2. TOTAL COVERED EMPLOYMENT IN ARKANSAS

| Period | 1991 | 1992 | 1993 | 1994 | 1995 | 1996 | 1997 |
|-----------|---------|---------|---------|-----------|-----------|-----------|-----------|
| Average | 887,236 | 914,767 | 947,353 | 987,634 | 1,021,440 | 1,039,357 | 1,057,570 |
| January | 862,827 | 887,266 | 914,402 | 949,582 | 994,537 | 1,017,447 | 1,025,949 |
| February | 869,815 | 893,766 | 923,979 | 954,796 | 1,003,997 | 1,021,306 | 1,034,361 |
| March | 879,075 | 902,974 | 932,968 | 968,696 | 1,014,804 | 1,032,978 | 1,046,551 |
| April | 885,135 | 913,918 | 944,486 | 982,542 | 1,019,684 | 1,038,846 | 1,057,633 |
| May | 891,700 | 924,041 | 951,453 | 992,205 | 1,025,143 | 1,049,419 | 1,067,078 |
| June | 897,506 | 928,512 | 956,517 | 1,000,327 | 1,029,990 | 1,051,282 | 1,066,728 |
| July | 859,685 | 889,584 | 923,648 | 966,045 | 992,336 | 1,009,501 | 1,028,510 |
| August | 879,820 | 902,798 | 938,347 | 983,551 | 1,013,715 | 1,031,586 | 1,050,656 |
| September | 905,173 | 929,312 | 968,086 | 1,015,514 | 1,041,492 | 1,055,695 | 1,075,759 |
| October | 908,984 | 937,094 | 972,089 | 1,013,272 | 1,041,045 | 1,055,507 | 1,080,031 |
| November | 903,927 | 934,174 | 970,765 | 1,012,367 | 1,039,808 | 1,055,247 | 1,077,610 |
| December | 903,181 | 933,759 | 971,500 | 1,012,712 | 1,040,728 | 1,053,474 | 1,079,971 |

TABLE 3. MANUFACTURING COVERED EMPLOYMENT

| Period | 1991 | 1992 | 1993 | 1994 | 1995 | 1996 | 1997 |
|-----------|---------|---------|---------|---------|---------|---------|---------|
| Average | 232,989 | 236,312 | 243,729 | 253,953 | 258,532 | 253,407 | 252,776 |
| January | 229,182 | 233,236 | 236,739 | 246,018 | 257,416 | 254,998 | 249,199 |
| February | 228,663 | 232,467 | 238,222 | 245,967 | 258,286 | 253,319 | 250,182 |
| March | 229,615 | 234,039 | 240,301 | 247,221 | 258,236 | 253,815 | 250,608 |
| April | 230,901 | 235,194 | 242,917 | 250,427 | 258,500 | 253,344 | 251,894 |
| May | 231,701 | 236,356 | 243,389 | 252,086 | 257,957 | 252,605 | 253,155 |
| June | 234,588 | 238,763 | 244,700 | 255,254 | 259,922 | 254,470 | 254,829 |
| July | 233,860 | 238,398 | 245,514 | 256,560 | 258,433 | 253,333 | 254,148 |
| August | 236,543 | 237,739 | 245,932 | 257,168 | 259,908 | 253,960 | 254,116 |
| September | 235,463 | 236,965 | 246,212 | 258,975 | 259,517 | 253,023 | 253,787 |
| October | 235,715 | 237,108 | 246,362 | 258,959 | 258,301 | 253,014 | 253,483 |
| November | 234,908 | 237,648 | 246,958 | 259,390 | 258,219 | 252,785 | 253,340 |
| December | 234,724 | 237,825 | 247,506 | 259,409 | 257,691 | 252,214 | 254,575 |

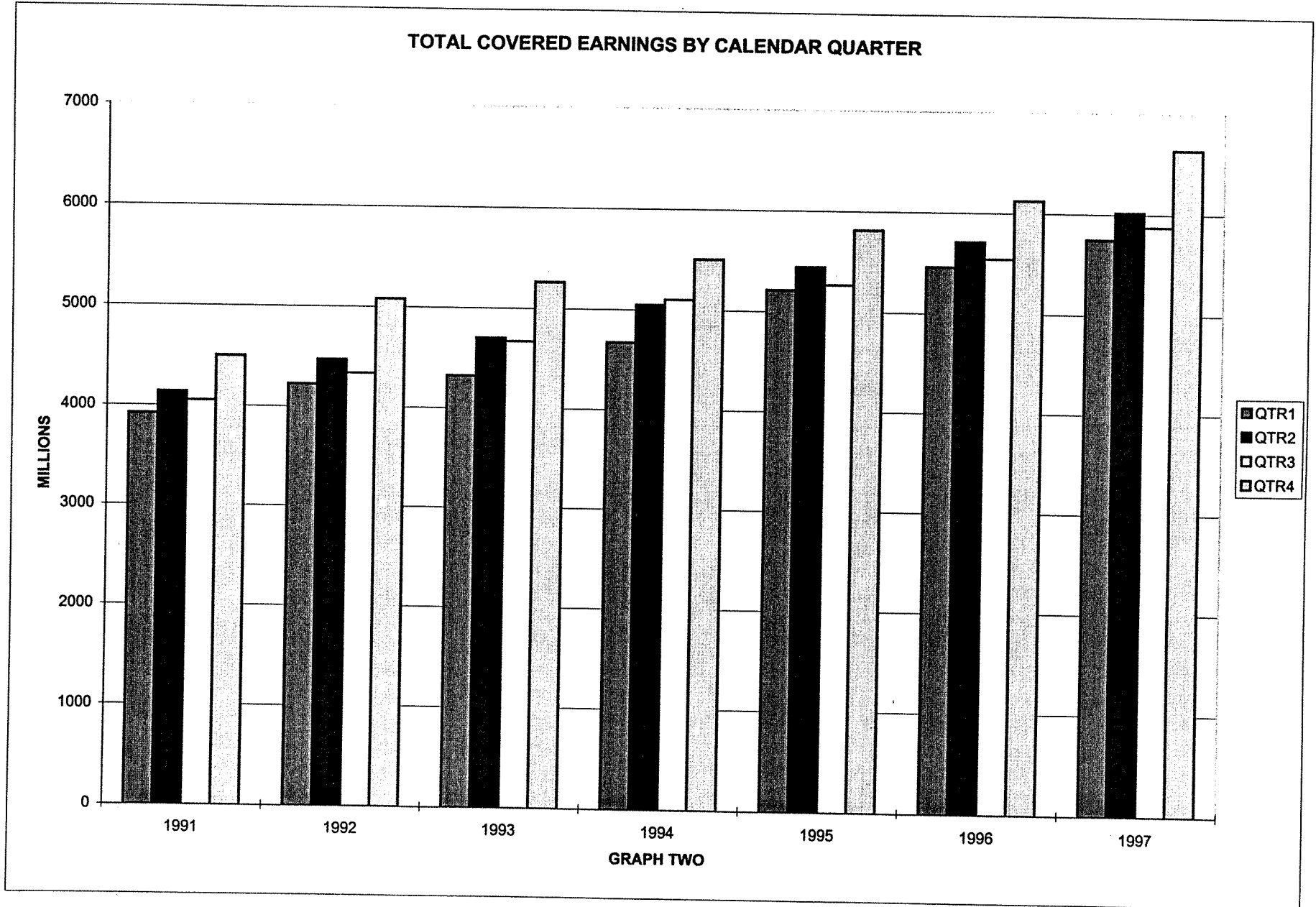


TABLE 4. TOTAL COVERED EARNINGS

| Period | 1991 | 1992 | 1993 | 1994 |
|----------------------------|-------------------------|-------------------------|-------------------------|-------------------------|
| Total | \$16,629,077,117 | \$18,130,080,166 | \$18,972,044,401 | \$20,339,457,312 |
| Jan.-March | 3,925,006,840 | 4,228,309,603 | 4,326,273,709 | 4,676,047,400 |
| Apr.-June | 4,142,221,179 | 4,476,880,731 | 4,705,927,956 | 5,049,632,485 |
| July-Sept. | 4,056,126,989 | 4,340,891,265 | 4,673,569,659 | 5,103,000,944 |
| Oct.-Dec. | 4,505,722,109 | 5,083,998,567 | 5,266,273,077 | 5,510,776,483 |
| Average Weekly Earnings | 360.43 | 381.14 | 385.12 | 396.04 |

TABLE 4. TOTAL COVERED EARNINGS (CONTINUED)

| Period | 1995 | 1996 | 1997 |
|----------------------------|-------------------------|-------------------------|-------------------------|
| Total | \$21,755,030,337 | \$22,858,110,862 | \$24,292,255,514 |
| Jan.-March | 5,216,754,264 | 5,464,913,869 | 5,751,056,136 |
| Apr.-June | 5,449,448,715 | 5,714,811,819 | 6,021,537,518 |
| July-Sept. | 5,270,916,007 | 5,548,435,311 | 5,877,681,886 |
| Oct.-Dec. | 5,817,911,351 | 6,129,949,863 | 6,641,979,974 |
| Average Weekly Earnings | 409.58 | 422.93 | 441.73 |

TABLE 5. TOTAL TAXABLE EARNINGS

| Period | 1991 | 1992 | 1993 | 1994 |
|--------------|------------------------|------------------------|------------------------|------------------------|
| Total | \$5,957,867,586 | \$6,180,939,855 | \$6,707,789,836 | \$7,425,105,759 |
| Jan.-March | 2,740,408,030 | 2,887,371,543 | 2,985,628,570 | 3,252,179,748 |
| Apr.-June | 1,647,491,787 | 1,693,464,296 | 1,888,648,820 | 2,080,889,209 |
| July-Sept. | 915,316,088 | 916,328,679 | 1,058,929,055 | 1,215,839,115 |
| Oct.-Dec. | 654,651,681 | 683,775,337 | 774,583,391 | 876,197,687 |

TABLE 5. TOTAL TAXABLE EARNINGS (CONTINUED)

| Period | 1995 | 1996 | 1997 |
|--------------|------------------------|------------------------|------------------------|
| Total | \$7,817,421,753 | \$7,993,176,348 | \$8,260,465,960 |
| Jan.-March | 3,591,833,807 | 3,726,235,905 | 3,871,667,342 |
| Apr.-June | 2,141,221,185 | 2,176,236,591 | 2,223,918,770 |
| July-Sept. | 1,183,562,914 | 1,189,773,883 | 1,208,701,615 |
| Oct.-Dec. | 900,803,847 | 900,929,969 | 956,178,233 |

TABLE 6. COVERED EARNINGS IN MANUFACTURING

| Period | 1991 | 1992 | 1993 | 1994 |
|----------------------------|------------------------|------------------------|------------------------|------------------------|
| Total | \$4,877,210,773 | \$5,191,846,556 | \$5,454,565,249 | \$5,889,443,098 |
| Jan.-March | 1,161,072,949 | 1,224,916,892 | 1,242,725,873 | 1,361,400,241 |
| Apr.-June | 1,205,186,874 | 1,273,929,756 | 1,342,226,591 | 1,438,659,873 |
| July-Sept. | 1,213,080,138 | 1,277,699,072 | 1,375,061,570 | 1,520,885,717 |
| Oct.-Dec. | 1,297,870,812 | 1,415,300,836 | 1,494,551,215 | 1,568,497,267 |
| Average Weekly Earnings | 402.56 | 422.51 | 430.38 | 445.98 |

TABLE 6. COVERED EARNINGS IN MANUFACTURING (CONTINUED)

| Period | 1995 | 1996 | 1997 |
|----------------------------|------------------------|------------------------|------------------------|
| Total | \$6,153,931,784 | \$6,287,177,585 | \$6,576,610,675 |
| Jan.-March | 1,511,433,659 | 1,541,337,684 | 1,580,259,292 |
| Apr.-June | 1,527,368,381 | 1,554,807,256 | 1,605,319,439 |
| July-Sept. | 1,518,447,296 | 1,548,044,837 | 1,612,928,955 |
| Oct.-Dec. | 1,596,682,448 | 1,642,987,808 | 1,778,102,989 |
| Average Weekly Earnings | 457.76 | 477.13 | 500.34 |

TABLE 7. STATE SUMMARY
EMPLOYMENT AND TOTAL EARNINGS, BY INDUSTRY
CALENDAR YEAR 1997

| INDUSTRY GROUP | | AVERAGE # OF EMPLOYING UNITS | AVERAGE COVERED EMPLOYMENT | TOTAL EARNINGS | AVERAGE WEEKLY EARNINGS |
|------------------------------|-------------------------------------------|------------------------------------|----------------------------------|-------------------------|-------------------------------|
| TOTAL, ALL INDUSTRIES | | 69,238 | 1,057,570 | \$24,292,255,514 | \$441.73 |
| MANUFACTURING | | 4,463 | 252,776 | \$6,576,610,675 | \$500.34 |
| 20 | FOOD AND KINDRED PRODUCTS | 343 | 57,090 | | |
| 201 | Meat Products | 106 | 39,252 | \$1,246,004,136 | \$419.72 |
| 202 | Dairy Products | 17 | 832 | 787,599,166 | 385.87 |
| 203 | Preserved Fruits and Vegetables | 39 | 6,547 | 21,675,276 | 501.00 |
| 204 | Grain Mill Products | 98 | 3,644 | 159,776,096 | 469.32 |
| 205 | Bakery Products | 19 | 2,720 | 100,684,044 | 531.35 |
| 207 | Fats and Oils | 10 | 870 | 77,264,540 | 546.27 |
| 208 | Beverages | 15 | 998 | 23,140,656 | 511.51 |
| | Other Food and Kindred Products | 39 | 2,227 | 27,814,037 | 535.96 |
| | | | | 48,050,321 | 414.93 |
| 22 | TEXTILE MILL PRODUCTS | 23 | 3,906 | \$88,851,160 | \$437.45 |
| 23 | APPAREL AND OTHER TEXTILE PRODUCTS | 162 | 8,233 | | |
| 232 | Men's and Boys' Furnishings | 42 | 6,464 | \$124,432,283 | \$290.65 |
| 233 | Women's and Misses' Outerwear | 11 | 197 | 99,090,718 | 294.80 |
| 238 | Miscellaneous Apparel and Accessories | 7 | 209 | 2,174,395 | 212.26 |
| 239 | Misc. Fabricated Textile Products | 93 | 982 | 3,029,751 | 278.78 |
| | Other Apparel and Other Textile Products | 9 | 381 | 14,812,829 | 290.08 |
| | | | | 5,324,590 | 268.76 |
| 24 | LUMBER AND WOOD PRODUCTS | 1,185 | 22,446 | \$528,946,887 | \$453.18 |
| 241 | Logging | 669 | 3,531 | 71,879,792 | 391.48 |
| 242 | Sawmills and Planing Mills | 233 | 9,234 | 240,594,565 | 501.06 |
| 243 | Millwork, Plywood & Structural Members | 102 | 3,751 | 99,195,954 | 508.56 |
| 249 | Miscellaneous Wood Products | 96 | 3,792 | 80,634,928 | 408.93 |
| | Other Lumber and Wood Products | 85 | 2,138 | 36,641,648 | 329.58 |
| 25 | FURNITURE AND FIXTURES | 129 | 10,717 | \$229,954,255 | \$412.63 |
| 251 | Household Furniture | 73 | 5,139 | 99,743,819 | 373.25 |
| 252 | Office Furniture | 10 | 618 | 12,448,885 | 387.38 |
| 253 | Public Building & Related Furniture | 18 | 2,691 | 63,886,044 | 456.55 |
| 254 | Partitions and Fixtures | 19 | 2,021 | 48,699,055 | 463.39 |
| 259 | Miscellaneous Furniture and Fixtures | 9 | 249 | 5,176,452 | 399.79 |

**TABLE 7. STATE SUMMARY
EMPLOYMENT AND TOTAL EARNINGS, BY INDUSTRY
CALENDAR YEAR 1997**

| INDUSTRY GROUP | | AVERAGE # OF EMPLOYING UNITS | AVERAGE COVERED EMPLOYMENT | TOTAL EARNINGS | AVERAGE WEEKLY EARNINGS |
|----------------|-------------------------------------------|------------------------------------|----------------------------------|----------------------|-------------------------------|
| 26 | PAPER AND ALLIED PRODUCTS | 112 | 14,747 | \$571,397,518 | \$745.13 |
| 262 | Paper Mills | 21 | 5,482 | 269,366,673 | 944.93 |
| 263 | Paperboard Mills | 5 | 914 | 45,668,927 | 960.88 |
| 265 | Paperboard Containers and Boxes | 47 | 3,764 | 116,820,760 | 596.85 |
| 267 | Misc. Converted Paper Products | 39 | 4,588 | 139,541,158 | 584.89 |
| 27 | PRINTING AND PUBLISHING | 478 | 10,839 | \$272,465,529 | \$483.41 |
| 271 | Newspapers | 134 | 3,715 | 75,265,535 | 389.61 |
| 272 | Periodicals | 20 | 152 | 3,345,274 | 423.24 |
| 273 | Books | 22 | 70 | 2,733,493 | 750.96 |
| 274 | Miscellaneous Publishing | 31 | 671 | 18,155,683 | 520.34 |
| 275 | Commercial Printing | 244 | 3,537 | 103,115,893 | 560.64 |
| 279 | Printing Trade Services | 9 | 191 | 7,190,165 | 723.94 |
| | Other Printing and Publishing | 18 | 2,503 | 62,659,486 | 481.42 |
| 28 | CHEMICALS AND ALLIED PRODUCTS | 123 | 6,645 | \$248,831,459 | \$720.12 |
| 281 | Industrial Inorganic Chemicals | 17 | 1,196 | 58,648,980 | 943.03 |
| 282 | Plastics Materials and Synthetics | 4 | 352 | 14,125,105 | 771.69 |
| 283 | Drugs | 6 | 92 | 3,540,321 | 740.03 |
| 284 | Soap, Cleaners, and Toilet Goods | 26 | 1,591 | 49,126,921 | 593.81 |
| 285 | Paints and Allied Products | 10 | 421 | 13,662,090 | 624.07 |
| 286 | Industrial Organic Chemicals | 13 | 1,129 | 45,008,546 | 766.65 |
| 287 | Agricultural Chemicals | 23 | 1,010 | 34,848,846 | 663.53 |
| 289 | Miscellaneous Chemical Products | 25 | 853 | 29,870,650 | 673.43 |
| 29 | PETROLEUM AND COAL PRODUCTS | 25 | 1,006 | \$36,457,015 | \$696.91 |
| 295 | Asphalt Paving and Roofing Materials | 16 | 383 | 12,486,228 | 626.94 |
| | Other Petroleum and Coal Products | 9 | 623 | 23,970,787 | 739.93 |
| 30 | RUBBER AND MISC. PLASTICS PRODUCTS | 214 | 14,009 | \$397,621,569 | \$545.83 |
| 301 | Tires and Inner Tubes | 4 | 2,251 | 96,199,227 | 821.85 |
| 305 | Hose & Belting & Gaskets & Packing | 10 | 1,435 | 42,472,486 | 569.18 |
| 306 | Fabricated Rubber Products, NEC | 24 | 2,162 | 58,385,890 | 519.34 |
| 308 | Miscellaneous Plastics Products, NEC | 176 | 8,162 | 200,563,966 | 472.56 |

TABLE 7. STATE SUMMARY
EMPLOYMENT AND TOTAL EARNINGS, BY INDUSTRY
CALENDAR YEAR 1997

| INDUSTRY GROUP | | AVERAGE # OF EMPLOYING UNITS | AVERAGE COVERED EMPLOYMENT | TOTAL EARNINGS | AVERAGE WEEKLY EARNINGS |
|----------------|----------------------------------------|------------------------------------|----------------------------------|----------------|-------------------------------|
| 31 | LEATHER AND LEATHER PRODUCTS | 27 | 3,102 | | |
| 314 | Footwear, Except Rubber | 13 | 2,492 | \$50,940,901 | \$315.81 |
| | Other Leather and Leather Products | 14 | 610 | 41,016,300 | 316.52 |
| | | | | 9,924,601 | 312.88 |
| 32 | STONE, CLAY, AND GLASS PRODUCTS | 252 | 5,556 | | |
| 322 | Glass and Glassware, Pressed or Blown | 8 | 588 | \$149,307,652 | \$516.79 |
| 323 | Products Of Purchased Glass | 12 | 251 | 14,037,041 | 459.09 |
| 325 | Structural Clay Products | 8 | 479 | 5,422,710 | 415.47 |
| 327 | Concrete, Gypsum, and Plaster Products | 162 | 2,742 | 10,928,558 | 438.76 |
| 328 | Cut Stone and Stone Products | 23 | 180 | 73,250,961 | 513.74 |
| 329 | Misc. Nonmetallic Mineral Products | 26 | 832 | 3,123,207 | 333.68 |
| | Other Stone, Clay, and Glass Products | 13 | 484 | 27,127,519 | 627.02 |
| | | | | 15,417,656 | 612.59 |
| 33 | PRIMARY METAL INDUSTRIES | 74 | 10,708 | | |
| 331 | Blast Furnace and Basic Steel Products | 22 | 4,950 | \$373,754,436 | \$671.24 |
| 332 | Iron and Steel Foundries | 10 | 300 | 204,011,756 | 792.59 |
| 335 | Nonferrous Rolling and Drawing | 19 | 3,433 | 7,337,286 | 470.34 |
| 336 | Nonferrous Foundries (Castings) | 11 | 1,577 | 103,139,273 | 577.76 |
| | Other Primary Metal Industries | 12 | 448 | 43,165,817 | 526.39 |
| | | | | 16,100,304 | 691.12 |
| 34 | FABRICATED METAL PRODUCTS | 349 | 18,598 | | |
| 341 | Metal Cans and Shipping Containers | 4 | 339 | \$530,385,375 | \$548.43 |
| 342 | Cutlery, Handtools, and Hardware | 31 | 2,204 | 11,489,691 | 651.79 |
| 343 | Plumbing and Heating, Except Electric | 6 | 1,263 | 54,723,645 | 477.49 |
| 344 | Fabricated Structural Metal Products | 166 | 5,574 | 34,385,277 | 523.56 |
| 345 | Screw Machine Products, Bolts, Etc. | 16 | 551 | 165,277,392 | 570.22 |
| 346 | Metal Forgings and Stampings | 24 | 2,114 | 16,892,332 | 589.57 |
| 347 | Metal Services, NEC | 31 | 450 | 53,473,641 | 486.44 |
| 348 | Ordnance and Accessories, NEC | 12 | 2,031 | 10,192,222 | 435.57 |
| 349 | Misc. Fabricated Metal Products | 59 | 4,071 | 64,780,733 | 613.38 |
| | | | | 119,170,442 | 562.94 |

**TABLE 7. STATE SUMMARY
EMPLOYMENT AND TOTAL EARNINGS, BY INDUSTRY
CALENDAR YEAR 1997**

| INDUSTRY GROUP | | AVERAGE # OF EMPLOYING UNITS | AVERAGE COVERED EMPLOYMENT | TOTAL EARNINGS | AVERAGE WEEKLY EARNINGS |
|----------------|--------------------------------------------------|------------------------------------|----------------------------------|----------------------|-------------------------------|
| 35 | INDUSTRIAL MACHINERY AND EQUIPMENT | 469 | 19,226 | \$511,723,042 | \$511.85 |
| 352 | Farm and Garden Machinery | 37 | 2,781 | 50,778,986 | 351.14 |
| 353 | Construction and Related Machinery | 39 | 2,565 | 74,100,492 | 555.56 |
| 354 | Metalworking Machinery | 99 | 3,441 | 98,590,193 | 550.99 |
| 355 | Special Industrial Machinery | 25 | 988 | 33,584,696 | 653.70 |
| 356 | General Industrial Machinery | 29 | 2,217 | 57,643,275 | 500.01 |
| 358 | Refrigeration and Service Machinery | 42 | 5,317 | 150,878,200 | 545.70 |
| 359 | Industrial Machinery, NEC | 189 | 1,702 | 39,487,226 | 446.16 |
| | Other Industrial Machinery and Equipment | 9 | 215 | 6,659,974 | 595.70 |
| 36 | ELECTRONIC & OTHER ELECTRIC EQUIPMENT | 116 | 20,296 | \$548,285,844 | \$519.51 |
| 361 | Electric Distribution Equipment | 10 | 1,278 | 29,552,768 | 444.70 |
| 362 | Electrical Industrial Apparatus | 22 | 6,802 | 191,932,892 | 542.64 |
| 364 | Electric Lighting and Wiring Equipment | 23 | 2,912 | 77,069,302 | 508.96 |
| 365 | Household Audio and Video Equipment | 8 | 856 | 20,157,774 | 452.86 |
| 367 | Electronic Components and Accessories | 27 | 1,981 | 45,883,418 | 445.42 |
| 369 | Misc. Electrical Equipment & Supplies | 11 | 1,905 | 43,873,006 | 442.89 |
| | Other Electronic & Other Electric Equipment | 15 | 4,562 | 139,816,684 | 589.39 |
| 37 | TRANSPORTATION EQUIPMENT | 195 | 16,866 | \$452,495,253 | \$515.94 |
| 371 | Motor Vehicles and Equipment | 88 | 10,211 | 254,871,936 | 480.01 |
| 372 | Aircraft and Parts | 34 | 3,680 | 127,004,215 | 663.69 |
| 373 | Ship and Boat Building And Repairing | 36 | 1,607 | 33,135,715 | 396.53 |
| 379 | Miscellaneous Transportation Equipment | 27 | 517 | 10,214,907 | 379.96 |
| | Other Transportation Equipment | 10 | 851 | 27,268,480 | 616.21 |
| 38 | INSTRUMENTS AND RELATED PRODUCTS | 52 | 5,047 | \$141,523,768 | \$539.25 |
| 381 | Search and Navigation Equipment | 5 | 193 | 6,403,633 | 638.07 |
| 382 | Measuring and Controlling Devices | 23 | 1,705 | 37,023,719 | 417.59 |
| 385 | Ophthalmic Goods | 12 | 228 | 4,246,590 | 358.18 |
| | Other Instruments and Related Products | 12 | 2,921 | 93,849,826 | 617.87 |

TABLE 7. STATE SUMMARY
 EMPLOYMENT AND TOTAL EARNINGS, BY INDUSTRY
 CALENDAR YEAR 1997

| INDUSTRY GROUP | | AVERAGE # OF EMPLOYING UNITS | AVERAGE COVERED EMPLOYMENT | TOTAL EARNINGS | AVERAGE WEEKLY EARNINGS |
|----------------|----------------------------------------------|------------------------------------|----------------------------------|----------------|-------------------------------|
| 39 | MISCELLANEOUS MANUFACTURING INDUSTRIES | 139 | 3,740 | | |
| 393 | Musical Instruments | 8 | 838 | \$73,232,593 | \$376.56 |
| 394 | Toys and Sporting Goods | 46 | 1,514 | 18,325,179 | 420.53 |
| 395 | Pens, Pencils, Office, & Art Supplies | 4 | 45 | 29,053,271 | 369.03 |
| 399 | Miscellaneous Manufactures | 70 | 1,312 | 911,805 | 389.66 |
| | Other Miscellaneous Manufacturing Industries | 11 | 31 | 24,138,805 | 353.82 |
| | | | | 803,533 | 498.47 |

**TABLE 7. STATE SUMMARY
EMPLOYMENT AND TOTAL EARNINGS, BY INDUSTRY
CALENDAR YEAR 1997**

| INDUSTRY GROUP | | AVERAGE # OF EMPLOYING UNITS | AVERAGE COVERED EMPLOYMENT | TOTAL EARNINGS | AVERAGE WEEKLY EARNINGS |
|-------------------------------------------|------------------------------------------|------------------------------------|----------------------------------|-------------------------|-------------------------------|
| NONMANUFACTURING | | 64,775 | 804,794 | \$17,715,644,839 | \$423.32 |
| AGRICULTURE, FORESTRY, AND FISHING | | 2,073 | 15,701 | \$297,532,630 | \$364.42 |
| 01 | AGRICULTURAL PRODUCTION-CROPS | 644 | 3,862 | \$67,527,546 | \$336.25 |
| 011 | Cash Grains | 350 | 1,882 | 34,783,436 | 355.43 |
| 013 | Field Crops, Except Cash Grains | 110 | 808 | 13,278,450 | 316.03 |
| 016 | Vegetables and Melons | 6 | 46 | 238,179 | 99.57 |
| 017 | Fruits and Tree Nuts | 12 | 97 | 1,277,374 | 253.25 |
| 018 | Horticultural Specialties | 37 | 269 | 3,780,486 | 270.27 |
| 019 | General Farms, Primarily Crop | 130 | 761 | 14,169,621 | 358.07 |
| 02 | AGRICULTURAL PRODUCTION-LIVESTOCK | 216 | 4,115 | \$93,518,908 | \$437.05 |
| 021 | Livestock, Except Dairy and Poultry | 59 | 676 | 15,009,606 | 426.99 |
| 025 | Poultry and Eggs | 87 | 2,839 | 65,997,523 | 447.05 |
| 027 | Animal Specialties | 61 | 552 | 11,648,187 | 405.80 |
| | Other Agricultural Production-Livestock | 9 | 48 | 863,592 | 345.99 |
| 07 | AGRICULTURAL SERVICES | 1,111 | 6,824 | \$116,619,885 | \$328.65 |
| 071 | Soil Preparation Services | 6 | 28 | 675,545 | 463.97 |
| 072 | Crop Services | 302 | 2,080 | 43,775,443 | 404.73 |
| 074 | Veterinary Services | 268 | 1,437 | 22,075,592 | 295.43 |
| 075 | Animal Services, Except Veterinary | 138 | 1,042 | 14,784,605 | 272.86 |
| 076 | Farm Labor and Management Services | 16 | 51 | 1,218,779 | 459.57 |
| 078 | Landscape and Horticultural Services | 381 | 2,186 | 34,089,921 | 299.90 |
| 08 | FORESTRY | 91 | 848 | \$19,203,965 | \$435.50 |
| 085 | Forestry Services | 63 | 711 | 15,232,325 | 412.00 |
| | Other Forestry | 28 | 137 | 3,971,640 | 557.50 |
| 09 | FISHING, HUNTING, AND TRAPPING | 11 | 51 | \$662,326 | \$249.75 |

TABLE 7. STATE SUMMARY
EMPLOYMENT AND TOTAL EARNINGS, BY INDUSTRY
CALENDAR YEAR 1997

| INDUSTRY GROUP | | AVERAGE # OF EMPLOYING UNITS | AVERAGE COVERED EMPLOYMENT | TOTAL EARNINGS | AVERAGE WEEKLY EARNINGS |
|---------------------|--------------------------------------------------|------------------------------------|----------------------------------|------------------------|-------------------------------|
| MINING | | 316 | 3,502 | \$112,359,986 | \$617.01 |
| 13 | OIL AND GAS EXTRACTION | 221 | 1,920 | \$64,887,185 | \$649.91 |
| 138 | Oil and Gas Field Services | 133 | 1,226 | 35,945,258 | 563.83 |
| | Other Oil and Gas Extraction | 88 | 694 | 28,941,927 | 801.98 |
| 14 | NONMETALLIC MINERALS, EXCEPT FUELS | 86 | 1,469 | \$42,621,672 | \$557.96 |
| 142 | Crushed and Broken Stone | 20 | 339 | 9,727,301 | 551.81 |
| 144 | Sand and Gravel | 40 | 831 | 24,772,392 | 573.28 |
| 149 | Miscellaneous Nonmetallic Minerals, Except Fuels | 20 | 205 | 5,156,406 | 483.72 |
| | Other Nonmetallic Minerals, Except Fuels | 6 | 94 | 2,965,573 | 606.70 |
| | OTHER MINING | 9 | 113 | \$4,851,129 | \$825.58 |
| CONSTRUCTION | | 6,745 | 47,498 | \$1,146,217,726 | \$464.08 |
| 15 | GENERAL BUILDING CONTRACTORS | 1,884 | 11,794 | \$288,420,718 | \$470.29 |
| 152 | Residential Building Construction | 1,256 | 4,007 | 75,930,020 | 364.41 |
| 153 | Operative Builders | 26 | 78 | 1,537,171 | 378.99 |
| 154 | Nonresidential Building Construction | 602 | 7,709 | 210,953,527 | 526.24 |
| 16 | HEAVY CONSTRUCTION, EX. BUILDING | 814 | 9,043 | \$237,033,273 | \$504.07 |
| 161 | Highway and Street Construction | 167 | 2,672 | 77,109,605 | 554.97 |
| 162 | Heavy Construction, Except Highway | 647 | 6,372 | 159,923,668 | 482.65 |
| 17 | SPECIAL TRADE CONTRACTORS | 4,048 | 26,660 | \$620,763,735 | \$447.78 |
| 171 | Plumbing, Heating, Air-Conditioning | 1,024 | 6,995 | 169,609,484 | 466.29 |
| 172 | Painting and Paper Hanging | 278 | 1,455 | 28,280,420 | 373.78 |
| 173 | Electrical Work | 643 | 4,863 | 126,464,420 | 500.10 |
| 174 | Masonry, Stonework, and Plastering | 459 | 3,245 | 65,690,693 | 389.30 |
| 175 | Carpentry and Floor Work | 213 | 843 | 17,501,392 | 399.25 |
| 176 | Roofing, Siding, and Sheet Metal Work | 268 | 1,797 | 38,191,297 | 408.71 |
| 177 | Concrete Work | 254 | 1,630 | 29,554,259 | 348.68 |
| 178 | Water Well Drilling | 52 | 326 | 8,125,271 | 479.31 |
| 179 | Misc. Special Trade Contractors | 857 | 5,506 | 137,346,499 | 479.71 |

**TABLE 7. STATE SUMMARY
EMPLOYMENT AND TOTAL EARNINGS, BY INDUSTRY
CALENDAR YEAR 1997**

| INDUSTRY GROUP | | AVERAGE # OF EMPLOYING UNITS | AVERAGE COVERED EMPLOYMENT | TOTAL EARNINGS | AVERAGE WEEKLY EARNINGS |
|--------------------------------------------|-----------------------------------------------|------------------------------------|----------------------------------|------------------------|-------------------------------|
| TRANSPORTATION AND PUBLIC UTILITIES | | 3,959 | 61,612 | \$1,914,953,536 | \$597.71 |
| 41 | LOCAL AND INTERURBAN PASSENGER TRANSIT | 142 | 1,937 | \$32,717,966 | \$324.83 |
| 411 | Local and Suburban Transportation | 97 | 1,324 | 23,699,678 | 344.23 |
| 414 | Bus Charter Service | 16 | 127 | 2,138,123 | 323.76 |
| | Other Local and Interurban Passenger Transit | 29 | 486 | 6,880,165 | 272.24 |
| 42 | TRUCKING AND WAREHOUSING | 2,233 | 32,040 | \$889,774,048 | \$534.05 |
| 421 | Trucking & Courier Services, Ex. Air | 2,028 | 29,968 | 845,789,500 | 542.75 |
| | Other Trucking and Warehousing | 205 | 2,072 | 43,984,548 | 408.23 |
| 44 | WATER TRANSPORTATION | 67 | 640 | \$16,222,326 | \$487.45 |
| 449 | Water Transportation Services | 59 | 556 | 14,515,808 | 502.07 |
| | Other Water Transportation | 8 | 84 | 1,706,518 | 390.69 |
| 45 | TRANSPORTATION BY AIR | 177 | 5,757 | \$147,043,764 | \$491.19 |
| 451 | Air Transportation, Scheduled | 62 | 4,307 | 103,512,716 | 462.18 |
| | Other Transportation by Air | 115 | 1,450 | 43,531,048 | 577.33 |
| 46 | PIPELINES, EXCEPT NATURAL GAS | 15 | 212 | \$10,320,778 | \$936.21 |
| 47 | TRANSPORTATION SERVICES | 275 | 1,751 | \$44,146,956 | \$484.85 |
| 472 | Passenger Transportation Arrangement | 127 | 614 | 12,007,291 | 376.07 |
| 473 | Freight Transportation Arrangement | 116 | 690 | 22,227,777 | 619.50 |
| | Other Transportation Services | 32 | 447 | 9,911,888 | 426.43 |
| 48 | COMMUNICATIONS | 547 | 9,969 | \$361,232,347 | \$696.84 |
| 481 | Telephone Communications | 307 | 6,560 | 279,223,205 | 818.55 |
| 483 | Radio and Television Broadcasting | 151 | 2,305 | 54,223,717 | 452.39 |
| | Other Communications | 89 | 1,104 | 27,785,425 | 484.00 |
| 49 | ELECTRIC, GAS, AND SANITARY SERVICES | 503 | 9,308 | \$413,495,351 | \$854.30 |
| 492 | Gas Production and Distribution | 115 | 1,854 | 78,485,274 | 814.10 |
| 494 | Water Supply | 148 | 606 | 11,455,890 | 363.54 |
| | Other Electric, Gas, and Sanitary Services | 240 | 6,848 | 323,554,187 | 908.62 |

TABLE 7. STATE SUMMARY
EMPLOYMENT AND TOTAL EARNINGS, BY INDUSTRY
CALENDAR YEAR 1997

| INDUSTRY GROUP | | AVERAGE # OF EMPLOYING UNITS | AVERAGE COVERED EMPLOYMENT | TOTAL EARNINGS | AVERAGE WEEKLY EARNINGS |
|-----------------------------------|-------------------------------------------------|------------------------------------|----------------------------------|------------------------|-------------------------------|
| WHOLESALE AND RETAIL TRADE | | 21,940 | 252,726 | \$4,446,421,470 | \$338.34 |
| WHOLESALE TRADE | | 6,128 | 49,970 | \$1,484,575,261 | \$571.33 |
| 50 | WHOLESALE TRADE-DURABLE GOODS | 3,667 | 26,025 | \$794,858,211 | \$587.35 |
| 501 | Motor Vehicles, Parts, and Supplies | 543 | 4,567 | 110,992,092 | 467.37 |
| 502 | Furniture and Homefurnishings | 110 | 584 | 19,484,728 | 641.62 |
| 503 | Lumber and Construction Materials | 257 | 1,827 | 55,004,584 | 578.97 |
| 504 | Professional & Commercial Equipment | 643 | 3,392 | 131,853,002 | 747.53 |
| 505 | Metals and Minerals, Except Petroleum | 88 | 868 | 28,163,013 | 623.96 |
| 506 | Electrical Goods | 319 | 2,271 | 81,241,472 | 687.95 |
| 507 | Hardware, Plumbing & Heating Equipment | 303 | 2,440 | 72,037,677 | 567.76 |
| 508 | Machinery, Equipment, and Supplies | 1,086 | 8,307 | 250,835,755 | 580.69 |
| 509 | Miscellaneous Durable Goods | 319 | 1,769 | 45,245,888 | 491.87 |
| 51 | WHOLESALE TRADE-NONDURABLE GOODS | 2,461 | 23,945 | \$689,717,050 | \$553.93 |
| 511 | Paper and Paper Products | 194 | 1,884 | 49,410,218 | 504.35 |
| 512 | Drugs, Proprietaries, and Sundries | 206 | 1,992 | 73,204,577 | 706.72 |
| 513 | Apparel, Piece Goods, and Notions | 107 | 1,059 | 27,162,103 | 493.25 |
| 514 | Groceries and Related Products | 596 | 7,176 | 216,345,246 | 579.78 |
| 515 | Farm-Product Raw Materials | 121 | 1,627 | 31,372,543 | 370.82 |
| 516 | Chemical and Allied Products | 207 | 965 | 41,499,073 | 827.00 |
| 517 | Petroleum and Petroleum Products | 253 | 2,119 | 57,403,903 | 520.96 |
| 518 | Beer, Wine, and Distilled Beverages | 49 | 1,026 | 35,180,632 | 659.41 |
| 519 | Misc. Nondurable Goods | 730 | 6,098 | 158,138,755 | 498.71 |
| RETAIL TRADE | | 15,812 | 202,756 | \$2,961,846,209 | \$280.92 |
| 52 | BUILDING MATERIALS & GARDEN SUPPLIES | 856 | 9,130 | \$176,298,693 | \$371.34 |
| 521 | Lumber and Other Building Materials | 326 | 5,995 | 114,700,748 | 367.94 |
| 523 | Paint, Glass, and Wallpaper Stores | 131 | 579 | 12,830,370 | 426.14 |
| 525 | Hardware Stores | 174 | 1,196 | 19,671,208 | 316.30 |
| 526 | Retail Nurseries and Garden Stores | 121 | 647 | 7,887,408 | 234.44 |
| 527 | Mobile Home Dealers | 105 | 712 | 21,208,959 | 572.84 |

**TABLE 7. STATE SUMMARY
EMPLOYMENT AND TOTAL EARNINGS, BY INDUSTRY
CALENDAR YEAR 1997**

| INDUSTRY GROUP | | AVERAGE # OF EMPLOYING UNITS | AVERAGE COVERED EMPLOYMENT | TOTAL EARNINGS | AVERAGE WEEKLY EARNINGS |
|----------------|--------------------------------------------------|------------------------------------|----------------------------------|----------------|-------------------------------|
| 53 | GENERAL MERCHANDISE STORES | 553 | 44,548 | | |
| 531 | Department Stores | 177 | 40,554 | \$903,398,365 | \$389.98 |
| 533 | Variety Stores | 191 | 2,405 | 852,126,309 | 404.08 |
| 539 | Misc. General Merchandise Stores | 186 | 1,589 | 33,571,972 | 268.45 |
| | | | | 17,700,084 | 214.21 |
| 54 | FOOD STORES | 2,096 | 29,838 | | |
| 541 | Grocery Stores | 1,801 | 28,352 | \$366,233,182 | \$236.04 |
| 542 | Meat and Fish Markets | 61 | 244 | 349,970,894 | 237.38 |
| 544 | Candy, Nut, and Confectionery Stores | 23 | 103 | 3,050,569 | 240.43 |
| 546 | Retail Bakeries | 127 | 686 | 799,505 | 149.27 |
| 549 | Miscellaneous Food Stores | 69 | 392 | 7,149,304 | 200.42 |
| | Other Food Stores | 15 | 61 | 4,592,561 | 225.30 |
| | | | | 670,349 | 211.33 |
| 55 | AUTOMOTIVE DEALERS & SERVICE STATIONS | 2,610 | 23,261 | | |
| 551 | New and Used Car Dealers | 316 | 8,716 | \$487,663,175 | \$403.17 |
| 552 | Used Car Dealers | 432 | 1,523 | 259,533,336 | 572.63 |
| 553 | Auto and Home Supply Stores | 637 | 3,852 | 32,487,717 | 410.22 |
| 554 | Gasoline Service Stations | 1,055 | 8,080 | 73,412,031 | 366.50 |
| 555 | Boat Dealers | 67 | 403 | 98,050,182 | 233.36 |
| 556 | Recreational Vehicle Dealers | 40 | 259 | 8,042,361 | 383.77 |
| 557 | Motorcycle Dealers | 53 | 402 | 6,301,870 | 467.91 |
| 559 | Automotive Dealers, NEC | 10 | 27 | 9,181,980 | 439.25 |
| | | | | 653,698 | 465.60 |
| 56 | APPAREL AND ACCESSORY STORES | 1,090 | 7,215 | | |
| 561 | Men's & Boys' Clothing Stores | 60 | 304 | \$77,376,369 | \$206.24 |
| 562 | Women's Clothing Stores | 352 | 2,083 | 4,768,182 | 301.63 |
| 563 | Women's Accessory & Specialty Stores | 42 | 287 | 22,355,366 | 206.39 |
| 564 | Children's and Infants' Wear Stores | 54 | 193 | 3,140,767 | 210.45 |
| 565 | Family Clothing Stores | 239 | 2,520 | 1,753,682 | 174.74 |
| 566 | Shoe Stores | 226 | 1,377 | 24,533,822 | 187.22 |
| 569 | Misc. Apparel & Accessory Stores | 117 | 450 | 15,382,717 | 214.83 |
| | | | | 5,441,833 | 232.56 |
| 57 | FURNITURE AND HOMEFURNISHINGS STORES | 1,235 | 7,216 | | |
| 571 | Furniture and Homefurnishings Stores | 753 | 4,170 | \$134,713,846 | \$359.01 |
| 572 | Household Appliance Stores | 115 | 529 | 79,640,933 | 367.28 |
| 573 | Radio, Television, & Computer Stores | 367 | 2,518 | 8,587,237 | 312.17 |
| | | | | 46,485,676 | 355.03 |

TABLE 7. STATE SUMMARY
EMPLOYMENT AND TOTAL EARNINGS, BY INDUSTRY
CALENDAR YEAR 1997

| INDUSTRY GROUP | | AVERAGE # OF EMPLOYING UNITS | AVERAGE COVERED EMPLOYMENT | TOTAL EARNINGS | AVERAGE WEEKLY EARNINGS |
|--------------------------------------------|--------------------------------------|------------------------------------|----------------------------------|------------------------|-------------------------------|
| 58 | EATING AND DRINKING PLACES | 3,932 | 63,090 | \$536,534,761 | \$163.54 |
| 59 | MISCELLANEOUS RETAIL | 3,441 | 18,458 | \$279,627,818 | \$291.33 |
| 591 | Drug Stores and Proprietary Stores | 527 | 4,207 | 79,463,288 | 363.24 |
| 592 | Liquor Stores | 366 | 1,426 | 17,829,779 | 240.45 |
| 593 | Used Merchandise Stores | 338 | 1,004 | 13,012,561 | 249.24 |
| 594 | Miscellaneous Shopping Goods Stores | 1,032 | 6,035 | 78,296,918 | 249.50 |
| 596 | Nonstore Retailers | 163 | 1,496 | 26,868,435 | 345.39 |
| 598 | Fuel Dealers | 178 | 983 | 20,862,825 | 408.15 |
| 599 | Retail Stores, NEC | 838 | 3,308 | 43,294,012 | 251.69 |
| FINANCE, INSURANCE, AND REAL ESTATE | | 5,446 | 42,182 | \$1,257,647,310 | \$573.36 |
| 60 | DEPOSITORY INSTITUTIONS | 896 | 16,825 | \$417,554,019 | \$477.26 |
| 602 | Commercial Banks | 679 | 14,507 | 366,308,068 | 485.59 |
| 603 | Savings Institutions | 96 | 1,464 | 32,294,969 | 424.22 |
| 606 | Credit Unions | 78 | 513 | 11,065,191 | 414.80 |
| | Other Depository Institutions | 43 | 341 | 7,885,791 | 444.72 |
| 61 | NONDEPOSITORY INSTITUTIONS | 237 | 2,036 | \$73,444,996 | \$693.72 |
| 611 | Federal & Fed.-Sponsored Credit | 45 | 285 | 10,893,631 | 735.06 |
| 614 | Personal Credit Institutions | 41 | 286 | 12,588,802 | 846.48 |
| 615 | Business Credit Institutions | 35 | 154 | 7,710,174 | 962.81 |
| 616 | Mortgage Bankers and Brokers | 116 | 1,312 | 42,252,389 | 619.32 |
| 32 | SECURITY AND COMMODITY BROKERS | 284 | 2,300 | \$166,465,503 | \$1,391.85 |
| 621 | Security Brokers and Dealers | 191 | 2,091 | 155,956,216 | 1434.32 |
| | Other Security and Commodity Brokers | 93 | 209 | 10,509,287 | 966.99 |
| 63 | INSURANCE CARRIERS | 440 | 5,382 | \$195,141,760 | \$697.27 |
| 631 | Life Insurance | 90 | 1,120 | 39,159,765 | 672.39 |
| 632 | Medical Service and Health Insurance | 45 | 2,060 | 76,790,396 | 716.86 |
| 633 | Fire, Marine, and Casualty Insurance | 220 | 1,599 | 62,339,589 | 749.74 |
| 635 | Surety Insurance | 12 | 43 | 2,565,386 | 1147.31 |
| 636 | Title Insurance | 66 | 509 | 11,386,731 | 430.21 |
| | Other Insurance Carriers | 7 | 51 | 2,899,893 | 1093.47 |

**TABLE 7. STATE SUMMARY
EMPLOYMENT AND TOTAL EARNINGS, BY INDUSTRY
CALENDAR YEAR 1997**

| INDUSTRY GROUP | | AVERAGE # OF EMPLOYING UNITS | AVERAGE COVERED EMPLOYMENT | TOTAL EARNINGS | AVERAGE WEEKLY EARNINGS |
|-----------------|------------------------------------------------|------------------------------------|----------------------------------|------------------------|-------------------------------|
| 64 | INSURANCE AGENTS, BROKERS & SERVICE | 1,349 | 4,997 | \$145,055,127 | \$558.24 |
| 65 | REAL ESTATE | 2,040 | 9,141 | \$183,805,537 | \$386.69 |
| 651 | Real Estate Operators and Lessors | 666 | 2,925 | 45,496,587 | 299.12 |
| 653 | Real Estate Agents and Managers | 1,097 | 4,230 | 84,464,471 | 384.00 |
| 654 | Title Abstract Offices | 101 | 684 | 15,513,218 | 436.16 |
| 655 | Subdividers and Developers | 177 | 1,303 | 38,331,261 | 565.72 |
| 67 | HOLDING AND OTHER INVESTMENT OFFICES | 199 | 1,502 | \$76,180,368 | \$975.37 |
| 671 | Holding Offices | 57 | 1,173 | 65,473,123 | 1073.40 |
| 679 | Miscellaneous Investing | 98 | 255 | 7,936,086 | 598.50 |
| | Other Holding and Other Investment Offices | 44 | 74 | 2,771,159 | 720.16 |
| SERVICES | | 21,201 | 231,905 | \$4,991,300,054 | \$413.90 |
| 70 | HOTELS AND OTHER LODGING PLACES | 689 | 10,860 | \$112,049,009 | \$198.42 |
| 701 | Hotels and Motels | 632 | 10,558 | 109,072,702 | 198.67 |
| 702 | Rooming and Boarding Houses | 9 | 26 | 251,708 | 186.17 |
| 703 | Camps and Recreational Vehicle Parks | 35 | 218 | 2,047,166 | 180.59 |
| 704 | Membership-Basis Organization Hotels | 13 | 57 | 677,433 | 228.55 |
| 72 | PERSONAL SERVICES | 1,634 | 9,088 | \$132,502,286 | \$280.38 |
| 721 | Laundry, Cleaning, & Garment Services | 467 | 4,286 | 58,685,247 | 263.31 |
| 722 | Photographic Studios, Portrait | 175 | 534 | 7,095,232 | 255.52 |
| 723 | Beauty Shops | 457 | 1,556 | 20,811,811 | 257.22 |
| 724 | Barber Shops | 28 | 59 | 1,035,349 | 337.47 |
| 725 | Shoe Repair and Shoeshine Parlors | 16 | 25 | 206,745 | 159.03 |
| 726 | Funeral Service and Crematories | 200 | 1,526 | 32,727,878 | 412.44 |
| 729 | Miscellaneous Personal Services | 293 | 1,103 | 11,940,024 | 208.17 |

TABLE 7. STATE SUMMARY
EMPLOYMENT AND TOTAL EARNINGS, BY INDUSTRY
CALENDAR YEAR 1997

| INDUSTRY GROUP | | AVERAGE # OF EMPLOYING UNITS | AVERAGE COVERED EMPLOYMENT | TOTAL EARNINGS | AVERAGE WEEKLY EARNINGS |
|----------------|--------------------------------------------|------------------------------------|----------------------------------|----------------------|-------------------------------|
| 73 | BUSINESS SERVICES | 3,181 | 49,346 | \$896,488,380 | \$349.37 |
| 731 | Advertising | 187 | 1,204 | 35,649,235 | 569.40 |
| 732 | Credit Reporting and Collection | 105 | 957 | 18,911,886 | 380.03 |
| 733 | Mailing, Reproduction, Stenographic | 172 | 958 | 18,041,376 | 362.16 |
| 734 | Services to Buildings | 586 | 6,261 | 72,835,717 | 223.72 |
| 735 | Misc. Equipment Rental & Leasing | 382 | 2,449 | 61,047,253 | 479.37 |
| 736 | Personnel Supply Services | 440 | 23,304 | 269,150,284 | 222.11 |
| 737 | Computer and Data Processing Services | 524 | 6,292 | 293,243,622 | 896.27 |
| 738 | Miscellaneous Business Services | 784 | 7,920 | 127,609,007 | 309.85 |
| 75 | AUTO REPAIR, SERVICES, AND PARKING | 1,757 | 7,921 | \$151,854,904 | \$368.68 |
| 751 | Automotive Rentals, No Drivers | 125 | 1,071 | 21,872,645 | 392.74 |
| 752 | Automobile Parking | 13 | 81 | 1,335,116 | 316.98 |
| 753 | Automotive Repair Shops | 1,366 | 5,098 | 107,371,706 | 405.03 |
| 754 | Automotive Services, Except Repair | 253 | 1,671 | 21,275,437 | 244.85 |
| 76 | MISCELLANEOUS REPAIR SERVICES | 718 | 2,961 | \$73,503,639 | \$477.38 |
| 762 | Electrical Repair Shops | 172 | 716 | 17,131,136 | 460.12 |
| 763 | Watch, Clock, and Jewelry Repair | 9 | 26 | 478,381 | 353.83 |
| 764 | Reupholstery and Furniture Repair | 41 | 107 | 1,580,895 | 284.13 |
| 769 | Miscellaneous Repair Shops | 496 | 2,112 | 54,313,227 | 494.55 |
| 78 | MOTION PICTURES | 366 | 3,115 | \$36,625,795 | \$226.11 |
| 783 | Motion Picture Theaters | 60 | 772 | 5,385,688 | 134.16 |
| 784 | Video Tape Rental | 251 | 1,446 | 11,750,832 | 156.28 |
| | Other Motion Pictures | 55 | 897 | 19,489,275 | 417.83 |
| 79 | AMUSEMENT & RECREATION SERVICES | 840 | 8,286 | \$95,634,127 | \$221.95 |
| 791 | Dance Studios, Schools, and Halls | 43 | 186 | 1,242,442 | 128.46 |
| 792 | Producers, Orchestras, Entertainers | 59 | 642 | 8,870,880 | 265.72 |
| 793 | Bowling Centers | 46 | 434 | 4,283,158 | 189.79 |
| 794 | Commercial Sports | 64 | 896 | 11,536,488 | 247.61 |
| 799 | Misc. Amusement, Recreation Services | 630 | 6,129 | 69,701,159 | 218.70 |

**TABLE 7. STATE SUMMARY
EMPLOYMENT AND TOTAL EARNINGS, BY INDUSTRY
CALENDAR YEAR 1997**

| INDUSTRY GROUP | | AVERAGE # OF EMPLOYING UNITS | AVERAGE COVERED EMPLOYMENT | TOTAL EARNINGS | AVERAGE WEEKLY EARNINGS |
|----------------|-----------------------------------------------|------------------------------------|----------------------------------|------------------------|-------------------------------|
| 80 | HEALTH SERVICES | 4,233 | 91,589 | \$2,522,072,414 | \$529.55 |
| 801 | Offices & Clinics of Medical Doctors | 1,769 | 15,560 | 839,587,326 | 1037.65 |
| 802 | Offices And Clinics of Dentists | 848 | 4,639 | 123,579,483 | 512.29 |
| 803 | Offices of Osteopathic Physicians | 21 | 105 | 3,858,789 | 706.74 |
| 804 | Offices of Other Health Practitioners | 801 | 3,726 | 99,746,143 | 514.81 |
| 805 | Nursing and Personal Care Facilities | 282 | 20,571 | 303,126,635 | 283.38 |
| 806 | Hospitals | 100 | 38,751 | 965,833,149 | 479.31 |
| 807 | Medical and Dental Laboratories | 109 | 1,004 | 29,247,093 | 560.20 |
| 808 | Home Health Care Services | 125 | 3,969 | 76,622,753 | 371.26 |
| 809 | Health and Allied Services, NEC | 178 | 3,262 | 80,471,043 | 474.41 |
| 81 | LEGAL SERVICES | 1,351 | 4,763 | \$162,094,325 | \$654.46 |
| 82 | EDUCATIONAL SERVICES | 251 | 5,760 | \$111,519,226 | \$372.33 |
| 821 | Elementary and Secondary Schools | 75 | 2,376 | 34,922,317 | 282.65 |
| 822 | Colleges and Universities | 20 | 2,635 | 60,558,808 | 441.97 |
| 823 | Libraries | 7 | 48 | 686,295 | 274.96 |
| 824 | Vocational Schools | 39 | 162 | 2,495,088 | 296.19 |
| 829 | Schools & Educational Services, NEC | 111 | 540 | 12,856,718 | 457.86 |
| 83 | SOCIAL SERVICES | 1,684 | 21,108 | \$273,883,845 | \$249.53 |
| 832 | Individual and Family Services | 532 | 7,336 | 98,752,000 | 258.87 |
| 833 | Job Training and Related Services | 105 | 2,914 | 38,932,315 | 256.93 |
| 835 | Child Day Care Services | 712 | 5,872 | 58,579,858 | 191.85 |
| 836 | Residential Care | 201 | 3,203 | 49,703,763 | 298.42 |
| 839 | Social Services, NEC | 135 | 1,783 | 27,915,909 | 301.09 |
| 84 | MUSEUMS, BOTANICAL, ZOOLOGICAL GARDENS | 29 | 169 | \$2,116,933 | \$240.89 |
| 86 | MEMBERSHIP ORGANIZATIONS | 827 | 3,956 | \$60,679,623 | \$294.97 |
| 861 | Business Associations | 187 | 584 | 15,057,432 | 495.83 |
| 862 | Professional Organizations | 47 | 229 | 7,647,393 | 642.21 |
| 863 | Labor Organizations | 163 | 788 | 7,686,935 | 187.60 |
| 864 | Civic and Social Associations | 258 | 1,672 | 16,595,540 | 190.88 |
| 865 | Political Organizations | 23 | 24 | 619,860 | 496.68 |
| 866 | Religious Organizations | 29 | 143 | 1,975,066 | 265.61 |
| 869 | Membership Organizations, NEC | 121 | 517 | 11,097,397 | 412.79 |

TABLE 7. STATE SUMMARY
EMPLOYMENT AND TOTAL EARNINGS, BY INDUSTRY
CALENDAR YEAR 1997

| | INDUSTRY GROUP | AVERAGE # OF EMPLOYING UNITS | AVERAGE COVERED EMPLOYMENT | TOTAL EARNINGS | AVERAGE WEEKLY EARNINGS |
|-----|----------------------------------------------|------------------------------------|----------------------------------|-----------------|-------------------------------|
| 87 | ENGINEERING & MANAGEMENT SERVICES | 2,200 | 10,738 | \$335,345,965 | \$600.57 |
| 871 | Engineering & Architectural Services | 529 | 3,337 | 114,591,879 | 660.38 |
| 872 | Accounting, Auditing, & Bookkeeping | 816 | 3,221 | 88,959,650 | 531.13 |
| 873 | Research and Testing Services | 139 | 1,687 | 39,645,123 | 451.93 |
| 874 | Management and Public Relations | 716 | 2,492 | 92,149,313 | 711.12 |
| 88 | PRIVATE HOUSEHOLDS | 1,407 | 2,137 | \$21,897,858 | \$197.06 |
| 89 | SERVICES, NEC | 36 | 109 | \$3,031,725 | \$534.88 |
| | LOCAL GOVERNMENT | 1,973 | 96,231 | \$2,071,233,946 | \$413.91 |
| | STATE GOVERNMENT | 1,125 | 53,436 | \$1,477,978,181 | \$531.90 |
| | NONCLASSIFIABLE ESTABLISHMENTS | 0 | 0 | \$0 | |

Note: Items do not necessarily add to totals because of rounding.

**TABLE 8. COUNTY SUMMARY
EMPLOYMENT AND TOTAL EARNINGS, BY INDUSTRY
CALENDAR YEAR 1997**

| INDUSTRY GROUP | AVERAGE # OF EMPLOYING UNITS | AVERAGE COVERED EMPLOYMENT | TOTAL EARNINGS | AVERAGE WEEKLY EARNINGS |
|-------------------------------------|------------------------------------|----------------------------------|----------------------|-------------------------------|
| ARKANSAS COUNTY - TOTAL | 688 | 9,116 | \$200,398,339 | \$422.75 |
| MANUFACTURING | 34 | 2,883 | 74,844,735 | 499.24 |
| NONMANUFACTURING | 654 | 6,233 | 125,553,604 | 387.37 |
| AGRICULTURE, FORESTRY, AND FISHING | 54 | 266 | 6,675,603 | 482.62 |
| CONSTRUCTION | 60 | 317 | 6,874,708 | 417.05 |
| TRANSPORTATION AND PUBLIC UTILITIES | 65 | 916 | 25,346,322 | 532.13 |
| WHOLESALE AND RETAIL TRADE | 208 | 2,021 | 39,123,097 | 372.27 |
| WHOLESALE TRADE | 51 | 596 | 20,218,023 | 652.36 |
| RETAIL TRADE | 157 | 1,425 | 18,905,074 | 255.13 |
| FINANCE, INSURANCE, AND REAL ESTATE | 37 | 313 | 7,316,796 | 449.55 |
| SERVICES | 185 | 1,245 | 19,110,938 | 295.20 |
| LOCAL GOVERNMENT | 33 | 977 | 17,428,998 | 343.06 |
| STATE GOVERNMENT | 14 | 179 | 3,677,142 | 395.05 |
| ASHLEY COUNTY - TOTAL | 561 | 10,092 | \$272,669,060 | \$519.58 |
| MANUFACTURING | 63 | 4,179 | 154,552,896 | 711.22 |
| NONMANUFACTURING | 498 | 5,913 | 118,116,164 | 384.15 |
| CONSTRUCTION | 49 | 1,119 | 31,330,540 | 538.44 |
| TRANSPORTATION AND PUBLIC UTILITIES | 36 | 355 | 9,707,773 | 525.88 |
| WHOLESALE AND RETAIL TRADE | 168 | 1,466 | 20,649,990 | 270.88 |
| WHOLESALE TRADE | 34 | 202 | 5,359,831 | 510.27 |
| RETAIL TRADE | 134 | 1,264 | 15,290,159 | 232.63 |
| FINANCE, INSURANCE, AND REAL ESTATE | 39 | 298 | 5,946,259 | 383.73 |
| SERVICES | 132 | 1,192 | 19,660,987 | 317.19 |
| LOCAL GOVERNMENT | 35 | 953 | 18,667,461 | 376.69 |
| STATE GOVERNMENT | 10 | 219 | 3,853,070 | 338.34 |
| OTHER NONMANUFACTURING | 29 | 311 | 8,300,084 | 513.24 |
| BAXTER COUNTY - TOTAL | 1,069 | 13,277 | \$263,258,924 | \$381.31 |
| MANUFACTURING | 74 | 3,817 | 87,552,214 | 441.10 |
| NONMANUFACTURING | 995 | 9,460 | 175,706,710 | 357.19 |
| CONSTRUCTION | 105 | 495 | 8,618,241 | 334.82 |
| TRANSPORTATION AND PUBLIC UTILITIES | 46 | 361 | 8,387,688 | 446.82 |
| WHOLESALE AND RETAIL TRADE | 322 | 3,031 | 39,930,798 | 253.35 |
| WHOLESALE TRADE | 41 | 296 | 6,121,753 | 397.72 |
| RETAIL TRADE | 281 | 2,735 | 33,809,045 | 237.72 |
| FINANCE, INSURANCE, AND REAL ESTATE | 72 | 408 | 11,204,768 | 528.13 |
| SERVICES | 381 | 3,720 | 79,063,212 | 408.72 |
| LOCAL GOVERNMENT | 32 | 1,009 | 20,397,919 | 388.77 |
| STATE GOVERNMENT | 12 | 240 | 4,816,380 | 385.93 |
| OTHER NONMANUFACTURING | 25 | 196 | 3,287,704 | 322.58 |

**TABLE 8. COUNTY SUMMARY
EMPLOYMENT AND TOTAL EARNINGS, BY INDUSTRY
CALENDAR YEAR 1997**

| INDUSTRY GROUP | AVERAGE # OF EMPLOYING UNITS | AVERAGE COVERED EMPLOYMENT | TOTAL EARNINGS | AVERAGE WEEKLY EARNINGS |
|-------------------------------------|---------------------------------------------|-------------------------------------------|------------------------|----------------------------------------|
| BENTON COUNTY - TOTAL | 3,105 | 61,519 | \$1,569,850,858 | \$490.73 |
| MANUFACTURING | 218 | 16,794 | 447,956,407 | 512.95 |
| NONMANUFACTURING | 2,887 | 44,725 | 1,121,894,451 | 482.39 |
| CONSTRUCTION | 428 | 2,212 | 51,665,206 | 449.17 |
| TRANSPORTATION AND PUBLIC UTILITIES | 160 | 3,610 | 118,855,538 | 633.15 |
| WHOLESALE AND RETAIL TRADE | 913 | 20,463 | 543,288,354 | 510.57 |
| WHOLESALE TRADE | 218 | 1,528 | 53,810,113 | 677.23 |
| RETAIL TRADE | 695 | 18,935 | 489,478,241 | 497.12 |
| FINANCE, INSURANCE, AND REAL ESTATE | 270 | 2,491 | 66,554,239 | 513.81 |
| SERVICES | 953 | 9,876 | 207,561,918 | 404.17 |
| LOCAL GOVERNMENT | 64 | 4,439 | 99,824,252 | 432.46 |
| STATE GOVERNMENT | 18 | 559 | 11,917,330 | 409.98 |
| OTHER NONMANUFACTURING | 81 | 1,075 | 22,227,614 | 397.63 |
| BOONE COUNTY - TOTAL | 945 | 13,194 | \$269,888,471 | \$393.37 |
| MANUFACTURING | 73 | 3,341 | 78,258,441 | 450.45 |
| NONMANUFACTURING | 872 | 9,853 | 191,630,030 | 374.02 |
| CONSTRUCTION | 90 | 456 | 9,865,434 | 416.05 |
| TRANSPORTATION AND PUBLIC UTILITIES | 52 | 815 | 25,175,729 | 594.05 |
| WHOLESALE AND RETAIL TRADE | 293 | 4,032 | 65,504,578 | 312.43 |
| WHOLESALE TRADE | 62 | 1,392 | 31,315,212 | 432.63 |
| RETAIL TRADE | 231 | 2,640 | 34,189,366 | 249.05 |
| FINANCE, INSURANCE, AND REAL ESTATE | 69 | 363 | 9,554,331 | 506.16 |
| SERVICES | 299 | 1,848 | 29,900,628 | 311.15 |
| LOCAL GOVERNMENT | 43 | 1,802 | 38,425,808 | 410.08 |
| STATE GOVERNMENT | 19 | 508 | 12,897,921 | 488.26 |
| OTHER NONMANUFACTURING | 7 | 29 | 305,601 | 202.65 |
| BRADLEY COUNTY - TOTAL | 339 | 4,062 | \$83,822,634 | \$396.84 |
| MANUFACTURING | 62 | 1,277 | 38,304,192 | 576.84 |
| NONMANUFACTURING | 277 | 2,785 | 45,518,442 | 314.31 |
| CONSTRUCTION | 26 | 110 | 1,830,586 | 320.03 |
| TRANSPORTATION AND PUBLIC UTILITIES | 23 | 67 | 1,800,287 | 516.73 |
| WHOLESALE AND RETAIL TRADE | 88 | 699 | 9,029,196 | 248.41 |
| WHOLESALE TRADE | 22 | 164 | 2,436,357 | 285.69 |
| RETAIL TRADE | 66 | 535 | 6,592,839 | 236.98 |
| FINANCE, INSURANCE, AND REAL ESTATE | 20 | 147 | 2,891,371 | 378.25 |
| SERVICES | 76 | 549 | 9,433,908 | 330.46 |
| LOCAL GOVERNMENT | 18 | 666 | 12,603,401 | 363.92 |
| STATE GOVERNMENT | 12 | 257 | 5,289,742 | 395.82 |
| OTHER NONMANUFACTURING | 14 | 290 | 2,639,951 | 175.06 |

**TABLE 8. COUNTY SUMMARY
EMPLOYMENT AND TOTAL EARNINGS, BY INDUSTRY
CALENDAR YEAR 1997**

| INDUSTRY GROUP | AVERAGE # OF EMPLOYING UNITS | AVERAGE COVERED EMPLOYMENT | TOTAL EARNINGS | AVERAGE WEEKLY EARNINGS |
|-------------------------------------|---------------------------------------------|-------------------------------------------|-----------------------|----------------------------------------|
| CALHOUN COUNTY - TOTAL | 144 | 3,095 | \$83,993,025 | \$521.89 |
| MANUFACTURING | 41 | 2,053 | 63,205,272 | 592.05 |
| NONMANUFACTURING | 103 | 1,042 | 20,787,753 | 383.65 |
| CONSTRUCTION | 11 | 67 | 1,200,343 | 344.53 |
| TRANSPORTATION AND PUBLIC UTILITIES | 18 | 117 | 3,064,305 | 503.67 |
| WHOLESALE AND RETAIL TRADE | 27 | 99 | 1,130,793 | 219.66 |
| SERVICES | 17 | 107 | 1,750,933 | 314.69 |
| LOCAL GOVERNMENT | 13 | 203 | 3,861,652 | 365.83 |
| STATE GOVERNMENT | 10 | 315 | 6,452,985 | 393.96 |
| OTHER NONMANUFACTURING | 7 | 134 | 3,326,742 | 477.43 |
| CARROLL COUNTY - TOTAL | 784 | 9,288 | \$159,496,256 | \$330.24 |
| AGRICULTURE, FORESTRY, AND FISHING | 24 | 431 | 8,599,749 | 383.71 |
| WHOLESALE AND RETAIL TRADE | 284 | 1,947 | 24,643,208 | 243.40 |
| WHOLESALE TRADE | 22 | 62 | 1,233,908 | 382.73 |
| RETAIL TRADE | 262 | 1,885 | 23,409,300 | 238.82 |
| SERVICES | 240 | 1,793 | 27,363,703 | 293.49 |
| LOCAL GOVERNMENT | 24 | 786 | 15,185,091 | 371.53 |
| STATE GOVERNMENT | 10 | 86 | 1,765,158 | 394.71 |
| OTHER | 202 | 4,245 | 81,939,347 | 371.20 |
| CHICOT COUNTY - TOTAL | 358 | 4,405 | \$76,581,708 | \$334.33 |
| MANUFACTURING | 12 | 1,211 | 16,369,181 | 259.94 |
| NONMANUFACTURING | 346 | 3,194 | 60,212,527 | 362.53 |
| CONSTRUCTION | 18 | 186 | 4,640,701 | 479.81 |
| TRANSPORTATION AND PUBLIC UTILITIES | 22 | 122 | 3,121,675 | 492.07 |
| WHOLESALE AND RETAIL TRADE | 112 | 805 | 12,278,211 | 293.32 |
| WHOLESALE TRADE | 28 | 257 | 5,932,272 | 443.90 |
| RETAIL TRADE | 84 | 548 | 6,345,939 | 222.70 |
| FINANCE, INSURANCE, AND REAL ESTATE | 30 | 154 | 3,255,371 | 406.51 |
| SERVICES | 84 | 478 | 8,387,157 | 337.43 |
| LOCAL GOVERNMENT | 16 | 882 | 16,475,479 | 359.22 |
| STATE GOVERNMENT | 13 | 285 | 6,442,252 | 434.70 |
| OTHER NONMANUFACTURING | 51 | 282 | 5,611,681 | 382.68 |

**TABLE 8. COUNTY SUMMARY
EMPLOYMENT AND TOTAL EARNINGS, BY INDUSTRY
CALENDAR YEAR 1997**

| INDUSTRY GROUP | AVERAGE # OF EMPLOYING UNITS | AVERAGE COVERED EMPLOYMENT | TOTAL EARNINGS | AVERAGE WEEKLY EARNINGS |
|-------------------------------------|---------------------------------------------|-------------------------------------------|-----------------------|----------------------------------------|
| CLARK COUNTY - TOTAL | 612 | 9,794 | \$187,347,862 | \$367.86 |
| MANUFACTURING | 88 | 3,431 | 73,106,685 | 409.76 |
| NONMANUFACTURING | 524 | 6,363 | 114,241,177 | 345.27 |
| AGRICULTURE, FORESTRY, AND FISHING | 8 | 20 | 361,353 | 347.45 |
| CONSTRUCTION | 40 | 173 | 3,113,166 | 346.06 |
| TRANSPORTATION AND PUBLIC UTILITIES | 34 | 412 | 11,090,992 | 517.69 |
| WHOLESALE AND RETAIL TRADE | 164 | 1,981 | 25,088,598 | 243.55 |
| WHOLESALE TRADE | 27 | 183 | 3,880,228 | 407.76 |
| RETAIL TRADE | 137 | 1,798 | 21,208,370 | 226.84 |
| FINANCE, INSURANCE, AND REAL ESTATE | 59 | 350 | 7,868,954 | 432.36 |
| SERVICES | 179 | 1,665 | 29,216,346 | 337.45 |
| LOCAL GOVERNMENT | 27 | 774 | 14,759,444 | 366.71 |
| STATE GOVERNMENT | 15 | 988 | 22,742,324 | 442.66 |
| CLAY COUNTY - TOTAL | 470 | 6,294 | \$104,705,068 | \$319.92 |
| MANUFACTURING | 28 | 2,924 | 48,869,042 | 321.41 |
| NONMANUFACTURING | 442 | 3,370 | 55,836,026 | 318.63 |
| AGRICULTURE, FORESTRY, AND FISHING | 64 | 197 | 3,207,121 | 313.07 |
| CONSTRUCTION | 39 | 153 | 2,930,281 | 368.31 |
| TRANSPORTATION AND PUBLIC UTILITIES | 44 | 241 | 5,535,538 | 441.71 |
| WHOLESALE AND RETAIL TRADE | 136 | 1,303 | 18,243,496 | 269.25 |
| WHOLESALE TRADE | 44 | 527 | 9,901,288 | 361.31 |
| RETAIL TRADE | 92 | 776 | 8,342,208 | 206.74 |
| FINANCE, INSURANCE, AND REAL ESTATE | 33 | 158 | 3,062,364 | 372.73 |
| SERVICES | 93 | 485 | 7,176,716 | 284.56 |
| LOCAL GOVERNMENT | 22 | 754 | 13,687,779 | 349.11 |
| STATE GOVERNMENT | 12 | 79 | 1,992,731 | 485.09 |
| CLEBURNE COUNTY - TOTAL | 548 | 5,961 | \$111,504,043 | \$359.72 |
| MANUFACTURING | 49 | 1,695 | 35,818,354 | 406.38 |
| NONMANUFACTURING | 499 | 4,266 | 75,685,689 | 341.18 |
| AGRICULTURE, FORESTRY, AND FISHING | 12 | 46 | 582,357 | 243.46 |
| CONSTRUCTION | 46 | 281 | 5,385,218 | 368.55 |
| TRANSPORTATION AND PUBLIC UTILITIES | 46 | 347 | 10,669,257 | 591.29 |
| WHOLESALE AND RETAIL TRADE | 177 | 1,414 | 20,032,191 | 272.44 |
| WHOLESALE TRADE | 34 | 187 | 4,308,868 | 443.12 |
| RETAIL TRADE | 143 | 1,227 | 15,723,323 | 246.43 |
| FINANCE, INSURANCE, AND REAL ESTATE | 42 | 217 | 4,361,387 | 386.51 |
| SERVICES | 148 | 1,219 | 20,308,930 | 320.39 |
| LOCAL GOVERNMENT | 20 | 609 | 11,792,500 | 372.38 |
| STATE GOVERNMENT | 10 | 132 | 2,553,849 | 372.06 |

**TABLE 8. COUNTY SUMMARY
EMPLOYMENT AND TOTAL EARNINGS, BY INDUSTRY
CALENDAR YEAR 1997**

| INDUSTRY GROUP | AVERAGE # OF EMPLOYING UNITS | AVERAGE COVERED EMPLOYMENT | TOTAL EARNINGS | AVERAGE WEEKLY EARNINGS |
|-------------------------------------|------------------------------------|----------------------------------|----------------------|-------------------------------|
| CLEVELAND COUNTY - TOTAL | 127 | 1,143 | \$18,714,875 | \$314.87 |
| MANUFACTURING | 25 | 210 | 3,728,616 | 341.45 |
| NONMANUFACTURING | 102 | 933 | 14,986,259 | 308.89 |
| CONSTRUCTION | 16 | 79 | 1,075,594 | 261.83 |
| TRANSPORTATION AND PUBLIC UTILITIES | 13 | 95 | 1,900,972 | 384.81 |
| WHOLESALE AND RETAIL TRADE | 26 | 178 | 2,114,003 | 228.39 |
| WHOLESALE TRADE | 6 | 88 | 1,317,999 | 288.02 |
| RETAIL TRADE | 20 | 90 | 796,004 | 170.09 |
| FINANCE, INSURANCE, AND REAL ESTATE | 6 | 28 | 540,156 | 370.99 |
| LOCAL GOVERNMENT | 12 | 299 | 5,236,817 | 336.82 |
| STATE GOVERNMENT | 8 | 67 | 1,376,642 | 395.13 |
| OTHER NONMANUFACTURING | 21 | 187 | 2,742,075 | 281.99 |
| COLUMBIA COUNTY - TOTAL | 741 | 9,793 | \$221,268,580 | \$434.51 |
| MANUFACTURING | 57 | 3,100 | 94,329,545 | 585.17 |
| NONMANUFACTURING | 684 | 6,693 | 126,939,035 | 364.73 |
| AGRICULTURE, FORESTRY, AND FISHING | 23 | 162 | 3,318,391 | 393.92 |
| MINING | 36 | 369 | 11,102,490 | 578.62 |
| CONSTRUCTION | 48 | 238 | 5,260,558 | 425.06 |
| TRANSPORTATION AND PUBLIC UTILITIES | 58 | 580 | 15,898,478 | 527.14 |
| WHOLESALE AND RETAIL TRADE | 209 | 2,043 | 26,353,093 | 248.06 |
| WHOLESALE TRADE | 43 | 298 | 6,134,710 | 395.89 |
| RETAIL TRADE | 166 | 1,745 | 20,218,383 | 222.82 |
| FINANCE, INSURANCE, AND REAL ESTATE | 37 | 286 | 6,737,689 | 453.05 |
| SERVICES | 227 | 1,394 | 22,378,392 | 308.72 |
| LOCAL GOVERNMENT | 30 | 1,114 | 22,726,141 | 392.32 |
| STATE GOVERNMENT | 17 | 507 | 13,163,803 | 499.31 |
| CONWAY COUNTY - TOTAL | 435 | 6,983 | \$151,797,874 | \$418.04 |
| MANUFACTURING | 30 | 2,079 | 56,718,074 | 524.64 |
| NONMANUFACTURING | 405 | 4,904 | 95,079,800 | 372.85 |
| CONSTRUCTION | 45 | 425 | 12,508,917 | 566.01 |
| TRANSPORTATION AND PUBLIC UTILITIES | 31 | 424 | 9,341,959 | 423.71 |
| WHOLESALE AND RETAIL TRADE | 140 | 1,552 | 22,655,589 | 280.72 |
| WHOLESALE TRADE | 32 | 343 | 8,351,246 | 468.22 |
| RETAIL TRADE | 108 | 1,209 | 14,304,343 | 227.53 |
| FINANCE, INSURANCE, AND REAL ESTATE | 21 | 146 | 2,930,281 | 385.97 |
| SERVICES | 120 | 1,199 | 23,670,781 | 379.66 |
| LOCAL GOVERNMENT | 24 | 734 | 14,573,444 | 381.82 |
| STATE GOVERNMENT | 13 | 332 | 6,124,708 | 354.77 |
| OTHER NONMANUFACTURING | 11 | 92 | 3,274,121 | 684.39 |

**TABLE 8. COUNTY SUMMARY
EMPLOYMENT AND TOTAL EARNINGS, BY INDUSTRY
CALENDAR YEAR 1997**

| INDUSTRY GROUP | AVERAGE # OF EMPLOYING UNITS | AVERAGE COVERED EMPLOYMENT | TOTAL EARNINGS | AVERAGE WEEKLY EARNINGS |
|-------------------------------------|---------------------------------------------|-------------------------------------------|-----------------------|----------------------------------------|
| CRAIGHEAD COUNTY - TOTAL | 2,321 | 35,891 | \$816,854,338 | \$437.68 |
| MANUFACTURING | 142 | 7,651 | 211,663,355 | 532.02 |
| NONMANUFACTURING | 2,179 | 28,240 | 605,190,983 | 412.12 |
| CONSTRUCTION | 230 | 1,793 | 36,743,690 | 394.09 |
| TRANSPORTATION AND PUBLIC UTILITIES | 147 | 1,671 | 45,479,689 | 523.40 |
| WHOLESALE AND RETAIL TRADE | 731 | 9,270 | 141,736,983 | 294.04 |
| WHOLESALE TRADE | 176 | 1,642 | 44,891,797 | 525.76 |
| RETAIL TRADE | 555 | 7,628 | 96,845,186 | 244.15 |
| FINANCE, INSURANCE, AND REAL ESTATE | 187 | 1,164 | 33,672,747 | 556.32 |
| SERVICES | 754 | 9,289 | 227,761,289 | 471.53 |
| LOCAL GOVERNMENT | 40 | 2,563 | 55,742,029 | 418.25 |
| STATE GOVERNMENT | 24 | 2,097 | 57,146,054 | 524.06 |
| OTHER NONMANUFACTURING | 66 | 393 | 6,908,502 | 338.06 |
| CRAWFORD COUNTY - TOTAL | 1,003 | 14,457 | \$303,273,425 | \$403.42 |
| MANUFACTURING | 72 | 4,061 | 85,458,404 | 404.69 |
| NONMANUFACTURING | 931 | 10,396 | 217,815,021 | 402.92 |
| CONSTRUCTION | 175 | 1,004 | 23,662,678 | 453.24 |
| TRANSPORTATION AND PUBLIC UTILITIES | 71 | 1,924 | 57,128,264 | 571.01 |
| WHOLESALE AND RETAIL TRADE | 300 | 3,042 | 42,378,620 | 267.91 |
| WHOLESALE TRADE | 77 | 539 | 10,897,307 | 388.80 |
| RETAIL TRADE | 223 | 2,503 | 31,481,313 | 241.87 |
| FINANCE, INSURANCE, AND REAL ESTATE | 67 | 335 | 7,910,273 | 454.09 |
| SERVICES | 247 | 2,130 | 42,621,487 | 384.81 |
| LOCAL GOVERNMENT | 40 | 1,567 | 35,825,121 | 439.66 |
| STATE GOVERNMENT | 10 | 179 | 4,346,244 | 466.94 |
| OTHER NONMANUFACTURING | 21 | 215 | 3,942,334 | 352.62 |
| CRITTENDEN COUNTY - TOTAL | 1,130 | 16,688 | \$344,536,336 | \$397.03 |
| MANUFACTURING | 57 | 2,495 | 65,398,611 | 504.07 |
| NONMANUFACTURING | 1,073 | 14,193 | 279,137,725 | 378.22 |
| CONSTRUCTION | 88 | 533 | 12,141,323 | 438.06 |
| TRANSPORTATION AND PUBLIC UTILITIES | 83 | 1,524 | 44,092,323 | 556.38 |
| WHOLESALE AND RETAIL TRADE | 346 | 4,953 | 80,310,191 | 311.82 |
| WHOLESALE TRADE | 81 | 819 | 22,426,709 | 526.60 |
| RETAIL TRADE | 265 | 4,134 | 57,883,482 | 269.27 |
| FINANCE, INSURANCE, AND REAL ESTATE | 86 | 507 | 12,161,723 | 461.30 |
| SERVICES | 347 | 3,782 | 68,768,013 | 349.67 |
| LOCAL GOVERNMENT | 40 | 1,977 | 44,045,676 | 428.44 |
| STATE GOVERNMENT | 20 | 446 | 9,814,908 | 423.20 |
| OTHER NONMANUFACTURING | 63 | 471 | 7,803,568 | 318.62 |

**TABLE 8. COUNTY SUMMARY
EMPLOYMENT AND TOTAL EARNINGS, BY INDUSTRY
CALENDAR YEAR 1997**

| INDUSTRY GROUP | AVERAGE # OF EMPLOYING UNITS | AVERAGE COVERED EMPLOYMENT | TOTAL EARNINGS | AVERAGE WEEKLY EARNINGS |
|-------------------------------------|---------------------------------------------|-------------------------------------------|-----------------------|----------------------------------------|
| CROSS COUNTY - TOTAL | 436 | 6,012 | \$117,526,292 | \$375.93 |
| MANUFACTURING | 24 | 1,761 | 40,259,330 | 439.65 |
| NONMANUFACTURING | 412 | 4,251 | 77,266,962 | 349.54 |
| AGRICULTURE, FORESTRY, AND FISHING | 36 | 180 | 3,307,934 | 353.41 |
| CONSTRUCTION | 35 | 141 | 2,395,172 | 326.67 |
| TRANSPORTATION AND PUBLIC UTILITIES | 44 | 430 | 10,371,842 | 463.86 |
| WHOLESALE AND RETAIL TRADE | 134 | 1,410 | 21,409,563 | 292.00 |
| WHOLESALE TRADE | 34 | 304 | 7,485,192 | 473.51 |
| RETAIL TRADE | 100 | 1,106 | 13,924,371 | 242.11 |
| FINANCE, INSURANCE, AND REAL ESTATE | 34 | 215 | 4,668,029 | 417.53 |
| SERVICES | 96 | 768 | 12,047,328 | 301.67 |
| LOCAL GOVERNMENT | 19 | 868 | 17,312,331 | 383.56 |
| STATE GOVERNMENT | 13 | 238 | 5,754,763 | 464.99 |
| DALLAS COUNTY - TOTAL | 298 | 3,499 | \$70,533,641 | \$387.66 |
| MANUFACTURING | 76 | 1,233 | 31,433,502 | 490.26 |
| NONMANUFACTURING | 222 | 2,266 | 39,100,139 | 331.83 |
| AGRICULTURE, FORESTRY, AND FISHING | 5 | 24 | 382,679 | 306.63 |
| CONSTRUCTION | 22 | 135 | 2,772,136 | 394.89 |
| TRANSPORTATION AND PUBLIC UTILITIES | 22 | 100 | 2,125,720 | 408.79 |
| WHOLESALE AND RETAIL TRADE | 83 | 665 | 9,983,856 | 288.72 |
| WHOLESALE TRADE | 19 | 94 | 2,333,556 | 477.41 |
| RETAIL TRADE | 64 | 571 | 7,650,300 | 257.66 |
| FINANCE, INSURANCE, AND REAL ESTATE | 9 | 73 | 1,429,497 | 376.58 |
| SERVICES | 55 | 788 | 13,610,846 | 332.17 |
| LOCAL GOVERNMENT | 17 | 415 | 7,355,623 | 340.85 |
| STATE GOVERNMENT | 9 | 67 | 1,439,782 | 413.26 |
| DESHA COUNTY - TOTAL | 454 | 5,665 | \$116,446,679 | \$395.30 |
| MANUFACTURING | 22 | 1,464 | 37,828,642 | 496.91 |
| NONMANUFACTURING | 432 | 4,201 | 78,618,037 | 359.89 |
| CONSTRUCTION | 28 | 280 | 7,864,166 | 540.12 |
| TRANSPORTATION AND PUBLIC UTILITIES | 36 | 220 | 4,978,224 | 435.16 |
| WHOLESALE AND RETAIL TRADE | 144 | 1,263 | 19,025,628 | 289.69 |
| WHOLESALE TRADE | 28 | 293 | 7,874,618 | 516.84 |
| RETAIL TRADE | 116 | 970 | 11,151,010 | 221.07 |
| FINANCE, INSURANCE, AND REAL ESTATE | 35 | 230 | 4,341,565 | 363.01 |
| SERVICES | 109 | 749 | 12,590,274 | 323.26 |
| LOCAL GOVERNMENT | 22 | 948 | 18,942,170 | 384.25 |
| STATE GOVERNMENT | 13 | 189 | 4,100,485 | 417.22 |
| OTHER NONMANUFACTURING | 45 | 322 | 6,775,525 | 404.65 |

**TABLE 8. COUNTY SUMMARY
EMPLOYMENT AND TOTAL EARNINGS, BY INDUSTRY
CALENDAR YEAR 1997**

| INDUSTRY GROUP | AVERAGE # OF EMPLOYING UNITS | AVERAGE COVERED EMPLOYMENT | TOTAL EARNINGS | AVERAGE WEEKLY EARNINGS |
|-------------------------------------------------|---------------------------------------------|-------------------------------------------|-----------------------|----------------------------------------|
| DREW COUNTY - TOTAL | 479 | 7,162 | \$137,858,924 | \$370.17 |
| MANUFACTURING | 56 | 2,540 | 52,509,372 | 397.56 |
| NONMANUFACTURING | 423 | 4,622 | 85,349,552 | 355.11 |
| CONSTRUCTION | 23 | 108 | 2,042,919 | 363.77 |
| TRANSPORTATION AND PUBLIC UTILITIES | 32 | 176 | 4,736,061 | 517.49 |
| WHOLESALE AND RETAIL TRADE | 152 | 1,558 | 21,492,318 | 265.28 |
| WHOLESALE TRADE | 32 | 233 | 6,237,205 | 514.79 |
| RETAIL TRADE | 120 | 1,325 | 15,255,113 | 221.41 |
| FINANCE, INSURANCE, AND REAL ESTATE SERVICES | 33 | 214 | 5,653,066 | 508.00 |
| LOCAL GOVERNMENT | 122 | 917 | 14,024,819 | 294.12 |
| STATE GOVERNMENT | 24 | 977 | 19,392,398 | 381.71 |
| OTHER NONMANUFACTURING | 14 | 520 | 14,500,578 | 536.26 |
| | 23 | 152 | 3,507,393 | 443.75 |
| FAULKNER COUNTY - TOTAL | 1,554 | 29,373 | \$668,595,307 | \$437.74 |
| MANUFACTURING | 85 | 7,242 | 195,556,918 | 519.29 |
| NONMANUFACTURING | 1,469 | 22,131 | 473,038,389 | 411.05 |
| CONSTRUCTION | 231 | 2,329 | 55,843,933 | 461.11 |
| TRANSPORTATION AND PUBLIC UTILITIES | 50 | 602 | 17,407,366 | 556.07 |
| WHOLESALE AND RETAIL TRADE | 491 | 6,543 | 87,544,399 | 257.30 |
| WHOLESALE TRADE | 113 | 763 | 16,408,788 | 413.57 |
| RETAIL TRADE | 378 | 5,780 | 71,135,611 | 236.68 |
| FINANCE, INSURANCE, AND REAL ESTATE SERVICES | 131 | 738 | 18,852,337 | 491.25 |
| LOCAL GOVERNMENT | 483 | 7,088 | 172,406,627 | 467.76 |
| STATE GOVERNMENT | 33 | 2,138 | 49,568,718 | 445.86 |
| OTHER NONMANUFACTURING | 20 | 2,529 | 68,319,694 | 519.51 |
| | 30 | 164 | 3,095,315 | 362.96 |
| FRANKLIN COUNTY - TOTAL | 304 | 4,229 | \$81,313,341 | \$369.76 |
| MANUFACTURING | 17 | 1,244 | 25,437,947 | 393.24 |
| NONMANUFACTURING | 287 | 2,985 | 55,875,394 | 359.98 |
| CONSTRUCTION | 26 | 197 | 4,162,942 | 406.38 |
| TRANSPORTATION AND PUBLIC UTILITIES | 23 | 363 | 9,844,803 | 521.55 |
| WHOLESALE AND RETAIL TRADE | 95 | 793 | 8,556,107 | 207.49 |
| WHOLESALE TRADE | 15 | 71 | 858,791 | 232.61 |
| RETAIL TRADE | 80 | 722 | 7,697,316 | 205.02 |
| FINANCE, INSURANCE, AND REAL ESTATE SERVICES | 19 | 188 | 4,200,887 | 429.71 |
| LOCAL GOVERNMENT | 82 | 617 | 10,659,285 | 332.23 |
| STATE GOVERNMENT | 23 | 617 | 12,770,457 | 398.03 |
| OTHER NONMANUFACTURING | 11 | 137 | 3,168,497 | 444.76 |
| | 8 | 73 | 2,512,416 | 661.86 |

**TABLE 8. COUNTY SUMMARY
EMPLOYMENT AND TOTAL EARNINGS, BY INDUSTRY
CALENDAR YEAR 1997**

| INDUSTRY GROUP | AVERAGE # OF EMPLOYING UNITS | AVERAGE COVERED EMPLOYMENT | TOTAL EARNINGS | AVERAGE WEEKLY EARNINGS |
|-------------------------------------------------|---------------------------------------------|-------------------------------------------|-----------------------|----------------------------------------|
| FULTON COUNTY - TOTAL | 194 | 1,877 | \$28,910,084 | \$296.20 |
| MANUFACTURING | 12 | 375 | 4,704,523 | 241.26 |
| NONMANUFACTURING | 182 | 1,502 | 24,205,561 | 309.91 |
| TRANSPORTATION AND PUBLIC UTILITIES | 11 | 109 | 2,789,993 | 492.24 |
| WHOLESALE AND RETAIL TRADE | 73 | 373 | 3,810,782 | 196.47 |
| WHOLESALE TRADE | 12 | 61 | 667,078 | 210.30 |
| RETAIL TRADE | 61 | 312 | 3,143,704 | 193.77 |
| FINANCE, INSURANCE, AND REAL ESTATE SERVICES | 11 | 61 | 1,205,069 | 379.91 |
| LOCAL GOVERNMENT | 50 | 396 | 5,446,575 | 264.50 |
| STATE GOVERNMENT | 13 | 420 | 7,699,351 | 352.53 |
| OTHER NONMANUFACTURING | 10 | 75 | 1,505,224 | 385.95 |
| | 14 | 68 | 1,748,567 | 494.50 |
| GARLAND COUNTY - TOTAL | 2,622 | 32,618 | \$673,234,833 | \$396.92 |
| MANUFACTURING | 122 | 3,897 | 104,366,451 | 515.02 |
| NONMANUFACTURING | 2,500 | 28,721 | 568,868,382 | 380.90 |
| AGRICULTURE, FORESTRY, AND FISHING | 66 | 495 | 9,447,048 | 367.02 |
| MINING | 14 | 220 | 6,770,876 | 591.86 |
| CONSTRUCTION | 346 | 2,224 | 44,395,216 | 383.88 |
| TRANSPORTATION AND PUBLIC UTILITIES | 85 | 989 | 28,067,097 | 545.76 |
| WHOLESALE AND RETAIL TRADE | 833 | 9,319 | 140,774,052 | 290.50 |
| WHOLESALE TRADE | 166 | 1,383 | 35,988,895 | 500.43 |
| RETAIL TRADE | 667 | 7,936 | 104,785,157 | 253.92 |
| FINANCE, INSURANCE, AND REAL ESTATE SERVICES | 230 | 1,389 | 35,844,540 | 496.27 |
| LOCAL GOVERNMENT | 868 | 10,822 | 227,674,054 | 404.58 |
| STATE GOVERNMENT | 35 | 2,371 | 53,908,431 | 437.24 |
| | 24 | 893 | 21,987,068 | 473.49 |
| GRANT COUNTY - TOTAL | 271 | 3,841 | \$82,792,089 | \$414.52 |
| MANUFACTURING | 41 | 1,677 | 43,980,939 | 504.35 |
| NONMANUFACTURING | 230 | 2,164 | 38,811,150 | 344.90 |
| CONSTRUCTION | 27 | 146 | 3,296,180 | 434.16 |
| TRANSPORTATION AND PUBLIC UTILITIES | 27 | 134 | 3,539,680 | 507.99 |
| WHOLESALE AND RETAIL TRADE | 78 | 706 | 9,436,506 | 257.04 |
| WHOLESALE TRADE | 16 | 106 | 2,761,035 | 500.91 |
| RETAIL TRADE | 62 | 600 | 6,675,471 | 213.96 |
| FINANCE, INSURANCE, AND REAL ESTATE SERVICES | 12 | 78 | 1,678,428 | 413.81 |
| LOCAL GOVERNMENT | 62 | 286 | 4,337,926 | 291.68 |
| STATE GOVERNMENT | 10 | 693 | 13,620,266 | 377.96 |
| OTHER NONMANUFACTURING | 8 | 61 | 1,307,900 | 412.33 |
| | 6 | 60 | 1,594,264 | 510.98 |

TABLE 8. COUNTY SUMMARY
EMPLOYMENT AND TOTAL EARNINGS, BY INDUSTRY
CALENDAR YEAR 1997

| INDUSTRY GROUP | AVERAGE # OF EMPLOYING UNITS | AVERAGE COVERED EMPLOYMENT | TOTAL EARNINGS | AVERAGE WEEKLY EARNINGS |
|-------------------------------------|------------------------------------|----------------------------------|----------------------|-------------------------------|
| GREENE COUNTY - TOTAL | 792 | 13,383 | \$278,524,870 | \$400.23 |
| MANUFACTURING | 58 | 5,735 | 146,240,387 | 490.38 |
| NONMANUFACTURING | 734 | 7,648 | 132,284,483 | 332.63 |
| CONSTRUCTION | 68 | 286 | 5,332,795 | 358.58 |
| TRANSPORTATION AND PUBLIC UTILITIES | 40 | 157 | 3,995,753 | 489.44 |
| WHOLESALE AND RETAIL TRADE | 274 | 2,652 | 36,119,649 | 261.92 |
| WHOLESALE TRADE | 62 | 420 | 8,841,978 | 404.85 |
| RETAIL TRADE | 212 | 2,232 | 27,277,671 | 235.02 |
| FINANCE, INSURANCE, AND REAL ESTATE | 53 | 271 | 6,509,586 | 461.93 |
| SERVICES | 232 | 2,677 | 45,847,548 | 329.36 |
| LOCAL GOVERNMENT | 31 | 1,228 | 25,566,278 | 400.37 |
| STATE GOVERNMENT | 12 | 243 | 6,107,362 | 483.33 |
| OTHER NONMANUFACTURING | 24 | 134 | 2,805,512 | 402.63 |
| HEMPSTEAD COUNTY - TOTAL | 526 | 9,332 | \$183,406,622 | \$377.95 |
| MANUFACTURING | 40 | 3,972 | 87,136,803 | 421.88 |
| NONMANUFACTURING | 486 | 5,360 | 96,269,819 | 345.40 |
| CONSTRUCTION | 40 | 168 | 3,453,773 | 395.35 |
| TRANSPORTATION AND PUBLIC UTILITIES | 30 | 245 | 8,516,426 | 668.48 |
| WHOLESALE AND RETAIL TRADE | 154 | 1,515 | 18,924,973 | 240.23 |
| WHOLESALE TRADE | 29 | 204 | 3,845,492 | 362.51 |
| RETAIL TRADE | 125 | 1,311 | 15,079,481 | 221.20 |
| FINANCE, INSURANCE, AND REAL ESTATE | 30 | 241 | 5,429,251 | 433.23 |
| SERVICES | 169 | 1,674 | 27,561,167 | 316.62 |
| LOCAL GOVERNMENT | 33 | 931 | 18,729,549 | 386.88 |
| STATE GOVERNMENT | 16 | 447 | 10,350,345 | 445.29 |
| OTHER NONMANUFACTURING | 14 | 139 | 3,304,335 | 457.16 |
| HOT SPRING COUNTY - TOTAL | 569 | 7,223 | \$152,053,029 | \$404.83 |
| MANUFACTURING | 84 | 2,308 | 60,422,500 | 503.45 |
| NONMANUFACTURING | 485 | 4,915 | 91,630,529 | 358.52 |
| AGRICULTURE, FORESTRY, AND FISHING | 12 | 82 | 1,451,766 | 340.47 |
| MINING | 5 | 58 | 1,787,430 | 592.65 |
| CONSTRUCTION | 77 | 350 | 6,885,660 | 378.33 |
| TRANSPORTATION AND PUBLIC UTILITIES | 46 | 275 | 8,035,722 | 561.94 |
| WHOLESALE AND RETAIL TRADE | 144 | 1,434 | 20,998,855 | 281.61 |
| WHOLESALE TRADE | 26 | 149 | 4,919,588 | 634.95 |
| RETAIL TRADE | 118 | 1,285 | 16,079,267 | 240.64 |
| FINANCE, INSURANCE, AND REAL ESTATE | 32 | 272 | 5,726,283 | 404.86 |
| SERVICES | 128 | 867 | 13,631,528 | 302.36 |
| LOCAL GOVERNMENT | 29 | 1,306 | 26,990,842 | 397.44 |
| STATE GOVERNMENT | 13 | 269 | 6,122,443 | 437.69 |

**TABLE 8. COUNTY SUMMARY
EMPLOYMENT AND TOTAL EARNINGS, BY INDUSTRY
CALENDAR YEAR 1997**

| INDUSTRY GROUP | AVERAGE # OF EMPLOYING UNITS | AVERAGE COVERED EMPLOYMENT | TOTAL EARNINGS | AVERAGE WEEKLY EARNINGS |
|-------------------------------------|---------------------------------------------|-------------------------------------------|-----------------------|----------------------------------------|
| HOWARD COUNTY - TOTAL | 359 | 8,480 | \$158,113,131 | \$358.57 |
| MANUFACTURING | 41 | 5,202 | 101,172,862 | 374.02 |
| NONMANUFACTURING | 318 | 3,278 | 56,940,269 | 334.05 |
| AGRICULTURE, FORESTRY, AND FISHING | 17 | 251 | 4,889,740 | 374.64 |
| TRANSPORTATION AND PUBLIC UTILITIES | 26 | 321 | 7,972,999 | 477.65 |
| WHOLESALE AND RETAIL TRADE | 115 | 972 | 12,139,368 | 240.17 |
| WHOLESALE TRADE | 26 | 122 | 2,543,770 | 400.97 |
| RETAIL TRADE | 89 | 850 | 9,595,598 | 217.09 |
| FINANCE, INSURANCE, AND REAL ESTATE | 21 | 139 | 2,836,608 | 392.45 |
| SERVICES | 87 | 803 | 13,078,029 | 313.20 |
| LOCAL GOVERNMENT | 18 | 533 | 10,855,005 | 391.65 |
| STATE GOVERNMENT | 14 | 182 | 3,979,140 | 420.45 |
| OTHER NONMANUFACTURING | 20 | 77 | 1,189,380 | 297.05 |
| INDEPENDENCE COUNTY - TOTAL | 865 | 15,488 | \$331,346,834 | \$411.42 |
| MANUFACTURING | 59 | 5,620 | 135,781,554 | 464.62 |
| NONMANUFACTURING | 806 | 9,868 | 195,565,280 | 381.12 |
| AGRICULTURE, FORESTRY, AND FISHING | 14 | 133 | 2,696,355 | 389.87 |
| MINING | 5 | 62 | 1,473,270 | 456.97 |
| CONSTRUCTION | 66 | 491 | 10,753,895 | 421.19 |
| TRANSPORTATION AND PUBLIC UTILITIES | 62 | 1,187 | 35,648,698 | 577.55 |
| WHOLESALE AND RETAIL TRADE | 279 | 3,015 | 41,824,128 | 266.77 |
| WHOLESALE TRADE | 55 | 555 | 12,421,894 | 430.42 |
| RETAIL TRADE | 224 | 2,460 | 29,402,234 | 229.85 |
| FINANCE, INSURANCE, AND REAL ESTATE | 66 | 306 | 7,756,020 | 487.43 |
| SERVICES | 264 | 3,094 | 62,535,862 | 388.69 |
| LOCAL GOVERNMENT | 37 | 1,206 | 23,913,811 | 381.33 |
| STATE GOVERNMENT | 15 | 374 | 8,963,241 | 460.88 |
| IZARD COUNTY - TOTAL | 254 | 2,747 | \$50,020,473 | \$350.18 |
| MANUFACTURING | 21 | 547 | 14,102,390 | 495.79 |
| NONMANUFACTURING | 233 | 2,200 | 35,918,083 | 313.97 |
| CONSTRUCTION | 23 | 83 | 1,392,041 | 322.53 |
| TRANSPORTATION AND PUBLIC UTILITIES | 14 | 122 | 2,851,153 | 449.43 |
| WHOLESALE AND RETAIL TRADE | 81 | 467 | 5,681,190 | 233.95 |
| WHOLESALE TRADE | 8 | 15 | 213,189 | 273.32 |
| RETAIL TRADE | 73 | 452 | 5,468,001 | 232.64 |
| FINANCE, INSURANCE, AND REAL ESTATE | 24 | 178 | 2,896,879 | 312.97 |
| SERVICES | 58 | 535 | 7,159,533 | 257.35 |
| LOCAL GOVERNMENT | 18 | 452 | 8,142,594 | 346.43 |
| STATE GOVERNMENT | 10 | 298 | 6,269,664 | 404.60 |
| OTHER NONMANUFACTURING | 5 | 65 | 1,525,029 | 451.19 |

TABLE 8. COUNTY SUMMARY
EMPLOYMENT AND TOTAL EARNINGS, BY INDUSTRY
CALENDAR YEAR 1997

| INDUSTRY GROUP | AVERAGE # OF EMPLOYING UNITS | AVERAGE COVERED EMPLOYMENT | TOTAL EARNINGS | AVERAGE WEEKLY EARNINGS |
|-------------------------------------|------------------------------------|----------------------------------|----------------------|-------------------------------|
| JACKSON COUNTY - TOTAL | 551 | 5,733 | \$114,811,555 | \$385.12 |
| MANUFACTURING | 33 | 1,339 | | 498.70 |
| NONMANUFACTURING | 518 | 4,394 | 34,723,663 | 350.51 |
| CONSTRUCTION | 32 | 224 | 80,087,892 | 391.25 |
| TRANSPORTATION AND PUBLIC UTILITIES | 28 | 304 | 4,557,277 | 391.25 |
| WHOLESALE AND RETAIL TRADE | 166 | 1,321 | 7,186,454 | 454.61 |
| WHOLESALE TRADE | 36 | 228 | 18,820,662 | 273.99 |
| RETAIL TRADE | 130 | 1,093 | 5,674,924 | 478.65 |
| FINANCE, INSURANCE, AND REAL ESTATE | 34 | 174 | 13,145,738 | 231.29 |
| SERVICES | 167 | 1,305 | 3,944,814 | 435.99 |
| LOCAL GOVERNMENT | 35 | 692 | 25,698,078 | 378.69 |
| STATE GOVERNMENT | 13 | 190 | 12,184,804 | 338.62 |
| OTHER NONMANUFACTURING | 43 | 184 | 4,054,913 | 410.42 |
| JEFFERSON COUNTY - TOTAL | 1,797 | 32,780 | \$750,615,451 | \$440.36 |
| MANUFACTURING | 92 | 8,219 | 233,364,645 | 546.03 |
| NONMANUFACTURING | 1,705 | 24,561 | 517,250,806 | 405.00 |
| AGRICULTURE, FORESTRY, AND FISHING | 60 | 382 | 7,739,722 | 389.64 |
| CONSTRUCTION | 115 | 944 | 21,525,878 | 438.52 |
| TRANSPORTATION AND PUBLIC UTILITIES | 86 | 1,141 | 38,993,332 | 657.21 |
| WHOLESALE AND RETAIL TRADE | 609 | 7,254 | 110,094,845 | 291.87 |
| WHOLESALE TRADE | 123 | 1,169 | 28,744,943 | 472.87 |
| RETAIL TRADE | 486 | 6,085 | 81,349,902 | 257.09 |
| FINANCE, INSURANCE, AND REAL ESTATE | 143 | 1,242 | 31,813,697 | 492.59 |
| SERVICES | 624 | 7,871 | 163,207,374 | 398.76 |
| LOCAL GOVERNMENT | 42 | 3,209 | 75,096,795 | 450.04 |
| STATE GOVERNMENT | 28 | 2,519 | 68,779,163 | 525.08 |
| JOHNSON COUNTY - TOTAL | 411 | 7,733 | \$145,435,552 | \$361.68 |
| MANUFACTURING | 46 | 3,395 | 69,967,810 | 396.33 |
| NONMANUFACTURING | 365 | 4,338 | 75,467,742 | 334.56 |
| CONSTRUCTION | 29 | 100 | 1,908,500 | 367.02 |
| TRANSPORTATION AND PUBLIC UTILITIES | 12 | 83 | 1,888,877 | 437.65 |
| WHOLESALE AND RETAIL TRADE | 146 | 1,894 | 28,114,031 | 285.46 |
| WHOLESALE TRADE | 21 | 65 | 1,269,028 | 375.45 |
| RETAIL TRADE | 125 | 1,829 | 26,845,003 | 282.26 |
| FINANCE, INSURANCE, AND REAL ESTATE | 33 | 241 | 4,766,262 | 380.33 |
| SERVICES | 109 | 1,038 | 18,171,288 | 336.65 |
| LOCAL GOVERNMENT | 14 | 672 | 14,030,912 | 401.53 |
| STATE GOVERNMENT | 9 | 135 | 2,923,592 | 416.47 |
| OTHER NONMANUFACTURING | 13 | 175 | 3,664,280 | 402.67 |

**TABLE 8. COUNTY SUMMARY
EMPLOYMENT AND TOTAL EARNINGS, BY INDUSTRY
CALENDAR YEAR 1997**

| INDUSTRY GROUP | AVERAGE # OF EMPLOYING UNITS | AVERAGE COVERED EMPLOYMENT | TOTAL EARNINGS | AVERAGE WEEKLY EARNINGS |
|-------------------------------------|------------------------------------|----------------------------------|---------------------|-------------------------------|
| LAFAYETTE COUNTY - TOTAL | 186 | 1,891 | \$35,264,429 | \$358.63 |
| MANUFACTURING | 16 | 571 | 11,386,878 | 383.50 |
| NONMANUFACTURING | 170 | 1,320 | 23,877,551 | 347.87 |
| AGRICULTURE, FORESTRY, AND FISHING | 13 | 65 | 876,902 | 259.44 |
| MINING | 9 | 64 | 1,877,677 | 564.21 |
| CONSTRUCTION | 12 | 67 | 1,799,960 | 516.64 |
| TRANSPORTATION AND PUBLIC UTILITIES | 17 | 129 | 3,736,851 | 557.07 |
| WHOLESALE AND RETAIL TRADE | 47 | 230 | 2,519,781 | 210.68 |
| FINANCE, INSURANCE, AND REAL ESTATE | 19 | 103 | 2,237,214 | 417.70 |
| SERVICES | 28 | 180 | 2,514,470 | 268.64 |
| LOCAL GOVERNMENT | 16 | 386 | 6,410,173 | 319.36 |
| STATE GOVERNMENT | 10 | 98 | 1,904,523 | 373.73 |
| LAWRENCE COUNTY - TOTAL | 469 | 5,126 | \$89,461,145 | \$335.62 |
| MANUFACTURING | 37 | 1,635 | 31,341,969 | 368.64 |
| NONMANUFACTURING | 432 | 3,491 | 58,119,176 | 320.16 |
| AGRICULTURE, FORESTRY, AND FISHING | 32 | 113 | 2,182,952 | 371.50 |
| MINING | 4 | 71 | 2,040,700 | 552.74 |
| CONSTRUCTION | 26 | 93 | 1,381,063 | 285.58 |
| TRANSPORTATION AND PUBLIC UTILITIES | 49 | 167 | 3,529,776 | 406.47 |
| WHOLESALE AND RETAIL TRADE | 148 | 1,220 | 16,246,805 | 256.10 |
| WHOLESALE TRADE | 31 | 270 | 5,761,229 | 410.34 |
| RETAIL TRADE | 117 | 950 | 10,485,576 | 212.26 |
| FINANCE, INSURANCE, AND REAL ESTATE | 26 | 143 | 2,918,229 | 392.45 |
| SERVICES | 109 | 535 | 8,122,643 | 291.97 |
| LOCAL GOVERNMENT | 29 | 1,007 | 18,167,424 | 346.94 |
| STATE GOVERNMENT | 12 | 142 | 3,529,584 | 478.00 |
| LEE COUNTY - TOTAL | 227 | 2,333 | \$42,801,664 | \$352.81 |
| AGRICULTURE, FORESTRY, AND FISHING | 31 | 211 | 3,338,940 | 304.31 |
| TRANSPORTATION AND PUBLIC UTILITIES | 22 | 103 | 2,289,178 | 427.40 |
| WHOLESALE AND RETAIL TRADE | 61 | 450 | 7,012,990 | 299.70 |
| WHOLESALE TRADE | 9 | 75 | 1,998,594 | 512.46 |
| RETAIL TRADE | 52 | 375 | 5,014,396 | 257.15 |
| SERVICES | 58 | 409 | 6,472,900 | 304.35 |
| LOCAL GOVERNMENT | 16 | 448 | 8,565,296 | 367.67 |
| STATE GOVERNMENT | 9 | 377 | 7,953,221 | 405.69 |
| OTHER | 30 | 335 | 7,169,139 | 411.55 |

TABLE 8. COUNTY SUMMARY
EMPLOYMENT AND TOTAL EARNINGS, BY INDUSTRY
CALENDAR YEAR 1997

| INDUSTRY GROUP | AVERAGE # OF EMPLOYING UNITS | AVERAGE COVERED EMPLOYMENT | TOTAL EARNINGS | AVERAGE WEEKLY EARNINGS |
|-------------------------------------|------------------------------------|----------------------------------|----------------------|-------------------------------|
| LINCOLN COUNTY - TOTAL | 197 | 3,034 | \$63,472,551 | \$402.32 |
| MANUFACTURING | 17 | 706 | 14,431,041 | 393.09 |
| NONMANUFACTURING | 180 | 2,328 | 49,041,510 | 405.11 |
| AGRICULTURE, FORESTRY, AND FISHING | 26 | 177 | 4,050,215 | 440.05 |
| CONSTRUCTION | 18 | 93 | 2,121,511 | 438.69 |
| WHOLESALE AND RETAIL TRADE | 44 | 289 | 3,758,650 | 250.11 |
| WHOLESALE TRADE | 9 | 39 | 1,052,879 | 519.17 |
| RETAIL TRADE | 35 | 250 | 2,705,771 | 208.14 |
| FINANCE, INSURANCE, AND REAL ESTATE | 14 | 68 | 1,417,094 | 400.76 |
| SERVICES | 40 | 339 | 5,467,925 | 310.18 |
| LOCAL AND STATE GOVERNMENT | 20 | 1,203 | 28,023,111 | 447.97 |
| OTHER NONMANUFACTURING | 18 | 159 | 4,203,004 | 508.35 |
| LITTLE RIVER COUNTY - TOTAL | 281 | 4,387 | \$137,866,577 | \$604.35 |
| MANUFACTURING | 25 | 1,675 | 84,683,794 | 972.26 |
| NONMANUFACTURING | 256 | 2,712 | 53,182,783 | 377.12 |
| TRANSPORTATION AND PUBLIC UTILITIES | 25 | 434 | 11,856,648 | 525.37 |
| WHOLESALE AND RETAIL TRADE | 92 | 653 | 8,258,033 | 243.20 |
| WHOLESALE TRADE | 15 | 68 | 1,667,026 | 471.44 |
| RETAIL TRADE | 77 | 585 | 6,591,007 | 216.67 |
| FINANCE, INSURANCE, AND REAL ESTATE | 20 | 138 | 2,800,263 | 390.23 |
| SERVICES | 59 | 281 | 4,358,754 | 298.30 |
| LOCAL GOVERNMENT | 20 | 709 | 12,920,654 | 350.46 |
| STATE GOVERNMENT | 13 | 97 | 2,029,383 | 402.34 |
| OTHER NONMANUFACTURING | 27 | 400 | 10,959,048 | 526.88 |
| LOGAN COUNTY - TOTAL | 441 | 6,244 | \$117,892,240 | \$363.09 |
| MANUFACTURING | 43 | 2,605 | 58,501,660 | 431.87 |
| NONMANUFACTURING | 398 | 3,639 | 59,390,580 | 313.86 |
| AGRICULTURE, FORESTRY, AND FISHING | 9 | 106 | 1,252,181 | 227.17 |
| MINING | 5 | 35 | 918,429 | 504.63 |
| CONSTRUCTION | 35 | 111 | 2,257,744 | 391.15 |
| TRANSPORTATION AND PUBLIC UTILITIES | 35 | 103 | 2,483,232 | 463.64 |
| WHOLESALE AND RETAIL TRADE | 140 | 1,168 | 13,601,671 | 223.95 |
| WHOLESALE TRADE | 27 | 112 | 1,893,696 | 325.15 |
| RETAIL TRADE | 113 | 1,056 | 11,707,975 | 213.21 |
| FINANCE, INSURANCE, AND REAL ESTATE | 33 | 186 | 3,858,374 | 398.92 |
| SERVICES | 107 | 791 | 12,565,066 | 305.48 |
| LOCAL GOVERNMENT | 23 | 716 | 13,444,900 | 361.11 |
| STATE GOVERNMENT | 12 | 424 | 9,008,983 | 408.61 |

**TABLE 8. COUNTY SUMMARY
EMPLOYMENT AND TOTAL EARNINGS, BY INDUSTRY
CALENDAR YEAR 1997**

| INDUSTRY GROUP | AVERAGE # OF EMPLOYING UNITS | AVERAGE COVERED EMPLOYMENT | TOTAL EARNINGS | AVERAGE WEEKLY EARNINGS |
|-------------------------------------------------|---------------------------------------------|-------------------------------------------|-----------------------|----------------------------------------|
| LONOKE COUNTY - TOTAL | 915 | 9,505 | \$187,732,302 | \$379.82 |
| MANUFACTURING | 43 | 1,630 | 42,774,472 | 504.65 |
| NONMANUFACTURING | 872 | 7,875 | 144,957,830 | 353.99 |
| CONSTRUCTION | 112 | 674 | 16,025,437 | 457.24 |
| TRANSPORTATION AND PUBLIC UTILITIES | 65 | 295 | 7,401,059 | 482.47 |
| WHOLESALE AND RETAIL TRADE | 269 | 2,609 | 37,365,473 | 275.42 |
| WHOLESALE TRADE | 60 | 408 | 11,551,484 | 544.47 |
| RETAIL TRADE | 209 | 2,201 | 25,813,989 | 225.54 |
| FINANCE, INSURANCE, AND REAL ESTATE SERVICES | 67 | 361 | 8,019,976 | 427.23 |
| LOCAL GOVERNMENT | 234 | 1,662 | 27,471,129 | 317.86 |
| STATE GOVERNMENT | 28 | 1,632 | 33,650,585 | 396.52 |
| OTHER NONMANUFACTURING | 15 | 170 | 4,397,583 | 497.46 |
| | 82 | 472 | 10,626,588 | 432.96 |
| MADISON COUNTY | 197 | 2,332 | \$43,882,629 | \$361.88 |
| MANUFACTURING | 32 | 794 | 16,871,168 | 408.62 |
| NONMANUFACTURING | 165 | 1,538 | 27,011,461 | 337.74 |
| AGRICULTURE, FORESTRY, AND FISHING | 5 | 18 | 226,206 | 241.67 |
| CONSTRUCTION | 18 | 72 | 1,134,508 | 303.02 |
| TRANSPORTATION AND PUBLIC UTILITIES | 17 | 102 | 2,948,510 | 555.90 |
| WHOLESALE AND RETAIL TRADE | 55 | 446 | 5,401,067 | 232.88 |
| WHOLESALE TRADE | 9 | 29 | 522,527 | 346.50 |
| RETAIL TRADE | 46 | 417 | 4,878,540 | 224.98 |
| FINANCE, INSURANCE, AND REAL ESTATE SERVICES | 11 | 87 | 1,713,675 | 378.80 |
| LOCAL GOVERNMENT | 44 | 298 | 5,448,654 | 351.62 |
| STATE GOVERNMENT | 8 | 460 | 8,896,123 | 371.91 |
| | 8 | 57 | 1,242,718 | 419.27 |
| MARION COUNTY - TOTAL | 252 | 3,831 | \$63,650,944 | \$319.51 |
| MANUFACTURING | 34 | 1,941 | 33,605,676 | 332.95 |
| NONMANUFACTURING | 218 | 1,890 | 30,045,268 | 305.71 |
| CONSTRUCTION | 17 | 54 | 811,606 | 289.03 |
| TRANSPORTATION AND PUBLIC UTILITIES | 14 | 79 | 2,765,176 | 673.12 |
| WHOLESALE AND RETAIL TRADE | 65 | 561 | 6,629,580 | 227.26 |
| WHOLESALE TRADE | 5 | 44 | 888,945 | 388.52 |
| RETAIL TRADE | 60 | 517 | 5,740,635 | 213.53 |
| FINANCE, INSURANCE, AND REAL ESTATE SERVICES | 18 | 120 | 2,573,140 | 412.36 |
| LOCAL GOVERNMENT | 73 | 509 | 6,093,451 | 230.22 |
| STATE GOVERNMENT | 19 | 430 | 8,268,236 | 369.78 |
| OTHER NONMANUFACTURING | 8 | 100 | 2,250,787 | 432.84 |
| | 4 | 37 | 653,292 | 339.55 |

TABLE 8. COUNTY SUMMARY
EMPLOYMENT AND TOTAL EARNINGS, BY INDUSTRY
CALENDAR YEAR 1997

| INDUSTRY GROUP | AVERAGE # OF EMPLOYING UNITS | AVERAGE COVERED EMPLOYMENT | TOTAL EARNINGS | AVERAGE WEEKLY EARNINGS |
|-------------------------------------|------------------------------------|----------------------------------|----------------------|-------------------------------|
| MILLER COUNTY - TOTAL | 804 | 13,093 | \$291,230,170 | \$427.75 |
| MANUFACTURING | 45 | 2,664 | 102,511,195 | 740.00 |
| NONMANUFACTURING | 759 | 10,429 | 188,718,975 | 347.99 |
| AGRICULTURE, FORESTRY, AND FISHING | 15 | 79 | 1,584,339 | 385.67 |
| MINING | 6 | 28 | 1,096,367 | 753.00 |
| CONSTRUCTION | 84 | 760 | 17,483,195 | 442.39 |
| TRANSPORTATION AND PUBLIC UTILITIES | 51 | 718 | 19,941,228 | 534.10 |
| WHOLESALE AND RETAIL TRADE | 284 | 3,568 | 52,947,065 | 285.37 |
| WHOLESALE TRADE | 61 | 731 | 18,791,276 | 494.35 |
| RETAIL TRADE | 223 | 2,837 | 34,155,789 | 231.53 |
| FINANCE, INSURANCE, AND REAL ESTATE | 58 | 439 | 10,515,450 | 460.64 |
| SERVICES | 220 | 2,949 | 42,750,007 | 278.78 |
| LOCAL GOVERNMENT | 26 | 1,530 | 34,299,184 | 431.11 |
| STATE GOVERNMENT | 15 | 360 | 8,102,140 | 432.81 |
| MISSISSIPPI COUNTY - TOTAL | 1,272 | 22,300 | \$530,396,601 | \$457.40 |
| MANUFACTURING | 71 | 9,107 | 285,927,907 | 603.78 |
| NONMANUFACTURING | 1,201 | 13,193 | 244,468,694 | 356.35 |
| AGRICULTURE, FORESTRY, AND FISHING | 115 | 792 | 13,750,192 | 333.87 |
| CONSTRUCTION | 91 | 652 | 15,451,354 | 455.74 |
| TRANSPORTATION AND PUBLIC UTILITIES | 71 | 652 | 19,404,560 | 572.34 |
| WHOLESALE AND RETAIL TRADE | 404 | 4,083 | 63,123,843 | 297.31 |
| WHOLESALE TRADE | 89 | 922 | 25,733,077 | 536.73 |
| RETAIL TRADE | 315 | 3,161 | 37,390,766 | 227.48 |
| FINANCE, INSURANCE, AND REAL ESTATE | 97 | 561 | 14,565,002 | 499.28 |
| SERVICES | 349 | 3,641 | 60,761,542 | 320.93 |
| LOCAL GOVERNMENT | 50 | 2,233 | 45,256,487 | 389.75 |
| STATE GOVERNMENT | 25 | 580 | 12,155,714 | 403.04 |
| MONROE COUNTY - TOTAL | 349 | 3,059 | \$47,006,879 | \$295.51 |
| MANUFACTURING | 12 | 381 | 5,931,288 | 299.38 |
| NONMANUFACTURING | 337 | 2,678 | 41,075,591 | 294.96 |
| AGRICULTURE, FORESTRY, AND FISHING | 33 | 136 | 2,353,412 | 332.78 |
| CONSTRUCTION | 16 | 61 | 1,094,592 | 345.08 |
| TRANSPORTATION AND PUBLIC UTILITIES | 38 | 186 | 3,812,534 | 394.18 |
| WHOLESALE AND RETAIL TRADE | 114 | 1,042 | 13,263,074 | 244.78 |
| WHOLESALE TRADE | 27 | 273 | 5,074,994 | 357.49 |
| RETAIL TRADE | 87 | 769 | 8,188,080 | 204.76 |
| FINANCE, INSURANCE, AND REAL ESTATE | 21 | 115 | 2,658,230 | 444.52 |
| SERVICES | 84 | 593 | 7,695,719 | 249.57 |
| LOCAL GOVERNMENT | 21 | 419 | 7,652,463 | 351.22 |
| STATE GOVERNMENT | 11 | 126 | 2,545,567 | 388.52 |

**TABLE 8. COUNTY SUMMARY
EMPLOYMENT AND TOTAL EARNINGS, BY INDUSTRY
CALENDAR YEAR 1997**

| INDUSTRY GROUP | AVERAGE # OF EMPLOYING UNITS | AVERAGE COVERED EMPLOYMENT | TOTAL EARNINGS | AVERAGE WEEKLY EARNINGS |
|----------------------------------------------|------------------------------------|----------------------------------|---------------------|-------------------------------|
| MONTGOMERY COUNTY - TOTAL | 198 | 1,535 | \$25,643,373 | \$321.27 |
| MANUFACTURING | 38 | 341 | 5,456,238 | 307.71 |
| NONMANUFACTURING | 160 | 1,194 | 20,187,135 | 325.14 |
| CONSTRUCTION | 20 | 131 | 2,774,702 | 407.33 |
| TRANSPORTATION AND PUBLIC UTILITIES | 12 | 45 | 632,170 | 270.16 |
| WHOLESALE AND RETAIL TRADE | 51 | 224 | 3,622,266 | 310.98 |
| WHOLESALE TRADE | 12 | 33 | 711,900 | 414.86 |
| RETAIL TRADE | 39 | 191 | 2,910,366 | 293.03 |
| FINANCE, INSURANCE, AND REAL ESTATE SERVICES | 11 | 62 | 1,294,699 | 401.58 |
| LOCAL GOVERNMENT | 43 | 271 | 3,522,749 | 249.98 |
| STATE GOVERNMENT | 11 | 357 | 6,218,284 | 334.96 |
| OTHER NONMANUFACTURING | 8 | 60 | 1,330,497 | 426.44 |
| | 4 | 44 | 791,768 | 346.05 |
| NEVADA COUNTY - TOTAL | 212 | 2,278 | \$48,311,696 | \$407.85 |
| MANUFACTURING | 22 | 633 | 20,602,749 | 625.92 |
| NONMANUFACTURING | 190 | 1,645 | 27,708,947 | 323.93 |
| TRANSPORTATION AND PUBLIC UTILITIES | 16 | 212 | 5,920,662 | 537.07 |
| WHOLESALE AND RETAIL TRADE | 57 | 389 | 4,804,399 | 237.51 |
| WHOLESALE TRADE | 9 | 28 | 329,228 | 226.12 |
| RETAIL TRADE | 48 | 361 | 4,475,171 | 238.40 |
| FINANCE, INSURANCE, AND REAL ESTATE SERVICES | 13 | 46 | 1,044,694 | 436.74 |
| LOCAL GOVERNMENT | 43 | 406 | 5,263,072 | 249.29 |
| STATE GOVERNMENT | 29 | 451 | 7,718,250 | 329.11 |
| OTHER NONMANUFACTURING | 11 | 92 | 2,215,319 | 463.07 |
| | 21 | 49 | 742,551 | 291.43 |
| NEWTON COUNTY - TOTAL | 118 | 965 | \$14,051,199 | \$280.02 |
| MANUFACTURING | 26 | 101 | 1,199,119 | 228.32 |
| NONMANUFACTURING | 92 | 864 | 12,852,080 | 286.06 |
| CONSTRUCTION | 10 | 25 | 279,719 | 215.17 |
| WHOLESALE AND RETAIL TRADE | 24 | 160 | 1,496,203 | 179.83 |
| WHOLESALE TRADE | 3 | 17 | 232,710 | 263.25 |
| RETAIL TRADE | 21 | 143 | 1,263,493 | 169.92 |
| SERVICES | 27 | 173 | 1,948,531 | 216.60 |
| LOCAL GOVERNMENT | 9 | 331 | 5,709,957 | 331.74 |
| STATE GOVERNMENT | 8 | 89 | 1,633,092 | 352.87 |
| OTHER NONMANUFACTURING | 14 | 86 | 1,784,578 | 399.06 |

**TABLE 8. COUNTY SUMMARY
EMPLOYMENT AND TOTAL EARNINGS, BY INDUSTRY
CALENDAR YEAR 1997**

| INDUSTRY GROUP | AVERAGE # OF EMPLOYING UNITS | AVERAGE COVERED EMPLOYMENT | TOTAL EARNINGS | AVERAGE WEEKLY EARNINGS |
|-------------------------------------|------------------------------------|----------------------------------|----------------------|-------------------------------|
| OUACHITA COUNTY - TOTAL | 668 | 8,161 | \$177,197,481 | \$417.55 |
| MANUFACTURING | 68 | 1,873 | 57,254,998 | 587.86 |
| NONMANUFACTURING | 600 | 6,288 | 119,942,483 | 366.82 |
| AGRICULTURE, FORESTRY, AND FISHING | 12 | 63 | 1,187,290 | 362.42 |
| MINING | 14 | 127 | 3,187,996 | 482.74 |
| CONSTRUCTION | 39 | 180 | 3,136,393 | 335.08 |
| TRANSPORTATION AND PUBLIC UTILITIES | 50 | 365 | 10,237,078 | 539.36 |
| WHOLESALE AND RETAIL TRADE | 215 | 2,084 | 31,513,616 | 290.80 |
| WHOLESALE TRADE | 39 | 367 | 9,893,852 | 518.44 |
| RETAIL TRADE | 176 | 1,717 | 21,619,764 | 242.15 |
| FINANCE, INSURANCE, AND REAL ESTATE | 48 | 320 | 7,548,011 | 453.61 |
| SERVICES | 179 | 1,708 | 31,946,894 | 359.70 |
| LOCAL GOVERNMENT | 32 | 1,148 | 23,852,512 | 399.57 |
| STATE GOVERNMENT | 13 | 294 | 7,332,693 | 479.64 |
| PERRY COUNTY - TOTAL | 126 | 1,115 | \$19,026,112 | \$328.15 |
| MANUFACTURING | 6 | 157 | 3,017,281 | 369.58 |
| NONMANUFACTURING | 120 | 958 | 16,008,831 | 321.36 |
| CONSTRUCTION | 21 | 71 | 1,306,715 | 353.93 |
| TRANSPORTATION AND PUBLIC UTILITIES | 7 | 40 | 1,121,193 | 539.04 |
| WHOLESALE AND RETAIL TRADE | 36 | 190 | 2,310,272 | 233.83 |
| WHOLESALE TRADE | 6 | 17 | 382,117 | 432.26 |
| RETAIL TRADE | 30 | 173 | 1,928,155 | 214.33 |
| SERVICES | 29 | 165 | 2,434,129 | 283.70 |
| LOCAL GOVERNMENT | 12 | 368 | 6,075,800 | 317.51 |
| STATE GOVERNMENT | 7 | 72 | 1,558,663 | 416.31 |
| OTHER NONMANUFACTURING | 8 | 52 | 1,202,059 | 444.55 |
| PHILLIPS COUNTY - TOTAL | 660 | 8,098 | \$151,934,045 | \$360.81 |
| MANUFACTURING | 25 | 1,155 | 28,881,340 | 480.87 |
| NONMANUFACTURING | 635 | 6,943 | 123,052,705 | 340.83 |
| AGRICULTURE, FORESTRY, AND FISHING | 54 | 470 | 7,307,698 | 299.01 |
| TRANSPORTATION AND PUBLIC UTILITIES | 46 | 337 | 9,591,974 | 547.36 |
| WHOLESALE AND RETAIL TRADE | 220 | 2,023 | 31,432,642 | 298.80 |
| WHOLESALE TRADE | 47 | 595 | 14,488,113 | 468.26 |
| RETAIL TRADE | 173 | 1,428 | 16,944,529 | 228.19 |
| FINANCE, INSURANCE, AND REAL ESTATE | 44 | 294 | 6,378,570 | 417.23 |
| SERVICES | 188 | 1,774 | 29,459,115 | 319.35 |
| LOCAL GOVERNMENT | 32 | 1,276 | 24,221,528 | 365.05 |
| STATE GOVERNMENT | 15 | 513 | 10,188,950 | 381.95 |
| OTHER NONMANUFACTURING | 36 | 256 | 4,472,228 | 335.95 |

**TABLE 8. COUNTY SUMMARY
EMPLOYMENT AND TOTAL EARNINGS, BY INDUSTRY
CALENDAR YEAR 1997**

| INDUSTRY GROUP | AVERAGE # OF EMPLOYING UNITS | AVERAGE COVERED EMPLOYMENT | TOTAL EARNINGS | AVERAGE WEEKLY EARNINGS |
|-------------------------------------|------------------------------------|----------------------------------|----------------------|-------------------------------|
| PIKE COUNTY - TOTAL | 285 | 2,965 | \$50,150,570 | \$325.27 |
| MANUFACTURING | 52 | 781 | 15,063,607 | 370.92 |
| NONMANUFACTURING | 233 | 2,184 | 35,086,963 | 308.95 |
| AGRICULTURE, FORESTRY, AND FISHING | 6 | 91 | 1,520,487 | 321.32 |
| MINING | 5 | 55 | 1,708,175 | 597.26 |
| CONSTRUCTION | 18 | 95 | 2,162,318 | 437.72 |
| TRANSPORTATION AND PUBLIC UTILITIES | 29 | 145 | 3,629,821 | 481.41 |
| WHOLESALE AND RETAIL TRADE | 92 | 692 | 8,468,803 | 235.35 |
| WHOLESALE TRADE | 18 | 122 | 1,868,052 | 294.46 |
| RETAIL TRADE | 74 | 570 | 6,600,751 | 222.70 |
| FINANCE, INSURANCE, AND REAL ESTATE | 19 | 172 | 3,163,736 | 353.73 |
| SERVICES | 42 | 309 | 3,765,853 | 234.37 |
| LOCAL GOVERNMENT | 12 | 481 | 8,219,843 | 328.64 |
| STATE GOVERNMENT | 11 | 144 | 2,447,927 | 326.91 |
| POINSETT COUNTY - TOTAL | 506 | 6,684 | \$130,306,808 | \$374.91 |
| MANUFACTURING | 31 | 2,347 | 53,642,158 | 439.53 |
| NONMANUFACTURING | 475 | 4,337 | 76,664,650 | 339.94 |
| AGRICULTURE, FORESTRY, AND FISHING | 43 | 311 | 7,306,982 | 451.83 |
| TRANSPORTATION AND PUBLIC UTILITIES | 42 | 226 | 5,409,947 | 460.34 |
| WHOLESALE AND RETAIL TRADE | 168 | 1,555 | 24,109,966 | 298.17 |
| WHOLESALE TRADE | 34 | 473 | 11,806,798 | 480.03 |
| RETAIL TRADE | 134 | 1,082 | 12,303,168 | 218.67 |
| FINANCE, INSURANCE, AND REAL ESTATE | 42 | 319 | 6,464,171 | 389.69 |
| SERVICES | 109 | 596 | 8,390,411 | 270.73 |
| LOCAL GOVERNMENT | 31 | 1,041 | 18,963,753 | 350.32 |
| STATE GOVERNMENT | 15 | 184 | 4,043,309 | 422.59 |
| OTHER NONMANUFACTURING | 25 | 105 | 1,976,111 | 361.93 |
| POLK COUNTY - TOTAL | 505 | 6,350 | \$111,224,823 | \$336.84 |
| MANUFACTURING | 59 | 2,309 | 44,775,017 | 372.91 |
| NONMANUFACTURING | 446 | 4,041 | 66,449,806 | 316.23 |
| AGRICULTURE, FORESTRY, AND FISHING | 21 | 197 | 4,733,763 | 462.10 |
| CONSTRUCTION | 36 | 121 | 1,924,969 | 305.94 |
| TRANSPORTATION AND PUBLIC UTILITIES | 44 | 367 | 8,029,123 | 420.73 |
| WHOLESALE AND RETAIL TRADE | 145 | 1,222 | 14,115,276 | 222.13 |
| WHOLESALE TRADE | 28 | 114 | 1,830,490 | 308.79 |
| RETAIL TRADE | 117 | 1,108 | 12,284,786 | 213.22 |
| FINANCE, INSURANCE, AND REAL ESTATE | 35 | 210 | 3,906,582 | 357.75 |
| SERVICES | 132 | 990 | 15,733,414 | 305.62 |
| LOCAL GOVERNMENT | 21 | 671 | 12,854,359 | 368.40 |
| STATE GOVERNMENT | 14 | 264 | 5,152,320 | 375.31 |

**TABLE 8. COUNTY SUMMARY
EMPLOYMENT AND TOTAL EARNINGS, BY INDUSTRY
CALENDAR YEAR 1997**

| INDUSTRY GROUP | AVERAGE # OF EMPLOYING UNITS | AVERAGE COVERED EMPLOYMENT | TOTAL EARNINGS | AVERAGE WEEKLY EARNINGS |
|-------------------------------------|------------------------------------|----------------------------------|------------------------|-------------------------------|
| POPE COUNTY - TOTAL | 1,502 | 23,410 | \$545,087,303 | \$447.78 |
| MANUFACTURING | 110 | 5,667 | 141,698,267 | 480.85 |
| NONMANUFACTURING | 1,392 | 17,743 | 403,389,036 | 437.21 |
| CONSTRUCTION | 164 | 1,148 | 28,856,117 | 483.38 |
| TRANSPORTATION AND PUBLIC UTILITIES | 83 | 2,529 | 120,016,488 | 912.62 |
| WHOLESALE AND RETAIL TRADE | 490 | 5,556 | 77,017,570 | 266.58 |
| WHOLESALE TRADE | 108 | 665 | 18,479,659 | 534.40 |
| RETAIL TRADE | 382 | 4,891 | 58,537,911 | 230.16 |
| FINANCE, INSURANCE, AND REAL ESTATE | 120 | 571 | 13,839,243 | 466.09 |
| SERVICES | 450 | 4,781 | 89,757,718 | 361.04 |
| LOCAL GOVERNMENT | 37 | 1,676 | 37,396,650 | 429.10 |
| STATE GOVERNMENT | 16 | 950 | 25,749,377 | 521.24 |
| OTHER NONMANUFACTURING | 32 | 532 | 10,755,873 | 388.80 |
| PRAIRIE COUNTY - TOTAL | 222 | 1,567 | \$28,863,645 | \$354.22 |
| MANUFACTURING | 8 | 200 | 5,235,036 | 503.37 |
| NONMANUFACTURING | 214 | 1,367 | 23,628,609 | 332.40 |
| AGRICULTURE, FORESTRY, AND FISHING | 26 | 143 | 3,383,068 | 454.96 |
| TRANSPORTATION AND PUBLIC UTILITIES | 23 | 78 | 1,974,499 | 486.81 |
| WHOLESALE AND RETAIL TRADE | 75 | 389 | 5,527,176 | 273.24 |
| WHOLESALE TRADE | 11 | 109 | 2,457,000 | 433.49 |
| RETAIL TRADE | 64 | 280 | 3,070,176 | 210.86 |
| SERVICES | 46 | 302 | 4,113,234 | 261.92 |
| LOCAL GOVERNMENT | 16 | 336 | 6,047,549 | 346.13 |
| STATE GOVERNMENT | 10 | 56 | 1,291,677 | 443.57 |
| OTHER NONMANUFACTURING | 18 | 63 | 1,291,406 | 394.20 |
| PULASKI COUNTY - TOTAL | 12,518 | 228,705 | \$6,165,898,749 | \$518.46 |
| MANUFACTURING | 510 | 22,124 | 679,090,468 | 590.28 |
| NONMANUFACTURING | 12,008 | 206,581 | 5,486,808,281 | 510.77 |
| AGRICULTURE, FORESTRY, AND FISHING | 175 | 1,279 | 24,306,278 | 365.46 |
| MINING | 6 | 298 | 11,316,169 | 730.26 |
| CONSTRUCTION | 1,047 | 9,696 | 274,216,801 | 543.87 |
| TRANSPORTATION AND PUBLIC UTILITIES | 501 | 17,922 | 618,295,556 | 663.45 |
| WHOLESALE AND RETAIL TRADE | 3,786 | 56,490 | 1,162,364,975 | 395.70 |
| WHOLESALE TRADE | 1,270 | 15,773 | 522,836,300 | 637.45 |
| RETAIL TRADE | 2,516 | 40,717 | 639,528,675 | 302.05 |
| FINANCE, INSURANCE, AND REAL ESTATE | 1,298 | 15,282 | 586,583,626 | 738.15 |
| SERVICES | 4,944 | 69,477 | 1,766,198,349 | 488.87 |
| LOCAL GOVERNMENT | 99 | 15,683 | 389,441,576 | 477.54 |
| STATE GOVERNMENT | 154 | 20,456 | 654,084,951 | 614.91 |

**TABLE 8. COUNTY SUMMARY
EMPLOYMENT AND TOTAL EARNINGS, BY INDUSTRY
CALENDAR YEAR 1997**

| INDUSTRY GROUP | AVERAGE # OF EMPLOYING UNITS | AVERAGE COVERED EMPLOYMENT | TOTAL EARNINGS | AVERAGE WEEKLY EARNINGS |
|-------------------------------------|------------------------------------|----------------------------------|----------------------|-------------------------------|
| RANDOLPH COUNTY - TOTAL | 374 | 5,009 | \$95,517,135 | \$366.71 |
| MANUFACTURING | 33 | 1,707 | 37,346,211 | 420.74 |
| NONMANUFACTURING | 341 | 3,302 | 58,170,924 | 338.79 |
| AGRICULTURE, FORESTRY, AND FISHING | 10 | 30 | 477,125 | 305.85 |
| CONSTRUCTION | 38 | 195 | 3,936,976 | 388.26 |
| TRANSPORTATION AND PUBLIC UTILITIES | 25 | 130 | 4,416,500 | 653.33 |
| WHOLESALE AND RETAIL TRADE | 119 | 1,057 | 12,948,315 | 235.58 |
| WHOLESALE TRADE | 26 | 164 | 2,993,591 | 351.03 |
| RETAIL TRADE | 93 | 893 | 9,954,724 | 214.38 |
| FINANCE, INSURANCE, AND REAL ESTATE | 18 | 143 | 3,874,598 | 521.06 |
| SERVICES | 101 | 930 | 16,133,328 | 333.61 |
| LOCAL GOVERNMENT | 22 | 654 | 12,045,269 | 354.19 |
| STATE GOVERNMENT | 10 | 165 | 4,338,813 | 505.69 |
| SAINT FRANCIS COUNTY - TOTAL | 664 | 9,234 | \$183,176,149 | \$381.48 |
| MANUFACTURING | 34 | 2,159 | 52,264,488 | 465.53 |
| NONMANUFACTURING | 630 | 7,075 | 130,911,661 | 355.83 |
| CONSTRUCTION | 56 | 295 | 5,912,848 | 385.45 |
| TRANSPORTATION AND PUBLIC UTILITIES | 39 | 401 | 12,506,312 | 599.77 |
| WHOLESALE AND RETAIL TRADE | 220 | 2,263 | 33,027,548 | 280.67 |
| WHOLESALE TRADE | 48 | 510 | 12,493,595 | 471.10 |
| RETAIL TRADE | 172 | 1,753 | 20,533,953 | 225.26 |
| FINANCE, INSURANCE, AND REAL ESTATE | 48 | 273 | 5,884,074 | 414.49 |
| SERVICES | 187 | 1,760 | 28,805,736 | 314.75 |
| LOCAL GOVERNMENT | 31 | 1,221 | 25,012,214 | 393.94 |
| STATE GOVERNMENT | 16 | 625 | 15,438,562 | 475.03 |
| OTHER NONMANUFACTURING | 33 | 237 | 4,324,367 | 350.89 |
| SALINE COUNTY - TOTAL | 1,314 | 16,512 | \$355,590,764 | \$414.14 |
| MANUFACTURING | 88 | 2,459 | 78,213,387 | 611.67 |
| NONMANUFACTURING | 1,226 | 14,053 | 277,377,377 | 379.58 |
| CONSTRUCTION | 216 | 1,252 | 29,179,087 | 448.19 |
| TRANSPORTATION AND PUBLIC UTILITIES | 58 | 446 | 12,371,906 | 533.46 |
| WHOLESALE AND RETAIL TRADE | 384 | 4,718 | 78,851,298 | 321.40 |
| WHOLESALE TRADE | 93 | 451 | 12,579,282 | 536.38 |
| RETAIL TRADE | 291 | 4,267 | 66,272,016 | 298.68 |
| FINANCE, INSURANCE, AND REAL ESTATE | 103 | 530 | 10,996,817 | 399.01 |
| SERVICES | 391 | 3,421 | 62,311,612 | 350.28 |
| LOCAL AND STATE GOVERNMENT | 47 | 3,601 | 82,419,208 | 440.15 |
| OTHER NONMANUFACTURING | 27 | 85 | 1,247,449 | 282.23 |

**TABLE 8. COUNTY SUMMARY
EMPLOYMENT AND TOTAL EARNINGS, BY INDUSTRY
CALENDAR YEAR 1997**

| INDUSTRY GROUP | AVERAGE # OF EMPLOYING UNITS | AVERAGE COVERED EMPLOYMENT | TOTAL EARNINGS | AVERAGE WEEKLY EARNINGS |
|-------------------------------------|------------------------------------|----------------------------------|------------------------|-------------------------------|
| SCOTT COUNTY - TOTAL | 210 | 3,262 | \$55,608,140 | \$327.83 |
| MANUFACTURING | 39 | 1,490 | 28,549,628 | 368.48 |
| NONMANUFACTURING | 171 | 1,772 | 27,058,512 | 293.65 |
| AGRICULTURE, FORESTRY, AND FISHING | 9 | 162 | 3,134,914 | 372.14 |
| TRANSPORTATION AND PUBLIC UTILITIES | 14 | 88 | 1,774,200 | 387.72 |
| WHOLESALE AND RETAIL TRADE | 72 | 628 | 6,852,738 | 209.85 |
| WHOLESALE TRADE | 11 | 70 | 1,212,508 | 333.11 |
| RETAIL TRADE | 61 | 558 | 5,640,230 | 194.38 |
| FINANCE, INSURANCE, AND REAL ESTATE | 13 | 93 | 1,582,661 | 327.27 |
| SERVICES | 39 | 369 | 5,953,576 | 310.28 |
| LOCAL GOVERNMENT | 5 | 317 | 5,907,836 | 358.40 |
| STATE GOVERNMENT | 7 | 65 | 1,185,686 | 350.79 |
| OTHER NONMANUFACTURING | 12 | 50 | 666,901 | 256.50 |
| SEARCY COUNTY - TOTAL | 139 | 1,644 | \$23,178,847 | \$271.14 |
| MANUFACTURING | 13 | 347 | 4,958,553 | 274.80 |
| NONMANUFACTURING | 126 | 1,297 | 18,220,294 | 270.15 |
| TRANSPORTATION AND PUBLIC UTILITIES | 10 | 53 | 1,206,051 | 437.61 |
| WHOLESALE AND RETAIL TRADE | 49 | 381 | 3,621,279 | 182.78 |
| WHOLESALE TRADE | 10 | 71 | 713,609 | 193.29 |
| RETAIL TRADE | 39 | 310 | 2,907,670 | 180.38 |
| FINANCE, INSURANCE, AND REAL ESTATE | 6 | 33 | 493,574 | 287.63 |
| SERVICES | 31 | 300 | 3,353,280 | 214.95 |
| LOCAL GOVERNMENT | 10 | 270 | 4,858,043 | 346.01 |
| STATE GOVERNMENT | 9 | 172 | 3,635,378 | 406.46 |
| OTHER NONMANUFACTURING | 11 | 88 | 1,052,689 | 230.05 |
| SEBASTIAN COUNTY - TOTAL | 3,494 | 70,752 | \$1,672,224,312 | \$454.52 |
| MANUFACTURING | 247 | 22,534 | 604,922,005 | 516.25 |
| NONMANUFACTURING | 3,247 | 48,218 | 1,067,302,307 | 425.67 |
| AGRICULTURE, FORESTRY, AND FISHING | 43 | 313 | 5,985,482 | 367.75 |
| MINING | 51 | 778 | 25,154,970 | 621.79 |
| CONSTRUCTION | 313 | 2,822 | 67,926,796 | 462.89 |
| TRANSPORTATION AND PUBLIC UTILITIES | 172 | 4,359 | 123,054,880 | 542.89 |
| WHOLESALE AND RETAIL TRADE | 1,129 | 14,950 | 246,943,786 | 317.65 |
| WHOLESALE TRADE | 297 | 2,834 | 79,381,297 | 538.66 |
| RETAIL TRADE | 832 | 12,116 | 167,562,489 | 265.96 |
| FINANCE, INSURANCE, AND REAL ESTATE | 310 | 2,358 | 65,493,685 | 534.14 |
| SERVICES | 1,162 | 18,233 | 422,663,955 | 445.79 |
| LOCAL GOVERNMENT | 43 | 3,431 | 88,151,973 | 494.09 |
| STATE GOVERNMENT | 23 | 975 | 21,926,780 | 432.48 |

**TABLE 8. COUNTY SUMMARY
EMPLOYMENT AND TOTAL EARNINGS, BY INDUSTRY
CALENDAR YEAR 1997**

| INDUSTRY GROUP | AVERAGE # OF EMPLOYING UNITS | AVERAGE COVERED EMPLOYMENT | TOTAL EARNINGS | AVERAGE WEEKLY EARNINGS |
|-------------------------------------|------------------------------------|----------------------------------|----------------------|-------------------------------|
| SEVIER COUNTY - TOTAL | 323 | 5,276 | \$102,399,762 | \$373.24 |
| MANUFACTURING | 29 | 2,364 | 47,648,011 | 387.61 |
| NONMANUFACTURING | 294 | 2,912 | 54,751,751 | 361.58 |
| CONSTRUCTION | 23 | 109 | 1,897,018 | 334.69 |
| TRANSPORTATION AND PUBLIC UTILITIES | 26 | 112 | 3,245,281 | 557.23 |
| WHOLESALE AND RETAIL TRADE | 97 | 956 | 14,309,906 | 287.86 |
| WHOLESALE TRADE | 22 | 163 | 5,318,204 | 627.44 |
| RETAIL TRADE | 75 | 793 | 8,991,702 | 218.05 |
| FINANCE, INSURANCE, AND REAL ESTATE | 20 | 136 | 3,125,282 | 441.92 |
| SERVICES | 97 | 718 | 15,027,239 | 402.49 |
| LOCAL GOVERNMENT | 10 | 580 | 10,878,797 | 360.70 |
| STATE GOVERNMENT | 9 | 151 | 3,669,890 | 467.38 |
| OTHER NONMANUFACTURING | 12 | 150 | 2,598,338 | 333.12 |
| SHARP COUNTY - TOTAL | 406 | 3,989 | \$61,600,068 | \$296.97 |
| MANUFACTURING | 23 | 475 | 6,916,717 | 280.03 |
| NONMANUFACTURING | 383 | 3,514 | 54,683,351 | 299.26 |
| CONSTRUCTION | 38 | 134 | 2,042,434 | 293.12 |
| TRANSPORTATION AND PUBLIC UTILITIES | 32 | 361 | 9,717,722 | 517.67 |
| WHOLESALE AND RETAIL TRADE | 135 | 1,173 | 11,640,395 | 190.84 |
| WHOLESALE TRADE | 15 | 69 | 1,183,454 | 329.84 |
| RETAIL TRADE | 120 | 1,104 | 10,456,941 | 182.15 |
| FINANCE, INSURANCE, AND REAL ESTATE | 34 | 211 | 3,849,375 | 350.84 |
| SERVICES | 98 | 836 | 12,868,164 | 296.01 |
| LOCAL GOVERNMENT | 27 | 649 | 11,408,828 | 338.06 |
| STATE GOVERNMENT | 10 | 105 | 2,541,534 | 465.48 |
| OTHER NONMANUFACTURING | 9 | 45 | 614,899 | 262.78 |
| STONE COUNTY - TOTAL | 244 | 2,737 | \$41,489,845 | \$291.52 |
| MANUFACTURING | 29 | 639 | 10,689,221 | 321.69 |
| NONMANUFACTURING | 215 | 2,098 | 30,800,624 | 282.33 |
| CONSTRUCTION | 19 | 92 | 1,427,453 | 298.38 |
| WHOLESALE AND RETAIL TRADE | 87 | 697 | 8,529,536 | 235.34 |
| WHOLESALE TRADE | 15 | 41 | 595,465 | 279.30 |
| RETAIL TRADE | 72 | 656 | 7,934,071 | 232.59 |
| FINANCE, INSURANCE, AND REAL ESTATE | 11 | 70 | 1,381,116 | 379.43 |
| SERVICES | 55 | 519 | 6,893,190 | 255.42 |
| LOCAL GOVERNMENT | 10 | 364 | 6,455,507 | 341.06 |
| STATE GOVERNMENT | 12 | 233 | 3,636,105 | 300.11 |
| OTHER NONMANUFACTURING | 21 | 123 | 2,477,717 | 387.39 |

**TABLE 8. COUNTY SUMMARY
EMPLOYMENT AND TOTAL EARNINGS, BY INDUSTRY
CALENDAR YEAR 1997**

| INDUSTRY GROUP | AVERAGE # OF EMPLOYING UNITS | AVERAGE COVERED EMPLOYMENT | TOTAL EARNINGS | AVERAGE WEEKLY EARNINGS |
|-------------------------------------|------------------------------------|----------------------------------|------------------------|-------------------------------|
| UNION COUNTY - TOTAL | 1,384 | 20,332 | \$481,733,457 | \$455.64 |
| MANUFACTURING | 98 | 5,861 | 175,684,556 | 576.45 |
| NONMANUFACTURING | 1,286 | 14,471 | 306,048,901 | 406.71 |
| AGRICULTURE, FORESTRY, AND FISHING | 28 | 115 | 1,922,469 | 321.48 |
| MINING | 69 | 473 | 18,489,728 | 751.74 |
| CONSTRUCTION | 105 | 1,505 | 43,257,381 | 552.74 |
| TRANSPORTATION AND PUBLIC UTILITIES | 81 | 1,305 | 44,125,404 | 650.24 |
| WHOLESALE AND RETAIL TRADE | 416 | 3,987 | 60,812,782 | 293.32 |
| WHOLESALE TRADE | 104 | 677 | 18,388,544 | 522.34 |
| RETAIL TRADE | 312 | 3,310 | 42,424,238 | 246.48 |
| FINANCE, INSURANCE, AND REAL ESTATE | 97 | 746 | 19,384,252 | 499.70 |
| SERVICES | 438 | 4,030 | 70,952,075 | 338.58 |
| LOCAL GOVERNMENT | 38 | 1,823 | 36,652,390 | 386.64 |
| STATE GOVERNMENT | 16 | 487 | 10,452,420 | 412.75 |
| VAN BUREN COUNTY - TOTAL | 347 | 3,608 | \$57,110,032 | \$304.40 |
| MANUFACTURING | 20 | 742 | 14,581,020 | 377.90 |
| NONMANUFACTURING | 327 | 2,866 | 42,529,012 | 285.37 |
| CONSTRUCTION | 37 | 119 | 1,670,526 | 269.96 |
| TRANSPORTATION AND PUBLIC UTILITIES | 52 | 251 | 5,026,507 | 385.11 |
| WHOLESALE AND RETAIL TRADE | 108 | 909 | 9,552,061 | 202.08 |
| WHOLESALE TRADE | 12 | 43 | 705,728 | 315.62 |
| RETAIL TRADE | 96 | 866 | 8,846,333 | 196.45 |
| FINANCE, INSURANCE, AND REAL ESTATE | 27 | 142 | 3,915,568 | 530.28 |
| SERVICES | 76 | 758 | 10,054,077 | 255.08 |
| LOCAL GOVERNMENT | 13 | 464 | 8,388,919 | 347.68 |
| STATE GOVERNMENT | 8 | 137 | 2,779,454 | 390.15 |
| OTHER NONMANUFACTURING | 6 | 86 | 1,141,900 | 255.34 |
| WASHINGTON COUNTY - TOTAL | 4,116 | 72,694 | \$1,675,954,676 | \$443.36 |
| MANUFACTURING | 223 | 17,193 | 446,627,386 | 499.56 |
| NONMANUFACTURING | 3,893 | 55,501 | 1,229,327,290 | 425.95 |
| CONSTRUCTION | 404 | 3,421 | 87,234,417 | 490.38 |
| TRANSPORTATION AND PUBLIC UTILITIES | 242 | 5,606 | 164,796,639 | 565.32 |
| WHOLESALE AND RETAIL TRADE | 1,361 | 18,500 | 304,407,467 | 316.43 |
| WHOLESALE TRADE | 334 | 3,479 | 103,360,661 | 571.34 |
| RETAIL TRADE | 1,027 | 15,021 | 201,046,806 | 257.39 |
| FINANCE, INSURANCE, AND REAL ESTATE | 354 | 2,366 | 72,076,678 | 585.84 |
| SERVICES | 1,365 | 14,721 | 309,744,739 | 404.63 |
| LOCAL AND STATE GOVERNMENT | 79 | 9,700 | 266,510,110 | 528.37 |
| OTHER NONMANUFACTURING | 88 | 1,187 | 24,557,240 | 397.86 |

**TABLE 8. COUNTY SUMMARY
EMPLOYMENT AND TOTAL EARNINGS, BY INDUSTRY
CALENDAR YEAR 1997**

| INDUSTRY GROUP | AVERAGE # OF EMPLOYING UNITS | AVERAGE COVERED EMPLOYMENT | TOTAL EARNINGS | AVERAGE WEEKLY EARNINGS |
|-------------------------------------|------------------------------------|----------------------------------|----------------------|-------------------------------|
| WHITE COUNTY - TOTAL | 1,372 | 21,416 | \$454,991,296 | \$408.57 |
| MANUFACTURING | 96 | 4,771 | 120,373,241 | 485.20 |
| NONMANUFACTURING | 1,276 | 16,645 | 334,618,055 | 386.60 |
| CONSTRUCTION | 148 | 930 | 21,535,053 | 445.31 |
| TRANSPORTATION AND PUBLIC UTILITIES | 91 | 1,405 | 36,290,745 | 496.73 |
| WHOLESALE AND RETAIL TRADE | 494 | 6,450 | 108,279,369 | 322.84 |
| WHOLESALE TRADE | 102 | 740 | 15,452,009 | 401.56 |
| RETAIL TRADE | 392 | 5,710 | 92,827,360 | 312.63 |
| FINANCE, INSURANCE, AND REAL ESTATE | 102 | 632 | 12,140,370 | 369.41 |
| SERVICES | 346 | 4,535 | 101,239,143 | 429.31 |
| LOCAL GOVERNMENT | 45 | 1,975 | 40,474,789 | 394.11 |
| STATE GOVERNMENT | 20 | 580 | 12,737,594 | 422.33 |
| OTHER NONMANUFACTURING | 30 | 138 | 1,920,992 | 267.70 |
| WOODRUFF COUNTY - TOTAL | 206 | 2,730 | \$51,599,528 | \$363.48 |
| MANUFACTURING | 9 | 801 | 15,707,059 | 377.10 |
| NONMANUFACTURING | 197 | 1,929 | 35,892,469 | 357.82 |
| AGRICULTURE, FORESTRY, AND FISHING | 24 | 132 | 2,475,112 | 360.59 |
| CONSTRUCTION | 7 | 41 | 612,966 | 287.51 |
| TRANSPORTATION AND PUBLIC UTILITIES | 16 | 102 | 2,868,402 | 540.80 |
| WHOLESALE AND RETAIL TRADE | 78 | 809 | 14,685,848 | 349.10 |
| WHOLESALE TRADE | 25 | 515 | 11,683,892 | 436.29 |
| RETAIL TRADE | 53 | 294 | 3,001,956 | 196.36 |
| FINANCE, INSURANCE, AND REAL ESTATE | 15 | 69 | 1,677,996 | 467.67 |
| SERVICES | 39 | 228 | 4,362,711 | 367.97 |
| LOCAL GOVERNMENT | 10 | 469 | 7,738,584 | 317.31 |
| STATE GOVERNMENT | 9 | 77 | 1,470,850 | 367.35 |
| YELL COUNTY - TOTAL | 391 | 6,554 | \$117,569,574 | \$344.97 |
| MANUFACTURING | 35 | 3,013 | 55,781,475 | 356.03 |
| NONMANUFACTURING | 356 | 3,541 | 61,788,099 | 335.56 |
| CONSTRUCTION | 43 | 233 | 4,055,116 | 334.69 |
| TRANSPORTATION AND PUBLIC UTILITIES | 29 | 273 | 6,872,101 | 484.09 |
| WHOLESALE AND RETAIL TRADE | 102 | 856 | 10,283,662 | 231.03 |
| WHOLESALE TRADE | 22 | 77 | 1,533,041 | 382.88 |
| RETAIL TRADE | 80 | 779 | 8,750,621 | 216.02 |
| FINANCE, INSURANCE, AND REAL ESTATE | 26 | 195 | 4,463,470 | 440.18 |
| SERVICES | 97 | 635 | 10,095,095 | 305.73 |
| LOCAL GOVERNMENT | 28 | 932 | 17,889,583 | 369.13 |
| STATE GOVERNMENT | 12 | 132 | 2,836,892 | 413.30 |
| OTHER NONMANUFACTURING | 19 | 285 | 5,292,180 | 357.10 |

**TABLE 8. COUNTY SUMMARY
EMPLOYMENT AND TOTAL EARNINGS, BY INDUSTRY
CALENDAR YEAR 1997**

| INDUSTRY GROUP | AVERAGE # OF EMPLOYING UNITS | AVERAGE COVERED EMPLOYMENT | TOTAL EARNINGS | AVERAGE WEEKLY EARNINGS |
|-------------------------------------|---------------------------------------------|-------------------------------------------|-----------------------|----------------------------------------|
| REST-OF-STATE-TOTAL | 3,040 | 10,629 | \$362,657,611 | \$656.15 |
| MINING | 28 | 80 | 3,034,953 | 729.56 |
| CONSTRUCTION | 580 | 3,211 | 79,348,116 | 475.22 |
| TRANSPORTATION AND PUBLIC UTILITIES | 119 | 377 | 11,571,884 | 590.28 |
| WHOLESALE AND RETAIL TRADE | 1,332 | 3,657 | 175,522,383 | 923.01 |
| WHOLESALE TRADE | 1,248 | 3,406 | 168,679,258 | 952.39 |
| RETAIL TRADE | 84 | 251 | 6,843,125 | 524.30 |
| FINANCE, INSURANCE, AND REAL ESTATE | 150 | 406 | 15,359,356 | 727.52 |
| SERVICES | 790 | 2,406 | 63,364,408 | 506.46 |
| OTHER | 41 | 492 | 14,456,511 | 565.06 |

Note: Items do not necessarily add to totals because of rounding.

TABLE 9. FEDERAL GOVERNMENT EMPLOYMENT AND EARNINGS IN ARKANSAS, 1997

| INDUSTRY | AVERAGE EMPLOYMENT | TOTAL EARNINGS | AVERAGE WEEKLY EARNINGS |
|-------------------------------------|-------------------------------|---------------------------|----------------------------------------|
| Manufacturing | 978 | \$40,215,048 | \$790.76 |
| Transportation and Public Utilities | 7,177 | \$247,260,970 | \$662.54 |
| Retail Trade | 345 | \$4,527,852 | \$252.39 |
| Finance, Insurance, and Real Estate | 218 | \$9,657,055 | \$851.89 |
| Services | 5,097 | \$212,996,784 | \$803.63 |
| Public Administration | 7,158 | \$290,246,360 | \$779.78 |
| TOTAL | 20,972 | \$804,904,069 | \$738.08 |

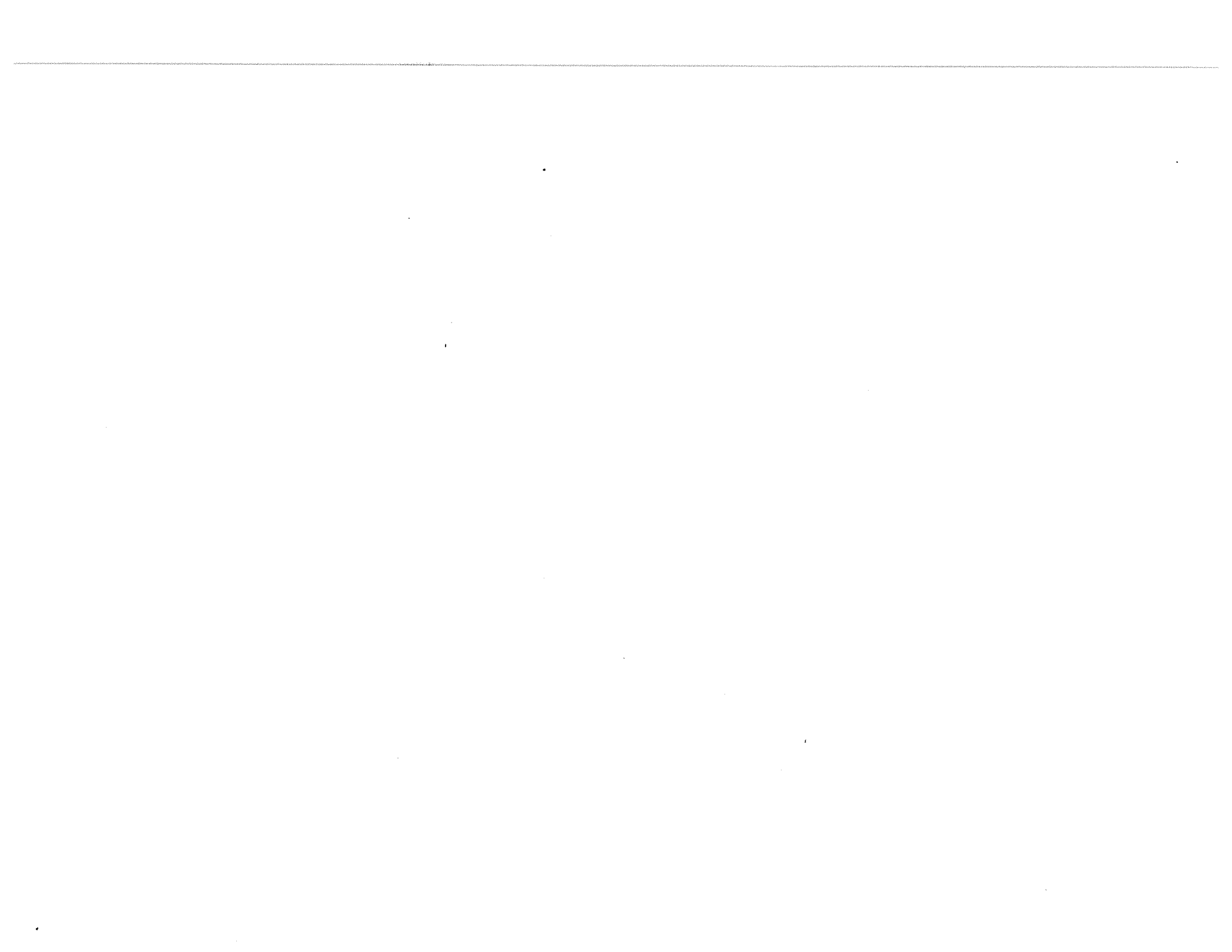


TABLE 7. STATE SUMMARY
 EMPLOYMENT AND TOTAL EARNINGS, BY INDUSTRY
 CALENDAR YEAR 1997

| AVERAGE WEEKLY EARNINGS | TOTAL EARNINGS | AVERAGE # OF EMPLOYING UNITS | AVERAGE EMPLOYMENT COVERED | INDUSTRY GROUP |
|-------------------------|----------------|------------------------------|----------------------------|--------------------------------------------------|
| \$389.98 | \$903,398,365 | 553 | 44,548 | GENERAL MERCHANDISE STORES |
| 404.08 | 852,126,309 | 177 | 40,554 | Department Stores |
| 268.45 | 33,571,972 | 191 | 2,405 | Variety Stores |
| 214.21 | 17,700,084 | 186 | 1,589 | Misc. General Merchandise Stores |
| \$236.04 | \$366,233,182 | 2,096 | 29,838 | FOOD STORES |
| 237.38 | 349,970,894 | 1,801 | 28,352 | Grocery Stores |
| 240.43 | 3,050,569 | 61 | 244 | Meat and Fish Markets |
| 149.27 | 799,505 | 23 | 103 | Candy, Nut, and Confectionery Stores |
| 200.42 | 7,149,304 | 127 | 686 | Retail Bakeries |
| 225.30 | 4,592,561 | 69 | 392 | Miscellaneous Food Stores |
| 211.33 | 670,349 | 15 | 61 | Other Food Stores |
| \$403.17 | \$487,663,175 | 2,610 | 23,261 | AUTOMOTIVE DEALERS & SERVICE STATIONS |
| 572.63 | 259,533,336 | 316 | 8,716 | New and Used Car Dealers |
| 410.22 | 32,487,717 | 432 | 1,523 | Used Car Dealers |
| 366.50 | 73,412,031 | 637 | 3,852 | Auto and Home Supply Stores |
| 233.36 | 98,050,182 | 1,055 | 8,080 | Gasoline Service Stations |
| 383.77 | 8,042,361 | 67 | 403 | Boat Dealers |
| 467.91 | 6,301,870 | 40 | 259 | Recreational Vehicle Dealers |
| 439.25 | 9,181,980 | 53 | 402 | Motorcycle Dealers |
| 465.60 | 653,698 | 10 | 27 | Automotive Dealers, NEC |
| \$206.24 | \$77,376,369 | 1,090 | 7,215 | APPAREL AND ACCESSORY STORES |
| 301.63 | 4,768,182 | 60 | 304 | Men's & Boys' Clothing Stores |
| 206.39 | 22,355,366 | 352 | 2,083 | Women's Clothing Stores |
| 210.45 | 3,140,767 | 42 | 287 | Women's Accessory & Specialty Stores |
| 174.74 | 1,753,682 | 54 | 193 | Children's and Infants' Wear Stores |
| 187.22 | 24,533,822 | 239 | 2,520 | Family Clothing Stores |
| 214.83 | 15,382,717 | 226 | 1,377 | Shoe Stores |
| 232.56 | 5,441,833 | 117 | 450 | Misc. Apparel & Accessory Stores |
| \$359.01 | \$134,713,846 | 1,235 | 7,216 | FURNITURE AND HOMEFURNISHINGS STORES |
| 367.28 | 79,640,933 | 753 | 4,170 | Furniture and Homefurnishings Stores |
| 312.17 | 8,587,237 | 115 | 529 | Household Appliance Stores |
| 355.03 | 46,485,676 | 367 | 2,518 | Radio, Television, & Computer Stores |

TABLE 7. STATE SUMMARY
EMPLOYMENT AND TOTAL EARNINGS, BY INDUSTRY
CALENDAR YEAR 1997

| INDUSTRY GROUP | AVERAGE # OF EMPLOYING UNITS | AVERAGE COVERED EMPLOYMENT | TOTAL EARNINGS | AVERAGE WEEKLY EARNINGS |
|--------------------------------------------|------------------------------|----------------------------|-----------------|-------------------------|
| 58 EATING AND DRINKING PLACES | 3,932 | 63,090 | \$536,534,761 | \$163.54 |
| 59 MISCELLANEOUS RETAIL | 3,441 | 18,458 | \$279,627,818 | \$291.33 |
| 591 Drug Stores and Proprietary Stores | 527 | 4,207 | 79,463,288 | 363.24 |
| 592 Liquor Stores | 366 | 1,426 | 17,829,779 | 240.45 |
| 593 Used Merchandise Stores | 338 | 1,004 | 17,829,779 | 240.45 |
| 594 Miscellaneous Shopping Goods Stores | 1,032 | 6,035 | 13,012,561 | 249.24 |
| 596 Nonstore Retailers | 163 | 1,496 | 78,296,918 | 249.50 |
| 598 Fuel Dealers | 178 | 1,496 | 26,868,435 | 345.39 |
| 599 Retail Stores, NEC | 838 | 3,308 | 20,862,825 | 408.15 |
| 60 DEPOSITORY INSTITUTIONS | 896 | 16,825 | \$417,554,019 | \$477.26 |
| 602 Commercial Banks | 679 | 14,507 | 366,308,068 | 485.59 |
| 603 Savings Institutions | 96 | 1,464 | 32,294,969 | 424.22 |
| 606 Credit Unions | 78 | 513 | 11,065,191 | 414.80 |
| Other Depository Institutions | 43 | 341 | 7,885,791 | 444.72 |
| 61 NONDEPOSITORY INSTITUTIONS | 237 | 2,036 | \$73,444,996 | \$693.72 |
| 611 Federal & Fed.-Sponsored Credit | 45 | 285 | 10,893,631 | 735.06 |
| 614 Personal Credit Institutions | 41 | 286 | 12,588,802 | 846.48 |
| 615 Business Credit Institutions | 35 | 154 | 7,710,174 | 962.81 |
| 616 Mortgage Bankers and Brokers | 116 | 1,312 | 42,252,389 | 619.32 |
| 62 SECURITY AND COMMODITY BROKERS | 284 | 2,300 | \$166,465,503 | \$1,391.85 |
| 621 Security Brokers and Dealers | 191 | 2,091 | 155,956,216 | 1434.32 |
| Other Security and Commodity Brokers | 93 | 209 | 10,509,287 | 966.99 |
| 63 INSURANCE CARRIERS | 440 | 5,382 | \$195,141,760 | \$697.27 |
| 631 Life Insurance | 90 | 1,120 | 39,159,765 | 672.39 |
| 632 Medical Service and Health Insurance | 45 | 2,060 | 76,790,396 | 716.86 |
| 633 Fire, Marine, and Casualty Insurance | 220 | 1,599 | 62,339,589 | 749.74 |
| 635 Surety Insurance | 12 | 43 | 2,565,386 | 1147.31 |
| 636 Title Insurance | 66 | 509 | 11,386,731 | 430.21 |
| Other Insurance Carriers | 7 | 51 | 2,899,893 | 1093.47 |
| FINANCE, INSURANCE, AND REAL ESTATE | 5,446 | 42,182 | \$1,257,647,310 | \$573.36 |