

Arkansas Covered
Employment & Earnings
Second Quarter
2019

**COVERED EMPLOYMENT AND EARNINGS
STATE OF ARKANSAS
SECOND QUARTER 2019**

**ASA HUTCHINSON, GOVERNOR
STATE OF ARKANSAS**

**CHARISSE CHILDERS, DIRECTOR
DIVISION OF WORKFORCE SERVICES**

**PUBLISHED BY
LABOR MARKET INFORMATION
BUREAU OF LABOR STATISTICS PROGRAMS
POST OFFICE BOX 2981
LITTLE ROCK, ARKANSAS 72203-2981
SUSAN PRICE, BLS PROGRAMS MANAGER
TELEPHONE (501) 682-3103**

STATE OF ARKANSAS WEBPAGE: <http://www.arkansas.gov>

DIVISION OF WORKFORCE SERVICES WEBPAGE: <http://www.dws.arkansas.gov/>

WEBPAGE FOR LABOR MARKET INFORMATION: <http://www.discover.arkansas.gov>

RELEASED: OCTOBER 2019

TABLE OF CONTENTS

DESCRIPTION OF DATA	PAGE
Description and Classification of Data	1
Definition of Covered Employment and Earnings	2
Significant Developments During Second Quarter 2019	3

LIST OF GRAPHS AND TABLES

Graph 1	Total Covered Employment for Selected Years, Arkansas	7
Graph 2	Total Covered Earnings, by Calendar Quarter for Selected Years, Arkansas	8
Table 1	Quarterly Comparison of Covered Employment and Wages, by Industry	5
Table 2	Total Covered Employment in Arkansas, 2012 – 2019	6
Table 3	Total Covered Earnings, 2012 – 2019	9
Table 4	Total Taxable Earnings, 2012 – 2019	10
Table 5	State Summary – Employment and Total Earnings, by Industry, Second Quarter 2019	11
Table 6	County Summary – Employment and Total Earnings, by Industry, Second Quarter 2019	22
Table 7	Federal Government Employment and Total Earnings in Arkansas, Second Quarter 2019	60
Table 8	Local Workforce Development Area – Employment and Total Earnings, by Industry, Second Quarter 2019	61

EMPLOYMENT AND EARNINGS
UNDER THE ARKANSAS EMPLOYMENT SECURITY LAW
SECOND QUARTER 2019

DESCRIPTION AND CLASSIFICATION OF DATA

This publication contains covered employment and payroll data by industry and county for the Second Quarter 2019 and a record for total covered employment by month, quarterly payroll data, average weekly earnings, and total taxable earnings for 2012 through 2019. These data are compiled from quarterly contributions and wage reports submitted by employers subject to the Arkansas Employment Security Law.

Employment data have been tabulated for each month of the quarter by industry under the **North American Industry Classification System** (NAICS) by state, county, and workforce area. Payroll data represent the total wages paid during the quarter and are classified by industry for the state and by publishable industry groups for each county and workforce area.

Due to industry classification revisions, previously published data will not always be comparable with current data. For this reason, comparisons should not be made between the same industries under different revisions. For more information, visit the NAICS home page at <http://www.census.gov/naics>.

Industry Classification Revisions

- SIC (Standard Industrial Classification) 1987 to NAICS 2002
- NAICS 2002 to NAICS 2007
- NAICS 2007 to NAICS 2012
- NAICS 2012 to NAICS 2018

The tabulation of this data is a joint effort in conjunction with the United States Bureau of Labor Statistics. Data included in this publication are subject to revisions. Revisions are typically reflected in the Annual Covered Employment and Earnings publication.

DEFINITION OF COVERED EMPLOYMENT AND EARNINGS

Covered Employment is the total number of workers employed by establishments subject to the Arkansas Employment Security Law that worked or received pay for the payroll period including the 12th of the month. Earnings include all wages paid to any covered employee by their employer including salaries, bonuses, commissions, fees, fringe benefits, sick pay made directly to employees or dependents, deferred compensation, and reported tips. These wages include both taxable and nontaxable wages. Only the first \$10,000 paid to each worker by an employer in the calendar year is taxable under the Arkansas Employment Security Law.

An Arkansas state unemployment insurance account is required of any entity meeting the definition of an employer. As described by Arkansas Department of Workforce Services Law, the definition of an employer includes, but is not limited to, a sole proprietorship, partnership, corporation, associations, trust, estate, and receiver or trustee in bankruptcy. The entity must employ one or more individuals for ten or more days in a calendar year, whether or not the days are consecutive.

Currently excluded from coverage is employment covered by the Railroad Unemployment Insurance Act, some domestic service workers, employees of small agricultural establishments, self-employed workers, unpaid family workers, insurance and real estate agents paid only on a commission basis, and employees of churches and religious organizations except separately incorporated schools.

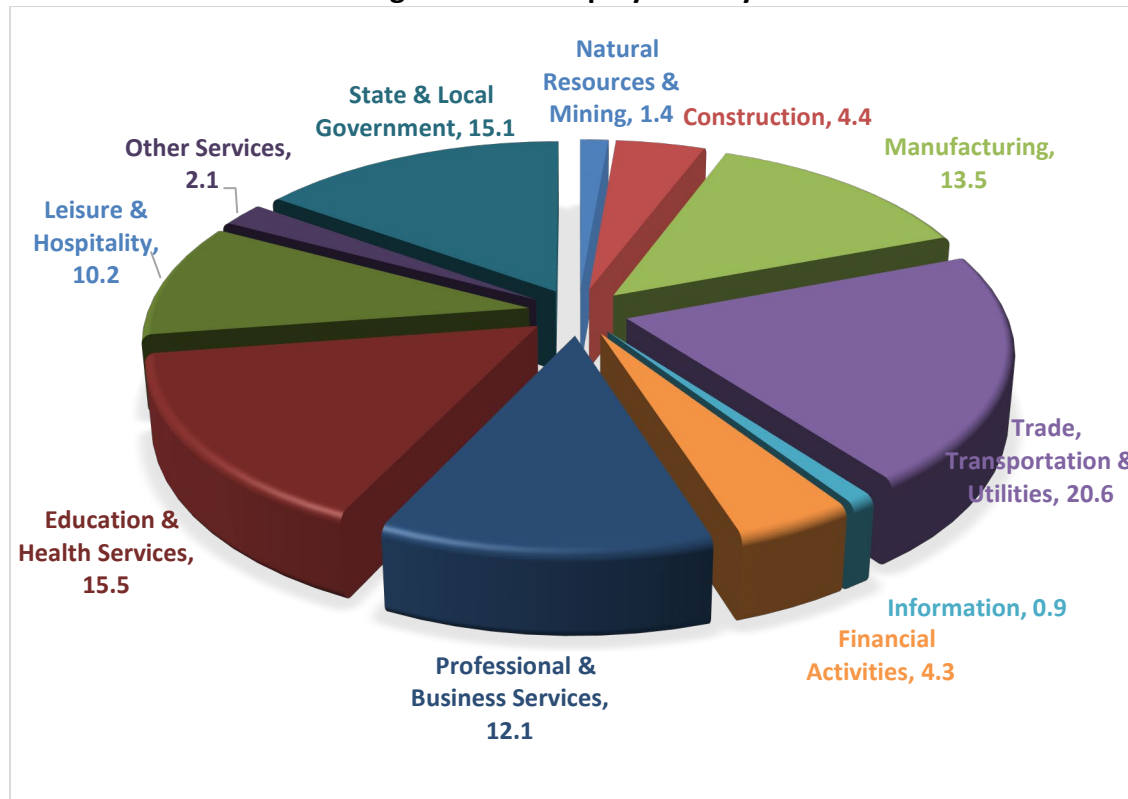
Civilian federal workers are covered by Unemployment Compensation for Federal Employees (UCFE).

SIGNIFICANT DEVELOPMENTS DURING SECOND QUARTER 2019

AVERAGE EMPLOYMENT CHANGES

Covered employment averaged 1,204,304 during the Second Quarter 2019 (refer to Table 1), an increase of 11,076 (0.9%) from the previous quarter and an increase of 21,997 (1.9%) from the average recorded one year ago. The over-the-year comparison is more significant when used as an economic indicator and allows for seasonal factors that appear when comparing over-the-quarter data to be disregarded.

Average Covered Employment by NAICS



EMPLOYMENT CHANGES FROM FIRST QUARTER 2019

Over the quarter increases were recorded in seven of the eleven industry groups. Large gains occurred in Leisure & Hospitality (4,796) and Construction (1,147). Over-the quarter losses occurred in four industry groups. Significant declines were posted in Trade, Transportation & Utilities

(-4,825), State & Local Government (-2,096), and Professional & Business Services (-1,932). Seasonal losses in State & Local Government were attributed to the end of the school year for Public Universities and Local schools.

EMPLOYMENT CHANGES FROM SECOND QUARTER 2018 (QUARTER YEAR AGO COMPARISON)

Over-the-year gains were recorded in ten industry groups (refer to Table 1). The largest expansions occurred in Leisure & Hospitality (7,734), Construction (3,556) and Education & Health Services (2,408). The only over-the-year contraction occurred in State & Local Government (-375).

COVERED WAGES

Wages paid to covered workers totaled \$13,356,848,831 for the Second Quarter 2019 (refer to Table 1), for an average weekly wage of \$853.15 (refer to Table 5). Benton County workers recorded the highest average weekly wage (\$1,197.36), and employees in Searcy County reported the lowest (\$516.96) (refer to Table 6). Professional and Business Services recorded the highest average weekly wage for the State of Arkansas (\$1,187.61). The Leisure & Hospitality sector recorded the lowest (\$329.18) (refer to Table 5).

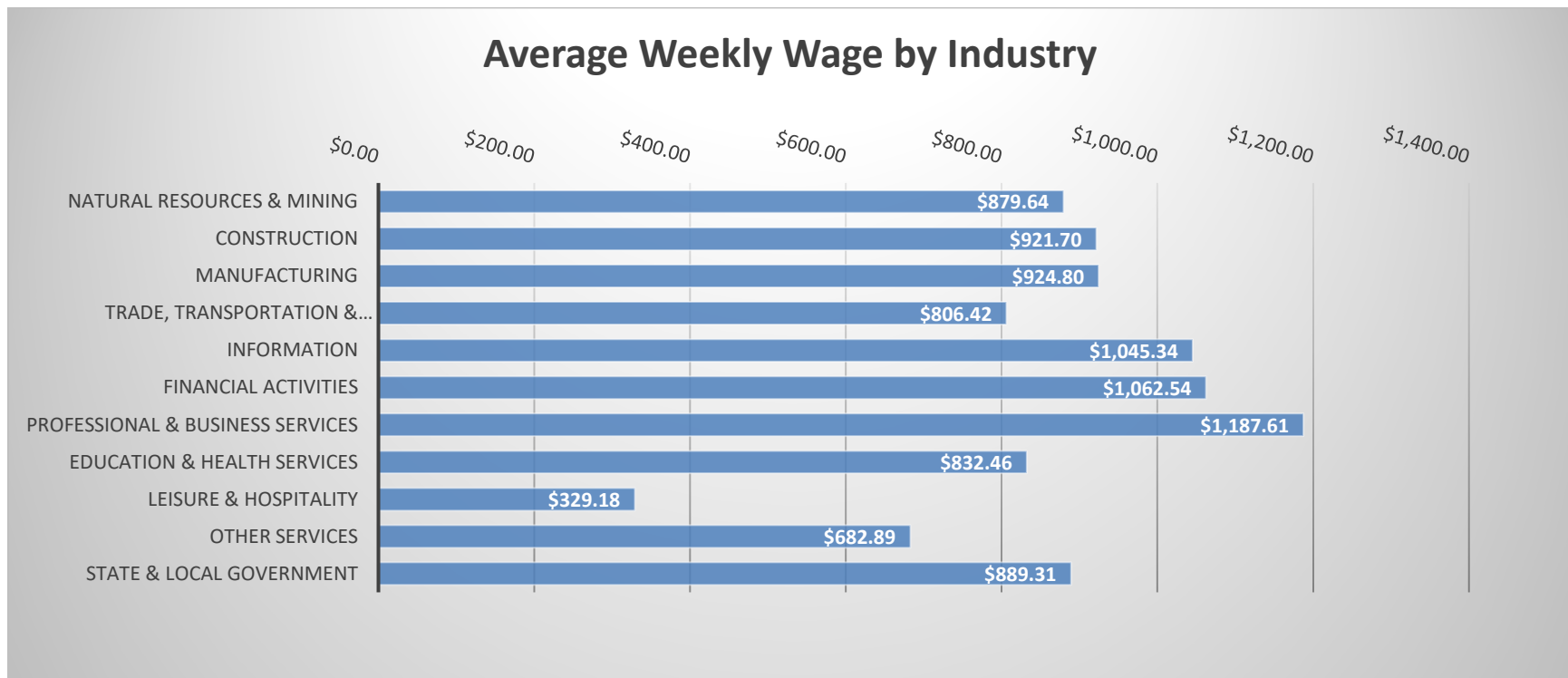


TABLE 1. QUARTERLY COMPARISON OF COVERED EMPLOYMENT AND WAGES, BY INDUSTRY

North American Industry Classification System - Industry Groups	Number of Employing Units	Monthly Employment Average	Percent of Total	Net Change From:		Total Wages Paid Apr - Jun 2019	Percent of Total
				Jan - Mar 2019	Apr - Jun 2018		
TOTAL	90,764	1,204,304	100	11,076	21,997	\$13,356,848,831	100
Natural Resources & Mining	2,560	16,491	1.4	15	590	188,575,562	1.4
Agriculture, Forestry, Fishing & Hunting	2,131	12,674	1.1	-46	584	128,647,326	1.0
Mining	429	3,817	0.3	62	6	59,928,236	0.4
Construction	7,131	52,635	4.4	1,147	3,556	630,672,943	4.7
Manufacturing	2,931	162,319	13.5	213	2,717	1,951,460,435	14.6
Trade, Transportation & Utilities	21,850	247,599	20.6	-4,825	1,685	2,595,703,093	19.4
Wholesale Trade	7,337	47,735	4.0	-48	779	801,004,982	6.0
Retail Trade	11,065	136,004	11.3	-4,912	-2,132	955,947,460	7.2
Transportation & Warehousing	3,037	56,056	4.7	119	2,988	670,232,609	5.0
Utilities	411	7,804	0.6	16	50	168,518,042	1.3
Information	1,295	11,109	0.9	175	158	150,959,947	1.1
Financial Activities	8,580	51,915	4.3	515	2,172	717,109,408	5.4
Finance & Insurance	5,053	37,923	3.1	235	1,507	583,625,971	4.4
Real Estate & Rental & Leasing	3,527	13,993	1.2	280	665	133,483,437	1.0
Professional & Business Services	14,868	145,637	12.1	-1,932	53	2,248,477,081	16.8
Professional & Technical Services	9,368	44,824	3.7	514	858	672,287,909	5.0
Management of Companies & Enterprises	545	33,329	2.8	-1,180	-1,789	1,044,951,074	7.8
Administrative & Waste Services	4,955	67,484	5.6	-1,266	984	531,238,098	4.0
Education & Health Services	15,793	187,068	15.5	-939	2,408	2,024,443,509	15.2
Educational Services	923	12,001	1.0	-376	116	115,194,898	0.9
Health Care & Social Assistance	14,870	175,067	14.5	-563	2,292	1,909,248,611	14.3
Leisure & Hospitality	7,338	122,459	10.2	4,796	7,734	524,043,214	3.9
Arts, Entertainment & Recreation	1,015	12,741	1.1	2,284	2,448	65,723,128	0.5
Accommodation & Food Services	6,323	109,718	9.1	2,512	5,286	458,320,086	3.4
Other Services	5,373	25,556	2.1	458	1,298	226,877,253	1.7
State & Local Government	3,045	181,516	15.1	-2,096	-375	2,098,526,386	15.7
Local Government	1,990	114,162	9.5	-787	455	1,293,326,327	9.7
State Government	1,055	67,354	5.6	-1,309	-830	805,200,059	6.0
Nonclassifiable Establishments	0	0	0.0	0	0	0	0.0

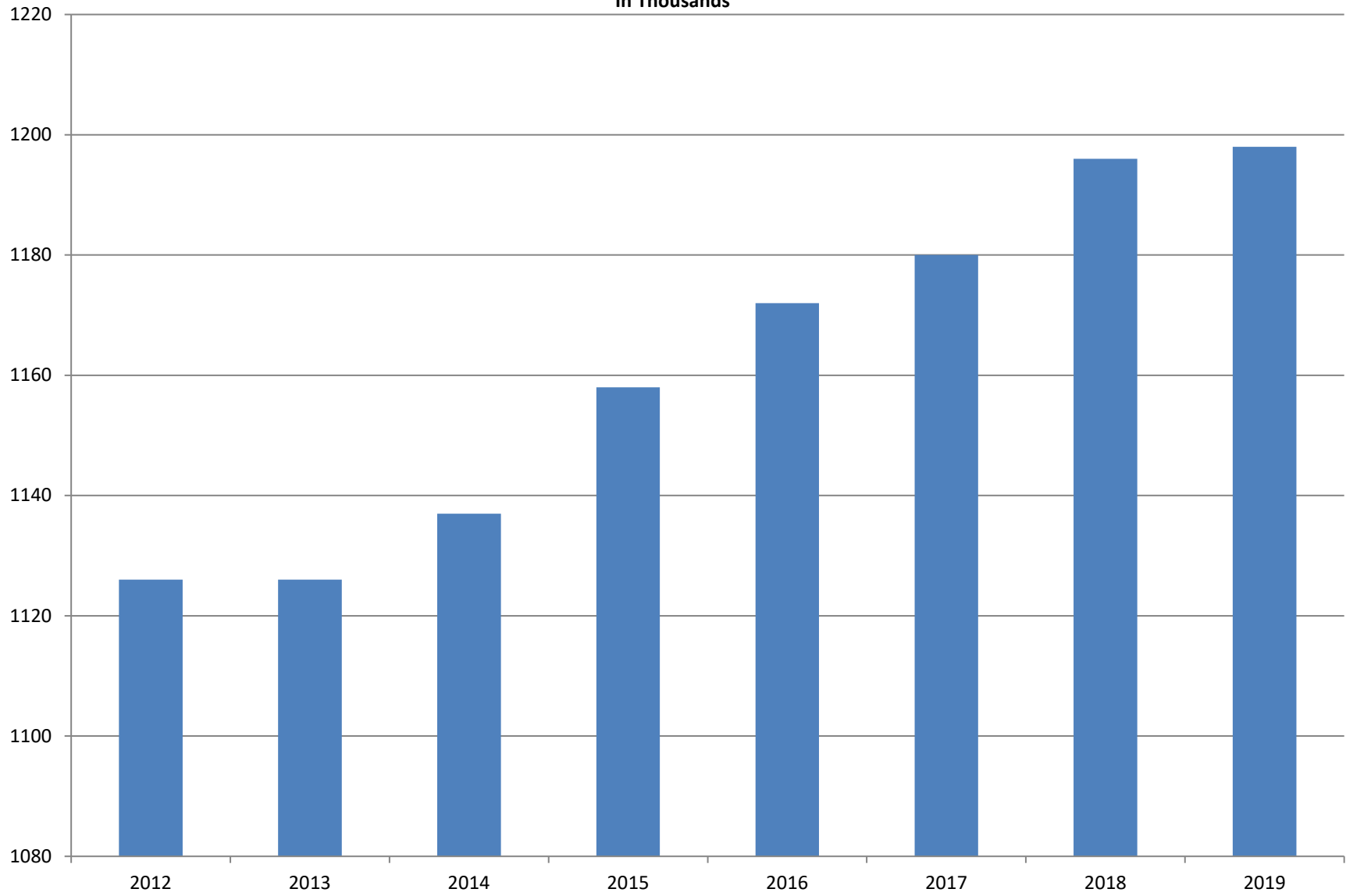
Note: Items do not necessarily add to total because of rounding. Because of industry code changes between years, substantial employment and wage shifts among industries are anticipated.

TABLE 2. TOTAL COVERED EMPLOYMENT IN ARKANSAS

PERIOD	2012	2013	2014	2015	2016	2017	2018	2019
AVERAGE	1,126,171	1,125,890	1,137,486	1,157,634	1,171,503	1,180,337	1,195,781	1,198,766
January	1,113,274	1,112,991	1,114,412	1,135,577	1,152,434	1,161,239	1,173,537	1,186,848
February	1,119,319	1,121,492	1,122,905	1,144,902	1,162,294	1,172,290	1,183,185	1,194,355
March	1,131,123	1,129,100	1,132,106	1,146,413	1,170,837	1,179,686	1,190,199	1,198,481
April	1,136,608	1,134,734	1,140,788	1,158,606	1,178,630	1,185,212	1,194,816	1,204,176
May	1,142,985	1,138,383	1,149,046	1,167,657	1,181,644	1,189,900	1,201,113	1,206,476
June	1,136,699	1,130,402	1,144,876	1,164,607	1,177,506	1,186,326	1,195,468	1,202,260
July	1,078,836	1,083,849	1,096,675	1,119,390	1,132,361	1,137,883	1,168,432	NA
August	1,108,552	1,109,759	1,125,162	1,148,502	1,160,743	1,168,802	1,200,284	NA
September	1,134,829	1,135,673	1,150,545	1,173,776	1,185,510	1,193,845	1,222,012	NA
October	1,135,677	1,138,312	1,153,684	1,173,953	1,185,022	1,194,194	1,205,161	NA
November	1,137,411	1,141,035	1,158,579	1,177,717	1,186,046	1,197,650	1,208,638	NA
December	1,138,742	1,134,955	1,161,056	1,180,513	1,185,009	1,197,013	1,206,531	NA

AVERAGE TOTAL COVERED EMPLOYMENT

In Thousands



TOTAL COVERED EARNINGS BY CALENDAR YEAR

In Thousands

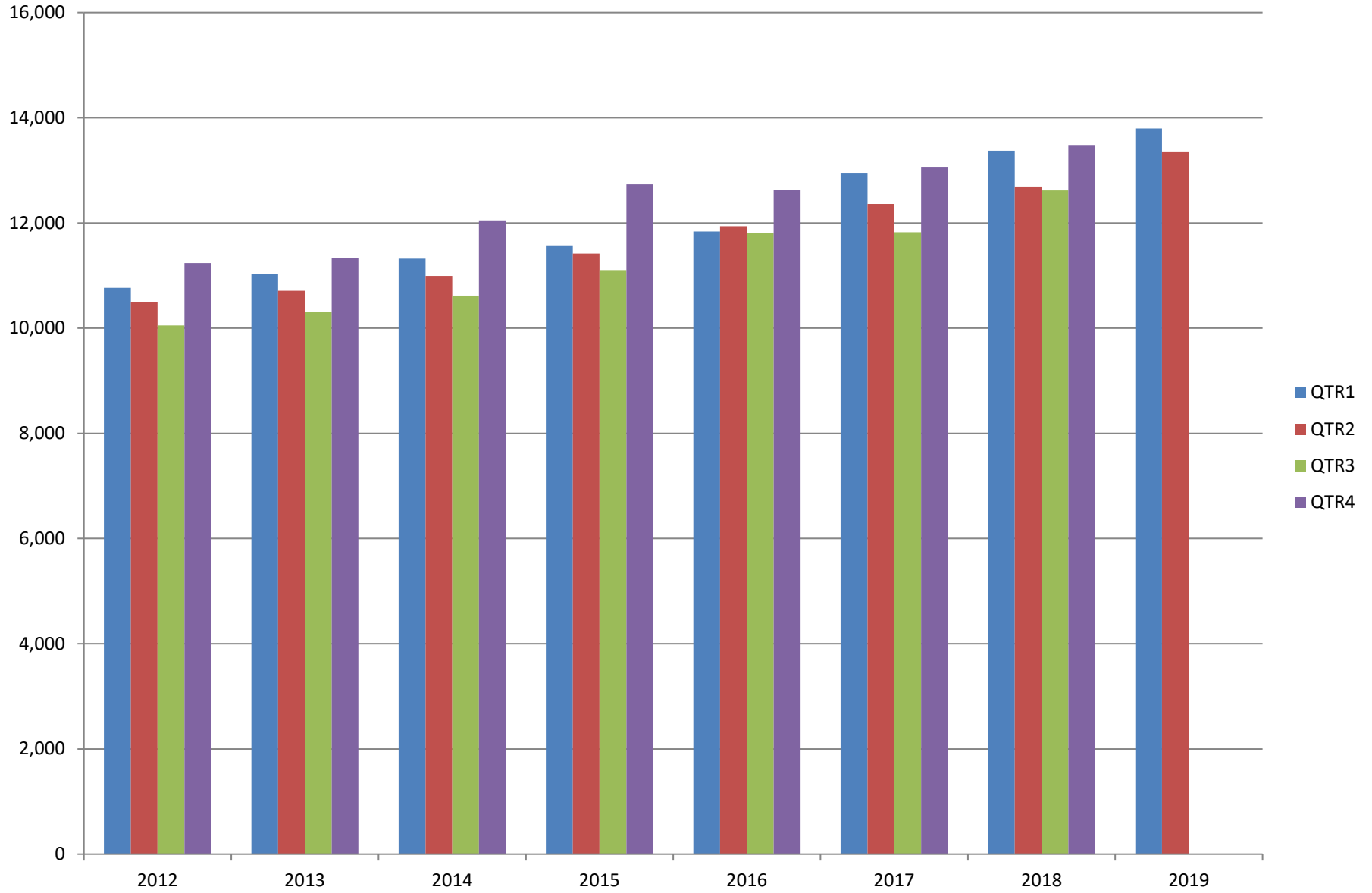


TABLE 3. TOTAL COVERED EARNINGS 2012 - 2019

PERIOD	2012	2013	2014	2015
TOTAL	\$42,551,238,929	\$43,371,086,461	\$44,980,520,034	\$46,836,352,793
January - March	10,766,175,449	11,027,184,315	11,321,422,241	11,575,046,688
April - June	10,494,369,042	10,711,027,503	10,991,760,061	11,419,363,330
July - September	10,053,294,410	10,304,451,772	10,619,889,280	11,104,443,452
October - December	11,237,400,028	11,328,422,871	12,047,448,452	12,737,499,323
Average Weekly Earnings	\$726.62	\$740.80	\$760.46	\$778.05

PERIOD	2016	2017	2018	2019
TOTAL	\$48,207,277,530	\$50,207,202,141	\$52,159,789,393	\$27,151,895,651
January - March	11,836,255,664	12,955,088,347	13,372,730,974	13,795,046,820
April - June	11,935,722,186	12,363,027,711	12,682,491,819	13,356,848,831
July - September	11,809,460,297	11,823,324,966	12,619,347,460	NA
October - December	12,625,839,383	13,065,761,117	13,485,219,140	NA
Average Weekly Earnings	\$791.34	\$818.01	\$838.84	\$871.15

TABLE 4. TOTAL TAXABLE EARNINGS, 2012 - 2019

PERIOD	2012	2013	2014	2015
TOTAL	11,624,348,048	11,644,747,978	11,919,662,224	12,258,632,610
January - March	6,167,036,199	6,184,735,653	6,288,682,396	6,378,966,662
April - June	2,838,154,846	2,805,431,293	2,831,013,392	2,915,293,283
July - September	1,494,712,584	1,506,497,129	1,552,243,963	1,640,978,599
October - December	1,124,444,419	1,148,083,903	1,247,722,473	1,323,394,066

PERIOD	2016	2017	2018	2019
TOTAL	12,511,938,047	12,744,039,136	11,335,932,409	9,021,347,345
January - March	6,595,351,454	6,958,706,950	6,577,871,657	6,737,833,125
April - June	3,003,077,908	2,908,226,426	2,278,450,975	2,283,514,220
July - September	1,651,582,584	1,576,968,648	1,328,868,479	
October - December	1,261,926,101	1,300,137,112	1,150,741,298	

TABLE 5. STATEWIDE SUMMARY

North American Industry Classification System - Industry Groups		Number of Employing Units	Employment			Total Earnings Apr- Jun 2019	Average Weekly Earnings
			Apr	May	Jun		
TOTAL, ALL INDUSTRIES		90,764	1,204,176	1,206,475	1,202,260	\$13,356,848,831	\$853.15
NATURAL RESOURCES & MINING		2,560	16,108	16,546	16,818	\$188,575,562	\$879.64
11	AGRICULTURE, FORESTRY, FISHING & HUNTING	2,131	12,337	12,728	12,956	\$128,647,326	\$780.83
111	CROP PRODUCTION	958	3,979	4,112	4,217	\$32,542,314	\$610.15
1111	Oilseed & Grain Farming	712	2,721	2,823	2,904	22,435,171	612.85
1112	Vegetable & Melon Farming	41	229	236	261	1,528,311	485.79
1113	Fruit & Tree Nut Farming	10	37	30	45	217,972	449.12
1114	Greenhouse & Nursery Production	37	388	392	359	3,282,852	665.13
1119	Other Crop Farming	158	604	631	648	5,078,008	622.33
112	ANIMAL PRODUCTION & AQUACULTURE	339	3,281	3,260	3,300	\$39,720,466	\$931.44
1121	Cattle Ranching & Farming	131	374	378	402	2,983,006	596.52
1122	Hog & Pig Farming	12	144	145	147	1,587,294	840.13
1123	Poultry & Egg Production	131	2,311	2,289	2,306	30,629,925	1,023.52
1125	Animal Aquaculture	42	385	385	384	4,137,639	827.42
	Other	23	67	63	61	382,602	462.27
115	SUPPORT ACTIVITIES FOR AGRICULTURE & FORESTRY	419	2,831	3,093	3,090	\$31,308,375	\$801.53
1151	Support Activities for Crop Production	278	1,277	1,341	1,389	15,360,362	884.63
1152	Support Activities for Animal Production	65	710	714	702	6,278,324	681.49
1153	Support Activities for Forestry	76	844	1,038	999	9,669,689	774.55
	OTHER	415	2,246	2,263	2,349	\$25,076,171	\$843.80
21	MINING	429	3,771	3,818	3,862	\$59,928,236	\$1,207.72
211	OIL & GAS EXTRACTION	76	679	674	678	\$13,731,189	\$1,560.19
212	MINING (EXCEPT OIL & GAS)	108	1,777	1,808	1,856	\$24,789,688	\$1,051.41
213	SUPPORT ACTIVITES FOR MINING	245	1,315	1,336	1,328	\$21,407,359	\$1,241.56

TABLE 5. STATEWIDE SUMMARY

North American Industry Classification System - Industry Groups		Number of Employing Units	Employment			Total Earnings Apr- Jun 2019	Average Weekly Earnings
			Apr	May	Jun		
CONSTRUCTION		7,131	52,381	52,415	53,108	\$630,672,943	\$921.70
236	CONSTRUCTION OF BUILDINGS	1,897	10,848	11,013	11,202	\$145,840,950	\$1,017.92
2361	Residential Building Construction	1,289	3,637	3,674	3,762	40,111,929	835.96
2362	Nonresidential Building Construction	608	7,211	7,339	7,440	105,729,021	1,109.55
237	HEAVY & CIVIL ENGINEERING CONSTRUCTION	741	8,144	8,136	8,303	\$105,811,292	\$993.29
2371	Utility System Construction	424	4,632	4,484	4,540	61,699,173	1,042.64
2372	Land Subdivision	43	85	96	94	888,777	745.83
2373	Highway, Street & Bridge Construction	178	2,672	2,775	2,875	33,736,072	935.50
2379	Other Heavy Construction	96	755	781	794	9,487,270	939.64
238	SPECIALTY TRADE CONTRACTORS	4,493	33,389	33,266	33,603	\$379,020,701	\$872.41
2381	Building Foundation & Exterior Contractors	830	6,107	6,046	6,115	66,970,591	846.00
2382	Building Equipment Contractors	2,204	18,562	18,438	18,628	221,967,991	920.82
2383	Building Finishing Contractors	735	3,820	3,878	3,869	41,117,912	820.33
2389	Other Specialty Trade Contractors	724	4,900	4,904	4,991	48,964,207	763.73
MANUFACTURING		2,931	161,909	162,321	162,728	\$1,951,460,435	\$924.80
311	FOOD MANUFACTURING	302	48,280	48,460	48,690	\$466,200,997	\$739.77
3111	Animal Food Manufacturing	49	1,980	1,994	1,989	28,117,304	1,088.14
3112	Grain & Oilseed Milling	34	2,695	2,710	2,747	31,455,128	890.44
3114	Fruit, Vegetable & Specialty Food	19	4,061	4,052	4,087	49,683,205	939.78
3115	Dairy Product Manufacturing	7	555	558	563	6,081,763	837.40
3116	Animal Slaughtering & Processing	79	32,664	32,773	32,848	284,170,001	667.22
3118	Bakeries & Tortilla Manufacturing	80	4,020	4,058	4,127	40,667,173	768.93
3119	Other Food Manufacturing	22	2,269	2,279	2,297	25,792,978	869.57
	Other	12	36	36	32	233,445	518.00
312	BEVERAGE & TOBACCO PRODUCT MANUFACTURING	63	1,465	1,494	1,528	\$16,783,036	\$863.16
313	TEXTILE MILLS	9	130	133	130	\$2,106,423	\$1,236.89
314	TEXTILE PRODUCT MILLS	44	914	912	892	\$11,067,780	\$939.70
3141	Textile Furnishing Mills	9	19	20	20	115,176	450.49
3149	Other Textile Product Mills	35	895	892	872	10,952,604	950.55
315	APPAREL MANUFACTURING	15	891	859	865	\$5,724,315	\$505.16
3151	Apparel Knitting Mills	3	534	510	495	3,870,228	580.33
	Other	12	357	349	370	1,854,087	397.65

TABLE 5. STATEWIDE SUMMARY

North American Industry Classification System - Industry Groups		Number of Employing Units	Employment			Total Earnings	Average Weekly Earnings
			Apr	May	Jun	Apr- Jun 2019	
316	LEATHER & ALLIED PRODUCT MANUFACTURING	12	1,138	1,149	1,143	\$8,226,946	\$553.51
3162	Footwear Manufacturing	4	934	946	937	6,447,621	\$528.19
3169	Other Leather & Allied Product Manufacturing	8	204	203	206	1,779,325	\$669.84
321	WOOD PRODUCT MANUFACTURING	303	9,679	9,685	9,658	\$107,349,991	\$853.60
3211	Sawmills & Wood Preservation	141	4,798	4,781	4,766	57,412,871	923.61
3212	Veneer & Engineered Wood Products	40	1,714	1,757	1,753	21,093,251	931.79
3219	Other Wood Product Manufacturing	122	3,167	3,147	3,139	28,843,869	704.14
322	PAPER MANUFACTURING	70	9,653	9,695	9,728	\$155,719,906	\$1,235.91
3221	Pulp, Paper & Paperboard Mills	15	3,906	3,929	3,951	78,973,268	1,546.29
3222	Converted Paper Product Manufacturing	55	5,747	5,766	5,777	76,746,638	1,024.34
323	PRINTING & RELATED SUPPORT ACTIVITIES	249	3,709	3,739	3,600	\$38,902,784	\$812.60
324	PETROLEUM & COAL PRODUCTS MANUFACTURING	21	1,220	1,212	1,220	\$22,089,189	\$1,395.81
325	CHEMICAL MANUFACTURING	124	5,628	5,671	5,716	\$87,812,647	\$1,190.98
3251	Basic Chemical Manufacturing	30	1,923	1,925	1,955	35,167,356	1,398.51
3252	Resin, Rubber & Artificial Fibers	11	486	483	489	7,303,295	1,155.95
3253	Agricultural Chemical Manufacturing	16	492	493	487	8,713,396	1,366.02
3254	Pharmaceutical & Medicine Manufacturing	25	522	515	511	6,947,638	1,035.72
3255	Paint, Coating & Adhesive Manufacturing	10	227	226	228	3,217,037	1,090.15
3256	Soap, Cleaning Compound, & Toilet Preparation Manufacturing	12	1,276	1,295	1,317	16,196,201	961.31
3259	Other Chemical Preparation Manufacturing	20	702	734	729	10,267,724	1,094.45
326	PLASTICS & RUBBER PRODUCTS MANUFACTURING	119	10,980	11,012	11,076	\$137,826,706	\$961.84
3261	Plastics Product Manufacturing	93	6,740	6,766	6,815	76,152,907	864.81
3262	Rubber Product Manufacturing	26	4,240	4,246	4,261	61,673,799	1,116.53
327	NONMETALLIC MINERAL PRODUCT MANUFACTURING	228	3,682	3,713	3,752	\$45,865,336	\$949.52
3271	Clay Product & Refractory Manufacturing	12	467	472	468	5,853,864	960.12
3272	Glass & Glass Product Manufacturing	8	368	366	368	4,626,669	968.87
3273	Cement & Concrete Product Manufacturing	170	2,113	2,156	2,206	25,708,085	916.24
3274	Lime & Gypsum Product Manufacturing	3	294	294	289	4,723,444	1,242.90
3279	Other Nonmetallic Mineral Products Manufacturing	35	440	425	421	4,953,274	888.85
331	PRIMARY METAL MANUFACTURING	68	8,499	8,529	8,599	\$156,822,999	\$1,412.18
3311	Iron & Steel Mills & Ferroalloys	9	3,341	3,353	3,382	84,086,281	1,925.82
3312	Purchased Steel Product Manufacturing	21	2,411	2,441	2,491	38,181,419	1,199.93
3313	Alumina & Aluminum Production	15	894	889	888	12,716,551	1,098.69
3314	Other Nonferrous Metal Production	6	262	265	269	3,386,634	981.82
3315	Foundries	17	1,591	1,581	1,569	18,452,114	898.16

TABLE 5. STATEWIDE SUMMARY

North American Industry Classification System - Industry Groups		Number of Employing Units	Employment			Total Earnings	Average Weekly Earnings
			Apr	May	Jun	Apr- Jun 2019	
332	FABRICATED METAL PRODUCT MANUFACTURING	524	15,355	15,337	15,392	\$195,637,308	\$979.67
3321	Forging & Stamping	12	436	441	448	6,274,479	1,092.80
3322	Cutlery & Hand Tool Manufacturing	14	549	561	579	6,449,508	881.20
3323	Architectural & Structural Metals	152	4,606	4,650	4,667	62,346,987	1,033.38
3324	Boilers, Tanks & Shipping Containers	14	620	611	619	7,930,114	989.20
3325	Hardware Manufacturing	5	266	266	275	3,929,977	1,123.81
3326	Spring & Wire Product Manufacturing	10	337	347	355	3,967,353	881.18
3327	Machine Shops & Threaded Products	207	2,335	2,344	2,334	25,599,881	842.39
3328	Coating, Engraving & Heat Treating Metals	41	669	650	624	6,720,618	798.20
3329	Other Fabricated Metal Product Manufacturing	69	5,537	5,467	5,491	72,418,391	1,013.15
333	MACHINERY MANUFACTURING	205	12,141	12,230	12,222	\$149,260,587	\$941.29
3331	Agriculture, Construction & Mining Machinery	35	3,005	2,996	2,953	32,086,357	826.95
3332	Industrial Machinery Manufacturing	26	713	711	711	11,056,244	1,195.05
3333	Commercial & Service Industry Machinery	23	815	823	829	10,983,607	1,027.43
3334	HVAC & Commercial Refrigeration Equipment	23	3,041	3,077	3,047	36,873,691	928.46
3335	Metalworking Machinery Manufacturing	49	904	918	918	11,319,084	953.32
3336	Turbine & Power Transmission Equipment Manufacturing	5	809	817	812	10,974,220	1,038.77
3339	Other General Purpose Machinery Manufacturing	44	2,854	2,888	2,952	35,967,384	954.70
334	COMPUTER & ELECTRONIC PRODUCT MANUFACTURING	49	1,968	1,928	1,925	\$26,284,137	\$1,042.02
3343	Audio & Video Equipment Manufacturing	5	110	111	113	1,400,925	967.94
3344	Semiconductors & Electronic Components	22	1,403	1,354	1,370	18,757,495	1,048.86
3345	Navigational, Measuring, Electromedical, & Control Instr, Mfg Other	18 4	376 79	386 77	369 73	4,950,938 1,174,779	1,010.19 1,183.86
335	ELECTRICAL EQUIPMENT & APPLIANCES	52	4,494	4,459	4,449	\$61,432,809	\$1,057.81
3351	Electric Lighting Equipment Manufacturing	9	313	308	300	3,583,738	\$897.95
3352	Household Appliance Manufacturing	4	30	28	29	382,561	\$1,014.75
3353	Electrical Equipment Manufacturing	20	2,835	2,821	2,819	40,789,765	1,110.68
3359	Other Electrical Equipment & Component Manufacturing	19	1,316	1,302	1,301	16,676,745	982.01
336	TRANSPORTATION EQUIPMENT MANUFACTURING	132	15,221	15,211	15,248	\$189,017,885	\$954.89
3362	Motor Vehicle Body & Trailer Manufacturing	29	2,176	2,190	2,199	22,562,327	793.10
3363	Motor Vehicle Parts Manufacturing	40	5,251	5,232	5,246	59,184,593	868.33
3364	Aerospace Product & Parts Manufacturing	28	3,970	3,982	4,011	68,121,321	1,314.08
3366	Ship & Boat Building Other	23 12	2,418 1,406	2,396 1,411	2,393 1,399	20,804,256 18,345,388	666.16 1,004.16
337	FURNITURE & RELATED PRODUCT MANUFACTURING	167	3,562	3,566	3,557	\$33,147,107	\$715.89
3371	Household & Institutional Furniture Other	135 32	2,802 760	2,818 748	2,802 755	25,112,680 8,034,427	688.11 819.31
339	MISCELLANEOUS MANUFACTURING	175	3,300	3,327	3,338	\$34,181,547	\$791.58
3391	Medical Equipment & Supplies Manufacturing	67	1,601	1,602	1,618	18,680,422	894.19
3399	Other Miscellaneous Manufacturing	108	1,699	1,725	1,720	15,501,125	695.41

TABLE 5. STATEWIDE SUMMARY

North American Industry Classification System - Industry Groups		Number of Employing Units	Employment			Total Earnings Apr- Jun 2019	Average Weekly Earnings
			Apr	May	Jun		
TRADE, TRANSPORTATION & UTILITIES		21,850	247,179	247,810	247,808	\$2,595,703,093	\$806.42
42	WHOLESALE TRADE	7,337	47,607	47,847	47,750	\$801,004,982	\$1,290.80
423	MERCHANT WHOLESALERS, DURABLE GOODS	3,233	24,063	24,180	24,263	\$382,908,120	\$1,218.70
4231	Motor Vehicle & Part Merchant Wholesalers	285	3,104	3,127	3,134	45,713,271	1,126.45
4232	Furniture & Furnishings Merchant Wholesalers	93	463	467	468	8,403,302	1,387.14
4233	Lumber & Supply Merchant Wholesalers	233	1,534	1,575	1,613	20,050,234	979.88
4234	Commercial Goods Merchant Wholesalers	622	3,172	3,171	3,138	68,065,776	1,656.73
4235	Metal & Mineral Merchant Wholesalers	143	1,096	1,076	1,073	14,946,070	1,062.89
4236	Appliances & Electronics Goods Merchant Wholesalers	325	2,653	2,679	2,685	47,441,271	1,365.60
4237	Hardware & Plumbing Merchant Wholesalers	304	2,789	2,802	2,807	41,539,870	1,141.48
4238	Machinery & Supply Merchant Wholesalers	928	7,274	7,306	7,348	109,850,169	1,156.06
4239	Miscellaneous Durable Goods Merchant Wholesalers	300	1,978	1,977	1,997	26,898,157	1,042.89
424	MERCHANT WHOLESALERS, NONDURABLE GOODS	2,021	18,052	18,170	18,000	\$307,353,719	\$1,308.10
4241	Paper & Paper Product Merchant Wholesalers	128	1,224	1,235	1,187	21,043,263	1,331.91
4242	Druggist' Goods Merchant Wholesalers	251	1,602	1,604	1,607	42,108,688	2,018.99
4243	Apparel & Piece Goods Merchant Wholesalers	81	753	743	723	11,073,284	1,151.59
4244	Grocery Product Merchant Wholesalers	562	5,694	5,745	5,708	109,855,066	1,478.46
4245	Farm Product & Raw Material Merchant Wholesalers	78	802	806	801	6,673,536	639.29
4246	Chemical Merchant Wholesalers	229	1,074	1,068	1,066	24,051,819	1,730.18
4247	Petroleum Merchant Wholesalers	166	1,187	1,187	1,164	15,300,509	997.99
4248	Alcoholic Beverage Merchant Wholesalers	70	1,652	1,649	1,644	23,339,916	1,089.21
4249	Miscellaneous Nondurable Goods Merchant Wholesaler	456	4,064	4,133	4,100	53,907,638	1,011.65
425	ELECTRONIC MARKETS & AGENTS & BROKERS	2,083	5,492	5,497	5,487	\$110,743,143	\$1,551.11
44 - 45	RETAIL TRADE	11,065	135,646	136,367	135,999	\$955,947,460	\$540.68
441	MOTOR VEHICLE & PARTS DEALERS	1,520	18,984	19,064	19,190	\$220,216,300	\$887.86
4411	Automobile Dealers	621	11,470	11,557	11,605	155,122,763	1,033.66
4412	Other Motor Vehicle Dealers	174	1,742	1,784	1,822	20,837,515	899.15
4413	Automotive Parts, Accessories & Tire Stores	725	5,772	5,723	5,763	44,256,022	591.78
442	FURNITURE & HOME FURNISHINGS STORES	502	3,525	3,558	3,503	\$28,750,309	\$626.74
4421	Furniture Stores	270	1,963	1,985	1,958	18,310,761	715.47
4422	Home Furnishings Stores	232	1,562	1,573	1,545	10,439,548	514.77
443	ELECTRONICS & APPLIANCE STORES	377	3,222	3,216	3,143	\$28,848,280	\$694.84
444	BUILDING MATERIAL & GARDEN SUPPLY STORES	847	12,296	12,292	12,279	\$87,223,631	\$545.98
4441	Building Material & Supplies Dealers	604	10,209	10,166	10,173	74,380,723	561.90
4442	Lawn & Garden Equipment & Supplies Stores	243	2,087	2,126	2,106	12,842,908	469.02

TABLE 5. STATEWIDE SUMMARY

North American Industry Classification System - Industry Groups		Number of Employing Units	Employment			Total Earnings Apr- Jun 2019	Average Weekly Earnings
			Apr	May	Jun		
445	FOOD & BEVERAGE STORES	1,043	18,985	19,101	18,961	\$107,368,392	\$434.33
4451	Grocery Stores	553	16,408	16,513	16,404	90,906,510	425.31
4452	Specialty Food Stores	145	820	813	798	6,975,161	662.14
4453	Beer, Wine & Liquor Stores	345	1,757	1,775	1,759	9,486,721	413.77
446	HEALTH & PERSONAL CARE STORES	1,020	8,619	8,720	8,694	\$80,470,300	\$713.33
447	GASOLINE STATIONS	1,598	12,420	12,452	12,522	\$60,175,254	\$371.36
44711	Gasoline Stations with Convenience Stores	1,502	11,222	11,260	11,327	52,946,508	361.40
44719	Other Gasoline Stations	96	1,198	1,192	1,195	7,228,746	465.32
448	CLOTHING & CLOTHING ACCESSORIES STORES	1,007	7,640	7,417	7,271	\$34,473,185	\$356.29
4481	Clothing Stores	756	5,836	5,649	5,570	23,554,340	318.71
4482	Shoe Stores	131	1,152	1,124	1,073	4,794,038	330.34
4483	Jewelry, Luggage & Leather Goods Stores	120	652	644	628	6,124,807	734.62
451	SPORTING GOODS, HOBBY, BOOK & MUSIC STORES	444	4,201	4,197	4,182	\$21,344,130	\$391.54
4511	Sporting Goods & Musical Instrument Stores	385	3,733	3,759	3,772	19,524,255	400.00
4512	Book, Periodical & Music Stores	59	468	438	410	1,819,875	319.13
452	GENERAL MERCHANDISE STORES	1,010	36,950	37,455	37,337	\$229,182,033	\$473.31
4522	Department Stores	140	7,209	7,205	7,214	38,686,756	412.78
4523	Gen. Merchandise Stores, Warehouse clubs & Supercenters	870	29,741	30,250	30,123	190,495,277	487.83
453	MISCELLANEOUS STORE RETAILERS	1,173	6,964	7,062	7,085	\$39,478,716	\$431.55
4531	Florists	165	596	621	600	3,090,635	392.53
4532	Office Supplies, Stationery & Gift Stores	234	1,431	1,472	1,485	8,424,869	443.07
4533	Used Merchandise Stores	248	2,065	2,076	2,078	10,090,885	374.44
4539	Other Miscellaneous Store Retailers	526	2,872	2,893	2,922	17,872,327	474.78
454	NONSTORE RETAILERS	524	1,840	1,833	1,832	\$18,416,930	\$772.04
4541	Electronic Shopping & Mail-Order Houses	285	717	718	723	7,509,066	802.99
4542	Vending Machine Operators	60	424	427	418	3,731,307	678.54
4543	Direct Selling Establishments	179	699	688	691	7,176,557	796.98
48 - 49	TRANSPORTATION & WAREHOUSING	3,037	56,149	55,812	56,208	\$670,232,609	\$919.72
481	AIR TRANSPORTATION	45	717	720	723	\$7,167,706	\$765.78
4811	Scheduled Air Transportation	17	619	621	618	5,249,128	651.96
4812	Nonshceduled Air Transportation	28	98	99	105	1,918,578	1,466.06
483	WATER TRANSPORTATION	7	39	38	37	\$709,751	\$1,436.74
484	TRUCK TRANSPORTATION	1,888	32,922	32,830	33,019	\$427,222,242	\$998.16
4841	General Freight Trucking	1,101	26,568	26,471	26,588	354,525,416	1,027.46
4842	Specialized Freight Trucking	787	6,354	6,359	6,431	72,696,826	876.32

TABLE 5. STATEWIDE SUMMARY

North American Industry Classification System - Industry Groups		Number of Employing Units	Employment			Total Earnings	Average Weekly Earnings
			Apr	May	Jun	Apr- Jun 2019	
485	TRANSIT & GROUND PASSENGER TRANSPORTATION	125	1,894	1,888	1,879	\$11,469,707	\$467.56
4853	Taxi & Limousine Service	28	354	351	349	1,973,228	432.03
4854	School & Employee Bus Transportation	14	413	416	413	2,129,916	395.75
4859	Other Ground Passenger Transportation	71	936	929	922	5,679,522	470.28
	Other	12	191	192	195	1,687,041	673.56
486	PIPELINE TRANSPORTATION	38	399	399	402	\$9,708,939	\$1,867.10
487	SCENIC & SIGHTSEEING TRANSPORTATION	4	27	38	39	\$99,794	\$221.44
488	SUPPORT ACTIVITIES FOR TRANSPORTATION	527	5,812	5,830	5,924	\$72,348,002	\$950.46
4881	Support Activities for Air Transportation	108	1,119	1,108	1,122	11,902,978	820.20
4882	Support Activities for Rail Transportation	37	897	880	885	10,909,700	945.76
4883	Support Activities for Water Transportation	22	442	445	450	6,013,468	1,037.94
4884	Support Activities for Road Transportation	162	896	906	933	8,419,237	710.38
4885	Freight Transportation Arrangement	185	2,356	2,380	2,407	34,003,328	1,098.55
4889	Other Support Activities for Transportation	13	102	111	127	1,099,291	746.13
493	WAREHOUSING & STORAGE	221	8,877	8,611	8,653	\$91,865,030	\$810.97
	OTHER	182	5,462	5,458	5,532	\$49,641,438	\$696.31
22	UTILITIES	411	7,777	7,784	7,851	\$168,518,042	\$1,661.06
2211	Power Generation & Supply	165	5,829	5,834	5,891	141,090,022	1,854.80
2212	Natural Gas Distribution	67	1,023	1,020	1,022	18,056,240	1,359.49
2213	Water, Sewage & Other Systems	179	925	930	938	9,371,780	774.34
INFORMATION		1,295	11,070	11,092	11,164	\$150,959,947	\$1,045.34
511	PUBLISHING INDUSTRIES, EXCEPT INTERNET	233	2,750	2,740	2,744	\$29,089,056	\$815.26
5111	Newspaper, Book & Directory Publishers	181	2,316	2,299	2,318	20,956,145	697.54
5112	Software Publishers	52	434	441	426	8,132,911	1,442.60
512	MOTION PICTURE & SOUND RECORDING INDUSTRY	151	1,347	1,390	1,431	\$7,628,744	\$422.38
5121	Motion Picture & Video Industries	136	1,332	1,374	1,415	7,431,145	416.13
5122	Sound Recording Industries	15	15	16	16	197,599	970.21
515	BROADCASTING, EXCEPT INTERNET	120	1,589	1,572	1,548	\$17,337,620	\$849.65

TABLE 5. STATEWIDE SUMMARY

North American Industry Classification System - Industry Groups		Number of Employing Units	Employment			Total Earnings	Average Weekly Earnings
			Apr	May	Jun	Apr- Jun 2019	
517	TELECOMMUNICATIONS	354	3,403	3,418	3,408	\$55,824,201	\$1,259.41
5173	Telecommunications Resellers	247	3,023	3,034	3,026	49,089,805	1,247.21
5174	Satellite Telecommunications Carriers	4	7	7	6	71,415	824.02
5179	Other Telecommunications	103	373	377	376	6,662,981	1,365.55
518	DATA PROCESSING, HOSTING & RELATED SERVICES	341	1,632	1,622	1,664	\$36,565,079	\$1,715.76
519	OTHER INFORMATION SERVICES	96	349	350	369	\$4,515,247	\$975.64
FINANCIAL ACTIVITIES		8,580	51,768	51,863	52,115	\$717,109,408	\$1,062.54
52	FINANCE & INSURANCE	5,053	37,873	37,860	38,035	\$583,625,971	\$1,183.84
522	CREDIT INTERMEDIATION & RELATED ACTIVITIES	1,958	19,497	19,518	19,663	\$275,505,204	\$1,083.51
5221	Depository Credit Intermediation	1,409	16,513	16,530	16,640	226,508,974	1,052.10
5222	Nondepository Credit Intermediation	408	1,871	1,885	1,907	31,955,322	1,302.19
5223	Activities Related to Credit Intermediation	141	1,113	1,103	1,116	17,040,908	1,180.23
523	FINANCIAL INVESTMENT & RELATED ACTIVITIES	728	3,116	3,090	3,079	\$82,711,841	\$2,055.72
5231	Insurance Carriers	302	2,161	2,134	2,133	64,229,786	2,305.89
5239	Insurance Agencies, Brokerages & Support	426	955	956	946	18,482,055	1,492.86
524	INSURANCE CARRIERS & RELATED ACTIVITIES	2,287	15,164	15,142	15,180	\$223,657,984	\$1,134.71
5231	Security & Commodity Contracts Intermediation & Brokerage	303	6,716	6,680	6,718	109,050,271	1,251.14
5239	Other Financial Investment Activities	1,984	8,448	8,462	8,462	114,607,713	1,042.41
	OTHER	80	96	110	113	\$1,750,942	\$1,266.66
53	REAL ESTATE & RENTAL & LEASING	3,527	13,895	14,003	14,080	\$133,483,437	\$733.81
531	REAL ESTATE	2,921	9,654	9,683	9,664	\$87,563,810	\$696.77
5311	Lessors of Real Estate	1,109	4,308	4,328	4,281	36,009,248	643.32
5312	Offices of Real Estate Agents & Brokers	951	1,946	1,946	1,965	19,234,285	757.84
5313	Activities Related to Real Estate	861	3,400	3,409	3,418	32,320,277	729.30
532	RENTAL & LEASING SERVICES	589	4,187	4,264	4,361	\$45,089,071	\$812.14
5321	Automotive Equipment Rental & Leasing	122	1,158	1,154	1,169	9,252,770	613.40
5322	Consumer Goods Rental	300	1,852	1,920	1,996	16,682,513	667.44
5323	General Rental Centers	35	213	218	221	2,630,199	930.93
5324	Machinery & Equipment Rental & Leasing	132	964	972	975	16,523,589	1,309.91
533	LESSORS OF NONFINANCIAL INTANGIBLE ASSETS	17	54	56	55	\$830,556	\$1,161.62

TABLE 5. STATEWIDE SUMMARY

North American Industry Classification System - Industry Groups		Number of Employing Units	Employment			Total Earnings Apr- Jun 2019	Average Weekly Earnings
			Apr	May	Jun		
PROFESSIONAL & BUSINESS SERVICES		14,868	146,762	146,462	143,686	\$2,248,477,081	\$1,187.61
54	PROFESSIONAL & TECHNICAL SERVICES	9,368	45,570	44,512	44,389	\$672,287,909	\$1,153.73
5411	Legal Services	1,673	5,943	5,963	6,023	75,680,630	974.11
5412	Accounting & Bookkeeping Services	1,292	7,192	6,139	5,927	78,370,275	939.11
5413	Architectural & Engineering Services	1,043	6,365	6,358	6,533	99,424,317	1,191.53
5414	Specialized Design Services	173	362	362	365	4,398,326	932.05
5415	Computer Systems Design & Related Services	2,005	9,823	9,835	9,651	202,791,758	1,596.71
5416	Management & Technical Consulting Services	2,043	6,714	6,715	6,711	105,322,772	1,206.82
5417	Scientific Research & Development Services	132	765	779	790	12,429,527	1,228.94
5418	Advertising & Related Services	398	3,940	3,906	3,873	49,182,734	968.50
5419	Other Professional & Technical Services	609	4,466	4,455	4,516	44,687,570	767.47
55	MANAGEMENT OF COMPANIES & ENTERPRISES	545	33,093	33,283	33,610	\$1,044,951,074	\$2,411.76
56	ADMINISTRATIVE & WASTE SERVICES	4,955	68,099	68,667	65,687	\$531,238,098	\$605.54
561	ADMINISTRATIVE & SUPPORT SERVICES	4,624	64,489	65,048	62,057	\$484,063,219	\$583.04
5611	Office Administrative Services	741	4,258	4,278	4,204	57,829,975	1,047.52
5612	Facilities Support Services	65	1,565	1,583	1,590	13,418,122	653.54
5613	Employment Services	1,219	29,059	29,292	26,465	172,425,362	469.14
5614	Business Support Services	377	7,793	7,669	7,652	88,347,653	882.06
5615	Travel Arrangement & Reservation Services	119	373	373	390	4,372,832	888.31
5616	Investigation & Security Services	300	4,984	5,029	4,956	36,178,961	557.75
5617	Services to Buildings & Dwellings	1,606	15,243	15,593	15,573	99,646,724	495.49
5619	Other Support Services	197	1,214	1,231	1,227	11,843,590	744.32
562	WASTE MANAGEMENT & REMEDIATION SERVICES	331	3,610	3,619	3,630	\$47,174,879	\$1,002.53
5621	Waste Collection Services	131	1,207	1,205	1,209	14,537,154	926.46
5622	Waste Treatment & Disposal Services	41	1,046	1,044	1,049	16,464,603	1,210.42
5629	Remediation & Other Waste Services	159	1,357	1,370	1,372	16,173,122	910.53
EDUCATION & HEALTH SERVICES		15,793	187,487	187,255	186,462	2,024,443,509	\$832.46
61	EDUCATIONAL SERVICES	923	12,371	12,100	11,532	115,194,898	\$738.37
6111	Elementary & Secondary Schools	103	4,428	4,353	4,095	41,194,986	738.31
6113	Colleges & Universities	122	4,491	4,352	3,898	43,224,685	782.90
6115	Technical & Trade Schools	115	831	823	789	12,008,753	1,134.36
6116	Other Schools & Instruction	325	1,782	1,710	1,646	8,803,949	395.42
6117	Educational Support Services	184	600	612	865	6,732,606	748.04
	Other	74	239	250	239	3,229,919	1,023.85

TABLE 5. STATEWIDE SUMMARY

North American Industry Classification System - Industry Groups		Number of Employing Units	Employment			Total Earnings Apr- Jun 2019	Average Weekly Earnings
			Apr	May	Jun		
62	HEALTH CARE & SOCIAL ASSISTANCE	14,870	175,116	175,155	174,930	\$1,909,248,611	\$838.91
621	AMBULATORY HEALTH CARE SERVICES	6,019	59,399	59,535	59,335	\$932,455,739	\$1,207.06
6211	Offices of Physicians	2,336	25,830	25,833	25,763	542,926,748	1,618.20
6212	Offices of Dentists	977	7,535	7,557	7,503	93,789,435	957.90
6213	Offices of Other Health Practitioners	1,686	9,793	9,911	9,915	103,378,353	805.45
6214	Outpatient Care Centers	362	5,165	5,167	5,144	73,841,951	1,101.09
6215	Medical & Diagnostic Laboratories	190	1,351	1,353	1,310	22,536,650	1,295.66
6216	Home Health Care Services	272	7,020	6,979	6,960	64,135,226	706.16
6219	Other Ambulatory Health Care Services	196	2,705	2,735	2,740	31,847,376	898.46
622	HOSPITALS	117	43,548	43,577	43,810	\$549,717,563	\$968.86
6221	General Medical & Surgical Hospitals	88	38,873	38,870	39,061	491,290,179	970.64
6222	Psychiatric & Substance Abuse Hospitals	10	1,898	1,889	1,897	21,924,462	890.13
6223	Speciality Hospitals	19	2,777	2,818	2,852	36,502,922	997.25
623	Residential & Mental Health Facilities	657	32,080	32,217	32,504	\$216,380,283	\$515.84
6231	Nursing Care Facilities (Skilled Nursing Facilities)	295	22,598	22,676	22,947	152,656,600	516.39
6232	Residential Mental Health Facilities	174	4,276	4,341	4,337	29,477,745	525.13
6233	Continuing Care & Assisted Living Facilities	153	4,392	4,370	4,403	27,400,146	480.30
6239	Other Residential Care Facilities	35	814	830	817	6,845,792	641.93
624	SOCIAL ASSISTANCE	8,077	40,089	39,826	39,281	\$210,695,026	\$407.92
6241	Individual & Family Services	7,018	24,613	24,459	24,321	131,132,008	412.32
6242	Emergency & Other Relief Services	145	1,388	1,405	1,425	9,385,703	513.50
6243	Vocational Rehabilitation Services	96	3,367	3,304	3,299	17,600,295	407.38
6244	Child Day Care Services	818	10,721	10,658	10,236	52,577,020	383.78
LEISURE & HOSPITALITY		7,338	122,089	122,921	122,366	\$524,043,214	\$329.18
71	ARTS, ENTERTAINMENT & RECREATION	1,015	12,132	12,520	13,570	65,723,128	\$396.81
711	PERFORMING ARTS & SPECTATOR SPORTS	237	3,818	3,376	3,275	22,154,002	\$488.34
7111	Performing Arts Companies	47	610	611	538	2,258,910	296.35
7112	Spectator Sports	69	2,132	1,641	1,576	14,521,063	626.47
7113	Performing Arts & Sports Promoters	55	983	1,003	1,070	4,502,321	339.99
7114	Agents & Managers for Public Figures	17	18	44	18	187,412	540.61
7115	Independent Artists, Writers, & Performers	49	75	77	73	684,296	701.84
712	MUSEUMS, PARKS, & HISTORICAL SITES	54	728	759	811	6,308,925	\$633.55
713	GAMBLING, RECREATIONAL & AMUSEMENT INDUSTRY	724	7,586	8,385	9,484	37,260,201	\$337.79
7131	Amusement Parks & Arcades	25	433	735	1,165	2,193,386	216.96
7139	Other Amusement & Recreation Industries	699	7,153	7,650	8,319	35,066,815	349.98
72	ACCOMMODATION & FOOD SERVICES	6,323	109,957	110,401	108,796	458,320,086	\$321.33

TABLE 5. STATEWIDE SUMMARY

North American Industry Classification System - Industry Groups		Number of Employing Units	Employment			Total Earnings	Average Weekly Earnings
			Apr	May	Jun	Apr- Jun 2019	
721	ACCOMMODATION	912	11,482	11,753	12,055	\$57,349,901	\$375.02
7211	Travel Accommodation	818	10,860	11,063	11,184	53,598,408	373.60
7212	RV Parks & Recreational Camps	77	500	587	790	3,125,579	384.28
7213	Rooming & Boarding Houses	17	122	103	81	625,914	472.03
722	FOOD SERVICES & DRINKING PLACES	5,411	98,475	98,648	96,741	\$400,970,185	\$314.88
7223	Special Food Services	311	5,026	4,572	3,424	21,661,495	383.87
7224	Drinking Places, Alcoholic Beverages	148	1,068	1,076	1,024	4,190,689	305.27
7225	Restaurants & Other Eating Places	4,952	92,381	93,000	92,293	375,118,001	311.75
722511	Full-Service Restaurants	2,113	39,594	39,703	39,492	178,841,181	347.43
722513	Limited-Service Eating Places	2,335	47,780	48,189	47,692	175,692,653	282.22
722514	Cafeterias, Grill Buffets, & Buffets	91	1,727	1,677	1,665	8,172,168	372.04
722515	Snack & Nonalcoholic Beverage Bars	413	3,280	3,431	3,444	12,411,999	282.06
OTHER SERVICES		5,373	25,315	25,546	25,808	\$226,877,253	\$682.89
811	REPAIR & MAINTENANCE	2,215	11,304	11,280	11,235	\$114,954,101	\$784.41
8111	Automotive Repair & Maintenance	1,400	6,912	6,976	6,966	62,524,078	691.89
8112	Electronic Equipment Repair & Maintenance	157	975	989	984	11,538,851	903.26
8113	Commercial Machinery Repair & Maintenance	492	2,790	2,684	2,651	35,679,468	1,013.38
8114	Household Goods Repair & Maintenance	166	627	631	634	5,211,704	635.68
812	PERSONAL & LAUNDRY SERVICES	1,355	7,720	7,781	7,818	\$53,093,244	\$525.42
8121	Personal Care Services	653	2,900	2,967	2,974	17,983,722	469.41
8122	Death Care Services	250	1,559	1,554	1,593	12,515,567	613.73
8123	Drycleaning & Laundry Service	207	2,204	2,178	2,185	15,969,619	561.18
8129	Other Personal Services	245	1,057	1,082	1,066	6,624,336	476.97
813	MEMBERSHIP ASSOCIATIONS & ORGANIZATIONS	1,114	5,388	5,580	5,843	\$53,299,718	\$731.66
8131	Religious Organizations	99	318	323	313	2,413,685	583.86
8132	Grantmaking & Giving Organizations	126	451	447	459	6,840,246	1,163.24
8133	Social Advocacy Organizations	216	1,344	1,280	1,276	13,655,932	808.04
8134	Civic & Social Organizations	192	1,219	1,370	1,463	6,374,887	363.06
8139	Professional & Similar Organizations	481	2,056	2,160	2,332	24,014,968	846.35
814	PRIVATE HOUSEHOLDS	689	903	905	912	\$5,530,190	\$469.19
	LOCAL GOVERNMENT	1,990	114,088	114,451	113,947	\$1,293,326,327	\$871.45
	STATE GOVERNMENT	1,055	68,020	67,793	66,250	\$805,200,059	\$919.59
	NONCLASSIFIABLE ESTABLISHMENTS	0	0	0	0	\$0	\$0.00

TABLE 6. COUNTY SUMMARY

North American Industry Classification System - Industry Groups	Number of Employing Units	Employment			Total Earnings	Average Weekly Earnings
		Apr	May	Jun	Apr- Jun 2019	
ARKANSAS COUNTY - TOTAL	807	10,115	10,183	10,138	\$105,040,174	\$796.43
Natural Resources & Mining	56	175	182	189	1,796,874	759.46
Construction	51	269	269	286	2,700,239	756.23
Manufacturing	32	3,964	4,021	4,028	45,966,584	883.02
Trade, Transportation & Utilities	193	2,148	2,159	2,150	23,724,394	847.90
Wholesale Trade	45	465	462	469	6,506,401	1,075.56
Retail Trade	92	1,030	1,044	1,030	6,959,400	517.40
Transportation, Warehousing & Utilities	56	653	653	651	10,258,593	1,209.69
Information	9	53	52	51	417,722	617.93
Financial Activities	51	299	299	291	3,683,349	956.13
Professional & Business Services	58	498	480	483	6,484,592	1,024.26
Education & Health Services	202	1,124	1,105	1,069	9,383,361	656.58
Leisure & Hospitality	68	592	610	569	2,232,977	290.97
Other Services	41	96	97	99	784,734	620.18
Local Government	32	723	735	752	6,542,360	683.16
State Government	14	174	174	171	1,322,988	588.26
ASHLEY COUNTY - TOTAL	566	6,644	6,719	6,668	\$72,435,766	\$834.50
Natural Resources & Mining	46	323	333	345	3,422,054	788.92
Construction	35	651	647	614	8,162,994	985.23
Manufacturing	25	1,673	1,674	1,668	27,241,802	1,253.55
Trade, Transportation & Utilities	119	1,195	1,205	1,225	10,501,596	668.54
Wholesale Trade	25	183	193	191	2,598,777	1,057.70
Retail Trade	66	703	713	704	4,462,723	485.78
Transportation, Warehousing & Utilities	28	309	299	330	3,440,096	846.34
Information	5	34	35	35	280,115	621.56
Financial Activities	37	183	182	186	1,558,239	652.62
Professional & Business Services	37	195	218	220	1,742,530	635.26
Education & Health Services	149	935	925	928	8,122,531	672.32
Leisure & Hospitality	36	377	399	393	1,380,879	272.60
Other Services	35	121	131	123	1,006,808	619.57
Local Government	32	854	866	837	8,131,299	733.85
State Government	10	103	104	94	884,919	678.45

TABLE 6. COUNTY SUMMARY

North American Industry Classification System - Industry Groups	Number of Employing Units	Employment			Total Earnings Apr- Jun 2019	Average Weekly Earnings
		Apr	May	Jun		
BAXTER COUNTY - TOTAL	1,219	14,746	14,892	14,892	\$131,771,499	\$682.88
Natural Resources & Mining	8	57	58	57	638,127	856.16
Construction	107	517	515	522	4,437,613	658.99
Manufacturing	54	2,425	2,462	2,460	23,823,239	748.29
Trade, Transportation & Utilities	254	2,696	2,701	2,693	18,799,434	536.26
Wholesale Trade	32	200	197	190	1,894,211	744.68
Retail Trade	198	2,280	2,302	2,296	14,799,916	496.56
Transportation, Warehousing & Utilities	24	216	202	207	2,105,307	777.34
Information	21	171	172	167	1,850,300	837.24
Financial Activities	123	708	725	732	10,778,193	1,148.86
Professional & Business Services	141	919	908	923	7,567,379	635.02
Education & Health Services	260	3,835	3,857	3,853	40,009,041	799.73
Leisure & Hospitality	117	1,611	1,667	1,670	6,420,465	299.44
Other Services	87	270	279	304	2,101,460	568.53
Local Government	36	1,210	1,220	1,242	12,585,321	790.93
State Government	11	327	328	269	2,760,927	689.54
BENTON COUNTY - TOTAL	6,755	121,119	121,693	121,779	\$1,891,700,303	\$1,197.36
Natural Resources & Mining	49	776	773	798	12,785,274	1,257.11
Construction	666	5,058	5,113	5,206	62,101,556	931.98
Manufacturing	193	12,130	12,164	12,321	132,182,953	833.09
Trade, Transportation & Utilities	1,694	29,316	29,132	29,311	386,081,756	1,015.23
Wholesale Trade	757	5,983	5,979	6,003	142,770,087	1,833.95
Retail Trade	756	12,180	12,254	12,230	92,311,727	581.03
Transportation, Warehousing & Utilities	181	11,153	10,899	11,078	150,999,942	1,051.80
Information	80	975	979	988	14,573,186	1,143.11
Financial Activities	697	3,942	3,956	3,995	61,280,765	1,189.08
Professional & Business Services	1,340	31,599	31,850	31,942	887,321,333	2,146.60
Education & Health Services	851	12,044	12,058	11,715	123,321,876	794.56
Leisure & Hospitality	662	13,101	13,367	13,319	64,146,117	372.05
Other Services	421	2,359	2,422	2,441	22,926,869	732.60
Local Government	85	8,713	8,773	8,793	115,280,310	1,012.33
State Government	17	1,106	1,106	950	9,698,308	707.80

TABLE 6. COUNTY SUMMARY

North American Industry Classification System - Industry Groups	Number of Employing Units	Employment			Total Earnings	Average Weekly Earnings
		Apr	May	Jun	Apr- Jun 2019	
BOONE COUNTY - TOTAL	953	14,218	14,247	14,209	\$146,680,066	\$793.21
Construction	62	369	376	390	3,745,967	761.63
Manufacturing	59	1,912	1,908	1,920	19,651,534	790.06
Trade, Transportation & Utilities	251	3,600	3,642	3,648	37,208,231	788.48
Wholesale Trade	39	334	330	333	3,043,590	704.48
Retail Trade	167	2,025	2,059	2,034	14,342,716	541.00
Transportation, Warehousing & Utilities	45	1,241	1,253	1,281	19,821,925	1,211.73
Information	14	268	270	287	3,054,474	854.40
Financial Activities	94	425	433	423	5,261,717	947.89
Professional & Business Services	93	1,460	1,439	1,376	23,337,387	1,259.78
Education & Health Services	165	1,625	1,638	1,635	13,461,816	634.25
Leisure & Hospitality	84	1,280	1,269	1,312	4,935,482	294.99
Local Government	53	2,250	2,245	2,219	26,465,655	909.66
State Government	17	750	754	715	6,936,025	721.33
Other	61	279	273	284	2,621,778	723.71
BRADLEY COUNTY - TOTAL	365	3,806	3,849	3,850	\$34,997,046	\$701.98
Natural Resources & Mining	44	253	257	209	2,465,838	791.43
Construction	18	80	91	94	736,857	641.68
Manufacturing	12	951	966	985	9,941,024	790.52
Trade, Transportation & Utilities	71	483	495	529	3,880,958	594.30
Wholesale Trade	12	96	98	96	1,227,086	976.46
Retail Trade	36	299	306	322	1,684,933	419.45
Transportation, Warehousing & Utilities	23	88	91	111	968,939	771.04
Information	3	24	24	28	214,248	650.55
Financial Activities	25	136	136	127	1,253,844	725.18
Professional & Business Services	26	101	99	98	962,539	745.38
Education & Health Services	102	674	670	672	6,840,044	782.97
Leisure & Hospitality	14	178	180	177	597,326	257.65
Other Services	26	97	98	103	574,615	444.98
Local Government	14	481	477	465	5,069,215	822.08
State Government	10	348	356	363	2,460,538	532.16

TABLE 6. COUNTY SUMMARY

North American Industry Classification System - Industry Groups	Number of Employing Units	Employment			Total Earnings	Average Weekly Earnings
		Apr	May	Jun	Apr- Jun 2019	
CALHOUN COUNTY - TOTAL	100	3,072	3,105	3,114	\$42,654,939	\$1,059.46
Natural Resources & Mining	6	35	34	35	284,052	630.29
Construction	10	126	127	131	1,342,236	806.63
Manufacturing	8	2,258	2,296	2,305	34,679,116	1,166.77
Trade, Transportation & Utilities	17	191	186	191	1,874,576	761.61
Retail Trade	8	46	40	43	236,085	422.33
Transportation, Warehousing & Utilities	9	145	146	148	1,638,491	861.31
Professional & Business Services	6	9	9	12	111,623	858.64
Education & Health Services	21	63	62	58	648,223	817.43
Leisure & Hospitality	4	12	12	12	40,842	261.81
Other Services	3	4	4	4	23,803	457.75
Local Government	11	189	190	184	1,614,287	661.68
State Government	7	77	78	77	715,259	711.46
Other	7	108	107	105	1,320,922	952.59
CARROLL COUNTY - TOTAL	776	10,696	10,848	10,916	\$83,293,174	\$592.16
Natural Resources & Mining	19	200	197	204	1,857,481	713.23
Trade, Transportation & Utilities	184	1,561	1,598	1,609	12,442,587	602.22
Wholesale Trade	24	194	192	199	1,712,292	675.46
Retail Trade	135	1,085	1,110	1,115	6,556,232	457.09
Transportation, Warehousing & Utilities	25	282	296	295	4,174,063	1,103.37
Information	11	66	67	67	646,749	746.25
Financial Activities	59	378	389	383	4,447,485	892.47
Professional & Business Services	64	278	269	263	2,635,089	750.74
Education & Health Services	102	1,117	1,119	1,099	9,368,363	648.25
Leisure & Hospitality	160	1,749	1,825	1,866	6,737,708	285.82
Other Services	43	154	161	156	963,155	471.90
Local Government	25	1,071	1,091	1,101	10,116,673	715.48
State Government	9	97	98	96	831,073	659.06
Other	100	4,025	4,034	4,072	33,246,811	632.46

TABLE 6. COUNTY SUMMARY

North American Industry Classification System - Industry Groups	Number of Employing Units	Employment			Total Earnings	Average Weekly Earnings
		Apr	May	Jun	Apr- Jun 2019	
CHICOT COUNTY - TOTAL	493	2,927	2,944	2,995	\$24,287,449	\$632.17
Natural Resources & Mining	51	224	226	245	2,091,964	694.62
Construction	14	113	121	135	1,455,108	910.01
Manufacturing	6	14	14	15	157,906	847.44
Trade, Transportation & Utilities	67	595	601	606	4,306,996	551.57
Wholesale Trade	13	47	47	46	504,599	831.76
Retail Trade	41	286	291	285	1,943,860	520.40
Transportation, Warehousing & Utilities	13	262	263	275	1,858,537	536.12
Financial Activities	29	177	178	169	1,914,182	843.00
Professional & Business Services	16	44	41	43	561,629	1,012.55
Education & Health Services	248	661	656	660	4,675,600	545.77
Leisure & Hospitality	15	104	106	105	348,083	255.01
Local Government	17	613	611	628	5,758,978	717.60
State Government	10	308	314	314	2,435,412	600.45
Other	20	74	76	75	581,591	596.50
CLARK COUNTY - TOTAL	657	9,358	9,206	8,946	\$81,104,479	\$680.35
Natural Resources & Mining	50	289	288	300	3,211,739	845.12
Construction	25	79	79	83	963,877	922.96
Manufacturing	34	1,316	1,369	1,342	17,355,094	994.54
Trade, Transportation & Utilities	136	1,452	1,466	1,487	11,008,273	576.70
Wholesale Trade	14	43	45	49	541,070	911.40
Retail Trade	90	1,203	1,224	1,233	8,220,802	518.34
Transportation, Warehousing & Utilities	32	206	197	205	2,246,401	852.63
Information	4	10	10	11	110,008	818.92
Financial Activities	72	305	305	313	2,780,779	695.25
Professional & Business Services	49	589	581	582	6,790,350	894.41
Education & Health Services	129	1,716	1,698	1,640	14,239,866	650.20
Leisure & Hospitality	71	1,259	1,173	1,130	4,413,288	285.92
Other Services	44	210	211	212	1,799,584	656.06
Local Government	30	946	949	958	9,178,047	742.38
State Government	13	1,187	1,077	888	9,253,574	677.49

TABLE 6. COUNTY SUMMARY

North American Industry Classification System - Industry Groups	Number of Employing Units	Employment			Total Earnings Apr- Jun 2019	Average Weekly Earnings
		Apr	May	Jun		
CLAY COUNTY - TOTAL	361	3,109	3,116	3,129	\$24,659,538	\$608.37
Natural Resources & Mining	54	233	238	240	1,756,786	570.20
Construction	29	119	128	136	1,025,171	617.70
Manufacturing	13	109	107	103	866,110	626.56
Trade, Transportation & Utilities	82	720	709	722	6,587,432	706.73
Wholesale Trade	19	248	237	243	2,476,533	785.04
Retail Trade	39	346	346	351	2,533,648	560.58
Transportation, Warehousing & Utilities	24	126	126	128	1,577,251	957.84
Information	6	24	22	22	149,001	505.66
Financial Activities	21	91	94	96	804,478	660.67
Professional & Business Services	27	126	130	135	1,152,078	679.96
Education & Health Services	52	522	516	517	3,492,151	518.25
Leisure & Hospitality	23	242	236	224	789,438	259.51
Other Services	24	79	77	78	634,083	625.33
Local Government	21	800	815	809	7,005,667	666.95
State Government	9	44	44	47	397,143	678.88
CLEBURNE COUNTY - TOTAL	638	6,351	6,413	6,544	\$64,588,158	\$771.96
Natural Resources & Mining	22	193	189	177	2,765,348	1,141.61
Construction	65	300	307	338	3,219,631	786.23
Manufacturing	31	1,231	1,246	1,263	12,715,050	784.56
Trade, Transportation & Utilities	152	1,209	1,207	1,213	10,278,748	653.63
Wholesale Trade	33	113	111	112	1,243,080	853.76
Retail Trade	98	951	955	957	7,154,088	576.65
Transportation, Warehousing & Utilities	21	145	141	144	1,881,580	1,009.79
Information	10	52	54	59	506,076	707.80
Financial Activities	75	264	261	263	2,669,890	781.89
Professional & Business Services	65	276	253	256	2,420,418	711.54
Education & Health Services	75	894	890	915	15,848,508	1,355.08
Leisure & Hospitality	81	907	981	1,037	3,863,216	304.79
Other Services	36	115	112	112	765,888	521.37
Local Government	18	805	803	807	8,524,140	814.54
State Government	8	105	110	104	1,011,245	731.55

TABLE 6. COUNTY SUMMARY

North American Industry Classification System - Industry Groups	Number of Employing Units	Employment			Total Earnings Apr- Jun 2019	Average Weekly Earnings
		Apr	May	Jun		
CLEVELAND COUNTY - TOTAL	124	1,044	1,028	1,026	\$8,222,305	\$612.48
Natural Resources & Mining	16	156	155	168	1,531,180	737.68
Construction	7	10	10	9	94,119	748.96
Manufacturing	3	113	115	113	1,327,684	898.50
Trade, Transportation & Utilities	30	167	158	163	1,269,955	600.55
Retail Trade	17	74	68	71	260,748	282.50
Other Trade, Transportation, & Utilities	13	93	90	92	1,009,207	846.89
Financial Activities	4	26	25	17	242,821	824.05
Education & Health Services	30	188	186	188	688,517	282.72
Other Services	5	11	12	12	112,284	740.33
Local Government	14	321	314	301	2,555,457	630.04
State Government	6	29	29	30	269,281	706.16
Other	9	23	24	25	131,007	419.89
COLUMBIA COUNTY - TOTAL	704	8,031	7,997	8,046	\$79,716,361	\$764.15
Natural Resources & Mining	44	379	386	398	6,149,803	1,220.28
Construction	38	163	162	163	1,480,797	700.25
Manufacturing	31	1,875	1,859	1,863	26,557,610	1,094.99
Trade, Transportation & Utilities	170	1,344	1,370	1,407	11,853,747	663.79
Wholesale Trade	31	206	220	233	3,090,955	1,082.39
Retail Trade	96	897	906	937	5,672,584	477.76
Transportation, Warehousing & Utilities	43	241	244	237	3,090,208	987.71
Information	6	34	32	31	316,080	751.97
Financial Activities	61	342	340	337	3,673,869	832.01
Professional & Business Services	51	279	281	282	2,183,053	598.32
Education & Health Services	165	934	966	937	5,901,301	480.03
Leisure & Hospitality	61	791	737	749	2,798,060	283.58
Other Services	38	124	123	120	1,053,081	662.18
Local Government	27	1,106	1,083	1,107	10,721,047	750.63
State Government	12	660	658	652	7,027,913	823.26

TABLE 6. COUNTY SUMMARY

North American Industry Classification System - Industry Groups	Number of Employing Units	Employment			Total Earnings Apr- Jun 2019	Average Weekly Earnings
		Apr	May	Jun		
CONWAY COUNTY - TOTAL	529	6,453	6,434	6,557	\$63,442,810	\$752.96
Natural Resources & Mining	30	232	247	263	2,367,046	736.17
Construction	49	459	461	472	6,349,534	1,052.64
Manufacturing	19	960	980	1,003	13,864,831	1,087.18
Trade, Transportation & Utilities	114	1,345	1,343	1,337	10,775,767	617.82
Wholesale Trade	14	136	131	137	1,152,424	658.28
Retail Trade	77	778	781	773	5,181,928	512.79
Transportation, Warehousing & Utilities	23	431	431	427	4,441,415	795.15
Information	3	13	13	12	53,738	326.34
Financial Activities	41	168	159	161	1,724,698	815.59
Professional & Business Services	41	459	433	472	3,869,100	654.60
Education & Health Services	127	793	796	792	7,253,494	703.02
Leisure & Hospitality	37	446	457	479	1,725,950	288.20
Other Services	28	84	91	88	680,505	597.11
Local Government	31	1,090	1,042	1,081	11,771,163	845.45
State Government	9	404	412	397	3,006,984	572.07
CRAIGHEAD COUNTY - TOTAL	2,816	51,614	51,703	51,802	\$513,154,629	\$763.42
Natural Resources & Mining	101	353	367	383	3,306,387	691.76
Construction	240	2,145	2,150	2,233	24,073,592	851.02
Manufacturing	102	7,026	7,076	7,154	84,106,410	913.11
Trade, Transportation & Utilities	769	10,373	10,401	10,359	92,015,763	682.05
Wholesale Trade	181	1,977	1,991	1,992	25,421,062	984.30
Retail Trade	462	6,551	6,584	6,529	44,374,359	520.76
Transportation, Warehousing & Utilities	126	1,845	1,826	1,838	22,220,342	930.80
Information	20	380	377	378	4,439,967	902.74
Financial Activities	280	1,684	1,694	1,711	21,939,825	994.90
Professional & Business Services	377	4,780	4,786	4,795	40,783,960	655.36
Education & Health Services	444	11,149	11,163	11,246	133,819,171	920.24
Leisure & Hospitality	264	5,736	5,681	5,509	23,502,103	320.43
Other Services	162	740	741	744	5,845,276	606.25
Local Government	35	4,170	4,206	4,240	48,512,171	887.37
State Government	22	3,078	3,061	3,050	30,810,004	773.75

TABLE 6. COUNTY SUMMARY

North American Industry Classification System - Industry Groups	Number of Employing Units	Employment			Total Earnings Apr- Jun 2019	Average Weekly Earnings
		Apr	May	Jun		
CRAWFORD COUNTY - TOTAL	1,265	19,636	19,785	19,785	\$183,546,781	\$715.42
Natural Resources & Mining	21	295	269	238	2,603,890	749.25
Construction	147	985	988	995	10,236,376	795.90
Manufacturing	62	4,599	4,644	4,680	48,932,205	811.04
Trade, Transportation & Utilities	314	5,618	5,678	5,675	52,316,651	711.39
Wholesale Trade	74	727	735	725	9,134,749	963.89
Retail Trade	167	1,970	1,989	1,997	13,823,448	535.60
Transportation, Warehousing & Utilities	73	2,921	2,954	2,953	29,358,454	767.45
Information	11	43	42	44	442,636	791.84
Financial Activities	128	504	497	511	4,947,755	755.15
Professional & Business Services	169	1,631	1,628	1,585	15,331,303	730.39
Education & Health Services	184	1,697	1,694	1,686	14,170,393	644.10
Leisure & Hospitality	92	1,565	1,635	1,663	6,291,848	298.57
Other Services	85	443	450	438	3,914,224	678.65
Local Government	42	2,102	2,097	2,103	23,172,034	848.52
State Government	10	154	163	167	1,187,466	566.18
CRITTENDEN COUNTY - TOTAL	1,202	16,468	16,526	16,575	\$152,559,017	\$710.24
Natural Resources & Mining	56	232	239	251	1,906,701	609.43
Construction	45	400	413	434	4,538,281	839.85
Manufacturing	41	2,036	2,047	2,073	24,853,683	931.69
Trade, Transportation & Utilities	300	4,347	4,349	4,296	42,892,321	761.87
Wholesale Trade	54	792	799	796	10,126,409	979.00
Retail Trade	159	1,901	1,897	1,862	11,548,197	470.84
Transportation, Warehousing & Utilities	87	1,654	1,653	1,638	21,217,715	990.17
Information	4	47	42	44	394,376	684.28
Financial Activities	103	448	457	466	5,374,330	904.62
Professional & Business Services	109	1,118	1,144	1,177	8,513,595	571.29
Education & Health Services	283	2,044	2,062	2,057	18,034,807	675.30
Leisure & Hospitality	135	2,686	2,668	2,730	13,243,771	378.06
Other Services	71	528	528	524	4,450,087	649.96
Local Government	42	2,149	2,138	2,148	25,081,410	899.46
State Government	13	433	439	375	3,275,655	606.19

TABLE 6. COUNTY SUMMARY

North American Industry Classification System - Industry Groups	Number of Employing Units	Employment			Total Earnings Apr- Jun 2019	Average Weekly Earnings
		Apr	May	Jun		
CROSS COUNTY - TOTAL	477	4,706	4,752	4,872	\$39,981,985	\$643.87
Natural Resources & Mining	45	287	311	293	2,101,766	544.36
Construction	23	58	59	65	561,659	712.16
Manufacturing	10	311	305	327	2,567,432	628.30
Trade, Transportation & Utilities	127	1,105	1,120	1,135	9,865,867	677.60
Wholesale Trade	27	307	314	306	3,768,259	938.08
Retail Trade	67	702	709	726	4,953,182	534.88
Transportation, Warehousing & Utilities	33	96	97	103	1,144,426	892.22
Information	6	40	45	42	292,063	530.70
Financial Activities	45	284	284	275	2,797,875	765.91
Professional & Business Services	41	147	124	129	1,532,610	884.20
Education & Health Services	88	987	977	969	7,932,635	624.14
Leisure & Hospitality	33	319	351	458	1,245,559	254.82
Other Services	33	108	107	109	840,325	598.52
Local Government	17	712	711	706	6,928,115	750.96
State Government	9	348	358	364	3,316,079	715.19
DALLAS COUNTY - TOTAL	225	2,665	2,652	2,675	\$22,494,790	\$649.54
Natural Resources & Mining	22	119	111	120	1,077,765	710.61
Construction	14	68	68	68	1,036,978	1,173.05
Manufacturing	9	547	550	551	5,317,681	744.63
Trade, Transportation & Utilities	54	474	476	514	3,830,800	603.85
Wholesale Trade	7	25	22	19	282,582	988.05
Retail Trade	33	288	287	330	2,060,981	525.54
Transportation, Warehousing & Utilities	14	161	167	165	1,487,237	696.16
Information	4	17	16	16	142,767	672.37
Financial Activities	15	74	72	71	751,103	798.76
Professional & Business Services	10	37	37	39	232,759	475.34
Education & Health Services	51	760	742	741	6,569,520	675.90
Leisure & Hospitality	12	148	158	149	489,046	248.04
Other Services	13	50	49	47	314,442	497.01
Local Government	14	341	343	329	2,470,264	562.75
State Government	7	30	30	30	261,665	670.94

TABLE 6. COUNTY SUMMARY

North American Industry Classification System - Industry Groups	Number of Employing Units	Employment			Total Earnings Apr- Jun 2019	Average Weekly Earnings
		Apr	May	Jun		
DESHA COUNTY - TOTAL	525	4,681	4,668	4,718	\$42,086,544	\$690.43
Natural Resources & Mining	65	265	273	296	2,238,339	619.35
Construction	15	98	101	98	912,466	708.99
Manufacturing	14	1,056	1,050	1,060	13,794,366	1,005.47
Trade, Transportation & Utilities	106	816	829	825	7,134,988	666.61
Wholesale Trade	20	186	190	186	2,796,496	1,148.30
Retail Trade	57	459	471	465	2,586,349	427.85
Transportation, Warehousing & Utilities	29	171	168	174	1,752,143	788.19
Information	4	19	21	20	192,466	740.25
Financial Activities	28	205	205	207	1,878,566	702.62
Professional & Business Services	34	93	96	94	825,963	673.52
Education & Health Services	167	777	750	763	5,145,619	518.54
Leisure & Hospitality	36	353	353	370	1,217,785	261.18
Other Services	26	60	56	67	324,626	409.36
Local Government	21	816	811	797	7,450,842	709.33
State Government	9	123	123	121	970,518	610.26
DREW COUNTY - TOTAL	535	6,350	6,464	6,387	\$59,081,700	\$710.08
Natural Resources & Mining	57	303	425	425	4,308,927	862.42
Construction	24	144	151	186	1,987,323	953.46
Manufacturing	21	911	905	905	8,838,691	749.61
Trade, Transportation & Utilities	113	1,023	1,019	1,025	7,648,676	575.51
Wholesale Trade	17	101	97	100	936,467	725.19
Retail Trade	77	822	822	821	5,465,754	511.69
Transportation, Warehousing & Utilities	19	100	100	104	1,246,455	946.20
Information	6	48	47	48	458,778	740.36
Financial Activities	50	213	211	213	2,533,124	917.69
Professional & Business Services	37	310	309	316	5,377,704	1,327.28
Education & Health Services	133	858	839	844	6,251,523	567.75
Leisure & Hospitality	41	695	692	630	2,277,150	260.53
Other Services	17	64	69	70	460,533	523.53
Local Government	23	1,205	1,223	1,184	13,443,543	858.90
State Government	13	576	574	541	5,495,728	750.00

TABLE 6. COUNTY SUMMARY

North American Industry Classification System - Industry Groups	Number of Employing Units	Employment			Total Earnings Apr- Jun 2019	Average Weekly Earnings
		Apr	May	Jun		
FAULKNER COUNTY - TOTAL	2,877	41,149	41,042	40,813	\$424,440,187	\$796.30
Natural Resources & Mining	40	239	236	239	4,368,142	1,411.81
Construction	333	2,929	2,920	2,978	34,056,101	890.35
Manufacturing	99	3,298	3,319	3,296	42,795,961	996.27
Trade, Transportation & Utilities	638	7,513	7,464	7,458	60,108,991	618.29
Wholesale Trade	136	712	719	727	9,531,921	1,019.31
Retail Trade	416	5,948	5,895	5,872	39,846,890	519.08
Transportation, Warehousing & Utilities	86	853	850	859	10,730,180	966.51
Information	22	263	265	273	7,489,621	2,157.77
Financial Activities	309	1,424	1,432	1,433	16,347,274	879.56
Professional & Business Services	448	4,901	4,899	4,892	73,320,515	1,151.66
Education & Health Services	463	7,467	7,431	7,469	76,182,003	786.00
Leisure & Hospitality	268	5,407	5,384	5,347	20,969,498	299.86
Other Services	196	937	938	934	6,835,396	561.55
Local Government	43	3,499	3,506	3,490	48,700,578	1,070.85
State Government	18	3,272	3,248	3,004	33,266,107	806.05
FRANKLIN COUNTY - TOTAL	389	4,705	4,691	4,612	\$41,251,559	\$679.58
Natural Resources & Mining	17	231	214	217	3,402,763	1,186.18
Construction	35	167	165	168	1,408,757	650.20
Manufacturing	18	970	966	967	9,256,838	735.86
Trade, Transportation & Utilities	87	968	971	976	8,847,757	700.44
Wholesale Trade	12	61	58	60	475,380	612.87
Retail Trade	52	621	624	624	3,664,859	452.51
Transportation, Warehousing & Utilities	23	286	289	292	4,707,518	1,253.00
Information	6	26	29	31	270,005	724.52
Financial Activities	30	77	78	70	692,439	710.19
Professional & Business Services	35	360	337	343	3,015,780	669.18
Education & Health Services	69	568	586	565	3,917,349	525.89
Leisure & Hospitality	34	367	366	351	1,257,092	267.62
Other Services	18	69	67	64	445,976	514.59
Local Government	32	753	763	736	7,306,446	748.71
State Government	8	149	149	124	1,430,357	782.19

TABLE 6. COUNTY SUMMARY

North American Industry Classification System - Industry Groups	Number of Employing Units	Employment			Total Earnings	Average Weekly Earnings
		Apr	May	Jun	Apr- Jun 2019	
FULTON COUNTY - TOTAL	199	2,020	2,078	2,136	\$16,592,696	\$614.23
Manufacturing	12	118	122	123	740,268	470.61
Trade, Transportation & Utilities	47	290	304	310	2,578,473	658.22
Retail Trade	29	171	181	183	977,071	421.45
Other Trade, Transportation, & Utilities	18	119	123	127	1,601,402	1,001.50
Information	5	29	29	30	230,309	603.96
Financial Activities	17	82	94	96	799,833	678.59
Professional & Business Services	18	40	40	39	333,116	645.99
Education & Health Services	43	514	513	532	3,576,328	529.38
Leisure & Hospitality	15	127	137	145	493,292	278.33
Other Services	10	17	17	18	133,274	591.45
Local Government	12	556	564	575	4,905,408	667.86
State Government	9	60	60	60	495,074	634.71
Other	11	187	198	208	2,307,321	897.91
GARLAND COUNTY - TOTAL	3,058	38,053	37,491	37,614	\$342,110,741	\$697.68
Natural Resources & Mining	28	264	269	276	3,023,891	862.57
Construction	335	1,887	1,887	1,902	17,818,973	724.47
Manufacturing	90	2,581	2,568	2,566	32,448,705	970.60
Trade, Transportation & Utilities	673	7,225	7,272	7,315	59,150,360	625.81
Wholesale Trade	139	819	817	805	10,284,204	972.26
Retail Trade	471	5,903	5,957	5,987	42,801,363	553.44
Transportation, Warehousing & Utilities	63	503	498	523	6,064,793	918.35
Information	32	443	431	418	3,991,670	712.97
Financial Activities	333	1,489	1,507	1,533	16,897,121	860.97
Professional & Business Services	385	2,954	2,961	2,996	27,193,967	704.25
Education & Health Services	517	8,101	8,051	7,981	91,093,411	871.07
Leisure & Hospitality	393	8,145	7,546	7,685	37,948,422	374.63
Other Services	216	985	1,000	1,015	6,650,746	511.60
Local Government	34	2,974	2,991	2,989	36,959,219	952.54
State Government	22	1,005	1,008	938	8,934,256	698.66

TABLE 6. COUNTY SUMMARY

North American Industry Classification System - Industry Groups	Number of Employing Units	Employment			Total Earnings Apr- Jun 2019	Average Weekly Earnings
		Apr	May	Jun		
GRANT COUNTY - TOTAL	351	4,266	4,263	4,360	\$44,651,930	\$799.46
Natural Resources & Mining	28	187	183	193	2,313,017	948.09
Construction	37	233	233	243	3,444,413	1,121.11
Manufacturing	17	1,448	1,455	1,461	18,387,644	972.34
Trade, Transportation & Utilities	84	615	618	647	4,845,847	594.83
Wholesale Trade	17	68	67	71	995,467	1,115.16
Retail Trade	47	491	495	522	3,351,842	512.93
Transportation, Warehousing & Utilities	20	56	56	54	498,538	693.06
Financial Activities	20	112	112	113	1,594,544	1,091.90
Professional & Business Services	32	120	117	113	1,564,354	1,031.44
Education & Health Services	76	406	404	411	2,713,542	512.86
Leisure & Hospitality	23	283	286	289	980,632	263.75
Local Government	10	759	756	794	7,991,078	798.66
State Government	7	45	45	43	375,311	651.20
Other	17	58	54	53	441,548	617.55
GREENE COUNTY - TOTAL	882	15,649	15,741	15,549	\$150,886,360	\$741.81
Natural Resources & Mining	38	239	248	265	2,252,125	691.12
Construction	74	362	353	359	4,162,332	894.36
Manufacturing	63	5,245	5,231	5,195	62,427,587	919.30
Trade, Transportation & Utilities	225	2,671	2,697	2,685	21,171,620	606.70
Wholesale Trade	42	469	470	471	5,356,755	876.72
Retail Trade	151	1,892	1,921	1,910	12,700,791	512.14
Transportation, Warehousing & Utilities	32	310	306	304	3,114,074	781.12
Information	11	190	187	187	1,824,617	746.57
Financial Activities	76	552	563	561	5,942,693	818.25
Professional & Business Services	90	833	789	755	6,505,511	631.58
Education & Health Services	150	1,994	2,009	1,964	18,132,548	701.26
Leisure & Hospitality	78	1,379	1,428	1,315	5,494,480	307.61
Other Services	36	159	158	158	1,202,412	584.17
Local Government	31	1,636	1,676	1,701	17,563,871	808.54
State Government	10	389	402	404	4,206,564	812.34

TABLE 6. COUNTY SUMMARY

North American Industry Classification System - Industry Groups	Number of Employing Units	Employment			Total Earnings Apr- Jun 2019	Average Weekly Earnings
		Apr	May	Jun		
HEMPSTEAD COUNTY - TOTAL	517	7,891	7,821	7,783	\$70,968,579	\$697.06
Natural Resources & Mining	23	272	274	264	3,070,315	874.73
Construction	26	152	146	148	1,701,684	880.48
Manufacturing	29	2,238	2,240	2,252	22,963,844	787.42
Trade, Transportation & Utilities	126	1,307	1,305	1,307	11,806,755	695.24
Wholesale Trade	24	171	173	181	1,573,861	691.81
Retail Trade	76	845	845	837	5,487,591	501.13
Transportation, Warehousing & Utilities	26	291	287	289	4,745,303	1,263.06
Information	8	25	24	23	256,435	821.91
Financial Activities	44	216	208	209	2,070,125	754.69
Professional & Business Services	32	241	239	237	2,064,502	664.47
Education & Health Services	110	1,021	1,010	1,006	6,781,682	515.31
Leisure & Hospitality	45	649	650	630	2,519,653	301.43
Other Services	30	123	118	123	1,090,266	691.21
Local Government	28	893	888	886	10,007,746	865.95
State Government	16	754	719	698	6,635,572	705.34
HOT SPRING COUNTY - TOTAL	611	8,191	8,172	8,207	\$76,880,417	\$722.09
Natural Resources & Mining	25	167	172	165	1,586,246	726.30
Construction	48	203	209	200	1,441,665	543.61
Manufacturing	28	1,387	1,395	1,384	17,436,905	965.89
Trade, Transportation & Utilities	150	1,588	1,593	1,623	16,563,095	795.64
Wholesale Trade	18	81	77	79	1,057,512	1,029.71
Retail Trade	98	868	872	887	5,566,279	488.97
Transportation, Warehousing & Utilities	34	639	644	657	9,939,304	1,182.31
Information	5	40	46	41	461,653	838.86
Financial Activities	50	216	224	205	2,238,371	800.85
Professional & Business Services	55	839	809	874	6,092,638	557.49
Education & Health Services	123	1,093	1,080	1,107	9,860,182	693.73
Leisure & Hospitality	49	689	664	676	2,264,370	257.54
Other Services	38	150	153	150	900,241	458.60
Local Government	27	967	968	958	11,106,947	885.98
State Government	13	852	859	824	6,928,104	630.69

TABLE 6. COUNTY SUMMARY

North American Industry Classification System - Industry Groups	Number of Employing Units	Employment			Total Earnings Apr- Jun 2019	Average Weekly Earnings
		Apr	May	Jun		
HOWARD COUNTY - TOTAL	353	6,630	6,601	6,640	\$57,746,345	\$670.63
Natural Resources & Mining	16	195	198	201	2,005,791	779.25
Construction	21	104	100	96	902,662	694.36
Manufacturing	18	3,124	3,122	3,137	27,807,060	683.90
Trade, Transportation & Utilities	80	822	830	838	7,219,712	669.11
Wholesale Trade	16	85	87	86	885,870	792.37
Retail Trade	46	535	548	546	3,729,539	528.34
Transportation, Warehousing & Utilities	18	202	195	206	2,604,303	996.67
Financial Activities	33	132	135	134	1,280,811	737.09
Professional & Business Services	22	180	150	152	1,288,074	616.70
Education & Health Services	88	838	832	852	6,786,837	621.01
Leisure & Hospitality	24	327	328	336	1,237,707	288.22
Local Government	17	692	695	692	7,517,318	834.42
State Government	10	102	102	93	874,198	679.25
Other	24	114	109	109	826,175	574.26
INDEPENDENCE COUNTY - TOTAL	908	16,357	16,158	16,134	\$162,402,467	\$770.37
Natural Resources & Mining	19	255	250	254	3,170,468	963.96
Construction	64	618	530	515	7,483,971	1,038.53
Manufacturing	42	3,513	3,501	3,497	38,644,956	848.45
Trade, Transportation & Utilities	235	2,910	2,911	2,858	26,278,540	698.73
Wholesale Trade	27	318	327	326	3,139,819	746.21
Retail Trade	161	1,854	1,845	1,816	12,287,888	514.17
Transportation, Warehousing & Utilities	47	738	739	716	10,850,833	1,141.83
Information	11	97	104	99	791,429	608.79
Financial Activities	87	556	559	569	6,949,102	952.28
Professional & Business Services	85	1,121	1,106	1,124	8,857,273	609.96
Education & Health Services	155	3,602	3,590	3,599	42,445,467	907.71
Leisure & Hospitality	86	1,283	1,251	1,249	4,692,720	286.26
Other Services	64	286	257	289	1,862,214	516.52
Local Government	45	1,508	1,508	1,505	15,712,266	802.01
State Government	15	608	591	576	5,514,061	716.89

TABLE 6. COUNTY SUMMARY

North American Industry Classification System - Industry Groups	Number of Employing Units	Employment			Total Earnings Apr- Jun 2019	Average Weekly Earnings
		Apr	May	Jun		
IZARD COUNTY - TOTAL	244	3,081	3,111	3,006	\$25,122,245	\$630.29
Natural Resources & Mining	9	139	138	139	1,701,375	943.81
Construction	20	66	73	72	665,729	728.10
Manufacturing	9	301	294	301	2,649,546	682.40
Trade, Transportation & Utilities	61	506	507	521	3,755,189	564.92
Wholesale Trade	12	53	52	53	373,042	544.85
Retail Trade	38	321	327	338	1,954,809	457.51
Transportation, Warehousing & Utilities	11	132	128	130	1,427,338	844.58
Information	3	5	5	5	77,241	1,188.32
Financial Activities	24	160	165	170	1,391,073	648.52
Professional & Business Services	16	45	42	45	283,793	496.14
Education & Health Services	48	714	735	746	5,420,319	569.86
Leisure & Hospitality	18	189	202	201	764,558	298.03
Other Services	13	34	35	33	200,397	453.39
Local Government	14	492	492	384	4,634,041	781.72
State Government	9	430	423	389	3,578,984	664.99
JACKSON COUNTY - TOTAL	429	5,175	5,206	5,208	\$47,764,985	\$707.08
Natural Resources & Mining	59	270	278	281	2,498,790	695.59
Construction	21	127	118	123	1,083,739	679.60
Manufacturing	11	922	928	941	10,911,206	902.18
Trade, Transportation & Utilities	107	964	984	991	8,758,680	687.73
Wholesale Trade	19	216	220	218	2,973,862	1,049.35
Retail Trade	70	657	671	679	4,684,996	538.69
Transportation, Warehousing & Utilities	18	91	93	94	1,099,822	912.97
Information	5	12	12	13	86,378	538.74
Financial Activities	31	127	127	132	1,376,872	823.16
Professional & Business Services	30	117	111	113	1,062,453	719.01
Education & Health Services	78	877	865	846	8,512,058	759.01
Leisure & Hospitality	25	320	330	321	1,235,370	293.60
Other Services	18	63	62	65	518,478	629.73
Local Government	32	582	591	575	5,154,932	680.55
State Government	12	794	800	807	6,566,029	631.09

TABLE 6. COUNTY SUMMARY

North American Industry Classification System - Industry Groups	Number of Employing Units	Employment			Total Earnings Apr- Jun 2019	Average Weekly Earnings
		Apr	May	Jun		
JEFFERSON COUNTY - TOTAL	2,010	25,836	25,824	25,399	\$258,886,672	\$775.29
Natural Resources & Mining	43	133	131	138	1,848,448	1,061.11
Construction	83	484	488	499	5,162,128	809.83
Manufacturing	59	4,706	4,731	4,739	63,894,265	1,040.13
Trade, Transportation & Utilities	387	4,399	4,406	4,350	37,949,655	665.73
Wholesale Trade	70	700	729	708	7,714,733	833.09
Retail Trade	267	3,009	3,003	2,963	19,664,396	505.62
Transportation, Warehousing & Utilities	50	690	674	679	10,570,526	1,194.00
Information	8	66	72	73	880,906	963.44
Financial Activities	148	979	994	1,006	11,679,416	904.75
Professional & Business Services	140	1,992	1,918	1,981	18,113,768	709.57
Education & Health Services	827	4,791	4,768	4,684	48,855,810	791.58
Leisure & Hospitality	136	1,837	1,841	1,806	6,715,480	282.59
Other Services	102	474	472	467	4,267,274	696.93
Local Government	41	2,504	2,544	2,538	26,907,993	818.55
State Government	36	3,471	3,459	3,118	32,611,529	748.98
JOHNSON COUNTY - TOTAL	484	8,441	8,465	8,382	\$71,583,278	\$653.24
Natural Resources & Mining	13	198	200	205	2,115,977	809.79
Construction	35	224	231	229	1,949,103	657.59
Manufacturing	34	2,516	2,467	2,449	22,017,147	683.65
Trade, Transportation & Utilities	103	1,869	1,870	1,862	15,791,927	650.65
Retail Trade	72	893	893	883	5,542,406	479.21
Other Trade, Transportation & Utilities	31	976	977	979	10,249,521	806.71
Information	4	17	17	17	188,331	852.18
Financial Activities	47	176	183	175	1,635,684	706.86
Professional & Business Services	46	383	386	386	1,868,891	373.40
Education & Health Services	110	1,254	1,237	1,210	11,437,010	713.13
Leisure & Hospitality	43	620	638	605	2,080,780	257.75
Other Services	27	81	80	77	596,126	578.01
Local Government	14	1,005	1,056	1,067	10,949,772	807.82
State Government	8	98	100	100	952,530	737.63

TABLE 6. COUNTY SUMMARY

North American Industry Classification System - Industry Groups	Number of Employing Units	Employment			Total Earnings Apr- Jun 2019	Average Weekly Earnings
		Apr	May	Jun		
LAFAYETTE COUNTY - TOTAL	162	1,176	1,204	1,172	\$9,838,193	\$639.18
Natural Resources & Mining	23	71	79	86	525,172	513.53
Construction	10	74	74	73	1,001,002	1,045.25
Manufacturing	6	35	37	38	796,967	1,671.96
Trade, Transportation & Utilities	33	208	214	210	1,436,882	524.66
Retail Trade	18	116	116	111	615,925	414.39
Other Trade, Transportation & Utilities	15	92	98	99	820,957	655.54
Financial Activities	14	66	64	65	587,348	695.09
Professional & Business Services	10	41	36	33	280,653	588.78
Education & Health Services	33	171	173	164	1,288,332	585.25
Leisure & Hospitality	5	39	37	37	150,042	306.42
Local Government	14	302	317	292	2,731,226	691.86
State Government	9	133	136	135	774,026	442.13
Other	5	36	37	39	266,543	549.20
LAWRENCE COUNTY - TOTAL	401	3,941	3,941	3,883	\$33,948,916	\$665.90
Natural Resources & Mining	54	185	184	187	1,702,935	706.81
Construction	24	106	107	105	1,116,913	810.53
Manufacturing	18	360	370	377	3,296,027	687.10
Trade, Transportation & Utilities	117	819	834	821	7,230,125	674.41
Wholesale Trade	18	196	202	196	2,352,786	914.06
Retail Trade	63	489	500	489	3,198,024	499.33
Transportation, Warehousing & Utilities	36	134	132	136	1,679,315	964.02
Financial Activities	29	123	127	124	1,231,859	760.09
Professional & Business Services	25	108	110	93	868,282	644.29
Education & Health Services	49	569	538	530	4,485,760	632.36
Leisure & Hospitality	29	332	327	312	1,123,125	266.92
Local Government	24	1,077	1,079	1,074	10,401,894	743.17
State Government	9	78	80	80	621,732	602.84
Other	23	184	185	180	1,870,264	786.16

TABLE 6. COUNTY SUMMARY

North American Industry Classification System - Industry Groups	Number of Employing Units	Employment			Total Earnings Apr- Jun 2019	Average Weekly Earnings
		Apr	May	Jun		
LEE COUNTY - TOTAL	260	1,840	1,849	1,828	\$15,837,387	\$662.46
Natural Resources & Mining	40	187	188	182	1,753,266	726.39
Construction	5	27	25	23	181,577	558.70
Trade, Transportation & Utilities	42	334	336	329	3,150,372	727.74
Wholesale Trade	10	110	114	113	1,449,912	992.86
Retail Trade	22	168	166	161	988,395	460.79
Transportation, Warehousing & Utilities	10	56	56	55	712,065	983.97
Financial Activities	16	54	55	55	489,013	688.10
Professional & Business Services	13	50	47	48	625,088	994.84
Education & Health Services	104	431	435	438	3,421,689	605.54
Leisure & Hospitality	7	71	70	66	267,466	298.18
Local Government	15	287	297	291	2,323,086	612.68
State Government	6	384	381	381	3,445,475	693.81
Other	12	15	15	15	180,355	924.90
LINCOLN COUNTY - TOTAL	288	2,842	2,844	2,853	\$24,901,817	\$672.98
Natural Resources & Mining	32	147	141	144	1,178,878	629.74
Construction	20	145	156	161	1,705,406	851.85
Manufacturing	8	302	310	313	2,777,554	692.94
Trade, Transportation & Utilities	44	332	337	341	3,749,071	856.60
Wholesale Trade	9	63	64	63	706,750	858.40
Retail Trade	23	153	156	159	911,310	449.36
Transportation, Warehousing & Utilities	12	116	117	119	2,131,011	1,397.08
Financial Activities	19	68	67	67	660,892	755.02
Professional & Business Services	11	29	27	26	282,693	795.57
Education & Health Services	109	425	416	419	2,623,973	480.58
Leisure & Hospitality	15	168	167	169	461,657	211.38
Local Government	7	327	326	320	3,066,480	727.29
State Government	10	855	853	850	7,908,046	713.42
Other	13	44	44	43	487,167	858.19

TABLE 6. COUNTY SUMMARY

North American Industry Classification System - Industry Groups	Number of Employing Units	Employment			Total Earnings Apr- Jun 2019	Average Weekly Earnings
		Apr	May	Jun		
LITTLE RIVER COUNTY - TOTAL	259	3,499	3,453	3,457	\$42,718,749	\$947.08
Natural Resources & Mining	17	64	67	73	599,174	677.80
Construction	14	192	201	164	1,849,240	766.15
Manufacturing	19	1,187	1,165	1,179	24,487,908	1,600.41
Trade, Transportation & Utilities	62	577	559	572	4,315,265	583.04
Wholesale Trade	6	30	30	31	539,820	1,368.94
Retail Trade	40	421	409	418	2,576,479	476.42
Transportation, Warehousing & Utilities	16	126	120	123	1,198,966	749.82
Financial Activities	14	55	55	55	490,399	685.87
Professional & Business Services	14	127	122	130	1,214,935	739.76
Education & Health Services	50	220	209	213	1,609,813	578.65
Leisure & Hospitality	19	225	236	223	743,456	250.83
Local Government	20	710	701	720	6,379,529	690.85
State Government	10	83	82	76	675,362	646.69
Other	20	59	56	52	353,668	488.72
LOGAN COUNTY - TOTAL	492	5,071	5,065	5,105	\$41,983,459	\$635.69
Natural Resources & Mining	22	115	114	115	989,068	663.51
Construction	43	208	199	206	2,055,908	773.96
Manufacturing	22	999	980	978	10,561,334	824.22
Trade, Transportation & Utilities	100	955	960	973	6,715,309	536.60
Wholesale Trade	7	30	28	29	244,700	649.07
Retail Trade	72	788	798	809	4,855,642	467.86
Transportation, Warehousing & Utilities	21	137	134	135	1,614,967	917.94
Information	5	29	28	26	231,812	644.52
Financial Activities	51	188	192	187	2,126,336	865.42
Professional & Business Services	43	109	110	108	1,025,747	723.89
Education & Health Services	110	723	712	711	5,587,992	600.90
Leisure & Hospitality	32	292	294	291	1,091,863	287.31
Other Services	30	155	161	182	1,238,994	574.14
Local Government	22	810	820	832	7,320,129	686.13
State Government	12	488	495	496	3,038,967	474.17

TABLE 6. COUNTY SUMMARY

North American Industry Classification System - Industry Groups	Number of Employing Units	Employment			Total Earnings Apr- Jun 2019	Average Weekly Earnings
		Apr	May	Jun		
LONOKE COUNTY - TOTAL	1,311	14,080	14,057	14,188	\$126,808,730	\$691.40
Natural Resources & Mining	88	523	535	540	5,306,486	766.32
Construction	137	951	951	970	11,046,894	887.63
Manufacturing	36	1,644	1,598	1,584	19,140,233	915.25
Trade, Transportation & Utilities	300	2,752	2,766	2,763	22,548,714	628.37
Wholesale Trade	71	416	420	422	5,472,559	1,003.89
Retail Trade	171	2,016	2,031	2,038	13,052,229	495.00
Transportation, Warehousing & Utilities	58	320	315	303	4,023,926	989.98
Information	14	98	102	100	1,038,070	798.52
Financial Activities	157	665	674	683	9,454,089	1,078.99
Professional & Business Services	161	580	532	523	5,580,365	787.63
Education & Health Services	200	1,785	1,761	1,803	13,953,517	601.99
Leisure & Hospitality	119	2,077	2,102	2,149	8,309,587	303.03
Other Services	61	198	196	193	1,365,645	536.88
Local Government	24	2,641	2,672	2,713	27,573,020	792.80
State Government	14	166	168	167	1,492,110	687.29
MADISON COUNTY - TOTAL	258	3,322	3,351	3,382	\$29,717,679	\$682.04
Natural Resources & Mining	13	44	46	41	434,223	764.93
Construction	31	121	123	132	1,215,850	746.23
Manufacturing	23	1,169	1,181	1,179	10,593,731	692.75
Trade, Transportation & Utilities	54	681	685	696	5,325,792	596.04
Wholesale Trade	8	33	36	36	295,311	649.04
Retail Trade	34	490	496	509	3,274,386	505.44
Transportation, Warehousing & Utilities	12	158	153	151	1,756,095	877.17
Information	6	54	56	55	1,207,585	1,688.93
Financial Activities	19	85	87	88	881,346	782.26
Professional & Business Services	23	82	82	77	992,124	950.01
Education & Health Services	36	261	264	266	2,028,931	591.93
Leisure & Hospitality	18	194	194	201	687,265	269.27
Other Services	19	38	31	39	276,781	591.41
Local Government	9	549	556	562	5,719,011	791.70
State Government	7	44	46	46	355,040	602.44

TABLE 6. COUNTY SUMMARY

North American Industry Classification System - Industry Groups	Number of Employing Units	Employment			Total Earnings	Average Weekly Earnings
		Apr	May	Jun	Apr- Jun 2019	
MARION COUNTY - TOTAL	282	3,917	3,943	3,954	\$31,363,417	\$612.64
Manufacturing	21	1,841	1,818	1,834	15,513,930	651.76
Trade, Transportation & Utilities	58	517	524	523	3,559,613	525.22
Wholesale Trade	6	33	34	35	279,649	632.69
Retail Trade	43	449	455	452	2,783,589	473.72
Transportation, Warehousing & Utilities	9	35	35	36	496,375	1,080.64
Information	3	54	55	54	706,389	1,000.08
Financial Activities	33	185	209	219	1,759,165	662.25
Professional & Business Services	26	79	72	76	585,608	595.33
Education & Health Services	45	323	328	330	2,486,728	584.97
Leisure & Hospitality	35	210	240	243	742,458	247.24
Other Services	14	30	29	31	130,654	335.01
Local Government	18	534	523	507	4,719,552	696.37
State Government	7	39	39	39	341,886	674.33
Other	22	105	106	98	817,434	610.48
MILLER COUNTY - TOTAL	879	13,177	13,196	13,387	\$136,975,641	\$795.01
Natural Resources & Mining	32	255	292	327	3,617,060	955.04
Construction	69	589	579	571	6,173,091	819.18
Manufacturing	27	2,310	2,336	2,364	39,780,595	1,309.58
Trade, Transportation & Utilities	221	3,479	3,477	3,500	34,043,932	751.37
Wholesale Trade	47	497	498	486	6,903,885	1,075.76
Retail Trade	126	1,251	1,263	1,270	8,222,534	501.46
Transportation, Warehousing & Utilities	48	1,731	1,716	1,744	18,917,513	840.99
Information	6	112	111	111	1,578,049	1,090.31
Financial Activities	84	420	409	416	4,372,671	810.50
Professional & Business Services	77	1,081	1,106	1,117	6,302,673	440.21
Education & Health Services	185	1,314	1,300	1,278	10,069,790	597.07
Leisure & Hospitality	85	1,407	1,386	1,496	5,937,159	319.45
Other Services	52	280	268	266	1,871,238	530.50
Local Government	26	1,461	1,461	1,467	18,021,619	947.56
State Government	15	469	471	474	5,207,764	849.92

TABLE 6. COUNTY SUMMARY

North American Industry Classification System - Industry Groups	Number of Employing Units	Employment			Total Earnings Apr- Jun 2019	Average Weekly Earnings
		Apr	May	Jun		
MISSISSIPPI COUNTY - TOTAL	1,104	17,804	17,800	17,511	\$230,136,002	\$999.87
Natural Resources & Mining	112	488	507	506	4,733,905	727.81
Construction	54	839	847	801	11,746,633	1,089.97
Manufacturing	57	6,733	6,716	6,580	125,203,896	1,442.57
Trade, Transportation & Utilities	267	2,697	2,678	2,767	25,233,616	715.20
Wholesale Trade	57	410	413	418	5,492,228	1,021.30
Retail Trade	144	1,534	1,519	1,548	9,536,241	478.30
Transportation, Warehousing & Utilities	66	753	746	801	10,205,147	1,023.93
Information	5	30	28	25	152,483	423.96
Financial Activities	82	440	449	452	4,559,125	784.57
Professional & Business Services	84	1,085	1,018	976	10,582,772	793.17
Education & Health Services	234	1,627	1,644	1,449	13,910,203	680.09
Leisure & Hospitality	92	1,189	1,223	1,208	4,349,996	277.31
Other Services	48	266	269	285	2,778,365	781.90
Local Government	49	1,900	1,912	1,974	20,414,388	814.21
State Government	20	510	509	488	6,470,620	990.86
MONROE COUNTY - TOTAL	276	2,021	2,012	2,024	\$15,764,343	\$600.62
Natural Resources & Mining	26	102	112	112	1,033,758	731.78
Manufacturing	6	140	135	142	1,291,473	714.71
Trade, Transportation & Utilities	71	526	526	534	5,011,397	729.18
Wholesale Trade	16	188	184	187	2,486,671	1,026.56
Retail Trade	33	236	239	242	1,416,024	455.75
Transportation, Warehousing & Utilities	22	102	103	105	1,108,702	825.34
Financial Activities	22	88	90	90	818,193	704.53
Professional & Business Services	14	35	21	23	178,808	522.32
Education & Health Services	60	375	370	366	2,382,204	494.81
Leisure & Hospitality	22	232	230	229	773,101	258.19
Local Government	21	335	340	339	2,893,990	658.62
State Government	7	66	66	65	638,901	748.42
Other	27	122	122	124	742,518	465.63

TABLE 6. COUNTY SUMMARY

North American Industry Classification System - Industry Groups	Number of Employing Units	Employment			Total Earnings Apr- Jun 2019	Average Weekly Earnings
		Apr	May	Jun		
MONTGOMERY COUNTY - TOTAL	166	1,239	1,302	1,337	\$9,523,258	\$566.70
Natural Resources & Mining	8	34	36	37	312,682	674.37
Construction	24	70	67	62	466,607	541.10
Manufacturing	8	34	32	31	263,212	626.20
Trade, Transportation & Utilities	34	228	242	234	1,495,032	490.07
Wholesale Trade	6	54	58	54	501,277	696.86
Retail Trade	22	147	156	157	813,023	407.87
Transportation, Warehousing & Utilities	6	27	28	23	180,732	534.71
Financial Activities	8	45	46	47	328,707	549.68
Professional & Business Services	16	20	21	21	109,067	405.96
Education & Health Services	23	57	57	57	421,215	568.44
Leisure & Hospitality	14	244	292	352	1,660,962	431.64
Local Government	9	441	442	428	4,009,104	705.70
State Government	7	34	34	34	290,875	658.09
Other	15	32	33	34	165,795	386.47
NEVADA COUNTY - TOTAL	202	2,495	2,497	2,481	\$24,281,596	\$749.83
Natural Resources & Mining	13	57	59	59	729,217	961.60
Trade, Transportation & Utilities	40	561	559	554	5,033,028	693.83
Retail Trade	24	318	310	304	1,795,899	444.68
Other Trade, Transportation & Utilities	16	243	249	250	3,237,129	1,006.78
Financial Activities	11	66	66	56	631,647	775.34
Professional & Business Services	13	48	50	53	682,794	1,043.50
Education & Health Services	47	440	434	439	2,547,143	447.68
Leisure & Hospitality	9	96	94	88	339,763	282.04
Other Services	13	44	42	37	220,044	412.84
Local Government	29	388	395	400	3,805,179	742.28
State Government	9	52	53	53	418,171	610.77
Other	18	743	745	742	9,874,610	1,021.86

TABLE 6. COUNTY SUMMARY

North American Industry Classification System - Industry Groups	Number of Employing Units	Employment			Total Earnings Apr- Jun 2019	Average Weekly Earnings
		Apr	May	Jun		
NEWTON COUNTY - TOTAL	114	1,032	1,047	1,046	\$7,510,807	\$554.64
Construction	6	21	20	24	183,467	651.36
Manufacturing	8	32	32	33	318,317	757.30
Trade, Transportation & Utilities	24	153	159	154	1,165,783	577.31
Retail Trade	11	99	103	101	586,488	446.68
Other Trade, Transportation & Utilities	13	54	56	53	579,295	820.14
Education & Health Services	23	249	248	251	1,308,972	403.84
Leisure & Hospitality	18	151	158	167	773,709	375.10
Other Services	3	3	3	3	15,538	398.41
Local Government	14	348	345	334	3,121,518	701.41
State Government	7	36	36	36	318,697	680.98
Other	11	39	46	44	304,806	545.27
OUACHITA COUNTY - TOTAL	658	6,787	6,850	6,870	\$61,965,239	\$697.31
Natural Resources & Mining	34	161	164	169	1,693,032	790.89
Construction	42	227	230	225	2,377,866	804.60
Manufacturing	24	458	444	445	4,958,162	849.44
Trade, Transportation & Utilities	156	1,516	1,533	1,568	11,837,487	591.67
Wholesale Trade	25	224	221	224	2,293,835	791.25
Retail Trade	99	959	966	983	5,385,342	427.36
Transportation, Warehousing & Utilities	32	333	346	361	4,158,310	922.70
Information	6	36	37	37	382,253	801.93
Financial Activities	53	247	251	250	2,649,306	817.35
Professional & Business Services	43	567	560	590	5,157,818	693.22
Education & Health Services	192	1,270	1,268	1,273	13,982,726	846.70
Leisure & Hospitality	38	456	461	480	1,655,405	273.45
Other Services	26	111	113	106	1,038,799	726.43
Local Government	31	1,112	1,141	1,128	10,799,029	737.08
State Government	13	626	648	599	5,433,356	669.43

TABLE 6. COUNTY SUMMARY

North American Industry Classification System - Industry Groups	Number of Employing Units	Employment			Total Earnings Apr- Jun 2019	Average Weekly Earnings
		Apr	May	Jun		
PERRY COUNTY - TOTAL	145	1,078	1,084	1,072	\$9,301,328	\$663.72
Construction	14	60	60	62	525,540	666.37
Manufacturing	6	30	35	34	393,601	917.48
Trade, Transportation & Utilities	27	165	160	152	1,194,395	577.84
Retail Trade	17	131	126	120	531,254	325.19
Other Trade, Transportation & Utilities	10	34	34	32	663,141	1,530.33
Financial Activities	11	28	27	27	279,014	785.22
Professional & Business Services	18	37	44	51	392,396	686.01
Education & Health Services	31	221	221	220	1,594,260	555.75
Leisure & Hospitality	8	64	68	65	267,495	313.35
Local Government	9	334	332	322	3,075,130	718.26
State Government	7	36	36	37	323,317	684.51
Other	14	103	101	102	1,256,180	947.35
PHILLIPS COUNTY - TOTAL	724	5,379	5,405	5,345	\$46,671,782	\$667.77
Natural Resources & Mining	59	270	281	281	2,050,234	568.67
Construction	28	114	118	113	783,117	523.82
Manufacturing	12	387	385	393	4,638,957	918.91
Trade, Transportation & Utilities	138	1,229	1,236	1,228	10,686,020	667.75
Wholesale Trade	27	282	289	282	3,578,540	968.13
Retail Trade	73	714	717	716	4,311,695	463.44
Transportation, Warehousing & Utilities	38	233	230	230	2,795,785	931.00
Information	6	16	15	13	162,000	849.65
Financial Activities	41	203	211	213	2,037,908	750.06
Professional & Business Services	39	272	286	276	2,735,066	756.80
Education & Health Services	292	1,377	1,378	1,355	10,554,481	592.62
Leisure & Hospitality	40	340	341	332	1,171,471	266.87
Other Services	28	75	74	70	398,333	419.74
Local Government	27	757	748	753	8,493,252	868.02
State Government	14	339	332	318	2,960,943	690.89

TABLE 6. COUNTY SUMMARY

North American Industry Classification System - Industry Groups	Number of Employing Units	Employment			Total Earnings Apr- Jun 2019	Average Weekly Earnings
		Apr	May	Jun		
PIKE COUNTY - TOTAL	258	2,620	2,638	2,697	\$22,219,213	\$644.56
Natural Resources & Mining	22	105	107	104	1,096,425	800.70
Construction	16	53	46	44	382,991	618.06
Manufacturing	17	437	442	436	4,058,017	712.14
Trade, Transportation & Utilities	68	542	537	565	4,105,157	576.24
Wholesale Trade	10	122	118	128	1,015,789	636.99
Retail Trade	38	337	342	353	2,214,530	495.20
Transportation, Warehousing & Utilities	20	83	77	84	874,838	827.40
Information	7	26	25	27	286,408	847.36
Financial Activities	22	208	207	210	2,197,997	811.57
Professional & Business Services	13	55	53	54	1,682,046	2,396.08
Education & Health Services	34	304	306	309	1,691,559	424.77
Leisure & Hospitality	26	252	263	274	944,463	276.24
Other Services	14	66	71	76	455,875	493.91
Local Government	10	467	458	469	4,657,827	771.08
State Government	9	105	123	129	660,448	426.92
POINSETT COUNTY - TOTAL	484	5,280	5,288	5,274	\$49,116,333	\$715.47
Natural Resources & Mining	67	278	280	291	2,893,639	786.53
Construction	24	77	78	81	702,110	686.55
Manufacturing	19	755	737	742	8,645,279	893.05
Trade, Transportation & Utilities	126	1,221	1,259	1,239	11,677,112	724.58
Wholesale Trade	24	430	443	448	6,302,342	1,100.97
Retail Trade	70	647	668	645	3,596,755	423.48
Transportation, Warehousing & Utilities	32	144	148	146	1,778,015	936.78
Professional & Business Services	28	200	192	194	3,017,562	1,188.33
Education & Health Services	80	752	755	761	6,402,704	651.48
Leisure & Hospitality	41	488	476	467	1,525,047	245.94
Other Services	18	55	58	55	469,217	644.53
Local Government	30	1,031	1,026	1,016	10,104,850	758.83
State Government	11	174	176	177	1,335,269	584.70
Other	40	249	251	251	2,343,544	720.13

TABLE 6. COUNTY SUMMARY

North American Industry Classification System - Industry Groups	Number of Employing Units	Employment			Total Earnings Apr- Jun 2019	Average Weekly Earnings
		Apr	May	Jun		
POLK COUNTY - TOTAL	492	5,823	5,830	5,799	\$49,236,339	\$651.06
Natural Resources & Mining	24	179	175	168	2,261,453	999.76
Construction	32	193	202	201	1,593,720	617.08
Manufacturing	35	1,351	1,343	1,354	13,549,812	772.45
Trade, Transportation & Utilities	127	1,081	1,088	1,073	8,105,288	576.94
Wholesale Trade	18	61	61	59	597,425	761.70
Retail Trade	72	778	784	770	4,506,527	445.96
Transportation, Warehousing & Utilities	37	242	243	244	3,001,336	950.09
Information	6	51	50	53	300,547	450.37
Financial Activities	40	204	205	215	1,833,239	677.97
Professional & Business Services	41	137	134	135	1,481,741	842.22
Education & Health Services	89	1,018	1,018	1,030	8,982,366	676.08
Leisure & Hospitality	42	482	479	449	1,665,013	272.51
Other Services	23	151	148	148	1,151,465	594.46
Local Government	21	684	691	688	6,259,719	700.22
State Government	12	292	297	285	2,051,976	541.80
POPE COUNTY - TOTAL	1,842	25,759	25,725	25,308	\$265,886,602	\$799.02
Natural Resources & Mining	35	679	751	761	7,351,335	774.29
Construction	158	1,095	1,080	1,112	15,587,717	1,094.36
Manufacturing	74	4,597	4,587	4,615	52,184,518	872.71
Trade, Transportation & Utilities	410	6,002	6,048	6,015	74,034,274	945.74
Wholesale Trade	72	548	547	548	5,647,891	793.28
Retail Trade	264	3,046	3,072	3,065	20,610,357	517.94
Transportation, Warehousing & Utilities	74	2,408	2,429	2,402	47,776,026	1,523.03
Information	17	138	137	132	1,037,757	588.41
Financial Activities	192	898	881	880	9,510,291	825.38
Professional & Business Services	265	1,883	1,853	1,861	20,044,539	826.45
Education & Health Services	375	3,248	3,221	3,247	29,776,512	707.24
Leisure & Hospitality	148	2,821	2,778	2,641	11,273,861	315.74
Other Services	110	546	511	514	3,925,990	576.70
Local Government	43	2,166	2,192	2,133	23,919,003	850.37
State Government	15	1,686	1,686	1,397	17,240,805	834.27

TABLE 6. COUNTY SUMMARY

North American Industry Classification System - Industry Groups	Number of Employing Units	Employment			Total Earnings Apr- Jun 2019	Average Weekly Earnings
		Apr	May	Jun		
PRAIRIE COUNTY - TOTAL	255	1,429	1,449	1,417	\$11,652,711	\$626.10
Natural Resources & Mining	35	160	170	169	1,758,056	813.04
Construction	12	53	48	45	371,621	587.39
Trade, Transportation & Utilities	60	341	348	347	2,802,624	624.29
Wholesale Trade	12	84	88	89	1,138,239	1,006.40
Retail Trade	34	201	204	205	1,108,931	419.52
Transportation, Warehousing & Utilities	14	56	56	53	555,454	776.86
Financial Activities	15	53	49	53	525,110	781.80
Professional & Business Services	15	69	63	62	595,493	708.36
Education & Health Services	52	240	238	242	1,632,093	523.11
Leisure & Hospitality	19	91	89	86	352,155	305.51
Local Government	16	319	321	313	2,782,600	673.81
State Government	7	28	28	28	249,479	685.38
Other	24	75	95	72	583,480	556.40
PULASKI COUNTY - TOTAL	14,465	243,582	244,022	244,943	\$2,942,738,192	\$927.03
Natural Resources & Mining	51	604	617	616	9,848,501	1,237.20
Construction	937	9,152	9,308	9,430	121,258,644	1,003.33
Manufacturing	331	13,569	13,692	13,769	195,441,308	1,099.24
Trade, Transportation & Utilities	3,137	49,511	49,613	49,434	543,481,500	844.24
Wholesale Trade	919	11,761	11,799	11,741	190,127,610	1,242.90
Retail Trade	1,808	24,464	24,567	24,496	188,426,462	591.39
Transportation, Warehousing & Utilities	410	13,286	13,247	13,197	164,927,428	957.97
Information	206	3,496	3,500	3,543	45,467,645	995.59
Financial Activities	1,705	17,839	17,769	17,860	296,894,525	1,281.40
Professional & Business Services	2,786	35,656	35,471	35,569	448,641,833	970.35
Education & Health Services	2,577	41,404	41,374	41,413	518,788,766	964.00
Leisure & Hospitality	1,289	23,585	23,938	24,047	111,476,044	359.44
Other Services	1,143	6,581	6,669	6,961	66,961,983	764.57
Local Government	108	15,453	15,416	15,400	193,279,223	963.99
State Government	195	26,732	26,655	26,901	391,198,220	1,124.41

TABLE 6. COUNTY SUMMARY

North American Industry Classification System - Industry Groups	Number of Employing Units	Employment			Total Earnings Apr- Jun 2019	Average Weekly Earnings
		Apr	May	Jun		
RANDOLPH COUNTY - TOTAL	392	5,751	5,796	5,817	\$47,710,087	\$634.07
Natural Resources & Mining	25	250	253	255	3,026,659	921.45
Construction	27	76	75	87	544,518	527.97
Manufacturing	27	1,598	1,608	1,623	14,805,564	707.53
Trade, Transportation & Utilities	93	892	897	899	6,861,565	589.08
Wholesale Trade	15	120	125	123	1,129,809	708.49
Retail Trade	55	617	623	618	3,779,608	469.44
Transportation, Warehousing & Utilities	23	155	149	158	1,952,148	975.10
Information	5	23	24	23	207,607	684.42
Financial Activities	32	150	147	149	1,630,398	843.60
Professional & Business Services	35	256	254	266	1,873,604	557.18
Education & Health Services	67	946	968	958	7,811,842	627.69
Leisure & Hospitality	31	410	413	410	1,434,022	268.39
Other Services	16	47	47	47	295,052	482.90
Local Government	24	826	828	848	6,912,598	637.58
State Government	10	277	282	252	2,306,658	656.36
SAINT FRANCIS COUNTY - TOTAL	676	6,658	6,708	6,755	\$58,207,809	\$667.59
Natural Resources & Mining	43	189	200	244	1,680,989	612.83
Construction	37	170	192	192	1,993,815	830.53
Trade, Transportation & Utilities	145	1,793	1,828	1,814	16,410,338	696.78
Wholesale Trade	30	564	578	571	7,124,549	959.79
Retail Trade	94	923	944	927	5,950,252	491.46
Transportation, Warehousing & Utilities	21	306	306	316	3,335,537	829.46
Information	5	48	48	50	351,812	556.08
Financial Activities	58	267	265	252	2,323,764	684.00
Professional & Business Services	47	186	164	158	1,741,506	791.11
Education & Health Services	220	1,424	1,440	1,451	13,333,267	713.07
Leisure & Hospitality	46	696	673	675	2,497,147	281.93
Local Government	28	844	851	861	8,158,387	736.58
State Government	15	416	413	410	3,486,378	649.35
Other	32	625	634	648	6230406	753.95

TABLE 6. COUNTY SUMMARY

North American Industry Classification System - Industry Groups	Number of Employing Units	Employment			Total Earnings Apr- Jun 2019	Average Weekly Earnings
		Apr	May	Jun		
SALINE COUNTY - TOTAL	2,100	24,710	24,868	24,986	\$231,991,877	\$718.00
Natural Resources & Mining	13	56	54	54	559,785	787.69
Construction	281	2,101	2,129	2,138	23,085,926	836.61
Manufacturing	74	1,328	1,342	1,358	17,570,856	1,006.66
Trade, Transportation & Utilities	481	5,544	5,567	5,574	47,243,857	653.43
Wholesale Trade	112	630	634	625	8,848,945	1,081.03
Retail Trade	294	4,314	4,337	4,350	31,766,011	563.85
Transportation, Warehousing & Utilities	75	600	596	599	6,628,901	852.23
Information	17	148	152	145	1,759,840	912.62
Financial Activities	211	804	808	803	9,522,657	909.95
Professional & Business Services	290	1,850	1,837	1,892	19,972,248	826.13
Education & Health Services	335	4,710	4,722	4,725	46,987,474	765.93
Leisure & Hospitality	197	3,513	3,602	3,547	14,533,430	314.56
Other Services	154	831	826	884	6,705,207	608.96
Local Government	33	3,055	3,061	3,097	37,994,730	951.70
State Government	14	770	768	769	6,055,867	605.77
SCOTT COUNTY - TOTAL	185	2,973	2,972	2,997	\$23,761,303	\$613.22
Natural Resources & Mining	19	162	168	170	1,911,072	882.03
Trade, Transportation & Utilities	35	320	323	325	2,264,181	539.78
Wholesale Trade	8	42	40	40	343,260	649.29
Retail Trade	21	209	212	213	1,085,053	394.95
Transportation, Warehousing & Utilities	6	69	71	72	835,868	909.87
Financial Activities	17	60	61	61	471,688	598.08
Professional & Business Services	12	94	89	93	676,609	565.73
Education & Health Services	42	306	310	300	2,918,524	735.27
Leisure & Hospitality	19	152	144	144	532,759	279.42
Other Services	10	30	34	36	244,920	565.20
Local Government	6	549	547	564	5,409,912	752.07
State Government	6	31	31	31	298,084	739.66
Other	19	1,269	1,265	1,273	9,033,554	547.59

TABLE 6. COUNTY SUMMARY

North American Industry Classification System - Industry Groups	Number of Employing Units	Employment			Total Earnings Apr- Jun 2019	Average Weekly Earnings
		Apr	May	Jun		
SEARCY COUNTY - TOTAL	166	1,457	1,576	1,628	\$10,441,297	\$516.96
Construction	14	5	6	12	36,020	361.40
Manufacturing	16	178	178	182	1,184,927	508.26
Trade, Transportation & Utilities	36	239	242	249	1,561,176	493.52
Wholesale Trade	6	37	37	38	256,866	529.26
Retail Trade	24	183	186	192	1,052,157	432.81
Transportation, Warehousing & Utilities	6	19	19	19	252,153	1,020.86
Financial Activities	12	60	69	95	543,363	559.78
Education & Health Services	38	340	334	331	2,182,938	501.25
Leisure & Hospitality	13	163	165	173	523,011	240.91
Local Government	10	308	311	316	2,652,070	654.56
State Government	6	41	42	42	351,251	648.46
Other	21	123	229	228	1,406,541	559.63
SEBASTIAN COUNTY - TOTAL	3,710	63,580	63,969	63,415	\$686,613,512	\$829.73
Natural Resources & Mining	43	359	359	359	6,170,982	1,322.26
Construction	270	2,354	2,444	2,440	26,168,538	834.33
Manufacturing	192	11,393	11,348	11,157	135,717,323	923.93
Trade, Transportation & Utilities	890	12,777	12,828	12,710	128,366,718	773.15
Wholesale Trade	225	2,699	2,701	2,674	36,374,578	1,039.65
Retail Trade	550	7,488	7,528	7,437	51,538,546	529.71
Transportation, Warehousing & Utilities	115	2,590	2,599	2,599	40,453,594	1,198.70
Information	37	865	865	889	14,580,302	1,284.72
Financial Activities	406	2,645	2,622	2,606	32,523,610	953.31
Professional & Business Services	557	7,743	7,772	7,869	79,942,817	788.93
Education & Health Services	638	11,691	11,720	11,673	150,073,245	987.12
Leisure & Hospitality	355	6,064	6,304	6,277	26,475,689	327.69
Other Services	256	1,202	1,210	1,206	9,634,739	614.54
Local Government	43	4,726	4,725	4,459	57,780,236	958.58
State Government	23	1,761	1,772	1,770	19,179,313	834.62

TABLE 6. COUNTY SUMMARY

North American Industry Classification System - Industry Groups	Number of Employing Units	Employment			Total Earnings Apr- Jun 2019	Average Weekly Earnings
		Apr	May	Jun		
SEVIER COUNTY - TOTAL	316	4,564	4,639	4,638	\$39,343,239	\$655.96
Natural Resources & Mining	18	165	165	171	1,887,364	869.35
Construction	20	172	161	156	2,149,845	1,014.56
Trade, Transportation & Utilities	85	799	825	835	6,447,907	605.12
Wholesale Trade	12	79	81	84	1,153,429	1,090.88
Retail Trade	60	637	658	663	4,231,364	498.71
Transportation, Warehousing & Utilities	13	83	86	88	1,063,114	954.61
Financial Activities	26	188	193	194	1,893,488	759.93
Professional & Business Services	24	86	83	85	615,508	559.21
Education & Health Services	64	412	412	420	3,202,317	594.05
Leisure & Hospitality	25	276	284	286	944,212	257.56
Local Government	13	928	945	921	8,439,594	697.06
State Government	7	169	168	143	1,424,426	684.82
Other	34	1,369	1,403	1,427	12,338,578	678.11
SHARP COUNTY - TOTAL	380	3,492	3,599	3,500	\$25,721,703	\$560.45
Construction	28	103	104	106	922,423	680.09
Manufacturing	16	142	132	134	1,170,587	662.10
Trade, Transportation & Utilities	82	754	771	748	4,520,384	458.94
Wholesale Trade	12	36	40	40	185,840	369.71
Retail Trade	60	659	674	650	3,767,570	438.45
Transportation, Warehousing & Utilities	10	59	57	58	566,974	751.95
Information	7	24	25	26	138,159	425.10
Financial Activities	31	172	171	172	1,917,931	859.42
Professional & Business Services	37	134	137	139	1,103,769	621.26
Education & Health Services	84	826	822	812	6,789,749	636.94
Leisure & Hospitality	32	411	431	420	1,542,591	282.08
Local Government	24	770	762	783	6,367,745	634.76
State Government	7	54	54	53	438,655	628.75
Other	32	102	190	107	809,710	468.31

TABLE 6. COUNTY SUMMARY

North American Industry Classification System - Industry Groups	Number of Employing Units	Employment			Total Earnings	Average Weekly Earnings
		Apr	May	Jun	Apr- Jun 2019	
STONE COUNTY - TOTAL	266	2,638	2,602	2,630	\$20,217,103	\$592.82
Natural Resources & Mining	4	9	8	8	49,813	459.81
Construction	14	34	36	35	218,427	480.06
Manufacturing	17	215	208	215	1,410,634	510.24
Trade, Transportation & Utilities	66	578	569	589	4,148,232	551.43
Wholesale Trade	5	41	43	46	340,365	604.20
Retail Trade	49	496	485	502	3,276,679	509.88
Transportation, Warehousing & Utilities	12	41	41	41	531,188	996.60
Financial Activities	33	158	157	164	1,974,866	951.44
Professional & Business Services	14	32	30	28	151,166	387.61
Education & Health Services	50	558	550	541	5,316,601	744.03
Leisure & Hospitality	28	473	459	460	1,690,516	280.26
Local Government	11	414	415	419	4,012,432	741.94
State Government	7	119	122	122	871,376	553.96
Other	22	48	48	49	373,040	593.70
UNION COUNTY - TOTAL	1,283	17,337	17,244	17,162	\$206,111,162	\$919.24
Natural Resources & Mining	82	394	413	409	5,303,042	1,006.40
Construction	82	1,747	1,540	1,534	23,194,920	1,110.28
Manufacturing	54	2,854	2,872	2,879	47,867,800	1,283.72
Trade, Transportation & Utilities	305	3,396	3,418	3,417	35,358,117	797.53
Wholesale Trade	68	471	468	469	6,622,324	1,085.39
Retail Trade	177	2,005	2,024	2,007	13,151,958	502.83
Transportation, Warehousing & Utilities	60	920	926	941	15,583,835	1,290.37
Information	8	87	86	87	851,737	755.98
Financial Activities	94	594	595	610	7,822,550	1,003.45
Professional & Business Services	126	1,863	1,865	1,851	32,616,606	1,349.15
Education & Health Services	295	2,240	2,242	2,228	21,331,458	733.63
Leisure & Hospitality	95	1,414	1,438	1,451	6,046,728	324.29
Other Services	94	411	425	411	3,124,760	578.27
Local Government	32	1,829	1,843	1,778	17,831,752	755.05
State Government	16	508	507	507	4,761,692	721.98

TABLE 6. COUNTY SUMMARY

North American Industry Classification System - Industry Groups	Number of Employing Units	Employment			Total Earnings Apr- Jun 2019	Average Weekly Earnings
		Apr	May	Jun		
VAN BUREN COUNTY - TOTAL	327	3,390	3,450	3,458	\$31,376,555	\$703.12
Natural Resources & Mining	8	100	92	95	2,092,996	1,682.92
Construction	34	114	120	127	1,114,812	712.64
Manufacturing	8	144	159	168	1,211,199	593.43
Trade, Transportation & Utilities	90	845	849	847	8,127,141	738.09
Wholesale Trade	10	43	45	46	474,728	817.56
Retail Trade	52	563	571	571	3,887,519	526.17
Transportation, Warehousing & Utilities	28	239	233	230	3,764,894	1,237.64
Information	6	36	35	35	330,532	719.59
Financial Activities	32	152	151	158	1,724,735	863.37
Professional & Business Services	32	139	143	153	1,351,236	716.84
Education & Health Services	58	759	771	747	6,790,823	688.24
Leisure & Hospitality	23	260	268	266	1,016,989	295.58
Other Services	19	151	177	184	1,147,856	517.36
Local Government	11	650	645	637	6,071,736	725.24
State Government	6	40	40	41	396,500	756.20
WASHINGTON COUNTY - TOTAL	6,276	107,564	107,815	107,526	\$1,246,435,842	\$890.79
Natural Resources & Mining	42	294	302	301	3,949,201	1,016.00
Construction	607	5,990	6,082	6,209	79,350,208	1,001.67
Manufacturing	230	13,491	13,514	13,603	149,089,006	847.25
Trade, Transportation & Utilities	1,386	22,283	22,278	22,276	235,391,528	812.74
Wholesale Trade	397	3,796	3,823	3,824	64,458,065	1,299.92
Retail Trade	794	12,049	12,042	11,962	91,423,293	585.19
Transportation, Warehousing & Utilities	195	6,438	6,413	6,490	79,510,170	948.68
Information	83	921	924	928	11,902,477	990.52
Financial Activities	704	3,732	3,736	3,744	48,660,641	1,001.55
Professional & Business Services	1,146	13,501	13,491	13,447	228,185,541	1,302.16
Education & Health Services	899	16,080	16,031	15,942	201,913,838	969.67
Leisure & Hospitality	706	13,650	13,770	13,418	58,348,818	329.72
Other Services	390	2,146	2,147	2,109	19,100,271	688.50
Local Government	61	8,954	8,963	8,975	117,581,059	1,009.00
State Government	22	6,522	6,577	6,574	92,963,254	1,090.48

TABLE 6. COUNTY SUMMARY

North American Industry Classification System - Industry Groups	Number of Employing Units	Employment			Total Earnings Apr- Jun 2019	Average Weekly Earnings
		Apr	May	Jun		
WHITE COUNTY - TOTAL	1,797	23,874	23,885	23,634	\$228,221,951	\$737.70
Natural Resources & Mining	50	359	354	369	4,508,221	961.51
Construction	165	992	1,023	1,072	11,711,782	875.52
Manufacturing	60	2,150	2,164	2,147	24,411,793	871.92
Trade, Transportation & Utilities	487	6,075	6,054	6,056	57,615,330	731.14
Wholesale Trade	84	604	581	609	6,515,082	838.06
Retail Trade	315	3,439	3,450	3,429	23,992,580	536.61
Transportation, Warehousing & Utilities	88	2,032	2,023	2,018	27,107,668	1,030.07
Information	19	119	116	113	918,296	608.95
Financial Activities	175	892	913	921	10,300,107	871.95
Professional & Business Services	186	1,161	1,109	1,090	9,926,492	681.76
Education & Health Services	317	5,623	5,672	5,557	61,690,340	844.78
Leisure & Hospitality	163	2,777	2,878	2,736	10,260,843	282.19
Other Services	114	472	484	489	4,270,935	682.08
Local Government	46	2,731	2,730	2,680	28,468,427	806.98
State Government	15	523	388	404	4,139,385	726.42
WOODRUFF COUNTY - TOTAL	194	1,664	1,702	1,711	\$14,560,732	\$661.84
Natural Resources & Mining	31	145	167	175	1,293,327	612.85
Construction	11	35	37	39	335,748	698.02
Manufacturing	5	155	167	168	1,784,706	840.52
Trade, Transportation & Utilities	48	365	368	374	3,353,436	699.07
Wholesale Trade	12	138	142	147	1,646,245	889.70
Retail Trade	28	163	162	162	833,184	394.81
Transportation, Warehousing & Utilities	8	64	64	65	874,007	1,045.05
Financial Activities	11	51	51	49	383,308	585.80
Education & Health Services	48	241	243	242	1,737,560	552.31
Leisure & Hospitality	11	76	78	76	284,030	284.98
Local Government	9	409	405	399	3,485,814	663.16
State Government	5	29	29	29	263,681	699.42
Other	15	158	157	160	1,639,122	796.33

TABLE 6. COUNTY SUMMARY

North American Industry Classification System - Industry Groups	Number of Employing Units	Employment			Total Earnings	Average Weekly Earnings
		Apr	May	Jun	Apr- Jun 2019	
YELL COUNTY - TOTAL	409	6,532	6,520	6,378	\$54,699,591	\$649.66
Natural Resources & Mining	24	247	246	252	2,976,935	922.13
Construction	32	253	251	249	2,361,508	723.72
Manufacturing	21	2,428	2,436	2,443	19,937,539	629.67
Trade, Transportation & Utilities	80	715	722	720	5,029,523	538.09
Wholesale Trade	14	59	58	57	322,045	427.12
Retail Trade	46	513	522	520	2,937,317	435.91
Transportation, Warehousing & Utilities	20	143	142	143	1,770,161	954.44
Financial Activities	29	118	121	115	955,595	622.94
Professional & Business Services	35	316	303	301	2,682,649	672.91
Education & Health Services	112	794	777	757	5,471,127	542.34
Leisure & Hospitality	26	301	307	303	1,059,234	268.32
Local Government	23	1,175	1,168	1,054	12,493,864	848.75
State Government	10	65	68	68	503,408	577.97
Other	17	120	121	116	1,228,209	793.93
STATEWIDE COUNTY - TOTAL	11,106	37,546	37,390	34,226	\$532,549,361	\$1,125.81
Natural Resources & Mining	104	315	323	323	5,588,705	1,342.04
Construction	868	3,441	3,214	3,219	45,964,252	1,074.25
Manufacturing	58	152	150	147	4,274,800	2,197.09
Trade, Transportation & Utilities	3,505	7,952	8,017	7,922	183,939,755	1,776.72
Wholesale Trade	2,952	6,374	6,428	6,361	160,469,419	1,932.44
Retail Trade	193	552	551	517	8,561,948	1,219.65
Transportation, Warehousing & Utilities	360	1,026	1,038	1,044	14,908,388	1,106.95
Information	424	801	802	802	18,769,723	1,801.03
Financial Activities	740	2,046	2,027	2,060	34,148,040	1,284.90
Professional & Business Services	4,297	17,786	17,855	14,644	180,773,089	829.61
Education & Health Services	611	3,096	3,093	3,258	34,467,771	841.97
Leisure & Hospitality	112	164	146	135	1,729,325	896.80
State Government	16	750	747	751	7,611,266	781.34
Other	371	1,043	1,016	965	15,282,635	1,028.79

Note: Statewide classification includes employment and payroll data for employers that have not provided a physical location for each employing unit. This section also includes employers without a physical location in Arkansas.

TABLE 7. FEDERAL GOVERNMENT EMPLOYMENT AND EARNINGS IN ARKANSAS

North American Industry Classification System - Industry Groups	Number of Employing Units	Employment			Total Earnings Apr - Jun 2019	Average Weekly Earnings
		Apr	May	Jun		
TOTAL	1,160	20,181	20,159	20,354	\$366,986,083	\$1,395.35
Trade, Transportation & Utilities	590	5,619	5,654	5,661	78,157,018	1,065.09
Information	2	39	40	40	657,154	1,274.38
Financial Activities	14	96	96	98	1,874,981	1,492.03
Professional & Business Services	32	815	818	837	17,603,933	1,644.72
Education & Health Services	18	5,416	5,434	5,437	122,778,496	1,739.64
Leisure & Hospitality	23	265	276	290	2,883,196	800.67
Other Services	1	1	1	1	8,051	619.31
Public Administration	480	7,930	7,840	7,990	143,023,254	1,389.11

TABLE 8. LOCAL WORKFORCE DEVELOPMENT AREA SUMMARY

North American Industry Classification System - Industry Groups	Number of Employing Units	Employment			Total Earnings Apr- Jun 2019	Average Weekly Earnings
		Apr	May	Jun		
CENTRAL LOCAL WORKFORCE DEVELOPMENT AREA	6,819	83,389	83,428	83,428	\$810,657,848	\$747.57
Natural Resources & Mining	202	1,080	1,107	1,114	13,026,227	1,144.18
Construction	772	6,050	6,063	6,149	68,712,250	868.29
Manufacturing	220	6,452	6,449	6,416	81,061,739	968.40
Trade, Transportation & Utilities	1,550	16,676	16,671	16,676	137,715,583	635.32
Wholesale Trade	347	2,030	2,045	2,050	27,478,335	1,035.29
Retail Trade	948	12,715	12,706	12,707	87,190,085	527.72
Transportation, Warehousing & Utilities	255	1,931	1,920	1,919	23,047,163	921.76
Information	60	554	568	567	10,515,299	1,436.71
Financial Activities	714	3,034	3,053	3,062	36,667,323	924.88
Professional & Business Services	928	7,435	7,352	7,392	99,647,429	1,036.82
Education & Health Services	1,110	14,577	14,522	14,605	141,137,291	745.24
Leisure & Hospitality	625	11,320	11,407	11,358	44,937,771	304.25
Other Services	441	2,060	2,058	2,104	15,589,554	578.20
Local Government	137	9,849	9,900	9,952	119,944,918	931.94
State Government	60	4,302	4,278	4,033	41,702,464	762.99
Note: Pulaski County is not included in the Central Local Workforce Development Area. Please refer to Page 51 for information on Pulaski County. Central Local Workforce Development Area includes these counties: Faulkner, Lonoke, Monroe, Prairie, and Saline.						
EASTERN LOCAL WORKFORCE DEVELOPMENT AREA	3,339	35,051	35,240	35,375	\$313,257,980	\$684.14
Natural Resources & Mining	243	1,165	1,219	1,251	9,492,956	602.66
Construction	138	769	807	827	8,058,449	773.88
Manufacturing	74	3,310	3,322	3,394	37,994,205	874.52
Trade, Transportation & Utilities	752	8,808	8,869	8,802	83,004,918	723.40
Wholesale Trade	148	2,055	2,094	2,068	26,047,669	966.87
Retail Trade	415	4,408	4,433	4,392	27,751,721	483.96
Transportation, Warehousing & Utilities	189	2,345	2,342	2,342	29,205,528	958.85
Information	22	153	152	151	1,275,584	645.54
Financial Activities	263	1,256	1,272	1,261	13,022,890	793.16
Professional & Business Services	249	1,773	1,765	1,788	15,147,865	656.34
Education & Health Services	987	6,263	6,292	6,270	53,276,879	653.10
Leisure & Hospitality	261	4,112	4,103	4,261	18,425,414	340.82
Other Services	164	773	771	763	6,090,040	609.19
Local Government	129	4,749	4,745	4,759	50,984,250	825.48
State Government	57	1,920	1,923	1,848	16,484,530	668.45
Eastern Local Workforce Development Area includes these counties: Crittenden, Cross, Lee, Phillips, and Saint Francis.						

TABLE 8. LOCAL WORKFORCE DEVELOPMENT AREA SUMMARY

North American Industry Classification System - Industry Groups	Number of Employing Units	Employment			Total Earnings Apr- Jun 2019	Average Weekly Earnings
		Apr	May	Jun		
NORTH CENTRAL LOCAL WORKFORCE DEVELOPMENT AREA	5,382	68,042	68,204	67,961	\$636,568,595	\$719.37
Natural Resources & Mining	209	1,496	1,504	1,526	18,387,058	937.51
Construction	431	2,572	2,541	2,631	29,034,453	865.22
Manufacturing	211	8,891	8,921	8,957	95,649,945	824.58
Trade, Transportation & Utilities	1,375	14,496	14,524	14,507	129,414,153	686.12
Wholesale Trade	220	1,598	1,597	1,633	17,208,278	822.52
Retail Trade	900	9,274	9,321	9,287	62,816,384	519.91
Transportation, Warehousing & Utilities	255	3,624	3,606	3,587	49,389,491	1,053.67
Information	72	398	404	404	3,226,381	617.37
Financial Activities	516	2,614	2,649	2,694	29,487,717	855.20
Professional & Business Services	491	3,204	3,110	3,127	27,013,177	660.29
Education & Health Services	956	14,608	14,651	14,537	158,127,753	833.20
Leisure & Hospitality	482	6,823	7,015	6,911	25,844,125	287.44
Other Services	324	1,261	1,353	1,318	9,771,902	573.51
Local Government	222	8,917	8,915	8,764	87,336,941	757.81
State Government	93	2,762	2,617	2,585	23,274,990	674.43

North Central Local Workforce Development Area includes these counties: Cleburne, Fulton, Independence, Izard, Jackson, Sharp, Stone, Van Buren, White, and Woodruff.

NORTHEAST LOCAL WORKFORCE DEVELOPMENT AREA	6,440	103,148	103,385	102,965	\$1,049,611,865	\$782.62
Natural Resources & Mining	451	2,026	2,077	2,127	19,672,436	906.01
Construction	472	3,724	3,738	3,802	43,371,269	888.56
Manufacturing	299	21,826	21,845	21,774	299,350,873	1,055.56
Trade, Transportation & Utilities	1,679	19,393	19,475	19,492	170,777,233	675.29
Wholesale Trade	356	3,850	3,881	3,891	48,531,515	963.65
Retail Trade	984	12,076	12,161	12,090	79,719,426	506.42
Transportation, Warehousing & Utilities	339	3,467	3,433	3,511	42,526,292	942.63
Information	54	726	719	717	7,578,105	808.88
Financial Activities	556	3,233	3,269	3,286	37,893,721	893.41
Professional & Business Services	666	7,388	7,279	7,214	64,783,769	683.25
Education & Health Services	1,076	17,559	17,593	17,425	188,054,379	825.40
Leisure & Hospitality	558	9,776	9,784	9,445	38,218,211	304.07
Other Services	324	1,507	1,510	1,523	12,848,440	653.09
Local Government	214	11,440	11,542	11,662	120,915,439	805.44
State Government	91	4,550	4,554	4,498	46,147,990	782.94

Northeast Local Workforce Development Area includes these counties: Clay, Craighead, Greene, Lawrence, Mississippi, Poinsett, and Randolph.

TABLE 8. LOCAL WORKFORCE DEVELOPMENT AREA SUMMARY

North American Industry Classification System - Industry Groups	Number of Employing Units	Employment			Total Earnings	Average Weekly Earnings
		Apr	May	Jun	Apr- Jun 2019	
NORTHWEST LOCAL WORKFORCE DEVELOPMENT AREA	16,799	278,071	279,412	279,332	\$3,578,914,084	\$986.96
Natural Resources & Mining	144	1,475	1,480	1,507	20,264,915	1,048.08
Construction	1,582	12,497	12,673	12,928	155,089,865	939.42
Manufacturing	635	36,880	36,947	37,257	382,322,603	794.25
Trade, Transportation & Utilities	3,941	61,046	60,961	61,159	701,535,900	883.86
Wholesale Trade	1,270	10,612	10,630	10,660	214,715,681	1,553.19
Retail Trade	2,162	30,840	31,007	30,891	227,130,504	565.19
Transportation, Warehousing & Utilities	509	19,594	19,324	19,608	259,689,715	1,023.96
Information	221	2,514	2,527	2,550	33,994,146	1,033.43
Financial Activities	1,744	9,536	9,630	9,703	133,830,696	1,069.80
Professional & Business Services	2,847	47,958	48,260	48,252	1,151,509,812	1,839.36
Education & Health Services	2,419	35,874	35,877	35,422	396,082,503	852.86
Leisure & Hospitality	1,813	32,109	32,655	32,369	143,315,033	340.49
Other Services	1,039	5,283	5,349	5,369	48,170,981	694.73
Local Government	311	23,937	24,027	24,049	298,241,169	955.73
State Government	103	8,962	9,026	8,767	114,556,461	988.08
Northwest Local Workforce Development Area includes these counties: Baxter, Benton, Boone, Carroll, Madison, Marion, Newton, Searcy, and Washington.						
SOUTHEAST LOCAL WORKFORCE DEVELOPMENT AREA	6,064	68,511	68,786	68,394	\$674,591,403	\$756.84
Natural Resources & Mining	438	2,166	2,306	2,352	23,195,519	784.41
Construction	304	2,227	2,267	2,325	26,361,053	892.11
Manufacturing	197	15,138	15,241	15,287	192,327,520	971.91
Trade, Transportation & Utilities	1,214	11,773	11,827	11,861	105,012,136	683.39
Wholesale Trade	229	1,929	1,967	1,951	24,226,321	956.16
Retail Trade	723	7,326	7,369	7,342	47,291,315	495.23
Transportation, Warehousing & Utilities	262	2,518	2,491	2,568	33,494,500	1,020.13
Information	42	265	272	275	2,689,703	764.41
Financial Activities	411	2,398	2,409	2,396	26,998,977	864.99
Professional & Business Services	396	3,394	3,318	3,388	36,009,469	822.76
Education & Health Services	2,043	10,839	10,719	10,638	95,300,520	683.08
Leisure & Hospitality	387	4,597	4,644	4,518	16,242,129	272.42
Other Services	296	1,079	1,089	1,093	8,802,862	622.95
Local Government	211	8,603	8,663	8,616	86,917,245	774.97
State Government	125	6,032	6,031	5,645	54,734,270	713.29
Southeast Local Workforce Development Area includes these counties: Arkansas, Ashley, Bradley, Chicot, Cleveland, Desha, Drew, Grant, Jefferson, and Lincoln.						

TABLE 8. LOCAL WORKFORCE DEVELOPMENT AREA SUMMARY

North American Industry Classification System - Industry Groups	Number of Employing Units	Employment			Total Earnings	Average Weekly Earnings
		Apr	May	Jun	Apr- Jun 2019	
SOUTHWEST LOCAL WORKFORCE DEVELOPMENT AREA	5,658	77,324	77,259	77,425	\$794,814,833	\$790.57
Natural Resources & Mining	330	2,167	2,242	2,312	26,941,787	925.06
Construction	356	3,634	3,408	3,348	43,334,607	962.49
Manufacturing	237	18,853	18,928	19,043	256,258,302	1,040.70
Trade, Transportation & Utilities	1,349	14,674	14,752	14,913	135,058,208	702.93
Wholesale Trade	242	1,851	1,864	1,879	23,783,947	981.16
Retail Trade	803	8,318	8,372	8,449	53,166,281	488.05
Transportation, Warehousing & Utilities	304	4,505	4,516	4,585	58,107,980	985.56
Information	46	385	378	380	4,520,888	912.76
Financial Activities	454	2,483	2,470	2,477	27,022,195	839.29
Professional & Business Services	428	4,559	4,538	4,581	52,750,998	889.99
Education & Health Services	1,301	9,683	9,650	9,609	80,719,142	643.61
Leisure & Hospitality	422	5,840	5,821	5,937	22,902,073	300.32
Other Services	342	1,432	1,418	1,384	10,758,639	586.39
Local Government	262	9,951	10,002	9,904	100,338,590	775.53
State Government	131	3,663	3,652	3,537	34,209,404	727.47
Southwest Local Workforce Development Area includes these counties: Calhoun, Columbia, Dallas, Hempstead, Howard, Lafayette, Little River, Miller, Nevada, Ouachita, Sevier, and Union						
WEST CENTRAL LOCAL WORKFORCE DEVELOPMENT AREA	8,159	107,724	107,037	106,498	\$996,751,717	\$715.99
Natural Resources & Mining	242	2,273	2,372	2,423	24,818,230	1,044.65
Construction	736	4,383	4,371	4,415	47,847,515	838.46
Manufacturing	331	16,286	16,311	16,303	179,959,569	849.27
Trade, Transportation & Utilities	1,795	21,131	21,253	21,310	199,147,803	721.53
Wholesale Trade	310	1,927	1,919	1,929	21,246,115	849.00
Retail Trade	1,195	13,819	13,945	13,978	94,419,259	521.99
Transportation, Warehousing & Utilities	290	5,385	5,389	5,403	83,482,429	1,190.90
Information	81	760	752	728	7,042,963	725.58
Financial Activities	805	3,651	3,660	3,666	38,548,257	810.40
Professional & Business Services	923	7,535	7,444	7,598	70,725,643	722.92
Education & Health Services	1,581	17,581	17,444	17,320	172,838,636	761.98
Leisure & Hospitality	815	14,841	14,186	14,210	63,638,825	339.66
Other Services	507	2,246	2,243	2,254	15,969,899	546.55
Local Government	230	11,565	11,598	11,459	128,120,076	853.97
State Government	113	5,472	5,403	4,812	48,094,301	707.51
West Central Local Workforce Development Area includes these counties: Clark, Conway, Garland, Hot Spring, Johnson, Montgomery, Perry, Pike, Pope, and Yell						

TABLE 8. LOCAL WORKFORCE DEVELOPMENT AREA SUMMARY

North American Industry Classification System - Industry Groups	Number of Employing Units	Employment			Total Earnings	Average Weekly Earnings
		Apr	May	Jun	Apr- Jun 2019	
WESTERN LOCAL WORKFORCE DEVELOPMENT AREA	6,533	101,788	102,312	101,713	\$1,026,392,953	\$774.53
Natural Resources & Mining	146	1,341	1,299	1,267	17,339,228	1,024.15
Construction	535	3,932	4,025	4,034	41,640,586	801.38
Manufacturing	338	20,552	20,515	20,381	226,819,571	851.83
Trade, Transportation & Utilities	1,553	21,719	21,848	21,732	206,615,904	730.19
Wholesale Trade	344	3,620	3,623	3,587	47,170,092	1,005.12
Retail Trade	934	11,854	11,935	11,850	79,474,075	514.61
Transportation, Warehousing & Utilities	275	6,245	6,290	6,295	79,971,737	980.09
Information	67	1,018	1,018	1,047	15,879,510	1,188.62
Financial Activities	672	3,678	3,655	3,650	42,595,067	894.99
Professional & Business Services	857	10,074	10,070	10,133	101,473,997	773.43
Education & Health Services	1,132	16,003	16,040	15,965	185,649,869	892.40
Leisure & Hospitality	574	8,922	9,222	9,175	37,314,264	315.20
Other Services	422	2,050	2,070	2,074	16,630,318	619.59
Local Government	166	9,624	9,643	9,382	107,248,476	863.89
State Government	71	2,875	2,907	2,873	27,186,163	724.87

Western Local Workforce Development Area includes these counties: Crawford, Franklin, Logan, Polk, Scott, and Sebastian