

Arkansas Covered
Employment & Earnings
First Quarter
2019

**COVERED EMPLOYMENT AND EARNINGS
STATE OF ARKANSAS
FIRST QUARTER 2019**

**ASA HUTCHINSON, GOVERNOR
STATE OF ARKANSAS**

**CHARISSE CHILDERS, DIRECTOR
DIVISION OF WORKFORCE SERVICES**

**PUBLISHED BY
LABOR MARKET INFORMATION
BUREAU OF LABOR STATISTICS PROGRAMS
POST OFFICE BOX 2981
LITTLE ROCK, ARKANSAS 72203-2981
SUSAN PRICE, BLS PROGRAMS MANAGER
TELEPHONE (501) 682-3103**

STATE OF ARKANSAS WEBPAGE: <http://www.arkansas.gov>

DIVISION OF WORKFORCE SERVICES WEBPAGE: <http://www.dws.arkansas.gov/>

WEBPAGE FOR LABOR MARKET INFORMATION: <http://www.discover.arkansas.gov>

RELEASED: AUGUST 2019

TABLE OF CONTENTS

DESCRIPTION OF DATA	PAGE
Description and Classification of Data	1
Definition of Covered Employment and Earnings	2
Significant Developments During First Quarter 2019	3

LIST OF GRAPHS AND TABLES

Graph 1	Total Covered Employment for Selected Years, Arkansas	7
Graph 2	Total Covered Earnings, by Calendar Quarter for Selected Years, Arkansas	8
Table 1	Quarterly Comparison of Covered Employment and Wages, by Industry	5
Table 2	Total Covered Employment in Arkansas, 2012 – 2019	6
Table 3	Total Covered Earnings, 2012 – 2019	9
Table 4	Total Taxable Earnings, 2012 – 2019	10
Table 5	State Summary – Employment and Total Earnings, by Industry, First Quarter 2019	11
Table 6	County Summary – Employment and Total Earnings, by Industry, First Quarter 2019	22
Table 7	Federal Government Employment and Total Earnings in Arkansas, First Quarter 2019	60
Table 8	Local Workforce Development Area – Employment and Total Earnings, by Industry, First Quarter 2019	61

EMPLOYMENT AND EARNINGS
UNDER THE ARKANSAS EMPLOYMENT SECURITY LAW
FIRST QUARTER 2019

DESCRIPTION AND CLASSIFICATION OF DATA

This publication contains covered employment and payroll data by industry and county for the FIRST Quarter 2019 and a record for total covered employment by month, quarterly payroll data, average weekly earnings, and total taxable earnings for 2012 through 2019. These data are compiled from quarterly contributions and wage reports submitted by employers subject to the Arkansas Employment Security Law.

Employment data have been tabulated for each month of the quarter by industry under the **North American Industry Classification System** (NAICS) by state, county, and workforce area. Payroll data represent the total wages paid during the quarter and are classified by industry for the state and by publishable industry groups for each county and workforce area.

Due to industry classification revisions, previously published data will not always be comparable with current data. For this reason, comparisons should not be made between the same industries under different revisions. For more information, visit the NAICS home page at <http://www.census.gov/naics>.

Industry Classification Revisions

- SIC (Standard Industrial Classification) 1987 to NAICS 2002
- NAICS 2002 to NAICS 2007
- NAICS 2007 to NAICS 2012
- NAICS 2012 to NAICS 2018

The tabulation of this data is a joint effort in conjunction with the United States Bureau of Labor Statistics. Data included in this publication are subject to revisions. Revisions are typically reflected in the Annual Covered Employment and Earnings publication.

DEFINITION OF COVERED EMPLOYMENT AND EARNINGS

Covered Employment is the total number of workers employed by establishments subject to the Arkansas Employment Security Law that worked or received pay for the payroll period including the 12th of the month. Earnings include all wages paid to any covered employee by their employer including salaries, bonuses, commissions, fees, fringe benefits, sick pay made directly to employees or dependents, deferred compensation, and reported tips. These wages include both taxable and nontaxable wages. Only the first \$10,000 paid to each worker by an employer in the calendar year is taxable under the Arkansas Employment Security Law.

An Arkansas state unemployment insurance account is required of any entity meeting the definition of an employer. As described by Arkansas Department of Workforce Services Law, the definition of an employer includes, but is not limited to, a sole proprietorship, partnership, corporation, associations, trust, estate, and receiver or trustee in bankruptcy. The entity must employ one or more individuals for ten or more days in a calendar year, whether or not the days are consecutive.

Currently excluded from coverage is employment covered by the Railroad Unemployment Insurance Act, some domestic service workers, employees of small agricultural establishments, self-employed workers, unpaid family workers, insurance and real estate agents paid only on a commission basis, and employees of churches and religious organizations except separately incorporated schools.

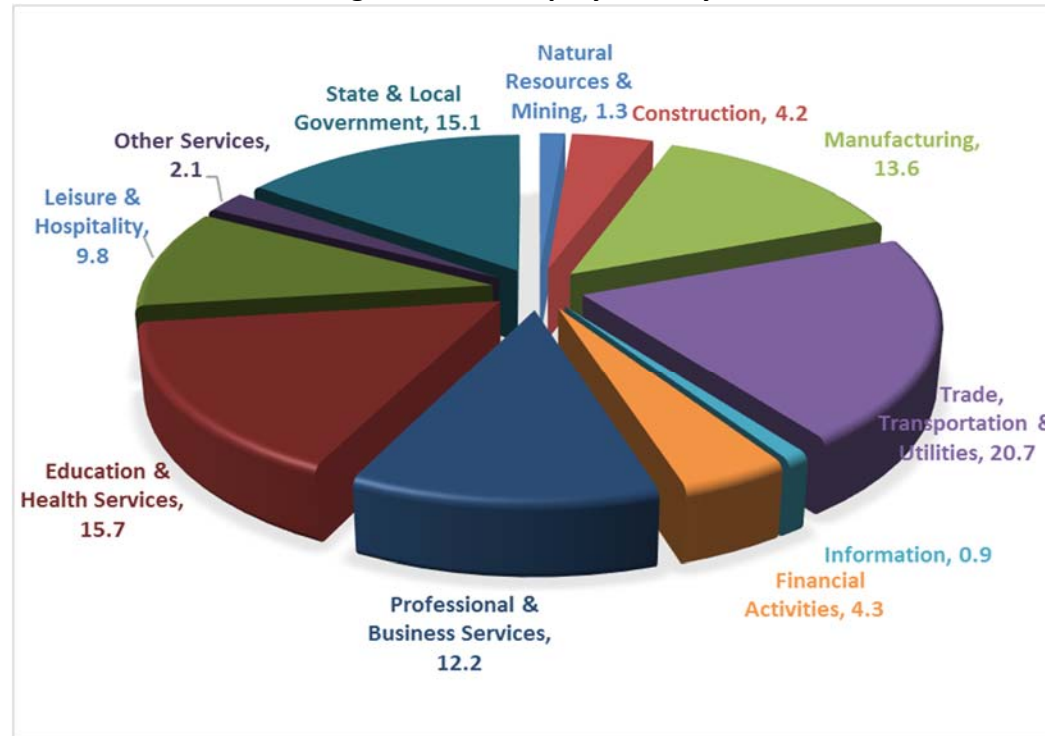
Civilian federal workers are covered by Unemployment Compensation for Federal Employees (UCFE).

SIGNIFICANT DEVELOPMENTS DURING FIRST QUARTER 2019

AVERAGE EMPLOYMENT CHANGES

Covered employment averaged 1,193,228 during the First Quarter 2019 (refer to Table 1), a decrease of 13,549 (-2.0%) from the previous quarter and an increase of 10,921 (1.0%) from the average recorded one year ago. The over-the-year comparison is more significant when used as an economic indicator and allows for seasonal factors that appear when comparing over-the-quarter data to be disregarded.

Average Covered Employment by NAICS



EMPLOYMENT CHANGES FROM FOURTH QUARTER 2018

Over the quarter increases were recorded in two of the eleven industry groups. Gains occurred in Manufacturing (598) and Information (106). Over-the quarter losses occurred in nine industry groups. Trade, Transportation and Utilities (-5,659), State & Local Government (-2,986), and Professional & Business Services (-2,318) had the greatest declines. The losses in Trade, Transportation and Utilities were mostly attributed to seasonal declines in Retail Trade (-5,067).

EMPLOYMENT CHANGES FROM FIRST QUARTER 2018 (QUARTER YEAR AGO COMPARISON)

Over-the-year gains were recorded in eight industry groups (refer to Table 1). The largest expansions occurred in Manufacturing (3,102), followed by Education & Health Services (2,764) and Leisure & Hospitality (2,067). Minor over-the-year losses were seen in State & Local Government (-1,266), Professional & Business Services (-332) and Natural Resources & Mining (-94). The losses in State & Local Government are attributed to the temporary closure of State colleges and universities at the end of the Winter Term.

COVERED WAGES

Wages paid to covered workers totaled \$13,795,046,820 for the First Quarter 2019 (refer to Table 1), for an average weekly wage of \$889.32 (refer to Table 5). Benton County workers recorded the highest average weekly wage (\$1,494.36), and employees in Newton County reported the lowest (\$484.60) (refer to Table 6). Professional and Business Services recorded the highest average weekly wage for the State of Arkansas (\$1,440.08). The Leisure & Hospitality sector recorded the lowest (\$322.98) (refer to Table 5).

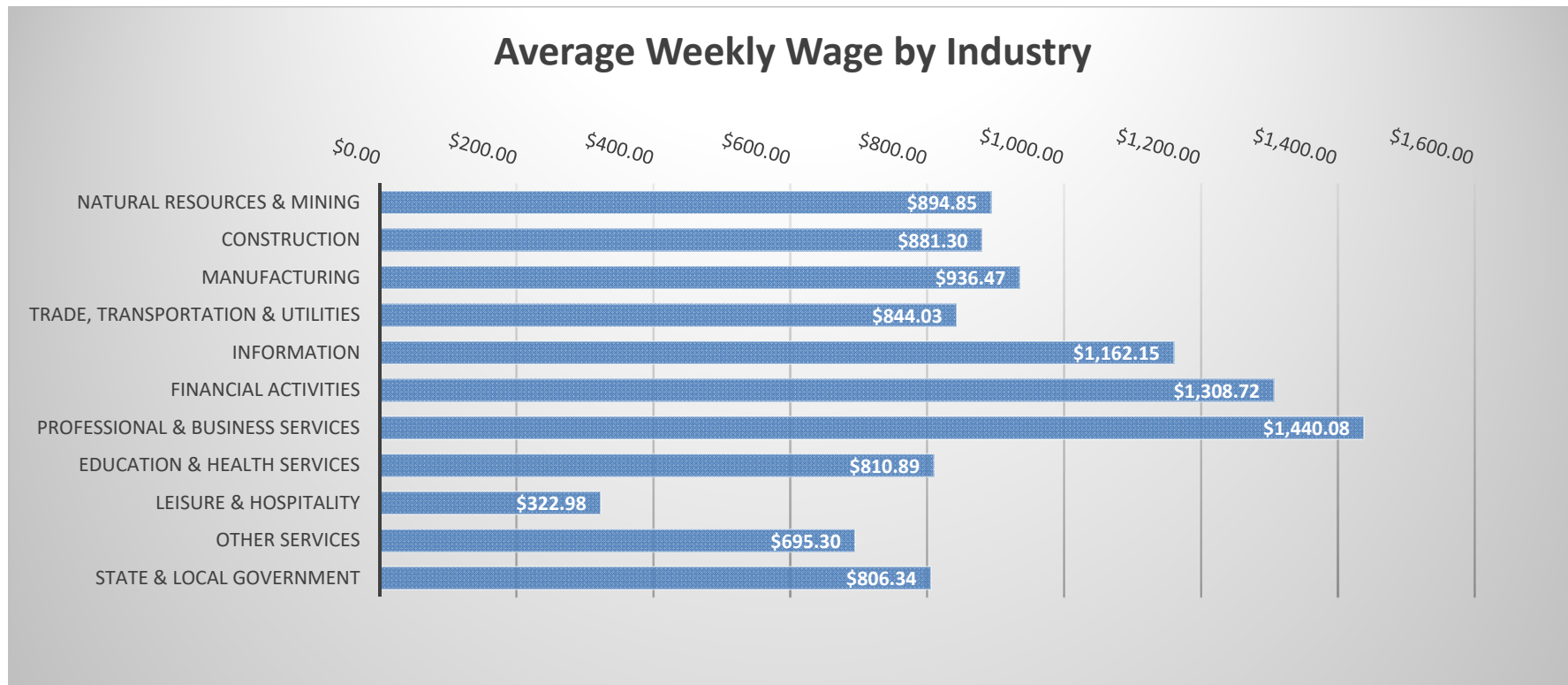


TABLE 1. QUARTERLY COMPARISON OF COVERED EMPLOYMENT AND WAGES, BY INDUSTRY

North American Industry Classification System - Industry Groups	Number of Employing Units	Monthly Employment Average	Percent of Total	Net Change From:		Total Wages Paid Jan - Mar 2019	Percent of Total
				Oct - Dec 2018	Jan - Mar 2018		
TOTAL	90,804	1,193,228	100	-13,549	10,921	\$13,795,046,820	100
Natural Resources & Mining	2,571	15,807	1.3	-669	-94	183,878,783	1.3
Agriculture, Forestry, Fishing & Hunting	2,137	12,089	1.0	-631	-1	119,088,606	0.9
Mining	434	3,718	0.3	-37	-93	64,790,177	0.5
Construction	7,122	50,634	4.2	-854	1,555	580,101,615	4.2
Manufacturing	2,952	162,704	13.6	598	3,102	1,980,780,185	14.4
Trade, Transportation & Utilities	21,850	246,765	20.7	-5,659	851	2,707,605,645	19.6
Wholesale Trade	7,336	47,108	3.9	-674	153	879,439,938	6.4
Retail Trade	11,077	135,849	11.4	-5,067	-2,287	941,854,323	6.8
Transportation & Warehousing	3,024	56,110	4.7	173	3,042	697,364,261	5.1
Utilities	413	7,697	0.6	-91	-57	188,947,123	1.4
Information	1,278	11,039	0.9	106	88	166,782,130	1.2
Financial Activities	8,610	51,224	4.3	-177	1,480	871,489,518	6.3
Finance & Insurance	5,058	37,630	3.2	-58	1,214	734,422,293	5.3
Real Estate & Rental & Leasing	3,552	13,594	1.1	-119	266	137,067,225	1.0
Professional & Business Services	14,816	145,251	12.2	-2,318	-332	2,719,257,675	19.7
Professional & Technical Services	9,347	45,515	3.8	1,206	1,549	702,325,076	5.1
Management of Companies & Enterprises	554	33,716	2.8	-793	-1,402	1,512,048,085	11.0
Administrative & Waste Services	4,915	66,020	5.5	-2,730	-480	504,884,514	3.7
Education & Health Services	15,902	187,424	15.7	-584	2,764	1,975,746,929	14.3
Educational Services	919	12,150	1.0	-227	265	111,707,656	0.8
Health Care & Social Assistance	14,983	175,274	14.7	-356	2,499	1,864,039,273	13.5
Leisure & Hospitality	7,286	116,792	9.8	-871	2,067	490,375,022	3.6
Arts, Entertainment & Recreation	1,010	10,278	0.9	-179	-15	57,285,670	0.4
Accommodation & Food Services	6,276	106,514	8.9	-692	2,082	433,089,352	3.1
Other Services	5,372	24,963	2.1	-135	705	225,642,223	1.6
State & Local Government	3,045	180,626	15.1	-2,986	-1,266	1,893,387,095	13.7
Local Government	1,989	113,365	9.5	-1,584	-342	1,047,729,318	7.6
State Government	1,056	67,261	5.6	-1,402	-924	845,657,777	6.1
Nonclassifiable Establishments	0	0	0.0	0	0	0	0.0

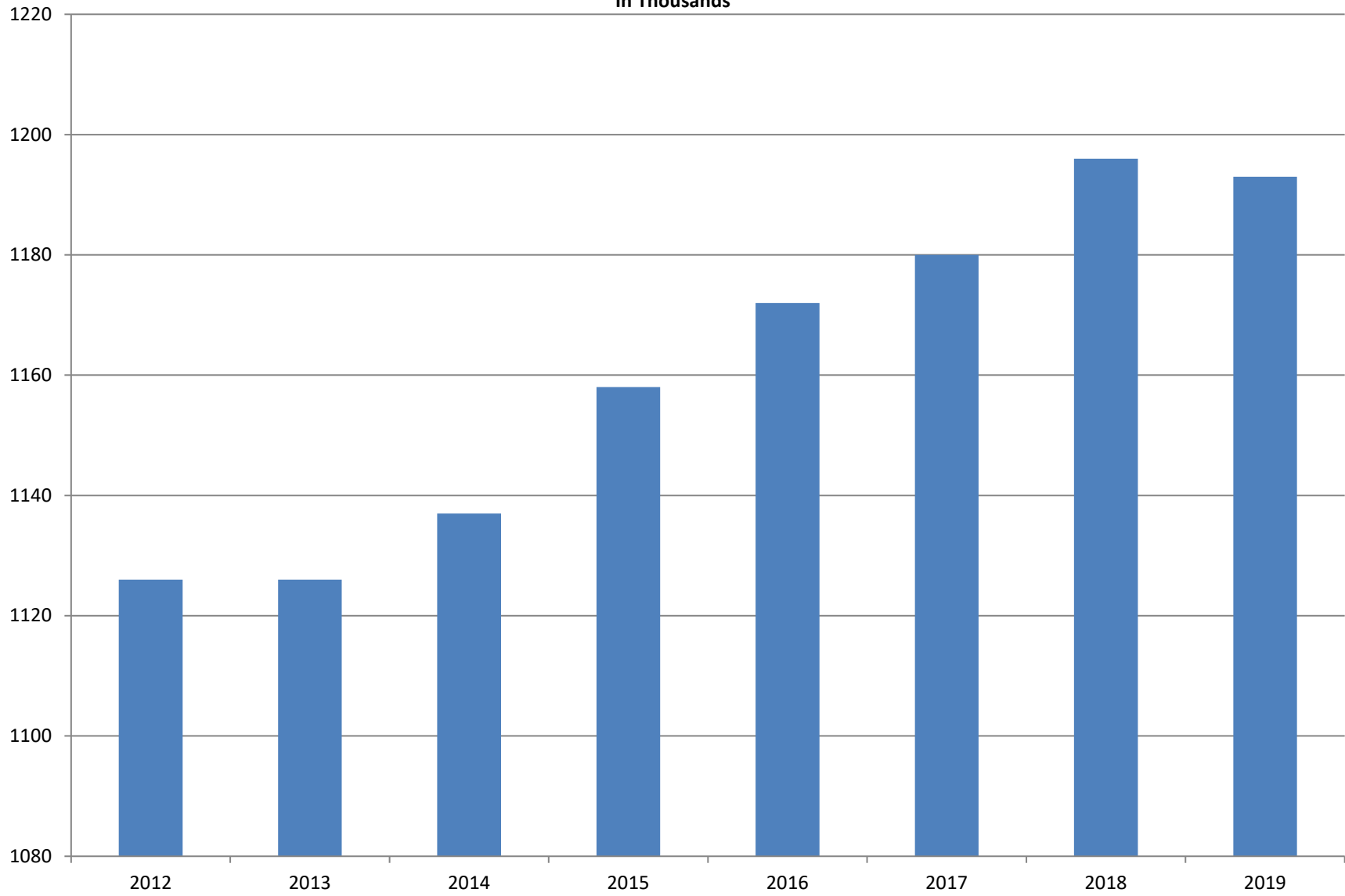
Note: Items do not necessarily add to total because of rounding. Because of industry code changes between years, substantial employment and wage shifts among industries are anticipated.

TABLE 2. TOTAL COVERED EMPLOYMENT IN ARKANSAS

PERIOD	2012	2013	2014	2015	2016	2017	2018	2019
AVERAGE	1,126,171	1,125,890	1,137,486	1,157,634	1,171,503	1,180,337	1,195,781	1,193,228
January	1,113,274	1,112,991	1,114,412	1,135,577	1,152,434	1,161,239	1,173,537	1,186,848
February	1,119,319	1,121,492	1,122,905	1,144,902	1,162,294	1,172,290	1,183,185	1,194,355
March	1,131,123	1,129,100	1,132,106	1,146,413	1,170,837	1,179,686	1,190,199	1,198,481
April	1,136,608	1,134,734	1,140,788	1,158,606	1,178,630	1,185,212	1,194,816	NA
May	1,142,985	1,138,383	1,149,046	1,167,657	1,181,644	1,189,900	1,201,113	NA
June	1,136,699	1,130,402	1,144,876	1,164,607	1,177,506	1,186,326	1,195,468	NA
July	1,078,836	1,083,849	1,096,675	1,119,390	1,132,361	1,137,883	1,168,432	NA
August	1,108,552	1,109,759	1,125,162	1,148,502	1,160,743	1,168,802	1,200,284	NA
September	1,134,829	1,135,673	1,150,545	1,173,776	1,185,510	1,193,845	1,222,012	NA
October	1,135,677	1,138,312	1,153,684	1,173,953	1,185,022	1,194,194	1,205,161	NA
November	1,137,411	1,141,035	1,158,579	1,177,717	1,186,046	1,197,650	1,208,638	NA
December	1,138,742	1,134,955	1,161,056	1,180,513	1,185,009	1,197,013	1,206,531	NA

AVERAGE TOTAL COVERED EMPLOYMENT

In Thousands



TOTAL COVERED EARNINGS BY CALENDAR YEAR

In Thousands

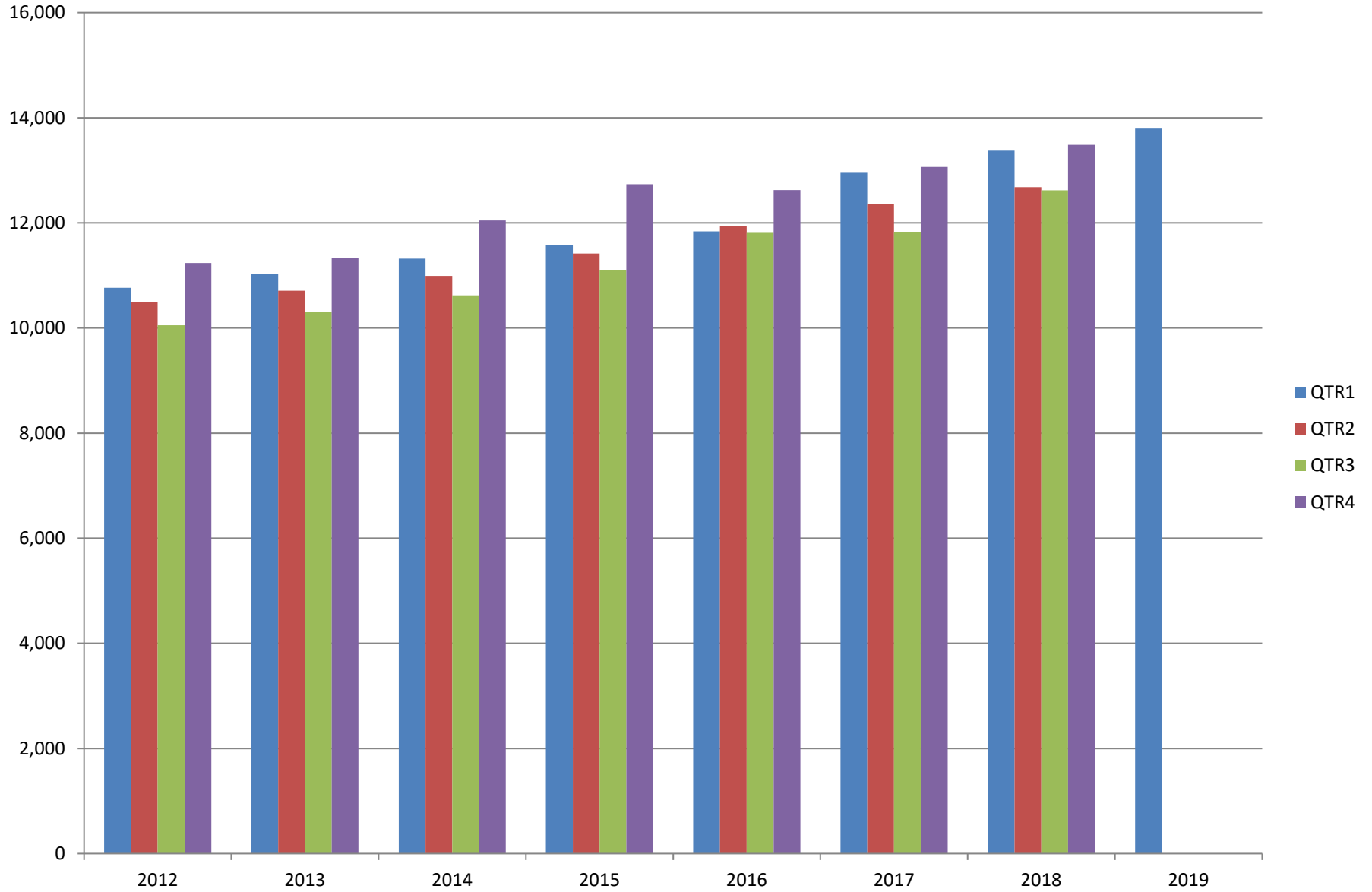


TABLE 3. TOTAL COVERED EARNINGS 2012 - 2019

PERIOD	2012	2013	2014	2015
TOTAL	\$42,551,238,929	\$43,371,086,461	\$44,980,520,034	\$46,836,352,793
January - March	10,766,175,449	11,027,184,315	11,321,422,241	11,575,046,688
April - June	10,494,369,042	10,711,027,503	10,991,760,061	11,419,363,330
July - September	10,053,294,410	10,304,451,772	10,619,889,280	11,104,443,452
October - December	11,237,400,028	11,328,422,871	12,047,448,452	12,737,499,323
Average Weekly Earnings	\$726.62	\$740.80	\$760.46	\$778.05

PERIOD	2016	2017	2018	2019
TOTAL	\$48,207,277,530	\$50,207,202,141	\$52,159,789,393	\$13,795,046,820
January - March	11,836,255,664	12,955,088,347	13,372,730,974	13,795,046,820
April - June	11,935,722,186	12,363,027,711	12,682,491,819	NA
July - September	11,809,460,297	11,823,324,966	12,619,347,460	NA
October - December	12,625,839,383	13,065,761,117	13,485,219,140	NA
Average Weekly Earnings	\$791.34	\$818.01	\$838.84	\$889.32

TABLE 4. TOTAL TAXABLE EARNINGS, 2012 - 2019

PERIOD	2012	2013	2014	2015
TOTAL	11,624,348,048	11,644,747,978	11,919,662,224	12,258,632,610
January - March	6,167,036,199	6,184,735,653	6,288,682,396	6,378,966,662
April - June	2,838,154,846	2,805,431,293	2,831,013,392	2,915,293,283
July - September	1,494,712,584	1,506,497,129	1,552,243,963	1,640,978,599
October - December	1,124,444,419	1,148,083,903	1,247,722,473	1,323,394,066

PERIOD	2016	2017	2018	2019
TOTAL	12,511,938,047	12,744,039,136	11,335,932,409	6,737,833,125
January - March	6,595,351,454	6,958,706,950	6,577,871,657	6,737,833,125
April - June	3,003,077,908	2,908,226,426	2,278,450,975	
July - September	1,651,582,584	1,576,968,648	1,328,868,479	
October - December	1,261,926,101	1,300,137,112	1,150,741,298	

TABLE 5. STATEWIDE SUMMARY

North American Industry Classification System - Industry Groups		Number of Employing Units	Employment			Total Earnings Jan - Mar 2019	Average Weekly Earnings
			Jan	Feb	Mar		
TOTAL, ALL INDUSTRIES		90,804	1,186,848	1,194,355	1,198,481	\$13,795,046,820	\$889.32
NATURAL RESOURCES & MINING		2,571	15,552	15,758	16,110	\$183,878,783	\$894.85
11	AGRICULTURE, FORESTRY, FISHING & HUNTING	2,137	11,822	12,059	12,385	\$119,088,606	\$757.79
111	CROP PRODUCTION	963	3,607	3,700	3,926	\$28,173,063	\$578.78
1111	Oilseed & Grain Farming	716	2,442	2,486	2,631	19,469,138	594.37
1112	Vegetable & Melon Farming	38	186	191	201	1,203,794	480.62
1113	Fruit & Tree Nut Farming	11	36	35	36	201,721	435.06
1114	Greenhouse & Nursery Production	39	405	433	454	3,192,573	570.24
1119	Other Crop Farming	159	538	555	604	4,105,837	558.34
112	ANIMAL PRODUCTION & AQUACULTURE	344	3,174	3,217	3,280	\$37,218,725	\$888.11
1121	Cattle Ranching & Farming	134	382	383	397	2,905,323	576.99
1122	Hog & Pig Farming	12	143	140	142	1,523,497	827.24
1123	Poultry & Egg Production	132	2,284	2,291	2,309	29,197,211	978.76
1125	Animal Aquaculture	43	300	337	368	3,205,761	736.11
	Other	23	65	66	64	386,933	457.91
115	SUPPORT ACTIVITIES FOR AGRICULTURE & FORESTRY	419	2,832	2,898	2,939	\$28,800,651	\$766.67
1151	Support Activities for Crop Production	280	1,207	1,223	1,286	13,683,334	849.76
1152	Support Activities for Animal Production	65	708	728	719	5,943,405	636.45
1153	Support Activities for Forestry	74	917	947	934	9,173,912	756.63
	OTHER	411	2,209	2,244	2,240	\$24,896,167	\$858.40
21	MINING	434	3,730	3,699	3,725	\$64,790,177	\$1,340.47
211	OIL & GAS EXTRACTION	76	693	684	680	\$14,671,723	\$1,645.98
212	MINING (EXCEPT OIL & GAS)	110	1,691	1,695	1,714	\$25,208,983	\$1,140.68
213	SUPPORT ACTIVITIES FOR MINING	248	1,346	1,320	1,331	\$24,909,471	\$1,438.16

TABLE 5. STATEWIDE SUMMARY

North American Industry Classification System - Industry Groups		Number of Employing Units	Employment			Total Earnings Jan - Mar 2019	Average Weekly Earnings
			Jan	Feb	Mar		
CONSTRUCTION		7,122	50,140	50,604	51,157	\$580,101,615	\$881.30
236	CONSTRUCTION OF BUILDINGS	1,893	10,703	10,797	10,739	\$135,019,491	\$966.48
2361	Residential Building Construction	1,291	3,611	3,638	3,645	38,702,950	819.85
2362	Nonresidential Building Construction	602	7,092	7,159	7,094	96,316,541	1,041.32
237	HEAVY & CIVIL ENGINEERING CONSTRUCTION	734	7,395	7,548	7,734	\$92,196,199	\$938.22
2371	Utility System Construction	415	4,161	4,244	4,389	52,987,780	955.76
2372	Land Subdivision	45	77	81	82	801,678	770.84
2373	Highway, Street & Bridge Construction	180	2,503	2,489	2,562	30,505,712	931.93
2379	Other Heavy Construction	94	654	734	701	7,901,029	872.82
238	SPECIALTY TRADE CONTRACTORS	4,495	32,042	32,259	32,684	\$352,885,925	\$839.67
2381	Building Foundation & Exterior Contractors	841	5,846	6,004	6,057	62,006,319	799.08
2382	Building Equipment Contractors	2,184	17,902	17,967	18,149	208,480,203	890.64
2383	Building Finishing Contractors	742	3,775	3,735	3,806	36,463,494	743.61
2389	Other Specialty Trade Contractors	728	4,519	4,553	4,672	45,935,909	771.29
MANUFACTURING		2,952	162,511	162,950	162,652	\$1,980,780,185	\$936.47
311	FOOD MANUFACTURING	306	48,688	48,987	48,771	\$458,701,121	\$722.82
3111	Animal Food Manufacturing	50	1,956	1,998	2,008	28,296,995	1,095.28
3112	Grain & Oilseed Milling	36	2,725	2,750	2,729	31,283,985	879.98
3114	Fruit, Vegetable & Specialty Food	18	4,090	4,085	4,094	48,330,236	909.05
3115	Dairy Product Manufacturing	7	562	558	557	6,561,094	902.86
3116	Animal Slaughtering & Processing	79	33,041	33,196	32,954	276,269,950	642.75
3118	Bakeries & Tortilla Manufacturing	80	3,977	4,037	4,026	39,621,966	759.43
3119	Other Food Manufacturing	24	2,294	2,331	2,369	28,097,311	927.08
	Other	12	43	32	34	239,584	507.24
312	BEVERAGE & TOBACCO PRODUCT MANUFACTURING	63	1,401	1,428	1,429	\$19,686,874	\$1,066.96
313	TEXTILE MILLS	9	119	121	126	\$1,979,452	\$1,248.08
314	TEXTILE PRODUCT MILLS	45	933	921	906	\$10,891,579	\$910.67
3141	Textile Furnishing Mills	9	23	21	20	113,077	407.73
3149	Other Textile Product Mills	36	910	900	886	10,778,502	922.61
315	APPAREL MANUFACTURING	15	887	878	876	\$5,569,149	\$486.63
3151	Apparel Knitting Mills	3	546	537	543	3,554,123	504.42
	Other	12	341	341	333	2,015,026	458.13

TABLE 5. STATEWIDE SUMMARY

North American Industry Classification System - Industry Groups		Number of Employing Units	Employment			Total Earnings	Average Weekly Earnings
			Jan	Feb	Mar	Jan - Mar 2019	
316	LEATHER & ALLIED PRODUCT MANUFACTURING	13	1,132	1,120	1,147	\$7,331,650	\$497.77
3162	Footwear Manufacturing	4	929	916	941	5,806,914	\$481.00
3169	Other Leather & Allied Product Manufacturing	9	203	204	206	1,524,736	\$574.00
321	WOOD PRODUCT MANUFACTURING	305	10,007	9,956	9,903	\$114,817,550	\$887.17
3211	Sawmills & Wood Preservation	144	4,897	4,854	4,853	59,818,886	945.25
3212	Veneer & Engineered Wood Products	39	1,791	1,775	1,764	24,924,489	1,079.14
3219	Other Wood Product Manufacturing	122	3,319	3,327	3,286	30,074,175	698.77
322	PAPER MANUFACTURING	72	9,724	9,694	9,654	\$171,777,807	\$1,363.55
3221	Pulp, Paper & Paperboard Mills	15	3,899	3,893	3,897	92,734,145	1,830.80
3222	Converted Paper Product Manufacturing	57	5,825	5,801	5,757	79,043,662	1,049.35
323	PRINTING & RELATED SUPPORT ACTIVITIES	255	3,753	3,753	3,712	\$38,177,649	\$785.37
324	PETROLEUM & COAL PRODUCTS MANUFACTURING	21	1,242	1,251	1,211	\$24,675,249	\$1,537.33
325	CHEMICAL MANUFACTURING	121	5,385	5,423	5,460	\$93,052,510	\$1,319.99
3251	Basic Chemical Manufacturing	30	1,929	1,925	1,910	39,261,913	1,571.90
3252	Resin, Rubber & Artificial Fibers	11	467	468	472	8,159,602	1,338.30
3253	Agricultural Chemical Manufacturing	15	454	459	474	8,027,269	1,335.58
3254	Pharmaceutical & Medicine Manufacturing	24	514	514	524	6,995,176	1,040.12
3255	Paint, Coating & Adhesive Manufacturing	9	229	226	230	3,484,049	1,173.74
3256	Soap, Cleaning Compound, & Toilet Preparation Manufacturing	13	1,271	1,271	1,294	17,819,826	1,072.02
3259	Other Chemical Preparation Manufacturing	19	521	560	556	9,304,675	1,311.69
326	PLASTICS & RUBBER PRODUCTS MANUFACTURING	121	11,149	11,121	11,069	\$141,891,508	\$982.16
3261	Plastics Product Manufacturing	93	6,910	6,886	6,828	78,828,424	882.04
3262	Rubber Product Manufacturing	28	4,239	4,235	4,241	63,063,084	1,144.56
327	NONMETALLIC MINERAL PRODUCT MANUFACTURING	231	3,702	3,698	3,683	\$48,619,670	\$1,012.35
3271	Clay Product & Refractory Manufacturing	13	511	500	467	6,577,810	1,027.03
3272	Glass & Glass Product Manufacturing	8	359	368	366	4,359,356	920.41
3273	Cement & Concrete Product Manufacturing	172	2,106	2,101	2,109	27,936,806	1,020.73
3274	Lime & Gypsum Product Manufacturing	3	299	299	296	4,881,418	1,260.05
3279	Other Nonmetallic Mineral Products Manufacturing	35	427	430	445	4,864,280	862.16
331	PRIMARY METAL MANUFACTURING	69	8,455	8,528	8,559	\$167,698,069	\$1,515.13
3311	Iron & Steel Mills & Ferroalloys	9	3,335	3,387	3,439	93,988,417	2,134.60
3312	Purchased Steel Product Manufacturing	21	2,366	2,382	2,364	35,873,510	1,164.02
3313	Alumina & Aluminum Production	15	888	894	903	14,097,837	1,211.67
3314	Other Nonferrous Metal Production	6	278	271	264	3,968,976	1,126.59
3315	Foundries	18	1,588	1,594	1,589	19,769,329	956.23

TABLE 5. STATEWIDE SUMMARY

North American Industry Classification System - Industry Groups		Number of Employing Units	Employment			Total Earnings	Average Weekly Earnings
			Jan	Feb	Mar	Jan - Mar 2019	
332	FABRICATED METAL PRODUCT MANUFACTURING	523	15,446	15,397	15,443	\$199,044,616	\$992.38
3321	Forging & Stamping	12	414	433	431	5,018,596	906.21
3322	Cutlery & Hand Tool Manufacturing	14	511	516	523	6,000,697	893.40
3323	Architectural & Structural Metals	153	4,666	4,670	4,722	65,275,201	1,071.53
3324	Boilers, Tanks & Shipping Containers	15	632	623	634	8,059,006	984.53
3325	Hardware Manufacturing	5	273	272	270	3,219,744	911.68
3326	Spring & Wire Product Manufacturing	10	350	343	345	3,738,277	831.10
3327	Machine Shops & Threaded Products	205	2,265	2,271	2,266	24,573,656	833.70
3328	Coating, Engraving & Heat Treating Metals	41	728	693	678	7,065,359	776.78
3329	Other Fabricated Metal Product Manufacturing	68	5,607	5,576	5,574	76,094,080	1,047.93
333	MACHINERY MANUFACTURING	208	11,776	12,016	12,099	\$145,614,368	\$936.26
3331	Agriculture, Construction & Mining Machinery	35	2,875	2,964	3,027	32,713,756	851.49
3332	Industrial Machinery Manufacturing	26	728	727	720	11,479,132	1,217.95
3333	Commercial & Service Industry Machinery	23	803	823	816	10,989,365	1,038.50
3334	HVAC & Commercial Refrigeration Equipment	23	2,937	2,994	3,000	34,649,322	895.31
3335	Metalworking Machinery Manufacturing	50	918	927	915	10,602,697	886.51
3336	Turbine & Power Transmission Equipment Manufacturing	6	804	813	813	9,807,455	931.38
3339	Other General Purpose Machinery Manufacturing	45	2,711	2,768	2,808	35,372,641	985.03
334	COMPUTER & ELECTRONIC PRODUCT MANUFACTURING	49	2,021	1,960	1,941	\$25,474,379	\$992.69
3343	Audio & Video Equipment Manufacturing	5	118	115	115	1,271,821	843.38
3344	Semiconductors & Electronic Components	22	1,439	1,398	1,392	17,678,270	964.67
3345	Navigational, Measuring, Electromedical, & Control Instr, Mfg Other	18 4	386 78	368 79	356 78	5,445,542 1,078,746	1,132.13 1,059.33
335	ELECTRICAL EQUIPMENT & APPLIANCES	52	4,557	4,548	4,515	\$60,324,989	\$1,022.11
3351	Electric Lighting Equipment Manufacturing	9	321	318	322	3,525,130	\$846.51
3352	Household Appliance Manufacturing	4	28	29	31	444,932	\$1,166.78
3353	Electrical Equipment Manufacturing	20	2,884	2,874	2,840	37,972,548	1,019.18
3359	Other Electrical Equipment & Component Manufacturing	19	1,324	1,327	1,322	18,382,379	1,067.73
336	TRANSPORTATION EQUIPMENT MANUFACTURING	129	15,167	15,180	15,194	\$178,188,743	\$902.93
3362	Motor Vehicle Body & Trailer Manufacturing	29	2,180	2,162	2,159	21,438,127	761.00
3363	Motor Vehicle Parts Manufacturing	39	5,299	5,289	5,284	54,495,393	792.33
3364	Aerospace Product & Parts Manufacturing	26	3,904	3,939	3,960	61,634,559	1,205.06
3366	Ship & Boat Building Other	23 12	2,361 1,423	2,389 1,401	2,401 1,390	20,484,622 20,136,042	661.06 1,102.70
337	FURNITURE & RELATED PRODUCT MANUFACTURING	168	3,648	3,650	3,621	\$32,377,245	\$684.28
3371	Household & Institutional Furniture Other	137 31	2,865 783	2,874 776	2,855 766	23,888,908 8,488,337	641.47 842.51
339	MISCELLANEOUS MANUFACTURING	177	3,319	3,320	3,333	\$34,886,008	\$807.32
3391	Medical Equipment & Supplies Manufacturing	68	1,607	1,614	1,612	19,226,476	918.04
3399	Other Miscellaneous Manufacturing	109	1,712	1,706	1,721	15,659,532	703.20

TABLE 5. STATEWIDE SUMMARY

North American Industry Classification System - Industry Groups		Number of Employing Units	Employment			Total Earnings Jan - Mar 2019	Average Weekly Earnings
			Jan	Feb	Mar		
TRADE, TRANSPORTATION & UTILITIES		21,850	247,696	246,005	246,593	\$2,707,605,645	\$844.03
42	WHOLESALE TRADE	7,336	46,963	47,054	47,308	\$879,439,938	\$1,436.04
423	MERCHANT WHOLESALERS, DURABLE GOODS	3,187	23,819	23,915	24,010	\$408,719,272	\$1,314.67
4231	Motor Vehicle & Part Merchant Wholesalers	285	3,064	3,072	3,071	47,251,973	1,184.35
4232	Furniture & Furnishings Merchant Wholesalers	85	454	464	465	8,059,314	1,344.79
4233	Lumber & Supply Merchant Wholesalers	228	1,536	1,519	1,537	22,089,250	1,110.09
4234	Commercial Goods Merchant Wholesalers	605	3,168	3,190	3,189	71,788,597	1,735.27
4235	Metal & Mineral Merchant Wholesalers	141	1,108	1,123	1,117	18,697,838	1,288.80
4236	Appliances & Electronics Goods Merchant Wholesalers	315	2,599	2,641	2,648	55,534,475	1,624.70
4237	Hardware & Plumbing Merchant Wholesalers	302	2,760	2,757	2,770	46,023,693	1,281.63
4238	Machinery & Supply Merchant Wholesalers	927	7,176	7,170	7,231	111,264,591	1,189.99
4239	Miscellaneous Durable Goods Merchant Wholesalers	299	1,954	1,979	1,982	28,009,541	1,092.77
424	MERCHANT WHOLESALERS, NONDURABLE GOODS	1,990	17,747	17,760	17,952	\$346,957,890	\$1,497.73
4241	Paper & Paper Product Merchant Wholesalers	124	1,229	1,240	1,228	23,674,563	1,477.78
4242	Druggist' Goods Merchant Wholesalers	253	1,666	1,662	1,666	54,680,228	2,526.73
4243	Apparel & Piece Goods Merchant Wholesalers	72	772	779	764	11,310,997	1,127.53
4244	Grocery Product Merchant Wholesalers	557	5,717	5,739	5,747	128,560,148	1,724.57
4245	Farm Product & Raw Material Merchant Wholesalers	77	822	780	776	7,098,974	688.91
4246	Chemical Merchant Wholesalers	228	1,068	1,067	1,078	28,824,251	2,070.26
4247	Petroleum Merchant Wholesalers	166	1,181	1,171	1,174	16,478,861	1,078.51
4248	Alcoholic Beverage Merchant Wholesalers	67	1,643	1,632	1,616	25,750,498	1,214.97
4249	Miscellaneous Nondurable Goods Merchant Wholesaler	446	3,649	3,690	3,903	50,579,370	1,038.26
425	ELECTRONIC MARKETS & AGENTS & BROKERS	2,159	5,397	5,379	5,346	\$123,762,776	\$1,771.53
44 - 45	RETAIL TRADE	11,077	136,700	135,342	135,505	\$941,854,323	\$533.32
441	MOTOR VEHICLE & PARTS DEALERS	1,519	18,810	18,992	18,940	\$204,572,736	\$832.00
4411	Automobile Dealers	628	11,501	11,554	11,469	144,759,381	967.62
4412	Other Motor Vehicle Dealers	172	1,657	1,702	1,726	17,663,321	801.60
4413	Automotive Parts, Accessories & Tire Stores	719	5,652	5,736	5,745	42,150,034	567.73
442	FURNITURE & HOME FURNISHINGS STORES	495	3,520	3,517	3,555	\$28,769,441	\$626.80
4421	Furniture Stores	266	1,883	1,926	1,964	18,271,833	730.40
4422	Home Furnishings Stores	229	1,637	1,591	1,591	10,497,608	502.70
443	ELECTRONICS & APPLIANCE STORES	384	3,369	3,349	3,258	\$29,637,269	\$685.58
444	BUILDING MATERIAL & GARDEN SUPPLY STORES	852	11,302	11,555	11,942	\$88,753,213	\$588.57
4441	Building Material & Supplies Dealers	609	9,442	9,674	9,997	76,807,322	608.83
4442	Lawn & Garden Equipment & Supplies Stores	243	1,860	1,881	1,945	11,945,891	484.83

TABLE 5. STATEWIDE SUMMARY

North American Industry Classification System - Industry Groups		Number of Employing Units	Employment			Total Earnings	Average Weekly Earnings
			Jan	Feb	Mar	Jan - Mar 2019	
445	FOOD & BEVERAGE STORES	1,046	19,089	19,005	19,052	\$109,839,801	\$443.56
4451	Grocery Stores	548	16,529	16,437	16,478	93,839,092	437.97
4452	Specialty Food Stores	151	790	809	806	6,414,180	615.47
4453	Beer, Wine & Liquor Stores	347	1,770	1,759	1,768	9,586,529	417.65
446	HEALTH & PERSONAL CARE STORES	1,010	8,846	8,737	8,687	\$83,841,554	\$736.51
447	GASOLINE STATIONS	1,607	12,308	12,172	12,216	\$57,713,302	\$362.94
44711	Gasoline Stations with Convenience Stores	1,510	11,137	11,002	11,040	51,356,042	357.20
44719	Other Gasoline Stations	97	1,171	1,170	1,176	6,357,260	417.13
448	CLOTHING & CLOTHING ACCESSORIES STORES	1,020	8,159	7,784	7,805	\$35,240,501	\$342.45
4481	Clothing Stores	764	6,250	5,951	5,970	24,004,635	304.86
4482	Shoe Stores	132	1,219	1,166	1,156	4,914,133	320.26
4483	Jewelry, Luggage & Leather Goods Stores	124	690	667	679	6,321,733	716.53
451	SPORTING GOODS, HOBBY, BOOK & MUSIC STORES	445	4,506	4,373	4,295	\$21,020,062	\$368.21
4511	Sporting Goods & Musical Instrument Stores	385	3,981	3,887	3,828	19,079,255	376.45
4512	Book, Periodical & Music Stores	60	525	486	467	1,940,807	303.03
452	GENERAL MERCHANDISE STORES	1,009	37,984	36,962	36,986	\$226,153,978	\$466.26
4522	Department Stores	135	7,758	7,360	7,252	38,749,952	399.75
4523	Gen. Merchandise Stores, Warehouse clubs & Supercenters	874	30,226	29,602	29,734	187,404,026	482.87
453	MISCELLANEOUS STORE RETAILERS	1,173	6,992	7,088	6,972	\$37,775,717	\$414.09
4531	Florists	164	576	652	574	2,902,255	371.67
4532	Office Supplies, Stationery & Gift Stores	234	1,457	1,469	1,451	7,914,378	417.27
4533	Used Merchandise Stores	251	2,162	2,121	2,111	10,168,720	367.00
4539	Other Miscellaneous Store Retailers	524	2,797	2,846	2,836	16,790,364	456.98
454	NONSTORE RETAILERS	517	1,815	1,808	1,797	\$18,536,749	\$789.25
4541	Electronic Shopping & Mail-Order Houses	276	698	695	700	7,167,880	790.31
4542	Vending Machine Operators	62	430	438	435	4,041,122	715.71
4543	Direct Selling Establishments	179	687	675	662	7,327,747	835.48
48 - 49	TRANSPORTATION & WAREHOUSING	3,024	56,319	55,928	56,084	\$697,364,261	\$956.03
481	AIR TRANSPORTATION	47	728	719	724	\$7,756,191	\$824.45
4811	Scheduled Air Transportation	17	630	621	625	5,974,235	734.90
4812	Nonshceduled Air Transportation	30	98	98	99	1,781,956	1,393.97
483	WATER TRANSPORTATION	7	29	31	39	\$602,574	\$1,404.60
484	TRUCK TRANSPORTATION	1,874	32,820	32,918	33,135	\$451,527,808	\$1,053.86
4841	General Freight Trucking	1,092	26,629	26,736	26,898	371,705,798	1,068.71
4842	Specialized Freight Trucking	782	6,191	6,182	6,237	79,822,010	989.82

TABLE 5. STATEWIDE SUMMARY

North American Industry Classification System - Industry Groups		Number of Employing Units	Employment			Total Earnings	Average Weekly Earnings
			Jan	Feb	Mar	Jan - Mar 2019	
485	TRANSIT & GROUND PASSENGER TRANSPORTATION	121	1,805	1,824	1,808	\$10,555,800	\$448.03
4853	Taxi & Limousine Service	27	332	333	328	1,748,112	406.25
4854	School & Employee Bus Transportation	15	394	391	396	2,267,627	443.10
4855	Charter Bus Industry Service	7	83	90	81	591,340	537.26
4859	Other Ground Passenger Transportation	67	891	909	903	5,154,516	440.07
	Other	5	105	101	100	794,205	598.95
486	PIPELINE TRANSPORTATION	38	406	407	391	\$11,156,546	\$2,138.36
487	SCENIC & SIGHTSEEING TRANSPORTATION	4	13	12	15	\$46,089	\$265.90
488	SUPPORT ACTIVITIES FOR TRANSPORTATION	522	5,674	5,726	5,711	\$76,731,938	\$1,034.85
4881	Support Activities for Air Transportation	107	1,040	1,062	1,044	11,321,920	830.50
4882	Support Activities for Rail Transportation	35	903	905	906	11,379,143	967.56
4883	Support Activities for Water Transportation	22	424	432	428	6,871,923	1,235.07
4884	Support Activities for Road Transportation	162	858	863	869	7,908,352	704.63
4885	Freight Transportation Arrangement	182	2,342	2,356	2,356	38,296,036	1,252.84
4889	Other Support Activities for Transportation	14	107	108	108	954,564	681.99
493	WAREHOUSING & STORAGE	223	8,717	8,899	8,817	\$88,739,758	\$774.73
	OTHER	188	6,127	5,392	5,444	\$50,247,557	\$683.58
22	UTILITIES	413	7,714	7,681	7,696	\$188,947,123	\$1,888.32
2211	Power Generation & Supply	167	5,766	5,740	5,752	155,725,659	2,082.32
2212	Natural Gas Distribution	67	1,028	1,024	1,028	24,370,951	1,826.00
2213	Water, Sewage & Other Systems	179	920	917	916	8,850,513	741.89
	INFORMATION	1,278	11,027	11,025	11,066	\$166,782,130	\$1,162.15
511	PUBLISHING INDUSTRIES, EXCEPT INTERNET	234	2,747	2,760	2,741	\$31,043,497	\$868.56
5111	Newspaper, Book & Directory Publishers	180	2,304	2,319	2,305	22,567,036	751.70
5112	Software Publishers	54	443	441	436	8,476,461	1,481.90
512	MOTION PICTURE & SOUND RECORDING INDUSTRY	152	1,314	1,290	1,293	\$6,391,625	\$378.49
5121	Motion Picture & Video Industries	138	1,301	1,276	1,279	6,176,531	369.65
5122	Sound Recording Industries	14	13	14	14	215,094	1,210.66
515	BROADCASTING, EXCEPT INTERNET	120	1,594	1,598	1,593	\$19,203,079	\$926.12

TABLE 5. STATEWIDE SUMMARY

North American Industry Classification System - Industry Groups		Number of Employing Units	Employment			Total Earnings Jan - Mar 2019	Average Weekly Earnings
			Jan	Feb	Mar		
517	TELECOMMUNICATIONS	355	3,411	3,416	3,435	\$64,810,387	\$1,457.44
5173	Telecommunications Resellers	248	3,033	3,038	3,055	57,477,111	1,453.42
5174	Satellite Telecommunications Carriers	4	7	7	7	115,348	1,267.56
5179	Other Telecommunications	103	371	371	373	7,217,928	1,493.88
518	DATA PROCESSING, HOSTING & RELATED SERVICES	320	1,618	1,612	1,658	\$40,521,000	\$1,913.05
519	OTHER INFORMATION SERVICES	97	343	349	346	\$4,812,542	\$1,069.93
FINANCIAL ACTIVITIES		8,610	51,161	51,290	51,220	\$871,489,518	\$1,308.72
52	FINANCE & INSURANCE	5,058	37,604	37,668	37,617	\$734,422,293	\$1,501.32
522	CREDIT INTERMEDIATION & RELATED ACTIVITIES	1,951	19,391	19,450	19,437	\$307,988,162	\$1,219.57
5221	Depository Credit Intermediation	1,396	16,430	16,469	16,468	252,743,183	1,181.46
5222	Nondepository Credit Intermediation	412	1,850	1,858	1,854	36,587,795	1,518.04
5223	Activities Related to Credit Intermediation	143	1,111	1,123	1,115	18,657,184	1,285.61
523	FINANCIAL INVESTMENT & RELATED ACTIVITIES	728	3,064	3,055	3,031	\$160,228,740	\$4,041.08
5231	Insurance Carriers	298	2,110	2,114	2,096	131,057,792	4,785.46
5239	Insurance Agencies, Brokerages & Support	430	954	941	935	29,170,948	2,378.71
524	INSURANCE CARRIERS & RELATED ACTIVITIES	2,296	15,087	15,106	15,091	\$264,758,689	\$1,349.22
5231	Security & Commodity Contracts Intermediation & Brokerage	305	6,645	6,674	6,680	143,703,623	1,658.20
5239	Other Financial Investment Activities	1,991	8,442	8,432	8,411	121,055,066	1,104.84
	OTHER	83	62	57	58	\$1,446,702	\$1,886.18
53	REAL ESTATE & RENTAL & LEASING	3,552	13,557	13,622	13,603	\$137,067,225	\$775.61
531	REAL ESTATE	2,940	9,508	9,544	9,462	\$93,695,447	\$758.30
5311	Lessors of Real Estate	1,116	4,301	4,298	4,249	42,916,799	770.85
5312	Offices of Real Estate Agents & Brokers	950	1,919	1,929	1,935	18,702,304	746.31
5313	Activities Related to Real Estate	874	3,288	3,317	3,278	32,076,344	748.99
532	RENTAL & LEASING SERVICES	595	3,987	4,018	4,084	\$42,297,820	\$807.43
5321	Automotive Equipment Rental & Leasing	123	1,108	1,128	1,144	10,063,570	687.09
5322	Consumer Goods Rental	301	1,699	1,704	1,762	14,535,375	649.43
5323	General Rental Centers	37	222	224	223	2,519,666	869.15
5324	Machinery & Equipment Rental & Leasing	134	958	962	955	15,179,209	1,218.40
533	LESSORS OF NONFINANCIAL INTANGIBLE ASSETS	17	62	60	57	\$1,073,958	\$1,384.56

TABLE 5. STATEWIDE SUMMARY

North American Industry Classification System - Industry Groups		Number of Employing Units	Employment			Total Earnings Jan - Mar 2019	Average Weekly Earnings
			Jan	Feb	Mar		
PROFESSIONAL & BUSINESS SERVICES		14,816	143,008	146,242	146,503	\$2,719,257,675	\$1,440.08
54	PROFESSIONAL & TECHNICAL SERVICES	9,347	45,120	45,873	45,553	\$702,325,076	\$1,186.96
5411	Legal Services	1,680	5,903	5,951	5,992	81,158,879	1,049.48
5412	Accounting & Bookkeeping Services	1,299	7,284	7,529	7,321	87,080,055	907.90
5413	Architectural & Engineering Services	1,045	6,207	6,249	6,353	97,892,633	1,201.05
5414	Specialized Design Services	173	360	364	366	4,631,434	980.54
5415	Computer Systems Design & Related Services	1,963	9,636	9,742	9,566	208,840,875	1,665.08
5416	Management & Technical Consulting Services	2,052	6,886	7,032	6,922	111,480,535	1,234.47
5417	Scientific Research & Development Services	134	747	776	777	14,056,945	1,410.40
5418	Advertising & Related Services	403	3,826	3,907	3,947	53,211,829	1,051.34
5419	Other Professional & Technical Services	598	4,271	4,323	4,309	43,971,891	786.43
55	MANAGEMENT OF COMPANIES & ENTERPRISES	554	33,888	33,777	33,482	\$1,512,048,085	\$3,449.77
56	ADMINISTRATIVE & WASTE SERVICES	4,915	64,000	66,592	67,468	\$504,884,514	\$588.27
561	ADMINISTRATIVE & SUPPORT SERVICES	4,583	60,420	63,020	63,848	\$458,929,541	\$565.48
5611	Office Administrative Services	745	3,946	4,026	4,275	59,394,520	1,119.17
5612	Facilities Support Services	65	1,470	1,518	1,547	11,357,426	577.94
5613	Employment Services	1,191	26,256	28,467	28,707	160,169,328	443.03
5614	Business Support Services	376	7,925	7,961	7,986	90,015,960	870.18
5615	Travel Arrangement & Reservation Services	116	357	360	367	4,360,800	928.36
5616	Investigation & Security Services	299	5,058	5,054	5,048	35,682,836	543.17
5617	Services to Buildings & Dwellings	1,595	14,213	14,398	14,679	86,534,045	461.29
5619	Other Support Services	196	1,195	1,236	1,239	11,414,626	717.75
562	WASTE MANAGEMENT & REMEDIATION SERVICES	332	3,580	3,572	3,620	\$45,954,973	\$984.50
5621	Waste Collection Services	134	1,265	1,261	1,247	14,847,488	908.12
5622	Waste Treatment & Disposal Services	41	1,051	1,055	1,050	16,375,122	1,197.36
5629	Remediation & Other Waste Services	157	1,264	1,256	1,323	14,732,363	884.67
EDUCATION & HEALTH SERVICES		15,902	186,896	187,751	187,624	\$1,975,746,929	\$810.89
61	EDUCATIONAL SERVICES	919	11,883	12,318	12,248	\$111,707,656	\$707.25
6111	Elementary & Secondary Schools	104	4,362	4,441	4,409	36,555,081	638.49
6112	Junior Colleges	8	115	115	117	790,785	525.90
6113	Colleges & Universities	123	4,101	4,389	4,406	42,128,112	753.87
6114	Business, Computer, & Management Training	63	126	129	123	2,760,377	1,685.21
6115	Technical & Trade Schools	121	879	857	852	13,981,155	1,246.68
6116	Other Schools & Instruction	321	1,730	1,811	1,751	9,326,370	406.70
6117	Educational Support Services	179	570	576	590	6,165,776	819.63

TABLE 5. STATEWIDE SUMMARY

North American Industry Classification System - Industry Groups		Number of Employing Units	Employment			Total Earnings	Average Weekly Earnings
			Jan	Feb	Mar	Jan - Mar 2019	
62	HEALTH CARE & SOCIAL ASSISTANCE	14,983	175,013	175,433	175,376	\$1,864,039,273	\$818.08
621	AMBULATORY HEALTH CARE SERVICES	6,037	58,892	59,181	59,185	\$895,752,779	\$1,166.17
6211	Offices of Physicians	2,357	25,715	25,715	25,725	514,086,503	1,537.62
6212	Offices of Dentists	990	7,399	7,445	7,402	89,512,217	928.56
6213	Offices of Other Health Practitioners	1,665	9,508	9,687	9,751	99,078,722	789.90
6214	Outpatient Care Centers	369	5,199	5,199	5,177	74,977,352	1,110.91
6215	Medical & Diagnostic Laboratories	188	1,346	1,374	1,355	23,485,409	1,329.99
6216	Home Health Care Services	272	7,051	7,082	7,096	63,476,708	690.02
6219	Other Ambulatory Health Care Services	196	2,674	2,679	2,679	31,135,868	894.57
622	HOSPITALS	116	43,988	44,001	43,854	\$542,722,360	\$949.95
6221	General Medical & Surgical Hospitals	87	39,268	39,312	39,159	490,058,191	960.52
6222	Psychiatric & Substance Abuse Hospitals	10	1,911	1,923	1,906	19,862,215	798.53
6223	Specialty Hospitals	19	2,809	2,766	2,789	32,801,954	905.03
623	Residential & Mental Health Facilities	639	32,311	32,257	32,297	\$215,125,468	\$512.51
6231	Nursing Care Facilities (Skilled Nursing Facilities)	276	22,822	22,751	22,826	152,190,539	513.47
6232	Residential Mental Health Facilities	173	4,321	4,333	4,301	29,179,394	519.78
6233	Continuing Care & Assisted Living Facilities	152	4,337	4,346	4,351	27,389,676	484.94
6239	Other Residential Care Facilities	38	831	827	819	6,365,859	593.07
624	SOCIAL ASSISTANCE	8,191	39,822	39,994	40,040	\$210,438,666	\$405.18
6241	Individual & Family Services	7,131	24,808	24,756	24,701	132,326,584	411.19
6242	Emergency & Other Relief Services	144	1,361	1,373	1,380	8,980,404	503.74
6243	Vocational Rehabilitation Services	94	3,322	3,311	3,313	18,228,911	422.95
6244	Child Day Care Services	822	10,331	10,554	10,646	50,902,767	372.55
LEISURE & HOSPITALITY		7,286	114,740	116,808	118,828	\$490,375,022	\$322.98
71	ARTS, ENTERTAINMENT & RECREATION	1,010	9,725	10,359	10,749	57,285,670	\$428.75
711	PERFORMING ARTS & SPECTATOR SPORTS	235	2,599	2,987	3,003	20,664,706	\$555.22
7111	Performing Arts Companies	47	286	371	366	1,985,561	447.90
7112	Spectator Sports	69	1,755	1,802	1,803	13,441,413	578.71
7113	Performing Arts & Sports Promoters	52	483	720	743	4,289,173	508.64
7114	Agents & Managers for Public Figures	18	16	35	19	164,553	542.48
7115	Independent Artists, Writers, & Performers	49	59	59	72	784,006	952.23
712	MUSEUMS, PARKS, & HISTORICAL SITES	56	694	683	729	5,531,530	\$606.13
713	GAMBLING, RECREATIONAL & AMUSEMENT INDUSTRY	719	6,432	6,689	7,017	31,089,434	\$356.27
7131	Amusement Parks & Arcades	30	106	176	305	786,495	309.20
7139	Other Amusement & Recreation Industries	689	6,326	6,513	6,712	30,302,939	357.68
72	ACCOMMODATION & FOOD SERVICES	6,276	105,015	106,449	108,079	433,089,352	\$312.77

TABLE 5. STATEWIDE SUMMARY

North American Industry Classification System - Industry Groups		Number of Employing Units	Employment			Total Earnings	Average Weekly Earnings
			Jan	Feb	Mar	Jan - Mar 2019	
721	ACCOMMODATION	925	10,505	10,717	11,093	\$50,839,135	\$363.05
7211	Travel Accommodation	830	10,010	10,187	10,496	47,771,100	359.17
7212	RV Parks & Recreational Camps	78	390	413	477	2,433,473	438.73
7213	Rooming & Boarding Houses	17	105	117	120	634,562	428.18
722	FOOD SERVICES & DRINKING PLACES	5,351	94,510	95,732	96,986	\$382,250,217	\$307.11
7223	Special Food Services	299	4,804	5,057	5,102	22,318,731	344.21
7224	Drinking Places, Alcoholic Beverages	149	1,011	1,039	1,053	4,087,597	303.99
7225	Restaurants & Other Eating Places	4,903	88,695	89,636	90,831	355,843,889	305.09
722511	Full-Service Restaurants	2,090	37,994	38,677	38,909	169,274,598	337.98
722513	Limited-Service Eating Places	2,312	46,020	46,177	47,041	166,952,872	276.70
722514	Cafeterias, Grill Buffets, & Buffets	89	1,655	1,685	1,717	8,281,439	377.91
722515	Snack & Nonalcoholic Beverage Bars	412	3,026	3,097	3,164	11,334,980	281.66
OTHER SERVICES		5,372	24,882	24,924	25,084	\$225,642,223	\$695.30
811	REPAIR & MAINTENANCE	2,212	10,984	11,067	11,298	\$110,315,879	\$763.37
8111	Automotive Repair & Maintenance	1,404	6,777	6,861	6,880	60,369,742	678.99
8112	Electronic Equipment Repair & Maintenance	159	989	997	963	10,926,975	855.07
8113	Commercial Machinery Repair & Maintenance	487	2,616	2,605	2,850	34,299,094	980.69
8114	Household Goods Repair & Maintenance	162	602	604	605	4,720,068	601.46
812	PERSONAL & LAUNDRY SERVICES	1,353	7,683	7,657	7,676	\$49,457,532	\$495.88
8121	Personal Care Services	644	2,824	2,833	2,859	16,065,189	435.34
8122	Death Care Services	253	1,576	1,575	1,554	11,434,147	560.82
8123	Drycleaning & Laundry Service	213	2,211	2,179	2,205	15,666,048	548.18
8129	Other Personal Services	243	1,072	1,070	1,058	6,292,148	453.76
813	MEMBERSHIP ASSOCIATIONS & ORGANIZATIONS	1,116	5,341	5,332	5,227	\$59,893,102	\$869.28
8131	Religious Organizations	95	316	317	321	2,376,400	574.84
8132	Grantmaking & Giving Organizations	127	439	439	429	6,511,869	1,149.76
8133	Social Advocacy Organizations	215	1,345	1,339	1,297	14,622,500	847.63
8134	Civic & Social Organizations	194	1,204	1,202	1,160	5,536,562	358.29
8139	Professional & Similar Organizations	485	2,037	2,035	2,020	30,845,771	1,168.46
814	PRIVATE HOUSEHOLDS	691	874	868	883	\$5,975,710	\$525.34
LOCAL GOVERNMENT		1,989	113,236	113,196	113,663	\$1,047,729,318	\$710.93
STATE GOVERNMENT		1,056	65,999	67,802	67,981	\$845,657,777	\$967.14
NONCLASSIFIABLE ESTABLISHMENTS		0	0	0	0	\$0	\$0.00

TABLE 6. COUNTY SUMMARY

North American Industry Classification System - Industry Groups	Number of Employing Units	Employment			Total Earnings	Average Weekly Earnings
		Jan	Feb	Mar	Jan - Mar 2019	
ARKANSAS COUNTY - TOTAL	813	9,871	9,967	10,037	\$95,704,289	\$739.27
Natural Resources & Mining	56	159	164	156	1,515,907	730.32
Construction	51	233	247	251	3,047,674	962.12
Manufacturing	33	3,870	3,928	3,979	38,291,543	750.32
Trade, Transportation & Utilities	196	2,075	2,090	2,113	22,196,015	815.89
Wholesale Trade	47	417	426	448	5,402,055	965.63
Retail Trade	91	1,032	1,024	1,016	7,132,825	535.82
Transportation, Warehousing & Utilities	58	626	640	649	9,661,135	1,164.23
Information	9	55	56	51	509,975	726.46
Financial Activities	51	304	306	301	3,608,312	914.04
Professional & Business Services	60	489	485	498	6,580,018	1,031.57
Education & Health Services	206	1,105	1,112	1,120	9,503,561	657.22
Leisure & Hospitality	66	605	596	579	2,316,760	300.36
Other Services	39	96	100	101	813,992	632.47
Local Government	32	709	713	717	5,928,976	639.66
State Government	14	171	170	171	1,391,556	627.20
ASHLEY COUNTY - TOTAL	563	6,540	6,600	6,519	\$74,171,486	\$870.67
Natural Resources & Mining	45	306	313	317	3,219,388	793.73
Construction	35	548	578	538	6,366,436	882.92
Manufacturing	25	1,663	1,655	1,650	31,216,840	1,450.06
Trade, Transportation & Utilities	115	1,219	1,200	1,214	9,983,331	634.14
Wholesale Trade	24	179	183	190	2,429,806	1,015.81
Retail Trade	66	718	714	713	4,285,106	461.01
Transportation, Warehousing & Utilities	25	322	303	311	3,268,419	805.82
Information	5	37	37	36	249,045	522.47
Financial Activities	37	177	183	184	2,107,505	894.02
Professional & Business Services	38	208	214	210	1,937,905	707.61
Education & Health Services	150	955	969	936	9,174,527	740.28
Leisure & Hospitality	36	365	380	368	1,291,774	267.84
Other Services	35	118	119	130	909,158	571.68
Local Government	32	835	843	826	6,720,536	619.37
State Government	10	109	109	110	995,041	700.08

TABLE 6. COUNTY SUMMARY

North American Industry Classification System - Industry Groups	Number of Employing Units	Employment			Total Earnings Jan - Mar 2019	Average Weekly Earnings
		Jan	Feb	Mar		
BAXTER COUNTY - TOTAL	1,233	14,601	14,602	14,611	\$127,957,495	\$673.95
Natural Resources & Mining	7	58	55	57	527,879	716.58
Construction	111	508	497	501	4,138,839	634.21
Manufacturing	54	2,417	2,424	2,448	24,602,321	778.91
Trade, Transportation & Utilities	258	2,762	2,730	2,681	18,641,960	526.37
Wholesale Trade	33	215	210	204	2,134,871	783.25
Retail Trade	201	2,305	2,296	2,270	14,310,520	480.63
Transportation, Warehousing & Utilities	24	242	224	207	2,196,569	753.20
Information	21	171	169	168	1,999,215	908.18
Financial Activities	120	687	690	690	9,518,261	1,062.66
Professional & Business Services	144	864	872	870	7,537,800	667.50
Education & Health Services	265	3,858	3,830	3,805	41,028,792	823.82
Leisure & Hospitality	119	1,499	1,507	1,553	5,750,521	291.08
Other Services	87	294	288	292	1,872,400	494.38
Local Government	36	1,196	1,204	1,211	9,589,344	612.83
State Government	11	287	336	335	2,750,163	662.48
BENTON COUNTY - TOTAL	6,739	119,634	120,561	121,282	\$2,340,759,627	\$1,494.36
Natural Resources & Mining	50	754	775	779	11,621,739	1,162.02
Construction	657	4,874	4,931	4,967	55,710,359	870.31
Manufacturing	195	12,242	12,208	12,157	139,091,998	876.83
Trade, Transportation & Utilities	1,698	29,306	29,441	29,687	429,796,925	1,121.56
Wholesale Trade	761	5,977	6,013	5,989	174,019,226	2,233.62
Retail Trade	752	12,295	12,124	12,115	89,059,043	562.55
Transportation, Warehousing & Utilities	185	11,034	11,304	11,583	166,718,656	1,134.21
Information	84	989	1,001	1,003	16,694,913	1,287.23
Financial Activities	699	3,910	3,888	3,875	65,252,410	1,290.01
Professional & Business Services	1,332	31,433	31,571	31,730	1,314,592,307	3,202.31
Education & Health Services	854	12,015	12,045	12,061	122,511,159	782.70
Leisure & Hospitality	649	12,359	12,688	12,908	59,668,239	362.79
Other Services	420	2,376	2,364	2,349	22,064,815	718.28
Local Government	84	8,518	8,560	8,660	93,764,104	840.70
State Government	17	858	1,089	1,106	9,990,659	755.17

TABLE 6. COUNTY SUMMARY

North American Industry Classification System - Industry Groups	Number of Employing Units	Employment			Total Earnings	Average Weekly Earnings
		Jan	Feb	Mar	Jan - Mar 2019	
BOONE COUNTY - TOTAL	965	13,970	14,047	14,161	\$130,991,291	\$716.69
Construction	64	386	378	388	3,497,313	700.58
Manufacturing	59	1,901	1,910	1,905	20,259,310	817.92
Trade, Transportation & Utilities	252	3,610	3,559	3,549	35,638,530	767.33
Wholesale Trade	39	340	336	331	3,113,540	713.51
Retail Trade	170	2,021	1,989	1,966	13,786,998	532.40
Transportation, Warehousing & Utilities	43	1,249	1,234	1,252	18,737,992	1,157.74
Information	13	249	250	261	2,856,733	867.43
Financial Activities	95	439	438	419	5,773,331	1,028.01
Professional & Business Services	96	1,445	1,453	1,459	15,604,247	826.48
Education & Health Services	168	1,573	1,593	1,630	12,882,111	619.85
Leisure & Hospitality	85	1,195	1,190	1,275	4,526,886	285.43
Local Government	53	2,240	2,248	2,240	20,429,062	700.71
State Government	17	661	750	754	6,992,221	745.31
Other	63	271	278	281	2,531,547	703.86
BRADLEY COUNTY - TOTAL	365	3,855	3,871	3,848	\$34,132,394	\$680.55
Natural Resources & Mining	44	258	264	266	2,573,798	753.75
Construction	18	73	70	71	565,482	609.79
Manufacturing	12	963	978	973	10,190,913	807.05
Trade, Transportation & Utilities	70	489	486	480	3,604,044	571.62
Wholesale Trade	12	97	100	99	1,192,947	930.05
Retail Trade	36	311	306	305	1,582,864	396.18
Transportation, Warehousing & Utilities	22	81	80	76	828,233	806.46
Information	3	21	21	19	141,320	534.63
Financial Activities	25	132	130	128	1,236,425	731.61
Professional & Business Services	27	152	146	143	2,061,273	1,078.64
Education & Health Services	101	687	686	676	6,233,699	702.07
Leisure & Hospitality	16	179	184	188	581,857	243.69
Other Services	25	82	89	87	555,464	496.84
Local Government	14	483	478	477	3,618,381	580.68
State Government	10	336	339	340	2,769,738	629.72

TABLE 6. COUNTY SUMMARY

North American Industry Classification System - Industry Groups	Number of Employing Units	Employment			Total Earnings	Average Weekly Earnings
		Jan	Feb	Mar	Jan - Mar 2019	
CALHOUN COUNTY - TOTAL	104	3,016	3,015	3,029	\$46,923,929	\$1,195.21
Natural Resources & Mining	6	34	35	34	289,576	648.79
Construction	11	126	120	119	1,442,397	911.95
Manufacturing	8	2,194	2,217	2,233	38,651,429	1,342.50
Trade, Transportation & Utilities	19	204	193	189	1,828,499	720.07
Retail Trade	9	52	48	47	245,628	385.60
Transportation, Warehousing & Utilities	10	152	145	142	1,582,871	832.07
Professional & Business Services	6	9	8	9	103,553	919.11
Education & Health Services	22	58	58	57	685,872	914.90
Leisure & Hospitality	4	13	13	13	47,353	280.20
Other Services	3	3	3	3	21,200	543.59
Local Government	11	188	182	184	1,396,559	581.74
State Government	7	79	79	79	860,667	838.04
Other	7	108	107	109	1,596,824	1,137.34
CARROLL COUNTY - TOTAL	790	10,089	10,175	10,416	\$77,851,069	\$585.58
Natural Resources & Mining	19	200	198	196	1,776,618	690.22
Trade, Transportation & Utilities	188	1,526	1,520	1,520	12,476,801	630.59
Wholesale Trade	23	207	211	193	1,919,704	725.06
Retail Trade	138	1,040	1,031	1,044	5,999,059	444.43
Transportation, Warehousing & Utilities	27	279	278	283	4,558,038	1,252.21
Information	11	66	70	68	716,331	810.33
Financial Activities	59	381	383	382	4,584,362	923.15
Professional & Business Services	63	259	263	276	2,292,148	662.85
Education & Health Services	103	1,139	1,123	1,126	9,238,653	629.28
Leisure & Hospitality	168	1,188	1,250	1,444	5,130,926	305.01
Other Services	42	126	135	145	865,564	491.98
Local Government	25	1,055	1,060	1,095	8,161,587	586.74
State Government	9	95	96	97	950,428	761.56
Other	103	4,054	4,077	4,067	31,657,651	598.92

TABLE 6. COUNTY SUMMARY

North American Industry Classification System - Industry Groups	Number of Employing Units	Employment			Total Earnings	Average Weekly Earnings
		Jan	Feb	Mar	Jan - Mar 2019	
CHICOT COUNTY - TOTAL	492	2,955	2,937	2,926	\$23,252,846	\$608.53
Natural Resources & Mining	52	214	221	231	1,809,909	627.13
Construction	14	114	106	97	1,259,360	916.79
Manufacturing	6	12	12	13	135,987	848.15
Trade, Transportation & Utilities	66	640	601	597	4,315,158	541.79
Wholesale Trade	13	56	49	48	491,346	741.10
Retail Trade	40	295	285	284	1,887,417	504.12
Transportation, Warehousing & Utilities	13	289	267	265	1,936,395	544.29
Financial Activities	29	180	172	177	2,189,505	955.14
Professional & Business Services	17	40	42	42	404,547	752.88
Education & Health Services	246	666	664	664	4,426,094	512.24
Leisure & Hospitality	16	128	131	115	386,076	238.22
Local Government	17	600	610	611	4,927,919	624.50
State Government	10	306	305	307	2,890,674	726.67
Other	19	55	73	72	507,617	585.71
CLARK COUNTY - TOTAL	664	9,136	9,364	9,359	\$82,673,566	\$684.82
Natural Resources & Mining	51	285	299	298	3,184,801	833.28
Construction	25	75	81	78	790,068	779.16
Manufacturing	34	1,396	1,377	1,364	18,885,670	1,053.48
Trade, Transportation & Utilities	139	1,480	1,463	1,451	11,466,620	602.22
Wholesale Trade	15	45	43	44	555,866	971.79
Retail Trade	92	1,223	1,206	1,199	8,563,545	544.71
Transportation, Warehousing & Utilities	32	212	214	208	2,347,209	854.36
Information	4	9	10	11	106,942	822.63
Financial Activities	73	308	310	312	3,292,047	816.89
Professional & Business Services	50	575	591	590	7,250,698	952.87
Education & Health Services	128	1,626	1,658	1,675	13,406,565	623.88
Leisure & Hospitality	70	1,156	1,216	1,235	4,157,214	265.97
Other Services	46	208	209	211	1,979,361	727.35
Local Government	30	948	951	944	7,473,125	606.60
State Government	14	1,070	1,199	1,190	10,680,455	712.55

TABLE 6. COUNTY SUMMARY

North American Industry Classification System - Industry Groups	Number of Employing Units	Employment			Total Earnings	Average Weekly Earnings
		Jan	Feb	Mar	Jan - Mar 2019	
CLAY COUNTY - TOTAL	369	3,076	3,034	3,089	\$22,375,224	\$561.31
Natural Resources & Mining	56	210	213	227	1,263,226	448.48
Construction	30	94	90	102	587,352	473.93
Manufacturing	13	106	105	106	823,117	599.21
Trade, Transportation & Utilities	85	717	702	717	5,805,484	627.21
Wholesale Trade	19	232	224	243	1,952,662	644.66
Retail Trade	41	347	345	343	2,264,223	504.84
Transportation, Warehousing & Utilities	25	138	133	131	1,588,599	911.94
Information	6	27	27	24	208,640	617.28
Financial Activities	22	92	92	90	939,818	791.54
Professional & Business Services	28	140	131	134	1,054,620	600.92
Education & Health Services	52	523	508	511	3,885,724	581.52
Leisure & Hospitality	23	237	237	245	737,452	236.69
Other Services	24	69	71	71	570,705	624.18
Local Government	21	817	814	816	6,048,605	570.43
State Government	9	44	44	46	450,481	775.80
CLEBURNE COUNTY - TOTAL	641	6,173	6,283	6,281	\$50,180,267	\$618.03
Natural Resources & Mining	22	186	184	186	2,826,116	1,172.99
Construction	67	305	305	284	2,611,125	674.01
Manufacturing	31	1,254	1,261	1,239	11,863,168	729.26
Trade, Transportation & Utilities	153	1,210	1,209	1,222	9,771,036	619.30
Wholesale Trade	33	116	116	114	1,287,742	858.88
Retail Trade	99	949	951	963	6,782,468	546.69
Transportation, Warehousing & Utilities	21	145	142	145	1,700,826	908.56
Information	9	47	48	52	438,318	688.10
Financial Activities	76	259	261	257	2,666,273	791.88
Professional & Business Services	65	259	280	272	2,531,234	720.26
Education & Health Services	76	879	896	901	6,489,773	559.66
Leisure & Hospitality	81	769	825	850	3,103,019	293.00
Other Services	35	108	111	113	750,779	521.86
Local Government	18	796	796	795	6,217,616	601.10
State Government	8	101	107	110	911,810	661.69

TABLE 6. COUNTY SUMMARY

North American Industry Classification System - Industry Groups	Number of Employing Units	Employment			Total Earnings	Average Weekly Earnings
		Jan	Feb	Mar	Jan - Mar 2019	
CLEVELAND COUNTY - TOTAL	129	1,101	1,091	1,094	\$8,081,333	\$567.54
Natural Resources & Mining	16	180	171	175	1,475,076	647.15
Construction	9	28	27	27	277,534	781.05
Manufacturing	4	116	114	113	1,178,697	793.02
Trade, Transportation & Utilities	30	165	163	162	1,224,151	576.52
Retail Trade	17	69	69	68	267,279	299.42
Other Trade, Transportation, & Utilities	13	96	94	94	956,872	777.52
Financial Activities	4	27	29	27	252,744	702.72
Education & Health Services	32	192	189	195	826,197	331.01
Other Services	5	12	12	12	99,329	636.72
Local Government	14	324	328	324	2,326,929	550.19
State Government	6	29	29	29	292,834	776.75
Other	9	28	29	30	127,842	339.10
COLUMBIA COUNTY - TOTAL	704	8,064	8,063	8,099	\$82,033,169	\$781.42
Natural Resources & Mining	41	357	353	368	5,633,283	1,205.93
Construction	37	153	156	162	1,353,204	663.01
Manufacturing	33	1,922	1,918	1,897	30,590,784	1,230.51
Trade, Transportation & Utilities	167	1,359	1,351	1,346	11,542,676	656.73
Wholesale Trade	32	205	203	211	3,011,308	1,122.64
Retail Trade	96	924	911	912	5,665,931	475.98
Transportation, Warehousing & Utilities	39	230	237	223	2,865,437	958.34
Information	6	35	34	33	362,725	820.64
Financial Activities	61	338	337	335	4,237,963	968.31
Professional & Business Services	52	288	287	285	2,033,216	545.59
Education & Health Services	167	975	974	970	6,213,628	491.23
Leisure & Hospitality	61	739	774	812	2,892,100	287.06
Other Services	40	125	126	128	736,489	448.44
Local Government	27	1,107	1,092	1,101	9,472,275	662.40
State Government	12	666	661	662	6,964,826	808.08

TABLE 6. COUNTY SUMMARY

North American Industry Classification System - Industry Groups	Number of Employing Units	Employment			Total Earnings	Average Weekly Earnings
		Jan	Feb	Mar	Jan - Mar 2019	
CONWAY COUNTY - TOTAL	524	6,231	6,296	6,418	\$61,331,917	\$747.08
Natural Resources & Mining	29	216	265	284	2,156,910	650.65
Construction	48	456	443	461	6,214,645	1,054.52
Manufacturing	19	942	945	955	13,648,627	1,108.26
Trade, Transportation & Utilities	115	1,312	1,308	1,350	10,616,145	617.10
Wholesale Trade	15	139	136	136	1,261,341	708.22
Retail Trade	77	753	746	786	5,091,762	514.23
Transportation, Warehousing & Utilities	23	420	426	428	4,263,042	772.20
Information	3	13	13	12	48,940	297.21
Financial Activities	40	161	161	162	1,855,864	884.87
Professional & Business Services	40	437	453	465	4,216,269	718.07
Education & Health Services	127	779	778	780	7,740,258	764.32
Leisure & Hospitality	37	398	410	426	1,580,576	295.58
Other Services	26	82	72	69	645,783	668.28
Local Government	31	1,066	1,074	1,076	9,637,704	691.57
State Government	9	369	374	378	2,970,196	611.45
CRAIGHEAD COUNTY - TOTAL	2,835	50,910	51,089	51,388	\$516,487,469	\$777.05
Natural Resources & Mining	100	335	335	352	3,000,359	677.49
Construction	243	2,040	2,031	2,099	21,878,196	818.28
Manufacturing	103	6,914	6,920	6,979	84,884,706	941.18
Trade, Transportation & Utilities	778	10,464	10,307	10,400	93,860,749	694.88
Wholesale Trade	185	1,901	1,919	1,954	27,170,888	1,085.94
Retail Trade	462	6,670	6,546	6,612	44,336,610	516.01
Transportation, Warehousing & Utilities	131	1,893	1,842	1,834	22,353,251	926.28
Information	22	378	370	380	5,044,976	1,032.11
Financial Activities	281	1,658	1,661	1,663	23,362,358	1,082.16
Professional & Business Services	380	4,801	4,882	4,907	43,561,745	689.01
Education & Health Services	447	11,047	11,170	11,114	140,754,056	974.52
Leisure & Hospitality	266	5,485	5,590	5,639	22,400,948	309.29
Other Services	158	681	701	734	5,400,482	588.97
Local Government	35	4,197	4,194	4,203	38,731,938	709.71
State Government	22	2,910	2,928	2,918	33,606,956	885.73

TABLE 6. COUNTY SUMMARY

North American Industry Classification System - Industry Groups	Number of Employing Units	Employment			Total Earnings	Average Weekly Earnings
		Jan	Feb	Mar	Jan - Mar 2019	
CRAWFORD COUNTY - TOTAL	1,261	19,405	19,459	19,603	\$177,832,434	\$701.90
Natural Resources & Mining	22	224	251	287	2,344,245	709.95
Construction	146	975	978	986	9,552,883	750.09
Manufacturing	62	4,604	4,654	4,663	47,944,692	794.78
Trade, Transportation & Utilities	317	5,573	5,566	5,572	54,142,874	747.68
Wholesale Trade	76	726	721	722	9,575,844	1,018.82
Retail Trade	168	1,974	1,967	1,971	13,633,428	532.17
Transportation, Warehousing & Utilities	73	2,873	2,878	2,879	30,933,602	827.18
Information	10	47	45	46	455,949	762.46
Financial Activities	129	510	504	506	5,305,355	805.47
Professional & Business Services	168	1,647	1,645	1,647	15,066,692	703.97
Education & Health Services	181	1,695	1,681	1,693	13,701,058	623.75
Leisure & Hospitality	91	1,484	1,465	1,529	5,547,957	285.91
Other Services	83	421	427	434	3,879,212	698.29
Local Government	42	2,082	2,098	2,097	18,584,847	683.26
State Government	10	143	145	143	1,306,670	699.63
CRITTENDEN COUNTY - TOTAL	1,201	15,978	16,113	16,114	\$148,920,604	\$712.92
Natural Resources & Mining	56	190	204	227	1,521,429	565.38
Construction	44	358	367	365	4,863,755	1,029.73
Manufacturing	41	2,038	2,048	2,043	28,540,619	1,074.61
Trade, Transportation & Utilities	302	4,261	4,300	4,313	43,470,902	779.23
Wholesale Trade	56	759	776	776	9,685,807	967.19
Retail Trade	157	1,850	1,858	1,874	11,366,176	469.90
Transportation, Warehousing & Utilities	89	1,652	1,666	1,663	22,418,919	1,038.67
Information	5	47	50	50	491,500	771.59
Financial Activities	102	448	444	445	5,770,877	996.07
Professional & Business Services	108	964	992	991	7,275,242	569.70
Education & Health Services	288	2,117	2,133	2,092	17,731,048	645.19
Leisure & Hospitality	131	2,459	2,461	2,499	11,694,959	363.77
Other Services	70	512	526	507	4,311,019	643.92
Local Government	41	2,150	2,155	2,150	19,573,077	699.75
State Government	13	434	433	432	3,676,177	653.08

TABLE 6. COUNTY SUMMARY

North American Industry Classification System - Industry Groups	Number of Employing Units	Employment			Total Earnings	Average Weekly Earnings
		Jan	Feb	Mar	Jan - Mar 2019	
CROSS COUNTY - TOTAL	478	4,661	4,672	4,716	\$38,428,462	\$631.23
Natural Resources & Mining	46	270	272	287	1,891,170	526.45
Construction	22	59	59	60	482,186	625.13
Manufacturing	11	294	293	309	2,391,688	615.99
Trade, Transportation & Utilities	127	1,098	1,095	1,108	9,639,932	673.92
Wholesale Trade	27	274	280	296	3,620,567	982.96
Retail Trade	68	714	709	708	4,812,829	521.19
Transportation, Warehousing & Utilities	32	110	106	104	1,206,536	870.10
Information	6	45	44	45	323,475	557.08
Financial Activities	46	298	297	296	2,845,879	737.08
Professional & Business Services	40	159	159	155	1,526,572	744.79
Education & Health Services	88	977	987	993	8,256,383	644.34
Leisure & Hospitality	32	305	307	305	1,029,766	259.15
Other Services	34	115	110	111	821,948	564.52
Local Government	17	694	704	702	6,215,131	682.98
State Government	9	347	345	345	3,004,332	668.57
DALLAS COUNTY - TOTAL	230	2,687	2,633	2,676	\$22,456,834	\$648.12
Natural Resources & Mining	24	106	115	113	1,109,088	766.30
Construction	13	68	66	69	481,387	547.24
Manufacturing	9	565	546	563	6,305,558	869.25
Trade, Transportation & Utilities	57	481	463	468	3,721,963	608.30
Wholesale Trade	7	20	22	25	298,946	1,029.66
Retail Trade	36	312	295	298	2,012,325	513.13
Transportation, Warehousing & Utilities	14	149	146	145	1,410,692	739.87
Information	4	17	17	17	134,627	609.17
Financial Activities	15	76	75	72	797,851	825.65
Professional & Business Services	10	35	34	34	468,322	1,049.27
Education & Health Services	52	767	749	768	6,259,669	632.46
Leisure & Hospitality	12	148	142	150	459,152	240.81
Other Services	13	48	51	50	322,478	499.45
Local Government	14	348	346	343	2,110,735	469.71
State Government	7	28	29	29	286,004	767.45

TABLE 6. COUNTY SUMMARY

North American Industry Classification System - Industry Groups	Number of Employing Units	Employment			Total Earnings	Average Weekly Earnings
		Jan	Feb	Mar	Jan - Mar 2019	
DESHA COUNTY - TOTAL	533	4,626	4,599	4,649	\$41,943,170	\$697.65
Natural Resources & Mining	64	220	220	235	1,665,890	569.54
Construction	16	100	97	97	887,815	696.87
Manufacturing	14	1,051	1,068	1,094	15,556,759	1,117.34
Trade, Transportation & Utilities	103	819	816	803	6,799,254	643.58
Wholesale Trade	19	175	173	182	2,617,523	1,139.71
Retail Trade	56	462	457	458	2,547,076	426.86
Transportation, Warehousing & Utilities	28	182	186	163	1,634,655	710.41
Information	4	22	20	21	213,022	780.30
Financial Activities	28	198	195	198	1,809,819	706.68
Professional & Business Services	34	80	80	86	759,725	712.69
Education & Health Services	177	783	797	808	5,266,610	508.95
Leisure & Hospitality	37	339	328	337	1,152,012	264.79
Other Services	26	58	60	61	301,634	388.87
Local Government	21	835	796	786	6,556,333	625.98
State Government	9	121	122	123	974,297	614.31
DREW COUNTY - TOTAL	524	6,466	6,437	6,459	\$54,141,894	\$645.30
Natural Resources & Mining	56	423	434	406	3,807,163	695.63
Construction	24	142	131	121	1,383,117	810.10
Manufacturing	21	925	920	928	9,779,759	813.87
Trade, Transportation & Utilities	110	1,050	1,021	1,029	8,079,147	601.43
Wholesale Trade	16	103	103	101	1,305,368	981.23
Retail Trade	75	842	813	825	5,462,212	508.27
Transportation, Warehousing & Utilities	19	105	105	103	1,311,567	966.99
Information	6	49	47	47	496,282	800.89
Financial Activities	48	207	213	213	2,860,988	1,043.01
Professional & Business Services	36	303	302	317	2,614,747	654.45
Education & Health Services	133	870	865	887	6,594,445	580.39
Leisure & Hospitality	40	654	656	658	2,322,908	272.39
Other Services	14	53	54	53	464,224	669.55
Local Government	23	1,212	1,215	1,217	9,416,559	596.34
State Government	13	578	579	583	6,322,555	838.54

TABLE 6. COUNTY SUMMARY

North American Industry Classification System - Industry Groups	Number of Employing Units	Employment			Total Earnings	Average Weekly Earnings
		Jan	Feb	Mar	Jan - Mar 2019	
FAULKNER COUNTY - TOTAL	2,893	40,424	40,644	40,705	\$404,628,987	\$766.80
Natural Resources & Mining	41	250	245	244	5,549,796	1,733.05
Construction	338	2,862	2,891	2,917	30,312,016	806.81
Manufacturing	100	3,320	3,274	3,256	45,516,063	1,066.37
Trade, Transportation & Utilities	639	7,519	7,460	7,462	60,641,545	623.60
Wholesale Trade	138	713	711	708	9,905,166	1,072.14
Retail Trade	414	5,994	5,942	5,937	39,816,204	514.09
Transportation, Warehousing & Utilities	87	812	807	817	10,920,175	1,034.50
Information	23	280	279	276	6,204,031	1,714.61
Financial Activities	317	1,404	1,422	1,412	17,384,249	946.61
Professional & Business Services	447	4,722	4,801	4,797	72,027,814	1,160.74
Education & Health Services	461	7,248	7,368	7,325	68,374,570	719.14
Leisure & Hospitality	268	5,156	5,203	5,285	20,308,013	299.57
Other Services	198	897	895	931	6,809,525	577.09
Local Government	43	3,501	3,504	3,496	35,267,285	775.03
State Government	18	3,265	3,302	3,304	36,234,080	847.10
FRANKLIN COUNTY - TOTAL	382	4,531	4,581	4,609	\$41,075,007	\$690.83
Natural Resources & Mining	19	233	235	231	3,481,516	1,149.39
Construction	36	138	149	163	1,398,963	717.42
Manufacturing	17	944	960	951	9,163,043	740.65
Trade, Transportation & Utilities	87	944	944	954	8,945,843	726.40
Wholesale Trade	12	57	59	56	459,293	616.22
Retail Trade	52	601	602	610	3,564,315	453.69
Transportation, Warehousing & Utilities	23	286	283	288	4,922,235	1,325.44
Information	6	24	25	25	248,583	775.21
Financial Activities	31	76	77	69	812,762	844.87
Professional & Business Services	35	358	358	354	3,849,447	830.22
Education & Health Services	62	575	563	565	3,910,291	529.87
Leisure & Hospitality	33	332	339	351	1,126,578	254.38
Other Services	16	61	62	64	442,090	545.57
Local Government	32	727	738	752	6,235,115	649.02
State Government	8	119	131	130	1,460,776	887.11

TABLE 6. COUNTY SUMMARY

North American Industry Classification System - Industry Groups	Number of Employing Units	Employment			Total Earnings	Average Weekly Earnings
		Jan	Feb	Mar	Jan - Mar 2019	
FULTON COUNTY - TOTAL	202	2,008	1,999	2,010	\$15,300,186	\$586.81
Manufacturing	12	123	118	122	738,703	469.61
Trade, Transportation & Utilities	48	289	280	286	2,601,530	702.17
Retail Trade	28	162	163	164	912,906	430.82
Other Trade, Transportation, & Utilities	20	127	117	122	1,688,624	1,064.71
Information	5	28	29	29	257,321	690.49
Financial Activities	18	74	76	80	812,423	815.14
Professional & Business Services	19	54	52	48	506,163	758.49
Education & Health Services	45	525	514	512	3,406,683	506.87
Leisure & Hospitality	14	112	117	122	371,539	244.27
Other Services	10	16	17	17	119,722	552.56
Local Government	12	567	556	547	3,940,284	544.49
State Government	9	63	63	62	542,763	666.24
Other	10	157	177	185	2,003,055	890.64
GARLAND COUNTY - TOTAL	3,061	36,902	37,272	37,549	\$335,638,878	\$693.28
Natural Resources & Mining	28	238	242	260	3,527,226	1,099.97
Construction	328	1,826	1,830	1,844	17,389,905	729.65
Manufacturing	93	2,548	2,578	2,559	29,112,513	874.21
Trade, Transportation & Utilities	671	7,227	7,130	7,160	59,236,893	635.31
Wholesale Trade	141	814	806	814	11,246,461	1,066.28
Retail Trade	468	5,883	5,844	5,857	41,839,082	549.09
Transportation, Warehousing & Utilities	62	530	480	489	6,151,350	946.99
Information	32	444	470	445	4,553,975	773.30
Financial Activities	333	1,435	1,431	1,437	17,437,998	935.20
Professional & Business Services	381	2,895	2,879	2,933	28,566,493	757.12
Education & Health Services	531	8,107	8,127	8,069	93,128,884	884.31
Leisure & Hospitality	383	7,343	7,654	7,891	35,398,685	356.91
Other Services	225	969	975	966	6,459,853	512.28
Local Government	34	2,917	2,952	2,984	31,111,798	810.98
State Government	22	953	1,004	1,001	9,714,655	757.89

TABLE 6. COUNTY SUMMARY

North American Industry Classification System - Industry Groups	Number of Employing Units	Employment			Total Earnings	Average Weekly Earnings
		Jan	Feb	Mar	Jan - Mar 2019	
GRANT COUNTY - TOTAL	345	4,224	4,205	4,233	\$42,732,193	\$778.81
Natural Resources & Mining	28	169	174	176	2,297,432	1,021.53
Construction	34	234	235	234	3,264,591	1,071.65
Manufacturing	17	1,430	1,417	1,421	17,926,742	969.29
Trade, Transportation & Utilities	81	623	613	616	4,780,056	595.62
Wholesale Trade	17	69	67	68	1,114,110	1,260.31
Retail Trade	45	494	487	494	3,159,468	494.31
Transportation, Warehousing & Utilities	19	60	59	54	506,478	675.60
Financial Activities	20	110	112	114	1,449,513	995.54
Professional & Business Services	32	119	117	119	1,463,059	951.07
Education & Health Services	76	394	387	395	2,864,314	562.07
Leisure & Hospitality	23	297	300	301	913,699	234.80
Local Government	10	750	747	755	6,890,382	706.08
State Government	7	44	45	43	438,477	766.57
Other	17	54	58	59	443,928	599.09
GREENE COUNTY - TOTAL	888	15,402	15,477	15,604	\$146,882,878	\$729.21
Natural Resources & Mining	38	184	188	213	1,571,715	620.01
Construction	74	346	397	377	3,710,694	764.57
Manufacturing	64	5,280	5,222	5,190	61,705,619	907.45
Trade, Transportation & Utilities	228	2,580	2,612	2,678	20,653,553	605.62
Wholesale Trade	43	438	442	465	5,111,389	876.99
Retail Trade	152	1,826	1,852	1,896	12,566,429	520.26
Transportation, Warehousing & Utilities	33	316	318	317	2,975,735	722.09
Information	11	187	187	187	1,954,913	804.16
Financial Activities	76	542	547	552	6,452,592	907.41
Professional & Business Services	89	808	841	836	6,419,471	596.14
Education & Health Services	154	1,986	1,983	2,012	19,561,755	754.77
Leisure & Hospitality	75	1,298	1,297	1,361	4,962,541	289.48
Other Services	38	169	167	170	1,228,980	560.50
Local Government	31	1,630	1,645	1,637	14,742,961	692.63
State Government	10	392	391	391	3,918,084	770.16

TABLE 6. COUNTY SUMMARY

North American Industry Classification System - Industry Groups	Number of Employing Units	Employment			Total Earnings	Average Weekly Earnings
		Jan	Feb	Mar	Jan - Mar 2019	
HEMPSTEAD COUNTY - TOTAL	519	7,850	7,852	7,851	\$71,612,935	\$701.65
Natural Resources & Mining	23	272	276	273	3,108,936	873.87
Construction	27	145	143	154	1,523,831	795.60
Manufacturing	29	2,292	2,320	2,278	24,333,925	815.02
Trade, Transportation & Utilities	125	1,298	1,283	1,300	12,847,196	763.91
Wholesale Trade	23	169	151	167	1,542,919	731.13
Retail Trade	76	838	847	843	5,426,300	495.34
Transportation, Warehousing & Utilities	26	291	285	290	5,877,977	1,566.35
Information	8	24	23	22	281,691	942.11
Financial Activities	43	210	212	210	2,315,121	845.35
Professional & Business Services	31	223	222	227	2,054,056	705.38
Education & Health Services	110	1,047	1,031	1,030	7,413,775	550.47
Leisure & Hospitality	47	617	618	627	2,372,308	294.01
Other Services	32	120	124	121	1,018,329	643.83
Local Government	28	891	882	883	7,822,383	679.66
State Government	16	711	718	726	6,521,384	698.35
HOT SPRING COUNTY - TOTAL	615	7,968	8,043	8,135	\$73,728,402	\$704.64
Natural Resources & Mining	26	157	165	162	1,532,084	730.49
Construction	51	194	197	193	1,416,102	559.58
Manufacturing	27	1,426	1,428	1,425	17,916,460	966.25
Trade, Transportation & Utilities	150	1,527	1,529	1,580	15,976,911	795.29
Wholesale Trade	18	81	79	79	976,003	942.39
Retail Trade	99	815	815	852	5,160,997	479.85
Transportation, Warehousing & Utilities	33	631	635	649	9,839,911	1,185.77
Information	5	42	45	42	428,845	767.16
Financial Activities	49	215	213	210	2,568,346	928.99
Professional & Business Services	54	784	816	855	5,104,325	479.80
Education & Health Services	127	1,094	1,083	1,098	9,100,203	641.24
Leisure & Hospitality	49	591	605	619	2,003,075	254.68
Other Services	37	149	145	141	954,141	506.18
Local Government	27	971	966	956	8,806,883	702.51
State Government	13	818	851	854	7,921,027	724.51

TABLE 6. COUNTY SUMMARY

North American Industry Classification System - Industry Groups	Number of Employing Units	Employment			Total Earnings	Average Weekly Earnings
		Jan	Feb	Mar	Jan - Mar 2019	
HOWARD COUNTY - TOTAL	358	6,726	6,737	6,723	\$56,012,261	\$640.34
Natural Resources & Mining	16	200	203	197	1,948,912	749.58
Construction	22	126	114	111	1,286,061	845.54
Manufacturing	18	3,182	3,187	3,162	27,142,449	657.19
Trade, Transportation & Utilities	83	843	834	843	7,422,988	679.76
Wholesale Trade	17	81	81	78	894,065	859.68
Retail Trade	48	553	551	560	3,659,939	507.57
Transportation, Warehousing & Utilities	18	209	202	205	2,868,984	1,074.79
Financial Activities	34	134	137	136	1,432,695	812.34
Professional & Business Services	24	166	167	161	1,291,078	603.12
Education & Health Services	87	846	854	862	7,092,154	638.82
Leisure & Hospitality	23	342	339	344	1,174,373	264.40
Local Government	17	688	697	697	5,512,562	611.01
State Government	10	92	100	102	928,401	728.73
Other	24	107	105	108	780,588	562.92
INDEPENDENCE COUNTY - TOTAL	911	16,007	16,009	16,194	\$151,814,733	\$726.70
Natural Resources & Mining	19	243	242	249	3,103,562	975.76
Construction	61	475	450	536	5,424,494	856.81
Manufacturing	42	3,448	3,502	3,526	36,980,697	814.62
Trade, Transportation & Utilities	236	2,906	2,835	2,845	25,779,574	692.89
Wholesale Trade	26	304	298	307	2,955,469	750.31
Retail Trade	161	1,853	1,831	1,842	12,120,091	506.14
Transportation, Warehousing & Utilities	49	749	706	696	10,704,014	1,148.38
Information	11	104	99	100	833,144	634.53
Financial Activities	86	546	557	557	8,077,410	1,122.90
Professional & Business Services	88	1,090	1,122	1,107	8,723,885	606.57
Education & Health Services	158	3,586	3,625	3,658	39,713,688	843.20
Leisure & Hospitality	85	1,266	1,212	1,234	4,443,198	276.23
Other Services	65	295	276	288	1,776,195	477.17
Local Government	45	1,483	1,491	1,486	11,545,353	597.38
State Government	15	565	598	608	5,413,533	705.41

TABLE 6. COUNTY SUMMARY

North American Industry Classification System - Industry Groups	Number of Employing Units	Employment			Total Earnings	Average Weekly Earnings
		Jan	Feb	Mar	Jan - Mar 2019	
IZARD COUNTY - TOTAL	254	3,080	3,076	3,124	\$25,167,901	\$625.86
Natural Resources & Mining	9	143	142	141	2,095,451	1,135.13
Construction	23	62	63	63	546,745	671.13
Manufacturing	9	385	375	385	2,976,258	599.85
Trade, Transportation & Utilities	66	513	497	504	4,337,104	661.08
Wholesale Trade	13	47	50	50	350,328	549.97
Retail Trade	42	333	322	323	2,067,850	487.93
Transportation, Warehousing & Utilities	11	133	125	131	1,918,926	1,138.38
Information	3	7	6	5	91,376	1,171.49
Financial Activities	25	160	160	166	1,325,447	629.37
Professional & Business Services	16	38	41	43	307,488	581.63
Education & Health Services	49	696	692	698	4,785,319	529.39
Leisure & Hospitality	19	157	152	170	592,109	285.26
Other Services	12	34	35	32	208,422	476.21
Local Government	14	503	487	490	3,782,395	589.77
State Government	9	382	426	427	4,119,787	769.81
JACKSON COUNTY - TOTAL	433	5,164	5,173	5,211	\$49,511,747	\$734.87
Natural Resources & Mining	60	231	238	260	2,005,344	634.80
Construction	21	98	101	106	979,049	740.77
Manufacturing	11	934	952	976	13,763,731	1,109.80
Trade, Transportation & Utilities	108	999	994	1,002	7,949,355	612.51
Wholesale Trade	19	203	202	211	2,361,921	884.84
Retail Trade	71	706	702	700	4,502,111	492.86
Transportation, Warehousing & Utilities	18	90	90	91	1,085,323	924.20
Information	4	10	10	11	92,915	691.67
Financial Activities	30	129	131	130	1,779,201	1,052.78
Professional & Business Services	31	118	116	116	1,047,040	690.36
Education & Health Services	82	896	881	871	7,736,719	674.24
Leisure & Hospitality	24	327	325	325	1,143,870	270.18
Other Services	18	62	64	65	774,324	935.55
Local Government	32	578	581	570	4,486,335	598.79
State Government	12	782	780	779	7,753,864	764.35

TABLE 6. COUNTY SUMMARY

North American Industry Classification System - Industry Groups	Number of Employing Units	Employment			Total Earnings Jan - Mar 2019	Average Weekly Earnings
		Jan	Feb	Mar		
JEFFERSON COUNTY - TOTAL	2,030	25,609	25,921	25,852	\$259,832,950	\$774.88
Natural Resources & Mining	44	130	143	143	2,026,529	1,124.18
Construction	85	443	464	450	4,297,052	730.75
Manufacturing	58	4,756	4,756	4,706	69,636,289	1,130.25
Trade, Transportation & Utilities	390	4,334	4,342	4,381	37,323,649	659.66
Wholesale Trade	71	655	680	694	7,369,971	838.23
Retail Trade	269	2,974	2,979	3,004	19,407,200	500.01
Transportation, Warehousing & Utilities	50	705	683	683	10,546,478	1,175.18
Information	8	67	66	67	940,410	1,085.09
Financial Activities	150	971	973	984	12,974,761	1,022.60
Professional & Business Services	140	2,053	1,971	1,928	18,746,902	726.85
Education & Health Services	840	4,831	4,856	4,826	45,675,932	726.29
Leisure & Hospitality	138	1,809	1,823	1,822	6,645,767	281.20
Other Services	101	476	473	478	3,942,842	637.62
Local Government	41	2,523	2,532	2,525	22,275,036	678.15
State Government	35	3,216	3,522	3,542	35,347,781	793.50
JOHNSON COUNTY - TOTAL	488	8,449	8,475	8,513	\$66,604,663	\$604.25
Natural Resources & Mining	14	190	193	197	1,980,043	787.82
Construction	36	222	221	224	1,840,150	636.66
Manufacturing	34	2,551	2,568	2,552	21,214,055	638.19
Trade, Transportation & Utilities	104	1,860	1,859	1,876	14,925,213	615.60
Retail Trade	73	886	894	891	5,249,378	453.54
Other Trade, Transportation & Utilities	31	974	965	985	9,675,835	763.64
Information	4	18	17	18	189,866	826.70
Financial Activities	47	179	178	178	1,747,421	753.74
Professional & Business Services	47	404	411	413	1,896,179	356.34
Education & Health Services	109	1,238	1,237	1,249	10,554,246	654.03
Leisure & Hospitality	43	580	581	596	1,954,687	256.73
Other Services	28	74	78	78	532,582	534.36
Local Government	14	1,032	1,031	1,031	8,661,171	646.00
State Government	8	101	101	101	1,109,050	844.67

TABLE 6. COUNTY SUMMARY

North American Industry Classification System - Industry Groups	Number of Employing Units	Employment			Total Earnings	Average Weekly Earnings
		Jan	Feb	Mar	Jan - Mar 2019	
LAFAYETTE COUNTY - TOTAL	165	1,171	1,184	1,185	\$8,752,911	\$570.59
Natural Resources & Mining	25	89	91	96	541,800	453.01
Construction	10	79	75	73	875,714	890.25
Manufacturing	6	32	35	35	500,587	1,132.55
Trade, Transportation & Utilities	32	200	209	210	1,483,967	553.24
Retail Trade	18	116	120	116	592,308	388.31
Other Trade, Transportation & Utilities	14	84	89	94	891,659	770.66
Financial Activities	14	64	65	69	560,079	652.77
Professional & Business Services	10	41	41	39	293,487	559.73
Education & Health Services	34	174	174	161	1,100,660	499.01
Leisure & Hospitality	6	33	35	37	132,427	291.05
Local Government	14	289	287	294	2,077,673	551.11
State Government	9	135	138	137	919,043	517.28
Other	5	35	34	34	267,474	599.27
LAWRENCE COUNTY - TOTAL	404	3,875	3,855	3,881	\$30,894,755	\$614.03
Natural Resources & Mining	54	165	165	173	1,561,956	716.60
Construction	25	102	101	107	983,789	732.35
Manufacturing	18	363	355	346	3,084,760	669.05
Trade, Transportation & Utilities	118	792	779	800	6,885,447	670.16
Wholesale Trade	18	183	183	194	1,909,506	786.88
Retail Trade	63	476	463	471	3,311,176	541.93
Transportation, Warehousing & Utilities	37	133	133	135	1,664,765	958.05
Financial Activities	29	124	121	121	1,250,257	788.31
Professional & Business Services	25	109	107	105	986,160	708.96
Education & Health Services	51	868	881	885	7,006,123	613.82
Leisure & Hospitality	30	344	334	329	1,096,925	251.38
Local Government	22	748	750	752	5,663,222	580.84
State Government	9	78	79	78	715,685	702.80
Other	23	182	183	185	1,660,431	696.68

TABLE 6. COUNTY SUMMARY

North American Industry Classification System - Industry Groups	Number of Employing Units	Employment			Total Earnings	Average Weekly Earnings
		Jan	Feb	Mar	Jan - Mar 2019	
LEE COUNTY - TOTAL	266	1,828	1,821	1,835	\$15,746,080	\$662.60
Natural Resources & Mining	41	166	176	195	1,722,388	740.18
Construction	6	28	26	25	176,228	514.78
Trade, Transportation & Utilities	43	339	321	323	3,101,128	728.02
Wholesale Trade	11	107	104	111	1,493,027	1,070.01
Retail Trade	22	172	163	160	919,264	428.56
Transportation, Warehousing & Utilities	10	60	54	52	688,837	957.60
Financial Activities	17	58	58	53	400,178	546.44
Professional & Business Services	13	48	50	49	737,449	1,157.69
Education & Health Services	106	430	426	434	3,170,880	567.24
Leisure & Hospitality	7	57	60	58	219,158	289.00
Local Government	15	285	288	283	1,846,376	497.76
State Government	6	400	399	398	4,272,118	823.62
Other	12	17	17	17	100,177	453.29
LINCOLN COUNTY - TOTAL	290	2,796	2,773	2,811	\$24,925,744	\$686.41
Natural Resources & Mining	32	158	136	140	1,283,141	682.28
Construction	20	128	131	133	1,304,490	767.95
Manufacturing	8	279	286	300	2,433,610	649.25
Trade, Transportation & Utilities	45	336	337	334	3,279,386	751.52
Wholesale Trade	9	54	56	57	685,711	947.55
Retail Trade	24	153	153	156	848,267	423.71
Transportation, Warehousing & Utilities	12	129	128	121	1,745,408	1,065.57
Financial Activities	19	74	75	75	896,568	923.66
Professional & Business Services	11	26	27	27	258,228	744.89
Education & Health Services	110	402	392	399	2,506,318	484.81
Leisure & Hospitality	15	156	155	155	428,900	212.40
Local Government	7	330	326	337	2,495,030	579.83
State Government	10	861	863	867	9,582,282	853.45
Other	13	46	45	44	457,791	782.55

TABLE 6. COUNTY SUMMARY

North American Industry Classification System - Industry Groups	Number of Employing Units	Employment			Total Earnings	Average Weekly Earnings
		Jan	Feb	Mar	Jan - Mar 2019	
LITTLE RIVER COUNTY - TOTAL	250	3,380	3,410	3,469	\$49,520,164	\$1,113.92
Natural Resources & Mining	16	76	65	64	582,525	655.75
Construction	14	156	152	180	1,671,513	790.44
Manufacturing	17	1,152	1,184	1,184	32,135,209	2,106.77
Trade, Transportation & Utilities	61	561	563	567	4,400,182	600.49
Wholesale Trade	6	30	24	31	523,086	1,420.14
Retail Trade	40	411	419	415	2,665,996	494.16
Transportation, Warehousing & Utilities	15	120	120	121	1,211,100	774.20
Financial Activities	14	57	57	55	502,661	686.38
Professional & Business Services	14	116	124	126	1,229,841	775.44
Education & Health Services	46	206	215	217	1,522,594	550.73
Leisure & Hospitality	17	207	206	214	655,461	241.24
Local Government	20	709	706	718	5,808,717	628.44
State Government	10	76	79	86	667,562	639.22
Other	21	64	59	58	343,899	438.46
LOGAN COUNTY - TOTAL	497	5,064	5,097	5,108	\$42,041,769	\$635.40
Natural Resources & Mining	22	109	116	117	963,769	650.32
Construction	43	202	213	213	2,091,721	768.64
Manufacturing	22	1,053	1,065	1,056	11,130,568	809.26
Trade, Transportation & Utilities	102	908	904	921	6,517,002	550.28
Wholesale Trade	7	28	29	30	264,159	700.69
Retail Trade	74	744	737	752	4,590,417	474.40
Transportation, Warehousing & Utilities	21	136	138	139	1,662,426	928.90
Information	6	30	30	29	275,889	715.36
Financial Activities	51	185	187	187	2,407,827	994.01
Professional & Business Services	45	127	123	118	1,121,345	703.18
Education & Health Services	112	729	737	727	5,702,594	600.08
Leisure & Hospitality	30	276	271	285	985,246	273.27
Other Services	30	148	154	154	1,144,958	579.43
Local Government	22	810	814	816	6,112,893	578.14
State Government	12	487	483	485	3,587,957	569.07

TABLE 6. COUNTY SUMMARY

North American Industry Classification System - Industry Groups	Number of Employing Units	Employment			Total Earnings Jan - Mar 2019	Average Weekly Earnings
		Jan	Feb	Mar		
LONOKE COUNTY - TOTAL	1,310	13,770	13,888	13,913	\$118,508,731	\$657.87
Natural Resources & Mining	87	450	488	520	4,193,029	663.66
Construction	140	892	921	917	10,389,546	878.24
Manufacturing	36	1,637	1,654	1,663	19,739,403	919.51
Trade, Transportation & Utilities	298	2,709	2,727	2,737	22,066,480	623.06
Wholesale Trade	69	394	409	417	5,177,705	979.39
Retail Trade	169	1,995	1,986	2,001	12,747,470	491.76
Transportation, Warehousing & Utilities	60	320	332	319	4,141,305	984.23
Information	14	103	103	99	1,154,411	873.45
Financial Activities	156	664	656	649	9,570,427	1,121.67
Professional & Business Services	159	576	610	629	5,115,833	650.46
Education & Health Services	203	1,770	1,781	1,770	13,631,813	591.21
Leisure & Hospitality	116	1,989	1,970	1,992	7,645,515	296.48
Other Services	62	197	198	195	1,286,289	503.11
Local Government	25	2,618	2,616	2,577	22,088,726	652.59
State Government	14	165	164	165	1,627,259	760.16
MADISON COUNTY - TOTAL	257	3,272	3,294	3,291	\$28,522,433	\$667.76
Natural Resources & Mining	12	44	41	41	393,477	720.65
Construction	30	121	113	115	1,019,742	674.28
Manufacturing	23	1,157	1,173	1,170	10,483,732	691.24
Trade, Transportation & Utilities	53	671	674	662	5,551,811	638.36
Wholesale Trade	8	33	35	37	509,914	1,120.69
Retail Trade	34	481	478	470	3,273,754	528.68
Transportation, Warehousing & Utilities	11	157	161	155	1,768,143	862.65
Information	6	56	57	57	1,355,419	1,839.94
Financial Activities	19	82	82	81	855,545	805.85
Professional & Business Services	25	76	75	76	909,743	924.85
Education & Health Services	36	251	261	256	2,068,157	621.44
Leisure & Hospitality	18	175	187	204	593,508	241.98
Other Services	19	40	39	36	273,204	548.24
Local Government	9	559	551	552	4,616,849	641.05
State Government	7	40	41	41	401,246	758.98

TABLE 6. COUNTY SUMMARY

North American Industry Classification System - Industry Groups	Number of Employing Units	Employment			Total Earnings	Average Weekly Earnings
		Jan	Feb	Mar	Jan - Mar 2019	
MARION COUNTY - TOTAL	287	3,829	3,843	3,844	\$29,786,053	\$596.88
Manufacturing	24	1,811	1,849	1,836	15,324,230	643.44
Trade, Transportation & Utilities	57	513	510	503	3,539,128	535.20
Wholesale Trade	6	32	32	30	270,379	663.78
Retail Trade	42	442	439	434	2,706,234	474.92
Transportation, Warehousing & Utilities	9	39	39	39	562,515	1,109.50
Information	3	56	55	54	782,028	1,093.75
Financial Activities	35	175	170	177	1,685,652	745.20
Professional & Business Services	24	81	80	81	632,080	602.75
Education & Health Services	45	336	333	327	2,488,821	576.65
Leisure & Hospitality	36	176	178	193	571,562	241.13
Other Services	14	30	30	32	117,768	295.40
Local Government	19	514	508	510	3,545,934	534.13
State Government	7	36	37	36	379,243	802.91
Other	23	101	93	95	719,607	574.61
MILLER COUNTY - TOTAL	886	12,960	12,892	12,933	\$128,764,527	\$766.14
Natural Resources & Mining	31	231	218	232	2,422,970	821.07
Construction	72	585	595	603	5,966,807	772.27
Manufacturing	26	2,292	2,284	2,305	36,534,965	1,225.28
Trade, Transportation & Utilities	223	3,575	3,500	3,471	34,979,811	765.43
Wholesale Trade	48	482	484	483	6,979,082	1,111.50
Retail Trade	124	1,268	1,252	1,251	8,128,559	497.43
Transportation, Warehousing & Utilities	51	1,825	1,764	1,737	19,872,170	861.04
Information	6	113	113	111	1,673,035	1,145.65
Financial Activities	82	398	392	397	4,604,574	895.19
Professional & Business Services	78	1,024	1,017	1,008	5,636,753	426.63
Education & Health Services	189	1,222	1,236	1,234	9,936,463	621.08
Leisure & Hospitality	84	1,300	1,329	1,352	5,457,156	316.34
Other Services	54	277	266	264	2,018,869	577.31
Local Government	26	1,470	1,469	1,478	13,898,999	726.16
State Government	15	473	473	478	5,634,125	913.05

TABLE 6. COUNTY SUMMARY

North American Industry Classification System - Industry Groups	Number of Employing Units	Employment			Total Earnings	Average Weekly Earnings
		Jan	Feb	Mar	Jan - Mar 2019	
MISSISSIPPI COUNTY - TOTAL	1,099	17,483	17,591	17,696	\$229,896,303	\$1,005.36
Natural Resources & Mining	112	485	474	479	4,325,461	694.15
Construction	52	742	739	749	10,668,051	1,103.97
Manufacturing	57	6,688	6,804	6,818	129,059,839	1,466.42
Trade, Transportation & Utilities	269	2,674	2,673	2,656	26,471,304	763.31
Wholesale Trade	57	384	384	396	5,390,622	1,068.72
Retail Trade	147	1,521	1,529	1,520	9,860,637	497.93
Transportation, Warehousing & Utilities	65	769	760	740	11,220,045	1,141.14
Information	5	24	29	30	171,336	476.37
Financial Activities	81	435	447	435	4,855,206	850.75
Professional & Business Services	82	982	1,027	1,067	12,061,879	904.91
Education & Health Services	236	1,629	1,611	1,619	14,668,617	696.66
Leisure & Hospitality	88	1,119	1,131	1,157	3,932,705	266.38
Other Services	48	277	263	271	2,891,983	822.91
Local Government	49	1,930	1,878	1,894	16,156,335	653.87
State Government	20	498	515	521	4,633,587	697.06
MONROE COUNTY - TOTAL	282	2,035	2,039	2,033	\$15,239,153	\$575.85
Natural Resources & Mining	26	84	88	97	696,248	597.30
Manufacturing	6	160	149	140	1,275,479	655.55
Trade, Transportation & Utilities	72	518	531	532	4,858,090	709.11
Wholesale Trade	16	180	191	186	2,436,647	1,009.52
Retail Trade	34	245	246	249	1,462,728	456.15
Transportation, Warehousing & Utilities	22	93	94	97	958,715	779.02
Financial Activities	22	92	91	90	895,427	756.91
Professional & Business Services	15	35	38	40	179,736	367.06
Education & Health Services	63	385	376	379	2,686,803	543.89
Leisure & Hospitality	23	237	233	225	796,623	264.51
Local Government	21	339	344	339	2,427,053	548.03
State Government	7	68	68	69	762,924	858.83
Other	27	117	121	122	660,770	423.57

TABLE 6. COUNTY SUMMARY

North American Industry Classification System - Industry Groups	Number of Employing Units	Employment			Total Earnings	Average Weekly Earnings
		Jan	Feb	Mar	Jan - Mar 2019	
MONTGOMERY COUNTY - TOTAL	164	1,201	1,217	1,254	\$7,803,903	\$490.44
Natural Resources & Mining	8	34	35	34	267,201	598.66
Construction	24	63	68	71	419,275	478.99
Manufacturing	8	29	31	32	277,882	697.03
Trade, Transportation & Utilities	34	225	221	230	1,417,255	483.81
Wholesale Trade	6	55	55	54	478,433	673.22
Retail Trade	22	141	138	148	760,842	411.19
Transportation, Warehousing & Utilities	6	29	28	28	177,980	483.20
Financial Activities	8	32	32	35	254,666	593.63
Professional & Business Services	15	20	20	20	118,769	456.80
Education & Health Services	22	53	56	57	446,392	620.56
Leisure & Hospitality	14	221	234	255	1,054,363	342.70
Local Government	9	453	451	452	3,044,508	518.13
State Government	7	33	32	33	333,280	784.80
Other	15	38	37	35	170,312	357.30
NEVADA COUNTY - TOTAL	203	2,479	2,507	2,471	\$25,403,380	\$786.15
Natural Resources & Mining	13	60	61	60	821,472	1,047.35
Trade, Transportation & Utilities	39	551	557	556	5,103,331	707.75
Retail Trade	24	302	308	305	1,658,115	418.19
Other Trade, Transportation & Utilities	15	249	249	251	3,445,216	1,061.48
Financial Activities	11	69	72	68	596,071	658.16
Professional & Business Services	13	51	54	50	791,586	1,178.54
Education & Health Services	48	435	440	426	2,419,848	429.23
Leisure & Hospitality	9	89	94	98	308,120	253.04
Other Services	13	41	39	38	185,703	363.17
Local Government	29	382	389	382	2,710,716	542.54
State Government	9	52	53	53	483,979	706.88
Other	19	749	748	740	11,982,554	1,236.12

TABLE 6. COUNTY SUMMARY

North American Industry Classification System - Industry Groups	Number of Employing Units	Employment			Total Earnings	Average Weekly Earnings
		Jan	Feb	Mar	Jan - Mar 2019	
NEWTON COUNTY - TOTAL	118	1,000	1,012	1,047	\$6,423,669	\$484.60
Construction	6	21	20	20	140,733	532.41
Manufacturing	8	35	34	35	349,785	776.15
Trade, Transportation & Utilities	26	152	148	147	1,224,050	631.93
Retail Trade	12	97	95	98	581,885	463.04
Other Trade, Transportation & Utilities	14	55	53	49	642,165	943.90
Education & Health Services	23	247	248	245	1,177,607	367.24
Leisure & Hospitality	21	123	137	163	509,150	277.77
Other Services	3	3	3	3	13,660	350.26
Local Government	14	353	357	358	2,288,663	494.53
State Government	7	37	37	37	361,535	751.63
Other	10	29	28	39	358,486	861.75
OUACHITA COUNTY - TOTAL	657	6,727	6,798	6,802	\$57,363,159	\$651.23
Natural Resources & Mining	34	167	164	164	1,671,926	779.45
Construction	42	199	228	237	2,149,545	747.06
Manufacturing	24	478	476	468	4,831,368	784.06
Trade, Transportation & Utilities	163	1,519	1,498	1,499	12,122,320	619.45
Wholesale Trade	27	226	241	245	2,635,233	854.12
Retail Trade	106	972	946	938	5,429,659	438.72
Transportation, Warehousing & Utilities	30	321	311	316	4,057,428	987.69
Information	6	37	37	37	397,450	826.30
Financial Activities	50	252	258	252	2,732,379	827.49
Professional & Business Services	43	542	564	568	4,624,947	637.57
Education & Health Services	189	1,279	1,268	1,268	13,203,826	798.70
Leisure & Hospitality	37	447	455	456	1,637,846	278.32
Other Services	25	101	110	112	756,816	540.71
Local Government	31	1,108	1,111	1,105	8,062,555	559.74
State Government	13	598	629	636	5,172,181	640.68

TABLE 6. COUNTY SUMMARY

North American Industry Classification System - Industry Groups	Number of Employing Units	Employment			Total Earnings	Average Weekly Earnings
		Jan	Feb	Mar	Jan - Mar 2019	
PERRY COUNTY - TOTAL	140	1,096	1,085	1,093	\$8,791,912	\$619.70
Construction	14	82	84	79	787,988	742.22
Manufacturing	5	27	31	29	365,242	968.81
Trade, Transportation & Utilities	27	171	171	169	1,121,548	506.49
Retail Trade	17	137	135	134	558,516	317.46
Other Trade, Transportation & Utilities	10	34	36	35	563,032	1,237.43
Financial Activities	10	26	26	28	285,240	822.81
Professional & Business Services	15	29	29	31	257,624	668.00
Education & Health Services	32	220	223	219	1,514,040	527.79
Leisure & Hospitality	7	57	62	64	227,260	286.58
Local Government	9	329	327	329	2,515,118	589.25
State Government	7	34	35	35	357,973	794.32
Other	14	121	97	110	1,359,879	956.76
PHILLIPS COUNTY - TOTAL	735	5,354	5,363	5,410	\$42,697,796	\$610.98
Natural Resources & Mining	61	228	239	246	1,714,495	554.91
Construction	29	91	89	97	711,968	593.14
Manufacturing	13	387	383	381	3,923,514	786.64
Trade, Transportation & Utilities	139	1,194	1,184	1,207	9,878,585	635.89
Wholesale Trade	27	258	261	264	2,981,060	878.59
Retail Trade	73	706	692	708	4,207,285	461.02
Transportation, Warehousing & Utilities	39	230	231	235	2,690,240	891.99
Information	6	17	17	16	201,116	928.23
Financial Activities	41	197	201	203	2,415,216	927.38
Professional & Business Services	40	249	270	270	2,466,262	721.34
Education & Health Services	294	1,449	1,440	1,439	10,419,799	555.58
Leisure & Hospitality	40	349	349	368	1,248,015	270.17
Other Services	31	77	75	74	377,687	385.66
Local Government	27	779	780	773	6,316,419	625.06
State Government	14	337	336	336	3,024,720	691.79

TABLE 6. COUNTY SUMMARY

North American Industry Classification System - Industry Groups	Number of Employing Units	Employment			Total Earnings Jan - Mar 2019	Average Weekly Earnings
		Jan	Feb	Mar		
PIKE COUNTY - TOTAL	257	2,549	2,534	2,578	\$20,238,500	\$609.64
Natural Resources & Mining	23	114	110	109	1,245,457	863.10
Construction	16	41	39	40	315,939	607.58
Manufacturing	17	443	445	444	4,453,023	771.49
Trade, Transportation & Utilities	66	534	526	544	4,046,992	582.25
Wholesale Trade	10	124	126	125	1,111,745	684.15
Retail Trade	36	329	322	337	2,067,291	482.86
Transportation, Warehousing & Utilities	20	81	78	82	867,956	831.11
Information	7	29	29	28	287,528	771.54
Financial Activities	22	200	197	202	2,199,639	847.43
Professional & Business Services	13	58	60	61	658,104	848.44
Education & Health Services	34	309	306	312	1,795,943	447.09
Leisure & Hospitality	26	209	213	237	709,034	248.29
Other Services	14	65	64	61	429,266	521.38
Local Government	10	457	454	450	3,388,260	574.51
State Government	9	90	91	90	709,315	604.02
POINSETT COUNTY - TOTAL	486	5,185	5,176	5,185	\$50,084,699	\$743.47
Natural Resources & Mining	67	253	243	254	2,978,561	916.48
Construction	23	75	76	79	485,453	487.08
Manufacturing	20	749	747	756	8,254,646	845.88
Trade, Transportation & Utilities	125	1,195	1,209	1,205	14,108,621	902.14
Wholesale Trade	25	374	387	405	8,892,891	1,760.04
Retail Trade	69	674	669	652	3,568,333	412.76
Transportation, Warehousing & Utilities	31	147	153	148	1,647,397	848.59
Professional & Business Services	28	196	207	201	3,620,505	1,383.28
Education & Health Services	82	764	761	753	6,421,315	650.50
Leisure & Hospitality	41	460	460	468	1,574,841	261.83
Other Services	18	60	60	58	459,888	596.22
Local Government	30	1,037	1,028	1,024	8,078,696	603.53
State Government	11	155	161	164	1,367,160	657.29
Other	41	241	224	223	2,735,013	917.38

TABLE 6. COUNTY SUMMARY

North American Industry Classification System - Industry Groups	Number of Employing Units	Employment			Total Earnings	Average Weekly Earnings
		Jan	Feb	Mar	Jan - Mar 2019	
POLK COUNTY - TOTAL	492	5,787	5,808	5,830	\$45,599,306	\$603.90
Natural Resources & Mining	24	170	176	181	2,164,250	947.71
Construction	33	197	196	198	1,557,666	608.23
Manufacturing	33	1,313	1,322	1,322	11,171,237	651.50
Trade, Transportation & Utilities	125	1,073	1,071	1,072	7,707,413	553.06
Wholesale Trade	18	59	59	61	611,136	787.88
Retail Trade	70	779	767	767	4,475,018	446.47
Transportation, Warehousing & Utilities	37	235	245	244	2,621,259	835.51
Information	6	54	53	53	285,816	412.23
Financial Activities	39	201	200	207	1,921,011	729.13
Professional & Business Services	42	142	138	138	1,517,967	838.04
Education & Health Services	91	1,021	1,035	1,045	9,266,488	689.59
Leisure & Hospitality	43	500	497	488	1,582,862	245.98
Other Services	23	156	148	150	1,182,214	600.92
Local Government	21	685	688	684	5,209,433	584.43
State Government	12	275	284	292	2,032,949	551.28
POPE COUNTY - TOTAL	1,877	25,728	25,965	25,938	\$264,457,144	\$786.14
Natural Resources & Mining	37	757	776	773	7,046,441	705.16
Construction	163	1,045	1,085	1,101	12,739,212	909.88
Manufacturing	74	4,599	4,585	4,570	51,256,618	860.00
Trade, Transportation & Utilities	417	6,114	6,075	6,052	76,466,380	967.39
Wholesale Trade	73	535	527	536	5,606,588	809.65
Retail Trade	266	3,074	3,060	3,070	20,356,258	510.39
Transportation, Warehousing & Utilities	78	2,505	2,488	2,446	50,503,534	1,566.70
Information	16	140	137	141	1,241,058	685.16
Financial Activities	196	935	909	895	11,488,575	967.95
Professional & Business Services	275	1,870	1,872	1,870	21,228,124	872.91
Education & Health Services	379	3,258	3,312	3,303	31,526,538	736.89
Leisure & Hospitality	147	2,733	2,778	2,809	11,125,905	308.60
Other Services	115	564	542	545	4,050,061	566.10
Local Government	43	2,176	2,187	2,180	19,545,275	689.35
State Government	15	1,537	1,707	1,699	16,742,957	781.66

TABLE 6. COUNTY SUMMARY

North American Industry Classification System - Industry Groups	Number of Employing Units	Employment			Total Earnings	Average Weekly Earnings
		Jan	Feb	Mar	Jan - Mar 2019	
PRAIRIE COUNTY - TOTAL	249	1,377	1,370	1,390	\$11,167,852	\$622.96
Natural Resources & Mining	35	143	145	151	1,521,035	799.56
Construction	12	43	44	49	364,366	618.27
Trade, Transportation & Utilities	58	335	331	330	2,847,088	659.66
Wholesale Trade	12	79	80	81	1,254,843	1,206.58
Retail Trade	33	200	197	193	1,083,488	423.79
Transportation, Warehousing & Utilities	13	56	54	56	508,757	707.26
Financial Activities	15	48	48	50	520,972	823.45
Professional & Business Services	16	68	71	72	624,568	683.09
Education & Health Services	49	239	238	243	1,775,314	569.01
Leisure & Hospitality	17	98	86	85	365,041	313.16
Local Government	16	298	303	305	2,248,010	572.60
State Government	7	29	29	29	294,174	780.30
Other	24	76	75	76	607,284	617.37
PULASKI COUNTY - TOTAL	14,517	241,542	242,412	242,316	\$3,091,305,738	\$982.25
Natural Resources & Mining	51	605	596	588	11,233,611	1,449.06
Construction	940	9,066	9,074	9,038	115,939,466	984.45
Manufacturing	334	13,637	13,675	13,676	191,654,823	1,079.05
Trade, Transportation & Utilities	3,133	49,511	49,064	48,975	571,212,394	893.38
Wholesale Trade	920	11,830	11,817	11,780	206,006,665	1,341.91
Retail Trade	1,807	24,894	24,565	24,509	186,759,379	582.66
Transportation, Warehousing & Utilities	406	12,787	12,682	12,686	178,446,350	1,079.28
Information	210	3,453	3,432	3,481	51,193,674	1,139.68
Financial Activities	1,730	17,688	17,754	17,734	421,950,374	1,831.15
Professional & Business Services	2,805	35,674	35,806	35,774	482,740,568	1,038.67
Education & Health Services	2,593	41,209	41,273	41,300	503,916,745	939.46
Leisure & Hospitality	1,282	22,482	23,040	23,146	105,728,540	355.32
Other Services	1,135	6,544	6,594	6,450	65,301,936	769.33
Local Government	108	15,356	15,360	15,423	168,382,977	842.19
State Government	196	26,317	26,744	26,731	402,050,630	1,162.78

TABLE 6. COUNTY SUMMARY

North American Industry Classification System - Industry Groups	Number of Employing Units	Employment			Total Earnings	Average Weekly Earnings
		Jan	Feb	Mar	Jan - Mar 2019	
RANDOLPH COUNTY - TOTAL	392	5,646	5,719	5,754	\$44,942,014	\$605.83
Natural Resources & Mining	27	217	210	227	2,828,560	998.08
Construction	26	90	93	91	672,947	566.77
Manufacturing	28	1,546	1,588	1,593	13,859,673	676.62
Trade, Transportation & Utilities	90	871	878	884	6,797,449	595.76
Wholesale Trade	15	112	113	118	1,107,574	745.17
Retail Trade	54	596	605	611	3,693,640	470.41
Transportation, Warehousing & Utilities	21	163	160	155	1,996,235	963.74
Information	5	24	24	23	252,622	821.09
Financial Activities	32	151	154	144	1,409,413	724.39
Professional & Business Services	36	266	260	258	1,777,468	523.20
Education & Health Services	67	976	973	978	7,653,456	603.41
Leisure & Hospitality	31	401	388	412	1,287,892	247.47
Other Services	16	49	48	47	277,515	444.74
Local Government	24	813	821	812	5,781,405	545.45
State Government	10	242	282	285	2,343,614	668.52
SAINT FRANCIS COUNTY - TOTAL	682	6,613	6,594	6,616	\$53,894,658	\$627.41
Natural Resources & Mining	43	153	152	169	1,262,536	614.67
Construction	38	180	162	177	1,598,926	710.95
Trade, Transportation & Utilities	142	1,787	1,758	1,776	14,850,881	644.08
Wholesale Trade	29	530	539	552	5,945,705	846.44
Retail Trade	93	951	924	929	5,685,977	467.96
Transportation, Warehousing & Utilities	20	306	295	295	3,219,199	829.12
Information	5	50	51	51	454,564	690.13
Financial Activities	61	257	261	255	2,168,615	647.41
Professional & Business Services	47	180	186	183	1,535,566	645.47
Education & Health Services	222	1,406	1,431	1,422	12,568,886	681.03
Leisure & Hospitality	47	646	642	649	2,417,405	288.00
Local Government	28	878	875	868	7,025,474	618.57
State Government	15	450	453	450	4,190,215	714.69
Other	34	626	623	616	5821590	720.35

TABLE 6. COUNTY SUMMARY

North American Industry Classification System - Industry Groups	Number of Employing Units	Employment			Total Earnings	Average Weekly Earnings
		Jan	Feb	Mar	Jan - Mar 2019	
SALINE COUNTY - TOTAL	2,084	24,454	24,356	24,462	\$219,613,755	\$691.67
Natural Resources & Mining	13	57	56	55	504,302	692.72
Construction	278	2,101	2,076	2,062	21,520,365	796.00
Manufacturing	77	1,362	1,334	1,328	17,252,984	989.43
Trade, Transportation & Utilities	475	5,611	5,557	5,595	47,855,371	658.80
Wholesale Trade	111	626	629	632	9,128,864	1,116.41
Retail Trade	288	4,385	4,335	4,362	32,423,166	571.95
Transportation, Warehousing & Utilities	76	600	593	601	6,303,341	810.82
Information	17	154	154	155	1,824,478	909.36
Financial Activities	209	807	804	798	10,071,524	964.80
Professional & Business Services	285	1,716	1,774	1,781	18,883,972	826.76
Education & Health Services	336	4,665	4,645	4,669	43,830,734	723.57
Leisure & Hospitality	192	3,310	3,280	3,326	13,240,428	308.14
Other Services	155	812	818	839	6,580,527	615.06
Local Government	33	3,060	3,061	3,055	30,836,884	775.52
State Government	14	799	797	799	7,212,186	694.93
SCOTT COUNTY - TOTAL	183	2,958	2,968	2,970	\$21,859,972	\$567.06
Natural Resources & Mining	19	168	164	160	1,853,426	869.34
Trade, Transportation & Utilities	34	304	307	309	2,090,800	524.45
Wholesale Trade	8	44	43	41	297,513	536.38
Retail Trade	20	195	200	204	1,078,387	415.46
Transportation, Warehousing & Utilities	6	65	64	64	714,900	854.80
Financial Activities	17	60	61	60	487,971	622.15
Professional & Business Services	12	90	95	96	682,717	560.68
Education & Health Services	42	316	313	306	3,220,820	794.94
Leisure & Hospitality	19	138	145	148	478,651	256.28
Other Services	9	27	28	30	211,133	573.21
Local Government	6	546	539	545	3,874,671	548.56
State Government	6	33	34	34	348,729	796.79
Other	19	1,276	1,282	1,282	8,611,054	517.49

TABLE 6. COUNTY SUMMARY

North American Industry Classification System - Industry Groups	Number of Employing Units	Employment			Total Earnings	Average Weekly Earnings
		Jan	Feb	Mar	Jan - Mar 2019	
SEARCY COUNTY - TOTAL	170	1,422	1,418	1,452	\$9,789,512	\$526.36
Construction	15	10	11	9	39,344	302.65
Manufacturing	16	162	152	162	1,142,597	553.94
Trade, Transportation & Utilities	36	233	238	246	1,503,796	484.00
Wholesale Trade	6	37	38	38	270,610	552.64
Retail Trade	24	181	185	190	1,048,539	435.20
Transportation, Warehousing & Utilities	6	15	15	18	184,647	887.73
Financial Activities	12	51	52	54	514,513	756.27
Education & Health Services	40	340	338	350	2,303,395	517.07
Leisure & Hospitality	14	144	146	157	473,326	244.36
Other Services	5	9	7	8	54,221	521.36
Local Government	10	317	312	307	2,203,097	543.17
State Government	6	42	42	42	417,881	765.35
Other	16	114	120	117	1,137,342	747.76
SEBASTIAN COUNTY - TOTAL	3,712	63,910	63,696	63,628	\$712,327,349	\$859.59
Natural Resources & Mining	43	343	343	338	9,293,369	2,094.36
Construction	268	2,295	2,314	2,317	23,979,238	798.97
Manufacturing	194	11,580	11,552	11,433	139,408,990	930.75
Trade, Transportation & Utilities	897	13,207	13,044	12,916	146,640,622	864.00
Wholesale Trade	228	2,693	2,703	2,694	37,567,940	1,071.63
Retail Trade	554	7,693	7,596	7,510	51,587,446	522.16
Transportation, Warehousing & Utilities	115	2,821	2,745	2,712	57,485,236	1,602.54
Information	37	851	855	853	19,922,735	1,796.62
Financial Activities	412	2,633	2,635	2,637	34,693,251	1,012.79
Professional & Business Services	558	7,593	7,477	7,654	84,434,786	857.46
Education & Health Services	631	11,711	11,738	11,727	151,334,931	992.82
Leisure & Hospitality	350	5,998	6,022	6,038	25,268,931	322.92
Other Services	256	1,230	1,207	1,193	9,197,121	584.69
Local Government	43	4,686	4,722	4,727	48,288,066	788.36
State Government	23	1,783	1,787	1,795	19,865,309	854.48

TABLE 6. COUNTY SUMMARY

North American Industry Classification System - Industry Groups	Number of Employing Units	Employment			Total Earnings	Average Weekly Earnings
		Jan	Feb	Mar	Jan - Mar 2019	
SEVIER COUNTY - TOTAL	315	4,713	4,735	4,633	\$38,778,652	\$635.53
Natural Resources & Mining	18	172	176	174	2,445,129	1,080.96
Construction	19	180	179	176	2,250,559	970.77
Trade, Transportation & Utilities	85	813	816	822	6,354,889	598.33
Wholesale Trade	12	73	80	82	1,161,911	1,140.99
Retail Trade	60	658	656	655	4,119,100	482.76
Transportation, Warehousing & Utilities	13	82	80	85	1,073,878	1,003.31
Financial Activities	26	182	186	188	2,023,383	839.81
Professional & Business Services	25	98	102	89	685,707	547.54
Education & Health Services	63	518	520	413	4,026,930	640.45
Leisure & Hospitality	25	279	272	279	852,932	237.15
Local Government	13	937	925	952	6,869,041	563.31
State Government	7	136	150	173	1,334,554	670.97
Other	34	1,398	1,409	1,367	11,935,528	659.88
SHARP COUNTY - TOTAL	380	3,490	3,488	3,540	\$24,839,460	\$544.99
Construction	30	129	126	125	1,121,524	681.09
Manufacturing	16	156	149	154	1,139,007	572.65
Trade, Transportation & Utilities	82	743	742	760	4,443,509	456.76
Wholesale Trade	12	35	38	39	181,181	373.31
Retail Trade	60	647	645	661	3,682,324	435.11
Transportation, Warehousing & Utilities	10	61	59	60	580,004	743.59
Information	7	25	26	27	189,209	559.79
Financial Activities	31	167	164	163	2,102,810	982.32
Professional & Business Services	35	118	119	122	1,101,981	708.37
Education & Health Services	86	866	867	864	7,125,493	633.17
Leisure & Hospitality	30	378	375	387	1,306,104	264.39
Local Government	24	751	762	778	5,097,708	513.49
State Government	7	54	55	55	526,960	741.50
Other	32	103	103	105	685,155	508.40

TABLE 6. COUNTY SUMMARY

North American Industry Classification System - Industry Groups	Number of Employing Units	Employment			Total Earnings	Average Weekly Earnings
		Jan	Feb	Mar	Jan - Mar 2019	
STONE COUNTY - TOTAL	275	2,561	2,564	2,632	\$19,002,485	\$565.32
Natural Resources & Mining	4	9	8	8	47,183	435.54
Construction	17	34	35	38	199,766	430.84
Manufacturing	17	244	231	231	1,387,243	453.45
Trade, Transportation & Utilities	70	593	583	599	4,124,735	536.26
Wholesale Trade	5	39	41	47	281,069	510.73
Retail Trade	52	510	501	511	3,299,366	500.26
Transportation, Warehousing & Utilities	13	44	41	41	544,300	996.89
Financial Activities	33	153	153	158	2,480,748	1,233.79
Professional & Business Services	14	33	33	31	220,607	524.84
Education & Health Services	50	557	550	552	4,853,602	675.14
Leisure & Hospitality	30	366	396	445	1,271,165	243.04
Local Government	11	408	413	409	3,205,401	601.39
State Government	7	114	112	112	848,011	578.98
Other	22	50	50	49	364,024	563.80
UNION COUNTY - TOTAL	1,285	17,303	17,216	17,259	\$244,116,697	\$1,088.00
Natural Resources & Mining	79	397	393	389	4,709,313	921.77
Construction	86	1,530	1,583	1,685	23,397,953	1,125.37
Manufacturing	53	2,894	2,858	2,805	51,157,693	1,379.64
Trade, Transportation & Utilities	309	3,426	3,376	3,360	36,569,127	830.45
Wholesale Trade	69	470	465	464	7,596,983	1,253.15
Retail Trade	179	2,011	1,994	1,995	12,798,608	492.25
Transportation, Warehousing & Utilities	61	945	917	901	16,173,536	1,350.83
Information	9	94	91	93	995,107	826.04
Financial Activities	94	608	599	598	7,600,443	971.72
Professional & Business Services	125	1,933	1,931	1,959	70,456,555	2,792.24
Education & Health Services	294	2,230	2,232	2,245	20,644,803	710.33
Leisure & Hospitality	95	1,418	1,391	1,381	5,786,653	318.71
Other Services	93	424	415	408	3,090,307	571.89
Local Government	32	1,824	1,825	1,817	14,582,481	615.66
State Government	16	525	522	519	5,126,262	755.42

TABLE 6. COUNTY SUMMARY

North American Industry Classification System - Industry Groups	Number of Employing Units	Employment			Total Earnings	Average Weekly Earnings
		Jan	Feb	Mar	Jan - Mar 2019	
VAN BUREN COUNTY - TOTAL	325	3,344	3,321	3,354	\$27,872,437	\$641.99
Natural Resources & Mining	10	106	104	105	1,986,828	1,455.55
Construction	34	110	120	117	909,076	604.57
Manufacturing	8	137	126	143	838,226	476.45
Trade, Transportation & Utilities	89	855	855	852	7,559,631	680.93
Wholesale Trade	10	45	47	46	415,432	694.70
Retail Trade	53	565	563	561	3,743,262	511.44
Transportation, Warehousing & Utilities	26	245	245	245	3,400,937	1,067.80
Information	5	37	36	35	317,442	678.29
Financial Activities	32	157	157	157	1,898,714	930.29
Professional & Business Services	32	121	118	127	1,265,787	798.10
Education & Health Services	59	782	778	784	6,180,988	608.52
Leisure & Hospitality	21	221	217	227	858,840	298.04
Other Services	18	137	139	144	867,780	476.80
Local Government	11	641	629	621	4,757,387	580.57
State Government	6	40	42	42	431,738	803.48
WASHINGTON COUNTY - TOTAL	6,283	105,964	106,481	107,083	\$1,183,623,714	\$854.84
Natural Resources & Mining	42	288	296	299	3,517,789	919.36
Construction	603	5,821	5,854	5,987	73,251,206	957.09
Manufacturing	229	13,596	13,678	13,648	147,623,115	832.48
Trade, Transportation & Utilities	1,391	22,807	22,580	22,542	238,164,123	809.09
Wholesale Trade	395	3,791	3,780	3,798	69,015,258	1,400.88
Retail Trade	799	12,249	12,145	12,116	90,517,569	572.14
Transportation, Warehousing & Utilities	197	6,767	6,655	6,628	78,631,296	905.02
Information	82	936	925	922	13,443,627	1,114.76
Financial Activities	695	3,670	3,694	3,670	52,732,392	1,102.87
Professional & Business Services	1,147	13,164	13,256	13,270	202,041,520	1,174.73
Education & Health Services	912	15,736	15,927	15,942	187,351,063	908.20
Leisure & Hospitality	703	12,571	12,979	13,149	55,572,723	331.39
Other Services	396	2,089	2,103	2,125	17,993,146	657.32
Local Government	61	8,913	8,804	9,091	92,451,483	795.84
State Government	22	6,373	6,385	6,438	99,481,527	1,195.94

TABLE 6. COUNTY SUMMARY

North American Industry Classification System - Industry Groups	Number of Employing Units	Employment			Total Earnings Jan - Mar 2019	Average Weekly Earnings
		Jan	Feb	Mar		
WHITE COUNTY - TOTAL	1,795	23,514	23,590	23,739	\$215,433,352	\$701.77
Natural Resources & Mining	51	353	354	360	5,235,042	1,132.23
Construction	161	946	935	972	10,266,238	830.40
Manufacturing	61	2,129	2,136	2,156	25,016,044	899.07
Trade, Transportation & Utilities	485	6,062	6,008	6,046	54,736,758	697.26
Wholesale Trade	85	576	583	583	6,647,330	880.60
Retail Trade	313	3,432	3,408	3,428	22,985,074	516.58
Transportation, Warehousing & Utilities	87	2,054	2,017	2,035	25,104,354	948.79
Information	19	117	118	118	938,498	613.53
Financial Activities	175	899	922	920	10,601,752	892.58
Professional & Business Services	186	1,116	1,114	1,134	9,103,246	624.48
Education & Health Services	323	5,594	5,658	5,615	57,136,278	781.72
Leisure & Hospitality	161	2,602	2,650	2,697	9,787,941	284.16
Other Services	112	490	492	484	4,103,687	645.98
Local Government	46	2,696	2,690	2,708	23,407,416	667.37
State Government	15	510	513	529	5,100,452	758.39
WOODRUFF COUNTY - TOTAL	201	1,662	1,653	1,658	\$14,557,677	\$675.54
Natural Resources & Mining	31	121	124	133	961,678	587.11
Construction	11	29	30	34	233,728	579.97
Manufacturing	5	178	175	169	2,035,122	899.70
Trade, Transportation & Utilities	48	380	375	366	3,398,118	699.54
Wholesale Trade	12	130	132	138	1,630,629	940.75
Retail Trade	26	180	172	160	837,347	377.41
Transportation, Warehousing & Utilities	10	70	71	68	930,142	1,027.02
Financial Activities	12	46	46	47	428,436	711.29
Education & Health Services	53	240	243	243	1,950,148	619.88
Leisure & Hospitality	11	76	75	79	286,315	287.27
Local Government	9	406	393	394	3,094,795	598.64
State Government	5	29	30	30	301,652	782.16
Other	16	157	162	163	1,867,685	894.20

TABLE 6. COUNTY SUMMARY

North American Industry Classification System - Industry Groups	Number of Employing Units	Employment			Total Earnings	Average Weekly Earnings
		Jan	Feb	Mar	Jan - Mar 2019	
YELL COUNTY - TOTAL	416	6,510	6,509	6,494	\$49,608,212	\$586.69
Natural Resources & Mining	25	242	240	235	2,640,322	849.80
Construction	32	237	254	243	2,077,667	653.22
Manufacturing	20	2,447	2,451	2,431	18,666,809	587.76
Trade, Transportation & Utilities	81	718	710	707	5,062,451	547.19
Wholesale Trade	14	61	59	61	323,119	411.97
Retail Trade	47	517	511	504	2,902,539	437.22
Transportation, Warehousing & Utilities	20	140	140	142	1,836,793	1,004.44
Financial Activities	30	117	119	122	1,063,482	685.53
Professional & Business Services	36	298	301	305	2,564,441	654.64
Education & Health Services	113	796	784	789	4,966,989	483.84
Leisure & Hospitality	27	286	284	299	986,960	262.09
Local Government	24	1,185	1,183	1,180	9,744,287	633.79
State Government	10	62	63	63	524,130	643.37
Other	18	122	120	120	1,310,674	835.53
STATEWIDE COUNTY - TOTAL	10,882	33,907	36,741	36,807	\$561,676,703	\$1,206.25
Natural Resources & Mining	101	305	321	316	5,886,055	1,441.95
Construction	843	2,982	3,104	3,133	40,719,199	1,019.28
Manufacturing	60	156	168	151	4,748,376	2,306.90
Trade, Transportation & Utilities	3,450	7,634	7,599	7,653	205,020,066	2,067.30
Wholesale Trade	2,923	6,243	6,228	6,263	183,600,692	2,261.63
Retail Trade	184	525	502	504	8,291,506	1,249.79
Transportation, Warehousing & Utilities	343	866	869	886	13,127,868	1,155.86
Information	400	743	744	751	18,268,432	1,883.73
Financial Activities	734	1,891	1,927	1,949	38,108,228	1,524.92
Professional & Business Services	4,216	15,530	18,062	17,816	182,821,560	820.68
Education & Health Services	590	2,923	3,065	3,075	34,096,300	868.19
Leisure & Hospitality	109	128	127	131	1,694,728	1,013.19
State Government	16	751	758	762	9,028,271	917.41
Other	363	864	866	1,070	21,285,488	1,028.79

Note: Statewide classification includes employment and payroll data for employers that have not provided a physical location for each employing unit. This section also includes employers without a physical location in Arkansas.

TABLE 7. FEDERAL GOVERNMENT EMPLOYMENT AND EARNINGS IN ARKANSAS

North American Industry Classification System - Industry Groups	Number of Employing Units	Employment			Total Earnings Jan -Mar 2019	Average Weekly Earnings
		Jan	Feb	Mar		
TOTAL	1,355	19,952	20,151	20,059	\$335,588,695	\$1,287.25
Trade, Transportation & Utilities	792	5,574	5,623	5,631	68,395,110	937.93
Information	2	5	37	38	731,901	2,111.25
Financial Activities	14	98	97	98	1,924,918	1,516.08
Professional & Business Services	31	799	808	814	16,725,134	1,594.24
Education & Health Services	18	5,445	5,412	5,437	104,630,831	1,481.87
Leisure & Hospitality	23	252	261	264	2,992,765	888.85
Other Services	1	1	1	1	9,436	725.85
Public Administration	474	7,778	7,912	7,776	140,178,600	1,378.54

TABLE 8. LOCAL WORKFORCE DEVELOPMENT AREA SUMMARY

North American Industry Classification System - Industry Groups	Number of Employing Units	Employment			Total Earnings Jan - Mar 2019	Average Weekly Earnings
		Jan	Feb	Mar		
CENTRAL LOCAL WORKFORCE DEVELOPMENT AREA	6,818	82,060	82,297	82,503	\$769,158,478	\$719.02
Natural Resources & Mining	202	984	1,022	1,067	12,464,410	1,171.05
Construction	777	5,911	5,946	5,958	62,692,087	812.09
Manufacturing	224	6,515	6,446	6,425	84,075,242	1,000.82
Trade, Transportation & Utilities	1,542	16,692	16,606	16,656	138,268,574	638.75
Wholesale Trade	346	1,992	2,020	2,024	27,903,225	1,066.80
Retail Trade	938	12,819	12,706	12,742	87,533,056	527.87
Transportation, Warehousing & Utilities	258	1,881	1,880	1,890	22,832,293	932.40
Information	61	583	584	580	9,362,027	1,236.67
Financial Activities	719	3,015	3,021	2,999	38,442,599	981.89
Professional & Business Services	922	7,117	7,294	7,319	96,831,923	1,028.34
Education & Health Services	1,112	14,307	14,408	14,386	130,299,234	697.64
Leisure & Hospitality	616	10,790	10,772	10,913	42,355,620	300.98
Other Services	445	2,004	2,010	2,062	15,368,181	583.69
Local Government	138	9,816	9,828	9,772	92,867,958	728.55
State Government	60	4,326	4,360	4,366	46,130,623	815.62
Note: Pulaski County is not included in the Central Local Workforce Development Area. Please refer to Page 51 for information on Pulaski County. Central Local Workforce Development Area includes these counties: Faulkner, Lonoke, Monroe, Prairie, and Saline.						
EASTERN LOCAL WORKFORCE DEVELOPMENT AREA	3,362	34,434	34,563	34,691	\$299,687,600	\$666.99
Natural Resources & Mining	247	1,007	1,043	1,124	8,112,018	589.79
Construction	139	716	703	724	7,833,063	843.50
Manufacturing	77	3,297	3,302	3,302	40,382,319	941.22
Trade, Transportation & Utilities	753	8,679	8,658	8,727	80,941,428	716.65
Wholesale Trade	150	1,928	1,960	1,999	23,726,166	930.06
Retail Trade	413	4,393	4,346	4,379	26,991,531	474.83
Transportation, Warehousing & Utilities	190	2,358	2,352	2,349	30,223,731	988.06
Information	23	161	164	164	1,477,297	697.17
Financial Activities	267	1,258	1,261	1,252	13,600,765	832.31
Professional & Business Services	248	1,600	1,657	1,648	13,541,091	637.08
Education & Health Services	998	6,379	6,417	6,380	52,146,996	627.55
Leisure & Hospitality	257	3,816	3,819	3,879	16,609,303	332.89
Other Services	168	767	771	754	5,899,281	593.97
Local Government	128	4,786	4,802	4,776	40,976,477	658.32
State Government	57	1,968	1,966	1,961	18,167,562	711.20
Eastern Local Workforce Development Area includes these counties: Crittenden, Cross, Lee, Phillips, and Saint Francis.						

TABLE 8. LOCAL WORKFORCE DEVELOPMENT AREA SUMMARY

North American Industry Classification System - Industry Groups	Number of Employing Units	Employment			Total Earnings Jan - Mar 2019	Average Weekly Earnings
		Jan	Feb	Mar		
NORTH CENTRAL LOCAL WORKFORCE DEVELOPMENT AREA	5,417	67,003	67,156	67,743	\$593,680,245	\$678.56
Natural Resources & Mining	213	1,417	1,421	1,468	18,541,481	993.68
Construction	433	2,341	2,338	2,456	24,268,712	784.93
Manufacturing	212	8,988	9,025	9,101	96,738,199	823.35
Trade, Transportation & Utilities	1,385	14,550	14,378	14,482	124,701,350	662.92
Wholesale Trade	222	1,533	1,544	1,574	16,415,326	814.48
Retail Trade	905	9,337	9,258	9,313	60,932,799	503.85
Transportation, Warehousing & Utilities	258	3,680	3,576	3,595	47,353,225	1,007.07
Information	69	401	398	403	3,318,090	637.03
Financial Activities	518	2,590	2,627	2,635	32,173,214	945.57
Professional & Business Services	495	3,084	3,136	3,142	26,550,818	654.47
Education & Health Services	981	14,621	14,704	14,698	139,378,691	730.63
Leisure & Hospitality	476	6,274	6,344	6,536	23,164,100	279.08
Other Services	320	1,268	1,261	1,270	9,360,330	568.59
Local Government	222	8,829	8,798	8,798	69,534,690	607.25
State Government	93	2,640	2,726	2,754	25,950,570	737.51

North Central Local Workforce Development Area includes these counties: Cleburne, Fulton, Independence, Izard, Jackson, Sharp, Stone, Van Buren, White, and Woodruff.

NORTHEAST LOCAL WORKFORCE DEVELOPMENT AREA	6,473	101,577	101,941	102,597	\$1,041,563,342	\$785.20
Natural Resources & Mining	454	1,849	1,828	1,925	17,529,838	890.65
Construction	473	3,489	3,527	3,604	38,986,482	847.16
Manufacturing	303	21,646	21,741	21,788	301,672,360	1,068.15
Trade, Transportation & Utilities	1,693	19,293	19,160	19,340	174,582,607	697.11
Wholesale Trade	362	3,624	3,652	3,775	51,535,532	1,076.18
Retail Trade	988	12,110	12,009	12,105	79,601,048	507.11
Transportation, Warehousing & Utilities	343	3,559	3,499	3,460	43,446,027	953.22
Information	56	717	714	724	8,576,607	918.43
Financial Activities	558	3,190	3,193	3,173	40,347,813	974.37
Professional & Business Services	668	7,302	7,455	7,508	69,481,848	720.16
Education & Health Services	1,089	17,793	17,887	17,872	199,951,046	861.64
Leisure & Hospitality	554	9,344	9,437	9,611	35,993,304	292.55
Other Services	322	1,463	1,469	1,511	12,202,708	633.81
Local Government	212	11,172	11,130	11,138	95,203,162	657.00
State Government	91	4,319	4,400	4,403	47,035,567	827.19

Northeast Local Workforce Development Area includes these counties: Clay, Craighead, Greene, Lawrence, Mississippi, Poinsett, and Randolph.

TABLE 8. LOCAL WORKFORCE DEVELOPMENT AREA SUMMARY

North American Industry Classification System - Industry Groups	Number of Employing Units	Employment			Total Earnings Jan - Mar 2019	Average Weekly Earnings
		Jan	Feb	Mar		
NORTHWEST LOCAL WORKFORCE DEVELOPMENT AREA	16,842	273,781	275,433	277,187	\$3,935,704,863	\$1,099.03
Natural Resources & Mining	143	1,449	1,473	1,481	18,591,726	974.43
Construction	1,577	12,154	12,219	12,396	141,698,814	889.33
Manufacturing	641	37,051	37,171	37,102	387,291,186	802.84
Trade, Transportation & Utilities	3,959	61,580	61,400	61,537	746,537,124	933.67
Wholesale Trade	1,273	10,634	10,657	10,622	251,259,112	1,816.90
Retail Trade	2,172	31,111	30,782	30,703	221,283,601	551.49
Transportation, Warehousing & Utilities	514	19,835	19,961	20,212	273,994,411	1,053.68
Information	222	2,527	2,531	2,537	37,898,897	1,151.53
Financial Activities	1,737	9,406	9,408	9,367	141,180,518	1,156.10
Professional & Business Services	2,845	47,361	47,611	47,802	1,544,168,658	2,495.88
Education & Health Services	2,446	35,495	35,698	35,742	381,049,758	822.32
Leisure & Hospitality	1,813	29,430	30,262	31,046	132,796,841	337.74
Other Services	1,045	5,234	5,243	5,267	45,716,315	670.09
Local Government	311	23,665	23,604	24,024	237,050,123	767.31
State Government	103	8,429	8,813	8,886	121,724,903	1,075.11
Northwest Local Workforce Development Area includes these counties: Baxter, Benton, Boone, Carroll, Madison, Marion, Newton, Searcy, and Washington.						
SOUTHEAST LOCAL WORKFORCE DEVELOPMENT AREA	6,084	68,043	68,401	68,428	\$658,918,299	\$742.21
Natural Resources & Mining	437	2,217	2,240	2,245	21,674,233	746.31
Construction	306	2,043	2,086	2,019	22,653,551	850.32
Manufacturing	198	15,065	15,134	15,177	196,347,139	998.56
Trade, Transportation & Utilities	1,206	11,750	11,669	11,729	101,584,191	666.97
Wholesale Trade	229	1,829	1,859	1,908	22,834,087	941.64
Retail Trade	719	7,350	7,287	7,323	46,579,714	489.49
Transportation, Warehousing & Utilities	258	2,571	2,523	2,498	32,170,390	977.86
Information	42	271	270	263	2,786,806	799.89
Financial Activities	411	2,380	2,388	2,401	29,386,140	945.94
Professional & Business Services	400	3,487	3,402	3,389	34,918,128	784.01
Education & Health Services	2,071	10,885	10,917	10,906	93,071,697	656.66
Leisure & Hospitality	390	4,542	4,563	4,533	16,068,721	271.90
Other Services	288	1,031	1,061	1,076	8,266,377	602.15
Local Government	211	8,601	8,588	8,575	71,156,081	637.35
State Government	124	5,771	6,083	6,115	61,005,235	783.47
Southeast Local Workforce Development Area includes these counties: Arkansas, Ashley, Bradley, Chicot, Cleveland, Desha, Drew, Grant, Jefferson, and Lincoln.						

TABLE 8. LOCAL WORKFORCE DEVELOPMENT AREA SUMMARY

North American Industry Classification System - Industry Groups	Number of Employing Units	Employment			Total Earnings Jan - Mar 2019	Average Weekly Earnings
		Jan	Feb	Mar		
SOUTHWEST LOCAL WORKFORCE DEVELOPMENT AREA	5,676	77,076	77,042	77,130	\$831,738,618	\$830.02
Natural Resources & Mining	326	2,161	2,150	2,164	25,284,930	901.16
Construction	363	3,365	3,427	3,588	42,533,050	945.60
Manufacturing	235	19,007	19,046	18,896	274,913,501	1,114.01
Trade, Transportation & Utilities	1,363	14,830	14,643	14,631	138,376,949	724.04
Wholesale Trade	247	1,809	1,805	1,843	25,137,195	1,063.02
Retail Trade	816	8,417	8,347	8,335	52,402,468	481.81
Transportation, Warehousing & Utilities	300	4,604	4,491	4,453	60,837,286	1,036.27
Information	48	393	386	384	4,807,538	953.94
Financial Activities	449	2,470	2,471	2,463	28,478,412	887.62
Professional & Business Services	431	4,526	4,551	4,555	89,669,101	1,517.96
Education & Health Services	1,301	9,757	9,751	9,651	80,520,222	637.25
Leisure & Hospitality	420	5,632	5,668	5,763	21,775,881	294.51
Other Services	347	1,423	1,407	1,401	10,155,350	553.90
Local Government	262	9,941	9,911	9,954	80,324,696	621.90
State Government	131	3,571	3,631	3,680	34,898,988	740.09
Southwest Local Workforce Development Area includes these counties: Calhoun, Columbia, Dallas, Hempstead, Howard, Lafayette, Little River, Miller, Nevada, Ouachita, Sevier, and Union						
WEST CENTRAL LOCAL WORKFORCE DEVELOPMENT AREA	8,206	105,770	106,760	107,331	\$970,877,097	\$700.46
Natural Resources & Mining	248	2,311	2,379	2,418	24,459,906	1,023.13
Construction	737	4,241	4,302	4,334	43,990,951	788.36
Manufacturing	331	16,408	16,439	16,361	175,796,899	824.43
Trade, Transportation & Utilities	1,804	21,168	20,992	21,119	200,336,408	730.60
Wholesale Trade	315	1,934	1,898	1,916	22,246,053	893.13
Retail Trade	1,197	13,758	13,671	13,778	92,550,210	518.30
Transportation, Warehousing & Utilities	292	5,476	5,423	5,425	85,540,145	1,209.26
Information	80	768	790	769	7,840,116	777.51
Financial Activities	808	3,608	3,576	3,581	42,193,278	904.50
Professional & Business Services	926	7,370	7,432	7,543	71,861,026	742.15
Education & Health Services	1,602	17,480	17,564	17,551	174,180,058	764.24
Leisure & Hospitality	803	13,574	14,037	14,431	59,197,759	324.94
Other Services	522	2,241	2,216	2,198	16,029,529	555.84
Local Government	231	11,534	11,576	11,582	103,928,129	691.32
State Government	114	5,067	5,457	5,444	51,063,038	737.96
West Central Local Workforce Development Area includes these counties: Clark, Conway, Garland, Hot Spring, Johnson, Montgomery, Perry, Pike, Pope, and Yell						

TABLE 8. LOCAL WORKFORCE DEVELOPMENT AREA SUMMARY

North American Industry Classification System - Industry Groups	Number of Employing Units	Employment			Total Earnings	Average Weekly Earnings
		Jan	Feb	Mar	Jan - Mar 2019	
WESTERN LOCAL WORKFORCE DEVELOPMENT AREA	6,527	101,655	101,609	101,748	\$1,040,735,837	\$787.41
Natural Resources & Mining	149	1,247	1,285	1,314	20,100,575	1,206.08
Construction	534	3,832	3,878	3,907	38,786,240	770.48
Manufacturing	337	20,741	20,803	20,673	227,160,141	842.56
Trade, Transportation & Utilities	1,562	22,009	21,836	21,744	226,044,554	795.32
Wholesale Trade	349	3,607	3,614	3,604	48,775,885	1,039.81
Retail Trade	938	11,986	11,869	11,814	78,929,011	510.65
Transportation, Warehousing & Utilities	275	6,416	6,353	6,326	98,339,658	1,188.47
Information	67	1,010	1,012	1,010	21,252,646	1,617.56
Financial Activities	679	3,665	3,664	3,666	45,628,177	957.67
Professional & Business Services	860	9,957	9,836	10,007	106,672,954	826.07
Education & Health Services	1,119	16,047	16,067	16,063	187,136,182	896.39
Leisure & Hospitality	566	8,728	8,739	8,839	34,990,225	306.95
Other Services	417	2,043	2,026	2,025	16,056,728	608.04
Local Government	166	9,536	9,599	9,621	88,305,025	708.65
State Government	71	2,840	2,864	2,879	28,602,390	769.03

Western Local Workforce Development Area includes these counties: Crawford, Franklin, Logan, Polk, Scott, and Sebastian