

Arkansas Covered  
Employment & Earnings  
Annual  
2018





**COVERED EMPLOYMENT AND EARNINGS  
STATE OF ARKANSAS  
ANNUAL 2018**

**ASA HUTCHINSON, GOVERNOR  
STATE OF ARKANSAS**

**DARYL E. BASSETT, DIRECTOR  
DEPARTMENT OF WORKFORCE SERVICES**

**PUBLISHED BY  
LABOR MARKET INFORMATION & ANALYSIS  
BUREAU OF LABOR STATISTICS PROGRAMS  
POST OFFICE BOX 2981  
LITTLE ROCK, ARKANSAS 72203-2981  
SUSAN PRICE, BLS PROGRAMS MANAGER  
TELEPHONE (501) 682-3103**

**STATE OF ARKANSAS WEBPAGE: <http://www.arkansas.gov>**

**DEPARTMENT OF WORKFORCE SERVICES WEBPAGE: <http://www.dws.arkansas.gov>**

**WEBPAGE FOR LABOR MARKET INFORMATION: <http://www.discover.arkansas.gov>**

**RELEASED: JUNE 2019**



## TABLE OF CONTENTS

	Page
Description of Data	1
Industry Classification	1
Definition of Covered Employment and Earnings	2
Federal Government	2
County Classification	2
Significant Developments During Calendar Year 2018	3

## GRAPHS AND TABLES

Graph 1	Average Total Covered Employment for Selected Years, Arkansas	7
Graph 2	Total Covered Earnings, by Calendar Quarter for Selected Years, Arkansas	8
Table 1	Annual Comparison of Covered Employment and Wages, by Industry	5
Table 2	Total Covered Employment in Arkansas, 2011 – 2018	6
Table 3	Total Covered Earnings, 2011 – 2018	9
Table 4	Total Taxable Earnings, 2011 – 2018	10
Table 5	State Summary – Employment and Total Earnings, by Industry, Calendar Year 2018	11
Table 6	County Summary – Employment and Total Earnings, by Industry, Calendar Year 2018	22
Table 7	Federal Government Employment and Total Earnings in Arkansas, Calendar Year 2018	60
Table 8	Workforce Investment Area – Employment and Total Earnings, by Industry, Calendar Year 2018	61



EMPLOYMENT AND EARNINGS  
UNDER THE ARKANSAS EMPLOYMENT SECURITY LAW  
ANNUAL 2018

**DESCRIPTION AND CLASSIFICATION OF DATA**

This publication contains covered employment and payroll data by industry and county for the Calendar Year 2018 and a record for total covered employment by month, quarterly payroll data, average weekly earnings, and total taxable earnings for 2011 through 2018. These data are compiled from quarterly contributions and wage reports submitted by employers subject to the Arkansas Employment Security Law.

Employment data have been tabulated for each month of the quarter by industry under the **North American Industry Classification System** (NAICS) by state, county, and workforce area. Payroll data represent the total wages paid during the quarter and are classified by industry for the state and by publishable industry groups for each county and workforce area.

Due to industry classification revisions, previously published data will not always be comparable with current data. For this reason, comparisons should not be made between the same industries under different revisions. For more information, visit the NAICS home page at <http://www.census.gov/naics>.

Industry Classification Revisions

- SIC (Standard Industrial Classification) 1987 to NAICS 2002
- NAICS 2002 to NAICS 2007
- NAICS 2007 to NAICS 2012
- NAICS 2012 to NAICS 2017

The tabulation of this data is a joint effort in conjunction with the United States Bureau of Labor Statistics. Data included in this publication are subject to revisions. Revisions are typically reflected in the Annual Covered Employment and Earnings publication.

## **DEFINITION OF COVERED EMPLOYMENT AND EARNINGS**

Covered Employment is the total number of workers employed by establishments subject to the Arkansas Employment Security Law that worked or received pay for the payroll period including the 12<sup>th</sup> of the month. Earnings include all wages paid to any covered employee by their employer including salaries, bonuses, commissions, fees, fringe benefits, sick pay made directly to employees or dependents, deferred compensation, and reported tips. These wages include both taxable and nontaxable wages. Only the first \$10,000 paid to each worker by an employer in the calendar year is taxable under the Arkansas Employment Security Law.

An Arkansas state unemployment account is required of any entity meeting the definition of an employer. As described by Arkansas Department of Workforce Services Law, the definition of an employer includes, but is not limited to, a sole proprietorship, partnership, corporation, associations, trust, estate, and receiver or trustee in bankruptcy. The entity must employ one or more individuals for ten or more days in a calendar year, whether or not the days are consecutive.

Currently excluded from coverage is employment covered by the Railroad Unemployment Insurance Act, some domestic service workers, employees of small agricultural establishments, self-employed workers, unpaid family workers, insurance and real estate agents paid only on a commission basis, and employees of churches and religious organizations except separately incorporated schools.

Civilian federal workers are covered by Unemployment Compensation for Federal Employees (UCFE).

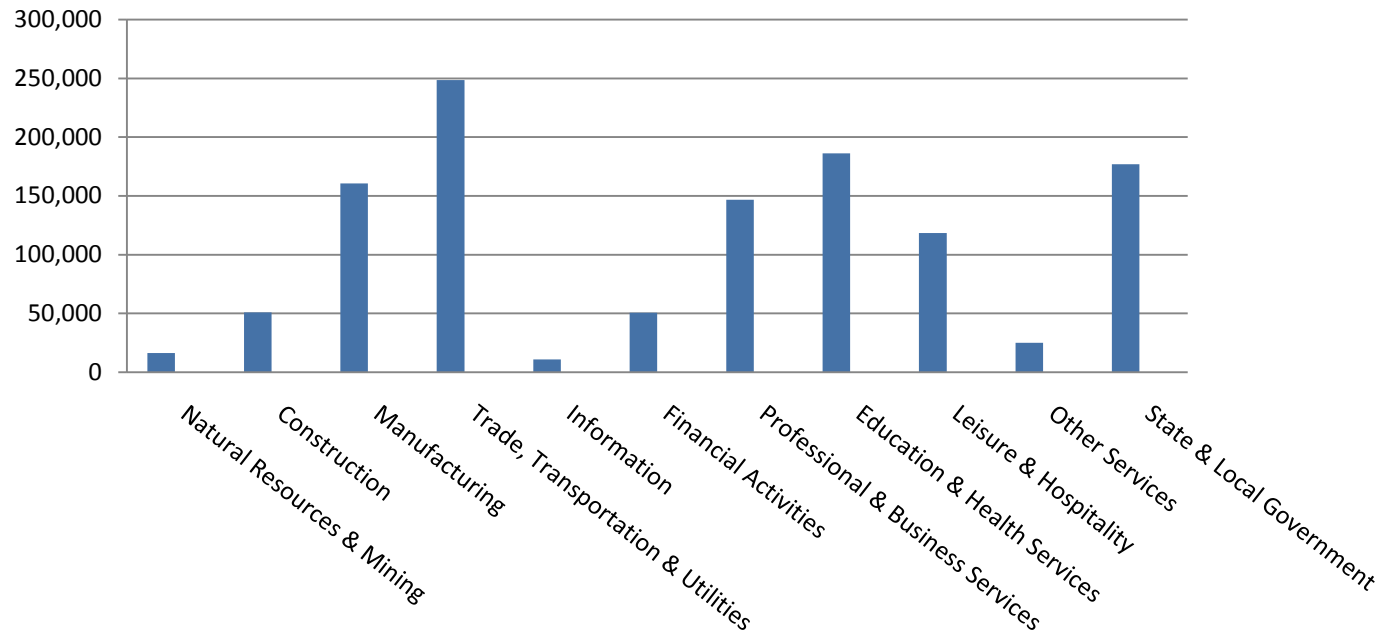


## SIGNIFICANT DEVELOPMENTS DURING CALENDAR YEAR 2018

### AVERAGE EMPLOYMENT CHANGES

Covered employment averaged 1,190,944 during the Calendar Year 2018 (see Table 1, page 5), an increase of 10,606 from the previous year. The greatest employment gain occurred in Manufacturing (+3,274). The largest annual loss occurred in Information (-1,860).

### Average Covered Employment by NAICS



### EMPLOYMENT CHANGES FOR CALENDAR YEAR 2018

Eight of the eleven major industry sectors recorded over-the-year employment gains (see Table 1). The Manufacturing subsector had an average of 160,597 jobs, an increase of 3,274 from 2017. The increase in Educational & Health Services brought the sector's employment average to 183,328; this growth was mainly due to the expansion in Health Care & Social Assistance. Jobs in Professional & Business Services grew to 146,671. This increase can be attributed mainly to Administrative & Waste Services which experienced a gain of 1,789. Three major industry sectors experienced over-the-year losses. Information had the most significant decline in average employment (-1,860). Construction (-272) and Natural Resources & Mining (-138) also reported job losses over the year.

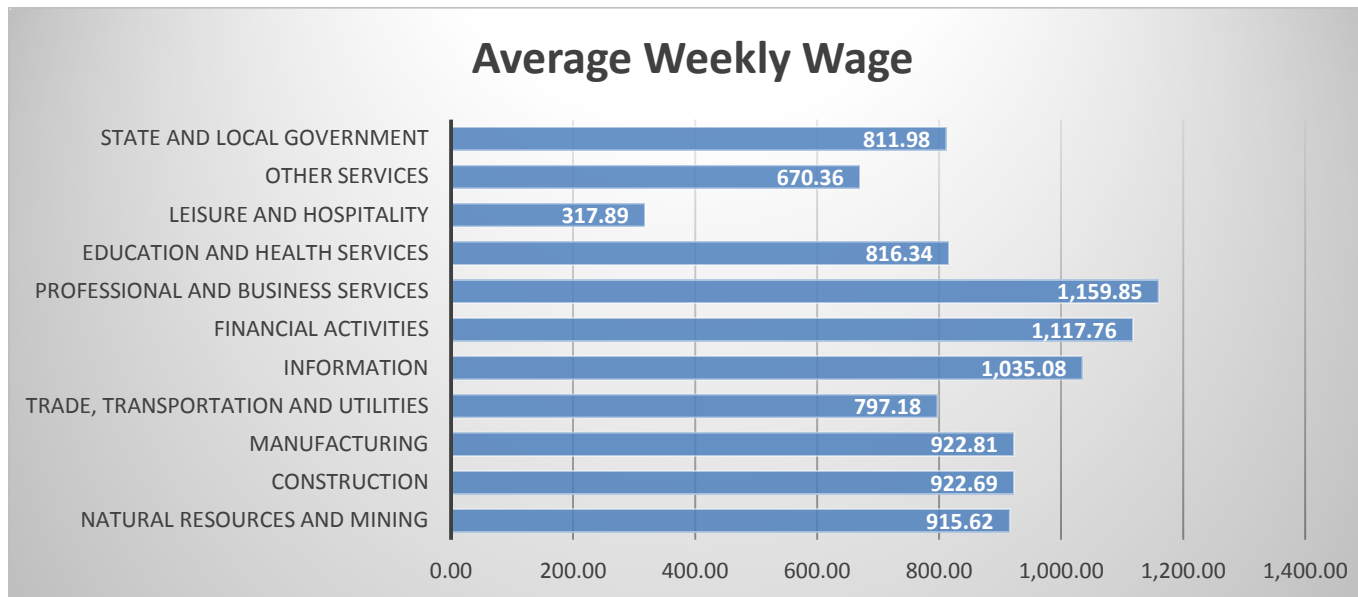
### EMPLOYMENT CHANGES FOR CALENDAR YEAR 2018

Pulaski County posted the highest average covered employment for Arkansas counties in 2018 at 241,967. Benton County averaged 119,328 in covered employment, slightly higher than Washington County with 105,952. Sebastian County had the fourth highest average covered employment with 64,521, followed by Craighead County with 50,710. Four of the five leading counties experienced over the year growth in employment ranging from a low of 128 added jobs in Pulaski County to 2,604 jobs in Washington County. Sebastian County lost 226 jobs from 2017 to 2018.

### COVERED WAGES

Wages paid to covered workers totaled \$51,800,994,865 for the Calendar Year 2018 (see Table 1), for an average weekly wage of \$836.46 (see Table 5). Employees in Benton County recorded the highest average weekly wage (\$1,139.71), and workers in Newton County the lowest (\$488.64) (see Table 6).

The Professional & Business Services sector recorded the highest average weekly wage for the State of Arkansas at \$1,159.85. The Leisure and Hospitality sector reported the lowest average weekly wage at \$317.89 (see Table 5).



**TABLE 1. YEARLY COMPARISON OF COVERED EMPLOYMENT AND WAGES, BY INDUSTRY**

North American Industry Classification System - Industry Groups	Number of Employing Units	Average Covered Employment	Percent of Total	Net Change From: 2017	Total Calendar Earnings 2018	Percent of Total	Average Weekly Earnings
<b>Total</b>	<b>89,414</b>	<b>1,190,944</b>	<b>100</b>	<b>10,606</b>	<b>\$51,800,994,865</b>	<b>100</b>	<b>\$836.46</b>
<b>Natural Resources &amp; Mining</b>	2,529	16,337	1.4	-138	777,844,615	1.5	915.62
Agriculture, Forestry, Fishing & Hunting	2,098	12,517	1.1	-159	525,971,965	1.0	808.09
Mining	431	3,820	0.3	21	251,872,650	0.5	1,267.99
<b>Construction</b>	6,959	50,837	4.3	-272	2,439,161,703	4.7	922.69
<b>Manufacturing</b>	2,929	160,597	13.5	3,274	7,706,451,643	14.9	922.81
<b>Trade, Transportation &amp; Utilities</b>	21,673	248,547	20.9	795	10,303,070,453	19.9	797.18
Wholesale Trade	7,247	47,373	4.0	475	3,239,476,104	6.3	1,315.04
Retail Trade	11,040	139,106	11.7	-1,507	3,814,488,324	7.4	527.34
Transportation & Warehousing	2,955	54,273	4.6	1,740	2,559,518,402	4.9	906.92
Utilities	431	7,795	0.7	87	689,587,623	1.3	1,701.26
<b>Information</b>	1,214	10,910	0.9	-1,860	587,221,350	1.1	1,035.08
<b>Financial Activities</b>	8,419	50,638	4.3	1,034	2,943,254,841	5.7	1,117.76
Finance & Insurance	4,980	37,005	3.1	805	2,411,228,303	4.7	1,253.07
Real Estate & Rental & Leasing	3,439	13,633	1.1	229	532,026,538	1.0	750.48
<b>Professional &amp; Business Services</b>	14,327	146,671	12.3	2,633	8,846,015,413	17.1	1,159.85
Professional & Technical Services	9,037	43,998	3.7	1,167	2,783,785,338	5.4	1,216.74
Management of Companies & Enterprises	560	34,783	2.9	-323	4,001,719,160	7.7	2,212.46
Administrative & Waste Services	4,730	67,890	5.7	1,789	2,060,510,915	4.0	583.67
<b>Education &amp; Health Services</b>	15,801	186,151	15.6	2,823	7,902,042,480	15.3	816.34
Educational Services	878	11,874	1.0	385	438,727,946	0.8	710.55
Health Care & Social Assistance	14,923	174,277	14.6	2,438	7,463,314,534	14.4	823.55
<b>Leisure &amp; Hospitality</b>	7,179	118,418	9.9	1,710	1,957,478,852	3.8	317.89
Arts, Entertainment & Recreation	987	11,427	1.0	241	241,489,777	0.5	406.41
Accommodation & Food Services	6,192	106,991	9.0	1,469	1,715,989,075	3.3	308.44
<b>Other Services</b>	5,355	24,954	2.1	159	869,864,498	1.7	670.36
<b>State &amp; Local Government</b>	3,029	176,884	14.9	448	7,468,589,017	14.4	811.98
Local Government	1,970	109,022	9.2	940	4,224,507,597	8.2	745.18
State Government	1,059	67,862	5.7	-492	3,244,081,420	6.3	919.31
<b>Nonclassifiable Establishments</b>	0	0	0.0	0	0	0.0	0.00

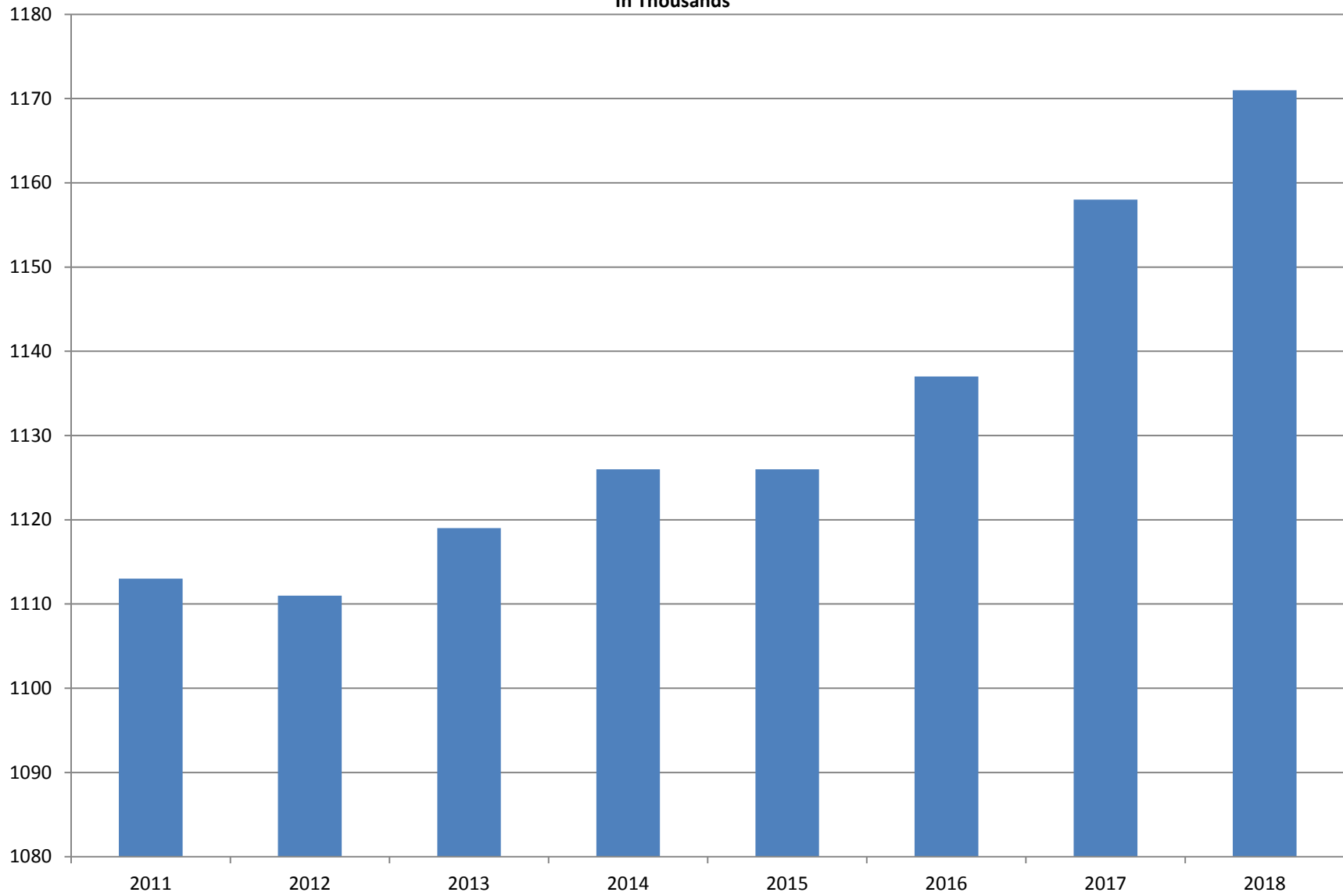
Note: Items do not necessarily add to total because of rounding. Because of industry code changes between years, substantial employment and wage shifts among industries are anticipated.

**TABLE 2. TOTAL COVERED EMPLOYMENT IN ARKANSAS**

<b>PERIOD</b>	<b>2011</b>	<b>2012</b>	<b>2013</b>	<b>2014</b>	<b>2015</b>	<b>2016</b>	<b>2017</b>	<b>2018</b>
<b>AVERAGE</b>	<b>1,118,639</b>	<b>1,126,171</b>	<b>1,125,890</b>	<b>1,137,486</b>	<b>1,157,634</b>	<b>1,171,286</b>	<b>1,180,337</b>	<b>1,195,781</b>
January	1,098,349	1,113,274	1,112,991	1,114,412	1,135,577	1,153,115	1,161,239	1,173,537
February	1,098,445	1,119,319	1,121,492	1,122,905	1,144,902	1,162,987	1,172,290	1,183,185
March	1,113,061	1,131,123	1,129,100	1,132,106	1,146,413	1,170,873	1,179,686	1,190,199
April	1,129,635	1,136,608	1,134,734	1,140,788	1,158,606	1,178,480	1,185,212	1,194,816
May	1,126,371	1,142,985	1,138,383	1,149,046	1,167,657	1,181,258	1,189,900	1,201,113
June	1,123,412	1,136,699	1,130,402	1,144,876	1,164,607	1,177,108	1,186,326	1,195,468
July	1,080,937	1,078,836	1,083,849	1,096,675	1,119,390	1,130,652	1,137,883	1,168,432
August	1,106,262	1,108,552	1,109,759	1,125,162	1,148,502	1,159,416	1,168,802	1,200,284
September	1,132,779	1,134,829	1,135,673	1,150,545	1,173,776	1,185,181	1,193,845	1,222,012
October	1,138,395	1,135,677	1,138,312	1,153,684	1,173,953	1,185,035	1,194,194	1,205,161
November	1,138,543	1,137,411	1,141,035	1,158,579	1,177,717	1,186,308	1,197,650	1,208,638
December	1,137,474	1,138,742	1,134,955	1,161,056	1,180,513	1,185,015	1,197,013	1,206,531

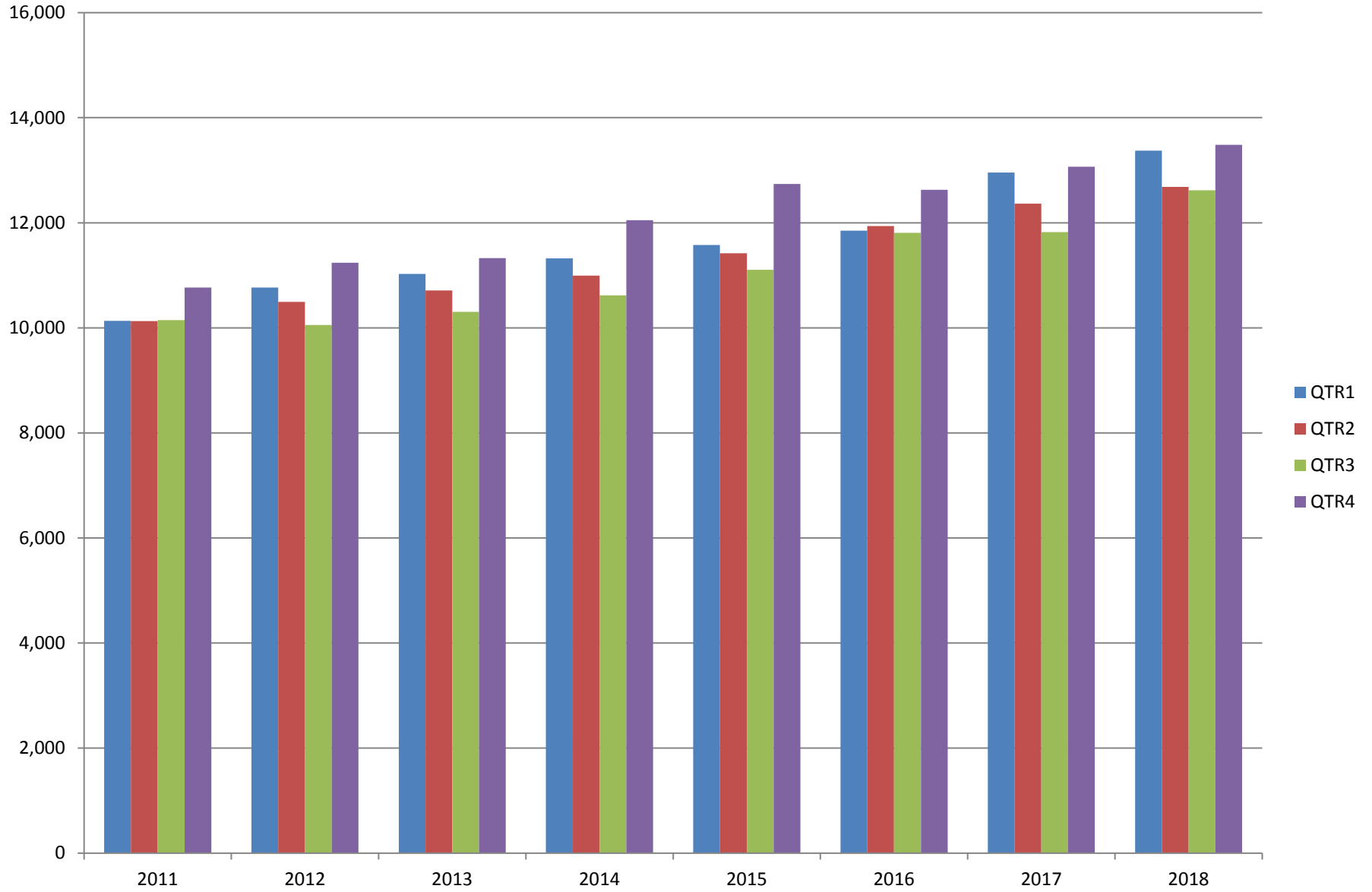
# AVERAGE TOTAL COVERED EMPLOYMENT

In Thousands



# TOTAL COVERED EARNINGS BY CALENDAR YEAR

In Thousands



**TABLE 3. TOTAL COVERED EARNINGS 2011 - 2018**

<b>PERIOD</b>	<b>2011</b>	<b>2012</b>	<b>2013</b>	<b>2014</b>
<b>TOTAL</b>	<b>\$41,177,659,236</b>	<b>\$42,551,238,929</b>	<b>\$43,371,086,461</b>	<b>\$44,980,520,034</b>
January - March	10,134,035,254	10,766,175,449	11,027,184,315	11,321,422,241
April - June	10,128,274,611	10,494,369,042	10,711,027,503	10,991,760,061
July - September	10,147,287,431	10,053,294,410	10,304,451,772	10,619,889,280
October - December	10,768,061,940	11,237,400,028	11,328,422,871	12,047,448,452
<b>Average Weekly Earnings</b>	<b>\$707.89</b>	<b>\$726.62</b>	<b>\$740.80</b>	<b>\$760.46</b>

<b>PERIOD</b>	<b>2015</b>	<b>2016</b>	<b>2017</b>	<b>2018</b>
<b>TOTAL</b>	<b>\$46,836,352,793</b>	<b>\$48,216,814,491</b>	<b>\$50,207,202,141</b>	<b>\$52,159,789,393</b>
January - March	11,575,046,688	11,847,506,815	12,955,088,347	13,372,730,974
April - June	11,419,363,330	11,935,742,777	12,363,027,711	12,682,491,819
July - September	11,104,443,452	11,807,220,282	11,823,324,966	12,619,347,460
October - December	12,737,499,323	12,626,344,617	13,065,761,117	13,485,219,140
<b>Average Weekly Earnings</b>	<b>\$778.05</b>	<b>\$791.65</b>	<b>\$818.01</b>	<b>\$838.84</b>

**TABLE 4. TOTAL TAXABLE EARNINGS, 2011 - 2018**

<b>PERIOD</b>	<b>2011</b>	<b>2012</b>	<b>2013</b>	<b>2014</b>
<b>TOTAL</b>	<b>11,479,396,226</b>	<b>11,624,348,048</b>	<b>11,644,747,978</b>	<b>11,919,662,224</b>
<b>January - March</b>	5,828,877,821	6,167,036,199	6,184,735,653	6,288,682,396
<b>April - June</b>	2,910,604,359	2,838,154,846	2,805,431,293	2,831,013,392
<b>July - September</b>	1,601,382,146	1,494,712,584	1,506,497,129	1,552,243,963
<b>October - December</b>	1,138,531,900	1,124,444,419	1,148,083,903	1,247,722,473

<b>PERIOD</b>	<b>2015</b>	<b>2016</b>	<b>2017</b>	<b>2018</b>
<b>TOTAL</b>	<b>12,258,632,610</b>	<b>12,538,167,625</b>	<b>12,744,039,136</b>	<b>11,343,357,036</b>
<b>January - March</b>	6,378,966,662	6,607,245,841	6,958,706,950	6,577,871,657
<b>April - June</b>	2,915,293,283	3,010,214,324	2,908,226,426	2,278,450,975
<b>July - September</b>	1,640,978,599	1,656,043,561	1,576,968,648	1,328,689,516
<b>October - December</b>	1,323,394,066	1,264,663,899	1,300,137,112	1,158,344,888



TABLE 5. STATEWIDE SUMMARY CALENDAR YEAR 2018

North American Industry Classification System - Industry Groups		Average Employing Units	Average Covered Employment	Total Calendar Earnings	Average Weekly Earnings
<b>TOTAL, ALL INDUSTRIES</b>		<b>89,414</b>	<b>1,190,944</b>	<b>\$51,800,994,865</b>	<b>\$836.46</b>
<b>NATURAL RESOURCES &amp; MINING</b>		<b>2,529</b>	<b>16,337</b>	<b>\$777,844,615</b>	<b>\$915.62</b>
<b>11</b>	<b>AGRICULTURE, FORESTRY, FISHING &amp; HUNTING</b>	<b>2,098</b>	<b>12,517</b>	<b>\$525,971,965</b>	<b>\$808.09</b>
<b>111</b>	<b>CROP PRODUCTION</b>	<b>942</b>	<b>4,056</b>	<b>\$131,194,106</b>	<b>\$622.03</b>
1111	Oilseed & Grain Farming	700	2,816	92,886,982	634.34
1112	Vegetable & Melon Farming	34	229	6,150,517	516.50
1113	Fruit & Tree Nut Farming	12	36	937,605	500.86
1114	Greenhouse & Nursery Production	38	352	11,360,761	620.67
1119	Other Crop Farming	158	623	19,858,241	612.98
<b>112</b>	<b>ANIMAL PRODUCTION &amp; AQUACULTURE</b>	<b>333</b>	<b>3,202</b>	<b>\$162,473,906</b>	<b>\$975.80</b>
1121	Cattle Ranching & Farming	127	399	12,431,976	599.19
1122	Hog & Pig Farming	12	142	7,087,855	959.89
1123	Poultry & Egg Production	128	2,249	126,976,415	1,085.75
1125	Animal Aquaculture	44	348	14,345,025	792.72
1129	Other Animal Production	22	64	1,632,635	490.58
<b>113</b>	<b>FORESTRY &amp; LOGGING</b>	<b>403</b>	<b>2,285</b>	<b>\$100,049,191</b>	<b>\$842.02</b>
1131	Timber Tract Operations	34	153	7,544,162	948.24
1132	Forest Nurseries & Gathering of Forest Products	8	53	4,282,176	1,553.76
1133	Logging	361	2,079	88,222,853	816.06
<b>114</b>	<b>FISHING, HUNTING &amp; TRAPPING</b>	<b>6</b>	<b>15</b>	<b>\$401,382</b>	<b>\$514.59</b>
<b>115</b>	<b>SUPPORT ACTIVITIES FOR AGRICULTURE &amp; FORESTRY</b>	<b>414</b>	<b>2,959</b>	<b>\$131,853,380</b>	<b>\$856.93</b>
1151	Support Activities for Crop Production	280	1,442	74,895,797	998.82
1152	Support Activities for Animal Production	64	722	24,427,092	650.63
1153	Support Activities for Forestry	70	795	32,530,491	786.90
<b>21</b>	<b>MINING</b>	<b>431</b>	<b>3,820</b>	<b>\$251,872,650</b>	<b>\$1,267.99</b>
<b>211</b>	<b>OIL &amp; GAS EXTRACTION</b>	<b>74</b>	<b>675</b>	<b>\$56,842,526</b>	<b>\$1,619.45</b>
<b>212</b>	<b>MINING (EXCEPT OIL &amp; GAS)</b>	<b>108</b>	<b>1,775</b>	<b>\$100,127,525</b>	<b>\$1,084.81</b>
<b>213</b>	<b>SUPPORT ACTIVITIES FOR MINING</b>	<b>249</b>	<b>1,370</b>	<b>\$94,902,599</b>	<b>\$1,332.15</b>

Note: Data may not add due to rounding.

TABLE 5. STATEWIDE SUMMARY CALENDAR YEAR 2018

North American Industry Classification System - Industry Groups		Average Employing Units	Average Covered Employment	Total Calendar Earnings	Average Weekly Earnings
<b>CONSTRUCTION</b>		<b>6,959</b>	<b>50,837</b>	<b>\$2,439,161,703</b>	<b>\$922.69</b>
<b>236</b>	<b>CONSTRUCTION OF BUILDINGS</b>	<b>1,844</b>	<b>10,768</b>	<b>\$576,518,989</b>	<b>\$1,029.62</b>
2361	Residential Building Construction	1,247	3,606	162,129,047	864.63
2362	Nonresidential Building Construction	597	7,162	414,389,942	1,112.68
<b>237</b>	<b>HEAVY &amp; CIVIL ENGINEERING CONSTRUCTION</b>	<b>720</b>	<b>8,000</b>	<b>\$404,530,593</b>	<b>\$972.43</b>
2371	Utility System Construction	405	4,402	223,576,367	976.73
2372	Land Subdivision	45	79	3,254,712	792.29
2373	Highway, Street & Bridge Construction	180	2,834	143,924,040	976.63
2379	Other Heavy Construction	90	685	33,775,474	948.22
<b>238</b>	<b>SPECIALTY TRADE CONTRACTORS</b>	<b>4,395</b>	<b>32,069</b>	<b>\$1,458,112,121</b>	<b>\$874.38</b>
2381	Building Foundation & Exterior Contractors	822	5,917	262,446,277	852.97
2382	Building Equipment Contractors	2,133	17,648	850,723,280	927.02
2383	Building Finishing Contractors	723	3,811	152,211,939	768.08
2389	Other Specialty Trade Contractors	717	4,693	192,730,625	789.76
<b>MANUFACTURING</b>		<b>2,929</b>	<b>160,597</b>	<b>\$7,706,451,643</b>	<b>\$922.81</b>
<b>311</b>	<b>FOOD MANUFACTURING</b>	<b>296</b>	<b>48,457</b>	<b>\$1,843,894,887</b>	<b>\$731.77</b>
3111	Animal Food Manufacturing	48	1,975	106,046,953	1,032.59
3112	Grain & Oilseed Milling	34	2,680	126,379,496	906.86
3114	Fruit, Vegetable & Specialty Food	18	4,093	193,149,014	907.50
3115	Dairy Product Manufacturing	7	572	25,751,777	865.78
3116	Animal Slaughtering & Processing	79	32,905	1,124,537,061	657.22
3118	Bakeries & Tortilla Manufacturing	76	3,938	165,359,451	807.51
3119	Other Food Manufacturing	23	2,261	101,788,810	865.76
	Other	11	33	882,325	514.18
<b>312</b>	<b>BEVERAGE &amp; TOBACCO PRODUCT MANUFACTURING</b>	<b>62</b>	<b>1,497</b>	<b>\$79,280,886</b>	<b>\$1,018.46</b>
<b>313</b>	<b>TEXTILE MILLS</b>	<b>8</b>	<b>116</b>	<b>\$7,041,223</b>	<b>\$1,167.31</b>
3132	Fiber, Yarn, & Thread Mills	4	95	6,167,883	1,248.56
3133	Textile, Fabric Finishing/Coating Mills	4	21	873,340	799.76
<b>314</b>	<b>TEXTILE PRODUCT MILLS</b>	<b>47</b>	<b>975</b>	<b>\$48,376,167</b>	<b>\$954.17</b>
3141	Textile Furnishing Mills	10	39	1,893,107	933.48
3149	Other Textile Product Mills	37	936	46,483,060	955.03
<b>315</b>	<b>APPAREL MANUFACTURING</b>	<b>15</b>	<b>866</b>	<b>23,394,223</b>	<b>\$519.50</b>
3151	Apparel Knitting Mills	3	567	15,585,301	528.60
3152	Other	12	299	7,808,922	502.25
<b>316</b>	<b>LEATHER &amp; ALLIED PRODUCT MANUFACTURING</b>	<b>12</b>	<b>1,097</b>	<b>\$28,609,175</b>	<b>\$501.53</b>
3162	Footwear Manufacturing	3	904	22,263,678	473.61
3169	Other Leather & Allied Product Manufacturing	9	193	6,345,497	632.27

Note: Data may not add due to rounding.

TABLE 5. STATEWIDE SUMMARY CALENDAR YEAR 2018

North American Industry Classification System - Industry Groups		Average Employing Units	Average Covered Employment	Total Calendar Earnings	Average Weekly Earnings
<b>321</b>	<b>WOOD PRODUCT MANUFACTURING</b>	<b>304</b>	<b>9,922</b>	<b>\$440,830,130</b>	<b>\$854.41</b>
3211	Sawmills & Wood Preservation	143	4,817	230,683,587	920.95
3212	Veneer & Engineered Wood Products	39	1,800	93,239,628	996.15
3219	Other Wood Product Manufacturing	122	3,305	116,906,915	680.25
<b>322</b>	<b>PAPER MANUFACTURING</b>	<b>73</b>	<b>9,647</b>	<b>\$639,818,816</b>	<b>\$1,275.44</b>
3221	Pulp, Paper & Paperboard Mills	15	3,881	329,585,896	1,633.13
3222	Converted Paper Product Manufacturing	58	5,766	310,232,920	1,034.69
<b>323</b>	<b>PRINTING &amp; RELATED SUPPORT ACTIVITIES</b>	<b>246</b>	<b>3,855</b>	<b>\$161,713,978</b>	<b>\$806.71</b>
<b>324</b>	<b>PETROLEUM &amp; COAL PRODUCTS MANUFACTURING</b>	<b>22</b>	<b>1,243</b>	<b>\$93,083,021</b>	<b>\$1,440.11</b>
<b>325</b>	<b>CHEMICAL MANUFACTURING</b>	<b>121</b>	<b>5,502</b>	<b>\$351,081,584</b>	<b>\$1,227.11</b>
3251	Basic Chemical Manufacturing	30	1,863	144,865,268	1,495.37
3252	Resin, Rubber & Artificial Fibers	11	478	30,143,510	1,212.73
3253	Agricultural Chemical Manufacturing	14	450	32,053,617	1,369.81
3254	Pharmaceutical & Medicine Manufacturing	21	511	26,325,727	990.73
3255	Paint, Coating & Adhesive Manufacturing	10	219	12,972,466	1,139.13
3256	Soap, Cleaning Compound, & Toilet Preparation Manufacturing	14	1,238	64,490,640	1,001.78
3259	Other Chemical Preparation Manufacturing	21	743	40,230,356	1,041.27
<b>326</b>	<b>PLASTICS &amp; RUBBER PRODUCTS MANUFACTURING</b>	<b>124</b>	<b>10,938</b>	<b>\$542,488,074</b>	<b>\$953.78</b>
3261	Plastics Product Manufacturing	96	6,733	306,330,386	874.94
3262	Rubber Product Manufacturing	28	4,205	236,157,688	1,080.02
<b>327</b>	<b>NONMETALLIC MINERAL PRODUCT MANUFACTURING</b>	<b>229</b>	<b>3,642</b>	<b>\$182,963,610</b>	<b>\$966.10</b>
3271	Clay Product & Refractory Manufacturing	12	513	24,925,595	934.38
3272	Glass & Glass Product Manufacturing	8	353	17,540,877	955.59
3273	Cement & Concrete Product Manufacturing	173	2,083	104,277,054	962.71
3274	Lime & Gypsum Product Manufacturing	3	299	18,895,543	1,215.30
3279	Other Nonmetallic Mineral Products Manufacturing	33	394	17,324,541	845.59
<b>331</b>	<b>PRIMARY METAL MANUFACTURING</b>	<b>72</b>	<b>8,130</b>	<b>\$622,489,742</b>	<b>\$1,472.44</b>
3311	Iron & Steel Mills & Ferroalloys	10	3,222	344,342,755	2,055.24
3312	Purchased Steel Product Manufacturing	22	2,173	134,390,623	1,189.34
3313	Alumina & Aluminum Production	15	818	46,377,731	1,090.32
3314	Other Nonferrous Metal Production	7	327	17,134,723	1,007.69
3315	Foundries	18	1,590	80,243,910	970.54

Note: Data may not add due to rounding.

TABLE 5. STATEWIDE SUMMARY CALENDAR YEAR 2018

North American Industry Classification System - Industry Groups		Average Employing Units	Average Covered Employment	Total Calendar Earnings	Average Weekly Earnings
<b>332</b>	<b>FABRICATED METAL PRODUCT MANUFACTURING</b>	<b>523</b>	<b>15,696</b>	<b>\$816,141,644</b>	<b>\$999.94</b>
3321	Forging & Stamping	15	448	21,901,678	940.15
3322	Cutlery & Hand Tool Manufacturing	14	536	24,731,238	887.31
3323	Architectural & Structural Metals	149	4,535	247,198,573	1,048.25
3324	Boilers, Tanks & Shipping Containers	15	634	34,370,344	1,042.54
3325	Hardware Manufacturing	5	269	13,836,364	989.16
3326	Spring & Wire Product Manufacturing	11	353	16,617,070	905.27
3327	Machine Shops & Threaded Products	205	2,108	94,130,283	858.73
3328	Coating, Engraving & Heat Treating Metals	42	658	27,973,679	817.56
3329	Other Fabricated Metal Product Manufacturing	67	6,155	335,382,415	1,047.87
<b>333</b>	<b>MACHINERY MANUFACTURING</b>	<b>208</b>	<b>11,413</b>	<b>\$553,721,327</b>	<b>\$933.01</b>
3331	Agriculture, Construction & Mining Machinery	39	2,715	110,993,552	786.18
3332	Industrial Machinery Manufacturing	25	698	42,402,264	1,168.24
3333	Commercial & Service Industry Machinery	20	768	40,688,933	1,018.85
3334	HVAC & Commercial Refrigeration Equipment	24	2,806	137,819,071	944.54
3335	Metalworking Machinery Manufacturing	52	981	46,083,520	903.39
3336	Turbine & Power Transmission Equipment Manufacturing	5	740	37,400,175	971.94
3339	Other General Purpose Machinery Manufacturing	43	2,705	138,333,812	983.46
<b>334</b>	<b>COMPUTER &amp; ELECTRONIC PRODUCT MANUFACTURING</b>	<b>51</b>	<b>2,098</b>	<b>\$111,684,384</b>	<b>\$1,023.73</b>
3343	Audio & Video Equipment Manufacturing	5	121	4,973,790	790.49
3344	Semiconductors & Electronic Components	24	1,487	77,891,096	1,007.33
3345	Electronic Instrument Manufacturing	17	402	22,866,992	1,093.91
	Other	5	88	5,952,506	1,300.81
<b>335</b>	<b>ELECTRICAL EQUIPMENT &amp; APPLIANCES</b>	<b>52</b>	<b>4,633</b>	<b>\$251,211,609</b>	<b>\$1,042.74</b>
3353	Electrical Equipment Manufacturing	20	2,999	164,328,947	1,053.74
3359	Other Electrical Equipment & Component Manufacturing	19	1,268	70,420,083	1,068.01
	Other	13	366	16,462,579	864.99
<b>336</b>	<b>TRANSPORTATION EQUIPMENT MANUFACTURING</b>	<b>127</b>	<b>13,892</b>	<b>\$639,041,901</b>	<b>\$884.63</b>
3362	Motor Vehicle Body & Trailer Manufacturing	31	2,113	83,498,619	759.94
3363	Motor Vehicle Parts Manufacturing	40	5,325	233,738,844	844.13
3364	Aerospace Product & Parts Manufacturing	24	2,997	182,285,573	1,169.67
3366	Ship & Boat Building	20	2,176	74,526,114	658.64
	Other	12	1,281	64,992,751	975.69
<b>337</b>	<b>FURNITURE &amp; RELATED PRODUCT MANUFACTURING</b>	<b>166</b>	<b>3,636</b>	<b>\$135,094,163</b>	<b>\$714.51</b>
3371	Household & Institutional Furniture	138	2,912	103,041,245	680.48
3372	Office Furniture & Fixtures Manufacturing	21	653	29,976,028	882.79
3379	Other Furniture Related Product Manufacturing	7	71	2,076,890	562.54
<b>339</b>	<b>MISCELLANEOUS MANUFACTURING</b>	<b>171</b>	<b>3,342</b>	<b>\$134,491,099</b>	<b>\$773.90</b>
3391	Medical Equipment & Supplies Manufacturing	65	1,630	72,338,977	853.46
3399	Other Miscellaneous Manufacturing	106	1,712	62,152,122	698.15

Note: Data may not add due to rounding.

TABLE 5. STATEWIDE SUMMARY CALENDAR YEAR 2018

North American Industry Classification System - Industry Groups		Average Employing Units	Average Covered Employment	Total Calendar Earnings	Average Weekly Earnings
<b>TRADE, TRANSPORTATION &amp; UTILITIES</b>		<b>21,673</b>	<b>248,547</b>	<b>\$10,303,070,453</b>	<b>\$797.18</b>
<b>42</b>	<b>WHOLESALE TRADE</b>	<b>7,247</b>	<b>47,373</b>	<b>\$3,239,476,104</b>	<b>\$1,315.04</b>
<b>423</b>	<b>MERCHANT WHOLESALERS, DURABLE GOODS</b>	<b>3,043</b>	<b>23,626</b>	<b>\$1,495,261,477</b>	<b>\$1,217.09</b>
4231	Motor Vehicle & Part Merchant Wholesalers	287	3,133	176,266,964	1,081.95
4232	Furniture & Furnishings Merchant Wholesalers	73	453	31,251,220	1,326.68
4233	Lumber & Supply Merchant Wholesalers	220	1,558	83,089,201	1,025.59
4234	Commercial Goods Merchant Wholesalers	556	3,065	258,067,526	1,619.20
4235	Metal & Mineral Merchant Wholesalers	143	1,051	62,031,116	1,135.02
4236	Appliances & Electronics Goods Merchant Wholesalers	290	2,538	182,535,539	1,383.10
4237	Hardware & Plumbing Merchant Wholesalers	301	2,745	165,305,656	1,158.09
4238	Machinery & Supply Merchant Wholesalers	886	7,093	429,217,524	1,163.71
4239	Miscellaneous Durable Goods Merchant Wholesalers	287	1,990	107,496,731	1,038.82
<b>424</b>	<b>MERCHANT WHOLESALERS, NONDURABLE GOODS</b>	<b>1,904</b>	<b>17,975</b>	<b>\$1,261,305,422</b>	<b>\$1,349.42</b>
4241	Paper & Paper Product Merchant Wholesalers	125	1,240	90,777,395	1,407.84
4242	Druggist' Goods Merchant Wholesalers	223	1,604	172,107,858	2,063.45
4243	Apparel & Piece Goods Merchant Wholesalers	61	720	41,044,960	1,096.29
4244	Grocery Product Merchant Wholesalers	525	5,680	452,378,577	1,531.62
4245	Farm Product Merchant Wholesalers	81	859	33,245,382	744.28
4246	Chemical merchant Wholesalers	223	1,122	109,769,936	1,881.43
4247	Petroleum Merchant Wholesalers	166	1,242	64,168,481	993.57
4248	Alcoholic Beverage Merchant Wholesalers	68	1,706	97,857,089	1,103.09
4249	Miscellaneous Nondurable Goods Merchant Wholesaler	432	3,802	199,955,744	1,011.39
<b>425</b>	<b>ELECTRONIC MARKETS &amp; AGENTS &amp; BROKERS</b>	<b>2,300</b>	<b>5,772</b>	<b>\$482,909,205</b>	<b>\$1,608.93</b>
<b>44 - 45</b>	<b>RETAIL TRADE</b>	<b>11,040</b>	<b>139,106</b>	<b>\$3,814,488,324</b>	<b>\$527.34</b>
<b>441</b>	<b>MOTOR VEHICLE &amp; PARTS DEALERS</b>	<b>1,531</b>	<b>19,159</b>	<b>\$850,829,454</b>	<b>\$854.02</b>
4411	Automobile Dealers	635	11,783	602,074,539	982.63
4412	Other Motor Vehicle Dealers	171	1,738	78,019,141	863.27
4413	Automotive Parts, Accessories & Tire Stores	725	5,638	170,735,774	582.37
<b>442</b>	<b>FURNITURE &amp; HOME FURNISHINGS STORES</b>	<b>491</b>	<b>3,676</b>	<b>\$117,031,673</b>	<b>\$612.24</b>
4421	Furniture Stores	264	2,039	73,610,382	694.25
4422	Home Furnishings Stores	227	1,637	43,421,291	510.09
<b>443</b>	<b>ELECTRONICS &amp; APPLIANCE STORES</b>	<b>395</b>	<b>3,451</b>	<b>\$120,654,596</b>	<b>\$672.35</b>
<b>444</b>	<b>BUILDING MATERIAL &amp; GARDEN SUPPLY STORES</b>	<b>834</b>	<b>11,924</b>	<b>\$348,538,331</b>	<b>\$562.12</b>
4441	Building Material & Supplies Dealers	595	9,928	299,993,382	581.09
4442	Lawn & Garden Equipment & Supplies Stores	239	1,996	48,544,949	467.71

Note: Data may not add due to rounding.

TABLE 5. STATEWIDE SUMMARY CALENDAR YEAR 2018

North American Industry Classification System - Industry Groups		Average Employing Units	Average Covered Employment	Total Calendar Earnings	Average Weekly Earnings
<b>445</b>	<b>FOOD &amp; BEVERAGE STORES</b>	<b>1,062</b>	<b>19,332</b>	<b>\$438,333,837</b>	<b>\$436.04</b>
4451	Grocery Stores	560	16,738	367,869,454	422.66
4452	Specialty Food Stores	150	830	30,519,239	707.12
4453	Beer, Wine & Liquor Stores	352	1,764	39,945,144	435.47
<b>446</b>	<b>HEALTH &amp; PERSONAL CARE STORES</b>	<b>985</b>	<b>8,726</b>	<b>\$328,516,109</b>	<b>\$724.00</b>
<b>447</b>	<b>GASOLINE STATIONS</b>	<b>1,610</b>	<b>12,263</b>	<b>\$233,122,035</b>	<b>\$365.58</b>
44711	Gasoline Stations with Convenience Stores	1,510	11,035	204,089,430	355.67
44719	Other Gasoline Stations	100	1,228	29,032,605	454.66
<b>448</b>	<b>CLOTHING &amp; CLOTHING ACCESSORIES STORES</b>	<b>1,019</b>	<b>8,063</b>	<b>\$143,121,997</b>	<b>\$341.36</b>
4481	Clothing Stores	758	6,147	95,476,745	298.70
4482	Shoe Stores	130	1,207	20,087,870	320.05
4483	Jewelry, Luggage & Leather Goods Stores	131	709	27,557,382	747.46
<b>451</b>	<b>SPORTING GOODS, HOBBY, BOOK &amp; MUSIC STORES</b>	<b>452</b>	<b>4,487</b>	<b>\$89,806,855</b>	<b>\$384.90</b>
4511	Sporting Goods & Musical Instrument Stores	392	4,009	82,032,148	393.50
4512	Book, Periodical & Music Stores	60	478	7,774,707	312.79
<b>452</b>	<b>GENERAL MERCH&amp;ISE STORES</b>	<b>996</b>	<b>39,172</b>	<b>\$916,801,737</b>	<b>\$450.09</b>
<b>453</b>	<b>MISCELLANEOUS STORE RETAILERS</b>	<b>1,169</b>	<b>7,012</b>	<b>\$154,035,773</b>	<b>\$422.45</b>
4531	Florists	166	617	11,975,554	373.26
4532	Office Supplies, Stationery & Gift Stores	233	1,541	34,507,043	430.63
4533	Used Merchandise Stores	252	2,055	41,207,804	385.62
4539	Other Miscellaneous Store Retailers	518	2,799	66,345,372	455.83
<b>454</b>	<b>NONSTORE RETAILERS</b>	<b>496</b>	<b>1,841</b>	<b>\$73,695,927</b>	<b>\$769.81</b>
4541	Electronic Shopping & Mail-Order Houses	253	711	30,372,027	821.49
4542	Vending Machine Operators	65	466	16,070,017	663.17
4543	Direct Selling Establishments	178	664	27,253,883	789.33
<b>48 - 49</b>	<b>TRANSPORTATION &amp; WAREHOUSING</b>	<b>2,955</b>	<b>54,273</b>	<b>\$2,559,518,402</b>	<b>\$906.92</b>
<b>481</b>	<b>AIR TRANSPORTATION</b>	<b>49</b>	<b>750</b>	<b>\$29,255,065</b>	<b>\$750.13</b>
4811	Scheduled Air Transportation	17	657	22,224,845	650.53
4812	Nonsheduled Air Transportation	32	93	7,030,220	1,453.73
<b>483</b>	<b>WATER TRANSPORTATION</b>	<b>5</b>	<b>28</b>	<b>\$1,959,445</b>	<b>\$1,345.77</b>
<b>484</b>	<b>TRUCK TRANSPORTATION</b>	<b>1,843</b>	<b>32,352</b>	<b>\$1,648,929,703</b>	<b>\$980.16</b>
4841	General Freight Trucking	1,069	26,168	1,359,878,100	999.37
4842	Specialized Freight Trucking	774	6,184	289,051,603	898.88

Note: Data may not add due to rounding.

TABLE 5. STATEWIDE SUMMARY CALENDAR YEAR 2018

North American Industry Classification System - Industry Groups		Average Employing Units	Average Covered Employment	Total Calendar Earnings	Average Weekly Earnings
<b>485</b>	<b>TRANSIT &amp; GROUND PASSENGER TRANSPORTATION</b>	<b>115</b>	<b>1,816</b>	<b>\$39,824,609</b>	<b>\$421.73</b>
4853	Taxi & Limousine Service	29	399	7,313,460	352.49
4854	School & Employee Bus Transportation	12	372	8,237,690	425.85
4855	Charter Bus Industry Service	8	98	2,733,256	536.35
4859	Other Ground Passenger Transportation	61	844	18,405,139	419.37
	Other	5	103	3,135,064	585.34
<b>486</b>	<b>PIPELINE TRANSPORTATION</b>	<b>40</b>	<b>412</b>	<b>\$41,638,243</b>	<b>\$1,943.53</b>
<b>487</b>	<b>SCENIC AND SIGHTSEEING TRANSPORTATION</b>	<b>4</b>	<b>30</b>	<b>\$442,494</b>	<b>\$283.65</b>
<b>488</b>	<b>SUPPORT ACTIVITIES FOR TRANSPORTATION</b>	<b>495</b>	<b>5,349</b>	<b>\$263,384,251</b>	<b>\$946.92</b>
4881	Support Activities for Air Transportation	106	1,034	42,852,436	796.99
4882	Support Activities for Rail Transportation	36	797	40,436,522	975.69
4883	Support Activities for Water Transportation	20	423	23,402,105	1,063.93
4884	Support Activities for Road Transportation	162	778	28,706,918	709.58
4885	Freight Transportation Arrangement	157	2,191	123,500,032	1,083.98
4889	Other Support Activities for Transportation	14	126	4,486,238	684.71
<b>491</b>	<b>POSTAL SERVICE</b>	<b>12</b>	<b>255</b>	<b>\$12,561,591</b>	<b>\$947.33</b>
<b>492</b>	<b>COURIERS &amp; MESSENGERS</b>	<b>164</b>	<b>4,848</b>	<b>\$182,161,270</b>	<b>\$722.59</b>
<b>493</b>	<b>OTHER WAREHOUSING &amp; STORAGE</b>	<b>228</b>	<b>8,433</b>	<b>\$339,361,731</b>	<b>\$773.89</b>
<b>22</b>	<b>UTILITIES</b>	<b>431</b>	<b>7,795</b>	<b>\$689,587,623</b>	<b>\$1,701.26</b>
2211	Power Generation & Supply	180	5,811	571,878,915	1,892.56
2212	Natural Gas Distribution	69	1,042	80,722,072	1,489.78
2213	Water, Sewage & Other Systems	182	942	36,986,636	755.08
<b>INFORMATION</b>		<b>1,214</b>	<b>10,910</b>	<b>\$587,221,350</b>	<b>\$1,035.08</b>
<b>511</b>	<b>PUBLISHING INDUSTRIES, EXCEPT INTERNET</b>	<b>225</b>	<b>2,769</b>	<b>\$118,745,157</b>	<b>\$824.69</b>
5111	Newspaper, Book & Directory Publishers	174	2,386	88,213,882	710.99
5112	Software Publishers	51	383	30,531,275	1,533.00
<b>512</b>	<b>MOTION PICTURE &amp; SOUND RECORDING INDUSTRY</b>	<b>148</b>	<b>1,328</b>	<b>\$24,567,942</b>	<b>\$355.77</b>
5121	Motion Picture & Video Industries	135	1,314	23,865,946	349.29
5122	Sound Recording Industries	13	14	701,996	964.28
<b>515</b>	<b>BROADCASTING, EXCEPT INTERNET</b>	<b>118</b>	<b>1,572</b>	<b>\$71,080,644</b>	<b>\$869.55</b>
5151	Radio & Television Broadcasting	116	1,555	70,409,900	870.76
5152	Cable & Other Subscription Programming	2	17	670,744	758.76

Note: Data may not add due to rounding.

TABLE 5. STATEWIDE SUMMARY CALENDAR YEAR 2018

North American Industry Classification System - Industry Groups		Average Employing Units	Average Covered Employment	Total Calendar Earnings	Average Weekly Earnings
<b>517</b>	<b>TELECOMMUNICATIONS</b>	<b>344</b>	<b>3,487</b>	<b>\$237,413,650</b>	<b>\$1,309.33</b>
5173	Wired & Wireless Telecommunications Carriers	244	3,108	211,555,232	1,309.00
5174	Satellite Telecommunications Carriers	4	7	326,687	897.49
5179	Other Telecommunications	96	372	25,531,731	1,319.88
<b>518</b>	<b>DATA PROCESSING, HOSTING &amp; RELATED SERVICES</b>	<b>287</b>	<b>1,411</b>	<b>\$117,402,788</b>	<b>\$1,600.10</b>
<b>519</b>	<b>OTHER INFORMATION SERVICES</b>	<b>92</b>	<b>343</b>	<b>\$18,011,169</b>	<b>\$1,009.82</b>
<b>FINANCIAL ACTIVITIES</b>		<b>8,419</b>	<b>50,638</b>	<b>\$2,943,254,841</b>	<b>\$1,117.76</b>
<b>52</b>	<b>FINANCE &amp; INSURANCE</b>	<b>4,980</b>	<b>37,005</b>	<b>\$2,411,228,303</b>	<b>\$1,253.07</b>
<b>522</b>	<b>CREDIT INTERMEDIATION &amp; RELATED ACTIVITIES</b>	<b>1,950</b>	<b>19,258</b>	<b>\$1,082,015,582</b>	<b>\$1,080.49</b>
5221	Depository Credit Intermediation	1,409	16,289	887,584,231	1,047.88
5222	Nondepository Credit Intermediation	405	1,858	130,839,311	1,354.22
5223	Activities Related to Credit Intermediation	136	1,111	63,592,040	1,100.74
<b>523</b>	<b>FINANCIAL INVESTMENT &amp; RELATED ACTIVITIES</b>	<b>707</b>	<b>3,083</b>	<b>\$427,840,905</b>	<b>\$2,668.73</b>
5231	Securities & Commodity Contracts Intermediation & Brokerage	297	2,161	337,314,926	3,001.77
5239	Other Financial Investment Activities	410	922	90,525,979	1,888.16
<b>524</b>	<b>INSURANCE CARRIERS &amp; RELATED ACTIVITIES</b>	<b>2,249</b>	<b>14,590</b>	<b>\$894,511,299</b>	<b>\$1,179.04</b>
5241	Insurance Carriers	303	6,438	445,536,428	1,330.85
5242	Insurance Agencies, Brokerages & Support	1,946	8,152	448,974,871	1,059.14
	<b>OTHER</b>	<b>74</b>	<b>74</b>	<b>\$6,860,517</b>	<b>\$1,782.88</b>
<b>53</b>	<b>REAL ESTATE &amp; RENTAL &amp; LEASING</b>	<b>3,439</b>	<b>13,633</b>	<b>\$532,026,538</b>	<b>\$750.48</b>
<b>531</b>	<b>REAL ESTATE</b>	<b>2,824</b>	<b>9,526</b>	<b>\$360,551,622</b>	<b>\$727.87</b>
5311	Lessors of Real Estate	1,110	4,351	149,743,391	661.84
5312	Offices of Real Estate Agents & Brokers	910	1,935	85,887,081	853.58
5313	Activities Related to Real Estate	804	3,240	124,921,150	741.46
<b>532</b>	<b>RENTAL &amp; LEASING SERVICES</b>	<b>601</b>	<b>4,066</b>	<b>\$168,131,732</b>	<b>\$795.20</b>
5321	Automotive Equipment Rental & Leasing	119	1,086	34,092,240	603.70
5322	Consumer Goods Rental	309	1,821	60,676,743	640.78
5323	General Rental Centers	37	226	10,597,035	901.72
5324	Machinery & Equipment Rental & Leasing	136	933	62,765,714	1,293.71
<b>533</b>	<b>LESSORS OF NONFINANCIAL INTANGIBLE ASSETS</b>	<b>14</b>	<b>41</b>	<b>\$3,343,184</b>	<b>\$1,568.10</b>

Note: Data may not add due to rounding.



TABLE 5. STATEWIDE SUMMARY CALENDAR YEAR 2018

North American Industry Classification System - Industry Groups		Average Employing Units	Average Covered Employment	Total Calendar Earnings	Average Weekly Earnings
<b>PROFESSIONAL &amp; BUSINESS SERVICES</b>		<b>14,327</b>	<b>146,671</b>	<b>\$8,846,015,413</b>	<b>\$1,159.85</b>
<b>54</b>	<b>PROFESSIONAL &amp; TECHNICAL SERVICES</b>	<b>9,037</b>	<b>43,998</b>	<b>\$2,783,785,338</b>	<b>\$1,216.74</b>
5411	Legal Services	1,677	5,989	341,195,142	1,095.58
5412	Accounting & Bookkeeping Services	1,263	6,119	326,259,860	1,025.37
5413	Architectural & Engineering Services	1,013	6,342	420,035,659	1,273.67
5414	Specialized Design Services	172	325	16,767,180	992.14
5415	Computer Systems Design & Related Services	1,836	9,628	826,745,817	1,651.33
5416	Management & Technical Consulting Services	1,969	6,683	430,754,895	1,239.53
5417	Scientific Research & Development Services	125	782	52,464,628	1,290.20
5418	Advertising & Related Services	397	3,945	200,539,360	977.57
5419	Other Professional & Technical Services	585	4,185	169,022,797	776.69
<b>55</b>	<b>MANAGEMENT OF COMPANIES &amp; ENTERPRISES</b>	<b>560</b>	<b>34,783</b>	<b>\$4,001,719,160</b>	<b>\$2,212.46</b>
<b>56</b>	<b>ADMINISTRATIVE &amp; SUPPORT SERVICES</b>	<b>4,730</b>	<b>67,890</b>	<b>\$2,060,510,915</b>	<b>\$583.67</b>
<b>561</b>	<b>ADMINISTRATIVE &amp; SUPPORT SERVICES</b>	<b>4,408</b>	<b>64,455</b>	<b>\$1,887,199,154</b>	<b>\$563.06</b>
5611	Office Administrative Services	687	3,950	215,542,776	1,049.38
5612	Facilities Support Services	55	1,411	45,265,810	616.94
5613	Employment Services	1,137	29,116	705,256,672	465.81
5614	Business Support Services	368	8,238	342,310,841	799.09
5615	Travel Arrangement & Reservation Services	110	368	17,834,679	932.00
5616	Investigation & Security Services	288	4,984	140,900,388	543.66
5617	Services to Buildings & Dwellings	1,574	15,132	374,040,290	475.36
5619	Other Support Services	189	1,256	46,047,698	705.04
<b>562</b>	<b>WASTE MANAGEMENT &amp; REMEDIATION SERVICES</b>	<b>322</b>	<b>3,435</b>	<b>\$173,311,761</b>	<b>\$970.28</b>
5621	Waste Collection Services	136	1,276	58,211,072	877.31
5622	Waste Treatment & disposal Services	40	1,012	61,577,327	1,170.14
5629	Remediation & Other Waste Services	146	1,147	53,523,362	897.38
<b>EDUCATION &amp; HEALTH SERVICES</b>		<b>15,801</b>	<b>186,151</b>	<b>\$7,902,042,480</b>	<b>\$816.34</b>
<b>61</b>	<b>EDUCATIONAL SERVICES</b>	<b>878</b>	<b>11,874</b>	<b>\$438,727,946</b>	<b>\$710.55</b>
6111	Elementary & Secondary Schools	102	4,092	143,823,579	675.91
6112	Junior Colleges	7	119	3,330,833	538.27
6113	Colleges & Universities	111	4,236	166,140,469	754.25
6114	Business, Computer, & Management Training	58	170	10,282,223	1,163.15
6115	Technical & Trade Schools	112	884	55,259,167	1,202.12
6116	Other Schools & Instruction	319	1,802	35,266,272	376.36
6117	Educational Support Services	169	571	24,625,403	829.36

Note: Data may not add due to rounding.

TABLE 5. STATEWIDE SUMMARY CALENDAR YEAR 2018

North American Industry Classification System - Industry Groups		Average Employing Units	Average Covered Employment	Total Calendar Earnings	Average Weekly Earnings
<b>62</b>	<b>HEALTH CARE &amp; SOCIAL ASSISTANCE</b>	<b>14,923</b>	<b>174,277</b>	<b>\$7,463,314,534</b>	<b>\$823.55</b>
<b>621</b>	<b>AMBULATORY HEALTH CARE SERVICES</b>	<b>5,899</b>	<b>58,357</b>	<b>\$3,623,432,878</b>	<b>\$1,194.05</b>
6211	Offices of Physicians	2,321	25,324	2,102,887,517	1,596.91
6212	Offices of Dentists	977	7,368	365,521,239	954.02
6213	Offices of Other Health Practitioners	1,612	9,506	400,370,668	809.96
6214	Outpatient Care Centers	358	5,218	300,649,624	1,108.03
6215	Medical & Diagnostic Laboratories	185	1,313	86,401,587	1,265.48
6216	Home Health Care Services	265	6,949	246,554,914	682.32
6219	Other Ambulatory Health Care Services	181	2,679	121,047,329	868.92
<b>622</b>	<b>HOSPITALS</b>	<b>113</b>	<b>43,690</b>	<b>\$2,149,548,043</b>	<b>\$946.15</b>
6221	General Medical & Surgical Hospitals	84	38,997	1,932,375,171	952.92
6222	Psychiatric & Substance Abuse Hospitals	10	1,929	82,169,629	819.17
6223	Other Hospitals	19	2,764	135,003,243	939.30
<b>623</b>	<b>Residential &amp; Mental Health Facilities</b>	<b>641</b>	<b>32,322</b>	<b>\$845,357,343</b>	<b>\$502.97</b>
6231	Nursing Care Facilities (Skilled Nursing Facilities)	279	22,833	597,812,166	503.50
6232	Residential Mental Health Facilities	173	4,414	118,039,465	514.27
6233	Continuing Care & Assisted Living Facilities	153	4,268	104,402,906	470.42
6239	Other Residential Care Facilities	36	807	25,102,806	598.20
<b>624</b>	<b>SOCIAL ASSISTANCE</b>	<b>8,270</b>	<b>39,908</b>	<b>\$844,976,270</b>	<b>\$407.18</b>
6241	Individual & Family Services	7,207	24,986	538,954,253	414.81
6242	Emergency & Other Relief Services	143	1,384	37,209,228	517.02
6243	Vocational Rehabilitation Services	91	3,300	73,715,506	429.58
6244	Child Day Care Services	829	10,238	195,097,283	366.47
<b>LEISURE &amp; HOSPITALITY</b>		<b>7,179</b>	<b>118,418</b>	<b>\$1,957,478,852</b>	<b>\$317.89</b>
<b>71</b>	<b>ARTS, ENTERTAINMENT &amp; RECREATION</b>	<b>987</b>	<b>11,427</b>	<b>\$241,489,777</b>	<b>\$406.41</b>
<b>711</b>	<b>PERFORMING ARTS &amp; SPECTATOR SPORTS</b>	<b>226</b>	<b>2,908</b>	<b>\$78,963,681</b>	<b>\$522.19</b>
7111	Performing Arts Companies	47	452	8,275,941	352.11
7112	Spectator Sports	70	1,456	47,582,541	628.47
7113	Performing Arts & Sports Promoters	49	902	18,986,241	404.79
7114	Agents & Managers for Public Figures	16	31	1,177,769	730.63
7115	Independent Artists, Writers, & Performers	44	67	2,941,189	844.20
<b>712</b>	<b>MUSEUMS, PARKS, &amp; HISTORICAL SITES</b>	<b>55</b>	<b>722</b>	<b>\$20,948,039</b>	<b>\$557.96</b>
<b>713</b>	<b>GAMBLING, RECREATIONAL &amp; AMUSEMENT INDUSTRY</b>	<b>706</b>	<b>7,797</b>	<b>\$141,578,057</b>	<b>\$349.19</b>
7131	Amusement Parks & Arcades	30	502	6,605,979	253.06
7139	Other Amusement & Recreation Industries	676	7,296	134,972,078	355.76
<b>72</b>	<b>ACCOMMODATION &amp; FOOD SERVICES</b>	<b>6,192</b>	<b>106,991</b>	<b>\$1,715,989,075</b>	<b>\$308.44</b>

Note: Data may not add due to rounding.

TABLE 5. STATEWIDE SUMMARY CALENDAR YEAR 2018

North American Industry Classification System - Industry Groups		Average Employing Units	Average Covered Employment	Total Calendar Earnings	Average Weekly Earnings
<b>721</b>	<b>ACCOMMODATION</b>	<b>903</b>	<b>11,313</b>	<b>\$213,313,529</b>	<b>\$362.61</b>
7211	Travel Accommodation	813	10,742	200,973,469	359.79
7212	RV Parks & Recreational Camps	74	470	9,900,906	405.11
7213	Rooming & Boarding Houses	16	101	2,439,154	464.42
<b>722</b>	<b>FOOD SERVICES &amp; DRINKING PLACES</b>	<b>5,289</b>	<b>95,678</b>	<b>\$1,502,675,546</b>	<b>\$302.03</b>
7223	Special Food Services	283	4,628	84,868,881	352.66
7224	Drinking Places, Alcoholic Beverages	144	1,041	16,192,295	299.13
7225	Restaurants & Other Eating Places	4,862	90,009	1,401,614,370	299.46
722511	Full-Service Restaurants	2,083	38,611	669,925,233	333.67
722513	Limited-Service Eating Places	2,290	46,601	652,313,080	269.19
722514	Caterias, Grill Buffets, & Buffets	91	1,704	32,585,668	367.75
722515	Snack & Nonalcoholic Beverage Bars	398	3,093	46,790,389	290.92
<b>OTHER SERVICES</b>		<b>5,355</b>	<b>24,954</b>	<b>\$869,864,498</b>	<b>\$670.36</b>
<b>811</b>	<b>REPAIR &amp; MAINTENANCE</b>	<b>2,212</b>	<b>10,883</b>	<b>\$435,190,327</b>	<b>\$769.00</b>
8111	Automotive Repair & Maintenance	1,396	6,675	236,795,382	682.21
8112	Electronic Equipment Repair & Maintenance	172	990	46,589,307	905.00
8113	Commercial Machinery Repair & Maintenance	479	2,631	132,442,728	968.06
8114	Household Goods Repair & Maintenance	165	587	19,362,910	634.35
<b>812</b>	<b>PERSONAL &amp; LAUNDRY SERVICES</b>	<b>1,338</b>	<b>7,744</b>	<b>\$203,219,861</b>	<b>\$504.66</b>
8121	Personal Care Services	628	2,852	63,659,391	429.25
8122	Death Care Services	249	1,577	48,462,225	590.97
8123	Drycleaning & Laundry Service	222	2,276	66,127,337	558.73
8129	Other Personal Services	239	1,039	24,970,908	462.18
<b>813</b>	<b>MEMBERSHIP ASSOCIATIONS &amp; ORGANIZATIONS</b>	<b>1,103</b>	<b>5,405</b>	<b>\$208,620,178</b>	<b>\$742.26</b>
8131	Religious Organizations	89	311	9,402,952	581.43
8132	Grantmaking & Giving Organizations	124	448	25,700,374	1,103.21
8133	Social Advocacy Organizations	211	1,348	56,151,769	801.07
8134	Civic & Social Organizations	194	1,245	23,574,612	364.14
8139	Professional & Similar Organizations	485	2,053	93,790,471	878.55
<b>814</b>	<b>PRIVATE HOUSEHOLDS</b>	<b>702</b>	<b>922</b>	<b>\$22,834,132</b>	<b>\$476.27</b>
	<b>LOCAL GOVERNMENT</b>	<b>1,970</b>	<b>109,022</b>	<b>\$4,224,507,597</b>	<b>\$745.18</b>
	<b>STATE GOVERNMENT</b>	<b>1,059</b>	<b>67,862</b>	<b>\$3,244,081,420</b>	<b>\$919.31</b>
	<b>NONCLASSIFIABLE ESTABLISHMENTS</b>	<b>0</b>	<b>0</b>	<b>0</b>	<b>\$0.00</b>

Note: Data may not add due to rounding.

TABLE 6. COUNTY SUMMARY CALENDAR YEAR 2018

North American Industry Classification System - Industry Groups	Average Employing Units	Average Covered Employment	Total Calendar Earnings	Average Weekly Earnings
<b>ARKANSAS COUNTY - TOTAL</b>	<b>786</b>	<b>9,605</b>	<b>\$388,458,110</b>	<b>\$777.76</b>
Natural Resources & Mining	54	181	7,571,742	804.48
Construction	45	229	10,756,782	903.32
Manufacturing	31	3,671	158,919,215	832.51
Trade, Transportation & Utilities	187	2,055	88,460,018	827.81
Wholesale Trade	47	448	25,031,866	1,074.51
Retail Trade	86	968	26,274,340	521.98
Transportation, Warehousing & Utilities	54	639	37,153,812	1,118.15
Information	9	59	2,138,813	697.14
Financial Activities	50	295	15,032,514	979.96
Professional & Business Services	55	491	27,843,635	1,090.54
Education & Health Services	202	1,075	37,093,262	663.56
Leisure & Hospitality	68	552	7,563,765	263.51
Other Services	39	99	2,959,953	574.97
Local Government	32	721	24,400,373	650.82
State Government	14	177	5,718,038	621.26
<b>ASHLEY COUNTY - TOTAL</b>	<b>560</b>	<b>6,611</b>	<b>\$287,944,986</b>	<b>\$837.60</b>
Natural Resources & Mining	44	343	14,047,075	787.57
Construction	33	564	26,540,645	904.96
Manufacturing	24	1,664	115,614,352	1,336.15
Trade, Transportation & Utilities	110	1,220	40,944,074	645.40
Wholesale Trade	22	193	10,526,419	1,048.87
Retail Trade	63	716	17,361,368	466.30
Transportation, Warehousing & Utilities	25	311	13,056,287	807.34
Information	6	36	1,064,484	568.63
Financial Activities	37	179	6,807,437	731.35
Professional & Business Services	39	213	7,475,967	674.97
Education & Health Services	154	968	34,939,640	694.13
Leisure & Hospitality	34	349	4,688,878	258.37
Other Services	37	143	4,806,373	646.37
Local Government	32	827	27,054,563	629.12
State Government	10	105	3,961,498	725.55

Note: Data may not add due to rounding.

TABLE 6. COUNTY SUMMARY CALENDAR YEAR 2018

North American Industry Classification System - Industry Groups	Average Employing Units	Average Covered Employment	Total Calendar Earnings	Average Weekly Earnings
<b>BAXTER COUNTY - TOTAL</b>	<b>1,227</b>	<b>14,834</b>	<b>\$520,312,319</b>	<b>\$674.53</b>
Natural Resources & Mining	6	60	2,435,263	780.53
Construction	112	499	17,293,516	666.47
Manufacturing	54	2,467	95,591,732	745.16
Trade, Transportation & Utilities	258	2,798	77,157,933	530.31
Wholesale Trade	35	236	9,923,941	808.67
Retail Trade	199	2,354	59,213,732	483.74
Transportation, Warehousing & Utilities	24	208	8,020,260	741.52
Information	20	173	7,820,320	869.31
Financial Activities	117	704	41,448,063	1,132.21
Professional & Business Services	138	808	26,469,090	629.98
Education & Health Services	269	3,856	165,656,619	826.17
Leisure & Hospitality	121	1,675	25,457,178	292.28
Other Services	85	376	11,259,446	575.87
Local Government	36	1,117	39,275,312	676.18
State Government	11	301	10,447,847	667.51
<b>BENTON COUNTY - TOTAL</b>	<b>6,571</b>	<b>119,328</b>	<b>\$7,071,967,519</b>	<b>\$1,139.71</b>
Natural Resources & Mining	44	766	55,519,437	1,393.84
Construction	644	4,960	237,864,606	922.24
Manufacturing	193	12,211	547,626,234	862.44
Trade, Transportation & Utilities	1,688	28,692	1,483,990,491	994.64
Wholesale Trade	760	6,012	594,982,197	1,903.19
Retail Trade	740	12,501	361,284,937	555.78
Transportation, Warehousing & Utilities	188	10,179	527,723,357	997.01
Information	81	932	53,664,635	1,107.31
Financial Activities	666	3,924	234,754,187	1,150.49
Professional & Business Services	1,282	31,815	3,254,927,581	1,967.46
Education & Health Services	828	11,744	476,738,189	780.66
Leisure & Hospitality	632	12,729	238,291,180	360.01
Other Services	412	2,238	83,771,925	719.84
Local Government	84	8,282	366,580,386	851.20
State Government	17	1,035	38,238,668	710.49

Note: Data may not add due to rounding.

TABLE 6. COUNTY SUMMARY CALENDAR YEAR 2018

North American Industry Classification System - Industry Groups	Average Employing Units	Average Covered Employment	Total Calendar Earnings	Average Weekly Earnings
<b>BOONE COUNTY - TOTAL</b>	<b>961</b>	<b>13,918</b>	<b>540,253,413</b>	<b>\$746.48</b>
Manufacturing	61	1,880	79,121,148	809.34
Trade, Transportation & Utilities	248	3,563	148,684,050	802.50
Wholesale Trade	38	336	12,200,146	698.27
Retail Trade	165	2,011	54,967,490	525.64
Transportation, Warehousing & Utilities	45	1,216	81,516,414	1,289.16
Information	14	260	12,215,004	903.48
Financial Activities	95	451	23,241,705	991.03
Professional & Business Services	98	1,466	68,791,912	902.40
Education & Health Services	169	1,589	50,706,189	613.67
Leisure & Hospitality	81	1,178	18,308,486	298.88
Other Services	57	259	9,235,389	685.73
Local Government	53	2,161	85,812,454	763.65
State Government	17	726	28,419,523	752.80
Other	68	385	15,717,553	785.09
<b>BRADLEY COUNTY - TOTAL</b>	<b>363</b>	<b>3,786</b>	<b>\$131,616,560</b>	<b>\$668.54</b>
Natural Resources & Mining	44	254	10,059,724	761.64
Construction	19	84	2,684,561	614.60
Manufacturing	12	945	39,702,033	807.94
Trade, Transportation & Utilities	71	495	14,600,659	567.24
Wholesale Trade	11	83	4,521,236	1,047.55
Retail Trade	38	308	6,560,246	409.61
Transportation, Warehousing & Utilities	22	104	3,519,177	650.74
Information	3	25	741,774	570.60
Financial Activities	25	133	5,711,404	825.82
Professional & Business Services	26	98	3,428,756	672.83
Education & Health Services	98	685	25,124,871	705.36
Leisure & Hospitality	16	181	2,240,467	238.04
Other Services	25	97	2,654,654	526.30
Local Government	14	444	14,678,483	635.76
State Government	10	345	9,989,174	556.81

Note: Data may not add due to rounding.

TABLE 6. COUNTY SUMMARY CALENDAR YEAR 2018

North American Industry Classification System - Industry Groups	Average Employing Units	Average Covered Employment	Total Calendar Earnings	Average Weekly Earnings
<b>CALHOUN COUNTY - TOTAL</b>	<b>103</b>	<b>3,021</b>	<b>\$166,427,394</b>	<b>\$1,059.43</b>
Natural Resources & Mining	6	35	1,245,264	684.21
Construction	11	116	5,217,939	865.04
Manufacturing	7	2,204	133,628,072	1,165.96
Trade, Transportation & Utilities	21	212	8,266,989	749.91
Retail Trade	10	52	1,064,374	393.63
Transportation, Warehousing & Utilities	11	160	7,202,615	865.70
Professional & Business Services	6	9	355,160	758.89
Education & Health Services	20	59	2,381,563	776.26
Leisure & Hospitality	4	13	187,741	277.72
Local Government	11	185	5,617,077	583.90
State Government	7	79	3,280,071	798.46
Other	10	109	6,247,518	1,102.24
<b>CARROLL COUNTY - TOTAL</b>	<b>807</b>	<b>10,572</b>	<b>\$318,923,872</b>	<b>\$580.13</b>
Natural Resources & Mining	20	202	7,598,840	723.42
Trade, Transportation & Utilities	196	1,643	51,304,904	600.51
Wholesale Trade	23	199	6,813,123	658.40
Retail Trade	144	1,101	25,424,328	444.08
Transportation, Warehousing & Utilities	29	343	19,067,453	1,069.04
Information	10	71	3,297,106	893.04
Financial Activities	61	380	18,208,664	921.49
Professional & Business Services	62	241	8,703,122	694.47
Education & Health Services	100	1,120	36,278,592	622.92
Leisure & Hospitality	174	1,615	24,653,132	293.56
Other Services	47	140	3,592,350	493.45
Local Government	26	1,023	33,118,479	622.57
State Government	9	91	3,587,890	758.22
Other	102	4,046	128,580,793	611.15

Note: Data may not add due to rounding.

TABLE 6. COUNTY SUMMARY CALENDAR YEAR 2018

North American Industry Classification System - Industry Groups	Average Employing Units	Average Covered Employment	Total Calendar Earnings	Average Weekly Earnings
<b>CHICOT COUNTY - TOTAL</b>	<b>496</b>	<b>3,012</b>	<b>\$97,554,554</b>	<b>\$622.86</b>
Natural Resources & Mining	51	221	8,544,246	743.50
Construction	15	133	6,282,117	908.35
Manufacturing	6	17	1,032,019	1,167.44
Trade, Transportation & Utilities	68	642	18,965,063	568.09
Wholesale Trade	14	56	3,153,331	1,082.87
Retail Trade	40	304	7,914,402	500.66
Transportation, Warehousing & Utilities	14	282	7,897,330	538.55
Professional & Business Services	17	45	1,813,538	775.02
Education & Health Services	249	668	17,939,536	516.45
Leisure & Hospitality	15	137	1,708,304	239.80
Other Services	18	78	2,491,133	614.18
Local Government	17	586	20,736,453	680.51
State Government	10	312	10,182,716	627.63
Other	30	173	7,859,429	\$873.66
<b>CLARK COUNTY - TOTAL</b>	<b>651</b>	<b>9,302</b>	<b>\$322,192,569</b>	<b>\$666.09</b>
Natural Resources & Mining	48	283	12,150,469	825.66
Construction	25	62	2,409,011	747.21
Manufacturing	32	1,389	74,595,527	1,032.78
Trade, Transportation & Utilities	136	1,501	45,131,496	578.22
Wholesale Trade	14	42	1,900,174	870.04
Retail Trade	92	1,248	33,694,503	519.21
Transportation, Warehousing & Utilities	30	211	9,536,819	869.20
Information	3	12	425,223	681.45
Financial Activities	72	299	11,729,512	754.41
Professional & Business Services	52	609	26,224,475	828.11
Education & Health Services	127	1,662	54,176,545	626.87
Leisure & Hospitality	67	1,154	16,128,358	268.77
Other Services	45	213	7,678,165	693.23
Local Government	30	966	31,384,606	624.79
State Government	14	1,152	40,159,182	670.39

Note: Data may not add due to rounding.



TABLE 6. COUNTY SUMMARY CALENDAR YEAR 2018

North American Industry Classification System - Industry Groups	Average Employing Units	Average Covered Employment	Total Calendar Earnings	Average Weekly Earnings
<b>CLAY COUNTY - TOTAL</b>	<b>373</b>	<b>3,257</b>	<b>\$97,571,038</b>	<b>\$576.10</b>
Natural Resources & Mining	58	276	7,808,210	544.05
Construction	29	132	4,277,388	623.16
Manufacturing	13	116	3,499,062	580.08
Trade, Transportation & Utilities	88	763	25,534,688	643.58
Wholesale Trade	20	236	8,707,579	709.55
Retail Trade	42	394	10,416,330	508.41
Transportation, Warehousing & Utilities	26	133	6,410,779	926.95
Information	6	31	877,896	544.60
Financial Activities	23	98	3,721,782	730.33
Professional & Business Services	27	133	4,453,861	643.99
Education & Health Services	51	512	14,844,972	557.58
Leisure & Hospitality	24	264	3,106,975	226.32
Other Services	24	77	2,440,863	609.61
Local Government	21	809	25,336,162	602.27
State Government	9	46	1,669,179	697.82
<b>CLEBURNE COUNTY - TOTAL</b>	<b>641</b>	<b>6,235</b>	<b>\$204,880,015</b>	<b>\$631.92</b>
Natural Resources & Mining	25	192	11,177,298	1,119.52
Construction	64	308	12,492,226	779.98
Manufacturing	31	1,240	48,909,350	758.52
Trade, Transportation & Utilities	147	1,138	36,495,341	616.73
Wholesale Trade	33	117	5,149,960	846.48
Retail Trade	94	912	25,940,889	547.00
Transportation, Warehousing & Utilities	20	109	5,404,492	953.51
Information	8	50	1,707,382	656.69
Financial Activities	78	265	10,862,775	788.30
Professional & Business Services	64	231	9,463,466	787.83
Education & Health Services	81	923	27,748,596	578.14
Leisure & Hospitality	81	903	13,941,487	296.91
Other Services	36	118	3,204,050	522.17
Local Government	18	765	25,418,350	638.97
State Government	8	102	3,459,694	652.28

Note: Data may not add due to rounding.

TABLE 6. COUNTY SUMMARY CALENDAR YEAR 2018

North American Industry Classification System - Industry Groups	Average Employing Units	Average Covered Employment	Total Calendar Earnings	Average Weekly Earnings
<b>CLEVELAND COUNTY - TOTAL</b>	<b>130</b>	<b>1,056</b>	<b>\$33,482,978</b>	<b>\$609.76</b>
Natural Resources & Mining	16	169	6,452,861	734.28
Construction	8	12	452,026	724.40
Manufacturing	4	113	4,683,336	797.03
Trade, Transportation & Utilities	35	176	5,503,098	601.30
Retail Trade	19	73	1,100,326	289.86
Other Trade, Transportation & Utilities	16	103	4,402,772	822.03
Financial Activities	4	26	1,172,773	867.44
Education & Health Services	31	187	3,359,495	345.48
Other Services	5	12	435,813	698.42
Local Government	12	306	9,721,419	610.95
State Government	6	28	1,150,554	790.22
Other	9	27	551,603	392.88
<b>COLUMBIA COUNTY - TOTAL</b>	<b>697</b>	<b>7,911</b>	<b>\$318,525,357</b>	<b>\$774.30</b>
Natural Resources & Mining	38	343	21,873,603	1,226.37
Construction	35	163	6,403,364	755.47
Manufacturing	32	1,875	111,085,983	1,139.34
Trade, Transportation & Utilities	165	1,341	45,461,357	651.94
Wholesale Trade	31	202	11,303,232	1,076.09
Retail Trade	95	926	22,879,777	475.16
Transportation, Warehousing & Utilities	39	213	11,278,348	1,018.27
Information	6	43	1,530,442	684.46
Financial Activities	63	343	16,514,960	925.93
Professional & Business Services	50	288	9,121,440	609.07
Education & Health Services	173	992	25,372,877	491.87
Leisure & Hospitality	54	722	10,330,417	275.15
Other Services	42	131	3,028,772	444.62
Local Government	27	1,065	38,460,920	694.49
State Government	12	605	29,341,222	932.65

Note: Data may not add due to rounding.

TABLE 6. COUNTY SUMMARY CALENDAR YEAR 2018

North American Industry Classification System - Industry Groups	Average Employing Units	Average Covered Employment	Total Calendar Earnings	Average Weekly Earnings
<b>CONWAY COUNTY - TOTAL</b>	<b>526</b>	<b>6,331</b>	<b>\$246,994,643</b>	<b>\$750.26</b>
Natural Resources & Mining	29	238	9,498,584	767.50
Construction	48	467	27,811,299	1,145.25
Manufacturing	19	913	54,210,441	1,141.85
Trade, Transportation & Utilities	117	1,330	43,545,330	629.63
Wholesale Trade	15	130	4,934,734	729.99
Retail Trade	77	760	20,487,623	518.41
Transportation, Warehousing & Utilities	25	440	18,122,973	792.09
Information	3	14	199,379	273.87
Financial Activities	38	157	7,057,802	864.50
Professional & Business Services	39	475	14,716,644	595.82
Education & Health Services	130	797	29,822,115	719.58
Leisure & Hospitality	37	444	6,481,150	280.72
Other Services	26	86	2,927,542	654.64
Local Government	31	1,020	38,375,375	723.52
State Government	9	390	12,348,982	608.92
<b>CRAIGHEAD COUNTY - TOTAL</b>	<b>2,830</b>	<b>50,710</b>	<b>\$1,993,726,019</b>	<b>\$756.08</b>
Natural Resources & Mining	99	394	15,009,077	732.58
Construction	238	2,140	99,582,260	894.88
Manufacturing	101	6,846	327,320,177	919.46
Trade, Transportation & Utilities	786	10,403	364,187,235	673.23
Wholesale Trade	187	1,926	101,385,137	1,012.31
Retail Trade	466	6,725	176,351,506	504.29
Transportation, Warehousing & Utilities	133	1,752	86,450,592	948.92
Information	20	398	18,365,598	887.40
Financial Activities	278	1,600	85,230,499	1,024.41
Professional & Business Services	373	4,708	150,755,558	615.79
Education & Health Services	455	10,949	536,354,111	942.05
Leisure & Hospitality	262	5,625	88,622,194	302.98
Other Services	161	746	22,971,865	592.18
Local Government	35	3,959	156,773,469	761.52
State Government	22	2,942	128,553,976	840.31

Note: Data may not add due to rounding.

TABLE 6. COUNTY SUMMARY CALENDAR YEAR 2018

North American Industry Classification System - Industry Groups	Average Employing Units	Average Covered Employment	Total Calendar Earnings	Average Weekly Earnings
<b>CRAWFORD COUNTY - TOTAL</b>	<b>1,244</b>	<b>19,439</b>	<b>\$697,137,405</b>	<b>\$689.67</b>
Natural Resources & Mining	22	244	10,244,456	807.41
Construction	145	1,044	45,888,888	845.29
Manufacturing	63	4,549	186,734,193	789.41
Trade, Transportation & Utilities	309	5,584	202,383,608	696.99
Wholesale Trade	75	735	37,277,289	975.33
Retail Trade	169	1,978	54,245,611	527.39
Transportation, Warehousing & Utilities	65	2,871	110,860,708	742.58
Information	9	47	1,845,135	754.97
Financial Activities	125	507	20,699,079	785.13
Professional & Business Services	164	1,671	57,458,020	661.26
Education & Health Services	183	1,657	53,779,301	624.15
Leisure & Hospitality	91	1,555	22,763,967	281.52
Other Services	81	422	15,183,901	691.94
Local Government	42	2,007	75,259,001	721.12
State Government	10	152	4,897,856	619.67
<b>CRITTENDEN COUNTY - TOTAL</b>	<b>1,196</b>	<b>16,000</b>	<b>\$593,625,800</b>	<b>\$713.49</b>
Natural Resources & Mining	56	252	8,702,414	664.10
Construction	43	434	19,810,675	877.82
Manufacturing	43	2,097	113,620,747	1,041.97
Trade, Transportation & Utilities	300	4,301	169,686,504	758.71
Wholesale Trade	57	768	38,232,822	957.35
Retail Trade	155	1,914	47,197,426	474.21
Transportation, Warehousing & Utilities	88	1,619	84,256,256	1,000.81
Information	5	51	1,982,777	747.65
Financial Activities	99	455	21,132,281	893.16
Professional & Business Services	106	1,030	34,470,520	643.59
Education & Health Services	289	2,000	66,696,350	641.31
Leisure & Hospitality	130	2,490	45,889,666	354.42
Other Services	71	498	16,796,392	648.61
Local Government	41	1,975	80,323,622	782.12
State Government	13	417	14,513,852	669.33

Note: Data may not add due to rounding.

TABLE 6. COUNTY SUMMARY CALENDAR YEAR 2018

North American Industry Classification System - Industry Groups	Average Employing Units	Average Covered Employment	Total Calendar Earnings	Average Weekly Earnings
<b>CROSS COUNTY - TOTAL</b>	<b>475</b>	<b>4,773</b>	<b>\$160,005,213</b>	<b>\$644.67</b>
Natural Resources & Mining	44	285	9,238,940	623.41
Construction	23	60	2,134,977	684.29
Manufacturing	10	344	11,645,257	651.01
Trade, Transportation & Utilities	126	1,167	40,169,128	661.94
Wholesale Trade	27	283	14,770,222	1,003.68
Retail Trade	68	766	20,421,578	512.69
Transportation, Warehousing & Utilities	31	118	4,977,328	811.17
Information	6	43	1,310,233	585.97
Financial Activities	45	283	10,775,881	732.26
Professional & Business Services	40	151	7,053,335	898.29
Education & Health Services	89	983	32,732,233	640.35
Leisure & Hospitality	32	311	4,254,591	263.08
Other Services	34	115	3,756,680	628.21
Local Government	17	678	24,209,153	686.67
State Government	9	353	12,724,805	693.22
<b>DALLAS COUNTY - TOTAL</b>	<b>231</b>	<b>2,692</b>	<b>\$87,216,249</b>	<b>\$623.04</b>
Natural Resources & Mining	25	123	4,642,363	725.82
Construction	13	60	2,232,815	715.65
Manufacturing	9	562	23,215,338	794.39
Trade, Transportation & Utilities	54	450	13,514,229	577.53
Wholesale Trade	6	14	619,687	851.22
Retail Trade	35	319	8,393,324	505.99
Transportation, Warehousing & Utilities	13	117	4,501,218	739.85
Information	4	18	573,710	612.94
Financial Activities	14	72	3,431,120	916.43
Professional & Business Services	10	29	861,316	571.16
Education & Health Services	55	814	26,291,608	621.14
Leisure & Hospitality	14	146	1,865,081	245.66
Other Services	12	49	1,253,907	492.11
Local Government	14	342	8,264,755	464.73
State Government	7	27	1,070,007	762.11

Note: Data may not add due to rounding.

TABLE 6. COUNTY SUMMARY CALENDAR YEAR 2018

North American Industry Classification System - Industry Groups	Average Employing Units	Average Covered Employment	Total Calendar Earnings	Average Weekly Earnings
<b>DESHA COUNTY - TOTAL</b>	<b>550</b>	<b>4,634</b>	<b>\$165,381,078</b>	<b>\$686.32</b>
Natural Resources & Mining	63	261	8,872,881	653.76
Construction	17	97	3,663,381	726.28
Manufacturing	15	1,057	57,001,369	1,037.07
Trade, Transportation & Utilities	109	849	28,552,896	646.75
Wholesale Trade	19	186	10,596,316	1,095.57
Retail Trade	62	475	10,401,305	421.11
Transportation, Warehousing & Utilities	28	188	7,555,275	772.84
Information	4	17	655,382	741.38
Financial Activities	29	199	7,180,438	693.90
Professional & Business Services	35	96	3,517,743	704.68
Education & Health Services	186	753	19,961,354	509.79
Leisure & Hospitality	37	353	4,888,361	266.31
Other Services	25	59	1,284,253	418.60
Local Government	21	785	26,198,104	641.80
State Government	9	108	3,604,916	641.90
<b>DREW COUNTY - TOTAL</b>	<b>537</b>	<b>6,392</b>	<b>\$225,795,068</b>	<b>\$679.32</b>
Natural Resources & Mining	53	366	15,521,019	815.52
Construction	26	149	6,921,612	893.34
Manufacturing	21	883	37,805,992	823.37
Trade, Transportation & Utilities	116	1,072	32,123,153	576.26
Wholesale Trade	17	101	4,204,270	800.51
Retail Trade	77	849	22,351,746	506.29
Transportation, Warehousing & Utilities	22	122	5,567,137	877.54
Information	6	44	1,763,084	770.58
Financial Activities	49	228	11,239,527	948.00
Professional & Business Services	35	287	13,084,203	876.72
Education & Health Services	139	921	31,187,350	651.20
Leisure & Hospitality	41	668	8,862,111	255.13
Other Services	15	56	1,711,675	587.80
Local Government	23	1,159	41,759,210	692.89
State Government	13	559	23,816,132	819.32

Note: Data may not add due to rounding.

TABLE 6. COUNTY SUMMARY CALENDAR YEAR 2018

North American Industry Classification System - Industry Groups	Average Employing Units	Average Covered Employment	Total Calendar Earnings	Average Weekly Earnings
<b>FAULKNER COUNTY - TOTAL</b>	<b>2,862</b>	<b>40,330</b>	<b>\$1,641,228,304</b>	<b>\$782.60</b>
Natural Resources & Mining	43	282	21,904,461	1,493.76
Construction	328	2,768	128,872,378	895.35
Manufacturing	101	3,239	173,975,322	1,032.94
Trade, Transportation & Utilities	644	7,677	242,444,326	607.32
Wholesale Trade	139	689	36,683,217	1,023.87
Retail Trade	416	6,198	163,301,258	506.68
Transportation, Warehousing & Utilities	89	790	42,459,851	1,033.59
Information	21	228	14,222,976	1,199.64
Financial Activities	312	1,427	66,812,984	900.40
Professional & Business Services	437	4,874	325,769,932	1,285.35
Education & Health Services	456	7,249	281,245,605	746.11
Leisure & Hospitality	265	5,171	79,064,396	294.04
Other Services	195	896	26,531,558	569.44
Local Government	42	3,247	142,020,476	841.13
State Government	18	3,272	138,363,890	813.22
<b>FRANKLIN COUNTY - TOTAL</b>	<b>364</b>	<b>4,518</b>	<b>\$161,903,863</b>	<b>\$689.14</b>
Natural Resources & Mining	20	240	16,101,655	1,290.20
Construction	32	113	4,295,044	730.95
Manufacturing	15	958	37,400,087	750.76
Trade, Transportation & Utilities	87	962	34,503,389	689.74
Wholesale Trade	11	55	1,356,233	474.21
Retail Trade	54	623	14,960,739	461.81
Transportation, Warehousing & Utilities	22	284	18,186,417	1,231.47
Information	5	20	672,560	646.69
Financial Activities	30	79	3,000,078	730.30
Professional & Business Services	37	339	12,965,694	735.52
Education & Health Services	67	579	16,222,579	538.81
Leisure & Hospitality	30	340	4,465,554	252.58
Other Services	14	54	1,516,886	540.20
Local Government	19	707	24,933,132	678.19
State Government	8	127	5,827,205	882.38

Note: Data may not add due to rounding.

TABLE 6. COUNTY SUMMARY CALENDAR YEAR 2018

North American Industry Classification System - Industry Groups	Average Employing Units	Average Covered Employment	Total Calendar Earnings	Average Weekly Earnings
<b>FULTON COUNTY - TOTAL</b>	<b>198</b>	<b>1,959</b>	<b>\$58,941,413</b>	<b>\$578.61</b>
Manufacturing	12	120	2,920,503	468.03
Trade, Transportation & Utilities	47	294	10,366,083	678.05
Retail Trade	26	168	3,901,054	446.55
Other Trade, Transportation & Utilities	21	126	6,465,029	986.73
Information	4	27	597,072	425.26
Financial Activities	18	85	3,400,066	769.25
Professional & Business Services	18	45	1,770,276	756.53
Education & Health Services	43	524	13,279,005	487.34
Leisure & Hospitality	15	124	1,688,225	261.82
Other Services	8	15	476,797	611.28
Local Government	12	534	16,103,690	579.94
State Government	9	61	2,067,014	651.64
Other	12	130	6,272,682	927.91
<b>GARLAND COUNTY - TOTAL</b>	<b>3,052</b>	<b>36,755</b>	<b>\$1,323,055,274</b>	<b>\$692.24</b>
Natural Resources & Mining	27	243	12,736,098	1,007.92
Construction	321	1,765	66,960,261	729.57
Manufacturing	90	2,526	120,176,956	914.92
Trade, Transportation & Utilities	674	7,298	236,358,057	622.82
Wholesale Trade	144	821	45,426,858	1,064.06
Retail Trade	469	5,994	167,954,558	538.85
Transportation, Warehousing & Utilities	61	483	22,976,641	914.82
Information	30	380	14,576,470	737.68
Financial Activities	334	1,465	69,579,804	913.36
Professional & Business Services	376	3,046	118,265,420	746.66
Education & Health Services	537	8,087	363,360,701	864.07
Leisure & Hospitality	383	7,115	134,532,790	363.62
Other Services	224	1,004	26,491,520	507.42
Local Government	34	2,853	123,548,227	832.78
State Government	22	973	36,468,970	720.79

Note: Data may not add due to rounding.



TABLE 6. COUNTY SUMMARY CALENDAR YEAR 2018

North American Industry Classification System - Industry Groups	Average Employing Units	Average Covered Employment	Total Calendar Earnings	Average Weekly Earnings
<b>GRANT COUNTY - TOTAL</b>	<b>341</b>	<b>4,143</b>	<b>\$164,522,678</b>	<b>\$763.67</b>
Natural Resources & Mining	26	176	9,190,521	1,004.21
Construction	32	220	11,995,498	1,048.56
Manufacturing	17	1,352	66,729,385	949.15
Trade, Transportation & Utilities	84	626	19,389,314	595.64
Wholesale Trade	16	70	4,327,553	1,188.89
Retail Trade	45	491	12,693,022	497.14
Transportation, Warehousing & Utilities	23	65	2,368,739	700.81
Financial Activities	18	101	6,005,990	1,143.56
Professional & Business Services	30	114	5,371,284	906.09
Education & Health Services	77	424	11,225,304	509.13
Leisure & Hospitality	23	311	3,774,998	233.43
Local Government	10	723	27,573,452	733.41
State Government	7	42	1,535,082	702.88
Other	17	54	1,731,850	616.76
<b>GREENE COUNTY - TOTAL</b>	<b>905</b>	<b>15,414</b>	<b>\$579,981,321</b>	<b>\$723.59</b>
Natural Resources & Mining	39	231	8,595,291	715.56
Construction	75	377	15,072,382	768.84
Manufacturing	65	5,076	236,415,423	895.68
Trade, Transportation & Utilities	238	2,672	82,342,264	592.63
Wholesale Trade	43	444	19,819,188	858.42
Retail Trade	160	1,912	50,339,236	506.31
Transportation, Warehousing & Utilities	35	316	12,183,840	741.47
Information	11	183	7,166,242	753.07
Financial Activities	77	546	26,322,227	927.10
Professional & Business Services	91	836	26,624,560	612.45
Education & Health Services	151	2,032	77,515,245	733.60
Leisure & Hospitality	76	1,310	19,494,563	286.18
Other Services	40	157	4,303,698	527.16
Local Government	31	1,599	59,531,377	715.97
State Government	11	395	16,598,049	808.08

Note: Data may not add due to rounding.

TABLE 6. COUNTY SUMMARY CALENDAR YEAR 2018

North American Industry Classification System - Industry Groups	Average Employing Units	Average Covered Employment	Total Calendar Earnings	Average Weekly Earnings
<b>HEMPSTEAD COUNTY - TOTAL</b>	<b>510</b>	<b>7,800</b>	<b>\$282,125,304</b>	<b>\$695.58</b>
Natural Resources & Mining	23	258	11,651,309	868.46
Construction	28	167	7,695,534	886.17
Manufacturing	30	2,326	99,892,290	825.88
Trade, Transportation & Utilities	123	1,259	45,657,810	697.41
Wholesale Trade	21	155	5,532,152	686.37
Retail Trade	76	834	21,125,192	487.11
Transportation, Warehousing & Utilities	26	270	19,000,466	1,353.31
Information	7	25	1,174,994	903.84
Financial Activities	43	205	8,850,651	830.27
Professional & Business Services	30	222	8,597,340	744.75
Education & Health Services	108	1,049	28,622,340	524.72
Leisure & Hospitality	47	628	9,429,175	288.74
Other Services	27	111	3,822,484	662.25
Local Government	28	831	31,240,313	722.95
State Government	16	719	25,491,064	681.80
<b>HOT SPRING COUNTY - TOTAL</b>	<b>621</b>	<b>8,185</b>	<b>\$293,908,626</b>	<b>\$690.54</b>
Natural Resources & Mining	22	124	4,074,766	631.94
Construction	50	212	7,197,926	652.93
Manufacturing	28	1,423	71,036,750	960.01
Trade, Transportation & Utilities	152	1,575	64,748,346	790.58
Wholesale Trade	16	88	4,863,839	1,062.90
Retail Trade	99	860	21,554,006	481.98
Transportation, Warehousing & Utilities	37	627	38,330,501	1,175.64
Information	6	44	1,932,866	844.78
Financial Activities	51	212	9,448,199	857.06
Professional & Business Services	52	846	21,442,984	487.43
Education & Health Services	131	1,104	37,750,091	657.58
Leisure & Hospitality	53	697	9,080,655	250.54
Other Services	36	144	3,607,393	481.76
Local Government	27	945	35,097,110	714.23
State Government	13	859	28,491,540	637.85

Note: Data may not add due to rounding.

TABLE 6. COUNTY SUMMARY CALENDAR YEAR 2018

North American Industry Classification System - Industry Groups	Average Employing Units	Average Covered Employment	Total Calendar Earnings	Average Weekly Earnings
<b>HOWARD COUNTY - TOTAL</b>	<b>362</b>	<b>6,881</b>	<b>227,467,436</b>	<b>\$635.72</b>
Natural Resources & Mining	18	211	8,147,393	742.56
Construction	22	146	5,028,901	662.39
Manufacturing	18	3,306	112,341,109	653.48
Trade, Transportation & Utilities	86	875	29,961,790	658.50
Wholesale Trade	17	81	3,491,363	828.91
Retail Trade	51	596	16,143,993	520.91
Transportation, Warehousing & Utilities	18	198	10,326,434	1,002.96
Professional & Business Services	23	152	5,021,763	635.34
Education & Health Services	86	848	27,202,457	616.89
Leisure & Hospitality	22	337	4,688,181	267.53
Other Services	22	102	3,311,354	624.31
Local Government	17	653	22,494,583	662.46
State Government	10	99	3,252,488	631.80
Other	38	152	6,017,417	761.31
<b>INDEPENDENCE COUNTY - TOTAL</b>	<b>898</b>	<b>15,836</b>	<b>\$608,523,484</b>	<b>\$738.97</b>
Natural Resources & Mining	18	247	13,046,877	1,015.80
Construction	61	492	25,791,357	1,008.10
Manufacturing	40	3,231	143,406,697	853.55
Trade, Transportation & Utilities	230	2,899	101,567,331	673.76
Wholesale Trade	28	308	11,858,269	740.40
Retail Trade	155	1,868	48,271,349	496.95
Transportation, Warehousing & Utilities	47	723	41,437,713	1,102.18
Information	12	107	3,669,832	659.57
Financial Activities	85	545	28,900,861	1,019.79
Professional & Business Services	91	1,182	37,593,213	611.63
Education & Health Services	159	3,550	160,231,267	867.99
Leisure & Hospitality	80	1,254	17,806,892	273.08
Other Services	62	335	8,058,919	462.62
Local Government	45	1,408	46,888,578	640.41
State Government	15	586	21,561,660	707.59

Note: Data may not add due to rounding.

TABLE 6. COUNTY SUMMARY CALENDAR YEAR 2018

North American Industry Classification System - Industry Groups	Average Employing Units	Average Covered Employment	Total Calendar Earnings	Average Weekly Earnings
<b>IZARD COUNTY - TOTAL</b>	<b>254</b>	<b>3,050</b>	<b>\$99,398,053</b>	<b>\$626.72</b>
Natural Resources & Mining	8	140	7,520,917	1,033.09
Construction	23	83	2,992,112	693.26
Manufacturing	9	326	11,663,183	688.01
Trade, Transportation & Utilities	65	500	15,280,343	587.71
Wholesale Trade	13	39	1,145,858	565.02
Retail Trade	41	331	7,990,049	464.21
Transportation, Warehousing & Utilities	11	130	6,144,436	908.94
Information	4	5	266,601	1,025.39
Financial Activities	26	165	5,893,587	686.90
Professional & Business Services	15	41	1,348,278	632.40
Education & Health Services	49	718	20,993,612	562.29
Leisure & Hospitality	20	166	2,373,227	274.93
Other Services	12	31	762,573	473.06
Local Government	14	473	15,474,203	629.13
State Government	9	402	14,829,417	709.41
<b>JACKSON COUNTY - TOTAL</b>	<b>431</b>	<b>5,120</b>	<b>\$190,348,804</b>	<b>\$714.95</b>
Natural Resources & Mining	58	285	10,386,873	700.87
Construction	19	88	3,514,088	767.94
Manufacturing	13	889	46,529,954	1,006.53
Trade, Transportation & Utilities	108	1,025	34,283,282	643.21
Wholesale Trade	21	212	10,612,542	962.68
Retail Trade	70	715	19,088,091	513.40
Transportation, Warehousing & Utilities	17	98	4,582,649	899.26
Information	3	12	356,760	571.73
Financial Activities	29	134	6,142,053	881.47
Professional & Business Services	30	112	4,238,341	727.74
Education & Health Services	80	867	32,542,457	721.82
Leisure & Hospitality	27	317	4,337,263	263.12
Other Services	20	58	2,224,386	737.53
Local Government	32	560	18,313,471	628.90
State Government	12	773	27,479,876	683.65

Note: Data may not add due to rounding.

TABLE 6. COUNTY SUMMARY CALENDAR YEAR 2018

North American Industry Classification System - Industry Groups	Average Employing Units	Average Covered Employment	Total Calendar Earnings	Average Weekly Earnings
<b>JEFFERSON COUNTY - TOTAL</b>	<b>2,060</b>	<b>26,256</b>	<b>\$1,027,494,308</b>	<b>\$752.57</b>
Natural Resources & Mining	42	155	8,653,052	1,073.58
Construction	88	502	19,577,312	749.97
Manufacturing	58	4,809	266,932,195	1,067.44
Trade, Transportation & Utilities	396	4,425	151,369,935	657.84
Wholesale Trade	74	685	31,307,889	878.94
Retail Trade	272	3,053	79,483,581	500.67
Transportation, Warehousing & Utilities	50	687	40,578,465	1,135.89
Information	8	71	3,709,551	1,004.75
Financial Activities	150	982	45,031,849	881.87
Professional & Business Services	143	2,156	71,013,016	633.41
Education & Health Services	853	4,886	191,523,423	753.82
Leisure & Hospitality	137	1,801	26,032,224	277.97
Other Services	108	506	17,035,116	647.43
Local Government	42	2,573	92,875,409	694.16
State Government	35	3,390	133,741,226	758.69
<b>JOHNSON COUNTY - TOTAL</b>	<b>489</b>	<b>8,482</b>	<b>\$276,593,416</b>	<b>\$627.10</b>
Natural Resources & Mining	14	214	8,717,572	783.39
Construction	34	199	7,056,760	681.94
Manufacturing	34	2,639	90,239,948	657.59
Trade, Transportation & Utilities	107	1,864	60,212,745	621.21
Retail Trade	75	873	21,223,181	467.51
Other Trade, Transportation & Utilities	32	991	38,989,564	756.61
Information	4	19	743,386	752.41
Financial Activities	48	176	6,853,331	748.83
Professional & Business Services	49	404	9,200,531	437.95
Education & Health Services	105	1,226	44,771,721	702.28
Leisure & Hospitality	43	601	7,855,832	251.37
Other Services	29	82	2,170,813	509.10
Local Government	14	959	34,457,674	690.98
State Government	8	99	4,313,103	837.82

Note: Data may not add due to rounding.

TABLE 6. COUNTY SUMMARY CALENDAR YEAR 2018

North American Industry Classification System - Industry Groups	Average Employing Units	Average Covered Employment	Total Calendar Earnings	Average Weekly Earnings
<b>LAFAYETTE COUNTY - TOTAL</b>	<b>163</b>	<b>1,169</b>	<b>\$35,291,983</b>	<b>\$580.57</b>
Natural Resources & Mining	25	91	2,294,787	484.95
Construction	9	72	3,639,378	972.06
Manufacturing	6	38	2,135,624	1,080.78
Trade, Transportation & Utilities	31	196	5,275,152	517.58
Retail Trade	19	116	2,368,178	392.60
Other Trade, Transportation & Utilities	12	80	2,906,974	698.79
Financial Activities	14	64	2,344,148	704.37
Professional & Business Services	10	38	1,179,002	596.66
Education & Health Services	35	173	4,352,512	483.83
Leisure & Hospitality	5	37	617,338	320.86
Local Government	14	286	8,716,321	586.09
State Government	9	135	3,594,123	511.98
Other	5	39	1,143,598	563.90
<b>LAWRENCE COUNTY - TOTAL</b>	<b>404</b>	<b>3,922</b>	<b>\$130,771,300</b>	<b>\$641.21</b>
Natural Resources & Mining	53	268	11,255,670	807.67
Construction	24	95	3,933,473	796.25
Manufacturing	19	423	14,879,499	676.46
Trade, Transportation & Utilities	116	810	28,810,911	684.02
Wholesale Trade	18	196	8,595,584	843.37
Retail Trade	60	480	13,419,340	537.63
Transportation, Warehousing & Utilities	38	134	6,795,987	975.31
Financial Activities	28	122	5,265,942	830.07
Professional & Business Services	25	98	3,696,851	725.44
Education & Health Services	53	550	17,647,093	617.03
Leisure & Hospitality	30	330	4,369,636	254.64
Local Government	24	1,063	35,142,508	635.76
State Government	9	79	2,712,211	660.23
Other	23	84	3,057,506	699.98

Note: Data may not add due to rounding.

TABLE 6. COUNTY SUMMARY CALENDAR YEAR 2018

North American Industry Classification System - Industry Groups	Average Employing Units	Average Covered Employment	Total Calendar Earnings	Average Weekly Earnings
<b>LEE COUNTY - TOTAL</b>	<b>272</b>	<b>1,888</b>	<b>\$64,225,762</b>	<b>\$654.19</b>
Natural Resources & Mining	43	222	9,478,340	821.06
Construction	7	28	1,004,630	689.99
Trade, Transportation & Utilities	41	328	12,237,632	717.50
Wholesale Trade	10	107	5,533,280	994.48
Retail Trade	21	168	3,948,889	452.02
Transportation, Warehousing & Utilities	10	53	2,755,463	999.81
Financial Activities	17	59	1,835,837	598.38
Professional & Business Services	13	47	3,155,523	1,291.13
Education & Health Services	112	431	12,649,267	564.40
Leisure & Hospitality	7	64	935,880	281.21
Local Government	15	296	7,574,027	492.08
State Government	6	395	14,898,793	725.36
Other	11	18	455,833	487.00
<b>LINCOLN COUNTY - TOTAL</b>	<b>292</b>	<b>2,796</b>	<b>\$97,614,141</b>	<b>\$671.39</b>
Natural Resources & Mining	33	152	5,336,837	675.21
Construction	19	132	5,322,353	775.40
Manufacturing	9	267	9,827,299	707.81
Trade, Transportation & Utilities	46	347	13,908,698	770.82
Wholesale Trade	9	57	2,640,883	890.99
Retail Trade	24	163	3,507,156	413.77
Transportation, Warehousing & Utilities	13	127	7,760,659	1,175.15
Financial Activities	20	73	2,590,152	682.34
Professional & Business Services	10	19	717,763	726.48
Education & Health Services	110	425	12,045,760	545.06
Leisure & Hospitality	15	159	1,668,885	201.85
Local Government	7	326	10,782,357	636.05
State Government	10	850	33,438,059	756.52
Other	13	46	1,975,978	826.08

Note: Data may not add due to rounding.

TABLE 6. COUNTY SUMMARY CALENDAR YEAR 2018

North American Industry Classification System - Industry Groups	Average Employing Units	Average Covered Employment	Total Calendar Earnings	Average Weekly Earnings
<b>LITTLE RIVER COUNTY - TOTAL</b>	<b>244</b>	<b>3,318</b>	<b>\$167,884,433</b>	<b>\$973.04</b>
Natural Resources & Mining	14	75	2,505,709	642.49
Construction	13	171	7,941,048	893.06
Manufacturing	18	1,161	101,325,859	1,678.36
Trade, Transportation & Utilities	60	571	17,078,179	575.18
Wholesale Trade	7	28	2,152,016	1,478.03
Retail Trade	39	418	10,305,025	474.10
Transportation, Warehousing & Utilities	14	125	4,621,138	710.94
Financial Activities	15	68	2,378,469	672.64
Professional & Business Services	14	65	2,370,376	701.29
Education & Health Services	45	210	5,950,310	544.90
Leisure & Hospitality	13	193	2,402,898	239.43
Local Government	20	674	22,103,354	630.66
State Government	10	76	2,620,552	663.10
Other	22	54	1,207,679	430.09
<b>LOGAN COUNTY - TOTAL</b>	<b>500</b>	<b>5,226</b>	<b>\$171,057,852</b>	<b>\$629.46</b>
Natural Resources & Mining	25	119	4,526,855	731.55
Construction	46	240	9,403,369	753.48
Manufacturing	21	1,085	46,088,411	816.88
Trade, Transportation & Utilities	99	967	27,542,348	547.74
Wholesale Trade	7	30	992,533	636.24
Retail Trade	70	779	19,120,029	472.01
Transportation, Warehousing & Utilities	22	158	7,429,786	904.31
Information	5	29	1,119,140	742.14
Financial Activities	50	186	8,758,340	905.54
Professional & Business Services	44	122	4,490,787	707.88
Education & Health Services	112	728	22,465,676	593.45
Leisure & Hospitality	33	310	4,185,054	259.62
Other Services	31	147	4,700,179	614.88
Local Government	22	790	24,096,038	586.56
State Government	12	503	13,681,655	523.08

Note: Data may not add due to rounding.



TABLE 6. COUNTY SUMMARY CALENDAR YEAR 2018

North American Industry Classification System - Industry Groups	Average Employing Units	Average Covered Employment	Total Calendar Earnings	Average Weekly Earnings
<b>LONOKE COUNTY - TOTAL</b>	<b>1,292</b>	<b>13,882</b>	<b>\$477,527,124</b>	<b>\$661.52</b>
Natural Resources & Mining	85	492	20,297,971	793.39
Construction	134	923	40,421,657	842.19
Manufacturing	34	1,656	78,944,503	916.77
Trade, Transportation & Utilities	305	2,779	88,943,236	615.49
Wholesale Trade	75	416	21,103,712	975.58
Retail Trade	173	2,044	52,098,055	490.16
Transportation, Warehousing & Utilities	57	319	15,741,469	948.97
Information	13	84	3,769,760	863.04
Financial Activities	151	654	37,933,728	1,115.44
Professional & Business Services	151	577	22,087,554	736.15
Education & Health Services	205	1,746	53,330,101	587.39
Leisure & Hospitality	112	1,990	29,320,670	283.35
Other Services	63	202	5,370,309	511.26
Local Government	25	2,614	90,874,533	668.55
State Government	14	165	6,233,102	726.47
<b>MADISON COUNTY - TOTAL</b>	<b>257</b>	<b>3,300</b>	<b>\$113,703,475</b>	<b>\$662.61</b>
Natural Resources & Mining	12	38	1,431,882	724.64
Construction	29	128	4,979,987	748.20
Manufacturing	20	1,160	42,232,694	700.14
Trade, Transportation & Utilities	54	688	21,626,254	604.49
Wholesale Trade	7	29	1,154,435	765.54
Retail Trade	35	492	13,077,384	511.15
Transportation, Warehousing & Utilities	12	167	7,394,435	851.50
Information	6	53	5,314,715	1,928.42
Financial Activities	19	84	3,234,677	740.54
Professional & Business Services	24	81	3,532,790	838.74
Education & Health Services	41	263	7,670,011	560.84
Leisure & Hospitality	16	195	2,284,947	225.34
Other Services	20	43	1,306,209	584.17
Local Government	9	528	18,696,172	680.95
State Government	7	39	1,393,137	686.95

Note: Data may not add due to rounding.

TABLE 6. COUNTY SUMMARY CALENDAR YEAR 2018

North American Industry Classification System - Industry Groups	Average Employing Units	Average Covered Employment	Total Calendar Earnings	Average Weekly Earnings
<b>MARION COUNTY - TOTAL</b>	<b>285</b>	<b>3,722</b>	<b>114,847,577</b>	<b>\$593.39</b>
Manufacturing	22	1,696	55,419,939	628.40
Trade, Transportation & Utilities	56	519	14,043,029	520.34
Wholesale Trade	6	37	1,241,598	645.32
Retail Trade	41	444	10,748,317	465.54
Transportation, Warehousing & Utilities	9	38	2,053,114	1,039.03
Information	3	55	3,385,957	1,183.90
Financial Activities	36	201	7,146,448	683.74
Professional & Business Services	24	78	2,433,765	600.04
Education & Health Services	48	332	10,309,023	597.14
Leisure & Hospitality	34	198	2,580,469	250.63
Other Services	14	30	497,671	319.02
Local Government	17	477	14,565,927	587.24
State Government	7	39	1,469,626	724.67
Other	24	97	2,995,723	593.92
<b>MILLER COUNTY - TOTAL</b>	<b>883</b>	<b>12,835</b>	<b>\$506,636,440</b>	<b>\$759.10</b>
Natural Resources & Mining	32	223	10,613,705	915.29
Construction	68	626	27,864,851	856.01
Manufacturing	26	2,299	144,704,417	1,210.43
Trade, Transportation & Utilities	222	3,451	132,874,264	740.44
Wholesale Trade	49	485	25,856,342	1,025.23
Retail Trade	126	1,251	31,522,874	484.58
Transportation, Warehousing & Utilities	47	1,715	75,495,048	846.55
Information	7	121	7,348,866	1,167.97
Financial Activities	80	393	17,682,854	865.28
Professional & Business Services	80	1,109	24,696,562	428.25
Education & Health Services	191	1,121	35,193,637	603.75
Leisure & Hospitality	86	1,445	22,943,756	305.35
Other Services	51	226	6,308,912	536.84
Local Government	25	1,357	55,300,611	783.69
State Government	15	464	21,104,005	874.67

Note: Data may not add due to rounding.

TABLE 6. COUNTY SUMMARY CALENDAR YEAR 2018

North American Industry Classification System - Industry Groups	Average Employing Units	Average Covered Employment	Total Calendar Earnings	Average Weekly Earnings
<b>MISSISSIPPI COUNTY - TOTAL</b>	<b>1,109</b>	<b>17,607</b>	<b>\$900,689,352</b>	<b>\$983.75</b>
Natural Resources & Mining	112	548	21,319,359	748.15
Construction	50	768	46,239,990	1,157.85
Manufacturing	58	6,593	496,567,331	1,448.41
Trade, Transportation & Utilities	274	2,790	108,377,040	747.02
Wholesale Trade	56	371	19,700,410	1,021.17
Retail Trade	148	1,578	38,961,359	474.81
Transportation, Warehousing & Utilities	70	841	49,715,271	1,136.82
Information	6	32	838,736	504.05
Financial Activities	81	462	18,760,252	780.90
Professional & Business Services	83	1,010	41,124,292	783.02
Education & Health Services	233	1,635	57,829,840	680.19
Leisure & Hospitality	91	1,149	15,974,220	267.36
Other Services	49	231	8,487,891	706.62
Local Government	49	1,879	67,190,539	687.67
State Government	23	510	17,979,862	677.97
<b>MONROE COUNTY - TOTAL</b>	<b>290</b>	<b>2,015</b>	<b>\$63,395,620</b>	<b>\$605.04</b>
Natural Resources & Mining	29	111	5,483,943	950.09
Construction	9	18	528,572	564.71
Manufacturing	6	143	4,861,875	653.83
Trade, Transportation & Utilities	73	522	19,075,863	702.77
Wholesale Trade	16	179	8,816,470	947.19
Retail Trade	33	241	5,935,042	473.59
Transportation, Warehousing & Utilities	24	102	4,324,351	815.30
Financial Activities	22	88	3,411,111	745.44
Professional & Business Services	15	29	702,107	465.59
Education & Health Services	67	380	11,033,207	558.36
Leisure & Hospitality	23	228	3,183,724	268.53
Local Government	21	337	10,067,875	574.52
State Government	7	68	2,774,190	784.56
Other	18	91	2,273,153	480.38

Note: Data may not add due to rounding.

TABLE 6. COUNTY SUMMARY CALENDAR YEAR 2018

North American Industry Classification System - Industry Groups	Average Employing Units	Average Covered Employment	Total Calendar Earnings	Average Weekly Earnings
<b>MONTGOMERY COUNTY - TOTAL</b>	<b>166</b>	<b>1,297</b>	<b>\$34,613,600</b>	<b>\$513.22</b>
Natural Resources & Mining	8	33	1,085,968	632.85
Construction	25	73	1,998,536	526.48
Trade, Transportation & Utilities	34	240	5,787,705	463.76
Wholesale Trade	6	53	1,844,386	669.23
Retail Trade	22	162	3,345,320	397.12
Transportation, Warehousing & Utilities	6	25	597,999	460.00
Financial Activities	10	43	1,331,534	595.50
Professional & Business Services	14	19	586,062	593.18
Education & Health Services	20	56	1,739,104	597.22
Leisure & Hospitality	15	287	5,541,834	371.34
Other Services	11	47	979,200	400.65
Local Government	9	424	12,924,738	586.21
State Government	7	34	1,325,298	749.60
Other	13	41	1,313,621	616.14
<b>NEVADA COUNTY - TOTAL</b>	<b>195</b>	<b>2,449</b>	<b>\$93,266,702</b>	<b>\$732.38</b>
Natural Resources & Mining	12	64	3,296,612	990.57
Trade, Transportation & Utilities	37	577	20,055,403	668.42
Retail Trade	22	314	6,819,478	417.66
Other Trade, Transportation & Utilities	15	263	13,235,925	967.82
Financial Activities	11	63	2,575,247	786.09
Professional & Business Services	12	47	2,572,696	1,052.66
Education & Health Services	47	432	10,263,712	456.90
Leisure & Hospitality	9	85	1,148,348	259.81
Local Government	28	384	11,268,706	564.34
State Government	9	55	1,860,277	650.45
Other	30	742	40,225,701	1,042.55

Note: Data may not add due to rounding.

TABLE 6. COUNTY SUMMARY CALENDAR YEAR 2018

North American Industry Classification System - Industry Groups	Average Employing Units	Average Covered Employment	Total Calendar Earnings	Average Weekly Earnings
<b>NEWTON COUNTY - TOTAL</b>	<b>119</b>	<b>1,014</b>	<b>\$25,764,847</b>	<b>\$488.64</b>
Construction	6	17	537,526	608.06
Manufacturing	8	35	1,331,015	731.33
Trade, Transportation & Utilities	28	159	4,792,549	579.65
Retail Trade	13	108	2,466,020	439.11
Other Trade, Transportation & Utilities	15	51	2,326,529	877.27
Education & Health Services	24	249	4,415,869	341.05
Leisure & Hospitality	19	145	2,398,481	318.10
Local Government	14	338	9,610,989	546.82
State Government	7	36	1,369,685	731.67
Other	13	35	1,308,733	719.08
<b>OUACHITA COUNTY - TOTAL</b>	<b>659</b>	<b>6,806</b>	<b>\$238,330,915</b>	<b>\$673.42</b>
Natural Resources & Mining	33	164	6,579,030	771.46
Construction	39	206	8,229,175	768.22
Manufacturing	25	576	26,060,944	870.09
Trade, Transportation & Utilities	160	1,526	47,404,415	597.39
Wholesale Trade	26	240	9,768,809	782.76
Retail Trade	105	985	22,379,628	436.93
Transportation, Warehousing & Utilities	29	301	15,255,978	974.70
Information	6	39	1,630,469	803.98
Financial Activities	50	246	10,601,258	828.74
Professional & Business Services	45	594	21,395,153	692.67
Education & Health Services	194	1,242	51,693,167	800.40
Leisure & Hospitality	37	446	6,290,955	271.26
Other Services	26	111	3,369,738	583.81
Local Government	31	1,029	33,308,329	622.49
State Government	13	627	21,768,282	667.66

Note: Data may not add due to rounding.

TABLE 6. COUNTY SUMMARY CALENDAR YEAR 2018

North American Industry Classification System - Industry Groups	Average Employing Units	Average Covered Employment	Total Calendar Earnings	Average Weekly Earnings
<b>PERRY COUNTY - TOTAL</b>	<b>137</b>	<b>1,130</b>	<b>\$36,641,387</b>	<b>\$623.58</b>
Construction	16	82	2,894,796	678.89
Manufacturing	5	25	1,335,420	1,027.25
Trade, Transportation & Utilities	27	168	4,715,294	539.75
Retail Trade	19	137	2,248,721	315.65
Other Trade, Transportation & Utilities	8	31	2,466,573	1,530.13
Financial Activities	8	24	1,095,510	877.81
Professional & Business Services	14	31	1,197,256	742.71
Education & Health Services	29	226	5,983,322	509.13
Leisure & Hospitality	7	70	1,042,125	286.30
Local Government	9	333	10,332,707	596.71
State Government	7	34	1,235,659	698.90
Other	15	137	6,809,298	955.83
<b>PHILLIPS COUNTY - TOTAL</b>	<b>739</b>	<b>5,433</b>	<b>\$176,571,849</b>	<b>\$625.00</b>
Natural Resources & Mining	58	249	8,074,007	623.57
Construction	29	114	3,308,541	558.12
Manufacturing	13	389	17,207,006	850.65
Trade, Transportation & Utilities	143	1,235	41,114,766	640.22
Wholesale Trade	28	253	12,587,711	956.80
Retail Trade	75	732	16,948,663	445.27
Transportation, Warehousing & Utilities	40	250	11,578,392	890.65
Information	7	20	1,002,888	964.32
Financial Activities	40	207	8,147,451	756.92
Professional & Business Services	40	278	10,384,926	718.38
Education & Health Services	299	1,446	43,251,457	575.21
Leisure & Hospitality	39	345	4,640,943	258.69
Other Services	31	72	1,495,788	399.52
Local Government	26	731	25,828,940	679.49
State Government	14	347	12,115,136	671.42

Note: Data may not add due to rounding.

TABLE 6. COUNTY SUMMARY CALENDAR YEAR 2018

North American Industry Classification System - Industry Groups	Average Employing Units	Average Covered Employment	Total Calendar Earnings	Average Weekly Earnings
<b>PIKE COUNTY - TOTAL</b>	<b>256</b>	<b>2,580</b>	<b>\$81,529,725</b>	<b>\$607.71</b>
Natural Resources & Mining	25	123	5,266,361	823.38
Construction	14	46	1,491,748	623.64
Manufacturing	17	416	15,208,815	703.07
Trade, Transportation & Utilities	67	545	16,920,905	597.07
Wholesale Trade	10	124	3,859,073	598.49
Retail Trade	37	345	8,674,785	483.54
Transportation, Warehousing & Utilities	20	76	4,387,047	1,110.08
Information	7	29	1,195,137	792.53
Financial Activities	24	215	9,620,944	860.55
Professional & Business Services	12	58	3,257,740	1,080.15
Education & Health Services	34	309	6,930,852	431.35
Leisure & Hospitality	25	232	3,150,428	261.14
Other Services	12	60	1,766,056	566.04
Local Government	10	437	13,970,062	614.77
State Government	9	110	2,750,677	480.89
<b>POINSETT COUNTY - TOTAL</b>	<b>502</b>	<b>5,190</b>	<b>\$189,350,291</b>	<b>\$701.61</b>
Natural Resources & Mining	67	276	12,186,492	849.11
Construction	24	94	4,117,497	842.37
Manufacturing	20	723	32,832,414	873.30
Trade, Transportation & Utilities	131	1,254	45,811,678	702.55
Wholesale Trade	28	390	22,786,550	1,123.60
Retail Trade	70	698	15,700,719	432.57
Transportation, Warehousing & Utilities	33	166	7,324,409	848.52
Information	5	55	2,285,806	799.23
Financial Activities	37	182	7,802,773	824.47
Professional & Business Services	27	190	12,333,004	1,248.28
Education & Health Services	88	796	26,329,581	636.10
Leisure & Hospitality	42	403	5,220,335	249.11
Other Services	20	66	2,158,282	628.87
Local Government	30	997	33,176,969	639.94
State Government	11	154	5,095,460	636.30

Note: Data may not add due to rounding.

TABLE 6. COUNTY SUMMARY CALENDAR YEAR 2018

North American Industry Classification System - Industry Groups	Average Employing Units	Average Covered Employment	Total Calendar Earnings	Average Weekly Earnings
<b>POLK COUNTY - TOTAL</b>	<b>504</b>	<b>5,794</b>	<b>\$183,241,762</b>	<b>\$608.19</b>
Natural Resources & Mining	24	174	8,593,743	949.79
Construction	33	198	6,613,136	642.30
Manufacturing	33	1,298	45,386,874	672.44
Trade, Transportation & Utilities	128	1,057	30,882,939	561.88
Wholesale Trade	22	73	2,863,736	754.41
Retail Trade	69	755	17,820,365	453.91
Transportation, Warehousing & Utilities	37	229	10,198,838	856.47
Information	7	59	1,523,299	496.51
Financial Activities	45	229	8,514,250	715.00
Professional & Business Services	43	145	5,907,095	783.43
Education & Health Services	89	1,028	35,667,428	667.23
Leisure & Hospitality	42	474	6,345,397	257.44
Other Services	26	159	4,727,993	571.84
Local Government	21	682	21,168,944	596.91
State Government	13	291	7,910,664	522.78
<b>POPE COUNTY - TOTAL</b>	<b>1,848</b>	<b>25,726</b>	<b>\$1,073,365,197</b>	<b>\$802.36</b>
Natural Resources & Mining	35	619	25,592,408	795.09
Construction	162	1,198	67,560,278	1,084.50
Manufacturing	75	4,499	204,362,749	873.54
Trade, Transportation & Utilities	417	6,153	299,059,214	934.69
Wholesale Trade	73	543	23,922,984	847.25
Retail Trade	263	3,110	81,681,260	505.08
Transportation, Warehousing & Utilities	81	2,500	193,454,970	1,488.12
Information	16	131	4,775,802	701.09
Financial Activities	191	941	42,050,032	859.36
Professional & Business Services	271	1,932	103,135,384	1,026.59
Education & Health Services	367	3,288	119,748,275	700.38
Leisure & Hospitality	142	2,738	43,449,415	305.17
Other Services	114	580	17,870,483	592.52
Local Government	43	2,025	77,744,369	738.31
State Government	15	1,622	68,016,788	806.42

Note: Data may not add due to rounding.



TABLE 6. COUNTY SUMMARY CALENDAR YEAR 2018

North American Industry Classification System - Industry Groups	Average Employing Units	Average Covered Employment	Total Calendar Earnings	Average Weekly Earnings
<b>PRAIRIE COUNTY - TOTAL</b>	<b>249</b>	<b>1,432</b>	<b>\$45,371,377</b>	<b>\$609.31</b>
Natural Resources & Mining	34	168	7,527,769	861.70
Construction	9	51	1,522,867	574.23
Manufacturing	5	41	1,082,594	507.78
Trade, Transportation & Utilities	60	345	11,004,464	613.40
Wholesale Trade	12	85	4,462,914	1,009.71
Retail Trade	35	209	4,484,163	412.60
Transportation, Warehousing & Utilities	13	51	2,057,387	775.79
Financial Activities	15	47	2,086,085	853.55
Professional & Business Services	16	70	2,831,514	777.89
Education & Health Services	51	240	6,089,255	487.92
Leisure & Hospitality	17	98	1,477,607	289.95
Local Government	16	302	9,394,790	598.24
State Government	7	28	1,023,886	703.22
Other	19	42	1,330,546	609.22
<b>PULASKI COUNTY - TOTAL</b>	<b>14,345</b>	<b>241,967</b>	<b>\$11,724,598,016</b>	<b>\$931.83</b>
Natural Resources & Mining	52	608	39,698,968	1,255.66
Construction	929	8,920	472,610,357	1,018.91
Manufacturing	334	13,141	732,804,090	1,072.40
Trade, Transportation & Utilities	3,133	49,330	2,183,759,275	851.32
Wholesale Trade	926	11,922	785,226,033	1,266.61
Retail Trade	1,815	25,341	762,860,071	578.92
Transportation, Warehousing & Utilities	392	12,067	635,673,171	1,013.05
Information	207	3,540	192,070,620	1,043.41
Financial Activities	1,698	17,194	1,265,327,706	1,415.22
Professional & Business Services	2,758	36,239	1,886,254,069	1,000.97
Education & Health Services	2,543	41,215	2,048,650,152	955.89
Leisure & Hospitality	1,248	23,396	422,954,340	347.66
Other Services	1,141	6,525	260,151,430	766.73
Local Government	108	14,692	673,793,345	881.95
State Government	194	27,167	1,546,523,664	1,094.74

Note: Data may not add due to rounding.

TABLE 6. COUNTY SUMMARY CALENDAR YEAR 2018

North American Industry Classification System - Industry Groups	Average Employing Units	Average Covered Employment	Total Calendar Earnings	Average Weekly Earnings
<b>RANDOLPH COUNTY - TOTAL</b>	<b>399</b>	<b>5,654</b>	<b>\$179,903,095</b>	<b>\$611.90</b>
Natural Resources & Mining	27	245	11,730,361	920.75
Construction	28	111	3,957,868	685.70
Manufacturing	28	1,512	54,463,708	692.71
Trade, Transportation & Utilities	89	878	27,370,714	599.50
Wholesale Trade	15	123	4,538,693	709.61
Retail Trade	55	598	14,946,834	480.67
Transportation, Warehousing & Utilities	19	157	7,885,187	965.85
Information	5	26	1,066,107	788.54
Financial Activities	33	152	5,729,007	724.82
Professional & Business Services	37	274	7,880,528	553.10
Education & Health Services	69	952	29,756,158	601.09
Leisure & Hospitality	32	401	5,382,780	258.14
Other Services	17	46	1,093,674	457.22
Local Government	24	789	22,453,241	547.27
State Government	10	268	9,018,949	647.17
<b>SAINT FRANCIS COUNTY - TOTAL</b>	<b>698</b>	<b>6,744</b>	<b>\$223,689,451</b>	<b>\$637.86</b>
Natural Resources & Mining	41	188	7,221,166	738.66
Trade, Transportation & Utilities	147	1,871	63,359,181	651.23
Wholesale Trade	29	560	25,945,700	890.99
Retail Trade	96	1,020	24,264,232	457.47
Transportation, Warehousing & Utilities	22	291	13,149,249	868.97
Information	5	46	1,591,851	665.49
Financial Activities	62	245	8,210,225	644.44
Professional & Business Services	48	172	6,259,903	699.90
Education & Health Services	233	1,445	51,245,204	682.00
Leisure & Hospitality	45	672	9,336,333	267.18
Other Services	24	55	1,279,004	447.20
Local Government	28	820	28,164,006	660.51
State Government	16	445	15,740,638	680.24
Other	49	785	31,281,940	766.34

Note: Data may not add due to rounding.

TABLE 6. COUNTY SUMMARY CALENDAR YEAR 2018

North American Industry Classification System - Industry Groups	Average Employing Units	Average Covered Employment	Total Calendar Earnings	Average Weekly Earnings
<b>SALINE COUNTY - TOTAL</b>	<b>2,039</b>	<b>24,614</b>	<b>\$881,813,194</b>	<b>\$688.96</b>
Natural Resources & Mining	12	51	2,227,334	839.87
Construction	269	2,098	93,362,469	855.78
Manufacturing	78	1,379	70,549,776	983.85
Trade, Transportation & Utilities	465	5,683	189,942,590	642.75
Wholesale Trade	114	631	35,457,378	1,080.62
Retail Trade	280	4,491	129,375,449	553.99
Transportation, Warehousing & Utilities	71	561	25,109,763	860.75
Information	17	170	7,671,004	867.76
Financial Activities	205	800	39,035,649	938.36
Professional & Business Services	274	1,727	71,274,102	793.66
Education & Health Services	333	4,652	176,038,874	727.72
Leisure & Hospitality	188	3,441	53,532,157	299.18
Other Services	152	882	27,215,800	593.40
Local Government	32	2,901	123,505,812	818.72
State Government	14	830	27,457,627	636.18
<b>SCOTT COUNTY - TOTAL</b>	<b>179</b>	<b>2,982</b>	<b>\$89,720,620</b>	<b>\$578.60</b>
Natural Resources & Mining	18	166	6,921,933	801.89
Trade, Transportation & Utilities	34	323	9,007,775	536.30
Wholesale Trade	8	44	1,267,390	553.93
Retail Trade	20	210	4,466,487	409.02
Transportation, Warehousing & Utilities	6	69	3,273,898	912.46
Financial Activities	18	59	1,959,940	638.83
Professional & Business Services	13	94	2,699,867	552.35
Education & Health Services	42	333	12,215,580	705.45
Leisure & Hospitality	16	138	2,028,375	282.66
Local Government	6	515	16,109,942	601.57
State Government	6	32	1,265,477	760.50
Other	26	1,322	37,511,731	545.67

Note: Data may not add due to rounding.

TABLE 6. COUNTY SUMMARY CALENDAR YEAR 2018

North American Industry Classification System - Industry Groups	Average Employing Units	Average Covered Employment	Total Calendar Earnings	Average Weekly Earnings
<b>SEARCY COUNTY - TOTAL</b>	<b>171</b>	<b>1,495</b>	<b>\$39,529,936</b>	<b>\$508.49</b>
Construction	14	11	237,348	414.94
Manufacturing	16	177	4,646,636	504.85
Trade, Transportation & Utilities	36	245	6,027,923	473.15
Wholesale Trade	6	37	977,914	508.27
Retail Trade	25	193	4,297,730	428.23
Transportation, Warehousing & Utilities	5	15	752,279	964.46
Financial Activities	12	64	2,030,845	610.23
Professional & Business Services	14	82	3,116,738	730.94
Education & Health Services	40	355	9,299,045	503.74
Leisure & Hospitality	14	152	1,988,920	251.63
Local Government	10	298	8,839,273	570.42
State Government	6	41	1,430,836	671.12
Other	9	70	1,912,372	525.38
<b>SEBASTIAN COUNTY - TOTAL</b>	<b>3,695</b>	<b>64,521</b>	<b>\$2,727,872,907</b>	<b>\$813.05</b>
Natural Resources & Mining	40	359	29,219,822	1,565.24
Construction	263	2,357	102,199,094	833.84
Manufacturing	194	11,614	556,811,889	921.98
Trade, Transportation & Utilities	888	13,160	514,897,194	752.42
Wholesale Trade	228	2,625	138,420,438	1,014.07
Retail Trade	546	7,762	207,119,668	513.15
Transportation, Warehousing & Utilities	114	2,773	169,357,088	1,174.49
Information	39	887	60,586,685	1,313.56
Financial Activities	407	2,547	125,882,979	950.46
Professional & Business Services	562	8,223	329,036,136	769.50
Education & Health Services	624	11,571	602,353,772	1,001.10
Leisure & Hospitality	350	6,196	101,327,677	314.49
Other Services	262	1,295	40,968,926	608.39
Local Government	43	4,557	187,835,454	792.68
State Government	23	1,755	76,753,279	841.04

Note: Data may not add due to rounding.

TABLE 6. COUNTY SUMMARY CALENDAR YEAR 2018

North American Industry Classification System - Industry Groups	Average Employing Units	Average Covered Employment	Total Calendar Earnings	Average Weekly Earnings
<b>SEVIER COUNTY - TOTAL</b>	<b>312</b>	<b>4,795</b>	<b>\$157,141,728</b>	<b>\$630.23</b>
Natural Resources & Mining	18	181	8,799,389	934.91
Construction	18	177	9,430,520	1,024.61
Trade, Transportation & Utilities	88	812	25,468,540	603.18
Wholesale Trade	12	77	4,859,923	1,213.77
Retail Trade	62	654	16,608,668	488.38
Transportation, Warehousing & Utilities	14	81	3,999,949	949.66
Financial Activities	25	185	7,933,150	824.65
Professional & Business Services	25	101	2,730,701	519.94
Education & Health Services	59	550	18,428,034	644.34
Leisure & Hospitality	25	295	3,704,850	241.52
Local Government	13	933	29,044,693	598.66
State Government	7	157	5,551,852	680.04
Other	34	1,404	46,049,999	630.75
<b>SHARP COUNTY - TOTAL</b>	<b>385</b>	<b>3,553</b>	<b>\$99,417,067</b>	<b>\$538.10</b>
Construction	32	150	5,769,597	739.69
Trade, Transportation & Utilities	79	778	18,284,084	451.95
Wholesale Trade	11	34	827,496	468.04
Retail Trade	58	670	14,887,585	427.31
Transportation, Warehousing & Utilities	10	74	2,569,003	667.62
Information	7	29	1,053,931	698.89
Financial Activities	33	169	7,495,271	852.90
Professional & Business Services	34	120	4,051,830	649.33
Education & Health Services	89	887	28,162,007	610.57
Leisure & Hospitality	30	381	5,503,529	277.79
Local Government	24	725	20,489,128	543.48
State Government	7	52	1,869,943	691.55
Other	50	262	6,737,747	494.55

Note: Data may not add due to rounding.

TABLE 6. COUNTY SUMMARY CALENDAR YEAR 2018

North American Industry Classification System - Industry Groups	Average Employing Units	Average Covered Employment	Total Calendar Earnings	Average Weekly Earnings
<b>STONE COUNTY - TOTAL</b>	<b>273</b>	<b>2,614</b>	<b>\$75,739,888</b>	<b>\$557.21</b>
Natural Resources & Mining	5	10	270,302	519.81
Construction	16	33	872,440	508.41
Manufacturing	17	236	6,076,984	495.19
Trade, Transportation & Utilities	70	604	16,804,072	535.03
Wholesale Trade	6	42	1,268,791	580.95
Retail Trade	52	521	13,417,994	495.28
Transportation, Warehousing & Utilities	12	41	2,117,287	993.10
Financial Activities	31	150	7,706,058	987.96
Professional & Business Services	13	27	654,211	465.96
Education & Health Services	52	546	19,631,583	691.45
Leisure & Hospitality	29	438	5,811,268	255.15
Local Government	11	395	12,899,668	628.03
State Government	7	128	3,567,183	535.93
Other	22	47	1,446,119	591.70
<b>UNION COUNTY - TOTAL</b>	<b>1,294</b>	<b>17,272</b>	<b>\$841,179,976</b>	<b>\$936.58</b>
Natural Resources & Mining	78	391	19,819,453	974.79
Construction	90	1,460	79,219,996	1,043.47
Manufacturing	49	2,886	197,230,626	1,314.24
Trade, Transportation & Utilities	308	3,413	137,744,780	776.13
Wholesale Trade	68	467	25,992,082	1,070.34
Retail Trade	178	2,063	53,792,582	501.44
Transportation, Warehousing & Utilities	62	883	57,960,116	1,262.31
Information	8	96	3,729,456	747.09
Financial Activities	98	606	30,369,362	963.74
Professional & Business Services	130	2,011	173,349,262	1,657.70
Education & Health Services	299	2,299	86,090,702	720.14
Leisure & Hospitality	95	1,434	23,327,796	312.84
Other Services	91	421	12,576,835	574.49
Local Government	32	1,744	57,778,206	637.11
State Government	16	511	19,943,502	750.55

Note: Data may not add due to rounding.

TABLE 6. COUNTY SUMMARY CALENDAR YEAR 2018

North American Industry Classification System - Industry Groups	Average Employing Units	Average Covered Employment	Total Calendar Earnings	Average Weekly Earnings
<b>VAN BUREN COUNTY - TOTAL</b>	<b>341</b>	<b>3,501</b>	<b>\$123,432,284</b>	<b>\$678.01</b>
Natural Resources & Mining	11	131	12,229,930	1,795.35
Construction	38	138	4,429,521	617.27
Manufacturing	8	126	3,730,157	569.32
Trade, Transportation & Utilities	94	957	38,091,292	765.44
Wholesale Trade	11	71	3,195,133	865.42
Retail Trade	55	606	15,225,323	483.16
Transportation, Warehousing & Utilities	28	280	19,670,836	1,351.02
Information	5	34	519,118	293.62
Financial Activities	30	133	5,958,953	861.62
Professional & Business Services	35	150	5,695,143	730.15
Education & Health Services	59	750	23,640,628	606.17
Leisure & Hospitality	27	354	5,916,601	321.41
Other Services	17	58	1,725,547	572.13
Local Government	11	631	19,881,158	605.91
State Government	6	39	1,614,236	795.97
<b>WASHINGTON COUNTY - TOTAL</b>	<b>6,116</b>	<b>105,952</b>	<b>\$4,824,202,867</b>	<b>\$875.61</b>
Natural Resources & Mining	41	303	17,410,093	1,104.98
Construction	579	5,647	293,620,711	999.92
Manufacturing	220	13,057	570,874,549	840.80
Trade, Transportation & Utilities	1,374	22,848	952,304,013	801.54
Wholesale Trade	390	3,827	262,355,516	1,318.34
Retail Trade	785	12,415	363,174,311	562.56
Transportation, Warehousing & Utilities	199	6,606	326,774,186	951.27
Information	77	922	46,899,908	978.22
Financial Activities	671	3,728	195,609,975	1,009.05
Professional & Business Services	1,108	13,461	936,012,626	1,337.21
Education & Health Services	890	15,945	774,954,896	934.65
Leisure & Hospitality	680	13,015	220,122,485	325.25
Other Services	393	2,100	72,336,710	662.42
Local Government	61	8,324	363,158,053	839.00
State Government	22	6,602	380,898,848	1,109.51

Note: Data may not add due to rounding.

TABLE 6. COUNTY SUMMARY CALENDAR YEAR 2018

North American Industry Classification System - Industry Groups	Average Employing Units	Average Covered Employment	Total Calendar Earnings	Average Weekly Earnings
<b>WHITE COUNTY - TOTAL</b>	<b>1,787</b>	<b>23,746</b>	<b>\$880,882,106</b>	<b>\$713.39</b>
Natural Resources & Mining	52	327	16,656,451	979.56
Construction	154	1,000	43,702,974	840.44
Manufacturing	59	2,124	99,258,030	898.69
Trade, Transportation & Utilities	481	6,172	226,858,269	706.85
Wholesale Trade	83	586	26,300,138	863.09
Retail Trade	311	3,466	94,420,055	523.88
Transportation, Warehousing & Utilities	87	2,120	106,138,076	962.79
Information	17	124	4,053,491	628.64
Financial Activities	175	893	41,430,241	892.20
Professional & Business Services	186	1,184	40,559,567	658.78
Education & Health Services	320	5,629	238,521,069	814.88
Leisure & Hospitality	168	2,686	38,511,050	275.72
Other Services	114	487	16,677,131	658.55
Local Government	46	2,627	95,704,752	700.60
State Government	15	493	18,949,081	739.16
<b>WOODRUFF COUNTY - TOTAL</b>	<b>201</b>	<b>1,676</b>	<b>\$59,110,241</b>	<b>\$678.24</b>
Natural Resources & Mining	29	128	4,280,264	643.07
Construction	10	37	1,268,006	659.05
Manufacturing	5	186	8,560,582	885.09
Trade, Transportation & Utilities	49	379	14,774,249	749.66
Wholesale Trade	12	140	7,432,771	1,020.99
Retail Trade	27	172	3,407,778	381.01
Transportation, Warehousing & Utilities	10	67	3,933,700	1,129.08
Financial Activities	12	50	1,794,988	690.38
Education & Health Services	54	237	7,553,449	612.91
Leisure & Hospitality	11	75	1,083,551	277.83
Local Government	9	414	12,379,159	575.03
State Government	5	28	1,090,140	748.72
Other	17	142	6,325,853	856.70

Note: Data may not add due to rounding.



TABLE 6. COUNTY SUMMARY CALENDAR YEAR 2018

North American Industry Classification System - Industry Groups	Average Employing Units	Average Covered Employment	Total Calendar Earnings	Average Weekly Earnings
<b>YELL COUNTY - TOTAL</b>	<b>411</b>	<b>6,437</b>	<b>\$201,586,678</b>	<b>\$602.25</b>
Natural Resources & Mining	23	230	10,154,375	849.03
Construction	32	235	8,635,846	706.70
Manufacturing	21	2,451	76,738,956	602.10
Trade, Transportation & Utilities	82	723	20,274,749	539.28
Wholesale Trade	14	61	1,345,535	424.19
Retail Trade	50	532	11,766,643	425.34
Transportation, Warehousing & Utilities	18	130	7,162,571	1,059.55
Financial Activities	28	116	4,195,459	695.53
Professional & Business Services	38	293	9,962,087	653.85
Education & Health Services	110	797	20,998,972	506.68
Leisure & Hospitality	25	307	3,993,757	250.17
Local Government	25	1,107	39,322,481	683.11
State Government	10	64	2,074,560	623.37
Other	17	114	5,235,436	883.17
<b>STATEWIDE COUNTY - TOTAL</b>	<b>10,162</b>	<b>34,779</b>	<b>\$2,043,997,657</b>	<b>\$1,130.21</b>
Natural Resources & Mining	99	319	21,829,145	1,315.96
Construction	807	3,219	177,873,814	1,062.64
Manufacturing	52	130	15,289,653	2,261.78
Trade, Transportation & Utilities	3,287	7,812	727,612,556	1,791.16
Wholesale Trade	2,816	6,307	644,672,575	1,965.68
Retail Trade	167	492	30,899,674	1,207.77
Transportation, Warehousing & Utilities	304	1,013	52,040,307	987.93
Information	358	630	59,878,382	1,827.79
Financial Activities	664	1,774	127,616,733	1,383.41
Professional & Business Services	3,916	16,479	706,202,073	824.13
Education & Health Services	517	2,626	116,242,721	851.27
Leisure & Hospitality	102	172	6,806,419	761.00
Other Services	344	877	51,842,049	1,136.79
Local Government	0	0	0	0.00
State Government	16	741	32,804,112	851.35

Note: Statewide classification includes employment and payroll data for employers that have not provided a physical location for each employing unit. This section also includes employers without a physical location in Arkansas.

**TABLE 7. FEDERAL GOVERNMENT EMPLOYMENT AND EARNINGS IN ARKANSAS**

<b>North American Industry Classification System - Industry Groups</b>	<b>Average Employing Units</b>	<b>Average Covered Employment</b>	<b>Total Calendar Earnings</b>	<b>Average Weekly Earnings</b>
<b>TOTAL</b>	<b>1,148</b>	<b>20,115</b>	<b>\$1,417,593,545</b>	<b>\$1,355.28</b>
Trade, Transportation & Utilities	590	5,578	297,839,959	1,026.84
Information	2	38	2,793,134	1,413.53
Financial Activities	14	106	9,321,584	1,691.14
Professional & Business Services	32	810	61,400,452	1,457.75
Education & Health Services	18	5,379	434,019,517	1,551.69
Leisure & Hospitality	23	302	12,659,297	806.12
Other Services	1	1	34,774	668.73
Public Administration	468	7,901	599,524,828	1,459.22

Note: Data may not add due to rounding.

TABLE 8. LOCAL WORKFORCE DEVELOPMENT AREA SUMMARY CALENDAR YEAR 2018

North American Industry Classification System - Industry Groups	Average Employing Units	Average Covered Employment	Total Calendar Earnings	Average weekly Earnings
<b>CENTRAL WORKFORCE DEVELOPMENT AREA</b>	<b>6,732</b>	<b>82,273</b>	<b>\$3,109,335,619</b>	<b>\$726.79</b>
Natural Resources & Mining	203	1,104	57,441,478	1,000.58
Construction	749	5,858	264,707,943	868.99
Trade, Transportation & Utilities	1,547	17,006	551,410,479	623.55
Wholesale Trade	356	2,000	106,523,691	1,024.27
Retail Trade	937	13,183	355,193,967	518.14
Transportation, Warehousing & Utilities	254	1,823	89,692,821	946.17
Information	58	518	26,482,007	983.15
Financial Activities	705	3,016	149,279,557	951.84
Professional & Business Services	893	7,277	422,665,209	1,116.97
Education & Health Services	1,112	14,267	527,737,042	711.35
Leisure & Hospitality	605	10,928	166,578,554	293.14
Local Government	136	9,401	375,863,486	768.87
State Government	60	4,363	175,852,695	775.10
Other	664	8,535	391,317,169	881.70
<b>EASTERN WORKFORCE DEVELOPMENT AREA</b>	<b>3,380</b>	<b>34,838</b>	<b>\$1,218,118,075</b>	<b>\$672.41</b>
Natural Resources & Mining	242	1,196	42,714,867	686.82
Manufacturing	78	3,425	165,578,667	929.69
Trade, Transportation & Utilities	757	8,902	326,567,211	705.48
Wholesale Trade	151	1,971	97,069,735	947.10
Retail Trade	415	4,600	112,780,788	471.49
Transportation, Warehousing & Utilities	191	2,331	116,716,688	962.91
Financial Activities	263	1,249	50,101,675	771.41
Professional & Business Services	247	1,678	61,324,207	702.81
Education & Health Services	1,022	6,305	206,574,511	630.07
Leisure & Hospitality	253	3,882	65,057,413	322.28
Local Government	127	4,500	166,099,748	709.83
State Government	58	1,957	69,993,224	687.80
Other	333	1,744	64,106,552	706.89

\*Note: Pulaski County is not included in the Central Workforce Investment Area. Please refer to Page 51 for information on Pulaski County. Central Workforce Investment Area includes these counties: Faulkner, Lonoke, Monroe, Prairie, and Saline.

Eastern Workforce Investment Area includes these counties: Crittenden, Cross, Lee, Phillips, and Saint Francis.

TABLE 8. LOCAL WORKFORCE DEVELOPMENT AREA SUMMARY CALENDAR YEAR 2018

North American Industry Classification System - Industry Groups	Average Employing Units	Average Covered Employment	Total Calendar Earnings	Average Weekly Earnings
<b>NORTH CENTRAL WORKFORCE DEVELOPMENT AREA</b>	<b>5,409</b>	<b>67,290</b>	<b>\$2,400,673,355</b>	<b>\$686.09</b>
Construction	426	2,454	106,994,035	838.46
Manufacturing	212	8,646	375,786,954	835.84
Trade, Transportation & Utilities	1,370	14,746	512,804,346	668.77
Retail Trade	889	9,429	246,550,167	502.85
Other Trade, Transportation & Utilities	481	5,317	266,254,179	963.00
Financial Activities	517	2,589	119,584,853	888.26
Education & Health Services	986	14,631	572,303,673	752.23
Leisure & Hospitality	488	6,698	96,973,093	278.42
Local Government	222	8,532	283,552,157	639.11
State Government	93	2,664	96,488,244	696.53
Other	1,095	6,330	236,186,000	717.54

North Central Workforce Investment Area includes these counties: Cleburne, Fulton, Independence, Izard, Jackson, Sharp, Stone, Van Buren, White, and Woodruff.

<b>NORTHEAST WORKFORCE DEVELOPMENT AREA</b>	<b>6,522</b>	<b>101,754</b>	<b>\$4,071,992,416</b>	<b>\$769.58</b>
Natural Resources & Mining	455	2,238	87,904,460	755.35
Construction	468	3,717	177,180,858	916.69
Manufacturing	304	21,289	1,165,977,614	1,053.25
Trade, Transportation & Utilities	1,722	19,570	682,434,530	670.61
Wholesale Trade	367	3,686	185,533,141	967.97
Retail Trade	1,001	12,385	320,135,324	497.09
Transportation, Warehousing & Utilities	354	3,499	176,766,065	971.52
Financial Activities	557	3,162	152,832,482	929.50
Professional & Business Services	663	7,249	246,868,654	654.91
Education & Health Services	1,100	17,426	760,277,000	839.02
Leisure & Hospitality	557	9,482	142,170,703	288.34
Local Government	214	11,095	399,604,265	692.63
State Government	95	4,394	181,627,686	794.91
Other	387	2,132	75,114,164	677.53

Northeast Workforce Investment Area includes these counties: Clay, Craighead, Greene, Lawrence, Mississippi, Poinsett, and Randolph.

TABLE 8. LOCAL WORKFORCE DEVELOPMENT AREA SUMMARY CALENDAR YEAR 2018

North American Industry Classification System - Industry Groups	Average Employing Units	Average Covered Employment	Total Calendar Earnings	Average Weekly Earnings
<b>NORTHWEST WORKFORCE DEVELOPMENT AREA</b>	<b>16,514</b>	<b>274,135</b>	<b>\$13,569,505,825</b>	<b>\$951.91</b>
Natural Resources & Mining	135	1,458	86,681,546	1,143.31
Trade, Transportation & Utilities	3,938	61,155	2,759,931,146	867.89
Retail Trade	2,147	31,619	894,654,249	544.13
Other Trade, Transportation & Utilities	1,791	29,536	1,865,276,897	1,214.47
Information	213	2,470	132,803,331	1,033.97
Professional & Business Services	2,752	48,034	4,304,037,338	1,723.15
Education & Health Services	2,409	35,453	1,536,028,433	833.19
Leisure & Hospitality	1,771	30,902	536,085,278	333.61
Other Services	1,036	5,197	182,281,111	674.51
Local Government	310	22,548	939,657,045	801.42
State Government	103	8,910	467,256,060	1,008.50
Other	3,847	58,008	2,624,744,537	870.15

Northwest Workforce Investment Area includes these counties: Baxter, Benton, Boone, Carroll, Madison, Marion, Newton, Searcy, and Washington.

<b>SOUTHEAST WORKFORCE DEVELOPMENT AREA</b>	<b>6,115</b>	<b>68,291</b>	<b>\$2,619,864,461</b>	<b>\$737.75</b>
Natural Resources & Mining	426	2,278	94,249,958	795.65
Construction	302	2,122	94,196,287	853.66
Manufacturing	197	14,778	758,247,195	986.72
Trade, Transportation & Utilities	1,222	11,907	413,816,908	668.35
Retail Trade	726	7,400	187,647,492	487.65
Other Trade, Transportation & Utilities	496	4,507	226,169,416	965.03
Financial Activities	410	2,386	108,576,488	875.11
Education & Health Services	2,099	10,992	384,399,995	672.52
Other Services	298	1,134	36,249,176	614.73
Local Government	210	8,450	295,779,823	673.14
State Government	124	5,916	227,137,395	738.34
Other	827	8,328	207,211,236	478.49

Southeast Workforce Investment Area includes these counties: Arkansas, Ashley, Bradley, Chicot, Cleveland, Desha, Drew, Grant, Jefferson, and Lincoln.

TABLE 8. LOCAL WORKFORCE DEVELOPMENT AREA SUMMARY CALENDAR YEAR 2018

North American Industry Classification System - Industry Groups	Average Employing Units	Average Covered Employment	Total Calendar Earnings	Average Weekly Earnings
<b>SOUTHWEST WORKFORCE DEVELOPMENT AREA</b>	<b>5,653</b>	<b>76,949</b>	<b>\$3,121,493,917</b>	<b>\$780.11</b>
Natural Resources & Mining	322	2,159	101,468,617	903.81
Trade, Transportation & Utilities	1,355	14,683	528,762,908	692.54
Wholesale Trade	241	1,797	90,995,535	973.80
Retail Trade	818	8,528	213,403,093	481.23
Transportation, Warehousing & Utilities	296	4,358	224,364,280	990.06
Information	48	418	20,890,523	961.10
Financial Activities	454	2,461	111,629,838	872.30
Professional & Business Services	435	4,665	252,250,771	1,039.87
Education & Health Services	1,312	9,789	321,842,919	632.27
Leisure & Hospitality	411	5,781	86,936,536	289.20
Other Services	339	1,370	39,421,257	553.36
Local Government	260	9,483	323,597,868	656.23
State Government	131	3,554	138,877,445	751.47
Other	586	22,586	1,195,815,235	1,018.17

Southwest Workforce Investment Area includes these counties: Calhoun, Columbia, Dallas, Hempstead, Howard, Lafayette, Little River, Miller, Nevada, Ouachita, Sevier, and Union

<b>WEST CENTRAL WORKFORCE DEVELOPMENT AREA</b>	<b>8,157</b>	<b>106,225</b>	<b>\$3,890,481,115</b>	<b>\$704.33</b>
Construction	727	4,339	194,016,461	859.90
Trade, Transportation & Utilities	1,813	21,397	796,753,841	716.09
Wholesale Trade	315	1,932	91,297,248	908.76
Retail Trade	1,203	14,021	372,630,600	511.09
Transportation, Warehousing & Utilities	295	5,444	332,825,993	1,175.70
Financial Activities	804	3,648	162,962,127	859.07
Professional & Business Services	917	7,713	307,988,583	767.91
Education & Health Services	1,590	17,552	685,281,698	750.83
Leisure & Hospitality	797	13,645	231,256,344	325.92
Local Government	232	11,069	417,157,349	724.75
State Government	114	5,337	197,184,759	710.51
Other	1,163	21,525	897,879,953	802.18

West Central Workforce Investment Area includes these counties: Clark, Conway, Garland, Hot Spring, Johnson, Montgomery, Perry, Pike, Pope, and Yell

TABLE 8. LOCAL WORKFORCE DEVELOPMENT AREA SUMMARY CALENDAR YEAR 2018

North American Industry Classification System - Industry Groups	Average Employing Units	Average Covered Employment	Total Calendar Earnings	Average Weekly Earnings
<b>WESTERN WORKFORCE DEVELOPMENT AREA</b>	<b>6,486</b>	<b>102,480</b>	<b>\$4,030,934,409</b>	<b>\$756.42</b>
Natural Resources & Mining	149	1,302	75,608,464	1,116.75
Trade, Transportation & Utilities	1,545	22,053	819,217,253	714.38
Wholesale Trade	351	3,562	182,177,619	983.55
Retail Trade	928	12,107	317,732,899	504.69
Transportation, Warehousing & Utilities	266	6,384	319,306,735	961.86
Financial Activities	675	3,607	168,814,666	900.04
Professional & Business Services	863	10,594	412,557,599	748.90
Education & Health Services	1,117	15,896	742,704,336	898.51
Leisure & Hospitality	562	9,013	141,116,024	301.10
Local Government	153	9,258	349,402,511	725.78
State Government	72	2,860	110,336,136	741.91
Other	1,350	27,897	1,211,177,420	834.92

Western Workforce Investment Area includes these counties: Crawford, Franklin, Logan, Polk, Scott, and Sebastian