

Arkansas Covered  
Employment & Earnings  
Second Quarter  
2018

**COVERED EMPLOYMENT AND EARNINGS  
STATE OF ARKANSAS  
SECOND QUARTER 2018**

**ASA HUTCHINSON, GOVERNOR  
STATE OF ARKANSAS**

**DARYL BASSETT, DIRECTOR  
DEPARTMENT OF WORKFORCE SERVICES**

**PUBLISHED BY  
LABOR MARKET INFORMATION  
BUREAU OF LABOR STATISTICS PROGRAMS  
POST OFFICE BOX 2981  
LITTLE ROCK, ARKANSAS 72203-2981  
SUSAN PRICE, BLS PROGRAMS MANAGER  
TELEPHONE (501) 682-3103**

**STATE OF ARKANSAS WEBPAGE: <http://www.arkansas.gov>**

**DEPARTMENT OF WORKFORCE SERVICES WEBPAGE: <http://www.dws.arkansas.gov/>**

**WEBPAGE FOR LABOR MARKET INFORMATION: <http://www.discover.arkansas.gov>**

**RELEASED: JANUARY 2019**



## TABLE OF CONTENTS

DESCRIPTION OF DATA	PAGE
Description and Classification of Data	1
Definition of Covered Employment and Earnings	2
Significant Developments During Second Quarter 2018	3

### LIST OF GRAPHS AND TABLES

Graph 1	Total Covered Employment for Selected Years, Arkansas	7
Graph 2	Total Covered Earnings, by Calendar Quarter for Selected Years, Arkansas	8
Table 1	Quarterly Comparison of Covered Employment and Wages, by Industry	5
Table 2	Total Covered Employment in Arkansas, 2011 – 2018	6
Table 3	Total Covered Earnings, 2011 – 2018	9
Table 4	Total Taxable Earnings, 2011 – 2018	10
Table 5	State Summary – Employment and Total Earnings, by Industry, Second Quarter 2018	11
Table 6	County Summary – Employment and Total Earnings, by Industry, Second Quarter 2018	22
Table 7	Federal Government Employment and Total Earnings in Arkansas, Second Quarter 2018	60
Table 8	Local Workforce Development Area – Employment and Total Earnings, by Industry, Second Quarter 2018	61



EMPLOYMENT AND EARNINGS  
UNDER THE ARKANSAS EMPLOYMENT SECURITY LAW  
SECOND QUARTER 2018

**DESCRIPTION AND CLASSIFICATION OF DATA**

This publication contains covered employment and payroll data by industry and county for the Second Quarter 2018 and a record for total covered employment by month, quarterly payroll data, average weekly earnings, and total taxable earnings for 2011 through 2018. These data are compiled from quarterly contributions and wage reports submitted by employers subject to the Arkansas Employment Security Law.

Employment data have been tabulated for each month of the quarter by industry under the **North American Industry Classification System** (NAICS) by state, county, and workforce area. Payroll data represent the total wages paid during the quarter and are classified by industry for the state and by publishable industry groups for each county and workforce area.

Due to industry classification revisions, previously published data will not always be comparable with current data. For this reason, comparisons should not be made between the same industries under different revisions. For more information, visit the NAICS home page at <http://www.census.gov/naics>.

Industry Classification Revisions

- SIC (Standard Industrial Classification) 1987 to NAICS 2002
- NAICS 2002 to NAICS 2007
- NAICS 2007 to NAICS 2012
- NAICS 2012 to NAICS 2018

The tabulation of this data is a joint effort in conjunction with the United States Bureau of Labor Statistics. Data included in this publication are subject to revisions. Revisions are typically reflected in the Annual Covered Employment and Earnings publication.

## **DEFINITION OF COVERED EMPLOYMENT AND EARNINGS**

Covered Employment is the total number of workers employed by establishments subject to the Arkansas Employment Security Law that worked or received pay for the payroll period including the 12<sup>th</sup> of the month. Earnings include all wages paid to any covered employee by their employer including salaries, bonuses, commissions, fees, fringe benefits, sick pay made directly to employees or dependents, deferred compensation, and reported tips. These wages include both taxable and nontaxable wages. Only the first \$10,000 paid to each worker by an employer in the calendar year is taxable under the Arkansas Employment Security Law.

An Arkansas state unemployment insurance account is required of any entity meeting the definition of an employer. As described by Arkansas Department of Workforce Services Law, the definition of an employer includes, but is not limited to, a sole proprietorship, partnership, corporation, associations, trust, estate, and receiver or trustee in bankruptcy. The entity must employ one or more individuals for ten or more days in a calendar year, whether or not the days are consecutive.

Currently excluded from coverage is employment covered by the Railroad Unemployment Insurance Act, some domestic service workers, employees of small agricultural establishments, self-employed workers, unpaid family workers, insurance and real estate agents paid only on a commission basis, and employees of churches and religious organizations except separately incorporated schools.

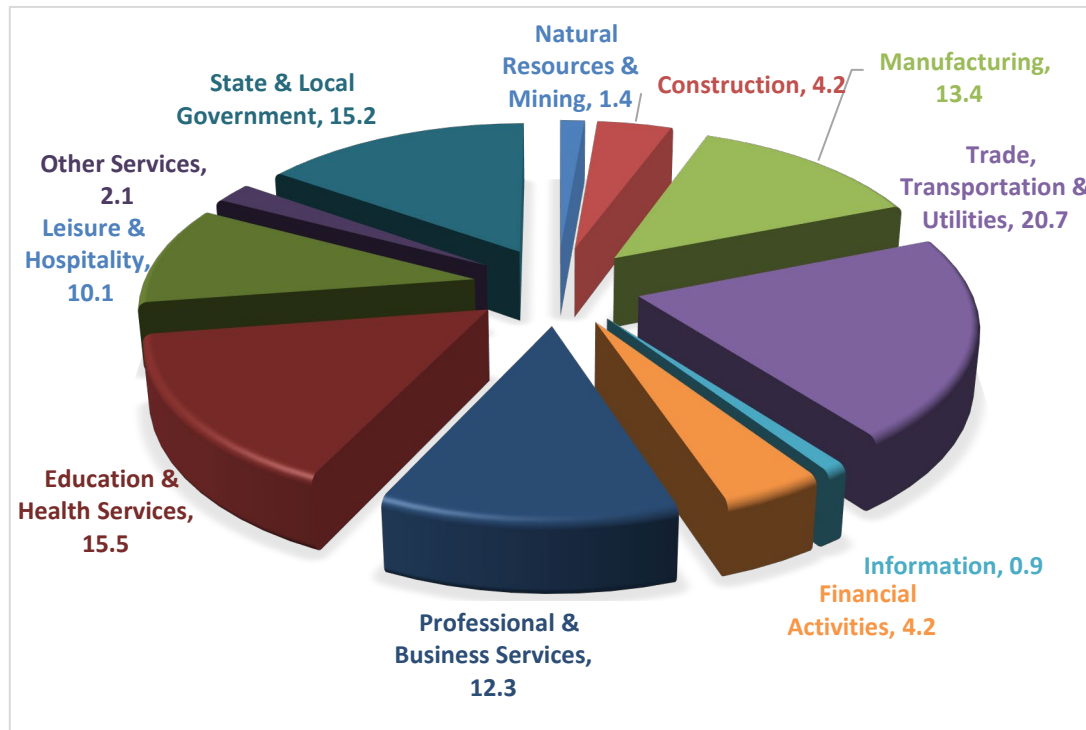
Civilian federal workers are covered by Unemployment Compensation for Federal Employees (UCFE).

## SIGNIFICANT DEVELOPMENTS DURING SECOND QUARTER 2018

### AVERAGE EMPLOYMENT CHANGES

Covered employment averaged 1,197,132 during the Second Quarter 2018 (refer to Table 1), an increase of 14,825 (1.2%) from the previous quarter and an increase of 10,065 (0.8%) from the average recorded one year ago. The over-the-year comparison is more significant when used as an economic indicator and allows for seasonal factors that appear when comparing over-the-quarter data to be disregarded.

#### Average Covered Employment by NAICS



### EMPLOYMENT CHANGES FROM FIRST QUARTER 2018

Over the quarter gains were recorded in six of the eleven industry groups. Leisure & Hospitality reported the largest increase (4,562), typically seen with the beginning of summer recreational activities. Losses occurred in five industry groups. The largest losses were recorded in Trade, Transportation & Utilities (-3,489), followed by Information (-1,706) and State & Local Government (-1,548). Declines in Retail Trade contributed significantly to the loss in Trade, Transportation & Utilities. State & Local Government losses were typical.

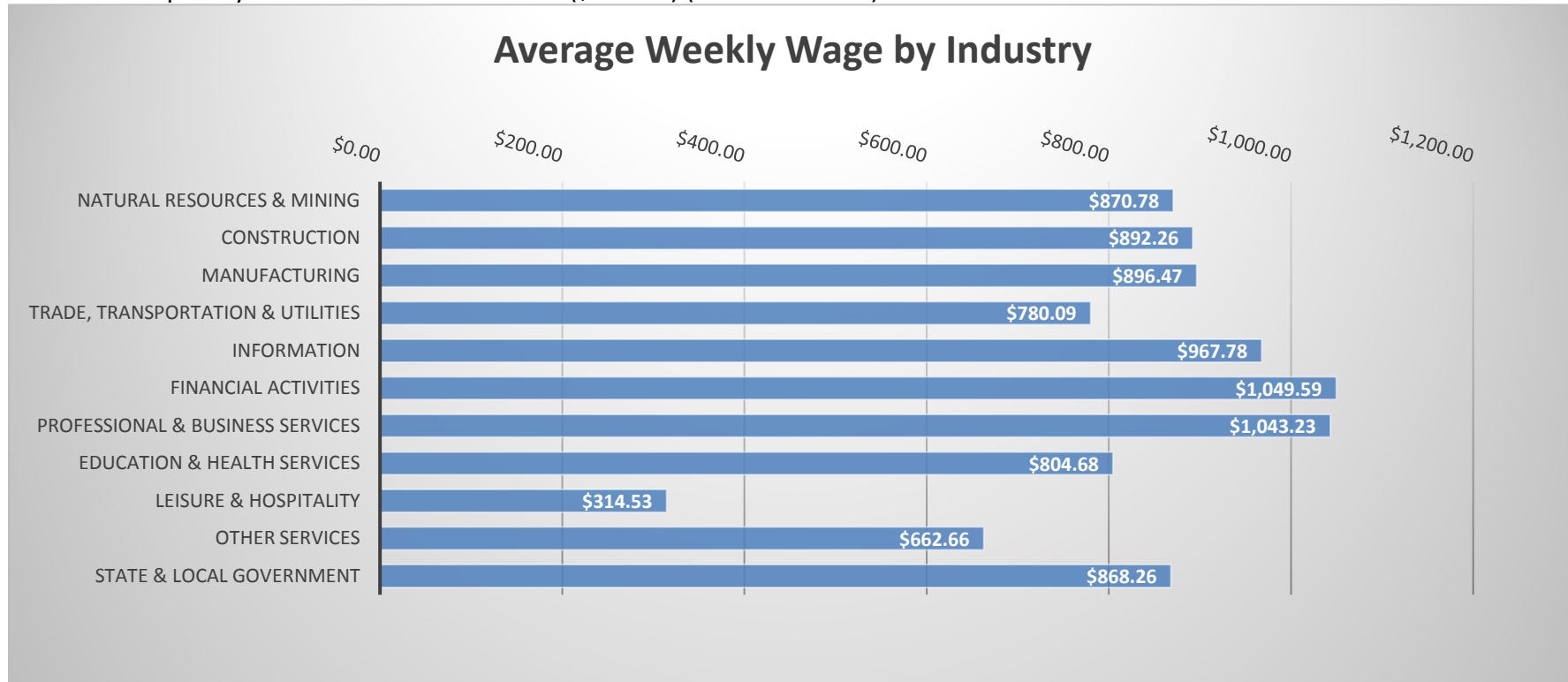


## EMPLOYMENT CHANGES FROM SECOND QUARTER 2017 (QUARTER YEAR AGO COMPARISON)

Over-the-year gains were recorded in ten industry groups (refer to Table 1). The largest gains occurred in Leisure & Hospitality (7,796), Education & Health Services (4,849) and Professional and Business Services (4,554). Losses occurred in Information (-2,022).

## COVERED WAGES

Wages paid to covered workers totaled \$12,682,491,819 for the Second Quarter 2018 (refer to Table 1), for an average weekly wage of \$814.93 (refer to Table 5). Benton County workers recorded the highest average weekly wage (\$1,028.07), and employees in Searcy County reported the lowest (\$490.47) (refer to Table 6). Financial Activities recorded the highest average weekly wage for the State of Arkansas (\$1,049.59). The Leisure & Hospitality sector recorded the lowest (\$314.53) (refer to Table 5).



**TABLE 1. QUARTERLY COMPARISON OF COVERED EMPLOYMENT AND WAGES, BY INDUSTRY**

North American Industry Classification System - Industry Groups	Number of Employing Units	Monthly Employment Average	Percent of Total	Net Change From:		Total Wages Paid Apr - Jun 2018	Percent of Total
				Jan - Mar 2018	Apr - Jun 2017		
<b>TOTAL</b>	<b>88,965</b>	<b>1,197,132</b>	<b>100</b>	<b>14,825</b>	<b>10,065</b>	<b>\$12,682,491,819</b>	<b>100</b>
<b>Natural Resources &amp; Mining</b>	2,507	16,594	1.4	-65	603	187,849,465	1.5
Agriculture, Forestry, Fishing & Hunting	2,081	12,718	1.1	-165	443	126,679,065	1.0
Mining	426	3,876	0.3	100	160	61,170,400	0.5
<b>Construction</b>	6,904	50,813	4.2	-236	1,135	589,392,155	4.6
<b>Manufacturing</b>	2,917	159,839	13.4	874	3,715	1,862,782,530	14.7
<b>Trade, Transportation &amp; Utilities</b>	21,641	247,560	20.7	-3,489	1,847	2,510,545,656	19.8
Wholesale Trade	7,210	47,221	3.9	-37	653	769,366,236	6.1
Retail Trade	11,067	138,901	11.6	-3,309	-998	956,684,234	7.5
Transportation & Warehousing	2,949	53,637	4.5	-183	2,039	616,893,183	4.9
Utilities	415	7,802	0.7	40	154	167,602,003	1.3
<b>Information</b>	1,201	10,917	0.9	-1,706	-2,022	137,351,896	1.1
<b>Financial Activities</b>	8,386	50,401	4.2	470	1,188	687,712,647	5.4
Finance & Insurance	4,964	36,711	3.1	309	531	557,973,767	4.4
Real Estate & Rental & Leasing	3,422	13,690	1.1	161	657	129,738,880	1.0
<b>Professional &amp; Business Services</b>	14,189	147,362	12.3	1,278	4,554	1,998,531,024	15.8
Professional & Technical Services	8,957	43,886	3.7	889	588	666,291,901	5.3
Management of Companies & Enterprises	558	34,754	2.9	446	-1,235	817,990,470	6.4
Administrative & Waste Services	4,674	68,722	5.7	-57	5,201	514,248,653	4.1
<b>Education &amp; Health Services</b>	15,709	185,912	15.5	269	4,849	1,944,790,139	15.3
Educational Services	867	11,936	1.0	-93	346	111,866,136	0.9
Health Care & Social Assistance	14,842	173,976	14.5	362	4,502	1,832,924,003	14.5
<b>Leisure &amp; Hospitality</b>	7,139	120,684	10.1	4,562	7,796	493,461,908	3.9
Arts, Entertainment & Recreation	982	12,608	1.1	2,185	2,633	62,369,564	0.5
Accommodation & Food Services	6,157	108,076	9.0	2,376	5,163	431,092,344	3.4
<b>Other Services</b>	5,346	25,058	2.1	466	562	215,865,780	1.7
<b>State &amp; Local Government</b>	3,026	181,992	15.2	-1,548	1,241	2,054,208,619	16.2
Local Government	1,967	114,566	9.6	325	1,643	1,276,800,581	10.1
State Government	1,059	67,426	5.6	-1,873	-402	777,408,038	6.1
<b>Nonclassifiable Establishments</b>	0	0	0.0	0	0	0	0.0

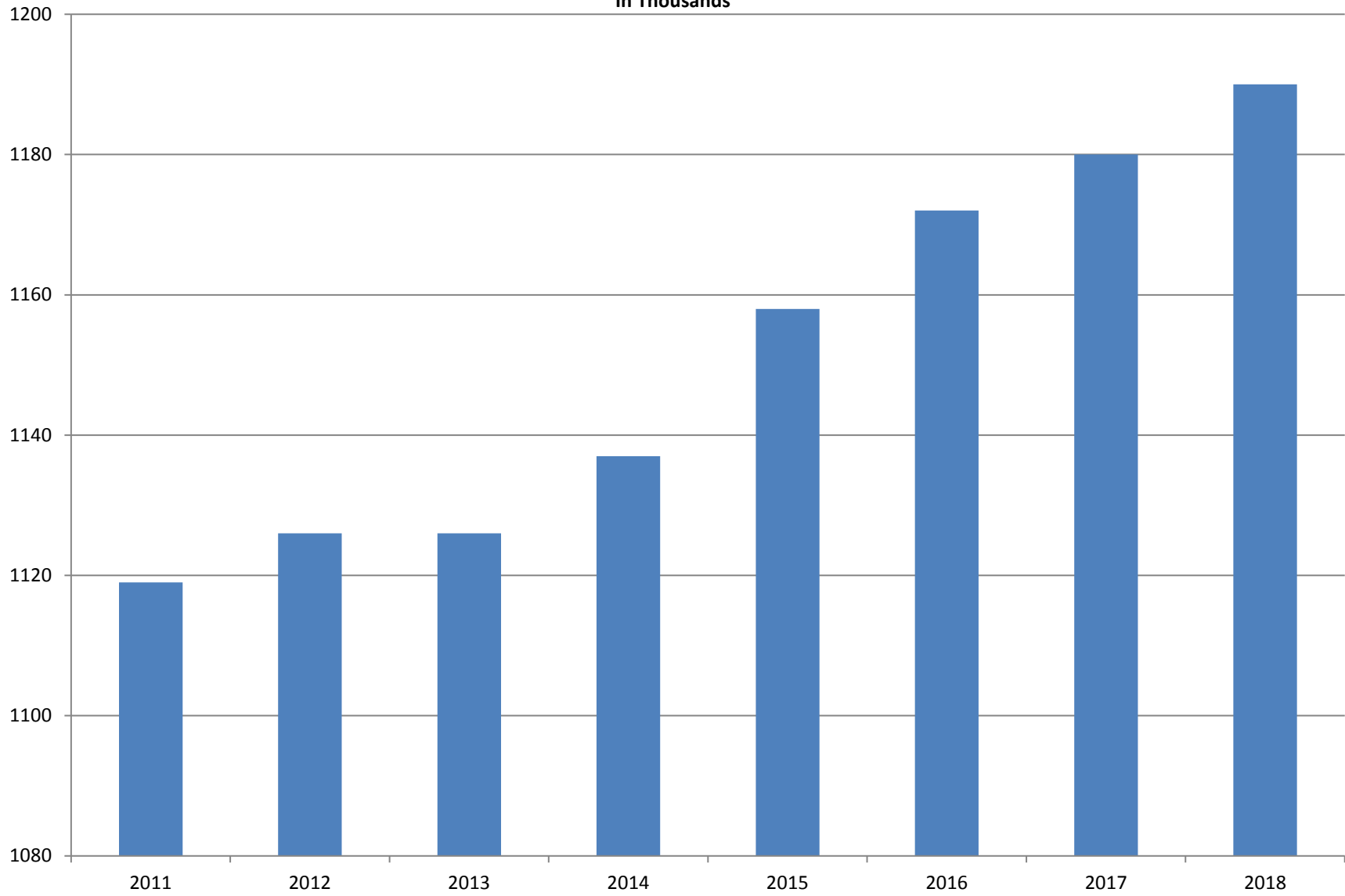
Note: Items do not necessarily add to total because of rounding. Because of industry code changes between years, substantial employment and wage shifts among industries are anticipated.

**TABLE 2. TOTAL COVERED EMPLOYMENT IN ARKANSAS**

<b>PERIOD</b>	<b>2011</b>	<b>2012</b>	<b>2013</b>	<b>2014</b>	<b>2015</b>	<b>2016</b>	<b>2017</b>	<b>2018</b>
<b>AVERAGE</b>	<b>1,118,639</b>	<b>1,126,171</b>	<b>1,125,890</b>	<b>1,137,486</b>	<b>1,157,634</b>	<b>1,171,503</b>	<b>1,180,337</b>	<b>1,189,720</b>
January	1,098,349	1,113,274	1,112,991	1,114,412	1,135,577	1,152,434	1,161,239	1,173,537
February	1,098,445	1,119,319	1,121,492	1,122,905	1,144,902	1,162,294	1,172,290	1,183,185
March	1,113,061	1,131,123	1,129,100	1,132,106	1,146,413	1,170,837	1,179,686	1,190,199
April	1,129,635	1,136,608	1,134,734	1,140,788	1,158,606	1,178,630	1,185,212	1,194,816
May	1,126,371	1,142,985	1,138,383	1,149,046	1,167,657	1,181,644	1,189,900	1,201,113
June	1,123,412	1,136,699	1,130,402	1,144,876	1,164,607	1,177,506	1,186,326	1,195,468
July	1,080,937	1,078,836	1,083,849	1,096,675	1,119,390	1,132,361	1,137,883	N/A
August	1,106,262	1,108,552	1,109,759	1,125,162	1,148,502	1,160,743	1,168,802	N/A
September	1,132,779	1,134,829	1,135,673	1,150,545	1,173,776	1,185,510	1,193,845	N/A
October	1,138,395	1,135,677	1,138,312	1,153,684	1,173,953	1,185,022	1,194,194	N/A
November	1,138,543	1,137,411	1,141,035	1,158,579	1,177,717	1,186,046	1,197,650	N/A
December	1,137,474	1,138,742	1,134,955	1,161,056	1,180,513	1,185,009	1,197,013	N/A

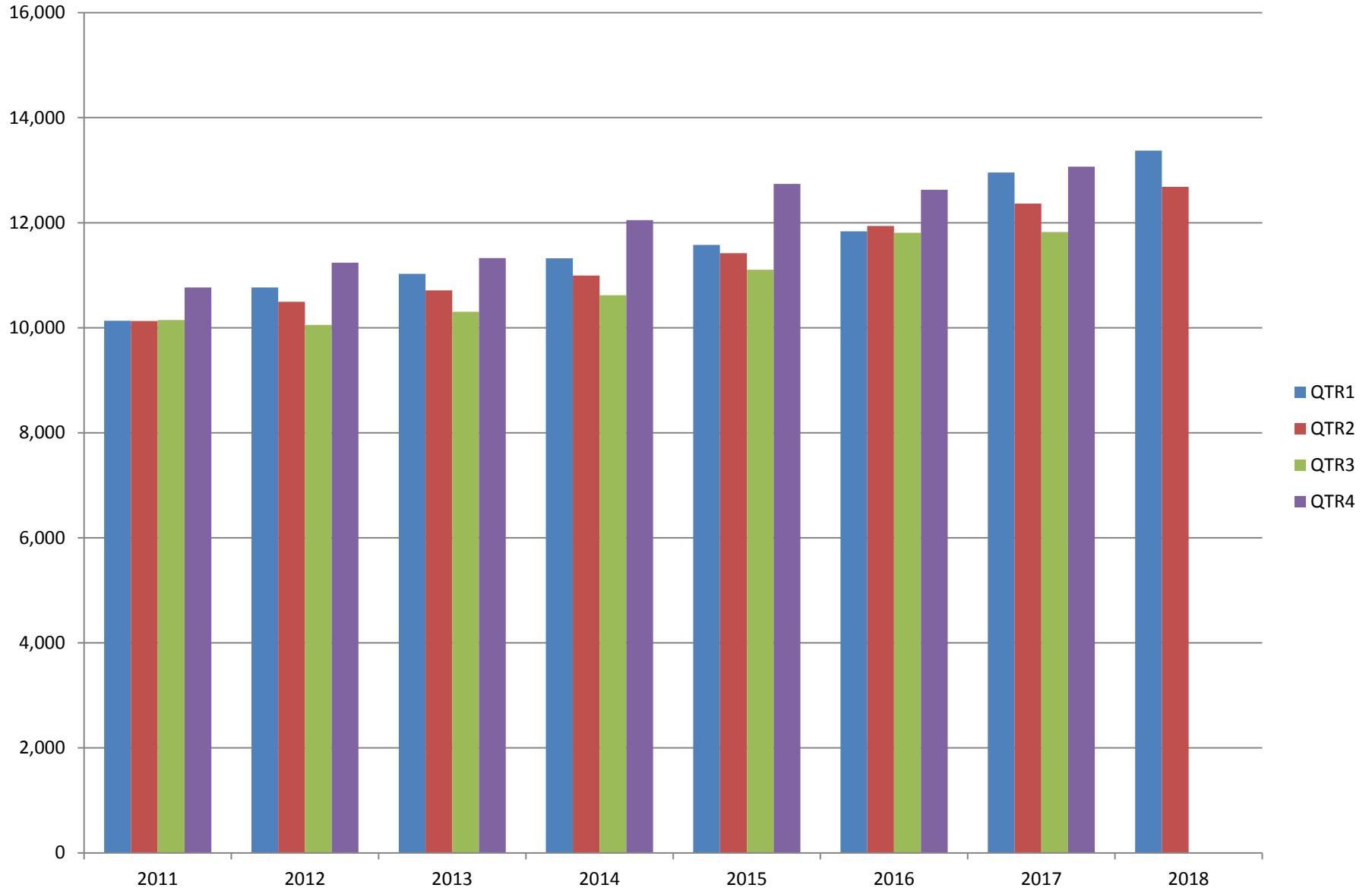
# AVERAGE TOTAL COVERED EMPLOYMENT

In Thousands



# TOTAL COVERED EARNINGS BY CALENDAR YEAR

In Thousands



**TABLE 3. TOTAL COVERED EARNINGS 2011 - 2018**

<b>PERIOD</b>	<b>2011</b>	<b>2012</b>	<b>2013</b>	<b>2014</b>
<b>TOTAL</b>	<b>\$41,177,659,236</b>	<b>\$42,551,238,929</b>	<b>\$43,371,086,461</b>	<b>\$44,980,520,034</b>
January - March	10,134,035,254	10,766,175,449	11,027,184,315	11,321,422,241
April - June	10,128,274,611	10,494,369,042	10,711,027,503	10,991,760,061
July - September	10,147,287,431	10,053,294,410	10,304,451,772	10,619,889,280
October - December	10,768,061,940	11,237,400,028	11,328,422,871	12,047,448,452
<b>Average Weekly Earnings</b>	<b>\$707.89</b>	<b>\$726.62</b>	<b>\$740.80</b>	<b>\$760.46</b>

<b>PERIOD</b>	<b>2015</b>	<b>2016</b>	<b>2017</b>	<b>2018</b>
<b>TOTAL</b>	<b>\$46,836,352,793</b>	<b>\$48,207,277,530</b>	<b>\$50,207,202,141</b>	<b>\$26,055,222,793</b>
January - March	11,575,046,688	11,836,255,664	12,955,088,347	13,372,730,974
April - June	11,419,363,330	11,935,722,186	12,363,027,711	12,682,491,819
July - September	11,104,443,452	11,809,460,297	11,823,324,966	N/A
October - December	12,737,499,323	12,625,839,383	13,065,761,117	N/A
<b>Average Weekly Earnings</b>	<b>\$778.05</b>	<b>\$791.34</b>	<b>\$818.01</b>	<b>\$842.32</b>

**TABLE 4. TOTAL TAXABLE EARNINGS, 2011 - 2018**

<b>PERIOD</b>	<b>2011</b>	<b>2012</b>	<b>2013</b>	<b>2014</b>
<b>TOTAL</b>	<b>11,479,396,226</b>	<b>11,624,348,048</b>	<b>11,644,747,978</b>	<b>11,919,662,224</b>
<b>January - March</b>	5,828,877,821	6,167,036,199	6,184,735,653	6,288,682,396
<b>April - June</b>	2,910,604,359	2,838,154,846	2,805,431,293	2,831,013,392
<b>July - September</b>	1,601,382,146	1,494,712,584	1,506,497,129	1,552,243,963
<b>October - December</b>	1,138,531,900	1,124,444,419	1,148,083,903	1,247,722,473

<b>PERIOD</b>	<b>2015</b>	<b>2016</b>	<b>2017</b>	<b>2018</b>
<b>TOTAL</b>	<b>12,258,632,610</b>	<b>12,511,938,047</b>	<b>12,744,039,136</b>	<b>8,856,322,632</b>
<b>January - March</b>	6,378,966,662	6,595,351,454	6,958,706,950	6,577,871,657
<b>April - June</b>	2,915,293,283	3,003,077,908	2,908,226,426	2,278,450,975
<b>July - September</b>	1,640,978,599	1,651,582,584	1,576,968,648	N/A
<b>October - December</b>	1,323,394,066	1,261,926,101	1,300,137,112	N/A

TABLE 5. STATEWIDE SUMMARY

North American Industry Classification System - Industry Groups		Number of Employing Units	Employment			Total Earnings Apr - Jun 2018	Average Weekly Earnings
			Apr	May	Jun		
<b>TOTAL, ALL INDUSTRIES</b>		<b>88,965</b>	<b>1,194,816</b>	<b>1,201,113</b>	<b>1,195,468</b>	<b>\$12,682,491,819</b>	<b>\$814.93</b>
<b>NATURAL RESOURCES &amp; MINING</b>		<b>2,507</b>	<b>16,266</b>	<b>16,649</b>	<b>16,868</b>	<b>\$187,849,465</b>	<b>\$870.78</b>
<b>11</b>	<b>AGRICULTURE, FORESTRY, FISHING &amp; HUNTING</b>	<b>2,081</b>	<b>12,447</b>	<b>12,770</b>	<b>12,938</b>	<b>\$126,679,065</b>	<b>\$766.18</b>
<b>111</b>	<b>CROP PRODUCTION</b>	<b>935</b>	<b>4,030</b>	<b>4,172</b>	<b>4,232</b>	<b>\$32,137,673</b>	<b>\$596.46</b>
1111	Oilseed & Grain Farming	697	2,784	2,914	2,967	22,610,620	602.17
1112	Vegetable & Melon Farming	32	216	212	216	1,442,480	516.89
1113	Fruit & Tree Nut Farming	12	37	37	36	276,903	580.92
1114	Greenhouse & Nursery Production	38	402	371	368	3,018,316	610.46
1119	Other Crop Farming	156	591	638	645	4,789,354	589.77
<b>112</b>	<b>ANIMAL PRODUCTION &amp; AQUACULTURE</b>	<b>330</b>	<b>3,211</b>	<b>3,233</b>	<b>3,300</b>	<b>\$37,404,763</b>	<b>\$885.86</b>
1121	Cattle Ranching & Farming	125	402	413	414	3,081,023	578.52
1122	Hog & Pig Farming	12	141	142	145	1,635,437	881.80
1123	Poultry & Egg Production	127	2,234	2,238	2,289	28,534,334	973.95
1125	Animal Aquaculture	44	366	377	389	3,776,284	769.83
	Other	22	68	63	63	377,685	449.27
<b>115</b>	<b>SUPPORT ACTIVITIES FOR AGRICULTURE &amp; FORESTRY</b>	<b>408</b>	<b>2,938</b>	<b>3,080</b>	<b>3,082</b>	<b>\$31,904,892</b>	<b>\$809.08</b>
1151	Support Activities for Crop Production	278	1,287	1,354	1,400	16,902,891	965.27
1152	Support Activities for Animal Production	62	750	731	724	6,111,871	639.65
1153	Support Activities for Forestry	68	901	995	958	8,890,130	718.84
	<b>OTHER</b>	<b>408</b>	<b>2,268</b>	<b>2,285</b>	<b>2,324</b>	<b>\$25,231,737</b>	<b>\$846.69</b>
<b>21</b>	<b>MINING</b>	<b>426</b>	<b>3,819</b>	<b>3,879</b>	<b>3,930</b>	<b>\$61,170,400</b>	<b>\$1,213.99</b>
<b>211</b>	<b>OIL &amp; GAS EXTRACTION</b>	<b>71</b>	<b>693</b>	<b>692</b>	<b>693</b>	<b>\$13,088,464</b>	<b>\$1,453.52</b>
<b>212</b>	<b>MINING (EXCEPT OIL &amp; GAS)</b>	<b>107</b>	<b>1,759</b>	<b>1,778</b>	<b>1,812</b>	<b>\$25,312,421</b>	<b>\$1,092.04</b>
<b>213</b>	<b>SUPPORT ACTIVITIES FOR MINING</b>	<b>248</b>	<b>1,367</b>	<b>1,409</b>	<b>1,425</b>	<b>\$22,769,515</b>	<b>\$1,250.77</b>



TABLE 5. STATEWIDE SUMMARY

North American Industry Classification System - Industry Groups		Number of Employing Units	Employment			Total Earnings Apr - Jun 2018	Average Weekly Earnings
			Apr	May	Jun		
<b>CONSTRUCTION</b>		<b>6,904</b>	<b>49,950</b>	<b>50,861</b>	<b>51,627</b>	<b>\$589,392,155</b>	<b>\$892.26</b>
<b>236</b>	<b>CONSTRUCTION OF BUILDINGS</b>	<b>1,829</b>	<b>10,494</b>	<b>10,630</b>	<b>10,849</b>	<b>\$134,486,322</b>	<b>\$970.67</b>
2361	Residential Building Construction	1,234	3,548	3,565	3,693	37,885,964	809.08
2362	Nonresidential Building Construction	595	6,946	7,065	7,156	96,600,358	1,053.17
<b>237</b>	<b>HEAVY &amp; CIVIL ENGINEERING CONSTRUCTION</b>	<b>721</b>	<b>7,987</b>	<b>8,098</b>	<b>8,113</b>	<b>\$100,764,956</b>	<b>\$960.97</b>
2371	Utility System Construction	403	4,328	4,414	4,393	56,445,014	991.68
2372	Land Subdivision	45	75	79	82	842,345	823.68
2373	Highway, Street & Bridge Construction	182	2,910	2,925	2,938	35,372,143	930.45
2379	Other Heavy Construction	91	674	680	700	8,105,454	910.66
<b>238</b>	<b>SPECIALTY TRADE CONTRACTORS</b>	<b>4,354</b>	<b>31,469</b>	<b>32,133</b>	<b>32,665</b>	<b>\$354,140,877</b>	<b>\$848.94</b>
2381	Building Foundation & Exterior Contractors	817	5,844	5,972	6,092	63,591,074	819.46
2382	Building Equipment Contractors	2,113	17,184	17,527	17,820	203,067,294	892.08
2383	Building Finishing Contractors	716	3,790	3,823	3,871	39,829,767	800.37
2389	Other Specialty Trade Contractors	708	4,651	4,811	4,882	47,652,742	766.65
<b>MANUFACTURING</b>		<b>2,917</b>	<b>159,375</b>	<b>159,743</b>	<b>160,398</b>	<b>\$1,862,782,530</b>	<b>\$896.47</b>
<b>311</b>	<b>FOOD MANUFACTURING</b>	<b>295</b>	<b>48,203</b>	<b>48,128</b>	<b>48,304</b>	<b>\$438,933,389</b>	<b>\$700.33</b>
3111	Animal Food Manufacturing	48	1,954	1,951	1,965	28,094,663	1,104.49
3112	Grain & Oilseed Milling	33	2,665	2,655	2,677	29,858,611	861.63
3114	Fruit, Vegetable & Specialty Food	18	4,057	4,047	4,055	47,232,611	896.44
3115	Dairy Product Manufacturing	7	581	576	575	6,142,050	818.36
3116	Animal Slaughtering & Processing	79	32,729	32,686	32,816	264,163,359	620.59
3118	Bakeries & Tortilla Manufacturing	77	3,901	3,908	3,932	38,204,771	750.91
3119	Other Food Manufacturing	23	2,286	2,275	2,255	25,038,866	847.74
	Other	10	30	30	29	198,458	514.58
<b>312</b>	<b>BEVERAGE &amp; TOBACCO PRODUCT MANUFACTURING</b>	<b>60</b>	<b>1,455</b>	<b>1,513</b>	<b>1,559</b>	<b>\$17,544,037</b>	<b>\$894.33</b>
<b>313</b>	<b>TEXTILE MILLS</b>	<b>8</b>	<b>114</b>	<b>118</b>	<b>120</b>	<b>\$1,615,375</b>	<b>\$1,059.03</b>
<b>314</b>	<b>TEXTILE PRODUCT MILLS</b>	<b>45</b>	<b>988</b>	<b>989</b>	<b>995</b>	<b>\$12,219,277</b>	<b>\$948.80</b>
3141	Textile Furnishing Mills	10	35	36	37	425,933	910.11
3149	Other Textile Product Mills	35	953	953	958	11,793,344	950.26
<b>315</b>	<b>APPAREL MANUFACTURING</b>	<b>14</b>	<b>826</b>	<b>845</b>	<b>861</b>	<b>\$5,631,979</b>	<b>\$513.30</b>
3151	Apparel Knitting Mills	3	575	570	571	4,045,732	544.07
	Other	11	251	275	290	1,586,247	448.60

TABLE 5. STATEWIDE SUMMARY

North American Industry Classification System - Industry Groups		Number of	Employment			Total Earnings	Average
		Employing Units	Apr	May	Jun	Apr - Jun 2018	Weekly Earnings
<b>316</b>	<b>LEATHER &amp; ALLIED PRODUCT MANUFACTURING</b>	<b>12</b>	<b>1,049</b>	<b>1,098</b>	<b>1,141</b>	<b>\$7,508,281</b>	<b>\$526.97</b>
3162	Footwear Manufacturing	3	861	909	950	5,848,949	\$496.23
3169	Other Leather & Allied Product Manufacturing	9	188	189	191	1,659,332	\$674.16
<b>321</b>	<b>WOOD PRODUCT MANUFACTURING</b>	<b>301</b>	<b>9,717</b>	<b>9,834</b>	<b>9,996</b>	<b>\$106,045,244</b>	<b>\$828.24</b>
3211	Sawmills & Wood Preservation	140	4,716	4,784	4,840	56,460,195	908.60
3212	Veneer & Engineered Wood Products	39	1,773	1,789	1,809	21,592,005	927.72
3219	Other Wood Product Manufacturing	122	3,228	3,261	3,347	27,993,044	656.76
<b>322</b>	<b>PAPER MANUFACTURING</b>	<b>74</b>	<b>9,554</b>	<b>9,610</b>	<b>9,680</b>	<b>\$151,113,569</b>	<b>\$1,209.00</b>
3221	Pulp, Paper & Paperboard Mills	15	3,827	3,849	3,903	75,475,044	1,504.22
3222	Converted Paper Product Manufacturing	59	5,727	5,761	5,777	75,638,525	1,011.01
<b>323</b>	<b>PRINTING &amp; RELATED SUPPORT ACTIVITIES</b>	<b>244</b>	<b>3,873</b>	<b>3,783</b>	<b>3,652</b>	<b>\$39,808,598</b>	<b>\$812.40</b>
<b>324</b>	<b>PETROLEUM &amp; COAL PRODUCTS MANUFACTURING</b>	<b>21</b>	<b>1,253</b>	<b>1,262</b>	<b>1,282</b>	<b>\$25,512,575</b>	<b>\$1,550.57</b>
<b>325</b>	<b>CHEMICAL MANUFACTURING</b>	<b>120</b>	<b>5,423</b>	<b>5,429</b>	<b>5,485</b>	<b>\$83,588,555</b>	<b>\$1,180.73</b>
3251	Basic Chemical Manufacturing	30	1,829	1,832	1,865	33,823,230	1,412.48
3252	Resin, Rubber & Artificial Fibers	11	467	470	468	6,966,551	1,144.25
3253	Agricultural Chemical Manufacturing	14	457	452	454	8,329,436	1,410.25
3254	Pharmaceutical & Medicine Manufacturing	20	495	487	497	6,157,416	960.75
3255	Paint, Coating & Adhesive Manufacturing	10	224	223	225	3,250,755	1,116.33
3256	Soap, Cleaning Compound, & Toilet Preparation Manufacturing	14	1,231	1,235	1,242	14,968,415	931.57
3259	Other Chemical Preparation Manufacturing	21	720	730	734	10,092,752	1,066.44
<b>326</b>	<b>PLASTICS &amp; RUBBER PRODUCTS MANUFACTURING</b>	<b>123</b>	<b>10,864</b>	<b>10,922</b>	<b>11,004</b>	<b>\$133,472,915</b>	<b>\$939.35</b>
3261	Plastics Product Manufacturing	95	6,671	6,712	6,830	74,619,078	851.92
3262	Rubber Product Manufacturing	28	4,193	4,210	4,174	58,853,837	1,079.88
<b>327</b>	<b>NONMETALLIC MINERAL PRODUCT MANUFACTURING</b>	<b>236</b>	<b>3,614</b>	<b>3,629</b>	<b>3,661</b>	<b>\$44,312,360</b>	<b>\$937.81</b>
3271	Clay Product & Refractory Manufacturing	12	503	513	519	6,333,627	952.19
3272	Glass & Glass Product Manufacturing	8	350	353	345	4,257,221	937.44
3273	Cement & Concrete Product Manufacturing	179	2,076	2,074	2,103	24,661,266	910.13
3274	Lime & Gypsum Product Manufacturing	3	299	304	301	4,848,643	1,237.74
3279	Other Nonmetallic Mineral Products Manufacturing	34	386	385	393	4,211,603	834.97
<b>331</b>	<b>PRIMARY METAL MANUFACTURING</b>	<b>72</b>	<b>7,993</b>	<b>8,033</b>	<b>8,059</b>	<b>\$147,011,386</b>	<b>\$1,408.58</b>
3311	Iron & Steel Mills & Ferroalloys	11	3,158	3,171	3,218	79,101,698	1,912.04
3312	Purchased Steel Product Manufacturing	21	2,096	2,151	2,159	32,881,987	1,184.54
3313	Alumina & Aluminum Production	15	803	795	797	11,389,106	1,097.39
3314	Other Nonferrous Metal Production	7	329	322	320	4,271,617	1,015.20
3315	Foundries	18	1,607	1,594	1,565	19,366,978	937.75

TABLE 5. STATEWIDE SUMMARY

North American Industry Classification System - Industry Groups		Number of	Employment			Total Earnings	Average
		Employing Units	Apr	May	Jun	Apr - Jun 2018	Weekly Earnings
<b>332</b>	<b>FABRICATED METAL PRODUCT MANUFACTURING</b>	<b>522</b>	<b>15,400</b>	<b>15,501</b>	<b>15,629</b>	<b>\$194,474,925</b>	<b>\$964.51</b>
3321	Forging & Stamping	15	443	449	453	5,487,943	941.60
3322	Cutlery & Hand Tool Manufacturing	14	546	539	550	6,257,748	883.24
3323	Architectural & Structural Metals	147	4,519	4,546	4,561	57,699,612	977.20
3324	Boilers, Tanks & Shipping Containers	16	629	626	624	8,455,936	1,038.52
3325	Hardware Manufacturing	5	264	264	268	3,695,613	1,071.40
3326	Spring & Wire Product Manufacturing	11	348	351	362	4,081,655	887.77
3327	Machine Shops & Threaded Products	205	2,022	2,065	2,079	21,733,465	813.40
3328	Coating, Engraving & Heat Treating Metals	42	627	627	647	6,850,308	831.58
3329	Other Fabricated Metal Product Manufacturing	67	6,002	6,034	6,085	80,212,645	1,021.50
<b>333</b>	<b>MACHINERY MANUFACTURING</b>	<b>207</b>	<b>11,485</b>	<b>11,444</b>	<b>11,353</b>	<b>\$137,557,438</b>	<b>\$925.97</b>
3331	Agriculture, Construction & Mining Machinery	40	2,753	2,734	2,708	26,820,175	755.25
3332	Industrial Machinery Manufacturing	24	727	710	725	10,889,652	1,162.35
3333	Commercial & Service Industry Machinery	20	782	778	779	9,711,032	958.10
3334	HVAC & Commercial Refrigeration Equipment	24	2,813	2,802	2,746	34,982,331	965.54
3335	Metalworking Machinery Manufacturing	51	986	1,000	990	11,647,279	903.17
3336	Turbine & Power Transmission Equipment Manufacturing	5	722	736	726	9,490,763	1,002.83
3339	Other General Purpose Machinery Manufacturing	43	2,702	2,684	2,679	34,016,206	973.33
<b>334</b>	<b>COMPUTER &amp; ELECTRONIC PRODUCT MANUFACTURING</b>	<b>50</b>	<b>2,162</b>	<b>2,160</b>	<b>2,171</b>	<b>\$28,772,042</b>	<b>\$1,022.59</b>
3343	Audio & Video Equipment Manufacturing	5	123	125	124	1,267,325	786.18
3344	Semiconductors & Electronic Components	24	1,537	1,536	1,549	20,702,612	1,033.65
3345	Navigational, Measuring, Electromedical, & Control Instr, Mfg Other	16 5	413 89	409 90	412 86	5,322,726 1,479,379	995.40 1,288.28
<b>335</b>	<b>ELECTRICAL EQUIPMENT &amp; APPLIANCES</b>	<b>52</b>	<b>4,637</b>	<b>4,638</b>	<b>4,612</b>	<b>\$61,014,220</b>	<b>\$1,013.91</b>
3351	Electric Lighting Equipment Manufacturing	9	336	334	326	3,642,954	\$844.06
3352	Household Appliance Manufacturing	4	31	28	28	383,073	\$1,016.11
3353	Electrical Equipment Manufacturing	20	3,052	3,044	2,986	40,374,645	1,025.90
3359	Other Electrical Equipment & Component Manufacturing	19	1,218	1,232	1,272	16,613,548	1,030.06
<b>336</b>	<b>TRANSPORTATION EQUIPMENT MANUFACTURING</b>	<b>127</b>	<b>13,822</b>	<b>13,863</b>	<b>13,815</b>	<b>\$159,778,140</b>	<b>\$888.48</b>
3362	Motor Vehicle Body & Trailer Manufacturing	31	2,079	2,085	2,080	20,415,607	754.53
3363	Motor Vehicle Parts Manufacturing	41	5,355	5,389	5,353	59,091,357	847.14
3364	Aerospace Product & Parts Manufacturing	24	2,979	2,983	2,996	47,574,727	1,225.58
3366	Ship & Boat Building Other	19 12	2,150 1,259	2,165 1,241	2,149 1,237	17,373,408 15,323,041	620.24 946.24
<b>337</b>	<b>FURNITURE &amp; RELATED PRODUCT MANUFACTURING</b>	<b>166</b>	<b>3,624</b>	<b>3,631</b>	<b>3,648</b>	<b>\$33,524,733</b>	<b>\$709.57</b>
3371	Household & Institutional Furniture	139	2,916	2,929	2,951	25,557,318	670.51
3372	Office Furniture & Fixtures Manufacturing	21	631	632	626	7,419,748	906.43
3379	Other Furniture Related Product Manufacturing	6	77	70	71	547,667	579.75
<b>339</b>	<b>MISCELLANEOUS MANUFACTURING</b>	<b>168</b>	<b>3,319</b>	<b>3,313</b>	<b>3,371</b>	<b>\$33,343,492</b>	<b>\$769.23</b>
3391	Medical Equipment & Supplies Manufacturing	63	1,606	1,634	1,648	18,433,328	870.26
3399	Other Miscellaneous Manufacturing	105	1,713	1,679	1,723	14,910,164	672.69

TABLE 5. STATEWIDE SUMMARY

North American Industry Classification System - Industry Groups		Number of Employing Units	Employment			Total Earnings Apr - Jun 2018	Average Weekly Earnings
			Apr	May	Jun		
<b>TRADE, TRANSPORTATION &amp; UTILITIES</b>		<b>21,641</b>	<b>246,942</b>	<b>248,265</b>	<b>247,473</b>	<b>\$2,510,545,656</b>	<b>\$780.09</b>
<b>42</b>	<b>WHOLESALE TRADE</b>	<b>7,210</b>	<b>47,130</b>	<b>47,233</b>	<b>47,299</b>	<b>\$769,366,236</b>	<b>\$1,253.31</b>
<b>423</b>	<b>MERCHANT WHOLESALERS, DURABLE GOODS</b>	<b>3,009</b>	<b>23,457</b>	<b>23,512</b>	<b>23,622</b>	<b>\$355,873,058</b>	<b>\$1,163.39</b>
4231	Motor Vehicle & Part Merchant Wholesalers	281	3,085	3,109	3,115	41,706,347	1,033.90
4232	Furniture & Furnishings Merchant Wholesalers	70	470	466	464	7,536,704	1,242.31
4233	Lumber & Supply Merchant Wholesalers	215	1,565	1,562	1,562	19,725,419	970.79
4234	Commercial Goods Merchant Wholesalers	552	3,029	3,021	3,041	62,252,744	1,580.25
4235	Metal & Mineral Merchant Wholesalers	141	1,018	1,033	1,049	14,906,320	1,109.65
4236	Appliances & Electronics Goods Merchant Wholesalers	285	2,524	2,534	2,512	42,397,271	1,292.47
4237	Hardware & Plumbing Merchant Wholesalers	299	2,736	2,736	2,754	38,935,204	1,092.27
4238	Machinery & Supply Merchant Wholesalers	884	7,039	7,056	7,139	102,904,078	1,118.35
4239	Miscellaneous Durable Goods Merchant Wholesalers	282	1,991	1,995	1,986	25,508,971	985.71
<b>424</b>	<b>MERCHANT WHOLESALERS, NONDURABLE GOODS</b>	<b>1,885</b>	<b>18,032</b>	<b>18,064</b>	<b>18,073</b>	<b>\$297,738,036</b>	<b>\$1,268.42</b>
4241	Paper & Paper Product Merchant Wholesalers	123	1,249	1,227	1,167	20,406,117	1,292.64
4242	Druggist' Goods Merchant Wholesalers	217	1,566	1,558	1,560	39,159,218	1,929.28
4243	Apparel & Piece Goods Merchant Wholesalers	58	719	715	715	10,699,875	1,149.00
4244	Grocery Product Merchant Wholesalers	522	5,648	5,650	5,667	106,345,447	1,446.58
4245	Farm Product & Raw Material Merchant Wholesalers	81	825	842	844	7,202,549	661.94
4246	Chemical Merchant Wholesalers	224	1,114	1,131	1,129	24,253,778	1,658.87
4247	Petroleum Merchant Wholesalers	163	1,223	1,227	1,254	15,127,349	942.47
4248	Alcoholic Beverage Merchant Wholesalers	67	1,704	1,734	1,738	22,761,606	1,014.81
4249	Miscellaneous Nondurable Goods Merchant Wholesaler	430	3,984	3,980	3,999	51,782,097	998.89
<b>425</b>	<b>ELECTRONIC MARKETS &amp; AGENTS &amp; BROKERS</b>	<b>2,316</b>	<b>5,641</b>	<b>5,657</b>	<b>5,604</b>	<b>\$115,755,142</b>	<b>\$1,580.45</b>
<b>44 - 45</b>	<b>RETAIL TRADE</b>	<b>11,067</b>	<b>138,761</b>	<b>139,546</b>	<b>138,395</b>	<b>\$956,684,234</b>	<b>\$529.81</b>
<b>441</b>	<b>MOTOR VEHICLE &amp; PARTS DEALERS</b>	<b>1,530</b>	<b>19,234</b>	<b>19,237</b>	<b>19,248</b>	<b>\$219,666,990</b>	<b>\$878.26</b>
4411	Automobile Dealers	637	11,884	11,815	11,767	156,077,996	1,015.56
4412	Other Motor Vehicle Dealers	173	1,725	1,788	1,779	20,612,065	898.83
4413	Automotive Parts, Accessories & Tire Stores	720	5,625	5,634	5,702	42,976,929	584.74
<b>442</b>	<b>FURNITURE &amp; HOME FURNISHINGS STORES</b>	<b>492</b>	<b>3,668</b>	<b>3,644</b>	<b>3,640</b>	<b>\$28,754,399</b>	<b>\$605.88</b>
4421	Furniture Stores	266	2,064	2,041	2,057	18,237,208	682.99
4422	Home Furnishings Stores	226	1,604	1,603	1,583	10,517,191	506.69
<b>443</b>	<b>ELECTRONICS &amp; APPLIANCE STORES</b>	<b>397</b>	<b>3,438</b>	<b>3,420</b>	<b>3,398</b>	<b>\$28,896,430</b>	<b>\$650.20</b>
<b>444</b>	<b>BUILDING MATERIAL &amp; GARDEN SUPPLY STORES</b>	<b>834</b>	<b>12,441</b>	<b>12,533</b>	<b>12,425</b>	<b>\$85,039,444</b>	<b>\$524.73</b>
4441	Building Material & Supplies Dealers	595	10,384	10,420	10,317	72,773,978	539.64
4442	Lawn & Garden Equipment & Supplies Stores	239	2,057	2,113	2,108	12,265,466	450.86

TABLE 5. STATEWIDE SUMMARY

North American Industry Classification System - Industry Groups		Number of Employing Units	Employment			Total Earnings Apr - Jun 2018	Average Weekly Earnings
			Apr	May	Jun		
<b>445</b>	<b>FOOD &amp; BEVERAGE STORES</b>	<b>1,060</b>	<b>19,292</b>	<b>19,343</b>	<b>19,215</b>	<b>\$106,905,452</b>	<b>\$426.46</b>
4451	Grocery Stores	561	16,728	16,770	16,652	90,069,091	414.46
4452	Specialty Food Stores	150	830	841	811	7,207,238	670.11
4453	Beer, Wine & Liquor Stores	349	1,734	1,732	1,752	9,629,123	425.85
<b>446</b>	<b>HEALTH &amp; PERSONAL CARE STORES</b>	<b>982</b>	<b>8,579</b>	<b>8,596</b>	<b>8,700</b>	<b>\$78,739,433</b>	<b>\$702.25</b>
<b>447</b>	<b>GASOLINE STATIONS</b>	<b>1,673</b>	<b>12,337</b>	<b>12,379</b>	<b>12,406</b>	<b>\$57,802,152</b>	<b>\$359.33</b>
44711	Gasoline Stations with Convenience Stores	1,572	11,103	11,139	11,154	50,508,289	349.02
44719	Other Gasoline Stations	101	1,234	1,240	1,252	7,293,863	451.74
<b>448</b>	<b>CLOTHING &amp; CLOTHING ACCESSORIES STORES</b>	<b>1,011</b>	<b>7,803</b>	<b>7,884</b>	<b>7,704</b>	<b>\$34,940,911</b>	<b>\$344.72</b>
4481	Clothing Stores	750	5,934	6,014	5,888	23,058,989	298.35
4482	Shoe Stores	131	1,159	1,165	1,135	4,804,752	320.55
4483	Jewelry, Luggage & Leather Goods Stores	130	710	705	681	7,077,170	779.20
<b>451</b>	<b>SPORTING GOODS, HOBBY, BOOK &amp; MUSIC STORES</b>	<b>451</b>	<b>4,394</b>	<b>4,374</b>	<b>4,306</b>	<b>\$21,289,218</b>	<b>\$375.78</b>
4511	Sporting Goods & Musical Instrument Stores	392	3,921	3,903	3,883	19,387,218	382.16
4512	Book, Periodical & Music Stores	59	473	471	423	1,902,000	321.08
<b>452</b>	<b>GENERAL MERCHANDISE STORES</b>	<b>978</b>	<b>38,831</b>	<b>39,290</b>	<b>38,626</b>	<b>\$239,093,862</b>	<b>\$472.61</b>
4522	Department Stores	133	7,484	7,564	7,458	39,903,100	409.15
4523	Gen. Merchandise Stores, Warehouse clubs & Supercenters	845	31,347	31,726	31,168	199,190,762	487.76
<b>453</b>	<b>MISCELLANEOUS STORE RETAILERS</b>	<b>1,167</b>	<b>6,902</b>	<b>7,024</b>	<b>6,942</b>	<b>\$38,251,766</b>	<b>\$423.01</b>
4531	Florists	164	619	666	603	3,105,875	379.63
4532	Office Supplies, Stationery & Gift Stores	235	1,509	1,514	1,521	8,745,601	444.15
4533	Used Merchandise Stores	251	2,015	2,065	2,008	10,001,823	379.13
4539	Other Miscellaneous Store Retailers	517	2,759	2,779	2,810	16,398,467	453.31
<b>454</b>	<b>NONSTORE RETAILERS</b>	<b>492</b>	<b>1,842</b>	<b>1,822</b>	<b>1,785</b>	<b>\$17,304,177</b>	<b>\$732.84</b>
4541	Electronic Shopping & Mail-Order Houses	251	726	714	696	7,128,427	770.14
4542	Vending Machine Operators	64	457	475	459	3,863,978	641.04
4543	Direct Selling Establishments	177	659	633	630	6,311,772	757.84
<b>48 - 49</b>	<b>TRANSPORTATION &amp; WAREHOUSING</b>	<b>2,949</b>	<b>53,309</b>	<b>53,688</b>	<b>53,913</b>	<b>\$616,893,183</b>	<b>\$884.72</b>
<b>481</b>	<b>AIR TRANSPORTATION</b>	<b>49</b>	<b>735</b>	<b>756</b>	<b>742</b>	<b>\$6,572,538</b>	<b>\$679.24</b>
4811	Scheduled Air Transportation	17	651	669	653	5,024,723	587.71
4812	Nonshceduled Air Transportation	32	84	87	89	1,547,815	1,373.80
<b>483</b>	<b>WATER TRANSPORTATION</b>	<b>5</b>	<b>23</b>	<b>23</b>	<b>26</b>	<b>\$438,052</b>	<b>\$1,404.01</b>
<b>484</b>	<b>TRUCK TRANSPORTATION</b>	<b>1,838</b>	<b>31,959</b>	<b>32,260</b>	<b>32,559</b>	<b>\$399,538,783</b>	<b>\$952.71</b>
4841	General Freight Trucking	1,063	25,644	25,943	26,264	328,655,739	974.22
4842	Specialized Freight Trucking	775	6,315	6,317	6,295	70,883,044	864.25

TABLE 5. STATEWIDE SUMMARY

North American Industry Classification System - Industry Groups		Number of Employing Units	Employment			Total Earnings Apr - Jun 2018	Average Weekly Earnings
			Apr	May	Jun		
<b>485</b>	<b>TRANSIT &amp; GROUND PASSENGER TRANSPORTATION</b>	<b>116</b>	<b>1,869</b>	<b>1,851</b>	<b>1,821</b>	<b>\$10,202,588</b>	<b>\$424.91</b>
4853	Taxi & Limousine Service	30	419	405	377	1,883,424	361.90
4854	School & Employee Bus Transportation	12	382	388	376	1,930,378	388.72
4855	Charter Bus Industry Service	8	108	103	106	738,398	537.54
4859	Other Ground Passenger Transportation	61	857	855	864	4,820,418	431.83
	Other	5	103	100	98	829,970	636.32
<b>486</b>	<b>PIPELINE TRANSPORTATION</b>	<b>39</b>	<b>404</b>	<b>409</b>	<b>406</b>	<b>\$9,873,459</b>	<b>\$1,869.15</b>
<b>487</b>	<b>SCENIC &amp; SIGHTSEEING TRANSPORTATION</b>	<b>4</b>	<b>30</b>	<b>35</b>	<b>49</b>	<b>\$130,586</b>	<b>\$264.34</b>
<b>488</b>	<b>SUPPORT ACTIVITIES FOR TRANSPORTATION</b>	<b>494</b>	<b>5,220</b>	<b>5,282</b>	<b>5,386</b>	<b>\$63,930,825</b>	<b>\$928.58</b>
4881	Support Activities for Air Transportation	106	1,024	1,041	1,045	10,502,454	779.31
4882	Support Activities for Rail Transportation	36	750	772	794	9,385,503	935.18
4883	Support Activities for Water Transportation	20	406	405	409	5,499,311	1,040.22
4884	Support Activities for Road Transportation	164	774	788	809	6,969,444	678.34
4885	Freight Transportation Arrangement	155	2,132	2,139	2,178	30,374,901	1,086.93
4889	Other Support Activities for Transportation	13	134	137	151	1,199,212	655.78
<b>493</b>	<b>WAREHOUSING &amp; STORAGE</b>	<b>229</b>	<b>8,362</b>	<b>8,354</b>	<b>8,215</b>	<b>\$81,182,353</b>	<b>\$751.45</b>
	<b>OTHER</b>	<b>175</b>	<b>4,707</b>	<b>4,718</b>	<b>4,709</b>	<b>\$45,023,999</b>	<b>\$735.12</b>
<b>22</b>	<b>UTILITIES</b>	<b>415</b>	<b>7,742</b>	<b>7,798</b>	<b>7,866</b>	<b>\$167,602,003</b>	<b>\$1,652.46</b>
2211	Power Generation & Supply	165	5,774	5,814	5,868	140,792,567	1,861.29
2212	Natural Gas Distribution	68	1,034	1,046	1,050	17,725,555	1,306.87
2213	Water, Sewage & Other Systems	182	934	938	948	9,083,881	743.36
	<b>INFORMATION</b>	<b>1,201</b>	<b>10,851</b>	<b>10,951</b>	<b>10,950</b>	<b>\$137,351,896</b>	<b>\$967.78</b>
<b>511</b>	<b>PUBLISHING INDUSTRIES, EXCEPT INTERNET</b>	<b>226</b>	<b>2,798</b>	<b>2,771</b>	<b>2,758</b>	<b>\$28,182,721</b>	<b>\$781.04</b>
5111	Newspaper, Book & Directory Publishers	174	2,403	2,392	2,388	21,024,896	675.47
5112	Software Publishers	52	395	379	370	7,157,825	1,443.89
<b>512</b>	<b>MOTION PICTURE &amp; SOUND RECORDING INDUSTRY</b>	<b>147</b>	<b>1,278</b>	<b>1,405</b>	<b>1,425</b>	<b>\$6,225,259</b>	<b>\$349.71</b>
5121	Motion Picture & Video Industries	134	1,264	1,390	1,411	6,037,045	342.72
5122	Sound Recording Industries	13	14	15	14	188,214	1,010.09
<b>515</b>	<b>BROADCASTING, EXCEPT INTERNET</b>	<b>119</b>	<b>1,562</b>	<b>1,551</b>	<b>1,553</b>	<b>\$17,235,038</b>	<b>\$852.40</b>

TABLE 5. STATEWIDE SUMMARY

North American Industry Classification System - Industry Groups		Number of Employing Units	Employment			Total Earnings Apr - Jun 2018	Average Weekly Earnings
			Apr	May	Jun		
<b>517</b>	<b>TELECOMMUNICATIONS</b>	<b>346</b>	<b>3,518</b>	<b>3,526</b>	<b>3,501</b>	<b>\$55,514,608</b>	<b>\$1,214.89</b>
5173	Telecommunications Resellers	247	3,141	3,150	3,114	49,470,684	1,213.86
5174	Satellite Telecommunications Carriers	4	7	7	7	66,211	727.59
5179	Other Telecommunications	95	370	369	380	5,977,713	1,232.77
<b>518</b>	<b>DATA PROCESSING, HOSTING &amp; RELATED SERVICES</b>	<b>274</b>	<b>1,359</b>	<b>1,358</b>	<b>1,365</b>	<b>\$25,787,145</b>	<b>\$1,457.83</b>
<b>519</b>	<b>OTHER INFORMATION SERVICES</b>	<b>89</b>	<b>336</b>	<b>340</b>	<b>348</b>	<b>\$4,407,125</b>	<b>\$993.19</b>
<b>FINANCIAL ACTIVITIES</b>		<b>8,386</b>	<b>50,003</b>	<b>50,471</b>	<b>50,730</b>	<b>\$687,712,647</b>	<b>\$1,049.59</b>
<b>52</b>	<b>FINANCE &amp; INSURANCE</b>	<b>4,964</b>	<b>36,506</b>	<b>36,762</b>	<b>36,866</b>	<b>\$557,973,767</b>	<b>\$1,169.15</b>
<b>522</b>	<b>CREDIT INTERMEDIATION &amp; RELATED ACTIVITIES</b>	<b>1,963</b>	<b>19,090</b>	<b>19,210</b>	<b>19,288</b>	<b>\$257,805,429</b>	<b>\$1,033.09</b>
5221	Depository Credit Intermediation	1,429	16,165	16,281	16,340	212,079,802	1,003.19
5222	Nondepository Credit Intermediation	400	1,825	1,825	1,850	29,986,176	1,258.16
5223	Activities Related to Credit Intermediation	134	1,100	1,104	1,098	15,739,451	1,099.99
<b>523</b>	<b>FINANCIAL INVESTMENT &amp; RELATED ACTIVITIES</b>	<b>703</b>	<b>3,058</b>	<b>3,025</b>	<b>3,051</b>	<b>\$90,608,268</b>	<b>\$2,289.21</b>
5231	Insurance Carriers	297	2,150	2,130	2,140	73,863,407	2,655.05
5239	Insurance Agencies, Brokerages & Support	406	908	895	911	16,744,861	1,423.80
<b>524</b>	<b>INSURANCE CARRIERS &amp; RELATED ACTIVITIES</b>	<b>2,225</b>	<b>14,289</b>	<b>14,456</b>	<b>14,427</b>	<b>\$207,607,253</b>	<b>\$1,109.73</b>
5231	Security & Commodity Contracts Intermediation & Brokerage	304	6,345	6,424	6,436	98,238,587	1,180.44
5239	Other Financial Investment Activities	1,921	7,944	8,032	7,991	109,368,666	1,053.07
	<b>OTHER</b>	<b>73</b>	<b>69</b>	<b>71</b>	<b>100</b>	<b>\$1,952,817</b>	<b>\$1,877.71</b>
<b>53</b>	<b>REAL ESTATE &amp; RENTAL &amp; LEASING</b>	<b>3,422</b>	<b>13,497</b>	<b>13,709</b>	<b>13,864</b>	<b>\$129,738,880</b>	<b>\$728.99</b>
<b>531</b>	<b>REAL ESTATE</b>	<b>2,800</b>	<b>9,475</b>	<b>9,525</b>	<b>9,606</b>	<b>\$87,351,595</b>	<b>\$704.68</b>
5311	Lessors of Real Estate	1,107	4,358	4,362	4,450	37,115,611	650.35
5312	Offices of Real Estate Agents & Brokers	901	1,878	1,913	1,917	19,488,771	787.91
5313	Activities Related to Real Estate	792	3,239	3,250	3,239	30,747,213	729.39
<b>532</b>	<b>RENTAL &amp; LEASING SERVICES</b>	<b>609</b>	<b>3,989</b>	<b>4,149</b>	<b>4,226</b>	<b>\$41,770,549</b>	<b>\$779.63</b>
5321	Automotive Equipment Rental & Leasing	119	1,060	1,064	1,092	8,128,764	583.29
5322	Consumer Goods Rental	312	1,788	1,920	1,951	15,867,817	647.08
5323	General Rental Centers	38	219	223	226	2,602,915	899.21
5324	Machinery & Equipment Rental & Leasing	140	922	942	957	15,171,053	1,241.05
<b>533</b>	<b>LESSORS OF NONFINANCIAL INTANGIBLE ASSETS</b>	<b>13</b>	<b>33</b>	<b>35</b>	<b>32</b>	<b>\$616,736</b>	<b>\$1,423.24</b>

TABLE 5. STATEWIDE SUMMARY

North American Industry Classification System - Industry Groups		Number of Employing Units	Employment			Total Earnings Apr - Jun 2018	Average Weekly Earnings
			Apr	May	Jun		
<b>PROFESSIONAL &amp; BUSINESS SERVICES</b>		<b>14,189</b>	<b>148,702</b>	<b>148,361</b>	<b>145,024</b>	<b>\$1,998,531,024</b>	<b>\$1,043.23</b>
<b>54</b>	<b>PROFESSIONAL &amp; TECHNICAL SERVICES</b>	<b>8,957</b>	<b>44,510</b>	<b>43,650</b>	<b>43,498</b>	<b>\$666,291,901</b>	<b>\$1,167.87</b>
5411	Legal Services	1,675	5,955	5,971	6,092	74,192,022	950.23
5412	Accounting & Bookkeeping Services	1,255	6,881	5,754	5,593	80,944,496	1,024.77
5413	Architectural & Engineering Services	1,003	6,289	6,343	6,374	97,472,079	1,183.50
5414	Specialized Design Services	169	319	317	312	3,845,491	936.10
5415	Computer Systems Design & Related Services	1,818	9,720	9,770	9,643	205,921,089	1,631.15
5416	Management & Technical Consulting Services	1,939	6,479	6,459	6,409	101,895,795	1,215.40
5417	Scientific Research & Development Services	121	774	784	807	12,672,251	1,236.52
5418	Advertising & Related Services	397	4,032	4,098	4,052	49,081,535	929.77
5419	Other Professional & Technical Services	580	4,061	4,154	4,216	40,267,143	747.52
<b>55</b>	<b>MANAGEMENT OF COMPANIES &amp; ENTERPRISES</b>	<b>558</b>	<b>34,829</b>	<b>34,578</b>	<b>34,856</b>	<b>\$817,990,470</b>	<b>\$1,810.49</b>
<b>56</b>	<b>ADMINISTRATIVE &amp; WASTE SERVICES</b>	<b>4,674</b>	<b>69,363</b>	<b>70,133</b>	<b>66,670</b>	<b>\$514,248,653</b>	<b>\$575.62</b>
<b>561</b>	<b>ADMINISTRATIVE &amp; SUPPORT SERVICES</b>	<b>4,358</b>	<b>66,020</b>	<b>66,758</b>	<b>63,275</b>	<b>\$472,351,828</b>	<b>\$555.99</b>
5611	Office Administrative Services	669	4,088	4,031	3,926	50,505,179	967.62
5612	Facilities Support Services	54	1,392	1,416	1,404	11,292,080	618.68
5613	Employment Services	1,116	30,223	30,604	27,641	179,869,774	469.19
5614	Business Support Services	366	8,389	8,247	8,096	82,877,519	773.31
5615	Travel Arrangement & Reservation Services	107	363	374	386	4,506,833	926.13
5616	Investigation & Security Services	284	4,964	4,993	4,885	36,069,628	560.82
5617	Services to Buildings & Dwellings	1,577	15,342	15,792	15,661	95,710,373	472.00
5619	Other Support Services	185	1,259	1,301	1,276	11,520,442	693.06
<b>562</b>	<b>WASTE MANAGEMENT &amp; REMEDIATION SERVICES</b>	<b>316</b>	<b>3,343</b>	<b>3,375</b>	<b>3,395</b>	<b>\$41,896,825</b>	<b>\$956.05</b>
5621	Waste Collection Services	134	1,263	1,258	1,237	13,726,549	842.91
5622	Waste Treatment & Disposal Services	40	1,008	1,013	1,019	15,300,401	1,161.47
5629	Remediation & Other Waste Services	142	1,072	1,104	1,139	12,869,875	895.92
<b>EDUCATION &amp; HEALTH SERVICES</b>		<b>15,709</b>	<b>185,797</b>	<b>186,243</b>	<b>185,695</b>	<b>\$1,944,790,139</b>	<b>\$804.68</b>
<b>61</b>	<b>EDUCATIONAL SERVICES</b>	<b>867</b>	<b>12,198</b>	<b>12,041</b>	<b>11,569</b>	<b>\$111,866,136</b>	<b>\$720.94</b>
6111	Elementary & Secondary Schools	99	4,121	4,104	3,818	37,982,932	727.83
6112	Junior Colleges	7	118	120	117	863,734	561.47
6113	Colleges & Universities	108	4,475	4,362	4,150	41,679,775	740.62
6114	Business, Computer, & Management Training	59	164	167	165	2,907,888	1,352.93
6115	Technical & Trade Schools	109	917	898	842	13,630,456	1,183.85
6116	Other Schools & Instruction	321	1,833	1,819	1,726	8,525,684	365.84
6117	Educational Support Services	164	570	571	751	6,275,667	765.45



TABLE 5. STATEWIDE SUMMARY

North American Industry Classification System - Industry Groups		Number of Employing Units	Employment			Total Earnings Apr - Jun 2018	Average Weekly Earnings
			Apr	May	Jun		
<b>62</b>	<b>HEALTH CARE &amp; SOCIAL ASSISTANCE</b>	<b>14,842</b>	<b>173,599</b>	<b>174,202</b>	<b>174,126</b>	<b>\$1,832,924,003</b>	<b>\$810.42</b>
<b>621</b>	<b>AMBULATORY HEALTH CARE SERVICES</b>	<b>5,858</b>	<b>57,981</b>	<b>58,149</b>	<b>58,332</b>	<b>\$880,234,891</b>	<b>\$1,164.33</b>
6211	Offices of Physicians	2,306	25,179	25,197	25,221	506,220,482	1,545.30
6212	Offices of Dentists	970	7,348	7,335	7,365	89,132,615	932.92
6213	Offices of Other Health Practitioners	1,596	9,380	9,458	9,511	99,482,900	809.82
6214	Outpatient Care Centers	350	5,217	5,262	5,265	74,077,898	1,085.80
6215	Medical & Diagnostic Laboratories	189	1,322	1,312	1,315	20,713,336	1,210.43
6216	Home Health Care Services	266	6,868	6,910	6,961	60,933,617	678.03
6219	Other Ambulatory Health Care Services	181	2,667	2,675	2,694	29,674,043	852.15
<b>622</b>	<b>HOSPITALS</b>	<b>113</b>	<b>43,500</b>	<b>43,662</b>	<b>43,814</b>	<b>\$536,418,935</b>	<b>\$945.13</b>
6221	General Medical & Surgical Hospitals	86	38,880	38,988	39,081	480,061,632	947.28
6222	Psychiatric & Substance Abuse Hospitals	9	1,909	1,936	1,947	21,678,011	863.71
6223	Specialty Hospitals	18	2,711	2,738	2,786	34,679,292	971.82
<b>623</b>	<b>Residential &amp; Mental Health Facilities</b>	<b>628</b>	<b>32,138</b>	<b>32,151</b>	<b>32,255</b>	<b>\$205,467,916</b>	<b>\$491.13</b>
6231	Nursing Care Facilities (Skilled Nursing Facilities)	267	22,607	22,541	22,654	143,844,673	489.59
6232	Residential Mental Health Facilities	174	4,444	4,478	4,460	29,704,879	512.25
6233	Continuing Care & Assisted Living Facilities	152	4,283	4,313	4,330	25,427,374	453.96
6239	Other Residential Care Facilities	35	804	819	811	6,490,990	615.42
<b>624</b>	<b>SOCIAL ASSISTANCE</b>	<b>8,243</b>	<b>39,980</b>	<b>40,240</b>	<b>39,725</b>	<b>\$210,802,261</b>	<b>\$405.57</b>
6241	Individual & Family Services	7,183	24,990	25,148	25,092	134,213,434	411.70
6242	Emergency & Other Relief Services	142	1,386	1,399	1,401	9,317,963	513.69
6243	Vocational Rehabilitation Services	91	3,221	3,273	3,321	17,729,160	416.85
6244	Child Day Care Services	827	10,383	10,420	9,911	49,541,704	372.23
<b>LEISURE &amp; HOSPITALITY</b>		<b>7,139</b>	<b>119,551</b>	<b>121,406</b>	<b>121,095</b>	<b>\$493,461,908</b>	<b>\$314.53</b>
<b>71</b>	<b>ARTS, ENTERTAINMENT &amp; RECREATION</b>	<b>982</b>	<b>11,722</b>	<b>12,554</b>	<b>13,548</b>	<b>62,369,564</b>	<b>\$380.52</b>
<b>711</b>	<b>PERFORMING ARTS &amp; SPECTATOR SPORTS</b>	<b>224</b>	<b>3,305</b>	<b>3,275</b>	<b>3,051</b>	<b>19,862,016</b>	<b>\$475.92</b>
7111	Performing Arts Companies	48	407	587	502	1,936,377	298.70
7112	Spectator Sports	69	1,925	1,447	1,420	11,599,880	558.62
7113	Performing Arts & Sports Promoters	50	881	1,144	1,045	5,472,514	411.36
7114	Agents & Managers for Public Figures	16	19	29	21	248,550	831.27
7115	Independent Artists, Writers, & Performers	41	73	68	63	604,695	684.04
<b>712</b>	<b>MUSEUMS, PARKS, &amp; HISTORICAL SITES</b>	<b>54</b>	<b>707</b>	<b>723</b>	<b>796</b>	<b>5,478,273</b>	<b>\$567.93</b>
<b>713</b>	<b>GAMBLING, RECREATIONAL &amp; AMUSEMENT INDUSTRY</b>	<b>704</b>	<b>7,710</b>	<b>8,556</b>	<b>9,701</b>	<b>37,029,275</b>	<b>\$329.08</b>
7131	Amusement Parks & Arcades	30	460	740	1,180	2,178,128	211.20
7139	Other Amusement & Recreation Industries	674	7,250	7,816	8,521	34,851,147	340.97
<b>72</b>	<b>ACCOMMODATION &amp; FOOD SERVICES</b>	<b>6,157</b>	<b>107,829</b>	<b>108,852</b>	<b>107,547</b>	<b>431,092,344</b>	<b>\$306.83</b>

TABLE 5. STATEWIDE SUMMARY

North American Industry Classification System - Industry Groups		Number of Employing Units	Employment			Total Earnings	Average Weekly Earnings
			Apr	May	Jun	Apr - Jun 2018	
<b>721</b>	<b>ACCOMMODATION</b>	<b>905</b>	<b>11,350</b>	<b>11,531</b>	<b>11,997</b>	<b>\$54,276,815</b>	<b>\$359.12</b>
7211	Travel Accommodation	815	10,827	10,991	11,237	51,047,086	356.38
7212	RV Parks & Recreational Camps	74	417	453	700	2,650,677	389.61
7213	Rooming & Boarding Houses	16	106	87	60	579,052	528.17
<b>722</b>	<b>FOOD SERVICES &amp; DRINKING PLACES</b>	<b>5,252</b>	<b>96,479</b>	<b>97,321</b>	<b>95,550</b>	<b>\$376,815,529</b>	<b>\$300.53</b>
7223	Special Food Services	278	4,777	4,479	3,376	20,236,740	369.70
7224	Drinking Places, Alcoholic Beverages	143	1,059	1,078	1,073	4,117,187	295.99
7225	Restaurants & Other Eating Places	4,831	90,643	91,764	91,101	352,461,602	297.39
722511	Full-Service Restaurants	2,073	39,064	39,429	39,130	168,731,864	331.04
722513	Limited-Service Eating Places	2,268	46,773	47,382	46,976	164,111,338	268.35
722514	Caterias, Grill Buffets, & Buffets	92	1,766	1,803	1,734	8,113,512	353.07
722515	Snack & Nonalcoholic Beverage Bars	398	3,040	3,150	3,261	11,504,888	280.92
	<b>OTHER SERVICES</b>	<b>5,346</b>	<b>24,760</b>	<b>24,986</b>	<b>25,429</b>	<b>\$215,865,780</b>	<b>\$662.66</b>
<b>811</b>	<b>REPAIR &amp; MAINTENANCE</b>	<b>2,217</b>	<b>10,763</b>	<b>10,842</b>	<b>10,852</b>	<b>\$108,766,144</b>	<b>\$773.33</b>
8111	Automotive Repair & Maintenance	1,397	6,591	6,610	6,693	58,708,405	681.01
8112	Electronic Equipment Repair & Maintenance	173	985	1,003	975	11,425,601	889.87
8113	Commercial Machinery Repair & Maintenance	482	2,644	2,627	2,575	33,868,046	996.14
8114	Household Goods Repair & Maintenance	165	543	602	609	4,764,092	626.80
<b>812</b>	<b>PERSONAL &amp; LAUNDRY SERVICES</b>	<b>1,333</b>	<b>7,724</b>	<b>7,808</b>	<b>7,884</b>	<b>\$51,158,995</b>	<b>\$504.18</b>
8121	Personal Care Services	626	2,847	2,864	2,901	16,209,024	434.34
8122	Death Care Services	247	1,582	1,594	1,605	12,686,028	612.33
8123	Drycleaning & Laundry Service	223	2,269	2,301	2,305	16,047,095	538.64
8129	Other Personal Services	237	1,026	1,049	1,073	6,216,848	455.74
<b>813</b>	<b>MEMBERSHIP ASSOCIATIONS &amp; ORGANIZATIONS</b>	<b>1,100</b>	<b>5,334</b>	<b>5,404</b>	<b>5,757</b>	<b>\$50,232,867</b>	<b>\$702.77</b>
8131	Religious Organizations	88	306	303	295	2,288,433	584.18
8132	Grantmaking & Giving Organizations	122	436	453	447	6,256,132	1,080.63
8133	Social Advocacy Organizations	209	1,368	1,340	1,334	12,896,257	736.28
8134	Civic & Social Organizations	195	1,217	1,264	1,419	6,220,645	368.09
8139	Professional & Similar Organizations	486	2,007	2,044	2,262	22,571,400	825.09
<b>814</b>	<b>PRIVATE HOUSEHOLDS</b>	<b>696</b>	<b>939</b>	<b>932</b>	<b>936</b>	<b>\$5,707,774</b>	<b>\$469.25</b>
	<b>LOCAL GOVERNMENT</b>	<b>1,967</b>	<b>114,223</b>	<b>115,169</b>	<b>114,306</b>	<b>\$1,276,800,581</b>	<b>\$857.28</b>
	<b>STATE GOVERNMENT</b>	<b>1,059</b>	<b>68,396</b>	<b>68,008</b>	<b>65,873</b>	<b>\$777,408,038</b>	<b>\$886.91</b>
	<b>NONCLASSIFIABLE ESTABLISHMENTS</b>	<b>0</b>	<b>0</b>	<b>0</b>	<b>0</b>	<b>\$0</b>	<b>\$0.00</b>

TABLE 6. COUNTY SUMMARY

North American Industry Classification System - Industry Groups	Number of Employing Units	Employment			Total Earnings	Average
		Apr	May	Jun	Apr - Jun 2018	Weekly Earnings
<b>ARKANSAS COUNTY - TOTAL</b>	<b>774</b>	<b>9,439</b>	<b>9,480</b>	<b>9,606</b>	<b>\$98,069,240</b>	<b>\$793.39</b>
Natural Resources & Mining	53	172	185	186	2,009,537	854.03
Construction	43	209	213	216	2,337,076	845.34
Manufacturing	29	3,586	3,609	3,646	40,744,664	867.32
Trade, Transportation & Utilities	187	2,018	2,026	2,045	22,568,450	855.33
Wholesale Trade	46	472	475	482	6,750,007	1,090.06
Retail Trade	86	945	959	962	6,279,906	505.66
Transportation, Warehousing & Utilities	55	601	592	601	9,538,537	1,226.98
Information	10	62	62	59	495,746	625.15
Financial Activities	48	290	292	300	3,371,301	882.08
Professional & Business Services	51	490	481	496	6,852,985	1,078.02
Education & Health Services	200	1,085	1,082	1,077	9,272,478	659.62
Leisure & Hospitality	70	522	512	545	1,732,922	253.26
Other Services	37	99	98	100	711,918	553.16
Local Government	32	727	745	763	6,594,164	680.86
State Government	14	179	175	173	1,377,999	603.42
<b>ASHLEY COUNTY - TOTAL</b>	<b>553</b>	<b>6,552</b>	<b>6,641</b>	<b>6,628</b>	<b>\$70,169,608</b>	<b>\$816.96</b>
Natural Resources & Mining	43	323	336	336	3,338,879	774.38
Construction	33	506	548	547	6,003,607	865.36
Manufacturing	23	1,644	1,652	1,652	26,699,240	1,245.22
Trade, Transportation & Utilities	109	1,209	1,208	1,216	10,224,847	649.49
Wholesale Trade	21	190	192	195	2,593,461	1,037.25
Retail Trade	64	716	713	710	4,443,864	479.43
Transportation, Warehousing & Utilities	24	303	303	311	3,187,522	802.16
Information	6	34	34	34	269,197	609.04
Financial Activities	36	178	180	179	1,501,562	645.28
Professional & Business Services	38	210	219	230	1,910,852	669.14
Education & Health Services	154	963	978	971	8,281,942	656.32
Leisure & Hospitality	33	345	344	346	1,106,469	246.70
Other Services	36	129	125	134	1,158,916	689.28
Local Government	32	883	894	871	8,573,488	747.17
State Government	10	128	123	112	1,100,609	699.69

TABLE 6. COUNTY SUMMARY

North American Industry Classification System - Industry Groups	Number of Employing Units	Employment			Total Earnings	Average Weekly Earnings
		Apr	May	Jun	Apr - Jun 2018	
<b>BAXTER COUNTY - TOTAL</b>	<b>1,229</b>	<b>14,909</b>	<b>14,952</b>	<b>15,046</b>	<b>\$130,171,813</b>	<b>\$668.93</b>
Natural Resources & Mining	6	57	58	62	606,690	790.99
Construction	111	491	515	505	4,305,639	657.58
Manufacturing	54	2,469	2,453	2,463	23,574,075	736.65
Trade, Transportation & Utilities	262	2,792	2,803	2,821	19,134,626	524.68
Wholesale Trade	35	230	233	237	2,351,172	775.11
Retail Trade	203	2,355	2,356	2,371	14,797,787	482.19
Transportation, Warehousing & Utilities	24	207	214	213	1,985,667	722.76
Information	20	178	176	169	1,966,470	867.69
Financial Activities	119	724	703	712	10,620,079	1,145.76
Professional & Business Services	137	808	784	813	6,229,251	597.72
Education & Health Services	267	3,881	3,824	3,836	39,395,194	787.73
Leisure & Hospitality	122	1,667	1,747	1,817	6,418,357	283.15
Other Services	84	357	387	388	2,899,631	591.12
Local Government	36	1,180	1,195	1,198	12,358,499	798.20
State Government	11	305	307	262	2,663,302	703.21
<b>BENTON COUNTY - TOTAL</b>	<b>6,532</b>	<b>119,498</b>	<b>119,651</b>	<b>119,922</b>	<b>\$1,599,655,830</b>	<b>\$1,028.07</b>
Natural Resources & Mining	42	748	755	780	11,938,949	1,206.81
Construction	640	4,910	4,936	5,044	59,224,625	917.88
Manufacturing	191	12,052	12,115	12,246	123,792,222	784.54
Trade, Transportation & Utilities	1,686	28,318	28,458	28,527	358,772,347	970.58
Wholesale Trade	756	5,949	5,966	5,955	138,577,664	1,789.56
Retail Trade	739	12,436	12,517	12,385	91,764,386	567.15
Transportation, Warehousing & Utilities	191	9,933	9,975	10,187	128,430,297	984.81
Information	80	927	923	944	12,923,495	1,067.41
Financial Activities	663	3,857	3,884	3,874	57,815,957	1,148.70
Professional & Business Services	1,267	31,987	31,698	31,743	657,257,927	1,589.42
Education & Health Services	833	11,909	11,857	11,654	115,256,088	750.92
Leisure & Hospitality	621	12,785	13,065	13,092	60,644,192	359.38
Other Services	408	2,203	2,232	2,266	20,597,966	709.35
Local Government	84	8,702	8,639	8,820	111,753,252	985.79
State Government	17	1,100	1,089	932	9,678,810	715.66

TABLE 6. COUNTY SUMMARY

North American Industry Classification System - Industry Groups	Number of Employing Units	Employment			Total Earnings	Average Weekly Earnings
		Apr	May	Jun	Apr - Jun 2018	
<b>BOONE COUNTY - TOTAL</b>	<b>961</b>	<b>13,959</b>	<b>14,028</b>	<b>14,050</b>	<b>\$136,216,244</b>	<b>\$747.78</b>
Construction	64	374	384	397	3,837,163	766.67
Manufacturing	62	1,875	1,856	1,849	19,446,780	804.25
Trade, Transportation & Utilities	245	3,569	3,567	3,557	34,956,332	754.40
Wholesale Trade	38	337	333	333	3,038,225	699.03
Retail Trade	163	2,035	2,034	2,014	13,693,358	519.48
Transportation, Warehousing & Utilities	44	1,197	1,200	1,210	18,224,749	1,165.99
Information	14	263	268	266	2,989,346	865.56
Financial Activities	98	412	476	462	6,074,225	1,038.33
Professional & Business Services	97	1,474	1,482	1,488	16,542,803	859.04
Education & Health Services	170	1,577	1,591	1,572	12,370,591	602.27
Leisure & Hospitality	80	1,149	1,169	1,207	4,558,841	298.45
Local Government	53	2,263	2,275	2,284	26,153,151	884.69
State Government	17	740	699	698	7,026,752	758.80
Other	61	263	261	270	2,260,260	656.93
<b>BRADLEY COUNTY - TOTAL</b>	<b>355</b>	<b>3,856</b>	<b>3,839</b>	<b>3,791</b>	<b>\$33,805,273</b>	<b>\$679.19</b>
Natural Resources & Mining	43	273	229	214	2,564,054	826.40
Construction	19	92	98	94	794,844	645.86
Manufacturing	12	941	943	948	9,449,816	770.03
Trade, Transportation & Utilities	69	515	522	522	3,651,342	540.49
Wholesale Trade	11	84	84	84	1,068,845	978.80
Retail Trade	37	318	316	307	1,663,370	407.92
Transportation, Warehousing & Utilities	21	113	122	131	919,127	579.53
Information	3	26	27	25	203,188	601.15
Financial Activities	24	134	134	131	1,276,147	738.08
Professional & Business Services	25	91	87	84	837,636	737.79
Education & Health Services	95	675	688	675	6,488,909	734.76
Leisure & Hospitality	16	182	181	181	565,449	239.87
Other Services	25	99	103	102	624,725	474.23
Local Government	14	489	484	480	5,040,855	800.60
State Government	10	339	343	335	2,308,308	523.78

TABLE 6. COUNTY SUMMARY

North American Industry Classification System - Industry Groups	Number of Employing Units	Employment			Total Earnings	Average Weekly Earnings
		Apr	May	Jun	Apr - Jun 2018	
<b>CALHOUN COUNTY - TOTAL</b>	<b>100</b>	<b>2,975</b>	<b>3,008</b>	<b>3,027</b>	<b>\$39,519,878</b>	<b>\$1,012.21</b>
Natural Resources & Mining	6	35	35	34	318,917	707.66
Construction	10	107	112	113	1,138,653	791.46
Manufacturing	7	2,168	2,184	2,209	31,560,872	1,110.09
Trade, Transportation & Utilities	21	208	219	220	2,234,813	797.10
Retail Trade	10	51	53	50	286,116	428.75
Transportation, Warehousing & Utilities	11	157	166	170	1,948,697	912.17
Professional & Business Services	5	6	6	7	72,010	874.62
Education & Health Services	19	60	58	53	549,023	740.92
Leisure & Hospitality	4	15	15	15	52,547	269.47
Other Services	3	3	3	3	14,971	383.87
Local Government	11	193	193	187	1,572,577	633.34
State Government	7	75	76	78	749,199	754.99
Other	7	105	107	108	1,256,296	905.98
<b>CARROLL COUNTY - TOTAL</b>	<b>802</b>	<b>10,444</b>	<b>10,804</b>	<b>10,953</b>	<b>\$79,672,204</b>	<b>\$570.97</b>
Natural Resources & Mining	20	200	199	198	1,798,534	695.22
Trade, Transportation & Utilities	194	1,607	1,686	1,700	12,555,960	580.32
Wholesale Trade	22	192	190	191	1,669,832	672.51
Retail Trade	142	1,107	1,134	1,140	6,502,584	443.83
Transportation, Warehousing & Utilities	30	308	362	369	4,383,544	973.62
Information	10	69	70	73	722,846	786.84
Financial Activities	62	367	379	384	4,529,760	925.07
Professional & Business Services	60	244	234	240	2,112,063	678.83
Education & Health Services	99	1,126	1,126	1,125	9,021,217	616.47
Leisure & Hospitality	173	1,527	1,801	1,886	6,297,131	278.71
Other Services	48	140	138	138	877,109	486.56
Local Government	26	1,057	1,076	1,098	9,786,613	698.99
State Government	9	88	86	85	821,745	732.18
Other	101	4,019	4,009	4,026	31,149,226	596.34

TABLE 6. COUNTY SUMMARY

North American Industry Classification System - Industry Groups	Number of Employing Units	Employment			Total Earnings	Average Weekly Earnings
		Apr	May	Jun	Apr - Jun 2018	
<b>CHICOT COUNTY - TOTAL</b>	<b>495</b>	<b>2,932</b>	<b>3,008</b>	<b>2,963</b>	<b>\$24,026,308</b>	<b>\$622.77</b>
Natural Resources & Mining	51	209	226	217	2,155,576	762.95
Construction	15	137	138	144	1,664,305	916.64
Manufacturing	6	15	15	17	228,541	1,122.13
Trade, Transportation & Utilities	68	614	633	611	4,406,862	547.35
Wholesale Trade	14	51	52	41	717,783	1,150.29
Retail Trade	40	299	312	300	1,891,208	479.07
Transportation, Warehousing & Utilities	14	264	269	270	1,797,871	516.68
Financial Activities	28	161	171	166	1,809,241	838.39
Professional & Business Services	17	46	47	48	600,639	983.04
Education & Health Services	247	653	658	663	4,443,346	519.45
Leisure & Hospitality	15	136	139	125	401,824	231.82
Local Government	17	581	593	576	5,422,090	715.00
State Government	10	306	310	308	2,304,042	575.44
Other	21	74	78	88	589,842	
<b>CLARK COUNTY - TOTAL</b>	<b>647</b>	<b>9,309</b>	<b>9,286</b>	<b>9,173</b>	<b>\$80,342,368</b>	<b>\$667.69</b>
Natural Resources & Mining	48	264	263	272	2,934,920	847.67
Construction	26	61	61	64	563,448	699.07
Manufacturing	31	1,375	1,374	1,377	18,720,649	1,047.06
Trade, Transportation & Utilities	135	1,483	1,510	1,515	10,863,178	556.10
Wholesale Trade	13	38	38	38	423,733	857.76
Retail Trade	93	1,234	1,255	1,264	8,083,707	497.06
Transportation, Warehousing & Utilities	29	211	217	213	2,355,738	848.10
Information	3	13	13	13	102,812	608.36
Financial Activities	72	296	302	311	2,701,287	685.78
Professional & Business Services	52	580	595	616	6,117,413	788.22
Education & Health Services	125	1,709	1,686	1,605	13,951,017	643.89
Leisure & Hospitality	66	1,153	1,142	1,145	4,084,304	273.99
Other Services	45	217	214	214	1,844,275	659.85
Local Government	30	969	1,015	1,040	9,212,579	703.04
State Government	14	1,189	1,111	1,001	9,246,486	646.41

TABLE 6. COUNTY SUMMARY

North American Industry Classification System - Industry Groups	Number of Employing Units	Employment			Total Earnings Apr - Jun 2018	Average Weekly Earnings
		Apr	May	Jun		
<b>CLAY COUNTY - TOTAL</b>	<b>372</b>	<b>3,341</b>	<b>3,393</b>	<b>3,365</b>	<b>\$25,448,000</b>	<b>\$581.50</b>
Natural Resources & Mining	58	286	294	297	1,975,024	519.70
Construction	29	140	166	171	1,336,744	646.71
Manufacturing	15	121	121	120	927,357	591.18
Trade, Transportation & Utilities	89	809	800	786	6,809,565	656.13
Wholesale Trade	21	248	240	237	2,492,587	793.40
Retail Trade	42	425	424	415	2,793,771	510.06
Transportation, Warehousing & Utilities	26	136	136	134	1,523,207	865.79
Information	5	34	33	28	191,523	465.24
Financial Activities	23	101	102	102	842,920	637.77
Professional & Business Services	27	131	139	140	1,122,386	631.74
Education & Health Services	49	507	509	496	3,471,012	529.76
Leisure & Hospitality	23	270	266	263	811,159	234.28
Other Services	24	79	80	80	608,324	587.37
Local Government	21	821	841	840	6,964,005	642.32
State Government	9	42	42	42	387,981	710.59
<b>CLEBURNE COUNTY - TOTAL</b>	<b>639</b>	<b>6,275</b>	<b>6,373</b>	<b>6,495</b>	<b>\$53,013,543</b>	<b>\$639.08</b>
Natural Resources & Mining	24	196	186	187	2,737,611	1,110.29
Construction	65	297	303	305	3,085,342	786.74
Manufacturing	31	1,237	1,223	1,252	12,185,772	757.57
Trade, Transportation & Utilities	146	1,132	1,162	1,168	9,083,909	605.51
Wholesale Trade	32	110	113	116	1,169,037	795.80
Retail Trade	95	920	947	945	6,551,352	537.64
Transportation, Warehousing & Utilities	19	102	102	107	1,363,520	1,011.76
Information	8	53	54	54	429,796	616.05
Financial Activities	79	270	268	275	2,706,532	768.25
Professional & Business Services	64	232	209	241	2,264,629	766.29
Education & Health Services	80	943	952	941	7,066,271	574.99
Leisure & Hospitality	81	866	982	1,057	3,718,702	295.41
Other Services	35	120	125	124	820,500	513.13
Local Government	18	818	826	812	8,097,760	760.88
State Government	8	111	83	79	816,719	690.38



TABLE 6. COUNTY SUMMARY

North American Industry Classification System - Industry Groups	Number of Employing Units	Employment			Total Earnings	Average Weekly Earnings
		Apr	May	Jun	Apr - Jun 2018	
<b>CLEVELAND COUNTY - TOTAL</b>	<b>129</b>	<b>1,060</b>	<b>1,068</b>	<b>1,076</b>	<b>\$8,417,445</b>	<b>\$606.27</b>
Natural Resources & Mining	16	166	163	180	1,563,940	709.06
Construction	8	12	10	12	74,577	506.18
Manufacturing	4	121	124	121	1,218,832	768.49
Trade, Transportation & Utilities	35	177	183	181	1,379,321	588.36
Retail Trade	19	73	76	71	280,100	293.81
Other Trade, Transportation, & Utilities	16	104	107	110	1,099,221	790.24
Financial Activities	4	27	26	24	368,182	1,103.44
Education & Health Services	31	168	168	168	796,735	364.81
Other Services	5	10	12	11	106,934	747.79
Local Government	11	320	323	320	2,488,608	596.36
State Government	6	27	26	27	269,110	776.28
Other	9	32	33	32	151,206	359.73
<b>COLUMBIA COUNTY - TOTAL</b>	<b>691</b>	<b>7,876</b>	<b>7,935</b>	<b>7,871</b>	<b>\$77,663,186</b>	<b>\$756.79</b>
Natural Resources & Mining	39	312	329	335	4,921,591	1,163.68
Construction	34	158	165	165	1,643,980	777.42
Manufacturing	32	1,856	1,892	1,877	25,920,365	1,063.40
Trade, Transportation & Utilities	162	1,323	1,339	1,329	11,142,730	644.30
Wholesale Trade	31	206	199	204	2,746,560	1,040.76
Retail Trade	94	912	933	912	5,673,767	474.91
Transportation, Warehousing & Utilities	37	205	207	213	2,722,403	1,005.19
Information	6	41	38	36	357,099	716.59
Financial Activities	62	346	346	349	3,828,931	848.80
Professional & Business Services	49	278	285	297	2,126,111	570.51
Education & Health Services	174	997	990	977	6,135,145	477.67
Leisure & Hospitality	53	706	702	684	2,425,912	267.60
Other Services	42	141	137	133	739,160	415.03
Local Government	26	1,120	1,123	1,111	10,923,214	751.56
State Government	12	598	589	578	7,498,948	980.47

TABLE 6. COUNTY SUMMARY

North American Industry Classification System - Industry Groups	Number of Employing Units	Employment			Total Earnings Apr - Jun 2018	Average Weekly Earnings
		Apr	May	Jun		
<b>CONWAY COUNTY - TOTAL</b>	<b>521</b>	<b>6,414</b>	<b>6,514</b>	<b>6,489</b>	<b>\$61,928,758</b>	<b>\$736.02</b>
Natural Resources & Mining	29	252	252	254	2,356,699	717.48
Construction	47	461	466	480	6,334,760	1,039.00
Manufacturing	18	911	916	911	12,702,418	1,070.61
Trade, Transportation & Utilities	115	1,326	1,345	1,370	10,638,158	607.51
Wholesale Trade	14	130	133	134	1,050,096	610.40
Retail Trade	76	757	764	775	5,107,972	513.40
Transportation, Warehousing & Utilities	25	439	448	461	4,480,090	766.96
Information	3	13	15	14	49,169	270.16
Financial Activities	39	155	164	164	1,717,409	820.55
Professional & Business Services	39	532	457	440	3,741,801	604.26
Education & Health Services	129	805	804	815	7,206,320	686.05
Leisure & Hospitality	37	451	451	518	1,697,570	275.88
Other Services	26	91	92	93	756,253	632.32
Local Government	30	1,036	1,160	1,046	11,630,460	827.87
State Government	9	381	392	384	3,097,741	617.86
<b>CRAIGHEAD COUNTY - TOTAL</b>	<b>2,833</b>	<b>50,549</b>	<b>51,000</b>	<b>50,909</b>	<b>\$487,195,568</b>	<b>\$737.45</b>
Natural Resources & Mining	100	362	383	390	3,156,044	641.69
Construction	232	2,121	2,166	2,211	24,008,916	852.65
Manufacturing	103	6,802	6,825	6,825	78,873,644	889.97
Trade, Transportation & Utilities	790	10,377	10,408	10,280	87,816,736	652.35
Wholesale Trade	187	1,934	1,945	1,938	23,692,928	939.93
Retail Trade	467	6,738	6,739	6,595	43,387,563	498.83
Transportation, Warehousing & Utilities	136	1,705	1,724	1,747	20,736,245	924.51
Information	20	412	410	406	4,385,006	824.04
Financial Activities	280	1,638	1,613	1,608	20,938,659	994.44
Professional & Business Services	370	4,436	4,596	4,698	35,460,534	596.01
Education & Health Services	454	10,791	10,911	10,965	126,495,857	893.60
Leisure & Hospitality	262	5,690	5,854	5,599	22,247,760	299.49
Other Services	165	750	765	783	5,786,774	581.12
Local Government	35	4,150	4,178	4,219	48,065,463	884.04
State Government	22	3,020	2,891	2,925	29,960,175	782.47

TABLE 6. COUNTY SUMMARY

North American Industry Classification System - Industry Groups	Number of Employing Units	Employment			Total Earnings	Average Weekly Earnings
		Apr	May	Jun	Apr - Jun 2018	
<b>CRAWFORD COUNTY - TOTAL</b>	<b>1,238</b>	<b>19,581</b>	<b>19,663</b>	<b>19,645</b>	<b>\$172,973,848</b>	<b>\$677.84</b>
Natural Resources & Mining	22	311	272	237	2,706,100	761.57
Construction	145	1,028	1,065	1,077	11,006,166	801.23
Manufacturing	62	4,548	4,539	4,560	42,891,344	725.29
Trade, Transportation & Utilities	308	5,544	5,605	5,603	49,823,786	686.35
Wholesale Trade	74	727	729	728	9,006,303	951.64
Retail Trade	170	1,981	2,028	2,014	13,556,652	519.42
Transportation, Warehousing & Utilities	64	2,836	2,848	2,861	27,260,831	736.22
Information	9	48	49	49	464,201	733.72
Financial Activities	124	512	513	513	4,896,547	734.70
Professional & Business Services	164	1,694	1,680	1,653	14,053,478	645.14
Education & Health Services	181	1,643	1,658	1,666	13,489,686	626.74
Leisure & Hospitality	92	1,576	1,595	1,590	5,936,285	287.74
Other Services	79	418	422	431	3,721,265	675.65
Local Government	42	2,112	2,119	2,120	22,863,119	830.75
State Government	10	147	146	146	1,121,871	589.73
<b>CRITTENDEN COUNTY - TOTAL</b>	<b>1,191</b>	<b>16,302</b>	<b>16,304</b>	<b>15,654</b>	<b>\$149,487,910</b>	<b>\$714.82</b>
Natural Resources & Mining	56	242	262	256	1,989,151	603.99
Construction	44	429	476	456	4,845,139	821.53
Manufacturing	44	2,105	2,103	2,079	25,777,517	946.18
Trade, Transportation & Utilities	296	4,264	4,265	4,222	41,412,258	749.48
Wholesale Trade	58	772	782	783	9,295,514	917.89
Retail Trade	152	1,896	1,907	1,884	11,740,059	476.39
Transportation, Warehousing & Utilities	86	1,596	1,576	1,555	20,376,685	994.78
Information	5	55	50	51	480,666	711.04
Financial Activities	98	455	461	473	5,037,177	836.88
Professional & Business Services	105	1,088	1,105	1,118	8,834,007	615.71
Education & Health Services	288	2,080	2,009	1,977	16,615,408	632.10
Leisure & Hospitality	130	2,468	2,510	2,577	11,497,503	351.19
Other Services	71	482	488	498	4,062,468	638.62
Local Government	41	2,179	2,199	1,591	25,394,188	981.77
State Government	13	455	376	356	3,542,428	688.70

TABLE 6. COUNTY SUMMARY

North American Industry Classification System - Industry Groups	Number of Employing Units	Employment			Total Earnings Apr - Jun 2018	Average Weekly Earnings
		Apr	May	Jun		
<b>CROSS COUNTY - TOTAL</b>	<b>478</b>	<b>4,829</b>	<b>4,789</b>	<b>4,837</b>	<b>\$40,931,311</b>	<b>\$653.45</b>
Natural Resources & Mining	44	274	285	285	2,231,107	610.04
Construction	23	60	59	62	522,286	665.90
Manufacturing	10	329	334	353	3,061,881	695.46
Trade, Transportation & Utilities	127	1,203	1,151	1,151	9,850,964	648.59
Wholesale Trade	27	289	290	289	3,449,579	917.12
Retail Trade	69	805	753	755	5,212,915	520.10
Transportation, Warehousing & Utilities	31	109	108	107	1,188,470	846.49
Information	6	39	42	39	320,256	615.88
Financial Activities	45	308	284	289	2,682,191	702.57
Professional & Business Services	40	162	149	147	1,841,380	927.80
Education & Health Services	90	978	981	989	8,017,370	627.60
Leisure & Hospitality	32	303	305	314	1,051,189	263.10
Other Services	35	116	124	124	947,064	600.42
Local Government	17	712	721	730	7,124,387	760.10
State Government	9	345	354	354	3,281,236	719.10
<b>DALLAS COUNTY - TOTAL</b>	<b>231</b>	<b>2,654</b>	<b>2,671</b>	<b>2,724</b>	<b>\$22,082,821</b>	<b>\$633.13</b>
Natural Resources & Mining	24	124	124	128	1,150,689	706.23
Construction	13	54	52	65	702,439	947.96
Manufacturing	9	555	557	554	5,414,771	750.04
Trade, Transportation & Utilities	54	440	451	454	3,331,480	571.60
Wholesale Trade	6	15	16	14	175,830	901.69
Retail Trade	35	319	326	327	2,094,920	497.37
Transportation, Warehousing & Utilities	13	106	109	113	1,060,730	746.29
Information	4	17	18	18	145,057	631.60
Financial Activities	14	71	72	70	738,861	800.50
Professional & Business Services	10	30	34	27	141,630	359.16
Education & Health Services	56	799	806	804	6,973,755	668.05
Leisure & Hospitality	14	145	148	147	491,351	257.70
Other Services	12	51	48	50	300,845	465.94
Local Government	14	342	337	383	2,441,926	530.62
State Government	7	26	24	24	250,017	779.68

TABLE 6. COUNTY SUMMARY

North American Industry Classification System - Industry Groups	Number of Employing Units	Employment			Total Earnings Apr - Jun 2018	Average Weekly Earnings
		Apr	May	Jun		
<b>DESHA COUNTY - TOTAL</b>	<b>546</b>	<b>4,580</b>	<b>4,643</b>	<b>4,676</b>	<b>\$40,733,579</b>	<b>\$676.31</b>
Natural Resources & Mining	62	248	260	291	2,099,687	606.44
Construction	16	97	97	97	875,906	694.61
Manufacturing	15	1,031	1,039	1,060	13,293,505	980.11
Trade, Transportation & Utilities	110	837	868	849	7,001,774	632.65
Wholesale Trade	19	195	198	192	2,560,752	1,010.16
Retail Trade	63	469	500	486	2,682,402	425.44
Transportation, Warehousing & Utilities	28	173	170	171	1,758,620	789.56
Information	4	21	19	18	177,507	706.26
Financial Activities	29	197	198	201	1,801,192	697.42
Professional & Business Services	34	93	93	98	856,672	696.10
Education & Health Services	186	748	753	734	4,851,614	500.94
Leisure & Hospitality	36	355	357	382	1,262,338	266.28
Other Services	24	59	58	66	349,116	440.25
Local Government	21	800	812	799	7,432,467	711.40
State Government	9	94	89	81	731,801	639.69
<b>DREW COUNTY - TOTAL</b>	<b>536</b>	<b>6,428</b>	<b>6,466</b>	<b>6,470</b>	<b>\$60,620,504</b>	<b>\$722.44</b>
Natural Resources & Mining	52	376	393	416	4,356,083	848.31
Construction	27	151	147	151	1,685,461	866.26
Manufacturing	21	839	844	912	9,419,002	837.62
Trade, Transportation & Utilities	115	1,067	1,088	1,083	7,945,681	566.28
Wholesale Trade	17	99	99	101	919,980	710.04
Retail Trade	77	848	864	860	5,657,245	507.59
Transportation, Warehousing & Utilities	21	120	125	122	1,368,456	860.48
Information	6	43	43	43	431,472	771.86
Financial Activities	49	243	245	218	2,793,312	913.05
Professional & Business Services	35	282	270	275	4,735,298	1,321.36
Education & Health Services	139	933	934	914	7,901,714	655.69
Leisure & Hospitality	42	660	674	667	2,134,778	246.20
Other Services	14	57	55	56	418,934	575.46
Local Government	23	1,203	1,206	1,212	13,250,859	844.49
State Government	13	574	567	523	5,547,910	769.40

TABLE 6. COUNTY SUMMARY

North American Industry Classification System - Industry Groups	Number of Employing Units	Employment			Total Earnings Apr - Jun 2018	Average Weekly Earnings
		Apr	May	Jun		
<b>FAULKNER COUNTY - TOTAL</b>	<b>2,859</b>	<b>40,681</b>	<b>40,641</b>	<b>40,368</b>	<b>\$418,834,478</b>	<b>\$794.27</b>
Natural Resources & Mining	43	286	289	293	5,281,387	1,404.13
Construction	326	2,690	2,726	2,800	31,081,920	873.02
Manufacturing	101	3,203	3,196	3,205	41,583,560	999.19
Trade, Transportation & Utilities	643	7,700	7,691	7,586	59,990,192	602.51
Wholesale Trade	139	683	682	682	8,847,777	997.46
Retail Trade	414	6,234	6,240	6,125	41,076,862	509.67
Transportation, Warehousing & Utilities	90	783	769	779	10,065,553	996.49
Information	20	192	203	203	2,131,942	822.72
Financial Activities	312	1,435	1,422	1,429	16,590,971	893.30
Professional & Business Services	439	5,074	4,999	4,999	85,463,198	1,308.54
Education & Health Services	457	7,210	7,248	7,298	70,887,336	751.91
Leisure & Hospitality	264	5,225	5,192	5,129	19,992,395	296.77
Other Services	194	861	842	861	6,217,005	559.55
Local Government	42	3,476	3,513	3,505	46,960,125	1,032.68
State Government	18	3,329	3,320	3,060	32,654,447	776.15
<b>FRANKLIN COUNTY - TOTAL</b>	<b>361</b>	<b>4,546</b>	<b>4,554</b>	<b>4,531</b>	<b>\$39,419,027</b>	<b>\$667.35</b>
Natural Resources & Mining	20	246	242	240	3,672,305	1,164.09
Construction	31	108	111	107	968,434	685.54
Manufacturing	14	939	962	957	8,772,116	708.30
Trade, Transportation & Utilities	88	971	985	968	8,484,398	669.61
Wholesale Trade	11	53	54	50	272,682	400.81
Retail Trade	55	635	643	629	3,687,363	446.21
Transportation, Warehousing & Utilities	22	283	288	289	4,524,353	1,214.05
Information	4	21	21	21	153,879	563.66
Financial Activities	29	75	77	77	697,597	702.99
Professional & Business Services	36	352	339	326	2,732,672	620.08
Education & Health Services	68	584	572	572	3,926,827	524.42
Leisure & Hospitality	30	348	342	359	1,178,402	259.24
Other Services	14	51	49	49	357,885	554.29
Local Government	19	722	725	744	6,978,810	735.05
State Government	8	129	129	111	1,495,702	935.40

TABLE 6. COUNTY SUMMARY

North American Industry Classification System - Industry Groups	Number of Employing Units	Employment			Total Earnings	Average Weekly Earnings
		Apr	May	Jun	Apr - Jun 2018	
<b>FULTON COUNTY - TOTAL</b>	<b>194</b>	<b>1,947</b>	<b>2,002</b>	<b>2,018</b>	<b>\$15,605,559</b>	<b>\$603.53</b>
Manufacturing	12	112	121	117	692,728	456.74
Trade, Transportation & Utilities	46	287	309	311	2,409,437	613.04
Retail Trade	25	164	175	173	880,490	396.86
Other Trade, Transportation, & Utilities	21	123	134	138	1,528,947	893.25
Information	4	28	26	26	133,586	385.34
Financial Activities	17	83	100	96	796,587	658.88
Professional & Business Services	17	46	45	49	442,338	729.13
Education & Health Services	43	521	505	519	3,298,104	492.62
Leisure & Hospitality	15	123	133	135	453,705	267.78
Other Services	8	14	15	13	111,172	610.84
Local Government	12	554	562	568	5,304,193	726.87
State Government	9	59	60	60	488,811	630.18
Other	11	120	126	124	1,474,898	919.89
<b>GARLAND COUNTY - TOTAL</b>	<b>3,046</b>	<b>37,402</b>	<b>36,838</b>	<b>37,327</b>	<b>\$332,399,829</b>	<b>\$687.55</b>
Natural Resources & Mining	26	246	246	249	3,769,795	1,174.03
Construction	320	1,770	1,790	1,774	16,212,740	701.43
Manufacturing	90	2,510	2,512	2,557	30,520,482	929.30
Trade, Transportation & Utilities	673	7,327	7,284	7,302	57,680,507	607.44
Wholesale Trade	143	820	816	824	10,039,079	941.75
Retail Trade	469	6,033	5,998	5,994	42,146,270	539.59
Transportation, Warehousing & Utilities	61	474	470	484	5,495,158	888.03
Information	30	377	368	386	3,487,559	711.60
Financial Activities	334	1,421	1,470	1,491	16,798,698	884.67
Professional & Business Services	376	3,074	3,076	3,067	29,064,911	727.71
Education & Health Services	531	7,956	7,987	8,039	87,369,237	840.72
Leisure & Hospitality	387	7,781	7,116	7,321	33,944,422	352.57
Other Services	223	973	985	1,030	6,478,707	500.36
Local Government	34	2,997	3,009	3,184	38,170,174	958.49
State Government	22	970	995	927	8,902,597	710.39

TABLE 6. COUNTY SUMMARY

North American Industry Classification System - Industry Groups	Number of Employing Units	Employment			Total Earnings Apr - Jun 2018	Average Weekly Earnings
		Apr	May	Jun		
<b>GRANT COUNTY - TOTAL</b>	<b>333</b>	<b>4,081</b>	<b>4,123</b>	<b>4,239</b>	<b>\$40,910,421</b>	<b>\$758.73</b>
Natural Resources & Mining	25	163	163	171	2,145,064	996.01
Construction	31	209	215	225	2,788,368	991.48
Manufacturing	16	1,296	1,318	1,360	16,231,868	942.58
Trade, Transportation & Utilities	83	613	625	660	4,881,840	593.56
Wholesale Trade	16	66	69	76	1,025,666	1,121.76
Retail Trade	44	477	489	511	3,221,346	503.31
Transportation, Warehousing & Utilities	23	70	67	73	634,828	697.61
Financial Activities	18	96	100	102	1,325,947	1,026.80
Professional & Business Services	28	117	110	109	1,272,595	874.04
Education & Health Services	75	426	423	417	2,706,929	493.42
Leisure & Hospitality	23	311	318	320	982,901	239.01
Local Government	10	754	760	781	7,790,685	783.38
State Government	7	40	39	39	347,014	678.65
Other	17	56	52	55	437,210	618.99
<b>GREENE COUNTY - TOTAL</b>	<b>902</b>	<b>15,484</b>	<b>15,534</b>	<b>15,474</b>	<b>\$144,502,913</b>	<b>\$717.26</b>
Natural Resources & Mining	39	239	254	269	2,329,523	705.49
Construction	75	355	389	407	3,764,684	754.80
Manufacturing	64	5,007	4,980	4,965	56,803,210	876.70
Trade, Transportation & Utilities	240	2,688	2,675	2,679	20,317,771	583.03
Wholesale Trade	43	443	432	452	5,006,766	870.69
Retail Trade	161	1,919	1,925	1,907	12,297,895	493.48
Transportation, Warehousing & Utilities	36	326	318	320	3,013,110	721.30
Information	11	182	184	188	1,722,198	717.38
Financial Activities	76	555	555	552	6,927,995	961.95
Professional & Business Services	89	847	848	858	6,553,674	592.40
Education & Health Services	151	2,061	2,072	2,011	18,659,466	700.85
Leisure & Hospitality	75	1,352	1,363	1,278	4,897,072	283.02
Other Services	40	165	158	166	1,097,491	517.93
Local Government	31	1,649	1,659	1,710	17,192,116	790.64
State Government	11	384	397	391	4,237,713	834.41



TABLE 6. COUNTY SUMMARY

North American Industry Classification System - Industry Groups	Number of Employing Units	Employment			Total Earnings	Average Weekly Earnings
		Apr	May	Jun	Apr - Jun 2018	
<b>HEMPSTEAD COUNTY - TOTAL</b>	<b>510</b>	<b>7,850</b>	<b>7,859</b>	<b>7,885</b>	<b>\$70,670,302</b>	<b>\$691.22</b>
Natural Resources & Mining	23	251	260	260	2,858,008	855.43
Construction	29	172	176	177	2,023,127	889.29
Manufacturing	30	2,307	2,281	2,319	23,676,255	791.05
Trade, Transportation & Utilities	124	1,262	1,274	1,270	11,319,036	686.31
Wholesale Trade	21	155	162	159	1,423,366	690.06
Retail Trade	77	832	846	844	5,316,352	486.46
Transportation, Warehousing & Utilities	26	275	266	267	4,579,318	1,307.88
Information	7	26	27	26	277,528	810.70
Financial Activities	42	204	199	206	2,081,402	788.71
Professional & Business Services	29	233	222	224	2,130,302	724.02
Education & Health Services	109	1,046	1,046	1,041	6,712,977	494.46
Leisure & Hospitality	47	634	643	636	2,371,734	286.11
Other Services	26	108	107	109	915,020	651.72
Local Government	28	895	904	904	9,931,724	847.92
State Government	16	712	720	713	6,373,189	685.66
<b>HOT SPRING COUNTY - TOTAL</b>	<b>619</b>	<b>8,256</b>	<b>8,333</b>	<b>8,246</b>	<b>\$75,231,246</b>	<b>\$699.06</b>
Natural Resources & Mining	22	131	126	120	1,002,569	613.69
Construction	50	200	209	217	1,784,579	657.87
Manufacturing	28	1,401	1,443	1,465	17,820,767	954.39
Trade, Transportation & Utilities	152	1,589	1,589	1,574	15,926,257	773.42
Wholesale Trade	16	92	87	88	1,148,550	992.70
Retail Trade	99	862	863	842	5,375,132	483.22
Transportation, Warehousing & Utilities	37	635	639	644	9,402,575	1,131.30
Information	6	43	48	45	487,481	827.17
Financial Activities	50	216	212	217	2,195,729	785.59
Professional & Business Services	52	886	806	806	5,506,124	508.66
Education & Health Services	131	1,100	1,114	1,109	9,609,086	667.31
Leisure & Hospitality	53	681	780	741	2,498,086	261.80
Other Services	36	147	149	146	914,492	477.46
Local Government	27	999	992	975	10,979,403	854.25
State Government	12	863	865	831	6,506,673	586.77

TABLE 6. COUNTY SUMMARY

North American Industry Classification System - Industry Groups	Number of Employing Units	Employment			Total Earnings	Average Weekly Earnings
		Apr	May	Jun	Apr - Jun 2018	
<b>HOWARD COUNTY - TOTAL</b>	<b>366</b>	<b>7,053</b>	<b>7,025</b>	<b>6,974</b>	<b>\$57,924,222</b>	<b>\$634.96</b>
Natural Resources & Mining	19	219	211	218	2,006,469	714.55
Construction	22	137	132	133	1,206,331	692.50
Manufacturing	18	3,402	3,388	3,368	27,603,234	627.09
Trade, Transportation & Utilities	90	883	903	888	7,482,137	645.72
Wholesale Trade	17	82	85	82	868,670	805.07
Retail Trade	55	607	622	608	4,123,249	517.97
Transportation, Warehousing & Utilities	18	194	196	198	2,490,218	977.32
Financial Activities	38	134	138	139	1,361,139	764.26
Professional & Business Services	22	174	147	143	1,269,320	631.29
Education & Health Services	84	854	845	828	6,615,406	604.13
Leisure & Hospitality	22	333	347	348	1,202,034	269.84
Local Government	17	693	690	697	7,412,266	822.37
State Government	10	99	100	92	800,038	634.45
Other	24	125	124	120	965,848	604.03
<b>INDEPENDENCE COUNTY - TOTAL</b>	<b>889</b>	<b>15,629</b>	<b>15,956</b>	<b>15,923</b>	<b>\$153,226,488</b>	<b>\$744.29</b>
Natural Resources & Mining	18	252	258	258	3,240,764	973.79
Construction	60	481	496	487	5,923,149	933.66
Manufacturing	40	3,197	3,209	3,214	35,475,823	851.01
Trade, Transportation & Utilities	227	2,860	2,941	2,919	25,453,115	673.60
Wholesale Trade	26	305	305	305	2,958,361	746.12
Retail Trade	155	1,841	1,916	1,898	12,295,389	501.75
Transportation, Warehousing & Utilities	46	714	720	716	10,199,365	1,094.74
Information	13	115	118	101	908,058	627.40
Financial Activities	84	536	537	551	6,589,117	936.31
Professional & Business Services	91	1,149	1,186	1,188	9,133,438	598.27
Education & Health Services	154	3,429	3,581	3,603	39,444,117	857.67
Leisure & Hospitality	80	1,179	1,207	1,206	4,389,280	281.99
Other Services	62	327	326	337	2,037,608	474.97
Local Government	45	1,503	1,502	1,502	15,285,283	782.64
State Government	15	601	595	557	5,346,736	703.86

TABLE 6. COUNTY SUMMARY

North American Industry Classification System - Industry Groups	Number of Employing Units	Employment			Total Earnings	Average Weekly Earnings
		Apr	May	Jun	Apr - Jun 2018	
<b>IZARD COUNTY - TOTAL</b>	<b>250</b>	<b>3,031</b>	<b>3,053</b>	<b>2,991</b>	<b>\$25,167,967</b>	<b>\$640.00</b>
Natural Resources & Mining	8	141	142	144	1,788,135	966.39
Construction	22	81	88	94	831,390	729.50
Manufacturing	9	283	291	299	2,711,711	716.81
Trade, Transportation & Utilities	65	504	504	508	3,668,789	558.47
Wholesale Trade	13	36	37	38	270,482	562.33
Retail Trade	41	335	335	340	1,995,991	456.05
Transportation, Warehousing & Utilities	11	133	132	130	1,402,316	819.27
Information	4	5	5	5	56,630	871.23
Financial Activities	25	165	169	178	1,369,112	617.09
Professional & Business Services	15	36	42	45	330,945	620.91
Education & Health Services	48	707	723	726	5,445,761	582.89
Leisure & Hospitality	19	157	169	173	588,330	272.08
Other Services	12	31	31	32	198,163	486.49
Local Government	14	511	498	401	4,692,500	768.00
State Government	9	410	391	386	3,486,501	677.82
<b>JACKSON COUNTY - TOTAL</b>	<b>428</b>	<b>5,077</b>	<b>5,155</b>	<b>5,144</b>	<b>\$46,500,340</b>	<b>\$697.90</b>
Natural Resources & Mining	57	286	298	299	2,805,793	733.29
Construction	19	81	81	87	789,204	731.42
Manufacturing	13	878	889	877	10,380,935	906.05
Trade, Transportation & Utilities	108	1,019	1,036	1,044	8,495,137	632.60
Wholesale Trade	21	223	219	219	2,549,538	890.10
Retail Trade	71	703	715	724	4,814,729	518.72
Transportation, Warehousing & Utilities	16	93	102	101	1,130,870	881.66
Information	4	12	12	11	82,736	545.51
Financial Activities	29	135	139	141	1,398,647	777.75
Professional & Business Services	29	115	115	114	1,010,332	677.77
Education & Health Services	79	854	870	852	8,329,449	746.19
Leisure & Hospitality	26	282	295	308	1,032,753	269.30
Other Services	20	58	59	60	455,393	593.73
Local Government	32	575	577	599	5,485,154	722.90
State Government	12	782	784	752	6,234,807	620.71

TABLE 6. COUNTY SUMMARY

North American Industry Classification System - Industry Groups	Number of Employing Units	Employment			Total Earnings Apr - Jun 2018	Average Weekly Earnings
		Apr	May	Jun		
<b>JEFFERSON COUNTY - TOTAL</b>	<b>2,055</b>	<b>26,289</b>	<b>26,396</b>	<b>25,923</b>	<b>\$254,496,144</b>	<b>\$747.12</b>
Natural Resources & Mining	42	160	165	168	2,148,296	1,005.60
Construction	90	504	513	497	4,963,653	756.58
Manufacturing	58	4,830	4,830	4,831	62,372,720	993.29
Trade, Transportation & Utilities	396	4,398	4,383	4,358	38,072,883	668.70
Wholesale Trade	74	679	678	674	8,411,733	955.77
Retail Trade	272	3,025	3,032	3,018	19,912,865	506.37
Transportation, Warehousing & Utilities	50	694	673	666	9,748,285	1,106.54
Information	9	76	78	69	911,290	943.04
Financial Activities	149	965	984	986	11,424,526	898.27
Professional & Business Services	144	2,121	2,136	2,090	16,078,425	584.59
Education & Health Services	846	4,850	4,834	4,832	47,797,277	759.86
Leisure & Hospitality	137	1,796	1,842	1,770	6,471,152	276.14
Other Services	107	505	498	501	4,286,211	657.66
Local Government	42	2,617	2,679	2,698	28,163,508	813.02
State Government	35	3,467	3,454	3,123	31,806,203	730.77
<b>JOHNSON COUNTY - TOTAL</b>	<b>483</b>	<b>8,576</b>	<b>8,600</b>	<b>8,575</b>	<b>\$71,858,165</b>	<b>\$643.96</b>
Natural Resources & Mining	14	227	218	217	2,204,322	768.41
Construction	34	197	194	193	1,803,465	712.64
Manufacturing	34	2,651	2,654	2,635	22,066,241	641.34
Trade, Transportation & Utilities	103	1,852	1,870	1,842	14,961,421	620.53
Retail Trade	72	869	877	868	5,460,670	482.08
Other Trade, Transportation & Utilities	31	983	993	974	9,500,751	743.21
Information	4	19	18	19	176,787	728.52
Financial Activities	47	175	176	175	1,699,638	745.67
Professional & Business Services	48	409	404	399	2,206,145	420.06
Education & Health Services	105	1,250	1,240	1,242	11,877,090	734.42
Leisure & Hospitality	43	597	591	598	1,974,917	255.18
Other Services	29	89	86	86	549,218	485.60
Local Government	14	1,018	1,055	1,075	11,334,629	830.90
State Government	8	92	94	94	1,004,292	827.71

TABLE 6. COUNTY SUMMARY

North American Industry Classification System - Industry Groups	Number of Employing Units	Employment			Total Earnings Apr - Jun 2018	Average Weekly Earnings
		Apr	May	Jun		
<b>LAFAYETTE COUNTY - TOTAL</b>	<b>163</b>	<b>1,197</b>	<b>1,200</b>	<b>1,189</b>	<b>\$9,437,703</b>	<b>\$607.34</b>
Natural Resources & Mining	25	87	98	95	607,275	500.50
Construction	9	69	70	74	901,753	976.98
Manufacturing	6	43	34	41	548,015	1,071.74
Trade, Transportation & Utilities	32	190	199	206	1,289,229	500.02
Retail Trade	20	108	114	118	588,221	399.25
Other Trade, Transportation & Utilities	12	82	85	88	701,008	634.40
Financial Activities	13	63	63	63	534,413	652.52
Professional & Business Services	10	41	37	36	280,072	566.95
Education & Health Services	35	173	173	165	1,042,043	470.59
Leisure & Hospitality	5	35	36	42	161,024	328.84
Local Government	14	320	313	290	2,964,146	741.10
State Government	9	133	133	133	828,167	478.99
Other	5	43	44	44	281,566	496.01
<b>LAWRENCE COUNTY - TOTAL</b>	<b>401</b>	<b>3,998</b>	<b>3,937</b>	<b>3,943</b>	<b>\$34,093,745</b>	<b>\$662.38</b>
Natural Resources & Mining	52	272	269	282	2,810,226	787.99
Construction	24	97	94	96	1,006,895	809.62
Manufacturing	20	425	415	414	3,718,705	684.34
Trade, Transportation & Utilities	114	817	827	830	7,247,182	676.00
Wholesale Trade	18	209	208	210	2,306,366	848.86
Retail Trade	59	476	482	485	3,243,017	518.63
Transportation, Warehousing & Utilities	37	132	137	135	1,697,799	969.80
Financial Activities	28	125	119	123	1,206,333	758.54
Professional & Business Services	26	102	99	96	877,705	681.98
Education & Health Services	53	565	528	520	4,263,053	609.91
Leisure & Hospitality	29	325	312	300	1,071,051	263.78
Local Government	24	1,114	1,113	1,121	10,539,719	726.48
State Government	9	74	77	77	618,028	625.53
Other	22	82	84	84	734,848	678.32

TABLE 6. COUNTY SUMMARY

North American Industry Classification System - Industry Groups	Number of Employing Units	Employment			Total Earnings	Average Weekly Earnings
		Apr	May	Jun	Apr - Jun 2018	
<b>LEE COUNTY - TOTAL</b>	<b>271</b>	<b>1,868</b>	<b>1,888</b>	<b>1,875</b>	<b>\$15,520,219</b>	<b>\$636.05</b>
Natural Resources & Mining	43	193	202	212	1,795,937	682.78
Construction	6	29	30	29	229,954	603.03
Trade, Transportation & Utilities	41	326	335	336	2,953,589	683.65
Wholesale Trade	10	109	113	114	1,355,672	931.09
Retail Trade	21	167	172	169	983,572	446.81
Transportation, Warehousing & Utilities	10	50	50	53	614,345	926.61
Financial Activities	17	58	61	59	464,756	602.54
Professional & Business Services	13	49	47	46	771,556	1,253.88
Education & Health Services	113	420	422	431	3,150,480	571.12
Leisure & Hospitality	7	67	70	67	233,629	264.29
Local Government	15	312	306	285	2,478,421	633.38
State Government	6	396	397	393	3,332,120	648.36
Other	10	18	18	17	109,777	477.98
<b>LINCOLN COUNTY - TOTAL</b>	<b>293</b>	<b>2,821</b>	<b>2,860</b>	<b>2,882</b>	<b>\$23,805,650</b>	<b>\$641.55</b>
Natural Resources & Mining	33	148	156	155	1,315,518	661.40
Construction	19	136	142	147	1,449,726	787.18
Manufacturing	9	265	265	271	2,302,249	663.28
Trade, Transportation & Utilities	47	346	351	361	3,573,452	779.44
Wholesale Trade	9	58	61	63	635,368	805.62
Retail Trade	25	162	165	172	918,521	424.78
Transportation, Warehousing & Utilities	13	126	125	126	2,019,563	1,236.21
Financial Activities	20	71	75	75	632,268	660.22
Professional & Business Services	10	19	19	18	172,803	712.10
Education & Health Services	110	435	437	435	2,945,662	520.10
Leisure & Hospitality	15	162	169	165	429,702	199.92
Local Government	7	347	350	355	3,197,822	701.48
State Government	10	843	849	851	7,292,028	661.73
Other	13	49	47	49	494,420	786.88

TABLE 6. COUNTY SUMMARY

North American Industry Classification System - Industry Groups	Number of Employing Units	Employment			Total Earnings	Average Weekly Earnings
		Apr	May	Jun	Apr - Jun 2018	
<b>LITTLE RIVER COUNTY - TOTAL</b>	<b>248</b>	<b>3,306</b>	<b>3,325</b>	<b>3,347</b>	<b>\$40,753,961</b>	<b>\$942.55</b>
Natural Resources & Mining	14	67	70	65	582,988	666.02
Construction	13	153	147	149	1,494,075	767.90
Manufacturing	18	1,149	1,167	1,178	23,839,503	1,574.53
Trade, Transportation & Utilities	63	577	578	569	4,302,832	575.96
Wholesale Trade	7	26	26	27	497,653	1,453.71
Retail Trade	41	426	423	414	2,627,217	480.03
Transportation, Warehousing & Utilities	15	125	129	128	1,177,962	711.62
Financial Activities	16	68	73	75	673,282	719.32
Professional & Business Services	14	67	63	59	556,011	678.89
Education & Health Services	45	215	206	207	1,502,198	552.01
Leisure & Hospitality	13	187	198	205	601,845	235.40
Local Government	20	689	696	722	6,234,817	682.87
State Government	10	74	76	70	661,012	693.37
Other	22	60	51	48	305,398	443.25
<b>LOGAN COUNTY - TOTAL</b>	<b>499</b>	<b>5,136</b>	<b>5,261</b>	<b>5,328</b>	<b>\$43,182,698</b>	<b>\$633.72</b>
Natural Resources & Mining	26	119	120	122	1,128,208	721.21
Construction	46	233	250	254	2,351,913	736.43
Manufacturing	21	1,019	1,090	1,109	11,163,941	800.59
Trade, Transportation & Utilities	98	953	974	967	6,851,326	546.33
Wholesale Trade	7	32	33	32	254,776	606.13
Retail Trade	69	769	780	778	4,764,831	472.53
Transportation, Warehousing & Utilities	22	152	161	157	1,831,719	899.37
Information	5	30	30	30	277,995	712.81
Financial Activities	50	185	185	188	2,053,058	849.07
Professional & Business Services	42	125	123	120	1,064,657	667.64
Education & Health Services	113	721	721	727	5,418,690	576.52
Leisure & Hospitality	34	314	317	323	1,062,701	257.06
Other Services	30	141	142	173	1,164,934	589.54
Local Government	22	796	813	815	7,545,034	718.30
State Government	12	500	496	500	3,100,241	478.24

TABLE 6. COUNTY SUMMARY

North American Industry Classification System - Industry Groups	Number of Employing Units	Employment			Total Earnings Apr - Jun 2018	Average Weekly Earnings
		Apr	May	Jun		
<b>LONOKE COUNTY - TOTAL</b>	<b>1,280</b>	<b>13,815</b>	<b>13,940</b>	<b>14,006</b>	<b>\$122,106,382</b>	<b>\$674.75</b>
Natural Resources & Mining	85	510	517	531	5,178,345	767.01
Construction	132	876	912	948	9,483,970	799.93
Manufacturing	33	1,638	1,648	1,649	19,892,543	930.21
Trade, Transportation & Utilities	303	2,759	2,769	2,778	21,719,578	603.44
Wholesale Trade	75	418	425	423	5,018,959	914.87
Retail Trade	172	2,028	2,036	2,040	13,062,361	493.84
Transportation, Warehousing & Utilities	56	313	308	315	3,638,258	897.01
Information	13	86	85	84	866,838	784.47
Financial Activities	150	649	655	661	8,631,671	1,013.70
Professional & Business Services	150	591	564	536	5,338,104	728.49
Education & Health Services	203	1,714	1,730	1,745	13,181,962	586.24
Leisure & Hospitality	109	1,958	2,004	1,983	7,401,043	287.29
Other Services	63	200	207	202	1,334,016	505.50
Local Government	25	2,678	2,693	2,736	27,612,093	785.99
State Government	14	156	156	153	1,466,219	727.65
<b>MADISON COUNTY - TOTAL</b>	<b>257</b>	<b>3,382</b>	<b>3,353</b>	<b>3,337</b>	<b>\$28,262,127</b>	<b>\$647.54</b>
Natural Resources & Mining	12	39	43	42	403,179	750.33
Construction	28	125	131	128	1,131,839	680.19
Manufacturing	20	1,138	1,163	1,150	9,870,021	660.01
Trade, Transportation & Utilities	54	738	694	699	5,213,745	564.60
Wholesale Trade	7	33	36	33	216,795	490.49
Retail Trade	35	491	497	508	3,215,526	496.02
Transportation, Warehousing & Utilities	12	214	161	158	1,781,424	771.29
Information	6	53	54	54	1,319,164	1,890.82
Financial Activities	20	84	83	85	802,104	734.53
Professional & Business Services	24	83	89	81	904,803	825.30
Education & Health Services	42	267	263	260	1,936,995	565.82
Leisure & Hospitality	15	200	205	197	623,005	238.82
Other Services	20	45	43	45	320,389	555.91
Local Government	9	572	549	559	5,413,482	743.61
State Government	7	38	36	37	323,401	672.35



TABLE 6. COUNTY SUMMARY

North American Industry Classification System - Industry Groups	Number of Employing Units	Employment			Total Earnings	Average Weekly Earnings
		Apr	May	Jun	Apr - Jun 2018	
<b>MARION COUNTY - TOTAL</b>	<b>282</b>	<b>3,747</b>	<b>3,767</b>	<b>3,797</b>	<b>\$28,421,637</b>	<b>\$579.86</b>
Manufacturing	22	1,724	1,675	1,665	12,735,583	580.37
Trade, Transportation & Utilities	56	511	525	528	3,501,210	516.61
Wholesale Trade	6	38	37	38	295,164	602.79
Retail Trade	42	436	453	453	2,711,500	466.27
Transportation, Warehousing & Utilities	8	37	35	37	494,546	1,047.03
Information	3	55	56	56	696,917	963.04
Financial Activities	36	188	223	231	1,861,000	668.94
Professional & Business Services	24	87	82	77	604,822	567.38
Education & Health Services	47	334	330	323	2,593,993	606.50
Leisure & Hospitality	34	194	208	238	666,521	240.33
Other Services	13	29	28	31	122,111	320.22
Local Government	17	494	503	511	4,479,945	685.57
State Government	7	37	37	37	340,208	707.29
Other	23	94	100	100	819,327	643.11
<b>MILLER COUNTY - TOTAL</b>	<b>887</b>	<b>12,824</b>	<b>12,896</b>	<b>13,052</b>	<b>\$129,696,300</b>	<b>\$771.95</b>
Natural Resources & Mining	32	219	218	231	2,874,885	993.17
Construction	67	621	631	650	6,598,833	800.63
Manufacturing	26	2,288	2,299	2,291	37,520,011	1,258.86
Trade, Transportation & Utilities	228	3,370	3,388	3,407	32,312,865	733.58
Wholesale Trade	49	476	474	470	5,892,335	957.58
Retail Trade	133	1,248	1,240	1,259	7,869,607	484.67
Transportation, Warehousing & Utilities	46	1,646	1,674	1,678	18,550,923	856.54
Information	7	122	121	120	1,610,559	1,023.88
Financial Activities	78	394	397	404	4,090,406	789.91
Professional & Business Services	80	1,093	1,094	1,119	6,133,860	428.16
Education & Health Services	191	1,095	1,120	1,103	8,659,313	602.26
Leisure & Hospitality	88	1,479	1,471	1,567	5,933,788	303.15
Other Services	51	228	242	240	1,605,419	521.80
Local Government	24	1,455	1,453	1,460	17,361,996	917.27
State Government	15	460	462	460	4,994,365	833.97

TABLE 6. COUNTY SUMMARY

North American Industry Classification System - Industry Groups	Number of Employing Units	Employment			Total Earnings Apr - Jun 2018	Average Weekly Earnings
		Apr	May	Jun		
<b>MISSISSIPPI COUNTY - TOTAL</b>	<b>1,100</b>	<b>17,578</b>	<b>17,636</b>	<b>17,472</b>	<b>\$221,915,845</b>	<b>\$972.01</b>
Natural Resources & Mining	109	505	515	534	4,799,731	712.76
Construction	49	775	748	824	11,521,218	1,132.83
Manufacturing	58	6,571	6,523	6,351	118,984,631	1,412.08
Trade, Transportation & Utilities	273	2,767	2,775	2,756	26,279,757	730.85
Wholesale Trade	57	377	382	379	4,827,616	978.97
Retail Trade	148	1,571	1,572	1,570	9,588,175	469.48
Transportation, Warehousing & Utilities	68	819	821	807	11,863,966	1,118.86
Information	6	35	34	34	241,008	539.97
Financial Activities	80	456	463	463	4,573,640	763.72
Professional & Business Services	84	947	1,040	1,064	10,260,609	776.08
Education & Health Services	229	1,680	1,676	1,614	14,138,684	656.49
Leisure & Hospitality	92	1,154	1,175	1,180	4,089,288	268.93
Other Services	48	228	224	222	1,987,332	680.44
Local Government	49	1,949	1,954	1,958	20,516,772	807.82
State Government	23	511	509	472	4,523,175	699.60
<b>MONROE COUNTY - TOTAL</b>	<b>292</b>	<b>2,002</b>	<b>2,007</b>	<b>2,055</b>	<b>\$16,264,536</b>	<b>\$618.96</b>
Natural Resources & Mining	29	107	117	129	1,128,333	737.63
Construction	9	18	16	17	162,616	735.82
Manufacturing	6	138	126	145	1,173,499	662.12
Trade, Transportation & Utilities	73	519	520	520	5,013,565	742.13
Wholesale Trade	16	182	181	176	2,450,272	1,049.07
Retail Trade	33	234	237	244	1,357,584	438.17
Transportation, Warehousing & Utilities	24	103	102	100	1,205,709	912.26
Financial Activities	22	86	89	88	782,516	686.62
Professional & Business Services	15	35	24	26	194,252	527.38
Education & Health Services	69	372	382	385	2,846,600	576.74
Leisure & Hospitality	23	225	226	236	786,892	264.32
Local Government	21	344	344	346	2,950,995	658.61
State Government	7	67	66	68	613,633	704.52
Other	18	91	97	95	611,635	498.75

TABLE 6. COUNTY SUMMARY

North American Industry Classification System - Industry Groups	Number of Employing Units	Employment			Total Earnings	Average Weekly Earnings
		Apr	May	Jun	Apr - Jun 2018	
<b>MONTGOMERY COUNTY - TOTAL</b>	<b>167</b>	<b>1,310</b>	<b>1,352</b>	<b>1,415</b>	<b>\$9,873,078</b>	<b>\$558.84</b>
Natural Resources & Mining	9	30	36	34	290,930	671.38
Construction	25	64	71	66	462,980	531.55
Manufacturing	9	38	35	35	293,487	627.11
Trade, Transportation & Utilities	33	243	230	237	1,413,339	459.37
Wholesale Trade	6	52	49	54	452,997	674.44
Retail Trade	22	168	158	168	837,440	391.21
Transportation, Warehousing & Utilities	5	23	23	15	122,902	464.95
Financial Activities	11	44	46	57	395,290	620.55
Professional & Business Services	14	18	17	16	133,860	605.70
Education & Health Services	20	58	55	56	421,059	574.96
Leisure & Hospitality	15	283	319	357	1,587,771	382.07
Local Government	9	435	445	456	4,191,740	724.05
State Government	7	33	34	33	323,743	747.10
Other	15	64	64	68	358,879	422.54
<b>NEVADA COUNTY - TOTAL</b>	<b>192</b>	<b>2,451</b>	<b>2,489</b>	<b>2,463</b>	<b>\$23,341,962</b>	<b>\$727.62</b>
Natural Resources & Mining	12	62	62	66	855,649	1,039.25
Trade, Transportation & Utilities	37	597	575	573	4,972,795	657.63
Retail Trade	22	335	314	310	1,716,470	413.04
Other Trade, Transportation & Utilities	15	262	261	263	3,256,325	956.06
Financial Activities	11	64	63	63	613,669	745.35
Professional & Business Services	12	47	43	50	674,178	1,111.28
Education & Health Services	45	432	428	432	2,606,694	465.59
Leisure & Hospitality	9	89	91	83	300,422	263.61
Other Services	13	37	30	36	195,486	437.98
Local Government	28	395	456	412	3,769,391	688.72
State Government	9	53	52	53	438,424	640.35
Other	16	675	689	695	8,915,254	999.21

TABLE 6. COUNTY SUMMARY

North American Industry Classification System - Industry Groups	Number of Employing Units	Employment			Total Earnings Apr - Jun 2018	Average Weekly Earnings
		Apr	May	Jun		
<b>NEWTON COUNTY - TOTAL</b>	<b>119</b>	<b>1,035</b>	<b>1,062</b>	<b>1,033</b>	<b>\$6,934,679</b>	<b>\$511.28</b>
Construction	6	19	17	16	132,426	587.69
Manufacturing	8	31	35	37	316,277	708.61
Trade, Transportation & Utilities	28	163	167	159	1,189,430	561.32
Retail Trade	13	113	115	114	645,434	435.52
Other Trade, Transportation & Utilities	15	50	52	45	543,996	854.00
Education & Health Services	24	245	252	243	1,098,212	342.48
Leisure & Hospitality	19	154	162	155	729,269	357.31
Other Services	4	3	3	3	15,206	389.90
Local Government	14	349	351	344	2,862,832	632.81
State Government	7	33	33	34	306,782	707.96
Other	9	38	42	42	284,245	537.66
<b>OUACHITA COUNTY - TOTAL</b>	<b>660</b>	<b>6,872</b>	<b>6,934</b>	<b>6,887</b>	<b>\$61,304,740</b>	<b>\$683.67</b>
Natural Resources & Mining	33	162	165	173	1,599,038	738.02
Construction	39	207	220	198	1,957,960	722.94
Manufacturing	25	565	562	579	6,169,644	834.56
Trade, Transportation & Utilities	161	1,551	1,566	1,538	12,002,852	595.04
Wholesale Trade	26	237	243	245	2,341,157	745.20
Retail Trade	107	1,025	1,021	987	5,842,144	444.51
Transportation, Warehousing & Utilities	28	289	302	306	3,819,551	982.65
Information	6	41	40	38	387,476	751.41
Financial Activities	51	248	251	246	2,624,456	812.94
Professional & Business Services	44	567	567	602	4,687,143	623.07
Education & Health Services	193	1,221	1,226	1,216	13,189,370	830.93
Leisure & Hospitality	38	451	468	456	1,539,808	258.43
Other Services	26	115	116	116	1,052,136	699.71
Local Government	31	1,095	1,111	1,115	10,649,586	740.02
State Government	13	649	642	610	5,445,271	661.02

TABLE 6. COUNTY SUMMARY

North American Industry Classification System - Industry Groups	Number of Employing Units	Employment			Total Earnings Apr - Jun 2018	Average Weekly Earnings
		Apr	May	Jun		
<b>PERRY COUNTY - TOTAL</b>	<b>137</b>	<b>1,143</b>	<b>1,167</b>	<b>1,156</b>	<b>\$9,745,355</b>	<b>\$648.85</b>
Construction	16	70	81	82	696,843	690.17
Manufacturing	5	23	28	30	345,444	984.17
Trade, Transportation & Utilities	27	168	167	168	1,212,999	556.51
Retail Trade	19	137	135	135	540,070	306.22
Other Trade, Transportation & Utilities	8	31	32	33	672,929	1,617.62
Financial Activities	8	25	23	20	260,162	882.90
Professional & Business Services	14	37	35	31	298,143	667.98
Education & Health Services	28	227	218	221	1,472,853	510.34
Leisure & Hospitality	8	67	69	76	290,667	316.40
Local Government	9	364	362	347	3,092,650	665.13
State Government	7	33	33	32	271,558	639.46
Other	15	129	151	149	1,804,036	970.43
<b>PHILLIPS COUNTY - TOTAL</b>	<b>736</b>	<b>5,491</b>	<b>5,551</b>	<b>5,491</b>	<b>\$46,156,849</b>	<b>\$644.26</b>
Natural Resources & Mining	58	235	254	251	1,887,185	588.52
Construction	29	134	139	149	907,544	496.29
Manufacturing	13	391	389	400	4,633,061	906.07
Trade, Transportation & Utilities	145	1,236	1,251	1,211	10,114,566	631.19
Wholesale Trade	29	255	264	252	3,011,130	901.27
Retail Trade	76	723	734	708	4,184,882	446.07
Transportation, Warehousing & Utilities	40	258	253	251	2,918,554	883.87
Information	7	19	20	19	218,592	869.73
Financial Activities	39	203	207	210	1,821,515	677.98
Professional & Business Services	40	292	287	298	2,755,091	724.96
Education & Health Services	296	1,438	1,443	1,425	10,843,154	581.11
Leisure & Hospitality	39	344	355	347	1,150,695	253.87
Other Services	30	70	69	64	363,757	413.52
Local Government	26	776	788	773	8,507,930	840.12
State Government	14	353	349	344	2,953,759	651.66

TABLE 6. COUNTY SUMMARY

North American Industry Classification System - Industry Groups	Number of Employing Units	Employment			Total Earnings	Average Weekly Earnings
		Apr	May	Jun	Apr - Jun 2018	
<b>PIKE COUNTY - TOTAL</b>	<b>260</b>	<b>2,589</b>	<b>2,603</b>	<b>2,628</b>	<b>\$20,711,573</b>	<b>\$611.20</b>
Natural Resources & Mining	25	134	128	117	1,322,967	805.54
Construction	14	45	52	39	326,719	554.39
Manufacturing	17	393	379	394	3,581,580	708.85
Trade, Transportation & Utilities	69	557	551	550	4,008,856	557.97
Wholesale Trade	10	120	125	127	920,731	571.17
Retail Trade	40	357	347	355	2,214,893	482.65
Transportation, Warehousing & Utilities	19	80	79	68	873,232	887.73
Information	7	30	30	29	300,397	778.90
Financial Activities	26	223	221	222	2,299,992	796.95
Professional & Business Services	12	63	56	55	647,040	858.14
Education & Health Services	35	305	314	296	1,673,614	422.10
Leisure & Hospitality	24	228	246	301	873,777	260.18
Other Services	12	60	59	59	465,681	603.74
Local Government	10	450	445	442	4,549,656	785.28
State Government	9	101	122	124	661,294	439.79
<b>POINSETT COUNTY - TOTAL</b>	<b>499</b>	<b>5,199</b>	<b>5,194</b>	<b>5,175</b>	<b>\$47,588,961</b>	<b>\$705.43</b>
Natural Resources & Mining	65	240	246	244	2,311,889	730.84
Construction	24	102	98	102	960,851	734.22
Manufacturing	21	720	725	717	7,980,861	851.87
Trade, Transportation & Utilities	130	1,282	1,277	1,295	11,481,363	687.48
Wholesale Trade	28	409	400	415	5,546,946	1,045.80
Retail Trade	70	705	710	704	3,999,003	435.51
Transportation, Warehousing & Utilities	32	168	167	176	1,935,414	874.04
Information	5	56	56	56	511,082	702.04
Financial Activities	37	184	186	185	1,786,728	742.92
Professional & Business Services	27	194	192	187	2,711,380	1,091.98
Education & Health Services	88	817	814	802	6,548,258	621.10
Leisure & Hospitality	41	351	346	348	1,128,666	249.25
Other Services	20	69	71	71	573,146	626.85
Local Government	30	1,027	1,027	1,018	10,383,975	780.05
State Government	11	157	156	150	1,210,762	603.47

TABLE 6. COUNTY SUMMARY

North American Industry Classification System - Industry Groups	Number of Employing Units	Employment			Total Earnings	Average Weekly Earnings
		Apr	May	Jun	Apr - Jun 2018	
<b>POLK COUNTY - TOTAL</b>	<b>505</b>	<b>5,762</b>	<b>5,903</b>	<b>5,806</b>	<b>\$46,950,040</b>	<b>\$620.15</b>
Natural Resources & Mining	23	181	185	176	2,188,728	931.90
Construction	32	187	198	207	1,673,325	652.28
Manufacturing	32	1,293	1,293	1,307	11,852,143	702.57
Trade, Transportation & Utilities	129	1,040	1,064	1,053	7,680,607	561.43
Wholesale Trade	22	75	74	71	700,710	735.01
Retail Trade	70	738	761	753	4,451,257	456.13
Transportation, Warehousing & Utilities	37	227	229	229	2,528,640	851.87
Information	8	56	57	59	384,498	515.87
Financial Activities	47	238	232	249	2,215,213	710.99
Professional & Business Services	43	149	148	140	1,450,966	766.22
Education & Health Services	88	1,005	1,009	1,013	8,611,199	656.49
Leisure & Hospitality	42	472	509	489	1,636,412	256.89
Other Services	27	155	151	158	1,116,017	555.05
Local Government	21	700	773	688	6,226,693	664.94
State Government	13	286	284	267	1,914,239	527.77
<b>POPE COUNTY - TOTAL</b>	<b>1,829</b>	<b>25,968</b>	<b>26,267</b>	<b>25,786</b>	<b>\$274,746,658</b>	<b>\$812.64</b>
Natural Resources & Mining	34	643	756	752	6,750,650	724.24
Construction	160	1,210	1,209	1,219	18,196,757	1,154.27
Manufacturing	75	4,437	4,483	4,539	49,344,404	846.06
Trade, Transportation & Utilities	416	6,106	6,196	6,140	76,220,093	953.76
Wholesale Trade	73	537	541	538	5,552,902	792.97
Retail Trade	263	3,099	3,142	3,061	20,158,087	500.09
Transportation, Warehousing & Utilities	80	2,470	2,513	2,541	50,509,104	1,549.17
Information	17	133	135	132	1,180,715	681.18
Financial Activities	190	929	943	954	9,663,423	789.11
Professional & Business Services	266	1,995	1,898	1,858	28,147,981	1,129.49
Education & Health Services	361	3,317	3,316	3,361	28,653,973	661.64
Leisure & Hospitality	139	2,762	2,832	2,651	10,836,178	303.29
Other Services	113	613	596	619	4,656,282	587.82
Local Government	43	2,148	2,218	2,154	23,360,157	826.81
State Government	15	1,675	1,685	1,407	17,736,045	858.60

TABLE 6. COUNTY SUMMARY

North American Industry Classification System - Industry Groups	Number of Employing Units	Employment			Total Earnings	Average Weekly Earnings
		Apr	May	Jun	Apr - Jun 2018	
<b>PRAIRIE COUNTY - TOTAL</b>	<b>246</b>	<b>1,429</b>	<b>1,462</b>	<b>1,454</b>	<b>\$11,648,627</b>	<b>\$618.68</b>
Natural Resources & Mining	34	162	176	181	1,900,974	845.25
Construction	9	47	56	55	447,205	653.17
Trade, Transportation & Utilities	59	348	365	360	2,870,787	617.42
Wholesale Trade	12	92	94	97	1,251,725	1,020.71
Retail Trade	35	205	222	211	1,109,389	401.27
Transportation, Warehousing & Utilities	12	51	49	52	509,673	773.80
Financial Activities	15	48	49	48	492,280	783.47
Professional & Business Services	16	75	69	73	772,882	821.92
Education & Health Services	50	242	244	239	1,319,654	420.05
Leisure & Hospitality	17	91	95	95	346,137	284.26
Local Government	16	318	312	310	2,727,636	669.63
State Government	7	25	25	24	230,266	718.09
Other	23	73	71	69	540,806	585.92
<b>PULASKI COUNTY - TOTAL</b>	<b>14,262</b>	<b>241,314</b>	<b>242,925</b>	<b>242,995</b>	<b>\$2,838,006,573</b>	<b>\$900.57</b>
Natural Resources & Mining	49	599	608	619	9,500,115	1,200.62
Construction	921	8,785	8,845	9,059	111,189,087	961.41
Manufacturing	335	12,907	13,024	13,163	178,942,888	1,056.29
Trade, Transportation & Utilities	3,120	48,795	48,992	48,978	527,617,603	829.61
Wholesale Trade	921	11,805	11,845	11,917	185,577,475	1,204.08
Retail Trade	1,815	25,118	25,159	25,093	191,506,310	586.36
Transportation, Warehousing & Utilities	384	11,872	11,988	11,968	150,533,818	969.59
Information	205	3,505	3,576	3,542	45,699,303	992.75
Financial Activities	1,683	16,878	17,000	17,075	280,702,136	1,271.32
Professional & Business Services	2,741	35,908	35,991	36,191	444,277,464	948.52
Education & Health Services	2,528	41,092	41,272	41,281	507,187,713	946.61
Leisure & Hospitality	1,239	23,680	24,204	24,309	107,137,068	342.47
Other Services	1,139	6,364	6,508	6,760	63,832,964	750.34
Local Government	108	15,438	15,464	15,087	190,220,312	954.51
State Government	194	27,363	27,441	26,931	371,699,920	1,049.45



TABLE 6. COUNTY SUMMARY

North American Industry Classification System - Industry Groups	Number of Employing Units	Employment			Total Earnings	Average Weekly Earnings
		Apr	May	Jun	Apr - Jun 2018	
<b>RANDOLPH COUNTY - TOTAL</b>	<b>396</b>	<b>5,615</b>	<b>5,760</b>	<b>5,710</b>	<b>\$46,277,451</b>	<b>\$625.08</b>
Natural Resources & Mining	27	246	255	258	2,924,077	889.05
Construction	28	116	121	115	1,048,041	687.09
Manufacturing	28	1,505	1,518	1,533	13,665,129	692.16
Trade, Transportation & Utilities	88	867	885	884	6,970,528	610.24
Wholesale Trade	15	126	132	133	1,243,566	733.96
Retail Trade	54	594	603	601	3,799,077	487.60
Transportation, Warehousing & Utilities	19	147	150	150	1,927,885	995.29
Information	5	26	25	29	257,299	742.21
Financial Activities	32	150	153	155	1,334,802	672.56
Professional & Business Services	37	266	277	285	1,958,869	545.95
Education & Health Services	69	942	956	931	7,431,129	606.18
Leisure & Hospitality	31	390	410	400	1,380,723	265.52
Other Services	17	46	43	49	272,661	455.95
Local Government	24	782	836	821	6,683,866	632.40
State Government	10	279	281	250	2,350,327	669.61
<b>SAINT FRANCIS COUNTY - TOTAL</b>	<b>697</b>	<b>6,798</b>	<b>6,809</b>	<b>6,848</b>	<b>\$58,303,358</b>	<b>\$657.77</b>
Natural Resources & Mining	41	189	190	204	1,821,365	720.95
Construction	38	181	184	200	2,064,310	843.15
Trade, Transportation & Utilities	147	1,896	1,895	1,890	16,499,885	670.25
Wholesale Trade	29	568	574	588	7,060,344	941.80
Retail Trade	96	1,040	1,035	1,021	6,129,775	456.90
Transportation, Warehousing & Utilities	22	288	286	281	3,309,766	893.32
Information	5	45	43	44	364,065	636.48
Financial Activities	62	250	255	253	2,108,638	641.96
Professional & Business Services	49	189	164	176	1,660,370	724.31
Education & Health Services	233	1,454	1,439	1,452	13,033,939	692.25
Leisure & Hospitality	43	672	669	678	2,262,186	258.57
Local Government	28	838	861	860	8,171,498	736.90
State Government	16	442	463	447	3,754,139	640.78
Other	35	642	646	644	6,562,963	783.92

TABLE 6. COUNTY SUMMARY

North American Industry Classification System - Industry Groups	Number of Employing Units	Employment			Total Earnings Apr - Jun 2018	Average Weekly Earnings
		Apr	May	Jun		
<b>SALINE COUNTY - TOTAL</b>	<b>2,018</b>	<b>24,556</b>	<b>24,783</b>	<b>25,086</b>	<b>\$225,588,541</b>	<b>\$699.48</b>
Natural Resources & Mining	11	52	50	49	541,664	827.81
Construction	266	2,018	2,091	2,134	22,654,881	837.43
Manufacturing	78	1,382	1,385	1,394	17,845,193	989.70
Trade, Transportation & Utilities	464	5,642	5,698	5,726	47,930,360	648.12
Wholesale Trade	114	630	636	645	8,730,198	1,054.24
Retail Trade	280	4,470	4,509	4,519	33,104,318	565.97
Transportation, Warehousing & Utilities	70	542	553	562	6,095,844	848.96
Information	16	167	175	177	1,849,860	822.53
Financial Activities	206	787	795	804	9,309,415	900.39
Professional & Business Services	268	1,745	1,719	1,708	17,613,116	785.88
Education & Health Services	327	4,628	4,630	4,629	44,297,406	736.12
Leisure & Hospitality	186	3,461	3,538	3,485	13,577,618	298.86
Other Services	150	882	893	931	6,838,840	583.22
Local Government	32	2,956	2,977	3,221	36,812,892	928.04
State Government	14	836	832	828	6,317,296	584.07
<b>SCOTT COUNTY - TOTAL</b>	<b>176</b>	<b>3,001</b>	<b>3,008</b>	<b>3,029</b>	<b>\$23,448,548</b>	<b>\$598.72</b>
Natural Resources & Mining	18	162	169	168	1,680,318	777.09
Trade, Transportation & Utilities	33	331	333	336	2,254,011	520.16
Wholesale Trade	7	47	47	49	356,696	575.63
Retail Trade	20	218	218	216	1,067,591	377.86
Transportation, Warehousing & Utilities	6	66	68	71	829,724	934.02
Financial Activities	18	52	57	55	510,658	718.56
Professional & Business Services	13	87	85	94	615,358	533.86
Education & Health Services	41	336	335	336	2,857,641	654.87
Leisure & Hospitality	15	139	135	138	513,831	287.81
Other Services	9	26	27	26	208,921	610.29
Local Government	6	543	547	552	5,559,352	781.32
State Government	6	30	30	31	287,777	729.78
Other	17	1,295	1,290	1,293	8,960,681	533.23

TABLE 6. COUNTY SUMMARY

North American Industry Classification System - Industry Groups	Number of Employing Units	Employment			Total Earnings	Average Weekly Earnings
		Apr	May	Jun	Apr - Jun 2018	
<b>SEARCY COUNTY - TOTAL</b>	<b>169</b>	<b>1,501</b>	<b>1,652</b>	<b>1,668</b>	<b>\$10,246,419</b>	<b>\$490.47</b>
Construction	13	9	10	10	53,523	425.91
Manufacturing	16	184	183	173	1,143,274	488.58
Trade, Transportation & Utilities	36	242	245	254	1,469,051	457.51
Wholesale Trade	6	35	37	39	255,601	531.40
Retail Trade	25	192	193	199	1,015,373	401.23
Transportation, Warehousing & Utilities	5	15	15	16	198,077	993.70
Financial Activities	12	65	84	94	566,570	538.05
Education & Health Services	40	359	361	365	2,234,183	475.19
Leisure & Hospitality	13	153	164	166	499,847	238.82
Other Services	4	7	9	7	58,662	588.58
Local Government	10	319	321	317	2,585,225	623.40
State Government	6	40	40	40	327,913	630.60
Other	19	123	235	242	1,308,171	503.14
<b>SEBASTIAN COUNTY - TOTAL</b>	<b>3,692</b>	<b>65,040</b>	<b>64,840</b>	<b>64,382</b>	<b>\$669,117,761</b>	<b>\$794.86</b>
Natural Resources & Mining	40	378	366	364	6,265,584	1,304.97
Construction	260	2,382	2,382	2,410	25,474,629	819.45
Manufacturing	194	11,687	11,686	11,632	136,170,668	897.70
Trade, Transportation & Utilities	886	13,083	13,083	13,029	123,709,463	728.37
Wholesale Trade	226	2,602	2,609	2,620	33,366,225	983.26
Retail Trade	548	7,717	7,719	7,625	52,410,436	524.47
Transportation, Warehousing & Utilities	112	2,764	2,755	2,784	37,932,802	1,054.28
Information	39	883	906	941	13,856,115	1,171.27
Financial Activities	406	2,491	2,496	2,534	30,162,309	925.48
Professional & Business Services	563	8,501	8,143	8,048	79,915,244	746.88
Education & Health Services	625	11,544	11,535	11,518	141,979,384	947.03
Leisure & Hospitality	351	6,250	6,386	6,326	25,631,255	311.93
Other Services	262	1,312	1,321	1,302	10,072,217	590.69
Local Government	43	4,770	4,771	4,519	56,950,474	934.74
State Government	23	1,759	1,765	1,759	18,930,419	826.91

TABLE 6. COUNTY SUMMARY

North American Industry Classification System - Industry Groups	Number of Employing Units	Employment			Total Earnings	Average Weekly Earnings
		Apr	May	Jun	Apr - Jun 2018	
<b>SEVIER COUNTY - TOTAL</b>	<b>312</b>	<b>4,761</b>	<b>4,846</b>	<b>4,822</b>	<b>\$40,609,844</b>	<b>\$649.49</b>
Natural Resources & Mining	18	185	191	201	2,094,178	837.56
Construction	18	167	177	184	2,446,601	1,069.32
Trade, Transportation & Utilities	91	804	818	813	6,461,138	612.33
Wholesale Trade	12	81	79	80	1,250,824	1,202.72
Retail Trade	65	644	658	657	4,261,181	501.97
Transportation, Warehousing & Utilities	14	79	81	76	949,133	928.10
Financial Activities	24	185	187	188	1,919,283	790.91
Professional & Business Services	25	98	92	99	644,155	514.36
Education & Health Services	59	529	549	558	4,557,628	642.89
Leisure & Hospitality	24	288	305	301	957,711	247.22
Local Government	12	937	971	923	8,796,622	717.06
State Government	7	168	164	144	1,515,261	734.61
Other	34	1,400	1,392	1,411	11,217,267	615.89
<b>SHARP COUNTY - TOTAL</b>	<b>381</b>	<b>3,623</b>	<b>3,668</b>	<b>3,687</b>	<b>\$25,860,418</b>	<b>\$543.61</b>
Construction	31	148	161	157	1,447,506	716.82
Manufacturing	18	186	186	181	1,177,778	491.49
Trade, Transportation & Utilities	78	791	792	785	4,607,614	449.03
Wholesale Trade	11	39	39	31	206,205	436.57
Retail Trade	57	668	673	672	3,760,944	431.15
Transportation, Warehousing & Utilities	10	84	80	82	640,465	600.81
Information	7	24	25	28	285,445	855.48
Financial Activities	33	169	175	174	1,784,658	795.07
Professional & Business Services	33	125	120	127	970,500	602.05
Education & Health Services	88	889	903	887	7,039,315	606.37
Leisure & Hospitality	30	389	390	398	1,406,965	275.86
Local Government	24	760	773	807	6,206,237	612.05
State Government	7	49	49	48	423,355	669.16
Other	32	93	94	95	511,045	418.20

TABLE 6. COUNTY SUMMARY

North American Industry Classification System - Industry Groups	Number of Employing Units	Employment			Total Earnings	Average Weekly Earnings
		Apr	May	Jun	Apr - Jun 2018	
<b>STONE COUNTY - TOTAL</b>	<b>265</b>	<b>2,607</b>	<b>2,652</b>	<b>2,715</b>	<b>\$19,223,428</b>	<b>\$556.33</b>
Natural Resources & Mining	5	10	11	11	99,228	715.59
Construction	15	36	33	35	217,856	483.41
Manufacturing	17	227	239	251	1,564,192	503.44
Trade, Transportation & Utilities	67	603	619	597	4,213,440	534.54
Wholesale Trade	6	47	47	41	329,467	563.19
Retail Trade	51	516	532	517	3,364,290	496.09
Transportation, Warehousing & Utilities	10	40	40	39	519,683	1,007.79
Financial Activities	30	146	150	154	1,665,352	854.03
Professional & Business Services	12	29	25	26	145,494	419.69
Education & Health Services	51	546	540	547	4,713,150	666.04
Leisure & Hospitality	29	440	456	509	1,576,852	259.00
Local Government	11	406	410	412	3,835,091	720.70
State Government	7	117	122	124	849,525	540.07
Other	21	47	47	49	343,248	553.92
<b>UNION COUNTY - TOTAL</b>	<b>1,290</b>	<b>17,213</b>	<b>17,411</b>	<b>17,404</b>	<b>\$206,731,397</b>	<b>\$916.95</b>
Natural Resources & Mining	76	389	397	403	4,920,399	954.98
Construction	90	1,351	1,390	1,433	18,174,800	1,004.84
Manufacturing	49	2,837	2,866	2,901	50,910,830	1,365.49
Trade, Transportation & Utilities	304	3,391	3,403	3,431	34,474,664	778.06
Wholesale Trade	66	461	458	463	6,179,326	1,031.84
Retail Trade	177	2,060	2,067	2,068	13,302,518	495.53
Transportation, Warehousing & Utilities	61	870	878	900	14,992,820	1,306.60
Information	8	108	92	91	922,745	731.76
Financial Activities	99	609	608	600	8,553,745	1,086.37
Professional & Business Services	130	2,036	2,008	2,017	36,167,044	1,377.04
Education & Health Services	299	2,325	2,355	2,293	21,657,803	716.76
Leisure & Hospitality	95	1,416	1,506	1,508	5,697,235	296.78
Other Services	92	428	441	424	3,176,877	567.00
Local Government	32	1,820	1,847	1,807	17,267,997	727.97
State Government	16	503	498	496	4,807,258	741.06

TABLE 6. COUNTY SUMMARY

North American Industry Classification System - Industry Groups	Number of Employing Units	Employment			Total Earnings	Average Weekly Earnings
		Apr	May	Jun	Apr - Jun 2018	
<b>VAN BUREN COUNTY - TOTAL</b>	<b>338</b>	<b>3,570</b>	<b>3,601</b>	<b>3,624</b>	<b>\$32,124,884</b>	<b>\$686.75</b>
Natural Resources & Mining	11	135	134	135	2,739,709	1,564.95
Construction	37	144	149	150	1,149,482	598.79
Manufacturing	8	107	107	109	809,648	578.46
Trade, Transportation & Utilities	93	992	986	979	9,538,653	744.41
Wholesale Trade	11	81	82	77	946,713	910.30
Retail Trade	54	627	620	615	3,967,955	491.77
Transportation, Warehousing & Utilities	28	284	284	287	4,623,985	1,248.04
Information	5	34	33	34	98,663	225.43
Financial Activities	30	132	131	133	1,355,925	790.17
Professional & Business Services	36	146	146	175	1,411,414	697.45
Education & Health Services	56	747	763	759	6,169,926	627.51
Leisure & Hospitality	28	360	374	387	1,495,550	307.87
Other Services	17	54	59	58	439,398	592.98
Local Government	11	682	681	668	6,546,524	743.84
State Government	6	37	38	37	369,992	762.35
<b>WASHINGTON COUNTY - TOTAL</b>	<b>6,097</b>	<b>106,266</b>	<b>106,936</b>	<b>106,265</b>	<b>\$1,183,334,537</b>	<b>\$854.79</b>
Natural Resources & Mining	39	301	303	307	3,963,658	1,004.05
Construction	575	5,573	5,658	5,686	70,575,565	962.74
Manufacturing	219	12,993	12,951	13,066	139,227,161	823.62
Trade, Transportation & Utilities	1,383	22,699	22,849	22,638	228,861,046	774.56
Wholesale Trade	390	3,800	3,783	3,826	61,320,861	1,240.33
Retail Trade	792	12,416	12,494	12,243	90,343,099	561.15
Transportation, Warehousing & Utilities	201	6,483	6,572	6,569	77,197,086	907.80
Information	76	893	899	919	10,650,750	906.63
Financial Activities	665	3,674	3,709	3,727	48,471,916	1,006.83
Professional & Business Services	1,104	13,485	13,635	13,625	212,921,536	1,205.93
Education & Health Services	889	15,930	16,003	15,879	193,597,282	934.42
Leisure & Hospitality	669	13,249	13,383	12,888	53,802,007	314.17
Other Services	395	2,095	2,139	2,111	17,775,521	646.50
Local Government	61	8,839	8,883	8,899	113,304,423	982.20
State Government	22	6,535	6,524	6,520	90,183,672	1,062.96

TABLE 6. COUNTY SUMMARY

North American Industry Classification System - Industry Groups	Number of Employing Units	Employment			Total Earnings Apr - Jun 2018	Average Weekly Earnings
		Apr	May	Jun		
<b>WHITE COUNTY - TOTAL</b>	<b>1,779</b>	<b>23,977</b>	<b>24,000</b>	<b>23,737</b>	<b>\$225,907,040</b>	<b>\$726.95</b>
Natural Resources & Mining	52	355	368	376	4,420,411	928.20
Construction	153	1,008	1,032	1,032	10,886,256	817.78
Manufacturing	58	2,114	2,130	2,111	24,507,856	889.95
Trade, Transportation & Utilities	480	6,046	6,127	6,104	56,187,793	709.44
Wholesale Trade	82	576	573	577	6,328,154	846.09
Retail Trade	312	3,392	3,439	3,448	23,905,183	536.68
Transportation, Warehousing & Utilities	86	2,078	2,115	2,079	25,954,456	954.96
Information	17	127	126	128	1,003,021	607.52
Financial Activities	176	884	908	904	9,915,664	848.75
Professional & Business Services	183	1,275	1,267	1,186	10,359,378	641.26
Education & Health Services	314	5,676	5,705	5,553	62,606,048	853.17
Leisure & Hospitality	168	2,704	2,694	2,648	9,728,463	279.02
Other Services	117	480	481	486	4,011,444	639.75
Local Government	46	2,787	2,771	2,782	27,926,993	772.74
State Government	15	521	391	427	4,353,713	750.34
<b>WOODRUFF COUNTY - TOTAL</b>	<b>196</b>	<b>1,679</b>	<b>1,681</b>	<b>1,696</b>	<b>\$14,519,356</b>	<b>\$662.70</b>
Natural Resources & Mining	28	127	131	135	1,213,239	712.41
Construction	10	37	38	40	365,538	733.52
Manufacturing	5	188	189	193	2,033,799	823.40
Trade, Transportation & Utilities	49	375	372	381	3,494,685	714.95
Wholesale Trade	12	137	139	143	1,690,142	930.87
Retail Trade	27	174	166	167	836,264	380.64
Transportation, Warehousing & Utilities	10	64	67	71	968,279	1,106.18
Financial Activities	11	49	49	50	399,205	622.46
Education & Health Services	52	239	233	233	1,732,964	567.25
Leisure & Hospitality	11	71	73	75	254,373	268.04
Local Government	9	427	430	420	3,410,585	616.33
State Government	5	27	26	27	251,351	725.05
Other	16	139	140	142	1,363,617	747.46

TABLE 6. COUNTY SUMMARY

North American Industry Classification System - Industry Groups	Number of Employing Units	Employment			Total Earnings	Average Weekly Earnings
		Apr	May	Jun	Apr - Jun 2018	
<b>YELL COUNTY - TOTAL</b>	<b>412</b>	<b>6,546</b>	<b>6,574</b>	<b>6,531</b>	<b>\$52,928,576</b>	<b>\$621.56</b>
Natural Resources & Mining	23	214	226	228	2,464,312	851.33
Construction	32	239	235	250	2,228,476	710.31
Manufacturing	21	2,464	2,452	2,458	19,468,488	609.27
Trade, Transportation & Utilities	84	774	796	734	5,550,034	555.89
Wholesale Trade	14	62	62	63	340,619	420.34
Retail Trade	51	533	553	540	3,044,776	432.13
Transportation, Warehousing & Utilities	19	179	181	131	2,164,639	1,017.38
Financial Activities	27	114	116	118	917,355	608.33
Professional & Business Services	39	282	287	303	2,335,022	617.95
Education & Health Services	109	799	792	786	5,209,341	505.74
Leisure & Hospitality	25	314	324	327	1,038,850	248.43
Local Government	25	1,172	1,172	1,151	12,080,708	797.67
State Government	10	60	61	62	466,569	588.36
Other	17	114	113	114	1,169,421	791.40
<b>STATEWIDE COUNTY - TOTAL</b>	<b>10,014</b>	<b>36,162</b>	<b>36,328</b>	<b>32,704</b>	<b>\$498,908,023</b>	<b>\$1,094.48</b>
Natural Resources & Mining	97	320	323	323	5,172,625	1,235.70
Construction	798	3,158	3,227	3,180	42,186,472	1,017.81
Manufacturing	48	126	125	126	3,591,550	2,198.46
Trade, Transportation & Utilities	3,261	7,662	7,662	7,554	172,531,632	1,740.32
Wholesale Trade	2,802	6,215	6,207	6,110	152,348,967	1,897.12
Retail Trade	162	486	492	455	7,486,336	1,205.59
Transportation, Warehousing & Utilities	297	961	963	989	12,696,329	1,005.81
Information	345	618	612	600	13,864,595	1,748.37
Financial Activities	653	1,698	1,695	1,694	29,288,450	1,328.66
Professional & Business Services	3,847	18,149	18,389	14,760	179,022,923	805.35
Education & Health Services	504	2,586	2,482	2,703	29,637,820	880.13
Leisure & Hospitality	101	197	200	198	1,869,736	725.17
State Government	16	737	733	734	7,466,899	781.82
Other	344	911	880	832	14,275,321	1,028.79

Note: Statewide classification includes employment and payroll data for employers that have not provided a physical location for each employing unit. This section also includes employers without a physical location in Arkansas.



**TABLE 7. FEDERAL GOVERNMENT EMPLOYMENT AND EARNINGS IN ARKANSAS**

North American Industry Classification System - Industry Groups	Number of Employing Units	Employment			Total Earnings	Average Weekly Earnings
		Apr	May	Jun	Apr - Jun 2018	
<b>TOTAL</b>	<b>1,149</b>	<b>19,869</b>	<b>19,918</b>	<b>20,202</b>	<b>\$354,262,298</b>	<b>\$1,362.80</b>
Trade, Transportation & Utilities	591	5,544	5,540	5,544	79,200,700	1,099.18
Information	2	38	37	37	609,570	1,255.98
Financial Activities	14	109	107	108	2,148,925	1,530.57
Professional & Business Services	32	775	777	840	14,308,231	1,380.39
Education & Health Services	18	5,308	5,308	5,370	113,235,883	1,634.64
Leisure & Hospitality	22	270	282	316	2,798,924	744.13
Other Services	1	1	1	1	7,903	607.92
Public Administration	469	7,824	7,866	7,986	141,952,162	1,383.60

TABLE 8. LOCAL WORKFORCE DEVELOPMENT AREA SUMMARY

North American Industry Classification System - Industry Groups	Number of Employing Units	Employment			Total Earnings Apr - Jun 2018	Average Weekly Earnings
		Apr	May	Jun		
<b>CENTRAL LOCAL WORKFORCE DEVELOPMENT AREA</b>	<b>6,695</b>	<b>82,483</b>	<b>82,833</b>	<b>82,969</b>	<b>\$794,442,564</b>	<b>\$738.40</b>
Natural Resources & Mining	202	1,117	1,149	1,183	14,030,703	938.78
Construction	742	5,649	5,801	5,954	63,830,592	846.37
Manufacturing	223	6,394	6,388	6,426	80,747,745	970.12
Trade, Transportation & Utilities	1,542	16,968	17,043	16,970	137,524,482	622.51
Wholesale Trade	356	2,005	2,018	2,023	26,298,931	1,003.80
Retail Trade	934	13,171	13,244	13,139	89,710,514	523.40
Transportation, Warehousing & Utilities	252	1,792	1,781	1,808	21,515,037	922.69
Information	56	487	509	509	5,099,057	781.86
Financial Activities	705	3,005	3,010	3,030	35,806,853	913.56
Professional & Business Services	888	7,520	7,375	7,342	109,381,552	1,135.13
Education & Health Services	1,106	14,166	14,234	14,296	132,532,958	716.33
Leisure & Hospitality	599	10,960	11,055	10,928	42,104,085	294.94
Other Services	436	2,032	2,031	2,080	15,038,935	564.96
Local Government	136	9,772	9,839	10,118	117,063,741	908.70
State Government	60	4,413	4,399	4,133	41,281,861	735.93
Note: Pulaski County is not included in the Central Local Workforce Development Area. Please refer to Page 51 for information on Pulaski County. Central Local Workforce Development Area includes these counties: Faulkner, Lonoke, Monroe, Prairie, and Saline.						
<b>EASTERN LOCAL WORKFORCE DEVELOPMENT AREA</b>	<b>3,373</b>	<b>35,288</b>	<b>35,341</b>	<b>34,705</b>	<b>\$310,399,647</b>	<b>\$680.03</b>
Natural Resources & Mining	242	1,133	1,193	1,208	9,724,745	635.02
Construction	140	833	888	896	8,569,233	755.64
Manufacturing	79	3,413	3,421	3,429	39,735,669	893.48
Trade, Transportation & Utilities	756	8,925	8,897	8,810	80,831,262	700.41
Wholesale Trade	153	1,993	2,023	2,026	24,172,239	923.24
Retail Trade	414	4,631	4,601	4,537	28,251,203	473.49
Transportation, Warehousing & Utilities	189	2,301	2,273	2,247	28,407,820	961.10
Information	24	160	157	155	1,391,454	680.31
Financial Activities	261	1,274	1,268	1,284	12,114,277	730.69
Professional & Business Services	247	1,780	1,752	1,785	15,862,404	688.46
Education & Health Services	1,020	6,370	6,294	6,274	51,660,351	629.51
Leisure & Hospitality	251	3,854	3,909	3,983	16,195,202	318.18
Other Services	168	738	748	748	5,774,944	596.54
Local Government	127	4,817	4,875	4,239	51,676,424	856.03
State Government	58	1,991	1,939	1,894	16,863,682	668.20
Eastern Local Workforce Development Area includes these counties: Crittenden, Cross, Lee, Phillips, and Saint Francis.						

TABLE 8. LOCAL WORKFORCE DEVELOPMENT AREA SUMMARY

North American Industry Classification System - Industry Groups	Number of Employing Units	Employment			Total Earnings	Average Weekly Earnings
		Apr	May	Jun	Apr - Jun 2018	
<b>NORTH CENTRAL LOCAL WORKFORCE DEVELOPMENT AREA</b>	<b>5,359</b>	<b>67,415</b>	<b>68,141</b>	<b>68,030</b>	<b>\$611,149,023</b>	<b>\$692.75</b>
Natural Resources & Mining	209	1,515	1,542	1,558	19,129,461	956.55
Construction	421	2,427	2,501	2,506	26,139,588	811.44
Manufacturing	211	8,529	8,584	8,604	91,540,242	821.43
Trade, Transportation & Utilities	1,359	14,609	14,848	14,796	127,152,572	663.07
Wholesale Trade	222	1,592	1,596	1,592	16,758,091	809.05
Retail Trade	888	9,340	9,518	9,499	62,372,587	507.59
Transportation, Warehousing & Utilities	249	3,677	3,734	3,705	48,021,894	996.94
Information	67	423	424	412	3,148,812	577.16
Financial Activities	514	2,569	2,626	2,656	27,980,799	822.46
Professional & Business Services	488	3,271	3,273	3,270	27,311,042	642.20
Education & Health Services	965	14,551	14,775	14,620	145,845,105	765.86
Leisure & Hospitality	487	6,571	6,773	6,896	24,644,973	280.99
Other Services	323	1,213	1,226	1,244	8,844,599	554.18
Local Government	222	9,023	9,030	8,971	86,790,320	741.14
State Government	93	2,714	2,539	2,497	22,621,510	673.59

North Central Local Workforce Development Area includes these counties: Cleburne, Fulton, Independence, Izard, Jackson, Sharp, Stone, Van Buren, White, and Woodruff.

<b>NORTHEAST LOCAL WORKFORCE DEVELOPMENT AREA</b>	<b>6,503</b>	<b>101,764</b>	<b>102,454</b>	<b>102,048</b>	<b>\$1,007,022,483</b>	<b>\$758.78</b>
Natural Resources & Mining	450	2,150	2,216	2,274	20,306,514	705.74
Construction	461	3,706	3,782	3,926	43,647,349	882.47
Manufacturing	309	21,151	21,107	20,925	280,953,537	1,026.15
Trade, Transportation & Utilities	1,724	19,607	19,647	19,510	166,922,902	655.51
Wholesale Trade	369	3,746	3,739	3,764	45,116,775	925.55
Retail Trade	1,001	12,428	12,455	12,277	79,108,501	491.28
Transportation, Warehousing & Utilities	354	3,433	3,453	3,469	42,697,626	951.55
Information	55	770	769	767	7,579,378	758.49
Financial Activities	556	3,209	3,191	3,188	37,611,077	905.24
Professional & Business Services	660	6,923	7,191	7,328	58,945,157	634.40
Education & Health Services	1,093	17,363	17,466	17,339	181,007,459	800.70
Leisure & Hospitality	553	9,532	9,726	9,368	35,625,719	287.20
Other Services	333	1,394	1,398	1,429	10,789,314	589.87
Local Government	214	11,492	11,608	11,687	120,345,916	798.35
State Government	95	4,467	4,353	4,307	43,288,161	760.99

Northeast Local Workforce Development Area includes these counties: Clay, Craighead, Greene, Lawrence, Mississippi, Poinsett, and Randolph.

TABLE 8. LOCAL WORKFORCE DEVELOPMENT AREA SUMMARY

North American Industry Classification System - Industry Groups	Number of Employing Units	Employment			Total Earnings	Average Weekly Earnings
		Apr	May	Jun	Apr - Jun 2018	
<b>NORTHWEST LOCAL WORKFORCE DEVELOPMENT AREA</b>	<b>16,448</b>	<b>274,741</b>	<b>276,205</b>	<b>276,071</b>	<b>\$3,202,915,490</b>	<b>\$893.74</b>
Natural Resources & Mining	131	1,453	1,464	1,500	19,355,554	1,011.24
Construction	1,526	11,843	12,006	12,149	142,497,454	913.50
Manufacturing	625	36,224	36,172	36,398	358,752,789	760.97
Trade, Transportation & Utilities	3,944	60,639	60,994	60,883	665,653,747	841.64
Wholesale Trade	1,262	10,618	10,619	10,654	207,740,763	1,503.25
Retail Trade	2,154	31,581	31,793	31,427	224,689,047	546.95
Transportation, Warehousing & Utilities	528	18,440	18,582	18,802	233,223,937	964.12
Information	211	2,442	2,450	2,485	31,320,581	979.78
Financial Activities	1,678	9,392	9,565	9,592	130,944,573	1,058.46
Professional & Business Services	2,729	48,213	48,164	48,231	897,393,276	1,432.08
Education & Health Services	2,411	35,628	35,607	35,257	377,503,755	818.05
Leisure & Hospitality	1,746	31,078	31,904	31,646	134,239,170	327.37
Other Services	1,034	5,138	5,236	5,255	44,884,584	662.74
Local Government	310	23,775	23,792	24,030	288,697,422	930.52
State Government	103	8,916	8,851	8,645	111,672,585	975.72

Northwest Local Workforce Development Area includes these counties: Baxter, Benton, Boone, Carroll, Madison, Marion, Newton, Searcy, and Washington.

<b>SOUTHEAST LOCAL WORKFORCE DEVELOPMENT AREA</b>	<b>6,069</b>	<b>68,038</b>	<b>68,524</b>	<b>68,254</b>	<b>\$655,054,172</b>	<b>\$738.06</b>
Natural Resources & Mining	420	2,238	2,276	2,334	23,696,634	798.55
Construction	301	2,053	2,121	2,130	22,637,523	828.69
Manufacturing	193	14,568	14,639	14,818	181,960,437	953.80
Trade, Transportation & Utilities	1,219	11,794	11,887	11,886	103,706,452	672.88
Wholesale Trade	228	1,913	1,929	1,930	24,920,934	996.36
Retail Trade	727	7,332	7,426	7,397	46,950,827	489.05
Transportation, Warehousing & Utilities	264	2,549	2,532	2,559	31,834,691	961.58
Information	46	284	284	269	2,723,375	750.86
Financial Activities	405	2,362	2,405	2,382	26,303,678	849.08
Professional & Business Services	386	3,484	3,479	3,465	33,424,555	739.68
Education & Health Services	2,083	10,936	10,955	10,886	95,486,606	672.28
Leisure & Hospitality	390	4,485	4,551	4,515	15,125,116	257.58
Other Services	293	1,116	1,106	1,142	8,950,226	613.98
Local Government	209	8,721	8,846	8,855	87,954,546	768.19
State Government	124	5,997	5,975	5,572	53,085,024	698.27

Southeast Local Workforce Development Area includes these counties: Arkansas, Ashley, Bradley, Chicot, Cleveland, Desha, Drew, Grant, Jefferson, and Lincoln.

TABLE 8. LOCAL WORKFORCE DEVELOPMENT AREA SUMMARY

North American Industry Classification System - Industry Groups	Number of Employing Units	Employment			Total Earnings	Average Weekly Earnings
		Apr	May	Jun	Apr - Jun 2018	
<b>SOUTHWEST LOCAL WORKFORCE DEVELOPMENT AREA</b>	<b>5,650</b>	<b>77,032</b>	<b>77,599</b>	<b>77,645</b>	<b>\$779,736,316</b>	<b>\$774.68</b>
Natural Resources & Mining	321	2,112	2,160	2,209	24,790,086	882.70
Construction	351	3,212	3,289	3,358	38,398,304	898.79
Manufacturing	232	19,111	19,177	19,283	252,144,717	1,010.70
Trade, Transportation & Utilities	1,367	14,596	14,713	14,698	131,326,571	688.67
Wholesale Trade	239	1,785	1,790	1,795	21,705,552	932.77
Retail Trade	836	8,567	8,617	8,554	53,701,762	481.49
Transportation, Warehousing & Utilities	292	4,244	4,306	4,349	55,919,257	1,000.42
Information	48	431	413	407	4,708,394	868.55
Financial Activities	453	2,465	2,478	2,484	27,776,439	863.06
Professional & Business Services	430	4,670	4,598	4,680	54,881,836	908.02
Education & Health Services	1,309	9,746	9,802	9,677	80,201,355	633.29
Leisure & Hospitality	412	5,778	5,930	5,992	21,735,411	283.38
Other Services	339	1,407	1,409	1,395	10,085,792	552.72
Local Government	257	9,954	10,094	10,011	99,326,262	762.55
State Government	131	3,550	3,536	3,451	34,361,149	752.54

Southwest Local Workforce Development Area includes these counties: Calhoun, Columbia, Dallas, Hempstead, Howard, Lafayette, Little River, Miller, Nevada, Ouachita, Sevier, and Union

<b>WEST CENTRAL LOCAL WORKFORCE DEVELOPMENT AREA</b>	<b>8,121</b>	<b>107,513</b>	<b>107,534</b>	<b>107,326</b>	<b>\$989,765,606</b>	<b>\$708.52</b>
Natural Resources & Mining	237	2,232	2,364	2,353	\$24,501,785	813.68
Construction	724	4,317	4,368	4,384	48,610,767	858.36
Manufacturing	328	16,203	16,276	16,401	174,863,960	825.56
Trade, Transportation & Utilities	1,807	21,425	21,538	21,432	198,474,842	711.26
Wholesale Trade	311	1,922	1,921	1,938	20,769,117	829.07
Retail Trade	1,204	14,049	14,092	14,002	92,969,017	509.09
Transportation, Warehousing & Utilities	292	5,454	5,525	5,492	84,736,708	1,187.22
Information	78	690	691	701	6,629,681	734.83
Financial Activities	804	3,598	3,673	3,729	38,648,983	810.82
Professional & Business Services	912	7,876	7,631	7,591	78,198,440	781.27
Education & Health Services	1,574	17,526	17,526	17,530	167,443,590	734.87
Leisure & Hospitality	797	14,317	13,870	14,035	58,826,542	321.52
Other Services	516	2,344	2,332	2,405	16,747,862	545.81
Local Government	231	11,588	11,873	11,870	128,602,156	839.98
State Government	113	5,397	5,392	4,895	48,216,998	709.45

West Central Local Workforce Development Area includes these counties: Clark, Conway, Garland, Hot Spring, Johnson, Montgomery, Perry, Pike, Pope, and Yell

TABLE 8. LOCAL WORKFORCE DEVELOPMENT AREA SUMMARY

North American Industry Classification System - Industry Groups	Number of Employing Units	Employment			Total Earnings	Average Weekly Earnings
		Apr	May	Jun	Apr - Jun 2018	
<b>WESTERN LOCAL WORKFORCE DEVELOPMENT AREA</b>	<b>6,471</b>	<b>103,066</b>	<b>103,229</b>	<b>102,721</b>	<b>\$995,091,922</b>	<b>\$743.12</b>
Natural Resources & Mining	149	1,397	1,354	1,307	17,641,243	1,003.22
Construction	519	3,967	4,033	4,085	41,685,786	796.01
Manufacturing	334	20,749	20,830	20,825	219,548,996	811.89
Trade, Transportation & Utilities	1,542	21,922	22,044	21,956	198,803,591	695.94
Wholesale Trade	347	3,536	3,546	3,550	43,957,392	954.10
Retail Trade	932	12,058	12,149	12,015	79,938,130	509.28
Transportation, Warehousing & Utilities	263	6,328	6,349	6,391	74,908,069	906.57
Information	66	1,041	1,066	1,103	15,187,266	1,091.82
Financial Activities	674	3,553	3,560	3,616	40,535,382	871.87
Professional & Business Services	861	10,908	10,518	10,381	99,832,375	724.31
Education & Health Services	1,116	15,833	15,830	15,832	176,283,427	856.53
Leisure & Hospitality	564	9,099	9,284	9,225	35,958,886	300.57
Other Services	421	2,103	2,112	2,139	16,641,239	604.39
Local Government	153	9,643	9,748	9,438	106,123,482	849.49
State Government	72	2,851	2,850	2,814	26,850,249	727.68

Western Local Workforce Development Area includes these counties: Crawford, Franklin, Logan, Polk, Scott, and Sebastian