

Arkansas Covered Employment & Earnings



Fourth Quarter
2017

**COVERED EMPLOYMENT AND EARNINGS
STATE OF ARKANSAS
FOURTH QUARTER 2017**

**ASA HUTCHINSON, GOVERNOR
STATE OF ARKANSAS**

**DARYL BASSETT, DIRECTOR
DEPARTMENT OF WORKFORCE SERVICES**

**PUBLISHED BY
LABOR MARKET INFORMATION
BUREAU OF LABOR STATISTICS PROGRAMS
POST OFFICE BOX 2981
LITTLE ROCK, ARKANSAS 72203-2981
SUSAN PRICE, BLS PROGRAMS MANAGER
TELEPHONE (501) 682-3103**

STATE OF ARKANSAS WEBPAGE: <http://www.arkansas.gov>

DEPARTMENT OF WORKFORCE SERVICES WEBPAGE: <http://www.dws.arkansas.gov/>

WEBPAGE FOR LABOR MARKET INFORMATION: <http://www.discover.arkansas.gov>

RELEASED: May 2018

TABLE OF CONTENTS

DESCRIPTION OF DATA	PAGE
Description and Classification of Data	1
Definition of Covered Employment and Earnings	2
Significant Developments During Fourth Quarter 2017	3

LIST OF GRAPHS AND TABLES

Graph 1	Total Covered Employment for Selected Years, Arkansas	7
Graph 2	Total Covered Earnings, by Calendar Quarter for Selected Years, Arkansas	8
Table 1	Quarterly Comparison of Covered Employment and Wages, by Industry	5
Table 2	Total Covered Employment in Arkansas, 2010 – 2017	6
Table 3	Total Covered Earnings, 2010 – 2017	9
Table 4	Total Taxable Earnings, 2010 – 2017	10
Table 5	State Summary – Employment and Total Earnings, by Industry, Fourth Quarter 2017	11
Table 6	County Summary – Employment and Total Earnings, by Industry, Fourth Quarter 2017	22
Table 7	Federal Government Employment and Total Earnings in Arkansas, Fourth Quarter 2017	60
Table 8	Local Workforce Development Area – Employment and Total Earnings, by Industry, Fourth Quarter 2017	61

EMPLOYMENT AND EARNINGS
UNDER THE ARKANSAS EMPLOYMENT SECURITY LAW
FOURTH QUARTER 2017

DESCRIPTION AND CLASSIFICATION OF DATA

This publication contains covered employment and payroll data by industry and county for the Fourth Quarter 2017 and a record for total covered employment by month, quarterly payroll data, average weekly earnings, and total taxable earnings for 2010 through 2017. These data are compiled from quarterly contributions and wage reports submitted by employers subject to the Arkansas Employment Security Law.

Employment data have been tabulated for each month of the quarter by industry under the **North American Industry Classification System** (NAICS) by state, county, and workforce area. Payroll data represent the total wages paid during the quarter and are classified by industry for the state and by publishable industry groups for each county and workforce area.

Due to industry classification revisions, previously published data will not always be comparable with current data. For this reason, comparisons should not be made between the same industries under different revisions. For more information, visit the NAICS home page at <http://www.census.gov/naics>.

Industry Classification Revisions

- SIC (Standard Industrial Classification) 1987 to NAICS 2002
- NAICS 2002 to NAICS 2007
- NAICS 2007 to NAICS 2012
- NAICS 2012 to NAICS 2017

The tabulation of this data is a joint effort in conjunction with the United States Bureau of Labor Statistics. Data included in this publication are subject to revisions. Revisions are typically reflected in the Annual Covered Employment and Earnings publication.

DEFINITION OF COVERED EMPLOYMENT AND EARNINGS

Covered Employment is the total number of workers employed by establishments subject to the Arkansas Employment Security Law that worked or received pay for the payroll period including the 12th of the month. Earnings include all wages paid to any covered employee by their employer including salaries, bonuses, commissions, fees, fringe benefits, sick pay made directly to employees or dependents, deferred compensation, and reported tips. These wages include both taxable and nontaxable wages. Only the first \$12,000 paid to each worker by an employer in the calendar year is taxable under the Arkansas Employment Security Law.

An Arkansas state unemployment insurance account is required of any entity meeting the definition of an employer. As described by Arkansas Department of Workforce Services Law, the definition of an employer includes, but is not limited to, a sole proprietorship, partnership, corporation, associations, trust, estate, and receiver or trustee in bankruptcy. The entity must employ one or more individuals for ten or more days in a calendar year, whether or not the days are consecutive.

Currently excluded from coverage is employment covered by the Railroad Unemployment Insurance Act, some domestic service workers, employees of small agricultural establishments, self-employed workers, unpaid family workers, insurance and real estate agents paid only on a commission basis, and employees of churches and religious organizations except separately incorporated schools.

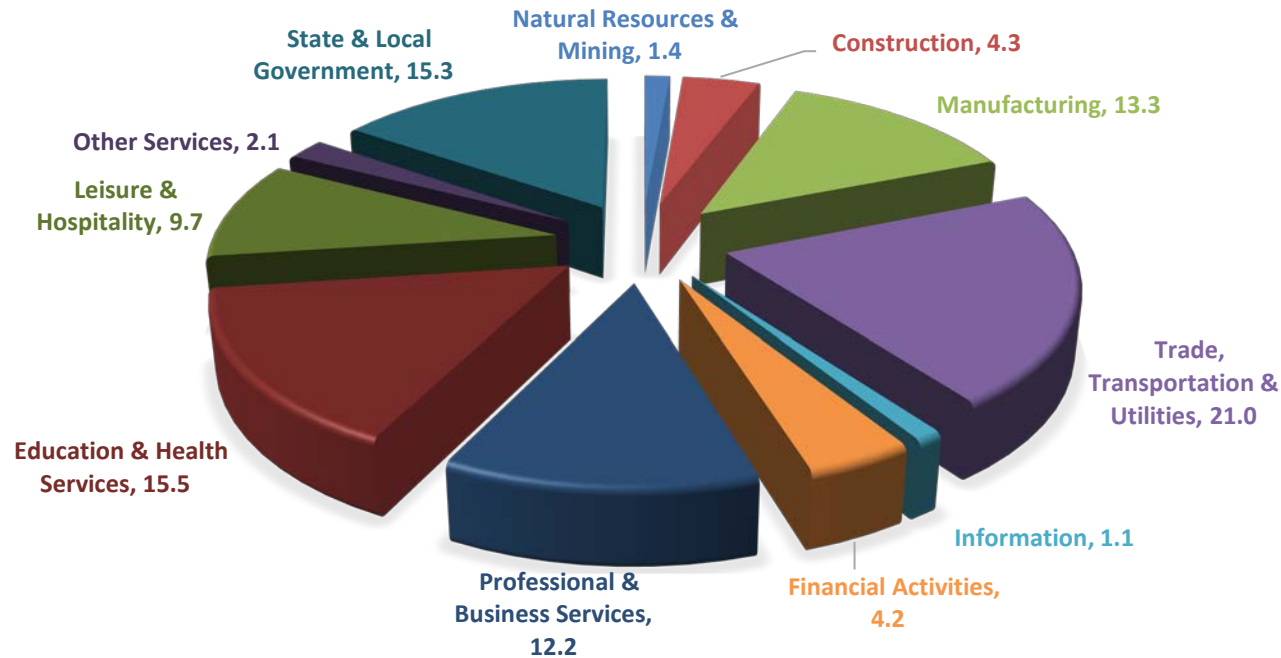
Civilian federal workers are covered by Unemployment Compensation for Federal Employees (UCFE).

SIGNIFICANT DEVELOPMENTS DURING FOURTH QUARTER 2017

AVERAGE EMPLOYMENT CHANGES

Covered employment averaged 1,196,257 during the Fourth Quarter 2017 (refer to Table 1), an increase of 29,648 (2.5%) from the previous quarter and an increase of 10,805 (0.9%) from the average recorded one year ago. The over-the-year comparison is more significant when used as an economic indicator and allows for seasonal factors that appear when comparing over-the-quarter data to be disregarded.

Average Covered Employment by NAICS



EMPLOYMENT CHANGES FROM THIRD QUARTER 2017

Compared to Third Quarter 2017, covered employment increased in seven major industry sectors, State and Local Government reported the largest gain (22,938), caused mostly due to complete staffing at public schools. Trade, Transportation, and Utilities grew 3,443 jobs. This boost is focused in Retail Trade (2,184) and Transportation & Warehousing (1,047) due to the increase need of seasonal workers for the holidays. Professional and Business Services advanced employment to total 146,084, an increase of 3,153 jobs. Gains in employment also occurred in Education and Health Services (2,405), Manufacturing (1,236), Natural Resources and Mining (251), and Financial Activities (174). Over the Quarter declines were seen in four industry sectors, Leisure and Hospitality reported the largest decrease (-2,545) in jobs. Three other sectors reported losses Construction (-918), Other Services (-471), and Information (-18).

EMPLOYMENT CHANGES FROM FOURTH QUARTER 2016 (QUARTER YEAR AGO COMPARISON)

Over-the-year gains were recorded in nine industry groups (refer to Table 1). The largest gains occurred in Education & Health Services (3,957), Manufacturing (3,385) and Leisure & Hospitality (1,897). Losses occurred in both Trade, Transportation & Utilities (--1,398), and Information (-561).

COVERED WAGES

Wages paid to covered workers totaled \$13,062,884,287 for the Fourth Quarter 2017 (refer to Table 1), for an average weekly wage of \$839.98 (refer to Table 5). Calhoun County workers recorded the highest average weekly wage (\$1,034.60), and employees in Newton County reported the lowest (\$472.26) (refer to Table 6).

Professional & Business Services industry recorded the highest average weekly wage for the State of Arkansas (\$1,134.24). The Leisure & Hospitality sector recorded the lowest (\$319.34) (refer to Table 5).

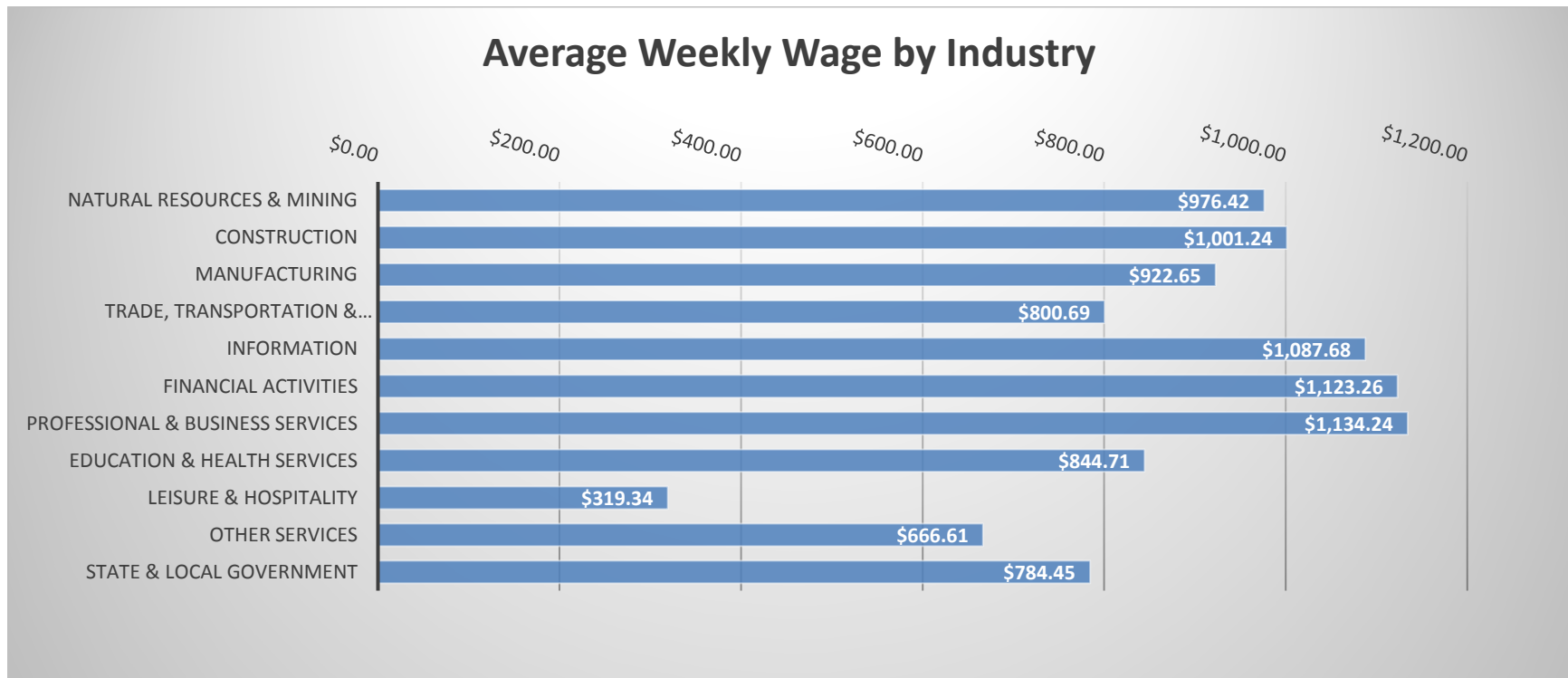


TABLE 1. QUARTERLY COMPARISON OF COVERED EMPLOYMENT AND WAGES, BY INDUSTRY

North American Industry Classification System - Industry Groups	Number of Employing Units	Monthly Employment Average	Percent of Total	Net Change From:		Total Wages Paid Jul - Sep 2017	Percent of Total
				Apr - Jun 2017	Jul - Sep 2016		
TOTAL	89,152	1,196,257	100	29,648	10,805	\$13,062,884,287	100
Natural Resources & Mining	2,548	16,659	1.4	251	4	211,459,703	1.6
Agriculture, Forestry, Fishing & Hunting	2,113	12,883	1.1	316	103	148,962,372	1.1
Mining	435	3,776	0.3	-65	-99	62,497,331	0.5
Construction	6,923	51,049	4.3	-918	717	664,461,403	5.1
Manufacturing	2,946	158,965	13.3	1,236	3,385	1,906,690,373	14.6
Trade, Transportation & Utilities	21,678	251,049	21.0	3,443	-1,398	2,613,155,450	20.0
Wholesale Trade	7,276	47,258	4.0	190	975	827,993,178	6.3
Retail Trade	11,065	142,210	11.9	2,184	-2,567	982,462,266	7.5
Transportation & Warehousing	2,924	53,819	4.5	1,047	82	644,093,833	4.9
Utilities	413	7,762	0.6	22	112	158,606,173	1.2
Information	1,170	12,624	1.1	-18	-561	178,496,246	1.4
Financial Activities	8,372	49,931	4.2	174	320	729,113,679	5.6
Finance & Insurance	4,959	36,402	3.0	203	174	591,040,027	4.5
Real Estate & Rental & Leasing	3,413	13,529	1.1	-28	145	138,073,652	1.1
Professional & Business Services	14,097	146,084	12.2	3,153	1,107	2,154,019,482	16.5
Professional & Technical Services	8,898	42,997	3.6	842	303	738,175,796	5.7
Management of Companies & Enterprises	548	34,308	2.9	-431	-1,518	909,784,870	7.0
Administrative & Waste Services	4,651	68,779	5.7	2,742	2,322	506,058,816	3.9
Education & Health Services	15,876	185,643	15.5	2,405	3,957	2,038,576,454	15.6
Educational Services	842	12,029	1.0	1,256	340	107,479,935	0.8
Health Care & Social Assistance	15,034	173,614	14.5	1,149	3,617	1,931,096,519	14.8
Leisure & Hospitality	7,139	116,122	9.7	-2,545	1,897	482,078,009	3.7
Arts, Entertainment & Recreation	979	10,423	0.9	-1,723	484	58,963,226	0.5
Accommodation & Food Services	6,160	105,700	8.8	-822	1,413	423,114,783	3.2
Other Services	5,376	24,592	2.1	-471	19	213,111,791	1.6
State & Local Government	3,027	183,540	15.3	22,938	1,357	1,871,721,697	14.3
Local Government	1,964	114,241	9.5	21,873	1,157	1,074,746,058	8.2
State Government	1,063	69,299	5.8	1,066	199	796,975,639	6.1
Nonclassifiable Establishments	0	0	0.0	0	0	0	0.0

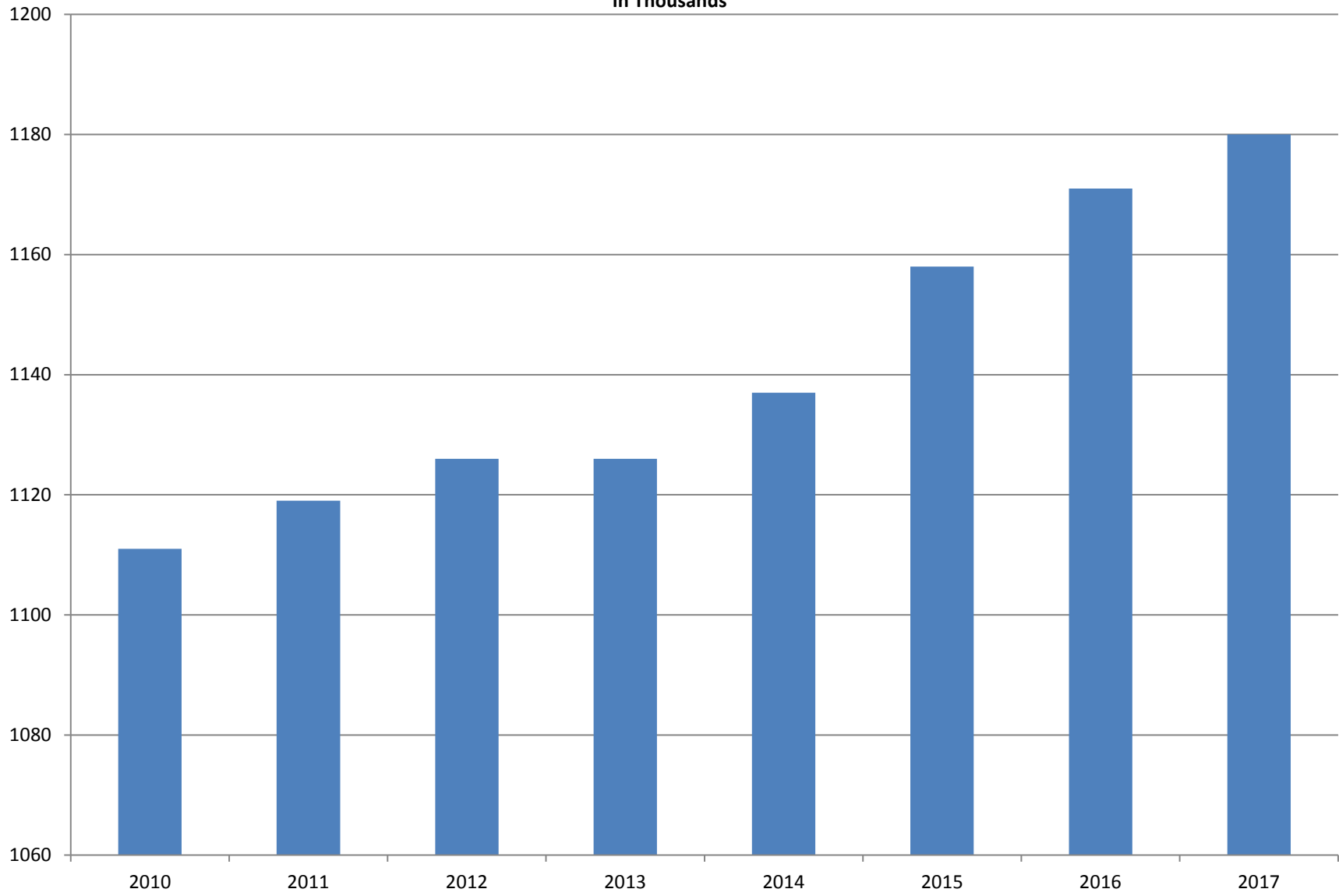
Note: Items do not necessarily add to total because of rounding. Because of industry code changes between years, substantial employment and wage shifts among industries are anticipated.

TABLE 2. TOTAL COVERED EMPLOYMENT IN ARKANSAS

PERIOD	2010	2011	2012	2013	2014	2015	2016	2017
AVERAGE	1,110,947	1,118,639	1,126,171	1,125,890	1,137,486	1,157,634	1,171,490	1,180,399
January	1,089,984	1,098,349	1,113,274	1,112,991	1,114,412	1,135,577	1,152,434	1,162,153
February	1,091,282	1,098,445	1,119,319	1,121,492	1,122,905	1,144,902	1,162,294	1,172,930
March	1,106,198	1,113,061	1,131,123	1,129,100	1,132,106	1,146,413	1,170,837	1,179,908
April	1,115,341	1,129,635	1,136,608	1,134,734	1,140,788	1,158,606	1,178,630	1,185,282
May	1,123,250	1,126,371	1,142,985	1,138,383	1,149,046	1,167,657	1,181,644	1,189,981
June	1,130,164	1,123,412	1,136,699	1,130,402	1,144,876	1,164,607	1,177,506	1,185,938
July	1,073,743	1,080,937	1,078,836	1,083,849	1,096,675	1,119,390	1,132,361	1,138,087
August	1,099,795	1,106,262	1,108,552	1,109,759	1,125,162	1,148,502	1,160,743	1,168,694
September	1,124,281	1,132,779	1,134,829	1,135,673	1,150,545	1,173,776	1,185,352	1,193,046
October	1,125,073	1,138,395	1,135,677	1,138,312	1,153,684	1,173,953	1,185,022	1,194,135
November	1,126,781	1,138,543	1,137,411	1,141,035	1,158,579	1,177,717	1,186,046	1,197,739
December	1,125,466	1,137,474	1,138,742	1,134,955	1,161,056	1,180,513	1,185,009	1,196,898

AVERAGE TOTAL COVERED EMPLOYMENT

In Thousands



TOTAL COVERED EARNINGS BY CALENDAR YEAR

In Thousands

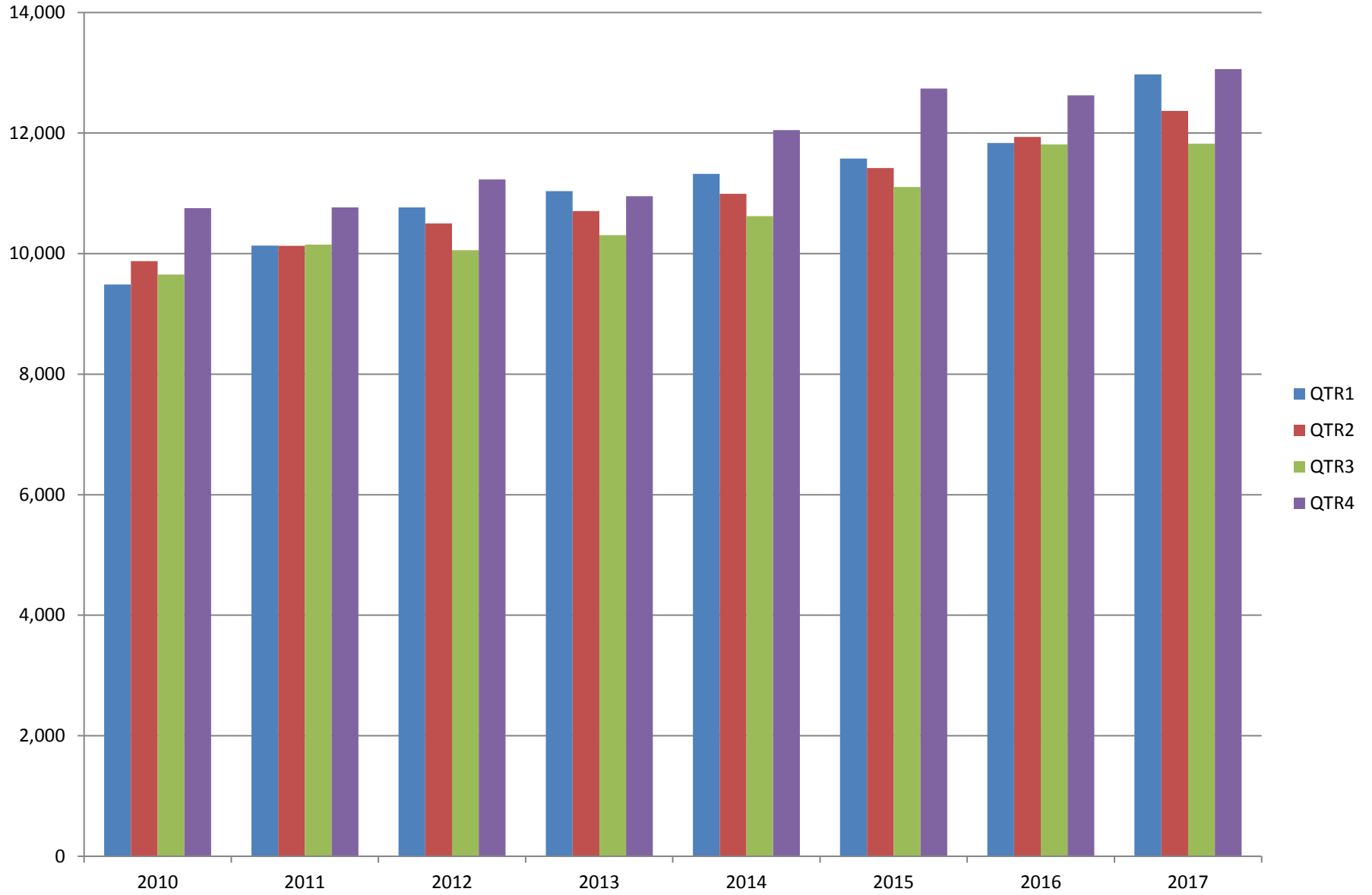


TABLE 3. TOTAL COVERED EARNINGS 2010 - 2017

PERIOD	2010	2011	2012	2013
TOTAL	\$39,769,504,992	\$41,177,659,236	\$42,551,238,929	\$43,371,086,461
January - March	9,486,245,580	10,134,035,254	10,766,175,449	11,050,678,946
April - June	9,873,489,653	10,128,274,611	10,494,369,042	10,692,826,528
July - September	9,653,588,807	10,147,287,431	10,053,294,410	10,322,652,747
October - December	10,756,180,952	10,768,061,940	11,237,400,028	11,304,928,240
Average Weekly Earnings	\$688.42	\$707.89	\$726.62	\$740.80

PERIOD	2014	2015	2016	2017
TOTAL	\$44,980,520,034	\$46,836,352,793	\$48,207,277,530	\$50,224,574,844
January - March	11,321,422,241	11,575,046,688	11,836,255,664	12,970,946,939
April - June	10,991,760,061	11,419,363,330	11,935,722,186	12,367,259,067
July - September	10,619,889,280	11,104,443,452	11,809,460,297	11,823,484,551
October - December	12,047,448,452	12,737,499,323	12,625,839,383	13,062,884,287
Average Weekly Earnings	\$760.46	\$778.05	\$791.35	\$818.25

TABLE 4. TOTAL TAXABLE EARNINGS, 2010 - 2017

PERIOD	2010	2011	2012	2013
TOTAL	11,332,118,456	11,479,396,226	11,624,348,048	11,644,747,978
January - March	5,607,134,758	5,828,877,821	6,167,036,199	6,184,735,653
April - June	2,977,100,591	2,910,604,359	2,838,154,846	2,805,431,293
July - September	1,577,067,770	1,601,382,146	1,494,712,584	1,506,497,129
October - December	1,170,815,337	1,138,531,900	1,124,444,419	1,148,083,903

PERIOD	2014	2015	2016	2017
TOTAL	11,919,662,224	12,258,632,610	12,511,938,047	12,765,934,583
January - March	6,288,682,396	6,378,966,662	6,595,351,454	6,971,816,280
April - June	2,831,013,392	2,915,293,283	3,003,077,908	2,918,611,828
July - September	1,552,243,963	1,640,978,599	1,651,582,584	1,580,186,171
October - December	1,247,722,473	1,323,394,066	1,261,926,101	1,295,320,304

TABLE 5. STATEWIDE SUMMARY

North American Industry Classification System - Industry Groups		Number of Employing Units	Employment			Total Earnings Oct - Dec 2017	Average Weekly Earnings
			Oct	Nov	Dec		
TOTAL, ALL INDUSTRIES		89,152	1,194,135	1,197,739	1,196,898	\$13,062,884,287	\$839.98
NATURAL RESOURCES & MINING		2,548	16,958	16,679	16,340	\$211,459,703	\$976.42
11	AGRICULTURE, FORESTRY, FISHING & HUNTING	2,113	13,166	12,869	12,615	\$148,962,372	\$889.42
111	CROP PRODUCTION	947	4,330	3,963	3,867	\$39,435,938	\$748.40
1111	Oilseed & Grain Farming	695	2,998	2,751	2,672	27,887,078	764.22
1112	Vegetable & Melon Farming	35	232	185	187	1,583,175	604.88
1113	Fruit & Tree Nut Farming	14	27	26	26	223,389	652.55
1114	Greenhouse & Nursery Production	39	325	321	367	2,823,120	643.13
1119	Other Crop Farming	164	748	680	615	6,919,176	781.56
112	ANIMAL PRODUCTION & AQUACULTURE	330	3,233	3,235	3,272	\$46,676,684	\$1,105.91
1121	Cattle Ranching & Farming	123	415	424	424	3,465,499	633.20
1122	Hog & Pig Farming	13	146	140	146	2,367,956	1,264.93
1123	Poultry & Egg Production	131	2,297	2,299	2,342	36,448,668	1,212.34
1125	Animal Aquaculture	43	314	316	306	4,015,736	990.07
	Other	20	61	56	54	378,825	511.23
115	SUPPORT ACTIVITIES FOR AGRICULTURE & FORESTRY	426	3,309	3,389	3,128	\$37,240,005	\$874.60
1151	Support Activities for Crop Production	292	2,002	1,963	1,700	24,903,347	1,014.46
1152	Support Activities for Animal Production	63	733	735	710	6,273,075	664.66
1153	Support Activities for Forestry	71	574	691	718	6,063,583	705.64
	OTHER	410	2,294	2,282	2,348	\$25,609,745	\$853.54
21	MINING	435	3,792	3,810	3,725	\$62,497,331	\$1,273.28
211	OIL & GAS EXTRACTION	75	749	737	725	\$15,684,609	\$1,637.05
212	MINING (EXCEPT OIL & GAS)	105	1,694	1,687	1,675	\$23,490,215	\$1,072.16
213	SUPPORT ACTIVITIES FOR MINING	255	1,349	1,386	1,325	\$23,322,507	\$1,325.64

TABLE 5. STATEWIDE SUMMARY

North American Industry Classification System - Industry Groups		Number of Employing Units	Employment			Total Earnings Oct - Dec 2017	Average Weekly Earnings
			Oct	Nov	Dec		
CONSTRUCTION		6,923	51,226	51,207	50,714	\$664,461,403	\$1,001.24
236	CONSTRUCTION OF BUILDINGS	1,824	10,920	10,870	10,907	\$159,204,773	\$1,123.64
2361	Residential Building Construction	1,232	3,489	3,507	3,555	42,542,737	930.49
2362	Nonresidential Building Construction	592	7,431	7,363	7,352	116,662,036	1,215.66
237	HEAVY & CIVIL ENGINEERING CONSTRUCTION	712	8,661	8,677	8,309	\$118,879,982	\$1,069.67
2371	Utility System Construction	398	4,534	4,623	4,430	63,681,677	1,081.61
2372	Land Subdivision	48	96	91	79	1,085,400	941.64
2373	Highway, Street & Bridge Construction	180	3,295	3,218	3,112	44,326,247	1,062.77
2379	Other Heavy Construction	86	736	745	688	9,786,658	1,041.24
238	SPECIALTY TRADE CONTRACTORS	4,387	31,645	31,660	31,498	\$386,376,648	\$940.52
2381	Building Foundation & Exterior Contractors	805	5,731	5,729	5,711	68,259,589	917.37
2382	Building Equipment Contractors	2,129	17,151	17,195	17,075	224,757,679	1,008.68
2383	Building Finishing Contractors	730	4,031	4,057	4,025	42,624,027	812.05
2389	Other Specialty Trade Contractors	723	4,732	4,679	4,687	50,735,353	830.48
MANUFACTURING		2,946	158,398	158,849	159,648	\$1,906,690,373	\$922.65
311	FOOD MANUFACTURING	289	48,209	48,359	48,734	\$463,152,931	\$735.58
3111	Animal Food Manufacturing	48	2,010	2,047	2,053	24,951,409	942.39
3112	Grain & Oilseed Milling	32	2,785	2,718	2,756	35,459,283	990.79
3114	Fruit, Vegetable & Specialty Food	19	4,219	4,244	4,290	50,043,835	905.56
3115	Dairy Product Manufacturing	8	581	579	576	6,254,294	831.39
3116	Animal Slaughtering & Processing	77	32,519	32,597	32,855	281,864,978	663.93
3118	Bakeries & Tortilla Manufacturing	74	3,912	3,953	3,938	39,867,013	779.47
3119	Other Food Manufacturing	21	2,151	2,183	2,225	24,487,739	861.57
	Other	10	32	38	41	224,380	466.49
312	BEVERAGE & TOBACCO PRODUCT MANUFACTURING	58	1,482	1,436	1,471	\$17,067,501	\$897.39
313	TEXTILE MILLS	9	117	120	124	\$1,783,149	\$1,139.88
314	TEXTILE PRODUCT MILLS	44	1,000	991	982	\$13,414,657	\$1,041.27
3141	Textile Furnishing Mills	9	38	37	36	430,445	894.90
3149	Other Textile Product Mills	35	962	954	946	12,984,212	1,046.95
315	APPAREL MANUFACTURING	16	883	861	858	\$6,392,866	\$566.98
3151	Apparel Knitting Mills	3	606	598	592	4,635,099	595.57
	Other	13	277	263	266	1,757,767	503.27

TABLE 5. STATEWIDE SUMMARY

North American Industry Classification System - Industry Groups		Number of Employing Units	Employment			Total Earnings	Average Weekly Earnings
			Oct	Nov	Dec	Oct - Dec 2017	
316	LEATHER & ALLIED PRODUCT MANUFACTURING	15	1,033	1,023	1,035	\$6,957,385	\$519.43
3162	Footwear Manufacturing	4	853	839	848	5,027,004	\$456.72
3169	Other Leather & Allied Product Manufacturing	11	180	184	187	1,930,381	\$808.48
321	WOOD PRODUCT MANUFACTURING	318	9,603	9,585	9,669	\$106,811,515	\$854.17
3211	Sawmills & Wood Preservation	150	4,652	4,655	4,687	56,711,068	935.20
3212	Veneer & Engineered Wood Products	40	1,811	1,794	1,793	21,949,848	938.38
3219	Other Wood Product Manufacturing	128	3,140	3,136	3,189	28,150,599	686.35
322	PAPER MANUFACTURING	74	9,341	9,405	9,380	\$154,210,323	\$1,265.27
3221	Pulp, Paper & Paperboard Mills	14	3,696	3,704	3,691	77,154,165	1,605.34
3222	Converted Paper Product Manufacturing	60	5,645	5,701	5,689	77,056,158	1,043.86
323	PRINTING & RELATED SUPPORT ACTIVITIES	246	3,966	3,970	3,949	\$44,474,915	\$863.56
324	PETROLEUM & COAL PRODUCTS MANUFACTURING	20	1,219	1,220	1,223	\$20,125,366	\$1,268.25
325	CHEMICAL MANUFACTURING	123	5,354	5,367	5,387	\$85,009,895	\$1,217.88
3251	Basic Chemical Manufacturing	33	1,807	1,801	1,831	34,098,496	1,446.75
3252	Resin, Rubber & Artificial Fibers	9	476	476	468	7,280,152	1,183.12
3253	Agricultural Chemical Manufacturing	14	440	443	449	8,122,644	1,407.25
3254	Pharmaceutical & Medicine Manufacturing	19	529	528	526	6,628,114	966.24
3255	Paint, Coating & Adhesive Manufacturing	10	233	235	234	3,422,890	1,125.21
3256	Soap, Cleaning Compound, & Toilet Preparation Manufacturing	14	1,152	1,161	1,156	14,985,118	996.86
3259	Other Chemical Preparation Manufacturing	24	717	723	723	10,472,481	1,117.30
326	PLASTICS & RUBBER PRODUCTS MANUFACTURING	122	10,865	10,922	10,987	\$137,087,018	\$965.26
3261	Plastics Product Manufacturing	94	6,599	6,671	6,749	78,739,393	907.67
3262	Rubber Product Manufacturing	28	4,266	4,251	4,238	58,347,625	1,055.65
327	NONMETALLIC MINERAL PRODUCT MANUFACTURING	232	3,574	3,578	3,592	\$45,494,884	\$977.18
3271	Clay Product & Refractory Manufacturing	13	497	498	503	6,030,544	929.01
3272	Glass & Glass Product Manufacturing	9	355	355	351	4,913,078	1,068.60
3273	Cement & Concrete Product Manufacturing	173	2,007	2,013	2,038	24,643,915	938.77
3274	Lime & Gypsum Product Manufacturing	3	297	298	303	4,835,195	1,242.55
3279	Other Nonmetallic Mineral Products Manufacturing	34	418	414	397	5,072,152	952.40
331	PRIMARY METAL MANUFACTURING	77	7,982	8,013	8,031	\$145,716,225	\$1,399.60
3311	Iron & Steel Mills & Ferroalloys	11	3,139	3,146	3,150	76,904,036	1,880.98
3312	Purchased Steel Product Manufacturing	21	1,948	1,952	1,947	31,426,637	1,240.35
3313	Alumina & Aluminum Production	18	924	931	937	12,863,277	1,063.20
3314	Other Nonferrous Metal Production	8	313	311	313	3,644,240	897.52
3315	Foundries	19	1,658	1,673	1,684	20,878,035	960.72

TABLE 5. STATEWIDE SUMMARY

North American Industry Classification System - Industry Groups		Number of Employing Units	Employment			Total Earnings	Average Weekly Earnings
			Oct	Nov	Dec	Oct - Dec 2017	
332	FABRICATED METAL PRODUCT MANUFACTURING	519	15,346	15,401	15,319	\$200,147,460	\$1,002.65
3321	Forging & Stamping	13	410	410	406	4,811,404	905.65
3322	Cutlery & Hand Tool Manufacturing	13	563	559	556	6,675,085	918.00
3323	Architectural & Structural Metals	153	4,472	4,508	4,506	63,961,797	1,094.50
3324	Boilers, Tanks & Shipping Containers	15	660	639	651	9,005,637	1,065.76
3325	Hardware Manufacturing	5	247	251	244	3,079,025	957.61
3326	Spring & Wire Product Manufacturing	11	357	357	360	4,179,991	898.15
3327	Machine Shops & Threaded Products	202	1,860	1,885	1,878	21,751,135	892.67
3328	Coating, Engraving & Heat Treating Metals	38	616	628	625	6,215,040	767.38
3329	Other Fabricated Metal Product Manufacturing	69	6,161	6,164	6,093	80,468,346	1,008.23
333	MACHINERY MANUFACTURING	213	11,065	11,134	11,329	\$136,778,658	\$941.43
3331	Agriculture, Construction & Mining Machinery	39	2,452	2,439	2,622	26,445,136	812.29
3332	Industrial Machinery Manufacturing	23	724	730	733	10,069,738	1,062.54
3333	Commercial & Service Industry Machinery	20	728	734	730	9,784,423	1,030.08
3334	HVAC & Commercial Refrigeration Equipment	24	2,796	2,806	2,789	32,924,726	905.50
3335	Metalworking Machinery Manufacturing	58	1,030	1,023	1,023	12,185,033	914.15
3336	Turbine & Power Transmission Equipment Manufacturing	5	656	699	725	10,066,507	1,116.85
3339	Other General Purpose Machinery Manufacturing	44	2,679	2,703	2,707	35,303,095	1,007.15
334	COMPUTER & ELECTRONIC PRODUCT MANUFACTURING	50	2,115	2,106	2,112	\$28,959,141	\$1,055.25
3343	Audio & Video Equipment Manufacturing	5	121	123	120	1,278,681	810.66
3344	Semiconductors & Electronic Components	24	1,494	1,487	1,489	20,562,033	1,061.54
3345	Navigational, Measuring, Electromedical, & Control Instr, Mfg Other	16 5	410 90	408 88	413 90	5,504,318 1,614,109	1,031.87 1,389.88
335	ELECTRICAL EQUIPMENT & APPLIANCES	55	4,773	4,809	4,817	\$66,924,532	\$1,072.58
3351	Electric Lighting Equipment Manufacturing	9	346	377	394	4,405,890	\$910.25
3352	Household Appliance Manufacturing	4	35	34	36	499,545	\$1,097.90
3353	Electrical Equipment Manufacturing	22	3,174	3,168	3,163	45,978,624	1,116.30
3359	Other Electrical Equipment & Component Manufacturing	20	1,218	1,230	1,224	16,040,473	1,008.07
336	TRANSPORTATION EQUIPMENT MANUFACTURING	134	13,582	13,653	13,636	\$158,244,694	\$893.49
3362	Motor Vehicle Body & Trailer Manufacturing	31	1,998	2,034	1,998	19,503,683	746.41
3363	Motor Vehicle Parts Manufacturing	43	5,251	5,268	5,257	56,891,692	832.20
3364	Aerospace Product & Parts Manufacturing	26	2,950	2,937	2,974	46,911,668	1,221.73
3366	Ship & Boat Building Other	21 13	2,100 1,283	2,123 1,291	2,116 1,291	18,917,744 16,019,907	688.69 956.51
337	FURNITURE & RELATED PRODUCT MANUFACTURING	162	3,603	3,584	3,603	\$34,526,430	\$738.43
3371	Household & Institutional Furniture	136	2,922	2,923	2,932	27,822,490	731.52
3372	Office Furniture & Fixtures Manufacturing	20	593	570	580	6,043,668	800.17
3379	Other Furniture Related Product Manufacturing	6	88	91	91	660,272	564.34
339	MISCELLANEOUS MANUFACTURING	170	3,286	3,312	3,410	\$33,410,828	\$770.40
3391	Medical Equipment & Supplies Manufacturing	66	1,579	1,596	1,682	17,271,287	820.61
3399	Other Miscellaneous Manufacturing	104	1,707	1,716	1,728	16,139,541	723.07

TABLE 5. STATEWIDE SUMMARY

North American Industry Classification System - Industry Groups		Number of Employing Units	Employment			Total Earnings Oct - Dec 2017	Average Weekly Earnings
			Oct	Nov	Dec		
TRADE, TRANSPORTATION & UTILITIES		21,678	248,081	251,895	253,170	\$2,613,155,450	\$800.69
42	WHOLESALE TRADE	7,276	47,137	47,275	47,362	\$827,993,178	\$1,347.75
423	MERCHANT WHOLESALERS, DURABLE GOODS	2,100	20,540	20,607	20,731	\$308,924,954	\$1,152.11
4231	Motor Vehicle & Part Merchant Wholesalers	233	2,610	2,635	2,642	30,250,409	885.11
4232	Furniture & Furnishings Merchant Wholesalers	50	488	488	497	8,374,578	1,312.01
4233	Lumber & Supply Merchant Wholesalers	165	1,449	1,461	1,469	18,467,703	973.23
4234	Commercial Goods Merchant Wholesalers	299	2,397	2,408	2,380	44,699,365	1,435.66
4235	Metal & Mineral Merchant Wholesalers	54	845	832	856	11,425,815	1,040.95
4236	Appliances & Electronics Goods Merchant Wholesalers	194	2,113	2,134	2,166	38,680,616	1,391.91
4237	Hardware & Plumbing Merchant Wholesalers	229	2,398	2,409	2,423	34,870,707	1,113.01
4238	Machinery & Supply Merchant Wholesalers	679	6,519	6,503	6,556	98,699,944	1,163.39
4239	Miscellaneous Durable Goods Merchant Wholesalers	197	1,721	1,737	1,742	23,455,817	1,040.94
424	MERCHANT WHOLESALERS, NONDURABLE GOODS	1,119	14,414	14,437	14,428	\$207,936,273	\$1,108.74
4241	Paper & Paper Product Merchant Wholesalers	69	1,132	1,134	1,109	21,772,698	1,488.73
4242	Druggist' Goods Merchant Wholesalers	52	759	763	774	11,186,490	1,124.35
4243	Apparel & Piece Goods Merchant Wholesalers	34	629	629	638	8,366,728	1,018.35
4244	Grocery Product Merchant Wholesalers	281	4,422	4,443	4,449	68,205,210	1,182.19
4245	Farm Product & Raw Material Merchant Wholesalers	70	819	767	774	8,409,010	822.26
4246	Chemical Merchant Wholesalers	87	643	642	635	11,644,776	1,399.61
4247	Petroleum Merchant Wholesalers	136	1,138	1,182	1,187	15,288,528	1,006.02
4248	Alcoholic Beverage Merchant Wholesalers	44	1,585	1,595	1,609	22,279,677	1,073.60
4249	Miscellaneous Nondurable Goods Merchant Wholesaler	346	3,287	3,282	3,253	40,783,156	958.21
425	ELECTRONIC MARKETS & AGENTS & BROKERS	4,057	12,183	12,231	12,203	\$311,131,951	\$1,960.83
44 - 45	RETAIL TRADE	11,065	140,107	143,260	143,262	\$982,462,266	\$531.43
441	MOTOR VEHICLE & PARTS DEALERS	1,541	19,271	19,024	19,164	\$214,890,985	\$863.05
4411	Automobile Dealers	634	11,961	11,768	11,900	153,216,532	992.38
4412	Other Motor Vehicle Dealers	176	1,694	1,672	1,660	18,577,131	852.97
4413	Automotive Parts, Accessories & Tire Stores	731	5,616	5,584	5,604	43,097,322	591.86
442	FURNITURE & HOME FURNISHINGS STORES	501	3,633	3,761	3,771	\$29,952,296	\$619.08
4421	Furniture Stores	271	2,011	2,026	2,037	18,724,301	711.39
4422	Home Furnishings Stores	230	1,622	1,735	1,734	11,227,995	508.95
443	ELECTRONICS & APPLIANCE STORES	408	3,578	3,702	3,711	\$31,285,019	\$656.87
444	BUILDING MATERIAL & GARDEN SUPPLY STORES	841	11,537	11,548	11,531	\$83,180,010	\$554.52
4441	Building Material & Supplies Dealers	593	9,509	9,511	9,544	70,369,031	568.51
4442	Lawn & Garden Equipment & Supplies Stores	248	2,028	2,037	1,987	12,810,979	488.50

TABLE 5. STATEWIDE SUMMARY

North American Industry Classification System - Industry Groups		Number of Employing Units	Employment			Total Earnings Oct - Dec 2017	Average Weekly Earnings
			Oct	Nov	Dec		
445	FOOD & BEVERAGE STORES	1,064	19,721	19,867	19,731	\$114,632,618	\$445.96
4451	Grocery Stores	561	16,839	16,964	16,813	92,861,928	423.38
4452	Specialty Food Stores	154	1,072	1,100	1,097	11,499,602	811.79
4453	Beer, Wine & Liquor Stores	349	1,810	1,803	1,821	10,271,088	436.19
446	HEALTH & PERSONAL CARE STORES	990	8,582	8,650	8,818	\$85,879,118	\$760.78
447	GASOLINE STATIONS	1,581	12,161	12,085	12,151	\$58,121,566	\$368.51
44711	Gasoline Stations with Convenience Stores	1,481	10,940	10,886	10,936	50,922,452	358.69
44719	Other Gasoline Stations	100	1,221	1,199	1,215	7,199,114	457.04
448	CLOTHING & CLOTHING ACCESSORIES STORES	1,047	8,279	9,140	9,130	\$39,789,447	\$345.86
4481	Clothing Stores	775	6,355	7,038	7,038	27,273,855	308.06
4482	Shoe Stores	133	1,195	1,329	1,306	5,126,093	308.86
4483	Jewelry, Luggage & Leather Goods Stores	139	729	773	786	7,389,499	745.31
451	SPORTING GOODS, HOBBY, BOOK & MUSIC STORES	471	4,544	5,156	5,110	\$25,303,881	\$394.28
4511	Sporting Goods & Musical Instrument Stores	408	4,074	4,658	4,584	23,248,256	402.90
4512	Book, Periodical & Music Stores	63	470	498	526	2,055,625	317.52
452	GENERAL MERCHANDISE STORES	966	39,584	41,115	41,009	\$237,787,774	\$450.87
4522	Department Stores	133	7,781	8,738	8,804	40,347,263	367.69
4523	Gen. Merchandise Stores, Warehouse clubs & Supercenters	833	31,803	32,377	32,205	197,440,511	472.72
453	MISCELLANEOUS STORE RETAILERS	1,198	7,298	7,283	7,180	\$42,111,069	\$446.58
4531	Florists	175	610	636	654	3,076,015	373.61
4532	Office Supplies, Stationery & Gift Stores	242	1,727	1,705	1,644	9,848,574	447.74
4533	Used Merchandise Stores	261	2,184	2,172	2,130	12,179,468	433.34
4539	Other Miscellaneous Store Retailers	520	2,777	2,770	2,752	17,007,012	472.91
454	NONSTORE RETAILERS	457	1,919	1,929	1,956	\$19,528,483	\$776.46
4541	Electronic Shopping & Mail-Order Houses	225	771	782	800	8,559,910	839.51
4542	Vending Machine Operators	63	476	466	472	4,164,697	679.69
4543	Direct Selling Establishments	169	672	681	684	6,803,876	770.80
48 - 49	TRANSPORTATION & WAREHOUSING	2,924	53,086	53,637	54,735	\$644,093,833	\$920.59
481	AIR TRANSPORTATION	51	741	728	744	\$7,312,001	\$762.49
4811	Scheduled Air Transportation	19	645	632	646	5,211,384	625.39
4812	Nonshceduled Air Transportation	32	96	96	98	2,100,617	1,671.58
483	WATER TRANSPORTATION	5	24	24	24	\$423,929	\$1,358.75
484	TRUCK TRANSPORTATION	1,825	31,545	31,743	31,829	\$407,148,854	\$987.81
4841	General Freight Trucking	1,053	25,188	25,381	25,441	333,167,930	1,011.51
4842	Specialized Freight Trucking	772	6,357	6,362	6,388	73,980,924	893.52

TABLE 5. STATEWIDE SUMMARY

North American Industry Classification System - Industry Groups		Number of Employing Units	Employment			Total Earnings	Average Weekly Earnings
			Oct	Nov	Dec	Oct - Dec 2017	
485	TRANSIT & GROUND PASSENGER TRANSPORTATION	117	1,846	1,847	1,835	\$10,609,499	\$442.90
4853	Taxi & Limousine Service	30	426	407	380	1,854,005	352.72
4854	School & Employee Bus Transportation	12	397	386	391	2,181,934	428.90
4855	Charter Bus Industry Service	8	99	96	89	631,610	513.23
4859	Other Ground Passenger Transportation	63	815	847	861	4,960,634	453.73
	Other	4	109	111	114	981,316	678.02
486	PIPELINE TRANSPORTATION	40	425	419	422	\$9,492,045	\$1,730.23
487	SCENIC & SIGHTSEEING TRANSPORTATION	4	34	16	15	\$83,142	\$295.18
488	SUPPORT ACTIVITIES FOR TRANSPORTATION	485	5,397	5,437	5,465	\$68,076,746	\$963.86
4881	Support Activities for Air Transportation	104	988	978	991	10,625,103	829.20
4882	Support Activities for Rail Transportation	42	736	766	770	9,616,389	976.75
4883	Support Activities for Water Transportation	21	740	734	738	10,549,297	1,100.57
4884	Support Activities for Road Transportation	162	867	857	856	7,674,306	686.43
4885	Freight Transportation Arrangement	141	1,964	1,994	2,004	28,427,494	1,100.33
4889	Other Support Activities for Transportation	15	102	108	106	1,184,157	864.77
493	WAREHOUSING & STORAGE	222	8,646	8,684	8,713	\$90,956,836	\$805.98
	OTHER	175	4,428	4,739	5,688	\$49,990,781	\$776.60
22	UTILITIES	413	7,751	7,723	7,811	\$158,606,173	\$1,571.89
2211	Power Generation & Supply	164	5,758	5,727	5,766	130,855,239	1,750.47
2212	Natural Gas Distribution	67	1,055	1,053	1,059	18,236,407	1,328.83
2213	Water, Sewage & Other Systems	182	938	943	986	9,514,527	765.84
	INFORMATION	1,170	12,569	12,751	12,551	\$178,496,246	\$1,087.68
511	PUBLISHING INDUSTRIES, EXCEPT INTERNET	218	2,973	2,989	2,928	\$30,830,517	\$800.31
5111	Newspaper, Book & Directory Publishers	178	2,598	2,616	2,556	23,868,328	708.89
5112	Software Publishers	40	375	373	372	6,962,189	1,434.52
512	MOTION PICTURE & SOUND RECORDING INDUSTRY	150	1,107	1,290	1,261	\$7,153,344	\$451.28
5121	Motion Picture & Video Industries	137	1,093	1,280	1,247	6,964,099	443.95
5122	Sound Recording Industries	13	14	10	14	189,245	1,149.26
515	BROADCASTING, EXCEPT INTERNET	117	1,592	1,586	1,599	\$17,327,683	\$837.07
5151	Radio & Television Broadcasting	114	1,571	1,565	1,579	17,112,346	837.54
5152	Cable & Other Subscription Programming	3	21	21	20	215,337	801.50

TABLE 5. STATEWIDE SUMMARY

North American Industry Classification System - Industry Groups		Number of Employing Units	Employment			Total Earnings Oct - Dec 2017	Average Weekly Earnings
			Oct	Nov	Dec		
517	TELECOMMUNICATIONS	357	5,257	5,247	5,157	\$94,102,546	\$1,386.63
5173	Telecommunications Resellers	262	4,897	4,863	4,789	88,088,193	1,397.21
5174	Satellite Telecommunications Carriers	5	6	7	7	69,503	801.96
5179	Other Telecommunications	90	354	377	361	5,944,850	1,256.31
518	DATA PROCESSING, HOSTING & RELATED SERVICES	244	1,370	1,373	1,351	\$25,603,715	\$1,443.22
519	OTHER INFORMATION SERVICES	84	270	266	255	\$3,478,441	\$1,014.81
FINANCIAL ACTIVITIES		8,372	49,914	49,961	49,918	\$729,113,679	\$1,123.26
52	FINANCE & INSURANCE	4,959	36,349	36,443	36,415	\$591,040,027	\$1,248.95
522	CREDIT INTERMEDIATION & RELATED ACTIVITIES	1,931	19,052	19,036	19,050	\$273,409,734	\$1,104.25
5221	Depository Credit Intermediation	1,392	16,177	16,189	16,236	222,813,630	1,057.95
5222	Nondepository Credit Intermediation	405	1,764	1,760	1,737	36,220,737	1,588.79
5223	Activities Related to Credit Intermediation	134	1,111	1,087	1,077	14,375,367	1,012.94
523	FINANCIAL INVESTMENT & RELATED ACTIVITIES	700	3,089	3,075	3,069	\$99,563,889	\$2,488.50
5231	Insurance Carriers	297	2,182	2,165	2,156	67,583,388	2,398.30
5239	Insurance Agencies, Brokerages & Support	403	907	910	913	31,980,501	2,703.34
524	INSURANCE CARRIERS & RELATED ACTIVITIES	2,243	14,105	14,207	14,187	\$215,986,387	\$1,172.80
5231	Security & Commodity Contracts Intermediation & Brokerage	298	6,200	6,269	6,325	102,108,313	1,253.78
5239	Other Financial Investment Activities	1,945	7,905	7,938	7,862	113,878,074	1,108.61
	OTHER	85	103	125	109	\$2,080,017	\$1,424.34
53	REAL ESTATE & RENTAL & LEASING	3,413	13,565	13,518	13,503	\$138,073,652	\$785.08
531	REAL ESTATE	2,789	9,447	9,455	9,434	\$95,277,345	\$775.94
5311	Lessors of Real Estate	1,117	4,266	4,281	4,218	36,476,984	659.44
5312	Offices of Real Estate Agents & Brokers	876	1,870	1,861	1,921	26,275,004	1,072.80
5313	Activities Related to Real Estate	796	3,311	3,313	3,295	32,525,357	756.71
532	RENTAL & LEASING SERVICES	607	4,070	4,014	4,019	\$41,835,225	\$797.68
5321	Automotive Equipment Rental & Leasing	115	981	995	994	7,858,072	610.57
5322	Consumer Goods Rental	313	1,892	1,819	1,794	15,767,248	660.96
5323	General Rental Centers	38	244	248	253	2,947,528	913.02
5324	Machinery & Equipment Rental & Leasing	141	953	952	978	15,262,377	1,221.67
533	LESSORS OF NONFINANCIAL INTANGIBLE ASSETS	17	48	49	50	\$961,082	\$1,508.76

TABLE 5. STATEWIDE SUMMARY

North American Industry Classification System - Industry Groups		Number of Employing Units	Employment			Total Earnings Oct - Dec 2017	Average Weekly Earnings
			Oct	Nov	Dec		
PROFESSIONAL & BUSINESS SERVICES		14,097	146,362	146,141	145,749	\$2,154,019,482	\$1,134.24
54	PROFESSIONAL & TECHNICAL SERVICES	8,898	42,759	42,949	43,282	\$738,175,796	\$1,320.63
5411	Legal Services	1,674	6,046	6,012	6,080	111,201,536	1,414.81
5412	Accounting & Bookkeeping Services	1,267	5,495	5,703	6,007	91,303,714	1,224.65
5413	Architectural & Engineering Services	981	6,588	6,501	6,475	128,513,359	1,515.89
5414	Specialized Design Services	178	381	393	406	6,069,299	1,186.96
5415	Computer Systems Design & Related Services	1,781	9,247	9,320	9,335	191,790,953	1,586.25
5416	Management & Technical Consulting Services	1,937	6,633	6,589	6,544	108,922,761	1,271.68
5417	Scientific Research & Development Services	118	787	782	792	13,417,198	1,311.43
5418	Advertising & Related Services	387	3,669	3,698	3,665	47,541,821	994.49
5419	Other Professional & Technical Services	575	3,913	3,951	3,978	39,415,155	768.10
55	MANAGEMENT OF COMPANIES & ENTERPRISES	548	34,303	34,260	34,361	\$909,784,870	\$2,039.86
56	ADMINISTRATIVE & WASTE SERVICES	4,651	69,300	68,932	68,106	\$506,058,816	\$565.98
561	ADMINISTRATIVE & SUPPORT SERVICES	4,337	66,003	65,675	64,837	\$465,463,977	\$546.60
5611	Office Administrative Services	679	4,076	4,041	4,093	63,045,937	1,191.57
5612	Facilities Support Services	51	1,320	1,312	1,337	9,285,257	539.87
5613	Employment Services	1,104	30,991	31,089	30,553	174,946,929	435.83
5614	Business Support Services	359	7,657	7,528	7,517	70,886,349	720.57
5615	Travel Arrangement & Reservation Services	109	376	371	382	4,385,003	896.30
5616	Investigation & Security Services	286	5,063	5,105	4,982	35,498,351	540.72
5617	Services to Buildings & Dwellings	1,560	15,247	14,996	14,734	94,632,873	485.54
5619	Other Support Services	189	1,273	1,233	1,239	12,783,278	787.71
562	WASTE MANAGEMENT & REMEDIATION SERVICES	314	3,297	3,257	3,269	\$40,594,839	\$953.68
5621	Waste Collection Services	140	1,326	1,298	1,297	15,147,936	891.53
5622	Waste Treatment & Disposal Services	36	915	907	906	13,275,059	1,122.97
5629	Remediation & Other Waste Services	138	1,056	1,052	1,066	12,171,844	884.97
EDUCATION & HEALTH SERVICES		15,876	185,448	185,752	185,728	\$2,038,576,454	\$844.71
61	EDUCATIONAL SERVICES	842	12,052	12,076	11,959	\$107,479,935	\$687.31
6111	Elementary & Secondary Schools	98	4,053	4,093	4,020	35,255,810	668.75
6112	Junior Colleges	6	109	110	110	750,626	526.51
6113	Colleges & Universities	105	4,436	4,489	4,456	41,336,092	712.88
6114	Business, Computer, & Management Training	49	137	137	144	2,242,553	1,238.07
6115	Technical & Trade Schools	107	915	889	884	12,774,491	1,096.71
6116	Other Schools & Instruction	312	1,893	1,856	1,817	9,013,536	373.71
6117	Educational Support Services	165	509	502	528	6,106,827	915.70

TABLE 5. STATEWIDE SUMMARY

North American Industry Classification System - Industry Groups		Number of Employing Units	Employment			Total Earnings Oct - Dec 2017	Average Weekly Earnings
			Oct	Nov	Dec		
62	HEALTH CARE & SOCIAL ASSISTANCE	15,034	173,396	173,676	173,769	\$1,931,096,519	\$855.61
621	AMBULATORY HEALTH CARE SERVICES	5,770	57,431	57,401	57,611	\$974,131,878	\$1,303.62
6211	Offices of Physicians	2,296	25,194	25,130	25,316	585,700,629	1,786.91
6212	Offices of Dentists	984	7,295	7,243	7,293	97,227,018	1,027.76
6213	Offices of Other Health Practitioners	1,544	9,033	9,074	9,018	101,800,116	866.08
6214	Outpatient Care Centers	330	5,104	5,149	5,152	78,478,513	1,175.62
6215	Medical & Diagnostic Laboratories	180	1,287	1,294	1,289	21,343,126	1,272.70
6216	Home Health Care Services	259	6,759	6,731	6,781	59,028,658	671.99
6219	Other Ambulatory Health Care Services	177	2,759	2,780	2,762	30,553,818	849.40
622	HOSPITALS	108	43,621	43,936	43,841	\$532,844,337	\$935.81
6221	General Medical & Surgical Hospitals	83	38,805	39,112	39,072	477,198,043	941.31
6222	Psychiatric & Substance Abuse Hospitals	10	2,214	2,177	2,120	23,230,640	823.36
6223	Speciality Hospitals	15	2,602	2,647	2,649	32,415,654	947.14
623	Residential & Mental Health Facilities	624	32,498	32,492	32,439	\$210,892,967	\$499.52
6231	Nursing Care Facilities (Skilled Nursing Facilities)	269	23,048	22,953	22,895	150,388,974	503.73
6232	Residential Mental Health Facilities	170	4,595	4,610	4,630	29,955,788	499.67
6233	Continuing Care & Assisted Living Facilities	151	4,095	4,172	4,161	24,555,496	455.96
6239	Other Residential Care Facilities	34	760	757	753	5,992,709	609.22
624	SOCIAL ASSISTANCE	8,532	39,846	39,847	39,878	\$213,227,337	\$411.52
6241	Individual & Family Services	7,424	25,096	25,049	25,059	136,161,974	417.82
6242	Emergency & Other Relief Services	136	1,337	1,343	1,342	9,229,829	529.58
6243	Vocational Rehabilitation Services	92	3,258	3,276	3,267	18,186,235	428.20
6244	Child Day Care Services	880	10,155	10,179	10,210	49,649,299	375.12
LEISURE & HOSPITALITY		7,139	117,352	116,253	114,762	\$482,078,009	\$319.34
71	ARTS, ENTERTAINMENT & RECREATION	979	11,172	10,105	9,991	58,963,226	\$435.17
711	PERFORMING ARTS & SPECTATOR SPORTS	226	3,036	2,461	2,590	19,980,181	\$570.15
7111	Performing Arts Companies	48	730	405	392	2,522,820	381.26
7112	Spectator Sports	68	1,111	1,104	1,303	11,572,243	759.10
7113	Performing Arts & Sports Promoters	52	1,099	847	797	4,600,599	387.05
7114	Agents & Managers for Public Figures	17	34	37	30	593,489	1,356.03
7115	Independent Artists, Writers, & Performers	41	62	68	68	691,030	805.40
712	MUSEUMS, PARKS, & HISTORICAL SITES	53	698	663	663	5,337,989	\$608.62
713	GAMBLING, RECREATIONAL & AMUSEMENT INDUSTRY	700	7,438	6,981	6,738	33,645,056	\$366.98
7131	Amusement Parks & Arcades	28	400	158	100	925,630	324.63
7139	Other Amusement & Recreation Industries	672	7,038	6,823	6,638	32,719,426	368.34
72	ACCOMMODATION & FOOD SERVICES	6,160	106,180	106,148	104,771	423,114,783	\$307.92

TABLE 5. STATEWIDE SUMMARY

North American Industry Classification System - Industry Groups		Number of Employing Units	Employment			Total Earnings	Average Weekly Earnings
			Oct	Nov	Dec	Oct - Dec 2017	
721	ACCOMMODATION	895	11,310	11,160	10,821	\$53,412,646	\$370.25
7211	Travel Accommodation	808	10,810	10,673	10,343	50,654,598	367.29
7212	RV Parks & Recreational Camps	69	388	377	383	2,115,566	425.27
7213	Rooming & Boarding Houses	18	112	110	95	642,482	467.71
722	FOOD SERVICES & DRINKING PLACES	5,265	94,870	94,988	93,950	\$369,702,137	\$300.61
7223	Special Food Services	274	4,931	4,874	4,816	23,310,347	367.92
7224	Drinking Places, Alcoholic Beverages	146	1,076	1,068	1,056	4,069,191	293.45
7225	Restaurants & Other Eating Places	4,845	88,863	89,046	88,078	342,322,599	297.00
722511	Full-Service Restaurants	2,122	38,688	38,762	38,113	164,475,769	328.44
722513	Limited-Service Eating Places	2,244	45,649	45,657	45,297	158,711,268	268.12
722514	Cafeterias, Grill Buffets, & Buffets	90	1,606	1,661	1,681	7,850,710	366.15
722515	Snack & Nonalcoholic Beverage Bars	389	2,920	2,966	2,987	11,284,852	293.50
	OTHER SERVICES	5,376	24,640	24,461	24,675	\$213,111,791	\$666.61
811	REPAIR & MAINTENANCE	2,212	10,474	10,402	10,440	\$105,517,149	\$777.56
8111	Automotive Repair & Maintenance	1,412	6,570	6,530	6,571	59,436,646	697.28
8112	Electronic Equipment Repair & Maintenance	168	873	890	889	11,066,506	962.97
8113	Commercial Machinery Repair & Maintenance	462	2,466	2,427	2,415	30,440,284	961.23
8114	Household Goods Repair & Maintenance	170	565	555	565	4,573,713	626.39
812	PERSONAL & LAUNDRY SERVICES	1,363	7,954	7,941	8,056	\$51,032,550	\$491.70
8121	Personal Care Services	654	3,115	3,111	3,147	16,295,987	401.22
8122	Death Care Services	247	1,570	1,569	1,624	13,099,806	634.69
8123	Drycleaning & Laundry Service	229	2,352	2,329	2,342	16,411,075	539.25
8129	Other Personal Services	233	917	932	943	5,225,682	431.92
813	MEMBERSHIP ASSOCIATIONS & ORGANIZATIONS	1,083	5,266	5,178	5,236	\$50,809,357	\$747.78
8131	Religious Organizations	85	288	292	286	2,178,234	580.45
8132	Grantmaking & Giving Organizations	123	470	473	453	5,991,314	990.41
8133	Social Advocacy Organizations	204	1,378	1,367	1,392	13,110,659	731.34
8134	Civic & Social Organizations	192	1,140	1,121	1,139	5,627,691	381.97
8139	Professional & Similar Organizations	479	1,990	1,925	1,966	23,901,459	937.89
814	PRIVATE HOUSEHOLDS	718	946	940	943	\$5,752,735	\$469.27
	LOCAL GOVERNMENT	1,964	113,964	114,424	114,336	\$1,074,746,058	\$723.67
	STATE GOVERNMENT	1,063	69,223	69,366	69,307	\$796,975,639	\$884.66
	NONCLASSIFIABLE ESTABLISHMENTS	0	0	0	0	\$0	\$0.00

TABLE 6. COUNTY SUMMARY

North American Industry Classification System - Industry Groups	Number of Employing Units	Employment			Total Earnings	Average Weekly Earnings
		Oct	Nov	Dec	Oct - Dec 2017	
ARKANSAS COUNTY - TOTAL	773	9,540	9,508	9,542	\$101,033,892	\$815.51
Natural Resources & Mining	54	202	206	210	2,344,280	875.38
Construction	43	232	235	233	2,736,438	902.12
Manufacturing	32	3,683	3,620	3,645	39,610,823	834.94
Trade, Transportation & Utilities	194	2,060	2,072	2,101	22,862,472	846.46
Wholesale Trade	48	449	432	436	5,982,134	1,048.21
Retail Trade	89	951	971	1,005	7,101,307	559.88
Transportation, Warehousing & Utilities	57	660	669	660	9,779,031	1,134.59
Information	10	64	63	63	751,424	912.66
Financial Activities	45	290	293	280	4,685,470	1,252.91
Professional & Business Services	49	465	471	474	8,157,648	1,335.13
Education & Health Services	198	1,097	1,087	1,087	9,716,033	685.47
Leisure & Hospitality	62	452	464	466	1,585,233	264.71
Other Services	40	96	94	95	854,767	692.12
Local Government	32	728	733	716	6,372,491	675.51
State Government	14	171	170	172	1,356,813	610.35
ASHLEY COUNTY - TOTAL	562	6,644	6,593	6,622	\$71,639,243	\$832.48
Natural Resources & Mining	40	414	376	350	4,068,372	823.56
Construction	37	521	509	565	5,932,165	858.28
Manufacturing	22	1,596	1,612	1,578	28,514,806	1,374.91
Trade, Transportation & Utilities	116	1,233	1,223	1,244	10,367,317	646.61
Wholesale Trade	26	231	210	208	3,174,071	1,128.63
Retail Trade	66	730	741	761	4,437,300	458.78
Transportation, Warehousing & Utilities	24	272	272	275	2,755,946	776.54
Information	5	39	40	36	253,476	508.65
Financial Activities	35	177	176	179	1,534,217	665.51
Professional & Business Services	38	216	218	221	1,808,788	637.27
Education & Health Services	155	1,001	969	984	8,842,074	690.75
Leisure & Hospitality	35	336	349	356	1,093,915	242.50
Other Services	37	135	137	136	1,196,008	676.48
Local Government	32	871	880	872	7,114,429	625.92
State Government	10	105	104	101	913,676	680.16

TABLE 6. COUNTY SUMMARY

North American Industry Classification System - Industry Groups	Number of Employing Units	Employment			Total Earnings Oct - Dec 2017	Average Weekly Earnings
		Oct	Nov	Dec		
BAXTER COUNTY - TOTAL	1,223	14,956	14,962	15,043	\$137,205,337	\$704.23
Natural Resources & Mining	6	57	56	57	602,267	817.56
Construction	118	517	501	514	4,608,865	694.25
Manufacturing	56	2,410	2,455	2,545	25,286,795	787.51
Trade, Transportation & Utilities	256	2,941	2,967	2,961	20,834,282	542.10
Wholesale Trade	35	407	409	412	4,337,061	815.03
Retail Trade	194	2,312	2,346	2,329	14,468,264	477.86
Transportation, Warehousing & Utilities	27	222	212	220	2,028,957	715.93
Information	19	182	181	183	2,161,115	913.40
Financial Activities	113	732	719	723	14,034,154	1,489.72
Professional & Business Services	139	804	789	791	6,868,375	664.85
Education & Health Services	269	3,851	3,851	3,850	42,355,339	846.11
Leisure & Hospitality	117	1,623	1,605	1,557	5,773,409	278.44
Other Services	83	324	325	325	2,146,159	508.49
Local Government	36	1,200	1,198	1,223	10,049,046	640.43
State Government	11	315	315	314	2,485,531	607.61
BENTON COUNTY - TOTAL	6,506	118,051	118,799	119,199	\$1,554,518,452	\$1,007.54
Natural Resources & Mining	46	761	756	741	17,465,081	1,784.94
Construction	637	5,058	5,080	5,123	66,520,668	1,005.89
Manufacturing	194	12,004	12,108	12,163	132,824,291	844.98
Trade, Transportation & Utilities	1,688	28,077	28,644	28,704	350,422,652	946.64
Wholesale Trade	754	5,712	5,735	5,745	137,378,383	1,844.04
Retail Trade	748	12,502	12,970	12,935	90,432,730	543.37
Transportation, Warehousing & Utilities	186	9,863	9,939	10,024	122,611,539	948.67
Information	80	892	946	936	12,995,437	1,081.09
Financial Activities	655	3,834	3,814	3,832	56,640,909	1,138.59
Professional & Business Services	1,248	31,678	31,648	31,848	622,301,736	1,508.90
Education & Health Services	826	11,509	11,495	11,562	118,353,764	790.15
Leisure & Hospitality	631	12,376	12,406	12,242	56,946,683	354.95
Other Services	401	2,150	2,154	2,209	19,895,125	704.93
Local Government	83	8,595	8,626	8,724	91,100,167	810.30
State Government	17	1,117	1,122	1,115	9,051,939	622.81

TABLE 6. COUNTY SUMMARY

North American Industry Classification System - Industry Groups	Number of Employing Units	Employment			Total Earnings Oct - Dec 2017	Average Weekly Earnings
		Oct	Nov	Dec		
BOONE COUNTY - TOTAL	965	13,860	13,886	13,863	\$134,827,675	\$747.77
Construction	66	380	381	390	4,253,996	852.90
Manufacturing	63	1,793	1,802	1,828	18,640,473	793.22
Trade, Transportation & Utilities	245	3,406	3,506	3,529	35,742,571	789.99
Wholesale Trade	37	289	287	294	2,621,789	695.43
Retail Trade	161	1,930	2,014	2,024	14,057,338	543.57
Transportation, Warehousing & Utilities	47	1,187	1,205	1,211	19,063,444	1,221.00
Information	15	285	282	284	3,117,306	845.33
Financial Activities	93	416	410	399	5,192,144	978.11
Professional & Business Services	101	1,609	1,558	1,540	19,073,502	935.11
Education & Health Services	166	1,518	1,489	1,521	12,779,564	651.31
Leisure & Hospitality	84	1,190	1,171	1,139	4,532,433	298.84
Local Government	53	2,245	2,275	2,273	22,238,560	755.48
State Government	17	749	748	684	6,858,046	725.64
Other	62	269	264	276	2,399,080	684.34
BRADLEY COUNTY - TOTAL	367	3,750	3,785	3,839	\$33,010,962	\$669.77
Natural Resources & Mining	44	275	324	320	2,783,219	698.89
Construction	18	91	86	79	680,240	613.20
Manufacturing	11	919	917	925	9,375,572	783.63
Trade, Transportation & Utilities	70	446	451	462	3,456,565	586.95
Wholesale Trade	10	62	62	66	945,753	1,148.69
Retail Trade	38	307	315	316	1,701,750	418.67
Transportation, Warehousing & Utilities	22	77	74	80	809,062	808.25
Information	3	24	24	24	222,728	713.87
Financial Activities	25	128	133	128	1,755,095	1,041.19
Professional & Business Services	26	74	72	122	792,421	682.34
Education & Health Services	102	675	669	677	6,507,720	743.09
Leisure & Hospitality	17	189	192	184	550,315	224.77
Other Services	27	110	106	106	935,514	670.46
Local Government	14	476	473	472	3,657,947	594.05
State Government	10	343	338	340	2,293,626	518.41

TABLE 6. COUNTY SUMMARY

North American Industry Classification System - Industry Groups	Number of Employing Units	Employment			Total Earnings Oct - Dec 2017	Average Weekly Earnings
		Oct	Nov	Dec		
CALHOUN COUNTY - TOTAL	101	2,938	2,950	2,955	\$39,645,604	\$1,034.60
Natural Resources & Mining	6	37	36	36	332,476	703.90
Construction	9	89	83	86	782,019	699.48
Manufacturing	9	2,105	2,121	2,135	31,198,624	1,131.85
Trade, Transportation & Utilities	20	231	233	226	2,158,757	721.99
Retail Trade	9	53	52	53	259,276	378.69
Transportation, Warehousing & Utilities	11	178	181	173	1,899,481	823.95
Professional & Business Services	5	10	10	10	99,024	761.72
Education & Health Services	20	65	64	65	675,734	803.81
Leisure & Hospitality	4	14	12	11	45,087	281.21
Other Services	3	3	3	3	14,211	364.38
Local Government	11	201	203	197	1,431,308	549.59
State Government	7	78	78	79	747,488	734.03
Other	7	105	107	107	2,160,876	1,563.21
CARROLL COUNTY - TOTAL	804	11,197	10,889	10,721	\$84,808,497	\$596.56
Natural Resources & Mining	20	200	197	195	1,904,313	742.33
Trade, Transportation & Utilities	194	1,664	1,643	1,619	12,379,077	579.92
Wholesale Trade	22	155	154	160	1,331,728	655.27
Retail Trade	144	1,154	1,149	1,125	6,660,645	448.39
Transportation, Warehousing & Utilities	28	355	340	334	4,386,704	983.79
Information	10	68	70	70	981,113	1,088.51
Financial Activities	61	374	376	376	4,878,905	999.91
Professional & Business Services	65	573	599	598	5,062,925	660.09
Education & Health Services	101	1,141	1,110	1,126	9,502,618	649.37
Leisure & Hospitality	174	1,789	1,503	1,362	6,166,519	305.77
Other Services	46	134	130	125	828,228	491.34
Local Government	25	1,071	1,078	1,058	8,968,530	645.36
State Government	9	90	90	91	814,786	693.83
Other	99	4,093	4,093	4,101	33,321,483	625.83

TABLE 6. COUNTY SUMMARY

North American Industry Classification System - Industry Groups	Number of Employing Units	Employment			Total Earnings Oct - Dec 2017	Average Weekly Earnings
		Oct	Nov	Dec		
CHICOT COUNTY - TOTAL	515	3,077	3,087	3,083	\$25,982,615	\$648.43
Natural Resources & Mining	54	221	212	209	2,403,169	863.83
Construction	17	157	159	158	2,154,969	1,049.16
Manufacturing	6	22	23	23	347,346	1,178.78
Trade, Transportation & Utilities	67	673	655	678	5,088,163	585.34
Wholesale Trade	15	71	74	78	1,084,908	1,122.71
Retail Trade	39	311	297	297	1,955,819	498.72
Transportation, Warehousing & Utilities	13	291	284	303	2,047,436	538.14
Information	3	3	3	3	14,025	359.62
Financial Activities	27	166	160	159	1,828,311	869.93
Professional & Business Services	18	43	43	44	448,573	796.28
Education & Health Services	260	726	732	721	4,814,830	509.92
Leisure & Hospitality	18	127	131	130	425,970	253.35
Other Services	18	64	77	77	683,460	723.49
Local Government	17	581	599	586	5,536,107	723.42
State Government	10	294	293	295	2,237,692	585.48
CLARK COUNTY - TOTAL	634	9,300	9,337	9,322	\$79,541,373	\$656.52
Natural Resources & Mining	48	278	257	278	2,989,838	848.66
Construction	22	58	54	58	514,414	698.30
Manufacturing	32	1,456	1,450	1,453	18,916,120	1,001.44
Trade, Transportation & Utilities	127	1,409	1,440	1,441	10,661,376	573.50
Wholesale Trade	13	34	33	34	402,795	920.32
Retail Trade	87	1,207	1,236	1,231	8,221,984	516.43
Transportation, Warehousing & Utilities	27	168	171	176	2,036,597	912.59
Information	4	15	14	14	141,564	759.74
Financial Activities	73	308	305	308	3,184,067	797.81
Professional & Business Services	48	541	548	552	5,397,689	759.06
Education & Health Services	132	1,670	1,701	1,693	13,652,233	622.14
Leisure & Hospitality	62	1,090	1,084	1,069	3,923,282	279.18
Other Services	42	242	241	238	1,938,482	620.45
Local Government	30	987	997	983	8,078,107	628.30
State Government	14	1,246	1,246	1,235	10,144,201	628.11

TABLE 6. COUNTY SUMMARY

North American Industry Classification System - Industry Groups	Number of Employing Units	Employment			Total Earnings Oct - Dec 2017	Average Weekly Earnings
		Oct	Nov	Dec		
CLAY COUNTY - TOTAL	377	3,343	3,314	3,277	\$25,766,094	\$598.55
Natural Resources & Mining	57	329	270	265	2,154,279	575.40
Construction	28	138	137	126	1,241,245	714.32
Manufacturing	13	119	123	122	982,589	622.94
Trade, Transportation & Utilities	90	786	788	771	7,028,171	691.64
Wholesale Trade	20	236	239	235	2,306,193	749.58
Retail Trade	44	407	411	407	2,950,359	555.80
Transportation, Warehousing & Utilities	26	143	138	129	1,771,619	997.16
Information	5	35	34	33	244,776	553.79
Financial Activities	24	117	118	118	1,039,427	679.51
Professional & Business Services	26	104	98	96	890,523	689.62
Education & Health Services	52	538	523	527	3,638,501	528.75
Leisure & Hospitality	26	247	282	292	817,460	229.77
Other Services	26	79	75	77	629,505	628.88
Local Government	21	808	823	807	6,713,957	635.51
State Government	9	43	43	43	385,661	689.91
CLEBURNE COUNTY - TOTAL	658	6,380	6,309	6,298	\$53,614,599	\$651.64
Natural Resources & Mining	27	221	209	215	2,979,905	1,066.16
Construction	65	295	297	295	3,227,786	839.77
Manufacturing	33	1,175	1,173	1,174	11,778,447	771.75
Trade, Transportation & Utilities	146	1,250	1,240	1,253	10,530,627	649.25
Wholesale Trade	33	143	137	138	1,873,914	1,034.55
Retail Trade	93	950	952	957	6,594,324	532.27
Transportation, Warehousing & Utilities	20	157	151	158	2,062,389	1,021.32
Information	10	57	49	54	494,793	713.64
Financial Activities	81	264	262	263	2,839,209	830.42
Professional & Business Services	66	264	246	239	2,735,528	842.82
Education & Health Services	85	978	976	980	7,649,441	601.65
Leisure & Hospitality	81	828	816	783	3,153,107	299.81
Other Services	38	124	121	121	857,103	540.42
Local Government	18	817	814	812	6,468,364	611.01
State Government	8	107	106	109	900,289	645.21

TABLE 6. COUNTY SUMMARY

North American Industry Classification System - Industry Groups	Number of Employing Units	Employment			Total Earnings Oct - Dec 2017	Average Weekly Earnings
		Oct	Nov	Dec		
CLEVELAND COUNTY - TOTAL	128	1,022	999	1,017	\$8,052,722	\$611.69
Natural Resources & Mining	16	141	129	141	1,511,021	848.41
Construction	9	21	21	21	226,012	827.88
Manufacturing	4	82	82	87	745,679	685.58
Trade, Transportation & Utilities	36	182	189	189	1,366,658	563.18
Retail Trade	19	85	85	87	256,381	230.21
Other Trade, Transportation, & Utilities	17	97	104	102	1,110,277	845.60
Financial Activities	3	25	26	26	360,404	1,080.13
Education & Health Services	31	175	172	173	825,434	366.32
Other Services	4	12	11	11	95,266	646.60
Local Government	11	335	328	327	2,580,337	601.48
State Government	6	28	27	26	269,471	767.72
Other	8	21	14	16	72,440	327.78
COLUMBIA COUNTY - TOTAL	709	7,972	7,978	7,976	\$80,847,276	\$779.78
Natural Resources & Mining	39	349	364	335	6,310,961	1,389.67
Construction	39	165	162	161	1,626,991	769.38
Manufacturing	31	1,807	1,800	1,847	26,192,983	1,108.28
Trade, Transportation & Utilities	166	1,345	1,381	1,362	11,561,953	652.68
Wholesale Trade	29	181	190	177	2,893,940	1,218.67
Retail Trade	98	958	994	989	6,139,963	481.78
Transportation, Warehousing & Utilities	39	206	197	196	2,528,050	973.95
Information	7	48	48	48	452,187	724.66
Financial Activities	65	331	331	337	4,657,735	1,075.94
Professional & Business Services	52	304	277	271	3,394,678	919.47
Education & Health Services	177	1,044	1,039	1,043	6,229,948	459.91
Leisure & Hospitality	50	730	705	679	2,578,075	281.43
Other Services	45	124	129	130	788,219	474.93
Local Government	26	1,092	1,098	1,128	9,962,648	692.91
State Government	12	633	644	635	7,090,898	855.84

TABLE 6. COUNTY SUMMARY

North American Industry Classification System - Industry Groups	Number of Employing Units	Employment			Total Earnings	Average Weekly Earnings
		Oct	Nov	Dec	Oct - Dec 2017	
CONWAY COUNTY - TOTAL	522	6,381	6,301	6,384	\$61,086,748	\$739.38
Natural Resources & Mining	31	234	242	243	2,667,497	856.16
Construction	43	468	453	462	7,535,831	1,257.44
Manufacturing	18	902	902	915	13,385,429	1,136.06
Trade, Transportation & Utilities	116	1,297	1,298	1,303	11,527,956	682.48
Wholesale Trade	17	118	122	121	1,677,477	1,072.33
Retail Trade	75	760	764	754	5,144,482	521.15
Transportation, Warehousing & Utilities	24	419	412	428	4,705,997	862.59
Information	3	13	14	14	52,950	298.03
Financial Activities	37	148	150	152	1,694,444	868.95
Professional & Business Services	36	528	472	496	3,521,516	543.22
Education & Health Services	133	804	791	787	7,045,688	682.59
Leisure & Hospitality	41	464	458	450	1,696,375	285.33
Other Services	25	85	83	93	740,701	654.91
Local Government	30	1,035	1,026	1,044	8,254,595	613.50
State Government	9	403	412	425	2,963,766	551.57
CRAIGHEAD COUNTY - TOTAL	2,843	50,880	51,245	51,098	\$500,888,937	\$754.39
Natural Resources & Mining	97	491	501	336	5,332,585	926.65
Construction	235	2,116	2,063	2,072	25,348,754	935.80
Manufacturing	100	6,758	6,761	6,823	82,503,837	935.96
Trade, Transportation & Utilities	787	10,233	10,496	10,598	90,452,915	666.32
Wholesale Trade	182	1,742	1,793	1,816	23,021,136	992.82
Retail Trade	470	6,830	7,009	7,032	46,461,999	513.73
Transportation, Warehousing & Utilities	135	1,661	1,694	1,750	20,969,780	947.93
Information	21	421	423	420	4,940,038	901.91
Financial Activities	274	1,638	1,625	1,620	21,114,633	997.87
Professional & Business Services	376	4,762	4,780	4,688	41,168,866	667.64
Education & Health Services	477	10,682	10,759	10,775	128,795,670	922.59
Leisure & Hospitality	261	5,724	5,796	5,729	22,106,323	295.75
Other Services	158	770	763	762	5,919,280	595.20
Local Government	35	4,174	4,178	4,171	39,197,290	722.31
State Government	22	3,111	3,100	3,104	34,008,746	842.53

TABLE 6. COUNTY SUMMARY

North American Industry Classification System - Industry Groups	Number of Employing Units	Employment			Total Earnings	Average Weekly Earnings
		Oct	Nov	Dec	Oct - Dec 2017	
CRAWFORD COUNTY - TOTAL	1,256	19,336	19,392	19,484	\$181,261,783	\$718.57
Natural Resources & Mining	22	227	219	220	2,314,771	802.07
Construction	153	952	967	1,001	14,345,687	1,133.75
Manufacturing	68	4,464	4,463	4,538	48,765,615	835.77
Trade, Transportation & Utilities	312	5,561	5,609	5,588	51,530,911	709.62
Wholesale Trade	76	747	757	740	9,610,089	988.29
Retail Trade	169	1,936	1,950	1,943	13,686,857	541.86
Transportation, Warehousing & Utilities	67	2,878	2,902	2,905	28,233,965	750.20
Information	10	45	98	92	575,568	565.21
Financial Activities	128	504	513	518	5,824,588	875.66
Professional & Business Services	155	1,600	1,599	1,603	14,107,808	677.98
Education & Health Services	185	1,679	1,677	1,683	14,230,747	651.72
Leisure & Hospitality	95	1,655	1,605	1,589	6,192,572	294.71
Other Services	76	390	391	388	3,606,093	711.87
Local Government	42	2,098	2,093	2,104	18,596,481	681.73
State Government	10	161	158	160	1,170,942	564.13
CRITTENDEN COUNTY - TOTAL	1,234	16,736	16,671	16,577	\$154,143,685	\$711.66
Natural Resources & Mining	55	303	281	288	3,592,081	950.62
Construction	44	522	543	531	7,258,203	1,049.48
Manufacturing	43	2,101	2,095	2,101	27,073,679	992.18
Trade, Transportation & Utilities	306	4,392	4,419	4,426	43,445,858	757.42
Wholesale Trade	61	778	772	789	9,720,677	959.06
Retail Trade	158	1,961	1,990	1,980	12,235,762	476.08
Transportation, Warehousing & Utilities	87	1,653	1,657	1,657	21,489,419	998.41
Information	5	53	52	51	499,984	739.62
Financial Activities	97	450	442	444	5,432,454	938.36
Professional & Business Services	108	1,307	1,353	1,272	10,140,078	595.12
Education & Health Services	320	2,067	2,021	1,975	16,865,701	641.94
Leisure & Hospitality	126	2,401	2,338	2,368	11,113,468	360.86
Other Services	76	486	489	478	4,228,482	671.58
Local Government	41	2,186	2,170	2,179	21,037,075	742.88
State Government	13	468	468	464	3,456,622	569.77

TABLE 6. COUNTY SUMMARY

North American Industry Classification System - Industry Groups	Number of Employing Units	Employment			Total Earnings Oct - Dec 2017	Average Weekly Earnings
		Oct	Nov	Dec		
CROSS COUNTY - TOTAL	477	4,855	4,841	4,812	\$42,102,228	\$669.69
Natural Resources & Mining	43	272	258	263	2,672,533	777.73
Construction	22	56	55	56	551,611	762.24
Manufacturing	10	398	396	391	3,457,855	673.39
Trade, Transportation & Utilities	123	1,201	1,194	1,193	11,389,563	732.54
Wholesale Trade	27	273	275	269	4,150,717	1,172.41
Retail Trade	69	797	790	798	5,989,626	579.55
Transportation, Warehousing & Utilities	27	131	129	126	1,249,220	746.84
Information	6	45	45	45	328,627	561.76
Financial Activities	45	271	271	255	2,575,914	745.85
Professional & Business Services	40	125	143	130	1,399,965	811.73
Education & Health Services	96	993	995	996	8,405,190	650.02
Leisure & Hospitality	33	311	309	303	1,078,586	269.67
Other Services	33	102	99	102	801,244	610.24
Local Government	17	726	716	717	6,079,867	649.86
State Government	9	355	360	361	3,361,273	720.89
DALLAS COUNTY - TOTAL	243	2,669	2,693	2,669	\$22,708,914	\$652.54
Natural Resources & Mining	27	145	147	140	1,464,759	782.46
Construction	14	62	66	63	627,503	758.16
Manufacturing	11	568	568	561	5,859,809	796.86
Trade, Transportation & Utilities	58	435	463	470	3,467,384	584.92
Wholesale Trade	6	14	13	12	153,461	908.05
Retail Trade	38	322	326	335	2,183,557	512.61
Transportation, Warehousing & Utilities	14	99	124	123	1,130,366	753.91
Information	4	19	19	19	152,138	615.94
Financial Activities	15	76	79	77	1,176,240	1,170.00
Professional & Business Services	10	28	28	28	177,530	487.72
Education & Health Services	57	798	782	776	6,617,586	648.19
Leisure & Hospitality	14	129	130	129	415,501	247.13
Other Services	12	47	49	48	338,303	542.15
Local Government	14	332	333	330	2,139,755	496.27
State Government	7	30	29	28	272,406	722.56

TABLE 6. COUNTY SUMMARY

North American Industry Classification System - Industry Groups	Number of Employing Units	Employment			Total Earnings Oct - Dec 2017	Average Weekly Earnings
		Oct	Nov	Dec		
DESHA COUNTY - TOTAL	557	4,716	4,668	4,678	\$40,833,235	\$670.11
Natural Resources & Mining	66	318	286	269	3,035,257	802.34
Construction	16	86	85	101	986,022	836.56
Manufacturing	15	995	999	1,002	12,563,112	967.68
Trade, Transportation & Utilities	110	876	872	866	7,428,942	655.84
Wholesale Trade	19	179	178	183	2,653,393	1,133.93
Retail Trade	64	475	483	472	2,764,434	446.12
Transportation, Warehousing & Utilities	27	222	211	211	2,011,115	720.66
Information	3	12	12	12	96,281	617.19
Financial Activities	30	208	210	208	1,970,154	726.28
Professional & Business Services	33	83	82	87	829,217	759.36
Education & Health Services	194	760	766	774	4,925,183	494.17
Leisure & Hospitality	36	360	351	347	1,218,558	265.79
Other Services	24	76	61	66	305,893	347.74
Local Government	21	827	825	826	6,539,477	609.00
State Government	9	115	119	120	935,139	609.61
DREW COUNTY - TOTAL	545	6,515	6,550	6,593	\$59,837,905	\$702.45
Natural Resources & Mining	55	319	313	347	3,812,599	898.70
Construction	27	201	187	202	2,688,471	1,051.55
Manufacturing	22	843	849	848	8,594,932	780.88
Trade, Transportation & Utilities	123	1,137	1,138	1,143	8,875,749	599.25
Wholesale Trade	20	155	155	152	1,633,033	815.70
Retail Trade	78	857	857	863	5,708,207	511.17
Transportation, Warehousing & Utilities	25	125	126	128	1,534,509	934.35
Information	5	43	48	44	453,514	775.24
Financial Activities	48	246	252	247	3,019,913	935.44
Professional & Business Services	34	280	279	268	3,229,766	901.25
Education & Health Services	140	964	947	966	8,607,884	690.45
Leisure & Hospitality	40	601	658	662	2,447,507	294.02
Other Services	14	50	53	50	430,142	648.78
Local Government	23	1,229	1,228	1,227	11,434,283	716.25
State Government	14	602	598	589	6,243,145	805.32

TABLE 6. COUNTY SUMMARY

North American Industry Classification System - Industry Groups	Number of Employing Units	Employment			Total Earnings Oct - Dec 2017	Average Weekly Earnings
		Oct	Nov	Dec		
FAULKNER COUNTY - TOTAL	2,834	40,337	40,498	40,397	\$405,403,183	\$771.70
Natural Resources & Mining	48	337	351	334	6,431,373	1,452.21
Construction	315	2,668	2,700	2,693	36,317,194	1,039.68
Manufacturing	99	3,163	3,187	3,190	41,102,305	994.25
Trade, Transportation & Utilities	643	7,504	7,665	7,678	59,735,707	603.37
Wholesale Trade	138	546	546	561	8,413,489	1,174.58
Retail Trade	420	6,198	6,337	6,316	41,367,434	506.41
Transportation, Warehousing & Utilities	85	760	782	801	9,954,784	980.48
Information	21	271	283	292	4,115,410	1,122.59
Financial Activities	312	1,471	1,484	1,484	17,092,418	888.58
Professional & Business Services	431	5,092	4,977	5,037	74,014,229	1,130.69
Education & Health Services	444	6,977	6,963	6,901	71,500,515	791.71
Leisure & Hospitality	266	5,180	5,269	5,199	19,615,210	289.28
Other Services	196	859	844	850	6,190,743	559.59
Local Government	42	3,506	3,494	3,469	35,795,411	789.04
State Government	17	3,309	3,281	3,270	33,492,668	783.88
FRANKLIN COUNTY - TOTAL	360	4,547	4,530	4,497	\$41,489,347	\$705.35
Natural Resources & Mining	19	257	257	241	4,290,660	1,311.46
Construction	31	111	106	110	1,032,902	728.94
Manufacturing	14	981	965	943	9,602,560	767.04
Trade, Transportation & Utilities	88	950	957	965	9,103,611	731.49
Wholesale Trade	14	53	49	53	261,429	389.22
Retail Trade	53	618	626	621	4,269,908	528.34
Transportation, Warehousing & Utilities	21	279	282	291	4,572,274	1,238.43
Information	4	20	20	22	158,073	588.36
Financial Activities	30	81	81	82	755,577	714.61
Professional & Business Services	34	330	339	348	3,011,691	683.39
Education & Health Services	69	532	540	532	4,041,358	581.43
Leisure & Hospitality	29	356	344	345	1,205,770	266.27
Other Services	15	48	48	51	349,877	549.26
Local Government	19	748	741	724	6,516,365	679.52
State Government	8	133	132	134	1,420,903	821.81

TABLE 6. COUNTY SUMMARY

North American Industry Classification System - Industry Groups	Number of Employing Units	Employment			Total Earnings	Average Weekly Earnings
		Oct	Nov	Dec	Oct - Dec 2017	
FULTON COUNTY - TOTAL	193	1,905	1,894	1,917	\$14,469,146	\$584.16
Natural Resources & Mining	3	5	7	6	46,228	592.67
Construction	10	77	79	92	1,075,914	1,001.16
Manufacturing	11	111	113	117	716,710	485.03
Trade, Transportation & Utilities	44	285	295	282	2,578,208	690.22
Retail Trade	26	159	167	157	1,063,858	508.29
Other Trade, Transportation, & Utilities	18	126	128	125	1,514,350	922.07
Information	4	28	29	30	166,329	441.19
Financial Activities	20	86	75	78	978,092	944.41
Professional & Business Services	16	30	36	30	336,971	810.03
Education & Health Services	41	500	499	510	3,360,838	513.97
Leisure & Hospitality	16	136	125	121	445,792	269.31
Other Services	7	16	15	15	121,833	611.20
Local Government	12	557	546	561	4,048,282	561.43
State Government	9	74	75	75	593,949	611.90
GARLAND COUNTY - TOTAL	3,122	35,998	36,020	36,038	\$340,713,836	\$727.64
Natural Resources & Mining	27	222	228	230	2,838,146	963.17
Construction	324	1,761	1,778	1,737	17,602,232	769.91
Manufacturing	93	2,595	2,604	2,576	30,055,178	892.07
Trade, Transportation & Utilities	683	7,179	7,354	7,376	61,806,782	651.02
Wholesale Trade	145	847	854	853	14,671,608	1,325.67
Retail Trade	476	5,856	6,036	6,015	41,670,211	537.01
Transportation, Warehousing & Utilities	62	476	464	508	5,464,963	870.96
Information	29	397	386	403	3,797,249	738.86
Financial Activities	341	1,503	1,499	1,478	26,791,987	1,380.08
Professional & Business Services	392	2,861	2,877	2,839	28,829,718	775.68
Education & Health Services	542	7,957	7,981	8,046	91,506,359	880.46
Leisure & Hospitality	396	6,560	6,325	6,386	32,023,869	383.48
Other Services	238	990	990	999	6,561,351	508.28
Local Government	34	2,986	2,997	2,978	30,256,430	779.18
State Government	23	987	1,001	990	8,644,535	669.88

TABLE 6. COUNTY SUMMARY

North American Industry Classification System - Industry Groups	Number of Employing Units	Employment			Total Earnings Oct - Dec 2017	Average Weekly Earnings
		Oct	Nov	Dec		
GRANT COUNTY - TOTAL	348	4,080	4,055	4,104	\$40,127,258	\$756.61
Natural Resources & Mining	23	167	163	171	2,605,908	1,200.33
Construction	30	212	216	216	3,123,689	1,119.33
Manufacturing	16	1,265	1,263	1,258	15,507,412	945.23
Trade, Transportation & Utilities	93	636	641	636	5,025,301	606.21
Wholesale Trade	21	73	72	74	1,189,638	1,253.57
Retail Trade	46	481	493	487	3,157,583	498.75
Transportation, Warehousing & Utilities	26	82	76	75	678,080	671.59
Financial Activities	20	96	93	92	1,016,791	835.03
Professional & Business Services	28	102	104	111	1,274,940	928.13
Education & Health Services	79	465	438	454	2,750,724	467.78
Leisure & Hospitality	24	300	310	316	957,140	238.53
Local Government	10	743	736	757	7,122,768	735.11
State Government	7	40	39	40	351,037	680.74
Other	18	54	52	53	391,548	568.28
GREENE COUNTY - TOTAL	901	15,195	15,330	15,160	\$143,505,226	\$724.89
Natural Resources & Mining	39	259	235	235	2,940,039	930.69
Construction	72	341	345	323	3,629,294	830.06
Manufacturing	64	4,923	4,960	4,902	55,874,679	872.11
Trade, Transportation & Utilities	240	2,662	2,726	2,705	20,377,822	581.07
Wholesale Trade	44	431	425	433	4,773,241	854.55
Retail Trade	161	1,909	1,980	1,949	12,569,515	496.86
Transportation, Warehousing & Utilities	35	322	321	323	3,035,066	725.05
Information	9	92	94	91	580,728	483.81
Financial Activities	74	545	543	552	7,622,971	1,072.65
Professional & Business Services	94	813	831	829	8,039,609	750.22
Education & Health Services	156	2,034	2,039	2,029	19,367,933	732.47
Leisure & Hospitality	71	1,313	1,333	1,269	4,604,977	271.44
Other Services	41	164	157	159	1,165,616	560.39
Local Government	30	1,649	1,667	1,664	14,974,142	693.89
State Government	11	400	400	402	4,327,416	830.81

TABLE 6. COUNTY SUMMARY

North American Industry Classification System - Industry Groups	Number of Employing Units	Employment			Total Earnings Oct - Dec 2017	Average Weekly Earnings
		Oct	Nov	Dec		
HEMPSTEAD COUNTY - TOTAL	504	7,765	7,789	7,832	\$72,495,502	\$715.37
Natural Resources & Mining	24	253	256	260	2,995,359	898.88
Construction	29	166	155	171	2,175,351	1,020.33
Manufacturing	29	2,278	2,309	2,313	28,067,001	938.70
Trade, Transportation & Utilities	126	1,275	1,275	1,278	11,169,605	673.35
Wholesale Trade	21	164	163	161	1,448,739	685.09
Retail Trade	77	856	859	855	5,574,167	500.52
Transportation, Warehousing & Utilities	28	255	253	262	4,146,699	1,242.77
Information	7	28	29	27	299,002	821.43
Financial Activities	43	208	210	204	2,265,548	840.54
Professional & Business Services	30	209	208	214	1,920,462	702.35
Education & Health Services	101	1,018	1,023	1,027	6,531,612	491.30
Leisure & Hospitality	43	582	581	589	2,210,065	291.10
Other Services	29	121	113	115	907,667	600.18
Local Government	27	907	904	900	7,637,102	650.10
State Government	16	720	726	734	6,316,728	668.67
HOT SPRING COUNTY - TOTAL	636	8,421	8,383	8,468	\$78,121,317	\$713.36
Natural Resources & Mining	23	149	144	144	1,247,527	658.79
Construction	54	339	350	323	3,089,579	704.53
Manufacturing	27	1,441	1,444	1,488	19,054,239	1,005.52
Trade, Transportation & Utilities	154	1,605	1,591	1,642	17,250,189	822.82
Wholesale Trade	18	99	98	101	1,657,332	1,283.43
Retail Trade	97	887	878	907	5,792,699	500.29
Transportation, Warehousing & Utilities	39	619	615	634	9,800,158	1,210.69
Information	7	42	48	41	565,217	995.68
Financial Activities	52	208	211	194	2,361,422	888.98
Professional & Business Services	55	945	885	906	6,149,026	518.64
Education & Health Services	135	1,080	1,109	1,114	9,738,434	680.39
Leisure & Hospitality	53	638	614	646	2,192,514	266.58
Other Services	37	125	124	120	953,384	596.24
Local Government	27	981	987	986	9,004,041	703.40
State Government	12	868	876	864	6,515,745	576.55

TABLE 6. COUNTY SUMMARY

North American Industry Classification System - Industry Groups	Number of Employing Units	Employment			Total Earnings Oct - Dec 2017	Average Weekly Earnings
		Oct	Nov	Dec		
HOWARD COUNTY - TOTAL	356	6,954	7,064	7,222	\$59,027,209	\$641.32
Natural Resources & Mining	19	218	215	213	2,145,404	766.40
Construction	23	115	244	403	2,305,188	698.12
Manufacturing	19	3,340	3,326	3,337	28,529,582	658.18
Trade, Transportation & Utilities	87	889	885	893	7,532,309	651.75
Wholesale Trade	17	79	79	80	985,029	955.10
Retail Trade	52	619	618	620	4,145,370	515.14
Transportation, Warehousing & Utilities	18	191	188	193	2,401,910	969.03
Financial Activities	32	129	130	131	1,433,681	848.33
Professional & Business Services	22	137	134	131	1,151,234	660.87
Education & Health Services	84	862	876	862	6,905,798	612.94
Leisure & Hospitality	21	317	315	318	1,147,334	278.70
Local Government	17	690	694	684	5,901,614	658.56
State Government	10	105	103	105	859,255	633.51
Other	22	152	142	145	1,115,810	586.55
INDEPENDENCE COUNTY - TOTAL	898	15,673	15,717	15,923	\$154,914,521	\$755.60
Natural Resources & Mining	17	243	242	242	3,306,436	1,049.55
Construction	61	480	532	461	6,861,267	1,074.93
Manufacturing	37	2,861	2,900	3,131	35,507,963	921.52
Trade, Transportation & Utilities	226	2,925	2,946	2,990	26,000,207	677.13
Wholesale Trade	28	320	322	324	2,991,750	714.70
Retail Trade	154	1,842	1,870	1,885	12,096,187	498.74
Transportation, Warehousing & Utilities	44	763	754	781	10,912,270	1,095.83
Information	12	124	126	127	1,070,881	655.51
Financial Activities	87	529	527	539	6,713,289	971.30
Professional & Business Services	91	1,270	1,239	1,212	10,392,556	644.53
Education & Health Services	163	3,458	3,446	3,486	41,199,760	915.08
Leisure & Hospitality	78	1,298	1,290	1,258	4,430,308	265.83
Other Services	65	350	346	350	2,028,702	447.57
Local Government	46	1,538	1,536	1,543	11,990,327	599.31
State Government	15	597	587	584	5,412,825	706.51

TABLE 6. COUNTY SUMMARY

North American Industry Classification System - Industry Groups	Number of Employing Units	Employment			Total Earnings Oct - Dec 2017	Average Weekly Earnings
		Oct	Nov	Dec		
IZARD COUNTY - TOTAL	253	3,030	3,044	3,057	\$24,796,136	\$626.68
Natural Resources & Mining	7	146	142	145	1,744,791	929.89
Construction	23	89	89	96	890,357	749.88
Manufacturing	10	253	252	247	2,403,116	737.45
Trade, Transportation & Utilities	65	549	538	542	4,052,012	574.02
Wholesale Trade	13	30	30	31	267,323	677.91
Retail Trade	41	372	371	368	2,316,790	481.23
Transportation, Warehousing & Utilities	11	147	137	143	1,467,899	793.32
Information	4	7	5	5	67,038	910.02
Financial Activities	25	160	161	159	1,950,168	937.58
Professional & Business Services	15	47	42	42	398,382	701.79
Education & Health Services	48	660	675	681	5,193,296	594.47
Leisure & Hospitality	20	185	174	180	660,098	282.62
Other Services	10	25	31	29	170,171	462.00
Local Government	17	488	505	511	3,904,892	599.15
State Government	9	421	430	420	3,361,815	610.39
JACKSON COUNTY - TOTAL	432	5,137	5,102	5,117	\$46,796,596	\$703.26
Natural Resources & Mining	56	291	263	258	2,630,494	747.58
Construction	19	92	89	89	1,324,934	1,132.42
Manufacturing	14	886	882	882	9,949,552	866.43
Trade, Transportation & Utilities	105	1,017	1,021	1,018	8,951,154	675.93
Wholesale Trade	20	194	196	196	2,809,540	1,106.41
Retail Trade	70	733	736	732	4,958,127	519.85
Transportation, Warehousing & Utilities	15	90	89	90	1,183,487	1,015.29
Information	4	13	13	13	154,883	916.47
Financial Activities	29	136	134	130	1,325,859	764.92
Professional & Business Services	30	118	115	121	1,181,543	770.24
Education & Health Services	86	879	876	902	8,995,242	781.27
Leisure & Hospitality	24	303	296	295	1,016,161	262.30
Other Services	21	62	62	64	520,193	638.53
Local Government	32	578	583	587	4,444,543	586.76
State Government	12	762	768	758	6,302,038	635.63

TABLE 6. COUNTY SUMMARY

North American Industry Classification System - Industry Groups	Number of Employing Units	Employment			Total Earnings	Average Weekly Earnings
		Oct	Nov	Dec	Oct - Dec 2017	
JEFFERSON COUNTY - TOTAL	2,114	26,535	26,688	26,514	\$266,709,065	\$771.89
Natural Resources & Mining	40	164	151	149	2,337,255	1,162.43
Construction	89	533	560	526	5,479,642	781.06
Manufacturing	58	4,845	4,865	4,871	67,688,894	1,071.29
Trade, Transportation & Utilities	411	4,419	4,497	4,505	38,189,538	656.66
Wholesale Trade	74	669	676	680	7,589,405	864.89
Retail Trade	286	3,047	3,090	3,086	20,003,376	500.51
Transportation, Warehousing & Utilities	51	703	731	739	10,596,757	1,125.36
Information	8	69	70	70	871,983	962.81
Financial Activities	155	936	943	950	11,510,555	938.95
Professional & Business Services	146	2,248	2,232	2,085	19,741,107	693.93
Education & Health Services	884	4,789	4,822	4,817	52,258,148	835.85
Leisure & Hospitality	137	1,840	1,821	1,772	6,691,433	284.22
Other Services	110	558	536	561	4,614,272	643.40
Local Government	40	2,680	2,695	2,728	24,176,678	688.54
State Government	36	3,454	3,496	3,480	33,149,560	733.45
JOHNSON COUNTY - TOTAL	484	8,650	8,755	8,740	\$72,260,779	\$637.81
Natural Resources & Mining	14	223	222	225	2,241,495	772.04
Construction	33	193	194	201	1,963,691	770.68
Manufacturing	34	2,699	2,771	2,792	23,800,033	664.77
Trade, Transportation & Utilities	108	1,896	1,908	1,884	15,431,640	626.08
Retail Trade	75	885	899	878	5,620,263	487.22
Other Trade, Transportation & Utilities	33	1,011	1,009	1,006	9,811,377	748.24
Information	5	22	23	20	173,673	616.59
Financial Activities	48	179	179	179	1,868,844	803.11
Professional & Business Services	52	398	408	413	2,548,536	482.46
Education & Health Services	98	1,250	1,260	1,241	12,050,480	741.37
Leisure & Hospitality	41	589	582	573	1,904,454	252.00
Other Services	29	82	82	82	547,407	513.52
Local Government	14	1,024	1,033	1,036	8,754,082	653.14
State Government	8	95	93	94	976,444	799.05

TABLE 6. COUNTY SUMMARY

North American Industry Classification System - Industry Groups	Number of Employing Units	Employment			Total Earnings Oct - Dec 2017	Average Weekly Earnings
		Oct	Nov	Dec		
LAFAYETTE COUNTY - TOTAL	169	1,170	1,192	1,193	\$10,227,104	\$663.88
Natural Resources & Mining	27	105	105	105	856,833	627.72
Construction	9	66	69	69	1,990,975	2,252.23
Manufacturing	6	36	36	36	312,889	668.57
Trade, Transportation & Utilities	29	194	200	195	1,428,953	559.86
Retail Trade	18	116	119	115	633,680	417.81
Other Trade, Transportation & Utilities	11	78	81	80	795,273	767.89
Financial Activities	15	57	57	55	553,108	755.27
Professional & Business Services	10	32	38	38	313,372	669.60
Education & Health Services	38	187	185	186	1,215,182	502.56
Leisure & Hospitality	6	41	46	43	165,233	293.31
Local Government	14	301	306	299	2,197,613	559.76
State Government	9	123	123	124	879,423	548.50
Other	6	28	27	43	313,523	738.28
LAWRENCE COUNTY - TOTAL	411	4,018	4,033	4,002	\$33,801,039	\$647.16
Natural Resources & Mining	52	205	193	185	2,035,916	805.88
Construction	24	95	92	90	958,430	798.47
Manufacturing	20	444	437	439	3,946,003	689.86
Trade, Transportation & Utilities	122	897	912	915	8,384,065	710.27
Wholesale Trade	20	269	270	266	3,232,121	926.55
Retail Trade	63	493	502	502	3,466,375	534.36
Transportation, Warehousing & Utilities	39	135	140	147	1,685,569	921.75
Financial Activities	28	129	123	125	1,249,305	764.72
Professional & Business Services	26	102	101	98	1,003,548	769.40
Education & Health Services	55	548	556	545	4,577,169	640.55
Leisure & Hospitality	30	318	332	330	1,165,996	274.57
Local Government	24	1,113	1,124	1,111	9,044,195	623.39
State Government	9	79	77	76	637,572	634.19
Other	21	88	86	88	798,840	703.62

TABLE 6. COUNTY SUMMARY

North American Industry Classification System - Industry Groups	Number of Employing Units	Employment			Total Earnings Oct - Dec 2017	Average Weekly Earnings
		Oct	Nov	Dec		
LEE COUNTY - TOTAL	279	1,979	1,936	1,913	\$16,369,866	\$648.19
Natural Resources & Mining	42	274	259	223	2,934,951	895.89
Construction	7	22	25	25	284,498	911.85
Trade, Transportation & Utilities	40	318	317	325	3,255,260	782.51
Wholesale Trade	10	109	106	106	1,464,102	1,052.55
Retail Trade	20	156	157	163	1,043,029	505.67
Transportation, Warehousing & Utilities	10	53	54	56	748,129	1,059.17
Financial Activities	17	59	58	64	500,136	637.66
Professional & Business Services	13	48	49	48	581,083	924.80
Education & Health Services	122	461	440	438	3,134,768	540.26
Leisure & Hospitality	7	62	57	59	248,878	322.66
Local Government	15	324	321	319	2,032,507	486.56
State Government	6	396	396	396	3,288,786	638.85
Other	10	15	14	16	108,999	558.97
LINCOLN COUNTY - TOTAL	292	2,776	2,755	2,768	\$23,529,844	\$654.29
Natural Resources & Mining	35	176	174	179	1,699,575	741.42
Construction	19	112	107	107	1,078,959	763.77
Manufacturing	9	261	259	258	2,260,197	670.42
Trade, Transportation & Utilities	47	349	350	350	3,218,508	708.04
Wholesale Trade	9	50	50	50	424,849	653.61
Retail Trade	24	169	173	174	892,357	399.09
Transportation, Warehousing & Utilities	14	130	127	126	1,901,302	1,145.59
Financial Activities	20	76	76	76	685,444	693.77
Professional & Business Services	11	25	26	24	417,105	1,283.40
Education & Health Services	105	422	411	417	3,039,592	561.16
Leisure & Hospitality	15	163	162	167	445,995	209.19
Local Government	7	350	343	338	2,805,074	627.86
State Government	10	790	794	798	7,344,331	711.52
Other	14	52	53	54	535,064	776.58

TABLE 6. COUNTY SUMMARY

North American Industry Classification System - Industry Groups	Number of Employing Units	Employment			Total Earnings Oct - Dec 2017	Average Weekly Earnings
		Oct	Nov	Dec		
LITTLE RIVER COUNTY - TOTAL	250	3,300	3,352	3,353	\$40,260,960	\$928.63
Natural Resources & Mining	16	108	122	123	1,066,950	697.50
Construction	13	194	219	202	2,268,736	851.31
Manufacturing	17	1,074	1,074	1,107	23,103,026	1,637.93
Trade, Transportation & Utilities	61	566	590	580	4,112,980	546.74
Wholesale Trade	8	21	28	28	469,714	1,407.73
Retail Trade	38	449	463	454	2,871,705	485.14
Transportation, Warehousing & Utilities	15	96	99	98	771,561	607.69
Financial Activities	15	65	67	65	592,811	694.43
Professional & Business Services	15	70	73	70	634,565	687.50
Education & Health Services	50	221	218	215	1,581,824	558.16
Leisure & Hospitality	14	179	177	178	577,879	249.73
Local Government	20	700	693	688	5,517,592	611.86
State Government	10	77	77	79	583,935	578.34
Other	19	46	42	46	220,662	380.01
LOGAN COUNTY - TOTAL	504	5,316	5,320	5,303	\$43,224,970	\$625.82
Natural Resources & Mining	28	116	114	111	1,065,975	721.39
Construction	43	243	226	232	2,243,772	738.65
Manufacturing	21	1,118	1,127	1,119	11,078,299	759.97
Trade, Transportation & Utilities	100	1,000	998	986	7,406,210	572.76
Wholesale Trade	9	41	36	39	297,068	590.98
Retail Trade	68	775	771	764	4,904,571	489.97
Transportation, Warehousing & Utilities	23	184	191	183	2,204,571	911.73
Information	5	29	29	29	295,076	782.69
Financial Activities	50	198	201	198	2,391,679	924.50
Professional & Business Services	39	115	123	122	1,170,537	750.34
Education & Health Services	118	708	714	718	5,656,356	609.96
Leisure & Hospitality	34	339	323	312	1,073,448	254.33
Other Services	32	143	147	152	1,187,950	620.23
Local Government	22	791	802	801	6,404,853	617.39
State Government	12	516	516	523	3,250,815	482.44

TABLE 6. COUNTY SUMMARY

North American Industry Classification System - Industry Groups	Number of Employing Units	Employment			Total Earnings Oct - Dec 2017	Average Weekly Earnings
		Oct	Nov	Dec		
LONOKE COUNTY - TOTAL	1,288	13,722	13,632	13,509	\$120,201,823	\$678.83
Natural Resources & Mining	85	468	453	424	5,454,615	935.88
Construction	133	932	932	934	10,248,586	845.27
Manufacturing	38	1,679	1,680	1,610	17,777,755	825.63
Trade, Transportation & Utilities	304	2,793	2,759	2,781	22,325,090	618.26
Wholesale Trade	76	413	412	409	5,143,328	961.85
Retail Trade	170	2,086	2,066	2,078	13,437,769	497.76
Transportation, Warehousing & Utilities	58	294	281	294	3,743,993	994.24
Information	12	82	83	81	1,118,246	1,049.01
Financial Activities	153	652	651	661	10,355,416	1,216.76
Professional & Business Services	151	667	623	614	6,629,916	803.56
Education & Health Services	204	1,709	1,722	1,711	13,519,785	606.76
Leisure & Hospitality	108	1,753	1,738	1,705	6,749,171	299.75
Other Services	61	196	197	203	1,331,020	515.37
Local Government	25	2,628	2,633	2,623	23,204,830	679.22
State Government	14	163	161	162	1,487,393	706.26
MADISON COUNTY - TOTAL	257	3,343	3,351	3,331	\$33,015,230	\$759.99
Natural Resources & Mining	12	47	51	55	406,252	612.75
Construction	27	122	121	116	1,740,061	1,118.53
Manufacturing	21	1,212	1,203	1,169	11,581,658	745.73
Trade, Transportation & Utilities	53	680	675	691	5,376,098	606.37
Wholesale Trade	7	29	29	33	226,556	574.53
Retail Trade	37	499	489	505	3,268,009	505.13
Transportation, Warehousing & Utilities	9	152	157	153	1,881,533	939.83
Information	6	53	53	53	1,303,271	1,891.54
Financial Activities	19	88	89	89	854,793	741.58
Professional & Business Services	23	72	75	75	847,267	880.73
Education & Health Services	45	264	265	253	2,114,694	624.05
Leisure & Hospitality	16	167	182	181	565,753	246.34
Other Services	19	41	43	45	356,904	638.47
Local Government	9	557	555	566	7,529,562	1,035.51
State Government	7	40	39	38	338,917	668.48

TABLE 6. COUNTY SUMMARY

North American Industry Classification System - Industry Groups	Number of Employing Units	Employment			Total Earnings Oct - Dec 2017	Average Weekly Earnings
		Oct	Nov	Dec		
MARION COUNTY - TOTAL	279	3,710	3,705	3,707	\$28,200,622	\$585.13
Manufacturing	21	1,675	1,676	1,695	13,189,874	603.21
Trade, Transportation & Utilities	55	532	533	517	3,595,304	524.45
Wholesale Trade	6	43	39	39	336,668	642.09
Retail Trade	41	454	456	442	2,753,015	469.90
Transportation, Warehousing & Utilities	8	35	38	36	505,621	1,070.47
Information	3	56	56	56	1,228,716	1,687.80
Financial Activities	35	193	181	176	1,737,406	728.98
Professional & Business Services	26	75	77	82	708,917	699.13
Education & Health Services	48	345	345	338	2,558,189	574.27
Leisure & Hospitality	31	206	194	194	695,384	270.16
Other Services	13	29	29	28	148,566	398.66
Local Government	17	490	509	505	3,364,174	516.19
State Government	7	39	39	40	350,486	685.44
Other	23	70	66	76	623,606	678.82
MILLER COUNTY - TOTAL	891	12,894	12,964	13,119	\$129,898,591	\$769.08
Natural Resources & Mining	30	214	223	214	2,414,192	855.79
Construction	69	636	623	620	7,644,474	938.86
Manufacturing	28	2,344	2,360	2,369	36,910,059	1,204.26
Trade, Transportation & Utilities	221	3,294	3,380	3,496	32,758,674	743.33
Wholesale Trade	49	466	480	474	6,385,310	1,037.70
Retail Trade	126	1,202	1,245	1,237	7,896,059	494.62
Transportation, Warehousing & Utilities	46	1,626	1,655	1,785	18,477,305	841.69
Information	7	123	121	125	2,288,608	1,431.27
Financial Activities	83	437	437	444	5,391,851	944.06
Professional & Business Services	85	1,254	1,231	1,246	7,791,708	481.93
Education & Health Services	188	1,079	1,085	1,088	8,628,646	612.31
Leisure & Hospitality	91	1,378	1,352	1,361	5,857,024	330.39
Other Services	50	207	206	219	1,411,958	515.56
Local Government	24	1,462	1,482	1,475	13,758,326	718.49
State Government	15	466	464	462	5,043,071	836.05

TABLE 6. COUNTY SUMMARY

North American Industry Classification System - Industry Groups	Number of Employing Units	Employment			Total Earnings Oct - Dec 2017	Average Weekly Earnings
		Oct	Nov	Dec		
MISSISSIPPI COUNTY - TOTAL	1,131	18,255	18,190	18,128	\$218,759,170	\$925.05
Natural Resources & Mining	109	624	612	591	6,628,716	837.28
Construction	51	753	727	709	10,134,955	1,068.45
Manufacturing	61	6,504	6,514	6,499	116,098,731	1,372.75
Trade, Transportation & Utilities	277	2,917	2,919	2,933	27,250,448	717.14
Wholesale Trade	58	332	322	321	4,367,354	1,033.69
Retail Trade	150	1,690	1,701	1,700	10,401,795	471.50
Transportation, Warehousing & Utilities	69	895	896	912	12,481,299	1,065.59
Information	6	36	39	38	260,329	531.65
Financial Activities	83	447	445	449	4,477,216	770.47
Professional & Business Services	87	1,380	1,321	1,319	11,066,783	635.29
Education & Health Services	238	1,704	1,715	1,694	14,616,276	659.69
Leisure & Hospitality	94	1,155	1,156	1,136	4,066,308	272.23
Other Services	53	272	275	278	2,699,433	755.09
Local Government	49	1,941	1,946	1,954	17,216,680	680.21
State Government	23	522	521	528	4,243,295	623.31
MONROE COUNTY - TOTAL	301	2,031	1,985	1,999	\$15,392,518	\$590.54
Natural Resources & Mining	34	143	119	124	1,470,353	879.05
Construction	9	21	21	22	96,372	347.50
Manufacturing	6	113	112	112	899,001	615.61
Trade, Transportation & Utilities	74	540	536	539	4,874,521	696.53
Wholesale Trade	16	174	175	175	2,144,345	944.37
Retail Trade	35	258	252	257	1,616,320	486.31
Transportation, Warehousing & Utilities	23	108	109	107	1,113,856	793.34
Financial Activities	22	88	89	91	962,024	828.38
Professional & Business Services	14	18	18	26	121,472	452.13
Education & Health Services	72	366	377	372	2,685,807	555.88
Leisure & Hospitality	22	231	221	230	781,221	264.34
Local Government	21	365	346	338	2,284,183	502.50
State Government	7	65	65	65	677,914	802.27
Other	20	81	81	80	539,650	514.61

TABLE 6. COUNTY SUMMARY

North American Industry Classification System - Industry Groups	Number of Employing Units	Employment			Total Earnings Oct - Dec 2017	Average Weekly Earnings
		Oct	Nov	Dec		
MONTGOMERY COUNTY - TOTAL	164	1,303	1,273	1,280	\$8,825,842	\$528.20
Natural Resources & Mining	6	27	23	27	218,169	653.85
Construction	26	74	75	85	575,707	567.76
Manufacturing	8	34	35	36	286,102	628.80
Trade, Transportation & Utilities	34	224	222	233	1,383,295	470.14
Wholesale Trade	8	54	52	51	450,940	662.82
Retail Trade	22	160	160	170	865,111	407.43
Transportation, Warehousing & Utilities	4	10	10	12	67,244	484.93
Financial Activities	9	57	46	48	503,804	769.95
Professional & Business Services	13	20	19	21	135,651	521.73
Education & Health Services	20	58	59	58	433,065	571.07
Leisure & Hospitality	16	253	235	228	1,208,981	389.66
Local Government	9	451	459	444	3,395,455	578.70
State Government	7	34	34	33	320,174	731.55
Other	16	71	66	67	365,439	413.39
NEVADA COUNTY - TOTAL	198	2,403	2,375	2,373	\$21,867,547	\$705.69
Natural Resources & Mining	12	79	78	77	842,549	830.92
Trade, Transportation & Utilities	38	576	577	577	4,885,689	651.71
Retail Trade	22	310	317	322	1,789,917	435.26
Other Trade, Transportation & Utilities	16	266	260	255	3,095,772	914.74
Financial Activities	11	62	71	58	720,263	870.23
Professional & Business Services	11	39	40	40	373,588	724.48
Education & Health Services	48	443	423	438	2,655,255	469.90
Leisure & Hospitality	10	91	83	79	300,549	274.14
Other Services	14	32	28	35	132,854	322.72
Local Government	28	374	373	370	2,767,963	571.85
State Government	9	54	55	55	448,584	631.22
Other	17	653	647	644	8,740,253	1,037.54

TABLE 6. COUNTY SUMMARY

North American Industry Classification System - Industry Groups	Number of Employing Units	Employment			Total Earnings Oct - Dec 2017	Average Weekly Earnings
		Oct	Nov	Dec		
NEWTON COUNTY - TOTAL	119	1,047	1,036	1,031	\$6,372,705	\$472.26
Construction	5	16	16	17	130,228	613.32
Manufacturing	9	32	31	32	318,634	774.01
Trade, Transportation & Utilities	32	158	158	157	1,155,308	563.66
Retail Trade	16	104	106	107	615,735	448.24
Other Trade, Transportation & Utilities	16	54	52	50	539,573	798.18
Education & Health Services	24	254	255	260	1,153,102	346.03
Leisure & Hospitality	16	161	149	135	605,275	313.89
Other Services	3	4	4	4	19,024	365.85
Local Government	14	350	357	360	2,401,375	519.37
State Government	7	38	36	36	312,452	655.49
Other	9	34	30	30	277,307	680.79
OUACHITA COUNTY - TOTAL	663	6,877	6,874	6,850	\$61,628,543	\$690.35
Natural Resources & Mining	34	169	166	163	1,726,754	800.16
Construction	39	210	199	198	2,148,028	816.64
Manufacturing	25	544	544	542	6,378,086	902.99
Trade, Transportation & Utilities	160	1,459	1,465	1,496	11,894,767	621.03
Wholesale Trade	26	201	209	212	2,283,561	847.23
Retail Trade	106	985	974	991	5,842,248	457.02
Transportation, Warehousing & Utilities	28	273	282	293	3,768,958	1,025.66
Information	6	44	44	45	440,614	764.51
Financial Activities	53	260	253	252	3,126,246	943.06
Professional & Business Services	43	639	646	618	5,398,447	654.65
Education & Health Services	195	1,250	1,244	1,238	13,348,042	825.38
Leisure & Hospitality	40	478	469	466	1,466,638	239.53
Other Services	26	105	108	108	823,282	591.86
Local Government	29	1,084	1,086	1,090	9,278,669	656.82
State Government	13	635	650	634	5,598,970	673.30

TABLE 6. COUNTY SUMMARY

North American Industry Classification System - Industry Groups	Number of Employing Units	Employment			Total Earnings Oct - Dec 2017	Average Weekly Earnings
		Oct	Nov	Dec		
PERRY COUNTY - TOTAL	138	1,155	1,146	1,144	\$9,498,039	\$636.24
Construction	17	101	92	95	833,103	667.55
Manufacturing	5	25	24	25	310,550	968.45
Trade, Transportation & Utilities	26	178	181	173	1,250,515	542.44
Retail Trade	18	141	143	142	568,322	307.87
Other Trade, Transportation & Utilities	8	37	38	31	682,193	1,485.18
Financial Activities	7	26	26	26	337,050	997.19
Professional & Business Services	14	36	27	31	360,533	885.11
Education & Health Services	29	228	235	240	1,893,032	621.41
Leisure & Hospitality	8	73	74	73	281,108	294.87
Local Government	10	348	341	343	2,739,865	612.67
State Government	7	32	32	32	300,766	723.00
Other	15	108	114	106	1,191,517	838.31
PHILLIPS COUNTY - TOTAL	763	5,401	5,442	5,409	\$45,934,905	\$652.25
Natural Resources & Mining	60	271	243	229	2,359,813	732.94
Construction	30	115	113	117	985,396	659.13
Manufacturing	15	379	390	391	4,182,812	832.12
Trade, Transportation & Utilities	144	1,258	1,267	1,271	11,162,412	678.59
Wholesale Trade	27	251	247	252	3,616,354	1,112.72
Retail Trade	80	761	767	758	4,481,252	452.38
Transportation, Warehousing & Utilities	37	246	253	261	3,064,806	930.61
Information	8	25	26	26	376,336	1,127.88
Financial Activities	41	209	209	207	1,922,798	709.96
Professional & Business Services	40	236	237	229	2,638,028	867.20
Education & Health Services	317	1,403	1,421	1,418	10,930,821	594.65
Leisure & Hospitality	37	306	311	298	1,040,959	262.54
Other Services	31	69	69	69	484,094	539.68
Local Government	26	791	811	806	6,840,613	655.57
State Government	14	339	345	348	3,010,823	673.26

TABLE 6. COUNTY SUMMARY

North American Industry Classification System - Industry Groups	Number of Employing Units	Employment			Total Earnings Oct - Dec 2017	Average Weekly Earnings
		Oct	Nov	Dec		
PIKE COUNTY - TOTAL	252	2,527	2,536	2,545	\$20,891,694	\$633.70
Natural Resources & Mining	25	122	120	127	1,258,135	786.83
Construction	12	45	42	47	451,887	778.22
Manufacturing	19	389	388	401	3,803,468	745.10
Trade, Transportation & Utilities	62	511	519	521	3,978,827	592.00
Wholesale Trade	8	115	117	117	898,000	593.78
Retail Trade	35	321	328	330	2,201,788	519.00
Transportation, Warehousing & Utilities	19	75	74	74	879,039	909.66
Information	7	33	32	31	309,416	743.79
Financial Activities	23	219	220	222	2,705,499	944.55
Professional & Business Services	13	55	58	57	1,231,204	1,671.32
Education & Health Services	35	314	321	328	1,916,310	459.22
Leisure & Hospitality	25	223	220	210	727,819	257.21
Other Services	12	60	61	58	460,407	593.56
Local Government	10	445	447	436	3,462,019	601.60
State Government	9	111	108	107	586,703	415.32
POINSETT COUNTY - TOTAL	509	5,268	5,293	5,150	\$48,243,067	\$708.61
Natural Resources & Mining	71	473	458	396	5,050,796	878.35
Construction	23	89	91	87	1,127,510	974.51
Manufacturing	19	680	682	682	8,148,145	919.93
Trade, Transportation & Utilities	130	1,166	1,179	1,148	10,258,395	677.73
Wholesale Trade	28	327	322	288	4,508,718	1,110.43
Retail Trade	70	673	693	689	3,835,931	430.76
Transportation, Warehousing & Utilities	32	166	164	171	1,913,746	881.50
Information	5	56	56	56	537,481	738.30
Financial Activities	40	188	191	181	2,045,283	842.84
Professional & Business Services	26	176	181	178	2,737,716	1,180.90
Education & Health Services	97	832	837	854	6,965,745	637.13
Leisure & Hospitality	38	354	361	345	1,171,189	254.98
Other Services	19	50	49	46	392,153	624.12
Local Government	30	1,039	1,044	1,016	8,483,072	631.70
State Government	11	165	164	161	1,325,582	624.29

TABLE 6. COUNTY SUMMARY

North American Industry Classification System - Industry Groups	Number of Employing Units	Employment			Total Earnings Oct - Dec 2017	Average Weekly Earnings
		Oct	Nov	Dec		
POLK COUNTY - TOTAL	504	5,722	5,734	5,761	\$44,815,649	\$600.69
Natural Resources & Mining	22	142	144	143	1,723,896	927.32
Construction	34	189	184	184	1,511,328	626.15
Manufacturing	33	1,259	1,262	1,261	10,936,651	667.33
Trade, Transportation & Utilities	126	1,014	1,023	1,047	7,465,094	558.60
Wholesale Trade	22	61	59	64	494,430	620.10
Retail Trade	71	756	760	771	4,560,790	460.21
Transportation, Warehousing & Utilities	33	197	204	212	2,409,874	907.22
Information	8	73	73	78	535,501	551.68
Financial Activities	47	244	246	242	2,339,966	737.69
Professional & Business Services	43	139	139	137	1,467,008	815.76
Education & Health Services	91	1,028	1,034	1,026	8,751,905	654.04
Leisure & Hospitality	40	458	454	458	1,566,269	263.83
Other Services	26	169	165	163	1,182,357	549.00
Local Government	21	697	695	704	5,401,970	594.76
State Government	13	310	315	318	1,933,704	473.21
POPE COUNTY - TOTAL	1,831	25,427	25,599	25,712	\$263,953,344	\$793.77
Natural Resources & Mining	31	414	514	540	5,161,949	811.46
Construction	158	1,290	1,289	1,290	18,140,903	1,082.03
Manufacturing	73	4,341	4,352	4,392	51,170,518	902.45
Trade, Transportation & Utilities	420	6,052	6,148	6,177	71,071,426	892.48
Wholesale Trade	78	568	561	562	6,265,581	855.06
Retail Trade	260	3,102	3,178	3,161	20,209,373	493.98
Transportation, Warehousing & Utilities	82	2,382	2,409	2,454	44,596,472	1,420.50
Information	20	141	144	147	1,649,517	881.15
Financial Activities	191	970	954	954	10,167,065	815.23
Professional & Business Services	275	1,701	1,683	1,729	24,007,269	1,083.54
Education & Health Services	349	3,318	3,284	3,317	30,447,650	708.38
Leisure & Hospitality	140	2,788	2,800	2,730	10,797,807	299.57
Other Services	116	529	541	548	4,332,278	617.90
Local Government	43	2,176	2,173	2,163	20,047,043	710.42
State Government	15	1,707	1,717	1,725	16,959,919	760.11

TABLE 6. COUNTY SUMMARY

North American Industry Classification System - Industry Groups	Number of Employing Units	Employment			Total Earnings Oct - Dec 2017	Average Weekly Earnings
		Oct	Nov	Dec		
PRAIRIE COUNTY - TOTAL	257	1,475	1,484	1,469	\$12,891,758	\$671.87
Natural Resources & Mining	35	155	154	156	2,166,012	1,074.94
Construction	10	40	42	42	384,470	715.51
Trade, Transportation & Utilities	60	344	346	340	3,143,604	704.32
Wholesale Trade	12	79	80	82	1,464,263	1,402.10
Retail Trade	34	201	198	203	989,109	379.16
Transportation, Warehousing & Utilities	14	64	68	55	690,232	851.79
Financial Activities	16	51	51	48	614,828	945.89
Professional & Business Services	16	104	82	78	1,040,721	909.72
Education & Health Services	54	263	267	265	1,884,372	546.99
Leisure & Hospitality	18	100	104	114	397,780	288.66
Local Government	16	314	329	324	2,463,276	587.85
State Government	7	27	27	27	232,559	662.56
Other	25	77	82	75	564,136	556.35
PULASKI COUNTY - TOTAL	14,345	243,326	244,325	244,062	\$3,018,728,593	\$952.05
Natural Resources & Mining	54	635	620	606	9,959,589	1,235.02
Construction	945	8,925	8,852	8,829	132,627,911	1,150.36
Manufacturing	344	12,724	12,782	12,799	183,790,494	1,107.25
Trade, Transportation & Utilities	3,123	48,775	49,601	49,980	550,635,028	856.52
Wholesale Trade	937	11,576	11,610	11,641	202,050,468	1,338.82
Retail Trade	1,800	25,706	26,421	26,472	198,424,648	582.58
Transportation, Warehousing & Utilities	386	11,493	11,570	11,867	150,159,912	992.05
Information	207	5,164	5,215	5,024	81,401,644	1,219.57
Financial Activities	1,697	16,709	16,805	16,846	293,798,397	1,346.30
Professional & Business Services	2,745	35,068	34,977	35,203	490,971,414	1,076.52
Education & Health Services	2,537	41,910	42,240	41,789	553,668,208	1,014.54
Leisure & Hospitality	1,238	23,759	23,474	23,252	105,669,977	345.97
Other Services	1,149	6,574	6,531	6,535	66,432,662	780.58
Local Government	109	15,397	15,440	15,377	172,789,591	862.82
State Government	197	27,686	27,788	27,822	376,983,678	1,044.42

TABLE 6. COUNTY SUMMARY

North American Industry Classification System - Industry Groups	Number of Employing Units	Employment			Total Earnings Oct - Dec 2017	Average Weekly Earnings
		Oct	Nov	Dec		
RANDOLPH COUNTY - TOTAL	393	5,441	5,468	5,497	\$44,260,756	\$622.58
Natural Resources & Mining	27	235	236	236	2,728,025	890.44
Construction	28	106	119	116	1,028,765	696.21
Manufacturing	25	1,354	1,364	1,381	12,233,131	688.71
Trade, Transportation & Utilities	92	864	873	889	6,911,362	607.36
Wholesale Trade	16	123	123	122	1,207,271	757.07
Retail Trade	57	591	599	605	3,866,884	497.14
Transportation, Warehousing & Utilities	19	150	151	162	1,837,207	915.70
Information	6	27	26	27	306,833	885.10
Financial Activities	31	149	152	152	1,400,761	713.58
Professional & Business Services	35	268	265	262	2,036,432	591.13
Education & Health Services	67	900	916	910	7,769,820	657.75
Leisure & Hospitality	32	367	364	367	1,290,708	271.27
Other Services	16	63	64	68	475,074	562.22
Local Government	24	818	812	808	5,452,826	516.14
State Government	10	290	277	281	2,627,019	714.90
SAINT FRANCIS COUNTY - TOTAL	712	6,845	6,774	6,775	\$56,502,895	\$639.36
Natural Resources & Mining	44	259	237	238	2,500,350	786.11
Construction	39	186	193	192	2,247,085	908.16
Trade, Transportation & Utilities	149	1,845	1,829	1,875	15,689,955	652.51
Wholesale Trade	29	525	514	512	5,871,412	873.59
Retail Trade	98	1,034	1,028	1,051	6,477,601	480.19
Transportation, Warehousing & Utilities	22	286	287	312	3,340,942	871.17
Information	5	50	48	47	435,441	693.01
Financial Activities	64	269	264	259	2,323,075	676.89
Professional & Business Services	47	141	138	141	1,875,230	1,030.35
Education & Health Services	242	1,468	1,471	1,461	12,946,933	679.03
Leisure & Hospitality	44	661	655	627	2,122,693	252.11
Local Government	28	852	850	848	6,969,041	630.68
State Government	16	470	457	459	3,957,977	659.00
Other	34	644	632	628	5,435,115	658.75

TABLE 6. COUNTY SUMMARY

North American Industry Classification System - Industry Groups	Number of Employing Units	Employment			Total Earnings Oct - Dec 2017	Average Weekly Earnings
		Oct	Nov	Dec		
SALINE COUNTY - TOTAL	2,057	24,392	24,483	24,496	\$224,197,619	\$705.15
Natural Resources & Mining	14	49	49	53	658,635	1,006.57
Construction	276	2,099	2,129	2,112	26,824,684	976.39
Manufacturing	83	1,420	1,432	1,443	18,459,263	991.81
Trade, Transportation & Utilities	462	5,607	5,713	5,750	47,470,809	641.76
Wholesale Trade	113	656	656	653	8,775,191	1,030.56
Retail Trade	281	4,433	4,525	4,564	32,626,919	556.82
Transportation, Warehousing & Utilities	68	518	532	533	6,068,699	884.69
Information	17	168	174	173	1,965,107	880.56
Financial Activities	204	759	756	749	9,095,910	927.14
Professional & Business Services	272	1,523	1,509	1,545	17,306,639	872.59
Education & Health Services	329	4,615	4,586	4,604	44,974,407	751.81
Leisure & Hospitality	193	3,561	3,544	3,482	14,006,398	305.30
Other Services	161	794	782	789	6,104,615	595.67
Local Government	32	2,942	2,951	2,936	30,627,303	800.53
State Government	14	855	858	860	6,703,849	601.26
SCOTT COUNTY - TOTAL	178	2,966	2,980	2,992	\$23,154,348	\$597.82
Natural Resources & Mining	17	166	164	163	1,751,456	819.84
Trade, Transportation & Utilities	32	318	308	312	2,398,675	590.13
Wholesale Trade	6	37	35	36	250,061	534.32
Retail Trade	20	208	203	200	1,286,895	486.05
Transportation, Warehousing & Utilities	6	73	70	76	861,719	908.03
Financial Activities	19	60	60	59	509,579	656.96
Professional & Business Services	13	98	98	101	771,847	599.73
Education & Health Services	44	322	324	322	3,070,783	732.07
Leisure & Hospitality	14	129	134	130	557,169	327.17
Other Services	9	25	25	26	203,999	619.43
Local Government	6	530	540	547	4,182,433	596.89
State Government	6	29	28	28	260,602	707.52
Other	18	1,289	1,299	1,304	9,447,805	560.19

TABLE 6. COUNTY SUMMARY

North American Industry Classification System - Industry Groups	Number of Employing Units	Employment			Total Earnings Oct - Dec 2017	Average Weekly Earnings
		Oct	Nov	Dec		
SEARCY COUNTY - TOTAL	165	1,531	1,485	1,490	\$9,840,370	\$503.96
Construction	11	11	11	13	71,871	473.87
Manufacturing	17	203	186	188	1,289,960	515.92
Trade, Transportation & Utilities	37	222	219	242	1,473,173	497.75
Wholesale Trade	7	36	34	36	226,335	492.75
Retail Trade	25	171	170	191	1,047,937	454.57
Transportation, Warehousing & Utilities	5	15	15	15	198,901	1,020.01
Financial Activities	11	59	50	40	411,224	636.90
Education & Health Services	39	355	352	356	2,323,213	504.35
Leisure & Hospitality	13	159	159	151	488,266	240.25
Other Services	3	8	8	8	61,259	589.03
Local Government	10	308	309	312	2,218,223	551.02
State Government	6	40	41	41	347,656	657.61
Other	18	166	150	139	1,155,525	586.07
SEBASTIAN COUNTY - TOTAL	3,691	64,581	65,174	64,996	\$680,451,311	\$806.30
Natural Resources & Mining	43	461	462	469	8,233,160	1,364.91
Construction	265	2,342	2,375	2,383	26,554,180	863.08
Manufacturing	190	11,802	11,756	11,785	142,080,911	927.71
Trade, Transportation & Utilities	895	13,245	13,746	13,729	128,879,247	730.39
Wholesale Trade	237	2,644	2,653	2,668	36,642,851	1,061.65
Retail Trade	549	7,872	8,286	8,215	53,392,707	505.53
Transportation, Warehousing & Utilities	109	2,729	2,807	2,846	38,843,689	1,069.43
Information	40	903	905	894	13,325,797	1,138.11
Financial Activities	407	2,445	2,468	2,466	30,822,992	963.95
Professional & Business Services	561	8,261	8,264	8,113	81,106,603	759.68
Education & Health Services	608	11,373	11,332	11,352	148,532,126	1,006.45
Leisure & Hospitality	350	5,973	6,089	6,029	25,616,456	326.76
Other Services	266	1,297	1,276	1,295	10,129,343	604.33
Local Government	43	4,699	4,717	4,697	45,918,335	750.84
State Government	23	1,780	1,784	1,784	19,252,161	830.74

TABLE 6. COUNTY SUMMARY

North American Industry Classification System - Industry Groups	Number of Employing Units	Employment			Total Earnings Oct - Dec 2017	Average Weekly Earnings
		Oct	Nov	Dec		
SEVIER COUNTY - TOTAL	308	4,817	4,832	4,845	\$41,258,820	\$656.91
Natural Resources & Mining	16	170	171	170	1,591,220	718.60
Construction	18	181	178	171	2,289,501	996.88
Trade, Transportation & Utilities	89	816	840	826	6,959,604	647.08
Wholesale Trade	13	100	100	99	1,782,564	1,375.79
Retail Trade	62	643	667	655	4,297,797	504.73
Transportation, Warehousing & Utilities	14	73	73	72	879,243	930.74
Financial Activities	24	194	195	194	2,167,009	857.77
Professional & Business Services	24	101	91	85	582,403	485.20
Education & Health Services	59	549	553	570	4,231,508	584.03
Leisure & Hospitality	24	294	297	296	935,155	243.30
Local Government	12	929	941	944	9,904,380	812.23
State Government	7	167	163	167	1,284,729	596.53
Other	35	1,416	1,403	1,422	11,313,311	615.60
SHARP COUNTY - TOTAL	391	3,835	3,784	3,779	\$28,477,585	\$576.57
Construction	30	153	152	150	1,601,188	812.10
Manufacturing	21	186	170	174	1,205,237	524.78
Trade, Transportation & Utilities	80	1,067	1,061	1,075	9,100,765	655.69
Wholesale Trade	11	42	33	40	217,655	436.77
Retail Trade	57	660	664	669	3,835,471	444.11
Transportation, Warehousing & Utilities	12	365	364	366	5,047,639	1,063.78
Information	7	40	33	38	270,880	563.16
Financial Activities	35	179	175	175	1,896,335	827.25
Professional & Business Services	34	116	113	116	1,009,473	675.23
Education & Health Services	87	808	805	807	5,959,120	568.26
Leisure & Hospitality	34	368	356	355	1,309,735	280.12
Local Government	24	783	785	755	5,220,045	518.56
State Government	7	52	51	51	443,674	664.85
Other	32	83	83	83	461,133	427.37

TABLE 6. COUNTY SUMMARY

North American Industry Classification System - Industry Groups	Number of Employing Units	Employment			Total Earnings	Average Weekly Earnings
		Oct	Nov	Dec	Oct - Dec 2017	
STONE COUNTY - TOTAL	267	2,565	2,573	2,542	\$18,827,248	\$565.72
Natural Resources & Mining	5	7	7	7	45,241	497.15
Construction	15	37	33	33	256,500	574.68
Manufacturing	18	201	202	204	1,435,332	545.68
Trade, Transportation & Utilities	71	584	605	592	4,298,534	556.97
Wholesale Trade	7	27	40	28	327,676	795.97
Retail Trade	53	518	524	524	3,480,224	512.85
Transportation, Warehousing & Utilities	11	39	41	40	490,634	943.53
Financial Activities	28	150	148	144	1,786,472	932.72
Professional & Business Services	12	29	29	26	144,409	396.73
Education & Health Services	51	545	548	553	5,128,353	719.00
Leisure & Hospitality	29	432	410	382	1,334,879	251.67
Local Government	10	399	403	402	3,187,385	610.92
State Government	7	134	140	151	824,078	447.46
Other	21	47	48	48	386,065	623.02
UNION COUNTY - TOTAL	1,300	17,476	17,536	17,583	\$209,560,573	\$919.48
Natural Resources & Mining	82	385	381	388	5,061,192	1,012.10
Construction	84	1,408	1,411	1,399	19,606,043	1,072.66
Manufacturing	49	3,003	2,996	2,995	48,713,126	1,249.89
Trade, Transportation & Utilities	305	3,361	3,452	3,483	34,305,478	768.91
Wholesale Trade	66	504	494	490	6,933,249	1,075.26
Retail Trade	177	2,004	2,091	2,095	13,937,808	519.62
Transportation, Warehousing & Utilities	62	853	867	898	13,434,421	1,184.21
Information	9	111	113	114	1,131,155	772.30
Financial Activities	101	597	596	605	7,014,532	900.30
Professional & Business Services	133	2,021	1,991	1,992	42,145,444	1,619.90
Education & Health Services	298	2,349	2,363	2,392	22,643,045	735.55
Leisure & Hospitality	95	1,480	1,476	1,465	5,651,844	295.02
Other Services	96	424	421	407	3,151,478	580.88
Local Government	32	1,819	1,819	1,826	15,231,971	643.31
State Government	16	518	517	517	4,905,265	729.37

TABLE 6. COUNTY SUMMARY

North American Industry Classification System - Industry Groups	Number of Employing Units	Employment			Total Earnings Oct - Dec 2017	Average Weekly Earnings
		Oct	Nov	Dec		
VAN BUREN COUNTY - TOTAL	350	3,589	3,586	3,592	\$32,434,382	\$695.17
Natural Resources & Mining	10	134	129	128	3,175,102	1,873.95
Construction	39	161	156	153	1,219,060	598.56
Manufacturing	7	149	135	130	1,158,673	645.86
Trade, Transportation & Utilities	96	1,017	1,003	1,009	10,465,844	797.36
Wholesale Trade	11	92	91	83	1,155,393	1,002.37
Retail Trade	56	622	615	631	3,740,505	462.10
Transportation, Warehousing & Utilities	29	303	297	295	5,569,946	1,436.17
Information	4	28	30	31	82,167	213.05
Financial Activities	30	110	114	113	1,099,382	752.83
Professional & Business Services	36	139	143	146	1,433,867	773.11
Education & Health Services	63	750	753	756	6,458,442	659.77
Leisure & Hospitality	27	353	365	360	1,531,143	327.77
Other Services	21	52	52	51	417,262	621.23
Local Government	11	655	666	675	5,003,680	578.50
State Government	6	41	40	40	389,760	743.34
WASHINGTON COUNTY - TOTAL	6,004	104,998	105,464	105,396	\$1,356,829,938	\$991.31
Natural Resources & Mining	38	302	294	302	5,307,001	1,363.80
Construction	561	5,248	5,252	5,285	73,632,113	1,076.47
Manufacturing	212	12,910	12,991	13,122	145,888,376	862.74
Trade, Transportation & Utilities	1,363	22,864	23,239	23,441	259,965,173	862.65
Wholesale Trade	377	3,826	3,878	3,921	71,401,831	1,417.41
Retail Trade	787	12,809	12,997	12,978	95,674,768	569.28
Transportation, Warehousing & Utilities	199	6,229	6,364	6,542	92,888,574	1,120.24
Information	75	884	887	905	10,798,912	931.26
Financial Activities	661	3,619	3,640	3,634	47,466,473	1,005.58
Professional & Business Services	1,095	13,311	13,382	13,052	354,184,268	2,056.48
Education & Health Services	854	15,680	15,657	15,695	202,516,079	993.67
Leisure & Hospitality	663	12,814	12,667	12,440	53,763,579	327.18
Other Services	398	2,107	2,110	2,138	17,212,965	625.05
Local Government	61	8,716	8,812	8,846	89,043,160	779.12
State Government	23	6,543	6,533	6,536	97,051,839	1,141.98

TABLE 6. COUNTY SUMMARY

North American Industry Classification System - Industry Groups	Number of Employing Units	Employment			Total Earnings Oct - Dec 2017	Average Weekly Earnings
		Oct	Nov	Dec		
WHITE COUNTY - TOTAL	1,790	23,859	23,991	24,120	\$227,540,085	\$729.60
Natural Resources & Mining	52	274	271	260	3,221,228	923.43
Construction	156	1,022	1,002	975	11,469,006	882.53
Manufacturing	59	2,097	2,105	2,109	24,055,323	879.61
Trade, Transportation & Utilities	482	6,130	6,240	6,265	60,553,740	749.88
Wholesale Trade	85	581	590	593	7,415,782	970.14
Retail Trade	309	3,471	3,540	3,546	26,355,753	576.12
Transportation, Warehousing & Utilities	88	2,078	2,110	2,126	26,782,205	978.86
Information	18	133	135	131	1,076,767	622.77
Financial Activities	170	864	861	865	11,009,871	980.98
Professional & Business Services	188	1,182	1,188	1,236	11,307,716	723.65
Education & Health Services	321	5,634	5,680	5,786	61,774,273	833.66
Leisure & Hospitality	169	2,775	2,754	2,719	9,714,995	271.81
Other Services	114	501	493	488	4,167,155	648.89
Local Government	46	2,715	2,729	2,743	24,261,352	683.86
State Government	15	532	533	543	4,928,659	707.33
WOODRUFF COUNTY - TOTAL	202	1,749	1,738	1,748	\$16,280,259	\$717.67
Natural Resources & Mining	28	136	130	123	1,314,885	780.04
Construction	10	42	40	44	388,748	711.99
Manufacturing	6	196	203	205	2,449,723	935.96
Trade, Transportation & Utilities	47	398	371	387	4,174,139	833.27
Wholesale Trade	11	139	123	120	2,063,084	1,246.33
Retail Trade	27	187	189	188	896,013	366.62
Transportation, Warehousing & Utilities	9	72	59	79	1,215,042	1,335.21
Financial Activities	12	66	65	66	801,895	939.35
Education & Health Services	59	251	250	253	2,012,226	615.86
Leisure & Hospitality	10	77	73	65	244,040	261.94
Local Government	9	428	452	450	3,192,955	554.01
State Government	5	27	26	26	237,992	695.21
Other	16	128	128	129	1,463,656	877.32

TABLE 6. COUNTY SUMMARY

North American Industry Classification System - Industry Groups	Number of Employing Units	Employment			Total Earnings Oct - Dec 2017	Average Weekly Earnings
		Oct	Nov	Dec		
YELL COUNTY - TOTAL	410	6,513	6,531	6,549	\$51,812,363	\$610.25
Natural Resources & Mining	23	207	205	213	2,398,491	885.60
Construction	31	223	215	217	2,136,794	752.83
Manufacturing	20	2,447	2,458	2,453	19,239,670	603.41
Trade, Transportation & Utilities	80	773	761	784	5,547,812	552.31
Wholesale Trade	15	67	65	74	362,468	406.05
Retail Trade	49	530	522	527	2,912,715	425.69
Transportation, Warehousing & Utilities	16	176	174	183	2,272,629	983.96
Financial Activities	29	122	120	120	1,098,235	700.11
Professional & Business Services	39	276	278	275	2,451,989	682.56
Education & Health Services	108	773	789	807	5,285,367	514.86
Leisure & Hospitality	27	321	318	308	956,107	232.99
Local Government	25	1,194	1,211	1,193	10,824,971	694.29
State Government	10	64	62	61	455,507	562.12
Other	18	113	114	118	1,417,420	948.11
STATEWIDE COUNTY - TOTAL	9,705	36,188	36,182	35,349	\$510,735,415	\$1,094.16
Natural Resources & Mining	92	276	279	281	4,852,460	1,339.47
Construction	783	3,952	3,830	3,217	53,168,691	1,115.53
Manufacturing	47	128	129	127	3,528,547	2,120.52
Trade, Transportation & Utilities	3,237	8,549	8,560	8,562	192,906,665	1,734.13
Wholesale Trade	2,815	6,897	6,924	6,893	171,104,352	1,906.23
Retail Trade	150	530	539	547	7,045,509	1,006.12
Transportation, Warehousing & Utilities	272	1,122	1,097	1,122	14,756,804	1,019.28
Information	304	581	589	565	12,448,155	1,655.71
Financial Activities	621	1,722	1,721	1,705	32,116,953	1,439.71
Professional & Business Services	3,733	16,633	16,893	16,716	163,402,239	750.53
Education & Health Services	462	2,565	2,558	2,555	29,137,585	875.76
Leisure & Hospitality	93	310	168	182	1,942,105	679.06
State Government	14	738	738	733	7,477,946	781.20
Other	319	734	717	706	9,754,069	1,028.79

Note: Statewide classification includes employment and payroll data for employers that have not provided a physical location for each employing unit. This section also includes employers without a physical location in Arkansas.

TABLE 7. FEDERAL GOVERNMENT EMPLOYMENT AND EARNINGS IN ARKANSAS

North American Industry Classification System - Industry Groups	Number of Employing Units	Employment			Total Earnings Oct - Dec 2017	Average Weekly Earnings
		Oct	Nov	Dec		
TOTAL	1,158	20,019	20,060	20,209	\$353,400,392	\$1,352.74
Trade, Transportation & Utilities	593	5,606	5,581	5,681	79,515,610	1,087.84
Information	2	42	40	42	648,050	1,206.05
Financial Activities	14	108	109	109	2,080,689	1,472.88
Professional & Business Services	34	785	775	779	14,082,439	1,389.39
Education & Health Services	18	5,186	5,254	5,346	112,454,136	1,643.92
Leisure & Hospitality	23	297	288	284	2,959,571	785.94
Other Services	1	1	1	1	8,329	640.69
Public Administration	473	7,994	8,012	7,967	141,651,568	1,363.57

TABLE 8. LOCAL WORKFORCE DEVELOPMENT AREA SUMMARY

North American Industry Classification System - Industry Groups	Number of Employing Units	Employment			Total Earnings	Average Weekly Earnings
		Oct	Nov	Dec	Oct - Dec 2017	
CENTRAL LOCAL WORKFORCE DEVELOPMENT AREA	6,737	81,957	82,082	81,870	778,086,901	\$730.18
Natural Resources & Mining	216	1,152	1,126	1,091	16,180,988	1,108.36
Construction	743	5,760	5,824	5,803	73,871,306	980.46
Trade, Transportation & Utilities	1,543	16,788	17,019	17,088	137,549,731	623.68
Wholesale Trade	355	1,868	1,869	1,880	25,940,616	1,065.75
Retail Trade	940	13,176	13,378	13,418	90,037,551	519.81
Transportation, Warehousing & Utilities	248	1,744	1,772	1,790	21,571,564	938.19
Information	58	548	567	573	7,367,846	1,007.27
Financial Activities	707	3,021	3,031	3,033	38,120,596	968.31
Professional & Business Services	884	7,404	7,209	7,300	99,112,977	1,043.77
Education & Health Services	1,103	13,930	13,915	13,853	134,564,886	744.72
Leisure & Hospitality	607	10,825	10,876	10,730	41,549,780	295.66
Local Government	136	9,755	9,753	9,690	94,375,003	745.90
State Government	59	4,419	4,392	4,384	42,594,383	744.94
Other	681	8,355	8,370	8,325	92,799,405	854.90

Note: Pulaski County is not included in the Central Local Workforce Development Area. Please refer to Page 51 for information on Pulaski County.
Central Local Workforce Development Area includes these counties: Faulkner, Lonoke, Monroe, Prairie, and Saline.

EASTERN LOCAL WORKFORCE DEVELOPMENT AREA	3,465	35,816	35,664	35,486	\$315,053,579	\$679.70
Natural Resources & Mining	244	1,379	1,278	1,241	14,059,728	832.36
Construction	142	901	929	921	11,326,793	950.15
Trade, Transportation & Utilities	762	9,014	9,026	9,090	84,943,048	722.53
Wholesale Trade	154	1,936	1,914	1,928	24,823,262	991.42
Retail Trade	425	4,709	4,732	4,750	30,227,270	491.55
Transportation, Warehousing & Utilities	183	2,369	2,380	2,412	29,892,516	963.31
Financial Activities	264	1,258	1,244	1,229	12,754,377	788.88
Professional & Business Services	248	1,857	1,920	1,820	16,634,384	685.85
Education & Health Services	1,097	6,392	6,348	6,288	52,283,413	634.09
Leisure & Hospitality	247	3,741	3,670	3,655	15,604,584	325.42
Local Government	127	4,879	4,868	4,869	42,959,103	678.27
State Government	58	2,028	2,026	2,028	17,075,481	647.89
Other	276	4,367	4,355	4,345	47,412,668	837.33

Eastern Local Workforce Development Area includes these counties: Crittenden, Cross, Lee, Phillips, and Saint Francis.

TABLE 8. LOCAL WORKFORCE DEVELOPMENT AREA SUMMARY

North American Industry Classification System - Industry Groups	Number of Employing Units	Employment			Total Earnings	Average Weekly Earnings
		Oct	Nov	Dec	Oct - Dec 2017	
NORTH CENTRAL LOCAL WORKFORCE DEVELOPMENT AREA	5,434	67,722	67,738	68,093	\$618,150,557	\$700.80
Construction	428	2,448	2,469	2,388	28,314,760	894.48
Manufacturing	216	8,115	8,135	8,373	90,660,076	849.68
Trade, Transportation & Utilities	1,362	15,222	15,320	15,413	140,705,230	706.57
Retail Trade	886	9,514	9,628	9,657	65,337,252	523.55
Other Trade, Transportation & Utilities	476	5,708	5,692	5,756	75,367,978	1,013.79
Financial Activities	517	2,544	2,522	2,532	30,400,572	923.34
Education & Health Services	1,004	14,463	14,508	14,714	147,730,991	780.40
Leisure & Hospitality	488	6,755	6,659	6,518	23,840,258	276.02
Local Government	225	8,958	9,019	9,039	71,721,825	612.64
State Government	93	2,747	2,756	2,757	23,395,079	653.62
Other	1,101	6,470	6,350	6,359	61,381,766	738.57

North Central Local Workforce Development Area includes these counties: Cleburne, Fulton, Independence, IZard, Jackson, Sharp, Stone, Van Buren, White, and Woodruff.

NORTHEAST LOCAL WORKFORCE DEVELOPMENT AREA	6,565	102,400	102,873	102,312	\$1,015,224,289	\$761.68
Natural Resources & Mining	452	2,616	2,505	2,244	26,870,356	841.94
Construction	461	3,638	3,574	3,523	43,468,953	934.45
Manufacturing	302	20,782	20,841	20,848	279,787,115	1,033.54
Trade, Transportation & Utilities	1,738	19,525	19,893	19,959	170,663,178	663.28
Wholesale Trade	368	3,460	3,494	3,481	43,416,034	960.14
Retail Trade	1,015	12,593	12,895	12,884	83,552,858	502.49
Transportation, Warehousing & Utilities	355	3,472	3,504	3,594	43,694,286	953.95
Financial Activities	554	3,213	3,197	3,197	38,949,596	935.61
Professional & Business Services	670	7,605	7,577	7,470	66,943,477	681.99
Education & Health Services	1,142	17,238	17,345	17,334	185,731,114	825.57
Leisure & Hospitality	552	9,478	9,624	9,468	35,222,961	284.51
Local Government	213	11,542	11,594	11,531	101,082,162	672.88
State Government	95	4,610	4,582	4,595	47,555,291	795.99
Other	386	2,153	2,141	2,143	18,950,086	679.37

Northeast Local Workforce Development Area includes these counties: Clay, Craighead, Greene, Lawrence, Mississippi, Poinsett, and Randolph.

TABLE 8. LOCAL WORKFORCE DEVELOPMENT AREA SUMMARY

North American Industry Classification System - Industry Groups	Number of Employing Units	Employment			Total Earnings Oct - Dec 2017	Average Weekly Earnings
		Oct	Nov	Dec		
NORTHWEST LOCAL WORKFORCE DEVELOPMENT AREA	16,322	272,693	273,577	273,781	\$3,345,618,826	\$941.49
Natural Resources & Mining	136	1,492	1,476	1,476	26,421,858	1,372.04
Trade, Transportation & Utilities	3,923	60,544	61,584	61,861	690,943,638	866.62
Retail Trade	2,153	31,935	32,697	32,636	228,978,441	543.25
Other Trade, Transportation & Utilities	1,770	28,609	28,887	29,225	461,965,197	1,229.31
Information	210	2,424	2,479	2,491	32,636,515	1,018.60
Professional & Business Services	2,712	48,197	48,188	48,032	1,009,681,223	1,613.41
Education & Health Services	2,372	34,917	34,819	34,961	393,656,562	867.68
Leisure & Hospitality	1,745	30,485	30,036	29,401	129,537,301	332.44
Other Services	1,024	5,059	5,059	5,150	42,986,945	649.73
Local Government	308	23,532	23,719	23,867	236,912,797	768.75
State Government	104	8,971	8,963	8,895	117,611,652	1,011.63
Other	3,788	57,072	57,254	57,647	665,230,335	892.67

Northwest Local Workforce Development Area includes these counties: Baxter, Benton, Boone, Carroll, Madison, Marion, Newton, Searcy, and Washington.

SOUTHEAST LOCAL WORKFORCE DEVELOPMENT AREA	6,201	68,655	68,688	68,760	\$670,756,741	\$751.03
Natural Resources & Mining	427	2,397	2,334	2,345	26,600,655	867.53
Construction	305	2,166	2,165	2,208	25,086,607	885.34
Manufacturing	195	14,511	14,489	14,495	185,208,773	982.65
Trade, Transportation & Utilities	1,267	12,011	12,088	12,174	105,879,213	673.60
Retail Trade	749	7,413	7,505	7,548	47,978,514	492.83
Other Trade, Transportation & Utilities	518	4,598	4,583	4,626	57,900,699	967.75
Financial Activities	408	2,348	2,362	2,345	28,366,354	927.86
Education & Health Services	2,148	11,074	11,013	11,070	102,287,622	711.91
Other Services	302	1,188	1,162	1,191	9,826,552	640.40
Local Government	207	8,820	8,840	8,849	77,339,591	673.27
State Government	126	5,942	5,978	5,961	55,094,490	711.04
Other	816	8,198	8,257	8,122	55,066,884	517.06

Southeast Local Workforce Development Area includes these counties: Arkansas, Ashley, Bradley, Chicot, Cleveland, Desha, Drew, Grant, Jefferson, and Lincoln.

TABLE 8. LOCAL WORKFORCE DEVELOPMENT AREA SUMMARY

North American Industry Classification System - Industry Groups	Number of Employing Units	Employment			Total Earnings	Average Weekly Earnings
		Oct	Nov	Dec	Oct - Dec 2017	
SOUTHWEST LOCAL WORKFORCE DEVELOPMENT AREA	5,692	77,235	77,599	77,970	\$789,426,643	\$782.53
Natural Resources & Mining	332	2,232	2,264	2,224	26,808,649	920.63
Manufacturing	237	19,017	19,033	19,158	254,119,814	1,025.08
Trade, Transportation & Utilities	1,360	14,441	14,741	14,882	132,236,153	692.54
Wholesale Trade	240	1,772	1,800	1,777	23,687,714	1,021.95
Retail Trade	823	8,517	8,725	8,721	55,571,547	493.94
Transportation, Warehousing & Utilities	297	4,152	4,216	4,384	52,976,892	958.71
Information	50	452	454	458	6,687,735	1,131.47
Professional & Business Services	440	4,844	4,767	4,743	63,982,455	1,028.65
Education & Health Services	1,315	9,865	9,855	9,900	81,264,180	633.13
Leisure & Hospitality	412	5,713	5,643	5,614	21,350,384	290.34
Other Services	345	1,367	1,347	1,380	9,793,241	552.02
Local Government	254	9,891	9,932	9,931	85,728,941	664.91
State Government	131	3,606	3,629	3,619	34,030,752	723.54
Other	816	5,807	5,934	6,061	73,424,339	951.81

Southwest Local Workforce Development Area includes these counties: Calhoun, Columbia, Dallas, Hempstead, Howard, Lafayette, Little River, Miller, Nevada, Ouachita, Sevier, and Union

WEST CENTRAL LOCAL WORKFORCE DEVELOPMENT AREA	8,193	105,675	105,881	106,182	\$986,705,335	\$716.63
Construction	720	4,552	4,542	4,515	\$52,844,141	896.08
Manufacturing	329	16,329	16,428	16,531	180,021,307	842.87
Trade, Transportation & Utilities	1,810	21,124	21,422	21,534	199,909,818	719.93
Wholesale Trade	325	1,979	1,977	1,981	27,210,965	1,057.68
Retail Trade	1,194	13,849	14,144	14,115	93,206,948	510.81
Transportation, Warehousing & Utilities	291	5,296	5,301	5,438	79,491,905	1,144.02
Financial Activities	810	3,740	3,710	3,681	50,712,417	1,051.38
Professional & Business Services	937	7,361	7,255	7,319	74,633,131	785.18
Education & Health Services	1,581	17,452	17,530	17,631	173,968,618	763.05
Leisure & Hospitality	809	12,999	12,710	12,673	55,712,316	334.97
Local Government	232	11,627	11,671	11,606	104,816,608	693.00
State Government	114	5,547	5,581	5,566	47,867,760	661.70
Other	851	4,944	5,032	5,126	46,219,219	706.26

West Central Local Workforce Development Area includes these counties: Clark, Conway, Garland, Hot Spring, Johnson, Montgomery, Perry, Pike, Pope, and Yell

TABLE 8. LOCAL WORKFORCE DEVELOPMENT AREA SUMMARY

North American Industry Classification System - Industry Groups	Number of Employing Units	Employment			Total Earnings	Average Weekly Earnings
		Oct	Nov	Dec	Oct - Dec 2017	
WESTERN LOCAL WORKFORCE DEVELOPMENT AREA	6,493	102,468	103,130	103,033	\$1,014,397,408	\$758.48
Natural Resources & Mining	151	1,369	1,360	1,347	19,379,918	1,097.22
Trade, Transportation & Utilities	1,553	22,088	22,641	22,627	206,783,748	708.46
Wholesale Trade	364	3,583	3,589	3,600	47,555,928	1,018.79
Retail Trade	930	12,165	12,596	12,514	82,101,728	508.29
Transportation, Warehousing & Utilities	259	6,340	6,456	6,513	77,126,092	921.76
Financial Activities	681	3,532	3,569	3,565	42,644,381	922.65
Professional & Business Services	845	10,543	10,562	10,424	101,635,494	743.90
Education & Health Services	1,115	15,642	15,621	15,633	184,283,275	906.83
Leisure & Hospitality	562	8,910	8,949	8,863	36,211,684	312.72
Other Services	424	2,072	2,052	2,075	16,659,619	620.19
Local Government	153	9,563	9,588	9,577	87,020,437	699.03
State Government	72	2,929	2,933	2,947	27,289,127	714.89
Other	937	25,820	25,855	25,975	292,489,725	869.25

Western Local Workforce Development Area includes these counties: Crawford, Franklin, Logan, Polk, Scott, and Sebastian