

Arkansas Covered Employment & Earnings



Second Quarter
2017

**COVERED EMPLOYMENT AND EARNINGS
STATE OF ARKANSAS
SECOND QUARTER 2017**

**ASA HUTCHINSON, GOVERNOR
STATE OF ARKANSAS**

**DARYL BASSETT, DIRECTOR
DEPARTMENT OF WORKFORCE SERVICES**

**PUBLISHED BY
LABOR MARKET INFORMATION
BUREAU OF LABOR STATISTICS PROGRAMS
POST OFFICE BOX 2981
LITTLE ROCK, ARKANSAS 72203-2981
SUSAN PRICE, BLS PROGRAMS MANAGER
TELEPHONE (501) 682-3103**

STATE OF ARKANSAS WEBPAGE: <http://www.arkansas.gov>

DEPARTMENT OF WORKFORCE SERVICES WEBPAGE: <http://www.dws.arkansas.gov/>

WEBPAGE FOR LABOR MARKET INFORMATION: <http://www.discover.arkansas.gov>

RELEASED: JANURAY 2018

TABLE OF CONTENTS

DESCRIPTION OF DATA	PAGE
Description and Classification of Data	1
Definition of Covered Employment and Earnings	2
Significant Developments During Second Quarter 2017	3

LIST OF GRAPHS AND TABLES

Graph 1	Total Covered Employment for Selected Years, Arkansas	7
Graph 2	Total Covered Earnings, by Calendar Quarter for Selected Years, Arkansas	8
Table 1	Quarterly Comparison of Covered Employment and Wages, by Industry	5
Table 2	Total Covered Employment in Arkansas, 2010 – 2017	6
Table 3	Total Covered Earnings, 2010 – 2017	9
Table 4	Total Taxable Earnings, 2010 – 2017	10
Table 5	State Summary – Employment and Total Earnings, by Industry, Second Quarter 2017	11
Table 6	County Summary – Employment and Total Earnings, by Industry, Second Quarter 2017	22
Table 7	Federal Government Employment and Total Earnings in Arkansas, Second Quarter 2017	60
Table 8	Local Workforce Development Area – Employment and Total Earnings, by Industry, Second Quarter 2017	61

EMPLOYMENT AND EARNINGS
UNDER THE ARKANSAS EMPLOYMENT SECURITY LAW
SECOND QUARTER 2017

DESCRIPTION AND CLASSIFICATION OF DATA

This publication contains covered employment and payroll data by industry and county for the Second Quarter 2017 and a record for total covered employment by month, quarterly payroll data, average weekly earnings, and total taxable earnings for 2010 through 2017. These data are compiled from quarterly contributions and wage reports submitted by employers subject to the Arkansas Employment Security Law.

Employment data have been tabulated for each month of the quarter by industry under the **North American Industry Classification System** (NAICS) by state, county, and workforce area. Payroll data represent the total wages paid during the quarter and are classified by industry for the state and by publishable industry groups for each county and workforce area.

Due to industry classification revisions, previously published data will not always be comparable with current data. For this reason, comparisons should not be made between the same industries under different revisions. For more information, visit the NAICS home page at <http://www.census.gov/naics>.

Industry Classification Revisions

- SIC (Standard Industrial Classification) 1987 to NAICS 2002
- NAICS 2002 to NAICS 2007
- NAICS 2007 to NAICS 2012
- NAICS 2012 to NAICS 2017

The tabulation of this data is a joint effort in conjunction with the United States Bureau of Labor Statistics. Data included in this publication are subject to revisions. Revisions are typically reflected in the Annual Covered Employment and Earnings publication.

DEFINITION OF COVERED EMPLOYMENT AND EARNINGS

Covered Employment is the total number of workers employed by establishments subject to the Arkansas Employment Security Law that worked or received pay for the payroll period including the 12th of the month. Earnings include all wages paid to any covered employee by their employer including salaries, bonuses, commissions, fees, fringe benefits, sick pay made directly to employees or dependents, deferred compensation, and reported tips. These wages include both taxable and nontaxable wages. Only the first \$12,000 paid to each worker by an employer in the calendar year is taxable under the Arkansas Employment Security Law.

An Arkansas state unemployment insurance account is required of any entity meeting the definition of an employer. As described by Arkansas Department of Workforce Services Law, the definition of an employer includes, but is not limited to, a sole proprietorship, partnership, corporation, associations, trust, estate, and receiver or trustee in bankruptcy. The entity must employ one or more individuals for ten or more days in a calendar year, whether or not the days are consecutive.

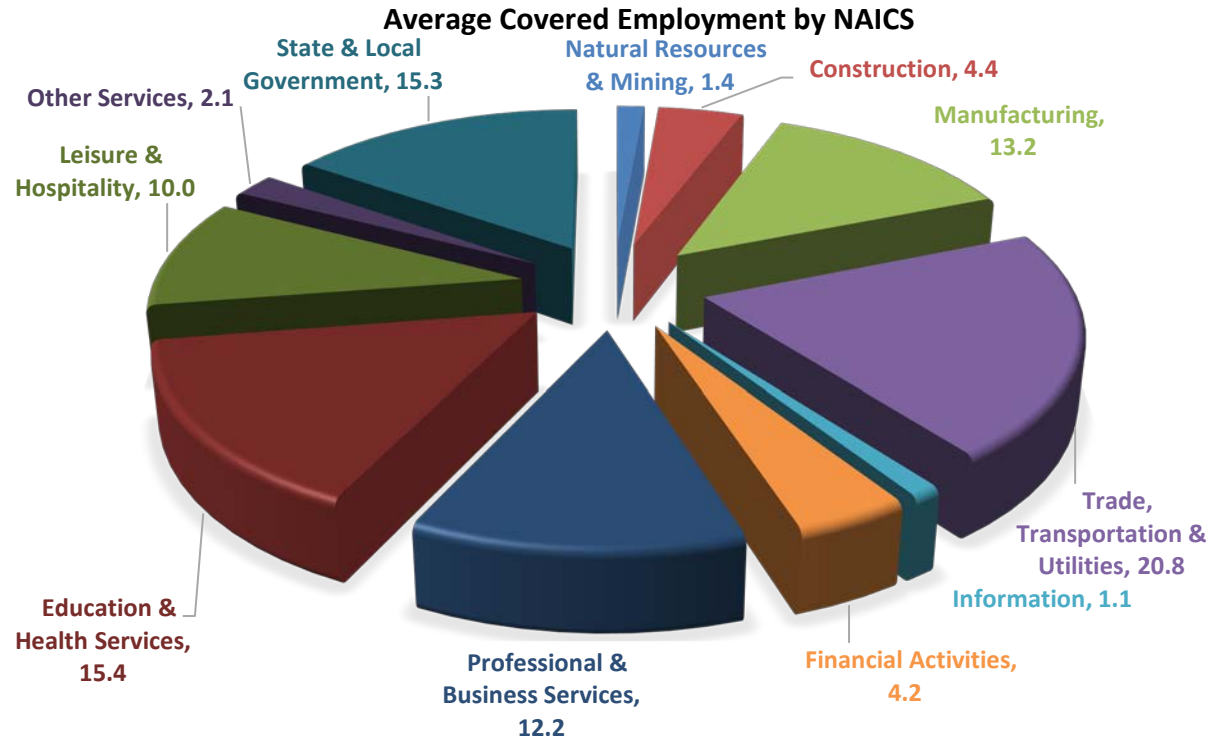
Currently excluded from coverage is employment covered by the Railroad Unemployment Insurance Act, some domestic service workers, employees of small agricultural establishments, self-employed workers, unpaid family workers, insurance and real estate agents paid only on a commission basis, and employees of churches and religious organizations except separately incorporated schools.

Civilian federal workers are covered by Unemployment Compensation for Federal Employees (UCFE).

SIGNIFICANT DEVELOPMENTS DURING SECOND QUARTER 2017

AVERAGE EMPLOYMENT CHANGES

Covered employment averaged 1,187,067 during the Second Quarter 2017 (refer to Table 1), an increase of 15,403 (1.3%) from the previous quarter and an increase of 8,118 (0.7%) from the average recorded one year ago. The over-the-year comparison is more significant when used as an economic indicator and allows for seasonal factors that appear when comparing over-the-quarter data to be disregarded.



EMPLOYMENT CHANGES FROM FOURTH QUARTER 2016

Over the quarter increases occurred in ten industry groups while one reported a loss. The largest increase was in Leisure & Hospitality (6,372), as warming weather and the start of the summer travel season begins. Jobs were added in Education & Health Services (2,160), all of the jobs created were in the Health Services sector. Construction has a seasonal increase of 2,004 jobs. Growth also occurred in Professional & Business Services (1,697), Natural Resources & Mining (693), Trade Transportation & Utilities (678), Other Services (610), State & Local Government (498), Finance Activities (497), and Manufacturing (276). Information is the only sector with an over the quarter decrease of 84 jobs, bringing the sector level to 12,856.

EMPLOYMENT CHANGES FROM SECOND QUARTER 2016 (QUARTER YEAR AGO COMPARISON)

Over-the-year gains were recorded in seven industry groups (refer to Table 1). The largest gains occurred in Education & Health Services (6,650), Professional & Business Services (2,369), and Manufacturing (2,222). The largest losses occurred in State & Local Government (-2,628), Trade, Transportation & Utilities (-2,084) and Information (-429).

COVERED WAGES

Wages paid to covered workers totaled \$12,367,259,067 for the Second Quarter 2017 (refer to Table 1), for an average weekly wage of \$801.41 (refer to Table 5). Benton County workers recorded the highest average weekly wage (\$1,022.18), and employees in Newton County reported the lowest (\$490.10) (refer to Table 6).

The Professional & Business Services industry recorded the highest average weekly wage for the State of Arkansas (\$1,051.43). The Leisure & Hospitality sector recorded the lowest (\$307.93) (refer to Table 5).

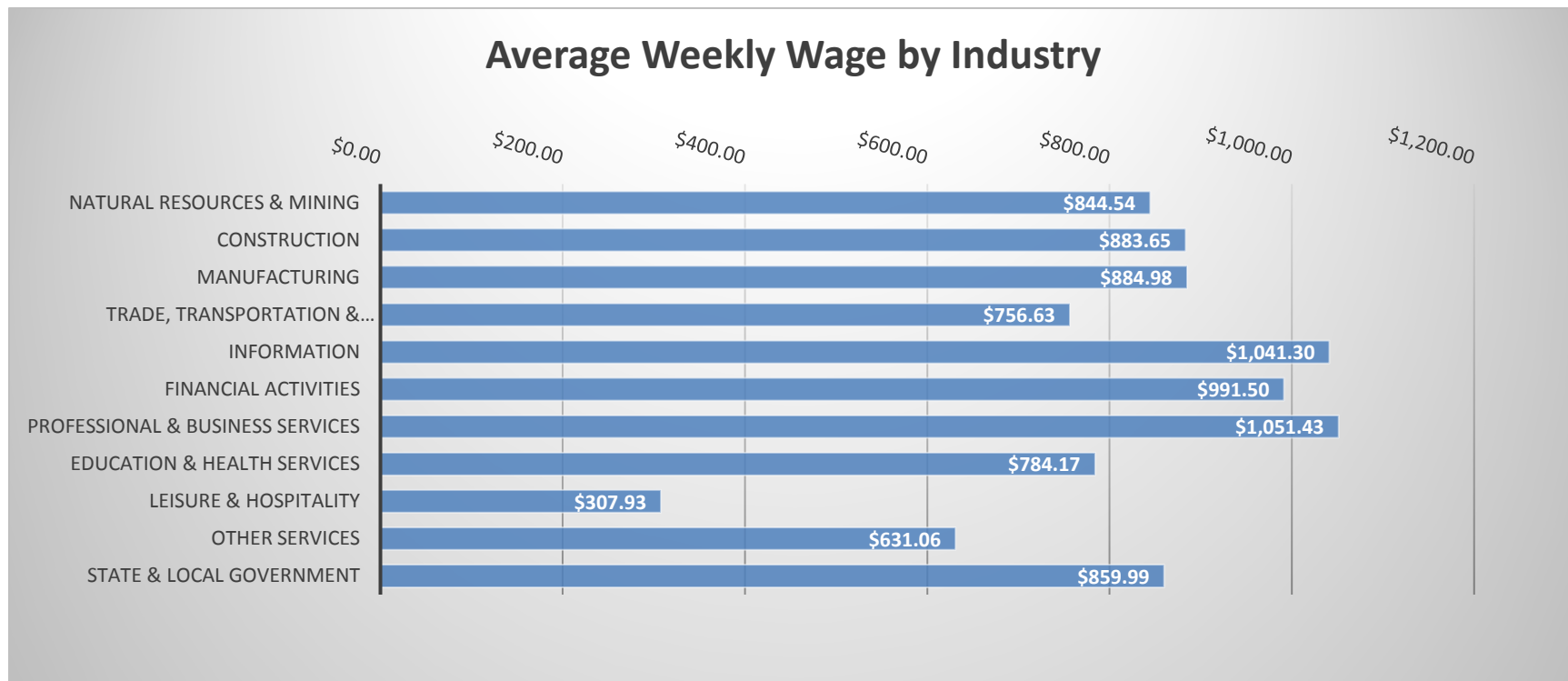


TABLE 1. QUARTERLY COMPARISON OF COVERED EMPLOYMENT AND WAGES, BY INDUSTRY

North American Industry Classification System - Industry Groups	Number of Employing Units	Monthly Employment Average	Percent of Total	Net Change From:		Total Wages Paid Apr - Jun 2017	Percent of Total
				Jan - Mar 2017	Apr - Jun 2016		
TOTAL	88,327	1,187,067	100	15,403	8,118	\$12,367,259,067	100
Natural Resources & Mining	2,549	16,684	1.4	693	-394	183,170,133	1.5
Agriculture, Forestry, Fishing & Hunting	2,101	12,837	1.1	562	-179	124,190,368	1.0
Mining	448	3,846	0.3	130	-216	58,979,765	0.5
Construction	6,839	51,682	4.4	2,004	936	593,697,374	4.8
Manufacturing	2,920	156,400	13.2	276	2,222	1,799,343,100	14.5
Trade, Transportation & Utilities	21,569	246,391	20.8	678	-2,084	2,423,554,770	19.6
Wholesale Trade	7,209	46,856	3.9	288	391	748,876,841	6.1
Retail Trade	11,052	140,297	11.8	398	-1,951	934,984,176	7.6
Transportation & Warehousing	2,895	51,560	4.3	-38	-529	575,214,739	4.7
Utilities	413	7,677	0.6	29	5	164,479,014	1.3
Information	1,108	12,856	1.1	-84	-429	174,026,133	1.4
Financial Activities	8,252	49,710	4.2	497	292	640,741,960	5.2
Finance & Insurance	4,895	36,169	3.0	-11	54	519,911,754	4.2
Real Estate & Rental & Leasing	3,357	13,541	1.1	508	238	120,830,206	1.0
Professional & Business Services	13,904	144,505	12.2	1,697	2,369	1,975,184,138	16.0
Professional & Technical Services	8,749	42,793	3.6	-505	370	635,251,572	5.1
Management of Companies & Enterprises	558	35,460	3.0	-529	878	858,739,934	6.9
Administrative & Waste Services	4,597	66,253	5.6	2,732	1,122	481,192,632	3.9
Education & Health Services	15,784	183,223	15.4	2,160	6,650	1,867,805,312	15.1
Educational Services	831	11,537	1.0	-53	369	103,675,319	0.8
Health Care & Social Assistance	14,953	171,686	14.5	2,213	6,282	1,764,129,993	14.3
Leisure & Hospitality	7,031	119,260	10.0	6,372	942	477,413,129	3.9
Arts, Entertainment & Recreation	962	12,118	1.0	2,143	-288	58,811,472	0.5
Accommodation & Food Services	6,069	107,142	9.0	4,229	1,230	418,601,657	3.4
Other Services	5,345	25,106	2.1	610	241	205,967,912	1.7
State & Local Government	3,026	181,249	15.3	498	-2,628	2,026,355,106	16.4
Local Government	1,958	113,389	9.6	466	-455	1,247,785,133	10.1
State Government	1,068	67,860	5.7	32	-2,173	778,569,973	6.3
Nonclassifiable Establishments	0	0	0.0	0	0	0	0.0

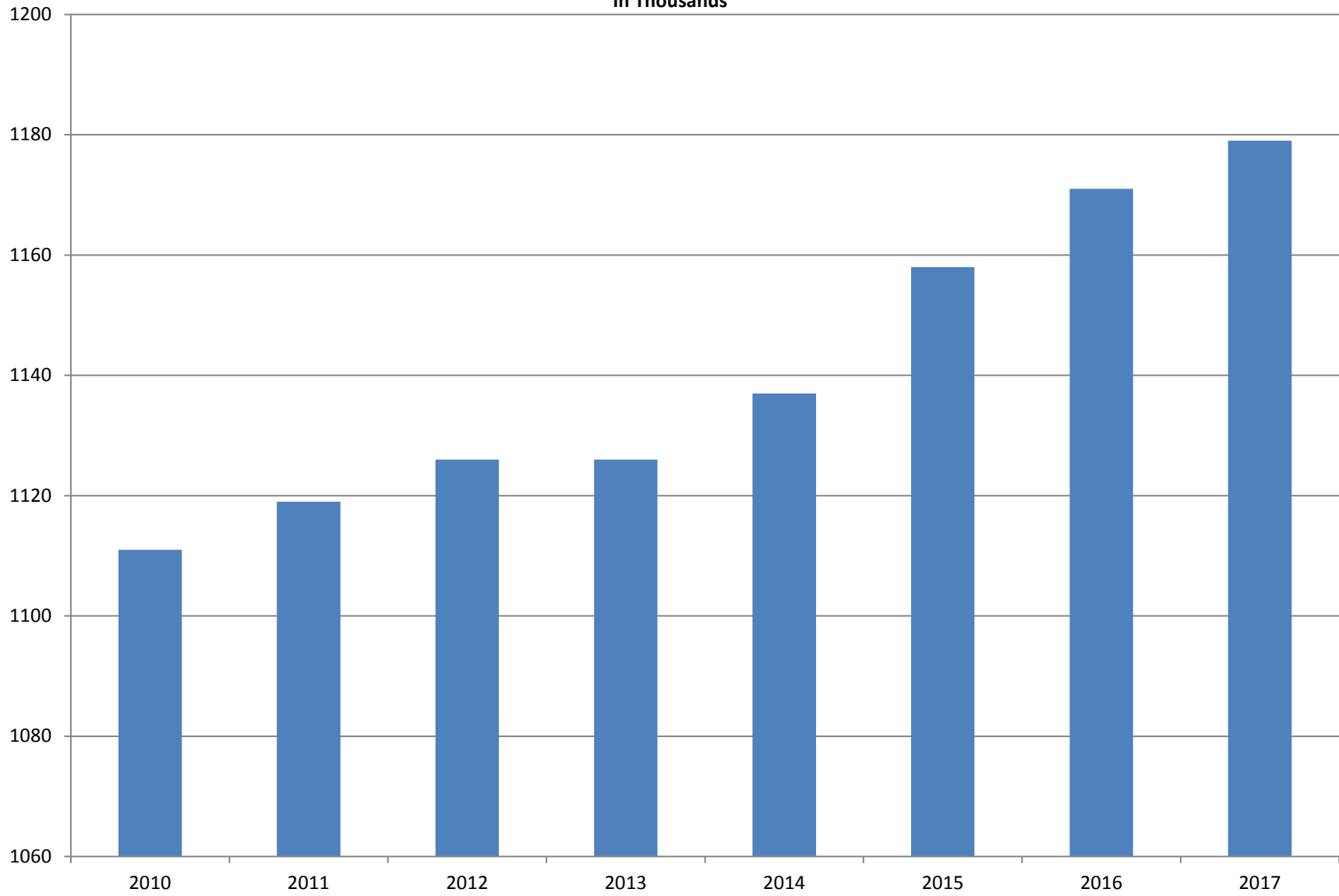
Note: Items do not necessarily add to total because of rounding. Because of industry code changes between years, substantial employment and wage shifts among industries are anticipated.

TABLE 2. TOTAL COVERED EMPLOYMENT IN ARKANSAS

PERIOD	2010	2011	2012	2013	2014	2015	2016	2017
AVERAGE	1,110,947	1,118,639	1,126,171	1,125,890	1,137,486	1,157,634	1,171,490	1,179,365
January	1,089,984	1,098,349	1,113,274	1,112,991	1,114,412	1,135,577	1,152,434	1,162,153
February	1,091,282	1,098,445	1,119,319	1,121,492	1,122,905	1,144,902	1,162,294	1,172,930
March	1,106,198	1,113,061	1,131,123	1,129,100	1,132,106	1,146,413	1,170,837	1,179,908
April	1,115,341	1,129,635	1,136,608	1,134,734	1,140,788	1,158,606	1,178,630	1,185,282
May	1,123,250	1,126,371	1,142,985	1,138,383	1,149,046	1,167,657	1,181,644	1,189,981
June	1,130,164	1,123,412	1,136,699	1,130,402	1,144,876	1,164,607	1,177,506	1,185,938
July	1,073,743	1,080,937	1,078,836	1,083,849	1,096,675	1,119,390	1,132,361	N/A
August	1,099,795	1,106,262	1,108,552	1,109,759	1,125,162	1,148,502	1,160,743	N/A
September	1,124,281	1,132,779	1,134,829	1,135,673	1,150,545	1,173,776	1,185,352	N/A
October	1,125,073	1,138,395	1,135,677	1,138,312	1,153,684	1,173,953	1,185,022	N/A
November	1,126,781	1,138,543	1,137,411	1,141,035	1,158,579	1,177,717	1,186,046	N/A
December	1,125,466	1,137,474	1,138,742	1,134,955	1,161,056	1,180,513	1,185,009	N/A

AVERAGE TOTAL COVERED EMPLOYMENT

In Thousands



TOTAL COVERED EARNINGS BY CALENDAR YEAR

In Thousands

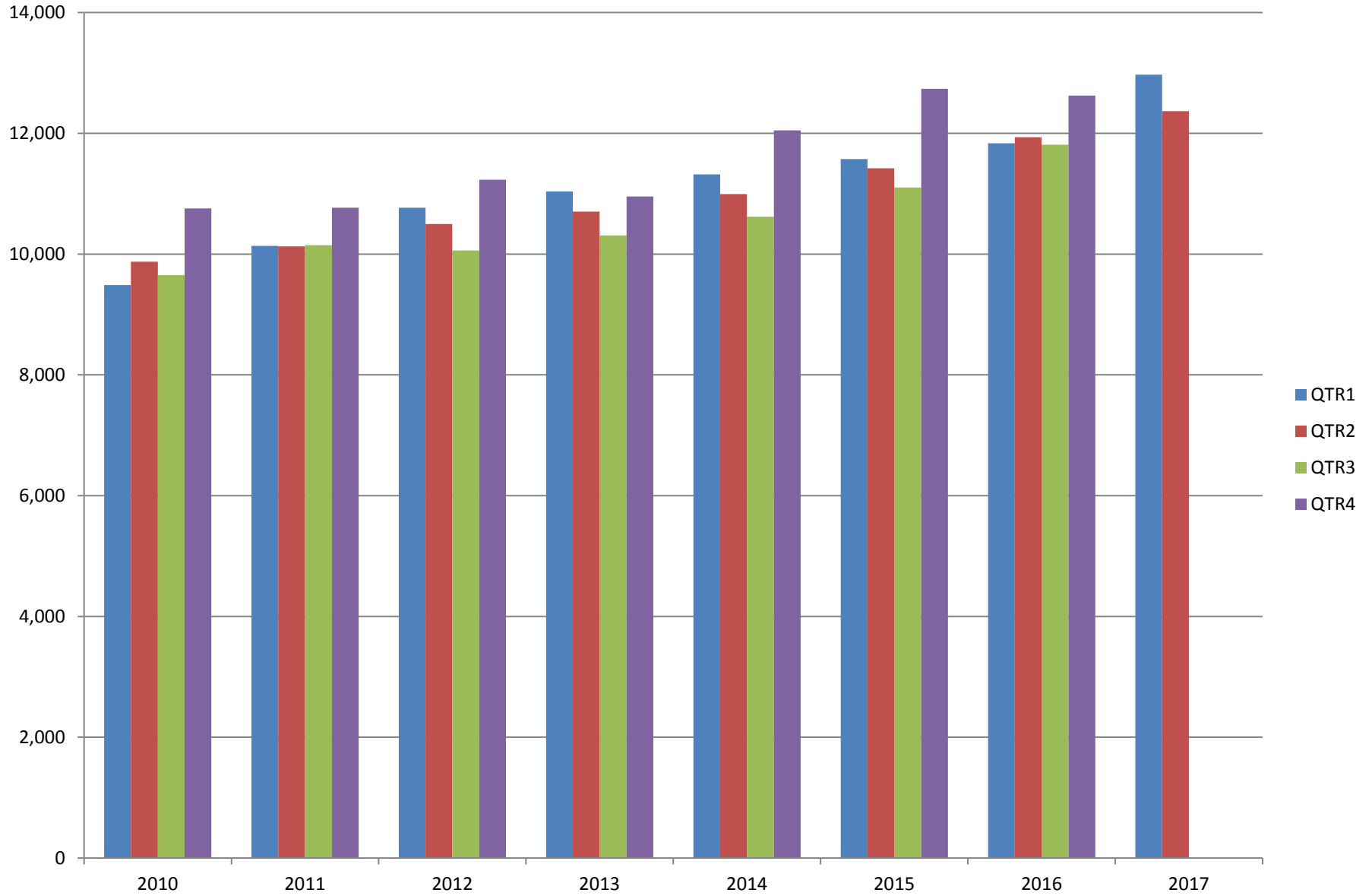


TABLE 3. TOTAL COVERED EARNINGS 2010 - 2017

PERIOD	2010	2011	2012	2013
TOTAL	\$39,769,504,992	\$41,177,659,236	\$42,551,238,929	\$43,371,086,461
January - March	9,486,245,580	10,134,035,254	10,766,175,449	11,050,678,946
April - June	9,873,489,653	10,128,274,611	10,494,369,042	10,692,826,528
July - September	9,653,588,807	10,147,287,431	10,053,294,410	10,322,652,747
October - December	10,756,180,952	10,768,061,940	11,237,400,028	11,304,928,240
Average Weekly Earnings	\$688.42	\$707.89	\$726.62	\$740.80

PERIOD	2014	2015	2016	2017
TOTAL	\$44,980,520,034	\$46,836,352,793	\$48,207,277,530	\$25,338,206,006
January - March	11,321,422,241	11,575,046,688	11,836,255,664	12,970,946,939
April - June	10,991,760,061	11,419,363,330	11,935,722,186	12,367,259,067
July - September	10,619,889,280	11,104,443,452	11,809,460,297	N/A
October - December	12,047,448,452	12,737,499,323	12,625,839,383	N/A
Average Weekly Earnings	\$760.46	\$778.05	\$791.35	\$826.33

TABLE 4. TOTAL TAXABLE EARNINGS, 2010 - 2017

PERIOD	2010	2011	2012	2013
TOTAL	11,332,118,456	11,479,396,226	11,624,348,048	11,644,747,978
January - March	5,607,134,758	5,828,877,821	6,167,036,199	6,184,735,653
April - June	2,977,100,591	2,910,604,359	2,838,154,846	2,805,431,293
July - September	1,577,067,770	1,601,382,146	1,494,712,584	1,506,497,129
October - December	1,170,815,337	1,138,531,900	1,124,444,419	1,148,083,903

PERIOD	2014	2015	2016	2017
TOTAL	11,919,662,224	12,258,632,610	12,511,938,047	9,890,428,108
January - March	6,288,682,396	6,378,966,662	6,595,351,454	6,971,816,280
April - June	2,831,013,392	2,915,293,283	3,003,077,908	2,918,611,828
July - September	1,552,243,963	1,640,978,599	1,651,582,584	N/A
October - December	1,247,722,473	1,323,394,066	1,261,926,101	N/A

TABLE 5. STATEWIDE SUMMARY

North American Industry Classification System - Industry Groups		Number of Employing Units	Employment			Total Earnings	Average Weekly Earnings
			Apr	May	Jun	Apr - Jun 2017	
TOTAL, ALL INDUSTRIES		88,327	1,185,282	1,189,981	1,185,938	\$12,367,259,067	\$801.41
NATURAL RESOURCES & MINING		2,549	16,443	16,690	16,918	\$183,170,133	\$844.54
11	AGRICULTURE, FORESTRY, FISHING & HUNTING	2,101	12,694	12,818	13,000	\$124,190,368	\$744.17
111	CROP PRODUCTION	937	4,193	4,192	4,259	\$31,673,340	\$578.08
1111	Oilseed & Grain Farming	685	2,805	2,860	2,909	21,943,070	590.60
1112	Vegetable & Melon Farming	34	230	236	227	1,333,944	444.20
1113	Fruit & Tree Nut Farming	14	58	38	68	284,182	399.88
1114	Greenhouse & Nursery Production	40	414	369	341	3,105,050	637.50
1119	Other Crop Farming	164	686	689	714	5,007,094	553.13
112	ANIMAL PRODUCTION & AQUACULTURE	331	3,223	3,276	3,332	\$37,611,563	\$882.88
1121	Cattle Ranching & Farming	122	410	418	427	3,063,063	563.24
1122	Hog & Pig Farming	14	143	148	140	1,755,069	939.71
1123	Poultry & Egg Production	129	2,245	2,273	2,323	28,764,780	970.33
1125	Animal Aquaculture	44	371	384	385	3,682,357	745.42
	Other	22	54	53	57	346,294	487.28
115	SUPPORT ACTIVITIES FOR AGRICULTURE & FORESTRY	430	3,064	3,140	3,189	\$32,593,020	\$800.75
1151	Support Activities for Crop Production	294	1,392	1,449	1,497	17,665,829	939.77
1152	Support Activities for Animal Production	64	703	690	725	5,788,796	630.73
1153	Support Activities for Forestry	72	969	1,001	967	9,138,395	718.03
	OTHER	403	2,214	2,210	2,220	\$22,312,445	\$774.99
21	MINING	448	3,749	3,872	3,918	\$58,979,765	\$1,179.54
211	OIL & GAS EXTRACTION	77	758	762	766	\$14,370,798	\$1,450.72
212	MINING (EXCEPT OIL & GAS)	99	1,647	1,722	1,721	\$22,956,907	\$1,040.81
213	SUPPORT ACTIVITIES FOR MINING	272	1,344	1,388	1,431	\$21,652,060	\$1,200.25

TABLE 5. STATEWIDE SUMMARY

North American Industry Classification System - Industry Groups		Number of Employing Units	Employment			Total Earnings Apr - Jun 2017	Average Weekly Earnings
			Apr	May	Jun		
CONSTRUCTION		6,839	51,069	51,529	52,448	\$593,697,374	\$883.65
236	CONSTRUCTION OF BUILDINGS	1,776	9,862	9,993	10,280	\$121,619,881	\$931.35
2361	Residential Building Construction	1,186	3,277	3,292	3,429	33,608,320	775.73
2362	Nonresidential Building Construction	590	6,585	6,701	6,851	88,011,561	1,008.61
237	HEAVY & CIVIL ENGINEERING CONSTRUCTION	704	9,410	9,464	9,579	\$130,265,833	\$1,056.53
2371	Utility System Construction	396	5,243	5,214	5,283	76,688,381	1,124.35
2372	Land Subdivision	49	91	98	89	939,968	780.27
2373	Highway, Street & Bridge Construction	176	3,288	3,330	3,400	40,679,033	937.06
2379	Other Heavy Construction	83	788	822	807	11,958,451	1,141.76
238	SPECIALTY TRADE CONTRACTORS	4,359	31,797	32,072	32,589	\$341,811,660	\$817.76
2381	Building Foundation & Exterior Contractors	798	6,017	5,985	6,099	60,951,067	777.06
2382	Building Equipment Contractors	2,107	17,033	17,191	17,505	194,318,023	866.88
2383	Building Finishing Contractors	725	4,125	4,205	4,189	41,770,800	769.98
2389	Other Specialty Trade Contractors	729	4,622	4,691	4,796	44,771,770	732.29
MANUFACTURING		2,920	155,924	156,162	157,114	\$1,799,343,100	\$884.98
311	FOOD MANUFACTURING	283	46,393	46,626	47,144	\$423,705,457	\$697.60
3111	Animal Food Manufacturing	46	1,781	1,795	1,875	26,089,497	1,104.50
3112	Grain & Oilseed Milling	33	2,635	2,644	2,656	28,260,281	821.88
3114	Fruit, Vegetable & Specialty Food	18	4,253	4,271	4,245	47,223,548	853.45
3115	Dairy Product Manufacturing	9	584	585	587	6,052,197	795.36
3116	Animal Slaughtering & Processing	76	31,178	31,334	31,769	255,395,459	625.13
3118	Bakeries & Tortilla Manufacturing	70	3,851	3,910	3,876	37,700,927	747.63
3119	Other Food Manufacturing	21	2,078	2,052	2,104	22,778,568	843.21
	Other	10	33	35	32	204,980	473.03
312	BEVERAGE & TOBACCO PRODUCT MANUFACTURING	52	1,459	1,483	1,520	\$16,656,733	\$861.47
313	TEXTILE MILLS	8	112	118	117	\$1,567,220	\$1,042.27
314	TEXTILE PRODUCT MILLS	43	991	989	993	\$12,067,307	\$936.68
3141	Textile Furnishing Mills	9	34	34	33	384,494	878.51
3149	Other Textile Product Mills	34	957	955	960	11,682,813	938.73
315	APPAREL MANUFACTURING	17	888	906	895	\$6,204,462	\$532.47
3151	Apparel Knitting Mills	3	629	632	625	4,664,796	570.78
	Other	14	259	274	270	1,539,666	442.48

TABLE 5. STATEWIDE SUMMARY

North American Industry Classification System - Industry Groups		Number of Employing Units	Employment			Total Earnings	Average Weekly Earnings
			Apr	May	Jun	Apr - Jun 2017	
316	LEATHER & ALLIED PRODUCT MANUFACTURING	15	1,018	1,052	1,063	\$7,045,546	\$518.96
3162	Footwear Manufacturing	5	829	864	879	5,643,718	\$506.37
3169	Other Leather & Allied Product Manufacturing	10	189	188	184	1,401,828	\$576.65
321	WOOD PRODUCT MANUFACTURING	320	9,529	9,510	9,577	\$99,296,823	\$800.76
3211	Sawmills & Wood Preservation	151	4,601	4,583	4,631	51,871,509	866.47
3212	Veneer & Engineered Wood Products	40	1,804	1,787	1,783	20,854,262	895.52
3219	Other Wood Product Manufacturing	129	3,124	3,140	3,163	26,571,052	650.45
322	PAPER MANUFACTURING	69	9,300	9,271	9,338	\$143,630,730	\$1,187.63
3221	Pulp, Paper & Paperboard Mills	11	3,677	3,683	3,706	72,710,140	1,516.29
3222	Converted Paper Product Manufacturing	58	5,623	5,588	5,632	70,920,590	971.70
323	PRINTING & RELATED SUPPORT ACTIVITIES	241	3,943	3,875	3,713	\$38,216,129	\$764.82
324	PETROLEUM & COAL PRODUCTS MANUFACTURING	20	1,262	1,265	1,282	\$20,151,417	\$1,220.88
325	CHEMICAL MANUFACTURING	122	5,331	5,353	5,368	\$79,577,793	\$1,144.04
3251	Basic Chemical Manufacturing	32	1,783	1,788	1,802	31,895,806	1,369.92
3252	Resin, Rubber & Artificial Fibers	9	473	476	474	6,864,781	1,113.27
3253	Agricultural Chemical Manufacturing	14	454	450	454	7,827,204	1,330.10
3254	Pharmaceutical & Medicine Manufacturing	19	482	493	500	5,932,028	928.09
3255	Paint, Coating & Adhesive Manufacturing	10	249	250	245	3,745,706	1,161.82
3256	Soap, Cleaning Compound, & Toilet Preparation Manufacturing	14	1,203	1,189	1,188	14,114,925	909.86
3259	Other Chemical Preparation Manufacturing	24	687	707	705	9,197,343	1,011.18
326	PLASTICS & RUBBER PRODUCTS MANUFACTURING	123	10,676	10,753	10,864	\$128,700,514	\$919.71
3261	Plastics Product Manufacturing	95	6,545	6,582	6,652	71,754,791	837.19
3262	Rubber Product Manufacturing	28	4,131	4,171	4,212	56,945,723	1,050.13
327	NONMETALLIC MINERAL PRODUCT MANUFACTURING	231	3,589	3,600	3,601	\$42,011,044	\$898.50
3271	Clay Product & Refractory Manufacturing	13	469	479	483	5,600,430	903.15
3272	Glass & Glass Product Manufacturing	9	345	347	337	3,939,203	883.43
3273	Cement & Concrete Product Manufacturing	173	2,051	2,057	2,071	23,273,291	869.20
3274	Lime & Gypsum Product Manufacturing	3	306	301	297	4,815,029	1,229.16
3279	Other Nonmetallic Mineral Products Manufacturing	33	418	416	413	4,383,091	811.13
331	PRIMARY METAL MANUFACTURING	75	7,744	7,801	7,865	\$134,232,946	\$1,323.23
3311	Iron & Steel Mills & Ferroalloys	10	2,884	2,954	2,993	70,291,767	1,836.84
3312	Purchased Steel Product Manufacturing	21	1,846	1,841	1,876	26,664,366	1,106.11
3313	Alumina & Aluminum Production	17	962	953	952	12,601,742	1,014.33
3314	Other Nonferrous Metal Production	8	370	366	359	4,634,589	976.73
3315	Foundries	19	1,682	1,687	1,685	20,040,482	915.06

TABLE 5. STATEWIDE SUMMARY

North American Industry Classification System - Industry Groups		Number of Employing Units	Employment			Total Earnings	Average Weekly Earnings
			Apr	May	Jun	Apr - Jun 2017	
332	FABRICATED METAL PRODUCT MANUFACTURING	513	15,248	15,147	15,362	\$198,271,048	\$999.95
3321	Forging & Stamping	13	413	400	412	4,739,408	892.82
3322	Cutlery & Hand Tool Manufacturing	11	576	564	589	6,207,618	828.53
3323	Architectural & Structural Metals	149	4,426	4,406	4,486	66,464,831	1,151.68
3324	Boilers, Tanks & Shipping Containers	15	660	656	659	8,591,503	1,003.88
3325	Hardware Manufacturing	5	245	244	244	3,070,133	966.57
3326	Spring & Wire Product Manufacturing	11	367	369	366	4,067,783	851.83
3327	Machine Shops & Threaded Products	201	1,783	1,786	1,849	18,421,495	784.63
3328	Coating, Engraving & Heat Treating Metals	40	612	614	613	6,230,315	781.82
3329	Other Fabricated Metal Product Manufacturing	68	6,166	6,108	6,144	80,477,962	1,008.35
333	MACHINERY MANUFACTURING	210	11,173	11,244	11,165	\$130,875,899	\$899.35
3331	Agriculture, Construction & Mining Machinery	40	2,620	2,614	2,580	24,337,842	718.76
3332	Industrial Machinery Manufacturing	21	689	713	707	9,975,442	1,091.52
3333	Commercial & Service Industry Machinery	20	724	721	728	9,183,591	975.28
3334	HVAC & Commercial Refrigeration Equipment	24	2,961	2,955	2,881	36,794,854	965.23
3335	Metalworking Machinery Manufacturing	58	1,025	1,036	1,032	11,133,449	830.67
3336	Turbine & Power Transmission Equipment Manufacturing	5	652	653	661	8,348,111	979.90
3339	Other General Purpose Machinery Manufacturing	42	2,502	2,552	2,576	31,102,610	940.70
334	COMPUTER & ELECTRONIC PRODUCT MANUFACTURING	52	2,089	2,080	2,127	\$26,685,675	\$978.12
3343	Audio & Video Equipment Manufacturing	6	133	132	129	1,336,926	783.05
3344	Semiconductors & Electronic Components	25	1,457	1,454	1,502	18,160,368	949.66
3345	Navigational, Measuring, Electromedical, & Control Instr, Mfg Other	16 5	412 87	408 86	408 88	5,682,681 1,505,700	1,067.91 1,331.30
335	ELECTRICAL EQUIPMENT & APPLIANCES	56	4,749	4,716	4,750	\$65,276,416	\$1,059.71
3351	Electric Lighting Equipment Manufacturing	10	357	351	351	4,162,434	\$907.05
3352	Household Appliance Manufacturing	5	41	38	39	716,422	\$1,401.09
3353	Electrical Equipment Manufacturing	22	3,123	3,142	3,157	44,678,434	1,094.29
3359	Other Electrical Equipment & Component Manufacturing	19	1,228	1,185	1,203	15,719,126	1,003.18
336	TRANSPORTATION EQUIPMENT MANUFACTURING	136	13,574	13,516	13,467	\$160,753,457	\$914.69
3362	Motor Vehicle Body & Trailer Manufacturing	32	2,016	2,027	2,022	19,136,906	728.15
3363	Motor Vehicle Parts Manufacturing	43	5,199	5,129	5,163	59,277,079	883.05
3364	Aerospace Product & Parts Manufacturing	27	3,004	3,003	2,937	50,565,570	1,304.67
3366	Ship & Boat Building Other	21 13	2,004 1,351	2,019 1,338	2,033 1,312	16,074,980 15,698,922	612.55 905.48
337	FURNITURE & RELATED PRODUCT MANUFACTURING	162	3,568	3,591	3,600	\$31,825,173	\$682.62
3371	Household & Institutional Furniture	136	2,901	2,909	2,922	24,896,979	657.98
3372	Office Furniture & Fixtures Manufacturing	20	575	597	593	6,275,171	820.46
3379	Other Furniture Related Product Manufacturing	6	92	85	85	653,023	575.18
339	MISCELLANEOUS MANUFACTURING	172	3,288	3,266	3,303	\$32,591,311	\$763.02
3391	Medical Equipment & Supplies Manufacturing	69	1,588	1,575	1,586	18,281,019	888.33
3399	Other Miscellaneous Manufacturing	103	1,700	1,691	1,717	14,310,292	646.51

TABLE 5. STATEWIDE SUMMARY

North American Industry Classification System - Industry Groups		Number of Employing Units	Employment			Total Earnings	Average Weekly Earnings
			Apr	May	Jun	Apr - Jun 2017	
TRADE, TRANSPORTATION & UTILITIES		21,569	245,559	246,551	247,063	\$2,423,554,770	\$756.63
42	WHOLESALE TRADE	7,209	46,687	46,874	47,007	\$748,876,841	\$1,229.42
423	MERCHANT WHOLESALERS, DURABLE GOODS	2,088	20,344	20,428	20,619	\$278,348,185	\$1,046.31
4231	Motor Vehicle & Part Merchant Wholesalers	232	2,605	2,640	2,664	28,521,920	832.21
4232	Furniture & Furnishings Merchant Wholesalers	52	491	493	490	8,008,950	1,253.88
4233	Lumber & Supply Merchant Wholesalers	161	1,408	1,419	1,464	16,671,489	896.59
4234	Commercial Goods Merchant Wholesalers	295	2,379	2,395	2,415	42,807,449	1,374.13
4235	Metal & Mineral Merchant Wholesalers	51	832	843	842	11,107,486	1,018.38
4236	Appliances & Electronics Goods Merchant Wholesalers	194	2,020	2,035	2,060	31,731,970	1,197.51
4237	Hardware & Plumbing Merchant Wholesalers	224	2,306	2,322	2,347	31,028,266	1,026.58
4238	Machinery & Supply Merchant Wholesalers	676	6,567	6,568	6,596	88,920,991	1,040.00
4239	Miscellaneous Durable Goods Merchant Wholesalers	203	1,736	1,713	1,741	19,549,664	869.26
424	MERCHANT WHOLESALERS, NONDURABLE GOODS	1,114	14,626	14,625	14,548	\$192,094,939	\$1,012.11
4241	Paper & Paper Product Merchant Wholesalers	70	1,117	1,102	1,054	16,366,637	1,153.96
4242	Druggist' Goods Merchant Wholesalers	51	716	734	748	10,888,863	1,143.23
4243	Apparel & Piece Goods Merchant Wholesalers	37	622	608	625	7,855,941	977.31
4244	Grocery Product Merchant Wholesalers	280	4,352	4,329	4,305	65,755,059	1,168.51
4245	Farm Product & Raw Material Merchant Wholesalers	70	733	751	744	6,070,812	628.80
4246	Chemical Merchant Wholesalers	86	615	620	621	10,162,235	1,263.54
4247	Petroleum Merchant Wholesalers	133	1,209	1,190	1,193	13,532,084	869.37
4248	Alcoholic Beverage Merchant Wholesalers	42	1,582	1,607	1,610	19,779,684	951.14
4249	Miscellaneous Nondurable Goods Merchant Wholesaler	345	3,680	3,684	3,648	41,683,624	873.53
425	ELECTRONIC MARKETS & AGENTS & BROKERS	4,007	11,717	11,821	11,840	\$278,433,717	\$1,816.21
44 - 45	RETAIL TRADE	11,052	140,082	140,554	140,256	\$934,984,176	\$512.64
441	MOTOR VEHICLE & PARTS DEALERS	1,537	19,607	19,574	19,554	\$213,963,783	\$840.66
4411	Automobile Dealers	630	12,117	12,105	12,120	153,769,337	976.42
4412	Other Motor Vehicle Dealers	171	1,708	1,741	1,724	18,383,251	820.08
4413	Automotive Parts, Accessories & Tire Stores	736	5,782	5,728	5,710	41,811,195	560.32
442	FURNITURE & HOME FURNISHINGS STORES	512	3,657	3,631	3,599	\$27,806,209	\$589.40
4421	Furniture Stores	276	2,061	2,050	2,010	17,668,909	666.14
4422	Home Furnishings Stores	236	1,596	1,581	1,589	10,137,300	490.85
443	ELECTRONICS & APPLIANCE STORES	426	3,544	3,507	3,513	\$30,248,885	\$660.78
444	BUILDING MATERIAL & GARDEN SUPPLY STORES	836	11,965	12,018	11,965	\$80,552,785	\$517.11
4441	Building Material & Supplies Dealers	592	9,848	9,884	9,871	67,611,774	527.07
4442	Lawn & Garden Equipment & Supplies Stores	244	2,117	2,134	2,094	12,941,011	470.67

TABLE 5. STATEWIDE SUMMARY

North American Industry Classification System - Industry Groups		Number of Employing Units	Employment			Total Earnings	Average Weekly Earnings
			Apr	May	Jun	Apr - Jun 2017	
445	FOOD & BEVERAGE STORES	1,066	20,010	20,047	19,937	\$107,745,257	\$414.45
4451	Grocery Stores	567	17,152	17,151	17,073	89,441,440	401.75
4452	Specialty Food Stores	154	1,095	1,122	1,082	8,908,517	623.16
4453	Beer, Wine & Liquor Stores	345	1,763	1,774	1,782	9,395,300	407.62
446	HEALTH & PERSONAL CARE STORES	993	8,669	8,663	8,665	\$79,405,270	\$704.86
447	GASOLINE STATIONS	1,577	12,131	12,236	12,340	\$56,008,518	\$352.11
44711	Gasoline Stations with Convenience Stores	1,477	10,899	10,982	11,093	48,740,662	341.11
44719	Other Gasoline Stations	100	1,232	1,254	1,247	7,267,856	449.29
448	CLOTHING & CLOTHING ACCESSORIES STORES	1,059	8,267	8,158	8,053	\$35,438,776	\$334.10
4481	Clothing Stores	783	6,310	6,190	6,122	24,068,965	298.27
4482	Shoe Stores	140	1,219	1,239	1,218	4,757,899	298.69
4483	Jewelry, Luggage & Leather Goods Stores	136	738	729	713	6,611,912	699.92
451	SPORTING GOODS, HOBBY, BOOK & MUSIC STORES	472	4,300	4,346	4,302	\$20,626,867	\$367.63
4511	Sporting Goods & Musical Instrument Stores	406	3,825	3,857	3,871	18,685,564	373.24
4512	Book, Periodical & Music Stores	66	475	489	431	1,941,303	321.14
452	GENERAL MERCHANDISE STORES	953	38,920	39,294	39,411	\$227,049,119	\$445.45
4522	Department Stores	135	7,478	7,480	7,520	36,450,633	374.22
4523	Gen. Merchandise Stores, Warehouse clubs & Supercenters	818	31,442	31,814	31,891	190,598,486	462.28
453	MISCELLANEOUS STORE RETAILERS	1,191	7,141	7,202	7,080	\$38,833,440	\$418.32
4531	Florists	176	628	667	613	3,222,327	389.73
4532	Office Supplies, Stationery & Gift Stores	246	1,651	1,621	1,631	9,364,555	440.76
4533	Used Merchandise Stores	263	2,198	2,189	2,111	10,327,158	366.76
4539	Other Miscellaneous Store Retailers	506	2,664	2,725	2,725	15,919,400	452.76
454	NONSTORE RETAILERS	430	1,871	1,878	1,837	\$17,305,267	\$714.92
4541	Electronic Shopping & Mail-Order Houses	201	746	761	744	7,442,176	762.96
4542	Vending Machine Operators	66	465	459	458	3,606,049	602.15
4543	Direct Selling Establishments	163	660	658	635	6,257,042	739.34
48 - 49	TRANSPORTATION & WAREHOUSING	2,895	51,176	51,468	52,037	\$575,214,739	\$858.17
481	AIR TRANSPORTATION	55	678	692	700	\$6,281,039	\$700.23
4811	Scheduled Air Transportation	21	603	613	615	4,883,770	615.52
4812	Nonshceduled Air Transportation	34	75	79	85	1,397,269	1,349.15
483	WATER TRANSPORTATION	5	20	19	19	\$368,428	\$1,465.89
484	TRUCK TRANSPORTATION	1,803	30,807	31,018	31,287	\$368,180,247	\$912.50
4841	General Freight Trucking	1,040	24,503	24,659	24,814	300,679,700	937.97
4842	Specialized Freight Trucking	763	6,304	6,359	6,473	67,500,547	814.02

TABLE 5. STATEWIDE SUMMARY

North American Industry Classification System - Industry Groups		Number of Employing Units	Employment			Total Earnings	Average Weekly Earnings
			Apr	May	Jun	Apr - Jun 2017	
485	TRANSIT & GROUND PASSENGER TRANSPORTATION	115	1,787	1,753	1,731	\$9,386,330	\$410.94
4853	Taxi & Limousine Service	31	450	429	401	1,915,342	345.31
4854	School & Employee Bus Transportation	12	412	417	404	1,943,680	363.78
4855	Charter Bus Industry Service	8	104	98	107	714,600	533.68
4859	Other Ground Passenger Transportation	59	704	693	704	3,995,347	438.84
	Other	5	117	116	115	817,361	542.02
486	PIPELINE TRANSPORTATION	37	427	429	434	\$9,241,029	\$1,653.14
487	SCENIC & SIGHTSEEING TRANSPORTATION	4	36	45	53	\$142,603	\$245.58
488	SUPPORT ACTIVITIES FOR TRANSPORTATION	479	5,092	5,105	5,186	\$61,498,985	\$922.58
4881	Support Activities for Air Transportation	99	976	963	986	10,220,341	806.34
4882	Support Activities for Rail Transportation	44	564	574	596	7,050,175	938.27
4883	Support Activities for Water Transportation	20	741	724	704	10,504,116	1,117.58
4884	Support Activities for Road Transportation	157	835	847	867	7,280,440	659.12
4885	Freight Transportation Arrangement	144	1,845	1,859	1,886	25,303,151	1,044.58
4889	Other Support Activities for Transportation	15	131	138	147	1,140,762	632.82
493	WAREHOUSING & STORAGE	224	8,447	8,496	8,523	\$79,725,512	\$722.46
	OTHER	173	3,882	3,911	4,104	\$40,390,566	\$783.47
22	UTILITIES	413	7,614	7,655	7,763	\$164,479,014	\$1,648.00
2211	Power Generation & Supply	165	5,640	5,655	5,736	137,544,664	1,863.72
2212	Natural Gas Distribution	66	1,048	1,042	1,067	18,090,228	1,322.35
2213	Water, Sewage & Other Systems	182	926	958	960	8,844,122	717.63
	INFORMATION	1,108	12,880	12,874	12,813	\$174,026,133	\$1,041.30
511	PUBLISHING INDUSTRIES, EXCEPT INTERNET	209	3,073	3,070	3,059	\$30,705,545	\$770.04
5111	Newspaper, Book & Directory Publishers	176	2,693	2,706	2,701	23,060,887	657.01
5112	Software Publishers	33	380	364	358	7,644,658	1,600.86
512	MOTION PICTURE & SOUND RECORDING INDUSTRY	143	1,109	1,128	1,141	\$5,589,820	\$381.87
5121	Motion Picture & Video Industries	130	1,087	1,107	1,120	5,319,688	370.43
5122	Sound Recording Industries	13	22	21	21	270,132	974.03
515	BROADCASTING, EXCEPT INTERNET	118	1,602	1,596	1,589	\$17,214,237	\$829.86
5151	Radio & Television Broadcasting	115	1,579	1,574	1,568	16,996,165	830.80
5152	Cable & Other Subscription Programming	3	23	22	21	218,072	762.49

TABLE 5. STATEWIDE SUMMARY

North American Industry Classification System - Industry Groups		Number of Employing Units	Employment			Total Earnings	Average Weekly Earnings
			Apr	May	Jun	Apr - Jun 2017	
517	TELECOMMUNICATIONS	343	5,443	5,402	5,379	\$92,109,884	\$1,310.17
5173	Telecommunications Resellers	253	5,123	5,069	5,046	86,680,212	1,312.71
5174	Satellite Telecommunications Carriers	6	7	7	7	58,449	642.30
5179	Other Telecommunications	84	313	326	326	5,371,223	1,284.47
518	DATA PROCESSING, HOSTING & RELATED SERVICES	216	1,382	1,405	1,374	\$25,085,196	\$1,391.23
519	OTHER INFORMATION SERVICES	79	271	273	271	\$3,321,451	\$940.48
FINANCIAL ACTIVITIES		8,252	49,504	49,701	49,926	\$640,741,960	\$991.50
52	FINANCE & INSURANCE	4,895	36,103	36,157	36,248	\$519,911,754	\$1,105.72
522	CREDIT INTERMEDIATION & RELATED ACTIVITIES	1,906	19,041	19,065	19,118	\$241,150,131	\$972.49
5221	Depository Credit Intermediation	1,383	16,142	16,179	16,228	200,448,259	952.80
5222	Nondepository Credit Intermediation	386	1,748	1,762	1,766	26,093,491	1,141.31
5223	Activities Related to Credit Intermediation	137	1,151	1,124	1,124	14,608,381	991.81
523	FINANCIAL INVESTMENT & RELATED ACTIVITIES	687	3,062	3,048	3,050	\$83,147,164	\$2,094.74
5231	Insurance Carriers	297	2,175	2,171	2,153	67,270,170	2,388.66
5239	Insurance Agencies, Brokerages & Support	390	887	877	897	15,876,994	1,376.90
524	INSURANCE CARRIERS & RELATED ACTIVITIES	2,221	13,916	13,954	13,996	\$193,811,358	\$1,068.31
5231	Security & Commodity Contracts Intermediation & Brokerage	300	6,180	6,184	6,231	92,321,452	1,145.74
5239	Other Financial Investment Activities	1,921	7,736	7,770	7,765	101,489,906	1,006.43
	OTHER	81	84	90	84	\$1,803,101	\$1,612.79
53	REAL ESTATE & RENTAL & LEASING	3,357	13,401	13,544	13,678	\$120,830,206	\$686.41
531	REAL ESTATE	2,726	9,235	9,339	9,423	\$79,128,135	\$652.22
5311	Lessors of Real Estate	1,114	4,201	4,282	4,285	33,363,007	603.00
5312	Offices of Real Estate Agents & Brokers	831	1,759	1,764	1,793	16,495,557	716.08
5313	Activities Related to Real Estate	781	3,275	3,293	3,345	29,269,571	681.38
532	RENTAL & LEASING SERVICES	615	4,123	4,164	4,213	\$40,913,863	\$755.33
5321	Automotive Equipment Rental & Leasing	113	994	991	1,004	7,089,604	547.36
5322	Consumer Goods Rental	320	1,937	1,981	2,033	15,932,943	617.85
5323	General Rental Centers	38	250	257	254	2,643,143	801.52
5324	Machinery & Equipment Rental & Leasing	144	942	935	922	15,248,173	1,257.17
533	LESSORS OF NONFINANCIAL INTANGIBLE ASSETS	16	43	41	42	\$788,208	\$1,443.60

TABLE 5. STATEWIDE SUMMARY

North American Industry Classification System - Industry Groups		Number of Employing Units	Employment			Total Earnings Apr - Jun 2017	Average Weekly Earnings
			Apr	May	Jun		
PROFESSIONAL & BUSINESS SERVICES		13,904	145,382	145,466	142,668	\$1,975,184,138	\$1,051.43
54	PROFESSIONAL & TECHNICAL SERVICES	8,749	43,556	42,462	42,360	\$635,251,572	\$1,141.91
5411	Legal Services	1,648	5,994	6,026	6,032	74,310,600	949.96
5412	Accounting & Bookkeeping Services	1,261	6,709	5,425	5,353	70,119,597	925.34
5413	Architectural & Engineering Services	975	6,488	6,571	6,661	100,505,221	1,176.14
5414	Specialized Design Services	171	374	373	384	4,937,523	1,007.45
5415	Computer Systems Design & Related Services	1,736	9,712	9,664	9,467	204,528,421	1,636.41
5416	Management & Technical Consulting Services	1,890	5,947	6,003	5,992	87,254,854	1,122.27
5417	Scientific Research & Development Services	119	731	749	766	11,302,022	1,161.25
5418	Advertising & Related Services	381	3,768	3,800	3,783	45,524,665	925.53
5419	Other Professional & Technical Services	568	3,833	3,851	3,922	36,768,669	731.09
55	MANAGEMENT OF COMPANIES & ENTERPRISES	558	35,645	35,251	35,483	\$858,739,934	\$1,862.87
56	ADMINISTRATIVE & WASTE SERVICES	4,597	66,181	67,753	64,825	\$481,192,632	\$558.69
561	ADMINISTRATIVE & SUPPORT SERVICES	4,288	63,037	64,520	61,578	\$444,591,427	\$542.46
5611	Office Administrative Services	688	4,156	4,069	4,046	49,035,785	922.17
5612	Facilities Support Services	50	1,194	1,212	1,247	8,561,774	540.87
5613	Employment Services	1,062	28,677	29,862	27,138	176,058,257	474.21
5614	Business Support Services	357	7,324	7,202	7,350	65,979,847	696.02
5615	Travel Arrangement & Reservation Services	105	385	389	397	4,292,034	845.83
5616	Investigation & Security Services	291	4,844	4,890	4,748	31,327,824	499.21
5617	Services to Buildings & Dwellings	1,549	15,189	15,608	15,366	97,468,913	487.25
5619	Other Support Services	186	1,268	1,288	1,286	11,866,993	712.79
562	WASTE MANAGEMENT & REMEDIATION SERVICES	309	3,144	3,233	3,247	\$36,601,205	\$877.64
5621	Waste Collection Services	137	1,232	1,300	1,315	13,796,770	827.62
5622	Waste Treatment & Disposal Services	36	872	869	868	11,962,234	1,058.07
5629	Remediation & Other Waste Services	136	1,040	1,064	1,064	10,842,201	789.79
EDUCATION & HEALTH SERVICES		15,784	183,228	183,479	182,963	\$1,867,805,312	\$784.17
61	EDUCATIONAL SERVICES	831	11,930	11,734	10,947	\$103,675,319	\$691.26
6111	Elementary & Secondary Schools	98	3,949	3,942	3,662	34,026,437	679.67
6112	Junior Colleges	6	111	109	93	640,353	472.12
6113	Colleges & Universities	102	4,553	4,371	3,994	40,390,973	721.55
6114	Business, Computer, & Management Training	46	138	135	136	2,012,730	1,135.64
6115	Technical & Trade Schools	103	870	856	804	12,635,546	1,152.53
6116	Other Schools & Instruction	313	1,793	1,808	1,707	8,221,901	357.45
6117	Educational Support Services	163	516	513	551	5,747,379	839.44

TABLE 5. STATEWIDE SUMMARY

North American Industry Classification System - Industry Groups		Number of Employing Units	Employment			Total Earnings	Average Weekly Earnings
			Apr	May	Jun	Apr - Jun 2017	
62	HEALTH CARE & SOCIAL ASSISTANCE	14,953	171,298	171,745	172,016	\$1,764,129,993	\$790.41
621	AMBULATORY HEALTH CARE SERVICES	5,684	56,069	56,434	56,545	\$838,199,271	\$1,144.23
6211	Offices of Physicians	2,244	24,606	24,676	24,772	490,128,207	1,527.35
6212	Offices of Dentists	997	7,223	7,303	7,325	86,686,775	915.50
6213	Offices of Other Health Practitioners	1,499	8,754	8,847	8,852	93,339,316	814.27
6214	Outpatient Care Centers	325	5,020	5,048	5,046	66,202,993	1,010.83
6215	Medical & Diagnostic Laboratories	182	1,218	1,251	1,214	17,328,304	1,085.76
6216	Home Health Care Services	261	6,541	6,603	6,608	56,108,418	655.53
6219	Other Ambulatory Health Care Services	176	2,707	2,706	2,728	28,405,258	805.19
622	HOSPITALS	108	43,098	43,083	43,242	\$514,669,422	\$917.69
6221	General Medical & Surgical Hospitals	82	38,396	38,397	38,492	459,668,327	920.13
6222	Psychiatric & Substance Abuse Hospitals	11	2,217	2,207	2,195	23,536,607	820.60
6223	Specialty Hospitals	15	2,485	2,479	2,555	31,464,488	965.69
623	Residential & Mental Health Facilities	619	32,006	31,967	32,353	\$204,894,070	\$490.87
6231	Nursing Care Facilities (Skilled Nursing Facilities)	267	22,672	22,616	22,888	145,906,945	493.88
6232	Residential Mental Health Facilities	170	4,599	4,571	4,668	29,798,192	496.93
6233	Continuing Care & Assisted Living Facilities	148	3,994	4,016	4,025	23,301,329	446.80
6239	Other Residential Care Facilities	34	741	764	772	5,887,604	596.70
624	SOCIAL ASSISTANCE	8,542	40,125	40,261	39,876	\$206,367,230	\$396.00
6241	Individual & Family Services	7,425	25,207	25,294	25,335	131,145,524	399.08
6242	Emergency & Other Relief Services	135	1,341	1,343	1,382	9,496,458	538.98
6243	Vocational Rehabilitation Services	90	3,181	3,200	3,269	17,336,063	414.57
6244	Child Day Care Services	892	10,396	10,424	9,890	48,389,185	363.62
LEISURE & HOSPITALITY		7,031	118,213	119,519	120,048	\$477,413,129	\$307.93
71	ARTS, ENTERTAINMENT & RECREATION	962	11,440	11,843	13,070	58,811,472	\$373.34
711	PERFORMING ARTS & SPECTATOR SPORTS	215	3,419	2,989	2,891	17,755,636	\$440.63
7111	Performing Arts Companies	48	322	550	535	2,017,158	330.84
7112	Spectator Sports	66	1,973	1,392	1,374	10,834,505	527.59
7113	Performing Arts & Sports Promoters	48	1,034	928	891	4,069,624	329.18
7114	Agents & Managers for Public Figures	16	25	50	28	256,273	574.17
7115	Independent Artists, Writers, & Performers	37	65	69	63	578,076	677.17
712	MUSEUMS, PARKS, & HISTORICAL SITES	53	648	687	764	5,199,869	\$571.69
713	GAMBLING, RECREATIONAL & AMUSEMENT INDUSTRY	694	7,373	8,167	9,415	35,855,967	\$331.57
7131	Amusement Parks & Arcades	29	381	633	1,144	2,028,488	216.92
7139	Other Amusement & Recreation Industries	665	6,992	7,534	8,271	33,827,479	342.43
72	ACCOMMODATION & FOOD SERVICES	6,069	106,773	107,676	106,978	418,601,657	\$300.54

TABLE 5. STATEWIDE SUMMARY

North American Industry Classification System - Industry Groups		Number of Employing Units	Employment			Total Earnings	Average Weekly Earnings
			Apr	May	Jun	Apr - Jun 2017	
721	ACCOMMODATION	894	11,477	11,696	12,142	\$54,229,283	\$354.37
7211	Travel Accommodation	809	10,899	11,106	11,355	51,052,630	353.16
7212	RV Parks & Recreational Camps	68	449	466	679	2,559,765	370.59
7213	Rooming & Boarding Houses	17	129	124	108	616,888	394.35
722	FOOD SERVICES & DRINKING PLACES	5,175	95,296	95,980	94,836	\$364,372,374	\$293.89
7223	Special Food Services	256	4,557	4,280	3,089	18,543,961	358.83
7224	Drinking Places, Alcoholic Beverages	145	1,024	1,024	1,015	3,860,355	290.84
7225	Restaurants & Other Eating Places	4,774	89,715	90,676	90,732	341,968,058	291.07
722511	Full-Service Restaurants	2,096	39,039	39,398	39,371	164,146,534	321.54
722513	Limited-Service Eating Places	2,216	46,107	46,605	46,600	160,220,996	265.40
722514	Cafeterias, Grill Buffets, & Buffets	88	1,662	1,650	1,632	7,270,520	339.36
722515	Snack & Nonalcoholic Beverage Bars	374	2,907	3,023	3,129	10,330,008	263.15
OTHER SERVICES		5,345	24,807	24,900	25,612	\$205,967,912	\$631.06
811	REPAIR & MAINTENANCE	2,205	10,552	10,538	10,610	\$101,609,530	\$739.70
8111	Automotive Repair & Maintenance	1,403	6,573	6,577	6,650	57,252,176	667.27
8112	Electronic Equipment Repair & Maintenance	173	885	874	884	9,786,388	854.48
8113	Commercial Machinery Repair & Maintenance	459	2,526	2,505	2,475	30,236,977	929.62
8114	Household Goods Repair & Maintenance	170	568	582	601	4,333,989	571.19
812	PERSONAL & LAUNDRY SERVICES	1,334	7,889	7,922	7,967	\$50,285,204	\$488.03
8121	Personal Care Services	636	3,049	3,061	3,060	16,326,745	410.87
8122	Death Care Services	244	1,566	1,605	1,561	12,581,258	613.56
8123	Drycleaning & Laundry Service	227	2,303	2,310	2,329	16,294,389	541.67
8129	Other Personal Services	227	971	946	1,017	5,082,812	399.78
813	MEMBERSHIP ASSOCIATIONS & ORGANIZATIONS	1,081	5,420	5,487	6,104	\$48,840,752	\$662.57
8131	Religious Organizations	82	285	294	283	1,965,062	526.07
8132	Grantmaking & Giving Organizations	120	446	449	454	5,701,601	975.36
8133	Social Advocacy Organizations	213	1,478	1,447	1,492	12,748,948	666.08
8134	Civic & Social Organizations	189	1,206	1,263	1,624	6,045,013	340.83
8139	Professional & Similar Organizations	477	2,005	2,034	2,251	22,380,128	821.09
814	PRIVATE HOUSEHOLDS	725	946	953	931	\$5,232,426	\$426.67
LOCAL GOVERNMENT		1,958	113,619	114,418	112,131	\$1,247,785,133	\$846.49
STATE GOVERNMENT		1,068	68,654	68,692	66,234	\$778,569,973	\$882.55
NONCLASSIFIABLE ESTABLISHMENTS		0	0	0	0	\$0	\$0.00

TABLE 6. COUNTY SUMMARY

North American Industry Classification System - Industry Groups	Number of Employing Units	Employment			Total Earnings	Average Weekly Earnings
		Apr	May	Jun	Apr - Jun 2017	
ARKANSAS COUNTY - TOTAL	758	9,282	9,313	9,385	\$93,726,126	\$773.02
Natural Resources & Mining	54	201	197	196	2,105,914	818.15
Construction	45	260	258	262	2,635,477	779.73
Manufacturing	32	3,560	3,592	3,655	39,583,044	845.24
Trade, Transportation & Utilities	192	1,974	1,987	1,984	20,859,039	809.69
Wholesale Trade	47	494	493	494	6,618,938	1,031.36
Retail Trade	89	945	956	944	6,206,164	503.41
Transportation, Warehousing & Utilities	56	535	538	546	8,033,937	1,145.14
Information	9	77	75	73	612,582	628.29
Financial Activities	43	293	287	291	3,210,196	850.53
Professional & Business Services	46	413	406	408	5,794,724	1,089.85
Education & Health Services	199	1,084	1,102	1,083	9,270,990	654.47
Leisure & Hospitality	52	442	437	425	1,401,221	247.97
Other Services	39	88	86	92	636,625	552.31
Local Government	32	714	716	748	6,329,322	670.62
State Government	15	176	170	168	1,286,992	577.82
ASHLEY COUNTY - TOTAL	552	6,772	6,586	6,535	\$67,523,671	\$783.31
Natural Resources & Mining	39	349	356	370	3,194,238	685.70
Construction	37	682	511	483	6,005,844	826.95
Manufacturing	22	1,589	1,589	1,594	25,593,544	1,237.68
Trade, Transportation & Utilities	114	1,205	1,199	1,189	9,556,045	613.76
Wholesale Trade	24	198	198	197	2,628,796	1,023.01
Retail Trade	67	763	756	745	4,339,479	442.32
Transportation, Warehousing & Utilities	23	244	245	247	2,587,770	811.38
Information	5	34	34	35	234,709	525.86
Financial Activities	34	186	186	172	1,467,228	622.41
Professional & Business Services	40	232	215	239	1,776,913	597.75
Education & Health Services	152	986	994	1,003	8,077,793	624.91
Leisure & Hospitality	30	388	386	355	1,194,305	244.12
Other Services	37	131	132	141	1,013,985	579.20
Local Government	32	893	889	868	8,562,441	745.64
State Government	10	97	95	86	846,626	702.79

TABLE 6. COUNTY SUMMARY

North American Industry Classification System - Industry Groups	Number of Employing Units	Employment			Total Earnings	Average Weekly Earnings
		Apr	May	Jun	Apr - Jun 2017	
BAXTER COUNTY - TOTAL	1,204	14,819	14,941	14,566	\$123,386,780	\$642.37
Natural Resources & Mining	6	54	55	56	539,463	754.49
Construction	112	518	506	512	4,078,271	612.72
Manufacturing	54	2,232	2,249	2,291	21,687,035	739.03
Trade, Transportation & Utilities	256	2,937	2,954	2,937	19,791,394	517.36
Wholesale Trade	34	412	418	419	3,959,929	731.65
Retail Trade	199	2,339	2,348	2,323	13,998,857	460.84
Transportation, Warehousing & Utilities	23	186	188	195	1,832,608	743.25
Information	18	188	188	185	2,008,028	826.01
Financial Activities	114	742	765	765	9,586,359	973.70
Professional & Business Services	131	819	802	813	6,218,385	589.57
Education & Health Services	264	3,812	3,813	3,830	36,264,623	730.58
Leisure & Hospitality	117	1,719	1,787	1,793	6,173,653	268.86
Other Services	85	327	338	342	2,101,038	481.48
Local Government	36	1,167	1,174	777	12,285,286	909.26
State Government	11	304	310	265	2,653,245	696.57
BENTON COUNTY - TOTAL	6,369	117,016	117,208	117,572	\$1,558,259,108	\$1,022.18
Natural Resources & Mining	49	743	730	765	11,524,343	1,188.32
Construction	618	4,728	4,755	4,878	57,497,711	923.94
Manufacturing	189	11,576	11,692	11,794	118,620,339	780.73
Trade, Transportation & Utilities	1,690	27,339	27,381	27,563	334,333,024	937.66
Wholesale Trade	750	5,530	5,550	5,592	131,523,672	1,820.51
Retail Trade	755	12,414	12,432	12,541	87,608,393	540.76
Transportation, Warehousing & Utilities	185	9,395	9,399	9,430	115,200,959	941.92
Information	75	913	886	887	12,339,368	1,060.14
Financial Activities	627	3,711	3,697	3,757	51,823,994	1,071.15
Professional & Business Services	1,222	33,075	32,733	32,711	674,588,294	1,580.14
Education & Health Services	804	11,140	11,165	11,053	108,081,950	747.71
Leisure & Hospitality	602	12,148	12,410	12,457	55,798,009	347.87
Other Services	394	2,025	2,087	2,157	17,789,403	654.85
Local Government	82	8,522	8,583	8,649	106,487,754	954.19
State Government	17	1,096	1,089	901	9,374,919	701.05

TABLE 6. COUNTY SUMMARY

North American Industry Classification System - Industry Groups	Number of Employing Units	Employment			Total Earnings Apr - Jun 2017	Average Weekly Earnings
		Apr	May	Jun		
BOONE COUNTY - TOTAL	948	13,705	13,777	13,931	\$129,397,129	\$721.05
Construction	69	419	404	405	3,830,947	719.92
Manufacturing	63	1,788	1,810	1,805	17,530,694	748.76
Trade, Transportation & Utilities	230	3,403	3,394	3,437	33,104,748	746.49
Wholesale Trade	37	297	294	294	2,455,611	640.32
Retail Trade	150	1,975	1,947	1,975	13,210,356	516.97
Transportation, Warehousing & Utilities	43	1,131	1,153	1,168	17,438,781	1,165.80
Information	15	287	288	287	3,250,809	870.29
Financial Activities	92	418	426	422	4,993,486	910.22
Professional & Business Services	103	1,440	1,464	1,483	15,497,344	815.21
Education & Health Services	170	1,506	1,541	1,520	11,576,728	584.97
Leisure & Hospitality	81	1,233	1,245	1,312	4,697,634	286.03
Local Government	53	2,230	2,227	2,268	25,721,438	882.63
State Government	17	718	710	723	6,938,150	744.36
Other	55	263	268	269	2,255,151	650.52
BRADLEY COUNTY - TOTAL	369	3,709	3,708	3,743	\$31,151,321	\$644.15
Natural Resources & Mining	46	218	209	197	1,944,440	719.10
Construction	17	68	69	86	600,176	621.09
Manufacturing	11	880	902	911	8,632,173	739.71
Trade, Transportation & Utilities	69	489	496	511	3,203,279	494.13
Wholesale Trade	10	71	73	75	878,641	925.86
Retail Trade	37	329	328	330	1,610,777	376.61
Transportation, Warehousing & Utilities	22	89	95	106	713,861	568.06
Information	4	23	22	22	216,524	745.78
Financial Activities	25	130	131	134	1,233,577	720.69
Professional & Business Services	25	94	92	89	703,058	589.98
Education & Health Services	105	678	678	674	6,141,166	698.12
Leisure & Hospitality	16	203	174	188	549,319	224.36
Other Services	27	106	113	114	654,344	453.46
Local Government	14	481	481	477	4,869,613	780.93
State Government	10	339	341	340	2,403,652	543.81

TABLE 6. COUNTY SUMMARY

North American Industry Classification System - Industry Groups	Number of Employing Units	Employment			Total Earnings Apr - Jun 2017	Average Weekly Earnings
		Apr	May	Jun		
CALHOUN COUNTY - TOTAL	99	2,835	2,836	2,856	\$36,626,435	\$991.23
Natural Resources & Mining	6	38	38	32	324,970	694.38
Construction	9	98	98	95	861,498	683.19
Manufacturing	9	2,015	2,018	2,055	29,121,359	1,103.86
Trade, Transportation & Utilities	20	219	219	219	2,094,224	735.59
Retail Trade	9	55	55	51	284,659	408.02
Transportation, Warehousing & Utilities	11	164	164	168	1,809,565	841.92
Professional & Business Services	5	9	9	9	91,430	781.45
Education & Health Services	17	65	63	57	578,113	721.14
Leisure & Hospitality	4	17	14	13	58,489	306.76
Other Services	4	3	3	3	16,515	423.46
Local Government	11	186	186	187	1,509,816	623.29
State Government	7	77	78	75	704,478	706.83
Other	7	108	110	111	1,265,543	887.69
CARROLL COUNTY - TOTAL	792	10,768	11,086	11,279	\$80,585,254	\$561.27
Natural Resources & Mining	19	206	213	216	1,829,311	664.80
Trade, Transportation & Utilities	192	1,655	1,672	1,702	12,336,252	566.08
Wholesale Trade	22	168	165	166	1,371,814	634.41
Retail Trade	145	1,151	1,160	1,177	6,589,633	435.98
Transportation, Warehousing & Utilities	25	336	347	359	4,374,805	968.88
Information	9	65	65	68	629,054	733.16
Financial Activities	62	360	379	374	4,193,405	869.46
Professional & Business Services	65	546	540	535	5,020,680	714.76
Education & Health Services	100	1,072	1,081	1,082	8,315,759	593.21
Leisure & Hospitality	169	1,540	1,809	1,894	6,210,044	273.33
Other Services	46	135	134	135	843,315	481.71
Local Government	25	1,062	1,065	1,089	9,520,198	683.14
State Government	9	89	87	85	803,988	710.86
Other	96	4,038	4,041	4,099	30,883,248	585.23

TABLE 6. COUNTY SUMMARY

North American Industry Classification System - Industry Groups	Number of Employing Units	Employment			Total Earnings Apr - Jun 2017	Average Weekly Earnings
		Apr	May	Jun		
CHICOT COUNTY - TOTAL	527	3,158	3,172	3,144	\$24,700,712	\$601.66
Natural Resources & Mining	54	225	226	240	2,271,162	758.49
Construction	17	159	159	155	1,763,610	860.44
Manufacturing	6	26	26	26	334,617	989.99
Trade, Transportation & Utilities	66	643	648	656	4,403,363	521.91
Wholesale Trade	15	64	64	62	686,512	833.82
Retail Trade	38	314	312	314	1,909,567	468.80
Transportation, Warehousing & Utilities	13	265	272	280	1,807,284	510.48
Information	3	4	3	3	14,246	328.75
Financial Activities	28	159	162	155	1,724,871	836.23
Professional & Business Services	18	43	41	40	624,245	1,161.75
Education & Health Services	273	784	778	753	4,881,842	486.64
Leisure & Hospitality	19	135	137	139	452,879	254.28
Other Services	16	60	68	73	556,348	638.75
Local Government	17	626	624	608	5,260,255	653.34
State Government	10	294	300	296	2,413,274	625.74
CLARK COUNTY - TOTAL	629	9,098	9,082	8,805	\$77,490,195	\$662.68
Natural Resources & Mining	46	249	256	263	2,611,111	784.59
Construction	19	58	57	59	383,503	508.62
Manufacturing	33	1,414	1,404	1,409	18,607,041	1,015.83
Trade, Transportation & Utilities	127	1,384	1,423	1,391	10,085,669	554.42
Wholesale Trade	13	31	31	31	355,838	882.97
Retail Trade	90	1,199	1,230	1,201	7,785,630	494.95
Transportation, Warehousing & Utilities	24	154	162	159	1,944,201	944.55
Information	3	17	17	15	122,029	574.70
Financial Activities	73	305	305	313	2,971,744	743.00
Professional & Business Services	50	600	585	565	5,286,421	697.11
Education & Health Services	129	1,656	1,664	1,610	13,188,585	617.35
Leisure & Hospitality	60	1,062	1,082	1,048	3,822,997	276.39
Other Services	45	225	225	231	1,732,867	587.21
Local Government	30	990	1,003	982	9,587,712	743.71
State Government	14	1,138	1,061	919	9,090,516	672.81

TABLE 6. COUNTY SUMMARY

North American Industry Classification System - Industry Groups	Number of Employing Units	Employment			Total Earnings Apr - Jun 2017	Average Weekly Earnings
		Apr	May	Jun		
CLAY COUNTY - TOTAL	376	3,249	3,318	3,276	\$24,434,208	\$572.86
Natural Resources & Mining	56	236	263	259	1,744,940	531.24
Construction	31	137	140	153	1,211,817	650.35
Manufacturing	13	137	135	129	956,044	550.19
Trade, Transportation & Utilities	89	809	831	810	6,777,357	638.37
Wholesale Trade	22	244	246	234	2,423,530	772.48
Retail Trade	41	398	413	405	2,616,693	496.59
Transportation, Warehousing & Utilities	26	167	172	171	1,737,134	786.03
Information	5	35	35	36	249,693	543.60
Financial Activities	26	103	103	104	822,105	611.99
Professional & Business Services	25	112	121	119	918,393	602.09
Education & Health Services	52	499	490	485	3,327,968	521.03
Leisure & Hospitality	24	254	260	250	772,772	233.42
Other Services	24	76	77	76	581,635	586.13
Local Government	22	810	823	815	6,711,922	632.72
State Government	9	41	40	40	359,562	685.75
CLEBURNE COUNTY - TOTAL	650	6,431	6,500	6,620	\$53,777,147	\$634.76
Natural Resources & Mining	26	319	307	309	3,821,307	943.14
Construction	67	295	326	329	2,833,303	688.25
Manufacturing	34	1,097	1,096	1,118	10,931,860	761.93
Trade, Transportation & Utilities	142	1,237	1,260	1,242	9,930,657	612.92
Wholesale Trade	32	113	109	114	1,245,293	855.28
Retail Trade	90	936	967	945	6,358,284	515.20
Transportation, Warehousing & Utilities	20	188	184	183	2,327,080	967.60
Information	9	46	50	53	420,730	651.62
Financial Activities	78	265	262	269	2,734,474	792.75
Professional & Business Services	65	258	253	268	2,394,393	709.31
Education & Health Services	88	970	968	990	7,299,526	575.31
Leisure & Hospitality	77	869	937	1,002	3,695,239	303.68
Other Services	38	130	132	132	811,410	475.25
Local Government	18	825	818	815	8,046,438	755.44
State Government	8	120	91	93	857,810	651.17

TABLE 6. COUNTY SUMMARY

North American Industry Classification System - Industry Groups	Number of Employing Units	Employment			Total Earnings Apr - Jun 2017	Average Weekly Earnings
		Apr	May	Jun		
CLEVELAND COUNTY - TOTAL	127	932	943	960	\$7,457,375	\$607.03
Natural Resources & Mining	15	110	109	110	1,376,268	965.35
Construction	9	18	16	27	202,976	767.88
Manufacturing	3	72	75	74	649,755	678.48
Trade, Transportation & Utilities	37	187	185	192	1,394,010	570.38
Retail Trade	20	75	74	83	290,824	289.28
Other Trade, Transportation, & Utilities	17	112	111	109	1,103,186	766.81
Financial Activities	3	25	25	26	288,790	876.89
Education & Health Services	32	157	161	162	722,716	347.46
Other Services	4	13	12	12	107,718	671.84
Local Government	11	306	315	312	2,359,447	583.59
State Government	6	28	28	29	279,807	759.66
Other	7	16	17	16	75,888	357.40
COLUMBIA COUNTY - TOTAL	710	7,915	7,890	7,939	\$77,617,257	\$754.37
Natural Resources & Mining	39	341	332	348	5,293,204	1,196.38
Construction	39	165	169	179	1,695,441	762.68
Manufacturing	32	1,764	1,753	1,793	24,268,720	1,054.70
Trade, Transportation & Utilities	159	1,316	1,333	1,323	10,158,655	590.21
Wholesale Trade	29	196	195	190	2,550,514	1,013.05
Retail Trade	93	949	973	960	5,676,845	454.56
Transportation, Warehousing & Utilities	37	171	165	173	1,931,296	875.61
Information	7	51	50	50	362,451	553.92
Financial Activities	66	327	329	330	3,493,784	817.71
Professional & Business Services	53	306	307	304	2,343,922	589.86
Education & Health Services	183	1,077	1,064	1,061	6,478,714	466.92
Leisure & Hospitality	49	705	681	673	2,475,700	277.47
Other Services	45	145	145	141	827,485	443.06
Local Government	26	1,119	1,119	1,131	10,814,102	740.74
State Government	12	599	608	606	9,405,079	1,197.13

TABLE 6. COUNTY SUMMARY

North American Industry Classification System - Industry Groups	Number of Employing Units	Employment			Total Earnings Apr - Jun 2017	Average Weekly Earnings
		Apr	May	Jun		
CONWAY COUNTY - TOTAL	530	6,397	6,305	6,437	\$60,889,080	\$734.17
Natural Resources & Mining	31	228	235	234	2,500,012	827.73
Construction	46	481	491	503	7,994,845	1,250.82
Manufacturing	18	848	859	874	12,242,174	1,094.58
Trade, Transportation & Utilities	114	1,324	1,312	1,324	10,447,382	608.82
Wholesale Trade	17	114	110	114	968,629	661.33
Retail Trade	73	772	773	786	5,149,798	509.83
Transportation, Warehousing & Utilities	24	438	429	424	4,328,955	773.81
Information	3	13	12	11	51,446	329.78
Financial Activities	38	150	149	148	1,518,487	783.94
Professional & Business Services	37	565	459	473	3,184,278	490.87
Education & Health Services	135	827	827	819	6,857,831	639.94
Leisure & Hospitality	41	488	480	542	1,726,653	263.88
Other Services	28	95	96	95	708,434	571.63
Local Government	30	1,026	1,020	1,061	10,804,731	802.51
State Government	9	352	365	353	2,852,807	615.27
CRAIGHEAD COUNTY - TOTAL	2,828	49,599	49,768	49,490	\$462,005,887	\$716.24
Natural Resources & Mining	87	324	328	336	2,725,458	636.59
Construction	235	2,105	2,142	2,186	22,090,630	792.45
Manufacturing	101	6,464	6,481	6,555	74,556,159	882.32
Trade, Transportation & Utilities	790	9,957	10,010	9,952	80,883,760	623.87
Wholesale Trade	179	1,613	1,620	1,634	19,605,324	929.59
Retail Trade	475	6,735	6,752	6,670	42,882,008	490.94
Transportation, Warehousing & Utilities	136	1,609	1,638	1,648	18,396,428	867.28
Information	18	397	392	394	4,422,463	862.70
Financial Activities	269	1,606	1,609	1,627	19,822,829	944.75
Professional & Business Services	375	4,758	4,742	4,559	35,462,722	582.10
Education & Health Services	476	10,506	10,539	10,604	118,392,403	863.26
Leisure & Hospitality	258	5,635	5,711	5,489	21,204,431	290.66
Other Services	162	822	828	840	6,443,881	597.21
Local Government	35	4,063	4,069	4,060	45,830,400	867.47
State Government	22	2,962	2,917	2,888	30,170,751	794.17

TABLE 6. COUNTY SUMMARY

North American Industry Classification System - Industry Groups	Number of Employing Units	Employment			Total Earnings Apr - Jun 2017	Average Weekly Earnings
		Apr	May	Jun		
CRAWFORD COUNTY - TOTAL	1,242	18,923	18,949	18,913	\$167,481,434	\$680.63
Natural Resources & Mining	24	305	265	232	2,424,515	697.64
Construction	148	936	928	970	9,553,482	777.93
Manufacturing	70	4,373	4,383	4,405	44,515,111	780.54
Trade, Transportation & Utilities	312	5,431	5,495	5,460	48,172,019	678.42
Wholesale Trade	76	771	779	773	9,385,381	932.35
Retail Trade	168	1,972	1,990	1,974	13,131,344	510.50
Transportation, Warehousing & Utilities	68	2,688	2,726	2,713	25,655,294	728.49
Information	10	50	51	51	442,638	672.02
Financial Activities	121	490	489	492	4,659,350	730.95
Professional & Business Services	155	1,338	1,316	1,301	10,645,714	621.16
Education & Health Services	177	1,660	1,657	1,610	13,421,929	628.65
Leisure & Hospitality	96	1,663	1,665	1,681	6,365,482	293.26
Other Services	76	391	404	402	3,452,753	665.66
Local Government	43	2,130	2,140	2,152	22,660,859	814.30
State Government	10	156	156	157	1,167,582	574.50
CRITTENDEN COUNTY - TOTAL	1,247	16,725	16,641	15,984	\$148,733,848	\$695.51
Natural Resources & Mining	53	237	256	260	1,969,383	603.55
Construction	47	522	533	566	6,985,641	994.49
Manufacturing	43	2,179	2,101	2,104	25,076,636	906.47
Trade, Transportation & Utilities	301	4,409	4,467	4,428	40,669,457	705.45
Wholesale Trade	61	800	805	800	9,646,408	925.61
Retail Trade	155	1,965	1,987	1,978	11,822,016	460.06
Transportation, Warehousing & Utilities	85	1,644	1,675	1,650	19,201,033	891.73
Information	5	58	57	54	529,520	723.06
Financial Activities	99	448	452	455	4,465,625	760.54
Professional & Business Services	108	1,227	1,158	1,241	9,664,208	615.06
Education & Health Services	330	2,075	2,072	1,978	16,124,896	607.53
Leisure & Hospitality	132	2,376	2,429	2,429	11,069,753	353.13
Other Services	74	502	495	497	4,114,501	635.54
Local Government	42	2,222	2,234	1,593	24,539,308	936.17
State Government	13	470	387	379	3,524,920	658.13

TABLE 6. COUNTY SUMMARY

North American Industry Classification System - Industry Groups	Number of Employing Units	Employment			Total Earnings	Average Weekly Earnings
		Apr	May	Jun	Apr - Jun 2017	
CROSS COUNTY - TOTAL	482	4,983	4,974	4,977	\$41,177,029	\$636.29
Natural Resources & Mining	41	262	255	239	1,921,773	586.62
Construction	23	70	67	64	490,576	563.23
Manufacturing	10	379	391	395	3,551,903	703.58
Trade, Transportation & Utilities	123	1,197	1,195	1,199	10,639,949	683.76
Wholesale Trade	28	299	297	299	3,895,895	1,004.53
Retail Trade	70	791	794	791	5,581,381	542.09
Transportation, Warehousing & Utilities	25	107	104	109	1,162,673	838.47
Information	6	38	40	39	314,288	619.90
Financial Activities	44	303	307	306	2,699,528	680.10
Professional & Business Services	39	131	119	123	1,181,340	730.88
Education & Health Services	103	1,040	1,038	1,043	7,956,222	588.29
Leisure & Hospitality	33	353	364	360	1,171,244	250.96
Other Services	34	112	106	107	785,665	557.87
Local Government	17	745	730	729	7,071,663	740.44
State Government	9	353	362	373	3,392,878	719.64
DALLAS COUNTY - TOTAL	248	2,820	2,840	2,850	\$22,461,413	\$609.10
Natural Resources & Mining	27	150	153	149	1,186,656	605.85
Construction	15	110	114	116	806,380	547.32
Manufacturing	11	585	582	575	5,548,576	735.04
Trade, Transportation & Utilities	60	454	449	456	3,278,128	556.65
Wholesale Trade	6	21	14	14	177,098	834.06
Retail Trade	40	339	337	338	2,185,665	497.42
Transportation, Warehousing & Utilities	14	94	98	104	915,365	713.64
Information	4	16	18	18	138,343	613.95
Financial Activities	15	74	76	76	721,696	736.93
Professional & Business Services	10	30	28	28	173,458	465.45
Education & Health Services	59	829	837	851	7,179,311	658.23
Leisure & Hospitality	13	155	160	157	441,137	215.68
Other Services	13	59	57	55	326,256	440.29
Local Government	14	331	339	342	2,399,017	547.05
State Government	7	27	27	27	262,455	747.74

TABLE 6. COUNTY SUMMARY

North American Industry Classification System - Industry Groups	Number of Employing Units	Employment			Total Earnings Apr - Jun 2017	Average Weekly Earnings
		Apr	May	Jun		
DESHA COUNTY - TOTAL	559	4,513	4,525	4,595	\$39,217,163	\$663.84
Natural Resources & Mining	69	276	276	293	2,118,891	578.67
Construction	16	92	92	95	871,448	720.80
Manufacturing	14	915	921	962	12,255,797	1,010.82
Trade, Transportation & Utilities	108	819	834	834	6,498,619	603.01
Wholesale Trade	19	188	190	189	2,459,490	1,001.01
Retail Trade	64	477	483	483	2,523,733	403.60
Transportation, Warehousing & Utilities	25	154	161	162	1,515,396	733.14
Information	3	12	12	12	107,066	686.32
Financial Activities	29	207	203	206	1,839,144	688.99
Professional & Business Services	34	90	86	93	742,891	637.31
Education & Health Services	198	786	779	769	4,911,028	485.57
Leisure & Hospitality	37	357	363	362	1,242,428	264.99
Other Services	21	50	47	57	269,049	403.17
Local Government	21	790	794	798	7,410,716	717.95
State Government	9	119	118	114	950,086	624.65
DREW COUNTY - TOTAL	533	6,396	6,407	6,354	\$58,732,213	\$707.50
Natural Resources & Mining	53	317	306	305	3,517,722	874.77
Construction	23	149	162	187	2,010,264	931.54
Manufacturing	21	816	810	839	7,882,786	737.97
Trade, Transportation & Utilities	122	1,164	1,175	1,177	8,674,906	569.37
Wholesale Trade	20	138	137	147	1,529,453	836.38
Retail Trade	79	888	900	895	5,632,858	484.49
Transportation, Warehousing & Utilities	23	138	138	135	1,512,595	849.30
Information	5	50	50	49	431,254	667.92
Financial Activities	48	246	247	242	2,587,661	812.45
Professional & Business Services	33	230	252	243	4,134,994	1,316.18
Education & Health Services	139	911	915	923	8,227,745	690.69
Leisure & Hospitality	38	615	601	589	2,044,486	261.39
Other Services	15	52	52	49	361,973	545.96
Local Government	22	1,251	1,248	1,238	13,254,712	818.51
State Government	14	595	589	513	5,603,710	762.03

TABLE 6. COUNTY SUMMARY

North American Industry Classification System - Industry Groups	Number of Employing Units	Employment			Total Earnings Apr - Jun 2017	Average Weekly Earnings
		Apr	May	Jun		
FAULKNER COUNTY - TOTAL	2,801	40,300	40,451	40,173	\$411,215,596	\$784.76
Natural Resources & Mining	57	345	367	379	5,920,301	1,252.27
Construction	307	2,682	2,725	2,829	30,969,881	867.76
Manufacturing	98	3,180	3,171	3,178	39,920,687	966.78
Trade, Transportation & Utilities	635	7,347	7,354	7,377	55,057,161	575.48
Wholesale Trade	139	532	536	537	6,708,135	964.51
Retail Trade	410	6,070	6,058	6,073	38,967,870	494.07
Transportation, Warehousing & Utilities	86	745	760	767	9,381,156	952.85
Information	18	264	269	268	3,429,478	988.04
Financial Activities	312	1,478	1,477	1,465	15,917,476	831.06
Professional & Business Services	421	5,187	5,248	5,247	91,704,403	1,349.48
Education & Health Services	434	7,063	7,030	6,932	64,967,485	713.08
Leisure & Hospitality	260	5,089	5,138	5,116	19,230,366	289.24
Other Services	201	857	866	852	6,180,986	553.93
Local Government	41	3,491	3,499	3,497	45,486,250	1,000.94
State Government	17	3,317	3,307	3,033	32,431,122	774.99
FRANKLIN COUNTY - TOTAL	360	4,474	4,458	4,491	\$38,649,987	\$664.47
Natural Resources & Mining	20	235	216	218	3,800,819	1,311.08
Construction	31	102	106	108	994,563	726.31
Manufacturing	14	937	930	938	8,753,307	720.14
Trade, Transportation & Utilities	89	941	958	977	8,299,272	665.93
Wholesale Trade	14	46	47	54	264,198	414.75
Retail Trade	53	619	630	639	3,633,936	444.17
Transportation, Warehousing & Utilities	22	276	281	284	4,401,138	1,207.67
Information	4	19	19	19	146,667	593.79
Financial Activities	29	78	80	81	677,899	654.55
Professional & Business Services	33	333	319	328	2,628,318	618.91
Education & Health Services	69	575	568	555	3,725,302	506.29
Leisure & Hospitality	30	354	357	364	1,183,061	253.97
Other Services	14	54	52	51	333,190	489.75
Local Government	19	721	725	743	6,718,908	708.32
State Government	8	125	128	109	1,388,681	885.26

TABLE 6. COUNTY SUMMARY

North American Industry Classification System - Industry Groups	Number of Employing Units	Employment			Total Earnings Apr - Jun 2017	Average Weekly Earnings
		Apr	May	Jun		
FULTON COUNTY - TOTAL	192	1,853	1,894	1,920	\$14,369,832	\$585.16
Natural Resources & Mining	3	6	6	6	34,225	438.78
Construction	9	48	48	54	539,693	830.30
Manufacturing	11	99	101	107	611,203	459.44
Trade, Transportation & Utilities	43	289	305	306	2,412,237	618.52
Retail Trade	27	167	176	178	940,162	416.43
Other Trade, Transportation, & Utilities	16	122	129	128	1,472,075	896.33
Information	4	31	29	27	164,698	436.86
Financial Activities	21	89	105	103	773,660	601.13
Professional & Business Services	14	28	28	39	296,045	719.14
Education & Health Services	44	469	467	470	3,054,561	501.35
Leisure & Hospitality	16	144	158	159	527,364	263.99
Other Services	6	15	14	14	92,657	497.26
Local Government	12	559	558	560	5,183,183	713.25
State Government	9	76	75	75	680,306	694.66
GARLAND COUNTY - TOTAL	3,101	37,038	36,281	36,746	\$322,074,904	\$675.28
Natural Resources & Mining	27	224	238	239	2,751,883	905.92
Construction	327	1,719	1,750	1,773	15,645,563	688.77
Manufacturing	94	2,568	2,577	2,588	29,620,920	883.95
Trade, Transportation & Utilities	685	7,257	7,257	7,246	55,548,614	589.10
Wholesale Trade	144	858	857	868	10,010,525	894.36
Retail Trade	483	5,932	5,929	5,897	40,268,412	523.30
Transportation, Warehousing & Utilities	58	467	471	481	5,269,677	857.00
Information	28	398	408	424	3,678,176	690.09
Financial Activities	338	1,453	1,458	1,500	17,339,967	907.17
Professional & Business Services	385	2,988	2,931	2,957	29,665,425	771.28
Education & Health Services	542	7,771	7,796	7,862	83,677,311	824.20
Leisure & Hospitality	387	7,694	6,937	7,309	32,500,841	341.85
Other Services	232	1,002	990	1,032	6,362,949	485.57
Local Government	33	2,957	2,942	2,893	36,815,365	966.32
State Government	23	1,007	997	923	8,467,890	667.62

TABLE 6. COUNTY SUMMARY

North American Industry Classification System - Industry Groups	Number of Employing Units	Employment			Total Earnings Apr - Jun 2017	Average Weekly Earnings
		Apr	May	Jun		
GRANT COUNTY - TOTAL	351	4,025	4,067	4,145	\$38,009,764	\$716.80
Natural Resources & Mining	23	162	159	175	1,932,280	899.01
Construction	29	208	216	220	2,478,189	888.03
Manufacturing	17	1,263	1,269	1,291	14,928,711	901.15
Trade, Transportation & Utilities	95	640	642	638	4,723,305	567.70
Wholesale Trade	22	98	86	72	1,057,283	953.08
Retail Trade	46	462	476	489	3,001,408	485.38
Transportation, Warehousing & Utilities	27	80	80	77	664,614	647.14
Financial Activities	23	95	94	92	948,261	778.75
Professional & Business Services	29	109	104	99	1,223,059	904.63
Education & Health Services	77	422	444	444	2,580,198	454.53
Leisure & Hospitality	23	306	313	318	1,009,469	248.62
Local Government	10	732	736	778	7,476,692	768.21
State Government	7	39	40	40	344,519	668.10
Other	18	49	50	50	365,081	565.43
GREENE COUNTY - TOTAL	891	15,254	15,364	15,407	\$139,552,004	\$699.71
Natural Resources & Mining	38	276	287	281	2,463,095	673.47
Construction	72	320	345	359	3,370,251	759.52
Manufacturing	65	4,999	5,007	4,999	56,272,464	865.44
Trade, Transportation & Utilities	239	2,693	2,714	2,711	20,162,123	573.15
Wholesale Trade	44	433	446	453	4,872,664	844.19
Retail Trade	159	1,936	1,941	1,928	12,255,088	487.18
Transportation, Warehousing & Utilities	36	324	327	330	3,034,371	713.80
Information	10	96	96	96	592,071	474.42
Financial Activities	74	535	543	546	5,491,669	780.36
Professional & Business Services	90	852	852	850	6,924,814	625.70
Education & Health Services	152	2,015	2,023	2,004	17,739,539	677.55
Leisure & Hospitality	70	1,270	1,292	1,281	4,369,871	262.41
Other Services	40	160	154	161	1,042,045	506.26
Local Government	30	1,638	1,649	1,711	16,735,448	772.71
State Government	11	400	402	408	4,388,614	836.99

TABLE 6. COUNTY SUMMARY

North American Industry Classification System - Industry Groups	Number of Employing Units	Employment			Total Earnings Apr - Jun 2017	Average Weekly Earnings
		Apr	May	Jun		
HEMPSTEAD COUNTY - TOTAL	495	7,736	7,741	7,812	\$68,614,841	\$679.90
Natural Resources & Mining	25	250	257	257	2,715,939	820.36
Construction	29	187	182	188	2,006,742	831.41
Manufacturing	29	2,239	2,248	2,290	23,893,411	813.61
Trade, Transportation & Utilities	123	1,255	1,261	1,245	10,444,331	640.85
Wholesale Trade	20	174	178	172	1,390,986	612.59
Retail Trade	76	844	846	832	5,151,846	471.41
Transportation, Warehousing & Utilities	27	237	237	241	3,901,499	1,259.23
Information	8	32	32	30	312,306	766.71
Financial Activities	43	206	204	213	1,924,152	712.74
Professional & Business Services	30	207	205	201	1,616,798	608.66
Education & Health Services	94	1,017	1,000	1,002	6,244,941	477.36
Leisure & Hospitality	41	597	597	614	2,253,753	287.66
Other Services	30	142	140	134	970,611	538.43
Local Government	27	899	900	902	9,693,934	828.23
State Government	16	705	715	736	6,537,923	699.79
HOT SPRING COUNTY - TOTAL	636	8,538	8,413	8,483	\$77,494,444	\$703.13
Natural Resources & Mining	22	144	144	142	1,080,947	580.11
Construction	54	324	365	352	3,343,815	741.26
Manufacturing	26	1,418	1,418	1,435	17,345,586	937.21
Trade, Transportation & Utilities	153	1,592	1,591	1,629	15,592,447	747.77
Wholesale Trade	17	99	99	97	1,166,462	912.49
Retail Trade	97	878	877	904	5,425,109	470.83
Transportation, Warehousing & Utilities	39	615	615	628	9,000,876	1,117.94
Information	7	57	61	58	629,158	824.94
Financial Activities	53	219	212	210	2,143,541	771.71
Professional & Business Services	53	958	882	929	6,159,994	513.38
Education & Health Services	137	1,088	1,082	1,069	9,483,109	675.64
Leisure & Hospitality	54	761	684	704	2,355,382	252.93
Other Services	38	138	134	147	838,092	461.59
Local Government	27	999	998	996	11,775,804	907.95
State Government	12	840	842	812	6,746,569	624.26

TABLE 6. COUNTY SUMMARY

North American Industry Classification System - Industry Groups	Number of Employing Units	Employment			Total Earnings Apr - Jun 2017	Average Weekly Earnings
		Apr	May	Jun		
HOWARD COUNTY - TOTAL	354	6,948	6,959	6,990	\$57,384,272	\$633.70
Natural Resources & Mining	21	199	204	210	1,889,131	711.18
Construction	20	84	83	84	967,026	889.08
Manufacturing	20	3,395	3,368	3,426	27,864,926	631.11
Trade, Transportation & Utilities	87	913	947	925	7,328,519	607.25
Wholesale Trade	17	80	80	84	812,844	768.77
Retail Trade	52	644	674	648	4,245,617	498.35
Transportation, Warehousing & Utilities	18	189	193	193	2,270,058	911.06
Financial Activities	32	125	124	132	1,218,532	738.06
Professional & Business Services	22	163	131	130	1,167,615	635.49
Education & Health Services	79	803	805	815	6,388,613	608.46
Leisure & Hospitality	21	335	352	327	1,201,020	273.33
Local Government	17	685	696	703	7,353,709	814.30
State Government	10	102	104	94	888,653	683.58
Other	25	144	145	144	1,116,528	595.06
INDEPENDENCE COUNTY - TOTAL	888	15,746	15,838	15,903	\$147,021,532	\$714.47
Natural Resources & Mining	16	230	248	243	3,098,966	991.88
Construction	61	401	425	452	4,466,034	806.43
Manufacturing	37	2,944	2,948	2,928	31,550,244	825.49
Trade, Transportation & Utilities	227	2,967	2,997	2,991	25,423,019	655.15
Wholesale Trade	27	316	317	312	2,986,875	729.40
Retail Trade	153	1,832	1,854	1,853	11,796,321	491.47
Transportation, Warehousing & Utilities	47	819	826	826	10,639,823	993.66
Information	10	116	122	120	932,845	601.32
Financial Activities	82	531	540	539	6,136,809	879.62
Professional & Business Services	89	1,347	1,359	1,380	9,378,890	529.70
Education & Health Services	164	3,511	3,524	3,547	39,511,159	861.65
Leisure & Hospitality	79	1,233	1,221	1,226	4,062,050	254.73
Other Services	63	367	369	402	2,053,253	416.37
Local Government	46	1,520	1,527	1,535	15,156,393	763.34
State Government	14	579	558	540	5,251,870	722.70

TABLE 6. COUNTY SUMMARY

North American Industry Classification System - Industry Groups	Number of Employing Units	Employment			Total Earnings Apr - Jun 2017	Average Weekly Earnings
		Apr	May	Jun		
IZARD COUNTY - TOTAL	255	3,126	3,070	2,990	\$25,583,722	\$642.71
Natural Resources & Mining	7	140	140	142	1,760,718	962.84
Construction	24	102	102	108	895,339	662.23
Manufacturing	10	304	306	308	2,536,597	637.66
Trade, Transportation & Utilities	67	536	527	545	3,925,314	563.33
Wholesale Trade	13	24	19	25	165,143	560.44
Retail Trade	43	369	365	373	2,270,833	473.39
Transportation, Warehousing & Utilities	11	143	143	147	1,489,338	793.75
Information	4	6	7	7	77,910	898.96
Financial Activities	25	173	177	178	1,489,978	651.21
Professional & Business Services	15	52	51	52	431,965	643.12
Education & Health Services	49	691	680	699	5,127,749	571.66
Leisure & Hospitality	18	161	175	180	598,468	267.65
Other Services	10	24	27	26	178,894	536.15
Local Government	17	517	510	379	4,758,853	781.08
State Government	9	420	368	366	3,801,937	760.29
JACKSON COUNTY - TOTAL	449	5,213	5,226	5,203	\$46,710,532	\$689.13
Natural Resources & Mining	56	299	293	307	2,642,932	678.43
Construction	20	98	94	97	887,008	708.28
Manufacturing	14	914	912	910	10,119,056	853.50
Trade, Transportation & Utilities	109	1,037	1,025	1,010	8,604,699	646.39
Wholesale Trade	20	205	208	204	2,879,189	1,076.87
Retail Trade	71	738	728	715	4,657,401	492.79
Transportation, Warehousing & Utilities	18	94	89	91	1,068,109	899.59
Information	3	13	13	12	103,042	625.76
Financial Activities	31	136	132	133	1,306,140	751.66
Professional & Business Services	31	112	109	113	1,033,769	714.26
Education & Health Services	90	885	909	896	8,526,241	731.45
Leisure & Hospitality	27	296	306	312	992,243	250.52
Other Services	23	67	69	70	511,343	572.83
Local Government	32	576	580	608	5,226,024	683.68
State Government	13	780	784	735	6,758,035	678.36

TABLE 6. COUNTY SUMMARY

North American Industry Classification System - Industry Groups	Number of Employing Units	Employment			Total Earnings Apr - Jun 2017	Average Weekly Earnings
		Apr	May	Jun		
JEFFERSON COUNTY - TOTAL	2,098	26,817	26,824	26,429	\$253,357,342	\$730.20
Natural Resources & Mining	42	160	165	163	1,990,274	941.18
Construction	86	577	572	543	5,910,778	806.16
Manufacturing	58	4,839	4,830	4,878	61,067,151	968.75
Trade, Transportation & Utilities	404	4,503	4,490	4,428	37,105,461	638.01
Wholesale Trade	72	672	676	683	7,016,225	797.21
Retail Trade	279	3,142	3,132	3,073	19,981,370	493.32
Transportation, Warehousing & Utilities	53	689	682	672	10,107,866	1,141.74
Information	9	68	67	67	807,073	922.02
Financial Activities	154	943	953	951	10,403,631	843.29
Professional & Business Services	145	2,110	2,131	2,140	15,678,295	567.01
Education & Health Services	870	4,889	4,877	4,819	46,810,067	740.65
Leisure & Hospitality	139	1,956	1,979	1,887	6,875,319	272.52
Other Services	115	530	516	501	4,421,292	659.53
Local Government	40	2,745	2,772	2,880	28,620,187	786.55
State Government	36	3,497	3,472	3,172	33,667,814	766.15
JOHNSON COUNTY - TOTAL	485	8,677	8,743	8,735	\$71,508,028	\$630.93
Natural Resources & Mining	14	214	219	226	2,120,012	742.39
Construction	37	194	191	200	1,883,589	743.03
Manufacturing	34	2,668	2,670	2,681	21,802,765	627.44
Trade, Transportation & Utilities	107	1,902	1,911	1,899	15,083,283	609.38
Retail Trade	74	898	883	883	5,308,071	459.81
Other Trade, Transportation & Utilities	33	1,004	1,028	1,016	9,775,212	740.10
Information	5	32	32	22	194,132	520.93
Financial Activities	49	182	184	181	1,653,125	697.42
Professional & Business Services	51	390	386	396	2,208,388	434.84
Education & Health Services	95	1,273	1,259	1,266	11,894,389	722.71
Leisure & Hospitality	42	611	642	618	2,012,275	248.19
Other Services	29	80	76	78	504,750	497.78
Local Government	14	1,034	1,079	1,072	11,175,929	809.75
State Government	8	97	94	96	975,391	784.29

TABLE 6. COUNTY SUMMARY

North American Industry Classification System - Industry Groups	Number of Employing Units	Employment			Total Earnings Apr - Jun 2017	Average Weekly Earnings
		Apr	May	Jun		
LAFAYETTE COUNTY - TOTAL	171	1,195	1,213	1,173	\$10,804,994	\$696.30
Natural Resources & Mining	28	109	113	111	740,706	513.31
Construction	9	65	67	67	824,327	955.93
Manufacturing	6	44	44	44	1,976,220	3,454.93
Trade, Transportation & Utilities	29	189	193	189	1,260,008	509.23
Retail Trade	18	112	119	114	581,638	389.06
Other Trade, Transportation & Utilities	11	77	74	75	678,370	692.69
Financial Activities	15	55	54	54	366,373	518.70
Professional & Business Services	9	44	36	31	393,487	818.06
Education & Health Services	40	188	187	190	1,169,603	477.71
Leisure & Hospitality	6	45	44	43	157,617	275.55
Local Government	13	314	314	304	2,912,234	721.09
State Government	9	100	100	98	644,377	499.00
Other	7	42	61	42	360,042	573.01
LAWRENCE COUNTY - TOTAL	409	3,985	3,949	3,949	\$33,174,486	\$644.25
Natural Resources & Mining	50	200	207	205	1,897,225	715.39
Construction	22	92	87	90	789,876	677.62
Manufacturing	20	471	467	471	4,366,629	715.18
Trade, Transportation & Utilities	116	822	848	852	7,247,285	663.14
Wholesale Trade	19	203	204	207	2,209,699	830.51
Retail Trade	61	488	498	500	3,320,256	515.62
Transportation, Warehousing & Utilities	36	131	146	145	1,717,330	939.12
Financial Activities	30	127	126	128	1,170,370	708.89
Professional & Business Services	27	105	99	101	927,384	701.68
Education & Health Services	58	588	567	549	4,461,959	604.27
Leisure & Hospitality	31	372	331	344	1,182,435	260.62
Local Government	24	1,057	1,066	1,058	9,984,348	724.33
State Government	9	74	76	77	595,081	604.96
Other	22	77	75	74	551,894	563.54

TABLE 6. COUNTY SUMMARY

North American Industry Classification System - Industry Groups	Number of Employing Units	Employment			Total Earnings Apr - Jun 2017	Average Weekly Earnings
		Apr	May	Jun		
LEE COUNTY - TOTAL	286	1,875	1,888	1,858	\$13,919,513	\$571.46
Natural Resources & Mining	42	202	218	213	1,659,897	605.14
Construction	7	27	27	27	223,127	635.69
Trade, Transportation & Utilities	40	324	327	324	2,929,847	693.45
Wholesale Trade	10	108	112	111	1,341,277	935.12
Retail Trade	20	168	168	167	983,093	451.03
Transportation, Warehousing & Utilities	10	48	47	46	605,477	990.96
Financial Activities	18	66	65	65	475,785	560.19
Professional & Business Services	12	43	40	40	520,223	976.03
Education & Health Services	128	481	477	480	3,190,802	512.06
Leisure & Hospitality	8	73	77	61	261,264	285.74
Local Government	15	271	267	260	1,071,075	309.74
State Government	6	373	374	372	3,483,681	718.43
Other	10	15	16	16	103,812	509.72
LINCOLN COUNTY - TOTAL	293	2,774	2,774	2,771	\$23,541,158	\$653.03
Natural Resources & Mining	35	170	171	171	1,345,311	606.36
Construction	19	103	108	110	963,430	692.62
Manufacturing	8	264	261	259	2,052,969	604.29
Trade, Transportation & Utilities	46	363	364	368	3,393,568	715.19
Wholesale Trade	9	61	58	61	512,451	656.99
Retail Trade	25	174	182	174	903,884	393.56
Transportation, Warehousing & Utilities	12	128	124	133	1,977,233	1,185.15
Financial Activities	20	68	68	67	643,966	732.06
Professional & Business Services	11	26	27	28	208,532	594.11
Education & Health Services	107	400	394	412	2,832,589	542.02
Leisure & Hospitality	15	172	175	171	463,504	206.49
Local Government	7	370	367	361	3,237,400	680.41
State Government	11	791	792	778	7,959,757	778.00
Other	14	47	47	46	440,132	725.49

TABLE 6. COUNTY SUMMARY

North American Industry Classification System - Industry Groups	Number of Employing Units	Employment			Total Earnings Apr - Jun 2017	Average Weekly Earnings
		Apr	May	Jun		
LITTLE RIVER COUNTY - TOTAL	250	3,353	3,317	3,288	\$40,051,179	\$928.16
Natural Resources & Mining	16	99	96	98	970,967	764.74
Construction	13	204	179	178	1,726,052	710.02
Manufacturing	16	1,102	1,087	1,088	22,858,437	1,609.71
Trade, Transportation & Utilities	60	573	570	579	3,970,590	532.11
Wholesale Trade	8	26	26	26	511,744	1,514.04
Retail Trade	37	456	450	457	2,732,441	462.63
Transportation, Warehousing & Utilities	15	91	94	96	726,405	596.55
Financial Activities	16	72	71	66	635,678	701.89
Professional & Business Services	16	79	89	71	650,108	627.72
Education & Health Services	50	212	211	205	1,396,104	513.02
Leisure & Hospitality	13	187	183	187	633,431	262.44
Local Government	20	683	689	678	6,197,690	697.68
State Government	10	72	73	69	604,589	651.97
Other	20	70	69	69	407,533	452.14
LOGAN COUNTY - TOTAL	493	5,353	5,345	5,383	\$44,124,180	\$633.20
Natural Resources & Mining	26	104	108	103	914,120	669.68
Construction	45	236	243	259	2,313,222	723.33
Manufacturing	21	1,168	1,152	1,140	12,599,313	840.33
Trade, Transportation & Utilities	98	987	997	991	6,963,840	540.18
Wholesale Trade	8	41	40	38	278,898	540.85
Retail Trade	67	775	784	781	4,705,361	464.04
Transportation, Warehousing & Utilities	23	171	173	172	1,979,581	885.32
Information	5	32	32	32	349,555	840.28
Financial Activities	47	196	194	197	1,966,070	772.93
Professional & Business Services	41	126	131	130	1,035,873	617.69
Education & Health Services	112	717	700	719	5,196,738	561.45
Leisure & Hospitality	35	345	338	324	1,154,504	264.57
Other Services	29	142	144	175	1,146,167	573.75
Local Government	22	797	797	807	7,271,302	698.87
State Government	12	503	509	506	3,213,476	488.52

TABLE 6. COUNTY SUMMARY

North American Industry Classification System - Industry Groups	Number of Employing Units	Employment			Total Earnings Apr - Jun 2017	Average Weekly Earnings
		Apr	May	Jun		
LONOKE COUNTY - TOTAL	1,278	13,910	14,031	14,107	\$121,425,679	\$666.41
Natural Resources & Mining	85	485	501	498	4,838,615	752.43
Construction	133	955	968	981	9,570,081	760.50
Manufacturing	36	1,744	1,709	1,707	20,684,307	925.06
Trade, Transportation & Utilities	304	2,801	2,855	2,853	21,101,367	572.28
Wholesale Trade	76	447	454	459	5,089,574	863.62
Retail Trade	170	2,079	2,130	2,124	13,000,104	473.71
Transportation, Warehousing & Utilities	58	275	271	270	3,011,689	851.72
Information	13	86	88	83	796,204	714.94
Financial Activities	150	641	649	662	8,313,087	982.79
Professional & Business Services	152	832	819	817	7,458,250	697.38
Education & Health Services	197	1,674	1,686	1,717	12,728,089	578.54
Leisure & Hospitality	107	1,696	1,766	1,768	6,641,951	293.07
Other Services	62	196	191	195	1,246,335	494.19
Local Government	25	2,632	2,631	2,661	26,615,427	775.12
State Government	14	168	168	165	1,431,966	659.59
MADISON COUNTY - TOTAL	253	3,245	3,251	3,286	\$27,311,173	\$644.30
Natural Resources & Mining	11	42	41	46	394,785	706.23
Construction	26	106	100	103	847,095	632.63
Manufacturing	21	1,127	1,124	1,127	9,746,477	665.83
Trade, Transportation & Utilities	51	672	668	675	5,002,526	572.92
Wholesale Trade	7	28	30	28	192,573	516.74
Retail Trade	35	499	495	502	3,213,738	495.74
Transportation, Warehousing & Utilities	9	145	143	145	1,596,215	850.71
Information	6	50	50	53	1,008,579	1,521.24
Financial Activities	19	89	87	90	819,492	710.95
Professional & Business Services	24	103	118	120	1,038,081	702.51
Education & Health Services	45	251	263	265	1,730,946	512.77
Leisure & Hospitality	16	182	180	182	584,216	247.83
Other Services	18	49	47	50	362,801	573.45
Local Government	9	537	534	535	5,458,682	784.37
State Government	7	37	39	40	317,493	631.62

TABLE 6. COUNTY SUMMARY

North American Industry Classification System - Industry Groups	Number of Employing Units	Employment			Total Earnings Apr - Jun 2017	Average Weekly Earnings
		Apr	May	Jun		
MARION COUNTY - TOTAL	281	3,730	3,754	3,771	\$27,360,565	\$560.99
Manufacturing	21	1,664	1,660	1,667	12,538,608	579.75
Trade, Transportation & Utilities	55	534	543	541	3,539,126	504.77
Wholesale Trade	6	47	46	47	374,706	617.65
Retail Trade	41	453	461	460	2,687,207	451.33
Transportation, Warehousing & Utilities	8	34	36	34	477,213	1,058.90
Information	3	54	53	53	672,816	970.41
Financial Activities	35	199	211	227	1,705,757	617.95
Professional & Business Services	26	89	78	79	585,153	548.92
Education & Health Services	50	356	347	353	2,490,718	544.30
Leisure & Hospitality	31	207	239	243	693,088	232.14
Other Services	13	38	29	26	128,675	319.29
Local Government	17	508	511	498	4,430,347	673.95
State Government	7	39	40	40	320,859	622.22
Other	23	42	43	44	255,418	456.92
MILLER COUNTY - TOTAL	882	12,805	12,906	13,010	\$125,894,696	\$750.31
Natural Resources & Mining	31	161	186	192	1,972,339	844.44
Construction	69	641	641	615	6,300,097	766.40
Manufacturing	27	2,358	2,344	2,344	37,427,603	1,225.82
Trade, Transportation & Utilities	219	3,375	3,362	3,367	30,073,856	686.87
Wholesale Trade	47	482	479	477	5,929,964	951.64
Retail Trade	126	1,242	1,236	1,240	7,479,351	464.23
Transportation, Warehousing & Utilities	46	1,651	1,647	1,650	16,664,541	777.22
Information	7	128	130	126	1,667,015	1,001.81
Financial Activities	85	421	426	422	4,015,755	730.27
Professional & Business Services	86	990	1,081	1,103	6,614,479	480.91
Education & Health Services	179	1,093	1,093	1,088	8,321,399	586.54
Leisure & Hospitality	91	1,478	1,470	1,589	5,903,236	300.26
Other Services	49	244	260	250	1,517,693	464.51
Local Government	24	1,441	1,443	1,445	17,100,579	911.59
State Government	15	475	470	469	4,980,645	812.86

TABLE 6. COUNTY SUMMARY

North American Industry Classification System - Industry Groups	Number of Employing Units	Employment			Total Earnings Apr - Jun 2017	Average Weekly Earnings
		Apr	May	Jun		
MISSISSIPPI COUNTY - TOTAL	1,135	17,633	17,685	17,452	\$206,346,125	\$902.38
Natural Resources & Mining	110	507	493	519	4,312,697	655.19
Construction	51	825	781	759	10,360,122	1,010.91
Manufacturing	59	6,095	6,094	5,941	104,123,182	1,325.34
Trade, Transportation & Utilities	283	2,856	2,890	2,923	26,319,003	700.61
Wholesale Trade	60	364	363	361	4,534,839	961.86
Retail Trade	154	1,715	1,734	1,754	10,363,158	459.64
Transportation, Warehousing & Utilities	69	777	793	808	11,421,006	1,108.33
Information	6	41	34	36	291,353	605.72
Financial Activities	80	447	450	453	4,113,391	703.14
Professional & Business Services	87	1,240	1,270	1,235	10,611,945	653.91
Education & Health Services	242	1,647	1,678	1,593	13,728,538	644.19
Leisure & Hospitality	93	1,178	1,186	1,227	4,297,780	276.19
Other Services	52	262	261	272	2,557,154	742.28
Local Government	49	2,015	2,046	2,069	20,795,583	782.87
State Government	23	520	502	425	4,835,377	771.15
MONROE COUNTY - TOTAL	300	2,141	2,127	2,157	\$15,790,893	\$567.17
Natural Resources & Mining	33	128	141	154	1,327,718	724.34
Construction	9	23	24	23	193,647	638.40
Manufacturing	6	152	156	145	1,137,679	579.56
Trade, Transportation & Utilities	75	551	550	564	4,555,603	631.41
Wholesale Trade	16	196	197	205	2,116,552	816.78
Retail Trade	36	252	251	254	1,413,263	430.83
Transportation, Warehousing & Utilities	23	103	102	105	1,025,788	763.61
Financial Activities	22	88	88	90	797,019	691.46
Professional & Business Services	13	41	19	19	117,696	343.81
Education & Health Services	71	391	388	379	2,630,063	524.13
Leisure & Hospitality	23	224	221	233	821,056	279.46
Local Government	21	349	350	359	2,893,948	631.22
State Government	7	63	60	60	637,637	804.08
Other	20	131	130	131	678,827	399.62

TABLE 6. COUNTY SUMMARY

North American Industry Classification System - Industry Groups	Number of Employing Units	Employment			Total Earnings Apr - Jun 2017	Average Weekly Earnings
		Apr	May	Jun		
MONTGOMERY COUNTY - TOTAL	163	1,305	1,340	1,421	\$9,530,068	\$540.89
Natural Resources & Mining	7	32	32	29	256,032	635.32
Construction	24	76	75	70	500,731	522.87
Manufacturing	8	40	38	38	280,405	557.83
Trade, Transportation & Utilities	34	215	223	229	1,365,275	472.36
Wholesale Trade	9	47	47	47	408,574	668.70
Retail Trade	20	149	157	163	831,987	409.38
Transportation, Warehousing & Utilities	5	19	19	19	124,714	504.91
Financial Activities	9	51	57	59	488,440	674.95
Professional & Business Services	13	20	19	20	138,938	543.43
Education & Health Services	21	60	61	59	388,740	498.38
Leisure & Hospitality	15	277	298	373	1,537,944	374.38
Local Government	9	438	436	439	3,883,883	682.62
State Government	7	34	34	35	327,529	733.82
Other	16	62	67	70	362,151	419.97
NEVADA COUNTY - TOTAL	197	2,441	2,461	2,431	\$20,951,161	\$659.33
Natural Resources & Mining	11	62	73	63	725,859	845.99
Trade, Transportation & Utilities	39	584	589	586	4,905,779	643.61
Retail Trade	22	338	335	328	1,742,861	401.80
Other Trade, Transportation & Utilities	17	246	254	258	3,162,918	962.93
Financial Activities	11	64	67	65	583,476	686.98
Professional & Business Services	11	44	45	43	381,197	666.43
Education & Health Services	46	430	432	436	2,534,988	450.69
Leisure & Hospitality	10	95	91	84	298,798	255.38
Other Services	15	41	38	37	154,651	307.66
Local Government	28	390	392	392	3,471,939	682.47
State Government	9	54	56	55	464,860	650.15
Other	17	677	678	670	7,429,614	846.68

TABLE 6. COUNTY SUMMARY

North American Industry Classification System - Industry Groups	Number of Employing Units	Employment			Total Earnings Apr - Jun 2017	Average Weekly Earnings
		Apr	May	Jun		
NEWTON COUNTY - TOTAL	119	1,057	1,085	1,064	\$6,808,779	\$490.10
Construction	6	17	17	17	124,250	562.22
Manufacturing	9	36	40	32	313,277	669.40
Trade, Transportation & Utilities	33	158	164	163	1,157,144	550.58
Retail Trade	16	99	105	107	575,239	426.84
Other Trade, Transportation & Utilities	17	59	59	56	581,905	771.76
Education & Health Services	23	252	253	251	1,157,279	353.26
Leisure & Hospitality	16	162	162	169	699,880	327.61
Other Services	3	4	5	4	18,059	320.57
Local Government	13	362	369	362	2,764,480	583.68
State Government	7	33	33	34	288,641	666.09
Other	9	33	42	32	285,769	616.32
OUACHITA COUNTY - TOTAL	655	6,837	6,882	6,924	\$59,692,433	\$667.30
Natural Resources & Mining	35	139	150	141	1,452,482	779.51
Construction	37	188	189	203	1,801,087	716.61
Manufacturing	24	549	547	547	5,737,985	805.93
Trade, Transportation & Utilities	157	1,469	1,498	1,499	11,618,143	600.34
Wholesale Trade	25	222	221	225	2,379,035	821.87
Retail Trade	105	960	983	985	5,570,785	439.06
Transportation, Warehousing & Utilities	27	287	294	289	3,668,323	973.03
Information	6	43	44	43	441,642	783.98
Financial Activities	53	286	283	282	2,468,162	669.30
Professional & Business Services	44	563	557	611	4,952,917	660.30
Education & Health Services	187	1,275	1,270	1,249	12,425,522	755.78
Leisure & Hospitality	43	522	518	532	1,602,835	235.30
Other Services	27	109	109	110	1,068,498	751.76
Local Government	29	1,063	1,080	1,077	10,519,372	753.90
State Government	13	631	637	630	5,603,788	681.34

TABLE 6. COUNTY SUMMARY

North American Industry Classification System - Industry Groups	Number of Employing Units	Employment			Total Earnings Apr - Jun 2017	Average Weekly Earnings
		Apr	May	Jun		
PERRY COUNTY - TOTAL	144	1,199	1,229	1,248	\$9,869,291	\$619.57
Construction	17	101	111	111	948,151	677.41
Manufacturing	5	29	27	30	326,162	875.21
Trade, Transportation & Utilities	28	186	185	181	1,312,034	548.51
Retail Trade	19	150	149	145	571,962	297.28
Other Trade, Transportation & Utilities	9	36	36	36	740,072	1,581.35
Financial Activities	7	25	27	27	251,812	735.58
Professional & Business Services	13	43	45	41	355,813	636.52
Education & Health Services	34	230	231	237	1,464,286	484.11
Leisure & Hospitality	8	80	78	85	285,571	271.20
Local Government	10	356	357	359	2,981,701	641.87
State Government	7	31	31	31	294,401	730.52
Other	15	118	137	146	1,649,360	949.18
PHILLIPS COUNTY - TOTAL	770	5,372	5,384	5,444	\$44,260,998	\$630.50
Natural Resources & Mining	58	214	233	236	1,703,008	575.41
Construction	30	115	113	124	866,483	568.06
Manufacturing	14	386	388	388	4,209,389	835.97
Trade, Transportation & Utilities	148	1,253	1,270	1,272	10,045,630	610.86
Wholesale Trade	27	257	265	262	2,989,036	879.82
Retail Trade	84	760	763	765	4,255,402	429.20
Transportation, Warehousing & Utilities	37	236	242	245	2,801,192	894.09
Information	8	27	27	26	278,321	802.85
Financial Activities	41	206	207	217	1,775,275	650.28
Professional & Business Services	39	234	240	242	2,519,544	812.06
Education & Health Services	326	1,413	1,387	1,414	10,390,915	569.03
Leisure & Hospitality	35	295	310	312	969,488	243.98
Other Services	30	73	73	76	475,715	494.51
Local Government	27	790	776	782	8,053,886	791.56
State Government	14	366	360	355	2,973,344	634.74

TABLE 6. COUNTY SUMMARY

North American Industry Classification System - Industry Groups	Number of Employing Units	Employment			Total Earnings Apr - Jun 2017	Average Weekly Earnings
		Apr	May	Jun		
PIKE COUNTY - TOTAL	255	2,549	2,596	2,622	\$19,001,959	\$564.58
Natural Resources & Mining	25	130	123	123	1,179,358	723.83
Construction	13	39	40	44	310,155	581.90
Manufacturing	18	326	377	390	2,869,620	605.87
Trade, Transportation & Utilities	61	518	528	543	3,760,673	546.16
Wholesale Trade	8	108	105	112	854,654	606.85
Retail Trade	35	346	350	357	2,077,306	455.25
Transportation, Warehousing & Utilities	18	64	73	74	828,713	906.36
Information	7	31	30	30	306,743	777.88
Financial Activities	24	231	227	227	2,182,099	735.13
Professional & Business Services	14	82	62	51	651,410	770.90
Education & Health Services	35	327	319	298	1,582,303	386.81
Leisure & Hospitality	26	260	265	286	876,773	249.48
Other Services	13	60	54	58	386,839	519.01
Local Government	10	448	445	443	4,259,819	735.80
State Government	9	97	126	129	636,167	417.07
POINSETT COUNTY - TOTAL	513	5,282	5,298	5,233	\$47,704,329	\$696.18
Natural Resources & Mining	71	396	393	400	4,055,847	787.19
Construction	23	98	100	95	831,792	655.13
Manufacturing	19	714	724	716	7,292,632	781.30
Trade, Transportation & Utilities	130	1,211	1,200	1,200	10,652,739	680.79
Wholesale Trade	29	369	359	358	5,019,026	1,066.52
Retail Trade	70	678	672	671	3,824,676	436.72
Transportation, Warehousing & Utilities	31	164	169	171	1,809,037	828.31
Information	5	56	56	56	600,644	825.06
Financial Activities	40	177	173	177	1,767,911	774.15
Professional & Business Services	28	193	187	175	3,192,153	1,327.30
Education & Health Services	98	852	856	833	6,665,037	605.31
Leisure & Hospitality	40	311	336	320	1,049,100	250.36
Other Services	18	52	50	48	353,342	543.60
Local Government	30	1,050	1,051	1,047	9,993,622	732.60
State Government	11	172	172	166	1,249,510	565.39

TABLE 6. COUNTY SUMMARY

North American Industry Classification System - Industry Groups	Number of Employing Units	Employment			Total Earnings Apr - Jun 2017	Average Weekly Earnings
		Apr	May	Jun		
POLK COUNTY - TOTAL	495	5,669	5,690	5,788	\$45,488,043	\$612.19
Natural Resources & Mining	20	143	138	136	1,653,407	915.00
Construction	34	187	192	198	1,513,985	605.51
Manufacturing	32	1,207	1,217	1,246	11,593,353	728.99
Trade, Transportation & Utilities	125	1,046	1,034	1,048	7,208,782	531.83
Wholesale Trade	22	60	60	61	519,042	661.76
Retail Trade	71	775	765	777	4,407,758	439.01
Transportation, Warehousing & Utilities	32	211	209	210	2,281,982	835.89
Information	8	73	73	73	494,377	520.95
Financial Activities	47	234	242	245	2,066,141	661.31
Professional & Business Services	42	141	139	140	1,377,666	756.96
Education & Health Services	86	1,035	1,020	1,029	8,534,647	638.63
Leisure & Hospitality	41	438	463	444	1,535,798	263.51
Other Services	26	181	179	253	1,412,523	531.76
Local Government	21	701	708	707	6,177,361	673.70
State Government	13	283	285	269	1,920,003	529.36
POPE COUNTY - TOTAL	1,832	26,336	26,415	26,165	\$277,787,346	\$812.32
Natural Resources & Mining	33	761	803	808	7,875,058	766.16
Construction	154	1,532	1,485	1,478	25,828,432	1,326.01
Manufacturing	71	4,286	4,322	4,346	44,789,955	797.91
Trade, Transportation & Utilities	434	6,001	6,010	6,038	72,943,858	932.64
Wholesale Trade	80	570	581	580	5,903,269	787.00
Retail Trade	270	3,189	3,206	3,174	19,475,139	469.67
Transportation, Warehousing & Utilities	84	2,242	2,223	2,284	47,565,450	1,626.41
Information	19	161	160	161	1,305,696	625.13
Financial Activities	187	976	986	977	9,280,954	728.74
Professional & Business Services	276	2,247	2,207	2,217	34,109,466	1,179.95
Education & Health Services	343	3,196	3,238	3,253	27,476,403	654.56
Leisure & Hospitality	143	2,850	2,853	2,728	10,536,296	288.39
Other Services	114	532	533	562	3,777,517	535.79
Local Government	43	2,114	2,131	2,173	22,947,097	825.10
State Government	15	1,680	1,687	1,424	16,916,614	814.83

TABLE 6. COUNTY SUMMARY

North American Industry Classification System - Industry Groups	Number of Employing Units	Employment			Total Earnings Apr - Jun 2017	Average Weekly Earnings
		Apr	May	Jun		
PRAIRIE COUNTY - TOTAL	260	1,572	1,583	1,549	\$13,294,506	\$652.20
Natural Resources & Mining	37	172	181	175	1,960,047	856.66
Construction	10	60	64	55	496,309	639.85
Trade, Transportation & Utilities	62	369	363	352	3,139,731	668.41
Wholesale Trade	12	88	90	87	1,525,482	1,328.43
Retail Trade	35	214	205	199	1,039,470	388.15
Transportation, Warehousing & Utilities	15	67	68	66	574,779	659.91
Financial Activities	15	50	50	51	435,801	666.02
Professional & Business Services	16	133	134	133	1,704,319	983.26
Education & Health Services	56	270	279	272	1,793,267	504.06
Leisure & Hospitality	18	98	101	112	331,223	245.78
Local Government	15	305	305	308	2,791,004	701.61
State Government	7	26	26	26	232,513	687.91
Other	24	89	80	65	410,292	404.63
PULASKI COUNTY - TOTAL	14,279	240,600	241,749	241,219	\$2,784,550,624	\$888.08
Natural Resources & Mining	53	623	643	641	9,810,000	1,187.12
Construction	932	8,939	9,055	9,174	108,525,912	921.84
Manufacturing	337	12,706	12,705	12,738	182,006,746	1,100.99
Trade, Transportation & Utilities	3,158	48,102	48,169	48,507	507,549,943	809.01
Wholesale Trade	944	11,467	11,488	11,540	177,961,649	1,190.55
Retail Trade	1,819	25,620	25,612	25,556	188,592,856	566.77
Transportation, Warehousing & Utilities	395	11,015	11,069	11,411	140,995,438	971.41
Information	201	5,388	5,363	5,327	83,475,048	1,198.13
Financial Activities	1,670	16,702	16,719	16,749	264,506,090	1,216.66
Professional & Business Services	2,728	33,880	33,935	34,053	398,600,047	902.98
Education & Health Services	2,517	40,714	40,787	40,816	496,862,428	937.40
Leisure & Hospitality	1,229	23,715	24,180	24,415	105,768,717	337.55
Other Services	1,145	6,536	6,595	6,874	63,487,473	732.36
Local Government	110	15,422	15,639	14,502	192,862,955	976.82
State Government	199	27,873	27,959	27,423	371,095,265	1,028.62

TABLE 6. COUNTY SUMMARY

North American Industry Classification System - Industry Groups	Number of Employing Units	Employment			Total Earnings Apr - Jun 2017	Average Weekly Earnings
		Apr	May	Jun		
RANDOLPH COUNTY - TOTAL	395	5,194	5,270	5,271	\$41,144,141	\$603.42
Natural Resources & Mining	28	207	206	226	2,388,851	862.71
Construction	29	118	132	134	960,740	577.37
Manufacturing	27	1,228	1,240	1,231	10,080,028	628.86
Trade, Transportation & Utilities	88	855	867	884	6,690,201	592.44
Wholesale Trade	18	133	133	137	1,268,960	726.64
Retail Trade	53	592	605	611	3,764,237	480.46
Transportation, Warehousing & Utilities	17	130	129	136	1,657,004	968.06
Information	6	31	30	30	280,986	712.56
Financial Activities	34	157	157	156	1,366,317	670.86
Professional & Business Services	35	156	168	169	1,110,638	519.88
Education & Health Services	66	904	910	896	7,081,228	603.00
Leisure & Hospitality	32	399	387	409	1,316,161	254.17
Other Services	17	66	65	62	448,359	536.10
Local Government	23	772	814	805	6,667,522	643.52
State Government	10	301	294	269	2,753,110	735.34
SAINT FRANCIS COUNTY - TOTAL	735	6,794	6,842	6,902	\$56,455,649	\$634.35
Natural Resources & Mining	43	203	206	229	2,144,742	775.77
Construction	40	197	199	203	1,877,485	723.32
Trade, Transportation & Utilities	152	1,954	1,960	1,934	16,068,236	634.07
Wholesale Trade	30	603	604	592	6,590,194	845.37
Retail Trade	100	1,074	1,067	1,053	6,325,761	457.04
Transportation, Warehousing & Utilities	22	277	289	289	3,152,281	850.82
Information	5	53	51	52	489,809	724.57
Financial Activities	63	240	246	245	2,021,720	638.24
Professional & Business Services	46	155	143	144	1,494,799	780.44
Education & Health Services	258	1,464	1,483	1,506	12,724,458	659.42
Leisure & Hospitality	48	619	639	654	2,037,575	245.93
Local Government	28	836	833	863	7,979,669	727.28
State Government	16	436	448	443	3,800,473	660.91
Other	36	637	634	629	5,816,683	706.48

TABLE 6. COUNTY SUMMARY

North American Industry Classification System - Industry Groups	Number of Employing Units	Employment			Total Earnings Apr - Jun 2017	Average Weekly Earnings
		Apr	May	Jun		
SALINE COUNTY - TOTAL	2,010	23,750	23,951	24,151	\$213,415,606	\$685.43
Natural Resources & Mining	13	60	61	60	616,248	785.70
Construction	274	2,067	2,096	2,115	21,415,830	787.21
Manufacturing	83	1,422	1,416	1,430	16,756,662	906.03
Trade, Transportation & Utilities	448	5,374	5,398	5,398	44,022,246	628.26
Wholesale Trade	116	651	645	636	7,911,910	945.04
Retail Trade	271	4,246	4,266	4,284	31,052,908	560.02
Transportation, Warehousing & Utilities	61	477	487	478	5,057,428	809.36
Information	17	164	163	160	1,812,011	858.64
Financial Activities	199	761	754	757	8,345,384	847.65
Professional & Business Services	265	1,568	1,607	1,641	15,428,399	739.29
Education & Health Services	326	4,463	4,513	4,522	43,178,853	738.21
Leisure & Hospitality	186	3,339	3,351	3,445	13,060,952	297.39
Other Services	153	779	787	844	6,158,980	589.75
Local Government	31	2,882	2,941	2,920	35,969,471	949.40
State Government	15	871	864	859	6,650,570	591.65
SCOTT COUNTY - TOTAL	177	3,012	3,032	3,061	\$22,874,627	\$579.76
Natural Resources & Mining	17	163	163	167	1,611,820	754.48
Trade, Transportation & Utilities	32	397	393	398	2,598,200	504.70
Wholesale Trade	6	34	31	32	157,372	374.40
Retail Trade	20	292	291	294	1,590,278	418.46
Transportation, Warehousing & Utilities	6	71	71	72	850,550	917.20
Financial Activities	19	65	64	63	471,492	566.70
Professional & Business Services	11	81	83	96	621,160	551.33
Education & Health Services	43	324	328	325	2,759,572	651.82
Leisure & Hospitality	14	125	134	129	512,795	304.99
Other Services	9	25	23	24	189,735	608.13
Local Government	6	517	526	532	5,177,304	758.58
State Government	6	31	31	27	246,167	638.29
Other	20	1,284	1,287	1,300	8,686,382	517.84

TABLE 6. COUNTY SUMMARY

North American Industry Classification System - Industry Groups	Number of Employing Units	Employment			Total Earnings	Average Weekly Earnings
		Apr	May	Jun	Apr - Jun 2017	
SEARCY COUNTY - TOTAL	164	1,512	1,558	1,581	\$10,012,868	\$496.81
Construction	10	12	14	14	80,906	466.77
Manufacturing	17	212	215	205	1,289,668	470.91
Trade, Transportation & Utilities	37	232	235	230	1,375,001	455.25
Wholesale Trade	7	38	40	40	228,708	447.28
Retail Trade	24	179	180	175	950,411	410.72
Transportation, Warehousing & Utilities	6	15	15	15	195,882	1,004.52
Financial Activities	11	61	70	90	475,822	496.86
Education & Health Services	39	355	351	365	2,268,297	488.75
Leisure & Hospitality	12	152	164	171	527,167	249.80
Other Services	3	8	8	6	56,709	594.85
Local Government	10	313	317	326	2,684,491	648.01
State Government	6	41	40	40	326,567	622.82
Other	19	126	144	134	928,240	530.22
SEBASTIAN COUNTY - TOTAL	3,659	64,710	65,095	64,998	\$660,998,250	\$783.04
Natural Resources & Mining	42	533	535	531	8,727,088	1,259.50
Construction	259	2,341	2,383	2,403	24,478,932	792.62
Manufacturing	185	11,803	11,804	11,836	141,197,689	919.34
Trade, Transportation & Utilities	895	13,069	13,050	13,163	122,179,619	717.77
Wholesale Trade	232	2,562	2,553	2,570	32,298,662	969.88
Retail Trade	554	7,834	7,855	7,898	50,929,501	498.28
Transportation, Warehousing & Utilities	109	2,673	2,642	2,695	38,951,456	1,122.20
Information	40	925	924	943	15,109,880	1,248.89
Financial Activities	407	2,448	2,438	2,443	27,761,062	874.12
Professional & Business Services	567	8,068	8,227	8,417	78,095,681	729.28
Education & Health Services	585	11,445	11,488	11,427	133,466,162	896.39
Leisure & Hospitality	345	6,266	6,394	6,360	25,200,426	305.76
Other Services	268	1,344	1,336	1,375	10,171,139	578.84
Local Government	43	4,684	4,715	4,432	55,693,339	929.24
State Government	23	1,784	1,801	1,668	18,917,233	831.05

TABLE 6. COUNTY SUMMARY

North American Industry Classification System - Industry Groups	Number of Employing Units	Employment			Total Earnings Apr - Jun 2017	Average Weekly Earnings
		Apr	May	Jun		
SEVIER COUNTY - TOTAL	309	4,840	4,884	4,928	\$38,412,023	\$604.99
Natural Resources & Mining	14	173	174	181	1,508,378	659.26
Construction	18	201	201	206	2,451,458	930.46
Trade, Transportation & Utilities	89	835	848	849	6,758,809	616.01
Wholesale Trade	13	101	99	100	1,765,449	1,358.04
Retail Trade	62	654	669	664	4,117,159	478.16
Transportation, Warehousing & Utilities	14	80	80	85	876,201	825.31
Financial Activities	25	194	197	198	1,891,785	741.20
Professional & Business Services	24	91	88	94	580,998	491.12
Education & Health Services	57	542	536	554	4,241,615	599.78
Leisure & Hospitality	26	319	320	358	980,099	226.86
Local Government	12	942	971	935	7,536,648	610.68
State Government	7	163	164	144	1,356,076	664.42
Other	37	1,380	1,385	1,409	11,106,157	614.03
SHARP COUNTY - TOTAL	395	3,770	3,808	3,904	\$29,045,454	\$583.77
Construction	29	131	135	139	1,253,164	714.05
Manufacturing	21	185	185	187	1,413,847	585.77
Trade, Transportation & Utilities	82	1,061	1,050	1,027	9,160,459	673.66
Wholesale Trade	12	36	36	31	205,301	459.97
Retail Trade	57	646	653	658	3,724,164	439.15
Transportation, Warehousing & Utilities	13	379	361	338	5,230,994	1,119.81
Information	7	31	33	29	258,957	642.57
Financial Activities	35	176	175	175	1,859,329	815.73
Professional & Business Services	34	118	114	121	949,254	620.56
Education & Health Services	88	784	796	802	5,769,220	558.92
Leisure & Hospitality	37	386	392	406	1,403,797	273.61
Local Government	24	743	769	789	5,993,384	601.08
State Government	7	50	51	51	432,509	656.64
Other	31	105	108	178	551,534	325.52

TABLE 6. COUNTY SUMMARY

North American Industry Classification System - Industry Groups	Number of Employing Units	Employment			Total Earnings	Average Weekly Earnings
		Apr	May	Jun	Apr - Jun 2017	
STONE COUNTY - TOTAL	264	2,551	2,586	2,645	\$18,538,079	\$549.73
Natural Resources & Mining	5	9	9	27	83,369	427.53
Construction	14	33	35	36	202,525	449.39
Manufacturing	19	210	202	198	1,279,337	483.99
Trade, Transportation & Utilities	68	592	594	591	4,075,885	529.31
Wholesale Trade	7	39	40	40	298,506	578.87
Retail Trade	51	517	517	515	3,311,129	493.29
Transportation, Warehousing & Utilities	10	36	37	36	466,250	987.12
Financial Activities	27	139	144	143	1,476,489	799.83
Professional & Business Services	11	35	27	26	169,594	444.74
Education & Health Services	53	552	563	557	4,794,912	661.79
Leisure & Hospitality	30	443	466	507	1,673,117	272.67
Local Government	10	382	383	394	3,644,539	725.67
State Government	7	112	119	120	817,143	537.24
Other	20	44	44	46	321,169	553.10
UNION COUNTY - TOTAL	1,280	17,317	17,516	17,485	\$193,707,945	\$854.43
Natural Resources & Mining	82	392	386	386	4,596,355	911.25
Construction	83	1,449	1,459	1,441	17,529,762	930.17
Manufacturing	50	3,018	3,003	3,024	46,586,397	1,188.58
Trade, Transportation & Utilities	307	3,412	3,426	3,452	32,113,145	720.19
Wholesale Trade	65	494	500	505	6,085,819	936.90
Retail Trade	181	2,067	2,075	2,082	13,098,509	485.66
Transportation, Warehousing & Utilities	61	851	851	865	12,928,817	1,162.28
Information	8	119	120	118	959,144	620.00
Financial Activities	100	602	603	613	7,872,443	999.29
Professional & Business Services	128	1,845	1,840	1,880	31,962,536	1,325.42
Education & Health Services	289	2,409	2,415	2,404	21,714,231	693.27
Leisure & Hospitality	90	1,271	1,428	1,418	5,275,525	295.71
Other Services	95	449	460	457	3,185,597	538.17
Local Government	32	1,846	1,868	1,798	17,092,799	715.62
State Government	16	505	508	494	4,820,011	738.10

TABLE 6. COUNTY SUMMARY

North American Industry Classification System - Industry Groups	Number of Employing Units	Employment			Total Earnings	Average Weekly Earnings
		Apr	May	Jun	Apr - Jun 2017	
VAN BUREN COUNTY - TOTAL	348	3,599	3,617	3,690	\$31,939,337	\$675.83
Natural Resources & Mining	10	133	134	137	2,877,814	1,643.84
Construction	41	149	147	171	1,181,390	583.79
Manufacturing	7	136	136	141	975,342	544.99
Trade, Transportation & Utilities	95	1,015	1,010	1,008	9,989,124	760.03
Wholesale Trade	11	91	84	95	1,185,527	1,013.27
Retail Trade	56	612	622	604	3,565,170	447.62
Transportation, Warehousing & Utilities	28	312	304	309	5,238,427	1,306.88
Information	4	21	20	21	99,309	369.64
Financial Activities	28	106	109	112	996,896	703.53
Professional & Business Services	34	153	164	165	1,231,672	589.69
Education & Health Services	64	760	759	767	6,211,099	627.00
Leisure & Hospitality	27	348	369	391	1,442,421	300.42
Other Services	21	59	56	58	394,454	526.17
Local Government	11	676	670	676	6,149,685	701.86
State Government	6	43	43	43	390,131	697.91
WASHINGTON COUNTY - TOTAL	5,913	103,533	104,368	104,346	\$1,157,233,533	\$855.26
Natural Resources & Mining	42	294	296	319	3,932,152	998.26
Construction	549	5,168	5,231	5,338	61,832,263	906.72
Manufacturing	213	12,463	12,513	12,654	134,730,926	826.25
Trade, Transportation & Utilities	1,352	22,757	22,838	22,835	221,519,491	747.04
Wholesale Trade	367	3,784	3,801	3,833	60,471,603	1,222.19
Retail Trade	784	12,678	12,701	12,592	89,651,586	544.86
Transportation, Warehousing & Utilities	201	6,295	6,336	6,410	71,396,302	865.29
Information	72	891	893	899	10,204,733	877.73
Financial Activities	653	3,575	3,592	3,616	43,246,525	925.53
Professional & Business Services	1,072	12,956	12,972	13,195	239,672,452	1,413.72
Education & Health Services	844	15,498	15,500	15,395	180,253,669	896.62
Leisure & Hospitality	645	12,849	13,061	12,732	51,638,720	308.39
Other Services	389	2,069	2,040	2,050	16,110,154	603.63
Local Government	59	8,686	8,766	8,729	107,867,314	950.78
State Government	23	6,327	6,666	6,584	86,225,134	1,016.40

TABLE 6. COUNTY SUMMARY

North American Industry Classification System - Industry Groups	Number of Employing Units	Employment			Total Earnings Apr - Jun 2017	Average Weekly Earnings
		Apr	May	Jun		
WHITE COUNTY - TOTAL	1,787	23,682	23,539	23,651	\$217,195,686	\$707.22
Natural Resources & Mining	54	289	299	311	3,036,344	779.42
Construction	157	1,016	1,016	1,068	10,515,583	782.80
Manufacturing	58	2,076	2,106	2,172	24,211,359	879.33
Trade, Transportation & Utilities	475	6,039	6,068	6,086	53,251,633	675.47
Wholesale Trade	86	560	581	576	5,995,051	805.75
Retail Trade	301	3,444	3,439	3,439	23,453,543	524.35
Transportation, Warehousing & Utilities	88	2,035	2,048	2,071	23,803,039	892.59
Information	17	135	133	138	1,089,989	619.55
Financial Activities	169	861	872	869	9,474,303	840.27
Professional & Business Services	192	1,178	1,176	1,168	9,906,493	649.10
Education & Health Services	326	5,608	5,516	5,468	60,762,057	845.11
Leisure & Hospitality	163	2,692	2,686	2,681	9,469,523	271.16
Other Services	115	508	519	513	4,115,369	616.69
Local Government	46	2,739	2,740	2,749	27,052,445	758.74
State Government	15	541	408	428	4,310,588	722.40
WOODRUFF COUNTY - TOTAL	204	1,745	1,770	1,773	\$14,715,827	\$642.20
Natural Resources & Mining	27	136	143	140	1,053,907	580.45
Construction	9	41	40	40	349,148	665.89
Manufacturing	7	201	203	202	2,395,329	912.16
Trade, Transportation & Utilities	47	394	398	397	3,414,702	662.75
Wholesale Trade	11	135	135	135	1,656,203	943.71
Retail Trade	27	193	195	193	862,675	342.65
Transportation, Warehousing & Utilities	9	66	68	69	895,824	1,018.37
Financial Activities	11	70	72	71	574,466	622.39
Education & Health Services	62	249	251	252	1,802,278	553.07
Leisure & Hospitality	11	78	73	76	245,860	249.94
Local Government	9	425	438	444	3,362,846	593.76
State Government	5	26	27	26	259,256	757.32
Other	16	125	125	125	1,258,035	774.18

TABLE 6. COUNTY SUMMARY

North American Industry Classification System - Industry Groups	Number of Employing Units	Employment			Total Earnings Apr - Jun 2017	Average Weekly Earnings
		Apr	May	Jun		
YELL COUNTY - TOTAL	405	6,461	6,506	6,528	\$50,773,037	\$601.02
Natural Resources & Mining	23	213	210	211	2,096,000	762.92
Construction	31	213	227	256	2,227,023	738.40
Manufacturing	20	2,402	2,408	2,431	18,360,908	585.16
Trade, Transportation & Utilities	76	753	766	767	5,141,157	518.99
Wholesale Trade	14	63	62	63	283,987	348.59
Retail Trade	46	515	525	526	2,807,738	413.75
Transportation, Warehousing & Utilities	16	175	179	178	2,049,432	889.00
Financial Activities	29	126	127	127	955,652	580.36
Professional & Business Services	38	261	265	283	2,276,098	649.26
Education & Health Services	108	797	791	781	5,089,523	495.78
Leisure & Hospitality	26	309	328	323	964,558	231.86
Local Government	25	1,201	1,195	1,157	12,024,114	780.97
State Government	10	65	67	66	465,464	542.50
Other	19	121	122	126	1,172,540	733.30
STATEWIDE COUNTY - TOTAL	9,434	34,804	35,589	32,073	\$483,735,242	\$1,089.45
Natural Resources & Mining	97	290	295	314	4,306,201	1,105.38
Construction	768	3,812	3,975	4,044	59,640,596	1,163.32
Manufacturing	41	118	118	118	3,209,793	2,092.43
Trade, Transportation & Utilities	3,165	8,237	8,352	8,287	176,178,791	1,634.37
Wholesale Trade	2,762	6,692	6,780	6,743	156,461,621	1,786.13
Retail Trade	139	536	548	520	6,132,064	882.23
Transportation, Warehousing & Utilities	264	1,009	1,024	1,024	13,585,106	1,025.52
Information	269	560	591	551	11,302,953	1,532.53
Financial Activities	593	1,559	1,573	1,560	25,904,878	1,274.09
Professional & Business Services	3,645	16,108	16,572	13,090	155,335,363	783.19
Education & Health Services	444	2,430	2,465	2,505	27,526,273	858.41
Leisure & Hospitality	89	184	170	175	1,613,802	704.00
State Government	14	729	737	727	8,099,357	852.29
Other	309	777	741	702	10,617,235	1,028.79

Note: Statewide classification includes employment and payroll data for employers that have not provided a physical location for each employing unit. This section also includes employers without a physical location in Arkansas.

TABLE 7. FEDERAL GOVERNMENT EMPLOYMENT AND EARNINGS IN ARKANSAS

North American Industry Classification System - Industry Groups	Number of Employing Units	Employment			Total Earnings Apr - Jun 2017	Average Weekly Earnings
		Apr	May	Jun		
TOTAL	1,165	19,914	19,951	20,076	\$344,547,961	\$1,326.49
Trade, Transportation & Utilities	593	5,582	5,610	5,611	75,347,687	1,034.81
Information	2	43	43	44	633,555	1,124.65
Financial Activities	14	109	112	111	2,024,083	1,406.92
Professional & Business Services	34	761	765	826	13,508,639	1,325.42
Education & Health Services	18	5,151	5,117	5,070	110,032,857	1,655.51
Leisure & Hospitality	23	281	297	329	2,808,868	714.66
Other Services	1	1	1	1	7,421	570.85
Public Administration	480	7,986	8,006	8,084	140,184,851	1,343.68

TABLE 8. LOCAL WORKFORCE DEVELOPMENT AREA SUMMARY

North American Industry Classification System - Industry Groups	Number of Employing Units	Employment			Total Earnings	Average Weekly Earnings
		Apr	May	Jun	Apr - Jun 2017	
CENTRAL LOCAL WORKFORCE DEVELOPMENT AREA	6,649	81,673	82,143	82,137	775,142,280	\$727.29
Natural Resources & Mining	225	1,190	1,251	1,266	14,662,929	912.80
Construction	733	5,787	5,877	6,003	62,645,748	818.29
Trade, Transportation & Utilities	1,524	16,442	16,520	16,544	127,876,108	596.09
Wholesale Trade	359	1,914	1,922	1,924	23,351,653	935.56
Retail Trade	922	12,861	12,910	12,934	85,473,615	509.62
Transportation, Warehousing & Utilities	243	1,667	1,688	1,686	19,050,840	872.12
Information	56	584	589	580	6,359,052	837.12
Financial Activities	698	3,018	3,018	3,025	33,808,767	861.06
Professional & Business Services	867	7,761	7,827	7,857	116,413,067	1,145.85
Education & Health Services	1,084	13,861	13,896	13,822	125,297,757	695.42
Leisure & Hospitality	594	10,446	10,577	10,674	40,085,548	291.84
Local Government	133	9,659	9,726	9,745	113,756,100	901.18
State Government	60	4,445	4,425	4,143	41,383,808	733.89
Other	675	8,480	8,437	8,478	92,853,396	843.78

Note: Pulaski County is not included in the Central Local Workforce Development Area. Please refer to Page 51 for information on Pulaski County.
Central Local Workforce Development Area includes these counties: Faulkner, Lonoke, Monroe, Prairie, and Saline.

EASTERN LOCAL WORKFORCE DEVELOPMENT AREA	3,520	35,749	35,729	35,165	\$304,547,037	\$659.02
Natural Resources & Mining	237	1,118	1,168	1,177	9,398,803	626.32
Construction	147	931	939	984	10,443,312	844.43
Trade, Transportation & Utilities	764	9,137	9,219	9,157	80,353,119	673.97
Wholesale Trade	156	2,067	2,083	2,064	24,462,810	908.48
Retail Trade	429	4,758	4,779	4,754	28,967,653	467.77
Transportation, Warehousing & Utilities	179	2,312	2,357	2,339	26,922,656	886.55
Financial Activities	265	1,263	1,277	1,288	11,437,933	689.53
Professional & Business Services	244	1,790	1,700	1,790	15,380,114	672.21
Education & Health Services	1,145	6,473	6,457	6,421	50,387,293	600.89
Leisure & Hospitality	256	3,716	3,819	3,816	15,509,324	315.31
Local Government	129	4,864	4,840	4,227	48,715,601	806.98
State Government	58	1,998	1,931	1,922	17,175,296	677.41
Other	275	4,459	4,379	4,383	45,746,242	798.49

Eastern Local Workforce Development Area includes these counties: Crittenden, Cross, Lee, Phillips, and Saint Francis.

TABLE 8. LOCAL WORKFORCE DEVELOPMENT AREA SUMMARY

North American Industry Classification System - Industry Groups	Number of Employing Units	Employment			Total Earnings	Average Weekly Earnings
		Apr	May	Jun	Apr - Jun 2017	
NORTH CENTRAL LOCAL WORKFORCE DEVELOPMENT AREA	5,432	67,716	67,848	68,299	\$598,897,148	\$677.94
Construction	431	2,314	2,368	2,494	23,123,187	743.61
Manufacturing	218	8,166	8,195	8,271	86,024,174	805.93
Trade, Transportation & Utilities	1,355	15,167	15,234	15,203	130,187,729	658.79
Retail Trade	876	9,454	9,516	9,473	60,939,682	494.43
Other Trade, Transportation & Utilities	479	5,713	5,718	5,730	69,248,047	931.20
Financial Activities	507	2,546	2,588	2,592	26,822,544	801.17
Education & Health Services	1,028	14,479	14,433	14,448	142,858,802	760.32
Leisure & Hospitality	485	6,650	6,783	6,940	24,110,082	273.10
Local Government	225	8,962	8,993	8,949	84,573,790	725.43
State Government	93	2,747	2,524	2,477	23,559,585	701.71
Other	1,090	6,685	6,730	6,925	57,637,255	653.93

North Central Local Workforce Development Area includes these counties: Cleburne, Fulton, Independence, IZard, Jackson, Sharp, Stone, Van Buren, White, and Woodruff.

NORTHEAST LOCAL WORKFORCE DEVELOPMENT AREA	6,547	100,196	100,652	100,078	\$954,361,180	\$731.86
Natural Resources & Mining	440	2,146	2,177	2,226	19,588,113	690.23
Construction	463	3,695	3,727	3,776	39,615,228	816.39
Manufacturing	304	20,108	20,148	20,042	257,647,138	986.05
Trade, Transportation & Utilities	1,735	19,203	19,360	19,332	158,732,468	632.71
Wholesale Trade	371	3,359	3,371	3,384	39,934,042	911.17
Retail Trade	1,013	12,542	12,615	12,539	79,026,116	483.79
Transportation, Warehousing & Utilities	351	3,302	3,374	3,409	39,772,310	910.09
Financial Activities	553	3,152	3,161	3,191	34,554,592	839.03
Professional & Business Services	667	7,416	7,439	7,208	59,148,049	618.66
Education & Health Services	1,144	17,011	17,063	16,964	171,396,672	774.97
Leisure & Hospitality	548	9,419	9,503	9,320	34,192,550	279.39
Local Government	213	11,405	11,518	11,565	116,718,845	781.00
State Government	95	4,470	4,403	4,273	44,352,005	778.57
Other	385	2,171	2,153	2,181	18,415,520	653.30

Northeast Local Workforce Development Area includes these counties: Clay, Craighead, Greene, Lawrence, Mississippi, Poinsett, and Randolph.

TABLE 8. LOCAL WORKFORCE DEVELOPMENT AREA SUMMARY

North American Industry Classification System - Industry Groups	Number of Employing Units	Employment			Total Earnings	Average Weekly Earnings
		Apr	May	Jun	Apr - Jun 2017	
NORTHWEST LOCAL WORKFORCE DEVELOPMENT AREA	16,043	269,385	271,028	271,396	\$3,120,355,189	\$887.01
Natural Resources & Mining	140	1,445	1,444	1,501	18,854,546	991.13
Trade, Transportation & Utilities	3,896	59,687	59,849	60,083	632,158,706	812.18
Retail Trade	2,149	31,787	31,829	31,852	218,485,420	528.13
Other Trade, Transportation & Utilities	1,747	27,900	28,020	28,231	413,673,286	1,134.43
Information	200	2,452	2,427	2,436	30,163,292	951.57
Professional & Business Services	2,659	49,074	48,772	48,997	943,078,795	1,482.08
Education & Health Services	2,339	34,242	34,314	34,114	352,139,969	791.50
Leisure & Hospitality	1,689	30,192	31,057	30,953	127,022,411	317.92
Other Services	1,003	4,915	4,953	5,036	39,634,082	613.68
Local Government	304	23,387	23,546	23,233	277,219,990	911.75
State Government	104	8,684	9,014	8,712	107,248,996	937.14
Other	3,709	55,307	55,652	56,331	592,834,402	817.79

Northwest Local Workforce Development Area includes these counties: Baxter, Benton, Boone, Carroll, Madison, Marion, Newton, Searcy, and Washington.

SOUTHEAST LOCAL WORKFORCE DEVELOPMENT AREA	6,167	68,378	68,319	68,061	\$637,416,845	\$718.39
Natural Resources & Mining	430	2,188	2,174	2,220	21,796,500	764.20
Construction	298	2,316	2,163	2,168	23,442,192	813.86
Manufacturing	192	14,224	14,275	14,489	172,980,547	928.60
Trade, Transportation & Utilities	1,253	11,987	12,020	11,977	99,811,595	640.10
Retail Trade	744	7,569	7,599	7,530	46,400,064	471.75
Other Trade, Transportation & Utilities	509	4,418	4,421	4,447	53,411,531	927.72
Financial Activities	407	2,352	2,356	2,336	24,347,325	797.65
Education & Health Services	2,152	11,097	11,122	11,042	94,456,134	655.35
Other Services	302	1,111	1,107	1,119	8,621,112	596.19
Local Government	206	8,908	8,942	9,068	87,380,785	749.12
State Government	128	5,975	5,945	5,536	55,756,237	737.10
Other	799	8,220	8,215	8,106	48,824,418	459.12

Southeast Local Workforce Development Area includes these counties: Arkansas, Ashley, Bradley, Chicot, Cleveland, Desha, Drew, Grant, Jefferson, and Lincoln.

TABLE 8. LOCAL WORKFORCE DEVELOPMENT AREA SUMMARY

North American Industry Classification System - Industry Groups	Number of Employing Units	Employment			Total Earnings	Average Weekly Earnings
		Apr	May	Jun	Apr - Jun 2017	
SOUTHWEST LOCAL WORKFORCE DEVELOPMENT AREA	5,650	77,042	77,445	77,686	\$752,218,649	\$747.67
Natural Resources & Mining	335	2,113	2,162	2,168	23,376,986	837.29
Manufacturing	237	18,948	18,872	19,080	242,404,303	983.12
Trade, Transportation & Utilities	1,349	14,594	14,695	14,689	124,004,187	650.70
Wholesale Trade	235	1,842	1,836	1,838	21,888,170	915.72
Retail Trade	821	8,660	8,752	8,699	52,867,376	467.24
Transportation, Warehousing & Utilities	293	4,092	4,107	4,152	49,248,641	920.17
Information	51	470	476	468	4,982,269	813.12
Professional & Business Services	438	4,371	4,416	4,505	50,928,945	884.20
Education & Health Services	1,280	9,940	9,913	9,912	78,673,154	609.96
Leisure & Hospitality	407	5,726	5,858	5,995	21,281,640	279.38
Other Services	354	1,547	1,591	1,547	10,674,538	525.80
Local Government	253	9,899	9,997	9,894	96,601,839	748.33
State Government	131	3,510	3,540	3,497	36,272,934	793.65
Other	815	5,924	5,925	5,931	63,017,854	817.92

Southwest Local Workforce Development Area includes these counties: Calhoun, Columbia, Dallas, Hempstead, Howard, Lafayette, Little River, Miller, Nevada, Ouachita, Sevier, and Union

WEST CENTRAL LOCAL WORKFORCE DEVELOPMENT AREA	8,180	107,598	106,910	107,190	\$976,418,352	\$700.43
Construction	722	4,737	4,792	4,846	\$59,065,807	948.21
Manufacturing	327	15,999	16,100	16,222	166,245,536	793.95
Trade, Transportation & Utilities	1,819	21,132	21,206	21,247	191,280,392	694.21
Wholesale Trade	325	1,960	1,971	1,991	20,776,202	809.61
Retail Trade	1,207	14,028	14,079	14,036	89,701,152	491.19
Transportation, Warehousing & Utilities	287	5,144	5,156	5,220	80,803,038	1,201.47
Financial Activities	807	3,718	3,732	3,769	38,785,821	797.80
Professional & Business Services	930	8,154	7,841	7,932	84,036,231	810.51
Education & Health Services	1,579	17,225	17,268	17,254	161,102,480	718.45
Leisure & Hospitality	802	14,392	13,647	14,016	56,619,290	310.69
Local Government	231	11,563	11,606	11,575	126,256,155	838.59
State Government	114	5,341	5,304	4,788	46,773,348	699.40
Other	849	5,337	5,414	5,541	46,253,292	655.16

West Central Local Workforce Development Area includes these counties: Clark, Conway, Garland, Hot Spring, Johnson, Montgomery, Perry, Pike, Pope, and Yell

TABLE 8. LOCAL WORKFORCE DEVELOPMENT AREA SUMMARY

North American Industry Classification System - Industry Groups	Number of Employing Units	Employment			Total Earnings Apr - Jun 2017	Average Weekly Earnings
		Apr	May	Jun		
WESTERN LOCAL WORKFORCE DEVELOPMENT AREA	6,426	102,141	102,569	102,634	\$979,616,521	\$735.55
Natural Resources & Mining	149	1,483	1,425	1,387	19,131,769	1,027.94
Trade, Transportation & Utilities	1,551	21,871	21,927	22,037	195,421,732	685.01
Wholesale Trade	358	3,514	3,510	3,528	42,903,553	938.29
Retail Trade	933	12,267	12,315	12,363	78,398,178	489.70
Transportation, Warehousing & Utilities	260	6,090	6,102	6,146	74,120,001	932.74
Financial Activities	670	3,511	3,507	3,521	37,602,014	823.36
Professional & Business Services	849	10,087	10,215	10,412	94,404,412	709.31
Education & Health Services	1,072	15,756	15,761	15,665	167,104,350	817.31
Leisure & Hospitality	561	9,191	9,351	9,302	35,952,066	297.97
Other Services	422	2,137	2,138	2,280	16,705,507	588.12
Local Government	154	9,550	9,611	9,373	103,699,073	838.67
State Government	72	2,882	2,910	2,736	26,853,142	726.65
Other	926	25,673	25,724	25,921	282,742,456	843.89

Western Local Workforce Development Area includes these counties: Crawford, Franklin, Logan, Polk, Scott, and Sebastian