

Arkansas Covered Employment & Earnings



First Quarter
2017

**COVERED EMPLOYMENT AND EARNINGS
STATE OF ARKANSAS
FIRST QUARTER 2017**

**ASA HUTCHINSON, GOVERNOR
STATE OF ARKANSAS**

**DARYL BASSETT, DIRECTOR
DEPARTMENT OF WORKFORCE SERVICES**

**PUBLISHED BY
LABOR MARKET INFORMATION
BUREAU OF LABOR STATISTICS PROGRAMS
POST OFFICE BOX 2981
LITTLE ROCK, ARKANSAS 72203-2981
SUSAN PRICE, BLS PROGRAMS MANAGER
TELEPHONE (501) 682-3103**

STATE OF ARKANSAS WEBPAGE: <http://www.arkansas.gov>

DEPARTMENT OF WORKFORCE SERVICES WEBPAGE: <http://www.dws.arkansas.gov/>

WEBPAGE FOR LABOR MARKET INFORMATION: <http://www.discover.arkansas.gov>

RELEASED: SEPTEMBER 2017

TABLE OF CONTENTS

DESCRIPTION OF DATA	PAGE
Description and Classification of Data	1
Definition of Covered Employment and Earnings	2
Significant Developments During First Quarter 2017	3

LIST OF GRAPHS AND TABLES

Graph 1	Total Covered Employment for Selected Years, Arkansas	7
Graph 2	Total Covered Earnings, by Calendar Quarter for Selected Years, Arkansas	8
Table 1	Quarterly Comparison of Covered Employment and Wages, by Industry	5
Table 2	Total Covered Employment in Arkansas, 2010 – 2017	6
Table 3	Total Covered Earnings, 2010 – 2017	9
Table 4	Total Taxable Earnings, 2010 – 2017	10
Table 5	State Summary – Employment and Total Earnings, by Industry, First Quarter 2017	11
Table 6	County Summary – Employment and Total Earnings, by Industry, First Quarter 2017	22
Table 7	Federal Government Employment and Total Earnings in Arkansas, First Quarter 2017	60
Table 8	Local Workforce Development Area – Employment and Total Earnings, by Industry, First Quarter 2017	61

EMPLOYMENT AND EARNINGS
UNDER THE ARKANSAS EMPLOYMENT SECURITY LAW
FIRST QUARTER 2017

DESCRIPTION AND CLASSIFICATION OF DATA

This publication contains covered employment and payroll data by industry and county for the First Quarter 2017 and a record for total covered employment by month, quarterly payroll data, average weekly earnings, and total taxable earnings for 2010 through 2017. These data are compiled from quarterly contributions and wage reports submitted by employers subject to the Arkansas Employment Security Law.

Employment data have been tabulated for each month of the quarter by industry under the **North American Industry Classification System** (NAICS) by state, county, and workforce area. Payroll data represent the total wages paid during the quarter and are classified by industry for the state and by publishable industry groups for each county and workforce area.

Due to industry classification revisions, previously published data will not always be comparable with current data. For this reason, comparisons should not be made between the same industries under different revisions. For more information, visit the NAICS home page at <http://www.census.gov/naics>.

Industry Classification Revisions

- SIC (Standard Industrial Classification) 1987 to NAICS 2002
- NAICS 2002 to NAICS 2007
- NAICS 2007 to NAICS 2012
- NAICS 2012 to NAICS 2017

The tabulation of this data is a joint effort in conjunction with the United States Bureau of Labor Statistics. Data included in this publication are subject to revisions. Revisions are typically reflected in the Annual Covered Employment and Earnings publication.

DEFINITION OF COVERED EMPLOYMENT AND EARNINGS

Covered Employment is the total number of workers employed by establishments subject to the Arkansas Employment Security Law that worked or received pay for the payroll period including the 12th of the month. Earnings include all wages paid to any covered employee by their employer including salaries, bonuses, commissions, fees, fringe benefits, sick pay made directly to employees or dependents, deferred compensation, and reported tips. These wages include both taxable and nontaxable wages. Only the first \$12,000 paid to each worker by an employer in the calendar year is taxable under the Arkansas Employment Security Law.

An Arkansas state unemployment insurance account is required of any entity meeting the definition of an employer. As described by Arkansas Department of Workforce Services Law, the definition of an employer includes, but is not limited to, a sole proprietorship, partnership, corporation, associations, trust, estate, and receiver or trustee in bankruptcy. The entity must employ one or more individuals for ten or more days in a calendar year, whether or not the days are consecutive.

Currently excluded from coverage is employment covered by the Railroad Unemployment Insurance Act, some domestic service workers, employees of small agricultural establishments, self-employed workers, unpaid family workers, insurance and real estate agents paid only on a commission basis, and employees of churches and religious organizations except separately incorporated schools.

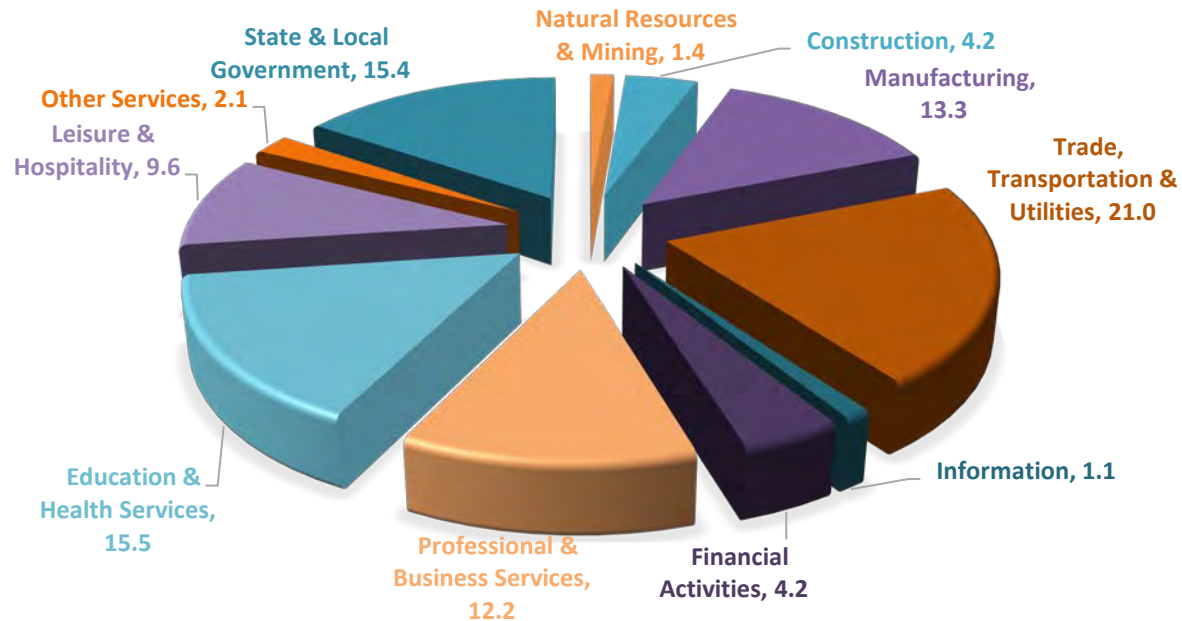
Civilian federal workers are covered by Unemployment Compensation for Federal Employees (UCFE).

SIGNIFICANT DEVELOPMENTS DURING FIRST QUARTER 2017

AVERAGE EMPLOYMENT CHANGES

Covered employment averaged 1,171,664 during the First Quarter 2017 (refer to Table 1), a decrease of 13,789 (-1.2%) from the previous quarter and an increase of 9,339 (0.8%) from the average recorded one year ago. The over-the-year comparison is more significant when used as an economic indicator and allows for seasonal factors that appear when comparing over-the-quarter data to be disregarded.

Average Covered Employment by NAICS



EMPLOYMENT CHANGES FROM FOURTH QUARTER 2016

Over the quarter declines occurred in ten industry groups while one reported a gain. The largest decrease was in Trade, Transportation, and Utilities (-6,734), seasonal reductions were seen in the Trade sector as both Retail and Wholesale trade were impacted with the wrap up of the holidays. Professional & Business Services reported losses of 2,169 jobs, all of the decline was reported in Administrative and Waste Services. State-Local Government, and Leisure-Hospitality both decreased 1,432 and 1,337 respectively. The only gain for the quarter was in Manufacturing, as they gained 544 jobs.

EMPLOYMENT CHANGES FROM FIRST QUARTER 2016 (QUARTER YEAR AGO COMPARISON)

Over-the-year gains were recorded in seven industry groups (refer to Table 1). The largest gains occurred in Education & Health Services (6,500), Professional & Business Services (2,920), and Manufacturing (1,899). The largest losses occurred in State & Local Government (-2,842), Trade, Transportation & Utilities (-930) and Natural Resources & Mining (-876).

COVERED WAGES

Wages paid to covered workers totaled \$12,970,946,939 for the First Quarter 2017 (refer to Table 1), for an average weekly wage of \$851.58 (refer to Table 5). Benton County workers recorded the highest average weekly wage (\$1,445.75), and employees in Newton County reported the lowest (\$456.28) (refer to Table 6).

The Professional & Business Services industry recorded the highest average weekly wage for the State of Arkansas (\$1,415.75). The Leisure & Hospitality sector recorded the lowest (\$304.99) (refer to Table 5).

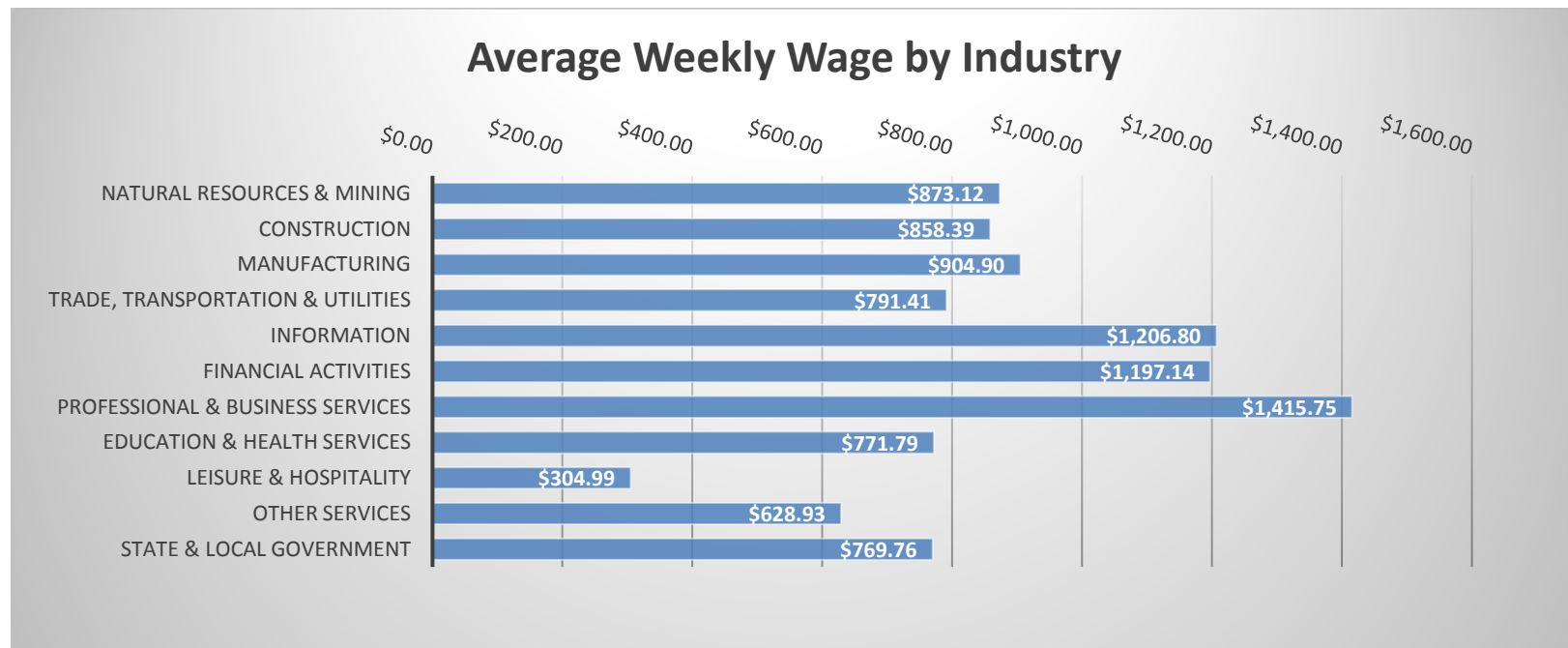


TABLE 1. QUARTERLY COMPARISON OF COVERED EMPLOYMENT AND WAGES, BY INDUSTRY

North American Industry Classification System - Industry Groups	Number of Employing Units	Monthly Employment Average	Percent of Total	Net Change From:		Total Wages Paid Jan - Mar 2017	Percent of Total
				Oct - Dec 2016	Jan - Mar 2016		
TOTAL	88,447	1,171,664	100	-13,789	9,339	\$12,970,946,939	100
Natural Resources & Mining	2,598	15,991	1.4	-664	-876	181,507,343	1.4
Agriculture, Forestry, Fishing & Hunting	2,135	12,275	1.0	-506	164	116,428,241	0.9
Mining	463	3,716	0.3	-158	-1,040	65,079,102	0.5
Construction	6,832	49,678	4.2	-654	921	554,361,525	4.3
Manufacturing	2,955	156,124	13.3	544	1,899	1,836,591,645	14.2
Trade, Transportation & Utilities	21,641	245,713	21.0	-6,734	-930	2,527,961,441	19.5
Wholesale Trade	7,195	46,568	4.0	285	475	833,527,151	6.4
Retail Trade	11,122	139,899	11.9	-4,878	-428	934,580,964	7.2
Transportation & Warehousing	2,908	51,598	4.4	-2,139	-854	574,716,388	4.4
Utilities	416	7,648	0.7	-2	-123	185,136,938	1.4
Information	1,111	12,940	1.1	-244	-377	203,003,238	1.6
Financial Activities	8,282	49,213	4.2	-398	83	765,898,202	5.9
Finance & Insurance	4,914	36,180	3.1	-48	96	640,729,612	4.9
Real Estate & Rental & Leasing	3,368	13,033	1.1	-350	-13	125,168,590	1.0
Professional & Business Services	13,929	142,808	12.2	-2,169	2,920	2,628,349,951	20.3
Professional & Technical Services	8,763	43,298	3.7	605	349	633,641,157	4.9
Management of Companies & Enterprises	558	35,989	3.1	163	1,634	1,548,687,053	11.9
Administrative & Waste Services	4,608	63,521	5.4	-2,937	937	446,021,741	3.4
Education & Health Services	15,718	181,063	15.5	-623	6,500	1,816,655,333	14.0
Educational Services	824	11,590	1.0	-99	472	99,791,746	0.8
Health Care & Social Assistance	14,894	169,473	14.5	-523	6,028	1,716,863,587	13.2
Leisure & Hospitality	6,988	112,888	9.6	-1,337	1,748	447,587,268	3.5
Arts, Entertainment & Recreation	967	9,975	0.9	36	103	52,796,478	0.4
Accommodation & Food Services	6,021	102,913	8.8	-1,373	1,645	394,790,790	3.0
Other Services	5,367	24,496	2.1	-77	293	200,281,115	1.5
State & Local Government	3,026	180,751	15.4	-1,432	-2,842	1,808,749,878	13.9
Local Government	1,953	112,923	9.6	-161	-1,326	1,005,535,039	7.8
State Government	1,073	67,828	5.8	-1,271	-1,516	803,214,839	6.2
Nonclassifiable Establishments	0	0	0.0	0	0	0	0.0

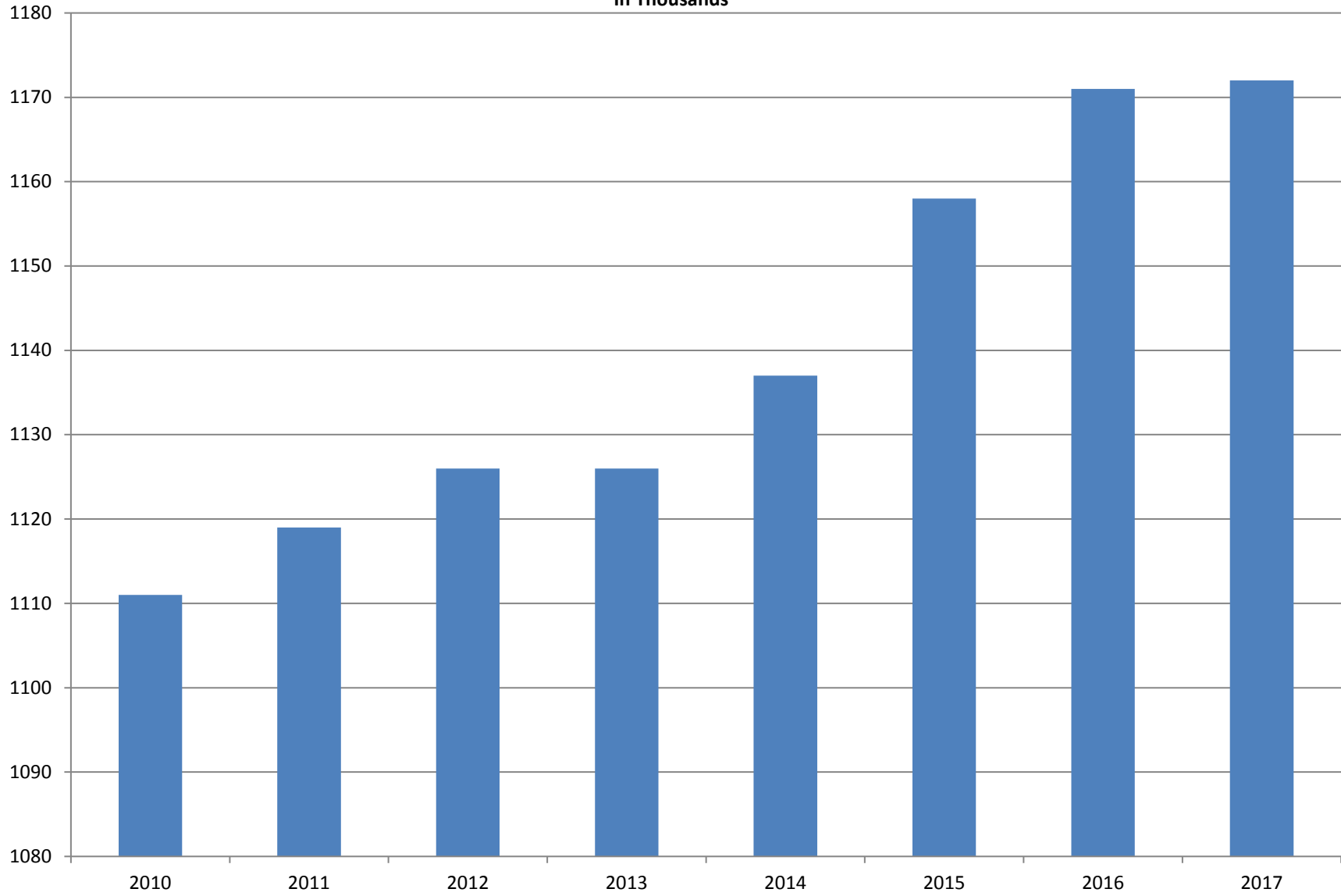
Note: Items do not necessarily add to total because of rounding. Because of industry code changes between years, substantial employment and wage shifts among industries are anticipated.

TABLE 2. TOTAL COVERED EMPLOYMENT IN ARKANSAS

PERIOD	2010	2011	2012	2013	2014	2015	2016	2017
AVERAGE	1,110,947	1,118,639	1,126,171	1,125,890	1,137,486	1,157,634	1,171,490	1,171,664
January	1,089,984	1,098,349	1,113,274	1,112,991	1,114,412	1,135,577	1,152,434	1,162,153
February	1,091,282	1,098,445	1,119,319	1,121,492	1,122,905	1,144,902	1,162,294	1,172,930
March	1,106,198	1,113,061	1,131,123	1,129,100	1,132,106	1,146,413	1,170,837	1,179,908
April	1,115,341	1,129,635	1,136,608	1,134,734	1,140,788	1,158,606	1,178,630	N/A
May	1,123,250	1,126,371	1,142,985	1,138,383	1,149,046	1,167,657	1,181,644	N/A
June	1,130,164	1,123,412	1,136,699	1,130,402	1,144,876	1,164,607	1,177,506	N/A
July	1,073,743	1,080,937	1,078,836	1,083,849	1,096,675	1,119,390	1,132,361	N/A
August	1,099,795	1,106,262	1,108,552	1,109,759	1,125,162	1,148,502	1,160,743	N/A
September	1,124,281	1,132,779	1,134,829	1,135,673	1,150,545	1,173,776	1,185,352	N/A
October	1,125,073	1,138,395	1,135,677	1,138,312	1,153,684	1,173,953	1,185,022	N/A
November	1,126,781	1,138,543	1,137,411	1,141,035	1,158,579	1,177,717	1,186,046	N/A
December	1,125,466	1,137,474	1,138,742	1,134,955	1,161,056	1,180,513	1,185,009	N/A

AVERAGE TOTAL COVERED EMPLOYMENT

In Thousands



TOTAL COVERED EARNINGS BY CALENDAR YEAR

In Thousands

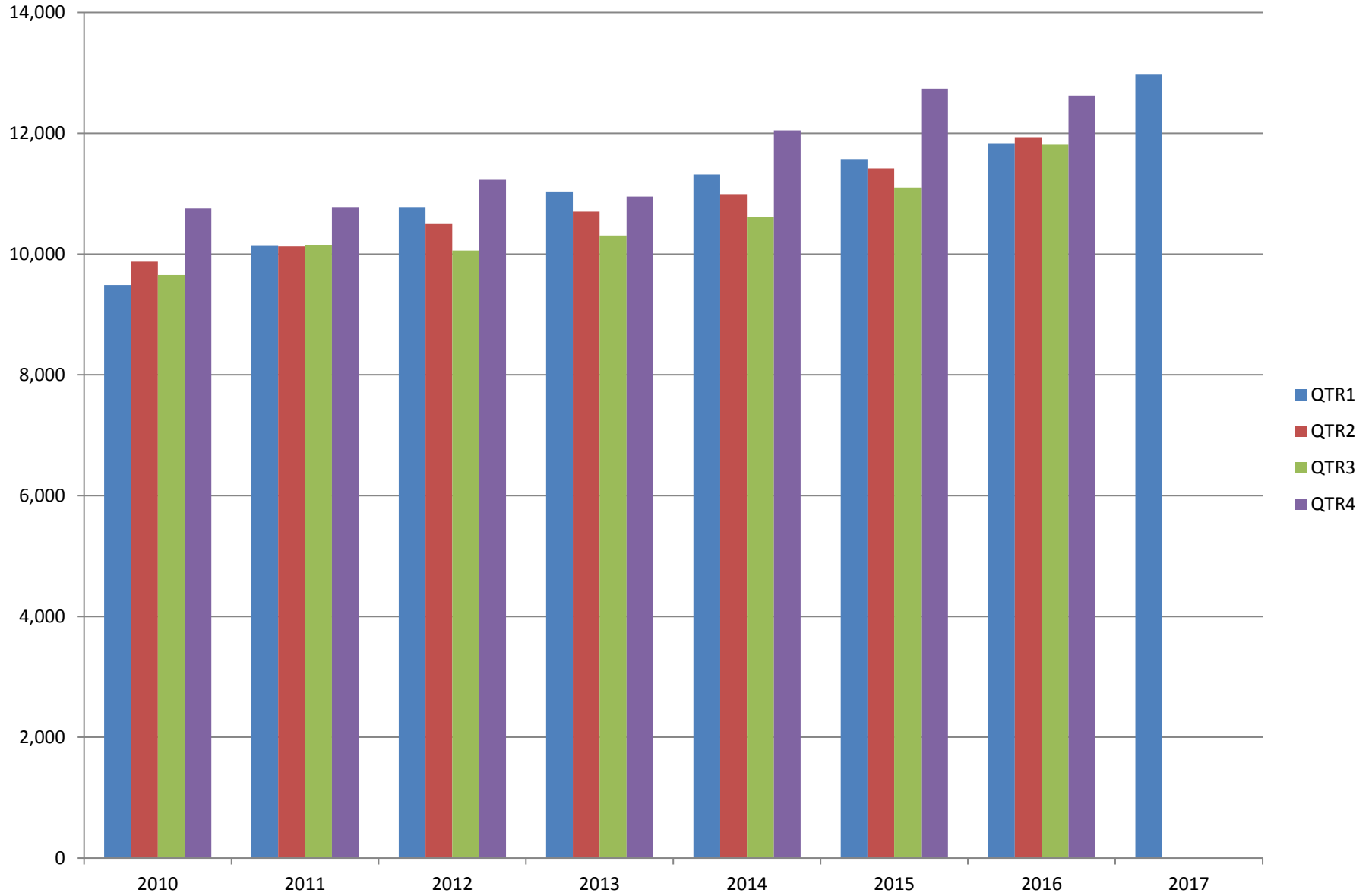


TABLE 3. TOTAL COVERED EARNINGS 2010 - 2017

PERIOD	2010	2011	2012	2013
TOTAL	\$39,769,504,992	\$41,177,659,236	\$42,551,238,929	\$43,371,086,461
January - March	9,486,245,580	10,134,035,254	10,766,175,449	11,050,678,946
April - June	9,873,489,653	10,128,274,611	10,494,369,042	10,692,826,528
July - September	9,653,588,807	10,147,287,431	10,053,294,410	10,322,652,747
October - December	10,756,180,952	10,768,061,940	11,237,400,028	11,304,928,240
Average Weekly Earnings	\$688.42	\$707.89	\$726.62	\$740.80

PERIOD	2014	2015	2016	2017
TOTAL	\$44,980,520,034	\$46,836,352,793	\$48,207,277,530	\$12,970,946,939
January - March	11,321,422,241	11,575,046,688	11,836,255,664	12,970,946,939
April - June	10,991,760,061	11,419,363,330	11,935,722,186	N/A
July - September	10,619,889,280	11,104,443,452	11,809,460,297	N/A
October - December	12,047,448,452	12,737,499,323	12,625,839,383	N/A
Average Weekly Earnings	\$760.46	\$778.05	\$791.35	\$851.58

TABLE 4. TOTAL TAXABLE EARNINGS, 2010 - 2017

PERIOD	2010	2011	2012	2013
TOTAL	11,332,118,456	11,479,396,226	11,624,348,048	11,644,747,978
January - March	5,607,134,758	5,828,877,821	6,167,036,199	6,184,735,653
April - June	2,977,100,591	2,910,604,359	2,838,154,846	2,805,431,293
July - September	1,577,067,770	1,601,382,146	1,494,712,584	1,506,497,129
October - December	1,170,815,337	1,138,531,900	1,124,444,419	1,148,083,903

PERIOD	2014	2015	2016	2017
TOTAL	11,919,662,224	12,258,632,610	12,511,938,047	6,971,816,280
January - March	6,288,682,396	6,378,966,662	6,595,351,454	6,971,816,280
April - June	2,831,013,392	2,915,293,283	3,003,077,908	N/A
July - September	1,552,243,963	1,640,978,599	1,651,582,584	N/A
October - December	1,247,722,473	1,323,394,066	1,261,926,101	N/A

TABLE 5. STATEWIDE SUMMARY

North American Industry Classification System - Industry Groups		Number of Employing Units	Employment			Total Earnings Jan - Mar 2017	Average Weekly Earnings
			Jan	Feb	Mar		
TOTAL, ALL INDUSTRIES		88,447	1,162,153	1,172,930	1,179,908	\$12,970,946,939	\$851.58
NATURAL RESOURCES & MINING		2,598	15,730	15,975	16,268	\$181,507,343	\$873.12
11	AGRICULTURE, FORESTRY, FISHING & HUNTING	2,135	12,033	12,259	12,534	\$116,428,241	\$729.59
111	CROP PRODUCTION	960	3,614	3,791	4,022	\$27,232,665	\$549.97
1111	Oilseed & Grain Farming	702	2,444	2,526	2,641	18,841,096	571.27
1112	Vegetable & Melon Farming	32	168	173	216	1,041,438	431.48
1113	Fruit & Tree Nut Farming	15	37	48	57	275,647	447.96
1114	Greenhouse & Nursery Production	40	370	417	476	3,116,244	569.38
1119	Other Crop Farming	171	595	627	632	3,958,240	492.69
112	ANIMAL PRODUCTION & AQUACULTURE	330	3,132	3,157	3,191	\$37,582,529	\$914.86
1121	Cattle Ranching & Farming	124	410	392	400	2,863,945	549.84
1122	Hog & Pig Farming	14	143	141	144	1,641,337	884.98
1123	Poultry & Egg Production	124	2,233	2,236	2,234	29,859,480	1,027.99
1125	Animal Aquaculture	45	293	337	359	2,860,477	667.45
	Other	23	53	51	54	357,290	521.85
115	SUPPORT ACTIVITIES FOR AGRICULTURE & FORESTRY	433	2,948	2,993	3,045	\$29,659,783	\$761.69
1151	Support Activities for Crop Production	300	1,206	1,221	1,293	13,954,173	865.64
1152	Support Activities for Animal Production	63	651	668	680	5,250,735	606.16
1153	Support Activities for Forestry	70	1,091	1,104	1,072	10,454,875	738.50
	OTHER	412	2,339	2,318	2,276	\$21,953,264	\$730.73
21	MINING	463	3,697	3,716	3,734	\$65,079,102	\$1,347.29
211	OIL & GAS EXTRACTION	77	771	775	774	\$17,144,109	\$1,705.32
212	MINING (EXCEPT OIL & GAS)	105	1,618	1,629	1,667	\$23,713,401	\$1,113.62
213	SUPPORT ACTIVITIES FOR MINING	281	1,308	1,312	1,293	\$24,221,592	\$1,428.47

TABLE 5. STATEWIDE SUMMARY

North American Industry Classification System - Industry Groups		Number of Employing Units	Employment			Total Earnings	Average Weekly Earnings
			Jan	Feb	Mar	Jan - Mar 2017	
CONSTRUCTION		6,832	48,749	49,526	50,759	\$554,361,525	\$858.39
236	CONSTRUCTION OF BUILDINGS	1,760	9,625	9,583	9,683	\$114,557,112	\$915.03
2361	Residential Building Construction	1,177	3,224	3,161	3,233	32,637,164	783.08
2362	Nonresidential Building Construction	583	6,401	6,422	6,450	81,919,948	980.89
237	HEAVY & CIVIL ENGINEERING CONSTRUCTION	711	8,425	8,765	9,230	\$110,137,209	\$962.01
2371	Utility System Construction	395	4,731	4,959	5,290	63,399,012	976.67
2372	Land Subdivision	50	89	95	88	905,284	768.06
2373	Highway, Street & Bridge Construction	178	2,971	3,076	3,117	37,512,430	944.64
2379	Other Heavy Construction	88	634	635	735	8,320,483	958.14
238	SPECIALTY TRADE CONTRACTORS	4,361	30,699	31,178	31,846	\$329,667,204	\$811.72
2381	Building Foundation & Exterior Contractors	803	5,784	5,868	6,026	59,815,563	780.83
2382	Building Equipment Contractors	2,103	16,802	16,943	17,249	193,853,031	877.27
2383	Building Finishing Contractors	729	3,829	3,913	4,031	35,696,121	699.70
2389	Other Specialty Trade Contractors	726	4,284	4,454	4,540	40,302,489	700.45
MANUFACTURING		2,955	155,820	156,132	156,419	\$1,836,591,645	\$904.90
311	FOOD MANUFACTURING	281	46,484	46,592	46,479	\$422,797,514	\$699.14
3111	Animal Food Manufacturing	45	1,759	1,768	1,772	24,393,027	1,062.31
3112	Grain & Oilseed Milling	35	2,662	2,677	2,672	28,838,616	830.74
3114	Fruit, Vegetable & Specialty Food	18	4,227	4,202	4,212	48,213,250	880.16
3115	Dairy Product Manufacturing	8	556	555	587	6,485,391	881.41
3116	Animal Slaughtering & Processing	76	31,341	31,428	31,254	251,256,113	616.68
3118	Bakeries & Tortilla Manufacturing	68	3,805	3,818	3,793	36,296,501	733.72
3119	Other Food Manufacturing	21	2,097	2,100	2,149	27,065,421	984.22
	Other	10	37	44	40	249,195	475.26
312	BEVERAGE & TOBACCO PRODUCT MANUFACTURING	52	1,391	1,418	1,448	\$18,670,154	\$1,012.10
313	TEXTILE MILLS	8	113	112	115	\$1,740,630	\$1,181.42
314	TEXTILE PRODUCT MILLS	43	985	992	981	\$12,071,452	\$941.76
3141	Textile Furnishing Mills	9	35	35	35	504,574	1,108.95
3149	Other Textile Product Mills	34	950	957	946	11,566,878	935.60
315	APPAREL MANUFACTURING	17	886	894	886	\$5,967,831	\$516.58
3151	Apparel Knitting Mills	3	641	638	641	4,387,976	527.40
	Other	14	245	256	245	1,579,855	488.72

TABLE 5. STATEWIDE SUMMARY

North American Industry Classification System - Industry Groups		Number of Employing Units	Employment			Total Earnings	Average Weekly Earnings
			Jan	Feb	Mar	Jan - Mar 2017	
316	LEATHER & ALLIED PRODUCT MANUFACTURING	15	1,065	971	993	\$5,799,075	\$441.81
3162	Footwear Manufacturing	6	874	779	804	4,535,477	\$425.99
3169	Other Leather & Allied Product Manufacturing	9	191	192	189	1,263,598	\$509.79
321	WOOD PRODUCT MANUFACTURING	322	9,449	9,530	9,577	\$104,214,963	\$842.19
3211	Sawmills & Wood Preservation	155	4,505	4,564	4,591	52,431,833	885.77
3212	Veneer & Engineered Wood Products	40	1,830	1,827	1,820	24,951,679	1,051.32
3219	Other Wood Product Manufacturing	127	3,114	3,139	3,166	26,831,451	657.38
322	PAPER MANUFACTURING	72	9,454	9,399	9,423	\$165,232,795	\$1,348.52
3221	Pulp, Paper & Paperboard Mills	12	3,756	3,737	3,728	90,846,321	1,868.33
3222	Converted Paper Product Manufacturing	60	5,698	5,662	5,695	74,386,474	1,006.51
323	PRINTING & RELATED SUPPORT ACTIVITIES	243	3,968	3,975	3,967	\$39,700,040	\$769.23
324	PETROLEUM & COAL PRODUCTS MANUFACTURING	20	1,232	1,247	1,240	\$21,801,010	\$1,352.78
325	CHEMICAL MANUFACTURING	122	5,302	5,320	5,360	\$88,098,573	\$1,272.08
3251	Basic Chemical Manufacturing	32	1,800	1,805	1,826	37,601,548	1,597.73
3252	Resin, Rubber & Artificial Fibers	9	479	476	466	7,258,127	1,178.71
3253	Agricultural Chemical Manufacturing	14	457	450	451	7,880,346	1,339.13
3254	Pharmaceutical & Medicine Manufacturing	18	413	430	455	5,577,630	991.64
3255	Paint, Coating & Adhesive Manufacturing	10	248	247	247	3,850,972	1,197.69
3256	Soap, Cleaning Compound, & Toilet Preparation Manufacturing	15	1,197	1,211	1,211	16,484,933	1,051.18
3259	Other Chemical Preparation Manufacturing	24	708	701	704	9,445,017	1,031.53
326	PLASTICS & RUBBER PRODUCTS MANUFACTURING	125	10,698	10,743	10,832	\$134,320,628	\$960.46
3261	Plastics Product Manufacturing	97	6,571	6,614	6,709	72,140,369	836.82
3262	Rubber Product Manufacturing	28	4,127	4,129	4,123	62,180,259	1,159.16
327	NONMETALLIC MINERAL PRODUCT MANUFACTURING	245	3,496	3,562	3,605	\$43,918,815	\$950.49
3271	Clay Product & Refractory Manufacturing	13	457	455	460	4,911,233	826.07
3272	Glass & Glass Product Manufacturing	9	342	344	354	3,941,728	874.64
3273	Cement & Concrete Product Manufacturing	187	2,019	2,058	2,067	25,726,717	966.30
3274	Lime & Gypsum Product Manufacturing	3	290	295	301	4,635,199	1,207.29
3279	Other Nonmetallic Mineral Products Manufacturing	33	388	410	423	4,703,938	889.05
331	PRIMARY METAL MANUFACTURING	76	7,599	7,656	7,673	\$141,942,211	\$1,428.64
3311	Iron & Steel Mills & Ferroalloys	10	2,808	2,849	2,848	76,099,954	2,064.85
3312	Purchased Steel Product Manufacturing	22	1,757	1,772	1,795	24,318,877	1,054.10
3313	Alumina & Aluminum Production	17	968	971	970	15,317,294	1,215.11
3314	Other Nonferrous Metal Production	8	378	379	372	4,863,512	994.11
3315	Foundries	19	1,688	1,685	1,688	21,342,574	973.17

TABLE 5. STATEWIDE SUMMARY

North American Industry Classification System - Industry Groups		Number of Employing Units	Employment			Total Earnings	Average Weekly Earnings
			Jan	Feb	Mar	Jan - Mar 2017	
332	FABRICATED METAL PRODUCT MANUFACTURING	518	15,179	15,232	15,271	\$195,224,250	\$986.20
3321	Forging & Stamping	13	416	412	421	4,633,161	856.04
3322	Cutlery & Hand Tool Manufacturing	11	567	573	572	6,237,450	840.78
3323	Architectural & Structural Metals	150	4,398	4,379	4,413	58,879,913	1,030.15
3324	Boilers, Tanks & Shipping Containers	16	656	659	659	8,658,159	1,012.18
3325	Hardware Manufacturing	5	245	245	244	2,829,523	889.60
3326	Spring & Wire Product Manufacturing	13	373	379	372	4,102,278	842.24
3327	Machine Shops & Threaded Products	205	1,790	1,810	1,806	18,187,394	776.38
3328	Coating, Engraving & Heat Treating Metals	39	641	619	613	5,813,964	716.33
3329	Other Fabricated Metal Product Manufacturing	66	6,093	6,156	6,171	85,882,408	1,075.95
333	MACHINERY MANUFACTURING	208	11,073	11,142	11,188	\$127,344,432	\$879.78
3331	Agriculture, Construction & Mining Machinery	40	2,637	2,687	2,680	25,014,314	721.21
3332	Industrial Machinery Manufacturing	21	687	689	697	9,415,117	1,048.10
3333	Commercial & Service Industry Machinery	21	706	729	731	9,773,968	1,041.33
3334	HVAC & Commercial Refrigeration Equipment	21	2,972	2,962	2,935	35,434,396	921.99
3335	Metalworking Machinery Manufacturing	58	1,026	1,021	1,028	11,240,749	843.58
3336	Turbine & Power Transmission Equipment Manufacturing	5	603	595	623	6,856,106	868.85
3339	Other General Purpose Machinery Manufacturing	42	2,442	2,459	2,494	29,609,782	924.01
334	COMPUTER & ELECTRONIC PRODUCT MANUFACTURING	54	2,106	2,107	2,113	\$26,389,190	\$962.66
3343	Audio & Video Equipment Manufacturing	6	134	133	131	1,346,716	780.86
3344	Semiconductors & Electronic Components	25	1,463	1,466	1,474	17,747,234	930.16
3345	Navigational, Measuring, Electromedical, & Control Instr, Mfg Other	18 5	415 94	421 87	420 88	5,883,888 1,411,352	1,081.07 1,210.77
335	ELECTRICAL EQUIPMENT & APPLIANCES	57	4,804	4,796	4,777	\$61,132,834	\$981.26
3351	Electric Lighting Equipment Manufacturing	10	383	382	366	4,089,525	\$834.43
3352	Household Appliance Manufacturing	5	42	43	43	593,160	\$1,069.40
3353	Electrical Equipment Manufacturing	23	3,132	3,129	3,124	39,996,360	983.48
3359	Other Electrical Equipment & Component Manufacturing	19	1,247	1,242	1,244	16,453,789	1,017.15
336	TRANSPORTATION EQUIPMENT MANUFACTURING	140	13,612	13,613	13,609	\$157,346,873	\$889.23
3362	Motor Vehicle Body & Trailer Manufacturing	33	1,919	1,954	2,006	19,100,379	749.75
3363	Motor Vehicle Parts Manufacturing	42	5,224	5,215	5,227	57,164,417	842.06
3364	Aerospace Product & Parts Manufacturing	30	3,205	3,128	3,045	48,049,228	1,182.37
3366	Ship & Boat Building Other	21 14	1,913 1,351	1,956 1,360	1,973 1,358	16,565,996 16,466,853	654.39 933.90
337	FURNITURE & RELATED PRODUCT MANUFACTURING	163	3,602	3,530	3,574	\$30,134,079	\$649.54
3371	Household & Institutional Furniture	136	2,921	2,873	2,922	22,969,594	608.15
3372	Office Furniture & Fixtures Manufacturing	21	587	564	560	6,467,052	872.24
3379	Other Furniture Related Product Manufacturing	6	94	93	92	697,433	576.87
339	MISCELLANEOUS MANUFACTURING	174	3,322	3,301	3,308	\$32,744,296	\$760.89
3391	Medical Equipment & Supplies Manufacturing	69	1,623	1,621	1,628	18,934,433	896.86
3399	Other Miscellaneous Manufacturing	105	1,699	1,680	1,680	13,809,863	629.94

TABLE 5. STATEWIDE SUMMARY

North American Industry Classification System - Industry Groups		Number of Employing Units	Employment			Total Earnings	Average Weekly Earnings
			Jan	Feb	Mar	Jan - Mar 2017	
TRADE, TRANSPORTATION & UTILITIES		21,641	246,407	245,317	245,414	\$2,527,961,441	\$791.41
42	WHOLESALE TRADE	7,195	46,286	46,561	46,857	\$833,527,151	\$1,376.86
423	MERCHANT WHOLESALERS, DURABLE GOODS	2,083	20,209	20,298	20,333	\$291,960,298	\$1,107.42
4231	Motor Vehicle & Part Merchant Wholesalers	232	2,599	2,639	2,633	29,887,351	876.26
4232	Furniture & Furnishings Merchant Wholesalers	51	464	472	477	7,248,320	1,183.79
4233	Lumber & Supply Merchant Wholesalers	163	1,437	1,408	1,405	17,950,237	974.67
4234	Commercial Goods Merchant Wholesalers	277	2,380	2,367	2,360	45,152,026	1,466.12
4235	Metal & Mineral Merchant Wholesalers	51	816	837	838	11,190,441	1,036.70
4236	Appliances & Electronics Goods Merchant Wholesalers	197	2,019	2,042	2,048	36,889,938	1,393.53
4237	Hardware & Plumbing Merchant Wholesalers	223	2,287	2,290	2,291	33,475,897	1,124.81
4238	Machinery & Supply Merchant Wholesalers	679	6,467	6,492	6,532	88,774,777	1,051.07
4239	Miscellaneous Durable Goods Merchant Wholesalers	210	1,740	1,751	1,749	21,391,311	942.07
424	MERCHANT WHOLESALERS, NONDURABLE GOODS	1,132	14,417	14,495	14,641	\$212,387,012	\$1,125.35
4241	Paper & Paper Product Merchant Wholesalers	72	1,171	1,175	1,146	19,821,804	1,309.93
4242	Druggist' Goods Merchant Wholesalers	53	694	712	721	11,515,566	1,249.38
4243	Apparel & Piece Goods Merchant Wholesalers	38	644	644	639	8,487,459	1,016.42
4244	Grocery Product Merchant Wholesalers	284	4,390	4,375	4,357	76,879,671	1,352.04
4245	Farm Product & Raw Material Merchant Wholesalers	70	790	760	747	6,749,719	678.11
4246	Chemical Merchant Wholesalers	88	624	623	629	11,540,291	1,419.59
4247	Petroleum Merchant Wholesalers	136	1,220	1,234	1,231	14,673,182	918.89
4248	Alcoholic Beverage Merchant Wholesalers	43	1,592	1,586	1,602	22,256,005	1,074.48
4249	Miscellaneous Nondurable Goods Merchant Wholesaler	348	3,292	3,386	3,569	40,463,315	911.26
425	ELECTRONIC MARKETS & AGENTS & BROKERS	3,980	11,660	11,768	11,883	\$329,179,841	\$2,151.30
44 - 45	RETAIL TRADE	11,122	140,763	139,548	139,386	\$934,580,964	\$513.88
441	MOTOR VEHICLE & PARTS DEALERS	1,538	19,245	19,387	19,454	\$207,668,296	\$825.04
4411	Automobile Dealers	626	12,017	12,103	12,120	150,275,663	956.93
4412	Other Motor Vehicle Dealers	174	1,563	1,589	1,653	16,040,105	770.36
4413	Automotive Parts, Accessories & Tire Stores	738	5,665	5,695	5,681	41,352,528	560.00
442	FURNITURE & HOME FURNISHINGS STORES	519	3,754	3,681	3,669	\$27,523,936	\$572.02
4421	Furniture Stores	281	2,045	2,059	2,076	17,896,353	668.27
4422	Home Furnishings Stores	238	1,709	1,622	1,593	9,627,583	451.21
443	ELECTRONICS & APPLIANCE STORES	420	3,680	3,607	3,576	\$31,681,097	\$673.02
444	BUILDING MATERIAL & GARDEN SUPPLY STORES	839	10,957	11,136	11,491	\$83,295,428	\$572.36
4441	Building Material & Supplies Dealers	595	9,074	9,198	9,473	71,707,573	596.43
4442	Lawn & Garden Equipment & Supplies Stores	244	1,883	1,938	2,018	11,587,855	457.98

TABLE 5. STATEWIDE SUMMARY

North American Industry Classification System - Industry Groups		Number of Employing Units	Employment			Total Earnings	Average Weekly Earnings
			Jan	Feb	Mar	Jan - Mar 2017	
445	FOOD & BEVERAGE STORES	1,081	19,941	20,056	19,879	\$109,867,171	\$423.44
4451	Grocery Stores	569	17,142	17,216	17,059	91,669,279	411.43
4452	Specialty Food Stores	157	1,040	1,075	1,084	9,133,991	658.91
4453	Beer, Wine & Liquor Stores	355	1,759	1,765	1,736	9,063,901	397.66
446	HEALTH & PERSONAL CARE STORES	991	8,691	8,660	8,663	\$80,433,552	\$713.52
447	GASOLINE STATIONS	1,609	12,014	12,033	12,020	\$53,853,982	\$344.58
44711	Gasoline Stations with Convenience Stores	1,510	10,812	10,836	10,836	47,460,161	337.16
44719	Other Gasoline Stations	99	1,202	1,197	1,184	6,393,821	411.80
448	CLOTHING & CLOTHING ACCESSORIES STORES	1,072	8,799	8,452	8,388	\$36,204,102	\$325.86
4481	Clothing Stores	795	6,789	6,493	6,451	24,183,283	282.81
4482	Shoe Stores	141	1,257	1,204	1,197	4,875,809	307.60
4483	Jewelry, Luggage & Leather Goods Stores	136	753	755	740	7,145,010	733.47
451	SPORTING GOODS, HOBBY, BOOK & MUSIC STORES	468	4,742	4,441	4,397	\$20,659,509	\$351.07
4511	Sporting Goods & Musical Instrument Stores	402	4,191	3,931	3,888	18,615,196	357.69
4512	Book, Periodical & Music Stores	66	551	510	509	2,044,313	300.49
452	GENERAL MERCHANDISE STORES	950	39,950	39,111	38,834	\$228,331,239	\$446.94
4522	Department Stores	134	8,101	7,714	7,601	41,048,871	404.54
4523	Gen. Merchandise Stores, Warehouse clubs & Supercenters	816	31,849	31,397	31,233	187,282,368	457.45
453	MISCELLANEOUS STORE RETAILERS	1,202	7,075	7,054	7,081	\$36,969,359	\$402.23
4531	Florists	179	611	694	637	2,894,355	343.94
4532	Office Supplies, Stationery & Gift Stores	250	1,672	1,656	1,641	9,133,925	424.20
4533	Used Merchandise Stores	265	2,174	2,077	2,149	10,380,169	374.28
4539	Other Miscellaneous Store Retailers	508	2,618	2,627	2,654	14,560,910	425.40
454	NONSTORE RETAILERS	433	1,915	1,930	1,934	\$18,093,293	\$722.51
4541	Electronic Shopping & Mail-Order Houses	206	771	770	755	7,557,164	759.56
4542	Vending Machine Operators	65	447	462	472	3,535,919	590.86
4543	Direct Selling Establishments	162	697	698	707	7,000,210	768.52
48 - 49	TRANSPORTATION & WAREHOUSING	2,908	51,702	51,577	51,515	\$574,716,388	\$856.80
481	AIR TRANSPORTATION	54	665	692	674	\$6,764,400	\$768.59
4811	Scheduled Air Transportation	21	597	623	601	5,452,479	690.97
4812	Nonshceduled Air Transportation	33	68	69	73	1,311,921	1,441.67
483	WATER TRANSPORTATION	4	19	19	21	\$336,091	\$1,314.57
484	TRUCK TRANSPORTATION	1,815	31,041	31,104	31,085	\$361,089,944	\$893.79
4841	General Freight Trucking	1,054	24,739	24,871	24,845	293,162,729	908.64
4842	Specialized Freight Trucking	761	6,302	6,233	6,240	67,927,215	834.91

TABLE 5. STATEWIDE SUMMARY

North American Industry Classification System - Industry Groups		Number of Employing Units	Employment			Total Earnings	Average Weekly Earnings
			Jan	Feb	Mar	Jan - Mar 2017	
485	TRANSIT & GROUND PASSENGER TRANSPORTATION	114	1,750	1,755	1,734	\$8,933,779	\$393.52
4853	Taxi & Limousine Service	32	412	416	398	1,707,584	321.42
4854	School & Employee Bus Transportation	13	413	405	396	2,048,532	389.41
4855	Charter Bus Industry Service	8	92	92	105	666,905	532.53
4859	Other Ground Passenger Transportation	57	715	725	717	3,643,495	389.80
	Other	4	118	117	118	867,263	566.96
486	PIPELINE TRANSPORTATION	36	414	428	429	\$11,278,030	\$2,047.70
487	SCENIC & SIGHTSEEING TRANSPORTATION	4	17	18	26	\$60,981	\$230.70
488	SUPPORT ACTIVITIES FOR TRANSPORTATION	483	4,990	5,028	5,060	\$61,722,663	\$944.67
4881	Support Activities for Air Transportation	101	967	979	988	10,065,135	791.66
4882	Support Activities for Rail Transportation	43	620	607	614	7,416,573	929.67
4883	Support Activities for Water Transportation	20	671	686	673	10,501,533	1,193.81
4884	Support Activities for Road Transportation	157	830	827	837	6,822,959	631.33
4885	Freight Transportation Arrangement	147	1,801	1,827	1,832	25,953,621	1,096.94
4889	Other Support Activities for Transportation	15	101	102	116	962,842	696.53
493	WAREHOUSING & STORAGE	225	8,430	8,525	8,483	\$81,666,449	\$740.86
	OTHER	173	4,376	4,008	4,003	\$42,864,051	\$798.56
22	UTILITIES	416	7,656	7,631	7,656	\$185,136,938	\$1,862.18
2211	Power Generation & Supply	165	5,666	5,657	5,667	153,279,173	2,081.94
2212	Natural Gas Distribution	67	1,070	1,063	1,063	23,432,747	1,691.98
2213	Water, Sewage & Other Systems	184	920	911	926	8,425,018	705.20
	INFORMATION	1,111	12,964	12,931	12,924	\$203,003,238	\$1,206.80
511	PUBLISHING INDUSTRIES, EXCEPT INTERNET	217	3,187	3,163	3,136	\$33,311,126	\$810.37
5111	Newspaper, Book & Directory Publishers	185	2,796	2,771	2,742	25,771,330	715.76
5112	Software Publishers	32	391	392	394	7,539,796	1,478.29
512	MOTION PICTURE & SOUND RECORDING INDUSTRY	145	1,057	1,062	1,072	\$5,216,831	\$377.27
5121	Motion Picture & Video Industries	130	1,032	1,040	1,051	4,898,498	361.97
5122	Sound Recording Industries	15	25	22	21	318,333	1,080.32
515	BROADCASTING, EXCEPT INTERNET	119	1,632	1,626	1,620	\$17,790,564	\$841.64
5151	Radio & Television Broadcasting	116	1,608	1,600	1,595	17,576,843	844.51
5152	Cable & Other Subscription Programming	3	24	26	25	213,721	657.60

TABLE 5. STATEWIDE SUMMARY

North American Industry Classification System - Industry Groups		Number of Employing Units	Employment			Total Earnings	Average Weekly Earnings
			Jan	Feb	Mar	Jan - Mar 2017	
517	TELECOMMUNICATIONS	344	5,436	5,439	5,437	\$116,531,761	\$1,648.60
5173	Telecommunications Resellers	255	5,115	5,115	5,124	110,939,722	1,667.41
5174	Satellite Telecommunications Carriers	6	7	7	7	89,293	981.24
5179	Other Telecommunications	83	314	317	306	5,502,746	1,355.24
518	DATA PROCESSING, HOSTING & RELATED SERVICES	209	1,382	1,376	1,383	\$26,655,525	\$1,485.46
519	OTHER INFORMATION SERVICES	77	270	265	276	\$3,497,431	\$995.19
FINANCIAL ACTIVITIES		8,282	49,116	49,203	49,321	\$765,898,202	\$1,197.14
52	FINANCE & INSURANCE	4,914	36,156	36,161	36,223	\$640,729,612	\$1,362.27
522	CREDIT INTERMEDIATION & RELATED ACTIVITIES	1,921	19,086	19,062	19,057	\$269,184,957	\$1,085.91
5221	Depository Credit Intermediation	1,390	16,139	16,137	16,121	222,194,039	1,059.48
5222	Nondepository Credit Intermediation	391	1,792	1,795	1,812	31,545,582	1,348.35
5223	Activities Related to Credit Intermediation	140	1,155	1,130	1,124	15,445,336	1,045.56
523	FINANCIAL INVESTMENT & RELATED ACTIVITIES	684	3,082	3,084	3,094	\$133,223,068	\$3,320.06
5231	Insurance Carriers	297	2,208	2,202	2,209	108,319,838	3,776.54
5239	Insurance Agencies, Brokerages & Support	387	874	882	885	24,903,230	2,176.03
524	INSURANCE CARRIERS & RELATED ACTIVITIES	2,221	13,896	13,915	13,975	\$236,449,783	\$1,305.83
5231	Security & Commodity Contracts Intermediation & Brokerage	305	6,168	6,187	6,192	131,192,442	1,632.35
5239	Other Financial Investment Activities	1,916	7,728	7,728	7,783	105,257,341	1,045.23
	OTHER	88	92	100	97	\$1,871,804	\$1,494.65
53	REAL ESTATE & RENTAL & LEASING	3,368	12,960	13,042	13,098	\$125,168,590	\$738.75
531	REAL ESTATE	2,735	8,997	9,026	9,033	\$85,504,992	\$729.30
5311	Lessors of Real Estate	1,116	4,037	4,036	4,039	37,908,903	722.28
5312	Offices of Real Estate Agents & Brokers	833	1,744	1,751	1,762	17,561,322	770.90
5313	Activities Related to Real Estate	786	3,216	3,239	3,232	30,034,767	715.51
532	RENTAL & LEASING SERVICES	614	3,917	3,970	4,019	\$38,600,151	\$748.17
5321	Automotive Equipment Rental & Leasing	116	978	1,002	1,007	8,121,198	627.43
5322	Consumer Goods Rental	317	1,816	1,836	1,868	13,649,331	570.62
5323	General Rental Centers	38	238	239	245	2,524,329	806.84
5324	Machinery & Equipment Rental & Leasing	143	885	893	899	14,305,293	1,233.18
533	LESSORS OF NONFINANCIAL INTANGIBLE ASSETS	19	46	46	46	\$1,063,447	\$1,778.34

TABLE 5. STATEWIDE SUMMARY

North American Industry Classification System - Industry Groups		Number of Employing Units	Employment			Total Earnings Jan - Mar 2017	Average Weekly Earnings
			Jan	Feb	Mar		
PROFESSIONAL & BUSINESS SERVICES		13,929	139,561	143,860	145,003	\$2,628,349,951	\$1,415.75
54	PROFESSIONAL & TECHNICAL SERVICES	8,763	43,030	43,459	43,406	\$633,641,157	\$1,125.72
5411	Legal Services	1,673	5,977	5,958	5,982	76,646,776	987.20
5412	Accounting & Bookkeeping Services	1,260	6,669	6,953	6,783	72,317,572	817.87
5413	Architectural & Engineering Services	979	6,319	6,421	6,489	97,489,385	1,169.98
5414	Specialized Design Services	175	391	390	382	4,926,890	977.62
5415	Computer Systems Design & Related Services	1,724	9,715	9,726	9,680	196,136,505	1,554.28
5416	Management & Technical Consulting Services	1,883	5,825	5,770	5,804	89,557,239	1,187.83
5417	Scientific Research & Development Services	119	743	750	758	12,013,865	1,231.64
5418	Advertising & Related Services	387	3,617	3,689	3,752	47,813,655	997.82
5419	Other Professional & Technical Services	563	3,774	3,802	3,776	36,739,270	746.85
55	MANAGEMENT OF COMPANIES & ENTERPRISES	558	36,017	35,976	35,974	\$1,548,687,053	\$3,310.17
56	ADMINISTRATIVE & WASTE SERVICES	4,608	60,514	64,425	65,623	\$446,021,741	\$540.13
561	ADMINISTRATIVE & SUPPORT SERVICES	4,300	57,458	61,328	62,515	\$410,232,454	\$522.16
5611	Office Administrative Services	694	4,096	4,159	4,167	53,920,747	1,001.71
5612	Facilities Support Services	48	1,045	1,046	1,133	6,485,288	464.21
5613	Employment Services	1,073	23,975	27,490	28,058	154,854,686	449.38
5614	Business Support Services	362	7,904	7,938	7,866	64,553,479	628.35
5615	Travel Arrangement & Reservation Services	106	371	366	376	4,153,329	861.15
5616	Investigation & Security Services	293	4,817	4,837	4,776	30,759,220	491.91
5617	Services to Buildings & Dwellings	1,533	13,942	14,176	14,806	83,682,330	449.90
5619	Other Support Services	191	1,308	1,316	1,333	11,823,375	689.53
562	WASTE MANAGEMENT & REMEDIATION SERVICES	308	3,056	3,097	3,108	\$35,789,287	\$891.81
5621	Waste Collection Services	141	1,170	1,182	1,213	13,096,999	847.79
5622	Waste Treatment & Disposal Services	32	878	877	874	12,055,528	1,058.21
5629	Remediation & Other Waste Services	135	1,008	1,038	1,021	10,636,760	800.34
EDUCATION & HEALTH SERVICES		15,718	180,104	181,380	181,705	\$1,816,655,333	\$771.79
61	EDUCATIONAL SERVICES	824	11,301	11,720	11,748	\$99,791,746	\$662.34
6111	Elementary & Secondary Schools	98	3,889	3,966	3,951	31,790,864	621.41
6112	Junior Colleges	6	115	112	113	701,218	475.94
6113	Colleges & Universities	98	4,104	4,375	4,395	38,873,014	696.81
6114	Business, Computer, & Management Training	47	130	135	129	1,823,877	1,068.26
6115	Technical & Trade Schools	109	889	881	872	13,341,204	1,165.31
6116	Other Schools & Instruction	302	1,700	1,758	1,772	7,770,801	342.88
6117	Educational Support Services	164	474	493	516	5,490,768	854.42

TABLE 5. STATEWIDE SUMMARY

North American Industry Classification System - Industry Groups		Number of Employing Units	Employment			Total Earnings	Average Weekly Earnings
			Jan	Feb	Mar	Jan - Mar 2017	
62	HEALTH CARE & SOCIAL ASSISTANCE	14,894	168,803	169,660	169,957	\$1,716,863,587	\$779.28
621	AMBULATORY HEALTH CARE SERVICES	5,686	55,343	55,500	55,618	\$808,453,811	\$1,120.78
6211	Offices of Physicians	2,245	24,414	24,445	24,430	471,347,787	1,484.16
6212	Offices of Dentists	990	7,123	7,128	7,146	83,867,643	904.52
6213	Offices of Other Health Practitioners	1,490	8,510	8,559	8,616	86,051,244	773.14
6214	Outpatient Care Centers	327	4,973	4,973	4,977	66,406,279	1,026.91
6215	Medical & Diagnostic Laboratories	191	1,227	1,212	1,209	16,997,404	1,075.24
6216	Home Health Care Services	265	6,467	6,501	6,516	55,780,966	660.67
6219	Other Ambulatory Health Care Services	178	2,629	2,682	2,724	28,002,488	804.25
622	HOSPITALS	107	42,668	42,976	43,007	\$502,562,942	\$901.48
6221	General Medical & Surgical Hospitals	81	38,058	38,303	38,337	453,396,595	912.22
6222	Psychiatric & Substance Abuse Hospitals	11	2,193	2,212	2,199	21,060,989	735.95
6223	Speciality Hospitals	15	2,417	2,461	2,471	28,105,358	882.55
623	Residential & Mental Health Facilities	644	31,984	32,021	32,107	\$204,141,638	\$490.15
6231	Nursing Care Facilities (Skilled Nursing Facilities)	283	22,692	22,694	22,761	146,116,787	494.80
6232	Residential Mental Health Facilities	170	4,554	4,564	4,586	29,038,169	488.99
6233	Continuing Care & Assisted Living Facilities	150	3,971	3,979	3,975	23,333,448	451.54
6239	Other Residential Care Facilities	41	767	784	785	5,653,234	558.47
624	SOCIAL ASSISTANCE	8,457	38,808	39,163	39,225	\$201,705,196	\$397.18
6241	Individual & Family Services	7,326	24,249	24,427	24,470	127,363,167	401.82
6242	Emergency & Other Relief Services	136	1,350	1,341	1,341	8,998,925	515.05
6243	Vocational Rehabilitation Services	91	3,138	3,140	3,162	17,855,630	436.50
6244	Child Day Care Services	904	10,071	10,255	10,252	47,487,474	358.38
LEISURE & HOSPITALITY		6,988	110,761	112,612	115,290	\$447,587,268	\$304.99
71	ARTS, ENTERTAINMENT & RECREATION	967	9,477	10,060	10,387	\$52,796,478	\$407.16
711	PERFORMING ARTS & SPECTATOR SPORTS	214	2,543	2,969	2,886	\$18,160,031	\$499.02
7111	Performing Arts Companies	49	344	428	305	2,036,371	436.33
7112	Spectator Sports	68	1,698	1,706	1,738	11,703,095	525.23
7113	Performing Arts & Sports Promoters	47	412	693	753	3,596,024	446.64
7114	Agents & Managers for Public Figures	14	39	86	31	261,193	386.38
7115	Independent Artists, Writers, & Performers	36	50	56	59	563,348	787.90
712	MUSEUMS, PARKS, & HISTORICAL SITES	55	609	617	651	\$4,247,963	\$522.27
713	GAMBLING, RECREATIONAL & AMUSEMENT INDUSTRY	698	6,325	6,474	6,850	\$30,388,484	\$356.90
7131	Amusement Parks & Arcades	27	106	113	262	688,856	330.49
7139	Other Amusement & Recreation Industries	671	6,219	6,361	6,588	29,699,628	357.56
72	ACCOMMODATION & FOOD SERVICES	6,021	101,284	102,552	104,903	\$394,790,790	\$295.09

TABLE 5. STATEWIDE SUMMARY

North American Industry Classification System - Industry Groups		Number of Employing Units	Employment			Total Earnings	Average Weekly Earnings
			Jan	Feb	Mar	Jan - Mar 2017	
721	ACCOMMODATION	902	10,560	10,829	11,268	\$49,315,898	\$348.49
7211	Travel Accommodation	815	10,086	10,331	10,712	46,804,524	346.98
7212	RV Parks & Recreational Camps	69	365	376	433	1,876,693	368.90
7213	Rooming & Boarding Houses	18	109	122	123	634,681	413.74
722	FOOD SERVICES & DRINKING PLACES	5,119	90,724	91,723	93,635	\$345,474,892	\$288.77
7223	Special Food Services	245	3,984	4,461	4,485	18,582,195	331.65
7224	Drinking Places, Alcoholic Beverages	144	941	1,009	1,027	3,558,339	275.83
7225	Restaurants & Other Eating Places	4,730	85,799	86,253	88,123	323,334,358	286.79
722511	Full-Service Restaurants	2,102	37,687	37,765	38,517	157,129,432	318.16
722513	Limited-Service Eating Places	2,176	43,944	44,202	45,199	149,257,344	258.31
722514	Cafeterias, Grill Buffets, & Buffets	89	1,572	1,613	1,648	7,177,904	342.74
722515	Snack & Nonalcoholic Beverage Bars	363	2,596	2,673	2,759	9,769,678	280.83
OTHER SERVICES		5,367	24,289	24,462	24,737	\$200,281,115	\$628.93
811	REPAIR & MAINTENANCE	2,207	10,227	10,356	10,523	\$97,710,157	\$724.89
8111	Automotive Repair & Maintenance	1,408	6,459	6,478	6,576	57,038,327	674.56
8112	Electronic Equipment Repair & Maintenance	172	856	883	883	9,104,976	801.35
8113	Commercial Machinery Repair & Maintenance	457	2,368	2,448	2,507	27,617,587	870.31
8114	Household Goods Repair & Maintenance	170	544	547	557	3,949,267	553.02
812	PERSONAL & LAUNDRY SERVICES	1,325	7,764	7,797	7,874	\$47,280,760	\$465.58
8121	Personal Care Services	622	2,993	3,005	3,042	15,510,629	395.95
8122	Death Care Services	245	1,588	1,578	1,553	11,276,162	551.43
8123	Drycleaning & Laundry Service	235	2,303	2,300	2,321	15,775,695	525.79
8129	Other Personal Services	223	880	914	958	4,718,274	395.65
813	MEMBERSHIP ASSOCIATIONS & ORGANIZATIONS	1,084	5,324	5,342	5,368	\$49,469,123	\$711.98
8131	Religious Organizations	84	272	268	268	1,963,043	560.66
8132	Grantmaking & Giving Organizations	120	472	468	448	5,785,992	961.98
8133	Social Advocacy Organizations	209	1,485	1,493	1,511	14,053,785	722.47
8134	Civic & Social Organizations	191	1,137	1,153	1,143	5,342,862	359.15
8139	Professional & Similar Organizations	480	1,958	1,960	1,998	22,323,441	870.78
814	PRIVATE HOUSEHOLDS	751	974	967	972	\$5,821,075	\$461.15
LOCAL GOVERNMENT		1,953	112,268	113,020	113,481	\$1,005,535,039	\$684.97
STATE GOVERNMENT		1,073	66,384	68,512	68,587	\$803,214,839	\$910.92
NONCLASSIFIABLE ESTABLISHMENTS		0	0	0	0	\$0	\$0.00

TABLE 6. COUNTY SUMMARY

North American Industry Classification System - Industry Groups	Number of Employing Units	Employment			Total Earnings	Average Weekly Earnings
		Jan	Feb	Mar	Jan - Mar 2017	
ARKANSAS COUNTY - TOTAL	772	9,233	9,183	9,267	\$87,140,139	\$726.41
Natural Resources & Mining	56	202	194	207	1,892,374	724.22
Construction	45	255	249	250	2,401,533	735.01
Manufacturing	32	3,562	3,534	3,581	35,058,562	757.74
Trade, Transportation & Utilities	194	1,976	1,957	1,986	19,930,071	777.03
Wholesale Trade	46	443	441	465	5,687,047	972.87
Retail Trade	87	970	951	955	6,422,578	515.35
Transportation, Warehousing & Utilities	61	563	565	566	7,820,446	1,065.36
Information	11	78	77	77	855,563	851.02
Financial Activities	45	291	293	282	3,088,361	822.98
Professional & Business Services	47	417	408	408	6,036,182	1,129.74
Education & Health Services	198	1,061	1,076	1,078	8,948,995	642.35
Leisure & Hospitality	54	422	424	436	1,440,108	259.23
Other Services	42	92	94	87	613,868	518.91
Local Government	32	714	710	710	5,647,346	610.70
State Government	16	163	167	165	1,227,176	572.11
ASHLEY COUNTY - TOTAL	560	6,405	6,466	6,556	\$69,771,685	\$828.80
Natural Resources & Mining	42	325	338	333	3,080,373	713.71
Construction	37	450	505	623	5,827,852	852.27
Manufacturing	24	1,618	1,601	1,600	29,399,118	1,407.85
Trade, Transportation & Utilities	112	1,191	1,183	1,173	10,114,163	658.03
Wholesale Trade	24	204	198	201	3,288,655	1,258.57
Retail Trade	65	733	734	730	4,202,977	441.47
Transportation, Warehousing & Utilities	23	254	251	242	2,622,531	810.17
Information	5	33	34	33	223,368	515.46
Financial Activities	35	184	187	188	1,740,636	718.58
Professional & Business Services	43	230	220	216	1,873,238	649.08
Education & Health Services	153	889	899	892	7,923,298	682.26
Leisure & Hospitality	30	382	382	386	1,230,966	247.02
Other Services	37	134	129	148	1,015,353	570.10
Local Government	32	874	888	865	6,437,067	565.47
State Government	10	95	100	99	906,253	711.34

TABLE 6. COUNTY SUMMARY

North American Industry Classification System - Industry Groups	Number of Employing Units	Employment			Total Earnings Jan - Mar 2017	Average Weekly Earnings
		Jan	Feb	Mar		
BAXTER COUNTY - TOTAL	1,213	14,475	14,595	14,791	\$122,465,108	\$644.34
Natural Resources & Mining	6	53	51	51	490,966	730.97
Construction	109	509	491	501	4,009,172	616.38
Manufacturing	54	2,229	2,236	2,252	23,632,993	811.94
Trade, Transportation & Utilities	263	2,908	2,888	2,911	20,165,792	534.47
Wholesale Trade	34	408	405	406	4,278,438	809.95
Retail Trade	206	2,307	2,292	2,316	14,001,775	467.27
Transportation, Warehousing & Utilities	23	193	191	189	1,885,579	759.40
Information	19	185	184	183	2,118,344	885.60
Financial Activities	114	726	733	739	9,036,014	948.70
Professional & Business Services	135	777	794	791	6,329,578	618.40
Education & Health Services	263	3,773	3,813	3,828	37,331,345	754.77
Leisure & Hospitality	119	1,549	1,602	1,698	5,720,497	272.24
Other Services	87	335	338	342	1,923,307	437.28
Local Government	33	1,169	1,165	1,187	9,238,415	605.49
State Government	11	262	300	308	2,468,685	654.82
BENTON COUNTY - TOTAL	6,313	114,812	115,640	116,207	\$2,171,786,500	\$1,445.75
Natural Resources & Mining	46	719	720	744	12,884,188	1,362.01
Construction	615	4,635	4,687	4,722	53,560,634	880.10
Manufacturing	189	11,585	11,580	11,541	124,883,554	830.38
Trade, Transportation & Utilities	1,677	27,403	27,394	27,396	364,985,163	1,024.75
Wholesale Trade	743	5,571	5,611	5,659	160,246,975	2,195.84
Retail Trade	745	12,443	12,298	12,278	86,555,121	539.57
Transportation, Warehousing & Utilities	189	9,389	9,485	9,459	118,183,067	962.59
Information	74	954	949	949	14,480,637	1,171.70
Financial Activities	616	3,664	3,651	3,658	54,502,236	1,146.22
Professional & Business Services	1,210	32,163	32,386	32,595	1,275,126,332	3,029.11
Education & Health Services	793	10,951	11,035	11,070	107,542,298	750.77
Leisure & Hospitality	598	11,498	11,630	11,772	51,559,476	340.93
Other Services	397	2,014	2,045	2,048	16,821,558	635.65
Local Government	81	8,412	8,474	8,599	85,901,649	777.85
State Government	17	814	1,089	1,113	9,538,775	729.86

TABLE 6. COUNTY SUMMARY

North American Industry Classification System - Industry Groups	Number of Employing Units	Employment			Total Earnings	Average Weekly Earnings
		Jan	Feb	Mar	Jan - Mar 2017	
BOONE COUNTY - TOTAL	961	13,524	13,591	13,628	\$120,670,397	\$683.48
Construction	70	463	446	435	4,091,682	702.56
Manufacturing	66	1,773	1,789	1,809	18,171,053	780.73
Trade, Transportation & Utilities	239	3,440	3,425	3,376	31,896,651	718.75
Wholesale Trade	38	301	311	294	2,822,735	718.98
Retail Trade	157	1,999	1,982	1,949	12,879,618	501.22
Transportation, Warehousing & Utilities	44	1,140	1,132	1,133	16,194,298	1,097.55
Information	14	288	286	284	3,015,908	811.16
Financial Activities	97	414	417	419	4,942,054	912.38
Professional & Business Services	104	1,388	1,380	1,379	15,308,335	851.87
Education & Health Services	164	1,483	1,500	1,513	10,793,208	553.99
Leisure & Hospitality	80	1,135	1,171	1,206	4,218,422	277.19
Local Government	54	2,204	2,197	2,200	19,467,837	680.59
State Government	17	678	736	740	6,573,049	704.20
Other	56	258	244	267	2,192,198	657.86
BRADLEY COUNTY - TOTAL	370	3,725	3,782	3,763	\$30,047,394	\$615.26
Natural Resources & Mining	47	348	359	314	2,930,550	662.37
Construction	17	55	57	61	449,462	599.55
Manufacturing	11	861	870	874	8,395,064	743.69
Trade, Transportation & Utilities	69	457	454	461	2,952,348	496.58
Wholesale Trade	11	78	72	79	901,297	908.26
Retail Trade	37	329	333	334	1,579,701	366.01
Transportation, Warehousing & Utilities	21	50	49	48	471,350	739.95
Information	4	24	23	23	198,183	653.35
Financial Activities	26	135	137	132	1,366,945	780.81
Professional & Business Services	25	113	114	115	854,987	576.91
Education & Health Services	105	643	658	661	5,616,388	660.60
Leisure & Hospitality	16	185	194	202	601,861	239.06
Other Services	26	97	97	99	598,340	471.26
Local Government	14	469	481	484	3,628,588	583.94
State Government	10	338	338	337	2,454,678	559.19

TABLE 6. COUNTY SUMMARY

North American Industry Classification System - Industry Groups	Number of Employing Units	Employment			Total Earnings Jan - Mar 2017	Average Weekly Earnings
		Jan	Feb	Mar		
CALHOUN COUNTY - TOTAL	99	2,802	2,818	2,817	\$38,070,736	\$1,041.31
Natural Resources & Mining	6	36	36	38	288,116	604.44
Construction	10	93	94	97	929,950	755.65
Manufacturing	9	2,001	2,000	1,994	30,710,944	1,182.18
Trade, Transportation & Utilities	20	215	217	221	1,951,472	689.65
Retail Trade	9	54	53	53	255,549	368.58
Transportation, Warehousing & Utilities	11	161	164	168	1,695,923	793.85
Professional & Business Services	4	7	10	10	87,649	749.14
Education & Health Services	17	64	64	64	581,833	699.32
Leisure & Hospitality	4	16	16	17	46,982	221.27
Other Services	4	4	5	3	14,564	280.08
Local Government	11	182	190	191	1,258,000	515.64
State Government	7	77	78	77	765,214	761.15
Other	7	107	108	105	1,436,012	1,035.59
CARROLL COUNTY - TOTAL	785	10,264	10,325	10,614	\$75,175,497	\$555.98
Natural Resources & Mining	18	198	192	195	1,711,664	675.21
Trade, Transportation & Utilities	194	1,600	1,619	1,651	12,223,389	579.22
Wholesale Trade	23	166	170	167	1,371,431	629.19
Retail Trade	145	1,117	1,124	1,151	6,293,705	428.18
Transportation, Warehousing & Utilities	26	317	325	333	4,558,253	1,078.88
Information	10	64	64	64	671,348	806.91
Financial Activities	61	363	359	360	3,903,123	832.46
Professional & Business Services	64	563	538	538	4,713,525	663.66
Education & Health Services	96	1,068	1,070	1,065	8,361,114	602.40
Leisure & Hospitality	166	1,194	1,223	1,420	4,713,015	283.46
Other Services	45	124	124	136	807,371	485.20
Local Government	25	1,033	1,044	1,065	7,606,671	558.68
State Government	9	87	86	88	833,817	737.24
Other	97	3,970	4,006	4,032	29,630,460	569.44

TABLE 6. COUNTY SUMMARY

North American Industry Classification System - Industry Groups	Number of Employing Units	Employment			Total Earnings	Average Weekly Earnings
		Jan	Feb	Mar	Jan - Mar 2017	
CHICOT COUNTY - TOTAL	527	2,969	2,978	2,987	\$22,833,258	\$589.79
Natural Resources & Mining	54	205	199	206	1,636,623	619.15
Construction	17	153	144	147	1,378,075	716.26
Manufacturing	6	26	27	27	397,712	1,147.25
Trade, Transportation & Utilities	67	650	662	656	4,607,185	540.24
Wholesale Trade	15	67	74	69	634,203	696.93
Retail Trade	39	309	310	311	1,903,610	472.36
Transportation, Warehousing & Utilities	13	274	278	276	2,069,372	576.75
Information	4	5	4	4	18,908	335.64
Financial Activities	28	155	160	157	2,131,146	1,041.96
Professional & Business Services	18	42	44	42	367,516	662.59
Education & Health Services	271	689	691	690	4,529,041	504.91
Leisure & Hospitality	19	139	132	132	444,040	254.27
Other Services	16	47	57	65	426,829	582.83
Local Government	17	610	610	612	4,593,689	578.65
State Government	10	248	248	249	2,302,494	713.21
CLARK COUNTY - TOTAL	625	8,821	9,104	9,159	\$78,245,424	\$666.69
Natural Resources & Mining	46	258	257	258	2,548,125	760.71
Construction	19	50	54	61	376,070	525.97
Manufacturing	33	1,394	1,400	1,408	20,294,516	1,114.55
Trade, Transportation & Utilities	127	1,402	1,397	1,383	10,550,010	582.17
Wholesale Trade	13	31	31	31	369,769	917.54
Retail Trade	90	1,205	1,212	1,196	8,291,623	529.60
Transportation, Warehousing & Utilities	24	166	154	156	1,888,618	915.62
Information	3	17	17	17	159,237	720.53
Financial Activities	73	296	301	299	3,159,175	813.66
Professional & Business Services	53	600	606	621	5,882,356	743.00
Education & Health Services	127	1,599	1,663	1,659	12,281,210	575.92
Leisure & Hospitality	57	948	1,044	1,088	3,570,810	267.54
Other Services	43	237	233	222	1,915,717	638.86
Local Government	30	976	981	987	7,491,539	587.23
State Government	14	1,044	1,151	1,156	10,016,659	689.81

TABLE 6. COUNTY SUMMARY

North American Industry Classification System - Industry Groups	Number of Employing Units	Employment			Total Earnings	Average Weekly Earnings
		Jan	Feb	Mar	Jan - Mar 2017	
CLAY COUNTY - TOTAL	377	3,065	3,146	3,164	\$21,666,668	\$533.33
Natural Resources & Mining	57	164	175	212	1,014,853	425.04
Construction	31	95	130	125	746,847	492.43
Manufacturing	13	131	134	134	903,852	522.76
Trade, Transportation & Utilities	88	821	807	816	6,015,298	567.98
Wholesale Trade	21	245	235	241	1,831,081	586.07
Retail Trade	41	412	411	416	2,523,755	470.06
Transportation, Warehousing & Utilities	26	164	161	159	1,660,462	791.70
Information	5	34	33	32	265,357	618.55
Financial Activities	25	99	101	99	923,373	712.66
Professional & Business Services	26	96	112	100	797,772	597.73
Education & Health Services	52	492	502	503	3,604,348	555.63
Leisure & Hospitality	24	227	241	235	738,489	242.42
Other Services	24	68	68	69	537,359	604.91
Local Government	22	796	802	797	5,752,524	554.28
State Government	10	42	41	42	366,596	676.79
CLEBURNE COUNTY - TOTAL	656	6,178	6,242	6,322	\$47,934,895	\$590.22
Natural Resources & Mining	26	238	253	253	3,186,342	988.32
Construction	67	251	272	281	2,512,312	721.10
Manufacturing	35	1,108	1,118	1,126	9,730,395	669.89
Trade, Transportation & Utilities	144	1,226	1,206	1,214	9,374,370	593.34
Wholesale Trade	32	115	117	115	1,210,383	804.95
Retail Trade	90	917	911	910	6,066,019	511.27
Transportation, Warehousing & Utilities	22	194	178	189	2,097,968	863.01
Information	9	53	47	47	450,555	707.31
Financial Activities	76	266	261	266	2,820,328	820.74
Professional & Business Services	66	231	239	233	2,548,826	836.69
Education & Health Services	88	958	952	965	6,531,681	524.28
Leisure & Hospitality	81	792	828	860	3,066,050	285.30
Other Services	38	124	125	123	767,069	475.85
Local Government	18	815	820	833	5,988,993	560.00
State Government	8	116	121	121	957,974	617.52

TABLE 6. COUNTY SUMMARY

North American Industry Classification System - Industry Groups	Number of Employing Units	Employment			Total Earnings Jan - Mar 2017	Average Weekly Earnings
		Jan	Feb	Mar		
CLEVELAND COUNTY - TOTAL	126	973	968	940	\$7,383,558	\$591.43
Natural Resources & Mining	15	139	148	104	1,437,412	848.36
Construction	9	17	17	29	170,056	622.92
Manufacturing	5	79	79	78	681,097	666.00
Trade, Transportation & Utilities	37	195	187	191	1,419,771	571.80
Retail Trade	20	81	81	80	315,666	301.02
Other Trade, Transportation, & Utilities	17	114	106	111	1,104,105	769.77
Financial Activities	3	28	28	29	305,447	829.27
Education & Health Services	29	153	151	149	834,234	424.98
Other Services	4	13	13	13	101,774	602.21
Local Government	11	305	302	304	2,077,759	526.33
State Government	6	29	29	29	293,592	778.76
Other	7	15	14	14	62,416	334.97
COLUMBIA COUNTY - TOTAL	719	7,925	7,969	7,960	\$78,533,360	\$759.75
Natural Resources & Mining	39	336	333	339	4,940,126	1,130.98
Construction	39	164	165	162	1,504,483	707.10
Manufacturing	33	1,749	1,770	1,778	29,115,002	1,268.42
Trade, Transportation & Utilities	158	1,355	1,344	1,322	10,194,566	585.08
Wholesale Trade	29	185	191	185	2,446,769	1,006.49
Retail Trade	93	985	966	945	5,645,399	449.86
Transportation, Warehousing & Utilities	36	185	187	192	2,102,398	860.23
Information	8	54	55	54	500,502	708.59
Financial Activities	67	329	330	332	3,701,131	861.86
Professional & Business Services	55	299	301	314	2,520,835	636.47
Education & Health Services	187	1,073	1,077	1,084	6,540,794	466.73
Leisure & Hospitality	50	695	712	721	2,541,724	275.64
Other Services	45	141	143	141	866,256	470.37
Local Government	26	1,110	1,118	1,105	9,467,462	655.51
State Government	12	620	621	608	6,640,479	828.78

TABLE 6. COUNTY SUMMARY

North American Industry Classification System - Industry Groups	Number of Employing Units	Employment			Total Earnings	Average Weekly Earnings
		Jan	Feb	Mar	Jan - Mar 2017	
CONWAY COUNTY - TOTAL	532	6,326	6,355	6,396	\$57,028,259	\$689.86
Natural Resources & Mining	31	250	249	242	2,781,185	866.14
Construction	47	472	458	472	5,687,521	936.17
Manufacturing	18	856	850	867	12,473,678	1,118.75
Trade, Transportation & Utilities	115	1,337	1,351	1,339	10,499,928	601.70
Wholesale Trade	17	113	121	115	996,233	658.74
Retail Trade	74	788	787	781	5,009,170	490.65
Transportation, Warehousing & Utilities	24	436	443	443	4,494,525	784.57
Information	3	11	12	12	48,232	318.01
Financial Activities	38	146	146	148	1,628,351	854.03
Professional & Business Services	38	568	593	584	3,254,770	430.43
Education & Health Services	135	801	798	815	7,286,880	696.60
Leisure & Hospitality	41	435	435	462	1,451,235	251.43
Other Services	27	92	90	91	714,194	603.71
Local Government	30	1,014	1,019	1,010	8,444,365	640.39
State Government	9	344	354	354	2,757,920	604.98
CRAIGHEAD COUNTY - TOTAL	2,828	48,877	49,123	49,206	\$465,912,296	\$730.39
Natural Resources & Mining	92	266	295	304	2,393,536	638.56
Construction	235	2,044	2,029	2,049	20,012,099	754.36
Manufacturing	100	6,329	6,355	6,425	74,955,006	905.19
Trade, Transportation & Utilities	796	10,117	10,029	9,956	84,939,385	651.17
Wholesale Trade	183	1,610	1,624	1,621	22,366,039	1,063.11
Retail Trade	481	6,912	6,830	6,751	44,535,415	501.51
Transportation, Warehousing & Utilities	132	1,595	1,575	1,584	18,037,931	875.60
Information	18	407	405	406	4,806,886	910.74
Financial Activities	268	1,608	1,602	1,617	21,765,676	1,040.57
Professional & Business Services	372	4,529	4,723	4,700	35,315,180	584.12
Education & Health Services	472	10,471	10,458	10,453	125,572,421	923.40
Leisure & Hospitality	258	5,307	5,376	5,480	20,184,626	288.19
Other Services	160	804	822	846	6,188,978	577.76
Local Government	35	3,987	4,009	4,038	36,142,268	693.08
State Government	22	3,008	3,020	2,932	33,636,235	866.32

TABLE 6. COUNTY SUMMARY

North American Industry Classification System - Industry Groups	Number of Employing Units	Employment			Total Earnings	Average Weekly Earnings
		Jan	Feb	Mar	Jan - Mar 2017	
CRAWFORD COUNTY - TOTAL	1,247	19,043	19,178	19,180	\$164,113,305	\$659.78
Natural Resources & Mining	28	225	266	306	2,548,370	737.87
Construction	148	908	911	917	8,894,587	750.22
Manufacturing	71	4,509	4,471	4,438	46,102,605	792.89
Trade, Transportation & Utilities	314	5,363	5,420	5,395	46,600,629	664.73
Wholesale Trade	77	752	769	763	9,620,916	972.07
Retail Trade	169	1,948	1,955	1,947	13,478,051	531.68
Transportation, Warehousing & Utilities	68	2,663	2,696	2,685	23,501,662	674.22
Information	10	56	53	54	471,463	667.48
Financial Activities	121	485	479	481	4,695,410	749.87
Professional & Business Services	157	1,625	1,645	1,643	13,863,264	651.17
Education & Health Services	175	1,636	1,658	1,644	13,130,630	613.64
Leisure & Hospitality	94	1,572	1,581	1,607	5,614,113	272.18
Other Services	76	399	390	390	3,217,230	629.72
Local Government	43	2,109	2,147	2,147	17,740,839	639.39
State Government	10	156	157	158	1,234,165	604.69
CRITTENDEN COUNTY - TOTAL	1,269	16,238	16,290	16,549	\$143,846,276	\$676.39
Natural Resources & Mining	57	202	197	212	1,492,219	563.60
Construction	47	370	433	502	4,767,312	843.03
Manufacturing	44	2,234	2,192	2,183	30,058,390	1,049.56
Trade, Transportation & Utilities	303	4,358	4,297	4,338	39,400,071	699.79
Wholesale Trade	60	781	785	795	9,088,442	888.32
Retail Trade	162	1,971	1,947	1,939	11,668,088	459.73
Transportation, Warehousing & Utilities	81	1,606	1,565	1,604	18,643,541	901.02
Information	6	61	61	61	580,257	731.72
Financial Activities	100	446	449	450	4,902,268	841.11
Professional & Business Services	112	1,174	1,111	1,145	9,124,053	613.86
Education & Health Services	342	2,010	2,082	2,109	15,352,811	571.35
Leisure & Hospitality	127	2,239	2,267	2,327	10,485,528	354.13
Other Services	76	468	488	507	4,011,625	632.78
Local Government	42	2,219	2,221	2,226	19,736,748	683.26
State Government	13	457	492	489	3,934,994	631.49

TABLE 6. COUNTY SUMMARY

North American Industry Classification System - Industry Groups	Number of Employing Units	Employment			Total Earnings	Average Weekly Earnings
		Jan	Feb	Mar	Jan - Mar 2017	
CROSS COUNTY - TOTAL	482	4,850	4,824	4,918	\$38,168,966	\$603.63
Natural Resources & Mining	41	233	239	249	1,548,049	495.48
Construction	23	61	61	62	465,184	583.42
Manufacturing	11	427	385	383	3,146,681	607.66
Trade, Transportation & Utilities	124	1,159	1,169	1,193	10,380,541	680.35
Wholesale Trade	29	277	287	301	3,995,453	1,065.93
Retail Trade	70	788	786	792	5,299,620	516.90
Transportation, Warehousing & Utilities	25	94	96	100	1,085,468	863.77
Information	6	41	40	40	329,436	628.29
Financial Activities	45	304	294	285	2,616,959	683.93
Professional & Business Services	39	124	133	140	1,214,543	705.99
Education & Health Services	100	1,009	1,008	1,040	7,930,988	598.70
Leisure & Hospitality	32	329	328	347	1,004,763	230.94
Other Services	36	95	98	100	690,190	543.60
Local Government	16	717	720	729	5,946,165	633.51
State Government	9	351	349	350	2,895,467	636.37
DALLAS COUNTY - TOTAL	248	2,817	2,791	2,778	\$21,713,125	\$597.51
Natural Resources & Mining	29	150	149	146	1,216,358	630.78
Construction	15	56	55	75	523,823	649.90
Manufacturing	11	608	595	580	6,102,512	789.83
Trade, Transportation & Utilities	58	472	467	472	3,372,921	551.64
Wholesale Trade	6	16	22	21	226,290	885.10
Retail Trade	39	359	347	360	2,278,531	493.26
Transportation, Warehousing & Utilities	13	97	98	91	868,100	700.46
Information	4	17	17	17	114,810	519.50
Financial Activities	16	76	75	76	738,660	750.93
Professional & Business Services	10	33	33	32	448,938	1,057.15
Education & Health Services	58	841	844	844	6,008,834	548.30
Leisure & Hospitality	13	144	144	143	529,151	283.32
Other Services	13	56	60	50	329,074	457.47
Local Government	14	335	323	314	2,045,753	485.70
State Government	7	29	29	29	282,291	748.78

TABLE 6. COUNTY SUMMARY

North American Industry Classification System - Industry Groups	Number of Employing Units	Employment			Total Earnings Jan - Mar 2017	Average Weekly Earnings
		Jan	Feb	Mar		
DESHA COUNTY - TOTAL	553	4,368	4,429	4,456	\$38,011,218	\$661.87
Natural Resources & Mining	70	237	236	246	1,679,339	539.00
Construction	16	86	94	93	790,681	668.37
Manufacturing	14	859	890	889	13,064,564	1,142.87
Trade, Transportation & Utilities	110	816	819	835	6,607,984	617.38
Wholesale Trade	19	193	191	194	2,678,328	1,069.34
Retail Trade	65	467	470	477	2,474,701	403.88
Transportation, Warehousing & Utilities	26	156	158	164	1,454,955	702.42
Information	3	10	10	12	125,144	902.48
Financial Activities	28	198	205	202	1,660,324	633.31
Professional & Business Services	34	85	83	85	711,887	649.33
Education & Health Services	191	747	747	754	4,841,103	496.97
Leisure & Hospitality	37	359	374	374	1,267,948	264.32
Other Services	20	48	40	46	218,000	375.43
Local Government	21	806	810	799	6,084,659	581.43
State Government	9	117	121	121	959,585	616.83
DREW COUNTY - TOTAL	537	6,356	6,371	6,388	\$53,586,283	\$646.93
Natural Resources & Mining	54	377	362	368	3,145,489	655.72
Construction	24	122	132	125	1,295,124	788.59
Manufacturing	21	801	804	807	8,301,658	794.27
Trade, Transportation & Utilities	124	1,179	1,158	1,174	9,070,561	596.19
Wholesale Trade	20	139	142	144	1,922,717	1,044.01
Retail Trade	81	905	882	895	5,618,271	483.42
Transportation, Warehousing & Utilities	23	135	134	135	1,529,573	873.71
Information	5	50	48	49	434,435	682.00
Financial Activities	48	250	248	251	2,803,550	863.78
Professional & Business Services	32	235	242	247	2,041,176	650.61
Education & Health Services	139	909	891	892	7,707,799	660.74
Leisure & Hospitality	39	594	598	612	2,065,050	264.16
Other Services	15	57	53	50	354,219	510.89
Local Government	22	1,233	1,234	1,213	10,138,563	635.78
State Government	14	549	601	600	6,228,659	821.36

TABLE 6. COUNTY SUMMARY

North American Industry Classification System - Industry Groups	Number of Employing Units	Employment			Total Earnings Jan - Mar 2017	Average Weekly Earnings
		Jan	Feb	Mar		
FAULKNER COUNTY - TOTAL	2,818	39,894	40,380	40,585	\$379,385,872	\$724.40
Natural Resources & Mining	59	330	325	327	6,210,874	1,459.55
Construction	308	2,637	2,671	2,698	27,480,253	792.11
Manufacturing	100	3,197	3,178	3,215	42,979,526	1,034.24
Trade, Transportation & Utilities	647	7,435	7,368	7,421	56,722,691	589.00
Wholesale Trade	142	521	523	520	7,428,155	1,096.03
Retail Trade	415	6,167	6,109	6,148	39,342,308	492.78
Transportation, Warehousing & Utilities	90	747	736	753	9,952,228	1,027.13
Information	18	261	263	262	3,406,062	1,000.02
Financial Activities	311	1,460	1,449	1,449	16,821,208	890.73
Professional & Business Services	426	5,330	5,491	5,361	71,993,787	1,026.69
Education & Health Services	434	6,728	6,913	6,884	59,790,534	672.24
Leisure & Hospitality	263	4,937	5,033	5,284	19,026,928	287.85
Other Services	194	812	844	809	5,910,870	553.37
Local Government	41	3,420	3,465	3,502	34,460,592	765.62
State Government	17	3,347	3,380	3,373	34,582,547	790.16
FRANKLIN COUNTY - TOTAL	360	4,308	4,359	4,384	\$38,195,945	\$675.38
Natural Resources & Mining	20	190	203	210	3,570,058	1,366.27
Construction	33	102	117	115	972,250	671.75
Manufacturing	14	921	925	915	9,357,934	782.15
Trade, Transportation & Utilities	89	926	934	932	7,909,880	653.78
Wholesale Trade	14	44	45	53	237,507	385.98
Retail Trade	53	608	611	603	3,494,904	442.65
Transportation, Warehousing & Utilities	22	274	278	276	4,177,469	1,164.29
Information	5	19	19	19	142,185	575.65
Financial Activities	28	78	80	80	778,232	754.59
Professional & Business Services	34	335	330	333	3,322,580	768.29
Education & Health Services	68	556	556	556	3,581,484	495.50
Leisure & Hospitality	26	293	301	326	977,870	245.29
Other Services	15	48	51	50	350,272	542.50
Local Government	19	723	714	719	5,881,407	629.52
State Government	9	117	129	129	1,351,793	831.87

TABLE 6. COUNTY SUMMARY

North American Industry Classification System - Industry Groups	Number of Employing Units	Employment			Total Earnings	Average Weekly Earnings
		Jan	Feb	Mar	Jan - Mar 2017	
FULTON COUNTY - TOTAL	189	1,781	1,805	1,818	\$12,635,829	\$539.59
Natural Resources & Mining	3	6	6	6	24,935	319.68
Construction	9	45	44	46	481,168	822.51
Manufacturing	12	100	104	104	589,172	441.44
Trade, Transportation & Utilities	44	289	267	273	2,573,652	716.43
Retail Trade	27	159	156	160	938,609	456.00
Other Trade, Transportation, & Utilities	17	130	111	113	1,635,043	1,065.87
Information	4	30	29	28	190,632	505.66
Financial Activities	20	79	79	85	796,698	756.60
Professional & Business Services	13	35	32	37	279,797	620.85
Education & Health Services	42	450	471	466	2,812,747	467.99
Leisure & Hospitality	15	115	125	132	392,796	243.67
Other Services	6	10	12	12	62,997	427.58
Local Government	12	549	562	554	3,712,274	514.52
State Government	9	73	74	75	718,961	747.36
GARLAND COUNTY - TOTAL	3,083	35,783	35,837	36,334	\$313,281,278	\$669.69
Natural Resources & Mining	27	226	218	234	2,850,664	970.27
Construction	328	1,676	1,652	1,669	14,573,074	673.01
Manufacturing	94	2,508	2,527	2,538	26,648,239	812.04
Trade, Transportation & Utilities	684	7,201	7,198	7,178	56,729,565	606.73
Wholesale Trade	144	862	859	849	11,532,101	1,035.51
Retail Trade	481	5,861	5,869	5,851	39,705,026	521.17
Transportation, Warehousing & Utilities	59	478	470	478	5,492,438	888.84
Information	30	406	411	420	4,193,908	782.40
Financial Activities	337	1,415	1,422	1,419	17,820,430	966.26
Professional & Business Services	383	2,878	2,893	3,010	30,433,372	799.80
Education & Health Services	533	7,620	7,653	7,701	83,223,879	835.97
Leisure & Hospitality	380	7,047	6,968	7,198	31,845,663	346.44
Other Services	231	952	958	985	6,078,374	484.53
Local Government	33	2,937	2,946	2,982	30,209,634	786.40
State Government	23	917	991	1,000	8,674,476	688.38

TABLE 6. COUNTY SUMMARY

North American Industry Classification System - Industry Groups	Number of Employing Units	Employment			Total Earnings	Average Weekly Earnings
		Jan	Feb	Mar	Jan - Mar 2017	
GRANT COUNTY - TOTAL	348	3,940	3,976	4,060	\$37,111,614	\$715.12
Natural Resources & Mining	25	169	164	167	2,003,948	924.90
Construction	30	198	210	213	2,378,481	883.87
Manufacturing	17	1,250	1,249	1,277	15,164,354	926.77
Trade, Transportation & Utilities	94	627	637	638	4,815,691	584.29
Wholesale Trade	22	103	102	101	1,305,221	984.33
Retail Trade	45	455	458	463	2,915,843	489.02
Transportation, Warehousing & Utilities	27	69	77	74	594,627	623.73
Financial Activities	23	98	94	95	843,662	678.37
Professional & Business Services	28	95	95	96	1,194,483	963.81
Education & Health Services	73	394	407	402	2,558,627	490.82
Leisure & Hospitality	23	295	298	320	909,169	229.80
Local Government	10	724	731	761	6,555,392	682.66
State Government	7	42	42	42	355,964	651.95
Other	18	48	49	49	331,843	524.51
GREENE COUNTY - TOTAL	879	14,973	15,135	15,394	\$138,414,038	\$701.98
Natural Resources & Mining	41	226	236	251	1,733,908	561.20
Construction	70	261	278	297	2,772,261	765.25
Manufacturing	66	5,088	5,109	5,269	58,940,920	879.46
Trade, Transportation & Utilities	238	2,636	2,622	2,655	20,015,203	583.71
Wholesale Trade	43	418	417	422	4,598,612	844.25
Retail Trade	159	1,900	1,877	1,907	12,371,347	502.27
Transportation, Warehousing & Utilities	36	318	328	326	3,045,244	722.99
Information	9	94	89	88	619,719	527.72
Financial Activities	72	530	536	533	5,883,840	849.16
Professional & Business Services	89	774	848	835	6,495,655	610.09
Education & Health Services	148	1,961	1,972	2,004	18,593,803	722.73
Leisure & Hospitality	66	1,217	1,257	1,270	4,156,395	256.19
Other Services	39	158	158	162	1,024,041	494.39
Local Government	30	1,634	1,633	1,634	14,420,955	679.03
State Government	11	394	397	396	3,757,338	730.48

TABLE 6. COUNTY SUMMARY

North American Industry Classification System - Industry Groups	Number of Employing Units	Employment			Total Earnings Jan - Mar 2017	Average Weekly Earnings
		Jan	Feb	Mar		
HEMPSTEAD COUNTY - TOTAL	503	7,742	7,753	7,753	\$66,979,309	\$664.86
Natural Resources & Mining	25	248	249	253	2,525,516	777.08
Construction	29	195	195	198	2,035,615	798.91
Manufacturing	29	2,258	2,263	2,235	22,792,400	778.54
Trade, Transportation & Utilities	126	1,238	1,237	1,236	11,842,043	736.40
Wholesale Trade	20	165	169	167	1,462,661	673.73
Retail Trade	80	836	831	832	5,298,745	489.31
Transportation, Warehousing & Utilities	26	237	237	237	5,080,637	1,649.02
Information	8	35	34	35	343,074	761.26
Financial Activities	45	208	214	211	2,161,268	787.92
Professional & Business Services	30	208	203	201	1,723,323	649.82
Education & Health Services	95	1,014	1,019	1,020	6,776,649	512.23
Leisure & Hospitality	42	593	581	605	2,126,585	275.86
Other Services	31	142	141	143	945,367	512.12
Local Government	27	904	906	899	7,608,701	648.16
State Government	16	699	711	717	6,098,768	661.69
HOT SPRING COUNTY - TOTAL	628	8,378	8,439	8,531	\$74,316,185	\$676.58
Natural Resources & Mining	22	147	142	141	1,090,988	585.50
Construction	54	321	320	343	3,264,448	765.58
Manufacturing	27	1,416	1,428	1,412	18,534,605	1,004.99
Trade, Transportation & Utilities	152	1,576	1,596	1,611	15,447,247	745.30
Wholesale Trade	18	102	100	105	1,087,709	817.62
Retail Trade	95	847	866	877	5,161,825	459.92
Transportation, Warehousing & Utilities	39	627	630	629	9,197,713	1,125.42
Information	7	66	68	65	580,336	672.98
Financial Activities	53	204	213	205	2,353,047	873.01
Professional & Business Services	49	998	1,026	986	5,879,734	450.78
Education & Health Services	132	1,071	1,053	1,054	8,599,424	624.44
Leisure & Hospitality	55	611	610	730	2,042,672	241.61
Other Services	38	143	129	133	779,000	443.87
Local Government	27	972	991	983	8,412,950	659.01
State Government	12	853	863	868	7,331,734	654.78

TABLE 6. COUNTY SUMMARY

North American Industry Classification System - Industry Groups	Number of Employing Units	Employment			Total Earnings	Average Weekly Earnings
		Jan	Feb	Mar	Jan - Mar 2017	
HOWARD COUNTY - TOTAL	354	6,797	6,903	6,925	\$55,912,003	\$625.59
Natural Resources & Mining	21	210	208	203	1,879,244	698.34
Construction	19	97	107	105	1,683,206	1,257.06
Manufacturing	20	3,315	3,367	3,369	27,665,682	635.20
Trade, Transportation & Utilities	86	889	909	920	7,177,044	609.36
Wholesale Trade	18	72	82	79	766,955	759.61
Retail Trade	51	628	630	647	3,944,529	477.84
Transportation, Warehousing & Utilities	17	189	197	194	2,465,560	980.99
Information	3	16	15	14	93,860	481.33
Financial Activities	32	127	128	128	1,379,852	831.40
Professional & Business Services	21	157	157	148	1,150,049	574.45
Education & Health Services	81	784	787	800	6,542,093	636.74
Leisure & Hospitality	21	315	321	331	1,092,804	260.79
Other Services	23	144	145	139	1,122,133	605.03
Local Government	17	649	652	660	5,239,667	616.60
State Government	10	94	107	108	886,369	661.96
INDEPENDENCE COUNTY - TOTAL	896	15,367	15,553	15,620	\$135,890,635	\$673.82
Natural Resources & Mining	15	210	219	226	2,702,125	952.01
Construction	59	370	378	391	3,783,838	766.63
Manufacturing	37	2,904	2,987	2,984	30,263,902	786.93
Trade, Transportation & Utilities	230	2,992	2,967	2,953	24,602,693	637.07
Wholesale Trade	27	315	321	315	2,783,639	675.48
Retail Trade	155	1,855	1,838	1,842	11,616,179	484.31
Transportation, Warehousing & Utilities	48	822	808	796	10,202,875	970.53
Information	10	119	124	122	995,285	629.26
Financial Activities	83	526	526	525	7,016,080	1,026.69
Professional & Business Services	91	1,240	1,257	1,269	8,389,674	514.09
Education & Health Services	170	3,416	3,434	3,451	36,319,601	813.65
Leisure & Hospitality	77	1,181	1,198	1,219	3,788,969	243.02
Other Services	64	353	350	359	2,002,192	435.07
Local Government	46	1,524	1,533	1,533	11,148,950	560.53
State Government	14	532	580	588	4,877,326	662.08

TABLE 6. COUNTY SUMMARY

North American Industry Classification System - Industry Groups	Number of Employing Units	Employment			Total Earnings Jan - Mar 2017	Average Weekly Earnings
		Jan	Feb	Mar		
IZARD COUNTY - TOTAL	258	2,953	3,026	3,081	\$23,765,662	\$605.34
Natural Resources & Mining	7	137	140	140	1,944,587	1,076.14
Construction	23	96	96	96	789,476	632.59
Manufacturing	11	268	284	306	2,560,828	688.76
Trade, Transportation & Utilities	66	536	545	545	4,263,914	605.15
Wholesale Trade	12	26	26	26	176,899	523.37
Retail Trade	43	369	366	370	2,284,082	477.01
Transportation, Warehousing & Utilities	11	141	153	149	1,802,933	939.19
Information	4	6	6	6	97,393	1,248.63
Financial Activities	26	166	167	177	1,408,324	637.25
Professional & Business Services	14	47	48	53	384,822	600.03
Education & Health Services	50	637	639	643	4,145,971	498.57
Leisure & Hospitality	20	152	152	168	467,941	228.78
Other Services	11	31	28	25	191,967	527.38
Local Government	17	500	503	505	3,617,756	553.63
State Government	9	377	418	417	3,892,683	741.18
JACKSON COUNTY - TOTAL	448	5,049	5,138	5,177	\$47,628,680	\$715.39
Natural Resources & Mining	57	250	265	277	2,210,949	644.22
Construction	20	91	91	98	907,560	747.99
Manufacturing	15	918	909	906	12,753,195	1,076.86
Trade, Transportation & Utilities	108	1,019	1,020	1,031	8,212,995	617.36
Wholesale Trade	20	201	207	206	2,608,150	980.26
Retail Trade	70	726	725	736	4,551,409	480.26
Transportation, Warehousing & Utilities	18	92	88	89	1,053,436	903.72
Information	3	14	13	13	129,182	745.28
Financial Activities	32	132	121	138	1,736,755	1,025.04
Professional & Business Services	31	110	115	117	1,029,411	694.61
Education & Health Services	87	859	868	861	7,314,284	652.21
Leisure & Hospitality	27	302	299	309	992,303	251.64
Other Services	23	58	59	62	726,330	936.39
Local Government	32	572	590	573	4,392,822	584.28
State Government	13	724	788	792	7,222,894	723.45

TABLE 6. COUNTY SUMMARY

North American Industry Classification System - Industry Groups	Number of Employing Units	Employment			Total Earnings	Average Weekly Earnings
		Jan	Feb	Mar	Jan - Mar 2017	
JEFFERSON COUNTY - TOTAL	2,093	26,355	26,481	26,588	\$254,717,822	\$740.09
Natural Resources & Mining	41	145	148	153	1,942,984	1,005.34
Construction	87	524	500	549	5,214,116	764.94
Manufacturing	60	4,865	4,882	4,885	67,005,187	1,056.78
Trade, Transportation & Utilities	402	4,476	4,455	4,475	37,150,837	639.51
Wholesale Trade	72	635	660	674	6,859,183	803.90
Retail Trade	276	3,110	3,082	3,094	19,756,726	490.98
Transportation, Warehousing & Utilities	54	731	713	707	10,534,928	1,130.24
Information	9	70	72	70	845,787	920.67
Financial Activities	154	941	926	937	11,932,005	982.00
Professional & Business Services	146	2,151	2,122	2,065	18,863,653	686.83
Education & Health Services	865	4,788	4,746	4,724	43,705,482	707.38
Leisure & Hospitality	139	1,898	1,910	1,963	6,757,466	270.22
Other Services	115	553	552	543	4,190,469	586.79
Local Government	39	2,723	2,743	2,749	22,676,924	637.02
State Government	36	3,221	3,425	3,475	34,432,912	785.11
JOHNSON COUNTY - TOTAL	495	8,665	8,663	8,696	\$66,470,364	\$589.43
Natural Resources & Mining	15	216	211	214	1,913,905	689.03
Construction	35	166	184	192	1,647,538	701.48
Manufacturing	34	2,688	2,692	2,682	21,208,021	607.07
Trade, Transportation & Utilities	114	1,934	1,900	1,910	14,970,504	601.45
Retail Trade	78	922	895	903	5,197,940	441.00
Other Trade, Transportation & Utilities	36	1,012	1,005	1,007	9,772,564	745.77
Information	5	30	31	32	211,267	524.24
Financial Activities	49	185	183	185	1,799,617	750.99
Professional & Business Services	52	432	417	414	2,244,442	410.09
Education & Health Services	93	1,262	1,270	1,286	10,780,819	651.62
Leisure & Hospitality	44	551	576	583	1,823,273	246.06
Other Services	32	80	84	81	504,346	475.05
Local Government	14	1,023	1,016	1,018	8,315,421	627.72
State Government	8	98	99	99	1,051,211	819.55

TABLE 6. COUNTY SUMMARY

North American Industry Classification System - Industry Groups	Number of Employing Units	Employment			Total Earnings	Average Weekly Earnings
		Jan	Feb	Mar	Jan - Mar 2017	
LAFAYETTE COUNTY - TOTAL	174	1,116	1,115	1,109	\$7,830,559	\$541.03
Natural Resources & Mining	29	100	103	101	738,105	560.30
Construction	9	61	63	63	698,036	861.42
Manufacturing	6	37	44	44	478,559	883.49
Trade, Transportation & Utilities	31	211	199	196	1,252,860	477.10
Retail Trade	18	126	116	113	575,385	374.03
Other Trade, Transportation & Utilities	13	85	83	83	677,475	622.87
Financial Activities	15	46	46	49	325,467	532.68
Professional & Business Services	9	41	45	42	345,106	622.19
Education & Health Services	41	185	187	189	1,160,804	477.50
Leisure & Hospitality	6	41	32	31	124,336	275.89
Local Government	13	301	302	300	2,041,549	521.73
State Government	8	33	33	33	289,129	673.96
Other	7	60	61	61	376,608	477.52
LAWRENCE COUNTY - TOTAL	408	3,875	3,908	3,963	\$30,557,708	\$600.36
Natural Resources & Mining	51	185	186	181	1,552,969	649.23
Construction	22	79	88	77	663,304	627.34
Manufacturing	20	474	480	474	4,278,033	691.34
Trade, Transportation & Utilities	115	808	806	842	6,916,286	649.86
Wholesale Trade	19	188	191	199	2,031,600	811.13
Retail Trade	62	492	483	497	3,351,762	525.46
Transportation, Warehousing & Utilities	34	128	132	146	1,532,924	871.31
Financial Activities	30	127	126	127	1,282,168	778.64
Professional & Business Services	26	89	96	103	941,868	754.70
Education & Health Services	57	562	569	571	4,480,528	607.50
Leisure & Hospitality	31	359	360	379	1,229,103	258.32
Local Government	25	1,047	1,052	1,056	8,057,793	589.38
State Government	9	74	75	76	630,194	646.35
Other	22	71	70	77	525,462	556.24

TABLE 6. COUNTY SUMMARY

North American Industry Classification System - Industry Groups	Number of Employing Units	Employment			Total Earnings Jan - Mar 2017	Average Weekly Earnings
		Jan	Feb	Mar		
LEE COUNTY - TOTAL	290	1,830	1,845	1,886	\$14,370,612	\$596.35
Natural Resources & Mining	43	158	186	201	1,939,786	821.36
Construction	8	27	27	26	207,813	599.46
Trade, Transportation & Utilities	41	313	314	322	2,749,463	668.59
Wholesale Trade	10	100	106	107	1,133,877	835.99
Retail Trade	21	164	160	167	949,087	446.07
Transportation, Warehousing & Utilities	10	49	48	48	666,499	1,060.74
Financial Activities	18	64	64	63	443,401	535.72
Professional & Business Services	12	41	41	42	492,787	917.10
Education & Health Services	129	487	477	483	3,127,997	498.86
Leisure & Hospitality	8	69	69	76	226,991	244.78
Local Government	15	271	267	271	1,407,439	401.48
State Government	6	385	384	386	3,665,229	732.31
Other	10	15	16	16	109,706	538.65
LINCOLN COUNTY - TOTAL	292	2,800	2,763	2,825	\$23,412,021	\$644.11
Natural Resources & Mining	35	163	167	169	1,273,859	589.11
Construction	18	103	97	109	906,757	677.19
Manufacturing	8	253	256	262	2,053,024	614.49
Trade, Transportation & Utilities	47	360	359	360	3,255,293	696.22
Wholesale Trade	9	53	52	55	686,936	990.77
Retail Trade	25	179	178	177	874,893	378.09
Transportation, Warehousing & Utilities	13	128	129	128	1,693,464	1,015.06
Financial Activities	19	67	68	69	709,278	802.35
Professional & Business Services	11	25	24	24	187,504	592.74
Education & Health Services	107	422	394	414	2,885,719	541.41
Leisure & Hospitality	15	166	161	173	459,688	212.16
Local Government	7	367	361	366	2,557,103	539.40
State Government	11	827	828	831	8,595,222	797.87
Other	14	47	48	48	528,574	853.00

TABLE 6. COUNTY SUMMARY

North American Industry Classification System - Industry Groups	Number of Employing Units	Employment			Total Earnings Jan - Mar 2017	Average Weekly Earnings
		Jan	Feb	Mar		
LITTLE RIVER COUNTY - TOTAL	252	3,387	3,360	3,382	\$48,998,434	\$1,116.33
Natural Resources & Mining	17	109	97	95	951,912	729.81
Construction	13	191	183	194	2,065,357	839.12
Manufacturing	16	1,148	1,149	1,135	32,309,385	2,172.50
Trade, Transportation & Utilities	59	566	541	556	3,912,323	542.90
Wholesale Trade	8	26	27	27	405,013	1,168.31
Retail Trade	36	434	435	449	2,722,229	476.64
Transportation, Warehousing & Utilities	15	106	79	80	785,081	683.67
Financial Activities	16	69	69	70	595,204	660.36
Professional & Business Services	17	78	83	76	721,621	702.65
Education & Health Services	52	196	200	202	1,323,365	510.69
Leisure & Hospitality	13	179	185	185	530,277	222.90
Local Government	20	701	710	722	5,599,338	605.79
State Government	10	70	75	77	601,314	625.07
Other	19	80	68	70	388,338	411.08
LOGAN COUNTY - TOTAL	497	5,311	5,317	5,323	\$41,508,376	\$600.52
Natural Resources & Mining	26	104	108	95	826,039	620.93
Construction	45	230	239	242	1,817,835	590.01
Manufacturing	21	1,176	1,174	1,171	12,041,821	789.23
Trade, Transportation & Utilities	99	995	976	979	6,612,415	517.27
Wholesale Trade	8	42	42	41	273,907	505.67
Retail Trade	68	781	771	771	4,495,372	446.57
Transportation, Warehousing & Utilities	23	172	163	167	1,843,136	847.29
Information	5	29	31	31	329,411	835.36
Financial Activities	47	195	197	201	2,160,352	840.71
Professional & Business Services	43	133	133	122	1,213,922	722.00
Education & Health Services	113	701	707	723	5,181,309	561.09
Leisure & Hospitality	35	324	326	331	1,042,407	245.21
Other Services	28	131	136	136	1,076,373	616.36
Local Government	22	789	788	789	5,837,651	569.38
State Government	13	504	502	503	3,368,841	515.19

TABLE 6. COUNTY SUMMARY

North American Industry Classification System - Industry Groups	Number of Employing Units	Employment			Total Earnings	Average Weekly Earnings
		Jan	Feb	Mar	Jan - Mar 2017	
LONOKE COUNTY - TOTAL	1,294	13,604	13,643	13,729	\$115,016,348	\$647.75
Natural Resources & Mining	85	410	446	481	3,954,617	682.58
Construction	131	892	907	923	9,812,392	831.89
Manufacturing	37	1,752	1,751	1,741	20,663,578	909.33
Trade, Transportation & Utilities	305	2,745	2,723	2,736	20,789,165	584.78
Wholesale Trade	77	410	414	426	5,042,187	930.87
Retail Trade	168	2,058	2,032	2,035	12,717,609	479.16
Transportation, Warehousing & Utilities	60	277	277	275	3,029,369	843.29
Information	13	86	88	83	1,112,132	998.62
Financial Activities	150	644	635	646	8,982,600	1,076.84
Professional & Business Services	157	829	825	812	7,429,056	695.21
Education & Health Services	201	1,638	1,661	1,668	12,259,195	569.57
Leisure & Hospitality	112	1,673	1,657	1,696	6,060,463	278.27
Other Services	64	186	183	184	1,186,554	495.15
Local Government	25	2,592	2,610	2,604	21,318,682	630.25
State Government	14	157	157	155	1,447,914	712.44
MADISON COUNTY - TOTAL	249	3,208	3,231	3,223	\$26,742,701	\$638.73
Natural Resources & Mining	10	42	46	49	396,437	667.78
Construction	24	88	79	84	745,591	685.50
Manufacturing	21	1,112	1,120	1,112	10,257,277	707.85
Trade, Transportation & Utilities	51	676	678	669	5,307,937	605.49
Wholesale Trade	7	28	29	26	372,138	1,034.67
Retail Trade	35	505	502	496	3,290,872	505.28
Transportation, Warehousing & Utilities	9	143	147	147	1,644,927	868.65
Information	6	50	51	51	1,031,404	1,565.90
Financial Activities	19	85	81	87	772,502	704.62
Professional & Business Services	23	100	96	99	1,035,642	810.15
Education & Health Services	45	267	262	259	1,706,776	499.84
Leisure & Hospitality	17	180	198	198	556,504	222.96
Other Services	17	49	49	47	364,185	579.60
Local Government	9	524	536	533	4,270,162	618.60
State Government	7	35	35	35	298,284	655.57

TABLE 6. COUNTY SUMMARY

North American Industry Classification System - Industry Groups	Number of Employing Units	Employment			Total Earnings Jan - Mar 2017	Average Weekly Earnings
		Jan	Feb	Mar		
MARION COUNTY - TOTAL	277	3,663	3,658	3,703	\$27,474,169	\$575.13
Natural Resources & Mining	3	11	11	11	72,968	510.27
Construction	19	43	44	46	289,569	502.43
Manufacturing	20	1,675	1,680	1,690	13,720,345	627.60
Trade, Transportation & Utilities	53	542	538	532	3,516,256	503.38
Wholesale Trade	6	47	49	46	383,935	623.95
Retail Trade	39	461	454	452	2,681,543	452.68
Transportation, Warehousing & Utilities	8	34	35	34	450,778	1,009.96
Information	3	54	54	54	673,424	959.29
Financial Activities	34	177	173	179	1,828,666	797.73
Professional & Business Services	27	83	87	89	590,188	525.86
Education & Health Services	50	353	353	349	2,369,955	518.40
Leisure & Hospitality	32	175	166	199	539,245	230.45
Other Services	12	28	29	29	116,623	312.94
Local Government	17	483	484	485	3,411,730	542.23
State Government	7	39	39	40	345,200	675.10
MILLER COUNTY - TOTAL	900	12,621	12,747	12,780	\$119,207,197	\$721.12
Natural Resources & Mining	31	162	172	170	1,590,277	728.15
Construction	71	622	625	641	6,372,015	778.85
Manufacturing	28	2,365	2,387	2,361	35,962,975	1,166.76
Trade, Transportation & Utilities	226	3,408	3,444	3,443	29,708,579	665.94
Wholesale Trade	48	477	480	480	5,809,285	932.92
Retail Trade	132	1,285	1,274	1,260	7,565,909	457.18
Transportation, Warehousing & Utilities	46	1,646	1,690	1,703	16,333,385	748.01
Information	7	132	133	131	1,741,557	1,014.89
Financial Activities	87	415	416	413	4,274,943	793.03
Professional & Business Services	89	913	927	953	5,988,204	494.77
Education & Health Services	181	1,057	1,052	1,076	8,215,038	595.22
Leisure & Hospitality	90	1,360	1,407	1,419	5,292,025	291.74
Other Services	50	252	255	251	1,604,514	488.49
Local Government	24	1,452	1,444	1,434	13,190,732	703.01
State Government	16	483	485	488	5,266,338	834.69

TABLE 6. COUNTY SUMMARY

North American Industry Classification System - Industry Groups	Number of Employing Units	Employment			Total Earnings Jan - Mar 2017	Average Weekly Earnings
		Jan	Feb	Mar		
MISSISSIPPI COUNTY - TOTAL	1,155	17,513	17,557	17,827	\$205,209,613	\$895.25
Natural Resources & Mining	115	453	448	474	3,710,739	622.78
Construction	53	1,033	1,013	1,083	15,963,926	1,177.37
Manufacturing	63	5,987	6,032	6,034	102,042,551	1,304.40
Trade, Transportation & Utilities	284	2,884	2,858	2,861	27,715,623	743.45
Wholesale Trade	61	351	353	366	4,635,607	999.77
Retail Trade	155	1,743	1,715	1,707	9,994,019	446.53
Transportation, Warehousing & Utilities	68	790	790	788	13,085,997	1,275.27
Information	6	41	42	41	326,039	606.77
Financial Activities	84	465	469	465	4,327,470	713.83
Professional & Business Services	90	1,082	1,129	1,269	9,797,942	649.73
Education & Health Services	241	1,653	1,661	1,684	14,404,179	665.07
Leisure & Hospitality	94	1,158	1,137	1,147	3,886,105	260.54
Other Services	53	251	264	256	2,562,182	766.89
Local Government	49	2,015	2,008	2,007	16,120,105	616.92
State Government	23	491	496	506	4,352,752	672.79
MONROE COUNTY - TOTAL	303	2,040	2,053	2,064	\$15,172,091	\$568.66
Natural Resources & Mining	34	103	107	112	872,981	625.64
Construction	10	19	17	18	144,840	618.97
Manufacturing	7	148	149	147	1,412,743	734.27
Trade, Transportation & Utilities	75	555	543	545	4,658,101	654.26
Wholesale Trade	16	195	178	183	2,248,255	933.14
Retail Trade	36	259	262	257	1,469,695	435.94
Transportation, Warehousing & Utilities	23	101	103	105	940,151	702.13
Financial Activities	21	91	90	91	880,112	746.70
Professional & Business Services	14	16	17	18	116,606	527.63
Education & Health Services	71	374	377	379	2,657,871	542.79
Leisure & Hospitality	23	223	217	215	751,720	264.85
Local Government	21	337	351	348	2,390,767	532.54
State Government	7	62	60	61	643,035	810.89
Other	20	112	125	130	643,315	404.52

TABLE 6. COUNTY SUMMARY

North American Industry Classification System - Industry Groups	Number of Employing Units	Employment			Total Earnings	Average Weekly Earnings
		Jan	Feb	Mar	Jan - Mar 2017	
MONTGOMERY COUNTY - TOTAL	161	1,240	1,259	1,300	\$7,938,726	\$482.24
Natural Resources & Mining	8	40	33	31	276,046	612.53
Construction	25	78	79	82	482,377	465.76
Manufacturing	8	37	37	37	287,194	597.08
Trade, Transportation & Utilities	34	219	213	217	1,282,099	455.88
Wholesale Trade	9	48	46	51	379,368	603.77
Retail Trade	20	149	145	144	785,442	413.83
Transportation, Warehousing & Utilities	5	22	22	22	117,289	410.10
Financial Activities	9	49	46	49	489,307	784.15
Professional & Business Services	14	20	20	21	141,120	533.87
Education & Health Services	20	57	58	60	407,897	537.89
Leisure & Hospitality	14	206	230	250	954,221	321.00
Local Government	9	429	440	450	2,902,735	507.86
State Government	7	36	35	35	337,035	733.75
Other	13	69	68	68	378,695	426.30
NEVADA COUNTY - TOTAL	197	2,432	2,421	2,382	\$24,410,228	\$778.59
Natural Resources & Mining	11	78	83	84	842,868	793.91
Trade, Transportation & Utilities	38	564	563	555	4,777,202	655.43
Retail Trade	22	302	306	303	1,515,583	383.92
Other Trade, Transportation & Utilities	16	262	257	252	3,261,619	976.24
Financial Activities	11	65	64	55	541,381	678.99
Professional & Business Services	11	47	47	48	360,984	586.65
Education & Health Services	47	434	418	421	2,443,121	442.89
Leisure & Hospitality	10	97	94	87	281,487	233.66
Other Services	15	38	37	37	218,893	451.02
Local Government	28	369	376	364	2,560,429	532.79
State Government	9	55	55	55	473,559	662.32
Other	17	685	684	676	11,910,304	1,344.03

TABLE 6. COUNTY SUMMARY

North American Industry Classification System - Industry Groups	Number of Employing Units	Employment			Total Earnings Jan - Mar 2017	Average Weekly Earnings
		Jan	Feb	Mar		
NEWTON COUNTY - TOTAL	117	1,005	1,011	1,053	\$6,068,018	\$456.28
Construction	6	18	19	16	135,912	591.78
Manufacturing	9	35	37	35	300,561	648.23
Trade, Transportation & Utilities	32	156	162	155	1,158,074	565.01
Retail Trade	16	98	101	101	529,055	406.97
Other Trade, Transportation & Utilities	16	58	61	54	629,019	839.06
Education & Health Services	23	260	259	260	1,053,551	312.10
Leisure & Hospitality	16	112	117	155	452,051	271.67
Other Services	3	4	5	5	18,768	309.36
Local Government	13	358	351	361	2,322,514	500.90
State Government	7	35	35	35	314,563	691.35
Other	8	27	26	31	312,024	857.21
OUACHITA COUNTY - TOTAL	653	6,798	6,841	6,848	\$55,300,975	\$622.92
Natural Resources & Mining	35	152	151	139	1,485,178	775.41
Construction	36	187	178	197	1,706,561	700.75
Manufacturing	25	550	554	563	6,259,379	866.51
Trade, Transportation & Utilities	151	1,457	1,475	1,480	11,013,819	576.08
Wholesale Trade	25	217	220	223	2,242,210	783.99
Retail Trade	99	948	960	956	5,277,977	425.28
Transportation, Warehousing & Utilities	27	292	295	301	3,493,632	907.91
Information	6	45	45	44	487,508	839.57
Financial Activities	54	271	270	253	2,486,360	722.64
Professional & Business Services	48	546	567	575	4,935,571	674.75
Education & Health Services	184	1,277	1,290	1,269	11,805,898	710.23
Leisure & Hospitality	42	496	498	511	1,506,922	231.06
Other Services	30	121	118	116	781,217	507.83
Local Government	29	1,099	1,075	1,077	7,719,173	547.94
State Government	13	597	620	624	5,113,389	640.96

TABLE 6. COUNTY SUMMARY

North American Industry Classification System - Industry Groups	Number of Employing Units	Employment			Total Earnings Jan - Mar 2017	Average Weekly Earnings
		Jan	Feb	Mar		
PERRY COUNTY - TOTAL	144	1,173	1,179	1,192	\$9,157,115	\$596.27
Construction	17	105	113	102	932,019	672.13
Manufacturing	5	38	36	39	322,066	657.72
Trade, Transportation & Utilities	28	185	189	184	1,368,293	565.88
Retail Trade	19	150	153	148	728,613	372.82
Other Trade, Transportation & Utilities	9	35	36	36	639,680	1,379.61
Financial Activities	6	25	26	25	251,788	764.54
Professional & Business Services	14	35	36	40	486,915	1,012.30
Education & Health Services	34	225	228	236	1,375,823	460.81
Leisure & Hospitality	8	75	74	89	233,841	226.74
Local Government	10	340	338	341	2,395,496	542.50
State Government	7	33	33	33	314,516	733.14
Other	15	112	106	103	1,476,358	1,061.36
PHILLIPS COUNTY - TOTAL	771	5,222	5,236	5,300	\$39,960,680	\$585.21
Natural Resources & Mining	57	200	221	232	1,397,568	493.90
Construction	29	96	97	105	702,426	543.95
Manufacturing	14	374	377	381	3,892,273	793.48
Trade, Transportation & Utilities	149	1,228	1,219	1,223	9,289,958	584.15
Wholesale Trade	27	261	261	262	2,981,746	877.67
Retail Trade	85	744	737	739	4,027,102	418.62
Transportation, Warehousing & Utilities	37	223	221	222	2,281,110	790.41
Information	8	23	23	23	262,999	879.60
Financial Activities	40	199	198	208	1,976,617	753.95
Professional & Business Services	39	229	221	235	2,225,185	749.64
Education & Health Services	326	1,397	1,399	1,396	9,815,937	540.37
Leisure & Hospitality	37	285	283	294	913,422	244.54
Other Services	31	73	76	78	449,477	456.94
Local Government	27	762	761	768	6,073,477	611.77
State Government	14	356	361	357	2,961,341	636.30

TABLE 6. COUNTY SUMMARY

North American Industry Classification System - Industry Groups	Number of Employing Units	Employment			Total Earnings	Average Weekly Earnings
		Jan	Feb	Mar	Jan - Mar 2017	
PIKE COUNTY - TOTAL	256	2,428	2,462	2,480	\$18,042,791	\$564.96
Natural Resources & Mining	26	133	130	127	1,536,191	908.99
Construction	13	36	49	37	329,455	623.18
Manufacturing	18	284	293	302	2,155,034	565.77
Trade, Transportation & Utilities	62	523	520	546	3,710,748	538.91
Wholesale Trade	9	106	104	110	888,522	640.76
Retail Trade	35	343	345	363	2,033,876	446.58
Transportation, Warehousing & Utilities	18	74	71	73	788,350	834.53
Information	7	28	26	30	231,783	636.77
Financial Activities	23	214	218	220	2,144,833	759.14
Professional & Business Services	15	82	83	79	1,206,129	1,140.73
Education & Health Services	34	333	342	327	1,886,765	434.54
Leisure & Hospitality	26	201	199	219	634,850	236.68
Other Services	13	62	63	57	410,797	520.88
Local Government	10	443	448	445	3,192,653	551.47
State Government	9	89	91	91	603,553	513.95
POINSETT COUNTY - TOTAL	519	5,107	5,102	5,166	\$44,627,943	\$669.84
Natural Resources & Mining	73	351	348	386	4,082,900	868.39
Construction	23	81	87	95	695,072	609.89
Manufacturing	19	701	708	703	7,346,943	802.77
Trade, Transportation & Utilities	130	1,196	1,188	1,216	10,574,945	677.88
Wholesale Trade	29	343	352	375	5,098,522	1,099.61
Retail Trade	71	686	677	678	3,740,636	422.94
Transportation, Warehousing & Utilities	30	167	159	163	1,735,787	819.15
Information	5	55	56	55	513,298	713.57
Financial Activities	39	175	177	173	1,912,002	840.44
Professional & Business Services	28	193	197	184	2,709,792	1,089.44
Education & Health Services	104	860	829	824	6,482,490	595.29
Leisure & Hospitality	39	308	310	324	966,183	236.69
Other Services	18	54	52	48	358,155	536.70
Local Government	30	1,026	1,034	1,040	7,933,627	590.59
State Government	11	107	116	118	1,052,536	712.30

TABLE 6. COUNTY SUMMARY

North American Industry Classification System - Industry Groups	Number of Employing Units	Employment			Total Earnings	Average Weekly Earnings
		Jan	Feb	Mar	Jan - Mar 2017	
POLK COUNTY - TOTAL	501	5,555	5,641	5,686	\$42,214,884	\$577.06
Natural Resources & Mining	20	127	133	143	1,615,972	925.35
Construction	34	178	183	194	1,421,687	591.14
Manufacturing	32	1,198	1,209	1,213	9,423,030	600.70
Trade, Transportation & Utilities	127	1,016	1,025	1,025	7,059,626	531.36
Wholesale Trade	22	60	62	61	441,252	556.43
Retail Trade	72	752	757	758	4,476,320	455.67
Transportation, Warehousing & Utilities	33	204	206	206	2,142,054	802.47
Information	8	71	75	71	512,180	544.68
Financial Activities	47	241	237	237	2,118,113	683.63
Professional & Business Services	44	144	143	139	1,353,040	732.96
Education & Health Services	86	1,010	1,022	1,029	8,899,143	670.91
Leisure & Hospitality	42	435	442	460	1,465,664	252.98
Other Services	27	178	174	177	1,218,090	531.38
Local Government	21	683	707	709	5,211,124	572.92
State Government	13	274	291	289	1,917,215	518.07
POPE COUNTY - TOTAL	1,825	25,390	25,706	26,152	\$248,618,198	\$742.72
Natural Resources & Mining	35	822	812	818	8,734,653	822.06
Construction	154	1,200	1,265	1,508	15,066,537	875.13
Manufacturing	73	4,302	4,301	4,318	44,035,262	786.47
Trade, Transportation & Utilities	431	6,024	6,016	5,989	68,171,028	872.58
Wholesale Trade	79	560	567	568	5,758,936	784.06
Retail Trade	271	3,198	3,198	3,180	19,975,989	481.40
Transportation, Warehousing & Utilities	81	2,266	2,251	2,241	42,436,103	1,449.09
Information	19	162	159	159	1,688,430	811.75
Financial Activities	190	1,043	1,009	1,001	10,777,243	814.63
Professional & Business Services	275	1,811	1,838	2,020	24,096,617	980.91
Education & Health Services	336	3,173	3,181	3,181	27,941,118	676.24
Leisure & Hospitality	141	2,738	2,778	2,839	10,042,302	277.37
Other Services	114	503	523	518	3,622,102	541.37
Local Government	42	2,100	2,122	2,104	18,640,411	679.99
State Government	15	1,512	1,702	1,697	15,802,495	742.56

TABLE 6. COUNTY SUMMARY

North American Industry Classification System - Industry Groups	Number of Employing Units	Employment			Total Earnings	Average Weekly Earnings
		Jan	Feb	Mar	Jan - Mar 2017	
PRAIRIE COUNTY - TOTAL	263	1,481	1,516	1,510	\$11,613,572	\$594.64
Natural Resources & Mining	37	149	155	159	1,313,211	654.53
Construction	10	55	60	62	466,551	608.28
Manufacturing	7	38	34	39	275,442	572.64
Trade, Transportation & Utilities	63	365	371	356	3,068,268	648.41
Wholesale Trade	12	73	78	85	1,458,814	1,426.48
Retail Trade	36	224	223	205	1,078,669	381.78
Transportation, Warehousing & Utilities	15	68	70	66	530,785	600.44
Financial Activities	16	54	55	48	464,918	683.37
Professional & Business Services	16	120	132	131	1,390,717	837.95
Education & Health Services	57	246	254	257	1,650,621	503.19
Leisure & Hospitality	18	107	92	97	321,130	250.36
Local Government	15	287	300	303	2,153,848	558.47
State Government	7	26	27	27	248,366	716.44
Other	17	34	36	31	260,500	595.20
PULASKI COUNTY - TOTAL	14,368	238,483	239,367	239,499	\$2,900,525,712	\$933.09
Natural Resources & Mining	52	617	621	627	10,882,590	1,346.58
Construction	933	8,910	8,911	8,976	107,654,307	927.09
Manufacturing	338	12,724	12,643	12,635	175,678,359	1,066.82
Trade, Transportation & Utilities	3,190	48,820	48,267	48,163	540,385,471	858.55
Wholesale Trade	954	11,491	11,459	11,515	189,993,678	1,272.15
Retail Trade	1,838	26,084	25,685	25,538	189,954,686	567.03
Transportation, Warehousing & Utilities	398	11,245	11,123	11,110	160,437,107	1,105.92
Information	199	5,446	5,415	5,403	104,000,832	1,475.66
Financial Activities	1,691	16,651	16,679	16,757	366,654,858	1,689.31
Professional & Business Services	2,774	33,506	33,455	33,494	403,184,873	926.21
Education & Health Services	2,513	40,243	40,486	40,412	479,024,182	912.52
Leisure & Hospitality	1,226	22,510	23,064	23,061	101,252,848	340.44
Other Services	1,141	6,413	6,444	6,530	62,570,788	744.80
Local Government	110	15,335	15,447	15,499	164,749,682	821.49
State Government	201	27,308	27,935	27,942	384,486,922	1,066.63

TABLE 6. COUNTY SUMMARY

North American Industry Classification System - Industry Groups	Number of Employing Units	Employment			Total Earnings	Average Weekly Earnings
		Jan	Feb	Mar	Jan - Mar 2017	
RANDOLPH COUNTY - TOTAL	401	5,253	5,269	5,274	\$39,718,354	\$580.26
Natural Resources & Mining	28	190	189	199	2,063,580	823.89
Construction	28	124	135	126	994,231	595.94
Manufacturing	28	1,338	1,329	1,296	10,354,654	602.96
Trade, Transportation & Utilities	88	869	866	872	6,579,810	582.44
Wholesale Trade	17	142	136	139	1,155,342	639.37
Retail Trade	55	590	592	601	3,704,779	479.50
Transportation, Warehousing & Utilities	16	137	138	132	1,719,689	975.06
Information	6	31	32	31	327,648	804.37
Financial Activities	36	153	156	154	1,436,025	715.75
Professional & Business Services	37	163	158	158	1,072,225	516.57
Education & Health Services	67	893	898	916	7,151,481	609.66
Leisure & Hospitality	33	378	380	395	1,273,637	254.91
Other Services	17	68	71	68	428,343	477.53
Local Government	23	771	752	752	5,401,597	547.92
State Government	10	275	303	307	2,635,123	687.12
SAINT FRANCIS COUNTY - TOTAL	739	6,657	6,709	6,752	\$52,344,705	\$600.43
Natural Resources & Mining	43	167	181	194	1,385,927	590.09
Construction	40	185	186	195	1,700,725	693.42
Trade, Transportation & Utilities	154	1,946	1,947	1,938	15,197,849	601.47
Wholesale Trade	30	614	610	600	6,165,924	780.10
Retail Trade	101	1,053	1,061	1,059	5,998,463	436.26
Transportation, Warehousing & Utilities	23	279	276	279	3,033,462	839.36
Information	5	50	52	52	479,451	718.46
Financial Activities	63	238	242	235	1,888,738	609.60
Professional & Business Services	45	152	156	150	1,296,123	653.07
Education & Health Services	263	1,443	1,457	1,476	12,153,687	640.93
Leisure & Hospitality	47	611	612	627	2,003,753	249.95
Local Government	28	817	821	838	6,641,459	619.00
State Government	15	408	413	410	3,880,690	727.49
Other	36	640	642	637	5,716,303	687.41

TABLE 6. COUNTY SUMMARY

North American Industry Classification System - Industry Groups	Number of Employing Units	Employment			Total Earnings	Average Weekly Earnings
		Jan	Feb	Mar	Jan - Mar 2017	
SALINE COUNTY - TOTAL	2,001	23,316	23,368	23,569	\$201,183,436	\$660.85
Natural Resources & Mining	13	56	57	56	528,616	721.82
Construction	274	2,007	1,987	2,016	20,082,110	771.10
Manufacturing	83	1,395	1,385	1,407	16,117,386	888.32
Trade, Transportation & Utilities	444	5,391	5,405	5,370	46,356,356	661.74
Wholesale Trade	114	659	671	664	9,853,745	1,140.39
Retail Trade	269	4,258	4,255	4,221	31,598,436	572.64
Transportation, Warehousing & Utilities	61	474	479	485	4,904,175	787.02
Information	16	161	156	172	1,898,933	896.15
Financial Activities	203	736	742	764	8,919,591	918.09
Professional & Business Services	265	1,512	1,533	1,549	15,086,155	757.82
Education & Health Services	323	4,388	4,394	4,381	38,634,524	677.33
Leisure & Hospitality	182	3,178	3,194	3,226	11,538,989	277.44
Other Services	152	782	776	781	6,079,766	599.84
Local Government	31	2,808	2,825	2,916	28,223,945	761.87
State Government	15	902	914	931	7,717,065	648.29
SCOTT COUNTY - TOTAL	176	3,014	3,014	3,014	\$21,176,258	\$540.46
Natural Resources & Mining	17	167	167	167	1,588,892	731.87
Trade, Transportation & Utilities	31	396	392	397	2,490,894	485.08
Wholesale Trade	6	35	35	36	154,573	336.52
Retail Trade	19	298	292	294	1,599,288	417.50
Transportation, Warehousing & Utilities	6	63	65	67	737,033	872.23
Financial Activities	19	63	63	62	444,788	545.98
Professional & Business Services	11	86	85	81	597,339	547.01
Education & Health Services	43	315	315	320	2,944,684	715.31
Leisure & Hospitality	14	127	125	125	446,548	273.34
Other Services	9	29	27	26	192,311	541.21
Local Government	6	526	520	512	3,761,151	557.10
State Government	6	29	29	30	270,399	709.09
Other	20	1,276	1,291	1,294	8,439,252	504.41

TABLE 6. COUNTY SUMMARY

North American Industry Classification System - Industry Groups	Number of Employing Units	Employment			Total Earnings Jan - Mar 2017	Average Weekly Earnings
		Jan	Feb	Mar		
SEARCY COUNTY - TOTAL	165	1,399	1,425	1,467	\$9,334,199	\$501.99
Construction	9	10	9	11	55,180	424.46
Manufacturing	18	181	199	193	1,369,906	551.71
Trade, Transportation & Utilities	38	224	224	240	1,336,656	448.34
Wholesale Trade	7	35	36	37	208,913	446.40
Retail Trade	25	174	173	188	946,162	408.12
Transportation, Warehousing & Utilities	6	15	15	15	181,581	931.18
Financial Activities	12	31	37	48	361,667	719.50
Education & Health Services	39	345	347	349	2,175,762	482.32
Leisure & Hospitality	12	124	120	138	400,859	242.16
Other Services	3	8	8	8	49,374	474.75
Local Government	10	314	317	315	2,171,113	529.63
State Government	6	44	44	44	350,669	613.06
Other	18	118	120	121	1,063,013	683.32
SEBASTIAN COUNTY - TOTAL	3,677	64,446	64,538	64,795	\$669,976,747	\$797.87
Natural Resources & Mining	44	533	536	525	11,862,768	1,717.42
Construction	255	2,342	2,337	2,345	24,635,968	809.40
Manufacturing	187	12,043	11,986	11,938	148,359,789	951.90
Trade, Transportation & Utilities	911	13,229	13,111	13,091	123,017,269	719.96
Wholesale Trade	239	2,540	2,558	2,559	33,804,144	1,018.80
Retail Trade	555	8,031	7,888	7,873	51,840,226	502.82
Transportation, Warehousing & Utilities	117	2,658	2,665	2,659	37,372,899	1,080.50
Information	39	910	906	910	15,709,546	1,329.89
Financial Activities	399	2,446	2,447	2,437	29,831,520	939.18
Professional & Business Services	573	8,085	8,175	8,344	78,947,277	740.47
Education & Health Services	587	11,344	11,411	11,398	138,871,717	938.35
Leisure & Hospitality	343	5,909	5,989	6,159	23,767,504	303.75
Other Services	272	1,282	1,283	1,293	9,503,758	568.47
Local Government	43	4,675	4,716	4,713	46,885,225	767.13
State Government	24	1,648	1,641	1,642	18,584,406	869.74

TABLE 6. COUNTY SUMMARY

North American Industry Classification System - Industry Groups	Number of Employing Units	Employment			Total Earnings Jan - Mar 2017	Average Weekly Earnings
		Jan	Feb	Mar		
SEVIER COUNTY - TOTAL	311	4,725	4,777	4,818	\$37,918,504	\$611.06
Natural Resources & Mining	14	170	172	177	1,536,186	683.05
Construction	18	172	174	181	1,994,712	873.47
Trade, Transportation & Utilities	92	854	858	862	7,550,270	676.91
Wholesale Trade	13	106	106	104	2,488,884	1,817.59
Retail Trade	64	659	664	669	4,053,760	469.62
Transportation, Warehousing & Utilities	15	89	88	89	1,007,626	874.17
Financial Activities	26	193	192	187	2,145,490	865.58
Professional & Business Services	24	106	107	100	647,132	477.12
Education & Health Services	57	529	542	540	4,127,534	591.25
Leisure & Hospitality	24	281	293	313	898,508	233.76
Local Government	12	936	934	933	6,581,887	541.88
State Government	7	131	143	166	1,231,065	645.66
Other	37	1,353	1,362	1,359	11,205,720	634.74
SHARP COUNTY - TOTAL	395	3,693	3,713	3,732	\$27,572,571	\$571.28
Construction	28	132	136	132	1,202,105	693.52
Manufacturing	21	180	185	187	1,230,937	514.61
Trade, Transportation & Utilities	82	1,049	1,023	1,013	8,983,434	671.99
Wholesale Trade	12	41	38	34	305,614	624.13
Retail Trade	58	661	636	639	3,728,636	444.45
Transportation, Warehousing & Utilities	12	347	349	340	4,949,184	1,102.43
Information	7	28	31	29	419,487	1,100.05
Financial Activities	34	181	179	180	1,982,199	847.09
Professional & Business Services	35	110	108	115	941,237	652.28
Education & Health Services	90	792	809	816	5,915,496	564.80
Leisure & Hospitality	36	367	365	385	1,210,653	250.12
Local Government	24	720	750	748	4,817,861	501.27
State Government	7	48	48	48	449,738	720.73
Other	31	86	79	79	419,424	396.68

TABLE 6. COUNTY SUMMARY

North American Industry Classification System - Industry Groups	Number of Employing Units	Employment			Total Earnings	Average Weekly Earnings
		Jan	Feb	Mar	Jan - Mar 2017	
STONE COUNTY - TOTAL	262	2,459	2,477	2,495	\$17,105,431	\$531.21
Natural Resources & Mining	5	8	8	8	47,754	459.17
Construction	16	35	36	32	204,458	458.08
Manufacturing	19	198	197	204	1,194,745	460.28
Trade, Transportation & Utilities	69	587	585	574	3,990,170	527.38
Wholesale Trade	7	37	36	36	268,779	569.05
Retail Trade	52	511	512	502	3,256,466	492.78
Transportation, Warehousing & Utilities	10	39	37	36	464,925	957.95
Financial Activities	25	134	139	133	1,854,812	1,054.27
Professional & Business Services	11	32	33	31	206,996	497.59
Education & Health Services	52	546	540	535	4,515,567	642.85
Leisure & Hospitality	30	376	387	426	1,141,892	221.63
Local Government	10	390	397	397	2,905,683	566.34
State Government	7	108	108	108	759,966	541.29
Other	18	45	47	47	283,388	470.48
UNION COUNTY - TOTAL	1,295	17,241	17,324	17,321	\$222,476,925	\$989.49
Natural Resources & Mining	83	410	399	390	4,393,510	845.61
Construction	85	1,409	1,441	1,428	18,421,289	993.70
Manufacturing	50	3,072	3,073	3,034	48,328,783	1,215.03
Trade, Transportation & Utilities	314	3,411	3,398	3,419	32,571,516	734.89
Wholesale Trade	66	479	482	489	6,584,881	1,047.99
Retail Trade	186	2,103	2,093	2,106	12,924,215	473.26
Transportation, Warehousing & Utilities	62	829	823	824	13,062,420	1,217.45
Information	10	121	123	120	1,130,680	716.83
Financial Activities	100	599	605	596	6,869,732	880.73
Professional & Business Services	130	1,870	1,883	1,888	63,271,355	2,588.39
Education & Health Services	289	2,368	2,380	2,387	20,712,314	669.90
Leisure & Hospitality	88	1,253	1,250	1,284	5,092,109	310.30
Other Services	98	455	448	457	3,135,388	532.02
Local Government	32	1,798	1,826	1,823	13,731,085	581.74
State Government	16	475	498	495	4,819,164	757.57

TABLE 6. COUNTY SUMMARY

North American Industry Classification System - Industry Groups	Number of Employing Units	Employment			Total Earnings	Average Weekly Earnings
		Jan	Feb	Mar	Jan - Mar 2017	
VAN BUREN COUNTY - TOTAL	352	3,549	3,500	3,543	\$31,317,563	\$682.32
Natural Resources & Mining	10	141	142	144	3,888,666	2,101.60
Construction	42	140	135	138	1,060,948	592.82
Manufacturing	6	132	122	122	747,458	458.75
Trade, Transportation & Utilities	98	1,008	988	982	10,678,405	827.48
Wholesale Trade	11	95	87	81	1,087,666	954.37
Retail Trade	59	596	580	582	3,439,926	451.55
Transportation, Warehousing & Utilities	28	317	321	319	6,150,813	1,483.20
Information	5	30	29	30	267,666	694.03
Financial Activities	28	108	111	109	1,234,306	868.41
Professional & Business Services	34	123	133	133	1,048,383	621.94
Education & Health Services	63	764	756	770	5,528,412	557.11
Leisure & Hospitality	27	324	310	330	1,257,865	301.12
Other Services	22	58	59	59	366,370	480.38
Local Government	11	677	670	681	4,841,100	550.88
State Government	6	44	45	45	397,984	685.39
WASHINGTON COUNTY - TOTAL	5,918	100,945	101,770	102,572	\$1,153,382,201	\$871.85
Natural Resources & Mining	44	297	297	299	4,008,791	1,035.95
Construction	543	5,045	5,110	5,144	60,965,689	919.60
Manufacturing	216	12,296	12,411	12,477	131,409,373	815.55
Trade, Transportation & Utilities	1,364	22,792	22,695	22,721	234,112,046	792.08
Wholesale Trade	366	3,687	3,750	3,782	68,245,739	1,403.78
Retail Trade	794	12,594	12,507	12,516	90,358,037	554.32
Transportation, Warehousing & Utilities	204	6,511	6,438	6,423	75,508,270	899.49
Information	76	859	869	872	11,808,146	1,048.06
Financial Activities	660	3,531	3,568	3,575	45,717,254	988.40
Professional & Business Services	1,066	12,492	12,460	12,781	253,384,472	1,549.66
Education & Health Services	834	15,216	15,439	15,469	170,337,333	852.24
Leisure & Hospitality	636	11,591	11,994	12,250	48,455,833	312.04
Other Services	398	2,051	2,087	2,102	15,867,865	586.83
Local Government	59	8,492	8,595	8,646	85,068,228	762.88
State Government	22	6,283	6,245	6,236	92,247,171	1,134.50

TABLE 6. COUNTY SUMMARY

North American Industry Classification System - Industry Groups	Number of Employing Units	Employment			Total Earnings Jan - Mar 2017	Average Weekly Earnings
		Jan	Feb	Mar		
WHITE COUNTY - TOTAL	1,806	23,358	23,523	23,659	\$205,038,645	\$670.78
Natural Resources & Mining	56	270	274	278	3,344,372	938.90
Construction	156	949	937	969	9,171,355	741.32
Manufacturing	62	2,043	2,033	2,066	24,544,682	922.20
Trade, Transportation & Utilities	482	6,249	6,231	6,183	54,486,983	673.74
Wholesale Trade	87	576	570	574	6,296,370	844.77
Retail Trade	307	3,527	3,522	3,504	23,025,968	503.52
Transportation, Warehousing & Utilities	88	2,146	2,139	2,105	25,164,645	908.80
Information	17	143	142	140	1,159,751	629.73
Financial Activities	171	858	862	858	9,506,938	851.01
Professional & Business Services	193	1,124	1,157	1,147	9,077,315	611.07
Education & Health Services	326	5,527	5,532	5,577	53,180,777	737.71
Leisure & Hospitality	164	2,543	2,598	2,657	8,953,262	264.96
Other Services	118	496	503	509	3,968,657	607.32
Local Government	46	2,704	2,721	2,729	22,704,037	642.55
State Government	15	452	533	546	4,940,516	744.69
WOODRUFF COUNTY - TOTAL	204	1,743	1,737	1,753	\$14,121,231	\$622.73
Natural Resources & Mining	27	110	118	125	795,347	519.95
Construction	9	36	37	40	304,361	621.57
Manufacturing	7	209	209	208	2,373,996	875.15
Trade, Transportation & Utilities	47	405	401	398	3,421,806	655.85
Wholesale Trade	11	125	124	130	1,593,299	970.14
Retail Trade	28	201	199	190	851,486	333.05
Transportation, Warehousing & Utilities	8	79	78	78	977,021	959.43
Financial Activities	11	70	69	73	627,051	682.57
Education & Health Services	63	244	245	249	1,827,432	571.43
Leisure & Hospitality	10	75	72	74	229,596	239.75
Local Government	9	444	434	433	3,013,794	530.50
State Government	5	27	28	28	262,522	729.90
Other	16	123	124	125	1,265,326	784.94

TABLE 6. COUNTY SUMMARY

North American Industry Classification System - Industry Groups	Number of Employing Units	Employment			Total Earnings	Average Weekly Earnings
		Jan	Feb	Mar	Jan - Mar 2017	
YELL COUNTY - TOTAL	407	6,373	6,433	6,461	\$46,951,806	\$562.36
Natural Resources & Mining	24	203	207	210	2,007,534	747.22
Construction	32	196	208	202	1,695,508	645.66
Manufacturing	20	2,393	2,405	2,419	17,363,020	555.20
Trade, Transportation & Utilities	74	741	740	744	5,277,439	547.36
Wholesale Trade	14	64	63	63	278,292	338.01
Retail Trade	45	508	510	514	2,714,821	408.94
Transportation, Warehousing & Utilities	15	169	167	167	2,284,326	1,048.02
Financial Activities	30	137	137	139	1,339,890	748.68
Professional & Business Services	38	270	269	269	2,238,509	639.33
Education & Health Services	108	810	795	791	5,202,657	501.09
Leisure & Hospitality	26	293	303	314	853,193	216.36
Local Government	25	1,143	1,180	1,182	9,238,310	608.25
State Government	10	65	65	64	489,698	582.51
Other	20	122	124	127	1,246,048	770.91
STATEWIDE COUNTY - TOTAL	9,321	30,669	34,799	35,309	\$538,540,109	\$1,233.20
Natural Resources & Mining	99	291	308	309	4,704,868	1,195.75
Construction	772	3,222	3,575	3,776	51,159,288	1,116.62
Manufacturing	37	111	118	118	3,662,824	2,435.93
Trade, Transportation & Utilities	3,119	8,026	8,161	8,223	203,970,478	1,928.31
Wholesale Trade	2,725	6,626	6,706	6,760	184,328,117	2,117.12
Retail Trade	133	392	420	435	5,849,557	1,082.52
Transportation, Warehousing & Utilities	261	1,008	1,035	1,028	13,792,804	1,036.46
Information	263	558	543	540	12,460,670	1,752.31
Financial Activities	596	1,498	1,551	1,549	28,989,499	1,454.96
Professional & Business Services	3,595	13,039	16,466	16,632	186,172,728	931.20
Education & Health Services	436	2,310	2,429	2,438	26,820,024	862.37
Leisure & Hospitality	81	177	185	181	1,419,504	603.27
State Government	14	745	753	749	8,539,988	877.07
Other	309	692	710	794	10,640,238	1,028.79

Note: Statewide classification includes employment and payroll data for employers that have not provided a physical location for each employing unit. This section also includes employers without a physical location in Arkansas.

TABLE 7. FEDERAL GOVERNMENT EMPLOYMENT AND EARNINGS IN ARKANSAS

North American Industry Classification System - Industry Groups	Number of Employing Units	Employment			Total Earnings Jan - Mar 2017	Average Weekly Earnings
		Jan	Feb	Mar		
TOTAL	1,168	20,127	20,057	20,040	\$330,980,557	\$1,268.27
Trade, Transportation & Utilities	598	5,554	5,601	5,600	65,347,130	900.04
Information	2	44	43	43	746,103	1,324.44
Financial Activities	14	106	108	109	2,386,826	1,705.28
Professional & Business Services	34	757	761	757	15,877,024	1,610.52
Education & Health Services	18	5,168	5,182	5,151	94,109,001	1,401.04
Leisure & Hospitality	23	297	289	285	3,257,114	862.96
Other Services	1	1	1	1	8,658	666.00
Public Administration	478	8,200	8,072	8,094	149,248,701	1,413.53

TABLE 8. LOCAL WORKFORCE DEVELOPMENT AREA SUMMARY

North American Industry Classification System - Industry Groups	Number of Employing Units	Employment			Total Earnings	Average Weekly Earnings
		Jan	Feb	Mar	Jan - Mar 2017	
CENTRAL LOCAL WORKFORCE DEVELOPMENT AREA	6,679	80,335	80,960	81,457	\$722,371,319	\$686.71
Natural Resources & Mining	228	1,048	1,090	1,135	12,880,299	908.15
Construction	733	5,610	5,642	5,717	57,986,146	788.58
Manufacturing	234	6,530	6,497	6,549	81,448,675	960.15
Trade, Transportation & Utilities	1,534	16,491	16,410	16,428	131,594,581	615.62
Wholesale Trade	361	1,858	1,864	1,878	26,031,156	1,072.71
Retail Trade	924	12,966	12,881	12,866	86,206,717	513.88
Transportation, Warehousing & Utilities	249	1,667	1,665	1,684	19,356,708	890.54
Information	55	560	573	587	6,711,909	900.52
Financial Activities	701	2,985	2,971	2,998	36,068,429	929.58
Professional & Business Services	878	7,807	7,998	7,871	96,016,321	935.87
Education & Health Services	1,086	13,374	13,599	13,569	114,992,745	654.55
Leisure & Hospitality	598	10,118	10,193	10,518	37,699,230	282.20
Other Services	439	1,874	1,898	1,865	13,786,223	564.38
Local Government	133	9,444	9,551	9,673	88,547,834	712.78
State Government	60	4,494	4,538	4,547	44,638,927	758.62

Note: Pulaski County is not included in the Central Local Workforce Development Area. Please refer to Page 51 for information on Pulaski County.
Central Local Workforce Development Area includes these counties: Faulkner, Lonoke, Monroe, Prairie, and Saline.

EASTERN LOCAL WORKFORCE DEVELOPMENT AREA	3,551	34,797	34,904	35,405	\$288,691,239	\$633.85
Natural Resources & Mining	241	960	1,024	1,088	7,763,549	583.20
Construction	147	739	804	890	7,843,460	743.95
Trade, Transportation & Utilities	771	9,004	8,946	9,014	77,017,882	659.15
Wholesale Trade	156	2,033	2,049	2,065	23,365,442	877.18
Retail Trade	439	4,720	4,691	4,696	27,942,360	457.09
Transportation, Warehousing & Utilities	176	2,251	2,206	2,253	25,710,080	884.22
Financial Activities	266	1,251	1,247	1,241	11,827,983	730.02
Professional & Business Services	247	1,720	1,662	1,712	14,352,691	650.21
Education & Health Services	1,160	6,346	6,423	6,504	48,381,420	579.30
Leisure & Hospitality	251	3,533	3,559	3,671	14,634,457	313.78
Local Government	128	4,786	4,790	4,832	39,805,288	637.55
State Government	57	1,957	1,999	1,992	17,337,721	672.67
Other	283	4,501	4,450	4,461	49,726,788	855.61

Eastern Local Workforce Development Area includes these counties: Crittenden, Cross, Lee, Phillips, and Saint Francis.

TABLE 8. LOCAL WORKFORCE DEVELOPMENT AREA SUMMARY

North American Industry Classification System - Industry Groups	Number of Employing Units	Employment			Total Earnings	Average Weekly Earnings
		Jan	Feb	Mar	Jan - Mar 2017	
NORTH CENTRAL LOCAL WORKFORCE DEVELOPMENT AREA	5,466	66,130	66,714	67,200	\$563,011,142	\$649.49
Construction	429	2,145	2,162	2,223	20,417,581	721.55
Manufacturing	225	8,060	8,148	8,213	85,989,310	812.57
Trade, Transportation & Utilities	1,370	15,360	15,233	15,166	130,588,422	658.58
Retail Trade	889	9,522	9,445	9,435	59,758,780	485.55
Other Trade, Transportation & Utilities	481	5,838	5,788	5,731	70,829,642	941.71
Financial Activities	506	2,520	2,514	2,544	28,983,491	882.62
Education & Health Services	1,031	14,193	14,246	14,333	128,091,968	691.10
Leisure & Hospitality	487	6,227	6,334	6,560	21,501,327	259.50
Local Government	225	8,895	8,980	8,986	67,143,270	576.84
State Government	93	2,501	2,743	2,768	24,480,564	705.11
Other	1,100	6,229	6,354	6,407	55,815,209	678.27

North Central Local Workforce Development Area includes these counties: Cleburne, Fulton, Independence, Izard, Jackson, Sharp, Stone, Van Buren, White, and Woodruff.

NORTHEAST LOCAL WORKFORCE DEVELOPMENT AREA	6,567	98,663	99,240	99,994	\$946,106,620	\$732.91
Natural Resources & Mining	457	1,835	1,877	2,007	16,552,485	667.91
Construction	462	3,717	3,760	3,852	41,847,740	852.43
Manufacturing	309	20,048	20,147	20,335	258,821,959	986.75
Trade, Transportation & Utilities	1,739	19,331	19,176	19,218	162,756,550	650.66
Wholesale Trade	373	3,297	3,308	3,363	41,716,803	965.79
Retail Trade	1,024	12,735	12,585	12,557	80,221,713	488.76
Transportation, Warehousing & Utilities	342	3,299	3,283	3,298	40,818,034	953.40
Financial Activities	554	3,157	3,167	3,168	37,530,554	912.44
Professional & Business Services	668	6,926	7,263	7,349	57,130,434	612.12
Education & Health Services	1,141	16,892	16,889	16,955	180,289,250	820.03
Leisure & Hospitality	545	8,954	9,061	9,230	32,434,538	274.73
Local Government	214	11,276	11,290	11,324	93,828,869	638.91
State Government	96	4,391	4,448	4,377	46,430,774	810.74
Other	382	2,136	2,162	2,179	18,483,467	658.55

Northeast Local Workforce Development Area includes these counties: Clay, Craighead, Greene, Lawrence, Mississippi, Poinsett, and Randolph.

TABLE 8. LOCAL WORKFORCE DEVELOPMENT AREA SUMMARY

North American Industry Classification System - Industry Groups	Number of Employing Units	Employment			Total Earnings	Average Weekly Earnings
		Jan	Feb	Mar	Jan - Mar 2017	
NORTHWEST LOCAL WORKFORCE DEVELOPMENT AREA	15,998	263,295	265,246	267,258	\$3,713,098,790	\$1,076.74
Natural Resources & Mining	136	1,415	1,414	1,447	20,270,886	1,093.99
Trade, Transportation & Utilities	3,911	59,741	59,623	59,651	674,701,964	869.76
Retail Trade	2,162	31,698	31,433	31,447	217,535,888	530.79
Other Trade, Transportation & Utilities	1,749	28,043	28,190	28,204	457,166,076	1,249.45
Information	204	2,457	2,460	2,460	33,842,025	1,058.66
Professional & Business Services	2,644	47,602	47,777	48,308	1,556,931,425	2,500.52
Education & Health Services	2,307	33,716	34,078	34,162	341,671,342	773.35
Leisure & Hospitality	1,676	27,558	28,221	29,036	116,615,902	317.29
Other Services	1,015	4,869	4,927	4,982	38,122,749	595.31
Local Government	301	22,989	23,163	23,391	219,458,319	728.24
State Government	103	8,277	8,609	8,639	112,970,213	1,021.35
Other	3,701	54,671	54,974	55,182	598,513,965	837.96

Northwest Local Workforce Development Area includes these counties: Baxter, Benton, Boone, Carroll, Madison, Marion, Newton, Searcy, and Washington.

SOUTHEAST LOCAL WORKFORCE DEVELOPMENT AREA	6,178	67,124	67,397	67,830	\$624,014,992	\$711.65
Natural Resources & Mining	439	2,310	2,315	2,267	21,022,951	703.92
Construction	300	1,963	2,005	2,199	20,812,137	778.79
Manufacturing	198	14,174	14,192	14,280	179,520,340	971.43
Trade, Transportation & Utilities	1,256	11,927	11,871	11,949	99,923,904	645.07
Retail Trade	740	7,538	7,479	7,516	46,064,966	471.77
Other Trade, Transportation & Utilities	516	4,389	4,392	4,433	53,858,938	940.59
Financial Activities	409	2,347	2,346	2,342	26,581,354	871.95
Education & Health Services	2,131	10,695	10,660	10,656	89,550,686	645.58
Other Services	303	1,121	1,116	1,133	8,108,169	555.23
Local Government	205	8,825	8,870	8,863	70,397,090	611.70
State Government	129	5,629	5,899	5,948	57,756,535	762.67
Other	808	8,133	8,123	8,193	50,341,826	475.17

Southeast Local Workforce Development Area includes these counties: Arkansas, Ashley, Bradley, Chicot, Cleveland, Desha, Drew, Grant, Jefferson, and Lincoln.

TABLE 8. LOCAL WORKFORCE DEVELOPMENT AREA SUMMARY

North American Industry Classification System - Industry Groups	Number of Employing Units	Employment			Total Earnings	Average Weekly Earnings
		Jan	Feb	Mar	Jan - Mar 2017	
SOUTHWEST LOCAL WORKFORCE DEVELOPMENT AREA	5,705	76,403	76,819	76,873	\$777,351,355	\$779.63
Natural Resources & Mining	340	2,161	2,152	2,135	22,387,396	801.23
Manufacturing	240	18,976	19,082	18,960	261,572,903	1,058.67
Trade, Transportation & Utilities	1,359	14,640	14,652	14,682	125,324,615	657.69
Wholesale Trade	238	1,794	1,830	1,826	22,734,828	962.66
Retail Trade	829	8,719	8,675	8,693	52,057,811	460.51
Transportation, Warehousing & Utilities	292	4,127	4,147	4,163	50,531,976	937.62
Information	55	488	489	481	5,348,183	846.50
Professional & Business Services	448	4,305	4,363	4,387	82,200,767	1,453.04
Education & Health Services	1,289	9,822	9,860	9,896	76,238,277	594.82
Leisure & Hospitality	403	5,470	5,533	5,647	20,062,910	278.07
Other Services	361	1,596	1,586	1,576	10,484,987	508.54
Local Government	253	9,836	9,856	9,822	77,043,776	602.40
State Government	131	3,363	3,455	3,477	32,467,079	727.77
Other	826	5,746	5,791	5,810	64,220,462	854.33

Southwest Local Workforce Development Area includes these counties: Calhoun, Columbia, Dallas, Hempstead, Howard, Lafayette, Little River, Miller, Nevada, Ouachita, Sevier, and Union

WEST CENTRAL LOCAL WORKFORCE DEVELOPMENT AREA	8,156	104,577	105,437	106,701	\$920,050,146	\$670.38
Construction	724	4,300	4,382	4,668	\$44,054,547	761.53
Manufacturing	330	15,916	15,969	16,022	163,321,635	786.72
Trade, Transportation & Utilities	1,821	21,142	21,120	21,101	188,006,861	684.72
Wholesale Trade	328	1,952	1,956	1,961	22,041,653	866.68
Retail Trade	1,208	13,971	13,980	13,957	89,604,325	493.41
Transportation, Warehousing & Utilities	285	5,219	5,184	5,183	76,360,883	1,130.61
Financial Activities	808	3,714	3,701	3,690	41,763,681	867.88
Professional & Business Services	931	7,694	7,781	8,044	75,863,964	744.38
Education & Health Services	1,552	16,951	17,041	17,110	158,986,472	717.96
Leisure & Hospitality	792	13,105	13,217	13,772	53,452,060	307.65
Local Government	230	11,377	11,481	11,502	99,243,514	666.54
State Government	114	4,991	5,384	5,397	47,379,297	693.23
Other	854	5,387	5,361	5,395	47,978,115	685.86

West Central Local Workforce Development Area includes these counties: Clark, Conway, Garland, Hot Spring, Johnson, Montgomery, Perry, Pike, Pope, and Yell

TABLE 8. LOCAL WORKFORCE DEVELOPMENT AREA SUMMARY

North American Industry Classification System - Industry Groups	Number of Employing Units	Employment			Total Earnings	Average Weekly Earnings
		Jan	Feb	Mar	Jan - Mar 2017	
WESTERN LOCAL WORKFORCE DEVELOPMENT AREA	6,458	101,677	102,047	102,382	\$977,185,515	\$736.69
Natural Resources & Mining	155	1,346	1,413	1,446	22,012,099	1,208.02
Trade, Transportation & Utilities	1,571	21,925	21,858	21,819	193,690,713	681.35
Wholesale Trade	366	3,473	3,511	3,513	44,532,299	979.01
Retail Trade	936	12,418	12,274	12,246	79,384,161	495.95
Transportation, Warehousing & Utilities	269	6,034	6,073	6,060	69,774,253	886.32
Financial Activities	661	3,508	3,503	3,498	40,028,415	878.99
Professional & Business Services	862	10,408	10,511	10,662	99,297,422	725.59
Education & Health Services	1,072	15,562	15,669	15,670	172,608,967	849.30
Leisure & Hospitality	554	8,660	8,764	9,008	33,314,106	290.85
Other Services	427	2,067	2,061	2,072	15,558,034	579.08
Local Government	154	9,505	9,592	9,589	85,317,397	686.35
State Government	75	2,728	2,749	2,751	26,726,819	749.60
Other	927	25,968	25,927	25,867	288,631,543	856.55

Western Local Workforce Development Area includes these counties: Crawford, Franklin, Logan, Polk, Scott, and Sebastian