

Arkansas Covered Employment & Earnings



Third Quarter
2016

**COVERED EMPLOYMENT AND EARNINGS
STATE OF ARKANSAS
THIRD QUARTER 2016**

**ASA HUTCHINSON, GOVERNOR
STATE OF ARKANSAS**

**DARYL BASSETT, DIRECTOR
DEPARTMENT OF WORKFORCE SERVICES**

**PUBLISHED BY
LABOR MARKET INFORMATION
BUREAU OF LABOR STATISTICS PROGRAMS
POST OFFICE BOX 2981
LITTLE ROCK, ARKANSAS 72203-2981
SUSAN PRICE, BLS PROGRAMS MANAGER
TELEPHONE (501) 682-3103**

STATE OF ARKANSAS WEBPAGE: <http://www.arkansas.gov>

DEPARTMENT OF WORKFORCE SERVICES WEBPAGE: <http://www.arkansas.gov/esd/>

WEBPAGE FOR LABOR MARKET INFORMATION: <http://www.discover.arkansas.gov>

RELEASED: FEBURARY 2017

TABLE OF CONTENTS

DESCRIPTION OF DATA	PAGE
Description and Classification of Data	1
Definition of Covered Employment and Earnings	2
Significant Developments During Third Quarter 2016	3

LIST OF GRAPHS AND TABLES

Graph 1	Total Covered Employment for Selected Years, Arkansas	7
Graph 2	Total Covered Earnings, by Calendar Quarter for Selected Years, Arkansas	8
Table 1	Quarterly Comparison of Covered Employment and Wages, by Industry	5
Table 2	Total Covered Employment in Arkansas, 2009 – 2016	6
Table 3	Total Covered Earnings, 2009 – 2016	9
Table 4	Total Taxable Earnings, 2009 – 2016	10
Table 5	State Summary – Employment and Total Earnings, by Industry, Third Quarter 2016	11
Table 6	County Summary – Employment and Total Earnings, by Industry, Third Quarter 2016	22
Table 7	Federal Government Employment and Total Earnings in Arkansas, Third Quarter 2016	60
Table 8	Local Workforce Development Area – Employment and Total Earnings, by Industry, Third Quarter 2016	61

EMPLOYMENT AND EARNINGS
UNDER THE ARKANSAS EMPLOYMENT SECURITY LAW
THIRD QUARTER 2016

DESCRIPTION AND CLASSIFICATION OF DATA

This publication contains covered employment and payroll data by industry and county for the Third Quarter 2016 and a record for total covered employment by month, quarterly payroll data, average weekly earnings, and total taxable earnings for 2009 through 2016. These data are compiled from quarterly contributions and wage reports submitted by employers subject to the Arkansas Employment Security Law.

Employment data have been tabulated for each month of the quarter by industry under the **North American Industry Classification System** (NAICS) by state, county, and workforce area. Payroll data represent the total wages paid during the quarter and are classified by industry for the state and by publishable industry groups for each county and workforce area.

Due to industry classification revisions, previously published data will not always be comparable with current data. For this reason, comparisons should not be made between the same industries under different revisions. For more information, visit the NAICS home page at <http://www.census.gov/naics>.

Industry Classification Revisions

- SIC (Standard Industrial Classification) 1987 to NAICS 2002
- NAICS 2002 to NAICS 2007
- NAICS 2007 to NAICS 2012

The tabulation of this data is a joint effort in conjunction with the United States Bureau of Labor Statistics. Data included in this publication are subject to revisions. Revisions are typically reflected in the Annual Covered Employment and Earnings publication.

DEFINITION OF COVERED EMPLOYMENT AND EARNINGS

Covered Employment is the total number of workers employed by establishments subject to the Arkansas Employment Security Law that worked or received pay for the payroll period including the 12th of the month. Earnings include all wages paid to any covered employee by their employer including salaries, bonuses, commissions, fees, fringe benefits, sick pay made directly to employees or dependents, deferred compensation, and reported tips. These wages include both taxable and nontaxable wages. Only the first \$12,000 paid to each worker by an employer in the calendar year is taxable under the Arkansas Employment Security Law.

An Arkansas state unemployment insurance account is required of any entity meeting the definition of an employer. As described by Arkansas Department of Workforce Services Law, the definition of an employer includes, but is not limited to, a sole proprietorship, partnership, corporation, associations, trust, estate, and receiver or trustee in bankruptcy. The entity must employ one or more individuals for ten or more days in a calendar year, whether or not the days are consecutive.

Currently excluded from coverage is employment covered by the Railroad Unemployment Insurance Act, some domestic service workers, employees of small agricultural establishments, self-employed workers, unpaid family workers, insurance and real estate agents paid only on a commission basis, and employees of churches and religious organizations except separately incorporated schools.

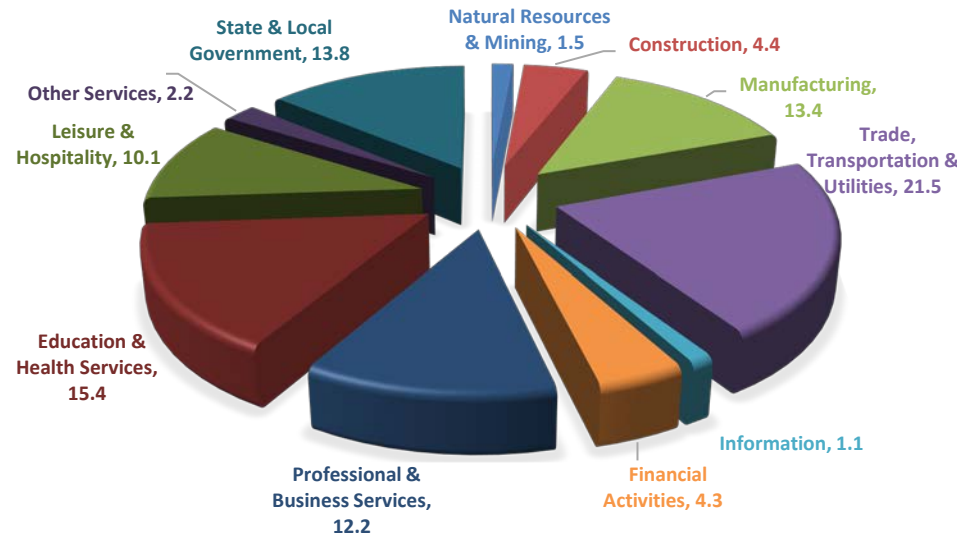
Civilian federal workers are covered by Unemployment Compensation for Federal Employees (UCFE).

SIGNIFICANT DEVELOPMENTS DURING THIRD QUARTER 2016

AVERAGE EMPLOYMENT CHANGES

Covered employment averaged 1,158,416 during the Third Quarter 2016 (refer to Table 1), a decrease of 20,532 (-1.7%) from the previous quarter and an increase of 11,160 (1.0%) from the average recorded one year ago. The over-the-year comparison is more significant when used as an economic indicator and allows for seasonal factors that appear when comparing over-the-quarter data to be disregarded.

Average Covered Employment by NAICS



EMPLOYMENT CHANGES FROM SECOND QUARTER 2016

Over the quarter losses occurred in five industry groups while six reported gains. The largest decline was in Government (-23,515), seasonal decreases were noted particularly with Local Government (-22,235), as schools let out for the summer break. Leisure & Hospitality lost 1,023 jobs. An over the quarter increase occurred in Education & Health Services of 2,090; all of the gain was in Health Care & Social Assistance. Manufacturing rose 1,096 jobs. This is the largest over the quarter increase in manufacturing since third quarter 2014. Minor gains also occurred in Construction (460), Trade, Transportation & Utilities (421), Other Services (246) and Financial Activities (155).

EMPLOYMENT CHANGES FROM THIRD QUARTER 2015 (QUARTER YEAR AGO COMPARISON)

Over-the-year gains were recorded in six industry groups (refer to Table 1). The largest gains occurred in Education & Health Services (6,450), Professional & Business Services (3,704), and Leisure & Hospitality (2,896). The largest losses occurred in Natural Resources & Mining (-1,725), State & Local Government (-1,516), and Information (-378).

COVERED WAGES

Wages paid to covered workers totaled \$11,807,220,282 for the Third Quarter 2016 (refer to Table 1), for an average weekly wage of \$784.04 (refer to Table 5). Calhoun County workers recorded the highest average weekly wage (\$1,014.66), and employees in Newton County reported the lowest (\$435.67) (refer to Table 6).

The Information industry recorded the highest average weekly wage for the State of Arkansas (\$1,052.99). The Leisure & Hospitality sector recorded the lowest (\$307.46) (refer to Table 5).

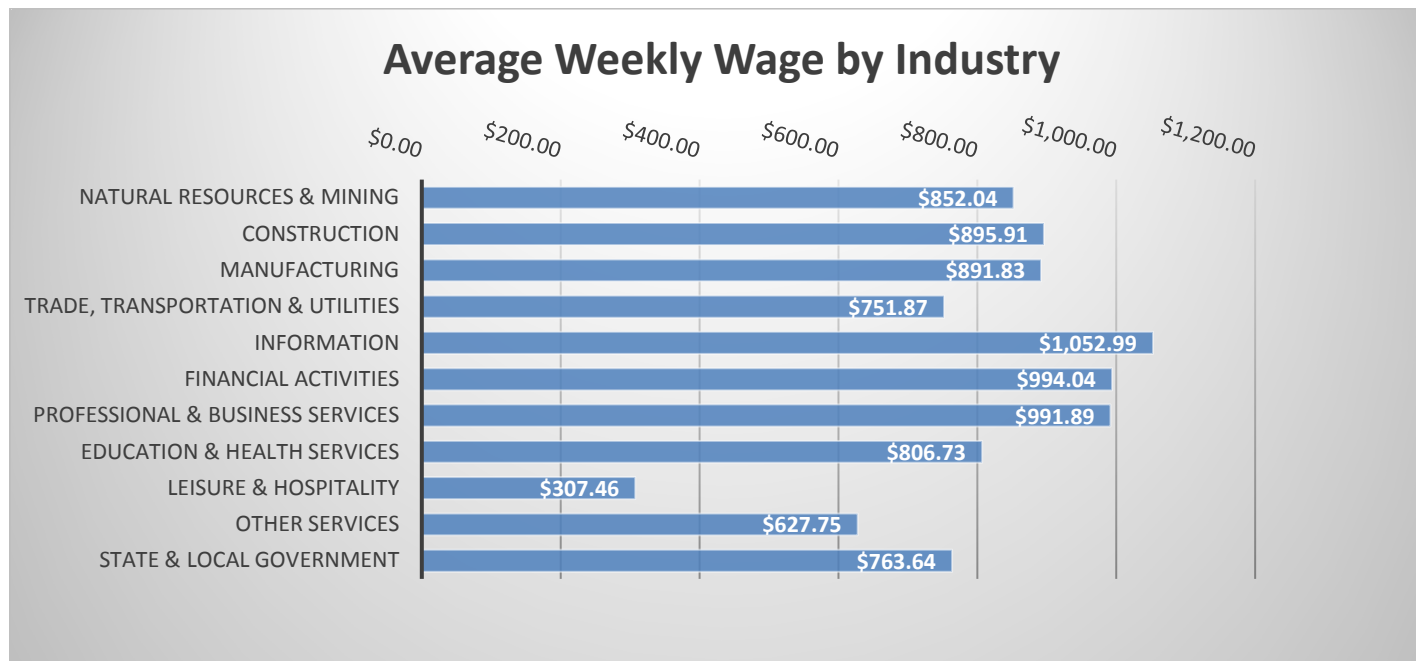


TABLE 1. QUARTERLY COMPARISON OF COVERED EMPLOYMENT AND WAGES, BY INDUSTRY

North American Industry Classification System - Industry Groups	Number of Employing Units	Monthly Employment Average	Percent of Total	Net Change From:		Total Wages Paid Jul - Sep 2016	Percent of Total
				Apr - Jun 2016	Jul - Sep 2015		
TOTAL	87,948	1,158,416	100	-20,532	11,160	\$11,807,220,282	100
Natural Resources & Mining	2,582	17,046	1.5	-33	-1,725	188,807,500	1.6
Agriculture, Forestry, Fishing & Hunting	2,106	13,121	1.1	105	-37	128,222,590	1.1
Mining	476	3,924	0.3	-138	-1,688	60,584,910	0.5
Construction	6,749	51,206	4.4	460	-224	596,385,155	5.1
Manufacturing	2,934	155,274	13.4	1,096	416	1,800,210,724	15.2
Trade, Transportation & Utilities	21,601	248,896	21.5	421	-197	2,432,789,572	20.6
Wholesale Trade	7,067	46,382	4.0	-83	-1,105	764,753,417	6.5
Retail Trade	11,174	142,174	12.3	-74	1,249	934,056,193	7.9
Transportation & Warehousing	2,910	52,653	4.5	564	4	578,079,889	4.9
Utilities	450	7,687	0.7	15	-345	155,900,073	1.3
Information	1,111	13,153	1.1	-132	-378	180,049,547	1.5
Financial Activities	8,232	49,572	4.3	155	1,069	640,601,647	5.4
Finance & Insurance	4,910	36,145	3.1	31	908	519,014,318	4.4
Real Estate & Rental & Leasing	3,322	13,427	1.2	124	162	121,587,329	1.0
Professional & Business Services	13,862	141,839	12.2	-297	3,704	1,828,949,270	15.5
Professional & Technical Services	8,744	42,160	3.6	-263	1,490	617,415,633	5.2
Management of Companies & Enterprises	537	35,430	3.1	848	1,689	744,835,083	6.3
Administrative & Waste Services	4,581	64,249	5.5	-882	525	466,698,554	4.0
Education & Health Services	15,425	178,663	15.4	2,090	6,450	1,873,711,711	15.9
Educational Services	811	10,752	0.9	-416	319	98,871,848	0.8
Health Care & Social Assistance	14,614	167,910	14.5	2,506	6,130	1,774,839,863	15.0
Leisure & Hospitality	6,978	117,295	10.1	-1,023	2,896	468,819,976	4.0
Arts, Entertainment & Recreation	971	11,447	1.0	-960	-324	58,538,429	0.5
Accommodation & Food Services	6,007	105,848	9.1	-64	3,219	410,281,547	3.5
Other Services	5,390	25,110	2.2	246	665	204,920,437	1.7
State & Local Government	3,084	160,362	13.8	-23,515	-1,516	1,591,974,743	13.5
Local Government	1,948	91,610	7.9	-22,235	-1,166	803,781,134	6.8
State Government	1,136	68,753	5.9	-1,280	-350	788,193,609	6.7
Nonclassifiable Establishments	0	0	0.0	0	0	0	0.0

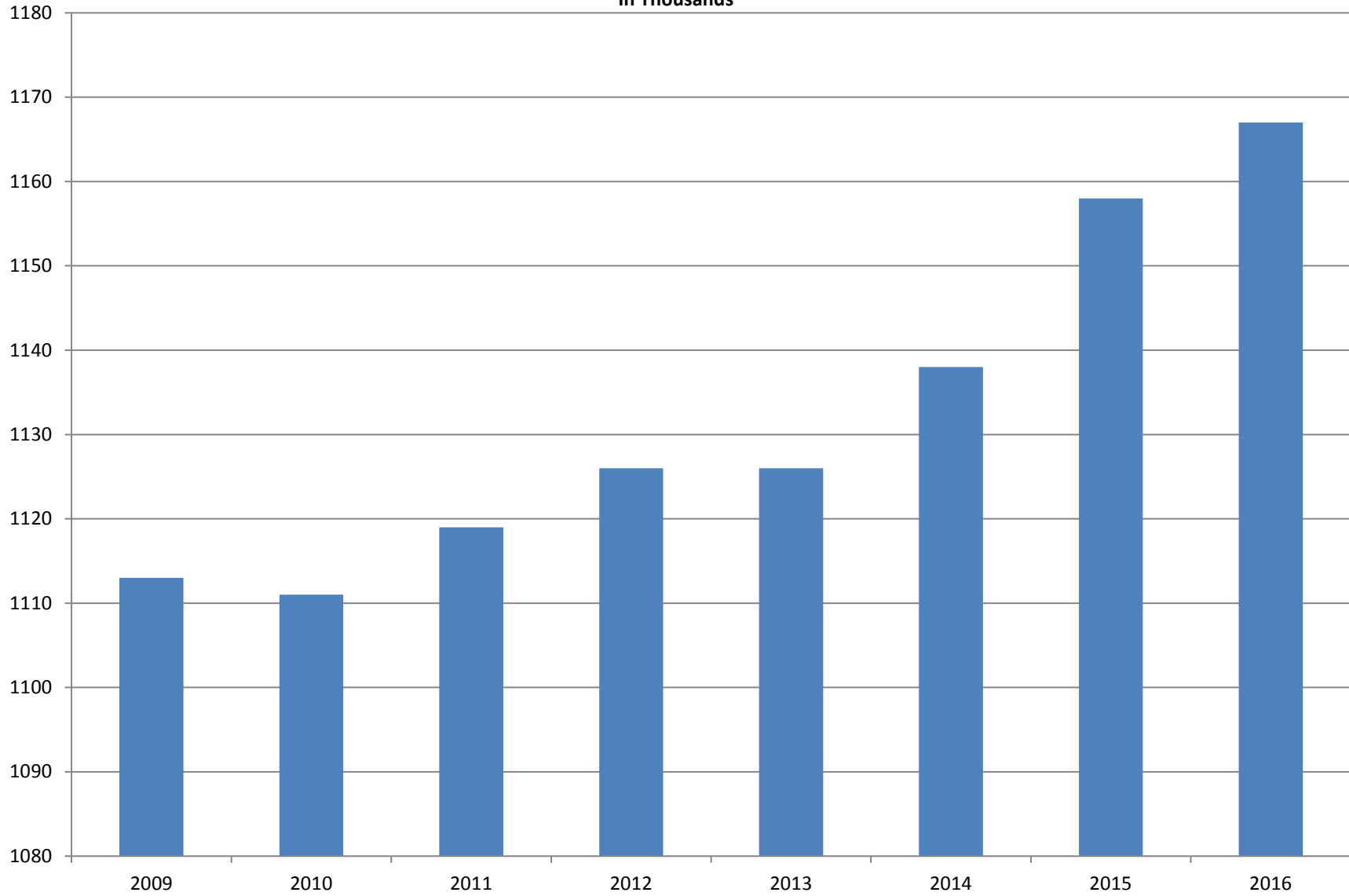
Note: Items do not necessarily add to total because of rounding. Because of industry code changes between years, substantial employment and wage shifts among industries are anticipated.

TABLE 2. TOTAL COVERED EMPLOYMENT IN ARKANSAS

PERIOD	2009	2010	2011	2012	2013	2014	2015	2016
AVERAGE	1,112,591	1,110,947	1,118,639	1,126,171	1,125,890	1,137,486	1,157,724	1,166,563
January	1,119,299	1,089,984	1,098,349	1,113,274	1,112,991	1,114,412	1,135,999	1,153,115
February	1,119,476	1,091,282	1,098,445	1,119,319	1,121,492	1,122,905	1,145,107	1,162,987
March	1,124,386	1,106,198	1,113,061	1,131,123	1,129,100	1,132,106	1,146,804	1,170,873
April	1,123,383	1,115,341	1,129,635	1,136,608	1,134,734	1,140,788	1,158,513	1,178,480
May	1,122,322	1,123,250	1,126,371	1,142,985	1,138,383	1,149,046	1,167,423	1,181,258
June	1,117,884	1,130,164	1,123,412	1,136,699	1,130,402	1,144,876	1,164,266	1,177,108
July	1,071,048	1,073,743	1,080,937	1,078,836	1,083,849	1,096,675	1,119,869	1,130,652
August	1,093,192	1,099,795	1,106,262	1,108,552	1,109,759	1,125,162	1,148,725	1,159,416
September	1,116,580	1,124,281	1,132,779	1,134,829	1,135,673	1,150,545	1,173,175	1,185,181
October	1,113,157	1,125,073	1,138,395	1,135,677	1,138,312	1,153,684	1,174,144	N/A
November	1,115,443	1,126,781	1,138,543	1,137,411	1,141,035	1,158,579	1,177,834	N/A
December	1,114,919	1,125,466	1,137,474	1,138,742	1,134,955	1,161,056	1,180,826	N/A

AVERAGE TOTAL COVERED EMPLOYMENT

In Thousands



TOTAL COVERED EARNINGS BY CALENDAR YEAR

In Thousands

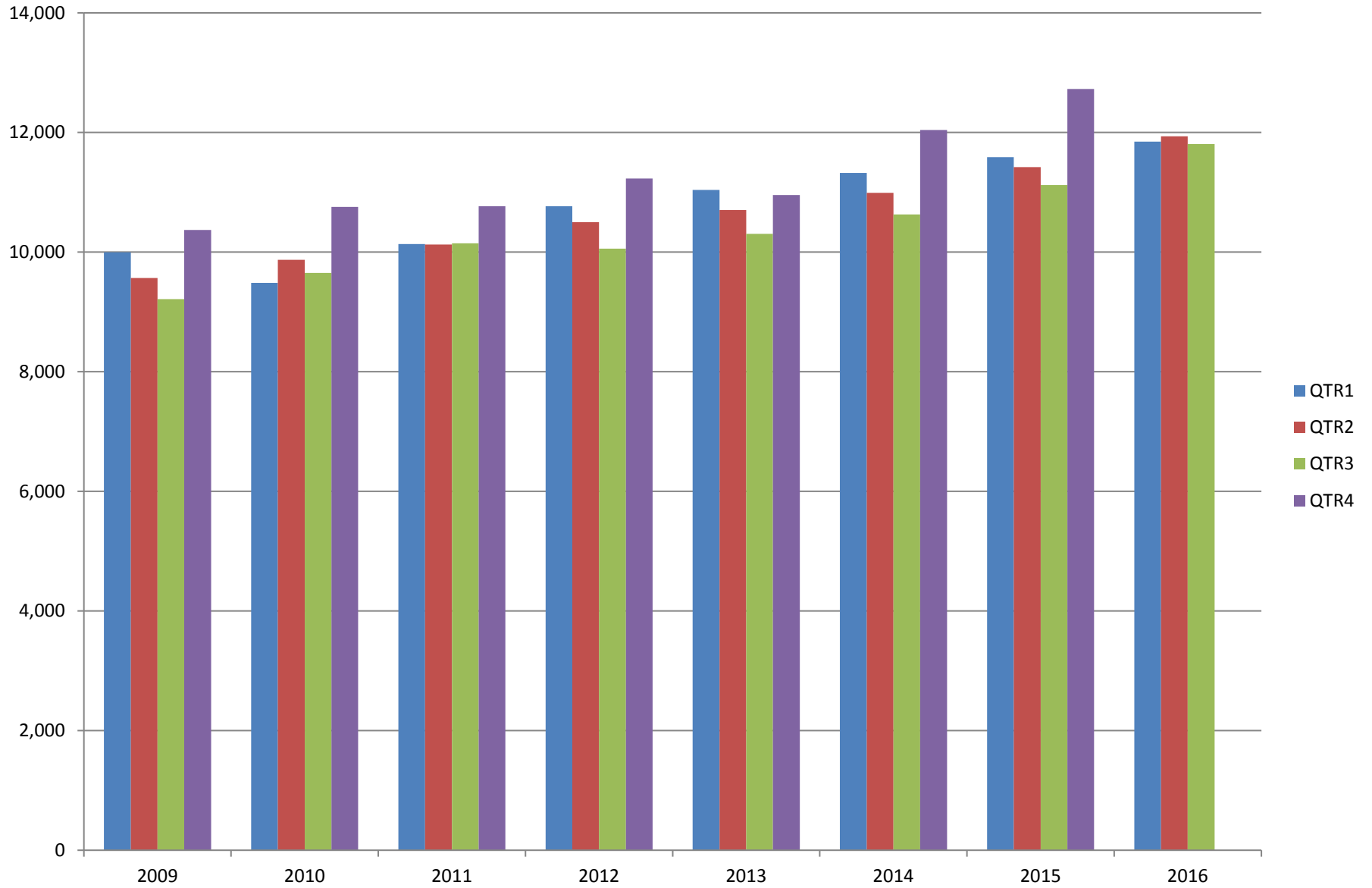


TABLE 3. TOTAL COVERED EARNINGS 2009 - 2016

PERIOD	2009	2010	2011	2012
TOTAL	\$39,149,476,305	\$39,769,504,992	\$41,177,659,236	\$42,551,238,929
January - March	9,998,452,028	9,486,245,580	10,134,035,254	10,766,175,449
April - June	9,566,968,853	9,873,489,653	10,128,274,611	10,494,369,042
July - September	9,213,797,140	9,653,588,807	10,147,287,431	10,053,294,410
October - December	10,370,258,284	10,756,180,952	10,768,061,940	11,237,400,028
Average Weekly Earnings	\$676.69	\$688.42	\$707.89	\$726.62

PERIOD	2013	2014	2015	2016
TOTAL	\$43,371,086,461	\$44,980,520,034	\$46,858,013,612	\$35,590,469,874
January - March	11,050,678,946	11,321,422,241	11,588,392,768	11,847,506,815
April - June	10,692,826,528	10,991,760,061	11,421,560,368	11,935,742,777
July - September	10,322,652,747	10,619,889,280	11,121,401,679	11,807,220,282
October - December	11,304,928,240	12,047,448,452	12,726,658,797	N/A
Average Weekly Earnings	\$740.80	\$760.46	\$778.35	\$782.28

TABLE 4. TOTAL TAXABLE EARNINGS, 2009 - 2016

PERIOD	2009	2010	2011	2012
TOTAL	9,787,660,886	11,332,118,456	11,479,396,226	11,624,348,048
January - March	5,423,705,265	5,607,134,758	5,828,877,821	6,167,036,199
April - June	2,293,670,854	2,977,100,591	2,910,604,359	2,838,154,846
July - September	1,165,280,065	1,577,067,770	1,601,382,146	1,494,712,584
October - December	905,004,702	1,170,815,337	1,138,531,900	1,124,444,419

PERIOD	2013	2014	2015	2016
TOTAL	11,644,747,978	11,919,662,224	12,280,544,995	11,273,503,726
January - March	6,184,735,653	6,288,682,396	6,387,946,312	6,607,245,841
April - June	2,805,431,293	2,831,013,392	2,919,500,476	3,010,214,324
July - September	1,506,497,129	1,552,243,963	1,645,440,596	1,656,043,561
October - December	1,148,083,903	1,247,722,473	1,327,657,611	N/A

TABLE 5. STATEWIDE SUMMARY

North American Industry Classification System - Industry Groups		Number of Employing Units	Employment			Total Earnings	Average Weekly Earnings
			Jul	Aug	Sep	Jul - Sep 2016	
TOTAL, ALL INDUSTRIES		87,948	1,130,652	1,159,416	1,185,181	\$11,807,220,282	\$784.04
NATURAL RESOURCES & MINING		2,582	17,226	16,859	17,052	\$188,807,500	\$852.04
11	AGRICULTURE, FORESTRY, FISHING & HUNTING	2,106	13,292	12,921	13,151	\$128,222,590	\$751.70
111	CROP PRODUCTION	942	4,521	4,405	4,632	\$33,697,568	\$573.56
1111	Oilseed & Grain Farming	678	2,995	2,983	3,152	23,444,620	592.58
1112	Vegetable & Melon Farming	28	203	219	243	1,521,624	528.04
1113	Fruit & Tree Nut Farming	14	140	43	39	308,935	321.14
1114	Greenhouse & Nursery Production	43	372	353	340	2,550,656	552.69
1119	Other Crop Farming	179	811	807	858	5,871,733	547.26
112	ANIMAL PRODUCTION & AQUACULTURE	321	3,237	3,218	3,212	\$35,625,008	\$850.44
1121	Cattle Ranching & Farming	126	435	430	420	3,040,544	546.04
1122	Hog & Pig Farming	13	138	140	139	1,489,057	824.05
1123	Poultry & Egg Production	113	2,192	2,193	2,195	27,006,767	947.16
1125	Animal Aquaculture	47	407	391	392	3,704,568	718.40
	Other	22	65	64	66	384,072	454.52
115	SUPPORT ACTIVITIES FOR AGRICULTURE & FORESTRY	426	3,086	2,827	2,838	\$33,718,433	\$889.18
1151	Support Activities for Crop Production	294	1,560	1,491	1,730	20,381,177	983.76
1152	Support Activities for Animal Production	64	700	681	669	5,528,676	622.37
1153	Support Activities for Forestry	68	826	655	439	7,808,580	938.53
	OTHER	417	2,448	2,471	2,469	\$25,181,581	\$786.56
21	MINING	476	3,934	3,938	3,901	\$60,584,910	\$1,187.56
211	OIL & GAS EXTRACTION	82	925	915	908	\$18,435,039	\$1,548.12
212	MINING (EXCEPT OIL & GAS)	101	1,662	1,672	1,671	\$21,716,207	\$1,001.29
213	SUPPORT ACTIVITIES FOR MINING	293	1,347	1,351	1,322	\$20,433,664	\$1,173.00

TABLE 5. STATEWIDE SUMMARY

North American Industry Classification System - Industry Groups		Number of Employing Units	Employment			Total Earnings Jul - Sep 2016	Average Weekly Earnings
			Jul	Aug	Sep		
CONSTRUCTION		6,749	51,421	50,920	51,276	\$596,385,155	\$895.91
236	CONSTRUCTION OF BUILDINGS	1,709	10,838	10,424	10,383	\$136,488,989	\$995.34
2361	Residential Building Construction	1,134	3,306	3,268	3,291	33,362,786	780.45
2362	Nonresidential Building Construction	575	7,532	7,156	7,092	103,126,203	1,092.67
237	HEAVY & CIVIL ENGINEERING CONSTRUCTION	713	7,698	7,849	8,055	\$94,238,481	\$921.42
2371	Utility System Construction	393	4,091	4,155	4,354	50,057,907	916.81
2372	Land Subdivision	51	95	95	95	954,068	772.52
2373	Highway, Street & Bridge Construction	178	2,905	2,966	2,957	35,003,980	915.03
2379	Other Heavy Construction	91	607	633	649	8,222,526	1,004.50
238	SPECIALTY TRADE CONTRACTORS	4,327	32,885	32,647	32,838	\$365,657,685	\$857.81
2381	Building Foundation & Exterior Contractors	807	6,246	6,132	6,264	66,256,478	820.19
2382	Building Equipment Contractors	2,066	17,655	17,562	17,607	212,137,798	926.75
2383	Building Finishing Contractors	709	4,072	4,019	4,042	38,429,420	730.93
2389	Other Specialty Trade Contractors	745	4,912	4,934	4,925	48,833,989	762.94
MANUFACTURING		2,934	155,199	155,102	155,521	\$1,800,210,724	\$891.83
311	FOOD MANUFACTURING	279	45,271	45,651	46,245	\$418,294,769	\$703.74
3111	Animal Food Manufacturing	44	1,592	1,646	1,679	19,465,202	913.56
3112	Grain & Oilseed Milling	35	2,560	2,578	2,739	33,010,998	967.11
3114	Fruit, Vegetable & Specialty Food	19	4,189	4,247	4,238	50,266,620	915.26
3115	Dairy Product Manufacturing	8	543	536	546	6,503,288	923.54
3116	Animal Slaughtering & Processing	77	30,532	30,765	31,057	243,410,186	608.22
3118	Bakeries & Tortilla Manufacturing	66	3,648	3,715	3,783	42,433,965	878.56
3119	Other Food Manufacturing	22	2,164	2,127	2,160	22,932,003	820.34
	Other	8	43	37	43	272,507	511.27
312	BEVERAGE & TOBACCO PRODUCT MANUFACTURING	53	1,399	1,406	1,388	\$17,803,925	\$979.87
313	TEXTILE MILLS	8	106	107	106	\$1,535,650	\$1,110.91
314	TEXTILE PRODUCT MILLS	46	912	924	948	\$10,898,904	\$903.42
3141	Textile Furnishing Mills	9	35	35	34	398,429	884.09
3149	Other Textile Product Mills	37	877	889	914	10,500,475	904.17
315	APPAREL MANUFACTURING	17	898	893	866	\$6,008,231	\$521.83
3151	Apparel Knitting Mills	3	678	676	657	4,561,507	523.45
	Other	14	220	217	209	1,446,724	516.81

TABLE 5. STATEWIDE SUMMARY

North American Industry Classification System - Industry Groups		Number of Employing Units	Employment			Total Earnings	Average Weekly Earnings
			Jul	Aug	Sep	Jul - Sep 2016	
316	LEATHER & ALLIED PRODUCT MANUFACTURING	15	1,199	1,215	1,208	\$8,209,154	\$523.03
3162	Footwear Manufacturing	6	1,012	1,031	1,022	6,947,779	\$523.11
3169	Other Leather & Allied Product Manufacturing	9	187	184	186	1,261,375	\$522.60
321	WOOD PRODUCT MANUFACTURING	320	9,521	9,531	9,502	\$99,964,702	\$807.90
3211	Sawmills & Wood Preservation	149	4,542	4,534	4,523	50,155,752	851.12
3212	Veneer & Engineered Wood Products	44	1,895	1,897	1,884	23,556,952	957.76
3219	Other Wood Product Manufacturing	127	3,084	3,100	3,095	26,251,998	652.89
322	PAPER MANUFACTURING	73	9,605	9,529	9,538	\$156,685,255	\$1,261.10
3221	Pulp, Paper & Paperboard Mills	12	3,905	3,878	3,837	82,583,866	1,640.09
3222	Converted Paper Product Manufacturing	61	5,700	5,651	5,701	74,101,389	1,002.83
323	PRINTING & RELATED SUPPORT ACTIVITIES	237	4,019	4,012	4,016	\$40,213,841	\$770.33
324	PETROLEUM & COAL PRODUCTS MANUFACTURING	19	1,162	1,166	1,168	\$18,839,795	\$1,243.61
325	CHEMICAL MANUFACTURING	119	4,986	4,893	4,997	\$81,353,804	\$1,262.03
3251	Basic Chemical Manufacturing	32	1,811	1,777	1,779	33,483,389	1,439.71
3252	Resin, Rubber & Artificial Fibers	7	296	290	288	4,496,863	1,187.34
3253	Agricultural Chemical Manufacturing	16	442	448	445	8,116,443	1,403.02
3254	Pharmaceutical & Medicine Manufacturing	16	330	327	327	4,611,799	1,081.57
3255	Paint, Coating & Adhesive Manufacturing	9	273	265	267	3,759,240	1,077.66
3256	Soap, Cleaning Compound, & Toilet Preparation Manufacturing	15	1,174	1,161	1,148	14,406,377	954.51
3259	Other Chemical Preparation Manufacturing	24	660	625	743	12,479,693	1,420.08
326	PLASTICS & RUBBER PRODUCTS MANUFACTURING	128	11,037	11,003	10,945	\$140,121,268	\$980.31
3261	Plastics Product Manufacturing	99	6,790	6,793	6,787	78,116,332	884.97
3262	Rubber Product Manufacturing	29	4,247	4,210	4,158	62,004,936	1,134.27
327	NONMETALLIC MINERAL PRODUCT MANUFACTURING	232	3,639	3,622	3,584	\$42,876,186	\$912.36
3271	Clay Product & Refractory Manufacturing	12	402	398	415	4,633,270	880.01
3272	Glass & Glass Product Manufacturing	10	351	348	348	4,308,668	949.67
3273	Cement & Concrete Product Manufacturing	172	2,161	2,133	2,117	25,036,760	901.22
3274	Lime & Gypsum Product Manufacturing	3	286	287	290	4,487,141	1,199.88
3279	Other Nonmetallic Mineral Products Manufacturing	35	439	456	414	4,410,347	777.52
331	PRIMARY METAL MANUFACTURING	76	7,808	7,904	7,789	\$127,666,951	\$1,253.63
3311	Iron & Steel Mills & Ferroalloys	10	2,588	2,654	2,683	59,833,842	1,742.31
3312	Purchased Steel Product Manufacturing	21	1,834	1,867	1,742	24,565,526	1,041.52
3313	Alumina & Aluminum Production	19	1,243	1,243	1,240	16,799,680	1,040.49
3314	Other Nonferrous Metal Production	8	409	405	403	4,998,332	947.79
3315	Foundries	18	1,734	1,735	1,721	21,469,571	954.63

TABLE 5. STATEWIDE SUMMARY

North American Industry Classification System - Industry Groups		Number of Employing Units	Employment			Total Earnings	Average Weekly Earnings
			Jul	Aug	Sep	Jul - Sep 2016	
332	FABRICATED METAL PRODUCT MANUFACTURING	515	15,128	15,123	15,110	\$193,379,504	\$983.80
3321	Forging & Stamping	11	364	357	344	3,812,697	826.15
3322	Cutlery & Hand Tool Manufacturing	11	579	583	573	6,570,118	873.88
3323	Architectural & Structural Metals	148	4,365	4,368	4,380	58,241,476	1,024.96
3324	Boilers, Tanks & Shipping Containers	15	666	661	667	8,950,976	1,035.91
3325	Hardware Manufacturing	5	247	243	242	2,968,902	935.97
3326	Spring & Wire Product Manufacturing	13	380	379	373	4,254,167	867.25
3327	Machine Shops & Threaded Products	208	1,856	1,859	1,846	19,236,878	798.29
3328	Coating, Engraving & Heat Treating Metals	38	656	658	658	6,347,861	742.85
3329	Other Fabricated Metal Product Manufacturing	66	6,015	6,015	6,027	82,996,429	1,060.70
333	MACHINERY MANUFACTURING	210	10,887	10,816	10,749	\$123,540,970	\$878.51
3331	Agriculture, Construction & Mining Machinery	39	2,543	2,500	2,464	23,162,830	712.04
3332	Industrial Machinery Manufacturing	21	631	628	649	8,535,442	1,032.35
3333	Commercial & Service Industry Machinery	22	746	741	744	9,904,870	1,024.54
3334	HVAC & Commercial Refrigeration Equipment	22	2,936	2,917	2,882	33,832,463	893.82
3335	Metalworking Machinery Manufacturing	60	1,055	1,063	1,055	10,872,719	790.76
3336	Turbine & Power Transmission Equipment Manufacturing	5	652	639	634	8,535,885	1,023.28
3339	Other General Purpose Machinery Manufacturing	41	2,324	2,328	2,321	28,696,761	949.71
334	COMPUTER & ELECTRONIC PRODUCT MANUFACTURING	56	2,338	2,305	2,292	\$29,252,388	\$973.40
3343	Audio & Video Equipment Manufacturing	6	132	134	130	1,491,090	868.93
3344	Semiconductors & Electronic Components	26	1,686	1,657	1,651	20,385,485	942.00
3345	Navigational, Measuring, Electromedical, & Control Instr, Mfg Other	18 6	411 109	407 107	404 107	5,660,830 1,714,983	1,069.02 1,225.28
335	ELECTRICAL EQUIPMENT & APPLIANCES	56	4,825	4,810	4,785	\$63,844,829	\$1,021.74
3351	Electric Lighting Equipment Manufacturing	10	373	372	374	3,670,907	\$757.04
3352	Household Appliance Manufacturing	5	39	39	40	663,838	\$1,298.25
3353	Electrical Equipment Manufacturing	22	3,106	3,100	3,089	41,362,957	1,026.93
3359	Other Electrical Equipment & Component Manufacturing	19	1,307	1,299	1,282	18,147,127	1,077.11
336	TRANSPORTATION EQUIPMENT MANUFACTURING	143	13,568	13,394	13,466	\$155,275,169	\$886.33
3362	Motor Vehicle Body & Trailer Manufacturing	34	1,892	1,782	1,772	17,317,779	733.82
3363	Motor Vehicle Parts Manufacturing	44	5,159	5,108	5,167	53,585,280	801.21
3364	Aerospace Product & Parts Manufacturing	29	3,317	3,254	3,233	50,811,739	1,196.02
3366	Ship & Boat Building Other	21 15	1,871 1,329	1,871 1,379	1,881 1,413	15,665,700 17,894,671	642.92 1,002.07
337	FURNITURE & RELATED PRODUCT MANUFACTURING	158	3,470	3,423	3,444	\$30,503,016	\$680.97
3371	Household & Institutional Furniture	133	2,695	2,676	2,743	23,019,154	654.68
3372	Office Furniture & Fixtures Manufacturing	19	681	654	608	6,818,959	809.88
3379	Other Furniture Related Product Manufacturing	6	94	93	93	664,903	548.00
339	MISCELLANEOUS MANUFACTURING	174	3,421	3,375	3,375	\$33,942,413	\$770.12
3391	Medical Equipment & Supplies Manufacturing	70	1,687	1,665	1,649	18,477,929	852.66
3399	Other Miscellaneous Manufacturing	104	1,734	1,710	1,726	15,464,484	690.28

TABLE 5. STATEWIDE SUMMARY

North American Industry Classification System - Industry Groups		Number of Employing Units	Employment			Total Earnings	Average Weekly Earnings
			Jul	Aug	Sep	Jul - Sep 2016	
TRADE, TRANSPORTATION & UTILITIES		21,601	248,709	248,973	249,007	\$2,432,789,572	\$751.87
42	WHOLESALE TRADE	7,067	46,515	46,351	46,281	\$764,753,417	\$1,268.31
423	MERCHANT WHOLESALERS, DURABLE GOODS	2,097	20,453	20,416	20,311	\$285,364,976	\$1,076.39
4231	Motor Vehicle & Part Merchant Wholesalers	227	2,635	2,621	2,583	29,235,865	860.66
4232	Furniture & Furnishings Merchant Wholesalers	52	461	463	493	6,859,784	1,117.17
4233	Lumber & Supply Merchant Wholesalers	166	1,435	1,413	1,415	17,715,321	958.98
4234	Commercial Goods Merchant Wholesalers	288	2,421	2,441	2,424	44,572,890	1,411.76
4235	Metal & Mineral Merchant Wholesalers	51	860	850	867	11,314,618	1,013.22
4236	Appliances & Electronics Goods Merchant Wholesalers	199	1,922	1,951	1,947	29,875,926	1,184.61
4237	Hardware & Plumbing Merchant Wholesalers	224	2,314	2,303	2,269	31,682,726	1,061.78
4238	Machinery & Supply Merchant Wholesalers	679	6,611	6,565	6,502	93,445,420	1,095.86
4239	Miscellaneous Durable Goods Merchant Wholesalers	211	1,794	1,809	1,811	20,662,426	880.73
424	MERCHANT WHOLESALERS, NONDURABLE GOODS	1,134	14,751	14,644	14,600	\$205,792,821	\$1,079.46
4241	Paper & Paper Product Merchant Wholesalers	70	1,141	1,150	1,154	19,039,661	1,275.40
4242	Druggist' Goods Merchant Wholesalers	55	620	638	636	9,250,531	1,127.11
4243	Apparel & Piece Goods Merchant Wholesalers	39	571	584	586	7,044,379	933.73
4244	Grocery Product Merchant Wholesalers	279	4,429	4,413	4,430	76,143,477	1,323.96
4245	Farm Product & Raw Material Merchant Wholesalers	71	826	853	855	7,599,989	692.12
4246	Chemical Merchant Wholesalers	92	636	621	630	11,016,248	1,347.22
4247	Petroleum Merchant Wholesalers	136	1,292	1,284	1,288	14,867,880	887.95
4248	Alcoholic Beverage Merchant Wholesalers	43	1,642	1,632	1,634	20,519,738	964.82
4249	Miscellaneous Nondurable Goods Merchant Wholesaler	349	3,594	3,469	3,387	40,310,918	890.19
425	ELECTRONIC MARKETS & AGENTS & BROKERS	3,836	11,311	11,291	11,370	\$273,595,620	\$1,858.51
44 - 45	RETAIL TRADE	11,174	142,364	142,491	141,667	\$934,056,193	\$505.37
441	MOTOR VEHICLE & PARTS DEALERS	1,551	19,781	19,909	19,767	\$221,244,485	\$858.71
4411	Automobile Dealers	630	12,134	12,236	12,211	157,783,103	995.37
4412	Other Motor Vehicle Dealers	169	1,718	1,703	1,656	19,029,278	864.95
4413	Automotive Parts, Accessories & Tire Stores	752	5,929	5,970	5,900	44,432,104	576.08
442	FURNITURE & HOME FURNISHINGS STORES	501	3,522	3,540	3,575	\$27,448,843	\$595.50
4421	Furniture Stores	271	2,028	2,021	2,022	17,551,466	667.16
4422	Home Furnishings Stores	230	1,494	1,519	1,553	9,897,377	500.22
443	ELECTRONICS & APPLIANCE STORES	461	3,732	3,675	3,710	\$32,549,691	\$675.67
444	BUILDING MATERIAL & GARDEN SUPPLY STORES	836	11,595	11,408	11,234	\$82,880,014	\$558.64
4441	Building Material & Supplies Dealers	596	9,548	9,392	9,236	69,971,304	573.08
4442	Lawn & Garden Equipment & Supplies Stores	240	2,047	2,016	1,998	12,908,710	491.49

TABLE 5. STATEWIDE SUMMARY

North American Industry Classification System - Industry Groups		Number of Employing Units	Employment			Total Earnings Jul - Sep 2016	Average Weekly Earnings
			Jul	Aug	Sep		
445	FOOD & BEVERAGE STORES	1,076	19,929	19,908	19,770	\$106,697,350	\$413.08
4451	Grocery Stores	571	17,129	17,088	16,951	88,755,389	400.29
4452	Specialty Food Stores	150	989	992	1,003	8,367,573	647.11
4453	Beer, Wine & Liquor Stores	355	1,811	1,828	1,816	9,574,388	405.04
446	HEALTH & PERSONAL CARE STORES	997	8,495	8,447	8,507	\$80,881,872	\$733.43
447	GASOLINE STATIONS	1,602	12,418	12,638	12,604	\$57,947,578	\$355.09
44711	Gasoline Stations with Convenience Stores	1,498	11,135	11,365	11,308	50,909,633	347.50
44719	Other Gasoline Stations	104	1,283	1,273	1,296	7,037,945	421.64
448	CLOTHING & CLOTHING ACCESSORIES STORES	1,087	8,600	8,890	8,693	\$37,363,033	\$329.31
4481	Clothing Stores	806	6,624	6,791	6,728	25,639,541	293.74
4482	Shoe Stores	143	1,259	1,374	1,247	5,719,736	340.19
4483	Jewelry, Luggage & Leather Goods Stores	138	717	725	718	6,003,756	641.43
451	SPORTING GOODS, HOBBY, BOOK & MUSIC STORES	479	4,483	4,583	4,698	\$22,180,257	\$371.88
4511	Sporting Goods & Musical Instrument Stores	414	4,034	4,056	4,194	20,043,746	376.55
4512	Book, Periodical & Music Stores	65	449	527	504	2,136,511	333.14
452	GENERAL MERCHANDISE STORES	931	40,314	40,314	39,934	\$207,246,632	\$396.69
453	MISCELLANEOUS STORE RETAILERS	1,216	7,587	7,306	7,270	\$39,876,647	\$415.21
4531	Florists	180	608	597	599	2,719,050	347.82
4532	Office Supplies, Stationery & Gift Stores	260	1,801	1,895	1,933	10,199,984	418.16
4533	Used Merchandise Stores	265	1,982	2,103	2,020	10,304,471	389.51
4539	Other Miscellaneous Store Retailers	511	3,196	2,711	2,718	16,653,142	445.57
454	NONSTORE RETAILERS	437	1,908	1,873	1,905	\$17,739,791	\$719.98
4541	Electronic Shopping & Mail-Order Houses	212	728	725	756	7,509,200	784.47
4542	Vending Machine Operators	67	459	455	457	3,652,878	614.86
4543	Direct Selling Establishments	158	721	693	692	6,577,713	720.77
48 - 49	TRANSPORTATION & WAREHOUSING	2,910	52,112	52,421	53,426	\$578,079,889	\$844.54
481	AIR TRANSPORTATION	52	664	661	649	\$6,169,131	\$721.20
4811	Scheduled Air Transportation	21	575	574	562	4,680,550	631.28
4812	Nonshceduled Air Transportation	31	89	87	87	1,488,581	1,306.15
483	WATER TRANSPORTATION	4	18	18	20	\$295,641	\$1,218.30
484	TRUCK TRANSPORTATION	1,831	32,049	32,222	32,770	\$372,081,872	\$884.83
4841	General Freight Trucking	1,065	25,681	25,868	26,379	303,028,659	897.36
4842	Specialized Freight Trucking	766	6,368	6,354	6,391	69,053,213	833.74

TABLE 5. STATEWIDE SUMMARY

North American Industry Classification System - Industry Groups		Number of Employing Units	Employment			Total Earnings	Average Weekly Earnings
			Jul	Aug	Sep	Jul - Sep 2016	
485	TRANSIT & GROUND PASSENGER TRANSPORTATION	114	1,648	1,614	1,784	\$9,108,419	\$416.56
4853	Taxi & Limousine Service	34	420	407	430	1,670,795	306.74
4854	School & Employee Bus Transportation	12	290	284	433	1,925,836	441.33
4855	Charter Bus Industry Service	8	110	93	105	749,156	561.31
4859	Other Ground Passenger Transportation	56	712	715	704	3,750,269	406.12
	Other	4	116	115	112	1,012,363	681.11
486	PIPELINE TRANSPORTATION	33	402	408	410	\$8,918,260	\$1,686.93
487	SCENIC & SIGHTSEEING TRANSPORTATION	5	33	32	30	\$156,762	\$380.80
488	SUPPORT ACTIVITIES FOR TRANSPORTATION	472	5,079	5,090	5,071	\$60,512,213	\$916.30
4881	Support Activities for Air Transportation	103	964	980	974	10,277,025	812.76
4882	Support Activities for Rail Transportation	42	607	607	612	7,424,493	938.30
4883	Support Activities for Water Transportation	20	695	691	658	10,367,013	1,170.44
4884	Support Activities for Road Transportation	154	864	840	873	7,206,356	645.33
4885	Freight Transportation Arrangement	137	1,821	1,842	1,835	24,159,134	1,014.04
4889	Other Support Activities for Transportation	16	128	130	119	1,078,192	659.98
493	WAREHOUSING & STORAGE	226	8,361	8,391	8,631	\$79,461,965	\$722.43
	OTHER	173	3,858	3,985	4,061	\$41,375,626	\$802.10
22	UTILITIES	450	7,718	7,710	7,633	\$155,900,073	\$1,560.08
2211	Power Generation & Supply	165	5,689	5,688	5,630	128,404,587	1,742.33
2212	Natural Gas Distribution	99	1,083	1,081	1,068	18,761,828	1,339.62
2213	Water, Sewage & Other Systems	186	946	941	935	8,733,658	714.20
	INFORMATION	1,111	13,247	13,131	13,081	\$180,049,547	\$1,052.99
511	PUBLISHING INDUSTRIES, EXCEPT INTERNET	226	3,161	3,179	3,193	\$32,249,315	\$780.67
5111	Newspaper, Book & Directory Publishers	192	2,789	2,804	2,814	25,370,053	696.40
5112	Software Publishers	34	372	375	379	6,879,262	1,409.88
512	MOTION PICTURE & SOUND RECORDING INDUSTRY	139	1,152	1,092	1,014	\$5,445,552	\$385.72
5121	Motion Picture & Video Industries	124	1,124	1,064	987	5,128,884	372.78
5122	Sound Recording Industries	15	28	28	27	316,668	880.45
515	BROADCASTING, EXCEPT INTERNET	122	1,604	1,610	1,628	\$17,540,468	\$835.98
5151	Radio & Television Broadcasting	119	1,580	1,585	1,603	17,303,192	837.47
5152	Cable & Other Subscription Programming	3	24	25	25	237,276	739.95

TABLE 5. STATEWIDE SUMMARY

North American Industry Classification System - Industry Groups		Number of Employing Units	Employment			Total Earnings Jul - Sep 2016	Average Weekly Earnings
			Jul	Aug	Sep		
517	TELECOMMUNICATIONS	342	5,633	5,570	5,557	\$95,778,756	\$1,318.78
5171	Wired Telecommunications Carriers	214	3,764	3,717	3,698	65,273,871	1,347.46
5172	Wireless Telecommunications Carriers (except Satellite)	43	1,579	1,559	1,551	25,522,757	1,256.10
5174	Satellite Telecommunications Carriers	6	6	6	6	75,830	972.18
5179	Other Telecommunications	79	284	288	302	4,906,298	1,295.45
518	DATA PROCESSING, HOSTING & RELATED SERVICES	197	1,371	1,356	1,345	\$25,003,157	\$1,416.98
519	OTHER INFORMATION SERVICES	85	326	324	344	\$4,032,299	\$936.15
FINANCIAL ACTIVITIES		8,232	49,677	49,701	49,339	\$640,601,647	\$994.04
52	FINANCE & INSURANCE	4,910	36,180	36,181	36,075	\$519,014,318	\$1,104.55
522	CREDIT INTERMEDIATION & RELATED ACTIVITIES	1,945	19,148	19,159	19,096	\$238,659,451	\$959.45
5221	Depository Credit Intermediation	1,403	16,242	16,221	16,143	197,073,279	935.66
5222	Nondepository Credit Intermediation	399	1,777	1,788	1,808	27,711,092	1,190.19
5223	Activities Related to Credit Intermediation	143	1,129	1,150	1,145	13,875,080	935.15
523	FINANCIAL INVESTMENT & RELATED ACTIVITIES	675	3,098	3,107	3,072	\$80,790,393	\$2,009.69
5231	Insurance Carriers	304	2,194	2,204	2,186	64,552,740	2,262.57
5239	Insurance Agencies, Brokerages & Support	371	904	903	886	16,237,653	1,391.44
524	INSURANCE CARRIERS & RELATED ACTIVITIES	2,210	13,847	13,828	13,819	\$197,529,799	\$1,098.56
5231	Security & Commodity Contracts Intermediation & Brokerage	315	6,014	5,992	6,027	96,261,870	1,231.87
5239	Other Financial Investment Activities	1,895	7,833	7,836	7,792	101,267,929	996.10
	OTHER	80	87	87	88	\$2,034,675	\$1,792.14
53	REAL ESTATE & RENTAL & LEASING	3,322	13,497	13,520	13,264	\$121,587,329	\$696.57
531	REAL ESTATE	2,678	9,236	9,264	9,054	\$81,250,858	\$680.49
5311	Lessors of Real Estate	1,099	4,189	4,225	4,131	33,491,685	616.09
5312	Offices of Real Estate Agents & Brokers	799	1,732	1,741	1,744	18,201,578	805.13
5313	Activities Related to Real Estate	780	3,315	3,298	3,179	29,557,595	696.59
532	RENTAL & LEASING SERVICES	625	4,211	4,205	4,160	\$39,394,416	\$722.89
5321	Automotive Equipment Rental & Leasing	111	981	983	990	7,370,760	575.81
5322	Consumer Goods Rental	329	2,157	2,135	2,062	16,424,257	596.51
5323	General Rental Centers	39	219	222	225	2,319,548	803.72
5324	Machinery & Equipment Rental & Leasing	146	854	865	883	13,279,851	1,177.78
533	LESSORS OF NONFINANCIAL INTANGIBLE ASSETS	19	50	51	50	\$942,055	\$1,439.72

TABLE 5. STATEWIDE SUMMARY

North American Industry Classification System - Industry Groups		Number of Employing Units	Employment			Total Earnings Jul - Sep 2016	Average Weekly Earnings
			Jul	Aug	Sep		
PROFESSIONAL & BUSINESS SERVICES		13,862	140,005	141,332	144,180	\$1,828,949,270	\$991.89
54	PROFESSIONAL & TECHNICAL SERVICES	8,744	42,279	42,235	41,966	\$617,415,633	\$1,126.51
5411	Legal Services	1,680	6,074	6,055	6,042	75,339,185	956.80
5412	Accounting & Bookkeeping Services	1,255	4,659	4,624	4,671	54,936,607	908.53
5413	Architectural & Engineering Services	957	6,345	6,306	6,199	97,462,646	1,193.18
5414	Specialized Design Services	180	403	402	402	4,973,438	950.88
5415	Computer Systems Design & Related Services	1,697	10,370	10,342	10,166	199,552,095	1,491.37
5416	Management & Technical Consulting Services	1,881	5,906	6,018	6,159	87,787,965	1,120.32
5417	Scientific Research & Development Services	144	914	885	873	13,037,617	1,126.00
5418	Advertising & Related Services	385	3,775	3,757	3,687	47,667,883	980.50
5419	Other Professional & Technical Services	565	3,833	3,846	3,767	36,658,197	739.09
55	MANAGEMENT OF COMPANIES & ENTERPRISES	537	35,336	35,479	35,476	\$744,835,083	\$1,617.12
56	ADMINISTRATIVE & WASTE SERVICES	4,581	62,390	63,618	66,738	\$466,698,554	\$558.76
561	ADMINISTRATIVE & SUPPORT SERVICES	4,284	59,365	60,604	63,707	\$431,236,593	\$541.80
5611	Office Administrative Services	654	4,003	4,023	4,037	48,911,014	935.68
5612	Facilities Support Services	43	1,059	1,063	998	6,195,706	458.26
5613	Employment Services	1,062	24,778	25,677	28,732	160,216,173	466.91
5614	Business Support Services	359	8,422	8,313	8,225	76,660,311	708.77
5615	Travel Arrangement & Reservation Services	106	397	391	388	4,068,048	798.28
5616	Investigation & Security Services	286	4,529	4,672	4,861	30,967,929	508.21
5617	Services to Buildings & Dwellings	1,586	14,871	15,167	15,197	92,761,938	473.23
5619	Other Support Services	188	1,306	1,298	1,269	11,455,474	682.56
562	WASTE MANAGEMENT & REMEDIATION SERVICES	297	3,025	3,014	3,031	\$35,461,961	\$902.26
5621	Waste Collection Services	131	1,171	1,163	1,177	13,131,448	863.10
5622	Waste Treatment & Disposal Services	34	840	841	852	11,948,972	1,088.61
5629	Remediation & Other Waste Services	132	1,014	1,010	1,002	10,381,541	791.72
EDUCATION & HEALTH SERVICES		15,425	176,720	178,288	180,980	\$1,873,711,711	\$806.73
61	EDUCATIONAL SERVICES	811	10,031	10,540	11,686	\$98,871,848	\$707.34
6111	Elementary & Secondary Schools	97	2,960	3,475	3,737	28,474,731	646.00
6112	Junior Colleges	7	145	142	121	1,157,098	654.47
6113	Colleges & Universities	86	3,748	3,709	4,234	38,648,375	762.88
6114	Business, Computer, & Management Training	50	126	130	138	1,908,098	1,117.59
6115	Technical & Trade Schools	110	772	796	871	13,363,504	1,264.41
6116	Other Schools & Instruction	288	1,628	1,574	1,831	7,721,996	354.06
6117	Educational Support Services	173	652	714	754	7,598,046	827.07

TABLE 5. STATEWIDE SUMMARY

North American Industry Classification System - Industry Groups		Number of Employing Units	Employment			Total Earnings	Average Weekly Earnings
			Jul	Aug	Sep	Jul - Sep 2016	
62	HEALTH CARE & SOCIAL ASSISTANCE	14,614	166,689	167,748	169,294	\$1,774,839,863	\$813.09
621	AMBULATORY HEALTH CARE SERVICES	5,639	53,825	53,874	55,305	\$842,757,988	\$1,193.12
6211	Offices of Physicians	2,241	24,458	24,481	24,611	501,647,884	1,573.96
6212	Offices of Dentists	992	7,229	7,199	7,163	86,480,315	924.32
6213	Offices of Other Health Practitioners	1,457	8,157	8,156	8,243	85,428,867	802.83
6214	Outpatient Care Centers	329	4,996	4,985	4,977	68,487,520	1,056.61
6215	Medical & Diagnostic Laboratories	192	1,095	1,116	1,102	16,419,423	1,143.71
6216	Home Health Care Services	254	5,165	5,189	6,405	54,441,844	749.66
6219	Other Ambulatory Health Care Services	174	2,725	2,748	2,804	29,852,135	832.30
622	HOSPITALS	106	41,855	41,939	41,865	\$513,695,337	\$943.39
6221	General Medical & Surgical Hospitals	80	37,263	37,342	37,246	460,844,117	950.81
6222	Psychiatric & Substance Abuse Hospitals	11	2,205	2,193	2,200	23,665,971	827.73
6223	Specialty Hospitals	15	2,387	2,404	2,419	29,185,249	934.13
623	Residential & Mental Health Facilities	662	32,131	32,394	32,499	\$210,115,552	\$499.75
6231	Nursing Care Facilities (Skilled Nursing Facilities)	290	22,566	22,837	22,920	147,837,151	499.34
6232	Residential Mental Health Facilities	180	4,547	4,522	4,508	30,768,655	522.98
6233	Continuing Care & Assisted Living Facilities	152	3,965	4,032	4,064	24,323,017	465.38
6239	Other Residential Care Facilities	40	1,053	1,003	1,007	7,186,729	541.45
624	SOCIAL ASSISTANCE	8,207	38,878	39,541	39,625	\$208,270,986	\$407.16
6241	Individual & Family Services	7,069	24,824	25,061	24,949	133,996,107	413.21
6242	Emergency & Other Relief Services	138	1,315	1,320	1,322	8,784,394	512.30
6243	Vocational Rehabilitation Services	92	3,420	3,250	3,223	19,072,085	444.89
6244	Child Day Care Services	908	9,319	9,910	10,131	46,418,400	364.85
LEISURE & HOSPITALITY		6,978	116,424	118,065	117,396	\$468,819,976	\$307.46
71	ARTS, ENTERTAINMENT & RECREATION	971	12,051	11,765	10,524	\$58,538,429	\$393.39
711	PERFORMING ARTS & SPECTATOR SPORTS	213	2,683	2,744	2,499	\$16,667,642	\$485.29
7111	Performing Arts Companies	47	509	545	567	2,247,949	320.02
7112	Spectator Sports	67	1,310	1,287	1,126	9,930,934	615.57
7113	Performing Arts & Sports Promoters	47	775	812	726	3,807,198	379.85
7114	Agents & Managers for Public Figures	15	29	52	27	269,093	574.99
7115	Independent Artists, Writers, & Performers	37	60	48	53	412,468	591.21
712	MUSEUMS, PARKS, & HISTORICAL SITES	56	692	673	668	\$4,914,054	\$557.80
713	GAMBLING, RECREATIONAL & AMUSEMENT INDUSTRY	702	8,676	8,348	7,357	\$36,956,733	\$349.80
7131	Amusement Parks & Arcades	33	664	568	236	1,589,274	249.83
7139	Other Amusement & Recreation Industries	669	8,012	7,780	7,121	35,367,459	356.20
72	ACCOMMODATION & FOOD SERVICES	6,007	104,373	106,300	106,872	\$410,281,547	\$298.16

TABLE 5. STATEWIDE SUMMARY

North American Industry Classification System - Industry Groups		Number of Employing Units	Employment			Total Earnings	Average Weekly Earnings
			Jul	Aug	Sep	Jul - Sep 2016	
721	ACCOMMODATION	896	11,835	11,735	11,615	\$54,775,713	\$359.26
7211	Travel Accommodation	811	11,075	11,142	11,059	51,343,309	356.07
7212	RV Parks & Recreational Camps	66	674	480	433	2,733,084	397.42
7213	Rooming & Boarding Houses	19	86	113	123	699,320	501.18
722	FOOD SERVICES & DRINKING PLACES	5,111	92,538	94,565	95,257	\$355,505,834	\$290.55
7223	Special Food Services	230	2,651	3,786	4,399	16,272,370	346.55
7224	Drinking Places, Alcoholic Beverages	151	1,091	1,103	1,105	4,000,943	279.87
7225	Restaurants & Other Eating Places	4,730	88,796	89,676	89,753	335,232,521	288.42
722511	Full-Service Restaurants	2,124	39,306	39,648	39,557	162,650,651	316.72
722513	Limited-Service Eating Places	2,152	44,933	45,511	45,745	154,844,074	262.38
722514	Cafeterias, Grill Buffets, & Buffets	91	1,649	1,652	1,628	7,427,359	347.74
722515	Snack & Nonalcoholic Beverage Bars	363	2,908	2,865	2,823	10,310,437	276.80
OTHER SERVICES		5,390	25,301	25,001	25,029	\$204,920,437	\$627.75
811	REPAIR & MAINTENANCE	2,218	10,382	10,299	10,444	\$99,302,158	\$736.25
8111	Automotive Repair & Maintenance	1,423	6,609	6,548	6,569	57,468,310	672.31
8112	Electronic Equipment Repair & Maintenance	173	860	880	859	9,791,516	869.40
8113	Commercial Machinery Repair & Maintenance	452	2,292	2,255	2,413	27,240,289	903.19
8114	Household Goods Repair & Maintenance	170	621	616	603	4,802,043	602.26
812	PERSONAL & LAUNDRY SERVICES	1,314	7,907	7,968	8,036	\$49,802,317	\$480.65
8121	Personal Care Services	612	2,951	2,969	3,039	15,944,211	410.70
8122	Death Care Services	247	1,639	1,655	1,642	12,031,214	562.49
8123	Drycleaning & Laundry Service	238	2,403	2,436	2,417	16,999,301	540.64
8129	Other Personal Services	217	914	908	938	4,827,591	403.64
813	MEMBERSHIP ASSOCIATIONS & ORGANIZATIONS	1,092	6,038	5,761	5,566	\$50,539,461	\$671.64
8131	Religious Organizations	77	266	266	265	1,899,037	549.86
8132	Grantmaking & Giving Organizations	113	446	451	435	6,035,313	1,045.62
8133	Social Advocacy Organizations	219	1,539	1,490	1,533	14,263,184	721.50
8134	Civic & Social Organizations	193	1,519	1,329	1,233	5,787,849	327.29
8139	Professional & Similar Organizations	490	2,268	2,225	2,100	22,554,078	789.44
814	PRIVATE HOUSEHOLDS	766	974	973	983	\$5,276,501	\$415.58
	LOCAL GOVERNMENT	1,948	69,506	93,040	112,283	\$803,781,134	\$674.92
	STATE GOVERNMENT	1,136	67,217	69,004	70,037	\$788,193,609	\$881.86
	NONCLASSIFIABLE ESTABLISHMENTS	0	0	0	0	\$0	\$0.00

TABLE 6. COUNTY SUMMARY

North American Industry Classification System - Industry Groups	Number of Employing Units	Employment			Total Earnings	Average Weekly Earnings
		Jul	Aug	Sep	Jul - Sep 2016	
ARKANSAS COUNTY - TOTAL	769	9,537	9,769	9,882	\$95,630,830	\$756.09
Natural Resources & Mining	54	249	237	235	2,125,031	680.16
Construction	46	264	270	267	3,020,867	870.32
Manufacturing	33	3,785	3,831	3,914	42,406,438	848.75
Trade, Transportation & Utilities	199	2,147	2,139	2,134	20,588,226	740.05
Wholesale Trade	45	493	466	463	5,954,518	966.33
Retail Trade	89	982	1,002	988	6,434,024	499.59
Transportation, Warehousing & Utilities	65	672	671	683	8,199,684	933.98
Information	11	86	86	84	780,071	703.19
Financial Activities	45	295	296	282	3,286,398	868.73
Professional & Business Services	51	413	421	441	6,086,382	1,101.61
Education & Health Services	186	1,063	1,083	1,107	8,551,234	606.63
Leisure & Hospitality	53	432	438	419	1,463,433	262.00
Other Services	43	100	98	99	673,878	523.60
Local Government	32	525	693	736	5,364,342	633.53
State Government	16	178	177	164	1,284,530	571.16
ASHLEY COUNTY - TOTAL	557	6,265	6,377	6,553	\$67,475,261	\$811.21
Natural Resources & Mining	40	350	336	350	3,479,126	774.98
Construction	40	544	557	516	6,014,351	858.33
Manufacturing	25	1,646	1,632	1,612	28,977,054	1,367.49
Trade, Transportation & Utilities	112	1,206	1,221	1,216	9,625,034	609.71
Wholesale Trade	23	211	230	226	3,031,120	1,048.71
Retail Trade	67	744	738	739	3,986,869	414.25
Transportation, Warehousing & Utilities	22	251	253	251	2,607,045	796.86
Information	5	27	30	31	232,700	610.23
Financial Activities	36	186	185	185	1,667,267	692.00
Professional & Business Services	43	238	228	248	1,823,521	589.37
Education & Health Services	148	853	852	901	7,999,962	708.42
Leisure & Hospitality	28	399	396	389	1,268,273	247.19
Other Services	37	123	124	125	979,304	607.51
Local Government	32	556	684	867	4,377,995	479.50
State Government	11	137	132	113	1,030,674	622.64

TABLE 6. COUNTY SUMMARY

North American Industry Classification System - Industry Groups	Number of Employing Units	Employment			Total Earnings Jul - Sep 2016	Average Weekly Earnings
		Jul	Aug	Sep		
BAXTER COUNTY - TOTAL	1,203	14,180	14,376	14,821	\$118,743,999	\$631.73
Natural Resources & Mining	7	64	65	67	643,497	757.65
Construction	108	528	520	530	4,425,008	647.12
Manufacturing	54	2,356	2,306	2,285	22,330,583	741.79
Trade, Transportation & Utilities	263	2,756	2,745	2,777	18,335,877	511.16
Wholesale Trade	32	211	213	220	2,079,203	745.06
Retail Trade	205	2,347	2,332	2,357	14,277,313	468.27
Transportation, Warehousing & Utilities	26	198	200	200	1,979,361	763.84
Information	18	187	184	180	2,064,533	864.67
Financial Activities	114	772	756	757	9,247,461	933.93
Professional & Business Services	132	790	791	794	6,028,966	585.81
Education & Health Services	261	3,781	3,812	3,856	37,791,458	761.74
Leisure & Hospitality	117	1,743	1,744	1,712	6,489,519	288.05
Other Services	84	348	353	356	1,963,147	428.60
Local Government	33	591	828	1,194	7,059,200	623.44
State Government	12	264	272	313	2,364,750	642.77
BENTON COUNTY - TOTAL	6,114	111,932	113,766	116,080	\$1,382,753,883	\$933.64
Natural Resources & Mining	44	746	748	727	10,711,097	1,112.92
Construction	580	4,614	4,612	4,587	53,842,527	899.53
Manufacturing	190	11,310	11,327	11,401	126,266,232	856.05
Trade, Transportation & Utilities	1,616	26,847	27,166	27,519	325,530,204	921.38
Wholesale Trade	719	5,364	5,354	5,325	136,619,376	1,965.19
Retail Trade	719	12,219	12,239	12,259	83,647,978	525.73
Transportation, Warehousing & Utilities	178	9,264	9,573	9,935	105,262,850	844.27
Information	71	912	891	909	11,969,347	1,018.49
Financial Activities	600	3,640	3,651	3,638	47,480,658	1,002.57
Professional & Business Services	1,190	32,677	32,853	32,722	549,848,257	1,291.46
Education & Health Services	754	10,612	10,722	11,008	109,584,659	781.92
Leisure & Hospitality	581	12,052	12,226	12,032	54,846,893	348.58
Other Services	389	2,071	2,082	2,066	17,706,383	657.03
Local Government	82	5,540	6,614	8,382	65,799,571	739.41
State Government	17	911	874	1,089	9,168,055	736.15

TABLE 6. COUNTY SUMMARY

North American Industry Classification System - Industry Groups	Number of Employing Units	Employment			Total Earnings	Average Weekly Earnings
		Jul	Aug	Sep	Jul - Sep 2016	
BOONE COUNTY - TOTAL	967	13,121	13,334	13,881	\$126,315,256	\$722.67
Construction	69	490	488	492	4,262,807	669.20
Manufacturing	61	1,786	1,788	1,799	18,264,975	784.48
Trade, Transportation & Utilities	245	3,580	3,541	3,492	35,419,918	770.17
Wholesale Trade	40	314	321	323	2,769,432	667.12
Retail Trade	161	2,164	2,114	2,071	13,483,005	490.07
Transportation, Warehousing & Utilities	44	1,102	1,106	1,098	19,167,481	1,337.95
Information	15	296	295	294	3,240,923	845.09
Financial Activities	97	466	464	463	4,834,123	800.84
Professional & Business Services	108	1,411	1,428	1,397	18,840,846	1,026.41
Education & Health Services	162	1,505	1,519	1,550	11,059,703	557.99
Leisure & Hospitality	80	1,240	1,219	1,181	4,472,086	283.52
Local Government	55	1,414	1,613	2,198	16,936,768	748.04
State Government	18	682	720	759	6,626,329	707.61
Other	57	251	259	256	2,356,778	710.02
BRADLEY COUNTY - TOTAL	357	3,422	3,495	3,710	\$28,568,611	\$620.38
Natural Resources & Mining	46	244	248	263	2,593,244	792.64
Construction	17	73	71	68	563,301	613.17
Manufacturing	11	797	808	820	8,337,249	793.39
Trade, Transportation & Utilities	71	530	536	530	3,335,680	482.31
Wholesale Trade	12	90	91	91	1,092,359	926.78
Retail Trade	40	342	368	364	1,678,030	360.56
Transportation, Warehousing & Utilities	19	98	77	75	565,291	521.81
Information	4	32	32	33	294,090	699.66
Financial Activities	24	133	133	127	1,246,214	731.78
Professional & Business Services	25	90	77	76	675,998	641.97
Education & Health Services	95	629	639	659	5,310,611	635.98
Leisure & Hospitality	14	204	206	214	620,866	229.61
Other Services	25	109	106	98	627,083	462.34
Local Government	14	203	260	466	2,405,803	597.62
State Government	11	378	379	356	2,558,472	530.47

TABLE 6. COUNTY SUMMARY

North American Industry Classification System - Industry Groups	Number of Employing Units	Employment			Total Earnings	Average Weekly Earnings
		Jul	Aug	Sep	Jul - Sep 2016	
CALHOUN COUNTY - TOTAL	100	2,685	2,672	2,769	\$35,728,756	\$1,014.66
Natural Resources & Mining	7	45	53	41	421,166	699.22
Construction	10	118	115	112	1,091,468	730.08
Manufacturing	9	1,917	1,863	1,925	28,265,180	1,143.34
Trade, Transportation & Utilities	21	223	230	235	2,227,274	747.07
Retail Trade	11	57	59	59	287,413	379.01
Transportation, Warehousing & Utilities	10	166	171	176	1,939,861	872.63
Professional & Business Services	4	10	11	10	99,517	740.82
Education & Health Services	15	54	58	62	579,014	767.92
Leisure & Hospitality	4	11	10	15	36,653	234.96
Other Services	4	6	5	5	23,035	332.24
Local Government	11	115	145	187	981,480	506.70
State Government	8	77	74	70	754,880	788.25
Other	7	109	108	107	1,249,089	889.66
CARROLL COUNTY - TOTAL	791	10,583	11,011	11,333	\$75,733,641	\$530.78
Natural Resources & Mining	17	211	208	204	1,878,379	695.78
Trade, Transportation & Utilities	195	1,605	1,633	1,620	11,942,992	567.33
Wholesale Trade	20	111	115	110	900,469	618.45
Retail Trade	152	1,200	1,225	1,211	6,741,677	427.88
Transportation, Warehousing & Utilities	23	294	293	299	4,300,846	1,120.21
Information	10	59	61	62	581,607	737.46
Financial Activities	65	370	367	371	3,885,451	809.24
Professional & Business Services	67	492	491	555	4,050,408	607.74
Education & Health Services	95	1,019	1,018	1,018	8,170,195	617.16
Leisure & Hospitality	168	1,913	1,929	2,135	7,144,924	275.86
Other Services	43	137	132	129	779,762	452.12
Local Government	25	562	941	1,005	6,496,840	597.80
State Government	10	104	105	90	865,442	667.95
Other	96	4,111	4,126	4,144	29,937,641	558.01

TABLE 6. COUNTY SUMMARY

North American Industry Classification System - Industry Groups	Number of Employing Units	Employment			Total Earnings	Average Weekly Earnings
		Jul	Aug	Sep	Jul - Sep 2016	
CHICOT COUNTY - TOTAL	513	3,119	3,182	3,233	\$25,049,504	\$606.32
Natural Resources & Mining	58	271	257	277	2,754,790	789.72
Construction	16	156	138	148	1,771,649	924.98
Manufacturing	7	24	24	24	380,474	1,219.47
Trade, Transportation & Utilities	65	674	675	686	4,883,063	553.74
Wholesale Trade	13	65	65	66	700,380	824.62
Retail Trade	39	326	327	326	1,939,291	457.13
Transportation, Warehousing & Utilities	13	283	283	294	2,243,392	601.98
Information	4	6	6	6	26,116	334.82
Financial Activities	29	153	150	150	1,710,188	871.21
Professional & Business Services	17	44	41	41	371,681	680.73
Education & Health Services	253	774	769	797	5,114,830	504.42
Leisure & Hospitality	20	162	155	154	481,201	235.77
Other Services	16	66	62	69	531,293	622.37
Local Government	18	499	617	615	4,745,885	632.70
State Government	10	290	288	266	2,278,334	622.95
CLARK COUNTY - TOTAL	622	8,629	8,905	9,183	\$74,793,807	\$646.03
Natural Resources & Mining	45	257	257	267	2,594,877	766.73
Construction	19	62	57	58	430,205	560.89
Manufacturing	32	1,468	1,454	1,440	18,796,752	994.43
Trade, Transportation & Utilities	128	1,377	1,393	1,390	10,751,893	596.44
Wholesale Trade	10	32	30	32	411,054	1,009.13
Retail Trade	96	1,199	1,208	1,202	8,346,108	533.67
Transportation, Warehousing & Utilities	22	146	155	156	1,994,731	1,007.27
Information	3	18	18	17	138,728	604.04
Financial Activities	73	292	289	299	2,747,561	720.51
Professional & Business Services	53	611	627	626	5,480,497	678.50
Education & Health Services	125	1,524	1,537	1,640	12,259,926	601.83
Leisure & Hospitality	59	1,007	1,011	1,042	3,680,382	277.56
Other Services	42	228	232	228	1,957,002	656.42
Local Government	28	796	971	999	6,424,624	536.01
State Government	15	989	1,059	1,177	9,531,360	682.03

TABLE 6. COUNTY SUMMARY

North American Industry Classification System - Industry Groups	Number of Employing Units	Employment			Total Earnings Jul - Sep 2016	Average Weekly Earnings
		Jul	Aug	Sep		
CLAY COUNTY - TOTAL	385	3,174	3,359	3,381	\$23,629,735	\$550.03
Natural Resources & Mining	59	251	255	271	2,057,238	611.00
Construction	28	151	145	146	1,049,728	548.07
Manufacturing	13	136	133	134	975,715	558.72
Trade, Transportation & Utilities	94	853	851	867	6,829,697	613.02
Wholesale Trade	21	237	233	237	2,086,284	680.98
Retail Trade	45	428	423	428	2,640,737	476.47
Transportation, Warehousing & Utilities	28	188	195	202	2,102,676	829.46
Information	5	42	41	44	326,789	593.80
Financial Activities	27	118	119	117	986,049	642.80
Professional & Business Services	26	131	133	133	938,478	545.52
Education & Health Services	50	490	501	514	3,593,399	550.99
Leisure & Hospitality	24	249	254	253	783,648	239.21
Other Services	26	82	80	81	627,931	596.33
Local Government	22	623	799	780	5,115,001	536.05
State Government	11	48	48	41	346,062	582.92
CLEBURNE COUNTY - TOTAL	666	6,394	6,445	6,626	\$50,256,275	\$595.82
Natural Resources & Mining	26	289	296	292	3,870,932	1,018.58
Construction	65	325	333	318	3,321,438	785.33
Manufacturing	36	1,139	1,109	1,124	10,669,970	730.22
Trade, Transportation & Utilities	151	1,255	1,236	1,237	9,319,213	576.87
Wholesale Trade	33	119	120	127	1,335,924	842.32
Retail Trade	96	977	961	953	6,153,956	491.23
Transportation, Warehousing & Utilities	22	159	155	157	1,829,333	896.29
Information	9	70	70	66	535,930	600.37
Financial Activities	73	253	256	251	2,707,364	822.07
Professional & Business Services	68	325	338	325	2,690,815	628.50
Education & Health Services	93	924	953	974	7,081,866	573.23
Leisure & Hospitality	81	1,067	992	951	3,921,720	300.67
Other Services	37	124	125	116	786,889	497.51
Local Government	18	485	590	819	4,380,869	533.77
State Government	9	138	147	153	969,269	510.68

TABLE 6. COUNTY SUMMARY

North American Industry Classification System - Industry Groups	Number of Employing Units	Employment			Total Earnings Jul - Sep 2016	Average Weekly Earnings
		Jul	Aug	Sep		
CLEVELAND COUNTY - TOTAL	121	762	955	962	\$7,314,888	\$630.10
Natural Resources & Mining	14	138	139	142	1,573,737	866.75
Construction	8	26	33	34	169,065	419.52
Manufacturing	4	73	76	76	660,775	677.72
Trade, Transportation & Utilities	36	174	186	180	1,336,182	571.02
Retail Trade	19	52	60	59	234,155	316.00
Other Trade, Transportation, & Utilities	17	122	126	121	1,102,027	689.20
Financial Activities	3	26	25	25	240,103	729.06
Education & Health Services	27	131	133	150	865,776	482.60
Other Services	4	13	13	12	110,803	672.89
Local Government	11	117	285	298	1,932,089	636.95
State Government	7	53	53	32	363,416	607.72
Other	7	11	12	13	62,942	403.47
COLUMBIA COUNTY - TOTAL	727	7,555	7,713	7,987	\$75,187,652	\$746.12
Natural Resources & Mining	41	351	352	350	5,550,649	1,216.45
Construction	42	178	171	179	1,754,815	766.96
Manufacturing	31	1,826	1,786	1,786	25,432,119	1,087.25
Trade, Transportation & Utilities	164	1,344	1,342	1,310	10,237,529	591.22
Wholesale Trade	31	187	177	185	2,522,097	1,060.15
Retail Trade	95	959	957	954	5,344,733	429.76
Transportation, Warehousing & Utilities	38	198	208	171	2,370,699	948.15
Information	8	56	56	54	494,838	687.91
Financial Activities	67	357	358	349	4,044,303	877.16
Professional & Business Services	57	315	313	312	2,904,500	713.05
Education & Health Services	182	986	991	1,040	6,427,874	491.67
Leisure & Hospitality	50	653	657	745	2,413,869	271.07
Other Services	46	146	149	152	839,778	433.55
Local Government	26	703	891	1,099	7,962,236	682.30
State Government	13	640	647	611	7,125,142	866.31

TABLE 6. COUNTY SUMMARY

North American Industry Classification System - Industry Groups	Number of Employing Units	Employment			Total Earnings	Average Weekly Earnings
		Jul	Aug	Sep	Jul - Sep 2016	
CONWAY COUNTY - TOTAL	547	6,345	6,442	6,566	\$57,585,367	\$686.66
Natural Resources & Mining	34	250	257	254	2,349,658	712.52
Construction	50	527	523	509	7,236,328	1,071.15
Manufacturing	20	849	846	848	12,536,981	1,137.69
Trade, Transportation & Utilities	121	1,544	1,534	1,556	12,089,124	602.03
Wholesale Trade	16	126	129	128	1,117,294	673.20
Retail Trade	78	838	820	841	5,081,438	469.24
Transportation, Warehousing & Utilities	27	580	585	587	5,890,392	775.87
Information	3	16	15	14	46,635	239.15
Financial Activities	39	156	155	154	1,501,311	745.07
Professional & Business Services	39	490	473	482	2,952,281	471.48
Education & Health Services	134	820	821	824	7,263,579	680.00
Leisure & Hospitality	42	493	466	469	1,617,923	261.46
Other Services	26	92	94	96	739,071	604.80
Local Government	29	737	880	995	6,280,025	554.84
State Government	10	371	378	365	2,972,451	615.75
CRAIGHEAD COUNTY - TOTAL	2,792	46,193	47,738	49,230	\$450,338,353	\$725.93
Natural Resources & Mining	88	360	357	418	2,889,132	587.42
Construction	229	2,186	2,185	2,187	24,850,056	874.45
Manufacturing	100	6,099	6,050	6,096	71,323,102	902.12
Trade, Transportation & Utilities	785	10,045	10,111	10,088	83,232,942	635.09
Wholesale Trade	181	1,653	1,641	1,648	21,303,381	994.77
Retail Trade	474	6,812	6,889	6,836	43,338,910	486.99
Transportation, Warehousing & Utilities	130	1,580	1,581	1,604	18,590,651	900.35
Information	20	423	418	424	4,796,676	875.04
Financial Activities	266	1,628	1,638	1,622	19,542,907	922.65
Professional & Business Services	365	4,296	4,448	4,461	33,067,779	577.89
Education & Health Services	470	10,243	10,264	10,350	126,509,952	946.13
Leisure & Hospitality	254	5,342	5,443	5,584	21,156,774	298.27
Other Services	157	857	842	875	6,426,591	576.17
Local Government	35	2,006	3,126	4,049	27,370,267	687.97
State Government	23	2,708	2,856	3,076	29,172,175	779.17

TABLE 6. COUNTY SUMMARY

North American Industry Classification System - Industry Groups	Number of Employing Units	Employment			Total Earnings	Average Weekly Earnings
		Jul	Aug	Sep	Jul - Sep 2016	
CRAWFORD COUNTY - TOTAL	1,240	18,370	19,545	19,517	\$160,481,905	\$644.84
Natural Resources & Mining	28	201	208	215	2,175,642	804.60
Construction	147	913	924	926	8,982,751	750.25
Manufacturing	70	4,498	4,506	4,461	42,929,174	735.74
Trade, Transportation & Utilities	308	5,856	5,892	5,844	50,291,596	659.72
Wholesale Trade	79	778	800	788	10,124,645	987.51
Retail Trade	163	1,982	2,034	2,020	13,933,481	532.71
Transportation, Warehousing & Utilities	66	3,096	3,058	3,036	26,233,470	658.75
Information	11	89	81	98	798,129	687.25
Financial Activities	118	496	507	496	4,401,976	677.68
Professional & Business Services	157	1,472	1,497	1,516	13,288,771	683.75
Education & Health Services	173	1,620	1,659	1,632	13,244,379	622.36
Leisure & Hospitality	95	1,660	1,684	1,655	5,810,272	268.22
Other Services	80	383	383	389	3,205,528	640.47
Local Government	43	1,016	2,039	2,120	14,092,972	628.45
State Government	10	166	165	165	1,260,715	586.56
CRITTENDEN COUNTY - TOTAL	1,270	15,841	15,793	16,586	\$140,837,702	\$674.02
Natural Resources & Mining	55	275	281	306	2,230,478	597.13
Construction	48	573	461	414	6,111,762	974.04
Manufacturing	40	1,933	1,954	2,049	24,880,687	967.27
Trade, Transportation & Utilities	310	4,823	4,397	4,409	41,306,430	699.41
Wholesale Trade	63	800	782	772	9,401,903	921.69
Retail Trade	166	2,452	2,032	2,004	11,731,292	417.27
Transportation, Warehousing & Utilities	81	1,571	1,583	1,633	20,173,235	972.50
Information	5	66	66	64	548,554	645.86
Financial Activities	96	455	452	453	4,399,106	746.45
Professional & Business Services	116	1,233	1,281	1,230	10,583,361	652.33
Education & Health Services	343	2,093	2,090	2,119	16,554,292	606.19
Leisure & Hospitality	124	2,367	2,388	2,347	11,109,727	360.99
Other Services	77	486	481	484	4,171,775	663.49
Local Government	42	1,134	1,551	2,229	15,202,537	713.94
State Government	14	403	391	482	3,738,993	676.21

TABLE 6. COUNTY SUMMARY

North American Industry Classification System - Industry Groups	Number of Employing Units	Employment			Total Earnings	Average Weekly Earnings
		Jul	Aug	Sep	Jul - Sep 2016	
CROSS COUNTY - TOTAL	473	4,646	4,973	5,050	\$39,947,860	\$628.45
Natural Resources & Mining	37	247	255	266	2,124,581	638.40
Construction	20	62	62	64	488,099	599.14
Manufacturing	11	461	463	479	4,191,141	689.37
Trade, Transportation & Utilities	129	1,271	1,255	1,254	11,281,958	688.76
Wholesale Trade	30	316	300	302	3,856,275	969.40
Retail Trade	72	824	820	812	6,104,429	573.58
Transportation, Warehousing & Utilities	27	131	135	140	1,321,254	751.00
Information	6	41	40	45	319,123	584.47
Financial Activities	44	309	307	295	2,703,568	684.85
Professional & Business Services	38	117	119	118	1,172,004	764.02
Education & Health Services	98	990	1,006	1,027	7,834,493	598.07
Leisure & Hospitality	30	346	347	343	1,131,090	251.95
Other Services	34	90	91	95	714,018	597.01
Local Government	16	325	648	705	4,930,072	678.01
State Government	10	387	380	359	3,057,713	626.67
DALLAS COUNTY - TOTAL	248	2,799	2,804	2,842	\$21,240,073	\$580.41
Natural Resources & Mining	28	166	163	160	1,348,811	636.53
Construction	16	93	80	88	677,342	598.89
Manufacturing	9	552	556	550	5,538,667	770.90
Trade, Transportation & Utilities	57	470	464	466	3,389,341	558.68
Wholesale Trade	6	12	10	15	163,911	1,022.31
Retail Trade	38	360	356	351	2,257,927	488.34
Transportation, Warehousing & Utilities	13	98	98	100	967,503	754.29
Information	4	18	18	18	147,043	628.39
Financial Activities	16	81	77	77	761,812	748.10
Professional & Business Services	11	33	31	31	206,932	502.67
Education & Health Services	59	847	859	866	6,494,370	582.70
Leisure & Hospitality	13	151	144	142	447,202	236.16
Other Services	13	58	58	58	337,690	447.86
Local Government	14	286	311	357	1,565,140	378.60
State Government	8	44	43	29	325,723	647.99

TABLE 6. COUNTY SUMMARY

North American Industry Classification System - Industry Groups	Number of Employing Units	Employment			Total Earnings Jul - Sep 2016	Average Weekly Earnings
		Jul	Aug	Sep		
DESHA COUNTY - TOTAL	548	4,312	4,582	4,673	\$37,692,072	\$641.13
Natural Resources & Mining	67	321	335	354	2,401,091	548.61
Construction	19	102	97	98	1,009,204	784.15
Manufacturing	15	822	842	828	11,947,332	1,106.37
Trade, Transportation & Utilities	109	852	854	878	6,758,496	603.58
Wholesale Trade	19	202	197	195	2,543,968	988.33
Retail Trade	65	492	493	477	2,496,383	394.04
Transportation, Warehousing & Utilities	25	158	164	206	1,718,145	750.94
Information	3	9	9	9	105,704	903.45
Financial Activities	28	208	203	208	1,621,323	604.45
Professional & Business Services	38	87	85	84	709,048	639.17
Education & Health Services	183	710	733	777	4,823,230	501.38
Leisure & Hospitality	35	416	419	414	1,572,052	290.46
Other Services	20	58	52	55	333,902	467.00
Local Government	21	586	822	839	5,424,100	557.06
State Government	10	141	131	129	986,590	567.77
DREW COUNTY - TOTAL	537	5,966	6,021	6,424	\$50,618,138	\$634.46
Natural Resources & Mining	52	345	344	351	3,273,262	726.32
Construction	22	118	115	111	958,152	642.77
Manufacturing	20	774	779	789	7,772,096	765.82
Trade, Transportation & Utilities	124	1,224	1,226	1,213	8,675,103	546.53
Wholesale Trade	19	136	136	131	1,556,903	891.53
Retail Trade	81	943	944	939	5,513,081	450.19
Transportation, Warehousing & Utilities	24	145	146	143	1,605,119	853.48
Information	6	55	53	52	407,241	587.37
Financial Activities	51	255	256	249	2,643,546	802.70
Professional & Business Services	33	241	222	228	1,967,807	657.18
Education & Health Services	135	900	891	919	8,575,744	730.26
Leisure & Hospitality	40	632	645	650	2,096,638	251.08
Other Services	17	64	65	62	379,740	458.81
Local Government	22	842	906	1,210	8,148,266	635.69
State Government	15	516	519	590	5,720,543	812.38

TABLE 6. COUNTY SUMMARY

North American Industry Classification System - Industry Groups	Number of Employing Units	Employment			Total Earnings Jul - Sep 2016	Average Weekly Earnings
		Jul	Aug	Sep		
FAULKNER COUNTY - TOTAL	2,811	38,388	38,893	40,514	\$375,842,586	\$736.30
Natural Resources & Mining	59	343	331	329	5,137,637	1,182.06
Construction	307	2,791	2,774	2,780	30,690,158	848.69
Manufacturing	102	3,191	3,148	3,127	41,174,521	1,003.78
Trade, Transportation & Utilities	649	7,205	7,177	7,269	56,001,658	596.90
Wholesale Trade	140	498	489	489	6,807,913	1,064.40
Retail Trade	418	5,990	5,993	6,065	40,008,597	511.57
Transportation, Warehousing & Utilities	91	717	695	715	9,185,148	996.54
Information	20	272	278	263	3,436,525	975.45
Financial Activities	307	1,407	1,421	1,430	15,082,488	817.42
Professional & Business Services	425	5,743	5,753	5,668	79,340,997	1,066.74
Education & Health Services	432	6,528	6,617	6,688	62,734,100	729.95
Leisure & Hospitality	258	5,122	5,153	5,187	18,734,474	279.61
Other Services	193	767	780	864	6,372,353	609.93
Local Government	41	1,918	2,418	3,466	24,346,839	720.14
State Government	18	3,101	3,043	3,443	32,790,836	789.31
FRANKLIN COUNTY - TOTAL	363	4,103	4,330	4,404	\$38,610,228	\$694.09
Natural Resources & Mining	20	200	194	192	3,774,521	1,486.42
Construction	34	121	119	120	1,048,437	672.08
Manufacturing	14	917	944	956	11,067,215	906.63
Trade, Transportation & Utilities	86	932	944	944	7,527,717	616.02
Wholesale Trade	12	42	44	44	237,388	421.40
Retail Trade	54	635	636	635	3,442,804	416.84
Transportation, Warehousing & Utilities	20	255	264	265	3,847,525	1,132.51
Information	5	20	19	19	164,562	654.76
Financial Activities	29	78	77	79	677,220	667.87
Professional & Business Services	37	299	294	290	2,497,743	652.78
Education & Health Services	68	571	566	570	3,904,586	527.86
Leisure & Hospitality	27	337	336	323	1,056,270	244.73
Other Services	15	61	64	67	376,053	451.99
Local Government	19	454	654	715	5,174,779	655.06
State Government	9	113	119	129	1,341,125	857.31

TABLE 6. COUNTY SUMMARY

North American Industry Classification System - Industry Groups	Number of Employing Units	Employment			Total Earnings	Average Weekly Earnings
		Jul	Aug	Sep	Jul - Sep 2016	
FULTON COUNTY - TOTAL	193	1,660	1,691	1,819	\$11,997,120	\$535.51
Natural Resources & Mining	3	6	6	6	37,840	485.13
Construction	9	35	38	37	383,600	804.76
Manufacturing	13	106	106	103	562,016	411.73
Trade, Transportation & Utilities	45	287	291	273	2,512,517	681.33
Retail Trade	30	176	172	167	933,438	418.27
Other Trade, Transportation, & Utilities	15	111	119	106	1,579,079	1,084.53
Information	4	29	29	30	174,505	457.62
Financial Activities	18	114	103	97	904,761	664.94
Professional & Business Services	13	37	34	38	279,588	591.93
Education & Health Services	45	406	431	445	2,890,630	520.33
Leisure & Hospitality	16	163	165	166	570,856	266.67
Other Services	5	11	11	11	77,242	540.15
Local Government	12	367	379	536	2,800,054	504.03
State Government	10	99	98	77	803,511	676.74
GARLAND COUNTY - TOTAL	3,105	34,445	34,934	35,586	\$310,186,557	\$681.96
Natural Resources & Mining	28	217	230	234	2,693,633	912.79
Construction	328	1,669	1,653	1,690	15,457,378	711.71
Manufacturing	96	2,537	2,515	2,557	27,847,951	844.59
Trade, Transportation & Utilities	693	7,351	7,395	7,285	58,087,104	608.45
Wholesale Trade	137	809	809	817	12,093,697	1,146.14
Retail Trade	495	6,072	6,115	5,986	40,502,764	514.32
Transportation, Warehousing & Utilities	61	470	471	482	5,490,643	890.42
Information	31	406	401	406	4,123,059	784.40
Financial Activities	337	1,472	1,490	1,477	17,357,683	902.37
Professional & Business Services	382	2,768	2,826	2,908	26,076,424	707.79
Education & Health Services	532	7,692	7,646	7,687	88,160,728	883.60
Leisure & Hospitality	387	6,711	6,655	6,470	30,760,729	357.87
Other Services	234	1,001	978	942	6,820,880	538.87
Local Government	33	1,703	2,195	2,930	24,200,059	817.90
State Government	24	918	950	1,000	8,600,929	692.06

TABLE 6. COUNTY SUMMARY

North American Industry Classification System - Industry Groups	Number of Employing Units	Employment			Total Earnings	Average Weekly Earnings
		Jul	Aug	Sep	Jul - Sep 2016	
GRANT COUNTY - TOTAL	342	3,713	3,832	4,047	\$37,829,455	\$753.09
Natural Resources & Mining	27	176	176	181	2,181,064	944.32
Construction	30	187	191	196	2,305,435	926.87
Manufacturing	17	1,185	1,208	1,235	14,872,941	946.04
Trade, Transportation & Utilities	91	645	656	656	4,779,104	563.55
Wholesale Trade	22	98	101	102	1,208,675	926.66
Retail Trade	45	472	481	476	2,859,084	461.71
Transportation, Warehousing & Utilities	24	75	74	78	711,345	723.16
Financial Activities	24	94	94	96	955,850	776.69
Professional & Business Services	26	91	87	90	2,924,853	2,518.53
Education & Health Services	68	393	404	424	2,503,307	473.13
Leisure & Hospitality	22	321	324	308	912,142	220.88
Local Government	10	516	588	765	5,675,216	700.73
State Government	8	55	54	46	373,532	556.13
Other	19	50	50	50	346,011	532.32
GREENE COUNTY - TOTAL	883	14,992	15,102	15,299	\$136,894,086	\$695.94
Natural Resources & Mining	40	294	280	288	2,469,082	661.01
Construction	70	317	329	313	3,071,818	739.19
Manufacturing	63	5,153	5,133	5,087	58,703,277	881.21
Trade, Transportation & Utilities	239	2,722	2,687	2,679	19,806,623	565.13
Wholesale Trade	44	420	416	407	4,844,168	899.34
Retail Trade	159	1,936	1,920	1,928	11,795,003	470.60
Transportation, Warehousing & Utilities	36	366	351	344	3,167,452	688.93
Information	10	95	95	89	610,221	504.73
Financial Activities	76	543	549	549	5,514,629	775.51
Professional & Business Services	90	912	939	901	7,090,839	594.60
Education & Health Services	145	1,907	1,922	1,930	18,431,167	738.56
Leisure & Hospitality	65	1,180	1,217	1,240	4,046,876	256.78
Other Services	43	182	180	183	1,297,125	549.24
Local Government	30	1,259	1,346	1,627	12,011,268	654.97
State Government	12	428	425	413	3,841,161	700.18

TABLE 6. COUNTY SUMMARY

North American Industry Classification System - Industry Groups	Number of Employing Units	Employment			Total Earnings	Average Weekly Earnings
		Jul	Aug	Sep	Jul - Sep 2016	
HEMPSTEAD COUNTY - TOTAL	508	7,384	7,445	7,850	\$62,878,635	\$639.82
Natural Resources & Mining	24	253	243	244	2,413,712	752.72
Construction	29	181	184	215	1,895,821	754.31
Manufacturing	29	2,267	2,240	2,263	21,996,679	749.80
Trade, Transportation & Utilities	124	1,310	1,266	1,266	10,906,962	655.13
Wholesale Trade	20	196	186	178	1,674,695	690.12
Retail Trade	77	849	844	851	5,118,425	464.30
Transportation, Warehousing & Utilities	27	265	236	237	4,113,842	1,286.38
Information	8	31	35	33	348,247	811.76
Financial Activities	46	217	217	216	2,008,255	712.99
Professional & Business Services	34	218	223	214	1,734,659	611.15
Education & Health Services	94	943	961	1,010	6,634,287	525.39
Leisure & Hospitality	45	614	602	622	2,175,806	273.18
Other Services	31	141	143	145	1,025,740	551.77
Local Government	27	460	602	901	5,765,199	677.75
State Government	17	749	729	721	5,973,268	626.85
HOT SPRING COUNTY - TOTAL	627	8,100	8,210	8,450	\$71,161,091	\$663.24
Natural Resources & Mining	22	162	160	160	1,241,340	594.32
Construction	56	302	300	318	2,756,156	691.34
Manufacturing	28	1,385	1,381	1,389	17,174,238	953.86
Trade, Transportation & Utilities	154	1,613	1,644	1,627	15,561,301	735.27
Wholesale Trade	17	109	107	105	1,159,824	833.81
Retail Trade	97	850	877	864	5,138,387	457.65
Transportation, Warehousing & Utilities	40	654	660	658	9,263,090	1,083.99
Information	7	78	80	79	690,077	671.93
Financial Activities	53	217	216	203	2,179,161	790.70
Professional & Business Services	50	1,035	989	1,001	6,651,076	507.39
Education & Health Services	125	1,004	1,026	1,041	8,656,819	650.51
Leisure & Hospitality	54	659	676	657	2,020,664	234.09
Other Services	38	129	125	121	816,998	502.77
Local Government	27	698	786	995	6,197,962	576.97
State Government	13	818	827	859	7,215,299	664.96

TABLE 6. COUNTY SUMMARY

North American Industry Classification System - Industry Groups	Number of Employing Units	Employment			Total Earnings	Average Weekly Earnings
		Jul	Aug	Sep	Jul - Sep 2016	
HOWARD COUNTY - TOTAL	351	6,727	6,833	6,958	\$53,830,938	\$605.45
Natural Resources & Mining	21	247	241	231	2,135,602	685.44
Construction	18	121	119	133	1,482,974	917.49
Manufacturing	20	3,378	3,380	3,381	27,140,782	617.74
Trade, Transportation & Utilities	88	909	906	903	7,126,330	605.05
Wholesale Trade	15	79	77	79	787,861	773.68
Retail Trade	54	642	639	637	3,966,335	477.22
Transportation, Warehousing & Utilities	19	188	190	187	2,372,134	968.88
Information	3	20	20	21	119,651	452.65
Financial Activities	34	136	138	137	1,212,494	680.79
Professional & Business Services	24	133	131	124	1,016,732	604.72
Education & Health Services	71	744	743	763	6,759,122	693.24
Leisure & Hospitality	21	311	340	341	1,130,223	262.92
Other Services	23	148	149	149	1,224,374	633.52
Local Government	17	476	564	677	3,621,951	486.80
State Government	11	104	102	98	860,703	653.37
INDEPENDENCE COUNTY - TOTAL	911	14,687	14,821	15,522	\$131,465,609	\$673.73
Natural Resources & Mining	13	203	200	199	2,533,394	971.15
Construction	60	430	421	432	4,493,736	808.27
Manufacturing	38	2,770	2,727	2,756	28,562,237	798.65
Trade, Transportation & Utilities	239	3,111	3,132	3,092	26,611,753	657.87
Wholesale Trade	29	438	443	421	4,379,934	776.31
Retail Trade	156	1,788	1,819	1,797	11,243,478	480.13
Transportation, Warehousing & Utilities	54	885	870	874	10,988,341	964.54
Information	10	119	118	119	945,375	612.82
Financial Activities	85	504	510	498	6,184,751	943.95
Professional & Business Services	95	1,241	1,251	1,251	7,846,193	483.75
Education & Health Services	166	3,420	3,451	3,483	35,696,655	795.60
Leisure & Hospitality	79	1,158	1,197	1,235	3,910,614	251.38
Other Services	64	387	365	368	2,049,286	422.24
Local Government	46	760	905	1,496	7,723,510	563.86
State Government	16	584	544	593	4,908,105	658.13

TABLE 6. COUNTY SUMMARY

North American Industry Classification System - Industry Groups	Number of Employing Units	Employment			Total Earnings Jul - Sep 2016	Average Weekly Earnings
		Jul	Aug	Sep		
IZARD COUNTY - TOTAL	260	2,866	3,108	3,205	\$23,894,687	\$600.74
Natural Resources & Mining	7	139	139	137	1,689,052	939.23
Construction	24	121	128	125	1,090,426	672.83
Manufacturing	10	312	322	320	2,760,465	667.75
Trade, Transportation & Utilities	68	556	552	564	3,989,475	550.63
Wholesale Trade	12	27	25	29	182,399	519.66
Retail Trade	45	398	395	395	2,308,081	448.35
Transportation, Warehousing & Utilities	11	131	132	140	1,498,995	858.37
Information	4	6	6	6	97,646	1,251.87
Financial Activities	25	176	185	182	1,402,737	596.15
Professional & Business Services	15	56	56	55	437,720	604.86
Education & Health Services	48	677	688	709	5,139,336	571.84
Leisure & Hospitality	21	167	168	170	511,271	233.63
Other Services	11	27	29	30	178,998	480.32
Local Government	17	255	430	486	2,879,342	567.43
State Government	10	374	405	421	3,718,219	715.04
JACKSON COUNTY - TOTAL	448	5,010	5,264	5,275	\$45,730,458	\$678.70
Natural Resources & Mining	54	298	306	319	2,791,019	697.81
Construction	20	105	110	114	1,049,946	736.46
Manufacturing	15	1,053	1,034	1,014	11,502,540	855.99
Trade, Transportation & Utilities	109	1,005	1,009	1,003	8,269,304	632.52
Wholesale Trade	20	216	210	202	2,475,441	909.64
Retail Trade	71	697	706	709	4,732,391	517.09
Transportation, Warehousing & Utilities	18	92	93	92	1,061,472	884.31
Information	4	14	14	14	120,423	661.66
Financial Activities	33	140	150	147	1,427,690	753.93
Professional & Business Services	32	122	124	122	1,104,850	692.84
Education & Health Services	88	822	830	844	7,265,369	671.72
Leisure & Hospitality	27	305	306	290	1,006,169	257.71
Other Services	21	60	60	60	466,656	598.28
Local Government	32	333	559	573	3,748,992	590.55
State Government	13	753	762	775	6,977,500	703.14

TABLE 6. COUNTY SUMMARY

North American Industry Classification System - Industry Groups	Number of Employing Units	Employment			Total Earnings Jul - Sep 2016	Average Weekly Earnings
		Jul	Aug	Sep		
JEFFERSON COUNTY - TOTAL	2,096	25,264	26,532	27,132	\$247,199,556	\$722.76
Natural Resources & Mining	37	176	178	176	2,060,067	896.98
Construction	90	582	594	597	6,494,278	845.28
Manufacturing	59	4,812	4,813	4,885	64,879,943	1,031.86
Trade, Transportation & Utilities	410	4,553	4,543	4,465	36,737,564	625.17
Wholesale Trade	72	675	670	668	6,990,079	801.34
Retail Trade	282	3,161	3,157	3,096	19,913,349	488.14
Transportation, Warehousing & Utilities	56	717	716	701	9,834,136	1,063.46
Information	9	72	71	70	862,599	934.56
Financial Activities	155	1,013	1,013	993	11,325,932	865.74
Professional & Business Services	152	2,055	2,178	2,353	16,762,976	587.36
Education & Health Services	850	4,735	4,828	4,838	46,346,097	742.67
Leisure & Hospitality	141	1,919	1,988	2,004	6,930,197	270.56
Other Services	117	581	558	570	4,482,006	605.21
Local Government	39	1,577	2,458	2,827	17,895,812	601.84
State Government	37	3,189	3,310	3,354	32,422,085	759.36
JOHNSON COUNTY - TOTAL	507	8,123	8,257	8,718	\$65,005,521	\$597.71
Natural Resources & Mining	15	237	233	235	2,078,032	680.21
Construction	36	154	156	162	1,452,901	710.35
Manufacturing	36	2,697	2,685	2,674	21,389,591	612.72
Trade, Transportation & Utilities	115	1,933	1,923	1,945	14,042,293	558.62
Retail Trade	78	947	939	956	5,230,574	424.72
Other Trade, Transportation & Utilities	37	986	984	989	8,811,719	687.22
Information	6	32	33	32	245,203	583.35
Financial Activities	51	183	182	174	1,492,943	639.19
Professional & Business Services	54	402	394	392	2,269,342	440.82
Education & Health Services	98	1,250	1,274	1,306	11,282,640	679.81
Leisure & Hospitality	39	544	560	576	1,677,426	230.42
Other Services	34	87	92	93	604,173	512.59
Local Government	14	479	603	1,023	7,351,917	805.98
State Government	9	125	122	106	1,119,060	731.57

TABLE 6. COUNTY SUMMARY

North American Industry Classification System - Industry Groups	Number of Employing Units	Employment			Total Earnings Jul - Sep 2016	Average Weekly Earnings
		Jul	Aug	Sep		
LAFAYETTE COUNTY - TOTAL	176	1,088	1,135	1,183	\$8,490,596	\$575.27
Natural Resources & Mining	29	150	142	145	1,579,861	834.29
Construction	9	63	57	60	742,696	952.17
Manufacturing	5	30	31	30	357,581	906.80
Trade, Transportation & Utilities	31	197	196	200	1,244,357	484.25
Retail Trade	18	117	116	118	590,589	388.29
Other Trade, Transportation & Utilities	13	80	80	82	653,768	623.43
Financial Activities	13	44	43	42	377,469	675.26
Professional & Business Services	10	39	38	41	371,964	727.44
Education & Health Services	43	189	208	222	1,461,146	544.73
Leisure & Hospitality	6	44	45	46	155,535	265.87
Local Government	13	190	236	271	1,422,909	471.11
State Government	8	47	47	34	304,416	548.83
Other	9	95	92	92	472,662	390.95
LAWRENCE COUNTY - TOTAL	422	3,568	3,923	4,059	\$30,344,336	\$606.28
Natural Resources & Mining	50	223	214	214	2,063,623	731.52
Construction	25	114	114	114	1,138,754	768.39
Manufacturing	20	486	481	477	4,106,876	656.33
Trade, Transportation & Utilities	118	828	817	832	6,824,501	635.80
Wholesale Trade	19	209	197	195	2,095,716	804.70
Retail Trade	62	487	487	484	3,171,715	502.01
Transportation, Warehousing & Utilities	37	132	133	153	1,557,070	859.63
Financial Activities	35	144	145	143	1,359,336	726.14
Professional & Business Services	28	109	109	106	1,099,399	783.05
Education & Health Services	58	457	543	575	4,380,726	641.86
Leisure & Hospitality	31	297	323	353	1,035,681	245.64
Local Government	25	746	1,017	1,100	7,111,234	573.19
State Government	10	96	95	78	671,732	576.26
Other	22	68	65	67	552,474	637.47

TABLE 6. COUNTY SUMMARY

North American Industry Classification System - Industry Groups	Number of Employing Units	Employment			Total Earnings	Average Weekly Earnings
		Jul	Aug	Sep	Jul - Sep 2016	
LEE COUNTY - TOTAL	294	1,882	1,937	2,002	\$15,286,513	\$606.02
Natural Resources & Mining	38	209	205	248	1,815,644	632.92
Construction	11	29	27	26	235,973	664.09
Trade, Transportation & Utilities	42	350	342	340	2,960,957	662.11
Wholesale Trade	10	122	116	115	1,337,505	874.38
Retail Trade	21	170	168	167	986,157	450.64
Transportation, Warehousing & Utilities	11	58	58	58	637,295	845.22
Financial Activities	18	63	65	65	470,865	563.01
Professional & Business Services	14	63	57	57	840,560	1,095.91
Education & Health Services	132	449	449	502	3,239,199	533.93
Leisure & Hospitality	8	82	90	85	301,360	270.60
Local Government	15	178	243	255	1,432,318	488.96
State Government	7	445	444	408	3,886,692	691.54
Other	9	14	15	16	102,945	527.92
LINCOLN COUNTY - TOTAL	282	2,697	2,857	2,895	\$23,317,050	\$636.86
Natural Resources & Mining	34	177	178	191	1,459,761	616.97
Construction	17	85	92	96	829,474	701.16
Manufacturing	8	256	262	258	2,128,528	632.99
Trade, Transportation & Utilities	45	369	380	365	3,651,032	756.32
Wholesale Trade	6	51	53	53	565,005	830.48
Retail Trade	24	177	188	178	969,355	411.97
Transportation, Warehousing & Utilities	15	141	139	134	2,116,672	1,179.86
Financial Activities	20	75	74	76	702,119	720.12
Professional & Business Services	12	43	43	44	277,590	492.76
Education & Health Services	95	414	404	412	2,937,183	551.07
Leisure & Hospitality	16	188	192	204	478,251	188.98
Local Government	7	183	330	358	2,028,848	537.54
State Government	12	861	856	846	8,334,057	750.39
Other	16	46	46	45	490,207	825.73

TABLE 6. COUNTY SUMMARY

North American Industry Classification System - Industry Groups	Number of Employing Units	Employment			Total Earnings Jul - Sep 2016	Average Weekly Earnings
		Jul	Aug	Sep		
LITTLE RIVER COUNTY - TOTAL	239	3,269	3,308	3,407	\$42,022,872	\$971.31
Natural Resources & Mining	14	85	85	86	894,298	806.16
Construction	15	224	207	220	2,020,749	716.32
Manufacturing	14	1,167	1,154	1,136	26,256,686	1,752.74
Trade, Transportation & Utilities	56	581	593	570	4,220,328	558.44
Wholesale Trade	7	23	23	22	413,743	1,404.11
Retail Trade	35	426	434	416	2,542,486	459.82
Transportation, Warehousing & Utilities	14	132	136	132	1,264,099	729.29
Financial Activities	16	76	71	70	615,981	655.07
Professional & Business Services	16	74	80	74	685,654	693.98
Education & Health Services	46	170	172	198	1,123,663	480.20
Leisure & Hospitality	13	202	207	184	602,557	234.49
Local Government	20	529	579	719	4,620,586	583.63
State Government	11	83	81	70	583,339	575.29
Other	18	78	79	80	399,031	388.54
LOGAN COUNTY - TOTAL	504	5,295	5,451	5,499	\$40,756,482	\$578.97
Natural Resources & Mining	28	119	120	116	1,189,507	773.24
Construction	44	219	219	209	2,076,646	740.69
Manufacturing	20	1,199	1,204	1,191	11,659,746	748.67
Trade, Transportation & Utilities	104	1,047	1,051	1,059	6,468,700	472.85
Wholesale Trade	9	73	71	78	378,447	393.40
Retail Trade	69	792	801	801	4,296,467	414.16
Transportation, Warehousing & Utilities	26	182	179	180	1,793,786	765.16
Information	5	29	29	29	310,114	822.58
Financial Activities	48	203	199	199	1,961,960	753.34
Professional & Business Services	50	135	137	143	1,330,158	739.66
Education & Health Services	111	709	710	723	5,455,942	587.80
Leisure & Hospitality	31	368	374	366	1,115,188	232.27
Other Services	27	153	131	123	1,069,476	606.39
Local Government	22	564	731	822	4,656,401	507.58
State Government	14	550	546	519	3,462,644	494.78

TABLE 6. COUNTY SUMMARY

North American Industry Classification System - Industry Groups	Number of Employing Units	Employment			Total Earnings	Average Weekly Earnings
		Jul	Aug	Sep	Jul - Sep 2016	
LONOKE COUNTY - TOTAL	1,310	13,799	14,129	14,023	\$114,891,525	\$632.01
Natural Resources & Mining	84	490	476	498	5,422,658	854.77
Construction	122	955	930	893	9,391,808	780.18
Manufacturing	34	1,798	1,793	1,795	23,461,636	1,005.24
Trade, Transportation & Utilities	321	2,971	2,938	2,858	21,690,461	570.95
Wholesale Trade	75	417	406	383	4,950,956	947.37
Retail Trade	183	2,245	2,218	2,153	13,099,184	456.91
Transportation, Warehousing & Utilities	63	309	314	322	3,640,321	888.97
Information	16	94	94	86	959,493	808.11
Financial Activities	148	681	682	687	9,200,891	1,035.75
Professional & Business Services	159	770	780	781	6,633,808	656.75
Education & Health Services	205	1,672	1,667	1,674	12,013,755	553.04
Leisure & Hospitality	115	1,859	1,868	1,840	6,485,870	268.86
Other Services	66	195	196	188	1,245,603	496.45
Local Government	24	2,168	2,561	2,588	17,178,670	541.79
State Government	16	146	144	135	1,206,872	655.32
MADISON COUNTY - TOTAL	251	2,873	3,205	3,285	\$25,316,398	\$623.97
Natural Resources & Mining	10	44	39	50	345,429	599.36
Construction	26	85	84	88	771,994	693.20
Manufacturing	22	1,084	1,127	1,162	10,339,935	707.42
Trade, Transportation & Utilities	52	682	685	683	5,018,063	564.89
Wholesale Trade	7	27	27	26	260,350	751.01
Retail Trade	35	515	517	516	3,212,349	478.88
Transportation, Warehousing & Utilities	10	140	141	141	1,545,364	845.08
Information	6	50	52	51	1,040,140	1,568.84
Financial Activities	18	74	74	81	604,184	608.85
Professional & Business Services	24	105	105	100	1,044,578	777.60
Education & Health Services	44	238	250	253	1,530,701	476.71
Leisure & Hospitality	17	195	183	203	516,737	205.24
Other Services	16	43	43	43	337,730	604.17
Local Government	9	231	522	529	3,438,199	618.90
State Government	7	42	41	42	328,708	606.85

TABLE 6. COUNTY SUMMARY

North American Industry Classification System - Industry Groups	Number of Employing Units	Employment			Total Earnings	Average Weekly Earnings
		Jul	Aug	Sep	Jul - Sep 2016	
MARION COUNTY - TOTAL	275	3,658	3,774	3,819	\$27,219,770	\$558.30
Natural Resources & Mining	3	18	18	18	90,750	387.82
Construction	19	56	56	55	354,935	490.47
Manufacturing	19	1,709	1,720	1,721	13,083,654	586.27
Trade, Transportation & Utilities	53	555	559	563	3,485,436	479.63
Wholesale Trade	6	38	41	40	383,856	744.39
Retail Trade	39	486	485	486	2,608,031	413.08
Transportation, Warehousing & Utilities	8	31	33	37	493,549	1,127.68
Information	4	52	54	53	1,537,661	2,231.73
Financial Activities	31	220	217	204	1,741,395	626.93
Professional & Business Services	28	81	79	80	523,757	503.61
Education & Health Services	49	326	342	352	2,506,825	567.15
Leisure & Hospitality	31	238	235	215	708,826	237.75
Other Services	13	24	36	26	117,090	314.19
Local Government	17	327	406	493	2,701,775	508.55
State Government	8	52	52	39	367,666	593.33
MILLER COUNTY - TOTAL	885	12,824	12,929	13,249	\$124,349,819	\$735.76
Natural Resources & Mining	29	176	178	180	1,732,896	748.87
Construction	70	616	610	630	6,602,224	820.90
Manufacturing	30	2,416	2,401	2,376	40,388,439	1,295.76
Trade, Transportation & Utilities	228	3,459	3,394	3,434	30,059,930	674.34
Wholesale Trade	48	463	464	467	5,598,168	926.75
Retail Trade	131	1,367	1,342	1,319	7,708,267	441.62
Transportation, Warehousing & Utilities	49	1,629	1,588	1,648	16,753,495	794.69
Information	5	60	60	59	1,162,918	1,499.25
Financial Activities	83	402	408	387	3,851,670	742.56
Professional & Business Services	89	1,083	1,028	985	6,421,962	478.68
Education & Health Services	165	1,092	1,114	1,128	9,019,221	624.28
Leisure & Hospitality	93	1,656	1,673	1,690	6,179,269	284.12
Other Services	52	276	278	275	1,687,102	469.64
Local Government	24	1,076	1,278	1,619	12,129,458	704.53
State Government	17	512	507	486	5,114,730	784.27

TABLE 6. COUNTY SUMMARY

North American Industry Classification System - Industry Groups	Number of Employing Units	Employment			Total Earnings	Average Weekly Earnings
		Jul	Aug	Sep	Jul - Sep 2016	
MISSISSIPPI COUNTY - TOTAL	1,182	17,483	17,950	18,455	\$191,949,074	\$822.00
Natural Resources & Mining	117	551	542	609	4,577,171	620.61
Construction	54	980	1,054	1,120	17,226,270	1,260.40
Manufacturing	58	5,866	6,030	6,016	92,426,302	1,190.77
Trade, Transportation & Utilities	289	2,981	2,993	3,034	26,827,768	687.28
Wholesale Trade	61	379	363	360	4,794,995	1,004.12
Retail Trade	163	1,789	1,819	1,831	10,192,032	432.43
Transportation, Warehousing & Utilities	65	813	811	843	11,840,741	1,107.61
Information	6	47	49	47	332,308	536.27
Financial Activities	86	476	479	479	4,254,562	684.67
Professional & Business Services	100	1,218	1,208	1,333	8,744,544	536.84
Education & Health Services	242	1,680	1,673	1,773	14,880,691	669.92
Leisure & Hospitality	100	1,262	1,292	1,260	4,303,545	260.39
Other Services	57	232	226	223	1,837,704	622.74
Local Government	49	1,692	1,905	2,074	12,366,044	503.21
State Government	24	498	499	487	4,172,165	648.79
MONROE COUNTY - TOTAL	307	1,963	2,087	2,096	\$15,808,767	\$593.59
Natural Resources & Mining	33	175	160	168	2,321,922	1,065.26
Construction	10	23	23	21	181,528	625.24
Manufacturing	7	134	131	127	1,111,969	654.61
Trade, Transportation & Utilities	80	558	570	552	4,557,495	626.03
Wholesale Trade	18	195	202	197	2,025,151	786.77
Retail Trade	39	265	266	252	1,525,402	449.57
Transportation, Warehousing & Utilities	23	98	102	103	1,006,942	766.90
Financial Activities	21	89	91	88	832,904	717.20
Professional & Business Services	14	22	22	22	181,602	634.97
Education & Health Services	71	344	348	381	2,485,181	534.49
Leisure & Hospitality	22	217	219	218	803,152	283.40
Local Government	21	206	328	338	1,990,332	526.73
State Government	8	85	84	66	702,649	690.00
Other	20	110	111	115	640,033	439.58

TABLE 6. COUNTY SUMMARY

North American Industry Classification System - Industry Groups	Number of Employing Units	Employment			Total Earnings Jul - Sep 2016	Average Weekly Earnings
		Jul	Aug	Sep		
MONTGOMERY COUNTY - TOTAL	167	1,323	1,331	1,384	\$8,222,460	\$469.91
Natural Resources & Mining	8	50	52	51	444,849	670.96
Construction	25	69	68	75	502,859	547.38
Manufacturing	10	54	55	59	362,255	497.60
Trade, Transportation & Utilities	35	218	214	216	1,269,674	452.16
Wholesale Trade	9	45	44	46	363,538	621.43
Retail Trade	20	158	155	155	825,753	407.18
Transportation, Warehousing & Utilities	6	15	15	15	80,383	412.22
Financial Activities	9	67	74	60	524,956	602.70
Professional & Business Services	15	19	18	18	136,162	571.31
Education & Health Services	20	55	58	60	451,551	602.34
Leisure & Hospitality	15	381	325	289	1,681,810	390.06
Local Government	9	292	351	451	2,165,452	456.78
State Government	8	42	41	35	356,044	696.31
Other	13	76	75	70	326,848	341.30
NEVADA COUNTY - TOTAL	196	2,317	2,376	2,503	\$20,685,665	\$663.37
Natural Resources & Mining	10	68	76	77	865,305	903.56
Trade, Transportation & Utilities	38	572	584	585	4,877,875	646.56
Retail Trade	22	300	307	316	1,552,439	388.14
Other Trade, Transportation & Utilities	16	272	277	269	3,325,436	938.15
Financial Activities	11	69	64	59	594,402	714.43
Professional & Business Services	11	43	43	46	366,760	641.19
Education & Health Services	45	397	403	431	2,606,687	488.66
Leisure & Hospitality	10	98	115	106	298,792	216.15
Other Services	14	42	42	40	201,581	375.15
Local Government	28	266	280	403	1,666,850	405.33
State Government	10	76	74	56	517,545	579.77
Other	19	686	695	700	8,689,868	963.65

TABLE 6. COUNTY SUMMARY

North American Industry Classification System - Industry Groups	Number of Employing Units	Employment			Total Earnings Jul - Sep 2016	Average Weekly Earnings
		Jul	Aug	Sep		
NEWTON COUNTY - TOTAL	117	965	1,080	1,092	\$5,922,348	\$435.67
Construction	6	15	19	17	144,931	655.80
Manufacturing	8	22	26	26	231,199	720.99
Trade, Transportation & Utilities	30	164	159	158	1,125,687	540.07
Retail Trade	16	109	102	107	546,016	396.24
Other Trade, Transportation & Utilities	14	55	57	51	579,671	820.68
Education & Health Services	24	223	235	259	1,100,054	354.06
Leisure & Hospitality	16	176	168	173	662,289	295.62
Other Services	3	4	4	4	17,831	342.90
Local Government	13	257	365	376	1,988,375	459.78
State Government	8	65	67	40	401,317	538.44
Other	9	39	37	39	250,665	503.01
OUACHITA COUNTY - TOTAL	653	6,807	6,861	7,019	\$53,991,156	\$602.29
Natural Resources & Mining	36	171	171	168	1,767,122	799.60
Construction	34	206	197	187	1,842,146	720.53
Manufacturing	24	525	515	519	5,664,579	838.49
Trade, Transportation & Utilities	159	1,641	1,636	1,628	12,206,821	574.30
Wholesale Trade	29	313	315	318	3,076,322	750.44
Retail Trade	102	991	987	971	5,294,755	414.33
Transportation, Warehousing & Utilities	28	337	334	339	3,835,744	876.41
Information	6	45	43	43	461,174	812.40
Financial Activities	55	276	278	266	2,568,228	722.77
Professional & Business Services	48	549	556	547	5,109,416	713.74
Education & Health Services	178	1,267	1,278	1,313	11,271,294	674.20
Leisure & Hospitality	40	501	501	507	1,649,456	252.25
Other Services	30	136	139	137	861,783	482.70
Local Government	29	865	923	1,061	5,274,094	427.20
State Government	14	625	624	643	5,315,043	648.28

TABLE 6. COUNTY SUMMARY

North American Industry Classification System - Industry Groups	Number of Employing Units	Employment			Total Earnings Jul - Sep 2016	Average Weekly Earnings
		Jul	Aug	Sep		
PERRY COUNTY - TOTAL	141	1,036	1,183	1,204	\$8,757,042	\$590.38
Construction	17	98	100	103	929,840	712.89
Manufacturing	5	37	38	38	316,524	646.41
Trade, Transportation & Utilities	24	175	178	181	1,292,999	558.77
Retail Trade	15	143	147	150	692,680	363.29
Other Trade, Transportation & Utilities	9	32	31	31	600,319	1,473.78
Financial Activities	6	28	25	26	303,419	886.33
Professional & Business Services	14	37	39	36	393,850	811.50
Education & Health Services	35	225	216	234	1,375,455	470.24
Leisure & Hospitality	7	72	75	81	245,174	248.15
Local Government	10	198	348	361	2,002,463	509.49
State Government	8	53	54	35	373,215	606.52
Other	15	113	110	109	1,524,103	1,059.39
PHILLIPS COUNTY - TOTAL	780	5,121	5,332	5,446	\$39,786,826	\$577.49
Natural Resources & Mining	61	253	244	278	1,793,264	533.97
Construction	30	125	121	107	878,583	574.36
Manufacturing	12	356	344	348	3,498,385	770.34
Trade, Transportation & Utilities	150	1,309	1,300	1,301	9,838,182	580.65
Wholesale Trade	26	292	287	290	3,111,379	826.25
Retail Trade	84	773	769	770	4,160,809	415.31
Transportation, Warehousing & Utilities	40	244	244	241	2,565,994	812.28
Information	8	34	34	34	364,304	824.22
Financial Activities	39	200	202	199	1,780,069	683.50
Professional & Business Services	43	231	222	228	2,294,997	777.70
Education & Health Services	326	1,321	1,360	1,392	10,520,130	596.05
Leisure & Hospitality	37	329	323	335	984,189	230.11
Other Services	32	73	73	74	485,685	509.46
Local Government	27	463	685	779	4,366,363	522.90
State Government	15	427	424	371	2,982,675	563.26

TABLE 6. COUNTY SUMMARY

North American Industry Classification System - Industry Groups	Number of Employing Units	Employment			Total Earnings	Average Weekly Earnings
		Jul	Aug	Sep	Jul - Sep 2016	
PIKE COUNTY - TOTAL	255	2,271	2,420	2,426	\$17,217,678	\$558.28
Natural Resources & Mining	26	121	125	119	1,207,343	763.34
Construction	13	55	54	53	435,201	619.94
Manufacturing	17	278	277	280	1,979,213	547.00
Trade, Transportation & Utilities	63	504	498	521	3,687,842	558.79
Wholesale Trade	9	110	114	112	867,754	595.98
Retail Trade	36	334	333	344	2,053,554	468.74
Transportation, Warehousing & Utilities	18	60	51	65	766,534	1,005.07
Information	6	25	24	24	279,428	883.33
Financial Activities	24	222	220	221	2,150,478	748.51
Professional & Business Services	18	89	87	73	1,528,216	1,416.33
Education & Health Services	28	271	282	321	1,641,939	433.53
Leisure & Hospitality	26	238	227	194	802,640	281.07
Other Services	14	55	55	56	409,817	569.72
Local Government	10	262	422	441	2,318,400	475.57
State Government	10	151	149	123	777,161	423.98
POINSETT COUNTY - TOTAL	522	4,879	5,154	5,242	\$43,888,091	\$663.05
Natural Resources & Mining	71	395	402	422	4,608,912	872.51
Construction	22	97	92	90	917,772	759.12
Manufacturing	19	691	680	707	8,216,816	912.51
Trade, Transportation & Utilities	130	1,232	1,220	1,214	10,308,048	648.88
Wholesale Trade	29	369	352	352	4,826,928	1,038.12
Retail Trade	71	709	709	703	3,807,421	414.26
Transportation, Warehousing & Utilities	30	154	159	159	1,673,699	818.30
Information	5	54	52	54	531,580	766.70
Financial Activities	39	180	178	170	1,817,622	794.42
Professional & Business Services	29	171	173	178	2,680,795	1,185.14
Education & Health Services	105	843	848	856	6,296,798	570.52
Leisure & Hospitality	42	346	337	342	1,094,327	246.38
Other Services	20	55	53	58	383,051	532.51
Local Government	29	698	1,000	1,043	6,039,147	508.45
State Government	11	117	119	108	993,223	666.29

TABLE 6. COUNTY SUMMARY

North American Industry Classification System - Industry Groups	Number of Employing Units	Employment			Total Earnings	Average Weekly Earnings
		Jul	Aug	Sep	Jul - Sep 2016	
POLK COUNTY - TOTAL	487	5,364	5,730	5,775	\$41,567,209	\$568.64
Natural Resources & Mining	19	124	120	129	1,500,939	928.61
Construction	31	191	209	216	1,514,251	567.28
Manufacturing	32	1,219	1,215	1,218	9,594,735	606.29
Trade, Transportation & Utilities	127	1,075	1,084	1,077	7,184,737	512.37
Wholesale Trade	22	57	60	61	522,636	677.57
Retail Trade	73	812	808	802	4,402,310	419.45
Transportation, Warehousing & Utilities	32	206	216	214	2,259,791	819.95
Information	8	80	77	79	568,948	556.34
Financial Activities	47	235	239	228	1,939,699	637.64
Professional & Business Services	43	147	153	146	1,345,280	696.07
Education & Health Services	80	983	988	995	8,976,396	698.41
Leisure & Hospitality	37	457	491	488	1,533,160	246.38
Other Services	28	181	174	183	1,239,511	531.67
Local Government	21	375	677	723	4,197,410	545.71
State Government	14	297	303	293	1,972,143	509.64
POPE COUNTY - TOTAL	1,806	24,733	25,118	26,210	\$244,645,403	\$742.25
Natural Resources & Mining	36	729	532	324	6,285,826	915.19
Construction	157	1,368	1,438	1,707	18,861,861	964.49
Manufacturing	73	4,356	4,353	4,363	45,828,161	809.04
Trade, Transportation & Utilities	424	6,104	6,119	6,149	67,257,280	844.81
Wholesale Trade	75	578	572	570	6,122,404	821.43
Retail Trade	265	3,214	3,228	3,253	20,552,132	489.20
Transportation, Warehousing & Utilities	84	2,312	2,319	2,326	40,582,744	1,346.16
Information	20	174	169	165	1,541,953	700.46
Financial Activities	190	1,166	1,151	1,122	10,125,141	679.43
Professional & Business Services	276	1,765	1,787	1,955	21,180,991	887.58
Education & Health Services	325	3,152	3,166	3,204	28,942,919	701.44
Leisure & Hospitality	139	2,623	2,801	2,844	10,077,601	281.28
Other Services	108	560	547	549	4,068,177	566.91
Local Government	42	1,222	1,455	2,103	14,393,618	694.90
State Government	16	1,514	1,600	1,725	16,081,875	766.94

TABLE 6. COUNTY SUMMARY

North American Industry Classification System - Industry Groups	Number of Employing Units	Employment			Total Earnings	Average Weekly Earnings
		Jul	Aug	Sep	Jul - Sep 2016	
PRAIRIE COUNTY - TOTAL	256	1,333	1,423	1,483	\$10,970,048	\$597.20
Natural Resources & Mining	36	173	169	161	1,907,698	875.22
Construction	10	50	52	52	451,504	676.58
Manufacturing	6	35	34	34	217,860	488.11
Trade, Transportation & Utilities	64	361	364	375	2,805,144	588.49
Wholesale Trade	12	89	81	81	1,182,620	1,087.30
Retail Trade	34	208	218	224	1,039,727	369.13
Transportation, Warehousing & Utilities	18	64	65	70	582,797	675.84
Financial Activities	16	58	56	58	525,567	705.14
Professional & Business Services	16	72	76	81	718,063	723.61
Education & Health Services	53	249	251	260	1,707,983	518.62
Leisure & Hospitality	16	95	96	93	315,784	256.60
Local Government	15	165	255	301	1,736,289	555.73
State Government	9	38	37	31	275,631	600.07
Other	15	37	33	37	308,525	665.40
PULASKI COUNTY - TOTAL	14,322	233,580	237,184	239,722	\$2,777,454,162	\$902.13
Natural Resources & Mining	55	602	595	601	9,056,909	1,162.43
Construction	929	9,029	8,907	8,898	112,856,184	970.55
Manufacturing	332	12,701	12,641	12,524	173,010,620	1,054.39
Trade, Transportation & Utilities	3,202	48,188	48,515	48,397	523,520,909	832.62
Wholesale Trade	967	11,759	11,703	11,661	188,445,541	1,238.15
Retail Trade	1,831	25,564	25,882	25,555	189,844,824	568.96
Transportation, Warehousing & Utilities	404	10,865	10,930	11,181	145,230,544	1,016.34
Information	198	5,572	5,539	5,499	85,796,728	1,192.01
Financial Activities	1,667	16,562	16,505	16,462	269,888,987	1,257.49
Professional & Business Services	2,770	33,278	33,703	33,823	402,107,619	920.54
Education & Health Services	2,481	39,646	40,037	40,152	501,022,956	964.83
Leisure & Hospitality	1,216	23,634	23,885	23,204	105,157,828	343.13
Other Services	1,162	6,855	6,722	6,583	63,700,941	729.18
Local Government	110	10,039	11,897	14,965	143,753,779	899.00
State Government	200	27,474	28,238	28,614	387,580,702	1,060.67

TABLE 6. COUNTY SUMMARY

North American Industry Classification System - Industry Groups	Number of Employing Units	Employment			Total Earnings	Average Weekly Earnings
		Jul	Aug	Sep	Jul - Sep 2016	
RANDOLPH COUNTY - TOTAL	400	4,785	4,985	5,185	\$36,174,832	\$558.21
Natural Resources & Mining	28	177	167	187	1,865,131	810.57
Construction	26	92	90	97	730,974	604.61
Manufacturing	30	1,010	1,165	1,275	9,130,665	610.75
Trade, Transportation & Utilities	87	841	823	811	5,919,134	551.90
Wholesale Trade	17	150	144	140	1,283,341	682.39
Retail Trade	55	565	557	547	3,265,228	451.48
Transportation, Warehousing & Utilities	15	126	122	124	1,370,565	850.23
Information	5	32	32	32	338,690	814.16
Financial Activities	36	146	147	146	1,235,448	649.44
Professional & Business Services	36	174	167	166	1,084,951	493.83
Education & Health Services	66	884	890	890	6,786,107	587.85
Leisure & Hospitality	32	396	392	383	1,304,653	257.11
Other Services	19	66	66	66	418,913	488.24
Local Government	24	695	776	827	4,724,379	474.43
State Government	11	272	270	305	2,635,787	718.13
SAINT FRANCIS COUNTY - TOTAL	748	7,111	7,480	7,527	\$57,584,337	\$600.81
Natural Resources & Mining	45	216	211	258	2,021,664	681.08
Construction	42	210	202	207	2,056,778	766.79
Trade, Transportation & Utilities	156	2,103	2,097	2,054	16,233,342	599.00
Wholesale Trade	29	643	642	635	6,271,378	753.77
Retail Trade	103	1,161	1,167	1,134	6,779,431	451.90
Transportation, Warehousing & Utilities	24	299	288	285	3,182,533	842.24
Information	5	57	58	58	578,618	771.83
Financial Activities	61	248	259	249	1,963,676	599.41
Professional & Business Services	45	508	527	532	3,425,490	504.47
Education & Health Services	268	1,420	1,433	1,429	12,951,422	697.99
Leisure & Hospitality	49	659	689	668	2,165,445	247.88
Local Government	27	502	822	855	5,567,573	589.64
State Government	16	458	459	514	3,904,790	629.70
Other	34	730	723	703	6,715,539	718.80

TABLE 6. COUNTY SUMMARY

North American Industry Classification System - Industry Groups	Number of Employing Units	Employment			Total Earnings	Average Weekly Earnings
		Jul	Aug	Sep	Jul - Sep 2016	
SALINE COUNTY - TOTAL	1,982	22,088	23,298	23,572	\$196,833,864	\$658.71
Natural Resources & Mining	14	64	62	59	637,972	795.81
Construction	263	2,088	2,083	2,127	22,789,745	835.05
Manufacturing	82	1,351	1,356	1,345	15,430,222	878.78
Trade, Transportation & Utilities	454	5,523	5,478	5,410	45,161,265	635.05
Wholesale Trade	114	576	573	561	7,549,001	1,018.76
Retail Trade	275	4,468	4,431	4,370	32,304,933	561.83
Transportation, Warehousing & Utilities	65	479	474	479	5,307,331	855.29
Information	14	169	166	162	1,846,052	857.17
Financial Activities	201	719	713	725	8,160,091	873.02
Professional & Business Services	263	1,536	1,558	1,547	15,401,370	765.82
Education & Health Services	312	4,285	4,265	4,331	38,908,222	697.06
Leisure & Hospitality	181	3,220	3,302	3,332	12,171,269	285.04
Other Services	153	875	837	786	6,430,572	594.07
Local Government	30	1,339	2,559	2,849	22,402,802	766.25
State Government	15	919	919	899	7,494,282	631.88
SCOTT COUNTY - TOTAL	181	2,910	2,980	3,052	\$19,626,512	\$506.51
Natural Resources & Mining	17	164	164	171	1,581,043	731.17
Trade, Transportation & Utilities	33	434	435	438	3,230,385	570.37
Wholesale Trade	6	82	80	83	919,884	866.45
Retail Trade	20	287	291	293	1,562,938	414.10
Transportation, Warehousing & Utilities	7	65	64	62	747,563	903.22
Financial Activities	19	69	70	69	476,066	528.18
Professional & Business Services	11	82	80	79	578,728	554.16
Education & Health Services	43	316	325	327	2,911,588	694.12
Leisure & Hospitality	15	120	119	124	473,289	300.88
Other Services	10	34	35	31	269,585	622.12
Local Government	6	425	483	540	2,463,337	392.58
State Government	7	44	43	40	311,240	565.55
Other	20	1,222	1,226	1,233	7,331,251	459.61

TABLE 6. COUNTY SUMMARY

North American Industry Classification System - Industry Groups	Number of Employing Units	Employment			Total Earnings	Average Weekly Earnings
		Jul	Aug	Sep	Jul - Sep 2016	
SEARCY COUNTY - TOTAL	169	1,479	1,602	1,513	\$9,968,086	\$500.72
Construction	7	10	11	11	93,928	677.37
Manufacturing	18	235	222	197	1,248,189	440.43
Trade, Transportation & Utilities	40	247	242	236	1,535,382	488.72
Wholesale Trade	8	48	47	46	331,737	542.94
Retail Trade	26	184	180	174	1,002,802	430.14
Transportation, Warehousing & Utilities	6	15	15	16	200,843	1,007.57
Financial Activities	12	92	81	59	455,495	453.08
Education & Health Services	41	307	316	353	2,318,484	548.19
Leisure & Hospitality	12	153	155	149	531,536	268.41
Other Services	5	10	9	8	59,838	511.44
Local Government	10	172	329	320	1,829,487	514.24
State Government	7	95	95	57	602,526	562.93
Other	17	158	142	123	1,293,221	705.52
SEBASTIAN COUNTY - TOTAL	3,671	64,247	65,993	66,174	\$661,201,596	\$776.85
Natural Resources & Mining	50	576	565	559	9,107,553	1,236.32
Construction	252	2,525	2,475	2,461	25,992,477	803.95
Manufacturing	185	11,922	11,905	11,906	145,987,778	942.81
Trade, Transportation & Utilities	904	13,446	13,499	13,448	122,913,732	702.22
Wholesale Trade	244	2,625	2,627	2,626	33,779,286	989.49
Retail Trade	541	8,071	8,141	8,111	51,394,890	487.62
Transportation, Warehousing & Utilities	119	2,750	2,731	2,711	37,739,556	1,063.13
Information	40	961	956	927	14,971,599	1,214.83
Financial Activities	397	2,373	2,379	2,393	27,195,609	878.36
Professional & Business Services	579	8,780	8,964	8,924	84,864,670	734.37
Education & Health Services	579	11,424	11,412	11,438	142,680,488	960.68
Leisure & Hospitality	347	6,464	6,487	6,405	25,741,136	306.90
Other Services	277	1,344	1,314	1,331	9,738,028	563.36
Local Government	39	2,827	4,419	4,633	35,544,886	690.52
State Government	22	1,605	1,618	1,749	16,463,640	764.14

TABLE 6. COUNTY SUMMARY

North American Industry Classification System - Industry Groups	Number of Employing Units	Employment			Total Earnings Jul - Sep 2016	Average Weekly Earnings
		Jul	Aug	Sep		
SEVIER COUNTY - TOTAL	319	4,703	4,787	4,868	\$36,879,338	\$592.74
Natural Resources & Mining	16	213	215	215	1,736,186	623.11
Construction	16	175	163	176	2,142,783	962.04
Trade, Transportation & Utilities	98	880	876	886	7,096,433	619.85
Wholesale Trade	13	110	108	107	1,993,926	1,415.81
Retail Trade	68	685	687	689	4,016,627	449.74
Transportation, Warehousing & Utilities	17	85	81	90	1,085,880	978.86
Financial Activities	26	213	206	201	1,962,789	730.57
Professional & Business Services	26	111	113	107	709,608	494.73
Education & Health Services	56	517	517	526	4,061,610	600.83
Leisure & Hospitality	25	320	321	321	894,750	214.64
Local Government	12	715	846	913	6,020,169	561.55
State Government	8	151	140	154	1,179,629	611.74
Other	36	1,408	1,390	1,369	11,075,381	613.36
SHARP COUNTY - TOTAL	387	3,591	3,702	3,892	\$26,705,873	\$551.00
Construction	26	146	148	151	1,403,672	727.92
Manufacturing	19	174	167	168	1,099,711	498.58
Trade, Transportation & Utilities	80	1,071	1,082	1,022	8,926,532	648.81
Wholesale Trade	12	38	40	37	228,127	457.78
Retail Trade	57	663	668	664	3,453,499	399.48
Transportation, Warehousing & Utilities	11	370	374	321	5,244,906	1,136.49
Information	6	32	36	37	396,598	871.64
Financial Activities	34	176	179	181	1,863,433	802.28
Professional & Business Services	36	134	129	141	1,140,801	651.64
Education & Health Services	89	764	799	814	5,691,664	552.57
Leisure & Hospitality	38	444	459	434	1,479,678	255.40
Local Government	24	453	508	757	3,755,211	504.42
State Government	8	60	60	52	492,678	661.02
Other	27	137	135	135	455,895	258.49

TABLE 6. COUNTY SUMMARY

North American Industry Classification System - Industry Groups	Number of Employing Units	Employment			Total Earnings	Average Weekly Earnings
		Jul	Aug	Sep	Jul - Sep 2016	
STONE COUNTY - TOTAL	270	2,464	2,523	2,551	\$16,754,514	\$512.92
Natural Resources & Mining	5	92	12	10	87,640	177.41
Construction	16	38	37	39	237,568	480.91
Manufacturing	20	232	233	224	1,397,223	467.98
Trade, Transportation & Utilities	70	606	598	589	4,022,551	517.73
Wholesale Trade	6	37	37	34	282,374	603.36
Retail Trade	53	530	523	519	3,262,814	478.98
Transportation, Warehousing & Utilities	11	39	38	36	477,363	974.87
Financial Activities	25	138	135	128	1,528,789	879.79
Professional & Business Services	11	35	23	25	162,644	452.21
Education & Health Services	56	518	540	577	4,518,060	637.69
Leisure & Hospitality	30	382	387	380	1,263,344	253.73
Local Government	10	226	365	400	2,385,729	555.55
State Government	8	143	140	126	826,349	466.25
Other	19	54	53	53	324,617	468.20
UNION COUNTY - TOTAL	1,300	16,782	17,417	17,668	\$195,137,113	\$868.21
Natural Resources & Mining	89	389	401	382	4,607,280	907.18
Construction	83	1,490	1,474	1,499	20,211,906	1,045.10
Manufacturing	51	3,151	3,157	3,140	50,299,085	1,228.56
Trade, Transportation & Utilities	314	3,525	3,505	3,493	32,304,369	708.43
Wholesale Trade	65	513	501	513	6,393,627	966.24
Retail Trade	186	2,172	2,163	2,143	13,158,225	468.74
Transportation, Warehousing & Utilities	63	840	841	837	12,752,517	1,168.74
Information	9	117	117	118	1,027,443	673.59
Financial Activities	102	601	614	602	6,871,605	872.73
Professional & Business Services	132	1,867	1,855	1,830	32,395,938	1,346.54
Education & Health Services	281	2,367	2,402	2,435	22,809,691	730.67
Leisure & Hospitality	89	1,321	1,321	1,302	5,063,580	296.28
Other Services	101	477	463	476	3,245,162	528.87
Local Government	32	933	1,526	1,870	11,431,863	609.41
State Government	17	544	582	521	4,869,191	682.25

TABLE 6. COUNTY SUMMARY

North American Industry Classification System - Industry Groups	Number of Employing Units	Employment			Total Earnings	Average Weekly Earnings
		Jul	Aug	Sep	Jul - Sep 2016	
VAN BUREN COUNTY - TOTAL	355	3,252	3,366	3,553	\$27,391,443	\$621.48
Natural Resources & Mining	10	152	149	148	2,987,667	1,535.55
Construction	40	146	143	148	1,180,021	623.14
Manufacturing	7	110	109	136	904,511	587.98
Trade, Transportation & Utilities	99	906	890	892	8,347,623	716.66
Wholesale Trade	13	91	94	84	1,110,592	952.75
Retail Trade	60	615	600	613	3,442,762	434.62
Transportation, Warehousing & Utilities	26	200	196	195	3,794,269	1,481.56
Information	5	31	30	30	313,338	794.60
Financial Activities	33	119	114	114	1,081,605	719.31
Professional & Business Services	32	145	151	143	1,071,059	563.02
Education & Health Services	63	753	750	772	5,413,601	549.14
Leisure & Hospitality	26	409	384	377	1,501,511	296.16
Other Services	22	65	64	62	421,179	508.88
Local Government	11	358	524	681	3,723,963	549.82
State Government	7	58	58	50	445,365	619.14
WASHINGTON COUNTY - TOTAL	5,894	96,925	100,574	102,438	\$1,104,408,598	\$849.72
Natural Resources & Mining	41	310	307	296	3,639,380	919.89
Construction	521	4,926	4,950	4,940	61,227,647	953.66
Manufacturing	220	12,362	12,293	12,324	133,313,658	831.95
Trade, Transportation & Utilities	1,366	23,313	23,321	23,450	226,923,164	747.20
Wholesale Trade	375	3,756	3,769	3,754	62,815,607	1,285.21
Retail Trade	788	12,849	12,884	12,941	90,667,905	541.02
Transportation, Warehousing & Utilities	203	6,708	6,668	6,755	73,439,652	841.87
Information	80	893	882	874	10,620,508	925.21
Financial Activities	656	3,601	3,594	3,580	43,542,585	932.56
Professional & Business Services	1,058	12,469	12,635	12,734	233,922,708	1,426.67
Education & Health Services	821	14,638	14,774	15,046	177,862,534	923.24
Leisure & Hospitality	656	11,879	12,477	12,720	50,134,626	312.05
Other Services	393	1,977	1,994	2,049	16,009,066	613.69
Local Government	60	4,375	6,560	7,999	62,190,267	757.98
State Government	22	6,182	6,787	6,426	85,022,455	1,011.63

TABLE 6. COUNTY SUMMARY

North American Industry Classification System - Industry Groups	Number of Employing Units	Employment			Total Earnings Jul - Sep 2016	Average Weekly Earnings
		Jul	Aug	Sep		
WHITE COUNTY - TOTAL	1,800	22,278	23,460	23,939	\$208,890,635	\$691.84
Natural Resources & Mining	57	396	392	388	6,438,384	1,263.42
Construction	155	1,072	1,041	1,076	10,649,128	770.61
Manufacturing	60	2,017	2,017	2,017	24,350,638	928.67
Trade, Transportation & Utilities	485	6,266	6,233	6,225	52,942,120	652.50
Wholesale Trade	89	580	565	563	6,190,019	836.34
Retail Trade	307	3,608	3,588	3,549	22,885,282	491.50
Transportation, Warehousing & Utilities	89	2,078	2,080	2,113	23,866,819	878.29
Information	17	145	142	147	1,220,652	649.05
Financial Activities	174	861	864	853	9,571,496	856.79
Professional & Business Services	197	1,293	1,320	1,301	10,544,909	621.73
Education & Health Services	320	5,334	5,361	5,611	56,747,030	803.11
Leisure & Hospitality	156	2,558	2,576	2,574	8,816,442	263.95
Other Services	116	504	512	497	4,182,167	637.88
Local Government	47	1,353	2,495	2,702	18,825,685	663.27
State Government	16	479	507	548	4,601,984	692.31
WOODRUFF COUNTY - TOTAL	208	1,676	1,784	1,806	\$14,395,854	\$630.86
Natural Resources & Mining	28	140	135	147	1,118,551	611.68
Construction	8	45	45	41	392,994	692.30
Manufacturing	7	225	223	214	2,293,797	799.60
Trade, Transportation & Utilities	47	403	397	407	3,452,099	660.02
Wholesale Trade	11	141	140	151	1,793,064	957.83
Retail Trade	27	195	187	185	823,508	335.17
Transportation, Warehousing & Utilities	9	67	70	71	835,527	926.99
Financial Activities	11	74	73	76	632,873	654.92
Education & Health Services	65	238	240	254	1,934,417	609.84
Leisure & Hospitality	11	78	81	80	257,791	248.91
Local Government	9	310	424	434	2,722,648	537.93
State Government	6	43	46	29	310,206	606.66
Other	16	120	120	124	1,280,478	811.80

TABLE 6. COUNTY SUMMARY

North American Industry Classification System - Industry Groups	Number of Employing Units	Employment			Total Earnings	Average Weekly Earnings
		Jul	Aug	Sep	Jul - Sep 2016	
YELL COUNTY - TOTAL	407	5,912	6,147	6,388	\$44,392,813	\$555.35
Natural Resources & Mining	26	209	221	217	2,129,667	759.60
Construction	37	212	192	196	1,924,887	740.34
Manufacturing	21	2,348	2,346	2,366	16,627,370	543.50
Trade, Transportation & Utilities	74	712	731	732	5,121,238	543.37
Wholesale Trade	13	42	43	49	248,681	428.27
Retail Trade	46	492	495	495	2,529,319	393.85
Transportation, Warehousing & Utilities	15	178	193	188	2,343,238	967.35
Financial Activities	29	154	154	153	1,525,132	763.46
Professional & Business Services	35	284	277	277	2,415,940	665.30
Education & Health Services	104	757	793	780	5,106,639	505.77
Leisure & Hospitality	25	313	318	310	915,857	224.60
Local Government	25	715	909	1,164	6,825,139	564.93
State Government	12	79	80	71	551,473	553.32
Other	19	129	126	122	1,249,471	764.83
STATEWIDE COUNTY - TOTAL	9,076	29,029	28,932	31,509	\$459,563,489	\$1,185.35
Natural Resources & Mining	94	304	328	315	4,124,830	1,005.16
Construction	772	3,836	3,617	3,538	54,214,752	1,138.30
Manufacturing	40	136	138	135	3,735,861	2,107.88
Trade, Transportation & Utilities	3,016	7,524	7,625	7,750	166,928,500	1,682.26
Wholesale Trade	2,614	6,220	6,270	6,359	148,165,362	1,814.00
Retail Trade	142	356	349	357	4,986,636	1,083.58
Transportation, Warehousing & Utilities	260	948	1,006	1,034	13,776,502	1,063.99
Information	255	544	524	543	11,348,378	1,625.61
Financial Activities	584	1,432	1,482	1,466	24,033,532	1,266.26
Professional & Business Services	3,480	11,596	11,583	14,022	153,181,047	950.23
Education & Health Services	429	2,166	2,172	2,199	23,966,370	846.06
Leisure & Hospitality	87	94	86	75	888,371	803.96
State Government	14	754	746	748	8,272,819	849.25
Other	305	643	631	718	8,869,029	1,028.79

Note: Statewide classification includes employment and payroll data for employers that have not provided a physical location for each employing unit. This section also includes employers without a physical location in Arkansas.

TABLE 7. FEDERAL GOVERNMENT EMPLOYMENT AND EARNINGS IN ARKANSAS

North American Industry Classification System - Industry Groups	Number of Employing Units	Employment			Total Earnings Jul - Sep 2016	Average Weekly Earnings
		Jul	Aug	Sep		
TOTAL	1,164	20,332	20,312	20,218	\$357,625,263	\$1,356.00
Trade, Transportation & Utilities	597	5,518	5,557	5,580	73,861,885	1,023.42
Information	2	41	42	43	682,058	1,249.19
Financial Activities	14	107	108	103	2,351,121	1,706.18
Professional & Business Services	34	818	803	777	15,685,629	1,509.49
Education & Health Services	18	5,254	5,244	5,203	105,715,357	1,553.78
Leisure & Hospitality	23	341	333	336	3,705,793	846.72
Other Services	1	1	1	1	7,991	614.69
Public Administration	475	8,252	8,224	8,175	155,615,429	1,456.79

TABLE 8. LOCAL WORKFORCE DEVELOPMENT AREA SUMMARY

North American Industry Classification System - Industry Groups	Number of Employing Units	Employment			Total Earnings	Average Weekly Earnings
		Jul	Aug	Sep	Jul - Sep 2016	
CENTRAL LOCAL WORKFORCE DEVELOPMENT AREA	6,666	77,571	79,830	81,688	\$714,346,790	\$689.49
Natural Resources & Mining	226	1,245	1,198	1,215	15,427,887	973.29
Construction	712	5,907	5,862	5,873	63,504,743	830.68
Manufacturing	231	6,509	6,462	6,428	81,396,208	968.28
Trade, Transportation & Utilities	1,568	16,618	16,527	16,464	130,216,023	605.73
Wholesale Trade	359	1,775	1,751	1,711	22,515,641	992.16
Retail Trade	949	13,176	13,126	13,064	87,977,843	515.74
Transportation, Warehousing & Utilities	260	1,667	1,650	1,689	19,722,539	909.18
Information	58	592	594	568	6,607,146	869.29
Financial Activities	693	2,954	2,963	2,988	33,801,941	875.96
Professional & Business Services	877	8,143	8,189	8,099	102,275,840	966.07
Education & Health Services	1,073	13,078	13,148	13,334	117,849,241	687.46
Leisure & Hospitality	592	10,513	10,638	10,670	38,510,549	279.28
Other Services	439	1,927	1,901	1,933	14,632,010	586.12
Local Government	131	5,796	8,121	9,542	67,654,932	665.53
State Government	66	4,289	4,227	4,574	42,470,270	748.73

Note: Pulaski County is not included in the Central Local Workforce Development Area. Please refer to Page 51 for information on Pulaski County.

Central Local Workforce Development Area includes these counties: Faulkner, Lonoke, Monroe, Prairie, and Saline.

EASTERN LOCAL WORKFORCE DEVELOPMENT AREA	3,565	34,601	35,515	36,611	\$293,443,238	\$634.49
Natural Resources & Mining	236	1,200	1,196	1,356	9,985,631	614.17
Construction	151	999	873	818	9,771,195	838.25
Trade, Transportation & Utilities	787	9,856	9,391	9,358	81,620,869	658.47
Wholesale Trade	158	2,173	2,127	2,114	23,978,440	862.72
Retail Trade	446	5,380	4,956	4,887	29,762,118	451.17
Transportation, Warehousing & Utilities	183	2,303	2,308	2,357	27,880,311	923.35
Financial Activities	258	1,275	1,285	1,261	11,317,284	683.51
Professional & Business Services	256	2,152	2,206	2,165	18,316,412	647.99
Education & Health Services	1,167	6,273	6,338	6,469	51,099,536	618.04
Leisure & Hospitality	248	3,783	3,837	3,778	15,691,811	317.70
Local Government	127	2,602	3,949	4,823	31,498,863	639.09
State Government	62	2,120	2,098	2,134	17,570,863	638.35
Other	273	4,341	4,342	4,449	46,570,774	818.39

Eastern Local Workforce Development Area includes these counties: Crittenden, Cross, Lee, Phillips, and Saint Francis.

TABLE 8. LOCAL WORKFORCE DEVELOPMENT AREA SUMMARY

North American Industry Classification System - Industry Groups	Number of Employing Units	Employment			Total Earnings	Average Weekly Earnings
		Jul	Aug	Sep	Jul - Sep 2016	
NORTH CENTRAL LOCAL WORKFORCE DEVELOPMENT AREA	5,498	63,878	66,164	68,188	\$557,482,468	\$648.99
Construction	423	2,463	2,444	2,481	24,202,529	755.98
Manufacturing	225	8,138	8,047	8,076	84,103,108	799.98
Trade, Transportation & Utilities	1,393	15,466	15,420	15,304	128,393,187	641.46
Retail Trade	902	9,647	9,619	9,551	59,239,209	474.39
Other Trade, Transportation & Utilities	491	5,819	5,801	5,753	69,153,978	918.59
Financial Activities	511	2,555	2,569	2,527	27,305,499	823.59
Education & Health Services	1,033	13,856	14,043	14,483	132,378,628	720.80
Leisure & Hospitality	485	6,731	6,715	6,657	23,239,396	266.77
Local Government	226	4,900	7,179	8,884	52,946,003	582.85
State Government	103	2,731	2,767	2,824	24,053,186	667.00
Other	1,099	7,038	6,980	6,952	60,860,932	669.76

North Central Local Workforce Development Area includes these counties: Cleburne, Fulton, Independence, IZard, Jackson, Sharp, Stone, Van Buren, White, and Woodruff.

NORTHEAST LOCAL WORKFORCE DEVELOPMENT AREA	6,586	95,074	98,211	100,851	\$913,218,507	\$716.48
Natural Resources & Mining	453	2,251	2,217	2,409	20,530,289	688.93
Construction	454	3,937	4,009	4,067	48,985,372	941.01
Manufacturing	303	19,441	19,672	19,792	244,882,753	959.37
Trade, Transportation & Utilities	1,742	19,502	19,502	19,525	159,748,713	629.86
Wholesale Trade	372	3,417	3,346	3,339	41,234,813	941.96
Retail Trade	1,029	12,726	12,804	12,757	78,211,046	471.41
Transportation, Warehousing & Utilities	341	3,359	3,352	3,429	40,302,854	917.22
Financial Activities	565	3,235	3,255	3,226	34,710,553	824.43
Professional & Business Services	674	7,011	7,177	7,278	54,706,785	588.12
Education & Health Services	1,136	16,504	16,641	16,888	180,878,840	834.27
Leisure & Hospitality	548	9,072	9,258	9,415	33,725,504	280.51
Local Government	214	7,719	9,969	11,500	74,737,340	590.90
State Government	102	4,167	4,312	4,508	41,832,305	743.33
Other	395	2,235	2,199	2,243	18,480,053	638.70

Northeast Local Workforce Development Area includes these counties: Clay, Craighead, Greene, Lawrence, Mississippi, Poinsett, and Randolph.

TABLE 8. LOCAL WORKFORCE DEVELOPMENT AREA SUMMARY

North American Industry Classification System - Industry Groups	Number of Employing Units	Employment			Total Earnings	Average Weekly Earnings
		Jul	Aug	Sep	Jul - Sep 2016	
NORTHWEST LOCAL WORKFORCE DEVELOPMENT AREA	15,781	255,716	262,722	268,262	\$2,876,381,979	\$843.75
Natural Resources & Mining	131	1,449	1,424	1,389	17,644,582	955.38
Trade, Transportation & Utilities	3,860	59,749	60,051	60,498	629,316,723	805.48
Retail Trade	2,141	32,073	32,078	32,122	216,187,076	518.21
Other Trade, Transportation & Utilities	1,719	27,676	27,973	28,376	413,129,647	1,134.63
Information	206	2,451	2,421	2,426	31,098,104	983.35
Professional & Business Services	2,622	48,143	48,499	48,493	815,297,682	1,296.35
Education & Health Services	2,251	32,649	32,988	33,695	351,924,613	817.60
Leisure & Hospitality	1,678	29,589	30,336	30,520	125,507,436	320.23
Other Services	1,000	4,863	4,910	4,935	39,309,125	616.76
Local Government	304	13,469	18,178	22,496	168,440,482	717.93
State Government	109	8,397	9,013	8,855	105,747,248	929.12
Other	3,620	54,957	54,902	54,955	592,095,984	829.04

Northwest Local Workforce Development Area includes these counties: Baxter, Benton, Boone, Carroll, Madison, Marion, Newton, Searcy, and Washington.

SOUTHEAST LOCAL WORKFORCE DEVELOPMENT AREA	6,122	65,057	67,602	69,511	\$620,695,365	\$708.50
Natural Resources & Mining	429	2,447	2,428	2,520	23,901,173	745.86
Construction	305	2,137	2,158	2,131	23,135,776	830.85
Manufacturing	199	14,174	14,275	14,441	182,362,830	981.20
Trade, Transportation & Utilities	1,262	12,374	12,416	12,323	100,369,484	624.10
Retail Trade	751	7,691	7,758	7,642	46,023,621	459.96
Other Trade, Transportation & Utilities	511	4,683	4,658	4,681	54,345,863	894.41
Financial Activities	415	2,438	2,429	2,391	25,398,940	807.56
Education & Health Services	2,040	10,602	10,736	10,984	93,027,974	664.19
Other Services	310	1,196	1,160	1,171	8,752,481	572.67
Local Government	206	5,604	7,643	8,981	57,998,356	602.13
State Government	137	5,798	5,899	5,896	55,352,233	726.06
Other	819	8,287	8,458	8,673	50,396,118	457.54

Southeast Local Workforce Development Area includes these counties: Arkansas, Ashley, Bradley, Chicot, Cleveland, Desha, Drew, Grant, Jefferson, and Lincoln.

TABLE 8. LOCAL WORKFORCE DEVELOPMENT AREA SUMMARY

North American Industry Classification System - Industry Groups	Number of Employing Units	Employment			Total Earnings	Average Weekly Earnings
		Jul	Aug	Sep	Jul - Sep 2016	
SOUTHWEST LOCAL WORKFORCE DEVELOPMENT AREA	5,702	74,940	76,280	78,303	\$730,422,613	\$734.39
Natural Resources & Mining	344	2,314	2,320	2,279	25,052,888	836.31
Manufacturing	235	19,142	18,987	18,995	249,699,515	1,008.73
Trade, Transportation & Utilities	1,378	15,111	14,992	14,976	125,897,549	644.50
Wholesale Trade	238	1,940	1,906	1,929	22,874,704	914.07
Retail Trade	837	8,925	8,891	8,824	51,838,221	449.05
Transportation, Warehousing & Utilities	303	4,246	4,195	4,223	51,184,624	932.71
Information	52	413	413	411	4,711,048	878.87
Professional & Business Services	462	4,475	4,422	4,321	52,023,642	908.27
Education & Health Services	1,235	9,573	9,706	9,994	79,247,979	624.74
Leisure & Hospitality	409	5,882	5,936	6,021	21,047,692	272.28
Other Services	366	1,718	1,713	1,724	11,077,906	495.91
Local Government	253	6,614	8,181	10,077	62,461,935	579.54
State Government	142	3,652	3,650	3,493	32,923,609	703.82
Other	826	6,046	5,960	6,012	66,278,850	848.88

Southwest Local Workforce Development Area includes these counties: Calhoun, Columbia, Dallas, Hempstead, Howard, Lafayette, Little River, Miller, Nevada, Ouachita, Sevier, and Union

WEST CENTRAL LOCAL WORKFORCE DEVELOPMENT AREA	8,184	100,917	102,947	106,115	\$901,967,739	\$671.49
Construction	738	4,516	4,541	4,871	\$49,987,616	828.23
Manufacturing	338	16,009	15,950	16,014	162,859,036	783.42
Trade, Transportation & Utilities	1,831	21,531	21,629	21,602	189,160,748	674.04
Wholesale Trade	311	1,920	1,914	1,927	23,144,912	927.12
Retail Trade	1,226	14,247	14,317	14,246	90,952,709	490.28
Transportation, Warehousing & Utilities	294	5,364	5,398	5,429	75,063,127	1,069.87
Financial Activities	811	3,957	3,956	3,889	39,907,785	780.33
Professional & Business Services	936	7,500	7,517	7,768	69,084,779	699.70
Education & Health Services	1,526	16,750	16,819	17,097	165,142,195	752.18
Leisure & Hospitality	793	13,041	13,114	12,932	53,480,206	315.75
Local Government	227	7,102	8,920	11,462	78,159,659	656.27
State Government	125	5,060	5,260	5,496	47,578,867	694.22
Other	859	5,451	5,241	4,984	46,606,848	686.11

West Central Local Workforce Development Area includes these counties: Clark, Conway, Garland, Hot Spring, Johnson, Montgomery, Perry, Pike, Pope, and Yell

TABLE 8. LOCAL WORKFORCE DEVELOPMENT AREA SUMMARY

North American Industry Classification System - Industry Groups	Number of Employing Units	Employment			Total Earnings	Average Weekly Earnings
		Jul	Aug	Sep	Jul - Sep 2016	
WESTERN LOCAL WORKFORCE DEVELOPMENT AREA	6,446	100,289	104,029	104,421	\$962,243,932	\$719.24
Natural Resources & Mining	162	1,384	1,371	1,382	19,329,205	1,078.22
Trade, Transportation & Utilities	1,562	22,790	22,905	22,810	197,616,867	665.70
Wholesale Trade	372	3,657	3,682	3,680	45,962,286	962.58
Retail Trade	920	12,579	12,711	12,662	79,032,890	480.56
Transportation, Warehousing & Utilities	270	6,554	6,512	6,468	72,621,691	857.93
Financial Activities	658	3,454	3,471	3,464	36,652,530	814.16
Professional & Business Services	877	10,915	11,125	11,098	103,905,350	723.58
Education & Health Services	1,054	15,623	15,660	15,685	177,173,379	870.51
Leisure & Hospitality	552	9,406	9,491	9,361	35,729,315	291.78
Other Services	437	2,156	2,101	2,124	15,898,181	574.96
Local Government	150	5,661	9,003	9,553	66,129,785	630.17
State Government	76	2,775	2,794	2,895	24,811,507	676.48
Other	918	26,125	26,108	26,049	284,997,813	840.15

Western Local Workforce Development Area includes these counties: Crawford, Franklin, Logan, Polk, Scott, and Sebastian