

Arkansas Covered  
Employment  
& Earnings



Annual  
2015



**COVERED EMPLOYMENT AND EARNINGS  
STATE OF ARKANSAS  
ANNUAL 2015**

**ASA HUTCHINSON, GOVERNOR  
STATE OF ARKANSAS**

**DARYL E. BASSETT, DIRECTOR  
DEPARTMENT OF WORKFORCE SERVICES**

**PUBLISHED BY  
LABOR MARKET INFORMATION & ANALYSIS  
BUREAU OF LABOR STATISTICS PROGRAMS  
POST OFFICE BOX 2981  
LITTLE ROCK, ARKANSAS 72203-2981  
SUSAN PRICE, BLS PROGRAMS MANAGER  
TELEPHONE (501) 682-3103**

**STATE OF ARKANSAS WEBPAGE: <http://www.arkansas.gov>**

**DEPARTMENT OF WORKFORCE SERVICES WEBPAGE: <http://www.arkansas.gov/esd/>**

**WEBPAGE FOR LABOR MARKET INFORMATION: <http://www.discover.arkansas.gov>**

**RELEASED: SEPTEMBER 2016**



## TABLE OF CONTENTS

	Page
Description of Data	1
Industry Classification	1
Definition of Covered Employment and Earnings	2
Federal Government	2
County Classification	2
Significant Developments During Calendar Year 2015	3

## GRAPHS AND TABLES

Graph 1	Average Total Covered Employment for Selected Years, Arkansas	7
Graph 2	Total Covered Earnings, by Calendar Quarter for Selected Years, Arkansas	8
Table 1	Annual Comparison of Covered Employment and Wages, by Industry	5
Table 2	Total Covered Employment in Arkansas, 2008 – 2015	6
Table 3	Total Covered Earnings, 2008 – 2015	9
Table 4	Total Taxable Earnings, 2008 – 2015	10
Table 5	State Summary – Employment and Total Earnings, by Industry, Calendar Year 2015	11
Table 6	County Summary – Employment and Total Earnings, by Industry, Calendar Year 2015	23
Table 7	Federal Government Employment and Total Earnings in Arkansas, Calendar Year 2015	60
Table 8	Workforce Investment Area – Employment and Total Earnings, by Industry, Calendar Year 2015	61



EMPLOYMENT AND EARNINGS  
UNDER THE ARKANSAS EMPLOYMENT SECURITY LAW  
ANNUAL 2015

**DESCRIPTION AND CLASSIFICATION OF DATA**

This publication contains covered employment and payroll data by industry and county for the Calendar Year 2015 and a record for total covered employment by month, quarterly payroll data, average weekly earnings, and total taxable earnings for 2008 through 2015. These data are compiled from quarterly contributions and wage reports submitted by employers subject to the Arkansas Employment Security Law.

Employment data have been tabulated for each month of the quarter by industry under the **North American Industry Classification System** (NAICS) by state, county, and workforce area. Payroll data represent the total wages paid during the quarter and are classified by industry for the state and by publishable industry groups for each county and workforce area.

Due to industry classification revisions, previously published data will not always be comparable with current data. For this reason, comparisons should not be made between the same industries under different revisions. For more information, visit the NAICS home page at <http://www.census.gov/naics>.

Industry Classification Revisions

- SIC (Standard Industrial Classification) 1987 to NAICS 2002
- NAICS 2002 to NAICS 2007
- NAICS 2007 to NAICS 2012

The tabulation of this data is a joint effort in conjunction with the United States Bureau of Labor Statistics. Data included in this publication are subject to revisions. Revisions are typically reflected in the Annual Covered Employment and Earnings publication.

## **DEFINITION OF COVERED EMPLOYMENT AND EARNINGS**

Covered Employment is the total number of workers employed by establishments subject to the Arkansas Employment Security Law that worked or received pay for the payroll period including the 12<sup>th</sup> of the month. Earnings include all wages paid to any covered employee by their employer including salaries, bonuses, commissions, fees, fringe benefits, sick pay made directly to employees or dependents, deferred compensation, and reported tips. These wages include both taxable and nontaxable wages. Only the first \$12,000 paid to each worker by an employer in the calendar year is taxable under the Arkansas Employment Security Law.

An Arkansas state unemployment account is required of any entity meeting the definition of an employer. As described by Arkansas Department of Workforce Services Law, the definition of an employer includes, but is not limited to, a sole proprietorship, partnership, corporation, associations, trust, estate, and receiver or trustee in bankruptcy. The entity must employ one or more individuals for ten or more days in a calendar year, whether or not the days are consecutive.

Currently excluded from coverage is employment covered by the Railroad Unemployment Insurance Act, some domestic service workers, employees of small agricultural establishments, self-employed workers, unpaid family workers, insurance and real estate agents paid only on a commission basis, and employees of churches and religious organizations except separately incorporated schools.

Civilian federal workers are covered by Unemployment Compensation for Federal Employees (UCFE).

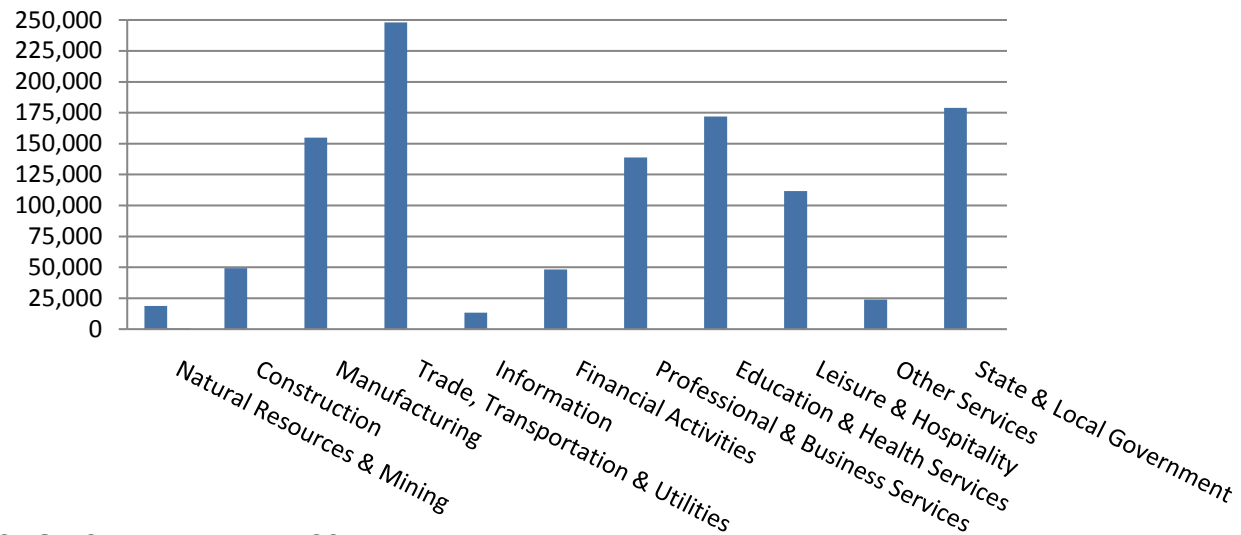


## SIGNIFICANT DEVELOPMENTS DURING CALENDAR YEAR 2015

### AVERAGE EMPLOYMENT CHANGES

Covered employment averaged 1,157,694 during the Calendar Year 2015 (see Table 1, page 5), an increase of 20,391 from the previous year. The greatest employment gain occurred in Trade, Transportation & Utilities (+6,629). The largest annual loss occurred in State and Local Government (-1,134).

### Average Covered Employment by NAICS



### EMPLOYMENT CHANGES FOR CALENDAR YEAR 2015

Seven of the eleven major industry sectors recorded over-the-year employment gains (see Table 1). The increase in Trade, Transportation & Utilities brought the sector's employment average to 248,067; this growth was mainly due to the expansion in Retail Trade. The Professional & Business Services subsector had an average of 138,722 jobs, an increase of 4,960 from 2014. Jobs in Leisure & Hospitality grew to 111,709. This increase can be attributed mainly to Accommodation & Food Services which expanded by 3,819 jobs. Education & Health Services sectors gained 3,180 to total 172,026 employees. Most of the growth occurred in Health Care & Social Assistance.

Four major industry sectors experienced over-the-year losses. State and Local Government had the most significant decline in average employment (-1,319). The other three sectors had minor decreases over-the-year, Natural Resources and Mining (-955), Information (-384) and Other Services (-147).

## EMPLOYMENT CHANGES FOR CALENDAR YEAR 2015

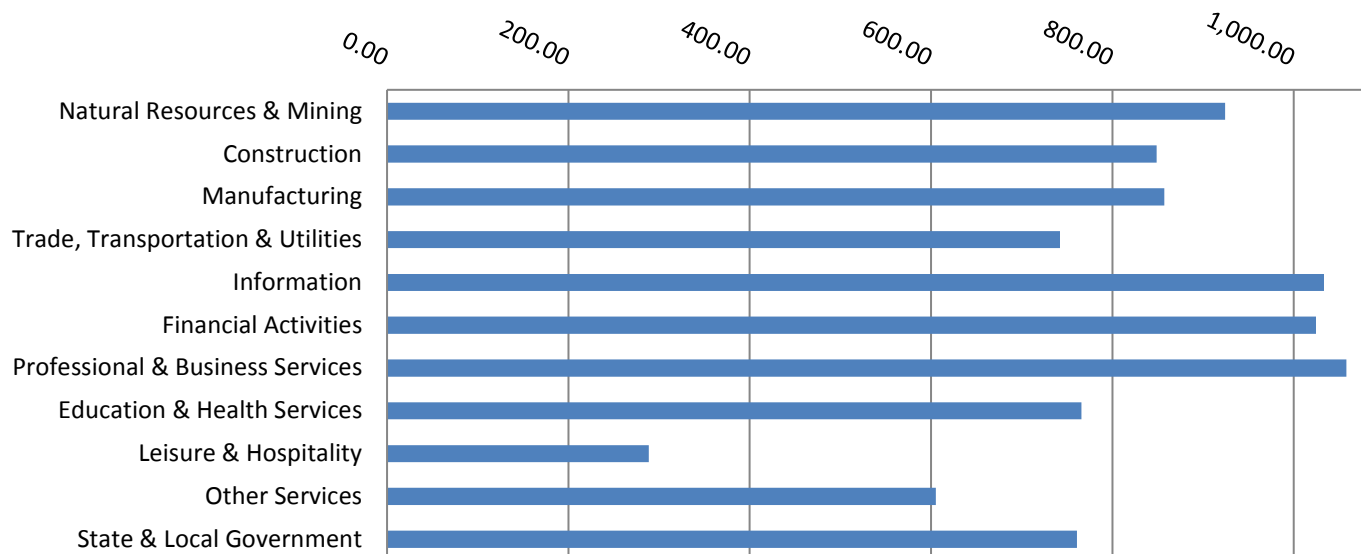
Pulaski County posted the highest average covered employment for Arkansas counties in 2015 at 235,883. Benton County averaged 109,018 in covered employment, slightly higher than Washington County with 97,667. Sebastian County had the fourth highest average covered employment with 64,489, followed by Craighead County with 46,732. All of the five leading counties experienced over the year growth in employment.

## COVERED WAGES

Wages paid to covered workers totaled \$46,825,512,267 for the Calendar Year 2015 (see Table 1), for an average weekly wage of \$777.83 (see Table 5). Employees in Benton County recorded the highest average weekly wage (\$1,054.51), and workers in Newton County the lowest (\$439.61) (see Table 6).

The Professional & Business Services sector recorded the highest average weekly wage for the State of Arkansas at \$1,058.08. The Leisure and Hospitality sector reported the lowest average weekly wage at \$288.76 (see Table 5).

## Average Weekly Wage by Industry



**TABLE 1. YEARLY COMPARISON OF COVERED EMPLOYMENT AND WAGES, BY INDUSTRY**

North American Industry Classification System - Industry Groups	Number of Employing Units	Average Covered Employment	Percent of Total	Net Change From: 2014	Total Calendar Earnings 2015	Percent of Total	Average Weekly Earnings
<b>Total</b>	<b>86,925</b>	<b>1,157,694</b>	<b>100</b>	<b>20,391</b>	<b>\$46,825,512,267</b>	<b>100</b>	<b>\$777.83</b>
<b>Natural Resources &amp; Mining</b>	2,614	18,681	1.6	-955	897,876,109	1.9	924.30
Agriculture, Forestry, Fishing & Hunting	2,098	12,778	1.1	-90	484,679,155	1.0	729.44
Mining	516	5,903	0.5	-865	413,196,954	0.9	1,346.11
<b>Construction</b>	6,660	49,233	4.3	3,120	2,172,608,495	4.6	848.64
<b>Manufacturing</b>	2,988	154,871	13.4	757	6,904,042,908	14.7	857.29
<b>Trade, Transportation &amp; Utilities</b>	21,428	248,067	21.4	6,629	9,572,707,758	20.4	742.10
Wholesale Trade	7,010	47,241	4.1	617	3,067,053,575	6.5	1,248.53
Retail Trade	11,133	140,543	12.1	4,245	3,536,722,270	7.6	483.94
Transportation & Warehousing	2,862	52,333	4.5	1,722	2,330,470,477	5.0	856.38
Utilities	423	7,950	0.7	45	638,461,436	1.4	1,544.42
<b>Information</b>	1,055	13,310	1.1	-384	715,289,509	1.5	1,033.48
<b>Financial Activities</b>	8,183	48,244	4.2	515	2,570,205,828	5.5	1,024.52
Finance & Insurance	4,874	35,129	3.0	360	2,100,797,324	4.5	1,150.05
Real Estate & Rental & Leasing	3,309	13,115	1.1	155	469,408,504	1.0	688.30
<b>Professional &amp; Business Services</b>	13,639	138,722	12.0	4,960	7,632,480,349	16.3	1,058.08
Professional & Technical Services	8,650	41,360	3.6	722	2,417,874,095	5.2	1,124.22
Management of Companies & Enterprises	522	33,407	2.9	1,001	3,501,041,869	7.5	2,015.38
Administrative & Waste Services	4,467	63,955	5.5	3,237	1,713,564,385	3.7	515.26
<b>Education &amp; Health Services</b>	15,151	172,026	14.9	3,180	6,849,946,253	14.6	765.75
Educational Services	778	10,899	0.9	261	375,572,479	0.8	662.68
Health Care & Social Assistance	14,373	161,127	13.9	2,919	6,474,373,774	13.8	772.73
<b>Leisure &amp; Hospitality</b>	6,796	111,709	9.6	4,035	1,677,389,059	3.6	288.76
Arts, Entertainment & Recreation	954	10,635	0.9	216	206,434,146	0.4	373.29
Accommodation & Food Services	5,842	101,074	8.7	3,819	1,470,954,913	3.1	279.87
<b>Other Services</b>	5,322	23,991	2.1	-147	755,095,123	1.6	605.27
<b>State &amp; Local Government</b>	3,089	178,840	15.4	-1,319	7,077,870,876	15.1	761.09
Local Government	1,951	108,669	9.4	-1,134	4,017,978,283	8.6	711.05
State Government	1,138	70,171	6.1	-185	3,059,892,593	6.5	838.58
<b>Nonclassifiable Establishments</b>	0	0	0.0	0	0	0.0	0.00

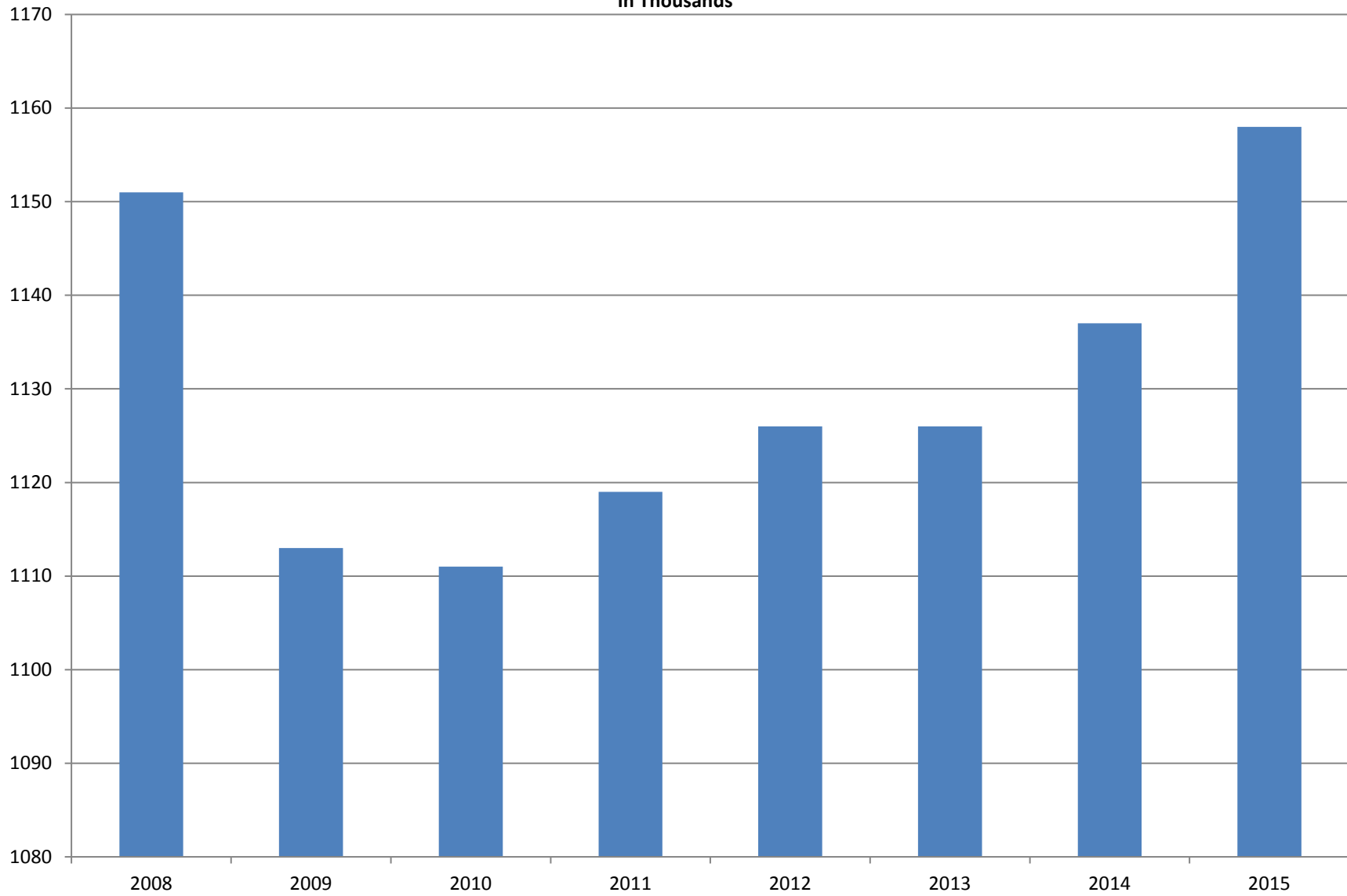
Note: Items do not necessarily add to total because of rounding. Because of industry code changes between years, substantial employment and wage shifts among industries are anticipated.

**TABLE 2. TOTAL COVERED EMPLOYMENT IN ARKANSAS**

<b>PERIOD</b>	<b>2008</b>	<b>2009</b>	<b>2010</b>	<b>2011</b>	<b>2012</b>	<b>2013</b>	<b>2014</b>	<b>2015</b>
<b>AVERAGE</b>	<b>1,150,965</b>	<b>1,112,591</b>	<b>1,110,947</b>	<b>1,118,639</b>	<b>1,126,171</b>	<b>1,125,890</b>	<b>1,137,486</b>	<b>1,157,724</b>
January	1,141,856	1,119,299	1,089,984	1,098,349	1,113,274	1,112,991	1,114,412	1,135,999
February	1,149,443	1,119,476	1,091,282	1,098,445	1,119,319	1,121,492	1,122,905	1,145,107
March	1,157,690	1,124,386	1,106,198	1,113,061	1,131,123	1,129,100	1,132,106	1,146,804
April	1,159,841	1,123,383	1,115,341	1,129,635	1,136,608	1,134,734	1,140,788	1,158,513
May	1,166,111	1,122,322	1,123,250	1,126,371	1,142,985	1,138,383	1,149,046	1,167,423
June	1,164,167	1,117,884	1,130,164	1,123,412	1,136,699	1,130,402	1,144,876	1,164,266
July	1,114,279	1,071,048	1,073,743	1,080,937	1,078,836	1,083,849	1,096,675	1,119,869
August	1,138,583	1,093,192	1,099,795	1,106,262	1,108,552	1,109,759	1,125,162	1,148,725
September	1,162,333	1,116,580	1,124,281	1,132,779	1,134,829	1,135,673	1,150,545	1,173,175
October	1,157,196	1,113,157	1,125,073	1,138,395	1,135,677	1,138,312	1,153,684	1,174,144
November	1,152,159	1,115,443	1,126,781	1,138,543	1,137,411	1,141,035	1,158,579	1,177,834
December	1,147,927	1,114,919	1,125,466	1,137,474	1,138,742	1,134,955	1,161,056	1,180,826

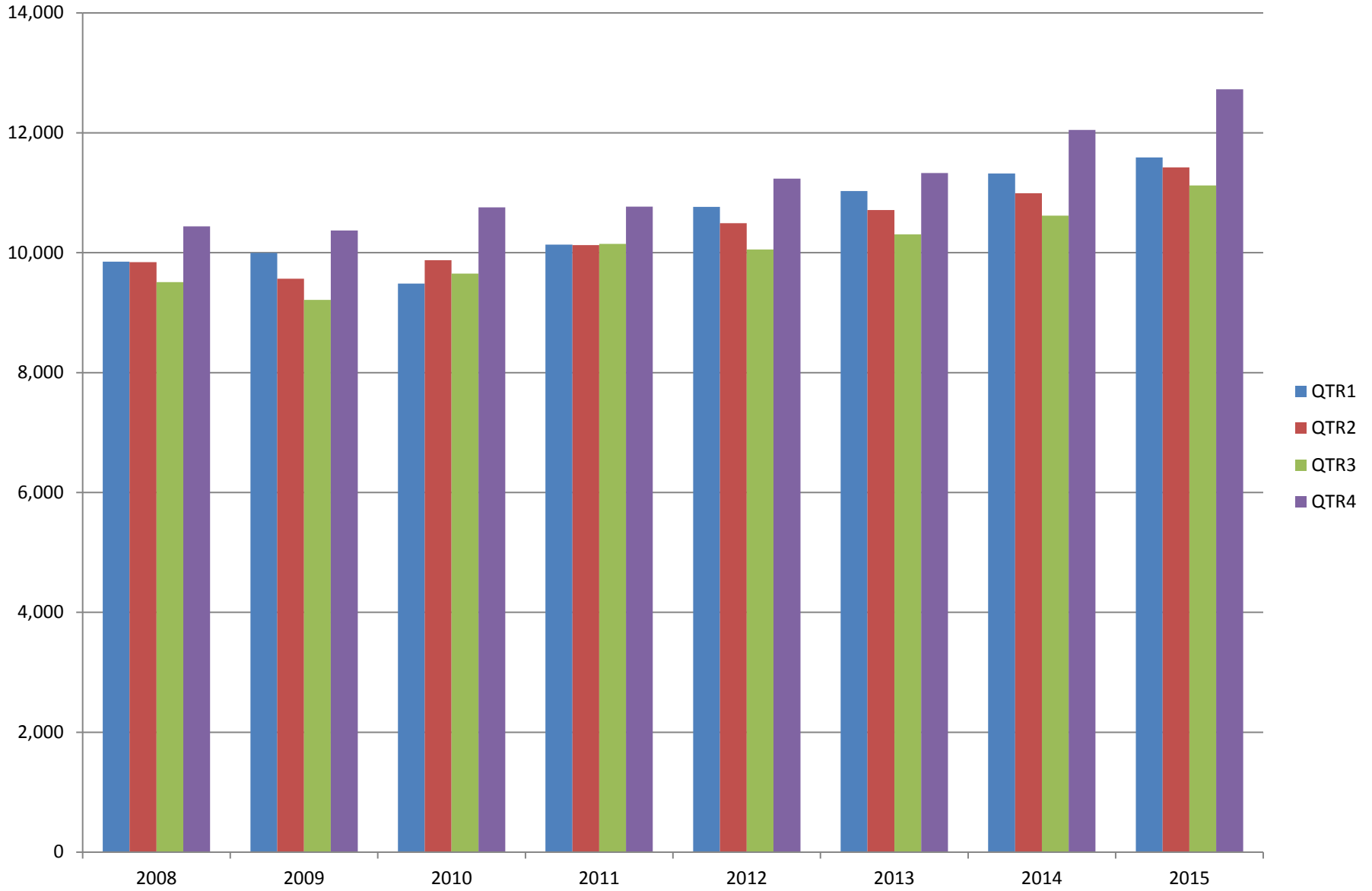
# AVERAGE TOTAL COVERED EMPLOYMENT

In Thousands



# TOTAL COVERED EARNINGS BY CALENDAR YEAR

In Thousands



**TABLE 3. TOTAL COVERED EARNINGS 2008 - 2015**

<b>PERIOD</b>	<b>2008</b>	<b>2009</b>	<b>2010</b>	<b>2011</b>
<b>TOTAL</b>	<b>\$39,643,039,342</b>	<b>\$39,149,476,305</b>	<b>\$39,769,504,992</b>	<b>\$41,177,659,236</b>
January - March	9,851,866,058	9,998,452,028	9,486,245,580	10,134,035,254
April - June	9,843,711,293	9,566,968,853	9,873,489,653	10,128,274,611
July - September	9,509,150,631	9,213,797,140	9,653,588,807	10,147,287,431
October - December	10,438,311,360	10,370,258,284	10,756,180,952	10,768,061,940
<b>Average Weekly Earnings</b>	<b>\$662.37</b>	<b>\$676.69</b>	<b>\$688.42</b>	<b>\$707.89</b>

<b>PERIOD</b>	<b>2012</b>	<b>2013</b>	<b>2014</b>	<b>2015</b>
<b>TOTAL</b>	<b>\$42,551,238,929</b>	<b>\$43,371,086,461</b>	<b>\$44,980,520,034</b>	<b>\$46,858,013,612</b>
January - March	10,766,175,449	11,027,184,315	11,321,422,241	11,588,392,768
April - June	10,494,369,042	10,711,027,503	10,991,760,061	11,421,560,368
July - September	10,053,294,410	10,304,451,772	10,619,889,280	11,121,401,679
October - December	11,237,400,028	11,328,422,871	12,047,448,452	12,726,658,797
<b>Average Weekly Earnings</b>	<b>\$726.62</b>	<b>\$740.80</b>	<b>\$760.46</b>	<b>\$778.35</b>

**TABLE 4. TOTAL TAXABLE EARNINGS, 2008 - 2015**

<b>PERIOD</b>	<b>2008</b>	<b>2009</b>	<b>2010</b>	<b>2011</b>
<b>TOTAL</b>	<b>10,360,487,108</b>	<b>9,787,660,886</b>	<b>11,332,118,456</b>	<b>11,479,396,226</b>
January - March	5,635,750,082	5,423,705,265	5,607,134,758	5,828,877,821
April - June	2,419,313,519	2,293,670,854	2,977,100,591	2,910,604,359
July - September	1,297,473,555	1,165,280,065	1,577,067,770	1,601,382,146
October - December	1,007,949,952	905,004,702	1,170,815,337	1,138,531,900

<b>PERIOD</b>	<b>2012</b>	<b>2013</b>	<b>2014</b>	<b>2015</b>
<b>TOTAL</b>	<b>11,624,348,048</b>	<b>11,644,747,978</b>	<b>11,919,662,224</b>	<b>12,280,544,995</b>
January - March	6,167,036,199	6,184,735,653	6,288,682,396	6,387,946,312
April - June	2,838,154,846	2,805,431,293	2,831,013,392	2,919,500,476
July - September	1,494,712,584	1,506,497,129	1,552,243,963	1,645,440,596
October - December	1,124,444,419	1,148,083,903	1,247,722,473	1,327,657,611



TABLE 5. STATEWIDE SUMMARY CALENDAR YEAR 2015

North American Industry Classification System - Industry Groups		Average Employing Units	Average Covered Employment	Total Calendar Earnings	Average Weekly Earnings
<b>TOTAL, ALL INDUSTRIES</b>		<b>86,925</b>	<b>1,157,694</b>	<b>\$46,825,512,267</b>	<b>\$777.83</b>
<b>NATURAL RESOURCES &amp; MINING</b>		<b>2,614</b>	<b>18,681</b>	<b>\$897,876,109</b>	<b>\$924.30</b>
<b>11</b>	<b>AGRICULTURE, FORESTRY, FISHING &amp; HUNTING</b>	<b>2,098</b>	<b>12,778</b>	<b>\$484,679,155</b>	<b>\$729.44</b>
<b>111</b>	<b>CROP PRODUCTION</b>	<b>952</b>	<b>4,410</b>	<b>\$128,727,901</b>	<b>\$561.35</b>
1111	Oilseed & Grain Farming	671	2,945	88,770,414	579.67
1112	Vegetable & Melon Farming	23	188	4,381,639	448.20
1113	Fruit & Tree Nut Farming	13	58	1,205,781	399.79
1114	Greenhouse & Nursery Production	43	357	10,276,680	553.58
1119	Other Crop Farming	202	862	24,093,387	537.51
<b>112</b>	<b>ANIMAL PRODUCTION &amp; AQUACULTURE</b>	<b>307</b>	<b>3,150</b>	<b>\$144,959,546</b>	<b>\$884.98</b>
1121	Cattle Ranching & Farming	115	422	11,697,998	533.08
1122	Hog & Pig Farming	12	135	6,655,941	948.14
1123	Poultry & Egg Production	109	2,127	111,785,750	1,010.68
1125	Animal Aquaculture	51	407	13,417,423	633.97
1129	Other Animal Production	20	59	1,402,434	457.12
<b>113</b>	<b>FORESTRY &amp; LOGGING</b>	<b>411</b>	<b>2,333</b>	<b>\$90,172,307</b>	<b>\$743.28</b>
1131	Timber Tract Operations	39	178	8,442,776	912.14
1132	Forest Nurseries & Gathering of Forest Products	5	25	1,258,200	967.85
1133	Logging	367	2,130	80,471,331	726.54
<b>114</b>	<b>FISHING, HUNTING &amp; TRAPPING</b>	<b>4</b>	<b>25</b>	<b>\$634,727</b>	<b>\$488.25</b>
<b>115</b>	<b>SUPPORT ACTIVITIES FOR AGRICULTURE &amp; FORESTRY</b>	<b>424</b>	<b>2,860</b>	<b>\$120,184,674</b>	<b>\$808.13</b>
1151	Support Activities for Crop Production	294	1,455	71,296,734	942.33
1152	Support Activities for Animal Production	62	663	20,341,161	590.01
1153	Support Activities for Forestry	68	742	28,546,779	739.86
<b>21</b>	<b>MINING</b>	<b>516</b>	<b>5,903</b>	<b>\$413,196,954</b>	<b>\$1,346.11</b>
<b>211</b>	<b>OIL &amp; GAS EXTRACTION</b>	<b>85</b>	<b>1,309</b>	<b>\$118,124,554</b>	<b>\$1,735.39</b>
<b>212</b>	<b>MINING (EXCEPT OIL &amp; GAS)</b>	<b>108</b>	<b>1,705</b>	<b>\$88,008,003</b>	<b>\$992.65</b>
<b>213</b>	<b>SUPPORT ACTIVITIES FOR MINING</b>	<b>323</b>	<b>2,889</b>	<b>\$207,064,397</b>	<b>\$1,378.33</b>

Note: Data may not add due to rounding.

TABLE 5. STATEWIDE SUMMARY CALENDAR YEAR 2015

North American Industry Classification System - Industry Groups		Average Employing Units	Average Covered Employment	Total Calendar Earnings	Average Weekly Earnings
<b>CONSTRUCTION</b>		<b>6,660</b>	<b>49,233</b>	<b>\$2,172,608,495</b>	<b>\$848.64</b>
<b>236</b>	<b>CONSTRUCTION OF BUILDINGS</b>	<b>1,651</b>	<b>10,376</b>	<b>\$512,296,836</b>	<b>\$949.49</b>
2361	Residential Building Construction	1,089	3,065	117,966,757	740.16
2362	Nonresidential Building Construction	562	7,311	394,330,079	1,037.24
<b>237</b>	<b>HEAVY &amp; CIVIL ENGINEERING CONSTRUCTION</b>	<b>732</b>	<b>7,949</b>	<b>\$373,138,079</b>	<b>\$902.72</b>
2371	Utility System Construction	402	4,545	219,150,326	927.27
2372	Land Subdivision	58	120	4,653,367	745.73
2373	Highway, Street & Bridge Construction	183	2,734	122,936,474	864.73
2379	Other Heavy Construction	89	550	26,397,912	923.00
<b>238</b>	<b>SPECIALTY TRADE CONTRACTORS</b>	<b>4,277</b>	<b>30,908</b>	<b>\$1,287,173,580</b>	<b>\$800.87</b>
2381	Building Foundation & Exterior Contractors	809	5,871	228,455,830	748.32
2382	Building Equipment Contractors	2,019	16,340	737,364,088	867.81
2383	Building Finishing Contractors	710	4,138	154,746,076	719.16
2389	Other Specialty Trade Contractors	739	4,559	166,607,586	702.78
<b>MANUFACTURING</b>		<b>2,988</b>	<b>154,871</b>	<b>\$6,904,042,908</b>	<b>\$857.29</b>
<b>311</b>	<b>FOOD MANUFACTURING</b>	<b>273</b>	<b>43,359</b>	<b>\$1,511,661,574</b>	<b>\$670.46</b>
3111	Animal Food Manufacturing	44	1,449	75,403,910	1,000.74
3112	Grain & Oilseed Milling	33	2,499	118,873,320	914.78
3114	Fruit, Vegetable & Specialty Food	20	4,305	196,678,368	878.58
3115	Dairy Product Manufacturing	8	531	23,009,599	833.32
3116	Animal Slaughtering & Processing	79	29,132	873,584,860	576.68
3118	Bakeries & Tortilla Manufacturing	60	3,412	136,646,415	770.17
3119	Other Food Manufacturing	21	1,983	86,419,018	838.08
	Other	8	48	1,046,084	419.10
<b>312</b>	<b>BEVERAGE &amp; TOBACCO PRODUCT MANUFACTURING</b>	<b>47</b>	<b>1,330</b>	<b>\$55,676,801</b>	<b>\$805.04</b>
<b>313</b>	<b>TEXTILE MILLS</b>	<b>8</b>	<b>44</b>	<b>\$1,596,688</b>	<b>\$697.85</b>
3132	Fiber, Yarn, & Thread Mills	4	25	828,945	637.65
3133	Textile, Fabric Finishing/Coating Mills	4	20	767,743	738.21
<b>314</b>	<b>TEXTILE PRODUCT MILLS</b>	<b>46</b>	<b>872</b>	<b>\$40,870,672</b>	<b>\$901.35</b>
3141	Textile Furnishing Mills	9	37	1,556,858	809.18
3149	Other Textile Product Mills	37	835	39,313,814	905.43
<b>315</b>	<b>APPAREL MANUFACTURING</b>	<b>19</b>	<b>877</b>	<b>\$24,206,518</b>	<b>\$530.80</b>
3151	Apparel Knitting Mills	3	629	18,103,379	553.48
3152	Cut & Sew Apparel Manufacturing	12	142	3,545,981	480.22
3159	Apparel Accessories, Other Apparel Manufacturing	4	106	2,557,158	463.93
<b>316</b>	<b>LEATHER &amp; ALLIED PRODUCT MANUFACTURING</b>	<b>15</b>	<b>1,069</b>	<b>\$28,816,208</b>	<b>\$518.39</b>
3162	Footwear Manufacturing	6	875	23,190,643	509.68
3169	Other Leather & Allied Product Manufacturing	9	194	5,625,565	557.65

Note: Data may not add due to rounding.

TABLE 5. STATEWIDE SUMMARY CALENDAR YEAR 2015

North American Industry Classification System - Industry Groups		Average Employing Units	Average Covered Employment	Total Calendar Earnings	Average Weekly Earnings
<b>321</b>	<b>WOOD PRODUCT MANUFACTURING</b>	<b>322</b>	<b>9,362</b>	<b>\$373,208,180</b>	<b>\$766.62</b>
3211	Sawmills & Wood Preservation	143	4,404	188,655,221	823.79
3212	Veneer & Engineered Wood Products	47	1,981	91,634,872	889.56
3219	Other Wood Product Manufacturing	132	2,977	92,918,087	600.23
<b>322</b>	<b>PAPER MANUFACTURING</b>	<b>70</b>	<b>9,503</b>	<b>\$604,731,773</b>	<b>\$1,223.77</b>
3221	Pulp, Paper & Paperboard Mills	12	3,991	327,267,787	1,576.95
3222	Converted Paper Product Manufacturing	58	5,512	277,463,986	968.04
<b>323</b>	<b>PRINTING &amp; RELATED SUPPORT ACTIVITIES</b>	<b>244</b>	<b>3,985</b>	<b>\$160,826,663</b>	<b>\$776.12</b>
<b>324</b>	<b>PETROLEUM &amp; COAL PRODUCTS MANUFACTURING</b>	<b>19</b>	<b>1,141</b>	<b>\$74,712,806</b>	<b>\$1,259.23</b>
<b>325</b>	<b>CHEMICAL MANUFACTURING</b>	<b>115</b>	<b>5,154</b>	<b>\$313,159,562</b>	<b>\$1,168.47</b>
3251	Basic Chemical Manufacturing	30	1,887	136,899,224	1,395.17
3252	Resin, Rubber & Artificial Fibers	7	302	18,835,993	1,199.44
3253	Agricultural Chemical Manufacturing	13	390	27,667,514	1,364.28
3254	Pharmaceutical & Medicine Manufacturing	15	308	16,113,620	1,006.10
3255	Paint, Coating & Adhesive Manufacturing	8	263	15,815,499	1,156.44
3256	Soap, Cleaning Compound, & Toilet Preparation Manufacturing	18	1,226	56,708,647	889.52
3259	Other Chemical Preparation Manufacturing	24	778	41,119,065	1,016.39
<b>326</b>	<b>PLASTICS &amp; RUBBER PRODUCTS MANUFACTURING</b>	<b>143</b>	<b>11,397</b>	<b>\$547,087,516</b>	<b>\$923.13</b>
3261	Plastics Product Manufacturing	104	7,043	304,400,806	831.16
3262	Rubber Product Manufacturing	39	4,354	242,686,710	1,071.90
<b>327</b>	<b>NONMETALLIC MINERAL PRODUCT MANUFACTURING</b>	<b>235</b>	<b>3,621</b>	<b>\$160,139,271</b>	<b>\$850.48</b>
3271	Clay Product & Refractory Manufacturing	13	406	17,788,555	842.58
3272	Glass & Glass Product Manufacturing	11	365	16,180,427	852.50
3273	Cement & Concrete Product Manufacturing	171	2,085	87,846,067	810.24
3274	Lime & Gypsum Product Manufacturing	4	275	16,330,008	1,141.96
3279	Other Nonmetallic Mineral Products Manufacturing	36	490	21,994,214	863.20
<b>331</b>	<b>PRIMARY METAL MANUFACTURING</b>	<b>75</b>	<b>8,827</b>	<b>\$542,458,448</b>	<b>\$1,181.82</b>
3311	Iron & Steel Mills & Ferroalloys	10	2,556	224,180,529	1,686.68
3312	Purchased Steel Product Manufacturing	21	2,532	141,168,732	1,072.19
3313	Alumina & Aluminum Production	18	1,244	67,156,815	1,038.16
3314	Other Nonferrous Metal Production	8	506	22,425,484	852.29
3315	Foundries	18	1,989	87,526,888	846.26

Note: Data may not add due to rounding.

TABLE 5. STATEWIDE SUMMARY CALENDAR YEAR 2015

North American Industry Classification System - Industry Groups		Average Employing Units	Average Covered Employment	Total Calendar Earnings	Average Weekly Earnings
<b>332</b>	<b>FABRICATED METAL PRODUCT MANUFACTURING</b>	<b>536</b>	<b>15,000</b>	<b>\$727,952,554</b>	<b>\$933.27</b>
3321	Forging & Stamping	11	370	15,518,690	806.58
3322	Cutlery & Hand Tool Manufacturing	11	655	30,026,268	881.57
3323	Architectural & Structural Metals	154	4,078	206,032,518	971.59
3324	Boilers, Tanks & Shipping Containers	17	742	36,788,318	953.46
3325	Hardware Manufacturing	6	281	12,717,148	870.32
3326	Spring & Wire Product Manufacturing	13	390	17,726,988	874.11
3327	Machine Shops & Threaded Products	216	1,941	80,033,799	792.95
3328	Coating, Engraving & Heat Treating Metals	38	704	25,495,526	696.45
3329	Other Fabricated Metal Product Manufacturing	70	5,839	303,613,299	999.95
<b>333</b>	<b>MACHINERY MANUFACTURING</b>	<b>210</b>	<b>11,270</b>	<b>\$496,874,515</b>	<b>\$847.85</b>
3331	Agriculture, Construction & Mining Machinery	42	2,859	107,119,450	720.53
3332	Industrial Machinery Manufacturing	22	645	35,444,787	1,056.79
3333	Commercial & Service Industry Machinery	21	749	40,505,119	1,039.98
3334	HVAC & Commercial Refrigeration Equipment	22	3,110	134,044,955	828.87
3335	Metalworking Machinery Manufacturing	58	1,086	44,662,084	790.87
3336	Turbine & Power Transmission Equipment Manufacturing	6	696	34,286,669	947.35
3339	Other General Purpose Machinery Manufacturing	39	2,125	100,811,451	912.32
<b>334</b>	<b>COMPUTER &amp; ELECTRONIC PRODUCT MANUFACTURING</b>	<b>59</b>	<b>2,464</b>	<b>\$121,419,083</b>	<b>\$947.64</b>
3343	Audio & Video Equipment Manufacturing	7	165	6,623,189	771.93
3344	Semiconductors & Electronic Components	25	1,701	82,412,291	931.72
3345	Electronic Instrument Manufacturing	19	460	23,688,008	990.30
	Other	8	138	8,695,595	1,211.76
<b>335</b>	<b>ELECTRICAL EQUIPMENT &amp; APPLIANCES</b>	<b>56</b>	<b>5,223</b>	<b>\$265,186,343</b>	<b>\$976.40</b>
3353	Electrical Equipment Manufacturing	22	3,343	173,817,668	999.89
3359	Other Electrical Equipment & Component Manufacturing	18	1,496	73,886,060	949.79
	Other	16	384	17,482,615	875.53
<b>336</b>	<b>TRANSPORTATION EQUIPMENT MANUFACTURING</b>	<b>142</b>	<b>13,739</b>	<b>\$612,322,727</b>	<b>\$857.08</b>
3362	Motor Vehicle Body & Trailer Manufacturing	32	1,843	69,583,220	726.07
3363	Motor Vehicle Parts Manufacturing	46	4,965	200,344,178	775.99
3364	Aerospace Product & Parts Manufacturing	28	3,400	200,619,320	1,134.72
3366	Ship & Boat Building	21	1,749	57,065,899	627.46
	Other	15	1,782	84,710,110	914.16
<b>337</b>	<b>FURNITURE &amp; RELATED PRODUCT MANUFACTURING</b>	<b>171</b>	<b>3,249</b>	<b>\$112,655,018</b>	<b>\$666.80</b>
3371	Household & Institutional Furniture	143	2,292	72,891,312	611.59
3372	Office Furniture & Fixtures Manufacturing	21	854	36,903,926	831.02
3379	Other Furniture Related Product Manufacturing	7	103	2,859,780	533.94
<b>339</b>	<b>MISCELLANEOUS MANUFACTURING</b>	<b>183</b>	<b>3,385</b>	<b>\$128,479,988</b>	<b>\$729.92</b>
3391	Medical Equipment & Supplies Manufacturing	68	1,672	72,214,947	830.59
3399	Other Miscellaneous Manufacturing	115	1,713	56,265,041	631.65

Note: Data may not add due to rounding.

TABLE 5. STATEWIDE SUMMARY CALENDAR YEAR 2015

North American Industry Classification System - Industry Groups		Average Employing Units	Average Covered Employment	Total Calendar Earnings	Average Weekly Earnings
<b>TRADE, TRANSPORTATION &amp; UTILITIES</b>		<b>21,428</b>	<b>248,067</b>	<b>\$9,572,707,758</b>	<b>\$742.10</b>
<b>42</b>	<b>WHOLESALE TRADE</b>	<b>7,010</b>	<b>47,241</b>	<b>\$3,067,053,575</b>	<b>\$1,248.53</b>
<b>423</b>	<b>MERCHANT WHOLESALERS, DURABLE GOODS</b>	<b>2,172</b>	<b>21,133</b>	<b>\$1,150,428,101</b>	<b>\$1,046.88</b>
4231	Motor Vehicle & Part Merchant Wholesalers	240	2,800	122,300,699	839.98
4232	Furniture & Furnishings Merchant Wholesalers	55	449	26,335,875	1,127.97
4233	Lumber & Supply Merchant Wholesalers	167	1,403	65,059,011	891.76
4234	Commercial Goods Merchant Wholesalers	295	2,674	189,663,663	1,364.02
4235	Metal & Mineral Merchant Wholesalers	53	867	45,088,733	1,000.10
4236	Appliances & Electronics Goods Merchant Wholesalers	204	1,892	121,376,867	1,233.71
4237	Hardware & Plumbing Merchant Wholesalers	228	2,288	121,928,983	1,024.82
4238	Machinery & Supply Merchant Wholesalers	707	6,815	372,737,829	1,051.80
4239	Miscellaneous Durable Goods Merchant Wholesalers	223	1,945	85,936,441	849.68
<b>424</b>	<b>MERCHANT WHOLESALERS, NONDURABLE GOODS</b>	<b>1,171</b>	<b>15,125</b>	<b>\$850,926,723</b>	<b>\$1,081.92</b>
4241	Paper & Paper Product Merchant Wholesalers	68	1,124	68,188,690	1,166.66
4242	Druggist' Goods Merchant Wholesalers	56	632	34,987,149	1,064.60
4243	Apparel & Piece Goods Merchant Wholesalers	38	626	29,383,027	902.65
4244	Grocery Product Merchant Wholesalers	293	4,288	272,767,847	1,223.31
4245	Farm Product Merchant Wholesalers	73	794	28,460,977	689.33
4246	Chemical merchant Wholesalers	94	660	44,865,465	1,307.27
4247	Petroleum Merchant Wholesalers	136	1,774	123,734,349	1,341.32
4248	Alcoholic Beverage Merchant Wholesalers	42	1,515	76,994,122	977.33
4249	Miscellaneous Nondurable Goods Merchant Wholesaler	371	3,712	171,545,097	888.72
<b>425</b>	<b>ELECTRONIC MARKETS &amp; AGENTS &amp; BROKERS</b>	<b>3,667</b>	<b>10,983</b>	<b>\$1,065,698,751</b>	<b>\$1,865.99</b>
<b>44 - 45</b>	<b>RETAIL TRADE</b>	<b>11,133</b>	<b>140,543</b>	<b>\$3,536,722,270</b>	<b>\$483.94</b>
<b>441</b>	<b>MOTOR VEHICLE &amp; PARTS DEALERS</b>	<b>1,560</b>	<b>18,987</b>	<b>\$808,892,163</b>	<b>\$819.28</b>
4411	Automobile Dealers	635	11,668	578,431,501	953.35
4412	Other Motor Vehicle Dealers	170	1,585	64,851,913	786.85
4413	Automotive Parts, Accessories & Tire Stores	755	5,734	165,608,749	555.42
<b>442</b>	<b>FURNITURE &amp; HOME FURNISHINGS STORES</b>	<b>516</b>	<b>3,636</b>	<b>\$106,964,047</b>	<b>\$565.73</b>
4421	Furniture Stores	278	2,074	69,889,327	648.04
4422	Home Furnishings Stores	238	1,562	37,074,720	456.45
<b>443</b>	<b>ELECTRONICS &amp; APPLIANCE STORES</b>	<b>450</b>	<b>3,803</b>	<b>\$122,241,716</b>	<b>\$618.14</b>
<b>444</b>	<b>BUILDING MATERIAL &amp; GARDEN SUPPLY STORES</b>	<b>838</b>	<b>10,980</b>	<b>\$294,706,498</b>	<b>\$516.16</b>
4441	Building Material & Supplies Dealers	621	9,524	258,546,244	522.05
4442	Lawn & Garden Equipment & Supplies Stores	217	1,456	36,160,254	477.60

Note: Data may not add due to rounding.

TABLE 5. STATEWIDE SUMMARY CALENDAR YEAR 2015

North American Industry Classification System - Industry Groups		Average Employing Units	Average Covered Employment	Total Calendar Earnings	Average Weekly Earnings
<b>445</b>	<b>FOOD &amp; BEVERAGE STORES</b>	<b>1,045</b>	<b>19,753</b>	<b>\$412,556,100</b>	<b>\$401.65</b>
4451	Grocery Stores	557	17,074	345,398,682	389.03
4452	Specialty Food Stores	140	963	31,553,946	630.12
4453	Beer, Wine & Liquor Stores	348	1,716	35,603,472	399.00
<b>446</b>	<b>HEALTH &amp; PERSONAL CARE STORES</b>	<b>1,038</b>	<b>8,312</b>	<b>\$299,209,766</b>	<b>\$692.26</b>
<b>447</b>	<b>GASOLINE STATIONS</b>	<b>1,593</b>	<b>12,299</b>	<b>\$210,702,282</b>	<b>\$329.45</b>
44711	Gasoline Stations with Convenience Stores	1,485	10,961	181,818,079	318.99
44719	Other Gasoline Stations	108	1,338	28,884,203	415.15
<b>448</b>	<b>CLOTHING &amp; CLOTHING ACCESSORIES STORES</b>	<b>1,049</b>	<b>8,329</b>	<b>\$139,660,125</b>	<b>\$322.46</b>
4481	Clothing Stores	773	6,353	94,101,480	284.85
4482	Shoe Stores	135	1,198	19,700,182	316.24
4483	Jewelry, Luggage & Leather Goods Stores	141	778	25,858,463	639.17
<b>451</b>	<b>SPORTING GOODS, HOBBY, BOOK &amp; MUSIC STORES</b>	<b>484</b>	<b>4,756</b>	<b>\$88,890,342</b>	<b>\$359.43</b>
4511	Sporting Goods & Musical Instrument Stores	419	4,244	80,782,757	366.05
4512	Book, Periodical & Music Stores	65	512	8,107,585	304.52
<b>452</b>	<b>GENERAL MERCH&amp;ISE STORES</b>	<b>912</b>	<b>40,515</b>	<b>\$831,218,604</b>	<b>\$394.54</b>
<b>453</b>	<b>MISCELLANEOUS STORE RETAILERS</b>	<b>1,238</b>	<b>7,292</b>	<b>\$151,289,222</b>	<b>\$398.99</b>
4531	Florists	184	684	12,477,404	350.80
4532	Office Supplies, Stationery & Gift Stores	273	1,980	43,334,716	420.89
4533	Used Merchandise Stores	269	1,930	36,177,287	360.48
4539	Other Miscellaneous Store Retailers	512	2,698	59,299,815	422.68
<b>454</b>	<b>NONSTORE RETAILERS</b>	<b>410</b>	<b>1,881</b>	<b>\$70,391,405</b>	<b>\$719.66</b>
4541	Electronic Shopping & Mail-Order Houses	195	753	29,760,883	760.06
4542	Vending Machine Operators	69	427	13,423,791	604.57
4543	Direct Selling Establishments	146	701	27,206,731	746.37
<b>48 - 49</b>	<b>TRANSPORTATION &amp; WAREHOUSING</b>	<b>2,862</b>	<b>52,333</b>	<b>\$2,330,470,477</b>	<b>\$856.38</b>
<b>481</b>	<b>AIR TRANSPORTATION</b>	<b>53</b>	<b>630</b>	<b>\$22,734,553</b>	<b>\$693.97</b>
4811	Scheduled Air Transportation	21	553	16,946,588	589.32
4812	Nonsheduled Air Transportation	32	77	5,787,965	1,445.55
<b>483</b>	<b>WATER TRANSPORTATION</b>	<b>4</b>	<b>19</b>	<b>\$1,367,731</b>	<b>\$1,384.34</b>
<b>484</b>	<b>TRUCK TRANSPORTATION</b>	<b>1,822</b>	<b>32,901</b>	<b>\$1,527,713,336</b>	<b>\$892.95</b>
4841	General Freight Trucking	1,070	26,434	1,241,161,982	902.95
4842	Specialized Freight Trucking	752	6,467	286,551,354	852.11

Note: Data may not add due to rounding.

TABLE 5. STATEWIDE SUMMARY CALENDAR YEAR 2015

North American Industry Classification System - Industry Groups		Average Employing Units	Average Covered Employment	Total Calendar Earnings	Average Weekly Earnings
<b>485</b>	<b>TRANSIT &amp; GROUND PASSENGER TRANSPORTATION</b>	<b>100</b>	<b>1,642</b>	<b>\$31,927,261</b>	<b>\$373.93</b>
4853	Taxi & Limousine Service	31	462	7,534,004	313.60
4854	School & Employee Bus Transportation	15	461	8,504,363	354.76
4855	Charter Bus Industry Service	7	117	2,897,942	476.32
4859	Other Ground Passenger Transportation	43	511	10,432,405	392.61
	Other	4	91	2,558,547	540.69
<b>486</b>	<b>PIPELINE TRANSPORTATION</b>	<b>35</b>	<b>516</b>	<b>\$55,557,307</b>	<b>\$2,070.56</b>
<b>487</b>	<b>SCENIC AND SIGHTSEEING TRANSPORTATION</b>	<b>7</b>	<b>38</b>	<b>\$547,328</b>	<b>\$276.99</b>
<b>488</b>	<b>SUPPORT ACTIVITIES FOR TRANSPORTATION</b>	<b>446</b>	<b>5,129</b>	<b>\$250,598,551</b>	<b>\$939.60</b>
4881	Support Activities for Air Transportation	101	1,065	46,498,207	839.62
4882	Support Activities for Rail Transportation	41	547	25,152,413	884.28
4883	Support Activities for Water Transportation	22	713	40,418,930	1,090.16
4884	Support Activities for Road Transportation	145	771	24,370,737	607.87
4885	Freight Transportation Arrangement	121	1,931	110,826,844	1,103.72
4889	Other Support Activities for Transportation	16	102	3,331,420	628.10
<b>491</b>	<b>POSTAL SERVICE</b>	<b>12</b>	<b>278</b>	<b>\$12,675,387</b>	<b>\$876.83</b>
<b>492</b>	<b>COURIERS &amp; MESSENGERS</b>	<b>164</b>	<b>3,671</b>	<b>\$150,250,541</b>	<b>\$787.10</b>
<b>493</b>	<b>OTHER WAREHOUSING &amp; STORAGE</b>	<b>231</b>	<b>7,787</b>	<b>289,773,869</b>	<b>\$715.63</b>
<b>22</b>	<b>UTILITIES</b>	<b>423</b>	<b>7,950</b>	<b>\$638,461,436</b>	<b>\$1,544.42</b>
2211	Power Generation & Supply	166	5,627	509,754,735	1,742.13
2212	Natural Gas Distribution	69	1,358	93,613,923	1,325.68
2213	Water, Sewage & Other Systems	188	965	35,092,778	699.34
<b>INFORMATION</b>		<b>1,055</b>	<b>13,310</b>	<b>\$715,289,509</b>	<b>\$1,033.48</b>
<b>511</b>	<b>PUBLISHING INDUSTRIES, EXCEPT INTERNET</b>	<b>223</b>	<b>3,312</b>	<b>\$129,867,670</b>	<b>\$754.06</b>
5111	Newspaper, Book & Directory Publishers	195	2,979	104,802,166	676.54
5112	Software Publishers	28	333	25,065,504	1,447.53
<b>512</b>	<b>MOTION PICTURE &amp; SOUND RECORDING INDUSTRY</b>	<b>136</b>	<b>1,147</b>	<b>\$21,113,998</b>	<b>\$354.00</b>
5121	Motion Picture & Video Industries	118	1,120	19,837,063	340.61
5122	Sound Recording Industries	18	27	1,276,935	909.50
<b>515</b>	<b>BROADCASTING, EXCEPT INTERNET</b>	<b>121</b>	<b>1,615</b>	<b>\$67,278,481</b>	<b>\$801.13</b>
5151	Radio & Television Broadcasting	116	1,584	66,238,834	804.18
5152	Cable & Other Subscription Programming	5	31	1,039,647	644.94

Note: Data may not add due to rounding.

TABLE 5. STATEWIDE SUMMARY CALENDAR YEAR 2015

North American Industry Classification System - Industry Groups		Average Employing Units	Average Covered Employment	Total Calendar Earnings	Average Weekly Earnings
<b>517</b>	<b>TELECOMMUNICATIONS</b>	<b>338</b>	<b>5,595</b>	<b>\$397,477,198</b>	<b>\$1,366.18</b>
5171	Wired Telecommunications Carriers	212	3,603	255,823,651	1,365.44
5172	Wireless Telecommunications Carriers (except Satellite)	47	1,700	122,529,146	1,386.08
5174	Satellite Telecommunications Carriers	5	6	288,059	923.27
5179	Other Telecommunications	74	286	18,836,342	1,266.56
<b>518</b>	<b>DATA PROCESSING, HOSTING &amp; RELATED SERVICES</b>	<b>163</b>	<b>1,300</b>	<b>\$84,283,823</b>	<b>\$1,246.80</b>
<b>519</b>	<b>OTHER INFORMATION SERVICES</b>	<b>74</b>	<b>341</b>	<b>\$15,268,339</b>	<b>\$861.06</b>
<b>FINANCIAL ACTIVITIES</b>		<b>8,183</b>	<b>48,244</b>	<b>\$2,570,205,828</b>	<b>\$1,024.52</b>
<b>52</b>	<b>FINANCE &amp; INSURANCE</b>	<b>4,874</b>	<b>35,129</b>	<b>\$2,100,797,324</b>	<b>\$1,150.05</b>
<b>522</b>	<b>CREDIT INTERMEDIATION &amp; RELATED ACTIVITIES</b>	<b>1,941</b>	<b>18,682</b>	<b>\$946,371,237</b>	<b>\$974.17</b>
5221	Depository Credit Intermediation	1,400	15,902	782,165,121	945.90
5222	Nondepository Credit Intermediation	390	2,297	135,367,558	1,133.31
5223	Activities Related to Credit Intermediation	151	483	28,838,558	1,148.21
<b>523</b>	<b>FINANCIAL INVESTMENT &amp; RELATED ACTIVITIES</b>	<b>670</b>	<b>3,129</b>	<b>\$394,922,398</b>	<b>\$2,427.18</b>
5231	Securities & Commodity Contracts Intermediation & Brokerage	315	2,212	315,386,345	2,741.92
5239	Other Financial Investment Activities	355	916	79,536,053	1,669.80
<b>524</b>	<b>INSURANCE CARRIERS &amp; RELATED ACTIVITIES</b>	<b>2,200</b>	<b>13,223</b>	<b>\$753,689,139</b>	<b>\$1,096.12</b>
5241	Insurance Carriers	312	5,723	381,619,469	1,282.34
5242	Insurance Agencies, Brokerages & Support	1,888	7,500	372,069,670	954.02
	<b>OTHER</b>	<b>63</b>	<b>95</b>	<b>\$5,814,550</b>	<b>\$1,177.03</b>
<b>53</b>	<b>REAL ESTATE &amp; RENTAL &amp; LEASING</b>	<b>3,309</b>	<b>13,115</b>	<b>\$469,408,504</b>	<b>\$688.30</b>
<b>531</b>	<b>REAL ESTATE</b>	<b>2,651</b>	<b>8,866</b>	<b>\$303,132,890</b>	<b>\$657.51</b>
5311	Lessors of Real Estate	1,111	4,070	125,827,531	594.54
5312	Offices of Real Estate Agents & Brokers	773	1,695	69,835,000	792.32
5313	Activities Related to Real Estate	767	3,101	107,470,359	666.47
<b>532</b>	<b>RENTAL &amp; LEASING SERVICES</b>	<b>636</b>	<b>4,186</b>	<b>\$162,504,765</b>	<b>\$746.56</b>
5321	Automotive Equipment Rental & Leasing	106	913	28,064,799	591.14
5322	Consumer Goods Rental	330	1,998	61,994,384	596.70
5323	General Rental Centers	43	228	9,176,541	774.00
5324	Machinery & Equipment Rental & Leasing	157	1,047	63,269,041	1,162.09
<b>533</b>	<b>LESSORS OF NONFINANCIAL INTANGIBLE ASSETS</b>	<b>22</b>	<b>63</b>	<b>\$3,770,849</b>	<b>\$1,151.05</b>

Note: Data may not add due to rounding.



TABLE 5. STATEWIDE SUMMARY CALENDAR YEAR 2015

North American Industry Classification System - Industry Groups		Average Employing Units	Average Covered Employment	Total Calendar Earnings	Average Weekly Earnings
<b>PROFESSIONAL &amp; BUSINESS SERVICES</b>		<b>13,639</b>	<b>138,722</b>	<b>\$7,632,480,349</b>	<b>\$1,058.08</b>
<b>54</b>	<b>PROFESSIONAL &amp; TECHNICAL SERVICES</b>	<b>8,650</b>	<b>41,360</b>	<b>\$2,417,874,095</b>	<b>\$1,124.22</b>
5411	Legal Services	1,697	6,004	330,903,016	1,059.88
5412	Accounting & Bookkeeping Services	1,294	5,310	235,557,530	853.10
5413	Architectural & Engineering Services	948	5,828	358,845,161	1,184.09
5414	Specialized Design Services	180	423	20,907,931	950.53
5415	Computer Systems Design & Related Services	1,570	9,867	741,209,708	1,444.62
5416	Management & Technical Consulting Services	1,860	5,869	369,351,688	1,210.24
5417	Scientific Research & Development Services	148	905	50,954,037	1,082.75
5418	Advertising & Related Services	388	3,458	169,935,602	945.05
5419	Other Professional & Technical Services	565	3,696	140,209,422	729.53
<b>55</b>	<b>MANAGEMENT OF COMPANIES &amp; ENTERPRISES</b>	<b>522</b>	<b>33,407</b>	<b>\$3,501,041,869</b>	<b>\$2,015.38</b>
<b>56</b>	<b>ADMINISTRATIVE &amp; SUPPORT SERVICES</b>	<b>4,467</b>	<b>63,955</b>	<b>\$1,713,564,385</b>	<b>\$515.26</b>
<b>561</b>	<b>ADMINISTRATIVE &amp; SUPPORT SERVICES</b>	<b>4,151</b>	<b>60,939</b>	<b>\$1,581,072,091</b>	<b>\$498.95</b>
5611	Office Administrative Services	593	3,963	189,272,142	918.46
5612	Facilities Support Services	28	204	8,902,340	839.21
5613	Employment Services	1,026	27,047	599,651,005	426.36
5614	Business Support Services	370	8,209	271,308,707	635.58
5615	Travel Arrangement & Reservation Services	100	340	13,495,242	763.31
5616	Investigation & Security Services	285	4,714	116,738,136	476.23
5617	Services to Buildings & Dwellings	1,546	15,091	330,863,928	421.63
5619	Other Support Services	203	1,371	50,840,591	713.13
<b>562</b>	<b>WASTE MANAGEMENT &amp; REMEDIATION SERVICES</b>	<b>316</b>	<b>3,016</b>	<b>\$132,492,294</b>	<b>\$844.80</b>
5621	Waste Collection Services	131	1,119	46,261,886	795.04
5622	Waste Treatment & disposal Services	38	825	44,187,078	1,030.00
5629	Remediation & Other Waste Services	147	1,072	42,043,330	754.22
<b>EDUCATION &amp; HEALTH SERVICES</b>		<b>15,151</b>	<b>172,026</b>	<b>\$6,849,946,253</b>	<b>\$765.75</b>
<b>61</b>	<b>EDUCATIONAL SERVICES</b>	<b>778</b>	<b>10,899</b>	<b>\$375,572,479</b>	<b>\$662.68</b>
6111	Elementary & Secondary Schools	87	3,341	106,542,299	613.26
6112	Junior Colleges	6	175	5,248,069	576.71
6113	Colleges & Universities	74	4,050	146,041,040	693.45
6114	Business, Computer, & Management Training	46	106	6,616,066	1,200.30
6115	Technical & Trade Schools	109	920	53,976,270	1,128.27
6116	Other Schools & Instruction	277	1,623	28,472,419	337.37
6117	Educational Support Services	179	684	28,676,316	806.24

Note: Data may not add due to rounding.

TABLE 5. STATEWIDE SUMMARY CALENDAR YEAR 2015

North American Industry Classification System - Industry Groups		Average Employing Units	Average Covered Employment	Total Calendar Earnings	Average Weekly Earnings
<b>62</b>	<b>HEALTH CARE &amp; SOCIAL ASSISTANCE</b>	<b>14,373</b>	<b>161,127</b>	<b>\$6,474,373,774</b>	<b>\$772.73</b>
<b>621</b>	<b>AMBULATORY HEALTH CARE SERVICES</b>	<b>5,450</b>	<b>51,183</b>	<b>\$3,059,360,224</b>	<b>\$1,149.48</b>
6211	Offices of Physicians	2,236	23,227	1,862,081,091	1,541.71
6212	Offices of Dentists	988	7,032	330,428,683	903.64
6213	Offices of Other Health Practitioners	1,379	7,771	319,474,270	790.60
6214	Outpatient Care Centers	319	4,504	200,993,817	858.19
6215	Medical & Diagnostic Laboratories	176	1,114	61,115,923	1,055.03
6216	Home Health Care Services	183	4,985	185,460,494	715.46
6219	Other Ambulatory Health Care Services	169	2,550	99,805,946	752.68
<b>622</b>	<b>HOSPITALS</b>	<b>108</b>	<b>40,400</b>	<b>\$1,876,738,717</b>	<b>\$893.34</b>
6221	General Medical & Surgical Hospitals	78	35,851	1,682,662,291	902.59
6222	Psychiatric & Substance Abuse Hospitals	15	2,333	89,965,676	741.58
6223	Other Hospitals	15	2,216	104,110,750	903.49
<b>623</b>	<b>Residential &amp; Mental Health Facilities</b>	<b>626</b>	<b>30,950</b>	<b>\$761,519,524</b>	<b>\$473.17</b>
6231	Nursing Care Facilities (Skilled Nursing Facilities)	270	21,949	542,363,218	475.20
6232	Residential Mental Health Facilities	175	4,255	108,467,767	490.23
6233	Continuing Care & Assisted Living Facilities	141	3,679	81,733,359	427.23
6239	Other Residential Care Facilities	40	1,067	28,955,180	521.87
<b>624</b>	<b>SOCIAL ASSISTANCE</b>	<b>8,189</b>	<b>38,594</b>	<b>\$776,755,309</b>	<b>\$387.04</b>
6241	Individual & Family Services	7,011	23,919	490,369,116	394.25
6242	Emergency & Other Relief Services	139	1,322	33,953,563	493.91
6243	Vocational Rehabilitation Services	115	3,402	73,906,128	417.78
6244	Child Day Care Services	924	9,951	178,526,502	345.01
<b>LEISURE &amp; HOSPITALITY</b>		<b>6,796</b>	<b>111,709</b>	<b>\$1,677,389,059</b>	<b>\$288.76</b>
<b>71</b>	<b>ARTS, ENTERTAINMENT &amp; RECREATION</b>	<b>954</b>	<b>10,635</b>	<b>\$206,434,146</b>	<b>\$373.29</b>
<b>711</b>	<b>PERFORMING ARTS &amp; SPECTATOR SPORTS</b>	<b>214</b>	<b>2,620</b>	<b>\$61,221,044</b>	<b>\$449.36</b>
7111	Performing Arts Companies	46	501	8,285,942	318.05
7112	Spectator Sports	62	1,411	37,127,325	506.01
7113	Performing Arts & Sports Promoters	39	630	12,505,331	381.73
7114	Agents & Managers for Public Figures	22	25	1,622,071	1,247.75
7115	Independent Artists, Writers, & Performers	45	53	1,680,375	609.72
<b>712</b>	<b>MUSEUMS, PARKS, &amp; HISTORICAL SITES</b>	<b>55</b>	<b>595</b>	<b>\$17,136,085</b>	<b>\$553.85</b>
<b>713</b>	<b>GAMBLING, RECREATIONAL &amp; AMUSEMENT INDUSTRY</b>	<b>685</b>	<b>7,420</b>	<b>\$128,077,017</b>	<b>\$331.94</b>
7131	Amusement Parks & Arcades	39	683	7,827,808	220.40
7139	Other Amusement & Recreation Industries	646	6,737	120,249,209	343.25
<b>72</b>	<b>ACCOMMODATION &amp; FOOD SERVICES</b>	<b>5,842</b>	<b>101,074</b>	<b>\$1,470,954,913</b>	<b>\$279.87</b>

Note: Data may not add due to rounding.

TABLE 5. STATEWIDE SUMMARY CALENDAR YEAR 2015

North American Industry Classification System - Industry Groups		Average Employing Units	Average Covered Employment	Total Calendar Earnings	Average Weekly Earnings
<b>721</b>	<b>ACCOMMODATION</b>	<b>888</b>	<b>11,134</b>	<b>\$196,947,409</b>	<b>\$340.17</b>
7211	Travel Accommodation	804	10,550	185,162,623	337.52
7212	RV Parks & Recreational Camps	65	479	9,347,743	375.29
7213	Rooming & Boarding Houses	19	105	2,437,043	446.34
<b>722</b>	<b>FOOD SERVICES &amp; DRINKING PLACES</b>	<b>4,954</b>	<b>89,940</b>	<b>\$1,274,007,504</b>	<b>\$272.41</b>
7223	Special Food Services	201	3,473	62,409,438	345.57
7224	Drinking Places, Alcoholic Beverages	151	1,095	14,658,885	257.44
7225	Restaurants & Other Eating Places	4,602	85,372	1,196,939,181	269.62
722511	Full-Service Restaurants	2,050	37,676	579,149,747	295.61
722513	Limited-Service Eating Places	2,112	43,352	553,798,894	245.66
722514	Cafeterias, Grill Buffets, & Buffets	93	1,780	28,645,109	309.48
722515	Snack & Nonalcoholic Beverage Bars	347	2,564	35,345,431	265.10
	<b>OTHER SERVICES</b>	<b>5,322</b>	<b>23,991</b>	<b>\$755,095,123</b>	<b>\$605.27</b>
<b>811</b>	<b>REPAIR &amp; MAINTENANCE</b>	<b>2,194</b>	<b>9,796</b>	<b>\$363,036,036</b>	<b>\$712.68</b>
8111	Automotive Repair & Maintenance	1,397	6,124	206,322,328	647.90
8112	Electronic Equipment Repair & Maintenance	176	836	36,165,475	831.93
8113	Commercial Machinery Repair & Maintenance	442	2,272	103,723,243	877.94
8114	Household Goods Repair & Maintenance	179	564	16,824,990	573.68
<b>812</b>	<b>PERSONAL &amp; LAUNDRY SERVICES</b>	<b>1,307</b>	<b>7,718</b>	<b>\$183,218,342</b>	<b>\$456.52</b>
8121	Personal Care Services	602	2,900	56,483,611	374.56
8122	Death Care Services	247	1,615	47,519,134	565.84
8123	Drycleaning & Laundry Service	242	2,396	61,837,157	496.32
8129	Other Personal Services	216	807	17,378,440	414.13
<b>813</b>	<b>MEMBERSHIP ASSOCIATIONS &amp; ORGANIZATIONS</b>	<b>1,068</b>	<b>5,484</b>	<b>\$187,604,177</b>	<b>\$657.87</b>
8131	Religious Organizations	62	233	6,781,556	559.72
8132	Grantmaking & Giving Organizations	113	461	21,718,099	905.98
8133	Social Advocacy Organizations	212	1,551	54,819,954	679.71
8134	Civic & Social Organizations	197	1,208	20,689,348	329.36
8139	Professional & Similar Organizations	484	2,031	83,595,220	791.53
<b>814</b>	<b>PRIVATE HOUSEHOLDS</b>	<b>753</b>	<b>993</b>	<b>\$21,236,568</b>	<b>\$411.27</b>
	<b>LOCAL GOVERNMENT</b>	<b>1,951</b>	<b>108,669</b>	<b>\$4,017,978,283</b>	<b>\$711.05</b>
	<b>STATE GOVERNMENT</b>	<b>1,138</b>	<b>70,171</b>	<b>\$3,059,892,593</b>	<b>\$838.58</b>
	<b>NONCLASSIFIABLE ESTABLISHMENTS</b>	<b>0</b>	<b>0</b>	<b>0</b>	<b>\$0.00</b>

Note: Data may not add due to rounding.

TABLE 6. COUNTY SUMMARY CALENDAR YEAR 2015

North American Industry Classification System - Industry Groups	Average Employing Units	Average Covered Employment	Total Calendar Earnings	Average Weekly Earnings
<b>ARKANSAS COUNTY - TOTAL</b>	<b>758</b>	<b>9,902</b>	<b>\$373,378,944</b>	<b>\$725.14</b>
Natural Resources & Mining	52	220	8,997,323	786.48
Construction	45	231	8,436,772	702.36
Manufacturing	32	3,677	153,971,914	805.28
Trade, Transportation & Utilities	202	2,510	96,715,257	741.00
Wholesale Trade	44	472	23,074,390	940.12
Retail Trade	96	1,054	25,592,534	466.95
Transportation, Warehousing & Utilities	62	984	48,048,333	939.03
Information	11	81	3,104,937	737.16
Financial Activities	45	291	12,935,769	854.86
Professional & Business Services	50	362	19,301,443	1,025.36
Education & Health Services	175	1,066	32,658,947	589.17
Leisure & Hospitality	53	460	5,867,927	245.31
Other Services	45	107	2,858,537	513.76
Local Government	32	705	23,162,612	631.82
State Government	16	192	5,367,506	537.61
<b>ASHLEY COUNTY - TOTAL</b>	<b>559</b>	<b>6,882</b>	<b>\$277,964,476</b>	<b>\$776.73</b>
Natural Resources & Mining	41	339	13,149,272	745.93
Construction	41	627	27,206,914	834.47
Manufacturing	24	1,742	117,456,135	1,296.65
Trade, Transportation & Utilities	113	1,187	36,540,290	591.99
Wholesale Trade	23	208	10,558,690	976.21
Retail Trade	68	732	15,761,218	414.07
Transportation, Warehousing & Utilities	22	247	10,220,382	795.73
Information	6	36	1,017,200	543.38
Financial Activities	35	185	6,310,148	655.94
Professional & Business Services	42	211	6,763,680	616.45
Education & Health Services	146	961	28,747,653	575.28
Leisure & Hospitality	29	401	4,905,085	235.23
Other Services	39	144	4,087,960	545.93
Local Government	32	871	27,298,882	602.73
State Government	11	178	4,481,257	484.15

Note: Data may not add due to rounding.

TABLE 6. COUNTY SUMMARY CALENDAR YEAR 2015

North American Industry Classification System - Industry Groups	Average Employing Units	Average Covered Employment	Total Calendar Earnings	Average Weekly Earnings
<b>BAXTER COUNTY - TOTAL</b>	<b>1,222</b>	<b>14,467</b>	<b>\$466,459,883</b>	<b>\$620.06</b>
Natural Resources & Mining	7	65	2,258,046	668.06
Construction	113	536	16,896,521	606.22
Manufacturing	56	2,447	90,612,729	712.12
Trade, Transportation & Utilities	263	2,728	68,678,844	484.14
Wholesale Trade	33	216	7,955,490	708.29
Retail Trade	205	2,334	53,269,877	438.91
Transportation, Warehousing & Utilities	25	178	7,453,477	805.26
Information	19	195	8,276,025	816.18
Financial Activities	115	747	38,508,034	991.35
Professional & Business Services	131	719	22,195,046	593.64
Education & Health Services	262	3,676	140,813,029	736.65
Leisure & Hospitality	119	1,566	21,705,068	266.54
Other Services	92	345	7,542,746	420.44
Local Government	33	1,115	38,351,679	661.46
State Government	12	328	10,622,116	622.78
<b>BENTON COUNTY - TOTAL</b>	<b>5,863</b>	<b>109,018</b>	<b>\$5,977,965,145</b>	<b>\$1,054.51</b>
Natural Resources & Mining	44	676	50,273,626	1,430.18
Construction	546	4,381	194,988,304	855.92
Manufacturing	193	10,912	454,084,258	800.26
Trade, Transportation & Utilities	1,575	25,781	1,238,105,164	923.54
Wholesale Trade	717	4,990	505,894,215	1,949.65
Retail Trade	699	11,944	310,439,460	499.83
Transportation, Warehousing & Utilities	159	8,847	421,771,489	916.81
Information	68	918	47,111,985	986.93
Financial Activities	584	2,986	158,660,880	1,021.83
Professional & Business Services	1,134	31,431	2,835,511,325	1,734.88
Education & Health Services	711	10,146	392,705,521	744.34
Leisure & Hospitality	539	11,070	189,091,539	328.49
Other Services	370	1,851	61,358,184	637.47
Local Government	82	7,788	320,313,409	790.94
State Government	17	1,078	35,760,950	637.95

Note: Data may not add due to rounding.

TABLE 6. COUNTY SUMMARY CALENDAR YEAR 2015

North American Industry Classification System - Industry Groups	Average Employing Units	Average Covered Employment	Total Calendar Earnings	Average Weekly Earnings
<b>BOONE COUNTY - TOTAL</b>	<b>1,003</b>	<b>13,550</b>	<b>\$476,718,461</b>	<b>\$676.58</b>
Natural Resources & Mining	5	6	102,528	\$328.62
Construction	76	400	14,017,487	673.92
Manufacturing	63	1,817	69,212,221	732.53
Trade, Transportation & Utilities	245	3,769	150,437,225	767.58
Wholesale Trade	48	308	11,083,277	692.01
Retail Trade	154	2,023	51,330,559	487.95
Transportation, Warehousing & Utilities	43	1,438	88,023,389	1,177.16
Information	14	271	12,458,060	884.05
Financial Activities	96	439	19,227,946	842.30
Professional & Business Services	111	1,076	37,405,600	668.53
Education & Health Services	168	1,458	44,869,636	591.82
Leisure & Hospitality	86	1,174	16,000,831	262.10
Other Services	64	269	8,946,585	639.59
Local Government	56	2,106	76,813,329	701.41
State Government	19	765	27,227,013	684.44
<b>BRADLEY COUNTY - TOTAL</b>	<b>365</b>	<b>3,700</b>	<b>\$117,435,212</b>	<b>\$610.37</b>
Natural Resources & Mining	44	268	9,304,838	667.68
Construction	18	107	3,226,461	579.88
Manufacturing	11	820	32,606,059	764.68
Trade, Transportation & Utilities	71	508	13,080,435	495.17
Wholesale Trade	15	104	4,664,093	862.44
Retail Trade	40	348	6,695,338	369.99
Transportation, Warehousing & Utilities	16	56	1,721,004	591.00
Information	3	10	179,149	344.52
Financial Activities	24	129	5,014,909	747.60
Professional & Business Services	23	85	2,609,023	590.28
Education & Health Services	101	622	21,649,590	669.35
Leisure & Hospitality	16	203	2,382,088	225.66
Other Services	29	102	2,482,784	468.10
Local Government	14	437	14,073,064	619.30
State Government	11	409	10,826,812	509.07

Note: Data may not add due to rounding.

TABLE 6. COUNTY SUMMARY CALENDAR YEAR 2015

North American Industry Classification System - Industry Groups	Average Employing Units	Average Covered Employment	Total Calendar Earnings	Average Weekly Earnings
<b>CALHOUN COUNTY - TOTAL</b>	<b>107</b>	<b>2,660</b>	<b>\$134,973,857</b>	<b>\$975.81</b>
Natural Resources & Mining	9	40	1,344,715	646.50
Construction	10	98	3,431,109	673.29
Manufacturing	10	1,836	105,929,749	1,109.54
Trade, Transportation & Utilities	20	222	7,800,730	675.74
Retail Trade	12	57	1,071,757	361.59
Transportation, Warehousing & Utilities	8	165	6,728,973	784.26
Financial Activities	5	80	2,908,745	699.22
Professional & Business Services	6	9	365,984	782.02
Education & Health Services	15	56	2,023,193	694.78
Leisure & Hospitality	7	16	196,401	236.06
Local Government	11	184	4,981,949	520.69
State Government	8	88	2,942,279	642.98
Other	6	31	3,049,003	1,891.44
<b>CARROLL COUNTY - TOTAL</b>	<b>778</b>	<b>10,400</b>	<b>\$284,533,107</b>	<b>\$526.13</b>
Natural Resources & Mining	17	204	6,565,954	618.96
Trade, Transportation & Utilities	199	1,610	44,688,189	533.78
Wholesale Trade	28	179	4,847,465	520.78
Retail Trade	151	1,158	24,882,506	413.22
Transportation, Warehousing & Utilities	20	273	14,958,218	1,053.69
Information	10	62	2,286,253	709.14
Financial Activities	64	361	15,886,845	846.31
Professional & Business Services	63	397	11,441,324	554.22
Education & Health Services	94	986	31,326,995	611.00
Leisure & Hospitality	163	1,618	22,874,136	271.87
Other Services	40	126	2,763,168	421.73
Local Government	24	996	31,956,136	617.01
State Government	10	114	3,441,227	580.50
Other	94	3,926	111,302,880	545.20

Note: Data may not add due to rounding.

TABLE 6. COUNTY SUMMARY CALENDAR YEAR 2015

North American Industry Classification System - Industry Groups	Average Employing Units	Average Covered Employment	Total Calendar Earnings	Average Weekly Earnings
<b>CHICOT COUNTY - TOTAL</b>	<b>496</b>	<b>3,273</b>	<b>\$98,885,312</b>	<b>\$581.01</b>
Natural Resources & Mining	60	280	9,792,871	672.59
Construction	17	159	7,642,578	924.36
Manufacturing	10	23	1,282,105	1,071.99
Trade, Transportation & Utilities	65	688	18,976,952	530.44
Wholesale Trade	14	76	3,318,406	839.68
Retail Trade	38	323	7,365,651	438.54
Transportation, Warehousing & Utilities	13	289	8,292,895	551.83
Information	4	5	72,290	278.04
Financial Activities	29	137	6,225,393	873.86
Professional & Business Services	18	42	1,751,885	802.15
Education & Health Services	226	756	19,971,486	508.03
Leisure & Hospitality	22	183	1,972,129	207.24
Other Services	17	64	2,177,251	654.22
Local Government	18	635	20,121,861	609.38
State Government	10	301	8,898,511	568.52
<b>CLARK COUNTY - TOTAL</b>	<b>610</b>	<b>9,025</b>	<b>\$290,705,836</b>	<b>\$619.45</b>
Natural Resources & Mining	41	267	9,291,030	669.19
Construction	23	65	1,777,436	525.87
Manufacturing	31	1,436	73,013,353	977.79
Trade, Transportation & Utilities	122	1,354	37,924,371	538.64
Wholesale Trade	10	29	1,438,058	953.62
Retail Trade	92	1,169	29,055,489	477.98
Transportation, Warehousing & Utilities	20	156	7,430,824	916.03
Information	5	15	644,794	826.66
Financial Activities	72	278	10,545,014	729.46
Professional & Business Services	53	611	22,081,765	695.01
Education & Health Services	123	1,559	47,070,548	580.63
Leisure & Hospitality	59	1,085	14,012,414	248.36
Other Services	41	233	7,031,037	580.31
Local Government	26	932	28,712,634	592.45
State Government	14	1,190	38,601,440	623.81

Note: Data may not add due to rounding.



TABLE 6. COUNTY SUMMARY CALENDAR YEAR 2015

North American Industry Classification System - Industry Groups	Average Employing Units	Average Covered Employment	Total Calendar Earnings	Average Weekly Earnings
<b>CLAY COUNTY - TOTAL</b>	<b>394</b>	<b>3,448</b>	<b>\$99,590,895</b>	<b>\$555.46</b>
Natural Resources & Mining	59	249	6,705,128	517.85
Construction	29	141	3,941,581	537.59
Manufacturing	15	290	10,603,525	703.15
Trade, Transportation & Utilities	100	867	28,423,237	630.45
Wholesale Trade	21	242	8,726,983	693.50
Retail Trade	49	417	10,562,023	487.09
Transportation, Warehousing & Utilities	30	208	9,134,231	844.51
Information	5	43	1,308,123	585.03
Financial Activities	26	120	4,255,139	681.91
Professional & Business Services	26	105	3,098,391	567.47
Education & Health Services	49	464	12,289,857	509.36
Leisure & Hospitality	22	262	2,810,271	206.27
Other Services	30	82	2,579,051	604.84
Local Government	22	775	22,252,026	552.16
State Government	11	50	1,324,566	509.45
<b>CLEBURNE COUNTY - TOTAL</b>	<b>668</b>	<b>6,569</b>	<b>\$202,229,047</b>	<b>\$592.03</b>
Natural Resources & Mining	28	328	15,762,787	924.18
Construction	63	362	12,906,899	685.66
Manufacturing	34	980	34,820,951	683.30
Trade, Transportation & Utilities	160	1,439	47,504,745	634.85
Wholesale Trade	35	179	8,686,805	933.26
Retail Trade	99	974	24,239,286	478.58
Transportation, Warehousing & Utilities	26	286	14,578,654	980.28
Information	7	49	1,366,476	536.29
Financial Activities	76	253	10,038,801	763.06
Professional & Business Services	68	362	11,352,291	603.08
Education & Health Services	89	868	25,385,932	562.43
Leisure & Hospitality	78	937	12,926,321	265.30
Other Services	38	126	2,791,904	426.11
Local Government	18	769	24,782,136	619.74
State Government	9	96	2,589,804	518.79

Note: Data may not add due to rounding.

TABLE 6. COUNTY SUMMARY CALENDAR YEAR 2015

North American Industry Classification System - Industry Groups	Average Employing Units	Average Covered Employment	Total Calendar Earnings	Average Weekly Earnings
<b>CLEVELAND COUNTY - TOTAL</b>	<b>126</b>	<b>975</b>	<b>\$29,004,657</b>	<b>\$572.08</b>
Natural Resources & Mining	16	139	5,499,406	760.85
Construction	7	26	547,057	404.63
Manufacturing	6	81	2,578,265	612.12
Trade, Transportation & Utilities	37	200	6,143,328	590.70
Wholesale Trade	4	53	1,728,584	627.21
Retail Trade	17	56	1,145,567	393.40
Transportation, Warehousing & Utilities	16	91	3,269,177	690.87
Financial Activities	3	22	767,070	670.52
Professional & Business Services	3	7	205,691	565.09
Education & Health Services	28	137	2,719,360	381.72
Other Services	5	14	452,498	621.56
Local Government	11	289	8,469,241	563.56
State Government	7	53	1,421,883	515.92
Other	3	7	200,858	551.81
<b>COLUMBIA COUNTY - TOTAL</b>	<b>737</b>	<b>8,251</b>	<b>\$316,072,061</b>	<b>\$736.68</b>
Natural Resources & Mining	44	424	31,903,162	1,446.99
Construction	42	181	7,066,677	750.82
Manufacturing	35	1,975	105,175,782	1,024.11
Trade, Transportation & Utilities	164	1,453	43,655,092	577.78
Wholesale Trade	28	210	10,951,973	1,002.93
Retail Trade	98	1,009	22,137,244	421.92
Transportation, Warehousing & Utilities	38	234	10,565,875	868.33
Information	8	58	2,049,040	679.39
Financial Activities	70	361	17,107,846	911.35
Professional & Business Services	57	265	8,753,360	635.22
Education & Health Services	180	1,012	25,289,947	480.58
Leisure & Hospitality	49	692	9,184,814	255.25
Other Services	49	169	3,353,366	381.58
Local Government	26	1,064	37,363,226	675.30
State Government	13	597	25,169,749	810.78

Note: Data may not add due to rounding.

TABLE 6. COUNTY SUMMARY CALENDAR YEAR 2015

North American Industry Classification System - Industry Groups	Average Employing Units	Average Covered Employment	Total Calendar Earnings	Average Weekly Earnings
<b>CONWAY COUNTY - TOTAL</b>	<b>572</b>	<b>6,919</b>	<b>\$245,592,226</b>	<b>\$682.60</b>
Natural Resources & Mining	35	297	13,118,831	849.45
Construction	52	519	26,379,093	977.44
Manufacturing	20	865	50,768,330	1,128.69
Trade, Transportation & Utilities	132	1,646	54,326,381	634.71
Wholesale Trade	20	126	5,360,211	818.10
Retail Trade	85	862	20,029,419	446.85
Transportation, Warehousing & Utilities	27	658	28,936,751	845.71
Information	3	15	205,407	263.34
Financial Activities	37	172	7,122,139	796.30
Professional & Business Services	42	651	14,424,974	426.12
Education & Health Services	143	828	26,257,090	609.84
Leisure & Hospitality	42	476	5,816,976	235.01
Other Services	27	115	3,814,519	637.88
Local Government	29	936	31,765,332	652.64
State Government	10	399	11,593,154	558.76
<b>CRAIGHEAD COUNTY - TOTAL</b>	<b>2,729</b>	<b>46,732</b>	<b>\$1,711,177,232</b>	<b>\$704.17</b>
Natural Resources & Mining	81	300	10,249,259	657.00
Construction	218	1,981	85,534,095	830.33
Manufacturing	102	5,934	266,037,800	862.17
Trade, Transportation & Utilities	768	10,145	324,956,714	615.98
Wholesale Trade	187	1,708	91,680,200	1,032.25
Retail Trade	458	6,938	166,098,976	460.39
Transportation, Warehousing & Utilities	123	1,499	67,177,538	861.83
Information	21	430	18,590,657	831.42
Financial Activities	264	1,534	74,714,713	936.65
Professional & Business Services	361	4,230	127,057,401	577.64
Education & Health Services	456	9,696	446,797,175	886.16
Leisure & Hospitality	247	5,038	72,533,625	276.87
Other Services	152	836	23,298,214	535.94
Local Government	36	3,770	141,273,835	720.64
State Government	23	2,838	120,133,744	814.05

Note: Data may not add due to rounding.

TABLE 6. COUNTY SUMMARY CALENDAR YEAR 2015

North American Industry Classification System - Industry Groups	Average Employing Units	Average Covered Employment	Total Calendar Earnings	Average Weekly Earnings
<b>CRAWFORD COUNTY - TOTAL</b>	<b>1,245</b>	<b>19,045</b>	<b>\$642,775,207</b>	<b>\$649.04</b>
Natural Resources & Mining	30	287	13,209,356	885.11
Construction	146	862	33,373,991	744.56
Manufacturing	69	4,366	163,146,114	718.60
Trade, Transportation & Utilities	313	5,941	207,260,692	670.89
Wholesale Trade	85	795	39,574,738	957.30
Retail Trade	164	2,005	51,948,271	498.26
Transportation, Warehousing & Utilities	64	3,141	115,737,683	708.60
Information	9	100	3,890,508	748.17
Financial Activities	125	495	18,467,877	717.48
Professional & Business Services	154	1,445	46,003,973	612.24
Education & Health Services	171	1,537	48,644,665	608.64
Leisure & Hospitality	97	1,539	21,097,440	263.63
Other Services	78	367	11,769,847	616.74
Local Government	43	1,952	71,236,509	701.81
State Government	10	154	4,674,235	583.70
<b>CRITTENDEN COUNTY - TOTAL</b>	<b>1,306</b>	<b>17,004</b>	<b>\$582,029,515</b>	<b>\$658.25</b>
Natural Resources & Mining	58	274	8,718,477	611.91
Construction	47	827	52,392,252	1,218.31
Manufacturing	40	1,820	83,945,887	887.00
Trade, Transportation & Utilities	310	4,467	159,133,205	685.08
Wholesale Trade	64	745	35,478,834	915.82
Retail Trade	166	2,007	45,457,789	435.57
Transportation, Warehousing & Utilities	80	1,715	78,196,582	876.84
Information	5	52	1,952,252	721.99
Financial Activities	93	425	17,586,749	795.78
Professional & Business Services	122	1,521	42,555,282	538.05
Education & Health Services	374	2,335	66,716,228	549.47
Leisure & Hospitality	120	2,276	39,461,837	333.43
Other Services	80	458	14,461,480	607.22
Local Government	43	2,068	80,207,730	745.87
State Government	14	481	14,898,136	595.64

Note: Data may not add due to rounding.

TABLE 6. COUNTY SUMMARY CALENDAR YEAR 2015

North American Industry Classification System - Industry Groups	Average Employing Units	Average Covered Employment	Total Calendar Earnings	Average Weekly Earnings
<b>CROSS COUNTY - TOTAL</b>	<b>491</b>	<b>5,018</b>	<b>\$158,386,829</b>	<b>\$606.99</b>
Natural Resources & Mining	35	236	7,351,007	599.01
Construction	23	72	2,255,680	602.48
Manufacturing	12	522	17,976,462	662.26
Trade, Transportation & Utilities	133	1,233	43,591,581	679.89
Wholesale Trade	32	328	18,166,092	1,065.09
Retail Trade	75	794	20,762,288	502.86
Transportation, Warehousing & Utilities	26	111	4,663,201	807.90
Information	5	41	1,251,661	587.08
Financial Activities	43	306	10,997,624	691.15
Professional & Business Services	40	127	4,805,842	727.72
Education & Health Services	110	983	27,566,525	539.29
Leisure & Hospitality	32	339	4,048,309	229.65
Other Services	32	88	2,419,979	528.84
Local Government	16	680	23,311,282	659.26
State Government	10	391	12,810,877	630.08
<b>DALLAS COUNTY - TOTAL</b>	<b>252</b>	<b>2,752</b>	<b>\$81,899,675</b>	<b>\$572.31</b>
Natural Resources & Mining	32	173	5,849,902	650.28
Construction	18	76	3,025,827	765.64
Manufacturing	9	546	20,319,538	715.68
Trade, Transportation & Utilities	55	463	13,148,876	546.14
Wholesale Trade	6	15	821,265	1,052.90
Retail Trade	38	350	8,557,261	470.18
Transportation, Warehousing & Utilities	11	98	3,770,350	739.86
Information	4	19	608,636	616.03
Financial Activities	16	77	3,310,197	826.72
Professional & Business Services	11	30	1,039,842	666.57
Education & Health Services	59	784	22,645,184	555.46
Leisure & Hospitality	13	155	1,565,209	194.19
Other Services	13	60	1,299,653	416.56
Local Government	14	320	7,812,729	469.51
State Government	8	49	1,274,082	500.03

Note: Data may not add due to rounding.

TABLE 6. COUNTY SUMMARY CALENDAR YEAR 2015

North American Industry Classification System - Industry Groups	Average Employing Units	Average Covered Employment	Total Calendar Earnings	Average Weekly Earnings
<b>DESHA COUNTY - TOTAL</b>	<b>541</b>	<b>4,506</b>	<b>\$147,954,874</b>	<b>\$631.44</b>
Natural Resources & Mining	70	307	9,200,174	576.31
Construction	20	98	3,670,430	720.26
Manufacturing	15	786	44,079,692	1,078.48
Trade, Transportation & Utilities	111	891	28,497,205	615.07
Wholesale Trade	22	228	11,987,480	1,011.09
Retail Trade	64	494	10,216,282	397.71
Transportation, Warehousing & Utilities	25	169	6,293,443	716.14
Information	3	11	378,062	660.95
Financial Activities	28	209	6,923,439	637.05
Professional & Business Services	40	92	2,722,214	569.02
Education & Health Services	163	720	17,621,339	470.66
Leisure & Hospitality	38	397	5,063,370	245.27
Other Services	22	53	981,986	356.31
Local Government	21	793	24,860,558	602.88
State Government	10	149	3,956,405	510.64
<b>DREW COUNTY - TOTAL</b>	<b>522</b>	<b>6,321</b>	<b>\$204,730,383</b>	<b>\$622.86</b>
Natural Resources & Mining	50	305	11,673,080	736.01
Construction	19	93	3,306,981	683.83
Manufacturing	21	794	28,628,562	693.39
Trade, Transportation & Utilities	128	1,237	32,752,571	509.18
Wholesale Trade	18	113	5,180,935	881.71
Retail Trade	86	994	22,107,601	427.71
Transportation, Warehousing & Utilities	24	130	5,464,035	808.29
Information	6	47	1,591,201	651.06
Financial Activities	48	240	10,136,551	812.22
Professional & Business Services	35	236	10,994,303	895.89
Education & Health Services	122	897	31,327,899	671.64
Leisure & Hospitality	39	623	8,358,988	258.03
Other Services	16	56	1,354,897	465.28
Local Government	22	1,197	40,951,871	657.92
State Government	16	596	23,653,479	763.21

Note: Data may not add due to rounding.

TABLE 6. COUNTY SUMMARY CALENDAR YEAR 2015

North American Industry Classification System - Industry Groups	Average Employing Units	Average Covered Employment	Total Calendar Earnings	Average Weekly Earnings
<b>FAULKNER COUNTY - TOTAL</b>	<b>2,837</b>	<b>40,298</b>	<b>\$1,557,349,814</b>	<b>\$743.19</b>
Natural Resources & Mining	64	921	70,769,770	1,477.70
Construction	307	2,573	110,370,719	824.92
Manufacturing	105	3,228	162,570,618	968.51
Trade, Transportation & Utilities	650	7,230	215,797,908	573.99
Wholesale Trade	147	549	28,323,449	992.13
Retail Trade	414	5,936	148,810,041	482.10
Transportation, Warehousing & Utilities	89	745	38,664,418	998.05
Information	19	234	10,360,172	851.43
Financial Activities	324	1,537	65,604,949	820.84
Professional & Business Services	431	6,007	334,183,624	1,069.85
Education & Health Services	444	6,255	229,612,977	705.94
Leisure & Hospitality	250	4,944	67,243,681	261.56
Other Services	185	764	23,854,047	600.43
Local Government	40	3,286	136,189,899	797.03
State Government	18	3,319	130,791,450	757.82
<b>FRANKLIN COUNTY - TOTAL</b>	<b>351</b>	<b>4,310</b>	<b>\$151,235,104</b>	<b>\$674.80</b>
Natural Resources & Mining	17	242	17,428,790	1,385.00
Construction	32	101	3,344,887	636.88
Manufacturing	14	860	34,587,060	773.41
Trade, Transportation & Utilities	88	945	31,578,030	642.61
Wholesale Trade	13	40	873,501	419.95
Retail Trade	54	627	14,422,696	442.36
Transportation, Warehousing & Utilities	21	278	16,281,833	1,126.30
Information	5	21	737,991	675.82
Financial Activities	31	113	4,897,061	833.40
Professional & Business Services	36	282	10,569,257	720.76
Education & Health Services	58	558	14,602,750	503.27
Leisure & Hospitality	27	326	3,949,846	233.00
Other Services	15	52	1,197,489	442.86
Local Government	19	688	23,196,398	648.38
State Government	9	122	5,145,545	811.09

Note: Data may not add due to rounding.

TABLE 6. COUNTY SUMMARY CALENDAR YEAR 2015

North American Industry Classification System - Industry Groups	Average Employing Units	Average Covered Employment	Total Calendar Earnings	Average Weekly Earnings
<b>FULTON COUNTY - TOTAL</b>	<b>199</b>	<b>1,846</b>	<b>\$49,533,862</b>	<b>\$516.02</b>
Natural Resources & Mining	3	6	148,969	477.46
Construction	8	32	1,006,753	605.02
Manufacturing	13	117	2,594,354	426.42
Trade, Transportation & Utilities	48	308	9,467,082	591.10
Retail Trade	31	189	3,637,778	370.14
Other Trade, Transportation & Utilities	17	119	5,829,304	942.03
Information	5	31	783,427	486.00
Financial Activities	17	94	3,542,872	724.81
Professional & Business Services	14	38	1,216,618	615.70
Education & Health Services	46	428	10,487,951	471.24
Leisure & Hospitality	16	154	1,808,871	225.88
Other Services	7	13	235,619	348.55
Local Government	12	517	14,931,654	555.41
State Government	10	108	3,309,692	589.33
<b>GARLAND COUNTY - TOTAL</b>	<b>3,098</b>	<b>35,492</b>	<b>\$1,201,075,933</b>	<b>\$650.78</b>
Natural Resources & Mining	29	283	15,358,674	1,043.67
Construction	338	1,690	57,270,052	651.68
Manufacturing	96	2,512	108,756,853	832.59
Trade, Transportation & Utilities	696	7,270	216,638,418	573.06
Wholesale Trade	142	829	41,106,795	953.58
Retail Trade	495	5,900	150,962,002	492.05
Transportation, Warehousing & Utilities	59	541	24,569,621	873.37
Information	32	496	17,266,637	669.46
Financial Activities	344	1,417	67,275,763	913.03
Professional & Business Services	382	2,859	105,199,845	707.62
Education & Health Services	523	7,476	324,697,194	835.23
Leisure & Hospitality	362	6,687	110,876,236	318.86
Other Services	237	968	25,546,825	507.53
Local Government	34	2,792	117,966,069	812.53
State Government	25	1,042	34,223,367	631.61

Note: Data may not add due to rounding.



TABLE 6. COUNTY SUMMARY CALENDAR YEAR 2015

North American Industry Classification System - Industry Groups	Average Employing Units	Average Covered Employment	Total Calendar Earnings	Average Weekly Earnings
<b>GRANT COUNTY - TOTAL</b>	<b>338</b>	<b>3,900</b>	<b>\$138,419,686</b>	<b>\$682.54</b>
Natural Resources & Mining	27	183	9,467,108	994.86
Construction	26	178	8,236,762	889.88
Manufacturing	17	1,164	51,518,144	851.15
Trade, Transportation & Utilities	88	666	18,524,710	534.90
Wholesale Trade	21	105	4,665,850	854.55
Retail Trade	44	483	11,106,491	442.21
Transportation, Warehousing & Utilities	23	78	2,752,369	678.59
Information	3	10	611,947	1,176.82
Financial Activities	25	84	3,133,515	717.38
Professional & Business Services	27	97	4,906,628	972.77
Education & Health Services	64	382	9,713,887	489.02
Leisure & Hospitality	23	297	3,374,471	218.50
Other Services	20	47	909,807	372.26
Local Government	10	733	26,289,300	689.72
State Government	8	59	1,733,407	565.00
<b>GREENE COUNTY - TOTAL</b>	<b>891</b>	<b>15,400</b>	<b>\$547,240,786</b>	<b>\$683.37</b>
Natural Resources & Mining	38	257	8,475,383	634.20
Construction	67	310	11,901,009	738.28
Manufacturing	66	5,631	248,466,626	848.55
Trade, Transportation & Utilities	242	2,491	71,176,087	549.49
Wholesale Trade	50	439	18,965,426	830.80
Retail Trade	158	1,798	43,218,775	462.25
Transportation, Warehousing & Utilities	34	254	8,991,886	680.79
Information	10	98	2,485,011	487.64
Financial Activities	76	483	20,141,564	801.94
Professional & Business Services	89	953	29,112,013	587.46
Education & Health Services	149	1,853	64,658,287	671.04
Leisure & Hospitality	66	1,143	14,572,908	245.19
Other Services	46	181	4,606,020	489.38
Local Government	30	1,579	55,608,904	677.27
State Government	12	421	16,036,974	732.55

Note: Data may not add due to rounding.

TABLE 6. COUNTY SUMMARY CALENDAR YEAR 2015

North American Industry Classification System - Industry Groups	Average Employing Units	Average Covered Employment	Total Calendar Earnings	Average Weekly Earnings
<b>HEMPSTEAD COUNTY - TOTAL</b>	<b>504</b>	<b>7,638</b>	<b>\$250,466,222</b>	<b>\$630.62</b>
Natural Resources & Mining	22	227	8,508,323	720.80
Construction	30	188	7,208,019	737.32
Manufacturing	27	2,149	83,163,809	744.21
Trade, Transportation & Utilities	128	1,388	46,590,636	645.51
Wholesale Trade	20	184	6,231,062	651.24
Retail Trade	78	879	19,974,218	437.00
Transportation, Warehousing & Utilities	30	325	20,385,356	1,206.23
Information	7	45	1,356,499	579.70
Financial Activities	44	216	8,716,658	776.06
Professional & Business Services	32	172	4,795,106	536.13
Education & Health Services	92	921	23,792,293	496.79
Leisure & Hospitality	46	612	7,988,174	251.01
Other Services	32	146	3,931,800	517.89
Local Government	27	833	29,696,230	685.57
State Government	17	741	24,718,675	641.51
<b>HOT SPRING COUNTY - TOTAL</b>	<b>624</b>	<b>8,442</b>	<b>\$284,710,817</b>	<b>\$648.57</b>
Natural Resources & Mining	24	143	4,425,438	595.14
Construction	58	376	12,727,467	650.95
Manufacturing	29	1,421	65,466,959	885.98
Trade, Transportation & Utilities	150	1,595	59,549,646	717.98
Wholesale Trade	18	123	5,431,355	849.18
Retail Trade	94	879	19,689,131	430.76
Transportation, Warehousing & Utilities	38	593	34,429,160	1,116.52
Information	6	49	1,718,901	674.61
Financial Activities	54	208	8,690,744	803.51
Professional & Business Services	55	1,033	26,124,761	486.35
Education & Health Services	121	1,048	34,309,209	629.57
Leisure & Hospitality	49	600	6,722,749	215.47
Other Services	38	137	3,047,717	427.81
Local Government	27	966	33,872,126	674.31
State Government	13	866	28,055,100	623.00

Note: Data may not add due to rounding.

TABLE 6. COUNTY SUMMARY CALENDAR YEAR 2015

North American Industry Classification System - Industry Groups	Average Employing Units	Average Covered Employment	Total Calendar Earnings	Average Weekly Earnings
<b>HOWARD COUNTY - TOTAL</b>	<b>353</b>	<b>7,003</b>	<b>\$209,844,701</b>	<b>\$576.25</b>
Natural Resources & Mining	16	237	7,810,054	633.73
Construction	19	148	6,001,861	779.87
Manufacturing	21	3,484	104,811,060	578.53
Trade, Transportation & Utilities	92	892	27,409,981	590.94
Wholesale Trade	15	74	2,837,977	737.52
Retail Trade	55	615	14,750,171	461.23
Transportation, Warehousing & Utilities	22	203	9,821,833	930.45
Information	4	27	561,265	399.76
Financial Activities	36	147	4,956,790	648.45
Professional & Business Services	23	130	4,275,076	632.41
Education & Health Services	70	671	21,264,453	609.44
Leisure & Hospitality	22	311	3,908,769	241.70
Other Services	22	131	3,661,823	537.55
Local Government	17	702	21,395,692	586.12
State Government	11	123	3,787,877	592.23
<b>INDEPENDENCE COUNTY - TOTAL</b>	<b>906</b>	<b>14,762</b>	<b>\$518,348,408</b>	<b>\$675.26</b>
Natural Resources & Mining	15	266	13,327,273	963.51
Construction	64	412	15,037,123	701.88
Manufacturing	40	2,737	120,055,702	843.54
Trade, Transportation & Utilities	236	2,959	98,520,840	640.29
Wholesale Trade	31	439	17,297,692	757.74
Retail Trade	157	1,741	42,247,566	466.66
Transportation, Warehousing & Utilities	48	779	38,975,582	962.17
Information	9	111	3,501,506	606.64
Financial Activities	78	506	23,153,510	879.96
Professional & Business Services	93	1,075	26,137,901	467.58
Education & Health Services	169	3,161	130,712,909	795.23
Leisure & Hospitality	76	1,128	14,025,529	239.11
Other Services	63	374	7,930,119	407.76
Local Government	47	1,417	44,906,241	609.44
State Government	16	616	21,039,755	656.84

Note: Data may not add due to rounding.

TABLE 6. COUNTY SUMMARY CALENDAR YEAR 2015

North American Industry Classification System - Industry Groups	Average Employing Units	Average Covered Employment	Total Calendar Earnings	Average Weekly Earnings
<b>IZARD COUNTY - TOTAL</b>	<b>257</b>	<b>3,112</b>	<b>\$95,208,577</b>	<b>\$588.35</b>
Natural Resources & Mining	7	171	7,259,022	816.35
Construction	21	114	4,568,283	770.63
Manufacturing	10	285	9,931,510	670.14
Trade, Transportation & Utilities	67	573	15,353,066	515.27
Wholesale Trade	12	22	639,023	558.59
Retail Trade	43	411	9,082,574	424.98
Transportation, Warehousing & Utilities	12	140	5,631,469	773.55
Information	4	6	297,649	954.00
Financial Activities	22	138	5,323,909	741.90
Professional & Business Services	16	48	1,420,157	568.97
Education & Health Services	50	665	17,977,386	519.88
Leisure & Hospitality	22	164	1,967,400	230.70
Other Services	11	27	612,376	436.17
Local Government	17	469	14,983,832	614.39
State Government	10	452	15,513,987	660.06
<b>JACKSON COUNTY - TOTAL</b>	<b>460</b>	<b>5,284</b>	<b>\$185,380,747</b>	<b>\$674.68</b>
Natural Resources & Mining	56	256	8,426,851	633.03
Construction	25	121	5,189,035	824.70
Manufacturing	17	1,033	49,241,379	916.70
Trade, Transportation & Utilities	114	1,015	32,536,479	616.45
Wholesale Trade	21	203	10,200,361	966.31
Retail Trade	74	716	17,657,755	474.26
Transportation, Warehousing & Utilities	19	96	4,678,363	937.17
Information	4	58	1,240,647	411.36
Financial Activities	33	142	5,456,824	739.01
Professional & Business Services	29	108	4,175,245	743.46
Education & Health Services	90	823	29,659,374	693.04
Leisure & Hospitality	29	282	3,579,290	244.09
Other Services	18	63	2,103,521	642.10
Local Government	32	608	17,790,478	562.70
State Government	13	775	25,981,624	644.71

Note: Data may not add due to rounding.

TABLE 6. COUNTY SUMMARY CALENDAR YEAR 2015

North American Industry Classification System - Industry Groups	Average Employing Units	Average Covered Employment	Total Calendar Earnings	Average Weekly Earnings
<b>JEFFERSON COUNTY - TOTAL</b>	<b>2,142</b>	<b>26,803</b>	<b>\$975,760,388</b>	<b>\$700.09</b>
Natural Resources & Mining	37	194	8,968,653	889.04
Construction	92	569	20,896,099	706.24
Manufacturing	63	4,981	237,230,036	915.90
Trade, Transportation & Utilities	422	4,600	153,636,700	642.29
Wholesale Trade	72	645	26,345,654	785.50
Retail Trade	291	3,155	79,270,289	483.18
Transportation, Warehousing & Utilities	59	800	48,020,757	1,154.35
Information	10	94	3,611,329	738.82
Financial Activities	155	1,108	52,652,358	913.85
Professional & Business Services	151	1,906	56,661,579	571.69
Education & Health Services	870	4,736	177,861,453	722.22
Leisure & Hospitality	141	1,900	25,490,788	258.00
Other Services	125	617	18,520,778	577.26
Local Government	39	2,753	94,883,246	662.80
State Government	37	3,345	125,347,369	720.64
<b>JOHNSON COUNTY - TOTAL</b>	<b>504</b>	<b>8,354</b>	<b>\$256,148,025</b>	<b>\$589.65</b>
Natural Resources & Mining	13	128	4,487,134	674.15
Construction	37	171	5,411,995	608.64
Manufacturing	36	2,651	83,593,208	606.40
Trade, Transportation & Utilities	121	1,959	60,382,547	592.75
Retail Trade	79	903	19,632,363	418.10
Other Trade, Transportation & Utilities	42	1,056	40,750,184	742.10
Information	5	41	1,006,865	472.26
Financial Activities	49	183	6,427,744	675.47
Professional & Business Services	52	363	8,761,413	464.16
Education & Health Services	90	1,179	40,501,143	660.62
Leisure & Hospitality	42	521	6,305,521	232.74
Other Services	36	82	1,920,232	450.34
Local Government	14	942	32,812,572	669.86
State Government	9	134	4,537,651	651.21

Note: Data may not add due to rounding.

TABLE 6. COUNTY SUMMARY CALENDAR YEAR 2015

North American Industry Classification System - Industry Groups	Average Employing Units	Average Covered Employment	Total Calendar Earnings	Average Weekly Earnings
<b>LAFAYETTE COUNTY - TOTAL</b>	<b>174</b>	<b>1,180</b>	<b>\$38,940,794</b>	<b>\$634.63</b>
Natural Resources & Mining	31	151	7,568,205	963.86
Construction	9	67	4,723,101	1,355.65
Manufacturing	6	30	1,702,952	1,091.64
Trade, Transportation & Utilities	30	194	4,949,125	490.60
Retail Trade	16	108	1,997,964	355.76
Other Trade, Transportation & Utilities	14	86	2,951,161	659.92
Financial Activities	14	48	1,482,121	593.80
Professional & Business Services	11	48	1,564,445	626.78
Education & Health Services	39	207	5,121,649	475.81
Leisure & Hospitality	5	42	550,142	251.90
Local Government	13	265	8,344,199	605.53
State Government	8	49	1,239,960	486.64
Other	8	79	1,694,895	412.58
<b>LAWRENCE COUNTY - TOTAL</b>	<b>410</b>	<b>4,039</b>	<b>\$123,163,729</b>	<b>\$586.42</b>
Natural Resources & Mining	54	212	7,478,582	678.39
Construction	23	119	4,370,231	706.24
Manufacturing	20	494	16,648,237	648.09
Trade, Transportation & Utilities	111	861	27,824,667	621.47
Wholesale Trade	19	230	9,552,617	798.71
Retail Trade	58	493	12,551,898	489.62
Transportation, Warehousing & Utilities	34	138	5,720,152	797.12
Financial Activities	34	136	4,622,034	653.57
Professional & Business Services	27	108	4,917,561	875.63
Education & Health Services	57	531	16,563,233	599.86
Leisure & Hospitality	28	353	4,170,718	227.21
Local Government	26	1,056	32,073,442	584.09
State Government	10	99	2,553,169	495.95
Other	20	70	1,941,855	533.48

Note: Data may not add due to rounding.

TABLE 6. COUNTY SUMMARY CALENDAR YEAR 2015

North American Industry Classification System - Industry Groups	Average Employing Units	Average Covered Employment	Total Calendar Earnings	Average Weekly Earnings
<b>LEE COUNTY - TOTAL</b>	<b>291</b>	<b>1,933</b>	<b>\$64,416,105</b>	<b>\$640.85</b>
Natural Resources & Mining	38	217	8,569,900	759.47
Construction	10	35	1,000,658	549.81
Trade, Transportation & Utilities	43	337	11,536,154	658.31
Wholesale Trade	9	109	4,891,947	863.08
Retail Trade	24	180	4,033,024	430.88
Transportation, Warehousing & Utilities	10	48	2,611,183	1,046.15
Financial Activities	17	65	2,238,646	662.32
Professional & Business Services	15	78	4,368,495	1,077.05
Education & Health Services	126	412	12,339,994	575.99
Leisure & Hospitality	9	82	1,112,033	260.80
Local Government	15	244	7,299,359	575.30
State Government	7	446	15,557,616	670.82
Other	11	17	393,250	444.85
<b>LINCOLN COUNTY - TOTAL</b>	<b>284</b>	<b>2,845</b>	<b>\$94,456,864</b>	<b>\$638.48</b>
Natural Resources & Mining	38	175	5,817,778	639.32
Construction	15	75	2,457,600	630.15
Manufacturing	9	302	11,334,150	721.74
Trade, Transportation & Utilities	46	373	13,217,159	681.44
Wholesale Trade	6	54	1,984,866	706.86
Retail Trade	25	182	3,680,206	388.86
Transportation, Warehousing & Utilities	15	137	7,552,087	1,060.09
Information	3	4	230,915	1,110.17
Financial Activities	20	73	2,676,342	705.04
Professional & Business Services	10	26	653,298	483.21
Education & Health Services	94	390	11,177,228	551.15
Leisure & Hospitality	15	161	1,645,480	196.55
Other Services	15	36	1,295,261	691.91
Local Government	7	339	10,541,706	598.01
State Government	12	891	33,409,947	721.10

Note: Data may not add due to rounding.

TABLE 6. COUNTY SUMMARY CALENDAR YEAR 2015

North American Industry Classification System - Industry Groups	Average Employing Units	Average Covered Employment	Total Calendar Earnings	Average Weekly Earnings
<b>LITTLE RIVER COUNTY - TOTAL</b>	<b>241</b>	<b>3,435</b>	<b>\$171,204,271</b>	<b>\$958.48</b>
Natural Resources & Mining	13	84	3,165,248	724.64
Construction	17	208	8,724,028	806.59
Manufacturing	14	1,221	105,959,569	1,668.86
Trade, Transportation & Utilities	57	539	15,225,032	543.21
Wholesale Trade	7	25	1,631,602	1,255.08
Retail Trade	37	389	9,204,386	455.03
Transportation, Warehousing & Utilities	13	125	4,389,044	675.24
Financial Activities	18	79	2,654,766	646.24
Professional & Business Services	17	84	2,907,278	665.59
Education & Health Services	40	167	4,216,257	485.52
Leisure & Hospitality	15	187	2,412,792	248.13
Local Government	20	702	22,200,670	608.17
State Government	11	92	2,366,944	494.76
Other	19	72	1,371,687	366.37
<b>LOGAN COUNTY - TOTAL</b>	<b>487</b>	<b>5,432</b>	<b>\$163,501,193</b>	<b>\$578.84</b>
Natural Resources & Mining	27	134	6,192,569	888.72
Construction	39	257	9,028,764	675.60
Manufacturing	19	1,170	42,989,304	706.60
Trade, Transportation & Utilities	104	1,036	26,009,338	482.80
Wholesale Trade	10	71	1,401,700	379.66
Retail Trade	68	794	17,429,584	422.15
Transportation, Warehousing & Utilities	26	171	7,178,054	807.25
Information	6	33	1,445,149	842.16
Financial Activities	47	189	7,421,830	755.17
Professional & Business Services	50	128	4,786,764	719.17
Education & Health Services	104	712	21,220,000	573.14
Leisure & Hospitality	29	332	3,876,610	224.55
Other Services	26	123	3,869,638	605.01
Local Government	22	767	23,032,927	577.50
State Government	14	551	13,628,300	475.65

Note: Data may not add due to rounding.



TABLE 6. COUNTY SUMMARY CALENDAR YEAR 2015

North American Industry Classification System - Industry Groups	Average Employing Units	Average Covered Employment	Total Calendar Earnings	Average Weekly Earnings
<b>LONOKE COUNTY - TOTAL</b>	<b>1,299</b>	<b>13,708</b>	<b>\$443,484,245</b>	<b>\$622.16</b>
Natural Resources & Mining	85	469	17,835,493	731.32
Construction	125	811	31,535,091	747.77
Manufacturing	38	1,704	83,101,466	937.86
Trade, Transportation & Utilities	322	2,967	83,637,333	542.10
Wholesale Trade	76	406	19,314,549	914.86
Retail Trade	183	2,250	51,312,350	438.57
Transportation, Warehousing & Utilities	63	311	13,010,434	804.50
Information	15	92	3,829,817	800.55
Financial Activities	143	633	34,814,029	1,057.66
Professional & Business Services	159	723	23,490,432	624.81
Education & Health Services	198	1,701	47,657,239	538.79
Leisure & Hospitality	108	1,743	22,620,882	249.58
Other Services	65	175	4,403,860	483.94
Local Government	25	2,530	85,709,499	651.49
State Government	16	160	4,849,104	582.83
<b>MADISON COUNTY - TOTAL</b>	<b>250</b>	<b>3,188</b>	<b>\$102,002,739</b>	<b>\$615.30</b>
Natural Resources & Mining	13	48	1,449,270	580.64
Construction	23	82	3,207,508	752.23
Manufacturing	23	1,108	38,840,166	674.12
Trade, Transportation & Utilities	54	646	18,443,229	549.04
Wholesale Trade	8	27	1,188,486	846.50
Retail Trade	36	491	11,684,219	457.63
Transportation, Warehousing & Utilities	10	128	5,570,524	836.92
Information	6	44	3,263,683	1,426.43
Financial Activities	17	71	2,472,435	669.67
Professional & Business Services	24	189	6,664,365	678.10
Education & Health Services	45	253	6,309,536	479.59
Leisure & Hospitality	16	168	1,836,279	210.20
Other Services	13	29	1,082,805	718.04
Local Government	9	508	17,227,636	652.17
State Government	7	42	1,205,827	552.12

Note: Data may not add due to rounding.

TABLE 6. COUNTY SUMMARY CALENDAR YEAR 2015

North American Industry Classification System - Industry Groups	Average Employing Units	Average Covered Employment	Total Calendar Earnings	Average Weekly Earnings
<b>MARION COUNTY - TOTAL</b>	<b>278</b>	<b>3,753</b>	<b>\$131,178,603</b>	<b>\$672.17</b>
Natural Resources & Mining	3	22	444,940	388.93
Construction	16	51	1,290,021	486.43
Manufacturing	19	1,732	51,475,237	571.54
Trade, Transportation & Utilities	53	512	12,698,578	476.96
Wholesale Trade	7	44	1,617,987	707.16
Retail Trade	37	439	9,526,769	417.33
Transportation, Warehousing & Utilities	9	29	1,553,822	1,030.39
Information	3	51	2,823,551	1,064.69
Financial Activities	31	188	6,757,085	691.19
Professional & Business Services	28	78	27,532,877	6,788.18
Education & Health Services	50	336	9,318,716	533.35
Leisure & Hospitality	35	212	2,464,294	223.54
Other Services	13	25	488,896	376.07
Local Government	18	481	14,177,110	566.81
State Government	9	65	1,707,298	505.12
<b>MILLER COUNTY - TOTAL</b>	<b>861</b>	<b>13,181</b>	<b>\$486,544,579</b>	<b>\$709.86</b>
Natural Resources & Mining	29	154	5,402,262	674.61
Construction	71	658	24,728,837	722.73
Manufacturing	27	2,378	148,827,915	1,203.56
Trade, Transportation & Utilities	231	3,656	124,224,241	653.43
Wholesale Trade	52	498	22,751,352	878.57
Retail Trade	130	1,372	30,647,226	429.57
Transportation, Warehousing & Utilities	49	1,786	70,825,663	762.62
Information	8	75	5,510,036	1,412.83
Financial Activities	84	406	16,288,305	771.52
Professional & Business Services	83	1,116	26,758,111	461.09
Education & Health Services	140	1,064	33,426,494	604.15
Leisure & Hospitality	90	1,494	22,748,467	292.82
Other Services	56	282	6,420,199	437.82
Local Government	25	1,383	52,649,708	732.10
State Government	17	515	19,560,004	730.40

Note: Data may not add due to rounding.

TABLE 6. COUNTY SUMMARY CALENDAR YEAR 2015

North American Industry Classification System - Industry Groups	Average Employing Units	Average Covered Employment	Total Calendar Earnings	Average Weekly Earnings
<b>MISSISSIPPI COUNTY - TOTAL</b>	<b>1,193</b>	<b>17,809</b>	<b>\$728,805,348</b>	<b>\$786.99</b>
Natural Resources & Mining	118	589	18,750,913	612.21
Construction	53	640	33,541,402	1,007.85
Manufacturing	57	6,176	366,190,172	1,140.24
Trade, Transportation & Utilities	292	2,910	99,575,471	658.05
Wholesale Trade	62	470	22,099,885	904.25
Retail Trade	164	1,663	35,859,126	414.67
Transportation, Warehousing & Utilities	66	777	41,616,460	1,030.01
Information	7	57	1,507,522	508.61
Financial Activities	87	461	15,718,470	655.70
Professional & Business Services	91	1,207	36,432,562	580.47
Education & Health Services	264	1,783	54,414,309	586.89
Leisure & Hospitality	89	1,199	14,812,216	237.57
Other Services	60	210	6,348,989	581.41
Local Government	51	2,032	64,286,495	608.40
State Government	24	545	17,226,827	607.86
<b>MONROE COUNTY - TOTAL</b>	<b>309</b>	<b>2,146</b>	<b>\$61,846,339</b>	<b>\$554.22</b>
Natural Resources & Mining	36	153	5,956,768	748.71
Construction	11	31	1,028,272	637.89
Manufacturing	7	119	4,632,907	748.69
Trade, Transportation & Utilities	81	631	20,815,519	634.39
Wholesale Trade	19	260	10,784,849	797.70
Retail Trade	38	263	6,261,674	457.86
Transportation, Warehousing & Utilities	24	108	3,768,996	671.12
Financial Activities	22	91	3,405,211	719.61
Professional & Business Services	14	36	613,169	327.55
Education & Health Services	70	295	7,967,113	519.37
Leisure & Hospitality	20	246	2,933,901	229.35
Local Government	21	329	9,371,224	547.77
State Government	8	104	2,956,308	546.65
Other	19	111	2,165,947	375.25

Note: Data may not add due to rounding.

TABLE 6. COUNTY SUMMARY CALENDAR YEAR 2015

North American Industry Classification System - Industry Groups	Average Employing Units	Average Covered Employment	Total Calendar Earnings	Average Weekly Earnings
<b>MONTGOMERY COUNTY - TOTAL</b>	<b>173</b>	<b>1,396</b>	<b>\$35,152,776</b>	<b>\$484.25</b>
Natural Resources & Mining	8	39	1,294,192	638.16
Construction	21	64	1,493,146	448.66
Trade, Transportation & Utilities	38	227	5,570,213	471.89
Wholesale Trade	9	49	1,603,587	629.35
Retail Trade	21	155	3,300,654	409.51
Transportation, Warehousing & Utilities	8	23	665,972	556.83
Financial Activities	11	58	2,242,398	743.50
Professional & Business Services	17	43	1,346,020	601.98
Education & Health Services	20	66	1,653,227	481.71
Leisure & Hospitality	18	309	5,444,374	338.83
Other Services	12	66	1,293,528	376.90
Local Government	9	436	12,237,993	539.78
State Government	8	47	1,397,845	571.95
Other	11	41	1,179,840	553.40
<b>NEVADA COUNTY - TOTAL</b>	<b>195</b>	<b>2,393</b>	<b>\$84,080,460</b>	<b>\$675.69</b>
Natural Resources & Mining	12	70	3,110,053	854.41
Trade, Transportation & Utilities	40	551	17,296,825	603.69
Retail Trade	22	289	5,512,903	366.84
Other Trade, Transportation & Utilities	18	262	11,783,922	864.94
Financial Activities	11	58	2,010,738	666.69
Professional & Business Services	13	51	1,644,640	620.15
Education & Health Services	40	405	9,715,719	461.34
Leisure & Hospitality	9	84	1,074,502	245.99
Local Government	27	358	10,042,193	539.44
State Government	10	84	2,132,699	488.26
Other	33	732	37,053,091	973.44

Note: Data may not add due to rounding.

TABLE 6. COUNTY SUMMARY CALENDAR YEAR 2015

North American Industry Classification System - Industry Groups	Average Employing Units	Average Covered Employment	Total Calendar Earnings	Average Weekly Earnings
<b>NEWTON COUNTY - TOTAL</b>	<b>124</b>	<b>1,066</b>	<b>\$24,368,418</b>	<b>\$439.61</b>
Construction	5	19	457,160	462.71
Manufacturing	7	24	890,039	713.17
Trade, Transportation & Utilities	31	153	4,095,834	514.81
Retail Trade	17	96	1,935,516	387.72
Other Trade, Transportation & Utilities	14	57	2,160,318	728.85
Professional & Business Services	6	9	229,573	490.54
Education & Health Services	27	236	4,146,168	337.86
Leisure & Hospitality	16	139	2,175,433	300.97
Other Services	3	5	107,925	415.10
Local Government	13	373	9,482,770	488.90
State Government	8	78	1,675,800	413.17
Other	8	30	1,107,716	710.07
<b>OUACHITA COUNTY - TOTAL</b>	<b>665</b>	<b>6,997</b>	<b>\$220,007,236</b>	<b>\$604.67</b>
Natural Resources & Mining	36	156	5,902,537	727.63
Construction	35	226	8,293,789	705.73
Manufacturing	23	520	21,715,606	803.09
Trade, Transportation & Utilities	170	1,643	48,049,312	562.40
Wholesale Trade	28	284	11,338,078	767.75
Retail Trade	113	1,037	21,932,460	406.73
Transportation, Warehousing & Utilities	29	322	14,778,774	882.63
Information	6	41	1,785,804	837.62
Financial Activities	59	284	10,864,023	735.65
Professional & Business Services	49	540	16,960,803	604.02
Education & Health Services	173	1,235	42,981,395	669.28
Leisure & Hospitality	41	515	6,125,562	228.74
Other Services	30	132	3,674,351	535.31
Local Government	29	1,043	31,524,312	581.24
State Government	14	662	22,129,742	642.86

Note: Data may not add due to rounding.

TABLE 6. COUNTY SUMMARY CALENDAR YEAR 2015

North American Industry Classification System - Industry Groups	Average Employing Units	Average Covered Employment	Total Calendar Earnings	Average Weekly Earnings
<b>PERRY COUNTY - TOTAL</b>	<b>154</b>	<b>1,237</b>	<b>\$39,395,468</b>	<b>\$612.45</b>
Construction	16	94	3,082,257	630.58
Manufacturing	5	41	1,182,660	554.72
Trade, Transportation & Utilities	25	188	4,941,090	505.43
Retail Trade	15	154	2,668,228	333.20
Other Trade, Transportation & Utilities	10	34	2,272,862	1,285.56
Financial Activities	9	26	1,045,502	773.30
Professional & Business Services	18	43	1,787,652	799.49
Education & Health Services	38	221	6,132,414	533.62
Leisure & Hospitality	8	77	863,858	215.75
Local Government	10	338	9,792,571	557.16
State Government	8	60	1,471,897	471.76
Other	17	149	9,095,567	1,173.92
<b>PHILLIPS COUNTY - TOTAL</b>	<b>814</b>	<b>5,611</b>	<b>\$174,985,689</b>	<b>\$599.73</b>
Natural Resources & Mining	65	280	7,656,345	525.85
Construction	28	100	3,286,850	632.09
Manufacturing	12	338	13,309,385	757.25
Trade, Transportation & Utilities	157	1,374	44,114,361	617.43
Wholesale Trade	30	309	15,141,660	942.35
Retail Trade	84	792	17,375,442	421.90
Transportation, Warehousing & Utilities	43	273	11,597,259	816.94
Information	8	40	1,669,859	802.82
Financial Activities	41	212	7,636,243	692.69
Professional & Business Services	46	264	10,550,803	768.56
Education & Health Services	350	1,364	40,426,381	569.96
Leisure & Hospitality	34	301	3,734,379	238.59
Other Services	32	76	1,900,456	480.88
Local Government	27	775	26,109,807	647.89
State Government	14	487	14,590,820	576.17

Note: Data may not add due to rounding.

TABLE 6. COUNTY SUMMARY CALENDAR YEAR 2015

North American Industry Classification System - Industry Groups	Average Employing Units	Average Covered Employment	Total Calendar Earnings	Average Weekly Earnings
<b>PIKE COUNTY - TOTAL</b>	<b>250</b>	<b>2,336</b>	<b>\$64,988,632</b>	<b>\$535.01</b>
Natural Resources & Mining	24	117	4,161,730	684.05
Construction	14	38	1,212,327	613.53
Manufacturing	17	242	5,960,819	473.68
Trade, Transportation & Utilities	65	520	13,657,172	505.07
Wholesale Trade	11	127	3,745,063	567.09
Retail Trade	37	335	7,489,055	429.91
Transportation, Warehousing & Utilities	17	58	2,423,054	803.40
Information	6	25	1,281,131	985.49
Financial Activities	22	202	7,880,404	750.23
Professional & Business Services	18	67	3,951,645	1,134.23
Education & Health Services	25	288	7,010,601	468.12
Leisure & Hospitality	24	207	2,618,563	243.27
Other Services	15	52	1,534,158	567.37
Local Government	10	418	12,688,667	583.76
State Government	10	160	3,031,415	364.35
<b>POINSETT COUNTY - TOTAL</b>	<b>526</b>	<b>5,127</b>	<b>\$174,830,667</b>	<b>\$655.77</b>
Natural Resources & Mining	71	431	16,707,674	745.48
Construction	22	89	3,447,444	744.91
Manufacturing	20	666	28,980,050	836.80
Trade, Transportation & Utilities	132	1,226	42,728,244	670.23
Wholesale Trade	33	370	21,920,031	1,139.29
Retail Trade	72	706	14,952,821	407.30
Transportation, Warehousing & Utilities	27	150	5,855,392	750.69
Information	5	53	1,946,002	706.10
Financial Activities	40	234	9,010,083	740.47
Professional & Business Services	30	179	9,746,760	1,047.14
Education & Health Services	105	731	20,436,536	537.63
Leisure & Hospitality	41	347	4,116,591	228.14
Other Services	20	42	1,222,367	559.69
Local Government	29	994	32,483,283	628.45
State Government	11	135	4,005,633	570.60

Note: Data may not add due to rounding.

TABLE 6. COUNTY SUMMARY CALENDAR YEAR 2015

North American Industry Classification System - Industry Groups	Average Employing Units	Average Covered Employment	Total Calendar Earnings	Average Weekly Earnings
<b>POLK COUNTY - TOTAL</b>	<b>492</b>	<b>5,824</b>	<b>\$170,072,680</b>	<b>\$561.58</b>
Natural Resources & Mining	22	123	5,677,223	887.62
Construction	30	206	5,825,714	543.85
Manufacturing	35	1,293	41,064,106	610.75
Trade, Transportation & Utilities	129	1,096	28,438,620	498.99
Wholesale Trade	22	56	1,895,487	650.92
Retail Trade	73	812	17,250,207	408.54
Transportation, Warehousing & Utilities	34	228	9,292,926	783.82
Information	7	63	1,842,754	562.50
Financial Activities	48	242	7,900,243	627.80
Professional & Business Services	44	158	6,034,983	734.54
Education & Health Services	80	997	33,702,030	650.07
Leisure & Hospitality	34	448	5,389,663	231.36
Other Services	28	188	5,092,830	520.95
Local Government	21	697	21,271,967	586.91
State Government	14	313	7,832,547	481.23
<b>POPE COUNTY - TOTAL</b>	<b>1,808</b>	<b>26,572</b>	<b>\$1,002,495,983</b>	<b>\$725.53</b>
Natural Resources & Mining	34	750	31,668,663	812.02
Construction	156	1,555	83,512,702	1,032.81
Manufacturing	76	4,552	183,912,623	776.97
Trade, Transportation & Utilities	426	6,162	267,877,045	836.01
Wholesale Trade	79	582	25,536,097	843.78
Retail Trade	266	3,348	76,647,297	440.26
Transportation, Warehousing & Utilities	81	2,232	165,693,651	1,427.61
Information	23	188	6,730,106	688.43
Financial Activities	184	1,262	41,925,167	638.87
Professional & Business Services	281	2,204	95,424,121	832.61
Education & Health Services	322	3,110	104,445,988	645.84
Leisure & Hospitality	139	2,631	35,589,598	260.14
Other Services	109	465	14,180,083	586.44
Local Government	42	2,018	73,645,431	701.81
State Government	16	1,675	63,584,456	730.02

Note: Data may not add due to rounding.



TABLE 6. COUNTY SUMMARY CALENDAR YEAR 2015

North American Industry Classification System - Industry Groups	Average Employing Units	Average Covered Employment	Total Calendar Earnings	Average Weekly Earnings
<b>PRAIRIE COUNTY - TOTAL</b>	<b>258</b>	<b>1,483</b>	<b>\$47,325,606</b>	<b>\$613.69</b>
Natural Resources & Mining	37	169	7,182,017	817.25
Construction	11	109	5,058,598	892.48
Manufacturing	6	32	743,791	446.99
Trade, Transportation & Utilities	64	365	12,061,558	635.49
Wholesale Trade	12	89	5,775,443	1,247.93
Retail Trade	36	207	3,842,419	356.97
Transportation, Warehousing & Utilities	16	69	2,443,696	681.07
Financial Activities	16	58	2,038,896	676.03
Professional & Business Services	12	61	1,855,260	584.89
Education & Health Services	53	235	6,278,575	513.80
Leisure & Hospitality	18	94	1,194,644	244.40
Local Government	15	289	8,786,943	584.70
State Government	9	35	1,085,465	596.41
Other	17	36	1,039,859	555.48
<b>PULASKI COUNTY - TOTAL</b>	<b>14,302</b>	<b>235,883</b>	<b>\$10,842,865,611</b>	<b>\$883.98</b>
Natural Resources & Mining	55	664	38,740,374	1,122.00
Construction	945	8,804	433,219,923	946.29
Manufacturing	332	12,781	692,613,496	1,042.13
Trade, Transportation & Utilities	3,166	48,245	2,027,052,958	808.00
Wholesale Trade	992	11,839	743,388,988	1,207.53
Retail Trade	1,793	25,753	725,770,508	541.96
Transportation, Warehousing & Utilities	381	10,653	557,893,462	1,007.11
Information	192	5,616	362,210,779	1,240.31
Financial Activities	1,695	16,180	1,120,313,585	1,331.55
Professional & Business Services	2,850	33,094	1,576,988,613	916.38
Education & Health Services	2,446	38,925	1,848,111,157	913.05
Leisure & Hospitality	1,184	22,778	385,205,528	325.22
Other Services	1,130	6,391	236,128,612	710.52
Local Government	108	14,682	660,380,460	864.98
State Government	199	27,723	1,461,900,126	1,014.08

Note: Data may not add due to rounding.

TABLE 6. COUNTY SUMMARY CALENDAR YEAR 2015

North American Industry Classification System - Industry Groups	Average Employing Units	Average Covered Employment	Total Calendar Earnings	Average Weekly Earnings
<b>RANDOLPH COUNTY - TOTAL</b>	<b>404</b>	<b>4,238</b>	<b>\$114,924,952</b>	<b>\$521.49</b>
Natural Resources & Mining	28	98	2,561,735	502.70
Construction	26	84	2,022,780	463.09
Manufacturing	28	542	17,676,769	627.19
Trade, Transportation & Utilities	93	825	23,350,222	544.29
Wholesale Trade	18	148	5,063,300	657.91
Retail Trade	59	553	12,748,206	443.32
Transportation, Warehousing & Utilities	16	124	5,538,716	858.98
Information	5	33	1,278,920	745.29
Financial Activities	35	144	4,783,040	638.76
Professional & Business Services	37	171	4,542,388	510.84
Education & Health Services	64	844	21,967,186	500.53
Leisure & Hospitality	29	390	4,737,366	233.60
Other Services	24	63	1,607,228	490.61
Local Government	24	726	19,888,597	526.82
State Government	11	318	10,508,721	635.51
<b>SAINT FRANCIS COUNTY - TOTAL</b>	<b>761</b>	<b>7,234</b>	<b>\$222,151,759</b>	<b>\$590.57</b>
Natural Resources & Mining	47	220	7,072,783	618.25
Trade, Transportation & Utilities	158	2,002	60,262,942	578.87
Wholesale Trade	33	564	23,343,033	795.93
Retail Trade	103	1,124	24,508,283	419.32
Transportation, Warehousing & Utilities	22	314	12,411,626	760.14
Information	5	63	2,212,207	675.28
Financial Activities	60	249	8,083,334	624.29
Professional & Business Services	47	456	11,667,972	492.07
Education & Health Services	273	1,406	46,752,762	639.47
Leisure & Hospitality	45	636	7,779,502	235.23
Other Services	27	55	1,171,466	409.60
Local Government	28	851	30,943,051	699.25
State Government	16	509	16,466,291	622.12
Other	55	787	29,739,449	726.70

Note: Data may not add due to rounding.

TABLE 6. COUNTY SUMMARY CALENDAR YEAR 2015

North American Industry Classification System - Industry Groups	Average Employing Units	Average Covered Employment	Total Calendar Earnings	Average Weekly Earnings
<b>SALINE COUNTY - TOTAL</b>	<b>1,941</b>	<b>22,739</b>	<b>\$762,689,989</b>	<b>\$645.02</b>
Natural Resources & Mining	14	56	2,333,349	801.29
Construction	266	1,918	81,151,689	813.66
Manufacturing	84	1,385	66,572,830	924.37
Trade, Transportation & Utilities	446	5,242	166,770,461	611.81
Wholesale Trade	113	574	27,831,714	932.45
Retail Trade	269	4,146	116,974,243	542.57
Transportation, Warehousing & Utilities	64	522	21,964,504	809.18
Information	13	145	6,512,779	863.76
Financial Activities	200	734	31,606,150	828.08
Professional & Business Services	263	1,698	61,563,615	697.24
Education & Health Services	283	3,242	108,118,699	641.33
Leisure & Hospitality	172	3,040	43,366,077	274.33
Other Services	155	770	22,522,617	562.50
Local Government	30	3,599	143,360,260	766.03
State Government	15	910	28,811,463	608.86
<b>SCOTT COUNTY - TOTAL</b>	<b>182</b>	<b>2,996</b>	<b>\$80,909,549</b>	<b>\$519.34</b>
Natural Resources & Mining	17	158	6,129,887	746.09
Trade, Transportation & Utilities	34	407	12,467,251	589.08
Wholesale Trade	5	53	3,073,899	1,115.35
Retail Trade	22	287	6,312,727	422.99
Transportation, Warehousing & Utilities	7	67	3,080,625	884.22
Financial Activities	21	68	1,951,113	551.79
Professional & Business Services	11	65	1,696,217	501.84
Education & Health Services	38	292	9,839,539	648.02
Leisure & Hospitality	14	134	1,832,338	262.96
Local Government	6	517	15,296,581	568.98
State Government	7	58	1,341,233	444.71
Other	34	1,297	30,355,390	450.08

Note: Data may not add due to rounding.

TABLE 6. COUNTY SUMMARY CALENDAR YEAR 2015

North American Industry Classification System - Industry Groups	Average Employing Units	Average Covered Employment	Total Calendar Earnings	Average Weekly Earnings
<b>SEARCY COUNTY - TOTAL</b>	<b>180</b>	<b>1,531</b>	<b>\$37,796,277</b>	<b>\$474.76</b>
Construction	12	14	380,736	522.99
Manufacturing	17	204	4,624,124	435.91
Trade, Transportation & Utilities	42	249	6,175,947	476.98
Wholesale Trade	8	54	1,241,951	442.29
Retail Trade	28	174	3,853,127	425.85
Transportation, Warehousing & Utilities	6	21	1,080,869	989.81
Financial Activities	13	62	1,600,674	496.49
Professional & Business Services	12	86	3,058,403	683.90
Education & Health Services	42	315	8,298,873	506.65
Leisure & Hospitality	13	118	1,396,611	227.61
Local Government	10	318	8,421,911	509.31
State Government	7	105	2,324,432	425.72
Other	12	60	1,514,566	485.44
<b>SEBASTIAN COUNTY - TOTAL</b>	<b>3,687</b>	<b>64,489</b>	<b>\$2,577,778,390</b>	<b>\$768.70</b>
Natural Resources & Mining	54	852	68,394,815	1,543.76
Construction	257	2,428	96,929,782	767.72
Manufacturing	189	11,870	551,871,475	894.10
Trade, Transportation & Utilities	911	13,312	479,280,167	692.38
Wholesale Trade	251	2,824	136,547,800	929.86
Retail Trade	538	7,821	196,141,280	482.28
Transportation, Warehousing & Utilities	122	2,667	146,591,087	1,057.02
Information	40	902	54,862,581	1,169.68
Financial Activities	410	2,416	112,946,796	899.03
Professional & Business Services	598	8,104	322,932,426	766.32
Education & Health Services	569	11,105	515,989,457	893.55
Leisure & Hospitality	335	6,110	91,630,121	288.40
Other Services	262	1,295	36,453,714	541.34
Local Government	40	4,418	179,243,950	780.22
State Government	22	1,677	67,243,106	771.10

Note: Data may not add due to rounding.

TABLE 6. COUNTY SUMMARY CALENDAR YEAR 2015

North American Industry Classification System - Industry Groups	Average Employing Units	Average Covered Employment	Total Calendar Earnings	Average Weekly Earnings
<b>SEVIER COUNTY - TOTAL</b>	<b>317</b>	<b>4,692</b>	<b>\$142,780,166</b>	<b>\$585.20</b>
Natural Resources & Mining	15	165	6,305,639	734.92
Construction	16	153	7,411,277	931.53
Trade, Transportation & Utilities	98	884	28,308,804	615.84
Wholesale Trade	16	117	9,158,831	1,505.40
Retail Trade	66	680	15,203,712	429.97
Transportation, Warehousing & Utilities	16	87	3,946,261	872.29
Financial Activities	27	205	8,125,353	762.23
Professional & Business Services	26	102	2,592,110	488.71
Education & Health Services	51	534	16,472,258	593.21
Leisure & Hospitality	26	297	3,398,555	220.06
Local Government	12	872	26,279,146	579.55
State Government	8	174	4,947,833	546.84
Other	38	1,306	38,939,191	573.38
<b>SHARP COUNTY - TOTAL</b>	<b>394</b>	<b>3,737</b>	<b>\$104,529,337</b>	<b>\$537.91</b>
Natural Resources & Mining	3	7	172,523	473.96
Construction	26	115	4,163,507	696.24
Manufacturing	18	162	4,052,411	481.06
Trade, Transportation & Utilities	83	1,086	36,078,373	638.87
Wholesale Trade	13	41	1,204,195	564.82
Retail Trade	58	673	13,980,334	399.48
Transportation, Warehousing & Utilities	12	372	20,893,844	1,080.12
Information	6	40	1,624,989	781.24
Financial Activities	32	178	7,166,007	774.20
Professional & Business Services	39	137	4,741,835	665.61
Education & Health Services	88	738	19,567,589	509.89
Leisure & Hospitality	41	414	4,797,644	222.86
Other Services	26	82	1,288,473	302.17
Local Government	24	706	18,919,698	515.35
State Government	8	72	1,956,288	522.51

Note: Data may not add due to rounding.

TABLE 6. COUNTY SUMMARY CALENDAR YEAR 2015

North American Industry Classification System - Industry Groups	Average Employing Units	Average Covered Employment	Total Calendar Earnings	Average Weekly Earnings
<b>STONE COUNTY - TOTAL</b>	<b>279</b>	<b>2,450</b>	<b>\$63,315,700</b>	<b>\$496.98</b>
Natural Resources & Mining	7	21	307,375	281.48
Construction	17	38	893,247	452.05
Manufacturing	21	219	5,087,544	446.75
Trade, Transportation & Utilities	67	589	15,926,349	519.99
Wholesale Trade	6	38	1,261,149	638.23
Retail Trade	50	514	12,890,967	482.30
Transportation, Warehousing & Utilities	11	37	1,774,233	922.16
Financial Activities	29	96	2,929,540	586.85
Professional & Business Services	14	31	748,976	464.63
Education & Health Services	52	492	16,583,430	648.20
Leisure & Hospitality	36	354	4,039,393	219.44
Local Government	10	387	11,923,663	592.51
State Government	8	168	3,518,619	402.77
Other	18	55	1,357,564	474.67
<b>UNION COUNTY - TOTAL</b>	<b>1,336</b>	<b>18,284</b>	<b>\$851,206,426</b>	<b>\$895.28</b>
Natural Resources & Mining	96	550	26,019,602	909.78
Construction	81	1,841	96,442,833	1,007.43
Manufacturing	51	3,225	198,250,500	1,182.17
Trade, Transportation & Utilities	328	4,162	199,280,731	920.79
Wholesale Trade	68	1,057	95,645,334	1,740.15
Retail Trade	200	2,263	52,820,224	448.86
Transportation, Warehousing & Utilities	60	842	50,815,173	1,160.59
Information	9	135	4,246,414	604.90
Financial Activities	105	613	26,845,672	842.19
Professional & Business Services	141	1,390	106,412,760	1,472.23
Education & Health Services	283	2,337	88,179,288	725.61
Leisure & Hospitality	87	1,204	17,943,687	286.60
Other Services	105	476	12,096,869	488.72
Local Government	33	1,760	55,245,317	603.64
State Government	17	591	20,242,753	658.69

Note: Data may not add due to rounding.

TABLE 6. COUNTY SUMMARY CALENDAR YEAR 2015

North American Industry Classification System - Industry Groups	Average Employing Units	Average Covered Employment	Total Calendar Earnings	Average Weekly Earnings
<b>VAN BUREN COUNTY - TOTAL</b>	<b>358</b>	<b>3,892</b>	<b>\$150,999,702</b>	<b>\$746.10</b>
Natural Resources & Mining	10	310	28,339,272	1,758.02
Construction	39	169	5,534,023	629.72
Manufacturing	8	95	2,918,973	590.89
Trade, Transportation & Utilities	100	1,128	54,315,837	926.01
Wholesale Trade	10	83	3,789,233	877.95
Retail Trade	59	594	13,478,486	436.37
Transportation, Warehousing & Utilities	31	451	37,048,118	1,579.74
Information	7	32	1,297,366	779.67
Financial Activities	30	119	4,335,042	700.56
Professional & Business Services	35	144	4,585,841	612.43
Education & Health Services	59	739	20,989,973	546.22
Leisure & Hospitality	29	381	5,396,109	272.37
Other Services	23	52	1,388,031	513.33
Local Government	11	661	20,062,855	583.70
State Government	7	62	1,836,380	569.60
<b>WASHINGTON COUNTY - TOTAL</b>	<b>5,743</b>	<b>97,667</b>	<b>\$4,133,251,516</b>	<b>\$813.84</b>
Natural Resources & Mining	40	344	19,156,720	1,070.93
Construction	490	4,275	195,505,052	879.46
Manufacturing	221	12,144	496,987,510	787.01
Trade, Transportation & Utilities	1,365	22,741	872,660,804	737.96
Wholesale Trade	382	3,688	243,266,498	1,268.49
Retail Trade	789	12,411	330,114,263	511.51
Transportation, Warehousing & Utilities	194	6,642	299,280,043	866.51
Information	80	950	44,586,048	902.55
Financial Activities	642	3,476	172,242,417	952.92
Professional & Business Services	1,023	11,546	791,477,070	1,318.27
Education & Health Services	796	14,218	648,845,502	877.61
Leisure & Hospitality	629	11,816	180,074,153	293.07
Other Services	375	1,829	54,898,740	577.23
Local Government	60	7,997	324,737,869	780.91
State Government	22	6,331	332,079,631	1,008.71

Note: Data may not add due to rounding.

TABLE 6. COUNTY SUMMARY CALENDAR YEAR 2015

North American Industry Classification System - Industry Groups	Average Employing Units	Average Covered Employment	Total Calendar Earnings	Average Weekly Earnings
<b>WHITE COUNTY - TOTAL</b>	<b>1,820</b>	<b>24,233</b>	<b>\$860,132,137</b>	<b>\$682.58</b>
Natural Resources & Mining	57	690	44,344,199	1,235.90
Construction	158	1,073	44,259,268	793.23
Manufacturing	65	2,228	98,941,696	854.01
Trade, Transportation & Utilities	484	6,333	211,969,134	643.66
Wholesale Trade	89	601	25,907,395	828.98
Retail Trade	302	3,728	90,294,904	465.78
Transportation, Warehousing & Utilities	93	2,004	95,766,835	919.00
Information	18	145	4,814,599	638.54
Financial Activities	173	849	37,530,219	850.10
Professional & Business Services	203	1,304	41,019,501	604.94
Education & Health Services	324	5,269	212,933,097	777.16
Leisure & Hospitality	158	2,586	33,288,676	247.55
Other Services	115	489	15,598,978	613.46
Local Government	47	2,577	94,143,060	702.54
State Government	18	690	21,289,710	593.36
<b>WOODRUFF COUNTY - TOTAL</b>	<b>209</b>	<b>1,773</b>	<b>\$57,285,878</b>	<b>\$621.35</b>
Natural Resources & Mining	27	146	5,687,229	749.11
Construction	9	45	1,500,309	641.16
Manufacturing	7	226	8,391,437	714.04
Trade, Transportation & Utilities	45	409	14,890,597	700.14
Wholesale Trade	11	169	8,377,643	953.30
Retail Trade	25	175	3,153,037	346.49
Transportation, Warehousing & Utilities	9	65	3,359,917	994.06
Financial Activities	12	67	2,295,253	658.80
Education & Health Services	66	217	6,201,951	549.62
Leisure & Hospitality	10	75	894,748	229.42
Local Government	9	435	11,871,194	524.81
State Government	6	48	1,369,784	548.79
Other	18	105	4,183,376	766.19

Note: Data may not add due to rounding.



TABLE 6. COUNTY SUMMARY CALENDAR YEAR 2015

North American Industry Classification System - Industry Groups	Average Employing Units	Average Covered Employment	Total Calendar Earnings	Average Weekly Earnings
<b>YELL COUNTY - TOTAL</b>	<b>406</b>	<b>6,207</b>	<b>\$178,189,788</b>	<b>\$552.07</b>
Natural Resources & Mining	24	162	5,683,454	674.67
Construction	33	158	5,445,553	662.80
Manufacturing	20	2,346	64,790,335	531.10
Trade, Transportation & Utilities	76	708	19,645,921	533.62
Wholesale Trade	14	35	908,224	499.02
Retail Trade	46	510	10,350,101	390.28
Transportation, Warehousing & Utilities	16	163	8,387,596	989.57
Financial Activities	30	163	6,531,892	770.63
Professional & Business Services	38	281	9,202,765	629.81
Education & Health Services	104	766	19,283,577	484.12
Leisure & Hospitality	27	299	3,476,977	223.63
Local Government	25	1,120	37,686,088	647.08
State Government	12	94	2,374,221	485.72
Other	17	110	4,069,005	711.36
<b>STATEWIDE COUNTY - TOTAL</b>	<b>8,342</b>	<b>29,917</b>	<b>\$1,656,270,762</b>	<b>\$1,064.66</b>
Natural Resources & Mining	93	329	20,291,755	1,186.10
Construction	720	3,166	153,282,279	931.06
Manufacturing	46	133	14,450,961	2,089.50
Trade, Transportation & Utilities	2,821	7,357	637,781,926	1,667.12
Wholesale Trade	2,426	6,014	567,723,178	1,815.39
Retail Trade	139	312	17,844,194	1,099.86
Transportation, Warehousing & Utilities	256	1,031	52,214,554	973.93
Information	206	467	33,307,705	1,371.59
Financial Activities	514	1,314	89,526,030	1,310.24
Professional & Business Services	3,216	13,509	545,407,171	776.42
Education & Health Services	358	2,146	90,202,048	808.32
Leisure & Hospitality	85	120	4,867,886	780.11
Other Services	268	646	36,562,320	1,088.42
State Government	15	730	30,590,681	805.87

Note: Statewide classification includes employment and payroll data for employers that have not provided a physical location for each employing unit. This section also includes employers without a physical location in Arkansas.

**TABLE 7. FEDERAL GOVERNMENT EMPLOYMENT AND EARNINGS IN ARKANSAS**

<b>North American Industry Classification System - Industry Groups</b>	<b>Average Employing Units</b>	<b>Average Covered Employment</b>	<b>Total Calendar Earnings</b>	<b>Average Weekly Earnings</b>
<b>TOTAL</b>	<b>1,159</b>	<b>20,275</b>	<b>\$1,326,293,656</b>	<b>\$1,257.99</b>
Trade, Transportation & Utilities	593	5,440	286,872,986	1,014.12
Information	2	43	2,555,932	1,143.08
Financial Activities	14	110	8,865,741	1,549.95
Professional & Business Services	33	769	54,586,687	1,365.08
Education & Health Services	16	5,361	394,785,322	1,416.16
Leisure & Hospitality	22	291	12,204,035	806.51
Other Services	1	1	31,769	610.94
Public Administration	478	8,260	566,391,184	1,318.66

Note: Data may not add due to rounding.

TABLE 8. WORKFORCE INVESTMENT AREA SUMMARY CALENDAR YEAR 2015

North American Industry Classification System - Industry Groups	Average Employing Units	Average Covered Employment	Total Calendar Earnings	Average Weekly Earnings
<b>CENTRAL WORKFORCE INVESTMENT AREA</b>	<b>6,644</b>	<b>80,374</b>	<b>\$2,872,695,993</b>	<b>\$687.34</b>
Natural Resources & Mining	236	1,768	104,077,397	1,132.06
Construction	720	5,442	229,144,369	809.74
Trade, Transportation & Utilities	1,563	16,435	499,082,779	583.98
Wholesale Trade	367	1,878	92,030,004	942.39
Retail Trade	940	12,802	327,200,727	491.51
Transportation, Warehousing & Utilities	256	1,755	79,852,048	875.00
Information	54	532	21,949,603	793.44
Financial Activities	705	3,053	137,469,235	865.92
Professional & Business Services	879	8,525	421,706,100	951.29
Education & Health Services	1,048	11,728	399,634,603	655.29
Leisure & Hospitality	568	10,067	137,359,185	262.39
Local Government	131	10,033	383,417,825	734.92
State Government	66	4,528	168,493,790	715.61
Other	674	8,263	370,361,107	861.95

\*Note: Pulaski County is not included in the Central Workforce Investment Area. Please refer to Page 51 for information on Pulaski County.  
Central Workforce Investment Area includes these counties: Faulkner, Lonoke, Monroe, Prairie, and Saline.

<b>EASTERN WORKFORCE INVESTMENT AREA</b>	<b>3,663</b>	<b>36,800</b>	<b>\$1,201,969,897</b>	<b>\$628.12</b>
Natural Resources & Mining	243	1,227	39,368,512	617.02
Manufacturing	75	3,286	138,011,765	807.69
Trade, Transportation & Utilities	801	9,413	318,638,243	650.98
Wholesale Trade	168	2,055	97,021,566	907.93
Retail Trade	452	4,897	112,136,826	440.37
Transportation, Warehousing & Utilities	181	2,461	109,479,851	855.50
Financial Activities	254	1,257	46,542,596	712.05
Professional & Business Services	270	2,446	73,948,394	581.39
Education & Health Services	1,233	6,500	193,801,890	573.38
Leisure & Hospitality	240	3,634	56,136,060	297.07
Local Government	129	4,618	167,871,229	699.07
State Government	61	2,314	74,323,740	617.68
Other	357	2,105	93,327,468	852.62

Eastern Workforce Investment Area includes these counties: Crittenden, Cross, Lee, Phillips, and Saint Francis.

TABLE 8. WORKFORCE INVESTMENT AREA SUMMARY CALENDAR YEAR 2015

North American Industry Classification System - Industry Groups	Average Employing Units	Average Covered Employment	Total Calendar Earnings	Average Weekly Earnings
<b>NORTH CENTRAL WORKFORCE INVESTMENT AREA</b>	<b>5,550</b>	<b>67,658</b>	<b>\$2,286,963,395</b>	<b>\$650.03</b>
Natural Resources & Mining	213	2,201	123,775,500	1,081.46
Construction	430	2,481	95,058,447	736.82
Manufacturing	233	8,082	336,035,957	799.58
Trade, Transportation & Utilities	1,404	15,839	536,562,502	651.46
Retail Trade	898	9,715	230,662,687	456.60
Other Trade, Transportation & Utilities	506	6,124	305,899,815	960.60
Financial Activities	502	2,442	101,771,977	801.46
Education & Health Services	1,033	13,400	490,499,592	703.93
Leisure & Hospitality	495	6,475	82,723,981	245.69
Local Government	227	8,546	274,314,811	617.28
State Government	105	3,087	98,405,643	613.03
Other	908	5,105	147,814,985	556.83

North Central Workforce Investment Area includes these counties: Cleburne, Fulton, Independence, IZard, Jackson, Sharp, Stone, Van Buren, White, and Woodruff.

<b>NORTHEAST WORKFORCE INVESTMENT AREA</b>	<b>6,547</b>	<b>96,793</b>	<b>\$3,499,733,609</b>	<b>\$695.32</b>
Natural Resources & Mining	449	2,136	70,928,674	638.58
Construction	438	3,364	144,758,542	827.53
Manufacturing	308	19,733	954,603,179	930.31
Trade, Transportation & Utilities	1,738	19,325	618,034,642	615.02
Wholesale Trade	390	3,607	178,008,442	949.05
Retail Trade	1,018	12,568	295,991,825	452.91
Transportation, Warehousing & Utilities	330	3,150	144,034,375	879.33
Financial Activities	562	3,112	133,245,043	823.39
Professional & Business Services	661	6,953	214,907,076	594.39
Education & Health Services	1,144	15,902	637,126,583	770.50
Leisure & Hospitality	522	8,732	117,753,695	259.33
Local Government	218	10,932	367,866,582	647.12
State Government	102	4,406	171,789,634	749.81
Other	405	2,198	68,719,959	601.25

Northeast Workforce Investment Area includes these counties: Clay, Craighead, Greene, Lawrence, Mississippi, Poinsett, and Randolph.

TABLE 8. WORKFORCE INVESTMENT AREA SUMMARY CALENDAR YEAR 2015

North American Industry Classification System - Industry Groups	Average Employing Units	Average Covered Employment	Total Calendar Earnings	Average Weekly Earnings
<b>NORTHWEST WORKFORCE INVESTMENT AREA</b>	<b>15,441</b>	<b>254,640</b>	<b>\$11,634,274,149</b>	<b>\$878.64</b>
Natural Resources & Mining	138	1,425	81,756,747	1,103.33
Trade, Transportation & Utilities	3,827	58,189	2,415,983,814	798.45
Retail Trade	2,116	31,070	797,036,296	493.33
Other Trade, Transportation & Utilities	1,711	27,119	1,618,947,518	1,148.04
Information	203	2,496	121,013,476	932.36
Professional & Business Services	2,532	45,531	3,735,515,583	1,577.76
Education & Health Services	2,195	31,624	1,286,633,976	782.41
Leisure & Hospitality	1,616	27,881	437,618,344	301.84
Other Services	975	4,489	137,435,146	588.77
Local Government	305	21,682	841,481,849	746.35
State Government	111	8,906	416,044,294	898.37
Other	3,539	52,417	2,160,790,920	792.75

Northwest Workforce Investment Area includes these counties: Baxter, Benton, Boone, Carroll, Madison, Marion, Newton, Searcy, and Washington.

<b>SOUTHEAST WORKFORCE INVESTMENT AREA</b>	<b>6,131</b>	<b>69,107</b>	<b>\$2,457,990,796</b>	<b>\$684.00</b>
Natural Resources & Mining	435	2,410	91,870,503	733.09
Construction	300	2,163	85,627,654	761.30
Manufacturing	208	14,370	680,685,062	910.93
Trade, Transportation & Utilities	1,283	12,860	418,084,607	625.20
Wholesale Trade	239	2,058	93,508,948	873.78
Retail Trade	769	7,821	182,941,177	449.83
Transportation, Warehousing & Utilities	275	2,981	141,634,482	913.70
Financial Activities	412	2,478	106,775,494	828.64
Professional & Business Services	399	3,064	106,569,744	668.87
Education & Health Services	1,989	10,667	353,448,842	637.21
Other Services	333	1,240	35,121,759	544.69
Local Government	206	8,752	290,652,341	638.65
State Government	138	6,173	219,096,576	682.55
Other	428	4,930	70,058,214	273.28

Southeast Workforce Investment Area includes these counties: Arkansas, Ashley, Bradley, Chicot, Cleveland, Desha, Drew, Grant, Jefferson, and Lincoln.

TABLE 8. WORKFORCE INVESTMENT AREA SUMMARY CALENDAR YEAR 2015

North American Industry Classification System - Industry Groups	Average Employing Units	Average Covered Employment	Total Calendar Earnings	Average Weekly Earnings
<b>SOUTHWEST WORKFORCE INVESTMENT AREA</b>	<b>5,742</b>	<b>78,466</b>	<b>\$2,988,020,448</b>	<b>\$732.32</b>
Natural Resources & Mining	355	2,431	112,889,702	893.03
Trade, Transportation & Utilities	1,413	16,047	575,939,385	690.21
Wholesale Trade	246	2,520	162,717,850	1,241.74
Retail Trade	865	9,048	203,809,526	433.18
Transportation, Warehousing & Utilities	302	4,479	209,412,009	899.12
Information	55	464	20,739,666	859.57
Financial Activities	489	2,574	105,271,214	786.50
Professional & Business Services	469	3,937	178,069,515	869.80
Education & Health Services	1,182	9,393	295,128,130	604.23
Leisure & Hospitality	410	5,609	77,097,074	264.33
Other Services	379	1,720	41,746,577	466.76
Local Government	254	9,486	307,535,371	623.46
State Government	142	3,765	130,512,597	666.63
Other	594	23,040	1,143,091,217	954.10

Southwest Workforce Investment Area includes these counties: Calhoun, Columbia, Dallas, Hempstead, Howard, Lafayette, Little River, Miller, Nevada, Ouachita, Sevier, and Union

<b>WEST CENTRAL WORKFORCE INVESTMENT AREA</b>	<b>8,199</b>	<b>105,980</b>	<b>\$3,598,455,484</b>	<b>\$652.96</b>
Construction	748	4,730	198,312,028	806.28
Trade, Transportation & Utilities	1,851	21,629	740,512,804	658.40
Wholesale Trade	329	2,107	93,477,942	853.18
Retail Trade	1,230	14,215	339,823,739	459.73
Transportation, Warehousing & Utilities	292	5,307	307,211,123	1,113.23
Financial Activities	812	3,969	159,686,767	773.72
Professional & Business Services	956	8,155	288,304,961	679.87
Education & Health Services	1,509	16,541	611,360,991	710.78
Leisure & Hospitality	770	12,892	191,727,266	286.00
Local Government	226	10,898	391,179,483	690.28
State Government	125	5,667	188,870,546	640.93
Other	1,202	21,499	828,500,638	741.09

West Central Workforce Investment Area includes these counties: Clark, Conway, Garland, Hot Spring, Johnson, Montgomery, Perry, Pike, Pope, and Yell

TABLE 8. WORKFORCE INVESTMENT AREA SUMMARY CALENDAR YEAR 2015

North American Industry Classification System - Industry Groups	Average Employing Units	Average Covered Employment	Total Calendar Earnings	Average Weekly Earnings
<b>WESTERN WORKFORCE INVESTMENT AREA</b>	<b>6,444</b>	<b>102,096</b>	<b>\$3,786,272,123</b>	<b>\$713.18</b>
Natural Resources & Mining	167	1,796	117,032,640	1,253.13
Trade, Transportation & Utilities	1,579	22,737	785,034,098	663.98
Wholesale Trade	386	3,839	183,367,125	918.54
Retail Trade	919	12,346	303,504,765	472.75
Transportation, Warehousing & Utilities	274	6,552	298,162,208	875.14
Financial Activities	682	3,523	153,584,920	838.36
Professional & Business Services	893	10,182	392,023,620	740.42
Education & Health Services	1,020	15,201	643,998,441	814.72
Leisure & Hospitality	536	8,889	127,776,018	276.44
Local Government	151	9,039	333,278,332	709.06
State Government	76	2,875	99,864,966	667.99
Other	1,340	27,854	1,133,679,088	782.71

Western Workforce Investment Area includes these counties: Crawford, Franklin, Logan, Polk, Scott, and Sebastian