

Arkansas Covered Employment & Earnings



Third Quarter
2014

**COVERED EMPLOYMENT AND EARNINGS
STATE OF ARKANSAS
THIRD QUARTER 2014**

**ASA HUTCHINSON, GOVERNOR
STATE OF ARKANSAS**

**DARYL BASSETT, DIRECTOR
DEPARTMENT OF WORKFORCE SERVICES**

**PUBLISHED BY
LABOR MARKET INFORMATION
BUREAU OF LABOR STATISTICS PROGRAMS
POST OFFICE BOX 2981
LITTLE ROCK, ARKANSAS 72203-2981
SUSAN PRICE, BLS PROGRAMS MANAGER
TELEPHONE (501) 682-3103**

STATE OF ARKANSAS WEBPAGE: <http://www.arkansas.gov>

DEPARTMENT OF WORKFORCE SERVICES WEBPAGE: <http://www.arkansas.gov/esd/>

WEBPAGE FOR LABOR MARKET INFORMATION: <http://www.discover.arkansas.gov>

RELEASED: March 2015

TABLE OF CONTENTS

DESCRIPTION OF DATA	PAGE
Description and Classification of Data	1
Definition of Covered Employment and Earnings	2
Significant Developments During Third Quarter 2014	3

LIST OF GRAPHS AND TABLES

Graph 1	Total Covered Employment for Selected Years, Arkansas	7
Graph 2	Total Covered Earnings, by Calendar Quarter for Selected Years, Arkansas	8
Table 1	Quarterly Comparison of Covered Employment and Wages, by Industry	5
Table 2	Total Covered Employment in Arkansas, 2007 – 2014	6
Table 3	Total Covered Earnings, 2007 – 2014	9
Table 4	Total Taxable Earnings, 2007 – 2014	10
Table 5	State Summary – Employment and Total Earnings, by Industry, Third Quarter 2014	11
Table 6	County Summary – Employment and Total Earnings, by Industry, Third Quarter 2014	22
Table 7	Federal Government Employment and Total Earnings in Arkansas, Third Quarter 2014	60
Table 8	Workforce Information Area – Employment and Total Earnings, by Industry, Third Quarter 2014	61

EMPLOYMENT AND EARNINGS
UNDER THE ARKANSAS EMPLOYMENT SECURITY LAW
THIRD QUARTER 2014

DESCRIPTION AND CLASSIFICATION OF DATA

This publication contains covered employment and payroll data by industry and county for the Third Quarter 2014 and a record for total covered employment by month, quarterly payroll data, average weekly earnings, and total taxable earnings for 2007 through 2014. These data are compiled from quarterly contributions and wage reports submitted by employers subject to the Arkansas Employment Security Law.

Employment data have been tabulated for each month of the quarter by industry under the **North American Industry Classification System** (NAICS) by state, county, and workforce area. Payroll data represent the total wages paid during the quarter and are classified by industry for the state and by publishable industry groups for each county and workforce area.

Due to industry classification revisions, previously published data will not always be comparable with current data. For this reason, comparisons should not be made between the same industries under different revisions. For more information, visit the NAICS home page at <http://www.census.gov/naics>.

Industry Classification Revisions

- SIC (Standard Industrial Classification) 1987 to NAICS 2002
- NAICS 2002 to NAICS 2007
- NAICS 2007 to NAICS 2012

The tabulation of this data is a joint effort in conjunction with the United States Bureau of Labor Statistics. Data included in this publication are subject to revisions. Revisions are typically reflected in the Annual Covered Employment and Earnings publication.

DEFINITION OF COVERED EMPLOYMENT AND EARNINGS

Covered Employment is the total number of workers employed by establishments subject to the Arkansas Employment Security Law that worked or received pay for the payroll period including the 12th of the month. Earnings include all wages paid to any covered employee by their employer including salaries, bonuses, commissions, fees, fringe benefits, sick pay made directly to employees or dependents, deferred compensation, and reported tips. These wages include both taxable and nontaxable wages. Only the first \$12,000 paid to each worker by an employer in the calendar year is taxable under the Arkansas Employment Security Law.

An Arkansas state unemployment insurance account is required of any entity meeting the definition of an employer. As described by Arkansas Department of Workforce Services Law, the definition of an employer includes, but is not limited to, a sole proprietorship, partnership, corporation, associations, trust, estate, and receiver or trustee in bankruptcy. The entity must employ one or more individuals for ten or more days in a calendar year, whether or not the days are consecutive.

Currently excluded from coverage is employment covered by the Railroad Unemployment Insurance Act, some domestic service workers, employees of small agricultural establishments, self-employed workers, unpaid family workers, insurance and real estate agents paid only on a commission basis, and employees of churches and religious organizations except separately incorporated schools.

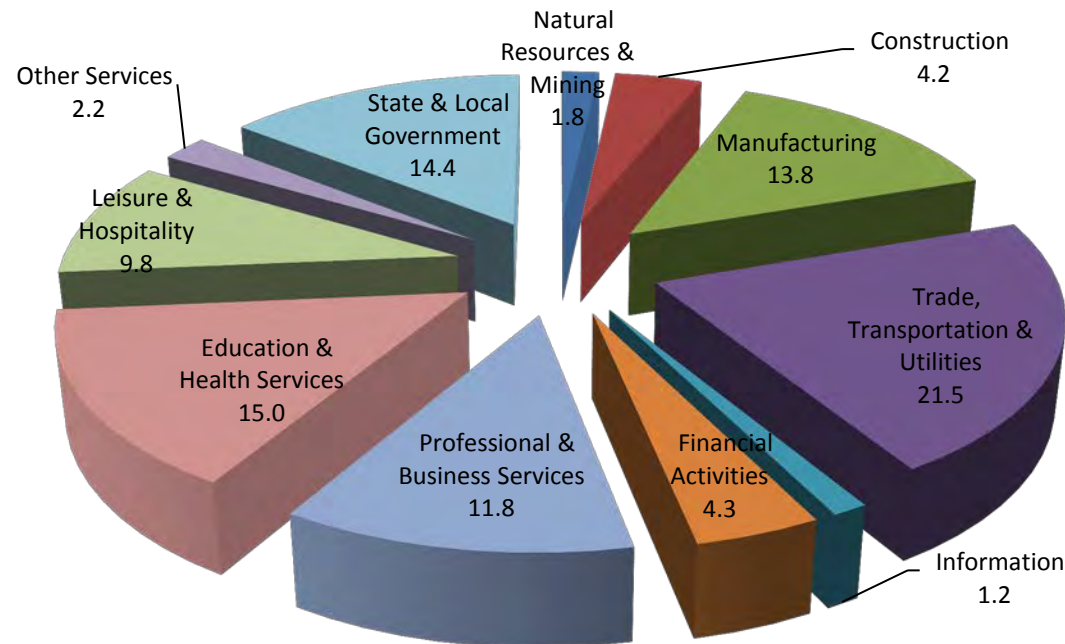
Civilian federal workers are covered by Unemployment Compensation for Federal Employees (UCFE).

SIGNIFICANT DEVELOPMENTS DURING THIRD QUARTER 2014

AVERAGE EMPLOYMENT CHANGES

Covered employment averaged 1,124,535 during the Third Quarter 2014 (refer to Table 1), a decrease of 20,368 (-1.8%) from the previous quarter and an increase of 14,028 (1.3%) from the average recorded one year ago. The over-the-year comparison is more significant when used as an economic indicator and allows for seasonal factors that appear when comparing over-the-quarter data to be disregarded.

Average Covered Employment by NAICS



EMPLOYMENT CHANGES FROM SECOND QUARTER 2014

Compared to Second Quarter 2014, covered employment decreased in five major industry sectors. The only significant decrease occurred in State & Local Government as schools reduced staffing for the summer months. The other four industries experienced only minor decreases. Trade, Transportation & Utilities had the largest growth of 1,843 jobs. Most of the increase was in Transportation & Warehousing. Jobs in Manufacturing rose 1,248 as companies expand and hire additional personnel. Construction experienced a seasonal gain of 1,166 jobs. Other minor expansions occurred in Financial Activities (246), Natural Resources & Mining (167), and Other Services (146).

EMPLOYMENT CHANGES FROM THIRD QUARTER 2013 (QUARTER YEAR AGO COMPARISON)

Over-the-year gains were recorded in seven industry groups (refer to Table 1). The largest gains occurred in Professional & Business Services (4,918), Trade, Transportation & Utilities (3,821) and Manufacturing (2,575). The most significant losses occurred in Natural Resources & Mining (-488), Information (-480), and State & Local Government (-380).

COVERED WAGES

Wages paid to covered workers totaled \$10,628,727,417 for the Third Quarter 2014 (refer to Table 1), for an average weekly wage of \$727.05 (refer to Table 5). Benton County workers recorded the highest average weekly wage (\$925.56), and employees in Newton County reported the lowest (\$400.95) (refer to Table 6).

The Information industry recorded the highest average weekly wage for the State of Arkansas (\$983.64). The Leisure & Hospitality sector recorded the lowest (\$277.26) (refer to Table 5).

Average Weekly Wage by Industry

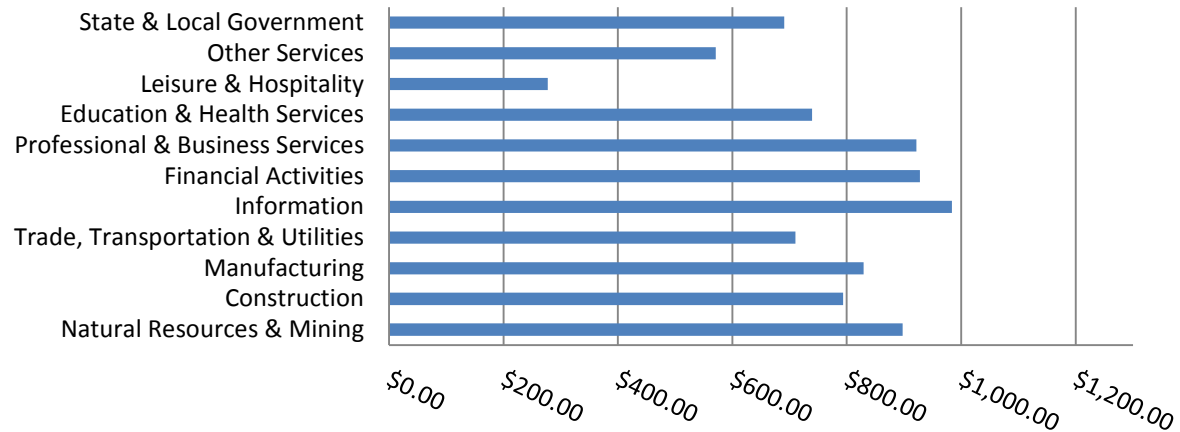


TABLE 1. QUARTERLY COMPARISON OF COVERED EMPLOYMENT AND WAGES, BY INDUSTRY

North American Industry Classification System - Industry Groups	Number of Employing Units	Monthly Employment Average	Percent of Total	Net Change From:		Total Wages Paid Jul - Sep 2014	Percent of Total
				Apr - Jun 2014	Jul - Sep 2013		
TOTAL	86,142	1,124,535	100	-20,368	14,028	\$10,628,727,417	100
Natural Resources & Mining	2,572	20,003	1.8	167	-488	233,361,831	2.2
Agriculture, Forestry, Fishing & Hunting	2,051	13,195	1.2	130	413	117,512,194	1.1
Mining	521	6,808	0.6	37	-901	115,849,637	1.1
Construction	6,677	47,105	4.2	1,166	918	486,023,294	4.6
Manufacturing	2,996	155,120	13.8	1,248	2,575	1,672,392,026	15.7
Trade, Transportation & Utilities	21,348	242,093	21.5	1,843	3,821	2,236,092,487	21.0
Wholesale Trade	6,923	47,068	4.2	327	20	704,276,566	6.6
Retail Trade	11,171	136,120	12.1	482	2,740	835,261,758	7.9
Transportation & Warehousing	2,845	51,030	4.5	1,058	1,303	553,943,338	5.2
Utilities	409	7,876	0.7	-23	-241	142,610,825	1.3
Information	1,114	13,685	1.2	-23	-480	174,994,502	1.6
Financial Activities	8,140	48,005	4.3	246	-283	578,983,853	5.4
Finance & Insurance	4,820	34,878	3.1	98	-75	468,768,619	4.4
Real Estate & Rental & Leasing	3,320	13,127	1.2	147	-208	110,215,234	1.0
Professional & Business Services	13,202	132,971	11.8	-396	4,918	1,593,017,319	15.0
Professional & Technical Services	8,322	39,802	3.5	-556	267	527,112,727	5.0
Management of Companies & Enterprises	496	32,449	2.9	206	1,277	672,857,629	6.3
Administrative & Waste Services	4,384	60,720	5.4	-46	3,374	393,046,963	3.7
Education & Health Services	14,971	168,653	15.0	-89	195	1,621,195,632	15.3
Educational Services	757	10,155	0.9	-440	-479	87,968,645	0.8
Health Care & Social Assistance	14,214	158,498	14.1	351	674	1,533,226,987	14.4
Leisure & Hospitality	6,705	110,598	9.8	-11	2,548	398,639,546	3.8
Arts, Entertainment & Recreation	929	11,745	1.0	80	627	51,154,711	0.5
Accommodation & Food Services	5,776	98,853	8.8	-91	1,921	347,484,835	3.3
Other Services	5,321	24,615	2.2	146	684	182,658,399	1.7
State & Local Government	3,096	161,687	14.4	-24,664	-380	1,451,368,528	13.7
Local Government	1,960	92,979	8.3	-22,754	-120	748,950,122	7.0
State Government	1,136	68,708	6.1	-1,910	-260	702,418,406	6.6
Nonclassifiable Establishments	0	0	0.0	0	0	0	0.0

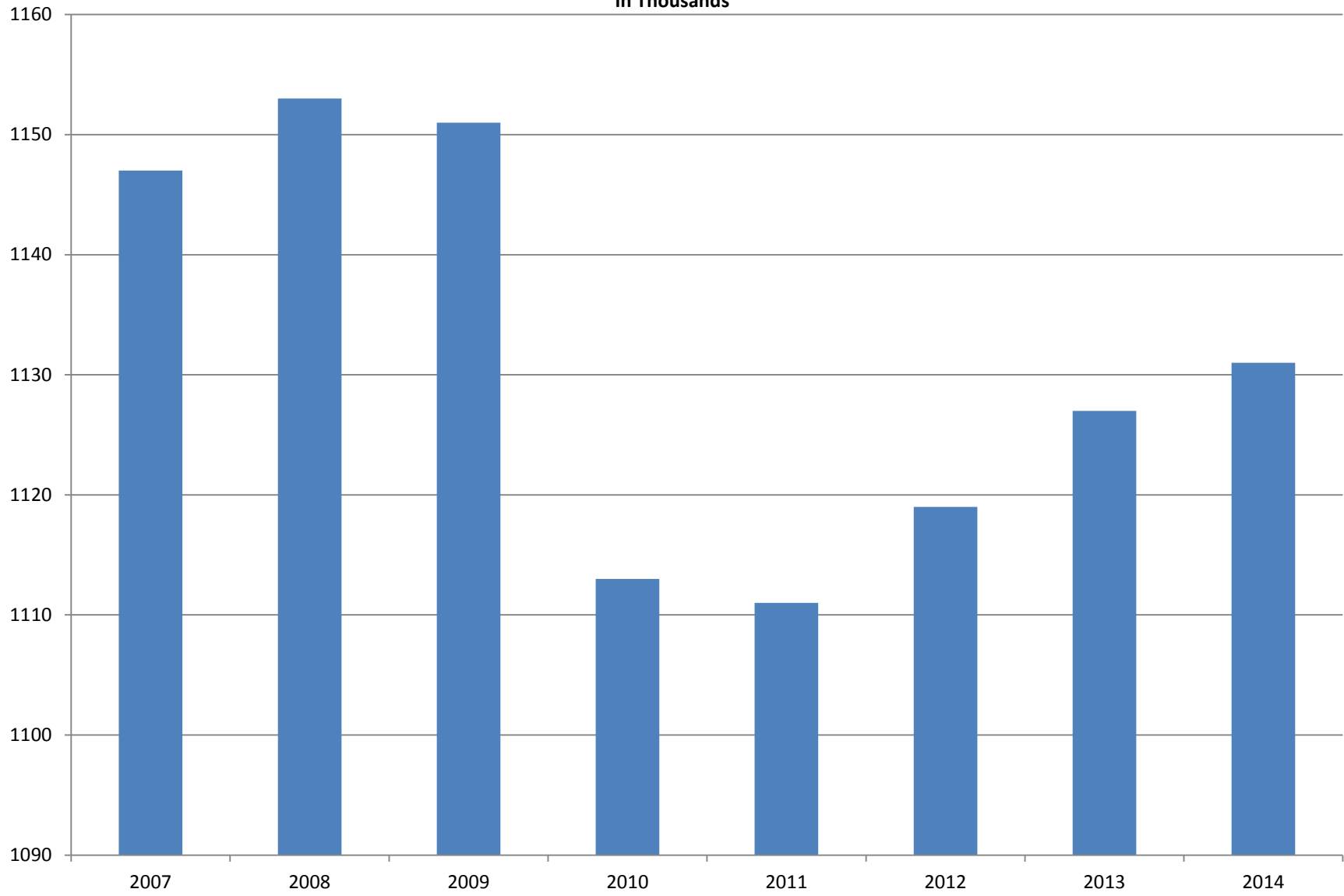
Note: Items do not necessarily add to total because of rounding. Because of industry code changes between years, substantial employment and wage shifts among industries are anticipated.

TABLE 2. TOTAL COVERED EMPLOYMENT IN ARKANSAS

PERIOD	2007	2008	2009	2010	2011	2012	2013	2014
AVERAGE	1,146,948	1,152,994	1,150,965	1,112,591	1,110,947	1,118,639	1,126,588	1,131,017
January	1,130,595	1,137,437	1,141,856	1,119,299	1,089,984	1,098,349	1,113,274	1,114,986
February	1,136,810	1,143,397	1,149,443	1,119,476	1,091,282	1,098,445	1,119,319	1,123,443
March	1,150,439	1,158,895	1,157,690	1,124,386	1,106,198	1,113,061	1,131,123	1,132,406
April	1,155,498	1,159,623	1,159,841	1,123,383	1,115,341	1,129,635	1,136,973	1,140,788
May	1,159,886	1,165,224	1,166,111	1,122,322	1,123,250	1,126,371	1,143,142	1,149,046
June	1,162,026	1,164,207	1,164,167	1,117,884	1,130,164	1,123,412	1,136,739	1,144,876
July	1,106,142	1,110,571	1,114,279	1,071,048	1,073,743	1,080,937	1,079,329	1,097,179
August	1,130,839	1,139,109	1,138,583	1,093,192	1,099,795	1,106,262	1,109,425	1,125,686
September	1,159,814	1,165,135	1,162,333	1,116,580	1,124,281	1,132,779	1,136,019	1,150,739
October	1,156,804	1,162,768	1,157,196	1,113,157	1,125,073	1,138,395	1,136,045	N/A
November	1,156,011	1,164,246	1,152,159	1,115,443	1,126,781	1,138,543	1,138,302	N/A
December	1,158,509	1,165,314	1,147,927	1,114,919	1,125,466	1,137,474	1,139,361	N/A

AVERAGE TOTAL COVERED EMPLOYMENT

In Thousands



TOTAL COVERED EARNINGS BY CALENDAR YEAR

In Thousands

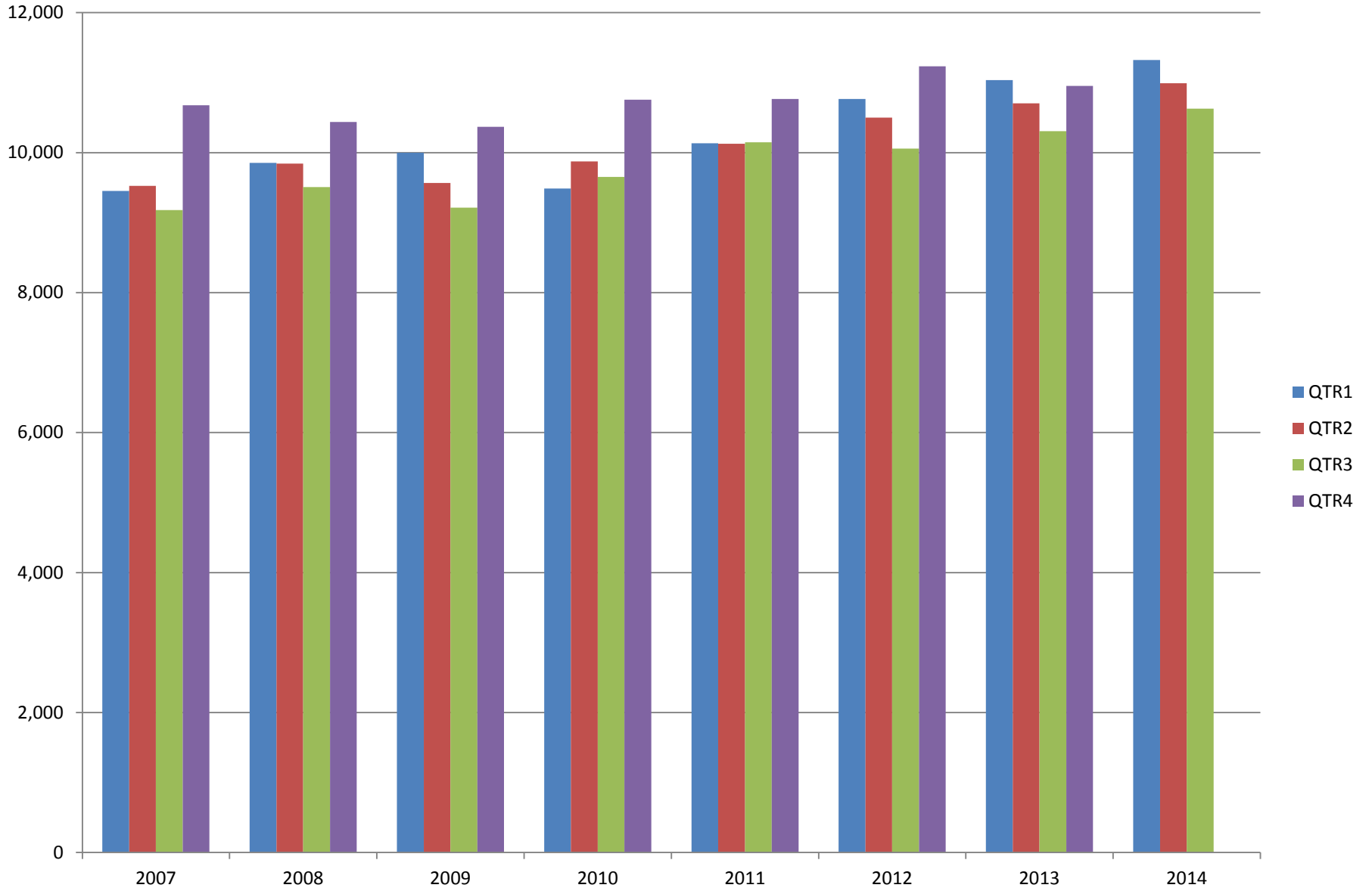


TABLE 3. TOTAL COVERED EARNINGS 2007 - 2014

PERIOD	2007	2008	2009	2010
TOTAL	\$38,833,265,464	\$39,643,039,342	\$39,149,476,305	\$39,769,504,992
January - March	9,452,711,662	9,851,866,058	9,998,452,028	9,486,245,580
April - June	9,525,837,049	9,843,711,293	9,566,968,853	9,873,489,653
July - September	9,178,902,477	9,509,150,631	9,213,797,140	9,653,588,807
October - December	10,675,814,276	10,438,311,360	10,370,258,284	10,756,180,952
Average Weekly Earnings	\$651.11	\$661.21	\$654.12	\$687.40

PERIOD	2011	2012	2013	2014
TOTAL	\$41,177,659,236	\$42,555,976,081	\$43,003,433,021	\$32,945,749,442
January - March	10,134,035,254	10,766,175,449	11,038,435,964	11,325,261,964
April - June	10,128,274,611	10,499,018,872	10,705,006,820	10,991,760,061
July - September	10,147,287,431	10,058,388,682	10,306,649,458	10,628,727,417
October - December	10,768,061,940	11,232,393,078	10,953,340,779	N/A
Average Weekly Earnings	\$712.80	\$731.59	\$734.07	\$746.91

TABLE 4. TOTAL TAXABLE EARNINGS, 2007 - 2014

PERIOD	2007	2008	2009	2010
TOTAL	10,459,105,059	10,360,487,108	9,787,660,886	11,332,118,456
January - March	5,617,417,571	5,635,750,082	5,423,705,265	5,607,134,758
April - June	2,466,606,627	2,419,313,519	2,293,670,854	2,977,100,591
July - September	1,307,060,412	1,297,473,555	1,165,280,065	1,577,067,770
October - December	1,068,020,449	1,007,949,952	905,004,702	1,170,815,337
PERIOD	2011	2012	2013	2014
TOTAL	11,479,396,226	11,642,854,241	11,669,483,946	10,687,883,226
January - March	5,828,877,821	6,167,036,199	6,194,767,117	6,294,681,175
April - June	2,910,604,359	2,845,540,593	2,807,334,202	2,831,013,392
July - September	1,601,382,146	1,505,833,030	1,509,412,524	1,562,188,659
October - December	1,138,531,900	1,124,444,419	1,157,970,103	N/A

TABLE 5. STATEWIDE SUMMARY

North American Industry Classification System - Industry Groups		Number of Employing Units	Employment			Total Earnings	Average Weekly Earnings
			Jul	Aug	Sep	Jul - Sep 2014	
TOTAL, ALL INDUSTRIES		86,142	1,097,179	1,125,686	1,150,739	\$10,628,727,417	\$727.05
NATURAL RESOURCES & MINING		2,572	20,120	19,952	19,937	\$233,361,831	\$897.41
11	AGRICULTURE, FORESTRY, FISHING & HUNTING	2,051	13,320	13,138	13,128	\$117,512,194	\$685.05
111	CROP PRODUCTION	913	4,773	4,680	4,812	\$32,475,486	\$525.37
1111	Oilseed & Grain Farming	630	3,090	3,079	3,201	21,998,380	541.79
1112	Vegetable & Melon Farming	18	154	142	145	907,517	474.89
1113	Fruit & Tree Nut Farming	14	135	62	57	453,381	411.91
1114	Greenhouse & Nursery Production	45	402	396	399	2,533,690	488.47
1119	Other Crop Farming	206	992	1,001	1,010	6,582,518	505.84
112	ANIMAL PRODUCTION & AQUACULTURE	295	3,102	3,106	3,113	\$31,384,277	\$777.01
1121	Cattle Ranching & Farming	105	391	395	396	2,570,566	501.87
1122	Hog & Pig Farming	12	137	135	142	1,339,323	746.56
1123	Poultry & Egg Production	105	2,079	2,088	2,090	23,751,499	876.00
1125	Animal Aquaculture	53	434	427	411	3,376,121	612.50
	Other	20	61	61	74	346,768	408.28
113	FORESTRY & LOGGING	413	2,314	2,345	2,408	\$22,499,654	\$734.71
1131	Timber Tract Operations	37	168	168	168	1,752,077	802.23
1132	Forest Nurseries & Gathering of Forest Products	5	24	25	25	303,662	946.97
1133	Logging	371	2,122	2,152	2,215	20,443,915	727.05
114	FISHING, HUNTING & TRAPPING	3	15	19	16	\$97,161	\$448.44
115	SUPPORT ACTIVITIES FOR AGRICULTURE & FORESTRY	427	3,116	2,988	2,779	\$31,055,616	\$806.79
1151	Support Activities for Crop Production	295	1,476	1,412	1,424	18,808,973	1,006.62
1152	Support Activities for Animal Production	59	644	655	654	4,825,812	570.22
1153	Support Activities for Forestry	73	996	921	701	7,420,831	654.13
21	MINING	521	6,800	6,814	6,809	\$115,849,637	\$1,309.04
211	OIL & GAS EXTRACTION	84	1,396	1,404	1,400	\$29,618,535	\$1,627.39
212	MINING (EXCEPT OIL & GAS)	113	1,789	1,802	1,796	\$21,828,235	\$935.08
213	SUPPORT ACTIVITIES FOR MINING	324	3,615	3,608	3,613	\$64,402,867	\$1,371.56

TABLE 5. STATEWIDE SUMMARY

North American Industry Classification System - Industry Groups		Number of Employing Units	Employment			Total Earnings	Average Weekly Earnings
			Jul	Aug	Sep	Jul - Sep 2014	
CONSTRUCTION		6,677	46,768	47,129	47,417	\$486,023,294	\$793.69
236	CONSTRUCTION OF BUILDINGS	1,630	9,468	9,473	9,582	\$104,810,245	\$847.98
2361	Residential Building Construction	1,080	3,017	3,042	3,097	26,915,159	678.37
2362	Nonresidential Building Construction	550	6,451	6,431	6,485	77,895,086	928.17
237	HEAVY & CIVIL ENGINEERING CONSTRUCTION	727	7,629	7,840	7,725	\$86,403,022	\$859.67
2371	Utility System Construction	395	3,961	4,040	3,970	44,276,528	853.53
2372	Land Subdivision	63	140	138	146	1,405,238	764.82
2373	Highway, Street & Bridge Construction	184	3,010	3,147	3,103	34,663,365	863.85
2379	Other Heavy Construction	85	518	515	506	6,057,891	908.37
238	SPECIALTY TRADE CONTRACTORS	4,320	29,671	29,816	30,110	\$294,810,027	\$759.32
2381	Building Foundation & Exterior Contractors	820	5,809	5,950	6,048	54,599,462	707.58
2382	Building Equipment Contractors	2,028	15,475	15,462	15,548	166,176,872	824.97
2383	Building Finishing Contractors	723	3,736	3,693	3,738	31,690,740	654.90
2389	Other Specialty Trade Contractors	749	4,651	4,711	4,776	42,342,953	691.15
MANUFACTURING		2,996	154,997	155,047	155,316	\$1,672,392,026	\$829.33
311	FOOD MANUFACTURING	272	43,167	42,919	43,018	\$359,643,995	\$642.85
3111	Animal Food Manufacturing	43	1,510	1,488	1,512	16,627,882	850.82
3112	Grain & Oilseed Milling	31	2,512	2,526	2,528	28,139,535	858.28
3114	Fruit, Vegetable & Specialty Food	19	4,474	4,482	4,479	45,988,894	789.94
3115	Dairy Product Manufacturing	8	522	520	532	5,466,263	801.43
3116	Animal Slaughtering & Processing	78	29,100	28,852	28,817	207,631,501	552.21
3118	Bakeries & Tortilla Manufacturing	61	3,230	3,227	3,281	35,875,670	850.17
3119	Other Food Manufacturing	24	1,774	1,778	1,816	19,667,843	845.52
	Other	8	45	46	53	246,407	394.88
312	BEVERAGE & TOBACCO PRODUCT MANUFACTURING	44	1,188	1,187	1,158	\$13,042,816	\$851.93
313	TEXTILE MILLS	10	74	76	69	\$630,655	\$664.55
314	TEXTILE PRODUCT MILLS	54	918	902	908	\$10,135,670	\$857.40
3141	Textile Furnishing Mills	10	35	37	39	485,288	1,008.91
3149	Other Textile Product Mills	44	883	865	869	9,650,382	850.98
315	APPAREL MANUFACTURING	19	840	856	860	\$5,457,745	\$492.75
316	LEATHER & ALLIED PRODUCT MANUFACTURING	14	1,027	1,091	1,091	\$6,982,907	\$502.16

TABLE 5. STATEWIDE SUMMARY

North American Industry Classification System - Industry Groups		Number of Employing Units	Employment			Total Earnings	Average Weekly Earnings
			Jul	Aug	Sep	Jul - Sep 2014	
321	WOOD PRODUCT MANUFACTURING	327	9,287	9,337	9,316	\$87,483,810	\$722.57
3211	Sawmills & Wood Preservation	142	4,365	4,428	4,398	44,022,657	770.15
3212	Veneer & Engineered Wood Products	52	2,028	2,046	2,047	21,961,425	827.97
3219	Other Wood Product Manufacturing	133	2,894	2,863	2,871	21,499,728	575.04
322	PAPER MANUFACTURING	77	9,954	9,977	9,919	\$148,979,438	\$1,151.75
3221	Pulp, Paper & Paperboard Mills	13	4,155	4,134	4,083	76,491,150	1,426.75
3222	Converted Paper Product Manufacturing	64	5,799	5,843	5,836	72,488,288	957.09
323	PRINTING & RELATED SUPPORT ACTIVITIES	244	3,939	4,045	4,023	\$38,578,757	\$741.47
324	PETROLEUM & COAL PRODUCTS MANUFACTURING	18	1,097	1,093	1,106	\$16,446,374	\$1,151.49
325	CHEMICAL MANUFACTURING	112	5,077	5,090	5,112	\$73,329,738	\$1,107.55
3251	Basic Chemical Manufacturing	29	1,793	1,799	1,792	29,464,258	1,262.90
3252	Resin, Rubber & Artificial Fibers	7	294	297	293	4,036,844	1,053.82
3253	Agricultural Chemical Manufacturing	12	322	323	326	5,441,359	1,293.20
3254	Pharmaceutical & Medicine Manufacturing	13	280	287	289	3,965,329	1,069.01
3255	Paint, Coating & Adhesive Manufacturing	8	264	269	264	3,752,453	1,086.51
3256	Soap, Cleaning Compound, & Toilet Preparation Manufacturing	18	1,242	1,237	1,244	13,410,080	831.22
3259	Other Chemical Preparation Manufacturing	25	882	878	904	13,259,415	1,148.60
326	PLASTICS & RUBBER PRODUCTS MANUFACTURING	136	10,880	10,875	10,864	\$122,441,803	\$866.24
3261	Plastics Product Manufacturing	95	6,616	6,613	6,579	68,503,173	798.08
3262	Rubber Product Manufacturing	41	4,264	4,262	4,285	53,938,630	971.62
327	NONMETALLIC MINERAL PRODUCT MANUFACTURING	238	3,696	3,741	3,726	\$41,747,930	\$863.04
3271	Clay Product & Refractory Manufacturing	14	400	400	390	4,487,852	870.30
3272	Glass & Glass Product Manufacturing	11	397	386	391	4,380,617	861.08
3273	Cement & Concrete Product Manufacturing	173	2,005	2,032	2,039	21,012,616	798.07
3274	Lime & Gypsum Product Manufacturing	4	255	266	265	3,797,574	1,114.97
3279	Other Nonmetallic Mineral Products Manufacturing	36	639	657	641	8,069,271	961.35
331	PRIMARY METAL MANUFACTURING	78	9,931	9,944	9,976	\$149,319,797	\$1,154.35
3311	Iron & Steel Mills & Ferroalloys	8	2,449	2,437	2,430	55,892,996	1,763.04
3312	Purchased Steel Product Manufacturing	21	2,971	3,020	3,094	43,858,905	1,114.07
3313	Alumina & Aluminum Production	19	1,242	1,230	1,230	16,437,898	1,024.68
3314	Other Nonferrous Metal Production	9	602	602	602	6,146,411	785.38
3315	Foundries	21	2,667	2,655	2,620	26,983,587	784.06

TABLE 5. STATEWIDE SUMMARY

North American Industry Classification System - Industry Groups		Number of Employing Units	Employment			Total Earnings	Average Weekly Earnings
			Jul	Aug	Sep	Jul - Sep 2014	
332	FABRICATED METAL PRODUCT MANUFACTURING	521	14,866	14,813	14,970	\$174,370,175	\$901.24
3321	Forging & Stamping	10	311	311	321	3,488,897	853.80
3322	Cutlery & Hand Tool Manufacturing	12	692	685	698	7,580,028	843.01
3323	Architectural & Structural Metals	150	3,931	3,871	3,914	47,524,321	936.08
3324	Boilers, Tanks & Shipping Containers	17	778	784	804	9,554,793	931.93
3325	Hardware Manufacturing	5	263	260	258	3,024,169	893.58
3326	Spring & Wire Product Manufacturing	13	392	388	397	4,273,670	837.92
3327	Machine Shops & Threaded Products	213	1,979	1,972	1,971	20,523,951	799.78
3328	Coating, Engraving & Heat Treating Metals	34	679	677	690	6,066,457	684.24
3329	Other Fabricated Metal Product Manufacturing	67	5,841	5,865	5,917	72,333,889	947.20
333	MACHINERY MANUFACTURING	210	11,414	11,397	11,388	\$121,052,222	\$816.84
3331	Agriculture, Construction & Mining Machinery	40	2,950	2,910	2,892	26,198,013	690.78
3332	Industrial Machinery Manufacturing	25	734	741	718	8,619,354	907.01
3333	Commercial & Service Industry Machinery	21	765	766	775	9,596,299	960.33
3334	HVAC & Commercial Refrigeration Equipment	20	3,068	3,073	3,080	32,941,277	824.40
3335	Metalworking Machinery Manufacturing	59	1,206	1,193	1,193	12,062,373	774.95
3336	Turbine & Power Transmission Equipment Manufacturing	6	656	673	666	8,153,076	943.10
3339	Other General Purpose Machinery Manufacturing	39	2,035	2,041	2,064	23,481,830	882.55
334	COMPUTER & ELECTRONIC PRODUCT MANUFACTURING	59	2,465	2,465	2,486	\$28,304,217	\$880.76
3343	Audio & Video Equipment Manufacturing	5	191	191	188	1,984,131	803.29
3344	Semiconductors & Electronic Components	24	1,607	1,612	1,630	17,972,760	855.34
3345	Electronic Instrument Manufacturing	20	506	500	505	5,866,617	895.99
	Other	10	161	162	163	2,480,709	1,177.92
335	ELECTRICAL EQUIPMENT & APPLIANCES	55	5,403	5,422	5,417	\$71,716,443	\$1,018.96
3351	Electric Lighting Equipment Manufacturing	11	348	338	342	9,047,193	\$2,030.95
3352	Household Appliance Manufacturing	5	57	55	55	824,190	\$1,138.91
3353	Electrical Equipment Manufacturing	22	3,426	3,462	3,467	43,179,913	962.30
3359	Other Electrical Equipment & Component Manufacturing	17	1,572	1,567	1,553	18,665,147	918.02
336	TRANSPORTATION EQUIPMENT MANUFACTURING	139	12,976	13,008	13,094	\$141,344,113	\$834.69
3362	Motor Vehicle Body & Trailer Manufacturing	30	1,798	1,776	1,792	16,203,070	696.83
3363	Motor Vehicle Parts Manufacturing	45	4,520	4,553	4,601	45,026,976	759.90
3364	Aerospace Product & Parts Manufacturing	28	3,336	3,310	3,294	47,698,524	1,107.38
3366	Ship & Boat Building	20	1,645	1,665	1,668	12,082,594	560.12
	Other	16	1,677	1,704	1,739	20,332,949	916.45
337	FURNITURE & RELATED PRODUCT MANUFACTURING	179	3,456	3,465	3,451	\$29,619,819	\$659.02
3371	Household & Institutional Furniture	146	2,403	2,397	2,355	18,262,166	589.01
3372	Office Furniture & Fixtures Manufacturing	24	948	964	986	10,688,330	851.12
3379	Other Furniture Related Product Manufacturing	9	105	104	110	669,323	484.20
339	MISCELLANEOUS MANUFACTURING	190	3,342	3,344	3,364	\$31,763,602	\$729.36
3391	Medical Equipment & Supplies Manufacturing	76	1,592	1,615	1,617	17,514,822	837.87
3399	Other Miscellaneous Manufacturing	114	1,750	1,729	1,747	14,248,780	629.20

TABLE 5. STATEWIDE SUMMARY

North American Industry Classification System - Industry Groups		Number of Employing Units	Employment			Total Earnings	Average Weekly Earnings
			Jul	Aug	Sep	Jul - Sep 2014	
TRADE, TRANSPORTATION & UTILITIES		21,348	241,110	242,540	242,630	\$2,236,092,487	\$710.50
42	WHOLESALE TRADE	6,923	47,042	47,170	46,991	\$704,276,566	\$1,151.01
423	MERCHANT WHOLESALERS, DURABLE GOODS	2,191	21,141	21,131	21,057	\$269,088,651	\$980.55
4231	Motor Vehicle & Part Merchant Wholesalers	232	2,667	2,696	2,701	28,475,805	814.90
4232	Furniture & Furnishings Merchant Wholesalers	54	450	446	439	5,759,086	995.52
4233	Lumber & Supply Merchant Wholesalers	167	1,387	1,397	1,387	15,106,996	835.83
4234	Commercial Goods Merchant Wholesalers	299	2,691	2,689	2,691	43,313,148	1,238.43
4235	Metal & Mineral Merchant Wholesalers	54	880	893	869	11,315,722	988.39
4236	Appliances & Electronics Goods Merchant Wholesalers	197	1,858	1,855	1,860	26,925,354	1,114.94
4237	Hardware & Plumbing Merchant Wholesalers	232	2,273	2,275	2,251	28,000,191	950.37
4238	Machinery & Supply Merchant Wholesalers	725	6,846	6,808	6,792	88,921,935	1,003.64
4239	Miscellaneous Durable Goods Merchant Wholesalers	231	2,089	2,072	2,067	21,270,414	788.14
424	MERCHANT WHOLESALERS, NONDURABLE GOODS	1,200	15,584	15,531	15,410	\$203,348,588	\$1,008.63
4241	Paper & Paper Product Merchant Wholesalers	66	1,106	1,152	1,153	15,857,097	1,072.80
4242	Druggist' Goods Merchant Wholesalers	54	542	563	566	7,701,389	1,063.58
4243	Apparel & Piece Goods Merchant Wholesalers	39	661	676	669	7,187,323	826.83
4244	Grocery Product Merchant Wholesalers	312	4,584	4,617	4,563	65,894,275	1,104.79
4245	Farm Product Merchant Wholesalers	75	846	893	922	7,459,965	646.95
4246	Chemical Merchant Wholesalers	96	609	613	609	9,752,016	1,229.09
4247	Petroleum Merchant Wholesalers	140	1,838	1,802	1,837	24,960,617	1,051.70
4248	Alcoholic Beverage Merchant Wholesalers	43	1,515	1,479	1,475	17,338,094	895.30
4249	Miscellaneous Nondurable Goods Merchant Wholesaler	375	3,883	3,736	3,616	47,197,812	969.45
425	ELECTRONIC MARKETS & AGENTS & BROKERS	3,532	10,317	10,508	10,524	\$231,839,327	\$1,706.64
44 - 45	RETAIL TRADE	11,171	135,736	136,533	136,090	\$835,261,758	\$472.02
441	MOTOR VEHICLE & PARTS DEALERS	1,575	18,517	18,544	18,360	\$192,486,986	\$801.50
4411	Automobile Dealers	634	11,166	11,203	11,096	136,494,290	941.24
4412	Other Motor Vehicle Dealers	167	1,552	1,545	1,519	15,381,939	768.99
4413	Automotive Parts, Accessories & Tire Stores	774	5,799	5,796	5,745	40,610,757	540.47
442	FURNITURE & HOME FURNISHINGS STORES	517	3,356	3,458	3,446	\$24,739,022	\$556.43
4421	Furniture Stores	276	1,928	1,965	1,966	15,670,593	617.22
4422	Home Furnishings Stores	241	1,428	1,493	1,480	9,068,429	475.51
443	ELECTRONICS & APPLIANCE STORES	484	3,660	3,685	3,716	\$28,172,988	\$587.78
444	BUILDING MATERIAL & GARDEN SUPPLY STORES	828	10,857	10,651	10,550	\$66,658,634	\$479.84
4441	Building Material & Supplies Dealers	611	9,472	9,275	9,185	58,401,837	482.51
4442	Lawn & Garden Equipment & Supplies Stores	217	1,385	1,376	1,365	8,256,797	461.81

TABLE 5. STATEWIDE SUMMARY

North American Industry Classification System - Industry Groups		Number of Employing Units	Employment			Total Earnings Jul - Sep 2014	Average Weekly Earnings
			Jul	Aug	Sep		
445	FOOD & BEVERAGE STORES	1,012	18,600	18,663	18,720	\$92,654,183	\$381.93
4451	Grocery Stores	543	16,114	16,203	16,266	78,755,978	374.09
4452	Specialty Food Stores	123	781	762	762	5,153,891	515.99
4453	Beer, Wine & Liquor Stores	346	1,705	1,698	1,692	8,744,314	396.06
446	HEALTH & PERSONAL CARE STORES	1,041	7,888	7,988	7,959	\$70,087,998	\$678.59
447	GASOLINE STATIONS	1,644	12,312	12,423	12,298	\$50,461,564	\$314.45
44711	Gasoline Stations with Convenience Stores	1,537	10,987	11,104	10,992	43,796,583	305.50
44719	Other Gasoline Stations	107	1,325	1,319	1,306	6,664,981	389.39
448	CLOTHING & CLOTHING ACCESSORIES STORES	1,055	8,072	8,267	8,116	\$32,748,637	\$309.03
4481	Clothing Stores	778	6,190	6,294	6,218	21,931,673	270.62
4482	Shoe Stores	140	1,135	1,215	1,137	4,847,252	320.79
4483	Jewelry, Luggage & Leather Goods Stores	137	747	758	761	5,969,712	607.95
451	SPORTING GOODS, HOBBY, BOOK & MUSIC STORES	487	4,557	4,768	4,683	\$20,619,196	\$339.68
4511	Sporting Goods & Musical Instrument Stores	420	4,060	4,188	4,148	18,518,031	344.74
4512	Book, Periodical & Music Stores	67	497	580	535	2,101,165	300.80
452	GENERAL MERCHANDISE STORES	902	39,032	39,011	39,068	\$202,800,490	\$399.62
453	MISCELLANEOUS STORE RETAILERS	1,253	7,076	7,261	7,349	\$37,480,716	\$398.85
4531	Florists	191	635	633	642	2,649,652	320.14
4532	Office Supplies, Stationery & Gift Stores	288	2,030	2,091	2,128	10,866,461	401.29
4533	Used Merchandise Stores	258	1,736	1,894	1,958	9,055,324	373.96
4539	Other Miscellaneous Store Retailers	516	2,675	2,643	2,621	14,909,279	433.38
454	NONSTORE RETAILERS	373	1,809	1,814	1,825	\$16,351,344	\$692.62
4541	Electronic Shopping & Mail-Order Houses	166	716	731	751	6,787,969	712.67
4542	Vending Machine Operators	66	416	414	403	3,264,732	611.03
4543	Direct Selling Establishments	141	677	669	671	6,298,643	720.64
48 - 49	TRANSPORTATION & WAREHOUSING	2,845	50,415	50,939	51,737	553,943,338	\$835.01
481	AIR TRANSPORTATION	50	605	592	609	\$5,116,360	\$653.76
484	TRUCK TRANSPORTATION	1,841	32,408	32,901	33,325	\$372,982,437	\$872.65
4841	General Freight Trucking	1,103	25,968	26,434	26,804	299,874,453	873.69
4842	Specialized Freight Trucking	738	6,440	6,467	6,521	73,107,984	868.39

TABLE 5. STATEWIDE SUMMARY

North American Industry Classification System - Industry Groups		Number of Employing Units	Employment			Total Earnings	Average Weekly Earnings
			Jul	Aug	Sep	Jul - Sep 2014	
485	TRANSIT & GROUND PASSENGER TRANSPORTATION	90	1,557	1,476	1,626	\$7,804,237	\$386.56
4853	Taxi & Limousine Service	31	442	441	451	1,922,843	332.63
4854	School & Employee Bus Transportation	12	383	315	475	2,205,180	433.83
4855	Charter Bus Industry Service	7	112	99	104	695,267	509.35
4859	Other Ground Passenger Transportation	36	531	531	508	2,319,854	340.99
	Other	4	89	90	88	661,093	571.39
486	PIPELINE TRANSPORTATION	33	527	524	524	\$12,532,479	\$1,836.26
488	SUPPORT ACTIVITIES FOR TRANSPORTATION	425	4,806	4,834	4,842	\$54,489,213	\$868.28
4881	Support Activities for Air Transportation	101	1,149	1,152	1,138	11,441,377	767.76
4882	Support Activities for Rail Transportation	38	390	380	388	3,892,536	775.71
4883	Support Activities for Water Transportation	22	680	662	663	8,994,996	1,035.30
4884	Support Activities for Road Transportation	136	716	739	738	5,351,194	563.11
4885	Freight Transportation Arrangement	113	1,727	1,759	1,779	24,045,131	1,053.92
4889	Other Support Activities for Transportation	15	144	142	136	763,979	417.78
	OTHER	9	78	73	70	\$512,741	\$535.41
493	WAREHOUSING & STORAGE	220	7,184	7,280	7,431	65,568,002	\$691.07
	OTHER	177	3,250	3,259	3,310	34,937,869	\$821.12
22	UTILITIES	409	7,917	7,898	7,812	\$142,610,825	\$1,392.91
2211	Power Generation & Supply	162	5,613	5,583	5,508	113,486,340	1,567.84
2212	Natural Gas Distribution	62	1,368	1,372	1,371	21,089,529	1,183.85
2213	Water, Sewage & Other Systems	185	936	943	933	8,034,956	659.40
	INFORMATION	1,114	13,828	13,706	13,521	\$174,994,502	\$983.64
511	PUBLISHING INDUSTRIES, EXCEPT INTERNET	225	3,480	3,500	3,447	\$31,059,219	\$687.40
5111	Newspaper, Book & Directory Publishers	197	3,139	3,158	3,105	25,300,028	620.98
5112	Software Publishers	28	341	342	342	5,759,191	1,296.63
512	MOTION PICTURE & SOUND RECORDING INDUSTRY	139	1,199	1,080	995	\$5,336,277	\$376.13
5121	Motion Picture & Video Industries	122	1,172	1,053	969	5,061,948	365.73
5122	Sound Recording Industries	17	27	27	26	274,329	791.33
515	BROADCASTING, EXCEPT INTERNET	125	1,669	1,666	1,665	\$16,494,540	\$761.29
5151	Radio & Television Broadcasting	120	1,638	1,635	1,631	16,240,065	764.21
5152	Cable & Other Subscription Programming	5	31	31	34	254,475	611.72

TABLE 5. STATEWIDE SUMMARY

North American Industry Classification System - Industry Groups		Number of Employing Units	Employment			Total Earnings	Average Weekly Earnings
			Jul	Aug	Sep	Jul - Sep 2014	
517	TELECOMMUNICATIONS	377	5,724	5,720	5,717	\$97,762,887	\$1,314.65
5171	Wired Telecommunications Carriers	262	3,535	3,545	3,546	60,553,803	1,315.07
5172	Wireless Telecommunications Carriers (except Satellite)	41	1,838	1,822	1,820	32,081,371	1,350.98
5174	Satellite Telecommunications Carriers	3	6	5	5	62,742	904.93
5179	Other Telecommunications	71	345	348	346	5,064,971	1,124.97
518	DATA PROCESSING, HOSTING & RELATED SERVICES	176	1,431	1,429	1,392	\$20,725,838	\$1,124.86
519	OTHER INFORMATION SERVICES	72	325	311	305	\$3,615,741	\$886.72
FINANCIAL ACTIVITIES		8,140	48,103	48,157	47,754	\$578,983,853	\$927.77
52	FINANCE & INSURANCE	4,820	34,937	34,936	34,760	\$468,768,619	\$1,033.87
522	CREDIT INTERMEDIATION & RELATED ACTIVITIES	1,957	19,093	19,055	18,941	\$215,508,487	\$871.14
5221	Depository Credit Intermediation	1,413	16,311	16,282	16,156	176,435,762	835.22
5222	Nondepository Credit Intermediation	391	2,276	2,269	2,294	32,195,589	1,086.38
5223	Activities Related to Credit Intermediation	153	506	504	491	6,877,136	1,057.32
523	FINANCIAL INVESTMENT & RELATED ACTIVITIES	673	3,113	3,128	3,115	\$90,897,559	\$2,242.02
524	INSURANCE CARRIERS & RELATED ACTIVITIES	2,131	12,652	12,663	12,633	\$160,366,727	\$975.22
5241	Insurance Carriers	349	5,407	5,464	5,459	77,644,018	1,097.24
5242	Insurance Agencies, Brokerages & Support	1,782	7,245	7,199	7,174	82,722,709	883.05
	OTHER	59	79	90	71	\$1,995,846	\$1,919.08
53	REAL ESTATE & RENTAL & LEASING	3,320	13,166	13,221	12,994	\$110,215,234	\$645.85
531	REAL ESTATE	2,633	8,731	8,781	8,593	\$68,202,377	\$602.91
5311	Lessors of Real Estate	1,125	4,120	4,130	4,041	29,155,844	547.41
5312	Offices of Real Estate Agents & Brokers	755	1,629	1,664	1,656	14,707,895	685.82
5313	Activities Related to Real Estate	753	2,982	2,987	2,896	24,338,638	633.57
532	RENTAL & LEASING SERVICES	663	4,371	4,374	4,335	\$41,085,810	\$724.87
5321	Automotive Equipment Rental & Leasing	105	887	902	887	6,156,016	530.87
5322	Consumer Goods Rental	350	2,129	2,104	2,103	15,720,001	572.55
5323	General Rental Centers	44	222	216	218	2,203,956	775.31
5324	Machinery & Equipment Rental & Leasing	164	1,133	1,152	1,127	17,005,837	1,150.18
533	LESSORS OF NONFINANCIAL INTANGIBLE ASSETS	24	64	66	66	\$927,047	\$1,091.50

TABLE 5. STATEWIDE SUMMARY

North American Industry Classification System - Industry Groups		Number of Employing Units	Employment			Total Earnings Jul - Sep 2014	Average Weekly Earnings
			Jul	Aug	Sep		
PROFESSIONAL & BUSINESS SERVICES		13,202	130,741	132,512	135,660	\$1,593,017,319	\$921.55
54	PROFESSIONAL & TECHNICAL SERVICES	8,322	39,927	39,892	39,586	\$527,112,727	\$1,018.73
5411	Legal Services	1,699	6,163	6,132	6,071	71,224,414	894.94
5412	Accounting & Bookkeeping Services	1,240	4,506	4,470	4,496	50,126,069	858.64
5413	Architectural & Engineering Services	949	5,864	5,797	5,716	79,755,480	1,059.17
5414	Specialized Design Services	176	432	427	434	4,400,477	785.38
5415	Computer Systems Design & Related Services	1,447	9,359	9,336	9,253	162,410,908	1,341.04
5416	Management & Technical Consulting Services	1,705	5,499	5,537	5,517	73,434,143	1,023.76
5417	Scientific Research & Development Services	152	1,079	1,059	1,048	14,995,711	1,086.17
5418	Advertising & Related Services	381	3,347	3,396	3,361	38,624,168	882.15
5419	Other Professional & Technical Services	573	3,678	3,738	3,690	32,141,357	667.86
55	MANAGEMENT OF COMPANIES & ENTERPRISES	496	32,378	32,532	32,437	\$672,857,629	\$1,595.07
56	ADMINISTRATIVE & SUPPORT SERVICES	4,384	58,436	60,088	63,637	\$393,046,963	\$497.93
561	ADMINISTRATIVE & SUPPORT SERVICES	4,067	55,418	57,061	60,620	\$361,969,346	\$482.56
5611	Office Administrative Services	592	3,838	3,959	3,962	41,537,948	815.18
5612	Facilities Support Services	25	212	215	214	2,144,112	771.91
5613	Employment Services	970	22,917	23,841	26,877	136,168,401	426.75
5614	Business Support Services	388	7,532	7,669	7,875	59,745,532	597.48
5615	Travel Arrangement & Reservation Services	99	373	362	366	3,085,597	646.74
5616	Investigation & Security Services	258	4,380	4,651	4,815	27,803,973	463.40
5617	Services to Buildings & Dwellings	1,522	14,808	14,991	15,137	79,758,886	409.60
5619	Other Support Services	213	1,358	1,373	1,374	11,724,897	659.13
562	WASTE MANAGEMENT & REMEDIATION SERVICES	317	3,018	3,027	3,017	\$31,077,617	\$791.41
5621	Waste Collection Services	129	1,118	1,131	1,124	10,851,947	742.45
5622	Waste Treatment & disposal Services	37	810	822	829	10,411,668	976.31
5629	Remediation & Other Waste Services	151	1,090	1,074	1,064	9,814,002	701.60
EDUCATION & HEALTH SERVICES		14,971	167,251	169,031	169,677	\$1,621,195,632	\$739.43
61	EDUCATIONAL SERVICES	757	9,600	10,000	10,865	\$87,968,645	\$666.35
6111	Elementary & Secondary Schools	86	2,659	3,120	3,292	23,552,991	599.20
6112	Junior Colleges	5	169	180	163	1,314,790	592.60
6113	Colleges & Universities	66	3,693	3,555	4,017	34,816,112	713.23
6114	Business, Computer, & Management Training	45	98	102	98	1,545,047	1,196.47
6115	Technical & Trade Schools	101	838	858	915	12,519,859	1,106.55
6116	Other Schools & Instruction	266	1,433	1,464	1,644	6,984,804	354.96
6117	Educational Support Services	188	710	721	736	7,235,042	770.48

TABLE 5. STATEWIDE SUMMARY

North American Industry Classification System - Industry Groups		Number of Employing Units	Employment			Total Earnings Jul - Sep 2014	Average Weekly Earnings
			Jul	Aug	Sep		
62	HEALTH CARE & SOCIAL ASSISTANCE	14,214	157,651	159,031	158,812	\$1,533,226,987	\$744.11
621	AMBULATORY HEALTH CARE SERVICES	5,329	49,409	49,771	49,704	\$711,219,765	\$1,102.39
6211	Offices of Physicians	2,245	22,652	22,779	22,683	440,472,782	1,492.32
6212	Offices of Dentists	1,002	7,111	7,130	7,064	78,927,400	854.92
6213	Offices of Other Health Practitioners	1,338	7,565	7,625	7,636	74,068,228	748.82
6214	Outpatient Care Centers	299	4,163	4,221	4,252	42,118,055	769.20
6215	Medical & Diagnostic Laboratories	121	1,061	1,071	1,068	14,248,800	1,027.56
6216	Home Health Care Services	166	4,561	4,593	4,629	39,691,933	664.56
6219	Other Ambulatory Health Care Services	158	2,296	2,352	2,372	21,692,567	713.10
622	HOSPITALS	107	40,882	40,890	40,775	\$451,783,985	\$850.76
6221	General Medical & Surgical Hospitals	78	36,121	36,086	35,980	402,394,979	858.33
6222	Psychiatric & Substance Abuse Hospitals	12	2,438	2,434	2,425	23,121,612	731.23
6223	Other Hospitals	17	2,323	2,370	2,370	26,267,394	858.23
623	Residential & Mental Health Facilities	615	31,375	31,477	31,346	\$186,989,650	\$458.09
6231	Nursing Care Facilities (Skilled Nursing Facilities)	262	22,597	22,732	22,559	135,453,766	460.44
6232	Residential Mental Health Facilities	173	4,318	4,296	4,342	26,372,729	469.74
6233	Continuing Care & Assisted Living Facilities	141	3,404	3,391	3,390	18,092,558	409.94
6239	Other Residential Care Facilities	39	1,056	1,058	1,055	7,070,597	514.89
624	SOCIAL ASSISTANCE	8,163	35,985	36,893	36,987	\$183,233,587	\$384.88
6241	Individual & Family Services	6,953	22,433	22,555	22,513	116,628,714	398.72
6242	Emergency & Other Relief Services	143	1,274	1,306	1,300	8,121,231	483.02
6243	Vocational Rehabilitation Services	129	3,574	3,539	3,524	17,905,527	388.46
6244	Child Day Care Services	938	8,704	9,493	9,650	40,578,115	336.27
LEISURE & HOSPITALITY		6,705	110,570	111,210	110,013	\$398,639,546	\$277.26
71	ARTS, ENTERTAINMENT & RECREATION	929	12,160	12,010	11,064	\$51,154,711	\$335.04
711	PERFORMING ARTS & SPECTATOR SPORTS	206	2,465	2,572	2,451	\$13,286,010	\$409.46
7111	Performing Arts Companies	45	594	556	616	2,221,180	290.25
7112	Spectator Sports	54	1,193	1,179	981	7,690,377	529.29
7113	Performing Arts & Sports Promoters	38	562	706	749	2,746,561	314.24
7114	Agents & Managers for Public Figures	21	36	52	23	232,435	483.23
7115	Independent Artists, Writers, & Performers	48	80	79	82	395,457	378.67
712	MUSEUMS, PARKS, & HISTORICAL SITES	55	556	552	549	\$4,113,996	\$572.95
713	GAMBLING, RECREATIONAL & AMUSEMENT INDUSTRY	668	9,139	8,886	8,064	\$33,754,705	\$298.58
72	ACCOMMODATION & FOOD SERVICES	5,776	98,410	99,200	98,949	\$347,484,835	\$270.40

TABLE 5. STATEWIDE SUMMARY

North American Industry Classification System - Industry Groups		Number of Employing Units	Employment			Total Earnings	Average Weekly Earnings
			Jul	Aug	Sep	Jul - Sep 2014	
721	ACCOMMODATION	900	12,187	11,664	11,221	\$49,870,384	\$328.14
7211	Travel Accommodation	817	10,923	10,944	10,728	46,234,292	327.33
7212	RV Parks & Recreational Camps	65	1,202	632	388	3,177,352	329.99
7213	Rooming & Boarding Houses	18	62	88	105	458,740	415.15
722	FOOD SERVICES & DRINKING PLACES	4,876	86,223	87,536	87,728	\$297,614,451	\$262.65
7223	Special Food Services	187	1,975	2,384	2,776	10,908,907	352.83
7224	Drinking Places, Alcoholic Beverages	159	1,140	1,181	1,169	3,634,486	240.32
7225	Restaurants & Other Eating Places	4,530	83,108	83,971	83,783	283,071,058	260.40
722511	Full-Service Restaurants	2,057	36,983	37,352	37,247	137,343,538	284.05
722513	Limited-Service Eating Places	2,047	41,808	42,249	42,107	130,290,142	238.32
722514	Cafeterias, Grill Buffets, & Buffets	101	1,855	1,921	2,005	7,630,453	304.60
722515	Snack & Nonalcoholic Beverage Bars	325	2,462	2,449	2,424	7,806,925	245.62
	OTHER SERVICES	5,321	24,791	24,665	24,389	\$182,658,399	\$570.82
811	REPAIR & MAINTENANCE	2,210	9,706	9,853	9,751	\$86,328,603	\$679.70
8111	Automotive Repair & Maintenance	1,421	6,085	6,123	6,084	49,336,046	622.42
8112	Electronic Equipment Repair & Maintenance	174	757	762	764	8,332,091	842.22
8113	Commercial Machinery Repair & Maintenance	429	2,239	2,355	2,292	24,091,757	807.38
8114	Household Goods Repair & Maintenance	186	625	613	611	4,568,709	570.21
812	PERSONAL & LAUNDRY SERVICES	1,321	8,089	8,079	8,030	\$45,407,391	\$433.04
8121	Personal Care Services	606	2,831	2,836	2,821	13,034,441	354.38
8122	Death Care Services	247	1,594	1,593	1,588	11,296,559	545.95
8123	Drycleaning & Laundry Service	251	2,866	2,853	2,836	17,030,551	459.40
8129	Other Personal Services	217	798	797	785	4,045,840	392.29
813	MEMBERSHIP ASSOCIATIONS & ORGANIZATIONS	1,060	6,048	5,796	5,675	\$45,944,138	\$605.20
8131	Religious Organizations	54	236	226	228	1,629,586	545.01
8132	Grantmaking & Giving Organizations	111	437	435	439	5,121,466	901.51
8133	Social Advocacy Organizations	205	1,513	1,506	1,491	12,639,364	646.74
8134	Civic & Social Organizations	195	1,590	1,310	1,272	5,328,368	294.73
8139	Professional & Similar Organizations	495	2,272	2,319	2,245	21,225,354	716.52
814	PRIVATE HOUSEHOLDS	730	948	937	933	\$4,978,267	\$407.68
	LOCAL GOVERNMENT	1,960	71,628	93,364	113,945	\$748,950,122	\$619.62
	STATE GOVERNMENT	1,136	67,272	68,373	70,480	\$702,418,406	\$786.40
	NONCLASSIFIABLE ESTABLISHMENTS	0	0	0	0	\$0	\$0.00

TABLE 6. COUNTY SUMMARY

North American Industry Classification System - Industry Groups	Number of Employing Units	Employment			Total Earnings	Average Weekly Earnings
		Jul	Aug	Sep	Jul - Sep 2014	
ARKANSAS COUNTY - TOTAL	752	9,577	9,853	9,901	\$88,527,959	\$696.52
Natural Resources & Mining	48	192	188	183	1,974,972	809.53
Construction	48	286	281	272	2,540,562	698.79
Manufacturing	30	3,516	3,581	3,598	35,743,962	771.26
Trade, Transportation & Utilities	206	2,515	2,534	2,559	24,773,190	751.43
Wholesale Trade	46	509	492	485	6,621,061	1,028.22
Retail Trade	96	1,013	1,023	1,034	5,993,306	450.51
Transportation, Warehousing & Utilities	64	993	1,019	1,040	12,158,823	919.36
Information	11	82	83	81	676,496	634.61
Financial Activities	47	312	316	291	3,150,427	791.10
Professional & Business Services	52	354	350	353	4,082,219	891.25
Education & Health Services	164	1,024	1,056	1,053	7,056,879	519.79
Leisure & Hospitality	54	487	471	478	1,435,191	230.64
Other Services	44	107	106	108	681,360	489.83
Local Government	32	499	685	721	5,167,001	625.92
State Government	16	203	202	204	1,245,700	472.03
ASHLEY COUNTY - TOTAL	563	6,835	6,962	7,198	\$64,679,348	\$710.93
Natural Resources & Mining	39	346	360	376	2,889,251	616.22
Construction	42	574	573	628	5,802,457	754.38
Manufacturing	27	1,918	1,891	1,869	27,970,459	1,136.79
Trade, Transportation & Utilities	116	1,237	1,245	1,239	8,897,490	551.81
Wholesale Trade	22	225	238	234	2,628,289	870.20
Retail Trade	72	742	745	739	3,761,942	390.00
Transportation, Warehousing & Utilities	22	270	262	266	2,507,259	725.06
Information	6	36	39	39	250,905	507.90
Financial Activities	34	230	224	217	2,741,481	942.85
Professional & Business Services	42	241	229	226	1,695,898	562.30
Education & Health Services	145	945	936	934	6,773,008	555.24
Leisure & Hospitality	29	416	409	395	1,178,790	222.97
Other Services	40	143	133	137	933,339	521.52
Local Government	32	583	754	947	4,517,312	456.42
State Government	11	166	169	191	1,028,958	451.43

TABLE 6. COUNTY SUMMARY

North American Industry Classification System - Industry Groups	Number of Employing Units	Employment			Total Earnings	Average Weekly Earnings
		Jul	Aug	Sep	Jul - Sep 2014	
BAXTER COUNTY - TOTAL	1,212	13,620	13,954	14,357	\$108,725,102	\$598.37
Natural Resources & Mining	6	81	81	81	697,116	662.03
Construction	113	584	592	596	4,402,043	573.28
Manufacturing	55	2,294	2,295	2,363	21,762,664	722.40
Trade, Transportation & Utilities	260	2,644	2,661	2,653	16,558,519	480.17
Wholesale Trade	33	236	239	235	2,056,984	668.58
Retail Trade	203	2,229	2,244	2,243	12,811,323	440.21
Transportation, Warehousing & Utilities	24	179	178	175	1,690,212	733.17
Information	18	189	196	189	1,846,717	742.45
Financial Activities	111	726	735	726	8,480,976	894.90
Professional & Business Services	133	706	716	728	5,132,749	550.92
Education & Health Services	253	3,569	3,592	3,576	33,017,707	709.65
Leisure & Hospitality	121	1,592	1,619	1,566	5,351,696	258.53
Other Services	90	340	343	340	1,822,901	411.21
Local Government	40	599	823	1,202	7,257,410	638.26
State Government	12	296	301	337	2,394,604	591.65
BENTON COUNTY - TOTAL	5,706	102,194	103,932	106,019	\$1,251,938,064	\$925.56
Natural Resources & Mining	43	634	635	642	9,199,406	1,110.91
Construction	540	3,872	3,886	3,879	40,907,779	811.23
Manufacturing	190	11,165	11,163	11,119	112,091,289	773.38
Trade, Transportation & Utilities	1,541	23,783	24,208	24,382	274,082,102	873.94
Wholesale Trade	705	4,547	4,618	4,610	105,043,524	1,759.77
Retail Trade	686	11,164	11,206	11,147	71,938,544	495.31
Transportation, Warehousing & Utilities	150	8,072	8,384	8,625	97,100,034	893.41
Information	71	832	828	837	9,894,012	914.39
Financial Activities	579	2,953	3,002	2,996	39,446,234	1,016.98
Professional & Business Services	1,099	30,755	31,001	30,909	549,981,441	1,369.65
Education & Health Services	678	9,551	9,797	9,969	92,083,570	724.84
Leisure & Hospitality	505	10,770	10,667	10,592	44,132,591	317.98
Other Services	361	1,746	1,729	1,702	13,646,615	608.31
Local Government	82	5,223	6,179	7,875	58,399,163	699.11
State Government	17	910	837	1,117	8,073,862	650.56

TABLE 6. COUNTY SUMMARY

North American Industry Classification System - Industry Groups	Number of Employing Units	Employment			Total Earnings	Average Weekly Earnings
		Jul	Aug	Sep	Jul - Sep 2014	
BOONE COUNTY - TOTAL	989	12,522	12,854	13,497	\$111,812,063	\$663.77
Construction	75	422	410	409	3,614,465	672.13
Manufacturing	65	1,785	1,809	1,802	16,641,585	711.71
Trade, Transportation & Utilities	245	3,572	3,623	3,613	36,740,111	784.46
Wholesale Trade	48	313	312	310	2,690,230	663.98
Retail Trade	149	1,872	1,900	1,888	11,818,597	481.87
Transportation, Warehousing & Utilities	48	1,387	1,411	1,415	22,231,284	1,217.73
Information	14	254	251	251	2,679,504	817.92
Financial Activities	94	480	480	479	4,792,438	768.55
Professional & Business Services	108	1,137	1,081	1,077	9,988,047	699.52
Education & Health Services	162	1,345	1,366	1,372	10,453,938	590.85
Leisure & Hospitality	80	1,157	1,159	1,161	4,061,517	269.56
Local Government	57	1,390	1,656	2,241	14,597,247	637.15
State Government	19	705	740	808	5,943,913	608.82
Other	70	275	279	284	2,299,298	633.18
BRADLEY COUNTY - TOTAL	369	3,131	3,249	3,442	\$24,306,739	\$571.09
Natural Resources & Mining	43	205	212	221	1,928,259	697.47
Construction	15	115	113	108	1,003,686	689.34
Manufacturing	11	560	561	567	6,062,115	828.76
Trade, Transportation & Utilities	74	523	537	541	3,036,440	437.67
Wholesale Trade	15	101	102	106	992,494	741.22
Retail Trade	44	324	336	337	1,631,862	377.72
Transportation, Warehousing & Utilities	15	98	99	98	412,084	322.36
Information	3	12	12	12	114,061	731.16
Financial Activities	25	130	132	128	1,304,467	771.87
Professional & Business Services	26	102	100	96	627,845	486.20
Education & Health Services	99	545	568	567	4,451,433	611.46
Leisure & Hospitality	16	213	207	204	540,839	200.01
Other Services	32	114	116	123	558,814	365.32
Local Government	14	211	289	479	2,327,936	548.74
State Government	11	401	402	396	2,350,844	452.46

TABLE 6. COUNTY SUMMARY

North American Industry Classification System - Industry Groups	Number of Employing Units	Employment			Total Earnings Jul - Sep 2014	Average Weekly Earnings
		Jul	Aug	Sep		
CALHOUN COUNTY - TOTAL	108	2,515	2,556	2,566	\$30,388,749	\$918.26
Natural Resources & Mining	9	36	36	36	331,789	708.95
Construction	10	83	84	79	651,153	610.84
Manufacturing	10	1,822	1,820	1,811	24,397,127	1,032.48
Trade, Transportation & Utilities	20	220	227	225	2,200,940	755.82
Retail Trade	12	57	59	59	262,886	346.66
Transportation, Warehousing & Utilities	8	163	168	166	1,938,054	899.89
Financial Activities	5	79	81	80	640,000	615.38
Education & Health Services	16	50	49	49	453,673	707.39
Leisure & Hospitality	9	14	14	14	45,453	249.74
Other Services	3	7	6	5	28,473	365.04
Local Government	11	111	146	177	884,130	470.12
State Government	8	85	84	81	658,832	608.15
Other	7	8	9	9	97,179	862.54
CARROLL COUNTY - TOTAL	772	10,223	10,641	10,537	\$69,230,171	\$508.78
Natural Resources & Mining	16	204	201	197	1,772,475	679.46
Trade, Transportation & Utilities	195	1,659	1,674	1,622	10,962,806	510.57
Wholesale Trade	22	169	176	171	1,073,898	480.28
Retail Trade	152	1,200	1,205	1,166	6,491,340	419.49
Transportation, Warehousing & Utilities	21	290	293	285	3,397,568	903.29
Information	10	66	67	67	556,384	641.98
Financial Activities	60	363	365	356	3,554,460	756.70
Professional & Business Services	64	423	436	417	2,900,410	524.55
Education & Health Services	86	939	954	948	7,630,238	619.79
Leisure & Hospitality	176	1,818	1,827	1,778	6,270,019	266.81
Other Services	37	119	121	121	659,711	421.72
Local Government	24	548	944	992	6,288,766	584.24
State Government	10	108	109	108	787,436	559.13
Other	94	3,976	3,943	3,931	27,847,466	542.31

TABLE 6. COUNTY SUMMARY

North American Industry Classification System - Industry Groups	Number of Employing Units	Employment			Total Earnings	Average Weekly Earnings
		Jul	Aug	Sep	Jul - Sep 2014	
CHICOT COUNTY - TOTAL	469	3,268	3,427	3,478	\$23,798,403	\$539.85
Natural Resources & Mining	57	300	307	303	2,702,882	685.43
Construction	18	175	171	188	1,699,899	734.61
Trade, Transportation & Utilities	66	680	707	701	4,905,279	542.14
Wholesale Trade	13	73	72	68	950,704	1,030.02
Retail Trade	40	336	348	343	1,934,331	434.65
Transportation, Warehousing & Utilities	13	271	287	290	2,020,244	549.78
Information	5	6	6	6	44,126	565.72
Financial Activities	31	140	138	130	1,394,162	788.55
Professional & Business Services	18	49	48	46	406,058	655.28
Education & Health Services	199	820	806	813	4,920,657	465.57
Leisure & Hospitality	24	209	222	213	605,171	216.86
Local Government	17	486	620	684	4,364,604	562.69
State Government	10	301	301	295	1,975,549	508.25
Other	24	102	101	99	780,016	596.04
CLARK COUNTY - TOTAL	609	8,589	8,888	9,212	\$68,674,256	\$593.80
Natural Resources & Mining	42	252	237	251	2,264,386	706.15
Construction	23	73	72	70	473,557	508.29
Manufacturing	30	1,433	1,436	1,440	17,339,565	928.62
Trade, Transportation & Utilities	126	1,350	1,393	1,390	9,611,986	536.69
Wholesale Trade	11	33	33	36	350,280	792.49
Retail Trade	96	1,141	1,186	1,181	7,338,213	482.73
Transportation, Warehousing & Utilities	19	176	174	173	1,923,493	848.72
Information	5	20	18	18	220,879	910.22
Financial Activities	70	291	289	293	2,872,973	759.44
Professional & Business Services	52	585	609	603	5,387,299	691.83
Education & Health Services	118	1,373	1,420	1,494	10,123,879	544.97
Leisure & Hospitality	61	1,143	1,143	1,199	3,624,977	240.04
Other Services	42	239	235	229	1,714,156	562.69
Local Government	26	801	900	937	6,295,150	550.69
State Government	14	1,029	1,136	1,288	8,745,449	584.47

TABLE 6. COUNTY SUMMARY

North American Industry Classification System - Industry Groups	Number of Employing Units	Employment			Total Earnings	Average Weekly Earnings
		Jul	Aug	Sep	Jul - Sep 2014	
CLAY COUNTY - TOTAL	399	3,374	3,559	3,642	\$25,563,529	\$557.85
Natural Resources & Mining	60	281	294	308	2,129,555	556.55
Construction	30	156	151	161	1,414,399	697.44
Manufacturing	17	336	335	346	3,029,008	687.32
Trade, Transportation & Utilities	103	880	875	894	7,460,583	649.93
Wholesale Trade	23	260	248	245	2,734,942	838.17
Retail Trade	49	414	414	414	2,537,168	471.42
Transportation, Warehousing & Utilities	31	206	213	235	2,188,473	772.22
Information	5	44	43	42	308,880	552.56
Financial Activities	27	127	125	126	1,143,549	698.14
Professional & Business Services	26	108	105	106	684,221	494.98
Education & Health Services	48	424	443	449	2,732,601	479.18
Leisure & Hospitality	20	257	266	295	698,409	197.03
Other Services	30	83	87	85	646,849	585.38
Local Government	22	625	783	778	4,994,150	527.22
State Government	11	53	52	52	321,325	472.31
CLEBURNE COUNTY - TOTAL	673	6,408	6,505	6,838	\$50,394,109	\$588.80
Natural Resources & Mining	25	343	338	334	4,376,996	995.15
Construction	62	381	393	400	3,650,901	717.65
Manufacturing	34	983	984	976	9,012,534	706.70
Trade, Transportation & Utilities	165	1,566	1,584	1,569	13,221,153	646.54
Wholesale Trade	35	169	172	170	1,938,630	875.49
Retail Trade	102	978	995	960	5,950,939	468.22
Transportation, Warehousing & Utilities	28	419	417	439	5,331,584	964.99
Information	7	54	55	51	396,122	571.33
Financial Activities	72	225	226	231	2,057,043	696.04
Professional & Business Services	76	329	344	334	2,786,888	638.66
Education & Health Services	89	768	810	833	5,776,000	552.85
Leisure & Hospitality	78	1,075	1,082	1,072	3,534,026	252.57
Other Services	38	141	136	137	741,578	413.37
Local Government	18	446	455	808	4,233,808	571.70
State Government	9	97	98	93	607,060	486.43

TABLE 6. COUNTY SUMMARY

North American Industry Classification System - Industry Groups	Number of Employing Units	Employment			Total Earnings Jul - Sep 2014	Average Weekly Earnings
		Jul	Aug	Sep		
CLEVELAND COUNTY - TOTAL	129	848	1,040	1,043	\$6,890,455	\$542.51
Natural Resources & Mining	17	163	162	162	1,679,264	795.73
Construction	5	30	31	30	127,811	324.12
Manufacturing	6	98	98	93	818,183	653.33
Trade, Transportation & Utilities	36	200	214	216	1,658,691	607.58
Wholesale Trade	4	47	49	53	471,002	729.48
Retail Trade	17	67	73	66	323,160	362.02
Transportation, Warehousing & Utilities	15	86	92	97	864,529	725.48
Financial Activities	3	19	20	19	169,076	672.72
Education & Health Services	27	134	136	135	628,320	358.02
Other Services	7	17	18	17	123,205	546.77
Local Government	11	116	295	303	1,142,081	369.13
State Government	7	44	40	41	250,261	462.02
Other	10	27	26	27	293,563	846.82
COLUMBIA COUNTY - TOTAL	753	7,860	8,129	8,377	\$74,406,287	\$704.70
Natural Resources & Mining	43	409	412	416	6,534,937	1,219.13
Construction	44	308	317	315	3,335,424	818.84
Manufacturing	35	1,866	1,882	1,863	25,023,048	1,029.15
Trade, Transportation & Utilities	162	1,439	1,459	1,457	10,558,626	559.50
Wholesale Trade	28	216	214	209	2,511,323	906.94
Retail Trade	100	969	991	996	5,283,291	412.46
Transportation, Warehousing & Utilities	34	254	254	252	2,764,012	839.27
Information	8	56	56	56	483,114	663.62
Financial Activities	73	370	377	356	3,565,394	745.95
Professional & Business Services	61	296	298	286	2,569,150	673.73
Education & Health Services	187	986	990	972	6,154,616	481.78
Leisure & Hospitality	50	622	655	726	2,096,490	241.54
Other Services	51	190	192	195	901,711	360.64
Local Government	26	734	910	1,113	7,376,006	617.39
State Government	13	584	581	622	5,807,771	750.00

TABLE 6. COUNTY SUMMARY

North American Industry Classification System - Industry Groups	Number of Employing Units	Employment			Total Earnings	Average Weekly Earnings
		Jul	Aug	Sep	Jul - Sep 2014	
CONWAY COUNTY - TOTAL	579	6,641	6,838	7,025	\$58,625,639	\$659.82
Natural Resources & Mining	33	324	325	330	3,532,235	832.62
Construction	50	494	499	506	6,015,436	926.07
Manufacturing	18	844	867	866	12,188,710	1,091.49
Trade, Transportation & Utilities	136	1,665	1,677	1,677	14,212,816	653.49
Wholesale Trade	23	198	198	194	2,158,349	844.20
Retail Trade	86	824	828	836	4,779,644	443.33
Transportation, Warehousing & Utilities	27	643	651	647	7,274,823	864.92
Information	4	17	17	17	98,837	447.23
Financial Activities	36	173	169	171	1,633,867	734.98
Professional & Business Services	44	595	611	616	3,942,867	499.39
Education & Health Services	150	848	859	854	6,264,784	564.51
Leisure & Hospitality	43	466	498	489	1,431,740	227.39
Other Services	26	107	108	104	944,795	683.48
Local Government	29	705	774	964	5,512,177	520.69
State Government	10	403	434	431	2,847,375	518.21
CRAIGHEAD COUNTY - TOTAL	2,712	43,779	45,274	46,397	\$394,240,560	\$671.68
Natural Resources & Mining	75	341	355	343	2,478,955	550.59
Construction	216	1,964	1,980	1,977	21,235,786	827.66
Manufacturing	106	5,849	5,838	5,879	67,879,447	891.75
Trade, Transportation & Utilities	751	9,539	9,551	9,609	74,536,550	599.35
Wholesale Trade	187	1,799	1,782	1,743	21,610,596	936.71
Retail Trade	447	6,283	6,337	6,390	37,860,240	459.60
Transportation, Warehousing & Utilities	117	1,457	1,432	1,476	15,065,714	796.50
Information	23	487	480	478	5,012,552	800.51
Financial Activities	269	1,574	1,601	1,570	17,274,481	840.13
Professional & Business Services	350	3,764	3,953	4,052	27,470,746	538.65
Education & Health Services	454	9,725	9,834	9,815	102,381,300	804.33
Leisure & Hospitality	249	4,994	5,072	5,107	17,347,983	263.85
Other Services	161	832	842	831	5,496,613	506.37
Local Government	35	1,948	3,014	3,992	26,090,449	672.42
State Government	23	2,762	2,754	2,744	27,035,698	755.33

TABLE 6. COUNTY SUMMARY

North American Industry Classification System - Industry Groups	Number of Employing Units	Employment			Total Earnings	Average Weekly Earnings
		Jul	Aug	Sep	Jul - Sep 2014	
CRAWFORD COUNTY - TOTAL	1,258	18,235	19,257	19,317	\$155,586,326	\$632.02
Natural Resources & Mining	32	299	298	308	4,458,828	1,136.97
Construction	146	870	878	863	7,581,328	670.06
Manufacturing	67	4,532	4,505	4,512	40,669,630	692.69
Trade, Transportation & Utilities	320	5,909	5,990	5,987	52,996,362	683.77
Wholesale Trade	86	805	815	804	9,358,676	890.96
Retail Trade	164	1,942	1,922	1,906	12,129,235	485.10
Transportation, Warehousing & Utilities	70	3,162	3,253	3,277	31,508,451	750.23
Information	11	113	104	99	1,041,456	760.56
Financial Activities	127	525	523	520	4,559,447	671.03
Professional & Business Services	151	1,379	1,397	1,424	10,031,913	551.20
Education & Health Services	174	1,517	1,524	1,509	11,325,356	574.41
Leisure & Hospitality	98	1,582	1,559	1,541	4,997,670	246.33
Other Services	79	369	371	377	2,821,992	583.02
Local Government	43	993	1,962	2,033	14,056,236	650.31
State Government	10	147	146	144	1,046,108	552.42
CRITTENDEN COUNTY - TOTAL	1,317	15,378	15,960	16,663	\$126,775,883	\$609.49
Natural Resources & Mining	54	336	318	328	2,471,762	580.86
Construction	54	379	414	399	3,960,156	766.68
Manufacturing	41	1,613	1,603	1,611	17,900,722	855.80
Trade, Transportation & Utilities	303	4,373	4,393	4,375	37,648,053	661.14
Wholesale Trade	61	741	748	715	7,789,233	815.57
Retail Trade	163	1,913	1,890	1,890	10,635,897	431.13
Transportation, Warehousing & Utilities	79	1,719	1,755	1,770	19,222,923	845.93
Information	6	67	64	64	548,045	648.57
Financial Activities	97	444	446	434	4,135,692	720.84
Professional & Business Services	122	1,476	1,478	1,438	10,412,988	547.13
Education & Health Services	390	2,536	2,588	2,640	20,253,347	601.99
Leisure & Hospitality	118	2,247	2,261	2,221	8,914,400	305.72
Other Services	75	403	391	396	3,078,554	597.00
Local Government	43	1,096	1,510	2,256	14,238,638	675.82
State Government	14	408	494	501	3,213,526	528.57

TABLE 6. COUNTY SUMMARY

North American Industry Classification System - Industry Groups	Number of Employing Units	Employment			Total Earnings	Average Weekly Earnings
		Jul	Aug	Sep	Jul - Sep 2014	
CROSS COUNTY - TOTAL	502	4,699	4,982	5,045	\$37,544,169	\$588.35
Natural Resources & Mining	33	218	205	207	1,702,081	623.47
Construction	21	80	79	81	625,305	601.25
Manufacturing	12	642	637	641	5,155,017	619.59
Trade, Transportation & Utilities	133	1,298	1,286	1,280	11,071,586	661.23
Wholesale Trade	30	365	344	325	4,145,935	925.29
Retail Trade	75	799	803	789	5,568,561	537.45
Transportation, Warehousing & Utilities	28	134	139	166	1,357,090	713.38
Information	5	37	37	40	321,558	650.93
Financial Activities	47	314	313	303	2,666,661	661.70
Professional & Business Services	42	131	128	119	1,152,961	703.88
Education & Health Services	116	814	845	868	5,960,266	544.30
Leisure & Hospitality	32	325	319	319	943,520	226.10
Other Services	35	91	88	87	511,399	443.67
Local Government	16	356	657	724	4,539,269	603.06
State Government	10	393	388	376	2,894,546	577.33
DALLAS COUNTY - TOTAL	254	2,629	2,636	2,652	\$18,967,338	\$552.87
Natural Resources & Mining	32	173	174	179	1,507,656	661.45
Construction	18	64	86	76	613,165	626.10
Manufacturing	9	524	521	520	4,970,982	733.00
Trade, Transportation & Utilities	59	473	467	459	3,239,667	534.39
Retail Trade	41	340	329	327	1,970,915	456.65
Other Trade, Transportation, & Utilities	18	133	138	132	1,268,752	726.52
Information	4	20	20	20	131,967	507.57
Financial Activities	15	77	79	78	690,666	681.13
Professional & Business Services	12	28	27	28	147,045	408.84
Education & Health Services	58	721	714	723	5,259,399	562.42
Leisure & Hospitality	13	134	139	135	363,801	205.77
Other Services	13	62	64	63	310,218	378.78
Local Government	14	309	300	325	1,449,697	358.19
State Government	7	44	45	46	283,075	483.89

TABLE 6. COUNTY SUMMARY

North American Industry Classification System - Industry Groups	Number of Employing Units	Employment			Total Earnings Jul - Sep 2014	Average Weekly Earnings
		Jul	Aug	Sep		
DESHA COUNTY - TOTAL	536	4,392	4,569	4,604	\$35,511,078	\$604.12
Natural Resources & Mining	71	366	363	392	2,764,753	569.15
Construction	20	119	116	109	1,013,210	679.70
Manufacturing	14	833	835	829	10,480,666	968.61
Trade, Transportation & Utilities	116	902	915	925	7,164,769	602.99
Wholesale Trade	24	246	246	248	3,185,460	993.39
Retail Trade	67	506	511	512	2,459,506	371.21
Transportation, Warehousing & Utilities	25	150	158	165	1,519,803	741.49
Information	4	16	16	16	135,927	653.50
Financial Activities	30	204	203	205	1,664,708	627.72
Professional & Business Services	42	121	119	109	705,876	466.75
Education & Health Services	152	711	703	713	4,509,273	489.23
Leisure & Hospitality	36	351	346	318	1,071,621	243.64
Other Services	22	41	41	44	177,263	324.66
Local Government	19	597	786	793	4,923,670	522.17
State Government	10	131	126	151	899,342	508.68
DREW COUNTY - TOTAL	527	5,785	5,876	6,364	\$46,373,856	\$593.71
Natural Resources & Mining	45	279	283	298	2,594,742	696.26
Construction	19	97	99	95	788,899	625.61
Manufacturing	21	781	802	803	7,103,769	687.06
Trade, Transportation & Utilities	130	1,239	1,236	1,232	8,217,805	511.58
Wholesale Trade	19	175	175	169	1,801,149	800.87
Retail Trade	89	961	956	958	5,303,954	425.74
Transportation, Warehousing & Utilities	22	103	105	105	1,112,702	820.38
Information	8	55	56	55	494,657	687.66
Financial Activities	49	238	238	242	2,331,136	749.24
Professional & Business Services	35	221	241	242	2,101,618	688.90
Education & Health Services	123	883	887	876	7,594,363	662.34
Leisure & Hospitality	40	578	597	620	1,907,082	245.18
Other Services	19	50	52	54	344,323	509.35
Local Government	22	826	864	1,237	7,537,174	594.24
State Government	16	538	521	610	5,358,288	740.88

TABLE 6. COUNTY SUMMARY

North American Industry Classification System - Industry Groups	Number of Employing Units	Employment			Total Earnings	Average Weekly Earnings
		Jul	Aug	Sep	Jul - Sep 2014	
FAULKNER COUNTY - TOTAL	2,809	38,289	38,899	40,207	\$363,484,589	\$714.52
Natural Resources & Mining	61	1,141	1,130	1,132	21,488,970	1,457.24
Construction	311	2,730	2,763	2,768	27,790,662	776.33
Manufacturing	100	3,254	3,238	3,243	39,165,355	928.42
Trade, Transportation & Utilities	665	7,102	7,201	7,238	53,832,363	576.71
Wholesale Trade	160	624	621	628	8,236,246	1,014.77
Retail Trade	410	5,632	5,732	5,796	34,847,364	468.63
Transportation, Warehousing & Utilities	95	846	848	814	10,748,753	989.03
Information	19	245	236	227	2,768,341	902.33
Financial Activities	324	1,559	1,548	1,535	16,939,231	842.11
Professional & Business Services	404	5,526	5,491	5,433	72,298,392	1,014.24
Education & Health Services	445	6,033	6,099	6,034	54,053,540	686.66
Leisure & Hospitality	245	4,830	4,872	4,979	16,023,370	251.87
Other Services	179	878	889	777	6,444,031	584.55
Local Government	38	1,960	2,465	3,457	23,096,785	676.23
State Government	18	3,031	2,967	3,384	29,583,549	727.67
FRANKLIN COUNTY - TOTAL	337	4,024	4,212	4,247	\$33,648,582	\$622.05
Natural Resources & Mining	18	260	265	262	4,512,441	1,323.17
Construction	33	114	106	107	817,120	576.65
Manufacturing	13	848	855	867	7,648,331	686.77
Trade, Transportation & Utilities	85	977	968	959	7,555,729	600.42
Wholesale Trade	13	41	44	42	241,368	438.59
Retail Trade	51	624	617	613	3,238,414	403.09
Transportation, Warehousing & Utilities	21	312	307	304	4,075,947	1,019.07
Information	5	24	25	24	177,577	561.36
Financial Activities	30	202	202	203	1,640,695	623.76
Professional & Business Services	29	98	100	93	598,008	474.23
Education & Health Services	56	536	541	528	3,277,984	471.31
Leisure & Hospitality	25	298	314	304	936,798	236.01
Other Services	15	49	51	50	306,568	471.64
Local Government	19	511	675	731	5,008,910	602.97
State Government	9	107	110	119	1,168,421	802.49

TABLE 6. COUNTY SUMMARY

North American Industry Classification System - Industry Groups	Number of Employing Units	Employment			Total Earnings	Average Weekly Earnings
		Jul	Aug	Sep	Jul - Sep 2014	
FULTON COUNTY - TOTAL	197	1,782	1,816	1,911	\$11,132,414	\$466.33
Construction	7	34	32	34	318,760	735.60
Manufacturing	13	122	132	128	693,385	418.88
Trade, Transportation & Utilities	48	305	311	303	2,212,876	555.67
Retail Trade	31	179	182	179	858,175	366.74
Other Trade, Transportation, & Utilities	17	126	129	124	1,354,701	824.86
Information	4	33	34	33	178,434	411.77
Financial Activities	16	107	107	101	787,918	577.23
Professional & Business Services	15	40	40	40	270,229	519.67
Education & Health Services	49	442	465	448	2,607,724	444.12
Leisure & Hospitality	15	173	173	169	513,765	230.22
Local Government	12	403	403	538	2,713,290	465.88
State Government	10	109	104	102	766,970	561.88
Other	8	14	15	15	69,063	362.22
GARLAND COUNTY - TOTAL	3,103	35,041	35,488	35,927	\$277,040,196	\$600.55
Natural Resources & Mining	31	294	290	295	3,458,825	908.07
Construction	348	1,718	1,730	1,730	13,674,138	609.42
Manufacturing	96	2,407	2,423	2,402	24,391,812	778.33
Trade, Transportation & Utilities	705	7,232	7,211	7,169	53,318,925	569.33
Wholesale Trade	142	829	834	840	10,088,683	930.15
Retail Trade	507	5,802	5,793	5,741	36,324,559	483.54
Transportation, Warehousing & Utilities	56	601	584	588	6,905,683	898.83
Information	33	592	514	485	4,290,911	622.38
Financial Activities	345	1,456	1,453	1,442	15,045,635	797.99
Professional & Business Services	379	3,090	3,095	3,092	24,274,913	603.85
Education & Health Services	517	7,566	7,531	7,514	78,444,821	800.61
Leisure & Hospitality	354	6,970	6,905	6,700	25,730,811	288.60
Other Services	237	987	996	969	6,290,917	491.79
Local Government	33	1,747	2,318	3,064	20,046,241	648.91
State Government	25	982	1,022	1,065	8,072,247	606.98

TABLE 6. COUNTY SUMMARY

North American Industry Classification System - Industry Groups	Number of Employing Units	Employment			Total Earnings	Average Weekly Earnings
		Jul	Aug	Sep	Jul - Sep 2014	
GRANT COUNTY - TOTAL	346	3,630	3,701	3,915	\$32,183,529	\$660.41
Natural Resources & Mining	28	176	202	203	2,377,821	944.45
Construction	31	201	191	191	2,025,769	801.86
Manufacturing	17	1,139	1,138	1,146	11,996,020	808.74
Trade, Transportation & Utilities	90	636	644	629	4,279,889	517.37
Wholesale Trade	20	102	108	102	965,943	714.45
Retail Trade	47	465	466	460	2,668,591	442.72
Transportation, Warehousing & Utilities	23	69	70	67	645,355	722.95
Information	4	35	35	34	562,386	1,247.90
Financial Activities	26	88	86	81	736,295	666.33
Professional & Business Services	26	101	100	99	1,051,640	808.95
Education & Health Services	61	347	370	370	2,276,698	483.34
Leisure & Hospitality	23	266	258	257	670,546	198.13
Other Services	22	48	47	46	236,373	386.86
Local Government	10	537	576	804	5,581,622	671.92
State Government	8	56	54	55	388,470	543.31
GREENE COUNTY - TOTAL	881	14,825	14,938	15,316	\$127,120,034	\$650.76
Natural Resources & Mining	38	271	267	265	2,145,426	616.56
Construction	60	291	295	295	2,636,977	690.73
Manufacturing	64	5,316	5,360	5,387	58,951,137	846.92
Trade, Transportation & Utilities	236	2,535	2,531	2,552	17,862,700	541.11
Wholesale Trade	51	542	544	542	5,527,200	783.48
Retail Trade	155	1,756	1,755	1,777	10,281,926	448.71
Transportation, Warehousing & Utilities	30	237	232	233	2,053,574	675.07
Information	9	91	93	78	508,692	448.06
Financial Activities	78	482	486	489	3,897,516	617.31
Professional & Business Services	93	1,090	1,077	1,097	7,020,275	496.34
Education & Health Services	147	1,781	1,812	1,868	14,688,546	620.70
Leisure & Hospitality	65	1,064	1,052	1,034	3,360,865	246.22
Other Services	49	209	206	207	1,278,221	474.23
Local Government	30	1,276	1,343	1,634	11,206,883	608.09
State Government	12	419	416	410	3,562,796	660.39

TABLE 6. COUNTY SUMMARY

North American Industry Classification System - Industry Groups	Number of Employing Units	Employment			Total Earnings Jul - Sep 2014	Average Weekly Earnings
		Jul	Aug	Sep		
HEMPSTEAD COUNTY - TOTAL	504	7,315	7,419	7,931	\$59,512,312	\$605.94
Natural Resources & Mining	22	214	217	222	2,081,977	735.77
Construction	32	169	184	196	1,801,152	757.10
Manufacturing	29	2,094	2,102	2,121	20,007,097	730.89
Trade, Transportation & Utilities	132	1,527	1,534	1,557	12,716,570	635.47
Wholesale Trade	21	274	273	281	2,599,293	724.44
Retail Trade	81	881	885	897	5,100,496	442.00
Transportation, Warehousing & Utilities	30	372	376	379	5,016,781	1,027.26
Information	8	45	45	43	343,977	596.84
Financial Activities	42	237	232	234	2,330,723	765.09
Professional & Business Services	32	170	163	168	1,128,232	519.68
Education & Health Services	86	921	917	952	5,439,387	449.91
Leisure & Hospitality	44	595	604	604	2,004,773	256.59
Other Services	33	155	151	152	945,451	476.38
Local Government	27	446	540	915	5,323,526	646.24
State Government	17	742	730	767	5,389,447	555.48
HOT SPRING COUNTY - TOTAL	607	7,972	8,047	8,324	\$64,968,814	\$615.90
Natural Resources & Mining	25	155	152	155	1,170,177	584.50
Construction	57	324	330	341	2,753,434	638.60
Manufacturing	30	1,413	1,401	1,407	15,895,224	869.02
Trade, Transportation & Utilities	149	1,532	1,517	1,488	13,309,748	676.98
Wholesale Trade	17	109	110	111	1,150,061	804.24
Retail Trade	93	864	852	836	4,720,158	426.83
Transportation, Warehousing & Utilities	39	559	555	541	7,439,529	1,037.35
Information	7	53	54	50	454,897	668.64
Financial Activities	51	223	223	210	2,022,296	711.41
Professional & Business Services	58	919	963	948	5,921,926	482.90
Education & Health Services	109	1,085	1,100	1,096	8,722,681	613.51
Leisure & Hospitality	46	622	598	584	1,705,978	218.23
Other Services	35	136	141	138	789,669	439.11
Local Government	27	686	727	1,023	6,038,655	572.06
State Government	13	824	841	884	6,184,129	559.87

TABLE 6. COUNTY SUMMARY

North American Industry Classification System - Industry Groups	Number of Employing Units	Employment			Total Earnings Jul - Sep 2014	Average Weekly Earnings
		Jul	Aug	Sep		
HOWARD COUNTY - TOTAL	354	7,039	7,040	7,230	\$50,958,313	\$551.86
Natural Resources & Mining	15	182	181	180	1,497,632	636.48
Construction	17	110	118	117	1,206,797	807.22
Manufacturing	21	3,821	3,768	3,737	27,964,286	569.78
Trade, Transportation & Utilities	94	886	886	897	6,772,591	585.58
Wholesale Trade	16	79	82	84	766,466	721.95
Retail Trade	54	594	592	598	3,633,428	470.00
Transportation, Warehousing & Utilities	24	213	212	215	2,372,697	855.54
Information	5	25	26	26	165,282	495.35
Financial Activities	34	142	141	143	1,090,431	590.70
Professional & Business Services	24	138	138	140	1,061,126	588.64
Education & Health Services	70	609	608	626	4,630,265	579.77
Leisure & Hospitality	23	328	345	344	1,000,114	226.94
Other Services	23	145	146	152	974,855	507.83
Local Government	17	537	574	751	3,717,092	460.68
State Government	11	116	109	117	877,842	592.34
INDEPENDENCE COUNTY - TOTAL	912	13,728	13,985	14,561	\$117,637,066	\$642.17
Natural Resources & Mining	18	297	293	287	3,614,091	950.99
Construction	64	439	437	469	4,056,200	695.95
Manufacturing	43	2,649	2,636	2,647	26,494,191	770.81
Trade, Transportation & Utilities	241	2,935	2,903	2,890	23,067,729	609.91
Wholesale Trade	32	475	475	478	4,648,794	751.26
Retail Trade	161	1,709	1,681	1,666	9,568,946	436.75
Transportation, Warehousing & Utilities	48	751	747	746	8,849,989	910.12
Information	10	119	117	114	895,725	590.59
Financial Activities	80	493	499	496	5,121,608	794.29
Professional & Business Services	95	984	1,027	959	6,128,622	476.19
Education & Health Services	167	3,030	3,050	3,019	30,561,906	775.11
Leisure & Hospitality	70	1,101	1,147	1,146	3,305,108	224.73
Other Services	61	338	355	364	1,995,211	435.60
Local Government	47	748	947	1,556	7,752,518	550.31
State Government	16	595	574	614	4,644,157	601.08

TABLE 6. COUNTY SUMMARY

North American Industry Classification System - Industry Groups	Number of Employing Units	Employment			Total Earnings Jul - Sep 2014	Average Weekly Earnings
		Jul	Aug	Sep		
IZARD COUNTY - TOTAL	251	2,787	3,007	3,133	\$21,138,684	\$546.45
Natural Resources & Mining	5	175	174	177	1,791,728	786.08
Construction	20	90	93	94	807,250	672.52
Manufacturing	9	288	284	283	2,506,849	676.61
Trade, Transportation & Utilities	67	560	563	567	3,378,204	461.29
Wholesale Trade	13	22	20	20	154,564	575.30
Retail Trade	44	409	414	415	2,089,353	389.47
Transportation, Warehousing & Utilities	10	129	129	132	1,134,287	671.18
Information	4	6	6	5	63,959	868.22
Financial Activities	25	141	138	146	1,072,414	582.31
Professional & Business Services	17	83	82	79	476,981	451.12
Education & Health Services	46	612	640	640	4,265,398	520.26
Leisure & Hospitality	21	138	136	127	376,225	216.51
Other Services	10	24	23	24	127,520	414.47
Local Government	17	270	449	515	2,907,695	543.77
State Government	10	400	419	476	3,364,461	599.55
JACKSON COUNTY - TOTAL	454	5,158	5,140	5,218	\$43,370,649	\$645.05
Natural Resources & Mining	54	303	297	302	2,531,842	647.75
Construction	25	130	129	122	1,355,439	820.98
Manufacturing	17	917	894	896	10,561,134	900.33
Trade, Transportation & Utilities	110	1,013	1,013	1,013	7,915,758	601.09
Wholesale Trade	21	219	219	217	2,494,309	878.79
Retail Trade	72	701	698	692	4,340,802	479.06
Transportation, Warehousing & Utilities	17	93	96	104	1,080,647	851.13
Information	4	34	35	34	190,327	426.42
Financial Activities	34	155	152	150	1,296,042	654.46
Professional & Business Services	31	126	124	126	963,034	591.06
Education & Health Services	84	802	823	843	7,690,183	719.07
Leisure & Hospitality	28	312	305	300	861,142	216.71
Other Services	21	65	64	65	431,717	513.54
Local Government	33	556	561	631	3,607,720	476.29
State Government	13	745	743	736	5,966,311	619.08

TABLE 6. COUNTY SUMMARY

North American Industry Classification System - Industry Groups	Number of Employing Units	Employment			Total Earnings	Average Weekly Earnings
		Jul	Aug	Sep	Jul - Sep 2014	
JEFFERSON COUNTY - TOTAL	2,175	25,422	26,508	26,849	\$232,261,941	\$680.37
Natural Resources & Mining	36	215	221	225	2,411,081	841.76
Construction	94	621	629	638	5,698,677	696.55
Manufacturing	65	5,039	5,066	5,074	60,233,584	915.74
Trade, Transportation & Utilities	434	4,693	4,696	4,674	36,743,465	602.95
Wholesale Trade	77	601	597	586	5,933,508	767.53
Retail Trade	297	3,229	3,246	3,235	19,436,333	461.93
Transportation, Warehousing & Utilities	60	863	853	853	11,373,624	1,021.67
Information	14	96	96	95	964,535	775.56
Financial Activities	157	1,134	1,128	1,117	12,224,745	834.89
Professional & Business Services	152	1,659	1,673	1,727	12,033,293	548.91
Education & Health Services	882	4,755	4,833	4,797	44,544,381	714.60
Leisure & Hospitality	139	1,811	1,829	1,782	5,830,308	248.15
Other Services	127	631	640	630	4,567,802	554.50
Local Government	39	1,790	2,580	2,991	18,744,575	587.65
State Government	36	2,978	3,117	3,099	28,265,495	709.46
JOHNSON COUNTY - TOTAL	502	7,786	7,921	8,342	\$59,694,605	\$572.82
Natural Resources & Mining	17	132	130	131	1,124,430	660.26
Construction	35	195	188	187	1,502,454	608.28
Manufacturing	36	2,732	2,703	2,711	20,679,365	585.83
Trade, Transportation & Utilities	121	1,863	1,889	1,901	14,772,992	603.07
Retail Trade	77	878	892	891	4,924,956	427.11
Other Trade, Transportation & Utilities	44	985	997	1,010	9,848,036	759.57
Information	5	56	56	43	267,976	398.97
Financial Activities	51	199	195	189	1,541,108	610.02
Professional & Business Services	51	192	217	243	1,659,884	587.50
Education & Health Services	90	1,235	1,259	1,241	10,065,436	621.90
Leisure & Hospitality	39	484	503	489	1,434,217	224.24
Other Services	34	71	72	68	408,779	447.08
Local Government	14	492	574	1,006	5,192,369	578.30
State Government	9	135	135	133	1,045,595	598.74

TABLE 6. COUNTY SUMMARY

North American Industry Classification System - Industry Groups	Number of Employing Units	Employment			Total Earnings Jul - Sep 2014	Average Weekly Earnings
		Jul	Aug	Sep		
LAFAYETTE COUNTY - TOTAL	165	1,112	1,165	1,198	\$8,310,746	\$551.90
Natural Resources & Mining	30	166	159	171	1,703,140	792.40
Construction	10	67	65	64	798,570	940.23
Manufacturing	6	41	46	45	398,448	696.59
Trade, Transportation & Utilities	29	192	194	193	1,249,884	498.16
Retail Trade	16	107	104	107	477,971	346.86
Other Trade, Transportation & Utilities	13	85	90	86	771,913	682.50
Financial Activities	12	48	47	44	339,470	563.59
Professional & Business Services	11	43	43	40	326,426	597.85
Education & Health Services	34	206	203	197	1,261,368	480.34
Leisure & Hospitality	5	41	40	39	140,669	270.52
Local Government	13	177	232	270	1,384,737	470.63
State Government	7	49	50	49	274,444	427.93
Other	8	82	86	86	433,590	393.93
LAWRENCE COUNTY - TOTAL	413	3,736	4,061	4,189	\$28,480,765	\$548.35
Natural Resources & Mining	53	242	240	244	2,105,655	669.31
Construction	23	146	158	158	1,396,159	697.38
Manufacturing	22	466	466	469	3,829,796	630.83
Trade, Transportation & Utilities	107	861	855	859	6,640,684	595.13
Wholesale Trade	20	253	251	248	2,454,396	753.19
Retail Trade	57	490	487	489	2,906,772	457.57
Transportation, Warehousing & Utilities	30	118	117	122	1,279,516	827.10
Financial Activities	34	154	154	155	1,176,170	586.23
Professional & Business Services	28	105	103	104	921,791	681.80
Education & Health Services	60	487	518	540	3,750,348	560.17
Leisure & Hospitality	30	326	343	370	957,207	212.60
Local Government	26	771	1,040	1,103	6,587,084	521.65
State Government	10	101	103	105	624,359	466.29
Other	20	77	81	82	491,512	472.61

TABLE 6. COUNTY SUMMARY

North American Industry Classification System - Industry Groups	Number of Employing Units	Employment			Total Earnings	Average Weekly Earnings
		Jul	Aug	Sep	Jul - Sep 2014	
LEE COUNTY - TOTAL	294	1,933	1,966	1,993	\$14,933,014	\$584.87
Natural Resources & Mining	37	225	223	238	1,855,644	624.24
Construction	10	40	45	44	324,528	580.55
Trade, Transportation & Utilities	46	345	337	344	2,569,219	577.87
Wholesale Trade	9	108	100	103	997,555	740.21
Retail Trade	26	186	183	189	950,547	393.11
Transportation, Warehousing & Utilities	11	51	54	52	621,117	912.96
Financial Activities	18	63	64	66	519,560	621.24
Professional & Business Services	15	76	80	74	888,319	891.29
Education & Health Services	127	356	361	362	2,778,880	594.33
Leisure & Hospitality	9	90	88	85	277,948	243.89
Local Government	15	247	277	293	1,908,882	539.18
State Government	7	475	473	471	3,711,289	603.56
Other	10	16	18	16	98,745	455.75
LINCOLN COUNTY - TOTAL	283	2,792	2,939	2,951	\$22,070,407	\$586.64
Natural Resources & Mining	36	177	177	190	1,493,251	633.45
Construction	16	107	98	90	770,601	602.82
Manufacturing	9	319	328	324	2,439,422	579.76
Trade, Transportation & Utilities	44	371	369	356	3,469,289	730.48
Wholesale Trade	9	62	59	57	638,727	828.08
Retail Trade	22	167	171	173	890,683	402.24
Transportation, Warehousing & Utilities	13	142	139	126	1,939,879	1,099.91
Financial Activities	20	71	71	69	598,247	654.30
Professional & Business Services	12	29	19	19	195,535	673.48
Education & Health Services	98	404	409	404	2,848,076	540.06
Leisure & Hospitality	14	177	173	182	411,907	178.68
Local Government	7	155	319	342	1,912,080	540.75
State Government	12	954	947	946	7,741,713	627.52
Other	15	28	29	29	190,286	510.61

TABLE 6. COUNTY SUMMARY

North American Industry Classification System - Industry Groups	Number of Employing Units	Employment			Total Earnings Jul - Sep 2014	Average Weekly Earnings
		Jul	Aug	Sep		
LITTLE RIVER COUNTY - TOTAL	242	3,350	3,297	3,536	\$39,793,110	\$901.80
Natural Resources & Mining	13	87	88	87	884,628	779.18
Construction	18	199	194	237	2,042,978	748.34
Manufacturing	16	1,259	1,228	1,246	24,890,468	1,538.70
Trade, Transportation & Utilities	57	533	512	530	3,828,904	561.01
Wholesale Trade	9	34	33	34	451,682	1,032.02
Retail Trade	35	359	352	361	2,139,878	460.65
Transportation, Warehousing & Utilities	13	140	127	135	1,237,344	710.30
Information	3	9	9	9	117,179	1,001.53
Financial Activities	18	83	81	77	628,270	601.60
Professional & Business Services	18	79	75	77	573,090	572.52
Education & Health Services	37	143	153	166	1,038,929	518.95
Leisure & Hospitality	14	208	210	207	692,536	255.71
Other Services	17	68	69	62	278,416	322.86
Local Government	20	589	586	741	4,267,247	513.96
State Government	11	93	92	97	550,465	450.46
LOGAN COUNTY - TOTAL	478	5,132	5,331	5,357	\$36,841,176	\$537.41
Natural Resources & Mining	23	133	134	142	1,663,479	938.58
Construction	39	203	214	224	1,890,615	680.65
Manufacturing	19	1,174	1,168	1,156	9,332,124	615.66
Trade, Transportation & Utilities	107	980	984	960	6,210,825	490.17
Wholesale Trade	12	96	101	97	535,848	420.60
Retail Trade	67	710	715	693	3,774,562	411.26
Transportation, Warehousing & Utilities	28	174	168	170	1,900,415	856.56
Information	5	33	33	33	316,165	736.98
Financial Activities	43	179	180	181	1,700,092	726.54
Professional & Business Services	48	135	138	131	1,195,407	682.83
Education & Health Services	100	717	715	720	5,060,881	542.70
Leisure & Hospitality	30	312	320	318	914,071	222.04
Other Services	28	128	127	127	944,522	570.59
Local Government	22	561	744	800	4,517,470	495.25
State Government	14	577	574	565	3,095,525	416.29

TABLE 6. COUNTY SUMMARY

North American Industry Classification System - Industry Groups	Number of Employing Units	Employment			Total Earnings	Average Weekly Earnings
		Jul	Aug	Sep	Jul - Sep 2014	
LONOKE COUNTY - TOTAL	1,317	13,200	13,654	13,803	\$108,585,950	\$616.33
Natural Resources & Mining	88	473	458	468	4,690,975	773.79
Construction	130	756	763	773	6,733,783	677.99
Manufacturing	37	1,762	1,784	1,810	21,422,597	923.02
Trade, Transportation & Utilities	329	2,954	2,974	2,988	27,227,886	704.73
Wholesale Trade	81	457	451	433	11,924,660	2,052.08
Retail Trade	186	2,192	2,212	2,233	12,225,827	425.09
Transportation, Warehousing & Utilities	62	305	311	322	3,077,399	757.11
Information	15	100	98	95	884,615	696.73
Financial Activities	142	525	529	517	6,166,090	905.76
Professional & Business Services	158	850	823	815	5,911,431	548.30
Education & Health Services	199	1,707	1,697	1,691	11,910,060	539.45
Leisure & Hospitality	106	1,607	1,617	1,691	5,110,144	239.93
Other Services	73	196	196	191	1,107,383	438.34
Local Government	25	2,106	2,556	2,608	16,279,781	516.76
State Government	15	164	159	156	1,141,205	549.80
MADISON COUNTY - TOTAL	244	2,846	3,166	3,256	\$22,346,432	\$556.42
Natural Resources & Mining	14	45	45	43	328,720	570.36
Construction	23	85	85	93	732,907	643.09
Manufacturing	22	1,131	1,136	1,144	8,597,149	581.64
Trade, Transportation & Utilities	49	546	600	636	4,096,080	530.44
Retail Trade	35	410	456	494	2,629,845	446.24
Other Trade, Transportation & Utilities	14	136	144	142	1,466,235	801.81
Information	6	40	39	41	556,983	1,071.12
Financial Activities	18	75	75	76	607,399	620.22
Professional & Business Services	21	152	145	144	1,148,136	600.80
Education & Health Services	47	282	274	270	1,746,723	488.00
Leisure & Hospitality	16	175	171	190	497,137	214.04
Other Services	12	27	29	30	236,128	633.62
Local Government	9	246	525	547	3,505,751	613.82
State Government	7	42	42	42	293,319	537.21

TABLE 6. COUNTY SUMMARY

North American Industry Classification System - Industry Groups	Number of Employing Units	Employment			Total Earnings	Average Weekly Earnings
		Jul	Aug	Sep	Jul - Sep 2014	
MARION COUNTY - TOTAL	282	3,636	3,736	3,857	\$23,635,246	\$485.73
Natural Resources & Mining	4	25	25	26	125,745	381.82
Construction	21	53	50	52	350,658	522.07
Manufacturing	19	1,710	1,742	1,754	10,898,966	483.12
Trade, Transportation & Utilities	55	529	516	517	3,267,693	482.77
Retail Trade	38	435	424	429	2,315,160	414.80
Other Trade, Transportation & Utilities	17	94	92	88	952,533	802.25
Information	3	50	50	50	633,913	975.25
Financial Activities	31	207	205	207	1,809,132	674.46
Professional & Business Services	25	68	67	66	387,414	444.79
Education & Health Services	48	345	359	353	2,196,168	479.48
Leisure & Hospitality	34	231	237	218	686,168	230.83
Other Services	15	32	29	32	137,862	342.09
Local Government	18	320	391	517	2,728,619	512.77
State Government	9	66	65	65	412,908	486.16
MILLER COUNTY - TOTAL	870	12,353	12,577	13,137	\$108,995,832	\$660.75
Natural Resources & Mining	30	169	162	149	1,416,745	681.13
Construction	77	716	712	721	6,451,501	692.79
Manufacturing	27	2,333	2,327	2,340	32,465,721	1,070.30
Trade, Transportation & Utilities	232	3,508	3,557	3,583	29,393,429	637.03
Wholesale Trade	51	527	524	533	5,538,701	806.92
Retail Trade	135	1,341	1,378	1,374	7,614,196	429.30
Transportation, Warehousing & Utilities	46	1,640	1,655	1,676	16,240,532	753.94
Information	7	71	70	71	1,127,198	1,226.99
Financial Activities	86	405	410	392	3,703,609	708.10
Professional & Business Services	88	1,016	956	1,021	6,150,118	474.19
Education & Health Services	133	972	971	992	7,581,403	596.10
Leisure & Hospitality	92	1,596	1,569	1,559	5,881,722	287.32
Other Services	57	278	275	271	1,474,284	412.89
Local Government	25	771	1,047	1,525	8,824,896	609.19
State Government	16	518	521	513	4,525,206	672.86

TABLE 6. COUNTY SUMMARY

North American Industry Classification System - Industry Groups	Number of Employing Units	Employment			Total Earnings	Average Weekly Earnings
		Jul	Aug	Sep	Jul - Sep 2014	
MISSISSIPPI COUNTY - TOTAL	1,181	18,292	18,531	19,004	\$187,000,439	\$772.99
Natural Resources & Mining	116	672	668	668	4,761,279	547.19
Construction	53	838	790	773	10,213,544	981.66
Manufacturing	54	6,560	6,616	6,672	99,541,281	1,157.35
Trade, Transportation & Utilities	281	2,923	2,929	2,943	24,643,588	646.62
Wholesale Trade	62	475	473	473	5,104,159	828.91
Retail Trade	157	1,652	1,654	1,639	8,947,186	417.54
Transportation, Warehousing & Utilities	62	796	802	831	10,592,243	1,006.33
Information	9	71	68	66	497,739	560.31
Financial Activities	89	426	425	421	3,555,579	645.06
Professional & Business Services	90	1,302	1,422	1,624	10,072,579	534.60
Education & Health Services	273	1,661	1,766	1,818	12,981,197	571.15
Leisure & Hospitality	84	1,249	1,196	1,204	3,561,839	225.26
Other Services	56	183	177	181	1,082,383	461.70
Local Government	52	1,892	1,957	2,092	12,253,012	475.95
State Government	24	515	517	542	3,836,419	562.47
MONROE COUNTY - TOTAL	306	2,160	2,249	2,253	\$15,192,823	\$526.27
Natural Resources & Mining	33	158	157	148	2,036,826	1,015.20
Construction	11	54	53	51	457,193	667.76
Manufacturing	7	139	139	143	998,176	547.15
Trade, Transportation & Utilities	85	707	685	679	5,156,128	574.54
Wholesale Trade	20	283	269	263	2,526,554	715.40
Retail Trade	41	302	299	293	1,534,366	396.07
Transportation, Warehousing & Utilities	24	122	117	123	1,095,208	698.18
Financial Activities	22	97	92	92	790,247	648.98
Professional & Business Services	13	31	29	31	176,143	446.69
Education & Health Services	68	311	304	312	1,751,339	435.98
Leisure & Hospitality	20	249	247	238	743,038	233.61
Local Government	21	201	329	358	1,859,250	483.17
State Government	8	109	108	104	742,993	534.14
Other	18	104	106	97	481,490	361.93

TABLE 6. COUNTY SUMMARY

North American Industry Classification System - Industry Groups	Number of Employing Units	Employment			Total Earnings Jul - Sep 2014	Average Weekly Earnings
		Jul	Aug	Sep		
MONTGOMERY COUNTY - TOTAL	177	1,673	1,537	1,414	\$8,804,274	\$439.39
Natural Resources & Mining	9	43	41	43	417,951	759.45
Construction	23	67	73	78	405,121	428.85
Manufacturing	7	25	26	23	111,612	348.06
Trade, Transportation & Utilities	38	238	233	243	1,587,671	513.15
Wholesale Trade	10	60	58	63	530,293	676.11
Retail Trade	20	154	150	152	857,784	434.10
Transportation, Warehousing & Utilities	8	24	25	28	199,594	598.18
Financial Activities	12	75	74	70	545,432	574.74
Professional & Business Services	16	38	36	37	377,366	784.54
Education & Health Services	21	71	73	74	386,316	408.94
Leisure & Hospitality	20	712	506	269	1,971,882	306.02
Local Government	9	292	360	464	2,363,950	488.82
State Government	8	47	47	45	319,174	529.90
Other	14	65	68	68	317,799	364.87
NEVADA COUNTY - TOTAL	201	2,270	2,286	2,421	\$18,105,491	\$598.85
Natural Resources & Mining	12	68	70	72	738,976	812.06
Trade, Transportation & Utilities	43	546	557	562	4,021,514	557.38
Wholesale Trade	3	15	14	14	60,048	322.26
Retail Trade	27	316	322	321	1,473,548	354.59
Transportation, Warehousing & Utilities	13	215	221	227	2,487,918	865.97
Financial Activities	11	55	55	48	431,393	630.08
Professional & Business Services	12	45	45	40	330,339	586.40
Education & Health Services	41	409	409	415	2,295,561	429.64
Leisure & Hospitality	9	81	85	83	233,797	216.68
Other Services	17	48	47	53	178,686	278.62
Local Government	27	258	268	387	1,539,441	389.11
State Government	10	83	82	80	472,643	445.19
Other	19	677	668	681	7,863,141	895.64

TABLE 6. COUNTY SUMMARY

North American Industry Classification System - Industry Groups	Number of Employing Units	Employment			Total Earnings Jul - Sep 2014	Average Weekly Earnings
		Jul	Aug	Sep		
NEWTON COUNTY - TOTAL	121	964	1,084	1,065	\$5,408,702	\$400.95
Construction	5	7	6	8	26,036	286.11
Manufacturing	9	39	38	38	306,925	615.90
Trade, Transportation & Utilities	31	167	165	158	992,798	467.57
Retail Trade	17	108	105	100	499,414	368.21
Other Trade, Transportation & Utilities	14	59	60	58	493,384	643.26
Education & Health Services	24	228	236	230	1,038,980	345.48
Leisure & Hospitality	14	120	116	103	440,229	299.68
Other Services	3	4	4	4	21,975	422.60
Local Government	13	259	379	387	1,849,602	416.42
State Government	8	92	89	86	420,415	363.37
Other	14	48	51	51	311,742	479.60
OUACHITA COUNTY - TOTAL	662	6,907	6,894	7,053	\$50,890,302	\$563.15
Natural Resources & Mining	37	185	188	184	1,865,604	772.93
Construction	35	246	247	236	2,167,017	685.98
Manufacturing	24	492	502	527	4,836,916	733.87
Trade, Transportation & Utilities	175	1,609	1,609	1,640	11,709,615	556.24
Wholesale Trade	29	272	278	281	3,096,906	860.01
Retail Trade	119	1,052	1,040	1,066	5,307,212	387.82
Transportation, Warehousing & Utilities	27	285	291	293	3,305,497	877.80
Information	7	44	45	44	426,643	740.27
Financial Activities	59	280	278	275	2,461,817	682.01
Professional & Business Services	53	554	562	583	4,596,223	624.29
Education & Health Services	154	1,197	1,172	1,163	9,614,287	628.17
Leisure & Hospitality	43	539	545	519	1,472,391	211.97
Other Services	31	123	126	125	748,620	461.92
Local Government	30	928	966	1,108	5,697,776	438.00
State Government	14	710	654	649	5,293,393	606.83

TABLE 6. COUNTY SUMMARY

North American Industry Classification System - Industry Groups	Number of Employing Units	Employment			Total Earnings Jul - Sep 2014	Average Weekly Earnings
		Jul	Aug	Sep		
PERRY COUNTY - TOTAL	152	1,139	1,301	1,286	\$8,136,880	\$503.96
Natural Resources & Mining	8	49	49	43	577,446	945.08
Construction	16	115	130	127	1,049,492	651.05
Manufacturing	5	36	42	40	310,603	607.44
Trade, Transportation & Utilities	25	206	208	202	1,282,449	480.44
Retail Trade	15	171	171	168	718,956	325.32
Other Trade, Transportation & Utilities	10	35	37	34	563,493	1,226.76
Financial Activities	10	29	29	29	242,651	643.64
Professional & Business Services	18	42	44	38	342,700	637.78
Education & Health Services	35	231	232	237	1,319,866	435.12
Leisure & Hospitality	8	81	80	72	228,471	226.28
Local Government	10	248	383	395	2,122,709	477.44
State Government	8	61	63	62	316,834	393.09
Other	9	41	41	41	343,659	644.76
PHILLIPS COUNTY - TOTAL	851	5,420	5,728	5,788	\$40,812,760	\$556.11
Natural Resources & Mining	63	301	302	323	2,022,640	504.06
Construction	25	108	104	106	795,450	577.25
Manufacturing	13	373	336	355	3,575,027	775.38
Trade, Transportation & Utilities	169	1,388	1,383	1,385	10,646,948	591.19
Wholesale Trade	31	325	330	328	3,479,034	816.74
Retail Trade	92	795	786	778	4,460,631	436.36
Transportation, Warehousing & Utilities	46	268	267	279	2,707,283	767.52
Information	9	41	41	43	352,243	650.29
Financial Activities	40	197	198	197	1,769,632	689.83
Professional & Business Services	49	288	301	288	2,441,433	642.43
Education & Health Services	382	1,336	1,409	1,383	9,530,036	532.76
Leisure & Hospitality	28	286	292	266	877,649	239.97
Other Services	32	67	66	67	521,670	601.93
Local Government	27	532	792	869	4,770,716	502.02
State Government	14	503	504	506	3,509,316	535.26

TABLE 6. COUNTY SUMMARY

North American Industry Classification System - Industry Groups	Number of Employing Units	Employment			Total Earnings	Average Weekly Earnings
		Jul	Aug	Sep	Jul - Sep 2014	
PIKE COUNTY - TOTAL	247	2,165	2,337	2,319	\$14,437,095	\$488.44
Natural Resources & Mining	22	112	112	117	987,525	668.30
Construction	13	31	43	33	274,553	592.13
Manufacturing	17	215	215	220	1,253,370	444.98
Trade, Transportation & Utilities	67	534	540	544	3,421,452	487.99
Wholesale Trade	9	121	119	126	914,377	576.53
Retail Trade	39	357	362	357	1,851,295	397.05
Transportation, Warehousing & Utilities	19	56	59	61	655,780	859.85
Information	5	23	23	23	292,413	977.97
Financial Activities	23	201	197	198	1,875,437	726.16
Professional & Business Services	16	47	49	48	644,376	1,032.65
Education & Health Services	24	279	287	293	1,743,760	468.46
Leisure & Hospitality	25	235	231	206	689,801	236.88
Other Services	15	34	37	36	266,530	574.83
Local Government	10	296	443	446	2,270,866	442.23
State Government	10	158	160	155	717,012	349.82
POINSETT COUNTY - TOTAL	528	4,815	5,067	5,120	\$39,420,666	\$606.39
Natural Resources & Mining	63	372	358	366	3,461,299	728.80
Construction	24	114	101	102	1,032,795	751.85
Manufacturing	21	671	659	659	6,985,891	810.52
Trade, Transportation & Utilities	130	1,286	1,269	1,275	10,428,901	628.37
Wholesale Trade	35	447	426	420	5,351,754	955.16
Retail Trade	69	696	698	700	3,656,231	402.93
Transportation, Warehousing & Utilities	26	143	145	155	1,420,916	740.19
Information	5	47	54	52	462,340	697.35
Financial Activities	36	238	236	235	2,133,190	694.32
Professional & Business Services	31	176	185	172	2,343,548	1,014.67
Education & Health Services	108	627	654	659	4,477,015	532.56
Leisure & Hospitality	45	386	382	383	1,079,625	216.46
Other Services	24	50	55	47	312,246	474.06
Local Government	30	713	978	1,035	5,720,618	484.28
State Government	11	135	136	135	983,198	558.85

TABLE 6. COUNTY SUMMARY

North American Industry Classification System - Industry Groups	Number of Employing Units	Employment			Total Earnings	Average Weekly Earnings
		Jul	Aug	Sep	Jul - Sep 2014	
POLK COUNTY - TOTAL	521	5,689	5,929	5,988	\$40,679,413	\$533.20
Natural Resources & Mining	23	124	122	128	1,402,131	865.16
Construction	34	208	216	213	1,469,831	532.48
Manufacturing	36	1,431	1,422	1,416	10,814,166	584.58
Trade, Transportation & Utilities	137	1,103	1,084	1,096	6,862,030	482.35
Wholesale Trade	24	59	56	62	431,563	562.66
Retail Trade	77	820	804	812	4,164,511	394.52
Transportation, Warehousing & Utilities	36	224	224	222	2,265,956	780.47
Information	8	58	54	54	386,221	536.92
Financial Activities	46	232	226	227	1,686,772	568.26
Professional & Business Services	49	172	174	181	1,396,545	611.54
Education & Health Services	83	1,013	1,028	1,040	8,482,351	635.33
Leisure & Hospitality	41	478	459	448	1,248,295	207.99
Other Services	29	239	176	173	1,156,216	453.77
Local Government	21	389	718	739	4,017,778	502.26
State Government	14	242	250	273	1,757,077	530.04
POPE COUNTY - TOTAL	1,807	25,074	25,596	26,178	\$218,894,890	\$657.33
Natural Resources & Mining	31	832	757	544	6,712,555	726.23
Construction	157	1,212	1,249	1,252	14,193,667	882.16
Manufacturing	74	4,463	4,458	4,494	43,403,607	746.64
Trade, Transportation & Utilities	434	6,017	6,049	6,065	59,435,687	756.49
Wholesale Trade	87	626	621	615	6,284,588	778.89
Retail Trade	270	3,326	3,332	3,328	18,368,888	424.49
Transportation, Warehousing & Utilities	77	2,065	2,096	2,122	34,782,211	1,277.52
Information	25	205	198	201	1,723,114	658.35
Financial Activities	188	1,342	1,304	1,282	9,249,552	543.41
Professional & Business Services	273	2,390	2,509	2,437	20,131,778	633.29
Education & Health Services	321	3,091	3,109	3,120	24,974,726	618.39
Leisure & Hospitality	140	2,428	2,447	2,478	8,022,684	251.79
Other Services	106	425	441	446	3,063,543	538.85
Local Government	42	1,172	1,464	2,120	13,170,402	639.05
State Government	16	1,497	1,611	1,739	14,813,575	705.29

TABLE 6. COUNTY SUMMARY

North American Industry Classification System - Industry Groups	Number of Employing Units	Employment			Total Earnings	Average Weekly Earnings
		Jul	Aug	Sep	Jul - Sep 2014	
PRAIRIE COUNTY - TOTAL	251	1,431	1,532	1,570	\$12,186,449	\$620.40
Natural Resources & Mining	34	181	168	160	1,905,672	863.99
Trade, Transportation & Utilities	64	336	333	353	2,445,170	552.12
Wholesale Trade	10	85	77	75	1,046,682	1,019.16
Retail Trade	36	197	196	190	855,894	338.79
Transportation, Warehousing & Utilities	18	54	60	88	542,594	619.87
Financial Activities	16	58	60	60	434,351	563.12
Professional & Business Services	14	57	52	51	362,787	523.25
Education & Health Services	51	272	279	270	1,629,274	457.96
Leisure & Hospitality	16	90	92	90	256,013	217.21
Other Services	13	28	26	24	145,514	430.51
Local Government	15	173	260	299	1,803,481	568.56
State Government	9	34	35	35	271,812	603.13
Other	19	202	227	228	2,932,375	1,029.99
PULASKI COUNTY - TOTAL	14,233	227,119	230,849	233,892	\$2,480,787,399	\$827.46
Natural Resources & Mining	57	665	685	691	8,876,801	1,003.67
Construction	947	8,327	8,376	8,397	95,243,212	875.67
Manufacturing	344	12,479	12,509	12,511	163,137,650	1,003.95
Trade, Transportation & Utilities	3,184	46,823	46,973	46,901	469,068,016	769.36
Wholesale Trade	995	11,631	11,652	11,625	170,656,571	1,128.17
Retail Trade	1,797	25,073	25,217	24,997	170,557,013	522.79
Transportation, Warehousing & Utilities	392	10,119	10,104	10,279	127,854,432	967.31
Information	204	5,967	5,951	5,931	93,700,284	1,211.45
Financial Activities	1,690	15,538	15,583	15,518	238,390,921	1,179.56
Professional & Business Services	2,791	32,969	33,220	32,980	362,990,719	844.69
Education & Health Services	2,392	37,660	37,844	37,965	434,567,702	883.81
Leisure & Hospitality	1,174	22,837	23,141	22,485	92,776,145	312.72
Other Services	1,145	7,171	7,058	6,988	60,030,143	652.93
Local Government	106	9,722	12,269	15,751	125,578,870	767.84
State Government	199	26,961	27,240	27,774	336,426,936	947.08

TABLE 6. COUNTY SUMMARY

North American Industry Classification System - Industry Groups	Number of Employing Units	Employment			Total Earnings	Average Weekly Earnings
		Jul	Aug	Sep	Jul - Sep 2014	
RANDOLPH COUNTY - TOTAL	411	4,498	4,600	4,718	\$30,281,266	\$505.79
Natural Resources & Mining	29	122	128	123	825,646	510.81
Construction	28	97	91	86	612,963	516.25
Manufacturing	27	503	511	507	4,398,535	667.35
Trade, Transportation & Utilities	98	842	847	843	5,825,943	530.98
Wholesale Trade	21	158	159	155	1,410,107	689.43
Retail Trade	59	553	554	545	3,038,662	424.47
Transportation, Warehousing & Utilities	18	131	134	143	1,377,174	778.94
Information	5	36	35	35	289,200	629.61
Financial Activities	35	125	126	129	962,319	584.40
Professional & Business Services	36	176	178	183	1,066,441	458.29
Education & Health Services	64	1,253	1,268	1,252	8,691,875	531.62
Leisure & Hospitality	29	421	414	426	1,158,307	211.98
Other Services	25	60	65	68	364,711	436.08
Local Government	24	572	657	734	3,570,505	419.75
State Government	11	291	280	332	2,514,821	642.68
SAINT FRANCIS COUNTY - TOTAL	786	6,883	7,224	7,270	\$51,924,427	\$560.54
Natural Resources & Mining	44	206	202	211	1,656,574	617.59
Construction	46	187	191	194	1,879,321	758.20
Trade, Transportation & Utilities	159	2,004	1,984	1,974	14,860,228	575.19
Wholesale Trade	33	569	547	530	5,410,960	758.62
Retail Trade	105	1,131	1,136	1,127	6,447,445	438.38
Transportation, Warehousing & Utilities	21	304	301	317	3,001,823	751.33
Information	7	66	67	67	596,965	688.81
Financial Activities	64	253	249	242	1,987,076	616.34
Professional & Business Services	49	448	452	455	2,892,966	492.70
Education & Health Services	292	1,388	1,400	1,401	10,597,703	583.82
Leisure & Hospitality	44	578	569	559	1,777,854	240.49
Local Government	28	558	926	944	5,911,189	561.83
State Government	16	515	492	538	3,895,122	581.80
Other	37	680	692	685	5,869,429	658.48

TABLE 6. COUNTY SUMMARY

North American Industry Classification System - Industry Groups	Number of Employing Units	Employment			Total Earnings	Average Weekly Earnings
		Jul	Aug	Sep	Jul - Sep 2014	
SALINE COUNTY - TOTAL	1,896	21,125	21,745	21,942	\$171,246,405	\$609.74
Natural Resources & Mining	14	68	67	80	738,868	793.06
Construction	268	1,748	1,717	1,723	16,660,385	741.08
Manufacturing	87	1,349	1,343	1,355	16,353,405	932.51
Trade, Transportation & Utilities	450	5,062	5,064	4,984	39,370,984	601.30
Wholesale Trade	110	553	552	555	6,373,504	886.03
Retail Trade	270	4,009	4,014	3,928	26,658,141	514.76
Transportation, Warehousing & Utilities	70	500	498	501	6,339,339	975.93
Information	15	136	136	134	1,419,894	807.06
Financial Activities	194	743	748	725	7,110,251	740.45
Professional & Business Services	247	1,422	1,430	1,420	12,385,224	669.04
Education & Health Services	273	3,240	3,280	3,288	26,409,624	621.38
Leisure & Hospitality	160	2,915	2,935	2,899	10,536,555	277.92
Other Services	142	738	727	704	4,742,603	504.59
Local Government	31	2,768	3,368	3,702	29,033,352	681.03
State Government	15	936	930	928	6,485,260	535.65
SCOTT COUNTY - TOTAL	184	2,946	2,993	3,049	\$18,593,921	\$477.40
Natural Resources & Mining	18	170	171	174	1,524,602	683.17
Trade, Transportation & Utilities	33	407	406	403	2,851,881	541.22
Wholesale Trade	6	53	52	52	635,655	934.33
Retail Trade	21	293	292	291	1,529,866	403.02
Transportation, Warehousing & Utilities	6	61	62	60	686,360	865.52
Financial Activities	21	66	66	64	447,520	526.91
Professional & Business Services	11	65	64	63	437,542	525.89
Education & Health Services	37	285	291	299	2,627,300	692.91
Leisure & Hospitality	14	140	143	143	468,175	253.62
Other Services	11	45	44	44	335,148	581.52
Local Government	6	428	481	524	2,343,850	377.45
State Government	7	63	65	60	334,211	410.24
Other	26	1,277	1,262	1,275	7,223,692	437.08

TABLE 6. COUNTY SUMMARY

North American Industry Classification System - Industry Groups	Number of Employing Units	Employment			Total Earnings	Average Weekly Earnings
		Jul	Aug	Sep	Jul - Sep 2014	
SEARCY COUNTY - TOTAL	185	1,497	1,664	1,649	\$9,409,875	\$451.46
Natural Resources & Mining	6	181	172	162	1,244,156	557.50
Construction	12	13	13	14	58,992	340.34
Manufacturing	17	223	238	235	1,256,133	416.49
Trade, Transportation & Utilities	40	253	245	247	1,488,017	460.92
Wholesale Trade	8	42	46	45	247,421	429.30
Retail Trade	26	190	178	181	977,544	410.91
Transportation, Warehousing & Utilities	6	21	21	21	263,052	963.56
Financial Activities	15	88	85	76	573,542	531.55
Professional & Business Services	12	19	19	25	113,833	416.97
Education & Health Services	46	314	320	317	2,006,486	486.89
Leisure & Hospitality	14	138	132	119	386,978	229.57
Local Government	10	147	320	334	1,634,897	471.02
State Government	7	109	107	109	558,478	396.55
Other	6	12	13	11	88,363	566.43
SEBASTIAN COUNTY - TOTAL	3,702	62,381	64,136	64,503	\$599,967,986	\$724.81
Natural Resources & Mining	55	960	963	948	18,340,540	1,474.20
Construction	261	2,367	2,367	2,384	22,720,863	736.62
Manufacturing	194	11,995	12,095	12,096	140,064,867	893.24
Trade, Transportation & Utilities	922	12,903	12,920	12,926	110,303,116	656.91
Wholesale Trade	250	2,870	2,851	2,856	32,604,864	877.25
Retail Trade	551	7,488	7,525	7,517	45,915,713	470.30
Transportation, Warehousing & Utilities	121	2,545	2,544	2,553	31,782,539	959.75
Information	47	939	936	901	12,563,954	1,044.44
Financial Activities	415	2,500	2,511	2,490	27,682,336	851.65
Professional & Business Services	585	8,055	8,305	8,243	74,542,247	699.19
Education & Health Services	572	10,822	10,844	10,836	115,176,717	817.77
Leisure & Hospitality	332	5,979	6,045	6,017	21,672,119	277.22
Other Services	258	1,316	1,261	1,266	8,786,656	527.63
Local Government	40	2,923	4,268	4,590	32,399,545	634.65
State Government	21	1,622	1,621	1,806	15,715,026	718.27

TABLE 6. COUNTY SUMMARY

North American Industry Classification System - Industry Groups	Number of Employing Units	Employment			Total Earnings Jul - Sep 2014	Average Weekly Earnings
		Jul	Aug	Sep		
SEVIER COUNTY - TOTAL	321	4,648	4,687	4,790	\$34,212,039	\$558.94
Natural Resources & Mining	14	164	168	172	1,574,649	720.99
Construction	18	144	139	144	1,660,898	897.62
Trade, Transportation & Utilities	98	884	869	871	6,751,854	593.80
Wholesale Trade	17	117	115	112	2,258,812	1,515.30
Retail Trade	66	680	673	678	3,588,270	407.71
Transportation, Warehousing & Utilities	15	87	81	81	904,772	838.53
Information	3	21	22	23	194,586	680.37
Financial Activities	29	230	230	222	1,845,237	624.38
Professional & Business Services	28	116	112	123	708,143	465.58
Education & Health Services	48	535	532	538	4,037,330	580.49
Leisure & Hospitality	26	286	272	271	805,149	224.13
Local Government	12	720	821	899	5,681,290	537.32
State Government	8	151	139	165	1,070,860	543.12
Other	37	1,397	1,383	1,362	9,882,043	550.57
SHARP COUNTY - TOTAL	391	3,492	3,546	3,759	\$23,060,696	\$492.89
Natural Resources & Mining	3	6	7	7	44,655	515.25
Construction	23	105	117	113	988,238	680.76
Manufacturing	18	151	151	146	887,100	456.95
Trade, Transportation & Utilities	84	1,061	1,058	1,041	8,104,631	591.87
Wholesale Trade	12	36	38	37	192,816	400.86
Retail Trade	61	666	666	665	3,396,847	392.53
Transportation, Warehousing & Utilities	11	359	354	339	4,514,968	990.41
Information	5	42	38	36	343,113	682.59
Financial Activities	34	179	190	189	1,668,173	689.90
Professional & Business Services	37	149	144	142	1,182,579	627.36
Education & Health Services	87	709	704	706	4,265,115	464.49
Leisure & Hospitality	41	410	441	445	1,261,773	224.67
Other Services	27	141	124	114	328,676	200.13
Local Government	24	464	497	748	3,527,705	476.35
State Government	8	75	75	72	458,938	477.07

TABLE 6. COUNTY SUMMARY

North American Industry Classification System - Industry Groups	Number of Employing Units	Employment			Total Earnings	Average Weekly Earnings
		Jul	Aug	Sep	Jul - Sep 2014	
STONE COUNTY - TOTAL	279	2,320	2,385	2,429	\$14,437,540	\$467.02
Natural Resources & Mining	7	67	13	12	130,493	327.32
Construction	18	46	48	47	268,062	438.73
Manufacturing	19	178	176	176	986,734	429.64
Trade, Transportation & Utilities	70	625	616	625	4,083,668	505.03
Wholesale Trade	7	61	61	66	475,401	583.55
Retail Trade	52	520	509	511	3,125,014	468.28
Transportation, Warehousing & Utilities	11	44	46	48	483,253	808.12
Information	3	17	17	17	87,486	395.86
Financial Activities	29	92	92	88	565,736	479.98
Professional & Business Services	16	29	29	27	162,876	442.20
Education & Health Services	50	463	469	471	3,763,682	619.06
Leisure & Hospitality	33	362	375	376	1,086,775	225.33
Other Services	16	40	39	39	255,554	499.78
Local Government	10	237	352	389	2,222,757	524.48
State Government	8	164	159	162	823,717	391.94
UNION COUNTY - TOTAL	1,335	17,572	17,673	17,856	\$185,768,730	\$807.32
Natural Resources & Mining	95	578	583	593	6,901,178	907.97
Construction	79	1,346	1,395	1,424	17,270,724	956.92
Manufacturing	50	3,128	3,140	3,121	46,034,142	1,131.46
Trade, Transportation & Utilities	331	4,201	4,222	4,169	42,855,359	785.40
Wholesale Trade	67	1,026	1,019	1,028	17,498,802	1,314.09
Retail Trade	206	2,298	2,331	2,268	12,759,675	426.93
Transportation, Warehousing & Utilities	58	877	872	873	12,596,882	1,108.69
Information	10	148	143	142	1,015,244	541.08
Financial Activities	116	629	628	620	6,576,697	808.58
Professional & Business Services	141	1,384	1,348	1,328	20,854,598	1,185.37
Education & Health Services	275	2,330	2,331	2,357	21,126,902	694.70
Leisure & Hospitality	86	1,184	1,171	1,168	4,061,182	266.02
Other Services	102	544	561	547	3,681,933	514.33
Local Government	33	1,542	1,611	1,807	10,540,773	490.42
State Government	17	558	540	580	4,849,998	667.00

TABLE 6. COUNTY SUMMARY

North American Industry Classification System - Industry Groups	Number of Employing Units	Employment			Total Earnings	Average Weekly Earnings
		Jul	Aug	Sep	Jul - Sep 2014	
VAN BUREN COUNTY - TOTAL	361	3,677	3,849	3,999	\$35,941,053	\$719.66
Natural Resources & Mining	13	343	346	346	7,004,151	1,561.68
Construction	38	153	160	160	1,400,704	683.38
Manufacturing	9	93	93	89	725,404	608.73
Trade, Transportation & Utilities	96	1,174	1,158	1,146	13,480,366	894.44
Wholesale Trade	9	66	53	54	636,706	849.32
Retail Trade	55	591	596	579	3,287,727	429.62
Transportation, Warehousing & Utilities	32	517	509	513	9,555,933	1,432.89
Information	9	44	44	45	353,611	613.55
Financial Activities	31	129	125	123	1,040,509	636.92
Professional & Business Services	33	153	154	147	987,711	502.06
Education & Health Services	61	680	693	694	5,096,600	569.01
Leisure & Hospitality	31	436	434	408	1,513,391	273.27
Other Services	22	56	56	57	400,722	547.19
Local Government	11	350	523	718	3,493,290	506.69
State Government	7	66	63	66	444,594	526.15
WASHINGTON COUNTY - TOTAL	5,641	90,038	93,214	94,844	\$915,521,698	\$759.72
Natural Resources & Mining	43	365	369	370	4,317,216	902.43
Construction	475	4,156	4,130	4,134	45,510,798	845.61
Manufacturing	219	12,185	12,111	12,118	119,412,651	756.76
Trade, Transportation & Utilities	1,347	21,741	21,913	21,884	200,424,301	705.72
Wholesale Trade	395	3,576	3,628	3,613	57,481,419	1,226.31
Retail Trade	770	11,651	11,824	11,820	76,142,042	497.84
Transportation, Warehousing & Utilities	182	6,514	6,461	6,451	66,800,840	793.55
Information	85	927	920	896	9,407,670	791.47
Financial Activities	619	3,459	3,444	3,446	38,672,924	862.36
Professional & Business Services	984	10,782	10,908	11,142	155,580,372	1,093.54
Education & Health Services	803	13,380	13,447	13,542	154,055,019	880.65
Leisure & Hospitality	609	10,915	11,232	11,353	40,876,031	281.58
Other Services	374	1,794	1,793	1,813	13,121,561	560.75
Local Government	61	4,314	6,358	7,865	56,589,595	704.49
State Government	22	6,020	6,589	6,281	77,553,560	947.43

TABLE 6. COUNTY SUMMARY

North American Industry Classification System - Industry Groups	Number of Employing Units	Employment			Total Earnings	Average Weekly Earnings
		Jul	Aug	Sep	Jul - Sep 2014	
WHITE COUNTY - TOTAL	1,821	22,648	24,111	24,429	\$216,950,081	\$703.28
Natural Resources & Mining	55	1,032	1,018	1,003	17,698,384	1,337.78
Construction	164	1,112	1,156	1,134	12,264,075	831.91
Manufacturing	62	2,366	2,337	2,331	24,819,094	814.26
Trade, Transportation & Utilities	490	6,062	6,116	6,134	51,073,821	643.64
Wholesale Trade	94	615	608	600	6,271,429	793.89
Retail Trade	307	3,515	3,551	3,593	20,863,397	451.70
Transportation, Warehousing & Utilities	89	1,932	1,957	1,941	23,938,995	947.58
Information	22	172	171	177	1,362,655	604.73
Financial Activities	172	892	903	887	9,245,983	795.56
Professional & Business Services	198	1,261	1,311	1,282	9,795,053	586.51
Education & Health Services	316	4,949	5,075	5,194	55,708,490	844.78
Leisure & Hospitality	158	2,288	2,398	2,362	7,330,128	240.01
Other Services	119	517	519	517	4,671,227	694.12
Local Government	47	1,396	2,487	2,683	18,145,625	637.75
State Government	18	601	620	725	4,835,546	573.43
WOODRUFF COUNTY - TOTAL	204	1,703	1,861	1,874	\$13,017,998	\$552.44
Natural Resources & Mining	26	162	157	169	1,317,807	623.17
Construction	6	43	45	40	365,975	659.81
Manufacturing	6	225	228	225	1,887,929	642.59
Trade, Transportation & Utilities	43	415	425	421	3,281,234	600.48
Wholesale Trade	11	181	184	184	1,806,781	759.47
Retail Trade	23	173	178	177	745,442	325.81
Transportation, Warehousing & Utilities	9	61	63	60	729,011	914.31
Financial Activities	14	67	67	68	533,100	609.03
Education & Health Services	68	260	262	250	1,536,382	459.26
Leisure & Hospitality	10	79	81	83	227,846	216.38
Local Government	9	305	444	469	2,645,363	501.21
State Government	6	45	50	48	307,319	495.94
Other	16	102	102	101	915,043	692.34

TABLE 6. COUNTY SUMMARY

North American Industry Classification System - Industry Groups	Number of Employing Units	Employment			Total Earnings	Average Weekly Earnings
		Jul	Aug	Sep	Jul - Sep 2014	
YELL COUNTY - TOTAL	408	5,949	6,217	6,463	\$42,348,547	\$524.60
Natural Resources & Mining	22	206	203	204	1,756,171	661.13
Construction	34	262	285	278	3,116,778	871.83
Manufacturing	20	2,438	2,427	2,442	15,806,216	499.19
Trade, Transportation & Utilities	81	640	659	668	3,915,368	459.35
Wholesale Trade	15	33	34	35	204,064	461.68
Retail Trade	48	486	501	508	2,507,980	387.13
Transportation, Warehousing & Utilities	18	121	124	125	1,203,324	750.51
Information	3	59	59	61	744,192	959.42
Financial Activities	29	163	160	158	1,338,275	642.06
Professional & Business Services	39	299	297	294	2,326,110	603.14
Education & Health Services	100	710	751	749	4,470,012	466.76
Leisure & Hospitality	27	290	296	314	840,690	215.56
Other Services	16	61	55	57	291,369	388.66
Local Government	25	725	930	1,146	7,145,413	588.70
State Government	12	96	95	92	597,953	487.59
STATEWIDE COUNTY - TOTAL	7,771	23,294	23,907	27,252	\$344,183,083	\$1,066.81
Natural Resources & Mining	90	361	363	360	5,921,375	1,260.58
Construction	704	2,422	2,454	2,586	28,113,776	869.44
Manufacturing	43	178	176	172	2,739,734	1,201.99
Trade, Transportation & Utilities	2,648	6,672	6,800	6,840	136,270,793	1,548.20
Wholesale Trade	2,281	5,594	5,700	5,731	121,980,977	1,653.42
Retail Trade	128	279	281	282	4,281,268	1,173.38
Transportation, Warehousing & Utilities	239	799	819	827	10,008,548	944.65
Information	198	414	425	407	7,198,803	1,333.28
Financial Activities	462	1,277	1,267	1,283	21,761,164	1,312.20
Professional & Business Services	2,952	8,589	9,008	12,219	107,771,303	834.13
Education & Health Services	322	1,946	1,977	1,971	19,587,592	766.92
Leisure & Hospitality	83	166	106	97	1,132,497	708.25
State Government	17	727	725	725	6,672,361	707.29
Other	252	542	606	592	7,013,685	1,028.79

Note: Statewide classification includes employment and payroll data for employers that have not provided a physical location for each employing unit. This section also includes employers without a physical location in Arkansas.

TABLE 7. FEDERAL GOVERNMENT EMPLOYMENT AND EARNINGS IN ARKANSAS

North American Industry Classification System - Industry Groups	Number of Employing Units	Employment			Total Earnings	Average Weekly Earnings
		Jul	Aug	Sep	Jul - Sep 2014	
TOTAL	1,153	20,168	20,186	20,173	\$341,802,114	\$1,303.18
Trade, Transportation & Utilities	585	5,406	5,392	5,402	71,179,185	1,013.95
Information	2	43	41	41	670,349	1,237.57
Financial Activities	14	117	112	114	2,393,897	1,610.61
Professional & Business Services	32	819	802	773	13,060,068	1,258.92
Education & Health Services	15	5,233	5,274	5,282	100,940,647	1,475.33
Leisure & Hospitality	21	339	322	318	3,413,723	804.68
Other Services	1	1	1	1	7,063	543.31
Public Administration	483	8,210	8,242	8,242	150,137,182	1,403.06

TABLE 8. WORKFORCE INVESTMENT AREA SUMMARY

North American Industry Classification System - Industry Groups	Number of Employing Units	Employment			Total Earnings	Average
		Jul	Aug	Sep	Jul - Sep 2014	Weekly Earnings
CENTRAL WORKFORCE INVESTMENT AREA	6,579	76,205	78,079	79,775	\$670,696,216	\$661.27
Natural Resources & Mining	230	2,021	1,980	1,988	30,861,311	1,189.15
Trade, Transportation & Utilities	1,593	16,161	16,257	16,242	128,032,531	607.19
Wholesale Trade	381	2,002	1,970	1,954	30,107,646	1,172.45
Retail Trade	943	12,332	12,453	12,440	76,121,592	471.90
Transportation, Warehousing & Utilities	269	1,827	1,834	1,848	21,803,293	913.33
Information	56	545	534	520	5,326,880	768.78
Financial Activities	698	2,982	2,977	2,929	31,440,170	816.32
Professional & Business Services	836	7,886	7,825	7,750	91,133,977	896.42
Education & Health Services	1,036	11,563	11,659	11,595	95,753,837	634.66
Leisure & Hospitality	547	9,691	9,763	9,897	32,669,120	256.86
Local Government	130	7,208	8,978	10,424	72,072,649	625.03
State Government	65	4,274	4,199	4,607	38,224,819	674.40
Other	1,388	13,874	13,907	13,823	145,180,922	805.29

Note: Pulaski County is not included in the Central Workforce Investment Area. Please refer to Page 51 for information on Pulaski County.
Central Workforce Investment Area includes these counties: Faulkner, Lonoke, Monroe, Prairie, and Saline.

EASTERN WORKFORCE INVESTMENT AREA	3,750	34,313	35,860	36,759	\$271,990,253	\$586.98
Natural Resources & Mining	231	1,286	1,250	1,307	9,708,701	583.00
Construction	156	794	833	824	7,584,760	714.13
Trade, Transportation & Utilities	810	9,408	9,383	9,358	76,796,034	629.58
Wholesale Trade	164	2,108	2,069	2,001	21,822,717	815.15
Retail Trade	461	4,824	4,798	4,773	28,063,081	449.89
Transportation, Warehousing & Utilities	185	2,476	2,516	2,584	26,910,236	819.70
Financial Activities	266	1,271	1,270	1,242	11,078,621	675.81
Professional & Business Services	277	2,419	2,439	2,374	17,788,667	567.63
Education & Health Services	1,307	6,430	6,603	6,654	49,120,232	575.78
Leisure & Hospitality	231	3,526	3,529	3,450	12,791,371	281.00
Local Government	129	2,789	4,162	5,086	31,368,694	601.39
State Government	61	2,294	2,351	2,392	17,223,799	564.83
Other	282	4,096	4,040	4,072	38,529,374	728.33

Eastern Workforce Investment Area includes these counties: Crittenden, Cross, Lee, Phillips, and Saint Francis.

TABLE 8. WORKFORCE INVESTMENT AREA SUMMARY

North American Industry Classification System - Industry Groups	Number of Employing Units	Employment			Total Earnings Jul - Sep 2014	Average Weekly Earnings
		Jul	Aug	Sep		
NORTH CENTRAL WORKFORCE INVESTMENT AREA	5,543	63,703	66,205	68,151	\$547,080,290	\$637.43
Construction	427	2,533	2,610	2,613	25,475,604	757.99
Manufacturing	230	7,972	7,915	7,897	78,574,354	762.38
Trade, Transportation & Utilities	1,414	15,716	15,747	15,709	129,819,440	635.09
Retail Trade	908	9,441	9,470	9,437	54,226,642	441.44
Other Trade, Transportation & Utilities	506	6,275	6,277	6,272	75,592,798	926.72
Financial Activities	507	2,480	2,499	2,479	23,388,526	723.70
Education & Health Services	1,017	12,715	12,991	13,098	121,271,480	721.21
Leisure & Hospitality	485	6,374	6,572	6,488	20,010,179	237.61
Local Government	228	5,175	7,118	9,055	51,249,771	554.00
State Government	105	2,897	2,905	3,094	22,219,073	576.38
Other	1,130	7,841	7,848	7,718	75,071,863	740.13

North Central Workforce Investment Area includes these counties: Cleburne, Fulton, Independence, Izard, Jackson, Sharp, Stone, Van Buren, White, and Woodruff.

NORTHEAST WORKFORCE INVESTMENT AREA	6,525	93,319	96,030	98,386	\$832,107,259	\$667.37
Natural Resources & Mining	434	2,301	2,310	2,317	17,907,815	596.50
Construction	434	3,606	3,566	3,552	38,542,623	829.40
Manufacturing	311	19,701	19,785	19,919	244,615,095	950.25
Trade, Transportation & Utilities	1,706	18,866	18,857	18,975	147,398,949	599.94
Wholesale Trade	399	3,934	3,883	3,826	44,193,154	875.93
Retail Trade	993	11,844	11,899	11,954	69,228,185	447.54
Transportation, Warehousing & Utilities	314	3,088	3,075	3,195	33,977,610	837.89
Financial Activities	568	3,126	3,153	3,125	30,142,804	739.69
Professional & Business Services	654	6,721	7,023	7,338	49,579,601	542.71
Education & Health Services	1,154	15,958	16,295	16,401	149,702,882	710.05
Leisure & Hospitality	522	8,697	8,725	8,819	28,164,235	247.68
Local Government	219	7,797	9,772	11,368	70,422,701	561.61
State Government	102	4,276	4,258	4,320	38,878,616	697.99
Other	421	2,270	2,286	2,252	16,751,938	567.84

Northeast Workforce Investment Area includes these counties: Clay, Craighead, Greene, Lawrence, Mississippi, Poinsett, and Randolph.

TABLE 8. WORKFORCE INVESTMENT AREA SUMMARY

North American Industry Classification System - Industry Groups	Number of Employing Units	Employment			Total Earnings	Average Weekly Earnings
		Jul	Aug	Sep	Jul - Sep 2014	
NORTHWEST WORKFORCE INVESTMENT AREA	15,152	237,540	244,245	249,081	\$2,518,027,353	\$795.06
Natural Resources & Mining	141	1,561	1,557	1,546	17,804,630	880.95
Trade, Transportation & Utilities	3,763	54,894	55,605	55,712	548,612,427	761.70
Wholesale Trade	1,227	8,977	9,112	9,072	169,505,064	1,440.17
Retail Trade	2,076	29,259	29,542	29,468	185,623,809	485.29
Transportation, Warehousing & Utilities	460	16,658	16,951	17,172	193,483,554	879.27
Information	211	2,362	2,358	2,337	25,633,443	838.23
Education & Health Services	2,147	29,953	30,345	30,577	304,228,829	772.56
Leisure & Hospitality	1,569	26,916	27,160	27,080	102,702,366	292.04
Other Services	961	4,334	4,322	4,324	31,935,355	567.77
Local Government	314	13,046	17,575	21,960	152,851,050	670.84
State Government	111	8,348	8,879	8,953	96,438,495	850.08
Other	5,935	96,126	96,444	96,592	1,237,820,758	987.86

Northwest Workforce Investment Area includes these counties: Baxter, Benton, Boone, Carroll, Madison, Marion, Newton, Searcy, and Washington.

SOUTHEAST WORKFORCE INVESTMENT AREA	6,149	65,680	68,124	69,745	\$576,603,715	\$653.71
Natural Resources & Mining	420	2,419	2,475	2,553	22,816,276	707.04
Construction	308	2,325	2,302	2,349	21,471,571	710.29
Trade, Transportation & Utilities	1,312	12,996	13,097	13,072	103,146,307	607.76
Wholesale Trade	249	2,141	2,138	2,108	24,188,337	873.95
Retail Trade	791	7,810	7,875	7,857	44,403,668	435.26
Transportation, Warehousing & Utilities	272	3,045	3,084	3,107	34,554,302	863.37
Financial Activities	422	2,566	2,556	2,499	26,314,744	796.83
Education & Health Services	1,950	10,568	10,704	10,662	85,603,088	618.61
Local Government	203	5,800	7,768	9,301	56,218,055	567.29
State Government	137	5,772	5,879	5,988	49,504,620	647.66
Other	1,397	23,234	23,343	23,321	211,529,054	698.37

Southeast Workforce Investment Area includes these counties: Arkansas, Ashley, Bradley, Chicot, Cleveland, Desha, Drew, Grant, Jefferson, and Lincoln.

TABLE 8. WORKFORCE INVESTMENT AREA SUMMARY

North American Industry Classification System - Industry Groups	Number of Employing Units	Employment			Total Earnings	Average Weekly Earnings
		Jul	Aug	Sep	Jul - Sep 2014	
SOUTHWEST WORKFORCE INVESTMENT AREA	5,769	75,570	76,359	78,747	\$680,309,249	\$680.58
Natural Resources & Mining	352	2,431	2,438	2,461	27,038,911	851.26
Trade, Transportation & Utilities	1,432	16,018	16,093	16,143	135,298,953	647.05
Wholesale Trade	250	2,625	2,622	2,645	35,275,314	1,031.48
Retail Trade	892	8,994	9,056	9,052	49,611,766	422.44
Transportation, Warehousing & Utilities	290	4,399	4,415	4,446	50,411,873	877.34
Information	59	454	452	450	4,158,043	707.63
Financial Activities	500	2,635	2,639	2,569	24,303,707	715.10
Education & Health Services	1,139	9,079	9,049	9,150	68,893,120	582.83
Leisure & Hospitality	414	5,628	5,649	5,669	18,798,077	255.99
Other Services	385	1,832	1,858	1,847	10,804,998	450.33
Local Government	255	7,122	8,001	10,018	56,686,611	520.33
State Government	139	3,733	3,627	3,766	30,053,976	623.36
Other	1,094	26,638	26,553	26,674	304,272,853	879.19

Southwest Workforce Investment Area includes these counties: Calhoun, Columbia, Dallas, Hempstead, Howard, Lafayette, Little River, Miller, Nevada, Ouachita, Sevier, and Union

WEST CENTRAL WORKFORCE INVESTMENT AREA	8,191	102,029	104,170	106,490	\$821,625,196	\$606.37
Natural Resources & Mining	240	2,399	2,296	2,113	\$22,001,701	745.79
Construction	756	4,491	4,599	4,602	\$43,458,630	732.47
Manufacturing	333	16,006	15,998	16,045	151,380,084	727.05
Trade, Transportation & Utilities	1,882	21,277	21,376	21,347	174,869,094	630.54
Wholesale Trade	342	2,225	2,234	2,243	23,805,786	819.70
Retail Trade	1,251	14,003	14,067	13,998	82,392,433	451.97
Transportation, Warehousing & Utilities	289	5,049	5,075	5,106	68,670,875	1,040.52
Financial Activities	815	4,152	4,093	4,042	36,367,226	683.03
Professional & Business Services	946	8,197	8,430	8,356	65,009,219	600.49
Education & Health Services	1,485	16,489	16,621	16,672	146,516,281	679.19
Leisure & Hospitality	763	13,431	13,207	12,800	45,681,251	267.30
Local Government	225	7,164	8,873	11,565	70,157,932	586.56
State Government	125	5,232	5,544	5,894	43,659,343	604.39
Other	621	3,191	3,133	3,054	22,524,435	554.27

West Central Workforce Investment Area includes these counties: Clark, Conway, Garland, Hot Spring, Johnson, Montgomery, Perry, Pike, Pope, and Yell

TABLE 8. WORKFORCE INVESTMENT AREA SUMMARY

North American Industry Classification System - Industry Groups	Number of Employing Units	Employment			Total Earnings	Average Weekly Earnings
		Jul	Aug	Sep	Jul - Sep 2014	
WESTERN WORKFORCE INVESTMENT AREA	6,480	98,407	101,858	102,461	\$885,317,404	\$674.88
Natural Resources & Mining	169	1,946	1,953	1,962	31,902,021	1,256.10
Trade, Transportation & Utilities	1,604	22,279	22,352	22,331	186,779,943	643.69
Wholesale Trade	391	3,924	3,919	3,913	43,807,974	859.95
Retail Trade	931	11,877	11,875	11,832	70,752,301	458.84
Transportation, Warehousing & Utilities	282	6,478	6,558	6,586	72,219,668	849.36
Financial Activities	682	3,704	3,708	3,685	37,716,862	784.35
Professional & Business Services	873	9,904	10,178	10,135	88,201,662	673.60
Education & Health Services	1,022	14,890	14,943	14,932	145,950,589	752.39
Leisure & Hospitality	540	8,789	8,840	8,771	30,237,128	264.31
Other Services	420	2,146	2,030	2,037	14,351,102	533.04
Local Government	151	5,805	8,848	9,417	62,343,789	597.72
State Government	75	2,758	2,766	2,967	23,116,368	628.26
Other	944	26,186	26,240	26,224	264,717,940	776.72

Western Workforce Investment Area includes these counties: Crawford, Franklin, Logan, Polk, Scott, and Sebastian

