

# Arkansas Covered Employment & Earnings



Second Quarter  
2014



**COVERED EMPLOYMENT AND EARNINGS  
STATE OF ARKANSAS  
SECOND QUARTER 2014**

**ASA HUTCHINSON, GOVERNOR  
STATE OF ARKANSAS**

**DARYL BASSETT, DIRECTOR  
DEPARTMENT OF WORKFORCE SERVICES**

**PUBLISHED BY  
LABOR MARKET INFORMATION  
BUREAU OF LABOR STATISTICS PROGRAMS  
POST OFFICE BOX 2981  
LITTLE ROCK, ARKANSAS 72203-2981  
SUSAN PRICE, BLS PROGRAMS MANAGER  
TELEPHONE (501) 682-3103**

**STATE OF ARKANSAS WEBPAGE: <http://www.arkansas.gov>**

**DEPARTMENT OF WORKFORCE SERVICES WEBPAGE: <http://www.arkansas.gov/esd/>**

**WEBPAGE FOR LABOR MARKET INFORMATION: <http://www.discover.arkansas.gov>**

**RELEASED: FEBURARY 2015**



## TABLE OF CONTENTS

DESCRIPTION OF DATA	PAGE
Description and Classification of Data	1
Definition of Covered Employment and Earnings	2
Significant Developments During Second Quarter 2014	3

### LIST OF GRAPHS AND TABLES

Graph 1	Total Covered Employment for Selected Years, Arkansas	7
Graph 2	Total Covered Earnings, by Calendar Quarter for Selected Years, Arkansas	8
Table 1	Quarterly Comparison of Covered Employment and Wages, by Industry	5
Table 2	Total Covered Employment in Arkansas, 2007 – 2014	6
Table 3	Total Covered Earnings, 2007 – 2014	9
Table 4	Total Taxable Earnings, 2007 – 2014	10
Table 5	State Summary – Employment and Total Earnings, by Industry, Second Quarter 2014	11
Table 6	County Summary – Employment and Total Earnings, by Industry, Second Quarter 2014	22
Table 7	Federal Government Employment and Total Earnings in Arkansas, Second Quarter 2014	60
Table 8	Workforce Information Area – Employment and Total Earnings, by Industry, Second Quarter 2014	61



EMPLOYMENT AND EARNINGS  
UNDER THE ARKANSAS EMPLOYMENT SECURITY LAW  
SECOND QUARTER 2014

**DESCRIPTION AND CLASSIFICATION OF DATA**

This publication contains covered employment and payroll data by industry and county for the Second Quarter 2014 and a record for total covered employment by month, quarterly payroll data, average weekly earnings, and total taxable earnings for 2007 through 2014. These data are compiled from quarterly contributions and wage reports submitted by employers subject to the Arkansas Employment Security Law.

Employment data have been tabulated for each month of the quarter by industry under the **North American Industry Classification System** (NAICS) by state, county, and workforce area. Payroll data represent the total wages paid during the quarter and are classified by industry for the state and by publishable industry groups for each county and workforce area.

Due to industry classification revisions, previously published data will not always be comparable with current data. For this reason, comparisons should not be made between the same industries under different revisions. For more information, visit the NAICS home page at <http://www.census.gov/naics>.

Industry Classification Revisions

- SIC (Standard Industrial Classification) 1987 to NAICS 2002
- NAICS 2002 to NAICS 2007
- NAICS 2007 to NAICS 2012

The tabulation of this data is a joint effort in conjunction with the United States Bureau of Labor Statistics. Data included in this publication are subject to revisions. Revisions are typically reflected in the Annual Covered Employment and Earnings publication.

## **DEFINITION OF COVERED EMPLOYMENT AND EARNINGS**

Covered Employment is the total number of workers employed by establishments subject to the Arkansas Employment Security Law that worked or received pay for the payroll period including the 12<sup>th</sup> of the month. Earnings include all wages paid to any covered employee by their employer including salaries, bonuses, commissions, fees, fringe benefits, sick pay made directly to employees or dependents, deferred compensation, and reported tips. These wages include both taxable and nontaxable wages. Only the first \$12,000 paid to each worker by an employer in the calendar year is taxable under the Arkansas Employment Security Law.

An Arkansas state unemployment insurance account is required of any entity meeting the definition of an employer. As described by Arkansas Department of Workforce Services Law, the definition of an employer includes, but is not limited to, a sole proprietorship, partnership, corporation, associations, trust, estate, and receiver or trustee in bankruptcy. The entity must employ one or more individuals for ten or more days in a calendar year, whether or not the days are consecutive.

Currently excluded from coverage is employment covered by the Railroad Unemployment Insurance Act, some domestic service workers, employees of small agricultural establishments, self-employed workers, unpaid family workers, insurance and real estate agents paid only on a commission basis, and employees of churches and religious organizations except separately incorporated schools.

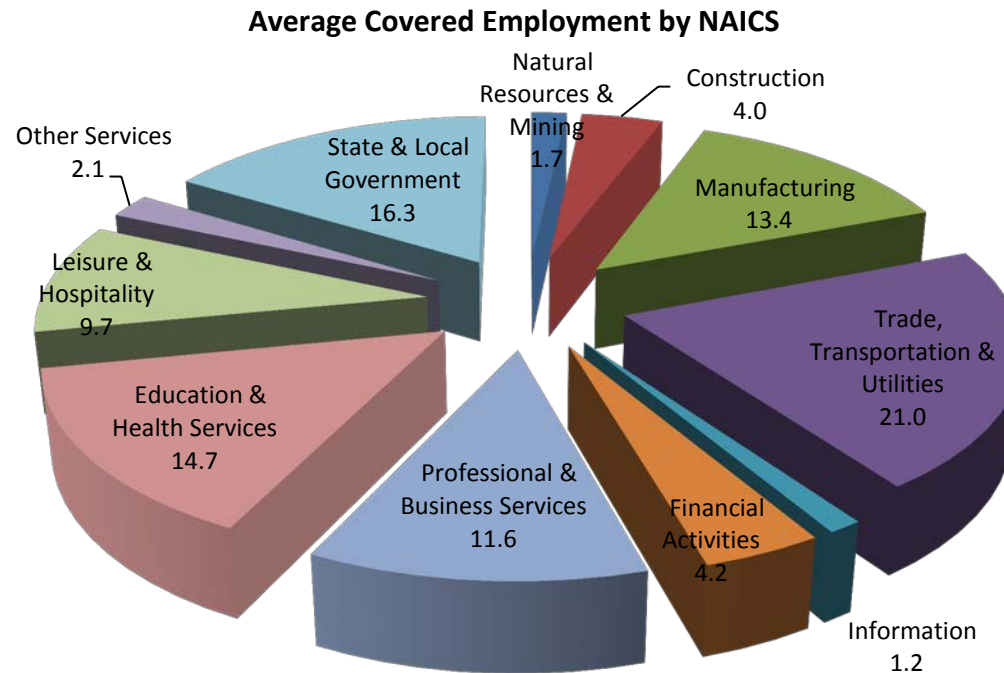
Civilian federal workers are covered by Unemployment Compensation for Federal Employees (UCFE).



## SIGNIFICANT DEVELOPMENTS DURING SECOND QUARTER 2014

### AVERAGE EMPLOYMENT CHANGES

Covered employment averaged 1,144,903 during the Second Quarter 2014 (refer to Table 1), an increase of 21,291 (1.9%) from the previous quarter and an increase of 10,620 (0.9%) from the average recorded one year ago. The over-the-year comparison is more significant when used as an economic indicator and allows for seasonal factors that appear when comparing over-the-quarter data to be disregarded.



### EMPLOYMENT CHANGES FROM FIRST QUARTER 2014

Compared to First Quarter 2014, covered employment increased in ten major industry sectors. Leisure & Hospitality increased 7,752, a slightly larger seasonal increase than in previous years. Trade, Transportation & Utilities expanded 4,326 jobs mainly due to increased hiring for spring and summer. Construction rose by 2,298 from new projects in the area. Increases are also seen in Professional & Business Services (2,245), Natural Resources & Mining (1,092), Other Services (1,005), Manufacturing (992), State & Local Government (852), Education & Health Services (467), and Financial Activities (332). Information experienced a slight decrease of 71 jobs.

## EMPLOYMENT CHANGES FROM SECOND QUARTER 2013 (QUARTER YEAR AGO COMPARISON)

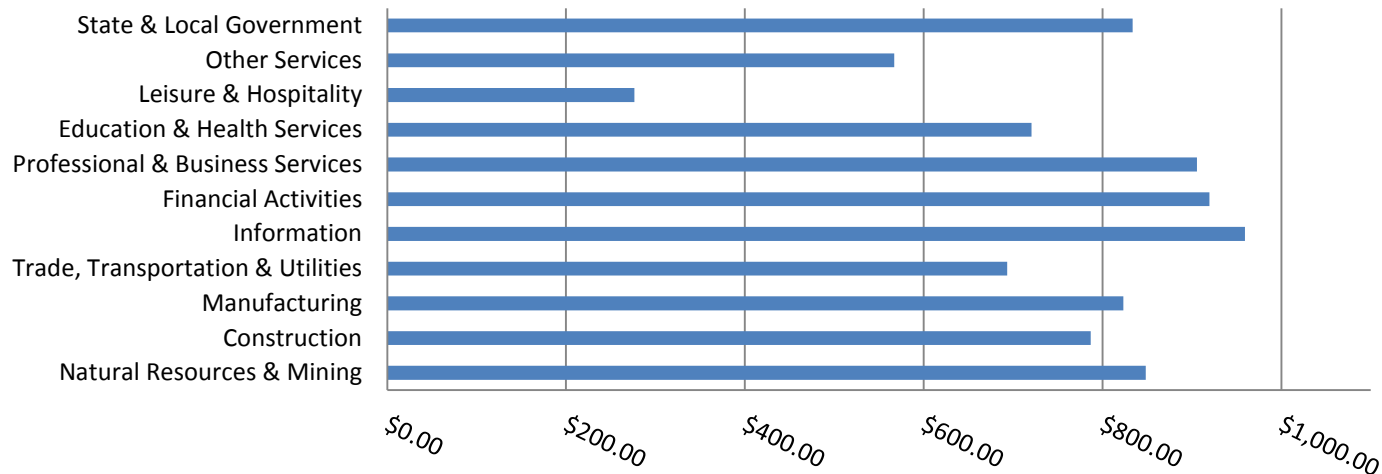
Over-the-year gains were recorded in six industry groups (refer to Table 1). The largest gains occurred in Professional & Business Services (4,590), Trade, Transportation & Utilities (3,636) and Leisure & Hospitality (3,050). The most significant losses occurred in State & Local Government (-937), Information (-466), and Financial Activities (-465).

## COVERED WAGES

Wages paid to covered workers totaled \$10,991,760,061 for the Second Quarter 2014 (refer to Table 1), for an average weekly wage of \$738.51 (refer to Table 5). Calhoun County workers recorded the highest average weekly wage (\$917.68), and employees in Searcy County reported the lowest (\$464.13) (refer to Table 6).

The Information industry recorded the highest average weekly wage for the State of Arkansas (\$959.45). The Leisure & Hospitality sector recorded the lowest (\$276.39) (refer to Table 5).

## Average Weekly Wage by Industry



**TABLE 1. QUARTERLY COMPARISON OF COVERED EMPLOYMENT AND WAGES, BY INDUSTRY**

North American Industry Classification System - Industry Groups	Number of Employing Units	Monthly Employment Average	Percent of Total	Net Change From:		Total Wages Paid Apr - Jun 2014	Percent of Total
				Jan - Mar 2014	Apr - Jun 2013		
<b>TOTAL</b>	<b>85,550</b>	<b>1,144,903</b>	<b>100</b>	<b>21,291</b>	<b>10,620</b>	<b>\$10,991,760,061</b>	<b>100</b>
<b>Natural Resources &amp; Mining</b>	2,565	19,836	1.7	1,092	-396	218,824,705	2.0
Agriculture, Forestry, Fishing & Hunting	2,044	13,065	1.1	1,160	468	109,516,549	1.0
Mining	521	6,771	0.6	-68	-863	109,308,156	1.0
<b>Construction</b>	6,632	45,939	4.0	2,298	-55	469,921,615	4.3
<b>Manufacturing</b>	2,981	153,872	13.4	992	1,413	1,646,751,981	15.0
<b>Trade, Transportation &amp; Utilities</b>	21,196	240,250	21.0	4,326	3,636	2,165,797,545	19.7
Wholesale Trade	6,848	46,741	4.1	995	-502	678,184,728	6.2
Retail Trade	11,099	135,638	11.8	2,588	3,908	814,477,892	7.4
Transportation & Warehousing	2,841	49,972	4.4	835	417	524,006,538	4.8
Utilities	408	7,899	0.7	-92	-188	149,128,387	1.4
<b>Information</b>	1,102	13,708	1.2	-71	-466	170,982,615	1.6
<b>Financial Activities</b>	8,083	47,759	4.2	332	-465	571,036,551	5.2
Finance & Insurance	4,803	34,780	3.0	78	-185	463,924,458	4.2
Real Estate & Rental & Leasing	3,280	12,980	1.1	255	-278	107,112,093	1.0
<b>Professional &amp; Business Services</b>	13,020	133,367	11.6	2,245	4,590	1,569,956,122	14.3
Professional & Technical Services	8,201	40,358	3.5	-951	505	548,795,047	5.0
Management of Companies & Enterprises	497	32,243	2.8	620	711	629,405,842	5.7
Administrative & Waste Services	4,322	60,766	5.3	2,577	3,374	391,755,233	3.6
<b>Education &amp; Health Services</b>	14,937	168,742	14.7	467	-22	1,580,889,856	14.4
Educational Services	743	10,595	0.9	-131	-424	90,515,456	0.8
Health Care & Social Assistance	14,194	158,147	13.8	598	402	1,490,374,400	13.6
<b>Leisure &amp; Hospitality</b>	6,635	110,609	9.7	7,752	3,050	397,418,803	3.6
Arts, Entertainment & Recreation	923	11,665	1.0	2,551	797	49,995,223	0.5
Accommodation & Food Services	5,712	98,944	8.6	5,201	2,253	347,423,580	3.2
<b>Other Services</b>	5,300	24,469	2.1	1,005	272	180,422,558	1.6
<b>State &amp; Local Government</b>	3,099	186,351	16.3	852	-937	2,019,757,710	18.4
Local Government	1,963	115,733	10.1	598	-1,056	1,222,697,710	11.1
State Government	1,136	70,618	6.2	254	119	797,060,000	7.3
<b>Nonclassifiable Establishments</b>	0	0	0.0	0	0	0	0.0

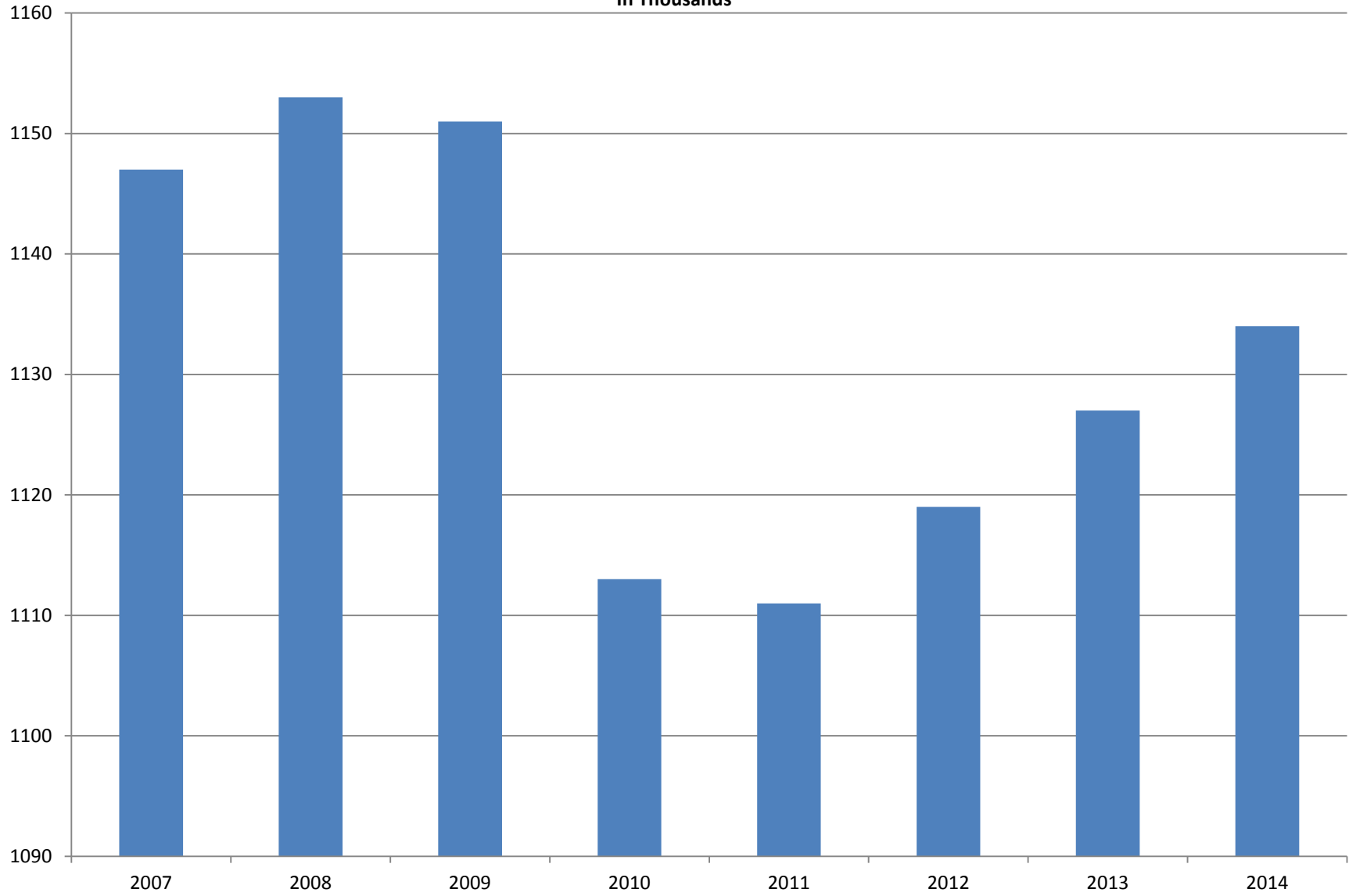
Note: Items do not necessarily add to total because of rounding. Because of industry code changes between years, substantial employment and wage shifts among industries are anticipated.

**TABLE 2. TOTAL COVERED EMPLOYMENT IN ARKANSAS**

<b>PERIOD</b>	<b>2007</b>	<b>2008</b>	<b>2009</b>	<b>2010</b>	<b>2011</b>	<b>2012</b>	<b>2013</b>	<b>2014</b>
<b>AVERAGE</b>	<b>1,146,948</b>	<b>1,152,994</b>	<b>1,150,965</b>	<b>1,112,591</b>	<b>1,110,947</b>	<b>1,118,639</b>	<b>1,126,588</b>	<b>1,134,258</b>
January	1,130,595	1,137,437	1,141,856	1,119,299	1,089,984	1,098,349	1,113,274	1,114,986
February	1,136,810	1,143,397	1,149,443	1,119,476	1,091,282	1,098,445	1,119,319	1,123,443
March	1,150,439	1,158,895	1,157,690	1,124,386	1,106,198	1,113,061	1,131,123	1,132,406
April	1,155,498	1,159,623	1,159,841	1,123,383	1,115,341	1,129,635	1,136,973	1,140,788
May	1,159,886	1,165,224	1,166,111	1,122,322	1,123,250	1,126,371	1,143,142	1,149,046
June	1,162,026	1,164,207	1,164,167	1,117,884	1,130,164	1,123,412	1,136,739	1,144,876
July	1,106,142	1,110,571	1,114,279	1,071,048	1,073,743	1,080,937	1,079,329	N/A
August	1,130,839	1,139,109	1,138,583	1,093,192	1,099,795	1,106,262	1,109,425	N/A
September	1,159,814	1,165,135	1,162,333	1,116,580	1,124,281	1,132,779	1,136,019	N/A
October	1,156,804	1,162,768	1,157,196	1,113,157	1,125,073	1,138,395	1,136,045	N/A
November	1,156,011	1,164,246	1,152,159	1,115,443	1,126,781	1,138,543	1,138,302	N/A
December	1,158,509	1,165,314	1,147,927	1,114,919	1,125,466	1,137,474	1,139,361	N/A

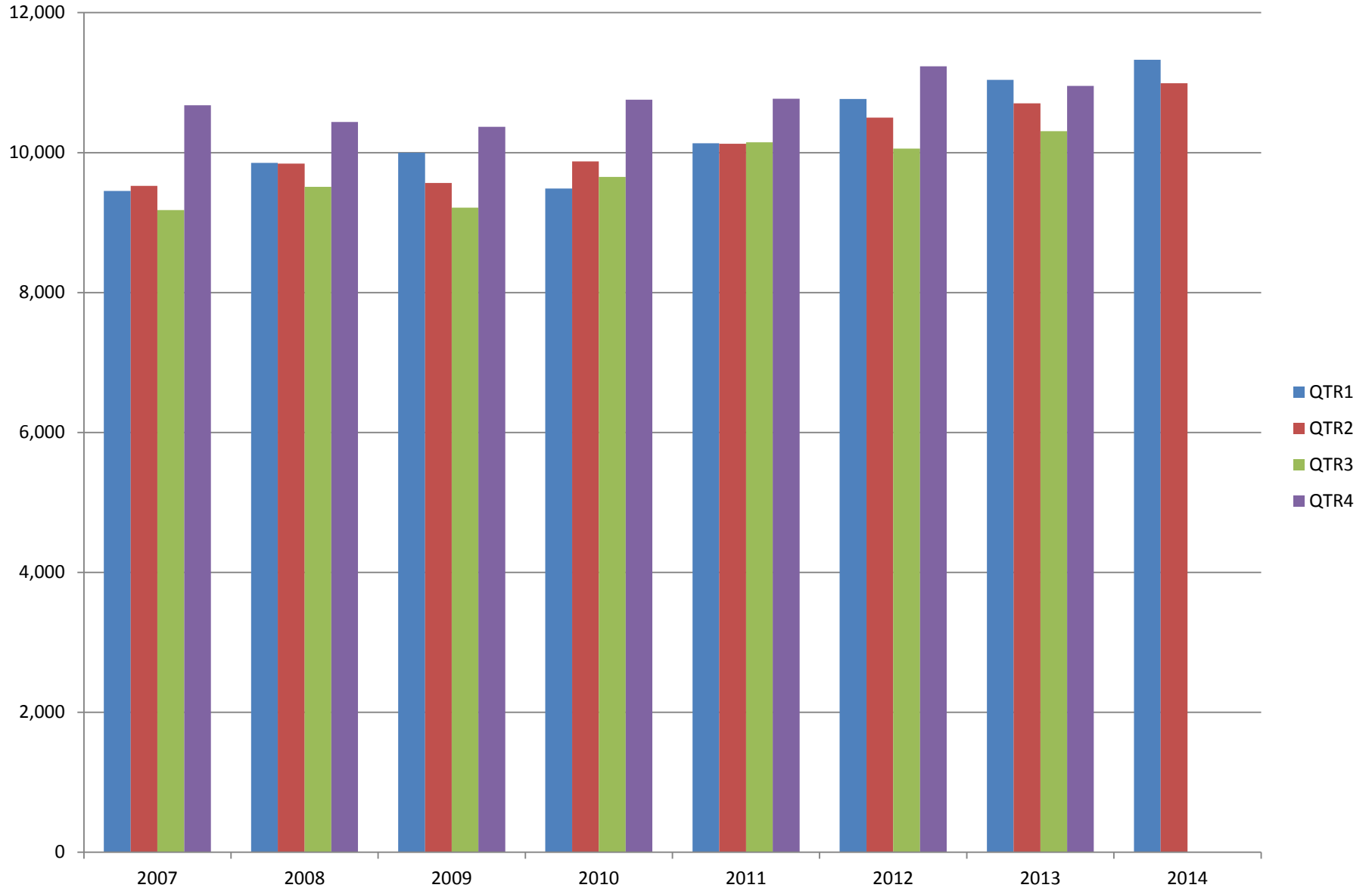
# AVERAGE TOTAL COVERED EMPLOYMENT

In Thousands



# TOTAL COVERED EARNINGS BY CALENDAR YEAR

In Thousands



**TABLE 3. TOTAL COVERED EARNINGS 2007 - 2014**

<b>PERIOD</b>	<b>2007</b>	<b>2008</b>	<b>2009</b>	<b>2010</b>
<b>TOTAL</b>	<b>\$38,833,265,464</b>	<b>\$39,643,039,342</b>	<b>\$39,149,476,305</b>	<b>\$39,769,504,992</b>
January - March	9,452,711,662	9,851,866,058	9,998,452,028	9,486,245,580
April - June	9,525,837,049	9,843,711,293	9,566,968,853	9,873,489,653
July - September	9,178,902,477	9,509,150,631	9,213,797,140	9,653,588,807
October - December	10,675,814,276	10,438,311,360	10,370,258,284	10,756,180,952
<b>Average Weekly Earnings</b>	<b>\$651.11</b>	<b>\$661.21</b>	<b>\$654.12</b>	<b>\$687.40</b>

<b>PERIOD</b>	<b>2011</b>	<b>2012</b>	<b>2013</b>	<b>2014</b>
<b>TOTAL</b>	<b>\$41,177,659,236</b>	<b>\$42,555,976,081</b>	<b>\$43,003,433,021</b>	<b>\$22,317,022,025</b>
January - March	10,134,035,254	10,766,175,449	11,038,435,964	11,325,261,964
April - June	10,128,274,611	10,499,018,872	10,705,006,820	10,991,760,061
July - September	10,147,287,431	10,058,388,682	10,306,649,458	N/A
October - December	10,768,061,940	11,232,393,078	10,953,340,779	N/A
<b>Average Weekly Earnings</b>	<b>\$712.80</b>	<b>\$731.59</b>	<b>\$734.07</b>	<b>\$756.75</b>

**TABLE 4. TOTAL TAXABLE EARNINGS, 2007 - 2014**

<b>PERIOD</b>	<b>2007</b>	<b>2008</b>	<b>2009</b>	<b>2010</b>
<b>TOTAL</b>	<b>10,459,105,059</b>	<b>10,360,487,108</b>	<b>9,787,660,886</b>	<b>11,332,118,456</b>
<b>January - March</b>	5,617,417,571	5,635,750,082	5,423,705,265	5,607,134,758
<b>April - June</b>	2,466,606,627	2,419,313,519	2,293,670,854	2,977,100,591
<b>July - September</b>	1,307,060,412	1,297,473,555	1,165,280,065	1,577,067,770
<b>October - December</b>	1,068,020,449	1,007,949,952	905,004,702	1,170,815,337
<b>PERIOD</b>	<b>2011</b>	<b>2012</b>	<b>2013</b>	<b>2014</b>
<b>TOTAL</b>	<b>11,479,396,226</b>	<b>11,642,854,241</b>	<b>11,669,483,946</b>	<b>9,125,694,567</b>
<b>January - March</b>	5,828,877,821	6,167,036,199	6,194,767,117	6,294,681,175
<b>April - June</b>	2,910,604,359	2,845,540,593	2,807,334,202	2,831,013,392
<b>July - September</b>	1,601,382,146	1,505,833,030	1,509,412,524	N/A
<b>October - December</b>	1,138,531,900	1,124,444,419	1,157,970,103	N/A



TABLE 5. STATEWIDE SUMMARY

North American Industry Classification System - Industry Groups		Number of Employing Units	Employment			Total Earnings Apr - Jun 2014	Average Weekly Earnings
			Apr	May	Jun		
<b>TOTAL, ALL INDUSTRIES</b>		<b>85,550</b>	<b>1,140,788</b>	<b>1,149,046</b>	<b>1,144,876</b>	<b>\$10,991,760,061</b>	<b>\$738.51</b>
<b>NATURAL RESOURCES &amp; MINING</b>		<b>2,565</b>	<b>19,474</b>	<b>19,946</b>	<b>20,089</b>	<b>\$218,824,705</b>	<b>\$848.58</b>
<b>11</b>	<b>AGRICULTURE, FORESTRY, FISHING &amp; HUNTING</b>	<b>2,044</b>	<b>12,715</b>	<b>13,128</b>	<b>13,353</b>	<b>\$109,516,549</b>	<b>\$644.79</b>
<b>111</b>	<b>CROP PRODUCTION</b>	<b>912</b>	<b>4,562</b>	<b>4,620</b>	<b>4,755</b>	<b>\$31,020,389</b>	<b>\$513.64</b>
1111	Oilseed & Grain Farming	631	2,966	3,035	3,101	20,851,329	528.66
1112	Vegetable & Melon Farming	18	136	146	127	806,453	455.02
1113	Fruit & Tree Nut Farming	14	55	61	101	432,894	460.36
1114	Greenhouse & Nursery Production	44	486	439	438	2,778,279	470.39
1119	Other Crop Farming	205	919	939	988	6,151,434	498.79
<b>112</b>	<b>ANIMAL PRODUCTION &amp; AQUACULTURE</b>	<b>294</b>	<b>3,048</b>	<b>3,081</b>	<b>3,109</b>	<b>\$29,509,694</b>	<b>\$737.16</b>
1121	Cattle Ranching & Farming	103	376	384	390	2,518,614	505.41
1122	Hog & Pig Farming	12	133	141	137	1,279,067	718.17
1123	Poultry & Egg Production	106	2,021	2,033	2,062	21,658,359	817.21
1125	Animal Aquaculture	53	467	472	468	3,745,509	614.32
	Other	20	51	51	52	308,145	461.76
<b>113</b>	<b>FORESTRY &amp; LOGGING</b>	<b>406</b>	<b>2,218</b>	<b>2,285</b>	<b>2,283</b>	<b>\$19,557,619</b>	<b>\$665.09</b>
1131	Timber Tract Operations	37	172	170	170	1,781,919	803.15
1132	Forest Nurseries & Gathering of Forest Products	5	25	25	25	307,157	945.10
1133	Logging	364	2,021	2,090	2,088	17,468,543	650.30
<b>114</b>	<b>FISHING, HUNTING &amp; TRAPPING</b>	<b>3</b>	<b>18</b>	<b>19</b>	<b>18</b>	<b>\$120,748</b>	<b>\$506.63</b>
<b>115</b>	<b>SUPPORT ACTIVITIES FOR AGRICULTURE &amp; FORESTRY</b>	<b>429</b>	<b>2,869</b>	<b>3,123</b>	<b>3,188</b>	<b>\$29,308,099</b>	<b>\$736.75</b>
1151	Support Activities for Crop Production	298	1,400	1,470	1,503	16,032,022	846.03
1152	Support Activities for Animal Production	58	654	657	653	4,706,261	552.98
1153	Support Activities for Forestry	73	815	996	1,032	8,569,816	695.62
<b>21</b>	<b>MINING</b>	<b>521</b>	<b>6,759</b>	<b>6,818</b>	<b>6,736</b>	<b>\$109,308,156</b>	<b>\$1,241.81</b>
<b>211</b>	<b>OIL &amp; GAS EXTRACTION</b>	<b>83</b>	<b>1,383</b>	<b>1,391</b>	<b>1,390</b>	<b>\$25,495,484</b>	<b>\$1,412.96</b>
<b>212</b>	<b>MINING (EXCEPT OIL &amp; GAS)</b>	<b>113</b>	<b>1,777</b>	<b>1,791</b>	<b>1,787</b>	<b>\$21,982,068</b>	<b>\$947.30</b>
<b>213</b>	<b>SUPPORT ACTIVITIES FOR MINING</b>	<b>325</b>	<b>3,599</b>	<b>3,636</b>	<b>3,559</b>	<b>\$61,830,604</b>	<b>\$1,321.90</b>

TABLE 5. STATEWIDE SUMMARY

North American Industry Classification System - Industry Groups		Number of Employing Units	Employment			Total Earnings Apr - Jun 2014	Average Weekly Earnings
			Apr	May	Jun		
<b>CONSTRUCTION</b>		<b>6,632</b>	<b>45,056</b>	<b>46,172</b>	<b>46,589</b>	<b>\$469,921,615</b>	<b>\$786.87</b>
<b>236</b>	<b>CONSTRUCTION OF BUILDINGS</b>	<b>1,602</b>	<b>9,023</b>	<b>9,141</b>	<b>9,348</b>	<b>\$100,368,581</b>	<b>\$841.89</b>
2361	Residential Building Construction	1,061	2,870	2,921	2,981	25,397,875	668.15
2362	Nonresidential Building Construction	541	6,153	6,220	6,367	74,970,706	923.21
<b>237</b>	<b>HEAVY &amp; CIVIL ENGINEERING CONSTRUCTION</b>	<b>721</b>	<b>7,648</b>	<b>8,039</b>	<b>7,898</b>	<b>\$87,802,400</b>	<b>\$859.11</b>
2371	Utility System Construction	391	3,990	4,326	4,247	48,318,647	887.56
2372	Land Subdivision	61	143	148	150	1,401,221	733.24
2373	Highway, Street & Bridge Construction	183	2,961	2,971	2,918	31,068,545	810.13
2379	Other Heavy Construction	86	554	594	583	7,013,987	935.07
<b>238</b>	<b>SPECIALTY TRADE CONTRACTORS</b>	<b>4,309</b>	<b>28,385</b>	<b>28,992</b>	<b>29,343</b>	<b>\$281,750,634</b>	<b>\$749.76</b>
2381	Building Foundation & Exterior Contractors	811	5,639	5,747	5,724	52,273,009	705.03
2382	Building Equipment Contractors	2,023	14,866	15,201	15,360	160,207,817	813.86
2383	Building Finishing Contractors	727	3,583	3,644	3,710	32,467,748	685.07
2389	Other Specialty Trade Contractors	748	4,297	4,400	4,549	36,802,060	641.16
<b>MANUFACTURING</b>		<b>2,981</b>	<b>153,276</b>	<b>153,918</b>	<b>154,423</b>	<b>\$1,646,751,981</b>	<b>\$823.24</b>
<b>311</b>	<b>FOOD MANUFACTURING</b>	<b>269</b>	<b>42,786</b>	<b>43,071</b>	<b>43,169</b>	<b>\$346,681,096</b>	<b>\$620.06</b>
3111	Animal Food Manufacturing	44	1,503	1,502	1,502	18,957,670	970.68
3112	Grain & Oilseed Milling	31	2,455	2,481	2,498	25,509,768	791.88
3114	Fruit, Vegetable & Specialty Food	19	4,393	4,410	4,384	44,029,603	770.51
3115	Dairy Product Manufacturing	8	521	521	516	5,723,138	847.70
3116	Animal Slaughtering & Processing	77	28,789	29,076	29,188	202,679,416	537.28
3118	Bakeries & Tortilla Manufacturing	58	3,259	3,233	3,234	30,277,476	718.40
3119	Other Food Manufacturing	24	1,781	1,786	1,798	19,193,389	825.58
	Other	8	85	62	49	310,636	365.74
<b>312</b>	<b>BEVERAGE &amp; TOBACCO PRODUCT MANUFACTURING</b>	<b>43</b>	<b>1,136</b>	<b>1,138</b>	<b>1,174</b>	<b>\$11,103,164</b>	<b>\$743.12</b>
<b>313</b>	<b>TEXTILE MILLS</b>	<b>10</b>	<b>70</b>	<b>70</b>	<b>71</b>	<b>\$600,380</b>	<b>\$656.63</b>
<b>314</b>	<b>TEXTILE PRODUCT MILLS</b>	<b>53</b>	<b>881</b>	<b>883</b>	<b>901</b>	<b>\$9,791,303</b>	<b>\$847.85</b>
3141	Textile Furnishing Mills	10	35	36	35	403,193	877.78
3149	Other Textile Product Mills	43	846	847	866	9,388,110	846.61
<b>315</b>	<b>APPAREL MANUFACTURING</b>	<b>19</b>	<b>846</b>	<b>868</b>	<b>859</b>	<b>\$5,097,385</b>	<b>\$457.18</b>
<b>316</b>	<b>LEATHER &amp; ALLIED PRODUCT MANUFACTURING</b>	<b>14</b>	<b>976</b>	<b>991</b>	<b>1,016</b>	<b>\$7,382,489</b>	<b>\$571.12</b>

TABLE 5. STATEWIDE SUMMARY

North American Industry Classification System - Industry Groups		Number of Employing Units	Employment			Total Earnings	Average Weekly Earnings
			Apr	May	Jun	Apr - Jun 2014	
<b>321</b>	<b>WOOD PRODUCT MANUFACTURING</b>	<b>325</b>	<b>8,995</b>	<b>9,079</b>	<b>9,157</b>	<b>\$88,547,447</b>	<b>\$750.40</b>
3211	Sawmills & Wood Preservation	140	4,268	4,308	4,298	45,186,626	809.98
3212	Veneer & Engineered Wood Products	52	1,935	1,957	2,017	22,575,864	881.67
3219	Other Wood Product Manufacturing	133	2,792	2,814	2,842	20,784,957	567.77
<b>322</b>	<b>PAPER MANUFACTURING</b>	<b>75</b>	<b>9,885</b>	<b>9,880</b>	<b>9,934</b>	<b>\$147,839,888</b>	<b>\$1,148.76</b>
3221	Pulp, Paper & Paperboard Mills	12	4,109	4,101	4,110	78,721,165	1,474.55
3222	Converted Paper Product Manufacturing	63	5,776	5,779	5,824	69,118,723	917.80
<b>323</b>	<b>PRINTING &amp; RELATED SUPPORT ACTIVITIES</b>	<b>240</b>	<b>3,971</b>	<b>3,895</b>	<b>3,754</b>	<b>\$36,558,211</b>	<b>\$726.03</b>
<b>324</b>	<b>PETROLEUM &amp; COAL PRODUCTS MANUFACTURING</b>	<b>18</b>	<b>1,074</b>	<b>1,067</b>	<b>1,087</b>	<b>\$15,164,087</b>	<b>\$1,084.08</b>
<b>325</b>	<b>CHEMICAL MANUFACTURING</b>	<b>113</b>	<b>5,011</b>	<b>5,049</b>	<b>5,064</b>	<b>\$72,684,743</b>	<b>\$1,109.06</b>
3251	Basic Chemical Manufacturing	29	1,786	1,815	1,808	30,721,718	1,310.71
3252	Resin, Rubber & Artificial Fibers	7	285	292	299	4,124,275	1,086.48
3253	Agricultural Chemical Manufacturing	13	347	347	345	4,910,464	1,090.65
3254	Pharmaceutical & Medicine Manufacturing	14	254	260	264	3,253,304	964.99
3255	Paint, Coating & Adhesive Manufacturing	8	272	269	264	3,687,258	1,057.03
3256	Soap, Cleaning Compound, & Toilet Preparation Manufacturing	17	1,201	1,198	1,221	13,713,887	874.24
3259	Other Chemical Preparation Manufacturing	25	866	868	863	12,273,837	1,090.65
<b>326</b>	<b>PLASTICS &amp; RUBBER PRODUCTS MANUFACTURING</b>	<b>138</b>	<b>10,590</b>	<b>10,698</b>	<b>10,813</b>	<b>\$126,414,011</b>	<b>\$908.77</b>
3261	Plastics Product Manufacturing	96	6,436	6,515	6,564	66,564,983	787.15
3262	Rubber Product Manufacturing	42	4,154	4,183	4,249	59,849,028	1,097.36
<b>327</b>	<b>NONMETALLIC MINERAL PRODUCT MANUFACTURING</b>	<b>238</b>	<b>3,683</b>	<b>3,692</b>	<b>3,681</b>	<b>\$39,988,276</b>	<b>\$834.67</b>
3271	Clay Product & Refractory Manufacturing	14	397	398	396	4,004,024	775.82
3272	Glass & Glass Product Manufacturing	11	387	385	397	4,134,254	816.13
3273	Cement & Concrete Product Manufacturing	173	1,980	1,983	1,993	20,163,876	781.26
3274	Lime & Gypsum Product Manufacturing	4	240	239	237	3,256,192	1,049.48
3279	Other Nonmetallic Mineral Products Manufacturing	36	679	687	658	8,429,930	961.15
<b>331</b>	<b>PRIMARY METAL MANUFACTURING</b>	<b>74</b>	<b>9,864</b>	<b>9,860</b>	<b>9,855</b>	<b>\$146,785,405</b>	<b>\$1,145.19</b>
3311	Iron & Steel Mills & Ferroalloys	8	2,404	2,414	2,441	55,258,003	1,756.69
3312	Purchased Steel Product Manufacturing	20	2,984	2,961	2,965	41,177,649	1,066.50
3313	Alumina & Aluminum Production	19	1,221	1,218	1,215	17,005,181	1,073.97
3314	Other Nonferrous Metal Production	7	598	602	598	6,217,469	798.00
3315	Foundries	20	2,657	2,665	2,636	27,127,103	786.64

TABLE 5. STATEWIDE SUMMARY

North American Industry Classification System - Industry Groups		Number of Employing Units	Employment			Total Earnings	Average Weekly Earnings
			Apr	May	Jun	Apr - Jun 2014	
<b>332</b>	<b>FABRICATED METAL PRODUCT MANUFACTURING</b>	<b>520</b>	<b>14,724</b>	<b>14,730</b>	<b>14,884</b>	<b>\$172,292,491</b>	<b>\$896.74</b>
3321	Forging & Stamping	10	309	304	307	3,371,730	845.75
3322	Cutlery & Hand Tool Manufacturing	12	685	687	693	7,283,601	813.96
3323	Architectural & Structural Metals	152	3,856	3,835	3,923	46,344,083	920.85
3324	Boilers, Tanks & Shipping Containers	17	765	764	775	9,117,811	913.24
3325	Hardware Manufacturing	5	266	265	264	3,042,251	883.09
3326	Spring & Wire Product Manufacturing	13	397	394	394	4,321,996	841.67
3327	Machine Shops & Threaded Products	212	1,977	1,975	1,990	19,545,296	759.08
3328	Coating, Engraving & Heat Treating Metals	35	664	681	707	5,950,276	669.17
3329	Other Fabricated Metal Product Manufacturing	64	5,805	5,825	5,831	73,315,447	968.96
<b>333</b>	<b>MACHINERY MANUFACTURING</b>	<b>213</b>	<b>11,265</b>	<b>11,369</b>	<b>11,377</b>	<b>\$122,105,442</b>	<b>\$828.50</b>
3331	Agriculture, Construction & Mining Machinery	40	3,000	3,001	2,979	27,827,569	715.12
3332	Industrial Machinery Manufacturing	26	755	745	750	9,630,823	987.78
3333	Commercial & Service Industry Machinery	21	756	761	756	9,507,157	965.23
3334	HVAC & Commercial Refrigeration Equipment	20	3,014	3,037	3,023	32,647,720	830.29
3335	Metalworking Machinery Manufacturing	59	1,173	1,188	1,198	11,897,631	771.45
3336	Turbine & Power Transmission Equipment Manufacturing	6	587	636	626	7,169,458	894.80
3339	Other General Purpose Machinery Manufacturing	41	1,980	2,001	2,045	23,425,084	897.08
<b>334</b>	<b>COMPUTER &amp; ELECTRONIC PRODUCT MANUFACTURING</b>	<b>59</b>	<b>2,480</b>	<b>2,477</b>	<b>2,452</b>	<b>\$28,167,067</b>	<b>\$877.32</b>
3343	Audio & Video Equipment Manufacturing	5	197	195	190	2,186,823	867.10
3344	Semiconductors & Electronic Components	24	1,617	1,622	1,604	17,677,941	842.35
3345	Electronic Instrument Manufacturing	20	512	506	503	6,171,042	936.28
	Other	10	154	154	155	2,131,261	1,062.27
<b>335</b>	<b>ELECTRICAL EQUIPMENT &amp; APPLIANCES</b>	<b>55</b>	<b>5,371</b>	<b>5,400</b>	<b>5,387</b>	<b>\$66,267,418</b>	<b>\$946.43</b>
3351	Electric Lighting Equipment Manufacturing	11	359	353	354	3,390,274	\$733.93
3352	Household Appliance Manufacturing	5	61	60	60	1,096,510	\$1,398.02
3353	Electrical Equipment Manufacturing	22	3,391	3,398	3,412	42,391,886	959.00
3359	Other Electrical Equipment & Component Manufacturing	17	1,560	1,589	1,561	19,388,748	949.96
<b>336</b>	<b>TRANSPORTATION EQUIPMENT MANUFACTURING</b>	<b>137</b>	<b>12,867</b>	<b>12,908</b>	<b>12,984</b>	<b>\$142,391,668</b>	<b>\$847.79</b>
3362	Motor Vehicle Body & Trailer Manufacturing	30	1,743	1,774	1,793	15,129,392	657.51
3363	Motor Vehicle Parts Manufacturing	45	4,494	4,556	4,553	47,806,420	811.02
3364	Aerospace Product & Parts Manufacturing	27	3,296	3,300	3,321	45,415,584	1,056.82
3366	Ship & Boat Building	19	1,651	1,656	1,633	14,681,069	685.82
	Other	16	1,683	1,622	1,684	19,359,203	895.47
<b>337</b>	<b>FURNITURE &amp; RELATED PRODUCT MANUFACTURING</b>	<b>181</b>	<b>3,476</b>	<b>3,480</b>	<b>3,471</b>	<b>\$30,252,963</b>	<b>\$669.56</b>
3371	Household & Institutional Furniture	149	2,389	2,380	2,393	18,448,093	594.42
3372	Office Furniture & Fixtures Manufacturing	23	987	993	969	11,131,248	871.06
3379	Other Furniture Related Product Manufacturing	9	100	107	109	673,622	491.93
<b>339</b>	<b>MISCELLANEOUS MANUFACTURING</b>	<b>187</b>	<b>3,325</b>	<b>3,313</b>	<b>3,333</b>	<b>\$30,637,047</b>	<b>\$709.07</b>
3391	Medical Equipment & Supplies Manufacturing	74	1,624	1,616	1,622	17,470,411	829.21
3399	Other Miscellaneous Manufacturing	113	1,701	1,697	1,711	13,166,636	594.73

TABLE 5. STATEWIDE SUMMARY

North American Industry Classification System - Industry Groups		Number of Employing Units	Employment			Total Earnings Apr - Jun 2014	Average Weekly Earnings
			Apr	May	Jun		
<b>TRADE, TRANSPORTATION &amp; UTILITIES</b>		<b>21,196</b>	<b>239,176</b>	<b>240,251</b>	<b>241,323</b>	<b>\$2,165,797,545</b>	<b>\$693.44</b>
<b>42</b>	<b>WHOLESALE TRADE</b>	<b>6,848</b>	<b>46,467</b>	<b>46,779</b>	<b>46,976</b>	<b>\$678,184,728</b>	<b>\$1,116.12</b>
<b>423</b>	<b>MERCHANT WHOLESALERS, DURABLE GOODS</b>	<b>2,162</b>	<b>20,866</b>	<b>20,993</b>	<b>21,167</b>	<b>\$262,273,773</b>	<b>\$960.31</b>
4231	Motor Vehicle & Part Merchant Wholesalers	228	2,633	2,663	2,669	27,316,260	791.43
4232	Furniture & Furnishings Merchant Wholesalers	53	431	434	448	6,241,093	1,096.92
4233	Lumber & Supply Merchant Wholesalers	166	1,349	1,366	1,380	15,016,276	846.23
4234	Commercial Goods Merchant Wholesalers	298	2,652	2,679	2,695	41,657,170	1,197.76
4235	Metal & Mineral Merchant Wholesalers	54	900	905	902	10,875,222	927.10
4236	Appliances & Electronics Goods Merchant Wholesalers	197	1,835	1,847	1,858	26,344,907	1,097.40
4237	Hardware & Plumbing Merchant Wholesalers	230	2,236	2,243	2,263	27,793,070	951.32
4238	Machinery & Supply Merchant Wholesalers	704	6,741	6,777	6,833	85,563,961	970.25
4239	Miscellaneous Durable Goods Merchant Wholesalers	232	2,089	2,079	2,119	21,465,814	787.92
<b>424</b>	<b>MERCHANT WHOLESALERS, NONDURABLE GOODS</b>	<b>1,187</b>	<b>15,500</b>	<b>15,554</b>	<b>15,554</b>	<b>\$193,662,292</b>	<b>\$958.88</b>
4241	Paper & Paper Product Merchant Wholesalers	65	1,129	1,113	1,047	14,359,975	1,007.55
4242	Druggist' Goods Merchant Wholesalers	54	534	534	542	7,844,686	1,124.42
4243	Apparel & Piece Goods Merchant Wholesalers	39	633	638	657	7,097,965	849.58
4244	Grocery Product Merchant Wholesalers	308	4,610	4,623	4,608	65,017,893	1,084.04
4245	Farm Product Merchant Wholesalers	72	840	833	844	6,811,640	624.52
4246	Chemical Merchant Wholesalers	95	615	616	613	10,442,525	1,306.84
4247	Petroleum Merchant Wholesalers	139	1,817	1,816	1,832	25,093,585	1,059.62
4248	Alcoholic Beverage Merchant Wholesalers	43	1,439	1,447	1,489	17,036,706	898.64
4249	Miscellaneous Nondurable Goods Merchant Wholesaler	372	3,883	3,934	3,922	39,957,317	785.49
<b>425</b>	<b>ELECTRONIC MARKETS &amp; AGENTS &amp; BROKERS</b>	<b>3,499</b>	<b>10,101</b>	<b>10,232</b>	<b>10,255</b>	<b>\$222,248,663</b>	<b>\$1,676.74</b>
<b>44 - 45</b>	<b>RETAIL TRADE</b>	<b>11,099</b>	<b>135,171</b>	<b>135,508</b>	<b>136,236</b>	<b>\$814,477,892</b>	<b>\$461.91</b>
<b>441</b>	<b>MOTOR VEHICLE &amp; PARTS DEALERS</b>	<b>1,576</b>	<b>18,342</b>	<b>18,417</b>	<b>18,548</b>	<b>\$190,810,670</b>	<b>\$796.16</b>
4411	Automobile Dealers	638	11,050	11,086	11,199	135,748,988	939.75
4412	Other Motor Vehicle Dealers	166	1,507	1,531	1,549	14,977,025	753.49
4413	Automotive Parts, Accessories & Tire Stores	772	5,785	5,800	5,800	40,084,657	532.09
<b>442</b>	<b>FURNITURE &amp; HOME FURNISHINGS STORES</b>	<b>513</b>	<b>3,408</b>	<b>3,420</b>	<b>3,422</b>	<b>\$24,466,880</b>	<b>\$550.85</b>
4421	Furniture Stores	275	1,946	1,951	1,935	15,732,306	622.52
4422	Home Furnishings Stores	238	1,462	1,469	1,487	8,734,574	456.24
<b>443</b>	<b>ELECTRONICS &amp; APPLIANCE STORES</b>	<b>473</b>	<b>3,588</b>	<b>3,592</b>	<b>3,697</b>	<b>\$28,910,492</b>	<b>\$613.37</b>
<b>444</b>	<b>BUILDING MATERIAL &amp; GARDEN SUPPLY STORES</b>	<b>828</b>	<b>11,228</b>	<b>11,332</b>	<b>11,180</b>	<b>\$71,408,840</b>	<b>\$488.41</b>
4441	Building Material & Supplies Dealers	607	9,765	9,851	9,725	62,696,022	493.11
4442	Lawn & Garden Equipment & Supplies Stores	221	1,463	1,481	1,455	8,712,818	457.07

TABLE 5. STATEWIDE SUMMARY

North American Industry Classification System - Industry Groups		Number of Employing Units	Employment			Total Earnings Apr - Jun 2014	Average Weekly Earnings
			Apr	May	Jun		
<b>445</b>	<b>FOOD &amp; BEVERAGE STORES</b>	<b>1,011</b>	<b>18,333</b>	<b>18,394</b>	<b>18,553</b>	<b>\$87,979,763</b>	<b>\$367.28</b>
4451	Grocery Stores	544	15,828	15,926	16,088	74,483,271	359.28
4452	Specialty Food Stores	124	831	772	777	5,182,283	502.48
4453	Beer, Wine & Liquor Stores	343	1,674	1,696	1,688	8,314,209	379.33
<b>446</b>	<b>HEALTH &amp; PERSONAL CARE STORES</b>	<b>1,032</b>	<b>7,878</b>	<b>7,947</b>	<b>8,048</b>	<b>\$70,860,718</b>	<b>\$684.98</b>
<b>447</b>	<b>GASOLINE STATIONS</b>	<b>1,634</b>	<b>12,130</b>	<b>12,222</b>	<b>12,225</b>	<b>\$49,678,984</b>	<b>\$313.43</b>
44711	Gasoline Stations with Convenience Stores	1,530	10,835	10,938	10,937	43,524,075	307.06
44719	Other Gasoline Stations	104	1,295	1,284	1,288	6,154,909	367.30
<b>448</b>	<b>CLOTHING &amp; CLOTHING ACCESSORIES STORES</b>	<b>1,048</b>	<b>8,250</b>	<b>8,132</b>	<b>8,122</b>	<b>\$33,349,145</b>	<b>\$314.07</b>
4481	Clothing Stores	770	6,335	6,249	6,265	22,055,020	270.02
4482	Shoe Stores	140	1,151	1,138	1,106	4,560,818	310.01
4483	Jewelry, Luggage & Leather Goods Stores	138	764	745	751	6,733,307	687.54
<b>451</b>	<b>SPORTING GOODS, HOBBY, BOOK &amp; MUSIC STORES</b>	<b>478</b>	<b>4,469</b>	<b>4,494</b>	<b>4,533</b>	<b>\$19,451,248</b>	<b>\$332.60</b>
4511	Sporting Goods & Musical Instrument Stores	409	3,955	3,963	4,046	17,573,184	338.96
4512	Book, Periodical & Music Stores	69	514	531	487	1,878,064	282.90
<b>452</b>	<b>GENERAL MERCHANDISE STORES</b>	<b>888</b>	<b>38,780</b>	<b>38,708</b>	<b>39,113</b>	<b>\$185,266,251</b>	<b>\$366.67</b>
<b>453</b>	<b>MISCELLANEOUS STORE RETAILERS</b>	<b>1,252</b>	<b>7,016</b>	<b>7,089</b>	<b>7,023</b>	<b>\$36,566,038</b>	<b>\$399.39</b>
4531	Florists	193	708	749	681	3,214,709	346.99
4532	Office Supplies, Stationery & Gift Stores	287	2,003	2,010	2,011	10,577,721	405.21
4533	Used Merchandise Stores	259	1,707	1,716	1,717	8,923,492	400.64
4539	Other Miscellaneous Store Retailers	513	2,598	2,614	2,614	13,850,116	408.41
<b>454</b>	<b>NONSTORE RETAILERS</b>	<b>366</b>	<b>1,749</b>	<b>1,761</b>	<b>1,772</b>	<b>\$15,728,863</b>	<b>\$687.19</b>
4541	Electronic Shopping & Mail-Order Houses	159	659	660	681	6,547,205	755.45
4542	Vending Machine Operators	66	423	427	429	3,383,939	610.56
4543	Direct Selling Establishments	141	667	674	662	5,797,719	667.97
<b>48 - 49</b>	<b>TRANSPORTATION &amp; WAREHOUSING</b>	<b>2,841</b>	<b>49,658</b>	<b>50,048</b>	<b>50,209</b>	<b>\$24,006,538</b>	<b>\$806.62</b>
<b>481</b>	<b>AIR TRANSPORTATION</b>	<b>52</b>	<b>590</b>	<b>589</b>	<b>586</b>	<b>\$5,481,355</b>	<b>\$716.67</b>
<b>484</b>	<b>TRUCK TRANSPORTATION</b>	<b>1,844</b>	<b>32,057</b>	<b>32,403</b>	<b>32,439</b>	<b>\$350,998,268</b>	<b>\$835.92</b>
4841	General Freight Trucking	1,105	25,674	25,969	26,000	284,633,778	845.98
4842	Specialized Freight Trucking	739	6,383	6,434	6,439	66,364,490	795.33

TABLE 5. STATEWIDE SUMMARY

North American Industry Classification System - Industry Groups		Number of Employing Units	Employment			Total Earnings	Average Weekly Earnings
			Apr	May	Jun	Apr - Jun 2014	
<b>485</b>	<b>TRANSIT &amp; GROUND PASSENGER TRANSPORTATION</b>	<b>90</b>	<b>1,606</b>	<b>1,629</b>	<b>1,605</b>	<b>\$7,679,551</b>	<b>\$366.16</b>
4853	Taxi & Limousine Service	31	426	440	445	1,775,483	312.53
4854	School & Employee Bus Transportation	12	455	454	418	2,203,900	383.26
4855	Charter Bus Industry Service	7	103	101	110	689,674	506.86
4859	Other Ground Passenger Transportation	36	542	548	552	2,475,504	347.91
	Other	4	80	86	80	534,990	501.87
<b>486</b>	<b>PIPELINE TRANSPORTATION</b>	<b>32</b>	<b>505</b>	<b>502</b>	<b>523</b>	<b>\$11,487,502</b>	<b>\$1,732.65</b>
<b>488</b>	<b>SUPPORT ACTIVITIES FOR TRANSPORTATION</b>	<b>421</b>	<b>4,645</b>	<b>4,628</b>	<b>4,742</b>	<b>\$52,510,413</b>	<b>\$864.63</b>
4881	Support Activities for Air Transportation	100	1,176	1,142	1,149	11,455,116	762.47
4882	Support Activities for Rail Transportation	38	371	378	379	3,812,250	779.92
4883	Support Activities for Water Transportation	21	683	664	644	9,405,229	1,090.12
4884	Support Activities for Road Transportation	132	713	715	720	5,130,291	551.17
4885	Freight Transportation Arrangement	115	1,611	1,636	1,709	21,984,749	1,023.69
4889	Other Support Activities for Transportation	15	91	93	141	722,778	513.22
	<b>OTHER</b>	<b>9</b>	<b>50</b>	<b>62</b>	<b>73</b>	<b>\$489,757</b>	<b>\$610.92</b>
<b>493</b>	<b>WAREHOUSING &amp; STORAGE</b>	<b>223</b>	<b>7,008</b>	<b>6,971</b>	<b>6,949</b>	<b>58,805,128</b>	<b>\$648.43</b>
	<b>OTHER</b>	<b>170</b>	<b>3,197</b>	<b>3,264</b>	<b>3,292</b>	<b>36,554,564</b>	<b>\$864.93</b>
<b>22</b>	<b>UTILITIES</b>	<b>408</b>	<b>7,880</b>	<b>7,916</b>	<b>7,902</b>	<b>\$149,128,387</b>	<b>\$1,452.20</b>
2211	Power Generation & Supply	162	5,563	5,595	5,588	119,440,189	1,645.95
2212	Natural Gas Distribution	63	1,374	1,375	1,367	21,456,470	1,202.99
2213	Water, Sewage & Other Systems	183	943	946	947	8,231,728	669.83
	<b>INFORMATION</b>	<b>1,102</b>	<b>13,703</b>	<b>13,717</b>	<b>13,705</b>	<b>\$170,982,615</b>	<b>\$959.45</b>
<b>511</b>	<b>PUBLISHING INDUSTRIES, EXCEPT INTERNET</b>	<b>222</b>	<b>3,462</b>	<b>3,455</b>	<b>3,479</b>	<b>\$32,473,298</b>	<b>\$720.84</b>
5111	Newspaper, Book & Directory Publishers	195	3,123	3,122	3,146	26,623,712	654.24
5112	Software Publishers	27	339	333	333	5,849,586	1,343.19
<b>512</b>	<b>MOTION PICTURE &amp; SOUND RECORDING INDUSTRY</b>	<b>136</b>	<b>1,093</b>	<b>1,121</b>	<b>1,147</b>	<b>\$5,069,435</b>	<b>\$348.07</b>
5121	Motion Picture & Video Industries	118	1,063	1,092	1,119	4,777,983	336.78
5122	Sound Recording Industries	18	30	29	28	291,452	773.08
<b>515</b>	<b>BROADCASTING, EXCEPT INTERNET</b>	<b>125</b>	<b>1,671</b>	<b>1,677</b>	<b>1,652</b>	<b>\$16,416,868</b>	<b>\$757.70</b>
5151	Radio & Television Broadcasting	120	1,639	1,645	1,620	16,188,795	761.80
5152	Cable & Other Subscription Programming	5	32	32	32	228,073	548.25

TABLE 5. STATEWIDE SUMMARY

North American Industry Classification System - Industry Groups		Number of Employing Units	Employment			Total Earnings Apr - Jun 2014	Average Weekly Earnings
			Apr	May	Jun		
<b>517</b>	<b>TELECOMMUNICATIONS</b>	<b>378</b>	<b>5,700</b>	<b>5,707</b>	<b>5,660</b>	<b>\$92,496,206</b>	<b>\$1,250.68</b>
5171	Wired Telecommunications Carriers	262	3,572	3,607	3,584	59,779,299	1,281.73
5172	Wireless Telecommunications Carriers (except Satellite)	41	1,779	1,749	1,724	27,503,817	1,208.50
5174	Satellite Telecommunications Carriers	4	6	6	6	65,218	836.13
5179	Other Telecommunications	71	343	345	346	5,147,872	1,148.91
<b>518</b>	<b>DATA PROCESSING, HOSTING &amp; RELATED SERVICES</b>	<b>174</b>	<b>1,423</b>	<b>1,397</b>	<b>1,435</b>	<b>\$20,946,990</b>	<b>\$1,136.06</b>
<b>519</b>	<b>OTHER INFORMATION SERVICES</b>	<b>67</b>	<b>354</b>	<b>360</b>	<b>332</b>	<b>\$3,579,818</b>	<b>\$789.78</b>
<b>FINANCIAL ACTIVITIES</b>		<b>8,083</b>	<b>47,456</b>	<b>47,816</b>	<b>48,006</b>	<b>\$571,036,551</b>	<b>\$919.73</b>
<b>52</b>	<b>FINANCE &amp; INSURANCE</b>	<b>4,803</b>	<b>34,639</b>	<b>34,797</b>	<b>34,903</b>	<b>\$463,924,458</b>	<b>\$1,026.07</b>
<b>522</b>	<b>CREDIT INTERMEDIATION &amp; RELATED ACTIVITIES</b>	<b>1,967</b>	<b>19,175</b>	<b>19,170</b>	<b>19,162</b>	<b>\$217,646,213</b>	<b>\$873.39</b>
5221	Depository Credit Intermediation	1,427	16,327	16,336	16,315	179,762,151	846.98
5222	Nondepository Credit Intermediation	385	2,334	2,325	2,350	30,805,213	1,014.25
5223	Activities Related to Credit Intermediation	155	514	509	497	7,078,849	1,074.72
<b>523</b>	<b>FINANCIAL INVESTMENT &amp; RELATED ACTIVITIES</b>	<b>654</b>	<b>3,015</b>	<b>3,043</b>	<b>3,054</b>	<b>\$79,135,269</b>	<b>\$2,004.17</b>
<b>524</b>	<b>INSURANCE CARRIERS &amp; RELATED ACTIVITIES</b>	<b>2,129</b>	<b>12,366</b>	<b>12,507</b>	<b>12,608</b>	<b>\$165,131,194</b>	<b>\$1,016.71</b>
5241	Insurance Carriers	352	5,275	5,329	5,408	84,005,734	1,210.71
5242	Insurance Agencies, Brokerages & Support	1,777	7,091	7,178	7,200	81,125,460	872.01
	<b>OTHER</b>	<b>53</b>	<b>83</b>	<b>77</b>	<b>79</b>	<b>\$2,011,782</b>	<b>\$1,942.50</b>
<b>53</b>	<b>REAL ESTATE &amp; RENTAL &amp; LEASING</b>	<b>3,280</b>	<b>12,817</b>	<b>13,019</b>	<b>13,103</b>	<b>\$107,112,093</b>	<b>\$634.79</b>
<b>531</b>	<b>REAL ESTATE</b>	<b>2,597</b>	<b>8,460</b>	<b>8,580</b>	<b>8,631</b>	<b>\$65,710,746</b>	<b>\$590.71</b>
5311	Lessors of Real Estate	1,117	3,971	4,031	4,047	28,346,185	542.90
5312	Offices of Real Estate Agents & Brokers	744	1,590	1,603	1,616	13,585,273	651.92
5313	Activities Related to Real Estate	736	2,899	2,946	2,968	23,779,288	622.66
<b>532</b>	<b>RENTAL &amp; LEASING SERVICES</b>	<b>659</b>	<b>4,293</b>	<b>4,373</b>	<b>4,410</b>	<b>\$40,529,650</b>	<b>\$715.28</b>
5321	Automotive Equipment Rental & Leasing	103	882	866	886	6,412,378	561.80
5322	Consumer Goods Rental	351	2,053	2,146	2,153	15,215,714	552.79
5323	General Rental Centers	43	218	218	224	2,101,255	734.70
5324	Machinery & Equipment Rental & Leasing	162	1,140	1,143	1,147	16,800,303	1,130.32
<b>533</b>	<b>LESSORS OF NONFINANCIAL INTANGIBLE ASSETS</b>	<b>24</b>	<b>64</b>	<b>66</b>	<b>62</b>	<b>\$871,697</b>	<b>\$1,047.71</b>



TABLE 5. STATEWIDE SUMMARY

North American Industry Classification System - Industry Groups		Number of Employing Units	Employment			Total Earnings Apr - Jun 2014	Average Weekly Earnings
			Apr	May	Jun		
<b>PROFESSIONAL &amp; BUSINESS SERVICES</b>		<b>13,020</b>	<b>133,799</b>	<b>134,385</b>	<b>131,918</b>	<b>\$1,569,956,122</b>	<b>\$905.51</b>
<b>54</b>	<b>PROFESSIONAL &amp; TECHNICAL SERVICES</b>	<b>8,201</b>	<b>41,088</b>	<b>40,118</b>	<b>39,869</b>	<b>\$548,795,047</b>	<b>\$1,046.00</b>
5411	Legal Services	1,690	6,105	6,129	6,198	70,242,225	879.43
5412	Accounting & Bookkeeping Services	1,235	6,026	4,904	4,529	56,119,639	837.74
5413	Architectural & Engineering Services	951	5,853	5,895	5,901	84,755,072	1,108.21
5414	Specialized Design Services	177	439	443	437	4,799,917	839.78
5415	Computer Systems Design & Related Services	1,406	9,217	9,209	9,223	175,465,339	1,464.50
5416	Management & Technical Consulting Services	1,667	5,407	5,418	5,423	72,900,239	1,035.40
5417	Scientific Research & Development Services	142	1,035	1,052	1,063	16,533,537	1,211.25
5418	Advertising & Related Services	376	3,416	3,412	3,472	36,099,589	808.80
5419	Other Professional & Technical Services	557	3,590	3,656	3,623	31,879,490	676.86
<b>55</b>	<b>MANAGEMENT OF COMPANIES &amp; ENTERPRISES</b>	<b>497</b>	<b>32,061</b>	<b>32,123</b>	<b>32,546</b>	<b>\$629,405,842</b>	<b>\$1,501.58</b>
<b>56</b>	<b>ADMINISTRATIVE &amp; SUPPORT SERVICES</b>	<b>4,322</b>	<b>60,650</b>	<b>62,144</b>	<b>59,503</b>	<b>\$391,755,233</b>	<b>\$495.92</b>
<b>561</b>	<b>ADMINISTRATIVE &amp; SUPPORT SERVICES</b>	<b>4,015</b>	<b>57,623</b>	<b>59,117</b>	<b>56,469</b>	<b>\$360,915,716</b>	<b>\$480.85</b>
5611	Office Administrative Services	589	3,750	3,831	3,828	41,610,875	841.66
5612	Facilities Support Services	24	208	211	210	2,036,388	747.12
5613	Employment Services	953	25,491	26,389	23,734	140,530,432	428.89
5614	Business Support Services	385	7,814	7,823	7,763	58,451,151	576.44
5615	Travel Arrangement & Reservation Services	97	371	376	380	3,211,679	657.64
5616	Investigation & Security Services	251	4,451	4,406	4,413	27,113,142	471.51
5617	Services to Buildings & Dwellings	1,504	14,155	14,671	14,762	76,229,242	403.58
5619	Other Support Services	212	1,383	1,410	1,379	11,732,807	648.99
<b>562</b>	<b>WASTE MANAGEMENT &amp; REMEDIATION SERVICES</b>	<b>307</b>	<b>3,027</b>	<b>3,027</b>	<b>3,034</b>	<b>\$30,839,517</b>	<b>\$783.10</b>
5621	Waste Collection Services	124	1,102	1,106	1,129	10,709,130	740.59
5622	Waste Treatment & disposal Services	38	831	829	808	10,481,091	980.03
5629	Remediation & Other Waste Services	145	1,094	1,092	1,097	9,649,296	678.27
<b>EDUCATION &amp; HEALTH SERVICES</b>		<b>14,937</b>	<b>168,770</b>	<b>169,374</b>	<b>168,082</b>	<b>\$1,580,889,856</b>	<b>\$720.67</b>
<b>61</b>	<b>EDUCATIONAL SERVICES</b>	<b>743</b>	<b>10,933</b>	<b>10,750</b>	<b>10,102</b>	<b>\$90,515,456</b>	<b>\$657.17</b>
6111	Elementary & Secondary Schools	81	3,245	3,290	3,056	25,068,602	603.18
6112	Junior Colleges	5	183	187	181	1,400,662	586.62
6113	Colleges & Universities	61	4,202	4,035	3,726	35,844,563	691.45
6114	Business, Computer, & Management Training	45	98	102	96	1,608,259	1,253.84
6115	Technical & Trade Schools	103	952	913	892	13,066,461	1,093.70
6116	Other Schools & Instruction	259	1,602	1,577	1,470	6,675,398	331.36
6117	Educational Support Services	189	651	646	681	6,851,511	799.35

TABLE 5. STATEWIDE SUMMARY

North American Industry Classification System - Industry Groups		Number of Employing Units	Employment			Total Earnings Apr - Jun 2014	Average Weekly Earnings
			Apr	May	Jun		
<b>62</b>	<b>HEALTH CARE &amp; SOCIAL ASSISTANCE</b>	<b>14,194</b>	<b>157,837</b>	<b>158,624</b>	<b>157,980</b>	<b>\$1,490,374,400</b>	<b>\$724.92</b>
<b>621</b>	<b>AMBULATORY HEALTH CARE SERVICES</b>	<b>5,284</b>	<b>48,802</b>	<b>49,144</b>	<b>49,321</b>	<b>\$685,777,085</b>	<b>\$1,074.62</b>
6211	Offices of Physicians	2,232	22,384	22,457	22,513	420,334,741	1,440.16
6212	Offices of Dentists	992	6,942	7,021	7,072	76,211,667	836.10
6213	Offices of Other Health Practitioners	1,321	7,430	7,551	7,588	71,895,103	735.13
6214	Outpatient Care Centers	310	4,170	4,172	4,189	44,673,353	822.70
6215	Medical & Diagnostic Laboratories	119	1,031	1,057	1,070	12,598,730	920.65
6216	Home Health Care Services	155	4,546	4,582	4,560	37,889,466	638.79
6219	Other Ambulatory Health Care Services	155	2,299	2,304	2,329	22,174,025	738.18
<b>622</b>	<b>HOSPITALS</b>	<b>110</b>	<b>40,931</b>	<b>40,945</b>	<b>40,863</b>	<b>\$437,639,575</b>	<b>\$822.83</b>
6221	General Medical & Surgical Hospitals	79	36,191	36,162	36,036	392,476,303	835.61
6222	Psychiatric & Substance Abuse Hospitals	12	2,387	2,441	2,454	21,517,519	681.90
6223	Other Hospitals	19	2,353	2,342	2,373	23,645,753	772.03
<b>623</b>	<b>Residential &amp; Mental Health Facilities</b>	<b>620</b>	<b>31,086</b>	<b>31,293</b>	<b>31,334</b>	<b>\$185,525,089</b>	<b>\$456.86</b>
6231	Nursing Care Facilities (Skilled Nursing Facilities)	269	22,422	22,525	22,494	135,103,437	462.30
6232	Residential Mental Health Facilities	175	4,314	4,315	4,345	25,920,996	461.06
6233	Continuing Care & Assisted Living Facilities	136	3,282	3,373	3,419	17,634,410	403.96
6239	Other Residential Care Facilities	40	1,068	1,080	1,076	6,866,246	491.48
<b>624</b>	<b>SOCIAL ASSISTANCE</b>	<b>8,180</b>	<b>37,018</b>	<b>37,242</b>	<b>36,462</b>	<b>\$181,432,651</b>	<b>\$378.15</b>
6241	Individual & Family Services	6,966	22,382	22,464	22,665	111,950,989	382.68
6242	Emergency & Other Relief Services	142	1,322	1,320	1,269	7,973,626	470.49
6243	Vocational Rehabilitation Services	129	3,416	3,451	3,473	18,952,562	422.99
6244	Child Day Care Services	943	9,898	10,007	9,055	42,555,474	339.11
	<b>LEISURE &amp; HOSPITALITY</b>	<b>6,635</b>	<b>108,576</b>	<b>110,769</b>	<b>112,482</b>	<b>\$397,418,803</b>	<b>\$276.39</b>
<b>71</b>	<b>ARTS, ENTERTAINMENT &amp; RECREATION</b>	<b>923</b>	<b>10,582</b>	<b>11,795</b>	<b>12,619</b>	<b>\$49,995,223</b>	<b>\$329.68</b>
<b>711</b>	<b>PERFORMING ARTS &amp; SPECTATOR SPORTS</b>	<b>204</b>	<b>2,843</b>	<b>2,974</b>	<b>3,004</b>	<b>\$14,199,533</b>	<b>\$371.48</b>
7111	Performing Arts Companies	45	378	527	625	1,994,459	300.82
7112	Spectator Sports	56	1,872	1,608	1,599	8,481,172	385.35
7113	Performing Arts & Sports Promoters	37	483	727	672	3,041,322	372.92
7114	Agents & Managers for Public Figures	20	40	38	32	277,869	582.94
7115	Independent Artists, Writers, & Performers	46	70	74	76	404,711	424.52
<b>712</b>	<b>MUSEUMS, PARKS, &amp; HISTORICAL SITES</b>	<b>55</b>	<b>532</b>	<b>544</b>	<b>579</b>	<b>\$3,600,071</b>	<b>\$501.99</b>
<b>713</b>	<b>GAMBLING, RECREATIONAL &amp; AMUSEMENT INDUSTRY</b>	<b>664</b>	<b>7,207</b>	<b>8,277</b>	<b>9,036</b>	<b>\$32,195,619</b>	<b>\$303.01</b>
<b>72</b>	<b>ACCOMMODATION &amp; FOOD SERVICES</b>	<b>5,712</b>	<b>97,994</b>	<b>98,974</b>	<b>99,863</b>	<b>\$347,423,580</b>	<b>\$270.10</b>

TABLE 5. STATEWIDE SUMMARY

North American Industry Classification System - Industry Groups		Number of Employing Units	Employment			Total Earnings	Average Weekly Earnings
			Apr	May	Jun	Apr - Jun 2014	
<b>721</b>	<b>ACCOMMODATION</b>	<b>891</b>	<b>10,874</b>	<b>11,250</b>	<b>12,306</b>	<b>\$48,116,714</b>	<b>\$322.51</b>
7211	Travel Accommodation	808	10,359	10,644	10,981	44,702,551	322.54
7212	RV Parks & Recreational Camps	65	414	515	1,253	2,983,672	315.55
7213	Rooming & Boarding Houses	18	101	91	72	430,491	376.30
<b>722</b>	<b>FOOD SERVICES &amp; DRINKING PLACES</b>	<b>4,821</b>	<b>87,120</b>	<b>87,724</b>	<b>87,557</b>	<b>\$299,306,866</b>	<b>\$263.23</b>
7223	Special Food Services	182	2,953	2,538	2,234	11,224,279	335.30
7224	Drinking Places, Alcoholic Beverages	157	1,139	1,131	1,165	3,582,816	240.70
7225	Restaurants & Other Eating Places	4,482	83,028	84,055	84,158	284,499,771	261.32
722511	Full-Service Restaurants	2,032	37,347	37,410	37,737	138,820,371	284.77
722513	Limited-Service Eating Places	2,030	41,224	42,143	42,110	129,638,978	238.42
722514	Cafeterias, Grill Buffets, & Buffets	100	2,048	1,981	1,924	8,064,176	312.61
722515	Snack & Nonalcoholic Beverage Bars	320	2,409	2,521	2,387	7,976,246	251.56
	<b>OTHER SERVICES</b>	<b>5,300</b>	<b>24,112</b>	<b>24,310</b>	<b>24,985</b>	<b>\$180,422,558</b>	<b>\$567.19</b>
<b>811</b>	<b>REPAIR &amp; MAINTENANCE</b>	<b>2,203</b>	<b>9,691</b>	<b>9,771</b>	<b>9,838</b>	<b>\$84,988,352</b>	<b>\$669.38</b>
8111	Automotive Repair & Maintenance	1,412	6,128	6,095	6,162	48,483,801	608.57
8112	Electronic Equipment Repair & Maintenance	172	765	758	756	7,925,853	802.56
8113	Commercial Machinery Repair & Maintenance	433	2,181	2,296	2,284	24,323,780	830.23
8114	Household Goods Repair & Maintenance	186	617	622	636	4,254,918	523.68
<b>812</b>	<b>PERSONAL &amp; LAUNDRY SERVICES</b>	<b>1,317</b>	<b>8,114</b>	<b>8,133</b>	<b>8,168</b>	<b>\$45,259,330</b>	<b>\$427.79</b>
8121	Personal Care Services	599	2,905	2,883	2,870	13,449,463	358.48
8122	Death Care Services	247	1,606	1,611	1,593	11,455,071	549.58
8123	Drycleaning & Laundry Service	258	2,878	2,886	2,916	16,476,629	438.05
8129	Other Personal Services	213	725	753	789	3,878,167	394.78
<b>813</b>	<b>MEMBERSHIP ASSOCIATIONS &amp; ORGANIZATIONS</b>	<b>1,052</b>	<b>5,343</b>	<b>5,452</b>	<b>6,018</b>	<b>\$45,226,684</b>	<b>\$620.77</b>
8131	Religious Organizations	54	232	231	238	1,568,289	516.28
8132	Grantmaking & Giving Organizations	109	443	445	439	5,110,992	888.82
8133	Social Advocacy Organizations	204	1,539	1,513	1,518	13,293,534	671.28
8134	Civic & Social Organizations	192	1,120	1,187	1,563	5,285,397	315.17
8139	Professional & Similar Organizations	493	2,009	2,076	2,260	19,968,472	726.26
<b>814</b>	<b>PRIVATE HOUSEHOLDS</b>	<b>728</b>	<b>964</b>	<b>954</b>	<b>961</b>	<b>\$4,948,192</b>	<b>\$396.63</b>
	<b>LOCAL GOVERNMENT</b>	<b>1,963</b>	<b>115,812</b>	<b>116,984</b>	<b>114,403</b>	<b>\$1,222,697,710</b>	<b>\$812.68</b>
	<b>STATE GOVERNMENT</b>	<b>1,136</b>	<b>71,578</b>	<b>71,404</b>	<b>68,871</b>	<b>\$797,060,000</b>	<b>\$868.23</b>
	<b>NONCLASSIFIABLE ESTABLISHMENTS</b>	<b>0</b>	<b>0</b>	<b>0</b>	<b>0</b>	<b>\$0</b>	<b>\$0.00</b>

TABLE 6. COUNTY SUMMARY

North American Industry Classification System - Industry Groups	Number of Employing Units	Employment			Total Earnings	Average Weekly Earnings
		Apr	May	Jun	Apr - Jun 2014	
<b>ARKANSAS COUNTY - TOTAL</b>	<b>746</b>	<b>9,577</b>	<b>9,699</b>	<b>9,735</b>	<b>\$89,434,098</b>	<b>\$711.41</b>
Natural Resources & Mining	48	183	191	185	2,175,227	897.99
Construction	49	280	283	288	2,426,609	658.03
Manufacturing	30	3,403	3,460	3,502	37,235,554	829.02
Trade, Transportation & Utilities	204	2,378	2,396	2,429	22,530,516	721.83
Wholesale Trade	44	516	516	528	6,455,900	955.01
Retail Trade	96	1,021	1,026	1,024	5,866,119	440.81
Transportation, Warehousing & Utilities	64	841	854	877	10,208,497	915.94
Information	11	77	82	81	761,877	732.57
Financial Activities	47	312	311	309	3,019,182	747.57
Professional & Business Services	48	340	344	347	3,983,572	891.64
Education & Health Services	163	1,063	1,079	1,026	7,392,956	538.53
Leisure & Hospitality	55	487	485	482	1,463,601	232.29
Other Services	43	103	104	104	718,019	532.79
Local Government	32	734	752	768	6,228,520	637.69
State Government	16	217	212	214	1,498,465	537.79
<b>ASHLEY COUNTY - TOTAL</b>	<b>559</b>	<b>7,153</b>	<b>7,268</b>	<b>7,214</b>	<b>\$70,770,289</b>	<b>\$754.87</b>
Natural Resources & Mining	39	318	340	373	2,677,683	599.35
Construction	41	611	701	592	6,020,652	729.72
Manufacturing	26	1,929	1,922	1,932	30,394,437	1,212.88
Trade, Transportation & Utilities	115	1,226	1,207	1,222	8,479,642	535.39
Wholesale Trade	22	221	218	222	2,393,615	835.66
Retail Trade	71	743	734	747	3,705,769	384.52
Transportation, Warehousing & Utilities	22	262	255	253	2,380,258	713.36
Information	6	36	37	36	239,035	506.07
Financial Activities	34	217	220	219	1,923,886	676.79
Professional & Business Services	41	239	240	256	1,824,072	572.71
Education & Health Services	144	940	936	921	7,131,840	588.42
Leisure & Hospitality	30	401	414	420	1,194,980	223.29
Other Services	40	121	133	131	919,548	551.18
Local Government	32	926	929	929	8,715,486	722.44
State Government	11	189	189	183	1,249,028	513.79

TABLE 6. COUNTY SUMMARY

North American Industry Classification System - Industry Groups	Number of Employing Units	Employment			Total Earnings	Average Weekly Earnings
		Apr	May	Jun	Apr - Jun 2014	
<b>BAXTER COUNTY - TOTAL</b>	<b>1,214</b>	<b>14,158</b>	<b>14,325</b>	<b>14,143</b>	<b>\$114,300,668</b>	<b>\$618.80</b>
Natural Resources & Mining	6	69	78	79	642,670	656.23
Construction	110	551	563	578	4,136,443	564.16
Manufacturing	54	2,292	2,314	2,299	21,899,634	731.90
Trade, Transportation & Utilities	262	2,638	2,682	2,683	16,509,186	476.05
Wholesale Trade	34	239	237	242	2,123,430	682.48
Retail Trade	204	2,229	2,265	2,263	12,577,913	429.57
Transportation, Warehousing & Utilities	24	170	180	178	1,807,843	790.14
Information	18	178	183	188	1,902,527	799.72
Financial Activities	112	726	732	742	8,427,941	884.05
Professional & Business Services	132	739	720	723	5,466,308	578.12
Education & Health Services	259	3,635	3,572	3,562	33,472,199	717.28
Leisure & Hospitality	117	1,445	1,537	1,608	5,398,289	271.41
Other Services	92	354	354	349	2,094,668	457.32
Local Government	40	1,175	1,231	1,017	11,294,682	761.46
State Government	12	356	359	315	3,056,121	684.72
<b>BENTON COUNTY - TOTAL</b>	<b>5,631</b>	<b>103,492</b>	<b>104,496</b>	<b>105,366</b>	<b>\$1,214,566,691</b>	<b>\$894.47</b>
Natural Resources & Mining	42	626	631	631	8,505,812	1,039.66
Construction	533	3,652	3,754	3,826	39,956,014	820.92
Manufacturing	184	10,780	10,885	10,977	105,902,241	748.70
Trade, Transportation & Utilities	1,523	23,495	23,727	23,864	255,496,132	829.43
Wholesale Trade	701	4,417	4,453	4,492	98,958,315	1,709.07
Retail Trade	670	10,939	11,053	11,147	69,094,338	481.15
Transportation, Warehousing & Utilities	152	8,139	8,221	8,225	87,443,479	820.80
Information	72	833	837	838	9,470,619	871.42
Financial Activities	572	2,883	2,902	2,925	36,730,286	973.16
Professional & Business Services	1,082	30,347	30,532	30,971	503,773,413	1,265.71
Education & Health Services	673	9,657	9,643	9,566	90,912,663	726.80
Leisure & Hospitality	497	10,400	10,632	10,927	43,413,448	313.48
Other Services	354	1,694	1,723	1,743	13,205,228	590.57
Local Government	82	7,950	8,056	8,136	96,022,332	917.86
State Government	17	1,175	1,174	962	11,178,503	779.12

TABLE 6. COUNTY SUMMARY

North American Industry Classification System - Industry Groups	Number of Employing Units	Employment			Total Earnings	Average Weekly Earnings
		Apr	May	Jun	Apr - Jun 2014	
<b>BOONE COUNTY - TOTAL</b>	<b>985</b>	<b>13,503</b>	<b>13,475</b>	<b>13,530</b>	<b>\$123,347,089</b>	<b>\$702.69</b>
Construction	76	409	411	418	3,425,997	638.62
Manufacturing	64	1,744	1,779	1,762	16,465,467	718.96
Trade, Transportation & Utilities	244	3,594	3,599	3,604	35,088,863	749.97
Wholesale Trade	47	309	306	310	2,726,478	680.20
Retail Trade	148	1,878	1,873	1,897	11,314,422	462.29
Transportation, Warehousing & Utilities	49	1,407	1,420	1,397	21,047,963	1,149.91
Information	14	274	264	255	2,923,178	850.67
Financial Activities	92	470	469	471	5,056,184	827.53
Professional & Business Services	105	1,081	1,061	1,089	13,272,246	947.95
Education & Health Services	164	1,381	1,384	1,371	9,864,428	550.39
Leisure & Hospitality	80	1,157	1,178	1,202	3,979,666	259.65
Local Government	57	2,268	2,278	2,291	23,534,262	794.35
State Government	19	832	760	761	7,492,330	734.81
Other	70	293	292	306	2,244,468	581.32
<b>BRADLEY COUNTY - TOTAL</b>	<b>366</b>	<b>3,376</b>	<b>3,324</b>	<b>3,345</b>	<b>\$25,596,845</b>	<b>\$588.05</b>
Natural Resources & Mining	42	295	223	196	1,698,611	549.00
Construction	15	87	96	96	812,574	672.10
Manufacturing	10	538	540	547	5,520,374	783.96
Trade, Transportation & Utilities	74	460	460	514	2,799,623	450.53
Wholesale Trade	14	93	93	94	896,488	738.86
Retail Trade	44	323	329	331	1,568,878	368.31
Transportation, Warehousing & Utilities	16	44	38	89	334,257	451.09
Information	4	12	12	12	111,981	717.83
Financial Activities	25	136	138	130	1,141,770	652.19
Professional & Business Services	26	102	96	87	711,107	575.80
Education & Health Services	98	572	569	559	3,965,040	538.24
Leisure & Hospitality	15	176	186	202	511,089	209.12
Other Services	32	100	103	107	532,128	396.13
Local Government	14	497	500	490	4,856,733	753.72
State Government	11	401	401	405	2,935,815	561.31

TABLE 6. COUNTY SUMMARY

North American Industry Classification System - Industry Groups	Number of Employing Units	Employment			Total Earnings Apr - Jun 2014	Average Weekly Earnings
		Apr	May	Jun		
<b>CALHOUN COUNTY - TOTAL</b>	<b>110</b>	<b>2,606</b>	<b>2,599</b>	<b>2,598</b>	<b>\$31,029,353</b>	<b>\$917.68</b>
Natural Resources & Mining	10	37	36	36	287,588	608.87
Construction	10	77	86	86	646,074	598.77
Manufacturing	10	1,824	1,810	1,811	24,484,288	1,037.69
Trade, Transportation & Utilities	20	225	230	228	2,082,797	703.73
Retail Trade	12	61	61	62	259,745	325.77
Transportation, Warehousing & Utilities	8	164	169	166	1,823,052	843.09
Financial Activities	5	75	75	78	608,760	616.15
Education & Health Services	16	59	55	51	471,040	658.80
Leisure & Hospitality	10	19	18	15	66,429	294.80
Other Services	3	5	6	6	30,260	410.77
Local Government	11	189	189	191	1,499,821	608.28
State Government	8	86	86	88	759,256	673.90
Other	7	10	8	8	93,040	825.80
<b>CARROLL COUNTY - TOTAL</b>	<b>762</b>	<b>10,201</b>	<b>10,695</b>	<b>10,679</b>	<b>\$70,139,824</b>	<b>\$512.62</b>
Natural Resources & Mining	16	193	197	196	1,524,700	600.43
Trade, Transportation & Utilities	191	1,545	1,612	1,666	10,421,494	498.64
Wholesale Trade	21	175	174	171	1,045,611	464.03
Retail Trade	149	1,110	1,165	1,219	5,747,545	379.61
Transportation, Warehousing & Utilities	21	260	273	276	3,628,338	1,034.99
Information	9	68	67	65	630,257	727.22
Financial Activities	60	358	362	366	3,460,188	735.27
Professional & Business Services	60	307	358	424	3,114,073	659.90
Education & Health Services	85	959	962	954	7,647,944	613.88
Leisure & Hospitality	173	1,485	1,805	1,832	5,842,035	263.21
Other Services	39	126	125	131	660,036	398.73
Local Government	24	1,067	1,108	914	9,015,065	673.49
State Government	10	112	108	108	952,042	669.82
Other	95	3,981	3,991	4,023	26,871,990	516.98

TABLE 6. COUNTY SUMMARY

North American Industry Classification System - Industry Groups	Number of Employing Units	Employment			Total Earnings Apr - Jun 2014	Average Weekly Earnings
		Apr	May	Jun		
<b>CHICOT COUNTY - TOTAL</b>	<b>465</b>	<b>3,339</b>	<b>3,318</b>	<b>3,387</b>	<b>\$24,089,505</b>	<b>\$553.48</b>
Natural Resources & Mining	58	255	271	276	2,107,436	606.40
Construction	17	131	129	157	1,517,569	839.83
Trade, Transportation & Utilities	66	679	681	668	4,603,400	523.83
Wholesale Trade	12	77	75	71	915,854	947.76
Retail Trade	41	341	337	334	1,784,398	406.90
Transportation, Warehousing & Utilities	13	261	269	263	1,903,148	553.83
Information	5	6	7	7	76,176	878.95
Financial Activities	28	138	136	133	1,427,172	809.21
Professional & Business Services	18	51	47	46	613,329	982.90
Education & Health Services	196	777	775	826	4,811,938	466.97
Leisure & Hospitality	24	215	208	204	594,711	218.89
Local Government	17	658	658	669	4,992,395	580.40
State Government	10	298	298	301	2,598,280	668.45
Other	26	131	108	100	747,099	508.58
<b>CLARK COUNTY - TOTAL</b>	<b>612</b>	<b>9,113</b>	<b>9,111</b>	<b>8,719</b>	<b>\$74,209,409</b>	<b>\$635.61</b>
Natural Resources & Mining	41	237	236	239	2,145,684	695.45
Construction	24	79	79	85	547,670	520.10
Manufacturing	30	1,378	1,384	1,404	17,888,147	990.89
Trade, Transportation & Utilities	128	1,353	1,397	1,378	9,077,199	507.45
Wholesale Trade	11	32	33	35	350,381	808.57
Retail Trade	96	1,141	1,181	1,161	6,796,698	450.32
Transportation, Warehousing & Utilities	21	180	183	182	1,930,120	817.27
Information	5	22	21	21	252,705	911.20
Financial Activities	75	306	315	294	5,743,331	1,448.51
Professional & Business Services	52	627	632	617	5,598,335	688.66
Education & Health Services	116	1,480	1,475	1,409	9,953,126	526.32
Leisure & Hospitality	58	1,203	1,193	1,123	3,477,633	228.06
Other Services	43	229	239	246	1,863,161	602.19
Local Government	26	915	908	845	7,989,701	691.07
State Government	14	1,284	1,232	1,058	9,672,717	624.56



TABLE 6. COUNTY SUMMARY

North American Industry Classification System - Industry Groups	Number of Employing Units	Employment			Total Earnings	Average Weekly Earnings
		Apr	May	Jun	Apr - Jun 2014	
<b>CLAY COUNTY - TOTAL</b>	<b>404</b>	<b>3,561</b>	<b>3,716</b>	<b>3,542</b>	<b>\$27,126,162</b>	<b>\$578.60</b>
Natural Resources & Mining	60	272	293	291	2,044,581	551.20
Construction	30	143	141	151	1,078,336	572.06
Manufacturing	17	346	362	349	3,150,181	687.76
Trade, Transportation & Utilities	104	881	888	877	7,563,407	659.64
Wholesale Trade	23	274	264	258	2,893,361	838.82
Retail Trade	50	409	416	414	2,523,694	470.05
Transportation, Warehousing & Utilities	31	198	208	205	2,146,352	810.66
Information	5	45	43	44	317,861	555.70
Financial Activities	27	124	125	123	1,200,728	744.87
Professional & Business Services	26	104	105	112	714,958	513.99
Education & Health Services	51	432	446	416	2,802,371	499.77
Leisure & Hospitality	20	287	290	268	682,762	186.46
Other Services	31	87	89	86	685,925	604.16
Local Government	22	785	879	767	6,518,492	618.79
State Government	11	55	55	58	366,560	503.52
<b>CLEBURNE COUNTY - TOTAL</b>	<b>670</b>	<b>6,532</b>	<b>6,635</b>	<b>6,826</b>	<b>\$50,485,073</b>	<b>\$582.72</b>
Natural Resources & Mining	25	240	246	350	3,466,761	956.96
Construction	61	354	349	366	3,208,846	692.71
Manufacturing	34	1,004	1,001	1,004	8,516,132	653.13
Trade, Transportation & Utilities	164	1,522	1,566	1,573	12,185,838	603.33
Wholesale Trade	35	169	166	166	1,907,530	878.64
Retail Trade	102	964	977	988	5,533,352	435.96
Transportation, Warehousing & Utilities	27	389	423	419	4,744,956	889.51
Information	7	55	55	55	437,240	611.52
Financial Activities	71	230	233	232	2,133,505	708.41
Professional & Business Services	76	320	310	328	2,688,306	647.58
Education & Health Services	90	806	820	810	5,568,725	527.54
Leisure & Hospitality	76	950	994	1,060	3,275,486	251.62
Other Services	39	135	130	136	748,840	430.95
Local Government	18	810	825	810	7,533,315	711.03
State Government	9	106	106	102	722,079	530.68

TABLE 6. COUNTY SUMMARY

North American Industry Classification System - Industry Groups	Number of Employing Units	Employment			Total Earnings Apr - Jun 2014	Average Weekly Earnings
		Apr	May	Jun		
<b>CLEVELAND COUNTY - TOTAL</b>	<b>131</b>	<b>1,012</b>	<b>1,032</b>	<b>994</b>	<b>\$7,380,978</b>	<b>\$560.67</b>
Natural Resources & Mining	17	140	150	160	1,170,636	600.33
Construction	5	29	31	31	123,049	312.04
Manufacturing	6	86	88	90	660,055	576.97
Trade, Transportation & Utilities	37	192	189	192	1,286,783	518.24
Wholesale Trade	4	45	46	45	350,023	593.93
Retail Trade	18	64	61	64	265,283	323.91
Transportation, Warehousing & Utilities	15	83	82	83	671,477	624.82
Financial Activities	3	18	18	19	140,855	591.00
Education & Health Services	28	135	134	136	702,918	400.52
Other Services	7	20	20	20	127,236	489.37
Local Government	11	318	328	269	2,542,990	641.36
State Government	7	46	46	48	296,366	488.52
Other	10	28	28	29	330,090	896.17
<b>COLUMBIA COUNTY - TOTAL</b>	<b>747</b>	<b>8,260</b>	<b>8,229</b>	<b>8,270</b>	<b>\$76,200,488</b>	<b>\$710.24</b>
Natural Resources & Mining	44	384	385	391	5,353,114	1,064.94
Construction	44	306	312	317	3,042,031	750.81
Manufacturing	35	1,802	1,805	1,830	24,898,732	1,056.81
Trade, Transportation & Utilities	162	1,436	1,424	1,449	10,002,031	535.66
Wholesale Trade	28	210	206	214	2,413,443	884.05
Retail Trade	99	974	966	978	4,954,527	391.83
Transportation, Warehousing & Utilities	35	252	252	257	2,634,061	798.77
Information	8	57	58	56	517,483	698.36
Financial Activities	73	368	370	364	3,901,678	817.05
Professional & Business Services	59	293	303	299	2,714,997	700.04
Education & Health Services	182	1,009	1,003	998	6,213,832	476.40
Leisure & Hospitality	49	687	660	613	2,141,990	252.20
Other Services	52	186	189	183	907,744	375.41
Local Government	26	1,105	1,127	1,167	10,450,387	709.51
State Government	13	627	593	603	6,056,469	766.67

TABLE 6. COUNTY SUMMARY

North American Industry Classification System - Industry Groups	Number of Employing Units	Employment			Total Earnings	Average Weekly Earnings
		Apr	May	Jun	Apr - Jun 2014	
<b>CONWAY COUNTY - TOTAL</b>	<b>585</b>	<b>6,796</b>	<b>6,906</b>	<b>6,934</b>	<b>\$60,889,589</b>	<b>\$680.92</b>
Natural Resources & Mining	34	328	329	311	3,555,267	847.57
Construction	50	467	475	467	6,110,097	1,000.73
Manufacturing	18	807	821	816	11,797,225	1,113.93
Trade, Transportation & Utilities	137	1,616	1,655	1,674	13,436,147	627.03
Wholesale Trade	23	196	196	196	2,061,670	809.13
Retail Trade	86	802	830	836	4,415,015	412.82
Transportation, Warehousing & Utilities	28	618	629	642	6,959,462	850.20
Information	4	18	19	19	108,233	446.02
Financial Activities	36	177	180	180	1,636,573	703.30
Professional & Business Services	45	561	614	598	3,531,271	459.62
Education & Health Services	155	854	845	843	6,479,812	588.25
Leisure & Hospitality	40	482	484	537	1,458,092	223.87
Other Services	27	101	94	99	894,899	702.43
Local Government	29	954	953	975	9,077,053	726.82
State Government	10	431	437	415	2,804,920	504.51
<b>CRAIGHEAD COUNTY - TOTAL</b>	<b>2,706</b>	<b>45,678</b>	<b>45,831</b>	<b>45,865</b>	<b>\$403,677,044</b>	<b>\$678.12</b>
Natural Resources & Mining	76	314	317	323	2,395,437	579.45
Construction	214	1,817	1,864	1,922	17,673,288	727.90
Manufacturing	106	5,703	5,760	5,827	60,104,782	802.22
Trade, Transportation & Utilities	749	9,557	9,606	9,579	73,456,559	589.78
Wholesale Trade	186	1,805	1,797	1,801	21,102,393	901.31
Retail Trade	445	6,347	6,394	6,353	37,510,586	453.35
Transportation, Warehousing & Utilities	118	1,405	1,415	1,425	14,843,580	806.94
Information	24	478	480	497	4,938,708	783.30
Financial Activities	272	1,574	1,573	1,576	17,105,853	835.80
Professional & Business Services	350	3,870	3,862	3,888	27,088,753	537.97
Education & Health Services	457	9,676	9,703	9,697	106,358,262	844.14
Leisure & Hospitality	244	5,040	4,989	4,979	17,132,658	263.44
Other Services	156	870	856	840	5,841,020	525.30
Local Government	35	4,029	4,065	3,982	42,673,421	815.48
State Government	23	2,750	2,756	2,755	28,908,303	807.55

TABLE 6. COUNTY SUMMARY

North American Industry Classification System - Industry Groups	Number of Employing Units	Employment			Total Earnings	Average Weekly Earnings
		Apr	May	Jun	Apr - Jun 2014	
<b>CRAWFORD COUNTY - TOTAL</b>	<b>1,262</b>	<b>19,291</b>	<b>19,374</b>	<b>19,253</b>	<b>\$163,167,592</b>	<b>\$650.13</b>
Natural Resources & Mining	33	414	369	320	4,141,024	866.38
Construction	146	817	859	849	7,275,929	664.97
Manufacturing	67	4,425	4,484	4,502	39,951,305	687.46
Trade, Transportation & Utilities	324	5,918	5,900	5,913	52,539,944	683.81
Wholesale Trade	86	798	807	808	10,073,538	963.39
Retail Trade	165	1,923	1,925	1,931	11,208,071	447.56
Transportation, Warehousing & Utilities	73	3,197	3,168	3,174	31,258,335	756.21
Information	11	122	120	119	1,005,254	642.61
Financial Activities	126	523	529	524	4,628,068	677.67
Professional & Business Services	155	1,374	1,371	1,339	11,064,948	625.23
Education & Health Services	173	1,561	1,578	1,529	11,942,958	590.42
Leisure & Hospitality	95	1,588	1,590	1,577	5,161,699	250.51
Other Services	79	363	366	377	2,655,626	554.10
Local Government	43	2,032	2,054	2,048	21,491,308	808.53
State Government	10	154	154	156	1,309,529	651.29
<b>CRITTENDEN COUNTY - TOTAL</b>	<b>1,322</b>	<b>16,664</b>	<b>16,493</b>	<b>16,566</b>	<b>\$136,516,761</b>	<b>\$633.59</b>
Natural Resources & Mining	55	307	309	336	2,218,036	537.66
Construction	53	365	406	407	3,747,798	734.19
Manufacturing	42	1,617	1,616	1,625	17,235,524	818.74
Trade, Transportation & Utilities	306	4,377	4,345	4,339	37,413,785	661.05
Wholesale Trade	62	719	730	740	8,333,227	878.51
Retail Trade	163	1,946	1,926	1,913	10,289,493	410.46
Transportation, Warehousing & Utilities	81	1,712	1,689	1,686	18,791,065	852.45
Information	6	69	68	66	588,422	668.91
Financial Activities	97	432	436	449	4,208,997	737.51
Professional & Business Services	120	1,517	1,462	1,410	10,539,082	554.13
Education & Health Services	391	2,605	2,612	2,551	19,803,557	588.32
Leisure & Hospitality	121	2,186	2,228	2,275	8,670,166	299.12
Other Services	74	416	400	406	3,091,157	583.75
Local Government	43	2,251	2,198	2,257	25,014,659	860.81
State Government	14	522	413	445	3,985,578	666.48

TABLE 6. COUNTY SUMMARY

North American Industry Classification System - Industry Groups	Number of Employing Units	Employment			Total Earnings Apr - Jun 2014	Average Weekly Earnings
		Apr	May	Jun		
<b>CROSS COUNTY - TOTAL</b>	<b>503</b>	<b>5,028</b>	<b>5,080</b>	<b>5,031</b>	<b>\$40,278,950</b>	<b>\$613.99</b>
Natural Resources & Mining	33	212	217	220	1,645,369	585.05
Construction	21	72	79	74	528,359	541.91
Manufacturing	13	636	629	636	5,235,814	635.59
Trade, Transportation & Utilities	133	1,306	1,318	1,287	10,654,931	628.70
Wholesale Trade	30	353	358	363	4,070,341	874.59
Retail Trade	75	797	807	812	5,201,423	496.82
Transportation, Warehousing & Utilities	28	156	153	112	1,383,167	758.18
Information	5	36	38	37	310,933	646.43
Financial Activities	46	313	312	310	2,624,846	647.84
Professional & Business Services	43	127	132	130	1,129,131	669.84
Education & Health Services	116	823	830	820	6,427,779	599.81
Leisure & Hospitality	32	317	318	303	897,271	220.75
Other Services	35	75	84	80	476,028	459.63
Local Government	16	726	731	732	6,867,325	723.97
State Government	10	385	392	402	3,481,164	681.38
<b>DALLAS COUNTY - TOTAL</b>	<b>252</b>	<b>2,699</b>	<b>2,726</b>	<b>2,743</b>	<b>\$19,300,583</b>	<b>\$545.30</b>
Natural Resources & Mining	34	168	177	180	1,346,246	591.76
Construction	18	73	84	78	1,122,649	1,102.44
Manufacturing	9	521	509	532	4,854,386	717.18
Trade, Transportation & Utilities	58	480	485	471	3,101,585	498.43
Retail Trade	40	350	350	339	1,971,939	437.98
Other Trade, Transportation, & Utilities	18	130	135	132	1,129,646	656.64
Information	3	18	18	18	120,347	514.30
Financial Activities	15	73	76	76	677,636	695.01
Professional & Business Services	12	30	30	30	133,110	341.31
Education & Health Services	56	749	748	746	4,488,126	461.76
Leisure & Hospitality	13	149	156	154	427,745	215.06
Other Services	13	65	68	65	322,781	376.20
Local Government	14	325	326	345	2,376,108	550.53
State Government	7	48	49	48	329,864	524.98

TABLE 6. COUNTY SUMMARY

North American Industry Classification System - Industry Groups	Number of Employing Units	Employment			Total Earnings Apr - Jun 2014	Average Weekly Earnings
		Apr	May	Jun		
<b>DESHA COUNTY - TOTAL</b>	<b>532</b>	<b>4,508</b>	<b>4,532</b>	<b>4,551</b>	<b>\$36,924,315</b>	<b>\$626.96</b>
Natural Resources & Mining	71	344	350	358	2,314,878	507.80
Construction	20	112	110	110	905,150	629.16
Manufacturing	15	809	811	827	11,107,062	1,047.47
Trade, Transportation & Utilities	114	881	899	902	6,520,367	561.04
Wholesale Trade	23	231	231	236	2,743,320	906.98
Retail Trade	66	483	504	505	2,403,618	371.77
Transportation, Warehousing & Utilities	25	167	164	161	1,373,429	644.20
Information	4	13	14	13	147,844	852.95
Financial Activities	30	211	206	209	1,568,701	578.29
Professional & Business Services	42	107	114	117	655,707	447.68
Education & Health Services	146	725	710	696	4,535,417	491.15
Leisure & Hospitality	38	328	345	358	1,070,971	239.72
Other Services	23	46	45	53	190,900	305.93
Local Government	19	794	785	771	6,902,382	677.81
State Government	10	138	143	137	1,004,936	554.80
<b>DREW COUNTY - TOTAL</b>	<b>530</b>	<b>6,486</b>	<b>6,442</b>	<b>6,213</b>	<b>\$50,748,473</b>	<b>\$611.84</b>
Natural Resources & Mining	45	328	323	281	2,403,327	595.08
Construction	19	92	96	90	686,840	570.15
Manufacturing	21	759	772	785	6,742,573	671.84
Trade, Transportation & Utilities	131	1,299	1,286	1,264	8,084,268	484.70
Wholesale Trade	19	172	173	173	1,778,500	792.32
Retail Trade	90	1,016	998	976	5,248,989	405.12
Transportation, Warehousing & Utilities	22	111	115	115	1,056,779	715.17
Information	8	54	56	55	473,394	662.09
Financial Activities	48	235	233	233	2,333,531	768.20
Professional & Business Services	35	229	220	222	3,485,068	1,198.58
Education & Health Services	123	889	867	868	6,452,832	567.50
Leisure & Hospitality	43	609	602	583	1,949,130	250.72
Other Services	19	56	53	51	345,212	497.90
Local Government	22	1,303	1,302	1,223	11,827,729	713.03
State Government	16	633	632	558	5,964,569	755.04

TABLE 6. COUNTY SUMMARY

North American Industry Classification System - Industry Groups	Number of Employing Units	Employment			Total Earnings Apr - Jun 2014	Average Weekly Earnings
		Apr	May	Jun		
<b>FAULKNER COUNTY - TOTAL</b>	<b>2,786</b>	<b>40,042</b>	<b>40,128</b>	<b>40,014</b>	<b>\$395,990,244</b>	<b>\$760.35</b>
Natural Resources & Mining	59	1,116	1,131	1,121	19,155,372	1,312.49
Construction	310	2,651	2,664	2,696	25,967,195	748.03
Manufacturing	97	3,141	3,157	3,206	40,191,137	975.89
Trade, Transportation & Utilities	653	7,128	7,080	7,180	53,143,183	573.40
Wholesale Trade	160	641	638	646	8,461,965	1,014.42
Retail Trade	401	5,628	5,583	5,669	33,505,027	458.05
Transportation, Warehousing & Utilities	92	859	859	865	11,176,191	998.50
Information	19	238	236	239	3,080,211	996.94
Financial Activities	323	1,522	1,532	1,553	17,478,518	875.52
Professional & Business Services	405	5,440	5,402	5,451	87,888,911	1,244.83
Education & Health Services	437	6,064	6,117	6,158	51,419,338	647.04
Leisure & Hospitality	244	4,837	4,855	4,916	16,084,645	254.10
Other Services	183	819	887	917	6,076,323	534.59
Local Government	38	3,707	3,694	3,575	43,203,067	908.34
State Government	18	3,379	3,373	3,002	32,302,344	764.24
<b>FRANKLIN COUNTY - TOTAL</b>	<b>333</b>	<b>4,175</b>	<b>4,197</b>	<b>4,195</b>	<b>\$34,713,480</b>	<b>\$637.45</b>
Natural Resources & Mining	19	267	262	261	4,149,790	1,212.21
Construction	31	97	97	103	738,306	573.66
Manufacturing	13	836	842	846	7,369,647	673.81
Trade, Transportation & Utilities	86	931	947	956	7,395,303	602.19
Wholesale Trade	13	39	44	44	216,629	393.63
Retail Trade	52	595	599	603	3,075,365	394.94
Transportation, Warehousing & Utilities	21	297	304	309	4,103,309	1,040.57
Information	5	22	23	22	183,947	633.57
Financial Activities	29	188	190	194	1,915,841	772.93
Professional & Business Services	27	120	96	94	736,089	547.96
Education & Health Services	55	533	541	539	3,217,615	460.34
Leisure & Hospitality	25	289	296	299	942,977	246.17
Other Services	15	51	52	53	305,838	452.42
Local Government	19	720	728	722	6,508,193	692.12
State Government	9	121	123	106	1,249,934	824.13

TABLE 6. COUNTY SUMMARY

North American Industry Classification System - Industry Groups	Number of Employing Units	Employment			Total Earnings Apr - Jun 2014	Average Weekly Earnings
		Apr	May	Jun		
<b>FULTON COUNTY - TOTAL</b>	<b>197</b>	<b>1,930</b>	<b>1,951</b>	<b>1,910</b>	<b>\$13,319,707</b>	<b>\$530.79</b>
Construction	7	35	31	31	311,313	740.63
Manufacturing	13	117	122	125	645,881	409.48
Trade, Transportation & Utilities	48	310	307	306	2,415,914	604.03
Retail Trade	31	188	186	187	856,370	352.27
Other Trade, Transportation, & Utilities	17	122	121	119	1,559,544	994.18
Information	4	32	33	31	200,892	482.91
Financial Activities	16	93	106	106	832,452	629.85
Professional & Business Services	15	50	40	39	323,584	578.86
Education & Health Services	49	451	451	433	2,432,733	420.52
Leisure & Hospitality	15	168	166	171	452,284	206.68
Local Government	12	551	572	544	4,699,425	650.56
State Government	10	109	109	110	938,732	660.46
Other	8	14	14	14	66,497	365.37
<b>GARLAND COUNTY - TOTAL</b>	<b>3,093</b>	<b>36,402</b>	<b>36,267</b>	<b>36,397</b>	<b>\$296,458,145</b>	<b>\$627.27</b>
Natural Resources & Mining	31	284	284	301	3,738,244	992.72
Construction	340	1,659	1,686	1,692	13,299,059	609.29
Manufacturing	97	2,396	2,391	2,402	27,336,321	877.50
Trade, Transportation & Utilities	706	7,204	7,237	7,353	51,344,876	543.67
Wholesale Trade	141	835	850	852	9,116,186	829.22
Retail Trade	508	5,799	5,819	5,915	35,532,591	467.68
Transportation, Warehousing & Utilities	57	570	568	586	6,696,099	896.32
Information	33	502	509	524	4,299,363	646.36
Financial Activities	352	1,451	1,459	1,447	15,268,313	808.69
Professional & Business Services	381	3,142	3,106	3,112	24,657,822	607.93
Education & Health Services	516	7,614	7,651	7,662	77,169,389	776.74
Leisure & Hospitality	345	7,105	6,870	7,124	25,914,052	283.43
Other Services	234	935	948	969	5,980,506	483.91
Local Government	33	3,027	3,031	2,811	37,502,179	975.80
State Government	25	1,083	1,095	1,000	9,948,021	722.37



TABLE 6. COUNTY SUMMARY

North American Industry Classification System - Industry Groups	Number of Employing Units	Employment			Total Earnings Apr - Jun 2014	Average Weekly Earnings
		Apr	May	Jun		
<b>GRANT COUNTY - TOTAL</b>	<b>343</b>	<b>3,908</b>	<b>3,915</b>	<b>3,931</b>	<b>\$32,961,827</b>	<b>\$647.15</b>
Natural Resources & Mining	26	172	182	187	1,985,202	846.81
Construction	31	167	176	179	1,709,158	755.60
Manufacturing	18	1,154	1,146	1,129	11,541,840	776.76
Trade, Transportation & Utilities	88	627	632	622	3,983,810	488.75
Wholesale Trade	19	102	106	98	1,039,521	783.95
Retail Trade	47	461	465	463	2,429,986	403.72
Transportation, Warehousing & Utilities	22	64	61	61	514,303	638.09
Information	4	35	35	35	829,072	1,822.14
Financial Activities	26	82	84	81	750,697	701.37
Professional & Business Services	26	120	118	100	1,051,821	718.13
Education & Health Services	61	366	364	360	2,383,199	504.56
Leisure & Hospitality	23	296	289	304	744,769	193.33
Other Services	22	46	47	48	239,953	392.72
Local Government	10	788	786	829	7,252,753	696.51
State Government	8	55	56	57	489,553	672.46
<b>GREENE COUNTY - TOTAL</b>	<b>883</b>	<b>15,092</b>	<b>15,132</b>	<b>15,322</b>	<b>\$130,889,167</b>	<b>\$663.18</b>
Natural Resources & Mining	38	283	287	292	2,143,913	573.95
Construction	59	269	275	291	2,480,246	685.47
Manufacturing	64	5,228	5,192	5,283	58,134,401	854.34
Trade, Transportation & Utilities	236	2,503	2,536	2,547	17,470,085	531.45
Wholesale Trade	50	546	542	539	5,628,495	798.33
Retail Trade	156	1,732	1,765	1,773	9,861,943	431.85
Transportation, Warehousing & Utilities	30	225	229	235	1,979,647	663.05
Information	9	92	90	95	513,084	427.45
Financial Activities	77	463	472	473	4,204,647	689.14
Professional & Business Services	93	1,075	1,046	1,094	6,741,676	483.91
Education & Health Services	150	1,804	1,821	1,772	14,329,073	612.69
Leisure & Hospitality	66	1,093	1,117	1,115	3,517,274	244.11
Other Services	49	211	209	208	1,223,215	449.49
Local Government	30	1,654	1,663	1,721	15,801,090	723.78
State Government	12	417	424	431	4,330,463	785.64

TABLE 6. COUNTY SUMMARY

North American Industry Classification System - Industry Groups	Number of Employing Units	Employment			Total Earnings	Average Weekly Earnings
		Apr	May	Jun	Apr - Jun 2014	
<b>HEMPSTEAD COUNTY - TOTAL</b>	<b>505</b>	<b>7,747</b>	<b>7,716</b>	<b>7,753</b>	<b>\$64,455,867</b>	<b>\$640.70</b>
Natural Resources & Mining	21	220	215	210	1,973,262	706.00
Construction	32	182	176	178	1,820,081	783.62
Manufacturing	29	2,014	2,009	1,998	18,311,763	701.84
Trade, Transportation & Utilities	132	1,507	1,537	1,536	12,663,667	638.08
Wholesale Trade	21	271	277	276	2,544,612	712.64
Retail Trade	81	890	901	885	4,780,400	412.25
Transportation, Warehousing & Utilities	30	346	359	375	5,338,655	1,140.74
Information	8	45	45	46	368,387	625.09
Financial Activities	42	246	246	245	2,283,061	714.87
Professional & Business Services	32	163	162	159	1,198,576	571.48
Education & Health Services	86	968	964	958	6,220,994	496.75
Leisure & Hospitality	45	569	568	626	1,953,479	255.70
Other Services	34	154	153	154	955,519	478.32
Local Government	27	913	902	896	9,651,078	821.53
State Government	17	766	739	747	7,056,000	723.05
<b>HOT SPRING COUNTY - TOTAL</b>	<b>604</b>	<b>8,338</b>	<b>8,335</b>	<b>8,312</b>	<b>\$70,246,448</b>	<b>\$648.82</b>
Natural Resources & Mining	26	157	154	149	1,162,282	583.08
Construction	57	341	335	320	2,671,099	618.88
Manufacturing	30	1,386	1,391	1,394	15,454,012	855.03
Trade, Transportation & Utilities	148	1,454	1,455	1,456	12,631,570	667.81
Wholesale Trade	15	92	95	95	921,087	753.75
Retail Trade	94	832	828	829	4,420,232	409.82
Transportation, Warehousing & Utilities	39	530	532	532	7,290,251	1,055.44
Information	7	51	55	52	503,981	736.10
Financial Activities	54	254	258	259	2,689,411	804.97
Professional & Business Services	55	972	964	949	5,589,718	447.12
Education & Health Services	107	1,109	1,107	1,097	8,204,090	571.46
Leisure & Hospitality	46	571	579	629	1,678,769	217.77
Other Services	34	150	146	150	844,312	436.86
Local Government	27	1,017	1,011	1,011	10,739,412	815.51
State Government	13	876	880	846	8,077,792	716.41

TABLE 6. COUNTY SUMMARY

North American Industry Classification System - Industry Groups	Number of Employing Units	Employment			Total Earnings Apr - Jun 2014	Average Weekly Earnings
		Apr	May	Jun		
<b>HOWARD COUNTY - TOTAL</b>	<b>351</b>	<b>7,202</b>	<b>7,349</b>	<b>7,382</b>	<b>\$55,607,750</b>	<b>\$585.08</b>
Natural Resources & Mining	14	185	182	184	1,400,763	586.67
Construction	16	104	170	168	1,703,316	889.31
Manufacturing	22	3,796	3,808	3,861	28,954,592	582.80
Trade, Transportation & Utilities	91	883	884	891	6,380,799	553.98
Wholesale Trade	16	87	84	86	726,983	652.78
Retail Trade	53	587	597	601	3,403,936	440.07
Transportation, Warehousing & Utilities	22	209	203	204	2,249,880	842.86
Information	5	25	25	27	164,989	494.47
Financial Activities	33	138	141	143	1,087,428	594.66
Professional & Business Services	24	158	139	135	1,107,562	591.65
Education & Health Services	71	630	650	633	4,850,541	585.13
Leisure & Hospitality	23	309	323	329	955,866	229.54
Other Services	24	156	151	153	1,073,121	538.36
Local Government	17	692	748	739	6,836,827	724.06
State Government	11	126	128	119	1,091,946	675.57
<b>INDEPENDENCE COUNTY - TOTAL</b>	<b>909</b>	<b>14,560</b>	<b>14,771</b>	<b>14,650</b>	<b>\$120,712,829</b>	<b>\$633.38</b>
Natural Resources & Mining	17	278	294	297	3,519,607	934.66
Construction	64	378	402	419	3,728,844	717.68
Manufacturing	42	2,720	2,753	2,689	26,556,306	750.84
Trade, Transportation & Utilities	239	2,889	2,893	2,935	22,575,779	597.66
Wholesale Trade	33	465	462	485	4,543,591	742.58
Retail Trade	159	1,676	1,694	1,718	9,478,982	429.92
Transportation, Warehousing & Utilities	47	748	737	732	8,553,206	890.31
Information	10	112	114	116	914,297	616.93
Financial Activities	79	491	495	485	5,177,861	812.30
Professional & Business Services	94	973	934	983	5,912,272	472.10
Education & Health Services	165	3,005	3,013	3,022	27,728,570	707.84
Leisure & Hospitality	74	1,122	1,155	1,156	3,377,624	227.05
Other Services	62	338	340	338	1,747,347	396.88
Local Government	47	1,611	1,748	1,618	14,147,412	655.97
State Government	16	643	630	592	5,326,910	659.14

TABLE 6. COUNTY SUMMARY

North American Industry Classification System - Industry Groups	Number of Employing Units	Employment			Total Earnings Apr - Jun 2014	Average Weekly Earnings
		Apr	May	Jun		
<b>IZARD COUNTY - TOTAL</b>	<b>252</b>	<b>3,129</b>	<b>3,076</b>	<b>2,982</b>	<b>\$23,814,369</b>	<b>\$598.20</b>
Natural Resources & Mining	5	177	175	173	1,984,252	872.20
Construction	21	92	97	95	785,395	638.19
Manufacturing	9	295	291	288	2,349,160	620.27
Trade, Transportation & Utilities	65	572	553	562	3,651,858	499.55
Wholesale Trade	11	20	21	21	131,358	488.93
Retail Trade	44	407	413	415	2,146,355	401.06
Transportation, Warehousing & Utilities	10	145	119	126	1,374,145	813.10
Information	4	7	7	7	75,773	832.67
Financial Activities	25	129	135	139	1,083,813	620.62
Professional & Business Services	17	86	86	90	511,744	450.74
Education & Health Services	48	620	621	624	3,843,506	475.58
Leisure & Hospitality	21	115	126	133	356,482	219.96
Other Services	10	24	21	24	147,404	492.99
Local Government	17	529	523	404	4,381,991	694.53
State Government	10	483	441	443	4,642,991	783.80
<b>JACKSON COUNTY - TOTAL</b>	<b>452</b>	<b>5,210</b>	<b>5,275</b>	<b>5,281</b>	<b>\$45,184,785</b>	<b>\$661.38</b>
Natural Resources & Mining	54	291	302	314	2,471,885	628.93
Construction	25	127	127	131	1,267,543	759.77
Manufacturing	17	914	924	922	10,574,903	884.19
Trade, Transportation & Utilities	108	1,028	1,039	1,031	7,348,130	547.36
Wholesale Trade	21	216	219	223	2,247,682	788.29
Retail Trade	70	717	723	713	4,047,288	433.81
Transportation, Warehousing & Utilities	17	95	97	95	1,053,160	846.82
Information	4	36	35	39	240,717	505.00
Financial Activities	33	151	155	158	1,424,826	708.63
Professional & Business Services	31	127	125	130	1,116,391	674.42
Education & Health Services	86	791	799	789	6,768,171	656.53
Leisure & Hospitality	27	283	291	294	853,031	226.79
Other Services	21	64	66	68	459,419	535.45
Local Government	33	631	643	656	5,405,018	646.28
State Government	13	767	769	749	7,254,751	732.68

TABLE 6. COUNTY SUMMARY

North American Industry Classification System - Industry Groups	Number of Employing Units	Employment			Total Earnings	Average Weekly Earnings
		Apr	May	Jun	Apr - Jun 2014	
<b>JEFFERSON COUNTY - TOTAL</b>	<b>2,159</b>	<b>26,931</b>	<b>27,132</b>	<b>27,256</b>	<b>\$244,586,318</b>	<b>\$694.09</b>
Natural Resources & Mining	36	204	209	215	2,149,114	789.73
Construction	95	560	597	611	5,142,864	671.28
Manufacturing	62	5,007	5,036	5,051	61,329,956	937.66
Trade, Transportation & Utilities	428	4,716	4,701	4,734	37,312,547	608.48
Wholesale Trade	74	603	594	593	5,937,869	765.52
Retail Trade	295	3,239	3,219	3,262	19,640,768	466.31
Transportation, Warehousing & Utilities	59	874	888	879	11,733,910	1,025.30
Information	14	108	105	99	898,752	664.76
Financial Activities	156	1,122	1,125	1,131	11,957,543	816.88
Professional & Business Services	153	1,546	1,629	1,672	12,104,913	576.32
Education & Health Services	873	4,816	4,818	4,794	41,638,919	666.00
Leisure & Hospitality	138	1,850	1,903	1,891	6,057,374	247.67
Other Services	129	615	612	630	4,528,283	562.73
Local Government	39	3,025	3,042	3,112	27,577,209	693.32
State Government	36	3,362	3,355	3,316	33,888,844	779.48
<b>JOHNSON COUNTY - TOTAL</b>	<b>495</b>	<b>8,272</b>	<b>8,382</b>	<b>8,398</b>	<b>\$62,874,105</b>	<b>\$579.17</b>
Natural Resources & Mining	17	138	137	138	1,120,035	625.83
Construction	34	186	185	190	1,466,832	603.39
Manufacturing	35	2,638	2,659	2,700	20,360,760	587.55
Trade, Transportation & Utilities	120	1,850	1,833	1,822	12,632,702	529.56
Retail Trade	76	882	872	861	4,405,266	388.76
Other Trade, Transportation & Utilities	44	968	961	961	8,227,436	656.97
Information	5	53	53	49	275,139	409.64
Financial Activities	50	191	189	190	1,491,630	603.90
Professional & Business Services	51	227	239	194	1,746,597	610.70
Education & Health Services	91	1,247	1,243	1,247	9,815,833	606.15
Leisure & Hospitality	38	512	506	506	1,538,457	232.96
Other Services	31	68	70	70	391,578	434.44
Local Government	14	1,026	1,133	1,155	10,765,125	749.63
State Government	9	136	135	137	1,269,417	718.00

TABLE 6. COUNTY SUMMARY

North American Industry Classification System - Industry Groups	Number of Employing Units	Employment			Total Earnings Apr - Jun 2014	Average Weekly Earnings
		Apr	May	Jun		
<b>LAFAYETTE COUNTY - TOTAL</b>	<b>168</b>	<b>1,230</b>	<b>1,231</b>	<b>1,237</b>	<b>\$10,014,125</b>	<b>\$624.92</b>
Natural Resources & Mining	30	159	158	170	1,800,661	853.26
Construction	10	59	60	61	666,873	854.97
Manufacturing	6	27	28	43	392,485	924.22
Trade, Transportation & Utilities	31	197	196	193	1,196,301	471.11
Retail Trade	18	113	111	110	478,254	330.44
Other Trade, Transportation & Utilities	13	84	85	83	718,047	657.55
Financial Activities	12	49	48	50	343,811	539.73
Professional & Business Services	10	49	43	42	328,746	566.15
Education & Health Services	36	218	216	207	1,349,938	486.00
Leisure & Hospitality	5	42	44	41	137,857	250.50
Local Government	13	290	298	293	3,014,626	789.65
State Government	7	49	49	50	355,188	553.83
Other	8	91	91	87	427,639	366.86
<b>LAWRENCE COUNTY - TOTAL</b>	<b>409</b>	<b>4,152</b>	<b>4,105</b>	<b>4,091</b>	<b>\$32,002,814</b>	<b>\$598.09</b>
Natural Resources & Mining	53	228	235	236	1,789,575	590.81
Construction	22	133	140	153	1,228,910	665.72
Manufacturing	22	458	462	464	3,722,012	620.61
Trade, Transportation & Utilities	106	880	877	872	6,831,433	599.65
Wholesale Trade	19	258	260	259	2,620,725	778.36
Retail Trade	57	503	498	497	2,906,871	447.81
Transportation, Warehousing & Utilities	30	119	119	116	1,303,837	849.96
Financial Activities	34	151	152	147	1,114,550	571.56
Professional & Business Services	27	104	101	102	1,016,666	764.22
Education & Health Services	59	537	485	483	3,632,477	556.99
Leisure & Hospitality	29	337	341	316	853,495	198.15
Local Government	27	1,141	1,134	1,137	10,568,591	714.80
State Government	10	105	102	101	773,691	579.69
Other	20	78	76	80	471,414	464.91

TABLE 6. COUNTY SUMMARY

North American Industry Classification System - Industry Groups	Number of Employing Units	Employment			Total Earnings Apr - Jun 2014	Average Weekly Earnings
		Apr	May	Jun		
<b>LEE COUNTY - TOTAL</b>	<b>297</b>	<b>1,978</b>	<b>2,014</b>	<b>2,004</b>	<b>\$16,669,838</b>	<b>\$641.58</b>
Natural Resources & Mining	37	224	232	234	2,128,057	711.72
Construction	10	44	46	46	306,491	520.06
Trade, Transportation & Utilities	45	355	361	353	2,663,669	575.02
Wholesale Trade	8	109	113	112	1,101,131	760.80
Retail Trade	25	198	199	191	977,703	383.71
Transportation, Warehousing & Utilities	12	48	49	50	584,835	918.11
Financial Activities	18	63	64	63	539,794	655.62
Professional & Business Services	15	74	75	78	871,744	886.22
Education & Health Services	130	348	359	358	2,673,957	579.41
Leisure & Hospitality	9	89	98	93	277,127	228.40
Local Government	15	288	286	285	2,216,961	595.58
State Government	7	476	476	478	4,897,045	790.27
Other	11	17	17	16	94,993	438.43
<b>LINCOLN COUNTY - TOTAL</b>	<b>283</b>	<b>2,961</b>	<b>3,005</b>	<b>3,027</b>	<b>\$25,917,243</b>	<b>\$665.06</b>
Natural Resources & Mining	35	171	179	181	1,337,968	581.47
Construction	16	103	106	106	803,370	588.55
Manufacturing	9	340	346	342	3,140,903	705.08
Trade, Transportation & Utilities	43	352	361	380	3,193,570	674.27
Wholesale Trade	8	61	61	62	688,723	863.78
Retail Trade	22	165	171	170	800,613	365.13
Transportation, Warehousing & Utilities	13	126	129	148	1,704,234	975.89
Financial Activities	20	67	69	69	556,349	626.28
Professional & Business Services	12	28	29	28	183,106	497.12
Education & Health Services	99	409	418	405	2,654,473	497.22
Leisure & Hospitality	15	157	160	167	450,767	214.92
Local Government	7	358	353	361	3,095,201	666.30
State Government	12	948	954	962	10,266,595	827.24
Other	15	28	30	26	234,941	645.44

TABLE 6. COUNTY SUMMARY

North American Industry Classification System - Industry Groups	Number of Employing Units	Employment			Total Earnings Apr - Jun 2014	Average Weekly Earnings
		Apr	May	Jun		
<b>LITTLE RIVER COUNTY - TOTAL</b>	<b>243</b>	<b>3,526</b>	<b>3,535</b>	<b>3,524</b>	<b>\$38,873,338</b>	<b>\$847.50</b>
Natural Resources & Mining	13	87	87	86	881,408	782.31
Construction	17	210	206	187	1,977,692	756.87
Manufacturing	17	1,284	1,272	1,275	21,790,990	1,312.63
Trade, Transportation & Utilities	57	532	532	529	3,635,065	526.59
Wholesale Trade	9	32	32	34	503,415	1,185.44
Retail Trade	35	365	365	363	2,012,707	424.95
Transportation, Warehousing & Utilities	13	135	135	132	1,118,943	642.33
Information	3	11	12	6	148,726	1,183.50
Financial Activities	19	70	74	74	614,980	651.00
Professional & Business Services	18	69	74	84	637,343	647.93
Education & Health Services	36	161	169	164	1,021,516	477.20
Leisure & Hospitality	15	192	203	207	619,388	237.43
Other Services	17	69	63	62	268,716	319.65
Local Government	20	738	741	753	6,629,762	685.46
State Government	11	103	102	97	647,752	494.97
<b>LOGAN COUNTY - TOTAL</b>	<b>476</b>	<b>5,441</b>	<b>5,503</b>	<b>5,486</b>	<b>\$41,019,877</b>	<b>\$576.15</b>
Natural Resources & Mining	24	129	128	131	1,521,163	904.74
Construction	39	244	245	230	2,093,691	671.99
Manufacturing	21	1,176	1,196	1,186	10,150,657	658.36
Trade, Transportation & Utilities	106	969	974	970	6,061,036	480.16
Wholesale Trade	12	91	88	89	508,940	438.24
Retail Trade	67	707	719	713	3,692,285	398.35
Transportation, Warehousing & Utilities	27	171	167	168	1,859,811	848.20
Information	5	33	33	33	319,750	745.34
Financial Activities	43	178	178	175	1,726,716	750.42
Professional & Business Services	46	129	124	129	1,095,088	661.55
Education & Health Services	99	755	760	756	5,272,574	535.78
Leisure & Hospitality	29	322	327	328	1,002,747	236.85
Other Services	28	126	126	126	922,978	563.48
Local Government	22	798	823	827	7,014,961	661.29
State Government	14	582	589	595	3,838,516	501.59



TABLE 6. COUNTY SUMMARY

North American Industry Classification System - Industry Groups	Number of Employing Units	Employment			Total Earnings Apr - Jun 2014	Average Weekly Earnings
		Apr	May	Jun		
<b>LONOKE COUNTY - TOTAL</b>	<b>1,306</b>	<b>13,527</b>	<b>13,585</b>	<b>13,663</b>	<b>\$108,772,959</b>	<b>\$615.61</b>
Natural Resources & Mining	87	473	472	485	4,245,301	685.09
Construction	131	705	741	751	6,727,220	706.62
Manufacturing	37	1,705	1,717	1,747	20,844,867	930.62
Trade, Transportation & Utilities	324	2,946	2,965	2,951	19,400,438	505.19
Wholesale Trade	78	468	474	470	5,270,746	861.42
Retail Trade	183	2,192	2,197	2,192	11,379,325	399.03
Transportation, Warehousing & Utilities	63	286	294	289	2,750,367	730.38
Information	15	96	97	99	1,007,203	796.00
Financial Activities	139	514	514	505	6,227,872	937.51
Professional & Business Services	155	877	820	872	6,219,727	558.71
Education & Health Services	202	1,667	1,683	1,677	11,325,362	519.90
Leisure & Hospitality	103	1,579	1,601	1,615	5,073,549	244.17
Other Services	73	215	207	203	1,170,612	432.23
Local Government	25	2,582	2,601	2,590	25,138,377	746.32
State Government	15	168	167	168	1,392,431	638.83
<b>MADISON COUNTY - TOTAL</b>	<b>244</b>	<b>3,123</b>	<b>3,137</b>	<b>3,112</b>	<b>\$23,287,982</b>	<b>\$573.43</b>
Natural Resources & Mining	14	52	49	47	373,466	582.33
Construction	23	71	76	78	584,000	598.97
Manufacturing	22	1,111	1,122	1,125	8,513,936	585.10
Trade, Transportation & Utilities	49	543	551	543	3,812,499	537.45
Retail Trade	34	411	411	406	2,413,129	453.48
Other Trade, Transportation & Utilities	15	132	140	137	1,399,370	789.56
Information	6	38	37	39	628,966	1,273.21
Financial Activities	18	75	75	77	543,687	552.71
Professional & Business Services	22	149	151	153	1,092,594	556.59
Education & Health Services	46	277	271	275	1,635,637	458.63
Leisure & Hospitality	16	197	197	198	472,508	184.19
Other Services	12	30	29	27	241,147	647.08
Local Government	9	539	538	507	5,012,807	730.30
State Government	7	41	41	43	376,735	695.51

TABLE 6. COUNTY SUMMARY

North American Industry Classification System - Industry Groups	Number of Employing Units	Employment			Total Earnings Apr - Jun 2014	Average Weekly Earnings
		Apr	May	Jun		
<b>MARION COUNTY - TOTAL</b>	<b>287</b>	<b>3,760</b>	<b>3,812</b>	<b>3,813</b>	<b>\$27,557,829</b>	<b>\$558.59</b>
Natural Resources & Mining	4	24	24	25	139,063	439.61
Construction	21	51	53	56	381,882	550.79
Manufacturing	19	1,729	1,715	1,689	13,692,194	615.57
Trade, Transportation & Utilities	54	512	524	533	2,994,153	440.38
Retail Trade	38	423	430	440	1,991,422	355.42
Other Trade, Transportation & Utilities	16	89	94	93	1,002,731	838.40
Information	3	51	50	50	588,459	899.33
Financial Activities	31	180	205	216	1,615,247	620.22
Professional & Business Services	25	64	61	65	421,065	511.41
Education & Health Services	54	343	339	339	2,061,195	465.88
Leisure & Hospitality	34	197	236	236	683,426	235.75
Other Services	15	33	31	29	135,669	336.65
Local Government	18	508	507	508	4,368,518	661.93
State Government	9	68	67	67	476,958	544.89
<b>MILLER COUNTY - TOTAL</b>	<b>857</b>	<b>12,740</b>	<b>12,952</b>	<b>13,120</b>	<b>\$121,126,263</b>	<b>\$720.20</b>
Natural Resources & Mining	30	162	170	175	1,484,861	675.86
Construction	78	671	707	697	6,268,176	697.11
Manufacturing	27	2,257	2,289	2,331	37,344,111	1,253.14
Trade, Transportation & Utilities	225	3,461	3,493	3,528	28,992,028	638.28
Wholesale Trade	51	520	528	546	5,734,742	830.24
Retail Trade	130	1,337	1,330	1,328	7,204,944	416.19
Transportation, Warehousing & Utilities	44	1,604	1,635	1,654	16,052,342	757.08
Information	7	71	71	71	1,338,100	1,449.73
Financial Activities	85	395	399	403	3,537,216	681.94
Professional & Business Services	87	957	952	954	5,896,179	475.26
Education & Health Services	132	993	980	976	7,029,521	550.08
Leisure & Hospitality	88	1,401	1,510	1,587	5,338,278	273.88
Other Services	57	276	268	265	1,386,273	395.44
Local Government	25	1,576	1,589	1,609	17,266,243	834.63
State Government	16	520	524	524	5,245,277	771.97

TABLE 6. COUNTY SUMMARY

North American Industry Classification System - Industry Groups	Number of Employing Units	Employment			Total Earnings Apr - Jun 2014	Average Weekly Earnings
		Apr	May	Jun		
<b>MISSISSIPPI COUNTY - TOTAL</b>	<b>1,182</b>	<b>18,715</b>	<b>18,802</b>	<b>18,302</b>	<b>\$196,284,777</b>	<b>\$811.49</b>
Natural Resources & Mining	118	603	640	655	4,323,219	525.64
Construction	54	841	899	854	11,820,820	1,051.61
Manufacturing	54	6,647	6,503	6,338	97,716,243	1,157.12
Trade, Transportation & Utilities	282	2,924	2,899	2,911	24,566,987	649.11
Wholesale Trade	64	476	483	486	5,105,649	815.38
Retail Trade	158	1,681	1,665	1,649	8,849,286	408.84
Transportation, Warehousing & Utilities	60	767	751	776	10,612,052	1,067.54
Information	9	65	67	65	515,545	603.92
Financial Activities	88	416	421	417	3,648,985	671.51
Professional & Business Services	88	1,322	1,400	1,345	10,552,994	598.80
Education & Health Services	273	1,820	1,840	1,681	13,441,744	580.78
Leisure & Hospitality	84	1,182	1,211	1,235	3,587,890	228.22
Other Services	56	185	185	187	1,103,077	457.01
Local Government	52	2,144	2,168	2,076	20,077,028	725.29
State Government	24	566	569	538	4,930,245	680.07
<b>MONROE COUNTY - TOTAL</b>	<b>309</b>	<b>2,348</b>	<b>2,348</b>	<b>2,357</b>	<b>\$16,544,203</b>	<b>\$541.31</b>
Natural Resources & Mining	33	142	148	173	1,399,565	697.57
Construction	11	61	63	54	637,432	826.40
Manufacturing	7	137	142	142	1,107,422	607.03
Trade, Transportation & Utilities	84	697	696	701	5,216,393	574.87
Wholesale Trade	19	277	281	278	2,657,758	733.65
Retail Trade	41	294	289	298	1,453,350	380.69
Transportation, Warehousing & Utilities	24	126	126	125	1,105,285	676.57
Financial Activities	21	95	100	99	858,306	673.71
Professional & Business Services	14	69	60	31	220,802	318.46
Education & Health Services	71	332	325	323	1,958,121	461.10
Leisure & Hospitality	21	243	234	249	764,126	242.89
Local Government	21	336	343	346	2,902,487	653.47
State Government	8	114	114	112	898,145	609.60
Other	18	122	123	127	581,404	360.67

TABLE 6. COUNTY SUMMARY

North American Industry Classification System - Industry Groups	Number of Employing Units	Employment			Total Earnings Apr - Jun 2014	Average Weekly Earnings
		Apr	May	Jun		
<b>MONTGOMERY COUNTY - TOTAL</b>	<b>180</b>	<b>1,376</b>	<b>1,440</b>	<b>1,849</b>	<b>\$10,121,082</b>	<b>\$500.67</b>
Natural Resources & Mining	9	33	32	40	348,538	766.02
Construction	23	74	76	69	483,493	509.48
Manufacturing	7	23	21	25	112,971	377.83
Trade, Transportation & Utilities	40	238	235	239	1,568,732	508.45
Wholesale Trade	11	61	60	63	563,202	706.36
Retail Trade	22	159	156	157	854,187	417.63
Transportation, Warehousing & Utilities	7	18	19	19	151,343	623.67
Information	3	4	4	4	22,084	424.69
Financial Activities	12	58	63	73	524,158	623.50
Professional & Business Services	16	39	37	41	339,135	668.91
Education & Health Services	19	70	78	67	403,653	433.26
Leisure & Hospitality	21	260	317	711	1,805,274	323.45
Other Services	13	56	61	64	281,994	359.53
Local Government	9	474	467	465	3,839,897	630.25
State Government	8	47	49	51	391,153	614.05
<b>NEVADA COUNTY - TOTAL</b>	<b>199</b>	<b>2,376</b>	<b>2,391</b>	<b>2,401</b>	<b>\$19,490,665</b>	<b>\$627.49</b>
Natural Resources & Mining	11	59	58	60	595,777	776.76
Trade, Transportation & Utilities	43	522	531	526	3,846,301	562.13
Wholesale Trade	3	16	16	15	64,347	315.94
Retail Trade	27	290	306	305	1,344,395	344.33
Transportation, Warehousing & Utilities	13	216	209	206	2,437,559	891.46
Financial Activities	11	47	52	61	431,845	622.85
Professional & Business Services	12	49	47	46	348,252	565.96
Education & Health Services	41	406	416	408	2,245,065	421.21
Leisure & Hospitality	8	85	84	89	275,016	245.99
Other Services	17	52	49	52	183,234	276.37
Local Government	27	399	399	391	3,349,923	650.18
State Government	10	87	88	89	573,650	501.44
Other	19	670	667	679	7,641,602	874.73

TABLE 6. COUNTY SUMMARY

North American Industry Classification System - Industry Groups	Number of Employing Units	Employment			Total Earnings Apr - Jun 2014	Average Weekly Earnings
		Apr	May	Jun		
<b>NEWTON COUNTY - TOTAL</b>	<b>120</b>	<b>1,049</b>	<b>1,055</b>	<b>1,058</b>	<b>\$6,380,472</b>	<b>\$465.66</b>
Construction	5	4	5	7	21,388	308.48
Manufacturing	9	35	35	32	289,731	655.50
Trade, Transportation & Utilities	31	150	156	162	1,024,313	505.09
Retail Trade	17	96	100	109	483,318	365.69
Other Trade, Transportation & Utilities	14	54	56	53	540,995	765.92
Education & Health Services	25	225	217	216	979,042	343.36
Leisure & Hospitality	14	96	108	115	421,612	305.00
Other Services	3	4	4	4	24,713	475.25
Local Government	13	391	385	376	2,780,578	557.01
State Government	8	98	94	96	492,394	394.55
Other	12	46	51	50	346,701	544.27
<b>OUACHITA COUNTY - TOTAL</b>	<b>653</b>	<b>7,152</b>	<b>7,229</b>	<b>7,138</b>	<b>\$55,962,781</b>	<b>\$600.14</b>
Natural Resources & Mining	37	181	193	188	1,571,219	645.18
Construction	35	227	232	233	2,001,618	667.50
Manufacturing	24	490	494	498	5,217,516	812.44
Trade, Transportation & Utilities	170	1,616	1,622	1,621	11,187,277	531.32
Wholesale Trade	29	268	270	274	2,997,414	851.86
Retail Trade	114	1,063	1,063	1,059	5,042,140	365.33
Transportation, Warehousing & Utilities	27	285	289	288	3,147,723	842.69
Information	7	44	45	43	416,850	728.76
Financial Activities	59	302	304	290	2,484,779	639.97
Professional & Business Services	52	580	579	556	4,653,421	626.16
Education & Health Services	154	1,243	1,246	1,191	9,515,772	596.72
Leisure & Hospitality	41	496	523	549	1,480,394	217.88
Other Services	30	129	132	129	1,020,426	603.80
Local Government	30	1,129	1,133	1,132	10,300,666	700.38
State Government	14	715	726	708	6,112,843	656.42

TABLE 6. COUNTY SUMMARY

North American Industry Classification System - Industry Groups	Number of Employing Units	Employment			Total Earnings Apr - Jun 2014	Average Weekly Earnings
		Apr	May	Jun		
<b>PERRY COUNTY - TOTAL</b>	<b>151</b>	<b>1,172</b>	<b>1,235</b>	<b>1,262</b>	<b>\$8,640,964</b>	<b>\$543.49</b>
Natural Resources & Mining	8	32	28	46	384,428	836.93
Construction	16	111	116	115	1,095,212	739.01
Manufacturing	5	45	41	39	331,382	611.78
Trade, Transportation & Utilities	25	139	201	206	1,153,887	487.70
Retail Trade	15	103	164	169	644,208	340.97
Other Trade, Transportation & Utilities	10	36	37	37	509,679	1,069.26
Financial Activities	9	26	26	28	233,058	672.28
Professional & Business Services	18	36	38	45	413,985	802.82
Education & Health Services	35	236	231	233	1,258,107	414.76
Leisure & Hospitality	8	79	81	79	228,060	220.21
Local Government	10	372	376	370	2,813,801	580.80
State Government	8	57	58	60	382,085	503.85
Other	9	39	39	41	346,959	672.84
<b>PHILLIPS COUNTY - TOTAL</b>	<b>846</b>	<b>5,921</b>	<b>5,918</b>	<b>5,923</b>	<b>\$45,727,733</b>	<b>\$594.11</b>
Natural Resources & Mining	62	299	322	326	1,941,182	473.04
Construction	26	100	97	108	1,052,770	796.55
Manufacturing	13	372	377	369	3,495,233	721.46
Trade, Transportation & Utilities	163	1,419	1,423	1,438	10,587,417	570.85
Wholesale Trade	30	315	319	322	3,388,962	818.06
Retail Trade	87	838	844	850	4,505,241	410.61
Transportation, Warehousing & Utilities	46	266	260	266	2,693,214	784.74
Information	9	42	42	41	384,870	710.53
Financial Activities	39	199	198	199	1,792,993	694.24
Professional & Business Services	49	315	313	302	2,492,344	618.45
Education & Health Services	383	1,404	1,404	1,403	9,691,784	531.12
Leisure & Hospitality	29	284	293	289	896,675	238.94
Other Services	32	77	81	82	506,326	486.85
Local Government	27	866	848	840	8,820,093	796.95
State Government	14	544	520	526	4,066,046	590.14

TABLE 6. COUNTY SUMMARY

North American Industry Classification System - Industry Groups	Number of Employing Units	Employment			Total Earnings Apr - Jun 2014	Average Weekly Earnings
		Apr	May	Jun		
<b>PIKE COUNTY - TOTAL</b>	<b>241</b>	<b>2,284</b>	<b>2,325</b>	<b>2,306</b>	<b>\$15,922,472</b>	<b>\$531.37</b>
Natural Resources & Mining	21	107	106	109	944,012	676.55
Construction	12	40	42	41	292,786	549.32
Manufacturing	18	214	207	213	1,266,374	460.95
Trade, Transportation & Utilities	68	511	534	528	3,249,389	476.71
Wholesale Trade	9	116	118	117	821,871	540.35
Retail Trade	40	348	352	350	1,827,094	401.56
Transportation, Warehousing & Utilities	19	47	64	61	600,424	805.58
Information	5	24	25	23	236,350	757.53
Financial Activities	22	196	196	199	1,733,184	676.76
Professional & Business Services	15	54	50	47	683,418	1,044.45
Education & Health Services	22	280	285	265	1,716,592	477.27
Leisure & Hospitality	24	229	239	241	669,111	217.79
Other Services	14	37	38	38	276,350	564.36
Local Government	10	436	448	443	4,038,578	702.32
State Government	10	156	155	159	816,328	400.82
<b>POINSETT COUNTY - TOTAL</b>	<b>526</b>	<b>5,069</b>	<b>5,130</b>	<b>5,117</b>	<b>\$42,793,521</b>	<b>\$644.78</b>
Natural Resources & Mining	63	352	356	363	3,429,366	738.93
Construction	23	98	111	110	849,135	614.28
Manufacturing	20	669	680	670	6,546,757	748.29
Trade, Transportation & Utilities	130	1,303	1,303	1,304	9,929,322	586.03
Wholesale Trade	34	453	453	458	5,102,469	863.26
Retail Trade	69	698	698	693	3,472,318	383.58
Transportation, Warehousing & Utilities	27	152	152	153	1,354,535	683.99
Information	5	53	53	53	471,251	683.96
Financial Activities	38	237	235	236	2,045,615	666.76
Professional & Business Services	31	171	173	177	2,417,705	1,070.89
Education & Health Services	108	618	630	614	4,193,695	519.75
Leisure & Hospitality	44	366	386	387	1,043,522	211.42
Other Services	23	52	56	59	342,042	472.65
Local Government	30	1,004	1,002	1,009	10,371,158	793.81
State Government	11	146	145	135	1,153,953	625.11

TABLE 6. COUNTY SUMMARY

North American Industry Classification System - Industry Groups	Number of Employing Units	Employment			Total Earnings	Average Weekly Earnings
		Apr	May	Jun	Apr - Jun 2014	
<b>POLK COUNTY - TOTAL</b>	<b>521</b>	<b>6,017</b>	<b>6,021</b>	<b>6,039</b>	<b>\$43,190,943</b>	<b>\$551.37</b>
Natural Resources & Mining	23	128	122	125	1,308,135	805.01
Construction	34	190	196	207	1,272,455	495.18
Manufacturing	38	1,404	1,427	1,437	11,557,364	624.90
Trade, Transportation & Utilities	138	1,099	1,106	1,119	6,436,549	446.86
Wholesale Trade	23	58	62	64	428,999	538.04
Retail Trade	79	820	818	823	3,828,817	359.03
Transportation, Warehousing & Utilities	36	221	226	232	2,178,733	740.48
Information	8	55	55	56	428,390	595.54
Financial Activities	46	233	236	237	1,785,122	583.50
Professional & Business Services	47	178	173	171	1,432,252	633.18
Education & Health Services	82	1,014	1,035	1,031	7,953,816	595.94
Leisure & Hospitality	40	455	483	492	1,392,815	224.77
Other Services	30	170	176	178	1,191,534	524.75
Local Government	21	805	729	720	6,456,926	661.07
State Government	14	286	283	266	1,975,585	545.99
<b>POPE COUNTY - TOTAL</b>	<b>1,783</b>	<b>26,554</b>	<b>27,146</b>	<b>26,677</b>	<b>\$244,940,154</b>	<b>\$703.24</b>
Natural Resources & Mining	31	697	850	854	8,152,174	783.54
Construction	152	1,474	1,672	1,546	21,452,706	1,055.12
Manufacturing	72	4,454	4,432	4,423	42,112,638	730.21
Trade, Transportation & Utilities	432	6,007	5,982	5,943	59,154,105	761.26
Wholesale Trade	86	613	619	614	6,196,664	774.65
Retail Trade	270	3,308	3,282	3,266	17,927,678	419.76
Transportation, Warehousing & Utilities	76	2,086	2,081	2,063	35,029,763	1,297.56
Information	24	192	202	206	1,947,527	749.05
Financial Activities	187	1,269	1,306	1,325	9,644,787	570.70
Professional & Business Services	264	2,623	2,723	2,708	26,165,377	749.71
Education & Health Services	317	3,065	3,076	3,089	25,662,122	641.61
Leisure & Hospitality	140	2,423	2,519	2,451	8,329,700	260.01
Other Services	106	410	408	420	2,850,841	531.41
Local Government	42	2,240	2,264	2,247	23,654,839	808.59
State Government	16	1,700	1,712	1,465	15,813,338	748.25



TABLE 6. COUNTY SUMMARY

North American Industry Classification System - Industry Groups	Number of Employing Units	Employment			Total Earnings Apr - Jun 2014	Average Weekly Earnings
		Apr	May	Jun		
<b>PRAIRIE COUNTY - TOTAL</b>	<b>252</b>	<b>1,577</b>	<b>1,540</b>	<b>1,547</b>	<b>\$12,248,573</b>	<b>\$606.04</b>
Natural Resources & Mining	34	168	175	176	1,582,615	703.70
Trade, Transportation & Utilities	65	331	338	331	2,495,200	575.82
Wholesale Trade	10	84	85	84	1,175,648	1,072.35
Retail Trade	37	188	194	187	885,157	358.99
Transportation, Warehousing & Utilities	18	59	59	60	434,395	563.17
Financial Activities	16	57	56	55	429,693	590.24
Professional & Business Services	13	49	49	49	347,194	545.05
Education & Health Services	52	259	273	272	1,681,272	482.57
Leisure & Hospitality	15	91	87	96	251,330	211.68
Other Services	14	26	22	25	151,846	480.02
Local Government	15	302	299	296	2,541,611	653.87
State Government	9	42	41	40	323,481	606.91
Other	19	252	200	207	2,444,331	855.96
<b>PULASKI COUNTY - TOTAL</b>	<b>14,142</b>	<b>233,794</b>	<b>235,182</b>	<b>233,811</b>	<b>\$2,561,667,810</b>	<b>\$841.16</b>
Natural Resources & Mining	57	656	660	647	8,489,949	998.07
Construction	940	7,973	7,981	8,109	91,286,305	875.45
Manufacturing	340	12,468	12,477	12,477	157,575,425	971.72
Trade, Transportation & Utilities	3,163	46,677	46,811	47,157	464,903,272	762.81
Wholesale Trade	988	11,480	11,548	11,614	164,173,035	1,093.65
Retail Trade	1,787	25,089	25,124	25,356	173,114,357	528.65
Transportation, Warehousing & Utilities	388	10,108	10,139	10,187	127,615,880	967.66
Information	203	5,951	5,926	5,912	87,129,615	1,130.30
Financial Activities	1,681	15,459	15,503	15,570	230,494,814	1,143.11
Professional & Business Services	2,772	33,233	33,309	33,127	360,680,714	835.10
Education & Health Services	2,381	37,936	38,165	37,966	421,945,456	853.64
Leisure & Hospitality	1,159	22,442	23,329	23,453	93,802,733	312.71
Other Services	1,142	6,812	6,851	7,189	58,983,173	652.77
Local Government	105	16,203	16,327	14,862	205,206,920	999.23
State Government	199	27,984	27,843	27,342	381,169,434	1,057.63

TABLE 6. COUNTY SUMMARY

North American Industry Classification System - Industry Groups	Number of Employing Units	Employment			Total Earnings	Average Weekly Earnings
		Apr	May	Jun	Apr - Jun 2014	
<b>RANDOLPH COUNTY - TOTAL</b>	<b>418</b>	<b>4,688</b>	<b>4,742</b>	<b>4,704</b>	<b>\$32,267,169</b>	<b>\$526.83</b>
Natural Resources & Mining	29	129	137	139	749,689	427.17
Construction	28	85	84	96	553,766	482.23
Manufacturing	27	515	512	506	4,199,437	632.16
Trade, Transportation & Utilities	100	843	853	852	5,609,499	508.05
Wholesale Trade	21	166	166	164	1,314,704	611.68
Retail Trade	58	545	551	550	2,876,906	403.34
Transportation, Warehousing & Utilities	21	132	136	138	1,417,889	805.92
Information	5	36	37	37	326,051	684.02
Financial Activities	36	125	128	127	994,793	604.13
Professional & Business Services	36	171	173	177	1,065,822	472.09
Education & Health Services	67	1,240	1,245	1,259	8,358,242	515.18
Leisure & Hospitality	29	386	401	402	1,094,437	212.42
Other Services	26	76	77	78	391,201	390.81
Local Government	24	753	764	741	6,101,102	623.54
State Government	11	329	331	290	2,823,130	685.78
<b>SAINT FRANCIS COUNTY - TOTAL</b>	<b>790</b>	<b>7,173</b>	<b>7,253</b>	<b>7,295</b>	<b>\$54,046,686</b>	<b>\$574.21</b>
Natural Resources & Mining	44	199	208	209	1,586,786	594.45
Construction	46	173	196	200	1,728,697	701.11
Trade, Transportation & Utilities	161	1,988	1,999	1,995	14,277,363	550.78
Wholesale Trade	32	555	563	569	5,697,355	779.36
Retail Trade	108	1,133	1,135	1,125	5,560,562	378.19
Transportation, Warehousing & Utilities	21	300	301	301	3,019,446	772.50
Information	7	63	65	65	539,664	645.27
Financial Activities	64	242	244	244	2,156,917	681.85
Professional & Business Services	48	387	385	423	2,239,109	432.40
Education & Health Services	294	1,388	1,398	1,393	10,345,466	571.29
Leisure & Hospitality	46	564	581	590	1,783,010	237.15
Local Government	28	944	970	976	9,169,407	732.19
State Government	16	539	535	517	4,532,805	657.47
Other	36	686	672	683	5,687,462	643.06

TABLE 6. COUNTY SUMMARY

North American Industry Classification System - Industry Groups	Number of Employing Units	Employment			Total Earnings Apr - Jun 2014	Average Weekly Earnings
		Apr	May	Jun		
<b>SALINE COUNTY - TOTAL</b>	<b>1,888</b>	<b>21,787</b>	<b>21,975</b>	<b>22,505</b>	<b>\$181,670,461</b>	<b>\$632.65</b>
Natural Resources & Mining	14	69	68	69	763,677	855.50
Construction	270	1,655	1,677	1,680	15,767,745	726.00
Manufacturing	86	1,340	1,323	1,341	17,209,591	991.87
Trade, Transportation & Utilities	450	4,995	5,065	5,111	38,679,038	588.35
Wholesale Trade	111	534	543	546	6,338,605	901.27
Retail Trade	267	3,982	3,998	4,045	27,281,641	523.56
Transportation, Warehousing & Utilities	72	479	524	520	5,058,792	766.52
Information	15	137	138	139	1,489,285	830.15
Financial Activities	193	725	729	738	7,168,853	754.72
Professional & Business Services	245	1,483	1,512	1,603	13,083,600	656.65
Education & Health Services	265	3,225	3,250	3,222	25,835,153	614.83
Leisure & Hospitality	161	2,889	2,926	2,930	10,280,142	271.28
Other Services	143	697	698	744	4,933,649	532.27
Local Government	31	3,640	3,648	3,980	38,439,567	787.24
State Government	15	932	941	948	8,020,161	656.08
<b>SCOTT COUNTY - TOTAL</b>	<b>182</b>	<b>3,043</b>	<b>3,083</b>	<b>3,133</b>	<b>\$21,141,662</b>	<b>\$526.93</b>
Natural Resources & Mining	18	167	172	170	1,419,405	643.53
Trade, Transportation & Utilities	34	405	418	417	2,693,860	501.34
Wholesale Trade	6	51	56	56	619,343	876.84
Retail Trade	22	291	297	296	1,381,442	360.63
Transportation, Warehousing & Utilities	6	63	65	65	693,075	828.71
Financial Activities	21	65	65	66	421,454	496.22
Professional & Business Services	11	62	61	65	428,818	526.37
Education & Health Services	37	294	296	298	2,642,548	686.73
Leisure & Hospitality	14	127	126	145	501,347	290.69
Other Services	11	46	46	55	318,647	500.23
Local Government	6	559	567	571	5,389,665	732.92
State Government	7	65	63	68	405,966	477.98
Other	23	1,253	1,269	1,278	6,919,952	420.24

TABLE 6. COUNTY SUMMARY

North American Industry Classification System - Industry Groups	Number of Employing Units	Employment			Total Earnings Apr - Jun 2014	Average Weekly Earnings
		Apr	May	Jun		
<b>SEARCY COUNTY - TOTAL</b>	<b>183</b>	<b>1,570</b>	<b>1,717</b>	<b>1,715</b>	<b>\$10,060,089</b>	<b>\$464.13</b>
Natural Resources & Mining	6	72	206	201	1,005,912	484.62
Construction	12	15	13	18	70,131	351.83
Manufacturing	17	229	235	229	1,265,431	421.39
Trade, Transportation & Utilities	36	233	233	233	1,335,483	440.90
Wholesale Trade	4	25	26	26	135,539	406.21
Retail Trade	26	188	187	186	974,992	401.07
Transportation, Warehousing & Utilities	6	20	20	21	224,952	851.02
Financial Activities	15	76	89	89	558,705	507.61
Professional & Business Services	12	30	20	21	111,049	360.94
Education & Health Services	48	309	306	307	1,941,487	485.94
Leisure & Hospitality	14	122	134	150	391,984	222.80
Local Government	10	362	358	347	2,664,872	576.35
State Government	7	110	111	108	634,953	445.37
Other	6	12	12	12	80,082	513.35
<b>SEBASTIAN COUNTY - TOTAL</b>	<b>3,681</b>	<b>63,600</b>	<b>63,913</b>	<b>63,807</b>	<b>\$626,725,516</b>	<b>\$755.95</b>
Natural Resources & Mining	54	933	934	938	18,985,561	1,561.95
Construction	263	2,206	2,241	2,296	21,118,143	722.74
Manufacturing	192	11,800	12,010	11,994	133,513,389	860.54
Trade, Transportation & Utilities	923	12,862	12,859	12,917	110,691,433	661.12
Wholesale Trade	248	2,851	2,880	2,883	31,978,349	856.70
Retail Trade	551	7,551	7,499	7,536	45,622,903	466.15
Transportation, Warehousing & Utilities	124	2,460	2,480	2,498	33,090,181	1,026.65
Information	47	946	934	942	13,453,283	1,100.14
Financial Activities	413	2,493	2,487	2,494	27,954,701	863.14
Professional & Business Services	573	8,002	7,895	8,114	78,027,459	749.92
Education & Health Services	571	10,823	10,856	10,893	120,235,411	851.86
Leisure & Hospitality	332	5,957	5,991	6,021	21,625,785	277.73
Other Services	252	1,229	1,240	1,310	8,550,198	522.13
Local Government	40	4,525	4,647	4,368	54,474,020	928.43
State Government	21	1,824	1,819	1,520	18,096,133	808.84

TABLE 6. COUNTY SUMMARY

North American Industry Classification System - Industry Groups	Number of Employing Units	Employment			Total Earnings Apr - Jun 2014	Average Weekly Earnings
		Apr	May	Jun		
<b>SEVIER COUNTY - TOTAL</b>	<b>320</b>	<b>4,837</b>	<b>4,849</b>	<b>4,856</b>	<b>\$35,228,085</b>	<b>\$559.04</b>
Natural Resources & Mining	14	171	166	163	1,544,870	713.02
Construction	18	120	138	147	1,509,628	860.19
Trade, Transportation & Utilities	98	887	871	878	6,313,299	552.70
Wholesale Trade	17	115	114	121	1,947,286	1,283.92
Retail Trade	66	682	666	672	3,420,472	390.76
Transportation, Warehousing & Utilities	15	90	91	85	945,541	820.31
Information	3	19	20	20	175,904	688.02
Financial Activities	29	223	226	223	1,923,508	660.55
Professional & Business Services	28	115	98	105	719,250	521.95
Education & Health Services	47	536	543	540	3,930,897	560.30
Leisure & Hospitality	26	277	276	271	822,367	230.31
Local Government	12	903	935	932	7,386,680	615.39
State Government	8	176	181	154	1,375,668	621.26
Other	37	1,410	1,395	1,423	9,526,014	519.94
<b>SHARP COUNTY - TOTAL</b>	<b>391</b>	<b>3,697</b>	<b>3,695</b>	<b>3,779</b>	<b>\$25,214,404</b>	<b>\$520.88</b>
Natural Resources & Mining	3	7	7	6	49,659	572.99
Construction	22	104	99	108	896,011	664.86
Manufacturing	18	155	154	151	931,500	467.31
Trade, Transportation & Utilities	80	1,055	1,045	1,023	7,799,811	576.35
Wholesale Trade	12	37	38	38	194,984	398.20
Retail Trade	57	649	650	665	3,117,916	366.35
Transportation, Warehousing & Utilities	11	369	357	320	4,486,911	989.91
Information	5	36	39	36	402,408	836.61
Financial Activities	34	178	180	184	1,609,287	685.19
Professional & Business Services	37	157	148	151	1,180,692	597.52
Education & Health Services	92	700	702	692	4,591,021	505.95
Leisure & Hospitality	40	408	417	423	1,134,403	209.76
Other Services	27	67	69	162	390,515	302.41
Local Government	25	755	763	769	5,743,289	579.53
State Government	8	75	72	74	485,808	507.28

TABLE 6. COUNTY SUMMARY

North American Industry Classification System - Industry Groups	Number of Employing Units	Employment			Total Earnings Apr - Jun 2014	Average Weekly Earnings
		Apr	May	Jun		
<b>STONE COUNTY - TOTAL</b>	<b>280</b>	<b>2,443</b>	<b>2,458</b>	<b>2,536</b>	<b>\$15,672,961</b>	<b>\$486.33</b>
Natural Resources & Mining	6	16	15	52	79,068	219.84
Construction	19	41	38	47	244,108	447.08
Manufacturing	19	183	180	173	930,765	400.73
Trade, Transportation & Utilities	71	606	607	632	3,761,468	470.48
Wholesale Trade	7	53	52	61	412,725	573.76
Retail Trade	53	509	512	527	2,921,742	435.56
Transportation, Warehousing & Utilities	11	44	43	44	427,001	752.20
Information	3	18	16	16	89,939	415.10
Financial Activities	28	86	84	91	552,127	488.18
Professional & Business Services	17	40	33	29	188,929	427.44
Education & Health Services	50	488	485	469	3,733,752	597.53
Leisure & Hospitality	33	342	354	381	976,191	209.17
Other Services	16	40	40	40	243,524	468.32
Local Government	10	405	423	420	3,949,603	730.33
State Government	8	178	183	186	923,487	389.60
<b>UNION COUNTY - TOTAL</b>	<b>1,336</b>	<b>17,526</b>	<b>17,688</b>	<b>17,868</b>	<b>\$186,581,040</b>	<b>\$811.14</b>
Natural Resources & Mining	96	528	567	570	6,748,431	935.33
Construction	78	1,298	1,346	1,406	16,119,003	918.46
Manufacturing	50	3,003	3,066	3,111	43,165,052	1,085.09
Trade, Transportation & Utilities	329	4,174	4,160	4,177	42,263,539	779.56
Wholesale Trade	67	1,006	1,003	1,013	17,367,078	1,326.20
Retail Trade	207	2,300	2,289	2,305	12,409,407	415.39
Transportation, Warehousing & Utilities	55	868	868	859	12,487,054	1,110.45
Information	10	145	150	148	1,138,161	592.90
Financial Activities	111	635	637	633	6,633,618	803.59
Professional & Business Services	141	1,408	1,399	1,391	21,841,382	1,200.65
Education & Health Services	276	2,304	2,313	2,318	19,616,091	652.75
Leisure & Hospitality	88	1,151	1,147	1,191	4,029,187	266.50
Other Services	106	458	466	547	3,038,424	476.67
Local Government	34	1,842	1,861	1,808	16,650,738	697.24
State Government	17	580	576	568	5,337,414	714.45

TABLE 6. COUNTY SUMMARY

North American Industry Classification System - Industry Groups	Number of Employing Units	Employment			Total Earnings	Average Weekly Earnings
		Apr	May	Jun	Apr - Jun 2014	
<b>VAN BUREN COUNTY - TOTAL</b>	<b>361</b>	<b>3,913</b>	<b>3,944</b>	<b>3,977</b>	<b>\$36,165,489</b>	<b>\$705.25</b>
Natural Resources & Mining	13	355	355	348	6,086,055	1,327.48
Construction	37	145	139	145	1,341,658	721.71
Manufacturing	9	55	61	80	577,358	679.78
Trade, Transportation & Utilities	98	1,153	1,141	1,161	12,362,092	825.70
Wholesale Trade	10	88	94	93	890,042	746.89
Retail Trade	56	580	567	572	3,046,345	408.96
Transportation, Warehousing & Utilities	32	485	480	496	8,425,705	1,330.86
Information	9	43	42	39	359,428	668.91
Financial Activities	32	129	129	130	1,176,480	699.73
Professional & Business Services	30	122	135	135	854,583	503.09
Education & Health Services	64	710	708	678	4,945,357	544.48
Leisure & Hospitality	30	366	401	417	1,388,764	270.68
Other Services	21	61	59	60	398,768	511.24
Local Government	11	708	708	718	6,139,052	663.87
State Government	7	66	66	66	535,894	624.59
<b>WASHINGTON COUNTY - TOTAL</b>	<b>5,590</b>	<b>94,044</b>	<b>94,776</b>	<b>94,988</b>	<b>\$920,630,890</b>	<b>\$748.58</b>
Natural Resources & Mining	42	390	368	369	4,051,614	829.63
Construction	474	4,008	4,092	4,138	42,104,521	793.96
Manufacturing	218	12,210	12,221	12,256	116,007,981	729.72
Trade, Transportation & Utilities	1,342	21,199	21,318	21,463	190,956,599	688.76
Wholesale Trade	396	3,541	3,556	3,601	53,199,469	1,147.58
Retail Trade	764	11,352	11,308	11,379	72,615,312	492.30
Transportation, Warehousing & Utilities	182	6,306	6,454	6,483	65,141,818	781.20
Information	83	913	924	932	9,895,084	824.66
Financial Activities	616	3,362	3,414	3,436	37,574,042	849.09
Professional & Business Services	964	10,821	10,875	10,969	145,499,300	1,027.91
Education & Health Services	806	13,429	13,577	13,434	141,869,953	809.58
Leisure & Hospitality	596	11,169	11,119	11,149	40,653,992	280.58
Other Services	366	1,816	1,838	1,826	12,670,601	533.57
Local Government	61	8,414	8,457	8,584	102,339,070	927.78
State Government	22	6,313	6,573	6,432	77,008,133	919.92

TABLE 6. COUNTY SUMMARY

North American Industry Classification System - Industry Groups	Number of Employing Units	Employment			Total Earnings Apr - Jun 2014	Average Weekly Earnings
		Apr	May	Jun		
<b>WHITE COUNTY - TOTAL</b>	<b>1,814</b>	<b>24,649</b>	<b>24,740</b>	<b>24,148</b>	<b>\$216,080,862</b>	<b>\$678.09</b>
Natural Resources & Mining	56	1,076	1,059	989	16,041,819	1,185.01
Construction	162	1,101	1,085	1,098	11,321,932	795.60
Manufacturing	61	2,385	2,406	2,387	25,599,102	823.00
Trade, Transportation & Utilities	487	6,168	6,163	6,102	49,173,673	615.62
Wholesale Trade	95	619	627	616	6,574,407	814.81
Retail Trade	302	3,596	3,582	3,567	20,541,650	441.17
Transportation, Warehousing & Utilities	90	1,953	1,954	1,919	22,057,616	873.71
Information	21	173	167	171	1,277,701	577.01
Financial Activities	177	895	894	897	8,919,273	766.30
Professional & Business Services	200	1,442	1,446	1,326	9,650,543	528.49
Education & Health Services	312	5,092	5,101	4,942	50,538,944	770.59
Leisure & Hospitality	156	2,342	2,424	2,372	7,458,471	241.13
Other Services	117	548	543	544	4,349,778	613.94
Local Government	47	2,675	2,696	2,713	26,326,148	751.52
State Government	18	752	756	607	5,423,478	591.76
<b>WOODRUFF COUNTY - TOTAL</b>	<b>210</b>	<b>1,872</b>	<b>1,890</b>	<b>1,904</b>	<b>\$14,139,255</b>	<b>\$575.87</b>
Natural Resources & Mining	26	171	169	170	1,345,205	608.69
Construction	6	41	44	45	334,202	593.26
Manufacturing	7	222	225	224	1,916,126	658.99
Trade, Transportation & Utilities	43	407	403	417	3,439,179	646.83
Wholesale Trade	11	177	172	184	2,017,253	873.40
Retail Trade	23	170	172	173	721,137	323.14
Transportation, Warehousing & Utilities	9	60	59	60	700,789	903.47
Financial Activities	14	65	66	68	568,670	659.45
Education & Health Services	72	254	259	263	1,559,279	463.70
Leisure & Hospitality	10	87	93	91	256,627	218.53
Local Government	10	480	483	476	3,479,229	557.96
State Government	6	50	49	50	335,791	520.07
Other	16	95	99	100	904,947	710.32



TABLE 6. COUNTY SUMMARY

North American Industry Classification System - Industry Groups	Number of Employing Units	Employment			Total Earnings Apr - Jun 2014	Average Weekly Earnings
		Apr	May	Jun		
<b>YELL COUNTY - TOTAL</b>	<b>408</b>	<b>6,473</b>	<b>6,530</b>	<b>6,398</b>	<b>\$45,026,117</b>	<b>\$535.57</b>
Natural Resources & Mining	23	202	199	192	1,670,596	650.12
Construction	34	234	263	227	1,779,021	567.05
Manufacturing	20	2,437	2,439	2,447	16,041,520	505.52
Trade, Transportation & Utilities	82	647	659	664	3,736,334	437.68
Wholesale Trade	15	32	34	33	186,499	434.73
Retail Trade	50	492	502	507	2,278,952	350.37
Transportation, Warehousing & Utilities	17	123	123	124	1,270,883	792.65
Information	3	62	61	60	643,863	811.93
Financial Activities	29	167	168	166	1,407,628	648.38
Professional & Business Services	39	293	296	297	2,264,828	589.90
Education & Health Services	98	741	733	726	4,576,536	480.06
Leisure & Hospitality	27	306	314	293	867,889	219.37
Other Services	16	60	60	58	296,990	385.03
Local Government	25	1,226	1,240	1,168	11,069,771	702.96
State Government	12	98	98	100	671,141	523.24
<b>STATEWIDE COUNTY - TOTAL</b>	<b>7,567</b>	<b>25,660</b>	<b>26,220</b>	<b>23,112</b>	<b>\$343,956,137</b>	<b>\$1,058.44</b>
Natural Resources & Mining	85	360	378	365	5,613,742	1,174.50
Construction	700	2,357	2,358	2,455	27,644,124	889.74
Manufacturing	44	191	195	197	3,339,253	1,321.78
Trade, Transportation & Utilities	2,594	6,514	6,600	6,536	134,320,819	1,577.46
Wholesale Trade	2,242	5,475	5,562	5,481	121,389,415	1,695.90
Retail Trade	120	268	265	262	3,791,390	1,100.55
Transportation, Warehousing & Utilities	232	771	773	793	9,140,014	902.54
Information	190	415	421	393	6,752,811	1,267.97
Financial Activities	431	1,213	1,243	1,265	20,951,574	1,299.38
Professional & Business Services	2,876	11,371	11,774	8,608	110,276,436	801.45
Education & Health Services	305	1,816	1,795	1,806	17,445,094	743.18
Leisure & Hospitality	80	103	91	211	1,034,354	589.38
State Government	17	721	730	734	8,590,578	907.30
Other	245	599	635	542	7,987,352	1,028.79

Note: Statewide classification includes employment and payroll data for employers that have not provided a physical location for each employing unit. This section also includes employers without a physical location in Arkansas.

**TABLE 7. FEDERAL GOVERNMENT EMPLOYMENT AND EARNINGS IN ARKANSAS**

North American Industry Classification System - Industry Groups	Number of Employing Units	Employment			Total Earnings Apr - Jun 2014	Average Weekly Earnings
		Apr	May	Jun		
<b>TOTAL</b>	<b>1,153</b>	<b>20,041</b>	<b>20,065</b>	<b>20,170</b>	<b>\$305,004,440</b>	<b>\$1,167.72</b>
Trade, Transportation & Utilities	584	5,429	5,396	5,406	62,095,550	882.86
Information	2	44	43	43	665,625	1,181.58
Financial Activities	14	114	114	116	2,029,350	1,361.37
Professional & Business Services	32	747	778	808	14,810,453	1,464.98
Education & Health Services	15	5,228	5,242	5,212	85,562,600	1,259.10
Leisure & Hospitality	20	277	290	345	3,238,860	819.55
Other Services	1	1	1	1	8,171	628.54
Public Administration	485	8,201	8,201	8,239	136,593,831	1,279.24

TABLE 8. WORKFORCE INVESTMENT AREA SUMMARY

North American Industry Classification System - Industry Groups	Number of Employing Units	Employment			Total Earnings	Average
		Apr	May	Jun	Apr - Jun 2014	Weekly Earnings
<b>CENTRAL WORKFORCE INVESTMENT AREA</b>	<b>6,541</b>	<b>79,281</b>	<b>79,576</b>	<b>80,086</b>	<b>\$715,226,440</b>	<b>\$690.76</b>
Natural Resources & Mining	227	1,968	1,994	2,024	27,146,530	1,046.54
Trade, Transportation & Utilities	1,576	16,097	16,144	16,274	118,934,252	565.73
Wholesale Trade	378	2,004	2,021	2,024	23,904,722	911.96
Retail Trade	929	12,284	12,261	12,391	74,504,500	465.49
Transportation, Warehousing & Utilities	269	1,809	1,862	1,859	20,525,030	856.52
Information	56	542	545	551	5,942,326	837.18
Financial Activities	692	2,913	2,931	2,950	32,163,242	844.02
Professional & Business Services	832	7,918	7,843	8,006	107,760,234	1,046.31
Education & Health Services	1,027	11,547	11,648	11,652	92,219,246	610.71
Leisure & Hospitality	544	9,639	9,703	9,806	32,453,792	256.94
Local Government	130	10,567	10,585	10,787	112,225,109	810.86
State Government	65	4,635	4,636	4,270	42,936,562	731.74
Other	1,392	13,455	13,547	13,766	143,445,147	811.98

Note: Pulaski County is not included in the Central Workforce Investment Area. Please refer to Page 51 for information on Pulaski County.  
Central Workforce Investment Area includes these counties: Faulkner, Lonoke, Monroe, Prairie, and Saline.

<b>EASTERN WORKFORCE INVESTMENT AREA</b>	<b>3,758</b>	<b>36,764</b>	<b>36,758</b>	<b>36,819</b>	<b>\$293,239,968</b>	<b>\$613.29</b>
Natural Resources & Mining	231	1,241	1,288	1,325	9,519,430	570.00
Construction	156	754	824	835	7,364,115	704.27
Trade, Transportation & Utilities	808	9,445	9,446	9,412	75,597,165	616.38
Wholesale Trade	162	2,051	2,083	2,106	22,591,016	835.47
Retail Trade	458	4,912	4,911	4,891	26,534,422	416.16
Transportation, Warehousing & Utilities	188	2,482	2,452	2,415	26,471,727	831.25
Financial Activities	264	1,249	1,254	1,265	11,323,547	693.50
Professional & Business Services	275	2,420	2,367	2,343	17,271,410	559.01
Education & Health Services	1,314	6,568	6,603	6,525	48,942,543	573.44
Leisure & Hospitality	237	3,440	3,518	3,550	12,524,249	275.05
Local Government	129	5,075	5,033	5,090	52,088,445	790.92
State Government	61	2,466	2,336	2,368	20,962,638	674.69
Other	283	4,106	4,089	4,106	37,646,426	706.25

Eastern Workforce Investment Area includes these counties: Crittenden, Cross, Lee, Phillips, and Saint Francis.

TABLE 8. WORKFORCE INVESTMENT AREA SUMMARY

North American Industry Classification System - Industry Groups	Number of Employing Units	Employment			Total Earnings	Average Weekly Earnings
		Apr	May	Jun	Apr - Jun 2014	
<b>NORTH CENTRAL WORKFORCE INVESTMENT AREA</b>	<b>5,536</b>	<b>67,935</b>	<b>68,435</b>	<b>67,993</b>	<b>\$560,789,734</b>	<b>\$633.25</b>
Construction	424	2,418	2,411	2,485	23,439,852	739.57
Manufacturing	229	8,050	8,117	8,043	78,597,233	749.19
Trade, Transportation & Utilities	1,403	15,710	15,717	15,742	124,713,742	610.15
Retail Trade	897	9,456	9,476	9,525	52,411,137	425.02
Other Trade, Transportation & Utilities	506	6,254	6,241	6,217	72,302,605	891.69
Financial Activities	509	2,447	2,477	2,490	23,478,294	730.79
Education & Health Services	1,028	12,917	12,959	12,722	111,710,058	667.89
Leisure & Hospitality	482	6,183	6,421	6,498	19,529,363	235.93
Local Government	230	9,155	9,384	9,128	81,804,482	682.33
State Government	105	3,229	3,181	2,979	26,589,921	653.55
Other	1,126	7,826	7,768	7,906	70,926,789	696.50

North Central Workforce Investment Area includes these counties: Cleburne, Fulton, Independence, Izard, Jackson, Sharp, Stone, Van Buren, White, and Woodruff.

<b>NORTHEAST WORKFORCE INVESTMENT AREA</b>	<b>6,528</b>	<b>96,955</b>	<b>97,458</b>	<b>96,943</b>	<b>\$865,040,654</b>	<b>\$685.16</b>
Natural Resources & Mining	437	2,181	2,265	2,299	16,875,780	577.38
Construction	430	3,386	3,514	3,577	35,684,501	786.00
Manufacturing	310	19,566	19,471	19,437	233,573,813	921.81
Trade, Transportation & Utilities	1,707	18,891	18,962	18,942	145,427,292	590.90
Wholesale Trade	397	3,978	3,965	3,965	43,767,796	848.19
Retail Trade	993	11,915	11,987	11,929	68,001,604	437.96
Transportation, Warehousing & Utilities	317	2,998	3,010	3,048	33,657,892	857.69
Financial Activities	572	3,090	3,106	3,099	30,315,171	752.64
Professional & Business Services	651	6,817	6,860	6,895	49,598,574	556.38
Education & Health Services	1,165	16,127	16,170	15,922	153,115,864	732.79
Leisure & Hospitality	516	8,691	8,735	8,702	27,912,038	246.53
Local Government	220	11,510	11,675	11,433	112,110,882	747.35
State Government	102	4,368	4,382	4,308	43,286,345	764.98
Other	418	2,328	2,318	2,329	17,140,394	567.09

Northeast Workforce Investment Area includes these counties: Clay, Craighead, Greene, Lawrence, Mississippi, Poinsett, and Randolph.

TABLE 8. WORKFORCE INVESTMENT AREA SUMMARY

North American Industry Classification System - Industry Groups	Number of Employing Units	Employment			Total Earnings Apr - Jun 2014	Average Weekly Earnings
		Apr	May	Jun		
<b>NORTHWEST WORKFORCE INVESTMENT AREA</b>	<b>15,016</b>	<b>244,900</b>	<b>247,488</b>	<b>248,404</b>	<b>\$2,510,271,534</b>	<b>\$781.99</b>
Natural Resources & Mining	138	1,451	1,583	1,579	16,369,347	818.89
Trade, Transportation & Utilities	3,732	53,909	54,402	54,751	517,638,722	732.57
Wholesale Trade	1,220	8,800	8,849	8,937	159,106,424	1,381.06
Retail Trade	2,050	28,626	28,792	29,046	177,212,391	472.97
Transportation, Warehousing & Utilities	462	16,483	16,761	16,768	181,319,907	836.66
Information	208	2,359	2,366	2,371	26,078,061	848.09
Education & Health Services	2,160	30,215	30,271	30,024	290,384,548	740.38
Leisure & Hospitality	1,541	26,268	26,946	27,417	101,256,960	289.80
Other Services	950	4,347	4,391	4,409	31,254,095	548.60
Local Government	314	22,674	22,918	22,680	257,032,186	868.81
State Government	111	9,105	9,287	8,892	101,668,169	859.91
Other	5,862	94,572	95,324	96,281	1,168,589,446	942.33

Northwest Workforce Investment Area includes these counties: Baxter, Benton, Boone, Carroll, Madison, Marion, Newton, Searcy, and Washington.

<b>SOUTHEAST WORKFORCE INVESTMENT AREA</b>	<b>6,114</b>	<b>69,251</b>	<b>69,667</b>	<b>69,653</b>	<b>\$608,409,891</b>	<b>\$673.16</b>
Natural Resources & Mining	417	2,410	2,418	2,412	20,020,082	638.12
Construction	308	2,172	2,325	2,260	20,147,835	688.10
Trade, Transportation & Utilities	1,300	12,810	12,812	12,927	98,794,526	591.42
Wholesale Trade	239	2,121	2,113	2,122	23,199,813	842.32
Retail Trade	790	7,856	7,844	7,876	43,714,421	427.89
Transportation, Warehousing & Utilities	271	2,833	2,855	2,929	31,880,292	853.78
Financial Activities	417	2,538	2,540	2,533	24,819,686	752.54
Education & Health Services	1,931	10,692	10,670	10,591	81,669,532	589.83
Local Government	203	9,401	9,435	9,421	83,991,398	685.94
State Government	137	6,287	6,286	6,181	60,192,451	740.67
Other	1,401	22,941	23,181	23,328	218,774,381	726.95

Southeast Workforce Investment Area includes these counties: Arkansas, Ashley, Bradley, Chicot, Cleveland, Desha, Drew, Grant, Jefferson, and Lincoln.

TABLE 8. WORKFORCE INVESTMENT AREA SUMMARY

North American Industry Classification System - Industry Groups	Number of Employing Units	Employment			Total Earnings	Average Weekly Earnings
		Apr	May	Jun	Apr - Jun 2014	
<b>SOUTHWEST WORKFORCE INVESTMENT AREA</b>	<b>5,741</b>	<b>77,901</b>	<b>78,494</b>	<b>78,890</b>	<b>\$713,870,338</b>	<b>\$700.17</b>
Natural Resources & Mining	354	2,341	2,394	2,413	24,988,200	806.73
Trade, Transportation & Utilities	1,416	15,920	15,965	16,027	131,664,689	634.17
Wholesale Trade	250	2,591	2,598	2,643	34,757,138	1,024.12
Retail Trade	882	9,012	9,005	9,007	47,282,866	403.77
Transportation, Warehousing & Utilities	284	4,317	4,362	4,377	49,624,685	877.13
Information	58	451	461	451	4,571,890	774.07
Financial Activities	494	2,621	2,648	2,640	24,528,320	715.69
Education & Health Services	1,133	9,276	9,303	9,190	66,953,333	556.40
Leisure & Hospitality	411	5,377	5,512	5,672	18,247,996	254.28
Other Services	391	1,774	1,771	1,838	10,378,853	444.94
Local Government	256	10,101	10,248	10,256	95,412,859	719.44
State Government	139	3,883	3,841	3,795	34,941,327	700.01
Other	1,089	26,157	26,351	26,608	302,182,871	881.42

Southwest Workforce Investment Area includes these counties: Calhoun, Columbia, Dallas, Hempstead, Howard, Lafayette, Little River, Miller, Nevada, Ouachita, Sevier, and Union

<b>WEST CENTRAL WORKFORCE INVESTMENT AREA</b>	<b>8,152</b>	<b>106,780</b>	<b>107,677</b>	<b>107,252</b>	<b>\$889,328,485</b>	<b>\$637.94</b>
Natural Resources & Mining	241	2,215	2,355	2,379	\$23,221,260	771.15
Construction	742	4,665	4,929	4,752	\$49,197,975	791.40
Manufacturing	332	15,778	15,786	15,863	152,701,350	743.01
Trade, Transportation & Utilities	1,886	21,019	21,188	21,263	167,984,941	610.77
Wholesale Trade	339	2,193	2,221	2,220	22,224,953	773.11
Retail Trade	1,257	13,866	13,986	14,051	79,101,921	435.63
Transportation, Warehousing & Utilities	290	4,960	4,981	4,992	66,658,067	1,030.11
Financial Activities	826	4,095	4,160	4,161	40,372,073	750.37
Professional & Business Services	936	8,574	8,699	8,608	70,990,486	632.99
Education & Health Services	1,476	16,696	16,724	16,638	145,239,260	669.56
Leisure & Hospitality	747	13,170	13,102	13,694	45,967,037	265.42
Local Government	225	11,687	11,831	11,490	121,490,356	800.85
State Government	125	5,868	5,851	5,291	49,846,912	676.26
Other	616	3,013	3,052	3,113	22,316,835	561.13

West Central Workforce Investment Area includes these counties: Clark, Conway, Garland, Hot Spring, Johnson, Montgomery, Perry, Pike, Pope, and Yell

TABLE 8. WORKFORCE INVESTMENT AREA SUMMARY

North American Industry Classification System - Industry Groups	Number of Employing Units	Employment			Total Earnings	Average Weekly Earnings
		Apr	May	Jun	Apr - Jun 2014	
<b>WESTERN WORKFORCE INVESTMENT AREA</b>	<b>6,455</b>	<b>101,567</b>	<b>102,091</b>	<b>101,913</b>	<b>\$929,959,070</b>	<b>\$702.31</b>
Natural Resources & Mining	171	2,038	1,987	1,945	31,525,078	1,218.60
Trade, Transportation & Utilities	1,611	22,184	22,204	22,292	185,818,125	643.09
Wholesale Trade	388	3,888	3,937	3,944	43,825,798	859.35
Retail Trade	936	11,887	11,857	11,902	68,808,883	445.46
Transportation, Warehousing & Utilities	287	6,409	6,410	6,446	73,183,444	876.64
Financial Activities	678	3,680	3,685	3,690	38,431,902	802.25
Professional & Business Services	859	9,865	9,720	9,912	92,784,654	725.90
Education & Health Services	1,017	14,980	15,066	15,046	151,264,922	774.13
Leisure & Hospitality	535	8,738	8,813	8,862	30,627,370	267.59
Other Services	415	1,985	2,006	2,099	13,944,821	528.41
Local Government	151	9,439	9,548	9,256	101,335,073	827.99
State Government	75	3,032	3,031	2,711	26,875,663	706.87
Other	943	25,626	26,031	26,100	257,351,462	763.77

Western Workforce Investment Area includes these counties: Crawford, Franklin, Logan, Polk, Scott, and Sebastian