

Arkansas Covered Employment & Earnings

Jobs for People. People for Jobs.
DWS
Department of
WORKFORCE**Services**

Annual
2013

**COVERED EMPLOYMENT AND EARNINGS
STATE OF ARKANSAS
ANNUAL 2013**

**MIKE BEEBE, GOVERNOR
STATE OF ARKANSAS**

**ARTEE WILLIAMS, DIRECTOR
DEPARTMENT OF WORKFORCE SERVICES**

**PUBLISHED BY
LABOR MARKET INFORMATION
BUREAU OF LABOR STATISTICS PROGRAMS
POST OFFICE BOX 2981
LITTLE ROCK, ARKANSAS 72203-2981
BERNADETTE COLEMAN, BLS PROGRAMS MANAGER
TELEPHONE (501) 682-3159
SUSAN PRICE, QCEW LEAD ANALYST
TELEPHONE (501) 682-3103**

STATE OF ARKANSAS WEBPAGE: <http://www.arkansas.gov>

DEPARTMENT OF WORKFORCE SERVICES WEBPAGE: <http://www.arkansas.gov/esd/>

WEBPAGE FOR LABOR MARKET INFORMATION: <http://www.discover.arkansas.gov>

RELEASED: MAY 2014

TABLE OF CONTENTS

	Page
Description and Classification of Data	1
Definition of Covered Employment and Earnings	2
Significant Developments During Calendar Year 2013	3

GRAPHS AND TABLES

Graph 1	Average Total Covered Employment for Selected Years, Arkansas	7
Graph 2	Total Covered Earnings, by Calendar Quarter for Selected Years, Arkansas	8
Table 1	Annual Comparison of Covered Employment and Wages, by Industry	5
Table 2	Total Covered Employment in Arkansas, 2006 – 2013	6
Table 3	Total Covered Earnings, 2006 – 2013	9
Table 4	Total Taxable Earnings, 2006 – 2013	10
Table 5	State Summary – Employment and Total Earnings, by Industry, Calendar Year 2013	11
Table 6	County Summary – Employment and Total Earnings, by Industry, Calendar Year 2013	23
Table 7	Federal Government Employment and Total Earnings in Arkansas, Calendar Year 2013	60
Table 8	Workforce Investment Area – Employment and Total Earnings, by Industry, Calendar Year 2013	61

EMPLOYMENT AND EARNINGS
UNDER THE ARKANSAS EMPLOYMENT SECURITY LAW
ANNUAL 2013

DESCRIPTION AND CLASSIFICATION OF DATA

This publication contains covered employment and payroll data by industry and county for the Calendar Year 2013 and a record for total covered employment by month, quarterly payroll data, average weekly earnings, and total taxable earnings for 2006 through 2013. These data are compiled from quarterly contributions and wage reports submitted by employers subject to the Arkansas Employment Security Law.

Employment data have been tabulated for each month of the quarter by industry under the **North American Industry Classification System** (NAICS) by state, county, and workforce area. Payroll data represent the total wages paid during the quarter and are classified by industry for the state and by publishable industry groups for each county and workforce area.

Due to industry classification revisions, previously published data will not always be comparable with current data. For this reason, comparisons should not be made between the same industries under different revisions. For more information, visit the NAICS home page at <http://www.census.gov/naics>.

Industry Classification Revisions

- SIC (Standard Industrial Classification) 1987 to NAICS 2002
- NAICS 2002 to NAICS 2007
- NAICS 2007 to NAICS 2012

The tabulation of this data is a joint effort in conjunction with the United States Bureau of Labor Statistics. Data included in this publication are subject to revisions. Revisions are typically reflected in the Annual Covered Employment and Earnings publication.

DEFINITION OF COVERED EMPLOYMENT AND EARNINGS

Covered Employment is the total number of workers employed by establishments subject to the Arkansas Employment Security Law that worked or received pay for the payroll period including the 12th of the month. Earnings include all wages paid to any covered employee by their employer including salaries, bonuses, commissions, fees, fringe benefits, sick pay made directly to employees or dependents, deferred compensation, and reported tips. These wages include both taxable and nontaxable wages. Only the first \$12,000 paid to each worker by an employer in the calendar year is taxable under the Arkansas Employment Security Law.

An Arkansas state unemployment insurance account is required of any entity meeting the definition of an employer. As described by Arkansas Department of Workforce Services Law, the definition of an employer includes, but is not limited to, a sole proprietorship, partnership, corporation, associations, trust, estate, and receiver or trustee in bankruptcy. The entity must employ one or more individuals for ten or more days in a calendar year, whether or not the days are consecutive.

Currently excluded from coverage is employment covered by the Railroad Unemployment Insurance Act, some domestic service workers, employees of small agricultural establishments, self-employed workers, unpaid family workers, insurance and real estate agents paid only on a commission basis, and employees of churches and religious organizations except separately incorporated schools.

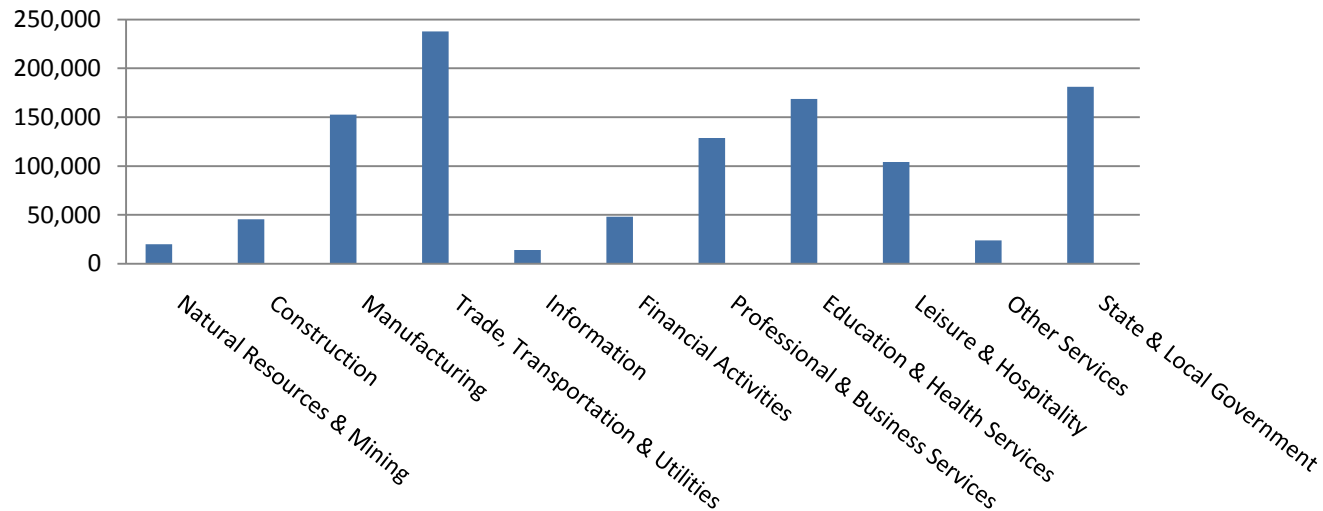
Civilian federal workers are covered by Unemployment Compensation for Federal Employees (UCFE).

SIGNIFICANT DEVELOPMENTS DURING CALENDAR YEAR 2013

AVERAGE EMPLOYMENT CHANGES

Covered employment averaged 1,125,079 during the Calendar Year 2013 (see Table 1, page 5), a decline of 1,258 from the previous year. The greatest employment gain occurred in Professional & Business Services (+5,176). The largest annual loss occurred in Manufacturing (-3,073).

Average Covered Employment by NAICS



EMPLOYMENT CHANGES FOR CALENDAR YEAR 2013

Two of the eleven major industry sectors recorded over-the-year employment gains (see Table 1). The increase in Professional & Business Services brought the sector's employment average to 128,832. The Administrative & Waste Services subsector had an average of 57,279, an increase of 3,255 from 2012. Jobs in Leisure & Hospitality grew to 104,305. This increase can be attributed to the Accommodation & Food Services subsector which grew by 1,165 from 2012.

Nine major industry sectors experienced over-the-year losses. Manufacturing (-3,073) and Construction (-1,948) experienced the most significant declines in average employment. Natural Resources & Mining lost 1,223 jobs, mostly due to a decrease in the Mining subsector (-1,130).

EMPLOYMENT CHANGES FOR CALENDAR YEAR 2013

Pulaski County posted the highest average covered employment for Arkansas counties in 2013 at 234,043. Benton County averaged 98,113 in covered employment, slightly higher than Washington County with 92,125. Sebastian County had the fourth highest average covered employment with 63,211, followed by Craighead County with 44,588. Of the five leading counties, only Sebastian County experienced a decline in covered employment compared to 2012.

COVERED WAGES

Wages paid to covered workers totaled \$43,350,205,228 for the Calendar Year 2013 (see Table 1), for an average weekly wage of \$740.98 (see Table 5). Employees in Benton County recorded the highest average weekly wage (\$1,016.78), and workers in Newton County the lowest (\$441.90) (see Table 6).

The Professional & Business Services sector recorded the highest average weekly wage for the State of Arkansas at \$1,021.36. The Leisure and Hospitality sector reported the lowest average weekly wage at \$273.19 (see Table 5).

Average Weekly Wage by Industry

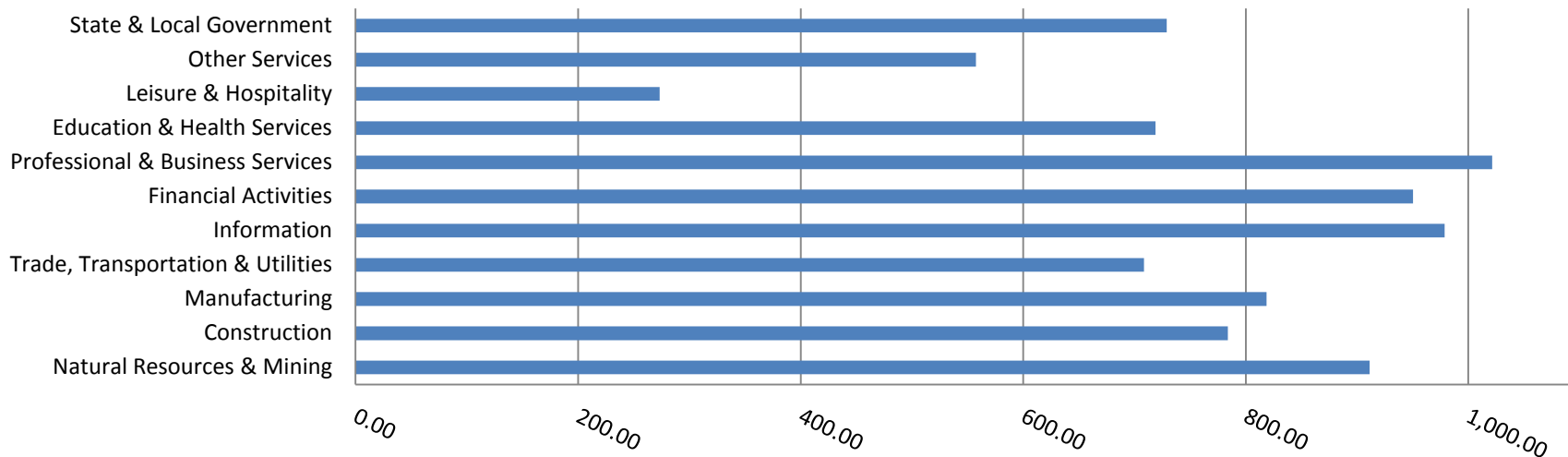


TABLE 1. YEARLY COMPARISON OF COVERED EMPLOYMENT AND WAGES, BY INDUSTRY

North American Industry Classification System - Industry Groups	Number of Employing Units	Average Covered Employment	Percent of Total	Net Change From: 2012	Total Calendar Earnings 2013	Percent of Total	Average Weekly Earnings
Total	85,787	1,125,079	100	-1,258	\$43,350,205,228	100	740.98
Natural Resources & Mining	2,513	20,129	1.8	-1,223	953,758,687	2.2	911.20
Agriculture, Forestry, Fishing & Hunting	1,993	12,538	1.1	-93	434,737,496	1.0	666.80
Mining	520	7,591	0.7	-1,130	519,021,191	1.2	1,314.87
Construction	6,753	45,448	4.0	-1,948	1,852,512,486	4.3	783.87
Manufacturing	3,042	152,502	13.6	-3,073	6,492,625,471	15.0	818.73
Trade, Transportation & Utilities	21,284	237,905	21.1	-90	8,765,816,153	20.2	708.57
Wholesale Trade	6,819	46,819	4.2	-507	2,815,577,724	6.5	1,156.49
Retail Trade	11,176	133,174	11.8	590	3,218,780,116	7.4	464.80
Transportation & Warehousing	2,874	49,828	4.4	-563	2,120,118,359	4.9	818.24
Utilities	415	8,084	0.7	390	611,339,954	1.4	1,454.30
Information	1,155	14,132	1.3	-224	719,261,351	1.7	978.77
Financial Activities	8,127	48,086	4.3	501	2,375,966,726	5.5	950.21
Finance & Insurance	4,835	34,941	3.1	540	1,937,824,839	4.5	1,066.54
Real Estate & Rental & Leasing	3,292	13,145	1.2	-39	438,141,887	1.0	640.99
Professional & Business Services	12,897	128,832	11.5	5,176	6,842,369,046	15.8	1,021.36
Professional & Technical Services	8,165	40,139	3.6	1,380	2,222,797,287	5.1	1,064.95
Management of Companies & Enterprises	501	31,414	2.8	541	3,152,547,541	7.3	1,929.90
Administrative & Waste Services	4,231	57,279	5.1	3,255	1,467,024,218	3.4	492.54
Education & Health Services	14,904	168,631	15.0	-817	6,303,851,186	14.5	718.89
Educational Services	727	11,065	1.0	-1,113	360,717,267	0.8	626.92
Health Care & Social Assistance	14,177	157,566	14.0	296	5,943,133,919	13.7	725.35
Leisure & Hospitality	6,673	104,305	9.3	1,500	1,481,740,719	3.4	273.19
Arts, Entertainment & Recreation	927	9,978	0.9	335	181,938,142	0.4	350.65
Accommodation & Food Services	5,746	94,327	8.4	1,165	1,299,802,577	3.0	265.00
Other Services	5,351	23,844	2.1	-465	691,303,920	1.6	557.55
State & Local Government	3,088	181,265	16.1	-595	6,870,999,483	15.8	728.96
Local Government	1,961	110,843	9.9	-1,183	3,888,184,704	9.0	674.58
State Government	1,127	70,422	6.3	588	2,982,814,779	6.9	814.54
Nonclassifiable Establishments	0	0	0.0	0	0	0.0	0.00

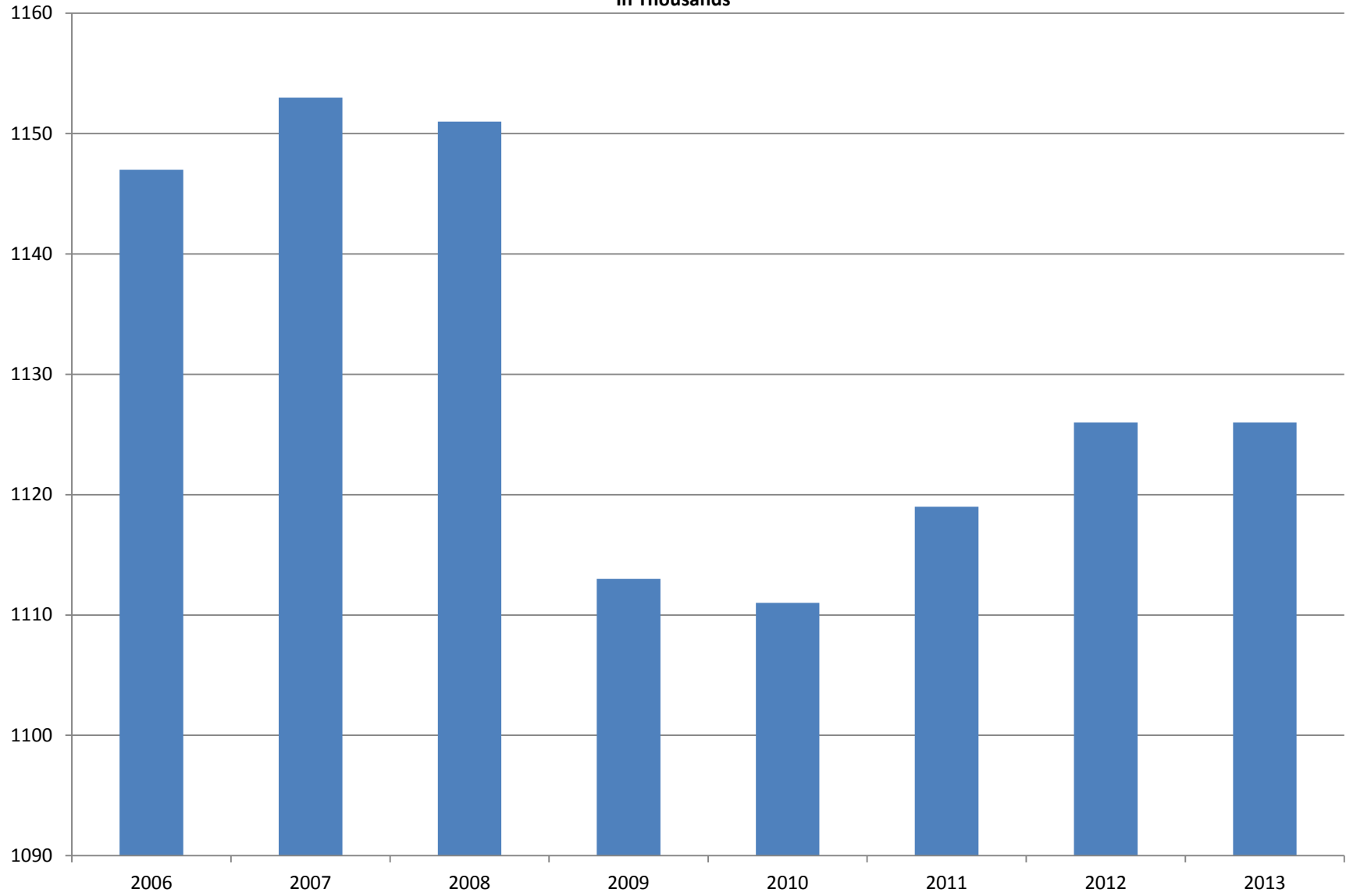
Note: Items do not necessarily add to total because of rounding. Because of industry code changes between years, substantial employment and wage shifts among industries are anticipated.

TABLE 2. TOTAL COVERED EMPLOYMENT IN ARKANSAS

PERIOD	2006	2007	2008	2009	2010	2011	2012	2013
AVERAGE	1,146,948	1,152,994	1,150,965	1,112,591	1,110,947	1,118,639	1,126,328	1,125,699
January	1,130,595	1,137,437	1,141,856	1,119,299	1,089,984	1,098,349	1,113,274	1,112,991
February	1,136,810	1,143,397	1,149,443	1,119,476	1,091,282	1,098,445	1,119,319	1,121,492
March	1,150,439	1,158,895	1,157,690	1,124,386	1,106,198	1,113,061	1,131,123	1,129,100
April	1,155,498	1,159,623	1,159,841	1,123,383	1,115,341	1,129,635	1,136,608	1,134,734
May	1,159,886	1,165,224	1,166,111	1,122,322	1,123,250	1,126,371	1,142,985	1,138,383
June	1,162,026	1,164,207	1,164,167	1,117,884	1,130,164	1,123,412	1,136,699	1,130,402
July	1,106,142	1,110,571	1,114,279	1,071,048	1,073,743	1,080,937	1,078,836	1,083,849
August	1,130,839	1,139,109	1,138,583	1,093,192	1,099,795	1,106,262	1,108,552	1,109,759
September	1,159,814	1,165,135	1,162,333	1,116,580	1,124,281	1,132,779	1,134,829	1,135,673
October	1,156,804	1,162,768	1,157,196	1,113,157	1,125,073	1,138,395	1,136,045	1,137,332
November	1,156,011	1,164,246	1,152,159	1,115,443	1,126,781	1,138,543	1,138,302	1,140,650
December	1,158,509	1,165,314	1,147,927	1,114,919	1,125,466	1,137,474	1,139,361	1,134,020

AVERAGE TOTAL COVERED EMPLOYMENT

In Thousands



TOTAL COVERED EARNINGS BY CALENDAR YEAR

In Thousands

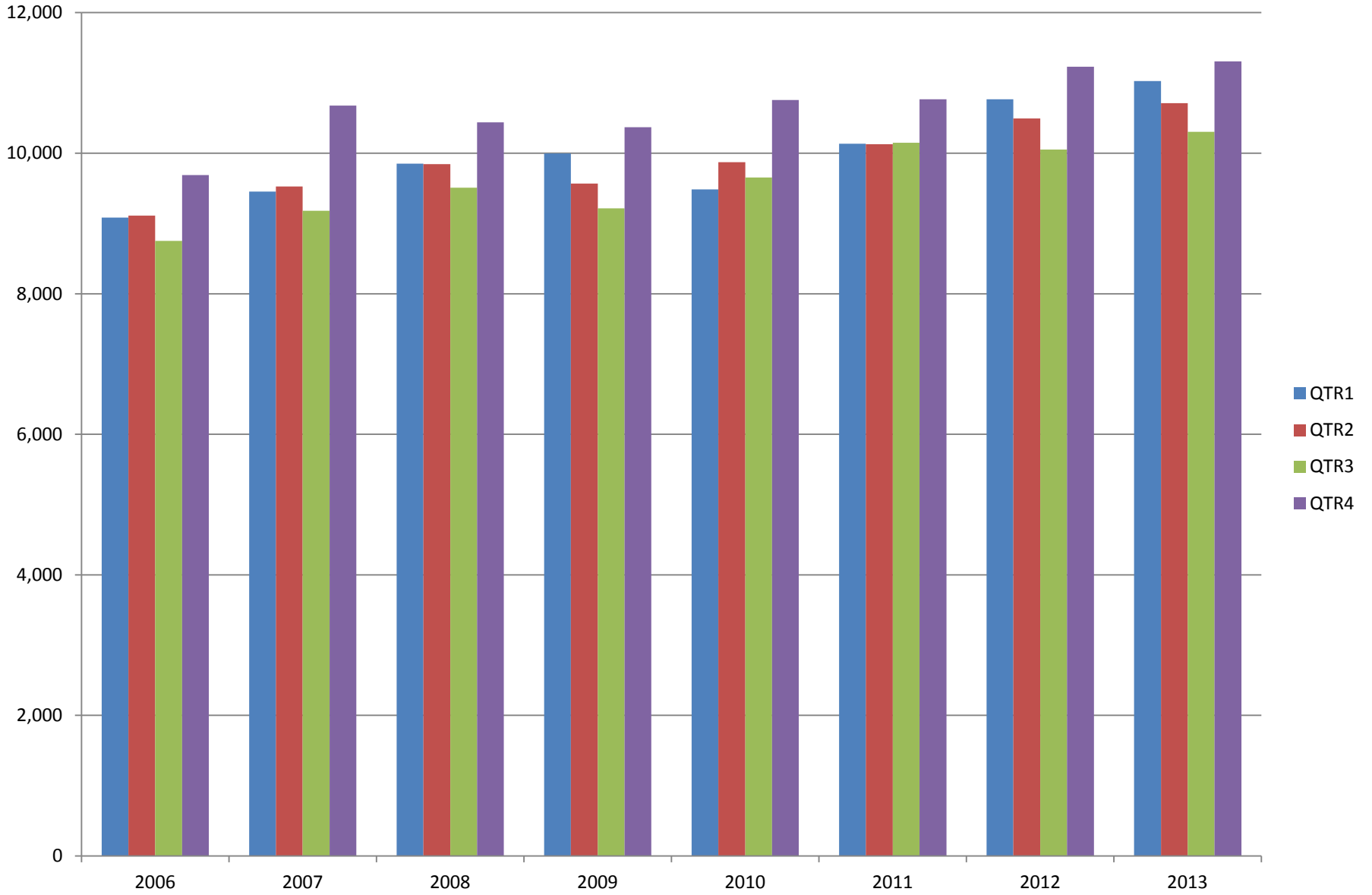


TABLE 3. TOTAL COVERED EARNINGS 2006 - 2013

PERIOD	2006	2007	2008	2009
TOTAL	\$36,636,090,775	\$38,833,265,464	\$39,643,039,342	\$39,149,476,305
January - March	9,085,021,816	9,452,711,662	9,851,866,058	9,998,452,028
April - June	9,112,624,590	9,525,837,049	9,843,711,293	9,566,968,853
July - September	8,750,878,205	9,178,902,477	9,509,150,631	9,213,797,140
October - December	9,687,566,164	10,675,814,276	10,438,311,360	10,370,258,284
Average Weekly Earnings	\$614.27	\$647.70	\$662.37	\$676.69

PERIOD	2010	2011	2012	2013
TOTAL	\$39,769,504,992	\$41,177,659,236	\$42,546,231,979	\$43,350,205,228
January - March	9,486,245,580	10,134,035,254	10,766,175,449	11,027,184,315
April - June	9,873,489,653	10,128,274,611	10,494,369,042	10,711,027,503
July - September	9,653,588,807	10,147,287,431	10,053,294,410	10,304,451,772
October - December	10,756,180,952	10,768,061,940	11,232,393,078	11,307,541,638
Average Weekly Earnings	\$688.42	\$707.89	\$726.43	\$740.57

TABLE 4. TOTAL TAXABLE EARNINGS, 2006 - 2013

PERIOD	2006	2007	2008	2009
TOTAL	10,197,511,360	10,459,105,059	10,360,487,108	9,787,660,886
January - March	5,421,204,601	5,617,417,571	5,635,750,082	5,423,705,265
April - June	2,385,110,992	2,466,606,627	2,419,313,519	2,293,670,854
July - September	1,314,939,803	1,307,060,412	1,297,473,555	1,165,280,065
October - December	1,076,255,964	1,068,020,449	1,007,949,952	905,004,702

PERIOD	2010	2011	2012	2013
TOTAL	11,332,118,456	11,479,396,226	11,627,967,713	11,654,634,178
January - March	5,607,134,758	5,828,877,821	6,167,036,199	6,184,735,653
April - June	2,977,100,591	2,910,604,359	2,838,154,846	2,805,431,293
July - September	1,577,067,770	1,601,382,146	1,494,712,584	1,506,497,129
October - December	1,170,815,337	1,138,531,900	1,128,064,084	1,157,970,103

TABLE 5. STATEWIDE SUMMARY CALENDAR YEAR 2013

North American Industry Classification System - Industry Groups		Average Employing Units	Average Covered Employment	Total Calendar Earnings	Average Weekly Earnings
TOTAL, ALL INDUSTRIES		85,787	1,125,079	\$43,350,205,228	\$740.98
NATURAL RESOURCES & MINING		2,513	20,129	\$953,758,687	\$911.20
11	AGRICULTURE, FORESTRY, FISHING & HUNTING	1,993	12,538	\$434,737,496	\$666.80
111	CROP PRODUCTION	869	4,266	\$116,283,113	\$524.19
1111	Oilseed & Grain Farming	579	2,686	74,668,273	534.60
1112	Vegetable & Melon Farming	15	142	3,164,400	428.55
1113	Fruit & Tree Nut Farming	13	73	1,687,884	444.65
1114	Greenhouse & Nursery Production	43	341	9,115,115	514.05
1119	Other Crop Farming	219	1,024	27,647,441	519.22
112	ANIMAL PRODUCTION & AQUACULTURE	290	2,980	\$122,176,504	\$788.44
1121	Cattle Ranching & Farming	101	359	9,528,512	510.42
1122	Hog & Pig Farming	11	126	6,200,839	946.40
1123	Poultry & Egg Production	102	2,021	92,117,297	876.54
1125	Animal Aquaculture	56	423	13,191,613	599.73
1129	Other Animal Production	20	51	1,138,243	429.20
113	FORESTRY & LOGGING	401	2,231	\$80,426,775	\$693.26
1131	Timber Tract Operations	36	180	8,225,950	878.84
1132	Forest Nurseries & Gathering of Forest Products	5	24	1,121,255	898.44
1133	Logging	360	2,027	71,079,570	674.35
114	FISHING, HUNTING & TRAPPING	3	18	\$433,692	\$463.35
115	SUPPORT ACTIVITIES FOR AGRICULTURE & FORESTRY	430	3,043	\$115,417,412	\$729.40
1151	Support Activities for Crop Production	293	1,529	68,576,621	862.51
1152	Support Activities for Animal Production	63	715	19,502,468	524.54
1153	Support Activities for Forestry	74	799	27,338,323	657.99
21	MINING	520	7,591	\$519,021,191	\$1,314.87
211	OIL & GAS EXTRACTION	88	1,549	\$139,415,517	\$1,730.84
212	MINING (EXCEPT OIL & GAS)	112	1,884	\$94,863,050	\$968.31
213	SUPPORT ACTIVITIES FOR MINING	320	4,158	\$284,742,624	\$1,316.94

TABLE 5. STATEWIDE SUMMARY CALENDAR YEAR 2013

North American Industry Classification System - Industry Groups		Average Employing Units	Average Covered Employment	Total Calendar Earnings	Average Weekly Earnings
CONSTRUCTION		6,753	45,448	\$1,852,512,486	\$783.87
236	CONSTRUCTION OF BUILDINGS	1,604	9,229	\$406,918,866	\$847.91
2361	Residential Building Construction	1,064	2,761	98,553,269	686.44
2362	Nonresidential Building Construction	540	6,468	308,365,597	916.84
237	HEAVY & CIVIL ENGINEERING CONSTRUCTION	736	7,696	\$353,773,351	\$884.01
2371	Utility System Construction	400	3,942	175,800,984	857.63
2372	Land Subdivision	67	151	6,003,864	764.63
2373	Highway, Street & Bridge Construction	185	2,881	123,781,117	826.24
2379	Other Heavy Construction	84	722	48,187,386	1,283.49
238	SPECIALTY TRADE CONTRACTORS	4,413	28,523	\$1,091,820,269	\$736.13
2381	Building Foundation & Exterior Contractors	857	5,406	191,332,812	680.63
2382	Building Equipment Contractors	2,033	14,961	628,557,815	807.94
2383	Building Finishing Contractors	756	3,729	121,232,217	625.20
2389	Other Specialty Trade Contractors	767	4,427	150,697,425	654.63
MANUFACTURING		3,042	152,502	\$6,492,625,471	\$818.73
311	FOOD MANUFACTURING	273	42,897	\$1,387,489,387	\$622.01
3111	Animal Food Manufacturing	43	1,487	65,687,764	849.51
3112	Grain & Oilseed Milling	31	2,405	106,606,486	852.44
3113	Sugar & Confectionery Product Manufacturing	7	35	703,774	386.69
3114	Fruit, Vegetable & Specialty Food	20	4,329	178,661,569	793.67
3115	Dairy Product Manufacturing	10	574	25,490,849	854.02
3116	Animal Slaughtering & Processing	79	29,081	814,312,500	538.49
3117	Seafood Product Preparation & Packaging	5	74	1,496,387	388.87
3118	Bakeries & Tortilla Manufacturing	56	3,177	122,494,530	741.47
3119	Other Food Manufacturing	22	1,735	72,035,528	798.44
312	BEVERAGE & TOBACCO PRODUCT MANUFACTURING	43	1,117	\$48,982,310	\$843.30
313	TEXTILE MILLS	12	80	\$2,907,760	\$698.98
314	TEXTILE PRODUCT MILLS	55	896	\$38,578,074	\$828.00
3141	Textile Furnishing Mills	10	33	1,586,543	924.56
3149	Other Textile Product Mills	45	863	36,991,531	824.31
315	APPAREL MANUFACTURING	22	1,028	\$24,380,390	\$456.08
316	LEATHER & ALLIED PRODUCT MANUFACTURING	16	1,124	\$30,217,864	\$517.00

TABLE 5. STATEWIDE SUMMARY CALENDAR YEAR 2013

North American Industry Classification System - Industry Groups		Average Employing Units	Average Covered Employment	Total Calendar Earnings	Average Weekly Earnings
321	WOOD PRODUCT MANUFACTURING	317	8,961	\$336,371,848	\$721.87
3211	Sawmills & Wood Preservation	130	4,232	168,159,409	764.14
3212	Veneer & Engineered Wood Products	53	1,957	86,212,369	847.18
3219	Other Wood Product Manufacturing	134	2,772	82,000,070	568.88
322	PAPER MANUFACTURING	76	10,062	\$608,292,370	\$1,162.58
3221	Pulp, Paper & Paperboard Mills	11	4,244	325,584,205	1,475.31
3222	Converted Paper Product Manufacturing	65	5,818	282,708,165	934.46
323	PRINTING & RELATED SUPPORT ACTIVITIES	244	3,500	\$142,428,450	\$782.57
324	PETROLEUM & COAL PRODUCTS MANUFACTURING	17	963	\$58,363,376	\$1,165.50
325	CHEMICAL MANUFACTURING	119	4,725	\$283,211,779	\$1,152.67
3251	Basic Chemical Manufacturing	30	1,729	117,527,561	1,307.20
3252	Resin, Rubber & Artificial Fibers	6	263	15,514,947	1,134.47
3253	Agricultural Chemical Manufacturing	17	400	23,824,401	1,145.40
3254	Pharmaceutical & Medicine Manufacturing	13	209	11,153,570	1,026.28
3255	Paint, Coating & Adhesive Manufacturing	9	239	14,278,344	1,148.89
3256	Soap, Cleaning Compound, & Toilet Preparation Manufacturing	16	1,116	55,906,904	963.38
3259	Other Chemical Preparation Manufacturing	28	769	45,006,052	1,125.49
326	PLASTICS & RUBBER PRODUCTS MANUFACTURING	142	10,620	\$482,628,800	\$873.95
3261	Plastics Product Manufacturing	100	6,437	261,879,212	782.37
3262	Rubber Product Manufacturing	42	4,183	220,749,588	1,014.87
327	NONMETALLIC MINERAL PRODUCT MANUFACTURING	252	3,507	\$147,221,482	\$807.29
3271	Clay Product & Refractory Manufacturing	14	377	15,868,153	809.43
3272	Glass & Glass Product Manufacturing	12	372	16,250,975	840.10
3273	Cement & Concrete Product Manufacturing	183	1,941	74,682,688	739.93
3274	Lime & Gypsum Product Manufacturing	5	211	11,696,538	1,066.04
3279	Other Nonmetallic Mineral Products Manufacturing	38	606	28,723,128	911.50
331	PRIMARY METAL MANUFACTURING	75	10,203	\$599,472,373	\$1,129.89
3311	Iron & Steel Mills & Ferroalloys	8	2,382	223,952,478	1,808.05
3312	Purchased Steel Product Manufacturing	20	3,037	168,800,208	1,068.87
3313	Alumina & Aluminum Production	19	1,234	64,232,336	1,001.00
3314	Other Nonferrous Metal Production	7	608	24,418,409	772.34
3315	Foundries	21	2,942	118,068,942	771.77

TABLE 5. STATEWIDE SUMMARY CALENDAR YEAR 2013

North American Industry Classification System - Industry Groups		Average Employing Units	Average Covered Employment	Total Calendar Earnings	Average Weekly Earnings
332	FABRICATED METAL PRODUCT MANUFACTURING	520	14,124	\$653,103,554	\$889.24
3321	Forging & Stamping	12	317	13,252,298	803.95
3322	Cutlery & Hand Tool Manufacturing	12	732	29,563,202	776.67
3323	Architectural & Structural Metals	152	3,592	169,772,498	908.92
3324	Boilers, Tanks & Shipping Containers	17	699	33,622,072	925.00
3325	Hardware Manufacturing	7	254	11,413,129	864.11
3326	Spring & Wire Product Manufacturing	13	392	16,805,553	824.45
3327	Machine Shops & Threaded Products	209	1,862	75,250,223	777.19
3328	Coating, Engraving & Heat Treating Metals	38	678	24,427,587	692.86
3329	Other Fabricated Metal Product Manufacturing	60	5,598	278,996,992	958.44
333	MACHINERY MANUFACTURING	212	11,007	\$463,188,600	\$809.26
3331	Agriculture, Construction & Mining Machinery	38	2,852	104,863,962	707.09
3332	Industrial Machinery Manufacturing	26	731	36,927,680	971.47
3333	Commercial & Service Industry Machinery	23	774	39,911,219	991.63
3334	HVAC & Commercial Refrigeration Equipment	19	3,003	127,697,556	817.76
3335	Metalworking Machinery Manufacturing	59	1,132	46,345,056	787.32
3336	Turbine & Power Transmission Equipment Manufacturing	7	537	22,833,772	817.71
3339	Other General Purpose Machinery Manufacturing	40	1,978	84,609,355	822.60
334	COMPUTER & ELECTRONIC PRODUCT MANUFACTURING	63	2,910	\$144,026,853	\$951.80
3343	Audio & Video Equipment Manufacturing	5	240	10,300,713	825.38
3344	Semiconductors & Electronic Components	28	2,016	102,429,003	977.08
3345	Electronic Instrument Manufacturing	20	504	22,977,368	876.73
	Other	10	150	8,319,769	1,066.64
335	ELECTRICAL EQUIPMENT & APPLIANCES	55	5,725	\$274,991,892	\$923.72
3353	Electrical Equipment Manufacturing	20	3,494	167,594,713	922.43
3359	Other Electrical Equipment & Component Manufacturing	18	1,665	81,906,741	946.02
	Other	17	566	25,490,438	866.08
336	TRANSPORTATION EQUIPMENT MANUFACTURING	144	12,390	\$530,610,810	\$823.57
3362	Motor Vehicle Body & Trailer Manufacturing	31	1,661	57,476,306	665.45
3363	Motor Vehicle Parts Manufacturing	47	4,773	177,762,372	716.22
3364	Aerospace Product & Parts Manufacturing	26	2,910	175,359,049	1,158.86
3366	Ship & Boat Building	23	1,524	46,671,315	588.93
	Other	17	1,522	73,341,768	926.69
337	FURNITURE & RELATED PRODUCT MANUFACTURING	192	3,347	\$114,323,301	\$656.86
3371	Household & Institutional Furniture	158	2,313	69,410,828	577.10
3372	Office Furniture & Fixtures Manufacturing	25	942	42,300,375	863.55
3379	Other Furniture Related Product Manufacturing	9	92	2,612,098	546.01
339	MISCELLANEOUS MANUFACTURING	193	3,316	\$121,834,198	\$706.56
3391	Medical Equipment & Supplies Manufacturing	77	1,595	68,621,041	827.36
3399	Other Miscellaneous Manufacturing	116	1,721	53,213,157	594.61

TABLE 5. STATEWIDE SUMMARY CALENDAR YEAR 2013

North American Industry Classification System - Industry Groups		Average Employing Units	Average Covered Employment	Total Calendar Earnings	Average Weekly Earnings
TRADE, TRANSPORTATION & UTILITIES		21,284	237,905	\$8,765,816,153	\$708.57
42	WHOLESALE TRADE	6,819	46,819	\$2,815,577,724	\$1,156.49
423	MERCHANT WHOLESALERS, DURABLE GOODS	2,145	20,887	\$1,073,974,442	\$988.81
4231	Motor Vehicle & Part Merchant Wholesalers	231	2,623	107,273,110	786.48
4232	Furniture & Furnishings Merchant Wholesalers	50	396	19,958,990	969.26
4233	Lumber & Supply Merchant Wholesalers	172	1,358	58,539,967	828.99
4234	Commercial Goods Merchant Wholesalers	302	2,776	178,635,842	1,237.50
4235	Metal & Mineral Merchant Wholesalers	52	891	45,691,125	986.17
4236	Appliances & Electronics Goods Merchant Wholesalers	184	1,833	112,045,551	1,175.52
4237	Hardware & Plumbing Merchant Wholesalers	225	2,172	113,165,334	1,001.96
4238	Machinery & Supply Merchant Wholesalers	704	6,815	353,433,305	997.33
4239	Miscellaneous Durable Goods Merchant Wholesalers	225	2,023	85,231,218	810.21
424	MERCHANT WHOLESALERS, NONDURABLE GOODS	1,190	15,820	\$820,701,262	\$997.64
4241	Paper & Paper Product Merchant Wholesalers	67	1,549	73,137,151	907.99
4242	Druggist' Goods Merchant Wholesalers	66	681	41,775,888	1,179.71
4243	Apparel & Piece Goods Merchant Wholesalers	39	605	26,150,423	831.23
4244	Grocery Product Merchant Wholesalers	297	4,805	281,762,024	1,127.68
4245	Farm Product Merchant Wholesalers	74	862	31,178,583	695.58
4246	Chemical merchant Wholesalers	96	681	42,159,527	1,190.54
4247	Petroleum Merchant Wholesalers	138	1,624	92,218,491	1,092.02
4248	Alcoholic Beverage Merchant Wholesalers	41	1,399	69,743,750	958.70
4249	Miscellaneous Nondurable Goods Merchant Wholesaler	372	3,614	162,575,425	865.09
425	ELECTRONIC MARKETS & AGENTS & BROKERS	3,484	10,112	\$920,902,020	\$1,751.35
44 - 45	RETAIL TRADE	11,176	133,174	\$3,218,780,116	\$464.80
441	MOTOR VEHICLE & PARTS DEALERS	1,594	17,849	\$715,061,436	\$770.42
4411	Automobile Dealers	644	10,677	501,778,137	903.77
4412	Other Motor Vehicle Dealers	161	1,392	52,120,101	720.05
4413	Automotive Parts, Accessories & Tire Stores	789	5,780	161,163,198	536.21
442	FURNITURE & HOME FURNISHINGS STORES	524	3,371	\$95,726,500	\$546.10
4421	Furniture Stores	284	1,880	60,443,600	618.29
4422	Home Furnishings Stores	240	1,491	35,282,900	455.08
443	ELECTRONICS & APPLIANCE STORES	514	3,792	\$116,866,858	\$592.68
444	BUILDING MATERIAL & GARDEN SUPPLY STORES	834	10,474	\$269,215,436	\$494.29
4441	Building Material & Supplies Dealers	619	9,194	238,471,065	498.80
4442	Lawn & Garden Equipment & Supplies Stores	215	1,280	30,744,371	461.90

TABLE 5. STATEWIDE SUMMARY CALENDAR YEAR 2013

North American Industry Classification System - Industry Groups		Average Employing Units	Average Covered Employment	Total Calendar Earnings	Average Weekly Earnings
445	FOOD & BEVERAGE STORES	1,014	17,893	\$344,924,153	\$370.71
4451	Grocery Stores	558	15,558	291,813,733	360.70
4452	Specialty Food Stores	128	747	20,996,407	540.53
4453	Beer, Wine & Liquor Stores	328	1,588	32,114,013	388.90
446	HEALTH & PERSONAL CARE STORES	1,004	7,919	\$279,857,201	\$679.61
447	GASOLINE STATIONS	1,661	12,108	\$206,707,300	\$328.31
44711	Gasoline Stations with Convenience Stores	1,558	10,828	179,346,338	318.52
44719	Other Gasoline Stations	103	1,280	27,360,962	411.07
448	CLOTHING & CLOTHING ACCESSORIES STORES	1,048	8,655	\$133,708,082	\$297.09
4481	Clothing Stores	765	6,702	89,967,419	258.15
4482	Shoe Stores	142	1,174	18,774,101	307.53
4483	Jewelry, Luggage & Leather Goods Stores	141	779	24,966,562	616.34
451	SPORTING GOODS, HOBBY, BOOK & MUSIC STORES	491	4,589	\$79,824,129	\$334.51
4511	Sporting Goods & Musical Instrument Stores	413	4,046	71,680,084	340.70
4512	Book, Periodical & Music Stores	78	543	8,144,045	288.43
452	GENERAL MERCH&ISE STORES	858	37,970	\$773,597,302	\$391.81
453	MISCELLANEOUS STORE RETAILERS	1,263	6,786	\$141,087,921	\$399.83
4531	Florists	202	718	11,877,902	318.14
4532	Office Supplies, Stationery & Gift Stores	308	2,091	43,772,968	402.58
4533	Used Merchandise Stores	255	1,536	31,307,558	391.97
4539	Other Miscellaneous Store Retailers	498	2,441	54,129,493	426.44
454	NONSTORE RETAILERS	371	1,768	\$62,203,798	\$676.60
4541	Electronic Shopping & Mail-Order Houses	150	634	24,100,855	731.04
4542	Vending Machine Operators	71	452	13,510,793	574.83
4543	Direct Selling Establishments	150	682	24,592,150	693.44
48 - 49	TRANSPORTATION & WAREHOUSING	2,874	49,828	2,120,118,359	\$818.24
481	AIR TRANSPORTATION	52	782	\$45,077,803	\$1,108.54
484	TRUCK TRANSPORTATION	1,869	32,029	\$1,398,755,778	\$839.84
4841	General Freight Trucking	1,133	25,682	1,132,093,972	847.72
4842	Specialized Freight Trucking	736	6,347	266,661,806	807.96

TABLE 5. STATEWIDE SUMMARY CALENDAR YEAR 2013

North American Industry Classification System - Industry Groups		Average Employing Units	Average Covered Employment	Total Calendar Earnings	Average Weekly Earnings
485	TRANSIT & GROUND PASSENGER TRANSPORTATION	83	1,458	\$26,695,651	\$352.11
4853	Taxi & Limousine Service	27	364	6,330,895	334.47
4854	School & Employee Bus Transportation	13	459	8,549,603	358.20
4855	Charter Bus Industry Service	6	98	2,519,396	494.39
4859	Other Ground Passenger Transportation	31	466	7,517,159	310.22
	Other	6	71	1,778,598	481.74
486	PIPELINE TRANSPORTATION	34	456	\$44,720,692	\$1,885.99
488	SUPPORT ACTIVITIES FOR TRANSPORTATION	419	4,501	\$205,833,137	\$879.43
4881	Support Activities for Air Transportation	96	1,230	49,882,482	779.90
4882	Support Activities for Rail Transportation	42	360	14,957,126	798.99
4883	Support Activities for Water Transportation	23	630	31,795,963	970.57
4884	Support Activities for Road Transportation	129	616	18,002,550	562.02
4885	Freight Transportation Arrangement	113	1,569	88,485,694	1,084.54
4889	Other Support Activities for Transportation	16	96	2,709,322	542.73
	OTHER	10	60	\$1,696,689	\$543.81
492	COURIERS & MESSENGERS	172	3,163	\$131,852,992	\$801.65
493	OTHER WAREHOUSING & STORAGE	235	7,379	265,485,617	\$691.89
22	UTILITIES	415	8,084	\$611,339,954	\$1,454.30
2211	Power Generation & Supply	158	5,829	491,915,707	1,622.91
2212	Natural Gas Distribution	70	1,331	88,016,226	1,271.69
2213	Water, Sewage & Other Systems	187	924	31,408,021	653.68
	INFORMATION	1,155	14,132	\$719,261,351	\$978.77
511	PUBLISHING INDUSTRIES, EXCEPT INTERNET	232	3,582	\$132,142,531	\$709.44
5111	Newspaper, Book & Directory Publishers	204	3,267	110,609,962	651.09
5112	Software Publishers	28	315	21,532,569	1,314.56
512	MOTION PICTURE & SOUND RECORDING INDUSTRY	137	1,144	\$22,885,584	\$384.71
5121	Motion Picture & Video Industries	119	1,114	21,570,662	372.37
5122	Sound Recording Industries	18	30	1,314,922	842.90
515	BROADCASTING, EXCEPT INTERNET	125	1,674	\$66,254,488	\$761.13
5151	Radio & Television Broadcasting	120	1,644	65,371,437	764.69
5152	Cable & Other Subscription Programming	5	30	883,051	566.06

TABLE 5. STATEWIDE SUMMARY CALENDAR YEAR 2013

North American Industry Classification System - Industry Groups		Average Employing Units	Average Covered Employment	Total Calendar Earnings	Average Weekly Earnings
517	TELECOMMUNICATIONS	392	5,904	\$403,201,243	\$1,313.32
5171	Wired Telecommunications Carriers	269	3,669	237,684,663	1,245.81
5172	Wireless Telecommunications Carriers (except Satellite)	54	1,897	144,815,977	1,468.07
5174	Satellite Telecommunications Carriers	5	4	173,258	832.97
5179	Other Telecommunications	64	334	20,527,345	1,181.91
518	DATA PROCESSING, HOSTING & RELATED SERVICES	189	1,517	\$81,742,814	\$1,036.24
519	OTHER INFORMATION SERVICES	80	311	\$13,034,691	\$806.00
FINANCIAL ACTIVITIES		8,127	48,086	\$2,375,966,726	\$950.21
52	FINANCE & INSURANCE	4,835	34,941	\$1,937,824,839	\$1,066.54
522	CREDIT INTERMEDIATION & RELATED ACTIVITIES	1,951	19,267	\$917,935,012	\$916.21
5221	Depository Credit Intermediation	1,437	16,616	763,745,140	883.93
5222	Nondepository Credit Intermediation	372	2,264	131,277,838	1,115.09
5223	Activities Related to Credit Intermediation	142	387	22,912,034	1,138.54
523	FINANCIAL INVESTMENT & RELATED ACTIVITIES	655	3,062	\$333,529,357	\$2,094.72
524	INSURANCE CARRIERS & RELATED ACTIVITIES	2,157	12,515	\$680,585,050	\$1,045.80
5241	Insurance Carriers	349	5,347	344,132,737	1,237.69
5242	Insurance Agencies, Brokerages & Support	1,808	7,168	336,452,313	902.66
	OTHER	72	97	\$5,775,420	\$1,145.01
53	REAL ESTATE & RENTAL & LEASING	3,292	13,145	\$438,141,887	\$640.99
531	REAL ESTATE	2,590	8,697	\$276,029,283	\$610.35
5311	Lessors of Real Estate	1,126	4,260	119,880,832	541.17
5312	Offices of Real Estate Agents & Brokers	734	1,540	58,754,148	733.69
5313	Activities Related to Real Estate	730	2,897	97,394,303	646.52
532	RENTAL & LEASING SERVICES	680	4,388	\$158,835,293	\$696.11
5321	Automotive Equipment Rental & Leasing	112	946	25,783,735	524.14
5322	Consumer Goods Rental	358	1,952	56,779,724	559.38
5323	General Rental Centers	46	271	9,455,570	670.99
5324	Machinery & Equipment Rental & Leasing	164	1,219	66,816,264	1,054.08
533	LESSORS OF NONFINANCIAL INTANGIBLE ASSETS	22	60	\$3,277,311	\$1,050.42

TABLE 5. STATEWIDE SUMMARY CALENDAR YEAR 2013

North American Industry Classification System - Industry Groups		Average Employing Units	Average Covered Employment	Total Calendar Earnings	Average Weekly Earnings
PROFESSIONAL & BUSINESS SERVICES		12,897	128,832	\$6,842,369,046	\$1,021.36
54	PROFESSIONAL & TECHNICAL SERVICES	8,165	40,139	\$2,222,797,287	\$1,064.95
5411	Legal Services	1,716	6,090	320,401,681	1,011.75
5412	Accounting & Bookkeeping Services	1,247	4,983	213,510,462	824.00
5413	Architectural & Engineering Services	930	5,798	338,552,512	1,122.91
5414	Specialized Design Services	176	432	23,019,730	1,024.74
5415	Computer Systems Design & Related Services	1,346	9,139	684,758,344	1,440.90
5416	Management & Technical Consulting Services	1,646	5,785	310,792,616	1,033.15
5417	Scientific Research & Development Services	130	1,088	66,913,576	1,182.72
5418	Advertising & Related Services	390	3,288	139,813,631	817.74
5419	Other Professional & Technical Services	584	3,536	125,034,735	680.01
55	MANAGEMENT OF COMPANIES & ENTERPRISES	501	31,414	\$3,152,547,541	\$1,929.90
56	ADMINISTRATIVE & SUPPORT SERVICES	4,231	57,279	\$1,467,024,218	\$492.54
561	ADMINISTRATIVE & SUPPORT SERVICES	3,937	54,335	\$1,348,465,047	\$477.26
5611	Office Administrative Services	556	2,148	125,795,888	1,126.23
5612	Facilities Support Services	28	220	8,588,115	750.71
5613	Employment Services	897	23,198	497,706,330	412.59
5614	Business Support Services	385	8,760	260,081,520	570.96
5615	Travel Arrangement & Reservation Services	92	334	12,071,016	695.01
5616	Investigation & Security Services	243	4,395	108,215,990	473.51
5617	Services to Buildings & Dwellings	1,511	13,734	284,174,622	397.91
5619	Other Support Services	225	1,546	51,831,566	644.74
562	WASTE MANAGEMENT & REMEDIATION SERVICES	294	2,944	\$118,559,171	\$774.45
5621	Waste Collection Services	117	1,029	38,418,110	717.99
5622	Waste Treatment & disposal Services	35	830	42,867,672	993.23
5629	Remediation & Other Waste Services	142	1,085	37,273,389	660.64
EDUCATION & HEALTH SERVICES		14,904	168,631	\$6,303,851,186	\$718.89
61	EDUCATIONAL SERVICES	727	11,065	\$360,717,267	\$626.92
6111	Elementary & Secondary Schools	89	3,696	104,246,539	542.41
6112	Junior Colleges	4	135	3,826,692	545.11
6113	Colleges & Universities	40	4,017	141,708,785	678.41
6114	Business, Computer, & Management Training	40	94	6,401,410	1,309.62
6115	Technical & Trade Schools	100	906	51,113,332	1,084.93
6116	Other Schools & Instruction	265	1,662	29,661,580	343.21
6117	Educational Support Services	189	555	23,758,929	823.25

TABLE 5. STATEWIDE SUMMARY CALENDAR YEAR 2013

North American Industry Classification System - Industry Groups		Average Employing Units	Average Covered Employment	Total Calendar Earnings	Average Weekly Earnings
62	HEALTH CARE & SOCIAL ASSISTANCE	14,177	157,566	\$5,943,133,919	\$725.35
621	AMBULATORY HEALTH CARE SERVICES	5,235	48,440	\$2,728,129,507	\$1,083.07
6211	Offices of Physicians	2,268	22,363	1,686,735,035	1,450.49
6212	Offices of Dentists	993	6,939	309,991,755	859.11
6213	Offices of Other Health Practitioners	1,284	7,220	275,952,154	735.01
6214	Outpatient Care Centers	276	3,947	164,318,838	800.60
6215	Medical & Diagnostic Laboratories	115	1,031	50,732,276	946.29
6216	Home Health Care Services	144	4,335	147,398,980	653.89
6219	Other Ambulatory Health Care Services	155	2,605	93,000,469	686.55
622	HOSPITALS	108	41,843	\$1,781,500,843	\$818.77
6221	General Medical & Surgical Hospitals	76	36,955	1,589,739,585	827.27
6222	Psychiatric & Substance Abuse Hospitals	12	2,458	89,228,934	698.10
6223	Other Hospitals	20	2,430	102,532,324	811.43
623	Residential & Mental Health Facilities	594	31,190	\$733,924,801	\$452.51
6231	Nursing Care Facilities (Skilled Nursing Facilities)	264	22,794	539,073,601	454.80
6232	Residential Mental Health Facilities	167	4,306	104,375,003	466.14
6233	Continuing Care & Assisted Living Facilities	122	3,020	63,057,784	401.54
6239	Other Residential Care Facilities	41	1,070	27,418,413	492.78
624	SOCIAL ASSISTANCE	8,240	36,093	\$699,578,768	\$372.74
6241	Individual & Family Services	6,993	22,020	433,635,852	378.71
6242	Emergency & Other Relief Services	139	1,314	32,193,878	471.17
6243	Vocational Rehabilitation Services	142	3,452	75,146,000	418.63
6244	Child Day Care Services	966	9,307	158,603,038	327.72
LEISURE & HOSPITALITY		6,673	104,305	\$1,481,740,719	\$273.19
71	ARTS, ENTERTAINMENT & RECREATION	927	9,978	\$181,938,142	\$350.65
711	PERFORMING ARTS & SPECTATOR SPORTS	196	2,359	\$51,948,432	\$423.49
7111	Performing Arts Companies	47	438	7,332,781	321.95
7112	Spectator Sports	49	1,234	30,576,755	476.51
7113	Performing Arts & Sports Promoters	37	587	10,681,863	349.95
7114	Agents & Managers for Public Figures	21	22	1,630,811	1,425.53
7115	Independent Artists, Writers, & Performers	42	78	1,726,222	425.60
712	MUSEUMS, PARKS, & HISTORICAL SITES	55	515	\$14,198,713	\$530.20
713	GAMBLING, RECREATIONAL & AMUSEMENT INDUSTRY	676	7,104	\$115,790,997	\$313.45
72	ACCOMMODATION & FOOD SERVICES	5,746	94,327	\$1,299,802,577	\$265.00

TABLE 5. STATEWIDE SUMMARY CALENDAR YEAR 2013

North American Industry Classification System - Industry Groups		Average Employing Units	Average Covered Employment	Total Calendar Earnings	Average Weekly Earnings
721	ACCOMMODATION	905	11,075	\$184,485,431	\$320.34
7211	Travel Accommodation	823	10,438	173,421,457	319.51
7212	RV Parks & Recreational Camps	64	546	9,287,325	327.11
7213	Rooming & Boarding Houses	18	91	1,776,649	375.45
722	FOOD SERVICES & DRINKING PLACES	4,841	83,252	\$1,115,317,146	\$257.63
7223	Special Food Services	181	2,651	44,016,478	319.30
7224	Drinking Places, Alcoholic Beverages	166	1,255	16,315,518	250.01
7225	Restaurants & Other Eating Places	4,494	79,346	1,054,985,150	255.69
722511	Full-Service Restaurants	2,056	35,220	511,948,684	279.53
722513	Limited-Service Eating Places	2,039	40,175	486,599,344	232.92
722514	Cafeterias, Grill Buffets, & Buffets	97	1,891	29,416,614	299.16
722515	Snack & Nonalcoholic Beverage Bars	302	2,060	27,020,508	252.25
	OTHER SERVICES	5,351	23,844	\$691,303,920	\$557.55
811	REPAIR & MAINTENANCE	2,230	9,380	\$318,518,237	\$653.02
8111	Automotive Repair & Maintenance	1,440	6,121	190,815,694	599.50
8112	Electronic Equipment Repair & Maintenance	169	628	26,624,415	815.30
8113	Commercial Machinery Repair & Maintenance	434	2,018	84,113,696	801.57
8114	Household Goods Repair & Maintenance	187	613	16,964,432	532.20
812	PERSONAL & LAUNDRY SERVICES	1,321	8,017	\$175,440,349	\$420.84
8121	Personal Care Services	608	2,777	48,568,018	336.33
8122	Death Care Services	248	1,596	46,768,472	563.53
8123	Drycleaning & Laundry Service	263	2,924	65,832,268	432.97
8129	Other Personal Services	202	720	14,271,591	381.19
813	MEMBERSHIP ASSOCIATIONS & ORGANIZATIONS	1,073	5,498	\$178,209,213	\$623.34
8131	Religious Organizations	56	267	6,645,113	478.62
8132	Grantmaking & Giving Organizations	108	446	20,898,778	901.12
8133	Social Advocacy Organizations	221	1,619	54,519,932	647.60
8134	Civic & Social Organizations	197	1,201	19,841,642	317.71
8139	Professional & Similar Organizations	491	1,965	76,303,748	746.76
814	PRIVATE HOUSEHOLDS	727	949	\$19,136,121	\$387.78
	LOCAL GOVERNMENT	1,961	110,843	\$3,888,184,704	\$674.58
	STATE GOVERNMENT	1,127	70,422	\$2,982,814,779	\$814.54
	NONCLASSIFIABLE ESTABLISHMENTS	0	0	0	\$0.00

TABLE 6. COUNTY SUMMARY CALENDAR YEAR 2013

North American Industry Classification System - Industry Groups	Average Employing Units	Average Covered Employment	Total Calendar Earnings	Average Weekly Earnings
ARKANSAS COUNTY - TOTAL	747	9,680	\$351,632,119	\$698.57
Natural Resources & Mining	49	179	7,997,133	859.17
Construction	48	291	10,865,003	718.02
Manufacturing	30	3,389	134,818,414	765.02
Trade, Transportation & Utilities	213	2,454	95,192,782	745.98
Wholesale Trade	43	476	27,964,568	1,129.79
Retail Trade	97	1,064	25,503,195	460.95
Transportation, Warehousing & Utilities	73	914	41,725,019	877.90
Information	10	83	2,947,092	682.83
Financial Activities	45	323	15,147,791	901.87
Professional & Business Services	47	338	17,748,976	1,009.84
Education & Health Services	159	1,091	29,937,038	527.69
Leisure & Hospitality	55	467	5,804,488	239.03
Other Services	44	114	2,905,925	490.20
Local Government	32	756	22,866,068	581.66
State Government	15	195	5,401,409	532.68
ASHLEY COUNTY - TOTAL	584	7,332	\$281,079,292	\$737.23
Natural Resources & Mining	43	326	10,949,144	645.89
Construction	45	628	23,740,467	726.99
Manufacturing	26	2,011	124,554,878	1,191.09
Trade, Transportation & Utilities	125	1,298	38,337,059	567.99
Wholesale Trade	26	227	11,177,284	946.91
Retail Trade	76	805	16,355,383	390.72
Transportation, Warehousing & Utilities	23	266	10,804,392	781.12
Information	6	39	1,132,795	558.58
Financial Activities	36	216	7,686,980	684.38
Professional & Business Services	47	291	7,830,427	517.47
Education & Health Services	143	942	27,214,600	555.58
Leisure & Hospitality	29	378	4,471,749	227.50
Other Services	41	140	3,679,325	505.40
Local Government	32	882	27,131,545	591.57
State Government	11	181	4,350,323	462.21

TABLE 6. COUNTY SUMMARY CALENDAR YEAR 2013

North American Industry Classification System - Industry Groups	Average Employing Units	Average Covered Employment	Total Calendar Earnings	Average Weekly Earnings
BAXTER COUNTY - TOTAL	1,240	13,933	\$447,628,391	\$617.83
Natural Resources & Mining	6	68	1,875,739	530.47
Construction	118	533	16,206,632	584.74
Manufacturing	57	2,271	84,574,629	716.18
Trade, Transportation & Utilities	266	2,582	64,106,202	477.46
Wholesale Trade	33	228	8,202,580	691.85
Retail Trade	209	2,174	48,893,292	432.50
Transportation, Warehousing & Utilities	24	180	7,010,330	748.97
Information	18	191	7,873,671	792.76
Financial Activities	106	712	41,641,389	1,124.71
Professional & Business Services	139	744	22,677,283	586.16
Education & Health Services	261	3,627	135,186,160	716.77
Leisure & Hospitality	122	1,427	19,241,624	259.31
Other Services	96	350	7,261,600	398.99
Local Government	39	1,095	36,666,109	643.94
State Government	12	333	10,317,353	595.83
BENTON COUNTY - TOTAL	5,639	98,113	\$5,187,478,692	\$1,016.78
Natural Resources & Mining	45	629	39,483,105	1,207.14
Construction	517	3,403	139,249,927	786.92
Manufacturing	197	10,253	414,114,774	776.72
Trade, Transportation & Utilities	1,513	22,435	1,017,087,965	871.82
Wholesale Trade	699	4,329	398,209,199	1,768.97
Retail Trade	653	10,401	265,358,681	490.63
Transportation, Warehousing & Utilities	161	7,705	353,520,085	882.34
Information	77	792	38,589,869	937.01
Financial Activities	576	2,907	151,829,760	1,004.40
Professional & Business Services	1,098	28,140	2,499,487,494	1,708.14
Education & Health Services	657	9,416	345,377,112	705.38
Leisure & Hospitality	500	9,892	156,924,196	305.07
Other Services	362	1,628	49,433,919	583.94
Local Government	80	7,501	297,864,438	763.65
State Government	17	1,117	38,036,133	654.85

TABLE 6. COUNTY SUMMARY CALENDAR YEAR 2013

North American Industry Classification System - Industry Groups	Average Employing Units	Average Covered Employment	Total Calendar Earnings	Average Weekly Earnings
BOONE COUNTY - TOTAL	993	13,528	\$462,377,129	\$657.29
Natural Resources & Mining	4	3	78,700	\$504.49
Construction	80	457	14,706,552	618.86
Manufacturing	61	1,735	64,646,529	716.54
Trade, Transportation & Utilities	244	3,590	141,473,189	757.84
Wholesale Trade	46	305	10,020,301	631.80
Retail Trade	146	1,797	43,707,858	467.74
Transportation, Warehousing & Utilities	52	1,488	87,745,030	1,134.01
Information	20	308	12,169,604	759.84
Financial Activities	92	461	19,754,448	824.06
Professional & Business Services	109	1,111	41,092,664	711.29
Education & Health Services	169	1,471	43,756,237	572.04
Leisure & Hospitality	79	1,129	14,649,364	249.53
Other Services	59	261	8,094,133	596.38
Local Government	57	2,214	74,019,306	642.93
State Government	19	788	27,936,403	681.77
BRADLEY COUNTY - TOTAL	366	3,353	\$99,051,027	\$568.10
Natural Resources & Mining	42	283	8,448,557	574.11
Construction	16	96	3,274,436	655.94
Manufacturing	10	525	22,411,270	820.93
Trade, Transportation & Utilities	73	495	11,790,766	458.07
Wholesale Trade	15	95	3,691,525	747.27
Retail Trade	43	349	6,453,312	355.59
Transportation, Warehousing & Utilities	15	51	1,645,929	620.64
Information	4	13	468,825	693.53
Financial Activities	24	135	4,575,672	651.81
Professional & Business Services	29	100	2,918,662	561.28
Education & Health Services	100	588	16,667,951	545.13
Leisure & Hospitality	13	165	1,874,258	218.44
Other Services	30	102	2,491,376	469.72
Local Government	14	455	13,963,823	590.19
State Government	11	396	10,165,431	493.66

TABLE 6. COUNTY SUMMARY CALENDAR YEAR 2013

North American Industry Classification System - Industry Groups	Average Employing Units	Average Covered Employment	Total Calendar Earnings	Average Weekly Earnings
CALHOUN COUNTY - TOTAL	114	2,632	\$122,833,207	\$897.48
Natural Resources & Mining	12	49	1,680,353	659.48
Construction	11	107	3,554,339	638.81
Manufacturing	10	1,821	97,873,962	1,033.60
Trade, Transportation & Utilities	24	229	7,477,247	627.92
Retail Trade	14	76	1,370,772	346.86
Transportation, Warehousing & Utilities	10	153	6,106,475	767.53
Financial Activities	6	81	2,656,869	630.79
Professional & Business Services	6	9	388,931	831.05
Education & Health Services	14	49	1,842,703	723.20
Leisure & Hospitality	8	17	226,296	255.99
Local Government	11	180	4,186,919	447.32
State Government	8	84	2,832,655	648.50
Other	4	6	112,933	361.96
CARROLL COUNTY - TOTAL	781	10,002	\$263,334,152	\$506.31
Natural Resources & Mining	16	250	7,417,152	570.55
Trade, Transportation & Utilities	195	1,571	40,603,117	497.03
Wholesale Trade	24	169	4,589,730	522.27
Retail Trade	151	1,139	23,811,269	402.03
Transportation, Warehousing & Utilities	20	263	12,202,118	892.23
Information	10	71	2,353,168	637.37
Financial Activities	62	356	14,015,649	757.11
Professional & Business Services	61	213	7,250,116	654.58
Education & Health Services	85	940	31,238,116	639.08
Leisure & Hospitality	177	1,580	20,943,565	254.91
Local Government	24	992	28,841,782	559.12
State Government	10	114	3,336,134	562.78
Other	141	3,915	107,335,353	527.24

TABLE 6. COUNTY SUMMARY CALENDAR YEAR 2013

North American Industry Classification System - Industry Groups	Average Employing Units	Average Covered Employment	Total Calendar Earnings	Average Weekly Earnings
CHICOT COUNTY - TOTAL	456	3,274	\$94,139,420	\$552.95
Natural Resources & Mining	56	255	8,120,180	612.38
Construction	16	150	6,444,717	826.25
Trade, Transportation & Utilities	68	488	13,957,952	550.05
Wholesale Trade	12	64	2,709,586	814.18
Retail Trade	44	353	7,969,903	434.19
Transportation, Warehousing & Utilities	12	71	3,278,463	887.99
Information	5	8	283,494	681.48
Financial Activities	28	144	6,222,563	831.00
Professional & Business Services	18	42	1,685,674	771.83
Education & Health Services	191	769	19,309,156	482.87
Leisure & Hospitality	22	190	2,171,380	219.78
Local Government	17	638	19,883,485	599.33
State Government	10	301	8,802,683	562.40
Other	25	289	7,258,136	482.97
CLARK COUNTY - TOTAL	614	9,173	\$285,078,940	\$597.65
Natural Resources & Mining	37	235	8,797,396	719.92
Construction	25	74	1,731,901	450.08
Manufacturing	31	1,391	68,217,581	943.12
Trade, Transportation & Utilities	140	1,646	49,234,201	575.22
Wholesale Trade	19	196	8,104,753	795.21
Retail Trade	98	1,267	33,448,036	507.68
Transportation, Warehousing & Utilities	23	183	7,681,412	807.21
Information	5	20	859,105	826.06
Financial Activities	75	313	11,352,537	697.50
Professional & Business Services	47	578	20,395,715	678.59
Education & Health Services	108	1,422	39,866,238	539.14
Leisure & Hospitality	60	1,117	13,776,733	237.19
Other Services	45	183	4,446,741	467.29
Local Government	27	977	28,725,233	565.41
State Government	14	1,217	37,675,559	595.34

TABLE 6. COUNTY SUMMARY CALENDAR YEAR 2013

North American Industry Classification System - Industry Groups	Average Employing Units	Average Covered Employment	Total Calendar Earnings	Average Weekly Earnings
CLAY COUNTY - TOTAL	415	3,581	\$100,770,613	\$541.16
Natural Resources & Mining	61	281	7,091,783	485.34
Construction	29	134	3,913,049	561.57
Manufacturing	16	360	12,919,699	690.15
Trade, Transportation & Utilities	109	910	28,759,797	607.77
Wholesale Trade	24	269	10,405,209	743.87
Retail Trade	52	424	9,884,767	448.33
Transportation, Warehousing & Utilities	33	217	8,469,821	750.60
Information	5	47	1,402,788	573.97
Financial Activities	26	116	3,927,867	651.17
Professional & Business Services	27	92	2,281,592	476.92
Education & Health Services	55	466	11,565,837	477.30
Leisure & Hospitality	21	248	2,487,965	192.93
Other Services	32	79	2,419,668	589.01
Local Government	23	791	22,459,484	546.03
State Government	11	57	1,541,084	519.93
CLEBURNE COUNTY - TOTAL	667	6,833	\$202,855,707	\$570.92
Natural Resources & Mining	27	334	16,330,039	940.24
Construction	63	370	13,196,986	685.91
Manufacturing	33	1,205	40,249,689	642.35
Trade, Transportation & Utilities	167	1,549	50,554,984	627.64
Wholesale Trade	38	252	12,394,992	945.89
Retail Trade	102	974	23,317,896	460.39
Transportation, Warehousing & Utilities	27	323	14,842,096	883.67
Information	7	50	1,420,489	546.34
Financial Activities	66	220	8,009,986	700.17
Professional & Business Services	69	303	8,969,126	569.25
Education & Health Services	83	828	22,649,261	526.04
Leisure & Hospitality	76	932	11,879,184	245.11
Other Services	49	166	3,787,531	438.78
Local Government	18	774	23,167,745	575.62
State Government	9	102	2,640,687	497.87

TABLE 6. COUNTY SUMMARY CALENDAR YEAR 2013

North American Industry Classification System - Industry Groups	Average Employing Units	Average Covered Employment	Total Calendar Earnings	Average Weekly Earnings
CLEVELAND COUNTY - TOTAL	130	1,045	\$29,107,873	\$535.66
Natural Resources & Mining	14	169	5,137,034	584.55
Construction	6	17	291,255	329.47
Manufacturing	7	98	2,939,028	576.73
Trade, Transportation & Utilities	38	211	6,211,703	566.14
Retail Trade	18	69	1,273,463	354.92
Other Trade, Transportation & Utilities	20	142	4,938,240	668.78
Financial Activities	3	18	526,362	562.35
Education & Health Services	29	139	2,723,342	376.78
Local Government	11	300	8,409,865	539.09
State Government	7	52	1,442,309	533.40
Other	15	41	1,426,975	669.31
COLUMBIA COUNTY - TOTAL	750	8,164	\$294,215,533	\$693.04
Natural Resources & Mining	46	394	24,723,209	1,206.72
Construction	43	328	12,294,849	720.85
Manufacturing	34	1,791	94,466,262	1,014.33
Trade, Transportation & Utilities	164	1,394	39,544,471	545.53
Wholesale Trade	28	185	8,575,503	891.42
Retail Trade	102	971	20,896,052	413.85
Transportation, Warehousing & Utilities	34	238	10,072,916	813.91
Information	9	54	1,883,490	670.76
Financial Activities	74	376	16,300,614	833.71
Professional & Business Services	60	301	10,648,456	680.33
Education & Health Services	182	1,012	23,440,328	445.43
Leisure & Hospitality	48	666	8,403,828	242.66
Other Services	51	188	3,648,000	373.16
Local Government	26	1,060	35,683,808	647.38
State Government	13	600	23,178,218	742.89

TABLE 6. COUNTY SUMMARY CALENDAR YEAR 2013

North American Industry Classification System - Industry Groups	Average Employing Units	Average Covered Employment	Total Calendar Earnings	Average Weekly Earnings
CONWAY COUNTY - TOTAL	575	6,650	\$231,981,643	\$670.85
Natural Resources & Mining	33	308	13,837,980	864.01
Construction	52	490	24,669,401	968.19
Manufacturing	17	833	46,779,911	1,079.97
Trade, Transportation & Utilities	133	1,600	54,692,010	657.36
Wholesale Trade	23	201	9,360,439	895.56
Retail Trade	81	814	18,645,872	440.51
Transportation, Warehousing & Utilities	29	585	26,685,699	877.24
Information	3	10	306,024	588.51
Financial Activities	33	158	6,049,700	736.33
Professional & Business Services	43	424	12,135,988	550.43
Education & Health Services	154	869	24,297,865	537.71
Leisure & Hospitality	40	484	5,460,691	216.97
Other Services	30	128	3,861,507	580.15
Local Government	27	922	28,206,478	588.32
State Government	10	424	11,684,088	529.94
CRAIGHEAD COUNTY - TOTAL	2,701	44,588	\$1,556,491,455	\$671.31
Natural Resources & Mining	76	342	10,556,957	593.62
Construction	207	1,815	70,898,513	751.20
Manufacturing	111	5,762	239,565,229	799.55
Trade, Transportation & Utilities	747	9,306	288,787,449	596.78
Wholesale Trade	186	1,740	85,834,059	948.65
Retail Trade	445	6,193	146,358,797	454.48
Transportation, Warehousing & Utilities	116	1,373	56,594,593	792.69
Information	28	486	19,805,818	783.71
Financial Activities	266	1,567	78,301,786	960.95
Professional & Business Services	357	4,021	119,571,436	571.86
Education & Health Services	452	9,207	391,850,271	818.46
Leisure & Hospitality	241	4,732	64,303,217	261.33
Other Services	157	852	22,705,227	512.49
Local Government	36	3,718	132,381,827	684.72
State Government	23	2,780	117,763,725	814.64

TABLE 6. COUNTY SUMMARY CALENDAR YEAR 2013

North American Industry Classification System - Industry Groups	Average Employing Units	Average Covered Employment	Total Calendar Earnings	Average Weekly Earnings
CRAWFORD COUNTY - TOTAL	1,299	19,021	\$623,866,587	\$630.75
Natural Resources & Mining	31	311	15,800,217	977.01
Construction	161	802	27,343,351	655.65
Manufacturing	70	4,255	155,655,305	703.50
Trade, Transportation & Utilities	324	5,999	202,568,071	649.36
Retail Trade	162	1,858	44,544,524	461.05
Other Trade, Transportation & Utilities	162	4,141	158,023,547	733.86
Information	11	117	4,020,879	660.89
Financial Activities	127	528	19,806,441	721.39
Professional & Business Services	158	1,370	44,372,524	622.86
Education & Health Services	182	1,544	48,827,979	608.16
Leisure & Hospitality	98	1,532	19,544,728	245.34
Other Services	84	382	11,397,357	573.77
Local Government	43	2,036	69,943,795	660.64
State Government	10	145	4,585,940	608.21
CRITTENDEN COUNTY - TOTAL	1,332	16,154	\$517,652,351	\$616.25
Natural Resources & Mining	53	282	9,070,691	618.57
Construction	50	356	13,907,225	751.25
Manufacturing	41	1,518	67,768,304	858.52
Trade, Transportation & Utilities	312	4,307	147,766,997	659.78
Wholesale Trade	64	679	31,427,603	890.10
Retail Trade	164	1,902	43,327,795	438.08
Transportation, Warehousing & Utilities	84	1,726	73,011,599	813.48
Information	6	69	2,479,932	691.17
Financial Activities	99	488	18,422,172	725.97
Professional & Business Services	121	1,430	39,348,412	529.16
Education & Health Services	399	2,522	77,724,041	592.66
Leisure & Hospitality	121	2,129	33,545,173	303.01
Other Services	73	415	11,799,288	546.77
Local Government	43	2,142	81,223,488	729.22
State Government	14	496	14,596,628	565.94

TABLE 6. COUNTY SUMMARY CALENDAR YEAR 2013

North American Industry Classification System - Industry Groups	Average Employing Units	Average Covered Employment	Total Calendar Earnings	Average Weekly Earnings
CROSS COUNTY - TOTAL	516	4,957	\$151,322,028	\$587.06
Natural Resources & Mining	33	192	5,765,716	577.50
Construction	22	82	2,379,951	558.15
Manufacturing	12	670	21,169,077	607.61
Trade, Transportation & Utilities	131	1,246	40,419,553	623.84
Wholesale Trade	28	318	15,591,900	942.91
Retail Trade	74	772	19,143,289	476.87
Transportation, Warehousing & Utilities	29	156	5,684,364	700.74
Information	5	34	1,009,950	571.24
Financial Activities	46	309	10,735,951	668.16
Professional & Business Services	43	125	4,289,598	659.94
Education & Health Services	127	848	24,446,327	554.39
Leisure & Hospitality	34	303	3,492,341	221.65
Other Services	37	75	1,891,076	484.89
Local Government	16	691	22,798,124	634.48
State Government	10	382	12,924,364	650.64
DALLAS COUNTY - TOTAL	260	2,695	\$76,047,232	\$542.65
Natural Resources & Mining	34	176	5,719,738	624.97
Construction	18	63	2,596,109	792.46
Manufacturing	11	526	19,667,428	719.05
Trade, Transportation & Utilities	60	457	11,737,627	493.92
Retail Trade	40	335	7,521,399	431.77
Other Trade, Transportation & Utilities	20	122	4,216,228	664.60
Information	3	17	477,726	540.41
Financial Activities	14	69	2,837,449	790.82
Professional & Business Services	13	36	1,031,246	550.88
Education & Health Services	59	787	19,978,323	488.18
Leisure & Hospitality	12	125	1,418,482	218.23
Other Services	14	62	1,286,468	399.03
Local Government	15	325	8,032,923	475.32
State Government	7	52	1,263,713	467.35

TABLE 6. COUNTY SUMMARY CALENDAR YEAR 2013

North American Industry Classification System - Industry Groups	Average Employing Units	Average Covered Employment	Total Calendar Earnings	Average Weekly Earnings
DESHA COUNTY - TOTAL	519	4,509	\$143,335,606	\$611.32
Natural Resources & Mining	69	340	9,716,457	549.57
Construction	22	110	4,040,656	706.41
Manufacturing	14	835	41,416,296	953.85
Trade, Transportation & Utilities	112	893	28,464,709	612.99
Wholesale Trade	21	217	11,542,204	1,022.88
Retail Trade	65	493	10,492,875	409.30
Transportation, Warehousing & Utilities	26	183	6,429,630	675.67
Information	5	27	976,005	695.16
Financial Activities	31	215	6,774,278	605.93
Professional & Business Services	40	92	2,595,114	542.46
Education & Health Services	135	748	17,949,490	461.47
Leisure & Hospitality	38	306	3,434,264	215.83
Other Services	24	52	914,216	338.10
Local Government	19	768	23,435,837	586.83
State Government	10	123	3,618,284	565.71
DREW COUNTY - TOTAL	528	6,318	\$191,068,367	\$581.58
Natural Resources & Mining	44	278	9,983,023	690.58
Construction	19	98	2,998,882	588.48
Manufacturing	23	756	25,979,768	660.86
Trade, Transportation & Utilities	129	1,232	32,472,940	506.88
Wholesale Trade	20	168	6,843,755	783.40
Retail Trade	88	954	21,348,225	430.34
Transportation, Warehousing & Utilities	21	110	4,280,960	748.42
Information	8	53	1,770,012	642.24
Financial Activities	47	232	9,091,280	753.59
Professional & Business Services	36	313	11,219,082	689.30
Education & Health Services	120	888	25,989,530	562.84
Leisure & Hospitality	45	634	7,822,826	237.29
Other Services	19	67	1,600,895	459.50
Local Government	22	1,152	38,216,277	637.96
State Government	16	615	23,923,852	748.09

TABLE 6. COUNTY SUMMARY CALENDAR YEAR 2013

North American Industry Classification System - Industry Groups	Average Employing Units	Average Covered Employment	Total Calendar Earnings	Average Weekly Earnings
FAULKNER COUNTY - TOTAL	2,791	40,135	\$1,533,198,559	\$734.64
Natural Resources & Mining	57	1,358	106,205,209	1,503.98
Construction	308	2,657	104,229,709	754.39
Manufacturing	101	3,159	154,377,221	939.79
Trade, Transportation & Utilities	663	6,982	208,369,757	573.92
Wholesale Trade	168	779	40,336,740	995.77
Retail Trade	404	5,366	124,509,993	446.22
Transportation, Warehousing & Utilities	91	837	43,523,024	999.98
Information	24	330	15,232,273	887.66
Financial Activities	326	1,582	73,433,509	892.66
Professional & Business Services	398	5,961	331,117,483	1,068.22
Education & Health Services	435	6,004	207,076,596	663.26
Leisure & Hospitality	245	4,721	60,165,676	245.08
Other Services	178	748	21,468,477	551.95
Local Government	38	3,395	129,512,675	733.62
State Government	18	3,238	122,009,974	724.63
FRANKLIN COUNTY - TOTAL	340	4,215	\$138,578,582	\$632.26
Natural Resources & Mining	17	268	16,943,326	1,215.80
Construction	33	108	3,311,575	589.67
Manufacturing	15	863	30,898,363	688.53
Trade, Transportation & Utilities	88	899	29,061,646	621.67
Wholesale Trade	14	38	851,219	430.78
Retail Trade	52	583	12,335,230	406.89
Transportation, Warehousing & Utilities	22	278	15,875,197	1,098.17
Information	5	22	701,197	612.93
Financial Activities	30	196	8,113,563	796.07
Professional & Business Services	27	112	2,713,093	465.85
Education & Health Services	55	567	14,427,915	489.35
Leisure & Hospitality	26	299	3,546,627	228.11
Other Services	16	46	1,223,985	511.70
Local Government	19	715	22,792,263	613.02
State Government	9	120	4,845,029	776.45

TABLE 6. COUNTY SUMMARY CALENDAR YEAR 2013

North American Industry Classification System - Industry Groups	Average Employing Units	Average Covered Employment	Total Calendar Earnings	Average Weekly Earnings
FULTON COUNTY - TOTAL	207	1,919	\$50,205,940	\$503.13
Construction	9	36	1,360,667	726.85
Manufacturing	12	123	2,498,200	390.59
Trade, Transportation & Utilities	51	325	9,388,316	555.52
Retail Trade	33	194	3,623,297	359.17
Other Trade, Transportation & Utilities	18	131	5,765,019	846.30
Information	4	32	805,571	484.12
Financial Activities	17	101	4,247,562	808.75
Professional & Business Services	17	52	1,746,009	645.71
Education & Health Services	49	470	11,015,343	450.71
Leisure & Hospitality	16	152	1,631,371	206.40
Local Government	12	499	13,766,319	530.53
State Government	10	112	3,404,105	584.50
Other	10	17	342,477	387.42
GARLAND COUNTY - TOTAL	3,120	35,317	\$1,128,887,338	\$614.70
Natural Resources & Mining	32	300	13,833,118	886.74
Construction	349	1,749	56,201,568	617.95
Manufacturing	98	2,494	102,505,978	790.40
Trade, Transportation & Utilities	709	7,165	203,086,230	545.08
Wholesale Trade	143	919	40,174,972	840.69
Retail Trade	508	5,683	136,950,150	463.43
Transportation, Warehousing & Utilities	58	563	25,961,108	886.77
Information	34	271	11,147,968	791.08
Financial Activities	353	1,408	61,389,272	838.47
Professional & Business Services	387	3,220	103,309,557	616.99
Education & Health Services	509	7,470	305,837,957	787.35
Leisure & Hospitality	354	6,278	97,370,207	298.26
Other Services	236	972	22,855,658	452.19
Local Government	34	2,888	114,538,668	762.70
State Government	25	1,102	36,811,157	642.38

TABLE 6. COUNTY SUMMARY CALENDAR YEAR 2013

North American Industry Classification System - Industry Groups	Average Employing Units	Average Covered Employment	Total Calendar Earnings	Average Weekly Earnings
GRANT COUNTY - TOTAL	333	3,776	\$124,959,465	\$636.41
Natural Resources & Mining	26	185	9,035,297	939.22
Construction	28	157	6,124,322	750.16
Manufacturing	17	1,110	43,320,386	750.53
Trade, Transportation & Utilities	86	599	16,321,363	523.99
Wholesale Trade	18	112	4,544,607	780.32
Retail Trade	45	422	9,487,022	432.33
Transportation, Warehousing & Utilities	23	65	2,289,734	677.44
Information	3	34	2,990,261	1,691.32
Financial Activities	26	90	3,140,196	670.98
Professional & Business Services	24	81	3,838,727	911.38
Education & Health Services	61	387	9,806,031	487.28
Leisure & Hospitality	23	269	2,747,220	196.40
Other Services	21	48	942,823	377.73
Local Government	10	763	25,057,093	631.54
State Government	8	53	1,635,746	593.52
GREENE COUNTY - TOTAL	896	14,603	\$493,137,816	\$649.42
Natural Resources & Mining	38	259	7,869,933	584.34
Construction	68	257	9,302,670	696.10
Manufacturing	60	5,105	215,814,705	812.98
Trade, Transportation & Utilities	234	2,488	69,097,581	534.08
Wholesale Trade	51	526	20,854,308	762.44
Retail Trade	152	1,712	39,614,657	444.99
Transportation, Warehousing & Utilities	31	250	8,628,616	663.74
Information	10	88	2,347,738	513.05
Financial Activities	80	457	17,852,048	751.22
Professional & Business Services	94	910	25,977,582	548.98
Education & Health Services	152	1,795	58,917,968	631.22
Leisure & Hospitality	68	1,037	12,916,441	239.53
Other Services	51	197	4,738,564	462.57
Local Government	30	1,614	52,708,432	628.02
State Government	11	396	15,594,154	757.29

TABLE 6. COUNTY SUMMARY CALENDAR YEAR 2013

North American Industry Classification System - Industry Groups	Average Employing Units	Average Covered Employment	Total Calendar Earnings	Average Weekly Earnings
HEMPSTEAD COUNTY - TOTAL	505	7,687	\$244,945,129	\$612.79
Natural Resources & Mining	20	202	7,835,184	745.92
Construction	34	255	10,303,193	777.01
Manufacturing	28	1,804	62,333,883	664.48
Trade, Transportation & Utilities	132	1,617	57,449,176	683.24
Wholesale Trade	23	464	20,607,805	854.10
Retail Trade	85	857	18,857,467	423.15
Transportation, Warehousing & Utilities	24	296	17,983,904	1,168.39
Information	8	47	1,359,276	556.17
Financial Activities	42	239	9,180,965	738.73
Professional & Business Services	32	143	5,015,585	674.50
Education & Health Services	85	994	24,752,286	478.88
Leisure & Hospitality	45	621	7,588,094	234.98
Other Services	35	164	4,863,341	570.28
Local Government	28	874	29,679,333	653.04
State Government	16	727	24,584,813	650.32
HOT SPRING COUNTY - TOTAL	597	8,100	\$257,094,733	\$610.39
Natural Resources & Mining	23	139	4,127,246	571.01
Construction	55	331	10,791,346	626.97
Manufacturing	31	1,353	60,298,135	857.04
Trade, Transportation & Utilities	151	1,346	45,360,840	648.09
Wholesale Trade	17	75	3,732,378	957.02
Retail Trade	97	856	19,089,999	428.87
Transportation, Warehousing & Utilities	37	415	22,538,463	1,044.41
Information	7	50	1,737,342	668.21
Financial Activities	53	262	10,076,462	739.61
Professional & Business Services	54	878	21,232,033	465.04
Education & Health Services	102	1,176	33,845,761	553.47
Leisure & Hospitality	48	561	5,960,549	204.32
Other Services	33	149	3,509,238	452.92
Local Government	27	991	32,559,558	631.83
State Government	13	864	27,596,223	614.23

TABLE 6. COUNTY SUMMARY CALENDAR YEAR 2013

North American Industry Classification System - Industry Groups	Average Employing Units	Average Covered Employment	Total Calendar Earnings	Average Weekly Earnings
HOWARD COUNTY - TOTAL	365	7,066	\$199,324,835	\$542.48
Natural Resources & Mining	15	203	6,319,398	598.65
Construction	19	118	4,244,095	691.67
Manufacturing	22	3,671	105,447,557	552.39
Trade, Transportation & Utilities	99	900	25,556,456	546.08
Wholesale Trade	18	66	2,293,552	668.28
Retail Trade	57	615	14,018,638	438.36
Transportation, Warehousing & Utilities	24	219	9,244,266	811.76
Information	5	29	715,767	474.65
Financial Activities	36	154	4,438,038	554.20
Professional & Business Services	24	134	3,708,431	532.21
Education & Health Services	68	613	17,351,483	544.34
Leisure & Hospitality	23	311	3,707,715	229.27
Other Services	26	121	3,345,074	531.64
Local Government	17	695	20,868,900	577.45
State Government	11	117	3,621,921	595.32
INDEPENDENCE COUNTY - TOTAL	909	14,508	\$481,421,270	\$638.14
Natural Resources & Mining	14	268	11,886,155	852.91
Construction	64	401	14,252,191	683.49
Manufacturing	42	2,931	118,725,719	778.98
Trade, Transportation & Utilities	239	2,908	91,252,242	603.46
Wholesale Trade	33	444	16,458,887	712.88
Retail Trade	156	1,696	38,599,034	437.67
Transportation, Warehousing & Utilities	50	768	36,194,321	906.31
Information	10	113	3,475,868	591.54
Financial Activities	79	478	20,157,516	810.97
Professional & Business Services	93	823	20,836,017	486.87
Education & Health Services	167	3,075	117,363,088	733.98
Leisure & Hospitality	75	1,084	12,656,831	224.54
Other Services	63	325	6,712,751	397.20
Local Government	47	1,488	43,120,107	557.28
State Government	16	614	20,982,785	657.19

TABLE 6. COUNTY SUMMARY CALENDAR YEAR 2013

North American Industry Classification System - Industry Groups	Average Employing Units	Average Covered Employment	Total Calendar Earnings	Average Weekly Earnings
IZARD COUNTY - TOTAL	254	3,052	\$89,498,072	\$563.93
Natural Resources & Mining	5	145	6,313,440	837.33
Construction	22	93	3,959,850	818.83
Trade, Transportation & Utilities	65	580	14,533,575	481.88
Wholesale Trade	8	12	340,499	545.67
Retail Trade	47	427	8,788,698	395.82
Transportation, Warehousing & Utilities	10	141	5,404,378	737.09
Financial Activities	27	142	4,902,623	663.95
Professional & Business Services	16	77	1,955,162	488.30
Education & Health Services	46	612	16,152,604	507.56
Leisure & Hospitality	22	130	1,346,119	199.13
Local Government	18	488	14,792,489	582.93
State Government	10	473	15,221,580	618.86
Other	23	312	10,320,630	636.13
JACKSON COUNTY - TOTAL	454	5,207	\$175,996,271	\$650.00
Natural Resources & Mining	52	284	8,783,841	594.79
Construction	24	127	4,791,083	725.48
Manufacturing	17	906	42,628,815	904.84
Trade, Transportation & Utilities	107	1,023	31,986,226	601.29
Wholesale Trade	23	238	11,033,587	891.53
Retail Trade	68	690	16,908,169	471.24
Transportation, Warehousing & Utilities	16	95	4,044,470	818.72
Information	4	30	715,812	458.85
Financial Activities	36	164	6,822,186	799.97
Professional & Business Services	33	130	4,525,174	669.40
Education & Health Services	88	806	27,530,665	656.87
Leisure & Hospitality	27	292	3,266,896	215.15
Other Services	21	68	1,905,219	538.81
Local Government	32	620	17,530,283	543.74
State Government	13	757	25,510,071	648.06

TABLE 6. COUNTY SUMMARY CALENDAR YEAR 2013

North American Industry Classification System - Industry Groups	Average Employing Units	Average Covered Employment	Total Calendar Earnings	Average Weekly Earnings
JEFFERSON COUNTY - TOTAL	2,172	27,795	\$999,360,817	\$691.44
Natural Resources & Mining	37	327	17,270,199	1,015.66
Construction	99	752	39,799,219	1,017.78
Manufacturing	58	5,292	236,567,556	859.67
Trade, Transportation & Utilities	449	4,855	162,653,035	644.27
Wholesale Trade	80	707	32,538,573	885.07
Retail Trade	300	3,177	77,634,731	469.93
Transportation, Warehousing & Utilities	69	971	52,479,731	1,039.37
Information	14	105	3,792,211	694.54
Financial Activities	151	1,104	50,012,105	871.17
Professional & Business Services	158	1,576	48,374,531	590.28
Education & Health Services	865	5,092	179,755,343	678.88
Leisure & Hospitality	137	1,815	22,336,235	236.66
Other Services	129	610	17,893,584	564.11
Local Government	39	2,964	98,402,634	638.45
State Government	36	3,303	122,504,165	713.25
JOHNSON COUNTY - TOTAL	496	8,401	\$240,679,079	\$550.94
Natural Resources & Mining	17	134	4,547,671	652.65
Construction	33	149	4,290,711	553.78
Manufacturing	34	3,010	79,936,163	510.71
Trade, Transportation & Utilities	123	1,902	57,628,825	582.67
Retail Trade	79	888	19,057,581	412.72
Other Trade, Transportation & Utilities	44	1,014	38,571,244	731.51
Information	5	42	1,062,811	486.64
Financial Activities	49	201	7,217,699	690.56
Professional & Business Services	50	152	4,884,315	617.95
Education & Health Services	92	1,184	37,538,390	609.71
Leisure & Hospitality	39	485	5,819,599	230.75
Other Services	31	77	1,724,151	430.61
Local Government	14	932	31,482,491	649.61
State Government	9	133	4,546,253	657.35

TABLE 6. COUNTY SUMMARY CALENDAR YEAR 2013

North American Industry Classification System - Industry Groups	Average Employing Units	Average Covered Employment	Total Calendar Earnings	Average Weekly Earnings
LAFAYETTE COUNTY - TOTAL	175	1,240	\$37,985,110	\$589.10
Natural Resources & Mining	31	171	7,452,137	838.07
Construction	9	74	4,297,562	1,116.83
Manufacturing	8	34	1,094,995	619.34
Trade, Transportation & Utilities	32	202	5,191,054	494.20
Retail Trade	20	121	2,083,072	331.07
Other Trade, Transportation & Utilities	12	81	3,107,982	737.89
Financial Activities	14	49	1,399,656	549.32
Professional & Business Services	12	49	1,515,796	594.90
Education & Health Services	36	222	5,440,144	471.25
Leisure & Hospitality	5	41	561,869	263.54
Local Government	14	282	8,349,695	569.40
State Government	7	47	1,203,339	492.36
Other	7	69	1,478,863	412.17
LAWRENCE COUNTY - TOTAL	409	4,068	\$115,156,360	\$544.38
Natural Resources & Mining	48	210	7,173,327	656.90
Construction	23	114	4,002,765	675.23
Manufacturing	23	467	13,973,557	575.42
Trade, Transportation & Utilities	109	859	25,501,884	570.92
Wholesale Trade	20	231	8,790,840	731.84
Retail Trade	59	515	11,721,482	437.70
Transportation, Warehousing & Utilities	30	113	4,989,562	849.14
Financial Activities	32	152	4,619,944	584.51
Professional & Business Services	29	113	4,342,982	739.11
Education & Health Services	60	526	15,324,606	560.27
Leisure & Hospitality	27	326	3,356,444	198.00
Local Government	27	1,129	32,359,964	551.20
State Government	10	102	2,631,387	496.11
Other	21	70	1,869,500	513.60

TABLE 6. COUNTY SUMMARY CALENDAR YEAR 2013

North American Industry Classification System - Industry Groups	Average Employing Units	Average Covered Employment	Total Calendar Earnings	Average Weekly Earnings
LEE COUNTY - TOTAL	310	1,978	\$60,744,935	\$590.58
Natural Resources & Mining	37	224	8,088,223	694.39
Construction	10	33	973,557	567.34
Trade, Transportation & Utilities	46	332	10,771,948	623.95
Wholesale Trade	8	83	3,909,163	905.74
Retail Trade	25	191	4,139,303	416.76
Transportation, Warehousing & Utilities	13	58	2,723,482	903.01
Financial Activities	18	68	2,471,315	698.90
Professional & Business Services	14	53	2,560,061	928.90
Education & Health Services	139	372	10,077,970	520.99
Leisure & Hospitality	10	83	1,019,078	236.12
Local Government	15	311	8,149,151	503.90
State Government	7	481	16,142,045	645.37
Other	14	21	491,587	450.17
LINCOLN COUNTY - TOTAL	277	2,956	\$92,654,276	\$602.78
Natural Resources & Mining	33	169	5,526,445	628.86
Construction	16	97	2,833,442	561.75
Manufacturing	9	318	10,403,370	629.13
Trade, Transportation & Utilities	43	356	13,100,289	707.66
Wholesale Trade	8	58	2,717,376	900.99
Retail Trade	22	170	3,107,980	351.58
Transportation, Warehousing & Utilities	13	128	7,274,933	1,092.99
Financial Activities	20	67	2,387,923	685.40
Professional & Business Services	12	19	654,890	662.84
Education & Health Services	95	398	9,856,425	476.25
Leisure & Hospitality	15	171	1,701,622	191.37
Local Government	7	343	10,518,860	589.75
State Government	12	982	34,674,111	679.03
Other	15	36	996,899	532.53

TABLE 6. COUNTY SUMMARY CALENDAR YEAR 2013

North American Industry Classification System - Industry Groups	Average Employing Units	Average Covered Employment	Total Calendar Earnings	Average Weekly Earnings
LITTLE RIVER COUNTY - TOTAL	242	3,640	\$164,113,131	\$867.04
Natural Resources & Mining	13	88	3,243,609	708.83
Construction	18	251	8,379,966	642.04
Manufacturing	16	1,278	99,830,895	1,502.21
Trade, Transportation & Utilities	57	534	14,351,818	516.85
Wholesale Trade	9	29	1,473,484	977.11
Retail Trade	35	363	8,252,450	437.19
Transportation, Warehousing & Utilities	13	142	4,625,884	626.47
Financial Activities	19	83	2,675,516	619.91
Professional & Business Services	19	138	2,783,983	387.96
Education & Health Services	35	161	4,050,295	483.79
Leisure & Hospitality	14	210	2,626,937	240.56
Local Government	20	726	22,309,758	590.96
State Government	11	87	2,243,941	496.01
Other	20	84	1,616,413	370.06
LOGAN COUNTY - TOTAL	485	5,376	\$159,864,453	\$571.86
Natural Resources & Mining	23	162	9,800,204	1,163.37
Construction	42	188	6,172,401	631.38
Manufacturing	22	1,213	40,368,793	640.00
Trade, Transportation & Utilities	112	921	23,666,258	494.16
Wholesale Trade	11	70	1,135,444	311.94
Retail Trade	72	705	15,860,161	432.63
Transportation, Warehousing & Utilities	29	146	6,670,653	878.64
Information	5	32	1,365,964	820.89
Financial Activities	45	229	9,902,588	831.59
Professional & Business Services	47	103	3,168,172	591.52
Education & Health Services	98	771	21,650,627	540.02
Leisure & Hospitality	28	299	3,357,379	215.94
Other Services	27	122	3,693,026	582.13
Local Government	22	784	22,913,170	562.04
State Government	14	552	13,805,871	480.97

TABLE 6. COUNTY SUMMARY CALENDAR YEAR 2013

North American Industry Classification System - Industry Groups	Average Employing Units	Average Covered Employment	Total Calendar Earnings	Average Weekly Earnings
LONOKE COUNTY - TOTAL	1,328	13,240	\$408,393,084	\$593.18
Natural Resources & Mining	83	500	18,597,736	715.30
Construction	142	755	28,114,929	716.12
Manufacturing	38	1,592	74,304,975	897.58
Trade, Transportation & Utilities	326	2,919	78,514,393	517.26
Wholesale Trade	79	434	19,785,878	876.72
Retail Trade	185	2,225	48,284,380	417.32
Transportation, Warehousing & Utilities	62	260	10,444,135	772.50
Information	15	99	4,042,603	785.28
Financial Activities	142	519	26,946,873	998.48
Professional & Business Services	154	791	24,197,905	588.30
Education & Health Services	210	1,586	44,288,584	537.01
Leisure & Hospitality	105	1,500	18,300,164	234.62
Other Services	73	191	4,348,443	437.82
Local Government	25	2,623	81,787,434	599.63
State Government	15	165	4,949,045	576.81
MADISON COUNTY - TOTAL	249	3,177	\$90,506,099	\$547.84
Natural Resources & Mining	12	45	1,327,596	567.35
Construction	23	73	2,548,278	671.31
Manufacturing	23	1,141	34,025,448	573.48
Trade, Transportation & Utilities	49	568	15,155,825	513.13
Retail Trade	33	438	9,759,718	428.51
Other Trade, Transportation & Utilities	16	130	5,396,107	798.24
Information	6	42	2,459,574	1,126.18
Financial Activities	18	73	2,354,475	620.25
Professional & Business Services	26	153	4,323,816	543.47
Education & Health Services	48	279	6,771,610	466.75
Leisure & Hospitality	14	178	1,879,081	203.01
Other Services	14	29	945,729	627.14
Local Government	9	554	17,465,553	606.27
State Government	7	42	1,249,114	571.94

TABLE 6. COUNTY SUMMARY CALENDAR YEAR 2013

North American Industry Classification System - Industry Groups	Average Employing Units	Average Covered Employment	Total Calendar Earnings	Average Weekly Earnings
MARION COUNTY - TOTAL	299	3,629	\$99,239,708	\$525.89
Natural Resources & Mining	5	24	540,620	433.19
Construction	22	56	1,310,933	450.18
Manufacturing	19	1,647	45,496,485	531.23
Trade, Transportation & Utilities	55	498	13,165,427	508.40
Wholesale Trade	9	53	2,976,978	1,080.18
Retail Trade	39	418	8,847,285	407.03
Transportation, Warehousing & Utilities	7	27	1,341,164	955.25
Information	4	54	2,901,414	1,033.27
Financial Activities	33	200	6,912,769	664.69
Professional & Business Services	28	59	1,585,262	516.71
Education & Health Services	58	331	8,515,250	494.73
Leisure & Hospitality	34	179	2,192,760	235.58
Other Services	16	27	531,265	378.39
Local Government	18	483	14,415,229	573.95
State Government	7	71	1,672,294	452.95
MILLER COUNTY - TOTAL	866	12,720	\$444,116,904	\$671.44
Natural Resources & Mining	29	152	4,895,124	619.32
Construction	79	768	27,343,884	684.69
Manufacturing	26	2,281	130,163,836	1,097.39
Trade, Transportation & Utilities	227	3,491	119,090,588	656.03
Wholesale Trade	53	538	23,077,316	824.90
Retail Trade	128	1,353	30,623,298	435.26
Transportation, Warehousing & Utilities	46	1,600	65,389,974	785.94
Information	8	68	4,906,876	1,387.69
Financial Activities	84	385	14,015,257	700.06
Professional & Business Services	87	931	22,103,804	456.58
Education & Health Services	134	915	25,337,733	532.53
Leisure & Hospitality	92	1,384	20,129,823	279.71
Other Services	59	282	6,024,766	410.85
Local Government	25	1,551	50,766,266	629.45
State Government	16	512	19,338,947	726.37

TABLE 6. COUNTY SUMMARY CALENDAR YEAR 2013

North American Industry Classification System - Industry Groups	Average Employing Units	Average Covered Employment	Total Calendar Earnings	Average Weekly Earnings
MISSISSIPPI COUNTY - TOTAL	1,204	18,158	\$739,642,318	\$783.34
Natural Resources & Mining	115	660	18,857,225	549.45
Construction	55	735	37,006,678	968.25
Manufacturing	53	6,184	378,168,747	1,176.01
Trade, Transportation & Utilities	298	2,998	103,638,397	664.79
Wholesale Trade	65	493	26,412,833	1,030.30
Retail Trade	174	1,742	37,032,820	408.82
Transportation, Warehousing & Utilities	59	763	40,192,744	1,013.02
Information	9	70	2,065,858	567.54
Financial Activities	91	412	14,080,284	657.22
Professional & Business Services	85	1,236	33,927,523	527.87
Education & Health Services	279	1,831	50,877,558	534.36
Leisure & Hospitality	86	1,111	13,091,488	226.61
Other Services	59	196	4,438,304	435.47
Local Government	52	2,140	65,127,648	585.26
State Government	22	585	18,362,608	603.64
MONROE COUNTY - TOTAL	308	2,229	\$62,534,589	\$539.52
Natural Resources & Mining	32	150	5,522,144	707.97
Construction	13	78	2,846,445	701.79
Manufacturing	7	120	3,891,785	623.68
Trade, Transportation & Utilities	81	649	21,360,657	632.95
Wholesale Trade	20	263	10,871,164	794.91
Retail Trade	39	270	6,415,039	456.91
Transportation, Warehousing & Utilities	22	116	4,074,454	675.47
Financial Activities	22	96	3,451,398	691.39
Professional & Business Services	14	45	774,658	331.05
Education & Health Services	67	308	7,192,551	449.09
Leisure & Hospitality	25	244	2,954,772	232.88
Local Government	21	327	9,234,716	543.09
State Government	8	115	3,324,892	556.00
Other	18	97	1,980,571	392.66

TABLE 6. COUNTY SUMMARY CALENDAR YEAR 2013

North American Industry Classification System - Industry Groups	Average Employing Units	Average Covered Employment	Total Calendar Earnings	Average Weekly Earnings
MONTGOMERY COUNTY - TOTAL	171	1,499	\$37,645,250	\$482.95
Natural Resources & Mining	7	30	944,919	605.72
Construction	22	83	2,280,639	528.41
Trade, Transportation & Utilities	40	250	6,874,460	528.80
Wholesale Trade	12	69	2,339,529	652.04
Retail Trade	20	154	3,573,608	446.25
Transportation, Warehousing & Utilities	8	27	961,323	684.70
Information	3	5	132,044	507.86
Financial Activities	12	64	2,119,293	636.81
Professional & Business Services	16	36	1,492,627	797.34
Education & Health Services	20	93	2,129,560	440.36
Leisure & Hospitality	20	311	5,198,697	321.46
Local Government	9	457	12,383,661	521.11
State Government	7	44	1,395,652	609.99
Other	18	131	2,693,698	395.43
NEVADA COUNTY - TOTAL	195	2,364	\$78,276,552	\$636.77
Natural Resources & Mining	9	34	1,090,750	616.94
Trade, Transportation & Utilities	42	537	16,094,775	576.38
Wholesale Trade	4	15	241,550	309.68
Retail Trade	26	298	5,785,598	373.36
Transportation, Warehousing & Utilities	12	224	10,067,627	864.32
Financial Activities	11	57	1,813,187	611.74
Professional & Business Services	11	43	1,164,805	520.93
Education & Health Services	42	413	9,618,233	447.86
Leisure & Hospitality	8	88	957,276	209.19
Local Government	27	386	9,723,078	484.41
State Government	10	81	2,146,727	509.67
Other	35	725	35,667,721	946.09

TABLE 6. COUNTY SUMMARY CALENDAR YEAR 2013

North American Industry Classification System - Industry Groups	Average Employing Units	Average Covered Employment	Total Calendar Earnings	Average Weekly Earnings
NEWTON COUNTY - TOTAL	122	1,027	\$23,599,381	\$441.90
Construction	6	18	350,353	374.31
Manufacturing	10	44	1,409,666	616.11
Trade, Transportation & Utilities	31	171	3,969,170	446.38
Retail Trade	15	114	1,938,245	326.96
Other Trade, Transportation & Utilities	16	57	2,030,925	685.20
Education & Health Services	30	227	4,104,106	347.69
Leisure & Hospitality	14	82	1,260,896	295.71
Local Government	13	359	9,380,131	502.47
State Government	6	89	1,831,999	395.85
Other	12	37	1,293,060	672.07
OUACHITA COUNTY - TOTAL	658	7,139	\$215,943,320	\$581.70
Natural Resources & Mining	38	202	6,744,573	642.10
Construction	38	210	7,311,081	669.51
Manufacturing	24	499	19,933,784	768.22
Trade, Transportation & Utilities	172	1,629	46,018,372	543.26
Wholesale Trade	27	233	10,602,436	875.08
Retail Trade	117	1,074	21,219,458	379.95
Transportation, Warehousing & Utilities	28	322	14,196,478	847.85
Information	7	43	1,592,378	712.15
Financial Activities	60	292	10,314,678	679.31
Professional & Business Services	51	599	20,862,927	669.80
Education & Health Services	151	1,228	38,367,234	600.84
Leisure & Hospitality	38	491	5,500,788	215.45
Other Services	35	134	3,268,498	469.07
Local Government	30	1,100	32,535,833	568.81
State Government	14	712	23,493,174	634.54

TABLE 6. COUNTY SUMMARY CALENDAR YEAR 2013

North American Industry Classification System - Industry Groups	Average Employing Units	Average Covered Employment	Total Calendar Earnings	Average Weekly Earnings
PERRY COUNTY - TOTAL	148	1,236	\$37,000,765	\$575.69
Natural Resources & Mining	7	92	\$5,491,836	\$1,147.96
Construction	16	125	4,143,561	637.47
Manufacturing	5	42	1,257,928	575.97
Trade, Transportation & Utilities	25	143	4,149,788	558.07
Retail Trade	15	109	2,177,816	384.23
Other Trade, Transportation & Utilities	10	34	1,971,972	1,115.37
Financial Activities	9	31	1,208,074	749.43
Professional & Business Services	16	39	2,023,383	997.72
Education & Health Services	34	253	5,874,596	446.53
Leisure & Hospitality	8	69	812,751	226.52
Local Government	10	344	9,195,442	514.06
State Government	8	57	1,402,554	473.20
Other	10	41	1,440,852	675.82
PHILLIPS COUNTY - TOTAL	872	5,875	\$176,801,863	\$578.73
Natural Resources & Mining	62	275	7,654,911	535.31
Construction	27	112	3,652,584	627.16
Manufacturing	10	344	11,958,821	668.54
Trade, Transportation & Utilities	161	1,397	45,881,011	631.59
Wholesale Trade	32	360	17,228,882	920.35
Retail Trade	87	768	17,755,702	444.60
Transportation, Warehousing & Utilities	42	269	10,896,427	778.98
Information	10	46	1,608,289	672.36
Financial Activities	39	207	7,539,831	700.47
Professional & Business Services	50	328	9,908,537	580.94
Education & Health Services	407	1,461	40,759,762	536.51
Leisure & Hospitality	31	279	3,389,598	233.64
Other Services	34	71	1,675,387	453.79
Local Government	27	856	27,934,782	627.58
State Government	14	499	14,838,350	571.85

TABLE 6. COUNTY SUMMARY CALENDAR YEAR 2013

North American Industry Classification System - Industry Groups	Average Employing Units	Average Covered Employment	Total Calendar Earnings	Average Weekly Earnings
PIKE COUNTY - TOTAL	247	2,201	\$59,369,447	\$518.73
Natural Resources & Mining	22	108	3,756,261	668.85
Construction	15	43	1,161,810	519.59
Manufacturing	17	206	5,003,752	467.12
Trade, Transportation & Utilities	71	517	12,779,186	475.35
Wholesale Trade	10	107	3,054,362	548.95
Retail Trade	42	348	7,309,340	403.92
Transportation, Warehousing & Utilities	19	62	2,415,484	749.22
Information	5	24	1,295,024	1,037.68
Financial Activities	23	187	7,112,637	731.45
Professional & Business Services	13	38	2,739,833	1,386.56
Education & Health Services	21	264	6,302,534	459.10
Leisure & Hospitality	20	190	2,159,011	218.52
Other Services	20	55	1,427,285	499.05
Local Government	10	422	12,822,603	584.33
State Government	10	147	2,809,511	367.54
POINSETT COUNTY - TOTAL	530	5,061	\$162,117,106	\$616.01
Natural Resources & Mining	57	339	11,666,668	661.83
Construction	24	111	3,822,119	662.18
Manufacturing	24	678	25,992,916	737.26
Trade, Transportation & Utilities	132	1,278	43,598,227	656.05
Wholesale Trade	32	412	22,706,346	1,059.86
Retail Trade	71	710	15,217,105	412.16
Transportation, Warehousing & Utilities	29	156	5,674,776	699.55
Information	5	54	1,831,798	652.35
Financial Activities	37	243	9,077,127	718.35
Professional & Business Services	32	167	8,628,332	993.59
Education & Health Services	111	638	16,561,757	499.21
Leisure & Hospitality	44	353	3,950,528	215.22
Other Services	23	48	1,304,586	522.67
Local Government	30	1,014	31,452,766	596.51
State Government	11	138	4,230,282	589.50

TABLE 6. COUNTY SUMMARY CALENDAR YEAR 2013

North American Industry Classification System - Industry Groups	Average Employing Units	Average Covered Employment	Total Calendar Earnings	Average Weekly Earnings
POLK COUNTY - TOTAL	523	5,900	\$164,785,676	\$537.11
Natural Resources & Mining	23	145	5,824,345	772.46
Construction	36	172	4,652,178	520.15
Manufacturing	37	1,299	42,668,829	631.68
Trade, Transportation & Utilities	136	1,138	27,230,573	460.16
Wholesale Trade	20	51	1,658,819	625.50
Retail Trade	80	823	16,237,626	379.42
Transportation, Warehousing & Utilities	36	264	9,334,128	679.93
Information	8	50	1,242,537	477.90
Financial Activities	47	252	8,979,135	685.22
Professional & Business Services	47	163	4,619,928	545.06
Education & Health Services	82	1,044	32,040,503	590.19
Leisure & Hospitality	43	474	5,153,559	209.09
Other Services	30	184	4,373,844	457.13
Local Government	21	702	20,806,358	569.97
State Government	13	277	7,193,887	499.44
POPE COUNTY - TOTAL	1,777	25,932	\$908,878,554	\$674.01
Natural Resources & Mining	33	672	24,669,380	705.97
Construction	157	1,384	68,462,465	951.29
Manufacturing	72	4,438	165,808,680	718.48
Trade, Transportation & Utilities	430	5,787	241,071,184	801.10
Wholesale Trade	90	601	24,693,535	790.14
Retail Trade	265	3,083	68,746,913	428.82
Transportation, Warehousing & Utilities	75	2,103	147,630,736	1,350.00
Information	25	224	7,679,062	659.26
Financial Activities	181	1,276	40,752,410	614.19
Professional & Business Services	267	2,577	88,719,262	662.06
Education & Health Services	311	2,984	99,018,623	638.14
Leisure & Hospitality	142	2,395	30,124,614	241.89
Other Services	101	404	10,130,416	482.22
Local Government	42	2,091	71,507,855	657.65
State Government	16	1,700	60,934,603	689.31

TABLE 6. COUNTY SUMMARY CALENDAR YEAR 2013

North American Industry Classification System - Industry Groups	Average Employing Units	Average Covered Employment	Total Calendar Earnings	Average Weekly Earnings
PRAIRIE COUNTY - TOTAL	262	1,469	\$43,784,365	\$573.18
Natural Resources & Mining	34	140	5,915,467	812.56
Construction	11	79	4,250,694	1,034.74
Manufacturing	4	20	520,961	500.92
Trade, Transportation & Utilities	63	331	9,474,335	550.45
Wholesale Trade	10	73	3,914,581	1,031.24
Retail Trade	36	188	3,284,798	336.01
Transportation, Warehousing & Utilities	17	70	2,274,956	624.99
Financial Activities	18	59	1,996,619	650.79
Professional & Business Services	17	70	2,093,380	575.10
Education & Health Services	54	269	6,893,595	492.82
Leisure & Hospitality	18	101	1,164,798	221.78
Local Government	15	314	8,924,628	546.58
State Government	9	41	1,245,314	584.11
Other	19	45	1,304,574	557.51
PULASKI COUNTY - TOTAL	14,390	234,043	\$10,229,698,703	\$840.55
Natural Resources & Mining	55	693	38,823,689	1,077.36
Construction	987	7,967	372,108,979	898.20
Manufacturing	356	12,411	669,805,305	1,037.86
Trade, Transportation & Utilities	3,227	47,450	1,922,777,994	779.27
Wholesale Trade	1,032	11,739	705,948,538	1,156.48
Retail Trade	1,794	24,990	668,108,957	514.14
Transportation, Warehousing & Utilities	401	10,721	548,720,499	984.27
Information	222	6,490	391,296,180	1,159.46
Financial Activities	1,717	15,719	963,217,338	1,178.41
Professional & Business Services	2,820	33,219	1,506,017,320	871.85
Education & Health Services	2,374	38,326	1,712,230,469	859.14
Leisure & Hospitality	1,180	21,813	353,041,253	311.25
Other Services	1,147	6,699	226,427,892	650.00
Local Government	104	15,456	653,899,542	813.60
State Government	201	27,800	1,420,052,742	982.33

TABLE 6. COUNTY SUMMARY CALENDAR YEAR 2013

North American Industry Classification System - Industry Groups	Average Employing Units	Average Covered Employment	Total Calendar Earnings	Average Weekly Earnings
RANDOLPH COUNTY - TOTAL	417	4,640	\$123,169,125	\$510.48
Natural Resources & Mining	29	111	2,551,489	442.05
Construction	28	73	1,700,329	447.93
Manufacturing	29	549	17,068,391	597.88
Trade, Transportation & Utilities	98	889	23,516,085	508.70
Wholesale Trade	20	183	5,398,150	567.27
Retail Trade	58	566	12,709,258	431.82
Transportation, Warehousing & Utilities	20	140	5,408,677	742.95
Information	5	37	1,277,735	664.10
Financial Activities	33	126	3,929,036	599.67
Professional & Business Services	42	238	5,014,984	405.22
Education & Health Services	69	1,189	33,531,996	542.34
Leisure & Hospitality	26	352	4,056,011	221.59
Other Services	24	64	1,375,431	413.29
Local Government	23	713	19,189,818	517.58
State Government	11	299	9,957,820	640.46
SAINT FRANCIS COUNTY - TOTAL	817	7,230	\$209,557,073	\$557.39
Natural Resources & Mining	43	190	6,168,383	624.33
Construction	45	177	6,244,820	678.49
Manufacturing	9	628	22,384,999	685.48
Trade, Transportation & Utilities	169	1,975	58,201,175	566.71
Wholesale Trade	36	566	22,886,333	777.60
Retail Trade	110	1,109	23,488,217	407.30
Transportation, Warehousing & Utilities	23	300	11,826,625	758.12
Information	7	66	2,236,941	651.79
Financial Activities	65	270	9,033,833	643.44
Professional & Business Services	49	392	9,890,511	485.21
Education & Health Services	309	1,388	39,339,725	545.05
Leisure & Hospitality	48	630	7,254,708	221.45
Other Services	29	67	1,155,228	331.58
Local Government	28	938	30,698,224	629.37
State Government	16	509	16,948,526	640.34

TABLE 6. COUNTY SUMMARY CALENDAR YEAR 2013

North American Industry Classification System - Industry Groups	Average Employing Units	Average Covered Employment	Total Calendar Earnings	Average Weekly Earnings
SALINE COUNTY - TOTAL	1,889	21,518	\$680,227,988	\$607.92
Natural Resources & Mining	12	55	2,499,189	873.84
Construction	272	1,745	66,079,250	728.23
Manufacturing	86	1,342	60,555,977	867.76
Trade, Transportation & Utilities	438	4,766	144,968,348	584.95
Wholesale Trade	116	536	24,434,999	876.69
Retail Trade	258	3,784	102,423,434	520.53
Transportation, Warehousing & Utilities	64	446	18,109,915	780.87
Information	13	80	3,539,940	850.95
Financial Activities	188	715	27,098,820	728.85
Professional & Business Services	249	1,323	47,934,776	696.77
Education & Health Services	273	3,446	109,595,271	611.61
Leisure & Hospitality	160	2,866	38,866,009	260.79
Other Services	152	696	17,892,934	494.39
Local Government	31	3,523	132,587,885	723.75
State Government	15	961	28,609,589	572.51
SCOTT COUNTY - TOTAL	188	3,020	\$81,685,337	\$520.16
Natural Resources & Mining	18	151	5,529,872	704.26
Trade, Transportation & Utilities	37	430	12,982,546	580.61
Wholesale Trade	9	77	3,852,430	962.15
Retail Trade	22	289	6,234,258	414.84
Transportation, Warehousing & Utilities	6	64	2,895,858	870.15
Information	3	10	355,503	683.66
Financial Activities	23	75	1,885,816	483.54
Professional & Business Services	11	11	357,037	624.19
Education & Health Services	38	295	9,871,985	643.55
Leisure & Hospitality	16	135	1,853,466	264.03
Local Government	6	558	15,344,737	528.84
State Government	7	60	1,510,469	484.12
Other	29	1,295	31,993,906	475.11

TABLE 6. COUNTY SUMMARY CALENDAR YEAR 2013

North American Industry Classification System - Industry Groups	Average Employing Units	Average Covered Employment	Total Calendar Earnings	Average Weekly Earnings
SEARCY COUNTY - TOTAL	192	1,619	\$37,665,893	\$447.40
Natural Resources & Mining	7	104	\$3,002,904	\$555.27
Construction	11	18	484,349	517.47
Manufacturing	18	219	4,686,810	411.56
Trade, Transportation & Utilities	40	242	5,049,009	401.22
Wholesale Trade	6	29	629,117	417.19
Retail Trade	27	192	3,468,906	347.45
Transportation, Warehousing & Utilities	7	21	950,986	870.87
Financial Activities	15	74	2,263,216	588.15
Professional & Business Services	12	24	549,171	440.04
Education & Health Services	50	331	8,243,612	478.95
Leisure & Hospitality	16	141	1,514,174	206.52
Local Government	10	343	9,180,697	514.73
State Government	7	110	2,351,567	411.11
Other	6	13	340,384	503.53
SEBASTIAN COUNTY - TOTAL	3,766	63,211	\$2,417,760,685	\$735.56
Natural Resources & Mining	59	1,239	96,029,808	1,490.50
Construction	280	2,188	84,723,994	744.66
Manufacturing	197	11,606	540,461,398	895.53
Trade, Transportation & Utilities	933	12,463	417,330,005	643.95
Wholesale Trade	244	2,650	127,745,747	927.04
Retail Trade	565	7,627	180,342,797	454.72
Transportation, Warehousing & Utilities	124	2,186	109,241,461	961.02
Information	50	986	50,832,911	991.44
Financial Activities	428	2,544	114,429,429	865.00
Professional & Business Services	587	8,222	305,426,251	714.37
Education & Health Services	573	10,778	453,037,319	808.34
Leisure & Hospitality	335	5,792	82,566,876	274.14
Other Services	263	1,285	33,740,351	504.94
Local Government	40	4,343	169,445,174	750.30
State Government	21	1,765	69,737,169	759.83

TABLE 6. COUNTY SUMMARY CALENDAR YEAR 2013

North American Industry Classification System - Industry Groups	Average Employing Units	Average Covered Employment	Total Calendar Earnings	Average Weekly Earnings
SEVIER COUNTY - TOTAL	327	4,822	\$133,099,381	\$530.82
Natural Resources & Mining	14	169	6,173,953	702.54
Construction	20	140	5,795,975	796.15
Trade, Transportation & Utilities	100	839	22,531,131	516.44
Wholesale Trade	17	102	5,217,760	983.74
Retail Trade	66	652	13,734,555	405.10
Transportation, Warehousing & Utilities	17	85	3,578,816	809.69
Information	3	20	696,317	669.54
Financial Activities	28	222	7,616,462	659.78
Professional & Business Services	31	123	2,779,526	434.57
Education & Health Services	48	524	15,004,864	550.68
Leisure & Hospitality	26	252	2,996,225	228.65
Local Government	12	877	25,491,219	558.97
State Government	8	173	4,934,151	548.48
Other	37	1,483	39,079,558	506.76
SHARP COUNTY - TOTAL	390	3,604	\$92,451,674	\$493.32
Construction	22	107	3,835,216	689.29
Manufacturing	17	132	3,319,501	483.61
Trade, Transportation & Utilities	83	1,040	28,616,358	529.15
Wholesale Trade	12	35	792,100	435.22
Retail Trade	58	648	12,959,098	384.59
Transportation, Warehousing & Utilities	13	357	14,865,160	800.75
Information	6	40	1,637,439	787.23
Financial Activities	35	187	6,765,239	695.73
Professional & Business Services	37	143	4,683,306	629.82
Education & Health Services	93	669	16,666,185	479.08
Leisure & Hospitality	36	401	4,508,690	216.22
Local Government	25	718	18,766,719	502.64
State Government	8	82	2,147,836	503.71
Other	28	85	1505185	340.54

TABLE 6. COUNTY SUMMARY CALENDAR YEAR 2013

North American Industry Classification System - Industry Groups	Average Employing Units	Average Covered Employment	Total Calendar Earnings	Average Weekly Earnings
STONE COUNTY - TOTAL	293	2,438	\$58,333,019	\$460.13
Natural Resources & Mining	6	23	294,731	246.43
Construction	21	45	964,380	412.13
Manufacturing	19	177	3,652,296	396.82
Trade, Transportation & Utilities	77	644	15,839,102	472.98
Wholesale Trade	8	47	1,394,243	570.48
Retail Trade	56	557	12,630,080	436.06
Transportation, Warehousing & Utilities	13	40	1,814,779	872.49
Financial Activities	26	95	2,309,139	467.44
Professional & Business Services	20	38	855,632	433.01
Education & Health Services	51	479	14,562,207	584.64
Leisure & Hospitality	34	332	3,608,354	209.01
Local Government	10	394	11,515,486	562.06
State Government	8	150	3,260,046	417.95
Other	21	61	1,471,646	463.95
UNION COUNTY - TOTAL	1,350	17,506	\$747,973,783	\$821.67
Natural Resources & Mining	95	576	28,617,087	955.43
Construction	76	1,353	66,439,334	944.33
Manufacturing	55	2,963	166,954,834	1,083.59
Trade, Transportation & Utilities	334	3,794	158,723,572	804.53
Wholesale Trade	70	782	59,755,202	1,469.49
Retail Trade	206	2,151	48,573,289	434.26
Transportation, Warehousing & Utilities	58	861	50,395,081	1,125.59
Information	11	140	4,126,348	566.81
Financial Activities	123	735	28,835,573	754.46
Professional & Business Services	140	1,519	108,722,799	1,376.45
Education & Health Services	267	2,355	81,892,773	668.73
Leisure & Hospitality	89	1,194	15,681,474	252.57
Other Services	109	534	14,209,675	511.73
Local Government	34	1,771	53,996,117	586.33
State Government	17	572	19,774,197	664.81

TABLE 6. COUNTY SUMMARY CALENDAR YEAR 2013

North American Industry Classification System - Industry Groups	Average Employing Units	Average Covered Employment	Total Calendar Earnings	Average Weekly Earnings
VAN BUREN COUNTY - TOTAL	358	3,803	\$142,535,523	\$720.76
Natural Resources & Mining	15	277	28,604,583	1,985.88
Construction	36	161	5,302,001	633.30
Manufacturing	8	58	2,041,663	676.94
Trade, Transportation & Utilities	99	1,174	50,935,788	834.36
Wholesale Trade	9	48	1,969,051	788.88
Retail Trade	58	573	12,590,515	422.56
Transportation, Warehousing & Utilities	32	553	36,376,222	1,265.00
Information	9	43	1,514,770	677.45
Financial Activities	34	132	4,717,395	687.27
Professional & Business Services	28	106	2,890,377	524.38
Education & Health Services	62	687	18,877,744	528.43
Leisure & Hospitality	28	373	5,277,326	272.08
Other Services	21	65	1,679,222	496.81
Local Government	11	661	18,716,417	544.53
State Government	7	66	1,978,237	576.41
WASHINGTON COUNTY - TOTAL	5,652	92,125	\$3,713,786,790	\$775.24
Natural Resources & Mining	46	382	17,740,363	893.09
Construction	478	3,983	166,150,303	802.21
Manufacturing	225	12,224	465,360,372	732.10
Trade, Transportation & Utilities	1,372	21,125	789,433,166	718.65
Wholesale Trade	406	3,547	227,827,402	1,235.21
Retail Trade	779	11,006	282,369,485	493.38
Transportation, Warehousing & Utilities	187	6,572	279,236,279	817.09
Information	88	953	39,905,532	805.26
Financial Activities	624	3,366	156,898,778	896.40
Professional & Business Services	986	10,171	687,194,018	1,299.31
Education & Health Services	792	13,408	576,157,627	826.37
Leisure & Hospitality	592	10,757	149,544,542	267.35
Other Services	366	1,790	49,016,177	526.60
Local Government	61	7,753	307,946,128	763.84
State Government	22	6,213	308,439,784	954.70

TABLE 6. COUNTY SUMMARY CALENDAR YEAR 2013

North American Industry Classification System - Industry Groups	Average Employing Units	Average Covered Employment	Total Calendar Earnings	Average Weekly Earnings
WHITE COUNTY - TOTAL	1,832	24,577	\$863,778,036	\$675.88
Natural Resources & Mining	55	1,152	71,402,767	1,191.95
Construction	170	1,092	41,980,501	739.30
Manufacturing	65	2,362	100,658,934	819.54
Trade, Transportation & Utilities	501	6,260	205,502,828	631.31
Wholesale Trade	95	608	24,696,393	781.14
Retail Trade	312	3,531	80,008,600	435.75
Transportation, Warehousing & Utilities	94	2,121	100,797,835	913.92
Information	21	168	5,039,390	576.85
Financial Activities	163	857	35,286,718	791.82
Professional & Business Services	211	1,524	42,970,226	542.22
Education & Health Services	313	4,950	204,139,357	793.08
Leisure & Hospitality	149	2,347	28,759,855	235.65
Other Services	119	544	17,779,607	628.52
Local Government	47	2,591	87,929,423	652.62
State Government	18	730	22,328,430	588.21
WOODRUFF COUNTY - TOTAL	211	1,852	\$54,948,419	\$570.57
Natural Resources & Mining	24	145	4,630,633	614.14
Construction	5	42	1,239,565	567.57
Manufacturing	7	244	8,644,964	681.35
Trade, Transportation & Utilities	47	421	14,255,698	651.18
Wholesale Trade	12	175	8,300,370	912.13
Retail Trade	26	185	3,189,377	331.54
Transportation, Warehousing & Utilities	9	61	2,765,951	871.99
Financial Activities	14	65	2,354,462	696.59
Education & Health Services	72	256	6,143,330	461.49
Leisure & Hospitality	10	81	918,348	218.03
Local Government	10	463	12,182,654	506.01
State Government	6	43	1,196,965	535.32
Other	16	92	3,381,800	706.90

TABLE 6. COUNTY SUMMARY CALENDAR YEAR 2013

North American Industry Classification System - Industry Groups	Average Employing Units	Average Covered Employment	Total Calendar Earnings	Average Weekly Earnings
YELL COUNTY - TOTAL	425	6,391	\$174,301,574	\$524.48
Natural Resources & Mining	22	198	6,591,645	640.21
Construction	34	260	8,633,178	638.55
Manufacturing	20	2,434	63,723,541	503.47
Trade, Transportation & Utilities	87	708	17,855,302	484.99
Wholesale Trade	15	39	934,019	460.56
Retail Trade	53	519	10,240,535	379.45
Transportation, Warehousing & Utilities	19	150	6,680,748	856.51
Financial Activities	30	164	6,246,052	732.42
Professional & Business Services	38	232	6,926,049	574.11
Education & Health Services	107	732	18,062,963	474.54
Leisure & Hospitality	30	308	3,541,740	221.14
Local Government	26	1,152	36,310,279	606.14
State Government	12	98	2,473,165	485.31
Other	19	105	3,937,660	721.18
STATEWIDE COUNTY - TOTAL	7,039	23,920	\$1,335,443,709	\$1,073.65
Natural Resources & Mining	75	309	20,469,550	1,273.93
Construction	678	2,592	111,642,230	828.30
Manufacturing	47	209	12,183,289	1,121.02
Trade, Transportation & Utilities	2,440	6,712	543,662,368	1,557.66
Wholesale Trade	2,106	5,719	493,106,803	1,658.13
Retail Trade	124	270	17,234,237	1,227.51
Transportation, Warehousing & Utilities	210	723	33,321,328	886.30
Information	191	400	27,623,020	1,328.03
Financial Activities	422	1,204	83,528,608	1,334.15
Professional & Business Services	2,612	9,377	404,919,234	830.43
Education & Health Services	261	1,828	72,230,568	759.87
Leisure & Hospitality	72	101	3,878,216	738.43
Other Services	224	483	26,197,138	1,043.05
State Government	17	705	29,109,488	794.04

Note: Statewide classification includes employment and payroll data for employers that have not provided a physical location for each employing unit. This section also includes employers without a physical location in Arkansas.

TABLE 7. FEDERAL GOVERNMENT EMPLOYMENT AND EARNINGS IN ARKANSAS

North American Industry Classification System - Industry Groups	Average Employing Units	Average Covered Employment	Total Calendar Earnings	Average Weekly Earnings
TOTAL	1,186	20,385	\$1,265,761,958	\$1,194.09
Trade, Transportation & Utilities	589	5,501	270,805,462	946.70
Information	2	45	2,314,246	988.99
Financial Activities	15	119	9,327,480	1,507.35
Professional & Business Services	30	788	55,182,750	1,346.71
Education & Health Services	16	5,220	367,955,968	1,355.57
Leisure & Hospitality	19	300	11,478,470	735.80
Other Services	2	1	29,893	574.87
Public Administration	513	8,411	548,667,689	1,254.46

TABLE 8. WORKFORCE INVESTMENT AREA SUMMARY CALENDAR YEAR 2013

North American Industry Classification System - Industry Groups	Average Employing Units	Average Covered Employment	Total Calendar Earnings	Average Weekly Earnings
CENTRAL WORKFORCE INVESTMENT AREA	6,578	78,591	\$2,728,138,585	\$667.56
Natural Resources & Mining	218	2,203	138,739,745	1,211.11
Construction	746	5,314	205,521,027	743.76
Trade, Transportation & Utilities	1,571	15,647	462,687,490	568.66
Wholesale Trade	393	2,085	99,343,362	916.28
Retail Trade	922	11,833	284,917,644	463.04
Transportation, Warehousing & Utilities	256	1,729	78,426,484	872.30
Information	60	565	24,081,334	819.65
Financial Activities	696	2,971	132,927,219	860.41
Professional & Business Services	832	8,190	406,118,202	953.60
Education & Health Services	1,039	11,613	375,046,597	621.07
Leisure & Hospitality	553	9,432	121,451,419	247.63
Local Government	130	10,182	362,047,338	683.80
State Government	65	4,520	160,138,814	681.33
Other	668	7,954	339,379,400	820.53

*Note: Pulaski County is not included in the Central Workforce Investment Area. Please refer to Page 51 for information on Pulaski County.
Central Workforce Investment Area includes these counties: Faulkner, Lonoke, Monroe, Prairie, and Saline.

EASTERN WORKFORCE INVESTMENT AREA	3,847	36,194	\$1,116,078,250	\$593.00
Natural Resources & Mining	228	1,163	36,747,924	607.64
Construction	154	760	27,158,137	687.20
Trade, Transportation & Utilities	819	9,257	303,040,684	629.55
Wholesale Trade	168	2,006	91,043,881	872.80
Retail Trade	460	4,742	107,854,306	437.39
Transportation, Warehousing & Utilities	191	2,509	104,142,497	798.22
Financial Activities	267	1,342	48,203,102	690.75
Professional & Business Services	277	2,328	65,997,119	545.18
Education & Health Services	1,381	6,591	192,347,825	561.22
Leisure & Hospitality	244	3,424	48,700,898	273.53
Local Government	129	4,938	170,803,769	665.19
State Government	61	2,367	75,449,913	613.00
Other	287	4,024	147,628,879	705.52

Eastern Workforce Investment Area includes these counties: Crittenden, Cross, Lee, Phillips, and Saint Francis.

TABLE 8. WORKFORCE INVESTMENT AREA SUMMARY CALENDAR YEAR 2013

North American Industry Classification System - Industry Groups	Average Employing Units	Average Covered Employment	Total Calendar Earnings	Average Weekly Earnings
NORTH CENTRAL WORKFORCE INVESTMENT AREA	5,575	67,793	\$2,212,023,931	\$627.48
Construction	436	2,474	90,882,440	706.44
Trade, Transportation & Utilities	1,436	15,924	512,865,117	619.37
Retail Trade	916	9,475	212,614,764	431.53
Other Trade, Transportation & Utilities	520	6,449	300,250,353	895.34
Financial Activities	497	2,441	95,572,826	752.95
Education & Health Services	1,024	12,832	455,099,784	682.04
Leisure & Hospitality	473	6,124	73,852,974	231.92
Local Government	230	8,696	261,487,642	578.27
State Government	105	3,129	98,670,742	606.43
Other	1,374	16,173	623,592,406	741.49

North Central Workforce Investment Area includes these counties: Cleburne, Fulton, Independence, IZard, Jackson, Sharp, Stone, Van Buren, White, and Woodruff.

NORTHEAST WORKFORCE INVESTMENT AREA	6,572	94,699	\$3,290,484,793	\$668.21
Natural Resources & Mining	424	2,202	65,767,382	574.37
Construction	434	3,239	130,646,123	775.68
Manufacturing	316	19,105	903,503,244	909.45
Trade, Transportation & Utilities	1,727	18,728	582,899,420	598.55
Wholesale Trade	398	3,854	180,401,745	900.17
Retail Trade	1,011	11,862	272,538,886	441.84
Transportation, Warehousing & Utilities	318	3,012	129,958,789	829.75
Financial Activities	565	3,073	131,788,092	824.73
Professional & Business Services	666	6,777	199,744,431	566.81
Education & Health Services	1,178	15,652	578,629,993	710.93
Leisure & Hospitality	513	8,159	104,162,094	245.51
Local Government	221	11,119	355,679,939	615.16
State Government	99	4,357	170,081,060	750.70
Other	429	2,288	67,583,015	568.04

Northeast Workforce Investment Area includes these counties: Clay, Craighead, Greene, Lawrence, Mississippi, Poinsett, and Randolph.

TABLE 8. WORKFORCE INVESTMENT AREA SUMMARY CALENDAR YEAR 2013

North American Industry Classification System - Industry Groups	Average Employing Units	Average Covered Employment	Total Calendar Earnings	Average Weekly Earnings
NORTHWEST WORKFORCE INVESTMENT AREA	15,167	237,153	\$10,325,616,235	\$837.31
Natural Resources & Mining	143	1,509	71,555,830	911.91
Trade, Transportation & Utilities	3,765	52,782	2,090,043,070	761.49
Retail Trade	2,052	27,679	688,154,739	478.11
Other Trade, Transportation & Utilities	1,713	25,103	1,401,888,331	1,073.95
Education & Health Services	2,150	30,030	1,159,349,830	742.43
Leisure & Hospitality	1,548	25,365	368,150,202	279.12
Local Government	311	21,294	795,779,373	718.67
State Government	107	8,877	395,170,781	856.08
Other	7,143	97,296	5,445,567,149	1,076.33

Northwest Workforce Investment Area includes these counties: Baxter, Benton, Boone, Carroll, Madison, Marion, Newton, Searcy, and Washington.

SOUTHEAST WORKFORCE INVESTMENT AREA	6,112	70,038	\$2,406,388,262	\$660.74
Natural Resources & Mining	413	2,511	92,183,469	706.00
Construction	315	2,396	100,412,399	805.93
Manufacturing	194	14,334	642,410,966	861.87
Trade, Transportation & Utilities	1,336	12,881	418,502,598	624.81
Retail Trade	798	7,856	179,626,089	439.71
Other Trade, Transportation & Utilities	538	5,025	238,876,509	914.18
Financial Activities	411	2,544	105,565,150	797.99
Education & Health Services	1,898	11,042	339,208,906	590.77
Local Government	203	9,021	287,885,487	613.71
State Government	136	6,201	216,518,313	671.47
Other	1,206	9,108	203,700,974	430.10

Southeast Workforce Investment Area includes these counties: Arkansas, Ashley, Bradley, Chicot, Cleveland, Desha, Drew, Grant, Jefferson, and Lincoln.

TABLE 8. WORKFORCE INVESTMENT AREA SUMMARY CALENDAR YEAR 2013

North American Industry Classification System - Industry Groups	Average Employing Units	Average Covered Employment	Total Calendar Earnings	Average Weekly Earnings
SOUTHWEST WORKFORCE INVESTMENT AREA	5,807	77,675	\$2,758,874,117	\$683.04
Natural Resources & Mining	356	2,416	104,495,115	831.76
Trade, Transportation & Utilities	1443	15623	523,766,287	644.72
Retail Trade	896	8,866	192,936,048	418.49
Other Trade, Transportation & Utilities	547	6,757	330,830,239	941.56
Information	61	446	17,079,570	736.44
Financial Activities	511	2,742	102,084,264	715.96
Education & Health Services	1,121	9,273	267,076,399	553.88
Leisure & Hospitality	408	5,400	69,798,807	248.57
Other Services	402	1,813	43,049,286	456.63
Local Government	259	9,827	301,623,849	590.26
State Government	138	3,764	128,615,796	657.11
Other	1,108	26,371	1,201,284,744	876.02

Southwest Workforce Investment Area includes these counties: Calhoun, Columbia, Dallas, Hempstead, Howard, Lafayette, Little River, Miller, Nevada, Ouachita, Sevier, and Union

WEST CENTRAL WORKFORCE INVESTMENT AREA	8,173	104,905	\$3,360,917,323	\$616.11
Construction	758	4,688	182,366,580	748.09
Trade, Transportation & Utilities	1,909	21,064	692,732,026	632.44
Retail Trade	1,258	13,721	319,239,850	447.43
Other Trade, Transportation & Utilities	651	7,343	373,492,176	978.15
Financial Activities	818	4,064	153,524,136	726.47
Professional & Business Services	931	8,174	263,858,762	620.77
Education & Health Services	1,458	16,447	572,774,487	669.72
Leisure & Hospitality	761	12,198	170,224,592	268.37
Local Government	226	11,176	377,732,268	649.97
State Government	124	5,786	187,328,765	622.62
Other	1,188	21,308	760,375,707	686.25

West Central Workforce Investment Area includes these counties: Clark, Conway, Garland, Hot Spring, Johnson, Montgomery, Perry, Pike, Pope, and Yell

TABLE 8. WORKFORCE INVESTMENT AREA SUMMARY CALENDAR YEAR 2013

North American Industry Classification System - Industry Groups	Average Employing Units	Average Covered Employment	Total Calendar Earnings	Average Weekly Earnings
WESTERN WORKFORCE INVESTMENT AREA	6,598	100,733	\$3,586,541,320	\$684.70
Natural Resources & Mining	171	2,276	149,927,772	1,266.80
Trade, Transportation & Utilities	1,630	21,850	712,839,099	627.39
Retail Trade	953	11,885	275,554,596	445.87
Other Trade, Transportation & Utilities	677	9,965	437,284,503	843.89
Financial Activities	700	3,824	163,116,972	820.31
Professional & Business Services	877	9,981	360,657,005	694.89
Education & Health Services	1,028	14,999	579,856,328	743.46
Leisure & Hospitality	546	8,531	116,022,635	261.54
Other Services	420	2,019	54,428,563	518.43
Local Government	151	9,138	321,245,497	676.06
State Government	74	2,919	101,678,365	669.87
Other	1,001	25,196	1,026,769,084	783.68

Western Workforce Investment Area includes these counties: Crawford, Franklin, Logan, Polk, Scott, and Sebastian