

Arkansas Covered Employment & Earnings

Jobs for People. People for Jobs.
DWS
Department of
WORKFORCE**Services**

Fourth Quarter
2013

**COVERED EMPLOYMENT AND EARNINGS
STATE OF ARKANSAS
FOURTH QUARTER 2013**

**MIKE BEEBE, GOVERNOR
STATE OF ARKANSAS**

**ARTEE WILLIAMS, DIRECTOR
DEPARTMENT OF WORKFORCE SERVICES**

**PUBLISHED BY
LABOR MARKET INFORMATION
BUREAU OF LABOR STATISTICS PROGRAMS
POST OFFICE BOX 2981
LITTLE ROCK, ARKANSAS 72203-2981
BERNADETTE COLEMAN, BLS PROGRAMS MANAGER
TELEPHONE (501) 682-3159
SUSAN PRICE, QCEW LEAD ANALYST
TELEPHONE (501) 682-3103**

STATE OF ARKANSAS WEBPAGE: <http://www.arkansas.gov>

DEPARTMENT OF WORKFORCE SERVICES WEBPAGE: <http://www.arkansas.gov/esd/>

WEBPAGE FOR LABOR MARKET INFORMATION: <http://www.discover.arkansas.gov>

RELEASED: MAY 2014

TABLE OF CONTENTS

DESCRIPTION OF DATA	PAGE
Description and Classification of Data	1
Definition of Covered Employment and Earnings	2
Significant Developments During Fourth Quarter 2013	3

LIST OF GRAPHS AND TABLES

Graph 1	Total Covered Employment for Selected Years, Arkansas	7
Graph 2	Total Covered Earnings, by Calendar Quarter for Selected Years, Arkansas	8
Table 1	Quarterly Comparison of Covered Employment and Wages, by Industry	5
Table 2	Total Covered Employment in Arkansas, 2006 – 2013	6
Table 3	Total Covered Earnings, 2006 – 2013	9
Table 4	Total Taxable Earnings, 2006 – 2013	10
Table 5	State Summary – Employment and Total Earnings, by Industry, Fourth Quarter 2013	11
Table 6	County Summary – Employment and Total Earnings, by Industry, Fourth Quarter 2013	22
Table 7	Federal Government Employment and Total Earnings in Arkansas, Fourth Quarter 2013	60
Table 8	Workforce Information Area – Employment and Total Earnings, by Industry, Fourth Quarter 2013	61

EMPLOYMENT AND EARNINGS
UNDER THE ARKANSAS EMPLOYMENT SECURITY LAW
FOURTH QUARTER 2013

DESCRIPTION AND CLASSIFICATION OF DATA

This publication contains covered employment and payroll data by industry and county for the Fourth Quarter 2013 and a record for total covered employment by month, quarterly payroll data, average weekly earnings, and total taxable earnings for 2006 through 2013. These data are compiled from quarterly contributions and wage reports submitted by employers subject to the Arkansas Employment Security Law.

Employment data have been tabulated for each month of the quarter by industry under the **North American Industry Classification System** (NAICS) by state, county, and workforce area. Payroll data represent the total wages paid during the quarter and are classified by industry for the state and by publishable industry groups for each county and workforce area.

Due to industry classification revisions, previously published data will not always be comparable with current data. For this reason, comparisons should not be made between the same industries under different revisions. For more information, visit the NAICS home page at <http://www.census.gov/naics>.

Industry Classification Revisions

- SIC (Standard Industrial Classification) 1987 to NAICS 2002
- NAICS 2002 to NAICS 2007
- NAICS 2007 to NAICS 2012

The tabulation of this data is a joint effort in conjunction with the United States Bureau of Labor Statistics. Data included in this publication are subject to revisions. Revisions are typically reflected in the Annual Covered Employment and Earnings publication.

DEFINITION OF COVERED EMPLOYMENT AND EARNINGS

Covered Employment is the total number of workers employed by establishments subject to the Arkansas Employment Security Law that worked or received pay for the payroll period including the 12th of the month. Earnings include all wages paid to any covered employee by their employer including salaries, bonuses, commissions, fees, fringe benefits, sick pay made directly to employees or dependents, deferred compensation, and reported tips. These wages include both taxable and nontaxable wages. Only the first \$12,000 paid to each worker by an employer in the calendar year is taxable under the Arkansas Employment Security Law.

An Arkansas state unemployment insurance account is required of any entity meeting the definition of an employer. As described by Arkansas Department of Workforce Services Law, the definition of an employer includes, but is not limited to, a sole proprietorship, partnership, corporation, associations, trust, estate, and receiver or trustee in bankruptcy. The entity must employ one or more individuals for ten or more days in a calendar year, whether or not the days are consecutive.

Currently excluded from coverage is employment covered by the Railroad Unemployment Insurance Act, some domestic service workers, employees of small agricultural establishments, self-employed workers, unpaid family workers, insurance and real estate agents paid only on a commission basis, and employees of churches and religious organizations except separately incorporated schools.

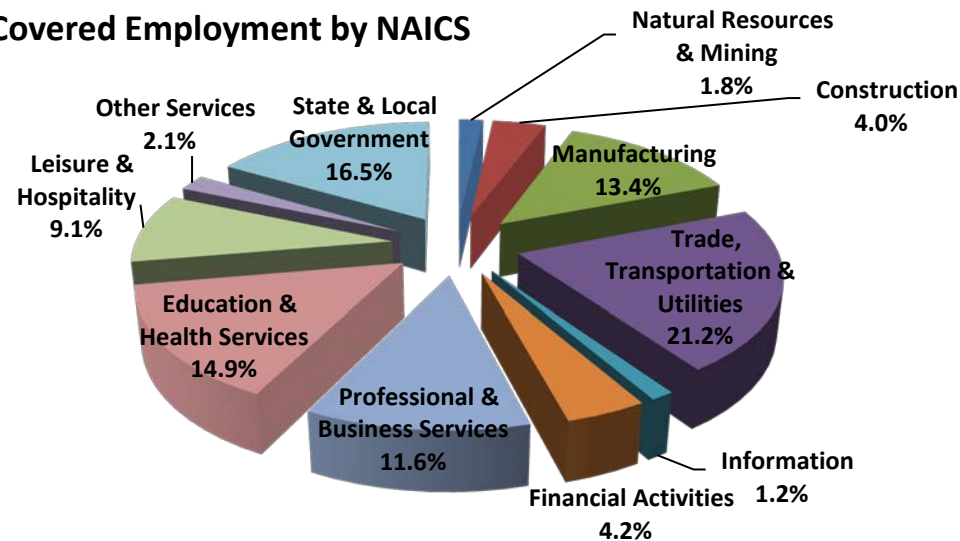
Civilian federal workers are covered by Unemployment Compensation for Federal Employees (UCFE).

SIGNIFICANT DEVELOPMENTS DURING FOURTH QUARTER 2013

AVERAGE EMPLOYMENT CHANGES

Covered employment averaged 1,137,334 during the Fourth Quarter 2013 (refer to Table 1), an increase of 26,827 (2.4%) from the previous quarter and a decrease of 569 (-.1%) from the average recorded one year ago. The over-the-year comparison is more significant when used as an economic indicator and allows for seasonal factors that appear when comparing over-the-quarter data to be disregarded.

Average Covered Employment by NAICS



EMPLOYMENT CHANGES FROM THIRD QUARTER 2013

Compared to Third Quarter 2013, covered employment increased in four major industry sectors. State & Local Government increased by 25,715, mainly due to educational facilities reopening. Professional & Business Services experienced a gain of 3,559, while Trade, Transportation, & Utilities gained 3,402 as retailers prepared for the holiday season. Education & Health Services increased by 1,110 jobs. Leisure & Hospitality (-4,451) experienced the largest decline. Construction decreased by 1,209 positions. Manufacturing (-437) and Other Services (-331) experienced modest contractions. Other industries reporting declines include Financial Activities (-206), Natural Resources & Mining (-187), and Information (-139).

EMPLOYMENT CHANGES FROM FOURTH QUARTER 2012 (QUARTER YEAR AGO COMPARISON)

Over-the-year gains were recorded in four industry groups (refer to Table 1). The largest gains occurred in Professional & Business Services (7,025) and Leisure & Hospitality (1,817). The most significant losses occurred in State & Local Government (-3,117), Education & Health Services (-2,516), Manufacturing (-2,064), and Construction (-1,494).

COVERED WAGES

Wages paid to covered workers totaled \$11,307,541,638 for the Fourth Quarter 2013 (refer to Table 1), for an average weekly wage of \$764.78 (refer to Table 5). Calhoun County workers recorded the highest average weekly wage (\$917.94), and employees in Newton County reported the lowest (\$458.04) (refer to Table 6).

The Financial Activities industry recorded the highest average weekly wage for the State of Arkansas (\$1,016.61). The Leisure & Hospitality sector recorded the lowest (\$276.82) (refer to Table 5).

Average Weekly Wage by Industry

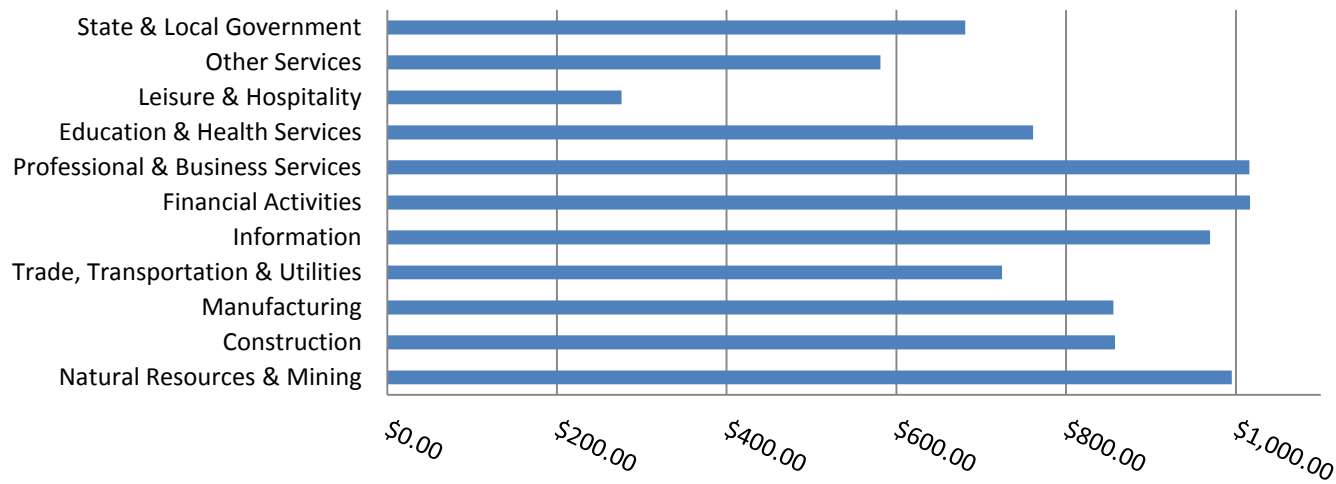


TABLE 1. QUARTERLY COMPARISON OF COVERED EMPLOYMENT AND WAGES, BY INDUSTRY

North American Industry Classification System - Industry Groups	Number of Employing Units	Monthly Employment Average	Percent of Total	Net Change From:		Total Wages Paid Oct - Dec 2013	Percent of Total
				Jul - Sept 2013	Oct - Dec 2012		
TOTAL	86,347	1,137,334	100	26,827	-569	\$11,307,541,638	100
Natural Resources & Mining	2,546	20,304	1.8	-187	-621	262,726,045	2.3
Agriculture, Forestry, Fishing & Hunting	2,024	12,912	1.1	130	27	124,609,304	1.1
Mining	522	7,392	0.6	-317	-648	138,116,741	1.2
Construction	6,757	44,978	4.0	-1,209	-1,494	501,482,879	4.4
Manufacturing	3,030	152,109	13.4	-437	-2,064	1,692,254,142	15.0
Trade, Transportation & Utilities	21,409	241,674	21.2	3,402	601	2,277,908,569	20.1
Wholesale Trade	6,875	46,222	4.1	-826	-881	738,802,848	6.5
Retail Trade	11,230	137,061	12.1	3,681	2,065	832,773,987	7.4
Transportation & Warehousing	2,894	50,336	4.4	609	-946	557,003,636	4.9
Utilities	410	8,055	0.7	-62	364	149,328,098	1.3
Information	1,159	14,026	1.2	-139	-307	176,783,764	1.6
Financial Activities	8,224	48,082	4.2	-206	497	635,446,976	5.6
Finance & Insurance	4,919	34,957	3.1	4	558	515,127,854	4.6
Real Estate & Rental & Leasing	3,305	13,124	1.2	-211	-61	120,319,122	1.1
Professional & Business Services	13,058	131,612	11.6	3,559	7,025	1,738,221,321	15.4
Professional & Technical Services	8,292	41,109	3.6	1,574	2,435	652,428,314	5.8
Management of Companies & Enterprises	499	31,661	2.8	489	118	694,450,476	6.1
Administrative & Waste Services	4,267	58,842	5.2	1,496	4,472	391,342,531	3.5
Education & Health Services	14,947	169,568	14.9	1,110	-2,516	1,677,836,184	14.8
Educational Services	732	11,563	1.0	929	-1,767	95,497,640	0.8
Health Care & Social Assistance	14,215	158,005	13.9	181	-748	1,582,338,544	14.0
Leisure & Hospitality	6,742	103,599	9.1	-4,451	1,817	372,820,502	3.3
Arts, Entertainment & Recreation	934	9,031	0.8	-2,087	633	45,504,584	0.4
Accommodation & Food Services	5,808	94,568	8.3	-2,364	1,185	327,315,918	2.9
Other Services	5,391	23,600	2.1	-331	-389	178,298,514	1.6
State & Local Government	3,084	187,783	16.5	25,715	-3,117	1,793,762,742	15.9
Local Government	1,960	116,069	10.2	22,970	-3,082	1,010,539,019	8.9
State Government	1,124	71,713	6.3	2,745	-36	783,223,723	6.9
Nonclassifiable Establishments	0	0	0.0	0	0	0	0.0

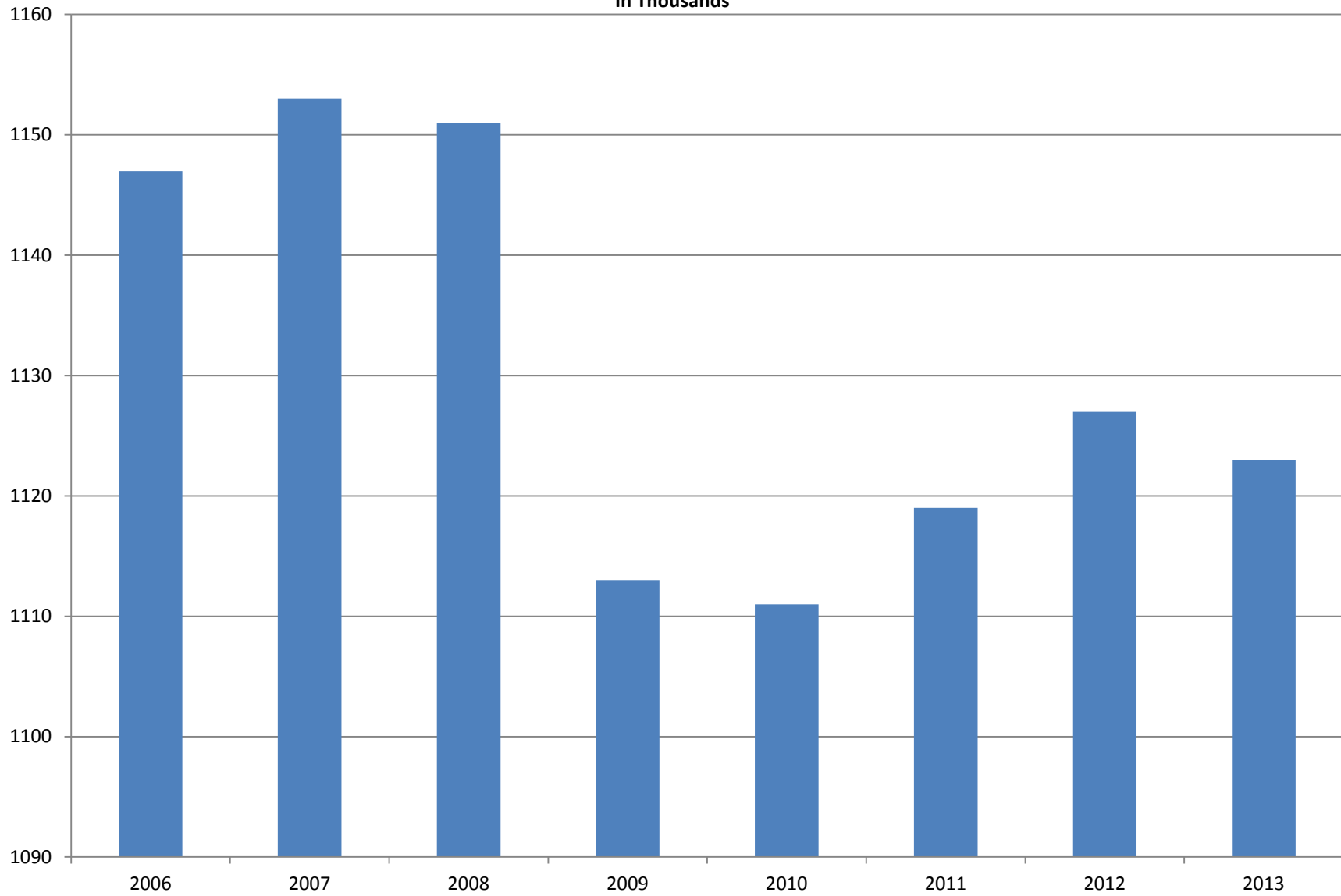
Note: Items do not necessarily add to total because of rounding. Because of industry code changes between years, substantial employment and wage shifts among industries are anticipated.

TABLE 2. TOTAL COVERED EMPLOYMENT IN ARKANSAS

PERIOD	2006	2007	2008	2009	2010	2011	2012	2013
AVERAGE	1,146,948	1,152,994	1,150,965	1,112,591	1,110,947	1,118,639	1,126,588	1,122,707
January	1,130,595	1,137,437	1,141,856	1,119,299	1,089,984	1,098,349	1,113,274	1,114,507
February	1,136,810	1,143,397	1,149,443	1,119,476	1,091,282	1,098,445	1,119,319	1,123,049
March	1,150,439	1,158,895	1,157,690	1,124,386	1,106,198	1,113,061	1,131,123	1,130,565
April	1,155,498	1,159,623	1,159,841	1,123,383	1,115,341	1,129,635	1,136,973	1,134,706
May	1,159,886	1,165,224	1,166,111	1,122,322	1,123,250	1,126,371	1,143,142	1,138,211
June	1,162,026	1,164,207	1,164,167	1,117,884	1,130,164	1,123,412	1,136,739	1,129,931
July	1,106,142	1,110,571	1,114,279	1,071,048	1,073,743	1,080,937	1,079,329	1,084,864
August	1,130,839	1,139,109	1,138,583	1,093,192	1,099,795	1,106,262	1,109,425	1,110,517
September	1,159,814	1,165,135	1,162,333	1,116,580	1,124,281	1,132,779	1,136,019	1,136,141
October	1,156,804	1,162,768	1,157,196	1,113,157	1,125,073	1,138,395	1,136,045	1,137,332
November	1,156,011	1,164,246	1,152,159	1,115,443	1,126,781	1,138,543	1,138,302	1,140,650
December	1,158,509	1,165,314	1,147,927	1,114,919	1,125,466	1,137,474	1,139,361	1,134,020

AVERAGE TOTAL COVERED EMPLOYMENT

In Thousands



TOTAL COVERED EARNINGS BY CALENDAR YEAR

In Thousands

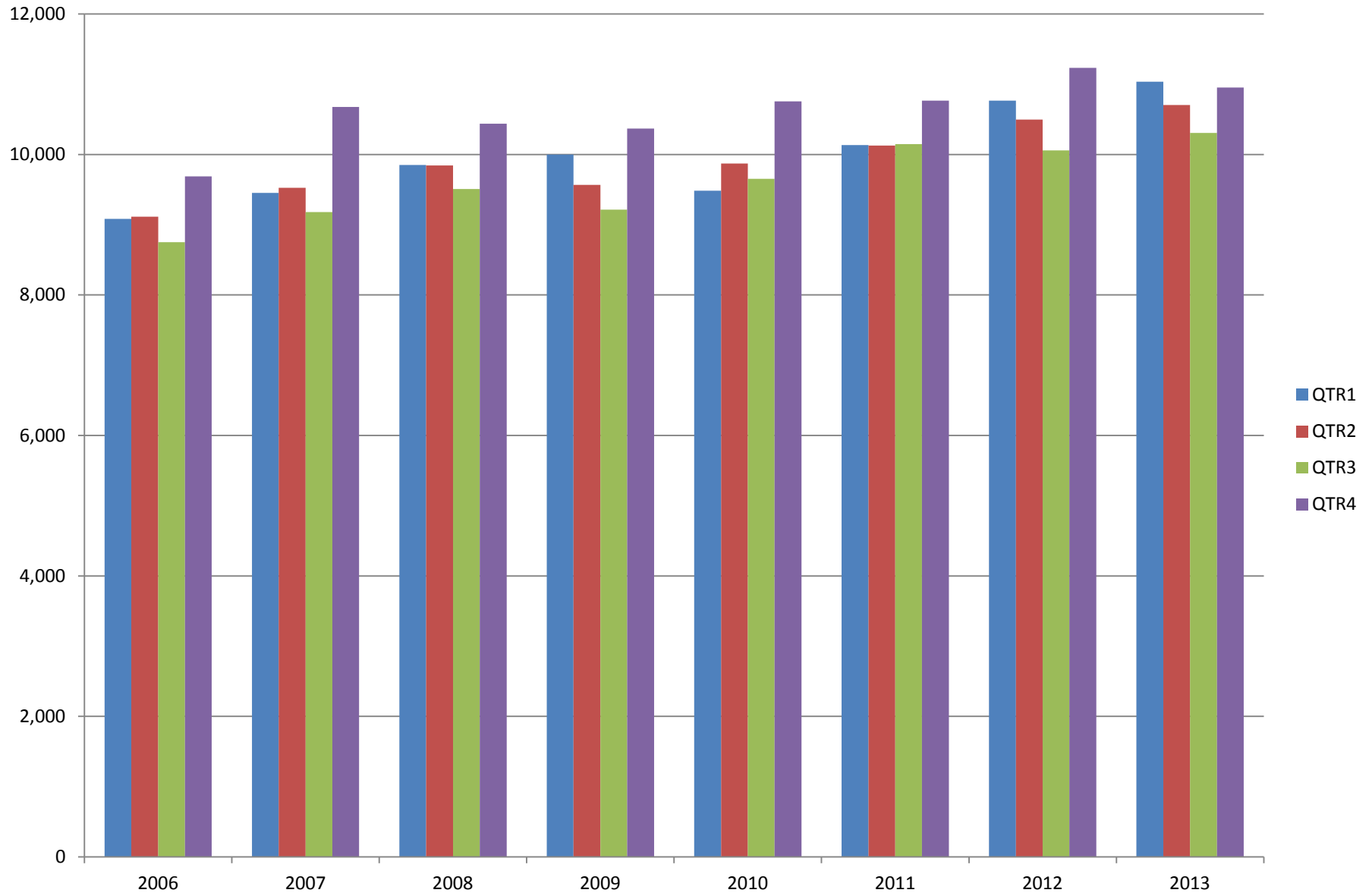


TABLE 3. TOTAL COVERED EARNINGS 2006 - 2013

PERIOD	2006	2007	2008	2009
TOTAL	\$36,636,090,775	\$38,833,265,464	\$39,643,039,342	\$39,149,476,305
January - March	9,085,021,816	9,452,711,662	9,851,866,058	9,998,452,028
April - June	9,112,624,590	9,525,837,049	9,843,711,293	9,566,968,853
July - September	8,750,878,205	9,178,902,477	9,509,150,631	9,213,797,140
October - December	9,687,566,164	10,675,814,276	10,438,311,360	10,370,258,284
Average Weekly Earnings	\$614.27	\$647.70	\$662.37	\$676.69

PERIOD	2010	2011	2012	2013
TOTAL	\$39,769,504,992	\$41,177,659,236	\$42,555,976,081	\$43,003,433,021
January - March	9,486,245,580	10,134,035,254	10,766,175,449	11,038,435,964
April - June	9,873,489,653	10,128,274,611	10,499,018,872	10,705,006,820
July - September	9,653,588,807	10,147,287,431	10,058,388,682	10,306,649,458
October - December	10,756,180,952	10,768,061,940	11,232,393,078	10,953,340,779
Average Weekly Earnings	\$688.42	\$707.89	\$726.43	\$736.60

TABLE 4. TOTAL TAXABLE EARNINGS, 2006 - 2013

PERIOD	2006	2007	2008	2009
TOTAL	10,197,511,360	10,459,105,059	10,360,487,108	9,787,660,886
January - March	5,421,204,601	5,617,417,571	5,635,750,082	5,423,705,265
April - June	2,385,110,992	2,466,606,627	2,419,313,519	2,293,670,854
July - September	1,314,939,803	1,307,060,412	1,297,473,555	1,165,280,065
October - December	1,076,255,964	1,068,020,449	1,007,949,952	905,004,702

PERIOD	2010	2011	2012	2013
TOTAL	11,332,118,456	11,479,396,226	11,642,854,241	11,669,483,946
January - March	5,607,134,758	5,828,877,821	6,167,036,199	6,194,767,117
April - June	2,977,100,591	2,910,604,359	2,845,540,593	2,807,334,202
July - September	1,577,067,770	1,601,382,146	1,505,833,030	1,509,412,524
October - December	1,170,815,337	1,138,531,900	1,124,444,419	1,157,970,103

TABLE 5. STATEWIDE SUMMARY

North American Industry Classification System - Industry Groups		Number of Employing Units	Employment			Total Earnings Oct - Dec 2013	Average Weekly Earnings
			Oct	Nov	Dec		
TOTAL, ALL INDUSTRIES		86,347	1,137,332	1,140,650	1,134,020	\$11,307,541,638	\$764.78
NATURAL RESOURCES & MINING		2,546	20,714	20,440	19,758	\$262,726,045	\$995.36
11	AGRICULTURE, FORESTRY, FISHING & HUNTING	2,024	13,231	13,026	12,479	\$124,609,304	\$742.36
111	CROP PRODUCTION	890	4,568	4,362	4,148	\$35,933,389	\$634.07
1111	Oilseed & Grain Farming	598	2,906	2,828	2,669	22,885,967	628.51
1112	Vegetable & Melon Farming	15	147	133	131	907,099	509.32
1113	Fruit & Tree Nut Farming	14	62	51	51	478,997	674.01
1114	Greenhouse & Nursery Production	43	310	278	294	2,260,816	591.53
1119	Other Crop Farming	220	1,143	1,072	1,003	9,400,510	674.13
112	ANIMAL PRODUCTION & AQUACULTURE	291	2,966	2,939	2,893	\$34,755,482	\$911.63
1121	Cattle Ranching & Farming	101	363	360	355	2,602,243	557.07
1122	Hog & Pig Farming	11	134	132	133	1,964,777	1,136.37
1123	Poultry & Egg Production	104	2,003	1,988	1,987	26,259,821	1,013.71
1125	Animal Aquaculture	54	407	400	375	3,614,932	705.77
1129	Other Animal Production	21	59	59	43	313,709	449.65
113	FORESTRY & LOGGING	407	2,292	2,297	2,302	\$21,337,744	\$714.57
1131	Timber Tract Operations	37	190	186	186	1,934,919	794.52
1132	Forest Nurseries & Gathering of Forest Products	5	25	25	25	325,751	1,002.31
1133	Logging	365	2,077	2,086	2,091	19,077,074	703.93
114	FISHING, HUNTING & TRAPPING	3	18	20	20	\$137,187	\$545.84
115	SUPPORT ACTIVITIES FOR AGRICULTURE & FORESTRY	433	3,387	3,408	3,116	\$32,445,502	\$755.47
1151	Support Activities for Crop Production	297	2,026	1,998	1,568	21,127,954	871.90
1152	Support Activities for Animal Production	62	713	719	714	5,074,530	545.69
1153	Support Activities for Forestry	74	648	691	834	6,243,018	663.00
21	MINING	522	7,483	7,414	7,279	\$138,116,741	\$1,437.28
211	OIL & GAS EXTRACTION	86	1,533	1,541	1,546	\$42,166,340	\$2,106.21
212	MINING (EXCEPT OIL & GAS)	113	1,920	1,909	1,827	\$24,459,846	\$997.98
213	SUPPORT ACTIVITIES FOR MINING	323	4,030	3,964	3,906	\$71,490,555	\$1,386.37

TABLE 5. STATEWIDE SUMMARY

North American Industry Classification System - Industry Groups		Number of Employing Units	Employment			Total Earnings Oct - Dec 2013	Average Weekly Earnings
			Oct	Nov	Dec		
CONSTRUCTION		6,757	45,349	45,211	44,375	\$501,482,879	\$857.65
236	CONSTRUCTION OF BUILDINGS	1,619	9,205	9,212	9,454	\$117,472,792	\$972.66
2361	Residential Building Construction	1,080	2,915	2,888	2,900	30,395,593	805.97
2362	Nonresidential Building Construction	539	6,290	6,324	6,554	87,077,199	1,048.35
237	HEAVY & CIVIL ENGINEERING CONSTRUCTION	733	7,657	7,490	7,177	\$88,713,689	\$917.06
2371	Utility System Construction	400	3,755	3,775	3,816	47,388,700	963.85
2372	Land Subdivision	66	147	143	142	1,746,422	932.92
2373	Highway, Street & Bridge Construction	183	3,087	3,026	2,685	32,768,524	859.51
2379	Other Heavy Construction	84	668	546	534	6,810,043	899.06
238	SPECIALTY TRADE CONTRACTORS	4,405	28,487	28,509	27,744	\$295,296,398	\$804.17
2381	Building Foundation & Exterior Contractors	848	5,325	5,382	5,133	51,105,688	744.55
2382	Building Equipment Contractors	2,044	14,943	14,913	14,762	171,748,668	888.30
2383	Building Finishing Contractors	752	3,667	3,666	3,625	32,036,914	674.68
2389	Other Specialty Trade Contractors	761	4,552	4,548	4,224	40,405,128	699.81
MANUFACTURING		3,030	152,673	152,162	151,491	\$1,692,254,142	\$855.79
311	FOOD MANUFACTURING	279	42,801	42,462	41,683	\$358,293,179	\$651.32
3111	Animal Food Manufacturing	43	1,469	1,466	1,465	15,696,732	823.26
3112	Grain & Oilseed Milling	35	2,462	2,392	2,403	30,060,709	955.92
3113	Sugar & Confectionery Product Manufacturing	7	31	31	32	195,538	480.04
3114	Fruit, Vegetable & Specialty Food	20	4,316	4,320	4,302	46,247,505	824.90
3115	Dairy Product Manufacturing	10	562	558	557	6,705,480	922.73
3116	Animal Slaughtering & Processing	79	28,927	28,652	27,863	208,924,284	564.28
3117	Seafood Product Preparation & Packaging	5	69	75	72	309,840	331.03
3118	Bakeries & Tortilla Manufacturing	58	3,226	3,214	3,237	31,258,384	745.42
3119	Other Food Manufacturing	22	1,739	1,754	1,752	18,894,707	831.33
312	BEVERAGE & TOBACCO PRODUCT MANUFACTURING	44	1,149	1,132	1,124	\$11,883,283	\$805.37
313	TEXTILE MILLS	12	83	80	76	\$633,956	\$612.12
314	TEXTILE PRODUCT MILLS	53	874	875	868	\$10,005,834	\$882.32
3141	Textile Furnishing Mills	10	33	33	34	383,336	884.62
3149	Other Textile Product Mills	43	841	842	834	9,622,498	882.23
315	APPAREL MANUFACTURING	20	1,031	1,022	1,018	\$6,747,802	\$507.06
316	LEATHER & ALLIED PRODUCT MANUFACTURING	15	1,079	1,081	1,085	\$7,562,684	\$537.82

TABLE 5. STATEWIDE SUMMARY

North American Industry Classification System - Industry Groups		Number of Employing Units	Employment			Total Earnings Oct - Dec 2013	Average Weekly Earnings
			Oct	Nov	Dec		
321	WOOD PRODUCT MANUFACTURING	320	9,090	9,049	9,036	\$90,108,405	\$765.20
3211	Sawmills & Wood Preservation	133	4,351	4,321	4,304	45,578,258	810.58
3212	Veneer & Engineered Wood Products	52	1,932	1,914	1,902	22,736,304	912.81
3219	Other Wood Product Manufacturing	135	2,807	2,814	2,830	21,793,843	595.12
322	PAPER MANUFACTURING	74	10,015	9,961	9,989	\$153,567,197	\$1,182.67
3221	Pulp, Paper & Paperboard Mills	11	4,212	4,161	4,165	80,324,395	1,478.42
3222	Converted Paper Product Manufacturing	63	5,803	5,800	5,824	73,242,802	969.88
323	PRINTING & RELATED SUPPORT ACTIVITIES	238	3,900	3,910	3,965	\$41,600,191	\$815.29
324	PETROLEUM & COAL PRODUCTS MANUFACTURING	17	981	971	959	\$16,493,225	\$1,307.50
325	CHEMICAL MANUFACTURING	117	4,763	4,786	4,822	\$74,236,161	\$1,192.08
3251	Basic Chemical Manufacturing	29	1,742	1,766	1,768	31,897,056	1,395.16
3252	Resin, Rubber & Artificial Fibers	6	263	263	269	4,041,232	1,173.07
3253	Agricultural Chemical Manufacturing	17	390	384	386	5,440,360	1,082.30
3254	Pharmaceutical & Medicine Manufacturing	13	214	215	214	2,872,705	1,031.00
3255	Paint, Coating & Adhesive Manufacturing	9	260	262	274	3,725,148	1,079.96
3256	Soap, Cleaning Compound, & Toilet Preparation Manufacturing	16	1,116	1,109	1,125	14,613,573	1,006.68
3259	Other Chemical Preparation Manufacturing	27	778	787	786	11,646,087	1,143.16
326	PLASTICS & RUBBER PRODUCTS MANUFACTURING	142	10,551	10,535	10,543	\$124,459,535	\$908.07
3261	Plastics Product Manufacturing	100	6,456	6,459	6,438	68,430,992	815.99
3262	Rubber Product Manufacturing	42	4,095	4,076	4,105	56,028,543	1,053.25
327	NONMETALLIC MINERAL PRODUCT MANUFACTURING	250	3,582	3,557	3,496	\$37,943,901	\$823.35
3271	Clay Product & Refractory Manufacturing	14	393	394	399	3,976,387	773.72
3272	Glass & Glass Product Manufacturing	12	375	358	351	4,081,718	868.94
3273	Cement & Concrete Product Manufacturing	181	1,947	1,934	1,890	19,369,756	774.55
3274	Lime & Gypsum Product Manufacturing	6	227	229	232	3,011,249	1,010.03
3279	Other Nonmetallic Mineral Products Manufacturing	37	640	642	624	7,504,791	908.64
331	PRIMARY METAL MANUFACTURING	74	9,987	9,987	10,017	\$152,740,863	\$1,175.28
3311	Iron & Steel Mills & Ferroalloys	8	2,349	2,349	2,372	57,946,921	1,891.42
3312	Purchased Steel Product Manufacturing	20	3,010	3,025	3,034	43,942,619	1,118.16
3313	Alumina & Aluminum Production	19	1,256	1,247	1,240	16,140,955	995.15
3314	Other Nonferrous Metal Production	7	591	598	598	5,789,546	747.65
3315	Foundries	20	2,781	2,768	2,773	28,920,822	801.97

TABLE 5. STATEWIDE SUMMARY

North American Industry Classification System - Industry Groups		Number of Employing Units	Employment			Total Earnings Oct - Dec 2013	Average Weekly Earnings
			Oct	Nov	Dec		
332	FABRICATED METAL PRODUCT MANUFACTURING	522	14,198	14,247	14,212	\$171,796,193	\$929.40
3321	Forging & Stamping	11	308	300	302	3,295,880	835.81
3322	Cutlery & Hand Tool Manufacturing	12	702	697	694	7,498,787	826.80
3323	Architectural & Structural Metals	152	3,570	3,620	3,595	44,949,951	961.80
3324	Boilers, Tanks & Shipping Containers	17	730	743	747	8,733,609	907.86
3325	Hardware Manufacturing	7	266	268	267	3,224,692	929.04
3326	Spring & Wire Product Manufacturing	13	391	393	396	4,500,137	880.08
3327	Machine Shops & Threaded Products	211	1,859	1,877	1,888	20,881,180	856.82
3328	Coating, Engraving & Heat Treating Metals	39	710	712	701	6,350,189	690.26
3329	Other Fabricated Metal Product Manufacturing	60	5,662	5,637	5,622	72,361,768	986.87
333	MACHINERY MANUFACTURING	211	10,968	10,986	11,088	\$125,356,741	\$875.51
3331	Agriculture, Construction & Mining Machinery	39	2,813	2,805	2,849	30,661,848	835.69
3332	Industrial Machinery Manufacturing	26	735	740	737	9,318,634	972.18
3333	Commercial & Service Industry Machinery	21	755	768	772	10,898,987	1,095.93
3334	HVAC & Commercial Refrigeration Equipment	19	3,009	2,997	3,019	33,175,979	848.31
3335	Metalworking Machinery Manufacturing	59	1,151	1,144	1,138	11,760,671	790.56
3336	Turbine & Power Transmission Equipment Manufacturing	6	515	545	589	5,865,077	820.79
3339	Other General Purpose Machinery Manufacturing	41	1,990	1,987	1,984	23,675,545	916.56
334	COMPUTER & ELECTRONIC PRODUCT MANUFACTURING	62	2,911	2,931	2,918	\$50,997,818	\$1,343.46
3343	Audio & Video Equipment Manufacturing	5	218	215	211	2,338,363	837.92
3344	Semiconductors & Electronic Components	27	2,047	2,048	2,038	40,585,619	1,527.13
3345	Electronic Instrument Manufacturing	20	494	512	517	5,972,679	905.00
	Other	10	152	156	152	2,101,157	1,054.09
335	ELECTRICAL EQUIPMENT & APPLIANCES	54	5,613	5,562	5,591	\$65,227,446	\$897.80
3353	Electrical Equipment Manufacturing	20	3,462	3,376	3,421	40,238,146	905.13
3359	Other Electrical Equipment & Component Manufacturing	17	1,640	1,637	1,628	19,233,926	904.91
	Other	17	511	549	542	5,755,374	829.07
336	TRANSPORTATION EQUIPMENT MANUFACTURING	144	12,467	12,435	12,413	\$133,594,568	\$826.20
3362	Motor Vehicle Body & Trailer Manufacturing	31	1,630	1,639	1,646	14,387,956	675.54
3363	Motor Vehicle Parts Manufacturing	48	4,692	4,726	4,692	45,779,821	748.73
3364	Aerospace Product & Parts Manufacturing	26	2,875	2,840	2,822	40,538,277	1,095.82
3366	Ship & Boat Building	23	1,573	1,588	1,576	12,705,094	618.95
	Other	16	1,697	1,642	1,677	20,183,420	928.57
337	FURNITURE & RELATED PRODUCT MANUFACTURING	190	3,328	3,286	3,280	\$28,475,621	\$664.17
3371	Household & Institutional Furniture	156	2,318	2,316	2,306	18,151,285	603.57
3372	Office Furniture & Fixtures Manufacturing	25	915	876	887	9,680,563	834.20
3379	Other Furniture Related Product Manufacturing	9	95	94	87	643,773	538.27
339	MISCELLANEOUS MANUFACTURING	192	3,302	3,307	3,308	\$30,529,539	\$710.42
3391	Medical Equipment & Supplies Manufacturing	76	1,580	1,601	1,611	16,838,243	810.88
3399	Other Miscellaneous Manufacturing	116	1,722	1,706	1,697	13,691,296	616.49

TABLE 5. STATEWIDE SUMMARY

North American Industry Classification System - Industry Groups		Number of Employing Units	Employment			Total Earnings Oct - Dec 2013	Average Weekly Earnings
			Oct	Nov	Dec		
TRADE, TRANSPORTATION & UTILITIES		21,409	238,575	242,855	243,592	\$2,277,908,569	\$725.04
42	WHOLESALE TRADE	6,875	46,208	46,238	46,221	\$738,802,848	\$1,229.51
423	MERCHANT WHOLESALERS, DURABLE GOODS	2,170	20,836	20,870	20,791	\$286,238,099	\$1,056.93
4231	Motor Vehicle & Part Merchant Wholesalers	235	2,648	2,670	2,657	28,303,839	819.02
4232	Furniture & Furnishings Merchant Wholesalers	49	388	397	397	5,377,844	1,049.95
4233	Lumber & Supply Merchant Wholesalers	173	1,347	1,363	1,349	15,721,780	893.84
4234	Commercial Goods Merchant Wholesalers	310	2,802	2,781	2,727	46,088,596	1,279.88
4235	Metal & Mineral Merchant Wholesalers	52	902	900	890	11,917,098	1,021.58
4236	Appliances & Electronics Goods Merchant Wholesalers	185	1,833	1,826	1,828	29,271,640	1,231.09
4237	Hardware & Plumbing Merchant Wholesalers	228	2,164	2,178	2,158	30,449,008	1,081.03
4238	Machinery & Supply Merchant Wholesalers	708	6,739	6,763	6,776	96,758,135	1,101.13
4239	Miscellaneous Durable Goods Merchant Wholesalers	230	2,013	1,992	2,009	22,350,159	857.62
424	MERCHANT WHOLESALERS, NONDURABLE GOODS	1,191	15,289	15,273	15,181	\$215,948,211	\$1,089.44
4241	Paper & Paper Product Merchant Wholesalers	67	1,118	1,127	1,118	16,070,266	1,102.74
4242	Druggist' Goods Merchant Wholesalers	68	597	597	590	9,950,066	1,287.09
4243	Apparel & Piece Goods Merchant Wholesalers	39	625	632	626	7,555,310	925.93
4244	Grocery Product Merchant Wholesalers	298	4,744	4,735	4,708	72,240,770	1,175.09
4245	Farm Product Merchant Wholesalers	72	921	885	862	9,196,671	795.47
4246	Chemical Merchant Wholesalers	96	682	680	669	11,466,007	1,302.81
4247	Petroleum Merchant Wholesalers	137	1,658	1,653	1,670	27,491,515	1,273.68
4248	Alcoholic Beverage Merchant Wholesalers	41	1,434	1,450	1,465	19,214,165	1,019.55
4249	Miscellaneous Nondurable Goods Merchant Wholesaler	373	3,510	3,514	3,473	42,763,441	940.12
425	ELECTRONIC MARKETS & AGENTS & BROKERS	3,514	10,083	10,095	10,249	\$236,616,538	\$1,794.58
44 - 45	RETAIL TRADE	11,230	134,252	138,156	138,775	\$832,773,987	\$467.38
441	MOTOR VEHICLE & PARTS DEALERS	1,590	18,100	18,084	17,954	\$182,980,150	\$779.97
4411	Automobile Dealers	638	10,859	10,865	10,790	128,396,404	911.30
4412	Other Motor Vehicle Dealers	163	1,421	1,408	1,389	13,464,390	736.64
4413	Automotive Parts, Accessories & Tire Stores	789	5,820	5,811	5,775	41,119,356	545.16
442	FURNITURE & HOME FURNISHINGS STORES	523	3,420	3,490	3,529	\$24,994,074	\$552.53
4421	Furniture Stores	280	1,883	1,889	1,910	15,659,833	636.01
4422	Home Furnishings Stores	243	1,537	1,601	1,619	9,334,241	452.82
443	ELECTRONICS & APPLIANCE STORES	500	3,745	3,988	4,027	\$30,761,527	\$603.64
444	BUILDING MATERIAL & GARDEN SUPPLY STORES	838	10,332	10,339	10,274	\$69,275,811	\$516.62
4441	Building Material & Supplies Dealers	622	9,092	9,141	9,107	61,936,856	522.79
4442	Lawn & Garden Equipment & Supplies Stores	216	1,240	1,198	1,167	7,338,955	469.79

TABLE 5. STATEWIDE SUMMARY

North American Industry Classification System - Industry Groups		Number of Employing Units	Employment			Total Earnings Oct - Dec 2013	Average Weekly Earnings
			Oct	Nov	Dec		
445	FOOD & BEVERAGE STORES	1,030	18,040	18,203	18,212	\$93,116,989	\$394.61
4451	Grocery Stores	574	15,692	15,753	15,725	78,030,299	381.75
4452	Specialty Food Stores	124	753	865	853	6,052,095	565.21
4453	Beer, Wine & Liquor Stores	332	1,595	1,585	1,634	9,034,595	433.09
446	HEALTH & PERSONAL CARE STORES	1,022	7,974	8,029	8,133	\$77,086,494	\$737.04
447	GASOLINE STATIONS	1,669	12,337	12,336	12,169	\$53,898,207	\$337.61
44711	Gasoline Stations with Convenience Stores	1,564	10,955	10,956	10,845	46,336,047	326.44
44719	Other Gasoline Stations	105	1,382	1,380	1,324	7,562,160	427.10
448	CLOTHING & CLOTHING ACCESSORIES STORES	1,061	8,512	9,537	9,695	\$36,532,579	\$303.87
4481	Clothing Stores	778	6,611	7,474	7,559	24,376,775	259.91
4482	Shoe Stores	143	1,135	1,242	1,275	4,834,280	305.48
4483	Jewelry, Luggage & Leather Goods Stores	140	766	821	861	7,321,524	690.19
451	SPORTING GOODS, HOBBY, BOOK & MUSIC STORES	490	4,821	5,224	5,344	\$23,250,677	\$348.66
4511	Sporting Goods & Musical Instrument Stores	413	4,322	4,723	4,807	21,265,574	354.28
4512	Book, Periodical & Music Stores	77	499	501	537	1,985,103	298.05
452	GENERAL MERCHANDISE STORES	869	38,343	40,251	40,633	\$185,263,123	\$358.59
453	MISCELLANEOUS STORE RETAILERS	1,265	6,842	6,850	6,923	\$37,669,163	\$421.68
4531	Florists	199	695	698	707	3,162,647	347.54
4532	Office Supplies, Stationery & Gift Stores	307	2,165	2,179	2,183	11,694,082	413.46
4533	Used Merchandise Stores	257	1,556	1,538	1,597	8,601,781	423.16
4539	Other Miscellaneous Store Retailers	502	2,426	2,435	2,436	14,210,653	449.42
454	NONSTORE RETAILERS	373	1,786	1,825	1,882	\$17,945,193	\$753.90
4541	Electronic Shopping & Mail-Order Houses	152	673	699	748	7,645,090	832.19
4542	Vending Machine Operators	70	441	441	433	3,438,506	603.42
4543	Direct Selling Establishments	151	672	685	701	6,861,597	769.41
48 - 49	TRANSPORTATION & WAREHOUSING	2,894	50,045	50,410	50,553	557,003,636	\$851.21
481	AIR TRANSPORTATION	53	778	765	744	\$12,714,685	\$1,282.97
484	TRUCK TRANSPORTATION	1,886	31,902	32,064	31,766	\$367,239,154	\$885.26
4841	General Freight Trucking	1,135	25,625	25,664	25,581	292,040,651	876.73
4842	Specialized Freight Trucking	751	6,277	6,400	6,185	75,198,503	920.02

TABLE 5. STATEWIDE SUMMARY

North American Industry Classification System - Industry Groups		Number of Employing Units	Employment			Total Earnings Oct - Dec 2013	Average Weekly Earnings
			Oct	Nov	Dec		
485	TRANSIT & GROUND PASSENGER TRANSPORTATION	81	1,581	1,563	1,499	\$7,460,571	\$370.81
4853	Taxi & Limousine Service	27	389	378	377	1,624,101	327.62
4854	School & Employee Bus Transportation	11	480	489	468	2,534,833	407.07
4855	Charter Bus Industry Service	6	100	102	97	647,509	499.75
4859	Other Ground Passenger Transportation	31	538	519	483	2,201,966	329.96
	Other	6	74	75	74	452,162	467.92
486	PIPELINE TRANSPORTATION	32	461	465	466	\$12,954,440	\$2,147.62
488	SUPPORT ACTIVITIES FOR TRANSPORTATION	418	4,549	4,547	4,556	\$52,111,714	\$880.88
4881	Support Activities for Air Transportation	95	1,214	1,222	1,211	12,699,509	803.58
4882	Support Activities for Rail Transportation	42	350	354	353	3,767,695	822.58
4883	Support Activities for Water Transportation	24	662	651	661	8,852,723	1,034.92
4884	Support Activities for Road Transportation	129	634	633	635	4,876,038	591.61
4885	Freight Transportation Arrangement	112	1,601	1,602	1,609	21,210,607	1,017.20
4889	Other Support Activities for Transportation	16	88	85	87	705,142	625.87
	OTHER	9	76	46	47	\$440,476	\$601.47
491	POSTAL SERVICE	14	223	228	221	\$2,731,676	\$938.08
492	COURIERS & MESSENGERS	176	3,072	3,404	4,033	\$35,493,701	\$779.41
493	WAREHOUSING & STORAGE	225	7,403	7,328	7,221	65,857,219	\$692.32
22	UTILITIES	410	8,070	8,051	8,043	\$149,328,098	\$1,426.10
2211	Power Generation & Supply	158	5,787	5,757	5,757	115,708,591	1,543.38
2212	Natural Gas Distribution	65	1,354	1,361	1,354	25,123,521	1,424.86
2213	Water, Sewage & Other Systems	187	929	933	932	8,495,986	701.72
	INFORMATION	1,159	13,928	14,052	14,098	\$176,783,764	\$969.54
511	PUBLISHING INDUSTRIES, EXCEPT INTERNET	236	3,583	3,589	3,585	\$35,500,158	\$761.58
5111	Newspaper, Book & Directory Publishers	208	3,262	3,262	3,261	29,857,138	704.15
5112	Software Publishers	28	321	327	324	5,643,020	1,339.75
512	MOTION PICTURE & SOUND RECORDING INDUSTRY	138	1,011	1,064	1,133	\$5,810,523	\$417.98
5121	Motion Picture & Video Industries	120	982	1,035	1,104	5,433,271	401.74
5122	Sound Recording Industries	18	29	29	29	377,252	1,000.67
515	BROADCASTING, EXCEPT INTERNET	124	1,664	1,672	1,668	\$16,791,378	\$774.37
5151	Radio & Television Broadcasting	119	1,633	1,641	1,638	16,552,911	777.67
5152	Cable & Other Subscription Programming	5	31	31	30	238,467	598.16

TABLE 5. STATEWIDE SUMMARY

North American Industry Classification System - Industry Groups		Number of Employing Units	Employment			Total Earnings Oct - Dec 2013	Average Weekly Earnings
			Oct	Nov	Dec		
517	TELECOMMUNICATIONS	394	5,864	5,906	5,887	\$92,509,415	\$1,209.06
5171	Wired Telecommunications Carriers	268	3,688	3,694	3,676	59,739,896	1,246.71
5172	Wireless Telecommunications Carriers (except Satellite)	55	1,849	1,873	1,876	27,693,132	1,141.61
5174	Satellite Telecommunications Carriers	5	3	3	3	41,437	1,062.49
5179	Other Telecommunications	66	324	336	332	5,034,950	1,171.28
518	DATA PROCESSING, HOSTING & RELATED SERVICES	189	1,500	1,512	1,502	\$22,862,929	\$1,168.82
519	OTHER INFORMATION SERVICES	78	306	309	323	\$3,309,361	\$814.18
FINANCIAL ACTIVITIES		8,224	48,113	48,065	48,067	\$635,446,976	\$1,016.61
52	FINANCE & INSURANCE	4,919	34,929	34,974	34,969	\$515,127,854	\$1,133.53
522	CREDIT INTERMEDIATION & RELATED ACTIVITIES	2,018	19,291	19,266	19,279	\$253,131,284	\$1,010.01
5221	Depository Credit Intermediation	1,496	16,605	16,577	16,586	214,591,126	995.04
5222	Nondepository Credit Intermediation	381	2,294	2,288	2,292	32,579,319	1,093.73
5223	Activities Related to Credit Intermediation	141	392	401	401	5,960,839	1,152.08
523	FINANCIAL INVESTMENT & RELATED ACTIVITIES	657	3,071	3,086	3,082	\$85,672,481	\$2,139.90
524	INSURANCE CARRIERS & RELATED ACTIVITIES	2,173	12,462	12,514	12,516	\$174,918,665	\$1,076.65
5241	Insurance Carriers	359	5,339	5,368	5,412	87,541,522	1,253.30
5242	Insurance Agencies, Brokerages & Support	1,814	7,123	7,146	7,104	87,377,143	943.43
	OTHER	71	105	108	92	\$1,405,424	\$1,063.37
53	REAL ESTATE & RENTAL & LEASING	3,305	13,184	13,091	13,098	\$120,319,122	\$705.20
531	REAL ESTATE	2,613	8,767	8,732	8,779	\$79,357,108	\$696.90
5311	Lessors of Real Estate	1,129	4,244	4,217	4,221	31,976,213	581.86
5312	Offices of Real Estate Agents & Brokers	747	1,607	1,610	1,655	21,175,965	1,003.03
5313	Activities Related to Real Estate	737	2,916	2,905	2,903	26,204,930	693.18
532	RENTAL & LEASING SERVICES	670	4,357	4,297	4,258	\$39,979,540	\$714.53
5321	Automotive Equipment Rental & Leasing	111	957	956	965	6,805,231	545.67
5322	Consumer Goods Rental	348	1,921	1,868	1,840	13,679,514	560.81
5323	General Rental Centers	48	268	263	278	2,305,891	657.76
5324	Machinery & Equipment Rental & Leasing	163	1,211	1,210	1,175	17,188,904	1,103.08
533	LESSORS OF NONFINANCIAL INTANGIBLE ASSETS	22	60	62	61	\$982,474	\$1,238.93

TABLE 5. STATEWIDE SUMMARY

North American Industry Classification System - Industry Groups		Number of Employing Units	Employment			Total Earnings Oct - Dec 2013	Average Weekly Earnings
			Oct	Nov	Dec		
PROFESSIONAL & BUSINESS SERVICES		13,058	132,289	132,521	130,025	\$1,738,221,321	\$1,015.94
54	PROFESSIONAL & TECHNICAL SERVICES	8,292	40,349	41,334	41,644	\$652,428,314	\$1,220.82
5411	Legal Services	1,731	6,165	6,156	6,193	112,781,245	1,405.77
5412	Accounting & Bookkeeping Services	1,238	4,353	4,416	4,750	59,649,111	1,018.21
5413	Architectural & Engineering Services	932	5,868	5,789	5,791	102,889,710	1,360.83
5414	Specialized Design Services	176	430	439	455	6,507,044	1,134.16
5415	Computer Systems Design & Related Services	1,408	9,571	9,626	9,566	185,765,801	1,490.42
5416	Management & Technical Consulting Services	1,712	6,015	6,873	6,892	92,660,627	1,081.05
5417	Scientific Research & Development Services	138	1,045	1,064	1,059	17,632,434	1,284.41
5418	Advertising & Related Services	394	3,353	3,393	3,370	40,059,082	913.84
5419	Other Professional & Technical Services	563	3,549	3,578	3,568	34,483,260	744.06
55	MANAGEMENT OF COMPANIES & ENTERPRISES	499	31,608	31,687	31,687	\$694,450,476	\$1,687.24
56	ADMINISTRATIVE & SUPPORT SERVICES	4,267	60,332	59,500	56,694	\$391,342,531	\$511.59
561	ADMINISTRATIVE & SUPPORT SERVICES	3,967	57,378	56,556	53,721	\$359,633,085	\$495.02
5611	Office Administrative Services	558	2,273	2,313	2,276	39,818,673	1,339.10
5612	Facilities Support Services	28	217	216	221	2,129,584	751.44
5613	Employment Services	920	26,208	25,598	23,144	133,071,503	409.72
5614	Business Support Services	386	8,369	8,398	8,412	66,271,095	607.38
5615	Travel Arrangement & Reservation Services	96	338	345	341	3,182,557	717.22
5616	Investigation & Security Services	246	4,372	4,436	4,378	27,638,922	483.71
5617	Services to Buildings & Dwellings	1,507	14,063	13,745	13,438	73,447,332	410.93
5619	Other Support Services	226	1,538	1,505	1,511	14,073,419	713.16
562	WASTE MANAGEMENT & REMEDIATION SERVICES	300	2,954	2,944	2,973	\$31,709,446	\$824.89
5621	Waste Collection Services	118	1,039	1,035	1,035	10,139,073	752.58
5622	Waste Treatment & disposal Services	37	819	835	843	11,840,592	1,094.29
5629	Remediation & Other Waste Services	145	1,096	1,074	1,095	9,729,781	687.70
EDUCATION & HEALTH SERVICES		14,947	169,407	170,031	169,266	\$1,677,836,184	\$761.14
61	EDUCATIONAL SERVICES	732	11,533	11,698	11,459	\$95,497,640	\$635.28
6111	Elementary & Secondary Schools	88	3,847	3,870	3,810	26,989,437	540.33
6112	Junior Colleges	4	135	136	140	830,200	466.14
6113	Colleges & Universities	46	4,166	4,298	4,137	37,151,142	680.37
6114	Business, Computer, & Management Training	39	101	98	98	1,893,712	1,471.42
6115	Technical & Trade Schools	101	950	941	934	13,312,297	1,087.46
6116	Other Schools & Instruction	262	1,741	1,737	1,710	8,231,127	366.13
6117	Educational Support Services	192	593	618	630	7,089,725	888.70

TABLE 5. STATEWIDE SUMMARY

North American Industry Classification System - Industry Groups		Number of Employing Units	Employment			Total Earnings Oct - Dec 2013	Average Weekly Earnings
			Oct	Nov	Dec		
62	HEALTH CARE & SOCIAL ASSISTANCE	14,215	157,874	158,333	157,807	\$1,582,338,544	\$770.35
621	AMBULATORY HEALTH CARE SERVICES	5,281	48,866	49,043	49,284	\$769,914,594	\$1,207.07
6211	Offices of Physicians	2,277	22,615	22,688	22,785	487,008,780	1,650.61
6212	Offices of Dentists	999	6,952	6,998	7,012	88,312,952	972.23
6213	Offices of Other Health Practitioners	1,310	7,352	7,353	7,388	74,339,604	776.50
6214	Outpatient Care Centers	274	3,978	3,994	3,990	44,544,202	859.34
6215	Medical & Diagnostic Laboratories	116	1,040	1,039	1,049	14,350,152	1,058.69
6216	Home Health Care Services	144	4,335	4,348	4,386	36,372,877	642.26
6219	Other Ambulatory Health Care Services	161	2,594	2,623	2,674	24,986,027	730.71
622	HOSPITALS	106	41,553	41,569	41,342	\$444,033,976	\$823.29
6221	General Medical & Surgical Hospitals	75	36,717	36,705	36,579	398,029,245	835.02
6222	Psychiatric & Substance Abuse Hospitals	12	2,422	2,445	2,404	21,535,287	683.49
6223	Other Hospitals	19	2,414	2,419	2,359	24,469,444	785.15
623	Residential & Mental Health Facilities	605	31,248	31,291	30,989	\$186,924,539	\$461.21
6231	Nursing Care Facilities (Skilled Nursing Facilities)	268	22,805	22,855	22,600	137,234,111	463.95
6232	Residential Mental Health Facilities	171	4,326	4,303	4,277	26,326,459	470.74
6233	Continuing Care & Assisted Living Facilities	125	3,045	3,062	3,030	16,445,652	415.36
6239	Other Residential Care Facilities	41	1,072	1,071	1,082	6,918,317	495.05
624	SOCIAL ASSISTANCE	8,223	36,207	36,430	36,192	\$181,465,435	\$384.79
6241	Individual & Family Services	6,990	21,927	22,003	22,056	111,939,061	391.48
6242	Emergency & Other Relief Services	138	1,302	1,315	1,293	8,195,023	483.67
6243	Vocational Rehabilitation Services	136	3,500	3,565	3,549	19,882,459	432.28
6244	Child Day Care Services	959	9,478	9,547	9,294	41,448,892	337.76
LEISURE & HOSPITALITY		6,742	104,632	103,684	102,481	\$372,820,502	\$276.82
71	ARTS, ENTERTAINMENT & RECREATION	934	9,465	9,031	8,598	\$45,504,584	\$387.58
711	PERFORMING ARTS & SPECTATOR SPORTS	198	2,183	2,237	2,004	\$13,878,682	\$498.56
7111	Performing Arts Companies	46	583	548	307	2,197,108	352.59
7112	Spectator Sports	49	931	922	1,004	7,355,406	594.12
7113	Performing Arts & Sports Promoters	37	565	662	583	2,815,093	358.92
7114	Agents & Managers for Public Figures	22	26	24	27	1,048,251	3,141.61
7115	Independent Artists, Writers, & Performers	44	78	81	83	462,824	441.35
712	MUSEUMS, PARKS, & HISTORICAL SITES	55	514	521	496	\$3,437,039	\$518.07
713	GAMBLING, RECREATIONAL & AMUSEMENT INDUSTRY	681	6,768	6,273	6,098	\$28,188,863	\$339.89
72	ACCOMMODATION & FOOD SERVICES	5,808	95,167	94,653	93,883	\$327,315,918	\$266.24

TABLE 5. STATEWIDE SUMMARY

North American Industry Classification System - Industry Groups		Number of Employing Units	Employment			Total Earnings Oct - Dec 2013	Average Weekly Earnings
			Oct	Nov	Dec		
721	ACCOMMODATION	911	10,983	10,690	10,483	\$45,614,199	\$327.35
7211	Travel Accommodation	829	10,500	10,222	10,027	43,414,489	325.82
7212	RV Parks & Recreational Camps	64	386	377	365	1,691,976	346.15
7213	Rooming & Boarding Houses	18	97	91	91	507,734	419.96
722	FOOD SERVICES & DRINKING PLACES	4,897	84,184	83,963	83,400	\$281,701,719	\$258.43
7223	Special Food Services	185	3,061	3,079	2,993	12,837,093	324.36
7224	Drinking Places, Alcoholic Beverages	168	1,238	1,266	1,192	3,958,328	247.15
7225	Restaurants & Other Eating Places	4,544	79,885	79,618	79,215	264,906,298	256.09
722511	Full-Service Restaurants	2,086	35,700	35,530	35,562	128,948,741	278.65
722513	Limited-Service Eating Places	2,049	40,147	40,071	39,638	120,656,040	232.31
722514	Cafeterias, Grill Buffets, & Buffets	97	1,961	1,936	1,893	7,823,185	311.80
722515	Snack & Nonalcoholic Beverage Bars	312	2,077	2,081	2,122	7,478,332	274.80
	OTHER SERVICES	5,391	23,793	23,535	23,472	\$178,298,514	\$581.16
811	REPAIR & MAINTENANCE	2,240	9,537	9,344	9,352	\$82,301,485	\$672.71
8111	Automotive Repair & Maintenance	1,441	6,135	6,086	6,059	48,257,067	609.20
8112	Electronic Equipment Repair & Maintenance	175	660	648	656	7,259,466	852.98
8113	Commercial Machinery Repair & Maintenance	436	2,141	2,011	2,038	22,547,537	840.59
8114	Household Goods Repair & Maintenance	188	601	599	599	4,237,415	543.56
812	PERSONAL & LAUNDRY SERVICES	1,330	7,913	7,935	7,880	\$44,641,791	\$434.17
8121	Personal Care Services	613	2,741	2,751	2,723	12,248,731	344.08
8122	Death Care Services	250	1,578	1,590	1,588	12,322,199	597.89
8123	Drycleaning & Laundry Service	262	2,886	2,873	2,869	16,480,237	440.79
8129	Other Personal Services	205	708	721	700	3,590,624	389.20
813	MEMBERSHIP ASSOCIATIONS & ORGANIZATIONS	1,072	5,368	5,313	5,289	\$46,237,891	\$668.15
8131	Religious Organizations	54	283	282	258	1,678,738	470.72
8132	Grantmaking & Giving Organizations	108	435	436	428	5,242,391	931.32
8133	Social Advocacy Organizations	218	1,597	1,601	1,601	14,333,153	689.24
8134	Civic & Social Organizations	199	1,135	1,118	1,132	4,794,587	326.87
8139	Professional & Similar Organizations	493	1,918	1,876	1,870	20,189,022	822.56
814	PRIVATE HOUSEHOLDS	749	975	943	951	\$5,117,347	\$411.62
	LOCAL GOVERNMENT	1,960	115,956	116,181	116,071	\$1,010,539,019	\$669.72
	STATE GOVERNMENT	1,124	71,903	71,913	71,324	\$783,223,723	\$840.12
	NONCLASSIFIABLE ESTABLISHMENTS	0	0	0	0	\$0	\$0.00

TABLE 6. COUNTY SUMMARY

North American Industry Classification System - Industry Groups	Number of Employing Units	Employment			Total Earnings	Average Weekly Earnings
		Oct	Nov	Dec	Oct - Dec 2013	
ARKANSAS COUNTY - TOTAL	756	9,823	9,785	9,823	\$95,621,318	\$749.77
Natural Resources & Mining	50	193	191	180	2,213,561	905.71
Construction	49	300	306	286	3,562,009	921.53
Manufacturing	33	3,437	3,419	3,438	34,824,007	780.68
Trade, Transportation & Utilities	213	2,509	2,513	2,533	25,228,335	770.61
Wholesale Trade	43	474	449	449	7,530,360	1,266.60
Retail Trade	97	1,070	1,118	1,138	7,331,896	508.71
Transportation, Warehousing & Utilities	73	965	946	946	10,366,079	837.30
Information	10	84	83	85	788,084	721.69
Financial Activities	46	327	326	321	5,237,545	1,240.93
Professional & Business Services	50	355	363	377	6,379,045	1,344.37
Education & Health Services	159	1,093	1,090	1,078	7,718,256	546.19
Leisure & Hospitality	56	456	441	442	1,469,015	253.18
Other Services	43	119	115	119	698,742	456.79
Local Government	32	755	744	763	6,100,662	622.39
State Government	15	195	194	201	1,402,057	548.39
ASHLEY COUNTY - TOTAL	581	7,250	7,340	7,201	\$72,302,694	\$765.69
Natural Resources & Mining	43	328	325	306	3,057,747	735.80
Construction	44	524	594	549	5,492,798	760.39
Manufacturing	25	1,980	1,961	1,930	31,620,533	1,242.90
Trade, Transportation & Utilities	126	1,324	1,346	1,315	10,122,569	586.19
Wholesale Trade	25	242	234	219	3,108,401	1,032.12
Retail Trade	79	798	819	812	3,988,761	378.96
Transportation, Warehousing & Utilities	22	284	293	284	3,025,407	810.88
Information	6	38	42	41	317,848	606.19
Financial Activities	35	212	221	218	2,094,336	742.41
Professional & Business Services	45	270	273	271	1,755,298	497.63
Education & Health Services	144	952	954	952	7,445,819	601.21
Leisure & Hospitality	30	384	376	379	1,208,663	244.88
Other Services	40	145	146	136	918,210	496.24
Local Government	32	902	915	919	7,103,428	599.14
State Government	11	191	187	185	1,165,445	477.71

TABLE 6. COUNTY SUMMARY

North American Industry Classification System - Industry Groups	Number of Employing Units	Employment			Total Earnings Oct - Dec 2013	Average Weekly Earnings
		Oct	Nov	Dec		
BAXTER COUNTY - TOTAL	1,243	14,014	14,025	13,962	\$119,212,864	\$655.00
Natural Resources & Mining	6	73	69	48	488,449	593.26
Construction	116	551	559	529	4,393,528	618.60
Manufacturing	56	2,257	2,284	2,284	21,435,035	724.77
Trade, Transportation & Utilities	265	2,598	2,672	2,687	16,776,907	486.56
Wholesale Trade	32	235	235	236	2,293,646	749.72
Retail Trade	209	2,190	2,257	2,260	12,670,071	435.94
Transportation, Warehousing & Utilities	24	173	180	191	1,813,190	769.17
Information	18	185	182	183	2,150,769	902.42
Financial Activities	109	713	716	711	10,811,947	1,165.92
Professional & Business Services	137	727	721	709	6,269,508	670.75
Education & Health Services	264	3,622	3,607	3,590	38,295,340	816.84
Leisure & Hospitality	123	1,414	1,364	1,360	5,007,190	279.24
Other Services	98	352	347	350	1,859,011	408.96
Local Government	39	1,171	1,159	1,165	9,094,059	600.47
State Government	12	351	345	346	2,631,121	582.71
BENTON COUNTY - TOTAL	5,717	99,784	100,287	100,343	\$1,188,100,098	\$912.66
Natural Resources & Mining	45	619	621	611	12,516,569	1,560.47
Construction	524	3,496	3,478	3,457	38,410,703	849.78
Manufacturing	195	10,259	10,318	10,315	106,712,490	797.16
Trade, Transportation & Utilities	1,534	22,631	23,093	23,218	253,334,402	847.99
Wholesale Trade	711	4,371	4,381	4,350	101,562,260	1,788.84
Retail Trade	665	10,626	11,075	11,167	68,091,342	478.08
Transportation, Warehousing & Utilities	158	7,634	7,637	7,701	83,680,800	840.63
Information	75	778	786	795	9,810,917	959.75
Financial Activities	598	2,940	2,944	2,993	42,467,360	1,103.99
Professional & Business Services	1,104	28,693	28,806	28,785	492,458,342	1,317.10
Education & Health Services	668	9,666	9,642	9,593	93,307,072	745.04
Leisure & Hospitality	501	9,984	9,815	9,819	39,175,586	305.24
Other Services	375	1,606	1,624	1,604	12,597,068	601.37
Local Government	81	7,919	7,964	7,977	77,164,682	746.32
State Government	17	1,193	1,196	1,176	10,144,907	656.70

TABLE 6. COUNTY SUMMARY

North American Industry Classification System - Industry Groups	Number of Employing Units	Employment			Total Earnings Oct - Dec 2013	Average Weekly Earnings
		Oct	Nov	Dec		
BOONE COUNTY - TOTAL	992	13,606	13,589	13,465	\$118,351,255	\$671.71
Natural Resources & Mining	4	3	4	3	20,900	\$482.31
Construction	77	440	409	416	3,842,304	700.94
Manufacturing	62	1,709	1,725	1,722	16,265,324	727.99
Trade, Transportation & Utilities	246	3,615	3,604	3,595	34,244,518	730.77
Wholesale Trade	45	305	299	294	2,514,500	646.18
Retail Trade	147	1,855	1,848	1,840	11,406,845	474.90
Transportation, Warehousing & Utilities	54	1,455	1,457	1,461	20,323,173	1,072.48
Information	20	298	295	293	2,768,812	721.17
Financial Activities	92	472	475	476	5,563,886	902.30
Professional & Business Services	107	1,104	1,082	1,034	11,644,347	834.52
Education & Health Services	170	1,450	1,462	1,442	11,212,886	594.30
Leisure & Hospitality	78	1,138	1,144	1,123	3,808,046	258.09
Other Services	60	256	261	247	2,009,109	606.86
Local Government	57	2,289	2,308	2,298	19,465,628	651.50
State Government	19	832	820	816	7,505,495	701.80
BRADLEY COUNTY - TOTAL	367	3,334	3,375	3,390	\$26,035,901	\$594.94
Natural Resources & Mining	43	258	302	306	2,211,739	589.38
Construction	15	89	88	93	847,644	724.48
Manufacturing	10	550	554	556	5,745,306	798.70
Trade, Transportation & Utilities	74	479	474	472	2,941,239	476.31
Wholesale Trade	16	89	89	87	919,212	800.47
Retail Trade	44	354	353	354	1,706,573	371.18
Transportation, Warehousing & Utilities	14	36	32	31	315,454	735.32
Information	4	14	13	13	114,928	663.05
Financial Activities	24	131	134	136	1,385,668	797.43
Professional & Business Services	29	92	90	91	796,712	673.47
Education & Health Services	99	577	580	581	4,404,259	584.79
Leisure & Hospitality	13	164	161	155	477,560	229.60
Other Services	31	101	96	100	884,991	687.64
Local Government	14	484	489	492	3,550,982	559.36
State Government	11	395	394	395	2,674,873	521.35

TABLE 6. COUNTY SUMMARY

North American Industry Classification System - Industry Groups	Number of Employing Units	Employment			Total Earnings Oct - Dec 2013	Average Weekly Earnings
		Oct	Nov	Dec		
CALHOUN COUNTY - TOTAL	116	2,670	2,667	2,657	\$31,798,114	\$917.94
Natural Resources & Mining	12	39	40	36	349,559	701.46
Construction	11	106	105	106	962,407	700.61
Manufacturing	10	1,850	1,854	1,853	25,330,074	1,051.90
Trade, Transportation & Utilities	23	231	243	232	1,869,092	610.95
Retail Trade	14	73	77	76	322,146	328.94
Transportation, Warehousing & Utilities	9	158	166	156	1,546,946	743.72
Financial Activities	6	82	79	79	636,119	611.65
Education & Health Services	15	47	49	50	482,398	762.48
Leisure & Hospitality	10	19	18	19	61,424	253.12
Other Services	3	6	6	6	30,728	393.95
Local Government	11	200	182	184	1,233,950	503.11
State Government	8	83	82	83	754,151	701.75
Other	7	7	9	9	88,212	814.26
CARROLL COUNTY - TOTAL	783	10,289	10,129	9,714	\$69,663,689	\$533.53
Natural Resources & Mining	16	235	246	246	1,830,218	580.96
Trade, Transportation & Utilities	196	1,637	1,639	1,590	10,920,857	517.92
Wholesale Trade	23	173	171	171	1,239,854	555.57
Retail Trade	153	1,183	1,180	1,152	6,170,447	405.11
Transportation, Warehousing & Utilities	20	281	288	267	3,510,556	969.05
Information	10	72	73	72	650,737	692.03
Financial Activities	62	360	356	354	3,735,722	805.69
Professional & Business Services	61	211	208	212	1,676,579	613.16
Education & Health Services	84	930	933	921	7,892,040	654.18
Leisure & Hospitality	180	1,763	1,653	1,309	5,371,882	262.36
Other Services	43	136	127	128	719,959	424.92
Local Government	24	1,004	980	978	8,082,924	629.74
State Government	10	114	112	111	905,966	620.38
Other	97	3,827	3,802	3,793	27,876,805	563.22

TABLE 6. COUNTY SUMMARY

North American Industry Classification System - Industry Groups	Number of Employing Units	Employment			Total Earnings Oct - Dec 2013	Average Weekly Earnings
		Oct	Nov	Dec		
CHICOT COUNTY - TOTAL	458	3,364	3,324	3,282	\$24,839,271	\$574.94
Natural Resources & Mining	56	268	267	255	2,111,728	616.86
Construction	17	155	153	147	2,043,854	1,036.61
Trade, Transportation & Utilities	69	500	478	495	3,757,543	588.68
Wholesale Trade	12	65	66	66	900,639	1,055.02
Retail Trade	45	353	337	335	1,994,901	449.13
Transportation, Warehousing & Utilities	12	82	75	94	862,003	792.52
Information	5	8	7	7	80,059	839.78
Financial Activities	28	147	144	139	1,577,634	846.67
Professional & Business Services	18	42	41	42	351,793	649.46
Education & Health Services	192	771	770	766	4,922,001	492.35
Leisure & Hospitality	21	197	197	194	602,559	236.48
Local Government	17	683	694	671	5,165,203	582.02
State Government	10	296	291	292	2,262,435	593.97
Other	25	297	282	274	1,964,462	531.46
CLARK COUNTY - TOTAL	624	9,348	9,398	9,310	\$74,228,675	\$610.55
Natural Resources & Mining	40	258	255	254	2,457,554	739.41
Construction	24	76	75	73	421,875	434.62
Manufacturing	30	1,406	1,405	1,395	17,247,172	946.29
Trade, Transportation & Utilities	144	1,637	1,673	1,662	13,022,322	604.41
Wholesale Trade	22	187	186	181	2,074,462	864.12
Retail Trade	99	1,268	1,305	1,300	8,981,294	535.14
Transportation, Warehousing & Utilities	23	182	182	181	1,966,566	832.70
Information	5	23	19	20	238,896	889.19
Financial Activities	75	299	297	307	2,822,288	721.26
Professional & Business Services	47	572	575	592	5,692,745	755.44
Education & Health Services	112	1,454	1,495	1,455	10,064,503	527.38
Leisure & Hospitality	60	1,137	1,125	1,091	3,430,207	236.08
Other Services	46	184	189	189	1,196,524	491.32
Local Government	27	986	972	972	7,357,763	579.50
State Government	14	1,316	1,318	1,300	10,276,826	602.84

TABLE 6. COUNTY SUMMARY

North American Industry Classification System - Industry Groups	Number of Employing Units	Employment			Total Earnings Oct - Dec 2013	Average Weekly Earnings
		Oct	Nov	Dec		
CLAY COUNTY - TOTAL	418	3,643	3,662	3,573	\$26,522,057	\$562.65
Natural Resources & Mining	60	320	311	287	1,893,670	476.04
Construction	29	131	134	123	1,042,161	619.84
Manufacturing	16	341	322	320	2,947,942	692.06
Trade, Transportation & Utilities	111	925	961	923	7,838,252	643.94
Wholesale Trade	23	252	293	261	2,636,038	754.74
Retail Trade	55	448	448	450	2,752,825	471.97
Transportation, Warehousing & Utilities	33	225	220	212	2,449,389	860.34
Information	5	46	46	47	334,885	555.98
Financial Activities	29	123	124	125	1,220,574	757.18
Professional & Business Services	27	98	95	93	656,692	529.88
Education & Health Services	54	474	466	472	2,950,014	482.13
Leisure & Hospitality	22	253	257	263	624,444	186.42
Other Services	32	84	75	81	708,901	681.64
Local Government	22	791	815	783	5,912,525	571.13
State Government	11	57	56	56	391,997	535.27
CLEBURNE COUNTY - TOTAL	665	6,914	6,868	6,717	\$52,686,155	\$593.12
Natural Resources & Mining	27	404	375	330	4,569,434	950.84
Construction	63	364	361	351	3,544,767	760.24
Manufacturing	32	1,228	1,227	1,218	10,171,969	639.09
Trade, Transportation & Utilities	164	1,523	1,545	1,522	12,707,121	638.87
Wholesale Trade	35	246	244	234	3,032,422	966.56
Retail Trade	102	981	994	988	6,057,880	471.81
Transportation, Warehousing & Utilities	27	296	307	300	3,616,819	924.31
Information	7	51	50	51	382,261	580.36
Financial Activities	66	216	219	216	2,122,103	752.25
Professional & Business Services	69	340	311	299	2,717,978	660.24
Education & Health Services	85	814	819	807	5,994,576	566.95
Leisure & Hospitality	75	887	875	849	2,797,391	247.24
Other Services	50	157	158	154	901,587	443.62
Local Government	18	828	824	819	6,102,372	569.91
State Government	9	102	104	101	674,596	507.09

TABLE 6. COUNTY SUMMARY

North American Industry Classification System - Industry Groups	Number of Employing Units	Employment			Total Earnings Oct - Dec 2013	Average Weekly Earnings
		Oct	Nov	Dec		
CLEVELAND COUNTY - TOTAL	127	1,064	1,080	1,066	\$7,770,731	\$558.64
Natural Resources & Mining	15	179	172	174	1,367,937	601.29
Construction	5	26	31	29	118,012	316.67
Manufacturing	6	96	95	95	701,579	566.09
Trade, Transportation & Utilities	38	204	217	211	1,599,138	583.91
Retail Trade	18	67	69	68	316,367	357.88
Other Trade, Transportation & Utilities	20	137	148	143	1,282,771	691.65
Financial Activities	3	19	19	19	149,223	604.14
Education & Health Services	27	136	136	136	737,089	416.91
Other Services	5	13	13	13	98,435	582.46
Local Government	11	310	320	311	2,381,081	583.93
State Government	7	48	44	47	274,338	455.46
Other	10	33	33	31	343,899	818.16
COLUMBIA COUNTY - TOTAL	747	8,141	8,075	8,084	\$78,132,384	\$742.00
Natural Resources & Mining	46	406	392	403	7,527,938	1,446.47
Construction	43	326	297	302	3,058,439	763.02
Manufacturing	36	1,755	1,730	1,710	24,642,687	1,094.66
Trade, Transportation & Utilities	163	1,367	1,383	1,377	10,540,067	589.37
Wholesale Trade	28	182	180	166	2,743,214	1,198.96
Retail Trade	102	946	963	967	5,226,676	419.39
Transportation, Warehousing & Utilities	33	239	240	244	2,570,177	820.36
Information	9	58	58	57	530,750	707.98
Financial Activities	74	374	371	367	5,213,561	1,081.95
Professional & Business Services	59	284	284	295	2,710,825	724.88
Education & Health Services	183	1,012	1,011	1,013	5,667,283	430.78
Leisure & Hospitality	47	637	647	640	2,145,166	257.30
Other Services	48	185	179	185	952,861	400.53
Local Government	26	1,108	1,099	1,111	9,289,635	646.10
State Government	13	629	624	624	5,853,172	719.62

TABLE 6. COUNTY SUMMARY

North American Industry Classification System - Industry Groups	Number of Employing Units	Employment			Total Earnings	Average Weekly Earnings
		Oct	Nov	Dec	Oct - Dec 2013	
CONWAY COUNTY - TOTAL	578	6,762	6,805	6,860	\$61,553,461	\$695.39
Natural Resources & Mining	33	333	328	351	3,862,888	880.87
Construction	52	496	470	464	6,322,460	1,020.30
Manufacturing	17	847	818	852	12,416,255	1,138.37
Trade, Transportation & Utilities	133	1,618	1,650	1,643	14,646,368	688.24
Wholesale Trade	22	201	201	199	2,765,856	1,062.02
Retail Trade	82	820	843	837	4,722,939	435.96
Transportation, Warehousing & Utilities	29	597	606	607	7,157,573	912.57
Information	3	8	10	10	80,037	659.65
Financial Activities	33	153	158	159	1,621,199	796.01
Professional & Business Services	43	399	451	490	3,519,301	606.08
Education & Health Services	159	895	901	889	6,557,637	563.61
Leisure & Hospitality	39	456	461	452	1,268,251	213.79
Other Services	29	133	133	130	956,637	557.48
Local Government	27	985	977	966	7,318,639	576.82
State Government	10	439	448	454	2,983,789	513.47
CRAIGHEAD COUNTY - TOTAL	2,728	45,648	45,888	45,421	\$423,211,483	\$713.10
Natural Resources & Mining	76	466	447	357	3,881,534	705.31
Construction	209	1,793	1,787	1,701	19,544,779	854.07
Manufacturing	114	5,789	5,738	5,743	61,641,352	823.68
Trade, Transportation & Utilities	755	9,386	9,807	9,814	76,163,415	605.93
Wholesale Trade	185	1,711	1,705	1,721	22,581,268	1,014.42
Retail Trade	450	6,228	6,604	6,576	38,279,244	455.16
Transportation, Warehousing & Utilities	120	1,447	1,498	1,517	15,302,903	791.45
Information	27	470	478	478	5,085,307	822.95
Financial Activities	276	1,582	1,580	1,581	23,531,261	1,144.91
Professional & Business Services	354	4,174	4,018	3,906	35,694,920	680.88
Education & Health Services	455	9,431	9,469	9,451	109,526,592	891.52
Leisure & Hospitality	245	4,848	4,862	4,731	16,100,558	257.29
Other Services	159	873	879	870	6,313,371	555.66
Local Government	35	4,033	4,029	4,027	34,271,851	654.22
State Government	23	2,803	2,794	2,762	31,456,543	868.43

TABLE 6. COUNTY SUMMARY

North American Industry Classification System - Industry Groups	Number of Employing Units	Employment			Total Earnings	Average Weekly Earnings
		Oct	Nov	Dec	Oct - Dec 2013	
CRAWFORD COUNTY - TOTAL	1,304	19,113	19,160	19,039	\$162,690,716	\$655.08
Natural Resources & Mining	31	312	285	307	3,816,439	974.24
Construction	159	835	839	815	7,835,284	726.45
Manufacturing	69	4,189	4,211	4,174	39,925,525	732.75
Trade, Transportation & Utilities	329	6,144	6,163	6,119	52,542,780	658.05
Retail Trade	162	1,871	1,896	1,890	11,298,219	460.89
Other Trade, Transportation & Utilities	167	4,273	4,267	4,229	41,244,561	745.40
Information	12	111	110	116	932,145	638.31
Financial Activities	127	521	527	529	5,576,764	816.07
Professional & Business Services	160	1,383	1,379	1,400	12,796,990	709.55
Education & Health Services	180	1,514	1,546	1,519	12,755,462	642.84
Leisure & Hospitality	101	1,513	1,529	1,486	4,800,797	244.67
Other Services	83	378	362	376	2,849,709	589.27
Local Government	43	2,063	2,062	2,052	17,643,984	659.17
State Government	10	150	147	146	1,214,837	632.84
CRITTENDEN COUNTY - TOTAL	1,330	16,508	16,577	16,595	\$137,163,009	\$637.14
Natural Resources & Mining	54	351	345	300	3,781,687	876.20
Construction	51	350	412	505	5,047,420	919.33
Manufacturing	42	1,514	1,517	1,527	17,999,157	911.29
Trade, Transportation & Utilities	310	4,268	4,287	4,295	37,765,698	678.22
Wholesale Trade	64	689	692	706	8,437,582	932.98
Retail Trade	163	1,911	1,916	1,906	10,937,291	440.26
Transportation, Warehousing & Utilities	83	1,668	1,679	1,683	18,390,825	843.74
Information	6	70	69	68	646,329	720.55
Financial Activities	100	495	493	491	4,777,360	745.41
Professional & Business Services	120	1,510	1,462	1,464	10,786,378	561.13
Education & Health Services	393	2,564	2,604	2,649	19,657,068	580.31
Leisure & Hospitality	124	2,186	2,174	2,146	8,489,892	301.14
Other Services	73	389	397	399	2,906,921	566.10
Local Government	43	2,287	2,297	2,323	21,561,353	720.38
State Government	14	524	520	428	3,743,746	586.92

TABLE 6. COUNTY SUMMARY

North American Industry Classification System - Industry Groups	Number of Employing Units	Employment			Total Earnings Oct - Dec 2013	Average Weekly Earnings
		Oct	Nov	Dec		
CROSS COUNTY - TOTAL	510	4,950	4,964	4,943	\$39,747,117	\$617.38
Natural Resources & Mining	33	201	189	181	1,808,331	730.84
Construction	21	84	80	74	614,690	596.01
Manufacturing	12	631	632	633	4,704,464	572.60
Trade, Transportation & Utilities	129	1,255	1,241	1,229	10,710,798	663.55
Wholesale Trade	28	304	306	299	4,418,682	1,121.78
Retail Trade	74	762	759	767	4,695,253	473.57
Transportation, Warehousing & Utilities	27	189	176	163	1,596,863	697.93
Information	5	35	38	38	282,861	588.07
Financial Activities	46	307	310	314	2,901,808	719.28
Professional & Business Services	43	107	117	128	1,159,345	760.06
Education & Health Services	126	840	846	843	6,810,896	621.49
Leisure & Hospitality	34	304	303	298	901,413	229.85
Other Services	35	74	79	77	443,420	444.90
Local Government	16	727	743	740	5,988,150	625.29
State Government	10	385	386	388	3,420,941	681.15
DALLAS COUNTY - TOTAL	253	2,686	2,679	2,693	\$19,383,250	\$555.11
Natural Resources & Mining	34	188	187	189	1,491,251	610.17
Construction	18	59	59	64	614,312	778.92
Manufacturing	11	525	523	531	5,173,567	756.11
Trade, Transportation & Utilities	58	470	465	460	3,021,300	499.80
Retail Trade	39	340	333	335	1,930,333	441.93
Other Trade, Transportation, & Utilities	19	130	132	125	1,090,967	650.55
Information	3	16	16	16	119,637	575.18
Financial Activities	14	71	71	70	950,379	1,034.52
Professional & Business Services	12	32	32	32	189,237	454.90
Education & Health Services	57	760	755	759	4,405,137	447.04
Leisure & Hospitality	12	114	120	118	348,384	228.40
Other Services	13	62	61	60	348,729	439.76
Local Government	14	339	341	345	2,382,606	536.42
State Government	7	50	49	49	338,711	528.14

TABLE 6. COUNTY SUMMARY

North American Industry Classification System - Industry Groups	Number of Employing Units	Employment			Total Earnings Oct - Dec 2013	Average Weekly Earnings
		Oct	Nov	Dec		
DESHA COUNTY - TOTAL	523	4,635	4,540	4,477	\$38,234,232	\$646.30
Natural Resources & Mining	71	409	362	339	3,210,106	667.38
Construction	22	112	108	106	1,201,938	850.83
Manufacturing	14	834	818	819	10,705,966	999.84
Trade, Transportation & Utilities	113	938	924	881	7,516,651	632.38
Wholesale Trade	21	215	217	214	2,858,246	1,021.05
Retail Trade	65	499	491	481	2,732,887	428.73
Transportation, Warehousing & Utilities	27	224	216	186	1,925,518	709.82
Information	5	26	26	26	269,659	797.81
Financial Activities	31	212	214	211	2,004,839	726.30
Professional & Business Services	39	89	89	89	676,853	585.01
Education & Health Services	137	746	738	744	4,616,311	478.14
Leisure & Hospitality	38	298	282	286	844,334	225.00
Other Services	24	51	47	51	225,915	349.89
Local Government	19	786	796	789	5,969,287	580.99
State Government	10	134	136	136	992,373	564.06
DREW COUNTY - TOTAL	530	6,414	6,411	6,445	\$49,990,567	\$598.67
Natural Resources & Mining	45	290	282	267	3,037,971	835.60
Construction	19	90	90	94	690,040	581.17
Manufacturing	22	767	755	771	6,968,431	701.31
Trade, Transportation & Utilities	128	1,220	1,251	1,273	8,253,138	508.70
Wholesale Trade	20	167	165	169	1,745,370	803.95
Retail Trade	88	941	975	995	5,341,784	423.47
Transportation, Warehousing & Utilities	20	112	111	109	1,165,984	810.46
Information	8	54	55	56	472,464	660.79
Financial Activities	47	244	240	240	2,511,173	800.42
Professional & Business Services	35	307	303	298	2,454,977	623.94
Education & Health Services	121	893	895	922	6,771,574	576.63
Leisure & Hospitality	47	618	609	598	2,072,525	262.07
Other Services	20	62	70	65	475,617	557.15
Local Government	22	1,228	1,229	1,234	10,039,668	627.70
State Government	16	641	632	627	6,242,989	758.26

TABLE 6. COUNTY SUMMARY

North American Industry Classification System - Industry Groups	Number of Employing Units	Employment			Total Earnings Oct - Dec 2013	Average Weekly Earnings
		Oct	Nov	Dec		
FAULKNER COUNTY - TOTAL	2,817	40,378	40,391	40,330	\$421,939,527	\$804.06
Natural Resources & Mining	57	1,357	1,357	1,327	31,770,633	1,814.32
Construction	315	2,662	2,640	2,620	29,698,614	865.13
Manufacturing	100	3,093	3,118	3,104	40,463,508	1,002.44
Trade, Transportation & Utilities	661	7,010	7,250	7,312	55,077,107	589.19
Wholesale Trade	166	738	739	740	10,324,742	1,074.71
Retail Trade	403	5,436	5,664	5,714	32,925,467	451.90
Transportation, Warehousing & Utilities	92	836	847	858	11,826,898	1,074.10
Information	26	305	305	302	4,787,390	1,211.38
Financial Activities	331	1,599	1,589	1,577	24,885,947	1,205.23
Professional & Business Services	403	5,760	5,637	5,701	93,602,872	1,263.34
Education & Health Services	438	6,050	6,009	5,990	54,455,189	696.25
Leisure & Hospitality	249	4,749	4,725	4,642	15,315,628	250.38
Other Services	181	812	742	733	5,611,203	566.20
Local Government	38	3,601	3,631	3,645	33,678,898	714.54
State Government	18	3,380	3,388	3,377	32,592,538	741.39
FRANKLIN COUNTY - TOTAL	340	4,282	4,270	4,224	\$36,282,776	\$655.37
Natural Resources & Mining	18	264	266	263	4,621,752	1,344.97
Construction	33	109	107	94	745,630	555.06
Manufacturing	15	877	864	848	7,658,195	682.61
Trade, Transportation & Utilities	86	919	910	916	7,938,622	667.39
Wholesale Trade	14	38	39	37	208,411	421.88
Retail Trade	51	603	597	597	3,443,794	442.25
Transportation, Warehousing & Utilities	21	278	274	282	4,286,417	1,186.06
Information	6	22	22	22	178,111	622.77
Financial Activities	30	196	194	193	2,504,428	991.33
Professional & Business Services	26	98	95	104	716,224	556.51
Education & Health Services	55	578	577	579	3,439,547	457.75
Leisure & Hospitality	27	297	298	298	949,943	245.48
Other Services	16	48	48	53	308,095	477.17
Local Government	19	735	749	724	5,952,011	622.07
State Government	9	139	140	130	1,270,218	716.69

TABLE 6. COUNTY SUMMARY

North American Industry Classification System - Industry Groups	Number of Employing Units	Employment			Total Earnings Oct - Dec 2013	Average Weekly Earnings
		Oct	Nov	Dec		
FULTON COUNTY - TOTAL	208	1,950	1,931	1,919	\$13,525,321	\$538.14
Construction	9	37	36	35	319,704	683.13
Manufacturing	12	114	123	116	648,699	424.08
Trade, Transportation & Utilities	51	328	319	319	2,592,829	619.40
Retail Trade	32	190	194	193	980,726	392.24
Other Trade, Transportation & Utilities	19	138	125	126	1,612,103	956.36
Information	4	32	33	36	197,144	450.44
Financial Activities	17	101	91	93	1,853,827	1,501.07
Professional & Business Services	17	55	55	55	442,783	619.28
Education & Health Services	50	472	463	466	2,710,722	446.50
Leisure & Hospitality	16	144	143	136	360,291	196.56
Local Government	12	542	543	539	3,437,935	488.53
State Government	10	110	110	109	885,089	620.82
Other	10	15	15	15	76,298	391.27
GARLAND COUNTY - TOTAL	3,135	34,965	34,761	34,933	\$294,049,033	\$648.37
Natural Resources & Mining	31	305	288	289	3,488,122	912.64
Construction	345	1,767	1,768	1,707	14,955,532	658.39
Manufacturing	96	2,488	2,471	2,458	27,256,698	848.05
Trade, Transportation & Utilities	717	7,174	7,387	7,453	53,177,170	557.45
Wholesale Trade	145	899	902	897	11,256,533	962.81
Retail Trade	514	5,714	5,919	5,957	35,365,477	463.97
Transportation, Warehousing & Utilities	58	561	566	599	6,555,160	876.44
Information	34	267	263	290	2,804,376	789.22
Financial Activities	356	1,427	1,415	1,404	17,350,048	942.97
Professional & Business Services	386	3,165	3,146	3,171	26,939,210	655.64
Education & Health Services	517	7,435	7,470	7,471	80,678,443	832.06
Leisure & Hospitality	359	5,851	5,442	5,600	23,074,170	315.21
Other Services	235	951	946	947	5,812,638	471.65
Local Government	34	2,993	3,023	3,007	28,882,184	738.68
State Government	25	1,142	1,142	1,136	9,630,442	649.83

TABLE 6. COUNTY SUMMARY

North American Industry Classification System - Industry Groups	Number of Employing Units	Employment			Total Earnings	Average Weekly Earnings
		Oct	Nov	Dec	Oct - Dec 2013	
GRANT COUNTY - TOTAL	329	3,794	3,793	3,825	\$33,060,285	\$668.53
Natural Resources & Mining	27	173	179	178	2,435,333	1,060.38
Construction	27	162	159	145	1,466,847	726.40
Manufacturing	17	1,121	1,114	1,120	10,895,282	749.42
Trade, Transportation & Utilities	85	621	617	614	4,351,636	542.24
Wholesale Trade	18	116	109	107	1,396,052	970.38
Retail Trade	44	439	442	442	2,381,209	415.35
Transportation, Warehousing & Utilities	23	66	66	65	574,375	672.83
Information	3	35	34	34	1,223,801	2,741.90
Financial Activities	26	87	86	89	845,299	744.54
Professional & Business Services	25	78	94	98	1,455,643	1,244.14
Education & Health Services	57	384	372	385	2,552,981	516.34
Leisure & Hospitality	23	250	254	247	691,542	212.50
Other Services	21	47	46	48	240,299	393.29
Local Government	10	782	787	816	6,468,582	625.89
State Government	8	54	51	51	433,040	640.59
GREENE COUNTY - TOTAL	890	14,698	14,729	14,745	\$128,029,959	\$668.87
Natural Resources & Mining	38	272	281	245	2,253,252	651.61
Construction	67	244	245	232	2,219,417	710.36
Manufacturing	60	5,165	5,098	5,137	54,296,998	813.64
Trade, Transportation & Utilities	236	2,514	2,558	2,497	17,662,768	538.52
Wholesale Trade	51	535	539	528	5,572,452	802.72
Retail Trade	152	1,752	1,793	1,747	10,000,407	436.09
Transportation, Warehousing & Utilities	33	227	226	222	2,089,909	714.50
Information	10	85	84	87	597,452	538.57
Financial Activities	82	451	456	456	5,331,415	902.66
Professional & Business Services	91	866	869	964	7,410,025	633.57
Education & Health Services	147	1,792	1,795	1,803	16,226,878	694.74
Leisure & Hospitality	68	1,086	1,092	1,085	3,386,362	239.49
Other Services	50	188	198	195	1,277,373	507.36
Local Government	30	1,638	1,655	1,644	13,205,324	617.25
State Government	11	397	398	400	4,162,695	803.87

TABLE 6. COUNTY SUMMARY

North American Industry Classification System - Industry Groups	Number of Employing Units	Employment			Total Earnings Oct - Dec 2013	Average Weekly Earnings
		Oct	Nov	Dec		
HEMPSTEAD COUNTY - TOTAL	502	7,753	7,739	7,766	\$62,635,637	\$621.48
Natural Resources & Mining	20	206	200	205	1,954,200	738.08
Construction	33	186	179	174	1,818,890	778.75
Manufacturing	28	1,815	1,806	1,812	15,855,589	673.47
Trade, Transportation & Utilities	133	1,676	1,676	1,714	15,355,519	699.48
Wholesale Trade	23	490	487	489	5,737,128	903.11
Retail Trade	84	846	846	883	4,755,803	426.21
Transportation, Warehousing & Utilities	26	340	343	342	4,862,588	1,094.77
Information	8	49	48	49	395,321	624.85
Financial Activities	41	234	234	245	2,342,822	758.28
Professional & Business Services	30	143	142	143	1,286,319	693.56
Education & Health Services	87	1,011	1,018	1,009	6,528,066	495.88
Leisure & Hospitality	44	599	599	612	1,902,814	242.60
Other Services	35	159	165	164	1,163,675	550.29
Local Government	27	932	931	927	7,442,511	615.59
State Government	16	743	741	712	6,589,911	692.51
HOT SPRING COUNTY - TOTAL	597	8,235	8,317	8,427	\$69,032,183	\$637.76
Natural Resources & Mining	23	145	143	142	1,069,872	574.17
Construction	54	349	387	423	3,426,538	682.26
Manufacturing	30	1,391	1,383	1,406	16,442,657	907.77
Trade, Transportation & Utilities	151	1,375	1,383	1,393	12,087,360	671.98
Wholesale Trade	17	79	79	81	1,185,063	1,144.25
Retail Trade	98	858	855	856	4,709,212	423.02
Transportation, Warehousing & Utilities	36	438	449	456	6,193,085	1,064.16
Information	7	51	56	66	504,048	672.36
Financial Activities	53	268	270	269	2,728,600	780.27
Professional & Business Services	56	854	885	910	5,918,335	515.58
Education & Health Services	104	1,165	1,165	1,169	8,445,196	556.99
Leisure & Hospitality	46	570	569	565	1,476,922	200.02
Other Services	33	163	162	161	979,137	464.93
Local Government	27	1,025	1,031	1,039	8,442,876	629.52
State Government	13	879	883	884	7,510,642	655.04

TABLE 6. COUNTY SUMMARY

North American Industry Classification System - Industry Groups	Number of Employing Units	Employment			Total Earnings Oct - Dec 2013	Average Weekly Earnings
		Oct	Nov	Dec		
HOWARD COUNTY - TOTAL	360	7,124	7,168	7,139	\$51,462,543	\$554.15
Natural Resources & Mining	15	200	193	189	1,616,340	640.90
Construction	17	133	128	122	1,176,307	708.76
Manufacturing	22	3,699	3,672	3,671	27,406,675	572.78
Trade, Transportation & Utilities	98	888	902	902	6,337,932	543.31
Wholesale Trade	18	67	67	70	609,370	689.33
Retail Trade	56	609	618	617	3,389,015	424.12
Transportation, Warehousing & Utilities	24	212	217	215	2,339,547	838.35
Information	5	29	29	29	180,527	478.85
Financial Activities	36	157	158	161	1,231,808	597.19
Professional & Business Services	25	134	134	127	930,207	543.45
Education & Health Services	67	604	635	598	4,477,317	562.45
Leisure & Hospitality	22	286	299	304	885,037	229.74
Other Services	25	124	126	129	835,366	508.65
Local Government	17	743	767	783	5,419,737	545.45
State Government	11	127	125	124	965,290	592.44
INDEPENDENCE COUNTY - TOTAL	909	14,576	14,508	14,401	\$127,027,722	\$674.12
Natural Resources & Mining	14	277	262	266	2,964,647	849.87
Construction	63	433	391	364	3,706,419	719.97
Manufacturing	43	2,905	2,591	2,595	34,374,436	980.42
Trade, Transportation & Utilities	238	2,845	2,926	2,926	23,276,202	617.62
Wholesale Trade	32	442	437	438	4,355,974	763.27
Retail Trade	156	1,674	1,729	1,753	10,164,941	454.96
Transportation, Warehousing & Utilities	50	729	760	735	8,755,287	908.48
Information	10	112	113	112	883,647	605.10
Financial Activities	80	478	483	484	5,217,256	833.21
Professional & Business Services	94	886	988	918	5,866,566	484.89
Education & Health Services	165	3,038	3,069	3,093	29,097,946	729.88
Leisure & Hospitality	76	1,035	1,106	1,082	3,159,666	226.23
Other Services	63	323	328	325	1,666,161	393.95
Local Government	47	1,606	1,615	1,608	11,228,684	536.60
State Government	16	638	636	628	5,586,092	677.76

TABLE 6. COUNTY SUMMARY

North American Industry Classification System - Industry Groups	Number of Employing Units	Employment			Total Earnings Oct - Dec 2013	Average Weekly Earnings
		Oct	Nov	Dec		
IZARD COUNTY - TOTAL	252	3,132	3,114	3,081	\$23,365,184	\$578.10
Natural Resources & Mining	5	149	149	132	1,675,324	899.10
Construction	22	90	89	87	762,626	661.62
Trade, Transportation & Utilities	65	576	586	579	4,082,809	541.18
Wholesale Trade	8	13	14	13	103,173	595.23
Retail Trade	47	418	431	422	2,400,985	435.94
Transportation, Warehousing & Utilities	10	145	141	144	1,578,651	847.22
Financial Activities	26	140	138	140	1,526,269	842.62
Professional & Business Services	15	80	79	81	484,213	465.59
Education & Health Services	46	623	626	627	3,909,284	480.89
Leisure & Hospitality	21	127	107	102	276,034	189.58
Local Government	18	517	510	502	3,745,150	565.25
State Government	10	497	493	496	4,056,262	629.92
Other	24	333	337	335	2,847,213	653.78
JACKSON COUNTY - TOTAL	448	5,220	5,194	5,121	\$44,375,594	\$659.19
Natural Resources & Mining	52	310	285	256	2,287,984	620.44
Construction	24	133	127	123	1,418,389	854.62
Manufacturing	17	864	861	909	10,028,054	878.57
Trade, Transportation & Utilities	107	1,056	1,045	1,043	8,136,958	597.25
Wholesale Trade	23	227	225	226	2,754,802	937.65
Retail Trade	69	731	727	728	4,269,831	450.75
Transportation, Warehousing & Utilities	15	98	93	89	1,112,325	916.75
Information	4	38	41	39	225,802	441.59
Financial Activities	35	166	167	164	1,574,810	731.22
Professional & Business Services	33	129	126	130	1,195,697	716.70
Education & Health Services	85	792	779	791	6,965,207	680.51
Leisure & Hospitality	26	285	282	286	798,946	216.15
Other Services	20	65	69	65	522,517	605.93
Local Government	32	623	655	620	4,579,182	556.76
State Government	13	759	757	695	6,642,048	693.25

TABLE 6. COUNTY SUMMARY

North American Industry Classification System - Industry Groups	Number of Employing Units	Employment			Total Earnings	Average Weekly Earnings
		Oct	Nov	Dec	Oct - Dec 2013	
JEFFERSON COUNTY - TOTAL	2,175	27,685	27,572	26,980	\$255,324,592	\$716.48
Natural Resources & Mining	37	327	318	313	4,217,186	1,015.86
Construction	99	714	625	539	6,295,853	773.64
Manufacturing	58	5,246	5,172	4,817	62,204,388	942.23
Trade, Transportation & Utilities	447	4,739	4,847	4,828	42,125,270	674.43
Wholesale Trade	79	620	610	595	7,926,636	1,002.31
Retail Trade	300	3,134	3,255	3,258	21,184,628	506.76
Transportation, Warehousing & Utilities	68	985	982	975	13,014,006	1,020.81
Information	14	99	97	97	907,359	714.64
Financial Activities	151	1,104	1,108	1,109	13,078,291	908.78
Professional & Business Services	156	1,637	1,584	1,574	12,667,407	609.64
Education & Health Services	870	4,932	4,905	4,887	46,783,188	733.23
Leisure & Hospitality	138	1,845	1,833	1,806	5,721,324	240.76
Other Services	130	596	583	590	4,777,049	623.17
Local Government	39	3,056	3,057	3,049	24,585,933	619.26
State Government	36	3,390	3,443	3,371	31,961,344	722.82
JOHNSON COUNTY - TOTAL	495	8,497	8,568	8,243	\$61,632,201	\$561.99
Natural Resources & Mining	17	140	139	135	1,226,506	683.67
Construction	33	141	142	138	1,040,160	570.16
Manufacturing	35	3,046	3,089	2,739	20,847,350	542.14
Trade, Transportation & Utilities	122	1,877	1,910	1,904	13,523,462	548.37
Retail Trade	78	897	912	915	4,773,313	404.38
Other Trade, Transportation & Utilities	44	980	998	989	8,750,149	680.57
Information	5	41	42	45	298,840	538.77
Financial Activities	50	202	202	205	2,032,371	770.13
Professional & Business Services	52	147	153	171	1,493,493	731.75
Education & Health Services	89	1,225	1,217	1,215	9,425,835	594.80
Leisure & Hospitality	38	470	470	467	1,489,608	244.32
Other Services	31	73	75	77	441,567	452.89
Local Government	14	998	993	1,009	8,615,070	662.70
State Government	9	137	136	138	1,197,939	672.62

TABLE 6. COUNTY SUMMARY

North American Industry Classification System - Industry Groups	Number of Employing Units	Employment			Total Earnings Oct - Dec 2013	Average Weekly Earnings
		Oct	Nov	Dec		
LAFAYETTE COUNTY - TOTAL	174	1,252	1,241	1,244	\$10,564,457	\$652.38
Natural Resources & Mining	30	179	160	170	2,055,909	932.10
Construction	10	72	72	74	1,716,920	1,817.49
Manufacturing	8	36	38	38	335,245	690.75
Trade, Transportation & Utilities	32	204	208	201	1,259,815	474.27
Retail Trade	20	122	125	121	489,237	306.80
Other Trade, Transportation & Utilities	12	82	83	80	770,578	725.82
Financial Activities	13	44	47	49	377,352	622.01
Professional & Business Services	12	49	47	48	448,292	718.42
Education & Health Services	36	235	231	230	1,371,173	454.63
Leisure & Hospitality	5	40	40	45	140,256	258.93
Local Government	14	280	288	280	2,186,830	595.11
State Government	7	47	44	43	310,708	535.09
Other	7	66	66	66	361,957	421.86
LAWRENCE COUNTY - TOTAL	410	4,182	4,201	4,129	\$30,353,848	\$559.84
Natural Resources & Mining	54	250	230	221	2,377,548	782.69
Construction	21	128	132	121	1,153,135	698.45
Manufacturing	23	464	457	457	3,577,905	599.18
Trade, Transportation & Utilities	107	864	882	867	6,591,882	582.17
Wholesale Trade	19	239	239	240	2,341,832	752.68
Retail Trade	58	496	510	508	2,914,884	444.30
Transportation, Warehousing & Utilities	30	129	133	119	1,335,166	808.70
Financial Activities	32	152	152	153	1,180,210	595.97
Professional & Business Services	28	120	128	117	1,233,118	779.63
Education & Health Services	59	515	528	518	3,998,959	591.18
Leisure & Hospitality	29	343	349	332	877,761	197.81
Local Government	27	1,173	1,172	1,173	8,176,923	536.38
State Government	10	101	100	99	696,382	535.68
Other	20	72	71	71	490,025	528.42

TABLE 6. COUNTY SUMMARY

North American Industry Classification System - Industry Groups	Number of Employing Units	Employment			Total Earnings Oct - Dec 2013	Average Weekly Earnings
		Oct	Nov	Dec		
LEE COUNTY - TOTAL	306	2,019	1,965	1,935	\$16,244,661	\$633.34
Natural Resources & Mining	36	269	253	210	2,500,715	788.37
Construction	9	37	36	32	262,225	576.32
Trade, Transportation & Utilities	46	320	317	322	2,575,649	619.79
Wholesale Trade	7	70	72	74	790,172	844.20
Retail Trade	26	191	188	190	1,048,170	425.11
Transportation, Warehousing & Utilities	13	59	57	58	737,307	977.86
Financial Activities	18	68	69	68	689,071	775.69
Professional & Business Services	15	48	49	61	683,326	998.04
Education & Health Services	136	355	350	345	2,646,811	581.72
Leisure & Hospitality	9	81	77	79	246,497	240.02
Local Government	15	338	314	314	2,185,629	522.13
State Government	7	479	478	483	4,306,070	690.08
Other	15	24	22	21	148,668	512.06
LINCOLN COUNTY - TOTAL	278	2,965	2,967	2,952	\$24,684,806	\$641.21
Natural Resources & Mining	33	182	191	163	1,608,481	692.51
Construction	16	97	96	105	811,908	628.74
Manufacturing	9	327	328	328	2,890,769	678.64
Trade, Transportation & Utilities	43	342	343	346	3,200,011	716.26
Wholesale Trade	8	53	52	53	612,829	895.08
Retail Trade	22	171	173	173	821,339	366.61
Transportation, Warehousing & Utilities	13	118	118	120	1,765,843	1,144.67
Financial Activities	19	67	67	66	590,157	680.95
Professional & Business Services	12	21	21	21	170,090	623.04
Education & Health Services	97	405	402	402	2,738,464	522.71
Leisure & Hospitality	15	161	157	153	408,777	200.28
Local Government	7	360	362	364	2,694,597	572.59
State Government	12	969	966	970	9,328,866	741.07
Other	15	34	34	34	242,686	549.06

TABLE 6. COUNTY SUMMARY

North American Industry Classification System - Industry Groups	Number of Employing Units	Employment			Total Earnings Oct - Dec 2013	Average Weekly Earnings
		Oct	Nov	Dec		
LITTLE RIVER COUNTY - TOTAL	244	3,867	3,882	3,842	\$39,255,834	\$781.56
Natural Resources & Mining	13	88	92	96	886,982	741.62
Construction	18	309	312	299	2,238,214	561.42
Manufacturing	16	1,286	1,280	1,283	22,435,683	1,345.15
Trade, Transportation & Utilities	56	546	542	530	3,669,267	523.33
Wholesale Trade	9	29	30	30	364,002	943.83
Retail Trade	35	370	370	370	2,075,262	431.45
Transportation, Warehousing & Utilities	12	147	142	130	1,230,003	677.44
Financial Activities	19	78	78	77	666,462	660.08
Professional & Business Services	20	292	316	276	922,819	240.90
Education & Health Services	36	160	162	163	1,062,177	505.40
Leisure & Hospitality	14	183	182	194	602,541	248.74
Local Government	20	743	741	753	5,792,845	597.59
State Government	11	92	95	92	583,138	482.33
Other	21	90	82	79	395,706	363.81
LOGAN COUNTY - TOTAL	482	5,392	5,425	5,419	\$42,762,404	\$607.80
Natural Resources & Mining	23	133	131	131	1,959,916	1,145.03
Construction	41	215	227	230	2,169,303	744.95
Manufacturing	22	1,188	1,195	1,178	10,780,967	698.66
Trade, Transportation & Utilities	111	944	950	950	6,343,355	514.72
Wholesale Trade	11	75	75	75	307,174	315.05
Retail Trade	71	723	717	711	4,245,197	455.44
Transportation, Warehousing & Utilities	29	146	158	164	1,790,984	883.13
Information	5	32	33	33	345,010	812.43
Financial Activities	44	214	215	216	2,951,345	1,055.94
Professional & Business Services	47	106	108	108	985,038	705.95
Education & Health Services	97	776	780	785	5,760,332	567.84
Leisure & Hospitality	29	299	295	302	841,264	216.67
Other Services	27	122	121	120	953,225	605.99
Local Government	22	799	797	795	5,964,764	575.69
State Government	14	564	573	571	3,707,885	500.98

TABLE 6. COUNTY SUMMARY

North American Industry Classification System - Industry Groups	Number of Employing Units	Employment			Total Earnings Oct - Dec 2013	Average Weekly Earnings
		Oct	Nov	Dec		
LONOKE COUNTY - TOTAL	1,342	13,384	13,424	13,368	\$108,738,413	\$624.59
Natural Resources & Mining	88	509	502	475	5,083,348	789.42
Construction	142	691	702	674	6,936,286	774.40
Manufacturing	37	1,627	1,631	1,599	19,633,749	932.85
Trade, Transportation & Utilities	329	2,912	2,991	3,004	20,533,845	532.01
Wholesale Trade	79	428	419	421	5,544,440	1,009.06
Retail Trade	189	2,199	2,298	2,315	12,213,662	413.76
Transportation, Warehousing & Utilities	61	285	274	268	2,775,743	774.55
Information	15	96	96	92	1,067,245	867.21
Financial Activities	144	533	535	539	7,797,562	1,119.75
Professional & Business Services	155	832	834	835	6,814,407	628.77
Education & Health Services	211	1,635	1,644	1,642	12,018,651	563.61
Leisure & Hospitality	108	1,537	1,530	1,501	4,607,523	232.77
Other Services	73	198	198	195	1,125,756	439.58
Local Government	25	2,650	2,598	2,652	21,796,479	636.70
State Government	15	164	163	160	1,323,562	627.18
MADISON COUNTY - TOTAL	246	3,218	3,215	3,138	\$23,332,499	\$562.58
Natural Resources & Mining	14	54	56	44	428,389	641.94
Construction	22	71	70	68	785,093	866.87
Manufacturing	22	1,156	1,144	1,112	8,684,850	587.40
Trade, Transportation & Utilities	48	552	571	564	3,916,039	535.69
Retail Trade	33	427	432	433	2,565,107	458.16
Other Trade, Transportation & Utilities	15	125	139	131	1,350,932	789.25
Information	6	42	42	43	642,448	1,167.38
Financial Activities	18	77	75	77	687,796	693.11
Professional & Business Services	24	156	155	156	1,134,021	560.38
Education & Health Services	47	279	273	270	1,691,124	474.77
Leisure & Hospitality	15	189	180	172	460,568	196.46
Other Services	14	30	31	31	266,664	668.89
Local Government	9	571	577	560	4,315,055	583.01
State Government	7	41	41	41	320,452	601.22

TABLE 6. COUNTY SUMMARY

North American Industry Classification System - Industry Groups	Number of Employing Units	Employment			Total Earnings Oct - Dec 2013	Average Weekly Earnings
		Oct	Nov	Dec		
MARION COUNTY - TOTAL	297	3,688	3,706	3,674	\$26,490,578	\$552.33
Natural Resources & Mining	5	23	23	23	136,957	458.05
Construction	22	59	56	58	338,030	450.91
Manufacturing	19	1,699	1,726	1,709	12,155,093	546.36
Trade, Transportation & Utilities	55	477	483	477	3,313,894	532.18
Wholesale Trade	8	52	53	54	858,644	1,246.22
Retail Trade	40	399	405	397	2,124,270	408.17
Transportation, Warehousing & Utilities	7	26	25	26	330,980	991.95
Information	4	55	55	55	1,015,181	1,419.83
Financial Activities	32	194	181	179	1,710,702	712.59
Professional & Business Services	27	63	62	62	451,246	556.86
Education & Health Services	58	335	342	343	2,193,822	496.34
Leisure & Hospitality	34	172	167	163	555,722	255.47
Other Services	16	31	30	31	144,938	363.56
Local Government	18	514	514	507	4,049,950	608.86
State Government	7	66	67	67	425,043	490.43
MILLER COUNTY - TOTAL	856	12,820	12,832	12,799	\$118,283,173	\$709.89
Natural Resources & Mining	29	171	170	175	1,543,257	690.19
Construction	77	792	740	734	7,312,927	744.75
Manufacturing	25	2,239	2,228	2,230	35,265,811	1,215.21
Trade, Transportation & Utilities	229	3,492	3,578	3,628	30,209,709	651.66
Wholesale Trade	54	531	533	539	5,685,001	818.42
Retail Trade	129	1,342	1,386	1,397	7,602,297	425.30
Transportation, Warehousing & Utilities	46	1,619	1,659	1,692	16,922,411	785.75
Information	7	69	70	69	1,572,347	1,744.47
Financial Activities	83	383	391	379	3,906,536	781.88
Professional & Business Services	84	998	1,002	965	6,427,756	500.28
Education & Health Services	131	921	931	917	6,642,138	553.56
Leisure & Hospitality	92	1,346	1,312	1,326	4,866,059	281.86
Other Services	58	277	273	260	1,451,041	413.40
Local Government	25	1,620	1,623	1,607	13,993,751	665.84
State Government	16	512	514	509	5,091,841	765.50

TABLE 6. COUNTY SUMMARY

North American Industry Classification System - Industry Groups	Number of Employing Units	Employment			Total Earnings Oct - Dec 2013	Average Weekly Earnings
		Oct	Nov	Dec		
MISSISSIPPI COUNTY - TOTAL	1,198	19,030	19,346	18,876	\$201,848,498	\$813.60
Natural Resources & Mining	116	829	826	670	6,690,185	664.04
Construction	54	816	949	796	11,651,257	1,049.88
Manufacturing	54	6,583	6,638	6,628	102,807,480	1,195.26
Trade, Transportation & Utilities	295	2,982	2,989	2,959	27,312,257	705.80
Wholesale Trade	66	481	470	465	7,062,359	1,150.97
Retail Trade	169	1,666	1,695	1,695	9,125,431	416.51
Transportation, Warehousing & Utilities	60	835	824	799	11,124,467	1,044.42
Information	9	70	71	71	536,970	584.51
Financial Activities	89	426	412	414	3,516,875	648.23
Professional & Business Services	84	1,331	1,461	1,348	9,300,589	518.43
Education & Health Services	277	1,823	1,854	1,854	13,875,954	578.94
Leisure & Hospitality	88	1,160	1,165	1,168	3,521,045	232.62
Other Services	58	192	188	187	1,117,890	454.98
Local Government	52	2,228	2,200	2,199	16,948,063	590.18
State Government	22	590	593	582	4,569,933	597.51
MONROE COUNTY - TOTAL	314	2,193	2,157	2,165	\$16,269,311	\$576.28
Natural Resources & Mining	33	166	152	150	1,397,677	689.19
Construction	13	60	66	65	610,785	737.96
Manufacturing	7	106	90	94	939,310	747.46
Trade, Transportation & Utilities	83	657	653	653	5,789,256	680.58
Wholesale Trade	20	265	266	255	2,626,445	771.12
Retail Trade	40	270	266	276	2,075,275	589.79
Transportation, Warehousing & Utilities	23	122	121	122	1,087,536	687.59
Financial Activities	23	95	87	93	946,168	793.99
Professional & Business Services	14	31	26	32	173,533	449.96
Education & Health Services	70	313	318	317	1,923,900	468.33
Leisure & Hospitality	24	224	223	225	731,415	251.17
Local Government	21	339	341	342	2,447,340	552.61
State Government	8	117	119	113	869,408	574.88
Other	18	85	82	81	440,519	409.91

TABLE 6. COUNTY SUMMARY

North American Industry Classification System - Industry Groups	Number of Employing Units	Employment			Total Earnings Oct - Dec 2013	Average Weekly Earnings
		Oct	Nov	Dec		
MONTGOMERY COUNTY - TOTAL	173	1,379	1,345	1,300	\$8,676,965	\$497.61
Natural Resources & Mining	7	30	30	34	251,369	617.11
Construction	23	76	76	73	540,519	554.38
Trade, Transportation & Utilities	40	247	241	247	1,705,275	535.41
Wholesale Trade	12	68	66	71	577,174	649.73
Retail Trade	20	153	154	155	927,915	463.49
Transportation, Warehousing & Utilities	8	26	21	21	200,186	679.36
Financial Activities	12	63	54	57	547,139	725.65
Professional & Business Services	15	38	39	36	367,870	751.27
Education & Health Services	19	89	89	90	551,556	474.93
Leisure & Hospitality	20	233	212	172	873,627	326.75
Local Government	9	481	485	476	3,105,977	497.06
State Government	7	47	45	43	349,058	596.68
Other	21	75	74	72	384,575	401.58
NEVADA COUNTY - TOTAL	195	2,352	2,328	2,346	\$17,723,688	\$582.14
Natural Resources & Mining	9	36	36	37	269,180	569.89
Trade, Transportation & Utilities	42	521	506	510	4,064,711	610.29
Wholesale Trade	4	19	19	20	83,416	331.89
Retail Trade	26	285	277	280	1,481,678	406.09
Transportation, Warehousing & Utilities	12	217	210	210	2,499,617	905.55
Financial Activities	11	60	60	56	533,491	699.51
Professional & Business Services	11	43	46	43	277,891	485.82
Education & Health Services	42	416	416	419	2,403,267	443.33
Leisure & Hospitality	8	74	77	80	236,416	236.18
Other Services	15	44	46	45	168,231	287.57
Local Government	27	403	398	394	2,474,465	477.85
State Government	10	86	84	82	549,470	503.18
Other	20	669	659	680	6,746,566	775.35

TABLE 6. COUNTY SUMMARY

North American Industry Classification System - Industry Groups	Number of Employing Units	Employment			Total Earnings Oct - Dec 2013	Average Weekly Earnings
		Oct	Nov	Dec		
NEWTON COUNTY - TOTAL	122	1,058	1,053	1,043	\$6,260,213	\$458.04
Construction	5	15	17	17	84,449	397.72
Manufacturing	10	43	44	41	365,475	658.91
Trade, Transportation & Utilities	33	170	164	174	1,134,579	515.41
Retail Trade	16	112	107	111	573,169	400.82
Other Trade, Transportation & Utilities	17	58	57	63	561,410	727.84
Education & Health Services	29	226	239	234	1,072,823	354.18
Leisure & Hospitality	14	87	87	73	283,987	265.33
Local Government	13	386	372	374	2,424,861	494.33
State Government	6	92	91	87	476,472	407.24
Other	12	39	39	43	417,567	796.38
OUACHITA COUNTY - TOTAL	658	7,112	7,107	7,072	\$57,204,430	\$620.03
Natural Resources & Mining	38	201	208	206	1,784,740	669.70
Construction	37	226	239	234	2,167,822	715.69
Manufacturing	24	489	476	460	5,371,332	869.85
Trade, Transportation & Utilities	173	1,630	1,619	1,644	12,045,510	568.10
Wholesale Trade	28	228	227	227	2,926,352	990.19
Retail Trade	117	1,081	1,070	1,084	5,341,724	381.05
Transportation, Warehousing & Utilities	28	321	322	333	3,777,434	893.15
Information	7	44	45	46	419,201	716.58
Financial Activities	60	293	292	288	3,093,694	817.79
Professional & Business Services	51	585	558	551	6,080,972	828.40
Education & Health Services	152	1,203	1,199	1,200	9,245,913	592.36
Leisure & Hospitality	39	463	468	460	1,370,516	227.37
Other Services	33	127	128	128	815,794	491.54
Local Government	30	1,139	1,149	1,135	8,679,412	585.14
State Government	14	712	726	720	6,129,524	655.47

TABLE 6. COUNTY SUMMARY

North American Industry Classification System - Industry Groups	Number of Employing Units	Employment			Total Earnings Oct - Dec 2013	Average Weekly Earnings
		Oct	Nov	Dec		
PERRY COUNTY - TOTAL	150	1,266	1,242	1,203	\$9,695,768	\$602.93
Construction	16	149	150	121	1,303,760	716.35
Manufacturing	5	41	39	40	289,906	557.51
Trade, Transportation & Utilities	25	144	146	141	1,069,093	572.42
Retail Trade	15	110	112	106	571,710	402.23
Other Trade, Transportation & Utilities	10	34	34	35	497,383	1,114.38
Financial Activities	9	34	29	29	396,495	994.55
Professional & Business Services	17	33	33	38	546,129	1,211.82
Education & Health Services	35	263	258	255	1,823,756	542.35
Leisure & Hospitality	8	76	79	73	203,750	206.22
Local Government	10	362	368	365	2,435,074	513.19
State Government	8	58	58	59	364,244	480.32
Other	17	106	82	82	1,263,561	1,079.97
PHILLIPS COUNTY - TOTAL	855	5,793	5,823	5,766	\$45,215,617	\$600.30
Natural Resources & Mining	62	288	319	273	2,421,909	635.12
Construction	27	104	104	94	826,718	631.73
Manufacturing	10	340	339	331	2,803,170	640.48
Trade, Transportation & Utilities	161	1,397	1,379	1,384	12,110,503	671.81
Wholesale Trade	32	354	350	348	4,770,274	1,046.42
Retail Trade	88	781	775	787	4,451,161	438.41
Transportation, Warehousing & Utilities	41	262	254	249	2,889,068	871.51
Information	9	43	43	42	391,044	705.01
Financial Activities	39	209	199	201	1,956,526	741.39
Professional & Business Services	48	285	311	295	2,609,173	675.78
Education & Health Services	394	1,435	1,441	1,432	9,807,943	525.39
Leisure & Hospitality	31	277	271	278	896,608	250.50
Other Services	33	72	70	70	450,241	490.10
Local Government	27	852	850	852	7,093,272	640.92
State Government	14	491	497	514	3,848,510	591.29

TABLE 6. COUNTY SUMMARY

North American Industry Classification System - Industry Groups	Number of Employing Units	Employment			Total Earnings Oct - Dec 2013	Average Weekly Earnings
		Oct	Nov	Dec		
PIKE COUNTY - TOTAL	246	2,216	2,221	2,215	\$15,642,016	\$542.65
Natural Resources & Mining	21	111	108	110	905,196	634.93
Construction	14	49	48	46	292,424	471.91
Manufacturing	18	193	197	199	1,249,576	489.58
Trade, Transportation & Utilities	71	535	533	539	3,296,612	473.40
Wholesale Trade	10	112	113	115	752,211	510.55
Retail Trade	42	357	357	365	1,957,565	418.67
Transportation, Warehousing & Utilities	19	66	63	59	586,836	720.34
Information	5	23	24	23	248,522	819.30
Financial Activities	22	185	186	184	1,945,592	808.98
Professional & Business Services	14	37	35	35	1,133,283	2,444.18
Education & Health Services	21	269	270	271	1,629,253	464.17
Leisure & Hospitality	20	187	174	163	499,598	220.02
Other Services	20	56	59	57	383,851	515.01
Local Government	10	426	438	442	3,330,684	588.53
State Government	10	145	149	146	727,425	381.52
POINSETT COUNTY - TOTAL	529	5,069	5,045	4,958	\$42,864,364	\$656.30
Natural Resources & Mining	57	371	367	330	3,309,908	715.19
Construction	24	98	103	85	1,120,457	904.08
Manufacturing	24	660	667	671	6,735,376	777.94
Trade, Transportation & Utilities	133	1,283	1,276	1,268	11,552,890	696.64
Wholesale Trade	33	414	407	410	6,424,588	1,204.38
Retail Trade	71	716	719	713	3,742,609	402.09
Transportation, Warehousing & Utilities	29	153	150	145	1,385,693	713.78
Information	5	54	54	54	470,336	669.99
Financial Activities	38	242	242	243	2,533,039	804.05
Professional & Business Services	31	163	166	166	2,232,280	1,040.69
Education & Health Services	110	636	632	629	4,215,710	512.84
Leisure & Hospitality	44	345	332	341	927,174	210.18
Other Services	22	45	49	44	379,452	634.54
Local Government	30	1,032	1,015	1,018	8,318,606	626.32
State Government	11	140	142	109	1,069,136	631.01

TABLE 6. COUNTY SUMMARY

North American Industry Classification System - Industry Groups	Number of Employing Units	Employment			Total Earnings Oct - Dec 2013	Average Weekly Earnings
		Oct	Nov	Dec		
POLK COUNTY - TOTAL	525	5,892	5,891	5,854	\$42,190,593	\$552.04
Natural Resources & Mining	23	144	148	133	1,527,076	829.18
Construction	36	167	144	159	1,066,096	523.45
Manufacturing	38	1,290	1,286	1,279	10,888,282	651.80
Trade, Transportation & Utilities	135	1,128	1,154	1,133	6,806,437	459.95
Wholesale Trade	21	53	53	53	448,426	650.84
Retail Trade	79	822	837	821	4,021,266	374.19
Transportation, Warehousing & Utilities	35	253	264	259	2,336,745	694.91
Information	8	46	47	49	323,897	526.38
Financial Activities	48	256	253	253	2,640,002	799.52
Professional & Business Services	48	165	170	168	1,210,912	555.55
Education & Health Services	80	1,044	1,043	1,034	7,952,461	588.01
Leisure & Hospitality	45	469	462	460	1,309,117	217.18
Other Services	30	174	176	177	1,152,644	504.73
Local Government	21	725	729	736	5,429,535	572.13
State Government	13	284	279	273	1,884,134	520.10
POPE COUNTY - TOTAL	1,790	26,027	26,004	26,265	\$231,760,775	\$683.09
Natural Resources & Mining	30	530	522	711	5,334,229	698.23
Construction	158	1,246	1,177	1,293	15,804,115	981.46
Manufacturing	72	4,359	4,373	4,360	44,502,044	784.43
Trade, Transportation & Utilities	429	5,810	5,925	5,988	58,403,480	760.47
Wholesale Trade	89	597	606	598	6,556,620	840.13
Retail Trade	264	3,091	3,189	3,215	17,851,295	433.86
Transportation, Warehousing & Utilities	76	2,122	2,130	2,175	33,995,565	1,220.65
Information	25	223	217	225	1,956,270	678.87
Financial Activities	188	1,282	1,308	1,297	11,371,301	675.11
Professional & Business Services	271	2,535	2,497	2,580	22,432,514	680.08
Education & Health Services	311	3,005	3,005	2,990	26,798,626	687.14
Leisure & Hospitality	146	2,406	2,388	2,355	7,792,089	251.53
Other Services	102	412	399	401	2,683,851	511.02
Local Government	42	2,238	2,210	2,221	18,692,866	646.83
State Government	16	1,981	1,983	1,844	15,989,390	635.31

TABLE 6. COUNTY SUMMARY

North American Industry Classification System - Industry Groups	Number of Employing Units	Employment			Total Earnings Oct - Dec 2013	Average Weekly Earnings
		Oct	Nov	Dec		
PRAIRIE COUNTY - TOTAL	262	1,563	1,561	1,493	\$12,624,825	\$631.02
Natural Resources & Mining	34	133	132	125	1,679,008	993.50
Construction	11	109	114	83	1,683,874	1,269.89
Trade, Transportation & Utilities	65	366	359	330	2,710,037	592.79
Wholesale Trade	10	72	70	69	1,018,316	1,113.73
Retail Trade	37	202	207	193	869,482	333.31
Transportation, Warehousing & Utilities	18	92	82	68	822,239	784.08
Financial Activities	18	58	58	55	622,543	840.14
Professional & Business Services	16	82	82	79	662,160	628.83
Education & Health Services	54	256	265	260	1,766,769	522.04
Leisure & Hospitality	17	98	101	108	317,338	238.54
Other Services	15	35	35	37	215,798	465.42
Local Government	15	340	330	331	2,352,355	542.31
State Government	9	41	41	40	320,021	605.34
Other	8	45	44	45	294,922	507.90
PULASKI COUNTY - TOTAL	14,458	235,408	237,799	237,341	\$2,731,027,938	\$886.97
Natural Resources & Mining	57	711	705	664	10,058,760	1,115.99
Construction	983	7,942	8,001	7,838	102,917,807	998.71
Manufacturing	351	12,351	12,346	12,425	183,780,734	1,142.47
Trade, Transportation & Utilities	3,232	47,664	48,664	49,111	509,573,490	808.54
Wholesale Trade	1,023	11,713	11,731	11,774	192,314,863	1,260.16
Retail Trade	1,806	25,351	26,263	26,551	174,845,792	516.20
Transportation, Warehousing & Utilities	403	10,600	10,670	10,786	142,412,835	1,025.22
Information	223	6,440	6,517	6,496	91,102,120	1,080.74
Financial Activities	1,726	15,653	15,644	15,662	244,414,491	1,201.12
Professional & Business Services	2,831	33,761	34,615	34,334	435,153,777	977.71
Education & Health Services	2,401	38,525	38,872	38,509	466,261,997	928.33
Leisure & Hospitality	1,192	21,607	21,630	21,622	89,617,921	318.86
Other Services	1,160	6,563	6,497	6,461	57,844,390	683.81
Local Government	104	16,279	16,334	16,252	169,759,017	801.70
State Government	198	27,912	27,974	27,967	370,543,434	1,019.76

TABLE 6. COUNTY SUMMARY

North American Industry Classification System - Industry Groups	Number of Employing Units	Employment			Total Earnings Oct - Dec 2013	Average Weekly Earnings
		Oct	Nov	Dec		
RANDOLPH COUNTY - TOTAL	417	4,682	4,697	4,675	\$31,452,825	\$516.46
Natural Resources & Mining	29	101	114	117	776,032	539.41
Construction	27	80	78	74	521,774	519.01
Manufacturing	29	548	551	547	4,471,093	626.85
Trade, Transportation & Utilities	100	853	889	897	5,634,380	492.70
Wholesale Trade	20	174	175	176	1,221,162	536.77
Retail Trade	59	538	566	569	2,958,089	408.03
Transportation, Warehousing & Utilities	21	141	148	152	1,455,129	761.45
Information	5	38	39	38	329,627	661.46
Financial Activities	33	127	125	124	1,030,983	632.76
Professional & Business Services	40	254	246	231	1,388,209	438.24
Education & Health Services	67	1,185	1,166	1,160	8,406,153	552.52
Leisure & Hospitality	28	349	349	348	1,011,413	223.14
Other Services	25	68	66	65	371,754	431.10
Local Government	23	739	737	740	4,872,538	507.42
State Government	11	340	337	334	2,638,869	602.34
SAINT FRANCIS COUNTY - TOTAL	810	7,275	7,236	7,213	\$53,955,049	\$573.15
Natural Resources & Mining	46	237	224	208	1,965,442	677.97
Construction	46	179	195	178	1,691,121	706.99
Manufacturing	9	626	641	648	5,539,926	667.60
Trade, Transportation & Utilities	169	2,026	2,000	2,020	14,884,766	568.14
Wholesale Trade	35	583	581	568	5,879,348	783.36
Retail Trade	110	1,124	1,097	1,136	5,834,445	401.08
Transportation, Warehousing & Utilities	24	319	322	316	3,170,973	764.64
Information	7	63	66	65	519,076	617.46
Financial Activities	65	261	265	269	2,284,192	663.05
Professional & Business Services	48	370	373	381	2,517,269	516.82
Education & Health Services	298	1,366	1,352	1,354	10,157,200	575.63
Leisure & Hospitality	49	636	619	569	1,757,325	222.33
Other Services	29	71	73	72	286,060	305.62
Local Government	28	974	970	996	7,887,342	619.10
State Government	16	466	458	453	4,465,330	748.34

TABLE 6. COUNTY SUMMARY

North American Industry Classification System - Industry Groups	Number of Employing Units	Employment			Total Earnings Oct - Dec 2013	Average Weekly Earnings
		Oct	Nov	Dec		
SALINE COUNTY - TOTAL	1,891	21,559	21,728	21,709	\$179,155,355	\$636.09
Natural Resources & Mining	13	71	74	76	720,288	752.13
Construction	273	1,769	1,716	1,719	18,791,710	833.31
Manufacturing	85	1,331	1,342	1,335	15,803,868	909.94
Trade, Transportation & Utilities	441	4,766	4,931	4,939	37,360,114	589.07
Wholesale Trade	114	531	529	540	6,447,456	929.92
Retail Trade	259	3,788	3,955	3,953	26,077,734	514.53
Transportation, Warehousing & Utilities	68	447	447	446	4,834,924	832.65
Information	13	78	81	83	971,261	926.19
Financial Activities	187	711	711	705	7,021,696	761.82
Professional & Business Services	247	1,270	1,277	1,308	14,013,121	838.86
Education & Health Services	274	3,486	3,485	3,442	28,899,026	640.45
Leisure & Hospitality	162	2,822	2,846	2,793	9,559,294	260.72
Other Services	150	691	689	690	4,803,655	535.52
Local Government	31	3,614	3,634	3,674	33,645,143	710.88
State Government	15	950	942	945	7,566,179	615.45
SCOTT COUNTY - TOTAL	186	3,006	3,026	3,016	\$21,402,249	\$545.86
Natural Resources & Mining	18	153	148	152	1,445,880	736.57
Trade, Transportation & Utilities	37	427	428	433	3,444,707	617.18
Wholesale Trade	9	75	75	77	1,031,263	1,048.39
Retail Trade	22	290	291	292	1,615,165	426.95
Transportation, Warehousing & Utilities	6	62	62	64	798,279	979.88
Financial Activities	23	73	74	74	482,564	503.90
Professional & Business Services	10	13	13	12	118,315	718.51
Education & Health Services	37	300	300	293	2,571,704	664.58
Leisure & Hospitality	16	125	134	136	484,674	283.16
Other Services	11	45	44	44	343,038	595.21
Local Government	6	563	574	568	3,937,657	532.96
State Government	7	61	59	59	392,130	505.54
Other	21	1,246	1,252	1,245	8,181,580	504.42

TABLE 6. COUNTY SUMMARY

North American Industry Classification System - Industry Groups	Number of Employing Units	Employment			Total Earnings Oct - Dec 2013	Average Weekly Earnings
		Oct	Nov	Dec		
SEARCY COUNTY - TOTAL	190	1,603	1,567	1,558	\$9,975,729	\$486.91
Construction	12	26	26	27	222,483	649.90
Manufacturing	17	230	227	224	1,278,086	433.10
Trade, Transportation & Utilities	40	248	244	239	1,399,923	441.94
Wholesale Trade	6	29	28	28	156,801	425.70
Retail Trade	27	197	194	189	1,021,371	406.38
Transportation, Warehousing & Utilities	7	22	22	22	221,751	775.35
Financial Activities	15	64	60	55	587,615	757.56
Professional & Business Services	12	20	20	27	150,817	519.46
Education & Health Services	49	327	323	320	2,268,004	539.57
Leisure & Hospitality	15	137	139	124	376,539	217.23
Local Government	10	364	360	351	2,440,577	523.92
State Government	7	111	106	104	580,104	417.04
Other	13	76	62	87	671,581	688.80
SEBASTIAN COUNTY - TOTAL	3,777	63,259	63,575	63,824	\$631,497,408	\$764.35
Natural Resources & Mining	59	1,212	1,213	1,155	23,786,810	1,533.31
Construction	277	2,088	2,078	2,073	22,948,472	848.82
Manufacturing	198	11,728	11,779	11,822	138,917,960	907.41
Trade, Transportation & Utilities	937	12,486	12,896	12,931	108,793,512	655.29
Wholesale Trade	245	2,660	2,676	2,658	34,344,447	991.45
Retail Trade	569	7,612	7,971	7,992	45,741,566	447.75
Transportation, Warehousing & Utilities	123	2,214	2,249	2,281	28,707,499	982.33
Information	49	974	974	987	12,640,436	993.88
Financial Activities	428	2,524	2,517	2,516	30,039,962	917.33
Professional & Business Services	592	7,998	7,875	7,946	79,793,740	773.08
Education & Health Services	574	10,816	10,882	10,931	122,435,042	865.92
Leisure & Hospitality	340	5,802	5,763	5,875	20,883,216	276.33
Other Services	262	1,260	1,246	1,257	8,511,925	522.00
Local Government	40	4,557	4,553	4,534	44,490,316	752.49
State Government	21	1,814	1,799	1,797	18,256,017	778.73

TABLE 6. COUNTY SUMMARY

North American Industry Classification System - Industry Groups	Number of Employing Units	Employment			Total Earnings Oct - Dec 2013	Average Weekly Earnings
		Oct	Nov	Dec		
SEVIER COUNTY - TOTAL	328	4,845	4,837	4,781	\$34,426,328	\$549.30
Natural Resources & Mining	14	179	181	179	1,686,823	722.20
Construction	20	111	118	141	1,408,371	878.40
Trade, Transportation & Utilities	100	849	848	847	5,808,551	526.90
Wholesale Trade	17	107	109	111	1,471,138	1,038.21
Retail Trade	67	656	653	658	3,428,115	402.19
Transportation, Warehousing & Utilities	16	86	86	78	909,298	839.35
Information	3	20	20	21	181,123	685.21
Financial Activities	28	221	228	223	2,150,998	738.67
Professional & Business Services	31	111	118	109	699,794	477.78
Education & Health Services	48	543	543	550	4,247,920	599.20
Leisure & Hospitality	26	248	242	237	722,832	229.45
Local Government	12	914	939	907	6,586,985	550.75
State Government	8	192	194	187	1,307,133	526.43
Other	38	1,457	1,406	1,380	9,625,798	523.53
SHARP COUNTY - TOTAL	388	3,736	3,663	3,569	\$23,966,202	\$504.25
Construction	21	106	93	87	935,199	754.60
Manufacturing	17	124	128	129	937,387	567.77
Trade, Transportation & Utilities	83	1,112	1,093	1,060	7,494,191	529.69
Wholesale Trade	12	33	34	35	276,527	625.63
Retail Trade	58	683	671	667	3,191,564	364.43
Transportation, Warehousing & Utilities	13	396	388	358	4,026,100	813.57
Information	6	38	44	39	423,245	807.21
Financial Activities	35	180	177	173	1,756,070	764.62
Professional & Business Services	36	149	154	149	1,238,997	632.57
Education & Health Services	93	667	667	670	4,482,452	516.17
Leisure & Hospitality	36	396	395	371	1,050,613	208.65
Local Government	25	811	764	748	4,745,286	471.40
State Government	8	79	77	76	548,157	545.25
Other	28	74	71	67	354,605	386.00

TABLE 6. COUNTY SUMMARY

North American Industry Classification System - Industry Groups	Number of Employing Units	Employment			Total Earnings Oct - Dec 2013	Average Weekly Earnings
		Oct	Nov	Dec		
STONE COUNTY - TOTAL	291	2,472	2,403	2,389	\$15,382,263	\$488.68
Natural Resources & Mining	6	16	8	8	54,523	393.19
Construction	20	45	42	36	217,084	407.29
Manufacturing	19	181	178	175	936,212	404.59
Trade, Transportation & Utilities	79	656	642	632	4,407,892	527.05
Wholesale Trade	9	52	55	53	463,073	667.89
Retail Trade	58	562	546	540	3,498,440	489.89
Transportation, Warehousing & Utilities	12	42	41	39	446,379	844.35
Financial Activities	27	93	85	82	694,242	616.19
Professional & Business Services	19	33	30	32	169,771	412.40
Education & Health Services	50	474	459	477	3,699,126	605.42
Leisure & Hospitality	33	335	313	289	871,367	214.60
Local Government	10	423	431	429	3,066,784	551.61
State Government	8	155	156	169	876,369	421.33
Other	20	61	59	60	388,893	498.58
UNION COUNTY - TOTAL	1,350	17,529	17,586	17,810	\$200,541,954	\$874.42
Natural Resources & Mining	94	566	551	545	8,004,188	1,111.38
Construction	77	1,392	1,420	1,660	20,706,671	1,068.53
Manufacturing	54	2,934	2,956	2,992	43,117,052	1,120.25
Trade, Transportation & Utilities	332	3,860	3,934	3,972	45,676,696	895.87
Wholesale Trade	70	841	840	854	18,257,419	1,662.03
Retail Trade	204	2,177	2,220	2,242	12,702,541	441.54
Transportation, Warehousing & Utilities	58	842	874	876	14,716,736	1,310.25
Information	10	138	140	142	1,121,715	616.33
Financial Activities	123	693	711	704	7,092,674	776.46
Professional & Business Services	140	1,477	1,430	1,389	27,556,142	1,480.24
Education & Health Services	272	2,334	2,351	2,316	20,452,931	674.18
Leisure & Hospitality	88	1,182	1,152	1,163	3,882,356	256.20
Other Services	109	553	544	541	3,634,917	512.10
Local Government	34	1,816	1,820	1,812	14,190,064	601.07
State Government	17	584	577	574	5,106,548	679.21

TABLE 6. COUNTY SUMMARY

North American Industry Classification System - Industry Groups	Number of Employing Units	Employment			Total Earnings	Average Weekly Earnings
		Oct	Nov	Dec	Oct - Dec 2013	
VAN BUREN COUNTY - TOTAL	360	3,902	3,905	3,825	\$41,157,820	\$816.54
Natural Resources & Mining	16	274	277	278	9,205,943	2,562.66
Construction	36	165	157	126	1,415,743	729.26
Manufacturing	8	63	65	64	588,761	707.65
Trade, Transportation & Utilities	100	1,232	1,244	1,234	15,382,531	956.82
Wholesale Trade	8	51	50	48	579,687	897.81
Retail Trade	58	573	578	579	3,139,667	418.81
Transportation, Warehousing & Utilities	34	608	616	607	11,663,177	1,469.96
Information	9	42	45	44	421,802	743.05
Financial Activities	33	134	132	131	1,286,355	747.74
Professional & Business Services	29	108	105	94	816,573	613.81
Education & Health Services	62	684	687	698	4,827,927	538.49
Leisure & Hospitality	29	357	357	324	1,244,853	276.76
Other Services	20	62	62	61	399,237	498.01
Local Government	11	715	710	710	5,063,454	547.30
State Government	7	66	64	61	504,641	609.72
WASHINGTON COUNTY - TOTAL	5,693	93,389	93,847	93,268	\$1,031,871,586	\$848.92
Natural Resources & Mining	44	365	391	376	5,242,919	1,068.82
Construction	482	3,949	3,946	3,806	44,891,862	885.37
Manufacturing	225	12,241	12,207	12,191	120,728,332	760.40
Trade, Transportation & Utilities	1,373	21,233	21,655	21,769	219,474,422	783.33
Wholesale Trade	410	3,563	3,562	3,545	63,617,900	1,375.92
Retail Trade	773	11,100	11,495	11,534	73,504,715	497.02
Transportation, Warehousing & Utilities	190	6,570	6,598	6,690	82,351,807	957.01
Information	89	918	912	912	10,325,593	869.01
Financial Activities	641	3,413	3,416	3,414	41,593,053	937.07
Professional & Business Services	987	10,406	10,386	10,234	224,139,253	1,667.13
Education & Health Services	799	13,419	13,461	13,381	152,010,415	871.30
Leisure & Hospitality	597	10,961	10,964	10,650	38,690,331	274.09
Other Services	373	1,872	1,851	1,838	12,836,050	532.67
Local Government	61	8,188	8,261	8,324	80,373,116	748.70
State Government	22	6,424	6,397	6,373	81,566,240	980.67

TABLE 6. COUNTY SUMMARY

North American Industry Classification System - Industry Groups	Number of Employing Units	Employment			Total Earnings Oct - Dec 2013	Average Weekly Earnings
		Oct	Nov	Dec		
WHITE COUNTY - TOTAL	1,837	24,723	24,618	24,482	\$219,193,368	\$685.19
Natural Resources & Mining	56	1,068	1,078	1,067	16,733,119	1,201.83
Construction	169	1,116	1,073	1,043	10,849,326	774.66
Manufacturing	64	2,311	2,317	2,331	25,149,413	833.99
Trade, Transportation & Utilities	498	6,326	6,342	6,312	51,056,294	620.77
Wholesale Trade	95	587	589	591	6,437,708	840.76
Retail Trade	312	3,655	3,669	3,687	20,722,077	434.29
Transportation, Warehousing & Utilities	91	2,084	2,084	2,034	23,896,509	889.16
Information	20	167	165	166	1,188,955	550.95
Financial Activities	170	902	888	908	10,668,347	912.50
Professional & Business Services	212	1,526	1,476	1,470	11,976,509	618.03
Education & Health Services	314	5,005	5,030	4,962	50,489,696	776.92
Leisure & Hospitality	151	2,386	2,356	2,311	7,323,058	239.61
Other Services	118	546	530	533	4,418,186	633.67
Local Government	47	2,611	2,612	2,621	23,209,027	682.81
State Government	18	759	751	758	6,131,438	623.87
WOODRUFF COUNTY - TOTAL	209	1,900	1,877	1,834	\$14,804,793	\$608.89
Natural Resources & Mining	24	145	136	131	1,320,030	739.37
Construction	5	39	40	38	344,487	679.46
Manufacturing	7	231	230	229	2,232,164	746.54
Trade, Transportation & Utilities	45	441	423	417	3,927,852	707.59
Wholesale Trade	11	191	180	171	2,396,566	1,020.39
Retail Trade	25	189	185	187	848,813	349.16
Transportation, Warehousing & Utilities	9	61	58	59	682,473	884.80
Financial Activities	15	66	66	66	736,322	858.18
Education & Health Services	71	260	270	259	1,644,122	480.88
Leisure & Hospitality	10	83	83	78	237,998	225.09
Local Government	10	493	489	478	3,130,590	494.82
State Government	6	47	46	44	312,530	526.44
Other	16	95	94	94	918,698	749.14

TABLE 6. COUNTY SUMMARY

North American Industry Classification System - Industry Groups	Number of Employing Units	Employment			Total Earnings	Average Weekly Earnings
		Oct	Nov	Dec	Oct - Dec 2013	
YELL COUNTY - TOTAL	423	6,440	6,428	6,450	\$45,250,838	\$540.56
Natural Resources & Mining	23	191	193	200	1,754,031	693.11
Construction	34	268	276	305	2,528,654	687.32
Manufacturing	20	2,425	2,413	2,408	16,505,663	525.67
Trade, Transportation & Utilities	86	692	699	710	4,082,489	448.41
Wholesale Trade	15	38	38	39	204,883	411.14
Retail Trade	52	523	530	538	2,572,330	373.11
Transportation, Warehousing & Utilities	19	131	131	133	1,305,276	762.58
Financial Activities	31	162	162	167	1,491,311	700.91
Professional & Business Services	38	232	229	232	1,934,685	644.25
Education & Health Services	105	743	727	734	4,972,884	520.68
Leisure & Hospitality	30	300	294	286	817,286	214.32
Local Government	25	1,227	1,236	1,206	9,387,281	590.43
State Government	12	98	98	100	644,874	502.76
Other	19	102	101	102	1,131,680	856.25
STATEWIDE COUNTY - TOTAL	7,292	25,629	25,213	23,051	\$334,812,057	\$1,045.62
Natural Resources & Mining	76	324	327	312	5,137,883	1,231.22
Construction	691	2,533	2,470	2,282	27,963,625	885.81
Manufacturing	49	206	203	205	2,945,241	1,106.96
Trade, Transportation & Utilities	2,500	6,104	6,169	6,265	128,645,957	1,601.44
Wholesale Trade	2,159	5,159	5,207	5,297	115,345,284	1,699.43
Retail Trade	128	263	261	269	4,281,076	1,245.83
Transportation, Warehousing & Utilities	213	682	701	699	9,019,597	999.73
Information	197	394	420	414	7,184,202	1,350.08
Financial Activities	430	1,205	1,199	1,169	19,788,199	1,278.06
Professional & Business Services	2,755	11,621	11,240	9,209	108,251,204	778.95
Education & Health Services	270	1,937	1,916	1,895	18,927,991	759.92
Leisure & Hospitality	76	86	82	86	1,201,283	1,091.41
State Government	17	706	708	702	7,748,200	845.01
Other	231	513	479	512	7,018,272	1,028.79

Note: Statewide classification includes employment and payroll data for employers that have not provided a physical location for each employing unit. This section also includes employers without a physical location in Arkansas.

TABLE 7. FEDERAL GOVERNMENT EMPLOYMENT AND EARNINGS IN ARKANSAS

North American Industry Classification System - Industry Groups	Number of Employing Units	Employment			Total Earnings Oct - Dec 2013	Average Weekly Earnings
		Oct	Nov	Dec		
TOTAL	1,178	20,247	20,200	20,279	\$301,809,110	\$1,146.93
Trade, Transportation & Utilities	587	5,484	5,442	5,483	62,984,894	885.79
Information	2	44	45	45	504,499	868.83
Financial Activities	14	117	117	117	2,076,345	1,365.12
Professional & Business Services	30	758	757	758	14,351,888	1,457.09
Education & Health Services	16	5,277	5,260	5,279	87,816,677	1,281.32
Leisure & Hospitality	19	276	274	281	2,681,681	744.70
Other Services	2	1	1	1	8,047	619.00
Public Administration	508	8,290	8,304	8,315	131,385,079	1,217.22

TABLE 8. WORKFORCE INVESTMENT AREA SUMMARY

North American Industry Classification System - Industry Groups	Number of Employing Units	Employment			Total Earnings	Average Weekly Earnings
		Oct	Nov	Dec	Oct - Dec 2013	
CENTRAL WORKFORCE INVESTMENT AREA	6,626	79,077	79,261	79,065	\$738,727,431	\$718.09
Natural Resources & Mining	225	2,236	2,217	2,153	40,650,954	1,420.07
Construction	754	5,291	5,238	5,161	57,721,269	848.97
Trade, Transportation & Utilities	1,579	15,711	16,184	16,238	121,470,359	582.38
Wholesale Trade	389	2,034	2,023	2,025	25,961,399	985.05
Retail Trade	928	11,895	12,390	12,451	74,161,620	465.87
Transportation, Warehousing & Utilities	262	1,782	1,771	1,762	21,347,340	926.87
Information	61	526	528	522	7,072,244	1,035.57
Financial Activities	703	2,996	2,980	2,969	41,273,916	1,064.81
Professional & Business Services	835	7,975	7,856	7,955	115,266,093	1,118.30
Education & Health Services	1,047	11,740	11,721	11,651	99,063,535	651.08
Leisure & Hospitality	560	9,430	9,425	9,269	30,531,198	250.52
Local Government	130	10,544	10,534	10,644	93,920,215	683.24
State Government	65	4,652	4,653	4,635	42,671,708	706.41
Other	667	7,976	7,925	7,868	89,085,940	864.92

Note: Pulaski County is not included in the Central Workforce Investment Area. Please refer to Page 51 for information on Pulaski County.
Central Workforce Investment Area includes these counties: Faulkner, Lonoke, Monroe, Prairie, and Saline.

EASTERN WORKFORCE INVESTMENT AREA	3,811	36,545	36,565	36,452	\$292,325,453	\$615.72
Natural Resources & Mining	231	1,346	1,330	1,172	12,478,084	748.33
Construction	154	754	827	883	8,442,174	790.66
Trade, Transportation & Utilities	815	9,266	9,224	9,250	78,047,414	649.28
Wholesale Trade	166	2,000	2,001	1,995	24,296,058	935.09
Retail Trade	461	4,769	4,735	4,786	26,966,320	435.48
Transportation, Warehousing & Utilities	188	2,497	2,488	2,469	26,785,036	829.24
Financial Activities	268	1,340	1,336	1,343	12,608,957	724.00
Professional & Business Services	274	2,320	2,312	2,329	17,755,491	588.63
Education & Health Services	1,347	6,560	6,593	6,623	49,079,918	572.72
Leisure & Hospitality	247	3,484	3,444	3,370	12,291,735	275.45
Local Government	129	5,178	5,174	5,225	44,715,746	662.45
State Government	61	2,345	2,339	2,266	19,784,597	656.93
Other	285	3,952	3,986	3,991	37,121,337	718.12

Eastern Workforce Investment Area includes these counties: Crittenden, Cross, Lee, Phillips, and Saint Francis.

TABLE 8. WORKFORCE INVESTMENT AREA SUMMARY

North American Industry Classification System - Industry Groups	Number of Employing Units	Employment			Total Earnings	Average Weekly Earnings
		Oct	Nov	Dec	Oct - Dec 2013	
NORTH CENTRAL WORKFORCE INVESTMENT AREA	5,567	68,525	68,081	67,338	\$575,484,422	\$651.18
Construction	432	2,528	2,409	2,290	23,513,744	750.83
Trade, Transportation & Utilities	1,430	16,095	16,165	16,044	133,064,679	635.71
Retail Trade	917	9,656	9,724	9,744	55,274,924	437.98
Other Trade, Transportation & Utilities	513	6,439	6,441	6,300	77,789,755	935.95
Financial Activities	504	2,476	2,446	2,457	27,435,601	858.01
Education & Health Services	1,021	12,829	12,869	12,850	113,821,058	681.39
Leisure & Hospitality	473	6,035	6,017	5,828	18,120,217	233.87
Local Government	230	9,169	9,153	9,074	68,308,464	575.39
State Government	105	3,212	3,194	3,137	26,217,222	633.99
Other	1,372	16,181	15,828	15,658	165,003,437	798.83

North Central Workforce Investment Area includes these counties: Cleburne, Fulton, Independence, IZard, Jackson, Sharp, Stone, Van Buren, White, and Woodruff.

NORTHEAST WORKFORCE INVESTMENT AREA	6,590	96,952	97,568	96,377	\$884,283,034	\$701.50
Natural Resources & Mining	430	2,609	2,576	2,227	21,182,129	659.50
Construction	431	3,290	3,428	3,132	37,252,980	872.78
Manufacturing	320	19,550	19,471	19,503	236,478,146	932.47
Trade, Transportation & Utilities	1,737	18,807	19,362	19,225	152,755,844	614.20
Wholesale Trade	397	3,806	3,828	3,801	47,839,699	965.45
Retail Trade	1,014	11,844	12,335	12,258	69,773,489	441.90
Transportation, Warehousing & Utilities	326	3,157	3,199	3,166	35,142,656	851.70
Financial Activities	579	3,103	3,091	3,096	38,344,357	952.50
Professional & Business Services	655	7,006	6,983	6,825	57,915,833	642.13
Education & Health Services	1,169	15,856	15,910	15,887	159,200,260	770.96
Leisure & Hospitality	524	8,384	8,406	8,268	26,448,757	243.58
Local Government	219	11,634	11,623	11,584	91,705,830	607.41
State Government	99	4,428	4,420	4,342	44,985,555	787.06
Other	427	2,285	2,298	2,288	18,013,343	605.00

Northeast Workforce Investment Area includes these counties: Clay, Craighead, Greene, Lawrence, Mississippi, Poinsett, and Randolph.

TABLE 8. WORKFORCE INVESTMENT AREA SUMMARY

North American Industry Classification System - Industry Groups	Number of Employing Units	Employment			Total Earnings	Average Weekly Earnings
		Oct	Nov	Dec	Oct - Dec 2013	
NORTHWEST WORKFORCE INVESTMENT AREA	15,283	240,649	241,418	240,165	\$2,593,258,511	\$828.60
Natural Resources & Mining	143	1,443	1,467	1,436	21,311,905	1,131.65
Trade, Transportation & Utilities	3,790	53,161	54,125	54,313	544,515,541	777.59
Retail Trade	2,063	28,089	28,993	29,083	178,127,337	477.07
Other Trade, Transportation & Utilities	1,727	25,072	25,132	25,230	366,388,204	1,120.86
Education & Health Services	2,168	30,254	30,282	30,094	309,943,526	789.20
Leisure & Hospitality	1,557	25,845	25,513	24,793	93,729,851	284.04
Local Government	312	22,406	22,495	22,534	207,410,852	709.78
State Government	107	9,224	9,175	9,121	104,555,800	876.75
Other	7,206	98,316	98,361	97,874	1,311,791,036	1,027.74

Northwest Workforce Investment Area includes these counties: Baxter, Benton, Boone, Carroll, Madison, Marion, Newton, Searcy, and Washington.

SOUTHEAST WORKFORCE INVESTMENT AREA	6,124	70,328	70,187	69,441	\$627,864,397	\$690.11
Natural Resources & Mining	420	2,607	2,589	2,481	25,471,789	765.68
Construction	313	2,269	2,250	2,093	22,530,903	786.36
Manufacturing	194	14,358	14,216	13,874	166,556,261	905.49
Trade, Transportation & Utilities	1,336	12,876	13,010	12,968	109,095,530	647.96
Retail Trade	802	7,826	8,032	8,056	47,800,345	461.27
Other Trade, Transportation & Utilities	534	5,050	4,978	4,912	61,295,185	946.79
Financial Activities	410	2,550	2,559	2,548	29,474,165	888.30
Education & Health Services	1,903	10,889	10,842	10,853	88,689,942	628.13
Local Government	203	9,346	9,393	9,408	74,059,423	607.19
State Government	136	6,313	6,338	6,275	56,737,760	691.82
Other	1,209	9,120	8,990	8,941	55,248,624	471.32

Southeast Workforce Investment Area includes these counties: Arkansas, Ashley, Bradley, Chicot, Cleveland, Desha, Drew, Grant, Jefferson, and Lincoln.

TABLE 8. WORKFORCE INVESTMENT AREA SUMMARY

North American Industry Classification System - Industry Groups	Number of Employing Units	Employment			Total Earnings	Average Weekly Earnings
		Oct	Nov	Dec	Oct - Dec 2013	
SOUTHWEST WORKFORCE INVESTMENT AREA	5,783	78,151	78,141	78,233	\$721,411,792	\$709.86
Natural Resources & Mining	354	2,459	2,410	2,430	29,170,367	922.27
Trade, Transportation & Utilities	1439	15734	15904	16017	139858169	677.26
Retail Trade	893	8,847	8,938	9,030	48,744,827	419.50
Other Trade, Transportation & Utilities	546	6,887	6,966	6,987	91,113,342	1,008.93
Information	59	450	453	457	4,843,669	821.89
Financial Activities	508	2,690	2,720	2,698	28,195,896	802.51
Education & Health Services	1,126	9,246	9,301	9,224	66,985,720	556.63
Leisure & Hospitality	407	5,191	5,156	5,198	17,163,801	254.80
Other Services	395	1,817	1,800	1,788	10,824,940	462.18
Local Government	257	10,237	10,278	10,238	79,672,791	597.86
State Government	138	3,857	3,855	3,799	33,579,597	673.19
Other	1,100	26,470	26,264	26,384	311,116,842	907.46

Southwest Workforce Investment Area includes these counties: Calhoun, Columbia, Dallas, Hempstead, Howard, Lafayette, Little River, Miller, Nevada, Ouachita, Sevier, and Union

WEST CENTRAL WORKFORCE INVESTMENT AREA	8,211	105,135	105,089	105,206	\$871,521,915	\$637.61
Construction	753	4,617	4,569	4,643	46,636,037	778.23
Trade, Transportation & Utilities	1,918	21,109	21,547	21,680	175,013,631	627.76
Retail Trade	1,264	13,791	14,176	14,244	82,433,050	450.66
Other Trade, Transportation & Utilities	654	7,318	7,371	7,436	92,580,581	965.64
Financial Activities	829	4,075	4,081	4,078	42,306,344	798.02
Professional & Business Services	939	8,012	8,043	8,255	69,977,565	664.28
Education & Health Services	1,472	16,543	16,597	16,539	150,947,689	701.18
Leisure & Hospitality	766	11,686	11,214	11,224	40,925,508	276.77
Local Government	225	11,721	11,733	11,703	97,568,414	640.44
State Government	124	6,242	6,260	6,104	49,674,629	616.11
Other	1,185	21,130	21,045	20,980	198,472,098	725.22

West Central Workforce Investment Area includes these counties: Clark, Conway, Garland, Hot Spring, Johnson, Montgomery, Perry, Pike, Pope, and Yell

TABLE 8. WORKFORCE INVESTMENT AREA SUMMARY

North American Industry Classification System - Industry Groups	Number of Employing Units	Employment			Total Earnings	Average
		Oct	Nov	Dec	Oct - Dec 2013	Weekly Earnings
WESTERN WORKFORCE INVESTMENT AREA	6,614	100,944	101,347	101,376	\$936,826,146	\$711.93
Natural Resources & Mining	172	2,218	2,191	2,141	37,157,873	1,309.14
Trade, Transportation & Utilities	1,635	22,048	22,501	22,482	185,869,413	639.90
Retail Trade	954	11,921	12,309	12,303	70,365,207	444.48
Other Trade, Transportation & Utilities	681	10,127	10,192	10,179	115,504,206	873.99
Financial Activities	700	3,784	3,780	3,781	44,195,065	898.97
Professional & Business Services	883	9,763	9,640	9,738	95,621,219	757.23
Education & Health Services	1,023	15,028	15,128	15,141	154,914,548	789.22
Leisure & Hospitality	558	8,505	8,481	8,557	29,269,011	264.43
Other Services	429	2,027	1,997	2,027	14,118,636	538.45
Local Government	151	9,442	9,464	9,409	83,418,267	679.86
State Government	74	3,012	2,997	2,976	26,725,221	686.41
Other	989	25,117	25,168	25,124	265,536,893	812.61

Western Workforce Investment Area includes these counties: Crawford, Franklin, Logan, Polk, Scott, and Sebastian