

# Arkansas Covered Employment & Earnings

Second Quarter  
2013

Jobs for People. People for Jobs.

**DWS**  
Department of  
WORKFORCE**Services**



**COVERED EMPLOYMENT AND EARNINGS  
STATE OF ARKANSAS  
SECOND QUARTER 2013**

**MIKE BEEBE, GOVERNOR  
STATE OF ARKANSAS**

**ARTEE WILLIAMS, DIRECTOR  
DEPARTMENT OF WORKFORCE SERVICES**

**PUBLISHED BY  
LABOR MARKET INFORMATION & ANALYSIS  
BUREAU OF LABOR STATISTICS PROGRAMS  
POST OFFICE BOX 2981  
LITTLE ROCK, ARKANSAS 72203-2981  
BERNADETTE COLEMAN, BLS PROGRAMS MANAGER  
TELEPHONE (501) 682-3159  
SUSAN PRICE, QCEW LEAD ANALYST  
TELEPHONE (501) 682-3103**

**STATE OF ARKANSAS WEBPAGE: <http://www.arkansas.gov>**

**DEPARTMENT OF WORKFORCE SERVICES WEBPAGE: <http://www.arkansas.gov/esd/>**

**WEBPAGE FOR LABOR MARKET INFORMATION: <http://www.discover.arkansas.gov>**

**RELEASED: NOVEMBER 2013**



## TABLE OF CONTENTS

DESCRIPTION OF DATA	PAGE
Description and Classification of Data	1
Definition of Covered Employment and Earnings	2
Significant Developments During Second Quarter 2013	3

### LIST OF GRAPHS AND TABLES

Graph 1	Total Covered Employment for Selected Years, Arkansas	7
Graph 2	Total Covered Earnings, by Calendar Quarter for Selected Years, Arkansas	8
Table 1	Quarterly Comparison of Covered Employment and Wages, by Industry	5
Table 2	Total Covered Employment in Arkansas, 2006 – 2013	6
Table 3	Total Covered Earnings, 2006 – 2013	9
Table 4	Total Taxable Earnings, 2006 – 2013	10
Table 5	State Summary – Employment and Total Earnings, by Industry, Second Quarter 2013	11
Table 6	County Summary – Employment and Total Earnings, by Industry, Second Quarter 2013	22
Table 7	Federal Government Employment and Total Earnings in Arkansas, Second Quarter 2013	60
Table 8	Workforce Information Area – Employment and Total Earnings, by Industry, Second Quarter 2013	61



EMPLOYMENT AND EARNINGS  
UNDER THE ARKANSAS EMPLOYMENT SECURITY LAW  
SECOND QUARTER 2013

**DESCRIPTION AND CLASSIFICATION OF DATA**

This publication contains covered employment and payroll data by industry and county for the Second Quarter 2013 and a record for total covered employment by month, quarterly payroll data, average weekly earnings, and total taxable earnings for 2006 through 2013. These data are compiled from quarterly contributions and wage reports submitted by employers subject to the Arkansas Employment Security Law.

Employment data have been tabulated for each month of the quarter by industry under the **North American Industry Classification System** (NAICS) by state, county, and workforce area. Payroll data represent the total wages paid during the quarter and are classified by industry for the state and by publishable industry groups for each county and workforce area.

Due to industry classification revisions, previously published data will not always be comparable with current data. For this reason, comparisons should not be made between the same industries under different revisions. For more information, visit the NAICS home page at <http://www.census.gov/naics>.

Industry Classification Revisions

- SIC (Standard Industrial Classification) 1987 to NAICS 2002
- NAICS 2002 to NAICS 2007
- NAICS 2007 to NAICS 2012

The tabulation of this data is a joint effort in conjunction with the United States Bureau of Labor Statistics. Data included in this publication are subject to revisions. Revisions are typically reflected in the Annual Covered Employment and Earnings publication.

## DEFINITION OF COVERED EMPLOYMENT AND EARNINGS

Covered Employment is the total number of workers employed by establishments subject to the Arkansas Employment Security Law who worked or received pay for the payroll period including the 12<sup>th</sup> of the month. Earnings includes all wages paid to any covered employee by their employer including salaries, bonuses, commissions, fees, fringe benefits, sick pay made directly to employees or dependents, deferred compensation, and reported tips. These wages include both taxable and nontaxable wages. Only the first \$12,000 paid to each worker by an employer in the calendar year is taxable under the Arkansas Employment Security Law.

Currently excluded from coverage is employment covered by the Railroad Unemployment Insurance Act, some domestic service workers, employees of small agricultural establishments, self-employed workers, unpaid family workers, insurance and real estate agents paid only on a commission basis, and employees of churches and religious organizations except separately incorporated schools.

An Arkansas state unemployment account is required of any entity meeting the definition of an employer. As described by Arkansas Department of Workforce Services Law, the definition of an employer includes, but is not limited to, a sole proprietorship, partnership, corporation, associations, trust, estate, and receiver or trustee in bankruptcy. The entity must have in employment one or more individuals for ten or more days in a calendar year, whether or not the days are consecutive.

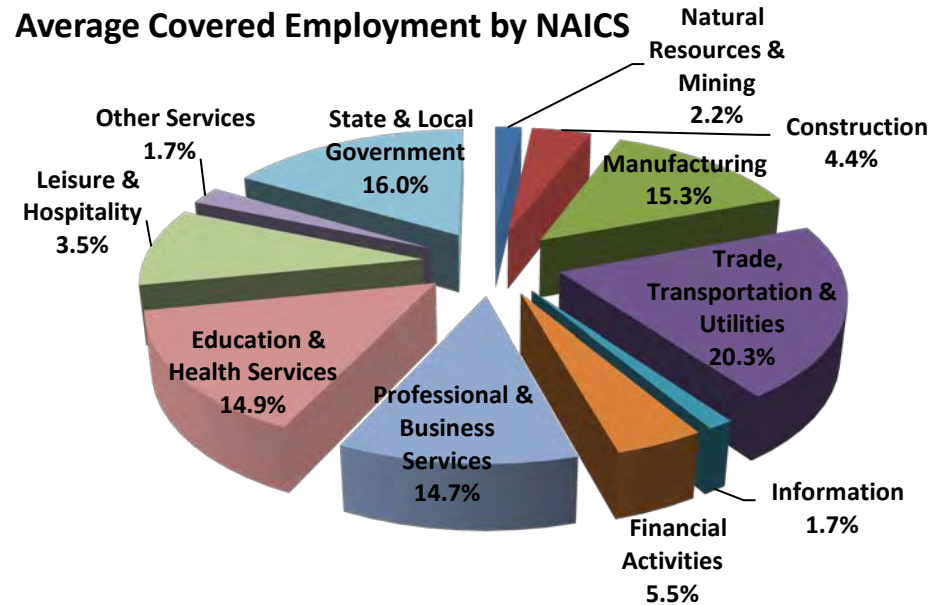
Civilian federal workers are covered by the Unemployment Compensation for Federal Employees (UCFE) program.



## SIGNIFICANT DEVELOPMENTS DURING SECOND QUARTER 2013

### AVERAGE EMPLOYMENT CHANGES

Covered employment averaged 1,134,283 during the Second Quarter 2013 (refer to Table 1), an increase of 11,576 (1.0%) from the previous quarter and a decrease of 4,669 from the average recorded one year ago. This over-the-year decrease is more significant when used as an economic indicator. This over-the-year comparison allows for the disregarding of many seasonal factors that are evident when making an over-the-quarter comparison.



### EMPLOYMENT CHANGES FROM FIRST QUARTER 2013

Compared to First Quarter 2013, covered employment increased in nine major industry sectors. Leisure & Hospitality had the largest gain (6,601), due to seasonal changes. Professional & Business Services increased by 1,939. Trade, Transportation, & Utilities experienced gains as well (1,408). Construction grew by 1,025, due to more temperate weather for projects. Gains were also recorded in Natural Resources & Mining (865), Other Services (613), Financial Activities (489), Education & Health Services (374) and Information (7). Sectors reporting losses included State & Local Government (-1,024) and Manufacturing (-714).

## EMPLOYMENT CHANGES FROM SECOND QUARTER 2012 (QUARTER YEAR AGO COMPARISON)

Over-the-year gains were recorded in four industry groups (refer to Table 1). Professional & Business Services increased by 4,025, while Leisure & Hospitality grew by 2,099. Other industries reporting gains included Financial Activities (299) and Education & Health Services (19). The most significant over-the-year losses occurred in Manufacturing (-3,821), Construction (-2,577), and Natural Resources & Mining (-1,713).

## COVERED WAGES

Wages paid to covered workers totaled \$10,705,006,820 for the Second Quarter 2013 (refer to Table 1), for an average weekly wage of \$725.98 (refer to Table 5). Benton County workers recorded the highest average weekly wage (\$899.68), and employees in Searcy County reported the lowest (\$448.32) (refer to Table 6).

The Information sector recorded the highest average weekly wage for the State of Arkansas at \$929.45. The Leisure & Hospitality industry recorded the lowest at \$269.81 (refer to Table 5).

## Average Weekly Wage by Industry

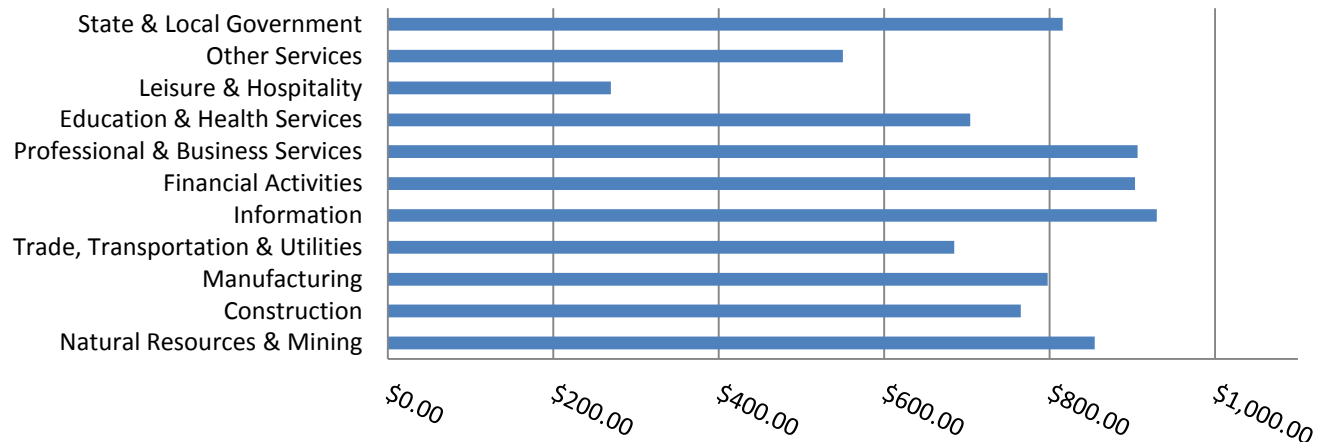


TABLE 1. QUARTERLY COMPARISON OF COVERED EMPLOYMENT AND WAGES, BY INDUSTRY

North American Industry Classification System	Number of Employing Units	Monthly Employment Average	Percent of Total	Net Change From:		Total Wages Paid Apr - Jun 2013	Percent of Total
				Jan - Mar 2013	Apr - Jun 2012		
<b>Total</b>	<b>86,038</b>	<b>1,134,283</b>	<b>100</b>	<b>11,576</b>	<b>-4,669</b>	<b>\$10,705,006,820</b>	<b>100</b>
<b>Natural Resources &amp; Mining</b>	2,505	20,232	1.8	865	-1,713	224,730,642	2.1
Agriculture, Forestry, Fishing & Hunting	1,980	12,597	1.1	897	-273	103,120,186	1.0
Mining	525	7,634	0.7	-31	-1,440	121,610,456	1.1
<b>Construction</b>	6,789	45,994	4.1	1,025	-2,577	457,384,197	4.3
<b>Manufacturing</b>	3,038	152,459	13.4	-714	-3,821	1,580,637,723	14.8
<b>Trade, Transportation &amp; Utilities</b>	21,364	236,614	20.9	1,408	-1,069	2,106,310,218	19.7
Wholesale Trade	6,814	47,243	4.2	413	-870	670,391,735	6.3
Retail Trade	11,245	131,730	11.6	1,055	-59	785,512,611	7.3
Transportation & Warehousing	2,880	49,555	4.4	-367	-547	507,302,251	4.7
Utilities	425	8,087	0.7	308	407	143,103,621	1.3
<b>Information</b>	1,153	14,174	1.2	7	-236	171,265,461	1.6
<b>Financial Activities</b>	8,149	48,224	4.3	489	299	566,254,158	5.3
Finance & Insurance	4,850	34,965	3.1	138	385	460,125,420	4.3
Real Estate & Rental & Leasing	3,299	13,258	1.2	351	-86	106,128,738	1.0
<b>Professional &amp; Business Services</b>	12,915	128,777	11.4	1,933	4,025	1,517,098,965	14.2
Professional & Technical Services	8,163	39,853	3.5	-157	793	540,441,660	5.0
Management of Companies & Enterprises	503	31,532	2.8	73	757	610,730,749	5.7
Administrative & Waste Services	4,249	57,392	5.1	2,016	2,474	365,926,556	3.4
<b>Education &amp; Health Services</b>	14,972	168,764	14.9	374	19	1,544,357,244	14.4
Educational Services	729	11,019	1.0	-176	-704	91,548,128	0.9
Health Care & Social Assistance	14,243	157,745	13.9	551	723	1,452,809,116	13.6
<b>Leisure &amp; Hospitality</b>	6,708	107,559	9.5	6,601	2,099	377,272,885	3.5
Arts, Entertainment & Recreation	936	10,868	1.0	1,980	87	47,257,406	0.4
Accommodation & Food Services	5,772	96,691	8.5	4,620	2,012	330,015,479	3.1
<b>Other Services</b>	5,357	24,197	2.1	613	-647	173,090,036	1.6
<b>State &amp; Local Government</b>	3,088	187,288	16.5	-1,024	-1,046	1,986,605,291	18.6
Local Government	1,960	116,789	10.3	-919	-1,676	1,195,399,839	11.2
State Government	1,128	70,499	6.2	-105	630	791,205,452	7.4
<b>Nonclassifiable Establishments</b>	0	0	0.0	0	0	0	0.0

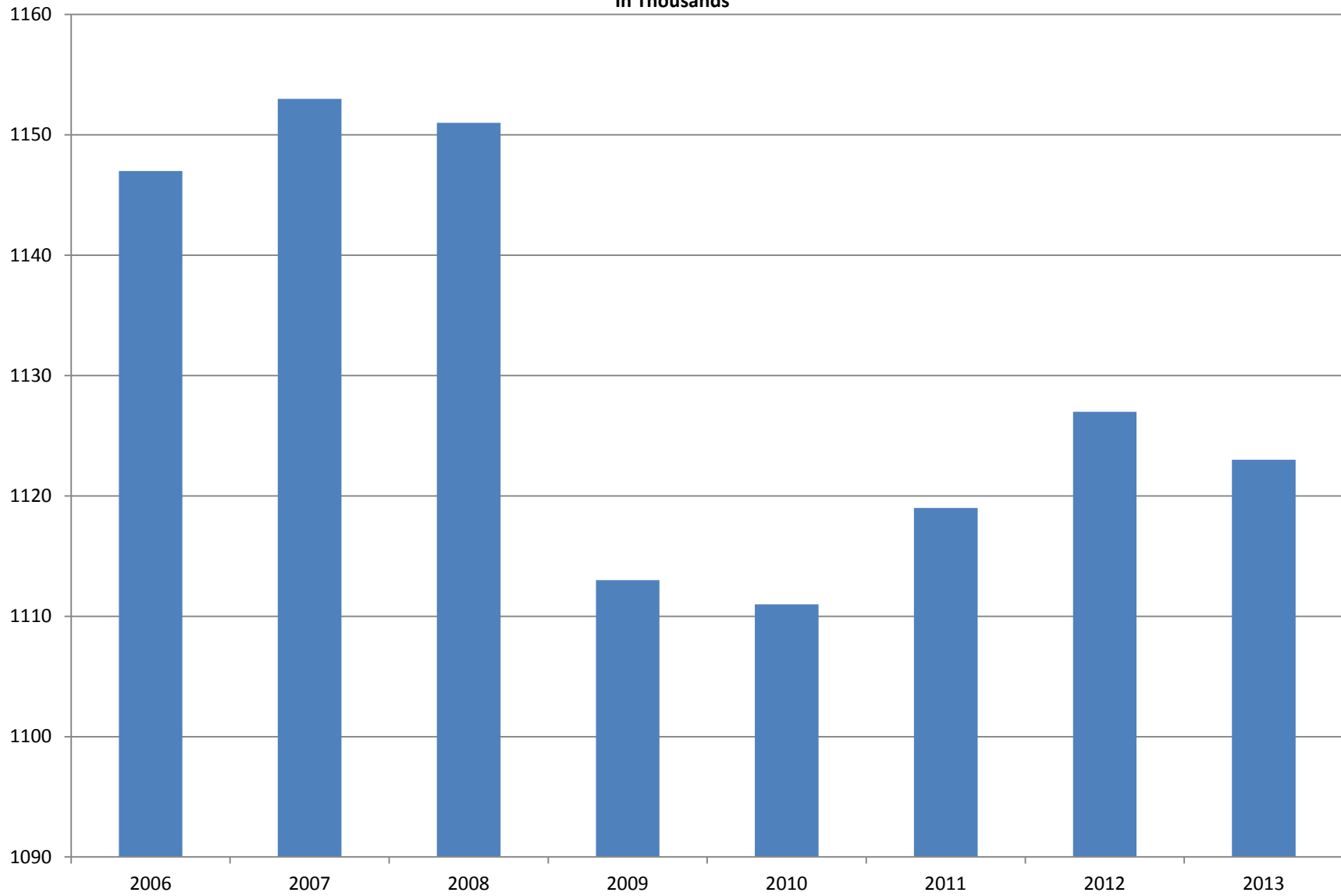
Note: Items do not necessarily add to total because of rounding. Because of industry code changes between years, substantial employment and wage shifts among industries are anticipated.

**TABLE 2. TOTAL COVERED EMPLOYMENT IN ARKANSAS**

<b>Period</b>	<b>2006</b>	<b>2007</b>	<b>2008</b>	<b>2009</b>	<b>2010</b>	<b>2011</b>	<b>2012</b>	<b>2013</b>
<b>Average</b>	<b>1,146,948</b>	<b>1,152,994</b>	<b>1,150,965</b>	<b>1,112,591</b>	<b>1,110,947</b>	<b>1,118,639</b>	<b>1,126,588</b>	<b>1,122,707</b>
January	1,130,595	1,137,437	1,141,856	1,119,299	1,089,984	1,098,349	1,113,274	1,114,507
February	1,136,810	1,143,397	1,149,443	1,119,476	1,091,282	1,098,445	1,119,319	1,123,049
March	1,150,439	1,158,895	1,157,690	1,124,386	1,106,198	1,113,061	1,131,123	1,130,565
April	1,155,498	1,159,623	1,159,841	1,123,383	1,115,341	1,129,635	1,136,973	1,134,706
May	1,159,886	1,165,224	1,166,111	1,122,322	1,123,250	1,126,371	1,143,142	1,138,211
June	1,162,026	1,164,207	1,164,167	1,117,884	1,130,164	1,123,412	1,136,739	1,129,931
July	1,106,142	1,110,571	1,114,279	1,071,048	1,073,743	1,080,937	1,079,329	
August	1,130,839	1,139,109	1,138,583	1,093,192	1,099,795	1,106,262	1,109,425	
September	1,159,814	1,165,135	1,162,333	1,116,580	1,124,281	1,132,779	1,136,019	
October	1,156,804	1,162,768	1,157,196	1,113,157	1,125,073	1,138,395	1,136,045	
November	1,156,011	1,164,246	1,152,159	1,115,443	1,126,781	1,138,543	1,138,302	
December	1,158,509	1,165,314	1,147,927	1,114,919	1,125,466	1,137,474	1,139,361	

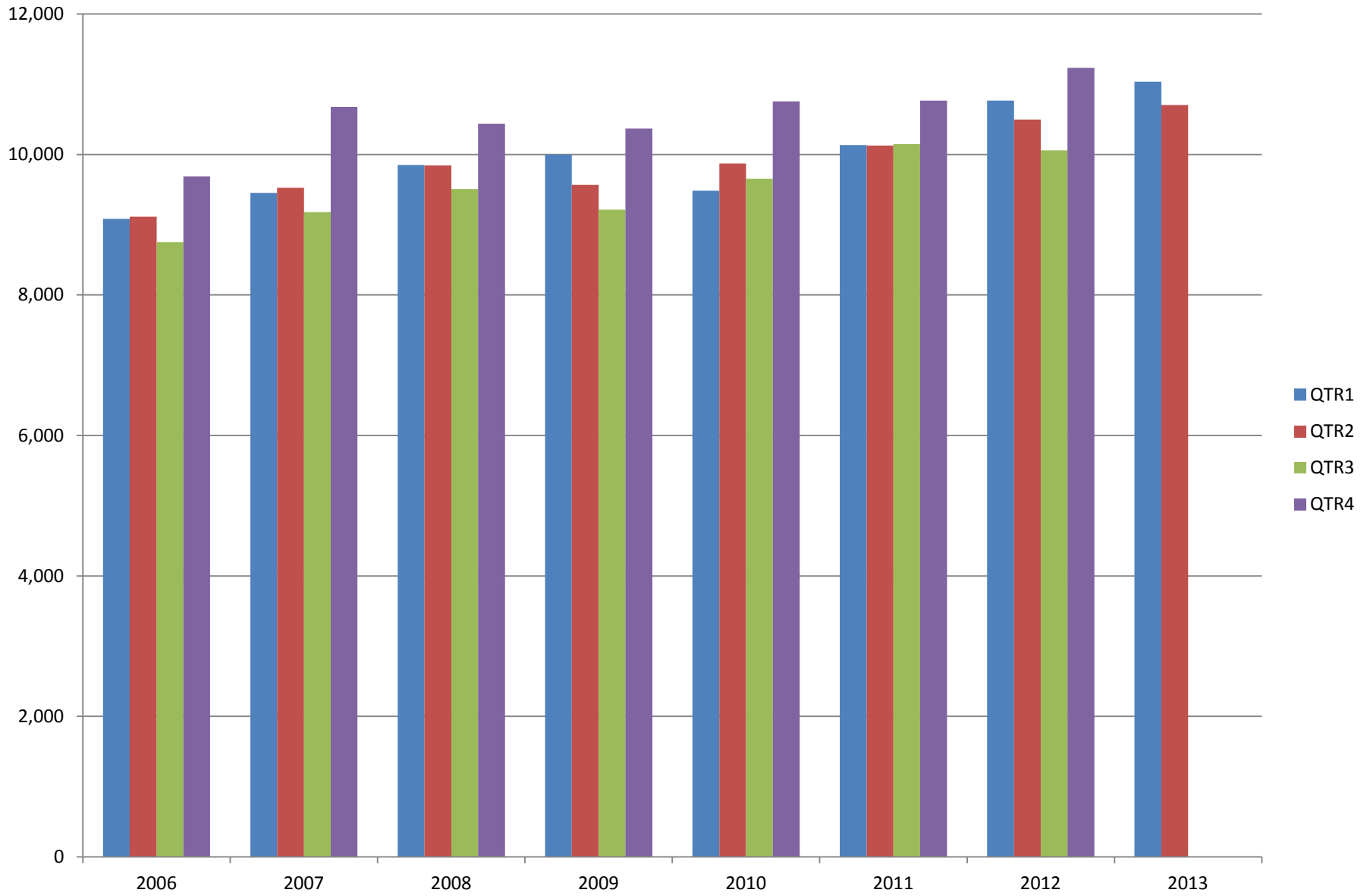
# AVERAGE TOTAL COVERED EMPLOYMENT

In Thousands



# TOTAL COVERED EARNINGS BY CALENDAR YEAR

In Thousands



**TABLE 3. TOTAL COVERED EARNINGS 2006 - 2013**

<b>Period</b>	<b>2006</b>	<b>2007</b>	<b>2008</b>	<b>2009</b>
<b>Total</b>	<b>\$36,636,090,775</b>	<b>\$38,833,265,464</b>	<b>\$39,643,039,342</b>	<b>\$39,149,476,305</b>
January - March	9,085,021,816	9,452,711,662	9,851,866,058	9,998,452,028
April - June	9,112,624,590	9,525,837,049	9,843,711,293	9,566,968,853
July - September	8,750,878,205	9,178,902,477	9,509,150,631	9,213,797,140
October - December	9,687,566,164	10,675,814,276	10,438,311,360	10,370,258,284
<b>Average Weekly Earnings</b>	<b>\$614.27</b>	<b>\$647.70</b>	<b>\$662.37</b>	<b>\$676.69</b>

<b>Period</b>	<b>2010</b>	<b>2011</b>	<b>2012</b>	<b>2013</b>
<b>Total</b>	<b>\$39,769,504,992</b>	<b>\$41,177,659,236</b>	<b>\$42,555,976,081</b>	<b>\$21,743,442,784</b>
January - March	9,486,245,580	10,134,035,254	10,766,175,449	11,038,435,964
April - June	9,873,489,653	10,128,274,611	10,499,018,872	10,705,006,820
July - September	9,653,588,807	10,147,287,431	10,058,388,682	
October - December	10,756,180,952	10,768,061,940	11,232,393,078	
<b>Average Weekly Earnings</b>	<b>\$688.42</b>	<b>\$707.89</b>	<b>\$726.43</b>	<b>\$744.88</b>

**TABLE 4. TOTAL TAXABLE EARNINGS, 2006 - 2013**

<b>Period</b>	<b>2006</b>	<b>2007</b>	<b>2008</b>	<b>2009</b>
<b>Total</b>	<b>10,197,511,360</b>	<b>10,459,105,059</b>	<b>10,360,487,108</b>	<b>9,787,660,886</b>
<b>January - March</b>	5,421,204,601	5,617,417,571	5,635,750,082	5,423,705,265
<b>April - June</b>	2,385,110,992	2,466,606,627	2,419,313,519	2,293,670,854
<b>July - September</b>	1,314,939,803	1,307,060,412	1,297,473,555	1,165,280,065
<b>October - December</b>	1,076,255,964	1,068,020,449	1,007,949,952	905,004,702

<b>Period</b>	<b>2010</b>	<b>2011</b>	<b>2012</b>	<b>2013</b>
<b>Total</b>	<b>11,332,118,456</b>	<b>11,479,396,226</b>	<b>11,642,854,241</b>	<b>9,002,101,319</b>
<b>January - March</b>	5,607,134,758	5,828,877,821	6,167,036,199	6,194,767,117
<b>April - June</b>	2,977,100,591	2,910,604,359	2,845,540,593	2,807,334,202
<b>July - September</b>	1,577,067,770	1,601,382,146	1,505,833,030	
<b>October - December</b>	1,170,815,337	1,138,531,900	1,124,444,419	



TABLE 5. STATEWIDE SUMMARY

NORTH AMERICAN INDUSTRY CLASSIFICATION SYSTEM - INDUSTRY GROUPS		NUMBER OF EMPLOYING UNITS	EMPLOYMENT			TOTAL EARNINGS	AVERAGE WEEKLY EARNINGS
			APR	MAY	JUN	APR - JUN 2013	
<b>TOTAL, ALL INDUSTRIES</b>		<b>86,038</b>	<b>1,134,706</b>	<b>1,138,211</b>	<b>1,129,931</b>	<b>\$10,705,006,820</b>	<b>\$725.98</b>
<b>NATURAL RESOURCES &amp; MINING</b>		<b>2,505</b>	<b>19,802</b>	<b>20,256</b>	<b>20,637</b>	<b>\$224,730,642</b>	<b>\$854.45</b>
<b>11</b>	<b>AGRICULTURE, FORESTRY, FISHING &amp; HUNTING</b>	<b>1,980</b>	<b>12,202</b>	<b>12,617</b>	<b>12,973</b>	<b>\$103,120,186</b>	<b>\$629.68</b>
<b>111</b>	<b>CROP PRODUCTION</b>	<b>857</b>	<b>4,204</b>	<b>4,311</b>	<b>4,563</b>	<b>\$28,074,176</b>	<b>\$495.39</b>
1111	Oilseed & Grain Farming	568	2,575	2,716	2,843	18,056,912	512.29
1112	Vegetable & Melon Farming	15	146	136	129	784,774	440.64
1113	Fruit & Tree Nut Farming	13	74	79	140	427,613	336.79
1114	Greenhouse & Nursery Production	44	403	361	375	2,436,197	493.59
1119	Other Crop Farming	217	1,006	1,019	1,076	6,368,680	473.94
<b>112</b>	<b>ANIMAL PRODUCTION &amp; AQUACULTURE</b>	<b>289</b>	<b>2,987</b>	<b>3,011</b>	<b>3,044</b>	<b>\$28,604,362</b>	<b>\$730.04</b>
1121	Cattle Ranching & Farming	101	345	352	360	2,308,039	503.90
1122	Hog & Pig Farming	10	124	121	123	1,234,107	773.90
1123	Poultry & Egg Production	101	2,019	2,032	2,051	21,228,622	802.84
1125	Animal Aquaculture	58	450	458	461	3,558,409	599.83
1129	Other Animal Production	19	49	48	49	275,185	434.96
<b>113</b>	<b>FORESTRY &amp; LOGGING</b>	<b>400</b>	<b>2,167</b>	<b>2,214</b>	<b>2,220</b>	<b>\$18,952,830</b>	<b>\$662.59</b>
1131	Timber Tract Operations	36	177	175	179	1,883,601	818.60
1132	Forest Nurseries & Gathering of Forest Products	5	23	24	24	268,499	872.69
1133	Logging	359	1,967	2,015	2,017	16,800,730	646.29
<b>114</b>	<b>FISHING, HUNTING &amp; TRAPPING</b>	<b>3</b>	<b>18</b>	<b>18</b>	<b>19</b>	<b>\$109,015</b>	<b>\$457.41</b>
<b>115</b>	<b>SUPPORT ACTIVITIES FOR AGRICULTURE &amp; FORESTRY</b>	<b>431</b>	<b>2,826</b>	<b>3,063</b>	<b>3,127</b>	<b>\$27,379,803</b>	<b>\$700.80</b>
1151	Support Activities for Crop Production	293	1,384	1,464	1,512	15,734,459	832.80
1152	Support Activities for Animal Production	64	715	722	728	4,846,417	516.58
1153	Support Activities for Forestry	74	727	877	887	6,798,927	629.86
<b>21</b>	<b>MINING</b>	<b>525</b>	<b>7,600</b>	<b>7,639</b>	<b>7,664</b>	<b>\$121,610,456</b>	<b>\$1,225.34</b>
<b>211</b>	<b>OIL &amp; GAS EXTRACTION</b>	<b>90</b>	<b>1,534</b>	<b>1,556</b>	<b>1,567</b>	<b>\$28,461,241</b>	<b>\$1,410.35</b>
<b>212</b>	<b>MINING (EXCEPT OIL &amp; GAS)</b>	<b>112</b>	<b>1,845</b>	<b>1,830</b>	<b>1,876</b>	<b>\$21,958,951</b>	<b>\$912.89</b>
<b>213</b>	<b>SUPPORT ACTIVITIES FOR MINING</b>	<b>323</b>	<b>4,221</b>	<b>4,253</b>	<b>4,221</b>	<b>\$71,190,264</b>	<b>\$1,294.09</b>

TABLE 5. STATEWIDE SUMMARY

NORTH AMERICAN INDUSTRY CLASSIFICATION SYSTEM - INDUSTRY GROUPS		NUMBER OF	EMPLOYMENT			TOTAL EARNINGS	AVERAGE
		EMPLOYING					WEEKLY
		UNITS	APR	MAY	JUN	APR - JUN 2013	EARNINGS
<b>CONSTRUCTION</b>		<b>6,789</b>	<b>45,419</b>	<b>46,345</b>	<b>46,218</b>	<b>\$457,384,197</b>	<b>\$764.96</b>
<b>236</b>	<b>CONSTRUCTION OF BUILDINGS</b>	<b>1,597</b>	<b>9,233</b>	<b>9,454</b>	<b>9,364</b>	<b>\$96,518,465</b>	<b>\$794.04</b>
2361	Residential Building Construction	1,057	2,686	2,761	2,821	23,160,370	646.43
2362	Nonresidential Building Construction	540	6,547	6,693	6,543	73,358,095	855.72
<b>237</b>	<b>HEAVY &amp; CIVIL ENGINEERING CONSTRUCTION</b>	<b>738</b>	<b>7,930</b>	<b>7,900</b>	<b>7,881</b>	<b>\$92,433,434</b>	<b>\$899.62</b>
2371	Utility System Construction	403	4,240	4,039	3,922	45,529,411	861.14
2372	Land Subdivision	66	152	162	161	1,420,797	690.27
2373	Highway, Street & Bridge Construction	185	2,821	2,945	3,029	33,366,501	875.49
2379	Other Heavy Construction	84	717	754	769	12,116,725	1,248.29
<b>238</b>	<b>SPECIALTY TRADE CONTRACTORS</b>	<b>4,454</b>	<b>28,256</b>	<b>28,991</b>	<b>28,973</b>	<b>\$268,432,298</b>	<b>\$718.46</b>
2381	Building Foundation & Exterior Contractors	873	5,245	5,483	5,414	47,510,484	679.22
2382	Building Equipment Contractors	2,044	14,878	15,196	15,152	152,908,787	780.23
2383	Building Finishing Contractors	760	3,760	3,819	3,853	30,750,520	620.74
2389	Other Specialty Trade Contractors	777	4,373	4,493	4,554	37,262,507	640.76
<b>MANUFACTURING</b>		<b>3,038</b>	<b>152,324</b>	<b>152,409</b>	<b>152,644</b>	<b>\$1,580,637,723</b>	<b>\$797.51</b>
<b>311</b>	<b>FOOD MANUFACTURING</b>	<b>271</b>	<b>43,012</b>	<b>42,778</b>	<b>42,768</b>	<b>\$339,467,162</b>	<b>\$609.36</b>
3111	Animal Food Manufacturing	43	1,478	1,439	1,419	18,241,985	970.87
3112	Grain & Oilseed Milling	30	2,389	2,412	2,441	24,026,108	765.60
3113	Sugar & Confectionery Product Manufacturing	7	31	31	33	173,643	421.80
3114	Fruit, Vegetable & Specialty Food	20	4,379	4,192	4,179	44,758,182	810.10
3115	Dairy Product Manufacturing	10	585	593	589	6,654,089	869.02
3116	Animal Slaughtering & Processing	80	29,143	29,092	29,091	198,981,169	525.83
3117	Seafood Product Preparation & Packaging	5	75	77	75	346,060	351.81
3118	Bakeries & Tortilla Manufacturing	55	3,181	3,198	3,207	29,004,799	698.25
3119	Other Food Manufacturing	21	1,751	1,744	1,734	17,281,127	762.66
<b>312</b>	<b>BEVERAGE &amp; TOBACCO PRODUCT MANUFACTURING</b>	<b>42</b>	<b>1,109</b>	<b>1,106</b>	<b>1,132</b>	<b>\$11,356,534</b>	<b>\$783.01</b>
<b>313</b>	<b>TEXTILE MILLS</b>	<b>12</b>	<b>78</b>	<b>83</b>	<b>84</b>	<b>\$688,538</b>	<b>\$648.54</b>
<b>314</b>	<b>TEXTILE PRODUCT MILLS</b>	<b>55</b>	<b>899</b>	<b>933</b>	<b>920</b>	<b>\$9,418,944</b>	<b>\$789.83</b>
3141	Textile Furnishing Mills	10	31	32	32	379,507	921.88
3149	Other Textile Product Mills	45	868	901	888	9,039,437	785.10
<b>315</b>	<b>APPAREL MANUFACTURING</b>	<b>22</b>	<b>1,019</b>	<b>1,023</b>	<b>1,026</b>	<b>\$5,877,592</b>	<b>\$442.10</b>
<b>316</b>	<b>LEATHER &amp; ALLIED PRODUCT MANUFACTURING</b>	<b>16</b>	<b>1,155</b>	<b>1,142</b>	<b>1,136</b>	<b>\$8,355,870</b>	<b>\$561.69</b>

TABLE 5. STATEWIDE SUMMARY

NORTH AMERICAN INDUSTRY CLASSIFICATION SYSTEM - INDUSTRY GROUPS		NUMBER OF EMPLOYING UNITS	EMPLOYMENT			TOTAL EARNINGS	AVERAGE WEEKLY EARNINGS
			APR	MAY	JUN	APR - JUN 2013	
<b>321</b>	<b>WOOD PRODUCT MANUFACTURING</b>	<b>318</b>	<b>8,840</b>	<b>8,873</b>	<b>8,911</b>	<b>\$81,566,245</b>	<b>\$706.99</b>
3211	Sawmills & Wood Preservation	128	4,162	4,198	4,181	40,055,111	737.06
3212	Veneer & Engineered Wood Products	55	1,985	1,981	1,998	21,869,962	846.23
3219	Other Wood Product Manufacturing	135	2,693	2,694	2,732	19,641,172	558.27
<b>322</b>	<b>PAPER MANUFACTURING</b>	<b>76</b>	<b>10,073</b>	<b>10,071</b>	<b>10,110</b>	<b>\$146,654,334</b>	<b>\$1,118.64</b>
3221	Pulp, Paper & Paperboard Mills	11	4,251	4,267	4,296	78,901,432	1,420.95
3222	Converted Paper Product Manufacturing	65	5,822	5,804	5,814	67,752,902	896.52
<b>323</b>	<b>PRINTING &amp; RELATED SUPPORT ACTIVITIES</b>	<b>245</b>	<b>3,297</b>	<b>3,235</b>	<b>3,232</b>	<b>\$31,598,844</b>	<b>\$746.83</b>
<b>324</b>	<b>PETROLEUM &amp; COAL PRODUCTS MANUFACTURING</b>	<b>17</b>	<b>937</b>	<b>957</b>	<b>972</b>	<b>\$12,278,813</b>	<b>\$988.69</b>
<b>325</b>	<b>CHEMICAL MANUFACTURING</b>	<b>119</b>	<b>4,688</b>	<b>4,721</b>	<b>4,753</b>	<b>\$68,028,316</b>	<b>\$1,108.52</b>
3251	Basic Chemical Manufacturing	31	1,715	1,734	1,738	28,402,004	1,263.60
3252	Resin, Rubber & Artificial Fibers	6	260	261	259	3,789,955	1,121.29
3253	Agricultural Chemical Manufacturing	17	413	416	414	5,361,886	995.46
3254	Pharmaceutical & Medicine Manufacturing	13	202	204	206	2,738,911	1,032.77
3255	Paint, Coating & Adhesive Manufacturing	8	226	230	235	3,345,887	1,117.41
3256	Soap, Cleaning Compound, & Toilet Preparation Manufacturing	16	1,127	1,119	1,128	13,343,764	912.66
3259	Other Chemical Preparation Manufacturing	28	745	757	773	11,045,909	1,120.46
<b>326</b>	<b>PLASTICS &amp; RUBBER PRODUCTS MANUFACTURING</b>	<b>144</b>	<b>10,648</b>	<b>10,668</b>	<b>10,787</b>	<b>\$120,046,396</b>	<b>\$862.94</b>
3261	Plastics Product Manufacturing	102	6,392	6,419	6,526	63,984,882	763.60
3262	Rubber Product Manufacturing	42	4,256	4,249	4,261	56,061,514	1,013.42
<b>327</b>	<b>NONMETALLIC MINERAL PRODUCT MANUFACTURING</b>	<b>254</b>	<b>3,509</b>	<b>3,526</b>	<b>3,554</b>	<b>\$36,164,731</b>	<b>\$788.15</b>
3271	Clay Product & Refractory Manufacturing	14	367	369	368	3,717,254	777.02
3272	Glass & Glass Product Manufacturing	11	373	370	379	4,155,587	854.71
3273	Cement & Concrete Product Manufacturing	186	1,979	1,989	1,999	18,949,195	732.85
3274	Lime & Gypsum Product Manufacturing	5	198	202	206	2,732,448	1,040.54
3279	Other Nonmetallic Mineral Products Manufacturing	38	592	596	602	6,610,247	852.20
<b>331</b>	<b>PRIMARY METAL MANUFACTURING</b>	<b>75</b>	<b>10,405</b>	<b>10,403</b>	<b>10,395</b>	<b>\$148,457,367</b>	<b>\$1,097.95</b>
3311	Iron & Steel Mills & Ferroalloys	8	2,379	2,402	2,428	53,556,377	1,714.41
3312	Purchased Steel Product Manufacturing	20	3,047	3,062	3,067	42,088,372	1,058.49
3313	Alumina & Aluminum Production	19	1,234	1,234	1,220	15,865,699	992.76
3314	Other Nonferrous Metal Production	7	619	613	622	6,171,820	768.21
3315	Foundries	21	3,126	3,092	3,058	30,775,099	765.63

TABLE 5. STATEWIDE SUMMARY

NORTH AMERICAN INDUSTRY CLASSIFICATION SYSTEM - INDUSTRY GROUPS		NUMBER OF EMPLOYING UNITS	EMPLOYMENT			TOTAL EARNINGS	AVERAGE WEEKLY EARNINGS
			APR	MAY	JUN	APR - JUN 2013	
<b>332</b>	<b>FABRICATED METAL PRODUCT MANUFACTURING</b>	<b>517</b>	<b>13,961</b>	<b>14,069</b>	<b>14,029</b>	<b>\$159,132,917</b>	<b>\$873.13</b>
3321	Forging & Stamping	12	328	328	321	3,342,285	789.45
3322	Cutlery & Hand Tool Manufacturing	12	739	730	724	7,358,205	774.30
3323	Architectural & Structural Metals	151	3,566	3,671	3,590	41,168,052	877.47
3324	Boilers, Tanks & Shipping Containers	17	676	682	679	7,976,760	903.68
3325	Hardware Manufacturing	6	207	202	200	2,009,570	761.49
3326	Spring & Wire Product Manufacturing	13	383	395	387	4,075,349	807.27
3327	Machine Shops & Threaded Products	208	1,830	1,867	1,881	17,967,976	743.36
3328	Coating, Engraving & Heat Treating Metals	38	663	661	676	5,977,373	689.70
3329	Other Fabricated Metal Product Manufacturing	60	5,569	5,533	5,571	69,257,347	958.58
<b>333</b>	<b>MACHINERY MANUFACTURING</b>	<b>211</b>	<b>11,048</b>	<b>11,043</b>	<b>11,030</b>	<b>\$112,438,084</b>	<b>\$783.41</b>
3331	Agriculture, Construction & Mining Machinery	37	2,894	2,869	2,874	24,382,884	651.48
3332	Industrial Machinery Manufacturing	26	721	723	741	8,702,816	919.15
3333	Commercial & Service Industry Machinery	23	766	770	767	9,685,620	970.54
3334	HVAC & Commercial Refrigeration Equipment	19	3,019	3,004	3,000	32,020,518	818.95
3335	Metalworking Machinery Manufacturing	59	1,131	1,145	1,152	11,204,672	754.29
3336	Turbine & Power Transmission Equipment Manufacturing	7	553	547	543	6,111,190	858.35
3339	Other General Purpose Machinery Manufacturing	40	1,964	1,985	1,953	20,330,384	794.92
<b>334</b>	<b>COMPUTER &amp; ELECTRONIC PRODUCT MANUFACTURING</b>	<b>61</b>	<b>2,893</b>	<b>2,877</b>	<b>2,897</b>	<b>\$30,488,128</b>	<b>\$811.78</b>
3343	Audio & Video Equipment Manufacturing	5	247	239	234	2,794,224	895.58
3344	Semiconductors & Electronic Components	27	1,988	1,992	2,006	19,817,146	763.98
3345	Electronic Instrument Manufacturing	20	507	496	508	5,865,800	895.86
	Other	9	151	150	149	2,010,958	1,031.26
<b>335</b>	<b>ELECTRICAL EQUIPMENT &amp; APPLIANCES</b>	<b>55</b>	<b>5,806</b>	<b>5,787</b>	<b>5,750</b>	<b>\$67,983,294</b>	<b>\$904.60</b>
3353	Electrical Equipment Manufacturing	19	3,534	3,525	3,484	40,736,883	891.66
3359	Other Electrical Equipment & Component Manufacturing	19	1,674	1,641	1,642	19,796,558	921.61
	Other	17	598	621	624	7,449,853	932.83
<b>336</b>	<b>TRANSPORTATION EQUIPMENT MANUFACTURING</b>	<b>141</b>	<b>12,295</b>	<b>12,425</b>	<b>12,423</b>	<b>\$132,059,407</b>	<b>\$820.48</b>
3362	Motor Vehicle Body & Trailer Manufacturing	30	1,681	1,718	1,704	14,471,662	654.44
3363	Motor Vehicle Parts Manufacturing	46	4,786	4,802	4,807	45,863,257	735.24
3364	Aerospace Product & Parts Manufacturing	26	2,909	2,938	2,930	42,475,487	1,116.79
3366	Ship & Boat Building	23	1,493	1,533	1,547	12,770,312	644.43
	Other	16	1,426	1,434	1,435	16,478,689	885.40
<b>337</b>	<b>FURNITURE &amp; RELATED PRODUCT MANUFACTURING</b>	<b>193</b>	<b>3,354</b>	<b>3,368</b>	<b>3,387</b>	<b>\$28,532,724</b>	<b>\$651.35</b>
3371	Household & Institutional Furniture	158	2,324	2,315	2,321	17,635,805	584.74
3372	Office Furniture & Fixtures Manufacturing	26	936	959	976	10,233,541	822.57
3379	Other Furniture Related Product Manufacturing	9	94	94	90	663,378	550.67
<b>339</b>	<b>MISCELLANEOUS MANUFACTURING</b>	<b>194</b>	<b>3,298</b>	<b>3,321</b>	<b>3,348</b>	<b>\$30,043,483</b>	<b>\$695.61</b>
3391	Medical Equipment & Supplies Manufacturing	78	1,588	1,606	1,613	17,030,176	817.57
3399	Other Miscellaneous Manufacturing	116	1,710	1,715	1,735	13,013,307	581.99

TABLE 5. STATEWIDE SUMMARY

NORTH AMERICAN INDUSTRY CLASSIFICATION SYSTEM - INDUSTRY GROUPS		NUMBER OF EMPLOYING UNITS	EMPLOYMENT			TOTAL EARNINGS	AVERAGE WEEKLY EARNINGS
			APR	MAY	JUN	APR - JUN 2013	
<b>TRADE, TRANSPORTATION &amp; UTILITIES</b>		<b>21,364</b>	<b>236,460</b>	<b>236,480</b>	<b>236,903</b>	<b>\$2,106,310,218</b>	<b>\$684.76</b>
<b>42</b>	<b>WHOLESALE TRADE</b>	<b>6,814</b>	<b>47,210</b>	<b>47,259</b>	<b>47,259</b>	<b>\$670,391,735</b>	<b>\$1,091.57</b>
<b>423</b>	<b>MERCHANT WHOLESALERS, DURABLE GOODS</b>	<b>2,143</b>	<b>20,832</b>	<b>20,928</b>	<b>20,993</b>	<b>\$256,878,624</b>	<b>\$944.65</b>
4231	Motor Vehicle & Part Merchant Wholesalers	233	2,585	2,601	2,617	25,861,685	764.84
4232	Furniture & Furnishings Merchant Wholesalers	50	402	402	393	5,091,176	981.53
4233	Lumber & Supply Merchant Wholesalers	172	1,375	1,372	1,384	14,598,985	815.54
4234	Commercial Goods Merchant Wholesalers	296	2,704	2,729	2,739	42,393,749	1,197.16
4235	Metal & Mineral Merchant Wholesalers	52	888	886	889	11,062,437	958.64
4236	Appliances & Electronics Goods Merchant Wholesalers	185	1,828	1,836	1,824	25,340,907	1,065.58
4237	Hardware & Plumbing Merchant Wholesalers	225	2,162	2,171	2,176	26,764,827	948.92
4238	Machinery & Supply Merchant Wholesalers	706	6,858	6,888	6,913	85,123,741	950.87
4239	Miscellaneous Durable Goods Merchant Wholesalers	224	2,030	2,043	2,058	20,641,117	776.93
<b>424</b>	<b>MERCHANT WHOLESALERS, NONDURABLE GOODS</b>	<b>1,194</b>	<b>16,239</b>	<b>16,108</b>	<b>16,022</b>	<b>\$196,390,914</b>	<b>\$936.98</b>
4241	Paper & Paper Product Merchant Wholesalers	66	1,827	1,696	1,535	17,904,999	816.91
4242	Druggist' Goods Merchant Wholesalers	64	699	663	683	10,721,074	1,209.83
4243	Apparel & Piece Goods Merchant Wholesalers	37	590	588	590	6,001,057	783.29
4244	Grocery Product Merchant Wholesalers	299	4,828	4,851	4,855	68,819,642	1,092.71
4245	Farm Product Merchant Wholesalers	75	842	834	855	6,843,197	623.94
4246	Chemical Merchant Wholesalers	95	680	676	687	10,410,319	1,175.91
4247	Petroleum Merchant Wholesalers	143	1,594	1,611	1,615	19,409,612	929.28
4248	Alcoholic Beverage Merchant Wholesalers	40	1,378	1,373	1,394	17,075,716	950.68
4249	Miscellaneous Nondurable Goods Merchant Wholesaler	375	3,801	3,816	3,808	39,205,298	791.89
<b>425</b>	<b>ELECTRONIC MARKETS &amp; AGENTS &amp; BROKERS</b>	<b>3,477</b>	<b>10,139</b>	<b>10,223</b>	<b>10,244</b>	<b>\$217,122,197</b>	<b>\$1,637.10</b>
<b>44 - 45</b>	<b>RETAIL TRADE</b>	<b>11,245</b>	<b>131,751</b>	<b>131,676</b>	<b>131,763</b>	<b>\$785,512,611</b>	<b>\$458.70</b>
<b>441</b>	<b>MOTOR VEHICLE &amp; PARTS DEALERS</b>	<b>1,610</b>	<b>17,758</b>	<b>17,844</b>	<b>17,916</b>	<b>\$178,317,072</b>	<b>\$768.90</b>
4411	Automobile Dealers	651	10,591	10,631	10,666	126,490,300	915.39
4412	Other Motor Vehicle Dealers	160	1,376	1,407	1,447	13,355,057	728.59
4413	Automotive Parts, Accessories & Tire Stores	799	5,791	5,806	5,803	38,471,715	510.23
<b>442</b>	<b>FURNITURE &amp; HOME FURNISHINGS STORES</b>	<b>531</b>	<b>3,364</b>	<b>3,329</b>	<b>3,343</b>	<b>\$23,677,728</b>	<b>\$544.45</b>
4421	Furniture Stores	289	1,904	1,884	1,896	15,120,107	613.87
4422	Home Furnishings Stores	242	1,460	1,445	1,447	8,557,621	453.78
<b>443</b>	<b>ELECTRONICS &amp; APPLIANCE STORES</b>	<b>526</b>	<b>3,745</b>	<b>3,735</b>	<b>3,676</b>	<b>\$28,878,442</b>	<b>\$597.37</b>
<b>444</b>	<b>BUILDING MATERIAL &amp; GARDEN SUPPLY STORES</b>	<b>834</b>	<b>10,907</b>	<b>10,982</b>	<b>10,891</b>	<b>\$69,471,321</b>	<b>\$489.07</b>
4441	Building Material & Supplies Dealers	621	9,522	9,570	9,476	61,072,108	493.33
4442	Lawn & Garden Equipment & Supplies Stores	213	1,385	1,412	1,415	8,399,213	460.18

TABLE 5. STATEWIDE SUMMARY

NORTH AMERICAN INDUSTRY CLASSIFICATION SYSTEM - INDUSTRY GROUPS		NUMBER OF EMPLOYING UNITS	EMPLOYMENT			TOTAL EARNINGS	AVERAGE WEEKLY EARNINGS
			APR	MAY	JUN	APR - JUN 2013	
<b>445</b>	<b>FOOD &amp; BEVERAGE STORES</b>	<b>1,022</b>	<b>17,852</b>	<b>17,786</b>	<b>17,794</b>	<b>\$81,707,140</b>	<b>\$352.89</b>
4451	Grocery Stores	557	15,548	15,459	15,429	69,266,873	344.23
4452	Specialty Food Stores	136	713	721	752	4,705,495	496.74
4453	Beer, Wine & Liquor Stores	329	1,591	1,606	1,613	7,734,772	371.09
<b>446</b>	<b>HEALTH &amp; PERSONAL CARE STORES</b>	<b>1,000</b>	<b>7,866</b>	<b>7,868</b>	<b>7,904</b>	<b>\$68,349,415</b>	<b>\$667.27</b>
<b>447</b>	<b>GASOLINE STATIONS</b>	<b>1,669</b>	<b>11,997</b>	<b>12,137</b>	<b>12,218</b>	<b>\$50,660,844</b>	<b>\$321.60</b>
44711	Gasoline Stations with Convenience Stores	1,567	10,774	10,878	10,916	44,248,359	313.53
44719	Other Gasoline Stations	102	1,223	1,259	1,302	6,412,485	391.07
<b>448</b>	<b>CLOTHING &amp; CLOTHING ACCESSORIES STORES</b>	<b>1,051</b>	<b>8,394</b>	<b>8,383</b>	<b>8,331</b>	<b>\$33,007,560</b>	<b>\$303.37</b>
4481	Clothing Stores	766	6,449	6,466	6,451	22,112,546	263.50
4482	Shoe Stores	143	1,173	1,145	1,130	4,600,840	307.93
4483	Jewelry, Luggage & Leather Goods Stores	142	772	772	750	6,294,174	633.17
<b>451</b>	<b>SPORTING GOODS, HOBBY, BOOK &amp; MUSIC STORES</b>	<b>494</b>	<b>4,367</b>	<b>4,343</b>	<b>4,249</b>	<b>\$18,320,426</b>	<b>\$326.24</b>
4511	Sporting Goods & Musical Instrument Stores	414	3,821	3,819	3,734	16,251,293	329.73
4512	Book, Periodical & Music Stores	80	546	524	515	2,069,133	301.26
<b>452</b>	<b>GENERAL MERCHANDISE STORES</b>	<b>855</b>	<b>37,088</b>	<b>36,743</b>	<b>36,977</b>	<b>\$183,631,682</b>	<b>\$382.43</b>
<b>453</b>	<b>MISCELLANEOUS STORE RETAILERS</b>	<b>1,275</b>	<b>6,670</b>	<b>6,793</b>	<b>6,716</b>	<b>\$35,011,993</b>	<b>\$400.40</b>
4531	Florists	203	711	775	727	3,078,557	321.03
4532	Office Supplies, Stationery & Gift Stores	312	2,094	2,058	2,028	10,412,664	388.82
4533	Used Merchandise Stores	254	1,464	1,510	1,522	8,193,143	420.53
4539	Other Miscellaneous Store Retailers	506	2,401	2,450	2,439	13,327,629	421.89
<b>454</b>	<b>NONSTORE RETAILERS</b>	<b>378</b>	<b>1,743</b>	<b>1,733</b>	<b>1,748</b>	<b>\$14,478,988</b>	<b>\$639.61</b>
4541	Electronic Shopping & Mail-Order Houses	151	605	620	635	5,586,813	693.15
4542	Vending Machine Operators	75	466	449	452	3,388,094	571.96
4543	Direct Selling Establishments	152	672	664	661	5,504,081	636.04
<b>48 - 49</b>	<b>TRANSPORTATION &amp; WAREHOUSING</b>	<b>2,880</b>	<b>49,460</b>	<b>49,450</b>	<b>49,754</b>	<b>507,302,251</b>	<b>\$787.48</b>
<b>481</b>	<b>AIR TRANSPORTATION</b>	<b>52</b>	<b>808</b>	<b>803</b>	<b>781</b>	<b>\$11,530,086</b>	<b>\$1,112.37</b>
<b>484</b>	<b>TRUCK TRANSPORTATION</b>	<b>1,870</b>	<b>32,045</b>	<b>32,029</b>	<b>32,223</b>	<b>\$335,766,617</b>	<b>\$804.64</b>
4841	General Freight Trucking	1,142	25,708	25,663	25,727	272,356,184	815.21
4842	Specialized Freight Trucking	728	6,337	6,366	6,496	63,410,433	762.18

TABLE 5. STATEWIDE SUMMARY

NORTH AMERICAN INDUSTRY CLASSIFICATION SYSTEM - INDUSTRY GROUPS		NUMBER OF EMPLOYING UNITS	EMPLOYMENT			TOTAL EARNINGS	AVERAGE WEEKLY EARNINGS
			APR	MAY	JUN	APR - JUN 2013	
<b>485</b>	<b>TRANSIT &amp; GROUND PASSENGER TRANSPORTATION</b>	<b>83</b>	<b>1,430</b>	<b>1,450</b>	<b>1,451</b>	<b>\$6,651,639</b>	<b>\$354.42</b>
4853	Taxi & Limousine Service	27	357	367	373	1,608,290	338.33
4854	School & Employee Bus Transportation	13	493	486	484	2,315,920	365.31
4855	Charter Bus Industry Service	6	101	105	99	684,917	518.22
4859	Other Ground Passenger Transportation	31	415	422	427	1,646,699	300.64
	Other	6	64	70	68	395,813	452.19
<b>486</b>	<b>PIPELINE TRANSPORTATION</b>	<b>39</b>	<b>448</b>	<b>438</b>	<b>442</b>	<b>\$9,306,352</b>	<b>\$1,617.18</b>
<b>488</b>	<b>SUPPORT ACTIVITIES FOR TRANSPORTATION</b>	<b>421</b>	<b>4,394</b>	<b>4,407</b>	<b>4,443</b>	<b>\$48,584,192</b>	<b>\$846.55</b>
4881	Support Activities for Air Transportation	97	1,208	1,218	1,217	11,515,702	729.47
4882	Support Activities for Rail Transportation	42	363	367	380	3,736,358	776.79
4883	Support Activities for Water Transportation	22	620	627	581	8,022,106	1,012.72
4884	Support Activities for Road Transportation	131	583	571	604	4,222,664	554.30
4885	Freight Transportation Arrangement	113	1,546	1,546	1,560	20,541,744	1,019.00
4889	Other Support Activities for Transportation	16	74	78	101	545,618	497.68
	<b>OTHER</b>	<b>10</b>	<b>39</b>	<b>58</b>	<b>78</b>	<b>\$490,796</b>	<b>\$647.20</b>
<b>491</b>	<b>POSTAL SERVICE</b>	<b>11</b>	<b>245</b>	<b>236</b>	<b>236</b>	<b>\$2,942,367</b>	<b>\$947.01</b>
<b>492</b>	<b>COURIERS &amp; MESSENGERS</b>	<b>173</b>	<b>2,997</b>	<b>3,016</b>	<b>3,062</b>	<b>\$32,363,134</b>	<b>\$822.97</b>
<b>493</b>	<b>WAREHOUSING &amp; STORAGE</b>	<b>221</b>	<b>7,054</b>	<b>7,013</b>	<b>7,038</b>	<b>59,667,068</b>	<b>\$652.42</b>
<b>22</b>	<b>UTILITIES</b>	<b>425</b>	<b>8,039</b>	<b>8,095</b>	<b>8,127</b>	<b>\$143,103,621</b>	<b>\$1,361.19</b>
2211	Power Generation & Supply	157	5,813	5,830	5,865	114,145,281	1,504.52
2212	Natural Gas Distribution	81	1,309	1,331	1,339	21,177,672	1,228.24
2213	Water, Sewage & Other Systems	187	917	934	923	7,780,668	647.27
	<b>INFORMATION</b>	<b>1,153</b>	<b>14,065</b>	<b>14,194</b>	<b>14,264</b>	<b>\$171,265,461</b>	<b>\$929.45</b>
<b>511</b>	<b>PUBLISHING INDUSTRIES, EXCEPT INTERNET</b>	<b>230</b>	<b>3,562</b>	<b>3,570</b>	<b>3,601</b>	<b>\$32,802,930</b>	<b>\$705.29</b>
5111	Newspaper, Book & Directory Publishers	201	3,255	3,260	3,285	27,702,439	652.33
5112	Software Publishers	29	307	310	316	5,100,491	1,261.56
<b>512</b>	<b>MOTION PICTURE &amp; SOUND RECORDING INDUSTRY</b>	<b>136</b>	<b>1,156</b>	<b>1,244</b>	<b>1,260</b>	<b>\$6,122,368</b>	<b>\$386.03</b>
5121	Motion Picture & Video Industries	119	1,123	1,210	1,227	5,793,519	375.55
5122	Sound Recording Industries	17	33	34	33	328,849	758.88
<b>515</b>	<b>BROADCASTING, EXCEPT INTERNET</b>	<b>124</b>	<b>1,664</b>	<b>1,672</b>	<b>1,651</b>	<b>\$16,250,043</b>	<b>\$751.96</b>
5151	Radio & Television Broadcasting	120	1,636	1,644	1,623	16,068,685	756.30
5152	Cable & Other Subscription Programming	4	28	28	28	181,358	498.24

TABLE 5. STATEWIDE SUMMARY

NORTH AMERICAN INDUSTRY CLASSIFICATION SYSTEM - INDUSTRY GROUPS		NUMBER OF EMPLOYING UNITS	EMPLOYMENT			TOTAL EARNINGS	AVERAGE WEEKLY EARNINGS
			APR	MAY	JUN	APR - JUN 2013	
<b>517</b>	<b>TELECOMMUNICATIONS</b>	<b>392</b>	<b>5,869</b>	<b>5,903</b>	<b>5,933</b>	<b>\$93,183,490</b>	<b>\$1,214.57</b>
5171	Wired Telecommunications Carriers	270	3,644	3,645	3,672	57,148,836	1,203.19
5172	Wireless Telecommunications Carriers (except Satellite)	53	1,885	1,917	1,925	31,020,728	1,249.98
5174	Satellite Telecommunications Carriers	5	5	4	4	45,892	814.65
5179	Other Telecommunications	64	335	337	332	4,968,034	1,141.90
<b>518</b>	<b>DATA PROCESSING, HOSTING &amp; RELATED SERVICES</b>	<b>190</b>	<b>1,513</b>	<b>1,496</b>	<b>1,521</b>	<b>\$19,871,652</b>	<b>\$1,012.31</b>
<b>519</b>	<b>OTHER INFORMATION SERVICES</b>	<b>81</b>	<b>301</b>	<b>309</b>	<b>298</b>	<b>\$3,034,978</b>	<b>\$771.34</b>
<b>FINANCIAL ACTIVITIES</b>		<b>8,149</b>	<b>48,107</b>	<b>48,323</b>	<b>48,241</b>	<b>\$566,254,158</b>	<b>\$903.25</b>
<b>52</b>	<b>FINANCE &amp; INSURANCE</b>	<b>4,850</b>	<b>34,976</b>	<b>35,023</b>	<b>34,897</b>	<b>\$460,125,420</b>	<b>\$1,012.27</b>
<b>522</b>	<b>CREDIT INTERMEDIATION &amp; RELATED ACTIVITIES</b>	<b>1,927</b>	<b>19,260</b>	<b>19,315</b>	<b>19,321</b>	<b>\$216,685,851</b>	<b>\$863.69</b>
5221	Depository Credit Intermediation	1,418	16,613	16,659	16,666	179,276,611	828.46
5222	Nondepository Credit Intermediation	368	2,253	2,262	2,269	31,466,515	1,070.39
5223	Activities Related to Credit Intermediation	141	394	394	386	5,942,725	1,168.14
<b>523</b>	<b>FINANCIAL INVESTMENT &amp; RELATED ACTIVITIES</b>	<b>659</b>	<b>3,056</b>	<b>3,071</b>	<b>3,029</b>	<b>\$78,110,196</b>	<b>\$1,968.70</b>
<b>524</b>	<b>INSURANCE CARRIERS &amp; RELATED ACTIVITIES</b>	<b>2,188</b>	<b>12,565</b>	<b>12,539</b>	<b>12,431</b>	<b>\$163,486,181</b>	<b>\$1,005.13</b>
5241	Insurance Carriers	356	5,348	5,309	5,200	82,478,193	1,200.32
5242	Insurance Agencies, Brokerages & Support	1,832	7,217	7,230	7,231	81,007,988	862.36
	<b>OTHER</b>	<b>76</b>	<b>95</b>	<b>98</b>	<b>116</b>	<b>\$1,843,192</b>	<b>\$1,376.54</b>
<b>53</b>	<b>REAL ESTATE &amp; RENTAL &amp; LEASING</b>	<b>3,299</b>	<b>13,131</b>	<b>13,300</b>	<b>13,344</b>	<b>\$106,128,738</b>	<b>\$615.74</b>
<b>531</b>	<b>REAL ESTATE</b>	<b>2,588</b>	<b>8,660</b>	<b>8,763</b>	<b>8,765</b>	<b>\$66,389,280</b>	<b>\$585.02</b>
5311	Lessors of Real Estate	1,128	4,250	4,301	4,313	29,060,531	521.32
5312	Offices of Real Estate Agents & Brokers	730	1,522	1,521	1,545	13,737,263	690.96
5313	Activities Related to Real Estate	730	2,888	2,941	2,907	23,591,486	623.19
<b>532</b>	<b>RENTAL &amp; LEASING SERVICES</b>	<b>689</b>	<b>4,410</b>	<b>4,477</b>	<b>4,520</b>	<b>\$39,006,183</b>	<b>\$671.40</b>
5321	Automotive Equipment Rental & Leasing	112	935	957	966	6,349,771	512.71
5322	Consumer Goods Rental	366	1,972	2,034	2,063	13,982,915	531.69
5323	General Rental Centers	45	274	264	269	2,397,816	685.68
5324	Machinery & Equipment Rental & Leasing	166	1,229	1,222	1,222	16,275,681	1,022.58
<b>533</b>	<b>LESSORS OF NONFINANCIAL INTANGIBLE ASSETS</b>	<b>22</b>	<b>61</b>	<b>60</b>	<b>59</b>	<b>\$733,275</b>	<b>\$940.10</b>



TABLE 5. STATEWIDE SUMMARY

NORTH AMERICAN INDUSTRY CLASSIFICATION SYSTEM - INDUSTRY GROUPS		NUMBER OF	EMPLOYMENT			TOTAL EARNINGS	AVERAGE
		EMPLOYING					WEEKLY
		UNITS	APR	MAY	JUN	APR - JUN 2013	EARNINGS
<b>PROFESSIONAL &amp; BUSINESS SERVICES</b>		<b>12,915</b>	<b>129,490</b>	<b>129,595</b>	<b>127,246</b>	<b>\$1,517,098,965</b>	<b>\$906.22</b>
<b>54</b>	<b>PROFESSIONAL &amp; TECHNICAL SERVICES</b>	<b>8,163</b>	<b>40,488</b>	<b>39,568</b>	<b>39,503</b>	<b>\$540,441,660</b>	<b>\$1,043.14</b>
5411	Legal Services	1,716	6,062	6,085	6,127	68,722,664	867.85
5412	Accounting & Bookkeeping Services	1,260	5,897	4,810	4,417	54,186,386	826.80
5413	Architectural & Engineering Services	932	5,742	5,792	5,866	82,615,161	1,095.69
5414	Specialized Design Services	176	428	432	439	5,479,539	973.45
5415	Computer Systems Design & Related Services	1,329	8,909	8,926	8,855	174,362,875	1,507.59
5416	Management & Technical Consulting Services	1,623	5,610	5,669	5,804	73,701,636	995.61
5417	Scientific Research & Development Services	127	1,116	1,125	1,128	18,024,684	1,234.65
5418	Advertising & Related Services	392	3,229	3,261	3,386	33,180,150	775.31
5419	Other Professional & Technical Services	608	3,495	3,468	3,481	30,168,565	666.60
<b>55</b>	<b>MANAGEMENT OF COMPANIES &amp; ENTERPRISES</b>	<b>503</b>	<b>31,635</b>	<b>31,456</b>	<b>31,506</b>	<b>\$610,730,749</b>	<b>\$1,489.88</b>
<b>56</b>	<b>ADMINISTRATIVE &amp; SUPPORT SERVICES</b>	<b>4,249</b>	<b>57,367</b>	<b>58,571</b>	<b>56,237</b>	<b>\$365,926,556</b>	<b>\$490.46</b>
<b>561</b>	<b>ADMINISTRATIVE &amp; SUPPORT SERVICES</b>	<b>3,960</b>	<b>54,493</b>	<b>55,665</b>	<b>53,274</b>	<b>\$337,060,813</b>	<b>\$475.94</b>
5611	Office Administrative Services	558	2,126	2,074	2,095	29,130,508	1,067.90
5612	Facilities Support Services	27	216	214	213	2,076,884	745.38
5613	Employment Services	899	23,143	23,895	21,594	126,814,073	426.40
5614	Business Support Services	392	8,993	8,977	8,955	64,651,603	554.12
5615	Travel Arrangement & Reservation Services	91	389	392	406	3,579,807	695.96
5616	Investigation & Security Services	244	4,362	4,364	4,307	26,671,842	472.27
5617	Services to Buildings & Dwellings	1,521	13,697	14,191	14,181	71,294,801	391.09
5619	Other Support Services	228	1,567	1,558	1,523	12,841,295	637.56
<b>562</b>	<b>WASTE MANAGEMENT &amp; REMEDIATION SERVICES</b>	<b>289</b>	<b>2,874</b>	<b>2,906</b>	<b>2,963</b>	<b>\$28,865,743</b>	<b>\$761.90</b>
5621	Waste Collection Services	117	996	1,007	1,005	9,311,591	714.37
5622	Waste Treatment & disposal Services	32	832	824	824	10,329,063	961.14
5629	Remediation & Other Waste Services	140	1,046	1,075	1,134	9,225,089	654.03
<b>EDUCATION &amp; HEALTH SERVICES</b>		<b>14,972</b>	<b>169,262</b>	<b>169,282</b>	<b>167,749</b>	<b>\$1,544,357,244</b>	<b>\$703.92</b>
<b>61</b>	<b>EDUCATIONAL SERVICES</b>	<b>729</b>	<b>11,283</b>	<b>11,186</b>	<b>10,588</b>	<b>\$91,548,128</b>	<b>\$639.09</b>
6111	Elementary & Secondary Schools	90	3,761	3,786	3,557	27,742,529	576.56
6112	Junior Colleges	4	147	148	140	958,290	508.38
6113	Colleges & Universities	37	4,179	4,049	3,783	35,623,167	684.43
6114	Business, Computer, & Management Training	41	95	93	88	1,533,137	1,281.89
6115	Technical & Trade Schools	100	894	899	879	12,779,176	1,103.68
6116	Other Schools & Instruction	271	1,722	1,715	1,605	7,422,071	339.70
6117	Educational Support Services	186	485	496	536	5,489,758	835.11

TABLE 5. STATEWIDE SUMMARY

NORTH AMERICAN INDUSTRY CLASSIFICATION SYSTEM - INDUSTRY GROUPS		NUMBER OF	EMPLOYMENT			TOTAL EARNINGS	AVERAGE
		EMPLOYING	APR	MAY	JUN	APR - JUN 2013	WEEKLY
		UNITS					EARNINGS
<b>62</b>	<b>HEALTH CARE &amp; SOCIAL ASSISTANCE</b>	<b>14,243</b>	<b>157,979</b>	<b>158,096</b>	<b>157,161</b>	<b>\$1,452,809,116</b>	<b>\$708.45</b>
<b>621</b>	<b>AMBULATORY HEALTH CARE SERVICES</b>	<b>5,244</b>	<b>48,024</b>	<b>48,238</b>	<b>48,434</b>	<b>\$660,026,718</b>	<b>\$1,052.65</b>
6211	Offices of Physicians	2,280	22,179	22,245	22,293	406,168,725	1,404.91
6212	Offices of Dentists	992	6,874	6,885	6,944	74,333,975	828.58
6213	Offices of Other Health Practitioners	1,274	7,152	7,202	7,209	66,656,711	713.37
6214	Outpatient Care Centers	278	3,876	3,889	3,894	40,857,575	808.70
6215	Medical & Diagnostic Laboratories	116	1,026	1,035	1,026	12,616,843	943.17
6216	Home Health Care Services	147	4,332	4,367	4,403	36,001,640	634.11
6219	Other Ambulatory Health Care Services	157	2,585	2,615	2,665	23,391,249	686.33
<b>622</b>	<b>HOSPITALS</b>	<b>109</b>	<b>42,115</b>	<b>42,144</b>	<b>42,079</b>	<b>\$436,617,186</b>	<b>\$797.53</b>
6221	General Medical & Surgical Hospitals	77	37,180	37,189	37,085	390,223,115	807.97
6222	Psychiatric & Substance Abuse Hospitals	12	2,469	2,492	2,508	21,997,499	679.66
6223	Other Hospitals	20	2,466	2,463	2,486	24,396,572	759.27
<b>623</b>	<b>Residential &amp; Mental Health Facilities</b>	<b>589</b>	<b>31,354</b>	<b>31,332</b>	<b>31,254</b>	<b>\$183,274,999</b>	<b>\$450.23</b>
6231	Nursing Care Facilities (Skilled Nursing Facilities)	258	22,876	22,873	22,758	134,845,237	454.23
6232	Residential Mental Health Facilities	171	4,332	4,281	4,300	25,955,943	463.86
6233	Continuing Care & Assisted Living Facilities	119	3,069	3,098	3,132	15,700,188	389.62
6239	Other Residential Care Facilities	41	1,077	1,080	1,064	6,773,631	485.30
<b>624</b>	<b>SOCIAL ASSISTANCE</b>	<b>8,301</b>	<b>36,486</b>	<b>36,382</b>	<b>35,394</b>	<b>\$172,890,213</b>	<b>\$368.53</b>
6241	Individual & Family Services	7,053	22,085	22,082	22,050	105,811,172	368.76
6242	Emergency & Other Relief Services	138	1,332	1,345	1,313	7,919,700	458.05
6243	Vocational Rehabilitation Services	146	3,391	3,428	3,427	19,001,733	427.97
6244	Child Day Care Services	964	9,678	9,527	8,604	40,157,608	333.24
<b>LEISURE &amp; HOSPITALITY</b>		<b>6,708</b>	<b>105,981</b>	<b>107,486</b>	<b>109,210</b>	<b>\$377,272,885</b>	<b>\$269.81</b>
<b>71</b>	<b>ARTS, ENTERTAINMENT &amp; RECREATION</b>	<b>936</b>	<b>10,291</b>	<b>10,705</b>	<b>11,608</b>	<b>\$47,257,406</b>	<b>\$334.49</b>
<b>711</b>	<b>PERFORMING ARTS &amp; SPECTATOR SPORTS</b>	<b>197</b>	<b>2,902</b>	<b>2,434</b>	<b>2,306</b>	<b>\$13,456,416</b>	<b>\$406.35</b>
7111	Performing Arts Companies	49	271	508	473	1,774,923	327.15
7112	Spectator Sports	48	1,754	1,208	1,178	7,997,779	445.81
7113	Performing Arts & Sports Promoters	36	784	616	557	3,047,924	359.41
7114	Agents & Managers for Public Figures	21	15	20	20	179,378	752.63
7115	Independent Artists, Writers, & Performers	43	78	82	78	456,412	442.55
<b>712</b>	<b>MUSEUMS, PARKS, &amp; HISTORICAL SITES</b>	<b>56</b>	<b>520</b>	<b>532</b>	<b>563</b>	<b>\$3,436,323</b>	<b>\$491.02</b>
<b>713</b>	<b>GAMBLING, RECREATIONAL &amp; AMUSEMENT INDUSTRY</b>	<b>683</b>	<b>6,869</b>	<b>7,739</b>	<b>8,739</b>	<b>\$30,364,667</b>	<b>\$300.13</b>
<b>72</b>	<b>ACCOMODATION &amp; FOOD SERVICES</b>	<b>5,772</b>	<b>95,690</b>	<b>96,781</b>	<b>97,602</b>	<b>\$330,015,479</b>	<b>\$262.55</b>

TABLE 5. STATEWIDE SUMMARY

NORTH AMERICAN INDUSTRY CLASSIFICATION SYSTEM - INDUSTRY GROUPS		NUMBER OF	EMPLOYMENT			TOTAL EARNINGS	AVERAGE
		EMPLOYING					WEEKLY
		UNITS	APR	MAY	JUN	APR - JUN 2013	EARNINGS
<b>721</b>	<b>ACCOMODATION</b>	<b>906</b>	<b>10,827</b>	<b>11,200</b>	<b>12,093</b>	<b>\$45,965,998</b>	<b>\$310.89</b>
7211	Travel Accommodation	824	10,307	10,613	10,853	42,657,423	309.82
7212	RV Parks & Recreational Camps	64	417	501	1,180	2,924,202	321.65
7213	Rooming & Boarding Houses	18	103	86	60	384,373	356.23
<b>722</b>	<b>FOOD SERVICES &amp; DRINKING PLACES</b>	<b>4,866</b>	<b>84,863</b>	<b>85,581</b>	<b>85,509</b>	<b>\$284,049,481</b>	<b>\$256.10</b>
7223	Special Food Services	176	2,750	2,433	2,215	10,401,655	324.46
7224	Drinking Places, Alcoholic Beverages	167	1,262	1,246	1,269	3,997,544	244.24
7225	Restaurants & Other Eating Places	4,523	80,851	81,902	82,025	269,650,282	254.22
722511	Full-Service Restaurants	2,073	36,247	36,578	36,704	130,503,866	274.96
722513	Limited-Service Eating Places	2,050	40,610	41,415	41,458	125,300,785	234.17
722514	Cafeterias, Grill Buffets, & Buffets	98	1,949	1,810	1,789	7,077,426	294.39
722515	Snack & Nonalcoholic Beverage Bars	302	2,045	2,099	2,074	6,768,205	251.19
<b>OTHER SERVICES</b>		<b>5,357</b>	<b>23,999</b>	<b>24,079</b>	<b>24,514</b>	<b>\$173,090,036</b>	<b>\$550.25</b>
<b>811</b>	<b>REPAIR &amp; MAINTENANCE</b>	<b>2,242</b>	<b>9,419</b>	<b>9,422</b>	<b>9,410</b>	<b>\$78,965,169</b>	<b>\$645.03</b>
8111	Automotive Repair & Maintenance	1,450	6,147	6,147	6,198	47,291,758	590.17
8112	Electronic Equipment Repair & Maintenance	169	621	631	624	6,472,097	796.14
8113	Commercial Machinery Repair & Maintenance	434	2,017	1,999	1,946	20,882,006	808.27
8114	Household Goods Repair & Maintenance	189	634	645	642	4,319,308	518.88
<b>812</b>	<b>PERSONAL &amp; LAUNDRY SERVICES</b>	<b>1,331</b>	<b>8,162</b>	<b>8,193</b>	<b>8,167</b>	<b>\$44,286,483</b>	<b>\$416.77</b>
8121	Personal Care Services	613	2,876	2,889	2,854	12,600,229	337.36
8122	Death Care Services	247	1,602	1,605	1,613	11,594,842	555.13
8123	Drycleaning & Laundry Service	266	2,959	2,967	2,957	16,486,138	428.29
8129	Other Personal Services	205	725	732	743	3,605,274	378.18
<b>813</b>	<b>MEMBERSHIP ASSOCIATIONS &amp; ORGANIZATIONS</b>	<b>1,069</b>	<b>5,456</b>	<b>5,509</b>	<b>5,974</b>	<b>\$45,205,084</b>	<b>\$615.85</b>
8131	Religious Organizations	59	250	255	257	1,604,872	486.03
8132	Grantmaking & Giving Organizations	108	456	455	443	5,367,011	914.73
8133	Social Advocacy Organizations	221	1,679	1,637	1,617	14,425,114	674.82
8134	Civic & Social Organizations	195	1,133	1,159	1,531	5,183,396	312.89
8139	Professional & Similar Organizations	486	1,938	2,003	2,126	18,624,691	708.42
<b>814</b>	<b>PRIVATE HOUSEHOLDS</b>	<b>715</b>	<b>962</b>	<b>955</b>	<b>963</b>	<b>\$4,633,300</b>	<b>\$371.26</b>
<b>LOCAL GOVERNMENT</b>		<b>1,960</b>	<b>118,264</b>	<b>118,510</b>	<b>113,593</b>	<b>\$1,195,399,839</b>	<b>\$787.35</b>
<b>STATE GOVERNMENT</b>		<b>1,128</b>	<b>71,533</b>	<b>71,252</b>	<b>68,712</b>	<b>\$791,205,452</b>	<b>\$863.30</b>
<b>NONCLASSIFIABLE ESTABLISHMENTS</b>		<b>0</b>	<b>0</b>	<b>0</b>	<b>0</b>	<b>\$0</b>	<b>\$0.00</b>

TABLE 6. COUNTY SUMMARY

NORTH AMERICAN INDUSTRY CLASSIFICATION SYSTEM - INDUSTRY GROUPS	NUMBER OF EMPLOYING UNITS	EMPLOYMENT			TOTAL EARNINGS	AVERAGE WEEKLY EARNINGS
		APR	MAY	JUN	APR - JUN 2013	
<b>ARKANSAS COUNTY - TOTAL</b>	<b>750</b>	<b>9,670</b>	<b>9,681</b>	<b>9,666</b>	<b>\$86,267,717</b>	<b>\$686.08</b>
Natural Resources & Mining	48	168	183	184	2,103,975	907.54
Construction	49	290	300	310	2,452,663	628.89
Manufacturing	30	3,382	3,378	3,366	34,026,884	775.46
Trade, Transportation & Utilities	213	2,393	2,407	2,429	22,786,436	727.40
Wholesale Trade	44	503	511	515	7,103,266	1,072.08
Retail Trade	97	1,029	1,039	1,052	6,019,424	445.22
Transportation, Warehousing & Utilities	72	861	857	862	9,663,746	864.38
Information	10	84	86	88	800,825	716.30
Financial Activities	45	331	325	320	3,203,355	757.41
Professional & Business Services	46	330	319	326	3,614,287	855.45
Education & Health Services	160	1,113	1,109	1,061	7,337,294	515.75
Leisure & Hospitality	59	481	496	508	1,569,108	243.84
Other Services	43	108	110	109	740,834	522.82
Local Government	32	770	767	774	6,105,848	609.71
State Government	15	220	201	191	1,526,208	575.49
<b>ASHLEY COUNTY - TOTAL</b>	<b>587</b>	<b>7,332</b>	<b>7,463</b>	<b>7,456</b>	<b>\$72,211,497</b>	<b>\$748.92</b>
Natural Resources & Mining	43	310	310	358	2,509,732	592.20
Construction	46	597	684	631	6,242,875	753.49
Manufacturing	26	2,023	2,042	2,037	31,498,820	1,191.24
Trade, Transportation & Utilities	127	1,286	1,298	1,312	8,997,020	532.91
Wholesale Trade	26	224	227	232	2,358,711	796.95
Retail Trade	77	811	804	823	4,044,288	382.81
Transportation, Warehousing & Utilities	24	251	267	257	2,594,021	772.41
Information	6	39	36	36	271,822	565.12
Financial Activities	36	220	215	218	1,871,342	661.33
Professional & Business Services	47	297	303	310	2,020,324	512.34
Education & Health Services	143	936	935	910	6,846,464	568.12
Leisure & Hospitality	28	380	400	395	1,115,116	219.01
Other Services	42	136	125	138	899,819	520.43
Local Government	32	922	928	934	8,780,971	727.87
State Government	11	186	187	177	1,157,192	485.54

TABLE 6. COUNTY SUMMARY

NORTH AMERICAN INDUSTRY CLASSIFICATION SYSTEM - INDUSTRY GROUPS	NUMBER OF EMPLOYING UNITS	EMPLOYMENT			TOTAL EARNINGS	AVERAGE WEEKLY EARNINGS
		APR	MAY	JUN	APR - JUN 2013	
<b>BAXTER COUNTY - TOTAL</b>	<b>1,253</b>	<b>14,153</b>	<b>14,154</b>	<b>13,832</b>	<b>\$111,560,040</b>	<b>\$610.95</b>
Natural Resources & Mining	6	70	72	72	497,195	536.16
Construction	120	532	518	548	3,910,635	564.74
Manufacturing	58	2,231	2,254	2,280	20,990,783	716.04
Trade, Transportation & Utilities	267	2,599	2,589	2,580	15,794,063	469.20
Wholesale Trade	33	232	235	225	1,987,071	662.65
Retail Trade	210	2,187	2,175	2,173	12,010,246	424.12
Transportation, Warehousing & Utilities	24	180	179	182	1,796,746	766.42
Information	18	196	200	201	1,905,580	736.60
Financial Activities	105	721	713	730	7,946,270	847.39
Professional & Business Services	143	765	744	752	5,764,618	588.37
Education & Health Services	265	3,642	3,640	3,603	33,556,692	711.42
Leisure & Hospitality	123	1,445	1,459	1,538	5,075,027	263.66
Other Services	97	347	350	355	1,961,624	430.31
Local Government	39	1,256	1,263	865	11,218,870	765.06
State Government	12	349	352	308	2,938,683	672.11
<b>BENTON COUNTY - TOTAL</b>	<b>5,638</b>	<b>98,259</b>	<b>98,498</b>	<b>98,256</b>	<b>\$1,150,137,917</b>	<b>\$899.68</b>
Natural Resources & Mining	44	638	646	665	7,984,893	945.44
Construction	517	3,374	3,419	3,452	34,372,334	774.24
Manufacturing	199	10,217	10,213	10,258	99,657,936	749.41
Trade, Transportation & Utilities	1,516	22,298	22,280	22,377	242,748,443	836.66
Wholesale Trade	696	4,273	4,325	4,349	95,561,644	1,703.30
Retail Trade	655	10,234	10,235	10,265	64,614,068	485.16
Transportation, Warehousing & Utilities	165	7,791	7,720	7,763	82,572,731	818.74
Information	77	797	802	791	9,619,451	928.82
Financial Activities	575	2,917	2,919	2,929	36,326,458	956.42
Professional & Business Services	1,098	28,078	27,954	27,937	477,846,365	1,313.25
Education & Health Services	655	9,296	9,289	9,253	84,273,018	698.60
Leisure & Hospitality	503	9,864	10,120	10,351	40,816,244	310.50
Other Services	357	1,654	1,663	1,658	12,391,221	574.78
Local Government	80	7,897	7,957	7,590	92,774,070	913.21
State Government	17	1,229	1,236	995	11,327,484	755.50

TABLE 6. COUNTY SUMMARY

NORTH AMERICAN INDUSTRY CLASSIFICATION SYSTEM - INDUSTRY GROUPS	NUMBER OF EMPLOYING UNITS	EMPLOYMENT			TOTAL EARNINGS	AVERAGE WEEKLY EARNINGS
		APR	MAY	JUN	APR - JUN 2013	
<b>BOONE COUNTY - TOTAL</b>	<b>994</b>	<b>13,855</b>	<b>13,770</b>	<b>13,788</b>	<b>\$118,938,786</b>	<b>\$662.77</b>
Natural Resources & Mining	4	4	4	3	18,739	\$393.13
Construction	84	504	494	501	3,727,669	573.87
Manufacturing	61	1,737	1,740	1,740	16,536,610	731.48
Trade, Transportation & Utilities	243	3,578	3,556	3,546	33,930,503	733.16
Wholesale Trade	47	296	303	301	2,449,678	628.12
Retail Trade	146	1,789	1,784	1,779	10,509,809	453.17
Transportation, Warehousing & Utilities	50	1,493	1,469	1,466	20,971,016	1,092.92
Information	19	320	310	308	2,993,133	736.38
Financial Activities	90	443	450	454	4,661,672	798.64
Professional & Business Services	109	1,146	1,091	1,071	10,394,457	725.13
Education & Health Services	171	1,526	1,491	1,507	10,512,472	536.24
Leisure & Hospitality	81	1,140	1,221	1,213	3,865,472	249.59
Other Services	57	269	272	272	2,008,514	570.11
Local Government	56	2,356	2,380	2,416	22,576,790	728.47
State Government	19	832	761	757	7,712,755	757.39
<b>BRADLEY COUNTY - TOTAL</b>	<b>365</b>	<b>3,342</b>	<b>3,322</b>	<b>3,320</b>	<b>\$25,242,504</b>	<b>\$583.45</b>
Natural Resources & Mining	41	239	222	195	1,750,385	615.75
Construction	16	94	98	102	789,035	619.34
Manufacturing	10	497	507	522	5,072,542	767.09
Trade, Transportation & Utilities	73	507	506	552	2,950,493	435.07
Wholesale Trade	15	98	101	101	960,718	739.01
Retail Trade	42	364	365	377	1,604,285	334.74
Transportation, Warehousing & Utilities	16	45	40	74	385,490	559.49
Information	4	12	12	12	106,181	680.65
Financial Activities	24	137	131	133	1,132,237	651.58
Professional & Business Services	30	85	82	84	628,786	578.11
Education & Health Services	100	592	593	575	4,264,604	559.17
Leisure & Hospitality	13	172	169	168	492,815	223.43
Other Services	29	104	101	106	533,718	396.03
Local Government	14	505	505	474	4,636,906	721.06
State Government	11	398	396	397	2,884,802	558.96

TABLE 6. COUNTY SUMMARY

NORTH AMERICAN INDUSTRY CLASSIFICATION SYSTEM - INDUSTRY GROUPS	NUMBER OF EMPLOYING UNITS	EMPLOYMENT			TOTAL EARNINGS	AVERAGE WEEKLY EARNINGS
		APR	MAY	JUN	APR - JUN 2013	
<b>CALHOUN COUNTY - TOTAL</b>	<b>113</b>	<b>2,632</b>	<b>2,629</b>	<b>2,603</b>	<b>\$30,236,158</b>	<b>\$887.28</b>
Natural Resources & Mining	12	49	54	50	436,660	658.61
Construction	11	107	110	107	833,284	593.51
Manufacturing	10	1,803	1,786	1,802	24,101,071	1,031.68
Trade, Transportation & Utilities	24	228	229	225	1,890,612	639.73
Retail Trade	14	77	79	76	362,846	360.92
Transportation, Warehousing & Utilities	10	151	150	149	1,527,766	783.47
Financial Activities	6	82	83	80	594,622	560.08
Education & Health Services	14	51	50	45	461,894	730.07
Leisure & Hospitality	7	16	17	16	58,800	276.92
Other Services	3	6	6	5	28,888	392.14
Local Government	11	196	202	180	938,623	374.75
State Government	8	85	83	85	799,150	728.93
Other	7	9	9	8	92,554	821.49
<b>CARROLL COUNTY - TOTAL</b>	<b>787</b>	<b>9,793</b>	<b>10,174</b>	<b>10,289</b>	<b>\$64,495,822</b>	<b>\$491.92</b>
Natural Resources & Mining	15	243	246	255	1,787,277	554.37
Trade, Transportation & Utilities	195	1,507	1,587	1,606	10,237,813	502.67
Wholesale Trade	24	168	166	164	1,151,645	533.66
Retail Trade	151	1,104	1,141	1,157	5,894,006	399.81
Transportation, Warehousing & Utilities	20	235	280	285	3,192,162	920.82
Information	9	70	69	67	541,681	606.81
Financial Activities	62	349	360	368	3,210,896	688.00
Professional & Business Services	62	214	211	208	1,655,806	603.65
Education & Health Services	86	965	946	936	7,739,038	627.30
Leisure & Hospitality	181	1,440	1,753	1,819	5,650,389	260.16
Other Services	45	128	126	127	736,530	446.11
Local Government	24	1,055	1,056	1,042	7,291,143	533.64
State Government	10	114	117	118	937,875	620.15
Other	98	3,708	3,703	3,743	24,707,374	511.18

TABLE 6. COUNTY SUMMARY

NORTH AMERICAN INDUSTRY CLASSIFICATION SYSTEM - INDUSTRY GROUPS	NUMBER OF EMPLOYING UNITS	EMPLOYMENT			TOTAL EARNINGS	AVERAGE WEEKLY EARNINGS
		APR	MAY	JUN	APR - JUN 2013	
<b>CHICOT COUNTY - TOTAL</b>	<b>453</b>	<b>3,285</b>	<b>3,290</b>	<b>3,305</b>	<b>\$23,396,848</b>	<b>\$546.49</b>
Natural Resources & Mining	56	259	270	268	2,032,009	588.36
Construction	16	152	157	147	1,434,271	725.85
Trade, Transportation & Utilities	67	485	486	486	3,260,591	516.43
Wholesale Trade	11	64	65	61	572,929	695.87
Retail Trade	44	362	362	364	1,983,466	420.70
Transportation, Warehousing & Utilities	12	59	59	61	704,196	907.86
Information	5	8	8	8	71,407	686.61
Financial Activities	28	145	145	143	1,423,955	758.90
Professional & Business Services	17	43	44	47	583,946	1,005.65
Education & Health Services	190	778	756	754	4,708,344	474.89
Leisure & Hospitality	22	194	194	219	579,447	220.29
Local Government	17	633	637	635	5,053,524	612.18
State Government	10	306	308	309	2,434,675	608.72
Other	25	282	285	289	1,814,679	489.22
<b>CLARK COUNTY - TOTAL</b>	<b>613</b>	<b>9,284</b>	<b>9,242</b>	<b>8,895</b>	<b>\$72,910,177</b>	<b>\$613.60</b>
Natural Resources & Mining	37	214	222	239	2,040,187	697.50
Construction	25	74	71	75	426,321	447.19
Manufacturing	32	1,389	1,395	1,370	16,993,753	944.06
Trade, Transportation & Utilities	137	1,591	1,618	1,651	13,052,867	619.79
Wholesale Trade	16	211	209	189	2,179,468	825.87
Retail Trade	98	1,194	1,224	1,266	8,943,074	560.20
Transportation, Warehousing & Utilities	23	186	185	196	1,930,325	785.64
Information	5	18	19	18	210,742	884.23
Financial Activities	75	310	317	315	2,770,334	678.67
Professional & Business Services	47	588	567	563	5,081,780	682.61
Education & Health Services	108	1,475	1,414	1,367	9,957,245	539.90
Leisure & Hospitality	62	1,146	1,152	1,128	3,491,237	235.16
Other Services	44	184	182	185	1,135,782	475.69
Local Government	27	1,024	1,051	948	8,135,651	621.06
State Government	14	1,271	1,234	1,036	9,614,278	626.57



TABLE 6. COUNTY SUMMARY

NORTH AMERICAN INDUSTRY CLASSIFICATION SYSTEM - INDUSTRY GROUPS	NUMBER OF EMPLOYING UNITS	EMPLOYMENT			TOTAL EARNINGS	AVERAGE WEEKLY EARNINGS
		APR	MAY	JUN	APR - JUN 2013	
<b>CLAY COUNTY - TOTAL</b>	<b>415</b>	<b>3,590</b>	<b>3,614</b>	<b>3,649</b>	<b>\$26,092,763</b>	<b>\$554.81</b>
Natural Resources & Mining	62	262	281	295	2,069,144	569.80
Construction	29	132	143	146	941,252	515.94
Manufacturing	16	369	374	383	3,146,371	644.84
Trade, Transportation & Utilities	110	932	897	914	7,544,788	634.74
Wholesale Trade	25	312	278	268	3,109,913	836.45
Retail Trade	51	409	410	429	2,423,879	448.20
Transportation, Warehousing & Utilities	34	211	209	217	2,010,996	728.53
Information	5	46	47	45	360,055	602.10
Financial Activities	25	111	112	116	917,371	624.49
Professional & Business Services	27	84	94	96	543,762	457.97
Education & Health Services	54	476	464	454	2,936,573	486.13
Leisure & Hospitality	21	227	226	273	604,247	192.07
Other Services	32	79	85	85	589,872	546.68
Local Government	23	812	835	787	6,015,700	570.35
State Government	11	60	56	55	423,628	571.70
<b>CLEBURNE COUNTY - TOTAL</b>	<b>667</b>	<b>6,815</b>	<b>6,868</b>	<b>7,099</b>	<b>\$51,479,662</b>	<b>\$571.64</b>
Natural Resources & Mining	27	288	292	332	3,770,800	954.15
Construction	63	362	384	385	3,232,500	659.56
Manufacturing	33	1,199	1,199	1,204	10,007,427	641.15
Trade, Transportation & Utilities	168	1,547	1,537	1,592	12,333,068	608.66
Wholesale Trade	38	263	257	256	3,105,594	923.55
Retail Trade	103	966	965	986	5,576,546	441.17
Transportation, Warehousing & Utilities	27	318	315	350	3,650,928	857.09
Information	7	50	49	52	372,864	569.84
Financial Activities	65	220	219	223	1,945,798	678.29
Professional & Business Services	69	295	272	311	2,086,590	548.43
Education & Health Services	83	853	849	836	5,549,828	504.62
Leisure & Hospitality	78	893	951	1,065	3,074,205	243.87
Other Services	47	171	171	171	975,437	438.79
Local Government	18	835	841	826	7,377,160	680.42
State Government	9	102	104	102	753,985	564.92

TABLE 6. COUNTY SUMMARY

NORTH AMERICAN INDUSTRY CLASSIFICATION SYSTEM - INDUSTRY GROUPS	NUMBER OF EMPLOYING UNITS	EMPLOYMENT			TOTAL EARNINGS	AVERAGE WEEKLY EARNINGS
		APR	MAY	JUN	APR - JUN 2013	
<b>CLEVELAND COUNTY - TOTAL</b>	<b>131</b>	<b>1,061</b>	<b>1,055</b>	<b>1,036</b>	<b>\$7,516,331</b>	<b>\$550.30</b>
Natural Resources & Mining	14	168	168	173	1,228,379	556.92
Construction	6	10	10	10	58,731	451.78
Manufacturing	7	100	103	99	724,541	553.65
Trade, Transportation & Utilities	38	214	218	219	1,466,361	519.80
Retail Trade	18	74	72	73	304,158	320.50
Other Trade, Transportation & Utilities	20	140	146	146	1,162,203	620.83
Financial Activities	3	18	18	18	128,223	547.96
Education & Health Services	31	140	141	142	720,896	393.29
Other Services	5	12	12	12	86,140	552.18
Local Government	11	318	305	289	2,496,631	631.74
State Government	7	54	54	56	409,406	576.09
Other	9	27	26	18	197,023	640.38
<b>COLUMBIA COUNTY - TOTAL</b>	<b>755</b>	<b>8,341</b>	<b>8,286</b>	<b>8,265</b>	<b>\$74,122,798</b>	<b>\$687.18</b>
Natural Resources & Mining	46	384	391	389	5,621,636	1,114.52
Construction	43	329	343	335	3,065,619	702.53
Manufacturing	32	1,824	1,814	1,812	23,441,752	992.59
Trade, Transportation & Utilities	166	1,428	1,432	1,422	9,648,260	519.97
Wholesale Trade	27	195	197	190	1,961,224	777.65
Retail Trade	104	1,003	1,002	997	5,222,376	401.45
Transportation, Warehousing & Utilities	35	230	233	235	2,464,660	814.85
Information	9	53	53	56	485,391	691.44
Financial Activities	76	379	380	374	3,863,846	786.99
Professional & Business Services	62	300	314	315	2,728,358	677.74
Education & Health Services	180	1,020	1,015	990	6,074,869	463.44
Leisure & Hospitality	49	700	635	651	2,048,501	238.03
Other Services	53	187	188	184	907,787	374.76
Local Government	26	1,124	1,136	1,141	10,446,028	708.80
State Government	13	613	585	596	5,790,751	744.89

TABLE 6. COUNTY SUMMARY

NORTH AMERICAN INDUSTRY CLASSIFICATION SYSTEM - INDUSTRY GROUPS	NUMBER OF EMPLOYING UNITS	EMPLOYMENT			TOTAL EARNINGS	AVERAGE WEEKLY EARNINGS
		APR	MAY	JUN	APR - JUN 2013	
<b>CONWAY COUNTY - TOTAL</b>	<b>574</b>	<b>6,590</b>	<b>6,594</b>	<b>6,593</b>	<b>\$59,026,319</b>	<b>\$688.75</b>
Natural Resources & Mining	33	299	290	291	3,368,373	883.31
Construction	51	500	495	510	6,021,315	923.28
Manufacturing	17	763	756	766	11,392,674	1,150.58
Trade, Transportation & Utilities	134	1,597	1,604	1,595	13,012,341	626.12
Wholesale Trade	24	209	212	212	2,167,597	790.23
Retail Trade	82	804	810	801	4,329,720	413.73
Transportation, Warehousing & Utilities	28	584	582	582	6,515,024	860.11
Information	3	10	10	10	78,256	601.97
Financial Activities	34	162	159	161	1,477,682	707.48
Professional & Business Services	42	415	411	409	2,804,567	524.05
Education & Health Services	153	870	872	857	6,131,873	544.46
Leisure & Hospitality	40	489	482	515	1,402,189	217.75
Other Services	30	113	112	115	927,117	629.26
Local Government	27	951	973	951	9,116,548	731.76
State Government	10	421	430	413	3,293,384	601.28
<b>CRAIGHEAD COUNTY - TOTAL</b>	<b>2,699</b>	<b>44,485</b>	<b>44,573</b>	<b>44,507</b>	<b>\$390,513,075</b>	<b>\$674.72</b>
Natural Resources & Mining	76	306	310	320	2,348,842	579.10
Construction	209	1,875	1,891	1,912	17,342,115	704.83
Manufacturing	110	5,740	5,715	5,775	59,192,984	792.80
Trade, Transportation & Utilities	748	9,071	9,067	9,109	69,869,581	591.76
Wholesale Trade	189	1,757	1,766	1,781	20,296,857	883.09
Retail Trade	445	6,007	5,988	6,011	35,774,084	458.49
Transportation, Warehousing & Utilities	114	1,307	1,313	1,317	13,798,640	808.81
Information	28	499	490	488	4,840,181	756.24
Financial Activities	265	1,544	1,561	1,572	17,088,119	843.15
Professional & Business Services	362	3,971	3,995	4,031	27,917,549	537.01
Education & Health Services	452	9,131	9,212	9,156	100,195,412	840.83
Leisure & Hospitality	238	4,803	4,738	4,761	16,340,880	263.67
Other Services	152	829	836	838	5,216,572	480.95
Local Government	36	3,974	4,013	3,810	41,114,775	804.27
State Government	23	2,742	2,745	2,735	29,046,065	815.24

TABLE 6. COUNTY SUMMARY

NORTH AMERICAN INDUSTRY CLASSIFICATION SYSTEM - INDUSTRY GROUPS	NUMBER OF EMPLOYING UNITS	EMPLOYMENT			TOTAL EARNINGS	AVERAGE WEEKLY EARNINGS
		APR	MAY	JUN	APR - JUN 2013	
<b>CRAWFORD COUNTY - TOTAL</b>	<b>1,311</b>	<b>19,443</b>	<b>19,227</b>	<b>19,116</b>	<b>\$157,999,419</b>	<b>\$630.97</b>
Natural Resources & Mining	31	369	332	301	4,138,058	953.03
Construction	164	755	781	801	6,523,622	644.18
Manufacturing	71	4,355	4,232	4,195	37,443,170	676.01
Trade, Transportation & Utilities	325	6,047	5,936	6,002	49,979,167	641.29
Retail Trade	164	1,851	1,858	1,864	10,608,221	439.27
Other Trade, Transportation & Utilities	161	4,196	4,078	4,138	39,370,946	732.00
Information	11	120	120	118	987,047	636.26
Financial Activities	130	532	537	532	4,770,966	687.69
Professional & Business Services	159	1,380	1,374	1,377	11,384,335	635.96
Education & Health Services	184	1,583	1,559	1,541	12,175,733	600.00
Leisure & Hospitality	98	1,551	1,589	1,580	5,033,766	246.11
Other Services	85	381	387	384	2,804,506	561.80
Local Government	43	2,228	2,232	2,131	21,454,343	751.18
State Government	10	142	148	154	1,304,706	678.12
<b>CRITTENDEN COUNTY - TOTAL</b>	<b>1,337</b>	<b>16,199</b>	<b>16,330</b>	<b>16,261</b>	<b>\$132,526,556</b>	<b>\$626.83</b>
Natural Resources & Mining	52	263	266	297	1,923,131	537.29
Construction	50	322	434	341	3,057,938	643.28
Manufacturing	41	1,521	1,544	1,514	16,196,238	816.25
Trade, Transportation & Utilities	311	4,285	4,285	4,270	36,045,491	647.83
Wholesale Trade	64	660	670	668	7,750,069	895.13
Retail Trade	164	1,868	1,881	1,867	10,282,493	422.52
Transportation, Warehousing & Utilities	83	1,757	1,734	1,735	18,012,929	795.41
Information	6	68	68	69	644,156	725.13
Financial Activities	99	485	482	489	4,387,085	695.33
Professional & Business Services	122	1,403	1,425	1,477	9,852,751	528.16
Education & Health Services	404	2,482	2,505	2,434	18,801,165	584.66
Leisure & Hospitality	120	2,107	2,144	2,178	8,466,974	303.92
Other Services	75	412	410	410	2,912,577	545.56
Local Government	43	2,319	2,318	2,325	26,049,154	863.45
State Government	14	532	449	457	4,189,896	672.39

TABLE 6. COUNTY SUMMARY

NORTH AMERICAN INDUSTRY CLASSIFICATION SYSTEM - INDUSTRY GROUPS	NUMBER OF EMPLOYING UNITS	EMPLOYMENT			TOTAL EARNINGS	AVERAGE WEEKLY EARNINGS
		APR	MAY	JUN	APR - JUN 2013	
<b>CROSS COUNTY - TOTAL</b>	<b>523</b>	<b>4,990</b>	<b>5,002</b>	<b>4,997</b>	<b>\$38,648,304</b>	<b>\$595.03</b>
Natural Resources & Mining	33	188	196	202	1,363,158	536.82
Construction	24	81	84	85	554,769	512.09
Manufacturing	12	688	683	697	5,790,151	646.13
Trade, Transportation & Utilities	133	1,213	1,209	1,221	9,248,181	585.83
Wholesale Trade	28	337	340	332	3,640,628	832.65
Retail Trade	74	738	731	744	4,352,740	453.90
Transportation, Warehousing & Utilities	31	138	138	145	1,254,813	687.82
Information	5	31	33	31	239,399	581.54
Financial Activities	46	308	309	313	2,538,212	629.83
Professional & Business Services	43	136	132	130	988,056	572.90
Education & Health Services	130	861	861	854	6,223,775	557.55
Leisure & Hospitality	33	298	301	300	862,405	221.38
Other Services	38	74	73	75	495,985	515.58
Local Government	16	731	735	698	6,828,629	728.21
State Government	10	381	386	391	3,515,584	700.59
<b>DALLAS COUNTY - TOTAL</b>	<b>262</b>	<b>2,723</b>	<b>2,718</b>	<b>2,636</b>	<b>\$18,966,110</b>	<b>\$541.88</b>
Natural Resources & Mining	33	164	173	176	1,335,796	600.90
Construction	19	60	65	59	1,013,280	1,270.84
Manufacturing	11	522	515	509	4,790,086	715.01
Trade, Transportation & Utilities	61	466	463	460	2,835,436	471.08
Retail Trade	40	343	339	341	1,853,753	418.17
Other Trade, Transportation, & Utilities	21	123	124	119	981,683	618.97
Information	3	15	15	15	110,433	566.32
Financial Activities	14	67	69	68	638,916	722.76
Professional & Business Services	13	34	30	29	181,504	450.38
Education & Health Services	60	811	803	784	4,609,181	443.56
Leisure & Hospitality	12	125	125	127	370,709	226.92
Other Services	14	62	62	61	323,540	403.58
Local Government	15	344	346	295	2,406,985	563.92
State Government	7	53	52	53	350,244	511.55

TABLE 6. COUNTY SUMMARY

NORTH AMERICAN INDUSTRY CLASSIFICATION SYSTEM - INDUSTRY GROUPS	NUMBER OF EMPLOYING UNITS	EMPLOYMENT			TOTAL EARNINGS	AVERAGE WEEKLY EARNINGS
		APR	MAY	JUN	APR - JUN 2013	
<b>DESHA COUNTY - TOTAL</b>	<b>517</b>	<b>4,500</b>	<b>4,542</b>	<b>4,615</b>	<b>\$36,315,244</b>	<b>\$613.64</b>
Natural Resources & Mining	67	324	328	352	2,197,217	505.03
Construction	22	109	111	123	922,072	620.37
Manufacturing	14	812	830	869	10,395,926	955.42
Trade, Transportation & Utilities	111	873	883	901	6,516,674	565.99
Wholesale Trade	21	215	219	226	2,680,309	937.17
Retail Trade	65	489	494	502	2,473,739	384.42
Transportation, Warehousing & Utilities	25	169	170	173	1,362,626	614.16
Information	6	28	28	27	244,280	679.18
Financial Activities	31	212	211	216	1,571,185	567.42
Professional & Business Services	39	92	95	95	642,282	525.60
Education & Health Services	136	755	767	767	4,696,286	473.46
Leisure & Hospitality	38	309	324	319	911,804	221.03
Other Services	24	58	59	55	237,425	318.55
Local Government	19	806	783	770	7,029,596	687.67
State Government	10	122	123	121	950,497	599.30
<b>DREW COUNTY - TOTAL</b>	<b>527</b>	<b>6,501</b>	<b>6,558</b>	<b>6,401</b>	<b>\$49,530,875</b>	<b>\$587.37</b>
Natural Resources & Mining	44	276	310	261	2,372,734	646.46
Construction	19	105	114	116	860,108	592.50
Manufacturing	22	762	779	782	6,406,846	636.46
Trade, Transportation & Utilities	129	1,229	1,230	1,224	7,748,309	485.49
Wholesale Trade	19	169	172	174	1,682,196	753.78
Retail Trade	87	951	944	938	5,055,320	411.79
Transportation, Warehousing & Utilities	23	109	114	112	1,010,793	696.30
Information	8	51	51	53	439,509	654.36
Financial Activities	47	226	224	225	2,195,634	750.64
Professional & Business Services	37	352	357	329	3,988,502	886.73
Education & Health Services	119	873	880	889	5,922,331	517.29
Leisure & Hospitality	44	674	657	638	1,979,473	232.00
Other Services	20	76	74	72	392,105	407.59
Local Government	22	1,229	1,232	1,230	11,176,754	698.79
State Government	16	648	650	582	6,048,570	742.46

TABLE 6. COUNTY SUMMARY

NORTH AMERICAN INDUSTRY CLASSIFICATION SYSTEM - INDUSTRY GROUPS	NUMBER OF EMPLOYING UNITS	EMPLOYMENT			TOTAL EARNINGS	AVERAGE WEEKLY EARNINGS
		APR	MAY	JUN	APR - JUN 2013	
<b>FAULKNER COUNTY - TOTAL</b>	<b>2,800</b>	<b>41,000</b>	<b>40,939</b>	<b>40,354</b>	<b>\$393,219,500</b>	<b>\$742.01</b>
Natural Resources & Mining	58	1,371	1,381	1,375	23,459,311	1,311.77
Construction	305	2,628	2,705	2,777	25,299,665	719.90
Manufacturing	101	3,203	3,210	3,206	38,923,947	933.82
Trade, Transportation & Utilities	670	6,962	6,909	6,970	50,652,111	560.86
Wholesale Trade	170	816	831	824	10,045,590	938.17
Retail Trade	409	5,332	5,255	5,299	30,163,249	438.17
Transportation, Warehousing & Utilities	91	814	823	847	10,443,272	970.20
Information	24	325	331	326	3,395,806	798.01
Financial Activities	329	1,572	1,599	1,597	16,368,985	792.25
Professional & Business Services	402	6,169	6,082	6,223	90,450,144	1,129.86
Education & Health Services	433	6,050	6,092	5,985	50,238,251	639.57
Leisure & Hospitality	246	4,892	4,808	4,787	15,392,543	245.19
Other Services	176	765	789	762	5,640,022	561.98
Local Government	38	3,747	3,733	3,446	42,270,377	892.80
State Government	18	3,316	3,300	2,900	31,128,338	754.88
<b>FRANKLIN COUNTY - TOTAL</b>	<b>343</b>	<b>4,260</b>	<b>4,320</b>	<b>4,292</b>	<b>\$34,783,888</b>	<b>\$623.61</b>
Natural Resources & Mining	17	265	265	267	4,062,628	1,176.32
Construction	33	101	109	107	848,953	618.02
Manufacturing	15	875	890	890	7,466,387	648.97
Trade, Transportation & Utilities	90	883	893	893	6,996,414	604.93
Wholesale Trade	14	37	38	37	211,824	436.45
Retail Trade	53	578	578	580	2,849,307	378.76
Transportation, Warehousing & Utilities	23	268	277	276	3,935,283	1,106.14
Information	5	22	20	21	190,596	698.15
Financial Activities	30	194	198	198	2,092,751	818.55
Professional & Business Services	28	139	103	104	695,171	463.65
Education & Health Services	55	574	579	573	3,839,583	513.36
Leisure & Hospitality	26	293	325	324	903,188	221.26
Other Services	16	38	47	40	269,869	498.22
Local Government	19	762	776	769	6,156,517	615.84
State Government	9	114	115	106	1,261,831	869.23

TABLE 6. COUNTY SUMMARY

NORTH AMERICAN INDUSTRY CLASSIFICATION SYSTEM - INDUSTRY GROUPS	NUMBER OF EMPLOYING UNITS	EMPLOYMENT			TOTAL EARNINGS	AVERAGE WEEKLY EARNINGS
		APR	MAY	JUN	APR - JUN 2013	
<b>FULTON COUNTY - TOTAL</b>	<b>206</b>	<b>1,975</b>	<b>2,003</b>	<b>1,998</b>	<b>\$13,590,088</b>	<b>\$524.79</b>
Construction	10	36	35	35	326,525	710.87
Manufacturing	12	142	139	137	620,152	342.37
Trade, Transportation & Utilities	49	320	334	340	2,389,203	554.68
Retail Trade	32	194	200	202	903,501	349.83
Other Trade, Transportation & Utilities	17	126	134	138	1,485,702	861.44
Information	4	29	32	30	192,524	488.23
Financial Activities	17	96	111	110	851,514	619.88
Professional & Business Services	17	52	52	51	460,666	685.86
Education & Health Services	48	484	472	467	2,801,316	454.29
Leisure & Hospitality	17	153	168	177	476,146	220.64
Local Government	12	529	528	519	4,419,458	647.13
State Government	10	114	113	114	963,320	651.92
Other	10	20	19	18	89,264	361.39
<b>GARLAND COUNTY - TOTAL</b>	<b>3,117</b>	<b>36,528</b>	<b>35,791</b>	<b>35,641</b>	<b>\$289,955,588</b>	<b>\$619.79</b>
Natural Resources & Mining	32	306	303	314	3,886,497	971.71
Construction	350	1,723	1,781	1,811	14,432,714	626.65
Manufacturing	97	2,492	2,519	2,585	28,108,406	853.94
Trade, Transportation & Utilities	712	7,123	7,126	7,105	49,092,345	530.53
Wholesale Trade	142	935	925	916	9,442,293	784.94
Retail Trade	511	5,641	5,640	5,631	33,675,446	459.51
Transportation, Warehousing & Utilities	59	547	561	558	5,974,606	827.58
Information	34	272	279	272	2,673,433	749.63
Financial Activities	354	1,391	1,410	1,416	14,485,439	792.69
Professional & Business Services	389	3,309	3,376	3,383	25,985,099	595.61
Education & Health Services	506	7,454	7,484	7,537	74,724,770	767.26
Leisure & Hospitality	350	7,218	6,372	6,646	24,766,088	282.43
Other Services	236	988	994	1,020	5,847,754	449.53
Local Government	32	3,118	3,025	2,528	36,160,932	962.38
State Government	25	1,134	1,122	1,024	9,792,111	688.94



TABLE 6. COUNTY SUMMARY

NORTH AMERICAN INDUSTRY CLASSIFICATION SYSTEM - INDUSTRY GROUPS	NUMBER OF EMPLOYING UNITS	EMPLOYMENT			TOTAL EARNINGS	AVERAGE WEEKLY EARNINGS
		APR	MAY	JUN	APR - JUN 2013	
<b>GRANT COUNTY - TOTAL</b>	<b>331</b>	<b>3,796</b>	<b>3,813</b>	<b>3,861</b>	<b>\$30,928,839</b>	<b>\$622.27</b>
Natural Resources & Mining	25	192	190	191	2,056,533	828.25
Construction	29	157	173	168	1,521,392	705.00
Manufacturing	16	1,103	1,115	1,112	10,369,148	718.58
Trade, Transportation & Utilities	86	581	586	577	3,873,985	512.61
Wholesale Trade	18	110	112	110	1,053,944	732.58
Retail Trade	45	408	409	400	2,251,613	426.95
Transportation, Warehousing & Utilities	23	63	65	67	568,428	672.70
Information	3	33	32	35	546,179	1,260.41
Financial Activities	26	91	92	91	773,062	651.09
Professional & Business Services	24	81	79	73	787,827	780.28
Education & Health Services	62	399	383	383	2,475,623	490.38
Leisure & Hospitality	23	269	281	293	715,809	195.95
Other Services	19	51	45	47	224,764	362.72
Local Government	10	786	784	839	7,119,313	681.99
State Government	8	53	53	52	465,204	679.46
<b>GREENE COUNTY - TOTAL</b>	<b>899</b>	<b>14,580</b>	<b>14,713</b>	<b>14,717</b>	<b>\$124,258,844</b>	<b>\$651.56</b>
Natural Resources & Mining	36	252	264	266	1,958,534	577.97
Construction	68	255	278	291	2,383,806	667.61
Manufacturing	59	5,055	5,075	5,096	52,849,535	801.00
Trade, Transportation & Utilities	235	2,476	2,496	2,492	16,752,324	517.94
Wholesale Trade	51	526	528	522	4,934,520	722.55
Retail Trade	153	1,681	1,704	1,698	9,596,157	435.67
Transportation, Warehousing & Utilities	31	269	264	272	2,221,647	636.88
Information	10	83	86	91	593,857	527.09
Financial Activities	80	453	459	458	4,134,199	696.38
Professional & Business Services	97	895	917	899	6,009,210	511.52
Education & Health Services	154	1,823	1,806	1,754	15,253,661	653.92
Leisure & Hospitality	67	1,002	1,032	1,018	3,201,800	242.10
Other Services	52	195	211	203	1,192,334	451.81
Local Government	30	1,698	1,690	1,739	15,716,778	707.42
State Government	11	393	399	410	4,212,806	808.81

TABLE 6. COUNTY SUMMARY

NORTH AMERICAN INDUSTRY CLASSIFICATION SYSTEM - INDUSTRY GROUPS	NUMBER OF EMPLOYING UNITS	EMPLOYMENT			TOTAL EARNINGS	AVERAGE WEEKLY EARNINGS
		APR	MAY	JUN	APR - JUN 2013	
<b>HEMPSTEAD COUNTY - TOTAL</b>	<b>506</b>	<b>7,797</b>	<b>7,747</b>	<b>7,706</b>	<b>\$62,881,858</b>	<b>\$624.14</b>
Natural Resources & Mining	18	204	200	197	1,954,946	750.65
Construction	35	301	209	199	1,887,119	614.23
Manufacturing	28	1,823	1,803	1,812	15,492,596	657.45
Trade, Transportation & Utilities	132	1,551	1,581	1,601	13,664,935	666.27
Wholesale Trade	23	436	449	467	4,889,947	834.65
Retail Trade	87	857	859	865	4,586,174	410.05
Transportation, Warehousing & Utilities	22	258	273	269	4,188,814	1,208.31
Information	8	44	44	45	337,879	586.26
Financial Activities	42	237	242	248	2,102,904	667.52
Professional & Business Services	33	144	145	144	1,182,199	630.06
Education & Health Services	85	987	993	988	6,455,584	501.94
Leisure & Hospitality	45	643	674	665	1,954,664	227.59
Other Services	35	166	168	168	1,176,304	540.75
Local Government	29	965	952	890	9,718,255	798.96
State Government	16	732	736	749	6,954,473	723.90
<b>HOT SPRING COUNTY - TOTAL</b>	<b>601</b>	<b>8,112</b>	<b>8,101</b>	<b>8,063</b>	<b>\$65,944,943</b>	<b>\$626.88</b>
Natural Resources & Mining	24	131	138	142	992,542	557.29
Construction	54	315	313	304	2,536,831	628.14
Manufacturing	34	1,342	1,345	1,326	14,439,937	830.37
Trade, Transportation & Utilities	150	1,329	1,338	1,343	10,692,410	615.33
Wholesale Trade	16	68	67	68	738,479	839.50
Retail Trade	98	851	863	867	4,593,208	410.68
Transportation, Warehousing & Utilities	36	410	408	408	5,360,723	1,009.05
Information	7	46	47	48	412,229	674.68
Financial Activities	53	256	260	259	2,459,590	732.38
Professional & Business Services	53	865	858	898	5,265,086	463.57
Education & Health Services	102	1,184	1,184	1,176	8,177,211	532.46
Leisure & Hospitality	50	566	559	589	1,550,999	208.82
Other Services	34	161	149	137	889,049	458.98
Local Government	27	1,052	1,045	1,013	10,749,584	797.64
State Government	13	865	865	828	7,779,475	701.82

TABLE 6. COUNTY SUMMARY

NORTH AMERICAN INDUSTRY CLASSIFICATION SYSTEM - INDUSTRY GROUPS	NUMBER OF EMPLOYING UNITS	EMPLOYMENT			TOTAL EARNINGS	AVERAGE WEEKLY EARNINGS
		APR	MAY	JUN	APR - JUN 2013	
<b>HOWARD COUNTY - TOTAL</b>	<b>368</b>	<b>7,099</b>	<b>7,079</b>	<b>7,084</b>	<b>\$50,982,022</b>	<b>\$553.34</b>
Natural Resources & Mining	15	205	204	206	1,530,110	574.15
Construction	19	112	105	108	957,759	680.07
Manufacturing	22	3,652	3,643	3,652	25,766,708	543.18
Trade, Transportation & Utilities	101	894	903	908	6,391,037	545.23
Wholesale Trade	19	64	66	66	587,487	691.70
Retail Trade	58	617	617	618	3,454,182	430.41
Transportation, Warehousing & Utilities	24	213	220	224	2,349,368	825.21
Information	5	30	30	30	179,476	460.19
Financial Activities	36	152	152	152	1,057,878	535.36
Professional & Business Services	24	155	128	124	944,104	535.31
Education & Health Services	69	604	621	613	4,403,678	552.90
Leisure & Hospitality	23	322	327	349	982,786	227.25
Other Services	26	122	122	121	879,169	555.85
Local Government	17	725	719	708	6,861,467	735.79
State Government	11	126	125	113	1,027,850	651.64
<b>INDEPENDENCE COUNTY - TOTAL</b>	<b>910</b>	<b>14,779</b>	<b>14,807</b>	<b>14,697</b>	<b>\$120,206,285</b>	<b>\$626.42</b>
Natural Resources & Mining	14	280	272	277	3,151,488	877.28
Construction	65	362	383	385	3,253,336	664.40
Manufacturing	41	3,055	3,076	3,046	27,768,455	698.28
Trade, Transportation & Utilities	239	2,911	2,906	2,914	22,323,403	590.03
Wholesale Trade	33	448	446	440	4,203,274	727.13
Retail Trade	158	1,687	1,679	1,703	9,345,705	425.47
Transportation, Warehousing & Utilities	48	776	781	771	8,774,424	869.79
Information	10	113	114	116	915,940	616.24
Financial Activities	80	488	487	489	5,029,905	792.86
Professional & Business Services	93	774	762	751	4,940,678	498.54
Education & Health Services	168	3,077	3,069	3,115	28,315,163	705.57
Leisure & Hospitality	75	1,105	1,119	1,128	3,280,893	225.87
Other Services	62	323	335	335	1,703,552	395.90
Local Government	47	1,642	1,637	1,567	13,875,808	660.77
State Government	16	649	647	574	5,647,664	696.96

TABLE 6. COUNTY SUMMARY

NORTH AMERICAN INDUSTRY CLASSIFICATION SYSTEM - INDUSTRY GROUPS	NUMBER OF EMPLOYING UNITS	EMPLOYMENT			TOTAL EARNINGS	AVERAGE WEEKLY EARNINGS
		APR	MAY	JUN	APR - JUN 2013	
<b>IZARD COUNTY - TOTAL</b>	<b>251</b>	<b>3,139</b>	<b>3,103</b>	<b>2,956</b>	<b>\$23,269,279</b>	<b>\$583.80</b>
Natural Resources & Mining	5	167	137	140	1,644,142	854.54
Construction	22	74	78	101	801,043	730.66
Trade, Transportation & Utilities	65	588	593	598	3,548,815	460.35
Wholesale Trade	8	11	10	10	76,305	568.03
Retail Trade	47	434	437	441	2,129,045	374.48
Transportation, Warehousing & Utilities	10	143	146	147	1,343,465	711.08
Financial Activities	27	144	144	144	1,117,196	596.79
Professional & Business Services	16	76	72	74	521,931	542.55
Education & Health Services	45	614	607	608	3,952,228	498.66
Leisure & Hospitality	21	134	144	154	370,966	198.17
Local Government	18	528	527	389	4,341,020	693.75
State Government	10	506	498	444	4,464,968	711.59
Other	22	308	303	304	2,506,970	632.27
<b>JACKSON COUNTY - TOTAL</b>	<b>456</b>	<b>5,298</b>	<b>5,297</b>	<b>5,276</b>	<b>\$43,681,560</b>	<b>\$635.14</b>
Natural Resources & Mining	52	291	308	321	2,339,612	586.86
Construction	24	124	124	129	1,067,023	653.15
Manufacturing	17	903	914	938	9,902,484	829.47
Trade, Transportation & Utilities	105	997	997	993	7,330,434	566.33
Wholesale Trade	23	248	248	246	2,419,840	752.59
Retail Trade	65	652	649	647	3,901,521	462.19
Transportation, Warehousing & Utilities	17	97	100	100	1,009,073	784.05
Information	4	18	18	18	142,104	607.28
Financial Activities	37	162	163	164	1,587,881	749.35
Professional & Business Services	33	132	128	131	1,200,442	708.50
Education & Health Services	89	845	807	780	6,426,038	609.76
Leisure & Hospitality	28	296	299	292	843,607	219.48
Other Services	22	70	64	64	453,593	528.66
Local Government	32	669	679	673	5,347,282	610.58
State Government	13	791	796	773	7,041,060	688.50

TABLE 6. COUNTY SUMMARY

NORTH AMERICAN INDUSTRY CLASSIFICATION SYSTEM - INDUSTRY GROUPS	NUMBER OF EMPLOYING UNITS	EMPLOYMENT			TOTAL EARNINGS	AVERAGE WEEKLY EARNINGS
		APR	MAY	JUN	APR - JUN 2013	
<b>JEFFERSON COUNTY - TOTAL</b>	<b>2,185</b>	<b>28,353</b>	<b>28,346</b>	<b>28,205</b>	<b>\$252,348,085</b>	<b>\$685.88</b>
Natural Resources & Mining	37	305	311	322	3,561,839	876.29
Construction	100	768	765	696	8,107,174	839.34
Manufacturing	57	5,271	5,285	5,243	59,004,721	861.86
Trade, Transportation & Utilities	455	4,947	4,883	4,869	39,079,028	613.53
Wholesale Trade	81	733	695	711	8,391,706	905.35
Retail Trade	305	3,234	3,218	3,186	18,834,860	450.98
Transportation, Warehousing & Utilities	69	980	970	972	11,852,462	936.07
Information	15	108	107	114	922,506	647.07
Financial Activities	155	1,114	1,110	1,108	11,633,320	805.71
Professional & Business Services	162	1,605	1,623	1,602	13,561,459	647.94
Education & Health Services	862	5,193	5,151	5,091	43,033,353	643.39
Leisure & Hospitality	138	1,822	1,844	1,826	5,659,255	237.80
Other Services	129	617	627	622	4,498,682	556.35
Local Government	39	3,180	3,203	3,312	30,320,010	721.70
State Government	36	3,423	3,437	3,400	32,966,738	741.49
<b>JOHNSON COUNTY - TOTAL</b>	<b>498</b>	<b>8,566</b>	<b>8,557</b>	<b>8,454</b>	<b>\$61,862,395</b>	<b>\$558.16</b>
Natural Resources & Mining	17	134	134	136	1,124,407	642.27
Construction	32	156	157	139	1,038,422	530.17
Manufacturing	34	3,021	3,007	2,981	19,582,039	501.60
Trade, Transportation & Utilities	126	1,927	1,927	1,906	14,117,403	565.60
Retail Trade	82	888	893	869	4,482,661	390.36
Other Trade, Transportation & Utilities	44	1,039	1,034	1,037	9,634,742	714.92
Information	5	44	41	40	258,326	476.91
Financial Activities	49	199	203	206	1,708,458	648.45
Professional & Business Services	48	148	151	158	1,131,812	571.53
Education & Health Services	94	1,175	1,161	1,134	9,076,119	603.60
Leisure & Hospitality	40	503	503	492	1,517,055	233.70
Other Services	30	79	79	80	427,410	414.42
Local Government	14	1,050	1,061	1,050	10,583,883	772.68
State Government	9	130	133	132	1,297,061	757.78

TABLE 6. COUNTY SUMMARY

NORTH AMERICAN INDUSTRY CLASSIFICATION SYSTEM - INDUSTRY GROUPS	NUMBER OF EMPLOYING UNITS	EMPLOYMENT			TOTAL EARNINGS	AVERAGE WEEKLY EARNINGS
		APR	MAY	JUN	APR - JUN 2013	
<b>LAFAYETTE COUNTY - TOTAL</b>	<b>173</b>	<b>1,288</b>	<b>1,267</b>	<b>1,278</b>	<b>\$9,976,197</b>	<b>\$600.63</b>
Natural Resources & Mining	31	173	178	186	1,997,819	858.54
Construction	8	75	78	78	796,207	795.41
Manufacturing	8	33	33	33	245,971	573.36
Trade, Transportation & Utilities	32	205	203	206	1,296,411	487.25
Retail Trade	20	124	123	128	528,946	325.51
Other Trade, Transportation & Utilities	12	81	80	78	767,465	741.03
Financial Activities	14	52	51	48	326,972	499.70
Professional & Business Services	12	55	49	49	392,902	592.61
Education & Health Services	36	218	211	213	1,255,658	451.35
Leisure & Hospitality	5	40	42	38	133,927	257.55
Local Government	13	322	308	310	2,824,425	693.39
State Government	7	46	44	47	329,916	555.73
Other	7	69	70	70	375,989	415.15
<b>LAWRENCE COUNTY - TOTAL</b>	<b>404</b>	<b>4,172</b>	<b>4,163</b>	<b>4,141</b>	<b>\$30,009,614</b>	<b>\$555.09</b>
Natural Resources & Mining	45	187	201	208	1,646,650	637.58
Construction	24	108	112	111	989,164	689.63
Manufacturing	23	465	470	472	3,502,312	574.43
Trade, Transportation & Utilities	108	868	886	890	6,436,832	561.81
Wholesale Trade	19	233	242	237	2,215,259	718.00
Retail Trade	60	527	538	542	3,042,134	436.86
Transportation, Warehousing & Utilities	29	108	106	111	1,179,439	837.47
Financial Activities	31	151	152	150	1,189,651	606.04
Professional & Business Services	29	115	107	108	977,884	683.83
Education & Health Services	61	559	528	520	3,897,377	559.67
Leisure & Hospitality	26	332	342	308	828,055	194.59
Local Government	27	1,216	1,196	1,200	9,339,226	596.68
State Government	10	102	102	104	736,814	552.06
Other	20	69	67	70	465,649	521.64

TABLE 6. COUNTY SUMMARY

NORTH AMERICAN INDUSTRY CLASSIFICATION SYSTEM - INDUSTRY GROUPS	NUMBER OF EMPLOYING UNITS	EMPLOYMENT			TOTAL EARNINGS	AVERAGE WEEKLY EARNINGS
		APR	MAY	JUN	APR - JUN 2013	
<b>LEE COUNTY - TOTAL</b>	<b>310</b>	<b>1,985</b>	<b>2,006</b>	<b>2,010</b>	<b>\$15,714,017</b>	<b>\$604.28</b>
Natural Resources & Mining	36	220	234	244	1,917,368	633.91
Construction	10	27	34	28	209,057	542.07
Trade, Transportation & Utilities	46	338	341	341	2,599,163	588.05
Wholesale Trade	8	90	91	94	977,352	820.16
Retail Trade	25	192	191	185	971,819	394.83
Transportation, Warehousing & Utilities	13	56	59	62	649,992	847.45
Financial Activities	19	70	68	70	599,868	665.53
Professional & Business Services	14	51	53	51	647,795	964.46
Education & Health Services	140	379	379	384	2,560,527	517.42
Leisure & Hospitality	10	81	90	84	253,770	229.66
Local Government	15	323	321	316	2,528,533	607.82
State Government	7	478	468	473	4,294,015	698.33
Other	13	18	18	19	103,921	436.03
<b>LINCOLN COUNTY - TOTAL</b>	<b>273</b>	<b>2,978</b>	<b>2,966</b>	<b>3,017</b>	<b>\$24,080,413</b>	<b>\$620.13</b>
Natural Resources & Mining	31	162	166	164	1,173,388	550.37
Construction	15	98	102	104	689,259	523.22
Manufacturing	9	322	320	322	2,495,172	597.31
Trade, Transportation & Utilities	43	350	354	365	3,030,085	654.12
Wholesale Trade	9	62	62	57	614,472	783.43
Retail Trade	21	160	166	167	730,316	341.85
Transportation, Warehousing & Utilities	13	128	126	141	1,685,297	984.59
Financial Activities	20	66	66	67	578,543	670.90
Professional & Business Services	12	15	16	18	152,062	716.15
Education & Health Services	93	402	386	404	2,380,998	460.96
Leisure & Hospitality	15	174	169	174	464,483	207.33
Local Government	7	368	376	380	3,293,461	676.18
State Government	12	984	975	983	9,561,669	750.01
Other	16	37	36	36	261,293	553.20

TABLE 6. COUNTY SUMMARY

NORTH AMERICAN INDUSTRY CLASSIFICATION SYSTEM - INDUSTRY GROUPS	NUMBER OF EMPLOYING UNITS	EMPLOYMENT			TOTAL EARNINGS	AVERAGE WEEKLY EARNINGS
		APR	MAY	JUN	APR - JUN 2013	
<b>LITTLE RIVER COUNTY - TOTAL</b>	<b>240</b>	<b>3,580</b>	<b>3,586</b>	<b>3,598</b>	<b>\$38,113,424</b>	<b>\$817.11</b>
Natural Resources & Mining	13	87	88	92	824,711	712.80
Construction	18	206	208	216	1,821,404	667.18
Manufacturing	16	1,278	1,291	1,281	21,184,702	1,269.81
Trade, Transportation & Utilities	57	524	521	518	3,488,485	515.06
Wholesale Trade	9	30	31	30	379,797	963.14
Retail Trade	35	351	349	351	1,991,226	437.22
Transportation, Warehousing & Utilities	13	143	141	137	1,117,462	612.53
Financial Activities	19	86	86	82	667,785	606.71
Professional & Business Services	18	94	85	90	638,162	547.47
Education & Health Services	35	159	157	161	972,978	470.72
Leisure & Hospitality	14	215	223	225	653,441	227.44
Local Government	20	759	756	769	6,797,792	686.83
State Government	11	88	91	85	639,467	558.97
Other	19	84	80	79	424,497	403.13
<b>LOGAN COUNTY - TOTAL</b>	<b>489</b>	<b>5,369</b>	<b>5,400</b>	<b>5,384</b>	<b>\$40,700,294</b>	<b>\$581.46</b>
Natural Resources & Mining	23	172	175	172	2,504,577	1,113.64
Construction	42	167	171	174	1,300,865	586.33
Manufacturing	22	1,196	1,223	1,200	10,222,708	651.86
Trade, Transportation & Utilities	116	913	907	920	5,462,966	460.10
Wholesale Trade	11	62	67	68	271,676	318.25
Retail Trade	74	708	698	710	3,656,884	398.82
Transportation, Warehousing & Utilities	31	143	142	142	1,534,406	829.26
Information	5	32	32	32	344,361	827.79
Financial Activities	46	235	234	236	2,217,645	725.91
Professional & Business Services	46	106	109	102	742,824	540.76
Education & Health Services	98	772	758	742	5,283,506	536.65
Leisure & Hospitality	28	290	297	298	878,432	229.06
Other Services	27	120	120	124	897,825	569.20
Local Government	22	824	837	839	6,928,468	639.55
State Government	14	542	537	545	3,916,117	556.48



TABLE 6. COUNTY SUMMARY

NORTH AMERICAN INDUSTRY CLASSIFICATION SYSTEM - INDUSTRY GROUPS	NUMBER OF EMPLOYING UNITS	EMPLOYMENT			TOTAL EARNINGS	AVERAGE WEEKLY EARNINGS
		APR	MAY	JUN	APR - JUN 2013	
<b>LONOKE COUNTY - TOTAL</b>	<b>1,331</b>	<b>13,403</b>	<b>13,438</b>	<b>13,249</b>	<b>\$104,906,484</b>	<b>\$603.87</b>
Natural Resources & Mining	79	503	514	521	4,395,357	659.50
Construction	143	755	775	780	7,119,403	711.23
Manufacturing	38	1,571	1,582	1,594	18,946,334	921.05
Trade, Transportation & Utilities	328	2,912	2,941	2,958	19,015,983	498.05
Wholesale Trade	81	448	454	454	4,867,001	828.28
Retail Trade	186	2,216	2,232	2,237	11,652,288	402.24
Transportation, Warehousing & Utilities	61	248	255	267	2,496,694	748.26
Information	14	107	103	101	1,146,781	850.94
Financial Activities	142	518	520	512	6,639,023	988.44
Professional & Business Services	155	812	762	724	5,787,414	581.18
Education & Health Services	213	1,570	1,581	1,597	10,663,735	518.29
Leisure & Hospitality	104	1,493	1,536	1,534	4,719,913	238.70
Other Services	75	186	184	197	1,088,952	443.20
Local Government	25	2,811	2,771	2,562	23,998,406	680.02
State Government	15	165	169	169	1,385,183	635.50
<b>MADISON COUNTY - TOTAL</b>	<b>249</b>	<b>3,217</b>	<b>3,194</b>	<b>3,156</b>	<b>\$22,809,498</b>	<b>\$550.20</b>
Natural Resources & Mining	11	50	46	46	322,154	523.54
Construction	23	86	71	61	563,345	596.34
Manufacturing	23	1,154	1,140	1,111	8,181,497	554.49
Trade, Transportation & Utilities	49	580	579	585	3,717,799	491.95
Retail Trade	33	448	450	448	2,402,615	411.92
Other Trade, Transportation & Utilities	16	132	129	137	1,315,184	762.57
Information	6	42	42	41	615,316	1,135.97
Financial Activities	18	69	71	73	538,077	582.97
Professional & Business Services	26	142	154	158	1,057,415	537.49
Education & Health Services	49	280	280	277	1,615,231	445.34
Leisure & Hospitality	14	170	173	184	491,483	215.22
Other Services	14	28	27	27	230,996	650.08
Local Government	9	573	566	548	5,122,330	700.70
State Government	7	43	45	45	353,855	613.98

TABLE 6. COUNTY SUMMARY

NORTH AMERICAN INDUSTRY CLASSIFICATION SYSTEM - INDUSTRY GROUPS	NUMBER OF EMPLOYING UNITS	EMPLOYMENT			TOTAL EARNINGS	AVERAGE WEEKLY EARNINGS
		APR	MAY	JUN	APR - JUN 2013	
<b>MARION COUNTY - TOTAL</b>	<b>302</b>	<b>3,637</b>	<b>3,664</b>	<b>3,681</b>	<b>\$26,321,099</b>	<b>\$553.10</b>
Natural Resources & Mining	4	25	24	24	145,167	458.91
Construction	21	53	53	54	296,662	427.88
Manufacturing	19	1,616	1,625	1,622	12,321,039	584.68
Trade, Transportation & Utilities	57	501	495	496	3,119,899	482.56
Wholesale Trade	10	55	54	56	665,365	930.58
Retail Trade	40	424	420	418	2,174,530	397.63
Transportation, Warehousing & Utilities	7	22	21	22	280,004	994.10
Information	4	53	55	55	616,307	872.54
Financial Activities	34	203	220	235	1,709,601	599.58
Professional & Business Services	28	59	56	56	395,855	534.22
Education & Health Services	59	333	335	332	2,125,392	490.48
Leisure & Hospitality	35	180	194	210	593,814	234.65
Other Services	16	27	27	26	124,386	358.81
Local Government	18	515	508	498	4,406,109	668.50
State Government	7	72	72	73	466,868	496.49
<b>MILLER COUNTY - TOTAL</b>	<b>876</b>	<b>12,791</b>	<b>12,899</b>	<b>13,211</b>	<b>\$116,420,116</b>	<b>\$690.63</b>
Natural Resources & Mining	29	134	140	144	1,110,401	613.03
Construction	80	779	778	772	6,781,009	671.90
Manufacturing	26	2,306	2,283	2,290	33,586,081	1,126.71
Trade, Transportation & Utilities	228	3,443	3,475	3,553	30,168,552	664.88
Wholesale Trade	54	547	547	547	6,110,781	859.34
Retail Trade	128	1,352	1,356	1,348	7,386,761	420.28
Transportation, Warehousing & Utilities	46	1,544	1,572	1,658	16,671,010	805.86
Information	8	65	67	68	1,234,395	1,424.30
Financial Activities	85	386	386	373	3,219,907	648.96
Professional & Business Services	90	853	899	956	5,223,903	445.17
Education & Health Services	135	896	896	911	6,112,701	521.87
Leisure & Hospitality	94	1,406	1,412	1,557	4,996,413	263.55
Other Services	60	293	296	299	1,468,241	381.56
Local Government	25	1,712	1,746	1,766	17,318,260	765.03
State Government	16	518	521	522	5,200,253	768.78

TABLE 6. COUNTY SUMMARY

NORTH AMERICAN INDUSTRY CLASSIFICATION SYSTEM - INDUSTRY GROUPS	NUMBER OF EMPLOYING UNITS	EMPLOYMENT			TOTAL EARNINGS	AVERAGE WEEKLY EARNINGS
		APR	MAY	JUN	APR - JUN 2013	
<b>MISSISSIPPI COUNTY - TOTAL</b>	<b>1,203</b>	<b>17,925</b>	<b>18,203</b>	<b>17,450</b>	<b>\$184,824,274</b>	<b>\$796.07</b>
Natural Resources & Mining	113	602	622	667	4,194,699	511.90
Construction	55	653	774	661	8,894,481	983.03
Manufacturing	53	6,007	6,020	5,883	90,658,111	1,168.12
Trade, Transportation & Utilities	297	2,984	3,010	3,023	25,682,045	657.27
Wholesale Trade	64	508	513	524	6,937,575	1,036.23
Retail Trade	175	1,763	1,754	1,760	9,237,158	403.95
Transportation, Warehousing & Utilities	58	713	743	739	9,507,312	999.54
Information	9	70	71	69	555,896	610.87
Financial Activities	91	420	423	416	3,738,261	685.21
Professional & Business Services	85	1,187	1,233	1,065	8,590,830	568.87
Education & Health Services	282	1,904	1,897	1,704	12,559,363	526.49
Leisure & Hospitality	84	1,064	1,072	1,106	3,260,553	232.09
Other Services	60	196	198	207	1,150,468	441.75
Local Government	52	2,218	2,261	2,084	20,117,353	707.37
State Government	22	620	622	565	5,422,214	692.46
<b>MONROE COUNTY - TOTAL</b>	<b>309</b>	<b>2,245</b>	<b>2,298</b>	<b>2,274</b>	<b>\$15,969,983</b>	<b>\$540.62</b>
Natural Resources & Mining	32	139	152	166	1,252,501	632.47
Construction	13	74	75	75	777,774	801.28
Manufacturing	7	131	134	137	1,014,648	582.46
Trade, Transportation & Utilities	81	647	654	645	5,005,922	593.63
Wholesale Trade	20	269	272	269	2,604,253	741.95
Retail Trade	40	265	269	266	1,432,210	413.14
Transportation, Warehousing & Utilities	21	113	113	110	969,459	665.84
Financial Activities	22	98	99	97	845,775	663.87
Professional & Business Services	13	63	56	28	189,040	296.77
Education & Health Services	67	306	312	304	1,848,275	462.61
Leisure & Hospitality	26	240	258	267	788,957	238.00
Local Government	22	337	338	335	2,776,246	634.33
State Government	8	111	113	115	891,097	606.60
Other	18	99	107	105	579,748	430.19

TABLE 6. COUNTY SUMMARY

NORTH AMERICAN INDUSTRY CLASSIFICATION SYSTEM - INDUSTRY GROUPS	NUMBER OF EMPLOYING UNITS	EMPLOYMENT			TOTAL EARNINGS	AVERAGE WEEKLY EARNINGS
		APR	MAY	JUN	APR - JUN 2013	
<b>MONTGOMERY COUNTY - TOTAL</b>	<b>175</b>	<b>1,522</b>	<b>1,571</b>	<b>1,919</b>	<b>\$11,080,285</b>	<b>\$510.17</b>
Natural Resources & Mining	7	28	26	25	216,064	631.15
Construction	22	91	91	91	590,321	499.00
Trade, Transportation & Utilities	43	248	249	250	1,770,407	546.93
Wholesale Trade	12	66	66	71	638,072	725.36
Retail Trade	22	153	157	150	877,210	440.07
Transportation, Warehousing & Utilities	9	29	26	29	255,125	700.89
Financial Activities	12	73	72	72	546,241	580.90
Professional & Business Services	15	35	34	36	476,200	1,046.59
Education & Health Services	20	100	106	103	593,516	443.25
Leisure & Hospitality	20	246	288	638	1,667,976	328.43
Local Government	9	481	478	477	3,807,219	611.83
State Government	7	44	45	44	395,966	687.04
Other	20	176	182	183	1,016,375	433.55
<b>NEVADA COUNTY - TOTAL</b>	<b>194</b>	<b>2,413</b>	<b>2,413</b>	<b>2,410</b>	<b>\$19,337,575</b>	<b>\$616.71</b>
Natural Resources & Mining	9	33	33	33	249,092	580.63
Trade, Transportation & Utilities	43	552	554	558	4,012,572	556.48
Wholesale Trade	4	15	15	16	48,093	241.27
Retail Trade	26	305	308	312	1,409,714	351.70
Transportation, Warehousing & Utilities	13	232	231	230	2,554,765	850.74
Financial Activities	11	55	62	60	416,602	543.16
Professional & Business Services	11	42	44	43	304,533	544.78
Education & Health Services	41	424	412	412	2,391,527	442.22
Leisure & Hospitality	8	85	92	91	260,285	224.13
Other Services	13	47	42	40	167,545	299.72
Local Government	27	411	414	413	3,360,740	626.46
State Government	10	80	81	83	620,578	586.93
Other	21	684	679	677	7,554,101	854.54

TABLE 6. COUNTY SUMMARY

NORTH AMERICAN INDUSTRY CLASSIFICATION SYSTEM - INDUSTRY GROUPS	NUMBER OF EMPLOYING UNITS	EMPLOYMENT			TOTAL EARNINGS	AVERAGE WEEKLY EARNINGS
		APR	MAY	JUN	APR - JUN 2013	
<b>NEWTON COUNTY - TOTAL</b>	<b>121</b>	<b>1,057</b>	<b>1,052</b>	<b>1,038</b>	<b>\$6,489,577</b>	<b>\$475.88</b>
Construction	6	22	22	22	74,822	261.62
Manufacturing	10	47	43	42	345,023	603.19
Trade, Transportation & Utilities	31	178	178	169	1,001,879	440.39
Retail Trade	15	120	119	116	466,829	303.46
Other Trade, Transportation & Utilities	16	58	59	53	535,050	726.31
Education & Health Services	30	221	219	228	1,050,610	362.95
Leisure & Hospitality	14	82	80	93	348,999	315.84
Local Government	13	381	384	359	2,851,747	585.49
State Government	6	89	89	88	497,412	431.53
Other	11	37	37	37	319,085	663.38
<b>OUACHITA COUNTY - TOTAL</b>	<b>661</b>	<b>7,223</b>	<b>7,277</b>	<b>7,227</b>	<b>\$55,591,067</b>	<b>\$590.45</b>
Natural Resources & Mining	38	196	189	195	1,586,045	631.05
Construction	38	203	203	200	1,618,159	616.21
Manufacturing	24	508	527	521	4,965,726	736.46
Trade, Transportation & Utilities	172	1,604	1,613	1,622	11,119,845	530.30
Wholesale Trade	27	239	236	238	2,630,697	851.45
Retail Trade	118	1,050	1,055	1,061	5,093,687	371.28
Transportation, Warehousing & Utilities	27	315	322	323	3,395,461	816.22
Information	7	42	42	43	395,370	718.42
Financial Activities	59	290	292	297	2,418,801	635.02
Professional & Business Services	51	638	645	623	5,085,951	615.78
Education & Health Services	153	1,238	1,238	1,210	9,273,122	580.56
Leisure & Hospitality	38	497	498	508	1,422,474	218.41
Other Services	37	144	143	146	999,867	532.88
Local Government	30	1,133	1,144	1,141	10,491,729	708.36
State Government	14	730	743	721	6,213,978	653.60

TABLE 6. COUNTY SUMMARY

NORTH AMERICAN INDUSTRY CLASSIFICATION SYSTEM - INDUSTRY GROUPS	NUMBER OF EMPLOYING UNITS	EMPLOYMENT			TOTAL EARNINGS	AVERAGE WEEKLY EARNINGS
		APR	MAY	JUN	APR - JUN 2013	
<b>PERRY COUNTY - TOTAL</b>	<b>149</b>	<b>1,238</b>	<b>1,271</b>	<b>1,192</b>	<b>\$9,555,924</b>	<b>\$595.84</b>
Construction	16	106	111	106	901,528	644.10
Manufacturing	5	44	44	46	346,992	597.58
Trade, Transportation & Utilities	27	145	149	150	1,028,972	534.81
Retail Trade	16	111	115	116	579,218	390.84
Other Trade, Transportation & Utilities	11	34	34	34	449,754	1,017.54
Financial Activities	9	31	33	32	277,182	666.30
Professional & Business Services	16	41	42	46	518,751	928.00
Education & Health Services	34	249	250	245	1,262,512	391.60
Leisure & Hospitality	7	68	68	68	208,699	236.08
Local Government	10	381	367	276	2,752,111	620.22
State Government	8	55	57	55	391,715	541.29
Other	17	118	150	168	1,867,462	988.42
<b>PHILLIPS COUNTY - TOTAL</b>	<b>888</b>	<b>6,075</b>	<b>6,046</b>	<b>6,004</b>	<b>\$47,330,235</b>	<b>\$602.61</b>
Natural Resources & Mining	65	275	287	294	1,861,514	501.85
Construction	27	114	121	124	1,273,211	818.43
Manufacturing	11	360	362	353	3,225,213	692.35
Trade, Transportation & Utilities	164	1,390	1,386	1,391	11,029,687	610.83
Wholesale Trade	31	350	343	351	3,705,038	818.97
Retail Trade	88	767	757	766	4,628,882	466.46
Transportation, Warehousing & Utilities	45	273	286	274	2,695,767	746.82
Information	10	49	49	45	430,556	694.82
Financial Activities	39	197	199	198	1,769,703	687.53
Professional & Business Services	51	355	373	345	2,533,141	544.80
Education & Health Services	415	1,471	1,472	1,483	11,080,408	577.73
Leisure & Hospitality	31	288	289	289	876,643	233.61
Other Services	34	71	75	73	408,428	430.38
Local Government	27	941	921	926	8,797,160	728.16
State Government	14	564	512	483	4,044,571	598.69

TABLE 6. COUNTY SUMMARY

NORTH AMERICAN INDUSTRY CLASSIFICATION SYSTEM - INDUSTRY GROUPS	NUMBER OF EMPLOYING UNITS	EMPLOYMENT			TOTAL EARNINGS	AVERAGE WEEKLY EARNINGS
		APR	MAY	JUN	APR - JUN 2013	
<b>PIKE COUNTY - TOTAL</b>	<b>244</b>	<b>2,214</b>	<b>2,255</b>	<b>2,290</b>	<b>\$15,707,646</b>	<b>\$536.30</b>
Natural Resources & Mining	22	107	106	108	871,989	626.88
Construction	15	41	42	35	299,569	585.86
Manufacturing	17	206	210	209	1,283,808	474.02
Trade, Transportation & Utilities	70	491	509	536	3,169,080	476.12
Wholesale Trade	10	99	100	101	752,402	578.77
Retail Trade	41	340	350	373	1,812,716	393.53
Transportation, Warehousing & Utilities	19	52	59	62	603,962	805.64
Information	5	22	23	23	278,435	944.92
Financial Activities	22	187	188	188	1,706,262	699.38
Professional & Business Services	12	42	39	38	536,082	1,039.59
Education & Health Services	21	274	274	277	1,563,445	437.33
Leisure & Hospitality	20	184	194	218	577,738	223.70
Other Services	20	56	58	54	382,753	525.76
Local Government	10	446	452	443	4,234,967	728.78
State Government	10	158	160	161	803,518	387.11
<b>POINSETT COUNTY - TOTAL</b>	<b>529</b>	<b>5,137</b>	<b>5,148</b>	<b>5,172</b>	<b>\$41,518,367</b>	<b>\$619.86</b>
Natural Resources & Mining	57	332	341	354	2,893,300	650.13
Construction	23	121	117	114	989,766	648.89
Manufacturing	24	685	680	672	6,333,447	717.51
Trade, Transportation & Utilities	133	1,267	1,285	1,304	10,008,260	598.96
Wholesale Trade	33	431	438	449	4,802,886	840.94
Retail Trade	71	692	704	712	3,854,429	421.96
Transportation, Warehousing & Utilities	29	144	143	143	1,350,945	725.02
Information	5	55	54	54	477,831	676.50
Financial Activities	37	237	243	244	2,228,099	710.19
Professional & Business Services	31	163	168	169	2,180,423	1,006.35
Education & Health Services	111	639	642	622	4,137,821	501.78
Leisure & Hospitality	44	363	356	377	1,007,101	212.05
Other Services	23	52	49	51	320,659	486.83
Local Government	30	1,080	1,068	1,072	9,729,619	697.30
State Government	11	143	145	139	1,212,041	655.04

TABLE 6. COUNTY SUMMARY

NORTH AMERICAN INDUSTRY CLASSIFICATION SYSTEM - INDUSTRY GROUPS	NUMBER OF EMPLOYING UNITS	EMPLOYMENT			TOTAL EARNINGS	AVERAGE WEEKLY EARNINGS
		APR	MAY	JUN	APR - JUN 2013	
<b>POLK COUNTY - TOTAL</b>	<b>523</b>	<b>5,953</b>	<b>6,006</b>	<b>6,023</b>	<b>\$43,185,412</b>	<b>\$554.21</b>
Natural Resources & Mining	23	143	147	150	1,365,270	716.05
Construction	37	169	182	186	1,241,562	533.55
Manufacturing	36	1,286	1,300	1,312	11,383,577	673.93
Trade, Transportation & Utilities	135	1,154	1,151	1,163	6,735,209	448.18
Wholesale Trade	20	50	51	50	412,485	630.39
Retail Trade	79	842	835	841	3,977,510	364.53
Transportation, Warehousing & Utilities	36	262	265	272	2,345,214	677.35
Information	8	48	49	50	304,730	478.38
Financial Activities	47	250	247	251	2,039,050	629.08
Professional & Business Services	46	156	155	154	1,159,405	575.39
Education & Health Services	83	1,054	1,034	1,023	8,127,879	602.91
Leisure & Hospitality	43	476	512	512	1,320,339	203.13
Other Services	31	178	182	234	1,140,523	443.09
Local Government	21	749	744	727	6,432,356	668.64
State Government	13	290	303	261	1,935,512	523.02
<b>POPE COUNTY - TOTAL</b>	<b>1,783</b>	<b>26,559</b>	<b>26,509</b>	<b>26,223</b>	<b>\$237,590,524</b>	<b>\$691.49</b>
Natural Resources & Mining	35	652	744	763	6,834,176	730.49
Construction	157	1,696	1,578	1,517	21,972,988	1,058.38
Manufacturing	72	4,469	4,420	4,419	39,582,307	686.38
Trade, Transportation & Utilities	431	5,769	5,768	5,714	58,445,826	781.84
Wholesale Trade	92	604	611	616	6,083,185	766.69
Retail Trade	264	3,093	3,061	3,009	17,244,543	434.30
Transportation, Warehousing & Utilities	75	2,072	2,096	2,089	35,118,098	1,295.22
Information	25	228	229	236	2,075,478	691.13
Financial Activities	179	1,272	1,275	1,271	9,728,719	588.03
Professional & Business Services	268	2,792	2,719	2,706	25,309,742	710.81
Education & Health Services	312	3,006	3,001	2,923	24,805,394	641.02
Leisure & Hospitality	141	2,427	2,496	2,512	7,783,779	241.59
Other Services	105	394	397	425	2,432,165	461.57
Local Government	42	2,248	2,274	2,258	22,937,507	780.72
State Government	16	1,606	1,608	1,479	15,682,443	771.15



TABLE 6. COUNTY SUMMARY

NORTH AMERICAN INDUSTRY CLASSIFICATION SYSTEM - INDUSTRY GROUPS	NUMBER OF EMPLOYING UNITS	EMPLOYMENT			TOTAL EARNINGS	AVERAGE WEEKLY EARNINGS
		APR	MAY	JUN	APR - JUN 2013	
<b>PRAIRIE COUNTY - TOTAL</b>	<b>262</b>	<b>1,458</b>	<b>1,488</b>	<b>1,478</b>	<b>\$10,881,138</b>	<b>\$567.59</b>
Natural Resources & Mining	35	135	156	160	1,415,921	724.50
Construction	12	65	76	74	948,901	1,018.50
Trade, Transportation & Utilities	62	334	336	335	2,189,679	502.80
Wholesale Trade	10	74	74	76	892,419	919.39
Retail Trade	36	193	195	191	825,609	329.06
Transportation, Warehousing & Utilities	16	67	67	68	471,651	538.82
Financial Activities	18	61	62	57	451,499	578.84
Professional & Business Services	17	62	59	63	470,796	590.46
Education & Health Services	55	277	272	268	1,696,163	479.10
Leisure & Hospitality	18	101	101	99	288,469	221.16
Other Services	14	31	34	32	182,956	435.26
Local Government	15	327	328	324	2,645,611	623.62
State Government	9	43	42	43	351,567	633.83
Other	7	22	22	23	239,576	825.18
<b>PULASKI COUNTY - TOTAL</b>	<b>14,481</b>	<b>234,606</b>	<b>235,646</b>	<b>233,663</b>	<b>\$2,527,369,081</b>	<b>\$828.56</b>
Natural Resources & Mining	52	684	687	693	8,556,789	956.71
Construction	998	7,903	8,083	7,997	92,566,749	890.70
Manufacturing	361	12,451	12,309	12,400	154,945,188	962.23
Trade, Transportation & Utilities	3,245	46,991	46,968	46,995	457,466,302	748.96
Wholesale Trade	1,034	11,673	11,689	11,744	164,733,211	1,082.87
Retail Trade	1,807	24,556	24,527	24,507	163,657,867	513.21
Transportation, Warehousing & Utilities	404	10,762	10,752	10,744	129,075,224	923.39
Information	224	6,433	6,478	6,521	89,339,781	1,060.98
Financial Activities	1,730	15,776	15,808	15,620	232,802,077	1,138.11
Professional & Business Services	2,836	32,929	33,084	33,090	355,357,532	827.48
Education & Health Services	2,384	38,404	38,378	38,345	414,178,860	830.21
Leisure & Hospitality	1,191	21,557	22,246	22,415	87,664,457	305.51
Other Services	1,154	6,770	6,797	6,979	56,763,755	637.56
Local Government	104	16,585	16,745	15,052	197,575,063	942.38
State Government	202	28,123	28,063	27,556	380,152,528	1,047.59

TABLE 6. COUNTY SUMMARY

NORTH AMERICAN INDUSTRY CLASSIFICATION SYSTEM - INDUSTRY GROUPS	NUMBER OF EMPLOYING UNITS	EMPLOYMENT			TOTAL EARNINGS	AVERAGE WEEKLY EARNINGS
		APR	MAY	JUN	APR - JUN 2013	
<b>RANDOLPH COUNTY - TOTAL</b>	<b>417</b>	<b>4,655</b>	<b>4,734</b>	<b>4,709</b>	<b>\$32,368,709</b>	<b>\$529.84</b>
Natural Resources & Mining	29	118	120	112	721,838	475.94
Construction	29	64	64	68	374,273	440.67
Manufacturing	28	547	547	557	4,054,550	566.73
Trade, Transportation & Utilities	98	896	912	919	5,988,244	506.75
Wholesale Trade	20	186	188	188	1,441,090	591.74
Retail Trade	58	577	588	591	3,239,597	425.74
Transportation, Warehousing & Utilities	20	133	136	140	1,307,557	737.76
Information	5	37	37	37	364,878	758.58
Financial Activities	32	133	132	128	978,633	574.65
Professional & Business Services	43	226	229	236	1,225,329	409.22
Education & Health Services	69	1,189	1,212	1,198	8,502,143	545.16
Leisure & Hospitality	27	364	379	383	1,036,312	212.39
Other Services	24	63	65	64	333,104	400.37
Local Government	22	706	717	734	6,121,241	654.89
State Government	11	312	320	273	2,668,164	680.36
<b>SAINT FRANCIS COUNTY - TOTAL</b>	<b>823</b>	<b>7,268</b>	<b>7,358</b>	<b>7,414</b>	<b>\$54,113,531</b>	<b>\$566.59</b>
Natural Resources & Mining	42	183	193	198	1,494,728	600.94
Construction	45	176	178	188	1,743,559	742.36
Manufacturing	9	618	633	634	5,739,869	702.70
Trade, Transportation & Utilities	168	1,941	1,953	1,966	14,233,707	560.53
Wholesale Trade	36	557	569	569	5,775,872	786.37
Retail Trade	110	1,102	1,100	1,111	5,618,565	391.36
Transportation, Warehousing & Utilities	22	282	284	286	2,839,270	769.03
Information	7	65	67	71	591,819	672.78
Financial Activities	65	274	271	277	2,270,639	637.46
Professional & Business Services	50	398	402	387	2,180,087	423.84
Education & Health Services	317	1,393	1,410	1,401	9,727,329	533.96
Leisure & Hospitality	48	628	658	681	1,898,678	222.75
Other Services	28	68	67	75	307,222	337.61
Local Government	28	982	977	991	9,354,129	731.74
State Government	16	542	549	545	4,571,765	644.88

TABLE 6. COUNTY SUMMARY

NORTH AMERICAN INDUSTRY CLASSIFICATION SYSTEM - INDUSTRY GROUPS	NUMBER OF EMPLOYING UNITS	EMPLOYMENT			TOTAL EARNINGS	AVERAGE WEEKLY EARNINGS
		APR	MAY	JUN	APR - JUN 2013	
<b>SALINE COUNTY - TOTAL</b>	<b>1,905</b>	<b>21,655</b>	<b>21,748</b>	<b>21,836</b>	<b>\$173,824,322</b>	<b>\$614.87</b>
Natural Resources & Mining	12	50	52	52	699,021	1,047.48
Construction	274	1,773	1,789	1,790	16,138,712	695.87
Manufacturing	86	1,355	1,336	1,335	14,782,829	847.35
Trade, Transportation & Utilities	439	4,701	4,671	4,677	36,083,103	592.70
Wholesale Trade	119	539	534	532	6,115,968	879.36
Retail Trade	257	3,717	3,695	3,706	25,524,560	529.80
Transportation, Warehousing & Utilities	63	445	442	439	4,442,575	773.16
Information	13	78	81	83	802,481	765.24
Financial Activities	188	708	712	708	6,590,660	714.72
Professional & Business Services	254	1,368	1,356	1,347	11,872,603	673.01
Education & Health Services	276	3,486	3,476	3,474	27,239,709	602.35
Leisure & Hospitality	163	2,859	3,001	2,985	9,851,227	257.02
Other Services	154	700	690	718	4,408,673	482.63
Local Government	31	3,610	3,630	3,705	37,423,273	789.05
State Government	15	967	954	962	7,932,031	634.92
<b>SCOTT COUNTY - TOTAL</b>	<b>188</b>	<b>2,999</b>	<b>3,063</b>	<b>3,074</b>	<b>\$21,602,057</b>	<b>\$545.65</b>
Natural Resources & Mining	18	147	153	155	1,322,053	670.53
Trade, Transportation & Utilities	37	426	433	433	3,186,972	569.24
Wholesale Trade	9	75	78	80	973,202	963.88
Retail Trade	22	288	289	289	1,515,704	403.90
Transportation, Warehousing & Utilities	6	63	66	64	698,066	834.67
Financial Activities	23	71	73	74	458,363	485.21
Professional & Business Services	11	12	11	11	76,703	520.61
Education & Health Services	38	288	296	293	2,436,334	641.08
Leisure & Hospitality	16	135	143	147	472,933	256.80
Other Services	12	47	48	45	318,076	524.30
Local Government	6	582	591	594	5,418,589	707.66
State Government	7	61	62	61	421,980	529.24
Other	20	1,230	1,253	1,261	7,490,054	461.67

TABLE 6. COUNTY SUMMARY

NORTH AMERICAN INDUSTRY CLASSIFICATION SYSTEM - INDUSTRY GROUPS	NUMBER OF EMPLOYING UNITS	EMPLOYMENT			TOTAL EARNINGS	AVERAGE WEEKLY EARNINGS
		APR	MAY	JUN	APR - JUN 2013	
<b>SEARCY COUNTY - TOTAL</b>	<b>191</b>	<b>1,661</b>	<b>1,723</b>	<b>1,717</b>	<b>\$9,909,854</b>	<b>\$448.32</b>
Construction	9	15	15	17	87,767	430.93
Manufacturing	18	192	201	207	1,100,281	423.19
Trade, Transportation & Utilities	40	244	242	249	1,212,896	380.82
Wholesale Trade	6	29	29	31	173,419	449.66
Retail Trade	27	195	193	198	816,387	321.50
Transportation, Warehousing & Utilities	7	20	20	20	223,090	858.04
Financial Activities	15	72	77	81	568,162	570.06
Professional & Business Services	11	30	21	23	132,740	413.95
Education & Health Services	51	338	331	328	1,957,336	453.05
Leisure & Hospitality	16	148	152	155	399,678	202.71
Local Government	10	374	376	349	2,805,457	589.09
State Government	7	108	108	107	665,477	475.45
Other	14	140	200	201	980,060	418.05
<b>SEBASTIAN COUNTY - TOTAL</b>	<b>3,773</b>	<b>63,405</b>	<b>63,749</b>	<b>63,272</b>	<b>\$611,243,177</b>	<b>\$740.74</b>
Natural Resources & Mining	59	1,236	1,231	1,237	23,448,150	1,460.88
Construction	280	2,245	2,240	2,264	21,195,950	724.76
Manufacturing	196	11,512	11,647	11,685	132,023,579	874.38
Trade, Transportation & Utilities	939	12,293	12,337	12,360	102,389,145	638.77
Wholesale Trade	244	2,633	2,656	2,657	30,227,782	877.88
Retail Trade	568	7,530	7,564	7,567	44,829,810	456.53
Transportation, Warehousing & Utilities	127	2,130	2,117	2,136	27,331,553	988.14
Information	51	986	992	993	12,898,767	1,001.90
Financial Activities	430	2,566	2,564	2,576	27,403,354	820.64
Professional & Business Services	588	8,396	8,307	8,242	76,266,965	705.55
Education & Health Services	572	10,787	10,846	10,727	115,096,565	820.79
Leisure & Hospitality	335	5,687	5,873	5,862	20,598,359	272.84
Other Services	262	1,317	1,310	1,386	8,551,183	491.74
Local Government	40	4,519	4,507	4,316	52,772,545	912.78
State Government	21	1,861	1,895	1,624	18,598,615	797.77

TABLE 6. COUNTY SUMMARY

NORTH AMERICAN INDUSTRY CLASSIFICATION SYSTEM - INDUSTRY GROUPS	NUMBER OF EMPLOYING UNITS	EMPLOYMENT			TOTAL EARNINGS	AVERAGE WEEKLY EARNINGS
		APR	MAY	JUN	APR - JUN 2013	
<b>SEVIER COUNTY - TOTAL</b>	<b>328</b>	<b>4,861</b>	<b>4,911</b>	<b>4,846</b>	<b>\$33,617,732</b>	<b>\$530.71</b>
Natural Resources & Mining	14	161	163	154	1,487,553	718.16
Construction	21	149	163	151	1,472,425	733.89
Trade, Transportation & Utilities	100	827	828	848	5,649,681	520.88
Wholesale Trade	17	97	94	97	1,332,266	1,067.52
Retail Trade	66	653	648	661	3,434,754	403.99
Transportation, Warehousing & Utilities	17	77	86	90	882,661	805.10
Information	3	20	21	20	169,257	640.32
Financial Activities	28	225	222	222	1,799,033	620.57
Professional & Business Services	31	134	123	120	722,939	442.53
Education & Health Services	48	508	509	517	3,630,409	546.15
Leisure & Hospitality	26	249	264	268	790,218	233.49
Local Government	12	875	917	878	6,984,261	603.65
State Government	8	196	200	159	1,401,758	582.85
Other	37	1,517	1,501	1,509	9,510,198	484.79
<b>SHARP COUNTY - TOTAL</b>	<b>387</b>	<b>3,659</b>	<b>3,679</b>	<b>3,761</b>	<b>\$24,437,982</b>	<b>\$508.11</b>
Construction	22	112	111	110	1,033,252	716.04
Manufacturing	18	155	161	164	885,520	425.73
Trade, Transportation & Utilities	83	1,024	1,004	983	7,124,054	546.00
Wholesale Trade	12	36	33	35	159,228	353.32
Retail Trade	58	633	628	636	3,140,791	382.08
Transportation, Warehousing & Utilities	13	355	343	312	3,824,035	873.73
Information	6	40	41	37	408,213	798.33
Financial Activities	34	194	192	194	1,618,520	643.97
Professional & Business Services	36	140	141	148	1,144,550	615.68
Education & Health Services	92	672	686	671	4,186,679	476.17
Leisure & Hospitality	36	410	425	438	1,204,420	218.34
Local Government	25	755	766	772	5,800,630	583.78
State Government	8	85	81	82	599,027	557.41
Other	27	72	71	162	433,117	327.71

TABLE 6. COUNTY SUMMARY

NORTH AMERICAN INDUSTRY CLASSIFICATION SYSTEM - INDUSTRY GROUPS	NUMBER OF EMPLOYING UNITS	EMPLOYMENT			TOTAL EARNINGS	AVERAGE WEEKLY EARNINGS
		APR	MAY	JUN	APR - JUN 2013	
<b>STONE COUNTY - TOTAL</b>	<b>292</b>	<b>2,512</b>	<b>2,545</b>	<b>2,534</b>	<b>\$15,218,298</b>	<b>\$462.64</b>
Natural Resources & Mining	6	31	31	68	98,751	175.30
Construction	21	46	46	48	247,050	407.23
Manufacturing	19	173	177	178	904,082	395.14
Trade, Transportation & Utilities	76	654	649	641	3,751,409	445.32
Wholesale Trade	8	39	40	43	292,481	553.24
Retail Trade	55	575	568	559	3,028,146	410.58
Transportation, Warehousing & Utilities	13	40	41	39	430,782	828.43
Financial Activities	26	103	97	104	555,965	422.04
Professional & Business Services	20	45	35	35	228,618	458.77
Education & Health Services	51	489	547	481	3,647,005	554.79
Leisure & Hospitality	34	362	352	355	987,536	213.18
Local Government	10	406	399	408	3,545,334	674.49
State Government	8	142	149	155	899,163	465.24
Other	21	61	63	61	353,385	440.81
<b>UNION COUNTY - TOTAL</b>	<b>1,363</b>	<b>17,515</b>	<b>17,618</b>	<b>17,499</b>	<b>\$175,183,513</b>	<b>\$768.11</b>
Natural Resources & Mining	99	566	579	573	6,656,030	894.07
Construction	76	1,292	1,301	1,272	14,619,639	872.90
Manufacturing	55	2,966	2,955	2,961	38,278,691	994.54
Trade, Transportation & Utilities	337	3,700	3,745	3,766	35,545,350	731.67
Wholesale Trade	71	743	749	763	11,845,701	1,212.25
Retail Trade	206	2,114	2,127	2,117	11,973,372	434.58
Transportation, Warehousing & Utilities	60	843	869	886	11,726,277	1,041.60
Information	11	138	137	142	1,080,660	598.04
Financial Activities	125	758	743	754	7,262,767	743.25
Professional & Business Services	141	1,602	1,607	1,600	22,774,999	1,092.90
Education & Health Services	268	2,331	2,349	2,291	19,652,171	650.57
Leisure & Hospitality	90	1,215	1,254	1,284	4,116,520	253.12
Other Services	110	514	526	552	3,823,016	554.17
Local Government	34	1,852	1,837	1,736	16,072,257	683.68
State Government	17	581	585	568	5,301,413	705.54

TABLE 6. COUNTY SUMMARY

NORTH AMERICAN INDUSTRY CLASSIFICATION SYSTEM - INDUSTRY GROUPS	NUMBER OF EMPLOYING UNITS	EMPLOYMENT			TOTAL EARNINGS	AVERAGE WEEKLY EARNINGS
		APR	MAY	JUN	APR - JUN 2013	
<b>VAN BUREN COUNTY - TOTAL</b>	<b>359</b>	<b>3,782</b>	<b>3,822</b>	<b>3,913</b>	<b>\$33,363,379</b>	<b>\$668.51</b>
Natural Resources & Mining	15	273	277	276	5,363,855	1,498.56
Construction	37	160	167	186	1,258,444	566.10
Manufacturing	8	54	55	57	427,356	594.10
Trade, Transportation & Utilities	98	1,116	1,125	1,175	11,026,060	744.87
Wholesale Trade	8	46	44	48	457,108	764.39
Retail Trade	60	572	575	580	2,931,911	391.77
Transportation, Warehousing & Utilities	30	498	506	547	7,637,041	1,136.30
Information	9	42	42	42	367,377	672.85
Financial Activities	34	136	132	139	1,192,773	676.30
Professional & Business Services	28	101	104	114	691,763	500.43
Education & Health Services	62	681	678	694	4,380,700	492.42
Leisure & Hospitality	29	373	395	410	1,376,646	269.68
Other Services	21	66	68	66	447,381	516.21
Local Government	11	714	710	687	6,280,644	686.58
State Government	7	66	69	67	550,380	628.77
<b>WASHINGTON COUNTY - TOTAL</b>	<b>5,690</b>	<b>92,833</b>	<b>93,112</b>	<b>93,333</b>	<b>\$897,029,505</b>	<b>\$741.22</b>
Natural Resources & Mining	48	382	378	381	3,884,930	785.73
Construction	482	4,005	4,052	4,146	40,599,164	767.77
Manufacturing	225	12,189	12,233	12,294	113,310,995	712.19
Trade, Transportation & Utilities	1,391	20,952	21,067	20,940	185,836,101	681.16
Wholesale Trade	410	3,582	3,620	3,628	53,335,730	1,136.50
Retail Trade	789	10,871	10,868	10,774	68,321,026	484.93
Transportation, Warehousing & Utilities	192	6,499	6,579	6,538	64,179,345	755.03
Information	86	944	987	1,034	10,343,600	805.05
Financial Activities	622	3,338	3,373	3,369	38,405,670	879.25
Professional & Business Services	997	10,161	10,122	10,358	143,309,109	1,079.32
Education & Health Services	794	13,525	13,595	13,454	137,733,114	783.37
Leisure & Hospitality	596	10,907	11,005	11,077	38,004,533	265.85
Other Services	366	1,792	1,808	1,762	12,104,996	520.97
Local Government	61	8,570	8,454	8,425	98,732,517	895.30
State Government	22	6,068	6,038	6,093	74,764,776	948.04

TABLE 6. COUNTY SUMMARY

NORTH AMERICAN INDUSTRY CLASSIFICATION SYSTEM - INDUSTRY GROUPS	NUMBER OF EMPLOYING UNITS	EMPLOYMENT			TOTAL EARNINGS	AVERAGE WEEKLY EARNINGS
		APR	MAY	JUN	APR - JUN 2013	
<b>WHITE COUNTY - TOTAL</b>	<b>1,846</b>	<b>24,835</b>	<b>24,904</b>	<b>24,570</b>	<b>\$213,664,879</b>	<b>\$663.54</b>
Natural Resources & Mining	56	1,162	1,190	1,197	17,278,607	1,123.52
Construction	172	994	1,053	1,123	9,839,954	716.33
Manufacturing	66	2,389	2,394	2,395	25,432,244	817.63
Trade, Transportation & Utilities	506	6,235	6,211	6,183	49,970,068	619.01
Wholesale Trade	95	616	624	621	6,268,134	777.27
Retail Trade	314	3,453	3,429	3,390	19,262,398	432.75
Transportation, Warehousing & Utilities	97	2,166	2,158	2,172	24,439,536	868.21
Information	22	171	163	166	1,304,107	601.90
Financial Activities	160	836	833	838	8,024,091	738.62
Professional & Business Services	212	1,566	1,555	1,574	10,567,377	519.41
Education & Health Services	317	4,971	4,966	4,836	48,497,751	757.58
Leisure & Hospitality	150	2,397	2,421	2,324	7,346,308	237.37
Other Services	121	541	537	538	4,252,576	607.28
Local Government	46	2,777	2,789	2,773	25,703,257	711.30
State Government	18	796	792	623	5,448,539	568.68
<b>WOODRUFF COUNTY - TOTAL</b>	<b>211</b>	<b>1,896</b>	<b>1,923</b>	<b>1,926</b>	<b>\$14,005,586</b>	<b>\$562.59</b>
Natural Resources & Mining	24	153	159	165	1,124,596	544.07
Construction	5	40	45	47	323,228	565.08
Manufacturing	7	250	269	266	2,242,928	659.36
Trade, Transportation & Utilities	46	430	428	435	3,354,165	598.64
Wholesale Trade	12	176	178	182	1,893,028	815.02
Retail Trade	26	188	187	191	769,300	313.66
Transportation, Warehousing & Utilities	8	66	63	62	691,837	835.89
Financial Activities	14	63	67	66	576,902	679.24
Education & Health Services	73	255	252	251	1,491,133	453.97
Leisure & Hospitality	10	91	93	94	265,625	220.50
Local Government	10	482	477	470	3,488,941	563.43
State Government	6	41	43	42	328,129	600.97
Other	16	91	90	90	809,939	689.70



TABLE 6. COUNTY SUMMARY

NORTH AMERICAN INDUSTRY CLASSIFICATION SYSTEM - INDUSTRY GROUPS	NUMBER OF EMPLOYING UNITS	EMPLOYMENT			TOTAL EARNINGS	AVERAGE WEEKLY EARNINGS
		APR	MAY	JUN	APR - JUN 2013	
<b>YELL COUNTY - TOTAL</b>	<b>423</b>	<b>6,380</b>	<b>6,430</b>	<b>6,352</b>	<b>\$45,045,072</b>	<b>\$542.48</b>
Natural Resources & Mining	22	196	196	205	1,623,124	627.42
Construction	34	220	235	239	1,855,415	616.96
Manufacturing	20	2,413	2,418	2,434	15,687,732	498.31
Trade, Transportation & Utilities	86	716	710	707	4,372,567	473.07
Wholesale Trade	15	39	37	38	199,337	403.52
Retail Trade	53	517	511	518	2,383,797	355.83
Transportation, Warehousing & Utilities	18	160	162	151	1,789,433	873.04
Financial Activities	29	163	166	166	1,373,208	640.19
Professional & Business Services	38	240	235	240	1,787,006	576.76
Education & Health Services	107	733	734	711	4,554,852	482.61
Leisure & Hospitality	30	309	328	322	975,348	234.70
Local Government	26	1,183	1,206	1,127	11,164,943	732.80
State Government	12	98	100	100	694,624	537.91
Other	19	109	102	101	956,253	707.29
<b>STATEWIDE COUNTY - TOTAL</b>	<b>6,933</b>	<b>24,621</b>	<b>24,921</b>	<b>22,199</b>	<b>\$328,867,243</b>	<b>\$1,057.87</b>
Natural Resources & Mining	76	307	301	298	5,157,260	1,313.62
Construction	672	2,733	2,792	2,733	28,912,451	807.96
Manufacturing	45	214	214	214	3,005,485	1,080.33
Trade, Transportation & Utilities	2,412	7,055	6,865	6,733	130,802,850	1,461.54
Wholesale Trade	2,083	6,015	5,875	5,746	118,722,122	1,553.49
Retail Trade	122	306	274	270	4,078,222	1,107.21
Transportation, Warehousing & Utilities	207	734	716	717	8,002,506	852.21
Information	186	389	418	392	6,843,310	1,317.12
Financial Activities	421	1,196	1,223	1,239	20,241,774	1,276.98
Professional & Business Services	2,557	9,610	10,015	7,489	100,591,717	856.14
Education & Health Services	260	1,789	1,817	1,815	17,319,451	737.28
Leisure & Hospitality	71	108	100	111	1,009,829	730.52
Other Services	216	511	472	470	6,535,519	1,037.99
State Government	17	709	704	705	8,447,597	920.42

Note: Statewide classification includes employment and payroll data for employers that have multiple employing units but have not provided physical location information for each unit. This section also includes employers without a physical location in Arkansas.

**TABLE 7. FEDERAL GOVERNMENT EMPLOYMENT AND EARNINGS IN ARKANSAS**

CLASSIFICATION SYSTEM - INDUSTRY GROUPS	NUMBER OF EMPLOYING UNITS	EMPLOYMENT			TOTAL EARNINGS	AVERAGE
		APR	MAY	JUN	APR - JUN 2013	WEEKLY EARNINGS
<b>TOTAL</b>	<b>1,191</b>	<b>20,443</b>	<b>20,375</b>	<b>20,456</b>	<b>\$310,224,066</b>	<b>\$1,168.36</b>
Trade, Transportation & Utilities	590	5,591	5,484	5,486	62,093,294	865.24
Information	2	44	46	48	676,694	1,131.60
Financial Activities	15	118	118	118	2,481,986	1,617.98
Professional & Business Services	30	784	806	823	14,956,658	1,430.39
Education & Health Services	16	5,193	5,233	5,217	83,763,369	1,235.70
Leisure & Hospitality	19	286	288	336	3,091,861	784.07
Other Services	2	1	1	1	7,728	594.46
Public Administration	517	8,426	8,399	8,427	143,152,476	1,308.22

TABLE 8. WORKFORCE INVESTMENT AREA SUMMARY

NORTH AMERICAN INDUSTRY CLASSIFICATION SYSTEM - INDUSTRY GROUPS	NUMBER OF EMPLOYING UNITS	EMPLOYMENT			TOTAL EARNINGS	AVERAGE WEEKLY EARNINGS
		APR	MAY	JUN	APR - JUN 2013	
<b>CENTRAL WORKFORCE INVESTMENT AREA</b>	<b>6,607</b>	<b>79,761</b>	<b>79,911</b>	<b>79,191</b>	<b>\$698,801,427</b>	<b>\$675.12</b>
Natural Resources & Mining	216	2,198	2,255	2,274	31,222,111	1,071.07
Construction	747	5,295	5,420	5,496	50,284,455	715.82
Trade, Transportation & Utilities	1,580	15,556	15,511	15,585	112,946,798	558.70
Wholesale Trade	400	2,146	2,165	2,155	24,525,231	875.30
Retail Trade	928	11,723	11,646	11,699	69,597,916	458.00
Transportation, Warehousing & Utilities	252	1,687	1,700	1,731	18,823,651	848.75
Information	59	570	579	576	5,757,588	770.25
Financial Activities	699	2,957	2,992	2,971	30,895,942	799.31
Professional & Business Services	841	8,474	8,315	8,385	108,769,997	997.09
Education & Health Services	1,044	11,689	11,733	11,628	91,686,133	603.66
Leisure & Hospitality	557	9,585	9,704	9,672	31,041,109	247.34
Local Government	131	10,832	10,800	10,372	109,113,913	786.78
State Government	65	4,602	4,578	4,189	41,688,216	719.60
Other	668	8,003	8,024	8,043	85,395,165	818.72
<b>EASTERN WORKFORCE INVESTMENT AREA</b>	<b>3,881</b>	<b>36,517</b>	<b>36,742</b>	<b>36,686</b>	<b>\$288,332,643</b>	<b>\$605.20</b>
Natural Resources & Mining	228	1,129	1,176	1,235	8,559,899	558.01
Construction	156	720	851	766	6,838,534	675.28
Trade, Transportation & Utilities	822	9,167	9,174	9,189	73,156,229	613.23
Wholesale Trade	167	1,994	2,013	2,014	21,848,959	837.41
Retail Trade	461	4,667	4,660	4,673	25,854,499	426.17
Transportation, Warehousing & Utilities	194	2,506	2,501	2,502	25,452,771	782.22
Financial Activities	268	1,334	1,329	1,347	11,565,507	665.58
Professional & Business Services	280	2,343	2,385	2,390	16,201,830	525.27
Education & Health Services	1,406	6,586	6,627	6,556	48,393,204	564.91
Leisure & Hospitality	242	3,402	3,482	3,532	12,358,470	273.81
Local Government	129	5,296	5,272	5,256	53,557,605	781.06
State Government	61	2,497	2,364	2,349	20,615,831	659.85
Other	289	4,043	4,082	4,066	37,085,534	702.01

Note: Pulaski County is not included in the Central Workforce Investment. Please refer to Page 51 for information on Pulaski County.  
Central Workforce Includes these counties: Faulkner, Lonoke, Monroe, Prairie, and Saline.

Eastern Workforce Includes these counties: Crittenden, Cross, Lee, Phillips, and Saint Francis.

TABLE 8. WORKFORCE INVESTMENT AREA SUMMARY

NORTH AMERICAN INDUSTRY CLASSIFICATION SYSTEM - INDUSTRY GROUPS	NUMBER OF EMPLOYING UNITS	EMPLOYMENT			TOTAL EARNINGS	AVERAGE WEEKLY EARNINGS
		APR	MAY	JUN	APR - JUN 2013	
<b>NORTH CENTRAL WORKFORCE INVESTMENT AREA</b>	<b>5,585</b>	<b>68,690</b>	<b>68,951</b>	<b>68,730</b>	<b>\$552,916,998</b>	<b>\$618.29</b>
Construction	441	2,310	2,426	2,549	21,382,355	677.34
Trade, Transportation & Utilities	1,435	15,822	15,784	15,854	123,150,679	598.81
Retail Trade	918	9,354	9,317	9,335	50,988,864	420.15
Other Trade, Transportation & Utilities	517	6,468	6,467	6,519	72,161,815	856.01
Financial Activities	494	2,442	2,445	2,471	22,500,545	705.69
Education & Health Services	1,028	12,941	12,933	12,739	109,247,841	652.92
Leisure & Hospitality	478	6,214	6,367	6,437	19,226,352	233.30
Local Government	229	9,337	9,353	9,084	80,179,534	666.20
State Government	105	3,292	3,292	2,976	26,696,235	644.42
Other	1,375	16,332	16,351	16,620	150,533,457	704.59

North Central Workforce Includes these counties: Cleburne, Fulton, Independence, IZard, Jackson, Sharp, Stone, Van Buren, White, and Woodruff.

<b>NORTHEAST WORKFORCE INVESTMENT AREA</b>	<b>6,566</b>	<b>94,544</b>	<b>95,148</b>	<b>94,345</b>	<b>\$829,585,646</b>	<b>\$674.01</b>
Natural Resources & Mining	418	2,059	2,139	2,222	15,833,007	569.12
Construction	437	3,208	3,379	3,303	31,914,857	744.69
Manufacturing	313	18,868	18,881	18,838	219,737,310	896.12
Trade, Transportation & Utilities	1,729	18,494	18,553	18,651	142,282,074	589.51
Wholesale Trade	401	3,953	3,953	3,969	43,738,100	849.97
Retail Trade	1,013	11,656	11,686	11,743	67,167,438	441.79
Transportation, Warehousing & Utilities	315	2,885	2,914	2,939	31,376,536	828.65
Financial Activities	561	3,049	3,082	3,084	30,274,333	758.15
Professional & Business Services	674	6,641	6,743	6,604	47,444,987	547.77
Education & Health Services	1,183	15,721	15,761	15,408	147,482,350	725.83
Leisure & Hospitality	507	8,155	8,145	8,226	26,278,948	247.26
Local Government	220	11,704	11,780	11,426	108,154,692	714.95
State Government	99	4,372	4,389	4,281	43,721,732	773.63
Other	425	2,273	2,296	2,302	16,461,356	552.87

Northeast Workforce Includes these counties: Clay, Craighead, Greene, Lawrence, Mississippi, Poinsett, and Randolph.

TABLE 8. WORKFORCE INVESTMENT AREA SUMMARY

NORTH AMERICAN INDUSTRY CLASSIFICATION SYSTEM - INDUSTRY GROUPS	NUMBER OF EMPLOYING UNITS	EMPLOYMENT			TOTAL EARNINGS	AVERAGE WEEKLY EARNINGS
		APR	MAY	JUN	APR - JUN 2013	
<b>NORTHWEST WORKFORCE INVESTMENT AREA</b>	<b>15,225</b>	<b>238,465</b>	<b>239,341</b>	<b>239,090</b>	<b>\$2,407,692,098</b>	<b>\$775.04</b>
Natural Resources & Mining	140	1,540	1,605	1,636	15,540,815	750.12
Trade, Transportation & Utilities	3,789	52,437	52,573	52,548	497,599,396	728.81
Retail Trade	2,066	27,372	27,385	27,328	167,209,516	470.08
Other Trade, Transportation & Utilities	1,723	25,065	25,188	25,220	330,389,880	1,010.21
Education & Health Services	2,160	30,126	30,126	29,918	280,562,903	718.04
Leisure & Hospitality	1,563	25,376	26,157	26,640	95,245,639	281.17
Local Government	310	22,977	22,944	22,092	247,779,033	840.72
State Government	107	8,904	8,818	8,584	99,665,185	874.31
Other	7,156	97,105	97,118	97,672	1,171,299,127	926.02

Northwest Workforce Includes these counties: Baxter, Benton, Boone, Carroll, Madison, Marion, Newton, Searcy, and Washington.

<b>SOUTHEAST WORKFORCE INVESTMENT AREA</b>	<b>6,119</b>	<b>70,818</b>	<b>71,036</b>	<b>70,882</b>	<b>\$607,838,353</b>	<b>\$659.36</b>
Natural Resources & Mining	406	2,403	2,458	2,468	20,986,191	660.80
Construction	318	2,380	2,514	2,407	23,077,580	729.43
Manufacturing	191	14,272	14,359	14,352	159,994,600	858.99
Trade, Transportation & Utilities	1,342	12,865	12,851	12,934	99,708,982	595.34
Retail Trade	801	7,882	7,873	7,882	43,301,469	422.75
Other Trade, Transportation & Utilities	541	4,983	4,978	5,052	56,407,513	867.06
Financial Activities	415	2,560	2,537	2,539	24,510,856	740.75
Education & Health Services	1,896	11,181	11,101	10,976	82,386,193	571.66
Local Government	203	9,517	9,520	9,637	86,013,014	692.24
State Government	136	6,394	6,384	6,268	58,404,961	707.66
Other	1,212	9,246	9,312	9,301	52,755,976	437.00

Southeast Workforce Includes these counties: Arkansas, Ashley, Bradley, Chicot, Cleveland, Desha, Drew, Grant, Jefferson, and Lincoln.

TABLE 8. WORKFORCE INVESTMENT AREA SUMMARY

NORTH AMERICAN INDUSTRY CLASSIFICATION SYSTEM - INDUSTRY GROUPS	NUMBER OF EMPLOYING UNITS	EMPLOYMENT			TOTAL EARNINGS	AVERAGE WEEKLY EARNINGS
		APR	MAY	JUN	APR - JUN 2013	
<b>SOUTHWEST WORKFORCE INVESTMENT AREA</b>	<b>5,839</b>	<b>78,263</b>	<b>78,430</b>	<b>78,363</b>	<b>\$685,428,570</b>	<b>\$672.93</b>
Natural Resources & Mining	357	2,356	2,392	2,395	24,790,799	800.92
Trade, Transportation & Utilities	1453	15422	15547	15687	125711176	621.79
Retail Trade	902	8,846	8,862	8,875	47,297,791	410.60
Other Trade, Transportation & Utilities	551	6,576	6,685	6,812	78,413,385	901.48
Information	61	436	437	447	4,371,627	764.27
Financial Activities	515	2,769	2,768	2,758	24,370,033	677.98
Education & Health Services	1,124	9,247	9,254	9,135	65,293,772	545.22
Leisure & Hospitality	411	5,513	5,563	5,779	17,788,738	243.55
Other Services	405	1,816	1,831	1,850	11,164,906	468.71
Local Government	259	10,418	10,477	10,227	94,220,822	698.65
State Government	138	3,848	3,846	3,781	34,629,831	696.43
Other	1,116	26,438	26,315	26,304	283,086,866	826.34

Southwest Workforce Includes these counties: Calhoun, Columbia, Dallas, Hempstead, Howard, Lafayette, Little River, Miller, Nevada, Ouachita, Sevier, and Union

<b>WEST CENTRAL WORKFORCE INVESTMENT AREA</b>	<b>8,177</b>	<b>106,993</b>	<b>106,321</b>	<b>105,622</b>	<b>\$868,678,873</b>	<b>\$628.54</b>
Construction	756	4,922	4,874	4,827	50,075,424	790.25
Trade, Transportation & Utilities	1,916	20,936	20,998	20,957	168,754,218	619.22
Retail Trade	1,267	13,592	13,624	13,600	78,921,593	446.21
Other Trade, Transportation & Utilities	649	7,344	7,374	7,357	89,832,625	939.10
Financial Activities	816	4,044	4,083	4,086	36,533,115	690.31
Professional & Business Services	928	8,475	8,432	8,477	68,896,125	626.34
Education & Health Services	1,457	16,520	16,480	16,330	140,846,937	658.89
Leisure & Hospitality	760	13,156	12,442	13,128	43,941,108	261.85
Local Government	224	11,934	11,932	11,071	119,643,345	790.28
State Government	124	5,782	5,754	5,272	49,744,575	682.98
Other	1,196	21,224	21,326	21,474	190,244,026	685.72

West Central Workforce Includes these counties: Clark, Conway, Garland, Hot Spring, Johnson, Montgomery, Perry, Pike, Pope, and Yell

TABLE 8. WORKFORCE INVESTMENT AREA SUMMARY

NORTH AMERICAN INDUSTRY CLASSIFICATION SYSTEM - INDUSTRY GROUPS	NUMBER OF EMPLOYING UNITS	EMPLOYMENT			TOTAL EARNINGS	AVERAGE WEEKLY EARNINGS
		APR	MAY	JUN	APR - JUN 2013	
<b>WESTERN WORKFORCE INVESTMENT AREA</b>	<b>6,627</b>	<b>101,429</b>	<b>101,765</b>	<b>101,161</b>	<b>\$909,514,247</b>	<b>\$689.62</b>
Natural Resources & Mining	171	2,332	2,303	2,282	36,840,736	1,229.10
Trade, Transportation & Utilities	1,642	21,716	21,657	21,771	174,749,873	619.04
Retail Trade	960	11,797	11,822	11,851	67,437,436	438.75
Other Trade, Transportation & Utilities	682	9,919	9,835	9,920	107,312,437	834.55
Financial Activities	706	3,848	3,853	3,867	38,982,129	777.65
Professional & Business Services	878	10,189	10,059	9,990	90,325,403	689.34
Education & Health Services	1,030	15,058	15,072	14,899	146,959,600	753.15
Leisure & Hospitality	546	8,432	8,739	8,723	29,207,017	260.30
Other Services	433	2,081	2,094	2,213	13,981,982	505.11
Local Government	151	9,664	9,687	9,376	99,162,818	796.59
State Government	74	3,010	3,060	2,751	27,438,761	717.83
Other	996	25,099	25,241	25,289	251,865,928	768.53

Western Workforce Includes these counties: Crawford, Franklin, Logan, Polk, Scott, and Sebastian