

Arkansas Covered Employment & Earnings

First Quarter
2013

Jobs for People. People for Jobs.

DWS

Department of
WORKFORCE**Services**

**COVERED EMPLOYMENT AND EARNINGS
STATE OF ARKANSAS
FIRST QUARTER 2013**

**MIKE BEEBE, GOVERNOR
STATE OF ARKANSAS**

**ARTEE WILLIAMS, DIRECTOR
DEPARTMENT OF WORKFORCE SERVICES**

**PUBLISHED BY
LABOR MARKET INFORMATION & ANALYSIS
BUREAU OF LABOR STATISTICS PROGRAMS
POST OFFICE BOX 2981
LITTLE ROCK, ARKANSAS 72203-2981
BERNADETTE COLEMAN, BLS PROGRAMS MANAGER
TELEPHONE (501) 682-3159
SUSAN PRICE, QCEW LEAD ANALYST
TELEPHONE (501) 682-3103**

STATE OF ARKANSAS WEBPAGE: <http://www.arkansas.gov>

DEPARTMENT OF WORKFORCE SERVICES WEBPAGE: <http://www.arkansas.gov/esd/>

WEBPAGE FOR LABOR MARKET INFORMATION: <http://www.discover.arkansas.gov>

RELEASED: SEPTEMBER 2013

TABLE OF CONTENTS

DESCRIPTION OF DATA	PAGE
Industry Classification	1
Definition of Covered Employment and Earnings	2
Federal Government	2
County Classification	2
Significant Developments During First Quarter 2013	3

LIST OF GRAPHS AND TABLES

Graph 1	Total Covered Employment for Selected Years, Arkansas	7
Graph 2	Total Covered Earnings, by Calendar Quarter for Selected Years, Arkansas	8
Table 1	Quarterly Comparison of Covered Employment and Wages, by Industry	5
Table 2	Total Covered Employment in Arkansas, 2006 – 2013	6
Table 3	Total Covered Earnings, 2006 – 2013	9
Table 4	Total Taxable Earnings, 2006 – 2013	10
Table 5	State Summary – Employment and Total Earnings, by Industry, First Quarter 2013	11
Table 6	County Summary – Employment and Total Earnings, by Industry, First Quarter 2013	22
Table 7	Federal Government Employment and Total Earnings in Arkansas, First Quarter 2013	60
Table 8	Workforce Information Area – Employment and Total Earnings, by Industry, First Quarter 2013	61

EMPLOYMENT AND EARNINGS
UNDER THE ARKANSAS EMPLOYMENT SECURITY LAW
FIRST QUARTER 2013

DESCRIPTION OF DATA

This publication contains covered employment and payroll data by industry and county for the First Quarter 2013. These data are compiled from quarterly contributions and wage reports submitted by employers subject to the Arkansas Employment Security Law. An employing unit is a single physical location where business is conducted, production takes place, or services are provided. Employment data have been tabulated for each month of the quarter by industry under the **North American Industry Classification System (NAICS)** (see "Industry Classification" below) on a statewide, county and workforce area basis. Payroll data represent the total wages paid during the quarter, and are also shown by industry for the State and

by publishable industry groups for each county and workforce area. The tabulation of this data is a joint effort in conjunction with the U.S. Bureau of Labor Statistics. In addition, there are tables included which set out total covered employment by months, quarterly payrolls, and average weekly earnings for the years 2006 through 2013. Data contained in this publication are subject to revisions. These revisions are typically reflected in the 2013 Annual Covered Employment and Earnings publication. Because of industry code changes between years, substantial employment and wage shifts among industries are anticipated.

INDUSTRY CLASSIFICATION

Previously published industry data will not be comparable in all instances with currently published data since industry codes have been revised. The last two revisions have occurred using the North American Classification System (NAICS) which is a six digit industry code. Since 2001 NAICS codes are revised every five years. The most recent revision is the NAICS 2012 codes which are being used as of 2011 publications.

Auxiliary units are establishments primarily engaged in performing management of support services for other establishments of the same enterprise. The NAICS code is based on the actual activities that

the establishment performs. Comparisons of many industries should not be made between this publication and previous Covered Employment and Earnings publications that were based on previous coding revisions. A summary is available on the NAICS home page at <http://www.census.gov/naics>.

DEFINITION OF COVERED EMPLOYMENT AND EARNINGS

Covered Employment is the number of workers employed by employers subject to the Arkansas Employment Security Law who worked or received pay for the payroll period including the 12th of the month. An employer is subject to the law when they employ one or more employees in each of ten days during the current or preceding calendar year.

Currently excluded from coverage is employment covered by the Railroad Unemployment Insurance Act, some domestic service workers, employees of small agricultural establishments, self-

employed and unpaid family workers, insurance and real estate agents who are on commission only, and employees of churches and religious organizations except separately incorporated school. The payroll information in this publication includes all wages and salaries paid to any covered employees by their employers including bonuses, commissions, and cash values of remuneration received in any medium other than cash. These wages include both taxable and nontaxable wages. Only the first \$12,000 paid to each worker by an employer in the calendar year is taxable under the Arkansas Employment Security Law.

FEDERAL GOVERNMENT EMPLOYMENT

Table 7 on page 60 lists the total number of civilians employed by the Federal Government in Arkansas during the First Quarter 2013. Employment and wage data are set out by industry divisions.

These data are obtained from required reports submitted by various government agencies having employment in the State. Civilian Federal workers are covered by the Unemployment Compensation for Federal Employees (UCFE) program.

COUNTY CLASSIFICATION

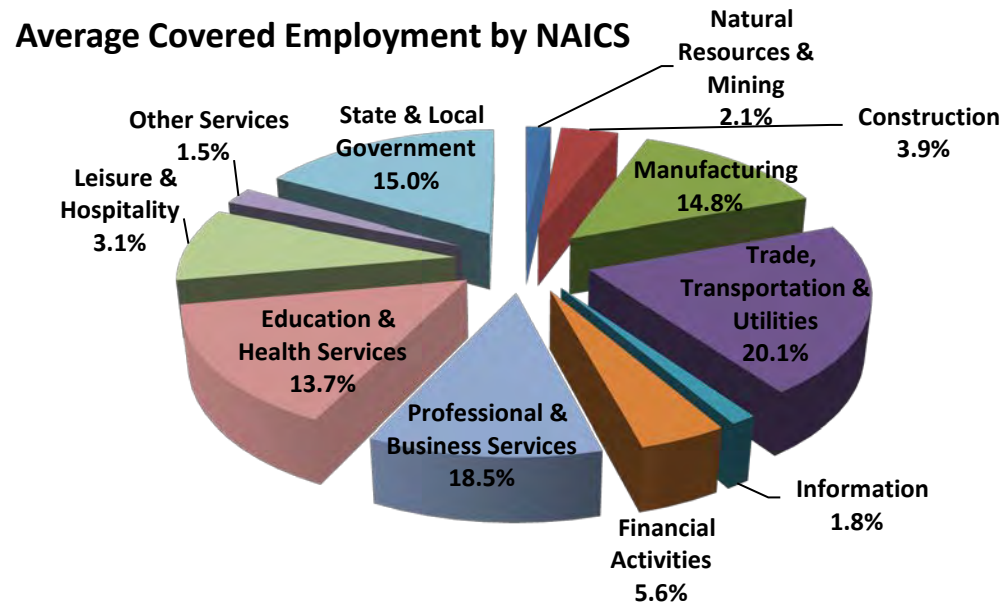
Employment and payroll data by county are classified according to the county where the workers are employed. Employers with operations in more than one county are requested to furnish this agency with a breakdown of employment and wages for at least one quarter of each year by the counties in which they operate. Many such employers submit county data with each regular contribution report. Note: This information is invaluable in the preparation of monthly employment and payroll data by county.

Employment and payroll data for multi-area employers, who do not furnish county data each quarter of the year, are prorated by county on the basis of one quarter's information. The "rest-of-state" table that appears on page 59 of this publication includes data on firms that did not provide a county breakdown of employment and payrolls. It also includes sales, and all other type of personnel with no permanent place of work, as well as employment of employers with no established place of business in Arkansas.

SIGNIFICANT DEVELOPMENTS DURING FIRST QUARTER 2013

AVERAGE EMPLOYMENT CHANGES

Covered employment averaged 1,122,707 during the First Quarter 2013 (refer to Table 1), a decrease of 15,196 (-1.3%) from the previous quarter and an increase of 1,468 from the average recorded one year ago. This over-the-year increase is more significant when used as an economic indicator. This over-the-year comparison allows for the disregarding of many seasonal factors that are evident when making an over-the-quarter comparison.



EMPLOYMENT CHANGES FROM FOURTH QUARTER 2012

Compared to Fourth Quarter 2012, covered employment decreased in nine major industry sectors. Trade, Transportation, & Utilities had the largest loss (-5,867), due to seasonal changes. Education and Health Services decreased by 3,694 as schools were closed for the holidays. State & Local Government (-2,588), Natural Resources & Mining (-1,559), Construction (-1,504), and Leisure & Hospitality

(-823) also experienced seasonal declines. Losses were also experienced in Manufacturing (-999), Other Services (-405), and Information (-166). Professional & Business Services (2,258) had the largest gain of the quarter, while Financial Activities (150) experienced modest growth.

EMPLOYMENT CHANGES FROM FIRST QUARTER 2012 (QUARTER YEAR AGO COMPARISON)

Over-the-year gains were recorded in five industry groups (refer to Table 1). The largest gains were posted in Professional & Business Services (5,056) and Leisure & Hospitality (2,125). Gains were also recorded in Financial Activities (393), Trade, Transportation, & Utilities (369), and State & Local Government (93). The most significant over-the-year losses occurred in Manufacturing (-2,560), Natural Resources & Mining (-1,702), and Construction (-1,423).

COVERED WAGES

Wages paid to covered workers totaled \$11,038,435,964 for the First Quarter 2013 (refer to Table 1), for an average weekly wage of \$756.31 (refer to Table 5). Employees in Benton County recorded the highest average weekly wage (\$1,340.04), and workers in Newton County reported the lowest (\$406.93) (refer to Table 6).

The Professional & Business Services sector recorded the highest average weekly wage for the State of Arkansas at \$1,235.73. The Leisure & Hospitality industry recorded the lowest at \$264.81 (refer to Table 5).

Average Weekly Wage by Industry

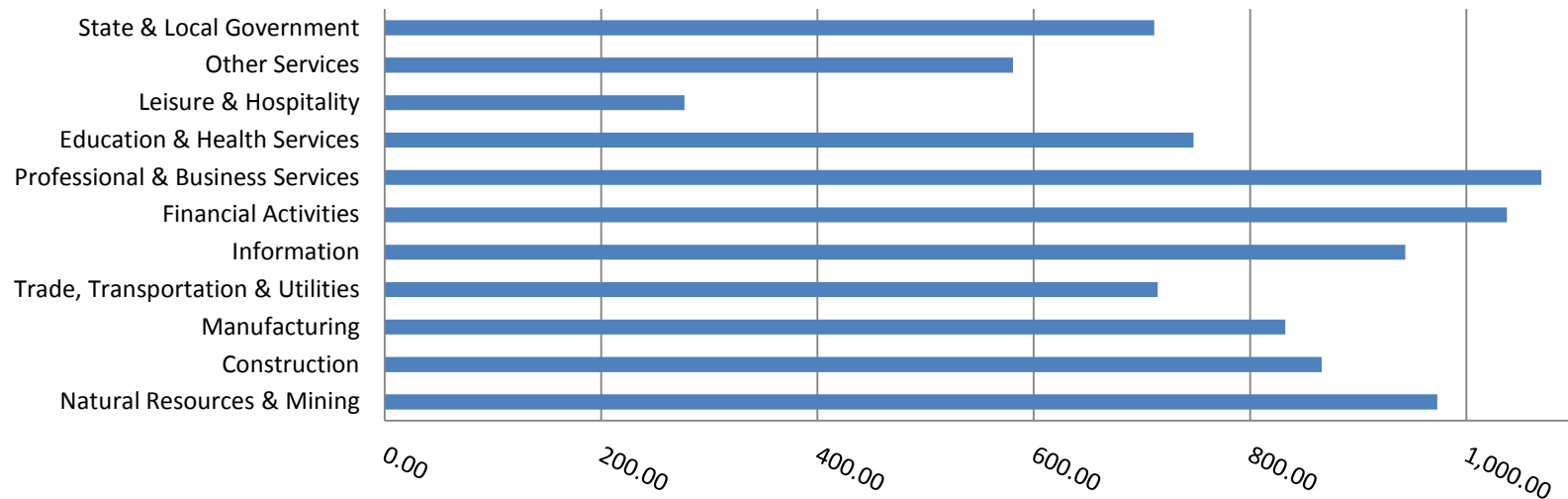


TABLE 1. QUARTERLY COMPARISON OF COVERED EMPLOYMENT AND WAGES, BY INDUSTRY

North American Industry Classification System	Number of Employing Units	Monthly Employment Average	Percent of Total	Net Change From:		Total Wages Paid Jan - Mar 2013	Percent of Total
				Oct - Dec 2012	Jan - Mar 2012		
Total	85,437	1,122,707	100	-15,196	1,468	\$11,038,435,964	100
Natural Resources & Mining	2,496	19,366	1.7	-1,559	-1,702	227,657,105	2.1
Agriculture, Forestry, Fishing & Hunting	1,971	11,701	1.0	-1,184	-44	94,147,055	0.9
Mining	525	7,666	0.7	-374	-1,658	133,510,050	1.2
Construction	6,789	44,969	4.0	-1,504	-1,423	429,146,689	3.9
Manufacturing	3,050	153,173	13.6	-999	-2,560	1,630,446,402	14.8
Trade, Transportation & Utilities	21,293	235,206	20.9	-5,867	369	2,215,001,446	20.1
Wholesale Trade	6,818	46,830	4.2	-274	66	727,264,602	6.6
Retail Trade	11,185	130,675	11.6	-4,321	60	787,611,166	7.1
Transportation & Warehousing	2,877	49,922	4.4	-1,360	155	526,785,353	4.8
Utilities	413	7,779	0.7	88	88	173,340,325	1.6
Information	1,152	14,168	1.3	-166	-229	197,858,233	1.8
Financial Activities	8,083	47,735	4.3	150	393	615,201,848	5.6
Finance & Insurance	4,804	34,828	3.1	429	492	511,000,257	4.6
Real Estate & Rental & Leasing	3,279	12,907	1.1	-279	-99	104,201,591	0.9
Professional & Business Services	12,792	126,844	11.3	2,258	5,056	2,037,690,170	18.5
Professional & Technical Services	8,079	40,010	3.6	1,336	595	505,820,877	4.6
Management of Companies & Enterprises	506	31,459	2.8	-83	836	1,191,894,899	10.8
Administrative & Waste Services	4,207	55,376	4.9	1,005	3,625	339,974,394	3.1
Education & Health Services	14,746	168,390	15.0	-3,694	-227	1,514,805,846	13.7
Educational Services	725	11,195	1.0	-2,135	-1,330	86,428,531	0.8
Health Care & Social Assistance	14,021	157,195	14.0	-1,558	1,103	1,428,377,315	12.9
Leisure & Hospitality	6,605	100,958	9.0	-823	2,125	347,547,604	3.1
Arts, Entertainment & Recreation	926	8,888	0.8	489	213	40,407,146	0.4
Accommodation & Food Services	5,679	92,071	8.2	-1,312	1,912	307,140,458	2.8
Other Services	5,341	23,585	2.1	-405	-428	167,297,681	1.5
State & Local Government	3,090	188,312	16.8	-2,588	93	1,655,782,940	15.0
Local Government	1,961	117,708	10.5	-1,443	-1,491	946,422,810	8.6
State Government	1,129	70,604	6.3	-1,145	1,584	709,360,130	6.4
Nonclassifiable Establishments	0	0	0.0	0	0	0	0.0

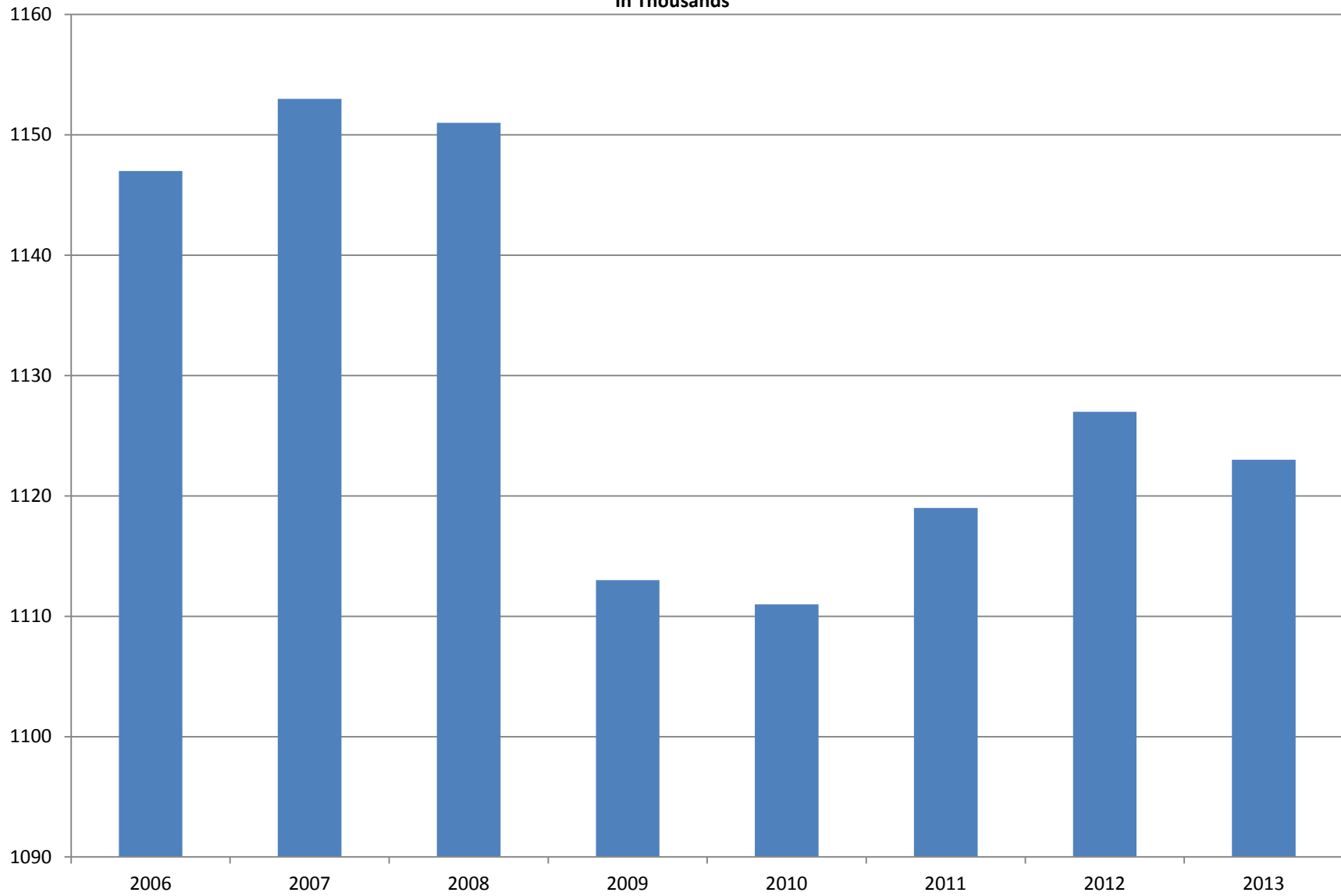
Note: Items do not necessarily add to total because of rounding. Because of industry code changes between years, substantial employment and wage shifts among industries are anticipated.

TABLE 2. TOTAL COVERED EMPLOYMENT IN ARKANSAS

Period	2006	2007	2008	2009	2010	2011	2012	2013
Average	1,146,948	1,152,994	1,150,965	1,112,591	1,110,947	1,118,639	1,126,588	1,122,707
January	1,130,595	1,137,437	1,141,856	1,119,299	1,089,984	1,098,349	1,113,274	1,114,507
February	1,136,810	1,143,397	1,149,443	1,119,476	1,091,282	1,098,445	1,119,319	1,123,049
March	1,150,439	1,158,895	1,157,690	1,124,386	1,106,198	1,113,061	1,131,123	1,130,565
April	1,155,498	1,159,623	1,159,841	1,123,383	1,115,341	1,129,635	1,136,973	
May	1,159,886	1,165,224	1,166,111	1,122,322	1,123,250	1,126,371	1,143,142	
June	1,162,026	1,164,207	1,164,167	1,117,884	1,130,164	1,123,412	1,136,739	
July	1,106,142	1,110,571	1,114,279	1,071,048	1,073,743	1,080,937	1,079,329	
August	1,130,839	1,139,109	1,138,583	1,093,192	1,099,795	1,106,262	1,109,425	
September	1,159,814	1,165,135	1,162,333	1,116,580	1,124,281	1,132,779	1,136,019	
October	1,156,804	1,162,768	1,157,196	1,113,157	1,125,073	1,138,395	1,136,045	
November	1,156,011	1,164,246	1,152,159	1,115,443	1,126,781	1,138,543	1,138,302	
December	1,158,509	1,165,314	1,147,927	1,114,919	1,125,466	1,137,474	1,139,361	

AVERAGE TOTAL COVERED EMPLOYMENT

In Thousands



TOTAL COVERED EARNINGS BY CALENDAR YEAR

In Thousands

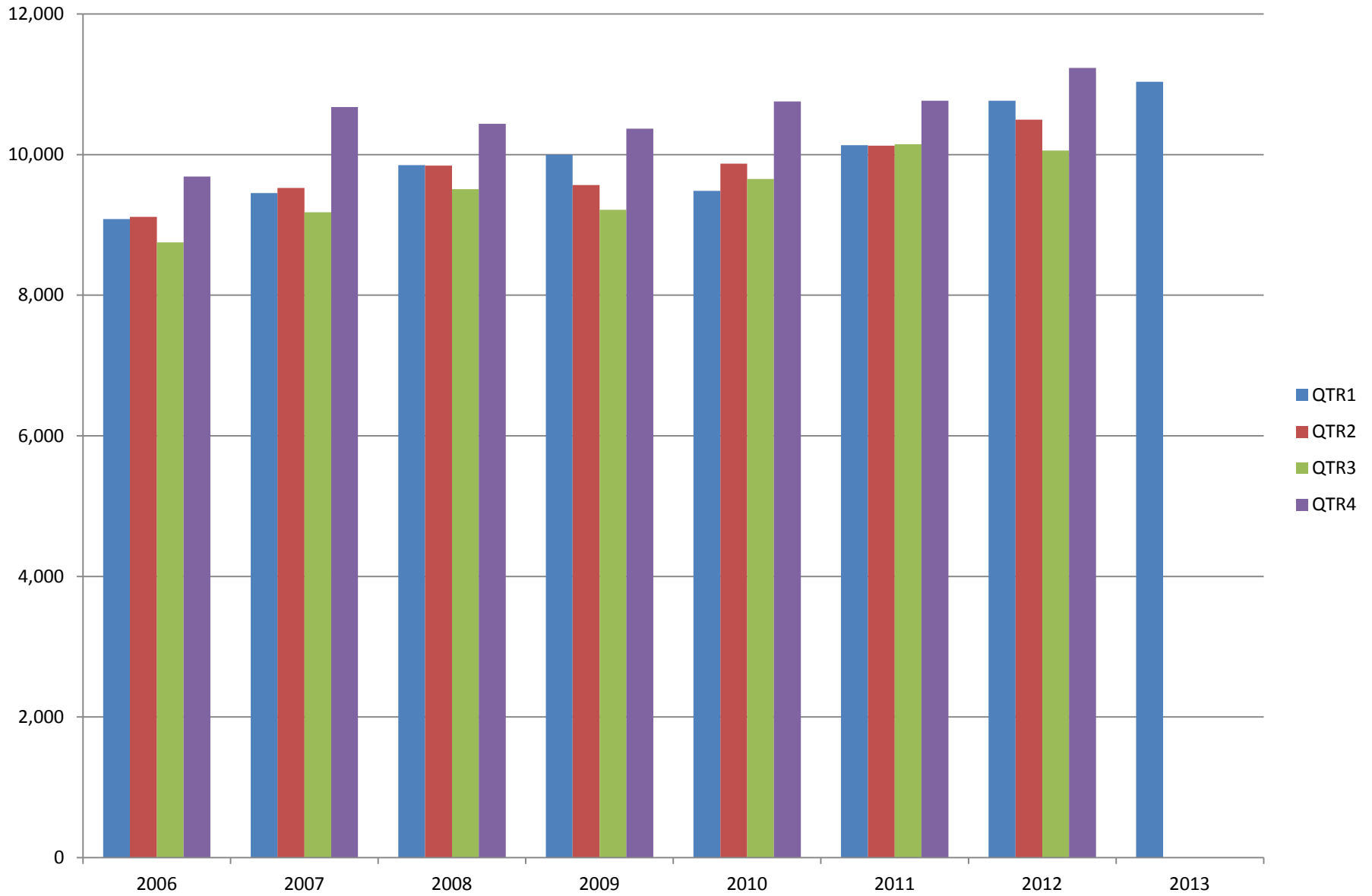


TABLE 3. TOTAL COVERED EARNINGS 2006 - 2013

Period	2006	2007	2008	2009
Total	\$36,636,090,775	\$38,833,265,464	\$39,643,039,342	\$39,149,476,305
January - March	9,085,021,816	9,452,711,662	9,851,866,058	9,998,452,028
April - June	9,112,624,590	9,525,837,049	9,843,711,293	9,566,968,853
July - September	8,750,878,205	9,178,902,477	9,509,150,631	9,213,797,140
October - December	9,687,566,164	10,675,814,276	10,438,311,360	10,370,258,284
Average Weekly Earnings	\$614.27	\$647.70	\$662.37	\$676.69

Period	2010	2011	2012	2013
Total	\$39,769,504,992	\$41,177,659,236	\$42,555,976,081	\$11,038,435,964
January - March	9,486,245,580	10,134,035,254	10,766,175,449	11,038,435,964
April - June	9,873,489,653	10,128,274,611	10,499,018,872	
July - September	9,653,588,807	10,147,287,431	10,058,388,682	
October - December	10,756,180,952	10,768,061,940	11,232,393,078	
Average Weekly Earnings	\$688.42	\$707.89	\$726.43	\$756.31

TABLE 4. TOTAL TAXABLE EARNINGS, 2006 - 2013

Period	2006	2007	2008	2009
Total	10,197,511,360	10,459,105,059	10,360,487,108	9,787,660,886
January - March	5,421,204,601	5,617,417,571	5,635,750,082	5,423,705,265
April - June	2,385,110,992	2,466,606,627	2,419,313,519	2,293,670,854
July - September	1,314,939,803	1,307,060,412	1,297,473,555	1,165,280,065
October - December	1,076,255,964	1,068,020,449	1,007,949,952	905,004,702

Period	2010	2011	2012	2013
Total	11,332,118,456	11,479,396,226	11,642,854,241	6,194,767,117
January - March	5,607,134,758	5,828,877,821	6,167,036,199	6,194,767,117
April - June	2,977,100,591	2,910,604,359	2,845,540,593	
July - September	1,577,067,770	1,601,382,146	1,505,833,030	
October - December	1,170,815,337	1,138,531,900	1,124,444,419	

TABLE 5. STATEWIDE SUMMARY

NORTH AMERICAN INDUSTRY CLASSIFICATION SYSTEM - INDUSTRY GROUPS		NUMBER OF EMPLOYING UNITS	EMPLOYMENT			TOTAL EARNINGS	AVERAGE WEEKLY EARNINGS
			JAN	FEB	MAR	JAN - MAR 2013	
TOTAL, ALL INDUSTRIES		85,437	1,114,507	1,123,049	1,130,565	\$11,038,435,964	\$756.31
NATURAL RESOURCES & MINING		2,496	19,101	19,262	19,736	\$227,657,105	\$904.25
11	AGRICULTURE, FORESTRY, FISHING & HUNTING	1,971	11,397	11,622	12,083	\$94,147,055	\$618.95
111	CROP PRODUCTION	848	3,417	3,570	3,870	\$21,789,566	\$463.14
1111	Oilseed & Grain Farming	560	2,171	2,234	2,394	14,035,026	476.37
1112	Vegetable & Melon Farming	13	99	102	112	585,065	431.36
1113	Fruit & Tree Nut Farming	13	55	65	68	307,178	377.06
1114	Greenhouse & Nursery Production	44	280	328	380	2,179,318	509.03
1119	Other Crop Farming	218	812	841	916	4,682,979	420.66
112	ANIMAL PRODUCTION & AQUACULTURE	287	2,937	2,972	3,011	\$28,062,851	\$726.01
1121	Cattle Ranching & Farming	103	346	345	348	2,178,919	483.95
1122	Hog & Pig Farming	10	120	120	122	1,593,958	1,016.12
1123	Poultry & Egg Production	98	2,041	2,052	2,049	21,196,521	796.40
1125	Animal Aquaculture	58	386	410	447	2,845,307	528.25
1129	Other Animal Production	18	44	45	45	248,146	427.35
113	FORESTRY & LOGGING	399	2,110	2,152	2,208	\$19,110,212	\$681.61
1131	Timber Tract Operations	36	173	171	174	2,524,317	1,124.58
1132	Forest Nurseries & Gathering of Forest Products	5	21	23	23	269,679	928.86
1133	Logging	358	1,916	1,958	2,011	16,316,216	639.81
114	FISHING, HUNTING & TRAPPING	4	22	14	14	\$97,471	\$449.87
115	SUPPORT ACTIVITIES FOR AGRICULTURE & FORESTRY	433	2,911	2,914	2,980	\$25,086,955	\$657.50
1151	Support Activities for Crop Production	293	1,258	1,281	1,353	12,781,947	757.88
1152	Support Activities for Animal Production	65	702	698	713	4,607,989	503.26
1153	Support Activities for Forestry	75	951	935	914	7,697,019	634.37
21	MINING	525	7,704	7,640	7,653	\$133,510,050	\$1,339.74
211	OIL & GAS EXTRACTION	91	1,521	1,544	1,543	\$36,373,601	\$1,821.59
212	MINING (EXCEPT OIL & GAS)	111	1,908	1,876	1,877	\$25,635,428	\$1,045.02
213	SUPPORT ACTIVITIES FOR MINING	323	4,275	4,220	4,233	\$71,501,021	\$1,296.37

TABLE 5. STATEWIDE SUMMARY

NORTH AMERICAN INDUSTRY CLASSIFICATION SYSTEM - INDUSTRY GROUPS		NUMBER OF	EMPLOYMENT			TOTAL EARNINGS	AVERAGE
		EMPLOYING	JAN	FEB	MAR	JAN - MAR 2013	WEEKLY
		UNITS					EARNINGS
CONSTRUCTION		6,789	44,319	44,835	45,753	\$429,146,689	\$734.09
236	CONSTRUCTION OF BUILDINGS	1,605	8,878	8,945	9,149	\$92,496,512	\$791.39
2361	Residential Building Construction	1,060	2,512	2,552	2,611	20,728,416	623.25
2362	Nonresidential Building Construction	545	6,366	6,393	6,538	71,768,096	858.26
237	HEAVY & CIVIL ENGINEERING CONSTRUCTION	747	7,671	7,886	8,239	\$88,554,856	\$858.79
2371	Utility System Construction	401	4,116	4,332	4,653	42,870,343	755.15
2372	Land Subdivision	68	149	154	153	1,392,419	704.67
2373	Highway, Street & Bridge Construction	192	2,504	2,546	2,643	24,788,437	743.59
2379	Other Heavy Construction	86	902	854	790	19,503,657	1,767.81
238	SPECIALTY TRADE CONTRACTORS	4,437	27,770	28,004	28,365	\$248,095,321	\$680.45
2381	Building Foundation & Exterior Contractors	876	5,400	5,513	5,652	44,281,959	616.90
2382	Building Equipment Contractors	2,022	14,626	14,686	14,706	143,461,430	752.11
2383	Building Finishing Contractors	759	3,706	3,735	3,773	28,524,870	587.00
2389	Other Specialty Trade Contractors	780	4,038	4,070	4,234	31,827,062	595.10
MANUFACTURING		3,050	153,081	153,126	153,313	\$1,630,446,402	\$818.80
311	FOOD MANUFACTURING	271	43,738	43,843	43,876	\$340,106,888	\$597.05
3111	Animal Food Manufacturing	43	1,649	1,631	1,619	16,908,767	796.49
3112	Grain & Oilseed Milling	30	2,376	2,401	2,418	24,339,302	780.65
3113	Sugar & Confectionery Product Manufacturing	7	42	41	39	164,412	310.99
3114	Fruit, Vegetable & Specialty Food	20	4,399	4,404	4,460	43,374,824	754.70
3115	Dairy Product Manufacturing	10	568	565	578	6,306,669	850.60
3116	Animal Slaughtering & Processing	80	29,815	29,865	29,792	201,296,120	519.19
3117	Seafood Product Preparation & Packaging	5	68	71	71	413,305	454.18
3118	Bakeries & Tortilla Manufacturing	54	3,075	3,113	3,150	28,842,562	712.78
3119	Other Food Manufacturing	22	1,746	1,752	1,749	18,460,927	811.93
312	BEVERAGE & TOBACCO PRODUCT MANUFACTURING	42	1,047	1,041	1,066	\$12,182,344	\$891.35
313	TEXTILE MILLS	13	83	83	81	\$811,580	\$758.25
314	TEXTILE PRODUCT MILLS	56	890	883	903	\$9,698,123	\$836.33
3141	Textile Furnishing Mills	11	33	33	33	446,235	1,040.17
3149	Other Textile Product Mills	45	857	850	870	9,251,888	828.50
315	APPAREL MANUFACTURING	25	1,047	1,033	1,035	\$5,769,467	\$427.42
316	LEATHER & ALLIED PRODUCT MANUFACTURING	16	1,184	1,145	1,164	\$7,351,711	\$485.70

TABLE 5. STATEWIDE SUMMARY

NORTH AMERICAN INDUSTRY CLASSIFICATION SYSTEM - INDUSTRY GROUPS		NUMBER OF EMPLOYING UNITS	EMPLOYMENT			TOTAL EARNINGS	AVERAGE WEEKLY EARNINGS
			JAN	FEB	MAR	JAN - MAR 2013	
321	WOOD PRODUCT MANUFACTURING	322	8,774	8,769	8,844	\$81,352,250	\$711.47
3211	Sawmills & Wood Preservation	131	4,092	4,134	4,144	40,776,474	760.71
3212	Veneer & Engineered Wood Products	55	1,989	1,941	1,988	20,854,995	813.23
3219	Other Wood Product Manufacturing	136	2,693	2,694	2,712	19,720,781	561.91
322	PAPER MANUFACTURING	76	10,135	10,095	10,110	\$160,260,053	\$1,218.95
3221	Pulp, Paper & Paperboard Mills	11	4,249	4,246	4,271	88,967,654	1,608.26
3222	Converted Paper Product Manufacturing	65	5,886	5,849	5,839	71,292,399	936.16
323	PRINTING & RELATED SUPPORT ACTIVITIES	251	3,273	3,264	3,280	\$34,912,418	\$820.69
324	PETROLEUM & COAL PRODUCTS MANUFACTURING	17	986	1,001	1,008	\$16,873,942	\$1,300.16
325	CHEMICAL MANUFACTURING	117	4,567	4,781	4,806	\$71,642,725	\$1,168.08
3251	Basic Chemical Manufacturing	29	1,682	1,693	1,697	28,607,429	1,301.60
3252	Resin, Rubber & Artificial Fibers	6	259	263	263	3,974,025	1,168.26
3253	Agricultural Chemical Manufacturing	17	387	395	395	7,106,495	1,393.34
3254	Pharmaceutical & Medicine Manufacturing	13	200	207	211	2,688,667	1,003.98
3255	Paint, Coating & Adhesive Manufacturing	9	215	217	216	3,648,535	1,299.34
3256	Soap, Cleaning Compound, & Toilet Preparation Manufacturing	15	1,082	1,251	1,265	14,641,429	939.07
3259	Other Chemical Preparation Manufacturing	28	742	755	759	10,976,145	1,122.76
326	PLASTICS & RUBBER PRODUCTS MANUFACTURING	144	10,565	10,582	10,666	\$124,600,847	\$903.85
3261	Plastics Product Manufacturing	101	6,240	6,286	6,349	63,769,369	779.66
3262	Rubber Product Manufacturing	43	4,325	4,296	4,317	60,831,478	1,085.02
327	NONMETALLIC MINERAL PRODUCT MANUFACTURING	256	3,410	3,417	3,483	\$35,200,858	\$787.90
3271	Clay Product & Refractory Manufacturing	14	367	365	371	3,948,427	826.09
3272	Glass & Glass Product Manufacturing	12	377	375	381	3,975,254	809.68
3273	Cement & Concrete Product Manufacturing	185	1,897	1,898	1,947	17,058,958	685.59
3274	Lime & Gypsum Product Manufacturing	6	197	196	195	2,891,563	1,134.84
3279	Other Nonmetallic Mineral Products Manufacturing	39	572	583	589	7,326,656	969.48
331	PRIMARY METAL MANUFACTURING	75	10,333	10,335	10,413	\$152,116,454	\$1,129.43
3311	Iron & Steel Mills & Ferroalloys	8	2,373	2,380	2,375	57,977,106	1,877.01
3312	Purchased Steel Product Manufacturing	20	3,043	3,032	3,072	40,578,232	1,023.75
3313	Alumina & Aluminum Production	19	1,203	1,202	1,217	16,719,871	1,065.28
3314	Other Nonferrous Metal Production	7	602	607	620	6,434,954	811.91
3315	Foundries	21	3,112	3,114	3,129	30,406,291	750.06

TABLE 5. STATEWIDE SUMMARY

NORTH AMERICAN INDUSTRY CLASSIFICATION SYSTEM - INDUSTRY GROUPS		NUMBER OF EMPLOYING UNITS	EMPLOYMENT			TOTAL EARNINGS	AVERAGE WEEKLY EARNINGS
			JAN	FEB	MAR	JAN - MAR 2013	
332	FABRICATED METAL PRODUCT MANUFACTURING	517	14,044	14,027	13,973	\$160,466,417	\$880.76
3321	Forging & Stamping	12	322	325	320	3,296,209	786.62
3322	Cutlery & Hand Tool Manufacturing	12	813	783	750	7,509,933	738.73
3323	Architectural & Structural Metals	153	3,591	3,591	3,537	42,092,731	906.21
3324	Boilers, Tanks & Shipping Containers	16	690	680	685	8,716,341	978.81
3325	Hardware Manufacturing	7	205	208	207	2,211,995	823.32
3326	Spring & Wire Product Manufacturing	13	398	399	397	4,133,004	798.80
3327	Machine Shops & Threaded Products	206	1,837	1,833	1,834	17,202,151	721.24
3328	Coating, Engraving & Heat Treating Metals	38	630	655	670	5,806,726	685.43
3329	Other Fabricated Metal Product Manufacturing	60	5,558	5,553	5,573	69,497,327	961.27
333	MACHINERY MANUFACTURING	208	11,011	10,975	11,002	\$112,476,556	\$786.84
3331	Agriculture, Construction & Mining Machinery	36	2,814	2,896	2,942	26,136,659	697.13
3332	Industrial Machinery Manufacturing	26	630	632	635	8,472,933	1,030.73
3333	Commercial & Service Industry Machinery	23	867	861	848	9,848,069	882.23
3334	HVAC & Commercial Refrigeration Equipment	19	3,073	2,991	2,960	31,372,623	802.29
3335	Metalworking Machinery Manufacturing	58	1,051	1,085	1,101	11,312,756	806.50
3336	Turbine & Power Transmission Equipment Manufacturing	7	612	556	553	6,023,065	807.63
3339	Other General Purpose Machinery Manufacturing	39	1,964	1,954	1,963	19,310,451	757.74
334	COMPUTER & ELECTRONIC PRODUCT MANUFACTURING	62	2,892	2,915	2,903	\$31,138,132	\$825.00
3343	Audio & Video Equipment Manufacturing	5	298	292	272	2,894,237	774.83
3344	Semiconductors & Electronic Components	28	1,955	1,976	1,978	20,538,289	802.10
3345	Electronic Instrument Manufacturing	20	495	501	506	5,591,872	859.14
	Other	9	144	146	147	2,113,734	1,116.21
335	ELECTRICAL EQUIPMENT & APPLIANCES	56	5,921	5,829	5,860	\$78,930,528	\$1,034.34
3353	Electrical Equipment Manufacturing	20	3,607	3,503	3,542	48,503,637	1,050.80
3359	Other Electrical Equipment & Component Manufacturing	19	1,731	1,755	1,745	24,169,204	1,066.24
	Other	17	583	571	573	6,257,687	836.18
336	TRANSPORTATION EQUIPMENT MANUFACTURING	141	12,518	12,422	12,245	\$135,758,480	\$842.51
3362	Motor Vehicle Body & Trailer Manufacturing	29	1,648	1,675	1,687	14,667,733	675.62
3363	Motor Vehicle Parts Manufacturing	47	4,915	4,904	4,795	43,253,798	683.02
3364	Aerospace Product & Parts Manufacturing	26	3,006	2,948	2,944	49,572,970	1,285.67
3366	Ship & Boat Building	23	1,418	1,458	1,477	10,255,684	543.69
	Other	16	1,531	1,437	1,342	18,008,295	964.21
337	FURNITURE & RELATED PRODUCT MANUFACTURING	194	3,418	3,419	3,338	\$28,412,665	\$644.40
3371	Household & Institutional Furniture	159	2,333	2,319	2,301	15,774,936	523.57
3372	Office Furniture & Fixtures Manufacturing	26	993	1,006	941	11,922,853	935.86
3379	Other Furniture Related Product Manufacturing	9	92	94	96	714,876	585.00
339	MISCELLANEOUS MANUFACTURING	191	3,245	3,267	3,257	\$30,383,964	\$717.75
3391	Medical Equipment & Supplies Manufacturing	74	1,558	1,581	1,573	17,799,416	871.72
3399	Other Miscellaneous Manufacturing	117	1,687	1,686	1,684	12,584,548	574.28

TABLE 5. STATEWIDE SUMMARY

NORTH AMERICAN INDUSTRY CLASSIFICATION SYSTEM - INDUSTRY GROUPS		NUMBER OF	EMPLOYMENT			TOTAL EARNINGS	AVERAGE
		EMPLOYING	JAN	FEB	MAR	JAN - MAR 2013	WEEKLY
		UNITS					EARNINGS
TRADE, TRANSPORTATION & UTILITIES		21,293	234,815	234,647	236,157	\$2,215,001,446	\$724.41
42	WHOLESALE TRADE	6,818	46,554	46,795	47,140	\$727,264,602	\$1,194.62
423	MERCHANT WHOLESALERS, DURABLE GOODS	2,137	20,657	20,797	20,836	\$269,537,286	\$998.57
4231	Motor Vehicle & Part Merchant Wholesalers	227	2,552	2,582	2,596	26,511,244	791.46
4232	Furniture & Furnishings Merchant Wholesalers	52	386	394	392	4,806,650	946.44
4233	Lumber & Supply Merchant Wholesalers	170	1,317	1,358	1,350	13,652,409	782.75
4234	Commercial Goods Merchant Wholesalers	299	2,762	2,796	2,768	45,859,477	1,271.07
4235	Metal & Mineral Merchant Wholesalers	52	872	869	891	11,409,887	1,000.40
4236	Appliances & Electronics Goods Merchant Wholesalers	184	1,826	1,833	1,841	30,611,082	1,284.38
4237	Hardware & Plumbing Merchant Wholesalers	221	2,132	2,149	2,141	28,293,214	1,016.69
4238	Machinery & Supply Merchant Wholesalers	706	6,790	6,796	6,839	85,980,795	971.44
4239	Miscellaneous Durable Goods Merchant Wholesalers	226	2,020	2,020	2,018	22,412,528	853.77
424	MERCHANT WHOLESALERS, NONDURABLE GOODS	1,186	15,926	15,994	16,193	\$211,586,644	\$1,014.85
4241	Paper & Paper Product Merchant Wholesalers	68	1,853	1,869	1,847	19,460,645	806.41
4242	Druggist' Goods Merchant Wholesalers	68	822	821	813	11,469,746	1,077.71
4243	Apparel & Piece Goods Merchant Wholesalers	38	571	576	583	6,362,507	848.71
4244	Grocery Product Merchant Wholesalers	295	4,818	4,814	4,828	73,828,384	1,178.24
4245	Farm Product Merchant Wholesalers	75	888	847	856	7,441,786	662.81
4246	Chemical Merchant Wholesalers	100	669	677	685	10,039,679	1,140.74
4247	Petroleum Merchant Wholesalers	138	1,594	1,570	1,580	22,327,033	1,086.09
4248	Alcoholic Beverage Merchant Wholesalers	40	1,337	1,348	1,372	17,121,641	973.91
4249	Miscellaneous Nondurable Goods Merchant Wholesaler	364	3,374	3,472	3,629	43,535,223	959.10
425	ELECTRONIC MARKETS & AGENTS & BROKERS	3,495	9,971	10,004	10,111	\$246,140,672	\$1,887.98
44 - 45	RETAIL TRADE	11,185	130,599	130,178	131,249	\$787,611,166	\$463.63
441	MOTOR VEHICLE & PARTS DEALERS	1,593	17,124	17,363	17,576	\$168,107,447	\$745.14
4411	Automobile Dealers	653	10,270	10,431	10,511	116,679,305	862.68
4412	Other Motor Vehicle Dealers	157	1,277	1,286	1,323	10,955,720	650.60
4413	Automotive Parts, Accessories & Tire Stores	783	5,577	5,646	5,742	40,472,422	550.53
442	FURNITURE & HOME FURNISHINGS STORES	529	3,312	3,303	3,337	\$23,189,331	\$537.72
4421	Furniture Stores	292	1,838	1,874	1,894	14,811,329	609.70
4422	Home Furnishings Stores	237	1,474	1,429	1,443	8,378,002	444.87
443	ELECTRONICS & APPLIANCE STORES	529	3,960	3,801	3,799	\$29,042,374	\$579.77
444	BUILDING MATERIAL & GARDEN SUPPLY STORES	834	9,704	10,166	10,594	\$64,118,883	\$485.71
4441	Building Material & Supplies Dealers	620	8,551	8,984	9,307	57,373,837	493.26
4442	Lawn & Garden Equipment & Supplies Stores	214	1,153	1,182	1,287	6,745,046	429.75

TABLE 5. STATEWIDE SUMMARY

NORTH AMERICAN INDUSTRY CLASSIFICATION SYSTEM - INDUSTRY GROUPS		NUMBER OF EMPLOYING UNITS	EMPLOYMENT			TOTAL EARNINGS	AVERAGE WEEKLY EARNINGS
			JAN	FEB	MAR	JAN - MAR 2013	
445	FOOD & BEVERAGE STORES	1,020	17,703	17,852	17,927	\$84,843,312	\$366.09
4451	Grocery Stores	554	15,461	15,607	15,643	72,266,360	357.02
4452	Specialty Food Stores	138	683	689	719	5,156,123	569.05
4453	Beer, Wine & Liquor Stores	328	1,559	1,556	1,565	7,420,829	365.92
446	HEALTH & PERSONAL CARE STORES	992	7,781	7,771	7,850	\$65,761,144	\$648.48
447	GASOLINE STATIONS	1,648	11,578	11,639	11,774	\$48,010,955	\$316.64
44711	Gasoline Stations with Convenience Stores	1,546	10,415	10,481	10,607	41,925,267	307.12
44719	Other Gasoline Stations	102	1,163	1,158	1,167	6,085,688	402.63
448	CLOTHING & CLOTHING ACCESSORIES STORES	1,055	8,655	8,516	8,494	\$31,985,768	\$287.60
4481	Clothing Stores	768	6,729	6,575	6,554	21,449,096	249.26
4482	Shoe Stores	142	1,139	1,152	1,154	4,519,763	302.76
4483	Jewelry, Luggage & Leather Goods Stores	145	787	789	786	6,016,909	587.86
451	SPORTING GOODS, HOBBY, BOOK & MUSIC STORES	495	4,514	4,386	4,424	\$18,590,023	\$321.98
4511	Sporting Goods & Musical Instrument Stores	415	3,825	3,808	3,878	16,512,654	331.04
4512	Book, Periodical & Music Stores	80	689	578	546	2,077,369	264.42
452	GENERAL MERCHANDISE STORES	849	37,643	36,870	37,063	\$206,240,526	\$426.56
453	MISCELLANEOUS STORE RETAILERS	1,269	6,844	6,746	6,643	\$32,784,450	\$373.93
4531	Florists	207	705	809	735	2,955,024	303.21
4532	Office Supplies, Stationery & Gift Stores	314	2,134	2,081	2,036	10,685,487	394.48
4533	Used Merchandise Stores	254	1,570	1,456	1,474	6,876,295	352.63
4539	Other Miscellaneous Store Retailers	494	2,435	2,400	2,398	12,267,644	391.40
454	NONSTORE RETAILERS	372	1,781	1,765	1,768	\$14,936,953	\$648.66
4541	Electronic Shopping & Mail-Order Houses	154	593	584	600	5,192,939	674.38
4542	Vending Machine Operators	72	471	465	471	3,439,208	564.08
4543	Direct Selling Establishments	146	717	716	697	6,304,806	683.08
48 - 49	TRANSPORTATION & WAREHOUSING	2,877	49,925	49,954	49,887	526,785,353	\$811.71
481	AIR TRANSPORTATION	51	801	758	795	\$10,443,385	\$1,023.79
484	TRUCK TRANSPORTATION	1,883	32,143	32,348	32,331	\$341,988,861	\$815.11
4841	General Freight Trucking	1,158	25,906	26,039	25,944	281,014,782	832.59
4842	Specialized Freight Trucking	725	6,237	6,309	6,387	60,974,079	743.20

TABLE 5. STATEWIDE SUMMARY

NORTH AMERICAN INDUSTRY CLASSIFICATION SYSTEM - INDUSTRY GROUPS		NUMBER OF EMPLOYING UNITS	EMPLOYMENT			TOTAL EARNINGS	AVERAGE WEEKLY EARNINGS
			JAN	FEB	MAR	JAN - MAR 2013	
485	TRANSIT & GROUND PASSENGER TRANSPORTATION	82	1,435	1,421	1,389	\$5,996,440	\$325.98
4853	Taxi & Limousine Service	27	345	346	341	1,490,696	333.34
4854	School & Employee Bus Transportation	13	503	500	494	2,003,208	308.80
4855	Charter Bus Industry Service	6	86	91	97	545,648	459.56
4859	Other Ground Passenger Transportation	30	430	414	392	1,513,496	282.58
	Other	6	71	70	65	443,392	496.71
486	PIPELINE TRANSPORTATION	31	447	442	443	\$11,781,307	\$2,041.11
488	SUPPORT ACTIVITIES FOR TRANSPORTATION	418	4,577	4,559	4,543	\$55,252,004	\$932.12
4881	Support Activities for Air Transportation	98	1,383	1,296	1,278	13,354,614	778.83
4882	Support Activities for Rail Transportation	43	342	363	375	3,741,811	799.53
4883	Support Activities for Water Transportation	23	615	629	645	7,558,981	923.44
4884	Support Activities for Road Transportation	128	596	618	621	4,160,192	523.18
4885	Freight Transportation Arrangement	111	1,552	1,561	1,537	25,764,884	1,278.65
4889	Other Support Activities for Transportation	15	89	92	87	671,522	578.23
	OTHER	10	50	48	31	\$351,241	\$628.34
491	POSTAL SERVICE	10	242	247	248	\$2,670,236	\$836.10
492	COURIERS & MESSENGERS	170	3,140	3,025	3,029	\$32,200,435	\$808.23
493	WAREHOUSING & STORAGE	222	7,090	7,106	7,078	66,101,444	\$717.03
22	UTILITIES	413	7,737	7,720	7,881	\$173,340,325	\$1,714.01
2211	Power Generation & Supply	159	5,523	5,509	5,657	144,223,827	1,994.27
2212	Natural Gas Distribution	68	1,306	1,303	1,308	21,731,692	1,280.32
2213	Water, Sewage & Other Systems	186	908	908	916	7,384,806	623.79
	INFORMATION	1,152	14,159	14,208	14,136	\$197,858,233	\$1,074.27
511	PUBLISHING INDUSTRIES, EXCEPT INTERNET	227	3,575	3,574	3,548	\$31,837,166	\$686.83
5111	Newspaper, Book & Directory Publishers	199	3,272	3,270	3,244	26,804,907	632.10
5112	Software Publishers	28	303	304	304	5,032,259	1,274.74
512	MOTION PICTURE & SOUND RECORDING INDUSTRY	138	1,140	1,181	1,147	\$5,091,325	\$338.79
5121	Motion Picture & Video Industries	121	1,113	1,153	1,114	4,785,891	326.76
5122	Sound Recording Industries	17	27	28	33	305,434	800.96
515	BROADCASTING, EXCEPT INTERNET	124	1,707	1,703	1,682	\$16,851,926	\$763.73
5151	Radio & Television Broadcasting	120	1,677	1,672	1,651	16,625,915	767.35
5152	Cable & Other Subscription Programming	4	30	31	31	226,011	566.92

TABLE 5. STATEWIDE SUMMARY

NORTH AMERICAN INDUSTRY CLASSIFICATION SYSTEM - INDUSTRY GROUPS		NUMBER OF EMPLOYING UNITS	EMPLOYMENT			TOTAL EARNINGS	AVERAGE WEEKLY EARNINGS
			JAN	FEB	MAR	JAN - MAR 2013	
517	TELECOMMUNICATIONS	390	5,890	5,909	5,951	\$121,155,739	\$1,575.16
5171	Wired Telecommunications Carriers	271	3,639	3,660	3,668	63,516,334	1,336.52
5172	Wireless Telecommunications Carriers (except Satellite)	53	1,906	1,906	1,942	52,117,147	2,090.20
5174	Satellite Telecommunications Carriers	5	6	4	4	50,245	828.21
5179	Other Telecommunications	61	339	339	337	5,472,013	1,244.11
518	DATA PROCESSING, HOSTING & RELATED SERVICES	195	1,546	1,544	1,507	\$19,526,707	\$980.24
519	OTHER INFORMATION SERVICES	78	301	297	301	\$3,395,370	\$871.58
FINANCIAL ACTIVITIES		8,083	47,720	47,705	47,779	\$615,201,848	\$991.38
52	FINANCE & INSURANCE	4,804	34,849	34,805	34,829	\$511,000,257	\$1,128.63
522	CREDIT INTERMEDIATION & RELATED ACTIVITIES	1,931	19,198	19,179	19,225	\$234,198,231	\$938.26
5221	Depository Credit Intermediation	1,420	16,618	16,595	16,626	191,879,187	888.46
5222	Nondepository Credit Intermediation	364	2,198	2,205	2,217	36,284,216	1,264.85
5223	Activities Related to Credit Intermediation	147	382	379	382	6,034,828	1,218.42
523	FINANCIAL INVESTMENT & RELATED ACTIVITIES	657	3,086	3,103	3,053	\$88,774,172	\$2,216.66
524	INSURANCE CARRIERS & RELATED ACTIVITIES	2,136	12,474	12,410	12,448	\$186,659,716	\$1,153.84
5241	Insurance Carriers	319	5,300	5,261	5,271	98,309,844	1,432.98
5242	Insurance Agencies, Brokerages & Support	1,817	7,174	7,149	7,177	88,349,872	948.30
	OTHER	80	91	113	103	\$1,368,138	\$1,028.42
53	REAL ESTATE & RENTAL & LEASING	3,279	12,871	12,900	12,950	\$104,201,591	\$621.02
531	REAL ESTATE	2,570	8,509	8,521	8,518	\$63,746,771	\$575.81
5311	Lessors of Real Estate	1,130	4,231	4,230	4,247	29,447,088	534.74
5312	Offices of Real Estate Agents & Brokers	717	1,481	1,496	1,476	10,855,208	562.55
5313	Activities Related to Real Estate	723	2,797	2,795	2,795	23,444,475	645.08
532	RENTAL & LEASING SERVICES	687	4,304	4,318	4,373	\$39,756,897	\$706.02
5321	Automotive Equipment Rental & Leasing	112	901	914	905	6,398,324	542.84
5322	Consumer Goods Rental	364	1,863	1,870	1,921	14,089,078	575.05
5323	General Rental Centers	44	270	274	277	2,338,528	657.32
5324	Machinery & Equipment Rental & Leasing	167	1,270	1,260	1,270	16,930,967	1,028.20
533	LESSORS OF NONFINANCIAL INTANGIBLE ASSETS	22	58	61	59	\$697,923	\$904.83

TABLE 5. STATEWIDE SUMMARY

NORTH AMERICAN INDUSTRY CLASSIFICATION SYSTEM - INDUSTRY GROUPS		NUMBER OF	EMPLOYMENT			TOTAL EARNINGS	AVERAGE
		EMPLOYING	JAN	FEB	MAR	JAN - MAR 2013	WEEKLY
		UNITS					EARNINGS
PROFESSIONAL & BUSINESS SERVICES		12,792	124,875	127,306	128,352	\$2,037,690,170	\$1,235.73
54	PROFESSIONAL & TECHNICAL SERVICES	8,079	39,489	40,282	40,258	\$505,820,877	\$972.50
5411	Legal Services	1,717	6,028	6,071	6,073	67,868,300	861.87
5412	Accounting & Bookkeeping Services	1,257	5,783	6,317	6,005	52,302,694	666.66
5413	Architectural & Engineering Services	925	5,644	5,687	5,707	74,098,467	1,003.62
5414	Specialized Design Services	176	414	413	414	5,690,950	1,058.26
5415	Computer Systems Design & Related Services	1,287	8,673	8,740	8,794	156,445,935	1,377.61
5416	Management & Technical Consulting Services	1,599	5,193	5,265	5,362	70,826,455	1,033.16
5417	Scientific Research & Development Services	124	1,117	1,112	1,120	16,409,623	1,130.74
5418	Advertising & Related Services	391	3,048	3,129	3,195	32,816,066	808.04
5419	Other Professional & Technical Services	603	3,589	3,548	3,588	29,362,387	631.79
55	MANAGEMENT OF COMPANIES & ENTERPRISES	506	31,353	31,447	31,577	\$1,191,894,899	\$2,914.40
56	ADMINISTRATIVE & SUPPORT SERVICES	4,207	54,033	55,577	56,517	\$339,974,394	\$472.26
561	ADMINISTRATIVE & SUPPORT SERVICES	3,921	51,107	52,692	53,631	\$311,548,855	\$456.68
5611	Office Administrative Services	555	2,012	2,052	2,081	27,302,101	1,025.30
5612	Facilities Support Services	28	226	221	207	2,176,238	767.90
5613	Employment Services	877	21,206	22,413	22,788	112,705,020	391.66
5614	Business Support Services	394	8,980	8,981	9,053	64,381,198	549.98
5615	Travel Arrangement & Reservation Services	89	317	320	334	2,977,859	707.72
5616	Investigation & Security Services	242	4,358	4,373	4,369	26,477,879	466.43
5617	Services to Buildings & Dwellings	1,510	12,445	12,762	13,218	63,116,664	379.06
5619	Other Support Services	226	1,563	1,570	1,581	12,411,896	607.61
562	WASTE MANAGEMENT & REMEDIATION SERVICES	286	2,926	2,885	2,886	\$28,425,539	\$754.25
5621	Waste Collection Services	113	1,020	1,017	1,013	9,200,814	696.15
5622	Waste Treatment & disposal Services	33	833	835	831	10,372,371	957.83
5629	Remediation & Other Waste Services	140	1,073	1,033	1,042	8,852,354	648.94
EDUCATION & HEALTH SERVICES		14,746	167,706	168,721	168,743	\$1,514,805,846	\$691.99
61	EDUCATIONAL SERVICES	725	10,940	11,364	11,282	\$86,428,531	\$593.85
6111	Elementary & Secondary Schools	90	3,784	3,865	3,838	24,848,330	499.19
6112	Junior Colleges	4	124	136	137	1,066,068	619.69
6113	Colleges & Universities	36	3,932	4,117	4,103	34,400,708	653.28
6114	Business, Computer, & Management Training	40	92	93	92	1,498,833	1,248.68
6115	Technical & Trade Schools	102	889	922	912	12,568,328	1,065.14
6116	Other Schools & Instruction	264	1,635	1,732	1,694	6,922,557	315.65
6117	Educational Support Services	189	484	499	506	5,123,707	794.09

TABLE 5. STATEWIDE SUMMARY

NORTH AMERICAN INDUSTRY CLASSIFICATION SYSTEM - INDUSTRY GROUPS		NUMBER OF	EMPLOYMENT			TOTAL EARNINGS	AVERAGE
		EMPLOYING	JAN	FEB	MAR	JAN - MAR 2013	WEEKLY
		UNITS					EARNINGS
62	HEALTH CARE & SOCIAL ASSISTANCE	14,021	156,766	157,357	157,461	\$1,428,377,315	\$698.98
621	AMBULATORY HEALTH CARE SERVICES	5,205	47,777	47,838	47,937	\$629,229,718	\$1,011.53
6211	Offices of Physicians	2,261	21,987	22,037	22,057	381,207,069	1,331.26
6212	Offices of Dentists	993	6,867	6,853	6,846	70,774,274	794.15
6213	Offices of Other Health Practitioners	1,268	7,072	7,077	7,093	66,094,482	718.04
6214	Outpatient Care Centers	280	3,952	3,940	3,956	38,826,457	756.24
6215	Medical & Diagnostic Laboratories	119	1,028	1,025	1,034	11,702,436	874.82
6216	Home Health Care Services	138	4,305	4,324	4,362	38,890,433	690.84
6219	Other Ambulatory Health Care Services	146	2,566	2,582	2,589	21,734,567	648.27
622	HOSPITALS	111	41,930	42,002	42,159	\$450,486,387	\$824.47
6221	General Medical & Surgical Hospitals	76	37,029	37,117	37,261	400,812,775	830.25
6222	Psychiatric & Substance Abuse Hospitals	12	2,451	2,455	2,474	22,628,083	707.57
6223	Other Hospitals	23	2,450	2,430	2,424	27,045,529	854.50
623	Residential & Mental Health Facilities	575	31,008	31,216	31,039	\$178,150,884	\$440.82
6231	Nursing Care Facilities (Skilled Nursing Facilities)	258	22,668	22,869	22,694	130,264,019	440.58
6232	Residential Mental Health Facilities	158	4,259	4,283	4,274	25,797,331	464.52
6233	Continuing Care & Assisted Living Facilities	118	3,002	3,005	3,011	15,217,006	389.40
6239	Other Residential Care Facilities	41	1,079	1,059	1,060	6,872,528	495.92
624	SOCIAL ASSISTANCE	8,130	36,051	36,301	36,326	\$170,510,326	\$362.07
6241	Individual & Family Services	6,892	21,960	22,059	22,050	105,263,840	367.67
6242	Emergency & Other Relief Services	139	1,302	1,322	1,327	7,902,464	461.57
6243	Vocational Rehabilitation Services	144	3,423	3,386	3,361	17,797,982	403.86
6244	Child Day Care Services	955	9,366	9,534	9,588	39,546,040	320.35
LEISURE & HOSPITALITY		6,605	99,326	100,487	103,062	\$347,547,604	\$264.81
71	ARTS, ENTERTAINMENT & RECREATION	926	8,585	8,793	9,285	\$40,407,146	\$349.73
711	PERFORMING ARTS & SPECTATOR SPORTS	199	2,374	2,437	2,576	\$12,471,638	\$389.61
7111	Performing Arts Companies	47	275	314	295	1,518,070	396.29
7112	Spectator Sports	50	1,476	1,468	1,455	7,925,541	415.77
7113	Performing Arts & Sports Promoters	38	533	567	737	2,471,450	310.47
7114	Agents & Managers for Public Figures	21	19	17	18	141,001	602.57
7115	Independent Artists, Writers, & Performers	43	71	71	71	415,576	450.24
712	MUSEUMS, PARKS, & HISTORICAL SITES	55	450	451	483	\$3,428,318	\$571.64
713	GAMBLING, RECREATIONAL & AMUSEMENT INDUSTRY	672	5,761	5,905	6,226	\$24,507,190	\$316.09
72	ACCOMODATION & FOOD SERVICES	5,679	90,741	91,694	93,777	\$307,140,458	\$256.61

TABLE 5. STATEWIDE SUMMARY

NORTH AMERICAN INDUSTRY CLASSIFICATION SYSTEM - INDUSTRY GROUPS		NUMBER OF EMPLOYING UNITS	EMPLOYMENT			TOTAL EARNINGS	AVERAGE WEEKLY EARNINGS
			JAN	FEB	MAR	JAN - MAR 2013	
721	ACCOMODATION	898	10,006	10,340	10,725	\$42,402,680	\$314.93
7211	Travel Accommodation	817	9,596	9,908	10,266	40,456,537	313.61
7212	RV Parks & Recreational Camps	63	310	330	361	1,475,270	340.11
7213	Rooming & Boarding Houses	18	100	102	98	470,873	362.21
722	FOOD SERVICES & DRINKING PLACES	4,781	80,735	81,354	83,052	\$264,737,778	\$249.22
7223	Special Food Services	173	2,675	2,771	2,760	10,721,170	301.50
7224	Drinking Places, Alcoholic Beverages	163	1,192	1,211	1,263	3,991,442	251.26
7225	Restaurants & Other Eating Places	4,445	76,868	77,372	79,029	250,025,166	247.35
722511	Full-Service Restaurants	2,037	34,738	34,860	35,661	121,702,785	266.82
722513	Limited-Service Eating Places	2,023	38,315	38,620	39,410	115,106,683	228.31
722514	Cafeterias, Grill Buffets, & Buffets	98	1,888	1,952	1,963	7,141,590	284.00
722515	Snack & Nonalcoholic Beverage Bars	287	1,927	1,940	1,995	6,074,108	239.12
OTHER SERVICES		5,341	23,469	23,544	23,741	\$167,297,681	\$545.65
811	REPAIR & MAINTENANCE	2,237	9,201	9,220	9,330	\$76,972,984	\$640.08
8111	Automotive Repair & Maintenance	1,452	6,065	6,081	6,072	47,294,094	599.08
8112	Electronic Equipment Repair & Maintenance	163	581	592	616	6,070,496	783.05
8113	Commercial Machinery Repair & Maintenance	439	1,959	1,963	2,029	19,498,792	756.13
8114	Household Goods Repair & Maintenance	183	596	584	613	4,109,602	528.93
812	PERSONAL & LAUNDRY SERVICES	1,322	7,998	8,063	8,115	\$42,570,922	\$406.36
8121	Personal Care Services	613	2,755	2,834	2,866	11,596,621	316.52
8122	Death Care Services	247	1,571	1,589	1,576	11,248,100	548.08
8123	Drycleaning & Laundry Service	264	2,978	2,943	2,949	16,300,717	424.09
8129	Other Personal Services	198	694	697	724	3,425,484	373.76
813	MEMBERSHIP ASSOCIATIONS & ORGANIZATIONS	1,076	5,321	5,322	5,351	\$42,931,065	\$619.43
8131	Religious Organizations	62	242	238	248	1,628,399	516.19
8132	Grantmaking & Giving Organizations	108	466	463	457	5,131,497	854.40
8133	Social Advocacy Organizations	223	1,660	1,655	1,647	13,228,243	615.21
8134	Civic & Social Organizations	193	1,076	1,099	1,115	4,581,740	321.38
8139	Professional & Similar Organizations	490	1,877	1,867	1,884	18,361,186	752.88
814	PRIVATE HOUSEHOLDS	706	949	939	945	\$4,822,710	\$392.85
LOCAL GOVERNMENT		1,961	117,201	117,824	118,100	\$946,422,810	\$618.49
STATE GOVERNMENT		1,129	68,735	71,384	71,693	\$709,360,130	\$772.85
NONCLASSIFIABLE ESTABLISHMENTS		0	0	0	0	\$0	\$0.00

TABLE 6. COUNTY SUMMARY

NORTH AMERICAN INDUSTRY CLASSIFICATION SYSTEM - INDUSTRY GROUPS	NUMBER OF EMPLOYING UNITS	EMPLOYMENT			TOTAL EARNINGS	AVERAGE WEEKLY EARNINGS
		JAN	FEB	MAR	JAN - MAR 2013	
ARKANSAS COUNTY - TOTAL	744	9,540	9,554	9,647	\$83,640,377	\$671.57
Natural Resources & Mining	48	161	161	159	1,661,084	796.94
Construction	47	268	277	275	2,040,788	574.33
Manufacturing	30	3,406	3,379	3,414	31,319,661	708.66
Trade, Transportation & Utilities	214	2,355	2,376	2,416	24,236,943	782.59
Wholesale Trade	43	447	484	503	7,317,402	1,177.57
Retail Trade	98	1,040	1,012	1,029	5,989,359	448.61
Transportation, Warehousing & Utilities	73	868	880	884	10,930,182	958.34
Information	10	79	81	81	667,747	639.40
Financial Activities	46	327	321	324	3,535,457	839.38
Professional & Business Services	44	321	328	328	3,646,655	861.35
Education & Health Services	156	1,100	1,103	1,105	7,477,815	521.66
Leisure & Hospitality	56	468	467	462	1,451,937	239.84
Other Services	46	107	108	110	722,000	512.66
Local Government	32	768	768	770	5,665,120	566.93
State Government	15	180	185	203	1,215,170	493.70
ASHLEY COUNTY - TOTAL	585	7,374	7,484	7,591	\$70,543,179	\$725.16
Natural Resources & Mining	43	293	303	313	2,988,214	758.62
Construction	46	660	731	814	6,027,302	630.80
Manufacturing	27	2,048	2,036	2,060	31,898,232	1,198.10
Trade, Transportation & Utilities	126	1,253	1,256	1,286	9,227,197	561.09
Wholesale Trade	26	220	221	224	2,661,207	923.50
Retail Trade	77	794	799	815	4,171,474	399.77
Transportation, Warehousing & Utilities	23	239	236	247	2,394,516	765.35
Information	6	42	43	40	272,258	502.63
Financial Activities	36	203	205	222	1,831,280	670.80
Professional & Business Services	47	289	307	306	2,202,473	563.48
Education & Health Services	141	941	946	950	6,385,205	519.39
Leisure & Hospitality	31	362	356	357	1,001,911	215.08
Other Services	39	143	147	147	980,121	517.58
Local Government	32	963	971	908	6,670,220	541.62
State Government	11	177	183	188	1,058,766	445.86

TABLE 6. COUNTY SUMMARY

NORTH AMERICAN INDUSTRY CLASSIFICATION SYSTEM - INDUSTRY GROUPS	NUMBER OF EMPLOYING UNITS	EMPLOYMENT			TOTAL EARNINGS	AVERAGE WEEKLY EARNINGS
		JAN	FEB	MAR	JAN - MAR 2013	
BAXTER COUNTY - TOTAL	1,238	13,836	13,877	13,965	\$103,750,633	\$574.46
Natural Resources & Mining	6	76	64	61	362,027	415.65
Construction	120	483	514	509	3,734,516	572.25
Manufacturing	58	2,290	2,300	2,230	21,365,257	722.94
Trade, Transportation & Utilities	270	2,501	2,509	2,578	15,529,324	472.28
Wholesale Trade	31	213	212	211	1,850,825	671.56
Retail Trade	215	2,110	2,119	2,187	11,928,578	429.04
Transportation, Warehousing & Utilities	24	178	178	180	1,749,921	753.41
Information	18	193	190	187	1,933,312	782.72
Financial Activities	105	695	690	688	7,845,681	873.39
Professional & Business Services	140	744	735	736	4,928,105	513.43
Education & Health Services	253	3,641	3,623	3,660	30,534,975	645.05
Leisure & Hospitality	121	1,333	1,345	1,393	4,178,296	236.85
Other Services	96	343	345	347	1,701,361	379.34
Local Government	39	1,227	1,222	1,232	9,206,411	577.17
State Government	12	310	340	344	2,431,368	564.47
BENTON COUNTY - TOTAL	5,613	96,196	97,031	97,958	\$1,690,866,529	\$1,340.04
Natural Resources & Mining	43	640	640	646	9,041,053	1,083.28
Construction	515	3,248	3,248	3,313	31,089,512	731.42
Manufacturing	201	10,216	10,288	10,433	102,226,078	762.54
Trade, Transportation & Utilities	1,505	21,925	21,978	22,229	271,666,050	947.99
Wholesale Trade	696	4,214	4,240	4,268	105,253,737	1,909.24
Retail Trade	643	9,949	9,943	10,153	65,871,956	505.95
Transportation, Warehousing & Utilities	166	7,762	7,795	7,808	100,540,357	993.01
Information	79	797	793	783	10,003,278	972.80
Financial Activities	561	2,843	2,838	2,830	36,510,924	989.97
Professional & Business Services	1,107	27,519	27,692	27,993	1,019,882,869	2,828.68
Education & Health Services	647	9,151	9,328	9,276	80,438,131	668.80
Leisure & Hospitality	503	9,280	9,422	9,587	36,133,989	294.77
Other Services	355	1,628	1,647	1,667	12,122,397	566.06
Local Government	80	7,902	7,922	7,956	72,132,527	700.00
State Government	17	1,047	1,235	1,245	9,619,721	629.41

TABLE 6. COUNTY SUMMARY

NORTH AMERICAN INDUSTRY CLASSIFICATION SYSTEM - INDUSTRY GROUPS	NUMBER OF EMPLOYING UNITS	EMPLOYMENT			TOTAL EARNINGS	AVERAGE WEEKLY EARNINGS
		JAN	FEB	MAR	JAN - MAR 2013	
BOONE COUNTY - TOTAL	1,001	13,657	13,695	13,791	\$109,315,260	\$613.14
Natural Resources & Mining	4	3	3	3	17,150	\$439.74
Construction	85	450	435	438	3,242,068	565.51
Manufacturing	62	1,765	1,746	1,744	15,448,907	678.43
Trade, Transportation & Utilities	246	3,589	3,604	3,600	33,166,719	709.15
Wholesale Trade	49	309	308	298	2,498,249	630.08
Retail Trade	147	1,764	1,773	1,786	10,910,117	472.99
Transportation, Warehousing & Utilities	50	1,516	1,523	1,516	19,758,353	1,001.01
Information	18	321	320	318	3,243,446	780.49
Financial Activities	91	469	467	473	4,769,718	781.20
Professional & Business Services	112	1,159	1,159	1,173	8,742,645	577.92
Education & Health Services	171	1,516	1,508	1,537	11,085,766	560.90
Leisure & Hospitality	81	1,057	1,038	1,074	3,229,736	235.19
Other Services	56	260	257	259	1,934,965	575.43
Local Government	56	2,326	2,333	2,348	17,727,729	583.85
State Government	19	742	825	824	6,706,411	647.27
BRADLEY COUNTY - TOTAL	365	3,389	3,399	3,425	\$24,362,079	\$550.48
Natural Resources & Mining	43	331	333	333	2,480,608	574.17
Construction	16	88	100	102	716,647	570.28
Manufacturing	10	493	494	504	5,672,953	878.03
Trade, Transportation & Utilities	73	481	488	481	2,972,257	473.04
Wholesale Trade	14	95	97	97	949,821	758.44
Retail Trade	43	344	349	345	1,526,424	339.36
Transportation, Warehousing & Utilities	16	42	42	39	496,012	930.60
Information	4	12	12	12	146,450	938.78
Financial Activities	24	138	135	134	1,025,769	581.61
Professional & Business Services	28	93	93	93	647,674	535.71
Education & Health Services	100	607	603	607	4,047,363	514.04
Leisure & Hospitality	12	164	158	165	437,883	207.49
Other Services	30	88	92	94	498,839	420.13
Local Government	14	504	497	506	3,455,855	529.20
State Government	11	390	394	394	2,259,781	442.69

TABLE 6. COUNTY SUMMARY

NORTH AMERICAN INDUSTRY CLASSIFICATION SYSTEM - INDUSTRY GROUPS	NUMBER OF EMPLOYING UNITS	EMPLOYMENT			TOTAL EARNINGS	AVERAGE WEEKLY EARNINGS
		JAN	FEB	MAR	JAN - MAR 2013	
CALHOUN COUNTY - TOTAL	114	2,621	2,611	2,611	\$31,038,796	\$913.27
Natural Resources & Mining	12	56	57	57	492,630	668.73
Construction	13	109	109	107	931,735	661.59
Manufacturing	10	1,810	1,789	1,782	24,621,906	1,055.93
Trade, Transportation & Utilities	23	216	214	220	1,774,785	630.10
Retail Trade	13	69	70	72	325,748	356.27
Transportation, Warehousing & Utilities	10	147	144	148	1,449,037	761.72
Financial Activities	6	80	80	82	790,550	753.86
Education & Health Services	14	53	56	54	475,473	673.16
Leisure & Hospitality	7	14	13	13	44,524	256.87
Other Services	3	6	6	6	26,005	333.40
Local Government	11	183	191	194	1,128,084	458.32
State Government	8	84	85	83	632,756	579.45
Other	7	10	11	13	120,348	816.84
CARROLL COUNTY - TOTAL	773	9,437	9,487	9,700	\$62,002,570	\$499.87
Natural Resources & Mining	15	252	253	252	1,754,719	534.92
Trade, Transportation & Utilities	192	1,472	1,463	1,502	9,187,770	477.86
Wholesale Trade	24	173	170	165	1,091,923	496.03
Retail Trade	150	1,071	1,065	1,105	5,558,893	395.81
Transportation, Warehousing & Utilities	18	228	228	232	2,536,954	850.95
Information	9	73	68	68	519,700	573.83
Financial Activities	62	341	342	345	3,502,648	786.29
Professional & Business Services	60	211	223	225	2,190,966	767.23
Education & Health Services	85	961	951	959	7,850,180	630.99
Leisure & Hospitality	170	1,086	1,151	1,295	3,588,120	234.44
Other Services	45	129	128	128	699,400	419.22
Local Government	24	1,048	1,051	1,052	7,111,030	520.79
State Government	10	111	108	111	708,307	495.32
Other	101	3,753	3,749	3,763	24,889,730	509.88

TABLE 6. COUNTY SUMMARY

NORTH AMERICAN INDUSTRY CLASSIFICATION SYSTEM - INDUSTRY GROUPS	NUMBER OF EMPLOYING UNITS	EMPLOYMENT			TOTAL EARNINGS	AVERAGE WEEKLY EARNINGS
		JAN	FEB	MAR	JAN - MAR 2013	
CHICOT COUNTY - TOTAL	451	3,187	3,229	3,246	\$21,953,582	\$524.34
Natural Resources & Mining	57	246	248	249	1,478,916	459.34
Construction	15	140	156	162	1,193,145	601.18
Trade, Transportation & Utilities	66	461	476	469	3,174,336	521.01
Wholesale Trade	11	57	64	61	484,605	614.46
Retail Trade	43	341	352	349	1,941,408	429.96
Transportation, Warehousing & Utilities	12	63	60	59	748,323	948.85
Information	5	8	8	8	65,896	633.62
Financial Activities	29	148	146	149	1,861,692	969.80
Professional & Business Services	17	41	47	42	384,729	682.95
Education & Health Services	188	762	759	773	4,686,010	471.40
Leisure & Hospitality	22	174	178	179	455,611	198.01
Local Government	17	616	634	626	4,913,096	604.37
State Government	10	299	295	298	2,052,379	530.97
Other	25	292	282	291	1,687,772	450.27
CLARK COUNTY - TOTAL	603	9,037	9,172	9,242	\$69,764,205	\$586.48
Natural Resources & Mining	32	199	220	228	1,925,428	686.75
Construction	24	64	65	70	439,190	509.30
Manufacturing	33	1,359	1,375	1,381	17,507,365	981.81
Trade, Transportation & Utilities	137	1,687	1,613	1,609	11,358,215	533.94
Wholesale Trade	17	211	211	211	2,032,605	741.02
Retail Trade	98	1,297	1,223	1,217	7,490,266	462.54
Transportation, Warehousing & Utilities	22	179	179	181	1,835,344	785.79
Information	5	18	18	18	182,510	779.96
Financial Activities	75	317	312	318	2,967,056	723.03
Professional & Business Services	45	578	606	607	4,809,274	619.67
Education & Health Services	106	1,397	1,446	1,464	10,030,916	537.46
Leisure & Hospitality	61	1,040	1,053	1,079	3,230,593	235.03
Other Services	44	186	188	183	1,073,665	444.83
Local Government	27	1,042	1,026	1,030	7,162,577	533.54
State Government	14	1,150	1,250	1,255	9,077,416	573.13

TABLE 6. COUNTY SUMMARY

NORTH AMERICAN INDUSTRY CLASSIFICATION SYSTEM - INDUSTRY GROUPS	NUMBER OF EMPLOYING UNITS	EMPLOYMENT			TOTAL EARNINGS	AVERAGE WEEKLY EARNINGS
		JAN	FEB	MAR	JAN - MAR 2013	
CLAY COUNTY - TOTAL	411	3,455	3,462	3,503	\$23,381,801	\$517.83
Natural Resources & Mining	60	210	228	249	1,016,044	341.30
Construction	32	96	111	126	654,504	453.57
Manufacturing	16	400	394	370	3,870,657	767.38
Trade, Transportation & Utilities	107	887	863	879	6,227,488	546.64
Wholesale Trade	25	278	252	265	2,061,382	598.37
Retail Trade	50	402	404	405	2,325,436	443.14
Transportation, Warehousing & Utilities	32	207	207	209	1,840,670	681.81
Information	5	50	49	49	375,869	586.07
Financial Activities	25	112	112	114	926,858	632.81
Professional & Business Services	27	73	76	84	447,954	443.67
Education & Health Services	54	469	466	467	2,868,416	472.14
Leisure & Hospitality	20	200	206	218	523,188	193.49
Other Services	31	79	79	79	536,954	522.84
Local Government	23	823	820	811	5,553,311	522.22
State Government	11	56	58	57	380,558	513.57
CLEBURNE COUNTY - TOTAL	668	6,724	6,738	6,750	\$49,261,449	\$562.44
Natural Resources & Mining	27	289	286	283	3,731,796	1,003.71
Construction	66	351	345	353	2,996,926	659.29
Manufacturing	33	1,220	1,211	1,193	10,242,376	652.21
Trade, Transportation & Utilities	168	1,583	1,598	1,557	12,837,527	625.27
Wholesale Trade	39	265	267	259	3,274,499	955.31
Retail Trade	102	951	951	961	5,700,563	459.49
Transportation, Warehousing & Utilities	27	367	380	337	3,862,465	822.27
Information	7	48	48	48	316,680	507.50
Financial Activities	68	222	223	223	1,999,241	690.66
Professional & Business Services	71	307	299	296	2,184,681	558.93
Education & Health Services	79	840	842	843	5,451,164	498.20
Leisure & Hospitality	73	751	770	826	2,404,819	236.45
Other Services	49	173	167	176	953,525	426.44
Local Government	18	841	850	846	5,542,940	504.19
State Government	9	99	99	106	599,774	455.29

TABLE 6. COUNTY SUMMARY

NORTH AMERICAN INDUSTRY CLASSIFICATION SYSTEM - INDUSTRY GROUPS	NUMBER OF EMPLOYING UNITS	EMPLOYMENT			TOTAL EARNINGS	AVERAGE WEEKLY EARNINGS
		JAN	FEB	MAR	JAN - MAR 2013	
CLEVELAND COUNTY - TOTAL	128	1,029	1,037	1,048	\$6,911,247	\$512.17
Natural Resources & Mining	12	160	148	160	1,195,768	589.63
Construction	6	9	10	10	45,668	363.41
Manufacturing	7	94	97	94	737,481	597.15
Trade, Transportation & Utilities	37	214	217	217	1,514,343	539.30
Retail Trade	17	67	68	72	341,078	380.24
Other Trade, Transportation & Utilities	20	147	149	145	1,173,265	613.95
Financial Activities	3	17	19	18	119,619	511.19
Education & Health Services	31	141	141	142	630,337	343.07
Other Services	5	12	12	12	100,144	641.95
Local Government	11	307	316	319	1,989,259	487.32
State Government	7	51	52	53	354,703	524.71
Other	9	24	25	23	223,925	717.71
COLUMBIA COUNTY - TOTAL	749	8,258	8,298	8,377	\$70,817,438	\$655.46
Natural Resources & Mining	45	392	385	394	5,933,423	1,169.30
Construction	43	340	345	346	3,114,979	697.23
Manufacturing	33	1,820	1,798	1,817	22,165,546	941.15
Trade, Transportation & Utilities	167	1,399	1,413	1,430	9,954,590	541.54
Wholesale Trade	28	193	195	185	2,029,373	817.31
Retail Trade	104	965	977	1,000	5,380,138	422.02
Transportation, Warehousing & Utilities	35	241	241	245	2,545,079	807.88
Information	9	51	51	51	419,484	632.71
Financial Activities	73	379	375	379	3,613,189	735.93
Professional & Business Services	61	303	299	304	2,545,256	648.31
Education & Health Services	178	1,008	1,020	1,020	5,832,589	441.60
Leisure & Hospitality	48	698	684	697	2,078,581	230.72
Other Services	53	213	205	202	929,098	345.82
Local Government	26	1,112	1,108	1,123	8,677,513	599.01
State Government	13	543	615	614	5,553,190	723.20

TABLE 6. COUNTY SUMMARY

NORTH AMERICAN INDUSTRY CLASSIFICATION SYSTEM - INDUSTRY GROUPS	NUMBER OF EMPLOYING UNITS	EMPLOYMENT			TOTAL EARNINGS	AVERAGE WEEKLY EARNINGS
		JAN	FEB	MAR	JAN - MAR 2013	
CONWAY COUNTY - TOTAL	572	6,538	6,567	6,507	\$55,363,204	\$651.44
Natural Resources & Mining	32	297	289	293	3,266,460	857.56
Construction	52	479	492	492	5,903,454	931.19
Manufacturing	17	823	806	750	11,074,607	1,074.27
Trade, Transportation & Utilities	134	1,560	1,582	1,573	13,629,013	667.05
Wholesale Trade	24	204	205	206	2,298,322	862.41
Retail Trade	82	798	799	790	4,869,413	470.76
Transportation, Warehousing & Utilities	28	558	578	577	6,461,278	870.44
Information	3	11	11	11	72,568	507.47
Financial Activities	34	160	159	161	1,523,936	732.66
Professional & Business Services	43	414	414	410	2,563,826	477.91
Education & Health Services	148	845	851	854	5,749,557	520.32
Leisure & Hospitality	42	483	490	495	1,360,584	213.88
Other Services	30	107	113	112	884,222	614.61
Local Government	27	950	957	948	6,607,766	534.10
State Government	10	409	403	408	2,727,211	515.87
CRAIGHEAD COUNTY - TOTAL	2,687	43,485	43,922	44,048	\$370,842,857	\$651.01
Natural Resources & Mining	77	234	263	292	1,863,573	545.06
Construction	206	1,734	1,781	1,814	15,148,579	656.00
Manufacturing	112	5,759	5,984	5,930	60,139,950	785.29
Trade, Transportation & Utilities	747	9,135	9,135	9,101	72,033,281	607.32
Wholesale Trade	189	1,698	1,746	1,747	22,737,492	1,010.81
Retail Trade	445	6,170	6,113	6,064	35,974,583	452.49
Transportation, Warehousing & Utilities	113	1,267	1,276	1,290	13,321,206	802.02
Information	28	499	502	499	5,104,098	785.25
Financial Activities	262	1,550	1,570	1,558	19,915,310	982.44
Professional & Business Services	363	3,936	3,948	3,907	27,313,551	534.57
Education & Health Services	445	8,608	8,600	8,664	86,871,876	774.87
Leisure & Hospitality	233	4,428	4,498	4,640	15,448,528	262.79
Other Services	155	849	838	835	5,089,164	465.67
Local Government	36	3,959	4,004	4,000	32,002,756	617.34
State Government	23	2,794	2,799	2,808	29,912,191	821.67

TABLE 6. COUNTY SUMMARY

NORTH AMERICAN INDUSTRY CLASSIFICATION SYSTEM - INDUSTRY GROUPS	NUMBER OF EMPLOYING UNITS	EMPLOYMENT			TOTAL EARNINGS	AVERAGE WEEKLY EARNINGS
		JAN	FEB	MAR	JAN - MAR 2013	
CRAWFORD COUNTY - TOTAL	1,295	19,005	19,185	19,316	\$153,082,600	\$614.31
Natural Resources & Mining	31	276	310	351	3,592,956	884.89
Construction	165	769	801	807	6,182,736	600.25
Manufacturing	73	4,281	4,350	4,385	39,484,269	700.04
Trade, Transportation & Utilities	320	5,965	5,931	5,935	50,339,590	651.50
Retail Trade	163	1,825	1,798	1,832	11,475,922	485.48
Other Trade, Transportation & Utilities	157	4,140	4,133	4,103	38,863,668	724.67
Information	11	124	122	121	1,121,429	705.15
Financial Activities	126	532	535	531	4,902,963	708.04
Professional & Business Services	154	1,304	1,343	1,405	9,858,656	561.47
Education & Health Services	182	1,574	1,576	1,579	11,965,860	583.92
Leisure & Hospitality	93	1,438	1,448	1,477	4,562,519	241.32
Other Services	87	384	387	378	2,851,599	572.73
Local Government	43	2,229	2,252	2,217	17,240,561	594.00
State Government	10	129	130	130	979,462	581.05
CRITTENDEN COUNTY - TOTAL	1,315	15,881	15,872	16,023	\$125,485,776	\$606.13
Natural Resources & Mining	51	214	223	236	1,372,789	470.72
Construction	49	280	302	326	2,579,831	655.67
Manufacturing	42	1,510	1,500	1,527	17,094,080	869.47
Trade, Transportation & Utilities	309	4,325	4,246	4,256	37,235,618	669.90
Wholesale Trade	63	654	637	652	7,620,312	905.06
Retail Trade	162	1,871	1,826	1,839	10,743,890	447.86
Transportation, Warehousing & Utilities	84	1,800	1,783	1,765	18,871,416	814.31
Information	6	69	66	67	606,019	692.33
Financial Activities	96	491	476	481	4,819,353	768.07
Professional & Business Services	121	1,260	1,282	1,323	8,521,381	508.79
Education & Health Services	393	2,432	2,490	2,481	19,238,644	599.71
Leisure & Hospitality	117	2,009	2,015	2,059	7,914,131	300.24
Other Services	74	438	434	435	2,992,386	528.35
Local Government	43	2,323	2,301	2,308	19,701,243	655.86
State Government	14	530	537	524	3,410,301	494.65

TABLE 6. COUNTY SUMMARY

NORTH AMERICAN INDUSTRY CLASSIFICATION SYSTEM - INDUSTRY GROUPS	NUMBER OF EMPLOYING UNITS	EMPLOYMENT			TOTAL EARNINGS	AVERAGE WEEKLY EARNINGS
		JAN	FEB	MAR	JAN - MAR 2013	
CROSS COUNTY - TOTAL	518	4,905	4,935	5,001	\$36,589,177	\$568.94
Natural Resources & Mining	33	179	180	184	1,045,157	444.18
Construction	23	75	72	79	569,540	581.56
Manufacturing	12	685	694	708	5,603,730	619.63
Trade, Transportation & Utilities	133	1,203	1,208	1,224	9,875,372	626.94
Wholesale Trade	28	304	309	325	3,964,981	975.48
Retail Trade	74	763	766	760	4,610,110	464.78
Transportation, Warehousing & Utilities	31	136	133	139	1,300,281	735.45
Information	5	35	35	36	259,139	564.16
Financial Activities	46	304	306	308	2,677,619	673.11
Professional & Business Services	44	123	132	127	1,038,675	627.47
Education & Health Services	126	833	834	852	5,543,234	507.82
Leisure & Hospitality	33	290	293	298	819,549	214.67
Other Services	37	74	76	77	466,014	473.75
Local Government	16	727	734	738	5,571,893	584.73
State Government	10	377	371	370	3,119,255	643.85
DALLAS COUNTY - TOTAL	261	2,791	2,751	2,757	\$19,434,400	\$540.41
Natural Resources & Mining	33	165	164	174	1,420,061	651.50
Construction	18	77	64	59	496,197	572.54
Manufacturing	11	558	531	516	4,778,639	687.08
Trade, Transportation & Utilities	62	437	439	443	2,909,531	509.04
Retail Trade	41	324	327	328	1,877,810	442.64
Other Trade, Transportation, & Utilities	21	113	112	115	1,031,721	700.26
Information	3	19	19	19	119,748	484.81
Financial Activities	14	69	69	72	636,081	698.99
Professional & Business Services	13	50	49	49	464,974	725.01
Education & Health Services	59	819	824	826	5,791,003	541.27
Leisure & Hospitality	12	136	130	134	352,536	203.39
Other Services	14	60	61	64	306,275	382.05
Local Government	15	346	348	347	1,876,059	415.89
State Government	7	55	53	54	283,296	403.56

TABLE 6. COUNTY SUMMARY

NORTH AMERICAN INDUSTRY CLASSIFICATION SYSTEM - INDUSTRY GROUPS	NUMBER OF EMPLOYING UNITS	EMPLOYMENT			TOTAL EARNINGS	AVERAGE WEEKLY EARNINGS
		JAN	FEB	MAR	JAN - MAR 2013	
DESHA COUNTY - TOTAL	513	4,366	4,416	4,454	\$34,575,489	\$602.82
Natural Resources & Mining	65	251	266	279	1,719,862	498.61
Construction	23	100	108	108	808,363	590.33
Manufacturing	14	817	813	812	10,183,169	962.31
Trade, Transportation & Utilities	111	860	877	888	7,580,864	666.45
Wholesale Trade	21	202	208	213	3,391,327	1,256.20
Retail Trade	65	484	496	497	2,732,427	426.92
Transportation, Warehousing & Utilities	25	174	173	178	1,457,110	640.49
Information	5	27	27	26	230,760	665.65
Financial Activities	32	211	212	211	1,600,004	582.38
Professional & Business Services	40	89	90	84	607,643	533.18
Education & Health Services	131	753	758	760	4,341,123	441.13
Leisure & Hospitality	40	279	295	305	790,410	207.51
Other Services	23	49	48	54	227,558	347.77
Local Government	19	810	800	808	5,611,319	535.53
State Government	10	120	122	119	874,414	558.97
DREW COUNTY - TOTAL	529	6,192	6,275	6,338	\$45,776,978	\$561.76
Natural Resources & Mining	44	256	270	276	2,153,785	619.73
Construction	19	86	86	93	644,844	561.55
Manufacturing	22	737	733	737	5,883,476	615.19
Trade, Transportation & Utilities	128	1,240	1,232	1,242	8,415,242	522.88
Wholesale Trade	19	166	167	166	1,829,731	846.18
Retail Trade	87	968	960	972	5,600,065	445.63
Transportation, Warehousing & Utilities	22	106	105	104	985,446	721.94
Information	8	53	52	53	428,533	625.90
Financial Activities	46	232	228	230	2,219,663	742.36
Professional & Business Services	41	245	251	287	2,121,636	625.30
Education & Health Services	119	863	864	853	6,109,392	546.46
Leisure & Hospitality	44	621	630	643	1,712,297	208.63
Other Services	20	59	60	57	360,108	472.17
Local Government	22	1,226	1,231	1,228	9,532,868	596.99
State Government	16	574	638	639	6,195,134	772.36

TABLE 6. COUNTY SUMMARY

NORTH AMERICAN INDUSTRY CLASSIFICATION SYSTEM - INDUSTRY GROUPS	NUMBER OF EMPLOYING UNITS	EMPLOYMENT			TOTAL EARNINGS	AVERAGE WEEKLY EARNINGS
		JAN	FEB	MAR	JAN - MAR 2013	
FAULKNER COUNTY - TOTAL	2,780	39,696	39,977	40,477	\$358,985,623	\$689.50
Natural Resources & Mining	57	1,337	1,353	1,375	25,745,000	1,461.54
Construction	304	2,499	2,502	2,525	22,365,670	685.80
Manufacturing	101	3,182	3,161	3,182	37,458,105	907.53
Trade, Transportation & Utilities	669	6,861	6,878	6,924	51,383,479	573.86
Wholesale Trade	170	773	783	800	10,501,533	1,028.62
Retail Trade	408	5,266	5,259	5,283	29,819,441	435.31
Transportation, Warehousing & Utilities	91	822	836	841	11,062,505	1,021.56
Information	24	362	360	369	3,965,572	838.80
Financial Activities	326	1,571	1,565	1,567	16,439,033	806.64
Professional & Business Services	398	5,881	5,905	6,025	71,451,594	925.77
Education & Health Services	431	5,916	5,989	6,008	49,884,958	642.66
Leisure & Hospitality	242	4,450	4,500	4,639	13,998,750	237.73
Other Services	172	697	719	735	5,035,735	540.26
Local Government	38	3,667	3,681	3,751	31,421,267	653.31
State Government	18	3,273	3,364	3,377	29,836,460	687.57
FRANKLIN COUNTY - TOTAL	338	4,234	4,220	4,201	\$34,585,079	\$630.67
Natural Resources & Mining	16	274	278	258	4,138,378	1,179.03
Construction	33	108	106	112	873,309	618.20
Manufacturing	15	849	849	855	8,174,849	738.94
Trade, Transportation & Utilities	87	896	897	901	7,046,161	603.58
Wholesale Trade	13	39	37	37	202,341	413.22
Retail Trade	53	571	574	579	2,958,204	395.98
Transportation, Warehousing & Utilities	21	286	286	285	3,885,616	1,046.30
Information	5	23	23	23	165,640	553.98
Financial Activities	31	232	233	230	2,025,954	672.70
Professional & Business Services	27	129	130	119	713,185	435.40
Education & Health Services	53	544	536	541	3,510,908	499.82
Leisure & Hospitality	25	281	278	280	778,149	214.03
Other Services	18	55	41	38	366,823	631.73
Local Government	19	730	737	733	5,654,965	593.18
State Government	9	113	112	111	1,136,758	780.74

TABLE 6. COUNTY SUMMARY

NORTH AMERICAN INDUSTRY CLASSIFICATION SYSTEM - INDUSTRY GROUPS	NUMBER OF EMPLOYING UNITS	EMPLOYMENT			TOTAL EARNINGS	AVERAGE WEEKLY EARNINGS
		JAN	FEB	MAR	JAN - MAR 2013	
FULTON COUNTY - TOTAL	202	1,914	1,899	1,922	\$11,808,780	\$475.17
Construction	8	30	37	36	368,733	826.14
Manufacturing	12	132	144	144	642,178	352.85
Trade, Transportation & Utilities	48	301	291	302	2,143,708	553.36
Retail Trade	32	169	173	186	834,506	364.73
Other Trade, Transportation & Utilities	16	132	118	116	1,309,202	825.47
Information	4	33	32	33	249,741	588.09
Financial Activities	17	89	89	96	729,975	614.80
Professional & Business Services	17	53	49	49	429,090	655.77
Education & Health Services	47	483	468	469	2,700,712	438.90
Leisure & Hospitality	17	135	131	136	323,691	185.82
Local Government	12	521	523	524	3,359,689	494.46
State Government	10	116	116	115	765,910	509.36
Other	10	21	19	18	95,353	379.39
GARLAND COUNTY - TOTAL	3,105	34,940	35,065	35,537	\$269,488,260	\$589.24
Natural Resources & Mining	34	280	287	290	3,256,029	876.77
Construction	353	1,626	1,654	1,681	12,384,582	576.09
Manufacturing	98	2,451	2,434	2,450	22,909,238	720.76
Trade, Transportation & Utilities	707	7,050	7,012	7,082	49,327,976	538.37
Wholesale Trade	141	926	924	930	9,249,141	767.78
Retail Trade	506	5,557	5,519	5,600	33,211,894	459.60
Transportation, Warehousing & Utilities	60	567	569	552	6,866,941	938.79
Information	35	269	265	255	2,903,513	849.23
Financial Activities	348	1,366	1,360	1,361	14,799,364	835.63
Professional & Business Services	387	3,072	3,209	3,260	25,197,530	609.46
Education & Health Services	500	7,499	7,499	7,512	72,792,701	746.26
Leisure & Hospitality	353	6,240	6,142	6,406	23,929,128	293.92
Other Services	231	926	935	939	5,287,840	435.81
Local Government	34	3,103	3,113	3,130	27,717,207	684.39
State Government	25	1,058	1,155	1,171	8,983,152	612.60

TABLE 6. COUNTY SUMMARY

NORTH AMERICAN INDUSTRY CLASSIFICATION SYSTEM - INDUSTRY GROUPS	NUMBER OF EMPLOYING UNITS	EMPLOYMENT			TOTAL EARNINGS	AVERAGE WEEKLY EARNINGS
		JAN	FEB	MAR	JAN - MAR 2013	
GRANT COUNTY - TOTAL	331	3,660	3,670	3,727	\$28,787,186	\$600.81
Natural Resources & Mining	26	186	190	186	2,148,381	882.17
Construction	29	136	150	151	1,499,079	791.63
Manufacturing	16	992	980	987	9,198,701	717.40
Trade, Transportation & Utilities	85	585	590	585	4,040,389	529.77
Wholesale Trade	17	114	114	111	1,061,402	722.53
Retail Trade	46	410	412	407	2,418,317	454.09
Transportation, Warehousing & Utilities	22	61	64	67	560,670	673.88
Information	3	31	31	31	606,449	1,504.84
Financial Activities	26	91	91	89	762,063	648.93
Professional & Business Services	24	81	86	83	812,836	750.31
Education & Health Services	61	395	392	394	2,398,186	468.61
Leisure & Hospitality	24	272	275	294	647,061	177.55
Other Services	19	47	50	49	248,691	393.08
Local Government	10	790	781	824	6,058,349	583.75
State Government	8	54	54	54	367,001	522.79
GREENE COUNTY - TOTAL	902	14,572	14,652	14,455	\$121,363,485	\$641.20
Natural Resources & Mining	36	230	242	258	1,600,891	506.08
Construction	68	217	255	259	2,197,959	693.87
Manufacturing	60	5,137	5,085	4,999	54,668,511	828.84
Trade, Transportation & Utilities	235	2,431	2,426	2,425	16,935,972	536.71
Wholesale Trade	52	508	510	512	4,771,682	719.71
Retail Trade	152	1,667	1,667	1,662	10,036,457	463.59
Transportation, Warehousing & Utilities	31	256	249	251	2,127,833	649.52
Information	10	92	92	89	586,457	495.74
Financial Activities	81	462	468	470	4,275,298	704.72
Professional & Business Services	95	969	1,011	857	6,349,141	516.46
Education & Health Services	155	1,811	1,833	1,813	13,984,132	591.37
Leisure & Hospitality	69	982	977	989	2,995,969	234.52
Other Services	52	192	203	207	1,102,603	422.67
Local Government	30	1,666	1,676	1,703	12,897,596	589.96
State Government	11	383	384	386	3,768,956	754.34

TABLE 6. COUNTY SUMMARY

NORTH AMERICAN INDUSTRY CLASSIFICATION SYSTEM - INDUSTRY GROUPS	NUMBER OF EMPLOYING UNITS	EMPLOYMENT			TOTAL EARNINGS	AVERAGE WEEKLY EARNINGS
		JAN	FEB	MAR	JAN - MAR 2013	
HEMPSTEAD COUNTY - TOTAL	508	7,875	7,892	7,921	\$62,077,148	\$604.76
Natural Resources & Mining	19	209	214	218	1,894,197	681.94
Construction	34	442	382	336	4,724,850	939.96
Manufacturing	29	1,913	1,950	1,956	15,558,359	617.01
Trade, Transportation & Utilities	135	1,514	1,532	1,568	14,205,493	710.49
Wholesale Trade	23	420	428	448	4,451,529	792.65
Retail Trade	87	836	848	850	4,716,240	429.50
Transportation, Warehousing & Utilities	25	258	256	270	5,037,724	1,482.85
Information	8	44	45	44	303,692	526.94
Financial Activities	42	242	240	244	2,449,722	778.68
Professional & Business Services	32	130	134	133	1,344,360	781.45
Education & Health Services	84	992	979	984	5,685,633	444.02
Leisure & Hospitality	45	558	576	597	1,754,789	233.94
Other Services	35	163	163	165	1,151,553	541.23
Local Government	29	957	960	955	7,344,411	590.13
State Government	16	711	717	721	5,660,089	607.81
HOT SPRING COUNTY - TOTAL	596	8,109	8,153	8,148	\$63,187,481	\$597.37
Natural Resources & Mining	23	140	136	135	1,001,605	562.38
Construction	57	295	295	300	2,163,171	560.89
Manufacturing	32	1,367	1,381	1,382	16,207,803	905.63
Trade, Transportation & Utilities	150	1,322	1,325	1,340	11,285,029	653.18
Wholesale Trade	15	65	65	65	818,593	968.75
Retail Trade	97	872	877	888	5,102,294	446.51
Transportation, Warehousing & Utilities	38	385	383	387	5,364,142	1,071.76
Information	7	44	47	45	376,780	639.33
Financial Activities	53	259	261	257	2,518,558	748.01
Professional & Business Services	52	884	868	867	4,806,925	423.55
Education & Health Services	99	1,217	1,217	1,182	8,631,820	550.87
Leisure & Hospitality	49	506	523	522	1,375,469	204.65
Other Services	34	154	145	148	857,253	442.57
Local Government	27	1,055	1,072	1,084	7,927,662	569.75
State Government	13	866	883	886	6,035,406	528.57

TABLE 6. COUNTY SUMMARY

NORTH AMERICAN INDUSTRY CLASSIFICATION SYSTEM - INDUSTRY GROUPS	NUMBER OF EMPLOYING UNITS	EMPLOYMENT			TOTAL EARNINGS	AVERAGE WEEKLY EARNINGS
		JAN	FEB	MAR	JAN - MAR 2013	
HOWARD COUNTY - TOTAL	369	7,021	7,118	7,142	\$48,772,113	\$528.88
Natural Resources & Mining	15	210	209	207	1,529,676	563.90
Construction	19	134	117	112	1,039,759	661.00
Manufacturing	22	3,582	3,667	3,712	25,680,544	540.67
Trade, Transportation & Utilities	101	898	903	869	6,395,598	552.77
Wholesale Trade	18	63	63	61	564,275	696.35
Retail Trade	57	598	609	613	3,515,136	445.71
Transportation, Warehousing & Utilities	26	237	231	195	2,316,187	806.19
Information	5	29	29	29	176,007	466.86
Financial Activities	36	153	153	154	1,108,718	556.21
Professional & Business Services	26	146	155	148	1,011,277	519.76
Education & Health Services	68	613	620	619	4,173,080	519.99
Leisure & Hospitality	23	293	302	320	853,015	215.14
Other Services	26	129	120	118	809,594	509.07
Local Government	17	729	733	731	5,182,602	545.36
State Government	11	105	110	123	812,243	554.56
INDEPENDENCE COUNTY - TOTAL	921	14,306	14,587	14,768	\$117,395,748	\$620.49
Natural Resources & Mining	14	248	253	265	2,720,204	819.50
Construction	66	343	348	361	2,751,440	603.56
Manufacturing	42	2,943	3,033	3,073	28,184,572	718.77
Trade, Transportation & Utilities	244	2,877	2,894	2,940	23,033,837	610.21
Wholesale Trade	33	446	449	448	3,833,517	658.72
Retail Trade	160	1,672	1,670	1,703	9,543,876	436.56
Transportation, Warehousing & Utilities	51	759	775	789	9,656,444	959.28
Information	10	115	114	114	816,241	549.16
Financial Activities	81	473	480	479	5,178,811	834.57
Professional & Business Services	93	711	777	766	4,662,870	477.39
Education & Health Services	168	3,049	3,055	3,077	29,762,279	748.09
Leisure & Hospitality	77	1,039	1,057	1,106	3,018,215	217.52
Other Services	63	316	323	329	1,666,291	397.24
Local Government	47	1,616	1,625	1,623	10,504,029	498.36
State Government	16	576	628	635	5,096,959	639.60

TABLE 6. COUNTY SUMMARY

NORTH AMERICAN INDUSTRY CLASSIFICATION SYSTEM - INDUSTRY GROUPS	NUMBER OF EMPLOYING UNITS	EMPLOYMENT			TOTAL EARNINGS	AVERAGE WEEKLY EARNINGS
		JAN	FEB	MAR	JAN - MAR 2013	
IZARD COUNTY - TOTAL	253	2,962	3,033	3,086	\$20,729,266	\$526.78
Natural Resources & Mining	5	146	148	149	1,533,895	799.04
Construction	23	76	75	73	544,048	560.49
Trade, Transportation & Utilities	65	545	556	589	3,278,422	447.67
Wholesale Trade	8	11	11	11	75,790	530.00
Retail Trade	47	411	418	443	2,071,341	375.79
Transportation, Warehousing & Utilities	10	123	127	135	1,131,291	678.10
Financial Activities	27	139	137	144	1,186,681	652.02
Professional & Business Services	16	68	67	71	461,700	517.21
Education & Health Services	46	610	590	592	4,063,177	523.25
Leisure & Hospitality	21	116	114	127	296,086	191.39
Local Government	18	540	546	546	3,563,627	503.91
State Government	10	428	502	501	3,471,649	559.85
Other	22	294	298	294	2,329,981	606.87
JACKSON COUNTY - TOTAL	463	5,163	5,191	5,240	\$44,979,211	\$665.63
Natural Resources & Mining	53	225	228	271	1,730,307	551.52
Construction	25	120	118	123	1,012,883	647.49
Manufacturing	17	922	919	931	12,676,002	1,055.28
Trade, Transportation & Utilities	108	970	1,004	997	8,152,722	633.25
Wholesale Trade	23	234	237	242	3,162,368	1,023.53
Retail Trade	70	641	667	656	4,030,493	473.58
Transportation, Warehousing & Utilities	15	95	100	99	959,861	753.42
Information	3	17	17	17	112,500	509.05
Financial Activities	39	159	157	157	1,715,892	837.16
Professional & Business Services	34	136	135	136	1,105,004	626.54
Education & Health Services	89	845	833	823	7,104,245	655.51
Leisure & Hospitality	28	269	280	287	780,760	215.52
Other Services	22	65	72	67	481,481	544.66
Local Government	32	662	658	657	4,178,926	487.79
State Government	13	773	770	774	5,928,489	590.47

TABLE 6. COUNTY SUMMARY

NORTH AMERICAN INDUSTRY CLASSIFICATION SYSTEM - INDUSTRY GROUPS	NUMBER OF EMPLOYING UNITS	EMPLOYMENT			TOTAL EARNINGS	AVERAGE WEEKLY EARNINGS
		JAN	FEB	MAR	JAN - MAR 2013	
JEFFERSON COUNTY - TOTAL	2,163	28,475	28,743	28,672	\$259,799,213	\$698.03
Natural Resources & Mining	38	339	336	344	5,548,572	1,256.56
Construction	99	951	914	889	18,395,767	1,541.46
Manufacturing	57	5,615	5,530	5,483	59,674,947	828.19
Trade, Transportation & Utilities	450	4,952	4,967	4,981	42,439,303	657.29
Wholesale Trade	83	852	852	853	8,909,920	804.12
Retail Trade	299	3,115	3,139	3,159	18,551,237	454.80
Transportation, Warehousing & Utilities	68	985	976	969	14,978,146	1,179.69
Information	14	109	102	98	1,024,639	765.23
Financial Activities	155	1,112	1,116	1,106	13,761,761	952.55
Professional & Business Services	158	1,415	1,457	1,481	10,415,469	552.16
Education & Health Services	849	5,324	5,347	5,297	44,656,250	645.37
Leisure & Hospitality	138	1,771	1,817	1,846	5,390,335	228.91
Other Services	130	611	619	604	4,209,484	529.67
Local Government	39	3,149	3,170	3,162	24,738,116	602.13
State Government	36	3,127	3,368	3,381	29,544,570	690.36
JOHNSON COUNTY - TOTAL	489	8,562	8,628	8,589	\$59,019,464	\$528.33
Natural Resources & Mining	16	132	133	134	1,063,447	615.06
Construction	32	149	165	165	1,168,105	562.76
Manufacturing	33	3,040	3,091	3,081	19,211,500	481.27
Trade, Transportation & Utilities	124	1,965	1,934	1,912	15,573,756	618.47
Retail Trade	79	895	888	878	4,928,956	427.45
Other Trade, Transportation & Utilities	45	1,070	1,046	1,034	10,644,800	779.84
Information	4	44	40	36	254,792	489.98
Financial Activities	49	202	204	204	1,794,546	678.90
Professional & Business Services	48	153	148	153	1,103,723	561.02
Education & Health Services	94	1,181	1,180	1,170	8,703,535	568.82
Leisure & Hospitality	38	466	482	483	1,311,351	211.47
Other Services	28	71	71	76	427,821	452.88
Local Government	14	1,029	1,051	1,046	7,418,415	547.65
State Government	9	130	129	129	988,473	587.91

TABLE 6. COUNTY SUMMARY

NORTH AMERICAN INDUSTRY CLASSIFICATION SYSTEM - INDUSTRY GROUPS	NUMBER OF EMPLOYING UNITS	EMPLOYMENT			TOTAL EARNINGS	AVERAGE WEEKLY EARNINGS
		JAN	FEB	MAR	JAN - MAR 2013	
LAFAYETTE COUNTY - TOTAL	174	1,243	1,266	1,256	\$8,962,102	\$549.32
Natural Resources & Mining	30	160	159	160	1,708,687	823.20
Construction	8	71	65	74	826,394	908.13
Manufacturing	8	28	33	33	225,302	553.11
Trade, Transportation & Utilities	34	199	206	199	1,357,060	518.49
Retail Trade	21	116	116	113	532,874	356.44
Other Trade, Transportation & Utilities	13	83	90	86	824,186	734.35
Financial Activities	14	51	52	53	364,881	539.76
Professional & Business Services	12	49	54	54	338,664	497.79
Education & Health Services	36	220	244	217	1,469,063	497.82
Leisure & Hospitality	5	49	38	39	137,685	252.17
Local Government	13	295	297	310	1,870,312	478.50
State Government	7	50	48	47	286,862	456.54
Other	7	71	70	70	377,192	412.53
LAWRENCE COUNTY - TOTAL	402	3,984	4,051	4,099	\$27,234,354	\$517.95
Natural Resources & Mining	43	160	166	169	1,076,507	501.87
Construction	25	102	110	116	890,642	626.62
Manufacturing	23	470	475	469	3,357,015	547.88
Trade, Transportation & Utilities	109	845	837	849	6,303,812	574.76
Wholesale Trade	20	212	215	224	2,147,129	761.12
Retail Trade	60	529	520	521	2,947,645	433.26
Transportation, Warehousing & Utilities	29	104	102	104	1,209,038	900.03
Financial Activities	30	150	148	150	1,063,761	547.95
Professional & Business Services	28	100	100	107	890,495	669.38
Education & Health Services	62	539	555	560	3,822,608	533.34
Leisure & Hospitality	25	284	318	321	835,064	208.78
Local Government	27	1,161	1,175	1,191	7,959,326	520.77
State Government	10	99	99	100	588,602	455.81
Other	20	74	68	67	446,522	493.03

TABLE 6. COUNTY SUMMARY

NORTH AMERICAN INDUSTRY CLASSIFICATION SYSTEM - INDUSTRY GROUPS	NUMBER OF EMPLOYING UNITS	EMPLOYMENT			TOTAL EARNINGS	AVERAGE WEEKLY EARNINGS
		JAN	FEB	MAR	JAN - MAR 2013	
LEE COUNTY - TOTAL	309	1,961	1,994	2,002	\$14,528,492	\$562.82
Natural Resources & Mining	38	179	193	210	1,579,016	626.10
Construction	10	28	25	25	209,462	619.71
Trade, Transportation & Utilities	46	326	333	341	2,910,247	671.60
Wholesale Trade	8	77	81	91	1,284,092	1,190.08
Retail Trade	24	192	193	192	1,017,204	406.83
Transportation, Warehousing & Utilities	14	57	59	58	608,951	807.63
Financial Activities	18	66	65	69	617,433	712.42
Professional & Business Services	14	52	53	50	627,091	933.63
Education & Health Services	139	389	394	384	2,515,512	497.43
Leisure & Hospitality	10	83	86	79	252,371	234.84
Local Government	15	327	327	325	1,961,199	462.29
State Government	7	492	500	501	3,751,109	579.80
Other	12	19	18	18	105,052	440.78
LINCOLN COUNTY - TOTAL	274	2,959	2,986	2,990	\$22,504,608	\$581.24
Natural Resources & Mining	32	153	151	157	1,410,152	705.90
Construction	15	81	85	85	564,743	519.22
Manufacturing	9	316	324	321	2,811,356	675.10
Trade, Transportation & Utilities	43	340	356	358	3,510,767	768.67
Wholesale Trade	9	51	58	59	846,367	1,162.59
Retail Trade	21	168	170	169	759,350	345.63
Transportation, Warehousing & Utilities	13	121	128	130	1,905,050	1,159.97
Financial Activities	20	66	66	66	652,569	760.57
Professional & Business Services	12	26	24	25	252,013	775.42
Education & Health Services	92	392	394	396	2,237,580	436.86
Leisure & Hospitality	16	192	179	180	425,337	178.14
Local Government	7	360	364	365	2,565,879	543.73
State Government	12	998	1,007	1,004	7,853,870	602.34
Other	16	35	36	33	220,342	488.92

TABLE 6. COUNTY SUMMARY

NORTH AMERICAN INDUSTRY CLASSIFICATION SYSTEM - INDUSTRY GROUPS	NUMBER OF EMPLOYING UNITS	EMPLOYMENT			TOTAL EARNINGS	AVERAGE WEEKLY EARNINGS
		JAN	FEB	MAR	JAN - MAR 2013	
LITTLE RIVER COUNTY - TOTAL	236	3,668	3,605	3,653	\$48,263,740	\$1,019.38
Natural Resources & Mining	13	84	87	83	717,117	651.53
Construction	19	299	273	277	2,383,591	647.89
Manufacturing	15	1,275	1,266	1,293	32,303,845	1,944.37
Trade, Transportation & Utilities	57	518	547	523	3,491,862	507.44
Wholesale Trade	10	30	31	28	385,991	1,000.84
Retail Trade	34	340	362	354	2,051,655	448.35
Transportation, Warehousing & Utilities	13	148	154	141	1,054,216	549.17
Financial Activities	19	84	87	88	678,798	604.81
Professional & Business Services	18	90	92	91	699,004	590.87
Education & Health Services	32	156	149	150	866,648	439.55
Leisure & Hospitality	14	201	203	222	643,462	237.21
Local Government	20	783	737	753	5,542,519	562.71
State Government	11	81	80	89	516,375	476.65
Other	18	97	84	84	420,519	366.20
LOGAN COUNTY - TOTAL	482	5,433	5,427	5,429	\$38,793,965	\$549.60
Natural Resources & Mining	23	175	173	181	3,171,114	1,383.36
Construction	42	164	149	153	1,105,669	547.54
Manufacturing	22	1,264	1,264	1,242	9,638,171	589.97
Trade, Transportation & Utilities	113	903	908	910	5,873,793	498.16
Wholesale Trade	12	67	71	71	254,694	281.22
Retail Trade	73	699	697	700	4,060,727	447.09
Transportation, Warehousing & Utilities	28	137	140	139	1,558,372	864.48
Information	5	32	31	31	355,107	871.78
Financial Activities	46	261	253	253	2,426,183	729.97
Professional & Business Services	45	101	96	97	756,115	593.50
Education & Health Services	97	773	777	781	5,220,565	516.84
Leisure & Hospitality	27	288	283	284	744,536	200.95
Other Services	26	121	121	122	908,249	575.81
Local Government	22	811	824	822	5,578,518	523.95
State Government	14	540	548	553	3,015,945	424.12

TABLE 6. COUNTY SUMMARY

NORTH AMERICAN INDUSTRY CLASSIFICATION SYSTEM - INDUSTRY GROUPS	NUMBER OF EMPLOYING UNITS	EMPLOYMENT			TOTAL EARNINGS	AVERAGE WEEKLY EARNINGS
		JAN	FEB	MAR	JAN - MAR 2013	
LONOKE COUNTY - TOTAL	1,311	12,891	13,112	13,226	\$96,314,880	\$566.58
Natural Resources & Mining	78	422	460	488	3,866,711	651.33
Construction	143	779	826	818	7,141,475	680.16
Manufacturing	40	1,528	1,543	1,564	16,613,077	827.14
Trade, Transportation & Utilities	321	2,814	2,834	2,910	19,004,448	512.46
Wholesale Trade	79	412	424	436	4,590,576	832.83
Retail Trade	182	2,161	2,162	2,210	12,064,184	426.15
Transportation, Warehousing & Utilities	60	241	248	264	2,349,688	720.10
Information	14	97	97	97	852,123	675.75
Financial Activities	141	497	496	498	6,412,504	992.49
Professional & Business Services	155	732	785	792	5,334,686	533.17
Education & Health Services	204	1,517	1,514	1,525	10,555,805	534.67
Leisure & Hospitality	102	1,420	1,418	1,449	4,240,187	228.25
Other Services	73	190	186	187	1,042,507	427.32
Local Government	25	2,734	2,794	2,736	20,147,883	562.62
State Government	15	161	159	162	1,103,474	528.32
MADISON COUNTY - TOTAL	243	3,135	3,219	3,244	\$22,288,076	\$535.88
Natural Resources & Mining	10	28	29	40	240,439	572.02
Construction	24	69	92	91	580,508	531.60
Manufacturing	23	1,133	1,155	1,157	8,570,753	574.13
Trade, Transportation & Utilities	46	542	572	579	3,768,983	513.74
Retail Trade	31	434	446	443	2,404,621	419.44
Other Trade, Transportation & Utilities	15	108	126	136	1,364,362	850.95
Information	6	40	41	40	490,733	935.92
Financial Activities	18	66	66	69	542,408	622.74
Professional & Business Services	25	133	142	144	967,949	533.11
Education & Health Services	48	281	276	276	1,713,423	474.68
Leisure & Hospitality	13	154	166	159	435,959	210.03
Other Services	14	31	31	31	231,890	575.41
Local Government	9	620	611	619	4,472,692	557.92
State Government	7	38	38	39	272,339	546.50

TABLE 6. COUNTY SUMMARY

NORTH AMERICAN INDUSTRY CLASSIFICATION SYSTEM - INDUSTRY GROUPS	NUMBER OF EMPLOYING UNITS	EMPLOYMENT			TOTAL EARNINGS	AVERAGE WEEKLY EARNINGS
		JAN	FEB	MAR	JAN - MAR 2013	
MARION COUNTY - TOTAL	300	3,557	3,555	3,608	\$23,568,782	\$507.36
Natural Resources & Mining	5	23	23	23	124,136	415.17
Construction	23	70	60	61	406,721	491.41
Manufacturing	19	1,579	1,586	1,598	10,437,175	505.69
Trade, Transportation & Utilities	57	502	498	507	3,523,433	539.55
Wholesale Trade	10	48	49	53	857,579	1,319.35
Retail Trade	39	426	426	428	2,325,419	419.25
Transportation, Warehousing & Utilities	8	28	23	26	340,435	1,020.28
Information	3	55	55	53	636,870	901.66
Financial Activities	34	183	179	190	1,700,105	710.75
Professional & Business Services	28	59	58	57	387,956	514.53
Education & Health Services	56	331	324	323	2,015,100	475.48
Leisure & Hospitality	34	149	154	171	444,311	216.31
Other Services	16	27	25	27	119,771	349.87
Local Government	18	506	518	524	3,381,544	504.11
State Government	7	73	75	74	391,660	407.13
MILLER COUNTY - TOTAL	875	12,877	12,877	12,911	\$107,470,912	\$641.43
Natural Resources & Mining	30	161	143	141	1,060,462	549.94
Construction	82	792	776	804	6,560,068	638.22
Manufacturing	26	2,331	2,332	2,316	33,252,494	1,099.53
Trade, Transportation & Utilities	227	3,412	3,465	3,504	29,396,452	653.48
Wholesale Trade	52	556	551	552	5,723,377	796.13
Retail Trade	129	1,326	1,329	1,368	7,996,573	458.70
Transportation, Warehousing & Utilities	46	1,530	1,585	1,584	15,676,502	769.88
Information	8	70	66	67	1,023,639	1,163.67
Financial Activities	86	383	381	368	3,590,585	731.98
Professional & Business Services	88	985	934	886	4,970,875	408.96
Education & Health Services	135	896	911	909	5,932,840	504.09
Leisure & Hospitality	90	1,359	1,342	1,388	4,924,845	277.94
Other Services	62	283	282	290	1,608,233	434.07
Local Government	25	1,700	1,736	1,733	10,684,470	477.01
State Government	16	505	509	505	4,465,949	678.48

TABLE 6. COUNTY SUMMARY

NORTH AMERICAN INDUSTRY CLASSIFICATION SYSTEM - INDUSTRY GROUPS	NUMBER OF EMPLOYING UNITS	EMPLOYMENT			TOTAL EARNINGS	AVERAGE WEEKLY EARNINGS
		JAN	FEB	MAR	JAN - MAR 2013	
MISSISSIPPI COUNTY - TOTAL	1,200	17,837	17,834	17,937	\$176,346,567	\$759.13
Natural Resources & Mining	113	505	507	528	3,335,170	499.78
Construction	57	628	621	636	6,996,941	856.59
Manufacturing	53	6,060	6,015	6,024	92,457,584	1,178.87
Trade, Transportation & Utilities	299	3,028	3,008	3,014	25,401,969	647.73
Wholesale Trade	62	478	483	498	6,189,069	978.92
Retail Trade	180	1,828	1,812	1,801	9,493,052	402.63
Transportation, Warehousing & Utilities	57	722	713	715	9,719,848	1,043.28
Information	9	68	68	70	485,408	543.77
Financial Activities	91	413	411	415	3,499,676	651.83
Professional & Business Services	86	1,193	1,219	1,239	7,731,166	488.66
Education & Health Services	276	1,890	1,889	1,898	12,248,934	497.92
Leisure & Hospitality	84	1,063	1,078	1,089	2,958,050	211.34
Other Services	58	199	195	193	1,073,165	421.90
Local Government	52	2,214	2,210	2,219	15,820,245	549.57
State Government	22	576	613	612	4,338,259	555.88
MONROE COUNTY - TOTAL	300	2,235	2,233	2,273	\$15,267,890	\$522.68
Natural Resources & Mining	32	120	118	141	928,566	565.39
Construction	13	87	85	90	739,478	651.33
Manufacturing	7	125	130	134	1,022,028	606.30
Trade, Transportation & Utilities	79	625	633	644	5,702,488	691.88
Wholesale Trade	20	236	249	266	3,325,059	1,021.73
Retail Trade	37	275	270	264	1,408,894	401.89
Transportation, Warehousing & Utilities	22	114	114	114	968,535	653.53
Financial Activities	21	99	99	100	856,213	663.05
Professional & Business Services	13	67	70	72	198,398	219.06
Education & Health Services	63	309	306	303	1,685,507	423.71
Leisure & Hospitality	24	235	231	235	686,737	226.07
Local Government	22	350	344	341	2,192,807	488.92
State Government	8	119	114	111	763,004	511.85
Other	18	99	103	102	492,664	373.99

TABLE 6. COUNTY SUMMARY

NORTH AMERICAN INDUSTRY CLASSIFICATION SYSTEM - INDUSTRY GROUPS	NUMBER OF EMPLOYING UNITS	EMPLOYMENT			TOTAL EARNINGS	AVERAGE WEEKLY EARNINGS
		JAN	FEB	MAR	JAN - MAR 2013	
MONTGOMERY COUNTY - TOTAL	174	1,382	1,428	1,477	\$8,699,965	\$468.32
Natural Resources & Mining	7	22	27	25	197,193	614.95
Construction	22	80	85	84	558,877	517.96
Trade, Transportation & Utilities	40	248	253	253	1,625,889	497.62
Wholesale Trade	12	62	68	69	506,698	587.59
Retail Trade	20	158	154	152	847,211	421.36
Transportation, Warehousing & Utilities	8	28	31	32	271,980	689.72
Financial Activities	11	54	55	56	482,355	674.62
Professional & Business Services	17	33	32	33	283,179	666.83
Education & Health Services	20	83	85	82	484,445	447.18
Leisure & Hospitality	20	161	193	237	813,688	317.72
Local Government	9	479	478	485	3,036,179	485.89
State Government	7	44	43	44	331,289	583.60
Other	21	178	177	178	886,871	383.98
NEVADA COUNTY - TOTAL	197	2,351	2,360	2,386	\$23,767,441	\$772.83
Natural Resources & Mining	9	33	34	35	298,356	675.01
Trade, Transportation & Utilities	43	515	532	545	3,949,367	572.48
Wholesale Trade	4	6	6	6	32,772	420.15
Retail Trade	28	288	302	312	1,430,847	366.07
Transportation, Warehousing & Utilities	11	221	224	227	2,485,748	853.62
Financial Activities	12	52	50	54	417,962	618.29
Professional & Business Services	11	41	46	46	318,141	552.01
Education & Health Services	41	400	399	393	2,409,604	466.50
Leisure & Hospitality	9	88	90	92	215,934	184.56
Other Services	14	46	46	40	169,585	296.48
Local Government	27	408	403	404	2,371,769	450.48
State Government	10	78	77	79	490,099	483.33
Other	21	690	683	698	13,126,624	1,462.69

TABLE 6. COUNTY SUMMARY

NORTH AMERICAN INDUSTRY CLASSIFICATION SYSTEM - INDUSTRY GROUPS	NUMBER OF EMPLOYING UNITS	EMPLOYMENT			TOTAL EARNINGS	AVERAGE WEEKLY EARNINGS
		JAN	FEB	MAR	JAN - MAR 2013	
NEWTON COUNTY - TOTAL	122	1,036	1,025	1,052	\$5,489,322	\$406.93
Construction	6	21	17	20	66,085	262.94
Manufacturing	10	47	48	46	341,941	559.64
Trade, Transportation & Utilities	32	164	168	174	903,099	411.87
Wholesale Trade	3	5	5	5	44,608	686.28
Retail Trade	15	107	110	118	433,596	298.69
Transportation, Warehousing & Utilities	14	52	53	51	424,895	628.54
Education & Health Services	30	226	220	223	942,493	325.11
Leisure & Hospitality	14	67	63	75	229,901	258.80
Local Government	13	386	386	392	2,274,582	450.95
State Government	6	89	87	88	431,453	377.14
Other	11	36	36	34	299,768	652.62
OUACHITA COUNTY - TOTAL	658	7,041	7,151	7,207	\$52,313,000	\$564.15
Natural Resources & Mining	39	198	197	193	1,510,521	592.83
Construction	39	194	188	196	1,552,049	619.66
Manufacturing	24	503	503	505	4,811,369	734.82
Trade, Transportation & Utilities	168	1,578	1,586	1,618	11,409,896	550.62
Wholesale Trade	26	236	237	234	2,598,415	848.14
Retail Trade	115	1,024	1,029	1,072	5,336,873	394.11
Transportation, Warehousing & Utilities	27	318	320	312	3,474,608	844.03
Information	7	42	41	42	399,885	738.25
Financial Activities	59	288	289	289	2,382,961	635.00
Professional & Business Services	52	557	610	634	4,786,016	613.25
Education & Health Services	150	1,270	1,279	1,254	9,898,480	600.65
Leisure & Hospitality	38	461	480	479	1,283,084	208.52
Other Services	38	130	135	136	726,201	417.92
Local Government	30	1,144	1,145	1,151	7,903,307	530.19
State Government	14	676	698	710	5,649,231	625.56

TABLE 6. COUNTY SUMMARY

NORTH AMERICAN INDUSTRY CLASSIFICATION SYSTEM - INDUSTRY GROUPS	NUMBER OF EMPLOYING UNITS	EMPLOYMENT			TOTAL EARNINGS	AVERAGE WEEKLY EARNINGS
		JAN	FEB	MAR	JAN - MAR 2013	
PERRY COUNTY - TOTAL	147	1,254	1,241	1,232	\$8,767,643	\$542.88
Construction	15	98	103	109	848,649	631.75
Manufacturing	5	40	42	43	308,704	569.92
Trade, Transportation & Utilities	26	133	135	132	1,031,433	595.06
Retail Trade	15	100	101	98	507,954	392.04
Other Trade, Transportation & Utilities	11	33	34	34	523,479	1,196.07
Financial Activities	10	30	31	31	268,606	673.76
Professional & Business Services	15	38	38	40	492,835	980.44
Education & Health Services	34	250	250	242	1,372,878	426.98
Leisure & Hospitality	7	57	64	61	175,251	222.21
Local Government	10	383	383	391	2,213,732	441.54
State Government	8	57	57	59	317,096	422.98
Other	17	168	138	124	1,738,459	932.98
PHILLIPS COUNTY - TOTAL	878	5,872	5,876	5,989	\$43,034,921	\$559.91
Natural Resources & Mining	64	242	234	266	1,472,431	457.94
Construction	27	100	102	107	698,272	521.49
Manufacturing	11	348	362	365	3,311,778	710.94
Trade, Transportation & Utilities	158	1,389	1,370	1,377	11,168,355	623.14
Wholesale Trade	31	341	344	350	4,438,034	989.53
Retail Trade	86	774	765	749	4,213,854	425.01
Transportation, Warehousing & Utilities	41	274	261	278	2,516,467	714.30
Information	10	44	44	43	391,868	690.31
Financial Activities	40	208	210	202	1,899,543	707.03
Professional & Business Services	50	317	325	332	2,367,945	561.04
Education & Health Services	412	1,493	1,481	1,505	9,974,365	513.90
Leisure & Hospitality	31	266	278	281	770,367	215.49
Other Services	34	69	69	71	390,429	431.10
Local Government	27	931	915	913	7,128,006	596.20
State Government	14	465	486	527	3,461,562	540.47

TABLE 6. COUNTY SUMMARY

NORTH AMERICAN INDUSTRY CLASSIFICATION SYSTEM - INDUSTRY GROUPS	NUMBER OF EMPLOYING UNITS	EMPLOYMENT			TOTAL EARNINGS	AVERAGE WEEKLY EARNINGS
		JAN	FEB	MAR	JAN - MAR 2013	
PIKE COUNTY - TOTAL	248	2,160	2,157	2,156	\$14,302,513	\$509.90
Natural Resources & Mining	22	108	109	108	1,072,010	761.19
Construction	16	38	38	39	251,944	505.57
Manufacturing	18	200	203	197	1,114,746	428.75
Trade, Transportation & Utilities	72	508	509	508	3,147,619	476.31
Wholesale Trade	10	110	109	105	839,981	598.28
Retail Trade	44	336	339	337	1,704,821	388.76
Transportation, Warehousing & Utilities	18	62	61	66	602,817	736.04
Information	5	25	25	25	465,166	1,431.28
Financial Activities	24	185	189	187	1,719,396	707.28
Professional & Business Services	12	35	39	34	522,827	1,117.15
Education & Health Services	19	268	262	259	1,522,612	445.34
Leisure & Hospitality	20	155	160	170	437,035	207.95
Other Services	20	53	53	55	331,996	475.87
Local Government	10	462	445	443	3,137,226	536.28
State Government	10	123	125	131	579,936	353.12
POINSETT COUNTY - TOTAL	526	5,013	5,035	5,089	\$39,271,197	\$598.70
Natural Resources & Mining	57	305	314	325	2,275,897	556.36
Construction	24	96	106	112	629,884	462.92
Manufacturing	24	681	687	693	6,046,392	677.01
Trade, Transportation & Utilities	129	1,240	1,248	1,265	11,407,042	701.41
Wholesale Trade	31	373	366	380	6,239,795	1,286.82
Retail Trade	68	683	691	696	3,610,312	402.49
Transportation, Warehousing & Utilities	30	184	191	189	1,556,935	637.04
Information	6	54	52	54	469,386	677.00
Financial Activities	36	244	241	241	2,212,314	703.21
Professional & Business Services	33	164	174	169	2,182,074	993.21
Education & Health Services	110	649	645	642	3,964,554	472.57
Leisure & Hospitality	43	323	323	338	974,393	228.52
Other Services	23	49	49	50	314,709	490.71
Local Government	30	1,066	1,054	1,059	7,817,801	567.51
State Government	11	142	142	141	976,751	530.36

TABLE 6. COUNTY SUMMARY

NORTH AMERICAN INDUSTRY CLASSIFICATION SYSTEM - INDUSTRY GROUPS	NUMBER OF EMPLOYING UNITS	EMPLOYMENT			TOTAL EARNINGS	AVERAGE WEEKLY EARNINGS
		JAN	FEB	MAR	JAN - MAR 2013	
POLK COUNTY - TOTAL	519	5,950	5,994	5,996	\$40,184,735	\$516.91
Natural Resources & Mining	23	141	143	141	1,391,604	755.62
Construction	36	174	175	177	1,178,506	517.04
Manufacturing	35	1,300	1,303	1,313	10,213,148	601.86
Trade, Transportation & Utilities	135	1,171	1,173	1,164	7,072,994	465.29
Wholesale Trade	19	47	47	47	420,313	687.91
Retail Trade	78	796	803	806	4,038,785	387.54
Transportation, Warehousing & Utilities	38	328	323	311	2,613,896	627.03
Information	7	54	53	53	306,075	441.45
Financial Activities	46	242	239	239	2,182,415	699.49
Professional & Business Services	46	153	155	154	1,207,758	603.28
Education & Health Services	85	1,079	1,079	1,063	7,726,493	553.57
Leisure & Hospitality	41	465	476	485	1,211,275	196.02
Other Services	31	168	172	174	1,015,548	455.95
Local Government	21	735	740	744	4,998,485	519.83
State Government	13	268	286	289	1,680,434	460.01
POPE COUNTY - TOTAL	1,780	25,463	25,863	26,573	\$220,679,255	\$653.74
Natural Resources & Mining	35	786	786	775	6,480,324	637.18
Construction	160	1,141	1,288	1,594	13,244,922	759.76
Manufacturing	72	4,488	4,478	4,479	39,225,019	673.26
Trade, Transportation & Utilities	428	5,617	5,668	5,772	64,232,150	869.02
Wholesale Trade	92	609	602	599	6,112,067	779.27
Retail Trade	263	2,984	3,009	3,034	16,385,385	418.88
Transportation, Warehousing & Utilities	73	2,024	2,057	2,139	41,734,698	1,548.41
Information	25	213	218	217	1,894,922	674.83
Financial Activities	178	1,279	1,277	1,288	10,270,373	616.57
Professional & Business Services	267	2,410	2,514	2,735	20,197,358	608.56
Education & Health Services	312	2,970	3,024	3,029	23,909,149	611.49
Leisure & Hospitality	140	2,282	2,341	2,385	7,118,697	234.41
Other Services	105	381	385	420	2,333,863	454.12
Local Government	42	2,256	2,264	2,273	17,083,676	580.36
State Government	16	1,640	1,620	1,606	14,688,802	696.61

TABLE 6. COUNTY SUMMARY

NORTH AMERICAN INDUSTRY CLASSIFICATION SYSTEM - INDUSTRY GROUPS	NUMBER OF EMPLOYING UNITS	EMPLOYMENT			TOTAL EARNINGS	AVERAGE WEEKLY EARNINGS
		JAN	FEB	MAR	JAN - MAR 2013	
PRAIRIE COUNTY - TOTAL	261	1,401	1,432	1,428	\$9,778,541	\$529.59
Natural Resources & Mining	36	130	129	130	1,042,989	618.74
Construction	12	48	61	63	577,195	774.41
Trade, Transportation & Utilities	61	293	301	308	2,376,187	607.93
Wholesale Trade	10	63	66	72	1,166,681	1,339.47
Retail Trade	34	167	173	172	750,427	338.23
Transportation, Warehousing & Utilities	17	63	62	64	459,079	560.54
Financial Activities	18	58	55	59	475,448	637.90
Professional & Business Services	18	60	64	62	421,206	522.59
Education & Health Services	53	272	284	271	1,734,195	483.92
Leisure & Hospitality	18	107	93	92	278,171	219.84
Other Services	14	34	34	33	181,876	415.56
Local Government	15	336	347	345	2,161,701	485.27
State Government	9	39	40	43	285,802	540.61
Other	7	24	24	22	243,771	803.64
PULASKI COUNTY - TOTAL	14,361	231,915	233,753	234,773	\$2,530,779,863	\$833.80
Natural Resources & Mining	53	674	673	684	10,818,798	1,229.27
Construction	992	8,255	8,214	8,262	88,640,953	827.12
Manufacturing	363	12,576	12,445	12,498	172,601,200	1,061.62
Trade, Transportation & Utilities	3,231	47,064	46,699	46,849	475,938,358	781.10
Wholesale Trade	1,048	11,666	11,725	11,735	173,973,195	1,142.96
Retail Trade	1,781	24,685	24,454	24,537	160,238,176	501.90
Transportation, Warehousing & Utilities	402	10,713	10,520	10,577	141,726,987	1,028.17
Information	226	6,505	6,492	6,531	116,540,220	1,377.20
Financial Activities	1,709	15,643	15,663	15,629	265,689,051	1,306.34
Professional & Business Services	2,824	31,986	32,631	32,916	357,627,387	846.17
Education & Health Services	2,342	37,839	38,177	38,102	408,320,671	825.71
Leisure & Hospitality	1,170	21,023	21,231	21,648	84,375,038	304.70
Other Services	1,147	6,603	6,625	6,681	55,780,172	646.56
Local Government	102	16,387	16,588	16,616	161,914,667	753.46
State Government	202	27,360	28,315	28,357	332,533,348	913.21

TABLE 6. COUNTY SUMMARY

NORTH AMERICAN INDUSTRY CLASSIFICATION SYSTEM - INDUSTRY GROUPS	NUMBER OF EMPLOYING UNITS	EMPLOYMENT			TOTAL EARNINGS	AVERAGE WEEKLY EARNINGS
		JAN	FEB	MAR	JAN - MAR 2013	
RANDOLPH COUNTY - TOTAL	415	4,559	4,598	4,567	\$29,903,729	\$502.83
Natural Resources & Mining	30	85	87	94	326,713	283.44
Construction	27	59	59	63	331,735	422.95
Manufacturing	29	563	555	550	4,182,248	578.62
Trade, Transportation & Utilities	98	873	913	915	6,088,182	520.16
Wholesale Trade	21	185	187	191	1,415,765	580.31
Retail Trade	58	547	587	585	3,344,048	448.93
Transportation, Warehousing & Utilities	19	141	139	139	1,328,369	731.62
Information	5	34	34	34	274,082	620.10
Financial Activities	32	130	129	132	955,557	563.97
Professional & Business Services	43	227	229	225	1,168,767	396.06
Education & Health Services	69	1,194	1,188	1,156	8,368,032	545.81
Leisure & Hospitality	26	337	336	339	947,192	215.99
Other Services	23	65	67	65	329,170	385.60
Local Government	22	723	721	713	4,617,457	494.00
State Government	11	269	280	281	2,314,594	643.54
SAINT FRANCIS COUNTY - TOTAL	816	7,136	7,260	7,263	\$50,971,108	\$543.08
Natural Resources & Mining	39	138	147	174	1,090,106	548.07
Construction	43	143	164	162	1,185,672	583.40
Manufacturing	9	622	628	626	5,517,374	678.70
Trade, Transportation & Utilities	169	1,923	1,912	1,920	14,116,639	566.06
Wholesale Trade	36	548	543	556	5,668,961	794.31
Retail Trade	110	1,078	1,077	1,073	5,571,147	398.28
Transportation, Warehousing & Utilities	23	297	292	291	2,876,531	754.34
Information	7	70	70	65	601,838	677.49
Financial Activities	66	278	276	275	2,270,427	632.02
Professional & Business Services	49	398	408	414	2,806,319	530.83
Education & Health Services	314	1,428	1,426	1,408	9,773,776	529.21
Leisure & Hospitality	48	614	634	638	1,789,659	218.98
Other Services	28	62	64	62	291,878	358.28
Local Government	28	972	977	977	7,489,870	590.71
State Government	16	488	554	542	4,037,550	588.22

TABLE 6. COUNTY SUMMARY

NORTH AMERICAN INDUSTRY CLASSIFICATION SYSTEM - INDUSTRY GROUPS	NUMBER OF EMPLOYING UNITS	EMPLOYMENT			TOTAL EARNINGS	AVERAGE WEEKLY EARNINGS
		JAN	FEB	MAR	JAN - MAR 2013	
SALINE COUNTY - TOTAL	1,879	21,344	21,410	21,441	\$163,328,956	\$587.14
Natural Resources & Mining	12	45	44	45	514,828	886.62
Construction	270	1,717	1,737	1,708	14,819,906	662.53
Manufacturing	86	1,357	1,350	1,346	14,772,931	841.14
Trade, Transportation & Utilities	438	4,728	4,704	4,686	35,320,146	577.33
Wholesale Trade	120	538	539	543	6,075,929	865.52
Retail Trade	259	3,757	3,735	3,706	25,058,804	516.41
Transportation, Warehousing & Utilities	59	433	430	437	4,185,413	742.97
Information	12	80	77	79	897,252	877.37
Financial Activities	188	708	698	703	6,673,524	730.22
Professional & Business Services	252	1,349	1,356	1,330	10,523,826	601.88
Education & Health Services	263	3,358	3,379	3,387	26,118,325	595.35
Leisure & Hospitality	155	2,707	2,802	2,818	9,505,931	263.44
Other Services	156	673	679	691	4,217,655	476.41
Local Government	31	3,630	3,581	3,638	33,248,430	707.23
State Government	16	992	1,003	1,010	6,716,202	515.77
SCOTT COUNTY - TOTAL	186	3,012	3,033	3,044	\$19,579,661	\$497.13
Natural Resources & Mining	17	147	151	148	1,306,011	675.76
Trade, Transportation & Utilities	37	430	431	423	3,103,405	557.77
Wholesale Trade	9	73	77	77	873,236	887.74
Retail Trade	22	293	292	283	1,545,288	410.84
Transportation, Warehousing & Utilities	6	64	62	63	684,881	836.24
Financial Activities	22	77	77	75	478,758	482.46
Professional & Business Services	11	14	12	13	86,213	510.14
Education & Health Services	38	280	284	287	2,404,348	652.00
Leisure & Hospitality	16	123	122	131	410,068	251.68
Other Services	12	47	46	47	335,891	553.67
Local Government	6	567	581	592	3,654,073	484.63
State Government	7	62	61	62	350,754	437.53
Other	20	1,265	1,268	1,266	7,450,140	452.56

TABLE 6. COUNTY SUMMARY

NORTH AMERICAN INDUSTRY CLASSIFICATION SYSTEM - INDUSTRY GROUPS	NUMBER OF EMPLOYING UNITS	EMPLOYMENT			TOTAL EARNINGS	AVERAGE WEEKLY EARNINGS
		JAN	FEB	MAR	JAN - MAR 2013	
SEARCY COUNTY - TOTAL	188	1,568	1,568	1,642	\$8,901,370	\$429.92
Construction	9	13	13	13	68,278	404.01
Manufacturing	18	196	200	198	1,025,697	398.48
Trade, Transportation & Utilities	39	227	235	248	1,166,735	379.22
Wholesale Trade	6	29	31	31	142,015	360.14
Retail Trade	26	178	184	197	768,574	317.29
Transportation, Warehousing & Utilities	7	20	20	20	256,146	985.18
Information	3	3	3	3	27,927	716.08
Financial Activities	15	66	64	68	518,254	604.03
Professional & Business Services	11	31	31	30	154,770	388.22
Education & Health Services	51	337	333	337	1,964,460	450.19
Leisure & Hospitality	15	124	125	141	298,978	176.91
Local Government	10	364	366	372	2,225,174	465.97
State Government	7	120	111	114	546,730	365.71
Other	10	87	87	118	904,367	714.73
SEBASTIAN COUNTY - TOTAL	3,761	62,856	62,978	63,134	\$598,812,346	\$731.27
Natural Resources & Mining	59	1,284	1,267	1,258	26,363,013	1,597.21
Construction	284	2,158	2,181	2,216	19,417,449	683.59
Manufacturing	193	11,516	11,295	11,323	137,332,573	928.46
Trade, Transportation & Utilities	940	12,323	12,219	12,295	104,760,028	656.28
Wholesale Trade	247	2,635	2,631	2,612	32,844,223	962.10
Retail Trade	566	7,527	7,425	7,500	44,666,003	459.09
Transportation, Warehousing & Utilities	127	2,161	2,163	2,183	27,249,802	966.41
Information	51	989	994	984	12,801,538	995.69
Financial Activities	427	2,520	2,516	2,512	28,745,690	878.86
Professional & Business Services	583	8,497	8,564	8,422	76,430,321	692.14
Education & Health Services	575	10,731	10,794	10,835	107,177,236	764.31
Leisure & Hospitality	325	5,497	5,537	5,683	19,980,459	275.82
Other Services	263	1,262	1,251	1,259	8,230,263	503.52
Local Government	40	4,487	4,526	4,499	40,620,368	693.75
State Government	21	1,592	1,834	1,848	16,953,408	741.81

TABLE 6. COUNTY SUMMARY

NORTH AMERICAN INDUSTRY CLASSIFICATION SYSTEM - INDUSTRY GROUPS	NUMBER OF EMPLOYING UNITS	EMPLOYMENT			TOTAL EARNINGS	AVERAGE WEEKLY EARNINGS
		JAN	FEB	MAR	JAN - MAR 2013	
SEVIER COUNTY - TOTAL	325	4,801	4,835	4,897	\$32,415,591	\$514.73
Natural Resources & Mining	14	168	169	169	1,419,080	647.19
Construction	21	134	139	153	1,505,092	815.33
Trade, Transportation & Utilities	100	817	822	827	5,326,663	498.47
Wholesale Trade	16	92	93	92	1,036,507	863.52
Retail Trade	66	648	639	645	3,420,657	408.58
Transportation, Warehousing & Utilities	18	77	90	90	869,499	780.75
Information	3	20	21	21	162,953	606.52
Financial Activities	28	221	222	225	1,929,496	666.57
Professional & Business Services	31	102	113	132	673,884	448.16
Education & Health Services	46	505	496	504	3,489,971	535.13
Leisure & Hospitality	25	236	247	254	678,501	212.45
Local Government	12	902	910	912	6,231,716	527.93
State Government	8	151	171	195	1,154,297	515.23
Other	37	1,545	1,525	1,505	9,843,938	496.54
SHARP COUNTY - TOTAL	391	3,540	3,555	3,587	\$22,357,901	\$483.01
Construction	22	108	111	108	937,940	661.92
Manufacturing	17	123	125	119	765,225	481.17
Trade, Transportation & Utilities	84	994	1,016	1,033	7,003,648	531.13
Wholesale Trade	13	35	36	36	163,578	352.79
Retail Trade	58	614	608	622	3,179,525	397.90
Transportation, Warehousing & Utilities	13	345	372	375	3,660,545	773.57
Information	6	39	41	40	435,457	837.42
Financial Activities	35	202	194	192	1,727,829	678.11
Professional & Business Services	39	130	129	134	1,105,514	649.16
Education & Health Services	91	676	672	661	3,949,527	453.67
Leisure & Hospitality	37	364	354	379	959,509	201.85
Local Government	25	749	751	756	4,628,866	473.49
State Government	8	86	88	92	498,134	432.16
Other	27	69	74	73	346,252	369.93

TABLE 6. COUNTY SUMMARY

NORTH AMERICAN INDUSTRY CLASSIFICATION SYSTEM - INDUSTRY GROUPS	NUMBER OF EMPLOYING UNITS	EMPLOYMENT			TOTAL EARNINGS	AVERAGE WEEKLY EARNINGS
		JAN	FEB	MAR	JAN - MAR 2013	
STONE COUNTY - TOTAL	290	2,350	2,389	2,423	\$13,680,483	\$440.80
Natural Resources & Mining	5	20	26	24	36,030	118.78
Construction	22	43	47	51	221,339	362.26
Manufacturing	19	164	178	176	824,760	367.43
Trade, Transportation & Utilities	76	641	626	632	3,783,089	459.73
Wholesale Trade	8	48	48	42	309,270	517.17
Retail Trade	55	552	539	550	2,995,402	421.23
Transportation, Warehousing & Utilities	13	41	39	40	478,417	920.03
Financial Activities	26	86	90	97	494,873	418.32
Professional & Business Services	20	44	48	49	264,647	433.14
Education & Health Services	50	470	470	483	3,600,317	583.87
Leisure & Hospitality	33	271	293	308	700,528	185.39
Local Government	10	402	406	398	2,681,482	513.10
State Government	8	145	142	141	695,211	374.84
Other	21	64	63	64	378,207	456.96
UNION COUNTY - TOTAL	1,365	17,544	17,698	17,866	\$200,804,965	\$872.55
Natural Resources & Mining	100	589	589	597	6,863,318	892.31
Construction	77	1,326	1,291	1,371	15,212,120	880.26
Manufacturing	57	3,030	3,071	3,082	47,982,263	1,205.80
Trade, Transportation & Utilities	338	3,679	3,700	3,714	38,735,917	805.83
Wholesale Trade	71	734	724	736	14,645,372	1,540.43
Retail Trade	207	2,076	2,107	2,108	11,749,519	431.00
Transportation, Warehousing & Utilities	60	869	869	870	12,341,026	1,092.00
Information	12	134	136	138	920,087	520.41
Financial Activities	124	768	771	761	7,523,773	754.89
Professional & Business Services	142	1,509	1,548	1,568	37,913,755	1,891.75
Education & Health Services	264	2,433	2,432	2,464	20,968,544	660.24
Leisure & Hospitality	92	1,194	1,193	1,207	3,671,730	235.76
Other Services	108	511	502	524	3,247,142	487.53
Local Government	34	1,837	1,870	1,860	13,103,578	543.18
State Government	17	534	595	580	4,662,738	629.62

TABLE 6. COUNTY SUMMARY

NORTH AMERICAN INDUSTRY CLASSIFICATION SYSTEM - INDUSTRY GROUPS	NUMBER OF EMPLOYING UNITS	EMPLOYMENT			TOTAL EARNINGS	AVERAGE WEEKLY EARNINGS
		JAN	FEB	MAR	JAN - MAR 2013	
VAN BUREN COUNTY - TOTAL	359	3,710	3,727	3,782	\$35,089,646	\$721.78
Natural Resources & Mining	15	264	270	280	7,717,875	2,188.02
Construction	37	121	139	150	1,151,927	648.36
Manufacturing	8	58	55	53	434,321	603.78
Trade, Transportation & Utilities	98	1,105	1,098	1,127	12,033,574	833.93
Wholesale Trade	9	41	40	44	391,577	722.91
Retail Trade	59	571	569	573	3,269,205	440.42
Transportation, Warehousing & Utilities	30	493	489	510	8,372,792	1,295.03
Information	9	44	44	44	363,800	636.01
Financial Activities	33	131	133	133	1,248,666	725.83
Professional & Business Services	30	111	116	118	818,381	547.41
Education & Health Services	61	689	690	676	4,607,646	517.42
Leisure & Hospitality	28	347	352	373	1,190,776	256.34
Other Services	22	62	63	62	425,004	524.48
Local Government	11	715	702	701	4,636,471	505.17
State Government	7	63	65	65	461,205	551.46
WASHINGTON COUNTY - TOTAL	5,624	90,498	91,158	91,844	\$884,501,582	\$746.31
Natural Resources & Mining	47	413	389	374	4,383,974	860.28
Construction	479	3,874	3,939	3,992	37,682,309	736.63
Manufacturing	222	12,221	12,208	12,202	114,831,286	723.42
Trade, Transportation & Utilities	1,387	20,871	20,817	20,985	191,339,847	704.54
Wholesale Trade	404	3,489	3,488	3,523	56,664,815	1,245.38
Retail Trade	793	10,799	10,734	10,939	68,776,733	488.78
Transportation, Warehousing & Utilities	190	6,583	6,595	6,523	65,898,299	771.90
Information	87	947	947	954	9,522,007	771.55
Financial Activities	612	3,267	3,268	3,287	38,984,882	915.96
Professional & Business Services	980	9,632	9,827	9,922	150,430,056	1,181.53
Education & Health Services	781	13,334	13,449	13,476	140,844,591	807.34
Leisure & Hospitality	583	10,069	10,287	10,511	34,668,384	259.19
Other Services	363	1,759	1,765	1,775	11,776,248	512.85
Local Government	61	8,109	8,235	8,294	73,279,014	686.36
State Government	22	6,002	6,027	6,072	76,758,984	978.60

TABLE 6. COUNTY SUMMARY

NORTH AMERICAN INDUSTRY CLASSIFICATION SYSTEM - INDUSTRY GROUPS	NUMBER OF EMPLOYING UNITS	EMPLOYMENT			TOTAL EARNINGS	AVERAGE WEEKLY EARNINGS
		JAN	FEB	MAR	JAN - MAR 2013	
WHITE COUNTY - TOTAL	1,848	24,590	24,735	24,795	\$215,826,160	\$671.96
Natural Resources & Mining	60	1,205	1,188	1,173	17,920,850	1,159.73
Construction	176	1,051	1,076	1,043	9,296,912	676.80
Manufacturing	66	2,384	2,406	2,407	25,578,539	820.17
Trade, Transportation & Utilities	507	6,203	6,233	6,223	53,499,575	661.67
Wholesale Trade	97	618	619	625	6,090,115	754.79
Retail Trade	312	3,349	3,391	3,375	19,373,927	442.01
Transportation, Warehousing & Utilities	98	2,236	2,223	2,223	28,035,533	968.23
Information	21	152	165	163	1,208,505	581.01
Financial Activities	162	827	835	843	8,375,950	771.62
Professional & Business Services	213	1,420	1,444	1,489	9,356,217	496.01
Education & Health Services	310	4,959	4,985	4,973	52,450,804	811.43
Leisure & Hospitality	146	2,322	2,303	2,367	6,902,622	227.82
Other Services	122	556	563	559	4,465,239	614.09
Local Government	47	2,778	2,766	2,774	21,057,453	584.20
State Government	18	733	771	781	5,713,494	577.02
WOODRUFF COUNTY - TOTAL	211	1,797	1,812	1,850	\$12,967,919	\$548.20
Natural Resources & Mining	26	120	125	139	948,193	569.83
Construction	5	35	37	44	229,350	456.27
Manufacturing	7	241	245	250	2,160,925	677.55
Trade, Transportation & Utilities	46	400	394	414	3,483,784	665.52
Wholesale Trade	12	159	160	171	2,016,185	949.54
Retail Trade	26	180	176	183	786,425	336.70
Transportation, Warehousing & Utilities	8	61	58	60	681,174	878.18
Financial Activities	14	62	62	64	514,549	631.61
Education & Health Services	72	246	251	253	1,480,076	455.41
Leisure & Hospitality	9	78	81	86	221,022	208.18
Local Government	10	486	485	468	2,828,113	453.54
State Government	6	40	40	41	276,253	526.87
Other	16	89	92	91	825,654	700.50

TABLE 6. COUNTY SUMMARY

NORTH AMERICAN INDUSTRY CLASSIFICATION SYSTEM - INDUSTRY GROUPS	NUMBER OF EMPLOYING UNITS	EMPLOYMENT			TOTAL EARNINGS	AVERAGE WEEKLY EARNINGS
		JAN	FEB	MAR	JAN - MAR 2013	
YELL COUNTY - TOTAL	424	6,446	6,460	6,486	\$41,933,491	\$499.02
Natural Resources & Mining	22	194	197	208	1,563,175	602.22
Construction	33	275	244	225	1,764,839	547.41
Manufacturing	21	2,482	2,488	2,476	15,479,583	479.75
Trade, Transportation & Utilities	88	706	717	714	4,688,669	506.32
Wholesale Trade	15	41	38	39	216,894	424.17
Retail Trade	55	505	511	508	2,651,777	401.54
Transportation, Warehousing & Utilities	18	160	168	167	1,819,998	848.48
Financial Activities	29	163	160	164	1,561,507	739.93
Professional & Business Services	38	208	213	224	1,487,413	532.17
Education & Health Services	108	726	735	747	4,266,672	445.93
Leisure & Hospitality	29	289	302	317	850,512	216.16
Local Government	26	1,200	1,200	1,208	8,855,222	566.38
State Government	12	96	95	96	549,220	441.61
Other	18	107	109	107	866,679	619.20
STATEWIDE COUNTY - TOTAL	6,825	23,746	24,534	24,775	\$349,010,609	\$1,102.47
Natural Resources & Mining	73	274	276	290	4,697,209	1,290.44
Construction	659	2,516	2,547	2,633	26,350,504	790.14
Manufacturing	45	200	208	208	3,249,173	1,217.22
Trade, Transportation & Utilities	2,411	7,006	7,044	7,148	155,955,942	1,697.79
Wholesale Trade	2,080	5,996	6,041	6,122	143,211,867	1,819.97
Retail Trade	123	282	261	271	4,809,643	1,363.54
Transportation, Warehousing & Utilities	208	728	742	755	7,934,432	822.93
Information	187	379	448	381	6,738,365	1,287.26
Financial Activities	415	1,204	1,216	1,227	24,261,322	1,535.17
Professional & Business Services	2,473	8,835	9,405	9,485	94,904,051	789.93
Education & Health Services	255	2,055	2,092	2,102	19,341,352	714.26
Leisure & Hospitality	73	127	130	116	964,956	597.00
Other Services	217	441	456	474	6,197,309	1,043.14
State Government	17	709	712	711	6,350,426	687.37

TABLE 7. FEDERAL GOVERNMENT EMPLOYMENT AND EARNINGS IN ARKANSAS

CLASSIFICATION SYSTEM - INDUSTRY GROUPS	NUMBER OF EMPLOYING UNITS	EMPLOYMENT			TOTAL EARNINGS	AVERAGE
		JAN	FEB	MAR	JAN - MAR 2013	WEEKLY EARNINGS
TOTAL	1,194	20,555	20,479	20,434	\$325,303,741	\$1,221.29
Trade, Transportation & Utilities	592	5,563	5,577	5,486	74,493,267	1,033.97
Information	2	45	44	43	556,576	973.03
Financial Activities	15	125	122	122	2,316,304	1,448.60
Professional & Business Services	30	790	780	783	13,015,899	1,276.53
Education & Health Services	16	5,133	5,142	5,170	98,165,733	1,466.73
Leisure & Hospitality	18	292	279	303	2,715,945	717.11
Other Services	3	1	1	1	7,391	568.54
Public Administration	518	8,606	8,534	8,526	134,032,626	1,205.12

TABLE 8. WORKFORCE INVESTMENT AREA SUMMARY

NORTH AMERICAN INDUSTRY CLASSIFICATION SYSTEM - INDUSTRY GROUPS	NUMBER OF EMPLOYING UNITS	EMPLOYMENT			TOTAL EARNINGS	AVERAGE WEEKLY EARNINGS
		JAN	FEB	MAR	JAN - MAR 2013	
CENTRAL WORKFORCE INVESTMENT AREA	6,531	77,567	78,164	78,845	\$643,675,890	\$633.23
Natural Resources & Mining	215	2,054	2,104	2,179	32,098,094	1,168.89
Construction	742	5,130	5,211	5,204	45,643,724	677.59
Trade, Transportation & Utilities	1,568	15,321	15,350	15,472	113,786,748	569.07
Wholesale Trade	399	2,022	2,061	2,117	25,659,778	955.08
Retail Trade	920	11,626	11,599	11,635	69,101,750	457.45
Transportation, Warehousing & Utilities	249	1,673	1,690	1,720	19,025,220	863.75
Information	58	596	594	604	6,062,876	779.89
Financial Activities	694	2,933	2,913	2,927	30,856,722	811.67
Professional & Business Services	836	8,089	8,180	8,281	87,929,710	826.54
Education & Health Services	1,014	11,372	11,472	11,494	89,978,790	604.70
Leisure & Hospitality	541	8,919	9,044	9,233	28,709,776	243.61
Local Government	131	10,717	10,747	10,811	89,172,088	637.59
State Government	66	4,584	4,680	4,703	38,704,942	639.50
Other	666	7,852	7,869	7,937	80,732,420	787.50
EASTERN WORKFORCE INVESTMENT AREA	3,836	35,755	35,937	36,278	\$270,609,474	\$578.39
Natural Resources & Mining	225	952	977	1,070	6,559,499	504.75
Construction	152	626	665	699	5,242,777	607.98
Trade, Transportation & Utilities	815	9,166	9,069	9,118	75,306,231	635.34
Wholesale Trade	166	1,924	1,914	1,974	22,976,380	912.29
Retail Trade	456	4,678	4,627	4,613	26,156,205	433.69
Transportation, Warehousing & Utilities	193	2,564	2,528	2,531	26,173,646	792.35
Financial Activities	266	1,347	1,333	1,335	12,284,375	706.07
Professional & Business Services	278	2,150	2,200	2,246	15,361,411	537.44
Education & Health Services	1,384	6,575	6,625	6,630	47,045,531	547.49
Leisure & Hospitality	239	3,262	3,306	3,355	11,546,077	268.52
Local Government	129	5,280	5,254	5,261	41,852,211	611.47
State Government	61	2,352	2,448	2,464	17,779,777	564.84
Other	287	4,045	4,060	4,100	37,631,585	711.53

*Note: Pulaski County is not included in the Central Workforce Investment. Please refer to Page 51 for information on Pulaski County.
Central Workforce Includes these counties: Faulkner, Lonoke, Monroe, Prairie, and Saline.

Eastern Workforce Includes these counties: Crittenden, Cross, Lee, Phillips, and Saint Francis.

TABLE 8. WORKFORCE INVESTMENT AREA SUMMARY

NORTH AMERICAN INDUSTRY CLASSIFICATION SYSTEM - INDUSTRY GROUPS	NUMBER OF EMPLOYING UNITS	EMPLOYMENT			TOTAL EARNINGS	AVERAGE WEEKLY EARNINGS
		JAN	FEB	MAR	JAN - MAR 2013	
NORTH CENTRAL WORKFORCE INVESTMENT AREA	5,606	67,056	67,666	68,203	\$544,096,563	\$618.75
Construction	450	2,278	2,333	2,342	19,511,498	647.58
Trade, Transportation & Utilities	1,444	15,619	15,710	15,814	129,249,886	632.69
Retail Trade	921	9,110	9,162	9,252	51,785,263	434.18
Other Trade, Transportation & Utilities	523	6,509	6,548	6,562	77,464,623	911.18
Financial Activities	502	2,390	2,400	2,428	23,172,467	740.86
Education & Health Services	1,013	12,867	12,856	12,850	115,169,947	689.02
Leisure & Hospitality	469	5,692	5,735	5,995	16,798,028	222.50
Local Government	230	9,310	9,312	9,293	62,981,596	520.66
State Government	105	3,059	3,221	3,251	23,507,078	569.16
Other	1,393	15,841	16,099	16,230	153,706,063	736.36

North Central Workforce Includes these counties: Cleburne, Fulton, Independence, Izard, Jackson, Sharp, Stone, Van Buren, White, and Woodruff.

NORTHEAST WORKFORCE INVESTMENT AREA	6,543	92,905	93,554	93,698	\$788,343,990	\$649.37
Natural Resources & Mining	416	1,729	1,807	1,915	11,494,795	486.63
Construction	439	2,932	3,043	3,126	26,850,244	680.83
Manufacturing	317	19,070	19,195	19,035	224,722,357	905.04
Trade, Transportation & Utilities	1,724	18,439	18,430	18,448	144,397,746	602.39
Wholesale Trade	400	3,732	3,759	3,817	45,562,314	929.82
Retail Trade	1,013	11,826	11,794	11,734	67,731,533	442.11
Transportation, Warehousing & Utilities	311	2,881	2,877	2,897	31,103,899	829.33
Financial Activities	557	3,061	3,079	3,080	32,848,774	822.18
Professional & Business Services	675	6,662	6,757	6,588	46,083,148	531.54
Education & Health Services	1,171	15,160	15,176	15,200	132,128,552	669.61
Leisure & Hospitality	500	7,617	7,736	7,934	24,682,384	244.60
Local Government	220	11,612	11,660	11,696	86,668,492	571.96
State Government	99	4,319	4,375	4,385	42,279,911	746.00
Other	425	2,304	2,296	2,291	16,187,587	542.10

Northeast Workforce Includes these counties: Clay, Craighead, Greene, Lawrence, Mississippi, Poinsett, and Randolph.

TABLE 8. WORKFORCE INVESTMENT AREA SUMMARY

NORTH AMERICAN INDUSTRY CLASSIFICATION SYSTEM - INDUSTRY GROUPS	NUMBER OF EMPLOYING UNITS	EMPLOYMENT			TOTAL EARNINGS	AVERAGE WEEKLY EARNINGS
		JAN	FEB	MAR	JAN - MAR 2013	
NORTHWEST WORKFORCE INVESTMENT AREA	15,102	232,920	234,615	236,804	\$2,910,684,124	\$953.65
Natural Resources & Mining	137	1,513	1,478	1,507	16,769,358	860.35
Trade, Transportation & Utilities	3,774	51,793	51,844	52,402	530,251,960	784.20
Retail Trade	2,059	26,838	26,800	27,356	168,978,487	481.46
Other Trade, Transportation & Utilities	1,715	24,955	25,044	25,046	361,273,473	1,110.94
Education & Health Services	2,122	29,778	30,012	30,067	277,389,119	712.39
Leisure & Hospitality	1,534	23,319	23,751	24,406	83,207,674	268.65
Local Government	310	22,488	22,644	22,789	191,810,703	651.70
State Government	107	8,532	8,846	8,911	97,866,973	859.09
Other	7,118	95,497	96,040	96,722	1,713,388,337	1,371.67
SOUTHEAST WORKFORCE INVESTMENT AREA	6,083	70,171	70,793	71,138	\$598,853,938	\$651.56
Natural Resources & Mining	408	2,376	2,406	2,456	22,785,342	726.47
Construction	315	2,519	2,617	2,689	31,936,346	941.84
Manufacturing	192	14,518	14,386	14,412	157,379,976	838.45
Trade, Transportation & Utilities	1,333	12,741	12,835	12,923	107,111,641	642.04
Retail Trade	796	7,731	7,757	7,814	44,031,139	436.06
Other Trade, Transportation & Utilities	537	5,010	5,078	5,109	63,080,502	957.89
Financial Activities	417	2,545	2,539	2,549	27,369,877	827.48
Education & Health Services	1,868	11,278	11,307	11,277	82,969,261	565.43
Local Government	203	9,493	9,532	9,516	71,200,081	575.69
State Government	136	5,970	6,298	6,333	51,775,788	642.34
Other	1,211	8,731	8,873	8,983	46,325,626	402.10

Northwest Workforce Includes these counties: Baxter, Benton, Boone, Carroll, Madison, Marion, Newton, Searcy, and Washington.

Southeast Workforce Includes these counties: Arkansas, Ashley, Bradley, Chicot, Cleveland, Desha, Drew, Grant, Jefferson, and Lincoln.

TABLE 8. WORKFORCE INVESTMENT AREA SUMMARY

NORTH AMERICAN INDUSTRY CLASSIFICATION SYSTEM - INDUSTRY GROUPS	NUMBER OF EMPLOYING UNITS	EMPLOYMENT			TOTAL EARNINGS	AVERAGE WEEKLY EARNINGS
		JAN	FEB	MAR	JAN - MAR 2013	
SOUTHWEST WORKFORCE INVESTMENT AREA	5,831	78,091	78,462	78,984	\$706,137,646	\$691.84
Natural Resources & Mining	359	2,425	2,407	2,428	24,847,528	789.81
Trade, Transportation & Utilities	1455	15182	15359	15460	128907214	646.68
Retail Trade	902	8,610	8,715	8,835	48,334,070	426.38
Other Trade, Transportation & Utilities	553	6,572	6,644	6,625	80,573,144	937.14
Information	62	438	439	442	3,865,197	676.25
Financial Activities	513	2,770	2,769	2,769	25,486,716	707.94
Education & Health Services	1,107	9,365	9,409	9,394	66,992,928	548.85
Leisure & Hospitality	408	5,287	5,298	5,442	16,638,686	239.58
Other Services	406	1,837	1,795	1,816	10,340,216	438.00
Local Government	259	10,396	10,438	10,473	71,916,340	530.11
State Government	138	3,573	3,758	3,800	30,167,125	625.43
Other	1,124	26,818	26,790	26,960	326,975,696	936.55

Southwest Workforce Includes these counties: Calhoun, Columbia, Dallas, Hempstead, Howard, Lafayette, Little River, Miller, Nevada, Ouachita, Sevier, and Union

WEST CENTRAL WORKFORCE INVESTMENT AREA	8,138	103,891	104,734	105,947	\$811,205,481	\$595.10
Construction	764	4,245	4,429	4,759	38,727,733	665.31
Trade, Transportation & Utilities	1,906	20,796	20,748	20,895	175,899,749	650.11
Retail Trade	1,259	13,502	13,420	13,502	77,699,971	443.57
Other Trade, Transportation & Utilities	647	7,294	7,328	7,393	98,199,778	1,029.37
Financial Activities	811	4,015	4,008	4,027	37,905,697	725.93
Professional & Business Services	924	7,825	8,081	8,363	61,464,890	584.46
Education & Health Services	1,440	16,436	16,549	16,541	137,464,285	640.52
Leisure & Hospitality	759	11,679	11,750	12,155	40,602,308	263.31
Local Government	226	11,959	11,989	12,038	91,159,662	584.58
State Government	124	5,573	5,760	5,785	44,278,001	596.92
Other	1,184	21,363	21,420	21,384	183,703,156	660.67

West Central Workforce Includes these counties: Clark, Conway, Garland, Hot Spring, Johnson, Montgomery, Perry, Pike, Pope, and Yell

TABLE 8. WORKFORCE INVESTMENT AREA SUMMARY

NORTH AMERICAN INDUSTRY CLASSIFICATION SYSTEM - INDUSTRY GROUPS	NUMBER OF EMPLOYING UNITS	EMPLOYMENT			TOTAL EARNINGS	AVERAGE WEEKLY EARNINGS
		JAN	FEB	MAR	JAN - MAR 2013	
WESTERN WORKFORCE INVESTMENT AREA	6,581	100,490	100,837	101,120	\$885,038,386	\$675.29
Natural Resources & Mining	169	2,297	2,322	2,337	39,963,076	1,325.80
Trade, Transportation & Utilities	1,632	21,688	21,559	21,628	178,195,971	633.87
Retail Trade	955	11,711	11,589	11,700	68,744,929	453.26
Other Trade, Transportation & Utilities	677	9,977	9,970	9,928	109,451,042	845.45
Financial Activities	698	3,864	3,853	3,840	40,761,963	813.93
Professional & Business Services	866	10,198	10,300	10,210	89,052,248	669.22
Education & Health Services	1,030	14,981	15,046	15,086	138,005,410	705.95
Leisure & Hospitality	527	8,092	8,144	8,340	27,687,006	259.98
Other Services	437	2,037	2,018	2,018	13,708,373	520.91
Local Government	151	9,559	9,660	9,607	77,746,970	622.41
State Government	74	2,704	2,971	2,993	24,116,761	642.06
Other	997	25,070	24,964	25,061	255,800,608	786.08

Western Workforce Includes these counties: Crawford, Franklin, Logan, Polk, Scott, and Sebastian