

Arkansas Covered Employment & Earnings

Third Quarter
2012

Jobs for People. People for Jobs.

DWS
Department of
WORKFORCE**Services**

**COVERED EMPLOYMENT AND EARNINGS
STATE OF ARKANSAS
THIRD QUARTER 2012**

**MIKE BEEBE, GOVERNOR
STATE OF ARKANSAS**

**ARTEE WILLIAMS, DIRECTOR
DEPARTMENT OF WORKFORCE SERVICES**

**PUBLISHED BY
LABOR MARKET INFORMATION & ANALYSIS
BUREAU OF LABOR STATISTICS PROGRAMS
POST OFFICE BOX 2981
LITTLE ROCK, ARKANSAS 72203-2981
BERNADETTE COLEMAN, BLS PROGRAMS MANAGER
TELEPHONE (501) 682-3159
SUSAN PRICE, QCEW LEAD ANALYST
TELEPHONE (501) 682-3103**

STATE OF ARKANSAS WEBPAGE: <http://www.arkansas.gov>

DEPARTMENT OF WORKFORCE SERVICES WEBPAGE: <http://www.arkansas.gov/esd/>

WEBPAGE FOR LABOR MARKET INFORMATION: <http://www.discover.arkansas.gov>

RELEASED: FEBRUARY 2013

TABLE OF CONTENTS

DESCRIPTION OF DATA	PAGE
Industry Classification	1
Definition of Covered Employment and Earnings	2
Federal Government	2
County Classification	2
Significant Developments During Third Quarter 2012	3

LIST OF GRAPHS AND TABLES

Graph 1	Total Covered Employment for Selected Years, Arkansas	7
Graph 2	Total Covered Earnings, by Calendar Quarter for Selected Years, Arkansas	8
Table 1	Quarterly Comparison of Covered Employment and Wages, by Industry	5
Table 2	Total Covered Employment in Arkansas, 2005 – 2012	6
Table 3	Total Covered Earnings, 2005 – 2012	9
Table 4	Total Taxable Earnings, 2005 – 2012	10
Table 5	State Summary – Employment and Total Earnings, by Industry, Third Quarter 2012	11
Table 6	County Summary – Employment and Total Earnings, by Industry, Third Quarter 2012	22
Table 7	Federal Government Employment and Total Earnings in Arkansas, Third Quarter 2012	60
Table 8	Workforce Information Area – Employment and Total Earnings, by Industry, Third Quarter 2012	61

EMPLOYMENT AND EARNINGS
UNDER THE ARKANSAS EMPLOYMENT SECURITY LAW
THIRD QUARTER 2012

DESCRIPTION OF DATA

This publication contains covered employment and payroll data by industry and county for the Third Quarter 2012. These data are compiled from quarterly contributions and wage reports submitted by employers subject to the Arkansas Employment Security Law. An employing unit is a single physical location where business is conducted, production takes place, or services are provided. Employment data have been tabulated for each month of the quarter by industry under the **North American Industry Classification System (NAICS)** (see "Industry Classification" below) on a statewide, county and workforce area basis. Payroll data represent the total wages paid during the quarter, and are also shown by industry for the State and

by publishable industry groups for each county and workforce area. The tabulation of this data is a joint effort in conjunction with the U.S. Bureau of Labor Statistics. In addition, there are tables included which set out total covered employment by months, quarterly payrolls, and average weekly earnings for the years 2005 through 2012. Data contained in this publication are subject to revisions. These revisions are typically reflected in the 2012 Annual Covered Employment and Earnings publication. Because of industry code changes between years, substantial employment and wage shifts among industries are anticipated.

INDUSTRY CLASSIFICATION

Previously published industry data will not be comparable in all instances with currently published data since industry codes have been revised. The last two revisions have occurred using the North American Classification System (NAICS) which is a six digit industry code. Since 2001 NAICS codes are revised every five years. The most recent revision is the NAICS 2012 codes which are being used as of 2011 publications.

Auxiliary units are establishments primarily engaged in performing management of support services for other establishments of the same enterprise. The NAICS code is based on the actual activities that

the establishment performs. Comparisons of many industries should not be made between this publication and previous Covered Employment and Earnings publications that were based on previous coding revisions. A summary is available on the NAICS home page at <http://www.census.gov/naics>.

DEFINITION OF COVERED EMPLOYMENT AND EARNINGS

Covered Employment is the number of workers employed by employers subject to the Arkansas Employment Security Law who worked or received pay for the payroll period including the 12th of the month. An employer is subject to the law when they employ one or more employees in each of ten days during the current or preceding calendar year.

Currently excluded from coverage is employment covered by the Railroad Unemployment Insurance Act, some domestic service workers, employees of small agricultural establishments, self-

employed and unpaid family workers, insurance and real estate agents who are on commission only, and employees of churches and religious organizations except separately incorporated school. The payroll information in this publication includes all wages and salaries paid to any covered employees by their employers including bonuses, commissions, and cash values of remuneration received in any medium other than cash. These wages include both taxable and nontaxable wages. Only the first \$12,000 paid to each worker by an employer in the calendar year is taxable under the Arkansas Employment Security Law.

FEDERAL GOVERNMENT EMPLOYMENT

Table 7 on page 60 lists the total number of civilians employed by the Federal Government in Arkansas during the Third Quarter 2012. Employment and wage data are set out by industry divisions.

These data are obtained from required reports submitted by various government agencies having employment in the State. Civilian Federal workers are covered by the Unemployment Compensation for Federal Employees (UCFE) program.

COUNTY CLASSIFICATION

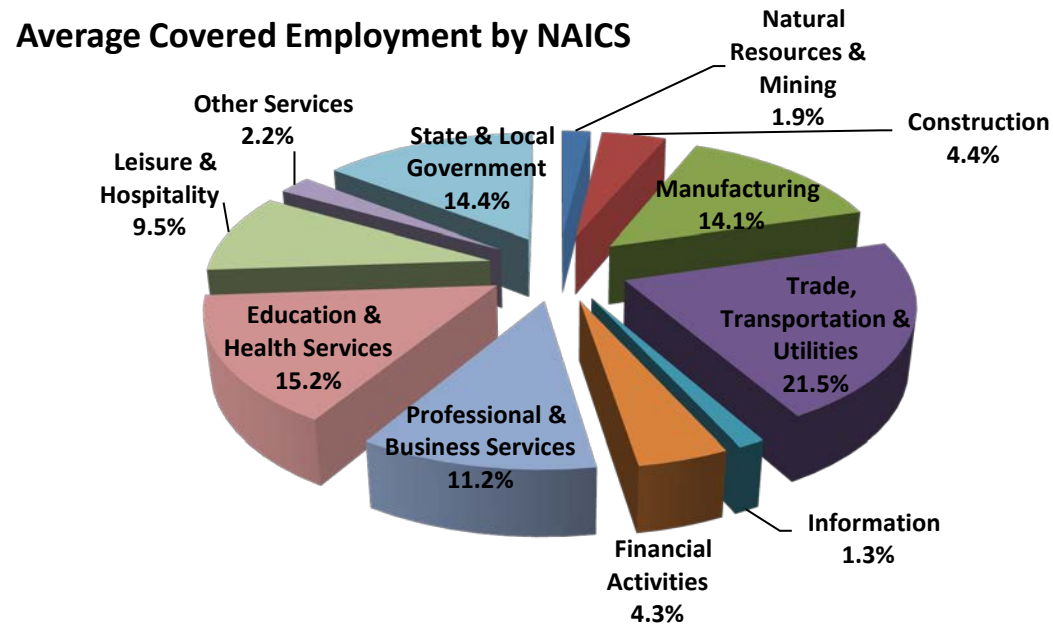
Employment and payroll data by county are classified according to the county where the workers are employed. Employers with operations in more than one county are requested to furnish this agency with a breakdown of employment and wages for at least one quarter of each year by the counties in which they operate. Many such employers submit county data with each regular contribution report. Note: This information is invaluable in the preparation of monthly employment and payroll data by county.

Employment and payroll data for multi-area employers, who do not furnish county data each quarter of the year, are prorated by county on the basis of one quarter's information. The "rest-of-state" table that appears on page 59 of this publication includes data on firms that did not provide a county breakdown of employment and payrolls. It also includes sales, and all other type of personnel with no permanent place of work, as well as employment of employers with no established place of business in Arkansas.

SIGNIFICANT DEVELOPMENTS DURING THIRD QUARTER 2012

AVERAGE EMPLOYMENT CHANGES

Covered employment averaged 1,108,258 during the Third Quarter 2012 (refer to table 1), a decrease of 30,694 (-2.7%) from the previous quarter and an increase of 1,598 (0.1%) from the average recorded one-year ago. This over-the-year increase is more significant when used as an economic indicator. This over-the-year comparison allows for the disregarding of many seasonal factors that are evident when making an over-the-quarter comparison.



EMPLOYMENT CHANGES FROM SECOND QUARTER 2012

Compared to Second Quarter 2012, covered employment decreased in nine major industry sectors. The largest decline occurred in State & Local Government (-28,278), as school districts started the summer recess for the year. Professional & Business Services experienced a downturn of 932 jobs over the quarter. The decrease was centered in

the Professional & Technical Services as was spread throughout that subsector. Natural Resources & Mining declined 615 jobs; this drop was due to the Mining subsector. Over the quarter gains were in Trade, Transportation & Utilities (+503) and Education & Health Services (+27).

EMPLOYMENT CHANGES FROM THIRD QUARTER 2011 (QUARTER YEAR AGO COMPARISON)

Over the year gains were recorded in four industry groups (refer to Table 1). The largest gains were posted in Education and Health Services (3,151), Trade, Transportation & Utilities (2,368), and Leisure & Hospitality (1,953). Losses occurred in Manufacturing (-3,531) and State & Local Government (-1,107).

COVERED WAGES

Wages paid to covered workers totaled \$10,058,388,682 for the Third Quarter 2012 (refer to Table 1), for an average weekly wage of \$698.14 (refer to Table 5). Employees in Benton County recorded the highest average weekly wage (\$884.87), and workers in Newton County the lowest (\$414.46) (refer to Table 6).

The Information sector recorded the highest average weekly wage for the State of Arkansas at \$910.23; while the Leisure and Hospitality sector recorded the lowest at \$268.03 for the State of Arkansas (refer to Table 5).

Average Weekly Wage by Industry

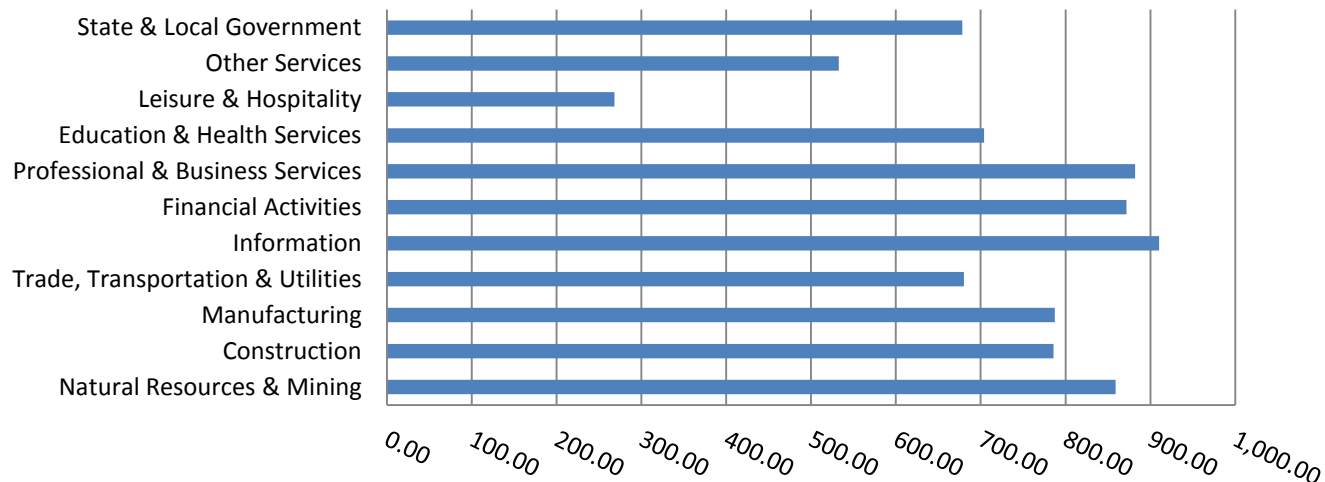


TABLE 1. QUARTERLY COMPARISON OF COVERED EMPLOYMENT AND WAGES, BY INDUSTRY

North American Industry Classification System	Number of Employing Units	Monthly Employment Average	Percent of Total	Net Change From:		Total Wages Paid Jul - Sept 2012	Percent of Total
				Apr - Jun 2012	Jul - Sept 2011		
Total	84,588	1,108,258	100	-30,694	1,598	\$10,058,388,682	100
Natural Resources & Mining	2,472	21,330	1.9	-615	-521	238,172,217	2.4
Agriculture, Forestry, Fishing & Hunting	1,955	12,886	1.2	16	418	104,761,938	1.0
Mining	517	8,444	0.8	-630	-939	133,410,279	1.3
Construction	6,822	48,409	4.4	-163	-641	494,612,613	4.9
Manufacturing	3,064	156,069	14.1	-211	-3,531	1,597,306,230	15.9
Trade, Transportation & Utilities	21,130	238,186	21.5	503	2,368	2,106,126,010	20.9
Wholesale Trade	6,745	47,448	4.3	-664	280	656,886,291	6.5
Retail Trade	11,085	132,594	12.0	805	1,330	791,868,184	7.9
Transportation & Warehousing	2,882	50,427	4.6	325	186	521,523,800	5.2
Utilities	418	7,717	0.7	37	572	135,847,735	1.4
Information	1,140	14,312	1.3	-99	-436	169,350,536	1.7
Financial Activities	7,977	47,831	4.3	-94	-148	542,204,525	5.4
Finance & Insurance	4,742	34,475	3.1	-105	-103	433,581,177	4.3
Real Estate & Rental & Leasing	3,235	13,356	1.2	12	-45	108,623,348	1.1
Professional & Business Services	12,603	123,821	11.2	-932	1,297	1,419,814,685	14.1
Professional & Technical Services	7,950	37,969	3.4	-1,091	-701	482,900,970	4.8
Management of Companies & Enterprises	494	31,111	2.8	336	4,786	587,346,044	5.8
Administrative & Waste Services	4,159	54,740	4.9	-177	-2,789	349,567,671	3.5
Education & Health Services	14,327	168,772	15.2	27	3,151	1,544,728,780	15.4
Educational Services	722	11,103	1.0	-621	414	85,255,302	0.8
Health Care & Social Assistance	13,605	157,670	14.2	647	2,737	1,459,473,478	14.5
Leisure & Hospitality	6,592	105,102	9.5	-358	1,953	366,218,146	3.6
Arts, Entertainment & Recreation	927	10,667	1.0	-113	-113	45,721,152	0.5
Accommodation & Food Services	5,665	94,434	8.5	-245	2,066	320,496,994	3.2
Other Services	5,366	24,370	2.2	-475	-786	168,716,998	1.7
State & Local Government	3,095	160,056	14.4	-28,278	-1,107	1,411,137,942	14.0
Local Government	1,963	91,402	8.2	-27,064	-1,256	724,811,775	7.2
State Government	1,132	68,654	6.2	-1,214	149	686,326,167	6.8
Nonclassifiable Establishments	0	0	0.0	0	0	0	0.0

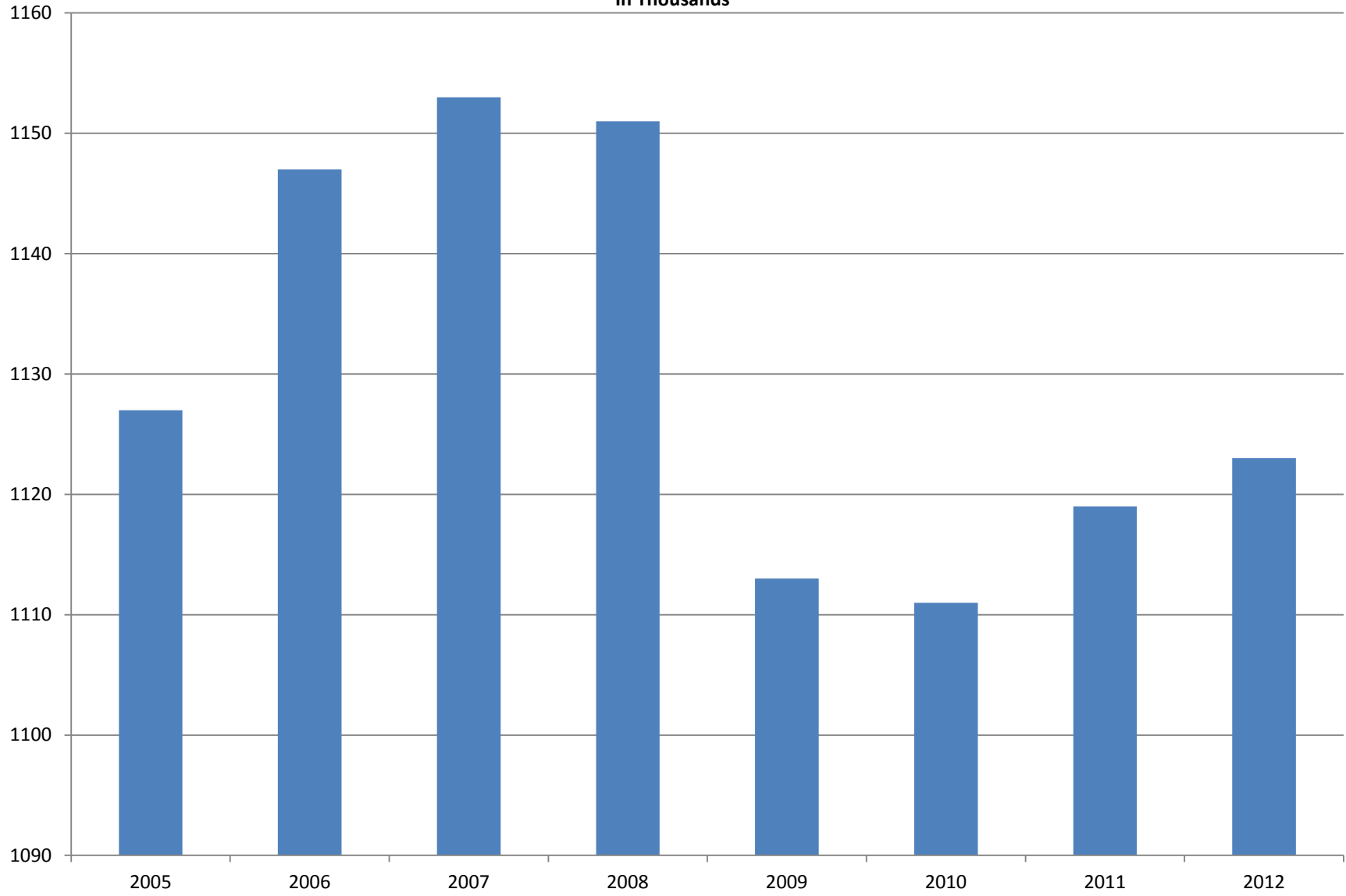
Note: Items do not necessarily add to total because of rounding. Because of industry code changes between years, substantial employment and wage shifts among industries are anticipated.

TABLE 2. TOTAL COVERED EMPLOYMENT IN ARKANSAS

Period	2005	2006	2007	2008	2009	2010	2011	2012
Average	1,126,778	1,146,948	1,152,994	1,150,965	1,112,591	1,110,947	1,118,639	1,122,816
January	1,102,768	1,130,595	1,137,437	1,141,856	1,119,299	1,089,984	1,098,349	1,113,274
February	1,110,577	1,136,810	1,143,397	1,149,443	1,119,476	1,091,282	1,098,445	1,119,319
March	1,122,619	1,150,439	1,158,895	1,157,690	1,124,386	1,106,198	1,113,061	1,131,123
April	1,129,785	1,155,498	1,159,623	1,159,841	1,123,383	1,115,341	1,129,635	1,136,973
May	1,135,567	1,159,886	1,165,224	1,166,111	1,122,322	1,123,250	1,126,371	1,143,142
June	1,136,118	1,162,026	1,164,207	1,164,167	1,117,884	1,130,164	1,123,412	1,136,739
July	1,090,071	1,106,142	1,110,571	1,114,279	1,071,048	1,073,743	1,080,937	1,079,329
August	1,114,098	1,130,839	1,139,109	1,138,583	1,093,192	1,099,795	1,106,262	1,109,425
September	1,144,815	1,159,814	1,165,135	1,162,333	1,116,580	1,124,281	1,132,779	1,136,019
October	1,142,300	1,156,804	1,162,768	1,157,196	1,113,157	1,125,073	1,138,395	N/A
November	1,145,667	1,156,011	1,164,246	1,152,159	1,115,443	1,126,781	1,138,543	N/A
December	1,146,954	1,158,509	1,165,314	1,147,927	1,114,919	1,125,466	1,137,474	N/A

AVERAGE TOTAL COVERED EMPLOYMENT

In Thousands



TOTAL COVERED EARNINGS BY CALENDAR YEAR

In Thousands

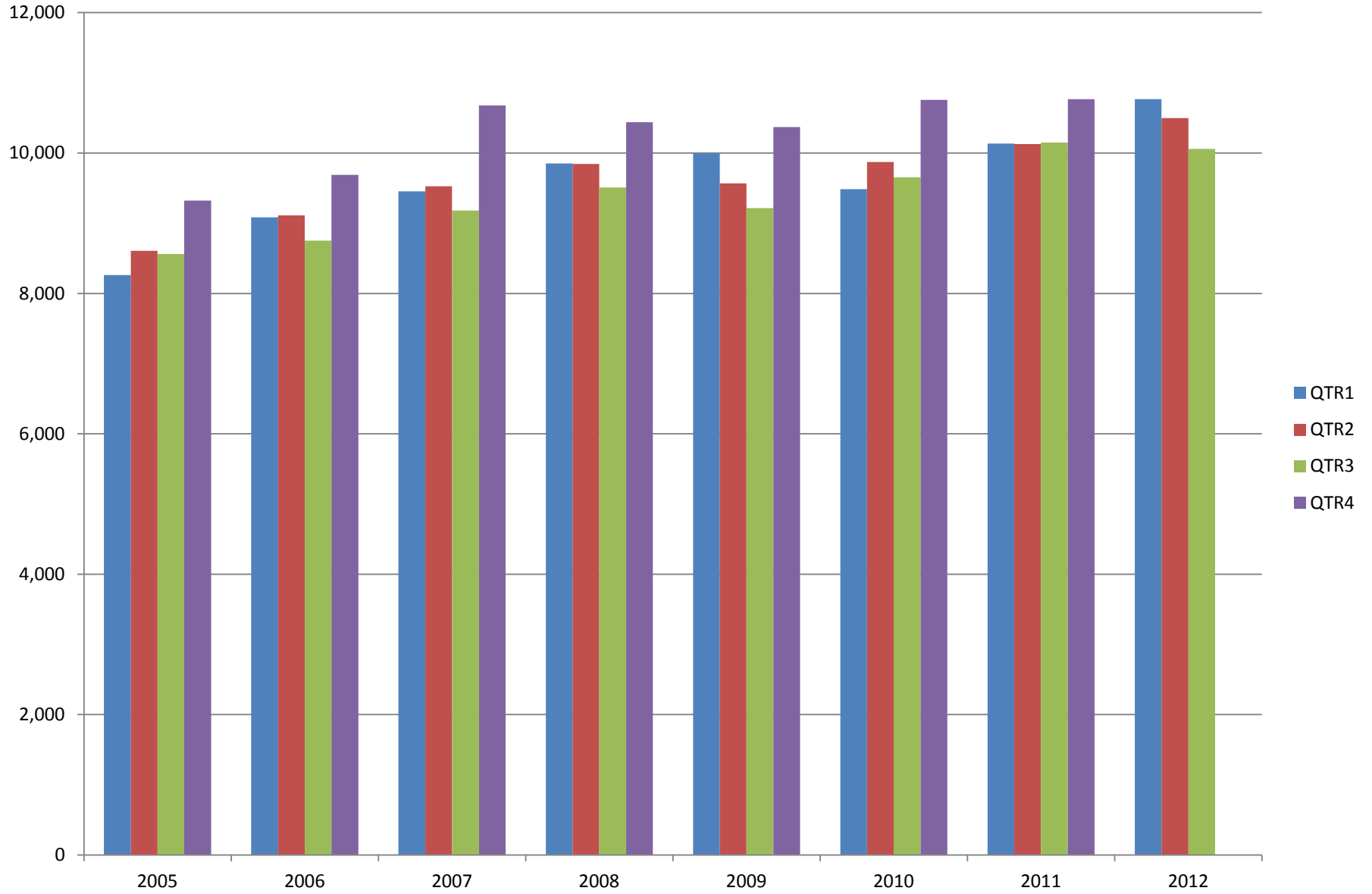


TABLE 3. TOTAL COVERED EARNINGS 2005 - 2012

Period	2005	2006	2007	2008
Total	\$34,753,107,631	\$36,636,090,775	\$38,833,265,464	\$39,643,039,342
January - March	8,261,153,981	9,085,021,816	9,452,711,662	9,851,866,058
April - June	8,607,722,353	9,112,624,590	9,525,837,049	9,843,711,293
July - September	8,562,555,369	8,750,878,205	9,178,902,477	9,509,150,631
October - December	9,321,675,928	9,687,566,164	10,675,814,276	10,438,311,360
Average Weekly Earnings	\$593.13	\$614.27	\$647.70	\$662.37

Period	2009	2010	2011	2012
Total	\$39,149,476,305	\$39,769,504,992	\$41,177,659,236	\$31,323,583,003
January - March	9,998,452,028	9,486,245,580	10,134,035,254	10,766,175,449
April - June	9,566,968,853	9,873,489,653	10,128,274,611	10,499,018,872
July - September	9,213,797,140	9,653,588,807	10,147,287,431	10,058,388,682
October - December	10,370,258,284	10,756,180,952	10,768,061,940	N/A
Average Weekly Earnings	\$676.69	\$688.42	\$707.89	\$715.32

TABLE 4. TOTAL TAXABLE EARNINGS, 2005 - 2012

Period	2005	2006	2007	2008
Total	9,991,605,239	10,197,511,360	10,459,105,059	10,360,487,108
January - March	5,062,670,306	5,421,204,601	5,617,417,571	5,635,750,082
April - June	2,506,505,721	2,385,110,992	2,466,606,627	2,419,313,519
July - September	1,353,660,445	1,314,939,803	1,307,060,412	1,297,473,555
October - December	1,068,768,767	1,076,255,964	1,068,020,449	1,007,949,952
<hr/>				
Period	2009	2010	2011	2012
Total	9,787,660,886	11,332,118,456	11,479,396,226	10,518,409,822
January - March	5,423,705,265	5,607,134,758	5,828,877,821	6,167,036,199
April - June	2,293,670,854	2,977,100,591	2,910,604,359	2,845,540,593
July - September	1,165,280,065	1,577,067,770	1,601,382,146	1,505,833,030
October - December	905,004,702	1,170,815,337	1,138,531,900	N/A

TABLE 5. STATEWIDE SUMMARY

NORTH AMERICAN INDUSTRY CLASSIFICATION SYSTEM - INDUSTRY GROUPS		NUMBER OF EMPLOYING UNITS	EMPLOYMENT			TOTAL EARNINGS	AVERAGE WEEKLY EARNINGS
			JULY	AUG	SEPT	JUL-SEPT 2012	
TOTAL, ALL INDUSTRIES		84,588	1,079,329	1,109,425	1,136,019	\$10,058,388,682	\$698.14
NATURAL RESOURCES & MINING		2,472	21,547	21,106	21,337	\$238,172,217	\$858.93
11	AGRICULTURE, FORESTRY, FISHING & HUNTING	1,955	12,871	12,694	13,093	\$104,761,938	\$625.38
111	CROP PRODUCTION	833	4,408	4,423	4,507	\$27,431,834	\$474.62
1111	Oilseed & Grain Farming	528	2,575	2,660	2,701	16,598,342	482.66
1112	Vegetable & Melon Farming	13	109	105	108	903,900	647.80
1113	Fruit & Tree Nut Farming	14	206	165	166	719,295	309.11
1114	Greenhouse & Nursery Production	43	346	342	341	2,152,504	482.73
1119	Other Crop Farming	235	1,172	1,151	1,191	7,057,793	463.50
112	ANIMAL PRODUCTION & AQUACULTURE	282	3,104	3,087	3,081	\$29,166,327	\$725.92
1121	Cattle Ranching & Farming	95	348	344	350	2,156,663	477.63
1122	Hog & Pig Farming	10	126	122	124	1,228,461	762.07
1123	Poultry & Egg Production	100	2,085	2,092	2,089	22,061,175	812.49
1125	Animal Aquaculture	60	497	485	477	3,468,487	548.61
1129	Other Animal Production	17	48	44	41	251,541	436.45
113	FORESTRY & LOGGING	403	2,225	2,223	2,212	\$20,124,835	\$697.33
1131	Timber Tract Operations	37	184	182	181	1,885,693	795.54
1132	Forest Nurseries & Gathering of Forest Products	5	22	23	22	220,297	758.77
1133	Logging	361	2,019	2,018	2,009	18,018,845	687.76
114	FISHING, HUNTING & TRAPPING	5	21	19	10	\$85,574	\$394.96
115	SUPPORT ACTIVITIES FOR AGRICULTURE & FORESTRY	432	3,113	2,942	3,283	\$27,953,368	\$690.81
1151	Support Activities for Crop Production	292	1,557	1,593	1,967	17,480,690	788.35
1152	Support Activities for Animal Production	65	729	729	727	4,926,997	520.37
1153	Support Activities for Forestry	75	827	620	589	5,545,681	628.57
21	MINING	517	8,676	8,412	8,244	\$133,410,279	\$1,215.34
211	OIL & GAS EXTRACTION	90	1,625	1,635	1,645	\$34,176,171	\$1,607.91
212	MINING (EXCEPT OIL & GAS)	109	2,122	2,077	2,041	\$24,050,563	\$889.44
213	SUPPORT ACTIVITIES FOR MINING	318	4,929	4,700	4,558	\$75,183,545	\$1,222.95

TABLE 5. STATEWIDE SUMMARY

NORTH AMERICAN INDUSTRY CLASSIFICATION SYSTEM - INDUSTRY GROUPS		NUMBER OF	EMPLOYMENT			TOTAL EARNINGS	AVERAGE
		EMPLOYING	JULY	AUG	SEPT	JUL-SEPT 2012	WEEKLY
		UNITS					EARNINGS
CONSTRUCTION		6,822	47,943	48,496	48,787	\$494,612,613	\$785.96
236	CONSTRUCTION OF BUILDINGS	1,609	9,922	9,850	9,851	\$107,056,174	\$833.99
2361	Residential Building Construction	1,047	2,770	2,742	2,800	22,985,292	638.15
2362	Nonresidential Building Construction	562	7,152	7,108	7,051	84,070,882	910.37
237	HEAVY & CIVIL ENGINEERING CONSTRUCTION	768	8,367	8,747	8,951	\$105,654,555	\$935.42
2371	Utility System Construction	413	4,608	4,815	5,098	58,922,192	936.40
2372	L& Subdivision	75	259	260	257	2,661,824	791.58
2373	Highway, Street & Bridge Construction	194	2,732	2,816	2,829	28,933,655	797.06
2379	Other Heavy Construction	86	768	856	767	15,136,884	1,460.95
238	SPECIALTY TRADE CONTRACTORS	4,445	29,654	29,899	29,985	\$281,901,884	\$726.55
2381	Building Foundation & Exterior Contractors	867	5,547	5,552	5,547	47,045,508	652.21
2382	Building Equipment Contractors	2,027	15,343	15,528	15,632	160,519,991	796.57
2383	Building Finishing Contractors	769	4,092	4,078	4,058	32,629,371	615.79
2389	Other Specialty Trade Contractors	782	4,672	4,741	4,748	41,707,014	679.66
MANUFACTURING		3,064	156,592	156,139	155,477	\$1,597,306,230	\$787.28
311	FOOD MANUFACTURING	276	43,621	43,334	43,274	\$348,964,068	\$618.37
3111	Animal Food Manufacturing	44	1,661	1,646	1,680	16,716,685	773.55
3112	Grain & Oilseed Milling	31	2,266	2,284	2,287	26,907,362	908.20
3113	Sugar & Confectionery Product Manufacturing	7	43	44	44	216,920	382.13
3114	Fruit, Vegetable & Specialty Food	20	4,685	4,482	4,473	45,867,042	776.00
3115	Dairy Product Manufacturing	10	561	554	565	5,496,036	754.95
3116	Animal Slaughtering & Processing	82	29,598	29,502	29,396	207,139,954	540.15
3117	Seafood Product Preparation & Packaging	5	78	78	78	374,105	368.94
3118	Bakeries & Tortilla Manufacturing	54	3,020	3,034	3,048	29,208,577	740.55
3119	Other Food Manufacturing	23	1,709	1,710	1,703	17,037,387	767.61
312	BEVERAGE & TOBACCO PRODUCT MANUFACTURING	40	1,066	1,074	1,081	\$13,025,714	\$933.23
313	TEXTILE MILLS	12	86	87	89	\$706,743	\$622.50
314	TEXTILE PRODUCT MILLS	54	913	893	861	\$8,943,522	\$773.86
3141	Textile Furnishing Mills	12	42	41	40	457,879	859.06
3149	Other Textile Product Mills	42	871	852	821	8,485,643	769.74
315	APPAREL MANUFACTURING	27	1,113	1,118	1,116	\$5,996,062	\$413.42
316	LEATHER & ALLIED PRODUCT MANUFACTURING	17	1,284	1,295	1,258	\$8,187,576	\$492.43

TABLE 5. STATEWIDE SUMMARY

NORTH AMERICAN INDUSTRY CLASSIFICATION SYSTEM - INDUSTRY GROUPS		NUMBER OF EMPLOYING UNITS	EMPLOYMENT			TOTAL EARNINGS	AVERAGE WEEKLY EARNINGS
			JULY	AUG	SEPT	JUL-SEPT 2012	
321	WOOD PRODUCT MANUFACTURING	327	8,804	8,860	8,817	\$76,755,835	\$668.89
3211	Sawmills & Wood Preservation	131	4,167	4,180	4,165	38,222,664	704.97
3212	Veneer & Engineered Wood Products	55	1,934	1,977	1,973	19,470,255	763.62
3219	Other Wood Product Manufacturing	141	2,703	2,703	2,679	19,062,916	544.11
322	PAPER MANUFACTURING	79	10,067	10,091	10,108	\$143,229,563	\$1,092.08
3221	Pulp, Paper & Paperboard Mills	12	4,262	4,250	4,261	74,162,147	1,339.88
3222	Converted Paper Product Manufacturing	67	5,805	5,841	5,847	69,067,416	911.14
323	PRINTING & RELATED SUPPORT ACTIVITIES	245	4,621	4,516	4,487	\$42,756,691	\$724.23
324	PETROLEUM & COAL PRODUCTS MANUFACTURING	16	966	966	963	\$13,451,502	\$1,072.26
325	CHEMICAL MANUFACTURING	120	4,654	4,666	4,654	\$65,870,199	\$1,087.79
3251	Basic Chemical Manufacturing	29	1,743	1,738	1,729	27,610,179	1,222.95
3252	Resin, Rubber & Artificial Fibers	6	265	268	269	3,595,511	1,034.58
3253	Agricultural Chemical Manufacturing	17	377	377	381	5,529,555	1,124.27
3254	Pharmaceutical & Medicine Manufacturing	13	161	166	166	2,434,583	1,139.61
3255	Paint, Coating & Adhesive Manufacturing	8	200	202	200	3,275,683	1,255.69
3256	Soap, Cleaning Compound, & Toilet Preparation Manufacturing	15	1,078	1,086	1,079	12,368,462	880.13
3259	Other Chemical Preparation Manufacturing	32	830	829	830	11,056,226	1,025.09
326	PLASTICS & RUBBER PRODUCTS MANUFACTURING	134	10,351	10,358	10,402	\$114,121,381	\$846.51
3261	Plastics Product Manufacturing	95	6,183	6,227	6,269	63,416,614	783.48
3262	Rubber Product Manufacturing	39	4,168	4,131	4,133	50,704,767	941.21
327	NONMETALLIC MINERAL PRODUCT MANUFACTURING	252	3,448	3,435	3,431	\$35,684,849	\$798.43
3271	Clay Product & Refractory Manufacturing	15	376	382	375	3,790,491	772.05
3272	Glass & Glass Product Manufacturing	13	366	356	374	3,974,538	836.86
3273	Cement & Concrete Product Manufacturing	184	1,971	1,963	1,958	19,361,284	758.31
3274	Lime & Gypsum Product Manufacturing	5	206	206	203	2,718,749	1,020.17
3279	Other Nonmetallic Mineral Products Manufacturing	35	529	528	521	5,839,787	854.02
331	PRIMARY METAL MANUFACTURING	74	10,379	10,333	10,237	\$141,919,545	\$1,058.21
3311	Iron & Steel Mills & Ferroalloys	7	2,426	2,422	2,412	50,436,255	1,603.19
3312	Purchased Steel Product Manufacturing	20	3,031	2,981	2,928	38,695,601	998.85
3313	Alumina & Aluminum Production	21	1,244	1,263	1,261	15,631,106	957.32
3314	Other Nonferrous Metal Production	7	691	688	628	6,634,765	762.88
3315	Foundries	19	2,987	2,979	3,008	30,521,818	784.88

TABLE 5. STATEWIDE SUMMARY

NORTH AMERICAN INDUSTRY CLASSIFICATION SYSTEM - INDUSTRY GROUPS		NUMBER OF	EMPLOYMENT			TOTAL EARNINGS	AVERAGE
		EMPLOYING	JULY	AUG	SEPT	JUL-SEPT 2012	WEEKLY
		UNITS					EARNINGS
332	FABRICATED METAL PRODUCT MANUFACTURING	525	14,367	14,352	14,360	\$156,718,006	\$839.52
3321	Forging & Stamping	11	330	321	324	3,329,857	788.13
3322	Cutlery & H& Tool Manufacturing	13	857	854	853	8,492,259	764.33
3323	Architectural & Structural Metals	154	3,626	3,605	3,597	40,433,830	861.74
3324	Boilers, Tanks & Shipping Containers	17	712	703	700	7,719,013	842.23
3325	Hardware Manufacturing	8	344	338	330	3,631,859	828.18
3326	Spring & Wire Product Manufacturing	13	387	384	391	3,855,805	765.75
3327	Machine Shops & Threaded Products	211	1,876	1,884	1,889	18,273,515	746.50
3328	Coating, Engraving & Heat Treating Metals	37	684	707	692	5,726,087	634.38
3329	Other Fabricated Metal Product Manufacturing	61	5,551	5,556	5,584	65,255,781	902.22
333	MACHINERY MANUFACTURING	219	11,777	11,620	11,318	\$115,537,947	\$768.04
3331	Agriculture, Construction & Mining Machinery	38	3,041	2,980	2,965	24,893,531	639.29
3332	Industrial Machinery Manufacturing	30	713	698	707	7,691,431	838.03
3333	Commercial & Service Industry Machinery	22	865	868	854	9,349,684	834.02
3334	HVAC & Commercial Refrigeration Equipment	19	3,386	3,292	3,015	32,270,556	768.29
3335	Metalworking Machinery Manufacturing	62	1,101	1,117	1,116	11,573,502	801.08
3336	Turbine & Power Transmission Equipment Manufacturing	6	722	713	702	8,203,911	885.92
3339	Other General Purpose Machinery Manufacturing	42	1,949	1,952	1,959	21,555,332	848.86
334	COMPUTER & ELECTRONIC PRODUCT MANUFACTURING	62	2,934	2,948	2,934	\$30,124,566	\$788.55
3343	Audio & Video Equipment Manufacturing	5	356	362	357	3,477,847	746.59
3344	Semiconductors & Electronic Components	27	1,933	1,936	1,930	19,358,592	770.37
3345	Electronic Instrument Manufacturing	20	505	507	508	5,398,709	819.64
	Other	10	140	143	139	1,889,418	1,033.22
335	ELECTRICAL EQUIPMENT & APPLIANCES	54	6,701	6,693	6,716	\$81,395,606	\$934.04
3353	Electrical Equipment Manufacturing	19	3,520	3,574	3,592	41,526,938	896.79
3359	Other Electrical Equipment & Component Manufacturing	18	1,738	1,709	1,717	19,402,219	867.05
	Other	17	1,443	1,410	1,407	20,466,449	1,108.69
336	TRANSPORTATION EQUIPMENT MANUFACTURING	144	12,663	12,746	12,659	\$133,924,349	\$811.85
3362	Motor Vehicle Body & Trailer Manufacturing	33	1,716	1,731	1,728	14,338,098	639.38
3363	Motor Vehicle Parts Manufacturing	49	5,027	4,977	4,893	45,032,120	697.59
3364	Aerospace Product & Parts Manufacturing	27	3,284	3,266	3,243	48,510,125	1,143.13
3366	Ship & Boat Building	23	1,338	1,374	1,377	9,457,637	533.76
	Other	12	1,298	1,398	1,418	16,586,369	930.39
337	FURNITURE & RELATED PRODUCT MANUFACTURING	193	3,419	3,386	3,366	\$29,121,964	\$660.75
3371	Household & Institutional Furniture	159	2,271	2,263	2,254	17,087,911	580.93
3372	Office Furniture & Fixtures Manufacturing	25	1,051	1,027	1,020	11,466,445	854.13
3379	Other Furniture Related Product Manufacturing	9	97	96	92	567,608	459.60
339	MISCELLANEOUS MANUFACTURING	194	3,358	3,368	3,346	\$30,870,542	\$707.30
3391	Medical Equipment & Supplies Manufacturing	76	1,571	1,572	1,576	16,116,025	788.11
3399	Other Miscellaneous Manufacturing	118	1,787	1,796	1,770	14,754,517	636.07

TABLE 5. STATEWIDE SUMMARY

NORTH AMERICAN INDUSTRY CLASSIFICATION SYSTEM - INDUSTRY GROUPS		NUMBER OF	EMPLOYMENT			TOTAL EARNINGS	AVERAGE
		EMPLOYING	JULY	AUG	SEPT	JUL-SEPT 2012	WEEKLY
		UNITS					EARNINGS
TRADE, TRANSPORTATION & UTILITIES		21,130	238,040	238,324	238,195	\$2,106,126,010	\$680.18
42	WHOLESALE TRADE	6,745	47,574	47,531	47,240	\$656,886,291	\$1,064.94
423	MERCHANT WHOLESALERS, DURABLE GOODS	2,109	21,346	21,313	21,238	\$255,703,569	\$923.49
4231	Motor Vehicle & Part Merchant Wholesalers	233	2,655	2,651	2,648	26,749,704	776.09
4232	Furniture & Furnishings Merchant Wholesalers	58	401	395	395	4,830,866	936.03
4233	Lumber & Supply Merchant Wholesalers	167	1,355	1,350	1,341	13,315,239	759.45
4234	Commercial Goods Merchant Wholesalers	290	2,877	2,860	2,842	43,691,852	1,175.28
4235	Metal & Mineral Merchant Wholesalers	49	868	890	880	10,981,756	960.67
4236	Appliances & Electronics Goods Merchant Wholesalers	183	2,132	2,121	2,130	27,464,352	992.94
4237	Hardware & Plumbing Merchant Wholesalers	219	2,185	2,175	2,169	25,927,517	916.41
4238	Machinery & Supply Merchant Wholesalers	698	6,901	6,877	6,848	84,222,775	942.31
4239	Miscellaneous Durable Goods Merchant Wholesalers	212	1,972	1,994	1,985	18,519,508	718.15
424	MERCHANT WHOLESALERS, NONDURABLE GOODS	1,174	15,642	15,529	15,411	\$187,921,870	\$930.97
4241	Paper & Paper Product Merchant Wholesalers	73	1,125	1,132	1,128	15,289,721	1,042.36
4242	Druggist' Goods Merchant Wholesalers	61	957	949	939	14,625,468	1,186.33
4243	Apparel & Piece Goods Merchant Wholesalers	37	578	574	580	5,643,003	751.87
4244	Grocery Product Merchant Wholesalers	290	5,037	5,005	4,994	68,092,532	1,045.07
4245	Farm Product Merchant Wholesalers	72	849	877	890	7,394,312	652.29
4246	Chemical merchant Wholesalers	99	665	667	656	9,594,179	1,113.70
4247	Petroleum Merchant Wholesalers	136	1,548	1,525	1,513	18,103,247	910.96
4248	Alcoholic Beverage Merchant Wholesalers	38	1,278	1,263	1,248	15,091,802	919.17
4249	Miscellaneous Nondurable Goods Merchant Wholesaler	368	3,605	3,537	3,463	34,087,606	741.76
425	ELECTRONIC MARKETS & AGENTS & BROKERS	3,462	10,586	10,689	10,591	\$213,260,852	\$1,544.41
44 - 45	RETAIL TRADE	11,085	132,667	132,490	132,626	\$791,868,184	\$459.39
441	MOTOR VEHICLE & PARTS DEALERS	1,598	17,542	17,573	17,516	\$170,547,737	\$747.79
4411	Automobile Dealers	656	10,290	10,345	10,320	117,246,357	874.07
4412	Other Motor Vehicle Dealers	161	1,412	1,410	1,389	12,296,130	673.85
4413	Automotive Parts, Accessories & Tire Stores	781	5,840	5,818	5,807	41,005,250	541.81
442	FURNITURE & HOME FURNISHINGS STORES	538	3,323	3,307	3,337	\$23,316,241	\$539.85
4421	Furniture Stores	294	1,898	1,902	1,908	14,671,536	593.16
4422	Home Furnishings Stores	244	1,425	1,405	1,429	8,644,705	468.40
443	ELECTRONICS & APPLIANCE STORES	523	3,825	3,832	3,840	\$28,992,320	\$581.94
444	BUILDING MATERIAL & GARDEN SUPPLY STORES	843	10,234	10,045	9,981	\$62,439,976	\$476.18
4441	Building Material & Supplies Dealers	627	8,958	8,771	8,716	54,508,851	475.67
4442	Lawn & Garden Equipment & Supplies Stores	216	1,276	1,274	1,265	7,931,125	479.75

TABLE 5. STATEWIDE SUMMARY

NORTH AMERICAN INDUSTRY CLASSIFICATION SYSTEM - INDUSTRY GROUPS		NUMBER OF	EMPLOYMENT			TOTAL EARNINGS	AVERAGE
		EMPLOYING	JULY	AUG	SEPT	JUL-SEPT 2012	WEEKLY
		UNITS					EARNINGS
445	FOOD & BEVERAGE STORES	1,016	18,106	18,145	18,071	\$87,492,677	\$371.68
4451	Grocery Stores	551	15,598	15,626	15,565	73,615,753	363.08
4452	Specialty Food Stores	139	874	877	869	5,974,404	526.22
4453	Beer, Wine & Liquor Stores	326	1,634	1,642	1,637	7,902,520	371.19
446	HEALTH & PERSONAL CARE STORES	959	7,886	7,876	7,954	\$70,025,395	\$681.38
447	GASOLINE STATIONS	1,597	11,883	11,977	11,900	\$49,787,761	\$321.29
44711	Gasoline Stations with Convenience Stores	1,494	10,712	10,802	10,738	43,121,534	308.54
44719	Other Gasoline Stations	103	1,171	1,175	1,162	6,666,227	438.53
448	CLOTHING & CLOTHING ACCESSORIES STORES	1,053	8,533	8,662	8,502	\$31,469,896	\$282.61
4481	Clothing Stores	767	6,626	6,691	6,570	21,426,408	248.63
4482	Shoe Stores	145	1,156	1,204	1,159	4,844,138	317.67
4483	Jewelry, Luggage & Leather Goods Stores	141	751	767	773	5,199,350	523.72
451	SPORTING GOODS, HOBBY, BOOK & MUSIC STORES	499	4,121	4,426	4,422	\$18,851,913	\$335.45
4511	Sporting Goods & Musical Instrument Stores	411	3,557	3,743	3,790	16,586,476	345.14
4512	Book, Periodical & Music Stores	88	564	683	632	2,265,437	278.23
452	GENERAL MERCH&ISE STORES	825	38,733	38,192	38,641	\$197,466,017	\$394.31
453	MISCELLANEOUS STORE RETAILERS	1,258	6,791	6,747	6,753	\$37,340,252	\$424.67
4531	Florists	210	699	712	725	2,724,470	294.35
4532	Office Supplies, Stationery & Gift Stores	309	2,087	2,102	2,180	10,741,016	389.18
4533	Used Merchandise Stores	249	1,368	1,503	1,460	7,381,461	393.31
4539	Other Miscellaneous Store Retailers	490	2,637	2,430	2,388	16,493,305	510.55
454	NONSTORE RETAILERS	376	1,690	1,708	1,709	\$14,137,999	\$638.85
4541	Electronic Shopping & Mail-Order Houses	159	551	539	546	4,944,069	697.40
4542	Vending Machine Operators	74	486	496	497	3,507,786	547.32
4543	Direct Selling Establishments	143	653	673	666	5,686,144	658.73
48 - 49	TRANSPORTATION & WAREHOUSING	2,882	50,055	50,579	50,646	\$21,523,800	\$795.56
481	AIR TRANSPORTATION	50	854	868	822	\$11,112,122	\$1,007.99
484	TRUCK TRANSPORTATION	1,893	32,720	32,976	32,694	\$349,996,649	\$820.90
4841	General Freight Trucking	1,176	26,072	26,402	26,189	282,248,813	828.02
4842	Specialized Freight Trucking	717	6,648	6,574	6,505	67,747,836	792.52

TABLE 5. STATEWIDE SUMMARY

NORTH AMERICAN INDUSTRY CLASSIFICATION SYSTEM - INDUSTRY GROUPS		NUMBER OF EMPLOYING UNITS	EMPLOYMENT			TOTAL EARNINGS	AVERAGE WEEKLY EARNINGS
			JULY	AUG	SEPT	JUL-SEPT 2012	
485	TRANSIT & GROUND PASSENGER TRANSPORTATION	82	1,151	1,159	1,334	\$5,562,277	\$352.25
4853	Taxi & Limousine Service	29	351	354	364	1,562,689	337.34
4854	School & Employee Bus Transportation	12	197	230	392	1,143,925	322.32
4855	Charter Bus Industry Service	7	102	95	95	578,400	457.11
4859	Other Ground Passenger Transportation	28	424	402	402	1,846,431	346.99
	Other	6	77	78	81	430,832	421.28
486	PIPELINE TRANSPORTATION	30	447	454	449	\$8,395,318	\$1,435.10
488	SUPPORT ACTIVITIES FOR TRANSPORTATION	420	4,574	4,595	4,609	\$49,610,877	\$830.94
4881	Support Activities for Air Transportation	102	1,294	1,330	1,329	13,464,528	786.04
4882	Support Activities for Rail Transportation	40	352	345	359	3,533,460	772.17
4883	Support Activities for Water Transportation	24	613	641	627	7,550,205	926.29
4884	Support Activities for Road Transportation	123	608	591	597	4,097,338	526.47
4885	Freight Transportation Arrangement	115	1,577	1,560	1,564	20,241,378	993.64
4889	Other Support Activities for Transportation	16	130	128	133	723,968	427.29
	OTHER	10	92	92	82	\$612,007	\$530.95
492	COURIERS & MESSENGERS	165	2,954	2,962	3,001	\$30,474,932	\$788.68
4921	Couriers	78	2,533	2,535	2,554	27,380,295	\$828.99
4922	Local Messenger & Local Delivery	87	421	427	447	3,094,637	\$551.46
493	OTHER WARHOUSING & STORAGE	232	7,263	7,473	7,655	65,759,618	\$677.74
22	UTILITIES	418	7,744	7,724	7,683	\$135,847,735	\$1,354.13
2211	Power Generation & Supply	160	5,545	5,545	5,516	112,602,920	1,564.81
2212	Natural Gas Distribution	74	1,271	1,264	1,257	15,726,354	957.06
2213	Water, Sewage & Other Systems	184	928	915	910	7,518,461	630.23
	INFORMATION	1,140	14,293	14,351	14,291	\$169,350,536	\$910.23
511	PUBLISHING INDUSTRIES, EXCEPT INTERNET	227	3,664	3,699	3,691	\$30,924,697	\$645.60
5111	Newspaper, Book & Directory Publishers	202	3,351	3,390	3,385	26,110,785	595.06
5112	Software Publishers	25	313	309	306	4,813,912	1,197.09
512	MOTION PICTURE & SOUND RECORDING INDUSTRY	138	1,257	1,227	1,166	\$5,739,332	\$362.87
5121	Motion Picture & Video Industries	119	1,224	1,198	1,135	5,424,314	351.92
5122	Sound Recording Industries	19	33	29	31	315,018	781.68
515	BROADCASTING, EXCEPT INTERNET	125	1,708	1,697	1,708	\$16,050,064	\$724.40
5151	Radio & Television Broadcasting	121	1,676	1,664	1,676	15,815,425	727.61
5152	Cable & Other Subscription Programming	4	32	33	32	234,639	558.22

TABLE 5. STATEWIDE SUMMARY

NORTH AMERICAN INDUSTRY CLASSIFICATION SYSTEM - INDUSTRY GROUPS		NUMBER OF EMPLOYING UNITS	EMPLOYMENT			TOTAL EARNINGS	AVERAGE WEEKLY EARNINGS
			JULY	AUG	SEPT	JUL-SEPT 2012	
517	TELECOMMUNICATIONS	380	5,915	5,935	5,899	\$95,076,066	\$1,236.16
5171	Wired Telecommunications Carriers	271	3,718	3,713	3,702	58,173,792	1,205.85
5172	Wireless Telecommunications Carriers (except Satellite)	46	1,832	1,852	1,831	31,486,255	1,317.51
5174	Satellite Telecommunications Carriers	4	4	5	6	50,518	777.20
5179	Other Telecommunications	59	361	365	360	5,365,501	1,140.14
518	DATA PROCESSING, HOSTING & RELATED SERVICES	192	1,466	1,507	1,546	\$18,656,572	\$952.72
519	OTHER INFORMATION SERVICES	78	283	286	281	\$2,903,805	\$788.36
FINANCIAL ACTIVITIES		7,977	47,856	47,961	47,677	\$542,204,525	\$871.98
52	FINANCE & INSURANCE	4,742	34,521	34,582	34,322	\$433,581,177	\$967.44
522	CREDIT INTERMEDIATION & RELATED ACTIVITIES	1,905	18,784	18,830	18,808	\$201,678,443	\$824.88
5221	Depository Credit Intermediation	1,414	16,760	16,796	16,783	172,653,715	791.50
5222	Nondepository Credit Intermediation	354	1,688	1,692	1,692	24,090,100	1,096.07
5223	Activities Related to Credit Intermediation	137	336	342	333	4,934,628	1,126.37
523	FINANCIAL INVESTMENT & RELATED ACTIVITIES	645	3,015	2,995	2,976	\$70,846,164	\$1,819.40
524	INSURANCE CARRIERS & RELATED ACTIVITIES	2,104	12,586	12,602	12,402	\$157,554,852	\$967.25
5241	Insurance Carriers	316	5,215	5,200	5,212	72,789,567	1,074.91
5242	Insurance Agencies, Brokerages & Support	1,788	7,371	7,402	7,190	84,765,285	890.64
	OTHER	88	136	155	136	\$3,501,718	\$1,892.48
53	REAL ESTATE & RENTAL & LEASING	3,235	13,335	13,379	13,355	\$108,623,348	\$625.59
531	REAL ESTATE	2,514	8,619	8,666	8,694	\$63,964,564	\$568.19
5311	Lessors of Real Estate	1,055	4,247	4,283	4,279	28,509,870	513.64
5312	Offices of Real Estate Agents & Brokers	731	1,561	1,554	1,590	13,282,431	651.47
5313	Activities Related to Real Estate	728	2,811	2,829	2,825	22,172,263	604.45
532	RENTAL & LEASING SERVICES	700	4,640	4,642	4,592	\$43,874,555	\$729.77
5321	Automotive Equipment Rental & Leasing	114	909	914	909	5,926,676	500.62
5322	Consumer Goods Rental	365	2,085	2,092	2,087	17,536,472	646.05
5323	General Rental Centers	44	277	271	273	2,352,693	661.30
5324	Machinery & Equipment Rental & Leasing	177	1,369	1,365	1,323	18,058,714	1,027.21
533	LESSORS OF NONFINANCIAL INTANGIBLE ASSETS	21	76	71	69	\$784,229	\$837.85

TABLE 5. STATEWIDE SUMMARY

NORTH AMERICAN INDUSTRY CLASSIFICATION SYSTEM - INDUSTRY GROUPS		NUMBER OF	EMPLOYMENT			TOTAL EARNINGS	AVERAGE
		EMPLOYING	JULY	AUG	SEPT	JUL-SEPT 2012	WEEKLY
		UNITS					EARNINGS
PROFESSIONAL & BUSINESS SERVICES		12,603	123,705	124,035	123,722	\$1,419,814,685	\$882.05
54	PROFESSIONAL & TECHNICAL SERVICES	7,950	38,044	38,023	37,841	\$482,900,970	\$978.32
5411	Legal Services	1,686	6,016	6,004	6,016	67,133,633	858.97
5412	Accounting & Bookkeeping Services	1,262	4,587	4,568	4,547	47,789,443	804.87
5413	Architectural & Engineering Services	935	5,781	5,755	5,713	75,873,055	1,015.08
5414	Specialized Design Services	193	438	448	451	5,171,220	892.56
5415	Computer Systems Design & Related Services	1,232	8,934	8,765	8,618	151,100,702	1,324.98
5416	Management & Technical Consulting Services	1,537	4,696	4,845	4,922	61,267,788	977.58
5417	Scientific Research & Development Services	124	1,177	1,183	1,150	15,946,548	1,048.43
5418	Advertising & Related Services	379	2,834	2,861	2,838	29,907,863	808.84
5419	Other Professional & Technical Services	602	3,581	3,594	3,586	28,710,718	615.70
55	MANAGEMENT OF COMPANIES & ENTERPRISES	494	31,098	31,057	31,178	\$587,346,044	\$1,452.23
56	ADMINISTRATIVE & SUPPORT SERVICES	4,159	54,563	54,955	54,703	\$349,567,671	\$491.23
561	ADMINISTRATIVE & SUPPORT SERVICES	3,880	51,556	51,918	51,660	\$319,918,974	\$475.89
5611	Office Administrative Services	567	1,974	2,052	2,061	26,972,801	1,022.59
5612	Facilities Support Services	24	209	209	202	2,236,816	832.56
5613	Employment Services	842	21,087	21,265	21,064	117,988,871	429.36
5614	Business Support Services	393	8,858	8,889	8,799	61,903,080	538.13
5615	Travel Arrangement & Reservation Services	82	339	341	333	2,608,246	594.18
5616	Investigation & Security Services	239	4,381	4,399	4,367	26,799,436	470.41
5617	Services to Buildings & Dwellings	1,492	13,238	13,273	13,381	69,191,570	400.26
5619	Other Support Services	241	1,470	1,490	1,453	12,218,154	638.92
562	WASTE MANAGEMENT & REMEDIATION SERVICES	279	3,007	3,037	3,043	\$29,648,697	\$752.94
5621	Waste Collection Services	111	1,050	1,057	1,052	9,402,450	686.86
5622	Waste Treatment & disposal Services	35	871	872	873	10,589,880	934.18
5629	Remediation & Other Waste Services	133	1,086	1,108	1,118	9,656,367	672.82
EDUCATION & HEALTH SERVICES		14,327	166,358	168,677	171,282	\$1,544,728,780	\$704.06
61	EDUCATIONAL SERVICES	722	9,738	10,540	13,030	\$85,255,302	\$590.68
6111	Elementary & Secondary Schools	91	3,000	3,597	5,573	24,017,980	455.43
6112	Junior Colleges	4	143	141	137	1,225,806	671.92
6113	Colleges & Universities	32	3,720	3,821	4,138	34,854,936	688.71
6114	Business, Computer, & Management Training	41	102	103	104	1,833,538	1,369.33
6115	Technical & Trade Schools	102	840	874	917	12,075,775	1,059.19
6116	Other Schools & Instruction	269	1,463	1,522	1,654	6,404,398	318.59
6117	Educational Support Services	183	470	482	507	4,842,869	765.99

TABLE 5. STATEWIDE SUMMARY

NORTH AMERICAN INDUSTRY CLASSIFICATION SYSTEM - INDUSTRY GROUPS		NUMBER OF	EMPLOYMENT			TOTAL EARNINGS	AVERAGE
		EMPLOYING	JULY	AUG	SEPT	JUL-SEPT 2012	WEEKLY
		UNITS					EARNINGS
62	HEALTH CARE & SOCIAL ASSISTANCE	13,605	156,620	158,137	158,252	\$1,459,473,478	\$712.04
621	AMBULATORY HEALTH CARE SERVICES	5,170	47,681	47,981	48,044	\$659,382,195	\$1,058.86
6211	Offices of Physicians	2,288	22,025	22,146	22,109	407,655,884	1,419.35
6212	Offices of Dentists	995	6,924	6,977	6,891	74,376,533	825.50
6213	Offices of Other Health Practitioners	1,242	6,900	6,961	7,108	63,075,229	694.16
6214	Outpatient Care Centers	273	3,993	3,993	4,009	42,499,178	817.63
6215	Medical & Diagnostic Laboratories	107	932	948	948	12,864,492	1,049.76
6216	Home Health Care Services	135	4,314	4,345	4,367	37,160,110	658.33
6219	Other Ambulatory Health Care Services	130	2,593	2,611	2,612	21,750,769	642.20
622	HOSPITALS	120	42,485	42,644	42,620	\$450,982,194	\$814.67
6221	General Medical & Surgical Hospitals	76	37,398	37,540	37,514	397,751,020	816.25
6222	Psychiatric & Substance Abuse Hospitals	22	2,504	2,502	2,506	24,241,090	744.69
6223	Other Hospitals	22	2,583	2,602	2,600	28,990,084	859.35
623	Residential & Mental Health Facilities	575	31,538	31,569	31,490	\$179,638,017	\$438.23
6231	Nursing Care Facilities (Skilled Nursing Facilities)	263	23,049	23,045	22,962	132,393,075	442.43
6232	Residential Mental Health Facilities	156	4,277	4,273	4,276	24,876,619	447.59
6233	Continuing Care & Assisted Living Facilities	116	3,099	3,153	3,161	15,453,292	378.85
6239	Other Residential Care Facilities	40	1,113	1,098	1,091	6,915,031	483.28
624	SOCIAL ASSISTANCE	7,740	34,916	35,943	36,098	\$169,471,072	\$365.65
6241	Individual & Family Services	6,481	20,885	20,995	21,020	100,996,836	370.54
6242	Emergency & Other Relief Services	133	1,187	1,253	1,254	7,203,293	450.00
6243	Vocational Rehabilitation Services	142	4,028	4,083	4,157	21,634,316	406.96
6244	Child Day Care Services	984	8,816	9,612	9,667	39,636,627	325.57
LEISURE & HOSPITALITY		6,592	105,248	105,914	104,143	\$366,218,146	\$268.03
71	ARTS, ENTERTAINMENT & RECREATION	927	11,271	11,051	9,680	\$45,721,152	\$329.70
711	PERFORMING ARTS & SPECTATOR SPORTS	202	2,335	2,388	2,117	\$11,909,390	\$401.80
7111	Performing Arts Companies	47	497	502	564	1,991,043	293.97
7112	Spectator Sports	48	1,223	1,183	991	6,867,022	466.50
7113	Performing Arts & Sports Promoters	35	531	616	475	2,333,539	332.00
7114	Agents & Managers for Public Figures	22	27	28	26	365,992	1,042.71
7115	Independent Artists, Writers, & Performers	50	57	59	61	351,794	458.66
712	MUSEUMS, PARKS, & HISTORICAL SITES	54	497	486	487	\$3,440,429	\$540.10
713	GAMBLING, RECREATIONAL & AMUSEMENT INDUSTRY	671	8,439	8,177	7,076	\$30,371,333	\$295.83
72	ACCOMODATION & FOOD SERVICES	5,665	93,977	94,863	94,463	\$320,496,994	\$261.07

TABLE 5. STATEWIDE SUMMARY

NORTH AMERICAN INDUSTRY CLASSIFICATION SYSTEM - INDUSTRY GROUPS		NUMBER OF	EMPLOYMENT			TOTAL EARNINGS	AVERAGE
		EMPLOYING	JULY	AUG	SEPT	JUL-SEPT 2012	WEEKLY
		UNITS					EARNINGS
721	ACCOMODATION	889	12,024	11,651	11,181	\$47,163,327	\$312.25
7211	Travel Accommodation	811	10,872	10,794	10,699	44,068,948	314.22
7212	RV Parks & Recreational Camps	59	1,088	766	392	2,702,854	277.71
7213	Rooming & Boarding Houses	19	64	91	90	391,525	368.78
722	FOOD SERVICES & DRINKING PLACES	4,776	81,953	83,212	83,282	\$273,333,667	\$253.89
7223	Special Food Services	172	2,042	2,518	2,843	9,433,401	294.06
7224	Drinking Places, Alcoholic Beverages	166	1,121	1,125	1,138	3,572,915	243.65
7225	Restaurants & Other Eating Places	4,438	78,790	79,569	79,301	260,327,351	252.78
722511	Full-Service Restaurants	2,039	35,409	35,431	35,437	125,008,955	271.44
722513	Limited-Service Eating Places	2,008	39,579	40,240	39,874	121,766,689	234.77
722514	Cafeterias, Grill Buffets, & Buffets	97	1,725	1,834	1,950	7,165,505	300.16
722515	Snack & Nonalcoholic Beverage Bars	294	2,077	2,064	2,040	6,386,202	238.43
OTHER SERVICES		5,366	24,505	24,364	24,240	\$168,716,998	\$532.56
811	REPAIR & MAINTENANCE	2,249	9,280	9,326	9,287	\$76,836,737	\$635.70
8111	Automotive Repair & Maintenance	1,462	6,223	6,249	6,190	47,219,741	583.91
8112	Electronic Equipment Repair & Maintenance	165	591	594	579	6,241,330	816.50
8113	Commercial Machinery Repair & Maintenance	432	1,878	1,891	1,930	19,047,687	771.30
8114	Household Goods Repair & Maintenance	190	588	592	588	4,327,979	564.91
812	PERSONAL & LAUNDRY SERVICES	1,338	8,241	8,330	8,321	\$44,058,547	\$408.46
8121	Personal Care Services	619	2,912	2,940	2,963	12,573,451	329.16
8122	Death Care Services	250	1,574	1,595	1,583	11,214,623	544.61
8123	Drycleaning & Laundry Service	273	3,004	3,046	3,049	16,763,262	425.15
8129	Other Personal Services	196	751	749	726	3,507,211	363.59
813	MEMBERSHIP ASSOCIATIONS & ORGANIZATIONS	1,087	6,046	5,771	5,699	\$43,522,238	\$573.40
8131	Religious Organizations	56	206	205	209	1,348,633	501.97
8132	Grantmaking & Giving Organizations	114	475	483	479	5,337,633	857.18
8133	Social Advocacy Organizations	224	1,643	1,705	1,762	13,157,779	594.21
8134	Civic & Social Organizations	189	1,550	1,233	1,202	5,342,915	309.41
8139	Professional & Similar Organizations	504	2,172	2,145	2,047	18,335,278	664.87
814	PRIVATE HOUSEHOLDS	692	938	937	933	\$4,299,476	\$353.34
LOCAL GOVERNMENT		1,963	66,348	91,723	116,134	\$724,811,775	\$610.00
STATE GOVERNMENT		1,132	66,894	68,335	70,734	\$686,326,167	\$768.99
NONCLASSIFIABLE ESTABLISHMENTS		0	0	0	0	\$0	\$0.00

TABLE 6. COUNTY SUMMARY

NORTH AMERICAN INDUSTRY CLASSIFICATION SYSTEM - INDUSTRY GROUPS	NUMBER OF EMPLOYING UNITS	EMPLOYMENT			TOTAL EARNINGS	AVERAGE WEEKLY EARNINGS
		JULY	AUG	SEPT	JUL-SEPT 2012	
ARKANSAS COUNTY - TOTAL	755	9,521	9,670	9,574	\$81,226,300	\$651.64
Natural Resources & Mining	45	183	188	184	1,816,396	755.26
Construction	49	300	313	293	2,733,543	696.27
Manufacturing	30	3,589	3,561	3,405	34,265,838	749.17
Trade, Transportation & Utilities	220	2,153	2,182	2,203	18,454,947	651.40
Wholesale Trade	47	438	430	437	5,066,442	895.92
Retail Trade	104	1,036	1,065	1,072	6,003,183	436.61
Transportation, Warehousing & Utilities	69	679	687	694	7,385,322	827.33
Information	11	85	88	87	670,528	595.14
Financial Activities	46	334	336	326	3,298,788	764.32
Professional & Business Services	49	312	326	325	3,757,630	900.46
Education & Health Services	149	1,043	1,099	1,104	7,318,706	520.31
Leisure & Hospitality	59	545	560	550	1,666,275	232.34
Other Services	50	119	120	116	821,169	533.80
Local Government	32	676	719	802	5,217,966	548.09
State Government	15	182	178	179	1,204,514	515.70
ASHLEY COUNTY - TOTAL	582	6,930	7,113	7,487	\$65,363,268	\$700.60
Natural Resources & Mining	44	347	338	348	2,603,282	581.57
Construction	44	637	602	653	6,078,248	741.37
Manufacturing	27	2,069	2,081	2,091	29,432,488	1,088.31
Trade, Transportation & Utilities	131	1,283	1,308	1,297	9,511,130	564.53
Wholesale Trade	25	226	232	225	2,967,650	1,002.70
Retail Trade	81	811	831	822	4,145,554	388.26
Transportation, Warehousing & Utilities	25	246	245	250	2,397,926	746.78
Information	6	41	42	40	299,984	562.82
Financial Activities	36	226	230	227	1,918,669	648.27
Professional & Business Services	49	246	235	232	1,755,350	568.14
Education & Health Services	132	851	872	879	6,202,738	550.12
Leisure & Hospitality	31	391	405	396	1,091,958	211.40
Other Services	39	135	135	144	832,481	464.04
Local Government	32	528	691	982	4,618,066	484.19
State Government	11	176	174	198	1,018,874	429.06

TABLE 6. COUNTY SUMMARY

NORTH AMERICAN INDUSTRY CLASSIFICATION SYSTEM - INDUSTRY GROUPS	NUMBER OF EMPLOYING UNITS	EMPLOYMENT			TOTAL EARNINGS	AVERAGE WEEKLY EARNINGS
		JULY	AUG	SEPT	JUL-SEPT 2012	
BAXTER COUNTY - TOTAL	1,232	13,518	13,885	14,270	\$103,508,164	\$573.19
Natural Resources & Mining	6	104	99	99	754,110	576.24
Construction	126	584	599	594	4,201,027	545.56
Manufacturing	56	2,202	2,215	2,220	19,736,767	686.25
Trade, Transportation & Utilities	271	2,564	2,539	2,517	15,493,138	469.20
Wholesale Trade	33	213	210	205	1,788,678	657.28
Retail Trade	215	2,183	2,166	2,147	12,078,635	429.09
Transportation, Warehousing & Utilities	23	168	163	165	1,625,825	756.43
Information	17	197	195	192	1,802,381	712.22
Financial Activities	104	673	675	678	7,338,279	835.86
Professional & Business Services	132	772	767	746	5,402,574	545.62
Education & Health Services	253	3,587	3,650	3,642	32,464,767	688.65
Leisure & Hospitality	123	1,610	1,653	1,629	5,138,100	242.38
Other Services	93	346	340	342	1,752,986	393.52
Local Government	39	581	825	1,263	7,066,853	611.02
State Government	12	298	328	348	2,357,182	558.49
BENTON COUNTY - TOTAL	5,492	92,740	94,492	96,607	\$1,088,358,468	\$884.87
Natural Resources & Mining	41	747	750	739	9,103,654	939.55
Construction	517	3,386	3,375	3,389	33,022,238	750.79
Manufacturing	201	10,508	10,471	10,455	103,812,582	762.13
Trade, Transportation & Utilities	1,482	22,618	22,558	22,415	246,136,005	840.36
Wholesale Trade	679	4,597	4,558	4,535	92,350,893	1,556.74
Retail Trade	637	10,025	9,900	9,917	63,031,586	487.43
Transportation, Warehousing & Utilities	166	7,996	8,100	7,963	90,753,526	870.49
Information	73	783	792	795	8,319,505	810.08
Financial Activities	537	2,730	2,741	2,763	33,159,126	929.33
Professional & Business Services	1,050	27,394	27,095	26,984	460,722,986	1,304.98
Education & Health Services	644	8,576	8,860	9,058	82,525,799	718.82
Leisure & Hospitality	497	9,650	9,715	9,516	37,747,382	301.61
Other Services	354	1,675	1,684	1,658	11,693,661	537.88
Local Government	79	3,705	5,547	7,619	54,110,509	740.15
State Government	17	968	904	1,216	8,005,021	598.22

TABLE 6. COUNTY SUMMARY

NORTH AMERICAN INDUSTRY CLASSIFICATION SYSTEM - INDUSTRY GROUPS	NUMBER OF EMPLOYING UNITS	EMPLOYMENT			TOTAL EARNINGS	AVERAGE WEEKLY EARNINGS
		JULY	AUG	SEPT	JUL-SEPT 2012	
BOONE COUNTY - TOTAL	1,008	12,755	13,024	13,789	\$116,221,767	\$677.83
Natural Resources & Mining	4	6	4	4	20,150	\$332.14
Construction	79	398	425	411	3,330,447	622.82
Manufacturing	62	1,794	1,801	1,775	16,480,416	708.23
Trade, Transportation & Utilities	245	3,725	3,714	3,726	41,008,153	847.60
Wholesale Trade	51	336	333	324	2,683,464	623.63
Retail Trade	144	1,876	1,881	1,900	11,276,561	460.01
Transportation, Warehousing & Utilities	50	1,513	1,500	1,502	27,048,128	1,382.48
Information	19	356	347	342	3,767,167	831.91
Financial Activities	98	532	530	528	5,233,171	759.53
Professional & Business Services	112	940	936	923	9,713,859	800.88
Education & Health Services	173	1,498	1,515	1,543	11,462,214	580.58
Leisure & Hospitality	85	1,164	1,134	1,147	3,639,326	243.79
Other Services	55	273	274	276	2,097,137	588.04
Local Government	57	1,394	1,617	2,287	13,644,646	594.33
State Government	19	675	727	827	5,825,081	603.07
BRADLEY COUNTY - TOTAL	363	3,176	3,269	3,457	\$22,782,971	\$530.96
Natural Resources & Mining	42	298	283	269	2,181,874	592.36
Construction	18	117	115	112	1,013,070	679.61
Manufacturing	12	500	498	485	5,087,017	791.59
Trade, Transportation & Utilities	74	525	529	524	2,958,168	432.61
Wholesale Trade	14	84	83	84	820,521	754.39
Retail Trade	41	367	372	364	1,671,064	349.62
Transportation, Warehousing & Utilities	19	74	74	76	466,583	480.68
Information	4	11	11	11	96,178	672.57
Financial Activities	25	139	141	142	1,099,398	601.20
Professional & Business Services	27	104	102	103	762,791	569.67
Education & Health Services	97	597	613	604	3,942,537	501.55
Leisure & Hospitality	11	174	175	174	467,995	206.50
Other Services	28	100	94	86	491,762	405.30
Local Government	14	219	305	542	2,338,648	506.27
State Government	11	392	403	405	2,343,533	450.68

TABLE 6. COUNTY SUMMARY

NORTH AMERICAN INDUSTRY CLASSIFICATION SYSTEM - INDUSTRY GROUPS	NUMBER OF EMPLOYING UNITS	EMPLOYMENT			TOTAL EARNINGS	AVERAGE WEEKLY EARNINGS
		JULY	AUG	SEPT	JUL-SEPT 2012	
CALHOUN COUNTY - TOTAL	116	2,665	2,685	2,713	\$29,386,608	\$841.07
Natural Resources & Mining	12	57	56	56	516,306	705.02
Construction	13	98	103	108	724,703	541.23
Manufacturing	10	1,854	1,836	1,827	22,770,657	952.47
Trade, Transportation & Utilities	27	233	234	230	1,839,828	609.15
Retail Trade	16	79	79	72	337,447	338.58
Transportation, Warehousing & Utilities	11	154	155	158	1,502,381	742.41
Financial Activities	6	84	85	83	597,820	547.45
Education & Health Services	11	46	49	52	438,626	688.58
Leisure & Hospitality	7	12	12	12	42,265	270.93
Other Services	4	5	6	6	25,013	339.54
Local Government	11	110	141	176	848,796	458.73
State Government	8	83	82	83	645,858	600.98
Other	7	83	81	80	936,736	885.94
CARROLL COUNTY - TOTAL	783	9,786	10,174	10,170	\$64,550,322	\$494.40
Natural Resources & Mining	15	253	251	256	2,008,886	609.99
Trade, Transportation & Utilities	198	1,635	1,623	1,601	10,010,827	475.45
Wholesale Trade	25	185	184	177	1,146,942	484.76
Retail Trade	156	1,186	1,176	1,163	6,167,871	403.79
Transportation, Warehousing & Utilities	17	264	263	261	2,696,014	789.54
Information	8	68	72	72	603,348	656.76
Financial Activities	63	356	356	353	3,319,707	719.33
Professional & Business Services	58	193	201	206	1,505,895	579.19
Education & Health Services	88	906	929	930	7,847,943	655.00
Leisure & Hospitality	170	1,798	1,739	1,702	5,828,692	256.74
Other Services	47	135	138	132	730,223	416.08
Local Government	24	534	965	1,053	6,061,917	548.16
State Government	10	110	112	111	727,935	504.46
Other	102	3,798	3,788	3,754	25,904,949	527.17

TABLE 6. COUNTY SUMMARY

NORTH AMERICAN INDUSTRY CLASSIFICATION SYSTEM - INDUSTRY GROUPS	NUMBER OF EMPLOYING UNITS	EMPLOYMENT			TOTAL EARNINGS	AVERAGE WEEKLY EARNINGS
		JULY	AUG	SEPT	JUL-SEPT 2012	
CHICOT COUNTY - TOTAL	435	3,368	3,471	3,497	\$24,098,029	\$538.03
Natural Resources & Mining	51	291	290	301	2,189,343	572.83
Construction	17	166	161	170	2,383,784	1,106.85
Manufacturing	10	284	286	282	1,468,753	397.82
Trade, Transportation & Utilities	66	511	519	513	3,514,384	525.61
Wholesale Trade	11	64	64	65	599,543	716.87
Retail Trade	43	373	375	371	1,974,438	407.18
Transportation, Warehousing & Utilities	12	74	80	77	940,403	939.46
Information	5	8	8	8	59,652	573.58
Financial Activities	27	144	145	140	1,356,353	729.61
Professional & Business Services	17	41	40	41	360,058	681.07
Education & Health Services	177	773	767	764	4,662,454	466.99
Leisure & Hospitality	22	221	202	196	539,373	201.08
Other Services	16	80	73	67	577,797	606.08
Local Government	17	546	677	713	4,989,408	594.73
State Government	10	303	303	302	1,996,670	507.46
CLARK COUNTY - TOTAL	611	8,634	9,083	9,315	\$66,953,416	\$571.57
Natural Resources & Mining	30	217	208	203	1,913,612	703.19
Construction	28	77	68	75	483,912	507.60
Manufacturing	35	1,411	1,432	1,424	16,042,240	867.60
Trade, Transportation & Utilities	139	1,587	1,670	1,622	11,942,817	564.88
Wholesale Trade	17	206	201	197	2,029,401	775.37
Retail Trade	100	1,195	1,284	1,243	8,127,523	503.92
Transportation, Warehousing & Utilities	22	186	185	182	1,785,893	745.26
Information	6	25	24	24	211,936	669.98
Financial Activities	74	314	317	322	2,705,851	655.22
Professional & Business Services	47	557	555	553	4,470,957	619.68
Education & Health Services	105	1,340	1,394	1,431	9,691,478	536.97
Leisure & Hospitality	62	1,061	1,101	1,140	3,485,652	243.60
Other Services	44	169	186	186	1,069,091	456.03
Local Government	27	846	985	1,039	6,305,919	507.04
State Government	14	1,030	1,143	1,296	8,629,951	574.09

TABLE 6. COUNTY SUMMARY

NORTH AMERICAN INDUSTRY CLASSIFICATION SYSTEM - INDUSTRY GROUPS	NUMBER OF EMPLOYING UNITS	EMPLOYMENT			TOTAL EARNINGS	AVERAGE WEEKLY EARNINGS
		JULY	AUG	SEPT	JUL-SEPT 2012	
CLAY COUNTY - TOTAL	401	3,480	3,644	3,649	\$24,505,857	\$524.94
Natural Resources & Mining	59	303	296	278	1,688,992	444.43
Construction	28	138	141	143	1,092,023	597.17
Manufacturing	14	397	388	388	3,511,422	690.82
Trade, Transportation & Utilities	102	893	897	914	6,925,462	591.04
Wholesale Trade	26	279	273	276	2,494,672	695.28
Retail Trade	48	429	422	420	2,457,079	446.12
Transportation, Warehousing & Utilities	28	185	202	218	1,973,711	752.85
Information	5	53	53	51	368,267	541.30
Financial Activities	28	119	113	111	852,938	573.85
Professional & Business Services	28	71	73	79	470,545	486.94
Education & Health Services	54	468	486	489	2,953,292	472.30
Leisure & Hospitality	18	208	215	221	595,975	213.56
Other Services	31	76	71	72	541,981	571.11
Local Government	23	697	856	848	5,132,630	493.32
State Government	11	57	55	55	372,330	514.50
CLEBURNE COUNTY - TOTAL	659	6,668	6,903	7,067	\$50,348,717	\$562.99
Natural Resources & Mining	27	357	344	327	4,408,401	989.61
Construction	69	392	398	395	3,370,899	656.46
Manufacturing	34	1,235	1,203	1,172	10,513,423	672.07
Trade, Transportation & Utilities	168	1,664	1,669	1,656	13,588,449	628.54
Wholesale Trade	40	280	296	307	3,348,811	875.20
Retail Trade	102	958	966	951	5,768,827	463.05
Transportation, Warehousing & Utilities	26	426	407	398	4,470,811	838.12
Information	7	52	51	50	342,397	516.44
Financial Activities	65	224	224	227	1,949,615	666.54
Professional & Business Services	65	271	337	342	1,991,864	483.85
Education & Health Services	74	810	838	848	5,600,766	517.82
Leisure & Hospitality	74	1,033	1,047	988	3,192,205	240.11
Other Services	49	159	160	156	819,727	398.25
Local Government	18	367	526	804	3,934,693	535.07
State Government	9	104	106	102	636,278	470.62

TABLE 6. COUNTY SUMMARY

NORTH AMERICAN INDUSTRY CLASSIFICATION SYSTEM - INDUSTRY GROUPS	NUMBER OF EMPLOYING UNITS	EMPLOYMENT			TOTAL EARNINGS	AVERAGE WEEKLY EARNINGS
		JULY	AUG	SEPT	JUL-SEPT 2012	
CLEVELAND COUNTY - TOTAL	124	830	1,027	1,046	\$6,434,553	\$511.50
Natural Resources & Mining	12	175	180	179	1,509,600	652.38
Construction	8	24	23	24	84,879	275.88
Manufacturing	7	95	93	92	729,816	601.50
Trade, Transportation & Utilities	33	180	187	191	1,250,197	517.04
Retail Trade	15	57	58	59	188,036	249.38
Other Trade, Transportation & Utilities	18	123	129	132	1,062,161	638.32
Financial Activities	3	15	15	14	97,705	512.44
Education & Health Services	30	145	146	146	638,288	337.06
Other Services	5	12	12	12	109,388	701.21
Local Government	11	113	300	316	1,543,380	488.57
State Government	7	52	53	53	364,957	533.04
Other	8	19	18	19	106,343	438.23
COLUMBIA COUNTY - TOTAL	735	8,070	8,267	8,560	\$70,911,778	\$657.28
Natural Resources & Mining	44	412	422	405	5,706,826	1,062.92
Construction	43	374	372	367	3,642,911	755.32
Manufacturing	34	1,927	1,920	1,925	23,474,989	938.55
Trade, Transportation & Utilities	166	1,425	1,436	1,444	9,766,032	523.51
Wholesale Trade	27	199	204	203	2,029,616	772.89
Retail Trade	106	974	981	994	5,235,793	409.72
Transportation, Warehousing & Utilities	33	252	251	247	2,500,623	769.42
Information	9	58	57	49	405,692	570.86
Financial Activities	69	349	343	342	3,169,982	707.48
Professional & Business Services	59	338	319	324	2,600,605	611.76
Education & Health Services	171	1,037	1,034	1,027	5,949,500	443.18
Leisure & Hospitality	48	643	629	716	2,048,459	237.79
Other Services	53	224	227	227	1,012,624	344.66
Local Government	26	695	903	1,124	7,248,955	614.56
State Government	13	588	605	610	5,885,203	753.26

TABLE 6. COUNTY SUMMARY

NORTH AMERICAN INDUSTRY CLASSIFICATION SYSTEM - INDUSTRY GROUPS	NUMBER OF EMPLOYING UNITS	EMPLOYMENT			TOTAL EARNINGS	AVERAGE WEEKLY EARNINGS
		JULY	AUG	SEPT	JUL-SEPT 2012	
CONWAY COUNTY - TOTAL	562	6,270	6,462	6,569	\$52,681,133	\$629.87
Natural Resources & Mining	33	322	312	317	3,425,746	831.29
Construction	54	487	481	485	5,862,503	931.10
Manufacturing	18	860	871	874	11,765,768	1,042.29
Trade, Transportation & Utilities	126	1,573	1,577	1,560	12,745,600	624.48
Wholesale Trade	24	212	219	220	2,164,362	767.23
Retail Trade	78	803	788	781	4,666,843	454.03
Transportation, Warehousing & Utilities	24	558	570	559	5,914,395	809.05
Information	3	11	11	11	100,323	701.56
Financial Activities	34	169	170	169	1,359,499	617.58
Professional & Business Services	45	359	359	348	2,005,111	434.07
Education & Health Services	144	894	913	914	6,033,992	511.75
Leisure & Hospitality	40	471	456	458	1,274,554	212.37
Other Services	29	101	99	98	723,842	560.54
Local Government	26	689	777	915	4,732,328	458.66
State Government	10	334	436	420	2,651,867	514.26
CRAIGHEAD COUNTY - TOTAL	2,661	41,627	43,108	44,324	\$358,025,497	\$640.18
Natural Resources & Mining	73	289	285	342	2,096,981	528.30
Construction	204	1,824	1,826	1,839	17,315,448	727.98
Manufacturing	115	6,184	6,146	6,146	63,206,903	789.47
Trade, Transportation & Utilities	739	9,014	9,151	9,106	67,503,441	571.22
Wholesale Trade	185	1,706	1,696	1,684	19,224,449	872.28
Retail Trade	442	6,029	6,142	6,105	35,090,528	443.08
Transportation, Warehousing & Utilities	112	1,279	1,313	1,317	13,188,464	778.59
Information	27	496	493	487	4,559,669	712.89
Financial Activities	252	1,446	1,443	1,441	15,826,982	843.51
Professional & Business Services	362	3,982	4,011	4,097	27,605,404	526.92
Education & Health Services	445	8,300	8,495	8,612	87,617,407	795.82
Leisure & Hospitality	233	4,631	4,720	4,741	15,917,558	260.66
Other Services	152	857	876	862	5,306,137	471.87
Local Government	36	1,870	2,922	3,906	24,374,522	646.69
State Government	23	2,734	2,740	2,745	26,695,045	749.53

TABLE 6. COUNTY SUMMARY

NORTH AMERICAN INDUSTRY CLASSIFICATION SYSTEM - INDUSTRY GROUPS	NUMBER OF EMPLOYING UNITS	EMPLOYMENT			TOTAL EARNINGS	AVERAGE WEEKLY EARNINGS
		JULY	AUG	SEPT	JUL-SEPT 2012	
CRAWFORD COUNTY - TOTAL	1,302	17,787	19,150	19,307	\$147,642,627	\$605.78
Natural Resources & Mining	29	279	273	281	3,720,568	1,030.72
Construction	166	836	849	860	7,577,312	687.08
Manufacturing	75	4,306	4,302	4,303	38,502,035	688.18
Trade, Transportation & Utilities	320	6,106	6,362	6,244	48,558,965	598.86
Retail Trade	161	1,905	1,918	1,913	11,412,576	459.15
Other Trade, Transportation & Utilities	159	4,201	4,444	4,331	37,146,389	660.62
Information	12	129	124	122	1,013,489	623.69
Financial Activities	123	506	510	513	4,294,661	648.19
Professional & Business Services	159	1,015	1,024	1,041	8,121,467	608.50
Education & Health Services	178	1,598	1,617	1,621	12,885,842	614.90
Leisure & Hospitality	97	1,529	1,526	1,524	5,027,863	253.39
Other Services	90	429	438	433	3,054,449	542.21
Local Government	43	917	1,987	2,228	13,870,732	623.72
State Government	10	137	138	137	1,015,244	568.66
CRITTENDEN COUNTY - TOTAL	1,315	15,281	15,627	16,359	\$123,455,258	\$602.74
Natural Resources & Mining	51	275	271	308	1,839,925	497.19
Construction	45	339	342	317	2,957,708	683.92
Manufacturing	42	1,452	1,475	1,465	16,117,831	846.88
Trade, Transportation & Utilities	310	4,659	4,494	4,443	40,986,501	695.68
Wholesale Trade	69	739	746	755	8,059,128	830.27
Retail Trade	158	2,107	1,924	1,882	14,269,122	556.89
Transportation, Warehousing & Utilities	83	1,813	1,824	1,806	18,658,251	791.06
Information	6	71	68	69	593,408	658.37
Financial Activities	94	490	490	497	4,438,885	693.54
Professional & Business Services	119	1,307	1,385	1,344	9,102,584	520.46
Education & Health Services	385	2,412	2,461	2,479	18,536,894	581.85
Leisure & Hospitality	126	2,137	2,137	2,136	8,238,564	296.60
Other Services	80	463	470	475	3,168,451	519.30
Local Government	43	1,233	1,528	2,288	14,061,341	642.69
State Government	14	443	506	538	3,413,166	529.69

TABLE 6. COUNTY SUMMARY

NORTH AMERICAN INDUSTRY CLASSIFICATION SYSTEM - INDUSTRY GROUPS	NUMBER OF EMPLOYING UNITS	EMPLOYMENT			TOTAL EARNINGS	AVERAGE WEEKLY EARNINGS
		JULY	AUG	SEPT	JUL-SEPT 2012	
CROSS COUNTY - TOTAL	518	4,734	5,020	5,047	\$36,403,453	\$567.58
Natural Resources & Mining	33	197	204	205	1,434,812	546.39
Construction	21	87	86	87	678,210	601.96
Manufacturing	12	695	694	667	5,291,249	593.90
Trade, Transportation & Utilities	136	1,271	1,279	1,275	10,509,542	634.06
Wholesale Trade	30	318	314	311	3,241,803	793.33
Retail Trade	75	770	772	757	5,345,816	536.60
Transportation, Warehousing & Utilities	31	183	193	207	1,921,923	760.76
Information	5	34	33	36	267,366	599.03
Financial Activities	45	311	312	307	3,128,746	776.36
Professional & Business Services	44	134	133	126	1,172,542	688.52
Education & Health Services	126	853	863	872	5,461,560	487.00
Leisure & Hospitality	34	336	322	312	881,554	209.73
Other Services	36	73	75	76	439,161	452.43
Local Government	16	370	645	721	4,406,831	585.81
State Government	10	373	374	363	2,731,880	567.96
DALLAS COUNTY - TOTAL	269	2,742	2,786	2,830	\$19,155,087	\$528.88
Natural Resources & Mining	33	183	171	185	1,455,782	623.28
Construction	19	67	69	72	508,930	564.64
Manufacturing	11	521	545	540	4,716,275	677.69
Trade, Transportation & Utilities	65	471	480	465	3,527,247	574.84
Wholesale Trade	6	36	36	36	641,850	1,371.47
Retail Trade	41	345	347	333	2,051,677	461.92
Transportation, Warehousing & Utilities	18	90	97	96	833,720	679.85
Information	3	17	17	17	135,747	614.24
Financial Activities	13	70	69	68	597,739	666.38
Professional & Business Services	16	53	48	46	289,812	454.96
Education & Health Services	60	874	837	832	5,487,613	497.98
Leisure & Hospitality	12	144	155	150	383,296	197.00
Other Services	15	65	56	70	427,201	516.15
Local Government	15	230	290	335	1,334,980	360.32
State Government	7	47	49	50	290,465	459.11

TABLE 6. COUNTY SUMMARY

NORTH AMERICAN INDUSTRY CLASSIFICATION SYSTEM - INDUSTRY GROUPS	NUMBER OF EMPLOYING UNITS	EMPLOYMENT			TOTAL EARNINGS	AVERAGE WEEKLY EARNINGS
		JULY	AUG	SEPT	JUL-SEPT 2012	
DESHA COUNTY - TOTAL	508	4,302	4,642	4,748	\$33,448,243	\$563.75
Natural Resources & Mining	62	313	318	354	2,185,987	512.14
Construction	23	133	130	119	1,116,903	674.73
Manufacturing	16	860	855	843	9,622,433	868.09
Trade, Transportation & Utilities	112	911	916	951	6,569,740	545.75
Wholesale Trade	19	190	190	192	2,239,577	903.54
Retail Trade	67	550	534	536	2,742,664	390.69
Transportation, Warehousing & Utilities	26	171	192	223	1,587,499	625.16
Information	5	28	28	28	225,536	619.60
Financial Activities	31	220	224	224	1,664,384	574.98
Professional & Business Services	38	92	93	91	574,820	480.62
Education & Health Services	130	759	782	803	4,793,937	471.97
Leisure & Hospitality	40	367	360	362	828,585	175.58
Other Services	22	55	62	65	252,065	319.61
Local Government	19	452	764	789	4,811,153	553.75
State Government	10	112	110	119	802,700	543.22
DREW COUNTY - TOTAL	515	5,804	5,971	6,482	\$43,100,925	\$544.80
Natural Resources & Mining	41	323	333	332	2,500,536	584.06
Construction	21	93	87	83	735,798	645.63
Manufacturing	21	773	772	773	6,314,074	628.60
Trade, Transportation & Utilities	124	1,195	1,195	1,210	7,508,210	481.30
Wholesale Trade	19	175	174	176	1,600,334	703.44
Retail Trade	84	922	922	934	5,053,731	419.81
Transportation, Warehousing & Utilities	21	98	99	100	854,145	663.67
Information	8	64	63	61	451,796	554.58
Financial Activities	46	244	245	245	2,295,089	721.57
Professional & Business Services	42	288	305	303	2,338,120	602.19
Education & Health Services	113	870	872	889	6,077,940	533.11
Leisure & Hospitality	41	592	618	621	1,698,907	214.12
Other Services	20	71	68	70	376,270	415.46
Local Government	22	730	886	1,262	7,432,624	595.98
State Government	16	561	527	633	5,371,561	720.27

TABLE 6. COUNTY SUMMARY

NORTH AMERICAN INDUSTRY CLASSIFICATION SYSTEM - INDUSTRY GROUPS	NUMBER OF EMPLOYING UNITS	EMPLOYMENT			TOTAL EARNINGS	AVERAGE WEEKLY EARNINGS
		JULY	AUG	SEPT	JUL-SEPT 2012	
FAULKNER COUNTY - TOTAL	2,793	38,475	39,127	40,686	\$358,921,895	\$700.22
Natural Resources & Mining	58	1,642	1,618	1,602	30,768,576	1,460.40
Construction	311	2,534	2,492	2,507	23,976,761	734.51
Manufacturing	101	3,261	3,250	3,253	38,045,831	899.20
Trade, Transportation & Utilities	672	7,108	7,153	7,185	51,555,856	554.77
Wholesale Trade	174	901	910	904	10,704,030	909.82
Retail Trade	404	5,391	5,428	5,460	31,412,124	445.29
Transportation, Warehousing & Utilities	94	816	815	821	9,439,702	888.41
Information	27	376	370	364	3,705,876	770.45
Financial Activities	325	1,589	1,583	1,585	15,295,938	742.03
Professional & Business Services	402	6,165	6,212	6,025	73,512,450	921.88
Education & Health Services	416	5,778	5,880	5,935	51,039,787	669.49
Leisure & Hospitality	252	4,513	4,650	4,607	14,354,590	240.57
Other Services	173	773	757	742	5,909,577	600.24
Local Government	38	1,750	2,241	3,524	20,969,615	643.93
State Government	18	2,986	2,921	3,357	29,787,038	742.00
FRANKLIN COUNTY - TOTAL	342	4,124	4,245	4,330	\$34,562,377	\$628.08
Natural Resources & Mining	15	297	283	267	4,143,923	1,129.03
Construction	34	149	152	150	1,470,678	752.52
Manufacturing	15	894	878	878	8,166,429	711.15
Trade, Transportation & Utilities	85	898	869	879	6,859,850	598.28
Wholesale Trade	14	48	40	42	230,750	409.62
Retail Trade	53	557	547	556	2,874,196	399.56
Transportation, Warehousing & Utilities	18	293	282	281	3,754,904	1,012.29
Information	5	22	23	24	173,785	581.22
Financial Activities	30	231	229	231	1,694,968	566.06
Professional & Business Services	30	129	126	131	827,043	494.45
Education & Health Services	53	555	566	573	3,832,271	522.06
Leisure & Hospitality	28	294	298	293	864,910	225.53
Other Services	18	55	56	56	344,124	475.53
Local Government	20	498	657	739	5,098,440	621.21
State Government	9	102	108	109	1,085,956	785.60

TABLE 6. COUNTY SUMMARY

NORTH AMERICAN INDUSTRY CLASSIFICATION SYSTEM - INDUSTRY GROUPS	NUMBER OF EMPLOYING UNITS	EMPLOYMENT			TOTAL EARNINGS	AVERAGE WEEKLY EARNINGS
		JULY	AUG	SEPT	JUL-SEPT 2012	
FULTON COUNTY - TOTAL	202	1,856	1,872	1,996	\$11,614,436	\$468.25
Construction	7	45	50	48	487,188	786.21
Manufacturing	12	145	138	138	668,103	366.22
Trade, Transportation & Utilities	51	328	324	326	2,226,958	525.47
Retail Trade	34	193	193	189	851,466	341.73
Other Trade, Transportation & Utilities	17	135	131	137	1,375,492	787.65
Information	4	35	37	35	176,937	381.60
Financial Activities	15	98	99	90	746,718	600.42
Professional & Business Services	17	64	64	61	501,118	611.87
Education & Health Services	48	491	486	484	2,896,761	457.55
Leisure & Hospitality	15	178	170	167	491,171	220.09
Local Government	12	336	368	506	2,543,213	485.04
State Government	10	112	113	118	770,523	518.41
Other	11	24	23	23	105,746	348.61
GARLAND COUNTY - TOTAL	3,128	34,528	35,339	35,572	\$265,306,519	\$580.66
Natural Resources & Mining	35	339	327	336	3,425,684	788.96
Construction	344	1,770	1,752	1,751	13,751,763	601.84
Manufacturing	100	2,182	2,180	2,181	20,147,691	710.60
Trade, Transportation & Utilities	714	7,294	7,246	7,237	50,974,419	540.17
Wholesale Trade	146	924	921	924	10,515,835	876.39
Retail Trade	506	5,769	5,722	5,740	33,775,506	452.34
Transportation, Warehousing & Utilities	62	601	603	573	6,683,078	867.89
Information	34	281	291	274	2,589,671	706.40
Financial Activities	355	1,469	1,467	1,459	13,532,373	710.55
Professional & Business Services	394	3,194	3,278	3,290	25,374,363	599.84
Education & Health Services	498	7,600	7,672	7,647	75,698,668	762.20
Leisure & Hospitality	361	6,584	6,444	6,167	24,819,128	298.38
Other Services	233	970	972	958	5,568,957	443.15
Local Government	34	1,841	2,606	3,123	20,829,308	634.98
State Government	26	1,004	1,104	1,149	8,594,494	608.95

TABLE 6. COUNTY SUMMARY

NORTH AMERICAN INDUSTRY CLASSIFICATION SYSTEM - INDUSTRY GROUPS	NUMBER OF EMPLOYING UNITS	EMPLOYMENT			TOTAL EARNINGS	AVERAGE WEEKLY EARNINGS
		JULY	AUG	SEPT	JUL-SEPT 2012	
GRANT COUNTY - TOTAL	325	3,444	3,496	3,711	\$27,470,552	\$595.19
Natural Resources & Mining	24	170	167	172	2,242,548	1,016.72
Construction	29	134	139	145	1,292,813	713.74
Manufacturing	16	1,002	975	978	8,686,664	678.38
Trade, Transportation & Utilities	86	607	604	602	3,961,999	504.31
Wholesale Trade	16	119	120	118	1,060,405	685.46
Retail Trade	44	428	420	416	2,360,362	430.93
Transportation, Warehousing & Utilities	26	60	64	68	541,232	650.52
Information	4	34	34	35	592,217	1,326.85
Financial Activities	24	91	98	94	758,427	618.45
Professional & Business Services	22	62	64	63	706,155	862.22
Education & Health Services	57	431	440	421	2,562,452	457.69
Leisure & Hospitality	24	266	273	259	732,965	211.96
Other Services	21	44	45	44	231,171	401.11
Local Government	10	542	594	841	5,316,401	620.57
State Government	8	61	63	57	386,740	493.08
GREENE COUNTY - TOTAL	912	14,134	14,520	14,724	\$116,927,831	\$622.05
Natural Resources & Mining	38	242	236	242	1,732,628	555.33
Construction	76	294	284	267	2,401,536	655.86
Manufacturing	61	4,863	5,006	4,992	51,951,765	806.73
Trade, Transportation & Utilities	234	2,457	2,461	2,428	16,930,904	531.87
Wholesale Trade	55	579	578	575	5,745,841	765.57
Retail Trade	150	1,653	1,657	1,631	9,319,037	435.25
Transportation, Warehousing & Utilities	29	225	226	222	1,866,026	639.85
Information	11	94	96	92	585,578	479.20
Financial Activities	82	472	484	487	4,226,220	675.87
Professional & Business Services	94	1,120	1,132	1,130	7,095,210	484.14
Education & Health Services	155	1,773	1,818	1,854	13,486,198	571.57
Leisure & Hospitality	72	1,026	1,043	1,004	3,285,321	246.71
Other Services	48	197	202	198	1,139,157	440.34
Local Government	30	1,201	1,362	1,651	10,808,577	591.90
State Government	11	395	396	379	3,284,737	647.88

TABLE 6. COUNTY SUMMARY

NORTH AMERICAN INDUSTRY CLASSIFICATION SYSTEM - INDUSTRY GROUPS	NUMBER OF EMPLOYING UNITS	EMPLOYMENT			TOTAL EARNINGS	AVERAGE WEEKLY EARNINGS
		JULY	AUG	SEPT	JUL-SEPT 2012	
HEMPSTEAD COUNTY - TOTAL	512	8,024	8,104	8,594	\$70,941,348	\$662.21
Natural Resources & Mining	18	196	199	197	1,926,064	750.80
Construction	36	1,154	1,061	1,026	17,803,314	1,267.65
Manufacturing	30	1,750	1,778	1,803	15,226,952	659.15
Trade, Transportation & Utilities	133	1,499	1,498	1,514	12,612,803	645.23
Wholesale Trade	24	379	372	382	3,871,468	788.54
Retail Trade	83	866	862	870	4,745,841	421.55
Transportation, Warehousing & Utilities	26	254	264	262	3,995,494	1,182.10
Information	8	45	45	45	289,922	495.59
Financial Activities	42	226	224	241	2,236,165	746.80
Professional & Business Services	35	155	149	154	1,273,838	641.84
Education & Health Services	83	1,138	1,142	1,133	6,085,035	411.44
Leisure & Hospitality	44	578	599	622	1,873,689	240.35
Other Services	38	179	178	175	1,309,846	568.18
Local Government	29	451	566	980	5,260,205	607.86
State Government	16	653	665	704	5,043,515	575.61
HOT SPRING COUNTY - TOTAL	597	7,978	8,176	8,466	\$62,670,096	\$587.42
Natural Resources & Mining	24	161	153	152	1,168,413	578.61
Construction	62	359	356	342	3,372,824	736.37
Manufacturing	32	1,446	1,468	1,459	16,713,931	882.02
Trade, Transportation & Utilities	148	1,340	1,339	1,368	10,562,075	602.27
Wholesale Trade	15	73	71	71	812,393	871.98
Retail Trade	94	904	902	914	5,226,643	443.44
Transportation, Warehousing & Utilities	39	363	366	383	4,523,039	938.65
Information	7	47	49	49	492,390	783.64
Financial Activities	53	265	259	260	2,376,100	699.40
Professional & Business Services	47	997	992	991	5,597,028	433.43
Education & Health Services	100	1,185	1,206	1,200	8,934,630	574.17
Leisure & Hospitality	47	570	583	570	1,539,918	206.25
Other Services	37	131	142	143	770,934	427.66
Local Government	27	659	798	1,060	5,417,030	496.66
State Government	13	818	831	872	5,724,823	524.04

TABLE 6. COUNTY SUMMARY

NORTH AMERICAN INDUSTRY CLASSIFICATION SYSTEM - INDUSTRY GROUPS	NUMBER OF EMPLOYING UNITS	EMPLOYMENT			TOTAL EARNINGS	AVERAGE WEEKLY EARNINGS
		JULY	AUG	SEPT	JUL-SEPT 2012	
HOWARD COUNTY - TOTAL	367	6,863	6,969	7,201	\$47,003,420	\$515.71
Natural Resources & Mining	19	242	241	241	1,802,917	574.67
Construction	18	116	120	123	1,114,376	716.33
Manufacturing	23	3,789	3,783	3,733	25,699,061	524.60
Trade, Transportation & Utilities	98	886	898	887	6,150,217	531.37
Wholesale Trade	19	69	71	71	641,652	701.77
Retail Trade	55	614	623	606	3,444,974	431.36
Transportation, Warehousing & Utilities	24	203	204	210	2,063,591	771.82
Information	5	33	33	33	187,736	437.61
Financial Activities	37	152	152	151	1,018,703	516.67
Professional & Business Services	27	137	138	142	905,146	500.91
Education & Health Services	64	648	653	630	4,316,049	515.80
Leisure & Hospitality	23	316	320	321	903,826	217.95
Other Services	25	116	120	122	690,363	445.01
Local Government	17	309	400	697	3,423,096	561.84
State Government	11	119	111	121	791,930	520.66
INDEPENDENCE COUNTY - TOTAL	903	13,714	14,009	14,392	\$113,403,013	\$621.39
Natural Resources & Mining	15	306	276	257	3,065,117	843.07
Construction	65	356	359	384	3,355,941	704.68
Manufacturing	44	3,071	2,875	2,874	28,679,420	750.38
Trade, Transportation & Utilities	229	2,784	2,768	2,791	20,877,987	577.49
Wholesale Trade	32	459	450	449	3,718,310	631.86
Retail Trade	152	1,597	1,592	1,605	9,027,298	434.55
Transportation, Warehousing & Utilities	45	728	726	737	8,132,379	856.55
Information	10	122	124	124	865,139	539.59
Financial Activities	76	480	473	476	4,477,146	723.01
Professional & Business Services	92	654	677	653	4,479,499	521.03
Education & Health Services	166	3,169	3,137	3,134	30,544,391	746.68
Leisure & Hospitality	77	1,052	1,064	1,075	3,217,038	232.65
Other Services	65	347	348	348	1,843,015	407.78
Local Government	47	797	1,349	1,650	7,472,569	454.28
State Government	17	576	559	626	4,525,751	593.07

TABLE 6. COUNTY SUMMARY

NORTH AMERICAN INDUSTRY CLASSIFICATION SYSTEM - INDUSTRY GROUPS	NUMBER OF EMPLOYING UNITS	EMPLOYMENT			TOTAL EARNINGS	AVERAGE WEEKLY EARNINGS
		JULY	AUG	SEPT	JUL-SEPT 2012	
IZARD COUNTY - TOTAL	257	2,847	3,014	3,144	\$21,306,992	\$546.03
Natural Resources & Mining	5	132	132	135	1,376,769	796.28
Construction	26	182	161	135	2,079,228	1,003.81
Trade, Transportation & Utilities	67	567	561	558	3,344,146	457.73
Wholesale Trade	10	20	20	19	124,644	487.53
Retail Trade	45	407	405	400	2,017,376	384.12
Transportation, Warehousing & Utilities	12	140	136	139	1,202,126	668.47
Financial Activities	28	143	141	142	1,087,109	588.90
Professional & Business Services	16	83	87	84	470,462	427.43
Education & Health Services	43	606	604	620	4,097,591	516.72
Leisure & Hospitality	21	133	139	134	377,328	214.47
Local Government	18	283	458	534	2,800,279	506.84
State Government	10	406	424	499	3,128,472	543.23
Other	23	312	307	303	2,545,608	637.15
JACKSON COUNTY - TOTAL	480	5,077	5,143	5,322	\$41,454,223	\$615.52
Natural Resources & Mining	54	301	329	335	2,432,652	581.74
Construction	23	120	124	121	1,061,664	671.23
Manufacturing	16	910	909	902	9,727,466	824.99
Trade, Transportation & Utilities	114	1,069	1,063	1,069	8,045,944	580.06
Wholesale Trade	24	242	241	236	2,551,808	819.02
Retail Trade	73	726	719	724	4,471,772	475.77
Transportation, Warehousing & Utilities	17	101	103	109	1,022,364	753.77
Information	4	22	22	21	111,882	397.21
Financial Activities	36	151	155	156	1,596,654	797.53
Professional & Business Services	40	143	148	142	1,015,629	541.28
Education & Health Services	92	823	834	786	7,051,119	666.06
Leisure & Hospitality	31	290	293	296	839,874	220.50
Other Services	25	67	66	69	422,914	483.15
Local Government	32	445	475	682	3,523,274	507.53
State Government	13	736	725	743	5,625,151	588.98

TABLE 6. COUNTY SUMMARY

NORTH AMERICAN INDUSTRY CLASSIFICATION SYSTEM - INDUSTRY GROUPS	NUMBER OF EMPLOYING UNITS	EMPLOYMENT			TOTAL EARNINGS	AVERAGE WEEKLY EARNINGS
		JULY	AUG	SEPT	JUL-SEPT 2012	
JEFFERSON COUNTY - TOTAL	2,124	27,102	28,174	28,628	\$246,475,820	\$677.91
Natural Resources & Mining	41	320	316	318	3,731,029	902.52
Construction	105	884	995	875	14,775,164	1,238.07
Manufacturing	63	5,456	5,444	5,424	56,898,662	804.37
Trade, Transportation & Utilities	436	5,173	5,151	5,092	44,774,789	670.25
Wholesale Trade	80	1,005	988	971	12,435,162	968.17
Retail Trade	288	3,214	3,208	3,175	19,932,778	479.30
Transportation, Warehousing & Utilities	68	954	955	946	12,406,849	1,002.84
Information	15	126	116	110	989,350	648.61
Financial Activities	154	1,132	1,104	1,099	11,661,928	806.96
Professional & Business Services	162	1,608	1,612	1,646	12,905,747	612.05
Education & Health Services	804	5,203	5,227	5,209	44,518,669	656.92
Leisure & Hospitality	134	1,887	1,897	1,879	5,694,431	232.05
Other Services	134	622	613	612	4,220,074	527.27
Local Government	39	1,688	2,657	3,144	18,773,882	578.51
State Government	37	3,003	3,042	3,220	27,532,095	685.76
JOHNSON COUNTY - TOTAL	475	7,951	8,104	8,587	\$57,389,902	\$537.45
Natural Resources & Mining	15	138	132	132	1,138,233	653.41
Construction	29	132	144	152	1,052,713	567.60
Manufacturing	34	3,125	3,137	3,137	20,684,481	507.86
Trade, Transportation & Utilities	116	1,917	1,946	1,934	14,411,793	573.71
Retail Trade	71	868	865	844	4,668,872	418.10
Other Trade, Transportation & Utilities	45	1,049	1,081	1,090	9,742,921	698.25
Information	5	37	38	38	266,399	544.04
Financial Activities	49	212	209	213	1,642,350	597.80
Professional & Business Services	50	149	146	144	1,120,838	589.19
Education & Health Services	86	1,109	1,138	1,150	9,344,743	634.82
Leisure & Hospitality	40	463	481	481	1,394,061	225.76
Other Services	28	79	81	74	450,037	443.82
Local Government	14	466	526	1,003	4,892,549	565.94
State Government	9	124	126	129	991,705	603.84

TABLE 6. COUNTY SUMMARY

NORTH AMERICAN INDUSTRY CLASSIFICATION SYSTEM - INDUSTRY GROUPS	NUMBER OF EMPLOYING UNITS	EMPLOYMENT			TOTAL EARNINGS	AVERAGE WEEKLY EARNINGS
		JULY	AUG	SEPT	JUL-SEPT 2012	
LAFAYETTE COUNTY - TOTAL	172	1,168	1,195	1,248	\$8,238,478	\$526.50
Natural Resources & Mining	30	161	158	169	1,532,660	724.78
Construction	10	78	81	79	859,657	833.54
Manufacturing	6	28	29	29	230,150	617.58
Trade, Transportation & Utilities	34	208	215	212	1,269,338	461.30
Retail Trade	20	123	125	120	469,093	294.16
Other Trade, Transportation & Utilities	14	85	90	92	800,245	691.66
Financial Activities	15	53	53	49	366,104	545.07
Professional & Business Services	15	48	49	44	378,902	620.13
Education & Health Services	30	223	218	221	1,300,483	453.34
Leisure & Hospitality	5	45	45	43	138,088	239.60
Local Government	13	202	223	279	1,447,743	474.57
State Government	7	41	44	43	277,038	499.47
Other	7	81	80	80	438,315	419.71
LAWRENCE COUNTY - TOTAL	398	3,661	3,901	4,101	\$26,487,787	\$524.10
Natural Resources & Mining	41	188	197	197	1,488,709	590.29
Construction	25	104	117	110	899,422	627.07
Manufacturing	23	467	478	483	3,587,940	579.82
Trade, Transportation & Utilities	112	911	913	893	6,241,525	530.13
Wholesale Trade	20	222	216	217	1,918,454	675.91
Retail Trade	60	573	576	558	3,080,105	416.40
Transportation, Warehousing & Utilities	32	116	121	118	1,242,966	808.00
Financial Activities	30	139	142	141	1,035,304	566.15
Professional & Business Services	28	101	103	101	887,562	671.55
Education & Health Services	63	513	527	548	3,794,234	551.38
Leisure & Hospitality	20	244	262	276	685,808	202.38
Local Government	27	834	995	1,186	6,796,183	520.18
State Government	10	99	100	101	625,852	481.42
Other	19	61	67	65	445,248	532.38

TABLE 6. COUNTY SUMMARY

NORTH AMERICAN INDUSTRY CLASSIFICATION SYSTEM - INDUSTRY GROUPS	NUMBER OF EMPLOYING UNITS	EMPLOYMENT			TOTAL EARNINGS	AVERAGE WEEKLY EARNINGS
		JULY	AUG	SEPT	JUL-SEPT 2012	
LEE COUNTY - TOTAL	307	1,921	2,067	2,118	\$14,048,731	\$530.96
Natural Resources & Mining	36	229	232	249	1,813,430	589.41
Construction	9	31	34	31	225,127	541.17
Trade, Transportation & Utilities	50	360	360	350	2,516,309	542.70
Wholesale Trade	8	86	82	79	755,710	706.05
Retail Trade	25	203	207	198	1,039,332	394.48
Transportation, Warehousing & Utilities	17	71	71	73	721,267	774.17
Financial Activities	16	72	72	76	590,695	619.61
Professional & Business Services	15	67	68	65	738,558	852.18
Education & Health Services	135	388	394	402	2,562,305	499.41
Leisure & Hospitality	10	95	92	96	277,049	225.92
Local Government	15	157	301	334	1,547,284	450.84
State Government	7	498	490	489	3,647,712	569.93
Other	14	24	24	26	130,262	406.22
LINCOLN COUNTY - TOTAL	259	2,725	2,889	2,916	\$20,248,458	\$547.80
Natural Resources & Mining	31	176	170	180	1,287,207	564.73
Construction	13	70	72	70	503,966	548.58
Manufacturing	8	326	323	319	2,085,511	497.18
Trade, Transportation & Utilities	44	374	377	359	3,282,899	682.52
Wholesale Trade	9	52	51	51	499,440	748.41
Retail Trade	23	178	183	178	817,217	349.89
Transportation, Warehousing & Utilities	12	144	143	130	1,966,242	1,088.13
Financial Activities	19	62	63	63	524,696	644.06
Professional & Business Services	12	28	30	30	246,138	645.47
Education & Health Services	83	381	387	385	2,159,668	432.25
Leisure & Hospitality	15	137	137	136	312,771	176.04
Local Government	7	155	314	366	2,015,763	557.10
State Government	12	983	986	976	7,567,260	592.97
Other	15	33	30	32	262,579	637.84

TABLE 6. COUNTY SUMMARY

NORTH AMERICAN INDUSTRY CLASSIFICATION SYSTEM - INDUSTRY GROUPS	NUMBER OF EMPLOYING UNITS	EMPLOYMENT			TOTAL EARNINGS	AVERAGE WEEKLY EARNINGS
		JULY	AUG	SEPT	JUL-SEPT 2012	
LITTLE RIVER COUNTY - TOTAL	236	3,766	3,694	3,855	\$42,690,396	\$870.67
Natural Resources & Mining	12	84	84	85	687,345	626.95
Construction	18	567	509	503	6,968,287	1,018.41
Manufacturing	16	1,245	1,248	1,250	22,591,685	1,392.86
Trade, Transportation & Utilities	57	575	568	550	3,895,236	530.95
Wholesale Trade	9	28	27	28	338,400	940.87
Retail Trade	35	381	375	365	2,252,457	463.69
Transportation, Warehousing & Utilities	13	166	166	157	1,304,379	615.56
Financial Activities	21	85	86	84	646,269	584.86
Professional & Business Services	18	90	86	84	618,848	549.27
Education & Health Services	30	163	167	164	1,044,069	487.73
Leisure & Hospitality	15	211	204	203	716,519	267.56
Local Government	20	572	569	758	4,574,036	555.84
State Government	11	76	74	79	500,880	504.75
Other	18	98	99	95	447,222	353.44
LOGAN COUNTY - TOTAL	481	5,266	5,510	5,606	\$38,626,019	\$544.12
Natural Resources & Mining	20	169	165	164	2,544,380	1,179.05
Construction	45	260	258	289	2,520,939	720.89
Manufacturing	22	1,304	1,312	1,278	10,180,287	603.31
Trade, Transportation & Utilities	115	918	908	903	5,993,322	506.81
Wholesale Trade	13	65	64	65	300,252	357.16
Retail Trade	73	706	693	690	3,919,912	433.03
Transportation, Warehousing & Utilities	29	147	151	148	1,773,158	917.47
Information	6	38	38	38	359,942	728.63
Financial Activities	42	205	210	206	1,712,302	636.31
Professional & Business Services	47	116	113	118	709,589	471.91
Education & Health Services	93	757	780	781	5,101,349	507.87
Leisure & Hospitality	27	312	310	314	869,274	214.32
Other Services	28	131	126	127	953,059	572.75
Local Government	22	500	736	836	4,598,927	512.21
State Government	14	556	554	552	3,082,649	428.03

TABLE 6. COUNTY SUMMARY

NORTH AMERICAN INDUSTRY CLASSIFICATION SYSTEM - INDUSTRY GROUPS	NUMBER OF EMPLOYING UNITS	EMPLOYMENT			TOTAL EARNINGS	AVERAGE WEEKLY EARNINGS
		JULY	AUG	SEPT	JUL-SEPT 2012	
LONOKE COUNTY - TOTAL	1,294	12,598	13,037	12,990	\$93,029,151	\$555.81
Natural Resources & Mining	76	522	509	494	4,676,250	707.63
Construction	139	779	776	756	7,319,167	730.87
Manufacturing	42	1,426	1,481	1,479	16,395,424	862.64
Trade, Transportation & Utilities	314	2,971	2,957	2,932	19,277,664	502.11
Wholesale Trade	77	398	392	376	4,102,297	811.91
Retail Trade	176	2,298	2,293	2,278	12,197,573	409.79
Transportation, Warehousing & Utilities	61	275	272	278	2,977,794	832.95
Information	15	97	90	91	838,512	696.05
Financial Activities	135	507	512	511	6,284,859	947.94
Professional & Business Services	153	653	631	680	5,033,104	591.39
Education & Health Services	200	1,612	1,621	1,611	10,605,142	505.23
Leisure & Hospitality	105	1,523	1,538	1,459	4,524,426	231.00
Other Services	75	215	220	224	1,262,694	442.17
Local Government	25	2,138	2,543	2,595	15,684,403	497.45
State Government	15	155	159	158	1,127,506	551.26
MADISON COUNTY - TOTAL	233	2,839	3,155	3,197	\$21,323,755	\$535.40
Natural Resources & Mining	9	34	29	31	233,200	572.50
Construction	25	77	86	82	783,419	737.91
Manufacturing	23	1,190	1,164	1,149	8,390,487	552.75
Trade, Transportation & Utilities	42	555	560	558	3,735,784	515.30
Retail Trade	31	439	449	441	2,396,640	416.16
Other Trade, Transportation & Utilities	11	116	111	117	1,339,144	898.35
Information	6	39	38	40	488,376	963.27
Financial Activities	14	65	66	65	495,243	583.10
Professional & Business Services	25	131	128	131	901,789	533.60
Education & Health Services	46	248	266	266	1,598,714	472.99
Leisure & Hospitality	13	161	159	169	500,188	236.05
Other Services	14	30	34	34	256,428	603.83
Local Government	9	269	583	631	3,658,663	569.32
State Government	7	40	42	41	281,464	528.08

TABLE 6. COUNTY SUMMARY

NORTH AMERICAN INDUSTRY CLASSIFICATION SYSTEM - INDUSTRY GROUPS	NUMBER OF EMPLOYING UNITS	EMPLOYMENT			TOTAL EARNINGS	AVERAGE WEEKLY EARNINGS
		JULY	AUG	SEPT	JUL-SEPT 2012	
MARION COUNTY - TOTAL	294	3,447	3,565	3,715	\$21,646,751	\$465.69
Natural Resources & Mining	5	27	26	28	130,928	373.01
Construction	22	77	72	80	392,985	396.02
Manufacturing	20	1,529	1,594	1,654	9,827,721	474.76
Trade, Transportation & Utilities	53	522	524	514	3,082,570	456.00
Wholesale Trade	7	44	43	45	419,428	733.27
Retail Trade	37	445	448	437	2,326,152	403.61
Transportation, Warehousing & Utilities	9	33	33	32	336,990	793.54
Information	3	56	55	55	648,800	901.95
Financial Activities	35	204	211	204	1,596,303	595.12
Professional & Business Services	29	59	59	59	373,768	487.31
Education & Health Services	52	327	323	328	1,940,878	457.97
Leisure & Hospitality	35	204	204	194	544,374	208.68
Other Services	15	30	29	27	125,876	337.77
Local Government	18	337	395	497	2,583,615	485.13
State Government	7	75	73	75	398,933	412.83
MILLER COUNTY - TOTAL	865	12,538	12,823	13,333	\$110,445,120	\$658.69
Natural Resources & Mining	28	127	129	129	1,180,217	707.42
Construction	80	923	985	990	8,277,531	659.14
Manufacturing	29	2,423	2,356	2,341	32,164,588	1,042.50
Trade, Transportation & Utilities	228	3,521	3,443	3,434	28,572,977	634.14
Wholesale Trade	55	591	584	578	5,948,795	783.11
Retail Trade	131	1,390	1,354	1,357	7,753,658	436.31
Transportation, Warehousing & Utilities	42	1,540	1,505	1,499	14,870,524	755.21
Information	7	76	72	73	2,261,902	2,361.89
Financial Activities	84	368	374	355	3,111,600	654.57
Professional & Business Services	87	1,252	1,284	1,243	6,749,374	412.16
Education & Health Services	128	905	908	908	6,397,313	542.56
Leisure & Hospitality	93	1,347	1,360	1,261	4,882,839	283.97
Other Services	60	306	316	315	1,617,047	398.25
Local Government	25	785	1,088	1,778	10,765,255	680.44
State Government	16	505	508	506	4,464,477	678.25

TABLE 6. COUNTY SUMMARY

NORTH AMERICAN INDUSTRY CLASSIFICATION SYSTEM - INDUSTRY GROUPS	NUMBER OF EMPLOYING UNITS	EMPLOYMENT			TOTAL EARNINGS	AVERAGE WEEKLY EARNINGS
		JULY	AUG	SEPT	JUL-SEPT 2012	
MISSISSIPPI COUNTY - TOTAL	1,169	18,011	18,491	19,457	\$180,785,681	\$745.54
Natural Resources & Mining	102	626	638	820	4,444,718	492.18
Construction	58	670	740	852	10,880,262	1,110.00
Manufacturing	54	6,874	6,887	6,837	94,827,837	1,062.40
Trade, Transportation & Utilities	293	3,076	3,140	3,140	25,593,728	631.28
Wholesale Trade	59	494	494	487	5,993,231	937.66
Retail Trade	176	1,850	1,874	1,882	9,834,543	404.84
Transportation, Warehousing & Utilities	58	732	772	771	9,765,954	990.63
Information	9	66	65	63	464,118	552.08
Financial Activities	92	511	510	508	4,157,625	627.50
Professional & Business Services	84	1,197	1,223	1,329	7,888,463	485.57
Education & Health Services	261	1,794	1,813	1,756	11,910,475	512.51
Leisure & Hospitality	82	1,109	1,151	1,136	3,260,302	221.55
Other Services	59	211	204	193	1,094,440	415.40
Local Government	53	1,333	1,569	2,221	12,189,804	549.10
State Government	22	544	551	602	4,073,909	554.00
MONROE COUNTY - TOTAL	303	2,141	2,281	2,282	\$14,552,355	\$500.93
Natural Resources & Mining	36	171	171	175	1,755,032	783.38
Construction	15	62	61	58	545,118	695.01
Manufacturing	7	129	128	131	1,026,875	610.75
Trade, Transportation & Utilities	80	673	656	645	4,530,513	529.64
Wholesale Trade	19	266	261	260	2,094,225	614.08
Retail Trade	38	301	284	278	1,481,245	396.09
Transportation, Warehousing & Utilities	23	106	111	107	955,043	680.23
Financial Activities	19	94	93	92	805,402	666.17
Professional & Business Services	14	36	37	35	203,377	434.57
Education & Health Services	60	315	308	320	1,884,389	461.14
Leisure & Hospitality	22	245	254	257	727,931	222.20
Local Government	22	210	361	356	1,870,819	465.73
State Government	8	115	116	119	751,259	495.34
Other	20	91	96	94	451,640	370.91

TABLE 6. COUNTY SUMMARY

NORTH AMERICAN INDUSTRY CLASSIFICATION SYSTEM - INDUSTRY GROUPS	NUMBER OF EMPLOYING UNITS	EMPLOYMENT			TOTAL EARNINGS	AVERAGE WEEKLY EARNINGS
		JULY	AUG	SEPT	JUL-SEPT 2012	
MONTGOMERY COUNTY - TOTAL	176	1,714	1,572	1,474	\$9,185,442	\$445.32
Natural Resources & Mining	9	33	36	30	272,468	635.12
Construction	21	79	81	80	604,498	581.25
Trade, Transportation & Utilities	44	258	253	255	1,741,443	524.64
Wholesale Trade	12	74	72	70	603,099	644.34
Retail Trade	22	160	156	160	953,252	462.15
Transportation, Warehousing & Utilities	10	24	25	25	185,092	577.21
Financial Activities	10	70	70	70	535,040	587.96
Professional & Business Services	13	27	26	24	239,299	717.18
Education & Health Services	20	90	80	84	516,011	468.82
Leisure & Hospitality	21	644	428	243	1,722,303	302.25
Local Government	9	307	383	472	2,339,180	464.55
State Government	7	43	43	43	337,499	603.75
Other	22	163	172	173	877,701	398.71
NEVADA COUNTY - TOTAL	188	2,266	2,252	2,415	\$17,165,899	\$571.38
Natural Resources & Mining	9	35	35	35	268,097	589.22
Trade, Transportation & Utilities	38	515	520	519	3,978,877	590.86
Wholesale Trade	3	13	14	14	25,297	142.38
Retail Trade	24	282	283	280	1,470,285	401.53
Transportation, Warehousing & Utilities	11	220	223	225	2,483,295	857.89
Financial Activities	14	52	61	56	442,494	604.22
Professional & Business Services	12	50	49	48	343,466	539.19
Education & Health Services	37	444	451	447	2,430,410	417.93
Leisure & Hospitality	9	79	81	87	230,480	215.33
Other Services	13	49	49	49	153,940	241.66
Local Government	27	268	278	425	1,562,878	371.44
State Government	10	70	72	79	481,468	502.75
Other	19	704	656	670	7,273,789	826.88

TABLE 6. COUNTY SUMMARY

NORTH AMERICAN INDUSTRY CLASSIFICATION SYSTEM - INDUSTRY GROUPS	NUMBER OF EMPLOYING UNITS	EMPLOYMENT			TOTAL EARNINGS	AVERAGE WEEKLY EARNINGS
		JULY	AUG	SEPT	JUL-SEPT 2012	
NEWTON COUNTY - TOTAL	128	864	994	1,063	\$5,246,052	\$414.46
Construction	5	23	25	20	150,279	510.00
Manufacturing	10	52	51	48	346,424	529.43
Trade, Transportation & Utilities	31	162	166	163	917,694	431.31
Wholesale Trade	3	6	6	6	48,874	626.59
Retail Trade	15	103	106	103	421,869	312.03
Transportation, Warehousing & Utilities	13	53	54	54	446,951	640.64
Education & Health Services	33	238	243	238	1,061,227	340.61
Leisure & Hospitality	15	93	85	83	336,030	297.11
Other Services	5	3	3	3	22,369	573.56
Local Government	13	165	292	377	1,724,587	477.20
State Government	6	91	93	95	424,977	351.51
Other	10	37	36	36	262,465	555.68
OUACHITA COUNTY - TOTAL	645	6,621	6,921	7,040	\$49,240,920	\$552.10
Natural Resources & Mining	40	201	210	205	1,686,000	631.62
Construction	41	202	205	208	1,604,838	602.19
Manufacturing	24	551	547	543	5,159,423	725.56
Trade, Transportation & Utilities	170	1,662	1,666	1,644	11,516,299	534.51
Wholesale Trade	26	243	250	243	2,708,518	849.24
Retail Trade	115	1,114	1,111	1,096	5,371,349	373.24
Transportation, Warehousing & Utilities	29	305	305	305	3,436,432	866.69
Information	7	45	45	45	375,058	641.12
Financial Activities	56	291	289	284	2,293,646	612.62
Professional & Business Services	47	473	496	469	3,728,782	598.39
Education & Health Services	139	1,240	1,242	1,232	9,764,439	606.71
Leisure & Hospitality	39	501	509	475	1,361,791	211.62
Other Services	38	127	136	135	703,567	407.94
Local Government	30	622	884	1,108	5,620,641	496.20
State Government	14	706	692	692	5,426,436	599.16

TABLE 6. COUNTY SUMMARY

NORTH AMERICAN INDUSTRY CLASSIFICATION SYSTEM - INDUSTRY GROUPS	NUMBER OF EMPLOYING UNITS	EMPLOYMENT			TOTAL EARNINGS	AVERAGE WEEKLY EARNINGS
		JULY	AUG	SEPT	JUL-SEPT 2012	
PERRY COUNTY - TOTAL	146	1,164	1,292	1,349	\$8,402,026	\$509.57
Construction	16	97	98	101	802,877	625.94
Manufacturing	5	43	41	41	300,787	555.30
Trade, Transportation & Utilities	25	170	173	169	1,054,217	475.16
Retail Trade	14	138	140	136	581,238	323.99
Other Trade, Transportation & Utilities	11	32	33	33	472,979	1,113.77
Financial Activities	10	36	35	35	294,903	642.02
Professional & Business Services	13	37	37	44	461,336	902.22
Education & Health Services	32	234	241	240	1,340,942	432.79
Leisure & Hospitality	10	159	150	143	393,529	200.92
Local Government	11	187	334	393	1,869,312	471.97
State Government	8	60	60	61	306,946	391.35
Other	16	141	123	122	1,577,177	942.91
PHILLIPS COUNTY - TOTAL	870	5,662	5,934	6,041	\$40,034,144	\$523.82
Natural Resources & Mining	75	350	375	385	2,120,620	440.88
Construction	28	124	111	102	841,871	576.49
Manufacturing	11	366	357	352	3,145,109	675.16
Trade, Transportation & Utilities	161	1,423	1,402	1,424	10,734,130	582.99
Wholesale Trade	33	362	356	359	3,577,207	766.49
Retail Trade	85	772	764	784	4,302,725	427.99
Transportation, Warehousing & Utilities	43	289	282	281	2,854,198	773.08
Information	10	44	42	42	332,398	599.28
Financial Activities	40	217	215	208	1,724,825	621.93
Professional & Business Services	50	250	263	248	1,820,683	552.11
Education & Health Services	387	1,461	1,538	1,515	9,699,758	495.88
Leisure & Hospitality	32	335	307	302	934,238	228.38
Other Services	35	72	73	70	419,655	450.43
Local Government	27	540	788	928	4,820,933	493.14
State Government	14	480	463	465	3,439,924	563.80

TABLE 6. COUNTY SUMMARY

NORTH AMERICAN INDUSTRY CLASSIFICATION SYSTEM - INDUSTRY GROUPS	NUMBER OF EMPLOYING UNITS	EMPLOYMENT			TOTAL EARNINGS	AVERAGE WEEKLY EARNINGS
		JULY	AUG	SEPT	JUL-SEPT 2012	
PIKE COUNTY - TOTAL	252	2,073	2,215	2,239	\$13,327,349	\$471.20
Natural Resources & Mining	25	113	118	114	919,568	615.10
Construction	16	38	38	37	288,681	589.55
Manufacturing	17	213	205	202	1,114,235	414.73
Trade, Transportation & Utilities	76	517	501	502	3,170,263	481.32
Wholesale Trade	12	98	97	94	736,437	588.05
Retail Trade	46	356	352	346	1,834,864	401.74
Transportation, Warehousing & Utilities	18	63	52	62	598,962	780.92
Information	5	26	26	27	323,991	946.42
Financial Activities	22	180	180	181	1,661,471	708.72
Professional & Business Services	11	35	35	35	452,294	994.05
Education & Health Services	20	274	271	275	1,484,392	417.75
Leisure & Hospitality	19	223	216	194	595,847	217.22
Other Services	21	62	73	75	420,602	462.20
Local Government	10	255	415	459	2,252,875	460.49
State Government	10	137	137	138	643,130	360.23
POINSETT COUNTY - TOTAL	523	4,809	5,116	5,147	\$36,409,157	\$557.47
Natural Resources & Mining	58	344	354	396	2,843,646	599.84
Construction	23	102	102	103	1,017,828	765.09
Manufacturing	22	665	663	654	5,983,324	696.65
Trade, Transportation & Utilities	127	1,294	1,310	1,271	9,849,448	586.57
Wholesale Trade	29	397	389	375	4,516,858	897.81
Retail Trade	69	713	730	695	3,650,808	394.06
Transportation, Warehousing & Utilities	29	184	191	201	1,681,782	673.79
Information	5	53	54	53	407,450	587.67
Financial Activities	37	258	259	256	2,509,173	749.08
Professional & Business Services	33	163	169	160	1,907,803	894.84
Education & Health Services	106	625	645	645	3,964,238	477.71
Leisure & Hospitality	43	389	370	371	1,035,921	211.56
Other Services	27	65	64	64	363,993	435.22
Local Government	31	720	996	1,038	5,566,060	466.40
State Government	11	131	130	136	960,273	558.19

TABLE 6. COUNTY SUMMARY

NORTH AMERICAN INDUSTRY CLASSIFICATION SYSTEM - INDUSTRY GROUPS	NUMBER OF EMPLOYING UNITS	EMPLOYMENT			TOTAL EARNINGS	AVERAGE WEEKLY EARNINGS
		JULY	AUG	SEPT	JUL-SEPT 2012	
POLK COUNTY - TOTAL	516	5,656	5,984	6,046	\$38,454,542	\$501.76
Natural Resources & Mining	22	140	144	142	1,389,957	752.96
Construction	37	172	189	206	1,171,662	476.87
Manufacturing	35	1,323	1,331	1,341	10,182,674	588.20
Trade, Transportation & Utilities	134	1,175	1,182	1,158	6,801,322	446.53
Wholesale Trade	19	58	56	49	386,893	547.75
Retail Trade	78	837	836	826	4,134,738	381.82
Transportation, Warehousing & Utilities	37	280	290	283	2,279,691	616.74
Information	7	49	51	52	321,702	488.41
Financial Activities	44	241	243	246	1,899,879	600.59
Professional & Business Services	47	159	160	156	1,113,457	540.95
Education & Health Services	84	1,065	1,085	1,087	7,685,036	547.87
Leisure & Hospitality	41	511	508	497	1,325,502	201.77
Other Services	31	195	138	139	878,847	429.68
Local Government	21	390	685	751	4,035,321	509.98
State Government	13	236	268	271	1,649,183	491.07
POPE COUNTY - TOTAL	1,763	24,514	25,195	26,342	\$209,484,437	\$635.66
Natural Resources & Mining	36	694	512	467	4,657,893	642.50
Construction	161	1,238	1,499	1,682	16,522,687	862.85
Manufacturing	71	4,410	4,379	4,413	40,017,258	699.50
Trade, Transportation & Utilities	426	5,798	5,782	5,812	58,042,858	770.15
Wholesale Trade	92	617	613	608	6,234,355	782.75
Retail Trade	263	3,151	3,142	3,169	17,524,316	427.40
Transportation, Warehousing & Utilities	71	2,030	2,027	2,035	34,284,187	1,298.71
Information	24	214	212	213	1,723,702	622.50
Financial Activities	178	1,248	1,260	1,259	9,233,000	565.62
Professional & Business Services	258	2,545	2,651	2,736	19,449,507	565.85
Education & Health Services	311	2,939	3,048	3,027	23,499,248	601.61
Leisure & Hospitality	135	2,385	2,417	2,460	7,337,336	233.16
Other Services	105	418	407	432	2,602,382	477.76
Local Government	42	1,186	1,488	2,284	12,591,983	586.09
State Government	16	1,439	1,540	1,557	13,806,583	702.41

TABLE 6. COUNTY SUMMARY

NORTH AMERICAN INDUSTRY CLASSIFICATION SYSTEM - INDUSTRY GROUPS	NUMBER OF EMPLOYING UNITS	EMPLOYMENT			TOTAL EARNINGS	AVERAGE WEEKLY EARNINGS
		JULY	AUG	SEPT	JUL-SEPT 2012	
PRAIRIE COUNTY - TOTAL	246	1,243	1,361	1,394	\$9,364,913	\$540.55
Natural Resources & Mining	34	155	157	139	1,437,220	735.40
Construction	14	84	88	80	1,001,831	917.43
Trade, Transportation & Utilities	59	298	327	332	2,192,671	528.74
Wholesale Trade	10	69	67	64	726,265	838.00
Retail Trade	34	176	191	181	786,493	331.20
Transportation, Warehousing & Utilities	15	53	69	87	679,913	750.73
Financial Activities	15	52	52	54	429,019	626.61
Professional & Business Services	13	47	47	47	293,014	479.56
Education & Health Services	48	209	209	219	1,292,714	468.32
Leisure & Hospitality	18	106	99	99	282,882	214.74
Other Services	14	38	38	35	176,676	367.31
Local Government	15	187	278	322	1,751,241	513.51
State Government	9	40	40	41	281,051	536.02
Other	7	27	26	26	226,594	661.91
PULASKI COUNTY - TOTAL	14,267	227,445	230,281	234,069	\$2,394,734,506	\$798.84
Natural Resources & Mining	55	775	777	779	10,523,652	1,041.84
Construction	1,005	8,281	8,349	8,312	92,703,329	857.71
Manufacturing	356	13,079	12,874	12,831	162,909,445	969.33
Trade, Transportation & Utilities	3,252	47,117	47,203	47,602	459,178,268	746.64
Wholesale Trade	1,049	12,228	12,186	12,048	169,882,604	1,075.19
Retail Trade	1,796	24,709	24,706	25,000	161,333,688	500.31
Transportation, Warehousing & Utilities	407	10,180	10,311	10,554	127,961,976	951.19
Information	220	6,284	6,340	6,364	89,427,718	1,086.85
Financial Activities	1,705	15,703	15,692	15,491	220,302,991	1,084.31
Professional & Business Services	2,799	32,516	32,481	32,390	336,961,229	798.47
Education & Health Services	2,284	38,329	38,521	38,666	430,200,228	859.42
Leisure & Hospitality	1,154	21,611	21,544	20,886	85,274,832	307.28
Other Services	1,135	7,048	6,946	6,833	55,412,182	613.98
Local Government	101	9,619	12,220	16,112	121,559,660	739.17
State Government	201	27,083	27,334	27,803	330,280,972	927.01

TABLE 6. COUNTY SUMMARY

NORTH AMERICAN INDUSTRY CLASSIFICATION SYSTEM - INDUSTRY GROUPS	NUMBER OF EMPLOYING UNITS	EMPLOYMENT			TOTAL EARNINGS	AVERAGE WEEKLY EARNINGS
		JULY	AUG	SEPT	JUL-SEPT 2012	
RANDOLPH COUNTY - TOTAL	418	4,408	4,558	4,632	\$29,113,092	\$494.07
Natural Resources & Mining	30	120	124	126	628,510	392.00
Construction	30	70	68	65	377,659	429.32
Manufacturing	31	541	577	570	4,374,519	598.05
Trade, Transportation & Utilities	101	898	894	892	5,883,447	505.86
Wholesale Trade	21	189	185	184	1,386,895	573.57
Retail Trade	61	568	564	564	3,144,102	427.81
Transportation, Warehousing & Utilities	19	141	145	144	1,352,450	725.82
Information	5	37	36	36	307,866	651.80
Financial Activities	28	126	126	123	880,228	541.68
Professional & Business Services	43	247	247	245	1,264,316	394.81
Education & Health Services	71	1,185	1,179	1,154	8,424,438	552.62
Leisure & Hospitality	26	341	344	340	970,309	218.46
Other Services	20	52	55	54	298,757	428.22
Local Government	22	566	648	739	3,621,033	427.87
State Government	11	225	260	288	2,082,010	621.56
SAINT FRANCIS COUNTY - TOTAL	797	6,841	7,295	7,334	\$50,456,462	\$542.33
Natural Resources & Mining	36	178	185	225	1,657,969	650.69
Construction	41	208	200	199	1,610,258	612.19
Manufacturing	10	694	688	668	5,631,778	633.97
Trade, Transportation & Utilities	166	1,990	1,988	1,986	14,288,390	552.87
Wholesale Trade	35	559	555	547	5,170,397	718.34
Retail Trade	107	1,137	1,130	1,134	6,316,168	428.57
Transportation, Warehousing & Utilities	24	294	303	305	2,801,825	716.82
Information	8	70	70	71	581,216	635.67
Financial Activities	63	301	295	292	2,196,128	570.72
Professional & Business Services	48	365	360	375	2,467,335	517.62
Education & Health Services	306	1,420	1,436	1,439	9,840,100	528.71
Leisure & Hospitality	48	578	574	556	1,737,577	234.77
Other Services	27	69	72	70	293,205	320.68
Local Government	28	506	946	978	6,156,528	584.67
State Government	16	462	481	475	3,995,978	650.32

TABLE 6. COUNTY SUMMARY

NORTH AMERICAN INDUSTRY CLASSIFICATION SYSTEM - INDUSTRY GROUPS	NUMBER OF EMPLOYING UNITS	EMPLOYMENT			TOTAL EARNINGS	AVERAGE WEEKLY EARNINGS
		JULY	AUG	SEPT	JUL-SEPT 2012	
SALINE COUNTY - TOTAL	1,851	20,330	21,172	21,412	\$160,194,266	\$587.59
Natural Resources & Mining	12	35	38	37	330,263	692.86
Construction	265	1,787	1,822	1,786	16,854,849	720.96
Manufacturing	83	1,357	1,364	1,359	15,222,794	861.02
Trade, Transportation & Utilities	431	4,661	4,615	4,644	34,433,112	570.84
Wholesale Trade	121	524	524	532	5,949,901	869.02
Retail Trade	248	3,744	3,698	3,710	24,371,553	504.32
Transportation, Warehousing & Utilities	62	393	393	402	4,111,658	798.69
Information	11	78	75	74	752,967	765.47
Financial Activities	186	683	692	690	6,397,824	714.97
Professional & Business Services	255	1,380	1,412	1,423	11,851,349	648.86
Education & Health Services	254	3,342	3,336	3,308	25,841,484	597.18
Leisure & Hospitality	150	2,797	2,817	2,748	9,649,037	266.29
Other Services	157	700	715	720	4,317,911	466.72
Local Government	31	2,534	3,303	3,647	27,796,351	676.35
State Government	16	976	983	976	6,746,325	530.44
SCOTT COUNTY - TOTAL	187	2,879	2,873	2,896	\$17,718,922	\$472.82
Natural Resources & Mining	16	151	153	153	1,410,141	712.07
Trade, Transportation & Utilities	37	432	428	421	3,155,712	568.49
Wholesale Trade	9	72	71	69	877,919	955.64
Retail Trade	21	296	292	289	1,562,342	411.11
Transportation, Warehousing & Utilities	7	64	65	63	715,451	859.92
Financial Activities	22	73	71	72	444,544	474.94
Professional & Business Services	12	10	10	12	59,773	431.06
Education & Health Services	37	275	295	303	2,267,057	599.27
Leisure & Hospitality	18	159	155	158	525,039	256.70
Other Services	12	47	47	48	346,314	562.81
Local Government	5	392	391	403	1,630,094	317.18
State Government	7	65	65	64	350,733	417.21
Other	21	1,275	1,258	1,262	7,529,515	457.86

TABLE 6. COUNTY SUMMARY

NORTH AMERICAN INDUSTRY CLASSIFICATION SYSTEM - INDUSTRY GROUPS	NUMBER OF EMPLOYING UNITS	EMPLOYMENT			TOTAL EARNINGS	AVERAGE WEEKLY EARNINGS
		JULY	AUG	SEPT	JUL-SEPT 2012	
SEARCY COUNTY - TOTAL	179	1,512	1,658	1,691	\$8,855,213	\$420.39
Construction	6	15	16	15	109,848	551.08
Manufacturing	17	182	184	184	906,976	380.55
Trade, Transportation & Utilities	39	274	264	268	1,373,965	393.39
Wholesale Trade	7	55	55	52	279,250	397.79
Retail Trade	26	201	192	199	866,349	337.71
Transportation, Warehousing & Utilities	6	18	17	17	228,366	1,013.46
Information	3	5	5	4	49,856	821.80
Financial Activities	14	105	102	101	684,092	512.56
Professional & Business Services	11	21	18	21	114,134	438.98
Education & Health Services	48	345	357	349	1,960,924	430.56
Leisure & Hospitality	14	156	138	134	368,121	198.48
Local Government	10	162	336	382	1,774,364	465.31
State Government	7	118	116	112	583,757	389.34
Other	10	129	122	121	929,176	576.41
SEBASTIAN COUNTY - TOTAL	3,781	63,289	64,817	64,852	\$589,814,471	\$705.39
Natural Resources & Mining	61	1,478	1,441	1,408	24,029,182	1,281.53
Construction	283	2,320	2,310	2,281	21,838,101	729.21
Manufacturing	194	12,567	12,455	12,283	142,932,928	884.19
Trade, Transportation & Utilities	953	12,629	12,611	12,634	101,467,001	618.25
Wholesale Trade	245	2,708	2,719	2,721	30,315,860	858.61
Retail Trade	569	7,691	7,668	7,693	44,798,414	448.47
Transportation, Warehousing & Utilities	139	2,230	2,224	2,220	26,352,727	911.21
Information	51	1,054	1,029	1,024	12,600,847	935.91
Financial Activities	424	2,511	2,503	2,509	27,517,574	844.11
Professional & Business Services	600	8,284	8,359	8,217	75,690,132	702.61
Education & Health Services	565	10,765	10,895	10,955	107,117,766	757.92
Leisure & Hospitality	320	5,702	5,879	5,705	20,840,793	278.23
Other Services	268	1,360	1,310	1,328	8,733,948	504.13
Local Government	40	2,895	4,295	4,624	31,395,182	613.26
State Government	22	1,724	1,730	1,884	15,651,017	676.62

TABLE 6. COUNTY SUMMARY

NORTH AMERICAN INDUSTRY CLASSIFICATION SYSTEM - INDUSTRY GROUPS	NUMBER OF EMPLOYING UNITS	EMPLOYMENT			TOTAL EARNINGS	AVERAGE WEEKLY EARNINGS
		JULY	AUG	SEPT	JUL-SEPT 2012	
SEVIER COUNTY - TOTAL	328	4,741	4,825	5,003	\$32,906,606	\$521.23
Natural Resources & Mining	14	173	173	176	1,538,431	680.12
Construction	19	143	138	144	1,579,902	857.87
Trade, Transportation & Utilities	100	823	809	835	5,319,384	497.59
Wholesale Trade	15	86	87	88	1,066,628	943.08
Retail Trade	67	664	656	672	3,438,005	398.29
Transportation, Warehousing & Utilities	18	73	66	75	814,751	878.60
Information	3	22	21	22	204,855	727.30
Financial Activities	29	240	243	242	1,821,170	579.68
Professional & Business Services	31	94	91	88	613,899	518.93
Education & Health Services	45	517	526	541	3,610,101	525.95
Leisure & Hospitality	27	271	269	270	755,693	215.30
Local Government	12	689	799	918	5,613,057	538.37
State Government	8	153	141	165	1,065,622	535.76
Other	40	1,616	1,615	1,602	10,784,492	514.94
SHARP COUNTY - TOTAL	385	3,438	3,385	3,591	\$21,990,913	\$487.31
Construction	21	121	114	107	987,382	666.25
Manufacturing	16	132	143	144	779,792	429.48
Trade, Transportation & Utilities	83	1,005	1,005	982	7,236,656	558.15
Wholesale Trade	13	38	38	37	169,597	346.35
Retail Trade	56	611	616	617	3,134,241	392.24
Transportation, Warehousing & Utilities	14	356	351	328	3,932,818	876.88
Information	6	46	45	44	397,489	679.47
Financial Activities	34	188	187	187	1,594,103	654.57
Professional & Business Services	42	147	145	144	1,084,232	573.87
Education & Health Services	88	670	656	666	4,166,805	482.72
Leisure & Hospitality	33	408	398	397	1,202,992	230.77
Local Government	25	476	516	747	3,585,437	475.80
State Government	8	96	97	91	540,663	439.33
Other	29	149	79	82	415,362	309.20

TABLE 6. COUNTY SUMMARY

NORTH AMERICAN INDUSTRY CLASSIFICATION SYSTEM - INDUSTRY GROUPS	NUMBER OF EMPLOYING UNITS	EMPLOYMENT			TOTAL EARNINGS	AVERAGE WEEKLY EARNINGS
		JULY	AUG	SEPT	JUL-SEPT 2012	
STONE COUNTY - TOTAL	283	2,454	2,544	2,634	\$14,438,500	\$436.58
Natural Resources & Mining	5	80	66	68	124,619	134.38
Construction	22	57	55	52	317,002	446.06
Manufacturing	21	177	184	186	983,707	415.01
Trade, Transportation & Utilities	68	687	679	686	3,904,140	439.06
Wholesale Trade	8	43	41	45	293,180	524.47
Retail Trade	47	608	600	603	3,211,445	409.22
Transportation, Warehousing & Utilities	13	36	38	38	399,515	823.18
Financial Activities	27	99	106	109	560,367	411.83
Professional & Business Services	17	33	34	33	187,542	432.79
Education & Health Services	48	469	471	485	3,918,649	634.60
Leisure & Hospitality	34	379	368	353	1,049,014	220.07
Local Government	10	255	359	440	2,180,749	477.47
State Government	8	147	153	154	789,802	401.46
Other	23	71	69	68	422,909	469.20
UNION COUNTY - TOTAL	1,345	16,384	17,027	17,507	\$170,216,274	\$771.45
Natural Resources & Mining	103	589	587	585	7,004,456	917.89
Construction	80	1,262	1,283	1,308	15,772,751	944.68
Manufacturing	56	2,976	2,992	3,006	40,005,448	1,028.75
Trade, Transportation & Utilities	338	3,696	3,709	3,723	34,622,487	717.99
Wholesale Trade	69	752	757	761	11,363,020	1,155.17
Retail Trade	210	2,076	2,070	2,082	11,578,921	429.04
Transportation, Warehousing & Utilities	59	868	882	880	11,680,546	1,024.91
Information	12	139	136	131	921,932	524.02
Financial Activities	123	747	749	748	7,176,687	738.04
Professional & Business Services	138	1,502	1,478	1,480	22,321,271	1,154.95
Education & Health Services	251	2,343	2,440	2,402	20,913,929	671.72
Leisure & Hospitality	87	1,153	1,200	1,202	3,602,757	233.87
Other Services	106	469	493	491	2,823,948	448.51
Local Government	34	947	1,427	1,832	10,296,404	564.93
State Government	17	561	533	599	4,754,204	648.04

TABLE 6. COUNTY SUMMARY

NORTH AMERICAN INDUSTRY CLASSIFICATION SYSTEM - INDUSTRY GROUPS	NUMBER OF EMPLOYING UNITS	EMPLOYMENT			TOTAL EARNINGS	AVERAGE WEEKLY EARNINGS
		JULY	AUG	SEPT	JUL-SEPT 2012	
VAN BUREN COUNTY - TOTAL	365	3,498	3,687	3,831	\$28,116,126	\$588.99
Natural Resources & Mining	15	207	210	213	2,961,607	1,084.84
Construction	40	211	203	199	1,590,611	598.80
Manufacturing	8	72	70	65	695,520	775.38
Trade, Transportation & Utilities	99	1,100	1,114	1,112	10,281,985	713.40
Wholesale Trade	8	32	33	32	282,895	673.03
Retail Trade	58	581	575	573	3,177,426	424.09
Transportation, Warehousing & Utilities	33	487	506	507	6,821,664	1,049.49
Information	9	49	46	47	420,321	683.08
Financial Activities	33	145	146	144	1,131,152	600.08
Professional & Business Services	30	115	114	107	683,937	469.74
Education & Health Services	62	690	700	691	4,595,892	509.65
Leisure & Hospitality	29	456	442	415	1,505,803	264.66
Other Services	22	66	68	68	451,127	515.38
Local Government	11	321	511	708	3,333,533	499.53
State Government	7	66	63	62	464,638	561.38
WASHINGTON COUNTY - TOTAL	5,531	86,223	89,610	91,978	\$829,561,982	\$714.82
Natural Resources & Mining	44	389	388	415	4,514,564	874.01
Construction	478	4,098	4,128	4,125	41,558,054	776.48
Manufacturing	218	12,248	12,219	12,239	114,086,625	717.26
Trade, Transportation & Utilities	1,345	20,772	20,833	20,879	181,805,987	671.46
Wholesale Trade	393	3,534	3,562	3,516	51,501,847	1,119.96
Retail Trade	771	10,673	10,773	10,820	67,255,800	481.02
Transportation, Warehousing & Utilities	181	6,565	6,498	6,543	63,048,340	742.10
Information	86	954	961	944	9,458,787	763.48
Financial Activities	597	3,239	3,269	3,292	35,845,845	844.09
Professional & Business Services	973	9,569	9,607	9,721	128,922,262	1,029.56
Education & Health Services	766	13,286	13,386	13,502	140,383,273	806.40
Leisure & Hospitality	573	10,476	10,824	10,956	36,442,745	260.72
Other Services	368	1,796	1,802	1,811	12,385,927	528.43
Local Government	61	3,566	5,727	7,802	52,165,202	704.19
State Government	22	5,830	6,466	6,292	71,992,711	893.79

TABLE 6. COUNTY SUMMARY

NORTH AMERICAN INDUSTRY CLASSIFICATION SYSTEM - INDUSTRY GROUPS	NUMBER OF EMPLOYING UNITS	EMPLOYMENT			TOTAL EARNINGS	AVERAGE WEEKLY EARNINGS
		JULY	AUG	SEPT	JUL-SEPT 2012	
WHITE COUNTY - TOTAL	1,846	23,780	25,015	25,256	\$215,925,359	\$672.90
Natural Resources & Mining	58	1,492	1,412	1,363	22,191,952	1,200.19
Construction	180	1,184	1,183	1,172	10,202,295	665.27
Manufacturing	68	2,331	2,365	2,343	25,027,601	820.51
Trade, Transportation & Utilities	498	6,533	6,437	6,376	52,352,515	624.49
Wholesale Trade	99	655	653	654	6,345,291	746.33
Retail Trade	298	3,282	3,257	3,282	17,990,119	422.72
Transportation, Warehousing & Utilities	101	2,596	2,527	2,440	28,017,105	854.88
Information	22	163	162	174	1,273,830	589.10
Financial Activities	172	865	877	878	8,196,417	721.94
Professional & Business Services	217	1,550	1,512	1,514	10,790,203	544.15
Education & Health Services	299	4,883	5,017	5,075	52,294,582	805.88
Leisure & Hospitality	150	2,341	2,466	2,459	7,147,002	226.99
Other Services	117	540	547	544	4,351,854	615.74
Local Government	47	1,319	2,439	2,608	17,118,107	620.54
State Government	18	579	598	750	4,979,001	596.26
WOODRUFF COUNTY - TOTAL	209	1,726	1,877	1,881	\$13,113,705	\$551.83
Natural Resources & Mining	27	166	170	169	1,174,813	536.85
Construction	5	53	50	46	341,580	529.03
Manufacturing	7	268	255	245	2,130,267	640.10
Trade, Transportation & Utilities	47	419	418	424	3,310,757	605.88
Wholesale Trade	12	170	171	180	1,673,181	741.11
Retail Trade	26	179	180	175	815,566	352.45
Transportation, Warehousing & Utilities	9	70	67	69	822,010	920.85
Financial Activities	13	62	62	62	512,568	635.94
Education & Health Services	72	256	266	267	1,467,894	429.33
Leisure & Hospitality	7	64	68	59	184,832	223.32
Local Government	10	307	457	479	2,882,683	535.18
State Government	6	46	46	45	307,130	517.34
Other	15	85	85	85	801,181	725.05

TABLE 6. COUNTY SUMMARY

NORTH AMERICAN INDUSTRY CLASSIFICATION SYSTEM - INDUSTRY GROUPS	NUMBER OF EMPLOYING UNITS	EMPLOYMENT			TOTAL EARNINGS	AVERAGE WEEKLY EARNINGS
		JULY	AUG	SEPT	JUL-SEPT 2012	
YELL COUNTY - TOTAL	423	5,983	6,276	6,506	\$40,369,718	\$496.46
Natural Resources & Mining	22	189	187	183	1,489,616	614.95
Construction	37	295	271	272	2,230,337	614.19
Manufacturing	20	2,449	2,463	2,463	15,891,531	497.26
Trade, Transportation & Utilities	82	710	726	728	4,633,928	494.16
Wholesale Trade	15	33	37	37	200,321	432.04
Retail Trade	48	498	508	517	2,439,934	369.71
Transportation, Warehousing & Utilities	19	179	181	174	1,993,673	861.57
Financial Activities	30	164	165	164	1,284,047	601.05
Professional & Business Services	40	205	209	215	1,516,267	556.29
Education & Health Services	106	713	763	751	4,241,498	439.52
Leisure & Hospitality	29	343	341	342	1,006,496	226.38
Local Government	27	707	938	1,175	6,620,550	541.78
State Government	12	102	106	104	584,154	432.07
Other	18	106	107	109	871,294	624.43
STATEWIDE COUNTY - TOTAL	6,566	20,926	21,316	23,358	\$308,414,139	\$1,084.95
Natural Resources & Mining	73	299	257	252	5,024,295	1,434.97
Construction	651	2,871	3,008	3,251	33,249,837	840.42
Manufacturing	41	242	239	235	2,677,955	863.11
Trade, Transportation & Utilities	2,341	6,235	6,288	6,287	121,288,666	1,488.02
Wholesale Trade	2,018	5,240	5,302	5,288	108,928,908	1,587.96
Retail Trade	120	293	287	272	4,609,448	1,248.50
Transportation, Warehousing & Utilities	203	702	699	727	7,750,310	840.48
Information	179	512	563	555	7,304,133	1,034.09
Financial Activities	400	1,170	1,210	1,147	21,095,593	1,380.27
Professional & Business Services	2,356	6,812	6,884	6,782	88,519,341	997.54
Education & Health Services	223	1,679	1,773	3,714	17,444,069	561.76
Leisure & Hospitality	68	79	58	90	814,279	827.80
Other Services	217	340	349	367	4,653,175	1,016.87
State Government	17	687	687	678	6,342,796	713.31

TABLE 7. FEDERAL GOVERNMENT EMPLOYMENT AND EARNINGS IN ARKANSAS

CLASSIFICATION SYSTEM - INDUSTRY GROUPS	NUMBER OF EMPLOYING UNITS	EMPLOYMENT			TOTAL EARNINGS	AVERAGE
		JULY	AUG	SEPT	JUL-SEPT 2012	WEEKLY EARNINGS
TOTAL	1,220	20,630	20,589	20,662	\$328,273,295	\$1,224.21
Trade, Transportation & Utilities	597	5,719	5,693	5,577	74,642,211	1,013.90
Information	2	46	45	46	694,783	1,170.33
Financial Activities	17	130	130	130	2,236,173	1,323.18
Professional & Business Services	30	867	841	809	13,648,996	1,251.40
Education & Health Services	17	4,922	4,980	4,993	94,315,137	1,461.23
Leisure & Hospitality	22	380	370	366	3,425,742	708.38
Other Services	3	7	7	8	45,577	478.08
Public Administration	532	8,559	8,523	8,733	139,264,676	1,244.94

TABLE 8. WORKFORCE INVESTMENT AREA SUMMARY

NORTH AMERICAN INDUSTRY CLASSIFICATION SYSTEM - INDUSTRY GROUPS	NUMBER OF EMPLOYING UNITS	EMPLOYMENT			TOTAL EARNINGS	AVERAGE WEEKLY EARNINGS
		JULY	AUG	SEPT	JUL-SEPT 2012	
CENTRAL WORKFORCE INVESTMENT AREA	6,487	74,787	76,978	78,764	\$636,062,580	\$636.73
Natural Resources & Mining	216	2,525	2,493	2,447	38,967,341	1,204.62
Construction	744	5,246	5,239	5,187	49,697,726	731.80
Trade, Transportation & Utilities	1,556	15,711	15,708	15,738	111,989,816	548.04
Wholesale Trade	401	2,158	2,154	2,136	23,576,718	843.79
Retail Trade	900	11,910	11,894	11,907	70,248,988	453.96
Transportation, Warehousing & Utilities	255	1,643	1,660	1,695	18,164,110	838.68
Information	62	601	586	582	5,574,546	727.21
Financial Activities	680	2,925	2,932	2,932	29,213,042	767.04
Professional & Business Services	837	8,281	8,339	8,210	90,893,294	844.76
Education & Health Services	978	11,256	11,354	11,393	90,663,516	615.31
Leisure & Hospitality	547	9,184	9,358	9,170	29,538,866	245.98
Local Government	131	6,819	8,726	10,444	68,072,429	604.45
State Government	66	4,272	4,219	4,651	38,693,179	679.44
Other	670	7,967	8,024	8,010	82,758,825	795.72
EASTERN WORKFORCE INVESTMENT AREA	3,807	34,439	35,943	36,899	\$264,398,048	\$568.74
Natural Resources & Mining	231	1,229	1,267	1,372	8,866,756	529.00
Construction	144	789	773	736	6,313,174	633.98
Trade, Transportation & Utilities	823	9,703	9,523	9,478	79,034,872	635.41
Wholesale Trade	175	2,064	2,053	2,051	20,804,245	778.37
Retail Trade	450	4,989	4,797	4,755	31,273,163	496.31
Transportation, Warehousing & Utilities	198	2,650	2,673	2,672	26,957,464	778.11
Financial Activities	258	1,391	1,384	1,380	12,079,279	670.88
Professional & Business Services	276	2,123	2,209	2,158	15,301,702	544.09
Education & Health Services	1,339	6,534	6,692	6,707	46,100,617	533.72
Leisure & Hospitality	250	3,481	3,432	3,402	12,068,982	270.01
Local Government	129	2,806	4,208	5,249	30,992,917	583.24
State Government	61	2,256	2,314	2,330	17,228,660	576.21
Other	296	4,127	4,141	4,087	36,411,089	680.09

*Note: Pulaski County is not included in the Central Workforce Investment. Please refer to Page 51 for information on Pulaski County.
Central Workforce Includes these counties: Faulkner, Lonoke, Monroe, Prairie, and Saline.

Eastern Workforce Includes these counties: Crittenden, Cross, Lee, Phillips, and Saint Francis.

TABLE 8. WORKFORCE INVESTMENT AREA SUMMARY

NORTH AMERICAN INDUSTRY CLASSIFICATION SYSTEM - INDUSTRY GROUPS	NUMBER OF EMPLOYING UNITS	EMPLOYMENT			TOTAL EARNINGS	AVERAGE WEEKLY EARNINGS
		JULY	AUG	SEPT	JUL-SEPT 2012	
NORTH CENTRAL WORKFORCE INVESTMENT AREA	5,589	65,058	67,449	69,114	\$531,711,984	\$608.58
Construction	458	2,721	2,697	2,659	23,793,790	679.82
Trade, Transportation & Utilities	1,424	16,156	16,038	15,980	125,169,537	599.60
Retail Trade	891	9,142	9,103	9,119	50,465,536	425.59
Other Trade, Transportation & Utilities	533	7,014	6,935	6,861	74,704,001	828.42
Financial Activities	499	2,455	2,470	2,471	21,851,849	681.82
Education & Health Services	992	12,867	13,009	13,056	116,634,450	691.35
Leisure & Hospitality	471	6,334	6,455	6,343	19,207,259	231.68
Local Government	230	4,906	7,458	9,158	49,374,537	529.42
State Government	106	2,868	2,884	3,190	21,767,409	561.76
Other	1,409	16,751	16,438	16,257	153,913,153	718.33

North Central Workforce Includes these counties: Cleburne, Fulton, Independence, Izard, Jackson, Sharp, Stone, Van Buren, White, and Woodruff.

NORTHEAST WORKFORCE INVESTMENT AREA	6,482	90,130	93,338	96,034	\$772,254,902	\$637.61
Natural Resources & Mining	401	2,112	2,130	2,401	14,924,184	518.45
Construction	444	3,202	3,278	3,379	33,984,178	795.47
Manufacturing	320	19,991	20,145	20,070	227,443,710	871.79
Trade, Transportation & Utilities	1,708	18,543	18,766	18,644	138,927,955	572.99
Wholesale Trade	395	3,866	3,831	3,798	41,280,400	828.73
Retail Trade	1,006	11,815	11,965	11,855	66,576,202	431.14
Transportation, Warehousing & Utilities	307	2,862	2,970	2,991	31,071,353	812.68
Financial Activities	549	3,071	3,077	3,067	29,488,470	738.47
Professional & Business Services	672	6,881	6,958	7,141	47,119,303	518.29
Education & Health Services	1,155	14,658	14,963	15,058	132,150,282	682.56
Leisure & Hospitality	494	7,948	8,105	8,089	25,751,194	246.15
Local Government	222	7,221	9,348	11,589	68,488,809	561.30
State Government	99	4,185	4,232	4,306	38,094,156	690.95
Other	418	2,318	2,336	2,290	15,882,661	527.83

Northeast Workforce Includes these counties: Clay, Craighead, Greene, Lawrence, Mississippi, Poinsett, and Randolph.

TABLE 8. WORKFORCE INVESTMENT AREA SUMMARY

NORTH AMERICAN INDUSTRY CLASSIFICATION SYSTEM - INDUSTRY GROUPS	NUMBER OF EMPLOYING UNITS	EMPLOYMENT			TOTAL EARNINGS	AVERAGE WEEKLY EARNINGS
		JULY	AUG	SEPT	JUL-SEPT 2012	
NORTHWEST WORKFORCE INVESTMENT AREA	14,880	223,684	230,557	236,480	\$2,259,272,474	\$754.82
Natural Resources & Mining	131	1,680	1,659	1,684	17,636,347	810.26
Trade, Transportation & Utilities	3,706	52,827	52,781	52,641	503,564,123	734.33
Retail Trade	2,032	27,131	27,091	27,127	165,821,463	470.40
Other Trade, Transportation & Utilities	1,674	25,696	25,690	25,514	337,742,660	1,013.53
Education & Health Services	2,103	29,011	29,529	29,856	281,245,739	734.23
Leisure & Hospitality	1,525	25,312	25,651	25,530	90,544,958	273.16
Local Government	310	10,713	16,287	21,911	142,790,356	673.71
State Government	107	8,205	8,861	9,117	90,597,061	798.50
Other	6,998	95,936	95,789	95,741	1,132,893,890	909.45

Northwest Workforce Includes these counties: Baxter, Benton, Boone, Carroll, Madison, Marion, Newton, Searcy, and Washington.

SOUTHEAST WORKFORCE INVESTMENT AREA	5,990	67,202	69,722	71,546	\$570,649,119	\$631.69
Natural Resources & Mining	393	2,596	2,583	2,637	22,247,802	656.87
Construction	327	2,558	2,637	2,544	30,718,168	915.99
Manufacturing	210	14,954	14,888	14,692	154,591,256	801.07
Trade, Transportation & Utilities	1,326	12,912	12,968	12,942	101,786,463	605.05
Retail Trade	790	7,936	7,968	7,927	44,889,027	434.69
Other Trade, Transportation & Utilities	536	4,976	5,000	5,015	56,897,436	875.87
Financial Activities	411	2,607	2,601	2,574	24,675,437	731.73
Education & Health Services	1,772	11,053	11,205	11,204	82,877,389	571.56
Local Government	203	5,649	7,907	9,757	57,057,291	564.80
State Government	137	5,825	5,839	6,142	48,588,904	629.72
Other	1,211	9,048	9,094	9,054	48,106,409	408.20

Southeast Workforce Includes these counties: Arkansas, Ashley, Bradley, Chicot, Cleveland, Desha, Drew, Grant, Jefferson, and Lincoln.

TABLE 8. WORKFORCE INVESTMENT AREA SUMMARY

NORTH AMERICAN INDUSTRY CLASSIFICATION SYSTEM - INDUSTRY GROUPS	NUMBER OF EMPLOYING UNITS	EMPLOYMENT			TOTAL EARNINGS	AVERAGE WEEKLY EARNINGS
		JULY	AUG	SEPT	JUL-SEPT 2012	
SOUTHWEST WORKFORCE INVESTMENT AREA	5,778	75,848	77,548	80,299	\$668,301,934	\$659.94
Natural Resources & Mining	362	2,460	2,465	2,468	25,305,101	789.89
Trade, Transportation & Utilities	1454	15514	15476	15457	123070725	611.47
Retail Trade	903	8,908	8,866	8,847	48,149,500	417.39
Other Trade, Transportation & Utilities	551	6,606	6,610	6,610	74,921,225	872.06
Information	61	463	453	437	5,078,106	866.13
Financial Activities	509	2,717	2,728	2,703	23,478,379	664.96
Education & Health Services	1,049	9,578	9,667	9,589	67,737,567	542.13
Leisure & Hospitality	409	5,300	5,383	5,362	16,939,702	243.64
Other Services	407	1,857	1,901	1,907	10,355,192	421.83
Local Government	259	5,880	7,568	10,410	57,996,046	560.97
State Government	138	3,602	3,576	3,731	29,627,096	626.73
Other	1,130	28,477	28,331	28,235	308,714,020	837.71

Southwest Workforce Includes these counties: Calhoun, Columbia, Dallas, Hempstead, Howard, Lafayette, Little River, Miller, Nevada, Ouachita, Sevier, and Union

WEST CENTRAL WORKFORCE INVESTMENT AREA	8,133	100,809	103,714	106,419	\$785,770,038	\$583.17
Construction	768	4,572	4,788	4,977	44,972,795	723.88
Trade, Transportation & Utilities	1,896	21,164	21,213	21,187	169,279,413	614.57
Retail Trade	1,242	13,842	13,859	13,850	79,798,991	443.19
Other Trade, Transportation & Utilities	654	7,322	7,354	7,337	89,480,422	938.05
Financial Activities	815	4,127	4,132	4,132	34,624,634	644.85
Professional & Business Services	918	8,105	8,288	8,380	60,687,000	565.32
Education & Health Services	1,422	16,378	16,726	16,719	140,785,602	652.09
Leisure & Hospitality	764	12,903	12,617	12,198	43,568,824	266.57
Local Government	227	7,143	9,250	11,923	67,851,034	552.97
State Government	125	5,091	5,526	5,769	42,271,152	595.32
Other	1,198	21,326	21,174	21,134	181,729,584	659.04

West Central Workforce Includes these counties: Clark, Conway, Garland, Hot Spring, Johnson, Montgomery, Perry, Pike, Pope, and Yell

TABLE 8. WORKFORCE INVESTMENT AREA SUMMARY

NORTH AMERICAN INDUSTRY CLASSIFICATION SYSTEM - INDUSTRY GROUPS	NUMBER OF EMPLOYING UNITS	EMPLOYMENT			TOTAL EARNINGS	AVERAGE WEEKLY EARNINGS
		JULY	AUG	SEPT	JUL-SEPT 2012	
WESTERN WORKFORCE INVESTMENT AREA	6,609	99,001	102,579	103,037	\$866,818,958	\$656.68
Natural Resources & Mining	163	2,514	2,459	2,415	37,238,151	1,163.16
Trade, Transportation & Utilities	1,644	22,158	22,360	22,239	172,836,172	597.47
Retail Trade	955	11,992	11,954	11,967	68,702,178	441.47
Other Trade, Transportation & Utilities	689	10,166	10,406	10,272	104,133,994	779.11
Financial Activities	685	3,767	3,766	3,777	37,563,928	766.45
Professional & Business Services	895	9,713	9,792	9,675	86,521,461	684.25
Education & Health Services	1,010	15,015	15,238	15,320	138,889,321	703.30
Leisure & Hospitality	531	8,507	8,676	8,491	29,453,381	264.74
Other Services	447	2,217	2,115	2,131	14,310,741	510.98
Local Government	151	5,592	8,751	9,581	60,628,696	584.82
State Government	75	2,820	2,863	3,017	22,834,782	605.70
Other	1,008	26,698	26,559	26,391	266,542,325	772.27

Western Workforce Includes these counties: Crawford, Franklin, Logan, Polk, Scott, and Sebastian