

# Arkansas Covered Employment & Earnings

Second Quarter  
2012

Jobs for People. People for Jobs.

**DWS**  
Department of  
WORKFORCE**Services**



**COVERED EMPLOYMENT AND EARNINGS  
STATE OF ARKANSAS  
SECOND QUARTER 2012**

**MIKE BEEBE, GOVERNOR  
STATE OF ARKANSAS**

**ARTEE WILLIAMS, DIRECTOR  
DEPARTMENT OF WORKFORCE SERVICES**

**PUBLISHED BY  
LABOR MARKET INFORMATION & ANALYSIS  
BUREAU OF LABOR STATISTICS PROGRAMS  
POST OFFICE BOX 2981  
LITTLE ROCK, ARKANSAS 72203-2981  
BERNADETTE COLEMAN, BLS PROGRAMS MANAGER  
TELEPHONE (501) 682-3159  
SUSAN PRICE, QCEW LEAD ANALYST  
TELEPHONE (501) 682-3103**

**STATE OF ARKANSAS WEBPAGE: <http://www.arkansas.gov>**

**DEPARTMENT OF WORKFORCE SERVICES WEBPAGE: <http://www.arkansas.gov/esd/>**

**WEBPAGE FOR LABOR MARKET INFORMATION: <http://www.discover.arkansas.gov>**

**RELEASED: FEBRUARY 2013**



## TABLE OF CONTENTS

DESCRIPTION OF DATA	PAGE
Industry Classification	1
Definition of Covered Employment and Earnings	2
Federal Government	2
County Classification	2
Significant Developments During Second Quarter 2012	3

### LIST OF GRAPHS AND TABLES

Graph 1	Total Covered Employment for Selected Years, Arkansas	7
Graph 2	Total Covered Earnings, by Calendar Quarter for Selected Years, Arkansas	8
Table 1	Quarterly Comparison of Covered Employment and Wages, by Industry	5
Table 2	Total Covered Employment in Arkansas, 2005 – 2012	6
Table 3	Total Covered Earnings, 2005 – 2012	9
Table 4	Total Taxable Earnings, 2005 – 2012	10
Table 5	State Summary – Employment and Total Earnings, by Industry, Second Quarter 2012	11
Table 6	County Summary – Employment and Total Earnings, by Industry, Second Quarter 2012	22
Table 7	Federal Government Employment and Total Earnings in Arkansas, Second Quarter 2012	60
Table 8	Workforce Information Area – Employment and Total Earnings, by Industry, Second Quarter 2012	61



EMPLOYMENT AND EARNINGS  
UNDER THE ARKANSAS EMPLOYMENT SECURITY LAW  
SECOND QUARTER 2012

#### DESCRIPTION OF DATA

This publication contains covered employment and payroll data by industry and county for the Second Quarter 2012. These data are compiled from quarterly contributions and wage reports submitted by employers subject to the Arkansas Employment Security Law. An employing unit is a single physical location where business is conducted, production takes place, or services are provided. Employment data have been tabulated for each month of the quarter by industry under the **North American Industry Classification System (NAICS)** (see "Industry Classification" below) on a statewide, county and workforce area basis. Payroll data represent the total wages paid during the quarter, and are also shown by industry for the State and

by publishable industry groups for each county and workforce area. The tabulation of this data is a joint effort in conjunction with the U.S. Bureau of Labor Statistics. In addition, there are tables included which set out total covered employment by months, quarterly payrolls, and average weekly earnings for the years 2005 through 2012. Data contained in this publication are subject to revisions. These revisions are typically reflected in the 2012 Annual Covered Employment and Earnings publication. Because of industry code changes between years, substantial employment and wage shifts among industries are anticipated.

#### INDUSTRY CLASSIFICATION

Previously published industry data will not be comparable in all instances with currently published data since industry codes have been revised. The last two revisions have occurred using the North American Classification System (NAICS) which is a six digit industry code. Since 2001 NAICS codes are revised every five years. The most recent revision is the NAICS 2012 codes which are being used as of 2011 publications.

Auxiliary units are establishments primarily engaged in performing management of support services for other establishments of the same enterprise. The NAICS code is based on the actual activities that

the establishment performs. Comparisons of many industries should not be made between this publication and previous Covered Employment and Earnings publications that were based on previous coding revisions. A summary is available on the NAICS home page at <http://www.census.gov/naics>.

## DEFINITION OF COVERED EMPLOYMENT AND EARNINGS

Covered Employment is the number of workers employed by employers subject to the Arkansas Employment Security Law who worked or received pay for the payroll period including the 12<sup>th</sup> of the month. An employer is subject to the law when they employ one or more employees in each of ten days during the current or preceding calendar year.

Currently excluded from coverage is employment covered by the Railroad Unemployment Insurance Act, some domestic service workers, employees of small agricultural establishments, self-

employed and unpaid family workers, insurance and real estate agents who are on commission only, and employees of churches and religious organizations except separately incorporated school. The payroll information in this publication includes all wages and salaries paid to any covered employees by their employers including bonuses, commissions, and cash values of remuneration received in any medium other than cash. These wages include both taxable and nontaxable wages. Only the first \$12,000 paid to each worker by an employer in the calendar year is taxable under the Arkansas Employment Security Law.

## FEDERAL GOVERNMENT EMPLOYMENT

Table 7 on page 60 lists the total number of civilians employed by the Federal Government in Arkansas during the Second Quarter 2012. Employment and wage data are set out by industry divisions.

These data are obtained from required reports submitted by various government agencies having employment in the State. Civilian Federal workers are covered by the Unemployment Compensation for Federal Employees (UCFE) program.

## COUNTY CLASSIFICATION

Employment and payroll data by county are classified according to the county where the workers are employed. Employers with operations in more than one county are requested to furnish this agency with a breakdown of employment and wages for at least one quarter of each year by the counties in which they operate. Many such employers submit county data with each regular contribution report. Note: This information is invaluable in the preparation of monthly employment and payroll data by county.

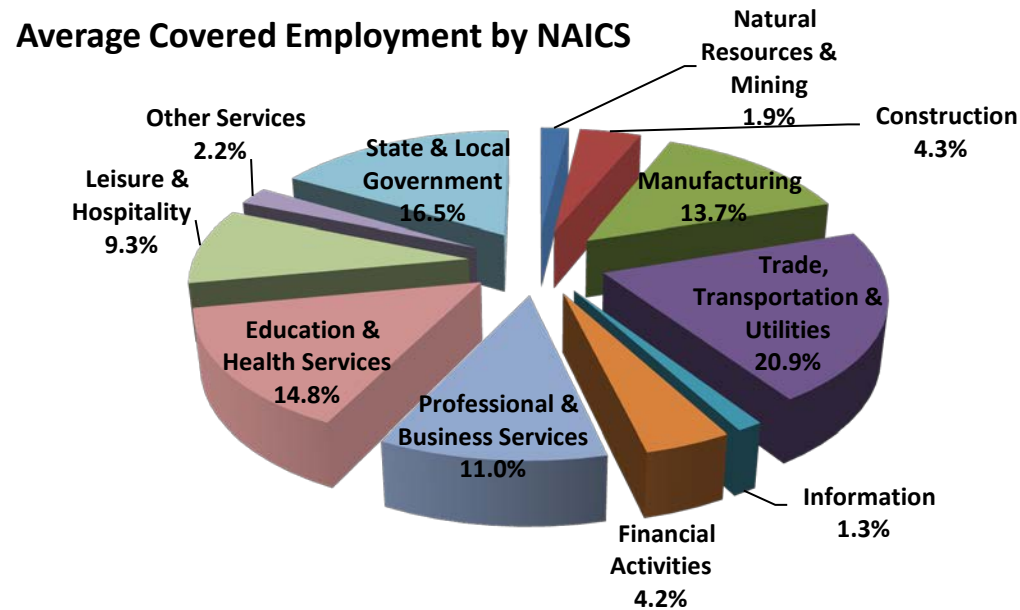
Employment and payroll data for multi-area employers, who do not furnish county data each quarter of the year, are prorated by county on the basis of one quarter's information. The "rest-of-state" table that appears on page 59 of this publication includes data on firms that did not provide a county breakdown of employment and payrolls. It also includes sales, and all other type of personnel with no permanent place of work, as well as employment of employers with no established place of business in Arkansas.



## SIGNIFICANT DEVELOPMENTS DURING SECOND QUARTER 2012

### AVERAGE EMPLOYMENT CHANGES

Covered employment averaged 1,138,951 during the Second Quarter 2012 (refer to table 1), an increase of 17,713 (1.6%) from the previous quarter and an increase of 12,479 (1.1%) from the average recorded one-year ago. This over-the-year increase is more significant when used as an economic indicator. This over-the-year comparison allows for the disregarding of many seasonal factors that are evident when making an over-the-quarter comparison.



### EMPLOYMENT CHANGES FROM FIRST QUARTER 2012

Compared to First Quarter 2012, covered employment increased in all major industry sectors. Most Significant gains occurred in Leisure and Hospitality 6,626, Accommodations and Food Services (4,521) accounted for 68% of the increase. Gains were also reported in Professional and Business Services 2,964, Trade, Transportation and Utilities 2,846, as well as Construction 2,180.

## EMPLOYMENT CHANGES FROM SECOND QUARTER 2011 (QUARTER YEAR AGO COMPARISON)

Over the year gains were recorded in seven industry groups (refer to Table 1). The largest gains were posted in Professional & Business Services (4,634), Education and Health Services (4,329), and Trade, Transportation & Utilities (3,340). Significant losses occurred in Manufacturing (-3,652).

## COVERED WAGES

Wages paid to covered workers totaled \$10,499,018,872 for the Second Quarter 2012 (refer to Table 1), for an average weekly wage of \$709.09 (refer to Table 5). Employees in Little River County recorded the highest average weekly wage (\$878.66), and workers in Stone County the lowest (\$465.51) (refer to Table 6).

The Information sector recorded the highest average weekly wage for the State of Arkansas at \$892.76; while the Leisure and Hospitality sector recorded the lowest at \$268.44 for the State of Arkansas (refer to Table 5).

## Average Weekly Wage by Industry

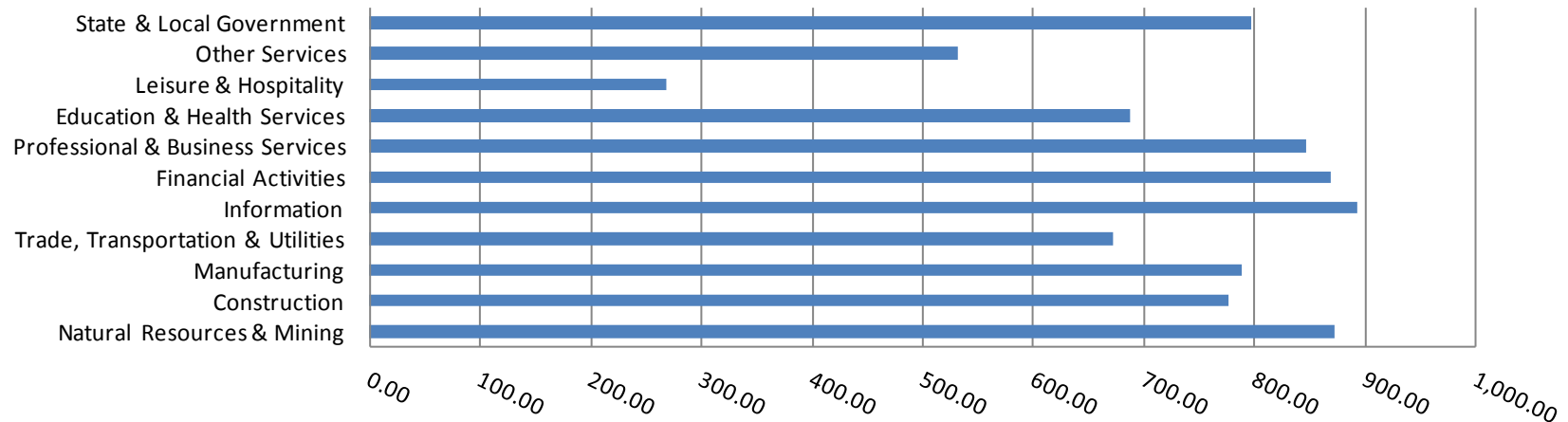


TABLE 1. QUARTERLY COMPARISON OF COVERED EMPLOYMENT AND WAGES, BY INDUSTRY

North American Industry Classification System	Number of Employing Units	Monthly Employment Average	Percent of Total	Net Change From:		Total Wages Paid Apr - Jun 2012	Percent of Total
				Jan - Mar 2012	Apr - Jun 2011		
<b>Total</b>	<b>84,160</b>	<b>1,138,951</b>	<b>100</b>	<b>17,713</b>	<b>12,479</b>	<b>\$10,499,018,872</b>	<b>100</b>
<b>Natural Resources &amp; Mining</b>	2,491	21,945	1.9	876	814	248,690,281	2.4
Agriculture, Forestry, Fishing & Hunting	1,972	12,870	1.1	1,125	642	105,647,029	1.0
Mining	519	9,074	0.8	-249	172	143,043,252	1.4
<b>Construction</b>	6,821	48,571	4.3	2,180	1,000	489,753,011	4.7
<b>Manufacturing</b>	3,073	156,280	13.7	547	-3,652	1,600,148,801	15.2
<b>Trade, Transportation &amp; Utilities</b>	21,101	237,683	20.9	2,846	3,340	2,077,361,045	19.8
Wholesale Trade	6,719	48,112	4.2	1,348	1,423	649,278,323	6.2
Retail Trade	11,064	131,789	11.6	1,174	804	794,000,257	7.6
Transportation & Warehousing	2,903	50,102	4.4	335	593	506,826,346	4.8
Utilities	415	7,680	0.7	-11	520	127,256,119	1.2
<b>Information</b>	1,134	14,410	1.3	14	-459	167,245,141	1.6
<b>Financial Activities</b>	7,993	47,925	4.2	584	235	541,318,222	5.2
Finance & Insurance	4,769	34,580	3.0	245	130	436,292,568	4.2
Real Estate & Rental & Leasing	3,224	13,345	1.2	339	106	105,025,654	1.0
<b>Professional &amp; Business Services</b>	12,524	124,752	11.0	2,964	4,634	1,373,241,407	13.1
Professional & Technical Services	7,889	39,060	3.4	-355	149	498,253,593	4.7
Management of Companies & Enterprises	498	30,775	2.7	152	4,961	527,895,636	5.0
Administrative & Waste Services	4,137	54,917	4.8	3,167	-477	347,092,178	3.3
<b>Education &amp; Health Services</b>	14,054	168,746	14.8	129	4,329	1,509,281,010	14.4
Educational Services	719	11,723	1.0	-802	341	86,927,590	0.8
Health Care & Social Assistance	13,335	157,022	13.8	931	3,988	1,422,353,420	13.5
<b>Leisure &amp; Hospitality</b>	6,518	105,460	9.3	6,626	3,261	368,021,941	3.5
Arts, Entertainment & Recreation	921	10,781	0.9	2,106	211	46,078,414	0.4
Accommodation & Food Services	5,597	94,679	8.3	4,521	3,049	321,943,527	3.1
<b>Other Services</b>	5,366	24,845	2.2	832	-51	171,756,441	1.6
<b>State &amp; Local Government</b>	3,085	188,334	16.5	115	-972	1,952,201,572	18.6
Local Government	1,959	118,465	10.4	-734	-1,431	1,179,457,431	11.2
State Government	1,126	69,869	6.1	848	460	772,744,141	7.4
<b>Nonclassifiable Establishments</b>	0	0	0.0	0	0	0	0.0

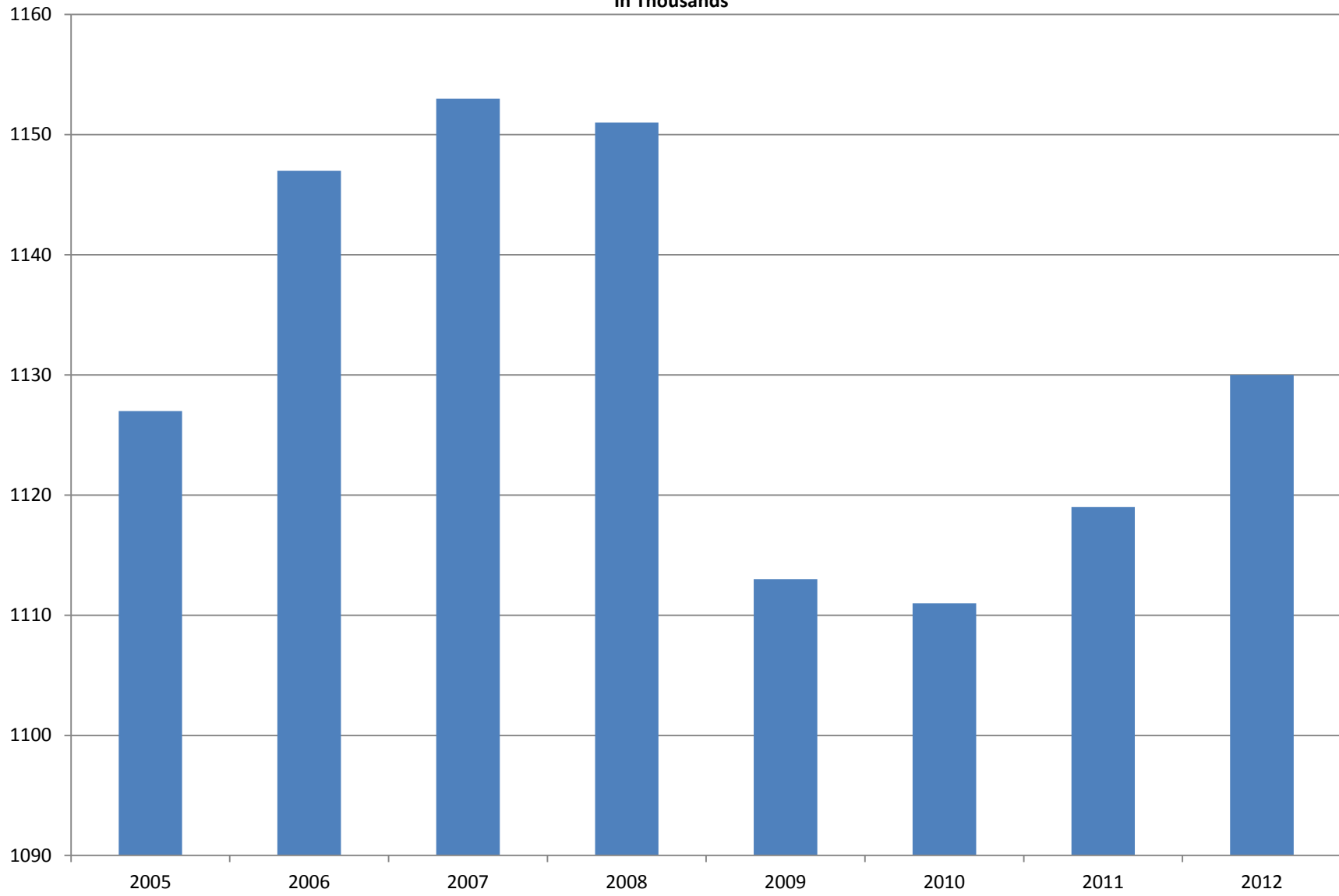
Note: Items do not necessarily add to total because of rounding. Because of industry code changes between years, substantial employment and wage shifts among industries are anticipated.

**TABLE 2. TOTAL COVERED EMPLOYMENT IN ARKANSAS**

<b>Period</b>	<b>2005</b>	<b>2006</b>	<b>2007</b>	<b>2008</b>	<b>2009</b>	<b>2010</b>	<b>2011</b>	<b>2012</b>
<b>Average</b>	<b>1,126,778</b>	<b>1,146,948</b>	<b>1,152,994</b>	<b>1,150,965</b>	<b>1,112,591</b>	<b>1,110,947</b>	<b>1,118,639</b>	<b>1,130,095</b>
January	1,102,768	1,130,595	1,137,437	1,141,856	1,119,299	1,089,984	1,098,349	1,113,274
February	1,110,577	1,136,810	1,143,397	1,149,443	1,119,476	1,091,282	1,098,445	1,119,319
March	1,122,619	1,150,439	1,158,895	1,157,690	1,124,386	1,106,198	1,113,061	1,131,123
April	1,129,785	1,155,498	1,159,623	1,159,841	1,123,383	1,115,341	1,129,635	1,136,973
May	1,135,567	1,159,886	1,165,224	1,166,111	1,122,322	1,123,250	1,126,371	1,143,142
June	1,136,118	1,162,026	1,164,207	1,164,167	1,117,884	1,130,164	1,123,412	1,136,739
July	1,090,071	1,106,142	1,110,571	1,114,279	1,071,048	1,073,743	1,080,937	N/A
August	1,114,098	1,130,839	1,139,109	1,138,583	1,093,192	1,099,795	1,106,262	N/A
September	1,144,815	1,159,814	1,165,135	1,162,333	1,116,580	1,124,281	1,132,779	N/A
October	1,142,300	1,156,804	1,162,768	1,157,196	1,113,157	1,125,073	1,138,395	N/A
November	1,145,667	1,156,011	1,164,246	1,152,159	1,115,443	1,126,781	1,138,543	N/A
December	1,146,954	1,158,509	1,165,314	1,147,927	1,114,919	1,125,466	1,137,474	N/A

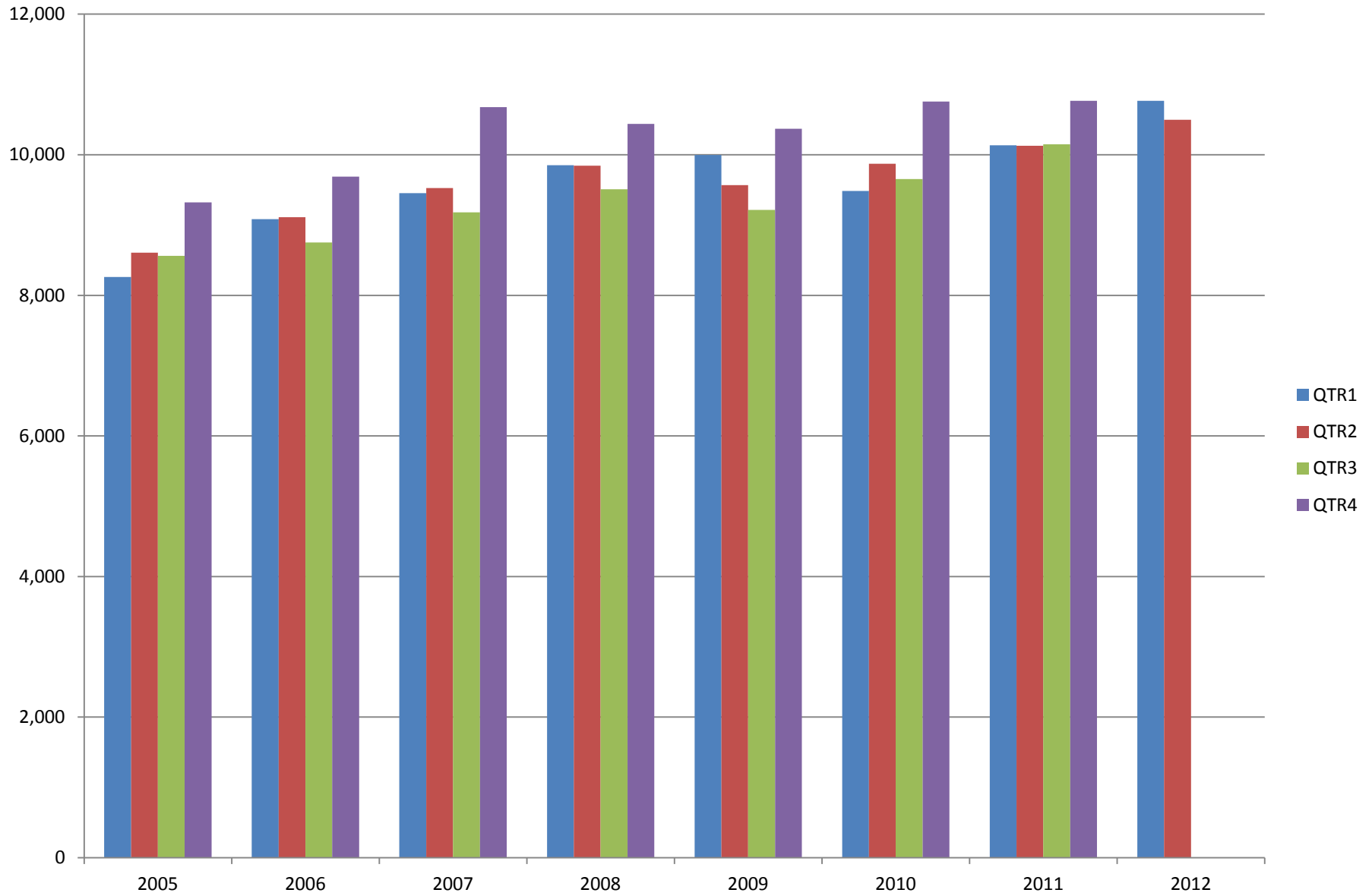
# AVERAGE TOTAL COVERED EMPLOYMENT

In Thousands



## TOTAL COVERED EARNINGS BY CALENDAR YEAR

In Thousands



**TABLE 3. TOTAL COVERED EARNINGS 2005 - 2012**

<b>Period</b>	<b>2005</b>	<b>2006</b>	<b>2007</b>	<b>2008</b>
<b>Total</b>	<b>\$34,753,107,631</b>	<b>\$36,636,090,775</b>	<b>\$38,833,265,464</b>	<b>\$39,643,039,342</b>
January - March	8,261,153,981	9,085,021,816	9,452,711,662	9,851,866,058
April - June	8,607,722,353	9,112,624,590	9,525,837,049	9,843,711,293
July - September	8,562,555,369	8,750,878,205	9,178,902,477	9,509,150,631
October - December	9,321,675,928	9,687,566,164	10,675,814,276	10,438,311,360
<b>Average Weekly Earnings</b>	<b>\$593.13</b>	<b>\$614.27</b>	<b>\$647.70</b>	<b>\$662.37</b>

<b>Period</b>	<b>2009</b>	<b>2010</b>	<b>2011</b>	<b>2012</b>
<b>Total</b>	<b>\$39,149,476,305</b>	<b>\$39,769,504,992</b>	<b>\$41,177,659,236</b>	<b>\$21,265,194,321</b>
January - March	9,998,452,028	9,486,245,580	10,134,035,254	10,766,175,449
April - June	9,566,968,853	9,873,489,653	10,128,274,611	10,499,018,872
July - September	9,213,797,140	9,653,588,807	10,147,287,431	N/A
October - December	10,370,258,284	10,756,180,952	10,768,061,940	N/A
<b>Average Weekly Earnings</b>	<b>\$676.69</b>	<b>\$688.42</b>	<b>\$707.89</b>	<b>\$723.74</b>

**TABLE 4. TOTAL TAXABLE EARNINGS, 2005 - 2012**

<b>Period</b>	<b>2005</b>	<b>2006</b>	<b>2007</b>	<b>2008</b>
<b>Total</b>	<b>9,991,605,239</b>	<b>10,197,511,360</b>	<b>10,459,105,059</b>	<b>10,360,487,108</b>
<b>January - March</b>	5,062,670,306	5,421,204,601	5,617,417,571	5,635,750,082
<b>April - June</b>	2,506,505,721	2,385,110,992	2,466,606,627	2,419,313,519
<b>July - September</b>	1,353,660,445	1,314,939,803	1,307,060,412	1,297,473,555
<b>October - December</b>	1,068,768,767	1,076,255,964	1,068,020,449	1,007,949,952

<b>Period</b>	<b>2009</b>	<b>2010</b>	<b>2011</b>	<b>2012</b>
<b>Total</b>	<b>9,787,660,886</b>	<b>11,332,118,456</b>	<b>11,479,396,226</b>	<b>9,012,576,792</b>
<b>January - March</b>	5,423,705,265	5,607,134,758	5,828,877,821	6,167,036,199
<b>April - June</b>	2,293,670,854	2,977,100,591	2,910,604,359	2,845,540,593
<b>July - September</b>	1,165,280,065	1,577,067,770	1,601,382,146	N/A
<b>October - December</b>	905,004,702	1,170,815,337	1,138,531,900	N/A



TABLE 5. STATEWIDE SUMMARY

NORTH AMERICAN INDUSTRY CLASSIFICATION SYSTEM - INDUSTRY GROUPS		NUMBER OF EMPLOYING UNITS	EMPLOYMENT			TOTAL EARNINGS	AVERAGE WEEKLY EARNINGS
			APRIL	MAY	JUNE	APR-JUN 2012	
<b>TOTAL, ALL INDUSTRIES</b>		<b>84,160</b>	<b>1,136,973</b>	<b>1,143,142</b>	<b>1,136,739</b>	<b>\$10,499,018,872</b>	<b>\$709.09</b>
<b>NATURAL RESOURCES &amp; MINING</b>		<b>2,491</b>	<b>21,784</b>	<b>21,934</b>	<b>22,116</b>	<b>\$248,690,281</b>	<b>\$871.74</b>
<b>11</b>	<b>AGRICULTURE, FORESTRY, FISHING &amp; HUNTING</b>	<b>1,972</b>	<b>12,677</b>	<b>12,823</b>	<b>13,111</b>	<b>\$105,647,029</b>	<b>\$631.43</b>
<b>111</b>	<b>CROP PRODUCTION</b>	<b>838</b>	<b>4,230</b>	<b>4,298</b>	<b>4,447</b>	<b>\$27,117,439</b>	<b>\$482.30</b>
1111	Oilseed & Grain Farming	530	2,463	2,522	2,580	16,502,168	503.40
1112	Vegetable & Melon Farming	13	141	156	153	544,644	279.30
1113	Fruit & Tree Nut Farming	14	113	130	183	671,186	363.59
1114	Greenhouse & Nursery Production	43	443	393	351	2,523,721	490.65
1119	Other Crop Farming	238	1,070	1,097	1,180	6,875,720	474.07
<b>112</b>	<b>ANIMAL PRODUCTION &amp; AQUACULTURE</b>	<b>281</b>	<b>3,072</b>	<b>3,099</b>	<b>3,142</b>	<b>\$28,282,543</b>	<b>\$700.82</b>
1121	Cattle Ranching & Farming	94	330	327	342	2,178,011	503.12
1122	Hog & Pig Farming	10	124	125	128	1,175,246	719.39
1123	Poultry & Egg Production	101	2,078	2,106	2,111	20,863,143	764.82
1125	Animal Aquaculture	59	496	497	512	3,797,893	582.35
1129	Other Animal Production	17	44	44	49	268,250	451.85
<b>113</b>	<b>FORESTRY &amp; LOGGING</b>	<b>408</b>	<b>2,167</b>	<b>2,199</b>	<b>2,235</b>	<b>\$19,359,255</b>	<b>\$676.79</b>
1131	Timber Tract Operations	37	179	179	179	1,804,827	775.60
1132	Forest Nurseries & Gathering of Forest Products	5	23	22	23	233,241	791.54
1133	Logging	366	1,965	1,998	2,033	17,321,187	666.64
<b>114</b>	<b>FISHING, HUNTING &amp; TRAPPING</b>	<b>5</b>	<b>21</b>	<b>20</b>	<b>22</b>	<b>\$118,341</b>	<b>\$433.48</b>
<b>115</b>	<b>SUPPORT ACTIVITIES FOR AGRICULTURE &amp; FORESTRY</b>	<b>440</b>	<b>3,187</b>	<b>3,207</b>	<b>3,265</b>	<b>\$30,769,451</b>	<b>\$735.13</b>
1151	Support Activities for Crop Production	301	1,513	1,573	1,605	17,145,959	843.48
1152	Support Activities for Animal Production	64	750	738	745	4,905,769	506.99
1153	Support Activities for Forestry	75	924	896	915	8,717,723	735.57
<b>21</b>	<b>MINING</b>	<b>519</b>	<b>9,107</b>	<b>9,111</b>	<b>9,005</b>	<b>\$143,043,252</b>	<b>\$1,212.58</b>
<b>211</b>	<b>OIL &amp; GAS EXTRACTION</b>	<b>90</b>	<b>1,631</b>	<b>1,633</b>	<b>1,634</b>	<b>\$32,466,212</b>	<b>\$1,529.65</b>
<b>212</b>	<b>MINING (EXCEPT OIL &amp; GAS)</b>	<b>110</b>	<b>2,149</b>	<b>2,167</b>	<b>2,174</b>	<b>\$25,327,373</b>	<b>\$900.58</b>
<b>213</b>	<b>SUPPORT ACTIVITIES FOR MINING</b>	<b>319</b>	<b>5,327</b>	<b>5,311</b>	<b>5,197</b>	<b>\$85,249,667</b>	<b>\$1,242.37</b>

TABLE 5. STATEWIDE SUMMARY

NORTH AMERICAN INDUSTRY CLASSIFICATION SYSTEM - INDUSTRY GROUPS		NUMBER OF	EMPLOYMENT			TOTAL EARNINGS	AVERAGE
		EMPLOYING					WEEKLY
		UNITS	APRIL	MAY	JUNE	APR-JUN 2012	EARNINGS
<b>CONSTRUCTION</b>		<b>6,821</b>	<b>47,635</b>	<b>48,650</b>	<b>49,429</b>	<b>\$489,753,011</b>	<b>\$775.63</b>
<b>236</b>	<b>CONSTRUCTION OF BUILDINGS</b>	<b>1,620</b>	<b>10,140</b>	<b>10,466</b>	<b>10,622</b>	<b>\$110,349,619</b>	<b>\$815.46</b>
2361	Residential Building Construction	1,052	2,708	2,760	2,873	23,490,409	649.91
2362	Nonresidential Building Construction	568	7,432	7,706	7,749	86,859,210	875.80
<b>237</b>	<b>HEAVY &amp; CIVIL ENGINEERING CONSTRUCTION</b>	<b>766</b>	<b>8,809</b>	<b>8,858</b>	<b>8,901</b>	<b>\$105,373,262</b>	<b>\$915.27</b>
2371	Utility System Construction	412	4,889	4,891	4,892	56,986,577	896.32
2372	L& Subdivision	77	247	249	246	2,651,815	824.74
2373	Highway, Street & Bridge Construction	191	2,659	2,708	2,792	27,855,858	787.88
2379	Other Heavy Construction	86	1,014	1,010	971	17,879,012	1,377.60
<b>238</b>	<b>SPECIALTY TRADE CONTRACTORS</b>	<b>4,435</b>	<b>28,686</b>	<b>29,326</b>	<b>29,906</b>	<b>\$274,030,130</b>	<b>\$719.28</b>
2381	Building Foundation & Exterior Contractors	864	5,488	5,577	5,750	48,824,639	670.07
2382	Building Equipment Contractors	2,015	14,817	15,052	15,289	152,097,190	777.26
2383	Building Finishing Contractors	770	3,810	3,993	4,162	33,188,439	640.11
2389	Other Specialty Trade Contractors	786	4,571	4,704	4,705	39,919,862	658.96
<b>MANUFACTURING</b>		<b>3,073</b>	<b>156,042</b>	<b>156,494</b>	<b>156,304</b>	<b>\$1,600,148,801</b>	<b>\$787.61</b>
<b>311</b>	<b>FOOD MANUFACTURING</b>	<b>276</b>	<b>43,474</b>	<b>43,659</b>	<b>43,411</b>	<b>\$335,401,620</b>	<b>\$592.91</b>
3111	Animal Food Manufacturing	44	1,649	1,648	1,646	19,433,002	907.25
3112	Grain & Oilseed Milling	29	2,307	2,313	2,320	22,863,594	760.26
3113	Sugar & Confectionery Product Manufacturing	7	41	44	43	220,196	396.99
3114	Fruit, Vegetable & Specialty Food	20	4,796	4,782	4,696	43,061,189	696.17
3115	Dairy Product Manufacturing	10	570	571	573	5,983,513	805.61
3116	Animal Slaughtering & Processing	85	29,315	29,431	29,277	200,456,906	525.54
3117	Seafood Product Preparation & Packaging	5	56	72	77	381,987	430.00
3118	Bakeries & Tortilla Manufacturing	54	3,019	3,036	3,052	26,268,418	665.64
3119	Other Food Manufacturing	22	1,721	1,762	1,727	16,732,815	741.16
<b>312</b>	<b>BEVERAGE &amp; TOBACCO PRODUCT MANUFACTURING</b>	<b>40</b>	<b>1,036</b>	<b>1,051</b>	<b>1,076</b>	<b>\$11,665,679</b>	<b>\$851.12</b>
<b>313</b>	<b>TEXTILE MILLS</b>	<b>14</b>	<b>90</b>	<b>94</b>	<b>92</b>	<b>\$691,575</b>	<b>\$578.24</b>
<b>314</b>	<b>TEXTILE PRODUCT MILLS</b>	<b>56</b>	<b>972</b>	<b>974</b>	<b>963</b>	<b>\$9,753,749</b>	<b>\$773.76</b>
3141	Textile Furnishing Mills	13	43	43	40	500,973	917.53
3149	Other Textile Product Mills	43	929	931	923	9,252,776	767.25
<b>315</b>	<b>APPAREL MANUFACTURING</b>	<b>27</b>	<b>1,153</b>	<b>1,129</b>	<b>1,132</b>	<b>\$6,612,356</b>	<b>\$446.96</b>
<b>316</b>	<b>LEATHER &amp; ALLIED PRODUCT MANUFACTURING</b>	<b>17</b>	<b>1,347</b>	<b>1,321</b>	<b>1,303</b>	<b>\$9,155,398</b>	<b>\$532.05</b>

TABLE 5. STATEWIDE SUMMARY

NORTH AMERICAN INDUSTRY CLASSIFICATION SYSTEM - INDUSTRY GROUPS		NUMBER OF	EMPLOYMENT			TOTAL EARNINGS	AVERAGE
		EMPLOYING	APRIL	MAY	JUNE	APR-JUN 2012	WEEKLY
		UNITS					EARNINGS
<b>321</b>	<b>WOOD PRODUCT MANUFACTURING</b>	<b>328</b>	<b>8,583</b>	<b>8,611</b>	<b>8,645</b>	<b>\$76,598,704</b>	<b>\$684.11</b>
3211	Sawmills & Wood Preservation	130	4,071	4,093	4,094	37,336,759	702.90
3212	Veneer & Engineered Wood Products	55	1,880	1,884	1,893	20,122,672	820.88
3219	Other Wood Product Manufacturing	143	2,632	2,634	2,658	19,139,273	557.39
<b>322</b>	<b>PAPER MANUFACTURING</b>	<b>80</b>	<b>10,030</b>	<b>10,022</b>	<b>10,020</b>	<b>\$147,246,182</b>	<b>\$1,129.95</b>
3221	Pulp, Paper & Paperboard Mills	12	4,215	4,211	4,187	78,516,555	1,436.55
3222	Converted Paper Product Manufacturing	68	5,815	5,811	5,833	68,729,627	908.45
<b>323</b>	<b>PRINTING &amp; RELATED SUPPORT ACTIVITIES</b>	<b>247</b>	<b>4,819</b>	<b>4,778</b>	<b>4,681</b>	<b>\$42,433,972</b>	<b>\$685.84</b>
<b>324</b>	<b>PETROLEUM &amp; COAL PRODUCTS MANUFACTURING</b>	<b>17</b>	<b>926</b>	<b>938</b>	<b>957</b>	<b>\$12,136,691</b>	<b>\$992.83</b>
<b>325</b>	<b>CHEMICAL MANUFACTURING</b>	<b>118</b>	<b>4,657</b>	<b>4,656</b>	<b>4,661</b>	<b>\$64,901,906</b>	<b>\$1,071.80</b>
3251	Basic Chemical Manufacturing	29	1,729	1,737	1,733	28,366,761	1,259.12
3252	Resin, Rubber & Artificial Fibers	6	262	264	265	3,729,392	1,088.03
3253	Agricultural Chemical Manufacturing	17	393	390	382	5,172,725	1,024.64
3254	Pharmaceutical & Medicine Manufacturing	13	163	162	170	2,087,452	973.17
3255	Paint, Coating & Adhesive Manufacturing	8	198	198	197	3,072,572	1,195.71
3256	Soap, Cleaning Compound, & Toilet Preparation Manufacturing	14	1,054	1,070	1,083	11,964,429	860.94
3259	Other Chemical Preparation Manufacturing	31	858	835	831	10,508,575	960.80
<b>326</b>	<b>PLASTICS &amp; RUBBER PRODUCTS MANUFACTURING</b>	<b>133</b>	<b>10,270</b>	<b>10,338</b>	<b>10,386</b>	<b>\$122,664,071</b>	<b>\$913.31</b>
3261	Plastics Product Manufacturing	94	6,129	6,198	6,240	61,984,024	770.40
3262	Rubber Product Manufacturing	39	4,141	4,140	4,146	60,680,047	1,126.83
<b>327</b>	<b>NONMETALLIC MINERAL PRODUCT MANUFACTURING</b>	<b>244</b>	<b>3,391</b>	<b>3,429</b>	<b>3,429</b>	<b>\$34,495,857</b>	<b>\$776.72</b>
3271	Clay Product & Refractory Manufacturing	14	370	379	380	3,381,123	691.11
3272	Glass & Glass Product Manufacturing	13	355	363	370	3,907,430	828.78
3273	Cement & Concrete Product Manufacturing	177	1,926	1,945	1,952	18,859,799	747.43
3274	Lime & Gypsum Product Manufacturing	5	210	207	206	2,711,072	1,004.22
3279	Other Nonmetallic Mineral Products Manufacturing	35	530	535	521	5,636,433	820.12
<b>331</b>	<b>PRIMARY METAL MANUFACTURING</b>	<b>75</b>	<b>10,412</b>	<b>10,410</b>	<b>10,391</b>	<b>\$145,133,335</b>	<b>\$1,073.02</b>
3311	Iron & Steel Mills & Ferroalloys	7	2,410	2,408	2,439	52,398,524	1,666.25
3312	Purchased Steel Product Manufacturing	20	3,084	3,081	3,032	38,836,670	974.48
3313	Alumina & Aluminum Production	22	1,244	1,246	1,240	15,781,480	976.38
3314	Other Nonferrous Metal Production	7	685	688	688	6,666,741	746.47
3315	Foundries	19	2,989	2,987	2,992	31,449,920	809.29

TABLE 5. STATEWIDE SUMMARY

NORTH AMERICAN INDUSTRY CLASSIFICATION SYSTEM - INDUSTRY GROUPS		NUMBER OF EMPLOYING UNITS	EMPLOYMENT			TOTAL EARNINGS	AVERAGE WEEKLY EARNINGS
			APRIL	MAY	JUNE	APR-JUN 2012	
<b>332</b>	<b>FABRICATED METAL PRODUCT MANUFACTURING</b>	<b>525</b>	<b>14,257</b>	<b>14,302</b>	<b>14,393</b>	<b>\$157,899,735</b>	<b>\$848.35</b>
3321	Forging & Stamping	11	318	332	322	3,288,191	780.67
3322	Cutlery & H& Tool Manufacturing	13	858	845	866	8,435,201	757.72
3323	Architectural & Structural Metals	154	3,581	3,574	3,634	40,420,220	864.56
3324	Boilers, Tanks & Shipping Containers	17	708	706	707	7,975,932	867.80
3325	Hardware Manufacturing	8	346	343	341	3,482,910	780.34
3326	Spring & Wire Product Manufacturing	14	390	388	390	4,144,538	818.86
3327	Machine Shops & Threaded Products	207	1,856	1,874	1,866	17,470,403	720.45
3328	Coating, Engraving & Heat Treating Metals	37	704	714	703	5,920,240	644.13
3329	Other Fabricated Metal Product Manufacturing	64	5,496	5,526	5,564	66,762,100	928.89
<b>333</b>	<b>MACHINERY MANUFACTURING</b>	<b>219</b>	<b>11,810</b>	<b>11,787</b>	<b>11,754</b>	<b>\$118,555,391</b>	<b>\$773.92</b>
3331	Agriculture, Construction & Mining Machinery	38	3,104	3,101	3,075	27,224,784	677.01
3332	Industrial Machinery Manufacturing	29	687	678	702	7,846,383	876.01
3333	Commercial & Service Industry Machinery	21	838	850	852	9,732,256	884.21
3334	HVAC & Commercial Refrigeration Equipment	19	3,417	3,419	3,384	33,540,432	757.35
3335	Metalworking Machinery Manufacturing	62	1,095	1,089	1,085	10,774,816	760.63
3336	Turbine & Power Transmission Equipment Manufacturing	7	733	731	724	8,016,654	845.52
3339	Other General Purpose Machinery Manufacturing	43	1,936	1,919	1,932	21,420,066	854.17
<b>334</b>	<b>COMPUTER &amp; ELECTRONIC PRODUCT MANUFACTURING</b>	<b>64</b>	<b>2,952</b>	<b>2,958</b>	<b>2,950</b>	<b>\$30,951,982</b>	<b>\$806.18</b>
3342	Communications Equipment Manufacturing	8	119	120	121	1,593,939	1,021.76
3343	Audio & Video Equipment Manufacturing	5	402	396	401	4,164,010	801.44
3344	Semiconductors & Electronic Components	26	1,906	1,918	1,911	19,132,680	769.88
3345	Electronic Instrument Manufacturing	22	503	500	494	5,915,493	911.90
	Other	3	22	24	23	145,860	487.83
<b>335</b>	<b>ELECTRICAL EQUIPMENT &amp; APPLIANCES</b>	<b>55</b>	<b>6,635</b>	<b>6,650</b>	<b>6,631</b>	<b>\$79,522,747</b>	<b>\$921.44</b>
3353	Electrical Equipment Manufacturing	20	3,391	3,420	3,422	41,980,335	946.72
3359	Other Electrical Equipment & Component Manufacturing	18	1,708	1,746	1,737	20,180,336	897.13
	Other	17	1,536	1,484	1,472	17,362,076	891.95
<b>336</b>	<b>TRANSPORTATION EQUIPMENT MANUFACTURING</b>	<b>145</b>	<b>12,544</b>	<b>12,676</b>	<b>12,675</b>	<b>\$135,363,526</b>	<b>\$824.32</b>
3362	Motor Vehicle Body & Trailer Manufacturing	33	1,713	1,725	1,740	14,248,046	635.00
3363	Motor Vehicle Parts Manufacturing	50	4,916	4,976	4,984	47,900,442	743.07
3364	Aerospace Product & Parts Manufacturing	27	3,275	3,279	3,276	47,310,428	1,110.66
3366	Ship & Boat Building	23	1,275	1,300	1,339	10,673,869	629.33
	Other	12	1,365	1,396	1,336	15,230,741	857.89
<b>337</b>	<b>FURNITURE &amp; RELATED PRODUCT MANUFACTURING</b>	<b>196</b>	<b>3,357</b>	<b>3,371</b>	<b>3,375</b>	<b>\$29,109,172</b>	<b>\$664.90</b>
3371	Household & Institutional Furniture	162	2,211	2,229	2,237	17,045,624	589.13
3372	Office Furniture & Fixtures Manufacturing	25	1,046	1,046	1,042	11,405,170	839.81
3379	Other Furniture Related Product Manufacturing	9	100	96	96	658,378	520.32
<b>339</b>	<b>MISCELLANEOUS MANUFACTURING</b>	<b>197</b>	<b>3,327</b>	<b>3,340</b>	<b>3,379</b>	<b>\$29,855,153</b>	<b>\$685.81</b>
3391	Medical Equipment & Supplies Manufacturing	79	1,599	1,598	1,599	16,775,808	807.20
3399	Other Miscellaneous Manufacturing	118	1,728	1,742	1,780	13,079,345	574.92

TABLE 5. STATEWIDE SUMMARY

NORTH AMERICAN INDUSTRY CLASSIFICATION SYSTEM - INDUSTRY GROUPS		NUMBER OF	EMPLOYMENT			TOTAL EARNINGS	AVERAGE
		EMPLOYING	APRIL	MAY	JUNE	APR-JUN 2012	WEEKLY
		UNITS					EARNINGS
<b>TRADE, TRANSPORTATION &amp; UTILITIES</b>		<b>21,101</b>	<b>237,148</b>	<b>237,829</b>	<b>238,073</b>	<b>\$2,077,361,045</b>	<b>\$672.31</b>
<b>42</b>	<b>WHOLESALE TRADE</b>	<b>6,719</b>	<b>47,926</b>	<b>48,133</b>	<b>48,278</b>	<b>\$649,278,323</b>	<b>\$1,038.08</b>
<b>423</b>	<b>MERCHANT WHOLESALERS, DURABLE GOODS</b>	<b>2,123</b>	<b>21,373</b>	<b>21,446</b>	<b>21,528</b>	<b>\$253,224,763</b>	<b>\$908.15</b>
4231	Motor Vehicle & Part Merchant Wholesalers	237	2,635	2,628	2,673	26,114,936	759.39
4232	Furniture & Furnishings Merchant Wholesalers	61	387	404	398	5,060,205	982.12
4233	Lumber & Supply Merchant Wholesalers	169	1,350	1,350	1,355	13,695,192	779.39
4234	Commercial Goods Merchant Wholesalers	294	2,879	2,871	2,916	43,001,826	1,145.11
4235	Metal & Mineral Merchant Wholesalers	47	873	881	874	10,291,797	903.74
4236	Appliances & Electronics Goods Merchant Wholesalers	185	2,133	2,138	2,139	27,933,430	1,005.64
4237	Hardware & Plumbing Merchant Wholesalers	217	2,163	2,172	2,186	25,874,962	915.68
4238	Machinery & Supply Merchant Wholesalers	699	7,017	7,024	6,997	82,029,724	899.80
4239	Miscellaneous Durable Goods Merchant Wholesalers	214	1,936	1,978	1,990	19,222,691	751.36
<b>424</b>	<b>MERCHANT WHOLESALERS, NONDURABLE GOODS</b>	<b>1,183</b>	<b>15,626</b>	<b>15,665</b>	<b>15,718</b>	<b>\$187,531,786</b>	<b>\$920.60</b>
4241	Paper & Paper Product Merchant Wholesalers	71	1,129	1,144	1,140	14,304,878	967.22
4242	Druggist' Goods Merchant Wholesalers	71	970	978	963	11,613,842	920.69
4243	Apparel & Piece Goods Merchant Wholesalers	37	567	582	598	5,766,540	761.73
4244	Grocery Product Merchant Wholesalers	293	4,970	4,990	5,005	65,793,276	1,014.57
4245	Farm Product Merchant Wholesalers	73	820	821	852	6,767,976	626.49
4246	Chemical merchant Wholesalers	100	656	659	665	10,012,010	1,166.90
4247	Petroleum Merchant Wholesalers	136	1,456	1,448	1,457	19,583,563	1,036.30
4248	Alcoholic Beverage Merchant Wholesalers	38	1,259	1,263	1,287	15,821,515	958.55
4249	Miscellaneous Nondurable Goods Merchant Wholesaler	364	3,799	3,780	3,751	37,868,186	771.30
<b>425</b>	<b>ELECTRONIC MARKETS &amp; AGENTS &amp; BROKERS</b>	<b>3,413</b>	<b>10,927</b>	<b>11,022</b>	<b>11,032</b>	<b>\$208,521,774</b>	<b>\$1,459.03</b>
<b>44 - 45</b>	<b>RETAIL TRADE</b>	<b>11,064</b>	<b>131,684</b>	<b>131,974</b>	<b>131,709</b>	<b>\$794,000,257</b>	<b>\$463.44</b>
<b>441</b>	<b>MOTOR VEHICLE &amp; PARTS DEALERS</b>	<b>1,606</b>	<b>17,267</b>	<b>17,390</b>	<b>17,450</b>	<b>\$167,849,745</b>	<b>\$743.37</b>
4411	Automobile Dealers	655	10,050	10,106	10,146	116,472,501	887.01
4412	Other Motor Vehicle Dealers	161	1,395	1,451	1,464	12,768,633	683.67
4413	Automotive Parts, Accessories & Tire Stores	790	5,822	5,833	5,840	38,608,611	509.27
<b>442</b>	<b>FURNITURE &amp; HOME FURNISHINGS STORES</b>	<b>538</b>	<b>3,339</b>	<b>3,309</b>	<b>3,293</b>	<b>\$23,304,304</b>	<b>\$540.98</b>
4421	Furniture Stores	297	1,943	1,920	1,899	14,958,485	599.09
4422	Home Furnishings Stores	241	1,396	1,389	1,394	8,345,819	460.87
<b>443</b>	<b>ELECTRONICS &amp; APPLIANCE STORES</b>	<b>532</b>	<b>3,993</b>	<b>3,947</b>	<b>3,981</b>	<b>\$29,665,240</b>	<b>\$574.27</b>
<b>444</b>	<b>BUILDING MATERIAL &amp; GARDEN SUPPLY STORES</b>	<b>842</b>	<b>11,079</b>	<b>10,964</b>	<b>10,640</b>	<b>\$69,590,381</b>	<b>\$491.37</b>
4441	Building Material & Supplies Dealers	625	9,651	9,518	9,236	61,283,606	497.88
4442	Lawn & Garden Equipment & Supplies Stores	217	1,428	1,446	1,404	8,306,775	448.09

TABLE 5. STATEWIDE SUMMARY

NORTH AMERICAN INDUSTRY CLASSIFICATION SYSTEM - INDUSTRY GROUPS		NUMBER OF EMPLOYING UNITS	EMPLOYMENT			TOTAL EARNINGS	AVERAGE WEEKLY EARNINGS
			APRIL	MAY	JUNE	APR-JUN 2012	
<b>445</b>	<b>FOOD &amp; BEVERAGE STORES</b>	<b>1,011</b>	<b>17,737</b>	<b>17,911</b>	<b>17,986</b>	<b>\$84,890,244</b>	<b>\$365.25</b>
4451	Grocery Stores	548	15,296	15,465	15,517	71,347,658	355.78
4452	Specialty Food Stores	139	877	869	878	6,073,102	534.10
4453	Beer, Wine & Liquor Stores	324	1,564	1,577	1,591	7,469,484	364.27
<b>446</b>	<b>HEALTH &amp; PERSONAL CARE STORES</b>	<b>961</b>	<b>7,858</b>	<b>7,882</b>	<b>7,968</b>	<b>\$66,241,877</b>	<b>\$644.79</b>
<b>447</b>	<b>GASOLINE STATIONS</b>	<b>1,601</b>	<b>11,683</b>	<b>11,728</b>	<b>11,756</b>	<b>\$49,767,281</b>	<b>\$326.58</b>
44711	Gasoline Stations with Convenience Stores	1,498	10,510	10,577	10,589	43,298,267	315.44
44719	Other Gasoline Stations	103	1,173	1,151	1,167	6,469,014	427.63
<b>448</b>	<b>CLOTHING &amp; CLOTHING ACCESSORIES STORES</b>	<b>1,037</b>	<b>8,387</b>	<b>8,381</b>	<b>8,333</b>	<b>\$32,132,908</b>	<b>\$295.42</b>
4481	Clothing Stores	747	6,468	6,477	6,435	21,526,243	256.33
4482	Shoe Stores	147	1,147	1,129	1,123	4,635,172	314.70
4483	Jewelry, Luggage & Leather Goods Stores	143	772	775	775	5,971,493	593.47
<b>451</b>	<b>SPORTING GOODS, HOBBY, BOOK &amp; MUSIC STORES</b>	<b>496</b>	<b>4,000</b>	<b>4,027</b>	<b>3,975</b>	<b>\$16,537,941</b>	<b>\$317.98</b>
4511	Sporting Goods & Musical Instrument Stores	410	3,404	3,411	3,407	14,248,511	321.67
4512	Book, Periodical & Music Stores	86	596	616	568	2,289,430	296.81
<b>452</b>	<b>GENERAL MERCH&amp;ISE STORES</b>	<b>814</b>	<b>38,063</b>	<b>38,094</b>	<b>38,024</b>	<b>\$205,766,184</b>	<b>\$415.87</b>
<b>453</b>	<b>MISCELLANEOUS STORE RETAILERS</b>	<b>1,254</b>	<b>6,512</b>	<b>6,611</b>	<b>6,551</b>	<b>\$34,104,441</b>	<b>\$400.03</b>
4531	Florists	214	778	837	783	3,162,476	304.34
4532	Office Supplies, Stationery & Gift Stores	309	2,031	2,055	2,047	10,422,313	392.17
4533	Used Merchandise Stores	239	1,277	1,272	1,256	7,408,412	449.31
4539	Other Miscellaneous Store Retailers	492	2,426	2,447	2,465	13,111,240	412.33
<b>454</b>	<b>NONSTORE RETAILERS</b>	<b>372</b>	<b>1,766</b>	<b>1,730</b>	<b>1,752</b>	<b>\$14,149,711</b>	<b>\$622.20</b>
4541	Electronic Shopping & Mail-Order Houses	153	553	562	570	5,151,840	705.57
4542	Vending Machine Operators	75	519	489	492	3,544,395	545.29
4543	Direct Selling Establishments	144	694	679	690	5,453,476	610.03
<b>48 - 49</b>	<b>TRANSPORTATION &amp; WAREHOUSING</b>	<b>2,903</b>	<b>49,891</b>	<b>50,046</b>	<b>50,369</b>	<b>506,826,346</b>	<b>\$778.15</b>
<b>481</b>	<b>AIR TRANSPORTATION</b>	<b>51</b>	<b>889</b>	<b>886</b>	<b>875</b>	<b>\$11,875,791</b>	<b>\$1,034.18</b>
<b>483</b>	<b>WATER TRANSPORTATION</b>	<b>3</b>	<b>82</b>	<b>80</b>	<b>81</b>	<b>\$1,389,178</b>	<b>\$1,319.26</b>
<b>484</b>	<b>TRUCK TRANSPORTATION</b>	<b>1,911</b>	<b>32,391</b>	<b>32,559</b>	<b>32,720</b>	<b>\$334,875,134</b>	<b>\$791.22</b>
4841	General Freight Trucking	1,184	25,796	25,915	25,986	269,705,162	801.06
4842	Specialized Freight Trucking	727	6,595	6,644	6,734	65,169,972	752.98

TABLE 5. STATEWIDE SUMMARY

NORTH AMERICAN INDUSTRY CLASSIFICATION SYSTEM - INDUSTRY GROUPS		NUMBER OF EMPLOYING UNITS	EMPLOYMENT			TOTAL EARNINGS	AVERAGE WEEKLY EARNINGS
			APRIL	MAY	JUNE	APR-JUN 2012	
<b>485</b>	<b>TRANSIT &amp; GROUND PASSENGER TRANSPORTATION</b>	<b>83</b>	<b>1,366</b>	<b>1,384</b>	<b>1,402</b>	<b>\$5,848,429</b>	<b>\$325.06</b>
4853	Taxi & Limousine Service	29	353	366	363	1,504,463	320.87
4854	School & Employee Bus Transportation	12	414	417	411	1,652,426	307.03
4855	Charter Bus Industry Service	7	93	89	90	611,685	518.96
4859	Other Ground Passenger Transportation	29	415	425	450	1,639,652	293.32
	Other	6	91	87	88	440,203	381.90
<b>486</b>	<b>PIPELINE TRANSPORTATION</b>	<b>30</b>	<b>441</b>	<b>441</b>	<b>444</b>	<b>\$7,889,424</b>	<b>\$1,373.03</b>
<b>487</b>	<b>SCENIC &amp; SIGHTSEEING TRANSPORTATION</b>	<b>7</b>	<b>49</b>	<b>62</b>	<b>71</b>	<b>\$219,037</b>	<b>\$277.73</b>
<b>488</b>	<b>SUPPORT ACTIVITIES FOR TRANSPORTATION</b>	<b>418</b>	<b>4,507</b>	<b>4,506</b>	<b>4,589</b>	<b>\$49,345,604</b>	<b>\$837.19</b>
4881	Support Activities for Air Transportation	101	1,266	1,270	1,295	12,415,232	747.86
4882	Support Activities for Rail Transportation	39	412	394	402	3,687,009	704.34
4883	Support Activities for Water Transportation	23	555	550	538	6,631,543	931.44
4884	Support Activities for Road Transportation	126	617	621	650	4,071,369	497.64
4885	Freight Transportation Arrangement	113	1,541	1,543	1,574	21,792,857	1,079.67
4889	Other Support Activities for Transportation	16	116	128	130	747,594	461.29
<b>492</b>	<b>COURIERS &amp; MESSENGERS</b>	<b>170</b>	<b>2,983</b>	<b>2,974</b>	<b>2,995</b>	<b>\$30,666,058</b>	<b>\$790.53</b>
4921	Couriers	79	2,554	2,557	2,556	27,525,685	\$828.50
4922	Local Messenger & Local Delivery	91	429	417	439	3,140,373	\$563.97
<b>493</b>	<b>WARHOUSING &amp; STORAGE</b>	<b>230</b>	<b>7,183</b>	<b>7,154</b>	<b>7,192</b>	<b>64,717,691</b>	<b>\$693.71</b>
<b>22</b>	<b>UTILITIES</b>	<b>415</b>	<b>7,647</b>	<b>7,676</b>	<b>7,717</b>	<b>\$127,256,119</b>	<b>\$1,274.60</b>
2211	Power Generation & Supply	159	5,459	5,492	5,528	101,881,509	1,426.73
2212	Natural Gas Distribution	73	1,278	1,272	1,271	17,717,000	1,070.02
2213	Water, Sewage & Other Systems	183	910	912	918	7,657,610	644.94
<b>INFORMATION</b>		<b>1,134</b>	<b>14,338</b>	<b>14,465</b>	<b>14,428</b>	<b>\$167,245,141</b>	<b>\$892.76</b>
<b>511</b>	<b>PUBLISHING INDUSTRIES, EXCEPT INTERNET</b>	<b>227</b>	<b>3,736</b>	<b>3,735</b>	<b>3,711</b>	<b>\$33,528,276</b>	<b>\$691.94</b>
5111	Newspaper, Book & Directory Publishers	200	3,421	3,427	3,404	28,611,506	644.04
5112	Software Publishers	27	315	308	307	4,916,770	1,220.04
<b>512</b>	<b>MOTION PICTURE &amp; SOUND RECORDING INDUSTRY</b>	<b>140</b>	<b>1,243</b>	<b>1,340</b>	<b>1,289</b>	<b>\$5,906,471</b>	<b>\$352.02</b>
5121	Motion Picture & Video Industries	120	1,210	1,307	1,260	5,578,444	340.83
5122	Sound Recording Industries	20	33	33	29	328,027	796.83
<b>515</b>	<b>BROADCASTING, EXCEPT INTERNET</b>	<b>124</b>	<b>1,677</b>	<b>1,685</b>	<b>1,688</b>	<b>\$16,296,839</b>	<b>\$744.71</b>
5151	Radio & Television Broadcasting	120	1,645	1,654	1,658	16,105,310	749.77
5152	Cable & Other Subscription Programming	4	32	31	30	191,529	475.26

TABLE 5. STATEWIDE SUMMARY

NORTH AMERICAN INDUSTRY CLASSIFICATION SYSTEM - INDUSTRY GROUPS		NUMBER OF EMPLOYING UNITS	EMPLOYMENT			TOTAL EARNINGS	AVERAGE WEEKLY EARNINGS
			APRIL	MAY	JUNE	APR-JUN 2012	
<b>517</b>	<b>TELECOMMUNICATIONS</b>	<b>376</b>	<b>5,951</b>	<b>5,941</b>	<b>5,950</b>	<b>\$89,724,711</b>	<b>\$1,160.50</b>
5171	Wired Telecommunications Carriers	266	3,725	3,702	3,697	57,372,820	1,190.21
5172	Wireless Telecommunications Carriers (except Satellite)	49	1,841	1,854	1,876	27,281,175	1,130.08
5174	Satellite Telecommunications Carriers	4	7	7	5	53,162	645.69
5179	Other Telecommunications	57	378	378	372	5,017,554	1,026.50
<b>518</b>	<b>DATA PROCESSING, HOSTING &amp; RELATED SERVICES</b>	<b>191</b>	<b>1,402</b>	<b>1,438</b>	<b>1,465</b>	<b>\$18,463,122</b>	<b>\$989.71</b>
<b>519</b>	<b>OTHER INFORMATION SERVICES</b>	<b>76</b>	<b>329</b>	<b>326</b>	<b>325</b>	<b>\$3,325,722</b>	<b>\$783.14</b>
<b>FINANCIAL ACTIVITIES</b>		<b>7,993</b>	<b>47,642</b>	<b>47,986</b>	<b>48,147</b>	<b>\$541,318,222</b>	<b>\$868.85</b>
<b>52</b>	<b>FINANCE &amp; INSURANCE</b>	<b>4,769</b>	<b>34,457</b>	<b>34,609</b>	<b>34,675</b>	<b>\$436,292,568</b>	<b>\$970.52</b>
<b>522</b>	<b>CREDIT INTERMEDIATION &amp; RELATED ACTIVITIES</b>	<b>1,910</b>	<b>18,783</b>	<b>18,822</b>	<b>18,811</b>	<b>\$202,744,995</b>	<b>\$829.33</b>
5221	Depository Credit Intermediation	1,425	16,805	16,820	16,795	174,743,571	799.79
5222	Nondepository Credit Intermediation	353	1,629	1,645	1,670	22,901,963	1,068.99
5223	Activities Related to Credit Intermediation	132	349	357	346	5,099,461	1,118.63
<b>523</b>	<b>FINANCIAL INVESTMENT &amp; RELATED ACTIVITIES</b>	<b>668</b>	<b>2,979</b>	<b>3,003</b>	<b>2,992</b>	<b>\$72,806,420</b>	<b>\$1,872.24</b>
<b>524</b>	<b>INSURANCE CARRIERS &amp; RELATED ACTIVITIES</b>	<b>2,106</b>	<b>12,564</b>	<b>12,650</b>	<b>12,742</b>	<b>\$159,195,787</b>	<b>\$967.90</b>
5241	Insurance Carriers	325	5,143	5,156	5,169	78,475,068	1,170.78
5242	Insurance Agencies, Brokerages & Support	1,781	7,421	7,494	7,573	80,720,719	828.35
	<b>OTHER</b>	<b>85</b>	<b>131</b>	<b>134</b>	<b>130</b>	<b>\$1,545,366</b>	<b>\$902.84</b>
<b>53</b>	<b>REAL ESTATE &amp; RENTAL &amp; LEASING</b>	<b>3,224</b>	<b>13,185</b>	<b>13,377</b>	<b>13,472</b>	<b>\$105,025,654</b>	<b>\$605.40</b>
<b>531</b>	<b>REAL ESTATE</b>	<b>2,495</b>	<b>8,558</b>	<b>8,672</b>	<b>8,718</b>	<b>\$63,351,122</b>	<b>\$563.41</b>
5311	Lessors of Real Estate	1,057	4,208	4,276	4,284	28,893,130	522.22
5312	Offices of Real Estate Agents & Brokers	732	1,560	1,562	1,580	12,788,641	627.65
5313	Activities Related to Real Estate	706	2,790	2,834	2,854	21,669,351	589.83
<b>532</b>	<b>RENTAL &amp; LEASING SERVICES</b>	<b>708</b>	<b>4,544</b>	<b>4,622</b>	<b>4,672</b>	<b>\$40,846,469</b>	<b>\$681.18</b>
5321	Automotive Equipment Rental & Leasing	114	890	883	902	6,053,982	522.27
5322	Consumer Goods Rental	369	2,025	2,086	2,121	14,628,207	541.68
5323	General Rental Centers	44	261	264	265	2,401,579	701.53
5324	Machinery & Equipment Rental & Leasing	181	1,368	1,389	1,384	17,762,701	989.88
<b>533</b>	<b>LESSORS OF NONFINANCIAL INTANGIBLE ASSETS</b>	<b>21</b>	<b>83</b>	<b>83</b>	<b>82</b>	<b>\$828,063</b>	<b>\$770.53</b>



TABLE 5. STATEWIDE SUMMARY

NORTH AMERICAN INDUSTRY CLASSIFICATION SYSTEM - INDUSTRY GROUPS		NUMBER OF	EMPLOYMENT			TOTAL EARNINGS	AVERAGE
		EMPLOYING	APRIL	MAY	JUNE	APR-JUN 2012	WEEKLY
		UNITS					EARNINGS
<b>PROFESSIONAL &amp; BUSINESS SERVICES</b>		<b>12,524</b>	<b>124,823</b>	<b>124,750</b>	<b>124,684</b>	<b>\$1,373,241,407</b>	<b>\$846.75</b>
<b>54</b>	<b>PROFESSIONAL &amp; TECHNICAL SERVICES</b>	<b>7,889</b>	<b>39,695</b>	<b>38,567</b>	<b>38,918</b>	<b>\$498,253,593</b>	<b>\$981.24</b>
5411	Legal Services	1,679	6,007	5,977	6,024	67,879,697	869.87
5412	Accounting & Bookkeeping Services	1,266	6,283	4,958	4,825	54,535,986	783.35
5413	Architectural & Engineering Services	920	5,782	5,823	5,913	76,252,299	1,004.49
5414	Specialized Design Services	195	448	454	446	5,168,573	884.83
5415	Computer Systems Design & Related Services	1,220	8,768	8,874	9,085	158,803,526	1,371.16
5416	Management & Technical Consulting Services	1,514	4,717	4,781	4,885	59,137,984	948.84
5417	Scientific Research & Development Services	119	1,214	1,225	1,233	18,012,289	1,131.99
5418	Advertising & Related Services	382	2,875	2,897	2,865	29,403,872	785.63
5419	Other Professional & Technical Services	594	3,601	3,578	3,642	29,059,367	619.72
<b>55</b>	<b>MANAGEMENT OF COMPANIES &amp; ENTERPRISES</b>	<b>498</b>	<b>30,754</b>	<b>30,739</b>	<b>30,832</b>	<b>\$527,895,636</b>	<b>\$1,319.49</b>
<b>56</b>	<b>ADMINISTRATIVE &amp; SUPPORT SERVICES</b>	<b>4,137</b>	<b>54,374</b>	<b>55,444</b>	<b>54,934</b>	<b>\$347,092,178</b>	<b>\$486.17</b>
<b>561</b>	<b>ADMINISTRATIVE &amp; SUPPORT SERVICES</b>	<b>3,864</b>	<b>51,424</b>	<b>52,471</b>	<b>51,921</b>	<b>\$318,378,263</b>	<b>\$471.53</b>
5611	Office Administrative Services	563	2,112	2,087	2,052	26,240,075	968.71
5612	Facilities Support Services	23	212	229	235	2,147,830	733.21
5613	Employment Services	824	20,710	21,692	21,092	117,204,201	425.98
5614	Business Support Services	395	8,905	8,729	8,829	63,352,698	552.46
5615	Travel Arrangement & Reservation Services	82	333	335	355	2,663,725	600.89
5616	Investigation & Security Services	241	4,453	4,464	4,409	25,948,574	449.36
5617	Services to Buildings & Dwellings	1,494	13,181	13,427	13,480	68,721,256	395.60
5619	Other Support Services	242	1,518	1,508	1,469	12,099,904	621.20
<b>562</b>	<b>WASTE MANAGEMENT &amp; REMEDIATION SERVICES</b>	<b>273</b>	<b>2,950</b>	<b>2,973</b>	<b>3,013</b>	<b>\$28,713,915</b>	<b>\$741.53</b>
5621	Waste Collection Services	108	1,028	1,029	1,044	9,162,952	681.89
5622	Waste Treatment & disposal Services	33	870	871	854	10,618,230	944.26
5629	Remediation & Other Waste Services	132	1,052	1,073	1,115	8,932,733	636.23
<b>EDUCATION &amp; HEALTH SERVICES</b>		<b>14,054</b>	<b>168,861</b>	<b>169,780</b>	<b>167,596</b>	<b>\$1,509,281,010</b>	<b>\$688.01</b>
<b>61</b>	<b>EDUCATIONAL SERVICES</b>	<b>719</b>	<b>12,374</b>	<b>12,423</b>	<b>10,373</b>	<b>\$86,927,590</b>	<b>\$570.38</b>
6111	Elementary & Secondary Schools	91	4,914	5,123	3,330	26,239,520	453.00
6112	Junior Colleges	4	144	148	144	1,110,209	587.62
6113	Colleges & Universities	32	4,155	4,079	3,945	34,306,298	650.04
6114	Business, Computer, & Management Training	43	109	105	106	1,714,365	1,236.32
6115	Technical & Trade Schools	100	904	909	886	12,252,234	1,047.59
6116	Other Schools & Instruction	270	1,713	1,609	1,487	6,477,581	310.84
6117	Educational Support Services	179	435	450	475	4,827,383	819.13

TABLE 5. STATEWIDE SUMMARY

NORTH AMERICAN INDUSTRY CLASSIFICATION SYSTEM - INDUSTRY GROUPS		NUMBER OF	EMPLOYMENT			TOTAL EARNINGS	AVERAGE
		EMPLOYING	APRIL	MAY	JUNE	APR-JUN 2012	WEEKLY
		UNITS					EARNINGS
<b>62</b>	<b>HEALTH CARE &amp; SOCIAL ASSISTANCE</b>	<b>13,335</b>	<b>156,487</b>	<b>157,357</b>	<b>157,223</b>	<b>\$1,422,353,420</b>	<b>\$696.79</b>
<b>621</b>	<b>AMBULATORY HEALTH CARE SERVICES</b>	<b>5,123</b>	<b>47,355</b>	<b>47,583</b>	<b>47,879</b>	<b>\$641,217,056</b>	<b>\$1,036.10</b>
6211	Offices of Physicians	2,259	22,004	22,035	22,147	394,933,442	1,377.01
6212	Offices of Dentists	985	6,832	6,894	6,930	72,197,801	806.60
6213	Offices of Other Health Practitioners	1,232	6,836	6,885	6,923	62,207,897	695.39
6214	Outpatient Care Centers	272	3,890	3,911	3,946	41,507,476	815.41
6215	Medical & Diagnostic Laboratories	108	961	954	963	12,447,671	998.10
6216	Home Health Care Services	134	4,275	4,324	4,335	35,321,280	630.20
6219	Other Ambulatory Health Care Services	133	2,557	2,580	2,635	22,601,489	671.09
<b>622</b>	<b>HOSPITALS</b>	<b>121</b>	<b>41,436</b>	<b>42,035</b>	<b>42,196</b>	<b>\$430,171,312</b>	<b>\$789.95</b>
6221	General Medical & Surgical Hospitals	77	36,368	36,876	37,028	382,099,267	799.63
6222	Psychiatric & Substance Abuse Hospitals	22	2,526	2,558	2,550	21,968,125	664.08
6223	Other Hospitals	22	2,542	2,601	2,618	26,103,920	776.19
<b>623</b>	<b>Residential &amp; Mental Health Facilities</b>	<b>581</b>	<b>31,498</b>	<b>31,536</b>	<b>31,545</b>	<b>\$179,619,075</b>	<b>\$438.26</b>
6231	Nursing Care Facilities (Skilled Nursing Facilities)	266	23,035	23,067	22,976	132,592,483	442.95
6232	Residential Mental Health Facilities	157	4,280	4,273	4,313	24,908,892	446.77
6233	Continuing Care & Assisted Living Facilities	117	3,075	3,080	3,131	15,294,624	380.09
6239	Other Residential Care Facilities	41	1,108	1,116	1,125	6,823,076	470.16
<b>624</b>	<b>SOCIAL ASSISTANCE</b>	<b>7,510</b>	<b>36,198</b>	<b>36,203</b>	<b>35,603</b>	<b>\$171,345,977</b>	<b>\$366.11</b>
6241	Individual & Family Services	6,264	20,793	20,846	21,062	99,383,386	365.78
6242	Emergency & Other Relief Services	131	1,242	1,220	1,191	7,034,681	444.40
6243	Vocational Rehabilitation Services	140	3,993	4,026	4,038	22,535,386	431.32
6244	Child Day Care Services	975	10,170	10,111	9,312	42,392,524	330.58
<b>LEISURE &amp; HOSPITALITY</b>		<b>6,518</b>	<b>104,048</b>	<b>105,287</b>	<b>107,045</b>	<b>\$368,021,941</b>	<b>\$268.44</b>
<b>71</b>	<b>ARTS, ENTERTAINMENT &amp; RECREATION</b>	<b>921</b>	<b>10,131</b>	<b>10,729</b>	<b>11,482</b>	<b>\$46,078,414</b>	<b>\$328.78</b>
<b>711</b>	<b>PERFORMING ARTS &amp; SPECTATOR SPORTS</b>	<b>202</b>	<b>2,850</b>	<b>2,646</b>	<b>2,547</b>	<b>\$13,379,929</b>	<b>\$383.90</b>
7111	Performing Arts Companies	46	383	536	531	2,051,249	326.46
7112	Spectator Sports	48	1,677	1,311	1,255	8,028,695	436.67
7113	Performing Arts & Sports Promoters	36	701	710	668	2,665,618	295.88
7114	Agents & Managers for Public Figures	21	24	24	27	287,887	885.81
7115	Independent Artists, Writers, & Performers	51	65	65	66	346,480	407.94
<b>712</b>	<b>MUSEUMS, PARKS, &amp; HISTORICAL SITES</b>	<b>55</b>	<b>442</b>	<b>435</b>	<b>470</b>	<b>\$3,014,699</b>	<b>\$516.48</b>
<b>713</b>	<b>GAMBLING, RECREATIONAL &amp; AMUSEMENT INDUSTRY</b>	<b>664</b>	<b>6,839</b>	<b>7,648</b>	<b>8,465</b>	<b>\$29,683,786</b>	<b>\$298.45</b>
<b>72</b>	<b>ACCOMODATION &amp; FOOD SERVICES</b>	<b>5,597</b>	<b>93,917</b>	<b>94,558</b>	<b>95,563</b>	<b>\$321,943,527</b>	<b>\$261.57</b>

TABLE 5. STATEWIDE SUMMARY

NORTH AMERICAN INDUSTRY CLASSIFICATION SYSTEM - INDUSTRY GROUPS		NUMBER OF EMPLOYING UNITS	EMPLOYMENT			TOTAL EARNINGS	AVERAGE WEEKLY EARNINGS
			APRIL	MAY	JUNE	APR-JUN 2012	
<b>721</b>	<b>ACCOMODATION</b>	<b>882</b>	<b>10,931</b>	<b>11,126</b>	<b>12,032</b>	<b>\$45,858,769</b>	<b>\$310.45</b>
7211	Travel Accommodation	801	10,520	10,648	10,875	42,891,564	308.90
7212	RV Parks & Recreational Camps	61	316	384	1,076	2,606,174	338.64
7213	Rooming & Boarding Houses	20	95	94	81	361,031	308.57
<b>722</b>	<b>FOOD SERVICES &amp; DRINKING PLACES</b>	<b>4,715</b>	<b>82,986</b>	<b>83,432</b>	<b>83,531</b>	<b>\$276,084,758</b>	<b>\$254.90</b>
7223	Special Food Services	171	2,809	2,548	2,418	9,981,943	296.27
7224	Drinking Places, Alcoholic Beverages	164	1,074	1,053	1,067	3,405,440	246.05
7225	Restaurants & Other Eating Places	4,380	79,103	79,831	80,046	262,697,375	253.67
722511	Full-Service Restaurants	2,004	35,437	35,907	35,934	125,701,409	270.40
722513	Limited-Service Eating Places	1,998	39,852	40,133	40,224	123,686,433	237.44
722514	Cafeterias, Grill Buffets, & Buffets	99	1,869	1,781	1,803	6,789,279	287.32
722515	Snack & Nonalcoholic Beverage Bars	279	1,945	2,010	2,085	6,520,254	249.12
<b>OTHER SERVICES</b>		<b>5,366</b>	<b>24,516</b>	<b>24,690</b>	<b>25,328</b>	<b>\$171,756,441</b>	<b>\$531.79</b>
<b>811</b>	<b>REPAIR &amp; MAINTENANCE</b>	<b>2,239</b>	<b>9,440</b>	<b>9,495</b>	<b>9,751</b>	<b>\$78,338,994</b>	<b>\$630.21</b>
8111	Automotive Repair & Maintenance	1,460	6,312	6,312	6,387	47,652,533	578.44
8112	Electronic Equipment Repair & Maintenance	165	575	575	593	5,920,944	783.92
8113	Commercial Machinery Repair & Maintenance	426	1,960	2,022	2,149	20,630,292	776.52
8114	Household Goods Repair & Maintenance	188	593	586	622	4,135,225	529.86
<b>812</b>	<b>PERSONAL &amp; LAUNDRY SERVICES</b>	<b>1,337</b>	<b>8,339</b>	<b>8,380</b>	<b>8,365</b>	<b>\$43,698,123</b>	<b>\$402.02</b>
8121	Personal Care Services	622	3,005	3,030	2,973	13,019,957	333.55
8122	Death Care Services	250	1,599	1,596	1,627	11,122,103	532.28
8123	Drycleaning & Laundry Service	274	2,984	2,993	3,001	16,076,379	413.22
8129	Other Personal Services	191	751	761	764	3,479,684	352.81
<b>813</b>	<b>MEMBERSHIP ASSOCIATIONS &amp; ORGANIZATIONS</b>	<b>1,088</b>	<b>5,775</b>	<b>5,846</b>	<b>6,252</b>	<b>\$45,230,064</b>	<b>\$583.99</b>
8131	Religious Organizations	54	204	205	201	1,330,263	503.25
8132	Grantmaking & Giving Organizations	111	502	502	501	5,400,429	828.07
8133	Social Advocacy Organizations	225	1,822	1,795	1,787	14,702,358	627.84
8134	Civic & Social Organizations	189	1,210	1,269	1,595	5,386,672	305.12
8139	Professional & Similar Organizations	509	2,037	2,075	2,168	18,410,342	676.52
<b>814</b>	<b>PRIVATE HOUSEHOLDS</b>	<b>702</b>	<b>962</b>	<b>969</b>	<b>960</b>	<b>\$4,489,260</b>	<b>\$358.35</b>
<b>LOCAL GOVERNMENT</b>		<b>1,959</b>	<b>119,442</b>	<b>120,257</b>	<b>115,697</b>	<b>\$1,179,457,431</b>	<b>\$765.86</b>
<b>STATE GOVERNMENT</b>		<b>1,126</b>	<b>70,694</b>	<b>71,020</b>	<b>67,892</b>	<b>\$772,744,141</b>	<b>\$850.77</b>
<b>NONCLASSIFIABLE ESTABLISHMENTS</b>		<b>0</b>	<b>0</b>	<b>0</b>	<b>0</b>	<b>\$0</b>	<b>\$0.00</b>

TABLE 6. COUNTY SUMMARY

NORTH AMERICAN INDUSTRY CLASSIFICATION SYSTEM - INDUSTRY GROUPS	NUMBER OF EMPLOYING UNITS	EMPLOYMENT			TOTAL EARNINGS	AVERAGE WEEKLY EARNINGS
		APRIL	MAY	JUNE	APR-JUN 2012	
<b>ARKANSAS COUNTY - TOTAL</b>	<b>733</b>	<b>9,755</b>	<b>9,765</b>	<b>9,763</b>	<b>\$82,937,382</b>	<b>\$653.60</b>
Natural Resources & Mining	45	189	190	189	2,222,336	902.90
Construction	47	283	289	290	2,442,073	653.78
Manufacturing	29	3,671	3,663	3,639	34,474,707	725.03
Trade, Transportation & Utilities	217	2,053	2,086	2,082	18,281,165	678.14
Wholesale Trade	45	467	475	471	6,102,962	996.73
Retail Trade	102	1,002	1,015	1,010	6,015,774	458.62
Transportation, Warehousing & Utilities	70	584	596	601	6,162,429	798.48
Information	10	102	102	102	963,609	726.70
Financial Activities	46	367	369	370	3,236,666	675.34
Professional & Business Services	46	340	315	313	3,714,025	885.42
Education & Health Services	140	1,116	1,119	1,094	7,458,079	517.00
Leisure & Hospitality	55	528	526	539	1,708,516	247.50
Other Services	51	119	118	122	799,990	514.24
Local Government	32	783	784	813	6,153,975	596.70
State Government	15	204	204	210	1,482,241	553.49
<b>ASHLEY COUNTY - TOTAL</b>	<b>582</b>	<b>7,590</b>	<b>7,642</b>	<b>7,624</b>	<b>\$75,054,675</b>	<b>\$757.80</b>
Natural Resources & Mining	46	300	312	314	2,513,840	626.48
Construction	46	777	795	745	8,908,234	887.24
Manufacturing	27	2,034	2,042	2,055	32,056,163	1,206.59
Trade, Transportation & Utilities	135	1,313	1,313	1,320	8,955,339	523.72
Wholesale Trade	25	218	220	227	2,511,247	871.46
Retail Trade	84	862	859	855	4,208,001	376.97
Transportation, Warehousing & Utilities	26	233	234	238	2,236,091	731.94
Information	6	41	36	40	290,162	572.31
Financial Activities	36	232	237	239	1,932,704	629.96
Professional & Business Services	49	244	240	239	1,626,245	519.07
Education & Health Services	126	881	893	884	6,579,595	571.24
Leisure & Hospitality	31	428	433	441	1,203,505	213.31
Other Services	37	135	129	138	795,534	456.68
Local Government	32	1,003	1,012	1,024	8,953,254	679.87
State Government	11	202	200	185	1,240,100	487.52

TABLE 6. COUNTY SUMMARY

NORTH AMERICAN INDUSTRY CLASSIFICATION SYSTEM - INDUSTRY GROUPS	NUMBER OF EMPLOYING UNITS	EMPLOYMENT			TOTAL EARNINGS	AVERAGE WEEKLY EARNINGS
		APRIL	MAY	JUNE	APR-JUN 2012	
<b>BAXTER COUNTY - TOTAL</b>	<b>1,225</b>	<b>14,134</b>	<b>14,187</b>	<b>13,994</b>	<b>\$111,371,147</b>	<b>\$607.37</b>
Natural Resources & Mining	6	100	106	110	837,011	611.25
Construction	127	596	593	608	4,380,392	562.53
Manufacturing	57	2,202	2,203	2,220	20,910,109	728.36
Trade, Transportation & Utilities	268	2,539	2,546	2,538	15,590,488	471.97
Wholesale Trade	32	198	201	208	1,763,850	670.58
Retail Trade	212	2,185	2,189	2,163	12,226,583	431.62
Transportation, Warehousing & Utilities	24	156	156	167	1,600,055	770.86
Information	18	208	207	211	1,994,545	735.27
Financial Activities	104	649	651	668	7,161,095	839.72
Professional & Business Services	127	795	792	755	5,767,374	568.29
Education & Health Services	251	3,593	3,575	3,568	33,525,051	720.62
Leisure & Hospitality	121	1,485	1,532	1,615	5,190,943	258.62
Other Services	95	348	359	369	1,931,753	414.30
Local Government	39	1,258	1,266	1,014	11,151,028	727.34
State Government	12	361	357	318	2,931,358	652.96
<b>BENTON COUNTY - TOTAL</b>	<b>5,455</b>	<b>96,135</b>	<b>96,741</b>	<b>96,924</b>	<b>\$1,058,939,361</b>	<b>\$843.24</b>
Natural Resources & Mining	40	743	772	765	8,412,079	851.43
Construction	515	3,228	3,331	3,389	33,959,529	787.78
Manufacturing	201	10,421	10,506	10,512	101,636,957	746.04
Trade, Transportation & Utilities	1,478	22,175	22,267	22,262	244,808,437	846.94
Wholesale Trade	680	4,600	4,617	4,668	90,608,050	1,505.91
Retail Trade	633	9,697	9,705	9,658	63,360,329	503.15
Transportation, Warehousing & Utilities	165	7,878	7,945	7,936	90,840,058	882.32
Information	71	770	783	776	8,906,099	882.46
Financial Activities	538	2,740	2,740	2,757	32,242,849	903.32
Professional & Business Services	1,046	27,370	27,445	27,466	402,457,539	1,128.75
Education & Health Services	628	8,753	8,763	8,755	78,804,680	692.23
Leisure & Hospitality	488	9,391	9,504	9,952	38,319,843	306.55
Other Services	354	1,630	1,637	1,659	11,395,879	533.86
Local Government	79	7,659	7,742	7,625	87,960,701	881.55
State Government	17	1,255	1,251	1,006	10,034,769	659.37

TABLE 6. COUNTY SUMMARY

NORTH AMERICAN INDUSTRY CLASSIFICATION SYSTEM - INDUSTRY GROUPS	NUMBER OF EMPLOYING UNITS	EMPLOYMENT			TOTAL EARNINGS	AVERAGE WEEKLY EARNINGS
		APRIL	MAY	JUNE	APR-JUN 2012	
<b>BOONE COUNTY - TOTAL</b>	<b>1,012</b>	<b>14,014</b>	<b>14,040</b>	<b>13,970</b>	<b>\$116,508,848</b>	<b>\$639.79</b>
Natural Resources & Mining	4	6	6	6	26,473	\$339.40
Construction	82	461	460	466	3,625,878	603.27
Manufacturing	62	1,845	1,828	1,831	17,273,845	724.25
Trade, Transportation & Utilities	249	3,698	3,670	3,685	32,735,558	683.47
Wholesale Trade	51	357	346	347	2,877,857	632.50
Retail Trade	147	1,843	1,852	1,831	11,069,059	462.25
Transportation, Warehousing & Utilities	51	1,498	1,472	1,507	18,788,642	968.47
Information	19	360	354	353	3,192,386	690.44
Financial Activities	96	541	543	536	5,161,273	735.22
Professional & Business Services	112	980	956	975	8,348,352	661.81
Education & Health Services	172	1,499	1,521	1,525	10,945,061	555.73
Leisure & Hospitality	84	1,170	1,195	1,195	3,841,394	249.01
Other Services	56	272	273	271	2,056,997	581.73
Local Government	57	2,352	2,347	2,353	21,757,208	711.98
State Government	19	830	887	774	7,544,423	698.92
<b>BRADLEY COUNTY - TOTAL</b>	<b>359</b>	<b>3,505</b>	<b>3,540</b>	<b>3,489</b>	<b>\$26,275,473</b>	<b>\$575.62</b>
Natural Resources & Mining	43	311	303	273	2,325,078	604.91
Construction	17	112	114	115	895,497	606.02
Manufacturing	11	496	497	499	5,105,591	789.69
Trade, Transportation & Utilities	73	522	529	533	2,880,048	419.59
Wholesale Trade	13	78	71	71	828,850	869.42
Retail Trade	41	362	371	371	1,587,175	331.77
Transportation, Warehousing & Utilities	19	82	87	91	464,023	411.85
Information	4	14	14	12	111,971	645.99
Financial Activities	25	141	143	142	1,106,613	599.47
Professional & Business Services	27	105	100	101	778,667	587.23
Education & Health Services	95	615	615	602	4,400,811	554.35
Leisure & Hospitality	11	144	163	164	500,454	245.20
Other Services	28	89	99	100	485,553	389.06
Local Government	14	564	568	550	4,805,484	659.31
State Government	11	392	395	398	2,879,706	560.80

TABLE 6. COUNTY SUMMARY

NORTH AMERICAN INDUSTRY CLASSIFICATION SYSTEM - INDUSTRY GROUPS	NUMBER OF EMPLOYING UNITS	EMPLOYMENT			TOTAL EARNINGS	AVERAGE WEEKLY EARNINGS
		APRIL	MAY	JUNE	APR-JUN 2012	
<b>CALHOUN COUNTY - TOTAL</b>	<b>114</b>	<b>2,775</b>	<b>2,764</b>	<b>2,753</b>	<b>\$30,985,913</b>	<b>\$862.35</b>
Natural Resources & Mining	12	60	59	57	624,406	818.71
Construction	13	92	98	101	697,167	552.87
Manufacturing	9	1,869	1,859	1,849	23,387,220	967.73
Trade, Transportation & Utilities	26	241	239	240	1,877,495	601.76
Retail Trade	15	83	84	84	366,970	337.39
Transportation, Warehousing & Utilities	11	158	155	156	1,510,525	743.25
Financial Activities	6	82	84	86	587,247	537.77
Education & Health Services	10	49	49	48	395,647	625.36
Leisure & Hospitality	7	15	16	16	46,717	229.38
Other Services	5	9	7	6	27,277	286.12
Local Government	11	184	181	180	1,450,681	614.26
State Government	8	85	84	85	789,856	717.62
Other	7	89	88	85	1,102,200	970.82
<b>CARROLL COUNTY - TOTAL</b>	<b>772</b>	<b>9,904</b>	<b>10,232</b>	<b>10,261</b>	<b>\$64,784,912</b>	<b>\$491.84</b>
Natural Resources & Mining	15	244	241	250	1,765,860	554.43
Trade, Transportation & Utilities	199	1,579	1,616	1,643	9,938,345	474.05
Wholesale Trade	25	181	177	179	1,175,611	505.20
Retail Trade	157	1,156	1,178	1,194	5,890,813	385.32
Transportation, Warehousing & Utilities	17	242	261	270	2,871,921	857.38
Information	7	72	72	75	624,424	657.98
Financial Activities	67	361	368	371	3,079,350	646.02
Professional & Business Services	54	210	199	189	1,529,710	590.32
Education & Health Services	87	921	928	924	7,627,777	634.78
Leisure & Hospitality	163	1,402	1,681	1,758	5,426,776	258.69
Other Services	45	129	129	134	709,295	417.56
Local Government	24	1,066	1,065	1,005	8,309,439	611.47
State Government	10	115	116	118	893,898	591.07
Other	101	3,805	3,817	3,794	24,880,038	502.94

TABLE 6. COUNTY SUMMARY

NORTH AMERICAN INDUSTRY CLASSIFICATION SYSTEM - INDUSTRY GROUPS	NUMBER OF EMPLOYING UNITS	EMPLOYMENT			TOTAL EARNINGS	AVERAGE WEEKLY EARNINGS
		APRIL	MAY	JUNE	APR-JUN 2012	
<b>CHICOT COUNTY - TOTAL</b>	<b>423</b>	<b>3,441</b>	<b>3,431</b>	<b>3,446</b>	<b>\$23,795,311</b>	<b>\$532.20</b>
Natural Resources & Mining	50	252	267	264	1,922,521	566.61
Construction	16	156	157	167	1,629,267	783.30
Manufacturing	10	297	285	290	1,607,773	425.49
Trade, Transportation & Utilities	66	488	489	492	3,139,544	493.20
Wholesale Trade	11	63	63	64	572,681	695.56
Retail Trade	43	365	368	372	1,926,804	402.40
Transportation, Warehousing & Utilities	12	60	58	56	640,059	848.88
Information	5	9	8	8	64,303	593.57
Financial Activities	27	146	144	140	1,432,120	768.58
Professional & Business Services	17	45	41	42	555,701	1,001.86
Education & Health Services	168	762	755	772	4,627,203	466.50
Leisure & Hospitality	22	202	192	184	524,900	209.57
Other Services	15	72	64	74	449,086	493.50
Local Government	17	713	721	704	5,346,530	577.09
State Government	10	299	308	309	2,496,363	628.91
<b>CLARK COUNTY - TOTAL</b>	<b>613</b>	<b>9,281</b>	<b>9,226</b>	<b>8,836</b>	<b>\$72,918,117</b>	<b>\$615.41</b>
Natural Resources & Mining	30	206	200	216	1,815,672	673.64
Construction	29	78	84	76	466,345	452.18
Manufacturing	34	1,433	1,434	1,414	16,159,706	871.10
Trade, Transportation & Utilities	140	1,612	1,620	1,619	12,798,364	608.84
Wholesale Trade	16	216	212	212	2,213,266	798.05
Retail Trade	102	1,215	1,225	1,227	8,788,835	553.09
Transportation, Warehousing & Utilities	22	181	183	180	1,796,263	761.99
Information	7	25	25	25	248,493	764.59
Financial Activities	75	318	333	333	2,996,249	702.69
Professional & Business Services	46	577	582	561	4,411,724	591.91
Education & Health Services	103	1,444	1,426	1,365	9,420,561	513.34
Leisure & Hospitality	63	1,083	1,072	1,058	3,305,064	237.38
Other Services	45	200	192	197	1,160,392	454.64
Local Government	27	1,033	1,031	915	10,495,681	813.05
State Government	14	1,272	1,227	1,057	9,639,866	625.59



TABLE 6. COUNTY SUMMARY

NORTH AMERICAN INDUSTRY CLASSIFICATION SYSTEM - INDUSTRY GROUPS	NUMBER OF EMPLOYING UNITS	EMPLOYMENT			TOTAL EARNINGS	AVERAGE WEEKLY EARNINGS
		APRIL	MAY	JUNE	APR-JUN 2012	
<b>CLAY COUNTY - TOTAL</b>	<b>398</b>	<b>3,664</b>	<b>3,671</b>	<b>3,663</b>	<b>\$25,944,299</b>	<b>\$544.38</b>
Natural Resources & Mining	59	258	267	298	1,957,371	548.85
Construction	29	162	161	155	1,174,193	566.88
Manufacturing	13	386	382	388	3,542,334	707.15
Trade, Transportation & Utilities	99	907	888	909	6,908,642	589.61
Wholesale Trade	26	303	285	285	2,645,652	699.35
Retail Trade	46	422	424	433	2,469,458	445.56
Transportation, Warehousing & Utilities	27	182	179	191	1,793,532	749.80
Information	4	52	52	51	326,962	486.79
Financial Activities	27	116	117	113	893,202	595.73
Professional & Business Services	28	72	71	73	508,574	543.35
Education & Health Services	55	505	504	482	3,097,949	479.48
Leisure & Hospitality	18	203	205	215	537,429	199.07
Other Services	32	83	82	84	560,583	519.54
Local Government	23	859	882	836	5,988,497	536.27
State Government	11	61	60	59	448,563	575.08
<b>CLEBURNE COUNTY - TOTAL</b>	<b>665</b>	<b>7,031</b>	<b>7,153</b>	<b>7,205</b>	<b>\$53,137,977</b>	<b>\$573.31</b>
Natural Resources & Mining	29	326	337	369	4,399,300	983.74
Construction	69	383	384	392	3,158,553	628.90
Manufacturing	35	1,225	1,257	1,221	10,518,360	655.50
Trade, Transportation & Utilities	167	1,644	1,654	1,671	13,143,485	610.41
Wholesale Trade	41	297	293	289	3,157,873	829.06
Retail Trade	100	954	959	955	5,542,855	446.00
Transportation, Warehousing & Utilities	26	393	402	427	4,442,757	838.99
Information	7	53	53	52	375,420	548.33
Financial Activities	70	225	227	231	1,980,759	669.25
Professional & Business Services	64	280	266	256	2,003,010	576.35
Education & Health Services	72	828	841	840	5,312,809	488.65
Leisure & Hospitality	77	946	1,016	1,058	3,225,355	246.46
Other Services	48	158	151	160	840,727	413.68
Local Government	18	860	861	852	7,433,334	666.69
State Government	9	103	106	103	746,865	552.41

TABLE 6. COUNTY SUMMARY

NORTH AMERICAN INDUSTRY CLASSIFICATION SYSTEM - INDUSTRY GROUPS	NUMBER OF EMPLOYING UNITS	EMPLOYMENT			TOTAL EARNINGS	AVERAGE WEEKLY EARNINGS
		APRIL	MAY	JUNE	APR-JUN 2012	
<b>CLEVELAND COUNTY - TOTAL</b>	<b>121</b>	<b>1,064</b>	<b>1,068</b>	<b>1,049</b>	<b>\$7,432,007</b>	<b>\$539.16</b>
Natural Resources & Mining	12	164	163	165	1,433,431	672.34
Construction	8	33	35	33	120,778	275.96
Manufacturing	7	92	92	95	733,895	607.03
Trade, Transportation & Utilities	32	188	188	186	1,181,857	485.30
Retail Trade	14	59	60	58	192,677	251.21
Other Trade, Transportation & Utilities	18	129	128	128	989,180	592.92
Financial Activities	3	16	16	16	90,316	434.21
Education & Health Services	29	150	150	153	732,977	373.40
Other Services	5	12	12	12	95,544	612.46
Local Government	11	341	342	318	2,536,368	584.73
State Government	7	50	51	51	401,496	609.56
Other	7	18	19	20	105,345	426.50
<b>COLUMBIA COUNTY - TOTAL</b>	<b>730</b>	<b>8,485</b>	<b>8,452</b>	<b>8,474</b>	<b>\$74,468,196</b>	<b>\$676.28</b>
Natural Resources & Mining	44	385	379	383	5,393,819	1,085.20
Construction	42	367	371	390	3,519,148	719.96
Manufacturing	35	1,854	1,864	1,881	23,616,462	973.38
Trade, Transportation & Utilities	166	1,422	1,439	1,409	9,771,790	528.11
Wholesale Trade	29	214	208	194	2,043,321	765.48
Retail Trade	105	975	986	973	5,336,747	419.75
Transportation, Warehousing & Utilities	32	233	245	242	2,391,722	766.58
Information	9	67	68	62	456,759	535.06
Financial Activities	68	359	359	357	3,301,214	708.67
Professional & Business Services	58	344	342	331	2,989,165	678.28
Education & Health Services	167	1,060	1,061	1,053	6,241,241	453.78
Leisure & Hospitality	49	702	666	696	2,160,572	241.57
Other Services	53	229	226	231	1,049,487	353.05
Local Government	26	1,114	1,128	1,166	10,176,114	689.07
State Government	13	582	549	515	5,792,425	812.10

TABLE 6. COUNTY SUMMARY

NORTH AMERICAN INDUSTRY CLASSIFICATION SYSTEM - INDUSTRY GROUPS	NUMBER OF EMPLOYING UNITS	EMPLOYMENT			TOTAL EARNINGS	AVERAGE WEEKLY EARNINGS
		APRIL	MAY	JUNE	APR-JUN 2012	
<b>CONWAY COUNTY - TOTAL</b>	<b>551</b>	<b>6,650</b>	<b>6,707</b>	<b>6,695</b>	<b>\$59,426,226</b>	<b>\$683.91</b>
Natural Resources & Mining	33	316	322	333	3,504,739	832.94
Construction	51	518	531	526	6,340,823	929.06
Manufacturing	18	860	866	855	11,825,810	1,057.35
Trade, Transportation & Utilities	127	1,638	1,626	1,610	13,581,564	643.05
Wholesale Trade	24	219	217	214	2,360,533	838.06
Retail Trade	77	819	828	822	4,892,468	457.28
Transportation, Warehousing & Utilities	26	600	581	574	6,328,563	832.16
Information	3	11	11	11	99,941	698.89
Financial Activities	34	157	161	170	1,383,551	654.26
Professional & Business Services	43	375	361	358	1,987,745	419.30
Education & Health Services	137	914	915	908	6,594,026	555.97
Leisure & Hospitality	41	460	470	483	1,300,384	212.38
Other Services	28	99	98	110	695,812	523.04
Local Government	26	926	943	959	8,662,730	706.89
State Government	10	376	403	372	3,449,101	691.53
<b>CRAIGHEAD COUNTY - TOTAL</b>	<b>2,648</b>	<b>43,884</b>	<b>43,647</b>	<b>43,160</b>	<b>\$372,882,583</b>	<b>\$658.42</b>
Natural Resources & Mining	74	294	294	331	2,173,978	545.91
Construction	198	1,685	1,738	1,799	16,169,323	714.55
Manufacturing	115	6,117	6,146	6,119	61,826,382	776.17
Trade, Transportation & Utilities	741	9,010	8,940	8,899	67,716,210	582.03
Wholesale Trade	187	1,733	1,740	1,740	19,133,114	846.99
Retail Trade	440	6,035	5,944	5,893	35,651,278	460.34
Transportation, Warehousing & Utilities	114	1,242	1,256	1,266	12,931,818	792.84
Information	26	479	486	488	4,621,635	734.02
Financial Activities	255	1,440	1,441	1,430	15,256,086	816.66
Professional & Business Services	361	4,033	3,909	3,900	26,917,071	524.54
Education & Health Services	444	8,461	8,390	8,349	89,223,443	817.06
Leisure & Hospitality	226	4,828	4,741	4,763	16,061,115	258.61
Other Services	149	864	884	880	5,193,331	456.04
Local Government	36	3,940	3,954	3,503	39,443,301	798.66
State Government	23	2,733	2,724	2,699	28,280,708	800.19

TABLE 6. COUNTY SUMMARY

NORTH AMERICAN INDUSTRY CLASSIFICATION SYSTEM - INDUSTRY GROUPS	NUMBER OF EMPLOYING UNITS	EMPLOYMENT			TOTAL EARNINGS	AVERAGE WEEKLY EARNINGS
		APRIL	MAY	JUNE	APR-JUN 2012	
<b>CRAWFORD COUNTY - TOTAL</b>	<b>1,296</b>	<b>19,193</b>	<b>19,226</b>	<b>18,966</b>	<b>\$155,302,458</b>	<b>\$624.54</b>
Natural Resources & Mining	29	405	354	296	4,114,224	899.94
Construction	164	830	848	853	7,429,805	677.43
Manufacturing	76	4,318	4,354	4,335	37,464,376	664.69
Trade, Transportation & Utilities	318	5,959	5,986	6,003	48,433,678	622.74
Wholesale Trade	88	789	794	802	8,671,702	839.06
Retail Trade	160	1,909	1,923	1,905	11,352,553	456.65
Transportation, Warehousing & Utilities	70	3,261	3,269	3,296	28,409,423	667.21
Information	13	129	128	130	971,050	579.04
Financial Activities	126	519	519	523	4,294,472	634.87
Professional & Business Services	160	1,047	1,025	1,009	8,598,741	644.05
Education & Health Services	173	1,662	1,671	1,623	12,968,316	603.85
Leisure & Hospitality	94	1,538	1,546	1,548	5,140,125	256.08
Other Services	90	425	429	417	3,056,832	555.01
Local Government	43	2,224	2,226	2,087	21,597,442	762.43
State Government	10	137	140	142	1,233,397	679.31
<b>CRITTENDEN COUNTY - TOTAL</b>	<b>1,309</b>	<b>16,279</b>	<b>16,372</b>	<b>16,243</b>	<b>\$132,940,159</b>	<b>\$627.45</b>
Natural Resources & Mining	53	280	289	292	1,855,693	497.37
Construction	48	409	474	353	4,141,089	773.17
Manufacturing	41	1,453	1,463	1,466	15,896,167	837.14
Trade, Transportation & Utilities	313	4,417	4,425	4,439	37,046,600	643.72
Wholesale Trade	70	731	723	719	8,023,096	852.04
Retail Trade	160	1,881	1,914	1,911	10,659,001	431.08
Transportation, Warehousing & Utilities	83	1,805	1,788	1,809	18,364,503	784.52
Information	6	67	67	71	627,546	706.43
Financial Activities	93	498	498	512	4,407,315	674.45
Professional & Business Services	120	1,345	1,321	1,313	8,987,700	521.26
Education & Health Services	374	2,350	2,456	2,375	17,835,489	573.16
Leisure & Hospitality	124	2,143	2,163	2,180	8,023,133	285.46
Other Services	80	455	467	467	3,020,641	501.85
Local Government	43	2,326	2,328	2,327	26,951,816	890.94
State Government	14	536	421	448	4,146,970	681.13

TABLE 6. COUNTY SUMMARY

NORTH AMERICAN INDUSTRY CLASSIFICATION SYSTEM - INDUSTRY GROUPS	NUMBER OF EMPLOYING UNITS	EMPLOYMENT			TOTAL EARNINGS	AVERAGE WEEKLY EARNINGS
		APRIL	MAY	JUNE	APR-JUN 2012	
<b>CROSS COUNTY - TOTAL</b>	<b>511</b>	<b>5,165</b>	<b>5,161</b>	<b>5,147</b>	<b>\$39,851,779</b>	<b>\$594.36</b>
Natural Resources & Mining	34	210	213	197	1,582,481	589.01
Construction	19	85	85	82	645,715	591.31
Manufacturing	11	719	725	715	5,603,887	598.98
Trade, Transportation & Utilities	139	1,286	1,283	1,297	10,289,225	614.18
Wholesale Trade	30	323	324	324	3,359,282	798.37
Retail Trade	77	747	742	754	4,386,858	451.34
Transportation, Warehousing & Utilities	32	216	217	219	2,543,085	900.10
Information	5	37	37	38	265,939	547.95
Financial Activities	44	306	306	311	2,555,644	638.96
Professional & Business Services	43	154	143	135	1,191,178	636.31
Education & Health Services	121	873	859	866	5,999,997	532.95
Leisure & Hospitality	33	328	331	340	940,347	217.22
Other Services	36	70	72	69	459,326	502.36
Local Government	16	735	735	715	6,958,973	734.97
State Government	10	362	372	382	3,359,067	694.60
<b>DALLAS COUNTY - TOTAL</b>	<b>266</b>	<b>2,982</b>	<b>3,015</b>	<b>3,055</b>	<b>\$20,389,093</b>	<b>\$519.79</b>
Natural Resources & Mining	33	185	195	198	1,476,230	589.39
Construction	18	66	67	67	1,213,125	1,399.76
Manufacturing	11	530	519	534	4,608,446	671.82
Trade, Transportation & Utilities	66	526	532	525	3,581,564	522.12
Wholesale Trade	6	41	38	37	728,047	1,448.37
Retail Trade	42	349	356	353	1,896,418	413.64
Transportation, Warehousing & Utilities	18	136	138	135	957,099	540.02
Information	3	17	16	17	120,317	555.31
Financial Activities	13	65	66	69	620,881	716.40
Professional & Business Services	16	56	55	55	310,893	432.20
Education & Health Services	57	899	914	897	4,795,593	408.37
Leisure & Hospitality	12	157	167	175	393,096	181.79
Other Services	15	75	76	71	468,274	486.77
Local Government	15	358	358	397	2,475,016	513.17
State Government	7	48	50	50	325,658	507.78

TABLE 6. COUNTY SUMMARY

NORTH AMERICAN INDUSTRY CLASSIFICATION SYSTEM - INDUSTRY GROUPS	NUMBER OF EMPLOYING UNITS	EMPLOYMENT			TOTAL EARNINGS	AVERAGE WEEKLY EARNINGS
		APRIL	MAY	JUNE	APR-JUN 2012	
<b>DESHA COUNTY - TOTAL</b>	<b>504</b>	<b>4,601</b>	<b>4,625</b>	<b>4,688</b>	<b>\$36,214,321</b>	<b>\$600.63</b>
Natural Resources & Mining	62	291	296	299	2,010,006	523.53
Construction	23	121	127	132	1,080,219	656.00
Manufacturing	16	823	819	842	10,299,960	956.89
Trade, Transportation & Utilities	112	878	891	909	6,196,287	533.95
Wholesale Trade	19	189	191	193	2,286,164	920.73
Retail Trade	67	531	538	552	2,668,778	379.93
Transportation, Warehousing & Utilities	26	158	162	164	1,241,345	591.87
Information	5	30	30	30	250,422	642.11
Financial Activities	31	225	223	225	1,652,847	566.76
Professional & Business Services	38	94	88	96	563,079	467.41
Education & Health Services	126	781	799	788	5,018,808	489.10
Leisure & Hospitality	40	322	339	376	881,875	196.25
Other Services	22	59	55	54	255,256	350.63
Local Government	19	848	831	817	7,032,993	650.24
State Government	10	129	127	120	972,569	596.91
<b>DREW COUNTY - TOTAL</b>	<b>514</b>	<b>6,369</b>	<b>6,382</b>	<b>6,362</b>	<b>\$47,424,220</b>	<b>\$572.60</b>
Natural Resources & Mining	43	294	304	314	2,327,691	588.99
Construction	21	93	99	93	727,944	589.43
Manufacturing	21	727	729	748	5,514,036	577.35
Trade, Transportation & Utilities	121	1,199	1,200	1,208	7,495,472	479.55
Wholesale Trade	18	171	171	172	1,608,768	722.28
Retail Trade	81	929	928	933	5,020,653	415.27
Transportation, Warehousing & Utilities	22	99	101	103	866,051	659.60
Information	8	62	64	63	463,528	565.97
Financial Activities	47	243	243	246	2,255,081	710.93
Professional & Business Services	43	302	308	291	3,691,542	945.50
Education & Health Services	112	827	833	863	5,682,873	519.79
Leisure & Hospitality	42	609	596	581	1,697,429	219.32
Other Services	18	64	65	64	361,936	432.77
Local Government	22	1,320	1,316	1,325	11,367,476	662.27
State Government	16	629	625	566	5,839,212	740.39

TABLE 6. COUNTY SUMMARY

NORTH AMERICAN INDUSTRY CLASSIFICATION SYSTEM - INDUSTRY GROUPS	NUMBER OF EMPLOYING UNITS	EMPLOYMENT			TOTAL EARNINGS	AVERAGE WEEKLY EARNINGS
		APRIL	MAY	JUNE	APR-JUN 2012	
<b>FAULKNER COUNTY - TOTAL</b>	<b>2,763</b>	<b>41,228</b>	<b>41,263</b>	<b>40,935</b>	<b>\$392,791,461</b>	<b>\$734.40</b>
Natural Resources & Mining	58	1,750	1,745	1,690	28,699,466	1,277.33
Construction	317	2,497	2,591	2,668	23,580,155	701.60
Manufacturing	104	3,269	3,278	3,274	40,059,740	941.30
Trade, Transportation & Utilities	659	7,313	7,244	7,237	52,808,849	559.17
Wholesale Trade	167	949	936	930	11,188,593	917.22
Retail Trade	400	5,492	5,452	5,445	32,169,727	452.97
Transportation, Warehousing & Utilities	92	872	856	862	9,450,529	842.04
Information	27	377	373	363	3,997,116	828.76
Financial Activities	325	1,580	1,580	1,575	15,248,394	743.16
Professional & Business Services	400	6,149	6,084	6,188	86,225,229	1,080.19
Education & Health Services	402	5,851	5,851	5,826	49,090,427	646.31
Leisure & Hospitality	246	4,656	4,625	4,683	14,907,565	246.36
Other Services	169	778	856	922	7,144,139	645.01
Local Government	38	3,661	3,694	3,562	39,497,320	834.91
State Government	18	3,347	3,342	2,947	31,533,061	755.17
<b>FRANKLIN COUNTY - TOTAL</b>	<b>339</b>	<b>4,335</b>	<b>4,398</b>	<b>4,373</b>	<b>\$36,509,254</b>	<b>\$642.85</b>
Natural Resources & Mining	15	310	306	311	4,152,227	1,033.66
Construction	32	135	131	127	1,175,698	690.37
Manufacturing	15	873	879	875	8,147,288	715.70
Trade, Transportation & Utilities	86	831	869	876	6,882,927	616.60
Wholesale Trade	15	45	45	47	243,941	410.91
Retail Trade	53	500	535	547	2,813,147	410.36
Transportation, Warehousing & Utilities	18	286	289	282	3,825,839	1,030.21
Information	5	26	26	26	189,370	560.27
Financial Activities	30	225	230	229	1,843,450	621.95
Professional & Business Services	31	161	138	137	935,824	495.32
Education & Health Services	52	558	564	557	3,991,548	548.62
Leisure & Hospitality	26	289	298	302	888,335	230.60
Other Services	18	61	60	62	436,800	550.82
Local Government	20	747	777	773	6,645,882	667.68
State Government	9	119	120	98	1,219,905	835.36

TABLE 6. COUNTY SUMMARY

NORTH AMERICAN INDUSTRY CLASSIFICATION SYSTEM - INDUSTRY GROUPS	NUMBER OF EMPLOYING UNITS	EMPLOYMENT			TOTAL EARNINGS	AVERAGE WEEKLY EARNINGS
		APRIL	MAY	JUNE	APR-JUN 2012	
<b>FULTON COUNTY - TOTAL</b>	<b>202</b>	<b>2,009</b>	<b>2,071</b>	<b>2,065</b>	<b>\$13,720,770</b>	<b>\$515.27</b>
Manufacturing	12	146	151	146	687,231	357.99
Trade, Transportation & Utilities	53	298	326	333	2,310,653	557.19
Retail Trade	35	181	191	187	857,947	354.18
Other Trade, Transportation & Utilities	18	117	135	146	1,452,706	842.31
Information	3	30	30	32	136,865	343.31
Financial Activities	15	91	106	103	773,435	594.95
Professional & Business Services	16	65	66	69	491,050	566.60
Education & Health Services	46	481	487	492	2,857,249	451.62
Leisure & Hospitality	15	157	156	163	448,072	217.23
Local Government	13	538	552	546	4,411,597	622.29
State Government	10	117	114	111	916,868	618.67
Other	19	86	83	70	687,750	664.07
<b>GARLAND COUNTY - TOTAL</b>	<b>3,123</b>	<b>36,060</b>	<b>36,041</b>	<b>36,028</b>	<b>\$285,963,083</b>	<b>\$610.30</b>
Natural Resources & Mining	34	320	346	345	4,636,589	1,058.34
Construction	347	1,737	1,805	1,845	14,015,300	600.39
Manufacturing	98	2,154	2,184	2,234	24,746,959	868.96
Trade, Transportation & Utilities	717	7,163	7,186	7,223	49,577,106	530.36
Wholesale Trade	145	886	898	909	8,802,530	754.31
Retail Trade	507	5,699	5,705	5,708	34,775,916	468.98
Transportation, Warehousing & Utilities	65	578	583	606	5,998,660	783.42
Information	33	284	287	282	2,712,160	733.74
Financial Activities	361	1,469	1,461	1,491	13,680,012	714.08
Professional & Business Services	398	3,263	3,236	3,262	25,689,609	607.35
Education & Health Services	492	7,574	7,632	7,690	73,605,580	741.87
Leisure & Hospitality	354	6,723	6,520	6,687	24,934,638	288.72
Other Services	229	983	976	994	5,719,569	446.97
Local Government	34	3,218	3,225	2,959	36,474,607	895.26
State Government	26	1,172	1,183	1,016	10,170,954	696.28



TABLE 6. COUNTY SUMMARY

NORTH AMERICAN INDUSTRY CLASSIFICATION SYSTEM - INDUSTRY GROUPS	NUMBER OF EMPLOYING UNITS	EMPLOYMENT			TOTAL EARNINGS	AVERAGE WEEKLY EARNINGS
		APRIL	MAY	JUNE	APR-JUN 2012	
<b>GRANT COUNTY - TOTAL</b>	<b>313</b>	<b>3,754</b>	<b>3,756</b>	<b>3,779</b>	<b>\$29,432,066</b>	<b>\$601.65</b>
Natural Resources & Mining	24	171	171	171	1,992,169	896.16
Construction	26	133	129	140	1,312,910	753.68
Manufacturing	16	1,026	1,026	1,022	8,673,205	651.11
Trade, Transportation & Utilities	84	597	606	605	4,010,807	511.93
Wholesale Trade	16	117	120	118	1,093,350	710.74
Retail Trade	43	420	425	428	2,390,635	433.37
Transportation, Warehousing & Utilities	25	60	61	59	526,822	675.41
Information	4	36	36	35	656,917	1,416.79
Financial Activities	24	93	95	90	741,837	615.80
Professional & Business Services	21	71	61	65	703,333	823.90
Education & Health Services	53	438	430	428	2,684,239	477.96
Leisure & Hospitality	24	268	275	264	745,233	213.11
Other Services	19	44	43	44	236,843	417.22
Local Government	10	815	824	857	7,210,913	666.69
State Government	8	62	60	58	463,660	594.44
<b>GREENE COUNTY - TOTAL</b>	<b>913</b>	<b>14,821</b>	<b>15,143</b>	<b>14,569</b>	<b>\$123,447,197</b>	<b>\$639.70</b>
Natural Resources & Mining	38	246	257	266	1,962,257	588.85
Construction	78	267	283	303	2,371,419	641.56
Manufacturing	60	4,904	4,943	4,921	51,501,971	804.79
Trade, Transportation & Utilities	236	2,436	2,478	2,445	17,123,454	536.97
Wholesale Trade	54	573	577	574	5,697,390	762.63
Retail Trade	152	1,655	1,689	1,652	9,588,703	442.91
Transportation, Warehousing & Utilities	30	208	212	219	1,837,361	663.55
Information	11	92	92	92	566,644	473.78
Financial Activities	79	478	479	482	4,205,973	674.50
Professional & Business Services	98	1,216	1,406	1,187	7,366,919	446.33
Education & Health Services	152	1,869	1,852	1,802	14,652,120	612.21
Leisure & Hospitality	74	1,051	1,069	1,069	3,364,444	243.47
Other Services	46	192	198	198	1,132,775	444.57
Local Government	30	1,683	1,683	1,396	15,120,279	732.74
State Government	11	387	403	408	4,078,942	785.72

TABLE 6. COUNTY SUMMARY

NORTH AMERICAN INDUSTRY CLASSIFICATION SYSTEM - INDUSTRY GROUPS	NUMBER OF EMPLOYING UNITS	EMPLOYMENT			TOTAL EARNINGS	AVERAGE WEEKLY EARNINGS
		APRIL	MAY	JUNE	APR-JUN 2012	
<b>HEMPSTEAD COUNTY - TOTAL</b>	<b>512</b>	<b>8,775</b>	<b>8,818</b>	<b>8,802</b>	<b>\$79,717,140</b>	<b>\$696.96</b>
Natural Resources & Mining	18	204	209	201	1,857,146	698.00
Construction	35	1,282	1,308	1,317	21,156,790	1,249.64
Manufacturing	29	1,767	1,788	1,781	14,837,614	641.69
Trade, Transportation & Utilities	134	1,492	1,481	1,494	12,384,917	639.82
Wholesale Trade	24	373	377	381	3,883,774	792.45
Retail Trade	84	859	855	865	4,752,514	425.26
Transportation, Warehousing & Utilities	26	260	249	248	3,748,629	1,142.76
Information	8	44	44	44	306,860	536.47
Financial Activities	42	242	242	251	2,063,421	647.86
Professional & Business Services	35	149	151	149	1,325,778	681.40
Education & Health Services	83	1,158	1,171	1,159	6,305,973	417.21
Leisure & Hospitality	44	599	604	611	1,856,248	236.14
Other Services	39	178	177	181	1,250,007	538.18
Local Government	29	942	946	888	9,734,673	809.24
State Government	16	718	697	726	6,637,713	715.45
<b>HOT SPRING COUNTY - TOTAL</b>	<b>597</b>	<b>8,260</b>	<b>8,345</b>	<b>8,436</b>	<b>\$68,007,615</b>	<b>\$626.73</b>
Natural Resources & Mining	24	151	153	154	1,104,707	556.62
Construction	63	334	352	374	3,102,302	675.39
Manufacturing	30	1,388	1,405	1,422	15,875,973	869.20
Trade, Transportation & Utilities	148	1,314	1,320	1,321	10,111,902	590.02
Wholesale Trade	15	77	75	74	756,558	772.52
Retail Trade	95	895	895	891	5,064,227	435.91
Transportation, Warehousing & Utilities	38	342	350	356	4,291,117	944.90
Information	7	49	53	51	409,561	617.74
Financial Activities	54	271	281	268	2,434,627	685.17
Professional & Business Services	47	931	930	984	6,095,253	494.41
Education & Health Services	98	1,121	1,131	1,152	8,011,258	543.11
Leisure & Hospitality	47	535	549	586	1,488,072	205.63
Other Services	39	164	149	162	880,917	427.98
Local Government	27	1,085	1,098	1,089	10,764,068	759.17
State Government	13	917	924	873	7,728,975	657.19

TABLE 6. COUNTY SUMMARY

NORTH AMERICAN INDUSTRY CLASSIFICATION SYSTEM - INDUSTRY GROUPS	NUMBER OF EMPLOYING UNITS	EMPLOYMENT			TOTAL EARNINGS	AVERAGE WEEKLY EARNINGS
		APRIL	MAY	JUNE	APR-JUN 2012	
<b>HOWARD COUNTY - TOTAL</b>	<b>363</b>	<b>7,301</b>	<b>7,314</b>	<b>7,245</b>	<b>\$52,221,252</b>	<b>\$551.28</b>
Natural Resources & Mining	19	247	237	238	1,734,843	554.50
Construction	19	100	100	94	860,235	675.22
Manufacturing	23	3,802	3,814	3,797	27,159,933	549.17
Trade, Transportation & Utilities	99	849	866	892	6,332,829	560.58
Wholesale Trade	18	66	69	70	613,678	690.82
Retail Trade	57	598	614	623	3,563,654	448.16
Transportation, Warehousing & Utilities	24	185	183	199	2,155,497	877.29
Information	5	32	33	32	197,948	470.93
Financial Activities	38	143	149	155	1,031,766	532.66
Professional & Business Services	26	155	151	156	1,023,047	511.01
Education & Health Services	59	655	642	649	4,509,125	534.72
Leisure & Hospitality	22	325	330	338	893,902	207.74
Other Services	25	111	104	112	655,661	462.71
Local Government	17	743	746	658	6,804,791	731.41
State Government	11	139	142	124	1,017,172	579.59
<b>INDEPENDENCE COUNTY - TOTAL</b>	<b>908</b>	<b>14,866</b>	<b>15,105</b>	<b>14,843</b>	<b>\$119,863,505</b>	<b>\$617.24</b>
Natural Resources & Mining	15	316	312	309	3,460,037	852.16
Construction	67	387	387	368	2,935,592	593.21
Manufacturing	44	3,237	3,225	3,124	28,897,446	695.66
Trade, Transportation & Utilities	233	2,809	2,823	2,818	21,391,094	584.19
Wholesale Trade	32	388	387	392	3,675,072	726.73
Retail Trade	153	1,670	1,676	1,668	9,578,845	440.87
Transportation, Warehousing & Utilities	48	751	760	758	8,137,177	827.59
Information	10	127	128	128	920,754	554.78
Financial Activities	78	469	484	481	4,779,313	769.12
Professional & Business Services	91	613	620	587	4,224,277	535.62
Education & Health Services	165	3,153	3,152	3,187	28,684,956	697.39
Leisure & Hospitality	75	1,103	1,110	1,112	3,308,317	229.61
Other Services	66	350	353	354	1,824,642	398.36
Local Government	47	1,643	1,841	1,791	13,929,727	609.39
State Government	17	659	670	584	5,507,350	664.36

TABLE 6. COUNTY SUMMARY

NORTH AMERICAN INDUSTRY CLASSIFICATION SYSTEM - INDUSTRY GROUPS	NUMBER OF EMPLOYING UNITS	EMPLOYMENT			TOTAL EARNINGS	AVERAGE WEEKLY EARNINGS
		APRIL	MAY	JUNE	APR-JUN 2012	
<b>IZARD COUNTY - TOTAL</b>	<b>258</b>	<b>3,204</b>	<b>3,182</b>	<b>3,079</b>	<b>\$23,763,317</b>	<b>\$579.38</b>
Natural Resources & Mining	5	161	130	140	1,458,376	780.85
Construction	27	157	167	184	2,094,562	951.50
Manufacturing	11	272	269	269	2,212,284	630.28
Trade, Transportation & Utilities	68	560	553	555	3,357,802	464.55
Wholesale Trade	10	21	18	19	135,259	538.17
Retail Trade	46	409	405	404	2,071,995	392.57
Transportation, Warehousing & Utilities	12	130	130	132	1,150,548	677.32
Financial Activities	28	143	141	142	1,059,917	574.17
Professional & Business Services	16	85	84	95	522,984	457.15
Education & Health Services	42	582	589	619	3,773,895	486.54
Leisure & Hospitality	22	136	148	165	436,087	224.13
Local Government	18	569	564	428	4,383,766	648.07
State Government	10	511	510	458	4,343,673	677.75
Other	11	28	27	24	119,971	350.45
<b>JACKSON COUNTY - TOTAL</b>	<b>473</b>	<b>5,303</b>	<b>5,332</b>	<b>5,398</b>	<b>\$43,111,408</b>	<b>\$620.52</b>
Natural Resources & Mining	55	286	286	306	2,350,233	617.72
Construction	23	91	110	113	905,608	665.56
Manufacturing	16	909	922	933	9,666,880	807.10
Trade, Transportation & Utilities	112	1,080	1,075	1,079	7,588,794	541.52
Wholesale Trade	24	256	259	260	2,407,255	716.80
Retail Trade	72	723	714	716	4,184,872	448.56
Transportation, Warehousing & Utilities	16	101	102	103	996,667	751.63
Information	4	20	20	20	123,288	474.18
Financial Activities	36	156	154	155	1,554,507	771.47
Professional & Business Services	39	139	138	128	1,177,769	671.09
Education & Health Services	91	820	823	834	6,505,959	606.13
Leisure & Hospitality	28	275	270	272	808,868	228.47
Other Services	24	59	64	63	445,082	552.21
Local Government	32	716	717	727	5,345,015	571.05
State Government	13	752	753	768	6,639,405	674.07

TABLE 6. COUNTY SUMMARY

NORTH AMERICAN INDUSTRY CLASSIFICATION SYSTEM - INDUSTRY GROUPS	NUMBER OF EMPLOYING UNITS	EMPLOYMENT			TOTAL EARNINGS	AVERAGE WEEKLY EARNINGS
		APRIL	MAY	JUNE	APR-JUN 2012	
<b>JEFFERSON COUNTY - TOTAL</b>	<b>2,099</b>	<b>29,715</b>	<b>29,775</b>	<b>29,596</b>	<b>\$262,259,003</b>	<b>\$679.36</b>
Natural Resources & Mining	41	307	320	334	3,513,017	843.60
Construction	107	1,162	1,147	1,103	17,244,667	1,166.34
Manufacturing	64	5,459	5,499	5,473	57,910,553	813.34
Trade, Transportation & Utilities	434	5,259	5,262	5,251	41,325,558	604.66
Wholesale Trade	81	1,013	1,016	1,012	9,951,451	755.18
Retail Trade	286	3,291	3,294	3,277	19,571,734	457.98
Transportation, Warehousing & Utilities	67	955	952	962	11,802,373	949.33
Information	14	122	128	126	967,438	593.76
Financial Activities	153	1,147	1,143	1,142	11,925,071	801.85
Professional & Business Services	169	1,681	1,666	1,647	14,616,830	675.43
Education & Health Services	773	5,276	5,285	5,252	42,239,095	616.42
Leisure & Hospitality	133	1,977	1,970	1,947	5,998,495	234.86
Other Services	133	637	618	618	4,246,930	523.26
Local Government	41	3,273	3,310	3,281	29,612,128	692.78
State Government	37	3,415	3,427	3,422	32,659,221	734.29
<b>JOHNSON COUNTY - TOTAL</b>	<b>467</b>	<b>8,636</b>	<b>8,607</b>	<b>8,552</b>	<b>\$63,790,052</b>	<b>\$570.68</b>
Natural Resources & Mining	15	137	137	148	1,126,354	615.94
Construction	28	128	128	129	967,836	580.12
Manufacturing	33	3,146	3,140	3,117	21,066,482	517.02
Trade, Transportation & Utilities	112	1,923	1,936	1,933	14,985,269	597.05
Retail Trade	69	863	876	873	4,738,974	418.69
Other Trade, Transportation & Utilities	43	1,060	1,060	1,060	10,246,295	743.56
Information	4	34	35	35	174,047	386.20
Financial Activities	49	217	223	221	1,684,514	588.10
Professional & Business Services	51	164	149	150	1,180,669	588.47
Education & Health Services	85	1,169	1,149	1,115	9,097,433	611.54
Leisure & Hospitality	39	486	481	480	1,452,060	231.58
Other Services	28	74	75	75	409,483	421.86
Local Government	14	1,029	1,022	1,018	10,411,764	782.90
State Government	9	129	132	131	1,234,141	726.54

TABLE 6. COUNTY SUMMARY

NORTH AMERICAN INDUSTRY CLASSIFICATION SYSTEM - INDUSTRY GROUPS	NUMBER OF EMPLOYING UNITS	EMPLOYMENT			TOTAL EARNINGS	AVERAGE WEEKLY EARNINGS
		APRIL	MAY	JUNE	APR-JUN 2012	
<b>LAFAYETTE COUNTY - TOTAL</b>	<b>173</b>	<b>1,304</b>	<b>1,299</b>	<b>1,291</b>	<b>\$9,907,235</b>	<b>\$587.13</b>
Natural Resources & Mining	30	171	181	180	1,575,966	683.62
Construction	9	75	79	79	878,853	870.44
Manufacturing	6	27	27	27	244,848	697.57
Trade, Transportation & Utilities	35	205	207	207	1,415,597	527.75
Retail Trade	21	129	130	126	690,304	413.77
Other Trade, Transportation & Utilities	14	76	77	81	725,293	715.28
Financial Activities	15	53	54	55	369,285	526.05
Professional & Business Services	15	61	54	56	498,892	673.27
Education & Health Services	31	230	223	223	1,170,604	399.61
Leisure & Hospitality	5	42	42	43	126,989	230.75
Local Government	13	314	305	298	2,857,143	719.02
State Government	7	44	45	44	325,962	565.58
Other	7	82	82	79	443,096	420.79
<b>LAWRENCE COUNTY - TOTAL</b>	<b>401</b>	<b>4,075</b>	<b>4,066</b>	<b>4,023</b>	<b>\$29,868,594</b>	<b>\$566.65</b>
Natural Resources & Mining	41	179	195	187	1,517,868	624.38
Construction	25	118	115	123	950,644	616.23
Manufacturing	23	418	424	439	3,480,349	626.98
Trade, Transportation & Utilities	114	899	903	899	6,401,306	546.92
Wholesale Trade	21	220	223	222	2,044,358	709.44
Retail Trade	61	572	570	564	3,241,495	438.47
Transportation, Warehousing & Utilities	32	107	110	113	1,115,453	780.04
Financial Activities	30	139	141	142	1,121,674	613.38
Professional & Business Services	27	94	100	98	938,648	741.82
Education & Health Services	62	540	533	506	3,958,717	578.56
Leisure & Hospitality	23	280	276	245	737,312	212.42
Local Government	27	1,235	1,212	1,215	9,557,206	602.27
State Government	10	100	102	105	788,919	593.02
Other	19	73	65	64	415,951	475.19

TABLE 6. COUNTY SUMMARY

NORTH AMERICAN INDUSTRY CLASSIFICATION SYSTEM - INDUSTRY GROUPS	NUMBER OF EMPLOYING UNITS	EMPLOYMENT			TOTAL EARNINGS	AVERAGE WEEKLY EARNINGS
		APRIL	MAY	JUNE	APR-JUN 2012	
<b>LEE COUNTY - TOTAL</b>	<b>300</b>	<b>2,078</b>	<b>2,095</b>	<b>2,103</b>	<b>\$15,953,727</b>	<b>\$586.62</b>
Natural Resources & Mining	37	218	232	243	1,601,080	533.16
Construction	9	30	31	31	206,644	518.34
Trade, Transportation & Utilities	48	345	353	356	2,503,120	548.05
Wholesale Trade	8	79	80	76	863,023	847.49
Retail Trade	24	195	199	207	1,013,465	389.15
Transportation, Warehousing & Utilities	16	71	74	73	626,632	663.34
Financial Activities	16	69	68	69	611,137	684.62
Professional & Business Services	15	63	64	63	703,287	854.19
Education & Health Services	129	405	397	388	2,656,816	515.22
Leisure & Hospitality	10	78	90	85	255,318	232.88
Local Government	15	337	336	337	2,704,102	617.85
State Government	7	505	498	506	4,575,741	699.76
Other	14	28	26	25	136,482	398.68
<b>LINCOLN COUNTY - TOTAL</b>	<b>258</b>	<b>3,016</b>	<b>3,024</b>	<b>2,978</b>	<b>\$23,852,769</b>	<b>\$610.39</b>
Natural Resources & Mining	30	170	176	180	1,257,237	551.58
Construction	14	70	70	70	544,278	598.11
Manufacturing	8	342	335	340	2,695,845	611.72
Trade, Transportation & Utilities	44	364	356	374	2,901,960	612.14
Wholesale Trade	9	59	60	56	577,689	761.79
Retail Trade	23	186	178	180	751,302	318.71
Transportation, Warehousing & Utilities	12	119	118	138	1,572,969	967.98
Financial Activities	19	64	64	64	529,511	636.43
Professional & Business Services	12	31	31	32	225,032	552.45
Education & Health Services	82	402	402	389	2,319,270	448.63
Leisure & Hospitality	14	150	154	158	346,780	173.22
Local Government	7	372	372	319	3,239,523	703.28
State Government	12	1,021	1,027	1,019	9,604,171	722.64
Other	16	30	37	33	189,162	436.53

TABLE 6. COUNTY SUMMARY

NORTH AMERICAN INDUSTRY CLASSIFICATION SYSTEM - INDUSTRY GROUPS	NUMBER OF EMPLOYING UNITS	EMPLOYMENT			TOTAL EARNINGS	AVERAGE WEEKLY EARNINGS
		APRIL	MAY	JUNE	APR-JUN 2012	
<b>LITTLE RIVER COUNTY - TOTAL</b>	<b>239</b>	<b>4,009</b>	<b>4,001</b>	<b>4,004</b>	<b>\$45,743,472</b>	<b>\$878.66</b>
Natural Resources & Mining	12	83	81	84	756,805	704.22
Construction	20	560	570	587	7,546,967	1,014.33
Manufacturing	16	1,271	1,270	1,233	22,422,485	1,371.07
Trade, Transportation & Utilities	58	566	568	568	3,839,045	520.52
Wholesale Trade	10	30	30	30	356,371	913.77
Retail Trade	35	374	372	374	2,199,479	453.19
Transportation, Warehousing & Utilities	13	162	166	164	1,283,195	601.87
Financial Activities	21	91	85	85	642,208	567.82
Professional & Business Services	18	94	87	97	711,082	590.27
Education & Health Services	29	154	156	150	1,001,621	502.49
Leisure & Hospitality	15	200	196	202	608,716	234.90
Local Government	20	795	797	812	7,077,284	679.38
State Government	11	86	88	78	619,146	566.98
Other	19	109	103	108	518,113	373.64
<b>LOGAN COUNTY - TOTAL</b>	<b>480</b>	<b>5,630</b>	<b>5,635</b>	<b>5,664</b>	<b>\$42,392,506</b>	<b>\$577.88</b>
Natural Resources & Mining	20	214	211	214	2,887,044	1,042.63
Construction	44	235	226	246	2,093,760	683.42
Manufacturing	23	1,215	1,233	1,256	10,719,488	667.85
Trade, Transportation & Utilities	113	940	943	938	5,950,226	486.75
Wholesale Trade	13	67	68	70	289,149	325.50
Retail Trade	71	714	717	715	3,850,792	414.09
Transportation, Warehousing & Utilities	29	159	158	153	1,810,285	888.85
Information	6	39	39	39	342,427	675.40
Financial Activities	42	207	203	207	1,801,450	673.78
Professional & Business Services	46	112	113	113	756,086	516.22
Education & Health Services	93	758	765	749	5,133,537	521.42
Leisure & Hospitality	28	338	329	331	936,180	216.47
Other Services	29	131	132	128	908,032	535.92
Local Government	22	883	881	883	7,006,591	610.84
State Government	14	558	560	560	3,857,685	530.53



TABLE 6. COUNTY SUMMARY

NORTH AMERICAN INDUSTRY CLASSIFICATION SYSTEM - INDUSTRY GROUPS	NUMBER OF EMPLOYING UNITS	EMPLOYMENT			TOTAL EARNINGS	AVERAGE WEEKLY EARNINGS
		APRIL	MAY	JUNE	APR-JUN 2012	
<b>LONOKE COUNTY - TOTAL</b>	<b>1,290</b>	<b>13,187</b>	<b>13,150</b>	<b>13,001</b>	<b>\$100,072,941</b>	<b>\$587.06</b>
Natural Resources & Mining	78	501	497	509	4,479,909	686.02
Construction	140	794	756	776	6,815,751	676.21
Manufacturing	42	1,456	1,441	1,447	15,519,184	824.44
Trade, Transportation & Utilities	311	2,888	2,927	2,940	19,477,803	513.41
Wholesale Trade	72	394	394	399	4,289,631	833.96
Retail Trade	177	2,240	2,277	2,273	12,661,480	430.32
Transportation, Warehousing & Utilities	62	254	256	268	2,526,692	749.46
Information	15	104	96	88	878,054	703.57
Financial Activities	136	487	497	503	5,724,611	888.41
Professional & Business Services	151	670	646	652	4,908,264	575.55
Education & Health Services	197	1,700	1,676	1,639	10,532,564	484.66
Leisure & Hospitality	107	1,509	1,515	1,521	4,584,816	232.79
Other Services	72	206	206	211	1,221,632	452.51
Local Government	26	2,715	2,734	2,554	24,613,678	709.74
State Government	15	157	159	161	1,316,675	637.00
<b>MADISON COUNTY - TOTAL</b>	<b>233</b>	<b>3,177</b>	<b>3,171</b>	<b>3,170</b>	<b>\$22,667,288</b>	<b>\$549.58</b>
Natural Resources & Mining	9	31	22	27	234,464	676.34
Construction	26	85	82	82	751,796	696.75
Manufacturing	23	1,162	1,173	1,179	8,378,044	550.20
Trade, Transportation & Utilities	42	554	548	572	3,671,251	506.10
Retail Trade	32	438	439	453	2,471,597	428.85
Other Trade, Transportation & Utilities	10	116	109	119	1,199,654	804.78
Information	6	39	39	40	402,568	787.29
Financial Activities	15	65	65	66	548,727	646.07
Professional & Business Services	26	145	143	132	992,325	545.23
Education & Health Services	44	254	262	261	1,470,781	436.82
Leisure & Hospitality	13	168	172	161	524,531	241.61
Other Services	13	30	36	37	240,944	539.83
Local Government	9	607	591	575	5,121,534	666.61
State Government	7	37	38	38	330,323	674.59

TABLE 6. COUNTY SUMMARY

NORTH AMERICAN INDUSTRY CLASSIFICATION SYSTEM - INDUSTRY GROUPS	NUMBER OF EMPLOYING UNITS	EMPLOYMENT			TOTAL EARNINGS	AVERAGE WEEKLY EARNINGS
		APRIL	MAY	JUNE	APR-JUN 2012	
<b>MARION COUNTY - TOTAL</b>	<b>289</b>	<b>3,610</b>	<b>3,666</b>	<b>3,691</b>	<b>\$24,752,886</b>	<b>\$520.85</b>
Natural Resources & Mining	4	25	25	27	150,459	450.93
Construction	22	73	74	75	365,586	380.03
Manufacturing	20	1,519	1,521	1,531	11,045,411	557.63
Trade, Transportation & Utilities	53	504	505	510	2,939,269	446.54
Wholesale Trade	6	43	44	45	439,862	768.99
Retail Trade	38	431	431	434	2,225,730	396.32
Transportation, Warehousing & Utilities	9	30	30	31	273,677	694.02
Information	3	57	57	57	637,180	859.89
Financial Activities	34	190	205	210	1,603,228	611.53
Professional & Business Services	29	58	60	61	352,034	453.85
Education & Health Services	50	345	341	332	2,013,152	456.36
Leisure & Hospitality	35	176	211	217	533,190	203.71
Other Services	14	34	33	33	121,171	279.63
Local Government	18	553	560	562	4,520,823	622.85
State Government	7	76	74	76	471,383	481.33
<b>MILLER COUNTY - TOTAL</b>	<b>855</b>	<b>13,431</b>	<b>13,448</b>	<b>13,624</b>	<b>\$123,945,356</b>	<b>\$706.19</b>
Natural Resources & Mining	28	138	140	129	1,247,078	707.09
Construction	79	910	951	968	8,033,288	655.30
Manufacturing	28	2,374	2,368	2,398	40,293,387	1,302.31
Trade, Transportation & Utilities	230	3,461	3,426	3,486	28,626,693	636.86
Wholesale Trade	53	567	576	591	5,988,317	796.95
Retail Trade	132	1,338	1,341	1,359	7,732,290	441.90
Transportation, Warehousing & Utilities	45	1,556	1,509	1,536	14,906,086	747.63
Information	7	70	71	72	1,281,932	1,388.88
Financial Activities	83	379	379	382	3,255,880	659.09
Professional & Business Services	85	1,296	1,275	1,315	6,500,270	386.02
Education & Health Services	127	911	910	917	6,010,671	506.60
Leisure & Hospitality	89	1,289	1,302	1,335	4,598,094	270.27
Other Services	58	328	331	326	1,614,532	378.26
Local Government	25	1,776	1,787	1,795	17,411,720	749.92
State Government	16	499	508	501	5,071,811	776.14

TABLE 6. COUNTY SUMMARY

NORTH AMERICAN INDUSTRY CLASSIFICATION SYSTEM - INDUSTRY GROUPS	NUMBER OF EMPLOYING UNITS	EMPLOYMENT			TOTAL EARNINGS	AVERAGE WEEKLY EARNINGS
		APRIL	MAY	JUNE	APR-JUN 2012	
<b>MISSISSIPPI COUNTY - TOTAL</b>	<b>1,162</b>	<b>19,442</b>	<b>19,506</b>	<b>19,017</b>	<b>\$188,656,728</b>	<b>\$751.08</b>
Natural Resources & Mining	106	584	616	672	4,056,741	500.09
Construction	60	667	645	651	7,746,847	910.72
Manufacturing	54	7,029	6,994	6,977	94,915,526	1,043.03
Trade, Transportation & Utilities	293	3,059	3,100	3,091	25,950,907	647.42
Wholesale Trade	60	513	522	521	6,817,842	1,011.15
Retail Trade	175	1,837	1,845	1,842	10,011,305	418.23
Transportation, Warehousing & Utilities	58	709	733	728	9,121,760	970.06
Information	9	62	63	61	503,882	625.16
Financial Activities	93	509	512	507	4,004,134	604.73
Professional & Business Services	86	1,394	1,359	1,239	8,549,693	494.24
Education & Health Services	254	1,890	1,897	1,811	12,257,137	505.28
Leisure & Hospitality	81	1,117	1,111	1,110	3,406,294	235.49
Other Services	60	214	203	220	1,140,548	413.19
Local Government	44	2,282	2,370	2,105	20,631,704	704.63
State Government	22	635	636	573	5,493,315	687.47
<b>MONROE COUNTY - TOTAL</b>	<b>302</b>	<b>2,343</b>	<b>2,350</b>	<b>2,364</b>	<b>\$16,035,320</b>	<b>\$524.37</b>
Natural Resources & Mining	35	164	171	181	1,416,826	633.64
Construction	15	68	66	69	689,494	783.81
Manufacturing	7	132	128	127	1,052,931	627.87
Trade, Transportation & Utilities	80	701	706	704	5,002,665	546.88
Wholesale Trade	19	287	289	287	2,543,937	680.26
Retail Trade	39	295	303	300	1,465,809	376.69
Transportation, Warehousing & Utilities	22	119	114	117	992,919	654.67
Financial Activities	19	84	90	91	756,797	659.04
Professional & Business Services	16	51	35	37	230,974	433.35
Education & Health Services	58	329	331	331	1,874,861	436.59
Leisure & Hospitality	22	224	229	232	674,009	227.07
Local Government	22	370	371	371	2,924,135	606.83
State Government	8	119	114	114	865,728	575.74
Other	20	101	109	107	546,900	398.13

TABLE 6. COUNTY SUMMARY

NORTH AMERICAN INDUSTRY CLASSIFICATION SYSTEM - INDUSTRY GROUPS	NUMBER OF EMPLOYING UNITS	EMPLOYMENT			TOTAL EARNINGS	AVERAGE WEEKLY EARNINGS
		APRIL	MAY	JUNE	APR-JUN 2012	
<b>MONTGOMERY COUNTY - TOTAL</b>	<b>177</b>	<b>1,499</b>	<b>1,512</b>	<b>1,854</b>	<b>\$10,628,719</b>	<b>\$504.17</b>
Natural Resources & Mining	9	29	29	32	246,873	633.01
Construction	21	86	85	83	544,382	494.59
Trade, Transportation & Utilities	46	253	252	257	1,697,606	514.11
Wholesale Trade	13	67	68	68	594,318	675.62
Retail Trade	23	159	160	164	906,219	432.98
Transportation, Warehousing & Utilities	10	27	24	25	197,069	598.39
Financial Activities	10	66	66	67	499,034	578.70
Professional & Business Services	13	22	23	22	145,041	499.57
Education & Health Services	19	91	92	90	561,202	474.39
Leisure & Hospitality	21	243	249	627	1,597,710	329.49
Local Government	9	504	511	469	3,935,866	612.05
State Government	7	39	40	40	382,180	741.14
Other	22	166	165	167	1,018,825	472.12
<b>NEVADA COUNTY - TOTAL</b>	<b>187</b>	<b>2,361</b>	<b>2,369</b>	<b>2,382</b>	<b>\$19,587,310</b>	<b>\$635.57</b>
Natural Resources & Mining	9	33	33	35	239,695	547.67
Trade, Transportation & Utilities	40	507	511	523	3,904,222	584.67
Wholesale Trade	3	15	15	15	41,083	210.68
Retail Trade	27	279	282	283	1,399,617	382.69
Transportation, Warehousing & Utilities	10	213	214	225	2,463,522	871.94
Financial Activities	14	64	58	58	436,736	559.92
Professional & Business Services	12	57	57	52	438,726	609.91
Education & Health Services	35	425	421	430	2,392,433	432.68
Leisure & Hospitality	8	77	84	79	252,120	242.42
Other Services	13	54	51	48	158,127	238.50
Local Government	27	406	402	409	3,248,597	616.00
State Government	10	73	72	75	572,740	600.78
Other	19	665	680	673	7,943,914	908.43

TABLE 6. COUNTY SUMMARY

NORTH AMERICAN INDUSTRY CLASSIFICATION SYSTEM - INDUSTRY GROUPS	NUMBER OF EMPLOYING UNITS	EMPLOYMENT			TOTAL EARNINGS	AVERAGE WEEKLY EARNINGS
		APRIL	MAY	JUNE	APR-JUN 2012	
<b>NEWTON COUNTY - TOTAL</b>	<b>125</b>	<b>1,064</b>	<b>1,080</b>	<b>1,021</b>	<b>\$6,485,937</b>	<b>\$472.91</b>
Construction	5	20	19	20	117,537	459.73
Manufacturing	10	45	50	45	360,380	594.03
Trade, Transportation & Utilities	29	163	166	157	971,535	461.32
Wholesale Trade	3	7	9	9	70,237	648.34
Retail Trade	14	101	102	95	415,876	322.05
Transportation, Warehousing & Utilities	12	55	55	53	485,422	687.24
Education & Health Services	32	236	242	232	1,151,942	374.41
Leisure & Hospitality	16	75	83	85	316,855	300.91
Other Services	4	5	3	3	14,344	300.92
Local Government	13	389	383	344	2,772,520	573.31
State Government	6	91	91	92	482,378	406.27
Other	10	40	43	43	298,446	546.60
<b>OUACHITA COUNTY - TOTAL</b>	<b>640</b>	<b>7,184</b>	<b>7,202</b>	<b>7,177</b>	<b>\$54,218,470</b>	<b>\$580.25</b>
Natural Resources & Mining	40	195	207	202	1,615,686	617.30
Construction	42	211	219	202	1,569,630	573.14
Manufacturing	24	555	558	550	5,411,642	750.96
Trade, Transportation & Utilities	171	1,648	1,633	1,650	11,277,099	527.76
Wholesale Trade	26	237	239	238	2,573,157	831.66
Retail Trade	114	1,117	1,092	1,100	5,406,950	377.08
Transportation, Warehousing & Utilities	31	294	302	312	3,296,992	837.93
Information	7	49	51	49	361,111	559.28
Financial Activities	60	298	299	296	2,296,346	593.42
Professional & Business Services	47	450	434	476	3,553,538	602.98
Education & Health Services	129	1,248	1,242	1,229	9,059,051	562.13
Leisure & Hospitality	37	483	506	528	1,397,708	212.62
Other Services	39	138	136	131	1,002,328	571.13
Local Government	30	1,129	1,128	1,132	10,350,565	704.81
State Government	14	780	789	732	6,323,766	634.22

TABLE 6. COUNTY SUMMARY

NORTH AMERICAN INDUSTRY CLASSIFICATION SYSTEM - INDUSTRY GROUPS	NUMBER OF EMPLOYING UNITS	EMPLOYMENT			TOTAL EARNINGS	AVERAGE WEEKLY EARNINGS
		APRIL	MAY	JUNE	APR-JUN 2012	
<b>PERRY COUNTY - TOTAL</b>	<b>144</b>	<b>1,283</b>	<b>1,318</b>	<b>1,346</b>	<b>\$9,415,726</b>	<b>\$550.51</b>
Construction	18	102	105	104	871,312	646.53
Manufacturing	5	44	41	40	309,796	571.93
Trade, Transportation & Utilities	24	174	178	177	1,078,191	470.35
Retail Trade	14	142	146	145	633,394	337.57
Other Trade, Transportation & Utilities	10	32	32	32	444,797	1,069.22
Financial Activities	10	32	33	35	301,301	695.31
Professional & Business Services	13	35	35	39	444,519	941.11
Education & Health Services	32	267	263	262	1,324,194	385.84
Leisure & Hospitality	8	68	74	75	230,822	245.47
Local Government	11	411	414	407	3,003,473	562.59
State Government	8	59	58	55	391,764	525.62
Other	15	91	117	152	1,460,354	936.12
<b>PHILLIPS COUNTY - TOTAL</b>	<b>859</b>	<b>6,166</b>	<b>6,174</b>	<b>6,154</b>	<b>\$46,354,926</b>	<b>\$578.42</b>
Natural Resources & Mining	76	341	335	346	2,020,718	456.28
Construction	28	116	128	121	1,077,157	681.03
Manufacturing	11	380	381	369	3,192,537	651.98
Trade, Transportation & Utilities	164	1,423	1,430	1,467	10,782,387	575.98
Wholesale Trade	33	363	365	379	3,724,644	776.45
Retail Trade	88	759	767	777	4,382,599	439.15
Transportation, Warehousing & Utilities	43	301	298	311	2,675,144	678.40
Information	10	45	45	46	361,983	614.22
Financial Activities	40	206	209	211	1,718,656	633.57
Professional & Business Services	50	314	299	283	2,300,746	592.57
Education & Health Services	371	1,478	1,479	1,448	9,810,356	513.95
Leisure & Hospitality	33	325	333	327	1,000,587	234.42
Other Services	35	78	75	73	407,761	416.37
Local Government	27	941	933	922	9,653,641	796.77
State Government	14	519	527	541	4,028,397	585.78

TABLE 6. COUNTY SUMMARY

NORTH AMERICAN INDUSTRY CLASSIFICATION SYSTEM - INDUSTRY GROUPS	NUMBER OF EMPLOYING UNITS	EMPLOYMENT			TOTAL EARNINGS	AVERAGE WEEKLY EARNINGS
		APRIL	MAY	JUNE	APR-JUN 2012	
<b>PIKE COUNTY - TOTAL</b>	<b>254</b>	<b>2,268</b>	<b>2,299</b>	<b>2,328</b>	<b>\$15,738,189</b>	<b>\$526.74</b>
Natural Resources & Mining	28	113	117	117	907,736	603.68
Construction	15	50	41	46	251,634	423.86
Manufacturing	17	200	211	213	1,278,010	472.64
Trade, Transportation & Utilities	76	498	513	522	3,059,867	460.62
Wholesale Trade	11	106	105	104	775,812	568.36
Retail Trade	48	344	346	363	1,690,538	370.49
Transportation, Warehousing & Utilities	17	48	62	55	593,517	830.09
Information	5	26	26	25	279,986	839.12
Financial Activities	22	181	178	178	1,570,969	675.10
Professional & Business Services	11	43	39	36	765,775	1,497.60
Education & Health Services	20	268	264	259	1,485,748	433.46
Leisure & Hospitality	19	190	208	224	628,515	233.19
Other Services	21	71	69	72	467,605	509.00
Local Government	10	501	498	494	4,304,051	665.27
State Government	10	127	135	142	738,293	421.72
<b>POINSETT COUNTY - TOTAL</b>	<b>522</b>	<b>5,187</b>	<b>5,183</b>	<b>5,193</b>	<b>\$41,904,100</b>	<b>\$621.36</b>
Natural Resources & Mining	59	347	348	353	3,234,343	712.20
Construction	24	104	97	108	840,543	627.74
Manufacturing	22	653	652	659	5,713,898	671.38
Trade, Transportation & Utilities	126	1,281	1,302	1,286	9,663,796	576.40
Wholesale Trade	28	396	401	393	4,430,369	859.15
Retail Trade	70	700	722	708	3,742,442	405.47
Transportation, Warehousing & Utilities	28	185	179	185	1,490,985	626.73
Information	6	51	54	57	468,020	666.70
Financial Activities	38	254	261	258	2,687,053	802.19
Professional & Business Services	33	200	165	172	2,110,889	907.13
Education & Health Services	102	651	645	632	4,005,422	479.42
Leisure & Hospitality	44	357	359	373	1,048,173	222.12
Other Services	26	64	60	62	374,386	464.50
Local Government	31	1,093	1,105	1,098	10,680,703	747.81
State Government	11	132	135	135	1,076,874	618.18

TABLE 6. COUNTY SUMMARY

NORTH AMERICAN INDUSTRY CLASSIFICATION SYSTEM - INDUSTRY GROUPS	NUMBER OF EMPLOYING UNITS	EMPLOYMENT			TOTAL EARNINGS	AVERAGE WEEKLY EARNINGS
		APRIL	MAY	JUNE	APR-JUN 2012	
<b>POLK COUNTY - TOTAL</b>	<b>518</b>	<b>5,872</b>	<b>5,934</b>	<b>5,909</b>	<b>\$42,060,320</b>	<b>\$547.91</b>
Natural Resources & Mining	22	135	138	140	1,253,799	700.58
Construction	37	177	180	186	1,128,196	479.47
Manufacturing	35	1,137	1,148	1,150	10,349,743	695.31
Trade, Transportation & Utilities	134	1,182	1,210	1,211	7,094,220	454.38
Wholesale Trade	19	62	61	59	446,450	566.08
Retail Trade	78	851	864	869	4,359,991	389.38
Transportation, Warehousing & Utilities	37	269	285	283	2,287,779	630.76
Information	7	50	52	51	316,735	477.73
Financial Activities	45	255	252	256	2,185,549	661.02
Professional & Business Services	48	161	161	164	1,128,223	535.72
Education & Health Services	83	1,060	1,052	1,035	7,998,175	586.51
Leisure & Hospitality	42	489	492	495	1,317,302	205.96
Other Services	31	140	139	199	876,662	423.24
Local Government	21	782	810	763	6,430,901	630.17
State Government	13	304	300	259	1,980,815	529.68
<b>POPE COUNTY - TOTAL</b>	<b>1,756</b>	<b>26,294</b>	<b>26,240</b>	<b>25,931</b>	<b>\$214,140,137</b>	<b>\$629.80</b>
Natural Resources & Mining	35	733	723	746	5,906,617	619.01
Construction	163	1,261	1,277	1,311	12,431,171	745.32
Manufacturing	73	4,446	4,437	4,413	38,348,379	665.59
Trade, Transportation & Utilities	427	5,831	5,845	5,841	53,333,844	702.62
Wholesale Trade	92	631	629	625	6,555,034	802.49
Retail Trade	263	3,185	3,194	3,187	17,669,949	426.27
Transportation, Warehousing & Utilities	72	2,015	2,022	2,029	29,108,861	1,107.39
Information	23	210	210	208	2,167,047	796.32
Financial Activities	180	1,118	1,157	1,185	9,248,885	616.87
Professional & Business Services	254	2,719	2,519	2,555	20,730,651	613.88
Education & Health Services	304	3,015	3,000	2,977	23,788,094	610.49
Leisure & Hospitality	134	2,403	2,448	2,432	7,432,360	235.50
Other Services	105	438	422	436	2,613,567	465.38
Local Government	42	2,399	2,513	2,395	22,741,930	718.23
State Government	16	1,721	1,689	1,432	15,397,592	733.85



TABLE 6. COUNTY SUMMARY

NORTH AMERICAN INDUSTRY CLASSIFICATION SYSTEM - INDUSTRY GROUPS	NUMBER OF EMPLOYING UNITS	EMPLOYMENT			TOTAL EARNINGS	AVERAGE WEEKLY EARNINGS
		APRIL	MAY	JUNE	APR-JUN 2012	
<b>PRAIRIE COUNTY - TOTAL</b>	<b>245</b>	<b>1,401</b>	<b>1,416</b>	<b>1,386</b>	<b>\$11,221,193</b>	<b>\$616.11</b>
Natural Resources & Mining	34	156	158	153	1,509,830	746.09
Construction	14	102	110	103	1,264,423	926.32
Trade, Transportation & Utilities	61	314	319	316	2,113,752	514.00
Wholesale Trade	10	75	75	75	911,757	935.14
Retail Trade	35	187	191	188	801,360	326.73
Transportation, Warehousing & Utilities	16	52	53	53	400,635	585.15
Financial Activities	15	52	50	51	405,667	611.87
Professional & Business Services	13	47	48	48	311,611	502.87
Education & Health Services	46	203	202	205	1,226,093	463.84
Leisure & Hospitality	18	94	101	105	281,177	216.29
Other Services	14	41	41	41	187,696	352.15
Local Government	15	330	327	300	3,415,582	823.63
State Government	9	43	40	41	333,945	621.49
Other	6	19	20	23	171,417	638.03
<b>PULASKI COUNTY - TOTAL</b>	<b>14,259</b>	<b>234,127</b>	<b>235,534</b>	<b>234,713</b>	<b>\$2,470,971,220</b>	<b>\$809.55</b>
Natural Resources & Mining	56	743	762	749	10,742,375	1,099.83
Construction	1,004	8,125	8,193	8,303	89,174,944	835.82
Manufacturing	367	13,065	13,100	13,099	159,359,327	936.61
Trade, Transportation & Utilities	3,224	46,713	46,817	46,934	450,529,366	740.18
Wholesale Trade	1,044	12,107	12,166	12,218	165,648,781	1,047.56
Retail Trade	1,771	24,216	24,215	24,210	161,590,692	513.35
Transportation, Warehousing & Utilities	409	10,390	10,436	10,506	123,289,893	908.07
Information	221	6,230	6,268	6,327	84,962,251	1,041.52
Financial Activities	1,711	15,646	15,687	15,705	221,791,961	1,088.12
Professional & Business Services	2,813	32,342	32,682	32,754	336,715,860	794.69
Education & Health Services	2,293	38,037	38,469	38,450	415,702,371	834.50
Leisure & Hospitality	1,135	21,380	21,684	21,952	85,945,364	305.06
Other Services	1,135	6,895	7,013	7,169	56,315,474	616.59
Local Government	102	16,997	16,771	15,841	189,106,642	879.68
State Government	198	27,954	28,088	27,430	370,625,285	1,024.64

TABLE 6. COUNTY SUMMARY

NORTH AMERICAN INDUSTRY CLASSIFICATION SYSTEM - INDUSTRY GROUPS	NUMBER OF EMPLOYING UNITS	EMPLOYMENT			TOTAL EARNINGS	AVERAGE WEEKLY EARNINGS
		APRIL	MAY	JUNE	APR-JUN 2012	
<b>RANDOLPH COUNTY - TOTAL</b>	<b>417</b>	<b>4,606</b>	<b>4,627</b>	<b>4,638</b>	<b>\$31,742,608</b>	<b>\$528.10</b>
Natural Resources & Mining	29	119	123	125	715,544	449.93
Construction	31	65	67	74	378,604	424.13
Manufacturing	30	554	557	565	3,969,192	546.52
Trade, Transportation & Utilities	100	903	898	907	5,967,435	508.53
Wholesale Trade	20	204	196	190	1,437,353	562.20
Retail Trade	60	560	563	571	3,179,256	433.10
Transportation, Warehousing & Utilities	20	139	139	146	1,350,826	735.21
Information	5	43	43	43	389,749	697.23
Financial Activities	29	126	127	132	907,508	543.96
Professional & Business Services	44	244	251	246	1,333,279	415.22
Education & Health Services	70	1,141	1,145	1,112	7,777,888	528.22
Leisure & Hospitality	26	337	341	348	986,804	221.95
Other Services	20	58	55	55	300,598	412.91
Local Government	22	739	742	752	6,229,012	643.74
State Government	11	277	278	279	2,786,995	771.17
<b>SAINT FRANCIS COUNTY - TOTAL</b>	<b>791</b>	<b>7,475</b>	<b>7,443</b>	<b>7,485</b>	<b>\$54,447,722</b>	<b>\$560.86</b>
Natural Resources & Mining	35	169	175	181	1,421,714	624.93
Construction	43	200	188	215	1,757,944	672.77
Manufacturing	11	693	693	720	6,030,132	660.76
Trade, Transportation & Utilities	165	2,036	2,031	2,023	14,074,606	533.33
Wholesale Trade	35	578	573	564	5,432,304	730.97
Retail Trade	108	1,157	1,147	1,158	5,892,422	392.78
Transportation, Warehousing & Utilities	22	301	311	301	2,749,880	695.06
Information	8	73	72	71	567,326	606.12
Financial Activities	63	299	308	310	2,318,029	583.35
Professional & Business Services	47	379	350	350	2,272,827	486.10
Education & Health Services	301	1,417	1,419	1,408	9,424,839	512.48
Leisure & Hospitality	47	568	570	588	1,730,209	231.33
Other Services	27	67	65	64	310,183	365.21
Local Government	28	1,014	1,012	1,002	9,937,691	757.37
State Government	16	560	560	553	4,602,222	634.82

TABLE 6. COUNTY SUMMARY

NORTH AMERICAN INDUSTRY CLASSIFICATION SYSTEM - INDUSTRY GROUPS	NUMBER OF EMPLOYING UNITS	EMPLOYMENT			TOTAL EARNINGS	AVERAGE WEEKLY EARNINGS
		APRIL	MAY	JUNE	APR-JUN 2012	
<b>SALINE COUNTY - TOTAL</b>	<b>1,847</b>	<b>21,332</b>	<b>21,604</b>	<b>21,457</b>	<b>\$172,049,736</b>	<b>\$616.59</b>
Natural Resources & Mining	12	39	39	38	411,426	818.49
Construction	268	1,673	1,706	1,747	15,823,542	712.37
Manufacturing	82	1,339	1,346	1,356	15,340,120	876.03
Trade, Transportation & Utilities	430	4,611	4,623	4,616	34,927,154	581.96
Wholesale Trade	119	543	543	538	6,153,434	874.40
Retail Trade	247	3,684	3,691	3,693	24,947,502	520.16
Transportation, Warehousing & Utilities	64	384	389	385	3,826,218	762.50
Information	10	75	78	79	735,193	731.29
Financial Activities	189	687	689	695	6,889,606	767.70
Professional & Business Services	252	1,411	1,347	1,347	12,147,701	682.90
Education & Health Services	256	3,352	3,354	3,352	25,862,997	593.40
Leisure & Hospitality	149	2,830	2,849	2,810	9,667,038	262.79
Other Services	152	696	696	730	4,532,640	492.93
Local Government	31	3,622	3,880	3,686	37,497,238	773.44
State Government	16	997	997	1,001	8,215,081	632.98
<b>SCOTT COUNTY - TOTAL</b>	<b>187</b>	<b>2,923</b>	<b>2,923</b>	<b>3,059</b>	<b>\$19,461,314</b>	<b>\$504.33</b>
Natural Resources & Mining	15	153	154	156	1,391,486	693.55
Trade, Transportation & Utilities	37	445	437	427	2,943,378	518.90
Wholesale Trade	9	73	70	69	842,766	917.38
Retail Trade	21	306	302	293	1,400,287	358.65
Transportation, Warehousing & Utilities	7	66	65	65	700,325	824.56
Financial Activities	22	67	68	70	440,159	495.49
Professional & Business Services	12	11	9	11	61,055	454.50
Education & Health Services	38	285	279	280	2,269,231	620.46
Leisure & Hospitality	17	152	155	149	513,004	259.62
Other Services	12	46	48	49	326,677	527.18
Local Government	5	421	430	574	3,851,373	623.70
State Government	7	63	66	67	400,233	471.23
Other	22	1,280	1,277	1,276	7,264,718	437.38

TABLE 6. COUNTY SUMMARY

NORTH AMERICAN INDUSTRY CLASSIFICATION SYSTEM - INDUSTRY GROUPS	NUMBER OF EMPLOYING UNITS	EMPLOYMENT			TOTAL EARNINGS	AVERAGE WEEKLY EARNINGS
		APRIL	MAY	JUNE	APR-JUN 2012	
<b>SEARCY COUNTY - TOTAL</b>	<b>185</b>	<b>1,663</b>	<b>1,652</b>	<b>1,732</b>	<b>\$11,053,277</b>	<b>\$505.40</b>
Construction	7	14	13	14	107,691	606.14
Manufacturing	17	170	172	173	891,182	399.33
Trade, Transportation & Utilities	40	267	273	289	1,363,360	379.52
Wholesale Trade	7	55	53	53	297,286	426.11
Retail Trade	27	193	201	218	873,841	329.50
Transportation, Warehousing & Utilities	6	19	19	18	192,233	792.17
Information	4	11	5	5	62,083	682.23
Financial Activities	15	91	93	107	608,317	482.41
Professional & Business Services	12	27	20	21	123,390	418.74
Education & Health Services	48	352	347	347	1,956,399	431.62
Leisure & Hospitality	15	104	105	172	318,054	192.64
Local Government	10	366	366	336	2,740,470	592.15
State Government	7	123	120	123	663,216	418.17
Other	10	138	138	145	2,219,115	1,216.40
<b>SEBASTIAN COUNTY - TOTAL</b>	<b>3,776</b>	<b>64,793</b>	<b>65,187</b>	<b>64,709</b>	<b>\$620,303,758</b>	<b>\$735.26</b>
Natural Resources & Mining	61	1,526	1,537	1,508	27,405,471	1,383.58
Construction	281	2,241	2,321	2,360	21,578,120	719.38
Manufacturing	195	12,417	12,492	12,481	138,184,808	852.87
Trade, Transportation & Utilities	962	12,671	12,617	12,582	101,856,333	620.68
Wholesale Trade	248	2,700	2,711	2,725	28,955,010	821.28
Retail Trade	573	7,782	7,735	7,688	46,114,776	458.60
Transportation, Warehousing & Utilities	141	2,189	2,171	2,169	26,786,547	946.78
Information	52	1,047	1,066	1,061	12,646,954	919.51
Financial Activities	421	2,512	2,513	2,525	27,267,195	833.43
Professional & Business Services	587	8,085	8,154	8,254	77,043,547	725.89
Education & Health Services	557	10,757	10,839	10,891	113,700,489	807.66
Leisure & Hospitality	322	5,662	5,719	5,709	20,016,361	270.28
Other Services	277	1,335	1,347	1,412	8,741,854	492.76
Local Government	40	4,676	4,720	4,343	53,557,468	899.59
State Government	21	1,864	1,862	1,583	18,305,158	795.68

TABLE 6. COUNTY SUMMARY

NORTH AMERICAN INDUSTRY CLASSIFICATION SYSTEM - INDUSTRY GROUPS	NUMBER OF EMPLOYING UNITS	EMPLOYMENT			TOTAL EARNINGS	AVERAGE WEEKLY EARNINGS
		APRIL	MAY	JUNE	APR-JUN 2012	
<b>SEVIER COUNTY - TOTAL</b>	<b>324</b>	<b>4,923</b>	<b>5,012</b>	<b>4,879</b>	<b>\$34,002,631</b>	<b>\$529.69</b>
Natural Resources & Mining	15	172	171	168	1,468,107	663.00
Construction	19	129	136	148	1,602,755	895.56
Trade, Transportation & Utilities	99	824	826	821	5,192,375	484.92
Wholesale Trade	14	89	89	88	1,072,216	930.20
Retail Trade	65	663	671	661	3,394,105	392.61
Transportation, Warehousing & Utilities	20	72	66	72	726,054	797.86
Information	3	23	23	23	191,597	640.79
Financial Activities	30	243	241	234	1,808,939	581.40
Professional & Business Services	31	93	92	94	613,139	507.15
Education & Health Services	44	486	490	495	3,406,326	534.38
Leisure & Hospitality	24	252	260	261	697,176	208.13
Local Government	12	916	943	884	6,952,318	584.90
State Government	8	200	209	161	1,462,981	592.30
Other	39	1,585	1,621	1,590	10,606,918	510.37
<b>SHARP COUNTY - TOTAL</b>	<b>391</b>	<b>3,556</b>	<b>3,603</b>	<b>3,658</b>	<b>\$23,312,706</b>	<b>\$497.35</b>
Construction	22	121	117	115	990,718	647.67
Manufacturing	17	142	139	137	861,160	475.43
Trade, Transportation & Utilities	85	953	944	923	6,144,337	502.81
Wholesale Trade	13	40	37	34	179,491	373.16
Retail Trade	58	604	605	598	2,989,000	381.72
Transportation, Warehousing & Utilities	14	309	302	291	2,975,846	761.35
Information	6	50	51	51	702,822	1,067.04
Financial Activities	35	186	195	191	1,613,908	651.12
Professional & Business Services	43	143	149	149	1,051,901	550.45
Education & Health Services	88	661	649	662	4,090,731	478.71
Leisure & Hospitality	33	362	395	408	1,153,354	228.46
Local Government	25	761	787	768	5,608,222	558.81
State Government	8	95	98	96	617,998	493.48
Other	29	82	79	158	477,555	345.47

TABLE 6. COUNTY SUMMARY

NORTH AMERICAN INDUSTRY CLASSIFICATION SYSTEM - INDUSTRY GROUPS	NUMBER OF EMPLOYING UNITS	EMPLOYMENT			TOTAL EARNINGS	AVERAGE WEEKLY EARNINGS
		APRIL	MAY	JUNE	APR-JUN 2012	
<b>STONE COUNTY - TOTAL</b>	<b>286</b>	<b>2,560</b>	<b>2,534</b>	<b>2,564</b>	<b>\$15,447,668</b>	<b>\$465.51</b>
Natural Resources & Mining	6	28	27	28	53,234	148.01
Construction	22	56	56	57	332,815	454.46
Manufacturing	21	161	160	158	935,852	450.87
Trade, Transportation & Utilities	69	665	660	677	3,798,029	437.80
Wholesale Trade	9	37	35	41	271,201	553.85
Retail Trade	47	595	593	601	3,178,291	409.98
Transportation, Warehousing & Utilities	13	33	32	35	348,537	804.32
Financial Activities	29	104	107	104	546,945	400.69
Professional & Business Services	18	43	35	36	222,650	450.71
Education & Health Services	46	494	474	473	3,620,822	579.86
Leisure & Hospitality	34	360	369	369	1,018,280	214.01
Local Government	10	424	420	437	3,607,009	649.79
State Government	8	153	154	152	899,473	452.22
Other	23	72	72	73	412,559	438.74
<b>UNION COUNTY - TOTAL</b>	<b>1,339</b>	<b>17,499</b>	<b>17,534</b>	<b>17,490</b>	<b>\$174,734,091</b>	<b>\$767.73</b>
Natural Resources & Mining	103	614	606	611	6,916,582	871.73
Construction	79	1,326	1,342	1,357	16,703,667	957.69
Manufacturing	55	2,923	2,928	2,943	38,265,589	1,004.15
Trade, Transportation & Utilities	338	3,716	3,724	3,705	36,439,006	754.51
Wholesale Trade	69	763	761	763	13,438,923	1,356.05
Retail Trade	209	2,102	2,104	2,085	11,634,969	426.80
Transportation, Warehousing & Utilities	60	851	859	857	11,365,114	1,021.71
Information	12	139	140	144	1,024,785	559.08
Financial Activities	120	730	732	742	6,731,237	704.79
Professional & Business Services	140	1,465	1,463	1,467	20,341,342	1,068.07
Education & Health Services	246	2,416	2,397	2,390	19,978,649	640.07
Leisure & Hospitality	87	1,187	1,187	1,193	3,742,433	242.12
Other Services	108	489	509	504	2,888,110	443.73
Local Government	34	1,885	1,904	1,850	16,431,320	672.43
State Government	17	609	602	584	5,271,371	677.70

TABLE 6. COUNTY SUMMARY

NORTH AMERICAN INDUSTRY CLASSIFICATION SYSTEM - INDUSTRY GROUPS	NUMBER OF EMPLOYING UNITS	EMPLOYMENT			TOTAL EARNINGS	AVERAGE WEEKLY EARNINGS
		APRIL	MAY	JUNE	APR-JUN 2012	
<b>VAN BUREN COUNTY - TOTAL</b>	<b>365</b>	<b>3,902</b>	<b>3,898</b>	<b>3,838</b>	<b>\$30,491,335</b>	<b>\$604.61</b>
Natural Resources & Mining	16	210	211	210	2,750,014	1,005.73
Construction	41	200	195	195	1,672,795	654.29
Manufacturing	9	73	72	69	559,195	603.01
Trade, Transportation & Utilities	98	1,138	1,130	1,126	10,436,369	709.60
Wholesale Trade	8	31	27	32	277,268	710.94
Retail Trade	57	564	569	573	3,267,237	441.96
Transportation, Warehousing & Utilities	33	543	534	521	6,891,864	995.26
Information	9	49	49	48	420,265	664.28
Financial Activities	33	142	138	138	1,227,805	677.85
Professional & Business Services	30	142	129	118	740,065	439.03
Education & Health Services	60	674	675	666	4,293,042	491.66
Leisure & Hospitality	29	411	424	427	1,444,284	264.10
Other Services	22	64	66	66	445,305	524.30
Local Government	11	734	745	713	6,007,665	632.47
State Government	7	65	64	62	494,531	597.50
<b>WASHINGTON COUNTY - TOTAL</b>	<b>5,506</b>	<b>89,963</b>	<b>90,870</b>	<b>90,873</b>	<b>\$846,328,659</b>	<b>\$718.82</b>
Natural Resources & Mining	45	458	460	465	4,332,274	722.89
Construction	473	3,842	3,876	4,029	38,969,863	765.56
Manufacturing	214	12,116	12,089	12,092	111,611,312	709.60
Trade, Transportation & Utilities	1,342	20,683	20,893	20,906	177,975,568	657.33
Wholesale Trade	390	3,459	3,500	3,526	49,011,027	1,078.71
Retail Trade	768	10,725	10,799	10,750	67,657,253	483.77
Transportation, Warehousing & Utilities	184	6,499	6,594	6,630	61,307,288	717.33
Information	85	946	960	969	10,110,894	811.58
Financial Activities	591	3,171	3,263	3,245	37,611,806	896.75
Professional & Business Services	969	9,676	9,623	9,722	123,956,370	985.68
Education & Health Services	756	13,375	13,500	13,422	130,292,114	746.15
Leisure & Hospitality	571	10,544	10,858	10,784	36,626,318	262.61
Other Services	377	1,807	1,812	1,843	12,125,159	512.29
Local Government	61	8,174	8,111	8,095	92,841,635	878.79
State Government	22	5,171	5,425	5,301	69,875,346	1,014.35

TABLE 6. COUNTY SUMMARY

NORTH AMERICAN INDUSTRY CLASSIFICATION SYSTEM - INDUSTRY GROUPS	NUMBER OF EMPLOYING UNITS	EMPLOYMENT			TOTAL EARNINGS	AVERAGE WEEKLY EARNINGS
		APRIL	MAY	JUNE	APR-JUN 2012	
<b>WHITE COUNTY - TOTAL</b>	<b>1,843</b>	<b>25,770</b>	<b>25,836</b>	<b>25,531</b>	<b>\$227,172,573</b>	<b>\$679.63</b>
Natural Resources & Mining	58	1,647	1,625	1,619	27,339,241	1,289.93
Construction	182	1,032	1,090	1,112	9,255,803	660.47
Manufacturing	70	2,314	2,328	2,342	24,562,417	811.61
Trade, Transportation & Utilities	500	6,620	6,614	6,554	56,150,219	654.83
Wholesale Trade	102	680	687	665	6,934,068	787.49
Retail Trade	295	3,283	3,293	3,263	18,528,645	434.58
Transportation, Warehousing & Utilities	103	2,657	2,634	2,626	30,687,506	894.50
Information	21	169	168	160	1,221,683	567.26
Financial Activities	172	863	871	867	8,248,917	731.87
Professional & Business Services	213	1,624	1,634	1,559	10,958,350	524.98
Education & Health Services	291	4,988	5,015	5,007	47,339,379	727.81
Leisure & Hospitality	151	2,413	2,397	2,397	7,353,878	235.47
Other Services	120	542	538	545	4,132,745	586.90
Local Government	47	2,769	2,772	2,722	25,210,352	704.08
State Government	18	789	784	647	5,399,589	561.29
<b>WOODRUFF COUNTY - TOTAL</b>	<b>209</b>	<b>1,937</b>	<b>1,956</b>	<b>1,950</b>	<b>\$14,377,281</b>	<b>\$567.83</b>
Natural Resources & Mining	27	174	172	175	1,264,474	560.08
Construction	5	43	47	51	362,848	593.86
Manufacturing	7	314	311	299	2,434,774	608.09
Trade, Transportation & Utilities	50	419	421	431	3,422,226	621.36
Wholesale Trade	12	164	166	170	1,833,586	846.27
Retail Trade	29	190	187	191	807,802	328.20
Transportation, Warehousing & Utilities	9	65	68	70	780,838	887.65
Financial Activities	13	61	61	61	539,208	679.96
Education & Health Services	67	250	257	258	1,427,725	430.69
Leisure & Hospitality	8	60	60	63	188,118	237.22
Local Government	10	493	501	485	3,658,863	570.89
State Government	6	42	45	43	340,842	605.04
Other	16	81	81	84	738,203	692.50



TABLE 6. COUNTY SUMMARY

NORTH AMERICAN INDUSTRY CLASSIFICATION SYSTEM - INDUSTRY GROUPS	NUMBER OF EMPLOYING UNITS	EMPLOYMENT			TOTAL EARNINGS	AVERAGE WEEKLY EARNINGS
		APRIL	MAY	JUNE	APR-JUN 2012	
<b>YELL COUNTY - TOTAL</b>	<b>422</b>	<b>6,487</b>	<b>6,515</b>	<b>6,518</b>	<b>\$44,530,278</b>	<b>\$526.45</b>
Natural Resources & Mining	22	190	187	188	1,489,613	608.42
Construction	37	271	308	326	2,286,675	583.09
Manufacturing	20	2,425	2,398	2,389	15,368,714	491.77
Trade, Transportation & Utilities	81	758	763	756	4,708,410	477.19
Wholesale Trade	15	39	37	39	204,743	410.86
Retail Trade	47	499	504	500	2,347,340	360.41
Transportation, Warehousing & Utilities	19	220	222	217	2,156,327	755.10
Financial Activities	32	157	157	160	1,304,769	635.23
Professional & Business Services	41	220	220	213	1,542,334	545.06
Education & Health Services	104	739	750	748	4,508,941	465.14
Leisure & Hospitality	29	323	328	337	992,291	231.77
Local Government	27	1,199	1,193	1,192	10,662,310	686.53
State Government	12	103	106	104	725,333	534.77
Other	17	102	105	105	940,888	695.92
<b>STATEWIDE COUNTY - TOTAL</b>	<b>6,473</b>	<b>23,408</b>	<b>24,079</b>	<b>22,567</b>	<b>\$309,406,586</b>	<b>\$1,019.24</b>
Natural Resources & Mining	74	369	359	350	6,802,730	1,456.27
Construction	638	3,032	3,182	3,279	34,439,916	837.21
Manufacturing	43	261	260	262	2,642,699	778.87
Trade, Transportation & Utilities	2,335	6,748	6,805	6,803	121,233,395	1,374.38
Wholesale Trade	2,010	5,624	5,700	5,702	108,704,297	1,473.37
Retail Trade	123	353	353	359	4,839,879	1,048.73
Transportation, Warehousing & Utilities	202	771	752	742	7,689,219	783.42
Information	181	574	606	541	7,977,235	1,069.67
Financial Activities	384	1,201	1,230	1,231	18,300,111	1,153.22
Professional & Business Services	2,296	7,026	7,240	7,174	86,467,411	930.69
Education & Health Services	220	2,929	3,131	1,644	17,129,783	513.11
Leisure & Hospitality	67	57	55	63	812,273	1,071.13
Other Services	220	512	508	524	5,651,800	844.73
State Government	15	699	703	696	7,949,233	874.37

**TABLE 7. FEDERAL GOVERNMENT EMPLOYMENT AND EARNINGS IN ARKANSAS**

CLASSIFICATION SYSTEM - INDUSTRY GROUPS	NUMBER OF EMPLOYING UNITS	EMPLOYMENT			TOTAL EARNINGS	AVERAGE
		APRIL	MAY	JUNE	APR-JUN 2012	WEEKLY EARNINGS
<b>TOTAL</b>	<b>1,229</b>	<b>20,449</b>	<b>20,467</b>	<b>20,633</b>	<b>\$311,134,030</b>	<b>\$1,166.55</b>
Trade, Transportation & Utilities	607	5,766	5,715	5,709	64,829,972	870.32
Information	2	46	46	46	695,758	1,163.47
Financial Activities	18	134	134	134	2,582,862	1,482.70
Professional & Business Services	30	829	844	877	15,429,833	1,396.36
Education & Health Services	18	4,886	4,890	4,898	80,016,911	1,258.38
Leisure & Hospitality	22	311	322	358	3,301,808	768.88
Other Services	3	10	10	10	47,123	362.48
Public Administration	529	8,467	8,506	8,601	144,229,763	1,301.47

TABLE 8. WORKFORCE INVESTMENT AREA SUMMARY

NORTH AMERICAN INDUSTRY CLASSIFICATION SYSTEM - INDUSTRY GROUPS	NUMBER OF EMPLOYING UNITS	EMPLOYMENT			TOTAL EARNINGS	AVERAGE WEEKLY EARNINGS
		APRIL	MAY	JUNE	APR-JUN 2012	
<b>CENTRAL WORKFORCE INVESTMENT AREA</b>	<b>6,447</b>	<b>79,491</b>	<b>79,783</b>	<b>79,143</b>	<b>\$692,170,651</b>	<b>\$669.97</b>
Natural Resources & Mining	217	2,610	2,610	2,571	36,517,457	1,081.65
Construction	754	5,134	5,229	5,363	48,173,365	706.91
Trade, Transportation & Utilities	1,541	15,827	15,819	15,813	114,330,223	555.93
Wholesale Trade	387	2,248	2,237	2,229	25,087,352	862.29
Retail Trade	898	11,898	11,914	11,899	72,045,878	465.57
Transportation, Warehousing & Utilities	256	1,681	1,668	1,685	17,196,993	788.35
Information	60	618	614	595	5,958,631	752.64
Financial Activities	684	2,890	2,906	2,915	29,025,075	768.92
Professional & Business Services	832	8,328	8,160	8,272	103,823,779	967.66
Education & Health Services	959	11,435	11,414	11,353	88,586,942	597.72
Leisure & Hospitality	542	9,313	9,319	9,351	30,114,605	248.35
Local Government	132	10,698	11,006	10,473	107,947,953	774.19
State Government	66	4,663	4,652	4,264	42,264,490	718.27
Other	660	7,975	8,054	8,173	85,428,131	814.57
<b>EASTERN WORKFORCE INVESTMENT AREA</b>	<b>3,770</b>	<b>37,163</b>	<b>37,245</b>	<b>37,132</b>	<b>\$289,548,313</b>	<b>\$599.06</b>
Natural Resources & Mining	235	1,218	1,244	1,259	8,481,686	526.02
Construction	147	840	906	802	7,828,549	709.02
Trade, Transportation & Utilities	829	9,507	9,522	9,582	74,695,938	602.48
Wholesale Trade	176	2,074	2,065	2,062	21,402,349	796.49
Retail Trade	457	4,739	4,769	4,807	26,334,345	424.53
Transportation, Warehousing & Utilities	196	2,694	2,688	2,713	26,959,244	768.54
Financial Activities	256	1,378	1,389	1,413	11,610,781	641.01
Professional & Business Services	275	2,255	2,177	2,144	15,455,738	542.38
Education & Health Services	1,296	6,523	6,610	6,485	45,727,497	537.90
Leisure & Hospitality	247	3,442	3,487	3,520	11,949,594	263.91
Local Government	129	5,353	5,344	5,303	56,206,223	810.67
State Government	61	2,482	2,378	2,430	20,712,397	655.66
Other	295	4,165	4,188	4,194	36,879,910	678.31

\*Note: Pulaski County is not included in the Central Workforce Investment. Please refer to Page 51 for information on Pulaski County.  
Central Workforce Includes these counties: Faulkner, Lonoke, Monroe, Prairie, and Saline.

Eastern Workforce Includes these counties: Crittenden, Cross, Lee, Phillips, and Saint Francis.

TABLE 8. WORKFORCE INVESTMENT AREA SUMMARY

NORTH AMERICAN INDUSTRY CLASSIFICATION SYSTEM - INDUSTRY GROUPS	NUMBER OF EMPLOYING UNITS	EMPLOYMENT			TOTAL EARNINGS	AVERAGE WEEKLY EARNINGS
		APRIL	MAY	JUNE	APR-JUN 2012	
<b>NORTH CENTRAL WORKFORCE INVESTMENT AREA</b>	<b>5,600</b>	<b>70,138</b>	<b>70,670</b>	<b>70,131</b>	<b>\$564,398,540</b>	<b>\$617.46</b>
Manufacturing	242	8,793	8,834	8,698	81,335,599	713.00
Trade, Transportation & Utilities	1,435	16,186	16,200	16,167	127,743,008	607.15
Retail Trade	892	9,173	9,192	9,156	51,007,489	427.71
Other Trade, Transportation & Utilities	543	7,013	7,008	7,011	76,735,519	841.96
Information	68	529	530	522	4,052,968	591.59
Financial Activities	509	2,440	2,484	2,473	22,324,714	696.48
Education & Health Services	968	12,931	12,962	13,038	107,906,567	639.63
Leisure & Hospitality	472	6,223	6,345	6,434	19,384,613	235.42
Local Government	231	9,507	9,760	9,469	79,595,550	639.21
State Government	106	3,286	3,298	3,024	25,906,594	622.24
Other	1,569	10,243	10,257	10,306	96,148,927	720.26

North Central Workforce Includes these counties: Cleburne, Fulton, Independence, Izard, Jackson, Sharp, Stone, Van Buren, White, and Woodruff.

<b>NORTHEAST WORKFORCE INVESTMENT AREA</b>	<b>6,461</b>	<b>95,679</b>	<b>95,843</b>	<b>94,263</b>	<b>\$814,446,109</b>	<b>\$657.66</b>
Natural Resources & Mining	406	2,027	2,100	2,232	15,618,102	566.78
Construction	445	3,068	3,106	3,213	29,631,573	728.46
Manufacturing	317	20,061	20,098	20,068	224,949,652	861.93
Trade, Transportation & Utilities	1,709	18,495	18,509	18,436	139,731,750	581.63
Wholesale Trade	396	3,942	3,944	3,925	42,206,078	824.64
Retail Trade	1,004	11,781	11,757	11,663	67,883,937	445.03
Transportation, Warehousing & Utilities	309	2,772	2,808	2,848	29,641,735	811.63
Financial Activities	551	3,062	3,078	3,064	29,075,630	729.00
Professional & Business Services	677	7,253	7,261	6,915	47,725,073	513.95
Education & Health Services	1,139	15,057	14,966	14,694	134,972,676	696.55
Leisure & Hospitality	492	8,173	8,102	8,123	26,141,571	247.26
Local Government	213	11,831	11,948	10,905	107,650,702	716.25
State Government	99	4,325	4,338	4,258	42,954,316	767.16
Other	413	2,327	2,337	2,355	15,995,064	525.88

Northeast Workforce Includes these counties: Clay, Craighead, Greene, Lawrence, Mississippi, Poinsett, and Randolph.

TABLE 8. WORKFORCE INVESTMENT AREA SUMMARY

NORTH AMERICAN INDUSTRY CLASSIFICATION SYSTEM - INDUSTRY GROUPS	NUMBER OF EMPLOYING UNITS	EMPLOYMENT			TOTAL EARNINGS	AVERAGE WEEKLY EARNINGS
		APRIL	MAY	JUNE	APR-JUN 2012	
<b>NORTHWEST WORKFORCE INVESTMENT AREA</b>	<b>14,802</b>	<b>233,664</b>	<b>235,639</b>	<b>235,636</b>	<b>\$2,262,892,315</b>	<b>\$740.78</b>
Natural Resources & Mining	130	1,737	1,761	1,787	17,928,046	782.83
Trade, Transportation & Utilities	3,700	52,162	52,484	52,562	489,993,811	719.27
Retail Trade	2,028	26,769	26,896	26,796	166,191,081	476.65
Other Trade, Transportation & Utilities	1,672	25,393	25,588	25,766	323,802,730	973.64
Education & Health Services	2,068	29,328	29,479	29,366	267,786,957	700.86
Leisure & Hospitality	1,506	24,515	25,341	25,939	91,097,904	277.36
Local Government	310	22,424	22,431	21,909	237,175,358	819.79
State Government	107	8,059	8,359	7,846	93,227,094	886.66
Other	6,981	95,439	95,784	96,227	1,065,683,145	855.55

Northwest Workforce Includes these counties: Baxter, Benton, Boone, Carroll, Madison, Marion, Newton, Searcy, and Washington.

<b>SOUTHEAST WORKFORCE INVESTMENT AREA</b>	<b>5,906</b>	<b>72,810</b>	<b>73,008</b>	<b>72,774</b>	<b>\$614,677,227</b>	<b>\$648.92</b>
Natural Resources & Mining	396	2,449	2,502	2,503	21,517,326	666.16
Construction	325	2,940	2,962	2,888	34,905,867	916.41
Manufacturing	209	14,967	14,987	15,003	159,071,728	816.53
Trade, Transportation & Utilities	1,318	12,861	12,920	12,960	96,368,037	574.04
Retail Trade	784	8,007	8,036	8,036	44,333,533	424.89
Other Trade, Transportation & Utilities	534	4,854	4,884	4,924	52,034,504	818.99
Financial Activities	411	2,674	2,677	2,674	24,902,766	716.11
Education & Health Services	1,704	11,248	11,281	11,225	81,742,950	558.86
Local Government	205	10,032	10,080	10,008	86,258,644	660.88
State Government	137	6,403	6,424	6,338	58,038,739	698.85
Other	1,201	9,236	9,175	9,175	51,871,170	433.93

Southeast Workforce Includes these counties: Arkansas, Ashley, Bradley, Chicot, Cleveland, Desha, Drew, Grant, Jefferson, and Lincoln.

TABLE 8. WORKFORCE INVESTMENT AREA SUMMARY

NORTH AMERICAN INDUSTRY CLASSIFICATION SYSTEM - INDUSTRY GROUPS	NUMBER OF EMPLOYING UNITS	EMPLOYMENT			TOTAL EARNINGS	AVERAGE WEEKLY EARNINGS
		APRIL	MAY	JUNE	APR-JUN 2012	
<b>SOUTHWEST WORKFORCE INVESTMENT AREA</b>	<b>5,742</b>	<b>81,029</b>	<b>81,228</b>	<b>81,176</b>	<b>\$719,920,159</b>	<b>\$682.47</b>
Natural Resources & Mining	363	2,487	2,498	2,486	24,906,363	769.32
Trade, Transportation & Utilities	1462	15457	15452	15520	124642632	619.52
Retail Trade	906	8,866	8,887	8,886	48,374,017	419.06
Other Trade, Transportation & Utilities	556	6,591	6,565	6,634	76,268,615	889.36
Information	61	474	479	476	4,310,463	696.10
Financial Activities	510	2,749	2,748	2,770	23,145,160	646.09
Education & Health Services	1,017	9,691	9,676	9,640	65,266,934	519.24
Leisure & Hospitality	399	5,328	5,360	5,477	16,773,771	239.46
Other Services	410	1,928	1,932	1,922	10,711,228	427.50
Local Government	259	10,562	10,625	10,469	94,970,222	692.32
State Government	138	3,863	3,835	3,675	34,210,601	694.17
Other	1,123	28,490	28,623	28,741	320,982,785	862.78

Southwest Workforce Includes these counties: Calhoun, Columbia, Dallas, Hempstead, Howard, Lafayette, Little River, Miller, Nevada, Ouachita, Sevier, and Union

<b>WEST CENTRAL WORKFORCE INVESTMENT AREA</b>	<b>8,104</b>	<b>106,718</b>	<b>106,810</b>	<b>106,524</b>	<b>\$844,558,142</b>	<b>\$608.96</b>
Construction	772	4,565	4,716	4,820	41,277,780	675.53
Trade, Transportation & Utilities	1,898	21,164	21,239	21,259	164,932,123	597.86
Retail Trade	1,245	13,820	13,879	13,880	81,507,860	452.38
Other Trade, Transportation & Utilities	653	7,344	7,360	7,379	83,424,263	871.79
Financial Activities	827	3,986	4,050	4,108	35,103,911	667.07
Professional & Business Services	917	8,349	8,094	8,180	62,993,320	590.38
Education & Health Services	1,394	16,602	16,622	16,566	138,397,037	641.45
Leisure & Hospitality	755	12,514	12,399	12,989	43,361,916	264.01
Local Government	227	12,305	12,448	11,897	121,456,480	764.76
State Government	125	5,915	5,897	5,222	49,858,199	675.46
Other	1,189	21,318	21,345	21,483	187,177,376	673.38

West Central Workforce Includes these counties: Clark, Conway, Garland, Hot Spring, Johnson, Montgomery, Perry, Pike, Pope, and Yell

TABLE 8. WORKFORCE INVESTMENT AREA SUMMARY

NORTH AMERICAN INDUSTRY CLASSIFICATION SYSTEM - INDUSTRY GROUPS	NUMBER OF EMPLOYING UNITS	EMPLOYMENT			TOTAL EARNINGS	AVERAGE WEEKLY EARNINGS
	UNITS	APRIL	MAY	JUNE	APR-JUN 2012	EARNINGS
<b>WESTERN WORKFORCE INVESTMENT AREA</b>	<b>6,596</b>	<b>102,746</b>	<b>103,303</b>	<b>102,680</b>	<b>\$916,029,610</b>	<b>\$684.72</b>
Natural Resources & Mining	162	2,743	2,700	2,625	41,204,251	1,178.57
Trade, Transportation & Utilities	1,650	22,028	22,062	22,037	173,160,762	604.29
Wholesale Trade	392	3,736	3,749	3,772	39,449,018	808.71
Retail Trade	956	12,062	12,076	12,017	69,891,546	446.10
Transportation, Warehousing & Utilities	302	6,230	6,237	6,248	63,820,198	786.95
Financial Activities	686	3,785	3,785	3,810	37,832,275	767.18
Professional & Business Services	884	9,577	9,600	9,688	88,523,476	707.73
Education & Health Services	996	15,080	15,170	15,135	146,061,296	742.68
Leisure & Hospitality	529	8,468	8,539	8,534	28,811,307	260.32
Other Services	457	2,138	2,155	2,267	14,346,857	504.70
Local Government	151	9,733	9,844	9,423	99,089,657	788.51
State Government	74	3,045	3,048	2,709	26,997,193	707.81
Other	1,007	26,149	26,400	26,452	260,002,536	759.49

Western Workforce Includes these counties: Crawford, Franklin, Logan, Polk, Scott, and Sebastian