

# Arkansas Covered Employment & Earnings

Annual  
2012

Jobs for People. People for Jobs.

**DWS**

Department of  
WORKFORCE**Services**



**COVERED EMPLOYMENT AND EARNINGS  
STATE OF ARKANSAS  
ANNUAL 2012**

**MIKE BEEBE, GOVERNOR  
STATE OF ARKANSAS**

**ARTEE WILLIAMS, DIRECTOR  
DEPARTMENT OF WORKFORCE SERVICES**

**PUBLISHED BY  
LABOR MARKET INFORMATION & ANALYSIS  
BUREAU OF LABOR STATISTICS PROGRAMS  
POST OFFICE BOX 2981  
LITTLE ROCK, ARKANSAS 72203-2981  
BERNADETTE COLEMAN, BLS PROGRAMS MANAGER  
TELEPHONE (501) 682-3159  
SUSAN PRICE, QCEW LEAD ANALYST  
TELEPHONE (501) 682-3103**

**STATE OF ARKANSAS WEBPAGE: <http://www.arkansas.gov>**

**DEPARTMENT OF WORKFORCE SERVICES WEBPAGE: <http://www.arkansas.gov/esd/>**

**WEBPAGE FOR LABOR MARKET INFORMATION: <http://www.discover.arkansas.gov>**

**RELEASED: JUNE 2013**



## TABLE OF CONTENTS

	Page
Description of Data	1
Industry Classification	1
Definition of Covered Employment and Earnings	2
Federal Government	2
County Classification	2
Significant Developments During Calendar Year 2012	3

## GRAPHS AND TABLES

Graph 1	Average Total Covered Employment for Selected Years, Arkansas	7
Graph 2	Total Covered Earnings, by Calendar Quarter for Selected Years, Arkansas	8
Table 1	Annual Comparison of Covered Employment and Wages, by Industry	5
Table 2	Total Covered Employment in Arkansas, 2005 – 2012	6
Table 3	Total Covered Earnings, 2005 – 2012	9
Table 4	Total Taxable Earnings, 2005 – 2012	10
Table 5	State Summary – Employment and Total Earnings, by Industry, Calendar Year 2012	11
Table 6	County Summary – Employment and Total Earnings, by Industry, Calendar Year 2012	23
Table 7	Federal Government Employment and Total Earnings in Arkansas, Calendar Year 2012	60
Table 8	Workforce Investment Area – Employment and Total Earnings, by Industry, Calendar Year 2012	61



EMPLOYMENT AND EARNINGS  
UNDER THE ARKANSAS EMPLOYMENT SECURITY LAW  
ANNUAL 2012

#### DESCRIPTION OF DATA

This publication contains covered employment and payroll data by industry and county for the Calendar Year 2012. These data are compiled from quarterly contributions and wage reports submitted by employers subject to the Arkansas Employment Security Law. An employing unit is a single physical location where business is conducted, production takes place, or services are provided. Employment and wage data have been tabulated annually for the calendar year by industry under the **North American Industry Classification System** (NAICS) (see "Industry Classification" below) on a statewide, county and workforce area basis. Payroll data represent the total wages paid during the calendar year, and are also shown by

industry for the State and by publishable industry groups for each county and workforce area. The tabulation of this data is a joint effort in conjunction with the U.S. Bureau of Labor Statistics. In addition, there are tables included which set out total covered employment by months, quarterly payrolls, and average weekly earnings for the years 2005 through 2012. Data contained in this publication are subject to revision. Because of industry code changes between years, substantial employment and wage shifts among industries are anticipated.

#### INDUSTRY CLASSIFICATION

Previously published industry data will not be comparable in all instances with currently published data since industry codes have been revised. The last two revisions were based on the North American Industry Classification System (NAICS) a six digit industry code instead of the Standard Industrial Classification (SIC) system, a four digit industry code, which had been used previously. The following are the NAICS Manuals used to revise the data: (a) between January 1, 2001 and December 31, 2006 industry codes were assigned under the 2002 North American Industry Classification System (NAICS) Manual; (b) since January 1, 2007 industry codes have been assigned under the 2007 North American Industry Classification System Manual. The NAICS Manual represents a significant change in coding methodology as compared to the SIC Manual. One of the most significant changes involves how NAICS treats auxiliary units.

Auxiliary units are establishments primarily engaged in performing management of support services for other establishments of the same enterprise. The SIC code for these units was based on the activity of the enterprise served. The NAICS code is based on the actual activities that the establishment performs. Comparisons of many industries should not be made between this publication and previous Covered Employment and Earnings publications that were based on SIC. Even though some titles are the same or similar in nature, NAICS and SIC could differ in classification of employers. The implementation of NAICS represents a profound change for statistical programs and will create significant benefits along with transition obstacles for both data collectors and data users. A summary is available on the NAICS home page at <http://www.census.gov/naics>.

## DEFINITION OF COVERED EMPLOYMENT AND EARNINGS

Covered Employment is the number of workers employed by businesses subject to the Arkansas Employment Security Law who worked or received pay for the payroll period including the 12<sup>th</sup> of the month. An employer is subject to the law when they employ one or more employees in each of ten days during the current or preceding calendar year.

Currently excluded from coverage is employment covered by the Railroad Unemployment Insurance Act, some domestic service workers, employees of small agricultural establishments, self-

employed and unpaid family workers, insurance and real estate agents who are on commission only, and employees of churches and religious organizations except separately incorporated schools. The payroll information in this publication includes all wages and salaries paid to any covered employees by their employers including bonuses, commissions, and cash values of remuneration received in any medium other than cash. These wages include both taxable and nontaxable wages. Only the first \$12,000 paid to each worker by an employer in the calendar year is taxable under the Arkansas Employment Security Law.

## FEDERAL GOVERNMENT EMPLOYMENT

Table 7 on page 60 lists the average number of civilians employed by the Federal Government in Arkansas during the Calendar Year 2012. Employment and wage data are set out by industry divisions.

These data are obtained from required reports submitted by various government agencies having employment in the State. Civilian Federal workers are covered by the Unemployment Compensation for Federal Employees (UCFE) program.

## COUNTY CLASSIFICATION

Employment and payroll data by county are classified according to the county where the workers are employed. Employers with operations in more than one county are requested to furnish this agency with a breakdown of employment and wages for at least one quarter of each year by the counties in which they operate. Many such employers submit county data with each regular contribution report. Note: This information is invaluable in the preparation of monthly employment and payroll data by county.

Employment and payroll data for multi-area employers, who do not furnish county data each quarter of the year, are prorated by county on the basis of one quarter's information. The "Statewide County" table that appears on page 59 of this publication includes data on firms that did not provide a county breakdown of employment and payrolls. It also includes sales, and all other types of personnel with no permanent place of work, as well as employment of employers with no established place of business in Arkansas.

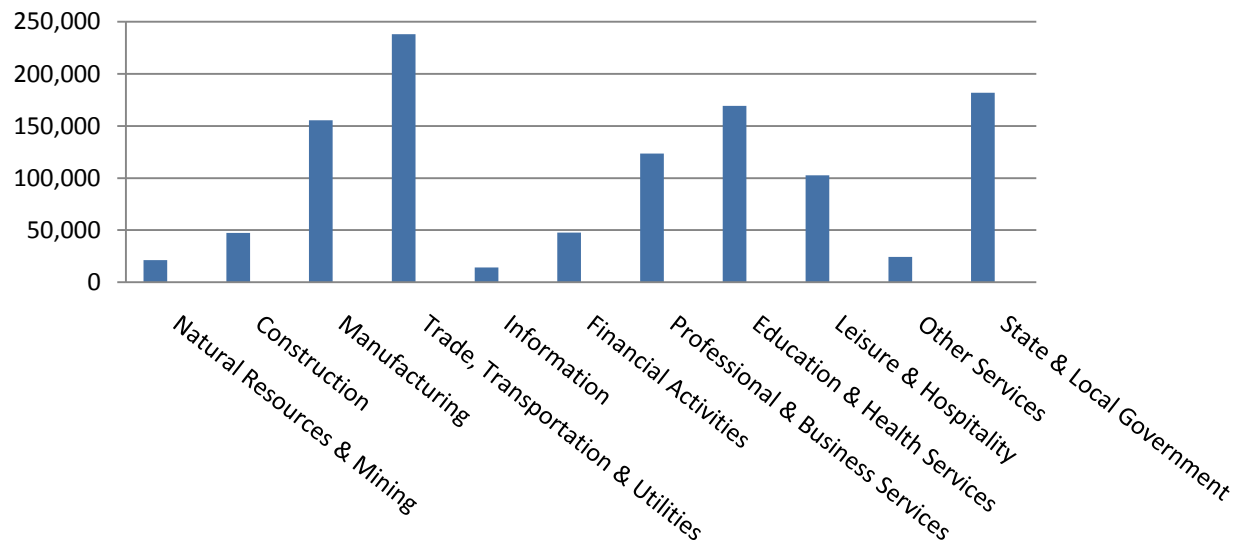


## SIGNIFICANT DEVELOPMENTS DURING CALENDAR YEAR 2012

### AVERAGE EMPLOYMENT CHANGES

Covered employment averaged 1,126,337 during the Calendar Year 2012 (see Table 1, page 5), an increase of 7,815 from the previous year. The largest employment gains occurred in Education and Health Services (+3,793), Trade, Transportation & Utilities (+3,145), and Professional & Business Services (+3,063). The greatest annual loss occurred in Manufacturing (-3,777).

### Average Covered Employment by NAICS



### EMPLOYMENT CHANGES FOR CALENDAR YEAR 2012

Six of the eleven major industry sectors recorded job gains over the year. The increase in Trade, Transportation & Utilities brought the sector's employment average up to 237,995. Jobs in Education and Health Services averaged 169,448 in 2012. The increase in Professional & Business Services brought the yearly average to 123,656. Professional & Technical Services, which includes legal services, information technology, and consulting, experienced the most growth in that sector.

Five industries experienced over-the-year decreases in employment. The most significant decline occurred in Manufacturing, which can be mostly attributed to a decrease in Miscellaneous Manufacturing (-928), Food Manufacturing (-846), and Printing and Related Support Activities (-804). Losses also occurred in the Other Services (-493), Information (-421), State & Local Government (-319), and Financial Activities (-172) sectors.

## EMPLOYMENT CHANGES FOR CALENDAR YEAR 2012

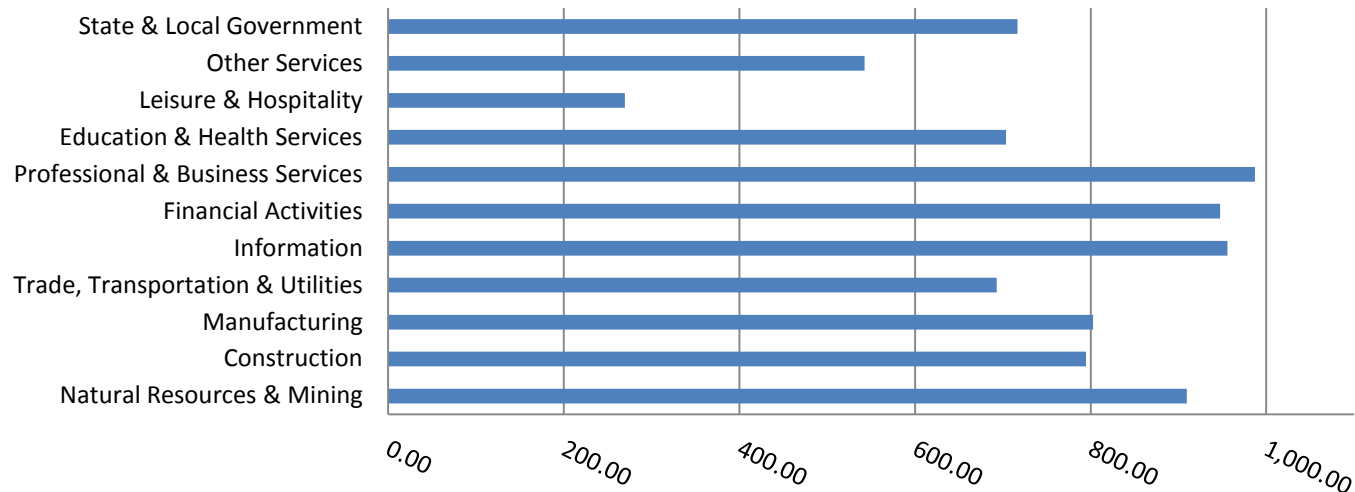
Pulaski County posted the highest average covered employment in 2012 at 233,477. Benton County came in second with 95,912 in covered employment, slightly higher than Washington County with 90,187. Sebastian County had the fourth highest number of covered employment with 64,453, followed by Craighead County with 43,674. Of the leading five counties, only Pulaski County experienced a decline in covered employment compared to 2011.

## COVERED WAGES

Wages paid to covered workers totaled \$42,546,231,979 for the Calendar Year 2012 (see Table 1), for an average weekly wage of \$726.42 (see Table 5). Employees in Benton County recorded the highest average weekly wage (\$955.59), and workers in Newton County the lowest (\$434.49) (see Table 6).

The Professional & Business Services sector recorded the highest average weekly wage for the State of Arkansas at \$987.00. The Leisure and Hospitality sector recorded the lowest average weekly wage at \$269.42 for the State of Arkansas (see Table 5).

### Average Weekly Wage by Industry



**TABLE 1. YEARLY COMPARISON OF COVERED EMPLOYMENT AND WAGES, BY INDUSTRY**

North American Industry Classification System	Number of Employing Units	Average Covered Employment	Percent of Total	Net Change From: 2011	Total Calendar Earnings 2012	Percent of Total	Average Weekly Earning
<b>Total</b>	<b>83,897</b>	<b>1,126,337</b>	<b>100</b>	<b>7,815</b>	<b>\$42,546,231,979</b>	<b>100</b>	<b>726.42</b>
<b>Natural Resources &amp; Mining</b>	2,493	21,352	1.9	127	1,009,687,615	2.4	909.38
Agriculture, Forestry, Fishing & Hunting	1,976	12,631	1.1	494	424,853,006	1.0	646.84
Mining	517	8,721	0.8	-367	584,834,609	1.4	1,289.62
<b>Construction</b>	6,807	47,396	4.2	179	1,958,808,449	4.6	794.78
<b>Manufacturing</b>	3,069	155,575	13.8	-3,777	6,493,683,543	15.3	802.69
<b>Trade, Transportation &amp; Utilities</b>	21,069	237,995	21.1	3,145	8,575,865,989	20.2	692.96
Wholesale Trade	6,719	47,326	4.2	684	2,754,948,173	6.5	1,119.46
Retail Trade	11,052	132,584	11.8	1,171	3,167,134,707	7.4	459.38
Transportation & Warehousing	2,883	50,391	4.5	766	2,088,241,313	4.9	796.94
Utilities	415	7,694	0.7	524	565,541,796	1.3	1,413.54
<b>Information</b>	1,138	14,356	1.3	-421	713,584,203	1.7	955.89
<b>Financial Activities</b>	7,984	47,585	4.2	-172	2,344,343,653	5.5	947.43
Finance & Insurance	4,758	34,401	3.1	-148	1,909,733,433	4.5	1,067.57
Real Estate & Rental & Leasing	3,226	13,184	1.2	-24	434,610,220	1.0	633.94
<b>Professional &amp; Business Services</b>	12,534	123,656	11.0	3,063	6,346,499,491	14.9	987.00
Professional & Technical Services	7,896	38,759	3.4	-327	2,076,161,965	4.9	1,030.11
Management of Companies & Enterprises	496	30,873	2.7	4,824	2,873,086,804	6.8	1,789.64
Administrative & Waste Services	4,142	54,024	4.8	-1,434	1,397,250,722	3.3	497.38
<b>Education &amp; Health Services</b>	13,825	169,448	15.0	3,793	6,200,038,159	14.6	703.65
Educational Services	723	12,178	1.1	566	354,373,104	0.8	559.60
Health Care & Social Assistance	13,102	157,270	14.0	3,227	5,845,665,055	13.7	714.80
<b>Leisure &amp; Hospitality</b>	6,532	102,805	9.1	2,690	1,440,266,648	3.4	269.42
Arts, Entertainment & Recreation	922	9,643	0.9	49	174,517,708	0.4	348.04
Accommodation & Food Services	5,610	93,162	8.3	2,641	1,265,748,940	3.0	261.28
<b>Other Services</b>	5,357	24,309	2.2	-493	685,798,933	1.6	542.53
<b>State &amp; Local Government</b>	3,089	181,860	16.1	-319	6,777,655,296	15.9	716.70
Local Government	1,960	112,026	9.9	-794	3,847,202,330	9.0	660.42
State Government	1,129	69,834	6.2	475	2,930,452,966	6.9	806.98
<b>Nonclassifiable Establishments</b>	0	0	0.0	0	0	0.0	0.00

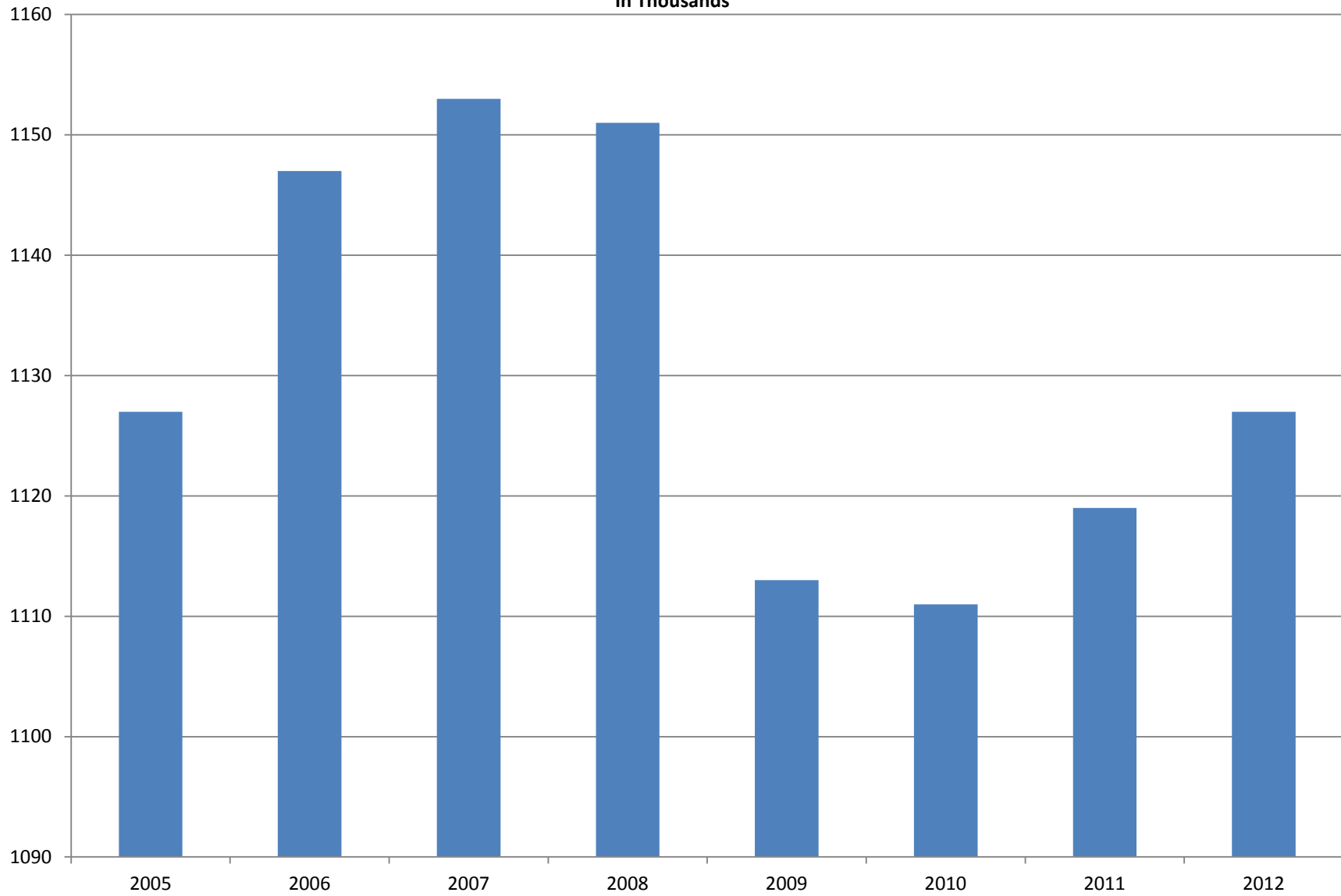
Note: Items do not necessarily add to total because of rounding. Because of industry code changes between years, substantial employment and wage shifts among industries are anticipated.

**TABLE 2. TOTAL COVERED EMPLOYMENT IN ARKANSAS**

<b>Period</b>	<b>2005</b>	<b>2006</b>	<b>2007</b>	<b>2008</b>	<b>2009</b>	<b>2010</b>	<b>2011</b>	<b>2012</b>
<b>Average</b>	<b>1,126,778</b>	<b>1,146,948</b>	<b>1,152,994</b>	<b>1,150,965</b>	<b>1,112,591</b>	<b>1,110,947</b>	<b>1,118,639</b>	<b>1,126,588</b>
January	1,102,768	1,130,595	1,137,437	1,141,856	1,119,299	1,089,984	1,098,349	1,113,274
February	1,110,577	1,136,810	1,143,397	1,149,443	1,119,476	1,091,282	1,098,445	1,119,319
March	1,122,619	1,150,439	1,158,895	1,157,690	1,124,386	1,106,198	1,113,061	1,131,123
April	1,129,785	1,155,498	1,159,623	1,159,841	1,123,383	1,115,341	1,129,635	1,136,973
May	1,135,567	1,159,886	1,165,224	1,166,111	1,122,322	1,123,250	1,126,371	1,143,142
June	1,136,118	1,162,026	1,164,207	1,164,167	1,117,884	1,130,164	1,123,412	1,136,739
July	1,090,071	1,106,142	1,110,571	1,114,279	1,071,048	1,073,743	1,080,937	1,079,329
August	1,114,098	1,130,839	1,139,109	1,138,583	1,093,192	1,099,795	1,106,262	1,109,425
September	1,144,815	1,159,814	1,165,135	1,162,333	1,116,580	1,124,281	1,132,779	1,136,019
October	1,142,300	1,156,804	1,162,768	1,157,196	1,113,157	1,125,073	1,138,395	1,136,045
November	1,145,667	1,156,011	1,164,246	1,152,159	1,115,443	1,126,781	1,138,543	1,138,302
December	1,146,954	1,158,509	1,165,314	1,147,927	1,114,919	1,125,466	1,137,474	1,139,361

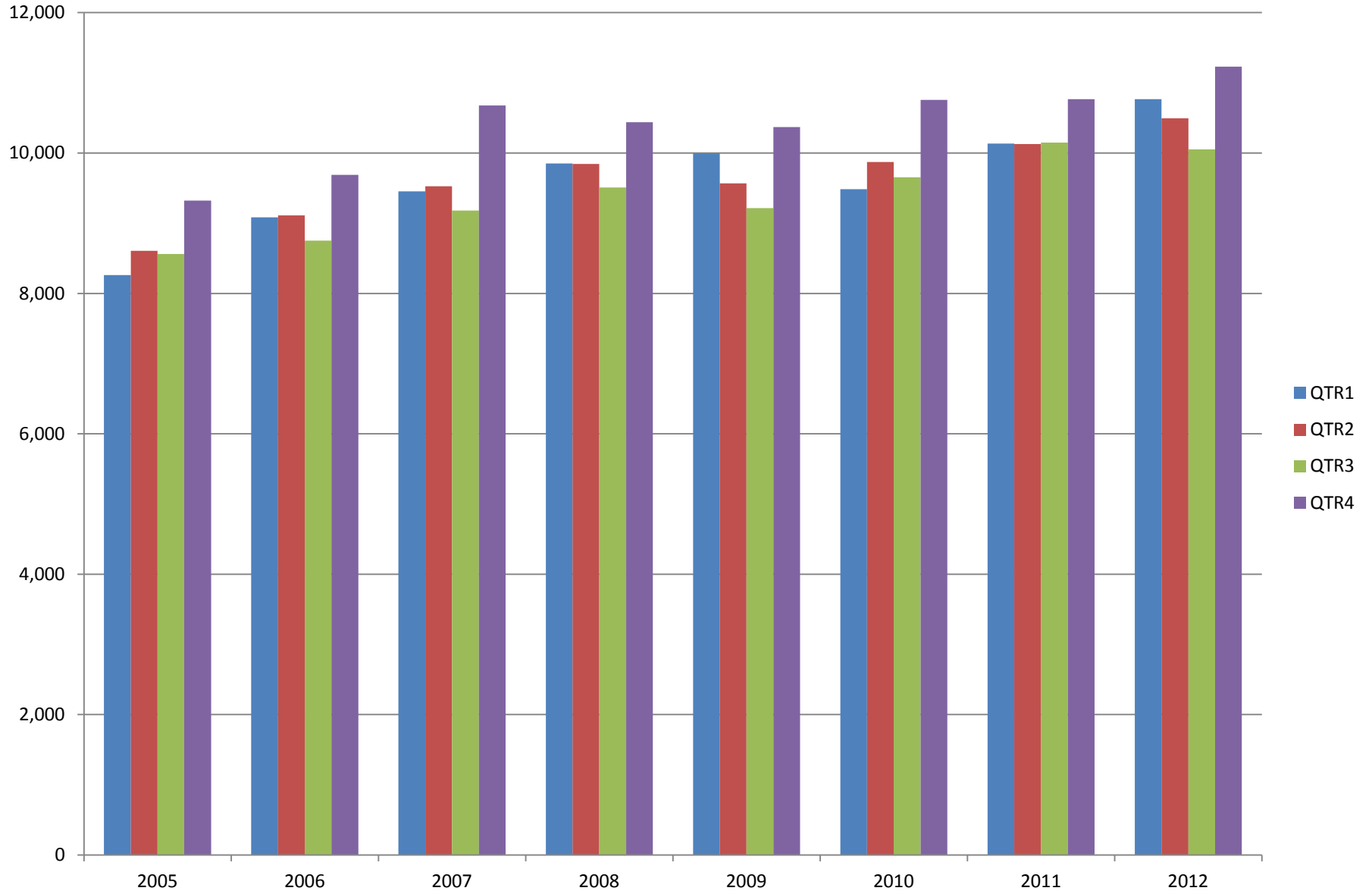
# AVERAGE TOTAL COVERED EMPLOYMENT

In Thousands



# TOTAL COVERED EARNINGS BY CALENDAR YEAR

In Thousands



**TABLE 3. TOTAL COVERED EARNINGS 2005 - 2012**

<b>Period</b>	<b>2005</b>	<b>2006</b>	<b>2007</b>	<b>2008</b>
<b>Total</b>	<b>\$34,753,107,631</b>	<b>\$36,636,090,775</b>	<b>\$38,833,265,464</b>	<b>\$39,643,039,342</b>
January - March	8,261,153,981	9,085,021,816	9,452,711,662	9,851,866,058
April - June	8,607,722,353	9,112,624,590	9,525,837,049	9,843,711,293
July - September	8,562,555,369	8,750,878,205	9,178,902,477	9,509,150,631
October - December	9,321,675,928	9,687,566,164	10,675,814,276	10,438,311,360
<b>Average Weekly Earnings</b>	<b>\$593.13</b>	<b>\$614.27</b>	<b>\$647.70</b>	<b>\$662.37</b>

<b>Period</b>	<b>2009</b>	<b>2010</b>	<b>2011</b>	<b>2012</b>
<b>Total</b>	<b>\$39,149,476,305</b>	<b>\$39,769,504,992</b>	<b>\$41,177,659,236</b>	<b>\$42,546,231,979</b>
January - March	9,998,452,028	9,486,245,580	10,134,035,254	10,766,175,449
April - June	9,566,968,853	9,873,489,653	10,128,274,611	10,494,369,042
July - September	9,213,797,140	9,653,588,807	10,147,287,431	10,053,294,410
October - December	10,370,258,284	10,756,180,952	10,768,061,940	11,232,393,078
<b>Average Weekly Earnings</b>	<b>\$676.69</b>	<b>\$688.42</b>	<b>\$707.89</b>	<b>\$726.26</b>

**TABLE 4. TOTAL TAXABLE EARNINGS, 2005 - 2012**

<b>Period</b>	<b>2005</b>	<b>2006</b>	<b>2007</b>	<b>2008</b>
<b>Total</b>	<b>9,991,605,239</b>	<b>10,197,511,360</b>	<b>10,459,105,059</b>	<b>10,360,487,108</b>
<b>January - March</b>	5,062,670,306	5,421,204,601	5,617,417,571	5,635,750,082
<b>April - June</b>	2,506,505,721	2,385,110,992	2,466,606,627	2,419,313,519
<b>July - September</b>	1,353,660,445	1,314,939,803	1,307,060,412	1,297,473,555
<b>October - December</b>	1,068,768,767	1,076,255,964	1,068,020,449	1,007,949,952
<hr/>				
<b>Period</b>	<b>2009</b>	<b>2010</b>	<b>2011</b>	<b>2012</b>
<b>Total</b>	<b>9,787,660,886</b>	<b>11,332,118,456</b>	<b>11,479,396,226</b>	<b>11,627,967,713</b>
<b>January - March</b>	5,423,705,265	5,607,134,758	5,828,877,821	6,167,036,199
<b>April - June</b>	2,293,670,854	2,977,100,591	2,910,604,359	2,838,154,846
<b>July - September</b>	1,165,280,065	1,577,067,770	1,601,382,146	1,494,712,584
<b>October - December</b>	905,004,702	1,170,815,337	1,138,531,900	1,128,064,084



TABLE 5. STATEWIDE SUMMARY CALENDAR YEAR 2012

NORTH AMERICAN INDUSTRY CLASSIFICATION SYSTEM - INDUSTRY GROUPS		AVERAGE EMPLOYING UNITS	AVERAGE COVERED EMPLOYMENT	TOTAL CALENDAR EARNINGS	AVERAGE WEEKLY EARNINGS
<b>TOTAL, ALL INDUSTRIES</b>		<b>83,897</b>	<b>1,126,337</b>	<b>\$42,546,231,979</b>	<b>\$726.42</b>
<b>NATURAL RESOURCES &amp; MINING</b>		<b>2,493</b>	<b>21,352</b>	<b>\$1,009,687,615</b>	<b>\$909.38</b>
<b>11</b>	<b>AGRICULTURE, FORESTRY, FISHING &amp; HUNTING</b>	<b>1,976</b>	<b>12,631</b>	<b>\$424,853,006</b>	<b>\$646.84</b>
<b>111</b>	<b>CROP PRODUCTION</b>	<b>845</b>	<b>4,182</b>	<b>\$109,607,617</b>	<b>\$504.03</b>
1111	Oilseed & Grain Farming	535	2,494	66,514,948	512.88
1112	Vegetable & Melon Farming	14	121	2,687,152	427.07
1113	Fruit & Tree Nut Farming	14	104	2,003,594	370.49
1114	Greenhouse & Nursery Production	44	362	9,247,629	491.27
1119	Other Crop Farming	238	1,101	29,154,294	509.23
<b>112</b>	<b>ANIMAL PRODUCTION &amp; AQUACULTURE</b>	<b>283</b>	<b>3,048</b>	<b>\$119,247,752</b>	<b>\$752.37</b>
1121	Cattle Ranching & Farming	96	341	8,941,124	504.24
1122	Hog & Pig Farming	10	124	5,291,355	820.62
1123	Poultry & Egg Production	100	2,083	89,462,514	825.94
1125	Animal Aquaculture	60	457	14,494,898	609.95
1129	Other Animal Production	17	43	1,057,861	473.10
<b>113</b>	<b>FORESTRY &amp; LOGGING</b>	<b>406</b>	<b>2,210</b>	<b>\$78,893,902</b>	<b>\$686.51</b>
1131	Timber Tract Operations	37	181	7,922,759	841.77
1132	Forest Nurseries & Gathering of Forest Products	5	23	941,122	786.89
1133	Logging	364	2,006	70,030,021	671.35
<b>114</b>	<b>FISHING, HUNTING &amp; TRAPPING</b>	<b>5</b>	<b>21</b>	<b>\$434,006</b>	<b>\$397.44</b>
<b>115</b>	<b>SUPPORT ACTIVITIES FOR AGRICULTURE &amp; FORESTRY</b>	<b>437</b>	<b>3,170</b>	<b>\$116,669,729</b>	<b>\$707.78</b>
1151	Support Activities for Crop Production	298	1,671	71,516,893	823.05
1152	Support Activities for Animal Production	65	733	19,482,110	511.13
1153	Support Activities for Forestry	74	766	25,670,726	644.47
<b>21</b>	<b>MINING</b>	<b>517</b>	<b>8,721</b>	<b>\$584,834,609</b>	<b>\$1,289.62</b>
<b>211</b>	<b>OIL &amp; GAS EXTRACTION</b>	<b>90</b>	<b>1,644</b>	<b>\$149,065,356</b>	<b>\$1,743.70</b>
<b>212</b>	<b>MINING (EXCEPT OIL &amp; GAS)</b>	<b>110</b>	<b>2,100</b>	<b>\$102,124,459</b>	<b>\$935.21</b>
<b>213</b>	<b>SUPPORT ACTIVITES FOR MINING</b>	<b>317</b>	<b>4,977</b>	<b>\$333,644,794</b>	<b>\$1,289.18</b>

TABLE 5. STATEWIDE SUMMARY CALENDAR YEAR 2012

NORTH AMERICAN INDUSTRY CLASSIFICATION SYSTEM - INDUSTRY GROUPS		AVERAGE EMPLOYING UNITS	AVERAGE COVERED EMPLOYMENT	TOTAL CALENDAR EARNINGS	AVERAGE WEEKLY EARNINGS
<b>CONSTRUCTION</b>		<b>6,807</b>	<b>47,396</b>	<b>\$1,958,808,449</b>	<b>\$794.78</b>
<b>236</b>	<b>CONSTRUCTION OF BUILDINGS</b>	<b>1,607</b>	<b>9,753</b>	<b>\$430,380,550</b>	<b>\$848.62</b>
2361	Residential Building Construction	1,048	2,733	94,114,671	662.24
2362	Nonresidential Building Construction	559	7,020	336,265,879	921.18
<b>237</b>	<b>HEAVY &amp; CIVIL ENGINEERING CONSTRUCTION</b>	<b>766</b>	<b>8,631</b>	<b>\$423,881,202</b>	<b>\$944.45</b>
2371	Utility System Construction	411	4,736	226,719,172	920.60
2372	Land Subdivision	76	245	10,598,341	831.89
2373	Highway, Street & Bridge Construction	193	2,728	113,564,405	800.56
2379	Other Heavy Construction	86	922	72,999,284	1,522.59
<b>238</b>	<b>SPECIALTY TRADE CONTRACTORS</b>	<b>4,434</b>	<b>29,012</b>	<b>\$1,104,546,697</b>	<b>\$732.16</b>
2381	Building Foundation & Exterior Contractors	868	5,489	191,358,365	670.43
2382	Building Equipment Contractors	2,018	15,030	626,535,737	801.65
2383	Building Finishing Contractors	767	3,950	127,469,366	620.59
2389	Other Specialty Trade Contractors	781	4,543	159,183,229	673.83
<b>MANUFACTURING</b>		<b>3,069</b>	<b>155,575</b>	<b>\$6,493,683,543</b>	<b>\$802.69</b>
<b>311</b>	<b>FOOD MANUFACTURING</b>	<b>275</b>	<b>43,626</b>	<b>\$1,385,591,463</b>	<b>\$610.78</b>
3111	Animal Food Manufacturing	45	1,667	70,090,837	808.58
3112	Grain & Oilseed Milling	30	2,316	103,443,881	858.94
3113	Sugar & Confectionery Product Manufacturing	7	46	933,475	390.25
3114	Fruit, Vegetable & Specialty Food	20	4,621	179,477,172	746.91
3115	Dairy Product Manufacturing	10	564	24,537,586	836.66
3116	Animal Slaughtering & Processing	83	29,580	825,471,671	536.66
3117	Seafood Product Preparation & Packaging	5	70	1,518,770	417.24
3118	Bakeries & Tortilla Manufacturing	53	3,026	110,743,191	703.79
3119	Other Food Manufacturing	22	1,736	69,374,880	768.51
<b>312</b>	<b>BEVERAGE &amp; TOBACCO PRODUCT MANUFACTURING</b>	<b>40</b>	<b>1,048</b>	<b>\$48,839,439</b>	<b>\$896.20</b>
<b>313</b>	<b>TEXTILE MILLS</b>	<b>13</b>	<b>89</b>	<b>\$2,936,783</b>	<b>\$634.57</b>
<b>314</b>	<b>TEXTILE PRODUCT MILLS</b>	<b>54</b>	<b>935</b>	<b>\$39,265,349</b>	<b>\$807.60</b>
3141	Textile Furnishing Mills	12	40	1,920,367	923.25
3149	Other Textile Product Mills	42	895	37,344,982	802.43
<b>315</b>	<b>APPAREL MANUFACTURING</b>	<b>27</b>	<b>1,133</b>	<b>\$26,045,080</b>	<b>\$442.07</b>
<b>316</b>	<b>LEATHER &amp; ALLIED PRODUCT MANUFACTURING</b>	<b>17</b>	<b>1,306</b>	<b>\$34,695,770</b>	<b>\$510.89</b>

TABLE 5. STATEWIDE SUMMARY CALENDAR YEAR 2012

NORTH AMERICAN INDUSTRY CLASSIFICATION SYSTEM - INDUSTRY GROUPS		AVERAGE EMPLOYING UNITS	AVERAGE COVERED EMPLOYMENT	TOTAL CALENDAR EARNINGS	AVERAGE WEEKLY EARNINGS
<b>321</b>	<b>WOOD PRODUCT MANUFACTURING</b>	<b>326</b>	<b>8,719</b>	<b>\$311,913,570</b>	<b>\$687.96</b>
3211	Sawmills & Wood Preservation	130	4,114	153,826,232	719.06
3212	Veneer & Engineered Wood Products	55	1,932	80,730,608	803.58
3219	Other Wood Product Manufacturing	141	2,673	77,356,730	556.54
<b>322</b>	<b>PAPER MANUFACTURING</b>	<b>80</b>	<b>10,075</b>	<b>\$606,021,317</b>	<b>\$1,156.75</b>
3221	Pulp, Paper & Paperboard Mills	12	4,233	324,434,740	1,473.93
3222	Converted Paper Product Manufacturing	68	5,842	281,586,577	926.93
<b>323</b>	<b>PRINTING &amp; RELATED SUPPORT ACTIVITIES</b>	<b>245</b>	<b>4,575</b>	<b>\$181,899,694</b>	<b>\$764.61</b>
<b>324</b>	<b>PETROLEUM &amp; COAL PRODUCTS MANUFACTURING</b>	<b>17</b>	<b>944</b>	<b>\$52,863,438</b>	<b>\$1,076.91</b>
<b>325</b>	<b>CHEMICAL MANUFACTURING</b>	<b>119</b>	<b>4,661</b>	<b>\$271,883,515</b>	<b>\$1,121.76</b>
3251	Basic Chemical Manufacturing	29	1,741	116,356,685	1,285.25
3252	Resin, Rubber & Artificial Fibers	6	264	15,583,385	1,135.15
3253	Agricultural Chemical Manufacturing	17	383	22,606,565	1,135.10
3254	Pharmaceutical & Medicine Manufacturing	13	164	8,998,379	1,055.16
3255	Paint, Coating & Adhesive Manufacturing	8	203	12,927,015	1,224.61
3256	Soap, Cleaning Compound, & Toilet Preparation Manufacturing	14	1,071	51,382,295	922.62
3259	Other Chemical Preparation Manufacturing	32	835	44,029,191	1,014.03
<b>326</b>	<b>PLASTICS &amp; RUBBER PRODUCTS MANUFACTURING</b>	<b>135</b>	<b>10,306</b>	<b>\$478,870,226</b>	<b>\$893.56</b>
3261	Plastics Product Manufacturing	95	6,159	253,039,249	790.09
3262	Rubber Product Manufacturing	40	4,147	225,830,977	1,047.24
<b>327</b>	<b>NONMETALLIC MINERAL PRODUCT MANUFACTURING</b>	<b>251</b>	<b>3,407</b>	<b>\$141,526,521</b>	<b>\$798.84</b>
3271	Clay Product & Refractory Manufacturing	15	374	15,078,688	775.33
3272	Glass & Glass Product Manufacturing	13	370	16,141,751	838.97
3273	Cement & Concrete Product Manufacturing	182	1,932	75,104,136	747.57
3274	Lime & Gypsum Product Manufacturing	5	204	11,059,208	1,042.53
3279	Other Nonmetallic Mineral Products Manufacturing	36	527	24,142,738	880.99
<b>331</b>	<b>PRIMARY METAL MANUFACTURING</b>	<b>75</b>	<b>10,316</b>	<b>\$589,356,834</b>	<b>\$1,098.66</b>
3311	Iron & Steel Mills & Ferroalloys	8	2,402	213,551,932	1,709.73
3312	Purchased Steel Product Manufacturing	20	3,025	159,326,898	1,012.89
3313	Alumina & Aluminum Production	21	1,252	64,544,145	991.40
3314	Other Nonferrous Metal Production	7	664	25,705,896	744.49
3315	Foundries	19	2,973	126,227,963	816.50

TABLE 5. STATEWIDE SUMMARY CALENDAR YEAR 2012

NORTH AMERICAN INDUSTRY CLASSIFICATION SYSTEM - INDUSTRY GROUPS		AVERAGE EMPLOYING UNITS	AVERAGE COVERED EMPLOYMENT	TOTAL CALENDAR EARNINGS	AVERAGE WEEKLY EARNINGS
<b>332</b>	<b>FABRICATED METAL PRODUCT MANUFACTURING</b>	<b>525</b>	<b>14,296</b>	<b>\$639,193,956</b>	<b>\$859.83</b>
3321	Forging & Stamping	12	326	13,030,241	768.66
3322	Cutlery & Hand Tool Manufacturing	13	846	33,571,229	763.12
3323	Architectural & Structural Metals	154	3,584	165,335,572	887.15
3324	Boilers, Tanks & Shipping Containers	17	700	32,267,501	886.47
3325	Hardware Manufacturing	8	342	14,881,192	836.77
3326	Spring & Wire Product Manufacturing	14	401	16,898,232	810.39
3327	Machine Shops & Threaded Products	208	1,860	72,240,053	746.90
3328	Coating, Engraving & Heat Treating Metals	37	699	23,373,627	643.05
3329	Other Fabricated Metal Product Manufacturing	62	5,538	267,596,309	929.23
<b>333</b>	<b>MACHINERY MANUFACTURING</b>	<b>219</b>	<b>11,508</b>	<b>\$470,647,053</b>	<b>\$786.49</b>
3331	Agriculture, Construction & Mining Machinery	38	2,968	107,647,098	697.49
3332	Industrial Machinery Manufacturing	30	678	32,503,383	921.92
3333	Commercial & Service Industry Machinery	22	854	40,071,088	902.34
3334	HVAC & Commercial Refrigeration Equipment	19	3,265	129,534,010	762.95
3335	Metalworking Machinery Manufacturing	61	1,098	44,818,056	784.96
3336	Turbine & Power Transmission Equipment Manufacturing	7	701	31,507,231	864.35
3339	Other General Purpose Machinery Manufacturing	42	1,944	84,566,187	836.56
<b>334</b>	<b>COMPUTER &amp; ELECTRONIC PRODUCT MANUFACTURING</b>	<b>63</b>	<b>2,946</b>	<b>\$124,549,200</b>	<b>\$813.03</b>
3343	Audio & Video Equipment Manufacturing	5	384	15,898,501	796.20
3344	Semiconductors & Electronic Components	27	1,919	78,340,505	785.07
3345	Electronic Instrument Manufacturing	21	502	22,744,043	871.29
	Other	10	141	7,566,151	1,031.94
<b>335</b>	<b>ELECTRICAL EQUIPMENT &amp; APPLIANCES</b>	<b>54</b>	<b>6,454</b>	<b>\$316,966,529</b>	<b>\$944.45</b>
3353	Electrical Equipment Manufacturing	19	3,469	168,666,270	935.02
3359	Other Electrical Equipment & Component Manufacturing	18	1,710	87,159,200	980.20
	Other	17	1,275	61,141,059	922.19
<b>336</b>	<b>TRANSPORTATION EQUIPMENT MANUFACTURING</b>	<b>144</b>	<b>12,571</b>	<b>\$535,813,879</b>	<b>\$819.67</b>
3362	Motor Vehicle Body & Trailer Manufacturing	32	1,697	58,192,603	659.45
3363	Motor Vehicle Parts Manufacturing	50	4,915	183,581,714	718.29
3364	Aerospace Product & Parts Manufacturing	27	3,228	189,370,454	1,128.17
3366	Ship & Boat Building	23	1,338	40,826,784	586.79
	Other	12	1,393	63,842,324	881.36
<b>337</b>	<b>FURNITURE &amp; RELATED PRODUCT MANUFACTURING</b>	<b>195</b>	<b>3,336</b>	<b>\$114,200,867</b>	<b>\$658.32</b>
3371	Household & Institutional Furniture	161	2,258	66,737,572	568.39
3372	Office Furniture & Fixtures Manufacturing	25	983	44,930,259	878.99
3379	Other Furniture Related Product Manufacturing	9	95	2,533,036	512.76
<b>339</b>	<b>MISCELLANEOUS MANUFACTURING</b>	<b>195</b>	<b>3,324</b>	<b>\$120,603,060</b>	<b>\$697.74</b>
3391	Medical Equipment & Supplies Manufacturing	77	1,577	66,298,964	808.48
3399	Other Miscellaneous Manufacturing	118	1,747	54,304,096	597.77

TABLE 5. STATEWIDE SUMMARY CALENDAR YEAR 2012

NORTH AMERICAN INDUSTRY CLASSIFICATION SYSTEM - INDUSTRY GROUPS		AVERAGE EMPLOYING UNITS	AVERAGE COVERED EMPLOYMENT	TOTAL CALENDAR EARNINGS	AVERAGE WEEKLY EARNINGS
<b>TRADE, TRANSPORTATION &amp; UTILITIES</b>		<b>21,069</b>	<b>237,995</b>	<b>\$8,575,865,989</b>	<b>\$692.96</b>
<b>42</b>	<b>WHOLESALE TRADE</b>	<b>6,719</b>	<b>47,326</b>	<b>\$2,754,948,173</b>	<b>\$1,119.46</b>
<b>423</b>	<b>MERCHANT WHOLESALERS, DURABLE GOODS</b>	<b>2,112</b>	<b>21,227</b>	<b>\$1,069,407,529</b>	<b>\$968.84</b>
4231	Motor Vehicle & Part Merchant Wholesalers	234	2,643	108,025,923	786.01
4232	Furniture & Furnishings Merchant Wholesalers	57	396	19,839,665	963.46
4233	Lumber & Supply Merchant Wholesalers	168	1,333	55,183,765	796.12
4234	Commercial Goods Merchant Wholesalers	290	2,834	177,697,148	1,205.81
4235	Metal & Mineral Merchant Wholesalers	48	872	45,836,504	1,010.86
4236	Appliances & Electronics Goods Merchant Wholesalers	183	2,126	121,077,228	1,095.21
4237	Hardware & Plumbing Merchant Wholesalers	219	2,163	109,405,241	972.70
4238	Machinery & Supply Merchant Wholesalers	700	6,898	349,175,335	973.46
4239	Miscellaneous Durable Goods Merchant Wholesalers	213	1,962	83,166,720	815.17
<b>424</b>	<b>MERCHANT WHOLESALERS, NONDURABLE GOODS</b>	<b>1,172</b>	<b>15,425</b>	<b>\$786,148,646</b>	<b>\$980.11</b>
4241	Paper & Paper Product Merchant Wholesalers	71	1,123	62,204,704	1,065.22
4242	Druggist' Goods Merchant Wholesalers	64	939	51,909,360	1,063.11
4243	Apparel & Piece Goods Merchant Wholesalers	37	581	24,389,790	807.29
4244	Grocery Product Merchant Wholesalers	290	4,960	278,255,209	1,078.84
4245	Farm Product Merchant Wholesalers	72	860	29,703,924	664.22
4246	Chemical merchant Wholesalers	98	654	39,187,918	1,152.31
4247	Petroleum Merchant Wholesalers	134	1,489	79,713,224	1,029.51
4248	Alcoholic Beverage Merchant Wholesalers	38	1,267	64,633,256	981.02
4249	Miscellaneous Nondurable Goods Merchant Wholesaler	368	3,552	156,151,261	845.41
<b>425</b>	<b>ELECTRONIC MARKETS &amp; AGENTS &amp; BROKERS</b>	<b>3,435</b>	<b>10,674</b>	<b>\$899,391,998</b>	<b>\$1,620.39</b>
<b>44 - 45</b>	<b>RETAIL TRADE</b>	<b>11,052</b>	<b>132,584</b>	<b>\$3,167,134,707</b>	<b>\$459.38</b>
<b>441</b>	<b>MOTOR VEHICLE &amp; PARTS DEALERS</b>	<b>1,595</b>	<b>17,245</b>	<b>\$678,552,467</b>	<b>\$756.69</b>
4411	Automobile Dealers	652	10,107	469,345,624	893.03
4412	Other Motor Vehicle Dealers	160	1,369	48,910,814	687.07
4413	Automotive Parts, Accessories & Tire Stores	783	5,769	160,296,029	534.34
<b>442</b>	<b>FURNITURE &amp; HOME FURNISHINGS STORES</b>	<b>537</b>	<b>3,363</b>	<b>\$94,635,308</b>	<b>\$541.16</b>
4421	Furniture Stores	295	1,919	60,512,654	606.41
4422	Home Furnishings Stores	242	1,444	34,122,654	454.44
<b>443</b>	<b>ELECTRONICS &amp; APPLIANCE STORES</b>	<b>525</b>	<b>3,953</b>	<b>\$119,844,334</b>	<b>\$583.03</b>
<b>444</b>	<b>BUILDING MATERIAL &amp; GARDEN SUPPLY STORES</b>	<b>842</b>	<b>10,286</b>	<b>\$263,775,651</b>	<b>\$493.16</b>
4441	Building Material & Supplies Dealers	626	9,014	232,591,751	496.22
4442	Lawn & Garden Equipment & Supplies Stores	216	1,272	31,183,900	471.45

TABLE 5. STATEWIDE SUMMARY CALENDAR YEAR 2012

NORTH AMERICAN INDUSTRY CLASSIFICATION SYSTEM - INDUSTRY GROUPS		AVERAGE EMPLOYING UNITS	AVERAGE COVERED EMPLOYMENT	TOTAL CALENDAR EARNINGS	AVERAGE WEEKLY EARNINGS
<b>445</b>	<b>FOOD &amp; BEVERAGE STORES</b>	<b>1,013</b>	<b>17,836</b>	<b>\$345,825,562</b>	<b>\$372.87</b>
4451	Grocery Stores	547	15,363	288,817,891	361.53
4452	Specialty Food Stores	140	877	24,805,767	543.94
4453	Beer, Wine & Liquor Stores	326	1,596	32,201,904	388.01
<b>446</b>	<b>HEALTH &amp; PERSONAL CARE STORES</b>	<b>963</b>	<b>7,964</b>	<b>\$280,164,040</b>	<b>\$676.52</b>
<b>447</b>	<b>GASOLINE STATIONS</b>	<b>1,597</b>	<b>11,691</b>	<b>\$198,073,338</b>	<b>\$325.81</b>
44711	Gasoline Stations with Convenience Stores	1,494	10,531	171,820,880	313.76
44719	Other Gasoline Stations	103	1,160	26,252,458	435.22
<b>448</b>	<b>CLOTHING &amp; CLOTHING ACCESSORIES STORES</b>	<b>1,038</b>	<b>8,703</b>	<b>\$131,516,586</b>	<b>\$290.61</b>
4481	Clothing Stores	750	6,752	88,198,378	251.20
4482	Shoe Stores	146	1,164	19,273,802	318.43
4483	Jewelry, Luggage & Leather Goods Stores	142	787	24,044,406	587.54
<b>451</b>	<b>SPORTING GOODS, HOBBY, BOOK &amp; MUSIC STORES</b>	<b>498</b>	<b>4,346</b>	<b>\$76,813,374</b>	<b>\$339.89</b>
4511	Sporting Goods & Musical Instrument Stores	410	3,723	67,736,508	349.89
4512	Book, Periodical & Music Stores	88	623	9,076,866	280.18
<b>452</b>	<b>GENERAL MERCH&amp;ISE STORES</b>	<b>822</b>	<b>38,795</b>	<b>\$779,916,141</b>	<b>\$386.61</b>
<b>453</b>	<b>MISCELLANEOUS STORE RETAILERS</b>	<b>1,248</b>	<b>6,665</b>	<b>\$138,474,727</b>	<b>\$399.55</b>
4531	Florists	211	753	12,273,728	313.46
4532	Office Supplies, Stationery & Gift Stores	307	2,112	43,880,092	399.55
4533	Used Merchandise Stores	242	1,370	27,983,900	392.81
4539	Other Miscellaneous Store Retailers	488	2,430	54,337,007	430.02
<b>454</b>	<b>NONSTORE RETAILERS</b>	<b>374</b>	<b>1,737</b>	<b>\$59,543,179</b>	<b>\$659.22</b>
4541	Electronic Shopping & Mail-Order Houses	156	552	21,658,986	754.56
4542	Vending Machine Operators	73	484	14,129,177	561.39
4543	Direct Selling Establishments	145	701	23,755,016	651.68
<b>48 - 49</b>	<b>TRANSPORTATION &amp; WAREHOUSING</b>	<b>2,883</b>	<b>50,391</b>	<b>2,088,241,313</b>	<b>\$796.94</b>
<b>481</b>	<b>AIR TRANSPORTATION</b>	<b>51</b>	<b>869</b>	<b>\$46,585,773</b>	<b>\$1,030.93</b>
<b>484</b>	<b>TRUCK TRANSPORTATION</b>	<b>1,892</b>	<b>32,756</b>	<b>\$1,395,947,265</b>	<b>\$819.55</b>
4841	General Freight Trucking	1,175	26,156	1,123,929,943	826.35
4842	Specialized Freight Trucking	717	6,600	272,017,322	792.59

TABLE 5. STATEWIDE SUMMARY CALENDAR YEAR 2012

NORTH AMERICAN INDUSTRY CLASSIFICATION SYSTEM - INDUSTRY GROUPS		AVERAGE EMPLOYING UNITS	AVERAGE COVERED EMPLOYMENT	TOTAL CALENDAR EARNINGS	AVERAGE WEEKLY EARNINGS
<b>485</b>	<b>TRANSIT &amp; GROUND PASSENGER TRANSPORTATION</b>	<b>81</b>	<b>1,316</b>	<b>\$23,379,168</b>	<b>\$341.64</b>
4853	Taxi & Limousine Service	28	354	6,115,377	332.21
4854	School & Employee Bus Transportation	12	374	6,463,792	332.36
4855	Charter Bus Industry Service	7	90	2,344,314	500.92
4859	Other Ground Passenger Transportation	28	417	6,695,503	308.78
	Other	6	81	1,760,182	417.90
<b>486</b>	<b>PIPELINE TRANSPORTATION</b>	<b>31</b>	<b>444</b>	<b>\$36,098,240</b>	<b>\$1,563.51</b>
<b>488</b>	<b>SUPPORT ACTIVITIES FOR TRANSPORTATION</b>	<b>419</b>	<b>4,538</b>	<b>\$198,860,464</b>	<b>\$842.71</b>
4881	Support Activities for Air Transportation	101	1,298	51,657,005	765.33
4882	Support Activities for Rail Transportation	39	378	14,789,832	752.43
4883	Support Activities for Water Transportation	24	588	29,409,624	961.85
4884	Support Activities for Road Transportation	126	609	16,071,427	507.50
4885	Freight Transportation Arrangement	113	1,549	84,025,330	1,043.17
4889	Other Support Activities for Transportation	16	116	2,907,246	481.97
	<b>OTHER</b>	<b>10</b>	<b>89</b>	<b>\$3,196,429</b>	<b>\$690.67</b>
<b>492</b>	<b>COURIERS &amp; MESSENGERS</b>	<b>169</b>	<b>3,045</b>	<b>\$124,690,611</b>	<b>\$787.49</b>
<b>493</b>	<b>OTHER WAREHOUSING &amp; STORAGE</b>	<b>230</b>	<b>7,334</b>	<b>259,483,363</b>	<b>\$680.40</b>
<b>22</b>	<b>UTILITIES</b>	<b>415</b>	<b>7,694</b>	<b>\$565,541,796</b>	<b>\$1,413.54</b>
2211	Power Generation & Supply	159	5,516	459,606,049	1,602.35
2212	Natural Gas Distribution	73	1,266	75,091,678	1,140.66
2213	Water, Sewage & Other Systems	183	912	30,844,069	650.39
<b>INFORMATION</b>		<b>1,138</b>	<b>14,356</b>	<b>\$713,584,203</b>	<b>\$955.89</b>
<b>511</b>	<b>PUBLISHING INDUSTRIES, EXCEPT INTERNET</b>	<b>227</b>	<b>3,727</b>	<b>\$133,264,841</b>	<b>\$687.63</b>
5111	Newspaper, Book & Directory Publishers	201	3,422	113,259,746	636.49
5112	Software Publishers	26	305	20,005,095	1,261.36
<b>512</b>	<b>MOTION PICTURE &amp; SOUND RECORDING INDUSTRY</b>	<b>139</b>	<b>1,218</b>	<b>\$22,996,957</b>	<b>\$363.09</b>
5121	Motion Picture & Video Industries	120	1,187	21,587,038	349.73
5122	Sound Recording Industries	19	31	1,409,919	874.64
<b>515</b>	<b>BROADCASTING, EXCEPT INTERNET</b>	<b>125</b>	<b>1,699</b>	<b>\$66,197,365</b>	<b>\$749.28</b>
5151	Radio & Television Broadcasting	121	1,667	65,332,296	753.68
5152	Cable & Other Subscription Programming	4	32	865,069	519.87

TABLE 5. STATEWIDE SUMMARY CALENDAR YEAR 2012

NORTH AMERICAN INDUSTRY CLASSIFICATION SYSTEM - INDUSTRY GROUPS		AVERAGE EMPLOYING UNITS	AVERAGE COVERED EMPLOYMENT	TOTAL CALENDAR EARNINGS	AVERAGE WEEKLY EARNINGS
<b>517</b>	<b>TELECOMMUNICATIONS</b>	<b>381</b>	<b>5,935</b>	<b>\$401,427,495</b>	<b>\$1,300.72</b>
5171	Wired Telecommunications Carriers	269	3,717	240,188,430	1,242.67
5172	Wireless Telecommunications Carriers (except Satellite)	49	1,849	140,019,309	1,456.29
5174	Satellite Telecommunications Carriers	5	6	206,206	660.92
5179	Other Telecommunications	58	363	21,013,550	1,113.24
<b>518</b>	<b>DATA PROCESSING, HOSTING &amp; RELATED SERVICES</b>	<b>191</b>	<b>1,471</b>	<b>\$77,197,042</b>	<b>\$1,009.22</b>
<b>519</b>	<b>OTHER INFORMATION SERVICES</b>	<b>75</b>	<b>306</b>	<b>\$12,500,503</b>	<b>\$785.60</b>
<b>FINANCIAL ACTIVITIES</b>		<b>7,984</b>	<b>47,585</b>	<b>\$2,344,343,653</b>	<b>\$947.43</b>
<b>52</b>	<b>FINANCE &amp; INSURANCE</b>	<b>4,758</b>	<b>34,401</b>	<b>\$1,909,733,433</b>	<b>\$1,067.57</b>
<b>522</b>	<b>CREDIT INTERMEDIATION &amp; RELATED ACTIVITIES</b>	<b>1,909</b>	<b>18,730</b>	<b>\$850,851,132</b>	<b>\$873.60</b>
5221	Depository Credit Intermediation	1,422	16,742	728,178,080	836.42
5222	Nondepository Credit Intermediation	351	1,645	102,056,242	1,193.08
5223	Activities Related to Credit Intermediation	136	343	20,616,810	1,155.91
<b>523</b>	<b>FINANCIAL INVESTMENT &amp; RELATED ACTIVITIES</b>	<b>653</b>	<b>2,995</b>	<b>\$375,850,218</b>	<b>\$2,413.32</b>
<b>524</b>	<b>INSURANCE CARRIERS &amp; RELATED ACTIVITIES</b>	<b>2,107</b>	<b>12,534</b>	<b>\$673,862,620</b>	<b>\$1,033.90</b>
5241	Insurance Carriers	320	5,175	329,844,740	1,225.73
5242	Insurance Agencies, Brokerages & Support	1,787	7,359	344,017,880	899.00
	<b>OTHER</b>	<b>89</b>	<b>142</b>	<b>\$9,169,463</b>	<b>\$1,241.80</b>
<b>53</b>	<b>REAL ESTATE &amp; RENTAL &amp; LEASING</b>	<b>3,226</b>	<b>13,184</b>	<b>\$434,610,220</b>	<b>\$633.94</b>
<b>531</b>	<b>REAL ESTATE</b>	<b>2,513</b>	<b>8,606</b>	<b>\$265,551,481</b>	<b>\$593.40</b>
5311	Lessors of Real Estate	1,059	4,222	117,900,762	537.03
5312	Offices of Real Estate Agents & Brokers	733	1,568	56,893,269	697.77
5313	Activities Related to Real Estate	721	2,816	90,757,450	619.79
<b>532</b>	<b>RENTAL &amp; LEASING SERVICES</b>	<b>692</b>	<b>4,504</b>	<b>\$165,759,101</b>	<b>\$707.74</b>
5321	Automotive Equipment Rental & Leasing	113	899	25,014,288	535.09
5322	Consumer Goods Rental	359	2,015	60,361,887	576.08
5323	General Rental Centers	44	266	9,488,941	686.01
5324	Machinery & Equipment Rental & Leasing	176	1,324	70,893,985	1,029.72
<b>533</b>	<b>LESSORS OF NONFINANCIAL INTANGIBLE ASSETS</b>	<b>21</b>	<b>74</b>	<b>\$3,299,638</b>	<b>\$857.49</b>



TABLE 5. STATEWIDE SUMMARY CALENDAR YEAR 2012

NORTH AMERICAN INDUSTRY CLASSIFICATION SYSTEM - INDUSTRY GROUPS		AVERAGE EMPLOYING UNITS	AVERAGE COVERED EMPLOYMENT	TOTAL CALENDAR EARNINGS	AVERAGE WEEKLY EARNINGS
<b>PROFESSIONAL &amp; BUSINESS SERVICES</b>		<b>12,534</b>	<b>123,656</b>	<b>\$6,346,499,491</b>	<b>\$987.00</b>
<b>54</b>	<b>PROFESSIONAL &amp; TECHNICAL SERVICES</b>	<b>7,896</b>	<b>38,759</b>	<b>\$2,076,161,965</b>	<b>\$1,030.11</b>
5411	Legal Services	1,682	6,021	322,767,808	1,030.90
5412	Accounting & Bookkeeping Services	1,259	5,265	216,020,721	789.03
5413	Architectural & Engineering Services	924	5,792	325,128,168	1,079.50
5414	Specialized Design Services	193	443	22,475,027	975.65
5415	Computer Systems Design & Related Services	1,221	8,774	616,553,537	1,351.36
5416	Management & Technical Consulting Services	1,520	4,854	259,188,479	1,026.86
5417	Scientific Research & Development Services	122	1,175	71,139,897	1,164.32
5418	Advertising & Related Services	378	2,844	124,615,101	842.63
5419	Other Professional & Technical Services	597	3,591	118,273,227	633.38
<b>55</b>	<b>MANAGEMENT OF COMPANIES &amp; ENTERPRISES</b>	<b>496</b>	<b>30,873</b>	<b>\$2,873,086,804</b>	<b>\$1,789.64</b>
<b>56</b>	<b>ADMINISTRATIVE &amp; SUPPORT SERVICES</b>	<b>4,142</b>	<b>54,024</b>	<b>\$1,397,250,722</b>	<b>\$497.38</b>
<b>561</b>	<b>ADMINISTRATIVE &amp; SUPPORT SERVICES</b>	<b>3,868</b>	<b>51,036</b>	<b>\$1,277,599,167</b>	<b>\$481.41</b>
5611	Office Administrative Services	566	2,045	117,684,475	1,106.68
5612	Facilities Support Services	25	210	8,855,918	810.98
5613	Employment Services	836	20,656	459,855,762	428.13
5614	Business Support Services	396	8,894	254,994,180	551.35
5615	Travel Arrangement & Reservation Services	82	330	10,780,278	628.22
5616	Investigation & Security Services	241	4,423	106,755,041	464.16
5617	Services to Buildings & Dwellings	1,483	12,994	269,293,237	398.55
5619	Other Support Services	239	1,484	49,380,276	639.91
<b>562</b>	<b>WASTE MANAGEMENT &amp; REMEDIATION SERVICES</b>	<b>274</b>	<b>2,988</b>	<b>\$119,651,555</b>	<b>\$770.08</b>
5621	Waste Collection Services	110	1,038	37,756,479	699.50
5622	Waste Treatment & disposal Services	34	868	43,434,069	962.29
5629	Remediation & Other Waste Services	130	1,082	38,461,007	683.58
<b>EDUCATION &amp; HEALTH SERVICES</b>		<b>13,825</b>	<b>169,448</b>	<b>\$6,200,038,159</b>	<b>\$703.65</b>
<b>61</b>	<b>EDUCATIONAL SERVICES</b>	<b>723</b>	<b>12,178</b>	<b>\$354,373,104</b>	<b>\$559.60</b>
6111	Elementary & Secondary Schools	91	4,816	106,090,644	423.63
6112	Junior Colleges	4	138	4,624,544	644.45
6113	Colleges & Universities	33	4,071	138,747,485	655.42
6114	Business, Computer, & Management Training	42	104	7,080,257	1,309.22
6115	Technical & Trade Schools	102	909	49,964,039	1,057.04
6116	Other Schools & Instruction	269	1,681	27,909,183	319.28
6117	Educational Support Services	182	459	19,956,952	836.14

TABLE 5. STATEWIDE SUMMARY CALENDAR YEAR 2012

NORTH AMERICAN INDUSTRY CLASSIFICATION SYSTEM - INDUSTRY GROUPS		AVERAGE EMPLOYING UNITS	AVERAGE COVERED EMPLOYMENT	TOTAL CALENDAR EARNINGS	AVERAGE WEEKLY EARNINGS
<b>62</b>	<b>HEALTH CARE &amp; SOCIAL ASSISTANCE</b>	<b>13,102</b>	<b>157,270</b>	<b>\$5,845,665,055</b>	<b>\$714.80</b>
<b>621</b>	<b>AMBULATORY HEALTH CARE SERVICES</b>	<b>5,138</b>	<b>47,611</b>	<b>\$2,661,538,106</b>	<b>\$1,075.03</b>
6211	Offices of Physicians	2,266	22,065	1,651,243,098	1,439.14
6212	Offices of Dentists	988	6,851	303,844,662	852.89
6213	Offices of Other Health Practitioners	1,234	6,934	256,188,089	710.51
6214	Outpatient Care Centers	272	3,936	164,890,352	805.63
6215	Medical & Diagnostic Laboratories	109	948	51,141,454	1,037.44
6216	Home Health Care Services	135	4,299	145,351,237	650.20
6219	Other Ambulatory Health Care Services	134	2,578	88,879,214	663.00
<b>622</b>	<b>HOSPITALS</b>	<b>120</b>	<b>42,195</b>	<b>\$1,774,471,361</b>	<b>\$808.73</b>
6221	General Medical & Surgical Hospitals	76	37,084	1,568,305,054	813.28
6222	Psychiatric & Substance Abuse Hospitals	22	2,532	96,388,116	732.08
6223	Other Hospitals	22	2,579	109,778,191	818.58
<b>623</b>	<b>Residential &amp; Mental Health Facilities</b>	<b>577</b>	<b>31,493</b>	<b>\$719,707,579</b>	<b>\$439.48</b>
6231	Nursing Care Facilities (Skilled Nursing Facilities)	263	23,026	530,574,518	443.12
6232	Residential Mental Health Facilities	157	4,269	99,636,889	448.84
6233	Continuing Care & Assisted Living Facilities	117	3,096	61,671,156	383.07
6239	Other Residential Care Facilities	40	1,102	27,825,016	485.57
<b>624</b>	<b>SOCIAL ASSISTANCE</b>	<b>7,267</b>	<b>35,971</b>	<b>\$689,948,009</b>	<b>\$368.86</b>
6241	Individual & Family Services	6,015	21,015	404,816,799	370.45
6242	Emergency & Other Relief Services	132	1,244	29,120,361	450.17
6243	Vocational Rehabilitation Services	144	3,961	87,544,103	425.03
6244	Child Day Care Services	976	9,751	168,466,746	332.25
<b>LEISURE &amp; HOSPITALITY</b>		<b>6,532</b>	<b>102,805</b>	<b>\$1,440,266,648</b>	<b>\$269.42</b>
<b>71</b>	<b>ARTS, ENTERTAINMENT &amp; RECREATION</b>	<b>922</b>	<b>9,643</b>	<b>\$174,517,708</b>	<b>\$348.04</b>
<b>711</b>	<b>PERFORMING ARTS &amp; SPECTATOR SPORTS</b>	<b>205</b>	<b>2,302</b>	<b>\$50,430,129</b>	<b>\$421.29</b>
7111	Performing Arts Companies	47	429	7,741,830	347.04
7112	Spectator Sports	49	1,177	28,506,786	465.77
7113	Performing Arts & Sports Promoters	37	605	10,462,921	332.58
7114	Agents & Managers for Public Figures	21	27	1,802,846	1,284.08
7115	Independent Artists, Writers, & Performers	51	64	1,915,746	575.64
<b>712</b>	<b>MUSEUMS, PARKS, &amp; HISTORICAL SITES</b>	<b>54</b>	<b>456</b>	<b>\$12,885,295</b>	<b>\$543.41</b>
<b>713</b>	<b>GAMBLING, RECREATIONAL &amp; AMUSEMENT INDUSTRY</b>	<b>663</b>	<b>6,885</b>	<b>\$111,202,284</b>	<b>\$310.60</b>
<b>72</b>	<b>ACCOMODATION &amp; FOOD SERVICES</b>	<b>5,610</b>	<b>93,162</b>	<b>\$1,265,748,940</b>	<b>\$261.28</b>

TABLE 5. STATEWIDE SUMMARY CALENDAR YEAR 2012

NORTH AMERICAN INDUSTRY CLASSIFICATION SYSTEM - INDUSTRY GROUPS		AVERAGE EMPLOYING UNITS	AVERAGE COVERED EMPLOYMENT	TOTAL CALENDAR EARNINGS	AVERAGE WEEKLY EARNINGS
<b>721</b>	<b>ACCOMODATION</b>	<b>886</b>	<b>10,964</b>	<b>\$178,648,032</b>	<b>\$313.35</b>
7211	Travel Accommodation	806	10,393	168,908,473	312.54
7212	RV Parks & Recreational Camps	60	477	8,056,895	324.82
7213	Rooming & Boarding Houses	20	94	1,682,664	344.24
<b>722</b>	<b>FOOD SERVICES &amp; DRINKING PLACES</b>	<b>4,724</b>	<b>82,198</b>	<b>\$1,087,100,908</b>	<b>\$254.33</b>
7223	Special Food Services	170	2,698	42,318,588	301.64
7224	Drinking Places, Alcoholic Beverages	164	1,137	14,292,243	241.73
7225	Restaurants & Other Eating Places	4,390	78,363	1,030,490,077	252.89
722511	Full-Service Restaurants	2,004	35,220	495,893,725	270.77
722513	Limited-Service Eating Places	2,007	39,327	480,824,632	235.12
722514	Cafeterias, Grill Buffets, & Buffets	98	1,862	28,365,638	292.96
722515	Snack & Nonalcoholic Beverage Bars	281	1,954	25,406,082	250.04
<b>OTHER SERVICES</b>		<b>5,357</b>	<b>24,309</b>	<b>\$685,798,933</b>	<b>\$542.53</b>
<b>811</b>	<b>REPAIR &amp; MAINTENANCE</b>	<b>2,233</b>	<b>9,311</b>	<b>\$308,393,935</b>	<b>\$636.95</b>
8111	Automotive Repair & Maintenance	1,452	6,226	189,667,461	585.84
8112	Electronic Equipment Repair & Maintenance	164	579	24,333,515	808.21
8113	Commercial Machinery Repair & Maintenance	430	1,926	78,093,885	779.75
8114	Household Goods Repair & Maintenance	187	580	16,299,074	540.42
<b>812</b>	<b>PERSONAL &amp; LAUNDRY SERVICES</b>	<b>1,331</b>	<b>8,307</b>	<b>\$175,768,737</b>	<b>\$406.91</b>
8121	Personal Care Services	618	2,931	50,186,462	329.28
8122	Death Care Services	248	1,609	45,330,780	541.79
8123	Drycleaning & Laundry Service	272	3,027	66,185,669	420.48
8129	Other Personal Services	193	740	14,065,826	365.54
<b>813</b>	<b>MEMBERSHIP ASSOCIATIONS &amp; ORGANIZATIONS</b>	<b>1,084</b>	<b>5,733</b>	<b>\$183,311,870</b>	<b>\$614.90</b>
8131	Religious Organizations	55	211	5,436,777	495.51
8132	Grantmaking & Giving Organizations	113	499	21,781,196	839.42
8133	Social Advocacy Organizations	224	1,755	56,536,245	619.51
8134	Civic & Social Organizations	189	1,257	20,181,765	308.76
8139	Professional & Similar Organizations	503	2,011	79,375,887	759.05
<b>814</b>	<b>PRIVATE HOUSEHOLDS</b>	<b>709</b>	<b>958</b>	<b>\$18,324,391</b>	<b>\$367.84</b>
	<b>LOCAL GOVERNMENT</b>	<b>1,960</b>	<b>112,026</b>	<b>\$3,847,202,330</b>	<b>\$660.42</b>
	<b>STATE GOVERNMENT</b>	<b>1,129</b>	<b>69,834</b>	<b>\$2,930,452,966</b>	<b>\$806.98</b>
	<b>NONCLASSIFIABLE ESTABLISHMENTS</b>	<b>0</b>	<b>0</b>	<b>0</b>	<b>\$0.00</b>

TABLE 6. COUNTY SUMMARY CALENDAR YEAR 2012

NORTH AMERICAN INDUSTRY CLASSIFICATION SYSTEM - INDUSTRY GROUPS	AVERAGE EMPLOYING UNITS	AVERAGE COVERED EMPLOYMENT	TOTAL CALENDAR EARNINGS	AVERAGE WEEKLY EARNINGS
<b>ARKANSAS COUNTY - TOTAL</b>	<b>731</b>	<b>9,621</b>	<b>\$333,035,137</b>	<b>\$665.68</b>
Natural Resources & Mining	45	182	8,368,535	884.25
Construction	47	291	10,032,233	662.98
Manufacturing	29	3,533	135,417,030	737.10
Trade, Transportation & Utilities	217	2,130	76,441,405	690.15
Wholesale Trade	45	448	24,975,620	1,072.10
Retail Trade	101	1,050	24,717,157	452.70
Transportation, Warehousing & Utilities	71	632	26,748,628	813.92
Information	10	93	3,351,872	693.11
Financial Activities	47	334	14,740,109	848.69
Professional & Business Services	45	329	16,885,039	986.97
Education & Health Services	137	1,109	29,318,744	508.41
Leisure & Hospitality	56	529	6,602,636	240.03
Other Services	51	120	3,181,104	509.79
Local Government	32	776	23,393,400	579.73
State Government	15	195	5,303,030	522.98
<b>ASHLEY COUNTY - TOTAL</b>	<b>577</b>	<b>7,404</b>	<b>\$285,881,597</b>	<b>\$742.53</b>
Natural Resources & Mining	44	329	10,814,446	632.13
Construction	45	681	28,272,673	798.39
Manufacturing	27	2,063	127,408,020	1,187.67
Trade, Transportation & Utilities	134	1,285	36,769,194	550.27
Wholesale Trade	26	216	10,768,997	958.78
Retail Trade	82	824	16,585,377	387.07
Transportation, Warehousing & Utilities	26	245	9,414,820	739.00
Information	6	41	1,185,211	555.92
Financial Activities	36	223	8,020,349	691.65
Professional & Business Services	49	250	7,307,479	562.11
Education & Health Services	123	877	26,139,042	573.17
Leisure & Hospitality	31	400	4,545,896	218.55
Other Services	39	137	3,480,079	488.50
Local Government	32	926	27,302,852	567.01
State Government	11	192	4,636,356	464.38

TABLE 6. COUNTY SUMMARY CALENDAR YEAR 2012

NORTH AMERICAN INDUSTRY CLASSIFICATION SYSTEM - INDUSTRY GROUPS	AVERAGE EMPLOYING UNITS	AVERAGE COVERED EMPLOYMENT	TOTAL CALENDAR EARNINGS	AVERAGE WEEKLY EARNINGS
<b>BAXTER COUNTY - TOTAL</b>	<b>1,225</b>	<b>13,999</b>	<b>\$436,306,047</b>	<b>\$599.36</b>
Natural Resources & Mining	6	96	2,930,594	587.06
Construction	127	588	16,830,225	550.44
Manufacturing	56	2,212	81,322,381	707.00
Trade, Transportation & Utilities	268	2,523	61,236,986	466.76
Wholesale Trade	32	200	6,985,696	671.70
Retail Trade	212	2,158	47,670,816	424.81
Transportation, Warehousing & Utilities	24	165	6,580,474	766.96
Information	18	195	7,802,449	769.47
Financial Activities	105	671	32,652,297	935.81
Professional & Business Services	131	768	23,497,203	588.37
Education & Health Services	247	3,615	135,993,303	723.45
Leisure & Hospitality	123	1,479	19,686,316	255.97
Other Services	93	347	7,084,324	392.61
Local Government	39	1,161	36,764,602	608.97
State Government	12	344	10,505,367	587.29
<b>BENTON COUNTY - TOTAL</b>	<b>5,456</b>	<b>95,912</b>	<b>\$4,765,911,996</b>	<b>\$955.59</b>
Natural Resources & Mining	41	741	38,909,585	1,009.80
Construction	517	3,256	132,660,428	783.53
Manufacturing	199	10,477	419,691,573	770.35
Trade, Transportation & Utilities	1,479	22,511	1,014,782,403	866.91
Wholesale Trade	679	4,539	389,412,306	1,649.86
Retail Trade	634	9,907	250,486,153	486.23
Transportation, Warehousing & Utilities	166	8,065	374,883,944	893.90
Information	72	783	36,481,965	896.01
Financial Activities	539	2,755	139,846,275	976.17
Professional & Business Services	1,047	27,201	2,143,858,858	1,515.68
Education & Health Services	627	8,836	324,435,560	706.11
Leisure & Hospitality	488	9,344	147,343,851	303.25
Other Services	351	1,654	45,643,121	530.68
Local Government	79	7,216	285,043,431	759.65
State Government	17	1,138	37,214,946	628.89

TABLE 6. COUNTY SUMMARY CALENDAR YEAR 2012

NORTH AMERICAN INDUSTRY CLASSIFICATION SYSTEM - INDUSTRY GROUPS	AVERAGE EMPLOYING UNITS	AVERAGE COVERED EMPLOYMENT	TOTAL CALENDAR EARNINGS	AVERAGE WEEKLY EARNINGS
<b>BOONE COUNTY - TOTAL</b>	<b>1,011</b>	<b>13,663</b>	<b>\$458,060,303</b>	<b>\$644.72</b>
Natural Resources & Mining	4	5	103,754	\$399.05
Construction	82	441	13,733,358	598.87
Manufacturing	63	1,801	67,359,084	719.25
Trade, Transportation & Utilities	247	3,710	140,507,817	728.32
Wholesale Trade	52	355	11,746,870	636.34
Retail Trade	145	1,852	44,518,197	462.27
Transportation, Warehousing & Utilities	50	1,503	84,242,750	1,077.88
Information	19	357	14,984,860	807.20
Financial Activities	98	532	21,532,184	778.35
Professional & Business Services	112	932	33,559,761	692.47
Education & Health Services	170	1,518	45,513,570	576.59
Leisure & Hospitality	84	1,125	14,469,042	247.33
Other Services	56	266	8,025,647	580.22
Local Government	57	2,189	70,915,752	623.01
State Government	19	787	27,355,474	668.45
<b>BRADLEY COUNTY - TOTAL</b>	<b>359</b>	<b>3,440</b>	<b>\$98,914,907</b>	<b>\$552.97</b>
Natural Resources & Mining	43	309	8,845,950	550.53
Construction	18	109	3,370,555	594.66
Manufacturing	11	493	20,752,289	809.50
Trade, Transportation & Utilities	74	507	12,098,835	458.91
Wholesale Trade	14	76	3,709,243	938.57
Retail Trade	42	364	6,521,692	344.55
Transportation, Warehousing & Utilities	18	67	1,867,900	536.14
Information	4	12	433,235	694.29
Financial Activities	25	143	4,622,255	621.61
Professional & Business Services	27	111	3,243,347	561.91
Education & Health Services	92	609	16,941,269	534.96
Leisure & Hospitality	11	164	1,858,151	217.89
Other Services	29	92	2,147,819	448.96
Local Government	14	496	14,357,008	556.65
State Government	11	395	10,244,194	498.74

TABLE 6. COUNTY SUMMARY CALENDAR YEAR 2012

NORTH AMERICAN INDUSTRY CLASSIFICATION SYSTEM - INDUSTRY GROUPS	AVERAGE EMPLOYING UNITS	AVERAGE COVERED EMPLOYMENT	TOTAL CALENDAR EARNINGS	AVERAGE WEEKLY EARNINGS
<b>CALHOUN COUNTY - TOTAL</b>	<b>115</b>	<b>2,743</b>	<b>\$124,592,779</b>	<b>\$873.50</b>
Natural Resources & Mining	12	60	2,463,574	789.61
Construction	13	101	2,987,679	568.87
Manufacturing	10	1,851	95,633,012	993.57
Trade, Transportation & Utilities	27	234	7,228,297	594.04
Retail Trade	16	80	1,416,722	340.56
Transportation, Warehousing & Utilities	11	154	5,811,575	725.72
Financial Activities	6	82	2,560,868	600.58
Education & Health Services	10	50	1,711,159	658.14
Leisure & Hospitality	7	14	177,302	243.55
Local Government	11	173	4,643,013	516.12
State Government	8	84	2,843,306	650.94
Other	11	94	4,344,569	888.82
<b>CARROLL COUNTY - TOTAL</b>	<b>773</b>	<b>9,922</b>	<b>\$258,273,889</b>	<b>\$500.59</b>
Natural Resources & Mining	15	252	7,355,913	561.35
Trade, Transportation & Utilities	198	1,590	39,110,616	473.04
Wholesale Trade	24	180	4,543,762	485.44
Retail Trade	157	1,158	23,490,263	390.10
Transportation, Warehousing & Utilities	17	252	11,076,591	845.28
Information	8	71	2,402,237	650.66
Financial Activities	64	356	13,678,741	738.91
Professional & Business Services	56	204	6,261,233	590.24
Education & Health Services	85	935	31,320,050	644.18
Leisure & Hospitality	166	1,476	19,984,457	260.38
Local Government	24	1,011	29,356,832	558.41
State Government	10	113	3,185,571	542.13
Other	147	3,914	105,618,239	518.94

TABLE 6. COUNTY SUMMARY CALENDAR YEAR 2012

NORTH AMERICAN INDUSTRY CLASSIFICATION SYSTEM - INDUSTRY GROUPS	AVERAGE EMPLOYING UNITS	AVERAGE COVERED EMPLOYMENT	TOTAL CALENDAR EARNINGS	AVERAGE WEEKLY EARNINGS
<b>CHICOT COUNTY - TOTAL</b>	<b>428</b>	<b>3,411</b>	<b>\$95,847,657</b>	<b>\$540.38</b>
Natural Resources & Mining	53	276	7,971,881	555.45
Construction	17	161	7,797,435	931.37
Manufacturing	11	288	6,295,724	420.39
Trade, Transportation & Utilities	67	495	13,429,207	521.73
Wholesale Trade	11	64	2,528,796	759.85
Retail Trade	44	363	7,869,704	416.92
Transportation, Warehousing & Utilities	12	68	3,030,707	857.10
Information	5	8	253,412	609.16
Financial Activities	27	145	5,845,866	775.31
Professional & Business Services	17	43	1,724,940	771.44
Education & Health Services	166	759	18,587,016	470.94
Leisure & Hospitality	22	190	2,028,193	205.28
Other Services	16	68	2,196,870	621.29
Local Government	17	677	20,730,665	588.87
State Government	10	301	8,986,448	574.14
<b>CLARK COUNTY - TOTAL</b>	<b>607</b>	<b>9,114</b>	<b>\$279,071,613</b>	<b>\$588.85</b>
Natural Resources & Mining	31	211	7,370,353	671.74
Construction	27	78	1,858,687	458.26
Manufacturing	34	1,426	64,878,865	874.94
Trade, Transportation & Utilities	140	1,614	47,613,499	567.31
Wholesale Trade	17	209	8,583,385	789.79
Retail Trade	101	1,223	31,820,065	500.35
Transportation, Warehousing & Utilities	22	182	7,210,049	761.84
Information	7	24	913,628	732.07
Financial Activities	75	320	12,477,134	749.83
Professional & Business Services	46	566	18,380,638	624.51
Education & Health Services	101	1,402	38,635,929	529.96
Leisure & Hospitality	61	1,066	13,322,521	240.34
Other Services	44	192	4,590,049	459.74
Local Government	27	999	31,548,455	607.31
State Government	14	1,216	37,481,855	592.77



TABLE 6. COUNTY SUMMARY CALENDAR YEAR 2012

NORTH AMERICAN INDUSTRY CLASSIFICATION SYSTEM - INDUSTRY GROUPS	AVERAGE EMPLOYING UNITS	AVERAGE COVERED EMPLOYMENT	TOTAL CALENDAR EARNINGS	AVERAGE WEEKLY EARNINGS
<b>CLAY COUNTY - TOTAL</b>	<b>402</b>	<b>3,601</b>	<b>\$100,903,798</b>	<b>\$538.87</b>
Natural Resources & Mining	60	271	6,816,185	483.69
Construction	29	144	4,212,187	562.52
Manufacturing	14	374	13,933,314	716.44
Trade, Transportation & Utilities	102	899	28,140,568	601.96
Wholesale Trade	26	286	10,636,629	715.21
Retail Trade	48	420	9,838,314	450.47
Transportation, Warehousing & Utilities	28	193	7,665,625	763.81
Information	5	51	1,421,629	536.06
Financial Activities	27	113	3,756,889	639.36
Professional & Business Services	29	77	1,995,618	498.41
Education & Health Services	52	490	12,343,716	484.45
Leisure & Hospitality	19	211	2,151,031	196.05
Other Services	31	79	2,238,446	544.90
Local Government	23	834	22,260,558	513.29
State Government	11	58	1,633,657	541.66
<b>CLEBURNE COUNTY - TOTAL</b>	<b>661</b>	<b>6,992</b>	<b>\$209,980,807</b>	<b>\$577.53</b>
Natural Resources & Mining	28	335	17,727,169	1,017.63
Construction	68	383	13,898,113	697.84
Manufacturing	35	1,213	41,916,402	664.54
Trade, Transportation & Utilities	169	1,662	55,183,578	638.52
Wholesale Trade	40	297	14,166,495	917.28
Retail Trade	102	949	22,471,509	455.37
Transportation, Warehousing & Utilities	27	416	18,545,574	857.32
Information	7	52	1,508,873	558.02
Financial Activities	68	229	8,091,930	679.54
Professional & Business Services	65	300	8,884,906	569.55
Education & Health Services	72	839	21,992,498	504.09
Leisure & Hospitality	74	937	11,738,610	240.92
Other Services	48	157	3,350,727	410.43
Local Government	18	781	22,956,587	565.27
State Government	9	104	2,731,414	505.07

TABLE 6. COUNTY SUMMARY CALENDAR YEAR 2012

NORTH AMERICAN INDUSTRY CLASSIFICATION SYSTEM - INDUSTRY GROUPS	AVERAGE EMPLOYING UNITS	AVERAGE COVERED EMPLOYMENT	TOTAL CALENDAR EARNINGS	AVERAGE WEEKLY EARNINGS
<b>CLEVELAND COUNTY - TOTAL</b>	<b>123</b>	<b>1,033</b>	<b>\$27,995,058</b>	<b>\$521.17</b>
Natural Resources & Mining	13	168	5,509,891	630.71
Construction	8	22	356,807	311.89
Manufacturing	7	92	2,870,075	599.93
Trade, Transportation & Utilities	33	191	5,184,837	522.03
Retail Trade	15	65	970,392	287.10
Other Trade, Transportation & Utilities	18	126	4,214,445	643.23
Financial Activities	3	15	404,165	518.16
Education & Health Services	28	149	2,726,058	351.84
Local Government	11	311	8,432,470	521.42
State Government	7	51	1,473,940	555.78
Other	13	34	1,036,815	586.43
<b>COLUMBIA COUNTY - TOTAL</b>	<b>733</b>	<b>8,448</b>	<b>\$296,643,264</b>	<b>\$675.27</b>
Natural Resources & Mining	44	404	24,669,088	1,174.27
Construction	42	368	14,456,631	755.47
Manufacturing	34	1,882	94,961,466	970.34
Trade, Transportation & Utilities	168	1,429	40,019,016	538.56
Wholesale Trade	28	204	9,356,018	881.98
Retail Trade	106	985	20,922,428	408.48
Transportation, Warehousing & Utilities	34	240	9,740,570	780.49
Information	9	59	1,766,257	575.70
Financial Activities	70	369	14,647,362	763.36
Professional & Business Services	59	332	11,511,706	666.80
Education & Health Services	166	1,043	24,244,995	447.03
Leisure & Hospitality	49	690	8,434,964	235.09
Other Services	53	226	4,026,925	342.66
Local Government	26	1,062	35,289,552	639.03
State Government	13	584	22,615,302	744.71

TABLE 6. COUNTY SUMMARY CALENDAR YEAR 2012

NORTH AMERICAN INDUSTRY CLASSIFICATION SYSTEM - INDUSTRY GROUPS	AVERAGE EMPLOYING UNITS	AVERAGE COVERED EMPLOYMENT	TOTAL CALENDAR EARNINGS	AVERAGE WEEKLY EARNINGS
<b>CONWAY COUNTY - TOTAL</b>	<b>554</b>	<b>6,604</b>	<b>\$227,287,749</b>	<b>\$661.86</b>
Natural Resources & Mining	33	318	14,451,416	873.94
Construction	53	502	24,831,226	951.24
Manufacturing	18	865	48,152,725	1,070.54
Trade, Transportation & Utilities	127	1,593	53,457,871	645.35
Wholesale Trade	24	215	9,846,940	880.76
Retail Trade	78	796	18,502,796	447.01
Transportation, Warehousing & Utilities	25	582	25,108,135	829.64
Information	3	11	411,395	719.22
Financial Activities	34	165	5,761,647	671.52
Professional & Business Services	45	364	8,413,871	444.52
Education & Health Services	135	920	25,304,791	528.95
Leisure & Hospitality	41	453	5,067,139	215.11
Other Services	29	104	2,945,755	544.70
Local Government	26	905	26,905,388	571.73
State Government	10	404	11,584,525	551.43
<b>CRAIGHEAD COUNTY - TOTAL</b>	<b>2,649</b>	<b>43,674</b>	<b>\$1,510,179,740</b>	<b>\$664.97</b>
Natural Resources & Mining	74	332	11,041,121	639.55
Construction	202	1,748	69,181,855	761.11
Manufacturing	115	6,071	249,962,667	791.79
Trade, Transportation & Utilities	739	9,082	277,570,893	587.75
Wholesale Trade	186	1,691	82,408,268	937.18
Retail Trade	441	6,121	142,858,456	448.83
Transportation, Warehousing & Utilities	112	1,270	52,304,169	792.01
Information	27	503	19,644,449	751.05
Financial Activities	254	1,443	67,098,922	894.22
Professional & Business Services	359	4,023	122,958,793	587.77
Education & Health Services	441	8,476	364,577,081	827.17
Leisure & Hospitality	228	4,741	63,744,632	258.57
Other Services	151	870	21,122,697	466.90
Local Government	36	3,643	128,404,708	677.83
State Government	23	2,742	114,871,922	805.64

TABLE 6. COUNTY SUMMARY CALENDAR YEAR 2012

NORTH AMERICAN INDUSTRY CLASSIFICATION SYSTEM - INDUSTRY GROUPS	AVERAGE EMPLOYING UNITS	AVERAGE COVERED EMPLOYMENT	TOTAL CALENDAR EARNINGS	AVERAGE WEEKLY EARNINGS
<b>CRAWFORD COUNTY - TOTAL</b>	<b>1,293</b>	<b>19,046</b>	<b>\$612,530,006</b>	<b>\$618.47</b>
Natural Resources & Mining	29	315	15,754,788	961.83
Construction	166	843	29,318,824	668.83
Manufacturing	75	4,310	154,108,872	687.62
Trade, Transportation & Utilities	320	6,110	197,027,835	620.13
Retail Trade	160	1,895	44,431,803	450.90
Other Trade, Transportation & Utilities	160	4,215	152,596,032	696.21
Information	13	128	4,114,379	618.15
Financial Activities	125	513	18,023,098	675.63
Professional & Business Services	158	1,045	34,860,180	641.52
Education & Health Services	170	1,634	52,609,375	619.17
Leisure & Hospitality	94	1,508	19,635,528	250.40
Other Services	90	418	12,152,000	559.07
Local Government	43	2,089	70,580,967	649.75
State Government	10	133	4,344,160	628.13
<b>CRITTENDEN COUNTY - TOTAL</b>	<b>1,301</b>	<b>16,009</b>	<b>\$513,258,335</b>	<b>\$616.55</b>
Natural Resources & Mining	52	283	8,530,839	579.70
Construction	48	342	11,827,561	665.07
Manufacturing	42	1,471	65,636,460	858.08
Trade, Transportation & Utilities	313	4,434	154,228,381	668.91
Wholesale Trade	70	732	33,245,160	873.40
Retail Trade	160	1,903	46,273,578	467.62
Transportation, Warehousing & Utilities	83	1,799	74,709,643	798.62
Information	6	69	2,453,069	683.69
Financial Activities	94	499	18,781,201	723.80
Professional & Business Services	119	1,315	36,009,109	526.60
Education & Health Services	365	2,401	74,551,590	597.12
Leisure & Hospitality	125	2,080	32,088,736	296.68
Other Services	80	456	12,381,090	522.14
Local Government	43	2,164	81,699,020	726.03
State Government	14	495	15,071,279	585.52

TABLE 6. COUNTY SUMMARY CALENDAR YEAR 2012

NORTH AMERICAN INDUSTRY CLASSIFICATION SYSTEM - INDUSTRY GROUPS	AVERAGE EMPLOYING UNITS	AVERAGE COVERED EMPLOYMENT	TOTAL CALENDAR EARNINGS	AVERAGE WEEKLY EARNINGS
<b>CROSS COUNTY - TOTAL</b>	<b>510</b>	<b>5,036</b>	<b>\$152,043,190</b>	<b>\$580.60</b>
Natural Resources & Mining	33	195	6,170,638	608.54
Construction	21	84	2,642,789	605.03
Manufacturing	12	699	21,492,129	591.29
Trade, Transportation & Utilities	137	1,259	40,667,121	621.18
Wholesale Trade	30	312	14,232,249	877.23
Retail Trade	76	765	18,912,753	475.43
Transportation, Warehousing & Utilities	31	182	7,522,119	794.81
Information	5	36	1,071,159	572.20
Financial Activities	45	305	11,026,076	695.21
Professional & Business Services	43	137	4,731,903	664.22
Education & Health Services	117	863	23,548,598	524.75
Leisure & Hospitality	34	322	3,575,100	213.52
Other Services	37	74	1,823,917	473.99
Local Government	16	691	23,070,691	642.07
State Government	10	371	12,223,069	633.58
<b>DALLAS COUNTY - TOTAL</b>	<b>264</b>	<b>2,901</b>	<b>\$80,654,798</b>	<b>\$534.66</b>
Natural Resources & Mining	33	187	5,903,730	607.13
Construction	19	67	2,994,569	859.52
Manufacturing	11	539	18,971,446	676.87
Trade, Transportation & Utilities	65	494	14,805,618	576.36
Wholesale Trade	6	38	3,348,884	1,694.78
Retail Trade	41	341	7,770,238	438.20
Transportation, Warehousing & Utilities	18	115	3,686,496	616.47
Information	3	16	515,189	619.22
Financial Activities	13	68	2,754,386	778.96
Professional & Business Services	15	56	1,311,332	450.32
Education & Health Services	56	868	20,697,718	458.56
Leisure & Hospitality	12	150	1,524,505	195.45
Other Services	15	68	1,781,253	503.75
Local Government	15	337	8,152,378	465.21
State Government	7	51	1,242,674	468.58

TABLE 6. COUNTY SUMMARY CALENDAR YEAR 2012

NORTH AMERICAN INDUSTRY CLASSIFICATION SYSTEM - INDUSTRY GROUPS	AVERAGE EMPLOYING UNITS	AVERAGE COVERED EMPLOYMENT	TOTAL CALENDAR EARNINGS	AVERAGE WEEKLY EARNINGS
<b>DESHA COUNTY - TOTAL</b>	<b>503</b>	<b>4,584</b>	<b>\$142,453,034</b>	<b>\$597.62</b>
Natural Resources & Mining	64	311	8,712,834	538.76
Construction	22	131	4,646,568	682.12
Manufacturing	16	833	41,390,075	955.54
Trade, Transportation & Utilities	115	888	26,658,663	577.33
Wholesale Trade	20	189	9,674,647	984.40
Retail Trade	69	520	11,100,227	410.51
Transportation, Warehousing & Utilities	26	179	5,883,789	632.12
Information	5	29	962,187	638.06
Financial Activities	31	221	6,839,823	595.18
Professional & Business Services	38	88	2,337,825	510.89
Education & Health Services	122	772	19,378,669	482.73
Leisure & Hospitality	39	346	3,402,534	189.11
Other Services	22	59	1,003,769	327.17
Local Government	19	783	23,434,805	575.57
State Government	10	123	3,685,282	576.19
<b>DREW COUNTY - TOTAL</b>	<b>515</b>	<b>6,278</b>	<b>\$181,648,260</b>	<b>\$556.42</b>
Natural Resources & Mining	42	291	9,395,318	620.89
Construction	21	91	2,796,714	591.02
Manufacturing	21	744	23,812,495	615.50
Trade, Transportation & Utilities	125	1,208	30,705,572	488.82
Wholesale Trade	19	173	6,872,964	764.00
Retail Trade	85	937	20,283,693	416.30
Transportation, Warehousing & Utilities	21	98	3,548,915	696.41
Information	8	62	1,830,051	567.63
Financial Activities	46	240	9,460,298	758.04
Professional & Business Services	42	294	10,505,795	687.19
Education & Health Services	111	860	23,468,730	524.79
Leisure & Hospitality	41	592	6,897,972	224.08
Other Services	20	66	1,550,821	451.87
Local Government	22	1,216	37,877,346	599.02
State Government	16	614	23,347,148	731.24

TABLE 6. COUNTY SUMMARY CALENDAR YEAR 2012

NORTH AMERICAN INDUSTRY CLASSIFICATION SYSTEM - INDUSTRY GROUPS	AVERAGE EMPLOYING UNITS	AVERAGE COVERED EMPLOYMENT	TOTAL CALENDAR EARNINGS	AVERAGE WEEKLY EARNINGS
<b>FAULKNER COUNTY - TOTAL</b>	<b>2,760</b>	<b>40,607</b>	<b>\$1,530,431,079</b>	<b>\$724.79</b>
Natural Resources & Mining	58	1,694	136,759,712	1,552.54
Construction	314	2,516	98,189,863	750.50
Manufacturing	102	3,233	157,085,828	934.39
Trade, Transportation & Utilities	661	7,240	211,828,693	562.66
Wholesale Trade	171	927	45,563,333	945.22
Retail Trade	398	5,461	126,759,970	446.38
Transportation, Warehousing & Utilities	92	852	39,505,390	891.69
Information	27	379	16,420,268	833.18
Financial Activities	323	1,580	63,766,853	776.13
Professional & Business Services	401	6,125	313,341,134	983.80
Education & Health Services	403	5,863	203,696,551	668.13
Leisure & Hospitality	245	4,608	57,954,806	241.87
Other Services	170	772	23,385,053	582.53
Local Government	38	3,353	124,114,505	711.85
State Government	18	3,244	123,887,813	734.42
<b>FRANKLIN COUNTY - TOTAL</b>	<b>342</b>	<b>4,296</b>	<b>\$144,006,671</b>	<b>\$644.64</b>
Natural Resources & Mining	15	285	17,030,472	1,149.15
Construction	33	139	5,174,409	715.88
Manufacturing	15	867	32,689,755	725.09
Trade, Transportation & Utilities	87	867	28,177,966	625.01
Wholesale Trade	15	43	884,388	395.52
Retail Trade	53	540	11,748,087	418.38
Transportation, Warehousing & Utilities	19	284	15,545,491	1,052.65
Information	5	25	728,549	560.42
Financial Activities	30	228	7,455,467	628.83
Professional & Business Services	30	140	3,700,145	508.26
Education & Health Services	52	561	15,705,634	538.38
Leisure & Hospitality	27	290	3,465,704	229.82
Other Services	19	60	1,826,229	585.33
Local Government	20	725	23,504,949	623.47
State Government	9	109	4,547,392	802.29

TABLE 6. COUNTY SUMMARY CALENDAR YEAR 2012

NORTH AMERICAN INDUSTRY CLASSIFICATION SYSTEM - INDUSTRY GROUPS	AVERAGE EMPLOYING UNITS	AVERAGE COVERED EMPLOYMENT	TOTAL CALENDAR EARNINGS	AVERAGE WEEKLY EARNINGS
<b>FULTON COUNTY - TOTAL</b>	<b>202</b>	<b>1,980</b>	<b>\$50,384,273</b>	<b>\$489.36</b>
Construction	8	51	2,025,234	763.66
Manufacturing	12	143	2,743,955	369.01
Trade, Transportation & Utilities	51	325	9,198,233	544.27
Retail Trade	34	187	3,480,245	357.90
Other Trade, Transportation & Utilities	17	138	5,717,988	796.82
Information	4	34	655,835	370.95
Financial Activities	15	89	3,173,460	685.71
Professional & Business Services	17	63	1,997,955	609.88
Education & Health Services	46	482	11,577,035	461.90
Leisure & Hospitality	15	149	1,609,685	207.75
Local Government	13	505	13,662,244	520.27
State Government	10	116	3,324,819	551.20
Other	11	23	415,818	347.67
<b>GARLAND COUNTY - TOTAL</b>	<b>3,109</b>	<b>35,311</b>	<b>\$1,108,924,718</b>	<b>\$603.93</b>
Natural Resources & Mining	35	332	14,700,290	851.50
Construction	347	1,736	54,593,647	604.77
Manufacturing	98	2,175	89,222,471	788.88
Trade, Transportation & Utilities	712	7,191	202,056,453	540.36
Wholesale Trade	145	909	39,999,447	846.23
Retail Trade	503	5,692	136,338,573	460.63
Transportation, Warehousing & Utilities	64	590	25,718,433	838.28
Information	34	289	11,061,232	736.04
Financial Activities	358	1,438	58,652,639	784.38
Professional & Business Services	395	3,210	104,233,229	624.45
Education & Health Services	485	7,632	303,121,376	763.79
Leisure & Hospitality	355	6,188	95,918,335	298.09
Other Services	230	972	22,591,043	446.96
Local Government	34	3,017	115,093,530	733.62
State Government	26	1,131	37,680,473	640.69



TABLE 6. COUNTY SUMMARY CALENDAR YEAR 2012

NORTH AMERICAN INDUSTRY CLASSIFICATION SYSTEM - INDUSTRY GROUPS	AVERAGE EMPLOYING UNITS	AVERAGE COVERED EMPLOYMENT	TOTAL CALENDAR EARNINGS	AVERAGE WEEKLY EARNINGS
<b>GRANT COUNTY - TOTAL</b>	<b>317</b>	<b>3,677</b>	<b>\$115,323,688</b>	<b>\$603.14</b>
Natural Resources & Mining	24	172	8,745,158	977.77
Construction	27	138	5,501,345	766.63
Manufacturing	16	998	34,742,716	669.47
Trade, Transportation & Utilities	85	599	15,920,667	511.13
Wholesale Trade	16	116	4,515,109	748.53
Retail Trade	44	421	9,313,698	425.44
Transportation, Warehousing & Utilities	25	62	2,091,860	648.84
Information	4	35	3,014,839	1,656.50
Financial Activities	24	93	3,074,711	635.80
Professional & Business Services	21	67	3,410,028	978.77
Education & Health Services	54	424	10,429,687	473.04
Leisure & Hospitality	24	253	2,767,704	210.38
Other Services	20	44	905,778	395.88
Local Government	10	796	25,155,231	607.73
State Government	8	58	1,655,824	549.01
<b>GREENE COUNTY - TOTAL</b>	<b>906</b>	<b>14,740</b>	<b>\$481,680,277</b>	<b>\$628.43</b>
Natural Resources & Mining	38	238	7,246,275	585.51
Construction	76	267	9,113,919	656.43
Manufacturing	60	4,922	205,253,315	801.95
Trade, Transportation & Utilities	233	2,455	67,430,215	528.20
Wholesale Trade	54	570	22,690,078	765.52
Retail Trade	150	1,668	37,428,370	431.52
Transportation, Warehousing & Utilities	29	217	7,311,767	647.98
Information	11	94	2,315,469	473.70
Financial Activities	81	479	18,394,950	738.52
Professional & Business Services	97	1,235	29,131,242	453.62
Education & Health Services	149	1,845	58,483,418	609.58
Leisure & Hospitality	72	1,036	13,058,119	242.39
Other Services	48	196	4,587,635	450.12
Local Government	30	1,583	51,924,063	630.79
State Government	11	390	14,741,657	726.91

TABLE 6. COUNTY SUMMARY CALENDAR YEAR 2012

NORTH AMERICAN INDUSTRY CLASSIFICATION SYSTEM - INDUSTRY GROUPS	AVERAGE EMPLOYING UNITS	AVERAGE COVERED EMPLOYMENT	TOTAL CALENDAR EARNINGS	AVERAGE WEEKLY EARNINGS
<b>HEMPSTEAD COUNTY - TOTAL</b>	<b>508</b>	<b>8,412</b>	<b>\$293,781,872</b>	<b>\$671.62</b>
Natural Resources & Mining	18	198	7,523,062	730.68
Construction	35	1,069	67,064,247	1,206.45
Manufacturing	30	1,782	61,149,708	659.91
Trade, Transportation & Utilities	133	1,505	51,325,740	655.84
Wholesale Trade	24	382	15,804,148	795.62
Retail Trade	83	867	18,736,441	415.59
Transportation, Warehousing & Utilities	26	256	16,785,151	1,260.90
Information	8	46	1,246,829	521.25
Financial Activities	42	232	9,031,384	748.62
Professional & Business Services	35	148	5,814,172	755.48
Education & Health Services	80	1,079	25,089,161	447.16
Leisure & Hospitality	44	594	7,297,628	236.26
Other Services	38	177	5,056,409	549.37
Local Government	29	878	29,840,525	653.59
State Government	16	704	23,343,007	637.65
<b>HOT SPRING COUNTY - TOTAL</b>	<b>594</b>	<b>8,391</b>	<b>\$264,730,894</b>	<b>\$606.72</b>
Natural Resources & Mining	24	151	4,440,193	565.49
Construction	63	359	13,460,417	721.04
Manufacturing	31	1,423	65,507,097	885.28
Trade, Transportation & Utilities	148	1,347	42,246,056	603.14
Wholesale Trade	15	72	3,329,756	889.36
Retail Trade	95	911	20,700,459	436.98
Transportation, Warehousing & Utilities	38	364	18,215,841	962.38
Information	7	49	1,772,445	695.62
Financial Activities	54	267	9,799,738	705.83
Professional & Business Services	47	1,027	24,493,247	458.64
Education & Health Services	95	1,177	34,113,537	557.37
Leisure & Hospitality	48	542	5,792,099	205.51
Other Services	37	152	3,432,846	434.32
Local Government	27	1,021	32,952,214	620.66
State Government	13	876	26,721,005	586.60

TABLE 6. COUNTY SUMMARY CALENDAR YEAR 2012

NORTH AMERICAN INDUSTRY CLASSIFICATION SYSTEM - INDUSTRY GROUPS	AVERAGE EMPLOYING UNITS	AVERAGE COVERED EMPLOYMENT	TOTAL CALENDAR EARNINGS	AVERAGE WEEKLY EARNINGS
<b>HOWARD COUNTY - TOTAL</b>	<b>360</b>	<b>7,156</b>	<b>\$197,338,611</b>	<b>\$530.32</b>
Natural Resources & Mining	18	239	7,142,353	574.70
Construction	19	116	4,151,392	688.23
Manufacturing	23	3,742	104,440,015	536.73
Trade, Transportation & Utilities	99	880	24,587,839	537.32
Wholesale Trade	19	70	2,710,599	744.67
Retail Trade	56	609	13,686,287	432.18
Transportation, Warehousing & Utilities	24	201	8,190,953	783.67
Information	5	32	753,418	452.78
Financial Activities	37	149	4,279,150	552.29
Professional & Business Services	27	149	3,882,190	501.06
Education & Health Services	58	640	17,753,135	533.45
Leisure & Hospitality	22	313	3,535,122	217.20
Other Services	24	113	2,749,415	467.91
Local Government	17	657	20,473,056	599.26
State Government	11	126	3,591,526	548.16
<b>INDEPENDENCE COUNTY - TOTAL</b>	<b>901</b>	<b>14,482</b>	<b>\$473,491,129</b>	<b>\$628.75</b>
Natural Resources & Mining	15	287	12,674,293	849.26
Construction	65	358	12,231,659	657.05
Manufacturing	44	3,067	121,124,906	759.48
Trade, Transportation & Utilities	232	2,785	84,777,473	585.40
Wholesale Trade	33	419	15,308,183	702.60
Retail Trade	152	1,653	37,399,584	435.10
Transportation, Warehousing & Utilities	47	713	32,069,706	864.97
Information	10	124	3,711,611	575.62
Financial Activities	78	475	19,351,145	783.45
Professional & Business Services	92	625	16,575,434	510.01
Education & Health Services	160	3,129	119,499,749	734.44
Leisure & Hospitality	75	1,088	12,905,133	228.10
Other Services	66	351	7,461,365	408.80
Local Government	47	1,572	42,835,104	524.02
State Government	17	621	20,343,257	629.98

TABLE 6. COUNTY SUMMARY CALENDAR YEAR 2012

NORTH AMERICAN INDUSTRY CLASSIFICATION SYSTEM - INDUSTRY GROUPS	AVERAGE EMPLOYING UNITS	AVERAGE COVERED EMPLOYMENT	TOTAL CALENDAR EARNINGS	AVERAGE WEEKLY EARNINGS
<b>IZARD COUNTY - TOTAL</b>	<b>256</b>	<b>3,099</b>	<b>\$88,965,251</b>	<b>\$552.07</b>
Natural Resources & Mining	5	146	5,998,964	790.17
Construction	25	146	6,805,141	896.36
Trade, Transportation & Utilities	67	555	13,605,616	471.44
Wholesale Trade	10	20	557,410	535.97
Retail Trade	45	403	8,333,314	397.66
Transportation, Warehousing & Utilities	12	132	4,714,892	686.90
Financial Activities	28	144	4,866,073	649.85
Professional & Business Services	16	83	1,979,480	458.64
Education & Health Services	42	603	15,300,985	487.98
Leisure & Hospitality	22	129	1,434,259	213.81
Local Government	18	513	14,414,492	540.35
State Government	10	481	15,072,290	602.60
Other	23	299	9,487,951	610.24
<b>JACKSON COUNTY - TOTAL</b>	<b>472</b>	<b>5,271</b>	<b>\$173,176,755</b>	<b>\$631.82</b>
Natural Resources & Mining	54	286	8,822,278	593.21
Construction	24	119	4,368,792	706.01
Manufacturing	17	912	41,226,229	869.31
Trade, Transportation & Utilities	113	1,054	31,726,446	578.87
Wholesale Trade	24	236	10,660,706	868.70
Retail Trade	72	716	16,962,152	455.58
Transportation, Warehousing & Utilities	17	102	4,103,588	773.68
Information	4	20	516,147	496.30
Financial Activities	36	153	6,166,066	775.02
Professional & Business Services	38	144	4,492,336	599.94
Education & Health Services	88	828	27,783,667	645.29
Leisure & Hospitality	29	280	3,236,046	222.26
Other Services	24	68	1,968,062	556.58
Local Government	32	662	17,822,511	517.74
State Government	13	745	25,048,175	646.57

TABLE 6. COUNTY SUMMARY CALENDAR YEAR 2012

NORTH AMERICAN INDUSTRY CLASSIFICATION SYSTEM - INDUSTRY GROUPS	AVERAGE EMPLOYING UNITS	AVERAGE COVERED EMPLOYMENT	TOTAL CALENDAR EARNINGS	AVERAGE WEEKLY EARNINGS
<b>JEFFERSON COUNTY - TOTAL</b>	<b>2,075</b>	<b>29,044</b>	<b>\$1,047,048,022</b>	<b>\$693.28</b>
Natural Resources & Mining	41	307	16,436,808	1,029.62
Construction	105	1,043	69,838,268	1,287.67
Manufacturing	64	5,521	237,906,549	828.68
Trade, Transportation & Utilities	436	5,180	175,575,867	651.83
Wholesale Trade	81	978	44,784,082	880.61
Retail Trade	288	3,243	80,096,302	474.97
Transportation, Warehousing & Utilities	67	959	50,695,483	1,016.59
Information	14	121	3,994,821	634.90
Financial Activities	152	1,120	48,359,021	830.34
Professional & Business Services	165	1,588	54,268,460	657.19
Education & Health Services	754	5,249	178,086,689	652.46
Leisure & Hospitality	135	1,889	23,049,508	234.65
Other Services	132	621	17,060,905	528.33
Local Government	40	3,050	99,951,915	630.21
State Government	37	3,355	122,519,211	702.28
<b>JOHNSON COUNTY - TOTAL</b>	<b>471</b>	<b>8,538</b>	<b>\$241,665,070</b>	<b>\$544.32</b>
Natural Resources & Mining	16	137	4,638,322	651.08
Construction	28	135	3,915,007	557.69
Manufacturing	34	3,149	83,650,012	510.85
Trade, Transportation & Utilities	115	1,942	56,824,826	562.71
Retail Trade	70	860	18,446,114	412.48
Other Trade, Transportation & Utilities	45	1,082	38,378,712	682.12
Information	5	36	949,906	507.43
Financial Activities	49	212	7,091,223	643.25
Professional & Business Services	50	152	4,851,045	613.75
Education & Health Services	84	1,162	37,031,780	612.87
Leisure & Hospitality	39	470	5,598,193	229.06
Other Services	28	74	1,682,794	437.32
Local Government	14	939	31,014,945	635.19
State Government	9	130	4,417,017	653.40

TABLE 6. COUNTY SUMMARY CALENDAR YEAR 2012

NORTH AMERICAN INDUSTRY CLASSIFICATION SYSTEM - INDUSTRY GROUPS	AVERAGE EMPLOYING UNITS	AVERAGE COVERED EMPLOYMENT	TOTAL CALENDAR EARNINGS	AVERAGE WEEKLY EARNINGS
<b>LAFAYETTE COUNTY - TOTAL</b>	<b>171</b>	<b>1,270</b>	<b>\$36,701,906</b>	<b>\$555.75</b>
Natural Resources & Mining	30	165	6,467,648	753.81
Construction	10	78	4,039,484	995.93
Manufacturing	6	28	1,037,044	712.26
Trade, Transportation & Utilities	35	208	5,220,822	482.69
Retail Trade	21	126	2,133,954	325.70
Other Trade, Transportation & Utilities	14	82	3,086,868	723.94
Financial Activities	15	52	1,480,853	547.65
Professional & Business Services	14	51	1,714,236	646.39
Education & Health Services	29	226	4,943,649	420.66
Leisure & Hospitality	5	45	546,232	233.43
Local Government	13	291	8,290,893	547.90
State Government	7	45	1,211,764	517.85
Other	7	81	1,749,281	415.31
<b>LAWRENCE COUNTY - TOTAL</b>	<b>400</b>	<b>4,020</b>	<b>\$112,870,035</b>	<b>\$539.94</b>
Natural Resources & Mining	42	187	5,818,455	598.36
Construction	25	111	3,548,079	614.71
Manufacturing	23	461	14,113,216	588.74
Trade, Transportation & Utilities	114	896	25,501,586	547.34
Wholesale Trade	21	214	8,042,572	722.73
Retail Trade	61	565	12,411,363	422.44
Transportation, Warehousing & Utilities	32	117	5,047,651	829.66
Financial Activities	30	142	4,400,976	596.02
Professional & Business Services	27	99	3,785,098	735.26
Education & Health Services	61	538	15,651,066	559.45
Leisure & Hospitality	22	274	2,954,096	207.33
Local Government	27	1,144	32,664,061	549.09
State Government	10	100	2,733,734	525.72
Other	19	68	1,699,668	480.68

TABLE 6. COUNTY SUMMARY CALENDAR YEAR 2012

NORTH AMERICAN INDUSTRY CLASSIFICATION SYSTEM - INDUSTRY GROUPS	AVERAGE EMPLOYING UNITS	AVERAGE COVERED EMPLOYMENT	TOTAL CALENDAR EARNINGS	AVERAGE WEEKLY EARNINGS
<b>LEE COUNTY - TOTAL</b>	<b>293</b>	<b>2,059</b>	<b>\$61,569,051</b>	<b>\$575.05</b>
Natural Resources & Mining	37	234	7,314,746	601.15
Construction	9	29	819,501	543.44
Trade, Transportation & Utilities	48	347	10,589,068	586.85
Wholesale Trade	8	79	3,674,378	894.44
Retail Trade	24	198	4,095,380	397.76
Transportation, Warehousing & Utilities	16	70	2,819,310	774.54
Financial Activities	16	71	2,549,711	690.60
Professional & Business Services	15	62	2,813,769	872.76
Education & Health Services	123	393	10,480,453	512.84
Leisure & Hospitality	9	85	1,007,773	228.00
Local Government	15	317	8,614,028	522.57
State Government	7	496	16,858,823	653.65
Other	14	25	521,179	400.91
<b>LINCOLN COUNTY - TOTAL</b>	<b>262</b>	<b>2,947</b>	<b>\$90,289,578</b>	<b>\$589.19</b>
Natural Resources & Mining	31	178	5,339,155	576.83
Construction	14	71	2,024,616	548.38
Manufacturing	8	324	10,188,901	604.75
Trade, Transportation & Utilities	46	358	12,516,152	672.33
Wholesale Trade	9	53	2,304,323	836.11
Retail Trade	24	176	3,120,286	340.94
Transportation, Warehousing & Utilities	13	129	7,091,543	1,057.18
Financial Activities	19	64	2,209,180	663.82
Professional & Business Services	13	32	999,363	600.58
Education & Health Services	82	394	9,151,124	446.66
Leisure & Hospitality	15	147	1,338,344	175.08
Local Government	7	348	10,697,325	591.14
State Government	12	998	34,927,546	673.03
Other	15	33	897,872	523.24

TABLE 6. COUNTY SUMMARY CALENDAR YEAR 2012

NORTH AMERICAN INDUSTRY CLASSIFICATION SYSTEM - INDUSTRY GROUPS	AVERAGE EMPLOYING UNITS	AVERAGE COVERED EMPLOYMENT	TOTAL CALENDAR EARNINGS	AVERAGE WEEKLY EARNINGS
<b>LITTLE RIVER COUNTY - TOTAL</b>	<b>236</b>	<b>3,774</b>	<b>\$176,783,080</b>	<b>\$900.81</b>
Natural Resources & Mining	12	85	2,998,441	678.38
Construction	19	386	19,327,296	962.90
Manufacturing	16	1,268	99,484,633	1,508.81
Trade, Transportation & Utilities	57	558	15,148,270	522.07
Wholesale Trade	9	28	1,427,452	980.39
Retail Trade	35	371	8,706,077	451.28
Transportation, Warehousing & Utilities	13	159	5,014,741	606.52
Financial Activities	21	84	2,583,734	591.51
Professional & Business Services	18	90	2,789,160	595.97
Education & Health Services	28	156	4,207,562	518.68
Leisure & Hospitality	15	203	2,526,829	239.37
Local Government	20	760	23,530,656	595.41
State Government	11	82	2,184,682	512.36
Other	19	102	2,001,817	377.42
<b>LOGAN COUNTY - TOTAL</b>	<b>479</b>	<b>5,541</b>	<b>\$163,274,893</b>	<b>\$566.67</b>
Natural Resources & Mining	20	189	11,297,507	1,149.52
Construction	45	247	9,023,015	702.51
Manufacturing	22	1,256	41,767,971	639.51
Trade, Transportation & Utilities	114	923	24,333,635	506.99
Wholesale Trade	13	71	1,137,060	307.98
Retail Trade	72	698	15,962,389	439.78
Transportation, Warehousing & Utilities	29	154	7,234,186	903.37
Information	6	39	1,473,602	726.63
Financial Activities	42	203	7,405,649	701.56
Professional & Business Services	47	115	3,090,318	516.78
Education & Health Services	92	763	20,930,892	527.55
Leisure & Hospitality	27	307	3,388,584	212.26
Other Services	28	129	3,786,905	564.54
Local Government	22	814	23,172,135	547.44
State Government	14	556	13,604,680	470.55



TABLE 6. COUNTY SUMMARY CALENDAR YEAR 2012

NORTH AMERICAN INDUSTRY CLASSIFICATION SYSTEM - INDUSTRY GROUPS	AVERAGE EMPLOYING UNITS	AVERAGE COVERED EMPLOYMENT	TOTAL CALENDAR EARNINGS	AVERAGE WEEKLY EARNINGS
<b>LONOKE COUNTY - TOTAL</b>	<b>1,285</b>	<b>13,022</b>	<b>\$392,305,267</b>	<b>\$579.35</b>
Natural Resources & Mining	78	478	18,168,164	730.94
Construction	139	760	28,377,511	718.05
Manufacturing	42	1,466	65,489,714	859.08
Trade, Transportation & Utilities	313	2,907	77,492,375	512.64
Wholesale Trade	76	383	17,531,385	880.27
Retail Trade	176	2,260	49,261,891	419.18
Transportation, Warehousing & Utilities	61	264	10,699,099	779.36
Information	15	96	3,737,412	748.68
Financial Activities	135	495	25,065,955	973.81
Professional & Business Services	153	654	21,140,278	621.63
Education & Health Services	192	1,643	42,957,440	502.80
Leisure & Hospitality	105	1,488	17,938,808	231.84
Other Services	73	214	4,957,212	445.47
Local Government	25	2,661	82,129,554	593.54
State Government	15	160	4,850,844	583.03
<b>MADISON COUNTY - TOTAL</b>	<b>234</b>	<b>3,137</b>	<b>\$90,634,298</b>	<b>\$555.62</b>
Natural Resources & Mining	9	29	947,029	628.00
Construction	26	83	4,859,645	1,125.96
Manufacturing	23	1,153	33,827,638	564.21
Trade, Transportation & Utilities	43	552	14,757,752	514.14
Retail Trade	31	438	9,709,081	426.29
Other Trade, Transportation & Utilities	12	114	5,048,671	851.67
Information	6	39	2,139,402	1,054.93
Financial Activities	15	66	2,170,516	632.43
Professional & Business Services	26	132	3,789,996	552.16
Education & Health Services	43	263	6,305,288	461.05
Leisure & Hospitality	13	164	1,993,360	233.74
Other Services	14	34	983,278	556.15
Local Government	9	584	17,659,360	581.51
State Government	7	38	1,201,034	607.81

TABLE 6. COUNTY SUMMARY CALENDAR YEAR 2012

NORTH AMERICAN INDUSTRY CLASSIFICATION SYSTEM - INDUSTRY GROUPS	AVERAGE EMPLOYING UNITS	AVERAGE COVERED EMPLOYMENT	TOTAL CALENDAR EARNINGS	AVERAGE WEEKLY EARNINGS
<b>MARION COUNTY - TOTAL</b>	<b>296</b>	<b>3,580</b>	<b>\$94,002,877</b>	<b>\$504.96</b>
Natural Resources & Mining	5	26	561,987	415.67
Construction	23	69	1,526,887	425.55
Manufacturing	20	1,534	42,118,746	528.02
Trade, Transportation & Utilities	55	508	12,227,778	462.89
Wholesale Trade	7	44	2,036,580	890.11
Retail Trade	38	433	8,956,168	397.77
Transportation, Warehousing & Utilities	10	31	1,235,030	766.15
Information	3	56	3,005,280	1,032.03
Financial Activities	35	191	6,263,587	630.65
Professional & Business Services	29	55	1,491,749	521.59
Education & Health Services	50	339	8,163,630	463.11
Leisure & Hospitality	36	185	2,035,094	211.55
Other Services	15	31	492,867	305.75
Local Government	18	511	14,385,230	541.37
State Government	7	75	1,730,042	443.60
<b>MILLER COUNTY - TOTAL</b>	<b>859</b>	<b>13,292</b>	<b>\$467,407,228</b>	<b>\$676.24</b>
Natural Resources & Mining	29	144	5,083,885	678.94
Construction	80	907	31,877,751	675.89
Manufacturing	28	2,368	143,182,724	1,162.80
Trade, Transportation & Utilities	230	3,490	119,262,168	657.16
Wholesale Trade	55	576	26,802,669	894.85
Retail Trade	131	1,365	31,111,205	438.31
Transportation, Warehousing & Utilities	44	1,549	61,348,294	761.64
Information	8	73	6,189,343	1,630.49
Financial Activities	84	374	13,664,058	702.59
Professional & Business Services	86	1,223	25,882,775	406.99
Education & Health Services	122	908	24,736,502	523.90
Leisure & Hospitality	90	1,337	18,958,348	272.69
Other Services	61	326	6,583,383	388.35
Local Government	25	1,640	52,989,161	621.36
State Government	16	502	18,997,130	727.75

TABLE 6. COUNTY SUMMARY CALENDAR YEAR 2012

NORTH AMERICAN INDUSTRY CLASSIFICATION SYSTEM - INDUSTRY GROUPS	AVERAGE EMPLOYING UNITS	AVERAGE COVERED EMPLOYMENT	TOTAL CALENDAR EARNINGS	AVERAGE WEEKLY EARNINGS
<b>MISSISSIPPI COUNTY - TOTAL</b>	<b>1,163</b>	<b>19,205</b>	<b>\$752,725,794</b>	<b>\$753.74</b>
Natural Resources & Mining	105	655	18,385,760	539.81
Construction	60	670	34,192,419	981.41
Manufacturing	54	6,926	390,795,528	1,085.08
Trade, Transportation & Utilities	295	3,111	104,449,141	645.66
Wholesale Trade	60	492	25,972,141	1,015.17
Retail Trade	177	1,876	39,602,334	405.96
Transportation, Warehousing & Utilities	58	743	38,874,666	1,006.18
Information	9	65	2,009,823	594.62
Financial Activities	93	509	16,861,201	637.04
Professional & Business Services	85	1,347	34,242,810	488.88
Education & Health Services	251	1,856	49,743,759	515.42
Leisure & Hospitality	82	1,106	13,145,629	228.57
Other Services	59	207	4,583,687	425.83
Local Government	48	2,150	65,480,382	585.69
State Government	22	603	18,835,655	600.70
<b>MONROE COUNTY - TOTAL</b>	<b>300</b>	<b>2,288</b>	<b>\$62,293,388</b>	<b>\$523.58</b>
Natural Resources & Mining	35	163	5,552,232	655.05
Construction	16	81	2,971,686	705.53
Manufacturing	7	127	4,331,046	655.82
Trade, Transportation & Utilities	81	671	20,715,997	593.72
Wholesale Trade	19	262	10,160,514	745.78
Retail Trade	39	292	6,471,801	426.23
Transportation, Warehousing & Utilities	23	117	4,083,682	671.22
Financial Activities	19	90	3,273,855	699.54
Professional & Business Services	14	37	829,087	430.92
Education & Health Services	56	324	7,232,389	429.27
Leisure & Hospitality	22	233	2,657,649	219.35
Local Government	22	349	9,535,248	525.42
State Government	8	118	3,218,701	524.56
Other	20	95	1,975,498	399.90

TABLE 6. COUNTY SUMMARY CALENDAR YEAR 2012

NORTH AMERICAN INDUSTRY CLASSIFICATION SYSTEM - INDUSTRY GROUPS	AVERAGE EMPLOYING UNITS	AVERAGE COVERED EMPLOYMENT	TOTAL CALENDAR EARNINGS	AVERAGE WEEKLY EARNINGS
<b>MONTGOMERY COUNTY - TOTAL</b>	<b>175</b>	<b>1,524</b>	<b>\$37,640,756</b>	<b>\$474.97</b>
Natural Resources & Mining	9	32	1,115,332	670.27
Construction	21	83	2,244,728	520.09
Trade, Transportation & Utilities	45	255	6,775,588	510.98
Wholesale Trade	13	70	2,285,342	627.84
Retail Trade	22	159	3,696,090	447.04
Transportation, Warehousing & Utilities	10	26	794,156	587.39
Financial Activities	10	64	2,039,674	612.88
Professional & Business Services	13	23	782,170	653.99
Education & Health Services	18	87	2,222,034	491.17
Leisure & Hospitality	21	299	4,942,319	317.87
Local Government	9	469	12,416,851	509.14
State Government	7	41	1,397,300	655.39
Other	22	171	3,704,760	416.64
<b>NEVADA COUNTY - TOTAL</b>	<b>187</b>	<b>2,343</b>	<b>\$77,600,994</b>	<b>\$636.93</b>
Natural Resources & Mining	9	35	1,058,927	581.83
Trade, Transportation & Utilities	39	511	15,962,786	600.74
Wholesale Trade	3	13	144,257	213.40
Retail Trade	25	279	5,732,513	395.13
Transportation, Warehousing & Utilities	11	219	10,086,016	885.67
Financial Activities	14	59	1,893,490	617.17
Professional & Business Services	12	53	1,508,796	547.46
Education & Health Services	35	422	9,818,718	447.44
Leisure & Hospitality	9	80	952,512	228.97
Local Government	27	391	9,685,040	476.34
State Government	10	74	2,103,428	546.63
Other	32	718	34,617,297	927.18

TABLE 6. COUNTY SUMMARY CALENDAR YEAR 2012

NORTH AMERICAN INDUSTRY CLASSIFICATION SYSTEM - INDUSTRY GROUPS	AVERAGE EMPLOYING UNITS	AVERAGE COVERED EMPLOYMENT	TOTAL CALENDAR EARNINGS	AVERAGE WEEKLY EARNINGS
<b>NEWTON COUNTY - TOTAL</b>	<b>127</b>	<b>1,036</b>	<b>\$23,406,691</b>	<b>\$434.49</b>
Construction	6	21	453,390	415.19
Manufacturing	10	49	1,416,061	555.75
Trade, Transportation & Utilities	30	162	3,756,534	445.93
Wholesale Trade	3	6	219,329	702.98
Retail Trade	14	102	1,725,661	325.35
Transportation, Warehousing & Utilities	13	54	1,811,544	645.14
Education & Health Services	31	238	4,347,577	351.29
Leisure & Hospitality	16	75	1,195,832	306.62
Local Government	13	357	9,185,071	494.78
State Government	6	93	1,800,824	372.38
Other	15	41	1,251,402	586.96
<b>OUACHITA COUNTY - TOTAL</b>	<b>638</b>	<b>7,077</b>	<b>\$209,027,127</b>	<b>\$568.00</b>
Natural Resources & Mining	40	201	6,502,789	622.16
Construction	41	203	6,596,578	624.91
Manufacturing	24	548	21,693,755	761.29
Trade, Transportation & Utilities	170	1,642	46,181,762	540.87
Wholesale Trade	27	239	10,865,052	874.24
Retail Trade	114	1,098	21,714,007	380.31
Transportation, Warehousing & Utilities	29	305	13,602,703	857.67
Information	7	48	1,545,337	619.13
Financial Activities	58	291	9,792,067	647.11
Professional & Business Services	48	455	14,360,641	606.96
Education & Health Services	129	1,248	37,549,556	578.61
Leisure & Hospitality	38	497	5,419,342	209.69
Other Services	39	138	3,313,052	461.69
Local Government	30	1,069	32,689,640	588.07
State Government	14	737	23,382,608	610.13

TABLE 6. COUNTY SUMMARY CALENDAR YEAR 2012

NORTH AMERICAN INDUSTRY CLASSIFICATION SYSTEM - INDUSTRY GROUPS	AVERAGE EMPLOYING UNITS	AVERAGE COVERED EMPLOYMENT	TOTAL CALENDAR EARNINGS	AVERAGE WEEKLY EARNINGS
<b>PERRY COUNTY - TOTAL</b>	<b>146</b>	<b>1,328</b>	<b>\$37,107,522</b>	<b>\$537.35</b>
Construction	17	98	3,285,668	644.75
Manufacturing	5	41	1,195,143	560.57
Trade, Transportation & Utilities	25	171	4,126,489	464.07
Retail Trade	14	139	2,339,297	323.64
Other Trade, Transportation & Utilities	11	32	1,787,192	1,074.03
Financial Activities	10	33	1,335,660	778.36
Professional & Business Services	13	36	1,762,538	941.53
Education & Health Services	31	248	5,792,253	449.15
Leisure & Hospitality	10	115	1,508,595	252.27
Local Government	11	389	9,805,567	484.75
State Government	8	59	1,387,837	452.36
Other	16	138	6,907,772	962.62
<b>PHILLIPS COUNTY - TOTAL</b>	<b>848</b>	<b>6,079</b>	<b>\$174,549,020</b>	<b>\$552.18</b>
Natural Resources & Mining	75	342	8,314,436	467.52
Construction	28	112	3,524,192	605.12
Manufacturing	11	368	12,898,183	674.03
Trade, Transportation & Utilities	162	1,426	44,638,254	601.98
Wholesale Trade	33	355	16,421,023	889.55
Retail Trade	86	777	17,254,609	427.05
Transportation, Warehousing & Utilities	43	294	10,962,622	717.07
Information	10	44	1,477,615	645.81
Financial Activities	40	212	7,304,219	662.57
Professional & Business Services	50	287	8,571,870	574.37
Education & Health Services	364	1,501	38,744,477	496.39
Leisure & Hospitality	32	309	3,795,173	236.19
Other Services	35	73	1,681,474	442.96
Local Government	27	894	28,860,348	620.81
State Government	14	511	14,738,779	554.67

TABLE 6. COUNTY SUMMARY CALENDAR YEAR 2012

NORTH AMERICAN INDUSTRY CLASSIFICATION SYSTEM - INDUSTRY GROUPS	AVERAGE EMPLOYING UNITS	AVERAGE COVERED EMPLOYMENT	TOTAL CALENDAR EARNINGS	AVERAGE WEEKLY EARNINGS
<b>PIKE COUNTY - TOTAL</b>	<b>249</b>	<b>2,233</b>	<b>\$58,780,536</b>	<b>\$506.22</b>
Natural Resources & Mining	26	115	3,944,639	659.64
Construction	15	47	1,117,875	457.40
Manufacturing	17	204	4,799,722	452.46
Trade, Transportation & Utilities	74	505	12,560,996	478.33
Wholesale Trade	10	103	3,095,790	578.00
Retail Trade	47	344	7,104,534	397.17
Transportation, Warehousing & Utilities	17	58	2,360,672	782.72
Information	5	25	1,158,512	891.16
Financial Activities	22	181	6,853,842	728.20
Professional & Business Services	11	36	2,702,357	1,443.57
Education & Health Services	19	266	6,040,480	436.70
Leisure & Hospitality	19	192	2,169,857	217.33
Other Services	21	72	1,832,859	489.55
Local Government	10	459	12,966,034	543.24
State Government	10	131	2,633,363	386.58
<b>POINSETT COUNTY - TOTAL</b>	<b>522</b>	<b>5,132</b>	<b>\$161,289,027</b>	<b>\$604.39</b>
Natural Resources & Mining	60	356	12,414,557	670.62
Construction	24	100	3,683,591	708.38
Manufacturing	22	664	23,824,892	690.02
Trade, Transportation & Utilities	127	1,280	42,111,848	632.69
Wholesale Trade	29	386	21,445,821	1,068.44
Retail Trade	69	712	14,465,809	390.71
Transportation, Warehousing & Utilities	29	182	6,200,218	655.14
Information	6	54	1,893,478	674.32
Financial Activities	38	261	11,213,809	826.25
Professional & Business Services	32	180	8,098,452	865.22
Education & Health Services	102	649	16,200,631	480.05
Leisure & Hospitality	43	353	4,001,874	218.01
Other Services	26	64	1,506,740	452.75
Local Government	31	1,039	32,158,882	595.23
State Government	11	132	4,180,273	609.01

TABLE 6. COUNTY SUMMARY CALENDAR YEAR 2012

NORTH AMERICAN INDUSTRY CLASSIFICATION SYSTEM - INDUSTRY GROUPS	AVERAGE EMPLOYING UNITS	AVERAGE COVERED EMPLOYMENT	TOTAL CALENDAR EARNINGS	AVERAGE WEEKLY EARNINGS
<b>POLK COUNTY - TOTAL</b>	<b>516</b>	<b>5,916</b>	<b>\$160,849,684</b>	<b>\$522.86</b>
Natural Resources & Mining	22	138	5,355,337	746.28
Construction	37	181	4,606,867	489.47
Manufacturing	35	1,235	40,704,695	633.83
Trade, Transportation & Utilities	134	1,189	27,263,725	440.96
Wholesale Trade	19	56	1,725,205	592.45
Retail Trade	78	847	16,540,079	375.54
Transportation, Warehousing & Utilities	37	286	8,998,441	605.06
Information	7	51	1,295,978	488.68
Financial Activities	44	238	8,322,229	672.45
Professional & Business Services	47	161	4,628,827	552.89
Education & Health Services	83	1,066	31,641,468	570.82
Leisure & Hospitality	42	492	5,224,420	204.21
Other Services	31	151	3,470,448	441.98
Local Government	21	724	21,010,473	558.08
State Government	13	290	7,325,217	485.76
<b>POPE COUNTY - TOTAL</b>	<b>1,758</b>	<b>25,796</b>	<b>\$862,954,336</b>	<b>\$643.33</b>
Natural Resources & Mining	36	621	20,881,894	646.66
Construction	163	1,299	55,052,246	815.01
Manufacturing	72	4,431	157,329,302	682.82
Trade, Transportation & Utilities	427	5,809	235,727,560	780.38
Wholesale Trade	92	621	26,509,940	820.94
Retail Trade	262	3,156	70,274,328	428.21
Transportation, Warehousing & Utilities	73	2,032	138,943,292	1,314.95
Information	24	214	8,062,961	724.57
Financial Activities	180	1,226	37,975,004	595.67
Professional & Business Services	258	2,586	82,701,317	615.01
Education & Health Services	299	3,019	95,864,723	610.65
Leisure & Hospitality	135	2,399	29,551,675	236.89
Other Services	106	424	10,579,769	479.85
Local Government	42	2,185	71,106,740	625.83
State Government	16	1,583	58,121,145	706.07



TABLE 6. COUNTY SUMMARY CALENDAR YEAR 2012

NORTH AMERICAN INDUSTRY CLASSIFICATION SYSTEM - INDUSTRY GROUPS	AVERAGE EMPLOYING UNITS	AVERAGE COVERED EMPLOYMENT	TOTAL CALENDAR EARNINGS	AVERAGE WEEKLY EARNINGS
<b>PRAIRIE COUNTY - TOTAL</b>	<b>246</b>	<b>1,384</b>	<b>\$40,921,861</b>	<b>\$568.61</b>
Natural Resources & Mining	34	145	5,533,182	733.84
Construction	14	98	4,765,616	935.17
Trade, Transportation & Utilities	61	312	8,811,302	543.10
Wholesale Trade	11	68	3,606,097	1,019.82
Retail Trade	34	183	3,085,547	324.25
Transportation, Warehousing & Utilities	16	61	2,119,658	668.24
Financial Activities	15	52	1,897,856	701.87
Professional & Business Services	14	50	1,362,345	523.98
Education & Health Services	45	207	5,036,463	467.90
Leisure & Hospitality	18	103	1,157,831	216.17
Local Government	15	315	9,604,558	586.36
State Government	9	41	1,216,475	570.58
Other	21	61	1,536,233	484.31
<b>PULASKI COUNTY - TOTAL</b>	<b>14,270</b>	<b>233,477</b>	<b>\$10,214,050,701</b>	<b>\$841.30</b>
Natural Resources & Mining	55	751	43,437,957	1,112.31
Construction	1,003	8,232	376,646,154	879.88
Manufacturing	361	12,897	667,043,870	994.63
Trade, Transportation & Utilities	3,241	47,244	1,880,904,484	765.63
Wholesale Trade	1,054	12,081	703,529,615	1,119.89
Retail Trade	1,780	24,744	652,221,358	506.90
Transportation, Warehousing & Utilities	407	10,419	525,153,511	969.30
Information	221	6,311	378,906,650	1,154.60
Financial Activities	1,714	15,612	1,005,986,202	1,239.17
Professional & Business Services	2,823	32,459	1,546,366,389	916.17
Education & Health Services	2,266	38,546	1,711,448,824	853.85
Leisure & Hospitality	1,142	21,212	340,953,254	309.11
Other Services	1,142	6,830	225,058,307	633.68
Local Government	102	15,681	644,129,172	789.94
State Government	200	27,702	1,393,169,438	967.14

TABLE 6. COUNTY SUMMARY CALENDAR YEAR 2012

NORTH AMERICAN INDUSTRY CLASSIFICATION SYSTEM - INDUSTRY GROUPS	AVERAGE EMPLOYING UNITS	AVERAGE COVERED EMPLOYMENT	TOTAL CALENDAR EARNINGS	AVERAGE WEEKLY EARNINGS
<b>RANDOLPH COUNTY - TOTAL</b>	<b>418</b>	<b>4,593</b>	<b>\$120,533,215</b>	<b>\$504.67</b>
Natural Resources & Mining	30	116	2,517,081	417.29
Construction	30	65	1,468,398	434.44
Manufacturing	31	578	17,234,917	573.43
Trade, Transportation & Utilities	101	897	23,479,327	503.37
Wholesale Trade	21	191	5,601,554	563.99
Retail Trade	60	566	12,405,404	421.49
Transportation, Warehousing & Utilities	20	140	5,472,369	751.70
Information	5	39	1,410,459	695.49
Financial Activities	29	124	3,675,580	570.03
Professional & Business Services	44	244	5,470,431	431.15
Education & Health Services	67	1,148	32,086,471	537.50
Leisure & Hospitality	27	338	3,884,547	221.01
Other Services	21	58	1,242,472	411.96
Local Government	22	715	18,124,306	487.47
State Government	11	271	9,939,226	705.31
<b>SAINT FRANCIS COUNTY - TOTAL</b>	<b>778</b>	<b>7,332</b>	<b>\$211,345,731</b>	<b>\$554.33</b>
Natural Resources & Mining	37	180	6,001,557	641.19
Construction	42	190	6,502,568	658.15
Manufacturing	10	682	23,239,686	655.30
Trade, Transportation & Utilities	165	2,004	57,653,573	553.25
Wholesale Trade	35	556	22,110,835	764.76
Retail Trade	107	1,150	24,165,900	404.11
Transportation, Warehousing & Utilities	23	298	11,376,838	734.18
Information	8	72	2,291,017	611.92
Financial Activities	63	296	9,507,091	617.66
Professional & Business Services	48	377	10,173,089	518.93
Education & Health Services	286	1,424	38,574,924	520.94
Leisure & Hospitality	47	570	6,876,126	231.99
Other Services	28	68	1,232,206	348.47
Local Government	28	952	31,935,637	645.11
State Government	16	517	17,358,257	645.67

TABLE 6. COUNTY SUMMARY CALENDAR YEAR 2012

NORTH AMERICAN INDUSTRY CLASSIFICATION SYSTEM - INDUSTRY GROUPS	AVERAGE EMPLOYING UNITS	AVERAGE COVERED EMPLOYMENT	TOTAL CALENDAR EARNINGS	AVERAGE WEEKLY EARNINGS
<b>SALINE COUNTY - TOTAL</b>	<b>1,836</b>	<b>21,273</b>	<b>\$667,297,733</b>	<b>\$603.24</b>
Natural Resources & Mining	12	39	1,868,131	921.17
Construction	267	1,734	65,506,918	726.50
Manufacturing	82	1,345	61,190,019	874.89
Trade, Transportation & Utilities	428	4,662	139,657,082	576.09
Wholesale Trade	119	526	24,888,471	909.93
Retail Trade	248	3,753	99,331,064	508.98
Transportation, Warehousing & Utilities	61	383	15,437,547	775.13
Information	11	78	3,304,610	814.75
Financial Activities	186	685	25,523,599	716.55
Professional & Business Services	253	1,395	49,587,886	683.59
Education & Health Services	246	3,352	105,181,518	603.44
Leisure & Hospitality	150	2,749	37,767,483	264.20
Other Services	154	700	18,001,917	494.56
Local Government	31	3,550	130,105,566	704.80
State Government	16	984	29,603,004	578.55
<b>SCOTT COUNTY - TOTAL</b>	<b>187</b>	<b>2,937</b>	<b>\$75,281,484</b>	<b>\$492.93</b>
Natural Resources & Mining	16	154	5,620,426	701.85
Trade, Transportation & Utilities	37	431	12,276,894	547.78
Wholesale Trade	9	72	3,518,449	939.76
Retail Trade	21	295	5,885,990	383.70
Transportation, Warehousing & Utilities	7	64	2,872,455	863.12
Financial Activities	22	71	1,837,053	497.58
Professional & Business Services	12	11	269,640	471.40
Education & Health Services	36	290	9,209,818	610.73
Leisure & Hospitality	18	149	2,036,865	262.89
Local Government	5	443	10,895,758	472.99
State Government	7	64	1,505,118	452.26
Other	34	1,324	31,629,912	459.42

TABLE 6. COUNTY SUMMARY CALENDAR YEAR 2012

NORTH AMERICAN INDUSTRY CLASSIFICATION SYSTEM - INDUSTRY GROUPS	AVERAGE EMPLOYING UNITS	AVERAGE COVERED EMPLOYMENT	TOTAL CALENDAR EARNINGS	AVERAGE WEEKLY EARNINGS
<b>SEARCY COUNTY - TOTAL</b>	<b>180</b>	<b>1,603</b>	<b>\$37,972,115</b>	<b>\$455.54</b>
Construction	7	14	441,794	606.86
Manufacturing	17	175	3,606,434	396.31
Trade, Transportation & Utilities	40	272	5,511,521	389.67
Wholesale Trade	7	54	1,158,312	412.50
Retail Trade	27	200	3,504,815	337.00
Transportation, Warehousing & Utilities	6	18	848,394	906.40
Information	4	7	227,029	623.71
Financial Activities	14	84	2,445,086	559.77
Professional & Business Services	11	24	540,019	432.71
Education & Health Services	46	351	8,037,576	440.37
Leisure & Hospitality	14	124	1,264,918	196.17
Local Government	10	343	9,093,181	509.82
State Government	7	118	2,464,517	401.65
Other	10	91	4,340,040	917.17
<b>SEBASTIAN COUNTY - TOTAL</b>	<b>3,766</b>	<b>64,453</b>	<b>\$2,453,571,050</b>	<b>\$732.07</b>
Natural Resources & Mining	61	1,467	106,806,830	1,400.12
Construction	282	2,271	89,763,379	760.11
Manufacturing	195	12,265	554,545,480	869.49
Trade, Transportation & Utilities	956	12,728	417,201,648	630.35
Wholesale Trade	247	2,711	127,272,939	902.82
Retail Trade	570	7,799	180,933,610	446.15
Transportation, Warehousing & Utilities	139	2,218	108,995,099	945.02
Information	51	1,007	50,400,952	962.51
Financial Activities	422	2,473	110,708,555	860.90
Professional & Business Services	593	8,193	320,827,186	753.05
Education & Health Services	553	10,829	448,427,518	796.34
Leisure & Hospitality	321	5,641	80,929,135	275.90
Other Services	270	1,327	34,607,344	501.53
Local Government	40	4,479	170,579,986	732.39
State Government	22	1,773	68,773,037	745.94

TABLE 6. COUNTY SUMMARY CALENDAR YEAR 2012

NORTH AMERICAN INDUSTRY CLASSIFICATION SYSTEM - INDUSTRY GROUPS	AVERAGE EMPLOYING UNITS	AVERAGE COVERED EMPLOYMENT	TOTAL CALENDAR EARNINGS	AVERAGE WEEKLY EARNINGS
<b>SEVIER COUNTY - TOTAL</b>	<b>327</b>	<b>4,876</b>	<b>\$131,405,455</b>	<b>\$518.26</b>
Natural Resources & Mining	15	168	5,938,816	679.81
Construction	20	129	5,577,493	831.47
Trade, Transportation & Utilities	99	818	21,003,577	493.78
Wholesale Trade	15	88	4,363,574	953.58
Retail Trade	66	658	13,544,495	395.85
Transportation, Warehousing & Utilities	18	72	3,095,508	826.79
Information	3	22	785,343	686.49
Financial Activities	29	219	7,362,396	646.50
Professional & Business Services	32	98	2,537,847	498.01
Education & Health Services	44	503	13,976,780	534.36
Leisure & Hospitality	26	253	2,814,157	213.91
Local Government	12	895	25,542,902	548.84
State Government	8	180	5,053,382	539.89
Other	39	1,591	40,812,762	493.31
<b>SHARP COUNTY - TOTAL</b>	<b>383</b>	<b>3,577</b>	<b>\$90,754,940</b>	<b>\$487.92</b>
Construction	22	116	3,986,640	660.92
Manufacturing	16	140	3,366,623	462.45
Trade, Transportation & Utilities	84	981	26,974,042	528.78
Wholesale Trade	13	38	819,897	414.93
Retail Trade	57	617	12,140,233	378.39
Transportation, Warehousing & Utilities	14	326	14,013,912	826.68
Information	6	48	2,149,148	861.04
Financial Activities	34	188	6,377,596	652.37
Professional & Business Services	41	142	4,351,690	589.34
Education & Health Services	85	669	16,707,514	480.27
Leisure & Hospitality	33	380	4,341,805	219.73
Local Government	25	725	18,533,045	491.59
State Government	8	94	2,299,077	470.35
Other	29	94	1667760	341.19

TABLE 6. COUNTY SUMMARY CALENDAR YEAR 2012

NORTH AMERICAN INDUSTRY CLASSIFICATION SYSTEM - INDUSTRY GROUPS	AVERAGE EMPLOYING UNITS	AVERAGE COVERED EMPLOYMENT	TOTAL CALENDAR EARNINGS	AVERAGE WEEKLY EARNINGS
<b>STONE COUNTY - TOTAL</b>	<b>284</b>	<b>2,512</b>	<b>\$60,133,879</b>	<b>\$460.36</b>
Natural Resources & Mining	5	28	257,597	176.92
Construction	22	52	1,195,537	442.14
Manufacturing	21	175	4,038,771	443.82
Trade, Transportation & Utilities	69	663	15,803,444	458.39
Wholesale Trade	9	41	1,219,457	571.98
Retail Trade	47	587	13,059,883	427.86
Transportation, Warehousing & Utilities	13	35	1,524,104	837.42
Financial Activities	28	103	2,263,991	422.70
Professional & Business Services	18	36	898,866	480.16
Education & Health Services	46	491	15,340,393	600.83
Leisure & Hospitality	34	336	3,723,975	213.14
Local Government	10	400	11,579,579	556.71
State Government	8	154	3,266,583	407.91
Other	23	74	1,765,143	458.72
<b>UNION COUNTY - TOTAL</b>	<b>1,338</b>	<b>17,361</b>	<b>\$736,495,416</b>	<b>\$815.82</b>
Natural Resources & Mining	102	603	30,189,898	962.81
Construction	80	1,304	66,396,748	979.19
Manufacturing	56	2,956	168,186,077	1,094.16
Trade, Transportation & Utilities	338	3,705	144,294,613	748.96
Wholesale Trade	69	747	50,160,637	1,291.34
Retail Trade	210	2,094	47,003,242	431.67
Transportation, Warehousing & Utilities	59	864	47,130,734	1,049.03
Information	12	138	4,096,126	570.81
Financial Activities	121	749	28,169,856	723.27
Professional & Business Services	140	1,472	111,483,715	1,456.47
Education & Health Services	242	2,407	83,189,852	664.65
Leisure & Hospitality	89	1,181	14,732,729	239.90
Other Services	107	493	11,781,786	459.58
Local Government	34	1,755	54,130,416	593.15
State Government	17	598	19,843,600	638.14

TABLE 6. COUNTY SUMMARY CALENDAR YEAR 2012

NORTH AMERICAN INDUSTRY CLASSIFICATION SYSTEM - INDUSTRY GROUPS	AVERAGE EMPLOYING UNITS	AVERAGE COVERED EMPLOYMENT	TOTAL CALENDAR EARNINGS	AVERAGE WEEKLY EARNINGS
<b>VAN BUREN COUNTY - TOTAL</b>	<b>362</b>	<b>3,793</b>	<b>\$121,033,555</b>	<b>\$613.65</b>
Natural Resources & Mining	15	211	13,304,029	1,212.54
Construction	41	200	6,677,799	642.10
Manufacturing	8	69	2,508,878	699.24
Trade, Transportation & Utilities	98	1,119	43,397,942	745.82
Wholesale Trade	8	35	1,343,464	738.17
Retail Trade	57	570	12,994,742	438.42
Transportation, Warehousing & Utilities	33	514	29,059,736	1,087.24
Information	9	47	1,735,155	709.97
Financial Activities	33	143	4,886,499	657.14
Professional & Business Services	30	113	2,896,379	492.92
Education & Health Services	59	682	17,644,027	497.52
Leisure & Hospitality	29	406	5,615,727	266.00
Other Services	22	66	1,779,572	518.52
Local Government	11	672	18,647,795	533.65
State Government	7	65	1,939,753	573.89
<b>WASHINGTON COUNTY - TOTAL</b>	<b>5,515</b>	<b>90,187</b>	<b>\$3,515,817,509</b>	<b>\$749.69</b>
Natural Resources & Mining	45	439	19,801,419	867.42
Construction	473	3,942	162,811,715	794.27
Manufacturing	215	12,130	458,234,026	726.48
Trade, Transportation & Utilities	1,348	20,869	755,097,031	695.82
Wholesale Trade	397	3,520	218,425,679	1,193.32
Retail Trade	768	10,771	270,911,223	483.69
Transportation, Warehousing & Utilities	183	6,578	265,760,129	776.95
Information	86	953	39,821,326	803.56
Financial Activities	594	3,244	151,913,298	900.56
Professional & Business Services	971	9,611	591,082,731	1,182.70
Education & Health Services	754	13,389	555,564,842	797.96
Leisure & Hospitality	572	10,480	144,331,770	264.85
Other Services	374	1,803	49,150,103	524.23
Local Government	61	7,631	295,074,964	743.61
State Government	22	5,696	292,934,284	989.00

TABLE 6. COUNTY SUMMARY CALENDAR YEAR 2012

NORTH AMERICAN INDUSTRY CLASSIFICATION SYSTEM - INDUSTRY GROUPS	AVERAGE EMPLOYING UNITS	AVERAGE COVERED EMPLOYMENT	TOTAL CALENDAR EARNINGS	AVERAGE WEEKLY EARNINGS
<b>WHITE COUNTY - TOTAL</b>	<b>1,826</b>	<b>25,357</b>	<b>\$889,522,114</b>	<b>\$674.61</b>
Natural Resources & Mining	57	1,487	95,335,814	1,232.94
Construction	181	1,110	39,319,618	681.21
Manufacturing	68	2,341	98,409,122	808.41
Trade, Transportation & Utilities	497	6,544	214,458,802	630.23
Wholesale Trade	100	663	27,207,594	789.17
Retail Trade	295	3,296	72,713,688	424.25
Transportation, Warehousing & Utilities	102	2,585	114,537,520	852.09
Information	21	165	4,948,250	576.72
Financial Activities	171	862	34,523,005	770.19
Professional & Business Services	214	1,567	45,468,179	558.00
Education & Health Services	285	5,006	202,922,030	779.53
Leisure & Hospitality	148	2,380	28,608,518	231.16
Other Services	119	544	17,155,878	606.47
Local Government	47	2,618	86,198,660	633.18
State Government	18	733	22,174,238	581.76
<b>WOODRUFF COUNTY - TOTAL</b>	<b>204</b>	<b>1,869</b>	<b>\$55,252,296</b>	<b>\$568.51</b>
Natural Resources & Mining	28	156	4,721,631	582.06
Construction	5	44	1,236,287	540.34
Manufacturing	7	278	9,179,152	634.97
Trade, Transportation & Utilities	47	415	14,063,010	651.67
Wholesale Trade	12	166	7,670,423	888.60
Retail Trade	26	183	3,249,618	341.49
Transportation, Warehousing & Utilities	9	66	3,142,969	915.78
Financial Activities	13	61	2,221,338	700.30
Education & Health Services	65	254	5,826,972	441.17
Leisure & Hospitality	7	60	704,106	225.68
Local Government	10	472	12,827,879	522.65
State Government	6	44	1,255,256	548.63
Other	16	85	3,216,665	727.75



TABLE 6. COUNTY SUMMARY CALENDAR YEAR 2012

NORTH AMERICAN INDUSTRY CLASSIFICATION SYSTEM - INDUSTRY GROUPS	AVERAGE EMPLOYING UNITS	AVERAGE COVERED EMPLOYMENT	TOTAL CALENDAR EARNINGS	AVERAGE WEEKLY EARNINGS
<b>YELL COUNTY - TOTAL</b>	<b>421</b>	<b>6,445</b>	<b>\$170,831,158</b>	<b>\$509.73</b>
Natural Resources & Mining	23	191	6,089,665	613.14
Construction	36	278	8,445,342	584.21
Manufacturing	20	2,457	63,184,043	494.54
Trade, Transportation & Utilities	83	732	18,520,734	486.57
Wholesale Trade	15	37	789,105	410.14
Retail Trade	48	502	9,404,918	360.29
Transportation, Warehousing & Utilities	20	193	8,326,711	829.68
Financial Activities	31	164	5,286,270	619.87
Professional & Business Services	41	210	6,081,776	556.94
Education & Health Services	101	742	17,831,708	462.15
Leisure & Hospitality	29	333	3,825,788	220.94
Local Government	27	1,128	35,286,483	601.58
State Government	12	104	2,545,411	470.68
Other	18	106	3,733,938	677.42
<b>STATEWIDE COUNTY - TOTAL</b>	<b>6,421</b>	<b>22,312</b>	<b>\$1,247,526,405</b>	<b>\$1,075.25</b>
Natural Resources & Mining	72	318	22,952,366	1,388.02
Construction	631	3,041	130,477,235	825.12
Manufacturing	42	240	10,628,493	851.64
Trade, Transportation & Utilities	2,301	6,355	507,286,375	1,535.09
Wholesale Trade	1,985	5,313	456,319,579	1,651.68
Retail Trade	119	303	19,328,192	1,226.72
Transportation, Warehousing & Utilities	197	739	31,638,604	823.32
Information	178	559	31,222,333	1,074.11
Financial Activities	388	1,136	78,284,549	1,325.24
Professional & Business Services	2,294	6,580	341,398,571	997.77
Education & Health Services	219	2,913	68,593,393	452.83
Leisure & Hospitality	68	74	3,457,427	898.50
Other Services	212	403	25,013,147	1,193.60
State Government	16	693	28,212,516	782.90

**TABLE 7. FEDERAL GOVERNMENT EMPLOYMENT AND EARNINGS IN ARKANSAS**

<b>NORTH AMERICAN INDUSTRY CLASSIFICATION SYSTEM - INDUSTRY GROUPS</b>	<b>AVERAGE EMPLOYING UNITS</b>	<b>AVERAGE COVERED EMPLOYMENT</b>	<b>TOTAL CALENDAR EARNINGS</b>	<b>AVERAGE WEEKLY EARNINGS</b>
<b>TOTAL</b>	<b>1,226</b>	<b>20,619</b>	<b>\$1,285,046,498</b>	<b>\$1,198.53</b>
Trade, Transportation & Utilities	602	5,698	280,295,857	946.00
Information	2	46	2,761,680	1,154.55
Financial Activities	18	132	10,339,724	1,506.37
Professional & Business Services	30	824	57,716,382	1,347.00
Education & Health Services	18	4,957	353,691,039	1,372.15
Leisure & Hospitality	22	322	12,404,234	740.82
Other Services	3	7	155,995	428.56
Public Administration	532	8,632	567,681,587	1,264.71

TABLE 8. WORKFORCE INVESTMENT AREA SUMMARY CALENDAR YEAR 2012

NORTH AMERICAN INDUSTRY CLASSIFICATION SYSTEM - INDUSTRY GROUPS	AVERAGE EMPLOYING UNITS	AVERAGE COVERED EMPLOYMENT	TOTAL CALENDAR EARNINGS	AVERAGE WEEKLY EARNINGS
<b>CENTRAL WORKFORCE INVESTMENT AREA</b>	<b>6,427</b>	<b>78,574</b>	<b>\$2,693,249,328</b>	<b>\$659.17</b>
Natural Resources & Mining	217	2,519	167,881,421	1,281.65
Construction	750	5,189	199,811,594	740.51
Trade, Transportation & Utilities	1,544	15,792	458,505,449	558.35
Wholesale Trade	396	2,166	101,749,800	903.38
Retail Trade	895	11,949	284,910,273	458.54
Transportation, Warehousing & Utilities	253	1,677	71,845,376	823.88
Information	62	607	24,668,231	781.53
Financial Activities	678	2,902	119,528,118	792.08
Professional & Business Services	835	8,261	386,260,730	899.18
Education & Health Services	942	11,389	364,104,361	614.80
Leisure & Hospitality	540	9,181	117,476,577	246.07
Local Government	131	10,228	355,489,431	668.39
State Government	66	4,547	162,776,837	688.44
Other	662	7,959	336,746,579	813.66

\*Note: Pulaski County is not included in the Central Workforce Investment. Please refer to Page 51 for information on Pulaski County.  
Central Workforce Includes these counties: Faulkner, Lonoke, Monroe, Prairie, and Saline.

<b>EASTERN WORKFORCE INVESTMENT AREA</b>	<b>3,730</b>	<b>36,515</b>	<b>\$1,112,765,327</b>	<b>\$586.04</b>
Natural Resources & Mining	234	1,234	36,332,216	566.20
Construction	148	757	25,316,611	643.14
Trade, Transportation & Utilities	825	9,470	307,776,397	625.00
Wholesale Trade	176	2,034	89,683,645	847.93
Retail Trade	453	4,793	110,702,220	444.17
Transportation, Warehousing & Utilities	196	2,643	107,390,532	781.39
Financial Activities	258	1,383	49,168,298	683.69
Professional & Business Services	275	2,178	62,299,740	550.08
Education & Health Services	1,255	6,582	185,900,042	543.15
Leisure & Hospitality	247	3,366	47,342,908	270.48
Local Government	129	5,018	174,179,724	667.52
State Government	61	2,390	76,250,207	613.54
Other	298	4,137	148,199,184	688.90

Eastern Workforce Includes these counties: Crittenden, Cross, Lee, Phillips, and Saint Francis.

TABLE 8. WORKFORCE INVESTMENT AREA SUMMARY CALENDAR YEAR 2012

NORTH AMERICAN INDUSTRY CLASSIFICATION SYSTEM - INDUSTRY GROUPS	AVERAGE EMPLOYING UNITS	AVERAGE COVERED EMPLOYMENT	TOTAL CALENDAR EARNINGS	AVERAGE WEEKLY EARNINGS
<b>NORTH CENTRAL WORKFORCE INVESTMENT AREA</b>	<b>5,551</b>	<b>68,932</b>	<b>\$2,212,694,999</b>	<b>\$617.30</b>
Construction	461	2,579	91,744,820	684.11
Trade, Transportation & Utilities	1,427	16,103	509,188,586	608.09
Retail Trade	887	9,161	202,804,968	425.73
Other Trade, Transportation & Utilities	540	6,942	306,383,618	848.75
Financial Activities	504	2,447	91,921,103	722.40
Education & Health Services	948	12,983	454,594,870	673.36
Leisure & Hospitality	466	6,145	73,917,864	231.33
Local Government	231	8,920	259,477,896	559.41
State Government	106	3,157	97,454,862	593.64
Other	1,408	16,598	634,394,998	735.02

North Central Workforce Includes these counties: Cleburne, Fulton, Independence, Izard, Jackson, Sharp, Stone, Van Buren, White, and Woodruff.

<b>NORTHEAST WORKFORCE INVESTMENT AREA</b>	<b>6,460</b>	<b>94,965</b>	<b>\$3,240,181,886</b>	<b>\$656.15</b>
Natural Resources & Mining	409	2,155	64,239,434	573.26
Construction	446	3,105	125,400,448	776.67
Manufacturing	319	19,996	915,117,849	880.10
Trade, Transportation & Utilities	1,711	18,620	568,683,578	587.34
Wholesale Trade	397	3,830	176,797,063	887.71
Retail Trade	1,006	11,928	269,010,050	433.71
Transportation, Warehousing & Utilities	308	2,862	122,876,465	825.65
Financial Activities	552	3,071	125,402,327	785.28
Professional & Business Services	673	7,205	205,682,444	548.98
Education & Health Services	1,123	15,002	549,086,142	703.86
Leisure & Hospitality	493	8,059	102,939,928	245.64
Local Government	217	11,108	351,016,960	607.70
State Government	99	4,296	166,936,124	747.28
Other	418	2,348	65,676,652	537.91

Northeast Workforce Includes these counties: Clay, Craighead, Greene, Lawrence, Mississippi, Poinsett, and Randolph.

TABLE 8. WORKFORCE INVESTMENT AREA SUMMARY CALENDAR YEAR 2012

NORTH AMERICAN INDUSTRY CLASSIFICATION SYSTEM - INDUSTRY GROUPS	AVERAGE EMPLOYING UNITS	AVERAGE COVERED EMPLOYMENT	TOTAL CALENDAR EARNINGS	AVERAGE WEEKLY EARNINGS
<b>NORTHWEST WORKFORCE INVESTMENT AREA</b>	<b>14,817</b>	<b>233,039</b>	<b>\$9,680,385,725</b>	<b>\$798.84</b>
Natural Resources & Mining	132	1,671	74,733,895	860.08
Trade, Transportation & Utilities	3,708	52,697	2,046,988,438	747.01
Retail Trade	2,026	27,019	660,972,377	470.45
Other Trade, Transportation & Utilities	1,682	25,678	1,386,016,061	1,038.02
Education & Health Services	2,053	29,484	1,119,681,396	730.31
Leisure & Hospitality	1,512	24,452	352,304,640	277.08
Local Government	310	21,003	767,478,423	702.72
State Government	107	8,402	378,392,059	866.08
Other	6,995	95,330	4,940,806,874	996.70

Northwest Workforce Includes these counties: Baxter, Benton, Boone, Carroll, Madison, Marion, Newton, Searcy, and Washington.

<b>SOUTHEAST WORKFORCE INVESTMENT AREA</b>	<b>5,890</b>	<b>71,439</b>	<b>\$2,418,436,938</b>	<b>\$651.02</b>
Natural Resources & Mining	400	2,523	90,139,976	687.06
Construction	324	2,738	134,637,214	945.65
Manufacturing	210	14,889	640,783,874	827.64
Trade, Transportation & Utilities	1,332	12,841	405,300,399	606.98
Retail Trade	794	7,963	180,578,528	436.10
Other Trade, Transportation & Utilities	538	4,878	224,721,871	885.93
Financial Activities	410	2,598	103,575,777	766.68
Education & Health Services	1,669	11,202	334,227,028	573.78
Local Government	204	9,379	291,333,017	597.35
State Government	137	6,282	216,778,979	663.61
Other	1,204	8,987	201,660,674	431.52

Southeast Workforce Includes these counties: Arkansas, Ashley, Bradley, Chicot, Cleveland, Desha, Drew, Grant, Jefferson, and Lincoln.

TABLE 8. WORKFORCE INVESTMENT AREA SUMMARY CALENDAR YEAR 2012

NORTH AMERICAN INDUSTRY CLASSIFICATION SYSTEM - INDUSTRY GROUPS	AVERAGE EMPLOYING UNITS	AVERAGE COVERED EMPLOYMENT	TOTAL CALENDAR EARNINGS	AVERAGE WEEKLY EARNINGS
<b>SOUTHWEST WORKFORCE INVESTMENT AREA</b>	<b>5,736</b>	<b>79,653</b>	<b>\$2,828,432,530</b>	<b>\$682.87</b>
Natural Resources & Mining	362	2,489	105,942,211	818.54
Trade, Transportation & Utilities	1460	15474	505,040,508	627.65
Retail Trade	904	8,873	192,477,609	417.16
Other Trade, Transportation & Utilities	556	6,601	312,562,899	910.59
Information	62	465	18,254,049	754.92
Financial Activities	510	2,728	98,219,604	692.39
Education & Health Services	999	9,550	267,918,787	539.51
Leisure & Hospitality	406	5,357	66,919,670	240.23
Other Services	409	1,913	42,405,266	426.29
Local Government	259	9,908	305,257,232	592.48
State Government	138	3,767	126,412,409	645.34
Other	1,131	28,002	1,292,062,794	887.34

Southwest Workforce Includes these counties: Calhoun, Columbia, Dallas, Hempstead, Howard, Lafayette, Little River, Miller, Nevada, Ouachita, Sevier, and Union

<b>WEST CENTRAL WORKFORCE INVESTMENT AREA</b>	<b>8,084</b>	<b>105,284</b>	<b>\$3,288,994,352</b>	<b>\$600.76</b>
Construction	770	4,615	168,804,843	703.41
Trade, Transportation & Utilities	1,896	21,159	679,910,072	617.95
Retail Trade	1,240	13,782	318,627,174	444.60
Other Trade, Transportation & Utilities	656	7,377	361,282,898	941.81
Financial Activities	823	4,070	147,272,831	695.86
Professional & Business Services	919	8,210	254,402,188	595.90
Education & Health Services	1,368	16,655	565,958,611	653.49
Leisure & Hospitality	758	12,057	167,696,521	267.47
Local Government	227	11,511	379,096,207	633.33
State Government	125	5,675	183,969,931	623.42
Other	1,198	21,332	741,883,148	668.81

West Central Workforce Includes these counties: Clark, Conway, Garland, Hot Spring, Johnson, Montgomery, Perry, Pike, Pope, and Yell

TABLE 8. WORKFORCE INVESTMENT AREA SUMMARY CALENDAR YEAR 2012

NORTH AMERICAN INDUSTRY CLASSIFICATION SYSTEM - INDUSTRY GROUPS	AVERAGE EMPLOYING UNITS	AVERAGE COVERED EMPLOYMENT	TOTAL CALENDAR EARNINGS	AVERAGE WEEKLY EARNINGS
<b>WESTERN WORKFORCE INVESTMENT AREA</b>	<b>6,583</b>	<b>102,189</b>	<b>\$3,609,513,788</b>	<b>\$679.27</b>
Natural Resources & Mining	163	2,548	161,865,360	1,221.66
Trade, Transportation & Utilities	1,648	22,248	706,281,703	610.50
Retail Trade	954	12,074	275,501,958	438.80
Other Trade, Transportation & Utilities	694	10,174	430,779,745	814.25
Financial Activities	685	3,726	153,752,051	793.55
Professional & Business Services	887	9,665	367,376,296	730.98
Education & Health Services	986	15,143	578,524,705	734.69
Leisure & Hospitality	529	8,387	114,680,236	262.95
Other Services	438	2,085	55,842,926	515.06
Local Government	151	9,274	319,744,268	663.03
State Government	75	2,925	100,099,604	658.12
Other	1,021	26,188	1,051,346,639	772.04

Western Workforce Includes these counties: Crawford, Franklin, Logan, Polk, Scott, and Sebastian