

# Arkansas Covered Employment & Earnings

First Quarter  
2011

Jobs for People. People for Jobs.

# DWS

Department of  
WORKFORCE**Services**





**COVERED EMPLOYMENT AND EARNINGS  
STATE OF ARKANSAS  
FIRST QUARTER 2011**

**MIKE BEEBE, GOVERNOR  
STATE OF ARKANSAS**

**ARTEE WILLIAMS, DIRECTOR  
DEPARTMENT OF WORKFORCE SERVICES**

**PUBLISHED BY  
LABOR MARKET INFORMATION & ANALYSIS  
BUREAU OF LABOR STATISTICS PROGRAMS  
POST OFFICE BOX 2981  
LITTLE ROCK, ARKANSAS 72203-2981  
BERNADETTE COLEMAN, BLS PROGRAMS MANAGER  
TELEPHONE (501) 682-3159  
SUSAN PRICE, QCEW LEAD ANALYST  
TELEPHONE (501) 682-3103**

**STATE OF ARKANSAS WEBPAGE: <http://www.arkansas.gov>**

**DEPARTMENT OF WORKFORCE SERVICES WEBPAGE: <http://www.arkansas.gov/esd/>**

**WEBPAGE FOR LABOR MARKET INFORMATION: <http://www.discover.arkansas.gov>**

**RELEASED: APRIL 2012**



## TABLE OF CONTENTS

DESCRIPTION OF DATA	PAGE
Industry Classification	1
Definition of Covered Employment and Earnings	2
Federal Government	2
County Classification	2
Significant Developments During First Quarter 2011	3

### LIST OF GRAPHS AND TABLES

Graph 1	Total Covered Employment for Selected Years, Arkansas	7
Graph 2	Total Covered Earnings, by Calendar Quarter for Selected Years, Arkansas	8
Table 1	Quarterly Comparison of Covered Employment and Wages, by Industry	5
Table 2	Total Covered Employment in Arkansas, 2004 – 2011	6
Table 3	Total Covered Earnings, 2004 – 2011	9
Table 4	Total Taxable Earnings, 2004 – 2011	10
Table 5	State Summary – Employment and Total Earnings, by Industry, First Quarter 2011	11
Table 6	County Summary – Employment and Total Earnings, by Industry, First Quarter 2011	25
Table 7	Federal Government Employment and Total Earnings in Arkansas, First Quarter 2011	63
Table 8	Workforce Information Area – Employment and Total Earnings, by Industry, First Quarter 2011	64



EMPLOYMENT AND EARNINGS  
UNDER THE ARKANSAS EMPLOYMENT SECURITY LAW  
FIRST QUARTER 2011

#### DESCRIPTION OF DATA

This publication contains covered employment and payroll data by industry and county for the First Quarter 2011. These data are compiled from quarterly contributions and wage reports submitted by employers subject to the Arkansas Employment Security Law. An employing unit is a single physical location where business is conducted, production takes place, or services are provided. Employment data have been tabulated for each month of the quarter by industry under the **North American Industry Classification System** (NAICS) (see "Industry Classification" below) on a statewide, county and workforce area basis. Payroll data represent the total wages paid during the quarter, and are also shown by industry for the State and

by publishable industry groups for each county and workforce area. The tabulation of this data is a joint effort in conjunction with the U.S. Bureau of Labor Statistics. In addition, there are tables included which set out total covered employment by months, quarterly payrolls, and average weekly earnings for the years 2004 through 2011. Data contained in this publication are subject to revisions. Revisions for a quarter are typically reflected in the specified year's Annual Covered Employment and Earnings publication. Industry codes changes between years could cause significant employment and wages shifts among industries.

#### INDUSTRY CLASSIFICATION

Previously published industry data will not be comparable in all instances with currently published data since industry codes have been revised. The last two revisions have occurred using the North American Industry Classification System (NAICS) which is a six digit industry code. Since 2001, NAICS codes are revised every five years. The most recent revision is NAICS 2012. These revisions are being incorporated in 2011 publications.

Auxiliary units are establishments primarily engaged in performing management of support services for other establishments of the same enterprise. The NAICS code is based on the actual activities that the establishment performs. Comparisons of many industries should

not be made between this publication and previous Covered Employment and Earnings publications that were based on previous coding revisions. A summary is available on the NAICS home page at <http://www.census.gov/naics>.



## DEFINITION OF COVERED EMPLOYMENT AND EARNINGS

Covered Employment is the number of workers employed by employers subject to the Arkansas Employment Security Law who worked or received pay for the payroll period including the 12<sup>th</sup> of the month. An employer is subject to the law when they employ one or more employees in each of ten days during the current or preceding calendar year.

Currently excluded from coverage is employment covered by the Railroad Unemployment Insurance Act, some domestic service workers, employees of small agricultural establishments, self-

employed and unpaid family workers, insurance and real estate agents who are on commission only, and employees of churches and religious organizations except separately incorporated school. The payroll information in this publication includes all wages and salaries paid to any covered employees by their employers including bonuses, commissions, and cash values of remuneration received in any medium other than cash. These wages include both taxable and nontaxable wages. Only the first \$12,000 paid to each worker by an employer in the calendar year is taxable under the Arkansas Employment Security Law.

## FEDERAL GOVERNMENT EMPLOYMENT

Table 7 on page 64 lists the total number of civilians employed by the Federal Government in Arkansas during the First Quarter 2011. Employment and wage data are set out by industry divisions.

These data are obtained from required reports submitted by various government agencies having employment in the State. Civilian Federal workers are covered by the Unemployment Compensation for Federal Employees (UCFE) program.

## COUNTY CLASSIFICATION

Employment and payroll data by county are classified according to the county where the workers are employed. Employers with operations in more than one county are requested to furnish this agency with a breakdown of employment and wages for at least one quarter of each year by the counties in which they operate. Many such employers submit county data with each regular contribution report. Note: This information is invaluable in the preparation of monthly employment and payroll data by county.

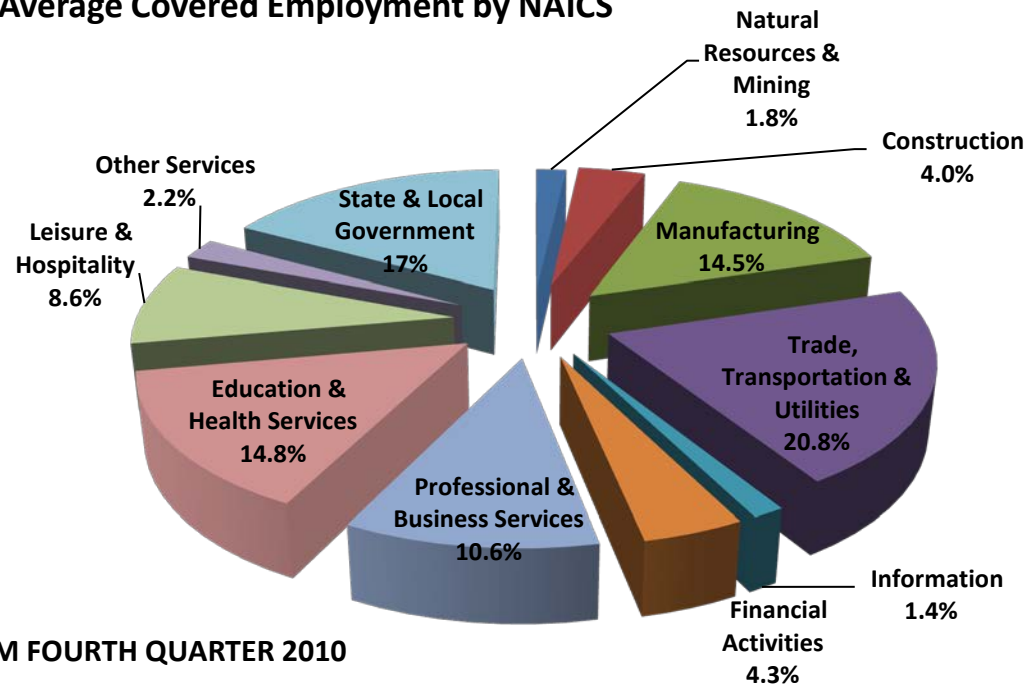
Employment and payroll data for multi-area employers, who do not furnish county data each quarter of the year, are prorated by county on the basis of one quarter's information. The "rest-of-state" table that appears on page 63 of this publication includes data on firms that did not provide a county breakdown of employment and payrolls. It also includes sales, and all other type of personnel with no permanent place of work, as well as employment of employers with no established place of business in Arkansas.

## SIGNIFICANT DEVELOPMENTS DURING FIRST QUARTER 2011

### AVERAGE EMPLOYMENT CHANGES

Covered employment averaged 1,103,285 during the First Quarter 2011 (see table 1), a decrease of 22,489 (-2.0%) from the previous quarter and an increase of 7,494 (0.7%) from the average recorded one-year ago. This over-the-year increase is more significant when used as an economic indicator. This over-the-year comparison allows for the disregarding of many seasonal factors that are evident when making an over-the-quarter comparison.

#### Average Covered Employment by NAICS



### EMPLOYMENT CHANGES FROM FOURTH QUARTER 2010

Compared to Fourth Quarter 2010, covered employment decreased in all major industry sectors. Trade, Transportation, and Utilities reported the largest drop (-6,390). Decreased employment in this industry is expected due to the fact that holiday help is no longer needed. Losses occurred in Construction (-3,825) this is generally due to weather conditions. State and Local Government (-3,320) also

experienced losses, caused mostly by fluctuations in public school employment.

Educational and Health Services posted the greatest yearly gain (2,837), while Professional and Business Services posted a gain of 2,691.

## EMPLOYMENT CHANGES FROM FIRST QUARTER 2010 (QUARTER YEAR AGO COMPARISON)

Over the year gains were recorded in seven industry groups while four recorded losses (see Table 1). The largest gains were posted in Trade, Transportation & Utilities (2,932), Education & Health Services (2,837), and Professional & Business Services (2,691), while significant losses occurred in Construction (-1,888), and Information (-420).

## COVERED WAGES

Wages paid to covered workers totaled \$10,134,035,254 for the First Quarter 2011 (see Table 1), for an average weekly wage of \$706.56 (see Table 5). Employees in Benton County recorded the highest average weekly wage (\$1,108.69), and workers in Newton County the lowest (\$391.38) (see Table 6).

The Professional & Business Services sector recorded the highest average weekly wage for the State of Arkansas at \$1,078.47; while Leisure and Hospitality sector recorded the lowest at \$252.24 for the State of Arkansas (see Table 5).

## Average Weekly Wage by Industry

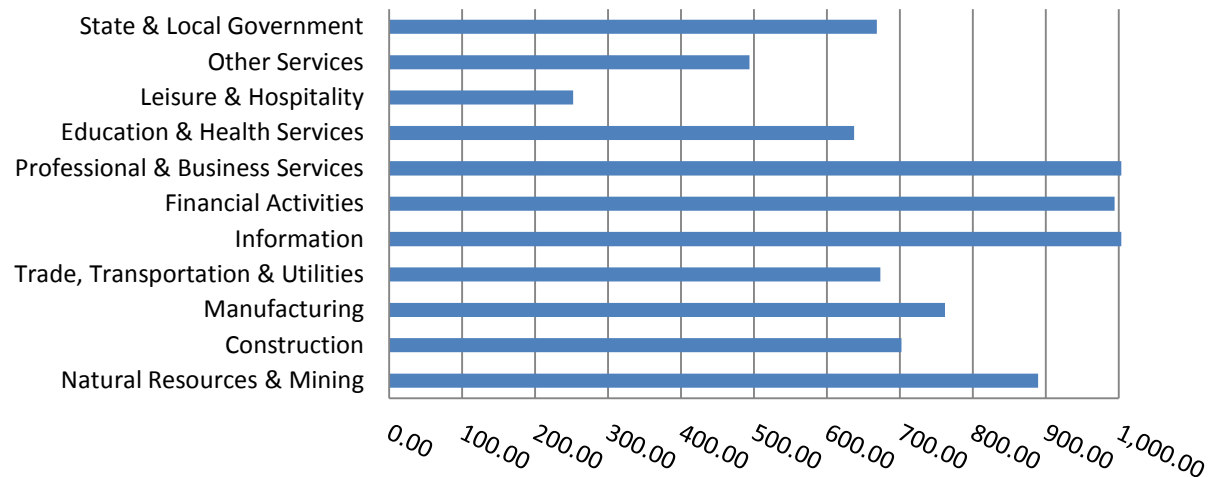


TABLE 1. QUARTERLY COMPARISON OF COVERED EMPLOYMENT AND WAGES, BY INDUSTRY

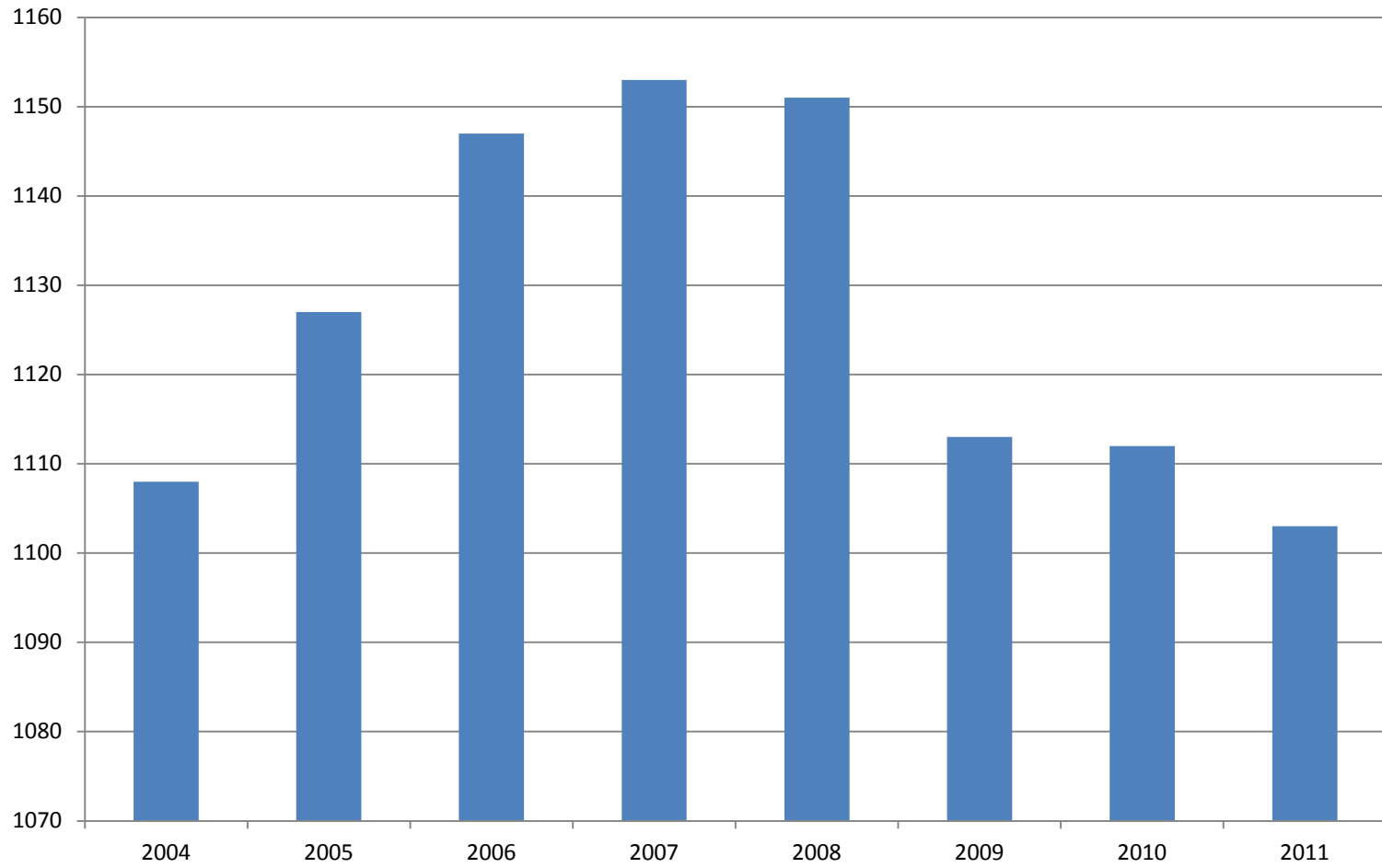
North American Industry Classification System	Number of Employing Units	Monthly Employment Average	Percent of Total	Net Change From:		Total Wages Paid Oct - Dec 2010	Percent of Total
				Oct - Dec 2010	Jan - Mar 2010		
<b>Total</b>	<b>84,062</b>	<b>1,103,285</b>	<b>100</b>	<b>-22,488</b>	<b>7,494</b>	<b>\$10,134,035,254</b>	<b>100</b>
<b>Natural Resources &amp; Mining</b>	2,499	19,788	1.8	-1,298	44	228,755,377	2.3
Agriculture, Forestry, Fishing & Hunting	1,966	11,129	1.0	-1,528	-615	83,298,288	0.8
Mining	533	8,659	0.8	231	630	145,457,089	1.4
<b>Construction</b>	6,895	44,291	4.0	-3,825	-1,888	404,206,640	4.0
<b>Manufacturing</b>	3,186	159,890	14.5	-377	1,807	1,583,493,109	15.6
<b>Trade, Transportation &amp; Utilities</b>	20,723	229,674	20.8	-6,390	2,932	2,010,645,990	19.8
Wholesale Trade	6,472	45,581	4.1	-1,236	12	650,731,909	6.4
Retail Trade	10,954	128,635	11.7	-4,345	2,155	731,971,693	7.2
Transportation & Warehousing	2,886	48,252	4.4	-685	841	489,140,656	4.8
Utilities	411	7,206	0.7	-123	-76	138,801,732	1.4
<b>Information</b>	1,108	14,993	1.4	-228	-420	202,321,529	2.0
<b>Financial Activities</b>	7,873	47,239	4.3	-705	-540	610,500,043	6.0
Finance & Insurance	4,664	34,435	3.1	-46	-79	513,912,184	5.1
Real Estate & Rental & Leasing	3,209	12,804	1.2	-659	-461	96,587,859	1.0
<b>Professional &amp; Business Services</b>	12,196	117,226	10.6	-2,053	2,691	1,643,518,180	16.2
Professional & Technical Services	7,608	39,277	3.6	701	519	518,020,946	5.1
Management of Companies & Enterprises	513	25,589	2.3	-582	-513	799,748,578	7.9
Administrative & Waste Services	4,075	52,360	4.7	-2,172	2,686	325,748,656	3.2
<b>Education &amp; Health Services</b>	14,744	163,372	14.8	-1,440	2,837	1,353,142,621	13.4
Educational Services	691	11,707	1.1	704	1,409	84,824,499	0.8
Health Care & Social Assistance	14,053	151,665	13.7	-2,144	1,427	1,268,318,122	12.5
<b>Leisure &amp; Hospitality</b>	6,391	95,010	8.6	-2,473	558	311,553,884	3.1
Arts, Entertainment & Recreation	914	8,443	0.8	-52	-123	34,998,009	0.3
Accommodation & Food Services	5,477	86,567	7.8	-2,421	681	276,555,875	2.7
<b>Other Services</b>	5,364	23,984	2.2	-379	22	153,946,132	1.5
<b>State &amp; Local Government</b>	3,083	187,818	17.0	-3,320	-549	1,631,951,749	16.1
Local Government	1,961	118,514	10.7	-2,399	-903	935,248,762	9.2
State Government	1,122	69,304	6.3	-921	354	696,702,987	6.9
<b>Nonclassifiable Establishments</b>	0	0	0.0	0	0	0	0.0

Note: Items do not necessarily add to totals because of rounding. Because of industry code changes between years, substantial employment and wage shifts among industries are anticipated.

TABLE 2. TOTAL COVERED EMPLOYMENT IN ARKANSAS

<b>Period</b>	<b>2004</b>	<b>2005</b>	<b>2006</b>	<b>2007</b>	<b>2008</b>	<b>2009</b>	<b>2010</b>	<b>2011</b>
<b>Average</b>	<b>1,108,264</b>	<b>1,126,778</b>	<b>1,146,948</b>	<b>1,152,994</b>	<b>1,150,965</b>	<b>1,112,591</b>	<b>1,110,947</b>	<b>1,103,285</b>
January	1,089,510	1,102,768	1,130,595	1,137,437	1,141,856	1,119,299	1,089,984	1,098,349
February	1,094,626	1,110,577	1,136,810	1,143,397	1,149,443	1,119,476	1,091,282	1,098,445
March	1,105,266	1,122,619	1,150,439	1,158,895	1,157,690	1,124,386	1,106,198	1,113,061
April	1,111,020	1,129,785	1,155,498	1,159,623	1,159,841	1,123,383	1,115,341	NA
May	1,117,144	1,135,567	1,159,886	1,165,224	1,166,111	1,122,322	1,123,250	NA
June	1,117,010	1,136,118	1,162,026	1,164,207	1,164,167	1,117,884	1,130,164	NA
July	1,071,463	1,090,071	1,106,142	1,110,571	1,114,279	1,071,048	1,073,743	NA
August	1,094,871	1,114,098	1,130,839	1,139,109	1,138,583	1,093,192	1,099,795	NA
September	1,122,704	1,144,815	1,159,814	1,165,135	1,162,333	1,116,580	1,124,281	NA
October	1,123,246	1,142,300	1,156,804	1,162,768	1,157,196	1,113,157	1,125,073	NA
November	1,125,061	1,145,667	1,156,011	1,164,246	1,152,159	1,115,443	1,126,781	NA
December	1,127,250	1,146,954	1,158,509	1,165,314	1,147,927	1,114,919	1,125,466	NA

### AVERAGE TOTAL COVERED EMPLOYMENT In Thousands



TOTAL COVERED EARNINGS BY CALENDAR YEAR  
In Thousands

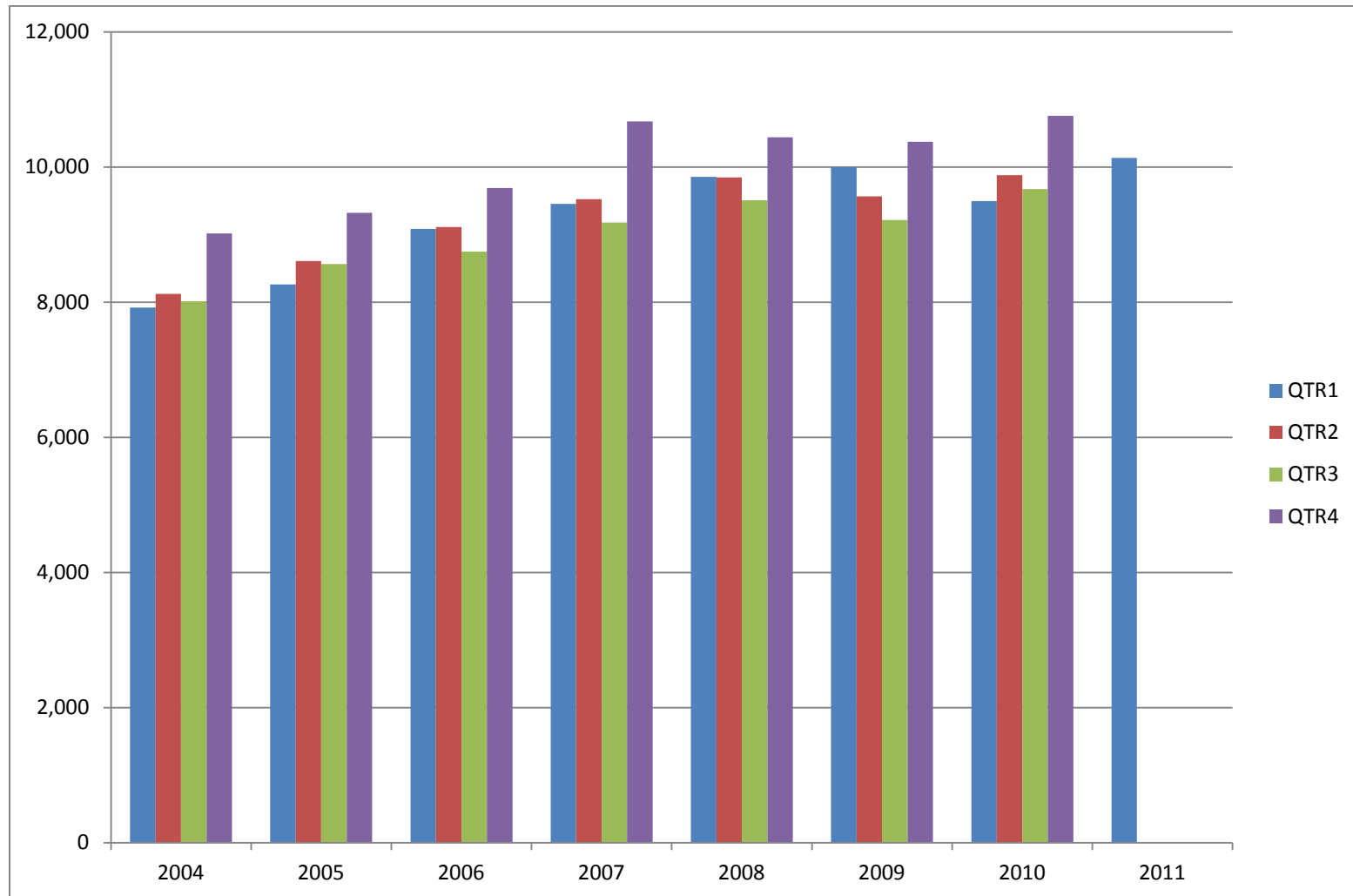


TABLE 3. TOTAL COVERED EARNINGS 2004 - 2011

<b>Period</b>	<b>2004</b>	<b>2005</b>	<b>2006</b>	<b>2007</b>
<b>Total</b>	<b>\$33,068,189,304</b>	<b>\$34,753,107,631</b>	<b>\$36,636,090,775</b>	<b>\$38,833,265,464</b>
January - March	7,918,843,610	8,261,153,981	9,085,021,816	9,452,711,662
April - June	8,122,370,361	8,607,722,353	9,112,624,590	9,525,837,049
July - September	8,010,300,454	8,562,555,369	8,750,878,205	9,178,902,477
October - December	9,016,674,879	9,321,675,928	9,687,566,164	10,675,814,276
<b>Average Weekly Earnings</b>	<b>\$573.80</b>	<b>\$593.13</b>	<b>\$614.27</b>	<b>\$647.70</b>

<b>Period</b>	<b>2008</b>	<b>2009</b>	<b>2010</b>	<b>2011</b>
<b>Total</b>	<b>\$39,643,039,342</b>	<b>\$39,149,476,305</b>	<b>\$39,769,504,992</b>	<b>\$10,134,035,254</b>
January - March	9,851,866,058	9,998,452,028	9,486,245,580	10,134,035,254
April - June	9,843,711,293	9,566,968,853	9,873,489,653	NA
July - September	9,509,150,631	9,213,797,140	9,653,588,807	NA
October - December	10,438,311,360	10,370,258,284	10,756,180,952	NA
<b>Average Weekly Earnings</b>	<b>\$662.37</b>	<b>\$676.65</b>	<b>\$677.30</b>	<b>\$706.56</b>



TABLE 4. TOTAL TAXABLE EARNINGS, 2004 - 2011

Period	2004	2005	2006	2007
<b>Total</b>	<b>9,731,247,501</b>	<b>9,991,605,239</b>	<b>10,197,511,360</b>	<b>10,459,105,059</b>
January - March	4,931,559,230	5,062,670,306	5,421,204,601	5,617,417,571
April - June	2,451,454,749	2,506,505,721	2,385,110,992	2,466,606,627
July - September	1,318,017,835	1,353,660,445	1,314,939,803	1,307,060,412
October - December	1,030,215,687	1,068,768,767	1,076,255,964	1,068,020,449

Period	2008	2009	2010	2011
<b>Total</b>	<b>10,360,487,108</b>	<b>9,787,660,886</b>	<b>11,332,118,456</b>	<b>5,828,877,821</b>
January - March	5,635,750,082	5,423,705,265	5,607,134,758	5,828,877,821
April - June	2,419,313,519	2,293,670,854	2,977,100,591	NA
July - September	1,297,473,555	1,165,280,065	1,577,067,770	NA
October - December	1,007,949,952	905,004,702	1,170,815,337	NA

TABLE 5. STATEWIDE SUMMARY

NORTH AMERICAN INDUSTRY CLASSIFICATION SYSTEM - INDUSTRY GROUPS		NUMBER OF EMPLOYING UNITS	EMPLOYMENT			TOTAL EARNINGS JAN - MAR 2011	AVERAGE WEEKLY EARNINGS
			JANUARY	FEBRUARY	MARCH		
<b>TOTAL, ALL INDUSTRIES</b>		<b>84,062</b>	<b>1,098,349</b>	<b>1,098,445</b>	<b>1,113,061</b>	<b>\$10,134,035,254</b>	<b>\$706.56</b>
<b>NATURAL RESOURCES &amp; MINING</b>		<b>2,499</b>	<b>19,301</b>	<b>19,688</b>	<b>20,374</b>	<b>\$228,755,377</b>	<b>\$889.27</b>
<b>11</b>	<b>AGRICULTURE, FORESTRY, FISHING &amp; HUNTING</b>	<b>1,966</b>	<b>10,692</b>	<b>11,074</b>	<b>11,620</b>	<b>\$83,298,288</b>	<b>\$575.77</b>
<b>111</b>	<b>CROP PRODUCTION</b>	<b>819</b>	<b>3,055</b>	<b>3,200</b>	<b>3,508</b>	<b>\$17,641,290</b>	<b>\$416.99</b>
1111	Oilseed & Grain Farming	504	1,824	1,845	1,986	10,505,589	428.71
1112	Vegetable & Melon Farming	10	75	80	87	328,624	313.37
1113	Fruit & Tree Nut Farming	10	52	71	75	301,657	351.58
1114	Greenhouse & Nursery Production	48	279	329	402	2,033,486	464.62
1119	Other Crop Farming	247	825	875	958	4,471,934	388.26
<b>112</b>	<b>ANIMAL PRODUCTION &amp; AQUACULTURE</b>	<b>279</b>	<b>2,771</b>	<b>2,766</b>	<b>2,797</b>	<b>\$25,250,108</b>	<b>\$699.18</b>
1121	Cattle Ranching & Farming	92	335	324	313	1,960,919	465.56
1122	Hog & Pig Farming	8	71	70	70	847,974	927.42
1123	Poultry & Egg Production	99	1,971	1,959	1,949	19,674,988	772.31
1125	Animal Aquaculture	58	331	356	408	2,379,906	501.56
1129	Other Animal Production	22	63	57	57	386,321	503.68
<b>113</b>	<b>FORESTRY &amp; LOGGING</b>	<b>428</b>	<b>2,232</b>	<b>2,178</b>	<b>2,198</b>	<b>\$17,627,576</b>	<b>\$615.60</b>
1131	Timber Tract Operations	38	187	183	182	2,224,322	929.90
1132	Forest Nurseries & Gathering of Forest Products	5	21	20	21	240,392	894.76
1133	Logging	385	2,024	1,975	1,995	15,162,862	583.77
	<b>OTHER</b>	<b>440</b>	<b>2,634</b>	<b>2,930</b>	<b>3,117</b>	<b>\$22,779,314</b>	<b>\$605.55</b>
<b>21</b>	<b>MINING</b>	<b>533</b>	<b>8,609</b>	<b>8,614</b>	<b>8,754</b>	<b>\$145,457,089</b>	<b>\$1,292.18</b>
<b>211</b>	<b>OIL &amp; GAS EXTRACTION</b>	<b>93</b>	<b>1,355</b>	<b>1,379</b>	<b>1,385</b>	<b>\$31,393,974</b>	<b>\$1,758.86</b>
<b>212</b>	<b>MINING (EXCEPT OIL &amp; GAS)</b>	<b>113</b>	<b>2,020</b>	<b>1,991</b>	<b>2,146</b>	<b>\$27,132,289</b>	<b>\$1,016.94</b>
<b>213</b>	<b>SUPPORT ACTIVITIES FOR MINING</b>	<b>327</b>	<b>5,234</b>	<b>5,244</b>	<b>5,223</b>	<b>\$86,930,826</b>	<b>\$1,277.69</b>

TABLE 5. STATEWIDE SUMMARY

NORTH AMERICAN INDUSTRY CLASSIFICATION SYSTEM - INDUSTRY GROUPS		NUMBER OF EMPLOYING UNITS	EMPLOYMENT			TOTAL EARNINGS JAN - MAR 2011	AVERAGE WEEKLY EARNINGS
			JANUARY	FEBRUARY	MARCH		
<b>CONSTRUCTION</b>		<b>6,895</b>	<b>43,720</b>	<b>43,635</b>	<b>45,517</b>	<b>\$404,206,640</b>	<b>\$702.02</b>
<b>236</b>	<b>CONSTRUCTION OF BUILDINGS</b>	<b>1,658</b>	<b>8,732</b>	<b>8,686</b>	<b>9,009</b>	<b>\$86,969,851</b>	<b>\$759.45</b>
2361	Residential Building Construction	1,098	2,591	2,452	2,570	18,656,787	565.53
2362	Nonresidential Building Construction	560	6,141	6,234	6,439	68,313,064	837.92
<b>237</b>	<b>HEAVY &amp; CIVIL ENGINEERING CONSTRUCTION</b>	<b>824</b>	<b>8,779</b>	<b>9,202</b>	<b>9,709</b>	<b>\$98,307,370</b>	<b>\$819.30</b>
2371	Utility System Construction	435	4,976	5,412	5,582	58,362,067	843.34
2372	L& Subdivision	92	302	283	288	2,606,338	688.96
2373	Highway, Street & Bridge Construction	205	2,348	2,340	2,640	21,379,570	673.27
2379	Other Heavy Construction	92	1,153	1,167	1,199	15,959,395	1,046.59
<b>238</b>	<b>SPECIALTY TRADE CONTRACTORS</b>	<b>4,413</b>	<b>26,209</b>	<b>25,747</b>	<b>26,799</b>	<b>\$218,929,419</b>	<b>\$641.51</b>
2381	Building Foundation & Exterior Contractors	839	4,741	4,707	5,031	36,099,661	575.36
2382	Building Equipment Contractors	2,006	13,867	13,675	13,866	127,703,462	711.70
2383	Building Finishing Contractors	802	3,723	3,625	3,760	26,858,067	557.98
2389	Other Specialty Trade Contractors	766	3,878	3,740	4,142	28,268,229	554.71
<b>MANUFACTURING</b>		<b>3,186</b>	<b>159,773</b>	<b>159,644</b>	<b>160,252</b>	<b>\$1,583,493,109</b>	<b>\$761.82</b>
<b>311</b>	<b>FOOD MANUFACTURING</b>	<b>285</b>	<b>45,590</b>	<b>45,344</b>	<b>45,036</b>	<b>\$335,570,708</b>	<b>\$569.53</b>
3111	Animal Food Manufacturing	49	1,679	1,669	1,653	15,396,037	710.44
3112	Grain & Oilseed Milling	30	2,309	2,323	2,334	21,479,476	711.57
3113	Sugar & Confectionery Product Manufacturing	6	38	32	32	215,797	488.23
3114	Fruit, Vegetable & Specialty Food	22	5,029	4,980	4,985	44,903,594	691.10
3115	Dairy Product Manufacturing	11	676	674	679	6,651,610	756.52
3116	Animal Slaughtering & Processing	84	31,138	30,965	30,636	202,418,363	503.69
3117	Seafood Product Preparation & Packaging	5	108	107	105	534,319	385.33
3118	Bakeries & Tortilla Manufacturing	55	2,971	2,959	2,973	26,156,417	677.98
3119	Other Food Manufacturing	23	1,642	1,635	1,639	17,815,095	836.28
<b>312</b>	<b>BEVERAGE &amp; TOBACCO PRODUCT MANUFACTURING</b>	<b>42</b>	<b>1,011</b>	<b>1,000</b>	<b>998</b>	<b>\$11,695,139</b>	<b>\$896.94</b>
<b>313</b>	<b>TEXTILE MILLS</b>	<b>14</b>	<b>84</b>	<b>87</b>	<b>89</b>	<b>\$856,994</b>	<b>\$760.65</b>

TABLE 5. STATEWIDE SUMMARY

NORTH AMERICAN INDUSTRY CLASSIFICATION SYSTEM - INDUSTRY GROUPS		NUMBER OF EMPLOYING UNITS	EMPLOYMENT			TOTAL EARNINGS JAN - MAR 2011	AVERAGE WEEKLY EARNINGS
			JANUARY	FEBRUARY	MARCH		
<b>314</b>	<b>TEXTILE PRODUCT MILLS</b>	<b>55</b>	<b>945</b>	<b>954</b>	<b>953</b>	<b>\$9,790,305</b>	<b>\$792.18</b>
3141	Textile Furnishing Mills	12	23	24	25	150,055	480.95
3149	Other Textile Product Mills	43	922	930	928	9,640,250	800.24
<b>315</b>	<b>APPAREL MANUFACTURING</b>	<b>25</b>	<b>1,236</b>	<b>1,170</b>	<b>1,174</b>	<b>\$6,291,012</b>	<b>\$405.52</b>
<b>316</b>	<b>LEATHER &amp; ALLIED PRODUCT MANUFACTURING</b>	<b>18</b>	<b>1,235</b>	<b>1,244</b>	<b>1,266</b>	<b>\$6,690,159</b>	<b>\$412.25</b>
<b>321</b>	<b>WOOD PRODUCT MANUFACTURING</b>	<b>338</b>	<b>9,116</b>	<b>9,116</b>	<b>9,183</b>	<b>\$76,307,235</b>	<b>\$642.33</b>
3211	Sawmills & Wood Preservation	135	4,028	4,005	3,984	34,629,590	665.01
3212	Veneer & Engineered Wood Products	54	2,560	2,530	2,554	24,674,479	744.91
3219	Other Wood Product Manufacturing	149	2,528	2,581	2,645	17,003,166	506.04
<b>322</b>	<b>PAPER MANUFACTURING</b>	<b>83</b>	<b>10,408</b>	<b>10,377</b>	<b>10,399</b>	<b>\$157,651,408</b>	<b>\$1,166.66</b>
3221	Pulp, Paper & Paperboard Mills	13	4,295	4,284	4,279	86,488,318	1,552.25
3222	Converted Paper Product Manufacturing	70	6,113	6,093	6,120	71,163,090	896.12
<b>323</b>	<b>PRINTING &amp; RELATED SUPPORT ACTIVITIES</b>	<b>257</b>	<b>5,449</b>	<b>5,392</b>	<b>5,419</b>	<b>\$48,703,426</b>	<b>\$691.22</b>
<b>324</b>	<b>PETROLEUM &amp; COAL PRODUCTS MANUFACTURING</b>	<b>18</b>	<b>924</b>	<b>916</b>	<b>946</b>	<b>\$11,761,043</b>	<b>\$974.19</b>
<b>325</b>	<b>CHEMICAL MANUFACTURING</b>	<b>120</b>	<b>4,788</b>	<b>4,831</b>	<b>4,828</b>	<b>\$64,758,929</b>	<b>\$1,034.43</b>
3251	Basic Chemical Manufacturing	29	1,724	1,734	1,729	26,417,550	1,175.31
3252	Resin, Rubber & Artificial Fibers	7	263	262	261	3,764,060	1,105.13
3253	Agricultural Chemical Manufacturing	19	366	364	373	5,400,246	1,129.84
3254	Pharmaceutical & Medicine Manufacturing	11	166	166	164	1,818,781	846.21
3255	Paint, Coating & Adhesive Manufacturing	9	187	186	187	2,874,120	1,184.39
3256	Soap, Cleaning Compound, & Toilet Preparation Manufacturing	13	966	993	984	11,391,255	893.22
3259	Other Chemical Preparation Manufacturing	32	1,116	1,126	1,130	13,092,917	896.04
<b>326</b>	<b>PLASTICS &amp; RUBBER PRODUCTS MANUFACTURING</b>	<b>143</b>	<b>10,306</b>	<b>10,336</b>	<b>10,564</b>	<b>\$108,802,166</b>	<b>\$804.60</b>
3261	Plastics Product Manufacturing	100	6,438	6,437	6,549	60,427,574	717.92
3262	Rubber Product Manufacturing	43	3,868	3,899	4,015	48,374,592	947.49

TABLE 5. STATEWIDE SUMMARY

NORTH AMERICAN INDUSTRY CLASSIFICATION SYSTEM - INDUSTRY GROUPS		NUMBER OF EMPLOYING UNITS	JANUARY	EMPLOYMENT FEBRUARY	MARCH	TOTAL EARNINGS JAN - MAR 2011	AVERAGE WEEKLY EARNINGS
<b>327</b>	<b>NONMETALLIC MINERAL PRODUCT MANUFACTURING</b>	<b>255</b>	<b>3,307</b>	<b>3,235</b>	<b>3,348</b>	<b>\$32,180,767</b>	<b>\$750.89</b>
3271	Clay Product & Refractory Manufacturing	14	333	330	337	3,354,416	774.10
3272	Glass & Glass Product Manufacturing	16	366	367	374	3,191,701	665.35
3273	Cement & Concrete Product Manufacturing	182	1,874	1,801	1,898	16,305,735	675.20
3274	Lime & Gypsum Product Manufacturing	5	211	212	208	2,891,398	1,057.44
3279	Other Nonmetallic Mineral Products Manufacturing	38	523	525	531	6,437,517	940.84
<b>331</b>	<b>PRIMARY METAL MANUFACTURING</b>	<b>71</b>	<b>8,542</b>	<b>8,615</b>	<b>8,574</b>	<b>\$125,504,607</b>	<b>\$1,125.59</b>
3311	Iron & Steel Mills & Ferroalloys	9	2,297	2,298	2,297	52,469,175	1,756.86
3312	Purchased Steel Product Manufacturing	17	2,565	2,596	2,550	31,543,647	944.02
3313	Alumina & Aluminum Production	20	1,456	1,452	1,447	18,305,578	970.00
3314	Other Nonferrous Metal Production	8	723	746	754	7,039,417	730.76
3315	Foundries	17	1,501	1,523	1,526	16,146,790	818.94
<b>332</b>	<b>FABRICATED METAL PRODUCT MANUFACTURING</b>	<b>537</b>	<b>13,827</b>	<b>13,842</b>	<b>13,812</b>	<b>\$143,318,816</b>	<b>\$797.32</b>
3321	Forging & Stamping	13	443	446	441	4,744,921	823.29
3322	Cutlery & H& Tool Manufacturing	16	1,000	999	974	8,635,506	670.30
3323	Architectural & Structural Metals	163	3,520	3,545	3,554	36,354,032	790.04
3324	Boilers, Tanks & Shipping Containers	19	572	572	569	7,639,581	1,029.18
3325	Hardware Manufacturing	8	366	358	358	3,978,348	848.50
3326	Spring & Wire Product Manufacturing	15	465	445	448	4,484,973	762.15
3327	Machine Shops & Threaded Products	203	1,683	1,680	1,677	14,449,612	661.61
3328	Coating, Engraving & Heat Treating Metals	37	560	542	548	4,317,357	603.83
3329	Other Fabricated Metal Product Manufacturing	63	5,218	5,255	5,243	58,714,486	862.15
<b>333</b>	<b>MACHINERY MANUFACTURING</b>	<b>222</b>	<b>11,245</b>	<b>11,498</b>	<b>11,981</b>	<b>\$112,902,263</b>	<b>\$750.33</b>
3331	Agriculture, Construction & Mining Machinery	39	2,831	2,881	3,158	24,136,131	627.95
3332	Industrial Machinery Manufacturing	30	550	557	573	6,794,640	933.33
3333	Commercial & Service Industry Machinery	21	856	869	870	9,457,221	841.02
3334	HVAC & Commercial Refrigeration Equipment	18	3,562	3,721	3,855	36,316,026	752.44
3335	Metalworking Machinery Manufacturing	63	992	990	1,009	10,512,385	811.08
3336	Turbine & Power Transmission Equipment Manufacturing	7	636	639	653	6,467,394	774.11
3339	Other General Purpose Machinery Manufacturing	44	1,818	1,841	1,863	19,218,466	803.16

TABLE 5. STATEWIDE SUMMARY

NORTH AMERICAN INDUSTRY CLASSIFICATION SYSTEM - INDUSTRY GROUPS		NUMBER OF EMPLOYING UNITS	JANUARY	EMPLOYMENT FEBRUARY	MARCH	TOTAL EARNINGS JAN - MAR 2011	AVERAGE WEEKLY EARNINGS
<b>334</b>	<b>COMPUTER &amp; ELECTRONIC PRODUCT MANUFACTURING</b>	<b>68</b>	<b>3,139</b>	<b>3,080</b>	<b>3,095</b>	<b>\$28,219,048</b>	<b>\$699.17</b>
3342	Communications Equipment Manufacturing	8	109	111	118	1,667,337	1,138.37
3343	Audio & Video Equipment Manufacturing	7	566	553	562	4,410,248	605.44
3344	Semiconductors & Electronic Components	27	1,938	1,904	1,921	16,742,620	670.43
3345	Electronic Instrument Manufacturing	23	512	498	480	5,305,559	821.72
	Other	3	14	14	14	93,284	512.55
<b>335</b>	<b>ELECTRICAL EQUIPMENT &amp; APPLIANCES</b>	<b>58</b>	<b>7,688</b>	<b>7,623</b>	<b>7,528</b>	<b>\$106,165,498</b>	<b>\$1,072.71</b>
3353	Electrical Equipment Manufacturing	20	3,904	3,884	3,826	74,043,105	1,471.23
3359	Other Electrical Equipment & Component Manufacturing	23	1,688	1,696	1,714	17,957,135	812.86
	Other	15	2,096	2,043	1,988	14,165,258	533.52
<b>336</b>	<b>TRANSPORTATION EQUIPMENT MANUFACTURING</b>	<b>160</b>	<b>12,819</b>	<b>12,889</b>	<b>12,911</b>	<b>\$128,508,596</b>	<b>\$767.91</b>
3362	Motor Vehicle Body & Trailer Manufacturing	35	1,564	1,561	1,550	12,449,890	614.56
3363	Motor Vehicle Parts Manufacturing	56	5,864	5,909	5,922	54,590,537	711.94
3364	Aerospace Product & Parts Manufacturing	29	3,329	3,327	3,296	43,560,831	1,010.10
3366	Ship & Boat Building	26	1,262	1,288	1,320	10,006,705	596.70
	Other	14	800	804	823	7,900,633	751.22
<b>337</b>	<b>FURNITURE &amp; RELATED PRODUCT MANUFACTURING</b>	<b>205</b>	<b>3,873</b>	<b>3,786</b>	<b>3,820</b>	<b>\$31,438,315</b>	<b>\$632.02</b>
3371	Household & Institutional Furniture	167	2,654	2,639	2,641	18,800,154	546.82
3372	Office Furniture & Fixtures Manufacturing	29	1,119	1,045	1,075	11,865,549	845.39
3379	Other Furniture Related Product Manufacturing	9	100	102	104	772,612	582.66
<b>339</b>	<b>MISCELLANEOUS MANUFACTURING</b>	<b>212</b>	<b>4,241</b>	<b>4,309</b>	<b>4,328</b>	<b>\$36,376,675</b>	<b>\$651.86</b>
3391	Medical Equipment & Supplies Manufacturing	89	2,344	2,384	2,384	23,446,821	760.80
3399	Other Miscellaneous Manufacturing	123	1,897	1,925	1,944	12,929,854	517.48

TABLE 5. STATEWIDE SUMMARY

NORTH AMERICAN INDUSTRY CLASSIFICATION SYSTEM - INDUSTRY GROUPS		NUMBER OF EMPLOYING UNITS	EMPLOYMENT			TOTAL EARNINGS JAN - MAR 2011	AVERAGE WEEKLY EARNINGS
			JANUARY	FEBRUARY	MARCH		
<b>TRADE, TRANSPORTATION &amp; UTILITIES</b>		<b>20,723</b>	<b>230,424</b>	<b>228,036</b>	<b>230,563</b>	<b>\$2,010,645,990</b>	<b>\$673.41</b>
<b>42</b>	<b>WHOLESALE TRADE</b>	<b>6,472</b>	<b>45,487</b>	<b>45,411</b>	<b>45,846</b>	<b>\$650,731,909</b>	<b>\$1,098.18</b>
<b>423</b>	<b>MERCHANT WHOLESALERS, DURABLE GOODS</b>	<b>2,186</b>	<b>20,401</b>	<b>20,265</b>	<b>20,421</b>	<b>\$250,353,763</b>	<b>\$945.76</b>
4231	Motor Vehicle & Part Merchant Wholesalers	248	2,470	2,464	2,489	23,291,765	724.10
4232	Furniture & Furnishings Merchant Wholesalers	57	357	363	371	4,353,064	920.76
4233	Lumber & Supply Merchant Wholesalers	184	1,393	1,362	1,375	13,186,816	736.83
4234	Commercial Goods Merchant Wholesalers	306	2,785	2,745	2,746	42,899,130	1,196.21
4235	Metal & Mineral Merchant Wholesalers	54	809	821	837	10,999,689	1,028.94
4236	Appliances & Electronics Goods Merchant Wholesalers	188	1,994	1,967	1,985	29,128,387	1,130.50
4237	Hardware & Plumbing Merchant Wholesalers	224	2,135	2,124	2,089	29,950,693	1,088.80
4238	Machinery & Supply Merchant Wholesalers	705	6,548	6,508	6,585	74,813,561	879.01
4239	Miscellaneous Durable Goods Merchant Wholesalers	220	1,910	1,911	1,944	21,730,658	869.86
<b>424</b>	<b>MERCHANT WHOLESALERS, NONDURABLE GOODS</b>	<b>1,209</b>	<b>15,454</b>	<b>15,441</b>	<b>15,661</b>	<b>\$189,360,756</b>	<b>\$938.63</b>
4241	Paper & Paper Product Merchant Wholesalers	72	1,080	1,069	1,044	15,465,530	1,117.75
4242	Druggist' Goods Merchant Wholesalers	66	955	971	965	11,789,636	941.09
4243	Apparel & Piece Goods Merchant Wholesalers	42	532	519	531	4,737,234	691.03
4244	Grocery Product Merchant Wholesalers	317	5,284	5,270	5,247	68,528,143	1,000.83
4245	Farm Product Merchant Wholesalers	75	831	827	820	6,214,109	578.70
4246	Chemical merchant Wholesalers	93	571	569	574	7,945,644	1,069.78
4247	Petroleum Merchant Wholesalers	139	1,496	1,474	1,501	22,699,597	1,171.63
4248	Alcoholic Beverage Merchant Wholesalers	38	1,209	1,206	1,215	14,735,880	936.80
4249	Miscellaneous Nondurable Goods Merchant Wholesaler	367	3,496	3,536	3,764	37,244,983	796.13
<b>425</b>	<b>ELECTRONIC MARKETS &amp; AGENTS &amp; BROKERS</b>	<b>3,077</b>	<b>9,632</b>	<b>9,705</b>	<b>9,764</b>	<b>\$211,017,390</b>	<b>\$1,673.36</b>
<b>44 - 45</b>	<b>RETAIL TRADE</b>	<b>10,954</b>	<b>129,436</b>	<b>127,414</b>	<b>129,056</b>	<b>\$731,971,693</b>	<b>\$437.71</b>
<b>441</b>	<b>MOTOR VEHICLE &amp; PARTS DEALERS</b>	<b>1,606</b>	<b>16,360</b>	<b>16,254</b>	<b>16,401</b>	<b>\$144,748,271</b>	<b>\$681.49</b>
4411	Automobile Dealers	659	9,609	9,560	9,625	97,462,680	781.11
4412	Other Motor Vehicle Dealers	162	1,170	1,175	1,212	9,235,000	599.14
4413	Automotive Parts, Accessories & Tire Stores	785	5,581	5,519	5,564	38,050,591	526.94
<b>442</b>	<b>FURNITURE &amp; HOME FURNISHINGS STORES</b>	<b>541</b>	<b>3,382</b>	<b>3,305</b>	<b>3,311</b>	<b>\$21,911,953</b>	<b>\$505.76</b>
4421	Furniture Stores	296	2,030	2,038	2,077	14,607,394	548.57
4422	Home Furnishings Stores	245	1,352	1,267	1,234	7,304,559	437.49

TABLE 5. STATEWIDE SUMMARY

NORTH AMERICAN INDUSTRY CLASSIFICATION SYSTEM - INDUSTRY GROUPS		NUMBER OF EMPLOYING UNITS	EMPLOYMENT			TOTAL EARNINGS JAN - MAR 2011	AVERAGE WEEKLY EARNINGS
			JANUARY	FEBRUARY	MARCH		
<b>443</b>	<b>ELECTRONICS &amp; APPLIANCE STORES</b>	<b>541</b>	<b>4,534</b>	<b>4,391</b>	<b>4,448</b>	<b>\$32,430,895</b>	<b>\$559.64</b>
<b>444</b>	<b>BUILDING MATERIAL &amp; GARDEN SUPPLY STORES</b>	<b>839</b>	<b>9,758</b>	<b>9,809</b>	<b>10,346</b>	<b>\$61,870,500</b>	<b>\$477.31</b>
4441	Building Material & Supplies Dealers	631	8,667	8,665	9,098	55,270,612	482.59
4442	Lawn & Garden Equipment & Supplies Stores	208	1,091	1,144	1,248	6,599,888	437.28
<b>445</b>	<b>FOOD &amp; BEVERAGE STORES</b>	<b>1,011</b>	<b>17,612</b>	<b>17,488</b>	<b>17,565</b>	<b>\$80,610,015</b>	<b>\$353.22</b>
4451	Grocery Stores	564	15,198	15,125	15,158	68,514,851	347.64
4452	Specialty Food Stores	141	896	866	900	5,422,018	470.04
4453	Beer, Wine & Liquor Stores	306	1,518	1,497	1,507	6,673,146	340.55
<b>446</b>	<b>HEALTH &amp; PERSONAL CARE STORES</b>	<b>974</b>	<b>7,722</b>	<b>7,691</b>	<b>7,684</b>	<b>\$61,746,834</b>	<b>\$616.93</b>
<b>447</b>	<b>GASOLINE STATIONS</b>	<b>1,546</b>	<b>11,249</b>	<b>11,074</b>	<b>11,136</b>	<b>\$44,766,720</b>	<b>\$308.76</b>
44711	Gasoline Stations with Convenience Stores	1,434	10,078	9,931	9,997	38,099,265	293.01
44719	Other Gasoline Stations	112	1,171	1,143	1,139	6,667,455	445.60
<b>448</b>	<b>CLOTHING &amp; CLOTHING ACCESSORIES STORES</b>	<b>1,007</b>	<b>8,197</b>	<b>7,953</b>	<b>8,145</b>	<b>\$28,713,838</b>	<b>\$272.74</b>
4481	Clothing Stores	714	6,296	6,092	6,223	19,235,277	238.51
4482	Shoe Stores	150	1,114	1,082	1,158	4,311,374	296.64
4483	Jewelry, Luggage & Leather Goods Stores	143	787	779	764	5,167,187	511.77
<b>451</b>	<b>SPORTING GOODS, HOBBY, BOOK &amp; MUSIC STORES</b>	<b>503</b>	<b>3,954</b>	<b>3,737</b>	<b>3,779</b>	<b>\$15,997,353</b>	<b>\$321.86</b>
4511	Sporting Goods & Musical Instrument Stores	409	3,167	3,088	3,146	13,701,818	336.34
4512	Book, Periodical & Music Stores	94	787	649	633	2,295,535	256.04
<b>452</b>	<b>GENERAL MERCH&amp;ISE STORES</b>	<b>789</b>	<b>38,600</b>	<b>37,856</b>	<b>38,353</b>	<b>\$196,133,058</b>	<b>\$394.23</b>
<b>453</b>	<b>MISCELLANEOUS STORE RETAILERS</b>	<b>1,245</b>	<b>6,366</b>	<b>6,148</b>	<b>6,159</b>	<b>\$29,416,366</b>	<b>\$363.54</b>
4531	Florists	211	759	805	721	2,891,212	291.99
4532	Office Supplies, Stationery & Gift Stores	314	1,966	1,910	1,925	9,830,017	391.05
4533	Used Merchandise Stores	233	1,289	1,187	1,230	5,233,581	325.89
4539	Other Miscellaneous Store Retailers	487	2,352	2,246	2,283	11,461,556	384.39
<b>454</b>	<b>NONSTORE RETAILERS</b>	<b>352</b>	<b>1,702</b>	<b>1,708</b>	<b>1,729</b>	<b>\$13,625,890</b>	<b>\$611.88</b>
4541	Electronic Shopping & Mail-Order Houses	135	438	456	487	3,974,146	664.09
4542	Vending Machine Operators	72	497	492	489	3,473,239	542.30
4543	Direct Selling Establishments	145	767	760	753	6,178,505	625.35



TABLE 5. STATEWIDE SUMMARY

NORTH AMERICAN INDUSTRY CLASSIFICATION SYSTEM - INDUSTRY GROUPS		NUMBER OF EMPLOYING UNITS	EMPLOYMENT			TOTAL EARNINGS JAN - MAR 2011	AVERAGE WEEKLY EARNINGS
			JANUARY	FEBRUARY	MARCH		
<b>48 - 49</b>	<b>TRANSPORTATION &amp; WAREHOUSING</b>	<b>2,886</b>	<b>48,287</b>	<b>48,023</b>	<b>48,446</b>	<b>\$489,140,656</b>	<b>\$779.79</b>
<b>481</b>	<b>AIR TRANSPORTATION</b>	<b>49</b>	<b>950</b>	<b>937</b>	<b>938</b>	<b>\$12,002,259</b>	<b>\$980.44</b>
<b>483</b>	<b>SUPPORT ACTIVITIES FOR TRANSPORTATION</b>	<b>4</b>	<b>86</b>	<b>83</b>	<b>85</b>	<b>\$1,203,259</b>	<b>\$1,093.21</b>
<b>484</b>	<b>TRUCK TRANSPORTATION</b>	<b>1,918</b>	<b>31,553</b>	<b>31,391</b>	<b>31,606</b>	<b>\$312,149,444</b>	<b>\$761.87</b>
4841	General Freight Trucking	1,188	25,510	25,449	25,555	258,052,994	778.30
4842	Specialized Freight Trucking	730	6,043	5,942	6,051	54,096,450	692.16
<b>485</b>	<b>TRANSIT &amp; GROUND PASSENGER TRANSPORTATION</b>	<b>78</b>	<b>1,274</b>	<b>1,266</b>	<b>1,293</b>	<b>\$4,864,493</b>	<b>\$292.87</b>
4853	Taxi & Limousine Service	25	298	309	308	1,205,735	304.09
4854	School & Employee Bus Transportation	11	431	414	431	1,687,330	305.16
4855	Charter Bus Industry Service	6	60	54	61	252,938	333.54
4859	Other Ground Passenger Transportation	30	365	378	384	1,226,189	251.08
	Other	6	120	111	109	492,301	334.14
<b>486</b>	<b>PIPELINE TRANSPORATATION</b>	<b>31</b>	<b>443</b>	<b>450</b>	<b>457</b>	<b>\$11,153,767</b>	<b>\$1,906.63</b>
<b>487</b>	<b>SCENIC &amp; SIGHTSEEING TRANSPORTATION</b>	<b>6</b>	<b>28</b>	<b>34</b>	<b>39</b>	<b>\$97,019</b>	<b>\$221.67</b>
<b>488</b>	<b>SUPPORT ACTIVITIES FOR TRANSPORTATION</b>	<b>403</b>	<b>4,098</b>	<b>4,075</b>	<b>4,155</b>	<b>\$45,990,410</b>	<b>\$860.90</b>
4881	Support Activities for Air Transportation	97	1,288	1,293	1,311	12,469,006	739.33
4882	Support Activities for Rail Transportation	33	342	345	348	3,154,888	703.43
4883	Support Activities for Water Transportation	25	538	532	566	6,370,422	898.59
4884	Support Activities for Road Transportation	120	470	455	467	3,050,393	505.70
4885	Freight Transportation Arrangement	112	1,374	1,370	1,383	20,401,759	1,140.80
4889	Other Support Activities for Transportation	16	86	80	80	543,942	510.26
<b>491</b>	<b>POSTAL SERVICE</b>	<b>7</b>	<b>14</b>	<b>13</b>	<b>12</b>	<b>\$47,545</b>	<b>\$281.33</b>
<b>492</b>	<b>COURIERS &amp; MESSENGERS</b>	<b>167</b>	<b>3,004</b>	<b>2,973</b>	<b>2,995</b>	<b>\$29,358,458</b>	<b>\$755.13</b>
4921	Couriers	79	2,619	2,605	2,620	2,686,207	79.03
4922	Local Messenger & Local Delivery	88	385	386	375	3,496,383	704.06
<b>493</b>	<b>WARHOUSING &amp; STORAGE</b>	<b>223</b>	<b>6,837</b>	<b>6,801</b>	<b>6,866</b>	<b>\$72,274,002</b>	<b>\$813.43</b>

TABLE 5. STATEWIDE SUMMARY

NORTH AMERICAN INDUSTRY CLASSIFICATION SYSTEM - INDUSTRY GROUPS		NUMBER OF EMPLOYING UNITS	EMPLOYMENT			TOTAL EARNINGS JAN - MAR 2011	AVERAGE WEEKLY EARNINGS
			JANUARY	FEBRUARY	MARCH		
<b>22</b>	<b>UTILITIES</b>	<b>411</b>	<b>7,214</b>	<b>7,188</b>	<b>7,215</b>	<b>\$138,801,732</b>	<b>\$1,481.76</b>
2211	Power Generation & Supply	158	5,026	5,000	5,015	112,201,252	1,721.47
2212	Natural Gas Distribution	73	1,280	1,290	1,290	19,462,056	1,163.53
2213	Water, Sewage & Other Systems	180	908	898	910	7,138,424	606.53
<b>INFORMATION</b>		<b>1,108</b>	<b>15,037</b>	<b>15,013</b>	<b>14,930</b>	<b>\$202,321,529</b>	<b>\$1,038.01</b>
<b>511</b>	<b>PUBLISHING INDUSTRIES, EXCEPT INTERNET</b>	<b>234</b>	<b>3,898</b>	<b>3,917</b>	<b>3,909</b>	<b>\$33,076,901</b>	<b>\$651.07</b>
5111	Newspaper, Book & Directory Publishers	207	3,647	3,668	3,660	28,939,111	608.50
5112	Software Publishers	27	251	249	249	4,137,790	1,274.87
<b>512</b>	<b>MOTION PICTURE &amp; SOUND RECORDING INDUSTRY</b>	<b>141</b>	<b>1,268</b>	<b>1,223</b>	<b>1,232</b>	<b>\$5,386,521</b>	<b>\$333.88</b>
5121	Motion Picture & Video Industries	119	1,228	1,185	1,198	5,025,490	321.17
5122	Sound Recording Industries	22	40	38	34	361,031	743.88
<b>515</b>	<b>BROADCASTING, EXCEPT INTERNET</b>	<b>125</b>	<b>1,703</b>	<b>1,697</b>	<b>1,700</b>	<b>\$16,153,736</b>	<b>\$730.94</b>
5151	Radio & Television Broadcasting	120	1,667	1,662	1,663	15,970,676	738.29
5152	Cable & Other Subscription Programming	5	36	35	37	183,060	391.15
<b>517</b>	<b>TELECOMMUNICATIONS</b>	<b>383</b>	<b>6,523</b>	<b>6,506</b>	<b>6,456</b>	<b>\$128,497,019</b>	<b>\$1,521.85</b>
5171	Wired Telecommunications Carriers	274	3,952	3,940	3,916	65,506,544	1,280.22
5174	Satellite Telecommunications	4	4	3	3	24,834	573.09
	Other	105	2,567	2,563	2,537	62,965,641	1,895.20
<b>518</b>	<b>DATA PROCESSING, HOSTING &amp; RELATED SERVICES</b>	<b>160</b>	<b>1,359</b>	<b>1,386</b>	<b>1,355</b>	<b>\$16,253,861</b>	<b>\$914.85</b>
<b>519</b>	<b>OTHER INFORMATION SERVICES</b>	<b>65</b>	<b>286</b>	<b>284</b>	<b>278</b>	<b>\$2,953,491</b>	<b>\$803.74</b>
<b>FINANCIAL ACTIVITIES</b>		<b>7,873</b>	<b>47,387</b>	<b>47,142</b>	<b>47,189</b>	<b>\$610,500,043</b>	<b>\$994.12</b>
<b>52</b>	<b>FINANCE &amp; INSURANCE</b>	<b>4,664</b>	<b>34,550</b>	<b>34,419</b>	<b>34,336</b>	<b>\$513,912,184</b>	<b>\$1,148.01</b>
<b>522</b>	<b>CREDIT INTERMEDIATION &amp; RELATED ACTIVITIES</b>	<b>1,859</b>	<b>19,103</b>	<b>18,997</b>	<b>18,954</b>	<b>\$213,765,421</b>	<b>\$864.63</b>
5221	Depository Credit Intermediation	1,399	17,167	17,179	17,137	182,480,760	817.96
5222	Non-Depository Credit Intermediation	335	1,613	1,490	1,493	26,928,835	1,352.12
5223	Activities Related to Credit Intermediation	125	323	328	324	4,355,826	1,030.96

TABLE 5. STATEWIDE SUMMARY

NORTH AMERICAN INDUSTRY CLASSIFICATION SYSTEM - INDUSTRY GROUPS		NUMBER OF EMPLOYING UNITS	JANUARY	EMPLOYMENT FEBRUARY	MARCH	TOTAL EARNINGS JAN - MAR 2011	AVERAGE WEEKLY EARNINGS
<b>523</b>	<b>FINANCIAL INVESTMENT &amp; RELATED ACTIVITIES</b>	<b>663</b>	<b>3,081</b>	<b>3,086</b>	<b>3,078</b>	<b>\$114,865,893</b>	<b>\$2,867.23</b>
<b>524</b>	<b>INSURANCE CARRIERS &amp; RELATED ACTIVITIES</b>	<b>2,058</b>	<b>11,891</b>	<b>11,762</b>	<b>11,747</b>	<b>\$174,491,793</b>	<b>\$1,137.50</b>
5241	Insurance Carriers	415	5,404	5,402	5,374	96,571,379	1,377.36
5242	Insurance Agencies, Brokerages & Support	1,643	6,487	6,360	6,373	77,920,414	935.57
	<b>OTHER</b>	<b>84</b>	<b>475</b>	<b>574</b>	<b>557</b>	<b>\$10,789,077</b>	<b>\$1,550.30</b>
<b>53</b>	<b>REAL ESTATE &amp; RENTAL &amp; LEASING</b>	<b>3,209</b>	<b>12,837</b>	<b>12,723</b>	<b>12,853</b>	<b>\$96,587,859</b>	<b>\$580.26</b>
<b>531</b>	<b>REAL ESTATE</b>	<b>2,490</b>	<b>8,471</b>	<b>8,358</b>	<b>8,408</b>	<b>\$60,414,640</b>	<b>\$552.44</b>
5311	Lessors of Real Estate	1,074	4,326	4,258	4,284	28,835,310	517.12
5312	Offices of Real Estate Agents & Brokers	757	1,585	1,562	1,580	11,754,054	573.83
5313	Activities Related to Real Estate	659	2,560	2,538	2,544	19,825,276	598.67
<b>532</b>	<b>RENTAL &amp; LEASING SERVICES</b>	<b>700</b>	<b>4,303</b>	<b>4,303</b>	<b>4,383</b>	<b>\$35,514,678</b>	<b>\$630.97</b>
5321	Automotive Equipment Rental & Leasing	122	864	860	861	6,020,370	537.45
5322	Consumer Goods Rental	360	2,026	2,020	2,086	13,302,975	500.64
5323	General Rental Centers	40	240	240	243	2,133,466	680.97
5324	Machinery & Equipment Rental & Leasing	178	1,173	1,183	1,193	14,057,867	914.09
<b>533</b>	<b>LESSORS OF NONFINANCIAL INTANGIBLE ASSETS</b>	<b>19</b>	<b>63</b>	<b>62</b>	<b>62</b>	<b>\$658,541</b>	<b>\$812.68</b>
<b>PROFESSIONAL &amp; BUSINESS SERVICES</b>		<b>12,196</b>	<b>116,196</b>	<b>116,820</b>	<b>118,661</b>	<b>\$1,643,518,180</b>	<b>\$1,078.47</b>
<b>54</b>	<b>PROFESSIONAL &amp; TECHNICAL SERVICES</b>	<b>7,608</b>	<b>39,245</b>	<b>39,372</b>	<b>39,214</b>	<b>\$518,020,946</b>	<b>\$1,014.53</b>
5411	Legal Services	1,685	6,008	5,863	5,889	67,642,396	878.93
5412	Accounting & Bookkeeping Services	1,283	6,482	6,798	6,523	58,257,765	678.89
5413	Architectural & Engineering Services	935	6,251	6,169	6,158	80,907,047	1,005.00
5414	Specialized Design Services	178	448	436	450	6,516,364	1,127.27
5415	Computer Systems Design & Related Services	1,080	8,237	8,515	8,594	162,607,918	1,480.51
5416	Management & Technical Consulting Services	1,367	4,723	4,660	4,662	79,954,436	1,313.71
5417	Scientific Research & Development Services	112	1,220	1,220	1,217	16,833,265	1,062.24
5418	Advertising & Related Services	362	2,194	2,064	2,060	21,598,427	788.90
5419	Other Professional & Technical Services	606	3,682	3,647	3,661	23,703,328	497.73

TABLE 5. STATEWIDE SUMMARY

NORTH AMERICAN INDUSTRY CLASSIFICATION SYSTEM - INDUSTRY GROUPS		NUMBER OF EMPLOYING UNITS	JANUARY	EMPLOYMENT FEBRUARY	MARCH	TOTAL EARNINGS JAN - MAR 2011	AVERAGE WEEKLY EARNINGS
<b>55</b>	<b>MANAGEMENT OF COMPANIES &amp; ENTERPRISES</b>	<b>513</b>	<b>25,620</b>	<b>25,558</b>	<b>25,588</b>	<b>\$799,748,578</b>	<b>\$2,404.16</b>
<b>56</b>	<b>ADMINISTRATIVE &amp; SUPPORT SERVICES</b>	<b>4,075</b>	<b>51,331</b>	<b>51,890</b>	<b>53,859</b>	<b>\$325,748,656</b>	<b>\$478.56</b>
<b>561</b>	<b>ADMINISTRATIVE &amp; SUPPORT SERVICES</b>	<b>3,824</b>	<b>48,410</b>	<b>49,011</b>	<b>50,954</b>	<b>\$298,580,293</b>	<b>\$464.39</b>
5611	Office Administrative Services	552	1,857	1,824	1,847	25,737,353	1,074.42
5612	Facilities Support Services	20	138	138	138	1,357,773	756.84
5613	Employment Services	802	18,299	18,965	20,304	101,264,920	405.93
5614	Business Support Services	426	10,101	10,132	10,028	66,067,920	503.83
5615	Travel Arrangement & Reservation Services	83	309	291	300	2,419,218	620.31
5616	Investigation & Security Services	245	4,393	4,409	4,416	26,520,035	463.01
5617	Services to Buildings & Dwellings	1,444	11,385	11,339	11,918	56,625,955	377.22
5619	Other Support Services	252	1,928	1,913	2,003	18,587,119	733.97
<b>562</b>	<b>WASTE MANAGEMENT &amp; REMEDIATION SERVICES</b>	<b>251</b>	<b>2,921</b>	<b>2,879</b>	<b>2,905</b>	<b>\$27,168,363</b>	<b>\$720.23</b>
5621	Waste Collection Services	110	1,137	1,123	1,121	10,051,999	686.10
5622	Waste Treatment & disposal Services	34	928	936	927	10,739,360	887.97
5629	Remediation & Other Waste Services	107	856	820	857	6,377,004	580.98
<b>EDUCATION &amp; HEALTH SERVICES</b>		<b>14,744</b>	<b>163,207</b>	<b>162,733</b>	<b>164,176</b>	<b>\$1,353,142,621</b>	<b>\$637.12</b>
<b>61</b>	<b>EDUCATIONAL SERVICES</b>	<b>691</b>	<b>11,366</b>	<b>11,672</b>	<b>12,082</b>	<b>\$84,824,499</b>	<b>\$557.37</b>
6111	Elementary & Secondary Schools	91	4,297	4,183	4,592	23,694,786	418.30
6112	Junior Colleges	8	202	217	213	1,623,333	592.75
6113	Colleges & Universities	32	3,666	4,006	4,048	31,093,350	612.23
6114	Business, Computer, & Management Training	45	252	252	254	6,798,782	2,069.85
6115	Technical & Trade Schools	104	867	865	864	10,946,204	973.05
6116	Other Schools & Instruction	260	1,643	1,704	1,671	6,471,975	297.64
6117	Educational Support Services	151	439	445	440	4,196,069	731.36

TABLE 5. STATEWIDE SUMMARY

NORTH AMERICAN INDUSTRY CLASSIFICATION SYSTEM - INDUSTRY GROUPS		NUMBER OF EMPLOYING UNITS	EMPLOYMENT			TOTAL EARNINGS JAN - MAR 2011	AVERAGE WEEKLY EARNINGS
			JANUARY	FEBRUARY	MARCH		
<b>62</b>	<b>HEALTH CARE &amp; SOCIAL ASSISTANCE</b>	<b>14,053</b>	<b>151,841</b>	<b>151,061</b>	<b>152,094</b>	<b>\$1,268,318,122</b>	<b>\$643.28</b>
<b>621</b>	<b>AMBULATORY HEALTH CARE SERVICES</b>	<b>5,066</b>	<b>45,768</b>	<b>45,312</b>	<b>45,569</b>	<b>\$552,698,797</b>	<b>\$933.38</b>
6211	Offices of Physicians	2,225	21,404	21,155	21,174	332,851,291	1,205.21
6212	Offices of Dentists	978	6,583	6,439	6,482	64,145,098	758.96
6213	Offices of Other Health Practitioners	1,204	6,484	6,432	6,524	55,624,117	660.31
6214	Outpatient Care Centers	278	3,843	3,918	3,943	37,451,015	738.43
6215	Medical & Diagnostic Laboratories	108	863	860	852	10,616,943	951.48
6216	Home Health Care Services	145	4,223	4,144	4,198	33,098,940	607.90
6219	Other Ambulatory Health Care Services	128	2,368	2,364	2,396	18,911,393	612.26
<b>622</b>	<b>HOSPITALS</b>	<b>111</b>	<b>41,466</b>	<b>41,277</b>	<b>41,378</b>	<b>\$403,890,884</b>	<b>\$750.93</b>
6221	General Medical & Surgical Hospitals	78	37,107	36,936	36,966	364,106,486	756.92
6222	Psychiatric & Substance Abuse Hospitals	10	1,962	1,937	1,979	16,646,779	653.55
6223	Other Hospitals	23	2,397	2,404	2,433	23,137,619	738.10
<b>623</b>	<b>Residential &amp; Mental Health Facilities</b>	<b>554</b>	<b>30,655</b>	<b>30,509</b>	<b>30,798</b>	<b>\$164,459,861</b>	<b>\$412.70</b>
6231	Nursing Care Facilities (Skilled Nursing Facilities)	265	22,414	22,317	22,535	121,338,602	416.28
6232	Residential Mental Health Facilities	140	4,345	4,324	4,358	22,991,221	407.28
6233	Continuing Care & Assisted Living Facilities	108	2,721	2,698	2,737	12,651,166	357.96
6239	Other Residential Care Facilities	41	1,175	1,170	1,168	7,478,872	491.29
<b>624</b>	<b>SOCIAL ASSISTANCE</b>	<b>8,322</b>	<b>33,952</b>	<b>33,963</b>	<b>34,349</b>	<b>\$147,268,580</b>	<b>\$332.33</b>
6241	Individual & Family Services	7,124	18,774	18,711	18,914	80,670,958	330.08
6242	Emergency & Other Relief Services	123	1,100	1,091	1,094	6,052,993	425.22
6243	Vocational Rehabilitation Services	131	3,792	3,851	3,876	19,514,206	390.94
6244	Child Day Care Services	944	10,286	10,310	10,465	41,030,423	304.84
<b>LEISURE &amp; HOSPITALITY</b>		<b>6,391</b>	<b>93,744</b>	<b>94,009</b>	<b>97,277</b>	<b>\$311,553,884</b>	<b>\$252.24</b>
<b>71</b>	<b>ARTS, ENTERTAINMENT &amp; RECREATION</b>	<b>914</b>	<b>8,357</b>	<b>8,363</b>	<b>8,608</b>	<b>\$34,998,009</b>	<b>\$318.87</b>
<b>711</b>	<b>PERFORMING ARTS &amp; SPECTATOR SPORTS</b>	<b>209</b>	<b>2,447</b>	<b>2,427</b>	<b>2,252</b>	<b>\$10,881,554</b>	<b>\$352.39</b>
7111	Performing Arts Companies	43	285	315	381	1,435,679	337.73
7112	Spectator Sports	53	1,423	1,366	1,371	6,513,937	361.35
7113	Performing Arts & Sports Promoters	35	661	670	418	2,232,568	294.57
7114	Agents & Managers for Public Figures	23	28	26	28	311,938	877.87
7115	Independent Artists, Writers, & Performers	55	50	50	54	387,432	580.57

TABLE 5. STATEWIDE SUMMARY

NORTH AMERICAN INDUSTRY CLASSIFICATION SYSTEM - INDUSTRY GROUPS		NUMBER OF EMPLOYING UNITS	EMPLOYMENT			TOTAL EARNINGS	AVERAGE
			JANUARY	FEBRUARY	MARCH	JAN - MAR 2011	WEEKLY EARNINGS
<b>712</b>	<b>MUSEUMS, PARKS, &amp; HISTORICAL SITES</b>	<b>54</b>	<b>264</b>	<b>261</b>	<b>290</b>	<b>\$1,852,661</b>	<b>\$524.59</b>
<b>713</b>	<b>GAMBLING, RECREATIONAL &amp; AMUSEMENT INDUSTRY</b>	<b>651</b>	<b>5,646</b>	<b>5,675</b>	<b>6,066</b>	<b>\$22,263,794</b>	<b>\$295.50</b>
<b>72</b>	<b>ACCOMODATION &amp; FOOD SERVICES</b>	<b>5,477</b>	<b>85,387</b>	<b>85,646</b>	<b>88,669</b>	<b>\$276,555,875</b>	<b>\$245.75</b>
<b>721</b>	<b>ACCOMODATION</b>	<b>877</b>	<b>9,936</b>	<b>10,024</b>	<b>10,515</b>	<b>\$38,669,444</b>	<b>\$292.82</b>
7211	Travel Accommodation	794	9,568	9,675	10,138	36,999,533	290.61
7212	RV Parks & Recreational Camps	62	278	257	281	1,268,941	358.86
7213	Rooming & Boarding Houses	21	90	92	96	400,970	332.85
<b>722</b>	<b>FOOD SERVICES &amp; DRINKING PLACES</b>	<b>4,600</b>	<b>75,451</b>	<b>75,622</b>	<b>78,154</b>	<b>\$237,886,431</b>	<b>\$239.49</b>
7223	Special Food Services	161	2,668	2,803	2,857	\$9,688,393	268.47
7224	Drinking Places, Alcoholic Beverages	153	971	971	1,030	\$2,894,430	224.75
7225	Restaurants & Other Eating Places	4,286	71,812	71,848	74,267	\$225,303,608	238.58
722511	Full-Service Restaurants	1,964	32,537	32,395	33,327	106,590,628	250.34
722513	Limited-Service Eating Places	1,996	36,074	36,204	37,644	107,878,631	226.48
722514	Cafeterias, Grill Buffets, & Buffets	89	1,712	1,781	1,769	6,584,660	288.78
722515	Snack & Non-Alcoholic Beverage Bars	237	1,489	1,468	1,527	4,249,689	218.71
<b>OTHER SERVICES</b>		<b>5,364</b>	<b>23,987</b>	<b>23,746</b>	<b>24,219</b>	<b>\$153,946,132</b>	<b>\$493.75</b>
<b>811</b>	<b>REPAIR &amp; MAINTENANCE</b>	<b>2,199</b>	<b>8,915</b>	<b>8,782</b>	<b>9,051</b>	<b>\$66,627,904</b>	<b>\$574.83</b>
8111	Automotive Repair & Maintenance	1,446	6,010	5,955	6,040	41,562,332	532.70
8112	Electronic Equipment Repair & Maintenance	166	741	709	765	6,707,136	698.78
8113	Commercial Machinery Repair & Maintenance	402	1,649	1,614	1,708	15,165,534	704.03
8114	Household Goods Repair & Maintenance	185	515	504	538	3,192,902	473.23
<b>812</b>	<b>PERSONAL &amp; LAUNDRY SERVICES</b>	<b>1,319</b>	<b>8,100</b>	<b>8,022</b>	<b>8,154</b>	<b>\$40,312,279</b>	<b>\$383.21</b>
8121	Personal Care Services	596	2,761	2,754	2,830	11,192,261	309.51
8122	Death Care Services	248	1,608	1,598	1,614	10,247,204	490.61
8123	Dry Cleaning & Laundry Service	285	3,082	3,038	3,050	15,200,953	382.54
8129	Other Personal Services	190	649	632	660	3,671,861	436.55
<b>813</b>	<b>MEMBERSHIP ASSOCIATIONS &amp; ORGANIZATIONS</b>	<b>1,087</b>	<b>5,935</b>	<b>5,925</b>	<b>6,009</b>	<b>\$42,518,775</b>	<b>\$549.11</b>
8131	Religious Organizations	48	193	196	202	1,263,243	493.26
8132	Grant Making & Giving Organizations	112	542	522	505	5,537,693	814.49
8133	Social Advocacy Organizations	219	2,047	2,081	2,097	14,025,682	519.95
8134	Civic & Social Organizations	198	1,267	1,267	1,297	4,580,151	275.90
8139	Professional & Similar Organizations	510	1,886	1,859	1,908	17,112,006	698.55

TABLE 5. STATEWIDE SUMMARY

NORTH AMERICAN INDUSTRY CLASSIFICATION SYSTEM - INDUSTRY GROUPS		NUMBER OF EMPLOYING UNITS	JANUARY	EMPLOYMENT FEBRUARY	MARCH	TOTAL EARNINGS JAN - MAR 2011	AVERAGE WEEKLY EARNINGS
814	PRIVATE HOUSEHOLDS	759	1,037	1,017	1,005	\$4,487,174	\$338.51
	LOCAL GOVERNMENT	1,961	117,646	118,300	119,596	\$935,248,762	\$607.04
	STATE GOVERNMENT	1,122	67,927	69,679	70,307	\$696,702,987	\$773.29
	NONCLASSIFIABLE ESTABLISHMENTS	0	0	0	0	\$0	\$0.00

TABLE 6. COUNTY SUMMARY

NORTH AMERICAN INDUSTRY CLASSIFICATION SYSTEM - INDUSTRY GROUPS	NUMBER OF EMPLOYING UNITS	EMPLOYMENT			TOTAL EARNINGS JAN - MAR 2011	AVERAGE WEEKLY EARNINGS
		JANUARY	FEBRUARY	MARCH		
<b>ARKANSAS COUNTY - TOTAL</b>	<b>735</b>	<b>9,341</b>	<b>9,287</b>	<b>9,502</b>	<b>\$73,673,411</b>	<b>\$604.39</b>
Natural Resources & Mining	42	182	186	187	1,685,078	700.66
Construction	45	259	257	258	2,032,755	606.07
Manufacturing	31	3,348	3,393	3,533	29,251,773	657.04
Trade, Transportation & Utilities	210	2,064	1,978	2,009	17,329,418	660.90
Wholesale Trade	47	415	411	436	5,385,056	984.71
Retail Trade	97	1,064	1,016	1,025	5,658,254	420.53
Transportation, Warehousing & Utilities	66	585	551	548	6,286,108	861.43
Information	10	105	106	105	876,366	639.99
Financial Activities	44	301	304	301	2,734,775	696.58
Professional & Business Services	41	356	350	342	3,631,727	799.71
Education & Health Services	161	1,130	1,111	1,107	6,777,134	467.13
Leisure & Hospitality	51	471	469	503	1,396,975	223.41
Other Services	53	133	125	133	742,196	438.05
Local Government	32	806	814	815	5,953,178	564.19
State Government	15	186	194	209	1,262,036	494.46
<b>ASHLEY COUNTY - TOTAL</b>	<b>587</b>	<b>7,629</b>	<b>7,679</b>	<b>7,772</b>	<b>\$71,828,249</b>	<b>\$718.19</b>
Natural Resources & Mining	46	266	270	285	2,235,401	628.33
Construction	42	494	544	567	4,658,265	669.77
Manufacturing	28	2,604	2,583	2,574	37,519,677	1,115.63
Trade, Transportation & Utilities	141	1,186	1,184	1,223	7,796,589	500.76
Wholesale Trade	22	164	170	181	1,767,296	791.92
Retail Trade	93	809	803	829	3,906,404	369.31
Transportation, Warehousing & Utilities	26	213	211	213	2,122,889	769.07
Information	7	41	42	42	257,374	475.15
Financial Activities	39	224	227	228	1,899,555	645.59
Professional & Business Services	50	262	258	258	1,725,846	511.92
Education & Health Services	121	806	813	820	5,907,980	558.99
Leisure & Hospitality	30	387	373	391	979,428	196.37
Other Services	40	154	156	173	971,483	464.16
Local Government	32	978	1,004	978	6,618,776	516.02
State Government	11	227	225	233	1,257,875	423.76



TABLE 6. COUNTY SUMMARY

NORTH AMERICAN INDUSTRY CLASSIFICATION SYSTEM - INDUSTRY GROUPS	NUMBER OF EMPLOYING UNITS	EMPLOYMENT			TOTAL EARNINGS JAN - MAR 2011	AVERAGE WEEKLY EARNINGS
		JANUARY	FEBRUARY	MARCH		
<b>BAXTER COUNTY - TOTAL</b>	<b>1,279</b>	<b>13,545</b>	<b>13,509</b>	<b>13,801</b>	<b>\$95,056,735</b>	<b>\$536.93</b>
Natural Resources & Mining	6	91	68	109	589,185	507.33
Construction	135	538	518	566	3,538,616	503.45
Manufacturing	60	2,123	2,125	2,128	19,136,453	692.61
Trade, Transportation & Utilities	266	2,432	2,385	2,465	14,036,180	444.81
Wholesale Trade	39	200	184	185	1,660,303	673.37
Retail Trade	204	2,075	2,052	2,128	11,035,284	407.13
Transportation, Warehousing & Utilities	23	157	149	152	1,340,593	675.48
Information	22	214	208	210	1,896,647	692.54
Financial Activities	105	617	603	604	6,098,251	771.54
Professional & Business Services	136	763	775	788	5,320,378	527.85
Education & Health Services	273	3,456	3,464	3,468	27,356,844	607.73
Leisure & Hospitality	126	1,357	1,393	1,457	4,126,071	226.33
Other Services	98	349	345	352	1,601,465	353.32
Local Government	40	1,254	1,270	1,290	8,929,644	540.30
State Government	12	351	355	364	2,427,001	523.44
<b>BENTON COUNTY - TOTAL</b>	<b>5,352</b>	<b>90,884</b>	<b>90,661</b>	<b>91,992</b>	<b>\$1,314,159,021</b>	<b>\$1,108.69</b>
Natural Resources & Mining	40	733	724	726	8,860,569	936.67
Construction	509	2,902	2,866	3,010	27,698,910	728.19
Manufacturing	209	11,399	11,312	11,377	108,182,393	732.37
Trade, Transportation & Utilities	1,430	21,231	20,938	21,189	244,780,923	891.57
Wholesale Trade	645	4,267	4,295	4,334	95,422,017	1,707.54
Retail Trade	625	9,073	8,865	9,003	54,891,228	470.18
Transportation, Warehousing & Utilities	160	7,891	7,778	7,852	94,467,678	926.84
Information	69	741	747	749	8,906,620	918.81
Financial Activities	522	3,437	3,447	3,470	53,750,371	1,197.98
Professional & Business Services	1,046	23,930	23,950	24,258	668,356,075	2,138.07
Education & Health Services	616	8,432	8,333	8,459	74,908,973	685.33
Leisure & Hospitality	466	8,103	8,025	8,240	29,592,837	280.25
Other Services	350	1,699	1,673	1,754	12,058,511	542.87
Local Government	78	7,427	7,430	7,529	68,086,905	701.88
State Government	17	850	1,216	1,231	8,975,934	628.26

TABLE 6. COUNTY SUMMARY

NORTH AMERICAN INDUSTRY CLASSIFICATION SYSTEM - INDUSTRY GROUPS	NUMBER OF EMPLOYING UNITS	EMPLOYMENT			TOTAL EARNINGS JAN - MAR 2011	AVERAGE WEEKLY EARNINGS
		JANUARY	FEBRUARY	MARCH		
<b>BOONE COUNTY - TOTAL</b>	<b>1,027</b>	<b>13,495</b>	<b>13,470</b>	<b>13,618</b>	<b>\$108,968,220</b>	<b>\$619.63</b>
Construction	83	395	360	382	2,698,403	547.68
Manufacturing	64	1,745	1,735	1,785	16,360,340	717.09
Trade, Transportation & Utilities	246	3,820	3,830	3,828	35,915,938	722.10
Wholesale Trade	52	560	555	550	4,252,148	589.35
Retail Trade	145	1,798	1,756	1,826	10,202,917	437.64
Transportation, Warehousing & Utilities	49	1,462	1,519	1,452	21,460,873	1,117.19
Information	22	387	386	385	3,592,146	715.85
Financial Activities	93	555	556	553	5,093,966	706.45
Professional & Business Services	115	963	981	997	7,358,005	577.36
Education & Health Services	193	1,369	1,353	1,365	9,680,681	546.61
Leisure & Hospitality	81	998	977	1,007	2,993,791	231.68
Local Government	56	2,294	2,303	2,315	16,704,279	557.70
State Government	19	735	753	761	6,911,194	709.16
Other	55	234	236	240	1,659,477	539.37
<b>BRADLEY COUNTY - TOTAL</b>	<b>389</b>	<b>3,343</b>	<b>3,453</b>	<b>3,444</b>	<b>\$23,707,151</b>	<b>\$534.27</b>
Natural Resources & Mining	43	308	392	314	2,638,331	600.44
Construction	18	116	100	123	691,665	470.84
Manufacturing	12	486	482	483	4,793,502	762.37
Trade, Transportation & Utilities	76	490	491	500	3,115,674	485.48
Wholesale Trade	14	89	90	90	1,022,917	877.54
Retail Trade	39	351	354	356	1,642,799	357.31
Transportation, Warehousing & Utilities	23	50	47	54	449,958	687.66
Information	4	14	13	13	120,851	697.22
Financial Activities	26	141	148	147	1,037,221	548.99
Professional & Business Services	28	106	105	109	701,121	505.62
Education & Health Services	117	608	608	616	4,003,696	504.33
Leisure & Hospitality	11	150	144	156	398,396	204.31
Other Services	29	88	92	89	401,542	344.47
Local Government	14	536	569	572	3,593,021	494.43
State Government	11	300	309	322	2,212,131	548.33

TABLE 6. COUNTY SUMMARY

NORTH AMERICAN INDUSTRY CLASSIFICATION SYSTEM - INDUSTRY GROUPS	NUMBER OF EMPLOYING UNITS	EMPLOYMENT			TOTAL EARNINGS JAN - MAR 2011	AVERAGE WEEKLY EARNINGS
		JANUARY	FEBRUARY	MARCH		
<b>CALHOUN COUNTY - TOTAL</b>	<b>123</b>	<b>2,995</b>	<b>2,960</b>	<b>2,959</b>	<b>\$30,520,511</b>	<b>\$790.13</b>
Natural Resources & Mining	16	90	82	87	774,167	689.78
Construction	14	98	90	91	613,284	507.27
Manufacturing	8	2,025	2,013	1,993	23,348,701	893.41
Trade, Transportation & Utilities	31	219	213	228	1,539,284	538.21
Retail Trade	17	76	72	75	353,430	365.74
Transportation, Warehousing & Utilities	14	143	141	153	1,185,854	626.22
Financial Activities	6	79	80	79	723,118	701.15
Education & Health Services	15	52	52	53	415,938	611.37
Leisure & Hospitality	5	11	10	14	28,986	191.12
Other Services	3	4	4	4	21,297	409.56
Local Government	11	207	208	205	1,116,674	415.64
State Government	8	85	85	83	666,940	608.34
Other	6	125	123	122	1,272,122	793.42
<b>CARROLL COUNTY - TOTAL</b>	<b>776</b>	<b>9,294</b>	<b>9,273</b>	<b>9,604</b>	<b>\$58,058,181</b>	<b>\$475.60</b>
Natural Resources & Mining	15	227	221	220	1,512,425	522.49
Trade, Transportation & Utilities	189	1,493	1,470	1,529	8,978,154	461.24
Wholesale Trade	24	191	185	183	1,025,303	423.27
Retail Trade	147	1,032	1,006	1,062	5,147,112	383.16
Transportation, Warehousing & Utilities	18	270	279	284	2,805,739	777.28
Information	8	75	76	74	574,510	589.24
Financial Activities	68	349	344	348	3,324,901	737.07
Professional & Business Services	58	196	202	213	1,417,406	535.34
Education & Health Services	93	943	930	933	6,907,031	568.04
Leisure & Hospitality	163	965	986	1,199	3,063,013	224.40
Other Services	42	120	112	117	603,031	398.74
Local Government	24	1,063	1,068	1,093	7,081,096	506.85
State Government	10	102	100	101	701,527	534.29
Other	106	3,761	3,764	3,777	23,895,087	487.90

TABLE 6. COUNTY SUMMARY

NORTH AMERICAN INDUSTRY CLASSIFICATION SYSTEM - INDUSTRY GROUPS	NUMBER OF EMPLOYING UNITS	EMPLOYMENT			TOTAL EARNINGS JAN - MAR 2011	AVERAGE WEEKLY EARNINGS
		JANUARY	FEBRUARY	MARCH		
<b>CHICOT COUNTY - TOTAL</b>	<b>423</b>	<b>3,266</b>	<b>3,219</b>	<b>3,270</b>	<b>\$20,209,617</b>	<b>\$478.09</b>
Natural Resources & Mining	51	219	204	211	1,246,376	453.67
Construction	14	147	143	161	1,159,278	593.18
Manufacturing	10	318	315	318	1,548,135	375.67
Trade, Transportation & Utilities	71	454	451	456	2,725,076	462.06
Wholesale Trade	13	69	64	65	443,480	516.88
Retail Trade	46	331	334	337	1,738,675	400.43
Transportation, Warehousing & Utilities	12	54	53	54	542,921	778.20
Information	5	10	10	10	61,490	473.00
Financial Activities	29	163	157	166	1,581,587	750.99
Professional & Business Services	20	51	51	52	382,639	573.39
Education & Health Services	163	700	697	684	3,987,582	442.20
Leisure & Hospitality	17	148	149	149	335,732	173.71
Other Services	15	61	52	69	365,398	463.31
Local Government	18	696	691	699	4,850,727	536.62
State Government	10	299	299	295	1,965,597	507.95
<b>CLARK COUNTY - TOTAL</b>	<b>614</b>	<b>9,129</b>	<b>9,291</b>	<b>9,354</b>	<b>\$65,355,618</b>	<b>\$543.03</b>
Natural Resources & Mining	32	198	190	200	1,535,401	602.59
Construction	32	104	105	112	518,157	372.51
Manufacturing	35	1,936	1,926	1,888	16,612,975	666.74
Trade, Transportation & Utilities	138	1,466	1,444	1,428	9,270,675	493.17
Wholesale Trade	18	107	104	105	1,079,831	788.58
Retail Trade	96	1,166	1,145	1,141	6,475,977	432.92
Transportation, Warehousing & Utilities	24	193	195	182	1,714,867	694.28
Information	9	30	31	30	250,914	636.30
Financial Activities	75	308	293	298	2,896,105	743.42
Professional & Business Services	54	581	615	622	5,139,949	652.44
Education & Health Services	96	1,265	1,300	1,318	8,883,310	527.94
Leisure & Hospitality	60	900	944	985	2,893,014	235.99
Other Services	42	202	201	203	1,078,353	410.64
Local Government	27	1,012	1,037	1,040	7,448,106	556.42
State Government	14	1,127	1,205	1,230	8,828,659	571.98

TABLE 6. COUNTY SUMMARY

NORTH AMERICAN INDUSTRY CLASSIFICATION SYSTEM - INDUSTRY GROUPS	NUMBER OF EMPLOYING UNITS	EMPLOYMENT			TOTAL EARNINGS JAN - MAR 2011	AVERAGE WEEKLY EARNINGS
		JANUARY	FEBRUARY	MARCH		
<b>CLAY COUNTY - TOTAL</b>	<b>401</b>	<b>3,717</b>	<b>3,653</b>	<b>3,729</b>	<b>\$23,704,001</b>	<b>\$492.85</b>
Natural Resources & Mining	59	177	187	204	947,516	384.96
Construction	30	120	126	125	548,328	341.07
Manufacturing	14	655	619	633	5,232,404	633.18
Trade, Transportation & Utilities	100	882	857	866	5,656,816	501.12
Wholesale Trade	25	287	271	279	1,928,568	531.73
Retail Trade	47	410	408	417	2,197,565	410.63
Transportation, Warehousing & Utilities	28	185	178	170	1,530,683	662.73
Information	4	59	61	58	326,131	422.81
Financial Activities	27	111	109	110	834,570	583.62
Professional & Business Services	25	56	56	58	363,170	492.99
Education & Health Services	59	496	483	487	2,982,784	469.53
Leisure & Hospitality	21	195	180	194	464,015	188.19
Other Services	29	68	71	74	456,271	494.33
Local Government	22	844	850	865	5,519,424	497.74
State Government	11	54	54	55	372,572	527.47
<b>CLEBURNE COUNTY - TOTAL</b>	<b>690</b>	<b>6,684</b>	<b>6,647</b>	<b>6,737</b>	<b>\$45,964,699</b>	<b>\$528.56</b>
Natural Resources & Mining	34	369	386	392	4,472,686	899.88
Construction	67	294	281	279	2,048,997	553.68
Manufacturing	35	1,194	1,108	1,091	8,901,836	605.44
Trade, Transportation & Utilities	176	1,549	1,546	1,576	11,517,873	569.04
Wholesale Trade	45	294	289	294	3,136,667	825.37
Retail Trade	103	934	932	950	5,124,687	419.96
Transportation, Warehousing & Utilities	28	321	325	332	3,256,519	768.41
Information	7	55	53	53	302,268	433.26
Financial Activities	72	222	219	229	1,876,205	646.22
Professional & Business Services	63	278	312	308	2,157,949	554.55
Education & Health Services	83	840	849	846	5,153,123	469.11
Leisure & Hospitality	76	748	783	832	2,453,066	239.57
Other Services	50	176	161	169	866,585	395.22
Local Government	18	849	842	856	5,518,318	499.98
State Government	9	110	107	106	695,793	497.11

TABLE 6. COUNTY SUMMARY

NORTH AMERICAN INDUSTRY CLASSIFICATION SYSTEM - INDUSTRY GROUPS	NUMBER OF EMPLOYING UNITS	EMPLOYMENT			TOTAL EARNINGS JAN - MAR 2011	AVERAGE WEEKLY EARNINGS
		JANUARY	FEBRUARY	MARCH		
<b>CLEVELAND COUNTY - TOTAL</b>	<b>122</b>	<b>1,092</b>	<b>1,089</b>	<b>1,104</b>	<b>\$5,935,527</b>	<b>\$416.97</b>
Natural Resources & Mining	12	151	147	144	1,069,085	558.17
Construction	6	15	13	18	91,954	461.31
Manufacturing	6	93	97	99	583,236	465.72
Trade, Transportation & Utilities	33	161	158	163	784,105	375.41
Retail Trade	16	78	78	84	234,347	225.33
Other Trade, Transportation & Utilities	17	83	80	79	549,758	524.24
Education & Health Services	31	151	150	152	604,959	308.18
Other Services	5	14	11	11	114,030	730.96
Local Government	11	340	347	351	2,027,823	450.83
State Government	7	53	54	53	311,156	448.78
Other	11	114	112	113	349,179	237.70
<b>COLUMBIA COUNTY - TOTAL</b>	<b>739</b>	<b>8,471</b>	<b>8,421</b>	<b>8,489</b>	<b>\$67,145,747</b>	<b>\$610.50</b>
Natural Resources & Mining	45	431	425	423	6,181,510	1,115.33
Construction	41	287	293	307	2,367,662	615.99
Manufacturing	36	1,957	1,941	1,927	21,436,877	849.27
Trade, Transportation & Utilities	165	1,511	1,445	1,479	9,822,708	511.11
Wholesale Trade	30	210	212	222	2,190,528	784.95
Retail Trade	100	1,037	971	987	4,974,947	383.33
Transportation, Warehousing & Utilities	35	264	262	270	2,657,233	770.36
Information	9	71	72	72	442,693	475.16
Financial Activities	71	367	355	361	3,010,323	641.45
Professional & Business Services	60	330	327	346	2,444,628	562.46
Education & Health Services	173	1,052	1,043	1,055	5,585,553	409.20
Leisure & Hospitality	48	599	614	627	1,668,664	209.28
Other Services	52	215	211	201	914,000	336.40
Local Government	26	1,126	1,132	1,131	8,291,247	564.58
State Government	13	525	563	560	4,979,882	697.33

TABLE 6. COUNTY SUMMARY

NORTH AMERICAN INDUSTRY CLASSIFICATION SYSTEM - INDUSTRY GROUPS	NUMBER OF EMPLOYING UNITS	EMPLOYMENT			TOTAL EARNINGS JAN - MAR 2011	AVERAGE WEEKLY EARNINGS
		JANUARY	FEBRUARY	MARCH		
<b>CONWAY COUNTY - TOTAL</b>	<b>572</b>	<b>6,788</b>	<b>6,641</b>	<b>6,798</b>	<b>\$51,826,625</b>	<b>\$591.29</b>
Natural Resources & Mining	35	264	260	249	2,660,513	794.26
Construction	53	520	528	603	5,354,788	748.47
Manufacturing	19	945	931	944	11,743,892	961.04
Trade, Transportation & Utilities	128	1,535	1,466	1,555	11,543,485	584.70
Wholesale Trade	22	216	204	206	2,408,450	887.85
Retail Trade	80	785	762	811	4,422,165	432.78
Transportation, Warehousing & Utilities	26	534	500	538	4,712,870	691.85
Information	3	9	9	10	102,528	845.01
Financial Activities	31	175	169	167	1,384,757	625.36
Professional & Business Services	43	548	525	491	2,366,061	349.11
Education & Health Services	159	950	941	950	5,928,141	481.53
Leisure & Hospitality	41	470	447	457	1,253,777	210.58
Other Services	24	87	81	88	599,238	540.18
Local Government	26	915	918	913	6,389,680	536.98
State Government	10	370	366	371	2,499,765	521.11
<b>CRAIGHEAD COUNTY - TOTAL</b>	<b>2,674</b>	<b>41,953</b>	<b>42,077</b>	<b>42,417</b>	<b>\$340,820,285</b>	<b>\$622.01</b>
Natural Resources & Mining	72	239	265	295	1,682,095	485.83
Construction	205	1,393	1,415	1,475	11,674,786	629.04
Manufacturing	124	6,012	6,031	6,071	59,186,093	754.02
Trade, Transportation & Utilities	726	8,612	8,578	8,657	63,094,127	563.32
Wholesale Trade	185	1,583	1,584	1,614	19,581,043	945.14
Retail Trade	427	5,850	5,823	5,856	32,313,171	425.40
Transportation, Warehousing & Utilities	114	1,179	1,171	1,187	11,199,913	730.73
Information	30	510	502	495	4,524,503	692.84
Financial Activities	265	1,444	1,433	1,438	19,985,176	1,068.82
Professional & Business Services	350	3,946	3,967	4,063	25,154,384	484.71
Education & Health Services	462	8,414	8,388	8,393	78,988,569	723.48
Leisure & Hospitality	221	4,071	4,147	4,194	13,014,112	241.96
Other Services	159	802	794	795	4,276,707	412.77
Local Government	37	3,817	3,850	3,845	30,991,994	621.26
State Government	23	2,693	2,707	2,696	28,247,739	805.18

TABLE 6. COUNTY SUMMARY

NORTH AMERICAN INDUSTRY CLASSIFICATION SYSTEM - INDUSTRY GROUPS	NUMBER OF EMPLOYING UNITS	EMPLOYMENT			TOTAL EARNINGS JAN - MAR 2011	AVERAGE WEEKLY EARNINGS
		JANUARY	FEBRUARY	MARCH		
<b>CRAWFORD COUNTY - TOTAL</b>	<b>1,304</b>	<b>19,169</b>	<b>18,904</b>	<b>19,066</b>	<b>\$142,230,021</b>	<b>\$574.43</b>
Natural Resources & Mining	27	329	387	416	4,314,191	879.49
Construction	176	976	858	895	7,182,972	607.41
Manufacturing	84	4,348	4,321	4,308	37,006,322	658.08
Trade, Transportation & Utilities	310	5,986	5,869	5,863	44,287,554	576.83
Wholesale Trade	83	742	735	739	7,168,715	746.53
Retail Trade	159	1,878	1,843	1,866	10,600,926	437.87
Transportation, Warehousing & Utilities	68	3,366	3,291	3,258	26,517,913	617.20
Information	12	123	125	119	1,036,571	651.79
Financial Activities	124	534	533	529	4,218,630	609.98
Professional & Business Services	157	1,057	1,060	1,057	6,816,270	495.58
Education & Health Services	180	1,666	1,659	1,670	11,554,412	533.81
Leisure & Hospitality	95	1,458	1,413	1,504	4,616,206	243.49
Other Services	86	374	364	379	2,488,842	514.19
Local Government	43	2,190	2,187	2,199	17,715,864	621.70
State Government	10	128	128	127	992,187	597.82
<b>CRITTENDEN COUNTY - TOTAL</b>	<b>1,347</b>	<b>15,326</b>	<b>15,281</b>	<b>15,454</b>	<b>\$116,397,119</b>	<b>\$583.16</b>
Natural Resources & Mining	47	215	230	245	1,183,012	395.66
Construction	51	322	316	319	3,056,967	737.15
Manufacturing	43	1,606	1,585	1,592	17,748,129	856.31
Trade, Transportation & Utilities	320	4,449	4,344	4,383	33,879,649	593.38
Wholesale Trade	71	716	712	705	7,620,457	824.46
Retail Trade	166	1,963	1,881	1,883	10,462,809	421.60
Transportation, Warehousing & Utilities	83	1,770	1,751	1,795	15,796,383	685.73
Information	6	58	55	57	420,606	570.96
Financial Activities	98	526	518	520	4,843,350	714.64
Professional & Business Services	121	1,021	1,041	1,063	6,399,867	472.61
Education & Health Services	397	2,190	2,203	2,189	16,612,888	582.46
Leisure & Hospitality	115	1,759	1,754	1,845	6,185,157	266.39
Other Services	92	460	448	466	2,669,910	448.42
Local Government	43	2,287	2,249	2,246	19,911,037	677.51
State Government	14	433	538	529	3,486,547	536.39



TABLE 6. COUNTY SUMMARY

NORTH AMERICAN INDUSTRY CLASSIFICATION SYSTEM - INDUSTRY GROUPS	NUMBER OF EMPLOYING UNITS	EMPLOYMENT			TOTAL EARNINGS JAN - MAR 2011	AVERAGE WEEKLY EARNINGS
		JANUARY	FEBRUARY	MARCH		
<b>CROSS COUNTY - TOTAL</b>	<b>517</b>	<b>4,878</b>	<b>4,920</b>	<b>5,002</b>	<b>\$35,043,884</b>	<b>\$546.42</b>
Natural Resources & Mining	31	155	158	178	872,042	409.86
Construction	18	82	65	70	532,819	566.63
Manufacturing	12	698	717	729	5,257,673	565.91
Trade, Transportation & Utilities	138	1,216	1,222	1,253	9,425,364	589.29
Wholesale Trade	30	301	306	318	3,258,062	812.82
Retail Trade	74	713	715	732	4,030,212	430.58
Transportation, Warehousing & Utilities	34	202	201	203	2,137,090	813.82
Information	4	36	34	34	248,257	550.87
Financial Activities	41	290	289	290	2,427,028	644.51
Professional & Business Services	44	166	175	171	1,337,181	602.70
Education & Health Services	133	760	792	787	4,683,728	462.10
Leisure & Hospitality	34	325	321	337	805,471	189.09
Other Services	36	68	66	64	343,828	400.73
Local Government	16	718	720	729	5,878,712	626.04
State Government	10	364	361	360	3,231,781	687.37
<b>DALLAS COUNTY - TOTAL</b>	<b>267</b>	<b>2,899</b>	<b>2,862</b>	<b>2,890</b>	<b>\$18,811,947</b>	<b>\$501.82</b>
Natural Resources & Mining	36	172	176	178	1,311,463	575.37
Construction	13	47	51	52	334,051	513.92
Manufacturing	14	614	593	600	4,638,871	592.42
Trade, Transportation & Utilities	64	480	483	487	3,525,213	561.04
Wholesale Trade	9	44	45	42	1,024,687	1,805.09
Retail Trade	39	338	346	355	1,839,200	408.50
Transportation, Warehousing & Utilities	16	98	92	90	661,326	545.05
Information	3	19	19	19	113,410	459.15
Financial Activities	13	65	63	64	562,052	675.54
Professional & Business Services	16	60	61	62	564,799	712.23
Education & Health Services	58	884	853	866	4,756,444	421.68
Leisure & Hospitality	12	92	93	99	285,533	232.01
Other Services	15	63	68	68	346,160	401.42
Local Government	15	351	351	344	2,063,771	455.31
State Government	8	52	51	51	310,180	464.81

TABLE 6. COUNTY SUMMARY

NORTH AMERICAN INDUSTRY CLASSIFICATION SYSTEM - INDUSTRY GROUPS	NUMBER OF EMPLOYING UNITS	EMPLOYMENT			TOTAL EARNINGS JAN - MAR 2011	AVERAGE WEEKLY EARNINGS
		JANUARY	FEBRUARY	MARCH		
<b>DESHA COUNTY - TOTAL</b>	<b>502</b>	<b>4,372</b>	<b>4,351</b>	<b>4,412</b>	<b>\$32,710,583</b>	<b>\$574.69</b>
Natural Resources & Mining	61	229	225	238	1,598,975	533.23
Construction	17	108	105	115	773,992	544.55
Manufacturing	18	820	821	828	9,930,491	928.17
Trade, Transportation & Utilities	108	857	833	851	5,996,114	544.56
Wholesale Trade	17	169	163	167	2,029,343	938.50
Retail Trade	63	511	497	513	2,725,868	413.57
Transportation, Warehousing & Utilities	28	177	173	171	1,240,903	549.64
Information	6	32	31	33	234,202	562.99
Financial Activities	32	214	213	215	1,586,571	570.30
Professional & Business Services	35	93	92	88	552,541	467.07
Education & Health Services	136	717	728	723	4,301,921	457.91
Leisure & Hospitality	37	276	280	288	686,184	187.62
Other Services	22	51	51	50	184,748	280.49
Local Government	20	823	820	831	5,823,927	543.24
State Government	10	152	152	152	1,040,917	526.78
<b>DREW COUNTY - TOTAL</b>	<b>528</b>	<b>6,334</b>	<b>6,464</b>	<b>6,515</b>	<b>\$42,877,920</b>	<b>\$512.34</b>
Natural Resources & Mining	46	326	418	422	2,735,274	541.35
Construction	21	97	105	104	645,741	486.98
Manufacturing	20	810	837	838	5,722,773	531.44
Trade, Transportation & Utilities	117	1,164	1,161	1,152	7,766,638	515.47
Wholesale Trade	18	161	159	158	1,710,475	825.78
Retail Trade	80	916	908	902	5,128,607	434.16
Transportation, Warehousing & Utilities	19	87	94	92	927,556	784.07
Information	8	67	64	64	489,757	579.59
Financial Activities	48	242	240	243	2,211,479	703.92
Professional & Business Services	44	242	237	250	1,685,488	533.55
Education & Health Services	120	806	812	830	4,931,814	464.91
Leisure & Hospitality	47	568	564	566	1,439,615	195.65
Other Services	18	65	63	63	358,456	433.09
Local Government	23	1,296	1,315	1,344	8,886,155	518.50
State Government	16	651	648	639	6,004,730	715.02

TABLE 6. COUNTY SUMMARY

NORTH AMERICAN INDUSTRY CLASSIFICATION SYSTEM - INDUSTRY GROUPS	NUMBER OF EMPLOYING UNITS	EMPLOYMENT			TOTAL EARNINGS JAN - MAR 2011	AVERAGE WEEKLY EARNINGS
		JANUARY	FEBRUARY	MARCH		
<b>FAULKNER COUNTY - TOTAL</b>	<b>2,719</b>	<b>39,273</b>	<b>39,439</b>	<b>40,003</b>	<b>\$348,367,823</b>	<b>\$677.19</b>
Natural Resources & Mining	52	1,260	1,284	1,304	26,762,785	1,605.00
Construction	318	2,423	2,403	2,505	21,589,024	679.59
Manufacturing	107	3,388	3,374	3,358	38,749,794	883.62
Trade, Transportation & Utilities	646	6,986	6,972	7,130	49,602,813	542.81
Wholesale Trade	174	987	985	993	11,402,223	887.45
Retail Trade	392	5,156	5,145	5,273	28,016,134	415.13
Transportation, Warehousing & Utilities	80	843	842	864	10,184,456	922.03
Information	31	378	379	362	3,849,249	793.82
Financial Activities	316	1,452	1,437	1,433	14,618,945	780.57
Professional & Business Services	381	5,992	6,085	6,149	72,110,340	913.03
Education & Health Services	426	5,755	5,790	5,901	44,668,221	590.85
Leisure & Hospitality	222	4,211	4,178	4,333	12,672,704	229.88
Other Services	163	684	701	714	4,275,015	470.01
Local Government	39	3,444	3,491	3,455	28,937,869	642.73
State Government	18	3,300	3,345	3,359	30,531,064	704.28
<b>FRANKLIN COUNTY - TOTAL</b>	<b>329</b>	<b>4,177</b>	<b>4,184</b>	<b>4,219</b>	<b>\$33,705,941</b>	<b>\$618.31</b>
Natural Resources & Mining	13	266	267	270	3,032,056	871.36
Construction	28	94	90	92	928,588	776.41
Manufacturing	16	848	845	856	8,703,700	787.97
Trade, Transportation & Utilities	89	832	832	852	6,712,685	615.69
Wholesale Trade	17	51	56	61	473,646	650.61
Retail Trade	52	493	492	507	2,549,943	394.40
Transportation, Warehousing & Utilities	20	288	284	284	3,689,096	994.54
Information	5	26	25	26	193,660	580.40
Financial Activities	27	228	228	229	1,720,745	579.70
Professional & Business Services	26	139	148	134	752,552	412.51
Education & Health Services	53	559	567	568	3,553,959	484.15
Leisure & Hospitality	23	267	269	280	788,915	223.11
Other Services	20	61	58	57	461,781	605.48
Local Government	20	763	754	755	5,896,501	598.91
State Government	9	94	101	100	960,799	751.60

TABLE 6. COUNTY SUMMARY

NORTH AMERICAN INDUSTRY CLASSIFICATION SYSTEM - INDUSTRY GROUPS	NUMBER OF EMPLOYING UNITS	EMPLOYMENT			TOTAL EARNINGS JAN - MAR 2011	AVERAGE WEEKLY EARNINGS
		JANUARY	FEBRUARY	MARCH		
<b>FULTON COUNTY - TOTAL</b>	<b>216</b>	<b>1,922</b>	<b>1,884</b>	<b>1,884</b>	<b>\$10,914,922</b>	<b>\$442.68</b>
Construction	9	18	18	18	106,827	456.53
Manufacturing	12	140	128	123	595,990	351.75
Trade, Transportation & Utilities	50	329	314	310	2,117,510	512.76
Retail Trade	32	176	170	168	795,618	357.21
Other Trade, Transportation & Utilities	18	153	144	142	1,321,892	694.88
Information	4	36	37	36	146,925	311.06
Financial Activities	16	84	85	91	613,480	544.51
Professional & Business Services	16	64	62	60	489,769	607.65
Education & Health Services	61	428	404	409	2,077,350	386.29
Leisure & Hospitality	16	113	116	120	278,619	184.23
Local Government	13	571	578	580	3,662,806	488.87
State Government	10	114	115	112	724,077	490.01
Other	9	25	27	25	101,569	304.40
<b>GARLAND COUNTY - TOTAL</b>	<b>3,109</b>	<b>34,592</b>	<b>34,432</b>	<b>35,094</b>	<b>\$250,293,547</b>	<b>\$554.76</b>
Natural Resources & Mining	37	307	321	319	4,217,483	1,027.74
Construction	345	1,572	1,565	1,535	10,793,190	533.12
Manufacturing	107	2,217	2,229	2,227	18,550,326	641.52
Trade, Transportation & Utilities	694	6,985	6,942	7,023	47,764,349	526.14
Wholesale Trade	141	875	872	880	10,333,728	907.77
Retail Trade	493	5,604	5,540	5,602	31,730,804	437.27
Transportation, Warehousing & Utilities	60	506	530	541	5,699,817	834.08
Information	34	318	312	314	2,742,568	670.45
Financial Activities	342	1,385	1,384	1,395	12,704,346	704.08
Professional & Business Services	397	2,980	2,976	2,983	22,785,994	588.24
Education & Health Services	508	7,428	7,361	7,429	66,959,210	695.48
Leisure & Hospitality	347	6,147	6,107	6,467	22,083,636	272.22
Other Services	238	962	945	960	5,137,714	413.54
Local Government	34	3,113	3,132	3,264	27,322,172	663.07
State Government	26	1,178	1,158	1,178	9,232,559	606.31

TABLE 6. COUNTY SUMMARY

NORTH AMERICAN INDUSTRY CLASSIFICATION SYSTEM - INDUSTRY GROUPS	NUMBER OF EMPLOYING UNITS	EMPLOYMENT			TOTAL EARNINGS JAN - MAR 2011	AVERAGE WEEKLY EARNINGS
		JANUARY	FEBRUARY	MARCH		
<b>GRANT COUNTY - TOTAL</b>	<b>313</b>	<b>3,610</b>	<b>3,544</b>	<b>3,628</b>	<b>\$24,989,791</b>	<b>\$534.86</b>
Natural Resources & Mining	21	155	147	147	1,891,804	972.32
Construction	27	166	150	155	1,593,639	780.81
Manufacturing	15	838	837	847	6,494,131	594.23
Trade, Transportation & Utilities	85	602	585	607	3,744,643	481.69
Wholesale Trade	15	109	105	113	928,250	655.08
Retail Trade	46	439	422	437	2,433,385	432.63
Transportation, Warehousing & Utilities	24	54	58	57	383,008	523.00
Information	3	13	14	14	133,277	750.15
Financial Activities	24	94	94	98	674,123	543.94
Professional & Business Services	20	84	82	79	760,075	715.93
Education & Health Services	56	441	456	463	2,474,404	419.86
Leisure & Hospitality	23	256	244	239	658,420	205.61
Other Services	21	49	47	48	215,083	344.68
Local Government	10	855	831	873	5,956,339	537.14
State Government	8	57	57	58	393,853	528.43
<b>GREENE COUNTY - TOTAL</b>	<b>909</b>	<b>14,181</b>	<b>14,302</b>	<b>14,234</b>	<b>\$107,827,906</b>	<b>\$582.52</b>
Natural Resources & Mining	38	189	202	225	1,243,979	466.03
Construction	76	276	261	259	1,957,499	567.50
Manufacturing	60	4,716	4,709	4,701	46,087,652	752.91
Trade, Transportation & Utilities	232	2,253	2,242	2,307	14,503,743	492.06
Wholesale Trade	55	489	486	484	4,492,055	710.51
Retail Trade	148	1,558	1,542	1,614	8,361,417	409.32
Transportation, Warehousing & Utilities	29	206	214	209	1,650,271	605.46
Information	11	118	113	108	537,761	366.07
Financial Activities	79	473	466	468	3,969,825	651.11
Professional & Business Services	102	1,139	1,272	1,115	6,744,990	441.45
Education & Health Services	146	1,795	1,801	1,794	12,418,622	531.69
Leisure & Hospitality	76	1,005	1,014	1,046	3,065,303	230.79
Other Services	48	176	180	180	941,033	405.15
Local Government	30	1,636	1,638	1,627	12,395,820	583.67
State Government	11	405	404	404	3,961,679	753.70

TABLE 6. COUNTY SUMMARY

NORTH AMERICAN INDUSTRY CLASSIFICATION SYSTEM - INDUSTRY GROUPS	NUMBER OF EMPLOYING UNITS	EMPLOYMENT			TOTAL EARNINGS JAN - MAR 2011	AVERAGE WEEKLY EARNINGS
		JANUARY	FEBRUARY	MARCH		
<b>HEMPSTEAD COUNTY - TOTAL</b>	<b>505</b>	<b>8,043</b>	<b>8,144</b>	<b>8,187</b>	<b>\$66,035,047</b>	<b>\$625.21</b>
Natural Resources & Mining	16	168	173	177	1,479,332	659.04
Construction	32	1,019	1,069	1,107	15,064,445	1,088.08
Manufacturing	31	1,595	1,671	1,655	12,633,575	592.45
Trade, Transportation & Utilities	127	1,303	1,296	1,319	10,114,625	595.75
Wholesale Trade	26	255	259	266	2,458,416	727.34
Retail Trade	81	848	830	842	4,713,119	431.60
Transportation, Warehousing & Utilities	20	200	207	211	2,943,090	1,098.99
Information	8	53	55	54	343,140	488.80
Financial Activities	38	230	228	227	2,180,259	734.51
Professional & Business Services	38	142	147	151	1,307,790	685.90
Education & Health Services	90	1,087	1,067	1,075	6,591,234	471.06
Leisure & Hospitality	43	576	551	538	1,677,401	232.49
Other Services	37	157	153	155	1,116,806	554.25
Local Government	29	1,015	1,012	1,007	7,672,085	583.55
State Government	16	698	722	722	5,854,355	630.72
<b>HOT SPRING COUNTY - TOTAL</b>	<b>586</b>	<b>7,853</b>	<b>7,866</b>	<b>7,944</b>	<b>\$57,501,220</b>	<b>\$560.77</b>
Natural Resources & Mining	25	144	142	141	974,592	526.71
Construction	63	347	346	366	2,801,862	610.56
Manufacturing	30	1,292	1,311	1,302	14,369,121	849.16
Trade, Transportation & Utilities	152	1,332	1,307	1,308	9,777,485	571.66
Wholesale Trade	18	79	76	74	756,705	762.55
Retail Trade	95	893	882	888	4,866,223	421.70
Transportation, Warehousing & Utilities	39	360	349	346	4,154,557	908.76
Information	7	51	51	48	380,215	584.95
Financial Activities	52	268	266	266	2,245,253	647.67
Professional & Business Services	48	781	809	832	3,923,854	373.87
Education & Health Services	90	1,157	1,146	1,158	8,040,264	536.10
Leisure & Hospitality	41	491	497	497	1,293,136	200.95
Other Services	38	164	158	177	790,339	365.50
Local Government	27	1,123	1,129	1,135	8,026,396	546.87
State Government	13	703	704	714	4,878,703	530.81

TABLE 6. COUNTY SUMMARY

NORTH AMERICAN INDUSTRY CLASSIFICATION SYSTEM - INDUSTRY GROUPS	NUMBER OF EMPLOYING UNITS	EMPLOYMENT			TOTAL EARNINGS JAN - MAR 2011	AVERAGE WEEKLY EARNINGS
		JANUARY	FEBRUARY	MARCH		
<b>HOWARD COUNTY - TOTAL</b>	<b>346</b>	<b>7,189</b>	<b>7,238</b>	<b>7,437</b>	<b>\$46,458,727</b>	<b>\$490.36</b>
Natural Resources & Mining	19	188	189	189	1,335,670	544.58
Construction	16	124	128	120	1,000,501	620.66
Manufacturing	22	3,797	3,793	4,014	24,797,340	493.15
Trade, Transportation & Utilities	98	922	910	930	6,234,893	520.93
Wholesale Trade	19	80	78	80	915,291	887.48
Retail Trade	57	636	622	640	3,401,837	413.61
Transportation, Warehousing & Utilities	22	206	210	210	1,917,765	706.97
Information	5	32	31	31	183,352	450.13
Financial Activities	34	143	142	142	1,042,102	563.20
Professional & Business Services	20	112	117	104	786,239	544.86
Education & Health Services	62	650	660	649	3,930,789	463.04
Leisure & Hospitality	20	293	306	300	773,795	198.63
Other Services	22	106	114	113	619,977	429.64
Local Government	17	715	726	723	4,935,426	526.31
State Government	11	107	122	122	818,643	538.23
<b>INDEPENDENCE COUNTY - TOTAL</b>	<b>941</b>	<b>15,121</b>	<b>15,097</b>	<b>15,086</b>	<b>\$114,489,300</b>	<b>\$583.18</b>
Natural Resources & Mining	16	241	222	235	2,278,676	753.36
Construction	72	382	381	412	2,843,863	558.53
Manufacturing	50	3,702	3,720	3,542	29,756,680	626.32
Trade, Transportation & Utilities	244	2,913	2,878	2,912	21,101,083	559.52
Wholesale Trade	38	415	400	399	3,514,876	668.14
Retail Trade	156	1,656	1,637	1,672	8,733,370	405.92
Transportation, Warehousing & Utilities	50	842	841	841	8,852,837	809.41
Information	10	132	130	131	963,877	565.99
Financial Activities	85	511	505	501	4,592,350	698.60
Professional & Business Services	86	571	551	538	3,348,972	465.57
Education & Health Services	175	3,041	3,012	3,032	28,530,612	724.71
Leisure & Hospitality	70	991	970	1,007	3,082,903	239.70
Other Services	69	384	389	402	2,162,870	424.79
Local Government	47	1,625	1,653	1,672	10,269,898	478.78
State Government	17	628	686	702	5,557,516	636.16

TABLE 6. COUNTY SUMMARY

NORTH AMERICAN INDUSTRY CLASSIFICATION SYSTEM - INDUSTRY GROUPS	NUMBER OF EMPLOYING UNITS	EMPLOYMENT			TOTAL EARNINGS JAN - MAR 2011	AVERAGE WEEKLY EARNINGS
		JANUARY	FEBRUARY	MARCH		
<b>IZARD COUNTY - TOTAL</b>	<b>266</b>	<b>2,915</b>	<b>2,952</b>	<b>3,003</b>	<b>\$18,401,954</b>	<b>\$478.76</b>
Natural Resources & Mining	5	131	128	132	1,258,927	743.02
Construction	27	59	55	58	324,967	436.00
Manufacturing	11	212	230	239	1,708,959	579.11
Trade, Transportation & Utilities	67	565	529	542	2,962,162	417.83
Wholesale Trade	9	27	22	21	128,474	423.54
Retail Trade	47	412	382	399	1,925,148	372.39
Transportation, Warehousing & Utilities	11	126	125	122	908,540	562.10
Financial Activities	29	140	135	136	963,787	541.15
Professional & Business Services	17	77	76	75	477,419	483.22
Education & Health Services	53	634	636	631	3,540,617	429.81
Leisure & Hospitality	18	88	94	97	220,407	182.31
Local Government	18	542	536	554	3,509,071	496.19
State Government	10	439	506	513	3,297,516	521.92
Other	11	28	27	26	138,122	393.51
<b>JACKSON COUNTY - TOTAL</b>	<b>481</b>	<b>5,069</b>	<b>5,045</b>	<b>5,105</b>	<b>\$39,506,519</b>	<b>\$599.05</b>
Natural Resources & Mining	54	194	196	218	1,461,891	554.87
Construction	25	109	97	112	860,830	624.70
Manufacturing	20	881	875	873	10,230,008	897.97
Trade, Transportation & Utilities	111	979	996	995	7,088,736	550.80
Wholesale Trade	23	189	190	186	2,290,203	935.41
Retail Trade	71	684	699	699	3,873,473	429.34
Transportation, Warehousing & Utilities	17	106	107	110	925,060	660.91
Information	4	24	24	24	123,686	396.43
Financial Activities	35	153	153	151	1,422,956	718.54
Professional & Business Services	37	164	157	150	1,232,686	603.96
Education & Health Services	100	832	806	832	6,282,170	586.94
Leisure & Hospitality	28	272	263	266	728,620	209.92
Other Services	22	66	67	67	453,211	522.94
Local Government	32	670	685	692	4,134,455	466.10
State Government	13	725	726	725	5,487,270	581.94



TABLE 6. COUNTY SUMMARY

NORTH AMERICAN INDUSTRY CLASSIFICATION SYSTEM - INDUSTRY GROUPS	NUMBER OF EMPLOYING UNITS	EMPLOYMENT			TOTAL EARNINGS JAN - MAR 2011	AVERAGE WEEKLY EARNINGS
		JANUARY	FEBRUARY	MARCH		
<b>JEFFERSON COUNTY - TOTAL</b>	<b>2,096</b>	<b>29,070</b>	<b>29,297</b>	<b>29,520</b>	<b>\$244,746,265</b>	<b>\$642.64</b>
Natural Resources & Mining	39	284	297	300	4,815,922	1,261.48
Construction	102	1,120	1,124	1,176	14,121,018	952.84
Manufacturing	64	5,317	5,343	5,352	54,423,547	784.37
Trade, Transportation & Utilities	434	5,231	5,189	5,201	41,510,206	613.23
Wholesale Trade	78	966	975	980	8,980,998	709.53
Retail Trade	291	3,323	3,266	3,278	18,855,251	440.99
Transportation, Warehousing & Utilities	65	942	948	943	13,673,957	1,113.85
Information	13	129	128	129	1,024,264	612.35
Financial Activities	145	1,122	1,111	1,101	12,314,059	852.34
Professional & Business Services	172	1,658	1,641	1,684	12,978,918	601.07
Education & Health Services	777	5,168	5,128	5,118	39,328,648	588.81
Leisure & Hospitality	136	1,857	1,904	1,979	5,497,365	221.01
Other Services	135	623	612	608	3,872,533	484.89
Local Government	42	3,255	3,253	3,263	24,771,058	585.04
State Government	37	3,306	3,567	3,609	30,088,727	662.43
<b>JOHNSON COUNTY - TOTAL</b>	<b>472</b>	<b>8,559</b>	<b>8,581</b>	<b>8,665</b>	<b>\$59,141,436</b>	<b>\$528.89</b>
Natural Resources & Mining	18	123	123	125	991,407	616.67
Construction	25	83	97	111	759,023	601.92
Manufacturing	37	3,170	3,157	3,172	20,184,542	490.36
Trade, Transportation & Utilities	106	1,978	1,984	2,004	15,303,249	591.94
Retail Trade	66	909	882	895	4,550,808	390.99
Other Trade, Transportation & Utilities	40	1,069	1,102	1,109	10,752,441	756.50
Information	4	30	31	31	176,504	442.74
Financial Activities	47	201	206	206	1,601,027	602.72
Professional & Business Services	45	158	164	160	1,142,186	546.85
Education & Health Services	101	1,198	1,183	1,186	9,016,220	583.31
Leisure & Hospitality	38	448	440	455	1,305,400	224.31
Other Services	28	66	66	69	342,128	392.80
Local Government	14	972	1,001	1,017	7,326,746	565.48
State Government	9	132	129	129	993,004	587.58

TABLE 6. COUNTY SUMMARY

NORTH AMERICAN INDUSTRY CLASSIFICATION SYSTEM - INDUSTRY GROUPS	NUMBER OF EMPLOYING UNITS	EMPLOYMENT			TOTAL EARNINGS JAN - MAR 2011	AVERAGE WEEKLY EARNINGS
		JANUARY	FEBRUARY	MARCH		
<b>LAFAYETTE COUNTY - TOTAL</b>	<b>179</b>	<b>1,284</b>	<b>1,279</b>	<b>1,311</b>	<b>\$8,112,985</b>	<b>\$483.28</b>
Natural Resources & Mining	33	157	147	157	1,248,874	625.17
Construction	8	56	59	63	545,200	706.83
Manufacturing	5	30	32	34	242,440	582.79
Trade, Transportation & Utilities	36	193	187	198	1,193,297	476.43
Retail Trade	22	128	126	136	526,862	311.75
Other Trade, Transportation & Utilities	14	65	61	62	666,435	818.05
Financial Activities	14	57	58	59	341,987	453.56
Professional & Business Services	14	63	59	63	554,695	691.93
Education & Health Services	35	231	232	229	1,221,010	407.18
Leisure & Hospitality	6	45	48	50	124,675	201.20
Local Government	13	320	323	327	1,909,467	454.27
State Government	7	46	45	44	266,801	456.07
Other	8	86	89	87	464,539	409.17
<b>LAWRENCE COUNTY - TOTAL</b>	<b>416</b>	<b>3,995</b>	<b>3,962</b>	<b>3,977</b>	<b>\$25,733,334</b>	<b>\$497.61</b>
Natural Resources & Mining	40	151	145	156	914,619	466.96
Construction	26	94	99	106	652,139	503.32
Manufacturing	23	478	471	460	3,159,847	517.53
Trade, Transportation & Utilities	110	835	812	831	5,578,414	519.50
Wholesale Trade	21	184	179	184	1,691,624	713.67
Retail Trade	59	527	510	529	2,734,662	402.99
Transportation, Warehousing & Utilities	30	124	123	118	1,152,128	728.43
Financial Activities	33	149	148	145	1,047,255	546.77
Professional & Business Services	25	88	88	94	764,623	653.52
Education & Health Services	78	551	547	546	3,662,985	514.18
Leisure & Hospitality	21	256	249	255	612,490	185.98
Local Government	27	1,200	1,214	1,202	8,210,562	523.99
State Government	10	107	105	104	653,309	477.10
Other	23	86	84	78	477,091	443.94

TABLE 6. COUNTY SUMMARY

NORTH AMERICAN INDUSTRY CLASSIFICATION SYSTEM - INDUSTRY GROUPS	NUMBER OF EMPLOYING UNITS	EMPLOYMENT			TOTAL EARNINGS JAN - MAR 2011	AVERAGE WEEKLY EARNINGS
		JANUARY	FEBRUARY	MARCH		
<b>LEE COUNTY - TOTAL</b>	<b>309</b>	<b>1,960</b>	<b>1,970</b>	<b>2,011</b>	<b>\$13,271,778</b>	<b>\$515.52</b>
Natural Resources & Mining	35	156	174	192	1,011,905	447.35
Construction	8	20	20	21	131,708	498.26
Trade, Transportation & Utilities	48	349	343	343	2,280,825	508.55
Wholesale Trade	7	71	73	73	739,860	786.81
Retail Trade	25	192	191	193	888,590	356.01
Transportation, Warehousing & Utilities	16	86	79	77	652,375	622.10
Financial Activities	15	72	71	74	669,501	711.98
Professional & Business Services	16	57	58	59	637,700	845.76
Education & Health Services	142	400	401	401	2,446,575	469.71
Leisure & Hospitality	7	73	78	81	200,560	199.50
Local Government	15	340	332	338	2,032,613	464.42
State Government	7	465	472	480	3,700,850	602.71
Other	16	28	21	22	159,541	518.55
<b>LINCOLN COUNTY - TOTAL</b>	<b>271</b>	<b>2,838</b>	<b>2,847</b>	<b>2,897</b>	<b>\$19,879,599</b>	<b>\$534.56</b>
Natural Resources & Mining	32	150	148	160	1,087,948	548.18
Construction	15	65	68	73	453,501	508.03
Manufacturing	9	335	336	342	2,623,697	597.70
Trade, Transportation & Utilities	50	328	330	337	2,690,563	624.02
Wholesale Trade	10	47	48	55	521,327	802.04
Retail Trade	24	160	161	158	679,299	327.27
Transportation, Warehousing & Utilities	16	121	121	124	1,489,937	939.43
Financial Activities	20	66	63	63	602,606	724.29
Professional & Business Services	12	26	28	25	196,903	575.18
Education & Health Services	88	381	389	402	2,045,441	402.75
Leisure & Hospitality	12	146	145	149	273,105	143.24
Local Government	7	367	363	366	2,315,296	487.50
State Government	12	939	942	940	7,378,385	603.58
Other	14	35	35	40	212,154	445.08

TABLE 6. COUNTY SUMMARY

NORTH AMERICAN INDUSTRY CLASSIFICATION SYSTEM - INDUSTRY GROUPS	NUMBER OF EMPLOYING UNITS	EMPLOYMENT			TOTAL EARNINGS JAN - MAR 2011	AVERAGE WEEKLY EARNINGS
		JANUARY	FEBRUARY	MARCH		
<b>LITTLE RIVER COUNTY - TOTAL</b>	<b>246</b>	<b>3,807</b>	<b>3,828</b>	<b>3,816</b>	<b>\$47,549,550</b>	<b>\$958.25</b>
Natural Resources & Mining	10	66	64	60	463,298	562.71
Construction	21	225	222	220	1,671,393	578.27
Manufacturing	18	1,375	1,375	1,378	32,147,586	1,797.16
Trade, Transportation & Utilities	58	608	606	606	3,757,063	476.38
Wholesale Trade	9	39	41	41	392,499	748.57
Retail Trade	35	366	367	362	2,073,674	437.02
Transportation, Warehousing & Utilities	14	203	198	203	1,290,890	493.21
Financial Activities	20	94	93	91	628,626	521.83
Professional & Business Services	16	103	96	92	761,658	604.01
Education & Health Services	40	151	154	156	908,602	454.83
Leisure & Hospitality	16	173	183	183	532,529	228.00
Local Government	20	844	847	852	5,749,206	521.72
State Government	11	75	82	79	491,142	480.26
Other	16	93	106	99	438,447	339.53
<b>LOGAN COUNTY - TOTAL</b>	<b>502</b>	<b>5,293</b>	<b>5,306</b>	<b>5,325</b>	<b>\$35,514,495</b>	<b>\$514.67</b>
Natural Resources & Mining	24	114	107	110	1,198,294	835.44
Construction	49	245	258	269	1,845,699	551.72
Manufacturing	23	1,189	1,192	1,181	8,567,665	555.07
Trade, Transportation & Utilities	121	890	887	881	5,579,134	484.38
Wholesale Trade	14	75	78	73	265,316	270.91
Retail Trade	76	680	676	676	3,688,099	418.85
Transportation, Warehousing & Utilities	31	135	133	132	1,625,719	937.91
Information	6	41	41	41	389,644	731.04
Financial Activities	41	214	218	213	1,817,895	650.41
Professional & Business Services	45	109	101	108	633,514	459.73
Education & Health Services	99	737	744	756	5,129,440	529.15
Leisure & Hospitality	30	260	256	260	778,831	231.61
Other Services	28	124	124	125	879,136	543.91
Local Government	22	846	858	860	5,593,796	503.46
State Government	14	524	520	521	3,101,447	457.33

TABLE 6. COUNTY SUMMARY

NORTH AMERICAN INDUSTRY CLASSIFICATION SYSTEM - INDUSTRY GROUPS	NUMBER OF EMPLOYING UNITS	EMPLOYMENT			TOTAL EARNINGS JAN - MAR 2011	AVERAGE WEEKLY EARNINGS
		JANUARY	FEBRUARY	MARCH		
<b>LONOKE COUNTY - TOTAL</b>	<b>1,301</b>	<b>12,550</b>	<b>12,573</b>	<b>12,782</b>	<b>\$86,078,808</b>	<b>\$524.06</b>
Natural Resources & Mining	81	419	423	454	3,529,957	628.55
Construction	140	705	702	711	5,718,862	623.11
Manufacturing	41	1,328	1,386	1,393	13,936,288	783.07
Trade, Transportation & Utilities	321	2,803	2,751	2,794	16,967,098	469.03
Wholesale Trade	79	359	365	387	3,803,549	790.05
Retail Trade	175	2,199	2,158	2,188	11,121,999	392.15
Transportation, Warehousing & Utilities	67	245	228	219	2,041,550	680.82
Information	17	94	89	86	817,707	701.49
Financial Activities	130	509	491	498	5,077,297	782.17
Professional & Business Services	150	548	580	605	4,425,818	589.35
Education & Health Services	204	1,624	1,624	1,612	10,092,526	479.23
Leisure & Hospitality	102	1,430	1,400	1,477	3,986,216	213.58
Other Services	74	218	215	217	1,184,356	420.48
Local Government	26	2,717	2,757	2,787	19,256,360	537.92
State Government	15	155	155	148	1,086,323	547.36
<b>MADISON COUNTY - TOTAL</b>	<b>233</b>	<b>3,008</b>	<b>2,975</b>	<b>3,031</b>	<b>\$19,678,443</b>	<b>\$503.79</b>
Natural Resources & Mining	11	22	18	29	151,849	507.86
Construction	26	47	52	58	429,705	631.61
Manufacturing	20	1,066	1,061	1,071	6,902,940	498.12
Trade, Transportation & Utilities	45	532	515	525	3,549,362	521.05
Wholesale Trade	5	16	16	16	425,460	2,045.48
Retail Trade	33	415	393	404	2,200,230	418.93
Transportation, Warehousing & Utilities	7	101	106	105	923,672	683.19
Information	5	38	38	39	476,874	956.94
Financial Activities	15	74	72	73	571,604	602.32
Professional & Business Services	24	163	156	157	1,035,584	502.06
Education & Health Services	42	242	241	243	1,397,307	444.15
Leisure & Hospitality	13	157	155	162	410,735	199.97
Other Services	16	28	29	28	210,398	571.22
Local Government	9	600	599	607	4,262,569	544.67
State Government	7	39	39	39	279,516	551.31

TABLE 6. COUNTY SUMMARY

NORTH AMERICAN INDUSTRY CLASSIFICATION SYSTEM - INDUSTRY GROUPS	NUMBER OF EMPLOYING UNITS	EMPLOYMENT			TOTAL EARNINGS JAN - MAR 2011	AVERAGE WEEKLY EARNINGS
		JANUARY	FEBRUARY	MARCH		
<b>MARION COUNTY - TOTAL</b>	<b>311</b>	<b>3,506</b>	<b>3,481</b>	<b>3,559</b>	<b>\$22,420,517</b>	<b>\$490.61</b>
Natural Resources & Mining	5	26	25	25	123,576	375.23
Construction	23	65	60	63	252,071	309.42
Manufacturing	20	1,422	1,404	1,435	9,752,101	528.16
Trade, Transportation & Utilities	55	521	526	530	3,439,795	503.36
Wholesale Trade	6	30	37	35	398,101	900.68
Retail Trade	40	461	458	462	2,711,645	453.12
Transportation, Warehousing & Utilities	9	30	31	33	330,049	810.27
Information	5	61	62	63	657,729	816.04
Financial Activities	37	176	178	187	1,406,242	599.85
Professional & Business Services	28	54	54	52	335,432	483.80
Education & Health Services	62	337	334	338	1,914,527	437.87
Leisure & Hospitality	39	173	175	202	468,199	196.45
Other Services	12	31	28	27	123,070	330.24
Local Government	18	564	562	561	3,484,882	476.71
State Government	7	76	73	76	462,893	474.76
<b>MILLER COUNTY - TOTAL</b>	<b>867</b>	<b>13,073</b>	<b>13,113</b>	<b>13,467</b>	<b>\$103,581,786</b>	<b>\$602.82</b>
Natural Resources & Mining	24	139	137	137	990,272	553.33
Construction	88	871	847	892	6,202,582	548.42
Manufacturing	28	2,324	2,333	2,382	30,757,030	1,008.35
Trade, Transportation & Utilities	233	3,296	3,288	3,359	26,523,066	615.58
Wholesale Trade	56	553	545	546	6,417,075	900.77
Retail Trade	127	1,294	1,280	1,286	7,152,918	427.64
Transportation, Warehousing & Utilities	50	1,449	1,463	1,527	12,953,073	673.39
Information	6	78	78	78	1,325,903	1,307.60
Financial Activities	78	371	364	372	3,265,292	680.69
Professional & Business Services	92	1,270	1,268	1,335	6,037,441	359.74
Education & Health Services	132	876	892	899	5,534,398	478.88
Leisure & Hospitality	85	1,292	1,321	1,415	4,357,240	249.63
Other Services	60	312	310	319	1,616,785	396.50
Local Government	25	1,753	1,784	1,791	12,608,789	546.12
State Government	16	491	491	488	4,362,988	684.93

TABLE 6. COUNTY SUMMARY

NORTH AMERICAN INDUSTRY CLASSIFICATION SYSTEM - INDUSTRY GROUPS	NUMBER OF EMPLOYING UNITS	EMPLOYMENT			TOTAL EARNINGS JAN - MAR 2011	AVERAGE WEEKLY EARNINGS
		JANUARY	FEBRUARY	MARCH		
<b>MISSISSIPPI COUNTY - TOTAL</b>	<b>1,225</b>	<b>18,428</b>	<b>18,652</b>	<b>18,948</b>	<b>\$175,795,039</b>	<b>\$724.07</b>
Natural Resources & Mining	105	478	466	502	3,021,802	482.25
Construction	69	596	608	636	6,509,565	816.42
Manufacturing	55	6,744	6,791	6,803	92,390,454	1,048.33
Trade, Transportation & Utilities	298	3,083	3,091	3,111	25,242,890	627.39
Wholesale Trade	62	459	455	475	5,639,771	936.99
Retail Trade	173	1,810	1,815	1,811	9,356,753	397.21
Transportation, Warehousing & Utilities	63	814	821	825	10,246,366	961.20
Information	11	93	91	89	511,289	432.20
Financial Activities	96	539	540	535	3,999,749	571.88
Professional & Business Services	93	910	1,073	1,167	7,340,912	537.80
Education & Health Services	284	1,744	1,726	1,751	10,669,055	471.57
Leisure & Hospitality	85	1,038	1,021	1,098	3,040,423	222.25
Other Services	62	259	253	253	1,135,430	342.51
Local Government	45	2,317	2,323	2,327	17,380,416	575.69
State Government	22	627	669	676	4,553,054	532.81
<b>MONROE COUNTY - TOTAL</b>	<b>322</b>	<b>2,198</b>	<b>2,209</b>	<b>2,238</b>	<b>\$13,630,473</b>	<b>\$473.36</b>
Natural Resources & Mining	35	122	121	138	785,909	476.02
Construction	16	63	64	59	519,845	644.97
Manufacturing	6	108	109	106	799,618	571.29
Trade, Transportation & Utilities	79	616	634	641	4,773,467	582.53
Wholesale Trade	18	211	213	230	2,396,135	845.50
Retail Trade	37	272	284	273	1,288,074	358.56
Transportation, Warehousing & Utilities	24	133	137	138	1,089,258	616.10
Financial Activities	18	84	86	85	736,343	666.37
Professional & Business Services	15	48	47	47	190,133	308.99
Education & Health Services	76	315	317	322	1,657,939	401.05
Leisure & Hospitality	26	233	218	227	583,215	198.51
Local Government	22	389	388	381	2,394,678	477.22
State Government	8	121	121	121	758,961	482.49
Other	21	99	104	111	430,365	316.29

TABLE 6. COUNTY SUMMARY

NORTH AMERICAN INDUSTRY CLASSIFICATION SYSTEM - INDUSTRY GROUPS	NUMBER OF EMPLOYING UNITS	EMPLOYMENT			TOTAL EARNINGS JAN - MAR 2011	AVERAGE WEEKLY EARNINGS
		JANUARY	FEBRUARY	MARCH		
<b>MONTGOMERY COUNTY - TOTAL</b>	<b>174</b>	<b>1,404</b>	<b>1,437</b>	<b>1,474</b>	<b>\$8,316,840</b>	<b>\$444.79</b>
Natural Resources & Mining	9	32	37	36	303,877	667.86
Construction	21	63	65	76	375,165	424.39
Trade, Transportation & Utilities	45	243	242	249	1,340,120	421.33
Wholesale Trade	13	64	65	67	436,277	513.67
Retail Trade	23	164	164	166	832,335	388.82
Transportation, Warehousing & Utilities	9	15	13	16	71,508	375.04
Financial Activities	9	65	62	60	533,451	658.31
Professional & Business Services	13	25	24	26	175,961	541.42
Education & Health Services	18	92	92	91	571,192	479.32
Leisure & Hospitality	20	138	167	191	659,105	306.66
Local Government	9	514	512	512	3,146,367	472.10
State Government	7	41	44	41	312,486	572.32
Other	23	191	192	192	899,116	360.85
<b>NEVADA COUNTY - TOTAL</b>	<b>192</b>	<b>2,131</b>	<b>2,126</b>	<b>2,183</b>	<b>\$15,959,795</b>	<b>\$571.90</b>
Natural Resources & Mining	9	34	34	35	215,308	482.39
Trade, Transportation & Utilities	40	502	484	484	3,314,758	520.37
Wholesale Trade	3	13	14	14	51,328	288.90
Retail Trade	27	272	258	257	1,275,971	374.15
Transportation, Warehousing & Utilities	10	217	212	213	1,987,459	714.40
Financial Activities	14	60	55	54	433,055	591.34
Professional & Business Services	12	61	60	60	410,214	523.01
Education & Health Services	33	402	390	398	2,134,665	413.96
Leisure & Hospitality	11	72	73	75	192,793	202.23
Other Services	15	54	54	53	186,181	266.86
Local Government	27	413	430	427	2,330,311	423.44
State Government	10	77	76	76	515,342	519.32
Other	21	456	470	521	6,227,168	993.12



TABLE 6. COUNTY SUMMARY

NORTH AMERICAN INDUSTRY CLASSIFICATION SYSTEM - INDUSTRY GROUPS	NUMBER OF EMPLOYING UNITS	EMPLOYMENT			TOTAL EARNINGS JAN - MAR 2011	AVERAGE WEEKLY EARNINGS
		JANUARY	FEBRUARY	MARCH		
<b>NEWTON COUNTY - TOTAL</b>	<b>128</b>	<b>1,008</b>	<b>995</b>	<b>1,053</b>	<b>\$5,182,880</b>	<b>\$391.38</b>
Construction	7	23	22	26	86,750	281.96
Manufacturing	10	50	40	41	305,904	538.88
Trade, Transportation & Utilities	31	156	155	157	786,094	387.62
Wholesale Trade	3	9	11	8	48,092	396.36
Retail Trade	14	100	99	104	387,088	294.81
Transportation, Warehousing & Utilities	14	47	45	45	350,914	591.10
Education & Health Services	31	221	223	227	974,564	335.17
Leisure & Hospitality	17	44	41	81	197,310	274.30
Other Services	3	4	4	5	19,123	339.46
Local Government	13	384	384	388	2,198,742	438.93
State Government	6	87	88	90	363,030	316.14
Other	10	39	38	38	251,363	504.41
<b>OUACHITA COUNTY - TOTAL</b>	<b>650</b>	<b>7,495</b>	<b>7,525</b>	<b>7,646</b>	<b>\$54,370,024</b>	<b>\$553.56</b>
Natural Resources & Mining	40	198	195	195	1,404,931	551.39
Construction	44	191	187	216	1,406,116	546.28
Manufacturing	27	898	920	930	8,695,672	730.24
Trade, Transportation & Utilities	167	1,719	1,715	1,718	11,704,330	524.26
Wholesale Trade	25	225	228	230	2,417,292	816.74
Retail Trade	111	1,091	1,078	1,091	5,066,217	358.63
Transportation, Warehousing & Utilities	31	403	409	397	4,220,821	805.65
Information	7	51	52	51	378,776	567.60
Financial Activities	62	327	323	323	2,440,379	578.79
Professional & Business Services	47	445	445	447	3,226,094	556.83
Education & Health Services	130	1,215	1,213	1,225	9,216,895	582.25
Leisure & Hospitality	40	431	421	441	1,261,896	225.22
Other Services	42	147	146	156	753,976	387.52
Local Government	30	1,172	1,188	1,198	8,094,105	524.98
State Government	14	701	720	746	5,786,854	616.26

TABLE 6. COUNTY SUMMARY

NORTH AMERICAN INDUSTRY CLASSIFICATION SYSTEM - INDUSTRY GROUPS	NUMBER OF EMPLOYING UNITS	EMPLOYMENT			TOTAL EARNINGS JAN - MAR 2011	AVERAGE WEEKLY EARNINGS
		JANUARY	FEBRUARY	MARCH		
<b>PERRY COUNTY - TOTAL</b>	<b>161</b>	<b>1,319</b>	<b>1,281</b>	<b>1,269</b>	<b>\$8,513,486</b>	<b>\$507.79</b>
Construction	22	100	94	92	854,750	689.69
Manufacturing	5	42	45	43	253,863	450.64
Trade, Transportation & Utilities	28	200	197	196	1,090,589	424.41
Wholesale Trade	7	15	14	13	152,492	837.87
Retail Trade	15	156	154	154	572,523	284.74
Transportation, Warehousing & Utilities	6	29	29	29	365,574	969.69
Financial Activities	14	32	32	34	334,501	787.68
Professional & Business Services	15	35	30	46	322,520	670.52
Education & Health Services	34	240	241	240	1,158,638	370.84
Leisure & Hospitality	8	46	45	48	124,731	207.08
Local Government	12	405	394	387	2,387,889	464.63
State Government	8	48	50	48	301,754	476.96
Other	15	171	153	135	1,684,251	846.78
<b>PHILLIPS COUNTY - TOTAL</b>	<b>961</b>	<b>6,284</b>	<b>6,262</b>	<b>6,323</b>	<b>\$41,241,859</b>	<b>\$504.39</b>
Natural Resources & Mining	77	239	270	305	1,220,019	345.88
Construction	26	118	105	109	714,782	496.84
Manufacturing	12	347	335	353	2,621,828	584.58
Trade, Transportation & Utilities	169	1,477	1,439	1,415	10,915,845	581.63
Wholesale Trade	33	355	339	342	3,782,949	842.65
Retail Trade	89	829	812	782	4,539,682	432.36
Transportation, Warehousing & Utilities	47	293	288	291	2,593,214	686.28
Information	10	51	49	49	356,850	552.68
Financial Activities	44	231	227	226	1,940,213	654.59
Professional & Business Services	52	265	259	261	1,875,311	551.29
Education & Health Services	455	1,527	1,535	1,529	8,513,129	427.92
Leisure & Hospitality	39	320	327	352	988,284	228.29
Other Services	35	75	66	64	352,823	397.17
Local Government	28	1,118	1,103	1,074	8,264,192	578.79
State Government	14	516	547	586	3,478,583	486.81

TABLE 6. COUNTY SUMMARY

NORTH AMERICAN INDUSTRY CLASSIFICATION SYSTEM - INDUSTRY GROUPS	NUMBER OF EMPLOYING UNITS	EMPLOYMENT			TOTAL EARNINGS JAN - MAR 2011	AVERAGE WEEKLY EARNINGS
		JANUARY	FEBRUARY	MARCH		
<b>PIKE COUNTY - TOTAL</b>	<b>260</b>	<b>2,293</b>	<b>2,324</b>	<b>2,368</b>	<b>\$14,175,765</b>	<b>\$468.34</b>
Natural Resources & Mining	26	114	119	118	1,159,950	762.62
Construction	14	44	52	57	236,492	356.70
Manufacturing	17	185	188	205	1,040,146	415.28
Trade, Transportation & Utilities	83	534	535	542	3,078,278	440.95
Wholesale Trade	14	120	121	119	844,187	541.15
Retail Trade	49	353	354	362	1,697,064	366.35
Transportation, Warehousing & Utilities	20	61	60	61	537,027	680.93
Information	5	21	21	22	230,664	831.72
Financial Activities	24	198	199	197	1,661,334	645.43
Professional & Business Services	9	33	36	32	551,765	1,260.70
Education & Health Services	21	273	262	266	1,406,865	405.32
Leisure & Hospitality	21	190	195	227	520,977	196.45
Other Services	19	64	69	68	335,678	385.39
Local Government	11	525	536	526	3,381,832	491.76
State Government	10	112	112	108	571,784	397.44
<b>POINSETT COUNTY - TOTAL</b>	<b>517</b>	<b>5,007</b>	<b>4,927</b>	<b>4,973</b>	<b>\$35,635,164</b>	<b>\$551.65</b>
Natural Resources & Mining	62	273	269	289	2,306,129	640.41
Construction	27	89	87	96	465,589	395.01
Manufacturing	21	650	628	619	5,061,425	615.72
Trade, Transportation & Utilities	127	1,219	1,219	1,259	9,334,737	582.68
Wholesale Trade	29	353	356	384	4,757,600	1,004.49
Retail Trade	71	710	712	718	3,462,318	373.36
Transportation, Warehousing & Utilities	27	156	151	157	1,114,819	554.45
Information	6	56	56	56	609,157	836.75
Financial Activities	40	278	261	264	2,407,688	691.93
Professional & Business Services	29	216	165	156	1,564,649	672.39
Education & Health Services	100	586	593	605	3,612,063	467.24
Leisure & Hospitality	42	331	337	343	818,461	186.82
Other Services	22	53	56	55	270,230	380.25
Local Government	30	1,108	1,107	1,085	8,118,625	567.74
State Government	11	148	149	146	1,066,411	555.52

TABLE 6. COUNTY SUMMARY

NORTH AMERICAN INDUSTRY CLASSIFICATION SYSTEM - INDUSTRY GROUPS	NUMBER OF EMPLOYING UNITS	EMPLOYMENT			TOTAL EARNINGS JAN - MAR 2011	AVERAGE WEEKLY EARNINGS
		JANUARY	FEBRUARY	MARCH		
<b>POLK COUNTY - TOTAL</b>	<b>536</b>	<b>5,754</b>	<b>5,730</b>	<b>5,780</b>	<b>\$35,377,658</b>	<b>\$472.90</b>
Natural Resources & Mining	23	140	140	135	1,253,753	697.17
Construction	41	181	178	188	1,204,694	508.24
Manufacturing	35	1,131	1,118	1,101	7,349,611	506.29
Trade, Transportation & Utilities	140	1,216	1,175	1,187	6,916,452	446.09
Wholesale Trade	21	74	74	75	652,020	674.74
Retail Trade	80	850	808	811	4,173,305	390.06
Transportation, Warehousing & Utilities	39	292	293	301	2,091,127	544.66
Information	9	57	59	59	358,439	472.67
Financial Activities	44	230	219	222	1,860,329	639.80
Professional & Business Services	47	138	138	143	1,069,629	589.11
Education & Health Services	89	1,031	1,052	1,064	6,714,865	492.40
Leisure & Hospitality	42	430	422	438	1,088,881	194.79
Other Services	32	139	131	126	812,029	473.21
Local Government	21	756	768	778	4,897,348	490.95
State Government	13	305	330	339	1,851,628	438.71
<b>POPE COUNTY - TOTAL</b>	<b>1,772</b>	<b>25,703</b>	<b>26,367</b>	<b>26,565</b>	<b>\$217,751,873</b>	<b>\$639.03</b>
Natural Resources & Mining	35	696	804	821	8,229,615	818.24
Construction	169	1,180	1,583	1,591	14,645,762	776.25
Manufacturing	75	4,560	4,549	4,518	40,355,459	683.41
Trade, Transportation & Utilities	441	5,803	5,781	5,799	63,445,043	842.27
Wholesale Trade	91	579	572	581	5,966,383	794.95
Retail Trade	273	3,147	3,135	3,164	16,654,868	406.88
Transportation, Warehousing & Utilities	77	2,077	2,074	2,054	40,823,792	1,518.27
Information	21	207	210	210	2,056,307	756.83
Financial Activities	177	738	737	738	6,562,144	684.29
Professional & Business Services	249	2,451	2,497	2,596	19,273,827	589.58
Education & Health Services	313	3,380	3,374	3,361	22,517,435	513.73
Leisure & Hospitality	139	2,460	2,446	2,533	7,224,940	224.13
Other Services	97	443	452	467	2,575,237	436.33
Local Government	40	2,301	2,347	2,346	17,352,964	572.57
State Government	16	1,484	1,587	1,585	13,513,140	669.76

TABLE 6. COUNTY SUMMARY

NORTH AMERICAN INDUSTRY CLASSIFICATION SYSTEM - INDUSTRY GROUPS	NUMBER OF EMPLOYING UNITS	EMPLOYMENT			TOTAL EARNINGS JAN - MAR 2011	AVERAGE WEEKLY EARNINGS
		JANUARY	FEBRUARY	MARCH		
<b>PRAIRIE COUNTY - TOTAL</b>	<b>249</b>	<b>1,292</b>	<b>1,256</b>	<b>1,299</b>	<b>\$8,448,146</b>	<b>\$506.78</b>
Natural Resources & Mining	27	120	120	140	1,016,457	617.28
Construction	13	80	70	71	696,498	727.29
Trade, Transportation & Utilities	62	260	259	254	1,866,951	557.35
Wholesale Trade	10	59	62	68	794,030	969.51
Retail Trade	34	141	137	129	591,411	335.33
Transportation, Warehousing & Utilities	18	60	60	57	481,510	627.78
Financial Activities	19	56	52	52	377,862	544.99
Professional & Business Services	14	42	44	45	278,562	490.71
Education & Health Services	52	200	193	205	1,143,093	441.12
Leisure & Hospitality	17	114	99	97	268,210	199.66
Other Services	14	39	40	39	171,057	334.53
Local Government	15	322	319	337	2,188,726	516.45
State Government	9	39	40	39	275,936	539.64
Other	7	20	20	20	164,794	633.82
<b>PULASKI COUNTY - TOTAL</b>	<b>14,908</b>	<b>230,401</b>	<b>230,393</b>	<b>232,964</b>	<b>\$2,418,158,505</b>	<b>\$804.37</b>
Natural Resources & Mining	62	744	740	743	11,667,121	1,208.99
Construction	1,079	8,037	7,872	8,123	80,487,157	772.88
Manufacturing	373	12,824	12,836	12,839	153,925,393	922.65
Trade, Transportation & Utilities	3,401	46,220	45,612	46,065	427,884,003	716.06
Wholesale Trade	1,221	12,177	12,188	12,240	169,200,872	1,066.69
Retail Trade	1,759	24,658	24,106	24,349	151,077,821	476.85
Transportation, Warehousing & Utilities	421	9,385	9,318	9,476	107,605,310	881.22
Information	235	6,994	7,017	6,961	124,606,926	1,371.14
Financial Activities	1,744	15,616	15,580	15,519	276,099,569	1,363.91
Professional & Business Services	3,040	32,795	32,834	33,375	364,946,104	850.66
Education & Health Services	2,410	36,889	36,922	37,138	362,002,187	752.95
Leisure & Hospitality	1,100	19,680	19,818	20,245	74,637,443	288.30
Other Services	1,166	6,931	6,865	6,937	51,245,021	570.38
Local Government	101	16,234	16,462	17,070	160,196,957	742.85
State Government	197	27,437	27,835	27,949	330,460,624	916.36

TABLE 6. COUNTY SUMMARY

NORTH AMERICAN INDUSTRY CLASSIFICATION SYSTEM - INDUSTRY GROUPS	NUMBER OF EMPLOYING UNITS	EMPLOYMENT			TOTAL EARNINGS JAN - MAR 2011	AVERAGE WEEKLY EARNINGS
		JANUARY	FEBRUARY	MARCH		
<b>RANDOLPH COUNTY - TOTAL</b>	<b>420</b>	<b>4,612</b>	<b>4,689</b>	<b>4,801</b>	<b>\$27,966,664</b>	<b>\$457.65</b>
Natural Resources & Mining	27	72	74	84	353,575	354.76
Construction	33	75	65	79	401,467	423.04
Manufacturing	34	770	829	860	4,840,869	454.30
Trade, Transportation & Utilities	100	856	867	855	5,328,504	476.98
Wholesale Trade	21	187	181	195	1,122,013	459.90
Retail Trade	59	552	557	542	3,078,973	430.36
Transportation, Warehousing & Utilities	20	117	129	118	1,127,518	714.83
Information	5	40	40	41	366,166	698.35
Financial Activities	29	123	122	122	877,987	552.08
Professional & Business Services	43	235	221	243	1,115,854	368.39
Education & Health Services	71	1,037	1,050	1,069	6,695,274	489.56
Leisure & Hospitality	27	361	354	370	904,125	192.30
Other Services	18	43	45	48	237,093	402.31
Local Government	22	753	754	753	4,614,828	471.22
State Government	11	247	268	277	2,230,922	650.04
<b>SAINT FRANCIS COUNTY - TOTAL</b>	<b>819</b>	<b>7,467</b>	<b>7,400</b>	<b>7,553</b>	<b>\$49,793,356</b>	<b>\$512.52</b>
Natural Resources & Mining	36	128	132	163	805,146	439.25
Construction	40	151	140	163	1,099,659	558.96
Manufacturing	12	712	694	710	5,326,743	580.93
Trade, Transportation & Utilities	173	1,999	1,955	2,006	13,586,306	526.06
Wholesale Trade	37	603	591	600	5,202,342	669.20
Retail Trade	110	1,118	1,091	1,122	5,770,915	399.80
Transportation, Warehousing & Utilities	26	278	273	284	2,613,049	722.17
Information	8	73	72	72	511,639	544.10
Financial Activities	63	276	275	275	2,343,068	654.61
Professional & Business Services	46	354	356	341	2,008,779	441.07
Education & Health Services	315	1,498	1,502	1,519	9,273,102	473.54
Leisure & Hospitality	51	591	593	607	1,711,792	220.56
Other Services	31	79	79	82	352,825	339.25
Local Government	28	1,082	1,073	1,091	8,423,845	598.88
State Government	16	524	529	524	4,350,452	636.62

TABLE 6. COUNTY SUMMARY

NORTH AMERICAN INDUSTRY CLASSIFICATION SYSTEM - INDUSTRY GROUPS	NUMBER OF EMPLOYING UNITS	EMPLOYMENT			TOTAL EARNINGS JAN - MAR 2011	AVERAGE WEEKLY EARNINGS
		JANUARY	FEBRUARY	MARCH		
<b>SALINE COUNTY - TOTAL</b>	<b>1,808</b>	<b>20,560</b>	<b>20,441</b>	<b>20,664</b>	<b>\$149,925,045</b>	<b>\$561.07</b>
Natural Resources & Mining	11	35	33	35	483,427	1,083.11
Construction	280	1,713	1,679	1,702	13,617,999	616.92
Manufacturing	82	1,226	1,203	1,212	13,287,350	842.16
Trade, Transportation & Utilities	406	4,394	4,415	4,454	30,681,369	533.84
Wholesale Trade	111	495	486	485	5,011,698	788.91
Retail Trade	242	3,612	3,625	3,668	23,106,088	488.97
Transportation, Warehousing & Utilities	53	287	304	301	2,563,583	663.22
Information	9	86	83	84	860,067	784.49
Financial Activities	185	641	635	639	5,469,497	659.11
Professional & Business Services	239	1,340	1,361	1,358	10,292,351	585.16
Education & Health Services	262	3,108	3,073	3,090	22,489,674	559.80
Leisure & Hospitality	147	2,649	2,636	2,686	8,537,323	247.16
Other Services	141	636	628	650	3,887,396	468.70
Local Government	30	3,611	3,569	3,615	32,604,095	696.99
State Government	16	1,121	1,126	1,139	7,714,497	525.77
<b>SCOTT COUNTY - TOTAL</b>	<b>188</b>	<b>2,902</b>	<b>2,877</b>	<b>2,886</b>	<b>\$17,579,286</b>	<b>\$468.18</b>
Natural Resources & Mining	17	164	165	164	1,376,274	644.22
Trade, Transportation & Utilities	39	437	420	419	2,741,303	495.77
Wholesale Trade	8	70	65	65	611,113	705.13
Retail Trade	24	300	288	292	1,421,236	372.70
Transportation, Warehousing & Utilities	7	67	67	62	708,954	834.72
Financial Activities	21	68	65	65	461,440	537.81
Professional & Business Services	12	11	11	11	80,746	564.66
Education & Health Services	34	285	284	285	2,153,437	581.91
Leisure & Hospitality	16	151	148	146	451,375	234.08
Other Services	11	43	41	42	306,927	562.14
Local Government	5	406	423	427	2,612,948	480.09
State Government	7	66	63	64	384,459	459.70
Other	26	1,271	1,257	1,263	7,010,377	426.74

TABLE 6. COUNTY SUMMARY

NORTH AMERICAN INDUSTRY CLASSIFICATION SYSTEM - INDUSTRY GROUPS	NUMBER OF EMPLOYING UNITS	EMPLOYMENT			TOTAL EARNINGS JAN - MAR 2011	AVERAGE WEEKLY EARNINGS
		JANUARY	FEBRUARY	MARCH		
<b>SEARCY COUNTY - TOTAL</b>	<b>193</b>	<b>1,559</b>	<b>1,536</b>	<b>1,649</b>	<b>\$8,158,230</b>	<b>\$396.85</b>
Construction	7	16	14	16	75,538	378.95
Manufacturing	16	202	182	179	869,631	356.45
Trade, Transportation & Utilities	43	269	259	271	1,258,988	363.62
Wholesale Trade	9	48	48	51	244,333	383.57
Retail Trade	27	199	192	200	806,040	314.74
Transportation, Warehousing & Utilities	7	22	19	20	208,615	789.21
Information	5	13	13	13	75,671	447.76
Financial Activities	14	76	75	72	493,232	510.42
Professional & Business Services	12	33	36	39	143,727	307.11
Education & Health Services	56	371	374	380	1,800,335	369.30
Leisure & Hospitality	13	80	84	92	191,012	172.19
Local Government	10	355	354	362	2,158,609	465.12
State Government	7	107	107	108	560,514	401.71
Other	10	37	38	117	530,973	638.19
<b>SEBASTIAN COUNTY - TOTAL</b>	<b>3,775</b>	<b>64,343</b>	<b>64,273</b>	<b>64,929</b>	<b>\$609,682,511</b>	<b>\$726.94</b>
Natural Resources & Mining	72	1,581	1,567	1,636	29,921,702	1,443.35
Construction	286	2,158	2,067	2,197	20,208,373	726.17
Manufacturing	202	13,694	13,711	13,711	165,708,583	930.06
Trade, Transportation & Utilities	957	12,661	12,505	12,521	99,859,299	611.47
Wholesale Trade	246	2,667	2,677	2,652	29,462,602	850.31
Retail Trade	570	7,826	7,676	7,718	45,314,341	450.35
Transportation, Warehousing & Utilities	141	2,168	2,152	2,151	25,082,356	894.49
Information	50	846	841	837	11,089,410	1,013.90
Financial Activities	400	2,426	2,418	2,444	26,328,594	833.68
Professional & Business Services	583	7,664	7,644	7,835	73,327,905	731.19
Education & Health Services	565	10,521	10,475	10,529	99,779,886	730.41
Leisure & Hospitality	321	5,253	5,181	5,313	18,600,539	272.59
Other Services	279	1,297	1,278	1,300	7,987,211	475.67
Local Government	40	4,534	4,604	4,614	40,378,444	677.58
State Government	20	1,708	1,982	1,992	16,492,565	669.83



TABLE 6. COUNTY SUMMARY

NORTH AMERICAN INDUSTRY CLASSIFICATION SYSTEM - INDUSTRY GROUPS	NUMBER OF EMPLOYING UNITS	EMPLOYMENT			TOTAL EARNINGS JAN - MAR 2011	AVERAGE WEEKLY EARNINGS
		JANUARY	FEBRUARY	MARCH		
<b>SEVIER COUNTY - TOTAL</b>	<b>326</b>	<b>4,990</b>	<b>5,031</b>	<b>5,053</b>	<b>\$31,623,210</b>	<b>\$484.12</b>
Natural Resources & Mining	15	208	214	212	1,520,788	553.55
Construction	18	126	126	137	1,064,295	631.38
Trade, Transportation & Utilities	96	828	823	824	5,129,331	478.26
Wholesale Trade	15	101	100	103	1,266,893	961.71
Retail Trade	65	633	630	630	3,089,834	376.67
Transportation, Warehousing & Utilities	16	94	93	91	772,604	641.34
Information	3	20	21	21	162,221	603.80
Financial Activities	28	190	191	192	1,446,436	582.54
Professional & Business Services	31	113	98	96	679,536	510.80
Education & Health Services	51	519	512	522	3,049,823	453.19
Leisure & Hospitality	23	267	267	276	608,276	173.30
Local Government	12	906	886	882	5,946,774	513.21
State Government	8	173	236	245	1,317,698	464.96
Other	41	1,640	1,657	1,646	10,698,032	499.45
<b>SHARP COUNTY - TOTAL</b>	<b>416</b>	<b>3,504</b>	<b>3,442</b>	<b>3,549</b>	<b>\$20,983,293</b>	<b>\$461.39</b>
Natural Resources & Mining	3	7	4	4	\$17,781	273.55
Construction	25	122	117	116	873,628	567.91
Manufacturing	18	171	164	168	870,218	399.24
Trade, Transportation & Utilities	87	881	854	898	5,813,624	509.53
Wholesale Trade	14	45	34	38	169,187	333.70
Retail Trade	57	587	571	577	2,866,272	381.24
Transportation, Warehousing & Utilities	16	249	249	283	2,778,165	820.89
Information	7	46	50	49	599,006	953.33
Financial Activities	35	202	202	203	1,649,416	627.07
Professional & Business Services	46	139	125	123	1,032,837	615.88
Education & Health Services	98	675	663	664	3,625,254	417.88
Leisure & Hospitality	33	317	311	354	813,989	191.29
Other Services	31	77	81	86	377,173	356.72
Local Government	25	768	773	784	4,763,192	472.77
State Government	8	99	98	100	547,175	425.16

TABLE 6. COUNTY SUMMARY

NORTH AMERICAN INDUSTRY CLASSIFICATION SYSTEM - INDUSTRY GROUPS	NUMBER OF EMPLOYING UNITS	EMPLOYMENT			TOTAL EARNINGS JAN - MAR 2011	AVERAGE WEEKLY EARNINGS
		JANUARY	FEBRUARY	MARCH		
<b>STONE COUNTY - TOTAL</b>	<b>290</b>	<b>2,568</b>	<b>2,498</b>	<b>2,559</b>	<b>\$14,039,131</b>	<b>\$424.89</b>
Natural Resources & Mining	6	5	11	11	23,997	205.10
Construction	21	52	49	57	239,088	349.20
Manufacturing	25	229	192	176	1,119,706	432.82
Trade, Transportation & Utilities	71	667	649	653	3,631,416	425.61
Wholesale Trade	12	42	45	41	260,943	470.45
Retail Trade	47	580	567	572	2,968,133	398.46
Transportation, Warehousing & Utilities	12	45	37	40	402,340	761.05
Financial Activities	29	104	108	108	506,398	365.19
Professional & Business Services	15	37	44	42	266,686	500.35
Education & Health Services	53	523	503	521	3,667,555	547.10
Leisure & Hospitality	34	298	293	341	707,423	175.16
Local Government	10	424	425	423	2,713,931	492.37
State Government	8	148	141	143	648,178	346.25
Other	18	81	83	84	514,753	478.99
<b>UNION COUNTY - TOTAL</b>	<b>1,344</b>	<b>16,744</b>	<b>16,857</b>	<b>17,005</b>	<b>\$194,273,098</b>	<b>\$885.91</b>
Natural Resources & Mining	111	529	492	496	5,753,389	875.22
Construction	77	1,120	1,169	1,159	11,912,173	797.26
Manufacturing	54	2,693	2,711	2,751	34,345,259	971.90
Trade, Transportation & Utilities	338	3,599	3,570	3,610	34,544,239	739.56
Wholesale Trade	69	697	695	709	13,861,385	1,522.50
Retail Trade	213	2,100	2,064	2,080	10,900,416	402.86
Transportation, Warehousing & Utilities	56	802	811	821	9,782,438	927.48
Information	13	142	141	142	981,463	532.92
Financial Activities	115	743	746	741	6,405,167	662.83
Professional & Business Services	134	1,404	1,440	1,461	56,723,448	3,040.66
Education & Health Services	252	2,372	2,375	2,397	19,036,322	614.92
Leisure & Hospitality	92	1,192	1,213	1,212	3,421,990	218.33
Other Services	107	465	461	476	2,606,636	429.05
Local Government	34	1,933	1,937	1,953	13,862,352	549.37
State Government	17	552	602	607	4,680,660	613.37

TABLE 6. COUNTY SUMMARY

NORTH AMERICAN INDUSTRY CLASSIFICATION SYSTEM - INDUSTRY GROUPS	NUMBER OF EMPLOYING UNITS	EMPLOYMENT			TOTAL EARNINGS JAN - MAR 2011	AVERAGE WEEKLY EARNINGS
		JANUARY	FEBRUARY	MARCH		
<b>VAN BUREN COUNTY - TOTAL</b>	<b>373</b>	<b>3,658</b>	<b>3,661</b>	<b>3,764</b>	<b>\$33,911,160</b>	<b>\$706.10</b>
Natural Resources & Mining	13	170	188	214	4,501,148	1,815.96
Construction	45	176	190	193	1,416,367	584.71
Manufacturing	10	55	58	62	412,327	543.73
Trade, Transportation & Utilities	101	1,075	1,069	1,092	12,491,591	890.81
Wholesale Trade	10	31	32	36	301,288	702.30
Retail Trade	60	598	564	577	3,107,606	412.39
Transportation, Warehousing & Utilities	31	446	473	479	9,082,697	1,499.29
Information	8	52	51	50	422,023	636.54
Financial Activities	32	149	152	154	1,224,774	621.19
Professional & Business Services	33	105	103	117	631,820	448.63
Education & Health Services	59	677	665	682	4,495,505	512.56
Leisure & Hospitality	27	350	337	351	1,177,052	261.68
Other Services	27	74	75	69	417,551	442.01
Local Government	11	702	699	710	6,257,259	684.03
State Government	7	73	74	70	463,743	493.17
<b>WASHINGTON COUNTY - TOTAL</b>	<b>5,437</b>	<b>87,054</b>	<b>86,157</b>	<b>87,600</b>	<b>808,341,755</b>	<b>\$715.23</b>
Natural Resources & Mining	43	436	434	431	5,391,379	956.31
Construction	478	3,678	3,638	3,741	33,478,923	698.73
Manufacturing	224	12,800	12,696	12,803	114,043,988	687.17
Trade, Transportation & Utilities	1,345	19,956	19,760	20,019	175,714,692	678.82
Wholesale Trade	408	3,490	3,497	3,547	55,836,912	1,223.22
Retail Trade	756	10,083	9,932	10,096	58,600,042	449.11
Transportation, Warehousing & Utilities	181	6,383	6,331	6,376	61,277,738	740.76
Information	84	1,078	1,043	1,042	11,030,936	804.81
Financial Activities	564	3,191	3,184	3,189	38,569,436	930.64
Professional & Business Services	941	9,226	9,131	9,326	133,310,122	1,111.29
Education & Health Services	734	12,626	12,524	12,667	118,299,851	721.90
Leisure & Hospitality	561	8,943	9,093	9,330	29,879,333	251.96
Other Services	381	1,756	1,755	1,781	10,940,248	477.07
Local Government	60	8,081	7,993	8,122	68,081,964	649.33
State Government	22	5,283	4,906	5,149	69,600,883	1,047.19

TABLE 6. COUNTY SUMMARY

NORTH AMERICAN INDUSTRY CLASSIFICATION SYSTEM - INDUSTRY GROUPS	NUMBER OF EMPLOYING UNITS	EMPLOYMENT			TOTAL EARNINGS JAN - MAR 2011	AVERAGE WEEKLY EARNINGS
		JANUARY	FEBRUARY	MARCH		
<b>WHITE COUNTY - TOTAL</b>	<b>1,821</b>	<b>24,546</b>	<b>24,950</b>	<b>25,018</b>	<b>\$213,526,555</b>	<b>\$661.29</b>
Natural Resources & Mining	51	1,515	1,538	1,499	21,909,081	1,110.71
Construction	192	1,061	1,039	1,146	9,178,736	652.55
Manufacturing	71	2,471	2,481	2,493	24,391,023	756.04
Trade, Transportation & Utilities	478	6,083	6,088	6,146	61,330,377	772.68
Wholesale Trade	95	598	572	588	5,485,675	720.09
Retail Trade	284	3,170	3,192	3,221	17,127,556	412.45
Transportation, Warehousing & Utilities	99	2,315	2,324	2,337	38,717,146	1,280.78
Information	19	131	140	146	1,022,891	566.07
Financial Activities	171	903	883	872	8,231,934	714.70
Professional & Business Services	192	1,419	1,516	1,450	9,307,276	489.81
Education & Health Services	311	4,651	4,799	4,784	42,031,892	681.44
Leisure & Hospitality	151	2,299	2,423	2,439	6,808,580	219.41
Other Services	120	537	532	523	3,778,076	547.65
Local Government	47	2,742	2,771	2,775	19,878,652	553.50
State Government	18	734	740	745	5,658,037	588.42
<b>WOODRUFF COUNTY - TOTAL</b>	<b>219</b>	<b>1,841</b>	<b>1,827</b>	<b>1,867</b>	<b>\$11,844,855</b>	<b>\$493.84</b>
Natural Resources & Mining	25	105	107	129	726,678	491.77
Construction	7	32	29	34	191,721	465.72
Manufacturing	7	334	330	324	2,141,822	500.27
Trade, Transportation & Utilities	50	406	401	406	3,001,285	570.98
Wholesale Trade	12	145	145	149	1,536,447	807.66
Retail Trade	25	187	185	188	747,151	307.89
Transportation, Warehousing & Utilities	13	74	71	69	717,687	773.93
Financial Activities	14	60	58	59	429,962	560.58
Professional & Business Services	6	7	7	7	80,131	880.56
Education & Health Services	79	270	269	277	1,797,185	508.25
Leisure & Hospitality	6	56	52	53	152,075	217.98
Local Government	10	505	509	504	2,883,478	438.35
State Government	6	46	45	43	332,583	572.76
Other	9	20	20	31	107,935	350.82

TABLE 6. COUNTY SUMMARY

NORTH AMERICAN INDUSTRY CLASSIFICATION SYSTEM - INDUSTRY GROUPS	NUMBER OF EMPLOYING UNITS	EMPLOYMENT			TOTAL EARNINGS JAN - MAR 2011	AVERAGE WEEKLY EARNINGS
		JANUARY	FEBRUARY	MARCH		
<b>YELL COUNTY - TOTAL</b>	<b>441</b>	<b>6,097</b>	<b>6,154</b>	<b>6,286</b>	<b>\$37,384,999</b>	<b>\$465.41</b>
Natural Resources & Mining	27	147	144	193	1,239,253	590.87
Construction	35	161	152	201	1,186,491	532.70
Manufacturing	20	2,407	2,426	2,419	14,698,066	467.71
Trade, Transportation & Utilities	87	643	637	629	3,471,546	419.66
Wholesale Trade	16	27	34	33	188,184	461.99
Retail Trade	50	514	512	504	2,445,810	368.90
Transportation, Warehousing & Utilities	21	102	91	92	837,552	678.18
Financial Activities	33	160	164	162	1,170,322	555.71
Professional & Business Services	44	207	198	203	1,321,909	501.74
Education & Health Services	108	700	706	706	4,066,680	444.35
Leisure & Hospitality	31	256	283	317	743,161	200.35
Other	17	108	107	107	832,900	596.92
Local Government	27	1,207	1,236	1,247	8,094,699	506.24
State Government	12	101	101	102	559,972	425.08
<b>STATEWIDE COUNTY - TOTAL</b>	<b>5,246</b>	<b>17,695</b>	<b>17,717</b>	<b>18,681</b>	<b>\$263,237,834</b>	<b>\$1,123.01</b>
Natural Resources & Mining	69	429	446	456	7,714,046	1,337.46
Construction	562	2,530	2,580	2,810	28,074,667	818.03
Manufacturing	37	266	273	265	3,623,790	1,040.12
Trade, Transportation & Utilities	1,846	5,600	5,659	5,699	117,484,207	1,598.76
Wholesale Trade	1,573	4,511	4,542	4,556	104,980,817	1,780.17
Retail Trade	104	427	454	452	5,954,758	1,030.89
Transportation, Warehousing & Utilities	169	662	663	691	6,548,632	749.61
Information	125	387	399	413	4,562,782	878.19
Financial Activities	327	954	961	969	17,071,933	1,366.05
Professional & Business Services	1,838	4,686	4,759	5,007	62,690,562	1,001.04
Education & Health Services	191	1,869	1,689	2,064	11,909,625	488.86
Leisure & Hospitality	61	78	77	86	674,748	646.10
Other	190	896	874	912	9,431,474	811.52

TABLE 7. FEDERAL GOVERNMENT EMPLOYMENT AND EARNINGS IN ARKANSAS

NORTH AMERICAN INDUSTRY CLASSIFICATION SYSTEM - INDUSTRY GROUPS	NUMBER OF EMPLOYING UNITS	EMPLOYMENT			TOTAL EARNINGS JAN - MAR 2011	AVERAGE WEEKLY EARNINGS
		JANUARY	FEBURARY	MARCH		
<b>TOTAL</b>	<b>1,255</b>	<b>21,218</b>	<b>20,949</b>	<b>20,969</b>	<b>\$303,171,930</b>	<b>\$1,108.13</b>
Trade, Transportation & Utilities	616	6,006	5,959	5,944	66,812,165	860.92
Information	2	55	56	57	612,722	841.65
Financial Activities	19	182	170	168	2,867,409	1,272.52
Professional & Business Services	30	840	843	845	13,719,663	1,252.40
Education & Health Services	18	4,990	4,964	4,970	82,452,614	1,274.96
Leisure & Hospitality	22	348	314	327	2,793,837	651.90
Other Services	3	8	8	8	37,939	364.80
Public Administration	545	8,789	8,635	8,650	133,875,581	1,184.87

TABLE 8. WORKFORCE INVESTMENT AREA SUMMARY

NORTH AMERICAN INDUSTRY CLASSIFICATION SYSTEM - INDUSTRY GROUPS	NUMBER OF EMPLOYING UNITS	EMPLOYMENT			TOTAL EARNINGS JAN - MAR 2011	AVERAGE WEEKLY EARNINGS
		JANUARY	FEBRUARY	MARCH		
<b>CENTRAL WORKFORCE INVESTMENT AREA</b>	<b>6,399</b>	<b>75,873</b>	<b>75,918</b>	<b>76,986</b>	<b>\$606,450,295</b>	<b>\$611.73</b>
Natural Resources & Mining	206	1,956	1,981	2,071	32,578,535	1,251.35
Construction	767	4,984	4,918	5,048	42,142,228	650.51
Trade, Transportation & Utilities	1,514	15,059	15,031	15,273	103,891,698	528.51
Wholesale Trade	392	2,111	2,111	2,163	23,407,635	846.01
Retail Trade	880	11,380	11,349	11,531	64,123,706	431.93
Transportation, Warehousing & Utilities	242	1,568	1,571	1,579	16,360,357	800.23
Information	66	624	617	596	5,808,723	729.71
Financial Activities	668	2,742	2,701	2,707	26,279,944	744.12
Professional & Business Services	799	7,970	8,117	8,204	87,297,204	829.34
Education & Health Services	1,020	11,002	10,997	11,130	80,051,453	557.62
Leisure & Hospitality	514	8,637	8,531	8,820	26,047,668	231.30
Local Government	132	10,483	10,524	10,575	85,381,728	623.88
State Government	66	4,736	4,787	4,806	40,366,781	650.11
Other	647	7,680	7,714	7,756	76,604,333	763.63

\*Note: Pulaski County is not included in the Central Workforce Investment. Please refer to Page 55 for information on Pulaski County.  
Central Workforce Includes these counties: Faulkner, Lonoke, Monroe, Prairie, and Saline.

<b>EASTERN WORKFORCE INVESTMENT AREA</b>	<b>3,953</b>	<b>35,915</b>	<b>35,833</b>	<b>36,343</b>	<b>\$255,747,996</b>	<b>\$546.01</b>
Natural Resources & Mining	226	893	964	1,083	5,092,124	399.70
Construction	143	693	646	682	5,535,935	632.12
Trade, Transportation & Utilities	848	9,490	9,303	9,400	70,087,989	573.69
Wholesale Trade	178	2,046	2,021	2,038	20,603,670	778.82
Retail Trade	464	4,815	4,690	4,712	25,692,208	417.03
Transportation, Warehousing & Utilities	206	2,629	2,592	2,650	23,792,111	697.56
Financial Activities	261	1,395	1,380	1,385	12,223,160	678.06
Professional & Business Services	279	1,863	1,889	1,895	12,258,838	500.97
Education & Health Services	1,442	6,375	6,433	6,425	41,529,422	498.30
Leisure & Hospitality	246	3,068	3,073	3,222	9,891,264	243.79
Local Government	130	5,545	5,477	5,478	44,510,399	622.52
State Government	61	2,302	2,447	2,479	18,248,213	582.61
Other	317	4,291	4,221	4,294	36,370,652	655.41

Eastern Workforce Includes these counties: Crittenden, Cross, Lee, Phillips, and Saint Francis.

TABLE 8. WORKFORCE INVESTMENT AREA SUMMARY

NORTH AMERICAN INDUSTRY CLASSIFICATION SYSTEM - INDUSTRY GROUPS	NUMBER OF EMPLOYING UNITS	EMPLOYMENT			TOTAL EARNINGS JAN - MAR 2011	AVERAGE WEEKLY EARNINGS
		JANUARY	FEBRUARY	MARCH		
<b>NORTH CENTRAL WORKFORCE INVESTMENT AREA</b>	<b>5,713</b>	<b>67,828</b>	<b>68,003</b>	<b>68,572</b>	<b>\$523,582,388</b>	<b>\$591.12</b>
Construction	490	2,305	2,256	2,425	18,085,024	597.40
Manufacturing	259	9,389	9,286	9,091	80,128,569	665.97
Trade, Transportation & Utilities	1,435	15,447	15,324	15,530	131,055,657	653.20
Retail Trade	882	8,984	8,899	9,023	47,269,014	405.42
Other Trade, Transportation & Utilities	553	6,463	6,425	6,507	83,786,643	996.93
Information	66	523	532	537	3,876,025	561.85
Financial Activities	518	2,528	2,500	2,504	21,511,262	659.07
Professional & Business Services	511	2,861	2,953	2,870	19,025,545	505.59
Education & Health Services	1,072	12,571	12,606	12,678	101,201,263	616.94
Leisure & Hospitality	459	5,532	5,642	5,860	16,422,734	222.49
Local Government	231	9,398	9,471	9,550	63,591,060	516.37
State Government	106	3,116	3,238	3,259	23,411,888	562.02
Other	566	4,158	4,195	4,268	45,273,361	827.80
North Central Workforce Includes these counties: Cleburne, Fulton, Independence, Izard, Jackson, Sharp, Stone, Van Buren, White, and Woodruff.						
<b>NORTHEAST WORKFORCE INVESTMENT AREA</b>	<b>6,562</b>	<b>91,893</b>	<b>92,262</b>	<b>93,079</b>	<b>\$737,482,393</b>	<b>\$613.88</b>
Natural Resources & Mining	403	1,579	1,608	1,755	10,469,715	488.89
Construction	466	2,643	2,661	2,776	22,209,373	634.31
Manufacturing	331	20,025	20,078	20,147	215,958,744	827.16
Trade, Transportation & Utilities	1,693	17,740	17,666	17,886	128,739,231	557.48
Wholesale Trade	398	3,542	3,512	3,615	39,212,674	848.17
Retail Trade	984	11,417	11,367	11,487	61,504,859	414.15
Transportation, Warehousing & Utilities	311	2,781	2,787	2,784	28,021,698	774.25
Financial Activities	569	3,117	3,079	3,082	33,122,250	823.84
Professional & Business Services	667	6,590	6,842	6,896	43,048,582	488.70
Education & Health Services	1,200	14,623	14,588	14,645	119,029,352	626.33
Leisure & Hospitality	493	7,257	7,302	7,500	21,918,929	229.30
Local Government	213	11,675	11,736	11,704	87,231,669	573.27
State Government	99	4,281	4,356	4,358	41,085,686	729.61
Other	428	2,363	2,346	2,330	14,668,862	480.91
Northeast Workforce Includes these counties: Clay, Craighead, Greene, Lawrence, Mississippi, Poinsett, and Randolph.						



TABLE 8. WORKFORCE INVESTMENT AREA SUMMARY

NORTH AMERICAN INDUSTRY CLASSIFICATION SYSTEM - INDUSTRY GROUPS	NUMBER OF EMPLOYING UNITS	EMPLOYMENT			TOTAL EARNINGS JAN - MAR 2011	AVERAGE WEEKLY EARNINGS
		JANUARY	FEBRUARY	MARCH		
<b>NORTHWEST WORKFORCE INVESTMENT AREA</b>	<b>14,736</b>	<b>223,353</b>	<b>222,057</b>	<b>225,907</b>	<b>\$2,440,023,982</b>	<b>\$838.77</b>
Natural Resources & Mining	131	1,563	1,521	1,650	17,122,293	834.66
Trade, Transportation & Utilities	3,650	50,410	49,838	50,513	488,460,126	747.68
Wholesale Trade	1,191	8,811	8,828	8,909	159,312,669	1,384.83
Retail Trade	1,991	25,236	24,753	25,285	145,981,586	447.54
Transportation, Warehousing & Utilities	468	16,363	16,257	16,319	183,165,871	863.71
Education & Health Services	2,100	27,997	27,776	28,080	243,240,113	669.41
Leisure & Hospitality	1,479	20,820	20,929	21,770	70,922,301	257.67
Other Services	957	4,231	4,190	4,312	27,255,011	493.96
Local Government	308	22,022	21,963	22,267	180,988,690	630.42
State Government	107	7,630	7,637	7,919	90,282,492	898.58
Other	6,004	88,680	88,203	89,396	1,321,752,956	1,145.49

Northwest Workforce Includes these counties: Baxter, Benton, Boone, Carroll, Madison, Marion, Newton, Searcy, and Washington.

<b>SOUTHEAST WORKFORCE INVESTMENT AREA</b>	<b>5,966</b>	<b>70,895</b>	<b>71,230</b>	<b>72,064</b>	<b>\$560,558,113</b>	<b>\$603.95</b>
Natural Resources & Mining	393	2,270	2,434	2,408	21,004,194	681.54
Construction	307	2,587	2,609	2,750	26,221,808	761.54
Manufacturing	213	14,969	15,044	15,214	152,890,962	780.12
Trade, Transportation & Utilities	1,325	12,537	12,360	12,499	93,459,026	576.73
Retail Trade	795	7,982	7,839	7,919	43,002,889	418.02
Other Trade, Transportation & Utilities	530	4,555	4,521	4,580	50,456,137	852.65
Education & Health Services	1,770	10,908	10,892	10,915	74,363,579	524.56
Local Government	209	9,952	10,007	10,092	70,796,300	543.66
State Government	137	6,170	6,447	6,510	51,915,407	626.36
Other	1,612	11,502	11,437	11,676	69,906,837	466.05

Southeast Workforce Includes these counties: Arkansas, Ashley, Bradley, Chicot, Cleveland, Desha, Drew, Grant, Jefferson, and Lincoln.

TABLE 8. WORKFORCE INVESTMENT AREA SUMMARY

NORTH AMERICAN INDUSTRY CLASSIFICATION SYSTEM - INDUSTRY GROUPS	NUMBER OF EMPLOYING UNITS	EMPLOYMENT			TOTAL EARNINGS JAN - MAR 2011	AVERAGE WEEKLY EARNINGS
		JANUARY	FEBRUARY	MARCH		
<b>SOUTHWEST WORKFORCE INVESTMENT AREA</b>	<b>5,784</b>	<b>79,121</b>	<b>79,384</b>	<b>80,443</b>	<b>\$684,442,427</b>	<b>\$661.02</b>
Natural Resources & Mining	374	2,380	2,328	2,346	22,679,002	741.94
Trade, Transportation & Utilities	1,453	15,180	15,020	15,242	117,402,807	596.21
Retail Trade	894	8,819	8,644	8,741	45,368,425	399.54
Other Trade, Transportation & Utilities	559	6,361	6,376	6,501	72,034,382	864.09
Information	61	525	527	526	4,640,023	678.56
Financial Activities	493	2,726	2,698	2,705	22,478,796	638.14
Education & Health Services	1,071	9,491	9,443	9,524	62,381,673	505.86
Leisure & Hospitality	401	5,043	5,100	5,230	14,933,778	224.18
Other Services	406	1,840	1,849	1,867	9,655,431	401.04
Local Government	259	10,755	10,824	10,840	74,580,207	530.89
State Government	139	3,582	3,795	3,823	30,051,485	619.19
Other	1,127	27,599	27,800	28,340	325,639,225	897.40

Southwest Workforce Includes these counties: Calhoun, Columbia, Dallas, Hempstead, Howard, Lafayette, Little River, Miller, Nevada, Ouachita, Sevier, and Union

<b>WEST CENTRAL WORKFORCE INVESTMENT AREA</b>	<b>8,161</b>	<b>103,737</b>	<b>104,374</b>	<b>105,817</b>	<b>\$770,261,409</b>	<b>\$566.22</b>
Construction	779	4,174	4,587	4,744	37,525,680	641.23
Trade, Transportation & Utilities	1,902	20,719	20,535	20,733	166,084,819	618.31
Retail Trade	1,240	13,691	13,530	13,687	74,248,577	418.85
Other Trade, Transportation & Utilities	662	7,028	7,005	7,046	91,836,242	1,005.41
Financial Activities	804	3,530	3,512	3,523	31,093,240	679.16
Professional & Business Services	917	7,799	7,874	7,991	57,004,026	555.90
Education & Health Services	1,448	16,683	16,606	16,705	128,547,955	593.37
Leisure & Hospitality	746	11,546	11,571	12,177	38,101,877	249.13
Local Government	227	12,087	12,242	12,387	90,876,851	571.18
State Government	125	5,296	5,456	5,506	41,691,826	591.78
Other	1,213	21,903	21,991	22,051	179,335,135	627.57

West Central Workforce Includes these counties: Clark, Conway, Garland, Hot Spring, Johnson, Montgomery, Perry, Pike, Pope, and Yell

TABLE 8. WORKFORCE INVESTMENT AREA SUMMARY

NORTH AMERICAN INDUSTRY CLASSIFICATION SYSTEM - INDUSTRY GROUPS	NUMBER OF EMPLOYING UNITS	EMPLOYMENT			TOTAL EARNINGS JAN - MAR 2011	AVERAGE WEEKLY EARNINGS
		JANUARY	FEBRUARY	MARCH		
<b>WESTERN WORKFORCE INVESTMENT AREA</b>	<b>6,634</b>	<b>101,638</b>	<b>101,274</b>	<b>102,205</b>	<b>\$874,089,912</b>	<b>\$661.10</b>
Natural Resources & Mining	176	2,594	2,633	2,731	41,096,270	1,191.73
Trade, Transportation & Utilities	1,656	22,022	21,688	21,723	166,096,427	585.79
Wholesale Trade	389	3,679	3,685	3,665	38,633,412	808.36
Retail Trade	961	12,027	11,783	11,870	67,747,850	438.18
Transportation, Warehousing & Utilities	306	6,316	6,220	6,188	59,715,165	735.98
Financial Activities	657	3,700	3,681	3,702	36,407,633	758.08
Professional & Business Services	870	9,118	9,102	9,288	82,680,616	693.62
Education & Health Services	1,020	14,799	14,781	14,872	128,885,999	669.10
Leisure & Hospitality	527	7,819	7,689	7,941	26,324,747	259.07
Other Services	456	2,038	1,996	2,029	12,935,926	492.37
Local Government	151	9,495	9,594	9,633	77,094,901	619.43
State Government	73	2,825	3,124	3,143	23,783,085	603.65
Other	1,048	27,228	26,986	27,143	278,784,308	790.77

Western Workforce Includes these counties: Crawford, Franklin, Logan, Polk, Scott, and Sebastian

