

Arkansas Covered Employment & Earnings

Annual
2010

Jobs for People. People for Jobs.

DWS

Department of
WORKFORCE**Services**

**COVERED EMPLOYMENT AND EARNINGS
STATE OF ARKANSAS
ANNUAL 2010**

**MIKE BEEBE, GOVERNOR
STATE OF ARKANSAS**

**ARTEE WILLIAMS, DIRECTOR
DEPARTMENT OF WORKFORCE SERVICES**

**PUBLISHED BY
LABOR MARKET INFORMATION & ANALYSIS
BUREAU OF LABOR STATISTICS PROGRAMS
POST OFFICE BOX 2981
LITTLE ROCK, ARKANSAS 72203-2981
BERNADETTE COLEMAN, BLS PROGRAMS MANAGER
TELEPHONE (501) 682-3159
SUSAN PRICE, QCEW LEAD ANALYST
TELEPHONE (501) 682-3103**

STATE OF ARKANSAS WEBPAGE: <http://www.arkansas.gov>

DEPARTMENT OF WORKFORCE SERVICES WEBPAGE: <http://www.arkansas.gov/esd/>

WEBPAGE FOR LABOR MARKET INFORMATION: <http://www.discover.arkansas.gov>

RELEASED: FEBRUARY 2012

TABLE OF CONTENTS

	Page
Description of Data	1
Industry Classification	1
Definition of Covered Employment and Earnings	2
Federal Government	2
County Classification	2
Significant Developments During Calendar Year 2010	3

GRAPHS AND TABLES

Graph 1	Average Total Covered Employment for Selected Years, Arkansas	7
Graph 2	Total Covered Earnings, by Calendar Quarter for Selected Years, Arkansas	8
Table 1	Annual Comparison of Covered Employment and Wages, by Industry	5
Table 2	Total Covered Employment in Arkansas, 2003 – 2010	6
Table 3	Total Covered Earnings, 2003 – 2010	9
Table 4	Total Taxable Earnings, 2003 – 2010	10
Table 5	State Summary – Employment and Total Earnings, by Industry, Calendar Year 2010	11
Table 6	County Summary – Employment and Total Earnings, by Industry, Calendar Year 2010	25
Table 7	Federal Government Employment and Total Earnings in Arkansas, Calendar Year 2010	63
Table 8	Workforce Investment Area – Employment and Total Earnings, by Industry, Calendar Year 2010	64

EMPLOYMENT AND EARNINGS
UNDER THE ARKANSAS EMPLOYMENT SECURITY LAW
ANNUAL 2010

DESCRIPTION OF DATA

This publication contains covered employment and payroll data by industry and county for the Calendar Year 2010. These data are compiled from quarterly contributions and wage reports submitted by employers subject to the Arkansas Employment Security Law. An employing unit is a single physical location where business is conducted, production takes place, or services are provided. Employment and wage data have been tabulated annually for the calendar year by industry under the **North American Industry Classification System** (NAICS) (see "Industry Classification" below) on a statewide, county and workforce area basis. Payroll data represent the total wages paid during the calendar year, and are also shown by

industry for the State and by publishable industry groups for each county and workforce area. The tabulation of this data is a joint effort in conjunction with the U.S. Bureau of Labor Statistics. In addition, there are tables included which set out total covered employment by months, quarterly payrolls, and average weekly earnings for the years 2003 through 2010. Data contained in this publication are subject to revision. Because of industry code changes between years, substantial employment and wage shifts among industries are anticipated.

INDUSTRY CLASSIFICATION

Previously published industry data will not be comparable in all instances with currently published data since industry codes have been revised. The last two revisions were based on the North American Industry Classification System (NAICS) a six digit industry code instead of the Standard Industrial Classification (SIC) system, a four digit industry code, which had been used previously. The following are the NAICS Manuals used to revise the data: (a) between January 1, 2001 and December 31, 2006 industry codes were assigned under the 2002 North American Industry Classification System (NAICS) Manual; (b) since January 1, 2007 industry codes have been assigned under the 2007 North American Industry Classification System Manual. The NAICS Manual represents a significant change in coding methodology as compared to the SIC Manual. One of the most significant changes involves how NAICS treats auxiliary units.

Auxiliary units are establishments primarily engaged in performing management of support services for other establishments of the same enterprise. The SIC code for these units was based on the activity of the enterprise served. The NAICS code is based on the actual activities that the establishment performs. Comparisons of many industries should not be made between this publication and previous Covered Employment and Earnings publications that were based on SIC. Even though some titles are the same or similar in nature, NAICS and SIC could differ in classification of employers. The implementation of NAICS represents a profound change for statistical programs and will create significant benefits along with transition obstacles for both data collectors and data users. A summary is available on the NAICS home page at <http://www.census.gov/naics>.

DEFINITION OF COVERED EMPLOYMENT AND EARNINGS

Covered Employment is the number of workers employed by businesses subject to the Arkansas Employment Security Law who worked or received pay for the payroll period including the 12th of the month. An employer is subject to the law when they employ one or more employees in each of ten days during the current or preceding calendar year.

Currently excluded from coverage is employment covered by the Railroad Unemployment Insurance Act, some domestic service workers, employees of small agricultural establishments, self-

employed and unpaid family workers, insurance and real estate agents who are on commission only, and employees of churches and religious organizations except separately incorporated schools. The payroll information in this publication includes all wages and salaries paid to any covered employees by their employers including bonuses, commissions, and cash values of remuneration received in any medium other than cash. These wages include both taxable and nontaxable wages. Only the first \$12,000 paid to each worker by an employer in the calendar year is taxable under the Arkansas Employment Security Law.

FEDERAL GOVERNMENT EMPLOYMENT

Table 7 on page 63 lists the average number of civilians employed by the Federal Government in Arkansas during the Calendar Year 2010. Employment and wage data are set out by industry divisions.

These data are obtained from required reports submitted by various government agencies having employment in the State. Civilian Federal workers are covered by the Unemployment Compensation for Federal Employees (UCFE) program.

COUNTY CLASSIFICATION

Employment and payroll data by county are classified according to the county where the workers are employed. Employers with operations in more than one county are requested to furnish this agency with a breakdown of employment and wages for at least one quarter of each year by the counties in which they operate. Many such employers submit county data with each regular contribution report. Note: This information is invaluable in the preparation of monthly employment and payroll data by county.

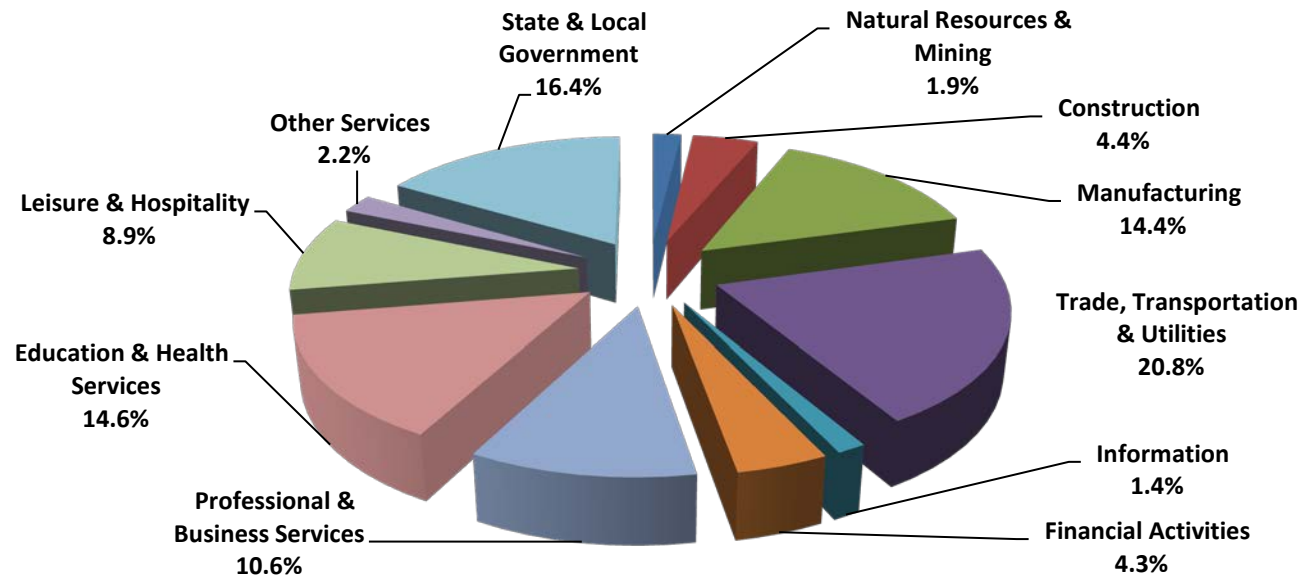
Employment and payroll data for multi-area employers, who do not furnish county data each quarter of the year, are prorated by county on the basis of one quarter's information. The "Statewide County" table that appears on page 62 of this publication includes data on firms that did not provide a county breakdown of employment and payrolls. It also includes sales, and all other types of personnel with no permanent place of work, as well as employment of employers with no established place of business in Arkansas.

SIGNIFICANT DEVELOPMENTS DURING CALENDAR YEAR 2010

AVERAGE EMPLOYMENT CHANGES

Covered employment averaged 1,110,965 during the Calendar Year 2010 (see Table 1, page 5), a decline of 3,541 from the previous year. The largest employment drops occurred in Manufacturing (-4,277) and Construction (-3,080). The greatest annual growth occurred in Professional and Business Services (+3,616) and Education and Health Services (+3,391).

Average Covered Employment by NAICS



EMPLOYMENT CHANGES FOR CALENDAR YEAR 2010

Seven of the eleven major industry sectors recorded job losses over the year. The decline in Manufacturing brought the sector's employment average down to 159,822. Jobs in Construction averaged 48,726 in 2010. Financial Activities posted a decline of 1,199. A majority of the loss occurred in finance and insurance. Employment in Leisure and Hospitality fell 933. Most of the decrease was in accommodation and food services (-857).

Four industries experienced gains over the year. The expansion in Professional and Business Services was mostly attributed to gains in the administrative and waste services subsector (+4,216). Increases in Education and Health Services were linked to growth in health care and social assistance (+3,337). State and Local Government added jobs (+1,181), which were split between the state (+602) and local (+579) levels.

EMPLOYMENT CHANGES FOR CALENDAR YEAR 2010

Pulaski County posted the highest average covered employment in 2010 at 233,249. Benton County came in second with 90,950 in covered employment, slightly higher than Washington County with 87,425. Sebastian County had the fourth highest number of covered employment with 66,334, followed by Craighead County with 41,949.

COVERED WAGES

Wages paid to covered workers totaled \$39,769,504,992 for the Calendar Year 2010 (see Table 1), for an average weekly wage of \$688.41 (see Table 5). Employees in Benton County recorded the highest average weekly wage (\$888.55), and workers in Newton County the lowest (\$411.99) (see Table 6).

The Information sector recorded the highest average weekly wage for the State of Arkansas at \$927.23; while the Leisure and Hospitality sector recorded the lowest at \$257.02 for the State of Arkansas (see Table 5).

Average Weekly Wage by Industry

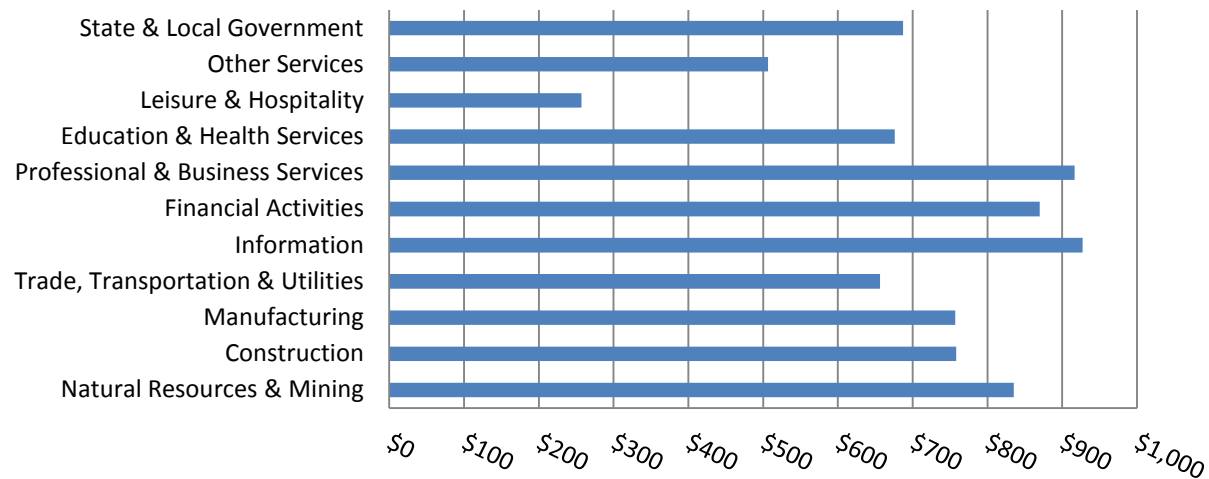


TABLE 1. YEARLY COMPARISON OF COVERED EMPLOYMENT AND WAGES, BY INDUSTRY

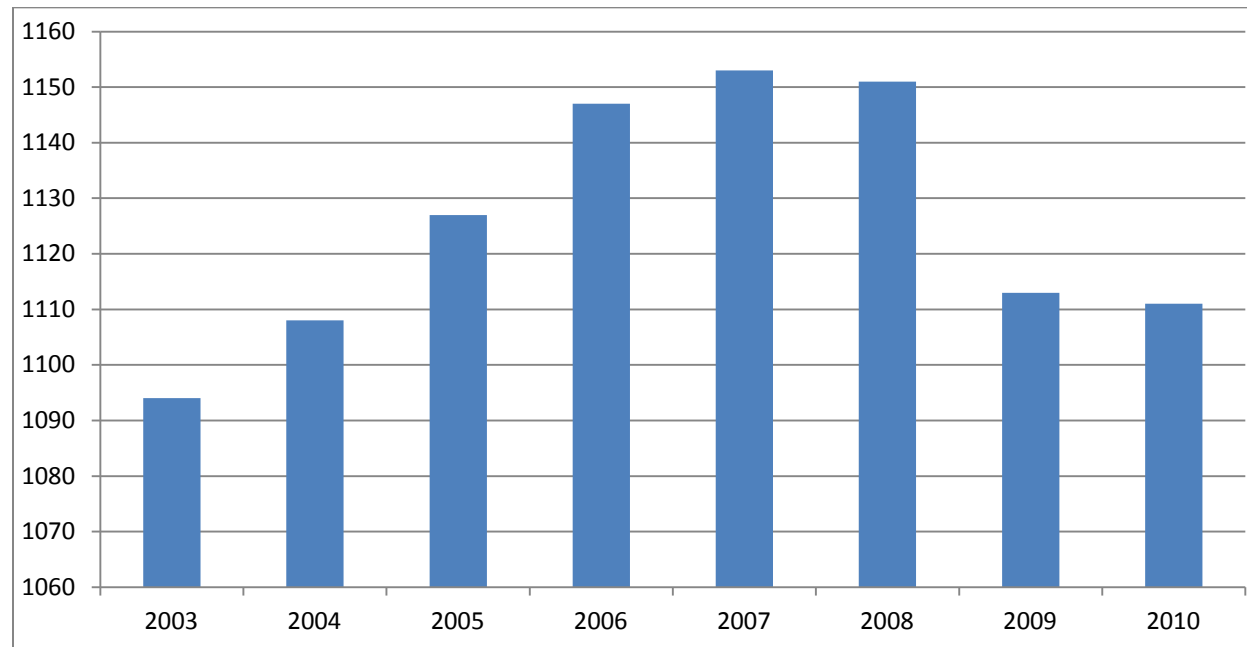
North American Industry Classification System	Number of Employing Units	Average Covered Employment	Percent of Total	Net Change From:		Total Earnings 2010	Percent of Total	Average Weekly Earnings
					2009			
Total	84,248	1,110,965	100		-3541	\$39,769,504,992	100	688.41
Natural Resources & Mining	2,512	21,096	1.9		315	916,160,844	2.3	835.16
Agriculture, Forestry, Fishing & Hunting	1,973	12,738	1.1		142	402,819,344	1.0	608.14
Mining	539	8,358	0.8		173	513,341,500	1.3	1,181.14
Construction	7,100	48,726	4.4		-3080	1,920,844,760	4.8	758.10
Manufacturing	3,270	159,822	14.4		-4277	6,289,906,001	15.8	756.84
Trade, Transportation & Utilities	20,659	231,444	20.8		-743	7,901,670,133	19.9	656.55
Wholesale Trade	6,426	46,444	4.2		-568	2,558,138,383	6.4	1,059.23
Retail Trade	10,981	129,514	11.7		-103	2,986,046,985	7.5	443.38
Transportation & Warehousing	2,846	48,169	4.3		-634	1,853,597,701	4.7	740.02
Utilities	406	7,317	0.7		562	503,887,064	1.3	1,324.33
Information	1,117	15,375	1.4		-887	741,317,173	1.9	927.23
Financial Activities	7,999	47,970	4.3		-1199	2,170,060,902	5.5	869.96
Finance & Insurance	4,667	34,437	3.1		-933	1,758,508,048	4.4	982.01
Real Estate & Rental & Leasing	3,332	13,533	1.2		-266	411,552,854	1.0	584.83
Professional & Business Services	12,181	117,715	10.6		4716	5,610,559,924	14.1	916.58
Professional & Technical Services	7,586	38,422	3.5		772	1,992,541,633	5.0	997.30
Management of Companies & Enterprises	521	26,207	2.4		-272	2,309,856,260	5.8	1,694.98
Administrative & Waste Services	4,074	53,086	4.8		4216	1,308,162,031	3.3	473.89
Education & Health Services	14,612	162,740	14.6		3391	5,721,283,622	14.4	676.08
Educational Services	685	10,378	0.9		54	321,705,447	0.8	596.13
Health Care & Social Assistance	13,927	152,362	13.7		3337	5,399,578,175	13.6	681.52
Leisure & Hospitality	6,319	98,781	8.9		-933	1,320,215,769	3.3	257.02
Arts, Entertainment & Recreation	909	9,675	0.9		-76	163,495,135	0.4	324.98
Accommodation & Food Services	5,410	89,106	8.0		-857	1,156,720,634	2.9	249.64
Other Services	5,359	24,608	2.2		-111	648,193,539	1.6	506.55
State & Local Government	3,120	182,688	16.4		1181	6,529,292,325	16.4	687.31
Local Government	1,970	113,639	10.2		579	3,752,557,726	9.4	635.03
State Government	1,150	69,049	6.2		602	2,776,734,599	7.0	773.35
Nonclassifiable Establishments	0	0	0.0		0	0	0.0	0.00

Note: Items do not necessarily add to totals because of rounding. Because of industry code changes between years, substantial employment and wage shifts among industries are anticipated.

TABLE 2. TOTAL COVERED EMPLOYMENT IN ARKANSAS

Period	2003	2004	2005	2006	2007	2008	2009	2010
Average	1,094,087	1,108,264	1,126,778	1,146,948	1,152,994	1,150,965	1,112,591	1,110,947
January	1,082,740	1,089,510	1,102,768	1,130,595	1,137,437	1,141,856	1,119,299	1,089,984
February	1,084,880	1,094,626	1,110,577	1,136,810	1,143,397	1,149,443	1,119,476	1,091,282
March	1,092,172	1,105,266	1,122,619	1,150,439	1,158,895	1,157,690	1,124,386	1,106,198
April	1,095,341	1,111,020	1,129,785	1,155,498	1,159,623	1,159,841	1,123,383	1,115,341
May	1,103,099	1,117,144	1,135,567	1,159,886	1,165,224	1,166,111	1,122,322	1,123,250
June	1,099,688	1,117,010	1,136,118	1,162,026	1,164,207	1,164,167	1,117,884	1,130,164
July	1,053,220	1,071,463	1,090,071	1,106,142	1,110,571	1,114,279	1,071,048	1,073,743
August	1,077,775	1,094,871	1,114,098	1,130,839	1,139,109	1,138,583	1,093,192	1,099,795
September	1,105,980	1,122,704	1,144,815	1,159,814	1,165,135	1,162,333	1,116,580	1,124,281
October	1,112,550	1,123,246	1,142,300	1,156,804	1,162,768	1,157,196	1,113,157	1,125,073
November	1,109,712	1,125,061	1,145,667	1,156,011	1,164,246	1,152,159	1,115,443	1,126,781
December	1,111,892	1,127,250	1,146,954	1,158,509	1,165,314	1,147,927	1,114,919	1,125,466

Graph 1
AVERAGE TOTAL COVERED EMPLOYMENT
In Thousands



Graph 2
TOTAL COVERED EARNINGS BY CALENDAR YEAR
In Thousands

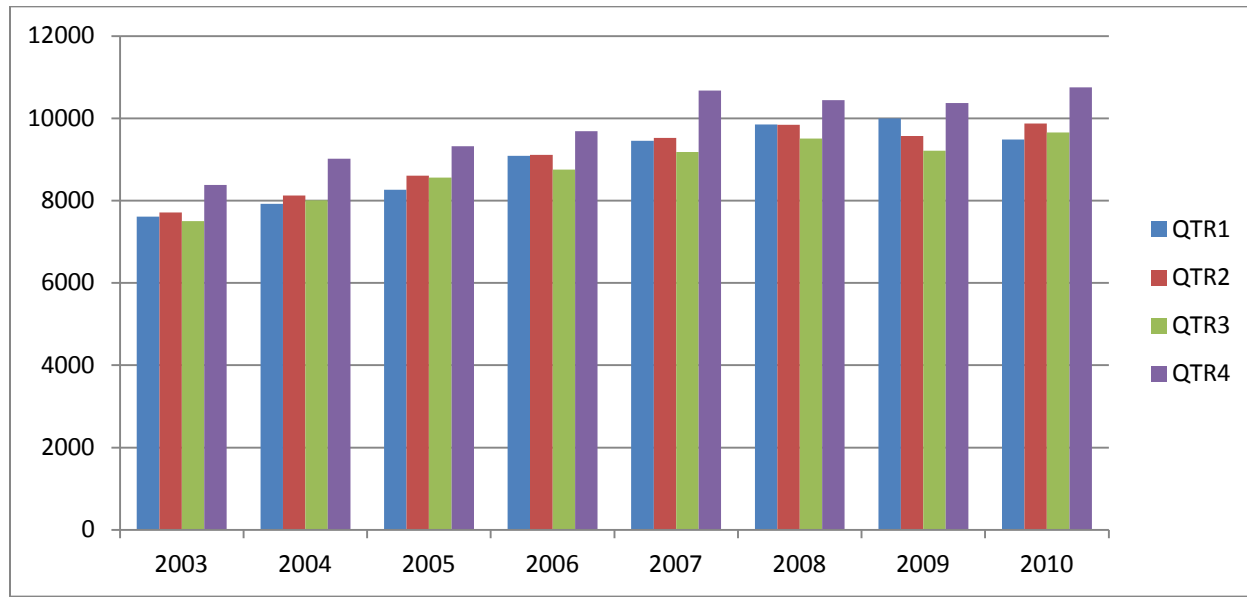


TABLE 3. TOTAL COVERED EARNINGS 2003 - 2010

Period	2003	2004	2005	2006
Total	\$31,202,576,767	\$33,068,189,304	\$34,753,107,631	\$36,636,090,775
January - March	7,608,130,008	7,918,843,610	8,261,153,981	9,085,021,816
April - June	7,714,813,038	8,122,370,361	8,607,722,353	9,112,624,590
July - September	7,500,204,764	8,010,300,454	8,562,555,369	8,750,878,205
October - December	8,379,428,957	9,016,674,879	9,321,675,928	9,687,566,164
Average Weekly Earnings	\$548.45	\$573.80	\$593.13	\$614.27

Period	2007	2008	2009	2010
Total	\$38,833,265,464	\$39,643,043,342	\$39,149,476,305	\$39,769,504,992
January - March	9,452,711,662	9,851,866,058	9,998,452,028	9,486,245,580
April - June	9,525,837,049	9,843,711,293	9,566,968,853	9,873,489,653
July - September	9,178,902,477	9,509,150,631	9,213,797,140	9,653,588,807
October - December	10,675,814,276	10,438,311,360	10,370,258,284	10,756,180,952
Average Weekly Earnings	\$647.70	\$662.37	\$676.69	\$688.42

TABLE 4. TOTAL TAXABLE EARNINGS, 2003 - 2010

Period	2003	2004	2005	2006
Total	9,154,938,743	9,731,247,501	9,991,605,239	10,197,511,360
January - March	4,737,918,796	4,931,559,230	5,062,670,306	5,421,204,601
April - June	2,270,519,362	2,451,454,749	2,506,505,721	2,385,110,992
July - September	1,188,681,170	1,318,017,835	1,353,660,445	1,314,939,803
October - December	957,819,415	1,030,215,687	1,068,768,767	1,076,255,964

Period	2007	2008	2009	2010
Total	10,459,105,059	10,360,487,108	9,787,660,886	11,332,118,456
January - March	5,617,417,571	5,635,750,082	5,423,705,265	5,607,134,758
April - June	2,466,606,627	2,419,313,519	2,293,670,854	2,977,100,591
July - September	1,307,060,412	1,297,473,555	1,165,280,065	1,577,067,770
October - December	1,068,020,449	1,007,949,952	905,004,702	1,170,815,337

TABLE 5. STATEWIDE SUMMARY
CALENDAR YEAR 2010

NORTH AMERICAN INDUSTRY CLASSIFICATION SYSTEM - INDUSTRY GROUPS		AVERAGE EMPLOYING UNITS	AVERAGE COVERED EMPLOYMENT	TOTAL CALENDAR EARNINGS	AVERAGE WEEKLY EARNINGS
TOTAL, ALL INDUSTRIES		84,248	1,110,965	\$39,769,504,992	\$688.41
NATURAL RESOURCES & MINING		2,512	21,096	\$916,160,844	\$835.16
11	AGRICULTURE, FORESTRY, FISHING & HUNTING	1,973	12,738	\$402,819,344	\$608.14
111	CROP PRODUCTION	819	3,881	\$93,730,014	\$464.44
1111	Oilseed & Grain Farming	483	2,210	54,140,339	471.11
1112	Vegetable & Melon Farming	11	75	1,238,955	317.68
1113	Fruit & Tree Nut Farming	8	80	1,622,529	390.03
1114	Greenhouse & Nursery Production	48	343	8,588,298	481.51
1119	Other Crop Farming	269	1,173	28,139,893	461.34
112	ANIMAL PRODUCTION	280	3,382	\$122,453,985	\$696.30
1121	Cattle Ranching & Farming	90	338	8,444,948	480.48
1122	Hog & Pig Farming	8	75	4,710,476	1,207.81
1123	Poultry & Egg Production	99	2,484	94,767,331	733.67
1125	Animal Aquaculture	58	421	12,811,660	585.22
1129	Other Animal Production	25	64	1,719,570	516.70
113	FORESTRY & LOGGING	439	2,344	\$80,214,147	\$658.10
1131	Timber Tract Operations	38	212	8,852,731	803.04
1132	Forest Nurseries & Gathering of Forest Products	7	37	1,659,591	862.57
1133	Logging	394	2,095	69,701,825	639.82
114	FISHING, HUNTING & TRAPPING	4	21	\$460,506	\$421.71
115	SUPPORT ACTIVITIES FOR AGRICULTURE & FORESTRY	431	3,110	\$105,960,692	\$655.21
1151	Support Activities for Crop Production	304	1,702	68,752,237	776.83
1152	Support Activities for Animal Production	59	653	15,897,476	468.18
1153	Support Activities for Forestry	68	755	21,310,979	542.82
21	MINING	539	8,358	\$513,341,500	\$1,181.14
211	OIL & GAS EXTRACTION	96	968	\$72,150,687	\$1,433.38
212	MINING (EXCEPT OIL & GAS)	108	2,080	\$100,300,140	\$927.33
213	SUPPORT ACTIVITIES FOR MINING	335	5,310	\$340,890,673	\$1,234.57

TABLE 5. STATEWIDE SUMMARY
CALENDAR YEAR 2010

NORTH AMERICAN INDUSTRY CLASSIFICATION SYSTEM - INDUSTRY GROUPS		AVERAGE EMPLOYING UNITS	AVERAGE COVERED EMPLOYMENT	TOTAL CALENDAR EARNINGS	AVERAGE WEEKLY EARNINGS
CONSTRUCTION		7,100	48,726	\$1,920,844,760	\$758.10
236	CONSTRUCTION OF BUILDINGS	1,763	9,754	\$403,845,061	\$796.21
2361	Residential Building Construction	1,182	2,933	92,267,275	604.97
2362	Nonresidential Building Construction	581	6,821	311,577,786	878.45
237	HEAVY & CIVIL ENGINEERING CONSTRUCTION	848	10,447	\$501,763,654	\$923.64
2371	Utility System Construction	454	6,132	309,976,735	972.13
2372	Land Subdivision	95	267	9,320,347	671.30
2373	Highway, Street & Bridge Construction	201	2,738	107,814,004	757.25
2379	Other Heavy Construction	98	1,310	74,652,568	1,095.90
238	SPECIALTY TRADE CONTRACTORS	4,489	28,525	\$1,015,236,045	\$684.44
2381	Building Foundation & Exterior Contractors	851	5,591	179,547,706	617.57
2382	Building Equipment Contractors	2,039	14,286	558,688,488	752.07
2383	Building Finishing Contractors	815	3,819	117,975,000	594.07
2389	Other Specialty Trade Contractors	784	4,829	159,024,851	633.29
MANUFACTURING		3,270	159,822	\$6,289,906,001	\$756.84
311	FOOD MANUFACTURING	300	46,216	\$1,421,094,944	\$591.33
3111	Animal Food Manufacturing	52	1,629	73,644,791	869.40
3112	Grain & Oilseed Milling	32	2,388	98,405,394	792.47
3113	Sugar & Confectionery Product Manufacturing	7	69	1,236,699	344.68
3114	Fruit, Vegetable & Specialty Food	22	5,597	206,720,075	710.27
3115	Dairy Product Manufacturing	11	701	28,601,174	784.63
3116	Animal Slaughtering & Processing	90	30,949	834,211,035	518.35
3117	Seafood Product Preparation & Packaging	5	113	2,381,781	405.34
3118	Bakeries and Tortilla Manufacturing	55	3,110	111,733,297	690.91
3119	Other Food Manufacturing	26	1,660	64,160,698	743.29
312	BEVERAGE & TOBACCO PRODUCT MANUFACTURING	40	1,051	\$45,428,396	\$831.23
313	TEXTILE MILLS	14	111	\$4,964,625	\$860.12

TABLE 5. STATEWIDE SUMMARY
CALENDAR YEAR 2010

NORTH AMERICAN INDUSTRY CLASSIFICATION SYSTEM - INDUSTRY GROUPS		AVERAGE	AVERAGE	TOTAL CALENDAR	AVERAGE
		EMPLOYING UNITS	COVERED EMPLOYMENT	EARNINGS	WEEKLY EARNINGS
314	TEXTILE PRODUCT MILLS	58	944	\$36,831,527	\$750.32
3141	Textile Furnishing Mills	12	23	555,030	464.07
3149	Other Textile Product Mills	46	921	36,276,497	757.46
315	APPAREL MANUFACTURING	29	1,296	\$28,496,293	\$422.84
316	LEATHER & ALLIED PRODUCT MANUFACTURING	20	1,284	\$30,874,271	\$462.41
321	WOOD PRODUCT MANUFACTURING	342	9,258	\$321,585,956	\$668.00
3211	Sawmills & Wood Preservation	139	4,119	144,010,576	672.36
3212	Veneer & Engineered Wood Products	56	2,522	106,185,450	809.69
3219	Other Wood Product Manufacturing	147	2,617	71,389,930	524.60
322	PAPER MANUFACTURING	81	10,504	\$594,836,909	\$1,089.03
3221	Pulp, Paper & Paperboard Mills	14	4,266	311,892,529	1,405.99
3222	Converted Paper Product Manufacturing	67	6,238	282,944,380	872.27
323	PRINTING & RELATED SUPPORT ACTIVITIES	261	5,146	\$190,907,782	\$713.43
324	PETROLEUM & COAL PRODUCTS MANUFACTURING	19	1,003	\$49,125,145	\$941.89
325	CHEMICAL MANUFACTURING	122	4,627	\$258,286,888	\$1,073.49
3251	Basic Chemical Manufacturing	32	1,764	111,529,191	1,215.87
3252	Resin, Rubber & Artificial Fibers	9	277	15,831,411	1,099.10
3253	Agricultural Chemical Manufacturing	15	296	17,531,253	1,138.98
3254	Pharmaceutical & Medicine Manufacturing	13	173	7,465,635	829.88
3255	Paint, Coating & Adhesive Manufacturing	9	169	10,219,426	1,162.88
3256	Soap, Cleaning Compound, & Toilet Preparation Manufacturing	15	952	48,070,797	971.05
3259	Other Chemical Preparation Manufacturing	29	996	47,639,175	919.82
326	PLASTICS & RUBBER PRODUCTS MANUFACTURING	149	10,153	\$444,152,963	\$841.27
3261	Plastics Product Manufacturing	106	6,483	249,219,154	739.27
3262	Rubber Product Manufacturing	43	3,670	194,933,809	1,021.45

TABLE 5. STATEWIDE SUMMARY
CALENDAR YEAR 2010

NORTH AMERICAN INDUSTRY CLASSIFICATION SYSTEM - INDUSTRY GROUPS		AVERAGE	AVERAGE	TOTAL CALENDAR	AVERAGE
		EMPLOYING UNITS	COVERED EMPLOYMENT	EARNINGS	WEEKLY EARNINGS
327	NONMETALLIC MINERAL PRODUCT MANUFACTURING	255	3,423	\$137,998,475	\$775.29
3271	Clay Product & Refractory Manufacturing	16	344	14,624,849	817.58
3272	Glass & Glass Product Manufacturing	16	347	13,384,898	741.79
3273	Cement & Concrete Product Manufacturing	185	2,048	77,508,128	727.80
3274	Lime & Gypsum Product Manufacturing	5	223	11,318,154	976.04
3279	Other Nonmetallic Mineral Products Manufacturing	33	461	21,162,446	882.80
331	PRIMARY METAL MANUFACTURING	71	7,206	\$405,236,942	\$1,081.46
3311	Iron & Steel Mills & Ferroalloys	9	2,218	180,494,268	1,564.94
3312	Purchased Steel Product Manufacturing	15	1,731	86,081,147	956.33
3313	Alumina & Aluminum Production	20	1,470	71,798,185	939.28
3314	Other Nonferrous Metal Production	12	699	27,248,753	749.66
3315	Foundries	15	1,088	39,614,589	700.20
332	FABRICATED METAL PRODUCT MANUFACTURING	541	14,484	\$619,652,383	\$822.73
3321	Forging & Stamping	12	471	20,503,714	837.16
3322	Cutlery & Hand Tool Manufacturing	16	989	37,595,143	731.02
3323	Architectural & Structural Metals	169	3,629	158,447,127	839.64
3324	Boilers, Tanks & Shipping Containers	19	572	26,989,146	907.38
3325	Hardware Manufacturing	7	255	9,247,887	697.43
3326	Spring & Wire Product Manufacturing	12	480	15,749,194	630.98
3327	Machine Shops & Threaded Products	209	1,757	64,469,542	705.63
3328	Coating, Engraving & Heat Treating Metals	36	549	17,676,422	619.18
3329	Other Fabricated Metal Product Manufacturing	61	5,782	268,974,208	894.60
333	MACHINERY MANUFACTURING	230	11,273	\$434,450,723	\$741.14
3331	Agriculture, Construction & Mining Machinery	38	2,725	77,820,033	549.19
3332	Industrial Machinery Manufacturing	33	677	31,409,334	892.21
3333	Commercial & Service Industry Machinery	20	813	35,176,136	832.06
3334	HVAC & Commercial Refrigeration Equipment	18	3,691	148,675,375	774.63
3335	Metalworking Machinery Manufacturing	67	953	39,934,110	805.84
3336	Turbine & Power Transmission Equipment Manufacturing	8	595	26,690,044	862.64
3339	Other General Purpose Machinery Manufacturing	46	1,819	74,745,691	790.22

TABLE 5. STATEWIDE SUMMARY
CALENDAR YEAR 2010

NORTH AMERICAN INDUSTRY CLASSIFICATION SYSTEM - INDUSTRY GROUPS		AVERAGE	AVERAGE	TOTAL CALENDAR	AVERAGE
		EMPLOYING UNITS	COVERED EMPLOYMENT	EARNINGS	WEEKLY EARNINGS
334	COMPUTER & ELECTRONIC PRODUCT MANUFACTURING	71	3,158	\$126,112,717	\$767.97
3342	Communications Equipment Manufacturing	7	116	6,756,676	1,120.14
3343	Audio & Video Equipment Manufacturing	8	566	20,896,168	709.98
3344	Semiconductors & Electronic Components	27	1,941	75,207,097	745.13
3345	Electronic Instrument Manufacturing	25	525	22,964,929	841.21
	Other	4	10	287,847	553.55
335	ELECTRICAL EQUIPMENT & APPLIANCES	56	8,117	\$343,004,374	\$812.64
3353	Electrical Equipment Manufacturing	20	3,914	174,428,830	857.03
3359	Other Electrical Equipment & Component Manufacturing	21	1,617	69,571,721	827.41
	Other	15	2,586	99,003,823	736.24
336	TRANSPORTATION EQUIPMENT MANUFACTURING	165	12,126	\$508,529,397	\$806.48
3362	Motor Vehicle Body & Trailer Manufacturing	38	1,481	51,496,613	668.68
3363	Motor Vehicle Parts Manufacturing	55	5,347	208,023,573	748.17
3364	Aerospace Product & Parts Manufacturing	29	3,439	184,082,244	1,029.38
3366	Ship & Boat Building	25	1,161	35,069,543	580.89
	Other	18	698	29,857,424	822.61
337	FURNITURE & RELATED PRODUCT MANUFACTURING	222	4,166	\$141,948,277	\$655.25
3371	Household & Institutional Furniture	182	2,827	87,051,658	592.17
3372	Office Furniture & Fixtures Manufacturing	32	1,244	52,331,437	808.98
3379	Other Furniture Related Product Manufacturing	8	95	2,565,182	519.27
339	MISCELLANEOUS MANUFACTURING	224	4,276	\$146,387,014	\$658.36
3391	Medical Equipment & Supplies Manufacturing	90	2,288	87,585,461	736.16
3399	Other Miscellaneous Manufacturing	134	1,988	58,801,553	568.81

TABLE 5. STATEWIDE SUMMARY
CALENDAR YEAR 2010

NORTH AMERICAN INDUSTRY CLASSIFICATION SYSTEM - INDUSTRY GROUPS		AVERAGE EMPLOYING UNITS	AVERAGE COVERED EMPLOYMENT	TOTAL CALENDAR EARNINGS	AVERAGE WEEKLY EARNINGS
TRADE, TRANSPORTATION & UTILITIES		20,659	231,444	\$7,901,670,133	\$656.55
42	WHOLESALE TRADE	6,426	46,444	\$2,558,138,383	\$1,059.23
423	MERCHANT WHOLESALERS, DURABLE GOODS	2,230	20,438	\$983,603,815	\$925.50
4231	Motor Vehicle & Part Merchant Wholesalers	253	2,463	96,868,410	756.34
4232	Furniture & Furnishings Merchant Wholesalers	61	349	16,851,724	928.57
4233	Lumber & Supply Merchant Wholesalers	188	1,422	56,710,027	766.93
4234	Commercial Goods Merchant Wholesalers	316	2,800	165,823,776	1,138.90
4235	Metal & Mineral Merchant Wholesalers	58	833	41,046,606	947.61
4236	Electric Goods Merchant Wholesalers	185	1,971	104,330,429	1,017.94
4237	Hardware & Plumbing Merchant Wholesalers	220	2,151	103,852,205	928.48
4238	Machinery & Supply Merchant Wholesalers	717	6,622	320,449,592	930.61
4239	Miscellaneous Durable Goods Merchant Wholesalers	232	1,827	77,671,046	817.56
424	MERCHANT WHOLESALERS, NONDURABLE GOODS	1,251	16,156	\$756,341,585	\$900.29
4241	Paper & Paper Product Merchant Wholesalers	75	1,084	54,316,410	963.60
4242	Druggist' Goods Merchant Wholesalers	65	993	48,234,524	934.13
4243	Apparel & Piece Goods Merchant Wholesalers	44	557	21,066,371	727.33
4244	Grocery Product Merchant Wholesalers	334	5,649	291,517,081	992.41
4245	Farm Product Merchant Wholesalers	73	863	26,980,812	601.23
4246	Chemical merchant Wholesalers	97	563	31,989,929	1,092.70
4247	Petroleum Merchant Wholesalers	141	1,572	80,472,034	984.44
4248	Alcoholic Beverage Merchant Wholesalers	38	1,186	57,088,821	925.68
4249	Miscellaneous Nondurable Goods Merchant Wholesaler	384	3,689	144,675,603	754.19
425	ELECTRONIC MARKETS & AGENTS & BROKERS	2,945	9,850	\$818,192,983	\$1,597.41
44 - 45	RETAIL TRADE	10,981	129,514	\$2,986,046,985	\$443.38
441	MOTOR VEHICLE & PARTS DEALERS	1,637	16,470	\$600,397,030	\$701.04
4411	Automobile Dealers	678	9,603	404,680,017	810.40
4412	Other Motor Vehicle Dealers	174	1,316	43,864,341	640.99
4413	Automotive Parts, Accessories & Tire Stores	785	5,551	151,852,672	526.08
442	FURNITURE & HOME FURNISHINGS STORES	550	3,383	\$92,702,478	\$526.97
4421	Furniture Stores	299	2,032	60,304,017	570.71
4422	Home Furnishings Stores	251	1,351	32,398,461	461.17

TABLE 5. STATEWIDE SUMMARY
CALENDAR YEAR 2010

NORTH AMERICAN INDUSTRY CLASSIFICATION SYSTEM - INDUSTRY GROUPS		AVERAGE EMPLOYING UNITS	AVERAGE COVERED EMPLOYMENT	TOTAL CALENDAR EARNINGS	AVERAGE WEEKLY EARNINGS
443	ELECTRONICS & APPLIANCE STORES	540	3,972	\$123,584,062	\$598.34
444	BUILDING MATERIAL & GARDEN SUPPLY STORES	843	10,265	\$264,475,057	\$495.48
4441	Building Material & Supplies Dealers	636	9,074	235,306,451	498.69
4442	Lawn & Garden Equipment & Supplies Stores	207	1,191	29,168,606	470.98
445	FOOD & BEVERAGE STORES	1,019	17,875	\$339,440,904	\$365.19
4451	Grocery Stores	564	15,448	286,564,579	356.74
4452	Specialty Food Stores	151	916	24,118,416	506.35
4453	Beer, Wine & Liquor Stores	304	1,511	28,757,909	366.01
446	HEALTH & PERSONAL CARE STORES	976	7,795	\$266,046,496	\$656.35
447	GASOLINE STATIONS	1,530	11,517	\$187,332,583	\$312.80
44711	Gasoline Stations with Convenience Stores	1,420	10,599	167,625,085	304.14
44719	Other Gasoline Stations	110	918	19,707,498	412.84
448	CLOTHING & CLOTHING ACCESSORIES STORES	986	8,559	\$124,370,841	\$279.44
4481	Clothing Stores	699	6,688	85,936,265	247.10
4482	Shoe Stores	149	1,129	17,753,858	302.41
4483	Jewelry, Luggage & Leather Goods Stores	138	742	20,680,718	535.99
451	SPORTING GOODS, HOBBY, BOOK & MUSIC STORES	529	4,320	\$70,017,463	\$311.69
4511	Sporting Goods & Musical Instrument Stores	405	3,146	54,145,060	330.98
4512	Book, Periodical & Music Stores	124	1,174	15,872,403	260.00
452	GENERAL MERCHANDISE STORES	761	37,469	\$735,709,718	\$377.60
453	MISCELLANEOUS STORE RETAILERS	1,252	6,174	\$124,642,752	\$388.24
4531	Florists	219	744	11,807,633	305.20
4532	Office Supplies, Stationery & Gift Stores	323	2,050	43,423,648	407.35
4533	Used Merchandise Stores	229	1,098	21,643,681	379.08
4539	Other Miscellaneous Store Retailers	481	2,282	47,767,790	402.55
454	NONSTORE RETAILERS	358	1,715	\$57,327,601	\$642.83
4541	Electronic Shopping & Mail-Order Houses	137	462	17,880,126	744.26
4542	Vending Machine Operators	65	490	13,795,330	541.42
4543	Direct Selling Establishments	156	763	25,652,145	646.54

TABLE 5. STATEWIDE SUMMARY
CALENDAR YEAR 2010

NORTH AMERICAN INDUSTRY CLASSIFICATION SYSTEM - INDUSTRY GROUPS		AVERAGE EMPLOYING UNITS	AVERAGE COVERED EMPLOYMENT	TOTAL CALENDAR EARNINGS	AVERAGE WEEKLY EARNINGS
48 - 49	TRANSPORTATION & WAREHOUSING	2,846	48,169	\$1,853,597,701	\$740.02
481	AIR TRANSPORTATION	48	800	\$41,629,943	\$1,000.72
483	SUPPORT ACTIVITIES FOR TRANSPORTATION	4	92	\$5,241,012	\$1,095.53
484	TRUCK TRANSPORTATION	1,899	31,524	\$1,225,766,350	\$747.76
4841	General Freight Trucking	1,172	25,233	983,823,635	749.80
4842	Specialized Freight Trucking	727	6,291	241,942,715	739.59
485	TRANSIT & GROUND PASSENGER TRANSPORTATION	77	1,178	\$19,424,111	\$317.10
4853	Taxi & Limousine Service	26	312	4,870,439	300.20
4854	School & Employee Bus Transportation	8	331	5,879,195	341.58
4855	Charter Bus Industry Service	9	71	1,400,877	379.44
4859	Other Ground Passenger Transportation	28	348	5,343,868	295.31
	Other	6	116	1,929,732	319.92
486	PIPELINE TRANSPORTATION	31	344	\$25,480,981	\$1,424.47
487	SCENIC AND SIGHTSEEING TRANSPORTATION	7	53	\$746,355	\$270.81
488	SUPPORT ACTIVITIES FOR TRANSPORTATION	399	4,054	\$175,303,029	\$831.58
4881	Support Activities for Air Transportation	97	1,346	50,325,154	719.01
4882	Support Activities for Rail Transportation	32	306	11,510,398	723.38
4883	Support Activities for Water Transportation	26	539	30,716,884	1,095.94
4884	Support Activities for Road Transportation	113	467	12,936,221	532.71
4885	Freight Transportation Arrangement	115	1,327	67,709,898	981.25
4889	Other Support Activities for Transportation	16	69	2,104,474	586.53
491	POSTAL SERVICE	12	16	\$312,350	\$375.42
492	COURIERS & MESSENGERS	148	3,041	\$121,184,248	\$766.35
493	WARHOUSING & STORAGE	221	7,067	\$238,509,322	\$649.03

TABLE 5. STATEWIDE SUMMARY
CALENDAR YEAR 2010

NORTH AMERICAN INDUSTRY CLASSIFICATION SYSTEM - INDUSTRY GROUPS		AVERAGE EMPLOYING UNITS	AVERAGE COVERED EMPLOYMENT	TOTAL CALENDAR EARNINGS	AVERAGE WEEKLY EARNINGS
22	UTILITIES	406	7,317	\$503,887,064	\$1,324.33
2211	Power Generation & Supply	159	5,073	388,668,506	1,473.37
2212	Natural Gas Distribution	70	1,389	87,117,218	1,206.14
2213	Water, Sewage and Other Systems	177	855	28,101,340	632.06
	INFORMATION	1,117	15,375	\$741,317,173	\$927.23
511	PUBLISHING INDUSTRIES, EXCEPT INTERNET	237	4,001	\$138,172,034	\$664.12
5111	Newspaper, Book & Directory Publishers	209	3,758	122,656,701	627.67
5112	Software Publishers	28	243	15,515,333	1,227.87
512	MOTION PICTURE & SOUND RECORDING INDUSTRY	145	1,253	\$22,709,740	\$348.54
5121	Motion Picture & Video Industries	124	1,216	21,292,675	336.74
5122	Sound Recording Industries	21	37	1,417,065	736.52
515	BROADCASTING, EXCEPT INTERNET	129	1,743	\$64,266,189	\$709.06
5151	Radio & Television Broadcasting	124	1,705	63,314,070	714.12
5152	Cable & Other Subscription Programming	5	38	952,119	481.84
517	TELECOMMUNICATIONS	388	6,687	\$435,774,299	\$1,253.22
5171	Wired Telecommunications Carriers	280	4,047	249,587,240	1,186.00
5174	Satellite Telecommunications	5	5	146,241	562.47
	Other	103	2,635	186,040,818	1,357.76
518	DATA PROCESSING, HOSTING & RELATED SERVICES	152	1,397	\$68,674,062	\$945.35
519	OTHER INFORMATION SERVICES	66	294	\$11,720,849	\$766.67
	FINANCIAL ACTIVITIES	7,999	47,970	\$2,170,060,902	\$869.96
52	FINANCE & INSURANCE	4,667	34,437	\$1,758,508,048	\$982.01
522	CREDIT INTERMEDIATION & RELATED ACTIVITIES	1,864	19,245	\$804,833,272	\$804.24
5221	Depository Credit Intermediation	1,400	17,221	684,857,058	764.78
5222	Nondepository Credit Intermediation	336	1,632	100,408,106	1,183.16
5223	Activities Related to Credit Intermediation	128	392	19,568,108	959.97

TABLE 5. STATEWIDE SUMMARY
CALENDAR YEAR 2010

NORTH AMERICAN INDUSTRY CLASSIFICATION SYSTEM - INDUSTRY GROUPS		AVERAGE EMPLOYING UNITS	AVERAGE COVERED EMPLOYMENT	TOTAL CALENDAR EARNINGS	AVERAGE WEEKLY EARNINGS
523	FINANCIAL INVESTMENT & RELATED ACTIVITIES	662	3,070	\$329,363,633	\$2,063.16
524	INSURANCE CARRIERS & RELATED ACTIVITIES	2,063	11,647	\$601,273,353	\$992.78
5241	Insurance Carriers	419	5,473	320,219,705	1,125.17
5242	Insurance Agencies, Brokerages & Support	1,644	6,174	281,053,648	875.43
	OTHER	78	475	\$23,037,790	\$932.70
53	REAL ESTATE & RENTAL & LEASING	3,332	13,533	\$411,552,854	\$584.83
531	REAL ESTATE	2,542	8,774	\$254,907,505	\$558.70
5311	Lessors of Real Estate	1,080	4,474	118,510,692	509.40
5312	Offices of Real Estate Agents & Brokers	802	1,659	52,782,029	611.84
5313	Activities Related to Real Estate	660	2,641	83,614,784	608.85
532	RENTAL & LEASING SERVICES	771	4,698	\$154,016,856	\$630.45
5321	Automotive Equipment Rental & Leasing	124	884	25,086,013	545.73
5322	Consumer Goods Rental	433	2,406	63,309,899	506.03
5323	General Rental Centers	29	233	8,089,437	667.67
5324	Machinery & Equipment Rental & Leasing	185	1,175	57,531,507	941.60
533	LESSORS OF NONFINANCIAL INTANGIBLE ASSETS	19	61	\$2,628,493	\$828.65
PROFESSIONAL & BUSINESS SERVICES		12,181	117,715	\$5,610,559,924	\$916.58
54	PROFESSIONAL & TECHNICAL SERVICES	7,586	38,422	\$1,992,541,633	\$997.30
5411	Legal Services	1,690	6,171	315,214,466	982.31
5412	Accounting & Bookkeeping Services	1,280	5,504	219,740,580	767.77
5413	Architectural & Engineering Services	972	6,281	353,220,546	1,081.47
5414	Specialized Design Services	172	425	19,110,144	864.71
5415	Computer Systems Design & Related Services	1,051	7,967	544,665,740	1,314.72
5416	Management & Technical Consulting Services	1,325	5,144	283,490,954	1,059.83
5417	Scientific Research & Development Services	115	1,140	66,163,530	1,116.12
5418	Advertising & Related Services	363	1,960	88,681,662	870.11
5419	Other Professional & Technical Services	618	3,830	102,254,011	513.43

TABLE 5. STATEWIDE SUMMARY
CALENDAR YEAR 2010

NORTH AMERICAN INDUSTRY CLASSIFICATION SYSTEM - INDUSTRY GROUPS		AVERAGE EMPLOYING UNITS	AVERAGE COVERED EMPLOYMENT	TOTAL CALENDAR EARNINGS	AVERAGE WEEKLY EARNINGS
55	MANAGEMENT OF COMPANIES & ENTERPRISES	521	26,207	\$2,309,856,260	\$1,694.98
56	ADMINISTRATIVE & SUPPORT SERVICES	4,074	53,086	\$1,308,162,031	\$473.89
561	ADMINISTRATIVE & SUPPORT SERVICES	3,832	50,037	\$1,192,340,218	\$458.25
5611	Office Administrative Services	561	1,721	91,861,194	1,026.47
5612	Facilities Support Services	19	129	5,076,943	756.85
5613	Employment Services	789	20,278	422,693,874	400.86
5614	Business Support Services	434	9,635	256,293,958	511.54
5615	Travel Arrangement & Reservation Services	84	328	10,505,774	615.96
5616	Investigation & Security Services	246	4,484	110,386,585	473.42
5617	Services to Buildings & Dwellings	1,420	11,690	235,561,455	387.51
5619	Other Support Services	279	1,772	59,960,435	650.73
562	WASTE MANAGEMENT & REMEDIATION SERVICES	242	3,049	\$115,821,813	\$730.52
5621	Waste Collection Services	107	1,204	44,507,761	710.90
5622	Waste Treatment & disposal Services	35	888	42,957,905	930.31
5629	Remediation & Other Waste Services	100	957	28,356,147	569.81
EDUCATION & HEALTH SERVICES		14,612	162,740	\$5,721,283,622	\$676.08
61	EDUCATIONAL SERVICES	685	10,378	\$321,705,447	\$596.13
6111	Elementary & Secondary Schools	88	3,252	84,745,428	501.14
6112	Junior Colleges	7	207	6,224,190	578.24
6113	Colleges & Universities	32	3,800	125,762,730	636.45
6114	Business, Computer, & Management Training	48	255	19,082,083	1,439.07
6115	Technical & Trade Schools	105	861	44,336,883	990.28
6116	Other Schools & Instruction	264	1,582	23,590,590	286.77
6117	Educational Support Services	141	421	17,963,543	820.55

TABLE 5. STATEWIDE SUMMARY
CALENDAR YEAR 2010

NORTH AMERICAN INDUSTRY CLASSIFICATION SYSTEM - INDUSTRY GROUPS		AVERAGE EMPLOYING UNITS	AVERAGE COVERED EMPLOYMENT	TOTAL CALENDAR EARNINGS	AVERAGE WEEKLY EARNINGS
62	HEALTH CARE & SOCIAL ASSISTANCE	13,927	152,362	\$5,399,578,175	\$681.52
621	AMBULATORY HEALTH CARE SERVICES	5,062	45,821	\$2,420,705,321	\$1,015.95
6211	Offices of Physicians	2,236	21,431	1,490,752,029	1,337.70
6212	Offices of Dentists	975	6,545	283,705,265	833.59
6213	Offices of Other Health Practitioners	1,188	6,383	222,413,192	670.09
6214	Outpatient Care Centers	267	3,791	153,931,409	780.85
6215	Medical & Diagnostic Laboratories	108	890	48,070,353	1,038.69
6216	Home Health Care Services	157	4,315	138,200,576	615.92
6219	Other Ambulatory Health Care Services	131	2,466	83,632,497	652.20
622	HOSPITALS	121	41,992	\$1,683,130,332	\$770.81
6221	General Medical & Surgical Hospitals	87	37,767	1,518,769,106	773.35
6222	Psychiatric & Substance Abuse Hospitals	10	1,898	69,013,410	699.25
6223	Other Hospitals	24	2,327	95,347,816	787.97
623	NURSING & RESIDENTIAL CARE FACILITIES	543	30,693	\$678,636,306	\$425.20
6231	Nursing Care Facilities	257	22,538	501,436,436	427.86
6232	Residential Mental Health Facilities	137	4,147	93,638,399	434.23
6233	Community Care Facilities for the Elderly	106	2,792	52,962,635	364.80
6239	Other Residential Care Facilities	43	1,216	30,598,836	483.91
624	SOCIAL ASSISTANCE	8,201	33,856	\$617,106,216	\$350.53
6241	Individual & Family Services	7,012	18,855	341,658,134	348.47
6242	Emergency & Other Relief Services	123	1,070	24,051,683	432.27
6243	Vocational Rehabilitation Services	129	3,816	82,770,036	417.12
6244	Child Day Care Services	937	10,115	168,626,363	320.59
LEISURE & HOSPITALITY		6,319	98,781	\$1,320,215,769	\$257.02
71	ARTS, ENTERTAINMENT & RECREATION	909	9,675	\$163,495,135	\$324.98
711	PERFORMING ARTS & SPECTATOR SPORTS	213	2,274	\$45,568,461	\$385.36
7111	Performing Arts Companies	43	479	7,562,072	303.60
7112	Spectator Sports	52	1,151	24,511,218	409.53
7113	Performing Arts & Sports Promoters	37	551	9,783,309	341.45
7114	Agents & Managers for Public Figures	24	22	1,095,680	957.76
7115	Independent Artists, Writers, & Performers	57	71	2,616,182	708.61

TABLE 5. STATEWIDE SUMMARY
CALENDAR YEAR 2010

NORTH AMERICAN INDUSTRY CLASSIFICATION SYSTEM - INDUSTRY GROUPS		AVERAGE EMPLOYING UNITS	AVERAGE COVERED EMPLOYMENT	TOTAL CALENDAR EARNINGS	AVERAGE WEEKLY EARNINGS
712	MUSEUMS, PARKS, & HISTORICAL SITES	53	323	\$7,763,185	\$462.20
713	GAMBLING, RECREATIONAL & AMUSEMENT INDUSTRY	643	7,078	\$110,163,489	\$299.31
72	ACCOMODATION & FOOD SERVICES	5,410	89,106	\$1,156,720,634	\$249.64
721	ACCOMODATION	877	11,155	\$174,208,954	\$300.33
7211	Travel Accommodation	794	10,575	164,903,536	299.88
7212	RV Parks & Recreational Camps	62	495	7,903,031	307.03
7213	Rooming & Boarding Houses	21	85	1,402,387	317.28
722	FOOD SERVICES & DRINKING PLACES	4,533	77,951	\$982,511,680	\$242.39
7221	Full - Service Restaurants	1,923	33,279	446,181,370	257.83
7222	Limited - Service Eating Places	2,297	41,145	485,608,379	226.97
7223	Special Food Services	162	2,443	37,943,331	298.68
7224	Drinking Places, Alcoholic Beverages	151	1,084	12,778,600	226.70
OTHER SERVICES		5,359	24,608	\$648,193,539	\$506.55
811	REPAIR & MAINTENANCE	2,176	8,877	\$278,823,444	\$604.03
8111	Automotive Repair & Maintenance	1,458	6,049	173,553,502	551.76
8112	Electronic Equipment Repair & Maintenance	164	712	28,169,224	760.84
8113	Commercial Machinery Repair & Maintenance	372	1,581	62,577,433	761.17
8114	Household Goods Repair & Maintenance	182	535	14,523,285	522.04
812	PERSONAL & LAUNDRY SERVICES	1,300	8,207	\$167,406,553	\$392.27
8121	Personal Care Services	575	2,735	44,635,135	313.85
8122	Death Care Services	244	1,642	44,433,735	520.40
8123	Drycleaning & Laundry Service	284	3,139	65,321,888	400.19
8129	Other Personal Services	197	691	13,015,795	362.23
813	MEMBERSHIP ASSOCIATIONS & ORGANIZATIONS	1,087	6,435	\$182,697,463	\$545.98
8131	Religious Organizations	48	212	5,417,945	491.47
8132	Grantmaking & Giving Organizations	108	526	21,763,113	795.67
8133	Social Advocacy Organizations	210	2,159	61,071,787	543.98
8134	Civic & Social Organizations	198	1,387	20,481,844	283.98
8139	Professional & Similar Organizations	523	2,151	73,962,774	661.26

TABLE 5. STATEWIDE SUMMARY
CALENDAR YEAR 2010

NORTH AMERICAN INDUSTRY CLASSIFICATION SYSTEM - INDUSTRY GROUPS		AVERAGE EMPLOYING UNITS	AVERAGE COVERED EMPLOYMENT	TOTAL CALENDAR EARNINGS	AVERAGE WEEKLY EARNINGS
814	PRIVATE HOUSEHOLDS	796	1,089	\$19,266,079	\$340.22
	LOCAL GOVERNMENT	1,970	113,639	3,752,557,726	\$635.03
	STATE GOVERNMENT	1,150	69,049	2,776,734,599	\$773.35
	NONCLASSIFIABLE ESTABLISHMENTS	0	0	0	\$0.00

TABLE 6. COUNTY SUMMARY
CALENDAR YEAR 2010

NORTH AMERICAN INDUSTRY CLASSIFICATION SYSTEM - INDUSTRY GROUPS	AVERAGE EMPLOYING UNITS	AVERAGE COVERED EMPLOYMENT	TOTAL CALENDAR EARNINGS	AVERAGE WEEKLY EARNINGS
ARKANSAS COUNTY - TOTAL	755	9,509	\$312,621,759	\$632.24
Natural Resources & Mining	41	190	8,635,678	874.06
Construction	48	276	9,314,179	648.98
Manufacturing	33	3,369	123,612,921	705.60
Trade, Transportation & Utilities	209	2,068	70,666,009	657.14
Wholesale Trade	47	427	22,833,798	1,028.36
Retail Trade	97	1,045	23,273,385	428.29
Transportation, Warehousing & Utilities	65	596	24,558,826	792.42
Information	10	105	3,704,375	678.46
Financial Activities	46	322	13,843,871	826.80
Professional & Business Services	48	379	16,442,509	834.31
Education & Health Services	163	1,176	28,776,807	470.58
Leisure & Hospitality	53	451	5,318,767	226.79
Other Services	57	156	3,613,749	445.48
Local Government	32	821	23,346,095	546.85
State Government	15	196	5,346,799	524.61
ASHLEY COUNTY - TOTAL	586	7,808	\$291,919,472	\$718.99
Natural Resources & Mining	48	308	9,514,498	594.06
Construction	44	628	23,148,862	708.87
Manufacturing	29	2,538	145,597,337	1,103.21
Trade, Transportation & Utilities	136	1,200	31,532,210	505.32
Wholesale Trade	24	196	8,190,290	803.60
Retail Trade	84	773	14,744,909	366.83
Transportation, Warehousing & Utilities	28	231	8,597,011	715.70
Information	7	44	1,294,218	565.65
Financial Activities	37	230	7,589,021	634.53
Professional & Business Services	51	405	9,767,806	463.81
Education & Health Services	122	752	23,510,967	601.24
Leisure & Hospitality	28	372	4,218,195	218.06
Other Services	41	158	3,394,080	413.11
Local Government	32	941	27,290,902	557.73
State Government	11	232	5,061,376	419.54

TABLE 6. COUNTY SUMMARY
CALENDAR YEAR 2010

NORTH AMERICAN INDUSTRY CLASSIFICATION SYSTEM - INDUSTRY GROUPS	AVERAGE EMPLOYING UNITS	AVERAGE COVERED EMPLOYMENT	TOTAL CALENDAR EARNINGS	AVERAGE WEEKLY EARNINGS
BAXTER COUNTY - TOTAL	1,306	13,882	\$414,571,046	\$574.31
Natural Resources & Mining	6	112	3,322,315	570.45
Construction	135	647	18,524,982	550.62
Manufacturing	63	2,047	75,376,026	708.13
Trade, Transportation & Utilities	273	2,469	60,155,738	468.55
Wholesale Trade	40	186	6,071,623	627.75
Retail Trade	207	2,123	47,962,537	434.46
Transportation, Warehousing & Utilities	26	160	6,121,578	735.77
Information	21	219	8,214,015	721.29
Financial Activities	115	710	29,401,576	796.36
Professional & Business Services	140	802	22,387,253	536.81
Education & Health Services	276	3,392	123,373,857	699.46
Leisure & Hospitality	125	1,509	19,481,611	248.27
Other Services	101	366	7,010,746	368.37
Local Government	39	1,256	37,065,802	567.52
State Government	12	353	10,257,125	558.79
BENTON COUNTY - TOTAL	5,377	90,950	\$4,202,294,875	\$888.55
Natural Resources & Mining	37	759	38,554,091	976.84
Construction	534	3,326	125,944,067	728.20
Manufacturing	219	11,797	446,098,025	727.20
Trade, Transportation & Utilities	1,430	20,643	868,898,383	809.46
Wholesale Trade	654	3,819	325,032,221	1,636.72
Retail Trade	613	8,836	216,297,390	470.75
Transportation, Warehousing & Utilities	163	7,988	327,568,772	788.61
Information	71	765	33,608,987	844.87
Financial Activities	541	3,509	170,097,563	932.20
Professional & Business Services	1,050	23,801	1,745,738,630	1,410.52
Education & Health Services	598	8,235	304,977,939	712.20
Leisure & Hospitality	452	8,346	122,368,071	281.96
Other Services	350	1,746	47,723,828	525.64
Local Government	78	6,975	264,725,073	729.87
State Government	17	1,048	33,560,218	615.83

TABLE 6. COUNTY SUMMARY
CALENDAR YEAR 2010

NORTH AMERICAN INDUSTRY CLASSIFICATION SYSTEM - INDUSTRY GROUPS	AVERAGE EMPLOYING UNITS	AVERAGE COVERED EMPLOYMENT	TOTAL CALENDAR EARNINGS	AVERAGE WEEKLY EARNINGS
BOONE COUNTY - TOTAL	1,046	13,531	\$433,207,002	\$615.69
Construction	87	428	12,970,377	582.78
Manufacturing	68	1,689	59,671,058	679.41
Trade, Transportation & Utilities	246	3,817	135,310,433	681.72
Wholesale Trade	51	550	17,615,101	615.91
Retail Trade	143	1,791	41,454,560	445.12
Transportation, Warehousing & Utilities	52	1,476	76,240,772	993.34
Information	22	374	14,146,381	727.40
Financial Activities	92	562	20,102,995	687.89
Professional & Business Services	116	961	31,362,216	627.60
Education & Health Services	197	1,363	40,506,238	571.51
Leisure & Hospitality	81	1,120	14,132,338	242.66
Local Government	57	2,180	68,401,566	603.40
State Government	19	755	28,598,320	728.43
Other	61	282	8,005,080	545.90
BRADLEY COUNTY - TOTAL	392	3,855	\$121,981,945	\$608.51
Natural Resources & Mining	43	309	8,435,776	525.00
Construction	20	171	4,725,927	531.48
Manufacturing	11	937	47,113,576	966.95
Trade, Transportation & Utilities	81	498	12,409,515	479.21
Wholesale Trade	14	84	3,798,466	869.61
Retail Trade	42	354	6,423,410	348.95
Transportation, Warehousing & Utilities	25	60	2,187,639	701.17
Information	4	14	430,136	590.85
Financial Activities	26	148	4,554,145	591.75
Professional & Business Services	26	95	2,007,917	406.46
Education & Health Services	115	616	15,969,124	498.54
Leisure & Hospitality	12	179	1,912,600	205.48
Other Services	29	98	1,948,631	382.38
Local Government	14	514	14,553,565	544.51
State Government	11	276	7,921,033	551.91

TABLE 6. COUNTY SUMMARY
CALENDAR YEAR 2010

NORTH AMERICAN INDUSTRY CLASSIFICATION SYSTEM - INDUSTRY GROUPS	AVERAGE EMPLOYING UNITS	AVERAGE COVERED EMPLOYMENT	TOTAL CALENDAR EARNINGS	AVERAGE WEEKLY EARNINGS
CALHOUN COUNTY - TOTAL	121	3,018	\$129,178,228	\$823.13
Natural Resources & Mining	15	89	3,012,936	651.02
Construction	14	98	2,748,345	539.31
Manufacturing	8	2,018	96,957,374	923.97
Trade, Transportation & Utilities	30	238	7,177,160	579.93
Retail Trade	17	82	1,686,306	395.48
Transportation, Warehousing & Utilities	13	156	5,490,854	676.88
Financial Activities	7	89	2,805,582	606.22
Education & Health Services	13	48	1,730,417	693.28
Leisure & Hospitality	6	20	182,916	175.88
Other Services	3	4	115,258	554.13
Local Government	11	209	4,834,324	444.82
State Government	8	83	2,764,189	640.45
Other	6	122	6,849,727	1,079.72
CARROLL COUNTY - TOTAL	796	9,729	\$248,720,424	\$491.63
Natural Resources & Mining	16	282	9,229,277	629.38
Trade, Transportation & Utilities	197	1,532	37,110,010	465.83
Wholesale Trade	25	180	4,139,286	442.23
Retail Trade	154	1,114	22,381,092	386.36
Transportation, Warehousing & Utilities	18	238	10,589,632	855.66
Information	8	75	2,256,902	578.69
Financial Activities	73	360	12,852,954	686.59
Professional & Business Services	61	209	5,326,817	490.14
Education & Health Services	94	934	29,131,680	599.81
Leisure & Hospitality	163	1,505	18,553,496	237.08
Other Services	41	128	2,797,389	420.28
Local Government	26	963	28,584,480	570.82
State Government	10	106	3,027,820	549.31
Other	107	3,635	99,849,599	528.25

TABLE 6. COUNTY SUMMARY
CALENDAR YEAR 2010

NORTH AMERICAN INDUSTRY CLASSIFICATION SYSTEM - INDUSTRY GROUPS	AVERAGE EMPLOYING UNITS	AVERAGE COVERED EMPLOYMENT	TOTAL CALENDAR EARNINGS	AVERAGE WEEKLY EARNINGS
CHICOT COUNTY - TOTAL	409	3,338	\$88,120,814	\$507.68
Natural Resources & Mining	50	252	6,809,263	519.63
Construction	13	157	6,479,850	793.71
Manufacturing	9	288	6,119,839	408.64
Trade, Transportation & Utilities	71	484	12,029,224	477.96
Wholesale Trade	13	69	2,172,913	605.61
Retail Trade	47	358	7,421,105	398.64
Transportation, Warehousing & Utilities	11	57	2,435,206	821.59
Information	5	10	251,353	483.37
Financial Activities	28	164	5,897,733	691.57
Professional & Business Services	23	60	1,999,393	640.83
Education & Health Services	149	692	17,425,033	484.24
Leisure & Hospitality	18	156	1,514,190	186.66
Other Services	15	60	1,647,755	528.13
Local Government	18	710	19,551,679	529.57
State Government	10	305	8,395,502	529.35
CLARK COUNTY - TOTAL	624	9,162	\$270,719,864	\$568.23
Natural Resources & Mining	32	218	7,450,575	657.25
Construction	33	112	2,762,256	474.29
Manufacturing	35	1,926	72,633,684	725.23
Trade, Transportation & Utilities	139	1,429	38,762,020	521.64
Wholesale Trade	20	53	2,353,333	853.89
Retail Trade	98	1,165	28,520,918	470.80
Transportation, Warehousing & Utilities	21	211	7,887,769	718.90
Information	9	32	1,056,044	634.64
Financial Activities	79	305	10,688,746	673.94
Professional & Business Services	53	373	17,746,970	914.98
Education & Health Services	95	1,359	37,475,384	530.30
Leisure & Hospitality	62	1,011	12,291,528	233.80
Other Services	46	237	6,015,312	488.10
Local Government	27	971	28,390,422	562.28
State Government	14	1,189	35,446,923	573.32

TABLE 6. COUNTY SUMMARY
CALENDAR YEAR 2010

NORTH AMERICAN INDUSTRY CLASSIFICATION SYSTEM - INDUSTRY GROUPS	AVERAGE EMPLOYING UNITS	AVERAGE COVERED EMPLOYMENT	TOTAL CALENDAR EARNINGS	AVERAGE WEEKLY EARNINGS
CLAY COUNTY - TOTAL	408	3,925	\$105,792,597	\$518.34
Natural Resources & Mining	60	255	6,341,737	478.26
Construction	29	147	3,696,342	483.56
Manufacturing	15	697	23,596,151	651.04
Trade, Transportation & Utilities	99	901	25,955,361	553.99
Wholesale Trade	23	301	10,178,234	650.28
Retail Trade	47	413	8,925,965	415.63
Transportation, Warehousing & Utilities	29	187	6,851,162	704.56
Information	4	61	1,358,938	428.42
Financial Activities	29	114	3,484,807	587.86
Professional & Business Services	25	67	1,732,903	497.39
Education & Health Services	62	471	11,588,992	473.17
Leisure & Hospitality	24	208	2,004,261	185.31
Other Services	28	72	1,932,183	516.07
Local Government	22	877	22,502,288	493.43
State Government	11	55	1,598,634	558.96
CLEBURNE COUNTY - TOTAL	696	6,776	\$190,641,668	\$541.05
Natural Resources & Mining	30	351	15,826,202	867.09
Construction	73	395	12,962,384	631.08
Manufacturing	38	1,177	36,819,465	601.59
Trade, Transportation & Utilities	175	1,526	46,182,404	581.99
Wholesale Trade	45	276	12,502,884	871.16
Retail Trade	103	952	21,042,526	425.07
Transportation, Warehousing & Utilities	27	298	12,636,994	815.50
Information	8	57	1,514,912	511.10
Financial Activities	73	264	9,050,937	659.30
Professional & Business Services	60	271	7,169,554	508.77
Education & Health Services	84	861	21,069,160	470.59
Leisure & Hospitality	78	837	10,432,837	239.70
Other Services	50	162	3,406,653	404.40
Local Government	18	767	23,252,939	583.01
State Government	9	108	2,954,221	526.04

TABLE 6. COUNTY SUMMARY
CALENDAR YEAR 2010

NORTH AMERICAN INDUSTRY CLASSIFICATION SYSTEM - INDUSTRY GROUPS	AVERAGE EMPLOYING UNITS	AVERAGE COVERED EMPLOYMENT	TOTAL CALENDAR EARNINGS	AVERAGE WEEKLY EARNINGS
CLEVELAND COUNTY - TOTAL	123	1,115	\$24,203,301	\$417.44
Natural Resources & Mining	14	168	5,270,641	603.32
Construction	7	24	449,854	360.46
Manufacturing	6	93	2,503,384	517.66
Trade, Transportation & Utilities	31	167	3,279,551	377.65
Retail Trade	16	83	965,812	223.77
Other Trade, Transportation & Utilities	15	84	2,313,739	529.70
Education & Health Services	31	137	2,545,158	357.27
Other Services	5	13	462,671	684.42
Local Government	11	336	6,698,955	383.41
State Government	7	58	1,306,555	433.21
Other	11	119	1,686,532	272.55
COLUMBIA COUNTY - TOTAL	755	8,577	\$280,636,963	\$629.23
Natural Resources & Mining	47	468	26,105,169	1,072.70
Construction	41	282	9,423,325	642.62
Manufacturing	39	1,980	90,427,766	878.28
Trade, Transportation & Utilities	165	1,532	40,316,254	506.08
Wholesale Trade	28	239	9,053,106	728.44
Retail Trade	103	1,040	20,752,855	383.74
Transportation, Warehousing & Utilities	34	253	10,510,293	798.90
Information	9	71	1,898,629	514.25
Financial Activities	74	390	14,357,342	707.96
Professional & Business Services	61	297	9,215,321	596.69
Education & Health Services	181	1,061	23,236,863	421.17
Leisure & Hospitality	48	601	7,501,547	240.03
Other Services	51	244	3,942,481	310.73
Local Government	26	1,077	33,728,138	602.25
State Government	13	574	20,484,128	686.28

TABLE 6. COUNTY SUMMARY
CALENDAR YEAR 2010

NORTH AMERICAN INDUSTRY CLASSIFICATION SYSTEM - INDUSTRY GROUPS	AVERAGE EMPLOYING UNITS	AVERAGE COVERED EMPLOYMENT	TOTAL CALENDAR EARNINGS	AVERAGE WEEKLY EARNINGS
CONWAY COUNTY - TOTAL	583	6,828	\$217,591,037	\$612.84
Natural Resources & Mining	32	231	10,953,387	911.87
Construction	52	540	24,693,660	879.40
Manufacturing	22	927	47,080,753	976.70
Trade, Transportation & Utilities	130	1,561	48,111,171	592.71
Wholesale Trade	22	230	9,949,194	831.87
Retail Trade	83	840	18,493,203	423.38
Transportation, Warehousing & Utilities	25	491	19,668,774	770.36
Information	4	11	533,883	933.36
Financial Activities	33	168	5,345,241	611.86
Professional & Business Services	41	541	10,172,406	361.60
Education & Health Services	168	981	26,174,465	513.10
Leisure & Hospitality	41	455	4,925,564	208.18
Other Services	24	94	2,523,962	516.36
Local Government	26	919	26,235,824	549.00
State Government	10	400	10,840,721	521.19
CRAIGHEAD COUNTY - TOTAL	2,689	41,949	\$1,379,860,329	\$632.57
Natural Resources & Mining	70	339	9,865,685	559.66
Construction	217	1,618	57,738,153	686.25
Manufacturing	129	5,956	233,305,142	753.30
Trade, Transportation & Utilities	729	8,603	253,943,900	567.66
Wholesale Trade	186	1,633	75,572,211	889.96
Retail Trade	431	5,791	130,591,984	433.67
Transportation, Warehousing & Utilities	112	1,179	47,779,705	779.34
Information	29	504	17,503,466	667.87
Financial Activities	263	1,511	64,728,684	823.81
Professional & Business Services	355	3,941	109,827,888	535.92
Education & Health Services	457	8,096	333,126,650	791.29
Leisure & Hospitality	214	4,231	53,543,585	243.37
Other Services	164	848	18,177,739	412.23
Local Government	39	3,578	121,822,926	654.76
State Government	23	2,724	106,276,511	750.29

TABLE 6. COUNTY SUMMARY
CALENDAR YEAR 2010

NORTH AMERICAN INDUSTRY CLASSIFICATION SYSTEM - INDUSTRY GROUPS	AVERAGE EMPLOYING UNITS	AVERAGE COVERED EMPLOYMENT	TOTAL CALENDAR EARNINGS	AVERAGE WEEKLY EARNINGS
CRAWFORD COUNTY - TOTAL	1,308	19,375	\$571,517,634	\$567.26
Natural Resources & Mining	30	353	16,995,933	925.91
Construction	184	1,177	39,931,040	652.43
Manufacturing	83	4,008	120,984,215	580.49
Trade, Transportation & Utilities	310	6,221	186,830,359	577.54
Wholesale Trade	81	725	29,797,588	790.39
Retail Trade	163	1,937	42,480,682	421.75
Transportation, Warehousing & Utilities	66	3,559	114,552,089	618.97
Information	13	130	3,983,896	589.33
Financial Activities	129	539	17,429,473	621.86
Professional & Business Services	162	1,206	34,490,675	549.99
Education & Health Services	167	1,694	49,666,974	563.83
Leisure & Hospitality	94	1,490	18,589,973	239.93
Other Services	84	371	10,131,809	525.18
Local Government	42	2,053	68,298,444	639.76
State Government	10	133	4,184,843	605.10
CRITTENDEN COUNTY - TOTAL	1,350	15,758	\$495,792,337	\$605.06
Natural Resources & Mining	49	287	7,636,263	511.68
Construction	56	423	16,844,036	765.78
Manufacturing	44	1,654	70,045,676	814.41
Trade, Transportation & Utilities	323	4,573	154,098,897	648.03
Wholesale Trade	78	773	34,282,741	852.89
Retail Trade	164	1,969	42,875,683	418.76
Transportation, Warehousing & Utilities	81	1,831	76,940,473	808.10
Information	6	60	2,065,947	662.16
Financial Activities	100	572	21,157,521	711.32
Professional & Business Services	123	1,020	27,193,190	512.69
Education & Health Services	384	2,156	63,598,485	567.28
Leisure & Hospitality	112	1,817	26,385,651	279.26
Other Services	95	496	12,028,411	466.36
Local Government	44	2,207	80,130,066	698.22
State Government	14	493	14,608,194	569.83

TABLE 6. COUNTY SUMMARY
CALENDAR YEAR 2010

NORTH AMERICAN INDUSTRY CLASSIFICATION SYSTEM - INDUSTRY GROUPS	AVERAGE EMPLOYING UNITS	AVERAGE COVERED EMPLOYMENT	TOTAL CALENDAR EARNINGS	AVERAGE WEEKLY EARNINGS
CROSS COUNTY - TOTAL	537	4,844	\$143,710,298	\$570.53
Natural Resources & Mining	35	193	4,959,461	494.17
Construction	23	98	2,859,306	561.09
Manufacturing	13	644	21,245,356	634.42
Trade, Transportation & Utilities	140	1,241	39,147,098	606.63
Wholesale Trade	31	304	12,152,254	768.74
Retail Trade	76	708	17,152,978	465.91
Transportation, Warehousing & Utilities	33	229	9,841,866	826.49
Information	4	34	1,024,096	579.24
Financial Activities	43	303	10,129,753	642.91
Professional & Business Services	47	112	3,629,171	623.14
Education & Health Services	136	761	20,877,917	527.59
Leisure & Hospitality	33	323	3,391,542	201.93
Other Services	37	70	1,401,787	385.11
Local Government	16	695	22,508,965	622.83
State Government	10	370	12,535,846	651.55
DALLAS COUNTY - TOTAL	264	3,103	\$85,219,710	\$528.15
Natural Resources & Mining	37	199	6,056,944	585.33
Construction	12	105	4,744,493	868.95
Manufacturing	15	645	22,260,276	663.69
Trade, Transportation & Utilities	63	495	14,487,210	562.83
Wholesale Trade	6	43	3,577,278	1,599.86
Retail Trade	42	361	7,836,003	417.43
Transportation, Warehousing & Utilities	15	91	3,073,929	649.60
Information	3	17	502,845	568.83
Financial Activities	17	84	2,660,323	609.05
Professional & Business Services	17	51	1,199,697	452.37
Education & Health Services	52	905	20,772,616	441.41
Leisure & Hospitality	11	99	1,136,889	220.84
Other Services	14	66	1,417,106	412.91
Local Government	15	383	8,679,175	435.79
State Government	8	54	1,302,136	463.72

TABLE 6. COUNTY SUMMARY
CALENDAR YEAR 2010

NORTH AMERICAN INDUSTRY CLASSIFICATION SYSTEM - INDUSTRY GROUPS	AVERAGE EMPLOYING UNITS	AVERAGE COVERED EMPLOYMENT	TOTAL CALENDAR EARNINGS	AVERAGE WEEKLY EARNINGS
DESHA COUNTY - TOTAL	497	4,155	\$111,465,940	\$515.90
Natural Resources & Mining	56	261	8,145,629	600.18
Construction	18	114	3,798,906	640.84
Manufacturing	18	478	14,247,681	573.21
Trade, Transportation & Utilities	108	892	24,503,694	528.28
Wholesale Trade	17	160	7,641,416	918.44
Retail Trade	64	544	10,828,753	382.80
Transportation, Warehousing & Utilities	27	188	6,033,525	617.18
Information	6	34	1,074,750	607.89
Financial Activities	44	221	6,551,312	570.08
Professional & Business Services	34	88	2,094,847	457.79
Education & Health Services	127	715	18,251,528	490.90
Leisure & Hospitality	35	301	2,950,767	188.52
Other Services	22	80	1,705,795	410.05
Local Government	19	811	23,972,415	568.44
State Government	10	160	4,168,616	501.04
DREW COUNTY - TOTAL	526	6,299	\$175,512,915	\$535.84
Natural Resources & Mining	49	349	11,120,019	612.74
Construction	21	93	2,614,500	540.63
Manufacturing	20	827	24,479,675	569.24
Trade, Transportation & Utilities	119	1,138	30,276,261	511.63
Wholesale Trade	17	169	6,743,709	767.38
Retail Trade	82	877	19,607,451	429.95
Transportation, Warehousing & Utilities	20	92	3,925,101	820.46
Information	7	63	1,855,447	566.38
Financial Activities	46	234	8,410,894	691.23
Professional & Business Services	45	287	9,717,990	651.17
Education & Health Services	119	785	19,841,732	486.08
Leisure & Hospitality	42	596	6,097,692	196.75
Other Services	19	59	1,446,792	471.57
Local Government	23	1,220	36,137,740	569.64
State Government	16	648	23,514,173	697.83

TABLE 6. COUNTY SUMMARY
CALENDAR YEAR 2010

NORTH AMERICAN INDUSTRY CLASSIFICATION SYSTEM - INDUSTRY GROUPS	AVERAGE EMPLOYING UNITS	AVERAGE COVERED EMPLOYMENT	TOTAL CALENDAR EARNINGS	AVERAGE WEEKLY EARNINGS
FAULKNER COUNTY - TOTAL	2,715	39,217	\$1,381,330,376	\$677.36
Natural Resources & Mining	49	863	68,846,941	1,534.16
Construction	323	2,549	95,292,932	718.93
Manufacturing	110	3,508	161,101,264	883.15
Trade, Transportation & Utilities	633	7,175	211,206,966	566.09
Wholesale Trade	173	1,175	56,559,367	925.69
Retail Trade	381	5,138	116,053,205	434.37
Transportation, Warehousing & Utilities	79	862	38,594,394	861.02
Information	29	334	14,228,339	819.23
Financial Activities	324	1,455	53,572,922	708.07
Professional & Business Services	381	5,824	279,043,429	921.40
Education & Health Services	433	5,991	190,776,381	612.38
Leisure & Hospitality	215	4,404	52,874,168	230.88
Other Services	160	680	17,254,120	487.96
Local Government	39	3,204	119,831,717	719.24
State Government	19	3,230	117,301,197	698.39
FRANKLIN COUNTY - TOTAL	327	4,182	\$135,256,365	\$621.97
Natural Resources & Mining	12	263	12,784,998	934.85
Construction	28	90	3,285,086	701.94
Manufacturing	16	864	32,609,133	725.81
Trade, Transportation & Utilities	90	865	29,243,241	650.14
Wholesale Trade	18	60	2,198,708	704.71
Retail Trade	51	475	10,134,919	410.32
Transportation, Warehousing & Utilities	21	330	16,909,614	985.41
Information	5	27	790,697	563.17
Financial Activities	29	227	6,532,467	553.41
Professional & Business Services	23	107	2,647,386	475.81
Education & Health Services	53	567	14,842,418	503.41
Leisure & Hospitality	23	273	3,140,037	221.19
Other Services	20	60	1,754,432	562.32
Local Government	19	741	23,674,301	614.41
State Government	9	98	3,952,169	775.54

TABLE 6. COUNTY SUMMARY
CALENDAR YEAR 2010

NORTH AMERICAN INDUSTRY CLASSIFICATION SYSTEM - INDUSTRY GROUPS	AVERAGE EMPLOYING UNITS	AVERAGE COVERED EMPLOYMENT	TOTAL CALENDAR EARNINGS	AVERAGE WEEKLY EARNINGS
FULTON COUNTY - TOTAL	224	1,929	\$46,012,215	\$458.71
Construction	11	20	632,027	607.72
Manufacturing	12	125	2,236,654	344.10
Trade, Transportation & Utilities	53	324	9,023,418	535.58
Retail Trade	34	170	3,118,850	352.81
Other Trade, Transportation & Utilities	19	154	5,904,568	737.33
Information	4	38	594,121	300.67
Financial Activities	16	94	2,797,657	572.35
Professional & Business Services	15	60	1,798,887	576.57
Education & Health Services	64	445	9,514,021	411.15
Leisure & Hospitality	16	145	1,535,146	203.60
Local Government	13	544	14,479,576	511.86
State Government	10	110	3,031,464	529.98
Other	10	24	369,244	295.87
GARLAND COUNTY - TOTAL	3,172	35,028	\$1,031,911,232	\$566.53
Natural Resources & Mining	37	324	14,291,401	848.26
Construction	372	1,727	51,345,398	571.75
Manufacturing	106	2,007	74,941,496	718.08
Trade, Transportation & Utilities	710	7,245	193,714,685	514.19
Wholesale Trade	146	1,087	40,609,513	718.45
Retail Trade	501	5,642	130,574,524	445.06
Transportation, Warehousing & Utilities	63	516	22,530,648	839.69
Information	36	333	11,566,301	667.95
Financial Activities	340	1,375	48,799,757	682.51
Professional & Business Services	411	3,189	97,215,931	586.25
Education & Health Services	512	7,403	279,638,704	726.42
Leisure & Hospitality	352	6,276	92,565,773	283.64
Other Services	236	963	21,665,956	432.66
Local Government	34	3,058	109,693,347	689.83
State Government	26	1,128	36,472,483	621.80

TABLE 6. COUNTY SUMMARY
CALENDAR YEAR 2010

NORTH AMERICAN INDUSTRY CLASSIFICATION SYSTEM - INDUSTRY GROUPS	AVERAGE EMPLOYING UNITS	AVERAGE COVERED EMPLOYMENT	TOTAL CALENDAR EARNINGS	AVERAGE WEEKLY EARNINGS
GRANT COUNTY - TOTAL	323	3,652	\$103,350,523	\$544.23
Natural Resources & Mining	22	164	7,980,890	935.85
Construction	31	154	5,059,035	631.75
Manufacturing	14	856	26,015,908	584.47
Trade, Transportation & Utilities	88	631	17,403,668	530.41
Wholesale Trade	17	130	5,945,480	879.51
Retail Trade	47	445	9,663,776	417.62
Transportation, Warehousing & Utilities	24	56	1,794,412	616.21
Information	3	13	546,847	808.95
Financial Activities	26	94	2,820,220	576.97
Professional & Business Services	21	70	3,020,740	829.87
Education & Health Services	57	465	10,015,372	414.20
Leisure & Hospitality	24	269	2,916,077	208.47
Other Services	19	48	925,376	370.74
Local Government	10	832	25,029,325	578.53
State Government	8	56	1,617,065	555.31
GREENE COUNTY - TOTAL	925	13,920	\$433,464,233	\$598.84
Natural Resources & Mining	34	208	6,288,120	581.37
Construction	83	343	10,291,756	577.02
Manufacturing	62	4,380	176,121,426	773.28
Trade, Transportation & Utilities	234	2,286	58,218,334	489.76
Wholesale Trade	61	497	17,559,173	679.43
Retail Trade	145	1,582	33,769,532	410.50
Transportation, Warehousing & Utilities	28	207	6,889,629	640.06
Information	12	119	2,339,577	378.08
Financial Activities	82	467	16,212,306	667.61
Professional & Business Services	105	1,109	30,372,641	526.68
Education & Health Services	150	1,799	51,961,003	555.45
Leisure & Hospitality	72	1,065	12,534,122	226.33
Other Services	50	177	3,954,247	429.62
Local Government	30	1,558	49,920,924	616.19
State Government	11	409	15,249,777	717.03

TABLE 6. COUNTY SUMMARY
CALENDAR YEAR 2010

NORTH AMERICAN INDUSTRY CLASSIFICATION SYSTEM - INDUSTRY GROUPS	AVERAGE EMPLOYING UNITS	AVERAGE COVERED EMPLOYMENT	TOTAL CALENDAR EARNINGS	AVERAGE WEEKLY EARNINGS
HEMPSTEAD COUNTY - TOTAL	498	7,875	\$255,684,610	\$624.38
Natural Resources & Mining	16	173	5,809,090	645.74
Construction	33	966	53,394,610	1,062.96
Manufacturing	27	1,624	53,770,231	636.73
Trade, Transportation & Utilities	133	1,272	35,404,592	535.27
Wholesale Trade	27	235	8,532,604	698.25
Retail Trade	83	860	17,937,482	401.11
Transportation, Warehousing & Utilities	23	177	8,934,506	970.72
Information	8	56	1,534,780	527.05
Financial Activities	37	216	7,752,620	690.23
Professional & Business Services	43	157	5,313,563	650.85
Education & Health Services	82	1,055	27,997,294	510.34
Leisure & Hospitality	41	567	6,863,734	232.80
Other Services	34	163	4,305,512	507.97
Local Government	28	918	29,688,647	621.93
State Government	16	708	23,849,937	647.81
HOT SPRING COUNTY - TOTAL	595	7,719	\$234,831,393	\$585.05
Natural Resources & Mining	26	183	5,375,228	564.86
Construction	64	324	11,027,249	654.51
Manufacturing	30	1,307	57,647,721	848.21
Trade, Transportation & Utilities	151	1,334	41,189,873	593.79
Wholesale Trade	19	79	5,053,217	1,230.09
Retail Trade	96	904	19,190,384	408.24
Transportation, Warehousing & Utilities	36	351	16,946,272	928.46
Information	8	52	1,664,275	615.49
Financial Activities	57	269	9,394,350	671.60
Professional & Business Services	48	588	14,876,194	486.53
Education & Health Services	92	1,176	31,999,041	523.27
Leisure & Hospitality	43	523	5,456,944	200.65
Other Services	36	176	3,720,071	406.48
Local Government	27	1,108	32,454,545	563.29
State Government	13	679	20,025,902	567.18

TABLE 6. COUNTY SUMMARY
CALENDAR YEAR 2010

NORTH AMERICAN INDUSTRY CLASSIFICATION SYSTEM - INDUSTRY GROUPS	AVERAGE EMPLOYING UNITS	AVERAGE COVERED EMPLOYMENT	TOTAL CALENDAR EARNINGS	AVERAGE WEEKLY EARNINGS
HOWARD COUNTY - TOTAL	356	6,944	\$196,537,390	\$544.29
Natural Resources & Mining	20	208	6,476,974	598.83
Construction	17	120	3,881,715	622.07
Manufacturing	23	3,571	108,436,821	583.96
Trade, Transportation & Utilities	99	920	24,356,140	509.12
Wholesale Trade	19	68	2,464,278	696.91
Retail Trade	59	621	12,599,407	390.17
Transportation, Warehousing & Utilities	21	231	9,292,455	773.60
Information	5	35	838,015	460.45
Financial Activities	39	156	4,130,906	509.23
Professional & Business Services	23	103	3,057,006	570.76
Education & Health Services	59	642	16,349,589	489.74
Leisure & Hospitality	19	303	3,294,677	209.11
Other Services	24	117	2,628,727	432.07
Local Government	17	650	19,736,611	583.92
State Government	11	119	3,350,209	541.40
INDEPENDENCE COUNTY - TOTAL	936	15,277	\$469,985,601	\$591.62
Natural Resources & Mining	13	238	10,402,067	840.50
Construction	72	439	13,643,176	597.65
Manufacturing	52	3,763	129,380,927	661.20
Trade, Transportation & Utilities	240	3,005	88,107,635	563.85
Wholesale Trade	38	450	16,178,312	691.38
Retail Trade	155	1,719	36,422,362	407.46
Transportation, Warehousing & Utilities	47	836	35,506,961	816.78
Information	10	131	3,829,608	562.19
Financial Activities	86	513	18,305,354	686.21
Professional & Business Services	89	525	13,798,539	505.44
Education & Health Services	171	3,050	111,049,098	700.18
Leisure & Hospitality	69	1,037	12,664,451	234.86
Other Services	70	375	7,510,964	385.18
Local Government	47	1,559	40,451,135	498.98
State Government	17	642	20,842,647	624.33

TABLE 6. COUNTY SUMMARY
CALENDAR YEAR 2010

NORTH AMERICAN INDUSTRY CLASSIFICATION SYSTEM - INDUSTRY GROUPS	AVERAGE EMPLOYING UNITS	AVERAGE COVERED EMPLOYMENT	TOTAL CALENDAR EARNINGS	AVERAGE WEEKLY EARNINGS
IZARD COUNTY - TOTAL	275	2,887	\$75,744,525	\$504.55
Natural Resources & Mining	5	108	4,166,648	741.92
Construction	28	75	1,881,599	482.46
Manufacturing	11	193	6,569,594	654.60
Trade, Transportation & Utilities	68	551	13,281,872	463.56
Wholesale Trade	10	36	959,541	512.58
Retail Trade	47	387	8,150,470	405.01
Transportation, Warehousing & Utilities	11	128	4,171,861	626.78
Financial Activities	29	143	4,502,770	605.54
Professional & Business Services	21	76	1,948,595	493.07
Education & Health Services	58	628	13,627,483	417.30
Leisure & Hospitality	16	110	1,170,349	204.61
Local Government	18	514	14,296,750	534.90
State Government	10	463	13,716,778	569.73
Other	11	26	582,087	430.54
JACKSON COUNTY - TOTAL	481	5,158	\$158,232,294	\$589.94
Natural Resources & Mining	52	257	7,017,134	525.08
Construction	22	124	5,226,352	810.54
Manufacturing	19	865	34,769,545	773.00
Trade, Transportation & Utilities	111	988	29,169,988	567.77
Wholesale Trade	26	199	9,086,017	878.05
Retail Trade	68	679	15,680,616	444.11
Transportation, Warehousing & Utilities	17	110	4,403,355	769.82
Information	4	29	655,879	434.93
Financial Activities	37	156	5,402,961	666.05
Professional & Business Services	37	142	4,609,633	624.27
Education & Health Services	104	822	25,686,809	600.95
Leisure & Hospitality	28	283	3,006,591	204.31
Other Services	22	75	1,824,495	467.82
Local Government	32	686	17,673,329	495.44
State Government	13	731	23,189,578	610.06

TABLE 6. COUNTY SUMMARY
CALENDAR YEAR 2010

NORTH AMERICAN INDUSTRY CLASSIFICATION SYSTEM - INDUSTRY GROUPS	AVERAGE EMPLOYING UNITS	AVERAGE COVERED EMPLOYMENT	TOTAL CALENDAR EARNINGS	AVERAGE WEEKLY EARNINGS
JEFFERSON COUNTY - TOTAL	2,105	29,906	\$1,024,870,780	\$659.03
Natural Resources & Mining	41	408	17,797,629	838.88
Construction	107	1,375	71,780,371	1,003.92
Manufacturing	69	5,263	221,442,988	809.14
Trade, Transportation & Utilities	435	5,219	165,283,022	609.03
Wholesale Trade	82	992	41,836,402	811.03
Retail Trade	292	3,329	77,098,076	445.38
Transportation, Warehousing & Utilities	61	898	46,348,544	992.56
Information	13	135	4,396,380	626.26
Financial Activities	149	1,152	46,052,052	768.76
Professional & Business Services	179	1,706	58,624,715	660.84
Education & Health Services	750	5,272	176,434,217	643.58
Leisure & Hospitality	141	2,053	23,815,619	223.08
Other Services	140	651	15,908,451	469.94
Local Government	43	3,164	101,809,396	618.80
State Government	38	3,508	121,525,940	666.20
JOHNSON COUNTY - TOTAL	475	8,466	\$233,738,259	\$530.94
Natural Resources & Mining	21	260	8,655,175	640.18
Construction	23	93	2,619,618	541.69
Manufacturing	39	2,920	77,381,901	509.63
Trade, Transportation & Utilities	109	1,980	55,905,756	542.99
Retail Trade	72	919	18,389,537	384.81
Other Trade, Transportation & Utilities	37	1,061	37,516,219	679.99
Information	5	32	753,415	452.77
Financial Activities	47	210	6,967,248	638.03
Professional & Business Services	45	155	4,505,626	559.01
Education & Health Services	98	1,163	35,965,868	594.71
Leisure & Hospitality	38	484	5,478,755	217.69
Other Services	27	63	1,416,268	432.32
Local Government	14	967	29,670,506	590.06
State Government	9	139	4,418,123	611.25

TABLE 6. COUNTY SUMMARY
CALENDAR YEAR 2010

NORTH AMERICAN INDUSTRY CLASSIFICATION SYSTEM - INDUSTRY GROUPS	AVERAGE EMPLOYING UNITS	AVERAGE COVERED EMPLOYMENT	TOTAL CALENDAR EARNINGS	AVERAGE WEEKLY EARNINGS
LAFAYETTE COUNTY - TOTAL	180	1,323	\$35,274,817	\$512.75
Natural Resources & Mining	33	165	5,571,468	649.36
Construction	10	61	2,844,017	896.60
Manufacturing	5	29	1,031,872	684.27
Trade, Transportation & Utilities	36	200	4,794,195	460.98
Retail Trade	22	143	2,465,880	331.61
Other Trade, Transportation & Utilities	14	57	2,328,315	785.53
Financial Activities	17	60	1,532,559	491.20
Professional & Business Services	12	52	2,046,855	756.97
Education & Health Services	35	248	5,130,346	397.82
Leisure & Hospitality	6	51	579,834	218.64
Local Government	13	317	8,465,246	513.54
State Government	7	45	1,225,903	523.89
Other	6	95	2,052,522	415.49
LAWRENCE COUNTY - TOTAL	421	3,967	\$105,232,042	\$510.13
Natural Resources & Mining	38	186	5,683,621	587.64
Construction	25	66	1,972,049	574.61
Manufacturing	23	448	12,417,280	533.02
Trade, Transportation & Utilities	115	855	23,656,776	532.09
Wholesale Trade	23	184	6,914,658	722.69
Retail Trade	61	529	11,230,230	408.25
Transportation, Warehousing & Utilities	31	142	5,511,888	746.46
Financial Activities	33	147	4,401,025	575.75
Professional & Business Services	26	101	3,279,998	624.52
Education & Health Services	77	527	14,377,608	524.65
Leisure & Hospitality	25	280	2,839,116	194.99
Local Government	27	1,175	32,009,554	523.89
State Government	10	106	2,750,557	499.01
Other	22	76	1,844,458	466.72

TABLE 6. COUNTY SUMMARY
CALENDAR YEAR 2010

NORTH AMERICAN INDUSTRY CLASSIFICATION SYSTEM - INDUSTRY GROUPS	AVERAGE EMPLOYING UNITS	AVERAGE COVERED EMPLOYMENT	TOTAL CALENDAR EARNINGS	AVERAGE WEEKLY EARNINGS
LEE COUNTY - TOTAL	309	2,068	\$59,452,171	\$552.86
Natural Resources & Mining	34	225	6,146,426	525.34
Construction	8	23	569,749	476.38
Trade, Transportation & Utilities	51	349	9,854,645	543.02
Wholesale Trade	8	78	3,065,092	755.69
Retail Trade	26	193	3,835,367	382.16
Transportation, Warehousing & Utilities	17	78	2,954,186	728.35
Financial Activities	16	76	2,722,629	688.92
Professional & Business Services	17	58	3,252,789	1,078.51
Education & Health Services	135	425	10,705,604	484.42
Leisure & Hospitality	9	92	893,217	186.71
Local Government	15	335	9,548,094	548.11
State Government	7	454	15,073,793	638.50
Other	17	31	685,225	425.08
LINCOLN COUNTY - TOTAL	269	2,813	\$82,909,348	\$566.80
Natural Resources & Mining	34	170	5,375,071	608.04
Construction	14	76	1,951,235	493.73
Manufacturing	9	336	10,726,964	613.95
Trade, Transportation & Utilities	46	325	10,768,828	637.21
Wholesale Trade	9	42	1,569,729	718.74
Retail Trade	23	161	2,840,438	339.28
Transportation, Warehousing & Utilities	14	122	6,358,661	1,002.31
Financial Activities	21	70	2,432,883	668.37
Professional & Business Services	13	28	850,912	584.42
Education & Health Services	87	393	8,829,063	432.03
Leisure & Hospitality	12	135	1,187,177	169.11
Local Government	7	349	10,353,977	570.53
State Government	12	896	29,618,343	635.70
Other	14	35	814,895	447.74

TABLE 6. COUNTY SUMMARY
CALENDAR YEAR 2010

NORTH AMERICAN INDUSTRY CLASSIFICATION SYSTEM - INDUSTRY GROUPS	AVERAGE EMPLOYING UNITS	AVERAGE COVERED EMPLOYMENT	TOTAL CALENDAR EARNINGS	AVERAGE WEEKLY EARNINGS
LITTLE RIVER COUNTY - TOTAL	250	3,937	\$175,739,072	\$858.42
Natural Resources & Mining	10	74	2,161,213	561.65
Construction	22	338	13,998,222	796.44
Manufacturing	18	1,367	103,650,874	1,458.15
Trade, Transportation & Utilities	58	623	16,071,881	496.11
Wholesale Trade	10	41	1,826,159	856.55
Retail Trade	36	379	7,958,885	403.84
Transportation, Warehousing & Utilities	12	203	6,286,837	595.57
Financial Activities	23	100	2,635,520	506.83
Professional & Business Services	16	103	3,041,244	567.82
Education & Health Services	39	159	3,864,885	467.45
Leisure & Hospitality	16	176	2,133,122	233.08
Local Government	20	816	24,184,440	569.96
State Government	11	84	2,175,193	497.98
Other	17	97	1,822,478	361.32
LOGAN COUNTY - TOTAL	509	5,423	\$150,924,079	\$535.20
Natural Resources & Mining	25	171	8,521,236	958.30
Construction	47	196	5,650,379	554.39
Manufacturing	25	1,227	38,865,573	609.14
Trade, Transportation & Utilities	126	883	20,883,715	454.82
Wholesale Trade	16	83	1,320,837	306.03
Retail Trade	77	693	14,908,453	413.71
Transportation, Warehousing & Utilities	33	107	4,654,425	836.52
Information	7	43	1,670,448	747.07
Financial Activities	45	252	9,369,791	715.03
Professional & Business Services	43	105	2,460,132	450.57
Education & Health Services	98	799	22,057,122	530.88
Leisure & Hospitality	31	314	3,364,605	206.06
Other Services	26	80	1,985,440	477.27
Local Government	22	812	23,116,341	547.47
State Government	14	541	12,979,297	461.37

TABLE 6. COUNTY SUMMARY
CALENDAR YEAR 2010

NORTH AMERICAN INDUSTRY CLASSIFICATION SYSTEM - INDUSTRY GROUPS	AVERAGE EMPLOYING UNITS	AVERAGE COVERED EMPLOYMENT	TOTAL CALENDAR EARNINGS	AVERAGE WEEKLY EARNINGS
LONOKE COUNTY - TOTAL	1,300	12,957	\$371,510,053	\$551.39
Natural Resources & Mining	78	481	16,225,380	648.70
Construction	146	759	25,954,476	657.61
Manufacturing	38	1,361	62,126,894	877.85
Trade, Transportation & Utilities	328	2,857	73,943,378	497.72
Wholesale Trade	81	470	19,518,371	798.62
Retail Trade	179	2,144	45,199,637	405.42
Transportation, Warehousing & Utilities	68	243	9,225,370	730.09
Information	17	96	4,091,638	819.64
Financial Activities	127	493	20,194,053	787.72
Professional & Business Services	149	687	20,967,987	586.94
Education & Health Services	200	1,653	43,317,932	503.95
Leisure & Hospitality	104	1,502	17,019,765	217.91
Other Services	72	209	5,075,062	466.97
Local Government	26	2,706	77,967,859	554.10
State Government	15	153	4,625,629	581.40
MADISON COUNTY - TOTAL	240	3,037	\$80,930,294	\$512.46
Natural Resources & Mining	10	35	1,042,242	572.66
Construction	31	67	2,131,479	611.79
Manufacturing	20	1,081	29,468,956	524.25
Trade, Transportation & Utilities	47	533	13,534,690	488.33
Wholesale Trade	6	19	937,611	949.00
Retail Trade	33	416	8,929,191	412.78
Transportation, Warehousing & Utilities	8	98	3,667,888	719.76
Information	5	37	1,785,799	928.17
Financial Activities	15	76	2,470,313	625.08
Professional & Business Services	25	149	3,707,172	478.47
Education & Health Services	42	241	5,283,615	421.61
Leisure & Hospitality	14	165	1,915,958	223.31
Other Services	15	31	892,934	553.93
Local Government	9	580	17,434,355	578.06
State Government	7	42	1,262,781	578.20

TABLE 6. COUNTY SUMMARY
CALENDAR YEAR 2010

NORTH AMERICAN INDUSTRY CLASSIFICATION SYSTEM - INDUSTRY GROUPS	AVERAGE EMPLOYING UNITS	AVERAGE COVERED EMPLOYMENT	TOTAL CALENDAR EARNINGS	AVERAGE WEEKLY EARNINGS
MARION COUNTY - TOTAL	317	3,478	\$87,762,108	\$485.26
Natural Resources & Mining	6	24	553,405	443.43
Construction	23	68	1,269,832	359.12
Manufacturing	20	1,264	33,609,563	511.34
Trade, Transportation & Utilities	55	544	12,765,274	451.26
Wholesale Trade	7	34	1,339,549	757.66
Retail Trade	39	474	9,957,199	403.98
Transportation, Warehousing & Utilities	9	36	1,468,526	784.47
Information	4	58	2,940,891	975.10
Financial Activities	36	188	5,897,841	603.30
Professional & Business Services	30	113	3,068,013	522.13
Education & Health Services	65	356	8,403,425	453.94
Leisure & Hospitality	38	223	2,348,175	202.50
Other Services	13	27	510,739	363.77
Local Government	20	533	14,635,565	528.05
State Government	7	80	1,759,385	422.93
MILLER COUNTY - TOTAL	853	12,960	\$435,040,392	\$645.54
Natural Resources & Mining	27	132	4,212,322	613.68
Construction	83	790	24,594,968	598.71
Manufacturing	32	2,347	135,743,408	1,112.25
Trade, Transportation & Utilities	228	3,311	105,586,180	613.26
Wholesale Trade	57	556	25,041,962	866.14
Retail Trade	128	1,344	29,328,663	419.65
Transportation, Warehousing & Utilities	43	1,411	51,215,555	698.03
Information	9	78	5,446,470	1,342.82
Financial Activities	78	376	13,642,121	697.74
Professional & Business Services	89	1,261	28,258,482	430.95
Education & Health Services	128	870	22,912,537	506.47
Leisure & Hospitality	82	1,319	17,837,870	260.07
Other Services	56	344	6,478,334	362.16
Local Government	25	1,644	52,617,864	615.50
State Government	16	488	17,709,836	697.90

TABLE 6. COUNTY SUMMARY
CALENDAR YEAR 2010

NORTH AMERICAN INDUSTRY CLASSIFICATION SYSTEM - INDUSTRY GROUPS	AVERAGE EMPLOYING UNITS	AVERAGE COVERED EMPLOYMENT	TOTAL CALENDAR EARNINGS	AVERAGE WEEKLY EARNINGS
MISSISSIPPI COUNTY - TOTAL	1,249	18,218	\$669,606,575	\$706.83
Natural Resources & Mining	107	665	18,037,245	521.61
Construction	68	578	26,146,666	869.93
Manufacturing	55	6,132	326,690,801	1,024.55
Trade, Transportation & Utilities	302	3,137	100,736,197	617.54
Wholesale Trade	63	501	22,430,686	861.00
Retail Trade	178	1,833	37,927,047	397.91
Transportation, Warehousing & Utilities	61	803	40,378,464	967.01
Information	11	96	2,335,639	467.88
Financial Activities	102	560	16,531,619	567.71
Professional & Business Services	98	1,035	31,323,139	582.00
Education & Health Services	286	1,707	43,044,792	484.94
Leisure & Hospitality	87	1,136	13,043,920	220.81
Other Services	66	239	4,884,935	393.06
Local Government	45	2,286	67,756,958	570.00
State Government	22	647	19,074,664	566.96
MONROE COUNTY - TOTAL	327	2,240	\$56,427,365	\$484.44
Natural Resources & Mining	37	142	4,055,283	549.20
Construction	15	48	1,509,551	604.79
Manufacturing	6	100	3,531,146	679.07
Trade, Transportation & Utilities	80	637	18,563,506	560.42
Wholesale Trade	18	206	7,793,283	727.53
Retail Trade	38	277	6,015,099	417.60
Transportation, Warehousing & Utilities	24	154	4,755,124	593.80
Financial Activities	18	88	2,819,303	616.11
Professional & Business Services	16	38	742,294	375.65
Education & Health Services	78	332	6,982,027	404.43
Leisure & Hospitality	25	229	2,410,106	202.39
Local Government	22	402	10,585,930	506.41
State Government	8	119	3,179,095	513.75
Other	22	105	2,049,124	375.30

TABLE 6. COUNTY SUMMARY
CALENDAR YEAR 2010

NORTH AMERICAN INDUSTRY CLASSIFICATION SYSTEM - INDUSTRY GROUPS	AVERAGE EMPLOYING UNITS	AVERAGE COVERED EMPLOYMENT	TOTAL CALENDAR EARNINGS	AVERAGE WEEKLY EARNINGS
MONTGOMERY COUNTY - TOTAL	182	1,586	\$36,444,906	\$441.91
Natural Resources & Mining	12	40	1,234,769	593.64
Construction	24	81	2,355,082	559.14
Trade, Transportation & Utilities	45	253	5,820,508	442.42
Wholesale Trade	14	72	1,984,288	529.99
Retail Trade	23	173	3,687,586	409.91
Transportation, Warehousing & Utilities	8	8	148,634	357.29
Financial Activities	10	77	2,152,328	537.54
Professional & Business Services	13	25	784,247	603.27
Education & Health Services	18	91	2,230,255	471.31
Leisure & Hospitality	21	307	4,516,578	282.92
Local Government	9	479	12,248,585	491.75
State Government	7	42	1,201,545	550.16
Other	23	191	3,901,009	392.77
NEVADA COUNTY - TOTAL	191	2,121	\$62,759,130	\$569.03
Natural Resources & Mining	11	39	1,024,575	505.21
Trade, Transportation & Utilities	42	492	13,828,316	540.51
Wholesale Trade	3	13	204,869	303.06
Retail Trade	28	272	5,254,180	371.48
Transportation, Warehousing & Utilities	11	207	8,369,267	777.52
Financial Activities	13	61	1,784,858	562.69
Professional & Business Services	9	49	1,428,843	560.77
Education & Health Services	30	391	8,800,542	432.84
Leisure & Hospitality	13	90	936,020	200.00
Other Services	15	57	911,592	307.55
Local Government	28	425	10,725,781	485.33
State Government	10	70	2,075,925	570.31
Other	20	447	21,242,678	913.90

TABLE 6. COUNTY SUMMARY
CALENDAR YEAR 2010

NORTH AMERICAN INDUSTRY CLASSIFICATION SYSTEM - INDUSTRY GROUPS	AVERAGE EMPLOYING UNITS	AVERAGE COVERED EMPLOYMENT	TOTAL CALENDAR EARNINGS	AVERAGE WEEKLY EARNINGS
NEWTON COUNTY - TOTAL	129	1,003	\$21,487,670	\$411.99
Construction	7	21	359,801	329.49
Manufacturing	11	40	1,047,477	503.59
Trade, Transportation & Utilities	29	163	3,568,583	421.02
Wholesale Trade	3	8	204,443	491.45
Retail Trade	13	105	1,847,249	338.32
Transportation, Warehousing & Utilities	13	50	1,516,891	583.42
Education & Health Services	30	224	3,815,551	327.57
Leisure & Hospitality	18	69	956,388	266.55
Other Services	3	5	85,301	328.08
Local Government	13	359	9,054,830	485.05
State Government	6	84	1,527,233	349.64
Other	12	38	1,072,506	542.77
OUACHITA COUNTY - TOTAL	667	7,688	\$221,856,336	\$554.95
Natural Resources & Mining	41	229	8,196,243	688.30
Construction	47	213	6,634,848	599.03
Manufacturing	28	874	32,272,275	710.09
Trade, Transportation & Utilities	173	1,807	50,685,488	539.41
Wholesale Trade	28	249	10,556,843	815.33
Retail Trade	113	1,086	21,459,025	379.99
Transportation, Warehousing & Utilities	32	472	18,669,620	760.66
Information	8	53	1,627,306	590.46
Financial Activities	64	321	10,058,002	602.56
Professional & Business Services	49	461	12,496,903	521.31
Education & Health Services	123	1,198	35,397,065	568.21
Leisure & Hospitality	42	487	4,942,281	195.16
Other Services	47	164	3,720,975	436.32
Local Government	30	1,147	32,895,224	551.53
State Government	15	734	22,929,726	600.76

TABLE 6. COUNTY SUMMARY
CALENDAR YEAR 2010

NORTH AMERICAN INDUSTRY CLASSIFICATION SYSTEM - INDUSTRY GROUPS	AVERAGE EMPLOYING UNITS	AVERAGE COVERED EMPLOYMENT	TOTAL CALENDAR EARNINGS	AVERAGE WEEKLY EARNINGS
PERRY COUNTY - TOTAL	160	1,292	\$36,644,987	\$545.44
Construction	20	81	3,172,083	753.11
Manufacturing	6	47	1,312,897	537.19
Trade, Transportation & Utilities	28	203	4,679,092	443.26
Wholesale Trade	6	9	475,289	1,015.57
Retail Trade	16	164	2,593,054	304.06
Transportation, Warehousing & Utilities	6	30	1,610,749	1,032.53
Financial Activities	14	33	1,710,691	996.91
Professional & Business Services	15	43	1,259,273	563.18
Education & Health Services	35	216	4,942,658	440.05
Leisure & Hospitality	8	48	510,287	204.44
Local Government	12	401	10,025,497	480.79
State Government	8	43	1,134,490	507.37
Other	14	177	7,898,019	858.11
PHILLIPS COUNTY - TOTAL	960	6,433	\$181,740,712	\$543.29
Natural Resources & Mining	88	340	7,456,706	421.76
Construction	27	130	3,848,841	569.36
Manufacturing	12	329	10,587,392	618.86
Trade, Transportation & Utilities	169	1,523	51,172,098	646.14
Wholesale Trade	34	366	14,859,312	780.75
Retail Trade	88	842	19,026,935	434.56
Transportation, Warehousing & Utilities	47	315	17,285,851	1,055.30
Information	10	51	1,462,379	551.42
Financial Activities	45	233	7,771,921	641.46
Professional & Business Services	53	268	7,991,470	573.44
Education & Health Services	440	1,505	36,937,187	471.98
Leisure & Hospitality	37	348	4,227,841	233.63
Other Services	36	77	1,554,370	388.20
Local Government	29	1,073	33,829,566	606.31
State Government	14	556	14,900,941	515.39

TABLE 6. COUNTY SUMMARY
CALENDAR YEAR 2010

NORTH AMERICAN INDUSTRY CLASSIFICATION SYSTEM - INDUSTRY GROUPS	AVERAGE EMPLOYING UNITS	AVERAGE COVERED EMPLOYMENT	TOTAL CALENDAR EARNINGS	AVERAGE WEEKLY EARNINGS
PIKE COUNTY - TOTAL	259	2,551	\$65,247,648	\$491.87
Natural Resources & Mining	24	130	4,529,255	670.01
Construction	13	35	793,802	436.15
Manufacturing	16	300	7,434,750	476.59
Trade, Transportation & Utilities	85	598	14,506,022	466.49
Wholesale Trade	17	160	4,876,411	586.11
Retail Trade	45	373	7,113,617	366.76
Transportation, Warehousing & Utilities	23	65	2,515,994	744.38
Information	4	23	1,066,170	891.45
Financial Activities	22	191	6,715,120	676.11
Professional & Business Services	10	31	2,793,445	1,732.91
Education & Health Services	24	280	5,795,817	398.06
Leisure & Hospitality	19	229	2,522,672	211.85
Other Services	20	103	2,337,753	436.47
Local Government	12	511	14,169,807	533.26
State Government	10	120	2,583,035	413.95
POINSETT COUNTY - TOTAL	515	4,999	\$145,248,696	\$558.76
Natural Resources & Mining	56	303	11,172,594	709.10
Construction	24	91	2,974,910	628.68
Manufacturing	21	639	21,014,556	632.44
Trade, Transportation & Utilities	126	1,239	36,543,102	567.19
Wholesale Trade	30	389	18,386,602	908.97
Retail Trade	69	698	13,578,577	374.11
Transportation, Warehousing & Utilities	27	152	4,577,923	579.19
Information	6	56	2,907,491	998.45
Financial Activities	45	288	9,799,266	654.33
Professional & Business Services	33	131	5,453,009	800.50
Education & Health Services	96	610	14,962,368	471.70
Leisure & Hospitality	43	353	3,475,748	189.35
Other Services	24	57	1,273,975	429.82
Local Government	30	1,083	31,236,300	554.66
State Government	11	149	4,435,377	572.45

TABLE 6. COUNTY SUMMARY
CALENDAR YEAR 2010

NORTH AMERICAN INDUSTRY CLASSIFICATION SYSTEM - INDUSTRY GROUPS	AVERAGE EMPLOYING UNITS	AVERAGE COVERED EMPLOYMENT	TOTAL CALENDAR EARNINGS	AVERAGE WEEKLY EARNINGS
POLK COUNTY - TOTAL	550	5,980	\$153,139,193	\$492.47
Natural Resources & Mining	25	220	7,814,827	683.11
Construction	44	198	5,081,538	493.54
Manufacturing	37	1,167	32,508,049	535.69
Trade, Transportation & Utilities	145	1,214	28,995,396	459.31
Wholesale Trade	22	72	2,736,433	730.88
Retail Trade	81	828	16,705,282	387.99
Transportation, Warehousing & Utilities	42	314	9,553,681	585.11
Information	9	58	1,545,548	512.45
Financial Activities	44	234	7,263,308	596.92
Professional & Business Services	54	191	4,680,040	471.21
Education & Health Services	87	1,058	28,234,506	513.21
Leisure & Hospitality	40	436	4,584,122	202.19
Other Services	31	136	3,261,341	461.16
Local Government	21	761	21,473,030	542.63
State Government	13	307	7,697,488	482.18
POPE COUNTY - TOTAL	1,783	25,915	\$843,238,831	\$625.74
Natural Resources & Mining	32	733	23,516,921	616.98
Construction	174	1,374	54,157,284	758.00
Manufacturing	80	4,448	164,066,818	709.34
Trade, Transportation & Utilities	449	6,049	230,266,215	732.05
Wholesale Trade	94	595	25,119,563	811.88
Retail Trade	277	3,257	69,871,529	412.55
Transportation, Warehousing & Utilities	78	2,197	135,275,123	1,184.09
Information	21	208	8,395,652	776.23
Financial Activities	182	753	25,610,405	654.06
Professional & Business Services	252	2,496	78,736,619	606.64
Education & Health Services	303	3,345	96,902,024	557.10
Leisure & Hospitality	137	2,384	28,900,342	233.13
Other Services	97	435	9,932,236	439.09
Local Government	40	2,153	69,222,292	618.30
State Government	16	1,537	53,532,023	669.79

TABLE 6. COUNTY SUMMARY
CALENDAR YEAR 2010

NORTH AMERICAN INDUSTRY CLASSIFICATION SYSTEM - INDUSTRY GROUPS	AVERAGE EMPLOYING UNITS	AVERAGE COVERED EMPLOYMENT	TOTAL CALENDAR EARNINGS	AVERAGE WEEKLY EARNINGS
PRAIRIE COUNTY - TOTAL	255	1,314	\$35,156,652	\$514.53
Natural Resources & Mining	29	151	5,572,496	709.69
Construction	13	53	1,675,270	607.86
Trade, Transportation & Utilities	65	299	7,844,178	504.51
Wholesale Trade	10	63	2,809,089	857.48
Retail Trade	34	166	2,628,134	304.46
Transportation, Warehousing & Utilities	21	70	2,406,955	661.25
Financial Activities	19	58	1,860,295	616.81
Professional & Business Services	15	43	1,132,909	506.67
Education & Health Services	52	216	4,763,239	424.08
Leisure & Hospitality	17	87	932,078	206.03
Other Services	14	43	876,979	392.21
Local Government	15	309	8,786,387	546.83
State Government	9	37	1,066,545	554.34
Other	7	18	646,276	690.47
PULASKI COUNTY - TOTAL	14,982	233,249	\$9,576,482,735	\$789.56
Natural Resources & Mining	66	801	41,696,896	1,001.08
Construction	1,104	8,602	370,097,263	827.40
Manufacturing	387	13,122	622,256,930	911.94
Trade, Transportation & Utilities	3,388	45,718	1,728,237,566	726.96
Wholesale Trade	1,247	12,638	703,507,118	1,070.50
Retail Trade	1,736	24,051	611,945,289	489.30
Transportation, Warehousing & Utilities	405	9,029	412,785,159	879.19
Information	235	7,092	414,820,226	1,124.83
Financial Activities	1,742	15,336	902,396,350	1,131.57
Professional & Business Services	3,056	33,594	1,413,226,019	809.00
Education & Health Services	2,436	37,442	1,585,664,136	814.42
Leisure & Hospitality	1,077	20,689	317,498,990	295.12
Other Services	1,166	7,045	217,774,141	594.46
Local Government	100	16,316	634,231,666	747.53
State Government	225	27,492	1,328,582,552	929.35

TABLE 6. COUNTY SUMMARY
CALENDAR YEAR 2010

NORTH AMERICAN INDUSTRY CLASSIFICATION SYSTEM - INDUSTRY GROUPS	AVERAGE EMPLOYING UNITS	AVERAGE COVERED EMPLOYMENT	TOTAL CALENDAR EARNINGS	AVERAGE WEEKLY EARNINGS
RANDOLPH COUNTY - TOTAL	423	4,847	\$118,897,654	\$471.73
Natural Resources & Mining	25	101	2,210,454	420.88
Construction	32	94	2,011,648	411.55
Manufacturing	32	776	18,392,625	455.80
Trade, Transportation & Utilities	100	899	21,721,260	464.65
Wholesale Trade	20	200	4,964,950	477.40
Retail Trade	61	570	11,949,078	403.14
Transportation, Warehousing & Utilities	19	129	4,807,232	716.64
Information	4	41	1,523,338	714.51
Financial Activities	27	120	3,632,687	582.16
Professional & Business Services	43	268	5,567,754	399.52
Education & Health Services	73	1,016	27,904,258	528.17
Leisure & Hospitality	33	396	4,128,090	200.47
Other Services	20	57	1,109,365	374.28
Local Government	23	800	21,555,139	518.15
State Government	11	279	9,141,036	630.07
SAINT FRANCIS COUNTY - TOTAL	805	7,554	\$212,379,901	\$540.67
Natural Resources & Mining	32	176	5,320,291	581.33
Construction	43	171	5,718,971	643.16
Manufacturing	13	685	21,969,858	616.78
Trade, Transportation & Utilities	171	2,008	58,242,252	557.79
Wholesale Trade	35	634	24,747,297	750.65
Retail Trade	114	1,152	23,653,462	394.86
Transportation, Warehousing & Utilities	22	222	9,841,493	852.52
Information	8	75	2,248,945	576.65
Financial Activities	61	325	9,636,594	570.21
Professional & Business Services	48	306	8,970,406	563.75
Education & Health Services	298	1,465	37,985,230	498.62
Leisure & Hospitality	53	682	7,884,113	222.31
Other Services	33	84	1,484,630	339.89
Local Government	28	1,043	35,264,545	650.21
State Government	17	534	17,654,066	635.77

TABLE 6. COUNTY SUMMARY
CALENDAR YEAR 2010

NORTH AMERICAN INDUSTRY CLASSIFICATION SYSTEM - INDUSTRY GROUPS	AVERAGE EMPLOYING UNITS	AVERAGE COVERED EMPLOYMENT	TOTAL CALENDAR EARNINGS	AVERAGE WEEKLY EARNINGS
SALINE COUNTY - TOTAL	1,828	20,701	\$619,562,742	\$575.56
Natural Resources & Mining	11	37	2,182,165	1,134.18
Construction	300	1,874	63,728,113	653.97
Manufacturing	79	1,207	53,344,248	849.92
Trade, Transportation & Utilities	414	4,425	128,461,450	558.29
Wholesale Trade	116	542	23,859,292	846.55
Retail Trade	247	3,628	94,717,458	502.06
Transportation, Warehousing & Utilities	51	255	9,884,700	745.45
Information	11	102	3,788,944	714.36
Financial Activities	185	679	23,707,581	671.45
Professional & Business Services	248	1,395	45,777,006	631.06
Education & Health Services	260	3,084	90,154,854	562.17
Leisure & Hospitality	139	2,657	34,875,022	252.42
Other Services	135	637	16,320,045	492.70
Local Government	30	3,468	124,732,394	691.67
State Government	16	1,136	32,490,920	550.02
SCOTT COUNTY - TOTAL	191	2,854	\$72,776,830	\$490.38
Natural Resources & Mining	18	202	6,467,447	615.71
Trade, Transportation & Utilities	39	428	10,843,105	487.20
Wholesale Trade	8	63	2,434,088	743.01
Retail Trade	25	317	6,091,946	369.57
Transportation, Warehousing & Utilities	6	48	2,317,071	928.31
Financial Activities	22	68	1,851,172	523.52
Professional & Business Services	10	9	279,793	597.85
Education & Health Services	34	303	9,022,953	572.67
Leisure & Hospitality	17	143	1,747,423	235.00
Other Services	10	40	1,180,529	567.56
Local Government	5	398	11,079,156	535.33
State Government	7	69	1,572,350	438.22
Other	29	1,194	28,732,902	462.78

TABLE 6. COUNTY SUMMARY
CALENDAR YEAR 2010

NORTH AMERICAN INDUSTRY CLASSIFICATION SYSTEM - INDUSTRY GROUPS	AVERAGE EMPLOYING UNITS	AVERAGE COVERED EMPLOYMENT	TOTAL CALENDAR EARNINGS	AVERAGE WEEKLY EARNINGS
SEARCY COUNTY - TOTAL	191	1,630	\$35,182,386	\$415.08
Construction	8	20	612,546	588.99
Manufacturing	16	206	3,665,845	342.22
Trade, Transportation & Utilities	40	279	5,247,762	361.72
Wholesale Trade	8	47	802,769	328.47
Retail Trade	25	203	3,483,923	330.04
Transportation, Warehousing & Utilities	7	29	961,070	637.31
Information	5	13	313,289	463.45
Financial Activities	15	90	2,295,669	490.53
Professional & Business Services	13	24	683,384	547.58
Education & Health Services	54	375	7,826,781	401.37
Leisure & Hospitality	12	96	1,048,757	210.09
Local Government	10	351	9,080,145	497.49
State Government	7	110	2,355,102	411.73
Other	11	66	2,053,106	598.22
SEBASTIAN COUNTY - TOTAL	3,810	66,334	\$2,374,369,506	\$688.35
Natural Resources & Mining	73	1,483	100,329,392	1,301.02
Construction	297	2,454	93,579,714	733.34
Manufacturing	207	14,505	599,913,057	795.37
Trade, Transportation & Utilities	970	12,841	399,700,639	598.59
Wholesale Trade	249	2,658	116,382,185	842.03
Retail Trade	576	7,820	177,164,128	435.68
Transportation, Warehousing & Utilities	145	2,363	106,154,326	863.91
Information	52	864	42,983,568	956.72
Financial Activities	408	2,447	100,647,844	790.98
Professional & Business Services	587	8,075	280,117,912	667.11
Education & Health Services	551	10,621	418,997,112	758.65
Leisure & Hospitality	322	5,443	74,094,535	261.78
Other Services	280	1,306	33,870,764	498.74
Local Government	43	4,440	165,624,825	717.36
State Government	20	1,855	64,510,144	668.78

TABLE 6. COUNTY SUMMARY
CALENDAR YEAR 2010

NORTH AMERICAN INDUSTRY CLASSIFICATION SYSTEM - INDUSTRY GROUPS	AVERAGE EMPLOYING UNITS	AVERAGE COVERED EMPLOYMENT	TOTAL CALENDAR EARNINGS	AVERAGE WEEKLY EARNINGS
SEVIER COUNTY - TOTAL	324	5,755	\$143,931,345	\$480.96
Natural Resources & Mining	14	209	5,966,914	549.04
Construction	17	137	4,744,651	666.01
Manufacturing	10	2,199	53,918,357	471.53
Trade, Transportation & Utilities	98	850	20,728,471	468.97
Wholesale Trade	18	129	4,537,167	676.38
Retail Trade	61	617	12,260,195	382.13
Transportation, Warehousing & Utilities	19	104	3,931,109	726.91
Information	3	22	692,040	604.93
Financial Activities	30	191	5,691,266	573.02
Professional & Business Services	28	91	2,207,631	466.53
Education & Health Services	48	554	13,761,293	477.69
Leisure & Hospitality	25	286	2,971,865	199.83
Other Services	31	152	3,125,868	395.48
Local Government	12	870	24,967,053	551.88
State Government	8	194	5,155,936	511.10
SHARP COUNTY - TOTAL	432	3,618	\$85,346,448	\$453.64
Natural Resources & Mining	3	7	\$132,173	363.11
Construction	28	132	4,336,070	631.71
Manufacturing	19	162	3,538,397	420.04
Trade, Transportation & Utilities	94	929	22,434,770	464.41
Wholesale Trade	13	45	1,032,437	441.21
Retail Trade	65	619	11,389,627	353.85
Transportation, Warehousing & Utilities	16	265	10,012,706	726.61
Information	7	54	2,429,547	865.22
Financial Activities	37	222	6,955,162	602.49
Professional & Business Services	46	133	3,839,818	555.21
Education & Health Services	100	662	15,362,337	446.27
Leisure & Hospitality	34	374	3,711,219	190.83
Other Services	31	90	1,599,780	341.83
Local Government	25	755	18,611,519	474.06
State Government	8	98	2,395,656	470.11

TABLE 6. COUNTY SUMMARY
CALENDAR YEAR 2010

NORTH AMERICAN INDUSTRY CLASSIFICATION SYSTEM - INDUSTRY GROUPS	AVERAGE EMPLOYING UNITS	AVERAGE COVERED EMPLOYMENT	TOTAL CALENDAR EARNINGS	AVERAGE WEEKLY EARNINGS
STONE COUNTY - TOTAL	299	2,732	\$61,682,350	\$434.19
Natural Resources & Mining	7	13	144,249	213.39
Construction	22	73	1,675,951	441.50
Manufacturing	26	293	6,898,774	452.79
Trade, Transportation & Utilities	75	674	15,386,806	439.02
Wholesale Trade	11	44	1,102,724	481.96
Retail Trade	51	584	12,587,223	414.49
Transportation, Warehousing & Utilities	13	46	1,696,859	709.39
Financial Activities	29	105	2,080,504	381.04
Professional & Business Services	13	35	865,103	475.33
Education & Health Services	57	515	13,925,175	519.98
Leisure & Hospitality	35	353	3,655,376	199.14
Local Government	10	436	11,685,758	515.43
State Government	8	156	3,113,336	383.79
Other	17	79	2,251,318	548.03
UNION COUNTY - TOTAL	1,360	17,021	\$691,054,644	\$780.77
Natural Resources & Mining	110	543	25,333,103	897.19
Construction	84	1,076	48,450,982	865.94
Manufacturing	55	2,732	136,934,211	963.89
Trade, Transportation & Utilities	342	3,657	133,063,915	699.73
Wholesale Trade	70	709	46,544,901	1,262.47
Retail Trade	213	2,138	45,326,964	407.70
Transportation, Warehousing & Utilities	59	810	41,192,050	977.97
Information	13	152	4,520,802	571.96
Financial Activities	116	736	25,905,159	676.87
Professional & Business Services	134	1,522	130,344,952	1,646.93
Education & Health Services	248	2,403	80,095,255	640.99
Leisure & Hospitality	89	1,185	14,518,101	235.61
Other Services	117	561	17,151,266	587.94
Local Government	35	1,861	55,872,078	577.36
State Government	17	593	18,864,820	611.78

TABLE 6. COUNTY SUMMARY
CALENDAR YEAR 2010

NORTH AMERICAN INDUSTRY CLASSIFICATION SYSTEM - INDUSTRY GROUPS	AVERAGE EMPLOYING UNITS	AVERAGE COVERED EMPLOYMENT	TOTAL CALENDAR EARNINGS	AVERAGE WEEKLY EARNINGS
VAN BUREN COUNTY - TOTAL	372	3,528	\$94,980,783	\$517.73
Natural Resources & Mining	7	34	1,852,551	1,047.82
Construction	42	218	7,428,823	655.33
Manufacturing	12	54	1,745,012	621.44
Trade, Transportation & Utilities	101	943	28,657,944	584.43
Wholesale Trade	12	33	1,237,253	721.01
Retail Trade	58	592	12,590,637	409.00
Transportation, Warehousing & Utilities	31	318	14,830,054	896.83
Information	8	47	1,666,039	681.69
Financial Activities	31	164	5,398,715	633.06
Professional & Business Services	32	129	2,797,085	416.98
Education & Health Services	64	662	17,504,794	508.51
Leisure & Hospitality	29	469	6,424,446	263.43
Other Services	28	81	1,895,665	450.06
Local Government	11	652	17,516,617	516.65
State Government	7	75	2,093,092	536.69
WASHINGTON COUNTY - TOTAL	5,505	87,425	3,394,995,694	\$746.79
Natural Resources & Mining	41	413	22,317,626	1,039.19
Construction	507	3,798	153,379,614	776.62
Manufacturing	230	13,166	478,192,812	698.47
Trade, Transportation & Utilities	1,353	20,153	713,091,882	680.46
Wholesale Trade	409	3,505	222,055,809	1,218.35
Retail Trade	756	10,377	249,595,271	462.55
Transportation, Warehousing & Utilities	188	6,271	241,440,802	740.41
Information	90	1,208	53,759,975	855.83
Financial Activities	582	3,343	145,434,247	836.62
Professional & Business Services	955	9,114	618,813,771	1,305.71
Education & Health Services	735	12,481	502,124,201	773.67
Leisure & Hospitality	551	9,232	125,940,889	262.34
Other Services	378	1,798	46,744,335	499.96
Local Government	60	7,335	271,704,316	712.35
State Government	23	5,384	263,492,026	941.15

TABLE 6. COUNTY SUMMARY
CALENDAR YEAR 2010

NORTH AMERICAN INDUSTRY CLASSIFICATION SYSTEM - INDUSTRY GROUPS	AVERAGE EMPLOYING UNITS	AVERAGE COVERED EMPLOYMENT	TOTAL CALENDAR EARNINGS	AVERAGE WEEKLY EARNINGS
WHITE COUNTY - TOTAL	1,828	25,075	\$834,887,132	\$640.30
Natural Resources & Mining	57	1,676	97,102,005	1,114.17
Construction	196	1,291	46,939,412	699.21
Manufacturing	74	2,402	99,218,026	794.35
Trade, Transportation & Utilities	478	5,983	188,401,612	605.57
Wholesale Trade	97	609	23,623,892	745.99
Retail Trade	285	3,137	69,604,347	426.70
Transportation, Warehousing & Utilities	96	2,237	95,173,373	818.17
Information	21	147	5,079,131	664.46
Financial Activities	180	953	36,102,788	728.53
Professional & Business Services	189	1,500	44,979,433	576.66
Education & Health Services	315	4,718	169,477,963	690.80
Leisure & Hospitality	141	2,419	27,675,385	220.02
Other Services	113	572	15,971,208	536.96
Local Government	46	2,680	82,470,254	591.78
State Government	18	734	21,469,915	562.51
WOODRUFF COUNTY - TOTAL	221	1,897	\$51,414,271	\$521.21
Natural Resources & Mining	26	139	4,166,524	576.44
Construction	7	44	1,174,599	513.37
Manufacturing	7	328	8,909,354	522.36
Trade, Transportation & Utilities	47	418	12,821,635	589.88
Wholesale Trade	11	150	6,636,026	850.77
Retail Trade	23	184	3,100,475	324.05
Transportation, Warehousing & Utilities	13	84	3,085,134	706.30
Financial Activities	14	64	2,109,036	633.72
Professional & Business Services	6	8	384,157	923.45
Education & Health Services	81	270	6,982,498	497.33
Leisure & Hospitality	7	72	834,344	222.85
Local Government	10	488	12,221,047	481.60
State Government	6	44	1,334,717	583.36
Other	10	22	476,360	416.40

TABLE 6. COUNTY SUMMARY
CALENDAR YEAR 2010

NORTH AMERICAN INDUSTRY CLASSIFICATION SYSTEM - INDUSTRY GROUPS	AVERAGE EMPLOYING UNITS	AVERAGE COVERED EMPLOYMENT	TOTAL CALENDAR EARNINGS	AVERAGE WEEKLY EARNINGS
YELL COUNTY - TOTAL	447	6,086	\$158,995,846	\$502.40
Natural Resources & Mining	28	231	6,849,217	570.20
Construction	40	263	7,218,940	527.85
Manufacturing	20	2,241	59,579,732	511.27
Trade, Transportation & Utilities	82	632	13,529,823	411.69
Wholesale Trade	17	33	876,776	510.94
Retail Trade	46	509	9,240,476	349.12
Transportation, Warehousing & Utilities	19	90	3,412,571	729.18
Information	2	65	2,721,094	805.06
Financial Activities	36	160	5,060,256	608.20
Professional & Business Services	42	200	5,819,409	559.56
Education & Health Services	109	698	17,150,805	472.53
Leisure & Hospitality	34	322	3,415,293	203.97
Other Services	15	35	626,893	344.45
Local Government	27	1,131	34,475,840	586.20
State Government	12	108	2,548,544	453.80
STATEWIDE COUNTY - TOTAL	4,882	17,747	\$1,052,561,694	\$1,140.56
Natural Resources & Mining	79	540	36,815,051	1,311.08
Construction	542	3,551	194,126,489	1,051.31
Manufacturing	39	191	8,651,393	871.06
Trade, Transportation & Utilities	1,698	5,498	429,338,926	1,501.73
Wholesale Trade	1,435	4,429	377,915,470	1,640.91
Retail Trade	111	441	26,482,582	1,154.83
Transportation, Warehousing & Utilities	152	628	24,940,874	763.75
Information	120	406	19,050,045	902.33
Financial Activities	301	873	56,313,589	1,240.50
Professional & Business Services	1,704	4,864	230,616,410	911.79
Education & Health Services	177	961	40,168,525	803.82
Leisure & Hospitality	57	85	3,410,922	771.70
Other	165	778	34,070,344	842.16

TABLE 7. FEDERAL GOVERNMENT EMPLOYMENT AND EARNINGS IN ARKANSAS

NORTH AMERICAN INDUSTRY CLASSIFICATION SYSTEM - INDUSTRY GROUPS	AVERAGE EMPLOYING UNITS	AVERAGE COVERED EMPLOYMENT	TOTAL CALENDAR EARNINGS	AVERAGE WEEKLY EARNINGS
TOTAL	1,257	22,861	\$1,331,589,635	\$1,120.14
Trade, Transportation & Utilities	618	6,113	289,143,332	909.61
Information	2	56	2,608,285	895.70
Financial Activities	19	181	12,327,588	1,309.77
Professional & Business Services	29	871	60,676,584	1,339.68
Education & Health Services	18	4,965	352,401,775	1,364.95
Leisure & Hospitality	22	392	13,458,736	660.26
Other Services	3	7	168,143	461.93
Public Administration	546	10,276	600,805,192	1,124.36

TABLE 8. WORKFORCE INVESTMENT AREA SUMMARY
CALENDAR YEAR 2010

NORTH AMERICAN INDUSTRY CLASSIFICATION SYSTEM - INDUSTRY GROUPS	AVERAGE EMPLOYING UNITS	AVERAGE COVERED EMPLOYMENT	TOTAL CALENDAR EARNINGS	AVERAGE WEEKLY EARNINGS
CENTRAL WORKFORCE INVESTMENT AREA*	6,425	76,429	2,463,987,188	\$619.98
Natural Resources & Mining	204	1,674	96,882,265	1,112.98
Construction	797	5,283	188,160,342	684.93
Trade, Transportation & Utilities	1,520	15,393	440,019,478	549.72
Wholesale Trade	398	2,456	110,539,402	865.54
Retail Trade	879	11,353	264,613,533	448.23
Transportation, Warehousing & Utilities	243	1,584	64,866,543	787.52
Information	66	591	23,445,699	762.91
Financial Activities	673	2,773	102,154,154	708.44
Professional & Business Services	809	7,987	347,663,625	837.09
Education & Health Services	1,023	11,276	335,994,433	573.03
Leisure & Hospitality	500	8,879	108,111,139	234.15
Local Government	132	10,089	341,904,287	651.71
State Government	67	4,675	158,663,386	652.67
Other	634	7,809	320,988,380	790.48
EASTERN WORKFORCE INVESTMENT AREA	3,961	36,657	1,093,075,419	\$573.44
Natural Resources & Mining	238	1,221	31,519,147	496.43
Construction	157	845	29,840,903	679.13
Trade, Transportation & Utilities	854	9,694	312,514,990	619.96
Wholesale Trade	186	2,155	89,106,696	795.17
Retail Trade	468	4,864	106,544,425	421.24
Transportation, Warehousing & Utilities	200	2,675	116,863,869	840.14
Financial Activities	265	1,509	51,418,418	655.28
Professional & Business Services	288	1,764	51,037,026	556.40
Education & Health Services	1,393	6,312	170,104,423	518.26
Leisure & Hospitality	244	3,262	42,782,364	252.22
Local Government	132	5,353	181,281,236	651.26
State Government	62	2,407	74,772,840	597.40
Other	328	4,290	147,804,072	662.56

*Note: Pulaski County is not included in the Central Workforce Investment Please refer to Page 53 for information on Pulaski County.
Central Workforce Includes these counties: Faulkner, Lonoke, Monroe, Prairie, and Saline.

Eastern Workforce Includes these counties: Crittenden, Cross, Lee, Phillips, and Saint Francis.

TABLE 8. WORKFORCE INVESTMENT AREA SUMMARY
CALENDAR YEAR 2010

NORTH AMERICAN INDUSTRY CLASSIFICATION SYSTEM - INDUSTRY GROUPS	AVERAGE EMPLOYING UNITS	AVERAGE COVERED EMPLOYMENT	TOTAL CALENDAR EARNINGS	AVERAGE WEEKLY EARNINGS
NORTH CENTRAL WORKFORCE INVESTMENT AREA	5,764	68,877	2,068,927,287	\$577.65
Construction	501	2,811	95,900,393	656.08
Manufacturing	270	9,362	330,085,748	678.04
Trade, Transportation & Utilities	1,442	15,341	453,468,084	568.45
Retail Trade	889	9,023	193,687,133	412.81
Other Trade, Transportation & Utilities	553	6,318	259,780,951	790.72
Information	69	553	17,175,949	597.30
Financial Activities	532	2,678	92,705,884	665.72
Professional & Business Services	508	2,879	82,190,804	549.01
Education & Health Services	1,098	12,633	404,199,338	615.30
Leisure & Hospitality	453	6,099	71,110,144	224.22
Local Government	230	9,081	252,658,924	535.05
State Government	106	3,161	94,141,404	572.73
Other	555	4,279	175,290,615	787.79
North Central Workforce Includes these counties: Cleburne, Fulton, Independence, IZard, Jackson, Sharp, Stone, Van Buren, White, and Woodruff.				
NORTHEAST WORKFORCE INVESTMENT AREA	6,630	91,825	2,958,102,126	\$619.51
Natural Resources & Mining	390	2,057	59,599,456	557.19
Construction	478	2,937	104,831,524	686.41
Manufacturing	337	19,028	811,537,981	820.19
Trade, Transportation & Utilities	1,705	17,920	520,774,930	558.87
Wholesale Trade	406	3,705	156,006,514	809.75
Retail Trade	992	11,416	247,972,413	417.72
Transportation, Warehousing & Utilities	307	2,799	116,796,003	802.46
Financial Activities	581	3,207	118,790,394	712.33
Professional & Business Services	685	6,652	187,557,332	542.22
Education & Health Services	1,201	14,226	496,965,671	671.80
Leisure & Hospitality	498	7,669	91,568,842	229.62
Local Government	216	11,357	346,804,089	587.24
State Government	99	4,369	158,526,556	697.78
Other	440	2,403	61,145,351	489.34
Northeast Workforce Includes these counties: Clay, Craighead, Greene, Lawrence, Mississippi, Poinsett, and Randolph.				

TABLE 8. WORKFORCE INVESTMENT AREA SUMMARY
CALENDAR YEAR 2010

NORTH AMERICAN INDUSTRY CLASSIFICATION SYSTEM - INDUSTRY GROUPS	AVERAGE EMPLOYING UNITS	AVERAGE COVERED EMPLOYMENT	TOTAL CALENDAR EARNINGS	AVERAGE WEEKLY EARNINGS
NORTHWEST WORKFORCE INVESTMENT AREA	14,907	224,665	8,919,151,499	\$763.46
Natural Resources & Mining	128	1,691	77,463,276	880.95
Trade, Transportation & Utilities	3,670	50,133	1,849,682,755	709.53
Wholesale Trade	1,203	8,348	578,198,412	1,331.96
Retail Trade	1,983	25,439	601,908,412	455.02
Transportation, Warehousing & Utilities	484	16,346	669,575,931	787.74
Education & Health Services	2,091	27,601	1,025,443,287	714.47
Leisure & Hospitality	1,454	22,265	306,745,683	264.94
Other Services	963	4,384	113,385,888	497.38
Local Government	312	20,532	720,686,132	675.01
State Government	108	7,962	345,840,010	835.31
Other	6,181	90,097	4,479,904,468	956.21

Northwest Workforce Includes these counties: Baxter, Benton, Boone, Carroll, Madison, Marion, Newton, Searcy, and Washington.

SOUTHEAST WORKFORCE INVESTMENT	5,985	72,450	2,336,956,797	\$620.31
Natural Resources & Mining	398	2,579	89,085,094	664.28
Construction	323	3,068	129,322,719	810.62
Manufacturing	218	14,985	621,860,273	798.05
Trade, Transportation & Utilities	1,324	12,622	378,151,982	576.15
Retail Trade	794	7,969	172,867,115	417.16
Other Trade, Transportation & Utilities	530	4,653	205,284,867	848.44
Education & Health Services	1,720	11,003	321,599,001	562.08
Local Government	209	9,698	288,744,049	572.57
State Government	138	6,335	208,475,402	632.86
Other	1,655	12,160	299,718,277	474.00

Southeast Workforce Includes these counties: Arkansas, Ashley, Bradley, Chicot, Cleveland, Desha, Drew, Grant, Jefferson, and Lincoln.

TABLE 8. WORKFORCE INVESTMENT AREA SUMMARY
CALENDAR YEAR 2010

NORTH AMERICAN INDUSTRY CLASSIFICATION SYSTEM - INDUSTRY GROUPS	AVERAGE EMPLOYING UNITS	AVERAGE COVERED EMPLOYMENT	TOTAL CALENDAR EARNINGS	AVERAGE WEEKLY EARNINGS
SOUTHWEST WORKFORCE INVESTMENT	5,819	80,322	2,712,912,637	\$649.53
Natural Resources & Mining	381	2,528	99,926,951	760.16
Trade, Transportation & Utilities	1467	15397	466499802	582.66
Retail Trade	905	8,943	184,865,845	397.53
Other Trade, Transportation & Utilities	562	6,454	281,633,957	839.18
Information	65	548	21,345,573	749.07
Financial Activities	515	2,780	92,956,258	643.03
Education & Health Services	1,038	9,534	260,048,702	524.54
Leisure & Hospitality	398	5,184	62,898,856	233.33
Other Services	412	2,034	46,589,335	440.49
Local Government	260	10,317	306,394,581	571.12
State Government	140	3,746	121,887,938	625.73
Other	1,143	28,254	1,234,364,641	840.16

Southwest Workforce Includes these counties: Calhoun, Columbia, Dallas, Hempstead, Howard, Lafayette, Little River, Miller, Nevada, Ouachita, Sevier, and Union

WEST CENTRAL WORKFORCE INVESTMENT	8,280	104,633	3,129,364,003	\$575.15
Construction	815	4,630	160,145,372	665.17
Trade, Transportation & Utilities	1,928	21,284	646,485,165	584.12
Retail Trade	1,257	13,946	307,674,828	424.27
Other Trade, Transportation & Utilities	671	7,338	338,810,337	887.92
Financial Activities	820	3,541	122,444,142	664.98
Professional & Business Services	930	7,641	233,910,120	588.70
Education & Health Services	1,454	16,712	538,275,021	619.40
Leisure & Hospitality	755	12,039	160,583,736	256.51
Local Government	228	11,698	366,586,665	602.65
State Government	125	5,385	168,203,789	600.68
Other	1,225	21,703	732,729,993	649.26

West Central Workforce Includes these counties: Clark, Conway, Garland, Hot Spring, Johnson, Montgomery, Perry, Pike, Pope, and Yell

TABLE 8. WORKFORCE INVESTMENT AREA SUMMARY
CALENDAR YEAR 2010

NORTH AMERICAN INDUSTRY CLASSIFICATION SYSTEM - INDUSTRY GROUPS	AVERAGE EMPLOYING UNITS	AVERAGE COVERED EMPLOYMENT	TOTAL CALENDAR EARNINGS	AVERAGE WEEKLY EARNINGS
WESTERN WORKFORCE INVESTMENT	6,695	104,148	3,457,983,607	\$638.51
Natural Resources & Mining	183	2,692	152,913,833	1,092.37
Trade, Transportation & Utilities	1,680	22,452	676,496,455	579.44
Wholesale Trade	394	3,661	154,869,839	813.51
Retail Trade	973	12,070	267,485,410	426.18
Transportation, Warehousing & Utilities	313	6,721	254,141,206	727.17
Financial Activities	677	3,767	143,094,055	730.50
Professional & Business Services	879	9,693	324,675,938	644.15
Education & Health Services	990	15,042	542,821,085	693.98
Leisure & Hospitality	527	8,099	105,520,695	250.55
Other Services	451	1,993	52,184,315	503.53
Local Government	152	9,205	313,266,097	654.46
State Government	73	3,003	94,896,291	607.70
Other	1,083	28,202	1,052,114,843	717.43

Western Workforce Includes these counties: Crawford, Franklin, Logan, Polk, Scott, and Sebastian

