

Arkansas Covered Employment & Earnings

Jobs for People. People for Jobs.

DWS
Department of
WORKFORCE**Services**

2008 Annual

**COVERED EMPLOYMENT AND EARNINGS
STATE OF ARKANSAS
CALENDAR YEAR 2008**

**MIKE BEEBE, GOVERNOR
STATE OF ARKANSAS**

**ARTEE WILLIAMS, DIRECTOR
ARKANSAS DEPARTMENT OF WORKFORCE SERVICES**

**PUBLISHED BY
BUREAU OF LABOR STATISTICS PROGRAMS
ARKANSAS DEPARTMENT OF WORKFORCE SERVICES
POST OFFICE BOX 2981
LITTLE ROCK, ARKANSAS 72203-2981
BERNADETTE COLEMAN, BLS PROGRAMS MANAGER
TELEPHONE: (501) 682-3159**

STATE OF ARKANSAS HOME PAGE: <http://www.arkansas.gov>

**ARKANSAS DEPARTMENT OF WORKFORCE SERVICES
HOME PAGE: <http://www.arkansas.gov/esd/>**

**INTERNET SITE FOR LABOR MARKET INFORMATION:
<http://www.discover.arkansas.gov>**

RELEASED: JULY 2009

TABLE OF CONTENTS

Description of Data		Page 1
Industry Classification		Page 1
Definition of Covered Employment and Earnings		Page 2
Federal Government Employment		Page 2
County Classification		Page 2
Significant Developments During Calendar Year 2008		Page 3
LIST OF GRAPHS AND TABLES		
Graph 1	Total Covered Employment for Selected Years, Arkansas	Page 7
Graph 2	Total Covered Earnings, by Calendar Quarter for Selected Years, Arkansas	Page 8
Map 1	Average Employment by County, Calendar Year 2008	Page 17
Table 1	Quarterly Comparison of Covered Employment and Wages, by Industry	Page 5
Table 2	Total Covered Employment in Arkansas, 2000-2008	Page 6
Table 3	Total Covered Earnings, 2000-2008	Page 9
Table 4	Total Taxable Earnings, 2000-2008	Page 10
Table 5	County Rankings of Average Employment, Calendar Year 2008	Page 11
Table 6	County Rankings of Average Weekly Wages, Calendar Year 2008	Page 14
Table 7	State Summary - Employment and Total Earnings, by Industry, Calendar Year 2008	Page 19
Table 8	County Summary - Employment and Total Earnings, by Industry, Calendar Year 2008	Page 30
Table 9	Federal Government Employment and Total Earnings in Arkansas, Calendar Year 2008	Page 68
Table 10	Workforce Information Area – Employment and Total Earnings, by Industry, Calendar Year 2008	Page 69

EMPLOYMENT AND EARNINGS
UNDER THE ARKANSAS EMPLOYMENT SECURITY LAW
CALENDAR YEAR 2008

DESCRIPTION OF DATA

This publication contains covered employment and payroll data by industry and county for the Calendar Year 2008. These data are compiled from quarterly contribution and wage reports submitted by employers subject to the Arkansas Employment Security Law. An employing unit is a single physical location where business is conducted, production takes place, or services are provided. Employment data have been tabulated for each month of the quarter by industry under the **North American Industry Classification System** (NAICS) (see "Industry Classification" below) on a statewide, county and workforce area basis. Payroll data represent the total wages paid during the quarter, and are also shown by

industry for the State and by publishable industry groups for each county and workforce area. The tabulation of this data is a joint effort in conjunction with the U.S. Bureau of Labor Statistics. In addition, there are tables included which set out total covered employment by months, quarterly payrolls, and average weekly earnings for the years 2001 through 2008. Data contained in this publication are subject to revision. These revisions will be reflected in the 2009 First Quarter Covered Employment and Earnings publication. Because of industry code changes between years, substantial employment and wage shifts among industries are anticipated.

INDUSTRY CLASSIFICATION

Previously published industry data **will not** be comparable in all instances with currently published data since industry codes have been revised according to the following Manuals: (a) between January 1, 1958 and December 31, 1967, industry codes were assigned under the 1957 Standard Industrial Classification (SIC) Manual; (b) between January 1, 1968 and December 31, 1974, industry codes were assigned under the 1967 Standard Industrial Classification (SIC) Manual; (c) between January 1, 1975 and December 31, 1987, industry codes were assigned under the 1972 Standard Industrial Classification (SIC) Manual; (d) between January 1, 1988 and December 31, 2000, industry codes were assigned under the 1987 Standard Industrial Classification (SIC) Manual; (e) January 1, 2001, industry codes have been assigned under the 2002 North American Industry Classification System (NAICS) Manual; and (f) since January 1, 2007, industry codes have been assigned under the 2007 North American Industry Classification System (NAICS) Manual. **The NAICS Manual**

represents a significant change in coding methodology as compared to the SIC Manual. One of the most significant changes involves how NAICS treats auxiliary units. Auxiliary units are establishments primarily engaged in performing management or support services for other establishments of the same enterprise. The SIC code for these units was based on the activity of the enterprise served. The NAICS code is based on the actual activities that the establishment performs. Comparisons of many industries **should not be made** between this publication and previous Covered Employment and Earnings publications that were based on SIC. Even though some titles are the same or similar, in nature, NAICS and SIC could differ in the classification of employers. The implementation of NAICS represents a profound change for statistical programs, and will create significant benefits along with transition obstacles for both data collectors and data users. A summary is available on the NAICS home page at <http://www.census.gov/naics>.

DEFINITION OF COVERED EMPLOYMENT AND EARNINGS

Covered Employment is the number of workers employed by employers subject to the Arkansas Employment Security Law who worked or received pay for the payroll period including the 12th of the month. An employer is subject to the law when they employ one or more employees in each of ten days during the current or preceding calendar year.

Currently excluded from coverage is employment covered by the Railroad Unemployment Insurance Act, some domestic service workers, employees of small agricultural establishments, self-employed and unpaid family workers, insurance and real estate

agents who are on commission only, and employees of churches and religious organizations except separately incorporated schools. The payroll information in this publication includes all wages and salaries paid to any covered employees by their employers including bonuses, commissions, and cash values of remuneration received in any medium other than cash. These wages include both taxable and nontaxable wages. Only the first \$10,000 paid to each worker by an employer in the calendar year is taxable under the Arkansas Employment Security Law.

FEDERAL GOVERNMENT EMPLOYMENT

Table 9 on page 68 lists the total number of civilians employed by the Federal Government in Arkansas during the Calendar Year 2008. Employment and wage data are set out by industry divisions. These data are obtained from required reports submitted by various

government agencies having employment in the State. Civilian Federal workers are covered by the Unemployment Compensation for Federal Employees (UCFE) program.

COUNTY CLASSIFICATION

Employment and payroll data by county are classified according to the county where the workers are employed. Employers with operations in more than one county are requested to furnish this agency with a breakdown of employment and wages for at least one quarter of each year by the counties in which they operate. Many such employers submit county data with each regular contribution report. **Note:** This information is invaluable in the preparation of monthly employment and payroll data by county.

Employment and payroll data for multi - area employers who do not furnish county data each quarter of the year, are prorated by county on the basis of one quarter's information. The "rest-of-state" table that appears on page 67 of this publication includes data on firms that **did not** provide a county breakdown of employment and payrolls. It also includes sales, and all other type of personnel with no permanent place of work, as well as employment of employers with no established place of business in Arkansas.

SIGNIFICANT DEVELOPMENTS DURING CALENDAR YEAR 2008

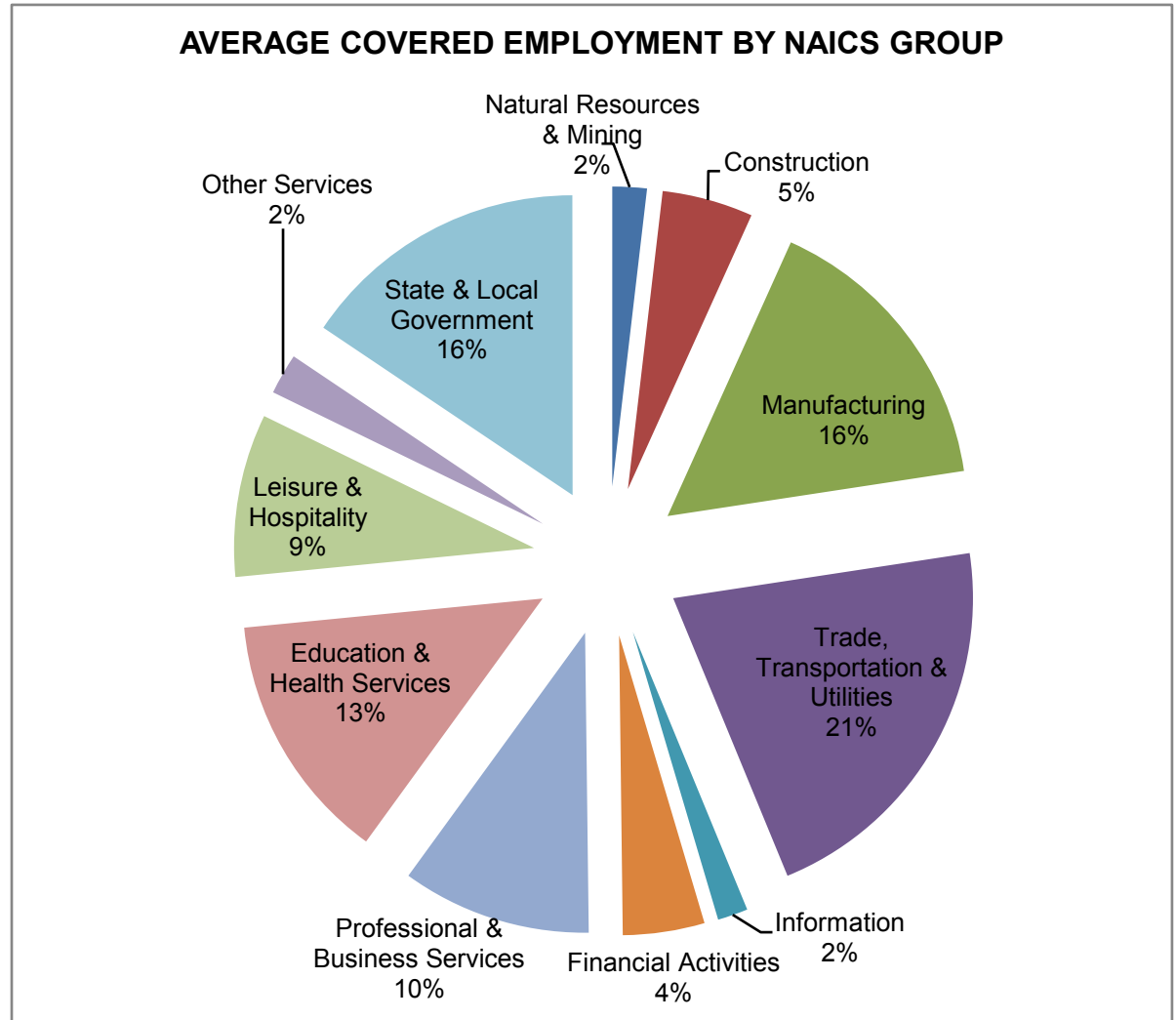
AVERAGE EMPLOYMENT CHANGES

Covered employment averaged 1,150,678 during the Calendar Year 2008 (see table 1), a decrease of 2,758 (-0.24%) from the previous year. Five industries gained jobs from the Calendar Year 2007 while six suffered losses.

Education & Health Services (+4,714) gained the most jobs in 2008. 95% of the new jobs can be attributed to the Health Care & Social Assistance subsector due to the increased demand for elderly care. State & Local Government added 2,361 jobs because of the expanded need for instructors at public educational facilities. The continued increase in oil and gas related activities in Arkansas led to a 1,244 job gain in Natural Resources & Mining. The opening of new restaurants across the state contributed to the growth seen in Leisure & Hospitality (+1,176). Jobs in Professional & Business Services (+449) also saw a slight increase.

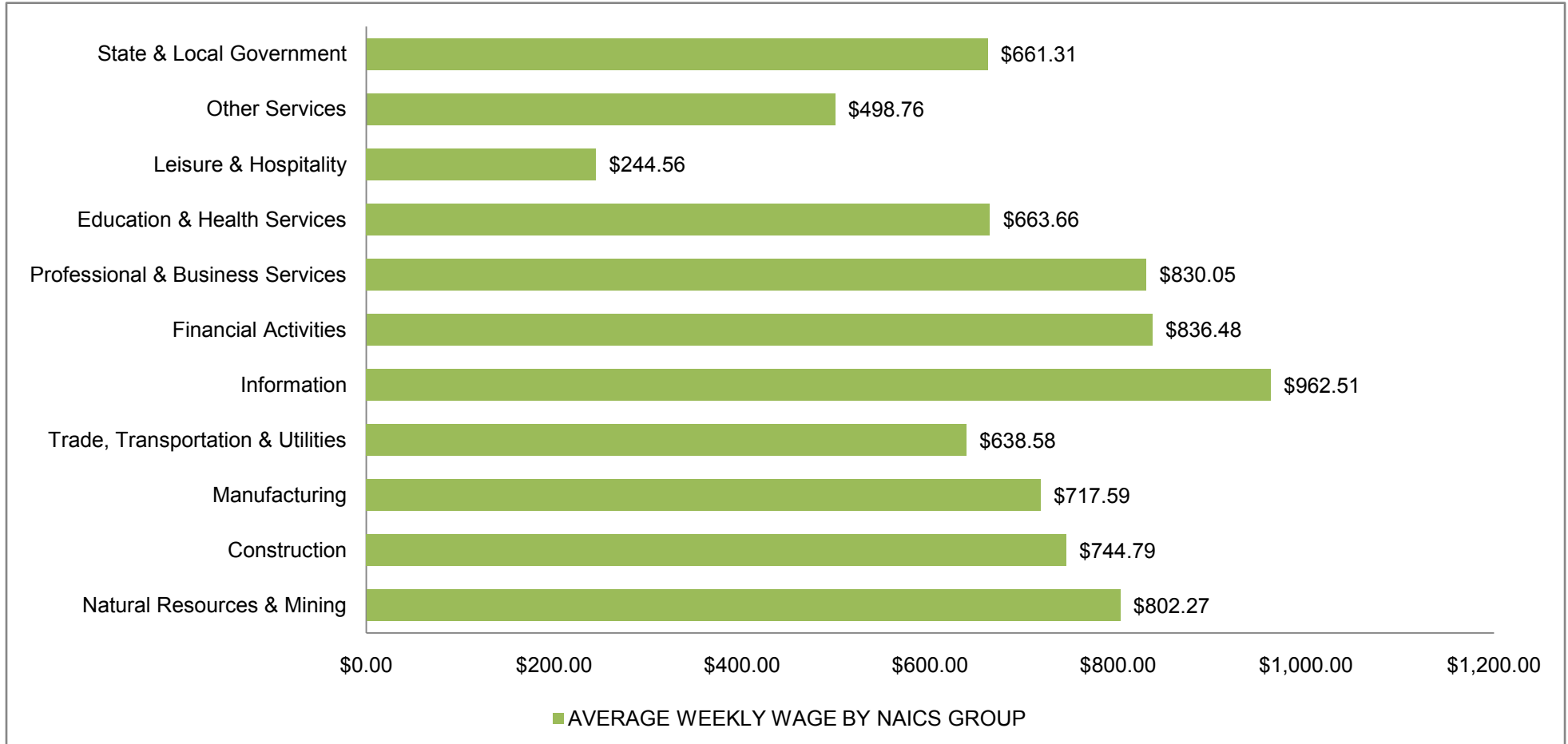
Layoffs and closures continue in the Manufacturing industry, leading to a job loss of 6,986. Declines in the trucking industry caused the elimination of 2,781 jobs in Trade, Transportation & Utilities. Financial Services suffered a job drop of 1,276 due to affects from the global financial crisis. Smaller losses were seen in Information (-1,183), Other Services (-247), and Construction (-227).

Pulaski County ranked first among counties in covered employment (see Table 5), with an average of 241,567. Benton County (94,690), Washington County (89,548), Sebastian County (71,946), and Craighead County (41,881) round out the top five counties in covered employment.



AVERAGE WEEKLY EARNINGS

Wages paid to covered workers totaled \$39,621,503,294 for the Calendar Year 2008 (see table 1), for an average weekly wage of \$662.18 (see table 7). This represented an increase of \$14.78 from the level of \$647.40 recorded in 2007. Employees in Information recorded the highest weekly wage with \$962.51 while Leisure & Hospitality recorded the lowest yearly average weekly wage at \$244.56. Workers in Little River County received the highest weekly wage at \$831.99 while Searcy County received the lowest at \$401.08. (see Table 6)



Note: Because of industry code changes between years, substantial employment and wage shifts among industries are anticipated.

TABLE 1. YEARLY COMPARISON OF COVERED EMPLOYMENT AND WAGES, BY INDUSTRY

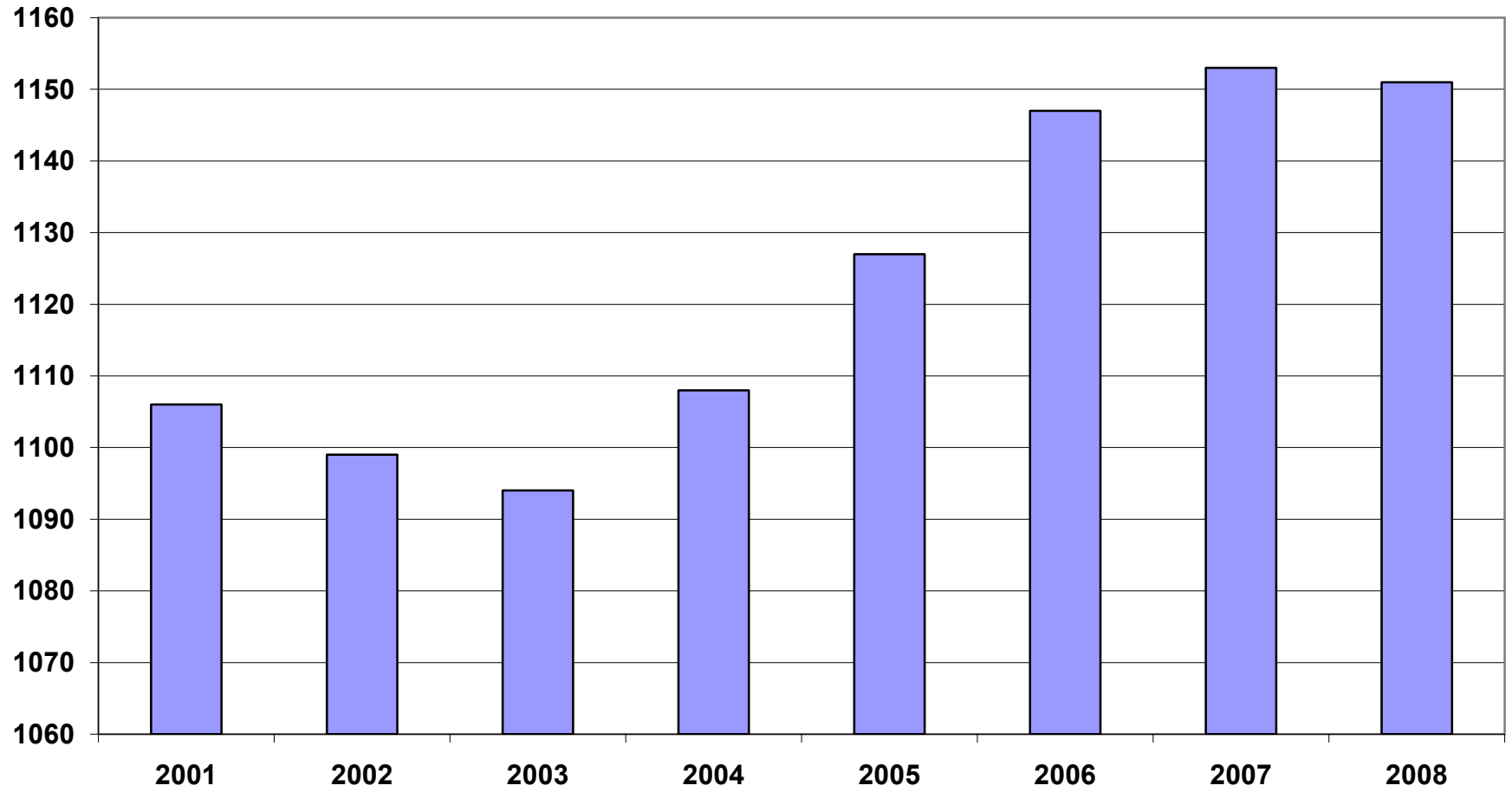
North American Industry Classification System Industry Group	Number of Employing Units	Average Covered Employment	% of Total Employment	Net Change From 2007	Total Earnings Calendar Year 2008	% of Total Wages	Average Weekly Earnings
Total	84,580	1,150,678	100.0%	-2,758	\$39,621,503,294	100.0%	\$662.18
Natural Resources & Mining	2,456	21,350	1.9%	1,244	\$890,679,642	2.2%	\$802.27
Agriculture, Forestry, Fishing & Hunting	1,946	13,035	1.1%	-233	\$390,169,579	1.0%	\$575.62
Mining	510	8,315	0.7%	1,477	\$500,510,063	1.3%	\$1,157.57
Construction	7,893	56,331	4.9%	-227	\$2,181,641,366	5.5%	\$744.79
Manufacturing	3,581	182,395	15.9%	-6,986	\$6,805,978,761	17.2%	\$717.59
Trade, Transportation & Utilities	21,101	243,726	21.2%	-2,781	\$8,093,240,814	20.4%	\$638.58
Wholesale Trade	6,431	48,479	4.2%	304	\$2,577,097,402	6.5%	\$1,022.29
Retail Trade	11,299	133,684	11.6%	-568	\$2,968,722,675	7.5%	\$427.06
Transportation & Warehousing	3,006	54,773	4.8%	-2,496	\$2,072,459,393	5.2%	\$727.64
Utilities	365	6,790	0.6%	-21	\$474,961,344	1.2%	\$1,345.19
Information	1,121	18,647	1.6%	-1,183	\$933,296,438	2.4%	\$962.51
Financial Activities	8,432	50,689	4.4%	-1,276	\$2,204,823,985	5.6%	\$836.48
Finance & Insurance	4,921	36,413	3.2%	-1,098	\$1,788,611,010	4.5%	\$944.62
Real Estate & Rental & Leasing	3,511	14,276	1.2%	-178	\$416,212,975	1.1%	\$560.67
Professional & Business Services	11,831	117,368	10.2%	449	\$5,065,913,849	12.8%	\$830.05
Professional & Technical Services	7,400	38,785	3.4%	180	\$1,915,530,460	4.8%	\$949.78
Management of Companies & Enterprises	555	25,766	2.2%	992	\$1,941,462,442	4.9%	\$1,449.03
Administrative & Waste Services	3,876	52,817	4.6%	-723	\$1,208,920,947	3.1%	\$440.17
Education & Health Services	13,279	154,805	13.5%	4,714	\$5,342,381,913	13.5%	\$663.66
Educational Services	617	9,754	0.8%	253	\$283,443,400	0.7%	\$558.83
Health Care & Social Assistance	12,662	145,051	12.6%	4,461	\$5,058,938,513	12.8%	\$670.71
Leisure & Hospitality	6,232	100,797	8.8%	1,176	\$1,281,862,650	3.2%	\$244.56
Arts, Entertainment & Recreation	918	9,855	0.9%	111	\$171,474,874	0.4%	\$334.61
Accommodation & Food Services	5,314	90,942	7.9%	1,065	\$1,110,387,776	2.8%	\$234.80
Other Services	5,428	25,215	2.2%	-247	\$653,961,769	1.7%	\$498.76
State & Local Government	3,226	179,357	15.6%	2,361	\$6,167,722,107	15.6%	\$661.31
Local Government	1,984	113,240	9.8%	493	\$3,626,195,054	9.2%	\$615.81
State Government	1,242	66,117	5.7%	1,868	\$2,541,527,053	6.4%	\$739.23
Nonclassifiable Establishments	0	0	0.0%	0	\$0	0.0%	\$0.00

Note: Items do not necessarily add to totals because of rounding. Because of industry code changes between years, substantial employment and wage shifts among industries are anticipated.

TABLE 2. TOTAL COVERED EMPLOYMENT IN ARKANSAS

Period	2001	2002	2003	2004	2005	2006	2007	2008
Average	1,106,053	1,098,558	1,094,087	1,108,273	1,126,778	1,146,948	1,153,436	1,150,678
January	1,096,009	1,081,635	1,082,740	1,089,510	1,102,768	1,130,595	1,137,437	1,141,856
February	1,101,616	1,086,793	1,084,880	1,094,626	1,110,577	1,136,810	1,143,397	1,149,443
March	1,112,143	1,098,500	1,092,172	1,105,266	1,122,619	1,150,439	1,158,895	1,157,690
April	1,115,526	1,103,399	1,095,341	1,111,020	1,129,785	1,155,498	1,159,623	1,159,841
May	1,119,815	1,111,998	1,103,099	1,117,144	1,135,567	1,159,886	1,165,224	1,166,111
June	1,119,734	1,112,028	1,099,688	1,117,010	1,136,118	1,162,026	1,164,207	1,164,167
July	1,071,830	1,065,697	1,053,220	1,071,473	1,090,071	1,106,142	1,110,571	1,114,279
August	1,094,068	1,086,011	1,077,775	1,094,886	1,114,098	1,130,839	1,139,109	1,138,583
September	1,115,996	1,113,148	1,105,980	1,122,724	1,144,815	1,159,814	1,165,135	1,162,333
October	1,110,994	1,108,447	1,112,550	1,123,260	1,142,300	1,156,804	1,164,709	1,156,197
November	1,109,012	1,107,611	1,109,712	1,125,081	1,145,667	1,156,011	1,166,114	1,150,885
December	1,105,887	1,107,425	1,111,892	1,127,271	1,146,954	1,158,509	1,166,810	1,146,754

AVERAGE TOTAL COVERED EMPLOYMENT GRAPH 1
In Thousands



TOTAL COVERED EARNINGS BY CALENDAR QUARTER, GRAPH 2
In Thousands

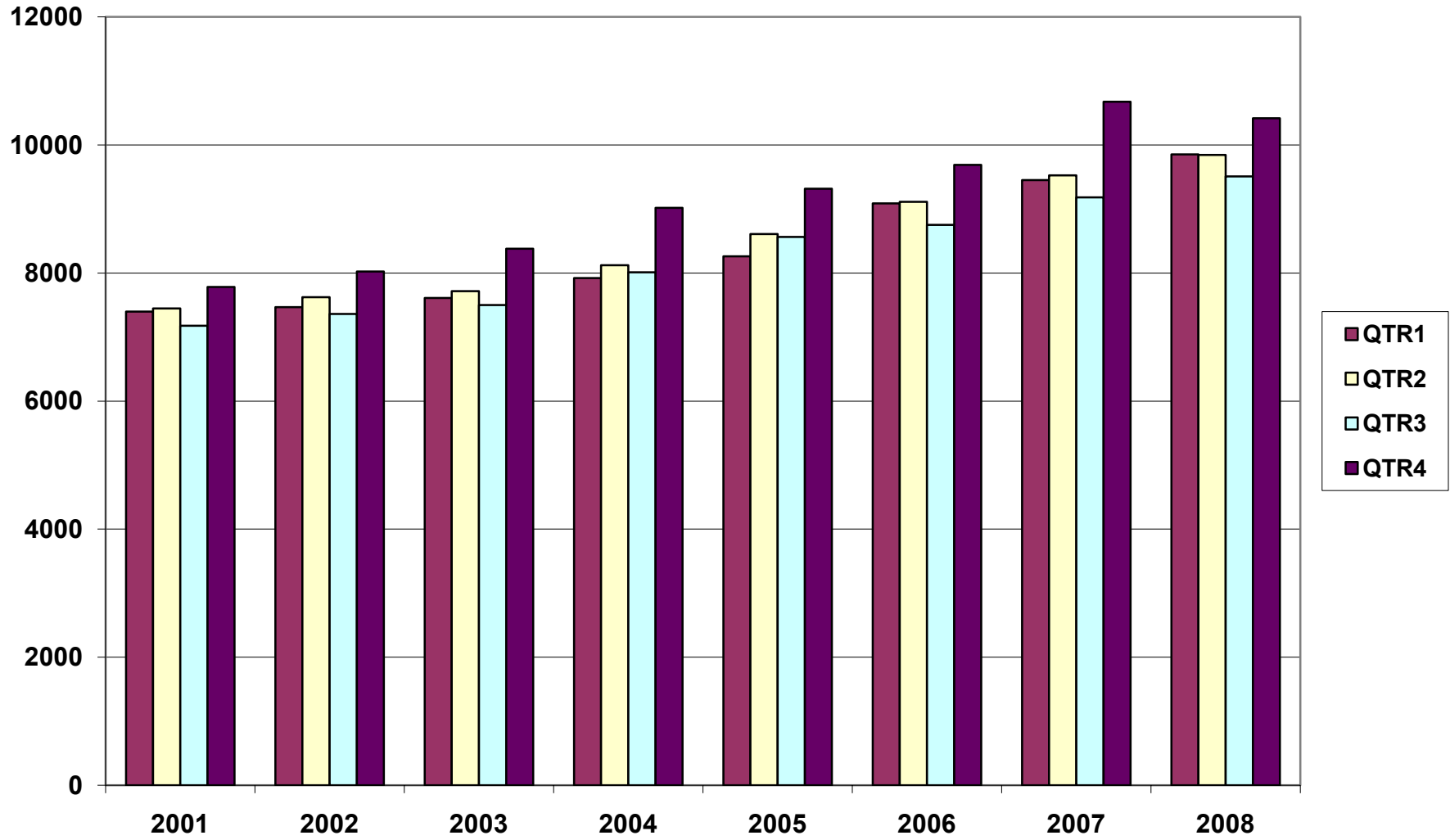


TABLE 3. TOTAL COVERED EARNINGS, 2000 - 2007

Period	2001	2002	2003	2004
Total	\$29,807,669,666	\$30,472,854,103	\$31,202,576,767	\$33,068,302,933
January - March	\$7,398,887,532	\$7,465,250,305	\$7,608,130,008	\$7,918,843,610
April - June	\$7,448,023,298	\$7,621,878,775	\$7,714,813,038	\$8,122,370,361
July - September	\$7,177,293,061	\$7,361,666,511	\$7,500,204,764	\$8,010,367,094
October - December	\$7,783,465,775	\$8,024,058,512	\$8,379,428,957	\$9,016,721,868
Average Weekly Earnings	\$518.26	\$533.44	\$548.45	\$573.80

Period	2005	2006	2007	2008
Total	\$34,753,107,631	\$36,636,090,775	\$38,830,050,835	\$39,621,503,294
January - March	\$8,261,153,981	\$9,085,021,816	\$9,452,711,662	\$9,851,866,058
April - June	\$8,607,722,353	\$9,112,624,590	\$9,525,837,049	\$9,843,711,293
July - September	\$8,562,555,369	\$8,750,878,205	\$9,178,902,477	\$9,509,150,631
October - December	\$9,321,675,928	\$9,687,566,164	\$10,672,599,647	\$10,416,775,312
Average Weekly Earnings	\$593.13	\$614.27	\$647.40	\$662.18

TABLE 4. TOTAL TAXABLE EARNINGS, 2000 - 2007

Period	2001	2002	2003	2004
Total	\$9,003,189,480	\$8,887,270,978	\$9,154,938,743	\$9,731,263,681
January - March	\$4,670,296,360	\$4,668,534,587	\$4,737,918,796	\$4,931,559,230
April - June	\$2,219,485,263	\$2,162,971,435	\$2,270,519,362	\$2,451,454,749
July - September	\$1,190,098,737	\$1,158,197,858	\$1,188,681,170	\$1,318,017,835
October - December	\$923,309,120	\$897,567,098	\$957,819,415	\$1,030,231,867

Period	2005	2006	2007	2008
Total	\$9,991,605,239	\$10,197,511,360	\$10,463,390,568	\$10,358,632,809
January - March	\$5,062,670,306	\$5,421,204,601	\$5,617,417,571	\$5,635,750,082
April - June	\$2,506,505,721	\$2,385,110,992	\$2,466,606,627	\$2,419,313,519
July - September	\$1,353,660,445	\$1,314,939,803	\$1,307,060,412	\$1,297,473,555
October - December	\$1,068,768,767	\$1,076,255,964	\$1,072,305,958	\$1,006,095,653

**TABLE 5. COUNTY RANKINGS OF AVERAGE EMPLOYMENT
CALENDAR YEAR 2008**

Rank	County	Average Employment
1	Pulaski	241,567
2	Benton	94,690
3	Washington	89,548
4	Sebastian	71,946
5	Craighead	41,881
6	Faulkner	38,999
7	Garland	36,522
8	Jefferson	30,619
9	Pope	26,639
10	White	24,553
11	Saline	21,234
12	Crawford	19,926
13	Mississippi	19,744
14	Union	19,138
15	Crittenden	16,792
16	Independence	15,315
17	Greene	14,937
18	Baxter	14,699
19	Boone	13,669
20	Miller	12,966
21	Lonoke	12,633
22	Arkansas	10,116
23	Carroll	10,050
24	Clark	9,775
25	Columbia	9,210
26	Johnson	8,798
27	Hempstead	7,888
28	Ashley	7,831

**TABLE 5. COUNTY RANKINGS OF AVERAGE EMPLOYMENT
CALENDAR YEAR 2008**

Rank	County	Average Employment
29	Saint Francis	7,651
30	Ouachita	7,600
31	Hot Spring	7,495
32	Howard	7,483
33	Cleburne	6,996
34	Conway	6,889
35	Yell	6,834
36	Drew	6,669
37	Phillips	6,523
38	Polk	6,329
39	Logan	5,766
40	Sevier	5,691
41	Jackson	5,656
42	Poinsett	5,442
43	Cross	4,940
44	Randolph	4,777
45	Desha	4,611
46	Little River	4,457
47	Franklin	4,233
48	Marion	4,048
49	Clay	4,018
50	Lawrence	4,002
51	Bradley	3,845
52	Grant	3,843
53	Sharp	3,713
54	Van Buren	3,704
55	Chicot	3,536
56	Dallas	3,323

**TABLE 5. COUNTY RANKINGS OF AVERAGE EMPLOYMENT
CALENDAR YEAR 2008**

Rank	County	Average Employment
57	Madison	3,174
58	Izard	3,103
59	Calhoun	2,957
60	Stone	2,937
61	Lincoln	2,924
62	Scott	2,857
63	Pike	2,678
64	Nevada	2,408
65	Monroe	2,387
66	Lee	2,098
67	Fulton	1,958
68	Woodruff	1,920
69	Searcy	1,755
70	Montgomery	1,580
71	Prairie	1,444
72	Lafayette	1,391
73	Perry	1,347
74	Newton	1,041
75	Cleveland	1,029

**TABLE 6. COUNTY RANKINGS OF AVERAGE WEEKLY WAGES
CALENDAR YEAR 2008**

Rank	County	Average Weekly Wage
1	Little River	\$831.99
2	Benton	\$818.31
3	Calhoun	\$790.90
4	Pulaski	\$773.40
5	Union	\$741.20
6	Mississippi	\$705.67
7	Washington	\$690.26
8	Ashley	\$678.42
9	Faulkner	\$662.95
10	Sebastian	\$660.04
11	Jefferson	\$636.78
12	Columbia	\$636.35
13	White	\$632.91
14	Miller	\$618.01
15	Pope	\$615.23
16	Craighead	\$611.95
17	Boone	\$607.44
18	Crittenden	\$596.41
19	Arkansas	\$595.60
20	Franklin	\$582.10
21	Hot Spring	\$581.21
22	Independence	\$575.78
23	Conway	\$573.13
24	Nevada	\$570.98
25	Saline	\$568.53
26	Desha	\$565.04
27	Baxter	\$562.75
28	Crawford	\$562.05

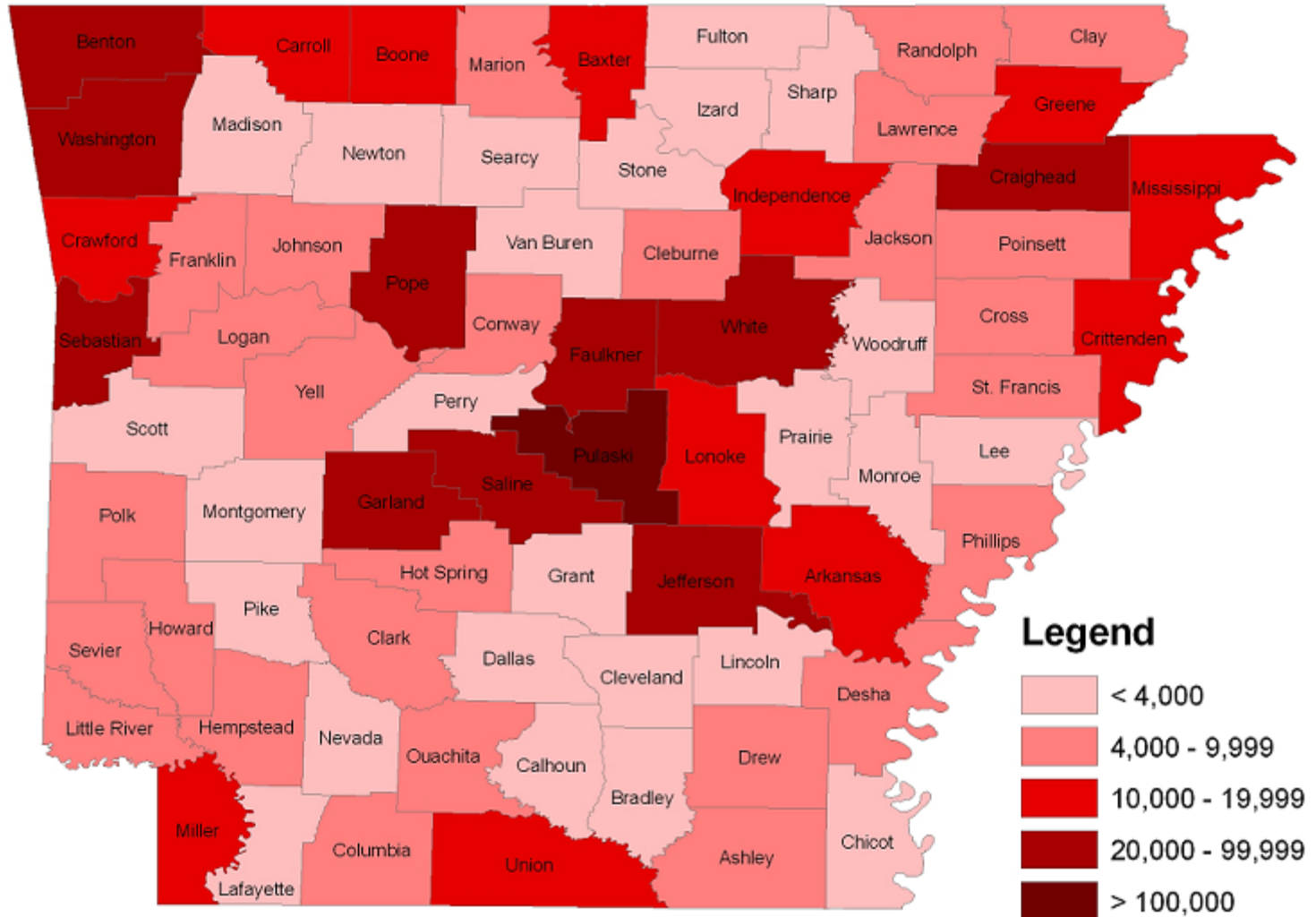
**TABLE 6. COUNTY RANKINGS OF AVERAGE WEEKLY WAGES
CALENDAR YEAR 2008**

Rank	County	Average Weekly Wage
29	Jackson	\$558.63
30	Greene	\$551.32
31	Garland	\$550.27
32	Hempstead	\$545.67
33	Lonoke	\$534.71
34	Clark	\$532.03
35	Perry	\$530.92
36	Ouachita	\$530.78
37	Lincoln	\$528.79
38	Poinsett	\$528.24
39	Cross	\$528.22
40	Johnson	\$527.14
41	Howard	\$524.32
42	Dallas	\$522.07
43	Grant	\$521.56
44	Cleburne	\$518.73
45	Saint Francis	\$518.13
46	Prairie	\$512.90
47	Lee	\$511.62
48	Logan	\$510.67
49	Woodruff	\$503.92
50	Yell	\$501.44
51	Phillips	\$498.82
52	Madison	\$498.38
53	Bradley	\$498.35
54	Lafayette	\$495.47
55	Drew	\$489.52
56	Lawrence	\$485.66

**TABLE 6. COUNTY RANKINGS OF AVERAGE WEEKLY WAGES
CALENDAR YEAR 2008**

Rank	County	Average Weekly Wage
57	Sevier	\$479.96
58	Van Buren	\$479.91
59	Clay	\$477.92
60	Pike	\$477.15
61	Carroll	\$475.99
62	Chicot	\$475.24
63	Marion	\$471.73
64	Scott	\$468.19
65	Izard	\$465.81
66	Polk	\$462.98
67	Randolph	\$461.26
68	Sharp	\$453.56
69	Monroe	\$448.29
70	Cleveland	\$446.44
71	Montgomery	\$443.63
72	Fulton	\$437.36
73	Stone	\$427.22
74	Newton	\$407.10
75	Searcy	\$401.08

**MAP 1. ANNUAL AVERAGE EMPLOYMENT BY COUNTY
CALENDAR YEAR 2008**



**TABLE 7. STATEWIDE SUMMARY
EMPLOYMENT AND TOTAL EARNINGS, BY INDUSTRY
CALENDAR YEAR 2008**

NORTH AMERICAN INDUSTRY CLASSIFICATION SYSTEM INDUSTRY GROUPS	AVERAGE EMPLOYING UNITS	AVERAGE COVERED EMPLOYMENT	TOTAL EARNINGS	AVERAGE WEEKLY EARNINGS
TOTAL, ALL INDUSTRIES	84,580	1,150,678	\$39,621,503,294	\$662.18
NATURAL RESOURCES & MINING	2,456	21,350	\$890,679,642	\$802.27
AGRICULTURE, FORESTRY, FISHING & HUNTING	1,946	13,035	\$390,169,579	\$575.62
CROP PRODUCTION	723	3,590	\$83,047,047	\$444.86
Oilseed and Grain Farming	450	1,995	\$47,700,260	\$459.81
Vegetable and Melon Farming	9	89	\$1,025,039	\$221.49
Fruit and Tree Nut Farming	9	127	\$2,372,717	\$359.28
Greenhouse & Nursery Production	53	371	\$9,065,630	\$469.92
Other Crop Farming	202	1,007	\$22,883,401	\$437.01
ANIMAL PRODUCTION	267	3,682	\$120,004,467	\$626.77
Cattle Ranching and Farming	77	334	\$8,743,446	\$503.42
Hog and Pig Farming	9	150	\$5,695,628	\$730.21
Poultry and Egg Production	91	2,627	\$89,583,248	\$655.79
Animal Aquaculture	62	500	\$14,358,496	\$552.25
Other	28	71	\$1,623,649	\$439.77
FORESTRY AND LOGGING	509	2,616	\$83,252,939	\$612.01
Timber Tract Operations	41	236	\$9,830,640	\$801.06
Forest Nurseries & Gathering of Forest Products	6	32	\$1,581,415	\$950.37
Logging	462	2,348	\$71,840,884	\$588.40
OTHER	447	3,147	\$103,865,126	\$634.70
MINING	510	8,315	\$500,510,063	\$1,157.57
OIL AND GAS EXTRACTION	103	961	\$66,411,778	\$1,328.98
MINING (EXCEPT OIL AND GAS)	113	2,196	\$102,352,717	\$896.32
SUPPORT ACTIVITIES FOR MINING	294	5,159	\$331,745,568	\$1,236.62
CONSTRUCTION	7,893	56,331	\$2,181,641,366	\$744.79
CONSTRUCTION OF BUILDINGS	2,174	13,204	\$560,347,860	\$816.11
Residential Building Construction	1,532	3,652	\$112,441,126	\$592.09
Nonresidential Building Construction	643	9,552	\$447,906,734	\$901.76
HEAVY & CIVIL ENGINEERING CONSTRUCTION	862	10,359	\$460,645,640	\$855.16
Utility System Construction	417	5,708	\$268,209,059	\$903.62
Land Subdivision	124	343	\$12,564,549	\$704.45
Highway, Street & Bridge Construction	213	2,948	\$108,767,560	\$709.53

**TABLE 7. STATEWIDE SUMMARY
EMPLOYMENT AND TOTAL EARNINGS, BY INDUSTRY
CALENDAR YEAR 2008**

NORTH AMERICAN INDUSTRY CLASSIFICATION SYSTEM INDUSTRY GROUPS	AVERAGE EMPLOYING UNITS	AVERAGE COVERED EMPLOYMENT	TOTAL EARNINGS	AVERAGE WEEKLY EARNINGS
Other Heavy Construction	109	1,359	\$71,104,472	\$1,006.18
SPECIALTY TRADE CONTRACTORS	4,857	32,768	\$1,160,647,866	\$681.16
Building Foundation & Exterior Contractors	971	6,785	\$231,220,101	\$655.35
Building Equipment Contractors	2,154	15,804	\$601,488,207	\$731.91
Building Finishing Contractors	905	4,768	\$151,714,959	\$611.91
Other Specialty Trade Contractors	827	5,412	\$176,224,599	\$626.19
MANUFACTURING	3,581	182,395	\$6,805,978,761	\$717.59
FOOD MANUFACTURING	311	48,775	\$1,434,275,507	\$565.50
Animal Food Manufacturing	61	1,560	\$61,720,456	\$760.85
Grain and Oilseed Milling	30	2,355	\$91,056,225	\$743.56
Sugar & Confectionery Product Manufacturing	7	58	\$1,209,057	\$400.88
Fruit, Vegetable & Specialty Food	24	5,748	\$202,978,679	\$679.09
Dairy Product Manufacturing	11	689	\$27,567,314	\$769.43
Animal Slaughtering & Processing	92	33,138	\$872,554,013	\$506.36
Seafood Product Preparation & Packaging	5	177	\$3,343,273	\$363.24
Bakeries and Tortilla Manufacturing	53	3,373	\$114,259,654	\$651.44
Other Food Manufacturing	28	1,677	\$59,586,836	\$683.30
BEVERAGE & TOBACCO PRODUCT MFG.	43	1,244	\$49,475,932	\$764.84
TEXTILE MILLS	17	291	\$12,928,742	\$854.40
TEXTILE PRODUCT MILLS	62	1,024	\$37,676,787	\$707.57
Textile Furnishing Mills	15	34	\$658,128	\$372.24
Other Textile Product Mills	47	990	\$37,018,659	\$719.09
APPAREL MANUFACTURING	36	1,482	\$32,021,858	\$415.52
Apparel Knitting Mills	3	707	\$17,292,161	\$470.36
Cut & Sew Apparel Manufacturing	27	554	\$10,566,357	\$366.79
Accessories & Other Apparel Manufacturing	6	221	\$4,163,340	\$362.28
LEATHER & ALLIED PRODUCT MANUFACTURING	22	1,930	\$48,105,110	\$479.33
WOOD PRODUCT MANUFACTURING	381	11,151	\$362,223,780	\$624.68
Sawmills and Wood Preservation	159	4,679	\$160,578,014	\$659.98
Veneer & Engineered Wood Products	55	2,846	\$108,372,467	\$732.29
Other Wood Product Manufacturing	168	3,625	\$93,273,299	\$494.82
PAPER MANUFACTURING	86	10,939	\$588,347,859	\$1,034.32
Pulp, Paper & Paperboard Mills	13	4,276	\$297,837,256	\$1,339.49
Converted Paper Product Manufacturing	73	6,664	\$290,510,603	\$838.35

**TABLE 7. STATEWIDE SUMMARY
EMPLOYMENT AND TOTAL EARNINGS, BY INDUSTRY
CALENDAR YEAR 2008**

NORTH AMERICAN INDUSTRY CLASSIFICATION SYSTEM INDUSTRY GROUPS	AVERAGE EMPLOYING UNITS	AVERAGE COVERED EMPLOYMENT	TOTAL EARNINGS	AVERAGE WEEKLY EARNINGS
PRINTING & RELATED SUPPORT ACTIVITIES	282	4,512	\$166,613,458	\$710.13
PETROLEUM AND COAL PRODUCTS MFG.	23	1,007	\$52,681,663	\$1,006.07
CHEMICAL MANUFACTURING	128	4,811	\$251,483,846	\$1,005.24
Basic Chemical Manufacturing	31	2,048	\$120,567,608	\$1,132.13
Resin, Rubber & Artificial Fibers	10	290	\$15,424,098	\$1,022.82
Agricultural Chemical Manufacturing	16	343	\$17,412,398	\$976.25
Paint, Coating & Adhesive Manufacturing	10	191	\$9,662,968	\$972.91
Other Chemical Preparation Manufacturing	31	899	\$41,531,332	\$888.41
Other	32	1,039	\$46,885,442	\$867.80
PLASTICS & RUBBER PRODUCTS MFG.	157	11,297	\$457,623,028	\$779.01
Plastics Product Manufacturing	109	7,253	\$260,803,981	\$691.50
Rubber Product Manufacturing	48	4,044	\$196,819,047	\$935.95
NONMETALLIC MINERAL PRODUCT MFG.	267	4,375	\$165,928,683	\$729.36
Clay Product & Refractory Manufacturing	22	535	\$19,229,786	\$691.22
Glass & Glass Product Manufacturing	13	441	\$15,879,828	\$692.47
Cement & Concrete Product Manufacturing	188	2,467	\$91,445,052	\$712.83
Lime & Gypsum Product Manufacturing	5	348	\$16,829,689	\$930.02
Other Nonmetallic Mineral Products	38	584	\$22,544,328	\$742.37
PRIMARY METAL MANUFACTURING	84	8,403	\$462,070,480	\$1,057.48
Iron & Steel Mills and Ferroalloys	14	2,250	\$188,033,317	\$1,607.12
Purchased Steel Product Manufacturing	17	2,377	\$112,574,962	\$910.77
Alumina & Aluminum Production	22	1,922	\$90,386,449	\$904.37
Other Nonferrous Metal Production	17	674	\$24,233,749	\$691.44
Foundries	16	1,181	\$46,842,003	\$762.75
FABRICATED METAL PRODUCT MANUFACTURING	578	16,772	\$683,571,281	\$783.78
Forging & Stamping	11	746	\$29,509,499	\$760.71
Cutlery & Hand Tool Manufacturing	20	1,197	\$42,976,981	\$690.46
Architectural & Structural Metals	195	4,942	\$217,507,969	\$846.39
Boilers, Tanks & Shipping Containers	18	697	\$31,235,132	\$861.80
Hardware Manufacturing	8	241	\$7,623,471	\$608.32
Spring & Wire Product Manufacturing	12	495	\$14,016,908	\$544.56
Machine Shops & Threaded Products	207	1,997	\$70,029,842	\$674.38
Coating, Engraving & Heat Treating Metals	39	636	\$19,078,424	\$576.88
Other Fabricated Metal Product Manufacturing	69	5,822	\$251,593,055	\$831.04

**TABLE 7. STATEWIDE SUMMARY
EMPLOYMENT AND TOTAL EARNINGS, BY INDUSTRY
CALENDAR YEAR 2008**

NORTH AMERICAN INDUSTRY CLASSIFICATION SYSTEM INDUSTRY GROUPS	AVERAGE EMPLOYING UNITS	AVERAGE COVERED EMPLOYMENT	TOTAL EARNINGS	AVERAGE WEEKLY EARNINGS
MACHINERY MANUFACTURING	267	13,981	\$502,559,301	\$691.27
Agriculture, Construction & Mining Machinery	42	3,034	\$75,128,253	\$476.19
Industrial Machinery Manufacturing	36	800	\$35,742,381	\$859.19
Commercial & Service Industry Machinery	27	933	\$41,090,195	\$846.94
HVAC & Commercial Refrigeration Equipment	23	4,382	\$159,006,956	\$697.82
Metalworking Machinery Manufacturing	77	1,371	\$56,359,379	\$790.54
Turbine & Power Transmission Equipment Manufacturing	7	649	\$25,989,512	\$770.11
Other General Purpose Machinery Manufacturing	55	2,813	\$109,242,625	\$746.83
COMPUTER & ELECTRONIC PRODUCT MFG.	83	4,048	\$149,617,057	\$710.78
Communications Equipment Manufacturing	9	151	\$8,799,290	\$1,120.64
Audio & Video Equipment Manufacturing	10	855	\$30,392,140	\$683.58
Semiconductors & Electronic Components	30	2,165	\$74,892,301	\$665.24
Electronic Instrument Manufacturing	28	845	\$35,070,256	\$798.14
Other	7	32	\$463,070	\$278.29
ELECTRICAL EQUIPMENT & APPLIANCES	65	9,683	\$373,926,240	\$742.63
Electrical Equipment Manufacturing	23	4,745	\$186,856,641	\$757.30
Other Electrical Equipment & Component Manufacturing	23	2,010	\$85,807,298	\$820.97
Other	19	2,929	\$101,262,301	\$664.85
TRANSPORTATION EQUIPMENT MANUFACTURING	178	15,901	\$626,858,807	\$758.13
Motor Vehicle Body & Trailer Manufacturing	40	2,346	\$78,466,131	\$643.21
Motor Vehicle Parts Manufacturing	60	6,245	\$208,218,748	\$641.19
Aerospace Product & Parts Manufacturing	31	4,412	\$239,407,174	\$1,043.51
Ship & Boat Building	28	1,552	\$45,773,412	\$567.18
Other	20	1,346	\$54,993,342	\$785.71
FURNITURE & RELATED PRODUCT MFG.	259	5,806	\$184,843,666	\$612.24
Household & Institutional Furniture	212	3,984	\$121,120,231	\$584.65
Office Furniture & Fixtures Manufacturing	40	1,701	\$60,829,610	\$687.71
Other Furniture Related Product Manufacturing	7	121	\$2,893,825	\$459.92
MISCELLANEOUS MANUFACTURING	254	4,964	\$163,145,676	\$632.03
Medical Equipment & Supplies Manufacturing	95	2,444	\$85,762,674	\$674.83
Other Miscellaneous Manufacturing	159	2,519	\$77,383,002	\$590.76
TRADE, TRANSPORTATION & UTILITIES	21,101	243,726	\$8,093,240,814	\$638.58
WHOLESALE TRADE	6,431	48,479	\$2,577,097,402	\$1,022.29
MERCHANT WHOLESALERS, DURABLE GOODS	2,244	22,207	\$1,039,072,895	\$899.81

**TABLE 7. STATEWIDE SUMMARY
EMPLOYMENT AND TOTAL EARNINGS, BY INDUSTRY
CALENDAR YEAR 2008**

NORTH AMERICAN INDUSTRY CLASSIFICATION SYSTEM INDUSTRY GROUPS	AVERAGE EMPLOYING UNITS	AVERAGE COVERED EMPLOYMENT	TOTAL EARNINGS	AVERAGE WEEKLY EARNINGS
Motor Vehicle & Part Merchant Wholesalers	253	2,657	\$102,440,900	\$741.44
Furniture & Furnishing Merchant Wholesalers	71	450	\$20,524,379	\$877.11
Lumber & Supply Merchant Wholesalers	188	1,683	\$69,315,845	\$792.04
Commercial Goods Merchant Wholesalers	298	2,726	\$169,255,185	\$1,194.02
Metal & Mineral Merchant Wholesalers	60	936	\$49,061,026	\$1,007.99
Electric Goods Merchant Wholesalers	183	2,182	\$111,484,731	\$982.56
Hardware & Plumbing Merchant Wholesalers	232	2,375	\$107,785,096	\$872.75
Machinery & Supply Merchant Wholesalers	720	7,380	\$333,653,300	\$869.43
Misc. Durable Goods Merchant Wholesalers	241	1,818	\$75,552,433	\$799.19
MERCHANT WHOLESALERS, NONDURABLE GOODS	1,285	16,333	\$733,136,475	\$863.21
Paper & Paper Product Merchant Wholesalers	77	1,109	\$51,296,077	\$889.51
Druggists' Goods Merchant Wholesalers	62	1,098	\$49,644,423	\$869.49
Apparel & Piece Goods Merchant Wholesalers	46	490	\$18,007,454	\$706.73
Grocery Product Merchant Wholesalers	336	5,552	\$274,067,990	\$949.30
Farm Product Merchant Wholesalers	75	890	\$25,808,966	\$557.67
Chemical Merchant Wholesalers	90	533	\$26,320,301	\$949.64
Petroleum Merchant Wholesalers	153	1,468	\$83,478,276	\$1,093.56
Alcoholic Beverage Merchant Wholesalers	37	1,157	\$53,484,655	\$888.98
Misc. Nondurable Goods Merchant Wholesalers	410	4,036	\$151,028,333	\$719.62
ELECTRONIC MARKETS & AGENTS & BROKERS	2,902	9,938	\$804,888,032	\$1,557.52
RETAIL TRADE	11,299	133,684	\$2,968,722,675	\$427.06
MOTOR VEHICLE & PARTS DEALERS	1,721	17,780	\$619,521,339	\$670.07
Automobile Dealers	724	10,547	\$420,060,728	\$765.91
Other Motor Vehicle Dealers	196	1,601	\$53,150,566	\$638.43
Automotive Parts, Accessories & Tire Stores	801	5,631	\$146,310,045	\$499.67
FURNITURE & HOME FURNISHINGS STORES	589	3,806	\$102,838,962	\$519.62
Furniture Stores	314	2,240	\$64,098,853	\$550.30
Home Furnishings Stores	276	1,565	\$38,740,109	\$476.04
ELECTRONICS & APPLIANCE STORES	532	4,108	\$125,637,693	\$588.15
BUILDING MATERIAL & GARDEN SUPPLY STORES	852	10,918	\$282,337,446	\$497.30
Building Material & Supplies Dealers	666	9,944	\$257,117,374	\$497.24
Lawn & Garden Equipment & Supplies Stores	186	974	\$25,220,072	\$497.95
FOOD & BEVERAGE STORES	1,070	18,460	\$323,301,259	\$336.80
Grocery Stores	610	16,086	\$275,117,826	\$328.90

**TABLE 7. STATEWIDE SUMMARY
EMPLOYMENT AND TOTAL EARNINGS, BY INDUSTRY
CALENDAR YEAR 2008**

NORTH AMERICAN INDUSTRY CLASSIFICATION SYSTEM INDUSTRY GROUPS	AVERAGE EMPLOYING UNITS	AVERAGE COVERED EMPLOYMENT	TOTAL EARNINGS	AVERAGE WEEKLY EARNINGS
Specialty Food Stores	155	856	\$21,956,366	\$493.27
Beer, Wine & Liquor Stores	305	1,517	\$26,227,067	\$332.48
HEALTH & PERSONAL CARE STORES	939	7,547	\$240,426,399	\$612.64
GASOLINE STATIONS	1,566	11,905	\$174,479,957	\$281.85
Gasoline Stations with Convenience Stores	1,415	10,652	\$152,194,055	\$274.77
Other Gasoline Stations	151	1,253	\$22,285,902	\$342.04
CLOTHING & CLOTHING ACCESSORIES STORES	1,062	8,941	\$126,334,428	\$271.73
Clothing Stores	726	6,946	\$87,208,793	\$241.45
Shoe Stores	176	1,153	\$17,279,234	\$288.20
Jewelry, Luggage & Leather Goods Stores	160	842	\$21,846,401	\$498.96
SPORTING GOODS, HOBBY, BOOK & MUSIC STORES	577	4,579	\$71,337,947	\$299.60
Sporting Goods & Musical Instrument Stores	432	3,230	\$53,857,258	\$320.66
Book, Periodical & Music Stores	145	1,348	\$17,480,689	\$249.38
GENERAL MERCHANDISE STORES	735	37,613	\$721,973,595	\$369.13
MISCELLANEOUS STORE RETAILERS	1,321	6,292	\$126,276,678	\$385.95
Florists	246	912	\$14,620,954	\$308.30
Office Supplies, Stationery & Gift Stores	351	2,182	\$44,882,926	\$395.57
Used Merchandise Stores	212	830	\$16,360,129	\$379.06
Other Miscellaneous Store Retailers	512	2,368	\$50,412,669	\$409.41
NONSTORE RETAILERS	337	1,737	\$54,256,972	\$600.69
Electronic Shopping & Mail -Order Houses	92	327	\$13,508,759	\$794.45
Vending Machine Operators	71	611	\$16,069,631	\$505.78
Direct Selling Establishments	174	799	\$24,678,582	\$593.98
TRANSPORTATION & WAREHOUSING	3,006	54,773	\$2,072,459,393	\$727.64
AIR TRANSPORTATION	48	974	\$49,334,466	\$974.07
TRUCK TRANSPORTATION	2,017	34,436	\$1,330,100,147	\$742.79
General Freight Trucking	1,285	28,745	\$1,109,796,663	\$742.47
Specialized Freight Trucking	732	5,692	\$220,303,484	\$744.31
TRANSIT & GROUND PASSENGER TRANSPORTATION	65	1,078	\$18,353,719	\$327.42
Urban Transit Systems	4	58	\$1,242,132	\$411.85
Interurban & Rural Bus Transportation	3	59	\$1,255,285	\$409.15
Taxi & Limousine Service	23	324	\$4,860,220	\$288.47
School & Employee Bus Transportation	7	302	\$5,205,130	\$331.45
Charter Bus Industry Service	6	53	\$1,347,079	\$488.78

**TABLE 7. STATEWIDE SUMMARY
EMPLOYMENT AND TOTAL EARNINGS, BY INDUSTRY
CALENDAR YEAR 2008**

NORTH AMERICAN INDUSTRY CLASSIFICATION SYSTEM INDUSTRY GROUPS	AVERAGE EMPLOYING UNITS	AVERAGE COVERED EMPLOYMENT	TOTAL EARNINGS	AVERAGE WEEKLY EARNINGS
Other Ground Passenger Transportation	21	283	\$4,443,873	\$301.98
PIPELINE TRANSPORTATION	68	862	\$52,363,113	\$1,168.19
SUPPORT ACTIVITIES FOR TRANSPORTATION	418	4,515	\$188,289,526	\$801.98
Support Activities for Air Transportation	102	1,433	\$52,941,024	\$710.47
Support Activities for Rail Transportation	33	371	\$13,154,970	\$681.89
Support Activities for Water Transportation	23	622	\$28,372,923	\$877.22
Support Activities for Road Transportation	110	514	\$13,707,334	\$512.85
Freight Transportation Arrangement	127	1,413	\$75,350,854	\$1,025.52
Other Support Activities for Transportation	23	162	\$4,762,421	\$565.34
POSTAL SERVICE	7	13	\$323,520	\$478.58
COURIERS & MESSENGERS	141	3,365	\$124,979,078	\$714.25
Couriers	84	3,047	\$116,507,573	\$735.32
Local Messengers & Local Delivery	57	319	\$8,471,505	\$510.70
WAREHOUSING & STORAGE	230	9,351	\$302,016,339	\$621.11
OTHER	13	178	\$6,699,485	\$723.80
UTILITIES	365	6,790	\$474,961,344	\$1,345.19
Power Generation & Supply	161	5,082	\$389,587,836	\$1,474.24
Natural Gas Distribution	34	866	\$57,991,607	\$1,287.79
Water, Sewage and Other Systems	170	843	\$27,381,901	\$624.64
INFORMATION	1,121	18,647	\$933,296,438	\$962.51
PUBLISHING INDUSTRIES, EXCEPT INTERNET	255	6,065	\$199,718,122	\$633.26
Newspaper, Book & Directory Publishers	227	5,837	\$185,965,045	\$612.69
Software Publishers	28	228	\$13,753,077	\$1,160.01
MOTION PICTURE & SOUND RECORDING INDUSTRY	144	1,215	\$22,414,363	\$354.77
Motion Picture & Video Industries	123	1,172	\$20,927,958	\$343.40
Sound Recording Industries	21	43	\$1,486,405	\$664.76
BROADCASTING, EXCEPT INTERNET	142	2,111	\$76,947,835	\$700.98
Radio & Television Broadcasting	137	2,073	\$75,952,306	\$704.59
Cable & Other Subscription Programming	6	39	\$995,529	\$490.89
TELECOMMUNICATIONS	422	7,962	\$561,058,676	\$1,355.14
Wired Telecommunications Carriers	301	4,405	\$266,685,360	\$1,164.26
Other Telecommunications	86	546	\$24,465,617	\$861.71
Other	36	3,010	\$269,907,699	\$1,724.43
DATA PROCESSING, HOSTING & RELATED SERVICES	99	989	\$61,779,009	\$1,201.27

**TABLE 7. STATEWIDE SUMMARY
EMPLOYMENT AND TOTAL EARNINGS, BY INDUSTRY
CALENDAR YEAR 2008**

NORTH AMERICAN INDUSTRY CLASSIFICATION SYSTEM INDUSTRY GROUPS	AVERAGE EMPLOYING UNITS	AVERAGE COVERED EMPLOYMENT	TOTAL EARNINGS	AVERAGE WEEKLY EARNINGS
OTHER	59	305	\$11,378,433	\$717.43
FINANCIAL ACTIVITIES	8,432	50,689	\$2,204,823,985	\$836.48
FINANCE & INSURANCE	4,921	36,413	\$1,788,611,010	\$944.62
CREDIT INTERMEDIATION & RELATED ACTIVITIES	2,099	21,168	\$832,190,256	\$756.03
Depository Credit Intermediation	1,430	18,235	\$690,395,918	\$728.10
Nondepository Credit Intermediation	397	2,000	\$109,455,404	\$1,052.46
Activities Related to Credit Intermediation	272	933	\$32,338,934	\$666.56
FINANCIAL INVESTMENT & RELATED ACTIVITIES	644	3,230	\$337,656,264	\$2,010.34
INSURANCE CARRIERS & RELATED ACTIVITIES	2,127	11,554	\$599,203,900	\$997.33
Insurance Carriers	390	4,954	\$296,206,280	\$1,149.83
Insurance Agencies, Brokerages & Support	1,737	6,600	\$302,997,620	\$882.86
OTHER	52	462	\$19,560,590	\$814.21
REAL ESTATE & RENTAL & LEASING	3,511	14,276	\$416,212,975	\$560.67
REAL ESTATE	2,653	8,927	\$253,768,269	\$546.67
Lessors of Real Estate	1,071	4,460	\$119,034,667	\$513.26
Offices of Real Estate Agents & Brokers	959	2,012	\$62,397,838	\$596.40
Activities Related to Real Estate	623	2,454	\$72,335,764	\$566.86
RENTAL & LEASING SERVICES	839	5,282	\$158,387,734	\$576.66
Automotive Equipment Rental & Leasing	125	1,043	\$29,728,072	\$548.12
Consumer Goods Rental	512	2,918	\$65,513,673	\$431.76
General Rental Centers	31	242	\$8,005,628	\$636.18
Machinery & Equipment Rental & Leasing	173	1,079	\$55,140,361	\$982.75
LESSORS OF NONFINANCIAL INTANGIBLE ASSETS	19	68	\$4,056,972	\$1,147.33
PROFESSIONAL & BUSINESS SERVICES	11,831	117,368	\$5,065,913,849	\$830.05
PROFESSIONAL & TECHNICAL SERVICES	7,400	38,785	\$1,915,530,460	\$949.78
Legal Services	1,675	6,533	\$316,347,478	\$931.21
Accounting & Bookkeeping Services	1,251	5,730	\$218,724,305	\$734.07
Architectural & Engineering Services	996	6,693	\$349,350,969	\$1,003.78
Specialized Design Services	180	460	\$18,563,595	\$776.07
Computer Systems Design & Related Services	986	7,874	\$533,491,175	\$1,302.95
Management & Technical Consulting Services	1,249	4,506	\$231,261,522	\$986.98
Scientific Research & Development Services	108	1,104	\$58,145,622	\$1,012.85
Advertising & Related Services	337	1,955	\$93,422,323	\$918.97
Other Professional & Technical Services	618	3,930	\$96,223,471	\$470.85

**TABLE 7. STATEWIDE SUMMARY
EMPLOYMENT AND TOTAL EARNINGS, BY INDUSTRY
CALENDAR YEAR 2008**

NORTH AMERICAN INDUSTRY CLASSIFICATION SYSTEM INDUSTRY GROUPS	AVERAGE EMPLOYING UNITS	AVERAGE COVERED EMPLOYMENT	TOTAL EARNINGS	AVERAGE WEEKLY EARNINGS
MANAGEMENT OF COMPANIES & ENTERPRISES	555	25,766	\$1,941,462,442	\$1,449.03
ADMINISTRATIVE & WASTE SERVICES	3,876	52,817	\$1,208,920,947	\$440.17
ADMINISTRATIVE & SUPPORT SERVICES	3,653	50,357	\$1,110,367,281	\$424.04
Office Administrative Services	398	1,348	\$72,707,066	\$1,037.25
Facilities Support Services	18	211	\$4,902,968	\$446.86
Employment Services	720	22,857	\$446,150,225	\$375.37
Business Support Services	460	7,140	\$169,586,389	\$456.76
Travel Arrangement & Reservation Services	102	394	\$12,626,949	\$616.31
Investigation & Security Services	245	4,548	\$112,502,838	\$475.71
Services to Buildings & Dwellings	1,393	12,215	\$237,388,324	\$373.73
Other Support Services	318	1,645	\$54,502,522	\$637.16
WASTE MANAGEMENT & REMEDIATION SERVICES	223	2,460	\$98,553,666	\$770.43
Waste Collection Services	106	1,261	\$48,528,670	\$740.08
Waste Treatment & Disposal Services	42	721	\$33,737,528	\$899.86
Remediation & Other Waste Services	75	478	\$16,287,468	\$655.27
EDUCATION & HEALTH SERVICES	13,279	154,805	\$5,342,381,913	\$663.66
EDUCATIONAL SERVICES	617	9,754	\$283,443,400	\$558.83
Elementary & Secondary Schools	75	3,191	\$75,415,168	\$454.49
Junior Colleges	8	286	\$8,065,628	\$542.34
Colleges & Universities	29	3,476	\$110,755,005	\$612.75
Business, Computer, & Management Training	46	215	\$19,086,474	\$1,707.20
Technical & Trade Schools	107	766	\$35,599,651	\$893.75
Other Schools & Instruction	242	1,463	\$20,644,734	\$271.37
Educational Support Services	110	358	\$13,876,740	\$745.42
HEALTH CARE & SOCIAL ASSISTANCE	12,662	145,051	\$5,058,938,513	\$670.71
AMBULATORY HEALTH CARE SERVICES	5,042	44,969	\$2,288,292,419	\$978.58
Offices of Physicians	2,228	21,279	\$1,432,967,653	\$1,295.04
Offices of Dentists	952	6,299	\$262,265,037	\$800.69
Offices of Other Health Practitioners	1,181	6,123	\$199,539,336	\$626.70
Outpatient Care Centers	254	3,968	\$154,139,429	\$747.03
Medical & Diagnostic Laboratories	107	855	\$46,474,692	\$1,045.31
Home Health Care Services	184	4,132	\$118,621,258	\$552.08
Other Ambulatory Health Care Services	137	2,314	\$74,285,014	\$617.35
HOSPITALS	125	42,401	\$1,661,135,130	\$753.40

**TABLE 7. STATEWIDE SUMMARY
EMPLOYMENT AND TOTAL EARNINGS, BY INDUSTRY
CALENDAR YEAR 2008**

NORTH AMERICAN INDUSTRY CLASSIFICATION SYSTEM INDUSTRY GROUPS	AVERAGE EMPLOYING UNITS	AVERAGE COVERED EMPLOYMENT	TOTAL EARNINGS	AVERAGE WEEKLY EARNINGS
General Medical & Surgical Hospitals	91	38,690	\$1,521,002,228	\$756.01
Psychiatric & Substance Abuse Hospitals	11	1,748	\$60,610,886	\$666.82
Other Hospitals	22	1,963	\$79,522,016	\$779.05
NURSING & RESIDENTIAL CARE FACILITIES	525	28,466	\$606,559,843	\$409.77
Nursing Care Facilities	253	21,098	\$449,670,142	\$409.87
Residential Mental Health Facilities	128	3,387	\$75,570,866	\$429.08
Community Care Facilities for the Elderly	97	2,412	\$45,386,429	\$361.86
Other Residential Care Facilities	46	1,570	\$35,932,406	\$440.13
SOCIAL ASSISTANCE	6,971	29,214	\$502,951,121	\$331.08
Individual & Family Services	5,763	15,568	\$273,413,951	\$337.74
Emergency & Other Relief Services	127	946	\$20,359,291	\$413.87
Vocational Rehabilitation Services	129	3,735	\$73,310,375	\$377.46
Child Day Care Services	952	8,965	\$135,867,504	\$291.45
LEISURE & HOSPITALITY	6,232	100,797	\$1,281,862,650	\$244.56
ARTS, ENTERTAINMENT & RECREATION	918	9,855	\$171,474,874	\$334.61
PERFORMING ARTS & SPECTATOR SPORTS	232	2,405	\$51,796,957	\$414.18
Performing Arts Companies	38	436	\$6,921,833	\$305.30
Spectator Sports	62	1,216	\$25,472,513	\$402.84
Performing Arts & Sports Promoters	48	620	\$12,429,235	\$385.52
Agents & Managers for Public Figures	21	25	\$1,195,086	\$919.30
Independent Artists, Writers & Performers	63	109	\$5,778,290	\$1,019.46
MUSEUMS, PARKS & HISTORICAL SITES	51	262	\$5,201,940	\$381.82
GAMBLING, RECREATION & AMUSEMENT INDUSTRY	635	7,188	\$114,475,977	\$306.27
ACCOMMODATION & FOOD SERVICES	5,314	90,942	\$1,110,387,776	\$234.80
ACCOMMODATION	845	11,682	\$177,284,437	\$291.84
Traveler Accommodation	765	11,169	\$169,108,628	\$291.17
RV Parks & Recreational Camps	61	442	\$6,959,840	\$302.81
Rooming & Boarding Houses	19	70	\$1,215,969	\$334.06
FOOD SERVICES & DRINKING PLACES	4,469	79,260	\$933,103,339	\$226.40
Full -Service Restaurants	1,953	34,462	\$433,509,847	\$241.91
Limited-Service Eating Places	2,223	41,472	\$453,571,610	\$210.32
Special Food Services	148	2,299	\$33,924,962	\$283.78
Drinking Places, Alcoholic Beverages	145	1,028	\$12,096,920	\$226.30
OTHER SERVICES	5,428	25,215	\$653,961,769	\$498.76

**TABLE 7. STATEWIDE SUMMARY
EMPLOYMENT AND TOTAL EARNINGS, BY INDUSTRY
CALENDAR YEAR 2008**

NORTH AMERICAN INDUSTRY CLASSIFICATION SYSTEM INDUSTRY GROUPS	AVERAGE EMPLOYING UNITS	AVERAGE COVERED EMPLOYMENT	TOTAL EARNINGS	AVERAGE WEEKLY EARNINGS
REPAIR & MAINTENANCE	2,176	9,429	\$293,788,309	\$599.19
Automotive Repair & Maintenance	1,488	6,456	\$180,483,273	\$537.61
Electronic Equipment Repair & Maintenance	159	678	\$25,598,241	\$726.07
Commercial Machinery Repair & Maintenance	345	1,659	\$69,835,125	\$809.51
Household Goods Repair & Maintenance	184	636	\$17,871,670	\$540.39
PERSONAL & LAUNDRY SERVICES	1,325	8,151	\$165,578,357	\$390.65
Personal Care Services	577	2,728	\$44,665,205	\$314.86
Death Care Services	240	1,635	\$44,173,272	\$519.56
Drycleaning & Laundry Services	331	3,104	\$63,118,970	\$391.05
Other Personal Services	177	685	\$13,620,910	\$382.40
MEMBERSHIP ASSOCIATIONS & ORGANIZATIONS	1,043	6,416	\$173,322,532	\$519.50
Religious Organizations	46	249	\$6,122,097	\$472.82
Grantmaking & Giving Services	104	497	\$19,971,058	\$772.75
Social Advocacy Organizations	183	2,014	\$54,988,471	\$525.06
Civic & Social Organizations	204	1,527	\$22,444,359	\$282.66
Professional & Similar Organizations	506	2,128	\$69,796,547	\$630.75
PRIVATE HOUSEHOLDS	885	1,219	\$21,272,571	\$335.59
LOCAL GOVERNMENT	1,984	113,240	\$3,626,195,054	\$615.81
STATE GOVERNMENT	1,242	66,117	\$2,541,527,053	\$739.23
NONCLASSIFIABLE ESTABLISHMENTS	0	0	\$0	

**TABLE 8. COUNTY SUMMARY
EMPLOYMENT AND TOTAL EARNINGS, BY INDUSTRY
CALENDAR YEAR 2008**

NORTH AMERICAN INDUSTRY CLASSIFICATION SYSTEM INDUSTRY GROUP	AVERAGE EMPLOYING UNITS	AVERAGE COVERED EMPLOYMENT	TOTAL EARNINGS	AVERAGE WEEKLY EARNINGS
ARKANSAS COUNTY - TOTAL	752	10,116	\$313,303,641	\$595.60
Natural Resources & Mining	45	228	\$8,423,697	\$710.50
Construction	47	326	\$11,961,916	\$705.63
Manufacturing	33	3,633	\$125,116,503	\$662.29
Trade, Transportation & Utilities	202	2,047	\$68,562,239	\$644.12
Wholesale Trade	43	403	\$20,912,773	\$997.94
Retail Trade	99	1,101	\$24,414,791	\$426.44
Transportation, Warehousing & Utilities	60	544	\$23,234,675	\$821.36
Information	11	105	\$3,789,498	\$694.05
Financial Activities	52	330	\$12,446,091	\$725.30
Professional & Business Services	62	414	\$17,194,565	\$798.71
Education & Health Services	136	1,276	\$27,785,830	\$418.76
Leisure & Hospitality	59	519	\$5,231,573	\$193.85
Other Services	60	143	\$3,230,895	\$434.49
Local Government	32	859	\$23,626,085	\$528.93
State Government	16	234	\$5,934,749	\$487.73
ASHLEY COUNTY - TOTAL	586	7,831	\$276,260,389	\$678.42
Natural Resources & Mining	63	394	\$12,065,918	\$588.93
Construction	49	586	\$19,170,001	\$629.10
Manufacturing	27	2,491	\$133,478,630	\$1,030.47
Trade, Transportation & Utilities	137	1,224	\$31,601,106	\$496.50
Wholesale Trade	24	182	\$7,222,146	\$763.12
Retail Trade	85	801	\$15,277,569	\$366.79
Transportation, Warehousing & Utilities	28	241	\$9,101,391	\$726.25
Information	8	48	\$1,372,744	\$549.98
Financial Activities	40	251	\$7,946,718	\$608.85
Professional & Business Services	52	380	\$9,119,454	\$461.51
Education & Health Services	98	698	\$21,589,496	\$594.82
Leisure & Hospitality	28	422	\$4,289,048	\$195.45
Other Services	42	189	\$4,350,852	\$442.70
Local Government	32	911	\$26,186,079	\$552.78
State Government	12	238	\$5,090,343	\$411.31

**TABLE 8. COUNTY SUMMARY
EMPLOYMENT AND TOTAL EARNINGS, BY INDUSTRY
CALENDAR YEAR 2008**

NORTH AMERICAN INDUSTRY CLASSIFICATION SYSTEM INDUSTRY GROUP	AVERAGE EMPLOYING UNITS	AVERAGE COVERED EMPLOYMENT	TOTAL EARNINGS	AVERAGE WEEKLY EARNINGS
BAXTER COUNTY - TOTAL	1,339	14,699	\$430,135,699	\$562.75
Natural Resources & Mining	5	131	\$3,877,832	\$569.26
Construction	151	722	\$19,789,189	\$527.09
Manufacturing	66	2,479	\$90,407,044	\$701.33
Trade, Transportation & Utilities	290	2,683	\$65,948,588	\$472.70
Wholesale Trade	39	216	\$6,422,862	\$571.84
Retail Trade	218	2,255	\$52,539,388	\$448.06
Transportation, Warehousing & Utilities	34	212	\$6,986,338	\$633.74
Information	23	241	\$8,254,989	\$658.71
Financial Activities	126	709	\$25,614,056	\$694.75
Professional & Business Services	142	872	\$24,648,413	\$543.59
Education & Health Services	262	3,440	\$121,561,705	\$679.57
Leisure & Hospitality	121	1,514	\$18,103,356	\$229.95
Other Services	104	383	\$7,334,246	\$368.26
Local Government	37	1,194	\$35,427,444	\$570.60
State Government	13	332	\$9,168,837	\$531.10
BENTON COUNTY - TOTAL	5,549	94,690	\$4,029,265,934	\$818.31
Natural Resources & Mining	30	782	\$34,863,607	\$857.36
Construction	687	4,111	\$155,403,142	\$726.96
Manufacturing	244	13,081	\$469,485,775	\$690.21
Trade, Transportation & Utilities	1,509	23,074	\$929,912,319	\$775.03
Wholesale Trade	685	3,867	\$308,225,197	\$1,532.82
Retail Trade	635	9,171	\$218,939,891	\$459.10
Transportation, Warehousing & Utilities	189	10,036	\$402,747,231	\$771.74
Information	74	869	\$36,632,255	\$810.66
Financial Activities	587	3,907	\$178,323,425	\$877.73
Professional & Business Services	1,016	22,961	\$1,507,473,227	\$1,262.57
Education & Health Services	529	7,399	\$257,813,613	\$670.08
Leisure & Hospitality	441	8,606	\$116,843,468	\$261.10
Other Services	336	1,657	\$44,507,612	\$516.55
Local Government	78	7,259	\$267,723,658	\$709.26
State Government	19	984	\$30,283,833	\$591.85

**TABLE 8. COUNTY SUMMARY
EMPLOYMENT AND TOTAL EARNINGS, BY INDUSTRY
CALENDAR YEAR 2008**

NORTH AMERICAN INDUSTRY CLASSIFICATION SYSTEM INDUSTRY GROUP	AVERAGE EMPLOYING UNITS	AVERAGE COVERED EMPLOYMENT	TOTAL EARNINGS	AVERAGE WEEKLY EARNINGS
BOONE COUNTY - TOTAL	1,081	13,669	\$431,763,981	\$607.44
Construction	96	459	\$14,120,872	\$591.62
Manufacturing	73	1,849	\$65,855,782	\$684.94
Trade, Transportation & Utilities	261	4,442	\$155,070,678	\$671.35
Wholesale Trade	59	654	\$20,147,027	\$592.42
Retail Trade	149	1,889	\$42,046,491	\$428.05
Transportation, Warehousing & Utilities	54	1,899	\$92,877,160	\$940.55
Information	20	425	\$15,607,151	\$706.21
Financial Activities	98	639	\$21,806,408	\$656.27
Professional & Business Services	113	514	\$14,727,591	\$551.02
Education & Health Services	198	1,191	\$35,850,734	\$578.87
Leisure & Hospitality	78	1,112	\$13,068,649	\$226.01
Local Government	61	2,155	\$66,279,625	\$591.47
State Government	21	598	\$21,338,456	\$686.21
Other	63	285	\$8,038,035	\$542.38
BRADLEY COUNTY - TOTAL	400	3,845	\$99,639,145	\$498.35
Natural Resources & Mining	47	354	\$8,790,822	\$477.55
Construction	20	170	\$4,608,820	\$521.36
Manufacturing	10	863	\$26,395,800	\$588.19
Trade, Transportation & Utilities	82	473	\$10,384,980	\$422.22
Wholesale Trade	16	73	\$2,430,614	\$640.31
Retail Trade	44	346	\$6,171,744	\$343.03
Transportation, Warehousing & Utilities	23	54	\$1,782,622	\$634.84
Information	4	15	\$473,672	\$607.27
Financial Activities	27	161	\$4,760,940	\$568.67
Professional & Business Services	28	87	\$1,555,077	\$343.74
Education & Health Services	108	632	\$16,618,741	\$505.68
Leisure & Hospitality	17	155	\$1,593,586	\$197.72
Other Services	32	121	\$2,881,389	\$457.94
Local & State Government	26	812	\$21,575,318	\$510.97

**TABLE 8. COUNTY SUMMARY
EMPLOYMENT AND TOTAL EARNINGS, BY INDUSTRY
CALENDAR YEAR 2008**

NORTH AMERICAN INDUSTRY CLASSIFICATION SYSTEM INDUSTRY GROUP	AVERAGE EMPLOYING UNITS	AVERAGE COVERED EMPLOYMENT	TOTAL EARNINGS	AVERAGE WEEKLY EARNINGS
CALHOUN COUNTY - TOTAL	122	2,957	\$121,612,344	\$790.90
Natural Resources & Mining	18	197	\$6,753,459	\$659.26
Construction	12	56	\$1,402,364	\$481.58
Manufacturing	10	1,977	\$91,762,334	\$892.59
Trade, Transportation & Utilities	32	205	\$5,294,082	\$496.63
Retail Trade	20	80	\$1,104,128	\$265.42
Other Trade, Transportation & Utilities	12	126	\$4,189,954	\$639.49
Financial Activities	6	83	\$2,566,385	\$594.62
Education & Health Services	8	49	\$1,438,199	\$564.44
Leisure & Hospitality	6	23	\$160,532	\$134.22
Local & State Government	20	268	\$6,788,038	\$487.09
Other	11	101	\$5,446,951	\$1,037.12
CARROLL COUNTY - TOTAL	844	10,050	\$248,754,852	\$475.99
Natural Resources & Mining	17	277	\$8,095,083	\$562.00
Construction	82	345	\$10,193,330	\$568.19
Trade, Transportation & Utilities	210	1,689	\$41,573,469	\$473.35
Wholesale Trade	28	155	\$3,581,562	\$444.36
Retail Trade	162	1,250	\$26,138,623	\$402.13
Transportation, Warehousing & Utilities	20	284	\$11,853,284	\$802.63
Information	14	101	\$3,121,432	\$594.33
Financial Activities	77	376	\$12,856,169	\$657.54
Professional & Business Services	66	224	\$5,866,041	\$503.61
Education & Health Services	92	898	\$27,089,581	\$580.13
Leisure & Hospitality	168	1,564	\$18,929,528	\$232.76
Local Government	25	1,016	\$28,340,618	\$536.43
State Government	11	106	\$3,166,148	\$574.41
Other	82	3,454	\$89,523,453	\$498.44

**TABLE 8. COUNTY SUMMARY
EMPLOYMENT AND TOTAL EARNINGS, BY INDUSTRY
CALENDAR YEAR 2008**

NORTH AMERICAN INDUSTRY CLASSIFICATION SYSTEM INDUSTRY GROUP	AVERAGE EMPLOYING UNITS	AVERAGE COVERED EMPLOYMENT	TOTAL EARNINGS	AVERAGE WEEKLY EARNINGS
CHICOT COUNTY - TOTAL	404	3,536	\$87,384,181	\$475.24
Natural Resources & Mining	48	257	\$7,421,068	\$555.30
Construction	14	123	\$3,902,309	\$610.12
Manufacturing	10	458	\$8,382,311	\$351.96
Trade, Transportation & Utilities	69	561	\$13,589,143	\$465.83
Wholesale Trade	14	102	\$4,217,857	\$795.22
Retail Trade	46	397	\$6,761,653	\$327.54
Transportation, Warehousing & Utilities	9	63	\$2,609,633	\$796.59
Information	6	10	\$224,860	\$432.42
Financial Activities	30	169	\$5,747,438	\$654.01
Professional & Business Services	29	83	\$2,867,653	\$664.42
Education & Health Services	131	644	\$15,218,740	\$454.45
Leisure & Hospitality	20	146	\$1,364,770	\$179.76
Other Services	18	43	\$898,087	\$401.65
Local Government	17	702	\$19,123,604	\$523.88
State Government	11	339	\$8,644,198	\$490.37
CLARK COUNTY - TOTAL	633	9,775	\$270,432,427	\$532.03
Natural Resources & Mining	34	214	\$6,910,436	\$621.00
Construction	33	106	\$2,570,023	\$466.26
Manufacturing	35	2,377	\$78,994,087	\$639.09
Trade, Transportation & Utilities	149	1,605	\$40,401,999	\$484.09
Wholesale Trade	21	90	\$3,493,639	\$746.50
Retail Trade	104	1,217	\$26,210,782	\$414.18
Transportation, Warehousing & Utilities	24	299	\$10,697,578	\$688.04
Information	9	47	\$1,462,198	\$598.28
Financial Activities	88	378	\$11,881,860	\$604.49
Professional & Business Services	50	317	\$14,822,940	\$899.23
Education & Health Services	89	1,332	\$36,338,014	\$524.63
Leisure & Hospitality	58	1,041	\$11,581,139	\$213.94
Other Services	46	206	\$4,596,780	\$429.12
Local Government	27	966	\$27,154,042	\$540.57
State Government	15	1,185	\$33,718,909	\$547.21

**TABLE 8. COUNTY SUMMARY
EMPLOYMENT AND TOTAL EARNINGS, BY INDUSTRY
CALENDAR YEAR 2008**

NORTH AMERICAN INDUSTRY CLASSIFICATION SYSTEM INDUSTRY GROUP	AVERAGE EMPLOYING UNITS	AVERAGE COVERED EMPLOYMENT	TOTAL EARNINGS	AVERAGE WEEKLY EARNINGS
CLAY COUNTY - TOTAL	419	4,018	\$99,854,720	\$477.92
Natural Resources & Mining	62	210	\$5,160,435	\$472.57
Construction	32	148	\$3,815,789	\$495.81
Manufacturing	17	684	\$18,988,506	\$533.86
Trade, Transportation & Utilities	97	939	\$25,093,711	\$513.92
Wholesale Trade	23	345	\$10,203,231	\$568.74
Retail Trade	49	428	\$8,427,524	\$378.66
Transportation, Warehousing & Utilities	26	166	\$6,462,956	\$748.72
Information	4	68	\$1,463,803	\$413.97
Financial Activities	34	129	\$3,751,063	\$559.19
Professional & Business Services	27	51	\$1,392,732	\$525.16
Education & Health Services	65	526	\$11,820,721	\$432.17
Leisure & Hospitality	21	203	\$1,792,647	\$169.82
Other Services	27	74	\$1,845,618	\$479.63
Local Government	22	910	\$22,802,207	\$481.87
State Government	12	77	\$1,927,488	\$481.39
CLEBURNE COUNTY - TOTAL	711	6,996	\$188,710,972	\$518.73
Natural Resources & Mining	21	178	\$7,354,447	\$794.56
Construction	86	598	\$21,585,637	\$694.16
Manufacturing	41	1,311	\$40,976,162	\$601.07
Trade, Transportation & Utilities	184	1,570	\$41,060,036	\$502.94
Wholesale Trade	44	201	\$7,556,993	\$723.02
Retail Trade	112	1,010	\$20,891,101	\$397.77
Transportation, Warehousing & Utilities	28	359	\$12,611,942	\$675.59
Information	7	56	\$1,411,758	\$484.81
Financial Activities	78	307	\$10,263,819	\$642.94
Professional & Business Services	57	225	\$5,906,712	\$504.85
Education & Health Services	88	832	\$21,776,320	\$503.34
Leisure & Hospitality	71	896	\$10,599,441	\$227.49
Other Services	50	157	\$3,037,052	\$372.01
Local Government	19	742	\$21,385,643	\$554.26
State Government	10	122	\$3,353,945	\$528.68

**TABLE 8. COUNTY SUMMARY
EMPLOYMENT AND TOTAL EARNINGS, BY INDUSTRY
CALENDAR YEAR 2008**

NORTH AMERICAN INDUSTRY CLASSIFICATION SYSTEM INDUSTRY GROUP	AVERAGE EMPLOYING UNITS	AVERAGE COVERED EMPLOYMENT	TOTAL EARNINGS	AVERAGE WEEKLY EARNINGS
CLEVELAND COUNTY - TOTAL	122	1,029	\$23,888,297	\$446.44
Natural Resources & Mining	16	159	\$4,392,135	\$531.22
Construction	9	29	\$541,938	\$359.38
Manufacturing	6	92	\$2,326,037	\$486.21
Trade, Transportation & Utilities	29	168	\$3,408,930	\$390.22
Retail Trade	15	72	\$858,085	\$229.19
Other Trade, Transportation & Utilities	15	96	\$2,550,845	\$510.99
Education & Health Services	30	118	\$1,994,558	\$325.06
Other Services	5	18	\$565,051	\$603.69
Local Government	11	311	\$7,758,610	\$479.76
State Government	8	63	\$1,574,819	\$480.71
Other	9	72	\$1,326,219	\$354.23
COLUMBIA COUNTY - TOTAL	739	9,210	\$304,761,732	\$636.35
Natural Resources & Mining	49	605	\$35,196,992	\$1,118.79
Construction	43	349	\$12,912,891	\$711.53
Manufacturing	38	2,484	\$108,903,751	\$843.12
Trade, Transportation & Utilities	171	1,497	\$37,229,129	\$478.25
Wholesale Trade	27	232	\$7,932,343	\$657.52
Retail Trade	111	998	\$19,214,686	\$370.25
Transportation, Warehousing & Utilities	33	268	\$10,082,100	\$723.46
Information	9	68	\$1,950,689	\$551.67
Financial Activities	78	408	\$14,677,004	\$691.79
Professional & Business Services	64	344	\$9,503,024	\$531.25
Education & Health Services	150	950	\$20,405,302	\$413.06
Leisure & Hospitality	49	636	\$7,026,686	\$212.47
Other Services	49	225	\$4,157,985	\$355.38
Local Government	26	1,089	\$32,466,768	\$573.33
State Government	14	554	\$20,331,511	\$705.76

**TABLE 8. COUNTY SUMMARY
EMPLOYMENT AND TOTAL EARNINGS, BY INDUSTRY
CALENDAR YEAR 2008**

NORTH AMERICAN INDUSTRY CLASSIFICATION SYSTEM INDUSTRY GROUP	AVERAGE EMPLOYING UNITS	AVERAGE COVERED EMPLOYMENT	TOTAL EARNINGS	AVERAGE WEEKLY EARNINGS
CONWAY COUNTY - TOTAL	595	6,889	\$205,309,841	\$573.13
Natural Resources & Mining	24	234	\$10,888,070	\$894.81
Construction	56	518	\$21,677,002	\$804.76
Manufacturing	25	1,044	\$47,342,102	\$872.05
Trade, Transportation & Utilities	140	1,462	\$39,968,590	\$525.74
Wholesale Trade	25	210	\$8,035,384	\$735.84
Retail Trade	84	882	\$18,914,161	\$412.40
Transportation, Warehousing & Utilities	32	370	\$13,019,045	\$676.67
Information	6	13	\$669,971	\$991.08
Financial Activities	36	181	\$5,472,354	\$581.42
Professional & Business Services	43	536	\$9,885,882	\$354.69
Education & Health Services	154	924	\$23,820,861	\$495.77
Leisure & Hospitality	45	503	\$4,971,426	\$190.07
Other Services	28	163	\$6,131,052	\$723.34
Local Government	28	908	\$24,376,904	\$516.28
State Government	11	404	\$10,105,627	\$481.04
CRAIGHEAD COUNTY - TOTAL	2,652	41,881	\$1,332,710,851	\$611.95
Natural Resources & Mining	63	298	\$7,779,200	\$502.01
Construction	230	1,759	\$60,225,180	\$658.43
Manufacturing	136	6,941	\$251,243,433	\$696.10
Trade, Transportation & Utilities	727	8,696	\$242,655,288	\$536.62
Wholesale Trade	186	1,715	\$74,324,929	\$833.43
Retail Trade	425	5,784	\$122,269,164	\$406.52
Transportation, Warehousing & Utilities	117	1,197	\$46,061,195	\$740.01
Information	31	552	\$19,015,281	\$662.46
Financial Activities	261	1,630	\$66,687,985	\$786.79
Professional & Business Services	352	3,681	\$102,631,513	\$536.18
Education & Health Services	417	7,307	\$295,548,413	\$777.83
Leisure & Hospitality	203	4,050	\$53,622,446	\$254.62
Other Services	169	896	\$18,983,993	\$407.45
Local Government	38	3,552	\$115,298,710	\$624.24
State Government	25	2,520	\$99,019,409	\$755.64

**TABLE 8. COUNTY SUMMARY
EMPLOYMENT AND TOTAL EARNINGS, BY INDUSTRY
CALENDAR YEAR 2008**

NORTH AMERICAN INDUSTRY CLASSIFICATION SYSTEM INDUSTRY GROUP	AVERAGE EMPLOYING UNITS	AVERAGE COVERED EMPLOYMENT	TOTAL EARNINGS	AVERAGE WEEKLY EARNINGS
CRAWFORD COUNTY - TOTAL	1,289	19,926	\$582,365,557	\$562.05
Natural Resources & Mining	27	438	\$18,386,772	\$807.29
Construction	189	1,338	\$47,441,736	\$681.87
Manufacturing	78	3,731	\$111,079,874	\$572.54
Trade, Transportation & Utilities	313	6,778	\$204,159,876	\$579.25
Wholesale Trade	81	746	\$30,100,566	\$775.95
Retail Trade	158	1,987	\$41,163,971	\$398.40
Transportation, Warehousing & Utilities	73	4,044	\$132,895,339	\$631.97
Information	12	175	\$5,974,129	\$656.50
Financial Activities	138	567	\$18,528,060	\$628.41
Professional & Business Services	164	1,301	\$33,758,881	\$499.01
Education & Health Services	151	1,457	\$43,619,451	\$575.73
Leisure & Hospitality	87	1,555	\$18,231,523	\$225.47
Other Services	79	378	\$10,135,539	\$515.65
Local Government	41	2,038	\$65,131,494	\$614.59
State Government	11	170	\$5,918,222	\$669.48
CRITTENDEN COUNTY - TOTAL	1,291	16,792	\$520,778,628	\$596.41
Natural Resources & Mining	41	256	\$7,642,231	\$574.09
Construction	71	524	\$19,421,564	\$712.77
Manufacturing	46	2,163	\$85,461,390	\$759.82
Trade, Transportation & Utilities	341	4,863	\$158,912,995	\$628.42
Wholesale Trade	80	803	\$38,131,214	\$913.19
Retail Trade	173	2,119	\$43,306,028	\$393.02
Transportation, Warehousing & Utilities	88	1,941	\$77,475,753	\$767.60
Information	7	70	\$2,666,935	\$732.67
Financial Activities	109	595	\$20,510,650	\$662.92
Professional & Business Services	133	853	\$23,779,011	\$536.09
Education & Health Services	285	2,182	\$68,748,463	\$605.91
Leisure & Hospitality	105	1,915	\$27,142,797	\$272.57
Other Services	94	590	\$13,514,264	\$440.49
Local Government	46	2,285	\$78,526,742	\$660.89
State Government	15	495	\$14,451,586	\$561.44

**TABLE 8. COUNTY SUMMARY
EMPLOYMENT AND TOTAL EARNINGS, BY INDUSTRY
CALENDAR YEAR 2008**

NORTH AMERICAN INDUSTRY CLASSIFICATION SYSTEM INDUSTRY GROUP	AVERAGE EMPLOYING UNITS	AVERAGE COVERED EMPLOYMENT	TOTAL EARNINGS	AVERAGE WEEKLY EARNINGS
CROSS COUNTY - TOTAL	557	4,940	\$135,687,929	\$528.22
Natural Resources & Mining	37	213	\$4,574,319	\$412.99
Construction	33	164	\$4,362,187	\$511.51
Manufacturing	15	674	\$21,081,828	\$601.51
Trade, Transportation & Utilities	144	1,250	\$36,963,874	\$568.67
Wholesale Trade	29	287	\$10,984,217	\$736.01
Retail Trade	79	724	\$16,277,598	\$432.36
Transportation, Warehousing & Utilities	37	239	\$9,702,059	\$780.66
Information	4	42	\$1,155,175	\$528.93
Financial Activities	46	337	\$10,426,414	\$594.98
Professional & Business Services	47	157	\$4,656,444	\$570.36
Education & Health Services	127	724	\$18,343,058	\$487.23
Leisure & Hospitality	34	377	\$3,906,332	\$199.26
Other Services	42	77	\$1,505,398	\$375.97
Local Government	17	701	\$21,506,540	\$590.00
State Government	11	224	\$7,206,360	\$618.68
DALLAS COUNTY - TOTAL	277	3,323	\$90,210,832	\$522.07
Natural Resources & Mining	40	199	\$5,573,146	\$538.57
Construction	15	62	\$2,114,485	\$655.86
Manufacturing	17	924	\$32,599,353	\$678.47
Trade, Transportation & Utilities	63	461	\$11,408,379	\$475.90
Wholesale Trade	7	25	\$757,455	\$582.66
Retail Trade	42	345	\$7,695,064	\$428.93
Transportation, Warehousing & Utilities	15	91	\$2,955,860	\$624.65
Information	3	22	\$650,890	\$568.96
Financial Activities	20	105	\$3,013,341	\$551.89
Professional & Business Services	16	42	\$1,535,332	\$702.99
Education & Health Services	49	813	\$18,891,123	\$446.85
Leisure & Hospitality	15	130	\$1,201,658	\$177.76
Other Services	15	60	\$1,103,632	\$353.73
Local Government	16	433	\$10,234,060	\$454.52
State Government	9	73	\$1,885,433	\$496.69

**TABLE 8. COUNTY SUMMARY
EMPLOYMENT AND TOTAL EARNINGS, BY INDUSTRY
CALENDAR YEAR 2008**

NORTH AMERICAN INDUSTRY CLASSIFICATION SYSTEM INDUSTRY GROUP	AVERAGE EMPLOYING UNITS	AVERAGE COVERED EMPLOYMENT	TOTAL EARNINGS	AVERAGE WEEKLY EARNINGS
DESHA COUNTY - TOTAL	492	4,611	\$135,481,864	\$565.04
Natural Resources & Mining	50	256	\$7,067,047	\$530.88
Construction	20	122	\$3,931,962	\$619.79
Manufacturing	19	1,009	\$43,693,414	\$832.76
Trade, Transportation & Utilities	125	902	\$23,774,750	\$506.88
Wholesale Trade	19	165	\$7,369,241	\$858.89
Retail Trade	78	566	\$10,775,682	\$366.12
Transportation, Warehousing & Utilities	28	171	\$5,629,827	\$633.13
Information	6	24	\$854,293	\$684.53
Financial Activities	45	205	\$6,052,073	\$567.74
Professional & Business Services	36	101	\$2,729,878	\$519.78
Education & Health Services	102	639	\$14,547,688	\$437.81
Leisure & Hospitality	35	281	\$2,625,898	\$179.71
Other Services	24	68	\$1,288,425	\$364.37
Local Government	19	825	\$23,943,435	\$558.12
State Government	11	178	\$4,973,001	\$537.27
DREW COUNTY - TOTAL	539	6,669	\$169,758,949	\$489.52
Natural Resources & Mining	44	314	\$9,924,223	\$607.80
Construction	23	107	\$2,492,677	\$448.00
Manufacturing	22	792	\$20,351,219	\$494.15
Trade, Transportation & Utilities	129	1,215	\$30,433,187	\$481.69
Wholesale Trade	20	195	\$6,891,376	\$679.62
Retail Trade	89	921	\$19,358,582	\$404.21
Transportation, Warehousing & Utilities	20	100	\$4,183,229	\$804.47
Information	6	73	\$1,949,577	\$513.59
Financial Activities	49	241	\$8,913,932	\$711.29
Professional & Business Services	49	311	\$9,286,322	\$574.22
Education & Health Services	112	925	\$21,216,911	\$441.10
Leisure & Hospitality	43	644	\$5,814,922	\$173.64
Other Services	22	73	\$1,429,666	\$376.62
Local Government	23	1,201	\$34,315,495	\$549.47
State Government	17	774	\$23,630,818	\$587.13

**TABLE 8. COUNTY SUMMARY
EMPLOYMENT AND TOTAL EARNINGS, BY INDUSTRY
CALENDAR YEAR 2008**

NORTH AMERICAN INDUSTRY CLASSIFICATION SYSTEM INDUSTRY GROUP	AVERAGE EMPLOYING UNITS	AVERAGE COVERED EMPLOYMENT	TOTAL EARNINGS	AVERAGE WEEKLY EARNINGS
FAULKNER COUNTY - TOTAL	2,692	38,999	\$1,344,424,882	\$662.95
Natural Resources & Mining	39	822	\$65,179,708	\$1,524.89
Construction	376	2,960	\$110,682,667	\$719.09
Manufacturing	123	4,586	\$191,709,772	\$803.91
Trade, Transportation & Utilities	632	6,936	\$191,875,262	\$531.99
Wholesale Trade	167	870	\$38,133,870	\$842.92
Retail Trade	378	5,075	\$109,450,255	\$414.74
Transportation, Warehousing & Utilities	87	992	\$44,291,137	\$858.62
Information	33	366	\$14,866,979	\$781.16
Financial Activities	320	1,522	\$57,409,009	\$725.37
Professional & Business Services	369	4,919	\$246,903,437	\$965.27
Education & Health Services	394	5,571	\$175,405,329	\$605.49
Leisure & Hospitality	201	4,189	\$46,270,269	\$212.42
Other Services	148	656	\$17,849,060	\$523.25
Local Government	39	3,145	\$112,590,848	\$688.46
State Government	19	3,327	\$113,682,542	\$657.11
FRANKLIN COUNTY - TOTAL	328	4,233	\$128,129,477	\$582.10
Natural Resources & Mining	12	176	\$8,856,693	\$967.73
Construction	31	237	\$8,076,942	\$655.38
Manufacturing	22	939	\$32,874,629	\$673.27
Trade, Transportation & Utilities	86	827	\$25,443,715	\$591.66
Wholesale Trade	17	47	\$1,173,086	\$479.99
Retail Trade	49	486	\$9,715,947	\$384.46
Transportation, Warehousing & Utilities	20	294	\$14,554,682	\$952.03
Information	6	51	\$1,047,190	\$394.87
Financial Activities	29	238	\$6,897,916	\$557.36
Professional & Business Services	23	78	\$2,183,823	\$538.42
Education & Health Services	47	472	\$10,964,111	\$446.71
Leisure & Hospitality	25	289	\$3,061,754	\$203.74
Other Services	18	50	\$1,224,135	\$470.82
Local Government	19	752	\$22,827,602	\$583.77
State Government	10	126	\$4,670,967	\$712.91

**TABLE 8. COUNTY SUMMARY
EMPLOYMENT AND TOTAL EARNINGS, BY INDUSTRY
CALENDAR YEAR 2008**

NORTH AMERICAN INDUSTRY CLASSIFICATION SYSTEM INDUSTRY GROUP	AVERAGE EMPLOYING UNITS	AVERAGE COVERED EMPLOYMENT	TOTAL EARNINGS	AVERAGE WEEKLY EARNINGS
FULTON COUNTY - TOTAL	239	1,958	\$44,530,258	\$437.36
Construction	15	30	\$795,730	\$510.08
Manufacturing	12	121	\$2,150,889	\$341.85
Trade, Transportation & Utilities	63	380	\$10,355,241	\$524.05
Wholesale Trade	14	66	\$1,713,410	\$499.25
Retail Trade	40	186	\$2,938,409	\$303.81
Transportation, Warehousing & Utilities	9	128	\$5,703,422	\$856.88
Financial Activities	14	98	\$2,815,892	\$552.57
Professional & Business Services	14	62	\$1,488,160	\$461.59
Education & Health Services	64	409	\$8,290,419	\$389.81
Leisure & Hospitality	18	170	\$1,684,899	\$190.60
Local Government	13	505	\$13,019,554	\$495.79
State Government	11	112	\$2,747,006	\$471.67
Other	14	71	\$1,182,468	\$320.28
GARLAND COUNTY - TOTAL	3,322	36,522	\$1,045,045,111	\$550.27
Natural Resources & Mining	45	374	\$14,973,482	\$769.92
Construction	438	2,199	\$63,103,932	\$551.86
Manufacturing	119	2,522	\$88,019,781	\$671.17
Trade, Transportation & Utilities	733	7,355	\$190,686,362	\$498.58
Wholesale Trade	162	1,024	\$38,665,759	\$726.14
Retail Trade	507	5,741	\$127,814,339	\$428.14
Transportation, Warehousing & Utilities	64	590	\$24,206,264	\$788.99
Information	40	387	\$14,227,594	\$707.00
Financial Activities	374	1,514	\$53,286,019	\$676.84
Professional & Business Services	427	3,477	\$96,935,904	\$536.14
Education & Health Services	479	7,127	\$270,152,995	\$728.95
Leisure & Hospitality	371	6,518	\$91,828,138	\$270.93
Other Services	235	971	\$21,301,955	\$421.89
Local Government	34	2,968	\$104,757,502	\$678.76
State Government	28	1,110	\$35,771,447	\$619.74

**TABLE 8. COUNTY SUMMARY
EMPLOYMENT AND TOTAL EARNINGS, BY INDUSTRY
CALENDAR YEAR 2008**

NORTH AMERICAN INDUSTRY CLASSIFICATION SYSTEM INDUSTRY GROUP	AVERAGE EMPLOYING UNITS	AVERAGE COVERED EMPLOYMENT	TOTAL EARNINGS	AVERAGE WEEKLY EARNINGS
GRANT COUNTY - TOTAL	313	3,843	\$104,225,874	\$521.56
Natural Resources & Mining	23	162	\$7,360,525	\$873.76
Construction	31	210	\$7,124,246	\$652.40
Manufacturing	16	939	\$26,958,426	\$552.11
Trade, Transportation & Utilities	87	628	\$16,415,444	\$502.68
Wholesale Trade	20	141	\$5,846,655	\$797.42
Retail Trade	42	427	\$8,734,644	\$393.38
Transportation, Warehousing & Utilities	26	60	\$1,834,145	\$587.87
Information	4	28	\$1,036,644	\$711.98
Financial Activities	26	105	\$3,277,412	\$600.26
Professional & Business Services	26	97	\$3,593,256	\$712.38
Education & Health Services	45	456	\$9,423,948	\$397.43
Leisure & Hospitality	20	253	\$2,844,973	\$216.25
Other Services	17	50	\$832,375	\$320.14
Local Government	10	854	\$23,649,666	\$532.55
State Government	9	59	\$1,708,959	\$557.03
GREENE COUNTY - TOTAL	927	14,937	\$428,226,819	\$551.32
Natural Resources & Mining	37	205	\$5,744,192	\$538.85
Construction	84	378	\$11,428,478	\$581.42
Manufacturing	63	5,183	\$187,274,921	\$694.86
Trade, Transportation & Utilities	242	2,308	\$56,493,223	\$470.71
Wholesale Trade	56	427	\$14,793,559	\$666.26
Retail Trade	157	1,675	\$34,241,092	\$393.12
Transportation, Warehousing & Utilities	29	206	\$7,458,572	\$696.28
Information	12	107	\$2,174,618	\$390.84
Financial Activities	91	500	\$15,380,033	\$591.54
Professional & Business Services	93	1,435	\$30,216,041	\$404.93
Education & Health Services	147	1,766	\$47,923,897	\$521.86
Leisure & Hospitality	68	1,109	\$11,919,876	\$206.70
Other Services	51	182	\$3,861,718	\$408.04
Local Government	31	1,497	\$47,214,101	\$606.52
State Government	11	270	\$8,595,721	\$612.23

**TABLE 8. COUNTY SUMMARY
EMPLOYMENT AND TOTAL EARNINGS, BY INDUSTRY
CALENDAR YEAR 2008**

NORTH AMERICAN INDUSTRY CLASSIFICATION SYSTEM INDUSTRY GROUP	AVERAGE EMPLOYING UNITS	AVERAGE COVERED EMPLOYMENT	TOTAL EARNINGS	AVERAGE WEEKLY EARNINGS
HEMPSTEAD COUNTY - TOTAL	499	7,888	\$223,819,031	\$545.67
Natural Resources & Mining	17	220	\$6,732,919	\$588.54
Construction	31	325	\$13,089,319	\$774.52
Manufacturing	28	2,117	\$68,635,345	\$623.48
Trade, Transportation & Utilities	133	1,356	\$35,205,959	\$499.29
Wholesale Trade	28	261	\$7,869,008	\$579.80
Retail Trade	86	905	\$17,897,264	\$380.31
Transportation, Warehousing & Utilities	20	190	\$9,439,687	\$955.43
Information	9	57	\$2,069,032	\$698.05
Financial Activities	43	242	\$8,239,528	\$654.76
Professional & Business Services	40	243	\$5,341,353	\$422.71
Education & Health Services	71	957	\$24,419,406	\$490.70
Leisure & Hospitality	44	630	\$6,617,022	\$201.98
Other Services	38	200	\$5,614,897	\$539.89
Local Government	29	984	\$30,055,222	\$587.38
State Government	17	556	\$17,799,029	\$615.63
HOT SPRING COUNTY - TOTAL	606	7,495	\$226,522,697	\$581.21
Natural Resources & Mining	30	203	\$5,400,668	\$511.62
Construction	69	333	\$10,204,194	\$589.29
Manufacturing	34	1,385	\$61,293,900	\$851.07
Trade, Transportation & Utilities	158	1,436	\$43,891,029	\$587.78
Wholesale Trade	21	92	\$6,006,657	\$1,255.57
Retail Trade	97	949	\$20,148,355	\$408.29
Transportation, Warehousing & Utilities	40	395	\$17,736,017	\$863.49
Information	8	59	\$1,939,551	\$632.19
Financial Activities	61	314	\$10,045,994	\$615.26
Professional & Business Services	49	214	\$5,517,731	\$495.84
Education & Health Services	80	1,122	\$31,062,442	\$532.40
Leisure & Hospitality	41	525	\$5,614,195	\$205.65
Other Services	36	176	\$3,241,842	\$354.22
Local Government	26	1,084	\$30,244,545	\$536.56
State Government	14	645	\$18,066,606	\$538.66

**TABLE 8. COUNTY SUMMARY
EMPLOYMENT AND TOTAL EARNINGS, BY INDUSTRY
CALENDAR YEAR 2008**

NORTH AMERICAN INDUSTRY CLASSIFICATION SYSTEM INDUSTRY GROUP	AVERAGE EMPLOYING UNITS	AVERAGE COVERED EMPLOYMENT	TOTAL EARNINGS	AVERAGE WEEKLY EARNINGS
HOWARD COUNTY - TOTAL	364	7,483	\$204,021,584	\$524.32
Natural Resources & Mining	24	244	\$7,717,663	\$608.26
Construction	21	128	\$4,704,102	\$706.75
Manufacturing	23	4,041	\$115,632,494	\$550.29
Trade, Transportation & Utilities	104	963	\$25,002,063	\$499.28
Wholesale Trade	18	87	\$3,680,288	\$813.50
Retail Trade	62	623	\$12,127,325	\$374.35
Transportation, Warehousing & Utilities	24	253	\$9,194,450	\$698.88
Information	5	37	\$955,690	\$496.72
Financial Activities	40	168	\$4,346,868	\$497.58
Professional & Business Services	27	125	\$3,438,798	\$529.05
Education & Health Services	50	558	\$13,720,456	\$472.86
Leisure & Hospitality	20	311	\$3,161,292	\$195.48
Other Services	22	117	\$2,564,473	\$421.51
Local Government	18	646	\$18,685,037	\$556.23
State Government	12	145	\$4,092,648	\$542.79
INDEPENDENCE COUNTY - TOTAL	946	15,315	\$458,536,437	\$575.78
Natural Resources & Mining	14	123	\$4,377,839	\$684.47
Construction	70	476	\$13,325,202	\$538.35
Manufacturing	55	3,927	\$138,901,649	\$680.21
Trade, Transportation & Utilities	254	2,993	\$89,035,158	\$572.07
Wholesale Trade	49	545	\$18,569,550	\$655.24
Retail Trade	156	1,643	\$33,557,656	\$392.78
Transportation, Warehousing & Utilities	49	805	\$36,907,952	\$881.70
Information	9	139	\$4,290,140	\$593.54
Financial Activities	88	502	\$16,129,656	\$617.90
Professional & Business Services	96	809	\$17,476,013	\$415.42
Education & Health Services	165	2,944	\$102,006,047	\$666.32
Leisure & Hospitality	66	1,026	\$11,168,134	\$209.33
Other Services	67	391	\$7,217,213	\$354.97
Local Government	47	1,501	\$39,054,302	\$500.36
State Government	17	485	\$15,555,084	\$616.78

**TABLE 8. COUNTY SUMMARY
EMPLOYMENT AND TOTAL EARNINGS, BY INDUSTRY
CALENDAR YEAR 2008**

NORTH AMERICAN INDUSTRY CLASSIFICATION SYSTEM INDUSTRY GROUP	AVERAGE EMPLOYING UNITS	AVERAGE COVERED EMPLOYMENT	TOTAL EARNINGS	AVERAGE WEEKLY EARNINGS
IZARD COUNTY - TOTAL	287	3,103	\$75,160,717	\$465.81
Natural Resources & Mining	4	87	\$3,264,868	\$721.68
Construction	27	83	\$2,120,230	\$491.25
Trade, Transportation & Utilities	69	525	\$11,167,387	\$409.06
Retail Trade	49	406	\$7,596,679	\$359.83
Other Trade, Transportation & Utilities	20	119	\$3,570,708	\$577.04
Financial Activities	30	152	\$4,516,440	\$571.41
Professional & Business Services	21	81	\$1,837,852	\$436.34
Education & Health Services	64	611	\$12,763,660	\$401.73
Leisure & Hospitality	18	196	\$1,598,047	\$156.79
Other Services	11	55	\$1,558,853	\$545.05
Local Government	18	509	\$13,747,963	\$519.42
State Government	11	466	\$13,097,685	\$540.51
Other	14	338	\$9,487,732	\$539.81
JACKSON COUNTY - TOTAL	515	5,656	\$164,300,441	\$558.63
Natural Resources & Mining	49	219	\$5,545,233	\$486.94
Construction	24	123	\$4,176,400	\$652.97
Manufacturing	26	1,223	\$43,150,632	\$678.51
Trade, Transportation & Utilities	117	1,114	\$30,332,408	\$523.62
Wholesale Trade	27	212	\$8,643,239	\$784.04
Retail Trade	72	667	\$14,220,995	\$410.02
Transportation, Warehousing & Utilities	19	235	\$7,468,174	\$611.14
Information	5	38	\$1,092,349	\$552.81
Financial Activities	40	167	\$5,468,396	\$629.71
Professional & Business Services	37	134	\$3,916,084	\$562.01
Education & Health Services	113	855	\$25,644,983	\$576.81
Leisure & Hospitality	31	291	\$3,361,237	\$222.13
Other Services	29	93	\$1,948,986	\$403.02
Local Government	32	678	\$17,186,234	\$487.47
State Government	14	723	\$22,477,499	\$597.87

**TABLE 8. COUNTY SUMMARY
EMPLOYMENT AND TOTAL EARNINGS, BY INDUSTRY
CALENDAR YEAR 2008**

NORTH AMERICAN INDUSTRY CLASSIFICATION SYSTEM INDUSTRY GROUP	AVERAGE EMPLOYING UNITS	AVERAGE COVERED EMPLOYMENT	TOTAL EARNINGS	AVERAGE WEEKLY EARNINGS
JEFFERSON COUNTY - TOTAL	2,029	30,619	\$1,013,868,588	\$636.78
Natural Resources & Mining	46	477	\$19,529,669	\$787.36
Construction	124	1,404	\$69,293,415	\$949.12
Manufacturing	71	5,787	\$239,602,001	\$796.22
Trade, Transportation & Utilities	442	5,496	\$164,310,122	\$574.93
Wholesale Trade	82	1,063	\$39,808,282	\$720.17
Retail Trade	297	3,591	\$79,999,468	\$428.42
Transportation, Warehousing & Utilities	64	842	\$44,502,372	\$1,016.41
Information	13	157	\$5,299,706	\$649.16
Financial Activities	160	1,182	\$46,577,042	\$757.79
Professional & Business Services	181	1,655	\$55,326,621	\$642.88
Education & Health Services	622	5,173	\$162,492,005	\$604.07
Leisure & Hospitality	146	2,134	\$23,733,370	\$213.88
Other Services	138	666	\$16,675,402	\$481.50
Local Government	44	3,231	\$100,675,300	\$599.21
State Government	42	3,259	\$110,353,935	\$651.18
JOHNSON COUNTY - TOTAL	477	8,798	\$241,163,031	\$527.14
Natural Resources & Mining	18	258	\$9,141,678	\$681.40
Construction	26	148	\$4,514,649	\$586.62
Manufacturing	45	3,050	\$82,056,546	\$517.38
Trade, Transportation & Utilities	118	2,118	\$59,128,251	\$536.87
Retail Trade	79	912	\$18,252,521	\$384.88
Other Trade, Transportation & Utilities	39	1,206	\$40,875,730	\$651.80
Information	5	34	\$840,595	\$475.45
Financial Activities	47	219	\$6,765,386	\$594.08
Professional & Business Services	49	165	\$5,076,193	\$591.63
Education & Health Services	83	1,142	\$33,113,231	\$557.61
Leisure & Hospitality	36	514	\$5,478,830	\$204.98
Other Services	26	66	\$1,525,248	\$444.42
Local Government	14	918	\$28,302,827	\$592.90
State Government	10	167	\$5,219,597	\$601.06

**TABLE 8. COUNTY SUMMARY
EMPLOYMENT AND TOTAL EARNINGS, BY INDUSTRY
CALENDAR YEAR 2008**

NORTH AMERICAN INDUSTRY CLASSIFICATION SYSTEM INDUSTRY GROUP	AVERAGE EMPLOYING UNITS	AVERAGE COVERED EMPLOYMENT	TOTAL EARNINGS	AVERAGE WEEKLY EARNINGS
LAFAYETTE COUNTY - TOTAL	180	1,391	\$35,838,468	\$495.47
Natural Resources & Mining	39	175	\$5,819,306	\$639.48
Construction	9	56	\$2,458,828	\$844.38
Manufacturing	6	43	\$1,554,207	\$695.08
Trade, Transportation & Utilities	32	196	\$5,083,337	\$498.76
Wholesale Trade	6	43	\$1,443,264	\$645.47
Retail Trade	20	127	\$2,330,023	\$352.82
Transportation, Warehousing & Utilities	7	69	\$2,753,314	\$767.37
Financial Activities	18	61	\$1,594,746	\$502.76
Professional & Business Services	10	90	\$2,600,733	\$555.71
Education & Health Services	31	249	\$4,517,107	\$348.87
Leisure & Hospitality	7	52	\$664,235	\$245.65
Local Government	13	321	\$8,096,402	\$485.05
State Government	8	56	\$1,482,499	\$509.10
Other	7	93	\$1,967,068	\$406.76
LAWRENCE COUNTY - TOTAL	439	4,002	\$101,067,297	\$485.66
Natural Resources & Mining	38	178	\$5,360,970	\$579.19
Construction	25	69	\$1,714,471	\$477.83
Manufacturing	23	504	\$13,420,242	\$512.07
Trade, Transportation & Utilities	127	858	\$22,106,200	\$495.48
Wholesale Trade	21	181	\$5,824,237	\$618.81
Retail Trade	67	527	\$10,530,589	\$384.27
Transportation, Warehousing & Utilities	39	149	\$5,751,374	\$742.30
Financial Activities	36	158	\$4,193,044	\$510.35
Professional & Business Services	24	108	\$3,571,052	\$635.87
Education & Health Services	80	470	\$12,669,986	\$518.41
Leisure & Hospitality	24	340	\$2,851,385	\$161.28
Local Government	28	1,132	\$30,592,939	\$519.72
State Government	11	120	\$3,076,443	\$493.02
Other	23	67	\$1,510,565	\$433.57

**TABLE 8. COUNTY SUMMARY
EMPLOYMENT AND TOTAL EARNINGS, BY INDUSTRY
CALENDAR YEAR 2008**

NORTH AMERICAN INDUSTRY CLASSIFICATION SYSTEM INDUSTRY GROUP	AVERAGE EMPLOYING UNITS	AVERAGE COVERED EMPLOYMENT	TOTAL EARNINGS	AVERAGE WEEKLY EARNINGS
LEE COUNTY - TOTAL	289	2,098	\$55,815,519	\$511.62
Natural Resources & Mining	34	209	\$5,068,507	\$466.37
Construction	10	36	\$1,128,646	\$602.91
Trade, Transportation & Utilities	52	369	\$9,123,521	\$475.48
Wholesale Trade	8	67	\$2,453,584	\$704.24
Retail Trade	27	202	\$3,523,999	\$335.49
Transportation, Warehousing & Utilities	17	101	\$3,145,938	\$599.00
Financial Activities	17	80	\$2,623,476	\$630.64
Professional & Business Services	15	67	\$3,069,421	\$881.00
Education & Health Services	107	377	\$8,906,732	\$454.33
Leisure & Hospitality	8	84	\$776,315	\$177.73
Local Government	15	327	\$9,301,713	\$547.03
State Government	8	500	\$14,788,688	\$568.80
Other	23	50	\$1,028,500	\$395.58
LINCOLN COUNTY - TOTAL	261	2,924	\$80,400,892	\$528.79
Natural Resources & Mining	34	170	\$5,367,243	\$607.15
Construction	13	75	\$1,889,659	\$484.53
Manufacturing	10	367	\$11,269,002	\$590.49
Trade, Transportation & Utilities	50	358	\$10,482,607	\$563.10
Wholesale Trade	7	28	\$1,146,264	\$787.27
Retail Trade	26	193	\$2,989,462	\$297.87
Transportation, Warehousing & Utilities	17	137	\$6,346,881	\$890.92
Financial Activities	22	76	\$2,392,284	\$605.34
Professional & Business Services	12	25	\$732,105	\$563.16
Education & Health Services	70	371	\$7,749,543	\$401.70
Leisure & Hospitality	17	162	\$1,441,805	\$171.15
Local & State Government	21	1,289	\$38,323,304	\$571.75
Other	13	33	\$753,340	\$439.01

**TABLE 8. COUNTY SUMMARY
EMPLOYMENT AND TOTAL EARNINGS, BY INDUSTRY
CALENDAR YEAR 2008**

NORTH AMERICAN INDUSTRY CLASSIFICATION SYSTEM INDUSTRY GROUP	AVERAGE EMPLOYING UNITS	AVERAGE COVERED EMPLOYMENT	TOTAL EARNINGS	AVERAGE WEEKLY EARNINGS
LITTLE RIVER COUNTY - TOTAL	261	4,457	\$192,824,618	\$831.99
Natural Resources & Mining	11	73	\$2,157,763	\$568.43
Construction	25	735	\$38,670,978	\$1,011.80
Manufacturing	17	1,378	\$96,557,944	\$1,347.52
Trade, Transportation & Utilities	61	664	\$15,732,555	\$455.65
Retail Trade	37	400	\$7,661,612	\$368.35
Other Trade, Transportation & Utilities	24	264	\$8,070,943	\$587.92
Financial Activities	23	97	\$2,451,139	\$485.95
Professional & Business Services	23	142	\$3,583,968	\$485.37
Education & Health Services	33	172	\$4,139,883	\$462.87
Leisure & Hospitality	18	209	\$2,233,006	\$205.47
Local Government	20	792	\$23,065,020	\$560.05
State Government	12	95	\$2,489,664	\$503.98
Other	17	99	\$1,742,698	\$338.52
LOGAN COUNTY - TOTAL	505	5,766	\$153,115,878	\$510.67
Natural Resources & Mining	22	162	\$7,611,264	\$903.52
Construction	53	192	\$5,636,334	\$564.54
Manufacturing	30	1,465	\$45,470,061	\$596.88
Trade, Transportation & Utilities	117	873	\$20,158,059	\$444.05
Wholesale Trade	16	33	\$854,110	\$497.73
Retail Trade	76	744	\$15,257,394	\$394.37
Transportation, Warehousing & Utilities	26	96	\$4,046,555	\$810.61
Information	7	42	\$1,316,328	\$602.71
Financial Activities	45	276	\$10,047,939	\$700.11
Professional & Business Services	44	126	\$2,852,298	\$435.33
Education & Health Services	94	783	\$19,698,229	\$483.80
Leisure & Hospitality	30	339	\$3,194,486	\$181.22
Other Services	27	84	\$1,944,977	\$445.28
Local & State Government	37	1,426	\$35,185,903	\$474.51

**TABLE 8. COUNTY SUMMARY
EMPLOYMENT AND TOTAL EARNINGS, BY INDUSTRY
CALENDAR YEAR 2008**

NORTH AMERICAN INDUSTRY CLASSIFICATION SYSTEM INDUSTRY GROUP	AVERAGE EMPLOYING UNITS	AVERAGE COVERED EMPLOYMENT	TOTAL EARNINGS	AVERAGE WEEKLY EARNINGS
LONOKE COUNTY - TOTAL	1,340	12,633	\$351,256,731	\$534.71
Natural Resources & Mining	75	462	\$16,487,608	\$686.30
Construction	175	967	\$34,545,510	\$687.01
Manufacturing	40	1,300	\$51,002,186	\$754.47
Trade, Transportation & Utilities	356	2,810	\$73,243,571	\$501.26
Wholesale Trade	85	495	\$19,818,934	\$769.97
Retail Trade	196	2,022	\$42,916,888	\$408.17
Transportation, Warehousing & Utilities	76	293	\$10,507,749	\$689.67
Information	16	89	\$3,907,741	\$844.37
Financial Activities	140	530	\$19,924,171	\$722.94
Professional & Business Services	145	583	\$16,865,024	\$556.31
Education & Health Services	171	1,470	\$38,822,649	\$507.88
Leisure & Hospitality	105	1,527	\$16,299,585	\$205.27
Other Services	74	215	\$4,873,356	\$435.90
Local Government	28	2,522	\$70,879,689	\$540.47
State Government	16	156	\$4,405,641	\$543.10
MADISON COUNTY - TOTAL	263	3,174	\$82,256,870	\$498.38
Natural Resources & Mining	12	47	\$1,263,854	\$517.13
Construction	43	87	\$2,236,518	\$494.37
Manufacturing	22	1,155	\$31,607,286	\$526.26
Trade, Transportation & Utilities	60	603	\$14,934,935	\$476.30
Wholesale Trade	10	29	\$1,250,517	\$829.26
Retail Trade	37	423	\$8,488,418	\$385.91
Transportation, Warehousing & Utilities	12	151	\$5,196,000	\$661.74
Financial Activities	17	76	\$2,324,273	\$588.13
Professional & Business Services	20	121	\$2,685,619	\$426.83
Education & Health Services	42	249	\$5,202,378	\$401.79
Leisure & Hospitality	13	123	\$1,022,885	\$159.93
Local Government	9	586	\$16,858,866	\$553.26
State Government	8	57	\$1,640,852	\$553.59
Other	19	69	\$2,479,404	\$691.03

**TABLE 8. COUNTY SUMMARY
EMPLOYMENT AND TOTAL EARNINGS, BY INDUSTRY
CALENDAR YEAR 2008**

NORTH AMERICAN INDUSTRY CLASSIFICATION SYSTEM INDUSTRY GROUP	AVERAGE EMPLOYING UNITS	AVERAGE COVERED EMPLOYMENT	TOTAL EARNINGS	AVERAGE WEEKLY EARNINGS
MARION COUNTY - TOTAL	318	4,048	\$99,298,042	\$471.73
Natural Resources & Mining	7	48	\$1,047,593	\$419.71
Construction	27	82	\$1,757,759	\$412.23
Manufacturing	22	1,647	\$43,428,743	\$507.08
Trade, Transportation & Utilities	57	635	\$13,412,188	\$406.18
Wholesale Trade	9	32	\$1,350,517	\$811.61
Retail Trade	37	472	\$8,604,645	\$350.58
Transportation, Warehousing & Utilities	11	131	\$3,457,026	\$507.49
Financial Activities	36	194	\$5,652,790	\$560.35
Professional & Business Services	28	53	\$1,677,539	\$608.69
Education & Health Services	57	363	\$8,140,774	\$431.28
Leisure & Hospitality	39	238	\$2,607,887	\$210.72
Local Government	20	540	\$14,331,601	\$510.38
State Government	8	108	\$2,811,675	\$500.65
Other	18	139	\$4,429,493	\$612.82
MILLER COUNTY - TOTAL	852	12,966	\$416,682,660	\$618.01
Natural Resources & Mining	26	133	\$3,933,219	\$568.71
Construction	91	788	\$24,063,705	\$587.26
Manufacturing	33	2,345	\$122,578,234	\$1,005.23
Trade, Transportation & Utilities	229	3,466	\$108,119,187	\$599.89
Wholesale Trade	55	533	\$25,954,395	\$936.44
Retail Trade	134	1,388	\$28,944,828	\$401.03
Transportation, Warehousing & Utilities	41	1,545	\$53,219,964	\$662.43
Information	9	93	\$5,877,018	\$1,215.26
Financial Activities	81	338	\$11,634,789	\$661.97
Professional & Business Services	85	947	\$21,323,317	\$433.01
Education & Health Services	115	1,078	\$28,136,324	\$501.93
Leisure & Hospitality	82	1,298	\$16,492,532	\$244.35
Other Services	57	350	\$6,487,756	\$356.47
Local Government	26	1,622	\$50,372,994	\$597.23
State Government	17	510	\$17,663,585	\$666.05

**TABLE 8. COUNTY SUMMARY
EMPLOYMENT AND TOTAL EARNINGS, BY INDUSTRY
CALENDAR YEAR 2008**

NORTH AMERICAN INDUSTRY CLASSIFICATION SYSTEM INDUSTRY GROUP	AVERAGE EMPLOYING UNITS	AVERAGE COVERED EMPLOYMENT	TOTAL EARNINGS	AVERAGE WEEKLY EARNINGS
MISSISSIPPI COUNTY - TOTAL	1,230	19,744	\$724,497,789	\$705.67
Natural Resources & Mining	96	655	\$18,278,237	\$536.65
Construction	68	774	\$36,404,711	\$904.51
Manufacturing	58	6,084	\$340,251,163	\$1,075.49
Trade, Transportation & Utilities	298	2,944	\$84,435,441	\$551.55
Wholesale Trade	67	500	\$21,161,219	\$813.89
Retail Trade	180	1,847	\$36,714,463	\$382.27
Transportation, Warehousing & Utilities	52	598	\$26,559,759	\$854.12
Financial Activities	105	595	\$18,294,018	\$591.27
Professional & Business Services	104	1,316	\$41,838,434	\$611.39
Education & Health Services	264	1,673	\$43,284,458	\$497.55
Leisure & Hospitality	86	1,192	\$12,441,791	\$200.73
Local Government	46	2,288	\$65,848,878	\$553.46
State Government	24	646	\$18,691,919	\$556.44
Other	81	1,578	\$44,728,739	\$545.10
MONROE COUNTY - TOTAL	323	2,387	\$55,644,166	\$448.29
Natural Resources & Mining	35	143	\$3,498,093	\$470.43
Construction	12	38	\$835,957	\$423.06
Manufacturing	7	111	\$3,196,426	\$553.78
Trade, Transportation & Utilities	87	703	\$18,930,371	\$517.85
Wholesale Trade	22	205	\$6,931,843	\$650.27
Retail Trade	42	337	\$6,806,293	\$388.40
Transportation, Warehousing & Utilities	24	161	\$5,192,235	\$620.19
Financial Activities	16	92	\$2,981,857	\$623.30
Professional & Business Services	16	46	\$1,094,550	\$457.59
Education & Health Services	69	360	\$6,672,523	\$356.44
Leisure & Hospitality	25	260	\$2,636,182	\$194.98
Local Government	22	388	\$10,325,387	\$511.77
State Government	9	137	\$3,452,262	\$484.60
Other	27	109	\$2,020,558	\$356.49

**TABLE 8. COUNTY SUMMARY
EMPLOYMENT AND TOTAL EARNINGS, BY INDUSTRY
CALENDAR YEAR 2008**

NORTH AMERICAN INDUSTRY CLASSIFICATION SYSTEM INDUSTRY GROUP	AVERAGE EMPLOYING UNITS	AVERAGE COVERED EMPLOYMENT	TOTAL EARNINGS	AVERAGE WEEKLY EARNINGS
MONTGOMERY COUNTY - TOTAL	186	1,580	\$36,448,298	\$443.63
Natural Resources & Mining	13	57	\$2,224,013	\$750.34
Construction	22	85	\$2,476,200	\$560.23
Manufacturing	10	154	\$3,119,189	\$389.51
Trade, Transportation & Utilities	45	226	\$5,425,167	\$461.64
Wholesale Trade	11	74	\$2,186,773	\$568.29
Retail Trade	24	137	\$2,975,661	\$417.70
Transportation, Warehousing & Utilities	10	14	\$262,733	\$360.90
Financial Activities	11	72	\$2,206,257	\$589.28
Professional & Business Services	14	34	\$756,826	\$428.07
Education & Health Services	17	68	\$1,576,285	\$445.78
Leisure & Hospitality	23	295	\$4,303,162	\$280.52
Local Government	9	471	\$11,597,685	\$473.53
State Government	8	54	\$1,633,350	\$581.68
Other	15	65	\$1,130,164	\$334.37
NEVADA COUNTY - TOTAL	191	2,408	\$71,495,578	\$570.98
Natural Resources & Mining	12	46	\$1,390,853	\$581.46
Trade, Transportation & Utilities	41	494	\$12,607,261	\$490.78
Retail Trade	28	285	\$5,186,593	\$349.97
Other Trade, Transportation & Utilities	13	209	\$7,420,668	\$682.80
Financial Activities	15	64	\$1,860,016	\$558.90
Professional & Business Services	9	42	\$1,287,253	\$589.40
Education & Health Services	22	402	\$8,594,857	\$411.16
Leisure & Hospitality	13	103	\$1,092,895	\$204.05
Other Services	18	65	\$905,222	\$267.82
Local Government	28	463	\$11,113,421	\$461.60
State Government	11	86	\$2,400,778	\$536.85
Other	22	643	\$30,243,022	\$904.50

**TABLE 8. COUNTY SUMMARY
EMPLOYMENT AND TOTAL EARNINGS, BY INDUSTRY
CALENDAR YEAR 2008**

NORTH AMERICAN INDUSTRY CLASSIFICATION SYSTEM INDUSTRY GROUP	AVERAGE EMPLOYING UNITS	AVERAGE COVERED EMPLOYMENT	TOTAL EARNINGS	AVERAGE WEEKLY EARNINGS
NEWTON COUNTY - TOTAL	134	1,041	\$22,037,219	\$407.10
Construction	8	26	\$493,744	\$365.20
Manufacturing	16	68	\$1,843,529	\$521.36
Trade, Transportation & Utilities	27	148	\$3,254,621	\$422.90
Retail Trade	13	95	\$1,522,966	\$308.29
Other Trade, Transportation & Utilities	14	54	\$1,731,655	\$616.69
Education & Health Services	27	218	\$3,601,119	\$317.67
Leisure & Hospitality	18	74	\$889,645	\$231.20
Other Services	4	10	\$133,500	\$256.73
Local Government	13	361	\$8,668,211	\$461.76
State Government	7	94	\$1,941,846	\$397.27
Other	14	42	\$1,211,004	\$554.49
OUACHITA COUNTY - TOTAL	656	7,600	\$209,764,502	\$530.78
Natural Resources & Mining	47	260	\$8,620,959	\$637.64
Construction	46	264	\$7,928,094	\$577.51
Manufacturing	31	890	\$30,278,055	\$654.24
Trade, Transportation & Utilities	170	1,748	\$48,092,851	\$529.10
Wholesale Trade	27	239	\$9,510,098	\$765.22
Retail Trade	116	1,066	\$20,234,030	\$365.02
Transportation, Warehousing & Utilities	28	443	\$18,348,723	\$796.52
Information	7	61	\$2,039,548	\$642.98
Financial Activities	65	341	\$10,997,055	\$620.18
Professional & Business Services	51	364	\$9,365,625	\$494.80
Education & Health Services	118	1,241	\$33,854,985	\$524.62
Leisure & Hospitality	37	509	\$4,788,023	\$180.90
Other Services	41	146	\$3,428,379	\$451.58
Local Government	30	1,204	\$33,115,961	\$528.94
State Government	14	574	\$17,254,967	\$578.09

**TABLE 8. COUNTY SUMMARY
EMPLOYMENT AND TOTAL EARNINGS, BY INDUSTRY
CALENDAR YEAR 2008**

NORTH AMERICAN INDUSTRY CLASSIFICATION SYSTEM INDUSTRY GROUP	AVERAGE EMPLOYING UNITS	AVERAGE COVERED EMPLOYMENT	TOTAL EARNINGS	AVERAGE WEEKLY EARNINGS
PERRY COUNTY - TOTAL	159	1,347	\$37,188,074	\$530.92
Construction	22	63	\$2,157,822	\$658.68
Manufacturing	7	73	\$1,825,373	\$480.87
Trade, Transportation & Utilities	29	234	\$6,279,101	\$516.03
Retail Trade	18	161	\$2,340,327	\$279.54
Other Trade, Transportation & Utilities	12	73	\$3,938,774	\$1,037.61
Financial Activities	15	66	\$2,990,811	\$871.45
Professional & Business Services	15	37	\$1,158,386	\$602.07
Education & Health Services	29	195	\$4,498,859	\$443.67
Local Government	12	411	\$9,756,390	\$456.50
State Government	9	51	\$1,465,472	\$552.59
Other	21	217	\$7,055,860	\$625.30
PHILLIPS COUNTY - TOTAL	886	6,523	\$169,199,125	\$498.82
Natural Resources & Mining	66	366	\$7,909,325	\$415.58
Construction	31	159	\$4,548,282	\$550.11
Manufacturing	13	354	\$11,243,450	\$610.79
Trade, Transportation & Utilities	175	1,639	\$43,137,307	\$506.14
Wholesale Trade	34	460	\$16,069,027	\$671.78
Retail Trade	97	895	\$17,594,113	\$378.04
Transportation, Warehousing & Utilities	44	283	\$9,474,167	\$643.80
Information	9	48	\$1,471,643	\$589.60
Financial Activities	56	273	\$8,462,018	\$596.08
Professional & Business Services	60	178	\$5,991,516	\$647.31
Education & Health Services	352	1,421	\$32,526,739	\$440.19
Leisure & Hospitality	39	395	\$4,086,352	\$198.95
Other Services	40	83	\$1,653,009	\$383.00
Local Government	30	1,031	\$33,722,420	\$629.01
State Government	17	577	\$14,447,064	\$481.50

**TABLE 8. COUNTY SUMMARY
EMPLOYMENT AND TOTAL EARNINGS, BY INDUSTRY
CALENDAR YEAR 2008**

NORTH AMERICAN INDUSTRY CLASSIFICATION SYSTEM INDUSTRY GROUP	AVERAGE EMPLOYING UNITS	AVERAGE COVERED EMPLOYMENT	TOTAL EARNINGS	AVERAGE WEEKLY EARNINGS
PIKE COUNTY - TOTAL	276	2,678	\$66,445,368	\$477.15
Natural Resources & Mining	26	148	\$5,129,489	\$666.51
Construction	12	24	\$749,839	\$600.83
Manufacturing	16	318	\$7,498,342	\$453.46
Trade, Transportation & Utilities	95	653	\$16,575,284	\$488.14
Wholesale Trade	21	164	\$5,452,395	\$639.35
Retail Trade	47	368	\$7,135,722	\$372.90
Transportation, Warehousing & Utilities	27	121	\$3,987,167	\$633.69
Information	5	28	\$1,216,469	\$835.49
Financial Activities	26	187	\$6,053,001	\$622.48
Professional & Business Services	14	37	\$2,159,981	\$1,122.65
Education & Health Services	20	235	\$4,917,595	\$402.42
Leisure & Hospitality	20	234	\$2,438,831	\$200.43
Other Services	19	125	\$2,362,210	\$363.42
Local Government	13	542	\$14,596,707	\$517.91
State Government	11	148	\$2,747,620	\$357.02
POINSETT COUNTY - TOTAL	500	5,442	\$149,482,827	\$528.24
Natural Resources & Mining	51	330	\$10,731,331	\$625.37
Construction	22	87	\$2,505,763	\$553.88
Manufacturing	22	803	\$25,096,017	\$601.02
Trade, Transportation & Utilities	126	1,340	\$39,209,313	\$562.71
Wholesale Trade	32	470	\$21,848,011	\$893.94
Retail Trade	68	706	\$12,396,121	\$337.66
Transportation, Warehousing & Utilities	27	164	\$4,965,181	\$582.22
Information	6	53	\$2,541,259	\$922.08
Financial Activities	52	286	\$9,595,642	\$645.22
Professional & Business Services	32	176	\$5,338,935	\$583.36
Education & Health Services	81	588	\$13,428,906	\$439.20
Leisure & Hospitality	44	393	\$3,286,032	\$160.80
Other Services	23	56	\$1,375,655	\$472.41
Local Government	30	1,122	\$30,701,762	\$526.22
State Government	12	208	\$5,672,212	\$524.43

**TABLE 8. COUNTY SUMMARY
EMPLOYMENT AND TOTAL EARNINGS, BY INDUSTRY
CALENDAR YEAR 2008**

NORTH AMERICAN INDUSTRY CLASSIFICATION SYSTEM INDUSTRY GROUP	AVERAGE EMPLOYING UNITS	AVERAGE COVERED EMPLOYMENT	TOTAL EARNINGS	AVERAGE WEEKLY EARNINGS
POLK COUNTY - TOTAL	559	6,329	\$152,369,542	\$462.98
Natural Resources & Mining	26	218	\$7,543,273	\$665.43
Construction	43	173	\$4,201,124	\$467.00
Manufacturing	42	1,312	\$34,149,926	\$500.56
Trade, Transportation & Utilities	150	1,347	\$30,188,648	\$431.00
Wholesale Trade	22	103	\$3,006,506	\$561.33
Retail Trade	84	888	\$16,852,352	\$364.96
Transportation, Warehousing & Utilities	45	357	\$10,329,790	\$556.44
Information	9	53	\$1,579,033	\$572.94
Financial Activities	41	253	\$7,358,840	\$559.35
Professional & Business Services	55	255	\$5,332,804	\$402.17
Education & Health Services	86	1,022	\$25,091,507	\$472.14
Leisure & Hospitality	37	448	\$4,229,403	\$181.55
Other Services	37	150	\$3,383,153	\$433.74
Local Government	20	774	\$21,694,130	\$539.01
State Government	14	323	\$7,617,701	\$453.54
POPE COUNTY - TOTAL	1,796	26,639	\$852,235,146	\$615.23
Natural Resources & Mining	28	666	\$21,648,845	\$625.11
Construction	189	1,578	\$63,909,791	\$778.86
Manufacturing	87	4,953	\$176,451,151	\$685.10
Trade, Transportation & Utilities	470	6,491	\$248,472,652	\$736.15
Wholesale Trade	103	656	\$25,396,902	\$744.52
Retail Trade	275	3,371	\$70,491,344	\$402.14
Transportation, Warehousing & Utilities	92	2,464	\$152,584,406	\$1,190.87
Information	16	223	\$8,745,154	\$754.15
Financial Activities	193	822	\$26,742,027	\$625.63
Professional & Business Services	248	2,441	\$71,196,066	\$560.90
Education & Health Services	271	3,079	\$87,959,044	\$549.37
Leisure & Hospitality	132	2,433	\$27,286,934	\$215.68
Other Services	106	484	\$11,369,373	\$451.74
Local Government	40	2,136	\$64,458,218	\$580.33
State Government	16	1,333	\$43,995,891	\$634.71

**TABLE 8. COUNTY SUMMARY
EMPLOYMENT AND TOTAL EARNINGS, BY INDUSTRY
CALENDAR YEAR 2008**

NORTH AMERICAN INDUSTRY CLASSIFICATION SYSTEM INDUSTRY GROUP	AVERAGE EMPLOYING UNITS	AVERAGE COVERED EMPLOYMENT	TOTAL EARNINGS	AVERAGE WEEKLY EARNINGS
PRAIRIE COUNTY - TOTAL	252	1,444	\$38,512,355	\$512.90
Natural Resources & Mining	28	141	\$4,569,745	\$623.26
Construction	15	66	\$1,779,256	\$518.43
Trade, Transportation & Utilities	65	323	\$8,279,976	\$492.97
Wholesale Trade	10	57	\$2,486,820	\$839.01
Retail Trade	36	183	\$2,733,392	\$287.24
Transportation, Warehousing & Utilities	20	82	\$3,059,764	\$717.58
Financial Activities	19	71	\$2,332,145	\$631.68
Professional & Business Services	17	58	\$1,467,100	\$486.44
Education & Health Services	42	187	\$4,274,225	\$439.55
Leisure & Hospitality	17	72	\$731,006	\$195.25
Other Services	15	40	\$793,683	\$381.58
Local Government	15	297	\$8,411,044	\$544.62
State Government	10	54	\$1,605,477	\$571.75
Other	9	137	\$4,268,698	\$599.20
PULASKI COUNTY - TOTAL	14,952	241,567	\$9,715,081,369	\$773.40
Natural Resources & Mining	60	782	\$42,159,086	\$1,036.77
Construction	1,172	10,164	\$453,259,672	\$857.59
Manufacturing	439	15,607	\$716,764,299	\$883.19
Trade, Transportation & Utilities	3,389	50,399	\$1,842,639,225	\$703.10
Wholesale Trade	1,202	13,719	\$722,604,456	\$1,012.92
Retail Trade	1,777	24,757	\$608,674,116	\$472.81
Transportation, Warehousing & Utilities	410	11,922	\$511,360,653	\$824.85
Information	225	8,247	\$534,498,880	\$1,246.37
Financial Activities	1,808	15,726	\$903,225,055	\$1,104.52
Professional & Business Services	2,903	34,710	\$1,371,753,162	\$760.01
Education & Health Services	2,337	35,967	\$1,516,357,660	\$810.76
Leisure & Hospitality	1,063	20,764	\$313,162,065	\$290.04
Other Services	1,218	6,955	\$211,917,131	\$585.96
Local Government	103	16,435	\$615,924,818	\$720.70
State Government	237	25,810	\$1,193,420,316	\$889.21

**TABLE 8. COUNTY SUMMARY
EMPLOYMENT AND TOTAL EARNINGS, BY INDUSTRY
CALENDAR YEAR 2008**

NORTH AMERICAN INDUSTRY CLASSIFICATION SYSTEM INDUSTRY GROUP	AVERAGE EMPLOYING UNITS	AVERAGE COVERED EMPLOYMENT	TOTAL EARNINGS	AVERAGE WEEKLY EARNINGS
RANDOLPH COUNTY - TOTAL	429	4,777	\$114,578,221	\$461.26
Natural Resources & Mining	25	99	\$2,085,478	\$405.10
Construction	26	83	\$1,554,225	\$360.11
Manufacturing	37	678	\$17,232,577	\$488.78
Trade, Transportation & Utilities	105	911	\$21,217,411	\$447.89
Wholesale Trade	22	212	\$4,776,200	\$433.25
Retail Trade	64	581	\$11,969,846	\$396.20
Transportation, Warehousing & Utilities	19	118	\$4,471,365	\$728.71
Information	5	40	\$1,550,084	\$745.23
Financial Activities	32	141	\$4,294,809	\$585.76
Professional & Business Services	36	264	\$4,944,423	\$360.17
Education & Health Services	79	958	\$25,475,624	\$511.39
Leisure & Hospitality	27	386	\$3,707,016	\$184.69
Other Services	24	65	\$1,259,660	\$372.68
Local Government	23	858	\$22,265,541	\$499.05
State Government	12	295	\$8,991,373	\$586.14
SAINT FRANCIS COUNTY - TOTAL	782	7,651	\$206,140,200	\$518.13
Natural Resources & Mining	31	186	\$4,665,783	\$482.40
Construction	44	237	\$7,033,693	\$570.73
Manufacturing	16	742	\$23,782,857	\$616.39
Trade, Transportation & Utilities	180	1,982	\$54,634,230	\$530.10
Wholesale Trade	31	536	\$19,802,237	\$710.47
Retail Trade	123	1,191	\$23,894,303	\$385.82
Transportation, Warehousing & Utilities	26	256	\$10,937,690	\$821.64
Information	7	80	\$2,552,812	\$613.66
Financial Activities	62	322	\$8,292,671	\$495.26
Professional & Business Services	57	291	\$9,620,173	\$635.75
Education & Health Services	246	1,412	\$34,470,374	\$469.47
Leisure & Hospitality	56	696	\$7,805,192	\$215.66
Other Services	38	96	\$1,522,649	\$305.02
Local Government	28	1,070	\$34,214,065	\$614.92
State Government	18	538	\$17,545,701	\$627.17

**TABLE 8. COUNTY SUMMARY
EMPLOYMENT AND TOTAL EARNINGS, BY INDUSTRY
CALENDAR YEAR 2008**

NORTH AMERICAN INDUSTRY CLASSIFICATION SYSTEM INDUSTRY GROUP	AVERAGE EMPLOYING UNITS	AVERAGE COVERED EMPLOYMENT	TOTAL EARNINGS	AVERAGE WEEKLY EARNINGS
SALINE COUNTY - TOTAL	1,873	21,234	\$627,754,610	\$568.53
Natural Resources & Mining	14	38	\$2,121,311	\$1,073.54
Construction	323	1,985	\$69,090,994	\$669.36
Manufacturing	84	1,830	\$78,753,833	\$827.59
Trade, Transportation & Utilities	438	4,633	\$135,074,809	\$560.67
Wholesale Trade	121	593	\$30,446,308	\$987.36
Retail Trade	260	3,743	\$93,423,106	\$479.99
Transportation, Warehousing & Utilities	58	298	\$11,205,395	\$723.12
Information	13	124	\$4,183,330	\$648.78
Financial Activities	194	785	\$25,989,908	\$636.70
Professional & Business Services	242	1,262	\$35,501,239	\$540.98
Education & Health Services	238	2,964	\$82,176,916	\$533.17
Leisure & Hospitality	138	2,537	\$30,915,434	\$234.34
Other Services	140	621	\$15,073,894	\$466.80
Local & State Government	48	4,457	\$148,872,942	\$642.35
SCOTT COUNTY - TOTAL	194	2,857	\$69,556,730	\$468.19
Natural Resources & Mining	16	180	\$5,781,793	\$617.71
Construction	10	35	\$698,848	\$383.98
Trade, Transportation & Utilities	41	453	\$10,499,475	\$445.72
Wholesale Trade	10	68	\$2,254,953	\$637.71
Retail Trade	25	323	\$5,720,972	\$340.62
Transportation, Warehousing & Utilities	6	62	\$2,523,550	\$782.74
Financial Activities	23	83	\$1,978,541	\$458.42
Professional & Business Services	12	9	\$324,808	\$694.03
Education & Health Services	35	302	\$7,818,216	\$497.85
Leisure & Hospitality	17	156	\$1,569,462	\$193.47
Local Government	5	365	\$10,386,317	\$547.22
State Government	8	75	\$1,814,613	\$465.29
Other	29	1,200	\$28,684,657	\$459.69

**TABLE 8. COUNTY SUMMARY
EMPLOYMENT AND TOTAL EARNINGS, BY INDUSTRY
CALENDAR YEAR 2008**

NORTH AMERICAN INDUSTRY CLASSIFICATION SYSTEM INDUSTRY GROUP	AVERAGE EMPLOYING UNITS	AVERAGE COVERED EMPLOYMENT	TOTAL EARNINGS	AVERAGE WEEKLY EARNINGS
SEARCY COUNTY - TOTAL	195	1,755	\$36,602,335	\$401.08
Construction	7	24	\$494,998	\$396.63
Manufacturing	18	235	\$4,245,954	\$347.46
Trade, Transportation & Utilities	41	327	\$5,551,598	\$326.49
Wholesale Trade	6	63	\$1,027,939	\$313.78
Retail Trade	26	218	\$3,372,914	\$297.54
Transportation, Warehousing & Utilities	9	47	\$1,150,745	\$470.84
Information	6	14	\$427,438	\$587.14
Financial Activities	14	97	\$2,458,250	\$487.36
Professional & Business Services	15	33	\$861,814	\$502.22
Education & Health Services	53	333	\$6,692,835	\$386.51
Leisure & Hospitality	15	131	\$1,392,459	\$204.41
Local Government	10	357	\$8,916,477	\$480.31
State Government	8	146	\$3,782,966	\$498.28
Other	8	58	\$1,777,546	\$589.37
SEBASTIAN COUNTY - TOTAL	3,809	71,946	\$2,469,350,974	\$660.04
Natural Resources & Mining	77	1,995	\$130,155,113	\$1,254.63
Construction	320	2,790	\$103,702,772	\$714.80
Manufacturing	233	17,464	\$647,653,594	\$713.17
Trade, Transportation & Utilities	969	13,304	\$404,930,581	\$585.32
Wholesale Trade	253	2,709	\$125,681,242	\$892.19
Retail Trade	575	8,213	\$184,145,734	\$431.18
Transportation, Warehousing & Utilities	141	2,383	\$95,103,605	\$767.48
Information	52	990	\$49,859,257	\$968.52
Financial Activities	431	2,546	\$106,126,451	\$801.61
Professional & Business Services	557	9,285	\$281,597,621	\$583.24
Education & Health Services	529	10,648	\$426,372,269	\$770.05
Leisure & Hospitality	304	5,714	\$73,045,150	\$245.84
Other Services	272	1,369	\$36,370,485	\$510.91
Local Government	43	4,364	\$159,040,125	\$700.84
State Government	22	1,476	\$50,497,556	\$657.93

**TABLE 8. COUNTY SUMMARY
EMPLOYMENT AND TOTAL EARNINGS, BY INDUSTRY
CALENDAR YEAR 2008**

NORTH AMERICAN INDUSTRY CLASSIFICATION SYSTEM INDUSTRY GROUP	AVERAGE EMPLOYING UNITS	AVERAGE COVERED EMPLOYMENT	TOTAL EARNINGS	AVERAGE WEEKLY EARNINGS
SEVIER COUNTY - TOTAL	327	5,691	\$142,035,590	\$479.96
Natural Resources & Mining	18	246	\$6,979,084	\$545.58
Construction	19	150	\$5,016,231	\$643.11
Manufacturing	12	2,151	\$51,126,782	\$457.09
Trade, Transportation & Utilities	95	841	\$22,205,953	\$507.77
Wholesale Trade	14	133	\$6,156,451	\$890.18
Retail Trade	62	595	\$11,191,035	\$361.70
Transportation, Warehousing & Utilities	19	113	\$4,858,467	\$826.83
Information	4	46	\$1,376,544	\$575.48
Financial Activities	31	186	\$5,246,736	\$542.47
Professional & Business Services	28	78	\$2,960,307	\$729.86
Education & Health Services	50	534	\$13,420,714	\$483.32
Leisure & Hospitality	24	256	\$2,622,034	\$196.97
Other Services	29	132	\$2,303,944	\$335.66
Local Government	11	869	\$23,522,877	\$520.56
State Government	9	202	\$5,254,384	\$500.23
SHARP COUNTY - TOTAL	446	3,713	\$87,571,529	\$453.56
Construction	29	195	\$6,160,523	\$607.55
Manufacturing	25	176	\$3,761,085	\$410.96
Trade, Transportation & Utilities	95	968	\$24,753,487	\$491.77
Wholesale Trade	11	41	\$845,978	\$396.80
Retail Trade	69	637	\$11,288,165	\$340.79
Transportation, Warehousing & Utilities	15	290	\$12,619,344	\$836.83
Information	7	57	\$2,988,568	\$1,008.29
Financial Activities	36	237	\$6,912,076	\$560.86
Professional & Business Services	46	167	\$4,814,432	\$554.40
Education & Health Services	109	585	\$13,002,446	\$427.43
Leisure & Hospitality	37	395	\$3,613,036	\$175.90
Local Government	24	735	\$17,294,303	\$452.49
State Government	9	110	\$2,825,457	\$493.96
Other	29	89	\$1,446,116	\$312.47

**TABLE 8. COUNTY SUMMARY
EMPLOYMENT AND TOTAL EARNINGS, BY INDUSTRY
CALENDAR YEAR 2008**

NORTH AMERICAN INDUSTRY CLASSIFICATION SYSTEM INDUSTRY GROUP	AVERAGE EMPLOYING UNITS	AVERAGE COVERED EMPLOYMENT	TOTAL EARNINGS	AVERAGE WEEKLY EARNINGS
STONE COUNTY - TOTAL	301	2,937	\$65,246,226	\$427.22
Natural Resources & Mining	5	41	\$455,217	\$213.52
Construction	26	102	\$2,371,882	\$447.19
Manufacturing	27	404	\$8,709,924	\$414.60
Trade, Transportation & Utilities	74	695	\$16,392,071	\$453.57
Wholesale Trade	8	56	\$1,230,802	\$422.67
Retail Trade	56	601	\$13,567,918	\$434.15
Transportation, Warehousing & Utilities	11	39	\$1,593,351	\$785.68
Financial Activities	32	128	\$3,440,721	\$516.94
Professional & Business Services	15	32	\$861,709	\$517.85
Education & Health Services	56	499	\$13,132,058	\$506.09
Leisure & Hospitality	33	389	\$3,791,270	\$187.43
Local Government	10	398	\$10,759,894	\$519.90
State Government	9	177	\$3,317,998	\$360.50
Other	15	73	\$2,013,482	\$530.42
UNION COUNTY - TOTAL	1,407	19,138	\$737,626,047	\$741.20
Natural Resources & Mining	115	528	\$22,547,747	\$821.23
Construction	89	1,294	\$58,593,029	\$870.78
Manufacturing	64	4,351	\$187,358,958	\$828.10
Trade, Transportation & Utilities	362	3,704	\$138,348,095	\$718.29
Wholesale Trade	79	701	\$52,890,214	\$1,450.96
Retail Trade	219	2,185	\$45,002,267	\$396.08
Transportation, Warehousing & Utilities	64	818	\$40,455,614	\$951.09
Information	15	170	\$5,216,077	\$590.05
Financial Activities	122	745	\$24,333,875	\$628.13
Professional & Business Services	142	1,663	\$109,262,122	\$1,263.50
Education & Health Services	223	2,464	\$84,494,423	\$659.45
Leisure & Hospitality	88	1,174	\$14,041,984	\$230.02
Other Services	135	604	\$20,363,053	\$648.34
Local Government	36	1,863	\$55,271,114	\$570.53
State Government	19	579	\$17,795,570	\$591.06

**TABLE 8. COUNTY SUMMARY
EMPLOYMENT AND TOTAL EARNINGS, BY INDUSTRY
CALENDAR YEAR 2008**

NORTH AMERICAN INDUSTRY CLASSIFICATION SYSTEM INDUSTRY GROUP	AVERAGE EMPLOYING UNITS	AVERAGE COVERED EMPLOYMENT	TOTAL EARNINGS	AVERAGE WEEKLY EARNINGS
VAN BUREN COUNTY - TOTAL	368	3,704	\$92,433,932	\$479.91
Natural Resources & Mining	11	52	\$1,985,448	\$734.26
Construction	45	249	\$7,717,511	\$596.04
Trade, Transportation & Utilities	99	858	\$21,796,514	\$488.54
Wholesale Trade	16	53	\$2,000,847	\$726.00
Retail Trade	57	626	\$12,480,632	\$383.41
Transportation, Warehousing & Utilities	26	180	\$7,315,035	\$781.52
Information	11	49	\$1,785,862	\$700.89
Financial Activities	29	152	\$4,747,468	\$600.64
Professional & Business Services	27	108	\$2,378,311	\$423.49
Education & Health Services	61	636	\$15,859,600	\$479.55
Leisure & Hospitality	24	432	\$5,753,352	\$256.11
Local Government	11	591	\$15,541,705	\$505.72
State Government	8	87	\$2,507,892	\$554.35
Other	42	490	\$12,360,269	\$485.10
WASHINGTON COUNTY - TOTAL	5,728	89,548	\$3,214,178,555	\$690.26
Natural Resources & Mining	38	494	\$18,255,720	\$710.67
Construction	645	4,947	\$187,043,080	\$727.10
Manufacturing	238	14,621	\$499,017,359	\$656.35
Trade, Transportation & Utilities	1,362	20,042	\$687,403,155	\$659.58
Wholesale Trade	414	3,681	\$209,086,996	\$1,092.34
Retail Trade	758	11,062	\$259,029,528	\$450.31
Transportation, Warehousing & Utilities	190	5,299	\$219,286,631	\$795.82
Information	93	1,518	\$67,778,297	\$858.65
Financial Activities	666	3,869	\$156,461,263	\$777.69
Professional & Business Services	978	8,730	\$465,156,308	\$1,024.66
Education & Health Services	696	11,274	\$443,951,505	\$757.28
Leisure & Hospitality	536	9,617	\$126,198,745	\$252.36
Other Services	394	1,929	\$48,881,049	\$487.31
Local & State Government	83	12,508	\$514,032,074	\$790.31

**TABLE 8. COUNTY SUMMARY
EMPLOYMENT AND TOTAL EARNINGS, BY INDUSTRY
CALENDAR YEAR 2008**

NORTH AMERICAN INDUSTRY CLASSIFICATION SYSTEM INDUSTRY GROUP	AVERAGE EMPLOYING UNITS	AVERAGE COVERED EMPLOYMENT	TOTAL EARNINGS	AVERAGE WEEKLY EARNINGS
WHITE COUNTY - TOTAL	1,822	24,553	\$808,072,205	\$632.91
Natural Resources & Mining	46	1,213	\$74,467,823	\$1,180.60
Construction	200	1,656	\$81,806,623	\$950.00
Manufacturing	81	2,650	\$104,302,843	\$756.91
Trade, Transportation & Utilities	501	6,005	\$186,839,903	\$598.35
Wholesale Trade	100	604	\$22,519,736	\$717.01
Retail Trade	304	3,270	\$70,059,598	\$412.02
Transportation, Warehousing & Utilities	97	2,131	\$94,260,569	\$850.64
Information	22	168	\$5,212,455	\$596.66
Financial Activities	191	976	\$31,469,416	\$620.06
Professional & Business Services	187	1,294	\$36,927,351	\$548.80
Education & Health Services	293	4,297	\$149,857,637	\$670.67
Leisure & Hospitality	133	2,394	\$25,085,123	\$201.51
Other Services	104	592	\$15,776,397	\$512.49
Local Government	45	2,556	\$74,487,225	\$560.43
State Government	19	754	\$21,839,409	\$557.01
WOODRUFF COUNTY - TOTAL	233	1,920	\$50,311,627	\$503.92
Natural Resources & Mining	24	140	\$4,203,644	\$577.42
Construction	9	56	\$1,598,541	\$548.95
Manufacturing	7	339	\$9,135,494	\$518.24
Trade, Transportation & Utilities	58	451	\$13,342,834	\$568.94
Wholesale Trade	13	152	\$6,788,824	\$858.91
Retail Trade	28	204	\$3,009,632	\$283.71
Transportation, Warehousing & Utilities	17	95	\$3,544,378	\$717.49
Financial Activities	16	60	\$1,896,980	\$608.01
Professional & Business Services	5	7	\$264,210	\$725.85
Education & Health Services	79	234	\$5,509,031	\$452.75
Leisure & Hospitality	10	72	\$671,355	\$179.31
Local Government	10	482	\$11,556,228	\$461.07
State Government	7	58	\$1,659,117	\$550.11
Other	8	22	\$474,193	\$414.50

**TABLE 8. COUNTY SUMMARY
EMPLOYMENT AND TOTAL EARNINGS, BY INDUSTRY
CALENDAR YEAR 2008**

NORTH AMERICAN INDUSTRY CLASSIFICATION SYSTEM INDUSTRY GROUP	AVERAGE EMPLOYING UNITS	AVERAGE COVERED EMPLOYMENT	TOTAL EARNINGS	AVERAGE WEEKLY EARNINGS
YELL COUNTY - TOTAL	424	6,834	\$178,196,510	\$501.44
Natural Resources & Mining	24	238	\$6,454,267	\$521.51
Construction	44	338	\$10,691,705	\$608.31
Manufacturing	19	2,731	\$71,340,105	\$502.35
Trade, Transportation & Utilities	84	676	\$13,644,680	\$388.16
Wholesale Trade	16	26	\$623,554	\$461.21
Retail Trade	51	561	\$9,619,715	\$329.76
Transportation, Warehousing & Utilities	17	89	\$3,401,411	\$734.96
Information	3	72	\$2,682,769	\$716.55
Financial Activities	38	192	\$5,294,155	\$530.26
Professional & Business Services	37	292	\$12,929,595	\$851.53
Education & Health Services	89	638	\$14,835,804	\$447.18
Leisure & Hospitality	29	340	\$3,343,156	\$189.09
Other Services	17	69	\$1,189,511	\$331.52
Local Government	27	1,128	\$32,854,896	\$560.13
State Government	13	121	\$2,935,867	\$466.60
REST-OF-STATE-TOTAL	4,510	17,933	\$1,052,841,958	\$1,129.03
Natural Resources & Mining	76	483	\$30,199,878	\$1,202.42
Construction	555	3,825	\$175,871,985	\$884.22
Manufacturing	67	252	\$11,643,098	\$888.51
Trade, Transportation & Utilities	1,650	6,117	\$469,933,668	\$1,477.39
Wholesale Trade	1,373	4,917	\$418,425,377	\$1,636.49
Retail Trade	121	454	\$22,590,304	\$956.89
Transportation, Warehousing & Utilities	156	745	\$28,917,987	\$746.46
Information	98	215	\$12,452,137	\$1,113.79
Financial Activities	273	775	\$55,626,463	\$1,380.31
Professional & Business Services	1,495	4,819	\$233,283,947	\$930.95
Education & Health Services	113	675	\$31,269,643	\$890.87
Other	186	775	\$32,561,139	\$807.97

TABLE 9. FEDERAL GOVERNMENT EMPLOYMENT AND EARNINGS IN ARKANSAS

NORTH AMERICAN INDUSTRY CLASSIFICATION SYSTEM INDUSTRY GROUP	AVERAGE EMPLOYING UNITS	AVERAGE COVERED EMPLOYMENT	TOTAL EARNINGS	AVERAGE WEEKLY EARNINGS
Trade, Transportation & Utilities	614	6,629	\$301,587,909	\$874.91
Information	1	34	\$1,716,381	\$970.80
Financial Activities	23	164	\$11,269,171	\$1,321.43
Professional & Business Services	30	796	\$52,179,895	\$1,260.63
Education & Health Services	5	4,504	\$377,406,479	\$1,611.42
Leisure & Hospitality	15	240	\$10,128,697	\$811.59
Other Services	2	265	\$4,207,125	\$305.31
Public Administration	496	8,600	\$530,084,016	\$1,185.34
TOTAL	1,188	21,231	\$1,288,579,673	\$1,167.18

**TABLE 10. WORKFORCE INFORMATION AREA, SUMMARY
EMPLOYMENT AND TOTAL EARNINGS, BY INDUSTRY
CALENDAR YEAR 2008**

NORTH AMERICAN INDUSTRY CLASSIFICATION SYSTEM INDUSTRY GROUP	AVERAGE EMPLOYING UNITS	AVERAGE COVERED EMPLOYMENT	TOTAL EARNINGS	AVERAGE WEEKLY EARNINGS
CENTRAL WORKFORCE INFORMATION*	6,480	76,697	\$2,417,592,744	\$606.18
Natural Resources & Mining	191	1,606	\$91,856,465	\$1,099.92
Trade, Transportation & Utilities	1,582	15,406	\$427,403,989	\$533.51
Wholesale Trade	405	2,220	\$97,817,775	\$847.35
Retail Trade	912	11,360	\$255,329,934	\$432.24
Transportation, Warehousing & Utilities	265	1,826	\$74,256,280	\$782.04
Financial Activities	689	3,000	\$108,637,090	\$696.39
Professional & Business Services	789	6,868	\$301,831,350	\$845.14
Education & Health Services	914	10,552	\$307,351,642	\$560.14
Leisure & Hospitality	486	8,585	\$96,852,476	\$216.95
Local & State Government	206	14,483	\$474,225,832	\$629.68
Other	1,630	16,200	\$609,433,900	\$723.45
*Note: Pulaski County is not included in the Central Workforce Information. Please refer to Page 59 for information on Pulaski County.				
Central Workforce Includes these counties: Faulkner, Lonoke Monroe, Prairie, and Saline.				
EASTERN WORKFORCE INFORMATION	3,805	38,004	\$1,087,621,401	\$550.36
Natural Resources & Mining	209	1,230	\$29,860,165	\$466.86
Construction	189	1,120	\$36,494,372	\$626.62
Trade, Transportation & Utilities	893	10,104	\$302,771,927	\$576.26
Wholesale Trade	182	2,153	\$87,440,279	\$781.02
Retail Trade	499	5,131	\$104,596,041	\$392.02
Transportation, Warehousing & Utilities	212	2,820	\$110,735,607	\$755.15
Financial Activities	290	1,607	\$50,315,229	\$602.12
Professional & Business Services	312	1,546	\$47,116,565	\$586.09
Education & Health Services	1,117	6,116	\$162,995,366	\$512.51
Leisure & Hospitality	242	3,467	\$43,716,988	\$242.49
Local Government	136	5,414	\$177,271,480	\$629.68
State Government	69	2,334	\$68,439,399	\$563.90
Other	354	5,069	\$168,639,910	\$639.79
Eastern Workforce Includes these counties: Crittenden, Cross, Lee, Phillips, and Saint Francis.				

**TABLE 10. WORKFORCE INFORMATION AREA, SUMMARY
EMPLOYMENT AND TOTAL EARNINGS, BY INDUSTRY
CALENDAR YEAR 2008**

NORTH AMERICAN INDUSTRY CLASSIFICATION SYSTEM INDUSTRY GROUP	AVERAGE EMPLOYING UNITS	AVERAGE COVERED EMPLOYMENT	TOTAL EARNINGS	AVERAGE WEEKLY EARNINGS
NORTH CENTRAL WORKFORCE INFORMATION	5,868	69,855	\$2,034,874,344	\$560.19
Construction	531	3,568	\$141,658,279	\$763.51
Trade, Transportation & Utilities	1,516	15,561	\$445,075,039	\$550.04
Retail Trade	943	9,250	\$189,610,785	\$394.20
Other Trade, Transportation & Utilities	573	6,311	\$255,464,254	\$778.45
Financial Activities	554	2,779	\$87,660,864	\$606.62
Professional & Business Services	505	2,919	\$75,870,834	\$499.85
Education & Health Services	1,092	11,902	\$367,842,201	\$594.34
Leisure & Hospitality	441	6,261	\$67,325,894	\$206.79
Local Government	229	8,697	\$234,033,051	\$517.49
State Government	115	3,094	\$89,381,092	\$555.55
Other	892	15,082	\$526,027,090	\$670.73
North Central Workforce Includes these counties: Cleburne, Fulton, Independence, IZard, Jackson, Sharp, Stone, Van Buren, White, and Woodruff				
NORTHEAST WORKFORCE INFORMATION	6,596	94,801	\$2,950,418,524	\$598.50
Natural Resources & Mining	372	1,975	\$55,139,843	\$536.90
Construction	487	3,298	\$117,648,617	\$686.01
Manufacturing	356	20,877	\$853,506,859	\$786.20
Trade, Transportation & Utilities	1,726	17,996	\$491,210,587	\$524.91
Wholesale Trade	407	3,850	\$152,931,386	\$763.89
Retail Trade	1,010	11,548	\$236,548,799	\$393.92
Transportation, Warehousing & Utilities	309	2,598	\$101,730,402	\$753.02
Financial Activities	611	3,439	\$122,196,594	\$683.32
Professional & Business Services	668	7,031	\$189,933,130	\$519.49
Education & Health Services	1,133	13,288	\$450,152,005	\$651.47
Leisure & Hospitality	473	7,673	\$89,621,193	\$224.62
Local Government	218	11,359	\$334,724,138	\$566.69
State Government	107	4,136	\$145,974,565	\$678.72
Other	456	3,738	\$100,310,993	\$516.07
Northeast Workforce Includes these counties: Clay, Craighead, Greene, Lawrence, Mississippi, Poinsett, and Randolph.				

**TABLE 10. WORKFORCE INFORMATION AREA, SUMMARY
EMPLOYMENT AND TOTAL EARNINGS, BY INDUSTRY
CALENDAR YEAR 2008**

NORTH AMERICAN INDUSTRY CLASSIFICATION SYSTEM INDUSTRY GROUP	AVERAGE EMPLOYING UNITS	AVERAGE COVERED EMPLOYMENT	TOTAL EARNINGS	AVERAGE WEEKLY EARNINGS
NORTHWEST WORKFORCE INFORMATION	15,451	232,674	\$8,594,293,487	\$710.33
Construction	1,746	10,803	\$391,532,632	\$696.98
Trade, Transportation & Utilities	3,818	53,645	\$1,917,061,551	\$687.23
Retail Trade	2,035	26,835	\$620,682,864	\$444.80
Other Trade, Transportation & Utilities	1,783	26,810	\$1,296,378,687	\$929.89
Education & Health Services	1,956	25,365	\$909,904,244	\$689.85
Leisure & Hospitality	1,429	22,979	\$299,056,622	\$250.28
Local & State Government	431	28,401	\$1,034,713,187	\$700.62
Other	6,079	91,483	\$4,042,025,251	\$849.68
Northwest Workforce Includes these counties: Baxter, Benton, Boone, Carroll, Madison, Marion, Newton, Searcy, and Washington.				
SOUTHEAST WORKFORCE INFORMATION	5,898	75,023	\$2,304,211,820	\$590.64
Natural Resources & Mining	416	2,771	\$90,342,347	\$626.98
Construction	350	3,152	\$124,916,943	\$762.13
Manufacturing	224	16,431	\$637,573,343	\$746.21
Trade, Transportation & Utilities	1,356	13,075	\$372,962,508	\$548.55
Retail Trade	821	8,415	\$175,341,680	\$400.71
Other Trade, Transportation & Utilities	535	4,660	\$197,620,828	\$815.54
Education & Health Services	1,454	10,932	\$298,637,460	\$525.34
Local & State Government	361	16,139	\$481,087,718	\$573.25
Other	1,749	12,525	\$298,691,501	\$458.61
Southeast Workforce Includes these counties: Arkansas, Ashley, Bradley, Chicot, Cleveland, Desha, Drew, Grant, Jefferson, and Lincoln				
SOUTHWEST WORKFORCE INFORMATION	5,875	84,512	\$2,750,692,986	\$625.92
Natural Resources & Mining	416	2,926	\$113,423,110	\$745.46
Trade, Transportation & Utilities	1,498	15,597	\$464,328,851	\$572.51
Retail Trade	937	8,997	\$178,588,855	\$381.73
Other Trade, Transportation & Utilities	561	6,600	\$285,739,996	\$832.58
Financial Activities	542	2,838	\$90,961,482	\$616.37
Education & Health Services	920	9,467	\$256,032,779	\$520.09
Leisure & Hospitality	403	5,331	\$60,101,899	\$216.81
Local & State Government	415	13,984	\$411,236,982	\$565.53
Other	1,697	34,377	\$1,354,607,883	\$757.78
Southwest Workforce Includes these counties: Calhoun, Columbia, Dallas, Hempstead, Howard, Lafayette, Little River, Miller, Nevada, Ouachita, Sevier, and Union				

**TABLE 10. WORKFORCE INFORMATION AREA, SUMMARY
EMPLOYMENT AND TOTAL EARNINGS, BY INDUSTRY
CALENDAR YEAR 2008**

NORTH AMERICAN INDUSTRY CLASSIFICATION SYSTEM INDUSTRY GROUP	AVERAGE EMPLOYING UNITS	AVERAGE COVERED EMPLOYMENT	TOTAL EARNINGS	AVERAGE WEEKLY EARNINGS
WEST CENTRAL WORKFORCE INFORMATION	8,474	108,557	\$3,158,986,503	\$559.61
Construction	911	5,392	\$182,055,157	\$649.31
Manufacturing	397	18,607	\$617,940,576	\$638.66
Trade, Transportation & Utilities	2,023	22,256	\$664,473,115	\$574.15
Retail Trade	1,286	14,299	\$303,902,927	\$408.72
Other Trade, Transportation & Utilities	737	7,957	\$360,570,188	\$871.44
Financial Activities	889	3,945	\$130,737,864	\$637.31
Professional & Business Services	946	7,550	\$220,439,504	\$561.49
Education & Health Services	1,311	15,862	\$508,275,130	\$616.22
Local Government	230	11,532	\$348,099,716	\$580.49
State Government	135	5,218	\$155,660,386	\$573.68
Other	1,638	18,200	\$331,305,055	\$350.07
West Central Workforce Includes these counties: Clark, Conway, Garland, Hot Spring, Johnson, Montgomery, Perry, Pike, Pope, and Yell				
WESTERN WORKFORCE INFORMATION	6,684	111,057	\$3,554,888,158	\$615.57
Natural Resources & Mining	180	3,169	\$178,334,908	\$1,082.21
Construction	646	4,765	\$169,757,756	\$685.11
Trade, Transportation & Utilities	1,677	23,583	\$695,380,354	\$567.05
Wholesale Trade	399	3,706	\$163,070,463	\$846.19
Retail Trade	967	12,641	\$272,856,370	\$415.10
Transportation, Warehousing & Utilities	311	7,236	\$259,453,521	\$689.54
Financial Activities	707	3,963	\$150,937,747	\$732.44
Professional & Business Services	855	11,054	\$326,050,235	\$567.23
Education & Health Services	942	14,684	\$533,563,783	\$698.78
Leisure & Hospitality	500	8,501	\$103,331,778	\$233.75
Local & State Government	230	11,889	\$384,784,630	\$622.40
Other	953	29,453	\$1,012,746,967	\$661.25
Western Workforce Includes these counties: Crawford, Franklin, Logan, Polk, Scott, and Sebastian				