

Arkansas Covered Employment & Earnings

Jobs for People. People for Jobs.

DWS
Department of
WORKFORCE**Services**

First Quarter
2008

**COVERED EMPLOYMENT AND EARNINGS
STATE OF ARKANSAS
FIRST QUARTER 2008**

**MIKE BEEBE, GOVERNOR
STATE OF ARKANSAS**

**ARTEE WILLIAMS, DIRECTOR
DEPARTMENT OF WORKFORCE SERVICES**

**PUBLISHED BY
LABOR MARKET INFORMATION & ANALYSIS
BUREAU OF LABOR STATISTICS PROGRAMS
POST OFFICE BOX 2981
LITTLE ROCK, ARKANSAS 72203-2981
BERNADETTE COLEMAN, BLS PROGRAMS MANAGER
TELEPHONE: (501) 682-3159**

STATE OF ARKANSAS HOME PAGE: <http://www.arkansas.gov>

DEPARTMENT OF WORKFORCE SERVICES HOME PAGE: <http://www.arkansas.gov/esd/>

**INTERNET SITE FOR LABOR MARKET INFORMATION:
<http://www.discover.arkansas.gov>**

RELEASED: FEBRUARY 2009

TABLE OF CONTENTS

Description of Data	Page 1
Industry Classification	Page 1
Definition of Covered Employment and Earnings	Page 2
Federal Government Employment	Page 2
County Classification	Page 2
Significant Developments During First Quarter 2008	Page 3

LIST OF GRAPHS AND TABLES

Graph 1	Total Covered Employment for Selected Years, Arkansas	Page 7
Graph 2	Total Covered Earnings, by Calendar Quarter for Selected Years, Arkansas	Page 8
Table 1	Quarterly Comparison of Covered Employment and Wages, by Industry	Page 5
Table 2	Total Covered Employment in Arkansas, 2001-2008	Page 6
Table 3	Total Covered Earnings, 2001-2008	Page 9
Table 4	Total Taxable Earnings, 2001-2008	Page 10
Table 5	State Summary - Employment and Total Earnings, by Industry, First Quarter 2008	Page 11
Table 6	County Summary - Employment and Total Earnings, by Industry, First Quarter 2008	Page 23
Table 7	Federal Government Employment and Total Earnings in Arkansas, First Quarter 2008	Page 61
Table 8	Workforce Information Area – Employment and Total Earnings, by Industry, First Quarter 2008	Page 62

EMPLOYMENT AND EARNINGS UNDER THE ARKANSAS EMPLOYMENT SECURITY LAW FIRST QUARTER 2008

DESCRIPTION OF DATA

This publication contains covered employment and payroll data by industry and county for the First Quarter 2008. These data are compiled from quarterly contribution and wage reports submitted by employers subject to the Arkansas Employment Security Law. An employing unit is a single physical location where business is conducted, production takes place, or services are provided. Employment data have been tabulated for each month of the quarter by industry under the **North American Industry Classification System** (NAICS) (see "Industry Classification" below) on a statewide, county and workforce area basis. Payroll data represent the total wages paid during the quarter, and are also shown by

industry for the State and by publishable industry groups for each county and workforce area. The tabulation of this data is a joint effort in conjunction with the U.S. Bureau of Labor Statistics. In addition, there are tables included which set out total covered employment by months, quarterly payrolls, and average weekly earnings for the years 2001 through 2008. Data contained in this publication are subject to revision. These revisions will be reflected in the 2008 Annual Covered Employment and Earnings publication. Because of industry code changes between years, substantial employment and wage shifts among industries are anticipated.

INDUSTRY CLASSIFICATION

Previously published industry data **will not** be comparable in all instances with currently published data since industry codes have been revised according to the following Manuals: (a) between January 1, 1958 and December 31, 1967, industry codes were assigned under the 1957 Standard Industrial Classification (SIC) Manual; (b) between January 1, 1968 and December 31, 1974, industry codes were assigned under the 1967 Standard Industrial Classification (SIC) Manual; (c) between January 1, 1975 and December 31, 1987, industry codes were assigned under the 1972 Standard Industrial Classification (SIC) Manual; (d) between January 1, 1988 and December 31, 2000, industry codes were assigned under the 1987 Standard Industrial Classification (SIC) Manual; (e) between January 1, 2001 and December 31, 2006, industry codes were assigned under the 2002 North American Industry Classification System (NAICS) Manual; and (f) since January 1, 2007, industry codes have been assigned under the 2007 North American Industry Classification System (NAICS) Manual.

The NAICS Manual represents a significant change in coding methodology as compared to the SIC Manual. One of the most significant changes involves how NAICS treats auxiliary units. Auxiliary units are establishments primarily engaged in performing management or support services for other establishments of the same enterprise. The SIC code for these units was based on the activity of the enterprise served. The NAICS code is based on the actual activities that the establishment performs. Comparisons of many industries **should not be made** between this publication and previous Covered Employment and Earnings publications that were based on SIC. Even though some titles are the same or similar, in nature, NAICS and SIC could differ in the classification of employers. The implementation of NAICS represents a profound change for statistical programs, and will create significant benefits along with transition obstacles for both data collectors and data users. A summary is available on the NAICS home page at <http://www.census.gov/naics>.

DEFINITION OF COVERED EMPLOYMENT AND EARNINGS

Covered Employment is the number of workers employed by employers subject to the Arkansas Employment Security Law who worked or received pay for the payroll period including the 12th of the month. An employer is subject to the law when they employ one or more employees in each of ten days during the current or preceding calendar year.

Currently excluded from coverage is employment covered by the Railroad Unemployment Insurance Act, some domestic service workers, employees of small agricultural establishments, self-employed and unpaid family workers, insurance and real estate

agents who are on commission only, and employees of churches and religious organizations except separately incorporated schools. The payroll information in this publication includes all wages and salaries paid to any covered employees by their employers including bonuses, commissions, and cash values of remuneration received in any medium other than cash. These wages include both taxable and nontaxable wages. Only the first \$10,000 paid to each worker by an employer in the calendar year is taxable under the Arkansas Employment Security Law.

FEDERAL GOVERNMENT EMPLOYMENT

Table 7 on page 61 lists the total number of civilians employed by the Federal Government in Arkansas during the First Quarter 2008. Employment and wage data are set out by industry divisions. These data are obtained from required reports submitted by various

government agencies having employment in the State. Civilian Federal workers are covered by the Unemployment Compensation for Federal Employees (UCFE) program.

COUNTY CLASSIFICATION

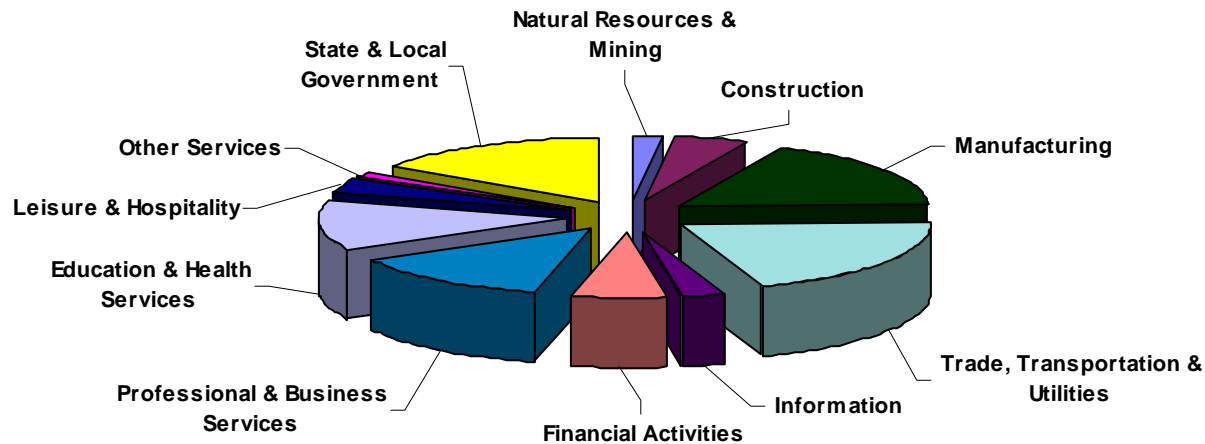
Employment and payroll data by county are classified according to the county where the workers are employed. Employers with operations in more than one county are requested to furnish this agency with a breakdown of employment and wages for at least one quarter of each year by the counties in which they operate. Many such employers submit county data with each regular contribution report. **Note:** This information is invaluable in the preparation of monthly employment and payroll data by county.

Employment and payroll data for multi - area employers, who do not furnish county data each quarter of the year, are prorated by county on the basis of one quarter's information. The "rest-of-state" table that appears on page 60 of this publication includes data on firms that **did not** provide a county breakdown of employment and payrolls. It also includes sales, and all other type of personnel with no permanent place of work, as well as employment of employers with no established place of business in Arkansas.

SIGNIFICANT DEVELOPMENTS DURING FIRST QUARTER 2008

AVERAGE EMPLOYMENT CHANGES

Covered employment averaged 1,149,414 during the First Quarter 2008 (see table 1), a decrease of 16,464 (-1.4%) from the previous quarter and 2,539 (0.2%) above the average recorded one-year ago. This *over-the-year* increase is more significant when used as an economic indicator. This *over-the-year* comparison allows for the disregarding of many seasonal factors that are evident when making an *over-the-quarter* comparison.

Average Covered Employment by NAICS Group**EMPLOYMENT CHANGES FROM FOURTH QUARTER 2007**

Over the quarter losses were recorded in ten industries while one industry gained jobs. The largest decrease was found in Trade, Transportation & Utilities (-5,123) due to the release of seasonal workers in both Retail Trade (-3,153) and Transportation & Warehousing (-1,807) following the end of the holiday season. Seasonal decreases were also noted in Leisure & Hospitality (-1,934), Construction (-1,917), Natural Resources & Mining (-1,691), State & Local Government (-1,427), and Professional & Business Services (-920). Continuing layoffs and closures caused a job loss of

2,005 in Manufacturing. Decreases also occurred in Information (-1,149), Financial Activities (-1,158) and Other Services (-1).

Education & Health Services (+860) was the only industry to experience a gain in jobs. All the growth occurred in the Health Care & Social Assistance (+1,043) which was partially offset by seasonal losses in Educational Services (-183).

EMPLOYMENT CHANGES FROM FIRST QUARTER 2007

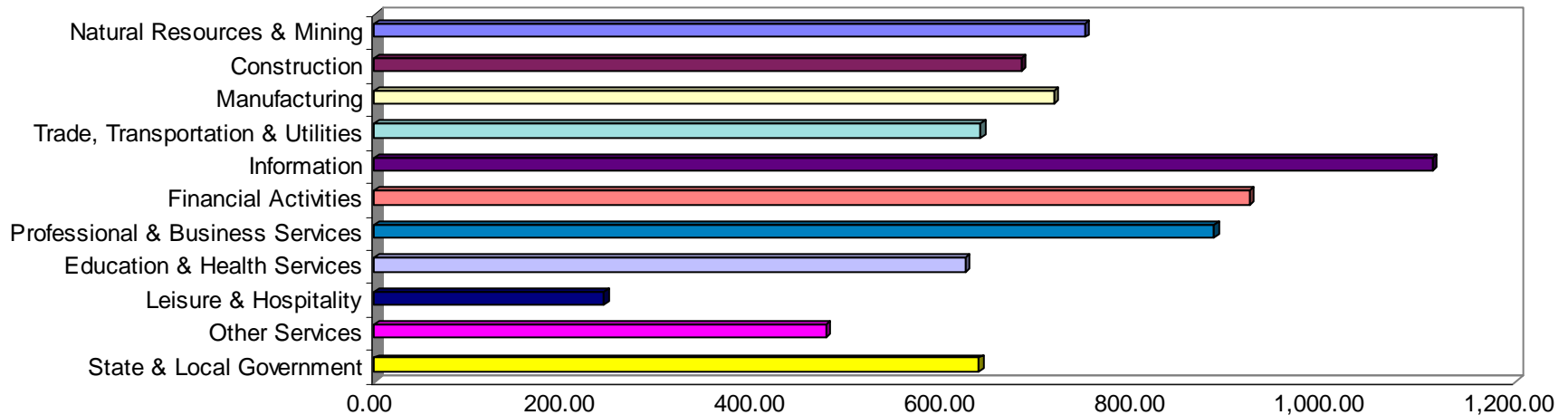
Over-the-year gains were recorded in five industry groups while six recorded losses (see table 1). Significant gains were posted in Educational & Health Services (+5,304), State & Local Government (+2,300), and Leisure & Hospitality (+1,987). Significant losses occurred in Manufacturing (-7,356), Information (-712), and Construction (-505).

COVERED WAGES

Wages paid to covered workers totaled \$9,849,712,834 for the First Quarter 2008 (see table 1), for an average weekly wage of \$659.18 (see table 5). Employees in Benton County recorded the highest average weekly wage (\$880.18), and workers in Searcy County the lowest (\$384.73) (see table 6).

The Information sector recorded the highest average weekly wage for the State of Arkansas at \$1,111.45, while the Leisure & Hospitality sector recorded the lowest at \$241.80 for the State of Arkansas (see table 5).

Average Weekly Wages by Industry Group



Note: Because of industry code changes between years, substantial employment and wage shifts among industries are anticipated.

TABLE 1. QUARTERLY COMPARISON OF COVERED EMPLOYMENT AND WAGES, BY INDUSTRY

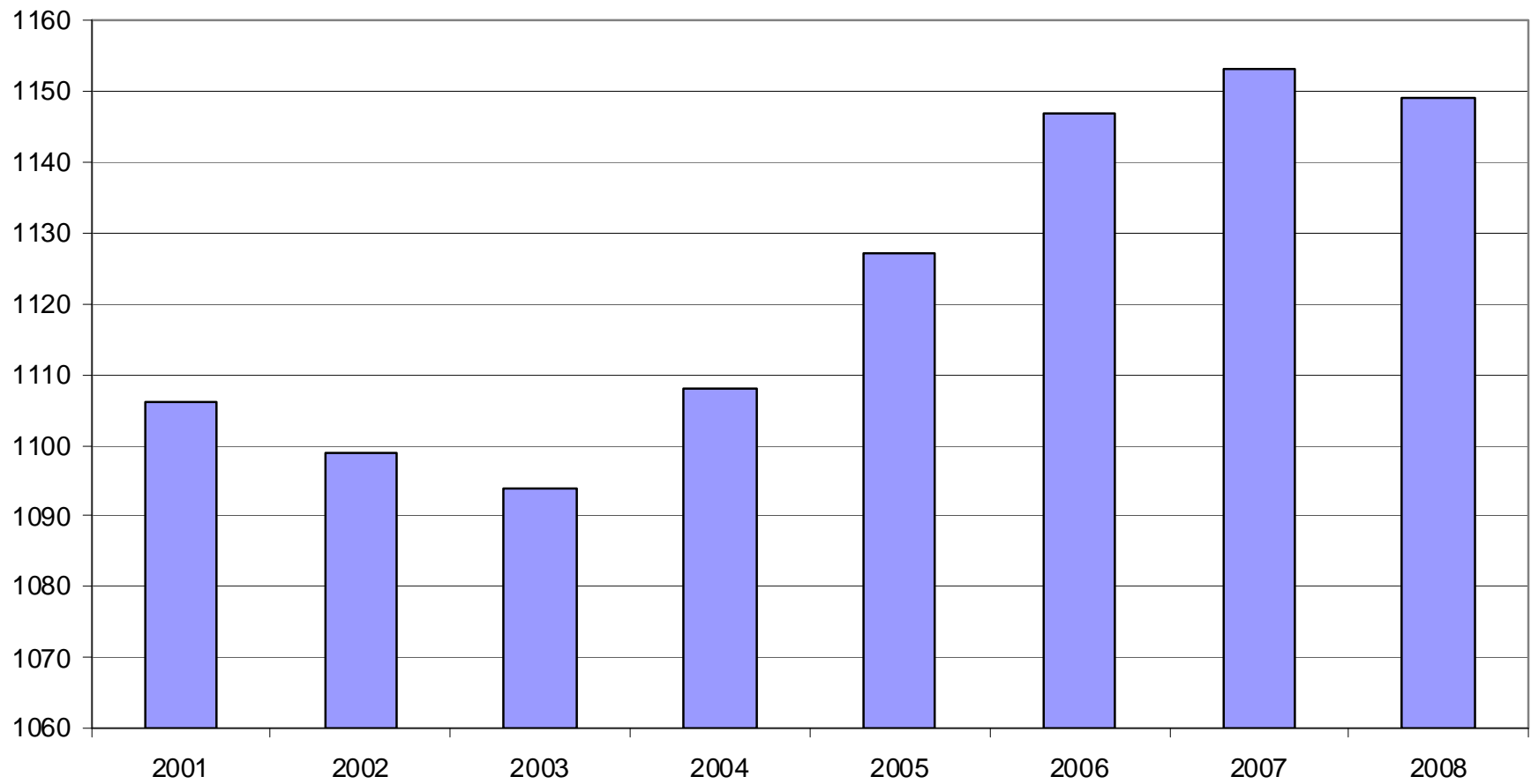
North American Industry Classification System Industry	Number of Employing Units	Average Monthly Employment	% of Employment Total	Net Change From Oct. - Dec. 2007	Net Change From Jan. - Mar. 2007	Total Wages Paid Jan. - Mar. 2008	% of Total Wages Paid
Total	84,031	1,149,414	100.0%	-16,464	2,539	\$9,849,712,834	100.0%
Natural Resources & Mining	2,440	19,347	1.7%	-1,691	788	\$187,660,702	1.9%
Agriculture, Forestry, Fishing & Hunting	1,956	12,216	1.1%	-1,606	-291	\$84,793,542	0.9%
Mining	484	7,132	0.6%	-85	1,079	\$102,867,160	1.0%
Construction	7,978	54,395	4.7%	-1,917	-505	\$480,584,070	4.9%
Manufacturing	3,599	184,874	16.1%	-2,005	-7,356	\$1,715,690,513	17.4%
Trade, Transportation & Utilities	21,145	244,123	21.2%	-5,123	-344	\$2,023,398,367	20.5%
Wholesale Trade	6,432	48,327	4.2%	-37	765	\$648,651,635	6.6%
Retail Trade	11,340	133,584	11.6%	-3,153	636	\$729,733,517	7.4%
Transportation & Warehousing	3,011	55,460	4.8%	-1,807	-1,564	\$510,655,850	5.2%
Utilities	362	6,752	0.6%	-125	-181	\$134,357,365	1.4%
Information	1,131	18,884	1.6%	-1,149	-712	\$272,850,995	2.8%
Financial Activities	8,403	50,987	4.4%	-1,158	-165	\$609,364,687	6.2%
Finance & Insurance	4,900	36,928	3.2%	-813	-104	\$508,897,614	5.2%
Real Estate & Rental & Leasing	3,503	14,058	1.2%	-345	-61	\$100,467,073	1.0%
Professional & Business Services	11,642	116,654	10.1%	-920	1,528	\$1,338,883,401	13.6%
Professional & Technical Services	7,295	39,562	3.4%	949	664	\$467,072,853	4.7%
Management of Companies & Enterprises	567	25,420	2.2%	499	836	\$589,168,316	6.0%
Administrative & Waste Services	3,780	51,673	4.5%	-2,368	28	\$282,642,232	2.9%
Education & Health Services	12,865	153,046	13.3%	860	5,304	\$1,235,885,991	12.5%
Educational Services	601	9,777	0.9%	-183	423	\$66,891,441	0.7%
Health Care & Social Assistance	12,264	143,269	12.5%	1,043	4,881	\$1,168,994,550	11.9%
Leisure & Hospitality	6,199	97,564	8.5%	-1,934	1,987	\$306,686,584	3.1%
Arts, Entertainment & Recreation	912	8,883	0.8%	-54	13	\$43,077,312	0.4%
Accommodation & Food Services	5,287	88,681	7.7%	-1,880	1,974	\$263,609,272	2.7%
Other Services	5,431	25,040	2.2%	-1	-286	\$154,377,158	1.6%
State & Local Government	3,198	184,500	16.1%	-1,427	2,300	\$1,524,330,366	15.5%
Local Government	1,991	119,219	10.4%	-1,070	831	\$885,040,511	9.0%
State Government	1,207	65,281	5.7%	-357	1,469	\$639,289,855	6.5%
Nonclassifiable Establishments	0	0	0.0%	0	0	\$0	0.0%

Note: Items do not necessarily add to totals because of rounding. Because of industry code changes between years, substantial employment and wage shifts among industries are anticipated.

TABLE 2. TOTAL COVERED EMPLOYMENT IN ARKANSAS

Period	2001	2002	2003	2004	2005	2006	2007	2008
Average	1,106,066	1,098,558	1,094,087	1,108,264	1,126,778	1,146,948	1,152,994	1,149,414
January	1,096,009	1,081,635	1,082,740	1,089,510	1,102,768	1,130,595	1,137,437	1,141,697
February	1,101,616	1,086,793	1,084,880	1,094,626	1,110,577	1,136,810	1,143,397	1,149,049
March	1,112,143	1,098,500	1,092,172	1,105,266	1,122,619	1,150,439	1,158,895	1,157,496
April	1,115,526	1,103,399	1,095,341	1,111,020	1,129,785	1,155,498	1,159,623	N/A
May	1,119,815	1,111,998	1,103,099	1,117,144	1,135,567	1,159,886	1,165,224	N/A
June	1,119,734	1,112,028	1,099,688	1,117,010	1,136,118	1,162,026	1,164,207	N/A
July	1,071,921	1,065,697	1,053,220	1,071,463	1,090,071	1,106,142	1,110,571	N/A
August	1,094,160	1,086,011	1,077,775	1,094,871	1,114,098	1,130,839	1,139,109	N/A
September	1,115,976	1,113,148	1,105,980	1,122,704	1,144,815	1,159,814	1,165,135	N/A
October	1,110,994	1,108,447	1,112,550	1,123,246	1,142,300	1,156,804	1,162,768	N/A
November	1,109,012	1,107,611	1,109,712	1,125,061	1,145,667	1,156,011	1,164,246	N/A
December	1,105,887	1,107,425	1,111,892	1,127,250	1,146,954	1,158,509	1,165,314	N/A

AVERAGE TOTAL COVERED EMPLOYMENT GRAPH 1
In Thousands



TOTAL COVERED EARNINGS BY CALENDAR QUARTER, GRAPH 2
In Thousands

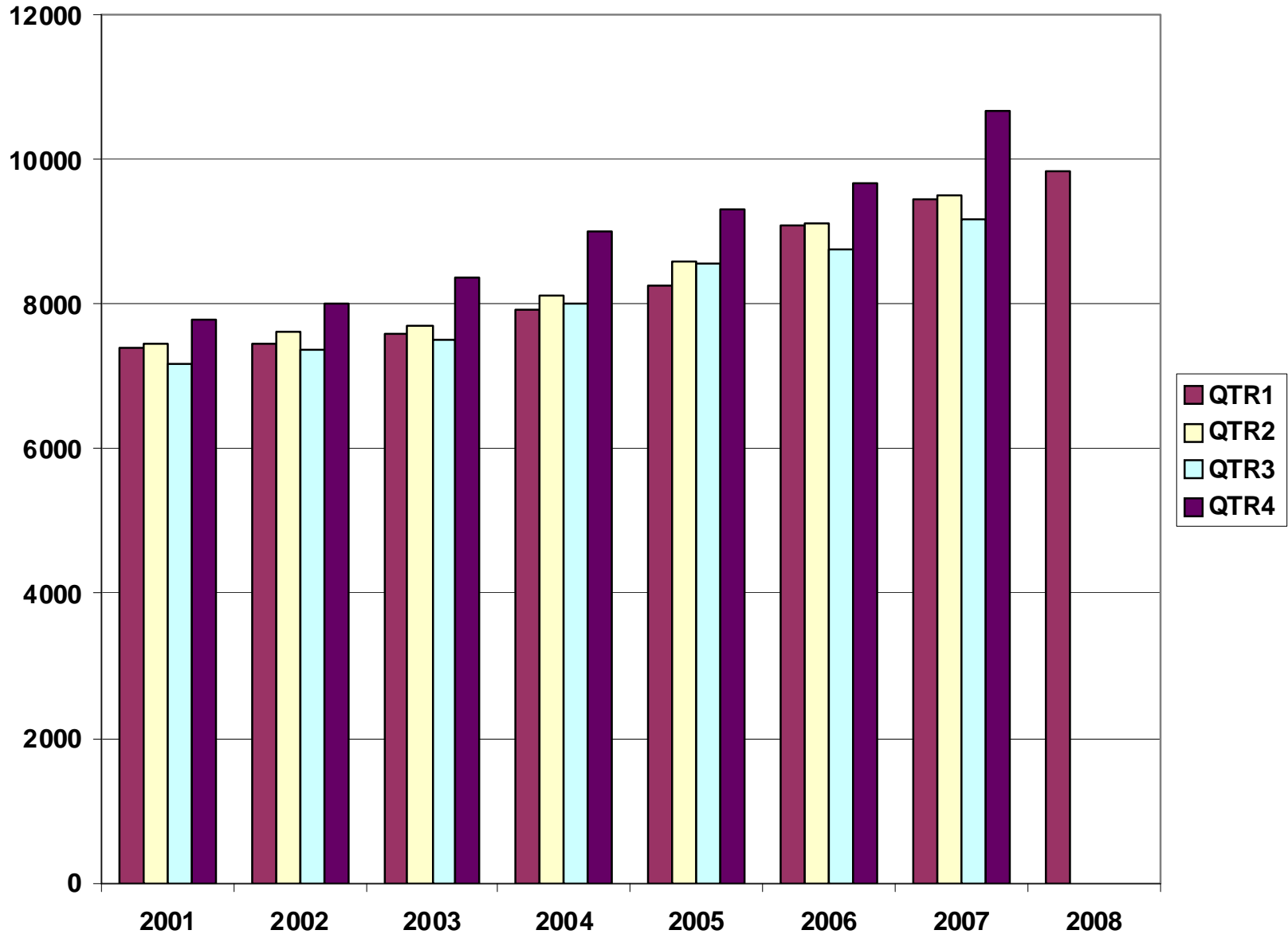


TABLE 3. TOTAL COVERED EARNINGS, 2001 - 2008

Period	2001	2002	2003	2004
Total	\$29,807,669,666	\$30,472,854,103	\$31,202,576,767	\$33,068,189,304
January - March	\$7,398,887,532	\$7,465,250,305	\$7,608,130,008	\$7,918,843,610
April - June	\$7,448,023,298	\$7,621,878,775	\$7,714,813,038	\$8,122,370,361
July - September	\$7,177,293,061	\$7,361,666,511	\$7,500,204,764	\$8,010,300,454
October - December	\$7,783,465,775	\$8,024,058,512	\$8,379,428,957	\$9,016,674,879
Average Weekly Earnings	\$518.26	\$533.44	\$548.45	\$573.80

Period	2005	2006	2007	2008
Total	\$34,753,107,631	\$36,636,090,775	\$38,833,265,464	\$9,849,712,834
January - March	\$8,261,153,981	\$9,085,021,816	\$9,452,711,662	\$9,849,712,834
April - June	\$8,607,722,353	\$9,112,624,590	\$9,525,837,049	N/A
July - September	\$8,562,555,369	\$8,750,878,205	\$9,178,902,477	N/A
October - December	\$9,321,675,928	\$9,687,566,164	\$10,675,814,276	N/A
Average Weekly Earnings	\$593.13	\$614.27	\$647.70	\$659.18

TABLE 4. TOTAL TAXABLE EARNINGS, 2001 - 2008

Period	2001	2002	2003	2004
Total	\$9,003,189,480	\$8,887,270,978	\$9,154,938,743	\$9,731,247,501
January - March	\$4,670,296,360	\$4,668,534,587	\$4,737,918,796	\$4,931,559,230
April - June	\$2,219,485,263	\$2,162,971,435	\$2,270,519,362	\$2,451,454,749
July - September	\$1,190,098,737	\$1,158,197,858	\$1,188,681,170	\$1,318,017,835
October - December	\$923,309,120	\$897,567,098	\$957,819,415	\$1,030,215,687

Period	2005	2006	2007	2008
Total	\$9,991,605,239	\$10,197,511,360	\$10,459,105,059	\$5,633,961,758
January - March	\$5,062,670,306	\$5,421,204,601	\$5,617,417,571	\$5,633,961,758
April - June	\$2,506,505,721	\$2,385,110,992	\$2,466,606,627	N/A
July - September	\$1,353,660,445	\$1,314,939,803	\$1,307,060,412	N/A
October - December	\$1,068,768,767	\$1,076,255,964	\$1,068,020,449	N/A

**TABLE 5. STATEWIDE SUMMARY
EMPLOYMENT AND TOTAL EARNINGS, BY INDUSTRY
FIRST QUARTER 2008**

NORTH AMERICAN INDUSTRY CLASSIFICATION SYSTEM INDUSTRY GROUPS	NUMBER OF EMPLOYING UNITS	EMPLOYMENT JANUARY	EMPLOYMENT FEBRUARY	EMPLOYMENT MARCH	TOTAL EARNINGS JANUARY - MARCH	AVERAGE WEEKLY EARNINGS
TOTAL, ALL INDUSTRIES	84,031	1,141,697	1,149,049	1,157,496	\$9,849,712,834	\$659.18
NATURAL RESOURCES AND MINING	2,440	18,843	19,302	19,897	\$187,660,702	\$746.12
AGRICULTURE, FORESTRY, FISHING AND HUNTING	1,956	11,760	12,261	12,626	\$84,793,542	\$533.95
CROP PRODUCTION	716	2,809	2,985	3,207	\$15,147,030	\$388.34
Oilseed and Grain Farming	448	1,617	1,677	1,792	\$8,756,252	\$397.30
Vegetable and Melon Farming	8	62	68	71	\$156,679	\$179.88
Fruit and Tree Nut Farming	8	53	64	72	\$297,346	\$363.06
Greenhouse and Nursery Production	54	319	375	408	\$2,155,142	\$451.31
Other Crop Farming	198	758	801	864	\$3,781,611	\$360.16
ANIMAL PRODUCTION	269	3,579	3,601	3,674	\$27,947,276	\$594.19
Cattle Ranching and Farming	79	330	320	330	\$2,046,424	\$481.89
Hog and Pig Farming	9	144	142	145	\$1,332,550	\$713.48
Poultry and Egg Production	90	2,589	2,602	2,626	\$21,041,192	\$621.17
Animal Aquaculture	62	439	462	495	\$3,131,995	\$517.74
Other	29	77	75	78	\$395,115	\$396.44
FORESTRY AND LOGGING	522	2,716	2,723	2,677	\$20,444,021	\$581.30
Timber Tract Operations	42	241	244	242	\$2,854,147	\$905.98
Forest Nurseries & Gathering of Forest Products	6	30	29	31	\$359,448	\$921.66
Logging	474	2,445	2,450	2,404	\$17,230,426	\$544.77
OTHER	449	2,656	2,952	3,068	\$21,255,215	\$565.36
MINING	484	7,083	7,041	7,271	\$102,867,160	\$1,109.54
OIL AND GAS EXTRACTION	101	1,080	1,068	1,156	\$18,653,254	\$1,302.84
MINING (EXCEPT OIL AND GAS)	111	2,099	2,099	2,090	\$25,371,607	\$931.14
SUPPORT ACTIVITIES FOR MINING	272	3,904	3,874	4,025	\$58,842,299	\$1,150.47
CONSTRUCTION	7,978	53,662	54,077	55,445	\$480,584,070	\$679.63
CONSTRUCTION OF BUILDINGS	2,226	12,449	12,604	13,026	\$123,782,108	\$750.15
Residential Building Construction	1,579	3,672	3,683	3,695	\$27,162,565	\$567.27
Nonresidential Building Construction	647	8,777	8,921	9,331	\$96,619,543	\$824.92
HEAVY AND CIVIL ENGINEERING CONSTRUCTION	863	8,712	9,085	9,621	\$85,807,743	\$722.22
Utility System Construction	408	4,356	4,685	5,175	\$42,211,496	\$685.22
Land Subdivision	130	354	372	382	\$3,381,384	\$704.26

**TABLE 5. STATEWIDE SUMMARY
EMPLOYMENT AND TOTAL EARNINGS, BY INDUSTRY
FIRST QUARTER 2008**

NORTH AMERICAN INDUSTRY CLASSIFICATION SYSTEM INDUSTRY GROUPS	NUMBER OF EMPLOYING UNITS	EMPLOYMENT	EMPLOYMENT	EMPLOYMENT	TOTAL EARNINGS	AVERAGE
		JANUARY	FEBRUARY	MARCH	JANUARY - MARCH	WEEKLY EARNINGS
Highway, Street and Bridge Construction	214	2,735	2,752	2,871	\$23,635,983	\$652.60
Other Heavy Construction	111	1,267	1,276	1,193	\$16,578,880	\$1,024.06
SPECIALTY TRADE CONTRACTORS	4,889	32,501	32,388	32,798	\$270,994,219	\$640.18
Building Foundation and Exterior Contractors	972	6,547	6,612	6,772	\$54,527,381	\$631.34
Building Equipment Contractors	2,162	15,792	15,668	15,789	\$141,849,323	\$692.81
Building Finishing Contractors	909	4,953	4,917	4,839	\$35,288,953	\$553.65
Other Specialty Trade Contractors	846	5,209	5,191	5,398	\$39,328,562	\$574.49
MANUFACTURING	3,599	185,246	184,611	184,766	\$1,715,690,513	\$713.87
FOOD MANUFACTURING	316	48,991	49,143	49,271	\$355,604,775	\$556.72
Animal Food Manufacturing	61	1,571	1,588	1,590	\$14,190,227	\$689.55
Grain and Oilseed Milling	30	2,393	2,385	2,371	\$21,227,621	\$685.23
Sugar & Confectionery Product Manufacturing	7	46	50	57	\$269,669	\$406.74
Fruit, Vegetable and Specialty Food	24	5,666	5,608	5,710	\$51,178,314	\$695.38
Dairy Product Manufacturing	11	690	676	681	\$6,805,256	\$767.19
Animal Slaughtering and Processing	94	33,300	33,523	33,566	\$217,020,193	\$498.88
Seafood Product Preparation & Packaging	5	169	177	180	\$826,070	\$362.42
Bakeries and Tortilla Manufacturing	55	3,489	3,452	3,429	\$28,455,341	\$633.23
Other Food Manufacturing	29	1,667	1,684	1,687	\$15,632,084	\$716.04
BEVERAGE AND TOBACCO PRODUCT MFG.	43	1,197	1,209	1,219	\$11,888,297	\$756.81
TEXTILE MILLS	18	255	251	248	\$2,719,437	\$832.31
TEXTILE PRODUCT MILLS	60	1,023	1,001	999	\$9,341,879	\$713.14
Textile Furnishing Mills	14	35	33	33	\$148,227	\$338.68
Other Textile Product Mills	46	988	968	966	\$9,193,652	\$726.08
APPAREL MANUFACTURING	37	1,463	1,493	1,519	\$8,041,231	\$414.67
Apparel Knitting Mills	3	668	698	716	\$4,205,130	\$466.10
Cut and Sew Apparel Manufacturing	28	546	557	561	\$2,719,781	\$377.19
Accessories & Other Apparel Manufacturing	6	249	238	242	\$1,116,320	\$353.38
LEATHER AND ALLIED PRODUCT MANUFACTURING	21	1,868	1,851	1,899	\$11,590,409	\$476.10
WOOD PRODUCT MANUFACTURING	381	11,849	11,608	11,683	\$91,832,797	\$603.08
Sawmills and Wood Preservation	157	4,901	4,826	4,752	\$39,370,964	\$627.50
Veneer and Engineered Wood Products	54	2,969	2,911	3,095	\$28,423,297	\$730.83
Other Wood Product Manufacturing	170	3,979	3,871	3,836	\$24,038,536	\$474.70

**TABLE 5. STATEWIDE SUMMARY
EMPLOYMENT AND TOTAL EARNINGS, BY INDUSTRY
FIRST QUARTER 2008**

NORTH AMERICAN INDUSTRY CLASSIFICATION SYSTEM INDUSTRY GROUPS	NUMBER OF EMPLOYING UNITS	EMPLOYMENT JANUARY	EMPLOYMENT FEBRUARY	EMPLOYMENT MARCH	TOTAL EARNINGS JANUARY - MARCH	AVERAGE WEEKLY EARNINGS
PAPER MANUFACTURING	86	11,076	11,067	11,021	\$156,285,194	\$1,087.50
Pulp, Paper and Paperboard Mills	12	4,243	4,288	4,265	\$81,242,734	\$1,465.17
Converted Paper Product Manufacturing	74	6,833	6,779	6,756	\$75,042,460	\$850.23
PRINTING AND RELATED SUPPORT ACTIVITIES	287	4,591	4,575	4,525	\$40,338,821	\$679.93
PETROLEUM AND COAL PRODUCTS MANUFACTURING	24	997	1,001	1,001	\$12,190,952	\$938.08
CHEMICAL MANUFACTURING	125	4,713	4,668	4,650	\$61,168,611	\$1,006.05
Basic Chemical Manufacturing	31	2,027	2,015	2,010	\$30,635,621	\$1,168.17
Resin, Rubber and Artificial Fibers	10	294	294	291	\$4,314,637	\$1,132.75
Agricultural Chemical Manufacturing	14	334	336	334	\$3,997,426	\$918.81
Paint, Coating and Adhesive Manufacturing	10	198	200	197	\$2,447,300	\$949.18
Other Chemical Preparation Manufacturing	30	945	919	922	\$10,208,012	\$845.55
Other	30	915	904	896	\$9,565,615	\$813.06
PLASTICS AND RUBBER PRODUCTS MANUFACTURING	157	11,447	11,363	11,316	\$118,731,923	\$802.90
Plastics Product Manufacturing	110	7,306	7,287	7,234	\$64,969,234	\$686.90
Rubber Product Manufacturing	47	4,141	4,076	4,082	\$53,762,689	\$1,008.76
NONMETALLIC MINERAL PRODUCT MANUFACTURING	267	4,649	4,605	4,593	\$42,065,529	\$701.05
Clay Product & Refractory Manufacturing	22	613	607	604	\$5,326,709	\$673.93
Glass and Glass Product Manufacturing	13	432	437	442	\$3,649,998	\$642.49
Cement and Concrete Product Manufacturing	189	2,569	2,564	2,559	\$22,130,611	\$663.94
Lime & Gypsum Product Manufacturing	5	418	395	393	\$4,991,415	\$955.11
Other Nonmetallic Mineral Products Manufacturing	38	617	602	595	\$5,966,796	\$759.07
PRIMARY METAL MANUFACTURING	82	8,484	8,472	8,451	\$120,125,158	\$1,091.08
Iron and Steel Mills and Ferroalloys	13	2,214	2,221	2,166	\$52,665,654	\$1,841.18
Purchased Steel Product Manufacturing	18	2,360	2,324	2,346	\$25,574,727	\$839.52
Alumina and Aluminum Production	22	2,039	2,049	2,038	\$23,657,154	\$891.18
Other Nonferrous Metal Production	14	643	653	671	\$6,422,747	\$753.52
Foundries	15	1,228	1,225	1,230	\$11,804,876	\$739.67
FABRICATED METAL PRODUCT MANUFACTURING	576	17,064	17,000	17,083	\$172,214,276	\$777.01
Forging and Stamping	11	768	759	763	\$7,268,075	\$732.42
Cutlery and Hand Tool Manufacturing	19	1,234	1,237	1,229	\$10,973,178	\$684.40
Architectural and Structural Metals	196	5,092	5,107	5,160	\$55,355,197	\$831.71
Boilers, Tanks and Shipping Containers	18	724	714	706	\$8,514,480	\$916.46

**TABLE 5. STATEWIDE SUMMARY
EMPLOYMENT AND TOTAL EARNINGS, BY INDUSTRY
FIRST QUARTER 2008**

NORTH AMERICAN INDUSTRY CLASSIFICATION SYSTEM INDUSTRY GROUPS	NUMBER OF EMPLOYING UNITS	EMPLOYMENT	EMPLOYMENT	EMPLOYMENT	TOTAL EARNINGS	AVERAGE
		JANUARY	FEBRUARY	MARCH	JANUARY - MARCH	WEEKLY EARNINGS
Hardware Manufacturing	8	267	262	264	\$2,202,934	\$641.07
Spring and Wire Product Manufacturing	12	580	569	574	\$3,617,724	\$484.54
Machine Shops and Threaded Products	202	1,951	1,970	1,976	\$16,417,123	\$642.46
Coating, Engraving and Heat Treating Metals	42	628	630	645	\$4,602,733	\$558.16
Other Fabricated Metal Product Manufacturing	68	5,820	5,752	5,766	\$63,262,832	\$842.03
MACHINERY MANUFACTURING	267	14,116	14,277	14,328	\$124,574,705	\$672.92
Agricultural, Construction and Mining Machinery	41	3,046	3,140	3,167	\$19,022,890	\$469.36
Industrial Machinery Manufacturing	35	846	817	833	\$10,036,048	\$927.89
Commercial and Service Industry Machinery	28	974	975	968	\$10,595,541	\$838.23
HVAC and Commercial Refrigeration Equipment	23	4,531	4,609	4,571	\$40,291,413	\$678.14
Metalworking Machinery Manufacturing	78	1,364	1,375	1,376	\$13,334,499	\$747.80
Turbine & Power Transmission Equipment Manufacturing	7	421	456	474	\$3,856,619	\$658.76
Other General Purpose Machinery Manufacturing	55	2,934	2,905	2,939	\$27,437,695	\$721.32
COMPUTER AND ELECTRONIC PRODUCT MANUFACTURING	81	4,221	4,080	4,129	\$37,378,615	\$693.95
Communications Equipment Manufacturing	9	147	150	151	\$2,241,159	\$1,154.44
Audio and Video Equipment Manufacturing	10	953	869	919	\$7,669,294	\$645.69
Semiconductors and Electronic Components	29	2,252	2,202	2,207	\$18,542,552	\$642.40
Electronic Instrument Manufacturing	26	854	844	838	\$8,827,829	\$803.31
Other	7	15	15	14	\$97,781	\$512.84
ELECTRICAL EQUIPMENT AND APPLIANCES	66	9,881	9,914	9,864	\$96,961,831	\$754.44
Electrical Equipment Manufacturing	23	4,780	4,757	4,741	\$46,811,051	\$756.59
Other Electrical Equipment & Component Manufacturing	23	1,992	2,017	1,985	\$22,857,340	\$880.01
Other	20	3,109	3,140	3,138	\$27,293,440	\$670.98
TRANSPORTATION EQUIPMENT MANUFACTURING	179	16,210	16,057	16,175	\$157,363,948	\$749.65
Motor Vehicle Body and Trailer Manufacturing	40	2,845	2,574	2,505	\$22,393,065	\$652.15
Motor Vehicle Parts Manufacturing	60	6,408	6,509	6,502	\$54,832,079	\$651.61
Aerospace Product and Parts Manufacturing	30	4,070	4,156	4,190	\$55,326,682	\$1,028.33
Ship and Boat Building	30	1,698	1,642	1,650	\$12,528,199	\$579.38
Other	19	1,189	1,176	1,328	\$12,283,923	\$767.60
FURNITURE & RELATED PRODUCT MFG.	267	5,939	5,862	5,707	\$45,160,022	\$595.24
Household & Institutional Furniture	219	4,140	4,102	4,007	\$28,504,957	\$537.03

**TABLE 5. STATEWIDE SUMMARY
EMPLOYMENT AND TOTAL EARNINGS, BY INDUSTRY
FIRST QUARTER 2008**

NORTH AMERICAN INDUSTRY CLASSIFICATION SYSTEM INDUSTRY GROUPS	NUMBER OF EMPLOYING UNITS	EMPLOYMENT	EMPLOYMENT	EMPLOYMENT	TOTAL EARNINGS	AVERAGE
		JANUARY	FEBRUARY	MARCH	JANUARY - MARCH	WEEKLY EARNINGS
Office Furniture & Fixtures Manufacturing	41	1,663	1,634	1,565	\$15,869,990	\$753.25
Other Furniture Related Product Manufacturing	7	136	126	135	\$785,075	\$456.35
MISCELLANEOUS MANUFACTURING	259	5,212	5,114	5,085	\$40,112,103	\$600.65
Medical Equipment & Supplies Manufacturing	94	2,486	2,504	2,503	\$21,838,209	\$672.57
Other Miscellaneous Manufacturing	165	2,726	2,610	2,582	\$18,273,894	\$532.59
TRADE, TRANSPORTATION AND UTILITIES	21,145	243,992	243,200	245,176	\$2,023,398,367	\$637.57
WHOLESALE TRADE	6,432	47,988	48,298	48,696	\$648,651,635	\$1,032.46
MERCHANT WHOLESALERS, DURABLE GOODS	2,188	22,048	22,065	22,125	\$253,443,152	\$882.98
Motor Vehicle & Part Merchant Wholesalers	247	2,681	2,673	2,646	\$25,875,304	\$746.40
Furniture & Furnishing Merchant Wholesalers	70	423	437	449	\$5,071,922	\$894.15
Lumber & Supply Merchant Wholesalers	186	1,751	1,775	1,795	\$18,391,118	\$797.61
Commercial Goods Merchant Wholesalers	280	2,665	2,683	2,681	\$42,112,838	\$1,210.41
Metal & Mineral Merchant Wholesalers	60	908	905	918	\$11,307,875	\$955.51
Electric Goods Merchant Wholesalers	181	2,248	2,231	2,214	\$29,457,429	\$1,015.67
Hardware & Plumbing Merchant Wholesalers	228	2,410	2,376	2,370	\$27,386,333	\$883.16
Machinery & Supply Merchant Wholesalers	694	7,167	7,170	7,231	\$75,222,943	\$804.86
Misc. Durable Goods Merchant Wholesalers	242	1,795	1,815	1,821	\$18,617,390	\$791.07
MERCHANT WHOLESALERS, NONDURABLE GOODS	1,258	16,237	16,351	16,559	\$188,486,454	\$885.04
Paper & Paper Product Merchant Wholesalers	73	1,133	1,137	1,155	\$13,719,259	\$924.37
Druggists' Goods Merchant Wholesalers	59	1,152	1,159	1,174	\$13,919,893	\$921.75
Apparel & Piece Goods Merchant Wholesalers	41	486	491	482	\$4,311,417	\$681.93
Grocery Product Merchant Wholesalers	324	5,524	5,521	5,533	\$71,479,884	\$995.01
Farm Product Merchant Wholesalers	75	870	850	881	\$6,205,028	\$550.53
Chemical Merchant Wholesalers	85	547	551	544	\$6,373,772	\$895.78
Petroleum Merchant Wholesalers	155	1,482	1,484	1,473	\$22,377,305	\$1,163.32
Alcoholic Beverage Merchant Wholesalers	36	1,163	1,167	1,158	\$13,307,329	\$880.42
Misc. Nondurable Goods Merchant Wholesalers	410	3,880	3,991	4,159	\$36,792,567	\$705.78
ELECTRONIC MARKETS & AGENTS & BROKERS	2,986	9,703	9,882	10,012	\$206,722,029	\$1,611.82
RETAIL TRADE	11,340	133,895	132,773	134,083	\$729,733,517	\$420.21
MOTOR VEHICLE & PARTS DEALERS	1,730	18,086	18,017	18,088	\$155,616,738	\$662.68
Automobile Dealers	730	10,914	10,865	10,865	\$108,041,167	\$763.77
Other Motor Vehicle Dealers	199	1,583	1,564	1,577	\$11,886,880	\$580.68

**TABLE 5. STATEWIDE SUMMARY
EMPLOYMENT AND TOTAL EARNINGS, BY INDUSTRY
FIRST QUARTER 2008**

NORTH AMERICAN INDUSTRY CLASSIFICATION SYSTEM INDUSTRY GROUPS	NUMBER OF EMPLOYING UNITS	EMPLOYMENT	EMPLOYMENT	EMPLOYMENT	TOTAL EARNINGS	AVERAGE
		JANUARY	FEBRUARY	MARCH	JANUARY - MARCH	WEEKLY EARNINGS
Automotive Parts, Accessories & Tire Stores	801	5,589	5,588	5,646	\$35,688,691	\$489.56
FURNITURE & HOME FURNISHINGS STORES	598	3,973	3,936	3,954	\$25,749,804	\$500.91
Furniture Stores	316	2,359	2,335	2,361	\$16,216,400	\$530.44
Home Furnishings Stores	282	1,614	1,601	1,593	\$9,533,404	\$457.57
ELECTRONICS & APPLIANCE STORES	535	4,140	4,053	4,071	\$30,820,311	\$579.94
BUILDING MATERIAL & GARDEN SUPPLY STORES	856	10,624	10,637	10,931	\$70,017,913	\$501.93
Building Material & Supplies Dealers	670	9,750	9,745	9,955	\$64,754,779	\$507.42
Lawn & Garden Equipment & Supplies Stores	186	874	892	976	\$5,263,134	\$442.95
FOOD & BEVERAGE STORES	1,076	18,380	18,451	18,415	\$78,771,083	\$329.04
Grocery Stores	611	16,078	16,173	16,069	\$67,482,629	\$322.29
Specialty Food Stores	158	835	824	839	\$5,145,354	\$475.34
Beer, Wine & Liquor Stores	307	1,467	1,454	1,507	\$6,143,100	\$320.15
HEALTH & PERSONAL CARE STORES	924	7,457	7,425	7,453	\$55,646,764	\$574.95
GASOLINE STATIONS	1,571	11,969	11,935	12,022	\$43,040,353	\$276.47
Gasoline Stations with Convenience Stores	1,418	10,737	10,698	10,786	\$37,269,104	\$266.92
Other Gasoline Stations	153	1,232	1,237	1,236	\$5,771,249	\$359.47
CLOTHING & CLOTHING ACCESSORIES STORES	1,086	9,346	9,027	9,034	\$31,837,073	\$268.07
Clothing Stores	739	7,213	6,927	6,939	\$21,720,234	\$237.79
Shoe Stores	183	1,203	1,207	1,224	\$4,281,175	\$271.87
Jewelry, Luggage & Leather Goods Stores	164	930	893	871	\$5,835,664	\$499.89
SPORTING GOODS, HOBBY, BOOK & MUSIC STORES	580	4,875	4,567	4,532	\$17,646,467	\$291.42
Sporting Goods & Musical Instrument Stores	433	3,352	3,169	3,170	\$13,154,120	\$313.24
Book, Periodical & Music Stores	147	1,523	1,398	1,362	\$4,492,347	\$242.05
GENERAL MERCHANDISE STORES	730	36,863	36,628	37,572	\$176,761,839	\$367.28
MISCELLANEOUS STORE RETAILERS	1,329	6,347	6,309	6,237	\$30,606,669	\$373.85
Florists	250	916	989	948	\$3,897,213	\$315.23
Office Supplies, Stationery & Gift Stores	350	2,201	2,171	2,152	\$11,107,769	\$392.91
Used Merchandise Stores	212	888	820	820	\$3,777,126	\$344.80
Other Miscellaneous Store Retailers	517	2,342	2,329	2,317	\$11,824,561	\$390.49
NONSTORE RETAILERS	325	1,835	1,788	1,774	\$13,218,503	\$565.21
Electronic Shopping & Mail -Order Houses	81	358	344	316	\$2,958,845	\$670.74
Vending Machine Operators	74	623	620	640	\$3,923,690	\$480.86

**TABLE 5. STATEWIDE SUMMARY
EMPLOYMENT AND TOTAL EARNINGS, BY INDUSTRY
FIRST QUARTER 2008**

NORTH AMERICAN INDUSTRY CLASSIFICATION SYSTEM INDUSTRY GROUPS	NUMBER OF EMPLOYING UNITS	EMPLOYMENT	EMPLOYMENT	EMPLOYMENT	TOTAL EARNINGS	AVERAGE
		JANUARY	FEBRUARY	MARCH	JANUARY - MARCH	WEEKLY EARNINGS
Direct Selling Establishments	170	854	824	818	\$6,335,968	\$585.80
TRANSPORTATION & WAREHOUSING	3,011	55,353	55,390	55,636	\$510,655,850	\$708.28
AIR TRANSPORTATION	51	1,062	1,064	1,080	\$13,595,844	\$978.63
WATER TRANSPORTATION	4	103	95	103	\$1,288,147	\$987.59
TRUCK TRANSPORTATION	2,024	34,993	35,022	35,035	\$319,635,038	\$702.16
General Freight Trucking	1,291	29,489	29,495	29,487	\$273,065,464	\$712.27
Specialized Freight Trucking	733	5,504	5,527	5,548	\$46,569,574	\$648.22
TRANSIT & GROUND PASSENGER TRANSPORTATION	65	1,092	1,116	1,132	\$4,352,132	\$300.70
Urban Transit Systems	4	51	54	55	\$265,005	\$382.22
Interurban & Rural Bus Transportation	3	61	59	61	\$295,602	\$376.88
Taxi & Limousine Service	23	276	303	324	\$1,109,033	\$283.42
School & Employee Bus Transportation	7	361	345	341	\$1,348,550	\$297.23
Charter Bus Industry	7	59	66	65	\$333,061	\$404.53
Other Ground Passenger Transportation	21	284	289	286	\$1,000,881	\$268.89
PIPELINE TRANSPORTATION	67	888	868	863	\$14,539,112	\$1,281.09
SUPPORT ACTIVITIES FOR TRANSPORTATION	416	4,510	4,589	4,604	\$48,563,114	\$817.84
Support Activities for Air Transportation	104	1,509	1,486	1,506	\$13,382,188	\$686.11
Support Activities for Rail Transportation	30	380	383	379	\$3,229,394	\$652.58
Support Activities for Water Transportation	23	595	583	576	\$7,025,163	\$924.28
Support Activities for Road Transportation	108	453	483	508	\$2,878,840	\$460.07
Freight Transportation Arrangement	127	1,407	1,486	1,466	\$20,915,470	\$1,107.28
Other Support Activities for Transportation	24	166	168	169	\$1,132,059	\$519.37
POSTAL SERVICE	8	11	12	15	\$91,818	\$557.60
COURIERS & MESSENGERS	140	3,258	3,278	3,277	\$30,052,228	\$706.73
Couriers	85	2,941	2,961	2,958	\$27,981,702	\$728.82
Local Messengers & Local Delivery	55	317	317	319	\$2,070,526	\$501.38
WAREHOUSING & STORAGE	227	9,380	9,302	9,474	\$78,346,287	\$642.13
OTHER	9	56	44	53	\$192,130	\$289.79
UTILITIES	362	6,756	6,739	6,761	\$134,357,365	\$1,530.68
Power Generation & Supply	161	5,061	5,030	5,031	\$110,199,124	\$1,681.69
Natural Gas Distribution	34	893	908	909	\$17,859,942	\$1,520.86
Water, Sewage and Other Systems	167	802	801	821	\$6,298,299	\$599.61

**TABLE 5. STATEWIDE SUMMARY
EMPLOYMENT AND TOTAL EARNINGS, BY INDUSTRY
FIRST QUARTER 2008**

NORTH AMERICAN INDUSTRY CLASSIFICATION SYSTEM INDUSTRY GROUPS	NUMBER OF EMPLOYING UNITS	EMPLOYMENT	EMPLOYMENT	EMPLOYMENT	TOTAL EARNINGS	AVERAGE
		JANUARY	FEBRUARY	MARCH	JANUARY - MARCH	WEEKLY EARNINGS
INFORMATION	1,131	18,834	18,942	18,876	\$272,850,995	\$1,111.45
PUBLISHING INDUSTRIES, EXCEPT INTERNET	256	6,161	6,208	6,154	\$51,046,653	\$635.97
Newspaper, Book & Directory Publishers	229	5,940	5,981	5,925	\$47,880,159	\$619.15
Software Publishers	27	221	227	229	\$3,166,494	\$1,079.36
MOTION PICTURE & SOUND RECORDING INDUSTRY	141	1,175	1,221	1,222	\$5,317,996	\$339.20
Motion Picture & Video Industries	121	1,133	1,179	1,178	\$4,997,861	\$330.47
Sound Recording Industries	20	42	42	44	\$320,135	\$577.17
BROADCASTING, EXCEPT INTERNET	148	2,210	2,172	2,146	\$19,803,287	\$700.06
Radio & Television Broadcasting	142	2,172	2,133	2,099	\$19,550,025	\$704.49
Cable & Other Subscription Programming	6	38	39	47	\$253,262	\$471.33
TELECOMMUNICATIONS	431	8,020	8,082	8,062	\$177,977,332	\$1,699.71
Wired Telecommunications Carriers	305	4,465	4,511	4,508	\$71,968,651	\$1,231.69
Other Telecommunications	89	553	555	558	\$6,124,362	\$848.33
Other	37	3,002	3,016	2,996	\$99,884,319	\$2,557.16
DATA PROCESSING, HOSTING & RELATED SERVICES	100	977	977	992	\$16,142,592	\$1,264.50
OTHER	55	291	282	300	\$2,563,135	\$677.54
FINANCIAL ACTIVITIES	8,403	50,956	50,946	51,058	\$609,364,687	\$919.34
FINANCE & INSURANCE	4,900	36,965	36,886	36,934	\$508,897,614	\$1,060.05
CREDIT INTERMEDIATION & RELATED ACTIVITIES	2,106	21,725	21,650	21,621	\$225,161,416	\$799.44
Depository Credit Intermediation	1,416	18,526	18,457	18,439	\$183,529,408	\$764.19
Nondepository Credit Intermediation	399	2,141	2,132	2,129	\$32,769,842	\$1,181.24
Activities Related to Credit Intermediation	291	1,058	1,061	1,053	\$8,862,166	\$644.74
FINANCIAL INVESTMENT & RELATED ACTIVITIES	627	3,161	3,164	3,181	\$114,155,273	\$2,771.25
INSURANCE CARRIERS & RELATED ACTIVITIES	2,123	11,618	11,620	11,671	\$163,938,889	\$1,083.73
Insurance Carriers	382	4,982	5,002	5,010	\$85,746,655	\$1,319.71
Insurance Agencies, Brokerages & Support	1,741	6,636	6,618	6,661	\$78,192,234	\$906.07
OTHER	44	461	452	461	\$5,642,036	\$947.60
REAL ESTATE & RENTAL & LEASING	3,503	13,991	14,060	14,124	\$100,467,073	\$549.73
REAL ESTATE	2,642	8,757	8,758	8,756	\$62,501,272	\$549.02
Lessors of Real Estate	1,054	4,292	4,295	4,339	\$28,728,449	\$512.89
Offices of Real Estate Agents & Brokers	971	2,030	2,019	2,011	\$14,918,855	\$568.12
Activities Related to Real Estate	617	2,435	2,444	2,406	\$18,853,968	\$597.24

**TABLE 5. STATEWIDE SUMMARY
EMPLOYMENT AND TOTAL EARNINGS, BY INDUSTRY
FIRST QUARTER 2008**

NORTH AMERICAN INDUSTRY CLASSIFICATION SYSTEM INDUSTRY GROUPS	NUMBER OF EMPLOYING UNITS	EMPLOYMENT	EMPLOYMENT	EMPLOYMENT	TOTAL EARNINGS	AVERAGE
		JANUARY	FEBRUARY	MARCH	JANUARY - MARCH	WEEKLY EARNINGS
RENTAL & LEASING SERVICES	843	5,168	5,233	5,300	\$36,904,880	\$542.42
Automotive Equipment Rental & Leasing	126	1,021	1,024	1,024	\$7,411,154	\$557.27
Consumer Goods Rental	513	2,935	2,984	3,025	\$16,144,962	\$416.57
General Rental Centers	32	249	244	244	\$2,029,811	\$635.57
Machinery & Equipment Rental & Leasing	172	963	981	1,007	\$11,318,953	\$885.15
LESSORS OF NONFINANCIAL INTANGIBLE ASSETS	18	66	69	68	\$1,060,921	\$1,206.05
PROFESSIONAL AND BUSINESS SERVICES	11,642	115,070	117,348	117,545	\$1,338,883,401	\$882.87
PROFESSIONAL & TECHNICAL SERVICES	7,295	39,405	39,793	39,488	\$467,072,853	\$908.16
Legal Services	1,672	6,423	6,447	6,479	\$68,626,615	\$818.49
Accounting & Bookkeeping Services	1,256	6,766	7,094	6,736	\$56,069,928	\$628.24
Architectural & Engineering Services	985	6,755	6,712	6,741	\$81,261,450	\$927.98
Specialized Design Services	177	466	458	466	\$4,619,192	\$766.88
Computer Systems Design & Related Services	958	7,917	7,993	7,801	\$139,782,017	\$1,360.44
Management & Technical Consulting Services	1,208	4,284	4,301	4,404	\$58,267,841	\$1,035.22
Scientific Research & Development Services	103	1,073	1,067	1,072	\$14,370,763	\$1,032.48
Advertising & Related Services	326	1,990	2,008	2,015	\$22,330,213	\$857.00
Other Professional & Technical Services	610	3,731	3,713	3,774	\$21,744,834	\$447.32
MANAGEMENT OF COMPANIES & ENTERPRISES	567	25,282	25,344	25,633	\$589,168,316	\$1,782.90
ADMINISTRATIVE & WASTE SERVICES	3,780	50,383	52,211	52,424	\$282,642,232	\$420.76
ADMINISTRATIVE & SUPPORT SERVICES	3,563	48,061	49,893	50,109	\$259,167,652	\$403.94
Office Administrative Services	391	1,235	1,279	1,297	\$17,413,062	\$1,054.42
Facilities Support Services	16	116	107	108	\$930,270	\$648.57
Employment Services	700	22,349	23,532	23,646	\$105,934,685	\$351.61
Business Support Services	414	6,447	6,883	6,886	\$39,485,777	\$450.74
Travel Arrangement & Reservation Services	101	381	387	415	\$3,233,485	\$630.76
Investigation & Security Services	248	4,624	4,608	4,582	\$27,939,780	\$466.75
Services to Buildings & Dwellings	1,385	11,370	11,550	11,702	\$52,581,038	\$350.47
Other Support Services	308	1,539	1,547	1,473	\$11,649,555	\$589.68
WASTE MANAGEMENT & REMEDIATION SERVICES	217	2,322	2,318	2,315	\$23,474,580	\$778.89
Waste Collection	103	1,212	1,205	1,222	\$11,924,284	\$756.19
Waste Treatment & Disposal Services	42	682	688	672	\$8,037,737	\$908.36
Remediation & Other Waste Services	72	428	425	421	\$3,512,559	\$636.26

**TABLE 5. STATEWIDE SUMMARY
EMPLOYMENT AND TOTAL EARNINGS, BY INDUSTRY
FIRST QUARTER 2008**

NORTH AMERICAN INDUSTRY CLASSIFICATION SYSTEM INDUSTRY GROUPS	NUMBER OF EMPLOYING UNITS	EMPLOYMENT JANUARY	EMPLOYMENT FEBRUARY	EMPLOYMENT MARCH	TOTAL EARNINGS JANUARY - MARCH	AVERAGE WEEKLY EARNINGS
EDUCATION AND HEALTH SERVICES	12,865	152,207	153,072	153,859	\$1,235,885,991	\$621.17
EDUCATIONAL SERVICES	601	9,538	9,905	9,889	\$66,891,441	\$526.27
Elementary & Secondary Schools	73	3,261	3,350	3,318	\$17,470,763	\$406.05
Junior Colleges	7	271	291	284	\$1,839,301	\$501.72
Colleges & Universities	29	3,301	3,540	3,530	\$26,272,484	\$584.60
Business, Computer & Management Training	42	188	190	199	\$4,714,294	\$1,885.47
Technical & Trade Schools	107	750	745	761	\$8,492,778	\$868.74
Other Schools & Instruction	239	1,465	1,494	1,487	\$5,028,258	\$260.99
Educational Support Services	104	302	295	310	\$3,073,563	\$782.01
HEALTH CARE & SOCIAL ASSISTANCE	12,264	142,669	143,167	143,970	\$1,168,994,550	\$627.65
AMBULATORY HEALTH CARE SERVICES	5,003	44,063	44,221	44,387	\$504,185,000	\$876.98
Offices of Physicians	2,214	20,923	20,948	20,946	\$305,742,272	\$1,123.20
Offices of Dentists	941	6,170	6,161	6,199	\$57,851,122	\$720.47
Offices of Other Health Practitioners	1,175	5,966	6,056	6,084	\$47,246,327	\$602.18
Outpatient Care Centers	249	3,896	3,897	3,949	\$37,036,478	\$727.89
Medical & Diagnostic Laboratories	105	829	825	829	\$10,604,127	\$985.54
Home Health Care Services	181	4,078	4,074	4,104	\$27,874,555	\$524.85
Other Ambulatory Health Care Services	138	2,201	2,260	2,276	\$17,830,119	\$610.75
HOSPITALS	125	41,818	42,080	42,297	\$398,554,490	\$728.83
General Medical & Surgical Hospitals	91	38,266	38,496	38,653	\$366,812,883	\$733.43
Psychiatric & Substance Abuse Hospitals	11	1,649	1,667	1,710	\$13,878,691	\$637.24
Other Hospitals	23	1,903	1,917	1,934	\$17,862,916	\$716.41
NURSING & RESIDENTIAL CARE FACILITIES	531	28,018	28,077	28,283	\$145,532,830	\$398.02
Nursing Care Facilities	257	20,809	20,874	21,009	\$108,293,450	\$398.63
Residential Mental Health Facilities	129	3,356	3,328	3,345	\$18,416,258	\$423.76
Community Care Facilities for the Elderly	99	2,353	2,355	2,389	\$10,662,290	\$346.70
Other Residential Care Facilities	46	1,500	1,520	1,540	\$8,160,832	\$413.00
SOCIAL ASSISTANCE	6,605	28,770	28,789	29,003	\$120,722,230	\$321.84
Individual & Family Services	5,413	15,103	15,054	15,131	\$64,414,669	\$328.23
Emergency & Other Relief Services	128	935	950	932	\$4,887,124	\$400.35
Vocational Rehabilitation Services	126	3,614	3,579	3,643	\$17,504,755	\$372.79
Child Day Care Services	938	9,118	9,206	9,297	\$33,915,682	\$283.36

**TABLE 5. STATEWIDE SUMMARY
EMPLOYMENT AND TOTAL EARNINGS, BY INDUSTRY
FIRST QUARTER 2008**

NORTH AMERICAN INDUSTRY CLASSIFICATION SYSTEM INDUSTRY GROUPS	NUMBER OF EMPLOYING UNITS	EMPLOYMENT JANUARY	EMPLOYMENT FEBRUARY	EMPLOYMENT MARCH	TOTAL EARNINGS JANUARY - MARCH	AVERAGE WEEKLY EARNINGS
LEISURE AND HOSPITALITY	6,199	95,941	97,194	99,556	\$306,686,584	\$241.80
ARTS, ENTERTAINMENT & RECREATION	912	8,683	8,792	9,174	\$43,077,312	\$373.03
PERFORMING ARTS & SPECTATOR SPORTS	225	2,530	2,558	2,645	\$13,728,841	\$409.70
Performing Arts Companies	35	305	289	305	\$1,355,802	\$348.03
Spectator Sports	59	1,511	1,485	1,502	\$7,230,081	\$370.94
Performing Arts & Sports Promoters	50	595	649	704	\$4,158,327	\$492.61
Agents & Managers for Public Figures	21	23	25	28	\$285,089	\$865.65
Independent Artists, Writers & Performers	60	96	110	106	\$699,542	\$517.41
MUSEUMS, PARKS & HISTORICAL SITES	48	199	196	232	\$1,125,598	\$414.28
GAMBLING, RECREATION & AMUSEMENT INDUSTRY	639	5,954	6,038	6,297	\$28,222,873	\$356.11
ACCOMMODATION & FOOD SERVICES	5,287	87,258	88,402	90,382	\$263,609,272	\$228.66
ACCOMMODATION	842	10,626	11,003	11,357	\$40,267,124	\$281.71
Traveler Accommodation	765	10,303	10,683	10,998	\$38,812,454	\$280.04
RV Parks & Recreational Camps	59	254	240	281	\$1,110,569	\$330.69
Rooming & Boarding Houses	18	69	80	78	\$344,101	\$349.81
FOOD SERVICES & DRINKING PLACES	4,445	76,632	77,399	79,025	\$223,342,148	\$221.15
Full -Service Restaurants	1,948	33,824	34,397	34,742	\$105,213,187	\$235.81
Limited-Service Eating Places	2,207	39,384	39,442	40,695	\$106,598,781	\$205.82
Special Food Services	143	2,446	2,571	2,566	\$8,674,758	\$263.99
Drinking Places, Alcoholic Beverages	147	978	989	1,022	\$2,855,422	\$220.46
OTHER SERVICES	5,431	24,829	25,006	25,286	\$154,377,158	\$474.24
REPAIR & MAINTENANCE	2,191	9,334	9,342	9,502	\$67,877,950	\$555.90
Automotive Repair & Maintenance	1,503	6,512	6,510	6,567	\$43,950,181	\$517.76
Electronic Equipment Repair & Maintenance	159	679	691	706	\$6,111,154	\$679.32
Commercial Machinery Repair & Maintenance	345	1,555	1,551	1,613	\$14,074,502	\$688.27
Household Goods Repair & Maintenance	184	588	590	616	\$3,742,113	\$481.36
PERSONAL & LAUNDRY SERVICES	1,317	8,040	8,247	8,321	\$39,698,739	\$372.29
Personal Care Services	575	2,601	2,718	2,782	\$10,519,905	\$299.68
Death Care Services	238	1,616	1,637	1,650	\$10,096,972	\$475.23
Drycleaning & Laundry Services	330	3,162	3,212	3,188	\$15,666,041	\$378.08
Other Personal Services	174	661	680	701	\$3,415,821	\$386.03
MEMBERSHIP ASSOCIATIONS & ORGANIZATIONS	1,032	6,228	6,178	6,221	\$41,662,046	\$516.15

**TABLE 5. STATEWIDE SUMMARY
EMPLOYMENT AND TOTAL EARNINGS, BY INDUSTRY
FIRST QUARTER 2008**

NORTH AMERICAN INDUSTRY CLASSIFICATION SYSTEM INDUSTRY GROUPS	NUMBER OF EMPLOYING UNITS	EMPLOYMENT JANUARY	EMPLOYMENT FEBRUARY	EMPLOYMENT MARCH	TOTAL EARNINGS JANUARY - MARCH	AVERAGE WEEKLY EARNINGS
Religious Organizations	43	236	243	238	\$1,583,003	\$509.50
Grantmaking & Giving Services	102	485	461	474	\$4,728,198	\$768.40
Social Advocacy Organizations	176	2,034	2,016	2,007	\$13,217,978	\$503.60
Civic & Social Organizations	207	1,456	1,458	1,438	\$5,096,042	\$270.22
Professional & Similar Organizations	504	2,017	2,000	2,064	\$17,036,825	\$646.53
PRIVATE HOUSEHOLDS	891	1,227	1,239	1,242	\$5,138,423	\$319.79
LOCAL GOVERNMENT	1,991	118,381	119,430	119,845	\$885,040,511	\$571.05
STATE GOVERNMENT	1,207	63,736	65,921	66,187	\$639,289,855	\$753.30
NONCLASSIFIABLE ESTABLISHMENTS	0	0	0	0	\$0	

**TABLE 6. COUNTY SUMMARY
EMPLOYMENT AND TOTAL EARNINGS, BY INDUSTRY
FIRST QUARTER 2008**

NORTH AMERICAN INDUSTRY CLASSIFICATION SYSTEM INDUSTRY GROUP	NUMBER OF EMPLOYING UNITS	EMPLOYMENT	EMPLOYMENT	EMPLOYMENT	TOTAL EARNINGS	AVERAGE WEEKLY EARNINGS
		JANUARY	FEBRUARY	MARCH	JANUARY - MARCH	
ARKANSAS COUNTY - TOTAL	749	9,969	10,060	10,191	\$73,283,456	\$559.62
Natural Resources & Mining	43	168	169	192	\$1,311,155	\$571.97
Construction	46	308	305	307	\$2,595,792	\$651.12
Manufacturing	33	3,649	3,696	3,765	\$30,231,178	\$627.94
Trade, Transportation & Utilities	204	1,975	1,961	2,003	\$15,816,207	\$614.56
Wholesale Trade	43	379	384	412	\$4,781,251	\$939.03
Retail Trade	99	1,116	1,100	1,110	\$5,795,195	\$402.09
Transportation, Warehousing & Utilities	62	480	477	481	\$5,239,761	\$840.87
Information	11	109	106	109	\$1,029,852	\$733.51
Financial Activities	53	337	344	340	\$2,836,652	\$641.15
Professional & Business Services	60	403	402	403	\$3,736,479	\$713.80
Education & Health Services	130	1,257	1,278	1,264	\$6,501,755	\$394.95
Leisure & Hospitality	62	526	531	533	\$1,271,313	\$184.52
Other Services	59	137	139	142	\$761,081	\$420.18
Local Government	32	874	896	888	\$5,752,062	\$499.40
State Government	16	226	233	245	\$1,439,930	\$472.01
ASHLEY COUNTY - TOTAL	586	7,800	7,934	8,210	\$69,454,664	\$669.40
Natural Resources & Mining	64	382	393	377	\$3,027,945	\$606.56
Construction	48	571	626	674	\$4,832,318	\$596.02
Manufacturing	27	2,450	2,478	2,677	\$34,452,535	\$1,045.44
Trade, Transportation & Utilities	137	1,259	1,256	1,274	\$7,641,393	\$465.40
Wholesale Trade	24	189	192	189	\$1,657,014	\$670.86
Retail Trade	85	850	836	858	\$3,846,134	\$348.89
Transportation, Warehousing & Utilities	28	220	228	227	\$2,138,245	\$731.02
Information	8	47	53	52	\$336,789	\$511.32
Financial Activities	40	251	256	256	\$2,047,332	\$619.22
Professional & Business Services	53	357	361	349	\$2,063,705	\$446.34
Education & Health Services	94	681	691	702	\$5,397,945	\$600.62
Leisure & Hospitality	28	407	418	441	\$972,744	\$177.31
Other Services	43	193	198	204	\$1,165,121	\$451.89
Local Government	32	974	966	965	\$6,212,773	\$493.53
State Government	12	228	238	239	\$1,304,064	\$426.86

**TABLE 6. COUNTY SUMMARY
EMPLOYMENT AND TOTAL EARNINGS, BY INDUSTRY
FIRST QUARTER 2008**

NORTH AMERICAN INDUSTRY CLASSIFICATION SYSTEM INDUSTRY GROUP	NUMBER OF EMPLOYING UNITS	EMPLOYMENT	EMPLOYMENT	EMPLOYMENT	TOTAL EARNINGS	AVERAGE WEEKLY EARNINGS
		JANUARY	FEBRUARY	MARCH	JANUARY - MARCH	
BAXTER COUNTY - TOTAL	1,324	14,571	14,632	14,826	\$103,650,170	\$543.26
Natural Resources & Mining	5	118	128	133	\$781,644	\$475.94
Construction	148	690	698	676	\$4,296,307	\$480.36
Manufacturing	65	2,548	2,531	2,567	\$22,652,548	\$683.69
Trade, Transportation & Utilities	292	2,643	2,633	2,723	\$16,702,308	\$481.86
Wholesale Trade	37	221	215	211	\$1,666,251	\$594.31
Retail Trade	220	2,211	2,203	2,300	\$13,272,008	\$456.18
Transportation, Warehousing & Utilities	35	211	215	212	\$1,764,049	\$638.07
Information	24	241	241	241	\$2,178,309	\$695.28
Financial Activities	126	710	717	708	\$6,107,754	\$660.18
Professional & Business Services	139	827	875	883	\$5,870,455	\$524.07
Education & Health Services	251	3,432	3,385	3,412	\$28,492,411	\$642.80
Leisure & Hospitality	118	1,357	1,371	1,429	\$4,024,832	\$223.43
Other Services	105	380	383	393	\$1,685,454	\$336.46
Local Government	38	1,295	1,329	1,325	\$8,569,999	\$500.81
State Government	13	330	341	336	\$2,288,149	\$524.36
BENTON COUNTY - TOTAL	5,612	93,992	94,727	95,284	\$1,083,224,334	\$880.18
Natural Resources & Mining	32	748	741	765	\$7,622,482	\$780.41
Construction	736	4,287	4,224	4,229	\$36,878,196	\$668.00
Manufacturing	245	13,233	13,203	13,103	\$113,217,075	\$660.79
Trade, Transportation & Utilities	1,534	22,947	23,068	23,348	\$235,309,689	\$782.87
Wholesale Trade	701	3,877	3,909	3,929	\$84,311,998	\$1,660.83
Retail Trade	643	8,895	8,839	8,976	\$53,137,296	\$459.10
Transportation, Warehousing & Utilities	190	10,175	10,320	10,443	\$97,860,395	\$729.95
Information	74	909	908	907	\$9,343,888	\$791.59
Financial Activities	597	3,953	3,945	3,968	\$50,470,061	\$981.54
Professional & Business Services	1,012	22,524	22,572	22,716	\$456,673,151	\$1,554.09
Education & Health Services	520	7,355	7,428	7,386	\$62,606,092	\$651.70
Leisure & Hospitality	430	8,041	8,298	8,486	\$27,195,802	\$252.81
Other Services	336	1,605	1,632	1,645	\$10,628,489	\$502.40
Local Government	77	7,631	7,693	7,688	\$65,809,585	\$659.95
State Government	19	759	1,015	1,043	\$7,469,824	\$611.93

**TABLE 6. COUNTY SUMMARY
EMPLOYMENT AND TOTAL EARNINGS, BY INDUSTRY
FIRST QUARTER 2008**

NORTH AMERICAN INDUSTRY CLASSIFICATION SYSTEM INDUSTRY GROUP	NUMBER OF EMPLOYING UNITS	EMPLOYMENT	EMPLOYMENT	EMPLOYMENT	TOTAL EARNINGS	AVERAGE
		JANUARY	FEBRUARY	MARCH	JANUARY - MARCH	WEEKLY EARNINGS
BOONE COUNTY - TOTAL	1,091	13,803	13,725	13,798	\$104,336,833	\$582.63
Construction	98	455	454	459	\$3,343,454	\$564.01
Manufacturing	74	1,934	1,893	1,912	\$16,288,278	\$654.96
Trade, Transportation & Utilities	264	4,478	4,409	4,439	\$36,554,298	\$633.02
Wholesale Trade	58	675	666	661	\$4,863,763	\$560.64
Retail Trade	151	1,907	1,857	1,882	\$10,169,678	\$415.67
Transportation, Warehousing & Utilities	55	1,896	1,886	1,896	\$21,520,857	\$874.67
Information	19	412	418	421	\$3,515,585	\$648.51
Financial Activities	99	652	653	646	\$5,783,409	\$684.08
Professional & Business Services	116	494	527	518	\$3,431,035	\$514.48
Education & Health Services	195	1,187	1,185	1,179	\$8,448,163	\$549.02
Leisure & Hospitality	81	1,059	1,052	1,065	\$2,995,076	\$217.62
Local Government	62	2,274	2,284	2,291	\$16,574,122	\$558.45
State Government	21	591	575	590	\$5,490,210	\$721.51
Other	62	267	275	278	\$1,913,203	\$538.42
BRADLEY COUNTY - TOTAL	402	4,078	4,087	4,088	\$25,073,177	\$472.22
Natural Resources & Mining	47	386	371	341	\$2,061,524	\$433.28
Construction	19	160	174	179	\$1,099,577	\$494.64
Manufacturing	9	1,045	1,033	1,026	\$7,353,852	\$546.73
Trade, Transportation & Utilities	87	456	457	464	\$2,501,706	\$419.26
Wholesale Trade	17	70	70	71	\$628,730	\$687.64
Retail Trade	44	335	337	347	\$1,427,483	\$323.28
Transportation, Warehousing & Utilities	26	51	50	46	\$445,493	\$699.36
Information	4	13	14	14	\$125,507	\$706.42
Financial Activities	25	156	162	159	\$1,069,241	\$517.29
Professional & Business Services	28	96	101	100	\$385,285	\$299.37
Education & Health Services	108	639	624	627	\$3,854,290	\$470.61
Leisure & Hospitality	16	170	174	181	\$441,332	\$193.99
Other Services	33	127	126	123	\$680,954	\$417.93
Local & State Government	26	830	851	874	\$5,499,909	\$496.76

**TABLE 6. COUNTY SUMMARY
EMPLOYMENT AND TOTAL EARNINGS, BY INDUSTRY
FIRST QUARTER 2008**

NORTH AMERICAN INDUSTRY CLASSIFICATION SYSTEM INDUSTRY GROUP	NUMBER OF EMPLOYING UNITS	EMPLOYMENT	EMPLOYMENT	EMPLOYMENT	TOTAL EARNINGS	AVERAGE
		JANUARY	FEBRUARY	MARCH	JANUARY - MARCH	WEEKLY EARNINGS
CALHOUN COUNTY - TOTAL	119	3,023	3,010	3,027	\$29,916,115	\$762.00
Natural Resources & Mining	17	195	197	195	\$1,529,549	\$601.32
Construction	11	54	51	50	\$318,575	\$474.31
Manufacturing	11	2,027	2,022	2,016	\$22,651,442	\$861.87
Trade, Transportation & Utilities	28	220	210	229	\$1,378,011	\$482.55
Retail Trade	18	85	80	81	\$280,638	\$263.26
Other Trade, Transportation & Utilities	10	135	130	148	\$1,097,373	\$613.17
Financial Activities	6	81	75	80	\$864,056	\$844.90
Education & Health Services	9	50	49	50	\$360,978	\$559.08
Leisure & Hospitality	6	19	21	21	\$41,040	\$155.26
Local & State Government	20	278	284	286	\$1,715,581	\$466.87
Other	11	99	101	100	\$1,056,883	\$812.99
CARROLL COUNTY - TOTAL	842	9,291	9,461	9,760	\$58,424,273	\$472.87
Natural Resources & Mining	17	270	273	280	\$1,886,268	\$528.91
Construction	84	328	339	350	\$2,484,496	\$563.76
Trade, Transportation & Utilities	206	1,591	1,627	1,675	\$9,999,357	\$471.60
Wholesale Trade	28	149	145	139	\$882,555	\$470.36
Retail Trade	158	1,188	1,191	1,238	\$6,096,357	\$388.96
Transportation, Warehousing & Utilities	20	254	291	298	\$3,020,445	\$826.84
Information	15	106	103	101	\$801,050	\$596.32
Financial Activities	75	363	366	373	\$3,272,674	\$685.33
Professional & Business Services	70	229	225	239	\$1,465,813	\$488.12
Education & Health Services	89	842	830	831	\$6,320,669	\$582.75
Leisure & Hospitality	169	1,088	1,147	1,321	\$3,392,710	\$220.17
Local Government	25	1,079	1,090	1,103	\$7,093,683	\$500.31
State Government	11	107	107	107	\$811,977	\$583.74
Other	81	3,288	3,354	3,380	\$20,895,576	\$481.15

**TABLE 6. COUNTY SUMMARY
EMPLOYMENT AND TOTAL EARNINGS, BY INDUSTRY
FIRST QUARTER 2008**

NORTH AMERICAN INDUSTRY CLASSIFICATION SYSTEM INDUSTRY GROUP	NUMBER OF EMPLOYING UNITS	EMPLOYMENT	EMPLOYMENT	EMPLOYMENT	TOTAL EARNINGS	AVERAGE WEEKLY EARNINGS
		JANUARY	FEBRUARY	MARCH	JANUARY - MARCH	
CHICOT COUNTY - TOTAL	391	3,460	3,503	3,520	\$20,477,188	\$450.78
Natural Resources & Mining	48	210	212	232	\$1,335,337	\$471.18
Construction	14	118	121	131	\$858,741	\$535.60
Manufacturing	10	485	490	478	\$2,236,808	\$355.26
Trade, Transportation & Utilities	67	528	540	540	\$2,837,333	\$407.19
Wholesale Trade	13	94	96	96	\$703,536	\$567.67
Retail Trade	45	381	389	389	\$1,579,213	\$314.44
Transportation, Warehousing & Utilities	9	53	55	55	\$554,584	\$785.16
Information	6	9	9	10	\$48,090	\$396.35
Financial Activities	29	168	155	157	\$1,557,135	\$748.62
Professional & Business Services	28	83	82	82	\$682,152	\$637.33
Education & Health Services	124	644	641	648	\$3,649,483	\$435.69
Leisure & Hospitality	19	142	151	152	\$331,430	\$171.87
Other Services	18	35	44	44	\$196,060	\$367.84
Local Government	17	705	721	709	\$4,498,324	\$486.22
State Government	11	333	337	337	\$2,246,295	\$514.77
CLARK COUNTY - TOTAL	635	9,790	9,987	9,954	\$66,626,729	\$517.15
Natural Resources & Mining	36	234	228	211	\$1,703,282	\$584.05
Construction	29	94	90	93	\$502,993	\$419.04
Manufacturing	37	2,482	2,501	2,434	\$19,491,895	\$606.46
Trade, Transportation & Utilities	152	1,623	1,573	1,608	\$9,740,105	\$467.88
Wholesale Trade	22	93	92	94	\$895,880	\$741.01
Retail Trade	106	1,241	1,196	1,220	\$6,241,585	\$393.87
Transportation, Warehousing & Utilities	24	289	285	294	\$2,602,640	\$691.95
Information	9	49	50	49	\$388,288	\$605.44
Financial Activities	89	382	377	383	\$3,429,182	\$692.95
Professional & Business Services	49	329	339	324	\$3,793,999	\$882.60
Education & Health Services	89	1,331	1,344	1,354	\$8,378,297	\$479.88
Leisure & Hospitality	58	959	1,037	1,046	\$2,703,371	\$205.08
Other Services	46	217	216	215	\$1,155,311	\$411.44
Local Government	26	968	991	994	\$6,538,073	\$510.93
State Government	15	1,122	1,241	1,243	\$8,801,933	\$563.29

**TABLE 6. COUNTY SUMMARY
EMPLOYMENT AND TOTAL EARNINGS, BY INDUSTRY
FIRST QUARTER 2008**

NORTH AMERICAN INDUSTRY CLASSIFICATION SYSTEM INDUSTRY GROUP	NUMBER OF EMPLOYING UNITS	EMPLOYMENT	EMPLOYMENT	EMPLOYMENT	TOTAL EARNINGS	AVERAGE WEEKLY EARNINGS
		JANUARY	FEBRUARY	MARCH	JANUARY - MARCH	
CLAY COUNTY - TOTAL	419	3,931	3,939	3,983	\$23,581,092	\$459.11
Natural Resources & Mining	62	164	164	177	\$893,939	\$408.50
Construction	33	117	118	145	\$603,825	\$366.70
Manufacturing	17	672	674	651	\$5,003,045	\$578.14
Trade, Transportation & Utilities	97	919	922	945	\$5,649,741	\$467.98
Wholesale Trade	23	350	347	368	\$2,183,023	\$473.03
Retail Trade	50	420	424	425	\$2,026,152	\$368.46
Transportation, Warehousing & Utilities	24	149	151	152	\$1,440,566	\$735.48
Information	4	72	72	74	\$388,153	\$410.89
Financial Activities	34	133	132	127	\$963,715	\$567.34
Professional & Business Services	28	52	51	53	\$355,995	\$526.62
Education & Health Services	63	538	536	537	\$2,983,546	\$427.38
Leisure & Hospitality	21	194	196	192	\$400,263	\$158.71
Other Services	26	68	70	71	\$435,214	\$480.55
Local Government	22	927	926	935	\$5,421,006	\$448.71
State Government	12	75	78	76	\$482,650	\$486.38
CLEBURNE COUNTY - TOTAL	723	6,800	6,955	7,091	\$44,057,273	\$487.72
Natural Resources & Mining	21	147	146	167	\$1,356,510	\$680.52
Construction	87	498	584	618	\$4,112,167	\$558.21
Manufacturing	40	1,340	1,345	1,360	\$10,532,744	\$600.90
Trade, Transportation & Utilities	189	1,550	1,542	1,566	\$9,615,493	\$476.38
Wholesale Trade	46	210	207	206	\$1,848,079	\$684.56
Retail Trade	115	1,000	986	1,013	\$4,946,981	\$380.66
Transportation, Warehousing & Utilities	28	340	349	347	\$2,820,433	\$628.25
Information	7	52	54	56	\$393,752	\$560.90
Financial Activities	81	288	291	300	\$2,459,155	\$645.62
Professional & Business Services	57	225	227	223	\$1,408,057	\$481.39
Education & Health Services	88	805	824	825	\$4,990,055	\$469.25
Leisure & Hospitality	73	796	839	859	\$2,290,209	\$211.91
Other Services	51	152	155	157	\$743,189	\$369.62
Local Government	19	823	824	839	\$5,282,093	\$490.32
State Government	10	124	124	121	\$873,849	\$546.50

**TABLE 6. COUNTY SUMMARY
EMPLOYMENT AND TOTAL EARNINGS, BY INDUSTRY
FIRST QUARTER 2008**

NORTH AMERICAN INDUSTRY CLASSIFICATION SYSTEM INDUSTRY GROUP	NUMBER OF EMPLOYING UNITS	EMPLOYMENT	EMPLOYMENT	EMPLOYMENT	TOTAL EARNINGS	AVERAGE WEEKLY EARNINGS
		JANUARY	FEBRUARY	MARCH	JANUARY - MARCH	
CLEVELAND COUNTY - TOTAL	122	1,023	1,039	1,060	\$5,717,045	\$422.59
Natural Resources & Mining	16	166	150	157	\$1,007,589	\$491.59
Construction	8	35	34	34	\$156,805	\$351.32
Manufacturing	6	92	93	94	\$563,768	\$466.31
Trade, Transportation & Utilities	28	167	172	175	\$785,834	\$352.81
Retail Trade	14	69	71	74	\$195,260	\$210.56
Other Trade, Transportation & Utilities	14	98	101	101	\$590,574	\$454.29
Education & Health Services	30	117	120	120	\$427,250	\$276.18
Other Services	6	24	24	27	\$176,475	\$543.00
Local Government	11	309	329	332	\$1,938,708	\$461.23
State Government	8	61	64	64	\$412,428	\$503.58
Other	9	52	53	57	\$248,188	\$353.54
COLUMBIA COUNTY - TOTAL	738	9,259	9,422	9,455	\$74,252,591	\$609.01
Natural Resources & Mining	49	595	606	620	\$8,377,702	\$1,061.68
Construction	46	364	398	411	\$3,497,042	\$687.99
Manufacturing	41	2,579	2,552	2,504	\$26,957,988	\$814.81
Trade, Transportation & Utilities	173	1,473	1,498	1,555	\$8,810,060	\$449.20
Wholesale Trade	27	202	234	257	\$1,690,085	\$562.80
Retail Trade	113	1,003	1,001	1,037	\$4,738,445	\$359.58
Transportation, Warehousing & Utilities	33	268	263	261	\$2,381,530	\$693.92
Information	9	75	75	72	\$517,550	\$537.99
Financial Activities	76	412	408	413	\$3,647,039	\$682.58
Professional & Business Services	62	339	347	338	\$2,073,968	\$467.39
Education & Health Services	143	929	952	951	\$4,792,161	\$390.50
Leisure & Hospitality	49	625	650	650	\$1,566,072	\$187.74
Other Services	49	225	221	236	\$1,004,731	\$339.97
Local Government	27	1,135	1,156	1,150	\$8,144,853	\$546.23
State Government	14	508	559	555	\$4,863,425	\$691.94

**TABLE 6. COUNTY SUMMARY
EMPLOYMENT AND TOTAL EARNINGS, BY INDUSTRY
FIRST QUARTER 2008**

NORTH AMERICAN INDUSTRY CLASSIFICATION SYSTEM INDUSTRY GROUP	NUMBER OF EMPLOYING UNITS	EMPLOYMENT	EMPLOYMENT	EMPLOYMENT	TOTAL EARNINGS	AVERAGE WEEKLY EARNINGS
		JANUARY	FEBRUARY	MARCH	JANUARY - MARCH	
CONWAY COUNTY - TOTAL	592	6,877	6,890	6,891	\$48,706,743	\$544.10
Natural Resources & Mining	23	205	199	198	\$2,044,263	\$783.64
Construction	56	501	485	499	\$4,423,182	\$687.36
Manufacturing	25	1,083	1,097	1,083	\$11,519,180	\$814.67
Trade, Transportation & Utilities	141	1,505	1,463	1,471	\$9,591,697	\$498.64
Wholesale Trade	26	208	206	208	\$1,815,539	\$673.59
Retail Trade	83	928	891	890	\$4,561,499	\$388.58
Transportation, Warehousing & Utilities	32	369	366	373	\$3,214,659	\$669.53
Information	6	13	13	13	\$179,343	\$1,061.20
Financial Activities	36	188	186	183	\$1,401,832	\$580.79
Professional & Business Services	44	512	529	514	\$2,194,646	\$325.70
Education & Health Services	152	918	920	925	\$6,110,311	\$510.34
Leisure & Hospitality	42	490	476	471	\$1,183,469	\$190.05
Other Services	28	156	152	161	\$1,460,927	\$718.84
Local Government	28	948	956	958	\$6,038,331	\$486.88
State Government	11	358	414	415	\$2,559,562	\$497.61
CRAIGHEAD COUNTY - TOTAL	2,695	41,272	41,400	41,651	\$323,197,584	\$599.92
Natural Resources & Mining	59	201	208	217	\$1,181,005	\$435.37
Construction	238	1,638	1,621	1,652	\$12,396,246	\$582.50
Manufacturing	133	6,815	6,792	6,779	\$61,082,004	\$691.45
Trade, Transportation & Utilities	754	8,733	8,686	8,720	\$59,764,903	\$527.64
Wholesale Trade	190	1,688	1,690	1,702	\$18,234,610	\$828.34
Retail Trade	439	5,823	5,759	5,801	\$30,201,092	\$400.94
Transportation, Warehousing & Utilities	125	1,222	1,237	1,217	\$11,329,201	\$711.22
Information	33	580	575	578	\$5,074,691	\$675.75
Financial Activities	258	1,660	1,653	1,645	\$17,177,502	\$799.52
Professional & Business Services	357	3,374	3,432	3,508	\$22,347,375	\$500.01
Education & Health Services	419	7,225	7,218	7,280	\$69,251,029	\$735.67
Leisure & Hospitality	204	3,883	3,976	4,014	\$16,683,890	\$324.28
Other Services	177	906	905	898	\$4,539,179	\$386.68
Local Government	38	3,709	3,774	3,796	\$28,209,110	\$577.16
State Government	25	2,548	2,560	2,564	\$25,490,650	\$766.74

**TABLE 6. COUNTY SUMMARY
EMPLOYMENT AND TOTAL EARNINGS, BY INDUSTRY
FIRST QUARTER 2008**

NORTH AMERICAN INDUSTRY CLASSIFICATION SYSTEM INDUSTRY GROUP	NUMBER OF EMPLOYING UNITS	EMPLOYMENT	EMPLOYMENT	EMPLOYMENT	TOTAL EARNINGS	AVERAGE
		JANUARY	FEBRUARY	MARCH	JANUARY - MARCH	WEEKLY EARNINGS
CRAWFORD COUNTY - TOTAL	1,288	19,859	20,002	20,125	\$140,679,167	\$541.20
Natural Resources & Mining	26	430	490	497	\$4,408,897	\$718.02
Construction	187	1,403	1,411	1,427	\$11,377,630	\$619.10
Manufacturing	78	3,640	3,630	3,639	\$26,282,342	\$555.98
Trade, Transportation & Utilities	314	6,761	6,750	6,739	\$50,448,387	\$574.91
Wholesale Trade	82	729	725	742	\$7,120,919	\$748.31
Retail Trade	158	1,947	1,980	1,980	\$9,894,001	\$386.53
Transportation, Warehousing & Utilities	74	4,085	4,045	4,017	\$33,433,467	\$635.17
Information	12	185	183	182	\$1,586,159	\$665.52
Financial Activities	143	562	567	561	\$4,297,478	\$586.82
Professional & Business Services	156	1,256	1,313	1,364	\$7,804,963	\$457.96
Education & Health Services	150	1,365	1,400	1,414	\$10,326,509	\$570.24
Leisure & Hospitality	89	1,531	1,533	1,560	\$4,316,671	\$215.43
Other Services	81	385	389	394	\$2,389,620	\$472.13
Local Government	41	2,170	2,166	2,178	\$15,965,285	\$565.60
State Government	11	171	170	170	\$1,475,226	\$666.22
CRITTENDEN COUNTY - TOTAL	1,277	16,728	16,664	16,880	\$127,007,479	\$583.02
Natural Resources & Mining	41	212	208	229	\$1,192,999	\$424.20
Construction	72	454	445	489	\$3,733,752	\$620.77
Manufacturing	45	2,244	2,203	2,233	\$22,138,553	\$764.80
Trade, Transportation & Utilities	340	4,811	4,683	4,742	\$38,368,824	\$621.97
Wholesale Trade	79	791	765	801	\$9,307,757	\$911.30
Retail Trade	174	2,061	2,015	2,015	\$10,339,615	\$391.74
Transportation, Warehousing & Utilities	87	1,959	1,903	1,926	\$18,721,452	\$746.43
Information	7	69	68	70	\$650,886	\$725.63
Financial Activities	110	576	582	593	\$5,685,287	\$749.28
Professional & Business Services	131	763	827	812	\$5,287,834	\$508.02
Education & Health Services	274	2,113	2,136	2,179	\$16,895,763	\$606.57
Leisure & Hospitality	104	1,941	1,932	1,961	\$6,718,414	\$265.75
Other Services	92	553	571	579	\$3,175,013	\$430.24
Local Government	46	2,489	2,499	2,479	\$19,532,081	\$603.64
State Government	15	503	510	514	\$3,628,073	\$548.30

**TABLE 6. COUNTY SUMMARY
EMPLOYMENT AND TOTAL EARNINGS, BY INDUSTRY
FIRST QUARTER 2008**

NORTH AMERICAN INDUSTRY CLASSIFICATION SYSTEM INDUSTRY GROUP	NUMBER OF EMPLOYING UNITS	EMPLOYMENT	EMPLOYMENT	EMPLOYMENT	TOTAL EARNINGS	AVERAGE WEEKLY EARNINGS
		JANUARY	FEBRUARY	MARCH	JANUARY - MARCH	
CROSS COUNTY - TOTAL	538	4,793	4,851	4,930	\$32,159,225	\$509.22
Natural Resources & Mining	36	166	176	188	\$768,198	\$334.48
Construction	32	142	151	161	\$931,953	\$473.71
Manufacturing	14	615	632	652	\$5,258,156	\$638.98
Trade, Transportation & Utilities	136	1,191	1,194	1,221	\$8,203,602	\$525.00
Wholesale Trade	28	267	271	282	\$2,330,758	\$655.94
Retail Trade	71	701	700	709	\$3,725,583	\$407.46
Transportation, Warehousing & Utilities	37	223	223	230	\$2,147,261	\$733.02
Information	4	42	41	42	\$286,009	\$528.02
Financial Activities	47	341	344	347	\$2,713,303	\$606.73
Professional & Business Services	45	202	187	185	\$1,306,991	\$525.46
Education & Health Services	122	695	698	707	\$4,190,533	\$460.50
Leisure & Hospitality	34	391	374	372	\$906,985	\$184.08
Other Services	40	70	77	76	\$368,804	\$381.65
Local Government	17	718	758	760	\$5,521,131	\$569.82
State Government	11	220	219	219	\$1,703,560	\$597.46
DALLAS COUNTY - TOTAL	279	3,298	3,268	3,309	\$21,712,043	\$507.39
Natural Resources & Mining	41	193	186	189	\$1,291,557	\$524.74
Construction	15	54	67	60	\$411,893	\$525.15
Manufacturing	16	927	893	921	\$8,185,866	\$689.18
Trade, Transportation & Utilities	67	466	460	462	\$2,702,969	\$449.40
Wholesale Trade	7	24	24	29	\$202,778	\$607.73
Retail Trade	43	350	344	341	\$1,801,990	\$401.78
Transportation, Warehousing & Utilities	17	92	92	92	\$698,201	\$583.78
Information	3	21	21	21	\$151,272	\$554.11
Financial Activities	20	106	107	107	\$735,723	\$530.57
Professional & Business Services	16	48	46	42	\$561,027	\$951.97
Education & Health Services	48	767	776	773	\$4,151,414	\$413.65
Leisure & Hospitality	14	127	122	124	\$263,730	\$163.17
Other Services	14	61	59	61	\$259,994	\$331.48
Local Government	16	459	461	478	\$2,509,677	\$414.27
State Government	9	69	70	71	\$486,921	\$535.08

**TABLE 6. COUNTY SUMMARY
EMPLOYMENT AND TOTAL EARNINGS, BY INDUSTRY
FIRST QUARTER 2008**

NORTH AMERICAN INDUSTRY CLASSIFICATION SYSTEM INDUSTRY GROUP	NUMBER OF EMPLOYING UNITS	EMPLOYMENT	EMPLOYMENT	EMPLOYMENT	TOTAL EARNINGS	AVERAGE
		JANUARY	FEBRUARY	MARCH	JANUARY - MARCH	WEEKLY EARNINGS
DESHA COUNTY - TOTAL	493	4,502	4,514	4,625	\$33,112,735	\$560.18
Natural Resources & Mining	50	212	217	239	\$1,412,546	\$487.98
Construction	21	124	128	129	\$862,401	\$522.35
Manufacturing	19	1,076	1,072	1,076	\$11,495,675	\$822.84
Trade, Transportation & Utilities	130	878	879	882	\$5,578,880	\$487.85
Wholesale Trade	19	162	162	171	\$1,801,614	\$839.91
Retail Trade	82	559	560	556	\$2,546,225	\$350.80
Transportation, Warehousing & Utilities	29	157	157	155	\$1,231,041	\$605.73
Information	6	26	18	19	\$237,049	\$868.31
Financial Activities	45	196	199	201	\$1,380,641	\$534.58
Professional & Business Services	35	135	135	123	\$881,046	\$517.35
Education & Health Services	101	616	623	636	\$3,496,423	\$430.33
Leisure & Hospitality	32	251	264	275	\$633,116	\$184.94
Other Services	24	68	65	70	\$327,626	\$372.44
Local Government	19	741	732	790	\$5,504,924	\$561.36
State Government	11	179	182	185	\$1,302,408	\$550.47
DREW COUNTY - TOTAL	533	6,658	6,765	6,919	\$40,990,424	\$465.01
Natural Resources & Mining	42	280	302	313	\$2,200,046	\$567.27
Construction	22	96	107	99	\$538,840	\$411.75
Manufacturing	23	767	777	814	\$4,846,359	\$474.30
Trade, Transportation & Utilities	129	1,184	1,192	1,201	\$7,479,315	\$482.53
Wholesale Trade	21	198	199	196	\$1,717,480	\$668.37
Retail Trade	88	884	895	904	\$4,719,427	\$405.93
Transportation, Warehousing & Utilities	20	102	98	101	\$1,042,408	\$799.19
Information	6	70	73	74	\$483,098	\$513.75
Financial Activities	48	246	244	245	\$2,329,787	\$731.49
Professional & Business Services	46	304	319	318	\$2,106,281	\$516.54
Education & Health Services	111	928	898	904	\$5,017,088	\$424.10
Leisure & Hospitality	41	571	587	658	\$1,313,136	\$166.87
Other Services	25	81	76	82	\$365,588	\$353.00
Local Government	23	1,280	1,297	1,295	\$8,020,868	\$478.04
State Government	17	851	893	916	\$6,290,018	\$545.69

**TABLE 6. COUNTY SUMMARY
EMPLOYMENT AND TOTAL EARNINGS, BY INDUSTRY
FIRST QUARTER 2008**

NORTH AMERICAN INDUSTRY CLASSIFICATION SYSTEM INDUSTRY GROUP	NUMBER OF EMPLOYING UNITS	EMPLOYMENT	EMPLOYMENT	EMPLOYMENT	TOTAL EARNINGS	AVERAGE
		JANUARY	FEBRUARY	MARCH	JANUARY - MARCH	WEEKLY EARNINGS
FAULKNER COUNTY - TOTAL	2,645	38,924	38,893	39,009	\$324,172,968	\$640.35
Natural Resources & Mining	33	737	736	735	\$12,713,368	\$1,328.74
Construction	372	2,932	2,849	2,864	\$23,075,205	\$615.97
Manufacturing	123	4,974	4,657	4,589	\$49,849,573	\$808.98
Trade, Transportation & Utilities	627	6,746	6,727	6,749	\$45,730,766	\$521.87
Wholesale Trade	162	788	791	808	\$8,994,700	\$869.59
Retail Trade	380	5,003	4,952	4,969	\$26,132,081	\$404.08
Transportation, Warehousing & Utilities	85	955	984	972	\$10,603,985	\$840.63
Information	35	353	346	358	\$3,630,444	\$792.62
Financial Activities	322	1,505	1,511	1,518	\$17,557,889	\$893.65
Professional & Business Services	372	4,981	5,107	5,098	\$62,378,759	\$947.92
Education & Health Services	358	5,405	5,511	5,557	\$39,311,973	\$550.72
Leisure & Hospitality	199	3,929	4,001	4,044	\$10,797,839	\$208.10
Other Services	145	620	620	633	\$3,441,927	\$424.07
Local Government	40	3,396	3,403	3,438	\$27,022,958	\$609.17
State Government	19	3,346	3,425	3,426	\$28,662,267	\$648.66
FRANKLIN COUNTY - TOTAL	335	4,244	4,265	4,327	\$31,355,328	\$563.71
Natural Resources & Mining	12	176	172	181	\$1,824,975	\$796.12
Construction	33	244	237	241	\$1,936,477	\$618.95
Manufacturing	23	921	956	949	\$8,276,358	\$675.84
Trade, Transportation & Utilities	86	850	833	857	\$6,467,064	\$587.56
Wholesale Trade	17	44	45	44	\$288,545	\$500.66
Retail Trade	49	497	473	505	\$2,313,130	\$361.90
Transportation, Warehousing & Utilities	20	309	315	308	\$3,865,389	\$957.10
Information	6	49	48	49	\$271,910	\$429.78
Financial Activities	29	233	233	233	\$1,740,164	\$574.50
Professional & Business Services	23	76	81	82	\$503,671	\$486.33
Education & Health Services	48	457	469	476	\$2,655,132	\$437.03
Leisure & Hospitality	27	294	282	299	\$701,719	\$185.07
Other Services	19	52	52	50	\$287,400	\$430.67
Local Government	19	773	775	783	\$5,559,288	\$550.37
State Government	10	119	127	127	\$1,131,170	\$699.84

**TABLE 6. COUNTY SUMMARY
EMPLOYMENT AND TOTAL EARNINGS, BY INDUSTRY
FIRST QUARTER 2008**

NORTH AMERICAN INDUSTRY CLASSIFICATION SYSTEM INDUSTRY GROUP	NUMBER OF EMPLOYING UNITS	EMPLOYMENT	EMPLOYMENT	EMPLOYMENT	TOTAL EARNINGS	AVERAGE WEEKLY EARNINGS
		JANUARY	FEBRUARY	MARCH	JANUARY - MARCH	
FULTON COUNTY - TOTAL	237	1,900	1,894	1,936	\$10,596,561	\$426.76
Construction	16	37	37	36	\$213,009	\$446.87
Manufacturing	12	104	105	114	\$490,121	\$350.17
Trade, Transportation & Utilities	65	397	377	382	\$2,556,860	\$510.42
Wholesale Trade	15	73	63	65	\$423,582	\$486.32
Retail Trade	41	193	186	183	\$692,198	\$284.23
Transportation, Warehousing & Utilities	9	131	128	134	\$1,441,080	\$846.20
Financial Activities	14	89	89	88	\$678,773	\$588.87
Professional & Business Services	14	58	61	63	\$347,151	\$440.17
Education & Health Services	62	400	396	402	\$2,004,558	\$386.14
Leisure & Hospitality	17	133	136	147	\$325,231	\$180.42
Local Government	13	501	511	520	\$2,992,504	\$450.77
State Government	11	110	111	112	\$692,639	\$480.00
Other	13	71	71	72	\$295,715	\$318.89
GARLAND COUNTY - TOTAL	3,340	36,702	36,744	37,434	\$256,239,136	\$533.30
Natural Resources & Mining	45	359	341	346	\$4,361,820	\$962.31
Construction	456	2,207	2,160	2,215	\$14,636,090	\$513.15
Manufacturing	122	2,675	2,621	2,616	\$21,728,889	\$633.77
Trade, Transportation & Utilities	732	7,392	7,303	7,399	\$47,832,418	\$499.60
Wholesale Trade	160	1,001	1,000	996	\$9,603,474	\$739.47
Retail Trade	506	5,782	5,693	5,785	\$32,011,407	\$428.00
Transportation, Warehousing & Utilities	66	609	610	618	\$6,217,537	\$781.06
Information	41	389	396	387	\$3,498,436	\$688.85
Financial Activities	374	1,497	1,523	1,528	\$13,276,450	\$673.66
Professional & Business Services	428	3,478	3,428	3,500	\$23,402,087	\$518.98
Education & Health Services	469	7,156	7,159	7,227	\$63,685,806	\$682.24
Leisure & Hospitality	381	6,344	6,489	6,805	\$22,553,505	\$265.03
Other Services	231	930	951	957	\$5,054,895	\$411.03
Local Government	34	3,194	3,244	3,284	\$26,738,156	\$634.68
State Government	27	1,081	1,129	1,170	\$9,470,584	\$646.60

**TABLE 6. COUNTY SUMMARY
EMPLOYMENT AND TOTAL EARNINGS, BY INDUSTRY
FIRST QUARTER 2008**

NORTH AMERICAN INDUSTRY CLASSIFICATION SYSTEM INDUSTRY GROUP	NUMBER OF EMPLOYING UNITS	EMPLOYMENT	EMPLOYMENT	EMPLOYMENT	TOTAL EARNINGS	AVERAGE WEEKLY EARNINGS
		JANUARY	FEBRUARY	MARCH	JANUARY - MARCH	
GRANT COUNTY - TOTAL	304	4,036	4,008	4,017	\$26,734,466	\$511.52
Natural Resources & Mining	22	164	160	152	\$2,014,922	\$976.85
Construction	29	216	218	221	\$1,805,365	\$636.07
Manufacturing	16	1,044	1,026	1,018	\$7,411,629	\$553.88
Trade, Transportation & Utilities	84	627	621	639	\$3,965,599	\$484.97
Wholesale Trade	18	132	135	134	\$1,398,320	\$804.71
Retail Trade	41	421	414	436	\$2,097,108	\$380.76
Transportation, Warehousing & Utilities	25	74	72	69	\$470,171	\$504.66
Information	4	30	29	30	\$253,913	\$658.37
Financial Activities	25	108	105	101	\$838,746	\$616.42
Professional & Business Services	25	115	114	112	\$942,679	\$637.95
Education & Health Services	44	445	453	446	\$2,274,162	\$390.48
Leisure & Hospitality	20	245	261	243	\$659,355	\$203.15
Other Services	16	51	52	53	\$203,877	\$301.59
Local Government	10	933	911	943	\$5,943,914	\$492.17
State Government	9	58	58	59	\$420,305	\$554.25
GREENE COUNTY - TOTAL	940	14,295	14,652	14,588	\$103,348,684	\$547.83
Natural Resources & Mining	38	181	193	197	\$1,042,064	\$421.15
Construction	88	299	291	312	\$2,109,040	\$539.58
Manufacturing	59	5,022	5,028	5,159	\$46,343,564	\$703.18
Trade, Transportation & Utilities	247	2,329	2,343	2,334	\$13,864,585	\$456.68
Wholesale Trade	56	440	446	438	\$3,645,686	\$635.43
Retail Trade	160	1,699	1,698	1,696	\$8,458,470	\$383.26
Transportation, Warehousing & Utilities	31	190	199	200	\$1,760,429	\$689.73
Information	11	115	114	110	\$578,114	\$393.54
Financial Activities	92	502	500	512	\$3,727,135	\$568.10
Professional & Business Services	95	997	1,284	1,016	\$6,372,755	\$446.05
Education & Health Services	146	1,702	1,733	1,753	\$11,556,142	\$514.03
Leisure & Hospitality	69	1,127	1,122	1,137	\$2,918,412	\$198.90
Other Services	53	185	188	190	\$951,893	\$390.17
Local Government	31	1,568	1,585	1,601	\$11,785,379	\$572.09
State Government	11	268	271	267	\$2,099,601	\$601.15

**TABLE 6. COUNTY SUMMARY
EMPLOYMENT AND TOTAL EARNINGS, BY INDUSTRY
FIRST QUARTER 2008**

NORTH AMERICAN INDUSTRY CLASSIFICATION SYSTEM INDUSTRY GROUP	NUMBER OF EMPLOYING UNITS	EMPLOYMENT	EMPLOYMENT	EMPLOYMENT	TOTAL EARNINGS	AVERAGE WEEKLY EARNINGS
		JANUARY	FEBRUARY	MARCH	JANUARY - MARCH	
HEMPSTEAD COUNTY - TOTAL	501	7,964	7,973	8,014	\$54,346,711	\$523.63
Natural Resources & Mining	17	215	213	211	\$1,557,891	\$562.62
Construction	31	135	133	133	\$852,269	\$490.47
Manufacturing	29	2,228	2,231	2,238	\$17,491,160	\$602.72
Trade, Transportation & Utilities	132	1,391	1,385	1,368	\$8,882,164	\$494.63
Wholesale Trade	27	269	271	267	\$1,730,267	\$494.79
Retail Trade	85	882	873	885	\$4,464,949	\$390.29
Transportation, Warehousing & Utilities	20	240	241	216	\$2,686,948	\$889.62
Information	9	51	50	60	\$507,639	\$727.62
Financial Activities	43	259	262	263	\$2,396,210	\$705.32
Professional & Business Services	36	274	277	290	\$1,378,837	\$378.35
Education & Health Services	74	957	960	958	\$6,336,865	\$508.64
Leisure & Hospitality	46	645	656	660	\$1,639,885	\$192.98
Other Services	38	204	195	201	\$1,499,117	\$576.58
Local Government	29	1,065	1,057	1,074	\$7,386,824	\$533.37
State Government	17	540	554	558	\$4,417,850	\$617.13
HOT SPRING COUNTY - TOTAL	610	7,494	7,537	7,517	\$55,840,123	\$571.50
Natural Resources & Mining	29	200	197	197	\$1,244,817	\$483.61
Construction	71	332	329	323	\$2,423,753	\$568.42
Manufacturing	37	1,486	1,450	1,446	\$16,427,913	\$865.14
Trade, Transportation & Utilities	159	1,430	1,404	1,426	\$9,999,793	\$541.70
Wholesale Trade	21	94	91	88	\$833,000	\$704.14
Retail Trade	97	945	923	953	\$4,918,849	\$402.38
Transportation, Warehousing & Utilities	41	391	390	385	\$4,247,944	\$840.73
Information	8	63	64	64	\$496,446	\$599.81
Financial Activities	58	307	306	309	\$2,585,529	\$647.14
Professional & Business Services	52	208	216	183	\$1,379,998	\$524.65
Education & Health Services	76	1,112	1,099	1,110	\$6,783,725	\$471.39
Leisure & Hospitality	42	490	511	510	\$1,294,361	\$197.68
Other Services	38	179	185	182	\$818,016	\$345.74
Local Government	26	1,091	1,115	1,107	\$7,545,493	\$525.59
State Government	14	596	661	660	\$4,840,279	\$582.67

**TABLE 6. COUNTY SUMMARY
EMPLOYMENT AND TOTAL EARNINGS, BY INDUSTRY
FIRST QUARTER 2008**

NORTH AMERICAN INDUSTRY CLASSIFICATION SYSTEM INDUSTRY GROUP	NUMBER OF EMPLOYING UNITS	EMPLOYMENT	EMPLOYMENT	EMPLOYMENT	TOTAL EARNINGS	AVERAGE WEEKLY EARNINGS
		JANUARY	FEBRUARY	MARCH	JANUARY - MARCH	
HOWARD COUNTY - TOTAL	362	7,493	7,573	7,574	\$50,687,168	\$516.65
Natural Resources & Mining	24	248	254	257	\$1,933,434	\$587.85
Construction	20	136	128	126	\$1,091,807	\$646.04
Manufacturing	26	3,989	4,034	4,036	\$28,989,635	\$554.77
Trade, Transportation & Utilities	103	969	965	981	\$6,049,209	\$478.89
Wholesale Trade	18	91	88	88	\$925,563	\$799.97
Retail Trade	61	620	624	632	\$2,970,918	\$365.46
Transportation, Warehousing & Utilities	24	258	253	261	\$2,152,728	\$643.50
Information	5	35	35	35	\$236,029	\$518.75
Financial Activities	40	172	165	173	\$1,160,323	\$525.03
Professional & Business Services	27	136	139	133	\$863,107	\$488.18
Education & Health Services	47	573	582	567	\$3,441,119	\$461.15
Leisure & Hospitality	20	284	300	303	\$733,491	\$190.83
Other Services	20	121	122	122	\$635,015	\$401.48
Local Government	18	691	700	691	\$4,516,200	\$500.58
State Government	12	139	149	150	\$1,037,799	\$546.79
INDEPENDENCE COUNTY - TOTAL	949	15,584	15,569	15,606	\$111,357,170	\$549.58
Natural Resources & Mining	14	131	131	122	\$1,046,229	\$628.74
Construction	72	461	443	451	\$2,831,920	\$482.30
Manufacturing	55	4,032	3,993	4,005	\$34,472,040	\$661.27
Trade, Transportation & Utilities	261	3,055	3,065	3,065	\$22,246,199	\$558.93
Wholesale Trade	50	568	566	571	\$4,783,556	\$647.45
Retail Trade	158	1,677	1,651	1,663	\$8,070,765	\$373.17
Transportation, Warehousing & Utilities	53	810	848	831	\$9,391,878	\$870.77
Information	10	142	144	137	\$1,077,355	\$587.76
Financial Activities	88	543	519	511	\$4,343,227	\$637.18
Professional & Business Services	96	855	796	811	\$4,101,869	\$384.48
Education & Health Services	157	2,929	2,939	2,934	\$23,544,687	\$617.29
Leisure & Hospitality	64	997	1,008	1,020	\$2,647,053	\$201.94
Other Services	68	377	403	412	\$1,730,875	\$335.09
Local Government	47	1,619	1,629	1,642	\$9,493,505	\$448.02
State Government	17	443	499	496	\$3,822,211	\$613.39

**TABLE 6. COUNTY SUMMARY
EMPLOYMENT AND TOTAL EARNINGS, BY INDUSTRY
FIRST QUARTER 2008**

NORTH AMERICAN INDUSTRY CLASSIFICATION SYSTEM INDUSTRY GROUP	NUMBER OF EMPLOYING UNITS	EMPLOYMENT	EMPLOYMENT	EMPLOYMENT	TOTAL EARNINGS	AVERAGE
		JANUARY	FEBRUARY	MARCH	JANUARY - MARCH	WEEKLY EARNINGS
IZARD COUNTY - TOTAL	284	3,117	3,107	3,086	\$18,018,682	\$446.63
Natural Resources & Mining	4	84	86	86	\$904,994	\$815.80
Construction	26	69	68	70	\$448,178	\$499.64
Trade, Transportation & Utilities	70	540	534	528	\$2,611,909	\$376.25
Retail Trade	50	424	420	417	\$1,850,347	\$338.62
Other Trade, Transportation & Utilities	20	116	114	111	\$761,562	\$515.38
Financial Activities	29	157	150	151	\$988,862	\$498.25
Professional & Business Services	20	76	85	88	\$421,795	\$390.91
Education & Health Services	60	582	577	578	\$2,848,607	\$378.45
Leisure & Hospitality	20	189	185	195	\$356,608	\$144.63
Local Government	18	541	535	536	\$3,313,380	\$474.33
State Government	11	435	485	486	\$3,533,704	\$579.99
Other	26	444	402	368	\$2,590,645	\$492.46
JACKSON COUNTY - TOTAL	513	5,469	5,601	5,598	\$40,583,943	\$561.89
Natural Resources & Mining	47	167	186	199	\$962,680	\$402.46
Construction	25	103	112	130	\$820,330	\$548.72
Manufacturing	25	1,100	1,166	1,155	\$11,503,844	\$776.01
Trade, Transportation & Utilities	117	1,101	1,098	1,096	\$7,047,478	\$493.58
Wholesale Trade	28	212	217	218	\$1,989,781	\$709.71
Retail Trade	71	656	653	644	\$3,319,417	\$392.23
Transportation, Warehousing & Utilities	18	233	228	234	\$1,738,280	\$577.18
Information	5	41	39	38	\$291,272	\$569.63
Financial Activities	40	173	175	174	\$1,602,155	\$708.29
Professional & Business Services	37	139	141	143	\$997,389	\$544.13
Education & Health Services	110	867	882	872	\$6,009,129	\$529.08
Leisure & Hospitality	33	289	284	281	\$826,146	\$223.24
Other Services	28	97	101	100	\$513,798	\$397.88
Local Government	32	707	722	711	\$4,140,522	\$446.50
State Government	14	685	695	699	\$5,869,200	\$651.48

**TABLE 6. COUNTY SUMMARY
EMPLOYMENT AND TOTAL EARNINGS, BY INDUSTRY
FIRST QUARTER 2008**

NORTH AMERICAN INDUSTRY CLASSIFICATION SYSTEM INDUSTRY GROUP	NUMBER OF EMPLOYING UNITS	EMPLOYMENT	EMPLOYMENT	EMPLOYMENT	TOTAL EARNINGS	AVERAGE WEEKLY EARNINGS
		JANUARY	FEBRUARY	MARCH	JANUARY - MARCH	
JEFFERSON COUNTY - TOTAL	2,018	30,330	30,703	30,875	\$251,373,591	\$631.17
Natural Resources & Mining	43	401	412	429	\$5,014,637	\$931.74
Construction	121	1,312	1,342	1,269	\$16,471,275	\$968.92
Manufacturing	70	5,714	5,779	5,783	\$60,149,669	\$803.47
Trade, Transportation & Utilities	450	5,601	5,528	5,605	\$41,520,877	\$572.59
Wholesale Trade	83	1,057	1,068	1,087	\$9,277,624	\$666.56
Retail Trade	301	3,688	3,609	3,660	\$20,244,557	\$426.38
Transportation, Warehousing & Utilities	66	856	851	858	\$11,998,696	\$1,079.50
Information	14	160	172	173	\$1,213,519	\$554.54
Financial Activities	159	1,188	1,196	1,186	\$13,057,151	\$844.03
Professional & Business Services	182	1,727	1,757	1,657	\$13,792,017	\$619.10
Education & Health Services	608	5,161	5,147	5,202	\$37,630,293	\$559.89
Leisure & Hospitality	149	2,001	2,075	2,133	\$5,635,413	\$209.45
Other Services	138	641	652	665	\$3,916,978	\$461.65
Local Government	44	3,331	3,390	3,405	\$24,693,963	\$562.77
State Government	40	3,093	3,253	3,368	\$28,277,799	\$671.78
JOHNSON COUNTY - TOTAL	482	8,766	8,779	8,865	\$58,074,149	\$507.45
Natural Resources & Mining	18	232	240	246	\$1,973,333	\$634.24
Construction	25	158	139	148	\$1,063,224	\$551.37
Manufacturing	46	2,996	3,032	3,056	\$20,934,704	\$531.82
Trade, Transportation & Utilities	117	2,060	2,053	2,068	\$13,512,596	\$504.50
Retail Trade	78	884	888	903	\$4,414,023	\$380.79
Other Trade, Transportation & Utilities	39	1,176	1,165	1,165	\$9,098,573	\$598.88
Information	6	35	34	34	\$199,509	\$447.00
Financial Activities	46	222	227	229	\$1,656,502	\$563.82
Professional & Business Services	51	170	172	177	\$1,364,778	\$606.84
Education & Health Services	84	1,151	1,152	1,157	\$7,630,625	\$508.93
Leisure & Hospitality	37	512	507	509	\$1,323,168	\$199.83
Other Services	28	67	64	68	\$380,406	\$441.14
Local Government	14	1,001	992	1,004	\$6,690,575	\$515.17
State Government	10	162	167	169	\$1,344,729	\$623.14

**TABLE 6. COUNTY SUMMARY
EMPLOYMENT AND TOTAL EARNINGS, BY INDUSTRY
FIRST QUARTER 2008**

NORTH AMERICAN INDUSTRY CLASSIFICATION SYSTEM INDUSTRY GROUP	NUMBER OF EMPLOYING UNITS	EMPLOYMENT	EMPLOYMENT	EMPLOYMENT	TOTAL EARNINGS	AVERAGE WEEKLY EARNINGS
		JANUARY	FEBRUARY	MARCH	JANUARY - MARCH	
LAFAYETTE COUNTY - TOTAL	177	1,377	1,381	1,413	\$8,607,356	\$476.22
Natural Resources & Mining	38	182	167	170	\$1,378,501	\$612.94
Construction	9	49	49	48	\$464,247	\$733.79
Manufacturing	6	48	49	48	\$406,129	\$646.36
Trade, Transportation & Utilities	33	196	199	201	\$1,311,526	\$507.82
Wholesale Trade	5	42	36	37	\$430,489	\$863.86
Retail Trade	21	131	140	141	\$591,933	\$331.55
Transportation, Warehousing & Utilities	7	23	23	23	\$289,104	\$966.90
Financial Activities	17	52	53	61	\$394,488	\$548.41
Professional & Business Services	10	93	97	91	\$666,246	\$547.15
Education & Health Services	26	234	233	243	\$1,022,198	\$332.24
Leisure & Hospitality	9	39	46	49	\$141,183	\$243.14
Local Government	13	342	342	352	\$1,955,939	\$435.69
State Government	8	52	53	54	\$380,127	\$551.71
Other	8	90	93	96	\$486,772	\$402.62
LAWRENCE COUNTY - TOTAL	439	4,057	4,082	4,085	\$24,476,518	\$462.08
Natural Resources & Mining	38	171	172	172	\$1,191,419	\$533.87
Construction	25	66	61	67	\$363,955	\$432.94
Manufacturing	22	535	517	503	\$3,128,857	\$464.34
Trade, Transportation & Utilities	131	863	871	875	\$5,396,132	\$477.29
Wholesale Trade	22	176	164	170	\$1,301,940	\$589.11
Retail Trade	70	550	556	555	\$2,713,300	\$376.97
Transportation, Warehousing & Utilities	39	137	151	150	\$1,380,892	\$727.55
Financial Activities	37	158	162	161	\$995,366	\$477.55
Professional & Business Services	23	114	114	113	\$1,029,749	\$696.88
Education & Health Services	76	456	460	461	\$3,158,872	\$529.39
Leisure & Hospitality	23	319	333	335	\$676,481	\$158.17
Local Government	28	1,180	1,198	1,204	\$7,350,915	\$473.58
State Government	11	120	118	120	\$787,178	\$507.42
Other	25	75	76	74	\$397,594	\$407.79

**TABLE 6. COUNTY SUMMARY
EMPLOYMENT AND TOTAL EARNINGS, BY INDUSTRY
FIRST QUARTER 2008**

NORTH AMERICAN INDUSTRY CLASSIFICATION SYSTEM INDUSTRY GROUP	NUMBER OF EMPLOYING UNITS	EMPLOYMENT	EMPLOYMENT	EMPLOYMENT	TOTAL EARNINGS	AVERAGE
		JANUARY	FEBRUARY	MARCH	JANUARY - MARCH	WEEKLY EARNINGS
LEE COUNTY - TOTAL	285	1,967	2,029	2,049	\$13,451,967	\$513.53
Natural Resources & Mining	34	123	159	180	\$768,668	\$383.95
Construction	10	29	23	27	\$198,889	\$580.98
Trade, Transportation & Utilities	51	336	364	358	\$2,019,184	\$440.42
Wholesale Trade	8	46	62	63	\$482,877	\$651.66
Retail Trade	26	193	201	196	\$793,450	\$310.35
Transportation, Warehousing & Utilities	17	97	101	99	\$742,857	\$577.20
Financial Activities	17	74	73	73	\$711,474	\$746.30
Professional & Business Services	17	59	59	64	\$639,496	\$810.86
Education & Health Services	102	353	359	355	\$2,083,587	\$450.64
Leisure & Hospitality	8	100	90	92	\$195,128	\$159.68
Local Government	14	347	349	345	\$2,468,514	\$547.22
State Government	8	488	495	499	\$4,107,314	\$639.57
Other	24	58	58	56	\$259,713	\$348.45
LINCOLN COUNTY - TOTAL	264	2,950	2,974	3,008	\$20,726,566	\$535.50
Natural Resources & Mining	33	140	143	134	\$1,050,593	\$581.40
Construction	13	73	73	74	\$412,752	\$432.96
Manufacturing	11	367	371	382	\$3,209,985	\$661.40
Trade, Transportation & Utilities	50	343	348	358	\$2,496,514	\$549.21
Wholesale Trade	7	27	27	28	\$292,809	\$824.04
Retail Trade	25	183	186	194	\$647,819	\$265.54
Transportation, Warehousing & Utilities	18	133	135	136	\$1,555,886	\$888.74
Financial Activities	23	79	78	80	\$653,877	\$636.69
Professional & Business Services	13	23	22	25	\$140,325	\$462.61
Education & Health Services	69	365	366	367	\$1,799,971	\$378.30
Leisure & Hospitality	17	164	167	162	\$360,906	\$168.94
Local & State Government	22	1,368	1,376	1,391	\$10,411,305	\$581.04
Other	13	28	30	35	\$190,338	\$472.30

**TABLE 6. COUNTY SUMMARY
EMPLOYMENT AND TOTAL EARNINGS, BY INDUSTRY
FIRST QUARTER 2008**

NORTH AMERICAN INDUSTRY CLASSIFICATION SYSTEM INDUSTRY GROUP	NUMBER OF EMPLOYING UNITS	EMPLOYMENT	EMPLOYMENT	EMPLOYMENT	TOTAL EARNINGS	AVERAGE WEEKLY EARNINGS
		JANUARY	FEBRUARY	MARCH	JANUARY - MARCH	
LITTLE RIVER COUNTY - TOTAL	263	4,131	4,197	4,235	\$47,258,547	\$868.09
Natural Resources & Mining	11	81	76	71	\$540,149	\$546.71
Construction	25	400	466	514	\$4,777,093	\$798.84
Manufacturing	16	1,370	1,367	1,366	\$28,827,489	\$1,621.37
Trade, Transportation & Utilities	63	669	658	642	\$3,682,541	\$431.60
Retail Trade	39	403	393	380	\$1,803,717	\$353.95
Other Trade, Transportation & Utilities	24	266	265	262	\$1,878,824	\$546.75
Financial Activities	23	98	96	95	\$618,672	\$494.02
Professional & Business Services	23	143	153	156	\$938,095	\$478.95
Education & Health Services	33	168	167	173	\$934,537	\$424.53
Leisure & Hospitality	20	211	212	208	\$513,062	\$187.64
Local Government	20	802	811	812	\$5,359,122	\$509.99
State Government	12	89	95	97	\$619,450	\$508.72
Other	17	100	96	101	\$448,337	\$348.36
LOGAN COUNTY - TOTAL	495	6,143	6,179	6,175	\$40,282,593	\$502.57
Natural Resources & Mining	21	164	160	157	\$1,513,491	\$726.13
Construction	53	191	164	167	\$1,166,616	\$515.75
Manufacturing	29	1,918	1,927	1,903	\$14,755,987	\$592.42
Trade, Transportation & Utilities	116	855	868	867	\$4,865,420	\$433.51
Wholesale Trade	16	24	27	37	\$223,245	\$585.43
Retail Trade	75	742	748	739	\$3,720,774	\$385.21
Transportation, Warehousing & Utilities	25	89	93	91	\$921,401	\$778.87
Information	6	39	39	39	\$328,516	\$647.96
Financial Activities	44	260	261	265	\$2,269,085	\$666.20
Professional & Business Services	42	120	123	127	\$689,951	\$430.32
Education & Health Services	92	752	763	766	\$4,634,753	\$468.90
Leisure & Hospitality	27	334	336	358	\$742,734	\$166.73
Other Services	28	82	83	81	\$465,017	\$436.23
Local & State Government	37	1,428	1,455	1,445	\$8,851,023	\$471.94

**TABLE 6. COUNTY SUMMARY
EMPLOYMENT AND TOTAL EARNINGS, BY INDUSTRY
FIRST QUARTER 2008**

NORTH AMERICAN INDUSTRY CLASSIFICATION SYSTEM INDUSTRY GROUP	NUMBER OF EMPLOYING UNITS	EMPLOYMENT	EMPLOYMENT	EMPLOYMENT	TOTAL EARNINGS	AVERAGE WEEKLY EARNINGS
		JANUARY	FEBRUARY	MARCH	JANUARY - MARCH	
LONOKE COUNTY - TOTAL	1,311	12,600	12,591	12,624	\$83,414,503	\$509.04
Natural Resources & Mining	73	372	396	437	\$3,117,518	\$597.04
Construction	175	1,007	971	943	\$7,579,478	\$598.81
Manufacturing	40	1,369	1,355	1,352	\$12,963,743	\$733.96
Trade, Transportation & Utilities	353	2,872	2,866	2,886	\$18,173,769	\$486.31
Wholesale Trade	88	564	584	582	\$5,408,332	\$721.43
Retail Trade	188	2,012	1,990	2,019	\$10,417,864	\$399.29
Transportation, Warehousing & Utilities	77	296	292	285	\$2,347,573	\$620.56
Information	14	92	91	95	\$899,784	\$746.92
Financial Activities	136	515	518	521	\$4,804,722	\$713.50
Professional & Business Services	142	587	605	610	\$4,065,383	\$520.62
Education & Health Services	165	1,440	1,441	1,439	\$8,723,440	\$466.00
Leisure & Hospitality	98	1,461	1,444	1,447	\$3,739,573	\$198.29
Other Services	71	197	203	213	\$1,198,517	\$451.19
Local Government	28	2,528	2,541	2,522	\$17,006,369	\$517.00
State Government	16	160	160	159	\$1,142,207	\$550.28
MADISON COUNTY - TOTAL	262	3,213	3,229	3,240	\$20,785,849	\$495.43
Natural Resources & Mining	11	55	57	54	\$363,810	\$505.76
Construction	45	97	100	93	\$588,339	\$468.17
Manufacturing	20	1,160	1,163	1,157	\$7,933,702	\$526.11
Trade, Transportation & Utilities	59	592	600	615	\$4,029,487	\$514.60
Wholesale Trade	10	32	32	32	\$508,053	\$1,221.28
Retail Trade	37	397	396	404	\$2,068,024	\$398.69
Transportation, Warehousing & Utilities	12	163	172	179	\$1,453,410	\$652.53
Financial Activities	17	78	77	75	\$602,361	\$604.38
Professional & Business Services	21	107	108	109	\$607,774	\$432.89
Education & Health Services	42	256	249	249	\$1,282,567	\$392.54
Leisure & Hospitality	12	122	125	131	\$260,503	\$159.04
Local Government	9	623	624	630	\$4,149,172	\$510.12
State Government	8	56	57	57	\$395,322	\$536.64
Other	18	67	69	70	\$572,812	\$641.69

**TABLE 6. COUNTY SUMMARY
EMPLOYMENT AND TOTAL EARNINGS, BY INDUSTRY
FIRST QUARTER 2008**

NORTH AMERICAN INDUSTRY CLASSIFICATION SYSTEM INDUSTRY GROUP	NUMBER OF EMPLOYING UNITS	EMPLOYMENT	EMPLOYMENT	EMPLOYMENT	TOTAL EARNINGS	AVERAGE WEEKLY EARNINGS
		JANUARY	FEBRUARY	MARCH	JANUARY - MARCH	
MARION COUNTY - TOTAL	322	4,124	4,105	4,135	\$24,675,554	\$460.56
Natural Resources & Mining	7	52	53	48	\$231,239	\$348.78
Construction	27	79	71	84	\$385,896	\$380.57
Manufacturing	22	1,705	1,681	1,681	\$11,287,144	\$514.06
Trade, Transportation & Utilities	60	640	637	652	\$3,142,916	\$375.99
Wholesale Trade	9	33	34	35	\$288,437	\$652.57
Retail Trade	39	468	464	478	\$2,025,303	\$331.47
Transportation, Warehousing & Utilities	12	139	139	139	\$829,176	\$458.87
Financial Activities	35	173	174	191	\$1,487,173	\$637.91
Professional & Business Services	28	49	48	50	\$383,713	\$602.38
Education & Health Services	56	366	375	374	\$1,975,880	\$408.94
Leisure & Hospitality	39	203	211	217	\$564,034	\$206.28
Local Government	20	567	575	574	\$3,382,831	\$454.93
State Government	8	109	110	104	\$691,487	\$494.04
Other	20	181	170	160	\$1,143,241	\$516.29
MILLER COUNTY - TOTAL	861	12,833	12,906	13,009	\$104,494,094	\$622.33
Natural Resources & Mining	26	138	133	138	\$910,948	\$513.98
Construction	97	745	727	756	\$5,086,320	\$526.83
Manufacturing	33	2,354	2,333	2,368	\$32,792,677	\$1,072.65
Trade, Transportation & Utilities	229	3,398	3,393	3,412	\$27,517,408	\$622.38
Wholesale Trade	56	562	552	549	\$6,156,945	\$854.38
Retail Trade	132	1,395	1,359	1,393	\$7,114,672	\$395.91
Transportation, Warehousing & Utilities	41	1,441	1,482	1,470	\$14,245,791	\$748.35
Information	11	92	94	92	\$1,364,415	\$1,132.61
Financial Activities	84	345	343	343	\$2,882,949	\$645.29
Professional & Business Services	84	892	919	929	\$4,849,816	\$408.46
Education & Health Services	110	1,077	1,082	1,079	\$6,622,929	\$472.01
Leisure & Hospitality	83	1,213	1,260	1,261	\$3,831,667	\$236.81
Other Services	61	336	348	341	\$1,519,055	\$342.00
Local Government	26	1,746	1,775	1,793	\$12,645,968	\$549.17
State Government	17	497	499	497	\$4,469,942	\$690.91

**TABLE 6. COUNTY SUMMARY
EMPLOYMENT AND TOTAL EARNINGS, BY INDUSTRY
FIRST QUARTER 2008**

NORTH AMERICAN INDUSTRY CLASSIFICATION SYSTEM INDUSTRY GROUP	NUMBER OF EMPLOYING UNITS	EMPLOYMENT	EMPLOYMENT	EMPLOYMENT	TOTAL EARNINGS	AVERAGE WEEKLY EARNINGS
		JANUARY	FEBRUARY	MARCH	JANUARY - MARCH	
MISSISSIPPI COUNTY - TOTAL	1,230	19,457	19,633	20,058	\$186,336,194	\$727.00
Natural Resources & Mining	98	517	536	550	\$3,271,009	\$470.90
Construction	73	761	800	884	\$10,298,955	\$972.06
Manufacturing	56	6,040	6,066	6,173	\$89,942,503	\$1,135.51
Trade, Transportation & Utilities	299	2,951	2,889	2,910	\$20,617,939	\$543.77
Wholesale Trade	68	482	483	504	\$4,865,370	\$764.31
Retail Trade	182	1,874	1,824	1,819	\$9,045,961	\$378.38
Transportation, Warehousing & Utilities	49	595	582	587	\$6,706,608	\$877.37
Financial Activities	106	595	598	596	\$4,772,894	\$615.67
Professional & Business Services	102	1,280	1,421	1,552	\$12,053,046	\$654.00
Education & Health Services	258	1,669	1,651	1,709	\$10,489,744	\$481.35
Leisure & Hospitality	85	1,102	1,098	1,101	\$2,808,190	\$196.32
Local Government	46	2,346	2,333	2,349	\$16,038,312	\$526.63
State Government	24	618	656	660	\$4,723,457	\$563.61
Other	83	1,578	1,585	1,574	\$11,320,145	\$551.48
MONROE COUNTY - TOTAL	318	2,357	2,418	2,433	\$13,196,972	\$422.51
Natural Resources & Mining	36	110	117	128	\$616,238	\$400.59
Construction	11	30	33	35	\$159,869	\$376.46
Manufacturing	7	107	114	113	\$782,436	\$540.61
Trade, Transportation & Utilities	87	716	729	728	\$4,374,578	\$464.57
Wholesale Trade	22	211	215	222	\$1,763,051	\$627.87
Retail Trade	40	352	351	342	\$1,511,773	\$333.85
Transportation, Warehousing & Utilities	25	153	163	164	\$1,099,754	\$528.73
Financial Activities	16	95	94	95	\$844,263	\$686.02
Professional & Business Services	16	55	55	54	\$271,362	\$381.84
Education & Health Services	65	352	359	359	\$1,618,356	\$349.03
Leisure & Hospitality	24	247	252	255	\$630,586	\$193.00
Local Government	22	401	412	410	\$2,553,603	\$481.84
State Government	9	133	139	136	\$881,847	\$498.78
Other	25	111	114	120	\$463,834	\$310.26

**TABLE 6. COUNTY SUMMARY
EMPLOYMENT AND TOTAL EARNINGS, BY INDUSTRY
FIRST QUARTER 2008**

NORTH AMERICAN INDUSTRY CLASSIFICATION SYSTEM INDUSTRY GROUP	NUMBER OF EMPLOYING UNITS	EMPLOYMENT	EMPLOYMENT	EMPLOYMENT	TOTAL EARNINGS	AVERAGE WEEKLY EARNINGS
		JANUARY	FEBRUARY	MARCH	JANUARY - MARCH	
MONTGOMERY COUNTY - TOTAL	184	1,485	1,512	1,548	\$8,376,946	\$425.33
Natural Resources & Mining	14	64	67	65	\$569,249	\$670.23
Construction	22	84	91	83	\$552,183	\$493.90
Manufacturing	10	174	167	166	\$806,074	\$366.90
Trade, Transportation & Utilities	43	213	220	220	\$1,247,512	\$440.87
Wholesale Trade	10	64	70	72	\$577,202	\$646.60
Retail Trade	23	129	130	127	\$589,322	\$352.32
Transportation, Warehousing & Utilities	10	20	20	21	\$80,988	\$306.39
Financial Activities	11	68	65	73	\$557,963	\$625.05
Professional & Business Services	13	25	25	27	\$146,892	\$440.24
Education & Health Services	15	67	69	70	\$389,386	\$436.21
Leisure & Hospitality	22	171	188	220	\$678,655	\$270.49
Local Government	9	495	499	503	\$2,746,258	\$423.35
State Government	8	55	54	54	\$411,562	\$582.67
Other	17	69	67	67	\$271,212	\$308.31
NEVADA COUNTY - TOTAL	190	2,540	2,572	2,556	\$19,551,505	\$588.40
Natural Resources & Mining	13	60	62	61	\$448,482	\$565.55
Manufacturing	9	717	723	706	\$9,285,438	\$998.51
Trade, Transportation & Utilities	41	501	492	487	\$3,049,534	\$475.50
Retail Trade	27	295	289	285	\$1,281,257	\$340.25
Other Trade, Transportation & Utilities	14	206	203	202	\$1,768,277	\$667.86
Financial Activities	15	59	63	71	\$426,638	\$510.13
Professional & Business Services	9	45	53	43	\$349,483	\$571.99
Education & Health Services	21	396	399	399	\$1,937,338	\$374.44
Leisure & Hospitality	14	99	99	106	\$269,998	\$204.96
Other Services	17	62	64	64	\$208,141	\$252.80
Local Government	28	490	504	504	\$2,701,116	\$416.11
State Government	11	82	84	84	\$633,700	\$584.95
Other	12	29	29	31	\$241,637	\$626.54

**TABLE 6. COUNTY SUMMARY
EMPLOYMENT AND TOTAL EARNINGS, BY INDUSTRY
FIRST QUARTER 2008**

NORTH AMERICAN INDUSTRY CLASSIFICATION SYSTEM INDUSTRY GROUP	NUMBER OF EMPLOYING UNITS	EMPLOYMENT	EMPLOYMENT	EMPLOYMENT	TOTAL EARNINGS	AVERAGE WEEKLY EARNINGS
		JANUARY	FEBRUARY	MARCH	JANUARY - MARCH	
NEWTON COUNTY - TOTAL	137	1,058	1,028	1,054	\$5,364,042	\$394.22
Construction	9	27	27	28	\$101,223	\$284.87
Manufacturing	16	78	68	71	\$493,041	\$524.33
Trade, Transportation & Utilities	27	149	149	146	\$761,721	\$395.90
Retail Trade	13	97	97	96	\$350,510	\$278.92
Other Trade, Transportation & Utilities	14	52	52	50	\$411,211	\$616.20
Professional & Business Services	7	20	6	20	\$154,718	\$776.18
Education & Health Services	27	227	220	216	\$826,829	\$287.79
Leisure & Hospitality	19	47	46	68	\$176,409	\$252.86
Other Services	4	13	11	12	\$34,595	\$221.76
Local Government	13	384	384	380	\$2,179,143	\$438.05
State Government	7	89	92	89	\$473,982	\$405.11
Other	8	24	25	24	\$162,381	\$513.32
OUACHITA COUNTY - TOTAL	651	7,468	7,578	7,679	\$49,822,923	\$505.94
Natural Resources & Mining	46	259	251	252	\$2,051,774	\$621.37
Construction	46	252	253	253	\$1,773,799	\$540.02
Manufacturing	29	817	836	849	\$7,317,547	\$674.93
Trade, Transportation & Utilities	173	1,667	1,687	1,734	\$11,279,792	\$511.60
Wholesale Trade	27	242	244	264	\$2,381,828	\$732.87
Retail Trade	119	1,032	1,040	1,068	\$4,891,340	\$359.48
Transportation, Warehousing & Utilities	27	393	403	402	\$4,006,624	\$771.79
Information	6	56	60	62	\$504,094	\$653.54
Financial Activities	62	351	354	352	\$2,692,230	\$587.78
Professional & Business Services	52	357	357	360	\$2,172,195	\$466.74
Education & Health Services	117	1,274	1,284	1,275	\$8,059,392	\$485.22
Leisure & Hospitality	33	472	499	507	\$1,116,671	\$174.35
Other Services	43	161	163	163	\$787,249	\$373.04
Local Government	30	1,268	1,278	1,273	\$7,899,925	\$477.37
State Government	14	534	556	599	\$4,168,255	\$569.51

**TABLE 6. COUNTY SUMMARY
EMPLOYMENT AND TOTAL EARNINGS, BY INDUSTRY
FIRST QUARTER 2008**

NORTH AMERICAN INDUSTRY CLASSIFICATION SYSTEM INDUSTRY GROUP	NUMBER OF EMPLOYING UNITS	EMPLOYMENT	EMPLOYMENT	EMPLOYMENT	TOTAL EARNINGS	AVERAGE WEEKLY EARNINGS
		JANUARY	FEBRUARY	MARCH	JANUARY - MARCH	
PERRY COUNTY - TOTAL	160	1,275	1,284	1,278	\$7,690,224	\$462.51
Natural Resources & Mining	8	55	61	63	\$658,484	\$848.93
Construction	23	58	54	55	\$369,455	\$510.53
Manufacturing	7	83	81	72	\$458,491	\$448.33
Trade, Transportation & Utilities	29	222	222	226	\$1,182,421	\$407.26
Retail Trade	19	160	161	160	\$590,270	\$283.19
Other Trade, Transportation & Utilities	10	62	61	66	\$592,151	\$723.02
Financial Activities	14	67	68	63	\$543,983	\$634.01
Professional & Business Services	16	35	34	39	\$271,088	\$579.25
Education & Health Services	27	191	187	184	\$956,934	\$392.94
Local Government	12	414	434	433	\$2,411,732	\$434.47
State Government	9	52	51	49	\$363,387	\$551.70
Other	15	98	92	94	\$474,249	\$385.36
PHILLIPS COUNTY - TOTAL	870	6,429	6,552	6,710	\$40,283,659	\$472.11
Natural Resources & Mining	66	247	289	342	\$1,463,454	\$384.65
Construction	31	142	159	167	\$883,819	\$435.81
Manufacturing	13	387	387	373	\$2,866,760	\$576.77
Trade, Transportation & Utilities	174	1,612	1,640	1,699	\$10,480,593	\$488.51
Wholesale Trade	34	439	464	462	\$4,179,486	\$706.59
Retail Trade	97	880	893	955	\$4,111,738	\$347.82
Transportation, Warehousing & Utilities	43	293	283	282	\$2,189,369	\$588.86
Information	9	45	45	45	\$347,673	\$594.31
Financial Activities	55	272	273	272	\$2,247,304	\$634.77
Professional & Business Services	60	181	189	186	\$1,395,930	\$579.38
Education & Health Services	340	1,418	1,421	1,413	\$7,628,680	\$414.03
Leisure & Hospitality	37	374	389	411	\$1,025,694	\$201.62
Other Services	38	88	86	84	\$380,882	\$340.68
Local Government	30	1,119	1,112	1,115	\$8,083,541	\$557.51
State Government	17	544	562	603	\$3,479,329	\$469.82

**TABLE 6. COUNTY SUMMARY
EMPLOYMENT AND TOTAL EARNINGS, BY INDUSTRY
FIRST QUARTER 2008**

NORTH AMERICAN INDUSTRY CLASSIFICATION SYSTEM INDUSTRY GROUP	NUMBER OF EMPLOYING UNITS	EMPLOYMENT	EMPLOYMENT	EMPLOYMENT	TOTAL EARNINGS	AVERAGE WEEKLY EARNINGS
		JANUARY	FEBRUARY	MARCH	JANUARY - MARCH	
PIKE COUNTY - TOTAL	277	2,562	2,585	2,614	\$15,352,307	\$456.49
Natural Resources & Mining	27	154	162	157	\$1,363,290	\$665.13
Construction	10	20	26	33	\$245,563	\$717.32
Manufacturing	16	236	217	214	\$1,243,730	\$430.31
Trade, Transportation & Utilities	98	642	632	650	\$4,021,331	\$482.33
Wholesale Trade	22	160	164	167	\$1,440,906	\$677.22
Retail Trade	47	374	351	368	\$1,677,017	\$354.07
Transportation, Warehousing & Utilities	29	108	117	115	\$903,408	\$613.17
Information	4	27	27	27	\$270,452	\$770.52
Financial Activities	25	185	188	190	\$1,382,159	\$566.54
Professional & Business Services	15	33	36	35	\$349,422	\$775.34
Education & Health Services	20	233	234	242	\$1,154,095	\$375.64
Leisure & Hospitality	19	202	202	212	\$521,129	\$195.23
Other Services	19	127	136	136	\$556,836	\$322.06
Local Government	13	560	577	574	\$3,564,852	\$480.81
State Government	11	143	148	144	\$679,448	\$360.45
POINSETT COUNTY - TOTAL	495	5,450	5,448	5,427	\$35,446,393	\$501.07
Natural Resources & Mining	51	271	283	303	\$2,092,368	\$563.42
Construction	22	78	81	83	\$363,377	\$346.51
Manufacturing	22	871	840	796	\$6,127,169	\$564.01
Trade, Transportation & Utilities	129	1,295	1,292	1,298	\$9,279,614	\$551.21
Wholesale Trade	32	443	441	463	\$5,090,539	\$872.12
Retail Trade	68	693	691	675	\$3,041,598	\$340.90
Transportation, Warehousing & Utilities	29	159	160	160	\$1,147,477	\$552.82
Information	6	52	54	54	\$663,017	\$956.27
Financial Activities	47	285	285	284	\$2,317,422	\$626.22
Professional & Business Services	30	179	189	176	\$1,411,048	\$598.58
Education & Health Services	78	599	598	598	\$3,069,721	\$394.65
Leisure & Hospitality	45	391	389	409	\$806,158	\$156.46
Other Services	23	61	62	60	\$329,975	\$416.11
Local Government	30	1,156	1,163	1,155	\$7,537,697	\$500.71
State Government	12	212	212	211	\$1,448,827	\$526.53

**TABLE 6. COUNTY SUMMARY
EMPLOYMENT AND TOTAL EARNINGS, BY INDUSTRY
FIRST QUARTER 2008**

NORTH AMERICAN INDUSTRY CLASSIFICATION SYSTEM INDUSTRY GROUP	NUMBER OF EMPLOYING UNITS	EMPLOYMENT	EMPLOYMENT	EMPLOYMENT	TOTAL EARNINGS	AVERAGE WEEKLY EARNINGS
		JANUARY	FEBRUARY	MARCH	JANUARY - MARCH	
POLK COUNTY - TOTAL	551	6,325	6,319	6,369	\$36,167,421	\$438.98
Natural Resources & Mining	26	214	213	214	\$1,754,945	\$631.81
Construction	41	163	163	160	\$892,942	\$424.00
Manufacturing	42	1,318	1,305	1,306	\$7,940,227	\$466.37
Trade, Transportation & Utilities	151	1,314	1,319	1,348	\$7,182,943	\$416.38
Wholesale Trade	22	106	107	105	\$504,111	\$365.83
Retail Trade	85	855	849	871	\$4,060,773	\$363.92
Transportation, Warehousing & Utilities	44	353	363	372	\$2,618,059	\$555.30
Information	9	49	48	48	\$365,141	\$581.13
Financial Activities	39	240	240	246	\$1,690,426	\$537.33
Professional & Business Services	51	272	253	267	\$1,257,043	\$366.27
Education & Health Services	84	1,022	1,020	1,004	\$6,012,753	\$455.53
Leisure & Hospitality	37	429	431	429	\$1,003,997	\$179.75
Other Services	36	144	146	146	\$828,213	\$438.36
Local Government	21	832	841	852	\$5,331,561	\$487.27
State Government	14	328	340	349	\$1,907,230	\$432.77
POPE COUNTY - TOTAL	1,789	26,162	26,807	27,382	\$214,851,683	\$617.06
Natural Resources & Mining	27	582	799	817	\$5,385,039	\$565.38
Construction	187	1,265	1,401	1,846	\$13,877,324	\$709.76
Manufacturing	90	5,010	4,931	4,922	\$43,455,798	\$674.71
Trade, Transportation & Utilities	473	6,562	6,470	6,522	\$67,924,032	\$801.61
Wholesale Trade	105	635	627	644	\$5,840,287	\$707.11
Retail Trade	277	3,401	3,357	3,375	\$17,138,382	\$390.31
Transportation, Warehousing & Utilities	91	2,526	2,486	2,503	\$44,945,363	\$1,380.17
Information	16	225	223	222	\$2,380,140	\$819.80
Financial Activities	191	839	848	842	\$7,312,999	\$667.31
Professional & Business Services	245	2,265	2,473	2,513	\$16,654,390	\$530.04
Education & Health Services	265	3,032	3,049	3,040	\$21,828,506	\$552.28
Leisure & Hospitality	131	2,389	2,444	2,453	\$6,585,373	\$208.58
Other Services	108	475	490	510	\$2,863,771	\$448.05
Local Government	40	2,278	2,323	2,338	\$15,851,311	\$527.16
State Government	16	1,240	1,356	1,357	\$10,733,000	\$626.57

**TABLE 6. COUNTY SUMMARY
EMPLOYMENT AND TOTAL EARNINGS, BY INDUSTRY
FIRST QUARTER 2008**

NORTH AMERICAN INDUSTRY CLASSIFICATION SYSTEM INDUSTRY GROUP	NUMBER OF EMPLOYING UNITS	EMPLOYMENT	EMPLOYMENT	EMPLOYMENT	TOTAL EARNINGS	AVERAGE WEEKLY EARNINGS
		JANUARY	FEBRUARY	MARCH	JANUARY - MARCH	
PRAIRIE COUNTY - TOTAL	247	1,393	1,434	1,450	\$8,791,453	\$474.35
Natural Resources & Mining	28	107	124	138	\$788,709	\$493.25
Construction	13	65	73	61	\$456,976	\$529.93
Trade, Transportation & Utilities	65	305	311	316	\$1,750,692	\$433.48
Wholesale Trade	9	47	51	52	\$502,442	\$772.99
Retail Trade	36	183	184	187	\$622,841	\$259.45
Transportation, Warehousing & Utilities	20	75	76	77	\$625,409	\$633.01
Financial Activities	19	69	71	71	\$551,985	\$603.70
Professional & Business Services	16	46	44	46	\$274,926	\$466.50
Education & Health Services	42	172	172	177	\$1,039,113	\$460.26
Leisure & Hospitality	17	80	79	80	\$197,875	\$191.06
Other Services	14	40	40	43	\$191,816	\$359.88
Local Government	15	319	329	323	\$2,096,589	\$498.28
State Government	10	50	51	52	\$386,972	\$583.67
Other	8	140	140	143	\$1,055,800	\$576.00
PULASKI COUNTY - TOTAL	14,659	239,309	240,383	241,713	\$2,430,357,573	\$777.44
Natural Resources & Mining	55	686	662	662	\$9,196,516	\$1,055.86
Construction	1,167	10,097	10,147	10,222	\$106,088,582	\$803.58
Manufacturing	446	15,332	15,306	15,348	\$174,883,891	\$877.61
Trade, Transportation & Utilities	3,324	50,926	50,760	50,954	\$458,629,873	\$693.38
Wholesale Trade	1,161	13,654	13,692	13,696	\$178,618,635	\$1,004.33
Retail Trade	1,767	24,859	24,769	24,951	\$149,608,884	\$462.93
Transportation, Warehousing & Utilities	396	12,413	12,299	12,307	\$130,402,354	\$812.90
Information	226	8,335	8,377	8,333	\$171,519,513	\$1,580.41
Financial Activities	1,797	15,943	15,963	15,935	\$270,810,807	\$1,306.30
Professional & Business Services	2,835	34,280	34,621	34,651	\$325,261,597	\$724.86
Education & Health Services	2,239	35,239	35,534	35,778	\$342,403,527	\$741.58
Leisure & Hospitality	1,052	20,194	20,025	20,734	\$75,876,232	\$287.27
Other Services	1,208	6,786	6,800	6,823	\$50,455,967	\$570.52
Local Government	103	16,831	16,838	16,910	\$148,064,592	\$675.55
State Government	207	24,660	25,350	25,363	\$297,166,476	\$909.83

**TABLE 6. COUNTY SUMMARY
EMPLOYMENT AND TOTAL EARNINGS, BY INDUSTRY
FIRST QUARTER 2008**

NORTH AMERICAN INDUSTRY CLASSIFICATION SYSTEM INDUSTRY GROUP	NUMBER OF EMPLOYING UNITS	EMPLOYMENT	EMPLOYMENT	EMPLOYMENT	TOTAL EARNINGS	AVERAGE WEEKLY EARNINGS
		JANUARY	FEBRUARY	MARCH	JANUARY - MARCH	
RANDOLPH COUNTY - TOTAL	429	4,670	4,722	4,766	\$27,667,734	\$450.97
Natural Resources & Mining	24	88	84	93	\$384,008	\$334.40
Construction	25	77	80	81	\$345,275	\$334.79
Manufacturing	36	688	653	657	\$4,372,789	\$505.06
Trade, Transportation & Utilities	108	925	910	937	\$5,069,441	\$422.03
Wholesale Trade	22	209	210	208	\$1,033,256	\$380.29
Retail Trade	65	595	580	608	\$2,956,933	\$382.71
Transportation, Warehousing & Utilities	21	121	120	121	\$1,079,252	\$688.01
Information	5	40	39	38	\$427,985	\$844.15
Financial Activities	31	146	150	147	\$1,203,312	\$626.83
Professional & Business Services	38	246	254	260	\$1,074,146	\$326.16
Education & Health Services	76	941	947	955	\$6,042,034	\$490.44
Leisure & Hospitality	27	350	349	359	\$839,617	\$183.14
Other Services	24	65	69	81	\$324,358	\$348.15
Local Government	23	847	853	869	\$5,322,495	\$478.11
State Government	12	257	334	289	\$2,262,274	\$593.25
SAINT FRANCIS COUNTY - TOTAL	765	7,635	7,597	7,701	\$49,502,568	\$498.13
Natural Resources & Mining	32	158	163	175	\$889,894	\$414.03
Construction	45	207	209	230	\$1,260,228	\$450.19
Manufacturing	16	815	742	786	\$5,952,496	\$586.28
Trade, Transportation & Utilities	180	2,003	1,995	2,003	\$13,314,308	\$512.00
Wholesale Trade	32	489	490	501	\$4,753,585	\$741.20
Retail Trade	123	1,252	1,240	1,238	\$5,889,440	\$364.37
Transportation, Warehousing & Utilities	25	262	265	264	\$2,671,283	\$779.33
Information	8	84	82	83	\$625,022	\$579.26
Financial Activities	62	315	318	317	\$2,167,803	\$526.59
Professional & Business Services	58	273	274	273	\$2,101,353	\$591.38
Education & Health Services	224	1,336	1,375	1,379	\$7,992,843	\$450.98
Leisure & Hospitality	54	689	665	687	\$1,860,231	\$210.33
Other Services	40	102	107	104	\$396,244	\$292.14
Local Government	29	1,123	1,134	1,132	\$8,329,931	\$567.22
State Government	17	530	533	532	\$4,612,215	\$667.31

**TABLE 6. COUNTY SUMMARY
EMPLOYMENT AND TOTAL EARNINGS, BY INDUSTRY
FIRST QUARTER 2008**

NORTH AMERICAN INDUSTRY CLASSIFICATION SYSTEM INDUSTRY GROUP	NUMBER OF EMPLOYING UNITS	EMPLOYMENT	EMPLOYMENT	EMPLOYMENT	TOTAL EARNINGS	AVERAGE WEEKLY EARNINGS
		JANUARY	FEBRUARY	MARCH	JANUARY - MARCH	
SALINE COUNTY - TOTAL	1,860	21,239	21,283	21,321	\$150,269,601	\$543.17
Natural Resources & Mining	15	34	35	36	\$386,882	\$850.29
Construction	320	1,969	1,950	1,979	\$15,050,930	\$588.89
Manufacturing	88	1,930	1,923	1,906	\$19,344,534	\$775.16
Trade, Transportation & Utilities	446	4,603	4,606	4,663	\$33,689,439	\$560.44
Wholesale Trade	124	590	599	600	\$6,003,709	\$774.44
Retail Trade	265	3,720	3,713	3,760	\$25,070,164	\$516.88
Transportation, Warehousing & Utilities	57	293	294	303	\$2,615,566	\$678.19
Information	13	121	125	128	\$968,337	\$597.49
Financial Activities	192	775	757	769	\$6,331,481	\$634.99
Professional & Business Services	234	1,287	1,288	1,240	\$8,213,230	\$496.82
Education & Health Services	228	2,952	2,976	2,930	\$19,453,521	\$506.80
Leisure & Hospitality	138	2,465	2,514	2,550	\$7,421,471	\$227.47
Other Services	137	640	629	625	\$3,588,529	\$437.23
Local & State Government	49	4,463	4,480	4,495	\$35,821,247	\$615.15
SCOTT COUNTY - TOTAL	191	2,843	2,862	2,856	\$16,506,803	\$444.96
Natural Resources & Mining	15	179	177	183	\$1,340,554	\$573.95
Construction	10	51	54	59	\$278,389	\$391.73
Manufacturing	18	1,111	1,130	1,138	\$6,516,461	\$445.04
Trade, Transportation & Utilities	41	452	455	459	\$2,444,324	\$412.94
Wholesale Trade	10	59	67	71	\$500,742	\$586.58
Retail Trade	24	329	323	324	\$1,316,820	\$311.35
Transportation, Warehousing & Utilities	7	64	65	64	\$626,762	\$749.42
Financial Activities	21	82	81	83	\$504,164	\$472.95
Professional & Business Services	12	18	11	10	\$72,212	\$427.29
Education & Health Services	35	298	293	286	\$1,911,623	\$503.01
Leisure & Hospitality	15	156	155	157	\$342,502	\$168.89
Local Government	5	383	389	364	\$2,338,997	\$475.15
State Government	8	73	73	73	\$451,597	\$475.87
Other	11	40	44	44	\$305,980	\$551.65

**TABLE 6. COUNTY SUMMARY
EMPLOYMENT AND TOTAL EARNINGS, BY INDUSTRY
FIRST QUARTER 2008**

NORTH AMERICAN INDUSTRY CLASSIFICATION SYSTEM INDUSTRY GROUP	NUMBER OF EMPLOYING UNITS	EMPLOYMENT	EMPLOYMENT	EMPLOYMENT	TOTAL EARNINGS	AVERAGE WEEKLY EARNINGS
		JANUARY	FEBRUARY	MARCH	JANUARY - MARCH	
SEARCY COUNTY - TOTAL	196	1,713	1,729	1,770	\$8,689,272	\$384.73
Construction	7	15	19	21	\$84,124	\$352.97
Manufacturing	17	252	248	251	\$1,236,911	\$380.08
Trade, Transportation & Utilities	41	328	331	332	\$1,329,317	\$309.55
Wholesale Trade	6	62	60	64	\$239,609	\$297.28
Retail Trade	26	214	221	218	\$791,872	\$279.85
Transportation, Warehousing & Utilities	9	52	50	50	\$297,836	\$452.18
Information	6	14	14	14	\$96,559	\$530.54
Financial Activities	13	83	84	89	\$602,226	\$542.87
Professional & Business Services	18	32	34	47	\$242,426	\$495.08
Education & Health Services	53	327	327	328	\$1,483,840	\$348.70
Leisure & Hospitality	15	102	103	123	\$241,513	\$169.92
Local Government	10	370	374	374	\$2,134,901	\$440.67
State Government	8	148	148	148	\$934,022	\$485.46
Other	8	42	47	43	\$303,433	\$530.48
SEBASTIAN COUNTY - TOTAL	3,771	71,594	72,206	72,306	\$613,029,698	\$654.63
Natural Resources & Mining	76	1,656	1,669	1,717	\$26,519,122	\$1,213.76
Construction	317	2,641	2,621	2,685	\$24,061,835	\$698.72
Manufacturing	234	18,166	18,166	18,019	\$163,715,247	\$695.12
Trade, Transportation & Utilities	961	13,304	13,281	13,322	\$100,655,753	\$582.06
Wholesale Trade	251	2,622	2,681	2,672	\$31,481,641	\$910.97
Retail Trade	574	8,351	8,265	8,279	\$45,992,305	\$426.33
Transportation, Warehousing & Utilities	136	2,331	2,335	2,371	\$23,181,807	\$760.22
Information	53	988	993	988	\$13,563,541	\$1,054.24
Financial Activities	431	2,561	2,531	2,525	\$26,129,543	\$791.64
Professional & Business Services	540	9,055	9,395	9,323	\$77,031,905	\$640.07
Education & Health Services	520	10,420	10,507	10,587	\$102,486,008	\$750.48
Leisure & Hospitality	307	5,533	5,604	5,704	\$17,239,952	\$236.24
Other Services	267	1,329	1,313	1,347	\$8,626,922	\$499.08
Local Government	43	4,539	4,603	4,574	\$40,160,313	\$675.69
State Government	22	1,402	1,523	1,515	\$12,839,557	\$667.34

**TABLE 6. COUNTY SUMMARY
EMPLOYMENT AND TOTAL EARNINGS, BY INDUSTRY
FIRST QUARTER 2008**

NORTH AMERICAN INDUSTRY CLASSIFICATION SYSTEM INDUSTRY GROUP	NUMBER OF EMPLOYING UNITS	EMPLOYMENT	EMPLOYMENT	EMPLOYMENT	TOTAL EARNINGS	AVERAGE WEEKLY EARNINGS
		JANUARY	FEBRUARY	MARCH	JANUARY - MARCH	
SEVIER COUNTY - TOTAL	328	5,798	5,841	5,818	\$37,307,881	\$493.18
Natural Resources & Mining	18	250	252	254	\$1,705,908	\$520.73
Construction	19	159	156	160	\$1,473,794	\$716.01
Manufacturing	11	2,221	2,260	2,235	\$13,893,162	\$477.38
Trade, Transportation & Utilities	95	841	830	835	\$5,673,617	\$522.46
Wholesale Trade	15	133	142	132	\$1,539,413	\$872.85
Retail Trade	62	590	575	594	\$2,760,127	\$362.11
Transportation, Warehousing & Utilities	18	118	113	109	\$1,374,077	\$932.63
Information	5	52	48	49	\$391,084	\$605.71
Financial Activities	30	188	189	189	\$1,313,466	\$535.53
Professional & Business Services	28	106	96	94	\$1,690,388	\$1,317.87
Education & Health Services	49	506	517	524	\$3,039,878	\$453.46
Leisure & Hospitality	23	245	252	250	\$596,316	\$184.22
Other Services	30	147	137	150	\$591,613	\$314.58
Local Government	11	904	894	865	\$5,655,219	\$490.07
State Government	9	179	210	213	\$1,283,436	\$491.99
SHARP COUNTY - TOTAL	447	3,696	3,648	3,629	\$20,773,683	\$436.88
Construction	29	170	171	164	\$1,279,603	\$584.74
Manufacturing	23	180	177	168	\$813,004	\$357.36
Trade, Transportation & Utilities	95	943	909	913	\$5,779,300	\$482.35
Wholesale Trade	11	44	43	41	\$268,423	\$483.94
Retail Trade	69	632	611	625	\$2,665,819	\$329.33
Transportation, Warehousing & Utilities	15	267	255	247	\$2,845,058	\$853.77
Information	7	57	57	58	\$821,289	\$1,101.91
Financial Activities	37	240	242	239	\$1,669,619	\$534.39
Professional & Business Services	46	175	172	172	\$1,166,566	\$518.70
Education & Health Services	105	575	566	571	\$3,119,333	\$420.47
Leisure & Hospitality	41	383	382	373	\$821,811	\$166.65
Local Government	24	782	788	779	\$4,275,289	\$420.01
State Government	9	115	109	116	\$712,230	\$483.41
Other	31	76	75	76	\$315,639	\$320.88

**TABLE 6. COUNTY SUMMARY
EMPLOYMENT AND TOTAL EARNINGS, BY INDUSTRY
FIRST QUARTER 2008**

NORTH AMERICAN INDUSTRY CLASSIFICATION SYSTEM INDUSTRY GROUP	NUMBER OF EMPLOYING UNITS	EMPLOYMENT	EMPLOYMENT	EMPLOYMENT	TOTAL EARNINGS	AVERAGE WEEKLY EARNINGS
		JANUARY	FEBRUARY	MARCH	JANUARY - MARCH	
STONE COUNTY - TOTAL	298	2,921	2,886	2,914	\$15,455,266	\$408.97
Natural Resources & Mining	5	17	20	22	\$90,835	\$355.29
Construction	26	108	98	104	\$542,737	\$404.02
Manufacturing	27	448	414	412	\$2,187,078	\$396.16
Trade, Transportation & Utilities	74	697	686	692	\$3,671,692	\$408.34
Wholesale Trade	8	57	53	57	\$285,296	\$394.24
Retail Trade	55	602	594	598	\$2,973,314	\$382.47
Transportation, Warehousing & Utilities	11	38	39	37	\$413,082	\$836.20
Financial Activities	29	126	125	129	\$909,914	\$552.58
Professional & Business Services	13	33	36	35	\$273,011	\$605.79
Education & Health Services	57	505	505	501	\$3,087,796	\$471.59
Leisure & Hospitality	33	330	337	354	\$777,524	\$175.74
Local Government	10	416	423	422	\$2,657,239	\$486.29
State Government	9	172	175	174	\$750,338	\$332.35
Other	15	69	67	69	\$507,102	\$570.85
UNION COUNTY - TOTAL	1,418	19,200	19,271	19,257	\$193,012,805	\$771.57
Natural Resources & Mining	115	510	519	517	\$5,128,884	\$765.58
Construction	87	1,177	1,136	1,141	\$11,729,990	\$783.71
Manufacturing	65	4,687	4,660	4,605	\$50,347,356	\$832.76
Trade, Transportation & Utilities	368	3,648	3,648	3,672	\$34,406,516	\$723.92
Wholesale Trade	79	676	676	673	\$13,945,228	\$1,589.20
Retail Trade	224	2,161	2,164	2,172	\$10,933,261	\$388.34
Transportation, Warehousing & Utilities	65	811	808	827	\$9,528,027	\$898.93
Information	15	177	178	186	\$1,346,222	\$574.25
Financial Activities	125	731	714	725	\$5,863,189	\$623.52
Professional & Business Services	142	1,596	1,691	1,659	\$41,143,703	\$1,919.67
Education & Health Services	220	2,444	2,447	2,444	\$18,948,676	\$596.15
Leisure & Hospitality	88	1,153	1,141	1,143	\$3,396,244	\$228.03
Other Services	139	538	564	589	\$3,152,642	\$430.24
Local Government	36	1,982	2,001	2,000	\$13,157,076	\$507.48
State Government	18	557	572	576	\$4,392,307	\$594.49

**TABLE 6. COUNTY SUMMARY
EMPLOYMENT AND TOTAL EARNINGS, BY INDUSTRY
FIRST QUARTER 2008**

NORTH AMERICAN INDUSTRY CLASSIFICATION SYSTEM INDUSTRY GROUP	NUMBER OF EMPLOYING UNITS	EMPLOYMENT	EMPLOYMENT	EMPLOYMENT	TOTAL EARNINGS	AVERAGE WEEKLY EARNINGS
		JANUARY	FEBRUARY	MARCH	JANUARY - MARCH	
VAN BUREN COUNTY - TOTAL	365	3,687	3,668	3,697	\$21,896,031	\$457.20
Natural Resources & Mining	12	76	59	58	\$593,084	\$709.15
Construction	46	219	218	217	\$1,363,370	\$481.08
Trade, Transportation & Utilities	96	835	835	852	\$5,193,189	\$475.19
Wholesale Trade	16	57	65	62	\$525,453	\$659.01
Retail Trade	56	600	594	610	\$3,052,773	\$390.51
Transportation, Warehousing & Utilities	24	178	176	180	\$1,614,963	\$697.91
Information	10	51	51	53	\$431,367	\$642.23
Financial Activities	27	146	148	144	\$1,198,487	\$631.45
Professional & Business Services	26	88	90	95	\$536,793	\$453.76
Education & Health Services	59	617	623	627	\$3,603,041	\$445.35
Leisure & Hospitality	27	414	417	416	\$1,274,925	\$235.94
Local Government	11	635	632	635	\$3,771,014	\$457.54
State Government	8	86	87	86	\$642,829	\$572.76
Other	43	520	508	514	\$3,287,932	\$492.06
WASHINGTON COUNTY - TOTAL	5,698	89,582	89,655	89,941	\$791,295,664	\$678.39
Natural Resources & Mining	38	501	508	506	\$4,327,346	\$659.15
Construction	668	5,232	5,217	5,213	\$46,916,242	\$691.28
Manufacturing	237	14,687	14,649	14,658	\$123,920,485	\$650.02
Trade, Transportation & Utilities	1,360	20,381	20,281	20,295	\$172,947,742	\$654.74
Wholesale Trade	407	3,584	3,590	3,609	\$49,501,435	\$1,059.39
Retail Trade	763	11,349	11,232	11,233	\$65,063,553	\$444.04
Transportation, Warehousing & Utilities	190	5,448	5,459	5,453	\$58,382,754	\$823.53
Information	95	1,533	1,535	1,511	\$17,213,360	\$867.51
Financial Activities	674	3,978	3,951	3,966	\$41,569,754	\$806.48
Professional & Business Services	967	8,505	8,556	8,580	\$118,253,216	\$1,064.28
Education & Health Services	669	10,931	10,959	11,056	\$96,433,768	\$675.47
Leisure & Hospitality	518	8,995	9,142	9,259	\$29,648,525	\$249.74
Other Services	390	1,971	1,984	2,008	\$11,930,565	\$461.72
Local & State Government	82	12,868	12,873	12,889	\$128,134,661	\$765.46

**TABLE 6. COUNTY SUMMARY
EMPLOYMENT AND TOTAL EARNINGS, BY INDUSTRY
FIRST QUARTER 2008**

NORTH AMERICAN INDUSTRY CLASSIFICATION SYSTEM INDUSTRY GROUP	NUMBER OF EMPLOYING UNITS	EMPLOYMENT	EMPLOYMENT	EMPLOYMENT	TOTAL EARNINGS	AVERAGE WEEKLY EARNINGS
		JANUARY	FEBRUARY	MARCH	JANUARY - MARCH	
WHITE COUNTY - TOTAL	1,783	23,479	23,690	24,025	\$185,018,654	\$599.72
Natural Resources & Mining	46	873	854	980	\$12,960,530	\$1,104.87
Construction	196	1,099	1,130	1,178	\$9,534,974	\$645.84
Manufacturing	85	2,704	2,724	2,704	\$26,978,489	\$765.59
Trade, Transportation & Utilities	498	5,955	5,925	6,049	\$50,913,617	\$655.32
Wholesale Trade	94	575	586	601	\$5,279,681	\$691.48
Retail Trade	309	3,260	3,276	3,313	\$16,971,315	\$397.65
Transportation, Warehousing & Utilities	95	2,120	2,063	2,135	\$28,662,621	\$1,046.92
Information	21	190	187	173	\$1,360,362	\$570.78
Financial Activities	183	943	948	962	\$7,464,108	\$603.75
Professional & Business Services	179	1,234	1,305	1,331	\$7,991,475	\$476.53
Education & Health Services	280	4,232	4,279	4,299	\$34,666,650	\$624.51
Leisure & Hospitality	128	2,268	2,331	2,357	\$5,912,557	\$196.15
Other Services	103	583	582	584	\$3,767,223	\$497.06
Local Government	45	2,636	2,644	2,636	\$17,731,692	\$516.92
State Government	19	762	781	772	\$5,736,977	\$571.89
WOODRUFF COUNTY - TOTAL	230	1,873	1,866	1,910	\$11,681,595	\$477.21
Natural Resources & Mining	23	109	109	119	\$712,591	\$487.96
Construction	9	44	44	49	\$313,192	\$527.56
Manufacturing	8	334	325	338	\$2,320,771	\$537.17
Trade, Transportation & Utilities	58	445	453	464	\$3,035,612	\$514.34
Wholesale Trade	13	151	151	152	\$1,408,960	\$716.18
Retail Trade	28	200	198	202	\$710,054	\$273.10
Transportation, Warehousing & Utilities	17	94	104	110	\$916,598	\$686.76
Financial Activities	16	58	60	60	\$439,415	\$569.68
Professional & Business Services	5	9	7	7	\$88,870	\$891.67
Education & Health Services	76	227	229	224	\$1,276,027	\$433.04
Leisure & Hospitality	10	48	48	54	\$99,693	\$153.37
Local Government	10	516	509	515	\$2,866,618	\$429.56
State Government	7	60	59	59	\$403,114	\$522.62
Other	8	23	23	21	\$125,692	\$432.92

**TABLE 6. COUNTY SUMMARY
EMPLOYMENT AND TOTAL EARNINGS, BY INDUSTRY
FIRST QUARTER 2008**

NORTH AMERICAN INDUSTRY CLASSIFICATION SYSTEM INDUSTRY GROUP	NUMBER OF EMPLOYING UNITS	EMPLOYMENT	EMPLOYMENT	EMPLOYMENT	TOTAL EARNINGS	AVERAGE WEEKLY EARNINGS
		JANUARY	FEBRUARY	MARCH	JANUARY - MARCH	
YELL COUNTY - TOTAL	421	6,718	6,857	6,933	\$43,340,659	\$487.70
Natural Resources & Mining	22	216	222	232	\$1,507,408	\$519.20
Construction	45	351	391	390	\$2,749,213	\$560.45
Manufacturing	20	2,663	2,678	2,705	\$17,597,770	\$504.73
Trade, Transportation & Utilities	86	668	678	678	\$3,261,994	\$371.92
Wholesale Trade	16	22	26	26	\$152,519	\$475.63
Retail Trade	52	564	569	568	\$2,359,829	\$320.15
Transportation, Warehousing & Utilities	18	82	83	84	\$749,646	\$694.76
Information	3	74	73	72	\$592,672	\$624.52
Financial Activities	38	190	192	190	\$1,352,001	\$545.45
Professional & Business Services	36	280	278	298	\$3,275,795	\$883.12
Education & Health Services	87	616	623	633	\$3,532,987	\$435.53
Leisure & Hospitality	28	290	312	306	\$744,182	\$189.13
Other Services	16	74	75	71	\$305,925	\$320.90
Local Government	27	1,174	1,214	1,241	\$7,666,966	\$487.54
State Government	13	122	121	117	\$753,746	\$483.17
REST-OF-STATE-TOTAL	4,426	17,289	17,909	18,385	\$262,133,058	\$1,128.94
Natural Resources & Mining	76	353	358	373	\$6,035,519	\$1,284.88
Construction	551	3,213	3,433	3,658	\$36,373,888	\$814.63
Manufacturing	68	246	236	237	\$2,795,699	\$897.30
Trade, Transportation & Utilities	1,661	6,279	6,350	6,427	\$129,827,405	\$1,572.22
Wholesale Trade	1,395	4,988	5,074	5,142	\$115,711,044	\$1,756.28
Retail Trade	116	493	488	486	\$6,307,340	\$992.19
Transportation, Warehousing & Utilities	150	798	788	799	\$7,809,021	\$755.59
Information	94	194	229	220	\$3,147,075	\$1,129.47
Financial Activities	262	746	755	769	\$13,002,827	\$1,321.87
Professional & Business Services	1,432	4,936	5,204	5,330	\$56,290,787	\$839.70
Education & Health Services	105	591	592	602	\$6,799,870	\$879.10
Leisure & Hospitality	54	54	58	68	\$568,664	\$729.06
Other	123	677	694	701	\$7,291,324	\$812.07

TABLE 7. FEDERAL GOVERNMENT EMPLOYMENT AND EARNINGS IN ARKANSAS

NORTH AMERICAN INDUSTRY CLASSIFICATION SYSTEM INDUSTRY GROUP	NUMBER OF EMPLOYING UNITS	EMPLOYMENT JANUARY	EMPLOYMENT FEBRUARY	EMPLOYMENT MARCH	TOTAL EARNINGS JAN. - MAR. 2008
Trade, Transportation & Utilities	614	6,722	6,721	6,679	\$69,942,040
Information	1	36	36	35	\$403,062
Financial Activities	23	165	161	162	\$2,599,838
Professional & Business Services	30	738	738	741	\$13,589,716
Education & Health Services	5	4,324	4,545	4,466	\$80,570,913
Leisure & Hospitality	15	192	188	197	\$1,780,593
Other Services	2	255	247	258	\$994,623
Public Administration	491	8,436	8,361	8,415	\$124,840,886
TOTAL	1,181	20,868	20,997	20,953	\$294,721,671

**TABLE 8. WORKFORCE INFORMATION AREA, SUMMARY
EMPLOYMENT AND TOTAL EARNINGS, BY INDUSTRY
FIRST QUARTER 2008**

NORTH AMERICAN INDUSTRY CLASSIFICATION SYSTEM INDUSTRY GROUP	NUMBER OF EMPLOYING UNITS	EMPLOYMENT JANUARY	EMPLOYMENT FEBRUARY	EMPLOYMENT MARCH	TOTAL EARNINGS JANUARY - MARCH	AVERAGE WEEKLY EARNINGS
CENTRAL WORKFORCE INFORMATION*	6,381	76,513	76,619	76,837	\$579,845,497	\$581.86
Natural Resources & Mining	185	1,360	1,408	1,474	\$17,622,715	\$958.69
Construction	891	6,003	5,876	5,882	\$46,322,458	\$601.87
Trade, Transportation & Utilities	1,578	15,242	15,239	15,342	\$103,719,244	\$522.34
Wholesale Trade	405	2,200	2,240	2,264	\$22,672,234	\$780.44
Retail Trade	909	11,270	11,190	11,277	\$63,754,723	\$436.10
Transportation, Warehousing & Utilities	264	1,772	1,809	1,801	\$17,292,287	\$741.46
Financial Activities	685	2,959	2,951	2,974	\$30,090,340	\$781.62
Professional & Business Services	780	6,956	7,099	7,048	\$75,203,660	\$822.38
Education & Health Services	858	10,321	10,459	10,462	\$70,146,403	\$518.14
Leisure & Hospitality	476	8,182	8,290	8,376	\$22,787,344	\$211.63
Local & State Government	208	14,796	14,940	14,961	\$115,574,059	\$596.71
Other	720	10,694	10,357	10,318	\$98,379,274	\$723.74
*Note: Pulaski County is not included in the Central Workforce Information. Please refer to Page 52 for information on Pulaski County.						
Central Workforce Includes these counties: Faulkner, Lonoke, Monroe, Prairie, and Saline.						
EASTERN WORKFORCE INFORMATION	3,735	37,552	37,693	38,270	\$262,404,898	\$533.45
Natural Resources & Mining	209	906	995	1,114	\$5,083,213	\$389.07
Construction	190	974	987	1,074	\$7,008,641	\$532.91
Trade, Transportation & Utilities	881	9,953	9,876	10,023	\$72,386,511	\$559.58
Wholesale Trade	181	2,032	2,052	2,109	\$21,054,463	\$784.55
Retail Trade	491	5,087	5,049	5,113	\$24,859,826	\$376.21
Transportation, Warehousing & Utilities	209	2,834	2,775	2,801	\$26,472,222	\$726.39
Financial Activities	291	1,578	1,590	1,602	\$13,525,171	\$654.34
Professional & Business Services	311	1,478	1,536	1,520	\$10,731,604	\$546.21
Education & Health Services	1,062	5,915	5,989	6,033	\$38,791,406	\$499.07
Leisure & Hospitality	237	3,495	3,450	3,523	\$10,706,452	\$236.03
Local Government	136	5,796	5,852	5,831	\$43,935,198	\$580.06
State Government	68	2,285	2,319	2,367	\$17,530,491	\$580.33
Other	350	5,172	5,099	5,183	\$42,706,211	\$637.72
Eastern Workforce Includes these counties: Crittenden, Cross, Lee, Phillips, and Saint Francis.						

**TABLE 8. WORKFORCE INFORMATION AREA, SUMMARY
EMPLOYMENT AND TOTAL EARNINGS, BY INDUSTRY
FIRST QUARTER 2008**

NORTH AMERICAN INDUSTRY CLASSIFICATION SYSTEM INDUSTRY GROUP	NUMBER OF EMPLOYING UNITS	EMPLOYMENT	EMPLOYMENT	EMPLOYMENT	TOTAL EARNINGS	AVERAGE
		JANUARY	FEBRUARY	MARCH	JANUARY - MARCH	WEEKLY EARNINGS
NORTH CENTRAL WORKFORCE INFORMATION	5,829	68,526	68,884	69,492	\$479,438,858	\$534.74
Construction	532	2,808	2,905	3,017	\$21,459,480	\$567.26
Trade, Transportation & Utilities	1,523	15,518	15,424	15,607	\$112,671,349	\$558.57
Retail Trade	952	9,244	9,169	9,268	\$45,252,983	\$377.26
Other Trade, Transportation & Utilities	571	6,274	6,255	6,339	\$67,418,366	\$824.58
Financial Activities	544	2,763	2,747	2,758	\$21,753,715	\$607.17
Professional & Business Services	493	2,892	2,920	2,968	\$17,332,976	\$455.57
Education & Health Services	1,054	11,739	11,820	11,833	\$85,149,883	\$555.21
Leisure & Hospitality	446	5,847	5,967	6,056	\$15,331,757	\$197.99
Local Government	229	9,176	9,217	9,235	\$56,523,856	\$472.13
State Government	115	2,992	3,125	3,121	\$23,037,091	\$575.48
Other	893	14,791	14,759	14,897	\$126,178,751	\$655.12
North Central Workforce Includes these counties: Cleburne, Fulton, Independence, Izard, Jackson, Sharp, Stone, Van Buren, White, and Woodruff						
NORTHEAST WORKFORCE INFORMATION	6,647	93,132	93,876	94,558	\$724,054,199	\$593.43
Natural Resources & Mining	370	1,593	1,640	1,709	\$10,055,812	\$469.56
Construction	504	3,036	3,052	3,224	\$26,480,673	\$656.24
Manufacturing	345	20,643	20,570	20,718	\$215,999,931	\$804.87
Trade, Transportation & Utilities	1,765	18,015	17,913	18,019	\$119,642,355	\$511.79
Wholesale Trade	413	3,788	3,781	3,853	\$36,354,424	\$734.50
Retail Trade	1,034	11,654	11,532	11,579	\$58,443,506	\$387.95
Transportation, Warehousing & Utilities	318	2,573	2,600	2,587	\$24,844,425	\$738.83
Financial Activities	605	3,479	3,480	3,472	\$31,157,346	\$689.31
Professional & Business Services	673	6,242	6,745	6,678	\$44,644,114	\$523.90
Education & Health Services	1,116	13,130	13,143	13,293	\$106,551,088	\$621.46
Leisure & Hospitality	474	7,366	7,463	7,547	\$25,133,011	\$259.20
Local Government	218	11,733	11,832	11,909	\$81,664,914	\$531.26
State Government	107	4,098	4,229	4,187	\$37,294,637	\$687.75
Other	470	3,797	3,809	3,802	\$25,430,318	\$514.42
Northeast Workforce Includes these counties: Clay, Craighead, Greene, Lawrence, Mississippi, Poinsett, and Randolph.						

**TABLE 8. WORKFORCE INFORMATION AREA, SUMMARY
EMPLOYMENT AND TOTAL EARNINGS, BY INDUSTRY
FIRST QUARTER 2008**

NORTH AMERICAN INDUSTRY CLASSIFICATION SYSTEM INDUSTRY GROUP	NUMBER OF EMPLOYING UNITS	EMPLOYMENT JANUARY	EMPLOYMENT FEBRUARY	EMPLOYMENT MARCH	TOTAL EARNINGS JANUARY - MARCH	AVERAGE WEEKLY EARNINGS
NORTHWEST WORKFORCE INFORMATION	15,484	231,347	232,291	233,808	\$2,200,445,991	\$728.08
Construction	1,822	11,210	11,149	11,153	\$95,078,277	\$654.72
Trade, Transportation & Utilities	3,843	53,749	53,735	54,225	\$480,776,835	\$686.10
Retail Trade	2,050	26,726	26,500	26,825	\$152,974,601	\$440.99
Other Trade, Transportation & Utilities	1,793	27,023	27,235	27,400	\$327,802,234	\$926.38
Professional & Business Services	2,378	32,787	32,951	33,162	\$587,082,301	\$1,369.87
Education & Health Services	1,902	24,923	24,958	25,031	\$207,870,219	\$640.35
Leisure & Hospitality	1,401	21,014	21,495	22,099	\$68,499,404	\$244.67
Local & State Government	431	29,280	29,671	29,728	\$256,583,070	\$667.71
Other	3,707	58,384	58,332	58,410	\$504,555,885	\$664.87
Northwest Workforce Includes these counties: Baxter, Benton, Boone, Carroll, Madison, Marion, Newton, Searcy, and Washington.						
SOUTHEAST WORKFORCE INFORMATION	5,862	74,806	75,587	76,513	\$566,943,312	\$576.60
Natural Resources & Mining	408	2,509	2,529	2,566	\$20,436,294	\$620.21
Construction	341	3,013	3,128	3,117	\$29,633,866	\$738.67
Manufacturing	224	16,689	16,815	17,113	\$161,951,458	\$738.36
Trade, Transportation & Utilities	1,366	13,018	12,954	13,141	\$90,623,658	\$534.69
Retail Trade	824	8,486	8,397	8,528	\$43,098,421	\$391.40
Other Trade, Transportation & Utilities	542	4,532	4,557	4,613	\$47,525,237	\$800.42
Education & Health Services	1,419	10,853	10,841	10,916	\$70,048,660	\$495.71
Local & State Government	360	16,374	16,727	17,005	\$120,169,997	\$553.46
Other	1,744	12,350	12,593	12,655	\$74,079,379	\$454.68
Southeast Workforce Includes these counties: Arkansas, Ashley, Bradley, Chicot, Cleveland, Desha, Drew, Grant, Jefferson, and Lincoln						

**TABLE 8. WORKFORCE INFORMATION AREA, SUMMARY
EMPLOYMENT AND TOTAL EARNINGS, BY INDUSTRY
FIRST QUARTER 2008**

NORTH AMERICAN INDUSTRY CLASSIFICATION SYSTEM INDUSTRY GROUP	NUMBER OF EMPLOYING UNITS	EMPLOYMENT JANUARY	EMPLOYMENT FEBRUARY	EMPLOYMENT MARCH	TOTAL EARNINGS JANUARY - MARCH	AVERAGE WEEKLY EARNINGS
SOUTHWEST WORKFORCE INFORMATION	5,887	84,384	84,992	85,346	\$690,969,739	\$625.99
Natural Resources & Mining	415	2,926	2,916	2,935	\$26,854,779	\$706.08
Manufacturing	292	23,964	23,960	23,892	\$247,145,889	\$794.16
Trade, Transportation & Utilities	1,505	15,439	15,425	15,578	\$114,743,347	\$570.16
Retail Trade	944	8,947	8,882	9,009	\$43,633,247	\$375.18
Other Trade, Transportation & Utilities	561	6,492	6,543	6,569	\$71,110,100	\$837.08
Financial Activities	541	2,854	2,829	2,872	\$22,994,983	\$620.28
Education & Health Services	897	9,375	9,448	9,436	\$59,647,485	\$487.09
Leisure & Hospitality	405	5,132	5,258	5,282	\$14,109,359	\$207.76
Local & State Government	415	14,408	14,664	14,732	\$100,400,712	\$528.93
Other	1,417	10,286	10,492	10,619	\$105,073,185	\$772.29
Southwest Workforce Includes these counties: Calhoun, Columbia, Dallas, Hempstead, Howard, Lafayette, Little River, Miller, Nevada, Ouachita, Sevier, and Union						
WEST CENTRAL WORKFORCE INFORMATION	8,490	107,831	108,982	110,416	\$775,098,699	\$546.62
Natural Resources & Mining	249	2,301	2,516	2,532	\$20,810,985	\$653.50
Construction	924	5,070	5,166	5,685	\$40,842,980	\$592.00
Manufacturing	410	18,888	18,775	18,714	\$153,664,444	\$629.00
Trade, Transportation & Utilities	2,030	22,317	22,018	22,268	\$168,313,899	\$583.18
Retail Trade	1,288	14,408	14,159	14,349	\$74,502,183	\$400.62
Other Trade, Transportation & Utilities	742	7,909	7,859	7,919	\$93,811,716	\$913.96
Financial Activities	882	3,945	3,980	3,990	\$33,498,600	\$648.80
Professional & Business Services	949	7,335	7,530	7,610	\$52,833,095	\$542.48
Education & Health Services	1,284	15,807	15,836	15,942	\$120,450,672	\$584.14
Local Government	229	12,123	12,345	12,436	\$85,791,747	\$536.48
State Government	134	4,931	5,342	5,378	\$39,958,230	\$589.17
Other	1,399	15,114	15,474	15,861	\$58,934,047	\$292.80
West Central Workforce Includes these counties: Clark, Conway, Garland, Hot Spring, Johnson, Montgomery, Perry, Pike, Pope, and Yell						

**TABLE 8. WORKFORCE INFORMATION AREA, SUMMARY
EMPLOYMENT AND TOTAL EARNINGS, BY INDUSTRY
FIRST QUARTER 2008**

NORTH AMERICAN INDUSTRY CLASSIFICATION SYSTEM INDUSTRY GROUP	NUMBER OF EMPLOYING UNITS	EMPLOYMENT JANUARY	EMPLOYMENT FEBRUARY	EMPLOYMENT MARCH	TOTAL EARNINGS JANUARY - MARCH	AVERAGE WEEKLY EARNINGS
WESTERN WORKFORCE INFORMATION	6,631	111,008	111,833	112,158	\$878,021,010	\$604.84
Natural Resources & Mining	176	2,819	2,881	2,949	\$37,361,984	\$996.88
Construction	641	4,693	4,650	4,739	\$39,713,889	\$650.81
Manufacturing	424	27,074	27,114	26,954	\$227,486,622	\$646.98
Trade, Transportation & Utilities	1,669	23,536	23,506	23,592	\$172,063,891	\$562.15
Wholesale Trade	398	3,584	3,652	3,671	\$40,119,203	\$848.84
Retail Trade	965	12,721	12,638	12,698	\$67,297,803	\$408.08
Transportation, Warehousing & Utilities	306	7,231	7,216	7,223	\$64,646,885	\$688.44
Financial Activities	707	3,938	3,913	3,913	\$36,630,860	\$718.57
Professional & Business Services	824	10,797	11,176	11,173	\$87,359,745	\$608.22
Education & Health Services	929	14,314	14,452	14,533	\$128,026,778	\$682.34
Leisure & Hospitality	502	8,277	8,341	8,507	\$24,347,575	\$223.63
Local & State Government	231	12,218	12,462	12,430	\$96,011,247	\$597.05
Other	528	3,342	3,338	3,368	\$29,018,419	\$666.46
Western Workforce Includes these counties: Crawford, Franklin, Logan, Polk, Scott, and Sebastian						