

Arkansas Covered Employment & Earnings

Jobs for People. People for Jobs.

DWS
Department of
WORKFORCE**Services**

2007 Annual

**COVERED EMPLOYMENT AND EARNINGS
STATE OF ARKANSAS
CALENDAR YEAR 2007**

**MIKE BEEBE, GOVERNOR
STATE OF ARKANSAS**

**ARTEE WILLIAMS, DIRECTOR
ARKANSAS DEPARTMENT OF WORKFORCE SERVICES**

**PUBLISHED BY
BUREAU OF LABOR STATISTICS PROGRAMS
ARKANSAS DEPARTMENT OF WORKFORCE SERVICES
POST OFFICE BOX 2981
LITTLE ROCK, ARKANSAS 72203-2981
BERNADETTE COLEMAN, BLS PROGRAMS MANAGER
TELEPHONE: (501) 682-3159**

STATE OF ARKANSAS HOME PAGE: <http://www.arkansas.gov>

**ARKANSAS DEPARTMENT OF WORKFORCE SERVICES
HOME PAGE: <http://www.arkansas.gov/esd/>**

**INTERNET SITE FOR LABOR MARKET INFORMATION:
<http://www.discover.arkansas.gov>**

RELEASED: DECEMBER 2008

TABLE OF CONTENTS

Description of Data	1
Industry Classification	1
Definition of Covered Employment and Earnings	2
Federal Government Employment	2
County Classification	2
Significant Developments During Calendar Year 2007	3

LIST OF GRAPHS AND TABLES

Graph 1	Total Covered Employment for Selected Years, Arkansas	7
Graph 2	Total Covered Earnings, by Calendar Quarter for Selected Years, Arkansas	8
Table 1	Quarterly Comparison of Covered Employment and Wages, by Industry	5
Table 2	Total Covered Employment in Arkansas, 2000-2007	6
Table 3	Total Covered Earnings, 2000-2007	9
Table 4	Total Taxable Earnings, 2000-2007	10
Table 5	State Summary - Employment and Total Earnings, by Industry, Calendar Year 2007	11
Table 6	County Summary - Employment and Total Earnings, by Industry, Calendar Year 2007	25
Table 7	Federal Government Employment and Total Earnings in Arkansas, Calendar Year 2007	62
Table 8	Workforce Information Area – Employment and Total Earnings, by Industry, Calendar Year 2007	63

EMPLOYMENT AND EARNINGS UNDER THE ARKANSAS EMPLOYMENT SECURITY LAW CALENDAR YEAR 2007

DESCRIPTION OF DATA

This publication contains covered employment and payroll data by industry and county for the Calendar Year 2007. These data are compiled from quarterly contribution and wage reports submitted by employers subject to the Arkansas Employment Security Law. An employing unit is a single physical location where business is conducted, production takes place, or services are provided. Employment data have been tabulated for each month of the quarter by industry under the **North American Industry Classification System** (NAICS) (see "Industry Classification" below) on a statewide, county and workforce area basis. Payroll data represent the total wages paid during the quarter, and are also shown by

industry for the State and by publishable industry groups for each county and workforce area. The tabulation of this data is a joint effort in conjunction with the U.S. Bureau of Labor Statistics. In addition, there are tables included which set out total covered employment by months, quarterly payrolls, and average weekly earnings for the years 2000 through 2007. Data contained in this publication are subject to revision. These revisions will be reflected in the 2008 First Quarter Covered Employment and Earnings publication. Because of industry code changes between years, substantial employment and wage shifts among industries are anticipated.

INDUSTRY CLASSIFICATION

Previously published industry data **will not** be comparable in all instances with currently published data since industry codes have been revised according to the following Manuals: (a) between January 1, 1958 and December 31, 1967, industry codes were assigned under the 1957 Standard Industrial Classification (SIC) Manual; (b) between January 1, 1968 and December 31, 1974, industry codes were assigned under the 1967 Standard Industrial Classification (SIC) Manual; (c) between January 1, 1975 and December 31, 1987, industry codes were assigned under the 1972 Standard Industrial Classification (SIC) Manual; (d) between January 1, 1988 and December 31, 2000, industry codes were assigned under the 1987 Standard Industrial Classification (SIC) Manual; (e) January 1, 2001, industry codes have been assigned under the 2002 North American Industry Classification System (NAICS) Manual; and (f) since January 1, 2007, industry codes have been assigned under the 2007 North American Industry Classification System (NAICS) Manual. **The NAICS Manual**

represents a significant change in coding methodology as compared to the SIC Manual. One of the most significant changes involves how NAICS treats auxiliary units. Auxiliary units are establishments primarily engaged in performing management or support services for other establishments of the same enterprise. The SIC code for these units was based on the activity of the enterprise served. The NAICS code is based on the actual activities that the establishment performs. Comparisons of many industries **should not be made** between this publication and previous Covered Employment and Earnings publications that were based on SIC. Even though some titles are the same or similar, in nature, NAICS and SIC could differ in the classification of employers. The implementation of NAICS represents a profound change for statistical programs, and will create significant benefits along with transition obstacles for both data collectors and data users. A summary is available on the NAICS home page at <http://www.census.gov/naics>.

DEFINITION OF COVERED EMPLOYMENT AND EARNINGS

Covered Employment is the number of workers employed by employers subject to the Arkansas Employment Security Law who worked or received pay for the payroll period including the 12th of the month. An employer is subject to the law when they employ one or more employees in each of ten days during the current or preceding calendar year.

Currently excluded from coverage is employment covered by the Railroad Unemployment Insurance Act, some domestic service workers, employees of small agricultural establishments, self-employed and unpaid family workers, insurance and real estate

agents who are on commission only, and employees of churches and religious organizations except separately incorporated schools. The payroll information in this publication includes all wages and salaries paid to any covered employees by their employers including bonuses, commissions, and cash values of remuneration received in any medium other than cash. These wages include both taxable and nontaxable wages. Only the first \$10,000 paid to each worker by an employer in the calendar year is taxable under the Arkansas Employment Security Law.

FEDERAL GOVERNMENT EMPLOYMENT

Table 7 on page 62 lists the total number of civilians employed by the Federal Government in Arkansas during the Calendar Year 2007. Employment and wage data are set out by industry divisions. These data are obtained from required reports submitted by various

government agencies having employment in the State. Civilian Federal workers are covered by the Unemployment Compensation for Federal Employees (UCFE) program.

COUNTY CLASSIFICATION

Employment and payroll data by county are classified according to the county where the workers are employed. Employers with operations in more than one county are requested to furnish this agency with a breakdown of employment and wages for at least one quarter of each year by the counties in which they operate. Many such employers submit county data with each regular contribution report. **Note:** This information is invaluable in the preparation of monthly employment and payroll data by county.

Employment and payroll data for multi - area employers who do not furnish county data each quarter of the year, are prorated by county on the basis of one quarter of information. The "rest-of-state" table that appears on page 61 of this publication includes data on firms that **did not** provide a county breakdown of employment and payrolls. It also includes sales, and all other type of personnel with no permanent place of work, as well as employment of employers with no established place of business in Arkansas.

SIGNIFICANT DEVELOPMENTS DURING CALENDAR YEAR 2007

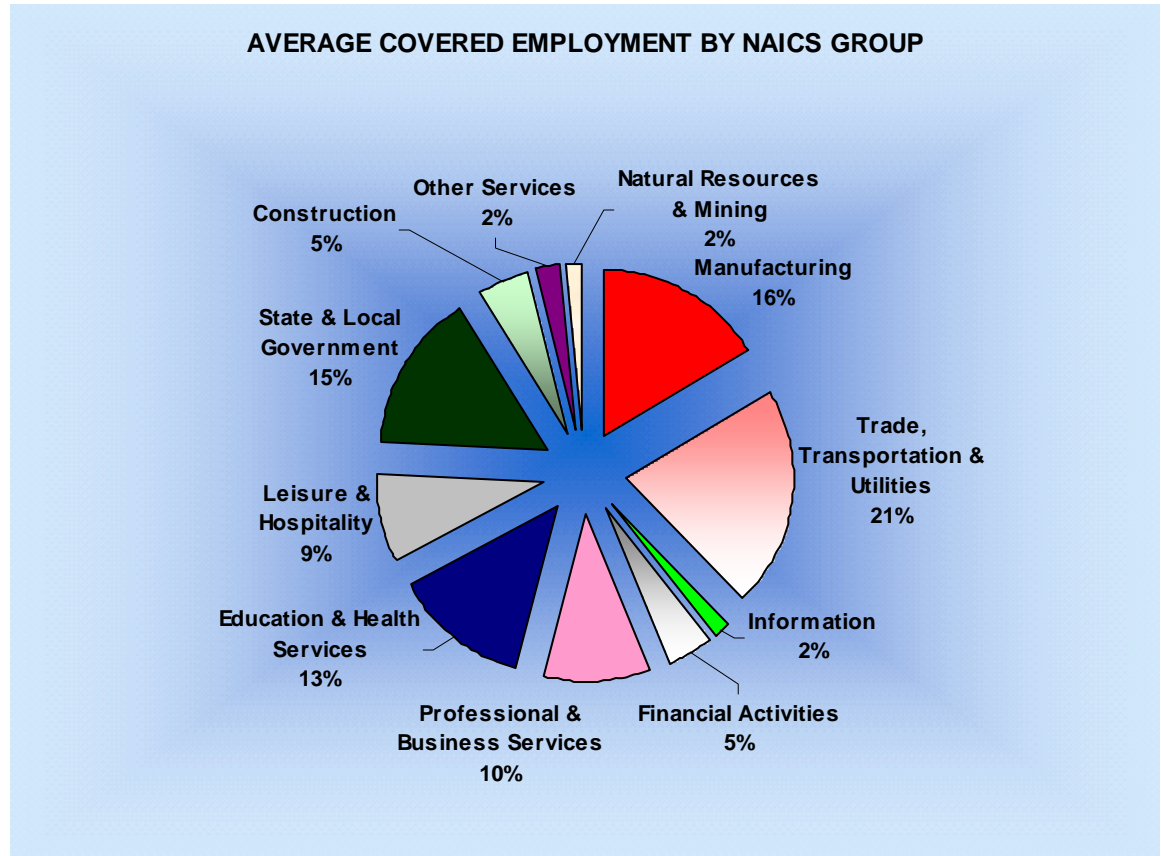
AVERAGE EMPLOYMENT CHANGES

Covered employment averaged 1,153,436 during the Calendar Year 2007 (see table 1), an increase of 6,364 (+0.55%) from the previous year and 44,782 (+4.04%) from 2004 above the average recorded previously. The sectors driving the three year increase are Education & Health Services (+13,441), State & Local Government (+10,781), Professional & Business Services (+8,828) and Trade, Transportation & Utilities (+8,700).

Seven of the eleven major industries recorded gains over the year. The largest increase occurred in Education & Health Services (+4,313). Ninety percent of the growth can be attributed to new jobs in the Health Care & Social Assistance sector which saw major growth in both Ambulatory Health Care Services (+1,522) and Social Assistance (+1,554). The Fayetteville Shale Play contributed to Natural Resources and Mining seeing an 8.4% gain in jobs, the largest growth rate in any of the major industries. The expansion of the natural gas industry also helped to create job expansion in Professional & Business Services (+2,702), with 1,423 new jobs in Professional & Technical Services. Job growth also occurred in Leisure & Hospitality (+2.2%), State & Local Government (+2.0%), Financial Activities (+1.6%), and Trade, Transportation & Utilities (+0.6%).

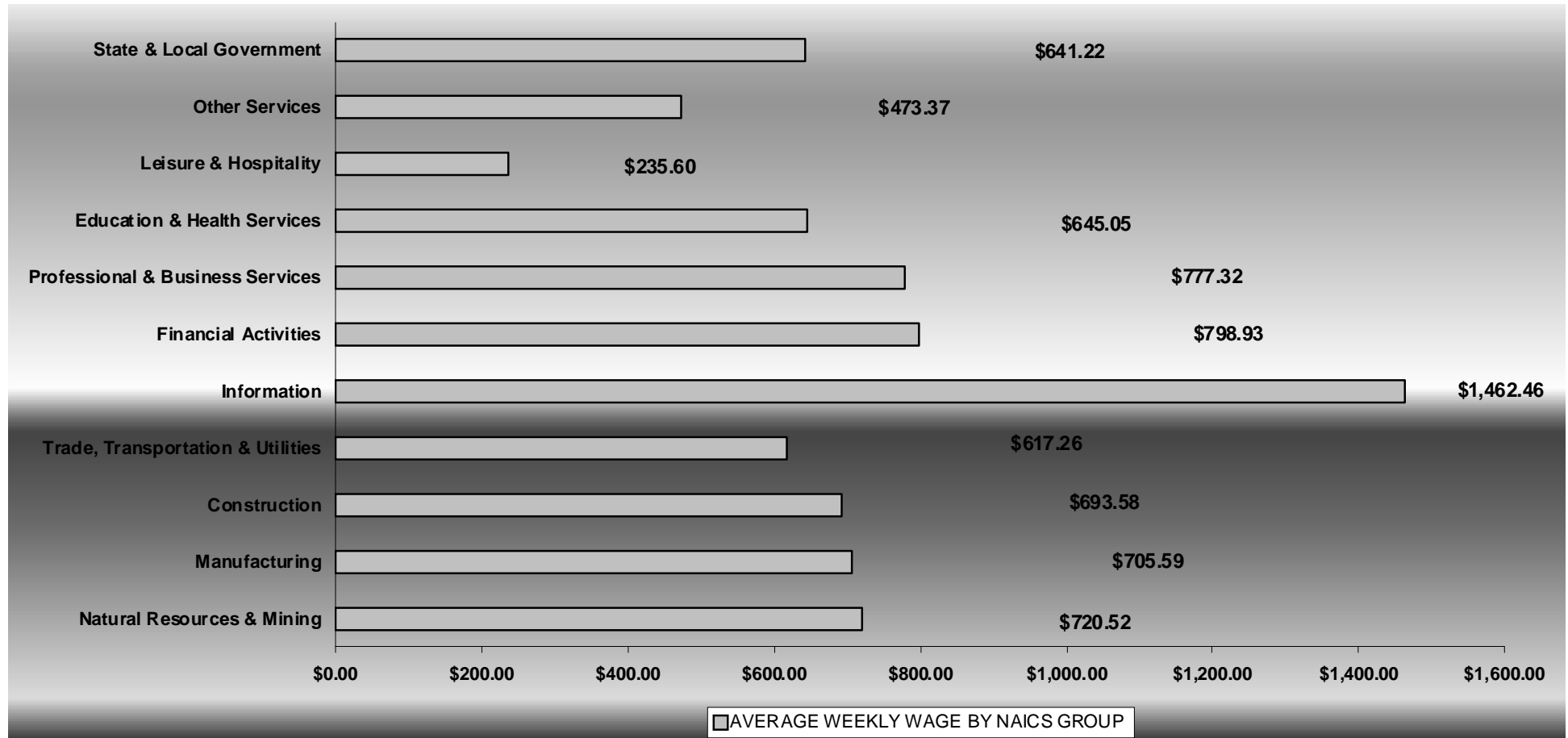
Four industries suffered losses over the year. The biggest job decrease occurred in Manufacturing (-9,441) due to plant closures and layoffs. Construction (-398), Other Services (-383), and Information (-81) also declined slightly.

Pulaski County ranked first among counties in covered employment, averaging 241,051 during 2007. The rest of the top five in average covered employment are Benton County (95,081), Washington County (90,775), Sebastian County (72,986), and Craighead County (41,332).



AVERAGE WEEKLY EARNINGS

Wages paid to covered workers totaled \$38,830,050,835 for the Calendar Year 2007 (see table 1), for an average weekly wage of \$647.40 (see table 5). This represented an increase of \$33.13 from the level of \$614.27 recorded in 2006. Employees in Information recorded the highest weekly wage with \$1,462.46 while Leisure & Hospitality recorded the lowest yearly average weekly wage at \$235.60.



Note: Because of industry code changes between years, substantial employment and wage shifts among industries are anticipated.

TABLE 1. YEARLY COMPARISON OF COVERED EMPLOYMENT AND WAGES, BY INDUSTRY

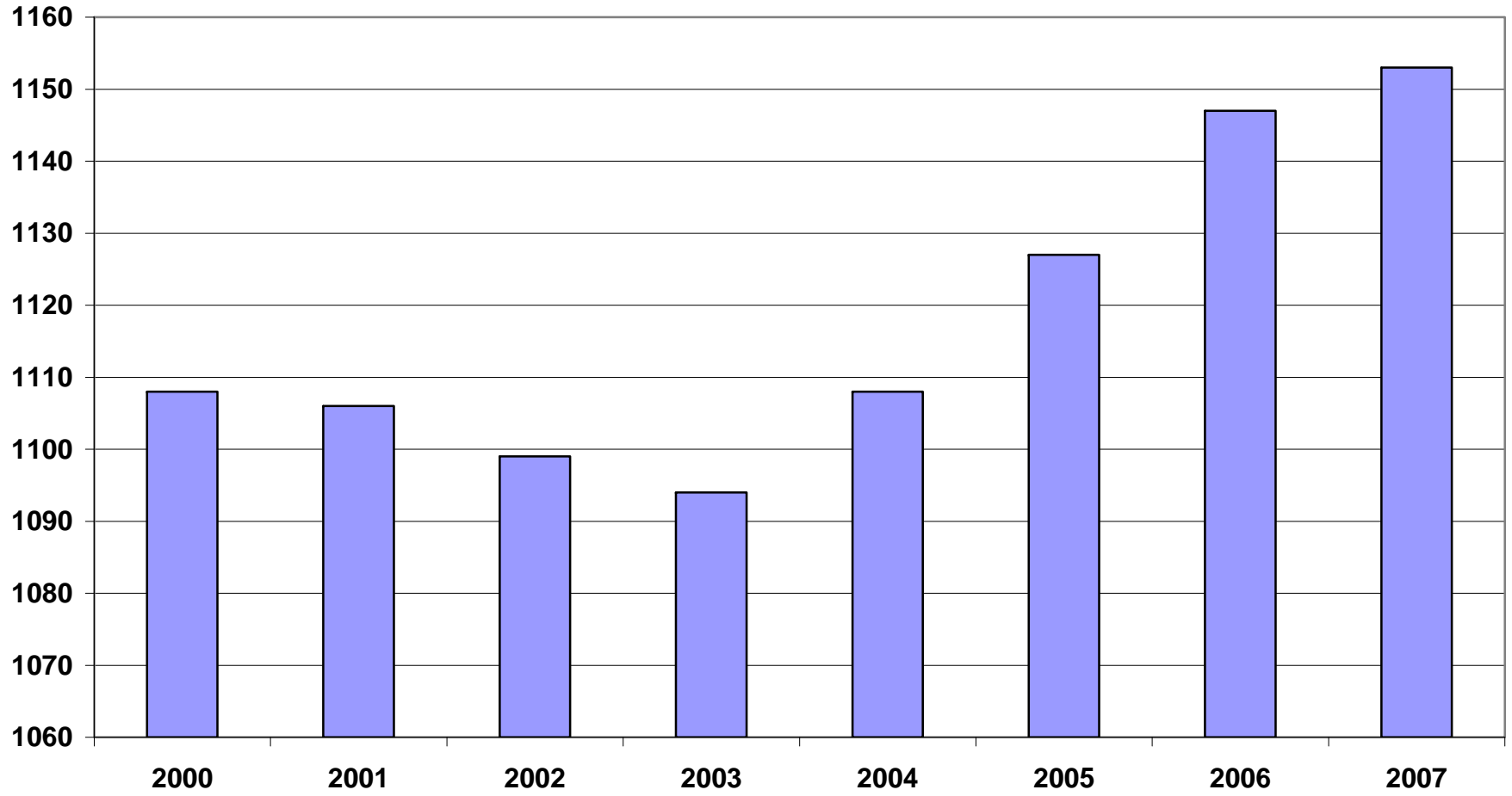
North American Industry Classification System Industry Group	Number of Employing Units	Average Covered Employment	% of Total	Net Change From 2006	Total Earnings 2007	% of Total	Average Weekly Earnings
Total	81,891	1,153,436	100.0	6,364	38,830,050,835	100.0	\$647.40
Natural Resources & Mining	2,397	20,106	1.7	1,556	753,314,079	1.9%	\$720.52
Agriculture, Forestry, Fishing & Hunting	1,954	13,268	1.2	-361	380,926,888	1.0%	\$552.12
Mining	443	6,838	0.6	1,917	372,387,191	1.0%	\$1,047.28
Construction	8,009	56,558	4.9	-398	2,039,827,788	5.3%	\$693.58
Manufacturing	3,627	189,381	16.4	-9,441	6,948,471,820	17.8%	\$705.59
Trade, Transportation & Utilities	20,842	246,507	21.4	1,590	7,912,201,056	20.4%	\$617.26
Wholesale Trade	6,332	48,175	4.2	230	2,458,441,762	6.3%	\$981.37
Retail Trade	11,194	134,252	11.6	1,024	2,886,334,974	7.4%	\$413.45
Transportation & Warehousing	2,954	57,269	5.0	350	2,120,067,663	5.5%	\$711.91
Utilities	362	6,811	0.6	-14	447,356,657	1.2%	\$1,263.11
Information	1,197	19,830	1.7	-81	1,508,032,452	3.9%	\$1,462.46
Financial Activities	8,287	51,965	4.5	794	2,158,849,842	5.6%	\$798.93
Finance & Insurance	4,843	37,511	3.3	562	1,750,080,354	4.5%	\$897.21
Real Estate & Rental & Leasing	3,444	14,454	1.3	232	408,769,488	1.1%	\$543.86
Professional & Business Services	11,200	116,919	10.1	2,702	4,725,959,956	12.2%	\$777.32
Professional & Technical Services	7,043	38,605	3.3	1,423	1,850,664,910	4.8%	\$921.89
Management of Companies & Enterprises	526	24,774	2.1	673	1,749,416,388	4.5%	\$1,357.98
Administrative & Waste Services	3,631	53,540	4.6	606	1,125,878,658	2.9%	\$404.40
Education & Health Services	11,586	150,091	13.0	4,313	5,034,475,911	13.0%	\$645.05
Educational Services	583	9,501	0.8	443	261,740,967	0.7%	\$529.78
Health Care & Social Assistance	11,003	140,590	12.2	3,870	4,772,734,944	12.3%	\$652.84
Leisure & Hospitality	6,140	99,621	8.6	2,172	1,220,459,682	3.1%	\$235.60
Arts, Entertainment & Recreation	914	9,744	0.8	324	157,601,919	0.4%	\$311.04
Accommodation & Food Services	5,226	89,877	7.8	1,848	1,062,857,763	2.7%	\$227.42
Other Services	5,415	25,462	2.2	-383	626,758,645	1.6%	\$473.37
State & Local Government	3,193	176,996	15.3	3,540	5,901,699,604	15.2%	\$641.22
Local Government	1,992	112,747	9.8	1,461	3,519,212,518	9.1%	\$600.26
State Government	1,201	64,249	5.6	2,079	2,382,487,086	6.1%	\$713.12
Nonclassifiable Establishments	0	0	0	0	0	0	\$0.00

Note: Items do not necessarily add to totals because of rounding. Because of industry code changes between years, substantial employment and wage shifts among industries are anticipated.

TABLE 2. TOTAL COVERED EMPLOYMENT IN ARKANSAS

Period	2000	2001	2002	2003	2004	2005	2006	2007
Average	1,108,479	1,106,066	1,098,558	1,094,087	1,108,264	1,126,778	1,146,948	1,153,436
January	1,089,943	1,096,009	1,081,635	1,082,740	1,089,510	1,102,768	1,130,595	1,137,437
February	1,096,113	1,101,616	1,086,793	1,084,880	1,094,626	1,110,577	1,136,810	1,143,397
March	1,109,144	1,112,143	1,098,500	1,092,172	1,105,266	1,122,619	1,150,439	1,158,895
April	1,111,525	1,115,526	1,103,399	1,095,341	1,111,020	1,129,785	1,155,498	1,159,623
May	1,116,760	1,119,815	1,111,998	1,103,099	1,117,144	1,135,567	1,159,886	1,165,224
June	1,121,225	1,119,734	1,112,028	1,099,688	1,117,010	1,136,118	1,162,026	1,164,207
July	1,075,066	1,071,830	1,065,697	1,053,220	1,071,463	1,090,071	1,106,142	1,110,571
August	1,096,848	1,094,160	1,086,011	1,077,775	1,094,871	1,114,098	1,130,839	1,139,109
September	1,123,725	1,115,976	1,113,148	1,105,980	1,122,704	1,144,815	1,159,814	1,165,135
October	1,122,884	1,110,994	1,108,447	1,112,550	1,123,246	1,142,300	1,156,804	1,164,709
November	1,120,620	1,109,012	1,107,611	1,109,712	1,125,061	1,145,667	1,156,011	1,166,114
December	1,117,892	1,105,887	1,107,425	1,111,892	1,127,250	1,147,954	1,158,509	1,166,810

AVERAGE TOTAL COVERED EMPLOYMENT GRAPH 1
In Thousands



TOTAL COVERED EARNINGS BY CALENDAR QUARTER, GRAPH 2
In Thousands

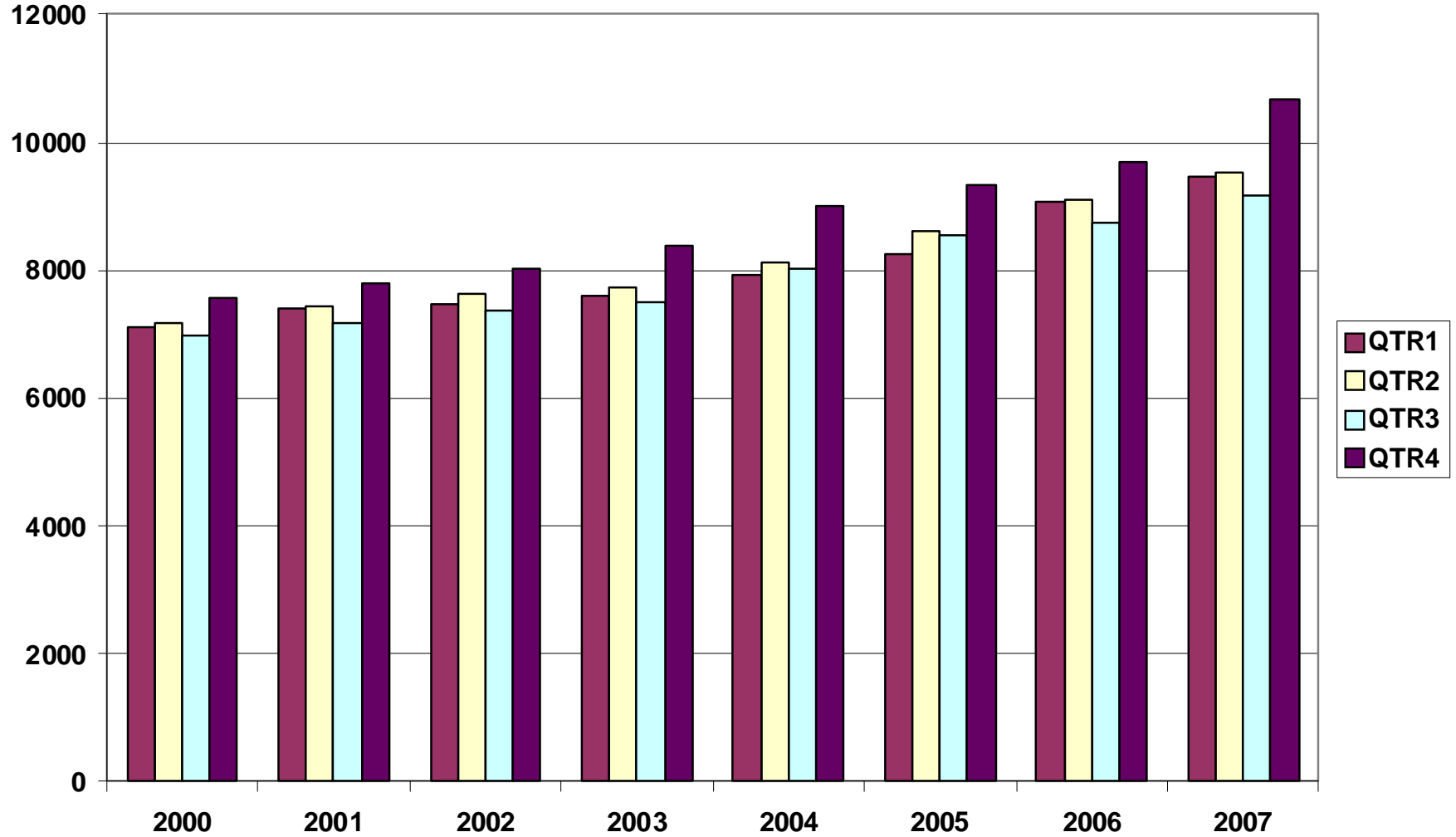


TABLE 3. TOTAL COVERED EARNINGS, 2000 - 2007

Period	2000	2001	2002	2003
Total	\$28,853,716,151	\$29,807,669,666	\$30,472,854,103	\$31,202,576,767
January - March	7,122,636,896	7,398,887,532	7,465,250,305	7,608,130,008
April - June	7,166,049,182	7,448,023,298	7,621,878,775	7,714,813,038
July - September	6,986,085,106	7,177,293,061	7,361,666,511	7,500,204,764
October - December	7,578,944,967	7,783,465,775	8,024,058,512	8,379,428,957
Average Weekly Earnings	500.58	518.26	533.44	548.45

Period	2004	2005	2006	2007
Total	\$33,068,189,304	\$34,753,107,631	\$36,636,090,775	\$38,830,050,835
January - March	7,918,843,610	8,261,153,981	9,085,021,816	9,452,711,662
April - June	8,122,370,361	8,607,722,353	9,112,624,590	9,525,837,049
July - September	8,010,300,454	8,562,555,369	8,750,878,205	9,178,902,477
October - December	9,016,674,879	9,321,675,928	9,687,566,164	10,672,599,647
Average Weekly Earnings	573.80	593.13	614.27	647.40

TABLE 4. TOTAL TAXABLE EARNINGS, 2000 - 2007

Period	2000	2001	2002	2003
Total	\$9,047,924,530	\$9,003,189,480	\$8,887,270,978	\$9,154,938,743
January - March	4,560,783,991	4,670,296,360	4,668,534,587	4,737,918,796
April - June	2,260,680,255	2,219,485,263	2,162,971,435	2,270,519,362
July - September	1,250,832,297	1,190,098,737	1,158,197,858	1,188,681,170
October - December	975,627,987	923,309,120	897,567,098	957,819,415
Total	\$9,731,247,501	\$9,991,605,239	\$10,197,511,360	\$10,463,390,568
January - March	4,931,559,230	5,062,670,306	5,421,204,601	5,617,417,571
April - June	2,451,454,749	2,506,505,721	2,385,110,992	2,466,606,627
July - September	1,318,017,835	1,353,660,445	1,314,939,803	1,307,060,412
October - December	1,030,215,687	1,068,768,767	1,076,255,964	1,072,305,958

**TABLE 5. STATEWIDE SUMMARY
EMPLOYMENT AND TOTAL EARNINGS, BY INDUSTRY
CALENDAR YEAR 2007**

NORTH AMERICAN INDUSTRY CLASSIFICATION SYSTEM INDUSTRY GROUPS		AVERAGE EMPLOYING UNITS	AVERAGE COVERED EMPLOYMENT	TOTAL EARNINGS	AVERAGE WEEKLY EARNINGS
TOTAL, ALL INDUSTRIES		81,891	1,153,436	\$38,830,050,835	\$647.40
NATURAL RESOURCES & MINING		2,397	20,106	\$753,314,079	\$720.52
11	AGRICULTURE, FORESTRY, FISHING & HUNTING	1,954	13,268	\$380,926,888	\$552.12
111	CROP PRODUCTION	702	3,653	\$79,961,717	\$420.95
1111	Oilseed and Grain Farming	447	2,029	45,179,195	\$428.21
1112	Vegetable and Melon Farming	11	181	2,095,121	\$222.60
1113	Fruit and Tree Nut Farming	8	77	1,789,615	\$446.96
1114	Greenhouse & Nursery Production	53	389	9,475,876	\$468.45
1119	Other Crop Farming	184	977	21,421,910	\$421.66
112	ANIMAL PRODUCTION	269	3,631	\$116,540,194	\$617.23
1121	Cattle Ranching and Farming	80	323	8,756,970	\$521.37
1122	Hog and Pig Farming	9	149	5,667,420	\$731.47
1123	Poultry and Egg Production	88	2,530	84,667,191	\$643.56
1125	Animal Aquaculture	63	546	15,694,977	\$552.80
	Other	30	81	1,753,636	\$416.34
113	FORESTRY AND LOGGING	534	2,812	\$87,322,536	\$597.18
1131	Timber Tract Operations	46	255	10,395,209	\$783.95
1132	Forest Nurseries & Gathering of Forest Products	6	34	1,377,335	\$779.04
1133	Logging	482	2,523	75,549,992	\$575.86
	OTHER	450	3,173	\$97,102,441	\$588.51
21	MINING	443	6,838	\$372,387,191	\$1,047.28
211	OIL AND GAS EXTRACTION	93	733	\$44,021,938	\$1,154.95
212	MINING (EXCEPT OIL AND GAS)	112	2,124	\$94,216,624	\$853.04
213	SUPPORT ACTIVITIES FOR MINING	237	3,980	\$234,148,629	\$1,131.37

**TABLE 5. STATEWIDE SUMMARY
EMPLOYMENT AND TOTAL EARNINGS, BY INDUSTRY
CALENDAR YEAR 2007**

NORTH AMERICAN INDUSTRY CLASSIFICATION SYSTEM INDUSTRY GROUPS		AVERAGE EMPLOYING UNITS	AVERAGE COVERED EMPLOYMENT	TOTAL EARNINGS	AVERAGE WEEKLY EARNINGS
CONSTRUCTION		8,009	56,558	\$2,039,827,788	\$693.58
236	CONSTRUCTION OF BUILDINGS	2,271	13,098	\$519,263,706	\$762.39
2361	Residential Building Construction	1,642	4,239	130,228,370	\$590.80
2362	Nonresidential Building Construction	629	8,859	389,035,336	\$844.50
237	HEAVY & CIVIL ENGINEERING CONSTRUCTION	878	9,810	\$389,672,985	\$763.88
2371	Utility System Construction	418	4,756	181,164,805	\$732.54
2372	Land Subdivision	135	390	16,300,049	\$803.75
2373	Highway, Street & Bridge Construction	210	3,249	117,922,269	\$697.98
2379	Other Heavy Construction	115	1,415	74,285,862	\$1,009.59
238	SPECIALTY TRADE CONTRACTORS	4,861	33,650	\$1,130,891,097	\$646.30
2381	Building Foundation & Exterior Contractors	970	6,720	208,445,824	\$596.51
2382	Building Equipment Contractors	2,143	16,170	590,603,905	\$702.40
2383	Building Finishing Contractors	908	5,232	158,386,966	\$582.17
2389	Other Specialty Trade Contractors	841	5,527	173,454,402	\$603.52
MANUFACTURING		3,627	189,381	\$6,948,471,820	\$705.59
311	FOOD MANUFACTURING	328	49,522	\$1,425,654,027	\$553.62
3111	Animal Food Manufacturing	59	1,455	61,609,339	\$814.29
3112	Grain and Oilseed Milling	31	2,361	85,590,196	\$697.15
3114	Fruit, Vegetable & Specialty Food	35	6,835	229,296,196	\$645.14
3115	Dairy Product Manufacturing	14	725	27,233,771	\$722.38
3116	Animal Slaughtering & Processing	92	32,899	844,483,040	\$493.63
3118	Bakeries and Tortilla Manufacturing	55	3,287	109,332,827	\$639.66
3119	Other Food Manufacturing	30	1,729	63,822,878	\$709.87
	Other	13	232	4,285,780	\$355.25
312	BEVERAGE & TOBACCO PRODUCT MFG.	39	1,268	\$49,561,689	\$751.66
313	TEXTILE MILLS	23	366	\$15,463,670	\$812.51
314	TEXTILE PRODUCT MILLS	61	1,323	\$49,116,364	\$713.94
3141	Textile Furnishing Mills	14	33	549,914	\$320.46
3149	Other Textile Product Mills	47	1,290	48,566,450	\$724.01

**TABLE 5. STATEWIDE SUMMARY
EMPLOYMENT AND TOTAL EARNINGS, BY INDUSTRY
CALENDAR YEAR 2007**

NORTH AMERICAN INDUSTRY CLASSIFICATION SYSTEM INDUSTRY GROUPS		AVERAGE EMPLOYING UNITS	AVERAGE COVERED EMPLOYMENT	TOTAL EARNINGS	AVERAGE WEEKLY EARNINGS
315	APPAREL MANUFACTURING	35	1,612	\$35,610,081	\$424.82
316	LEATHER & ALLIED PRODUCT MANUFACTURING	21	1,785	\$44,250,568	\$476.74
321	WOOD PRODUCT MANUFACTURING	386	12,276	\$396,606,625	\$621.30
3211	Sawmills and Wood Preservation	164	5,147	175,070,385	\$654.12
3212	Veneer & Engineered Wood Products	55	3,110	118,556,903	\$733.10
3219	Other Wood Product Manufacturing	167	4,020	102,979,337	\$492.63
322	PAPER MANUFACTURING	87	11,193	\$599,175,890	\$1,029.45
3221	Pulp, Paper & Paperboard Mills	12	4,277	296,638,208	\$1,333.78
3222	Converted Paper Product Manufacturing	75	6,915	302,537,682	\$841.36
323	PRINTING & RELATED SUPPORT ACTIVITIES	295	4,605	\$175,329,616	\$732.19
324	PETROLEUM AND COAL PRODUCTS MFG.	23	981	\$49,154,894	\$963.59
325	CHEMICAL MANUFACTURING	123	4,691	\$241,104,363	\$988.41
3251	Basic Chemical Manufacturing	31	2,008	115,555,268	\$1,106.68
3252	Resin, Rubber & Artificial Fibers	8	303	15,888,943	\$1,008.44
3253	Agricultural Chemical Manufacturing	17	340	16,480,428	\$932.15
3255	Paint, Coating & Adhesive Manufacturing	9	167	9,127,227	\$1,051.04
3259	Other Chemical Preparation Manufacturing	29	958	42,311,643	\$849.36
	Other	30	916	41,740,854	\$876.32
326	PLASTICS & RUBBER PRODUCTS MFG.	162	12,084	\$480,308,379	\$764.37
3261	Plastics Product Manufacturing	113	7,502	260,071,169	\$666.67
3262	Rubber Product Manufacturing	50	4,582	220,237,210	\$924.34
327	NONMETALLIC MINERAL PRODUCT MFG.	259	4,522	\$170,208,588	\$723.85
3273	Cement & Concrete Product Manufacturing	182	2,674	98,288,871	\$706.87
3274	Lime & Gypsum Product Manufacturing	4	420	20,443,762	\$936.07
3279	Other Nonmetallic Mineral Products	40	591	22,941,919	\$746.52
	Other	33	837	28,534,036	\$655.59

**TABLE 5. STATEWIDE SUMMARY
EMPLOYMENT AND TOTAL EARNINGS, BY INDUSTRY
CALENDAR YEAR 2007**

NORTH AMERICAN INDUSTRY CLASSIFICATION SYSTEM INDUSTRY GROUPS		AVERAGE EMPLOYING UNITS	AVERAGE COVERED EMPLOYMENT	TOTAL EARNINGS	AVERAGE WEEKLY EARNINGS
331	PRIMARY METAL MANUFACTURING	72	8,283	\$441,205,678	\$1,024.35
3311	Iron & Steel Mills and Ferroalloys	12	2,165	185,656,074	\$1,649.10
3312	Purchased Steel Product Manufacturing	17	2,380	103,980,560	\$840.18
3313	Alumina & Aluminum Production	19	1,753	78,693,529	\$863.28
3314	Other Nonferrous Metal Production	10	604	21,593,455	\$687.51
3315	Foundries	14	1,382	51,282,060	\$713.60
332	FABRICATED METAL PRODUCT MANUFACTURING	580	17,223	\$687,462,795	\$767.60
3321	Forging & Stamping	12	760	29,197,442	\$738.80
3322	Cutlery & Hand Tool Manufacturing	17	1,313	46,200,747	\$676.68
3323	Architectural & Structural Metals	203	5,216	223,066,203	\$822.42
3324	Boilers, Tanks & Shipping Containers	19	814	40,770,883	\$963.21
3325	Hardware Manufacturing	9	276	8,603,495	\$599.46
3326	Spring & Wire Product Manufacturing	14	638	17,777,666	\$535.86
3327	Machine Shops & Threaded Products	198	1,886	64,280,075	\$655.44
3328	Coating, Engraving & Heat Treating Metals	40	604	18,253,633	\$581.18
3329	Other Fabricated Metal Product Manufacturing	68	5,716	239,312,651	\$805.14
333	MACHINERY MANUFACTURING	264	14,368	\$492,960,643	\$659.80
3331	Agri., Construction & Mining Machinery	38	3,204	76,893,243	\$461.52
3333	Commercial & Service Industry Machinery	26	935	39,575,242	\$813.97
3334	HVAC & Commercial Refrigeration Equipment	23	4,793	167,698,189	\$672.85
3335	Metalworking Machinery Manufacturing	81	1,416	56,376,819	\$765.66
3339	Other General Purpose Machinery Manufacturing	58	3,010	112,229,541	\$717.03
	Other	39	1,010	40,187,609	\$765.19
334	COMPUTER & ELECTRONIC PRODUCT MFG.	84	4,765	\$171,512,360	\$692.20
3343	Audio & Video Equipment Manufacturing	12	1,099	38,241,721	\$669.17
3344	Semiconductors & Electronic Components	29	2,334	77,686,822	\$640.09
3345	Electronic Instrument Manufacturing	29	964	35,290,823	\$704.01
	Other	15	368	20,292,994	\$1,060.46
335	ELECTRICAL EQUIPMENT & APPLIANCES	71	10,487	\$428,784,422	\$786.29

**TABLE 5. STATEWIDE SUMMARY
EMPLOYMENT AND TOTAL EARNINGS, BY INDUSTRY
CALENDAR YEAR 2007**

NORTH AMERICAN INDUSTRY CLASSIFICATION SYSTEM INDUSTRY GROUPS		AVERAGE EMPLOYING UNITS	AVERAGE COVERED EMPLOYMENT	TOTAL EARNINGS	AVERAGE WEEKLY EARNINGS
336	TRANSPORTATION EQUIPMENT MANUFACTURING	179	16,582	\$633,143,970	\$734.28
3362	Motor Vehicle Body & Trailer Manufacturing	45	3,718	126,088,325	\$652.17
3363	Motor Vehicle Parts Manufacturing	63	6,120	209,292,998	\$657.66
3364	Aerospace Product & Parts Manufacturing	27	3,722	197,570,418	\$1,020.80
3366	Ship & Boat Building	27	1,695	48,444,284	\$549.63
	Other	18	1,327	51,747,945	\$749.93
337	FURNITURE & RELATED PRODUCT MFG.	273	6,112	\$192,465,602	\$605.57
3371	Household & Institutional Furniture	223	4,194	124,896,909	\$572.69
3372	Office Furniture & Fixtures Manufacturing	43	1,774	64,028,892	\$694.10
3379	Other Furniture Related Product Manufacturing	7	143	3,539,801	\$476.04
339	MISCELLANEOUS MANUFACTURING	264	5,336	\$169,391,596	\$610.48
3391	Medical Equipment & Supplies Manufacturing	96	2,438	83,509,544	\$658.72
3399	Other Miscellaneous Manufacturing	168	2,898	85,882,052	\$569.90
TRADE, TRANSPORTATION & UTILITIES		20,842	246,507	\$7,912,201,056	\$617.26
42	WHOLESALE TRADE	6,332	48,175	\$2,458,441,762	\$981.37
423	MERCHANT WHOLESALERS, DURABLE GOODS	2,125	22,052	\$995,917,416	\$868.50
4231	Motor Vehicle & Part Merchant Wholesalers	246	2,674	101,299,949	\$728.53
4232	Furniture & Furnishing Merchant Wholesalers	72	440	20,268,227	\$885.85
4233	Lumber & Supply Merchant Wholesalers	181	1,843	76,753,742	\$800.89
4234	Commercial Goods Merchant Wholesalers	250	2,627	159,706,447	\$1,169.12
4235	Metal & Mineral Merchant Wholesalers	51	830	38,193,685	\$884.93
4236	Electric Goods Merchant Wholesalers	177	2,161	107,084,470	\$952.95
4237	Hardware & Plumbing Merchant Wholesalers	223	2,449	108,810,178	\$854.43
4238	Machinery & Supply Merchant Wholesalers	689	7,213	312,684,396	\$833.66
4239	Misc. Durable Goods Merchant Wholesalers	237	1,815	71,116,322	\$753.51

**TABLE 5. STATEWIDE SUMMARY
EMPLOYMENT AND TOTAL EARNINGS, BY INDUSTRY
CALENDAR YEAR 2007**

NORTH AMERICAN INDUSTRY CLASSIFICATION SYSTEM INDUSTRY GROUPS		AVERAGE EMPLOYING UNITS	AVERAGE COVERED EMPLOYMENT	TOTAL EARNINGS	AVERAGE WEEKLY EARNINGS
424	MERCHANT WHOLESALERS, NONDURABLE GOODS	1,264	16,664	\$705,587,884	\$814.27
4241	Paper & Paper Product Merchant Wholesalers	73	1,175	51,836,402	\$848.39
4242	Druggists' Goods Merchant Wholesalers	58	1,173	54,447,697	\$892.64
4243	Apparel & Piece Goods Merchant Wholesalers	38	462	15,564,165	\$647.86
4244	Grocery Product Merchant Wholesalers	328	5,198	247,270,145	\$914.81
4245	Farm Product Merchant Wholesalers	75	930	23,403,619	\$483.95
4246	Chemical Merchant Wholesalers	82	537	25,631,586	\$917.91
4247	Petroleum Merchant Wholesalers	153	1,577	82,576,632	\$1,006.98
4248	Alcoholic Beverage Merchant Wholesalers	37	1,150	51,030,739	\$853.36
4249	Misc. Nondurable Goods Merchant Wholesalers	421	4,462	153,826,899	\$662.98
425	ELECTRONIC MARKETS & AGENTS & BROKERS	2,943	9,460	\$756,936,462	\$1,538.74
44-45	RETAIL TRADE	11,194	134,252	\$2,886,334,974	\$413.45
441	MOTOR VEHICLE & PARTS DEALERS	1,741	18,290	\$629,718,979	\$662.11
4411	Automobile Dealers	743	10,948	431,320,649	\$757.64
4412	Other Motor Vehicle Dealers	197	1,631	54,326,741	\$640.55
4413	Automotive Parts, Accessories & Tire Stores	801	5,711	144,071,589	\$485.14
442	FURNITURE & HOME FURNISHINGS STORES	589	4,097	\$108,526,633	\$509.41
4421	Furniture Stores	310	2,470	67,192,384	\$523.14
4422	Home Furnishings Stores	279	1,627	41,334,249	\$488.56
443	ELECTRONICS & APPLIANCE STORES	444	3,105	\$78,724,839	\$487.58
444	BUILDING MATERIAL & GARDEN SUPPLY STORES	861	11,135	\$283,934,274	\$490.37
4441	Building Material & Supplies Dealers	680	10,243	262,731,850	\$493.27
4442	Lawn & Garden Equipment & Supplies Stores	181	892	21,202,424	\$457.11
445	FOOD & BEVERAGE STORES	1,089	18,624	\$309,179,775	\$319.25
4451	Grocery Stores	615	16,178	260,917,525	\$310.15
4452	Specialty Food Stores	161	923	23,101,633	\$481.32
4453	Beer, Wine & Liquor Stores	313	1,523	25,160,617	\$317.70
446	HEALTH & PERSONAL CARE STORES	818	7,159	\$208,260,587	\$559.44
447	GASOLINE STATIONS	1,586	12,411	\$177,857,850	\$275.59
44711	Gasoline Stations with Convenience Stores	1,427	11,133	154,459,677	\$266.81
44719	Other Gasoline Stations	159	1,278	23,398,173	\$352.09

**TABLE 5. STATEWIDE SUMMARY
EMPLOYMENT AND TOTAL EARNINGS, BY INDUSTRY
CALENDAR YEAR 2007**

NORTH AMERICAN INDUSTRY CLASSIFICATION SYSTEM INDUSTRY GROUPS		AVERAGE EMPLOYING UNITS	AVERAGE COVERED EMPLOYMENT	TOTAL EARNINGS	AVERAGE WEEKLY EARNINGS
448	CLOTHING & CLOTHING ACCESSORIES STORES	1,086	9,226	\$127,433,268	\$265.62
4481	Clothing Stores	735	7,075	87,005,168	\$236.49
4482	Shoe Stores	184	1,230	17,374,697	\$271.65
4483	Jewelry, Luggage & Leather Goods Stores	167	922	23,053,403	\$480.84
451	SPORTING GOODS, HOBBY, BOOK & MUSIC STORES	584	4,712	\$70,229,818	\$286.62
4511	Sporting Goods & Musical Instrument Stores	433	3,299	52,732,792	\$307.39
4512	Book, Periodical & Music Stores	150	1,413	17,497,026	\$238.13
452	GENERAL MERCHANDISE STORES	713	37,059	\$709,864,339	\$368.36
453	MISCELLANEOUS STORE RETAILERS	1,364	6,566	\$127,439,024	\$373.25
4531	Florists	256	976	14,817,809	\$291.97
4532	Office Supplies, Stationery & Gift Stores	363	2,324	45,522,231	\$376.69
4533	Used Merchandise Stores	215	822	16,040,728	\$375.27
4539	Other Miscellaneous Store Retailers	530	2,445	51,058,256	\$401.59
454	NONSTORE RETAILERS	320	1,868	\$55,165,588	\$567.92
4541	Electronic Shopping & Mail -Order Houses	75	420	15,110,535	\$691.87
4542	Vending Machine Operators	78	651	15,982,701	\$472.13
4543	Direct Selling Establishments	168	797	24,072,352	\$580.84
48-49	TRANSPORTATION & WAREHOUSING	2,954	57,269	\$2,120,067,663	\$711.91
481	AIR TRANSPORTATION	49	913	\$46,719,139	\$984.06
484	TRUCK TRANSPORTATION	1,994	36,583	\$1,377,647,783	\$724.20
4841	General Freight Trucking	1,257	31,190	1,187,142,022	\$731.95
4842	Specialized Freight Trucking	737	5,394	190,505,761	\$679.19
485	TRANSIT & GROUND PASSENGER TRANS.	63	1,129	\$20,050,193	\$341.52
4853	Taxi & Limousine Service	22	277	4,098,341	\$284.53
4854	School & Employee Bus Transportation	8	433	8,669,744	\$385.05
4855	Charter Bus Industry Service	8	80	1,640,622	\$394.38
4859	Other Ground Passenger Transportation	18	233	3,653,576	\$301.55
	Other	7	106	1,987,910	\$360.65
486	PIPELINE TRANSPORTATION	66	900	\$50,580,112	\$1,080.77

**TABLE 5. STATEWIDE SUMMARY
EMPLOYMENT AND TOTAL EARNINGS, BY INDUSTRY
CALENDAR YEAR 2007**

NORTH AMERICAN INDUSTRY CLASSIFICATION SYSTEM INDUSTRY GROUPS		AVERAGE EMPLOYING UNITS	AVERAGE COVERED EMPLOYMENT	TOTAL EARNINGS	AVERAGE WEEKLY EARNINGS
488	SUPPORT ACTIVITIES FOR TRANSPORTATION	411	4,813	\$207,438,322	\$828.84
4881	Support Activities for Air Transportation	103	1,601	57,869,231	\$695.11
4882	Support Activities for Rail Transportation	30	375	13,296,780	\$681.89
4883	Support Activities for Water Transportation	25	642	41,402,990	\$1,240.20
4884	Support Activities for Road Transportation	103	504	12,134,435	\$463.00
4885	Freight Transportation Arrangement	127	1,511	77,872,017	\$991.09
4889	Other Support Activities for Transportation	23	180	4,862,869	\$519.54
492	COURIERS & MESSENGERS	140	3,299	\$121,018,401	\$705.45
4921	Couriers	86	3,024	114,661,886	\$729.18
4922	Local Messengers & Local Delivery	55	275	6,356,515	\$444.51
493	WAREHOUSING & STORAGE	210	9,422	\$289,534,891	\$590.96
	OTHER	22	211	\$7,078,822	\$645.17
22	UTILITIES	362	6,811	\$447,356,657	\$1,263.11
2211	Power Generation & Supply	161	5,106	365,560,493	\$1,376.81
2212	Natural Gas Distribution	34	859	56,199,182	\$1,258.15
2213	Water, Sewage and Other Systems	168	846	25,596,982	\$581.86
INFORMATION		1,197	19,830	\$1,508,032,452	\$1,462.46
511	PUBLISHING INDUSTRIES, EXCEPT INTERNET	251	6,239	\$200,454,215	\$617.87
5111	Newspaper, Book & Directory Publishers	225	5,959	184,813,445	\$596.43
5112	Software Publishers	26	279	15,640,770	\$1,078.08
512	MOTION PICTURE & SOUND RECORDING INDUSTRY	135	1,239	\$21,149,664	\$328.27
5121	Motion Picture & Video Industries	118	1,200	19,880,358	\$318.60
5122	Sound Recording Industries	17	39	1,269,306	\$625.89
515	BROADCASTING, EXCEPT INTERNET	145	2,247	\$78,546,597	\$672.23
5151	Radio & Television Broadcasting	138	2,207	77,579,456	\$675.99
5152	Cable & Other Subscription Programming	7	40	967,141	\$464.97

**TABLE 5. STATEWIDE SUMMARY
EMPLOYMENT AND TOTAL EARNINGS, BY INDUSTRY
CALENDAR YEAR 2007**

NORTH AMERICAN INDUSTRY CLASSIFICATION SYSTEM INDUSTRY GROUPS		AVERAGE EMPLOYING UNITS	AVERAGE COVERED EMPLOYMENT	TOTAL EARNINGS	AVERAGE WEEKLY EARNINGS
517	TELECOMMUNICATIONS	527	8,848	\$1,142,855,503	\$2,483.95
5171	Wired Telecommunications Carriers	314	4,605	628,357,245	\$2,624.06
5172	Wireless Telecommunications Carriers	119	3,685	490,047,397	\$2,557.39
	Other	95	559	24,450,861	\$841.16
518	DATA PROCESSING, HOSTING, & RELATED SERVICES	90	966	\$55,271,419	\$1,100.32
	OTHER	49	292	\$9,755,054	\$642.46
FINANCIAL ACTIVITIES		8,287	51,965	\$2,158,849,842	\$798.93
52	FINANCE & INSURANCE	4,843	37,511	\$1,750,080,354	\$897.21
522	CREDIT INTERMEDIATION & RELATED ACTIVITIES	2,062	22,284	\$866,101,536	\$747.43
5221	Depository Credit Intermediation	1,364	18,515	696,697,458	\$723.63
5222	Nondepository Credit Intermediation	400	2,653	132,287,399	\$958.91
5223	Activities Related to Credit Intermediation	299	1,115	37,116,679	\$640.16
523	FINANCIAL INVESTMENT & RELATED ACTIVITIES	591	3,111	\$307,019,261	\$1,897.85
524	INSURANCE CARRIERS & RELATED ACTIVITIES	2,155	11,675	\$558,705,659	\$920.29
5241	Insurance Carriers	420	4,885	263,537,244	\$1,037.47
5242	Insurance Agencies, Brokerages & Support	1,734	6,791	295,168,415	\$835.86
	OTHER	35	442	\$18,253,898	\$794.20
53	REAL ESTATE & RENTAL & LEASING	3,444	14,454	\$408,769,488	\$543.86
531	REAL ESTATE	2,611	8,967	\$256,368,880	\$549.81
5311	Lessors of Real Estate	1,048	4,292	113,054,849	\$506.55
5312	Offices of Real Estate Agents & Brokers	949	2,135	68,100,089	\$613.40
5313	Activities Related to Real Estate	614	2,540	75,213,942	\$569.46

**TABLE 5. STATEWIDE SUMMARY
EMPLOYMENT AND TOTAL EARNINGS, BY INDUSTRY
CALENDAR YEAR 2007**

NORTH AMERICAN INDUSTRY CLASSIFICATION SYSTEM INDUSTRY GROUPS		AVERAGE EMPLOYING UNITS	AVERAGE COVERED EMPLOYMENT	TOTAL EARNINGS	AVERAGE WEEKLY EARNINGS
532	RENTAL & LEASING SERVICES	811	5,416	\$147,650,862	\$524.27
5321	Automotive Equipment Rental & Leasing	125	1,010	28,059,747	\$534.27
5322	Consumer Goods Rental	496	3,216	68,198,329	\$407.81
5323	General Rental Centers	35	260	8,352,166	\$617.76
5324	Machinery & Equipment Rental & Leasing	157	931	43,040,620	\$889.05
533	LESSORS OF NONFINANCIAL INTANGIBLE ASSETS	22	71	\$4,749,746	\$1,286.50
PROFESSIONAL & BUSINESS SERVICES		11,200	116,919	\$4,725,959,956	\$777.32
54	PROFESSIONAL & TECHNICAL SERVICES	7,043	38,605	\$1,850,664,910	\$921.89
5411	Legal Services	1,668	6,631	307,695,461	\$892.36
5412	Accounting & Bookkeeping Services	1,235	5,583	203,804,680	\$702.01
5413	Architectural & Engineering Services	955	6,910	345,008,174	\$960.17
5414	Specialized Design Services	166	503	17,626,301	\$673.89
5415	Computer Systems Design & Related Services	878	7,869	537,434,349	\$1,313.42
5416	Management & Technical Consulting Services	1,131	4,195	206,967,113	\$948.78
5417	Scientific Research & Development Services	96	1,057	53,282,316	\$969.40
5418	Advertising & Related Services	316	2,034	90,813,747	\$858.61
5419	Other Professional & Technical Services	599	3,822	88,032,769	\$442.95
55	MANAGEMENT OF COMPANIES & ENTERPRISES	526	24,774	\$1,749,416,388	\$1,357.98
56	ADMINISTRATIVE & WASTE SERVICES	3,631	53,540	\$1,125,878,658	\$404.40
561	ADMINISTRATIVE & SUPPORT SERVICES	3,424	51,210	\$1,034,940,931	\$388.65
5611	Office Administrative Services	351	1,187	62,744,936	\$1,016.54
5612	Facilities Support Services	17	124	4,483,662	\$695.36
5613	Employment Services	673	25,024	443,627,984	\$340.93
5614	Business Support Services	382	6,274	132,162,109	\$405.10
5615	Travel Arrangement & Reservation Services	99	419	12,803,534	\$587.64
5616	Investigation & Security Services	252	4,560	107,082,893	\$451.60
5617	Services to Buildings & Dwellings	1,351	12,040	222,687,214	\$355.68
5619	Other Support Services	300	1,581	49,348,599	\$600.26

**TABLE 5. STATEWIDE SUMMARY
EMPLOYMENT AND TOTAL EARNINGS, BY INDUSTRY
CALENDAR YEAR 2007**

NORTH AMERICAN INDUSTRY CLASSIFICATION SYSTEM INDUSTRY GROUPS		AVERAGE EMPLOYING UNITS	AVERAGE COVERED EMPLOYMENT	TOTAL EARNINGS	AVERAGE WEEKLY EARNINGS
562	WASTE MANAGEMENT & REMEDIATION SERVICES	207	2,330	\$90,937,727	\$750.56
5621	Waste Collection Services	99	1,170	44,250,349	\$727.32
5622	Waste Treatment & Disposal Services	38	646	29,966,092	\$892.06
5629	Remediation & Other Waste Services	71	514	16,721,286	\$625.61
EDUCATION & HEALTH SERVICES		11,586	150,091	\$5,034,475,911	\$645.05
61	EDUCATIONAL SERVICES	583	9,501	\$261,740,967	\$529.78
6111	Elementary & Secondary Schools	77	3,226	70,299,568	\$419.07
6112	Junior Colleges	7	270	7,793,831	\$555.12
6113	Colleges & Universities	29	3,298	103,720,727	\$604.80
6114	Business, Computer, & Management Training	45	187	14,522,907	\$1,493.51
6115	Technical & Trade Schools	102	731	31,716,501	\$834.38
6116	Other Schools & Instruction	229	1,466	21,096,889	\$276.75
6117	Educational Support Services	96	323	12,590,544	\$749.62
62	HEALTH CARE & SOCIAL ASSISTANCE	11,003	140,590	\$4,772,734,944	\$652.84
621	AMBULATORY HEALTH CARE SERVICES	4,926	43,869	\$2,176,296,001	\$954.02
6211	Offices of Physicians	2,199	20,936	1,377,831,728	\$1,265.61
6212	Offices of Dentists	924	6,145	248,135,938	\$776.54
6213	Offices of Other Health Practitioners	1,157	5,974	189,294,806	\$609.35
6214	Outpatient Care Centers	231	3,655	137,373,501	\$722.79
6215	Medical & Diagnostic Laboratories	103	852	43,579,889	\$983.66
6216	Home Health Care Services	170	4,081	112,484,874	\$530.06
6219	Other Ambulatory Health Care Services	142	2,227	67,595,265	\$583.70
622	HOSPITALS	108	41,605	\$1,569,281,115	\$725.36
6221	General Medical & Surgical Hospitals	77	38,122	1,443,437,352	\$728.15
6222	Psychiatric & Substance Abuse Hospitals	11	1,608	53,233,634	\$636.64
6223	Other Hospitals	21	1,874	72,610,129	\$745.12

**TABLE 5. STATEWIDE SUMMARY
EMPLOYMENT AND TOTAL EARNINGS, BY INDUSTRY
CALENDAR YEAR 2007**

NORTH AMERICAN INDUSTRY CLASSIFICATION SYSTEM INDUSTRY GROUPS		AVERAGE EMPLOYING UNITS	AVERAGE COVERED EMPLOYMENT	TOTAL EARNINGS	AVERAGE WEEKLY EARNINGS
623	NURSING & RESIDENTIAL CARE FACILITIES	514	27,666	\$563,898,372	\$391.97
6231	Nursing Care Facilities	248	20,631	420,066,232	\$391.56
6232	Residential Mental Health Facilities	128	3,232	68,489,807	\$407.52
6233	Community Care Facilities for the Elderly	94	2,301	41,657,957	\$348.16
6239	Other Residential Care Facilities	45	1,502	33,684,376	\$431.28
624	SOCIAL ASSISTANCE	5,455	27,451	\$463,259,456	\$324.54
6241	Individual & Family Services	4,286	14,050	249,871,275	\$342.01
6242	Emergency & Other Relief Services	124	910	19,006,741	\$401.66
6243	Vocational Rehabilitation Services	128	3,675	70,042,367	\$366.52
6244	Child Day Care Services	917	8,816	124,339,073	\$271.23
LEISURE & HOSPITALITY		6,140	99,621	\$1,220,459,682	\$235.60
71	ARTS, ENTERTAINMENT & RECREATION	914	9,744	\$157,601,919	\$311.04
711	PERFORMING ARTS & SPECTATOR SPORTS	213	2,386	\$47,858,532	\$385.73
7111	Performing Arts Companies	34	477	6,807,581	\$274.45
7112	Spectator Sports	59	1,174	22,987,691	\$376.55
7113	Performing Arts & Sports Promoters	49	578	12,489,108	\$415.53
7114	Agents & Managers for Public Figures	15	19	709,246	\$717.86
7115	Independent Artists, Writers & Performers	56	138	4,864,906	\$677.94
712	MUSEUMS, PARKS & HISTORICAL SITES	47	230	\$4,380,237	\$366.24
713	GAMBLING, RECREATION & AMUSEMENT INDUSTRY	655	7,128	\$105,363,150	\$284.26
72	ACCOMMODATION & FOOD SERVICES	5,226	89,877	\$1,062,857,763	\$227.42
721	ACCOMMODATION	825	11,285	\$165,724,549	\$282.41
7211	Traveler Accommodation	750	10,839	157,996,077	\$280.32
7212	RV Parks & Recreational Camps	56	376	6,497,398	\$332.31
7213	Rooming & Boarding Houses	19	71	1,231,074	\$333.44

**TABLE 5. STATEWIDE SUMMARY
EMPLOYMENT AND TOTAL EARNINGS, BY INDUSTRY
CALENDAR YEAR 2007**

NORTH AMERICAN INDUSTRY CLASSIFICATION SYSTEM INDUSTRY GROUPS		AVERAGE EMPLOYING UNITS	AVERAGE COVERED EMPLOYMENT	TOTAL EARNINGS	AVERAGE WEEKLY EARNINGS
722	FOOD SERVICES & DRINKING PLACES	4,400	78,592	\$897,133,214	\$219.52
7221	Full -Service Restaurants	1,950	34,795	425,409,121	\$235.12
7222	Limited-Service Eating Places	2,159	40,654	429,362,175	\$203.10
7223	Special Food Services	148	2,227	31,673,064	\$273.51
7224	Drinking Places, Alcoholic Beverages	144	916	10,688,854	\$224.40
OTHER SERVICES		5,415	25,462	\$626,758,645	\$473.37
811	REPAIR & MAINTENANCE	2,203	9,623	\$279,891,791	\$559.34
8111	Automotive Repair & Maintenance	1,511	6,769	181,472,074	\$515.56
8112	Electronic Equipment Repair & Maintenance	161	701	26,676,567	\$731.83
8113	Commercial Machinery Repair & Maintenance	344	1,563	56,647,249	\$696.97
8114	Household Goods Repair & Maintenance	187	590	15,095,901	\$492.04
812	PERSONAL & LAUNDRY SERVICES	1,315	8,218	\$163,323,495	\$382.19
8121	Personal Care Services	567	2,664	41,923,796	\$302.64
8122	Death Care Services	242	1,660	43,576,096	\$504.82
8123	Drycleaning & Laundry Services	331	3,203	62,789,093	\$376.98
8129	Other Personal Services	175	691	15,034,510	\$418.42
813	MEMBERSHIP ASSOCIATIONS & ORGANIZATIONS	997	6,344	\$162,118,045	\$491.43
8131	Religious Organizations	43	226	5,563,063	\$473.37
8132	Grantmaking & Giving Services	100	464	17,750,232	\$735.67
8133	Social Advocacy Organizations	141	1,946	48,569,947	\$479.98
8134	Civic & Social Organizations	209	1,536	21,462,875	\$268.72
8139	Professional & Similar Organizations	504	2,173	68,771,928	\$608.62
814	PRIVATE HOUSEHOLDS	901	1,277	\$21,425,314	\$322.65
	LOCAL GOVERNMENT	1,992	112,747	\$3,519,212,518	\$600.26
	STATE GOVERNMENT	1,201	64,249	\$2,382,487,086	\$713.12
	NONCLASSIFIABLE ESTABLISHMENTS	0	0	\$0	

**TABLE 6. COUNTY SUMMARY
EMPLOYMENT AND TOTAL EARNINGS, BY INDUSTRY
CALENDAR YEAR 2007**

NORTH AMERICAN INDUSTRY CLASSIFICATION SYSTEM INDUSTRY GROUP	AVERAGE EMPLOYING UNITS	AVERAGE COVERED EMPLOYMENT	TOTAL EARNINGS	AVERAGE WEEKLY EARNINGS
ARKANSAS COUNTY - TOTAL	714	10,045	\$301,196,807	\$576.63
Natural Resources & Mining	44	233	7,350,268	606.66
Construction	50	323	11,372,891	677.12
Manufacturing	33	3,617	123,250,324	655.29
Trade, Transportation & Utilities	203	2,051	63,904,212	599.18
Wholesale Trade	44	428	19,046,975	855.81
Retail Trade	99	1,087	22,168,136	392.19
Transportation, Warehousing & Utilities	60	536	22,689,101	814.05
Information	10	102	3,568,047	672.71
Financial Activities	50	331	11,788,461	684.90
Professional & Business Services	57	390	15,565,169	767.51
Education & Health Services	107	1,217	27,433,208	433.49
Leisure & Hospitality	60	532	5,293,120	191.34
Other Services	54	141	3,169,156	432.24
Local Government	32	885	22,725,288	493.81
State Government	16	224	5,776,663	495.94
ASHLEY COUNTY - TOTAL	549	7,808	\$281,037,005	\$692.18
Natural Resources & Mining	58	436	12,438,999	548.65
Construction	50	533	15,660,937	565.05
Manufacturing	30	2,634	146,704,959	1071.09
Trade, Transportation & Utilities	131	1,185	29,740,630	482.65
Wholesale Trade	25	164	6,454,337	756.84
Retail Trade	81	788	14,565,426	355.46
Transportation, Warehousing & Utilities	25	232	8,720,867	722.88
Information	9	51	1,387,452	523.17
Financial Activities	33	222	6,437,744	557.67
Professional & Business Services	52	379	9,507,286	482.41
Education & Health Services	72	604	19,515,214	621.35
Leisure & Hospitality	28	404	4,052,324	192.89
Other Services	43	190	4,428,321	448.21
Local Government	32	942	26,243,909	535.76
State Government	12	229	4,919,230	413.10

**TABLE 6. COUNTY SUMMARY
EMPLOYMENT AND TOTAL EARNINGS, BY INDUSTRY
CALENDAR YEAR 2007**

NORTH AMERICAN INDUSTRY CLASSIFICATION SYSTEM INDUSTRY GROUP	AVERAGE EMPLOYING UNITS	AVERAGE COVERED EMPLOYMENT	TOTAL EARNINGS	AVERAGE WEEKLY EARNINGS
BAXTER COUNTY - TOTAL	1,309	14,967	\$427,577,703	\$549.39
Natural Resources & Mining	5	114	3,396,990	573.04
Construction	145	768	20,983,054	525.42
Manufacturing	63	2,511	88,880,585	680.70
Trade, Transportation & Utilities	289	2,736	64,224,357	451.42
Wholesale Trade	36	237	6,721,462	545.40
Retail Trade	221	2,280	50,610,484	426.88
Transportation, Warehousing & Utilities	32	219	6,892,411	605.23
Information	24	260	8,523,229	630.42
Financial Activities	123	746	26,256,329	676.85
Professional & Business Services	138	860	24,333,215	544.12
Education & Health Services	245	3,488	122,344,695	674.54
Leisure & Hospitality	124	1,580	18,347,939	223.32
Other Services	104	400	7,154,237	343.95
Local Government	37	1,178	34,447,481	562.35
State Government	13	326	8,685,592	512.36
BENTON COUNTY - TOTAL	5,479	95,081	\$3,811,458,109	\$770.89
Natural Resources & Mining	31	697	30,954,040	854.05
Construction	780	4,833	175,809,135	699.55
Manufacturing	254	13,609	475,479,109	671.90
Trade, Transportation & Utilities	1,467	23,835	905,545,878	730.62
Wholesale Trade	675	3,727	279,775,238	1443.60
Retail Trade	618	8,844	208,175,707	452.67
Transportation, Warehousing & Utilities	173	11,263	417,594,933	713.01
Information	71	945	34,012,224	692.15
Financial Activities	593	3,982	176,250,641	851.19
Professional & Business Services	963	22,834	1,347,646,006	1134.99
Education & Health Services	486	6,950	236,411,629	654.16
Leisure & Hospitality	418	7,884	103,916,970	253.48
Other Services	323	1,733	46,090,053	511.45
Local Government	76	6,961	251,532,821	694.90
State Government	19	821	27,809,603	651.40

**TABLE 6. COUNTY SUMMARY
EMPLOYMENT AND TOTAL EARNINGS, BY INDUSTRY
CALENDAR YEAR 2007**

NORTH AMERICAN INDUSTRY CLASSIFICATION SYSTEM INDUSTRY GROUP	AVERAGE EMPLOYING UNITS	AVERAGE COVERED EMPLOYMENT	TOTAL EARNINGS	AVERAGE WEEKLY EARNINGS
BOONE COUNTY - TOTAL	1,069	13,884	\$427,242,057	\$591.77
Construction	95	481	14,310,931	572.16
Manufacturing	74	1,946	67,672,234	668.75
Trade, Transportation & Utilities	257	4,552	156,023,012	659.15
Wholesale Trade	57	675	20,211,423	575.82
Retail Trade	148	1,965	42,756,036	418.44
Transportation, Warehousing & Utilities	53	1,913	93,055,553	935.46
Information	20	426	15,725,306	709.88
Financial Activities	99	648	21,411,846	635.44
Professional & Business Services	113	541	13,564,549	482.18
Education & Health Services	181	1,157	33,885,115	563.21
Leisure & Hospitality	81	1,132	12,884,005	218.88
Local Government	61	2,127	64,028,170	578.90
State Government	21	595	20,637,345	667.01
Other	68	281	7,099,544	485.87
BRADLEY COUNTY - TOTAL	392	4,225	\$108,820,016	\$495.31
Natural Resources & Mining	49	446	9,953,311	429.17
Construction	24	226	6,126,345	521.30
Manufacturing	9	1,053	33,404,663	610.06
Trade, Transportation & Utilities	86	516	10,448,673	389.41
Wholesale Trade	17	79	2,421,834	589.54
Retail Trade	45	357	6,031,004	324.88
Transportation, Warehousing & Utilities	24	80	1,995,835	479.77
Information	4	13	363,351	537.50
Financial Activities	24	170	4,792,592	542.15
Professional & Business Services	27	79	1,418,612	345.33
Education & Health Services	94	609	15,944,747	503.50
Leisure & Hospitality	18	189	1,735,634	176.60
Other Services	33	121	3,148,381	500.38
Local & State Government	26	804	21,483,707	513.87

**TABLE 6. COUNTY SUMMARY
EMPLOYMENT AND TOTAL EARNINGS, BY INDUSTRY
CALENDAR YEAR 2007**

NORTH AMERICAN INDUSTRY CLASSIFICATION SYSTEM INDUSTRY GROUP	AVERAGE EMPLOYING UNITS	AVERAGE COVERED EMPLOYMENT	TOTAL EARNINGS	AVERAGE WEEKLY EARNINGS
CALHOUN COUNTY - TOTAL	113	3,032	\$118,460,063	\$751.35
Natural Resources & Mining	18	205	6,157,893	577.66
Construction	11	63	1,649,586	503.54
Manufacturing	11	2,027	88,737,058	841.88
Trade, Transportation & Utilities	27	221	5,947,567	517.54
Wholesale Trade & Retail Trade	19	72	1,031,307	275.46
Transportation, Warehousing & Utilities	8	149	4,916,260	634.52
Financial Activities	6	79	2,150,004	523.37
Education & Health Services	6	46	1,422,940	594.87
Local & State Government	20	272	6,883,761	486.69
Other	14	119	5,511,254	890.64
CARROLL COUNTY - TOTAL	841	9,908	\$238,508,892	\$462.93
Natural Resources & Mining	17	272	7,543,509	533.34
Trade, Transportation & Utilities	206	1,686	40,483,958	461.77
Wholesale Trade	28	147	3,417,947	447.14
Retail Trade	159	1,274	26,388,675	398.33
Transportation, Warehousing & Utilities	20	266	10,677,336	771.93
Professional & Business Services	76	231	6,760,986	562.85
Education & Health Services	81	816	24,565,725	578.94
Leisure & Hospitality	171	1,622	18,999,359	225.26
Local Government	25	1,063	28,823,048	521.44
State Government	11	105	2,899,891	531.12
Other	255	4,113	108,432,416	506.99

**TABLE 6. COUNTY SUMMARY
EMPLOYMENT AND TOTAL EARNINGS, BY INDUSTRY
CALENDAR YEAR 2007**

NORTH AMERICAN INDUSTRY CLASSIFICATION SYSTEM INDUSTRY GROUP	AVERAGE EMPLOYING UNITS	AVERAGE COVERED EMPLOYMENT	TOTAL EARNINGS	AVERAGE WEEKLY EARNINGS
CHICOT COUNTY - TOTAL	363	3,534	\$85,388,577	\$464.65
Natural Resources & Mining	48	278	7,398,159	511.77
Construction	16	122	3,867,967	609.70
Manufacturing	10	492	8,830,555	345.16
Trade, Transportation & Utilities	72	572	13,660,027	459.25
Wholesale Trade	14	105	4,244,131	777.31
Retail Trade	48	403	6,921,458	330.29
Transportation, Warehousing & Utilities	10	64	2,494,438	749.53
Information	6	11	237,412	415.06
Financial Activities	28	165	5,355,100	624.14
Professional & Business Services	28	84	2,708,289	620.03
Education & Health Services	91	554	13,318,822	462.33
Leisure & Hospitality	19	177	1,661,539	180.52
Other Services	18	46	892,067	372.94
Local Government	17	703	18,965,412	518.80
State Government	11	330	8,493,228	494.94
CLARK COUNTY - TOTAL	612	9,817	\$267,787,192	\$524.58
Natural Resources & Mining	40	256	7,561,034	567.99
Construction	28	93	2,332,246	482.27
Manufacturing	37	2,432	76,615,135	605.83
Trade, Transportation & Utilities	146	1,507	38,783,609	494.92
Wholesale Trade	19	59	2,307,865	752.24
Retail Trade	105	1,158	25,902,593	430.16
Transportation, Warehousing & Utilities	23	290	10,573,151	701.14
Information	10	42	1,207,100	552.70
Financial Activities	87	389	11,581,883	572.57
Professional & Business Services	45	395	16,904,554	823.01
Education & Health Services	78	1,425	38,645,226	521.53
Leisure & Hospitality	57	1,027	11,240,705	210.48
Other Services	44	208	4,544,726	420.19
Local Government	26	927	25,369,416	526.29
State Government	15	1,117	33,001,558	568.17

**TABLE 6. COUNTY SUMMARY
EMPLOYMENT AND TOTAL EARNINGS, BY INDUSTRY
CALENDAR YEAR 2007**

NORTH AMERICAN INDUSTRY CLASSIFICATION SYSTEM INDUSTRY GROUP	AVERAGE EMPLOYING UNITS	AVERAGE COVERED EMPLOYMENT	TOTAL EARNINGS	AVERAGE WEEKLY EARNINGS
CLAY COUNTY - TOTAL	410	4,054	\$98,003,129	\$464.89
Natural Resources & Mining	59	213	4,593,414	414.72
Construction	33	161	3,773,787	450.76
Manufacturing	18	734	20,277,886	531.28
Trade, Transportation & Utilities	97	899	22,999,398	491.99
Wholesale Trade	23	312	8,997,740	554.59
Retail Trade	50	427	7,985,137	359.63
Transportation, Warehousing & Utilities	24	161	6,016,521	718.65
Information	4	72	1,887,574	504.16
Financial Activities	35	149	3,904,229	503.90
Professional & Business Services	27	52	1,376,289	508.98
Education & Health Services	56	507	11,339,989	430.13
Leisure & Hospitality	22	215	1,865,912	166.90
Other Services	26	71	1,776,036	481.05
Local Government	22	904	22,227,620	472.85
State Government	12	76	1,980,995	501.26
CLEBURNE COUNTY - TOTAL	700	6,805	\$172,723,561	\$488.11
Natural Resources & Mining	18	133	4,703,251	680.05
Construction	79	440	12,068,668	527.48
Manufacturing	41	1,378	43,742,195	610.45
Trade, Transportation & Utilities	187	1,569	39,130,522	479.61
Wholesale Trade	43	206	7,090,189	661.89
Retail Trade	111	1,023	20,301,027	381.63
Transportation, Warehousing & Utilities	33	340	11,739,306	663.99
Information	7	55	1,492,234	521.76
Financial Activities	76	264	7,947,909	578.96
Professional & Business Services	57	234	5,865,557	482.05
Education & Health Services	82	792	20,564,220	499.33
Leisure & Hospitality	70	910	10,386,275	219.49
Other Services	54	160	3,207,069	385.47
Local Government	19	746	20,375,531	525.25
State Government	10	123	3,240,130	506.59

**TABLE 6. COUNTY SUMMARY
EMPLOYMENT AND TOTAL EARNINGS, BY INDUSTRY
CALENDAR YEAR 2007**

NORTH AMERICAN INDUSTRY CLASSIFICATION SYSTEM INDUSTRY GROUP	AVERAGE EMPLOYING UNITS	AVERAGE COVERED EMPLOYMENT	TOTAL EARNINGS	AVERAGE WEEKLY EARNINGS
CLEVELAND COUNTY - TOTAL	113	1,071	\$27,428,391	\$492.50
Natural Resources & Mining	16	146	4,155,452	547.35
Construction	7	32	548,142	329.41
Manufacturing	5	90	2,250,384	480.85
Trade, Transportation & Utilities	28	174	3,477,615	384.35
Retail Trade	14	76	822,233	208.05
Other Trade, Transportation & Utilities	15	98	2,655,382	521.07
Local Government	11	313	8,021,867	492.86
State Government	8	64	1,524,315	458.03
Other	36	253	7,450,616	566.33
COLUMBIA COUNTY - TOTAL	715	9,451	\$302,769,961	\$616.07
Natural Resources & Mining	49	565	32,396,829	1102.68
Construction	48	334	11,230,309	646.61
Manufacturing	43	2,681	111,463,765	799.53
Trade, Transportation & Utilities	176	1,564	36,294,410	446.27
Wholesale Trade	29	268	7,811,478	560.53
Retail Trade	113	1,036	18,813,817	349.23
Transportation, Warehousing & Utilities	34	260	9,669,115	715.17
Information	9	73	1,875,189	493.99
Financial Activities	74	533	21,829,803	787.62
Professional & Business Services	59	323	8,808,077	524.42
Education & Health Services	119	903	19,258,586	410.14
Leisure & Hospitality	50	631	6,997,295	213.25
Other Services	48	207	3,413,554	317.13
Local Government	27	1,081	31,227,132	555.52
State Government	14	557	17,975,012	620.60

**TABLE 6. COUNTY SUMMARY
EMPLOYMENT AND TOTAL EARNINGS, BY INDUSTRY
CALENDAR YEAR 2007**

NORTH AMERICAN INDUSTRY CLASSIFICATION SYSTEM INDUSTRY GROUP	AVERAGE EMPLOYING UNITS	AVERAGE COVERED EMPLOYMENT	TOTAL EARNINGS	AVERAGE WEEKLY EARNINGS
CONWAY COUNTY - TOTAL	570	6,862	\$193,382,730	\$541.96
Natural Resources & Mining	22	183	7,216,745	758.38
Construction	59	515	20,908,381	780.75
Manufacturing	29	1,135	46,850,471	793.81
Trade, Transportation & Utilities	138	1,502	39,685,413	508.11
Wholesale Trade	25	226	7,928,049	674.61
Retail Trade	82	922	19,122,192	398.84
Transportation, Warehousing & Utilities	31	354	12,635,172	686.40
Information	5	13	578,549	855.84
Financial Activities	34	196	5,483,113	537.98
Professional & Business Services	44	553	8,805,743	306.22
Education & Health Services	134	891	23,035,522	497.18
Leisure & Hospitality	39	493	4,748,236	185.22
Other Services	28	93	2,613,356	540.40
Local Government	28	896	24,088,632	517.01
State Government	11	393	9,368,569	458.43
CRAIGHEAD COUNTY - TOTAL	2,684	41,332	\$1,264,033,549	\$588.12
Natural Resources & Mining	60	294	7,366,433	481.84
Construction	242	1,636	54,019,376	634.98
Manufacturing	139	6,636	241,747,570	700.57
Trade, Transportation & Utilities	741	8,591	227,628,040	509.54
Wholesale Trade	188	1,607	66,207,805	792.30
Retail Trade	438	5,818	118,504,046	391.70
Transportation, Warehousing & Utilities	116	1,166	42,916,189	707.81
Information	36	610	20,735,284	653.70
Financial Activities	268	1,630	68,473,367	807.85
Professional & Business Services	358	3,543	96,972,276	526.35
Education & Health Services	401	7,283	274,907,842	725.89
Leisure & Hospitality	201	4,127	47,082,532	219.39
Other Services	177	962	19,510,737	390.03
Local Government	38	3,534	110,345,905	600.46
State Government	25	2,485	95,244,187	737.07

**TABLE 6. COUNTY SUMMARY
EMPLOYMENT AND TOTAL EARNINGS, BY INDUSTRY
CALENDAR YEAR 2007**

NORTH AMERICAN INDUSTRY CLASSIFICATION SYSTEM INDUSTRY GROUP	AVERAGE EMPLOYING UNITS	AVERAGE COVERED EMPLOYMENT	TOTAL EARNINGS	AVERAGE WEEKLY EARNINGS
CRAWFORD COUNTY - TOTAL	1,264	19,881	\$574,683,186	\$555.89
Natural Resources & Mining	26	653	29,134,939	858.02
Construction	187	1,421	48,290,725	653.53
Manufacturing	78	3,678	105,274,283	550.44
Trade, Transportation & Utilities	309	6,810	202,489,783	571.81
Retail Trade	160	1,958	39,876,979	391.66
Other Trade, Transportation & Utilities	149	4,852	162,612,804	644.51
Information	11	192	6,238,384	624.84
Financial Activities	141	544	15,524,106	548.79
Professional & Business Services	154	1,081	31,580,814	561.82
Education & Health Services	141	1,362	39,533,257	558.19
Leisure & Hospitality	89	1,577	17,426,419	212.51
Other Services	78	367	9,834,447	515.32
Local Government	41	2,023	63,617,576	604.75
State Government	11	173	5,738,453	637.89
CRITTENDEN COUNTY - TOTAL	1,234	17,083	\$513,424,911	\$577.98
Natural Resources & Mining	43	275	7,544,614	527.60
Construction	74	496	16,849,830	653.30
Manufacturing	46	2,050	86,390,563	810.42
Trade, Transportation & Utilities	337	4,943	154,779,007	602.17
Wholesale Trade	77	809	36,084,750	857.77
Retail Trade	171	2,107	41,647,632	380.12
Transportation, Warehousing & Utilities	89	2,027	77,046,625	730.96
Information	10	86	3,040,690	679.94
Financial Activities	108	584	20,065,556	660.75
Professional & Business Services	133	1,049	25,868,541	474.23
Education & Health Services	224	2,056	65,243,079	610.25
Leisure & Hospitality	102	2,130	28,287,984	255.40
Other Services	98	599	13,517,398	433.97
Local Government	46	2,340	78,798,837	647.59
State Government	15	476	13,038,812	526.78

**TABLE 6. COUNTY SUMMARY
EMPLOYMENT AND TOTAL EARNINGS, BY INDUSTRY
CALENDAR YEAR 2007**

NORTH AMERICAN INDUSTRY CLASSIFICATION SYSTEM INDUSTRY GROUP	AVERAGE EMPLOYING UNITS	AVERAGE COVERED EMPLOYMENT	TOTAL EARNINGS	AVERAGE WEEKLY EARNINGS
CROSS COUNTY - TOTAL	523	4,817	\$127,473,909	\$508.91
Natural Resources & Mining	39	194	3,987,148	395.24
Construction	34	166	4,243,287	491.58
Manufacturing	16	614	19,009,518	595.39
Trade, Transportation & Utilities	133	1,161	33,308,190	551.72
Wholesale Trade	30	271	9,988,530	708.81
Retail Trade	68	647	14,149,469	420.56
Transportation, Warehousing & Utilities	36	243	9,170,191	725.72
Information	6	68	1,809,225	511.66
Financial Activities	49	347	10,212,598	565.98
Professional & Business Services	44	170	5,103,519	577.32
Education & Health Services	103	674	16,649,697	475.05
Leisure & Hospitality	33	390	3,617,147	178.36
Other Services	39	73	1,335,896	351.92
Local Government	17	738	21,306,158	555.19
State Government	11	223	6,891,526	594.30
DALLAS COUNTY - TOTAL	275	3,253	\$87,709,669	\$518.51
Natural Resources & Mining	40	192	5,561,779	557.07
Construction	14	66	2,138,680	623.16
Manufacturing	17	904	32,095,291	682.76
Trade, Transportation & Utilities	71	437	9,933,151	437.12
Wholesale Trade	9	29	903,079	598.86
Retail Trade	44	355	7,431,550	402.58
Transportation, Warehousing & Utilities	18	53	1,598,522	580.02
Information	3	22	631,492	552.00
Financial Activities	21	105	3,069,804	562.24
Professional & Business Services	16	48	2,377,598	952.56
Education & Health Services	40	795	17,546,887	424.45
Leisure & Hospitality	15	120	1,105,105	177.10
Other Services	14	58	1,025,981	340.18
Local Government	16	438	10,348,752	454.37
State Government	9	69	1,875,149	522.62

**TABLE 6. COUNTY SUMMARY
EMPLOYMENT AND TOTAL EARNINGS, BY INDUSTRY
CALENDAR YEAR 2007**

NORTH AMERICAN INDUSTRY CLASSIFICATION SYSTEM INDUSTRY GROUP	AVERAGE EMPLOYING UNITS	AVERAGE COVERED EMPLOYMENT	TOTAL EARNINGS	AVERAGE WEEKLY EARNINGS
DESHA COUNTY - TOTAL	476	4,646	\$133,724,082	\$553.51
Natural Resources & Mining	51	275	7,383,642	516.34
Construction	26	137	4,392,276	616.55
Manufacturing	17	1,117	45,163,454	777.55
Trade, Transportation & Utilities	129	917	23,168,353	485.87
Wholesale Trade	21	179	7,310,653	785.42
Retail Trade	78	550	9,999,484	349.63
Transportation, Warehousing & Utilities	31	188	5,858,216	599.24
Information	5	21	782,871	716.91
Financial Activities	43	209	5,847,997	538.09
Professional & Business Services	37	117	2,782,414	457.33
Education & Health Services	80	579	13,156,749	436.99
Leisure & Hospitality	33	271	2,518,577	178.72
Other Services	26	60	1,127,863	361.49
Local Government	19	767	22,346,258	560.28
State Government	11	177	5,053,628	549.07
DREW COUNTY - TOTAL	516	6,666	\$164,910,186	\$475.75
Natural Resources & Mining	40	278	8,891,525	615.08
Construction	24	113	2,695,527	458.74
Manufacturing	22	788	20,623,500	503.31
Trade, Transportation & Utilities	130	1,204	29,199,829	466.39
Wholesale Trade	22	226	7,447,390	633.71
Retail Trade	86	882	17,913,125	390.57
Transportation, Warehousing & Utilities	22	96	3,839,314	769.09
Information	8	79	2,412,626	587.30
Financial Activities	44	257	9,225,766	690.34
Professional & Business Services	46	335	10,168,778	583.74
Education & Health Services	92	834	18,384,361	423.92
Leisure & Hospitality	43	660	5,646,362	164.52
Other Services	27	92	1,738,641	363.43
Local Government	23	1,202	32,593,096	521.46
State Government	17	823	23,330,175	545.15

**TABLE 6. COUNTY SUMMARY
EMPLOYMENT AND TOTAL EARNINGS, BY INDUSTRY
CALENDAR YEAR 2007**

NORTH AMERICAN INDUSTRY CLASSIFICATION SYSTEM INDUSTRY GROUP	AVERAGE EMPLOYING UNITS	AVERAGE COVERED EMPLOYMENT	TOTAL EARNINGS	AVERAGE WEEKLY EARNINGS
FAULKNER COUNTY - TOTAL	2,600	39,208	\$1,295,619,394	\$635.48
Natural Resources & Mining	28	646	42,144,369	1254.60
Construction	370	3,008	99,113,566	633.65
Manufacturing	128	5,128	202,631,605	759.90
Trade, Transportation & Utilities	624	6,785	175,876,144	498.49
Wholesale Trade	163	832	35,028,450	809.64
Retail Trade	380	5,083	103,718,964	392.41
Transportation, Warehousing & Utilities	82	870	37,128,730	820.71
Information	43	389	14,024,909	693.34
Financial Activities	319	1,473	49,710,834	649.00
Professional & Business Services	348	5,279	268,954,183	979.77
Education & Health Services	343	5,536	170,156,779	591.08
Leisure & Hospitality	195	3,936	42,301,416	206.68
Other Services	144	594	13,012,462	421.28
Local Government	41	3,160	111,073,858	675.96
State Government	19	3,275	106,619,269	626.07
FRANKLIN COUNTY - TOTAL	333	4,189	\$119,008,722	\$546.34
Natural Resources & Mining	11	128	5,772,384	867.25
Construction	35	250	8,109,223	623.79
Manufacturing	23	939	30,461,567	623.85
Trade, Transportation & Utilities	89	842	23,590,282	538.79
Wholesale Trade	15	51	1,093,589	412.36
Retail Trade	51	483	8,977,649	357.45
Transportation, Warehousing & Utilities	22	308	13,519,044	844.10
Information	6	46	1,011,166	422.73
Financial Activities	29	225	6,080,289	519.68
Professional & Business Services	22	67	1,989,365	571.00
Education & Health Services	45	472	10,866,275	442.73
Leisure & Hospitality	26	303	3,028,474	192.21
Other Services	20	56	1,135,619	389.98
Local Government	19	722	22,565,538	601.04
State Government	10	139	4,398,540	608.54

**TABLE 6. COUNTY SUMMARY
EMPLOYMENT AND TOTAL EARNINGS, BY INDUSTRY
CALENDAR YEAR 2007**

NORTH AMERICAN INDUSTRY CLASSIFICATION SYSTEM INDUSTRY GROUP	AVERAGE EMPLOYING UNITS	AVERAGE COVERED EMPLOYMENT	TOTAL EARNINGS	AVERAGE WEEKLY EARNINGS
FULTON COUNTY - TOTAL	237	1,906	\$40,988,980	\$413.56
Construction	17	28	773,193	531.04
Manufacturing	13	120	1,953,938	313.13
Trade, Transportation & Utilities	66	395	9,381,607	456.75
Retail Trade	41	201	2,825,463	270.33
Other Trade, Transportation & Utilities	26	194	6,556,144	649.90
Financial Activities	15	105	2,911,106	533.17
Professional & Business Services	17	64	1,646,948	494.88
Education & Health Services	57	387	7,063,173	350.98
Leisure & Hospitality	15	139	1,453,750	201.13
Local Government	13	489	12,006,448	472.17
State Government	11	108	2,659,295	473.52
Other	13	72	1,139,522	304.36
GARLAND COUNTY - TOTAL	3,297	36,807	\$1,032,278,346	\$539.34
Natural Resources & Mining	47	370	15,588,785	810.23
Construction	459	2,413	67,329,565	536.59
Manufacturing	129	2,714	92,338,593	654.29
Trade, Transportation & Utilities	716	7,469	188,499,437	485.34
Wholesale Trade	155	1,047	39,454,775	724.69
Retail Trade	492	5,771	123,980,986	413.14
Transportation, Warehousing & Utilities	69	651	25,063,676	740.39
Information	42	419	13,981,331	641.70
Financial Activities	384	1,535	51,895,714	650.16
Professional & Business Services	423	3,373	95,297,102	543.33
Education & Health Services	446	7,123	263,596,981	711.66
Leisure & Hospitality	367	6,383	88,433,170	266.43
Other Services	225	969	20,445,290	405.76
Local Government	34	2,950	100,169,659	653.00
State Government	27	1,090	34,702,719	612.26

**TABLE 6. COUNTY SUMMARY
EMPLOYMENT AND TOTAL EARNINGS, BY INDUSTRY
CALENDAR YEAR 2007**

NORTH AMERICAN INDUSTRY CLASSIFICATION SYSTEM INDUSTRY GROUP	AVERAGE EMPLOYING UNITS	AVERAGE COVERED EMPLOYMENT	TOTAL EARNINGS	AVERAGE WEEKLY EARNINGS
GRANT COUNTY - TOTAL	301	3,858	\$102,356,372	\$510.21
Natural Resources & Mining	24	182	7,719,193	815.64
Construction	32	232	7,687,687	637.24
Manufacturing	17	935	26,851,089	552.26
Trade, Transportation & Utilities	84	611	14,230,338	447.89
Wholesale Trade	17	131	4,509,061	661.93
Retail Trade	41	419	7,898,019	362.49
Transportation, Warehousing & Utilities	27	62	1,823,258	565.53
Information	4	32	1,100,839	661.56
Financial Activities	25	106	3,423,438	621.09
Professional & Business Services	23	100	3,556,129	683.87
Education & Health Services	36	418	8,580,103	394.74
Leisure & Hospitality	21	274	2,972,726	208.64
Other Services	16	53	891,889	323.62
Local Government	10	858	23,714,295	531.52
State Government	9	58	1,628,646	540.00
GREENE COUNTY - TOTAL	921	14,967	\$420,538,564	\$540.34
Natural Resources & Mining	38	205	5,685,138	533.32
Construction	85	371	10,653,317	552.21
Manufacturing	58	5,288	188,744,515	686.40
Trade, Transportation & Utilities	246	2,271	53,856,177	456.05
Wholesale Trade	58	437	14,537,479	639.74
Retail Trade	159	1,614	31,570,061	376.16
Transportation, Warehousing & Utilities	30	220	7,748,637	677.33
Information	13	127	2,618,712	396.53
Financial Activities	91	496	15,239,328	590.85
Professional & Business Services	93	1,515	29,589,224	375.59
Education & Health Services	138	1,727	45,138,017	502.63
Leisure & Hospitality	70	1,067	11,122,039	200.45
Other Services	48	167	3,696,580	425.68
Local Government	31	1,468	45,899,365	601.28
State Government	11	265	8,296,152	602.04

**TABLE 6. COUNTY SUMMARY
EMPLOYMENT AND TOTAL EARNINGS, BY INDUSTRY
CALENDAR YEAR 2007**

NORTH AMERICAN INDUSTRY CLASSIFICATION SYSTEM INDUSTRY GROUP	AVERAGE EMPLOYING UNITS	AVERAGE COVERED EMPLOYMENT	TOTAL EARNINGS	AVERAGE WEEKLY EARNINGS
HEMPSTEAD COUNTY - TOTAL	500	8,172	\$221,725,893	\$521.78
Natural Resources & Mining	18	210	6,627,717	606.93
Construction	31	137	3,882,886	545.04
Manufacturing	29	2,484	78,425,746	607.16
Trade, Transportation & Utilities	131	1,334	33,064,451	476.65
Wholesale Trade	25	246	6,750,826	527.74
Retail Trade	83	890	17,256,677	372.88
Transportation, Warehousing & Utilities	23	198	9,056,948	879.66
Information	11	76	2,489,240	629.87
Financial Activities	45	262	8,768,607	643.61
Professional & Business Services	35	283	5,373,612	365.15
Education & Health Services	74	980	24,264,617	476.15
Leisure & Hospitality	44	672	6,955,256	199.04
Other Services	37	206	5,616,306	524.30
Local Government	29	983	29,255,076	572.33
State Government	17	545	17,002,379	599.94
HOT SPRING COUNTY - TOTAL	583	7,962	\$237,092,209	\$572.65
Natural Resources & Mining	31	208	5,723,752	529.19
Construction	67	463	18,919,745	785.83
Manufacturing	36	1,693	68,317,055	776.01
Trade, Transportation & Utilities	153	1,415	41,425,675	563.00
Wholesale Trade	19	84	4,684,152	1072.38
Retail Trade	94	941	19,538,326	399.30
Transportation, Warehousing & Utilities	40	390	17,203,197	848.28
Information	9	73	2,632,618	693.52
Financial Activities	60	339	10,791,137	612.16
Professional & Business Services	53	216	5,384,264	479.37
Education & Health Services	63	1,027	26,154,801	489.75
Leisure & Hospitality	41	533	5,409,813	195.19
Other Services	34	276	4,794,332	334.05
Local Government	26	1,079	30,058,654	535.73
State Government	14	640	17,480,363	525.25

**TABLE 6. COUNTY SUMMARY
EMPLOYMENT AND TOTAL EARNINGS, BY INDUSTRY
CALENDAR YEAR 2007**

NORTH AMERICAN INDUSTRY CLASSIFICATION SYSTEM INDUSTRY GROUP	AVERAGE EMPLOYING UNITS	AVERAGE COVERED EMPLOYMENT	TOTAL EARNINGS	AVERAGE WEEKLY EARNINGS
HOWARD COUNTY - TOTAL	353	7,614	\$203,696,808	\$514.48
Natural Resources & Mining	23	242	7,872,727	625.61
Construction	24	89	2,294,082	495.70
Manufacturing	25	4,222	120,341,754	548.14
Trade, Transportation & Utilities	96	935	23,803,273	489.58
Wholesale Trade	17	92	3,680,404	769.32
Retail Trade	59	638	12,143,653	366.04
Transportation, Warehousing & Utilities	21	205	7,979,216	748.52
Information	6	38	949,032	480.28
Financial Activities	38	160	4,257,936	511.77
Professional & Business Services	27	123	3,076,689	481.03
Education & Health Services	45	588	13,084,373	427.93
Leisure & Hospitality	19	298	2,909,833	187.78
Other Services	20	136	2,536,347	358.65
Local Government	18	639	18,479,596	556.15
State Government	12	144	4,091,166	546.36
INDEPENDENCE COUNTY - TOTAL	939	15,922	\$460,561,702	\$556.27
Natural Resources & Mining	13	147	4,238,716	554.52
Construction	73	475	12,748,503	516.13
Manufacturing	53	4,433	149,637,912	649.14
Trade, Transportation & Utilities	268	3,058	87,628,109	551.06
Wholesale Trade	54	564	18,733,790	638.77
Retail Trade	158	1,693	33,971,533	385.88
Transportation, Warehousing & Utilities	56	802	34,922,786	837.40
Information	12	162	4,765,561	565.71
Financial Activities	85	483	17,164,228	683.40
Professional & Business Services	94	855	17,766,247	399.60
Education & Health Services	145	2,906	96,119,237	636.08
Leisure & Hospitality	66	1,051	10,838,409	198.32
Other Services	67	385	6,847,771	342.05
Local Government	48	1,498	38,355,245	492.39
State Government	17	470	14,451,764	591.32

**TABLE 6. COUNTY SUMMARY
EMPLOYMENT AND TOTAL EARNINGS, BY INDUSTRY
CALENDAR YEAR 2007**

NORTH AMERICAN INDUSTRY CLASSIFICATION SYSTEM INDUSTRY GROUP	AVERAGE EMPLOYING UNITS	AVERAGE COVERED EMPLOYMENT	TOTAL EARNINGS	AVERAGE WEEKLY EARNINGS
IZARD COUNTY - TOTAL	280	3,082	\$71,665,765	\$447.17
Natural Resources & Mining	5	93	3,145,788	650.49
Construction	25	75	2,052,175	526.20
Trade, Transportation & Utilities	69	538	11,003,990	393.34
Retail Trade	50	418	7,633,906	351.21
Other Trade, Transportation & Utilities	19	120	3,370,084	540.08
Financial Activities	32	156	4,372,000	538.95
Professional & Business Services	19	81	1,663,277	394.89
Education & Health Services	56	557	11,703,132	404.06
Leisure & Hospitality	20	211	1,814,325	165.36
Other Services	13	36	842,047	449.81
Local Government	18	513	13,168,925	493.66
State Government	11	461	12,508,320	521.79
Other	14	362	9,391,786	498.93
JACKSON COUNTY - TOTAL	519	5,629	\$158,874,347	\$542.77
Natural Resources & Mining	47	228	5,514,968	465.16
Construction	26	139	4,931,867	682.33
Manufacturing	26	1,212	42,179,907	669.27
Trade, Transportation & Utilities	123	1,114	28,823,982	497.58
Wholesale Trade	33	214	8,048,934	723.30
Retail Trade	71	665	13,292,197	384.39
Transportation, Warehousing & Utilities	19	235	7,482,851	612.34
Information	6	39	1,133,964	559.15
Financial Activities	42	172	5,642,181	630.83
Professional & Business Services	37	149	4,383,928	565.81
Education & Health Services	99	824	24,141,227	563.42
Leisure & Hospitality	38	313	3,597,196	221.01
Other Services	30	87	1,572,658	347.63
Local Government	32	675	16,572,689	472.16
State Government	14	680	20,379,780	576.35

**TABLE 6. COUNTY SUMMARY
EMPLOYMENT AND TOTAL EARNINGS, BY INDUSTRY
CALENDAR YEAR 2007**

NORTH AMERICAN INDUSTRY CLASSIFICATION SYSTEM INDUSTRY GROUP	AVERAGE EMPLOYING UNITS	AVERAGE COVERED EMPLOYMENT	TOTAL EARNINGS	AVERAGE WEEKLY EARNINGS
JEFFERSON COUNTY - TOTAL	1,942	31,340	\$1,000,955,734	\$614.20
Natural Resources & Mining	40	428	16,702,463	750.47
Construction	128	1,417	68,492,143	929.54
Manufacturing	71	5,876	234,990,261	769.07
Trade, Transportation & Utilities	458	5,773	165,728,219	552.07
Wholesale Trade	83	1,051	37,366,967	683.73
Retail Trade	308	3,853	80,061,671	399.60
Transportation, Warehousing & Utilities	67	869	48,299,581	1068.86
Information	18	200	6,452,577	620.44
Financial Activities	158	1,175	43,091,121	705.26
Professional & Business Services	180	1,751	55,923,868	614.20
Education & Health Services	516	5,488	163,975,470	574.59
Leisure & Hospitality	149	2,156	23,640,946	210.87
Other Services	145	711	17,525,076	474.01
Local Government	41	3,145	99,086,799	605.89
State Government	40	3,220	105,346,791	629.16
JOHNSON COUNTY - TOTAL	474	8,629	\$233,188,763	\$519.69
Natural Resources & Mining	17	210	7,101,170	650.29
Construction	26	155	4,508,877	559.41
Manufacturing	45	2,963	83,643,652	542.87
Trade, Transportation & Utilities	118	2,042	53,629,469	505.06
Information	6	35	986,109	541.82
Financial Activities	44	229	6,970,462	585.36
Professional & Business Services	51	178	4,963,410	536.24
Education & Health Services	78	1,148	31,905,140	534.46
Leisure & Hospitality	37	527	5,516,253	201.29
Other Services	28	79	1,653,170	402.43
Local Government	14	897	27,225,602	583.69
State Government	10	167	5,085,449	585.61

**TABLE 6. COUNTY SUMMARY
EMPLOYMENT AND TOTAL EARNINGS, BY INDUSTRY
CALENDAR YEAR 2007**

NORTH AMERICAN INDUSTRY CLASSIFICATION SYSTEM INDUSTRY GROUP	AVERAGE EMPLOYING UNITS	AVERAGE COVERED EMPLOYMENT	TOTAL EARNINGS	AVERAGE WEEKLY EARNINGS
LAFAYETTE COUNTY - TOTAL	172	1,403	\$34,746,068	\$476.26
Natural Resources & Mining	38	185	5,935,613	617.01
Trade, Transportation & Utilities	34	238	5,467,198	441.76
Retail Trade	22	165	2,776,704	323.63
Other Trade, Transportation & Utilities	13	73	2,690,494	708.77
Financial Activities	16	65	1,594,263	471.68
Professional & Business Services	9	57	2,018,895	681.14
Education & Health Services	23	228	4,204,809	354.66
Leisure & Hospitality	7	55	670,569	234.46
Other Services	7	72	1,242,061	331.75
Local Government	13	330	7,911,943	461.07
State Government	8	50	1,399,683	538.34
Other	16	123	4,301,034	672.46
LAWRENCE COUNTY - TOTAL	437	4,081	\$99,793,513	\$470.25
Natural Resources & Mining	35	166	5,091,327	589.82
Construction	26	69	1,727,484	481.46
Manufacturing	22	541	13,923,546	494.94
Trade, Transportation & Utilities	135	913	22,181,736	467.22
Wholesale Trade	22	178	5,448,960	588.69
Retail Trade	73	586	11,362,929	372.90
Transportation, Warehousing & Utilities	40	148	5,369,847	697.75
Financial Activities	35	136	3,621,654	512.11
Professional & Business Services	24	123	4,028,207	629.80
Education & Health Services	71	448	11,668,083	500.86
Leisure & Hospitality	25	338	2,674,983	152.20
Local Government	28	1,152	30,297,068	505.76
State Government	11	119	3,108,928	502.41
Other	28	75	1,470,497	377.05

**TABLE 6. COUNTY SUMMARY
EMPLOYMENT AND TOTAL EARNINGS, BY INDUSTRY
CALENDAR YEAR 2007**

NORTH AMERICAN INDUSTRY CLASSIFICATION SYSTEM INDUSTRY GROUP	AVERAGE EMPLOYING UNITS	AVERAGE COVERED EMPLOYMENT	TOTAL EARNINGS	AVERAGE WEEKLY EARNINGS
LEE COUNTY - TOTAL	260	2,073	\$54,306,009	\$503.79
Natural Resources & Mining	29	199	4,683,358	452.59
Construction	10	30	812,777	521.01
Trade, Transportation & Utilities	52	359	8,415,921	450.82
Wholesale Trade	9	69	2,282,113	636.04
Retail Trade	26	197	3,204,678	312.83
Transportation, Warehousing & Utilities	17	93	2,929,130	605.69
Financial Activities	16	75	2,472,096	633.87
Professional & Business Services	19	67	2,609,970	749.13
Education & Health Services	77	339	8,045,358	456.40
Leisure & Hospitality	9	92	772,218	161.42
Local Government	15	340	9,859,359	557.66
State Government	8	488	15,013,580	591.64
Other	27	85	1,621,372	366.83
LINCOLN COUNTY - TOTAL	242	2,970	\$81,763,296	\$529.42
Natural Resources & Mining	33	170	5,075,148	574.11
Construction	16	80	2,090,432	502.51
Manufacturing	10	440	13,441,740	587.49
Trade, Transportation & Utilities	49	357	9,993,161	538.31
Wholesale Trade	7	29	1,201,754	796.92
Retail Trade	24	188	2,664,012	272.51
Transportation, Warehousing & Utilities	18	140	6,127,395	841.68
Financial Activities	23	78	2,400,214	591.77
Professional & Business Services	13	22	579,623	506.66
Education & Health Services	47	314	6,695,606	410.07
Leisure & Hospitality	16	154	1,390,956	173.70
Local & State Government	22	1,320	39,327,374	572.95
Other	14	36	769,042	410.81

**TABLE 6. COUNTY SUMMARY
EMPLOYMENT AND TOTAL EARNINGS, BY INDUSTRY
CALENDAR YEAR 2007**

NORTH AMERICAN INDUSTRY CLASSIFICATION SYSTEM INDUSTRY GROUP	AVERAGE EMPLOYING UNITS	AVERAGE COVERED EMPLOYMENT	TOTAL EARNINGS	AVERAGE WEEKLY EARNINGS
LITTLE RIVER COUNTY - TOTAL	266	4,740	\$195,662,214	\$793.83
Natural Resources & Mining	10	58	1,695,574	562.19
Construction	25	257	7,109,125	531.96
Manufacturing	18	1,381	97,208,194	1353.65
Trade, Transportation & Utilities	68	1,452	52,246,023	691.96
Wholesale Trade	10	43	1,657,623	741.33
Other Trade, Transportation & Utilities	59	1,410	50,588,400	689.97
Financial Activities	25	101	2,549,490	485.43
Professional & Business Services	23	149	3,501,140	451.88
Education & Health Services	29	164	3,683,850	431.97
Leisure & Hospitality	19	220	2,248,043	196.51
Local Government	20	769	21,387,183	534.84
State Government	12	84	2,256,494	516.60
Other	17	107	1,777,098	319.39
LOGAN COUNTY - TOTAL	476	6,084	\$156,526,945	\$494.76
Natural Resources & Mining	22	154	6,469,296	807.85
Construction	50	170	4,445,142	502.84
Manufacturing	28	1,859	55,815,729	577.40
Trade, Transportation & Utilities	111	894	18,758,164	403.51
Wholesale Trade	16	44	1,101,201	481.29
Retail Trade	71	764	14,242,368	358.50
Transportation, Warehousing & Utilities	23	86	3,414,595	763.55
Information	6	41	1,323,789	620.91
Financial Activities	45	255	9,468,173	714.04
Professional & Business Services	42	136	3,231,871	457.00
Education & Health Services	82	748	17,792,482	457.44
Leisure & Hospitality	28	331	3,008,289	174.78
Other Services	28	84	1,872,415	428.67
Local & State Government	37	1,412	34,341,595	467.72

**TABLE 6. COUNTY SUMMARY
EMPLOYMENT AND TOTAL EARNINGS, BY INDUSTRY
CALENDAR YEAR 2007**

NORTH AMERICAN INDUSTRY CLASSIFICATION SYSTEM INDUSTRY GROUP	AVERAGE EMPLOYING UNITS	AVERAGE COVERED EMPLOYMENT	TOTAL EARNINGS	AVERAGE WEEKLY EARNINGS
LONOKE COUNTY - TOTAL	1,283	12,618	\$341,218,124	\$520.04
Natural Resources & Mining	74	419	14,250,679	654.06
Construction	176	1,016	33,227,699	628.93
Manufacturing	37	1,351	53,137,851	756.39
Trade, Transportation & Utilities	349	2,830	69,743,209	473.93
Wholesale Trade	89	502	19,815,024	759.08
Retail Trade	185	2,028	40,151,911	380.75
Transportation, Warehousing & Utilities	76	300	9,776,274	626.68
Information	15	120	4,363,077	699.21
Financial Activities	129	607	22,273,585	705.66
Professional & Business Services	144	618	17,578,662	547.01
Education & Health Services	152	1,415	34,960,747	475.14
Leisure & Hospitality	94	1,383	14,277,418	198.53
Other Services	69	189	4,452,230	453.01
Local Government	28	2,506	68,775,564	527.78
State Government	16	165	4,177,403	486.88
MADISON COUNTY - TOTAL	257	3,217	\$80,677,413	\$482.28
Natural Resources & Mining	10	56	1,547,452	531.41
Construction	46	136	3,587,397	507.27
Manufacturing	20	1,120	30,005,776	515.21
Trade, Transportation & Utilities	60	594	14,594,583	472.50
Wholesale Trade	12	37	1,497,447	778.30
Retail Trade	34	404	7,828,627	372.65
Transportation, Warehousing & Utilities	14	153	5,268,509	662.21
Financial Activities	16	72	2,186,671	584.05
Professional & Business Services	20	101	2,309,325	439.70
Education & Health Services	39	261	5,214,471	384.21
Leisure & Hospitality	14	141	1,132,949	154.52
Local Government	9	623	16,363,109	505.10
State Government	8	55	1,458,677	510.03
Other	17	59	2,277,003	742.18

**TABLE 6. COUNTY SUMMARY
EMPLOYMENT AND TOTAL EARNINGS, BY INDUSTRY
CALENDAR YEAR 2007**

NORTH AMERICAN INDUSTRY CLASSIFICATION SYSTEM INDUSTRY GROUP	AVERAGE EMPLOYING UNITS	AVERAGE COVERED EMPLOYMENT	TOTAL EARNINGS	AVERAGE WEEKLY EARNINGS
MARION COUNTY - TOTAL	321	4,182	\$100,131,293	\$460.45
Natural Resources & Mining	7	47	976,610	399.59
Construction	30	91	1,939,420	409.85
Manufacturing	25	1,739	45,482,875	502.97
Trade, Transportation & Utilities	57	654	13,802,893	405.87
Wholesale Trade	9	39	1,454,543	717.23
Retail Trade	36	472	8,679,526	353.63
Transportation, Warehousing & Utilities	13	143	3,668,824	493.39
Financial Activities	37	201	5,430,732	519.59
Professional & Business Services	29	63	1,661,882	507.29
Education & Health Services	53	363	7,912,050	419.16
Leisure & Hospitality	38	255	2,600,790	196.14
Local Government	20	529	13,546,712	492.46
State Government	8	113	2,789,258	474.69
Other	18	129	3,988,071	594.52
MILLER COUNTY - TOTAL	847	12,156	\$389,624,283	\$616.38
Natural Resources & Mining	27	130	3,920,912	580.02
Construction	95	787	23,100,030	564.46
Manufacturing	33	2,434	132,902,221	1050.05
Trade, Transportation & Utilities	227	2,523	73,687,306	561.66
Wholesale Trade	61	606	24,551,191	779.11
Retail Trade	129	1,359	27,651,571	391.29
Transportation, Warehousing & Utilities	38	558	21,484,544	740.44
Information	12	101	6,607,573	1258.11
Financial Activities	85	380	12,431,911	629.15
Professional & Business Services	84	964	21,862,473	436.13
Education & Health Services	96	1,081	27,556,264	490.22
Leisure & Hospitality	85	1,320	16,463,443	239.85
Other Services	62	356	6,220,195	336.01
Local Government	26	1,587	48,374,199	586.18
State Government	17	494	16,497,756	642.24

**TABLE 6. COUNTY SUMMARY
EMPLOYMENT AND TOTAL EARNINGS, BY INDUSTRY
CALENDAR YEAR 2007**

NORTH AMERICAN INDUSTRY CLASSIFICATION SYSTEM INDUSTRY GROUP	AVERAGE EMPLOYING UNITS	AVERAGE COVERED EMPLOYMENT	TOTAL EARNINGS	AVERAGE WEEKLY EARNINGS
MISSISSIPPI COUNTY - TOTAL	1,187	19,318	\$688,683,442	\$685.57
Natural Resources & Mining	100	736	19,477,662	508.93
Construction	74	652	24,967,721	736.42
Manufacturing	58	5,766	316,848,223	1056.75
Trade, Transportation & Utilities	302	2,993	94,638,010	608.07
Wholesale Trade	67	472	18,134,081	738.84
Retail Trade	184	1,891	36,366,098	369.83
Transportation, Warehousing & Utilities	51	630	40,137,831	1225.21
Financial Activities	105	597	17,673,108	569.29
Professional & Business Services	98	1,215	34,940,171	553.03
Education & Health Services	214	1,692	44,246,752	502.90
Leisure & Hospitality	84	1,157	11,972,263	198.99
Local Government	46	2,354	64,635,663	528.03
State Government	24	639	17,784,504	535.23
Other	85	1,518	41,499,365	525.73
MONROE COUNTY - TOTAL	311	2,396	\$52,833,650	\$424.05
Natural Resources & Mining	38	147	3,498,970	457.74
Construction	12	34	763,842	432.04
Manufacturing	8	123	3,386,386	529.45
Trade, Transportation & Utilities	89	694	16,963,942	470.07
Wholesale Trade	23	206	6,570,943	613.42
Retail Trade	40	345	6,134,686	341.96
Transportation, Warehousing & Utilities	27	144	4,258,313	568.68
Financial Activities	17	96	2,859,257	572.77
Professional & Business Services	17	48	1,152,378	461.69
Education & Health Services	51	340	5,871,643	332.11
Leisure & Hospitality	24	252	2,554,589	194.95
Local Government	22	418	10,559,167	485.79
State Government	9	130	3,221,068	476.49
Other	25	115	2,002,408	334.85

**TABLE 6. COUNTY SUMMARY
EMPLOYMENT AND TOTAL EARNINGS, BY INDUSTRY
CALENDAR YEAR 2007**

NORTH AMERICAN INDUSTRY CLASSIFICATION SYSTEM INDUSTRY GROUP	AVERAGE EMPLOYING UNITS	AVERAGE COVERED EMPLOYMENT	TOTAL EARNINGS	AVERAGE WEEKLY EARNINGS
MONTGOMERY COUNTY - TOTAL	182	1,612	\$36,134,877	\$431.08
Natural Resources & Mining	13	61	2,189,922	690.39
Construction	24	98	2,912,403	571.51
Trade, Transportation & Utilities	45	230	4,641,039	388.05
Wholesale Trade	10	71	1,857,115	503.01
Retail Trade	25	138	2,350,647	327.57
Transportation, Warehousing & Utilities	10	22	433,277	378.74
Financial Activities	10	76	2,169,373	548.93
Education & Health Services	15	56	1,207,597	414.70
Leisure & Hospitality	23	283	4,566,071	310.28
Other Services	11	76	1,268,059	320.87
Local Government	9	468	11,217,336	460.94
State Government	8	55	1,623,218	567.56
Other	24	208	4,339,859	401.24
NEVADA COUNTY - TOTAL	189	2,594	\$74,144,766	\$549.68
Natural Resources & Mining	15	65	2,146,021	634.92
Manufacturing	9	743	31,246,870	808.75
Trade, Transportation & Utilities	44	539	13,578,659	484.47
Retail Trade	29	306	5,370,631	337.52
Other Trade, Transportation & Utilities	15	232	8,208,028	680.37
Financial Activities	13	57	1,798,148	606.66
Professional & Business Services	7	32	901,971	542.05
Education & Health Services	18	397	8,014,221	388.21
Leisure & Hospitality	14	103	1,133,492	211.63
Other Services	17	69	909,149	253.39
Local Government	28	451	10,824,912	461.58
State Government	11	87	2,450,664	541.70
Other	13	52	1,140,659	421.84

**TABLE 6. COUNTY SUMMARY
EMPLOYMENT AND TOTAL EARNINGS, BY INDUSTRY
CALENDAR YEAR 2007**

NORTH AMERICAN INDUSTRY CLASSIFICATION SYSTEM INDUSTRY GROUP	AVERAGE EMPLOYING UNITS	AVERAGE COVERED EMPLOYMENT	TOTAL EARNINGS	AVERAGE WEEKLY EARNINGS
NEWTON COUNTY - TOTAL	139	1,056	\$21,526,557	\$392.02
Natural Resources & Mining	4	2	28,000	269.23
Construction	10	21	408,841	374.40
Manufacturing	16	81	1,962,653	465.97
Trade, Transportation & Utilities	31	145	2,890,140	383.31
Retail Trade	15	94	1,451,810	297.02
Other Trade, Transportation & Utilities	17	51	1,438,330	542.36
Education & Health Services	23	221	3,531,060	307.26
Leisure & Hospitality	18	68	839,150	237.32
Other Services	4	11	129,571	226.52
Local Government	13	367	8,653,222	453.43
State Government	7	92	1,769,970	369.98
Other	14	48	1,313,950	526.42
OUACHITA COUNTY - TOTAL	644	7,651	\$204,657,558	\$514.41
Natural Resources & Mining	46	263	8,715,975	637.32
Construction	49	262	7,834,591	575.06
Manufacturing	29	850	28,217,031	638.39
Trade, Transportation & Utilities	173	1,739	46,765,596	517.16
Wholesale Trade	28	236	10,192,091	830.52
Retail Trade	117	1,053	18,882,128	344.84
Transportation, Warehousing & Utilities	28	450	17,691,377	756.04
Information	8	95	2,845,279	575.97
Financial Activities	62	361	10,961,352	583.92
Professional & Business Services	54	351	8,227,374	450.77
Education & Health Services	103	1,263	33,087,040	503.79
Leisure & Hospitality	34	485	4,684,884	185.76
Other Services	42	159	3,346,415	404.74
Local Government	30	1,253	33,391,072	512.48
State Government	14	570	16,580,949	559.41

**TABLE 6. COUNTY SUMMARY
EMPLOYMENT AND TOTAL EARNINGS, BY INDUSTRY
CALENDAR YEAR 2007**

NORTH AMERICAN INDUSTRY CLASSIFICATION SYSTEM INDUSTRY GROUP	AVERAGE EMPLOYING UNITS	AVERAGE COVERED EMPLOYMENT	TOTAL EARNINGS	AVERAGE WEEKLY EARNINGS
PERRY COUNTY - TOTAL	164	1,278	\$31,335,371	\$471.52
Natural Resources & Mining	8	55	1,962,925	686.34
Construction	26	70	1,867,518	513.05
Manufacturing	7	82	1,878,298	440.50
Trade, Transportation & Utilities	29	207	4,481,517	416.34
Retail Trade	18	163	2,316,140	273.26
Other Trade, Transportation & Utilities	11	44	2,165,377	946.41
Financial Activities	15	70	2,599,405	714.12
Professional & Business Services	15	37	1,063,565	552.79
Education & Health Services	27	201	4,472,074	427.87
Local Government	12	406	9,688,586	458.91
State Government	9	53	1,449,747	526.03
Other	16	97	1,871,736	371.08
PHILLIPS COUNTY - TOTAL	790	6,511	\$163,545,608	\$483.05
Natural Resources & Mining	66	400	8,612,770	414.08
Construction	30	133	3,613,078	522.42
Manufacturing	13	373	11,565,612	596.29
Trade, Transportation & Utilities	178	1,638	41,710,141	489.69
Wholesale Trade	35	447	15,295,608	658.05
Retail Trade	102	880	16,876,981	368.82
Transportation, Warehousing & Utilities	42	311	9,537,552	589.76
Information	9	48	1,361,889	545.63
Financial Activities	55	271	7,921,617	562.14
Professional & Business Services	59	179	5,316,474	571.17
Education & Health Services	257	1,317	30,959,967	452.08
Leisure & Hospitality	37	442	4,233,671	184.20
Other Services	41	89	1,546,827	334.23
Local Government	30	1,066	32,720,632	590.28
State Government	17	557	13,982,930	482.77

**TABLE 6. COUNTY SUMMARY
EMPLOYMENT AND TOTAL EARNINGS, BY INDUSTRY
CALENDAR YEAR 2007**

NORTH AMERICAN INDUSTRY CLASSIFICATION SYSTEM INDUSTRY GROUP	AVERAGE EMPLOYING UNITS	AVERAGE COVERED EMPLOYMENT	TOTAL EARNINGS	AVERAGE WEEKLY EARNINGS
PIKE COUNTY - TOTAL	270	2,809	\$66,453,227	\$454.95
Natural Resources & Mining	26	136	4,117,483	582.22
Construction	13	96	3,006,429	602.25
Manufacturing	16	406	9,596,679	454.56
Trade, Transportation & Utilities	93	603	13,981,201	445.89
Wholesale Trade	19	127	3,958,960	599.48
Retail Trade	46	366	6,578,894	345.68
Transportation, Warehousing & Utilities	28	111	3,443,347	596.56
Information	6	30	1,276,064	817.99
Financial Activities	26	184	5,806,965	606.92
Professional & Business Services	14	34	1,830,620	1035.42
Education & Health Services	20	249	4,783,675	369.45
Leisure & Hospitality	18	231	2,334,913	194.38
Other Services	14	129	2,635,970	392.96
Local Government	13	577	14,477,946	482.53
State Government	11	134	2,605,282	373.89
POINSETT COUNTY - TOTAL	495	5,634	\$151,809,491	\$518.18
Natural Resources & Mining	53	339	10,141,392	575.30
Construction	23	73	2,121,041	558.76
Manufacturing	22	976	31,400,887	618.71
Trade, Transportation & Utilities	130	1,345	38,136,089	545.27
Wholesale Trade	32	489	21,224,388	834.69
Retail Trade	70	703	12,401,702	339.25
Transportation, Warehousing & Utilities	28	153	4,509,999	566.87
Information	6	48	2,253,835	902.98
Financial Activities	45	272	8,727,269	617.03
Professional & Business Services	32	173	4,758,541	528.96
Education & Health Services	69	584	12,784,379	420.98
Leisure & Hospitality	45	399	3,502,404	168.81
Other Services	28	65	1,458,291	431.45
Local Government	31	1,149	31,109,653	520.68
State Government	12	210	5,415,710	495.94

**TABLE 6. COUNTY SUMMARY
EMPLOYMENT AND TOTAL EARNINGS, BY INDUSTRY
CALENDAR YEAR 2007**

NORTH AMERICAN INDUSTRY CLASSIFICATION SYSTEM INDUSTRY GROUP	AVERAGE EMPLOYING UNITS	AVERAGE COVERED EMPLOYMENT	TOTAL EARNINGS	AVERAGE WEEKLY EARNINGS
POLK COUNTY - TOTAL	554	6,283	\$146,941,100	\$449.75
Natural Resources & Mining	29	230	7,484,171	625.77
Construction	41	193	4,117,528	410.28
Manufacturing	44	1,349	35,046,773	499.61
Trade, Transportation & Utilities	150	1,291	27,863,809	415.06
Wholesale Trade	25	118	2,148,813	350.20
Retail Trade	81	805	15,143,483	361.77
Transportation, Warehousing & Utilities	45	369	10,571,513	550.94
Information	10	57	1,722,560	581.16
Financial Activities	39	238	6,615,290	534.53
Professional & Business Services	48	233	4,850,514	400.34
Education & Health Services	83	988	23,650,508	460.34
Leisure & Hospitality	40	453	4,142,720	175.87
Other Services	36	143	2,946,171	396.20
Local Government	21	779	21,152,103	522.17
State Government	14	329	7,348,953	429.56
POPE COUNTY - TOTAL	1,759	27,204	\$808,440,906	\$571.49
Natural Resources & Mining	25	609	17,126,777	540.82
Construction	186	1,345	46,801,740	669.17
Manufacturing	90	5,070	178,783,589	678.14
Trade, Transportation & Utilities	469	6,744	242,289,940	690.90
Wholesale Trade	106	720	25,392,417	678.22
Retail Trade	272	3,435	69,897,510	391.32
Transportation, Warehousing & Utilities	91	2,588	147,000,013	1092.32
Information	20	249	9,545,427	737.21
Financial Activities	190	859	28,472,371	637.42
Professional & Business Services	233	2,654	58,172,947	421.52
Education & Health Services	248	3,026	84,500,681	537.02
Leisure & Hospitality	135	2,469	26,296,576	204.82
Other Services	107	477	10,990,175	443.08
Local Government	40	2,134	62,227,928	560.77
State Government	16	1,570	43,232,755	529.55

**TABLE 6. COUNTY SUMMARY
EMPLOYMENT AND TOTAL EARNINGS, BY INDUSTRY
CALENDAR YEAR 2007**

NORTH AMERICAN INDUSTRY CLASSIFICATION SYSTEM INDUSTRY GROUP	AVERAGE EMPLOYING UNITS	AVERAGE COVERED EMPLOYMENT	TOTAL EARNINGS	AVERAGE WEEKLY EARNINGS
PRAIRIE COUNTY - TOTAL	242	1,404	\$36,908,581	\$505.54
Natural Resources & Mining	29	139	4,043,979	559.49
Construction	14	58	1,695,592	562.20
Trade, Transportation & Utilities	68	323	8,128,548	483.96
Wholesale Trade	10	57	2,087,906	704.42
Retail Trade	38	185	3,052,245	317.28
Transportation, Warehousing & Utilities	20	80	2,988,397	718.36
Financial Activities	18	66	2,076,995	605.19
Professional & Business Services	16	46	1,142,630	477.69
Education & Health Services	32	157	3,735,074	457.51
Leisure & Hospitality	18	88	873,102	190.80
Other Services	14	38	695,474	351.96
Local Government	15	300	8,223,494	527.15
State Government	10	50	1,439,426	553.63
Other	8	140	4,854,267	666.79
PULASKI COUNTY - TOTAL	14,553	241,051	\$9,948,809,190	\$793.70
Natural Resources & Mining	55	695	36,076,032	998.23
Construction	1,173	10,744	458,842,350	821.29
Manufacturing	449	15,417	692,823,725	864.21
Trade, Transportation & Utilities	3,339	51,715	1,851,831,786	688.62
Wholesale Trade	1,189	13,540	705,576,581	1002.13
Retail Trade	1,753	24,952	595,932,129	459.29
Transportation, Warehousing & Utilities	396	13,223	550,323,076	800.36
Information	243	8,661	1,103,730,978	2450.71
Financial Activities	1,798	16,449	887,602,393	1037.71
Professional & Business Services	2,817	34,241	1,283,484,096	720.84
Education & Health Services	2,120	34,617	1,425,355,639	791.83
Leisure & Hospitality	1,042	20,584	298,525,284	278.90
Other Services	1,211	6,952	204,343,168	565.26
Local Government	104	16,241	601,193,835	711.87
State Government	204	24,735	1,104,999,904	859.11

**TABLE 6. COUNTY SUMMARY
EMPLOYMENT AND TOTAL EARNINGS, BY INDUSTRY
CALENDAR YEAR 2007**

NORTH AMERICAN INDUSTRY CLASSIFICATION SYSTEM INDUSTRY GROUP	AVERAGE EMPLOYING UNITS	AVERAGE COVERED EMPLOYMENT	TOTAL EARNINGS	AVERAGE WEEKLY EARNINGS
RANDOLPH COUNTY - TOTAL	417	4,819	\$118,823,070	\$474.18
Natural Resources & Mining	23	75	1,588,802	407.39
Construction	22	85	1,579,473	357.35
Manufacturing	40	805	26,259,210	627.31
Trade, Transportation & Utilities	101	940	20,502,195	419.44
Wholesale Trade	22	208	4,377,624	404.74
Retail Trade	60	605	11,436,136	363.51
Transportation, Warehousing & Utilities	19	126	4,688,435	715.57
Information	5	41	1,559,507	731.48
Financial Activities	31	157	4,791,381	586.89
Professional & Business Services	37	244	4,268,935	336.45
Education & Health Services	71	886	24,010,007	521.14
Leisure & Hospitality	29	397	3,517,475	170.39
Other Services	25	63	1,202,079	366.93
Local Government	23	853	21,246,321	479.00
State Government	12	272	8,297,685	586.66
SAINT FRANCIS COUNTY - TOTAL	691	7,800	\$203,041,185	\$500.59
Natural Resources & Mining	26	174	4,678,268	517.05
Construction	45	239	6,700,139	539.12
Manufacturing	17	996	30,462,958	588.18
Trade, Transportation & Utilities	182	2,037	52,209,262	492.89
Wholesale Trade	33	518	17,491,793	649.38
Retail Trade	121	1,237	23,727,705	368.88
Transportation, Warehousing & Utilities	28	281	10,989,764	752.11
Information	9	94	2,766,904	566.06
Financial Activities	58	312	8,147,517	502.19
Professional & Business Services	56	196	6,889,864	676.01
Education & Health Services	160	1,334	31,279,535	450.92
Leisure & Hospitality	52	678	7,813,867	221.63
Other Services	42	117	2,004,192	329.42
Local Government	29	1,101	33,221,033	580.26
State Government	17	523	16,867,646	620.23

**TABLE 6. COUNTY SUMMARY
EMPLOYMENT AND TOTAL EARNINGS, BY INDUSTRY
CALENDAR YEAR 2007**

NORTH AMERICAN INDUSTRY CLASSIFICATION SYSTEM INDUSTRY GROUP	AVERAGE EMPLOYING UNITS	AVERAGE COVERED EMPLOYMENT	TOTAL EARNINGS	AVERAGE WEEKLY EARNINGS
SALINE COUNTY - TOTAL	1,812	20,975	\$602,463,062	\$552.36
Natural Resources & Mining	16	35	1,281,640	704.20
Construction	316	1,949	67,052,342	661.60
Manufacturing	89	1,910	79,919,938	804.67
Trade, Transportation & Utilities	440	4,614	126,635,929	527.81
Wholesale Trade	129	523	24,809,708	912.26
Retail Trade	252	3,788	90,768,096	460.81
Transportation, Warehousing & Utilities	60	304	11,058,125	699.53
Information	18	150	4,609,510	590.96
Financial Activities	177	776	25,150,608	623.28
Professional & Business Services	228	1,263	34,742,162	528.99
Education & Health Services	209	2,897	78,618,764	521.88
Leisure & Hospitality	137	2,542	30,442,984	230.31
Other Services	133	578	15,134,593	503.55
Local & State Government	50	4,262	138,874,592	626.62
SCOTT COUNTY - TOTAL	192	2,841	\$66,571,890	\$450.63
Natural Resources & Mining	18	183	6,007,761	631.33
Trade, Transportation & Utilities	41	463	9,965,293	413.91
Wholesale Trade	9	68	2,020,687	571.46
Retail Trade	25	326	5,443,491	321.11
Transportation, Warehousing & Utilities	7	69	2,501,115	697.08
Financial Activities	20	76	1,803,318	456.31
Professional & Business Services	12	19	466,695	472.36
Education & Health Services	32	306	7,185,733	451.59
Leisure & Hospitality	18	163	1,528,072	180.28
Other Services	10	39	1,240,389	611.63
Local Government	5	362	9,566,910	508.23
State Government	8	75	1,797,093	460.79
Other	30	1,156	27,010,626	449.34

**TABLE 6. COUNTY SUMMARY
EMPLOYMENT AND TOTAL EARNINGS, BY INDUSTRY
CALENDAR YEAR 2007**

NORTH AMERICAN INDUSTRY CLASSIFICATION SYSTEM INDUSTRY GROUP	AVERAGE EMPLOYING UNITS	AVERAGE COVERED EMPLOYMENT	TOTAL EARNINGS	AVERAGE WEEKLY EARNINGS
SEARCY COUNTY - TOTAL	186	1,740	\$35,115,227	\$388.10
Construction	7	14	348,509	478.72
Manufacturing	17	272	4,811,689	340.19
Trade, Transportation & Utilities	39	320	5,255,442	315.83
Retail Trade	26	220	3,344,560	292.36
Other Trade, Transportation & Utilities	13	100	1,910,882	367.48
Financial Activities	14	94	2,482,215	507.82
Professional & Business Services	16	34	731,701	413.86
Education & Health Services	47	320	5,931,822	356.48
Leisure & Hospitality	13	117	1,157,794	190.30
Local Government	10	360	8,701,369	464.82
State Government	8	144	3,692,791	493.16
Other	15	65	2,001,895	592.28
SEBASTIAN COUNTY - TOTAL	3,709	72,986	\$2,439,452,459	\$642.76
Natural Resources & Mining	74	1,749	109,953,522	1208.97
Construction	310	2,836	107,348,430	727.92
Manufacturing	237	18,991	702,509,637	711.38
Trade, Transportation & Utilities	944	12,978	378,577,719	560.98
Wholesale Trade	248	2,610	113,654,263	837.42
Retail Trade	564	8,065	175,252,606	417.88
Transportation, Warehousing & Utilities	133	2,304	89,670,850	748.45
Information	60	1,089	49,795,921	879.35
Financial Activities	415	2,586	100,590,807	748.04
Professional & Business Services	536	9,770	285,743,446	562.44
Education & Health Services	491	10,243	399,010,119	749.12
Leisure & Hospitality	305	5,541	67,688,638	234.92
Other Services	271	1,450	35,698,769	473.46
Local Government	43	4,341	155,485,262	688.80
State Government	22	1,412	47,050,189	640.80

**TABLE 6. COUNTY SUMMARY
EMPLOYMENT AND TOTAL EARNINGS, BY INDUSTRY
CALENDAR YEAR 2007**

NORTH AMERICAN INDUSTRY CLASSIFICATION SYSTEM INDUSTRY GROUP	AVERAGE EMPLOYING UNITS	AVERAGE COVERED EMPLOYMENT	TOTAL EARNINGS	AVERAGE WEEKLY EARNINGS
SEVIER COUNTY - TOTAL	336	5,923	\$156,849,114	\$509.26
Natural Resources & Mining	18	254	6,635,227	502.36
Construction	21	149	4,978,998	642.62
Manufacturing	11	2,329	57,480,113	474.62
Trade, Transportation & Utilities	98	883	22,363,291	487.05
Wholesale Trade	16	145	6,839,601	907.11
Retail Trade	62	607	10,917,317	345.88
Transportation, Warehousing & Utilities	20	131	4,606,373	676.21
Information	6	38	1,203,511	609.06
Financial Activities	30	203	6,051,735	573.30
Professional & Business Services	30	99	13,392,314	2601.46
Education & Health Services	51	518	12,424,868	461.27
Leisure & Hospitality	22	262	2,447,169	179.62
Other Services	31	139	2,438,488	337.37
Local Government	11	852	22,394,540	505.47
State Government	9	198	5,038,860	489.40
SHARP COUNTY - TOTAL	446	3,874	\$86,100,621	\$427.41
Construction	31	201	6,141,547	587.60
Manufacturing	21	183	3,550,914	373.15
Trade, Transportation & Utilities	103	1,003	24,813,859	475.76
Retail Trade	73	666	11,665,220	336.83
Other Trade, Transportation & Utilities	30	337	13,148,639	750.32
Information	7	60	2,765,336	886.33
Financial Activities	38	260	7,380,041	545.86
Professional & Business Services	44	163	4,315,588	509.15
Education & Health Services	97	592	11,941,265	387.90
Leisure & Hospitality	44	455	4,077,792	172.35
Local Government	24	759	16,961,493	429.75
State Government	9	112	2,707,085	464.82
Other	29	88	1,445,701	315.93

**TABLE 6. COUNTY SUMMARY
EMPLOYMENT AND TOTAL EARNINGS, BY INDUSTRY
CALENDAR YEAR 2007**

NORTH AMERICAN INDUSTRY CLASSIFICATION SYSTEM INDUSTRY GROUP	AVERAGE EMPLOYING UNITS	AVERAGE COVERED EMPLOYMENT	TOTAL EARNINGS	AVERAGE WEEKLY EARNINGS
STONE COUNTY - TOTAL	290	2,983	\$64,458,318	\$415.55
Construction	24	109	2,510,231	442.88
Manufacturing	25	455	9,963,854	421.13
Trade, Transportation & Utilities	78	726	15,864,560	420.23
Wholesale Trade	9	57	1,317,743	444.58
Retail Trade	56	619	12,877,185	400.06
Transportation, Warehousing & Utilities	13	50	1,669,632	642.17
Financial Activities	27	127	3,235,999	490.01
Professional & Business Services	11	27	783,622	558.14
Education & Health Services	51	483	12,464,173	496.26
Leisure & Hospitality	34	395	3,771,293	183.61
Other Services	14	27	602,775	429.33
Local Government	10	398	10,671,831	515.65
State Government	9	178	3,204,457	346.20
Other	7	58	1,385,523	459.39
UNION COUNTY - TOTAL	1,398	19,498	\$693,054,972	\$683.56
Natural Resources & Mining	112	530	20,221,430	733.72
Construction	92	1,332	59,279,732	855.85
Manufacturing	65	4,769	198,300,875	799.64
Trade, Transportation & Utilities	355	3,630	123,588,581	654.74
Wholesale Trade	82	634	42,801,924	1298.29
Retail Trade	215	2,207	43,413,718	378.29
Transportation, Warehousing & Utilities	58	789	37,372,939	910.91
Information	20	201	5,926,483	567.02
Financial Activities	120	714	23,076,238	621.53
Professional & Business Services	143	1,625	87,492,229	1035.41
Education & Health Services	207	2,445	78,188,645	614.98
Leisure & Hospitality	89	1,209	13,703,366	217.97
Other Services	142	559	13,418,394	461.62
Local Government	37	1,927	53,290,981	531.82
State Government	18	557	16,568,018	572.02

**TABLE 6. COUNTY SUMMARY
EMPLOYMENT AND TOTAL EARNINGS, BY INDUSTRY
CALENDAR YEAR 2007**

NORTH AMERICAN INDUSTRY CLASSIFICATION SYSTEM INDUSTRY GROUP	AVERAGE EMPLOYING UNITS	AVERAGE COVERED EMPLOYMENT	TOTAL EARNINGS	AVERAGE WEEKLY EARNINGS
VAN BUREN COUNTY - TOTAL	357	3,697	\$85,992,971	\$447.31
Natural Resources & Mining	13	49	2,004,610	786.74
Construction	42	205	5,374,941	504.22
Manufacturing	15	475	12,259,160	496.32
Trade, Transportation & Utilities	96	800	18,085,276	434.74
Wholesale Trade	15	48	1,753,244	702.42
Retail Trade	58	603	11,740,359	374.42
Transportation, Warehousing & Utilities	23	148	4,591,673	596.63
Information	10	50	1,738,801	668.77
Financial Activities	27	152	4,355,145	551.01
Professional & Business Services	26	105	2,194,246	401.88
Education & Health Services	54	619	14,648,322	455.09
Leisure & Hospitality	31	460	5,706,607	238.57
Other Services	25	78	1,734,716	427.69
Local Government	11	611	15,379,573	484.06
State Government	8	94	2,511,574	513.82
WASHINGTON COUNTY - TOTAL	5,649	90,725	\$3,180,107,713	\$674.08
Natural Resources & Mining	39	502	17,451,289	668.53
Construction	685	5,565	201,208,982	695.31
Manufacturing	240	15,043	513,711,386	656.72
Trade, Transportation & Utilities	1,355	20,692	706,409,524	656.52
Wholesale Trade	409	3,863	219,325,591	1091.85
Retail Trade	754	11,441	264,917,268	445.29
Transportation, Warehousing & Utilities	192	5,388	222,166,665	792.95
Information	94	1,607	69,017,675	825.93
Financial Activities	663	4,054	158,020,155	749.59
Professional & Business Services	949	8,936	448,714,740	965.66
Education & Health Services	638	10,751	411,738,018	736.49
Leisure & Hospitality	513	9,331	119,883,740	247.07
Other Services	390	1,959	47,026,870	461.65
Local & State Government	84	12,286	486,925,334	762.16

**TABLE 6. COUNTY SUMMARY
EMPLOYMENT AND TOTAL EARNINGS, BY INDUSTRY
CALENDAR YEAR 2007**

NORTH AMERICAN INDUSTRY CLASSIFICATION SYSTEM INDUSTRY GROUP	AVERAGE EMPLOYING UNITS	AVERAGE COVERED EMPLOYMENT	TOTAL EARNINGS	AVERAGE WEEKLY EARNINGS
WHITE COUNTY - TOTAL	1,703	23,298	\$688,919,509	\$568.65
Natural Resources & Mining	43	504	22,184,400	846.47
Construction	188	1,233	40,444,742	630.81
Manufacturing	85	2,744	111,505,590	781.46
Trade, Transportation & Utilities	480	5,922	168,649,703	547.66
Wholesale Trade	98	624	20,578,426	634.20
Retail Trade	296	3,194	65,096,308	391.94
Transportation, Warehousing & Utilities	87	2,103	82,974,969	758.76
Information	23	223	6,468,378	557.81
Financial Activities	180	948	29,823,830	604.99
Professional & Business Services	173	1,337	36,878,371	530.44
Education & Health Services	241	4,191	140,913,264	646.59
Leisure & Hospitality	121	2,282	23,067,284	194.39
Other Services	105	620	16,101,703	499.43
Local Government	46	2,550	72,126,126	543.94
State Government	19	744	20,756,118	536.50
WOODRUFF COUNTY - TOTAL	201	1,940	\$50,503,114	\$500.63
Natural Resources & Mining	20	130	3,620,176	535.53
Construction	7	62	1,618,302	501.95
Manufacturing	8	326	9,101,408	536.89
Trade, Transportation & Utilities	59	503	14,919,599	570.41
Wholesale Trade	13	190	7,791,792	788.64
Retail Trade	27	197	2,823,201	275.60
Transportation, Warehousing & Utilities	19	115	4,304,606	719.83
Financial Activities	16	62	1,807,021	560.49
Professional & Business Services	4	7	260,431	715.47
Education & Health Services	55	232	5,574,877	462.11
Leisure & Hospitality	7	55	421,162	147.26
Local Government	10	482	11,170,408	445.68
State Government	7	60	1,532,107	491.06
Other	8	22	477,623	417.50

**TABLE 6. COUNTY SUMMARY
EMPLOYMENT AND TOTAL EARNINGS, BY INDUSTRY
CALENDAR YEAR 2007**

NORTH AMERICAN INDUSTRY CLASSIFICATION SYSTEM INDUSTRY GROUP	AVERAGE EMPLOYING UNITS	AVERAGE COVERED EMPLOYMENT	TOTAL EARNINGS	AVERAGE WEEKLY EARNINGS
YELL COUNTY - TOTAL	406	6,711	\$167,917,303	\$481.18
Natural Resources & Mining	22	225	6,056,688	517.67
Construction	44	325	9,548,661	565.01
Manufacturing	20	2,723	68,339,110	482.63
Trade, Transportation & Utilities	84	679	13,279,511	376.10
Wholesale Trade	12	22	550,661	481.35
Retail Trade	53	567	9,565,005	324.41
Transportation, Warehousing & Utilities	19	90	3,163,845	676.04
Information	3	73	2,701,171	711.58
Financial Activities	38	200	5,350,011	514.42
Professional & Business Services	36	263	11,173,179	816.99
Education & Health Services	73	479	10,154,989	407.70
Leisure & Hospitality	29	336	3,433,707	196.53
Other Services	17	73	1,148,384	302.52
Local Government	28	1,217	33,966,556	536.73
State Government	13	118	2,765,336	450.67
REST-OF-STATE-TOTAL	3,871	15,796	\$897,711,541	\$1,092.91
Natural Resources & Mining	57	524	24,626,345	903.79
Construction	500	3,119	129,861,969	800.69
Manufacturing	53	151	5,887,294	749.78
Trade, Transportation & Utilities	1,513	6,091	452,893,914	1429.90
Wholesale Trade	1,281	4,924	404,609,917	1580.21
Retail Trade	101	489	23,729,923	933.22
Transportation, Warehousing & Utilities	131	678	24,554,074	696.45
Information	88	215	11,753,420	1051.29
Financial Activities	239	731	41,503,566	1091.85
Professional & Business Services	1,165	3,811	180,308,339	909.86
Education & Health Services	94	510	24,815,774	935.74
Other	163	644	26,060,920	778.22

TABLE 7. FEDERAL GOVERNMENT EMPLOYMENT AND EARNINGS IN ARKANSAS

NORTH AMERICAN INDUSTRY CLASSIFICATION SYSTEM INDUSTRY GROUP	AVERAGE EMPLOYING UNITS	AVERAGE COVERED EMPLOYMENT	TOTAL EARNINGS CALENDAR YEAR 2007	AVERAGE WEEKLY EARNINGS
Trade, Transportation & Utilities	614	6,750	\$301,664,208	\$859.44
Information	1	33	\$1,644,814	\$958.52
Financial Activities	23	170	\$11,189,434	\$1,265.77
Professional & Business Services	31	788	\$50,502,802	\$1,232.50
Education & Health Services	6	4,138	\$318,681,936	\$1,481.03
Leisure & Hospitality	15	223	\$9,902,437	\$853.95
Other Services	2	260	\$3,861,302	\$285.60
Public Administration	489	8,497	\$518,491,317	\$1,173.47
TOTAL	1,182	20,858	\$1,215,938,250	\$1,121.08

**TABLE 8. WORKFORCE INFORMATION AREA, SUMMARY
EMPLOYMENT AND TOTAL EARNINGS, BY INDUSTRY
CALENDAR YEAR 2007**

NORTH AMERICAN INDUSTRY CLASSIFICATION SYSTEM INDUSTRY GROUP	AVERAGE EMPLOYING UNITS	AVERAGE COVERED EMPLOYMENT	TOTAL EARNINGS	AVERAGE WEEKLY EARNINGS
CENTRAL WORKFORCE INFORMATION*	6,248	76,601	\$2,329,042,811	\$584.71
Natural Resources & Mining	185	1,386	65,219,637	904.92
Trade, Transportation & Utilities	1,574	15,247	397,347,772	501.17
Wholesale Trade	414	2,120	88,312,031	801.09
Retail Trade	895	11,429	243,825,902	410.27
Transportation, Warehousing & Utilities	265	1,698	65,209,839	738.54
Financial Activities	660	3,018	102,071,279	650.40
Professional & Business Services	753	7,254	323,570,015	857.80
Education & Health Services	787	10,345	293,343,007	545.31
Leisure & Hospitality	468	8,201	90,449,509	212.10
Local & State Government	210	14,266	452,963,841	610.60
Other	1,619	16,890	604,077,751	687.80
EASTERN WORKFORCE INFORMATION	3,498	38,284	\$1,061,791,622	\$533.36
Natural Resources & Mining	203	1,242	29,506,158	456.86
Construction	193	1,064	32,219,111	582.33
Trade, Transportation & Utilities	884	10,137	290,422,521	550.96
Wholesale Trade	184	2,114	81,142,794	738.14
Retail Trade	488	5,068	99,606,465	377.96
Transportation, Warehousing & Utilities	212	2,955	109,673,262	713.74
Financial Activities	286	1,589	48,819,384	590.83
Professional & Business Services	311	1,661	45,788,368	530.13
Education & Health Services	821	5,720	152,177,636	511.62
Leisure & Hospitality	233	3,732	44,724,887	230.46
Local Government	137	5,585	175,906,019	605.70
State Government	68	2,267	65,794,494	558.13
Other	373	5,292	176,433,044	641.15

*Note: Pulaski County is not included in the Central Workforce Information. Please refer to Page 55 for information on Pulaski County.
Central Workforce includes these counties: Faulkner, Lonoke Monroe, Prairie, and Saline.

Eastern Workforce includes these counties: Crittenden, Cross, Lee, Phillips, and Saint Francis.

**TABLE 8. WORKFORCE INFORMATION AREA, SUMMARY
EMPLOYMENT AND TOTAL EARNINGS, BY INDUSTRY
CALENDAR YEAR 2007**

NORTH AMERICAN INDUSTRY CLASSIFICATION SYSTEM INDUSTRY GROUP	AVERAGE EMPLOYING UNITS	AVERAGE COVERED EMPLOYMENT	TOTAL EARNINGS	AVERAGE WEEKLY EARNINGS
NORTH CENTRAL WORKFORCE INFORMATION	5,672	69,136	\$1,880,788,888	\$523.16
Construction	512	2,967	88,664,169	574.68
Trade, Transportation & Utilities	1,531	15,626	418,301,207	514.80
Retail Trade	941	9,279	182,226,399	377.67
Other Trade, Transportation & Utilities	590	6,347	236,074,808	715.28
Financial Activities	538	2,729	84,639,460	596.44
Professional & Business Services	482	3,022	75,758,215	482.09
Education & Health Services	937	11,583	345,132,890	573.01
Leisure & Hospitality	446	6,271	65,134,093	199.74
Local Government	231	8,721	226,788,269	500.09
State Government	115	3,030	83,950,630	532.82
Other	890	15,194	492,419,955	623.25

North Central Workforce Includes these counties: Cleburne, Fulton, Independence, Izard, Jackson, Sharp, Stone, Van Buren, White, and Woodruff

NORTHEAST WORKFORCE INFORMATION	6,551	94,205	\$2,841,684,758	\$580.09
Natural Resources & Mining	368	2,028	53,944,168	511.53
Construction	505	3,047	98,842,199	623.83
Manufacturing	357	20,746	839,201,837	777.91
Trade, Transportation & Utilities	1,754	17,951	479,941,645	514.16
Wholesale Trade	412	3,703	138,928,077	721.49
Retail Trade	1,034	11,644	229,626,109	379.24
Transportation, Warehousing & Utilities	308	2,604	111,387,459	822.61
Financial Activities	610	3,437	122,430,336	685.02
Professional & Business Services	669	6,865	175,933,643	492.84
Education & Health Services	1,020	13,127	424,095,069	621.29
Leisure & Hospitality	476	7,700	81,737,608	204.14
Local Government	219	11,414	325,761,595	548.86
State Government	107	4,066	140,128,161	662.76
Other	481	3,819	99,668,497	501.89

Northeast Workforce includes these counties: Clay, Craighead, Greene, Lawrence, Mississippi, Poinsett, and Randolph.

**TABLE 8. WORKFORCE INFORMATION AREA, SUMMARY
EMPLOYMENT AND TOTAL EARNINGS, BY INDUSTRY
CALENDAR YEAR 2007**

NORTH AMERICAN INDUSTRY CLASSIFICATION SYSTEM INDUSTRY GROUP	AVERAGE EMPLOYING UNITS	AVERAGE COVERED EMPLOYMENT	TOTAL EARNINGS	AVERAGE WEEKLY EARNINGS
NORTHWEST WORKFORCE INFORMATION	15,250	234,760	\$8,322,344,964	\$681.74
Trade, Transportation & Utilities	3,764	55,215	1,909,229,787	664.96
Retail Trade	2,011	26,994	614,152,693	437.53
Other Trade, Transportation & Utilities	1,753	28,221	1,295,077,094	882.51
Education & Health Services	1,793	24,327	851,534,585	673.15
Leisure & Hospitality	1,390	22,130	279,762,696	243.11
Local & State Government	430	27,745	982,764,393	681.18
Other	7,886	105,353	4,299,053,503	784.73

Northwest Workforce includes these counties: Baxter, Benton, Boone, Carroll, Madison, Marion, Newton, Searcy, and Washington.

SOUTHEAST WORKFORCE INFORMATION	5,608	76,163	\$2,287,580,466	\$577.60
Natural Resources & Mining	403	2,872	87,068,160	583.00
Construction	373	3,215	122,934,347	735.34
Manufacturing	224	17,042	655,510,929	739.70
Trade, Transportation & Utilities	1,373	13,360	363,551,057	523.31
Retail Trade	824	8,603	169,044,568	377.87
Other Trade, Transportation & Utilities	549	4,757	194,506,489	786.32
Local & State Government	357	16,064	470,580,681	563.35
Other	2,889	23,616	587,935,292	478.76

Southeast Workforce includes these counties: Arkansas, Ashley, Bradley, Chicot, Cleveland, Desha, Drew, Grant, Jefferson, and Lincoln.

SOUTHWEST WORKFORCE INFORMATION	5,808	85,487	\$2,683,101,369	\$603.58
Natural Resources & Mining	414	2,899	107,887,697	715.68
Trade, Transportation & Utilities	1,500	15,495	446,739,506	554.45
Education & Health Services	811	9,408	242,737,100	496.18
Local & State Government	416	13,937	395,505,277	545.73
Other	2,675	43,755	1,490,231,789	654.97

Southwest Workforce includes these counties: Calhoun, Columbia, Dallas, Hempstead, Howard, Lafayette, Little River, Miller, Nevada, Ouachita, Sevier, and Union.

**TABLE 8. WORKFORCE INFORMATION AREA, SUMMARY
EMPLOYMENT AND TOTAL EARNINGS, BY INDUSTRY
CALENDAR YEAR 2007**

NORTH AMERICAN INDUSTRY CLASSIFICATION SYSTEM INDUSTRY GROUP	AVERAGE EMPLOYING UNITS	AVERAGE COVERED EMPLOYMENT	TOTAL EARNINGS	AVERAGE WEEKLY EARNINGS
WEST CENTRAL WORKFORCE INFORMATION	8,317	109,691	\$3,074,010,924	\$538.93
Natural Resources & Mining	251	2,313	74,645,281	620.62
Construction	932	5,573	178,135,565	614.69
Trade, Transportation & Utilities	1,991	22,398	640,696,811	550.10
Financial Activities	888	4,077	131,120,434	618.48
Education & Health Services	1,182	15,625	488,456,686	601.18
Local Government	230	11,551	338,490,315	563.54
State Government	134	5,337	151,314,996	545.23
Other	2,718	42,822	1,071,150,836	481.04

West Central Workforce Includes these counties: Clark, Conway, Garland, Hot Spring, Johnson, Montgomery, Perry, Pike, Pope, and Yell

WESTERN WORKFORCE INFORMATION	6,528	112,264	\$3,503,184,302	\$600.09
Natural Resources & Mining	180	3,097	164,822,073	1023.46
Trade, Transportation & Utilities	1,644	23,280	661,245,050	546.23
Retail Trade	952	12,401	258,936,576	401.54
Other Trade, Transportation & Utilities	692	10,879	402,308,474	711.16
Financial Activities	689	3,924	140,081,983	686.51
Professional & Business Services	814	11,306	327,862,705	557.67
Education & Health Services	874	14,119	498,038,374	678.35
Leisure & Hospitality	506	8,368	96,822,612	222.51
Local & State Government	231	11,767	373,062,212	609.69
Other	1,599	36,406	1,241,249,293	655.67

Western Workforce includes these counties: Crawford, Franklin, Logan, Polk, Scott, and Sebastian.