

# Arkansas Covered Employment & Earnings

Jobs for People. People for Jobs.  
**DWS**  
Department of  
WORKFORCE**Services**

Second Quarter  
2007



**COVERED EMPLOYMENT AND EARNINGS  
STATE OF ARKANSAS  
SECOND QUARTER 2007**

**MIKE BEEBE, GOVERNOR  
STATE OF ARKANSAS**

**ARTEE WILLIAMS, DIRECTOR  
DEPARTMENT OF WORKFORCE SERVICES**

**PUBLISHED BY  
LABOR MARKET INFORMATION & ANALYSIS  
BUREAU OF LABOR STATISTICS PROGRAMS  
POST OFFICE BOX 2981  
LITTLE ROCK, ARKANSAS 72203-2981  
BERNADETTE COLEMAN, BLS PROGRAMS MANAGER  
TELEPHONE: (501) 682-3159**

**STATE OF ARKANSAS HOME PAGE: <http://www.arkansas.gov>**

**DEPARTMENT OF WORKFORCE SERVICES HOME PAGE: <http://www.arkansas.gov/esd/>**

**INTERNET SITE FOR LABOR MARKET INFORMATION:  
<http://www.discover.arkansas.gov>**

**RELEASED: NOVEMBER 2008**



## TABLE OF CONTENTS

Description of Data	1
Industry Classification	1
Definition of Covered Employment and Earnings	2
Federal Government Employment	2
County Classification	2
Significant Developments During Second Quarter 2007	3

## LIST OF GRAPHS AND TABLES

Graph 1	Total Covered Employment for Selected Years, Arkansas	7
Graph 2	Total Covered Earnings, by Calendar Quarter for Selected Years, Arkansas	8
Table 1	Quarterly Comparison of Covered Employment and Wages, by Industry	5
Table 2	Total Covered Employment in Arkansas, 2000-2007	6
Table 3	Total Covered Earnings, 2000-2007	9
Table 4	Total Taxable Earnings, 2000-2007	10
Table 5	State Summary - Employment and Total Earnings, by Industry, Second Quarter 2007	11
Table 6	County Summary - Employment and Total Earnings, by Industry, Second Quarter 2007	24
Table 7	Federal Government Employment and Total Earnings in Arkansas, Second Quarter 2007	62
Table 8	Workforce Information Area – Employment and Total Earnings, by Industry, Second Quarter 2007	63



## EMPLOYMENT AND EARNINGS UNDER THE ARKANSAS EMPLOYMENT SECURITY LAW SECOND QUARTER 2007

### DESCRIPTION OF DATA

This publication contains covered employment and payroll data by industry and county for the Second Quarter 2007. These data are compiled from quarterly contribution and wage reports submitted by employers subject to the Arkansas Employment Security Law. An employing unit is a single physical location where business is conducted, production takes place, or services are provided. Employment data have been tabulated for each month of the quarter by industry under the **North American Industry Classification System** (NAICS) (see "Industry Classification" below) on a statewide, county and workforce area basis. Payroll data represent the total wages paid during the quarter, and are also shown by

industry for the State and by publishable industry groups for each county and workforce area. The tabulation of this data is a joint effort in conjunction with the U.S. Bureau of Labor Statistics. In addition, there are tables included which set out total covered employment by months, quarterly payrolls, and average weekly earnings for the years 2000 through 2007. Data contained in this publication are subject to revision. These revisions will be reflected in the 2007 Annual Covered Employment and Earnings publication. Because of industry code changes between years, substantial employment and wage shifts among industries are anticipated.

### INDUSTRY CLASSIFICATION

Previously published industry data **will not** be comparable in all instances with currently published data since industry codes have been revised according to the following Manuals: (a) between January 1, 1958 and December 31, 1967, industry codes were assigned under the 1957 Standard Industrial Classification (SIC) Manual; (b) between January 1, 1968 and December 31, 1974, industry codes were assigned under the 1967 Standard Industrial Classification (SIC) Manual; (c) between January 1, 1975 and December 31, 1987, industry codes were assigned under the 1972 Standard Industrial Classification (SIC) Manual; (d) between January 1, 1988 and December 31, 2000, industry codes were assigned under the 1987 Standard Industrial Classification (SIC) Manual; (e) between January 1, 2001 and December 31, 2006, industry codes were assigned under the 2002 North American Industry Classification System (NAICS) Manual; and (f) since January 1, 2007, industry codes have been assigned under the 2007 North American Industry Classification System (NAICS) Manual. **The**

**NAICS Manual represents a significant change in coding methodology as compared to the SIC Manual.** One of the most significant changes involves how NAICS treats auxiliary units. Auxiliary units are establishments primarily engaged in performing management or support services for other establishments of the same enterprise. The SIC code for these units was based on the activity of the enterprise served. The NAICS code is based on the actual activities that the establishment performs. Comparisons of many industries **should not be made** between this publication and previous Covered Employment and Earnings publications that were based on SIC. Even though some titles are the same or similar, in nature, NAICS and SIC could differ in the classification of employers. The implementation of NAICS represents a profound change for statistical programs, and will create significant benefits along with transition obstacles for both data collectors and data users. A summary is available on the NAICS home page at <http://www.census.gov/naics>.

## DEFINITION OF COVERED EMPLOYMENT AND EARNINGS

Covered Employment is the number of workers employed by employers subject to the Arkansas Employment Security Law who worked or received pay for the payroll period including the 12th of the month. An employer is subject to the law when they employ one or more employees in each of ten days during the current or preceding calendar year.

Currently excluded from coverage is employment covered by the Railroad Unemployment Insurance Act, some domestic service workers, employees of small agricultural establishments, self-employed and unpaid family workers, insurance and real estate

agents who are on commission only, and employees of churches and religious organizations except separately incorporated schools. The payroll information in this publication includes all wages and salaries paid to any covered employees by their employers including bonuses, commissions, and cash values of remuneration received in any medium other than cash. These wages include both taxable and nontaxable wages. Only the first \$10,000 paid to each worker by an employer in the calendar year is taxable under the Arkansas Employment Security Law.

## FEDERAL GOVERNMENT EMPLOYMENT

Table 7 on page 62 lists the total number of civilians employed by the Federal Government in Arkansas during the Second Quarter 2007. Employment and wage data are set out by industry divisions. These data are obtained from required reports submitted by various

government agencies having employment in the State. Civilian Federal workers are covered by the Unemployment Compensation for Federal Employees (UCFE) program.

## COUNTY CLASSIFICATION

Employment and payroll data by county are classified according to the county where the workers are employed. Employers with operations in more than one county are requested to furnish this agency with a breakdown of employment and wages for at least one quarter of each year by the counties in which they operate. Many such employers submit county data with each regular contribution report. **Note:** This information is invaluable in the preparation of monthly employment and payroll data by county.

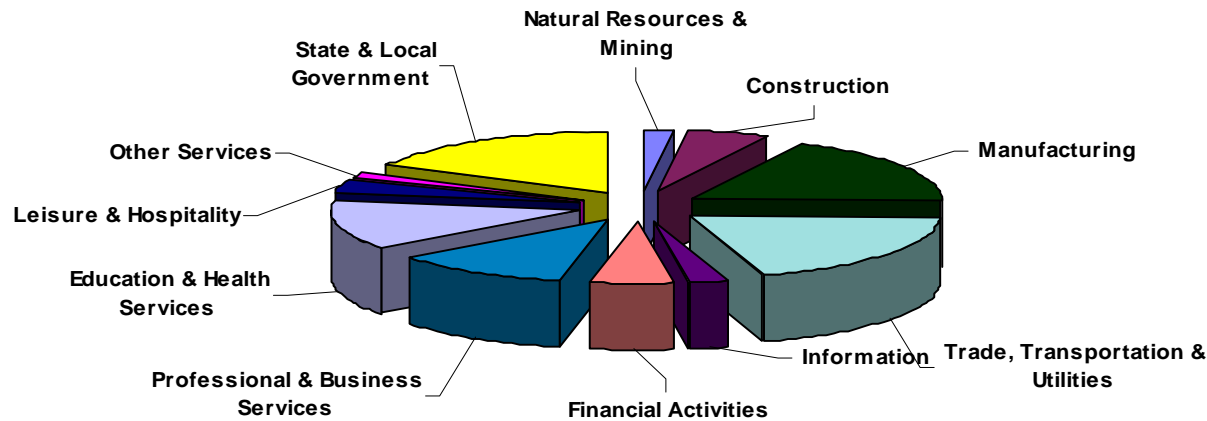
Employment and payroll data for multi - area employers, who do not furnish county data each quarter of the year, are prorated by county on the basis of one quarter's information. The "rest-of-state" table that appears on page 61 of this publication includes data on firms that **did not** provide a county breakdown of employment and payrolls. It also includes sales, and all other type of personnel with no permanent place of work, as well as employment of employers with no established place of business in Arkansas.



## SIGNIFICANT DEVELOPMENTS DURING SECOND QUARTER 2007

**AVERAGE EMPLOYMENT CHANGES**

Covered employment averaged 1,164,068 during the Second Quarter 2007 (see table 1), an increase of 17,193 (1.5%) from the previous quarter and 4,905 (0.4%) above the average recorded one-year ago. This *over-the-year* increase is more significant when used as an economic indicator. This *over-the-year* comparison allows for the disregarding of many seasonal factors that are evident when making an *over-the-quarter* comparison.

**Average Covered Employment by NAICS Group****EMPLOYMENT CHANGES FROM FIRST QUARTER 2007**

*Over the quarter* gains were recorded in ten industries while only one suffered a loss. The largest gain was the addition of 6,334 jobs in the Leisure and Hospitality sector. This is because of the seasonal increase in employees during the summer travel and recreation season. Another significant gain occurred in Construction, which added 2,753 jobs, due to the increase in new projects that occur during the summer. Also showing seasonal gains are Natural Resources and Mining (7.2%) and Trade, Transportation, and Utilities (0.7%). Other industries that gained jobs are Financial

Activities (1.9%), Professional and Business Services (1.8%), Other Services (1.6%), Educational and Health Services (1.4%), Information (1.1%), and State and Local Government (0.8%).

The only sector that recorded a decline in jobs was Manufacturing, which lost 2,032 jobs.

## EMPLOYMENT CHANGES FROM SECOND QUARTER 2006

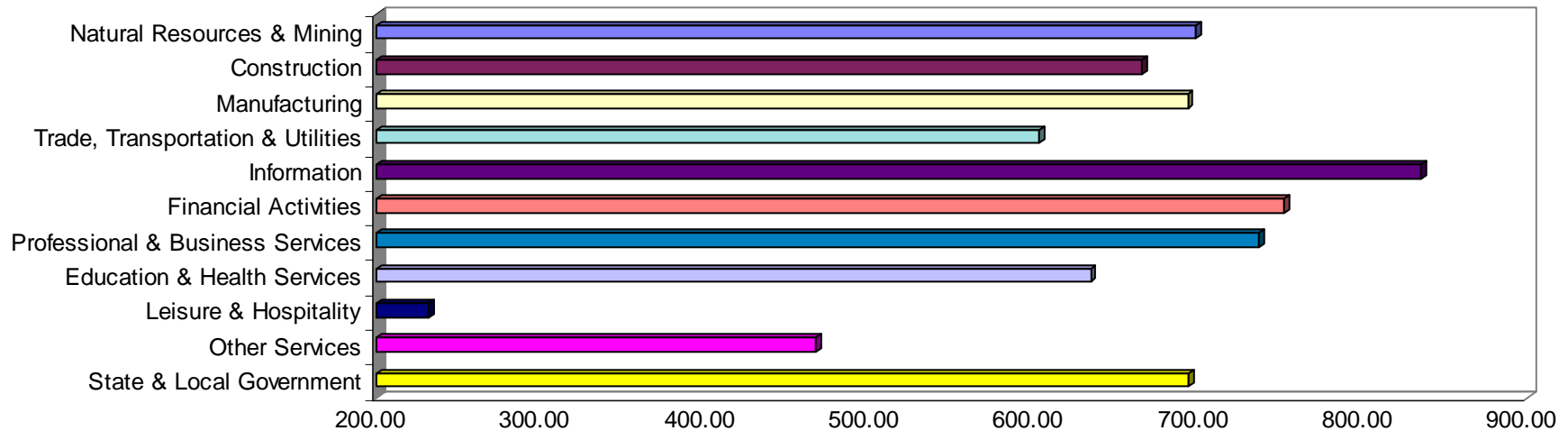
Over-the-year gains were recorded in seven industry groups while four recorded losses (see table 1). Significant gains were posted in State & Local Government (+4,128) Educational & Health Services (+3,967), and Professional and Business Services (+2,225). Significant losses were posted in Manufacturing (-10,270), Other Services (-513) and Construction (-295).

## COVERED WAGES

Wages paid to covered workers totaled \$9,523,821,876 for the Second Quarter 2007 (see table 1), for an average weekly wage of \$629.35 (see table 5). Employees in Little River County recorded the highest average weekly wage (\$774.14), and workers in Searcy County the lowest (\$400.30) (see table 6).

The Information sector recorded the highest average weekly wage for the State of Arkansas at \$835.51, while the Leisure & Hospitality sector recorded the lowest at \$231.81 for the State of Arkansas (see table 5).

**Average Weekly Wages by Industry Group**



Note: Because of industry code changes between years, substantial employment and wage shifts among industries are anticipated.

TABLE 1. QUARTERLY COMPARISON OF COVERED EMPLOYMENT AND WAGES, BY INDUSTRY

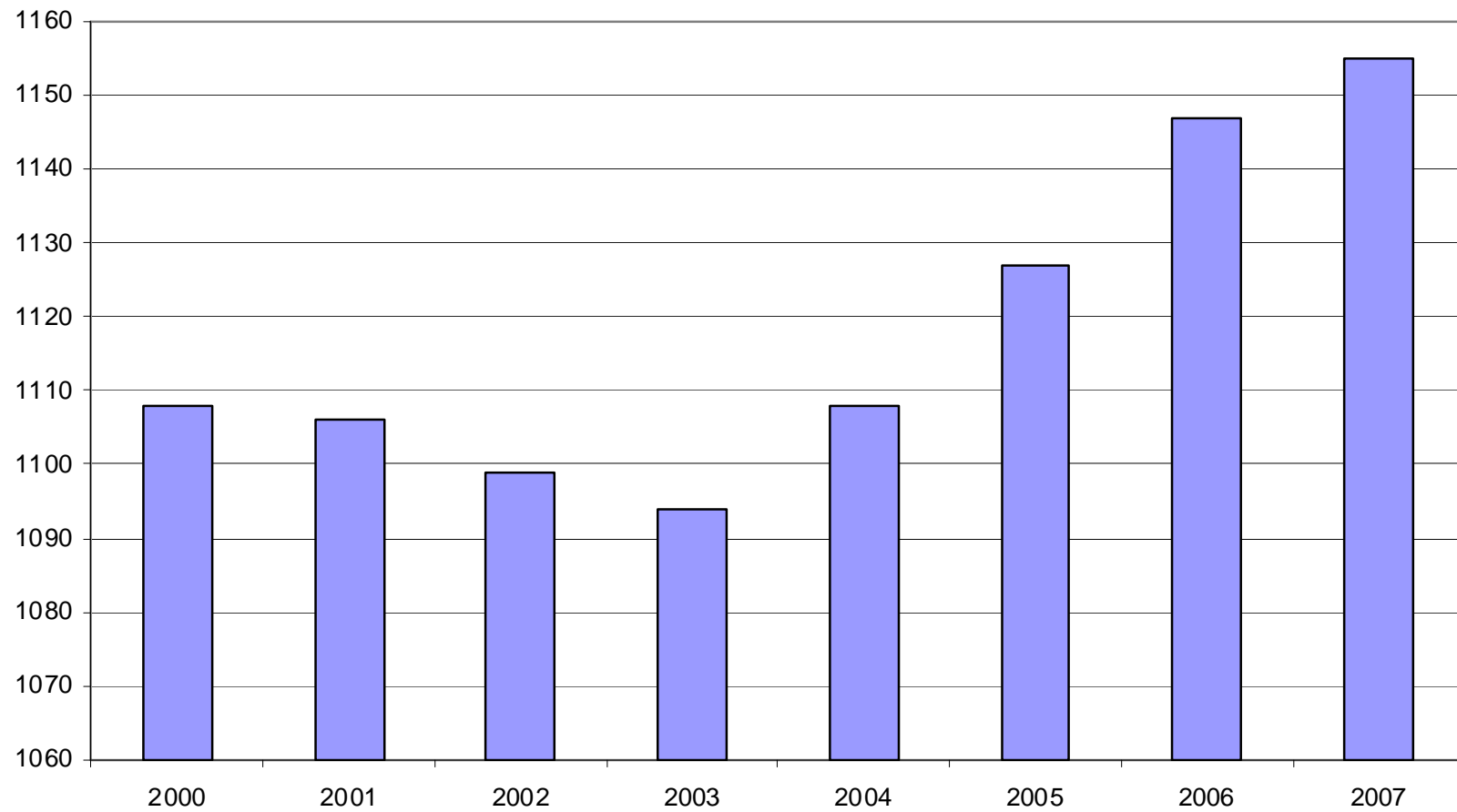
North American Industry Classification System Industry Group	Number of Employing Units	Average Covered Employment		Net Change From:		Total Wages Paid April - June 2007	% of Total
		April – June 2007 Monthly Average	% of Total	Jan. – Mar. 2007	Apr. – June 2006		
<b>Total</b>	<b>81,495</b>	<b>1,164,068</b>	<b>100.0</b>	<b>17,193</b>	<b>4,905</b>	<b>\$9,523,821,876</b>	<b>100.0</b>
<b>Natural Resources and Mining</b>	2,399	19,893	1.7	1,334	1,391	180,603,256	1.9
Agriculture, Forestry, Fishing and Hunting	1,958	13,129	1.1	623	-595	93,342,814	1.0
Mining	441	6,764	0.6	711	1,986	87,260,442	0.9
<b>Construction</b>	8,022	57,652	5.0	2,753	-295	498,747,730	5.2
<b>Manufacturing</b>	3,633	190,198	16.3	-2,032	-10,270	1,714,942,257	18.0
<b>Trade, Transportation, and Utilities</b>	20,893	246,168	21.1	1,701	1,586	1,929,428,090	20.3
Wholesale Trade	6,340	48,374	4.2	811	107	580,426,704	6.1
Retail Trade	11,220	133,754	11.5	807	685	719,485,130	7.6
Transportation and Warehousing	2,972	57,234	4.9	210	799	522,575,221	5.5
Utilities	361	6,806	0.6	-127	-6	106,941,035	1.1
<b>Information</b>	1,196	19,804	1.7	208	-32	215,102,629	2.3
<b>Financial Activities</b>	8,286	52,136	4.5	984	1,015	509,764,287	5.4
Finance and Insurance	4,848	37,548	3.2	515	675	410,831,252	4.3
Real Estate and Rental and Leasing	3,438	14,589	1.3	470	341	98,933,035	1.0
<b>Professional and Business Services</b>	11,127	117,164	10.1	2,038	2,225	1,121,501,509	11.8
Professional and Technical Services	7,003	38,667	3.3	-231	1,699	446,896,342	4.7
Management of Companies and Enterprises	523	24,675	2.1	91	600	396,125,535	4.2
Administrative and Waste Services	3,601	53,823	4.6	2,179	-73	278,479,632	2.9
<b>Education and Health Services</b>	11,157	149,801	12.9	2,059	3,967	1,234,839,943	13.0
Educational Services	574	9,508	0.8	154	433	63,967,838	0.7
Health Care and Social Assistance	10,583	140,293	12.1	1,905	3,534	1,170,872,105	12.3
<b>Leisure and Hospitality</b>	6,153	101,911	8.8	6,334	1,701	307,118,406	3.2
Arts, Entertainment and Recreation	915	10,533	0.9	1,663	325	40,478,232	0.4
Accommodation and Food Services	5,238	91,378	7.8	4,671	1,377	266,640,174	2.8
<b>Other Services</b>	5,438	25,743	2.2	416	-513	156,298,452	1.6
<b>State and Local Government</b>	3,191	183,597	15.8	1,397	4,128	1,655,475,317	17.4
Local Government	1,991	119,323	10.3	935	2,194	1,084,934,410	11.4
State Government	1,200	64,274	5.5	462	1,934	570,540,907	6.0
Nonclassifiable Establishments	0	0	0.0	0	0	0	0.0

Note: Items do not necessarily add to totals because of rounding. Because of industry code changes between years, substantial employment and wage shifts among industries are anticipated.

TABLE 2. TOTAL COVERED EMPLOYMENT IN ARKANSAS

<b>Period</b>	<b>2000</b>	<b>2001</b>	<b>2002</b>	<b>2003</b>	<b>2004</b>	<b>2005</b>	<b>2006</b>	<b>2007</b>
<b>Average</b>	<b>1,108,479</b>	<b>1,106,066</b>	<b>1,098,558</b>	<b>1,094,087</b>	<b>1,108,264</b>	<b>1,126,778</b>	<b>1,146,948</b>	<b>1,155,472</b>
January	1,089,943	1,096,009	1,081,635	1,082,740	1,089,510	1,102,768	1,130,595	1,137,460
February	1,096,113	1,101,616	1,086,793	1,084,880	1,094,626	1,110,577	1,136,810	1,143,824
March	1,109,144	1,112,143	1,098,500	1,092,172	1,105,266	1,122,619	1,150,439	1,159,342
April	1,111,525	1,115,526	1,103,399	1,095,341	1,111,020	1,129,785	1,155,498	1,160,427
May	1,116,760	1,119,815	1,111,998	1,103,099	1,117,144	1,135,567	1,159,886	1,166,301
June	1,121,225	1,119,734	1,112,028	1,099,688	1,117,010	1,136,118	1,162,026	1,165,475
July	1,075,066	1,071,921	1,065,697	1,053,220	1,071,463	1,090,071	1,106,142	N/A
August	1,096,848	1,094,160	1,086,011	1,077,775	1,094,871	1,114,098	1,130,839	N/A
September	1,123,725	1,115,976	1,113,148	1,105,980	1,122,704	1,144,815	1,159,814	N/A
October	1,122,884	1,110,994	1,108,447	1,112,550	1,123,246	1,142,300	1,156,804	N/A
November	1,120,620	1,109,012	1,107,611	1,109,712	1,125,061	1,145,667	1,156,011	N/A
December	1,117,892	1,105,887	1,107,425	1,111,892	1,127,250	1,146,954	1,158,509	N/A

AVERAGE TOTAL COVERED EMPLOYMENT GRAPH 1  
In Thousands



## TOTAL COVERED EARNINGS BY CALENDAR QUARTER, GRAPH 2

In Thousands

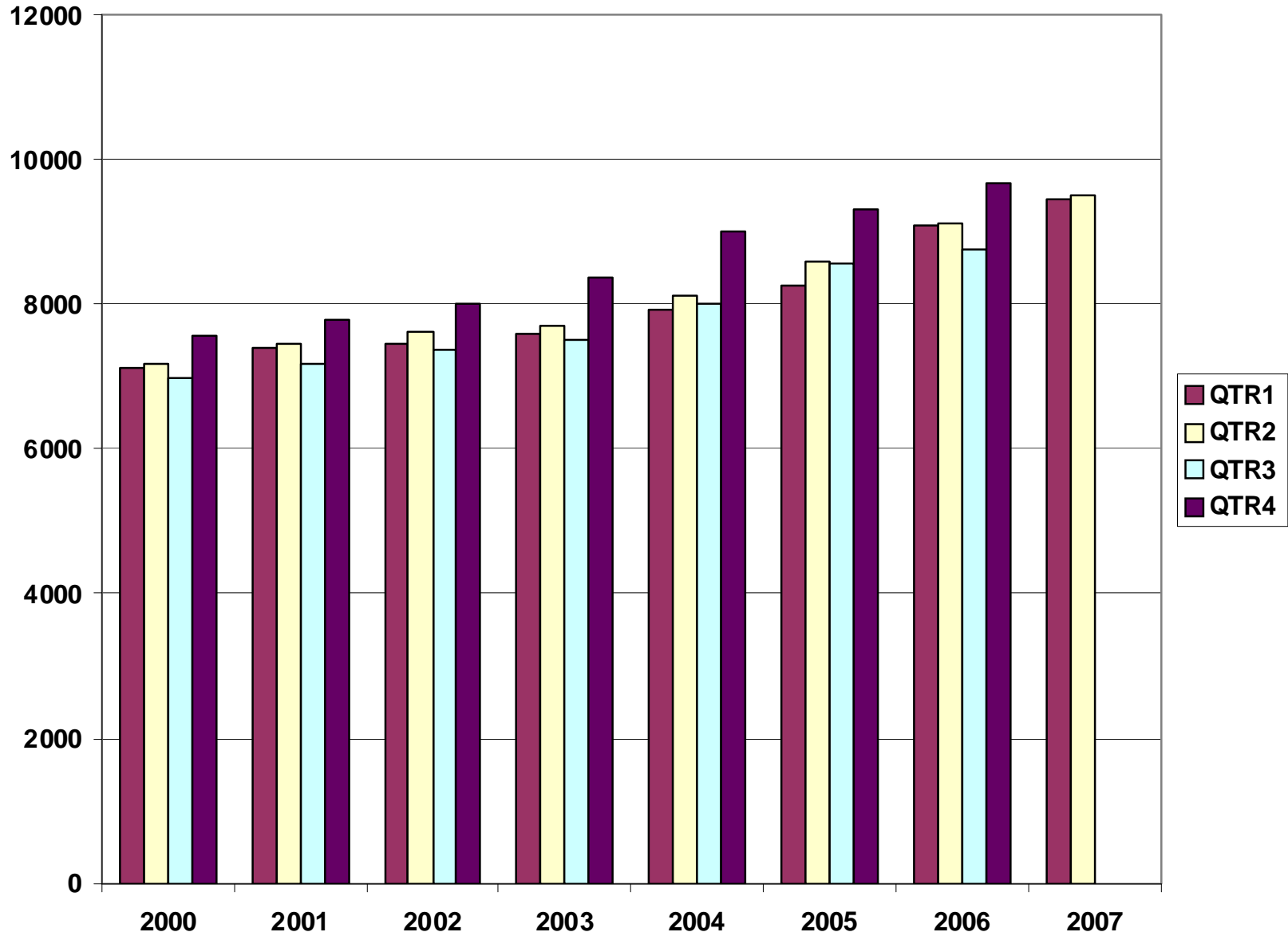


TABLE 3. TOTAL COVERED EARNINGS, 2000- 2007

<b>Period</b>	<b>2000</b>	<b>2001</b>	<b>2002</b>	<b>2003</b>
<b>Total</b>	<b>\$28,853,716,151</b>	<b>\$29,807,669,666</b>	<b>\$30,472,854,103</b>	<b>\$31,202,576,767</b>
January - March	7,122,636,896	7,398,887,532	7,465,250,305	7,608,130,008
April - June	7,166,049,182	7,448,023,298	7,621,878,775	7,714,813,038
July - September	6,986,085,106	7,177,293,061	7,361,666,511	7,500,204,764
October - December	7,578,944,967	7,783,465,775	8,024,058,512	8,379,428,957
Average Weekly Earnings	500.58	518.26	533.44	548.45

<b>Period</b>	<b>2004</b>	<b>2005</b>	<b>2006</b>	<b>2007</b>
<b>Total</b>	<b>\$33,068,189,304</b>	<b>\$34,753,107,631</b>	<b>\$36,636,090,775</b>	<b>\$18,980,857,128</b>
January - March	7,918,843,610	8,261,153,981	9,085,021,816	9,457,035,252
April - June	8,122,370,361	8,607,722,353	9,112,624,590	9,523,821,876
July - September	8,010,300,454	8,562,555,369	8,750,878,205	N/A
October - December	9,016,674,879	9,321,675,928	9,687,566,164	N/A
Average Weekly Earnings	573.80	593.13	614.27	631.81

TABLE 4. TOTAL TAXABLE EARNINGS, 2000 - 2007

<b>Period</b>	<b>2000</b>	<b>2001</b>	<b>2002</b>	<b>2003</b>
<b>Total</b>	<b>\$9,047,924,530</b>	<b>\$9,003,189,480</b>	<b>\$8,887,270,978</b>	<b>\$9,154,938,743</b>
January - March	4,560,783,991	4,670,296,360	4,668,534,587	4,737,918,796
April - June	2,260,680,255	2,219,485,263	2,162,971,435	2,270,519,362
July - September	1,250,832,297	1,190,098,737	1,158,197,858	1,188,681,170
October - December	975,627,987	923,309,120	897,567,098	957,819,415
<b>Period</b>	<b>2004</b>	<b>2005</b>	<b>2006</b>	<b>2007</b>
<b>Total</b>	<b>\$9,731,247,501</b>	<b>\$9,991,605,239</b>	<b>\$10,197,511,360</b>	<b>\$8,090,867,059</b>
January - March	4,931,559,230	5,062,670,306	5,421,204,601	5,622,850,182
April - June	2,451,454,749	2,506,505,721	2,385,110,992	2,468,016,877
July - September	1,318,017,835	1,353,660,445	1,314,939,803	N/A
October - December	1,030,215,687	1,068,768,767	1,076,255,964	N/A



**TABLE 5. STATEWIDE SUMMARY  
EMPLOYMENT AND TOTAL EARNINGS, BY INDUSTRY  
SECOND QUARTER 2007**

NORTH AMERICAN INDUSTRY CLASSIFICATION SYSTEM INDUSTRY GROUPS		NUMBER OF EMPLOYING UNITS	EMPLOYMENT			TOTAL EARNINGS	AVERAGE
			APRIL	MAY	JUNE	APRIL - JUNE	WEEKLY EARNINGS
<b>TOTAL, ALL INDUSTRIES</b>		<b>81,495</b>	<b>1,160,427</b>	<b>1,166,301</b>	<b>1,165,475</b>	<b>\$9,523,821,876</b>	<b>\$629.35</b>
<b>NATURAL RESOURCES &amp; MINING</b>		<b>2,399</b>	<b>19,450</b>	<b>19,833</b>	<b>20,396</b>	<b>\$180,603,256</b>	<b>\$698.36</b>
<b>11</b>	<b>AGRICULTURE, FORESTRY, FISHING &amp; HUNTING</b>	<b>1,958</b>	<b>12,910</b>	<b>13,085</b>	<b>13,392</b>	<b>\$93,342,814</b>	<b>\$546.90</b>
<b>111</b>	<b>CROP PRODUCTION</b>	<b>698</b>	<b>3,648</b>	<b>3,728</b>	<b>3,898</b>	<b>\$19,547,822</b>	<b>\$400.13</b>
1111	Oilseed and Grain Farming	446	1,992	2,052	2,118	10,880,149	407.47
1112	Vegetable and Melon Farming	10	174	203	231	640,462	243.09
1113	Fruit and Tree Nut Farming	8	88	87	127	509,102	389.02
1114	Greenhouse & Nursery Production	53	491	443	429	2,639,784	446.94
1119	Other Crop Farming	181	903	943	993	4,878,325	396.54
<b>112</b>	<b>ANIMAL PRODUCTION</b>	<b>270</b>	<b>3,599</b>	<b>3,697</b>	<b>3,682</b>	<b>\$29,134,966</b>	<b>\$612.45</b>
1121	Cattle Ranching and Farming	80	310	329	330	1,929,645	459.55
1122	Hog and Pig Farming	9	152	154	151	1,446,313	730.34
1123	Poultry and Egg Production	89	2,475	2,520	2,508	20,987,700	645.52
1125	Animal Aquaculture	62	579	608	614	4,286,616	549.26
	Other	30	83	86	79	484,692	451.02
<b>113</b>	<b>FORESTRY AND LOGGING</b>	<b>537</b>	<b>2,804</b>	<b>2,777</b>	<b>2,816</b>	<b>\$21,634,040</b>	<b>\$594.55</b>
1131	Timber Tract Operations	45	274	250	251	2,710,388	807.06
1132	Forest Nurseries & Gathering of Forest Products	6	39	37	30	328,548	715.27
1133	Logging	486	2,491	2,490	2,535	18,595,104	570.94
	<b>OTHER</b>	<b>453</b>	<b>2,859</b>	<b>2,883</b>	<b>2,996</b>	<b>\$23,025,986</b>	<b>\$608.11</b>
<b>21</b>	<b>MINING</b>	<b>441</b>	<b>6,540</b>	<b>6,748</b>	<b>7,004</b>	<b>\$87,260,442</b>	<b>\$992.36</b>
<b>211</b>	<b>OIL AND GAS EXTRACTION</b>	<b>94</b>	<b>753</b>	<b>771</b>	<b>783</b>	<b>\$10,412,784</b>	<b>\$1,041.59</b>
<b>212</b>	<b>MINING (EXCEPT OIL AND GAS)</b>	<b>112</b>	<b>2,104</b>	<b>2,124</b>	<b>2,167</b>	<b>\$22,904,516</b>	<b>\$826.53</b>
<b>213</b>	<b>SUPPORT ACTIVITIES FOR MINING</b>	<b>235</b>	<b>3,683</b>	<b>3,853</b>	<b>4,054</b>	<b>\$53,943,142</b>	<b>\$1,074.07</b>

**TABLE 5. STATEWIDE SUMMARY  
EMPLOYMENT AND TOTAL EARNINGS, BY INDUSTRY  
SECOND QUARTER 2007**

NORTH AMERICAN INDUSTRY CLASSIFICATION SYSTEM INDUSTRY GROUPS		NUMBER OF	EMPLOYMENT			TOTAL EARNINGS	AVERAGE
		EMPLOYING UNITS	APRIL	MAY	JUNE	APRIL - JUNE	WEEKLY EARNINGS
<b>CONSTRUCTION</b>		<b>8,022</b>	<b>56,945</b>	<b>57,674</b>	<b>58,338</b>	<b>\$498,747,730</b>	<b>\$665.46</b>
<b>236</b>	<b>CONSTRUCTION OF BUILDINGS</b>	<b>2,266</b>	<b>12,964</b>	<b>13,281</b>	<b>13,500</b>	<b>\$121,561,973</b>	<b>\$705.82</b>
2361	Residential Building Construction	1,644	4,285	4,342	4,364	32,274,550	573.32
2362	Nonresidential Building Construction	622	8,679	8,939	9,136	89,287,423	770.16
<b>237</b>	<b>HEAVY &amp; CIVIL ENGINEERING CONSTRUCTION</b>	<b>886</b>	<b>10,301</b>	<b>10,356</b>	<b>10,204</b>	<b>\$98,223,911</b>	<b>\$734.49</b>
2371	Utility System Construction	424	5,111	5,136	5,059	47,992,384	723.58
2372	Land Subdivision	136	373	378	401	3,412,643	683.62
2373	Highway, Street & Bridge Construction	210	3,223	3,309	3,403	28,799,629	668.96
2379	Other Heavy Construction	116	1,594	1,533	1,341	18,019,255	930.68
<b>238</b>	<b>SPECIALTY TRADE CONTRACTORS</b>	<b>4,870</b>	<b>33,680</b>	<b>34,037</b>	<b>34,634</b>	<b>\$278,961,846</b>	<b>\$628.97</b>
2381	Building Foundation & Exterior Contractors	975	6,855	6,913	6,947	52,577,607	585.73
2382	Building Equipment Contractors	2,145	15,961	16,220	16,608	141,588,473	669.71
2383	Building Finishing Contractors	909	5,246	5,280	5,360	42,134,320	612.07
2389	Other Specialty Trade Contractors	841	5,618	5,624	5,719	42,661,446	580.45
<b>MANUFACTURING</b>		<b>3,633</b>	<b>190,546</b>	<b>190,390</b>	<b>189,657</b>	<b>\$1,714,942,257</b>	<b>\$693.59</b>
<b>311</b>	<b>FOOD MANUFACTURING</b>	<b>328</b>	<b>49,372</b>	<b>49,307</b>	<b>49,391</b>	<b>\$349,285,083</b>	<b>\$544.37</b>
3111	Animal Food Manufacturing	58	1,390	1,411	1,431	14,397,036	785.06
3112	Grain and Oilseed Milling	33	2,329	2,345	2,377	19,931,371	652.33
3114	Fruit, Vegetable & Specialty Food	35	6,754	6,867	6,820	57,733,952	651.79
3115	Dairy Product Manufacturing	14	717	715	728	6,662,573	711.81
3116	Animal Slaughtering & Processing	92	32,971	32,681	32,704	207,441,316	486.71
3118	Bakeries and Tortilla Manufacturing	54	3,245	3,312	3,335	26,793,062	625.05
3119	Other Food Manufacturing	29	1,733	1,755	1,781	15,377,634	673.50
	Other	13	233	221	215	948,139	327.06
<b>312</b>	<b>BEVERAGE &amp; TOBACCO PRODUCT MFG.</b>	<b>38</b>	<b>1,260</b>	<b>1,284</b>	<b>1,300</b>	<b>\$12,437,513</b>	<b>\$746.67</b>
<b>313</b>	<b>TEXTILE MILLS</b>	<b>22</b>	<b>392</b>	<b>389</b>	<b>384</b>	<b>\$4,040,270</b>	<b>\$800.32</b>
3132	Fabric Mills	8	302	295	289	3,515,651	915.69
	Other	14	90	94	95	524,619	433.93

**TABLE 5. STATEWIDE SUMMARY  
EMPLOYMENT AND TOTAL EARNINGS, BY INDUSTRY  
SECOND QUARTER 2007**

NORTH AMERICAN INDUSTRY CLASSIFICATION SYSTEM INDUSTRY GROUPS		NUMBER OF EMPLOYING UNITS	EMPLOYMENT			TOTAL EARNINGS	AVERAGE
			APRIL	MAY	JUNE	APRIL - JUNE	WEEKLY EARNINGS
<b>314</b>	<b>TEXTILE PRODUCT MILLS</b>	<b>60</b>	<b>1,338</b>	<b>1,331</b>	<b>1,326</b>	<b>\$11,675,068</b>	<b>\$674.40</b>
3141	Textile Furnishing Mills	14	30	31	30	134,842	\$341.95
3149	Other Textile Product Mills	46	1,308	1,300	1,296	11,540,226	\$682.15
<b>315</b>	<b>APPAREL MANUFACTURING</b>	<b>35</b>	<b>1,591</b>	<b>1,599</b>	<b>1,592</b>	<b>\$8,926,236</b>	<b>\$430.76</b>
3152	Cut & Sew Apparel Manufacturing	25	653	649	642	2,864,209	340.01
	Other	10	938	950	950	6,062,027	492.93
<b>316</b>	<b>LEATHER &amp; ALLIED PRODUCT MANUFACTURING</b>	<b>21</b>	<b>1,824</b>	<b>1,809</b>	<b>1,734</b>	<b>\$11,775,676</b>	<b>\$506.33</b>
3162	Footwear Manufacturing	10	1,605	1,592	1,516	10,217,044	500.27
	Other	11	219	217	218	1,558,632	549.98
<b>321</b>	<b>WOOD PRODUCT MANUFACTURING</b>	<b>389</b>	<b>12,416</b>	<b>12,496</b>	<b>12,645</b>	<b>\$96,694,970</b>	<b>\$594.14</b>
3211	Sawmills and Wood Preservation	167	5,239	5,255	5,314	42,817,387	625.06
3212	Veneer & Engineered Wood Products	55	3,177	3,204	3,212	28,411,862	683.48
3219	Other Wood Product Manufacturing	167	4,000	4,037	4,119	25,465,721	483.44
<b>322</b>	<b>PAPER MANUFACTURING</b>	<b>87</b>	<b>11,244</b>	<b>11,186</b>	<b>11,208</b>	<b>\$142,725,489</b>	<b>\$979.15</b>
3221	Pulp, Paper & Paperboard Mills	12	4,302	4,283	4,294	69,207,516	1240.08
3222	Converted Paper Product Manufacturing	75	6,942	6,903	6,914	73,517,973	817.27
<b>323</b>	<b>PRINTING &amp; RELATED SUPPORT ACTIVITIES</b>	<b>300</b>	<b>4,606</b>	<b>4,603</b>	<b>4,636</b>	<b>\$46,958,852</b>	<b>\$782.71</b>
<b>324</b>	<b>PETROLEUM AND COAL PRODUCTS MFG.</b>	<b>23</b>	<b>950</b>	<b>950</b>	<b>984</b>	<b>\$12,426,007</b>	<b>\$994.29</b>
<b>325</b>	<b>CHEMICAL MANUFACTURING</b>	<b>119</b>	<b>4,657</b>	<b>4,673</b>	<b>4,714</b>	<b>59,068,201</b>	<b>\$970.60</b>
3251	Basic Chemical Manufacturing	30	1,981	1,997	2,009	28,003,480	1079.40
3252	Resin, Rubber & Artificial Fibers	7	305	299	303	3,811,287	969.71
3253	Agricultural Chemical Manufacturing	16	345	353	357	4,331,082	947.37
3255	Paint, Coating & Adhesive Manufacturing	9	159	156	162	2,162,890	1046.39
3259	Other Chemical Preparation Manufacturing	28	962	972	961	10,587,999	844.00
	Other	29	905	896	922	10,171,463	862.01
<b>326</b>	<b>PLASTICS &amp; RUBBER PRODUCTS MFG.</b>	<b>163</b>	<b>12,165</b>	<b>12,181</b>	<b>12,114</b>	<b>\$122,231,736</b>	<b>\$773.65</b>
3261	Plastics Product Manufacturing	113	7,526	7,541	7,566	64,575,954	658.43
3262	Rubber Product Manufacturing	50	4,639	4,640	4,548	57,655,782	962.26

**TABLE 5. STATEWIDE SUMMARY  
EMPLOYMENT AND TOTAL EARNINGS, BY INDUSTRY  
SECOND QUARTER 2007**

NORTH AMERICAN INDUSTRY CLASSIFICATION SYSTEM INDUSTRY GROUPS		NUMBER OF EMPLOYING UNITS	EMPLOYMENT			TOTAL EARNINGS	AVERAGE WEEKLY EARNINGS
			APRIL	MAY	JUNE	APRIL - JUNE	
<b>327</b>	<b>NONMETALLIC MINERAL PRODUCT MFG.</b>	<b>256</b>	<b>4,542</b>	<b>4,578</b>	<b>4,620</b>	<b>\$42,400,517</b>	<b>\$712.13</b>
3271	Clay Product & Refractory Manufacturing	22	432	425	419	3,551,094	642.23
3272	Glass & Glass Product Manufacturing	12	410	414	408	3,494,825	654.63
3273	Cement & Concrete Product Manufacturing	179	2,707	2,729	2,764	24,561,894	691.24
3274	Lime & Gypsum Product Manufacturing	4	419	420	425	5,111,313	933.18
3279	Other Nonmetallic Mineral Products	39	574	590	604	5,681,391	741.57
<b>331</b>	<b>PRIMARY METAL MANUFACTURING</b>	<b>70</b>	<b>8,295</b>	<b>8,291</b>	<b>8,325</b>	<b>\$103,849,831</b>	<b>\$962.04</b>
3311	Iron & Steel Mills and Ferroalloys	12	2,133	2,146	2,179	42,278,184	1510.76
3312	Purchased Steel Product Manufacturing	16	2,377	2,356	2,345	23,586,299	769.00
3313	Alumina & Aluminum Production	19	1,774	1,796	1,807	19,977,515	857.39
3314	Other Nonferrous Metal Production	9	590	586	605	5,361,563	694.71
3315	Foundries	14	1,421	1,407	1,389	12,646,270	692.05
<b>332</b>	<b>FABRICATED METAL PRODUCT MANUFACTURING</b>	<b>583</b>	<b>17,198</b>	<b>17,226</b>	<b>17,182</b>	<b>\$167,861,557</b>	<b>\$750.64</b>
3321	Forging & Stamping	12	779	782	773	7,247,674	716.60
3322	Cutlery & Hand Tool Manufacturing	16	1,342	1,323	1,290	11,041,374	644.25
3323	Architectural & Structural Metals	208	5,210	5,288	5,311	53,620,048	782.71
3324	Boilers, Tanks & Shipping Containers	19	804	778	731	12,034,182	1200.66
3325	Hardware Manufacturing	9	282	289	283	2,074,850	560.67
3326	Spring & Wire Product Manufacturing	14	655	665	643	4,556,254	535.63
3327	Machine Shops & Threaded Products	197	1,893	1,873	1,906	15,231,424	619.70
3328	Coating, Engraving & Heat Treating Metals	40	563	556	593	4,424,852	596.45
3329	Other Fabricated Metal Product Manufacturing	68	5,670	5,672	5,652	57,630,899	782.60
<b>333</b>	<b>MACHINERY MANUFACTURING</b>	<b>265</b>	<b>14,819</b>	<b>14,727</b>	<b>14,462</b>	<b>\$122,461,057</b>	<b>\$642.16</b>
3331	Agri., Construction & Mining Machinery	40	3,547	3,389	3,202	19,921,036	453.46
3333	Commercial & Service Industry Machinery	26	949	959	948	9,457,860	764.21
3334	HVAC & Commercial Refrigeration Equipment	23	4,809	4,849	4,897	42,462,731	673.25
3335	Metalworking Machinery Manufacturing	82	1,420	1,438	1,418	14,254,137	769.27
3339	Other General Purpose Machinery Manufacturing	57	3,093	3,067	3,001	26,967,676	679.33
	Other	37	1,001	1,025	996	9,397,617	717.63
<b>334</b>	<b>COMPUTER &amp; ELECTRONIC PRODUCT MFG.</b>	<b>84</b>	<b>4,939</b>	<b>4,797</b>	<b>4,602</b>	<b>\$42,502,885</b>	<b>\$684.08</b>
3343	Audio & Video Equipment Manufacturing	12	1,178	1,150	1,066	9,386,248	638.20
3344	Semiconductors & Electronic Components	28	2,337	2,326	2,330	19,400,291	640.21
3345	Electronic Instrument Manufacturing	29	980	952	906	8,732,745	710.09
	Other	15	444	369	300	4,983,601	1033.30

**TABLE 5. STATEWIDE SUMMARY  
EMPLOYMENT AND TOTAL EARNINGS, BY INDUSTRY  
SECOND QUARTER 2007**

NORTH AMERICAN INDUSTRY CLASSIFICATION SYSTEM INDUSTRY GROUPS		NUMBER OF	EMPLOYMENT			TOTAL EARNINGS	AVERAGE
		EMPLOYING UNITS	APRIL	MAY	JUNE	APRIL - JUNE	WEEKLY EARNINGS
<b>335</b>	<b>ELECTRICAL EQUIPMENT &amp; APPLIANCES</b>	<b>71</b>	<b>10,621</b>	<b>10,616</b>	<b>10,398</b>	<b>\$112,449,042</b>	<b>\$820.29</b>
3353	Electrical Equipment Manufacturing	22	4,900	4,951	4,698	48,115,993	763.19
	Other	49	5,721	5,665	5,700	64,333,049	868.90
<b>336</b>	<b>TRANSPORTATION EQUIPMENT MANUFACTURING</b>	<b>179</b>	<b>16,835</b>	<b>16,840</b>	<b>16,521</b>	<b>\$156,011,649</b>	<b>\$717.24</b>
3362	Motor Vehicle Body & Trailer Manufacturing	46	3,664	3,716	3,758	30,590,600	633.81
3363	Motor Vehicle Parts Manufacturing	63	6,423	6,328	6,139	54,947,770	671.27
3364	Aerospace Product & Parts Manufacturing	26	3,623	3,629	3,650	45,570,249	964.61
3366	Ship & Boat Building	27	1,703	1,710	1,704	11,098,254	500.52
	Other	17	1,422	1,457	1,270	13,804,776	767.83
<b>337</b>	<b>FURNITURE &amp; RELATED PRODUCT MFG.</b>	<b>275</b>	<b>6,087</b>	<b>6,104</b>	<b>6,147</b>	<b>\$46,518,130</b>	<b>\$585.39</b>
3371	Household & Institutional Furniture	225	4,179	4,191	4,216	30,612,729	561.30
3372	Office Furniture & Fixtures Manufacturing	43	1,763	1,772	1,790	15,104,024	654.56
3379	Other Furniture Related Product Manufacturing	7	145	141	141	801,377	433.10
<b>339</b>	<b>MISCELLANEOUS MANUFACTURING</b>	<b>265</b>	<b>5,395</b>	<b>5,403</b>	<b>5,372</b>	<b>\$42,642,488</b>	<b>\$608.57</b>
3391	Medical Equipment & Supplies Manufacturing	96	2,457	2,445	2,428	21,735,252	684.29
3399	Other Miscellaneous Manufacturing	169	2,938	2,958	2,944	20,907,236	545.79
<b>TRADE, TRANSPORTATION &amp; UTILITIES</b>		<b>20,893</b>	<b>244,830</b>	<b>246,706</b>	<b>246,969</b>	<b>\$1,929,428,090</b>	<b>\$602.91</b>
<b>42</b>	<b>WHOLESALE TRADE</b>	<b>6,340</b>	<b>48,162</b>	<b>48,332</b>	<b>48,629</b>	<b>\$580,426,704</b>	<b>\$922.97</b>
<b>423</b>	<b>MERCHANT WHOLESALERS, DURABLE GOODS</b>	<b>2,125</b>	<b>22,092</b>	<b>22,167</b>	<b>22,363</b>	<b>\$236,689,969</b>	<b>\$819.86</b>
4231	Motor Vehicle & Part Merchant Wholesalers	246	2,684	2,696	2,701	24,525,550	700.38
4232	Furniture & Furnishing Merchant Wholesalers	73	439	431	433	5,295,651	937.89
4233	Lumber & Supply Merchant Wholesalers	179	1,877	1,889	1,909	19,006,511	772.88
4234	Commercial Goods Merchant Wholesalers	250	2,601	2,623	2,654	38,578,225	1130.07
4235	Metal & Mineral Merchant Wholesalers	53	818	838	845	9,203,548	849.22
4236	Electric Goods Merchant Wholesalers	175	2,170	2,155	2,175	24,034,223	853.29
4237	Hardware & Plumbing Merchant Wholesalers	223	2,465	2,490	2,511	24,878,536	768.98
4238	Machinery & Supply Merchant Wholesalers	689	7,236	7,223	7,294	75,375,904	799.63
4239	Misc. Durable Goods Merchant Wholesalers	237	1,802	1,822	1,841	15,791,821	666.84

**TABLE 5. STATEWIDE SUMMARY  
EMPLOYMENT AND TOTAL EARNINGS, BY INDUSTRY  
SECOND QUARTER 2007**

NORTH AMERICAN INDUSTRY CLASSIFICATION SYSTEM INDUSTRY GROUPS		NUMBER OF	EMPLOYMENT			TOTAL EARNINGS	AVERAGE
		EMPLOYING UNITS	APRIL	MAY	JUNE	APRIL - JUNE	WEEKLY EARNINGS
<b>424</b>	<b>MERCHANT WHOLESALERS, NONDURABLE GOODS</b>	<b>1,276</b>	<b>16,691</b>	<b>16,847</b>	<b>16,907</b>	<b>\$169,307,419</b>	<b>\$774.53</b>
4241	Paper & Paper Product Merchant Wholesalers	74	1,187	1,210	1,202	13,183,905	845.36
4242	Druggists' Goods Merchant Wholesalers	59	1,184	1,175	1,173	12,457,148	813.91
4243	Apparel & Piece Goods Merchant Wholesalers	38	479	475	481	3,537,630	568.90
4244	Grocery Product Merchant Wholesalers	335	5,133	5,203	5,235	58,841,552	872.06
4245	Farm Product Merchant Wholesalers	74	931	917	929	5,036,561	418.54
4246	Chemical Merchant Wholesalers	82	537	552	556	6,350,356	890.86
4247	Petroleum Merchant Wholesalers	153	1,448	1,472	1,465	17,276,047	909.19
4248	Alcoholic Beverage Merchant Wholesalers	37	1,150	1,153	1,159	11,993,266	799.44
4249	Misc. Nondurable Goods Merchant Wholesalers	424	4,642	4,690	4,707	40,630,954	667.88
<b>425</b>	<b>ELECTRONIC MARKETS &amp; AGENTS &amp; BROKERS</b>	<b>2,939</b>	<b>9,379</b>	<b>9,318</b>	<b>9,359</b>	<b>\$174,429,316</b>	<b>\$1,434.73</b>
<b>44-45</b>	<b>RETAIL TRADE</b>	<b>11,220</b>	<b>132,915</b>	<b>134,142</b>	<b>134,205</b>	<b>\$719,485,130</b>	<b>\$413.78</b>
<b>441</b>	<b>MOTOR VEHICLE &amp; PARTS DEALERS</b>	<b>1,749</b>	<b>18,178</b>	<b>18,257</b>	<b>18,492</b>	<b>\$158,547,690</b>	<b>\$666.12</b>
4411	Automobile Dealers	751	10,786	10,883	10,998	108,535,654	766.73
4412	Other Motor Vehicle Dealers	195	1,644	1,659	1,704	13,972,497	643.98
4413	Automotive Parts, Accessories & Tire Stores	803	5,748	5,715	5,790	36,039,539	482.05
<b>442</b>	<b>FURNITURE &amp; HOME FURNISHINGS STORES</b>	<b>593</b>	<b>4,020</b>	<b>4,068</b>	<b>4,008</b>	<b>\$25,817,052</b>	<b>\$492.54</b>
4421	Furniture Stores	310	2,475	2,476	2,436	16,059,430	501.70
4422	Home Furnishings Stores	283	1,545	1,592	1,572	9,757,622	478.18
<b>443</b>	<b>ELECTRONICS &amp; APPLIANCE STORES</b>	<b>440</b>	<b>3,010</b>	<b>3,043</b>	<b>3,030</b>	<b>\$18,627,067</b>	<b>\$473.25</b>
<b>444</b>	<b>BUILDING MATERIAL &amp; GARDEN SUPPLY STORES</b>	<b>861</b>	<b>11,430</b>	<b>11,403</b>	<b>11,399</b>	<b>\$71,103,153</b>	<b>\$479.33</b>
4441	Building Material & Supplies Dealers	679	10,400	10,367	10,407	64,735,499	479.21
4442	Lawn & Garden Equipment & Supplies Stores	182	1,030	1,036	992	6,367,654	480.53
<b>445</b>	<b>FOOD &amp; BEVERAGE STORES</b>	<b>1,096</b>	<b>18,388</b>	<b>18,611</b>	<b>18,781</b>	<b>\$74,766,470</b>	<b>\$309.32</b>
4451	Grocery Stores	619	15,944	16,155	16,264	62,745,064	299.39
4452	Specialty Food Stores	165	913	917	920	5,952,877	499.54
4453	Beer, Wine & Liquor Stores	312	1,531	1,539	1,597	6,068,529	300.07
<b>446</b>	<b>HEALTH &amp; PERSONAL CARE STORES</b>	<b>819</b>	<b>7,013</b>	<b>7,060</b>	<b>7,211</b>	<b>\$49,635,560</b>	<b>\$538.17</b>
<b>447</b>	<b>GASOLINE STATIONS</b>	<b>1,588</b>	<b>12,294</b>	<b>12,537</b>	<b>12,704</b>	<b>\$43,713,517</b>	<b>\$268.76</b>
44711	Gasoline Stations with Convenience Stores	1,427	11,075	11,276	11,408	37,832,839	258.62
44719	Other Gasoline Stations	161	1,219	1,261	1,296	5,880,678	359.40

**TABLE 5. STATEWIDE SUMMARY  
EMPLOYMENT AND TOTAL EARNINGS, BY INDUSTRY  
SECOND QUARTER 2007**

NORTH AMERICAN INDUSTRY CLASSIFICATION SYSTEM INDUSTRY GROUPS		NUMBER OF EMPLOYING UNITS	EMPLOYMENT			TOTAL EARNINGS	AVERAGE
			APRIL	MAY	JUNE	APRIL - JUNE	WEEKLY EARNINGS
<b>448</b>	<b>CLOTHING &amp; CLOTHING ACCESSORIES STORES</b>	<b>1,085</b>	<b>8,864</b>	<b>8,937</b>	<b>8,944</b>	<b>\$30,476,625</b>	<b>\$262.97</b>
4481	Clothing Stores	737	6,739	6,813	6,835	21,011,075	237.83
4482	Shoe Stores	184	1,222	1,220	1,201	4,162,772	263.69
4483	Jewelry, Luggage & Leather Goods Stores	164	903	904	908	5,302,778	450.72
<b>451</b>	<b>SPORTING GOODS, HOBBY, BOOK &amp; MUSIC STORES</b>	<b>586</b>	<b>4,522</b>	<b>4,557</b>	<b>4,512</b>	<b>\$16,791,177</b>	<b>\$285.11</b>
4511	Sporting Goods & Musical Instrument Stores	434	3,183	3,155	3,173	12,638,122	306.64
4512	Book, Periodical & Music Stores	152	1,339	1,402	1,339	4,153,055	234.90
<b>452</b>	<b>GENERAL MERCHANDISE STORES</b>	<b>712</b>	<b>36,861</b>	<b>37,245</b>	<b>36,698</b>	<b>\$185,131,252</b>	<b>\$385.57</b>
<b>453</b>	<b>MISCELLANEOUS STORE RETAILERS</b>	<b>1,372</b>	<b>6,463</b>	<b>6,594</b>	<b>6,577</b>	<b>\$31,759,866</b>	<b>\$373.29</b>
4531	Florists	258	993	1,019	968	3,736,927	289.39
4532	Office Supplies, Stationery & Gift Stores	363	2,265	2,297	2,280	11,107,738	374.65
4533	Used Merchandise Stores	216	783	817	813	4,545,057	434.67
4539	Other Miscellaneous Store Retailers	535	2,422	2,461	2,516	12,370,144	385.82
<b>454</b>	<b>NONSTORE RETAILERS</b>	<b>319</b>	<b>1,872</b>	<b>1,830</b>	<b>1,849</b>	<b>\$13,115,701</b>	<b>\$545.25</b>
4541	Electronic Shopping & Mail -Order Houses	74	406	397	404	3,614,673	691.10
4542	Vending Machine Operators	79	686	664	670	3,923,866	448.27
4543	Direct Selling Establishments	166	780	769	775	5,577,162	553.80
<b>48-49</b>	<b>TRANSPORTATION &amp; WAREHOUSING</b>	<b>2,972</b>	<b>57,018</b>	<b>57,426</b>	<b>57,259</b>	<b>\$522,575,221</b>	<b>\$702.34</b>
<b>481</b>	<b>AIR TRANSPORTATION</b>	<b>51</b>	<b>899</b>	<b>892</b>	<b>902</b>	<b>\$10,715,196</b>	<b>\$918.21</b>
<b>484</b>	<b>TRUCK TRANSPORTATION</b>	<b>1,999</b>	<b>36,592</b>	<b>36,878</b>	<b>36,758</b>	<b>\$343,492,394</b>	<b>\$719.12</b>
4841	General Freight Trucking	1,248	31,340	31,536	31,305	298,104,461	730.44
4842	Specialized Freight Trucking	751	5,252	5,342	5,453	45,387,933	652.72
<b>485</b>	<b>TRANSIT &amp; GROUND PASSENGER TRANS.</b>	<b>63</b>	<b>1,157</b>	<b>1,178</b>	<b>995</b>	<b>\$5,039,093</b>	<b>\$349.21</b>
4853	Taxi & Limousine Service	22	292	278	278	997,870	271.55
4854	School & Employee Bus Transportation	8	457	473	278	2,106,983	402.51
4855	Charter Bus Industry Service	8	85	86	84	459,721	416.04
4859	Other Ground Passenger Transportation	18	220	230	246	969,159	321.34
	Other	7	103	111	109	505,360	361.06
<b>486</b>	<b>PIPELINE TRANSPORTATION</b>	<b>66</b>	<b>902</b>	<b>901</b>	<b>901</b>	<b>\$12,799,828</b>	<b>\$1,092.38</b>

**TABLE 5. STATEWIDE SUMMARY  
EMPLOYMENT AND TOTAL EARNINGS, BY INDUSTRY  
SECOND QUARTER 2007**

NORTH AMERICAN INDUSTRY CLASSIFICATION SYSTEM INDUSTRY GROUPS		NUMBER OF	EMPLOYMENT			TOTAL EARNINGS	AVERAGE
		EMPLOYING UNITS	APRIL	MAY	JUNE	APRIL - JUNE	WEEKLY EARNINGS
<b>488</b>	<b>SUPPORT ACTIVITIES FOR TRANSPORTATION</b>	<b>413</b>	<b>4,766</b>	<b>4,781</b>	<b>4,877</b>	<b>\$47,780,579</b>	<b>\$764.44</b>
4881	Support Activities for Air Transportation	104	1,553	1,578	1,623	14,244,331	691.45
4882	Support Activities for Rail Transportation	30	365	361	380	3,066,331	639.80
4883	Support Activities for Water Transportation	25	653	651	650	6,996,210	826.26
4884	Support Activities for Road Transportation	102	505	503	522	3,035,680	457.87
4885	Freight Transportation Arrangement	127	1,524	1,524	1,527	19,195,535	968.25
4889	Other Support Activities for Transportation	25	166	164	175	1,242,492	567.78
<b>492</b>	<b>COURIERS &amp; MESSENGERS</b>	<b>144</b>	<b>3,264</b>	<b>3,278</b>	<b>3,253</b>	<b>\$29,227,224</b>	<b>\$688.59</b>
4921	Couriers	88	2,988	2,996	2,978	27,653,431	712.07
4922	Local Messengers & Local Delivery	56	276	282	275	1,573,793	435.99
<b>493</b>	<b>WAREHOUSING &amp; STORAGE</b>	<b>213</b>	<b>9,236</b>	<b>9,300</b>	<b>9,329</b>	<b>\$71,770,314</b>	<b>\$594.38</b>
	<b>OTHER</b>	<b>23</b>	<b>202</b>	<b>218</b>	<b>244</b>	<b>\$1,750,593</b>	<b>\$608.41</b>
<b>22</b>	<b>UTILITIES</b>	<b>361</b>	<b>6,735</b>	<b>6,806</b>	<b>6,876</b>	<b>\$106,941,035</b>	<b>\$1,208.73</b>
2211	Power Generation & Supply	161	5,041	5,094	5,144	87,929,894	1328.07
2212	Natural Gas Distribution	34	850	859	861	12,927,621	1160.82
2213	Water, Sewage and Other Systems	166	844	853	871	6,083,520	546.69
<b>INFORMATION</b>		<b>1,196</b>	<b>19,751</b>	<b>19,838</b>	<b>19,823</b>	<b>\$215,102,629</b>	<b>\$835.51</b>
<b>511</b>	<b>PUBLISHING INDUSTRIES, EXCEPT INTERNET</b>	<b>252</b>	<b>6,270</b>	<b>6,225</b>	<b>6,080</b>	<b>\$47,786,176</b>	<b>\$593.68</b>
5111	Newspaper, Book & Directory Publishers	225	5,994	5,949	5,802	43,896,175	570.86
5112	Software Publishers	27	276	276	278	3,890,001	1081.56
<b>512</b>	<b>MOTION PICTURE &amp; SOUND RECORDING INDUSTRY</b>	<b>131</b>	<b>1,225</b>	<b>1,323</b>	<b>1,349</b>	<b>\$5,539,219</b>	<b>\$328.02</b>
5121	Motion Picture & Video Industries	115	1,188	1,284	1,312	5,257,910	320.66
5122	Sound Recording Industries	16	37	39	37	281,309	574.49
<b>515</b>	<b>BROADCASTING, EXCEPT INTERNET</b>	<b>146</b>	<b>2,238</b>	<b>2,245</b>	<b>2,248</b>	<b>\$19,721,745</b>	<b>\$676.15</b>
5151	Radio & Television Broadcasting	139	2,193	2,208	2,212	19,469,169	679.40
5152	Cable & Other Subscription Programming	7	45	37	36	252,576	493.96
<b>517</b>	<b>TELECOMMUNICATIONS</b>	<b>533</b>	<b>8,749</b>	<b>8,764</b>	<b>8,864</b>	<b>\$126,045,850</b>	<b>\$1,102.76</b>
5171	Wired Telecommunications Carriers	315	4,606	4,599	4,638	63,136,133	1052.51
5172	Wireless Telecommunications Carriers	122	3,601	3,601	3,670	56,616,998	1201.75
	Other	96	542	564	556	6,292,719	873.75



**TABLE 5. STATEWIDE SUMMARY  
EMPLOYMENT AND TOTAL EARNINGS, BY INDUSTRY  
SECOND QUARTER 2007**

NORTH AMERICAN INDUSTRY CLASSIFICATION SYSTEM INDUSTRY GROUPS		NUMBER OF EMPLOYING UNITS	EMPLOYMENT			TOTAL EARNINGS	AVERAGE WEEKLY EARNINGS
			APRIL	MAY	JUNE	APRIL - JUNE	
518	<b>DATA PROCESSING, HOSTING &amp; RELATED SERVICES</b>	85	980	980	983	\$13,516,791	\$1,059.89
	<b>OTHER</b>	49	289	301	299	\$2,492,848	\$647.10
<b>FINANCIAL ACTIVITIES</b>		<b>8,286</b>	<b>51,788</b>	<b>52,094</b>	<b>52,527</b>	<b>\$509,764,287</b>	<b>\$752.12</b>
52	<b>FINANCE &amp; INSURANCE</b>	<b>4,848</b>	<b>37,422</b>	<b>37,479</b>	<b>37,742</b>	<b>\$410,831,252</b>	<b>\$841.66</b>
522	<b>CREDIT INTERMEDIATION &amp; RELATED ACTIVITIES</b>	<b>2,080</b>	<b>22,287</b>	<b>22,238</b>	<b>22,433</b>	<b>\$214,078,919</b>	<b>\$737.82</b>
5221	Depository Credit Intermediation	1,357	18,456	18,457	18,613	172,812,185	718.22
5222	Nondepository Credit Intermediation	423	2,684	2,669	2,683	32,264,256	926.53
5223	Activities Related to Credit Intermediation	300	1,147	1,112	1,137	9,002,478	611.75
523	<b>FINANCIAL INVESTMENT &amp; RELATED ACTIVITIES</b>	<b>595</b>	<b>3,052</b>	<b>3,088</b>	<b>3,082</b>	<b>\$64,965,543</b>	<b>\$1,625.68</b>
524	<b>INSURANCE CARRIERS &amp; RELATED ACTIVITIES</b>	<b>2,140</b>	<b>11,640</b>	<b>11,697</b>	<b>11,786</b>	<b>\$127,438,361</b>	<b>\$837.31</b>
5241	Insurance Carriers	421	4,896	4,900	4,941	58,541,717	916.71
5242	Insurance Agencies, Brokerages & Support	1,719	6,744	6,797	6,845	68,896,644	779.91
	<b>OTHER</b>	<b>33</b>	<b>443</b>	<b>456</b>	<b>441</b>	<b>\$4,348,429</b>	<b>\$748.87</b>
53	<b>REAL ESTATE &amp; RENTAL &amp; LEASING</b>	<b>3,438</b>	<b>14,366</b>	<b>14,615</b>	<b>14,785</b>	<b>\$98,933,035</b>	<b>\$521.65</b>
531	<b>REAL ESTATE</b>	<b>2,609</b>	<b>8,870</b>	<b>9,029</b>	<b>9,137</b>	<b>\$62,294,902</b>	<b>\$531.73</b>
5311	Lessors of Real Estate	1,046	4,265	4,344	4,350	27,670,017	492.74
5312	Offices of Real Estate Agents & Brokers	950	2,071	2,098	2,168	16,235,012	591.22
5313	Activities Related to Real Estate	613	2,534	2,587	2,619	18,389,873	548.30
532	<b>RENTAL &amp; LEASING SERVICES</b>	<b>806</b>	<b>5,422</b>	<b>5,516</b>	<b>5,578</b>	<b>\$35,713,454</b>	<b>\$499.00</b>
5321	Automotive Equipment Rental & Leasing	124	1,010	1,023	1,022	6,664,069	503.39
5322	Consumer Goods Rental	498	3,263	3,335	3,352	17,141,887	397.57
5323	General Rental Centers	34	255	261	276	2,109,199	614.57
5324	Machinery & Equipment Rental & Leasing	150	894	897	928	9,798,299	831.61
533	<b>LESSORS OF NONFINANCIAL INTANGIBLE ASSETS</b>	<b>23</b>	<b>74</b>	<b>70</b>	<b>70</b>	<b>\$924,679</b>	<b>\$997.14</b>

**TABLE 5. STATEWIDE SUMMARY  
EMPLOYMENT AND TOTAL EARNINGS, BY INDUSTRY  
SECOND QUARTER 2007**

NORTH AMERICAN INDUSTRY CLASSIFICATION SYSTEM INDUSTRY GROUPS		NUMBER OF	EMPLOYMENT			TOTAL EARNINGS	AVERAGE
		EMPLOYING UNITS	APRIL	MAY	JUNE	APRIL - JUNE	WEEKLY EARNINGS
<b>PROFESSIONAL &amp; BUSINESS SERVICES</b>		<b>11,127</b>	<b>116,798</b>	<b>117,050</b>	<b>117,644</b>	<b>\$1,121,501,509</b>	<b>\$736.31</b>
<b>54</b>	<b>PROFESSIONAL &amp; TECHNICAL SERVICES</b>	<b>7,003</b>	<b>39,178</b>	<b>38,287</b>	<b>38,535</b>	<b>\$446,896,342</b>	<b>\$889.05</b>
5411	Legal Services	1,676	6,572	6,614	6,755	68,947,136	797.90
5412	Accounting & Bookkeeping Services	1,239	6,560	5,465	5,059	52,724,858	712.20
5413	Architectural & Engineering Services	944	6,784	6,891	6,975	79,807,677	891.87
5414	Specialized Design Services	165	482	499	495	3,844,563	601.09
5415	Computer Systems Design & Related Services	866	7,802	7,846	7,888	138,988,492	1362.77
5416	Management & Technical Consulting Services	1,117	4,043	4,057	4,275	46,927,724	875.11
5417	Scientific Research & Development Services	97	1,045	1,061	1,074	12,998,578	943.29
5418	Advertising & Related Services	313	2,025	2,043	2,094	21,609,825	809.30
5419	Other Professional & Technical Services	586	3,865	3,811	3,920	21,047,489	418.86
<b>55</b>	<b>MANAGEMENT OF COMPANIES &amp; ENTERPRISES</b>	<b>523</b>	<b>24,472</b>	<b>24,712</b>	<b>24,840</b>	<b>\$396,125,535</b>	<b>\$1,234.92</b>
<b>56</b>	<b>ADMINISTRATIVE &amp; WASTE SERVICES</b>	<b>3,601</b>	<b>53,148</b>	<b>54,051</b>	<b>54,269</b>	<b>\$278,479,632</b>	<b>\$398.00</b>
<b>561</b>	<b>ADMINISTRATIVE &amp; SUPPORT SERVICES</b>	<b>3,392</b>	<b>50,866</b>	<b>51,725</b>	<b>51,907</b>	<b>\$255,691,086</b>	<b>\$381.92</b>
5611	Office Administrative Services	348	1,148	1,164	1,167	13,493,668	895.06
5612	Facilities Support Services	17	160	110	127	1,222,873	710.83
5613	Employment Services	664	24,804	25,373	24,980	110,778,861	340.15
5614	Business Support Services	372	6,165	6,164	6,510	32,570,259	398.97
5615	Travel Arrangement & Reservation Services	98	403	413	439	2,942,324	541.03
5616	Investigation & Security Services	250	4,460	4,509	4,482	26,113,937	448.02
5617	Services to Buildings & Dwellings	1,351	12,132	12,382	12,562	56,852,026	353.86
5619	Other Support Services	292	1,594	1,610	1,640	11,717,138	558.21
<b>562</b>	<b>WASTE MANAGEMENT &amp; REMEDIATION SERVICES</b>	<b>209</b>	<b>2,282</b>	<b>2,326</b>	<b>2,362</b>	<b>\$22,788,546</b>	<b>\$754.50</b>
5621	Waste Collection Services	100	1,155	1,173	1,189	11,106,561	728.76
5622	Waste Treatment & Disposal Services	36	640	634	632	7,484,390	906.17
5629	Remediation & Other Waste Services	73	487	519	541	4,197,595	626.16

**TABLE 5. STATEWIDE SUMMARY  
EMPLOYMENT AND TOTAL EARNINGS, BY INDUSTRY  
SECOND QUARTER 2007**

NORTH AMERICAN INDUSTRY CLASSIFICATION SYSTEM INDUSTRY GROUPS		NUMBER OF	EMPLOYMENT			TOTAL EARNINGS	AVERAGE
		EMPLOYING UNITS	APRIL	MAY	JUNE	APRIL - JUNE	WEEKLY EARNINGS
<b>EDUCATION &amp; HEALTH SERVICES</b>		<b>11,157</b>	<b>149,091</b>	<b>150,089</b>	<b>150,224</b>	<b>\$1,234,839,943</b>	<b>\$634.09</b>
<b>61</b>	<b>EDUCATIONAL SERVICES</b>	<b>574</b>	<b>9,701</b>	<b>9,571</b>	<b>9,252</b>	<b>\$63,967,838</b>	<b>\$517.52</b>
6111	Elementary & Secondary Schools	77	3,263	3,310	3,116	17,459,663	415.85
6112	Junior Colleges	7	284	293	269	1,965,059	536.02
6113	Colleges & Universities	31	3,403	3,265	3,196	25,727,708	601.90
6114	Business, Computer, & Management Training	46	195	199	202	3,746,742	1450.73
6115	Technical & Trade Schools	102	714	707	693	7,444,203	812.63
6116	Other Schools & Instruction	222	1,520	1,511	1,436	4,846,261	250.36
6117	Educational Support Services	89	322	286	340	2,778,202	676.29
<b>62</b>	<b>HEALTH CARE &amp; SOCIAL ASSISTANCE</b>	<b>10,583</b>	<b>139,390</b>	<b>140,518</b>	<b>140,972</b>	<b>\$1,170,872,105</b>	<b>\$641.99</b>
<b>621</b>	<b>AMBULATORY HEALTH CARE SERVICES</b>	<b>4,892</b>	<b>43,544</b>	<b>43,935</b>	<b>44,237</b>	<b>\$525,862,474</b>	<b>\$921.32</b>
6211	Offices of Physicians	2,200	20,794	20,905	21,024	332,291,510	1222.56
6212	Offices of Dentists	921	6,072	6,172	6,237	58,577,799	731.45
6213	Offices of Other Health Practitioners	1,147	5,946	5,981	6,038	46,268,728	594.34
6214	Outpatient Care Centers	225	3,617	3,640	3,690	33,485,542	705.90
6215	Medical & Diagnostic Laboratories	102	847	846	847	10,450,265	949.45
6216	Home Health Care Services	152	4,060	4,127	4,158	28,574,398	534.15
6219	Other Ambulatory Health Care Services	145	2,208	2,264	2,243	16,214,232	557.22
<b>622</b>	<b>HOSPITALS</b>	<b>109</b>	<b>41,469</b>	<b>41,698</b>	<b>42,014</b>	<b>\$392,537,864</b>	<b>\$723.64</b>
6221	General Medical & Surgical Hospitals	78	37,965	37,972	38,230	358,122,346	723.88
6222	Psychiatric & Substance Abuse Hospitals	10	1,641	1,854	1,873	15,282,847	657.01
6223	Other Hospitals	21	1,863	1,872	1,911	19,132,671	782.01
<b>623</b>	<b>NURSING &amp; RESIDENTIAL CARE FACILITIES</b>	<b>510</b>	<b>27,241</b>	<b>27,503</b>	<b>27,774</b>	<b>\$138,903,628</b>	<b>\$388.46</b>
6231	Nursing Care Facilities	247	20,336	20,545	20,768	103,834,896	388.68
6232	Residential Mental Health Facilities	127	3,211	3,218	3,246	16,390,951	390.96
6233	Community Care Facilities for the Elderly	92	2,176	2,246	2,253	10,364,514	358.32
6239	Other Residential Care Facilities	44	1,518	1,494	1,507	8,313,267	424.53
<b>624</b>	<b>SOCIAL ASSISTANCE</b>	<b>5,072</b>	<b>27,136</b>	<b>27,382</b>	<b>26,947</b>	<b>\$113,568,139</b>	<b>\$321.71</b>
6241	Individual & Family Services	3,911	13,646	13,702	13,836	60,706,921	340.16
6242	Emergency & Other Relief Services	124	909	920	878	4,613,377	393.29
6243	Vocational Rehabilitation Services	128	3,630	3,684	3,737	17,175,282	358.66
6244	Child Day Care Services	909	8,951	9,076	8,496	31,072,559	270.35

**TABLE 5. STATEWIDE SUMMARY  
EMPLOYMENT AND TOTAL EARNINGS, BY INDUSTRY  
SECOND QUARTER 2007**

NORTH AMERICAN INDUSTRY CLASSIFICATION SYSTEM INDUSTRY GROUPS		NUMBER OF	EMPLOYMENT			TOTAL EARNINGS	AVERAGE
		EMPLOYING UNITS	APRIL	MAY	JUNE	APRIL - JUNE	WEEKLY EARNINGS
<b>LEISURE &amp; HOSPITALITY</b>		<b>6,153</b>	<b>100,486</b>	<b>101,881</b>	<b>103,366</b>	<b>\$307,118,406</b>	<b>\$231.81</b>
<b>71</b>	<b>ARTS, ENTERTAINMENT &amp; RECREATION</b>	<b>915</b>	<b>9,880</b>	<b>10,361</b>	<b>11,358</b>	<b>\$40,478,232</b>	<b>\$295.61</b>
<b>711</b>	<b>PERFORMING ARTS &amp; SPECTATOR SPORTS</b>	<b>211</b>	<b>2,665</b>	<b>2,397</b>	<b>2,335</b>	<b>\$12,039,237</b>	<b>\$375.60</b>
7111	Performing Arts Companies	36	367	662	658	1,792,581	245.21
7112	Spectator Sports	59	1,555	992	980	5,633,858	368.62
7113	Performing Arts & Sports Promoters	48	584	564	506	3,337,146	465.60
7114	Agents & Managers for Public Figures	12	19	20	18	174,561	706.72
7115	Independent Artists, Writers & Performers	56	140	159	173	1,101,091	538.34
<b>712</b>	<b>MUSEUMS, PARKS &amp; HISTORICAL SITES</b>	<b>45</b>	<b>226</b>	<b>236</b>	<b>282</b>	<b>\$1,140,254</b>	<b>\$353.68</b>
<b>713</b>	<b>GAMBLING, RECREATION &amp; AMUSEMENT INDUSTRY</b>	<b>659</b>	<b>6,989</b>	<b>7,728</b>	<b>8,741</b>	<b>\$27,298,741</b>	<b>\$268.55</b>
<b>72</b>	<b>ACCOMMODATION &amp; FOOD SERVICES</b>	<b>5,238</b>	<b>90,606</b>	<b>91,520</b>	<b>92,008</b>	<b>\$266,640,174</b>	<b>\$224.46</b>
<b>721</b>	<b>ACCOMMODATION</b>	<b>827</b>	<b>11,149</b>	<b>11,445</b>	<b>12,128</b>	<b>\$42,024,748</b>	<b>\$279.30</b>
7211	Traveler Accommodation	751	10,765	11,067	11,361	39,771,242	276.50
7212	RV Parks & Recreational Camps	57	306	312	712	1,965,580	341.05
7213	Rooming & Boarding Houses	19	78	66	55	287,926	333.89
<b>722</b>	<b>FOOD SERVICES &amp; DRINKING PLACES</b>	<b>4,411</b>	<b>79,457</b>	<b>80,075</b>	<b>79,880</b>	<b>\$224,615,426</b>	<b>\$216.51</b>
7221	Full -Service Restaurants	1,973	35,009	35,326	35,252	107,283,416	234.48
7222	Limited-Service Eating Places	2,147	41,126	41,803	41,720	107,448,842	198.93
7223	Special Food Services	147	2,411	2,047	2,010	7,226,187	257.82
7224	Drinking Places, Alcoholic Beverages	144	911	899	898	2,656,981	226.42
<b>OTHER SERVICES</b>		<b>5,438</b>	<b>25,429</b>	<b>25,595</b>	<b>26,205</b>	<b>\$156,298,452</b>	<b>\$467.04</b>
<b>811</b>	<b>REPAIR &amp; MAINTENANCE</b>	<b>2,212</b>	<b>9,666</b>	<b>9,670</b>	<b>9,848</b>	<b>\$70,456,959</b>	<b>\$557.13</b>
8111	Automotive Repair & Maintenance	1,515	6,802	6,778	6,847	44,894,802	507.19
8112	Electronic Equipment Repair & Maintenance	166	688	711	717	6,440,450	702.39
8113	Commercial Machinery Repair & Maintenance	344	1,614	1,600	1,665	15,280,200	722.73
8114	Household Goods Repair & Maintenance	187	562	581	619	3,841,507	503.12

**TABLE 5. STATEWIDE SUMMARY  
EMPLOYMENT AND TOTAL EARNINGS, BY INDUSTRY  
SECOND QUARTER 2007**

NORTH AMERICAN INDUSTRY CLASSIFICATION SYSTEM INDUSTRY GROUPS		NUMBER OF EMPLOYING UNITS	EMPLOYMENT			TOTAL EARNINGS	AVERAGE
			APRIL	MAY	JUNE	APRIL - JUNE	WEEKLY EARNINGS
<b>812</b>	<b>PERSONAL &amp; LAUNDRY SERVICES</b>	<b>1,323</b>	<b>8,247</b>	<b>8,356</b>	<b>8,309</b>	<b>\$40,875,897</b>	<b>\$378.65</b>
8121	Personal Care Services	571	2,766	2,808	2,778	10,908,935	301.42
8122	Death Care Services	245	1,675	1,681	1,695	11,109,297	507.56
8123	Drycleaning & Laundry Services	335	3,154	3,206	3,161	15,622,643	378.66
8129	Other Personal Services	172	652	661	675	3,235,022	375.52
<b>813</b>	<b>MEMBERSHIP ASSOCIATIONS &amp; ORGANIZATIONS</b>	<b>996</b>	<b>6,215</b>	<b>6,295</b>	<b>6,770</b>	<b>\$39,586,959</b>	<b>\$473.83</b>
8131	Religious Organizations	44	198	232	245	1,280,941	437.93
8132	Grantmaking & Giving Services	100	449	443	447	4,249,293	732.34
8133	Social Advocacy Organizations	140	1,961	1,934	1,857	11,643,476	467.13
8134	Civic & Social Organizations	208	1,459	1,488	1,860	5,475,175	262.85
8139	Professional & Similar Organizations	504	2,148	2,198	2,361	16,938,074	582.79
<b>814</b>	<b>PRIVATE HOUSEHOLDS</b>	<b>907</b>	<b>1,301</b>	<b>1,274</b>	<b>1,278</b>	<b>\$5,378,637</b>	<b>\$322.14</b>
	<b>LOCAL GOVERNMENT</b>	<b>1,991</b>	<b>119,981</b>	<b>120,406</b>	<b>117,581</b>	<b>\$1,084,934,410</b>	<b>\$699.42</b>
	<b>STATE GOVERNMENT</b>	<b>1,200</b>	<b>65,332</b>	<b>64,745</b>	<b>62,745</b>	<b>\$570,540,907</b>	<b>\$682.82</b>
	<b>NONCLASSIFIABLE ESTABLISHMENTS</b>	<b>0</b>	<b>0</b>	<b>0</b>	<b>0</b>	<b>\$0</b>	

**TABLE 6. COUNTY SUMMARY  
EMPLOYMENT AND TOTAL EARNINGS, BY INDUSTRY  
SECOND QUARTER 2007**

NORTH AMERICAN INDUSTRY CLASSIFICATION SYSTEM INDUSTRY GROUP	NUMBER OF EMPLOYING UNITS	EMPLOYMENT			TOTAL EARNINGS	AVERAGE
		APRIL	MAY	JUNE	APRIL - JUNE	WEEKLY EARNINGS
<b>ARKANSAS COUNTY - TOTAL</b>	<b>709</b>	<b>9,999</b>	<b>10,072</b>	<b>10,063</b>	<b>\$74,845,513</b>	<b>\$573.17</b>
Natural Resources & Mining	44	232	233	241	1,799,270	588.12
Construction	51	311	320	318	2,768,504	673.22
Manufacturing	32	3,636	3,679	3,671	31,271,032	656.87
Trade, Transportation & Utilities	202	2,003	1,998	1,996	15,504,272	596.62
Wholesale Trade	45	463	458	458	4,668,310	781.22
Retail Trade	100	1,062	1,045	1,049	5,342,640	390.66
Transportation, Warehousing & Utilities	57	478	495	489	5,493,322	867.09
Information	10	99	98	98	858,822	671.83
Financial Activities	51	321	327	323	2,617,713	622.13
Professional & Business Services	56	371	381	392	3,419,713	689.83
Education & Health Services	102	1,200	1,186	1,179	6,909,846	447.29
Leisure & Hospitality	60	514	532	558	1,348,720	194.04
Other Services	53	145	144	142	796,437	426.43
Local Government	32	919	925	926	6,068,986	505.61
State Government	16	248	249	219	1,482,198	477.72
<b>ASHLEY COUNTY - TOTAL</b>	<b>546</b>	<b>7,974</b>	<b>8,025</b>	<b>8,085</b>	<b>\$69,692,704</b>	<b>\$667.78</b>
Natural Resources & Mining	58	412	428	442	2,986,397	537.57
Construction	50	606	565	537	4,183,511	565.24
Manufacturing	29	2,679	2,702	2,714	34,638,948	987.47
Trade, Transportation & Utilities	131	1,174	1,161	1,166	7,176,320	473.03
Wholesale Trade	25	158	151	153	1,420,704	709.64
Retail Trade	81	794	784	784	3,596,929	351.42
Transportation, Warehousing & Utilities	25	222	226	229	2,158,687	735.83
Information	9	51	52	53	324,497	480.03
Financial Activities	33	222	226	225	1,385,203	474.98
Professional & Business Services	52	390	393	411	2,412,305	466.24
Education & Health Services	68	563	595	618	4,664,696	606.12
Leisure & Hospitality	29	410	415	401	995,726	187.42
Other Services	43	187	188	192	1,070,227	435.58
Local Government	32	1,041	1,066	1,092	8,584,968	619.30
State Government	12	239	234	234	1,269,906	414.51

**TABLE 6. COUNTY SUMMARY  
EMPLOYMENT AND TOTAL EARNINGS, BY INDUSTRY  
SECOND QUARTER 2007**

NORTH AMERICAN INDUSTRY CLASSIFICATION SYSTEM INDUSTRY GROUP	NUMBER OF EMPLOYING UNITS	EMPLOYMENT			TOTAL EARNINGS	AVERAGE
		APRIL	MAY	JUNE	APRIL - JUNE	WEEKLY EARNINGS
<b>BAXTER COUNTY - TOTAL</b>	<b>1,304</b>	<b>15,103</b>	<b>15,304</b>	<b>15,054</b>	<b>\$107,685,195</b>	<b>\$546.63</b>
Natural Resources & Mining	5	116	111	120	835,353	555.54
Construction	144	741	765	795	4,886,806	490.10
Manufacturing	64	2,489	2,484	2,501	24,038,638	742.22
Trade, Transportation & Utilities	288	2,747	2,779	2,792	15,662,600	434.53
Wholesale Trade	35	235	237	236	1,642,337	535.31
Retail Trade	221	2,291	2,319	2,332	12,320,783	409.57
Transportation, Warehousing & Utilities	32	221	223	224	1,699,480	587.11
Information	24	262	267	264	2,007,407	584.17
Financial Activities	121	738	744	752	6,124,446	632.65
Professional & Business Services	139	854	889	893	5,829,199	510.32
Education & Health Services	237	3,501	3,512	3,524	28,904,633	633.04
Leisure & Hospitality	125	1,633	1,696	1,671	4,659,007	215.03
Other Services	107	410	424	413	1,951,136	361.08
Local Government	37	1,278	1,304	1,022	10,600,210	678.75
State Government	13	334	329	307	2,185,760	520.01
<b>BENTON COUNTY - TOTAL</b>	<b>5,459</b>	<b>95,163</b>	<b>95,927</b>	<b>95,698</b>	<b>\$924,467,077</b>	<b>\$743.89</b>
Natural Resources & Mining	31	647	694	703	7,303,628	824.59
Construction	781	4,922	4,881	4,917	46,703,992	732.19
Manufacturing	254	13,611	13,546	13,247	115,069,822	657.23
Trade, Transportation & Utilities	1,460	23,866	24,086	23,972	224,833,054	721.38
Wholesale Trade	674	3,746	3,710	3,715	66,416,306	1372.02
Retail Trade	615	8,702	8,829	8,828	51,567,680	451.47
Transportation, Warehousing & Utilities	171	11,418	11,547	11,429	106,849,068	716.91
Information	69	924	920	931	8,156,318	678.28
Financial Activities	597	4,016	4,049	4,084	42,936,016	815.57
Professional & Business Services	954	22,739	22,976	22,951	305,293,866	1026.02
Education & Health Services	483	6,812	6,881	6,903	57,186,293	640.75
Leisure & Hospitality	415	7,642	7,839	7,966	25,099,661	247.03
Other Services	321	1,728	1,782	1,785	10,931,112	476.40
Local Government	75	7,427	7,437	7,502	74,128,680	764.85
State Government	19	829	836	737	6,824,635	655.67

**TABLE 6. COUNTY SUMMARY  
EMPLOYMENT AND TOTAL EARNINGS, BY INDUSTRY  
SECOND QUARTER 2007**

NORTH AMERICAN INDUSTRY CLASSIFICATION SYSTEM INDUSTRY GROUP	NUMBER OF EMPLOYING UNITS	EMPLOYMENT			TOTAL EARNINGS	AVERAGE
		APRIL	MAY	JUNE	APRIL - JUNE	WEEKLY EARNINGS
<b>BOONE COUNTY - TOTAL</b>	<b>1,057</b>	<b>14,103</b>	<b>14,091</b>	<b>14,025</b>	<b>\$107,720,034</b>	<b>\$588.80</b>
Construction	94	466	475	520	3,318,297	524.13
Manufacturing	75	1,992	2,010	1,999	16,768,953	644.85
Trade, Transportation & Utilities	260	4,535	4,559	4,459	37,823,181	644.02
Wholesale Trade	58	695	688	704	5,306,995	586.82
Retail Trade	149	1,949	1,971	1,940	10,530,227	414.68
Transportation, Warehousing & Utilities	53	1,891	1,900	1,815	21,985,959	905.05
Information	19	424	420	425	4,046,456	735.85
Financial Activities	98	641	639	629	5,146,854	622.18
Professional & Business Services	111	551	544	539	3,387,128	478.36
Education & Health Services	172	1,151	1,167	1,147	8,173,235	544.34
Leisure & Hospitality	79	1,158	1,155	1,140	3,122,283	208.67
Local Government	60	2,250	2,255	2,291	19,053,036	646.98
State Government	21	659	584	600	5,106,671	639.43
Other	68	276	283	276	1,773,940	490.26
<b>BRADLEY COUNTY - TOTAL</b>	<b>391</b>	<b>4,292</b>	<b>4,246</b>	<b>4,260</b>	<b>\$28,627,865</b>	<b>\$516.21</b>
Natural Resources & Mining	49	451	404	463	2,516,605	440.63
Construction	24	208	237	220	1,616,454	560.94
Manufacturing	9	1,052	1,033	1,053	8,544,068	628.33
Trade, Transportation & Utilities	87	507	511	530	2,649,382	394.96
Wholesale Trade	17	84	84	86	642,000	583.28
Retail Trade	47	355	358	357	1,504,044	324.38
Transportation, Warehousing & Utilities	23	68	69	87	503,338	518.55
Information	4	12	12	12	84,973	544.70
Financial Activities	23	173	169	170	1,151,256	518.90
Professional & Business Services	28	81	80	80	342,364	327.83
Education & Health Services	89	611	595	609	4,106,446	522.12
Leisure & Hospitality	19	209	217	210	430,418	156.17
Other Services	33	120	125	136	752,980	456.08
Local & State Government	26	868	863	777	6,432,919	591.91



**TABLE 6. COUNTY SUMMARY  
EMPLOYMENT AND TOTAL EARNINGS, BY INDUSTRY  
SECOND QUARTER 2007**

NORTH AMERICAN INDUSTRY CLASSIFICATION SYSTEM INDUSTRY GROUP	NUMBER OF EMPLOYING UNITS	EMPLOYMENT			TOTAL EARNINGS	AVERAGE
		APRIL	MAY	JUNE	APRIL - JUNE	WEEKLY EARNINGS
<b>CALHOUN COUNTY - TOTAL</b>	<b>112</b>	<b>3,055</b>	<b>3,067</b>	<b>3,060</b>	<b>\$29,079,443</b>	<b>\$730.85</b>
Natural Resources & Mining	18	209	203	199	1,465,055	553.34
Construction	11	71	66	70	419,229	467.37
Manufacturing	10	2,044	2,051	2,040	21,528,195	809.79
Trade, Transportation & Utilities	27	202	213	209	1,538,958	569.14
Wholesale Trade & Retail Trade	19	67	69	65	248,045	284.78
Transportation, Warehousing & Utilities	8	135	144	144	1,290,913	704.26
Financial Activities	6	82	80	81	489,397	464.76
Education & Health Services	6	46	46	46	344,549	576.17
Local Government	11	206	214	213	1,476,583	538.31
State Government	9	80	76	74	533,476	535.26
Other	14	115	118	128	1,284,001	820.80
<b>CARROLL COUNTY - TOTAL</b>	<b>839</b>	<b>9,830</b>	<b>10,236</b>	<b>10,228</b>	<b>\$60,556,986</b>	<b>\$461.30</b>
Natural Resources & Mining	18	267	265	266	1,832,799	530.02
Trade, Transportation & Utilities	206	1,697	1,715	1,741	9,803,250	439.02
Wholesale Trade	27	146	149	152	797,988	411.97
Retail Trade	159	1,284	1,296	1,312	6,478,196	384.11
Transportation, Warehousing & Utilities	20	267	270	277	2,527,066	716.42
Professional & Business Services	78	227	222	230	1,574,832	535.23
Education & Health Services	80	828	818	806	6,049,542	569.35
Leisure & Hospitality	169	1,513	1,910	1,984	5,154,259	219.98
Local Government	24	1,139	1,148	953	8,498,888	605.33
State Government	11	107	106	105	683,708	496.16
Other	253	4,052	4,052	4,143	26,959,708	508.00

**TABLE 6. COUNTY SUMMARY  
EMPLOYMENT AND TOTAL EARNINGS, BY INDUSTRY  
SECOND QUARTER 2007**

NORTH AMERICAN INDUSTRY CLASSIFICATION SYSTEM INDUSTRY GROUP	NUMBER OF EMPLOYING UNITS	EMPLOYMENT			TOTAL EARNINGS	AVERAGE
		APRIL	MAY	JUNE	APRIL - JUNE	WEEKLY EARNINGS
<b>CHICOT COUNTY - TOTAL</b>	<b>358</b>	<b>3,523</b>	<b>3,544</b>	<b>3,563</b>	<b>\$21,155,247</b>	<b>\$459.26</b>
Natural Resources & Mining	47	249	259	271	1,818,580	538.73
Construction	16	112	124	142	901,606	550.43
Manufacturing	10	499	482	465	2,064,951	329.55
Trade, Transportation & Utilities	75	545	557	576	3,242,377	445.91
Wholesale Trade	14	103	103	105	950,294	705.14
Retail Trade	50	385	397	410	1,709,546	330.97
Transportation, Warehousing & Utilities	11	57	57	61	582,537	768.18
Information	6	13	12	12	57,866	360.91
Financial Activities	29	164	165	164	1,231,198	576.31
Professional & Business Services	27	86	85	85	738,006	665.27
Education & Health Services	82	564	556	552	3,379,243	466.40
Leisure & Hospitality	20	190	193	199	459,790	182.31
Other Services	18	45	45	45	214,522	366.70
Local Government	17	732	735	724	5,075,480	534.58
State Government	11	324	331	328	1,971,628	462.86
<b>CLARK COUNTY - TOTAL</b>	<b>609</b>	<b>9,956</b>	<b>9,969</b>	<b>9,685</b>	<b>\$66,802,721</b>	<b>\$520.64</b>
Natural Resources & Mining	41	253	241	260	1,818,170	556.47
Construction	27	91	87	94	500,340	424.50
Manufacturing	36	2,511	2,477	2,477	18,491,494	571.64
Trade, Transportation & Utilities	146	1,426	1,456	1,473	10,022,154	531.07
Wholesale Trade	18	58	57	60	542,380	715.23
Retail Trade	105	1,083	1,104	1,112	6,796,357	475.41
Transportation, Warehousing & Utilities	23	285	295	301	2,683,417	702.89
Information	10	40	42	45	252,281	458.41
Financial Activities	86	376	396	392	2,765,272	548.23
Professional & Business Services	44	398	415	386	4,004,366	770.71
Education & Health Services	76	1,468	1,426	1,396	10,000,964	537.98
Leisure & Hospitality	57	1,034	1,063	1,058	2,858,228	209.06
Other Services	45	218	212	195	1,100,673	406.40
Local Government	26	978	1,046	925	7,221,025	565.07
State Government	15	1,163	1,108	984	7,767,754	550.71

**TABLE 6. COUNTY SUMMARY  
EMPLOYMENT AND TOTAL EARNINGS, BY INDUSTRY  
SECOND QUARTER 2007**

NORTH AMERICAN INDUSTRY CLASSIFICATION SYSTEM INDUSTRY GROUP	NUMBER OF EMPLOYING UNITS	EMPLOYMENT			TOTAL EARNINGS	AVERAGE
		APRIL	MAY	JUNE	APRIL - JUNE	WEEKLY EARNINGS
<b>CLAY COUNTY - TOTAL</b>	<b>403</b>	<b>4,064</b>	<b>4,105</b>	<b>4,091</b>	<b>\$25,464,257</b>	<b>\$479.31</b>
Natural Resources & Mining	58	202	220	232	1,254,609	442.70
Construction	34	172	175	173	1,058,356	469.68
Manufacturing	18	729	729	755	4,751,181	495.45
Trade, Transportation & Utilities	96	908	907	899	6,149,968	522.93
Wholesale Trade	22	331	323	314	2,697,594	643.10
Retail Trade	50	423	430	429	2,069,217	372.47
Transportation, Warehousing & Utilities	24	154	154	156	1,383,157	687.91
Information	4	68	68	69	435,870	490.66
Financial Activities	34	149	148	148	923,338	478.83
Professional & Business Services	27	54	58	56	333,834	458.56
Education & Health Services	51	500	497	477	2,878,449	450.65
Leisure & Hospitality	22	237	230	228	498,634	165.57
Other Services	25	75	70	73	423,449	448.25
Local Government	22	892	924	906	6,280,991	532.50
State Government	12	78	79	75	475,578	473.06
<b>CLEBURNE COUNTY - TOTAL</b>	<b>691</b>	<b>6,906</b>	<b>6,979</b>	<b>6,824</b>	<b>\$44,652,721</b>	<b>\$497.58</b>
Natural Resources & Mining	18	163	161	135	1,325,021	666.17
Construction	75	382	413	405	2,610,899	502.10
Manufacturing	42	1,438	1,422	1,294	10,877,603	604.29
Trade, Transportation & Utilities	189	1,600	1,624	1,648	10,115,468	479.13
Wholesale Trade	43	206	215	221	1,815,990	652.76
Retail Trade	113	1,031	1,045	1,059	5,127,467	377.44
Transportation, Warehousing & Utilities	33	363	364	368	3,172,011	668.50
Information	6	52	50	51	325,288	490.63
Financial Activities	75	260	255	266	1,823,487	538.80
Professional & Business Services	57	241	237	237	1,406,886	454.08
Education & Health Services	79	772	774	793	5,159,304	509.02
Leisure & Hospitality	68	875	909	957	2,706,720	227.88
Other Services	53	174	171	166	790,656	357.06
Local Government	19	822	834	747	6,693,552	642.81
State Government	10	127	129	125	817,837	495.36

**TABLE 6. COUNTY SUMMARY  
EMPLOYMENT AND TOTAL EARNINGS, BY INDUSTRY  
SECOND QUARTER 2007**

NORTH AMERICAN INDUSTRY CLASSIFICATION SYSTEM INDUSTRY GROUP	NUMBER OF EMPLOYING UNITS	EMPLOYMENT			TOTAL EARNINGS	AVERAGE
		APRIL	MAY	JUNE	APRIL - JUNE	WEEKLY EARNINGS
<b>CLEVELAND COUNTY - TOTAL</b>	<b>111</b>	<b>1,072</b>	<b>1,095</b>	<b>1,018</b>	<b>\$7,150,728</b>	<b>\$518.11</b>
Natural Resources & Mining	17	138	139	140	1,025,922	567.75
Construction	7	32	33	33	132,262	311.45
Manufacturing	5	87	89	91	529,778	457.89
Trade, Transportation & Utilities	29	179	177	186	870,740	370.74
Retail Trade	14	84	81	84	222,148	205.88
Other Trade, Transportation & Utilities	15	95	96	102	648,592	510.84
Local Government	11	337	342	239	2,388,393	600.40
State Government	8	65	65	66	369,058	434.53
Other	34	234	250	263	1,834,575	566.75
<b>COLUMBIA COUNTY - TOTAL</b>	<b>727</b>	<b>9,501</b>	<b>9,548</b>	<b>9,558</b>	<b>\$74,330,828</b>	<b>\$599.62</b>
Natural Resources & Mining	49	553	565	582	7,493,715	1017.25
Construction	47	325	339	339	3,133,913	721.05
Manufacturing	43	2,678	2,698	2,697	26,605,308	760.52
Trade, Transportation & Utilities	185	1,615	1,621	1,578	9,247,391	443.29
Wholesale Trade	30	301	292	278	2,099,302	556.20
Retail Trade	120	1,041	1,056	1,036	4,700,008	346.19
Transportation, Warehousing & Utilities	35	273	273	264	2,448,081	697.46
Information	9	75	72	73	446,815	468.69
Financial Activities	77	517	525	517	5,185,071	767.51
Professional & Business Services	59	309	310	314	2,571,376	636.01
Education & Health Services	116	892	902	891	4,942,942	424.83
Leisure & Hospitality	53	637	620	617	1,635,683	201.42
Other Services	48	208	207	205	844,072	314.17
Local Government	27	1,116	1,120	1,148	8,674,831	591.57
State Government	14	576	569	597	3,549,711	470.24

**TABLE 6. COUNTY SUMMARY  
EMPLOYMENT AND TOTAL EARNINGS, BY INDUSTRY  
SECOND QUARTER 2007**

NORTH AMERICAN INDUSTRY CLASSIFICATION SYSTEM INDUSTRY GROUP	NUMBER OF EMPLOYING UNITS	EMPLOYMENT			TOTAL EARNINGS	AVERAGE
		APRIL	MAY	JUNE	APRIL - JUNE	WEEKLY EARNINGS
<b>CONWAY COUNTY - TOTAL</b>	<b>558</b>	<b>6,926</b>	<b>6,936</b>	<b>6,963</b>	<b>\$49,396,539</b>	<b>\$547.38</b>
Natural Resources & Mining	22	169	170	171	1,634,391	739.54
Construction	58	505	516	525	5,503,834	821.55
Manufacturing	29	1,158	1,156	1,169	11,527,145	763.74
Trade, Transportation & Utilities	137	1,502	1,510	1,541	9,756,633	494.52
Wholesale Trade	25	226	229	230	1,906,704	642.35
Retail Trade	82	939	938	964	4,806,382	390.41
Transportation, Warehousing & Utilities	30	337	343	347	3,043,547	683.89
Information	4	14	13	12	126,319	747.45
Financial Activities	34	197	198	201	1,433,900	555.20
Professional & Business Services	44	604	583	599	2,267,315	292.96
Education & Health Services	125	876	879	885	5,388,151	470.99
Leisure & Hospitality	38	504	500	525	1,189,672	179.56
Other Services	28	89	92	106	612,070	492.15
Local Government	28	914	917	871	7,770,894	663.69
State Government	11	394	402	358	2,186,215	437.18
<b>CRAIGHEAD COUNTY - TOTAL</b>	<b>2,693</b>	<b>41,324</b>	<b>41,774</b>	<b>41,206</b>	<b>\$310,936,807</b>	<b>\$577.25</b>
Natural Resources & Mining	62	241	258	281	1,462,216	432.61
Construction	241	1,581	1,628	1,708	12,817,859	601.58
Manufacturing	139	6,556	6,560	6,558	57,603,785	675.67
Trade, Transportation & Utilities	743	8,494	8,519	8,487	56,170,623	508.33
Wholesale Trade	187	1,634	1,655	1,640	15,636,198	732.07
Retail Trade	439	5,731	5,720	5,695	30,179,144	406.18
Transportation, Warehousing & Utilities	117	1,129	1,144	1,152	10,355,281	697.72
Information	36	605	606	600	5,025,283	640.35
Financial Activities	271	1,623	1,632	1,649	16,513,065	777.06
Professional & Business Services	364	3,522	3,618	3,592	22,734,165	488.85
Education & Health Services	394	7,258	7,306	7,222	65,142,759	690.03
Leisure & Hospitality	200	4,222	4,302	4,283	11,656,649	210.04
Other Services	180	984	987	986	4,928,844	384.66
Local Government	38	3,717	3,811	3,486	33,978,407	711.93
State Government	25	2,521	2,547	2,354	22,903,152	712.12

**TABLE 6. COUNTY SUMMARY  
EMPLOYMENT AND TOTAL EARNINGS, BY INDUSTRY  
SECOND QUARTER 2007**

NORTH AMERICAN INDUSTRY CLASSIFICATION SYSTEM INDUSTRY GROUP	NUMBER OF EMPLOYING UNITS	EMPLOYMENT			TOTAL EARNINGS	AVERAGE
		APRIL	MAY	JUNE	APRIL - JUNE	WEEKLY EARNINGS
<b>CRAWFORD COUNTY - TOTAL</b>	<b>1,261</b>	<b>19,978</b>	<b>20,013</b>	<b>19,950</b>	<b>\$145,415,500</b>	<b>\$559.84</b>
Natural Resources & Mining	25	732	693	648	7,718,872	859.28
Construction	185	1,470	1,424	1,457	11,205,809	594.34
Manufacturing	78	3,706	3,705	3,675	26,540,392	552.47
Trade, Transportation & Utilities	313	6,766	6,783	6,819	50,126,460	567.93
Wholesale Trade	83	669	700	716	6,367,302	704.74
Other Trade, Transportation & Utilities	230	6,097	6,083	6,103	43,759,158	552.33
Financial Activities	137	531	542	543	3,618,447	516.72
Professional & Business Services	155	997	997	1,055	7,168,610	542.57
Education & Health Services	137	1,333	1,349	1,341	9,416,074	540.13
Leisure & Hospitality	88	1,552	1,587	1,647	4,355,968	210.03
Local Government	41	2,148	2,183	2,021	19,723,268	716.55
State Government	11	178	179	175	1,448,145	628.17
Other	91	565	571	569	4,093,455	554.04
<b>CRITTENDEN COUNTY - TOTAL</b>	<b>1,223</b>	<b>17,243</b>	<b>17,249</b>	<b>17,449</b>	<b>\$131,245,639</b>	<b>\$583.11</b>
Natural Resources & Mining	43	254	272	274	1,534,294	442.58
Construction	75	473	494	492	4,056,027	641.54
Manufacturing	46	1,948	2,013	2,087	20,451,045	780.34
Trade, Transportation & Utilities	335	4,933	4,943	4,893	37,641,988	588.17
Wholesale Trade	77	798	801	797	8,720,987	839.96
Retail Trade	170	2,091	2,100	2,058	10,186,074	376.16
Transportation, Warehousing & Utilities	88	2,044	2,042	2,038	18,734,927	705.98
Information	10	96	92	87	687,919	577.27
Financial Activities	109	580	576	588	5,049,552	668.17
Professional & Business Services	133	1,178	1,163	1,172	7,020,569	461.18
Education & Health Services	211	2,021	2,033	2,050	16,267,198	615.00
Leisure & Hospitality	102	2,171	2,132	2,160	7,020,343	250.67
Other Services	98	621	618	627	3,391,823	419.47
Local Government	46	2,458	2,470	2,555	24,721,320	762.38
State Government	15	510	443	464	3,403,561	554.30

**TABLE 6. COUNTY SUMMARY  
EMPLOYMENT AND TOTAL EARNINGS, BY INDUSTRY  
SECOND QUARTER 2007**

NORTH AMERICAN INDUSTRY CLASSIFICATION SYSTEM INDUSTRY GROUP	NUMBER OF EMPLOYING UNITS	EMPLOYMENT			TOTAL EARNINGS	AVERAGE
		APRIL	MAY	JUNE	APRIL - JUNE	WEEKLY EARNINGS
<b>CROSS COUNTY - TOTAL</b>	<b>521</b>	<b>4,813</b>	<b>4,853</b>	<b>4,916</b>	<b>\$32,258,338</b>	<b>\$510.51</b>
Natural Resources & Mining	39	186	209	226	1,101,542	409.34
Construction	37	165	165	174	995,778	455.94
Manufacturing	16	595	591	624	4,883,355	622.61
Trade, Transportation & Utilities	132	1,132	1,134	1,145	7,778,670	526.26
Wholesale Trade	30	280	273	276	2,254,917	627.70
Retail Trade	68	645	642	642	3,470,774	415.21
Transportation, Warehousing & Utilities	34	207	219	227	2,052,979	725.52
Information	6	65	67	67	443,939	514.81
Financial Activities	49	339	339	352	2,460,594	551.29
Professional & Business Services	44	160	156	150	1,222,697	605.50
Education & Health Services	100	678	672	659	4,059,178	466.27
Leisure & Hospitality	31	398	410	422	899,141	168.69
Other Services	39	74	72	73	328,865	346.54
Local Government	17	794	812	795	6,338,673	609.23
State Government	11	227	226	229	1,745,906	590.76
<b>DALLAS COUNTY - TOTAL</b>	<b>271</b>	<b>3,276</b>	<b>3,285</b>	<b>3,158</b>	<b>\$22,534,729</b>	<b>\$535.07</b>
Natural Resources & Mining	40	175	180	205	1,357,475	559.40
Construction	13	66	69	64	812,685	942.43
Manufacturing	17	896	916	899	7,860,881	669.14
Trade, Transportation & Utilities	71	447	440	434	2,429,563	424.43
Wholesale Trade	9	29	32	33	236,097	579.62
Retail Trade	44	362	358	353	1,799,590	387.04
Transportation, Warehousing & Utilities	18	56	50	48	393,876	590.22
Information	3	22	22	22	163,164	570.50
Financial Activities	19	103	102	104	735,049	548.95
Professional & Business Services	16	47	44	46	432,003	727.69
Education & Health Services	38	797	790	801	4,501,061	434.97
Leisure & Hospitality	15	125	123	113	273,976	175.14
Other Services	14	62	58	61	242,761	309.51
Local Government	16	468	471	339	3,259,224	588.52
State Government	9	68	70	70	466,887	518.00

**TABLE 6. COUNTY SUMMARY  
EMPLOYMENT AND TOTAL EARNINGS, BY INDUSTRY  
SECOND QUARTER 2007**

NORTH AMERICAN INDUSTRY CLASSIFICATION SYSTEM INDUSTRY GROUP	NUMBER OF EMPLOYING UNITS	EMPLOYMENT			TOTAL EARNINGS	AVERAGE
		APRIL	MAY	JUNE	APRIL - JUNE	WEEKLY EARNINGS
<b>DESHA COUNTY - TOTAL</b>	<b>472</b>	<b>4,584</b>	<b>4,642</b>	<b>4,708</b>	<b>\$33,371,357</b>	<b>\$552.68</b>
Natural Resources & Mining	52	235	245	257	1,575,007	493.17
Construction	27	144	147	153	1,212,052	629.96
Manufacturing	16	1,116	1,100	1,110	11,121,844	771.67
Trade, Transportation & Utilities	130	909	906	909	5,550,642	470.23
Wholesale Trade	21	186	187	190	1,791,561	734.35
Retail Trade	77	557	553	557	2,437,647	337.45
Transportation, Warehousing & Utilities	32	166	166	162	1,321,434	617.30
Information	5	22	22	22	182,179	636.99
Financial Activities	43	211	212	210	1,408,369	513.44
Professional & Business Services	37	104	107	109	586,373	422.87
Education & Health Services	72	574	580	583	3,093,359	410.97
Leisure & Hospitality	33	243	253	272	634,098	190.53
Other Services	27	59	59	59	247,863	323.16
Local Government	19	787	828	845	6,467,574	606.71
State Government	11	180	183	179	1,291,997	550.10
<b>DREW COUNTY - TOTAL</b>	<b>512</b>	<b>6,910</b>	<b>6,927</b>	<b>6,768</b>	<b>\$42,370,425</b>	<b>\$474.53</b>
Natural Resources & Mining	38	257	257	258	2,010,347	600.94
Construction	24	111	119	120	673,621	444.15
Manufacturing	24	813	821	839	4,982,192	464.92
Trade, Transportation & Utilities	131	1,233	1,218	1,198	7,260,897	459.19
Wholesale Trade	22	231	230	227	1,914,431	642.14
Retail Trade	86	903	892	878	4,442,307	383.52
Transportation, Warehousing & Utilities	23	99	96	93	904,159	724.49
Information	8	81	80	79	565,551	543.80
Financial Activities	45	261	259	260	2,233,703	660.86
Professional & Business Services	46	331	343	345	2,283,519	517.14
Education & Health Services	85	817	815	837	4,588,784	428.90
Leisure & Hospitality	44	689	688	651	1,379,751	157.00
Other Services	27	99	101	96	431,540	336.44
Local Government	23	1,356	1,369	1,336	10,376,206	589.64
State Government	17	862	857	749	5,584,314	522.16



**TABLE 6. COUNTY SUMMARY  
EMPLOYMENT AND TOTAL EARNINGS, BY INDUSTRY  
SECOND QUARTER 2007**

NORTH AMERICAN INDUSTRY CLASSIFICATION SYSTEM INDUSTRY GROUP	NUMBER OF EMPLOYING UNITS	EMPLOYMENT			TOTAL EARNINGS	AVERAGE
		APRIL	MAY	JUNE	APRIL - JUNE	WEEKLY EARNINGS
<b>FAULKNER COUNTY - TOTAL</b>	<b>2,567</b>	<b>39,387</b>	<b>39,521</b>	<b>39,656</b>	<b>\$337,694,470</b>	<b>\$657.28</b>
Natural Resources & Mining	26	570	583	656	9,448,928	1205.37
Construction	369	2,981	3,023	3,159	24,364,759	613.62
Manufacturing	126	5,169	5,139	5,175	51,081,242	761.35
Trade, Transportation & Utilities	621	6,703	6,786	6,812	42,614,057	484.41
Wholesale Trade	162	821	836	869	8,088,533	738.95
Retail Trade	377	5,054	5,111	5,085	25,852,871	391.22
Transportation, Warehousing & Utilities	82	828	839	858	8,672,653	792.63
Information	43	390	398	404	3,260,725	631.27
Financial Activities	314	1,461	1,465	1,480	12,194,653	638.71
Professional & Business Services	340	5,418	5,335	5,417	75,104,091	1071.84
Education & Health Services	331	5,498	5,558	5,653	42,954,513	593.25
Leisure & Hospitality	194	3,899	3,915	3,896	10,585,337	208.61
Other Services	143	597	613	581	3,222,970	415.28
Local Government	41	3,402	3,419	3,440	37,172,914	836.02
State Government	19	3,299	3,287	2,983	25,690,281	619.56
<b>FRANKLIN COUNTY - TOTAL</b>	<b>331</b>	<b>4,201</b>	<b>4,273</b>	<b>4,300</b>	<b>\$29,537,895</b>	<b>\$533.62</b>
Natural Resources & Mining	11	131	133	140	1,328,314	758.75
Construction	34	253	248	251	1,935,402	593.92
Manufacturing	23	911	953	959	7,314,765	597.95
Trade, Transportation & Utilities	89	829	838	844	5,741,875	527.70
Wholesale Trade	15	49	53	50	276,365	419.58
Retail Trade	52	478	478	483	2,208,113	354.11
Transportation, Warehousing & Utilities	22	302	307	311	3,257,397	817.07
Information	6	42	46	45	247,475	429.40
Financial Activities	30	224	226	226	1,371,567	468.22
Professional & Business Services	22	63	63	62	452,029	554.86
Education & Health Services	42	466	463	466	2,695,222	445.86
Leisure & Hospitality	26	297	316	327	741,508	182.04
Other Services	19	55	54	57	273,767	380.58
Local Government	19	784	790	791	6,290,926	613.85
State Government	10	146	143	132	1,145,045	627.65

**TABLE 6. COUNTY SUMMARY  
EMPLOYMENT AND TOTAL EARNINGS, BY INDUSTRY  
SECOND QUARTER 2007**

NORTH AMERICAN INDUSTRY CLASSIFICATION SYSTEM INDUSTRY GROUP	NUMBER OF EMPLOYING UNITS	EMPLOYMENT			TOTAL EARNINGS	AVERAGE
		APRIL	MAY	JUNE	APRIL - JUNE	WEEKLY EARNINGS
<b>FULTON COUNTY - TOTAL</b>	<b>236</b>	<b>1,976</b>	<b>2,022</b>	<b>2,019</b>	<b>\$11,076,968</b>	<b>\$424.83</b>
Construction	17	28	28	28	187,358	514.72
Manufacturing	15	139	120	119	509,198	310.87
Trade, Transportation & Utilities	65	390	407	405	2,162,413	415.16
Retail Trade	40	200	207	206	692,872	260.84
Other Trade, Transportation & Utilities	25	190	200	199	1,469,541	575.76
Financial Activities	15	99	124	125	763,171	506.08
Professional & Business Services	17	69	72	71	432,147	470.41
Education & Health Services	54	389	395	395	1,700,438	332.83
Leisure & Hospitality	16	151	159	164	406,160	197.74
Local Government	13	528	532	531	3,996,267	579.65
State Government	11	109	110	107	634,110	448.87
Other	13	74	75	74	285,706	295.66
<b>GARLAND COUNTY - TOTAL</b>	<b>3,277</b>	<b>37,375</b>	<b>36,885</b>	<b>37,132</b>	<b>\$259,796,306</b>	<b>\$538.22</b>
Natural Resources & Mining	46	347	346	363	3,608,672	788.61
Construction	457	2,410	2,478	2,516	16,628,368	518.28
Manufacturing	130	2,712	2,693	2,718	22,371,863	635.57
Trade, Transportation & Utilities	714	7,336	7,370	7,413	46,114,561	481.12
Wholesale Trade	154	1,065	1,060	1,043	9,262,414	674.71
Retail Trade	490	5,656	5,676	5,713	30,699,834	415.64
Transportation, Warehousing & Utilities	70	615	634	657	6,152,313	744.89
Information	42	428	426	427	3,360,942	605.47
Financial Activities	385	1,556	1,551	1,580	12,816,464	631.03
Professional & Business Services	418	3,388	3,303	3,413	22,841,616	521.69
Education & Health Services	436	7,064	7,097	7,177	62,947,534	680.77
Leisure & Hospitality	361	6,864	6,327	6,717	22,927,034	265.77
Other Services	227	965	971	1,002	5,130,885	403.01
Local Government	34	3,159	3,164	2,789	32,599,410	825.61
State Government	27	1,146	1,159	1,017	8,448,957	586.92

**TABLE 6. COUNTY SUMMARY  
EMPLOYMENT AND TOTAL EARNINGS, BY INDUSTRY  
SECOND QUARTER 2007**

NORTH AMERICAN INDUSTRY CLASSIFICATION SYSTEM INDUSTRY GROUP	NUMBER OF EMPLOYING UNITS	EMPLOYMENT			TOTAL EARNINGS	AVERAGE
		APRIL	MAY	JUNE	APRIL - JUNE	WEEKLY EARNINGS
<b>GRANT COUNTY - TOTAL</b>	<b>302</b>	<b>3,981</b>	<b>4,015</b>	<b>4,046</b>	<b>\$26,239,157</b>	<b>\$502.84</b>
Natural Resources & Mining	24	190	187	186	1,895,044	776.76
Construction	34	230	235	247	1,865,854	604.75
Manufacturing	17	941	943	938	6,706,688	548.44
Trade, Transportation & Utilities	83	604	617	610	3,371,847	424.97
Wholesale Trade	16	120	126	130	847,790	520.33
Retail Trade	41	424	434	423	2,064,915	371.99
Transportation, Warehousing & Utilities	26	60	57	57	459,142	608.94
Information	4	31	32	31	273,702	671.94
Financial Activities	25	107	104	106	847,886	617.24
Professional & Business Services	23	104	109	102	858,899	629.23
Education & Health Services	35	436	461	472	2,138,700	360.52
Leisure & Hospitality	22	310	311	320	829,623	203.46
Other Services	16	56	57	56	238,994	326.35
Local Government	10	912	901	921	6,829,250	576.44
State Government	9	60	58	57	382,670	504.62
<b>GREENE COUNTY - TOTAL</b>	<b>920</b>	<b>15,250</b>	<b>15,521</b>	<b>14,626</b>	<b>\$107,328,870</b>	<b>\$545.59</b>
Natural Resources & Mining	38	203	232	228	1,366,635	475.68
Construction	85	369	379	407	2,782,505	555.95
Manufacturing	57	5,319	5,393	5,279	47,744,688	689.01
Trade, Transportation & Utilities	247	2,338	2,318	2,285	13,511,543	449.22
Wholesale Trade	58	441	440	438	3,685,501	644.81
Retail Trade	159	1,667	1,650	1,621	7,860,837	367.36
Transportation, Warehousing & Utilities	30	230	228	226	1,965,205	663.02
Information	13	132	132	138	669,373	384.26
Financial Activities	90	498	496	506	3,665,983	564.00
Professional & Business Services	93	1,549	1,635	1,073	7,270,044	394.10
Education & Health Services	133	1,734	1,733	1,722	10,681,613	475.04
Leisure & Hospitality	73	1,109	1,174	1,182	3,022,690	201.31
Other Services	49	167	165	165	926,973	430.42
Local Government	31	1,566	1,592	1,372	13,593,585	692.49
State Government	11	266	272	269	2,093,238	598.58

**TABLE 6. COUNTY SUMMARY  
EMPLOYMENT AND TOTAL EARNINGS, BY INDUSTRY  
SECOND QUARTER 2007**

NORTH AMERICAN INDUSTRY CLASSIFICATION SYSTEM INDUSTRY GROUP	NUMBER OF EMPLOYING UNITS	EMPLOYMENT			TOTAL EARNINGS	AVERAGE
		APRIL	MAY	JUNE	APRIL - JUNE	WEEKLY EARNINGS
<b>HEMPSTEAD COUNTY - TOTAL</b>	<b>502</b>	<b>8,261</b>	<b>8,298</b>	<b>8,354</b>	<b>\$55,963,762</b>	<b>\$518.39</b>
Natural Resources & Mining	18	201	198	204	1,657,690	634.40
Construction	32	132	134	135	898,685	517.18
Manufacturing	29	2,570	2,572	2,621	18,480,138	549.36
Trade, Transportation & Utilities	134	1,354	1,382	1,376	8,451,944	474.33
Wholesale Trade	26	248	259	260	1,694,222	509.74
Retail Trade	84	908	925	915	4,527,088	380.17
Transportation, Warehousing & Utilities	24	198	198	201	2,230,634	862.25
Information	11	76	76	74	566,654	578.61
Financial Activities	45	263	261	272	2,173,091	630.00
Professional & Business Services	34	242	226	239	1,001,464	326.88
Education & Health Services	72	953	971	941	5,842,578	470.61
Leisure & Hospitality	44	634	661	723	1,787,637	204.43
Other Services	37	202	201	210	1,390,570	523.49
Local Government	29	1,069	1,072	1,017	9,456,754	691.05
State Government	17	565	544	542	4,256,557	594.96
<b>HOT SPRING COUNTY - TOTAL</b>	<b>587</b>	<b>8,229</b>	<b>8,260</b>	<b>7,979</b>	<b>\$61,719,044</b>	<b>\$582.10</b>
Natural Resources & Mining	31	210	205	209	1,541,810	570.20
Construction	66	542	544	539	5,173,390	734.68
Manufacturing	36	1,741	1,744	1,700	16,854,980	750.17
Trade, Transportation & Utilities	154	1,427	1,433	1,437	10,248,712	550.40
Wholesale Trade	19	84	83	83	868,703	801.88
Retail Trade	94	939	948	942	4,946,608	403.51
Transportation, Warehousing & Utilities	41	404	402	412	4,433,401	839.98
Information	9	75	78	76	634,336	639.24
Financial Activities	60	333	338	339	2,592,431	592.33
Professional & Business Services	54	220	226	223	1,413,062	487.43
Education & Health Services	60	1,035	1,064	1,056	6,767,889	495.03
Leisure & Hospitality	42	561	567	538	1,348,485	186.79
Other Services	35	285	278	224	1,090,768	319.84
Local Government	26	1,142	1,154	1,028	9,875,713	685.62
State Government	14	658	629	610	4,177,468	508.19

**TABLE 6. COUNTY SUMMARY  
EMPLOYMENT AND TOTAL EARNINGS, BY INDUSTRY  
SECOND QUARTER 2007**

NORTH AMERICAN INDUSTRY CLASSIFICATION SYSTEM INDUSTRY GROUP	NUMBER OF EMPLOYING UNITS	EMPLOYMENT			TOTAL EARNINGS	AVERAGE
		APRIL	MAY	JUNE	APRIL - JUNE	WEEKLY EARNINGS
<b>HOWARD COUNTY - TOTAL</b>	<b>351</b>	<b>7,972</b>	<b>7,845</b>	<b>7,678</b>	<b>\$53,147,294</b>	<b>\$522.02</b>
Natural Resources & Mining	22	244	241	243	1,907,363	604.62
Construction	25	82	81	89	532,152	487.32
Manufacturing	25	4,455	4,356	4,232	31,104,241	550.33
Trade, Transportation & Utilities	97	937	933	933	5,729,429	471.70
Wholesale Trade	17	96	92	99	869,168	698.88
Retail Trade	60	634	636	637	3,028,275	366.46
Transportation, Warehousing & Utilities	20	207	205	197	1,831,986	694.20
Information	6	39	39	38	225,330	448.27
Financial Activities	37	160	158	168	1,113,033	528.51
Professional & Business Services	27	134	122	129	767,543	460.07
Education & Health Services	43	603	593	605	3,116,863	399.38
Leisure & Hospitality	19	307	320	317	769,939	188.22
Other Services	20	153	142	140	640,872	339.99
Local Government	18	708	712	642	6,202,581	694.16
State Government	12	150	148	142	1,037,948	544.38
<b>INDEPENDENCE COUNTY - TOTAL</b>	<b>934</b>	<b>16,191</b>	<b>16,296</b>	<b>16,364</b>	<b>\$119,852,432</b>	<b>\$566.18</b>
Natural Resources & Mining	13	149	145	147	1,070,621	560.24
Construction	73	475	492	496	3,275,810	516.72
Manufacturing	53	4,523	4,516	4,471	37,940,868	648.08
Trade, Transportation & Utilities	268	2,947	3,014	3,068	21,214,330	542.21
Wholesale Trade	54	545	544	561	4,471,477	625.38
Retail Trade	158	1,626	1,682	1,716	8,099,406	372.03
Transportation, Warehousing & Utilities	56	776	788	791	8,643,447	846.98
Information	12	164	170	168	1,182,758	543.71
Financial Activities	85	485	481	479	5,368,475	857.36
Professional & Business Services	94	877	839	898	4,457,545	393.52
Education & Health Services	140	2,949	2,992	3,050	24,614,000	631.76
Leisure & Hospitality	65	1,071	1,096	1,097	2,715,017	191.96
Other Services	66	392	398	401	1,733,732	335.93
Local Government	48	1,656	1,651	1,640	12,727,151	593.70
State Government	17	503	502	449	3,552,125	563.77

**TABLE 6. COUNTY SUMMARY  
EMPLOYMENT AND TOTAL EARNINGS, BY INDUSTRY  
SECOND QUARTER 2007**

NORTH AMERICAN INDUSTRY CLASSIFICATION SYSTEM INDUSTRY GROUP	NUMBER OF EMPLOYING UNITS	EMPLOYMENT			TOTAL EARNINGS	AVERAGE
		APRIL	MAY	JUNE	APRIL - JUNE	WEEKLY EARNINGS
<b>IZARD COUNTY - TOTAL</b>	<b>279</b>	<b>3,066</b>	<b>3,112</b>	<b>3,063</b>	<b>\$18,330,069</b>	<b>\$457.74</b>
Natural Resources & Mining	5	97	99	95	730,431	579.25
Construction	26	73	78	83	566,026	558.21
Trade, Transportation & Utilities	69	543	539	537	2,685,871	382.84
Retail Trade	50	428	418	420	1,886,884	343.95
Other Trade, Transportation & Utilities	19	115	121	117	798,987	522.33
Information	3	7	7	7	28,844	316.97
Financial Activities	31	154	151	156	995,528	498.35
Professional & Business Services	18	77	79	84	401,162	385.73
Education & Health Services	54	547	556	555	3,003,868	418.09
Leisure & Hospitality	20	188	195	214	481,253	186.03
Local Government	18	547	560	546	4,090,600	571.07
State Government	11	480	490	427	2,897,228	478.59
Other	24	353	358	359	2,449,258	528.24
<b>JACKSON COUNTY - TOTAL</b>	<b>518</b>	<b>5,747</b>	<b>5,776</b>	<b>5,677</b>	<b>\$40,371,033</b>	<b>\$541.65</b>
Natural Resources & Mining	47	237	252	253	1,458,294	453.54
Construction	26	191	168	149	1,543,000	700.94
Manufacturing	26	1,190	1,203	1,250	10,496,983	664.94
Trade, Transportation & Utilities	124	1,095	1,118	1,126	7,163,935	495.12
Wholesale Trade	34	212	213	216	2,011,358	724.12
Retail Trade	71	656	673	677	3,298,135	379.42
Transportation, Warehousing & Utilities	19	227	232	233	1,854,442	618.42
Information	6	39	40	40	262,808	509.65
Financial Activities	42	168	167	176	1,379,612	623.04
Professional & Business Services	37	162	149	144	1,148,810	582.66
Education & Health Services	95	846	845	828	6,282,568	575.56
Leisure & Hospitality	39	319	321	333	927,149	219.89
Other Services	30	88	85	88	381,040	336.91
Local Government	32	722	735	619	4,626,270	514.26
State Government	14	690	693	671	4,700,564	528.11

**TABLE 6. COUNTY SUMMARY  
EMPLOYMENT AND TOTAL EARNINGS, BY INDUSTRY  
SECOND QUARTER 2007**

NORTH AMERICAN INDUSTRY CLASSIFICATION SYSTEM INDUSTRY GROUP	NUMBER OF EMPLOYING UNITS	EMPLOYMENT			TOTAL EARNINGS	AVERAGE
		APRIL	MAY	JUNE	APRIL - JUNE	WEEKLY EARNINGS
<b>JEFFERSON COUNTY - TOTAL</b>	<b>1,921</b>	<b>31,952</b>	<b>31,886</b>	<b>31,715</b>	<b>\$253,137,272</b>	<b>\$611.35</b>
Natural Resources & Mining	40	421	440	425	3,966,338	711.75
Construction	131	1,599	1,455	1,418	17,013,859	877.97
Manufacturing	72	5,919	5,910	5,911	56,697,339	737.54
Trade, Transportation & Utilities	475	5,811	5,861	5,868	39,832,206	524.06
Wholesale Trade	84	1,060	1,057	1,087	8,695,939	626.33
Retail Trade	322	3,886	3,951	3,913	19,944,468	391.71
Transportation, Warehousing & Utilities	69	865	853	868	11,191,799	998.73
Information	18	206	203	205	1,610,239	605.20
Financial Activities	159	1,182	1,187	1,193	10,684,125	692.19
Professional & Business Services	183	1,789	1,777	1,816	14,105,889	604.83
Education & Health Services	464	5,397	5,415	5,473	40,715,266	576.96
Leisure & Hospitality	150	2,284	2,249	2,199	5,956,865	204.20
Other Services	148	724	716	755	4,306,086	452.72
Local Government	41	3,332	3,386	3,347	33,031,054	757.33
State Government	40	3,288	3,287	3,105	25,218,006	601.19
<b>JOHNSON COUNTY - TOTAL</b>	<b>476</b>	<b>8,673</b>	<b>8,691</b>	<b>8,805</b>	<b>\$61,355,928</b>	<b>\$541.06</b>
Natural Resources & Mining	17	207	204	205	1,719,246	644.07
Construction	27	136	148	168	1,064,743	543.61
Manufacturing	44	2,913	2,926	2,968	20,848,357	546.29
Trade, Transportation & Utilities	122	2,029	2,045	2,056	13,729,724	516.87
Wholesale Trade	20	184	185	190	1,671,252	689.93
Other Trade, Transportation & Utilities	102	1,845	1,860	1,866	12,058,472	499.50
Information	6	35	35	35	237,265	521.46
Financial Activities	45	236	234	236	1,826,484	597.02
Professional & Business Services	51	185	188	177	1,180,687	495.39
Education & Health Services	77	1,183	1,152	1,144	8,184,099	542.87
Leisure & Hospitality	36	529	535	576	1,382,304	194.51
Other Services	27	82	83	76	416,586	398.90
Local Government	14	973	973	996	9,553,972	749.41
State Government	10	165	168	168	1,212,461	558.48

**TABLE 6. COUNTY SUMMARY  
EMPLOYMENT AND TOTAL EARNINGS, BY INDUSTRY  
SECOND QUARTER 2007**

NORTH AMERICAN INDUSTRY CLASSIFICATION SYSTEM INDUSTRY GROUP	NUMBER OF EMPLOYING UNITS	EMPLOYMENT			TOTAL EARNINGS	AVERAGE
		APRIL	MAY	JUNE	APRIL - JUNE	WEEKLY EARNINGS
<b>LAFAYETTE COUNTY - TOTAL</b>	<b>172</b>	<b>1,402</b>	<b>1,419</b>	<b>1,459</b>	<b>\$8,939,883</b>	<b>\$482.02</b>
Natural Resources & Mining	38	169	188	181	1,338,146	573.98
Manufacturing	5	24	23	24	174,239	566.32
Trade, Transportation & Utilities	35	244	239	243	1,390,606	442.02
Retail Trade	23	170	168	168	702,171	320.24
Other Trade, Transportation & Utilities	12	74	71	75	688,435	722.13
Financial Activities	16	66	64	65	420,632	497.79
Professional & Business Services	9	63	53	56	508,332	682.02
Education & Health Services	23	222	221	235	1,057,173	359.83
Leisure & Hospitality	7	54	58	55	133,020	183.81
Other Services	7	72	75	71	316,019	334.53
Local Government	13	337	340	368	2,464,154	544.16
State Government	8	50	50	49	341,217	528.47
Other	11	101	108	112	796,345	572.50
<b>LAWRENCE COUNTY - TOTAL</b>	<b>436</b>	<b>4,205</b>	<b>4,167</b>	<b>4,171</b>	<b>\$26,587,152</b>	<b>\$489.16</b>
Natural Resources & Mining	35	169	166	179	1,290,573	579.43
Construction	26	67	75	70	451,431	491.40
Manufacturing	21	542	538	558	3,635,748	512.22
Trade, Transportation & Utilities	135	934	940	947	5,459,641	446.62
Wholesale Trade	22	182	180	185	1,362,134	574.66
Retail Trade	72	601	611	611	2,845,912	360.26
Transportation, Warehousing & Utilities	41	151	149	151	1,251,595	640.42
Information	4	19	15	15	122,385	576.38
Financial Activities	34	131	133	139	874,381	500.70
Professional & Business Services	24	124	116	124	1,097,713	695.93
Education & Health Services	68	452	437	418	2,837,004	500.91
Leisure & Hospitality	26	343	339	336	654,617	148.39
Other Services	24	57	59	58	215,759	286.15
Local Government	28	1,245	1,229	1,210	9,196,874	576.10
State Government	11	122	120	117	751,026	482.77



**TABLE 6. COUNTY SUMMARY  
EMPLOYMENT AND TOTAL EARNINGS, BY INDUSTRY  
SECOND QUARTER 2007**

NORTH AMERICAN INDUSTRY CLASSIFICATION SYSTEM INDUSTRY GROUP	NUMBER OF EMPLOYING UNITS	EMPLOYMENT			TOTAL EARNINGS	AVERAGE
		APRIL	MAY	JUNE	APRIL - JUNE	WEEKLY EARNINGS
<b>LEE COUNTY - TOTAL</b>	<b>255</b>	<b>2,104</b>	<b>2,132</b>	<b>2,127</b>	<b>\$13,606,040</b>	<b>\$493.46</b>
Natural Resources & Mining	29	186	200	191	998,006	399.15
Construction	10	35	30	26	190,377	482.78
Trade, Transportation & Utilities	53	345	359	361	2,036,371	441.25
Wholesale Trade	9	70	76	75	568,173	593.29
Retail Trade	27	189	200	202	799,055	312.01
Transportation, Warehousing & Utilities	17	86	83	84	669,143	610.35
Financial Activities	15	75	75	77	624,640	635.01
Professional & Business Services	19	69	66	67	694,202	793.07
Education & Health Services	70	337	336	327	1,958,243	451.90
Leisure & Hospitality	9	79	83	94	187,470	168.99
Local Government	14	371	370	375	2,958,464	611.76
State Government	8	487	488	488	3,488,311	550.24
Other	28	120	125	121	469,956	296.32
<b>LINCOLN COUNTY - TOTAL</b>	<b>232</b>	<b>2,988</b>	<b>3,021</b>	<b>2,819</b>	<b>\$20,474,906</b>	<b>\$535.23</b>
Natural Resources & Mining	33	155	157	157	1,144,309	563.05
Construction	17	88	96	85	607,747	521.37
Manufacturing	9	439	451	450	3,391,360	584.05
Trade, Transportation & Utilities	49	342	345	364	2,350,996	516.21
Wholesale Trade	7	29	29	29	272,496	722.80
Retail Trade	24	174	175	184	654,144	283.22
Transportation, Warehousing & Utilities	18	139	141	151	1,424,356	762.64
Financial Activities	23	77	78	75	592,015	593.99
Professional & Business Services	13	21	21	22	153,561	553.71
Education & Health Services	35	293	300	288	1,598,626	418.74
Leisure & Hospitality	17	144	149	145	360,793	190.09
Local & State Government	22	1,392	1,387	1,197	10,087,105	585.46
Other	14	37	37	36	188,394	395.23

**TABLE 6. COUNTY SUMMARY  
EMPLOYMENT AND TOTAL EARNINGS, BY INDUSTRY  
SECOND QUARTER 2007**

NORTH AMERICAN INDUSTRY CLASSIFICATION SYSTEM INDUSTRY GROUP	NUMBER OF EMPLOYING UNITS	EMPLOYMENT			TOTAL EARNINGS	AVERAGE
		APRIL	MAY	JUNE	APRIL - JUNE	WEEKLY EARNINGS
<b>LITTLE RIVER COUNTY - TOTAL</b>	<b>267</b>	<b>4,773</b>	<b>4,774</b>	<b>4,779</b>	<b>\$48,058,361</b>	<b>\$774.14</b>
Natural Resources & Mining	10	56	56	59	396,786	535.47
Manufacturing	19	1,415	1,389	1,383	22,219,527	1,224.64
Trade, Transportation & Utilities	69	1,416	1,427	1,415	13,394,561	725.94
Retail Trade	43	320	323	325	1,496,469	356.76
Other Trade, Transportation & Utilities	26	1,096	1,104	1,090	11,898,092	834.56
Financial Activities	24	104	101	102	663,067	498.42
Professional & Business Services	23	144	147	150	815,430	426.70
Education & Health Services	28	163	163	156	820,748	392.95
Leisure & Hospitality	20	226	233	239	596,568	197.23
Other Services	15	105	97	102	348,782	264.76
Local Government	20	809	819	815	6,522,815	616.15
State Government	12	87	85	86	557,667	498.81
Other	27	248	257	272	1,722,410	511.56
<b>LOGAN COUNTY - TOTAL</b>	<b>469</b>	<b>6,080</b>	<b>6,086</b>	<b>6,122</b>	<b>\$39,289,721</b>	<b>\$495.78</b>
Natural Resources & Mining	22	151	139	148	1,447,530	762.66
Construction	50	165	166	168	1,076,314	497.76
Manufacturing	28	1,817	1,805	1,811	13,598,897	577.62
Trade, Transportation & Utilities	107	915	919	907	4,756,328	400.44
Wholesale Trade	16	60	58	56	360,733	478.43
Retail Trade	68	769	771	763	3,559,434	356.67
Transportation, Warehousing & Utilities	23	86	90	88	836,161	730.91
Information	6	40	40	39	311,827	604.71
Financial Activities	45	253	253	263	2,266,519	680.16
Professional & Business Services	42	144	143	136	844,929	460.95
Education & Health Services	77	728	741	744	4,374,338	456.15
Leisure & Hospitality	28	345	352	359	776,203	169.62
Other Services	27	83	84	85	471,596	431.86
Local & State Government	37	1,439	1,444	1,462	9,365,240	497.40

**TABLE 6. COUNTY SUMMARY  
EMPLOYMENT AND TOTAL EARNINGS, BY INDUSTRY  
SECOND QUARTER 2007**

NORTH AMERICAN INDUSTRY CLASSIFICATION SYSTEM INDUSTRY GROUP	NUMBER OF EMPLOYING UNITS	EMPLOYMENT			TOTAL EARNINGS	AVERAGE
		APRIL	MAY	JUNE	APRIL - JUNE	WEEKLY EARNINGS
<b>LONOKE COUNTY - TOTAL</b>	<b>1,275</b>	<b>12,787</b>	<b>12,897</b>	<b>12,816</b>	<b>\$86,918,239</b>	<b>\$520.99</b>
Natural Resources & Mining	74	432	434	445	3,577,704	629.77
Construction	178	1,065	1,058	1,068	7,515,644	543.52
Manufacturing	37	1,357	1,346	1,338	12,886,789	735.93
Trade, Transportation & Utilities	349	2,851	2,910	2,851	17,197,329	460.82
Wholesale Trade	88	532	533	523	4,907,717	713.19
Retail Trade	185	2,032	2,087	2,025	9,858,422	370.28
Transportation, Warehousing & Utilities	76	287	290	303	2,431,190	637.55
Information	15	119	128	126	970,284	600.30
Financial Activities	129	612	604	612	5,319,990	671.60
Professional & Business Services	143	635	602	601	4,225,519	530.53
Education & Health Services	144	1,405	1,433	1,418	8,488,053	460.24
Leisure & Hospitality	94	1,372	1,435	1,441	3,703,118	201.17
Other Services	68	184	183	202	1,123,937	455.83
Local Government	28	2,583	2,593	2,549	20,905,284	624.50
State Government	16	172	171	165	1,004,588	456.35
<b>MADISON COUNTY - TOTAL</b>	<b>255</b>	<b>3,192</b>	<b>3,223</b>	<b>3,209</b>	<b>\$20,531,486</b>	<b>\$492.31</b>
Natural Resources & Mining	10	57	55	57	381,622	521.10
Construction	45	134	137	138	956,409	539.63
Manufacturing	20	1,100	1,106	1,093	7,345,058	513.80
Trade, Transportation & Utilities	61	584	594	590	3,558,365	464.46
Wholesale Trade	12	38	39	38	399,734	802.14
Retail Trade	34	402	410	406	1,918,021	363.40
Transportation, Warehousing & Utilities	15	144	145	146	1,240,610	658.15
Financial Activities	16	69	71	70	513,543	564.33
Professional & Business Services	19	93	91	91	531,346	445.88
Education & Health Services	38	262	266	260	1,282,576	375.61
Leisure & Hospitality	14	139	142	148	286,962	154.36
Local Government	8	641	643	650	4,766,673	568.77
State Government	8	58	57	56	353,010	476.40
Other	16	55	61	56	555,922	745.87

**TABLE 6. COUNTY SUMMARY  
EMPLOYMENT AND TOTAL EARNINGS, BY INDUSTRY  
SECOND QUARTER 2007**

NORTH AMERICAN INDUSTRY CLASSIFICATION SYSTEM INDUSTRY GROUP	NUMBER OF EMPLOYING UNITS	EMPLOYMENT			TOTAL EARNINGS	AVERAGE
		APRIL	MAY	JUNE	APRIL - JUNE	WEEKLY EARNINGS
<b>MARION COUNTY - TOTAL</b>	<b>319</b>	<b>4,163</b>	<b>4,240</b>	<b>4,258</b>	<b>\$24,832,952</b>	<b>\$452.62</b>
Natural Resources & Mining	7	49	51	50	244,950	376.85
Construction	30	83	92	96	467,505	398.10
Manufacturing	26	1,734	1,729	1,730	10,774,368	478.80
Trade, Transportation & Utilities	56	641	660	657	3,387,749	399.28
Retail Trade	36	466	481	475	2,108,718	342.21
Other Trade, Transportation & Utilities	20	175	179	182	1,279,031	550.67
Financial Activities	36	208	219	230	1,372,830	482.20
Professional & Business Services	29	69	69	69	407,828	454.66
Education & Health Services	53	369	372	366	1,949,833	406.47
Leisure & Hospitality	37	256	283	292	679,726	188.76
Local Government	20	552	563	570	4,114,041	563.44
State Government	8	112	114	112	678,418	463.19
Other	17	90	88	86	755,704	660.58
<b>MILLER COUNTY - TOTAL</b>	<b>851</b>	<b>12,330</b>	<b>12,687</b>	<b>12,553</b>	<b>\$104,101,075</b>	<b>\$639.43</b>
Natural Resources & Mining	26	132	131	124	960,142	572.54
Construction	98	744	798	764	5,544,995	554.91
Manufacturing	33	2,505	2,492	2,336	36,341,515	1143.67
Trade, Transportation & Utilities	230	2,505	2,543	2,551	17,703,039	537.61
Wholesale Trade	62	611	628	628	5,643,015	697.50
Retail Trade	129	1,346	1,358	1,382	6,897,127	389.54
Transportation, Warehousing & Utilities	39	548	557	541	5,162,897	723.84
Information	12	101	98	100	1,374,166	1060.59
Financial Activities	86	377	379	387	2,944,851	594.56
Professional & Business Services	85	951	941	996	5,214,407	416.66
Education & Health Services	89	1,102	1,340	1,327	8,667,576	530.70
Leisure & Hospitality	87	1,314	1,356	1,328	4,226,773	243.97
Other Services	62	338	341	430	1,577,811	328.32
Local Government	26	1,755	1,759	1,706	15,630,315	691.00
State Government	17	506	509	504	3,915,485	594.85

**TABLE 6. COUNTY SUMMARY  
EMPLOYMENT AND TOTAL EARNINGS, BY INDUSTRY  
SECOND QUARTER 2007**

NORTH AMERICAN INDUSTRY CLASSIFICATION SYSTEM INDUSTRY GROUP	NUMBER OF EMPLOYING UNITS	EMPLOYMENT			TOTAL EARNINGS	AVERAGE
		APRIL	MAY	JUNE	APRIL - JUNE	WEEKLY EARNINGS
<b>MISSISSIPPI COUNTY - TOTAL</b>	<b>1,185</b>	<b>19,209</b>	<b>19,276</b>	<b>18,892</b>	<b>\$162,623,931</b>	<b>\$654.07</b>
Natural Resources & Mining	99	582	607	649	3,551,042	445.85
Construction	74	636	678	660	5,948,970	695.46
Manufacturing	59	5,656	5,641	5,679	71,550,541	972.65
Trade, Transportation & Utilities	302	3,020	3,057	3,026	20,763,789	526.38
Wholesale Trade	68	487	495	497	5,048,499	787.72
Retail Trade	184	1,901	1,924	1,877	9,323,288	377.33
Transportation, Warehousing & Utilities	50	632	638	652	6,392,002	767.47
Financial Activities	105	596	591	598	4,359,136	563.56
Professional & Business Services	98	1,118	1,092	1,140	7,443,782	512.77
Education & Health Services	207	1,746	1,738	1,706	11,315,128	503.12
Leisure & Hospitality	85	1,205	1,238	1,239	3,011,842	188.77
Local Government	46	2,459	2,460	2,298	20,890,021	667.97
State Government	24	675	675	582	4,607,241	550.32
Other	86	1,516	1,499	1,315	9,182,439	489.38
<b>MONROE COUNTY - TOTAL</b>	<b>313</b>	<b>2,460</b>	<b>2,468</b>	<b>2,407</b>	<b>\$13,432,328</b>	<b>\$422.60</b>
Natural Resources & Mining	38	142	144	152	854,888	450.42
Construction	14	38	36	37	232,393	483.15
Manufacturing	8	140	144	134	869,901	480.25
Trade, Transportation & Utilities	89	691	691	700	4,031,051	446.80
Wholesale Trade	23	210	214	207	1,620,201	592.54
Retail Trade	40	348	345	353	1,448,907	319.66
Transportation, Warehousing & Utilities	26	133	132	140	961,943	548.12
Financial Activities	18	94	96	101	648,120	513.97
Professional & Business Services	17	54	53	49	305,807	452.38
Education & Health Services	48	345	345	346	1,400,130	311.88
Leisure & Hospitality	24	240	250	270	619,640	188.15
Local Government	22	462	455	361	3,191,273	576.25
State Government	9	128	130	128	772,800	462.02
Other	26	126	124	129	506,325	308.30

**TABLE 6. COUNTY SUMMARY  
EMPLOYMENT AND TOTAL EARNINGS, BY INDUSTRY  
SECOND QUARTER 2007**

NORTH AMERICAN INDUSTRY CLASSIFICATION SYSTEM INDUSTRY GROUP	NUMBER OF EMPLOYING UNITS	EMPLOYMENT			TOTAL EARNINGS	AVERAGE
		APRIL	MAY	JUNE	APRIL - JUNE	WEEKLY EARNINGS
<b>MONTGOMERY COUNTY - TOTAL</b>	<b>183</b>	<b>1,635</b>	<b>1,664</b>	<b>1,896</b>	<b>\$9,895,843</b>	<b>\$439.59</b>
Natural Resources & Mining	14	57	57	52	543,414	755.44
Construction	23	98	105	99	704,084	538.02
Trade, Transportation & Utilities	46	233	240	241	1,115,068	360.40
Wholesale Trade	10	68	75	78	416,314	434.72
Retail Trade	25	139	140	142	578,803	317.27
Transportation, Warehousing & Utilities	11	26	25	21	119,951	384.46
Financial Activities	10	78	79	79	536,946	525.04
Education & Health Services	15	49	49	49	260,760	409.36
Leisure & Hospitality	23	258	273	549	1,424,098	304.29
Other Services	11	78	79	66	300,903	311.39
Local Government	9	520	515	496	3,498,951	527.40
State Government	8	56	58	56	399,493	542.30
Other	24	208	209	209	1,112,126	409.98
<b>NEVADA COUNTY - TOTAL</b>	<b>191</b>	<b>2,628</b>	<b>2,639</b>	<b>2,654</b>	<b>\$18,828,073</b>	<b>\$548.53</b>
Natural Resources & Mining	15	64	62	65	468,188	565.67
Manufacturing	9	710	721	755	7,160,910	755.96
Trade, Transportation & Utilities	45	542	546	560	3,432,104	480.60
Retail Trade	30	318	325	330	1,480,052	351.03
Other Trade, Transportation & Utilities	15	224	221	230	1,952,052	667.37
Financial Activities	13	57	58	60	425,376	560.94
Education & Health Services	18	396	398	413	2,096,083	400.76
Leisure & Hospitality	14	106	108	114	286,036	201.24
Other Services	17	65	66	66	207,430	242.99
Local Government	28	486	487	477	3,668,252	583.81
State Government	11	91	88	88	605,622	523.44
Other	21	111	105	56	478,072	405.60

**TABLE 6. COUNTY SUMMARY  
EMPLOYMENT AND TOTAL EARNINGS, BY INDUSTRY  
SECOND QUARTER 2007**

NORTH AMERICAN INDUSTRY CLASSIFICATION SYSTEM INDUSTRY GROUP	NUMBER OF EMPLOYING UNITS	EMPLOYMENT			TOTAL EARNINGS	AVERAGE
		APRIL	MAY	JUNE	APRIL - JUNE	WEEKLY EARNINGS
<b>NEWTON COUNTY - TOTAL</b>	<b>144</b>	<b>1,076</b>	<b>1,095</b>	<b>1,079</b>	<b>\$5,753,002</b>	<b>\$408.50</b>
Natural Resources & Mining	4	3	3	3	7,000	179.49
Construction	10	18	18	19	78,529	329.49
Manufacturing	17	79	77	80	473,852	463.35
Trade, Transportation & Utilities	33	143	144	140	664,854	359.32
Retail Trade	15	92	94	91	346,387	288.58
Other Trade, Transportation & Utilities	18	51	50	49	318,467	489.95
Education & Health Services	23	224	228	228	907,148	307.86
Leisure & Hospitality	19	72	87	91	257,693	237.87
Other Services	4	10	10	10	30,925	237.88
Local Government	13	389	387	369	2,608,118	525.65
State Government	7	89	91	90	421,235	360.03
Other	14	49	50	49	303,648	473.46
<b>OUACHITA COUNTY - TOTAL</b>	<b>647</b>	<b>7,775</b>	<b>7,789</b>	<b>7,838</b>	<b>\$54,078,165</b>	<b>\$533.27</b>
Natural Resources & Mining	47	253	261	270	2,155,305	634.41
Construction	49	260	270	273	1,874,397	538.67
Manufacturing	29	864	854	858	6,853,281	613.95
Trade, Transportation & Utilities	176	1,738	1,744	1,745	11,501,462	507.78
Wholesale Trade	30	242	238	245	2,488,071	791.96
Retail Trade	118	1,049	1,064	1,050	4,714,666	343.98
Transportation, Warehousing & Utilities	28	447	442	450	4,298,725	740.86
Information	8	95	90	97	682,914	558.85
Financial Activities	63	360	363	360	2,653,714	565.46
Professional & Business Services	54	352	354	361	2,046,918	442.70
Education & Health Services	98	1,262	1,251	1,258	8,507,838	520.64
Leisure & Hospitality	36	500	506	519	1,199,691	181.54
Other Services	43	162	162	172	1,052,351	489.62
Local Government	30	1,334	1,331	1,342	11,446,282	659.21
State Government	14	595	603	583	4,104,012	531.77

**TABLE 6. COUNTY SUMMARY  
EMPLOYMENT AND TOTAL EARNINGS, BY INDUSTRY  
SECOND QUARTER 2007**

NORTH AMERICAN INDUSTRY CLASSIFICATION SYSTEM INDUSTRY GROUP	NUMBER OF EMPLOYING UNITS	EMPLOYMENT			TOTAL EARNINGS	AVERAGE
		APRIL	MAY	JUNE	APRIL - JUNE	WEEKLY EARNINGS
<b>PERRY COUNTY - TOTAL</b>	<b>163</b>	<b>1,273</b>	<b>1,276</b>	<b>1,312</b>	<b>\$8,231,042</b>	<b>\$491.96</b>
Natural Resources & Mining	8	42	45	64	480,549	734.41
Construction	28	67	68	71	494,949	554.46
Manufacturing	7	85	88	89	467,428	411.71
Trade, Transportation & Utilities	28	211	194	205	993,859	375.99
Retail Trade	18	172	151	163	559,936	265.88
Other Trade, Transportation & Utilities	10	39	43	42	433,923	807.55
Financial Activities	15	69	70	71	628,158	690.28
Professional & Business Services	14	37	38	39	253,380	512.91
Education & Health Services	27	205	204	202	1,094,842	413.51
Local Government	12	416	416	422	3,003,306	552.69
State Government	9	57	54	54	368,276	515.07
Other	15	84	99	95	446,295	370.47
<b>PHILLIPS COUNTY - TOTAL</b>	<b>775</b>	<b>6,615</b>	<b>6,666</b>	<b>6,444</b>	<b>\$43,791,826</b>	<b>\$512.33</b>
Natural Resources & Mining	66	342	357	373	1,927,581	414.95
Construction	29	142	142	138	1,112,569	608.40
Manufacturing	12	388	383	377	3,026,583	608.40
Trade, Transportation & Utilities	177	1,663	1,671	1,644	10,631,786	492.87
Wholesale Trade	35	462	470	456	3,896,895	647.90
Retail Trade	101	900	897	889	4,397,662	377.83
Transportation, Warehousing & Utilities	41	301	304	299	2,337,229	596.64
Information	9	47	47	46	319,484	526.62
Financial Activities	56	267	267	280	1,854,447	525.74
Professional & Business Services	61	172	171	177	1,281,224	568.59
Education & Health Services	239	1,297	1,321	1,288	7,691,667	454.43
Leisure & Hospitality	37	458	447	470	1,068,348	179.30
Other Services	42	88	89	90	386,748	334.27
Local Government	30	1,137	1,146	1,018	10,938,144	764.67
State Government	17	614	625	543	3,553,245	460.15



**TABLE 6. COUNTY SUMMARY  
EMPLOYMENT AND TOTAL EARNINGS, BY INDUSTRY  
SECOND QUARTER 2007**

NORTH AMERICAN INDUSTRY CLASSIFICATION SYSTEM INDUSTRY GROUP	NUMBER OF EMPLOYING UNITS	EMPLOYMENT			TOTAL EARNINGS	AVERAGE
		APRIL	MAY	JUNE	APRIL - JUNE	WEEKLY EARNINGS
<b>PIKE COUNTY - TOTAL</b>	<b>270</b>	<b>2,942</b>	<b>2,963</b>	<b>2,964</b>	<b>\$17,982,395</b>	<b>\$467.90</b>
Natural Resources & Mining	26	139	135	130	985,172	562.74
Construction	14	92	102	102	789,914	615.84
Manufacturing	15	495	506	516	2,997,100	455.93
Trade, Transportation & Utilities	92	601	611	601	3,483,561	443.41
Wholesale Trade	19	125	127	124	961,468	590.10
Retail Trade	45	370	373	362	1,634,779	341.41
Transportation, Warehousing & Utilities	28	106	111	115	887,314	616.76
Information	6	31	31	31	350,424	869.54
Financial Activities	25	183	187	187	1,423,025	589.57
Professional & Business Services	14	36	33	32	296,494	677.44
Education & Health Services	19	250	250	249	1,204,804	371.20
Leisure & Hospitality	20	251	236	260	624,054	192.79
Other Services	15	128	137	128	645,621	379.11
Local Government	13	595	595	588	4,535,806	588.71
State Government	11	141	140	140	646,420	354.33
<b>POINSETT COUNTY - TOTAL</b>	<b>498</b>	<b>5,859</b>	<b>5,852</b>	<b>5,688</b>	<b>\$41,741,128</b>	<b>\$553.63</b>
Natural Resources & Mining	53	337	358	372	2,663,317	576.02
Construction	24	70	78	81	482,484	486.21
Manufacturing	22	1,119	1,055	949	8,967,509	662.64
Trade, Transportation & Utilities	131	1,360	1,378	1,374	9,544,100	535.62
Wholesale Trade	32	528	531	512	5,316,590	780.97
Retail Trade	72	688	704	715	3,158,390	345.92
Transportation, Warehousing & Utilities	27	144	143	147	1,069,120	568.48
Information	6	45	48	46	492,816	818.18
Financial Activities	44	268	264	269	2,093,705	603.20
Professional & Business Services	32	177	170	168	1,126,412	504.74
Education & Health Services	67	570	573	569	3,326,486	448.39
Leisure & Hospitality	46	417	430	427	858,505	155.51
Other Services	30	67	64	71	354,060	404.49
Local Government	31	1,214	1,220	1,164	10,545,015	676.34
State Government	12	215	214	198	1,286,719	473.58

**TABLE 6. COUNTY SUMMARY  
EMPLOYMENT AND TOTAL EARNINGS, BY INDUSTRY  
SECOND QUARTER 2007**

NORTH AMERICAN INDUSTRY CLASSIFICATION SYSTEM INDUSTRY GROUP	NUMBER OF EMPLOYING UNITS	EMPLOYMENT			TOTAL EARNINGS	AVERAGE
		APRIL	MAY	JUNE	APRIL - JUNE	WEEKLY EARNINGS
<b>POLK COUNTY - TOTAL</b>	<b>547</b>	<b>6,389</b>	<b>6,427</b>	<b>6,454</b>	<b>\$38,369,086</b>	<b>\$459.49</b>
Natural Resources & Mining	28	236	236	239	1,848,923	600.10
Construction	39	198	194	203	997,034	386.70
Manufacturing	45	1,395	1,395	1,411	9,966,382	547.47
Trade, Transportation & Utilities	148	1,283	1,296	1,307	6,894,774	409.44
Wholesale Trade	24	123	126	128	575,800	352.46
Retail Trade	81	818	823	816	3,809,308	357.78
Transportation, Warehousing & Utilities	43	342	347	363	2,509,666	550.53
Information	10	56	60	66	414,856	526.02
Financial Activities	39	243	241	243	1,562,455	495.96
Professional & Business Services	47	223	233	240	1,246,000	413.13
Education & Health Services	78	973	982	979	5,365,265	422.00
Leisure & Hospitality	43	453	456	462	1,061,673	178.70
Other Services	35	130	137	146	699,628	390.93
Local Government	21	864	858	865	6,486,155	578.59
State Government	14	335	339	293	1,825,941	435.75
<b>POPE COUNTY - TOTAL</b>	<b>1,753</b>	<b>27,795</b>	<b>27,988</b>	<b>27,110</b>	<b>\$209,248,592</b>	<b>\$582.54</b>
Natural Resources & Mining	25	611	606	639	5,270,377	655.30
Construction	186	1,696	1,697	1,295	15,827,686	779.13
Manufacturing	92	4,982	5,008	4,967	43,098,301	664.96
Trade, Transportation & Utilities	468	6,727	6,735	6,800	59,926,401	682.52
Wholesale Trade	105	737	743	751	6,199,258	641.24
Retail Trade	272	3,419	3,411	3,463	16,819,308	377.09
Transportation, Warehousing & Utilities	91	2,571	2,581	2,586	36,907,835	1100.70
Information	22	251	257	264	2,273,717	679.67
Financial Activities	190	860	865	878	7,135,390	632.59
Professional & Business Services	231	2,653	2,770	2,585	14,957,981	431.05
Education & Health Services	242	2,998	3,025	3,024	20,380,804	519.87
Leisure & Hospitality	134	2,452	2,472	2,463	6,555,167	204.78
Other Services	107	473	461	458	2,702,576	448.04
Local Government	40	2,384	2,387	2,299	19,527,356	637.39
State Government	16	1,708	1,705	1,438	11,592,836	551.49

**TABLE 6. COUNTY SUMMARY  
EMPLOYMENT AND TOTAL EARNINGS, BY INDUSTRY  
SECOND QUARTER 2007**

NORTH AMERICAN INDUSTRY CLASSIFICATION SYSTEM INDUSTRY GROUP	NUMBER OF EMPLOYING UNITS	EMPLOYMENT			TOTAL EARNINGS	AVERAGE
		APRIL	MAY	JUNE	APRIL - JUNE	WEEKLY EARNINGS
<b>PRAIRIE COUNTY - TOTAL</b>	<b>244</b>	<b>1,442</b>	<b>1,463</b>	<b>1,424</b>	<b>\$9,701,740</b>	<b>\$517.18</b>
Natural Resources & Mining	31	157	174	166	1,312,363	609.36
Trade, Transportation & Utilities	69	319	319	323	1,964,017	471.63
Wholesale Trade	11	59	63	67	584,906	714.17
Retail Trade	37	186	183	179	650,556	273.96
Transportation, Warehousing & Utilities	21	74	73	77	728,555	750.57
Information	4	8	8	8	93,768	901.62
Financial Activities	17	62	63	62	430,250	530.95
Professional & Business Services	17	48	53	51	296,101	449.55
Education & Health Services	29	155	154	159	903,494	445.51
Leisure & Hospitality	18	93	96	94	208,193	169.77
Other Services	14	28	27	42	169,144	402.40
Local Government	15	334	335	273	2,412,528	591.02
State Government	10	50	48	51	346,669	536.92
Other	20	188	186	195	1,565,213	634.80
<b>PULASKI COUNTY - TOTAL</b>	<b>14,467</b>	<b>240,679</b>	<b>241,956</b>	<b>243,119</b>	<b>\$2,268,707,181</b>	<b>\$721.38</b>
Natural Resources & Mining	54	677	681	702	8,712,662	976.03
Construction	1,166	10,729	10,847	11,051	103,958,582	735.29
Manufacturing	446	15,415	15,402	15,406	167,023,578	833.87
Trade, Transportation & Utilities	3,330	51,035	51,416	51,454	448,241,783	672.11
Wholesale Trade	1,170	13,390	13,423	13,527	166,398,568	951.90
Retail Trade	1,752	24,399	24,674	24,814	148,559,085	463.99
Transportation, Warehousing & Utilities	408	13,246	13,319	13,113	133,284,130	775.19
Information	241	8,579	8,628	8,751	118,958,987	1057.56
Financial Activities	1,799	16,226	16,355	16,432	199,325,403	938.49
Professional & Business Services	2,780	34,311	34,460	34,445	304,643,723	681.12
Education & Health Services	2,078	34,196	34,366	34,528	348,740,146	780.66
Leisure & Hospitality	1,046	20,487	20,918	21,291	74,979,820	275.98
Other Services	1,219	6,909	6,928	7,230	50,430,682	552.42
Local Government	104	17,157	17,039	17,458	181,526,034	810.99
State Government	204	24,958	24,916	24,371	262,165,781	814.87

**TABLE 6. COUNTY SUMMARY  
EMPLOYMENT AND TOTAL EARNINGS, BY INDUSTRY  
SECOND QUARTER 2007**

NORTH AMERICAN INDUSTRY CLASSIFICATION SYSTEM INDUSTRY GROUP	NUMBER OF EMPLOYING UNITS	EMPLOYMENT			TOTAL EARNINGS	AVERAGE
		APRIL	MAY	JUNE	APRIL - JUNE	WEEKLY EARNINGS
<b>RANDOLPH COUNTY - TOTAL</b>	<b>414</b>	<b>4,848</b>	<b>4,806</b>	<b>4,787</b>	<b>\$32,926,631</b>	<b>\$526.17</b>
Natural Resources & Mining	23	80	78	81	422,591	408.04
Construction	23	79	84	90	383,503	349.81
Manufacturing	40	810	785	734	8,581,718	850.32
Trade, Transportation & Utilities	100	901	909	930	5,114,625	430.77
Wholesale Trade	21	186	185	188	1,058,244	436.87
Retail Trade	60	600	604	604	2,887,572	368.56
Transportation, Warehousing & Utilities	19	115	120	138	1,168,809	723.12
Information	5	43	40	42	382,626	706.39
Financial Activities	31	159	156	160	1,191,168	578.71
Professional & Business Services	38	238	232	237	1,044,548	340.95
Education & Health Services	65	900	891	862	5,872,714	510.83
Leisure & Hospitality	29	428	439	421	898,872	161.05
Other Services	25	54	52	69	282,582	372.64
Local Government	23	871	875	894	6,728,485	588.15
State Government	12	285	265	267	2,023,199	571.47
<b>SAINT FRANCIS COUNTY - TOTAL</b>	<b>681</b>	<b>8,011</b>	<b>8,039</b>	<b>7,988</b>	<b>\$51,828,957</b>	<b>\$497.57</b>
Natural Resources & Mining	25	162	166	178	1,119,689	510.65
Construction	44	235	242	260	1,771,187	554.59
Manufacturing	16	1,063	1,041	988	7,871,747	587.50
Trade, Transportation & Utilities	183	2,038	2,041	2,039	12,834,456	484.11
Wholesale Trade	33	524	527	529	4,416,129	645.00
Retail Trade	122	1,252	1,252	1,238	5,897,210	363.68
Transportation, Warehousing & Utilities	28	262	262	272	2,521,117	730.90
Information	9	98	98	97	698,518	550.16
Financial Activities	58	302	319	319	2,054,401	504.35
Professional & Business Services	55	209	199	188	1,554,505	601.90
Education & Health Services	152	1,376	1,390	1,360	7,759,532	433.99
Leisure & Hospitality	52	687	690	711	1,935,045	213.86
Other Services	41	114	114	113	492,876	333.55
Local Government	29	1,188	1,199	1,222	9,791,477	626.09
State Government	17	539	540	513	3,945,524	571.93

**TABLE 6. COUNTY SUMMARY  
EMPLOYMENT AND TOTAL EARNINGS, BY INDUSTRY  
SECOND QUARTER 2007**

NORTH AMERICAN INDUSTRY CLASSIFICATION SYSTEM INDUSTRY GROUP	NUMBER OF EMPLOYING UNITS	EMPLOYMENT			TOTAL EARNINGS	AVERAGE
		APRIL	MAY	JUNE	APRIL - JUNE	WEEKLY EARNINGS
<b>SALINE COUNTY - TOTAL</b>	<b>1,806</b>	<b>20,991</b>	<b>21,076</b>	<b>21,406</b>	<b>\$152,806,169</b>	<b>\$555.56</b>
Natural Resources & Mining	15	36	35	38	350,910	742.93
Construction	319	1,920	1,918	1,966	16,221,512	644.97
Manufacturing	90	1,883	1,895	1,915	19,304,074	782.50
Trade, Transportation & Utilities	442	4,732	4,775	4,772	31,633,540	511.24
Wholesale Trade	131	645	642	638	6,587,555	789.72
Retail Trade	250	3,790	3,832	3,831	22,308,584	449.50
Transportation, Warehousing & Utilities	61	297	301	303	2,737,401	701.12
Information	18	153	160	156	1,084,483	533.61
Financial Activities	175	778	769	790	6,234,731	615.65
Professional & Business Services	230	1,300	1,307	1,297	8,755,326	517.54
Education & Health Services	199	2,814	2,838	2,926	18,679,167	502.52
Leisure & Hospitality	137	2,504	2,540	2,602	7,474,588	225.60
Other Services	131	625	577	628	4,618,178	582.37
Local & State Government	50	4,246	4,262	4,316	38,449,660	691.91
<b>SCOTT COUNTY - TOTAL</b>	<b>191</b>	<b>2,864</b>	<b>2,881</b>	<b>2,894</b>	<b>17,539,240</b>	<b>\$468.52</b>
Natural Resources & Mining	17	183	187	181	1,527,166	639.61
Trade, Transportation & Utilities	41	450	451	457	2,400,868	407.99
Wholesale Trade	9	66	68	69	442,952	503.55
Retail Trade	25	313	312	320	1,326,618	323.96
Transportation, Warehousing & Utilities	7	71	71	68	631,298	693.73
Financial Activities	19	75	77	78	446,212	447.70
Professional & Business Services	12	20	18	18	99,779	411.18
Education & Health Services	30	305	310	308	1,735,701	433.96
Leisure & Hospitality	18	180	179	181	413,337	176.64
Other Services	10	39	42	40	370,516	706.64
Local Government	5	384	380	380	3,394,433	684.73
State Government	8	78	74	75	438,602	445.88
Other	31	1,150	1,163	1,176	6,712,626	443.99

**TABLE 6. COUNTY SUMMARY  
EMPLOYMENT AND TOTAL EARNINGS, BY INDUSTRY  
SECOND QUARTER 2007**

NORTH AMERICAN INDUSTRY CLASSIFICATION SYSTEM INDUSTRY GROUP	NUMBER OF EMPLOYING UNITS	EMPLOYMENT			TOTAL EARNINGS	AVERAGE
		APRIL	MAY	JUNE	APRIL - JUNE	WEEKLY EARNINGS
<b>SEARCY COUNTY - TOTAL</b>	<b>182</b>	<b>1,703</b>	<b>1,765</b>	<b>1,798</b>	<b>\$9,134,642</b>	<b>\$400.30</b>
Construction	7	13	11	15	80,860	478.46
Manufacturing	17	262	281	291	1,199,649	331.94
Trade, Transportation & Utilities	37	315	337	333	1,299,056	304.35
Retail Trade	25	214	233	227	809,721	277.24
Other Trade, Transportation & Utilities	12	101	104	106	489,335	363.10
Financial Activities	14	95	103	102	634,209	487.85
Professional & Business Services	16	39	38	38	162,679	326.45
Education & Health Services	46	311	319	318	1,420,632	345.82
Leisure & Hospitality	12	111	126	150	316,392	188.67
Local Government	10	347	349	350	2,623,257	578.74
State Government	8	141	148	144	915,294	487.81
Other	15	69	53	57	482,614	622.19
<b>SEBASTIAN COUNTY - TOTAL</b>	<b>3,700</b>	<b>72,590</b>	<b>73,276</b>	<b>73,821</b>	<b>\$609,034,328</b>	<b>\$639.76</b>
Natural Resources & Mining	77	1,703	1,731	1,774	25,734,366	1140.30
Construction	313	2,766	2,850	2,867	25,975,919	706.64
Manufacturing	235	19,193	19,216	19,123	184,371,833	739.54
Trade, Transportation & Utilities	942	12,784	12,845	12,955	91,931,747	549.84
Wholesale Trade	249	2,610	2,624	2,640	26,073,756	764.16
Retail Trade	559	7,906	7,953	8,012	44,218,024	427.47
Transportation, Warehousing & Utilities	134	2,268	2,268	2,303	21,639,967	730.20
Information	59	1,072	1,071	1,079	12,132,479	868.96
Financial Activities	412	2,617	2,644	2,671	24,413,423	710.27
Professional & Business Services	534	9,402	9,555	10,149	63,575,605	504.06
Education & Health Services	484	10,143	10,194	10,225	96,053,839	725.29
Leisure & Hospitality	307	5,483	5,650	5,726	16,859,748	230.78
Other Services	272	1,421	1,463	1,499	8,792,527	462.94
Local Government	43	4,502	4,555	4,525	47,788,888	811.97
State Government	22	1,504	1,502	1,228	11,403,954	621.56

**TABLE 6. COUNTY SUMMARY  
EMPLOYMENT AND TOTAL EARNINGS, BY INDUSTRY  
SECOND QUARTER 2007**

NORTH AMERICAN INDUSTRY CLASSIFICATION SYSTEM INDUSTRY GROUP	NUMBER OF EMPLOYING UNITS	EMPLOYMENT			TOTAL EARNINGS	AVERAGE
		APRIL	MAY	JUNE	APRIL - JUNE	WEEKLY EARNINGS
<b>SEVIER COUNTY - TOTAL</b>	<b>336</b>	<b>6,076</b>	<b>6,008</b>	<b>5,909</b>	<b>37,842,583</b>	<b>\$485.35</b>
Natural Resources & Mining	17	234	236	234	1,589,732	521.11
Construction	21	151	148	138	1,207,875	637.85
Manufacturing	11	2,446	2,399	2,338	14,755,499	474.05
Trade, Transportation & Utilities	100	888	885	905	5,411,084	466.29
Wholesale Trade	16	149	142	146	1,522,917	804.22
Retail Trade	63	610	618	623	2,806,015	349.83
Transportation, Warehousing & Utilities	21	129	125	136	1,082,152	640.33
Information	6	38	38	39	286,131	574.18
Financial Activities	30	205	201	208	1,430,978	537.83
Professional & Business Services	29	102	93	100	1,673,065	1308.79
Education & Health Services	50	531	529	525	3,066,388	446.45
Leisure & Hospitality	21	262	273	266	642,577	185.13
Other Services	31	132	142	137	582,305	326.95
Local Government	11	883	862	828	5,876,158	527.03
State Government	9	204	202	191	1,320,791	510.55
<b>SHARP COUNTY - TOTAL</b>	<b>442</b>	<b>4,039</b>	<b>4,051</b>	<b>4,091</b>	<b>\$22,609,918</b>	<b>\$428.35</b>
Construction	29	212	214	210	1,562,780	567.05
Manufacturing	21	185	185	186	861,197	357.44
Trade, Transportation & Utilities	103	1,072	1,069	1,038	6,458,853	468.86
Retail Trade	73	725	736	708	3,081,291	327.83
Other Trade, Transportation & Utilities	30	347	333	330	3,377,562	771.72
Information	7	57	59	57	608,792	812.08
Financial Activities	38	258	261	262	1,906,457	563.32
Professional & Business Services	44	175	164	174	1,111,603	500.05
Education & Health Services	93	596	597	598	2,809,734	362.03
Leisure & Hospitality	46	482	499	504	1,088,449	169.15
Local Government	24	809	809	797	5,129,593	490.17
State Government	9	113	112	111	660,947	453.95
Other	28	80	82	154	411,513	300.52

**TABLE 6. COUNTY SUMMARY  
EMPLOYMENT AND TOTAL EARNINGS, BY INDUSTRY  
SECOND QUARTER 2007**

NORTH AMERICAN INDUSTRY CLASSIFICATION SYSTEM INDUSTRY GROUP	NUMBER OF EMPLOYING UNITS	EMPLOYMENT			TOTAL EARNINGS	AVERAGE
		APRIL	MAY	JUNE	APRIL - JUNE	WEEKLY EARNINGS
<b>STONE COUNTY - TOTAL</b>	<b>286</b>	<b>2,993</b>	<b>3,066</b>	<b>3,157</b>	<b>\$16,970,282</b>	<b>\$424.94</b>
Natural Resources & Mining	5	22	19	76	113,851	224.56
Construction	24	119	124	127	665,833	415.28
Manufacturing	24	422	435	452	2,468,180	435.13
Trade, Transportation & Utilities	77	706	729	736	4,123,076	438.27
Wholesale Trade	9	57	58	61	345,705	453.28
Retail Trade	55	601	622	623	3,357,663	419.74
Transportation, Warehousing & Utilities	13	48	49	52	419,708	650.04
Financial Activities	27	121	126	133	715,642	434.60
Professional & Business Services	11	32	22	24	170,708	505.05
Education & Health Services	49	492	498	468	3,153,012	499.05
Leisure & Hospitality	35	395	428	443	1,002,457	182.73
Local Government	10	450	453	463	3,424,616	578.55
State Government	9	179	179	180	798,603	342.55
Other	15	55	53	55	334,304	473.29
<b>UNION COUNTY - TOTAL</b>	<b>1,402</b>	<b>19,764</b>	<b>19,853</b>	<b>19,894</b>	<b>\$166,140,207</b>	<b>\$644.25</b>
Natural Resources & Mining	111	530	526	540	4,751,677	687.06
Construction	92	1,338	1,369	1,337	14,023,535	800.25
Manufacturing	65	4,775	4,756	4,803	45,677,369	735.38
Trade, Transportation & Utilities	359	3,641	3,682	3,658	29,805,130	626.36
Wholesale Trade	84	618	619	620	9,610,449	1194.29
Retail Trade	218	2,244	2,272	2,237	10,727,633	366.59
Transportation, Warehousing & Utilities	57	779	791	801	9,467,048	921.43
Information	20	188	191	188	1,331,845	542.06
Financial Activities	120	724	712	708	5,784,098	622.57
Professional & Business Services	144	1,652	1,612	1,614	17,316,583	819.22
Education & Health Services	206	2,441	2,467	2,494	19,233,294	599.63
Leisure & Hospitality	89	1,298	1,308	1,304	3,579,992	211.29
Other Services	141	534	570	585	3,294,096	450.07
Local Government	37	2,074	2,095	2,090	17,303,282	637.97
State Government	18	569	565	573	4,039,306	546.07



**TABLE 6. COUNTY SUMMARY  
EMPLOYMENT AND TOTAL EARNINGS, BY INDUSTRY  
SECOND QUARTER 2007**

NORTH AMERICAN INDUSTRY CLASSIFICATION SYSTEM INDUSTRY GROUP	NUMBER OF EMPLOYING UNITS	EMPLOYMENT			TOTAL EARNINGS	AVERAGE
		APRIL	MAY	JUNE	APRIL - JUNE	WEEKLY EARNINGS
<b>VAN BUREN COUNTY - TOTAL</b>	<b>356</b>	<b>3,744</b>	<b>3,830</b>	<b>3,817</b>	<b>\$22,881,510</b>	<b>\$463.55</b>
Natural Resources & Mining	13	45	59	53	573,172	842.49
Construction	42	207	214	229	1,396,098	495.66
Manufacturing	15	473	484	490	3,038,262	484.55
Trade, Transportation & Utilities	97	792	804	793	4,563,481	440.82
Wholesale Trade	16	46	47	46	367,585	610.27
Retail Trade	58	602	618	607	3,012,710	380.54
Transportation, Warehousing & Utilities	23	144	139	140	1,183,186	645.49
Information	10	50	50	49	426,730	660.91
Financial Activities	27	154	154	153	1,058,995	530.12
Professional & Business Services	26	112	119	111	535,190	361.13
Education & Health Services	52	605	617	617	3,724,242	467.34
Leisure & Hospitality	30	469	488	491	1,495,943	238.41
Other Services	25	82	80	76	413,743	401.17
Local Government	11	659	665	661	5,046,981	586.74
State Government	8	96	96	94	608,673	491.13
<b>WASHINGTON COUNTY - TOTAL</b>	<b>5,637</b>	<b>91,290</b>	<b>91,068</b>	<b>92,283</b>	<b>\$801,082,273</b>	<b>\$673.12</b>
Natural Resources & Mining	38	489	490	500	4,337,640	676.80
Construction	692	5,616	5,682	5,770	50,510,737	682.93
Manufacturing	241	15,186	15,171	15,114	128,109,848	650.17
Trade, Transportation & Utilities	1,361	20,355	20,554	20,718	169,269,513	633.85
Wholesale Trade	408	3,717	3,756	3,830	48,161,464	983.30
Retail Trade	758	11,239	11,350	11,393	66,551,344	451.95
Transportation, Warehousing & Utilities	195	5,399	5,448	5,495	54,556,705	770.41
Information	91	1,606	1,626	1,638	16,676,942	790.25
Financial Activities	668	4,092	4,120	4,141	38,452,734	718.34
Professional & Business Services	941	8,910	8,901	8,974	113,992,882	982.12
Education & Health Services	625	10,678	10,762	10,692	102,428,869	735.64
Leisure & Hospitality	510	9,564	9,500	9,356	29,881,074	242.63
Other Services	386	1,939	1,947	1,935	12,001,960	475.81
Local & State Government	84	12,855	12,315	13,445	135,420,074	809.29

**TABLE 6. COUNTY SUMMARY  
EMPLOYMENT AND TOTAL EARNINGS, BY INDUSTRY  
SECOND QUARTER 2007**

NORTH AMERICAN INDUSTRY CLASSIFICATION SYSTEM INDUSTRY GROUP	NUMBER OF EMPLOYING UNITS	EMPLOYMENT			TOTAL EARNINGS	AVERAGE
		APRIL	MAY	JUNE	APRIL - JUNE	WEEKLY EARNINGS
<b>WHITE COUNTY - TOTAL</b>	<b>1,677</b>	<b>23,386</b>	<b>23,643</b>	<b>23,518</b>	<b>\$171,971,927</b>	<b>\$562.54</b>
Natural Resources & Mining	41	491	563	597	5,707,267	797.74
Construction	185	1,154	1,187	1,223	8,563,423	554.48
Manufacturing	84	2,763	2,779	2,777	25,933,702	719.40
Trade, Transportation & Utilities	476	5,880	5,988	6,003	42,580,830	549.85
Wholesale Trade	96	645	634	656	5,186,830	618.58
Retail Trade	295	3,144	3,181	3,191	16,019,002	388.47
Transportation, Warehousing & Utilities	85	2,091	2,173	2,156	21,374,998	768.33
Information	22	241	233	227	1,588,048	522.79
Financial Activities	181	939	946	960	7,287,889	591.15
Professional & Business Services	169	1,309	1,295	1,395	8,888,433	512.92
Education & Health Services	228	4,232	4,218	4,127	35,802,822	656.93
Leisure & Hospitality	120	2,302	2,308	2,291	5,769,093	192.92
Other Services	106	618	621	637	4,020,693	494.59
Local Government	46	2,677	2,717	2,664	21,034,613	602.40
State Government	19	780	788	617	4,795,114	506.44
<b>WOODRUFF COUNTY - TOTAL</b>	<b>196</b>	<b>1,988</b>	<b>1,999</b>	<b>1,858</b>	<b>\$12,782,395</b>	<b>\$504.67</b>
Natural Resources & Mining	21	132	141	137	889,216	500.50
Construction	7	71	68	64	441,760	502.19
Manufacturing	8	344	339	334	2,378,292	539.66
Trade, Transportation & Utilities	59	490	487	502	3,511,539	547.91
Wholesale Trade	13	184	189	192	1,711,982	699.24
Retail Trade	28	190	188	197	681,852	273.65
Transportation, Warehousing & Utilities	18	116	110	113	1,117,705	760.86
Financial Activities	16	62	63	62	393,638	485.77
Professional & Business Services	4	6	8	7	69,238	760.86
Education & Health Services	48	225	233	228	1,357,195	456.56
Leisure & Hospitality	7	58	58	58	108,770	144.26
Local Government	10	519	523	384	3,134,399	507.24
State Government	7	59	57	60	385,586	505.58
Other	9	22	22	22	112,762	394.27

**TABLE 6. COUNTY SUMMARY  
EMPLOYMENT AND TOTAL EARNINGS, BY INDUSTRY  
SECOND QUARTER 2007**

NORTH AMERICAN INDUSTRY CLASSIFICATION SYSTEM INDUSTRY GROUP	NUMBER OF EMPLOYING UNITS	EMPLOYMENT			TOTAL EARNINGS	AVERAGE
		APRIL	MAY	JUNE	APRIL - JUNE	WEEKLY EARNINGS
<b>YELL COUNTY - TOTAL</b>	<b>399</b>	<b>6,792</b>	<b>6,807</b>	<b>6,798</b>	<b>\$43,458,730</b>	<b>\$491.69</b>
Natural Resources & Mining	22	218	236	227	1,490,346	505.03
Construction	43	322	313	331	2,358,257	563.37
Manufacturing	20	2,708	2,692	2,743	16,975,355	481.07
Trade, Transportation & Utilities	84	690	697	695	3,320,454	368.04
Wholesale Trade	14	21	24	25	128,371	423.20
Retail Trade	52	574	579	572	2,386,301	319.24
Transportation, Warehousing & Utilities	18	95	94	98	805,782	647.91
Information	3	73	73	74	562,010	589.52
Financial Activities	37	202	205	202	1,262,438	478.38
Professional & Business Services	36	264	265	276	3,010,351	862.98
Education & Health Services	67	473	472	464	2,385,046	390.63
Leisure & Hospitality	29	369	362	363	912,755	192.54
Other Services	17	69	70	68	275,662	307.32
Local Government	28	1,281	1,299	1,235	10,213,373	617.81
State Government	13	123	123	120	692,683	436.75
<b>REST-OF-STATE-TOTAL</b>	<b>3,851</b>	<b>15,691</b>	<b>15,677</b>	<b>16,118</b>	<b>213,776,784</b>	<b>\$1,038.90</b>
Natural Resources & Mining	57	521	549	539	5,433,381	779.28
Construction	495	3,040	3,183	3,483	31,465,035	748.11
Manufacturing	54	146	148	148	1,372,629	716.65
Trade, Transportation & Utilities	1,519	5,990	5,997	6,008	106,819,206	1369.86
Wholesale Trade	1,295	4,836	4,858	4,857	95,060,153	1507.59
Retail Trade	96	466	463	472	5,797,437	954.94
Transportation, Warehousing & Utilities	128	688	676	679	5,961,616	673.40
Information	91	212	223	247	2,799,941	947.42
Financial Activities	233	747	749	738	10,329,958	1067.07
Professional & Business Services	1,151	3,855	3,650	3,761	43,327,085	887.50
Education & Health Services	94	514	490	523	5,951,015	899.35
Other	157	666	688	671	6,278,534	715.50

TABLE 7. FEDERAL GOVERNMENT EMPLOYMENT AND EARNINGS IN ARKANSAS

NORTH AMERICAN INDUSTRY CLASSIFICATION SYSTEM INDUSTRY GROUP	NUMBER OF EMPLOYING UNITS	EMPLOYMENT			TOTAL
		APRIL	MAY	JUNE	APR. - JUNE 2007
Trade, Transportation & Utilities	614	6,772	6,792	6,800	81,179,774
Information	1	33	32	31	408,312
Financial Activities	23	168	167	171	3,003,256
Professional & Business Services	31	776	782	860	11,357,810
Education & Health Services	6	4,058	4,063	4,193	85,411,398
Leisure & Hospitality	15	223	238	245	2,385,653
Other Services	2	248	265	274	938,219
Public Administration	489	8,391	8,384	8,529	127,917,998
<b>TOTAL</b>	<b>1,181</b>	<b>20,669</b>	<b>20,723</b>	<b>21,103</b>	<b>\$312,602,420</b>

Note: Industries with employing units that have no employment or wages are not included in this table.

**TABLE 8. WORKFORCE INFORMATION AREA, SUMMARY  
EMPLOYMENT AND TOTAL EARNINGS, BY INDUSTRY  
SECOND QUARTER 2007**

NORTH AMERICAN INDUSTRY CLASSIFICATION SYSTEM INDUSTRY GROUP	NUMBER OF EMPLOYING UNITS	EMPLOYMENT			TOTAL EARNINGS	AVERAGE WEEKLY EARNINGS
		APRIL	MAY	JUNE	APRIL - JUNE	
<b>CENTRAL WORKFORCE INFORMATION*</b>	<b>6,205</b>	<b>77,067</b>	<b>77,425</b>	<b>77,709</b>	<b>\$600,552,946</b>	<b>\$596.85</b>
Natural Resources & Mining	184	1,337	1,370	1,457	15,544,793	861.49
Trade, Transportation & Utilities	1,570	15,296	15,481	15,458	97,439,994	486.34
Wholesale Trade	415	2,267	2,288	2,304	21,788,912	733.08
Retail Trade	889	11,410	11,558	11,473	60,119,340	402.82
Transportation, Warehousing & Utilities	266	1,619	1,635	1,681	15,531,742	726.29
Financial Activities	653	3,007	2,997	3,045	24,827,744	633.16
Professional & Business Services	747	7,455	7,350	7,415	88,686,844	921.07
Education & Health Services	751	10,217	10,328	10,502	72,425,357	538.33
Leisure & Hospitality	467	8,108	8,236	8,303	22,590,876	211.52
Local & State Government	210	14,676	14,700	14,266	129,945,997	687.13
Other	1,623	16,971	16,963	17,263	149,091,341	672.03

\*Note: Pulaski County is not included in the Central Workforce Information. Please refer to Page 54 for information on Pulaski County.  
Central Workforce Includes these counties: Faulkner, Lonoke, Monroe, Prairie, and Saline.

<b>EASTERN WORKFORCE INFORMATION</b>	<b>3,455</b>	<b>38,786</b>	<b>38,939</b>	<b>38,924</b>	<b>\$272,730,800</b>	<b>\$539.55</b>
Natural Resources & Mining	202	1,130	1,204	1,242	6,681,112	431.15
Construction	195	1,050	1,073	1,090	8,125,938	583.63
Trade, Transportation & Utilities	880	10,111	10,148	10,082	70,923,271	539.43
Wholesale Trade	184	2,134	2,147	2,133	19,857,101	714.44
Retail Trade	488	5,077	5,091	5,029	24,750,775	375.85
Transportation, Warehousing & Utilities	208	2,900	2,910	2,920	26,315,395	695.62
Financial Activities	287	1,563	1,576	1,616	12,043,634	584.50
Professional & Business Services	312	1,788	1,755	1,754	11,773,197	512.91
Education & Health Services	772	5,709	5,752	5,684	37,735,818	507.92
Leisure & Hospitality	231	3,793	3,762	3,857	11,110,347	224.67
Local Government	136	5,948	5,997	5,965	54,748,078	705.43
State Government	68	2,377	2,322	2,237	16,136,547	536.88
Other	372	5,317	5,350	5,397	43,452,858	624.23

Eastern Workforce Includes these counties: Crittenden, Cross, Lee, Phillips, and Saint Francis.

**TABLE 8. WORKFORCE INFORMATION AREA, SUMMARY  
EMPLOYMENT AND TOTAL EARNINGS, BY INDUSTRY  
SECOND QUARTER 2007**

NORTH AMERICAN INDUSTRY CLASSIFICATION SYSTEM INDUSTRY GROUP	NUMBER OF EMPLOYING UNITS	EMPLOYMENT			TOTAL EARNINGS	AVERAGE WEEKLY EARNINGS
		APRIL	MAY	JUNE	APRIL - JUNE	
<b>NORTH CENTRAL WORKFORCE INFORMATION</b>	<b>5,615</b>	<b>70,036</b>	<b>70,774</b>	<b>70,388</b>	<b>\$481,499,255</b>	<b>\$526.12</b>
Construction	504	2,912	2,986	3,014	20,812,987	538.94
Trade, Transportation & Utilities	1,527	15,515	15,779	15,856	104,579,796	511.85
Retail Trade	941	9,203	9,370	9,404	45,257,282	373.31
Other Trade, Transportation & Utilities	586	6,312	6,409	6,452	59,322,514	714.02
Financial Activities	537	2,700	2,728	2,772	21,692,894	610.49
Professional & Business Services	477	3,060	2,984	3,145	18,621,722	467.66
Education & Health Services	892	11,653	11,725	11,659	87,607,183	577.02
Leisure & Hospitality	446	6,310	6,461	6,552	16,701,011	199.46
Local Government	231	9,389	9,479	9,052	69,904,042	577.78
State Government	115	3,136	3,156	2,841	19,850,787	501.58
Other	886	15,361	15,476	15,497	121,728,833	606.28
<b>NORTHEAST WORKFORCE INFORMATION</b>	<b>6,549</b>	<b>94,759</b>	<b>95,501</b>	<b>93,461</b>	<b>\$707,608,776</b>	<b>\$575.55</b>
Natural Resources & Mining	368	1,814	1,919	2,022	12,010,983	481.63
Construction	507	2,974	3,097	3,189	23,925,108	596.24
Manufacturing	356	20,731	20,701	20,512	202,835,170	755.65
Trade, Transportation & Utilities	1,754	17,955	18,028	17,948	116,714,289	499.42
Wholesale Trade	410	3,789	3,809	3,774	34,804,760	706.28
Retail Trade	1,036	11,611	11,643	11,552	58,324,360	386.70
Transportation, Warehousing & Utilities	308	2,555	2,576	2,622	23,585,169	702.02
Financial Activities	609	3,424	3,420	3,469	29,620,776	662.81
Professional & Business Services	676	6,782	6,921	6,390	41,050,498	471.47
Education & Health Services	985	13,160	13,175	12,976	102,054,153	599.09
Leisure & Hospitality	481	7,961	8,152	8,116	20,601,809	196.22
Local Government	219	11,964	12,111	11,330	101,213,378	659.71
State Government	107	4,162	4,172	3,862	34,140,153	645.99
Other	487	3,832	3,805	3,647	23,442,459	479.42

North Central Workforce Includes these counties: Cleburne, Fulton, Independence, Izard, Jackson, Sharp, Stone, Van Buren, White, and Woodruff

Northeast Workforce Includes these counties: Clay, Craighead, Greene, Lawrence, Mississippi, Poinsett, and Randolph.

**TABLE 8. WORKFORCE INFORMATION AREA, SUMMARY  
EMPLOYMENT AND TOTAL EARNINGS, BY INDUSTRY  
SECOND QUARTER 2007**

NORTH AMERICAN INDUSTRY CLASSIFICATION SYSTEM INDUSTRY GROUP	NUMBER OF EMPLOYING UNITS	EMPLOYMENT			TOTAL EARNINGS	AVERAGE WEEKLY EARNINGS
		APRIL	MAY	JUNE	APRIL - JUNE	

<b>NORTHWEST WORKFORCE INFORMATION</b>	<b>15,196</b>	<b>235,623</b>	<b>236,949</b>	<b>237,632</b>	<b>\$2,061,763,647</b>	<b>\$669.94</b>
Trade, Transportation & Utilities	3,762	54,883	55,428	55,402	466,301,622	649.36
Retail Trade	2,012	26,639	26,983	27,004	152,631,077	436.86
Other Trade, Transportation & Utilities	1,750	28,244	28,445	28,398	313,670,545	850.72
Education & Health Services	1,757	24,136	24,325	24,244	208,302,761	661.16
Leisure & Hospitality	1,380	22,088	22,738	22,798	69,457,057	237.02
Local & State Government	426	29,207	28,666	29,303	278,981,708	738.51
Other	7,871	105,309	105,792	105,885	1,038,720,499	756.20

Northwest Workforce Includes these counties: Baxter, Benton, Boone, Carroll, Madison, Marion, Newton, Searcy, and Washington.

<b>SOUTHEAST WORKFORCE INFORMATION</b>	<b>5,554</b>	<b>77,275</b>	<b>77,473</b>	<b>77,045</b>	<b>\$577,065,174</b>	<b>\$574.52</b>
Natural Resources & Mining	402	2,740	2,749	2,840	20,737,819	574.58
Construction	381	3,441	3,331	3,273	30,975,470	711.62
Manufacturing	223	17,181	17,210	17,242	159,948,200	714.87
Trade, Transportation & Utilities	1,392	13,307	13,351	13,403	87,809,679	505.82
Retail Trade	842	8,624	8,670	8,639	41,918,788	373.02
Other Trade, Transportation & Utilities	550	4,683	4,681	4,764	45,890,891	749.59
Local & State Government	357	16,942	17,066	16,341	132,911,712	609.19
Other	2,799	23,664	23,766	23,946	144,682,294	467.78

Southeast Workforce Includes these counties: Arkansas, Ashley, Bradley, Chicot, Cleveland, Desha, Drew, Grant, Jefferson, and Lincoln

<b>SOUTHWEST WORKFORCE INFORMATION</b>	<b>5,829</b>	<b>86,813</b>	<b>87,212</b>	<b>86,894</b>	<b>\$673,044,403</b>	<b>\$595.27</b>
Natural Resources & Mining	411	2,820	2,847	2,906	25,541,274	687.52
Manufacturing	295	25,382	25,227	24,986	238,761,103	728.87
Trade, Transportation & Utilities	1,528	15,529	15,655	15,607	110,035,271	542.68
Education & Health Services	787	9,408	9,671	9,692	62,197,093	498.88
Local Government	266	11,245	11,282	10,985	91,981,231	633.40
State Government	150	3,541	3,509	3,499	24,728,679	540.96
Other	2,392	18,888	19,021	19,219	119,799,752	483.93

Southwest Workforce Includes these counties: Calhoun, Columbia, Dallas, Hempstead, Howard, Lafayette, Little River, Miller, Nevada, Ouachita, Sevier, and Union

**TABLE 8. WORKFORCE INFORMATION AREA, SUMMARY  
EMPLOYMENT AND TOTAL EARNINGS, BY INDUSTRY  
SECOND QUARTER 2007**

NORTH AMERICAN INDUSTRY CLASSIFICATION SYSTEM INDUSTRY GROUP	NUMBER OF EMPLOYING UNITS	EMPLOYMENT			TOTAL EARNINGS	AVERAGE WEEKLY EARNINGS
		APRIL	MAY	JUNE	APRIL - JUNE	

<b>WEST CENTRAL WORKFORCE INFORMATION</b>	<b>8,275</b>	<b>111,596</b>	<b>111,439</b>	<b>110,644</b>	<b>\$787,887,140</b>	<b>\$544.90</b>
Natural Resources & Mining	252	2,253	2,245	2,320	19,092,147	646.21
Construction	929	5,959	6,058	5,740	49,045,565	637.39
Trade, Transportation & Utilities	1,991	22,182	22,291	22,462	158,711,127	547.18
Financial Activities	887	4,090	4,123	4,165	32,420,508	604.43
Education & Health Services	1,144	15,601	15,618	15,646	118,614,893	584.07
Local Government	230	12,362	12,466	11,649	107,799,806	681.99
State Government	134	5,611	5,546	4,945	37,492,563	537.33
Other	2,708	43,538	43,092	43,717	264,710,531	468.65

West Central Workforce Includes these counties: Clark, Conway, Garland, Hot Spring, Johnson, Montgomery, Perry, Pike, Pope, and Yell

<b>WESTERN WORKFORCE INFORMATION</b>	<b>6,499</b>	<b>112,102</b>	<b>112,956</b>	<b>113,541</b>	<b>\$879,185,770</b>	<b>\$599.20</b>
Natural Resources & Mining	180	3,136	3,119	3,130	39,605,171	973.86
Trade, Transportation & Utilities	1,640	23,027	23,132	23,289	161,852,052	537.82
Wholesale Trade	396	3,577	3,629	3,659	34,096,908	724.21
Other Trade, Transportation & Utilities	1,244	19,450	19,503	19,630	127,755,144	503.25
Financial Activities	682	3,943	3,983	4,024	33,678,623	650.38
Professional & Business Services	812	10,849	11,009	11,660	73,386,952	505.26
Education & Health Services	848	13,948	14,039	14,063	119,640,439	656.58
Leisure & Hospitality	510	8,310	8,540	8,702	24,208,437	218.64
Local & State Government	231	12,362	12,447	11,947	109,310,597	686.30
Other	1,596	36,527	36,687	36,726	317,503,499	666.45

Western Workforce Includes these counties: Crawford, Franklin, Logan, Polk, Scott, and Sebastian



