

Arkansas Covered Employment & Earnings

Jobs for People. People for Jobs.

DWS
Department of
WORKFORCE**Services**

First Quarter
2007

**COVERED EMPLOYMENT AND EARNINGS
STATE OF ARKANSAS
FIRST QUARTER 2007**

**MIKE BEEBE, GOVERNOR
STATE OF ARKANSAS**

**ARTEE WILLIAMS, DIRECTOR
DEPARTMENT OF WORKFORCE SERVICES**

**PUBLISHED BY
LABOR MARKET INFORMATION & ANALYSIS
BUREAU OF LABOR STATISTICS PROGRAMS
POST OFFICE BOX 2981
LITTLE ROCK, ARKANSAS 72203-2981
BERNADETTE COLEMAN, BLS PROGRAMS MANAGER
TELEPHONE: (501) 682-3159**

STATE OF ARKANSAS HOME PAGE: <http://www.arkansas.gov>

DEPARTMENT OF WORKFORCE SERVICES HOME PAGE: <http://www.arkansas.gov/esd/>

**INTERNET SITE FOR LABOR MARKET INFORMATION:
<http://www.discover.arkansas.gov>**

RELEASED: NOVEMBER 2008

TABLE OF CONTENTS

Description of Data	Page 1
Industry Classification	Page 1
Definition of Covered Employment and Earnings	Page 2
Federal Government Employment	Page 2
County Classification	Page 2
Significant Developments During First Quarter 2007	Page 3

LIST OF GRAPHS AND TABLES

Graph 1	Total Covered Employment for Selected Years, Arkansas	Page 7
Graph 2	Total Covered Earnings, by Calendar Quarter for Selected Years, Arkansas	Page 8
Table 1	Quarterly Comparison of Covered Employment and Wages, by Industry	Page 5
Table 2	Total Covered Employment in Arkansas, 2000-2007	Page 6
Table 3	Total Covered Earnings, 2000-2007	Page 9
Table 4	Total Taxable Earnings, 2000-2007	Page 10
Table 5	State Summary - Employment and Total Earnings, by Industry, First Quarter 2007	Page 11
Table 6	County Summary - Employment and Total Earnings, by Industry, First Quarter 2007	Page 23
Table 7	Federal Government Employment and Total Earnings in Arkansas, First Quarter 2007	Page 61
Table 8	Workforce Information Area – Employment and Total Earnings, by Industry, First Quarter 2007	Page 62

EMPLOYMENT AND EARNINGS UNDER THE ARKANSAS EMPLOYMENT SECURITY LAW FIRST QUARTER 2007

DESCRIPTION OF DATA

This publication contains covered employment and payroll data by industry and county for the First Quarter 2007. These data are compiled from quarterly contribution and wage reports submitted by employers subject to the Arkansas Employment Security Law. An employing unit is a single physical location where business is conducted, production takes place, or services are provided. Employment data have been tabulated for each month of the quarter by industry under the **North American Industry Classification System** (NAICS) (see "Industry Classification" below) on a statewide, county and workforce area basis. Payroll data represent the total wages paid during the quarter, and are also shown by

industry for the State and by publishable industry groups for each county and workforce area. The tabulation of this data is a joint effort in conjunction with the U.S. Bureau of Labor Statistics. In addition, there are tables included which set out total covered employment by months, quarterly payrolls, and average weekly earnings for the years 2000 through 2007. Data contained in this publication are subject to revision. These revisions will be reflected in the 2007 Annual Covered Employment and Earnings publication. Because of industry code changes between years, substantial employment and wage shifts among industries are anticipated.

INDUSTRY CLASSIFICATION

Previously published industry data **will not** be comparable in all instances with currently published data since industry codes have been revised according to the following Manuals: (a) between January 1, 1958 and December 31, 1967, industry codes were assigned under the 1957 Standard Industrial Classification (SIC) Manual; (b) between January 1, 1968 and December 31, 1974, industry codes were assigned under the 1967 Standard Industrial Classification (SIC) Manual; (c) between January 1, 1975 and December 31, 1987, industry codes were assigned under the 1972 Standard Industrial Classification (SIC) Manual; (d) between January 1, 1988 and December 31, 2000, industry codes were assigned under the 1987 Standard Industrial Classification (SIC) Manual; (e) between January 1, 2001 and December 31, 2006, industry codes were assigned under the 2002 North American Industry Classification System (NAICS) Manual; and (f) since January 1, 2007, industry codes have been assigned under the 2007 North American Industry Classification System (NAICS) Manual. **The**

NAICS Manual represents a significant change in coding methodology as compared to the SIC Manual. One of the most significant changes involves how NAICS treats auxiliary units. Auxiliary units are establishments primarily engaged in performing management or support services for other establishments of the same enterprise. The SIC code for these units was based on the activity of the enterprise served. The NAICS code is based on the actual activities that the establishment performs. Comparisons of many industries **should not be made** between this publication and previous Covered Employment and Earnings publications that were based on SIC. Even though some titles are the same or similar, in nature, NAICS and SIC could differ in the classification of employers. The implementation of NAICS represents a profound change for statistical programs, and will create significant benefits along with transition obstacles for both data collectors and data users. A summary is available on the NAICS home page at <http://www.census.gov/naics>.

DEFINITION OF COVERED EMPLOYMENT AND EARNINGS

Covered Employment is the number of workers employed by employers subject to the Arkansas Employment Security Law who worked or received pay for the payroll period including the 12th of the month. An employer is subject to the law when they employ one or more employees in each of ten days during the current or preceding calendar year.

Currently excluded from coverage is employment covered by the Railroad Unemployment Insurance Act, some domestic service workers, employees of small agricultural establishments, self-employed and unpaid family workers, insurance and real estate

agents who are on commission only, and employees of churches and religious organizations except separately incorporated schools. The payroll information in this publication includes all wages and salaries paid to any covered employees by their employers including bonuses, commissions, and cash values of remuneration received in any medium other than cash. These wages include both taxable and nontaxable wages. Only the first \$10,000 paid to each worker by an employer in the calendar year is taxable under the Arkansas Employment Security Law.

FEDERAL GOVERNMENT EMPLOYMENT

Table 7 on page 62 lists the total number of civilians employed by the Federal Government in Arkansas during the First Quarter 2007. Employment and wage data are set out by industry divisions. These data are obtained from required reports submitted by various

government agencies having employment in the State. Civilian Federal workers are covered by the Unemployment Compensation for Federal Employees (UCFE) program.

COUNTY CLASSIFICATION

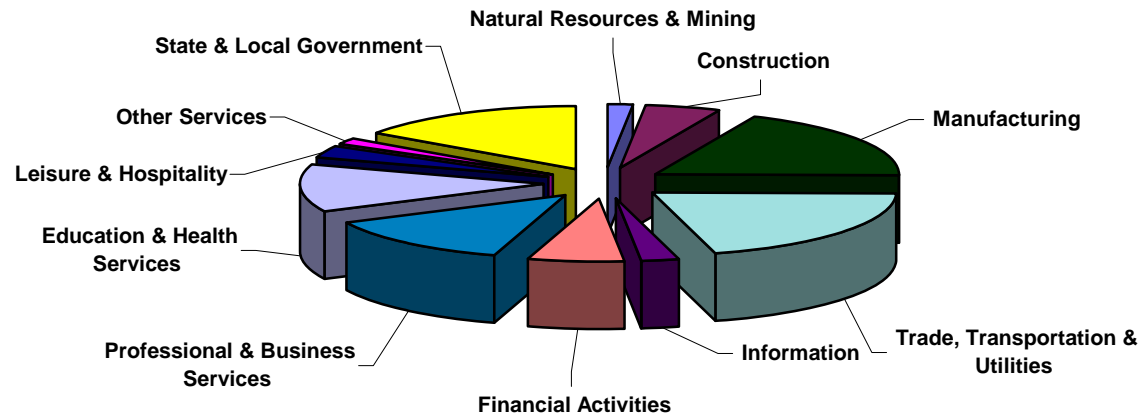
Employment and payroll data by county are classified according to the county where the workers are employed. Employers with operations in more than one county are requested to furnish this agency with a breakdown of employment and wages for at least one quarter of each year by the counties in which they operate. Many such employers submit county data with each regular contribution report. **Note:** This information is invaluable in the preparation of monthly employment and payroll data by county.

Employment and payroll data for multi - area employers, who do not furnish county data each quarter of the year, are prorated by county on the basis of one quarter's information. The "rest-of-state" table that appears on page 61 of this publication includes data on firms that **did not** provide a county breakdown of employment and payrolls. It also includes sales, and all other type of personnel with no permanent place of work, as well as employment of employers with no established place of business in Arkansas.

SIGNIFICANT DEVELOPMENTS DURING FIRST QUARTER 2007

AVERAGE EMPLOYMENT CHANGES

Covered employment averaged 1,146,875 during the First Quarter 2007 (see table 1), a decrease of 10,171 (-0.9%) from the previous quarter and 6,826 (0.6%) above the average recorded one-year ago. This *over-the-year* increase is more significant when used as an economic indicator. This *over-the-year* comparison allows for the disregarding of many seasonal factors that are evident when making an *over-the-quarter* comparison.

Average Covered Employment by NAICS Group**EMPLOYMENT CHANGES FROM FOURTH QUARTER 2006**

Over the quarter losses were recorded in eight of the eleven industry groups (see Table 1). Trade, Transportation and Utilities suffered the biggest decrease with the loss of 4,430 jobs. This is a result of the holiday season coming to a close causing the release of temporary workers in the retail sector. There were also seasonal decreases in Natural Resources and Mining (-4.9%), Construction (-3.3%) and Leisure and Hospitality (-1.1%). Continuing layoffs caused a loss of 2,507 jobs in Manufacturing. Other industries with declines were

Information (-452), Other Services (-303), and Financial Activities (-431).

Professional and Business Services had the biggest increase, gaining 1,017 jobs. State and Local Government (+433) had a seasonal increase in jobs due to the start of school following the holiday break. Educational and Health Services also gained 335 jobs.

EMPLOYMENT CHANGES FROM FIRST QUARTER 2006

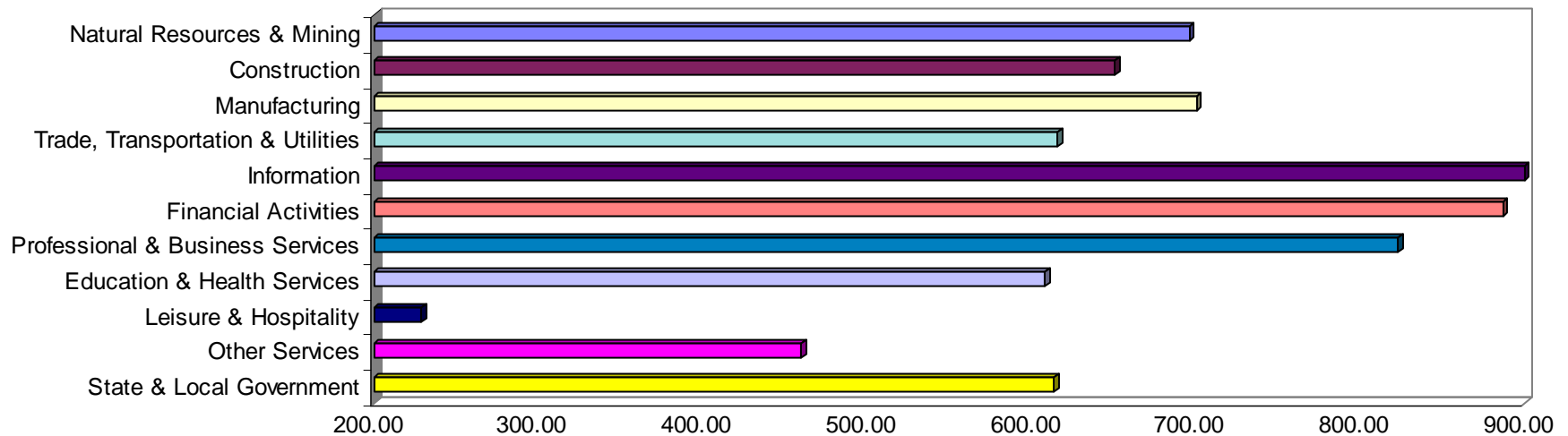
Over-the-year gains were recorded in nine industry groups while two recorded losses (see table 1). Significant gains were posted in Education and Health Services (+4,559), Trade, Transportation, & Utilities (2,693), and State & Local Government (+2,609). The only losses occurred in Manufacturing (-8,902) and Information (-150).

COVERED WAGES

Wages paid to covered workers totaled \$9,457,035,252 for the First Quarter 2007 (see table 1), for an average weekly wage of \$634.30 (see table 5). Employees in Little River County recorded the highest average weekly wage (\$924.59), and workers in Newton County the lowest (\$380.82) (see table 6).

The Information sector recorded the highest average weekly wage for the State of Arkansas at \$927.30, while the Leisure & Hospitality sector recorded the lowest at \$229.42 for the State of Arkansas (see table 5).

Average Weekly Wages by Industry Group



Note: Because of industry code changes between years, substantial employment and wage shifts among industries are anticipated.

TABLE 1. QUARTERLY COMPARISON OF COVERED EMPLOYMENT AND WAGES, BY INDUSTRY

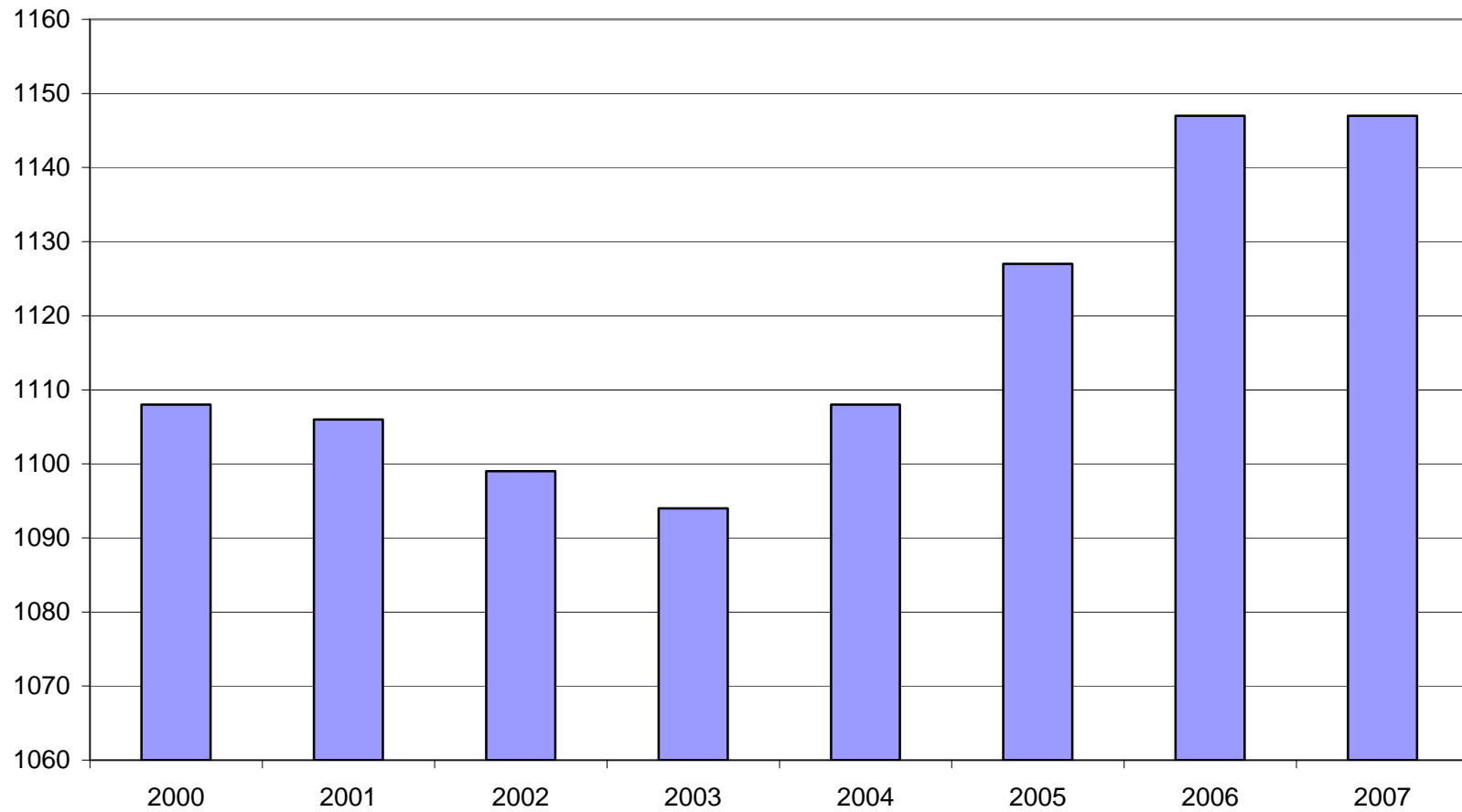
North American Industry Classification System Industry	Number of Employing Units	Average Monthly Employment	% of Employment Total	Net Change From Oct. - Dec. 2006	Net Change From Jan. - Mar. 2006	Total Wages Paid Jan. - Mar. 2007	% of Total Wages Paid
Total	81,516	1,146,875	100.0%	-10,171	6,826	\$9,457,035,252	100.0%
Natural Resources & Mining	2,419	18,559	1.6%	-909	1,392	\$167,918,112	1.8%
Agriculture, Forestry, Fishing & Hunting	1,990	12,506	1.1%	-1,665	-162	\$83,691,067	0.9%
Mining	429	6,053	0.5%	756	1,554	\$84,227,045	0.9%
Construction	8,047	54,899	4.8%	-1,858	3	\$464,457,170	4.9%
Manufacturing	3,629	192,230	16.8%	-2,507	-8,902	\$1,750,362,142	18.5%
Trade, Transportation & Utilities	20,996	244,467	21.3%	-4,430	2,693	\$1,958,499,078	20.7%
Wholesale Trade	6,384	47,563	4.1%	-595	306	\$615,561,530	6.5%
Retail Trade	11,266	132,947	11.6%	-2,678	976	\$700,419,895	7.4%
Transportation & Warehousing	2,988	57,024	5.0%	-1,199	1,197	\$512,565,633	5.4%
Utilities	358	6,933	0.6%	42	214	\$129,952,020	1.4%
Information	1,195	19,596	1.7%	-452	-150	\$236,230,742	2.5%
Financial Activities	8,191	51,152	4.5%	-431	577	\$589,707,696	6.2%
Finance & Insurance	4,800	37,033	3.2%	-117	292	\$490,999,508	5.2%
Real Estate & Rental & Leasing	3,391	14,119	1.2%	-314	285	\$98,708,188	1.0%
Professional & Business Services	11,109	115,126	10.0%	1,017	1,883	\$1,232,007,739	13.0%
Professional & Technical Services	7,010	38,898	3.4%	1,353	1,362	\$436,685,175	4.6%
Management of Companies & Enterprises	509	24,584	2.1%	317	710	\$533,980,423	5.6%
Administrative & Waste Services	3,590	51,644	4.5%	-653	-190	\$261,342,141	2.8%
Education & Health Services	11,178	147,742	12.9%	335	4,599	\$1,168,272,863	12.4%
Educational Services	574	9,354	0.8%	-53	331	\$63,213,346	0.7%
Health Care & Social Assistance	10,604	138,388	12.1%	388	4,268	\$1,105,059,517	11.7%
Leisure & Hospitality	6,105	95,577	8.3%	-1,066	1,959	\$285,049,081	3.0%
Arts, Entertainment & Recreation	910	8,870	0.8%	213	420	\$35,091,444	0.4%
Accommodation & Food Services	5,195	86,707	7.6%	-1,279	1,540	\$249,957,637	2.6%
Other Services	5,457	25,327	2.2%	-303	163	\$151,521,132	1.6%
State & Local Government	3,190	182,200	15.9%	433	2,609	\$1,453,009,497	15.4%
Local Government	1,991	118,388	10.3%	295	958	\$853,119,249	9.0%
State Government	1,199	63,812	5.6%	138	1,651	\$599,890,248	6.3%
Nonclassifiable Establishments	0	0	0.0%	0	0	\$0	0.0%

Note: Items do not necessarily add to totals because of rounding. Because of industry code changes between years, substantial employment and wage shifts among industries are anticipated.

TABLE 2. TOTAL COVERED EMPLOYMENT IN ARKANSAS

Period	2000	2001	2002	2003	2004	2005	2006	2007
Average	1,108,479	1,106,066	1,098,558	1,094,087	1,108,264	1,126,778	1,146,948	1,146,875
January	1,089,943	1,096,009	1,081,635	1,082,740	1,089,510	1,102,768	1,130,595	1,137,460
February	1,096,113	1,101,616	1,086,793	1,084,880	1,094,626	1,110,577	1,136,810	1,143,824
March	1,109,144	1,112,143	1,098,500	1,092,172	1,105,266	1,122,619	1,150,439	1,159,342
April	1,111,525	1,115,526	1,103,399	1,095,341	1,111,020	1,129,785	1,155,498	N/A
May	1,116,760	1,119,815	1,111,998	1,103,099	1,117,144	1,135,567	1,159,886	N/A
June	1,121,225	1,119,734	1,112,028	1,099,688	1,117,010	1,136,118	1,162,026	N/A
July	1,075,066	1,071,921	1,065,697	1,053,220	1,071,463	1,090,071	1,106,142	N/A
August	1,096,848	1,094,160	1,086,011	1,077,775	1,094,871	1,114,098	1,130,839	N/A
September	1,123,725	1,115,976	1,113,148	1,105,980	1,122,704	1,144,815	1,159,814	N/A
October	1,122,884	1,110,994	1,108,447	1,112,550	1,123,246	1,142,300	1,156,804	N/A
November	1,120,620	1,109,012	1,107,611	1,109,712	1,125,061	1,145,667	1,156,011	N/A
December	1,117,892	1,105,887	1,107,425	1,111,892	1,127,250	1,146,954	1,158,509	N/A

AVERAGE TOTAL COVERED EMPLOYMENT GRAPH 1
In Thousands



TOTAL COVERED EARNINGS BY CALENDAR QUARTER, GRAPH 2

In Thousands

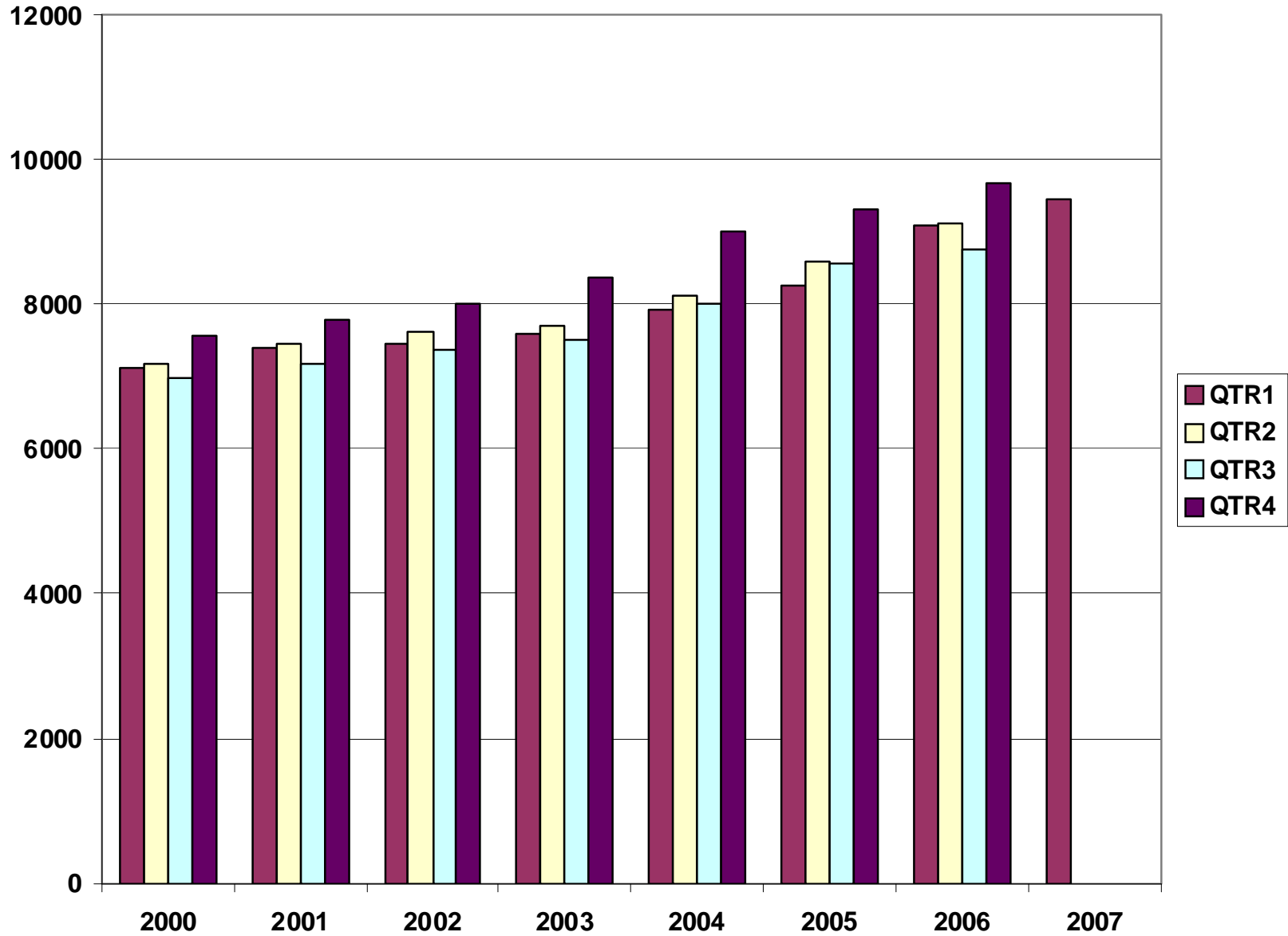


TABLE 3. TOTAL COVERED EARNINGS, 2000- 2007

Period	2000	2001	2002	2003
Total	\$28,853,716,151	\$29,807,669,666	\$30,472,854,103	\$31,202,576,767
January - March	\$7,122,636,896	\$7,398,887,532	\$7,465,250,305	\$7,608,130,008
April - June	\$7,166,049,182	\$7,448,023,298	\$7,621,878,775	\$7,714,813,038
July - September	\$6,986,085,106	\$7,177,293,061	\$7,361,666,511	\$7,500,204,764
October - December	\$7,578,944,967	\$7,783,465,775	\$8,024,058,512	\$8,379,428,957
Average Weekly Earnings	\$500.58	\$518.26	\$533.44	\$548.45

Period	2004	2005	2006	2007
Total	\$33,068,189,304	\$34,753,107,631	\$36,636,090,775	\$9,457,035,252
January - March	\$7,918,843,610	\$8,261,153,981	\$9,085,021,816	\$9,457,035,252
April - June	\$8,122,370,361	\$8,607,722,353	\$9,112,624,590	N/A
July - September	\$8,010,300,454	\$8,562,555,369	\$8,750,878,205	N/A
October - December	\$9,016,674,879	\$9,321,675,928	\$9,687,566,164	N/A
Average Weekly Earnings	\$573.80	\$593.13	\$614.27	\$634.30

TABLE 4. TOTAL TAXABLE EARNINGS, 2000 - 2007

Period	2000	2001	2002	2003
Total	\$9,047,924,530	\$9,003,189,480	\$8,887,270,978	\$9,154,938,743
January - March	\$4,560,783,991	\$4,670,296,360	\$4,668,534,587	\$4,737,918,796
April - June	\$2,260,680,255	\$2,219,485,263	\$2,162,971,435	\$2,270,519,362
July - September	\$1,250,832,297	\$1,190,098,737	\$1,158,197,858	\$1,188,681,170
October - December	\$975,627,987	\$923,309,120	\$897,567,098	\$957,819,415

Period	2004	2005	2006	2007
Total	\$9,731,247,501	\$9,991,605,239	\$10,197,511,360	\$5,622,850,182
January - March	\$4,931,559,230	\$5,062,670,306	\$5,421,204,601	\$5,622,850,182
April - June	\$2,451,454,749	\$2,506,505,721	\$2,385,110,992	N/A
July - September	\$1,318,017,835	\$1,353,660,445	\$1,314,939,803	N/A
October - December	\$1,030,215,687	\$1,068,768,767	\$1,076,255,964	N/A

**TABLE 5. STATEWIDE SUMMARY
EMPLOYMENT AND TOTAL EARNINGS, BY INDUSTRY
FIRST QUARTER 2007**

NORTH AMERICAN INDUSTRY CLASSIFICATION SYSTEM INDUSTRY GROUPS	NUMBER OF EMPLOYING UNITS	EMPLOYMENT JANUARY	EMPLOYMENT FEBRUARY	EMPLOYMENT MARCH	TOTAL EARNINGS JANUARY - MARCH	AVERAGE WEEKLY EARNINGS
TOTAL, ALL INDUSTRIES	81,516	1,137,460	1,143,824	1,159,342	\$9,457,035,252	\$634.30
NATURAL RESOURCES AND MINING	2,419	17,684	18,515	19,479	\$167,918,112	\$695.97
AGRICULTURE, FORESTRY, FISHING AND HUNTING	1,990	11,846	12,520	13,153	\$83,691,067	\$514.76
CROP PRODUCTION	710	2,833	3,070	3,552	\$15,836,439	\$386.52
Oilseed and Grain Farming	455	1,657	1,727	1,994	\$9,252,801	\$397.04
Vegetable and Melon Farming	12	99	127	115	\$242,161	\$163.88
Fruit and Tree Nut Farming	8	62	58	66	\$302,414	\$375.20
Greenhouse and Nursery Production	54	316	371	454	\$2,097,854	\$424.29
Other Crop Farming	181	699	787	923	\$3,941,209	\$377.55
ANIMAL PRODUCTION	265	3,498	3,510	3,583	\$26,722,274	\$582.26
Cattle Ranching and Farming	77	290	277	296	\$1,738,759	\$464.95
Hog and Pig Farming	9	147	146	151	\$1,480,158	\$769.31
Poultry and Egg Production	87	2,500	2,509	2,499	\$19,752,444	\$607.12
Animal Aquaculture	62	483	499	555	\$3,331,351	\$500.18
Other	30	78	79	82	\$419,562	\$405.11
FORESTRY AND LOGGING	560	2,782	2,825	2,865	\$20,859,135	\$568.18
Timber Tract Operations	54	240	263	264	\$2,880,258	\$866.59
Forest Nurseries & Gathering of Forest Products	7	36	39	38	\$382,977	\$782.12
Logging	499	2,506	2,523	2,563	\$17,595,900	\$534.85
OTHER	455	2,733	3,115	3,153	\$20,273,219	\$519.77
MINING	429	5,838	5,995	6,326	\$84,227,045	\$1,070.38
OIL AND GAS EXTRACTION	92	562	582	627	\$9,317,394	\$1,214.10
MINING (EXCEPT OIL AND GAS)	111	2,075	2,027	2,104	\$24,581,627	\$914.06
SUPPORT ACTIVITIES FOR MINING	226	3,201	3,386	3,595	\$50,328,024	\$1,140.66
CONSTRUCTION	8,047	54,137	53,882	56,679	\$464,457,170	\$650.78
CONSTRUCTION OF BUILDINGS	2,280	12,748	12,603	12,934	\$114,373,191	\$689.40
Residential Building Construction	1,654	4,253	4,188	4,323	\$30,802,985	\$556.91
Nonresidential Building Construction	626	8,495	8,415	8,611	\$83,570,206	\$755.67
HEAVY AND CIVIL ENGINEERING CONSTRUCTION	889	9,388	9,126	9,929	\$91,077,873	\$738.95
Utility System Construction	429	4,551	4,566	4,776	\$42,872,984	\$712.14

**TABLE 5. STATEWIDE SUMMARY
EMPLOYMENT AND TOTAL EARNINGS, BY INDUSTRY
FIRST QUARTER 2007**

NORTH AMERICAN INDUSTRY CLASSIFICATION SYSTEM INDUSTRY GROUPS	NUMBER OF EMPLOYING UNITS	EMPLOYMENT	EMPLOYMENT	EMPLOYMENT	TOTAL EARNINGS	AVERAGE
		JANUARY	FEBRUARY	MARCH	JANUARY - MARCH	WEEKLY EARNINGS
Land Subdivision	135	386	374	382	\$4,222,205	\$853.20
Highway, Street and Bridge Construction	213	3,163	2,882	3,238	\$26,796,710	\$666.15
Other Heavy Construction	112	1,288	1,304	1,533	\$17,185,974	\$961.45
SPECIALTY TRADE CONTRACTORS	4,878	32,001	32,153	33,816	\$259,006,106	\$610.09
Building Foundation and Exterior Contractors	977	6,290	6,349	6,974	\$48,132,268	\$566.33
Building Equipment Contractors	2,140	15,584	15,622	16,063	\$136,048,372	\$664.19
Building Finishing Contractors	917	5,114	5,193	5,371	\$36,448,708	\$536.50
Other Specialty Trade Contractors	844	5,013	4,989	5,408	\$38,376,758	\$574.70
MANUFACTURING	3,629	192,967	191,949	191,774	\$1,750,362,142	\$700.43
FOOD MANUFACTURING	322	50,136	49,886	49,571	\$342,350,893	\$528.13
Animal Food Manufacturing	58	1,394	1,402	1,391	\$12,212,808	\$673.12
Grain and Oilseed Milling	31	2,350	2,346	2,359	\$20,161,984	\$659.50
Fruit, Vegetable and Specialty Food	35	6,889	6,847	6,817	\$55,032,445	\$617.90
Dairy Product Manufacturing	13	711	708	716	\$6,889,775	\$744.71
Animal Slaughtering and Processing	91	33,578	33,354	33,018	\$203,018,056	\$468.74
Bakeries and Tortilla Manufacturing	54	3,261	3,272	3,296	\$26,360,409	\$618.90
Other Food Manufacturing	27	1,725	1,724	1,742	\$17,535,809	\$779.57
Other	13	228	233	232	\$1,139,607	\$379.49
BEVERAGE AND TOBACCO PRODUCT MFG.	39	1,222	1,221	1,232	\$11,592,543	\$727.95
TEXTILE MILLS	20	399	398	397	\$4,046,533	\$782.09
Fabric Mills	6	315	314	306	\$3,511,446	\$866.67
Textile and Fabric Finishing Mills	14	84	84	91	\$535,087	\$476.76
TEXTILE PRODUCT MILLS	60	1,286	1,288	1,297	\$12,207,999	\$727.78
APPAREL MANUFACTURING	35	1,648	1,665	1,569	\$8,698,233	\$411.16
Cut and Sew Apparel Manufacturing	25	709	726	640	\$3,269,559	\$363.62
Other	10	939	939	929	\$5,428,674	\$446.30
LEATHER AND ALLIED PRODUCT MANUFACTURING	21	1,819	1,818	1,819	\$10,860,699	\$459.37
Footwear Manufacturing	11	1,603	1,597	1,598	\$9,399,783	\$452.10
Other Leather Product Manufacturing	10	216	221	221	\$1,460,916	\$512.36
WOOD PRODUCT MANUFACTURING	395	12,485	12,280	12,473	\$107,726,140	\$667.59
Sawmills and Wood Preservation	170	5,537	5,281	5,300	\$48,974,573	\$701.19

**TABLE 5. STATEWIDE SUMMARY
EMPLOYMENT AND TOTAL EARNINGS, BY INDUSTRY
FIRST QUARTER 2007**

NORTH AMERICAN INDUSTRY CLASSIFICATION SYSTEM INDUSTRY GROUPS	NUMBER OF EMPLOYING UNITS	EMPLOYMENT JANUARY	EMPLOYMENT FEBRUARY	EMPLOYMENT MARCH	TOTAL EARNINGS JANUARY - MARCH	AVERAGE WEEKLY EARNINGS
Veneer and Engineered Wood Products	56	2,985	3,007	3,164	\$33,703,079	\$849.46
Other Wood Product Manufacturing	169	3,963	3,992	4,009	\$25,048,488	\$483.15
PAPER MANUFACTURING	91	11,351	11,349	11,285	\$166,599,005	\$1,131.26
Pulp, Paper and Paperboard Mills	13	4,372	4,305	4,292	\$88,071,337	\$1,567.13
Converted Paper Product Manufacturing	78	6,979	7,044	6,993	\$78,527,668	\$862.28
PRINTING AND RELATED SUPPORT ACTIVITIES	298	4,546	4,527	4,582	\$41,456,315	\$700.61
PETROLEUM AND COAL PRODUCTS MANUFACTURING	22	923	909	920	\$11,047,731	\$926.41
CHEMICAL MANUFACTURING	116	4,656	4,652	4,684	\$60,637,100	\$1,000.08
Basic Chemical Manufacturing	30	1,956	1,959	1,977	\$29,898,797	\$1,171.03
Resin, Rubber and Artificial Fibers	8	311	307	306	\$4,384,430	\$1,095.01
Agricultural Chemical Manufacturing	16	343	345	343	\$3,804,193	\$851.49
Paint, Coating and Adhesive Manufacturing	8	162	162	162	\$2,357,502	\$1,119.42
Other Chemical Preparation Manufacturing	25	955	963	981	\$10,314,355	\$821.05
Other	29	929	916	915	\$9,877,823	\$825.90
PLASTICS AND RUBBER PRODUCTS MANUFACTURING	166	12,485	12,479	12,552	\$120,979,530	\$744.17
Plastics Product Manufacturing	116	7,564	7,629	7,733	\$65,707,984	\$661.41
Rubber Product Manufacturing	50	4,921	4,850	4,819	\$55,271,546	\$874.23
NONMETALLIC MINERAL PRODUCT MANUFACTURING	254	4,637	4,465	4,565	\$42,553,088	\$718.51
Clay Product and Refractory Manufacturing	19	437	431	430	\$4,098,880	\$728.73
Glass and Glass Product Manufacturing	12	401	400	399	\$3,187,327	\$612.95
Cement and Concrete Product Manufacturing	179	2,780	2,617	2,725	\$23,772,895	\$675.46
Lime and Gypsum Product Manufacturing	5	425	429	427	\$5,389,080	\$970.83
Other Nonmetallic Mineral Products	39	594	588	584	\$6,104,906	\$797.75
PRIMARY METAL MANUFACTURING	70	8,419	8,303	8,264	\$113,872,622	\$1,051.72
Iron and Steel Mills and Ferroalloys	11	2,142	2,142	2,089	\$52,284,593	\$1,893.25
Purchased Steel Product Manufacturing	16	2,557	2,483	2,439	\$23,909,186	\$737.73
Alumina and Aluminum Production	19	1,735	1,694	1,728	\$19,815,978	\$886.74
Other Nonferrous Metal Production	11	585	577	584	\$5,058,168	\$668.54
Foundries	13	1,400	1,407	1,424	\$12,804,697	\$698.40
FABRICATED METAL PRODUCT MANUFACTURING	580	17,311	17,240	17,488	\$169,103,143	\$749.90
Forging and Stamping	12	667	664	780	\$6,797,835	\$743.12

**TABLE 5. STATEWIDE SUMMARY
EMPLOYMENT AND TOTAL EARNINGS, BY INDUSTRY
FIRST QUARTER 2007**

NORTH AMERICAN INDUSTRY CLASSIFICATION SYSTEM INDUSTRY GROUPS	NUMBER OF EMPLOYING UNITS	EMPLOYMENT JANUARY	EMPLOYMENT FEBRUARY	EMPLOYMENT MARCH	TOTAL EARNINGS JANUARY - MARCH	AVERAGE WEEKLY EARNINGS
Cutlery and Hand Tool Manufacturing	17	1,372	1,375	1,372	\$11,603,115	\$650.07
Architectural and Structural Metals	203	5,180	5,178	5,306	\$53,024,991	\$781.19
Boilers, Tanks and Shipping Containers	19	1,080	987	979	\$11,600,236	\$878.85
Hardware Manufacturing	9	295	294	280	\$2,343,847	\$622.43
Spring and Wire Product Manufacturing	14	662	667	680	\$4,339,006	\$498.41
Machine Shops and Threaded Products	199	1,842	1,836	1,878	\$15,199,226	\$631.30
Coating, Engraving and Heat Treating Metals	39	583	579	584	\$4,017,214	\$530.96
Other Fabricated Metal Product Manufacturing	68	5,630	5,660	5,629	\$60,177,673	\$820.80
MACHINERY MANUFACTURING	260	14,254	14,695	14,881	\$123,511,894	\$650.30
Agricultural, Construction and Mining Machinery	36	2,908	3,465	3,641	\$19,673,245	\$453.36
Commercial and Service Industry Machinery	26	934	945	945	\$10,474,097	\$855.91
HVAC and Commercial Refrigeration Equipment	23	4,846	4,750	4,752	\$41,212,139	\$662.84
Metalworking Machinery Manufacturing	80	1,428	1,425	1,440	\$13,345,768	\$717.40
Other General Purpose Machinery Manufacturing	57	3,163	3,133	3,121	\$28,593,652	\$700.70
Other	38	975	977	982	\$10,212,993	\$803.29
COMPUTER AND ELECTRONIC PRODUCT MANUFACTURING	82	5,657	5,545	5,201	\$47,586,487	\$669.48
Audio and Video Equipment Manufacturing	11	1,435	1,441	1,216	\$11,098,488	\$625.90
Semiconductors and Electronic Components	28	2,398	2,413	2,376	\$19,174,557	\$615.68
Electronic Instrument Manufacturing	29	1,156	1,113	1,069	\$8,998,603	\$622.11
Other	14	668	578	540	\$8,314,839	\$1,074.36
ELECTRICAL EQUIPMENT AND APPLIANCES	72	11,046	10,651	10,586	\$110,846,897	\$792.37
Electrical Equipment Manufacturing	23	4,918	4,884	4,881	\$48,604,393	\$763.90
Other	49	6,128	5,767	5,705	\$62,242,504	\$816.12
TRANSPORTATION EQUIPMENT MANUFACTURING	176	17,042	16,863	16,833	\$155,504,058	\$707.27
Motor Vehicle Body and Trailer Manufacturing	44	3,814	3,702	3,638	\$30,209,787	\$625.02
Motor Vehicle Parts Manufacturing	63	6,556	6,503	6,477	\$52,731,448	\$622.89
Aerospace Product and Parts Manufacturing	25	3,556	3,599	3,602	\$45,986,918	\$986.55
Ship and Boat Building	27	1,653	1,631	1,676	\$12,111,476	\$563.50
Other	17	1,463	1,428	1,440	\$14,464,429	\$770.71
FURNITURE & RELATED PRODUCT MFG.	279	6,241	6,274	6,159	\$48,844,088	\$603.60
Household & Institutional Furniture	228	4,309	4,227	4,202	\$28,853,608	\$522.73

**TABLE 5. STATEWIDE SUMMARY
EMPLOYMENT AND TOTAL EARNINGS, BY INDUSTRY
FIRST QUARTER 2007**

NORTH AMERICAN INDUSTRY CLASSIFICATION SYSTEM INDUSTRY GROUPS	NUMBER OF EMPLOYING UNITS	EMPLOYMENT	EMPLOYMENT	EMPLOYMENT	TOTAL EARNINGS	AVERAGE
		JANUARY	FEBRUARY	MARCH	JANUARY - MARCH	WEEKLY EARNINGS
Office Furniture & Fixtures Manufacturing	43	1,788	1,893	1,805	\$18,871,883	\$793.85
Other Furniture Related Product Manufacturing	8	144	154	152	\$1,118,597	\$573.64
MISCELLANEOUS MANUFACTURING	271	5,404	5,441	5,416	\$40,337,144	\$572.45
Medical Equipment & Supplies Manufacturing	99	2,473	2,480	2,483	\$20,496,248	\$636.08
Other Miscellaneous Manufacturing	172	2,931	2,961	2,933	\$19,840,896	\$518.83
TRADE, TRANSPORTATION AND UTILITIES	20,996	243,141	242,852	247,408	\$1,958,499,078	\$616.25
WHOLESALE TRADE	6,384	47,234	47,429	48,025	\$615,561,530	\$995.55
MERCHANT WHOLESALERS, DURABLE GOODS	2,114	21,865	21,839	22,094	\$249,416,593	\$874.76
Motor Vehicle & Part Merchant Wholesalers	239	2,679	2,684	2,710	\$25,953,346	\$741.88
Furniture & Furnishing Merchant Wholesalers	73	417	428	446	\$5,122,904	\$915.73
Lumber & Supply Merchant Wholesalers	185	1,839	1,868	1,902	\$18,989,977	\$781.30
Commercial Goods Merchant Wholesalers	242	2,591	2,596	2,626	\$41,812,097	\$1,234.99
Metal & Mineral Merchant Wholesalers	50	846	832	828	\$10,057,932	\$926.20
Electric Goods Merchant Wholesalers	172	2,143	2,115	2,155	\$28,809,657	\$1,036.70
Hardware & Plumbing Merchant Wholesalers	223	2,437	2,412	2,422	\$28,663,105	\$909.72
Machinery & Supply Merchant Wholesalers	693	7,127	7,108	7,210	\$71,788,735	\$772.52
Misc. Durable Goods Merchant Wholesalers	237	1,786	1,796	1,795	\$18,218,840	\$781.91
MERCHANT WHOLESALERS, NONDURABLE GOODS	1,282	16,227	16,316	16,655	\$172,916,006	\$811.08
Paper & Paper Product Merchant Wholesalers	76	1,170	1,207	1,185	\$13,216,277	\$856.24
Druggists' Goods Merchant Wholesalers	56	1,185	1,191	1,189	\$14,805,912	\$958.41
Apparel & Piece Goods Merchant Wholesalers	40	451	451	480	\$3,843,605	\$641.81
Grocery Product Merchant Wholesalers	339	5,143	5,148	5,155	\$62,778,431	\$937.93
Farm Product Merchant Wholesalers	75	848	881	902	\$4,820,012	\$422.77
Chemical Merchant Wholesalers	81	500	521	522	\$6,140,301	\$918.34
Petroleum Merchant Wholesalers	153	1,561	1,537	1,566	\$18,978,672	\$939.04
Alcoholic Beverage Merchant Wholesalers	38	1,127	1,130	1,133	\$12,457,079	\$848.00
Misc. Nondurable Goods Merchant Wholesalers	424	4,242	4,250	4,523	\$35,875,717	\$636.11
ELECTRONIC MARKETS & AGENTS & BROKERS	2,988	9,142	9,274	9,276	\$193,228,931	\$1,610.26
RETAIL TRADE	11,266	132,411	131,588	134,843	\$700,419,895	\$405.26
MOTOR VEHICLE & PARTS DEALERS	1,749	17,757	17,811	17,996	\$149,238,621	\$642.96
Automobile Dealers	752	10,648	10,713	10,802	\$102,751,682	\$737.24

**TABLE 5. STATEWIDE SUMMARY
EMPLOYMENT AND TOTAL EARNINGS, BY INDUSTRY
FIRST QUARTER 2007**

NORTH AMERICAN INDUSTRY CLASSIFICATION SYSTEM INDUSTRY GROUPS	NUMBER OF EMPLOYING UNITS	EMPLOYMENT	EMPLOYMENT	EMPLOYMENT	TOTAL EARNINGS	AVERAGE
		JANUARY	FEBRUARY	MARCH	JANUARY - MARCH	WEEKLY EARNINGS
Other Motor Vehicle Dealers	195	1,508	1,499	1,546	\$11,630,829	\$589.51
Automotive Parts, Accessories & Tire Stores	802	5,601	5,599	5,648	\$34,856,110	\$477.43
FURNITURE & HOME FURNISHINGS STORES	601	4,141	4,103	4,087	\$26,096,387	\$488.38
Furniture Stores	318	2,492	2,520	2,487	\$16,405,362	\$504.85
Home Furnishings Stores	283	1,649	1,583	1,600	\$9,691,025	\$462.83
ELECTRONICS & APPLIANCE STORES	443	3,141	3,031	3,076	\$19,119,174	\$477.09
BUILDING MATERIAL & GARDEN SUPPLY STORES	862	10,798	10,876	11,382	\$71,083,219	\$496.24
Building Material & Supplies Dealers	677	10,009	10,104	10,478	\$66,680,420	\$503.02
Lawn & Garden Equipment & Supplies Stores	185	789	772	904	\$4,402,799	\$412.18
FOOD & BEVERAGE STORES	1,097	18,323	18,327	18,452	\$75,379,114	\$315.69
Grocery Stores	617	15,937	15,954	16,041	\$63,922,944	\$307.76
Specialty Food Stores	165	889	884	911	\$5,432,789	\$467.11
Beer, Wine & Liquor Stores	315	1,497	1,489	1,500	\$6,023,381	\$309.86
HEALTH & PERSONAL CARE STORES	812	7,009	7,012	7,021	\$48,113,465	\$527.66
GASOLINE STATIONS	1,595	12,109	12,152	12,419	\$42,955,032	\$270.25
Gasoline Stations with Convenience Stores	1,432	10,863	10,911	11,164	\$37,485,230	\$262.63
Other Gasoline Stations	163	1,246	1,241	1,255	\$5,469,802	\$337.32
CLOTHING & CLOTHING ACCESSORIES STORES	1,101	9,448	9,099	9,196	\$31,570,545	\$262.61
Clothing Stores	748	7,248	6,936	7,037	\$21,487,461	\$233.67
Shoe Stores	185	1,203	1,210	1,212	\$4,290,805	\$273.15
Jewelry, Luggage & Leather Goods Stores	168	997	953	947	\$5,792,279	\$461.40
SPORTING GOODS, HOBBY, BOOK & MUSIC STORES	582	4,746	4,475	4,439	\$16,615,475	\$280.70
Sporting Goods & Musical Instrument Stores	432	3,157	3,050	3,075	\$12,138,960	\$301.80
Book, Periodical & Music Stores	150	1,589	1,425	1,364	\$4,476,515	\$235.96
GENERAL MERCHANDISE STORES	717	36,438	36,237	38,394	\$176,075,856	\$365.83
MISCELLANEOUS STORE RETAILERS	1,393	6,593	6,567	6,512	\$30,238,975	\$354.73
Florists	258	1,010	1,104	1,006	\$3,863,828	\$285.79
Office Supplies, Stationery & Gift Stores	373	2,353	2,281	2,288	\$11,113,987	\$370.52
Used Merchandise Stores	218	836	796	786	\$3,514,797	\$335.45
Other Miscellaneous Store Retailers	544	2,394	2,386	2,432	\$11,746,363	\$375.86
NONSTORE RETAILERS	314	1,908	1,898	1,869	\$13,934,032	\$566.62

**TABLE 5. STATEWIDE SUMMARY
EMPLOYMENT AND TOTAL EARNINGS, BY INDUSTRY
FIRST QUARTER 2007**

NORTH AMERICAN INDUSTRY CLASSIFICATION SYSTEM INDUSTRY GROUPS	NUMBER OF EMPLOYING UNITS	EMPLOYMENT	EMPLOYMENT	EMPLOYMENT	TOTAL EARNINGS	AVERAGE
		JANUARY	FEBRUARY	MARCH	JANUARY - MARCH	WEEKLY EARNINGS
Electronic Shopping & Mail -Order Houses	73	414	434	405	\$3,364,324	\$619.62
Vending Machine Operators	77	643	646	651	\$3,994,497	\$475.16
Direct Selling Establishments	164	851	818	813	\$6,575,211	\$611.34
TRANSPORTATION & WAREHOUSING	2,988	56,592	56,929	57,550	\$512,565,633	\$691.43
AIR TRANSPORTATION	47	943	920	911	\$12,417,588	\$1,033.02
TRUCK TRANSPORTATION	2,019	36,093	36,482	36,941	\$331,976,740	\$699.53
General Freight Trucking	1,270	31,073	31,379	31,703	\$290,717,147	\$712.53
Specialized Freight Trucking	749	5,020	5,103	5,238	\$41,259,593	\$619.85
TRANSIT & GROUND PASSENGER TRANSPORTATION	62	1,135	1,108	1,130	\$4,630,645	\$316.81
Taxi & Limousine Service	20	281	282	290	\$928,155	\$251.10
School & Employee Bus Transportation	8	451	441	440	\$2,124,982	\$368.15
Charter Bus Industry	8	83	83	90	\$368,461	\$332.15
Other Ground Passenger Transportation	20	224	206	208	\$812,943	\$294.05
Other	6	96	96	102	\$396,104	\$310.91
PIPELINE TRANSPORTATION	66	898	892	896	\$13,922,970	\$1,196.20
SUPPORT ACTIVITIES FOR TRANSPORTATION	420	4,914	4,882	4,940	\$50,935,470	\$797.66
Support Activities for Air Transportation	107	1,653	1,656	1,672	\$14,365,019	\$665.53
Support Activities for Rail Transportation	30	398	389	389	\$3,233,021	\$634.42
Support Activities for Water Transportation	26	660	623	626	\$6,724,914	\$812.94
Support Activities for Road Transportation	105	513	508	530	\$3,028,287	\$450.57
Freight Transportation Arrangement	128	1,513	1,531	1,553	\$22,367,293	\$1,122.84
Other Support Activities for Transportation	24	177	175	170	\$1,216,936	\$537.99
COURIERS & MESSENGERS	142	3,205	3,224	3,246	\$28,535,083	\$680.62
Couriers	86	2,926	2,947	2,972	\$26,956,812	\$703.31
Local Messengers & Local Delivery	56	279	277	274	\$1,578,271	\$438.81
WAREHOUSING & STORAGE	210	9,243	9,251	9,296	\$68,661,586	\$570.17
OTHER	22	161	170	190	\$1,485,551	\$658.00
UTILITIES	358	6,904	6,906	6,990	\$129,952,020	\$1,441.78
Power Generation & Supply	157	5,045	5,022	5,046	\$104,818,896	\$1,600.54
Natural Gas Distribution	34	1,052	1,077	1,107	\$19,051,213	\$1,358.60
Water, Sewage and Other Systems	167	807	807	837	\$6,081,911	\$572.63

**TABLE 5. STATEWIDE SUMMARY
EMPLOYMENT AND TOTAL EARNINGS, BY INDUSTRY
FIRST QUARTER 2007**

NORTH AMERICAN INDUSTRY CLASSIFICATION SYSTEM INDUSTRY GROUPS	NUMBER OF EMPLOYING UNITS	EMPLOYMENT	EMPLOYMENT	EMPLOYMENT	TOTAL EARNINGS	AVERAGE
		JANUARY	FEBRUARY	MARCH	JANUARY - MARCH	WEEKLY EARNINGS
INFORMATION	1,195	19,566	19,622	19,601	\$236,230,742	\$927.30
PUBLISHING INDUSTRIES, EXCEPT INTERNET	244	6,237	6,230	6,211	\$48,855,733	\$603.62
Newspaper, Book & Directory Publishers	216	5,975	5,966	5,943	\$45,538,862	\$587.62
Software Publishers	28	262	264	268	\$3,316,871	\$964.02
MOTION PICTURE & SOUND RECORDING INDUSTRY	134	1,153	1,160	1,184	\$4,978,054	\$328.50
Motion Picture & Video Industries	118	1,120	1,130	1,150	\$4,670,265	\$316.99
Sound Recording Industries	16	33	30	34	\$307,789	\$732.25
BROADCASTING, EXCEPT INTERNET	145	2,220	2,250	2,226	\$19,200,828	\$661.73
Radio & Television Broadcasting	137	2,180	2,206	2,182	\$18,964,733	\$666.33
Cable & Other Subscription Programming	8	40	44	44	\$236,095	\$425.65
TELECOMMUNICATIONS	539	8,668	8,697	8,708	\$146,615,953	\$1,297.68
Wired Telecommunications Carriers	316	4,528	4,534	4,544	\$82,795,410	\$1,404.28
Wireless Telecommunications Carriers	127	3,578	3,592	3,601	\$57,725,337	\$1,236.77
Other	96	562	571	563	\$6,095,206	\$829.35
DATA PROCESSING, HOSTING & RELATED SERVICES	87	994	988	975	\$14,162,529	\$1,105.27
OTHER	46	294	297	297	\$2,417,645	\$628.29
FINANCIAL ACTIVITIES	8,191	51,051	51,094	51,310	\$589,707,696	\$886.82
FINANCE & INSURANCE	4,800	36,955	37,012	37,131	\$490,999,508	\$1,019.89
CREDIT INTERMEDIATION & RELATED ACTIVITIES	2,044	22,003	22,056	22,056	\$231,368,261	\$807.57
Depository Credit Intermediation	1,340	18,258	18,199	18,222	\$184,608,274	\$779.13
Nondepository Credit Intermediation	397	2,576	2,670	2,669	\$37,076,829	\$1,081.01
Activities Related to Credit Intermediation	307	1,169	1,187	1,165	\$9,683,158	\$634.64
FINANCIAL INVESTMENT & RELATED ACTIVITIES	591	3,050	3,060	3,042	\$104,636,199	\$2,638.42
INSURANCE CARRIERS & RELATED ACTIVITIES	2,134	11,474	11,466	11,584	\$149,716,787	\$1,000.75
Insurance Carriers	418	4,786	4,810	4,858	\$71,980,575	\$1,149.23
Insurance Agencies, Brokerages & Support	1,716	6,688	6,656	6,726	\$77,736,212	\$893.83
OTHER	31	428	430	449	\$5,278,261	\$931.95
REAL ESTATE & RENTAL & LEASING	3,391	14,096	14,082	14,179	\$98,708,188	\$537.78
REAL ESTATE	2,575	8,832	8,757	8,793	\$61,591,746	\$538.76
Lessors of Real Estate	1,042	4,261	4,223	4,284	\$26,871,737	\$485.68
Offices of Real Estate Agents & Brokers	922	2,117	2,093	2,094	\$15,844,340	\$580.01

**TABLE 5. STATEWIDE SUMMARY
EMPLOYMENT AND TOTAL EARNINGS, BY INDUSTRY
FIRST QUARTER 2007**

NORTH AMERICAN INDUSTRY CLASSIFICATION SYSTEM INDUSTRY GROUPS	NUMBER OF EMPLOYING UNITS	EMPLOYMENT JANUARY	EMPLOYMENT FEBRUARY	EMPLOYMENT MARCH	TOTAL EARNINGS JANUARY - MARCH	AVERAGE WEEKLY EARNINGS
Activities Related to Real Estate	611	2,454	2,441	2,415	\$18,875,669	\$595.89
RENTAL & LEASING SERVICES	793	5,191	5,250	5,311	\$35,981,896	\$527.14
Automotive Equipment Rental & Leasing	125	989	999	995	\$7,302,104	\$564.90
Consumer Goods Rental	482	3,085	3,146	3,215	\$16,383,156	\$400.25
General Rental Centers	36	246	244	249	\$1,979,077	\$618.01
Machinery & Equipment Rental & Leasing	150	871	861	852	\$10,317,559	\$921.43
LESSORS OF NONFINANCIAL INTANGIBLE ASSETS	23	73	75	75	\$1,134,546	\$1,174.07
PROFESSIONAL AND BUSINESS SERVICES	11,109	113,806	115,021	116,551	\$1,232,007,739	\$823.18
PROFESSIONAL & TECHNICAL SERVICES	7,010	39,067	38,906	38,720	\$436,685,175	\$863.58
Legal Services	1,669	6,597	6,562	6,603	\$66,265,426	\$773.81
Accounting & Bookkeeping Services	1,246	6,578	6,741	6,318	\$49,249,547	\$578.77
Architectural & Engineering Services	948	6,653	6,666	6,782	\$76,369,670	\$876.76
Specialized Design Services	161	455	476	472	\$3,923,012	\$645.27
Computer Systems Design & Related Services	865	8,058	7,853	7,796	\$137,951,826	\$1,342.85
Management & Technical Consulting Services	1,116	3,749	3,773	3,844	\$47,848,963	\$971.50
Scientific Research & Development Services	99	1,014	1,017	1,041	\$12,681,679	\$952.65
Advertising & Related Services	316	2,089	2,022	2,015	\$21,668,815	\$816.27
Other Professional & Technical Services	590	3,874	3,796	3,849	\$20,726,237	\$415.23
MANAGEMENT OF COMPANIES & ENTERPRISES	509	24,346	24,583	24,823	\$533,980,423	\$1,670.82
ADMINISTRATIVE & WASTE SERVICES	3,590	50,393	51,532	53,008	\$261,342,141	\$389.26
ADMINISTRATIVE & SUPPORT SERVICES	3,384	48,089	49,210	50,689	\$238,764,523	\$372.32
Office Administrative Services	351	1,158	1,130	1,129	\$14,174,006	\$957.25
Facilities Support Services	15	129	126	133	\$1,147,195	\$682.31
Employment Services	669	23,398	24,041	24,892	\$100,826,329	\$321.68
Business Support Services	380	5,772	6,158	6,240	\$31,428,495	\$399.16
Travel Arrangement & Reservation Services	95	396	385	393	\$2,937,390	\$577.39
Investigation & Security Services	253	4,549	4,501	4,488	\$26,082,952	\$444.61
Services to Buildings & Dwellings	1,343	11,199	11,357	11,836	\$50,014,870	\$335.60
Other Support Services	278	1,488	1,512	1,578	\$12,153,286	\$612.63
WASTE MANAGEMENT & REMEDIATION SERVICES	206	2,304	2,322	2,319	\$22,577,618	\$750.21
Waste Collection	101	1,120	1,150	1,159	\$10,854,612	\$730.51

**TABLE 5. STATEWIDE SUMMARY
EMPLOYMENT AND TOTAL EARNINGS, BY INDUSTRY
FIRST QUARTER 2007**

NORTH AMERICAN INDUSTRY CLASSIFICATION SYSTEM INDUSTRY GROUPS	NUMBER OF EMPLOYING UNITS	EMPLOYMENT JANUARY	EMPLOYMENT FEBRUARY	EMPLOYMENT MARCH	TOTAL EARNINGS JANUARY - MARCH	AVERAGE WEEKLY EARNINGS
Waste Treatment & Disposal	38	664	658	657	\$7,643,085	\$891.25
Remediation & Other Waste Services	67	520	514	503	\$4,079,921	\$612.57
EDUCATION AND HEALTH SERVICES	11,178	146,704	147,683	148,839	\$1,168,272,863	\$608.27
EDUCATIONAL SERVICES	574	9,020	9,501	9,542	\$63,213,346	\$519.82
Elementary & Secondary Schools	78	3,212	3,299	3,314	\$16,656,490	\$391.23
Junior Colleges	8	260	268	274	\$2,025,483	\$582.82
Colleges & Universities	29	2,975	3,354	3,307	\$24,331,349	\$582.70
Business, Computer & Management Training	45	185	176	185	\$4,103,029	\$1,734.16
Technical & Trade Schools	103	725	714	730	\$7,726,152	\$822.02
Other Schools & Instruction	221	1,418	1,433	1,464	\$4,943,861	\$264.40
Educational Support Services	90	245	257	268	\$3,426,982	\$1,027.07
HEALTH CARE & SOCIAL ASSISTANCE	10,604	137,684	138,182	139,297	\$1,105,059,517	\$614.25
AMBULATORY HEALTH CARE SERVICES	4,868	42,858	43,074	43,317	\$481,667,584	\$860.00
Offices of Physicians	2,193	20,581	20,678	20,730	\$297,163,299	\$1,106.26
Offices of Dentists	917	5,988	5,999	6,055	\$54,888,697	\$702.06
Offices of Other Health Practitioners	1,144	5,928	5,949	5,936	\$44,523,750	\$576.81
Outpatient Care Centers	222	3,553	3,566	3,623	\$32,874,106	\$706.23
Medical & Diagnostic Laboratories	100	828	827	836	\$9,632,294	\$892.35
Home Health Care Services	150	3,836	3,922	3,974	\$26,014,635	\$511.71
Other Ambulatory Health Care Services	142	2,144	2,133	2,163	\$16,570,803	\$593.79
HOSPITALS	107	41,317	41,333	41,516	\$376,674,825	\$700.07
General Medical & Surgical Hospitals	76	37,976	37,961	38,098	\$348,334,051	\$704.91
Psychiatric & Substance Abuse Hospitals	10	1,565	1,560	1,580	\$12,374,961	\$606.96
Other Hospitals	21	1,776	1,812	1,838	\$15,965,813	\$679.03
NURSING & RESIDENTIAL CARE FACILITIES	509	27,055	27,028	27,284	\$135,186,080	\$383.41
Nursing Care Facilities	244	20,288	20,261	20,421	\$100,900,453	\$381.90
Residential Mental Health Facilities	126	3,100	3,125	3,137	\$16,652,840	\$410.49
Community Care Facilities for the Elderly	93	2,188	2,175	2,215	\$9,813,881	\$344.29
Other Residential Care Facilities	46	1,479	1,467	1,511	\$7,818,906	\$404.84
SOCIAL ASSISTANCE	5,120	26,454	26,747	27,180	\$111,531,028	\$320.20
Individual & Family Services	3,970	13,622	13,723	13,824	\$59,879,993	\$335.65

**TABLE 5. STATEWIDE SUMMARY
EMPLOYMENT AND TOTAL EARNINGS, BY INDUSTRY
FIRST QUARTER 2007**

NORTH AMERICAN INDUSTRY CLASSIFICATION SYSTEM INDUSTRY GROUPS	NUMBER OF EMPLOYING UNITS	EMPLOYMENT	EMPLOYMENT	EMPLOYMENT	TOTAL EARNINGS	AVERAGE
		JANUARY	FEBRUARY	MARCH	JANUARY - MARCH	WEEKLY EARNINGS
Emergency & Other Relief Services	123	916	915	911	\$4,624,073	\$389.17
Vocational Rehabilitation Services	128	3,445	3,500	3,563	\$16,912,106	\$371.41
Child Day Care Services	899	8,471	8,609	8,882	\$30,114,856	\$267.68
LEISURE AND HOSPITALITY	6,105	94,075	94,872	97,784	\$285,049,081	\$229.42
ARTS, ENTERTAINMENT & RECREATION	910	8,654	8,789	9,168	\$35,091,444	\$304.31
PERFORMING ARTS & SPECTATOR SPORTS	208	2,547	2,581	2,561	\$11,387,902	\$341.78
Performing Arts Companies	36	295	295	339	\$1,420,822	\$352.94
Spectator Sports	59	1,558	1,562	1,493	\$6,631,718	\$331.76
Performing Arts & Sports Promoters	45	544	574	571	\$2,319,348	\$316.89
Agents & Managers for Public Figures	12	15	16	12	\$114,984	\$617.09
Independent Artists, Writers & Performers	56	135	134	146	\$901,030	\$501.04
MUSEUMS, PARKS & HISTORICAL SITES	45	183	174	202	\$898,720	\$371.01
GAMBLING, RECREATION & AMUSEMENT INDUSTRY	657	5,924	6,034	6,405	\$22,804,822	\$286.59
ACCOMMODATION & FOOD SERVICES	5,195	85,421	86,083	88,616	\$249,957,637	\$221.75
ACCOMMODATION	821	9,941	10,239	10,806	\$37,056,617	\$275.98
Traveler Accommodation	745	9,655	9,960	10,503	\$35,632,176	\$273.02
RV Parks & Recreational Camps	57	211	203	231	\$1,088,290	\$389.37
Rooming & Boarding Houses	19	75	76	72	\$336,151	\$347.86
FOOD SERVICES & DRINKING PLACES	4,374	75,480	75,844	77,810	\$212,901,020	\$214.42
Full -Service Restaurants	1,944	33,538	34,014	34,643	\$101,216,143	\$228.56
Limited-Service Eating Places	2,137	38,829	38,659	39,824	\$101,393,646	\$199.46
Special Food Services	149	2,243	2,300	2,434	\$7,766,348	\$256.88
Drinking Places, Alcoholic Beverages	144	870	871	909	\$2,524,883	\$219.87
OTHER SERVICES	5,457	25,076	25,161	25,743	\$151,521,132	\$460.21
REPAIR & MAINTENANCE	2,205	9,337	9,385	9,693	\$66,574,059	\$540.67
Automotive Repair & Maintenance	1,518	6,683	6,756	6,862	\$44,156,624	\$501.95
Electronic Equipment Repair & Maintenance	163	678	675	701	\$5,942,818	\$667.68
Commercial Machinery Repair & Maintenance	341	1,464	1,451	1,601	\$13,531,335	\$691.46
Household Goods Repair & Maintenance	183	512	503	529	\$2,943,282	\$439.91
PERSONAL & LAUNDRY SERVICES	1,318	8,216	8,276	8,482	\$39,698,475	\$366.83
Personal Care Services	570	2,618	2,694	2,791	\$10,243,784	\$291.74

**TABLE 5. STATEWIDE SUMMARY
EMPLOYMENT AND TOTAL EARNINGS, BY INDUSTRY
FIRST QUARTER 2007**

NORTH AMERICAN INDUSTRY CLASSIFICATION SYSTEM INDUSTRY GROUPS	NUMBER OF EMPLOYING UNITS	EMPLOYMENT	EMPLOYMENT	EMPLOYMENT	TOTAL EARNINGS	AVERAGE
		JANUARY	FEBRUARY	MARCH	JANUARY - MARCH	WEEKLY EARNINGS
Death Care Services	244	1,626	1,649	1,686	\$9,957,417	\$463.19
Drycleaning & Laundry Services	332	3,226	3,205	3,260	\$15,409,602	\$366.94
Other Personal Services	172	746	728	745	\$4,087,672	\$425.11
MEMBERSHIP ASSOCIATIONS & ORGANIZATIONS	1,003	6,179	6,169	6,233	\$39,747,338	\$493.65
Religious Organizations	42	189	190	195	\$1,191,483	\$479.02
Grantmaking & Giving Services	96	468	484	461	\$4,329,032	\$707.01
Social Advocacy Organizations	142	1,984	1,971	1,984	\$12,625,459	\$490.58
Civic & Social Organizations	214	1,420	1,419	1,416	\$5,024,406	\$272.50
Professional & Similar Organizations	509	2,118	2,105	2,177	\$16,576,958	\$597.73
PRIVATE HOUSEHOLDS	931	1,344	1,331	1,335	\$5,501,260	\$316.59
LOCAL GOVERNMENT	1,991	117,379	118,575	119,209	\$853,119,249	\$554.32
STATE GOVERNMENT	1,199	61,874	64,598	64,965	\$599,890,248	\$723.14
NONCLASSIFIABLE ESTABLISHMENTS	0	0	0	0	\$0	

**TABLE 6. COUNTY SUMMARY
EMPLOYMENT AND TOTAL EARNINGS, BY INDUSTRY
FIRST QUARTER 2007**

NORTH AMERICAN INDUSTRY CLASSIFICATION SYSTEM INDUSTRY GROUP	NUMBER OF EMPLOYING UNITS	EMPLOYMENT JANUARY	EMPLOYMENT FEBRUARY	EMPLOYMENT MARCH	TOTAL EARNINGS JANUARY - MARCH 2007	AVERAGE WEEKLY EARNINGS
ARKANSAS COUNTY - TOTAL	695	9,696	9,751	9,847	\$70,500,385	\$555.38
Natural Resources & Mining	43	196	201	207	\$1,482,398	\$566.38
Construction	52	309	308	323	\$2,569,738	\$630.87
Manufacturing	34	3,460	3,498	3,555	\$29,213,862	\$641.27
Trade, Transportation & Utilities	204	1,951	1,948	1,978	\$15,016,080	\$589.63
Wholesale Trade	44	401	406	439	\$4,580,435	\$848.33
Retail Trade	100	1,078	1,069	1,059	\$5,451,518	\$392.40
Transportation, Warehousing & Utilities	60	472	473	480	\$4,984,127	\$807.15
Information	10	102	100	100	\$925,893	\$707.51
Financial Activities	44	318	320	317	\$2,545,101	\$615.01
Professional & Business Services	54	396	380	377	\$3,439,947	\$688.49
Education & Health Services	97	1,216	1,215	1,208	\$6,471,832	\$410.41
Leisure & Hospitality	60	525	528	535	\$1,294,621	\$188.14
Other Services	49	135	133	136	\$728,759	\$416.28
Local Government	32	882	899	897	\$5,441,531	\$468.91
State Government	16	206	221	214	\$1,370,623	\$493.44
ASHLEY COUNTY - TOTAL	543	7,712	7,666	7,865	\$74,740,705	\$742.07
Natural Resources & Mining	56	374	382	383	\$2,793,229	\$565.93
Construction	49	484	466	507	\$3,323,114	\$526.34
Manufacturing	29	2,598	2,539	2,682	\$42,597,412	\$1,257.22
Trade, Transportation & Utilities	132	1,181	1,176	1,173	\$7,316,143	\$478.28
Wholesale Trade	26	175	173	157	\$1,527,427	\$697.99
Retail Trade	81	773	772	784	\$3,567,759	\$353.51
Transportation, Warehousing & Utilities	25	233	231	232	\$2,220,957	\$736.39
Information	9	53	52	52	\$318,345	\$467.93
Financial Activities	32	228	231	219	\$1,714,848	\$583.68
Professional & Business Services	51	381	386	378	\$2,315,823	\$466.74
Education & Health Services	67	584	575	582	\$4,832,372	\$640.53
Leisure & Hospitality	29	395	394	408	\$926,671	\$178.65
Other Services	45	181	196	192	\$1,105,071	\$448.18
Local Government	32	1,043	1,050	1,057	\$6,325,985	\$463.44
State Government	12	210	219	232	\$1,171,692	\$409.06

**TABLE 6. COUNTY SUMMARY
EMPLOYMENT AND TOTAL EARNINGS, BY INDUSTRY
FIRST QUARTER 2007**

NORTH AMERICAN INDUSTRY CLASSIFICATION SYSTEM INDUSTRY GROUP	NUMBER OF EMPLOYING UNITS	EMPLOYMENT	EMPLOYMENT	EMPLOYMENT	TOTAL EARNINGS	AVERAGE
		JANUARY	FEBRUARY	MARCH	JANUARY - MARCH 2007	WEEKLY EARNINGS
BAXTER COUNTY - TOTAL	1,292	14,757	14,753	14,970	\$101,400,012	\$526.08
Natural Resources & Mining	5	101	97	106	\$669,514	\$508.23
Construction	146	718	718	742	\$4,423,123	\$468.65
Manufacturing	63	2,507	2,486	2,477	\$21,194,921	\$654.77
Trade, Transportation & Utilities	283	2,692	2,683	2,772	\$16,247,748	\$460.23
Wholesale Trade	34	229	229	238	\$1,714,958	\$568.62
Retail Trade	217	2,242	2,239	2,306	\$12,757,819	\$433.79
Transportation, Warehousing & Utilities	32	221	215	228	\$1,774,971	\$616.88
Information	23	260	259	253	\$2,265,492	\$677.21
Financial Activities	119	722	732	733	\$6,049,560	\$638.34
Professional & Business Services	140	819	829	837	\$5,558,144	\$516.16
Education & Health Services	233	3,404	3,438	3,466	\$28,659,561	\$641.61
Leisure & Hospitality	128	1,558	1,522	1,561	\$4,367,872	\$217.19
Other Services	103	404	394	412	\$1,688,692	\$322.06
Local Government	36	1,259	1,273	1,289	\$8,117,982	\$490.29
State Government	13	313	322	322	\$2,157,403	\$520.23
BENTON COUNTY - TOTAL	5,417	94,163	94,537	95,882	\$1,033,023,240	\$837.68
Natural Resources & Mining	29	637	641	638	\$6,725,676	\$810.06
Construction	802	5,076	4,891	5,002	\$41,668,128	\$642.38
Manufacturing	250	13,857	13,779	13,672	\$116,651,008	\$651.68
Trade, Transportation & Utilities	1,437	23,928	23,929	24,366	\$231,359,635	\$739.25
Wholesale Trade	649	3,568	3,624	3,621	\$73,116,057	\$1,560.43
Retail Trade	617	8,730	8,637	8,970	\$50,953,269	\$446.46
Transportation, Warehousing & Utilities	171	11,630	11,668	11,775	\$107,290,309	\$705.94
Information	67	897	889	879	\$7,760,367	\$671.99
Financial Activities	601	3,798	3,918	3,956	\$50,300,118	\$994.49
Professional & Business Services	930	22,478	22,625	23,044	\$419,025,164	\$1,418.96
Education & Health Services	477	6,556	6,627	6,738	\$56,190,839	\$650.93
Leisure & Hospitality	408	7,280	7,251	7,460	\$23,945,636	\$251.28
Other Services	322	1,736	1,732	1,804	\$11,220,780	\$491.16
Local Government	75	7,220	7,326	7,381	\$61,474,790	\$646.99
State Government	19	700	929	942	\$6,701,099	\$601.48

**TABLE 6. COUNTY SUMMARY
EMPLOYMENT AND TOTAL EARNINGS, BY INDUSTRY
FIRST QUARTER 2007**

NORTH AMERICAN INDUSTRY CLASSIFICATION SYSTEM INDUSTRY GROUP	NUMBER OF EMPLOYING UNITS	EMPLOYMENT	EMPLOYMENT	EMPLOYMENT	TOTAL EARNINGS	AVERAGE
		JANUARY	FEBRUARY	MARCH	JANUARY - MARCH 2007	WEEKLY EARNINGS
BOONE COUNTY - TOTAL	1,055	13,903	13,992	14,168	\$103,215,797	\$566.27
Construction	92	470	451	469	\$3,461,366	\$574.66
Manufacturing	73	1,952	1,974	1,968	\$16,268,760	\$636.97
Trade, Transportation & Utilities	257	4,496	4,500	4,591	\$36,567,949	\$621.09
Wholesale Trade	56	662	647	666	\$4,663,402	\$544.90
Retail Trade	149	1,946	1,957	2,011	\$10,597,347	\$413.52
Transportation, Warehousing & Utilities	52	1,888	1,896	1,914	\$21,307,200	\$862.94
Information	20	436	442	429	\$3,885,031	\$685.96
Financial Activities	97	643	635	638	\$5,563,801	\$670.12
Professional & Business Services	111	570	572	593	\$3,258,187	\$433.37
Education & Health Services	171	1,137	1,130	1,141	\$8,242,567	\$558.14
Leisure & Hospitality	85	1,121	1,112	1,124	\$3,097,094	\$212.90
Local Government	60	2,258	2,267	2,284	\$15,980,623	\$541.61
State Government	21	558	646	657	\$5,259,201	\$652.16
Other	68	262	263	274	\$1,631,218	\$471.13
BRADLEY COUNTY - TOTAL	389	4,315	4,449	4,398	\$26,643,117	\$467.13
Natural Resources & Mining	49	524	661	577	\$2,867,267	\$375.53
Construction	24	239	193	242	\$1,216,620	\$416.56
Manufacturing	9	1,067	1,058	1,045	\$8,243,026	\$600.07
Trade, Transportation & Utilities	87	493	499	499	\$2,520,117	\$390.05
Wholesale Trade	16	80	79	80	\$569,874	\$550.25
Retail Trade	48	346	352	352	\$1,492,689	\$328.06
Transportation, Warehousing & Utilities	23	67	68	67	\$457,554	\$522.72
Information	3	12	12	12	\$114,031	\$730.97
Financial Activities	24	164	172	173	\$1,094,471	\$496.21
Professional & Business Services	27	83	86	82	\$355,041	\$326.42
Education & Health Services	89	610	605	606	\$3,735,736	\$473.42
Leisure & Hospitality	18	170	171	173	\$432,733	\$194.28
Other Services	33	119	115	118	\$649,231	\$425.63
Local & State Government	26	834	877	871	\$5,414,844	\$483.96

**TABLE 6. COUNTY SUMMARY
EMPLOYMENT AND TOTAL EARNINGS, BY INDUSTRY
FIRST QUARTER 2007**

NORTH AMERICAN INDUSTRY CLASSIFICATION SYSTEM INDUSTRY GROUP	NUMBER OF EMPLOYING UNITS	EMPLOYMENT	EMPLOYMENT	EMPLOYMENT	TOTAL EARNINGS	AVERAGE WEEKLY EARNINGS
		JANUARY	FEBRUARY	MARCH	JANUARY - MARCH 2007	
CALHOUN COUNTY - TOTAL	115	3,014	3,048	3,066	\$28,937,081	\$731.57
Natural Resources & Mining	20	209	212	214	\$1,561,014	\$567.30
Construction	12	67	70	70	\$441,587	\$492.29
Manufacturing	10	2,022	2,033	2,039	\$21,932,046	\$830.53
Trade, Transportation & Utilities	27	197	205	211	\$1,258,522	\$473.78
Wholesale Trade & Retail Trade	18	65	65	68	\$221,908	\$258.63
Transportation, Warehousing & Utilities	9	132	140	143	\$1,036,614	\$576.43
Financial Activities	6	79	77	75	\$621,557	\$620.94
Education & Health Services	5	45	45	46	\$353,129	\$599.20
Local Government	11	201	208	213	\$1,187,725	\$440.66
State Government	9	83	83	83	\$578,994	\$536.60
Other	15	111	115	115	\$1,002,507	\$678.44
CARROLL COUNTY - TOTAL	838	9,133	9,218	9,616	\$54,628,704	\$450.77
Natural Resources & Mining	17	270	270	270	\$1,716,469	\$489.02
Trade, Transportation & Utilities	210	1,562	1,583	1,703	\$9,590,983	\$456.54
Wholesale Trade	27	146	149	148	\$893,441	\$465.41
Retail Trade	161	1,158	1,175	1,289	\$6,010,701	\$382.96
Transportation, Warehousing & Utilities	22	258	259	266	\$2,686,841	\$791.88
Professional & Business Services	78	216	227	229	\$1,474,048	\$506.20
Education & Health Services	81	802	804	827	\$5,721,340	\$542.67
Leisure & Hospitality	171	1,088	1,130	1,345	\$3,269,011	\$211.73
Local Government	25	1,088	1,107	1,115	\$6,767,308	\$471.81
State Government	11	109	108	108	\$747,796	\$530.98
Other	245	3,998	3,989	4,019	\$25,341,749	\$487.10

**TABLE 6. COUNTY SUMMARY
EMPLOYMENT AND TOTAL EARNINGS, BY INDUSTRY
FIRST QUARTER 2007**

NORTH AMERICAN INDUSTRY CLASSIFICATION SYSTEM INDUSTRY GROUP	NUMBER OF EMPLOYING UNITS	EMPLOYMENT	EMPLOYMENT	EMPLOYMENT	TOTAL EARNINGS	AVERAGE
		JANUARY	FEBRUARY	MARCH	JANUARY - MARCH 2007	WEEKLY EARNINGS
CHICOT COUNTY - TOTAL	360	3,409	3,453	3,493	\$19,908,302	\$443.67
Natural Resources & Mining	48	233	236	257	\$1,382,343	\$439.40
Construction	16	100	96	105	\$702,943	\$538.93
Manufacturing	9	522	532	513	\$2,220,204	\$326.97
Trade, Transportation & Utilities	76	534	529	546	\$2,861,834	\$410.46
Wholesale Trade	15	102	99	107	\$732,885	\$549.11
Retail Trade	50	373	372	380	\$1,552,146	\$318.39
Transportation, Warehousing & Utilities	11	59	58	59	\$576,803	\$756.30
Information	6	14	10	10	\$83,751	\$568.45
Financial Activities	29	164	159	160	\$1,445,753	\$690.76
Professional & Business Services	28	87	89	87	\$710,591	\$623.51
Education & Health Services	81	512	547	549	\$3,164,259	\$454.11
Leisure & Hospitality	20	183	180	183	\$401,088	\$169.52
Other Services	19	35	45	46	\$183,392	\$335.88
Local Government	17	700	704	710	\$4,457,996	\$486.65
State Government	11	325	326	327	\$2,294,148	\$541.33
CLARK COUNTY - TOTAL	616	9,466	9,802	9,875	\$68,428,779	\$541.85
Natural Resources & Mining	45	254	262	254	\$1,891,703	\$566.94
Construction	28	93	93	96	\$501,181	\$410.13
Manufacturing	36	2,332	2,486	2,453	\$22,222,533	\$705.31
Trade, Transportation & Utilities	148	1,465	1,423	1,469	\$9,039,151	\$478.76
Wholesale Trade	18	61	57	58	\$549,823	\$720.92
Retail Trade	107	1,119	1,073	1,116	\$5,963,763	\$416.04
Transportation, Warehousing & Utilities	23	285	293	295	\$2,525,565	\$667.61
Information	9	27	26	27	\$230,767	\$665.67
Financial Activities	86	390	382	401	\$3,226,911	\$634.84
Professional & Business Services	46	374	415	412	\$3,982,981	\$765.32
Education & Health Services	76	1,395	1,440	1,448	\$9,082,657	\$489.38
Leisure & Hospitality	56	961	965	994	\$2,567,382	\$202.90
Other Services	45	215	213	213	\$1,180,067	\$424.84
Local Government	26	912	929	939	\$5,960,564	\$494.79
State Government	15	1,048	1,168	1,169	\$8,542,882	\$582.40

**TABLE 6. COUNTY SUMMARY
EMPLOYMENT AND TOTAL EARNINGS, BY INDUSTRY
FIRST QUARTER 2007**

NORTH AMERICAN INDUSTRY CLASSIFICATION SYSTEM INDUSTRY GROUP	NUMBER OF EMPLOYING UNITS	EMPLOYMENT	EMPLOYMENT	EMPLOYMENT	TOTAL EARNINGS	AVERAGE
		JANUARY	FEBRUARY	MARCH	JANUARY - MARCH 2007	WEEKLY EARNINGS
CLAY COUNTY - TOTAL	401	3,953	3,981	3,998	\$23,382,595	\$452.23
Natural Resources & Mining	58	155	145	185	\$714,676	\$340.05
Construction	34	120	146	180	\$737,052	\$381.37
Manufacturing	18	812	799	752	\$5,915,440	\$577.70
Trade, Transportation & Utilities	95	884	854	850	\$5,070,860	\$452.16
Wholesale Trade	22	318	279	280	\$1,938,147	\$509.99
Retail Trade	51	428	432	423	\$1,875,002	\$337.25
Transportation, Warehousing & Utilities	22	138	143	147	\$1,257,711	\$678.13
Information	5	74	74	73	\$395,152	\$412.62
Financial Activities	34	152	149	151	\$956,243	\$488.21
Professional & Business Services	26	47	47	46	\$293,355	\$483.55
Education & Health Services	51	488	489	495	\$2,681,109	\$420.32
Leisure & Hospitality	21	185	195	194	\$421,211	\$169.34
Other Services	25	71	71	75	\$435,025	\$462.63
Local Government	22	889	937	923	\$5,270,232	\$442.42
State Government	12	76	75	74	\$492,240	\$504.86
CLEBURNE COUNTY - TOTAL	684	6,584	6,675	6,860	\$41,671,072	\$477.98
Natural Resources & Mining	18	90	126	129	\$861,980	\$576.58
Construction	72	347	347	380	\$2,180,239	\$468.47
Manufacturing	41	1,538	1,526	1,531	\$12,046,108	\$604.98
Trade, Transportation & Utilities	184	1,515	1,539	1,609	\$9,734,677	\$481.76
Wholesale Trade	42	192	196	190	\$1,572,190	\$627.70
Retail Trade	110	1,004	1,004	1,037	\$5,091,889	\$385.90
Transportation, Warehousing & Utilities	32	319	339	382	\$3,070,598	\$681.35
Information	6	58	57	60	\$399,601	\$526.95
Financial Activities	74	246	255	259	\$1,833,335	\$556.68
Professional & Business Services	57	221	226	225	\$1,377,331	\$472.98
Education & Health Services	78	792	768	778	\$4,559,292	\$450.02
Leisure & Hospitality	69	696	737	795	\$2,107,748	\$218.31
Other Services	56	152	150	159	\$707,058	\$353.94
Local Government	19	813	818	814	\$5,037,067	\$475.42
State Government	10	116	126	121	\$826,636	\$525.52

**TABLE 6. COUNTY SUMMARY
EMPLOYMENT AND TOTAL EARNINGS, BY INDUSTRY
FIRST QUARTER 2007**

NORTH AMERICAN INDUSTRY CLASSIFICATION SYSTEM INDUSTRY GROUP	NUMBER OF EMPLOYING UNITS	EMPLOYMENT JANUARY	EMPLOYMENT FEBRUARY	EMPLOYMENT MARCH	TOTAL EARNINGS JANUARY - MARCH 2007	AVERAGE WEEKLY EARNINGS
CLEVELAND COUNTY - TOTAL	113	1,063	1,071	1,089	\$6,506,027	\$465.84
Natural Resources & Mining	18	144	137	142	\$927,517	\$506.01
Construction	7	30	31	32	\$140,903	\$349.64
Manufacturing	4	91	90	93	\$533,662	\$449.46
Trade, Transportation & Utilities	30	176	176	183	\$815,306	\$351.68
Retail Trade	15	81	79	86	\$217,176	\$203.73
Other Trade, Transportation & Utilities	15	95	97	97	\$598,130	\$477.61
Local Government	11	335	343	337	\$1,989,517	\$452.33
State Government	8	63	60	63	\$363,703	\$451.24
Other	35	224	234	239	\$1,735,419	\$574.58
COLUMBIA COUNTY - TOTAL	711	9,331	9,419	9,534	\$73,440,745	\$599.20
Natural Resources & Mining	50	537	533	531	\$7,391,634	\$1,065.44
Construction	46	313	319	339	\$2,383,509	\$566.47
Manufacturing	42	2,742	2,736	2,734	\$28,060,399	\$788.54
Trade, Transportation & Utilities	177	1,524	1,543	1,623	\$8,741,787	\$430.14
Wholesale Trade	30	255	266	300	\$1,863,429	\$523.78
Retail Trade	111	1,012	1,021	1,064	\$4,582,556	\$341.46
Transportation, Warehousing & Utilities	36	257	256	259	\$2,295,802	\$686.27
Information	9	72	75	74	\$480,812	\$502.07
Financial Activities	73	530	532	526	\$5,360,875	\$779.05
Professional & Business Services	59	323	312	303	\$1,740,571	\$428.22
Education & Health Services	118	864	868	886	\$4,410,192	\$388.75
Leisure & Hospitality	47	616	613	627	\$1,657,535	\$206.09
Other Services	49	203	204	208	\$865,353	\$324.71
Local Government	27	1,110	1,120	1,123	\$7,777,278	\$535.27
State Government	14	497	564	560	\$4,570,800	\$650.71

**TABLE 6. COUNTY SUMMARY
EMPLOYMENT AND TOTAL EARNINGS, BY INDUSTRY
FIRST QUARTER 2007**

NORTH AMERICAN INDUSTRY CLASSIFICATION SYSTEM INDUSTRY GROUP	NUMBER OF EMPLOYING UNITS	EMPLOYMENT	EMPLOYMENT	EMPLOYMENT	TOTAL EARNINGS	AVERAGE
		JANUARY	FEBRUARY	MARCH	JANUARY - MARCH 2007	WEEKLY EARNINGS
CONWAY COUNTY - TOTAL	554	6,590	6,776	6,880	\$46,435,021	\$529.28
Natural Resources & Mining	23	158	164	170	\$1,536,406	\$720.64
Construction	57	505	494	528	\$4,500,896	\$680.20
Manufacturing	30	1,126	1,137	1,146	\$11,722,363	\$793.53
Trade, Transportation & Utilities	134	1,389	1,469	1,479	\$9,196,781	\$489.36
Wholesale Trade	25	224	223	223	\$1,774,920	\$611.34
Retail Trade	79	878	925	929	\$4,691,146	\$396.26
Transportation, Warehousing & Utilities	30	287	321	327	\$2,730,715	\$673.97
Information	5	12	12	12	\$122,897	\$787.80
Financial Activities	34	192	195	199	\$1,388,311	\$546.72
Professional & Business Services	44	619	617	640	\$2,288,478	\$281.51
Education & Health Services	125	859	869	875	\$5,813,371	\$515.38
Leisure & Hospitality	37	409	435	450	\$1,034,006	\$184.40
Other Services	28	87	82	85	\$607,569	\$552.00
Local Government	26	907	915	905	\$5,834,881	\$493.77
State Government	11	327	387	391	\$2,389,062	\$498.93
CRAIGHEAD COUNTY - TOTAL	2,660	40,900	40,838	41,351	\$306,926,715	\$575.43
Natural Resources & Mining	64	211	211	253	\$1,228,832	\$420.11
Construction	240	1,532	1,500	1,586	\$11,226,568	\$561.01
Manufacturing	137	6,754	6,698	6,563	\$60,382,851	\$696.20
Trade, Transportation & Utilities	735	8,468	8,424	8,587	\$54,921,234	\$497.43
Wholesale Trade	180	1,562	1,554	1,575	\$16,038,397	\$788.99
Retail Trade	443	5,816	5,772	5,867	\$28,694,245	\$379.36
Transportation, Warehousing & Utilities	112	1,090	1,098	1,145	\$10,188,592	\$705.43
Information	34	623	614	610	\$5,483,312	\$685.10
Financial Activities	261	1,516	1,523	1,530	\$18,827,974	\$950.96
Professional & Business Services	350	3,422	3,330	3,402	\$21,416,415	\$486.73
Education & Health Services	403	7,331	7,361	7,441	\$66,566,196	\$694.05
Leisure & Hospitality	199	3,996	4,003	4,108	\$11,178,601	\$213.07
Other Services	174	979	970	993	\$4,845,771	\$380.10
Local Government	38	3,653	3,736	3,769	\$26,914,100	\$556.64
State Government	25	2,415	2,468	2,509	\$23,934,861	\$747.22

**TABLE 6. COUNTY SUMMARY
EMPLOYMENT AND TOTAL EARNINGS, BY INDUSTRY
FIRST QUARTER 2007**

NORTH AMERICAN INDUSTRY CLASSIFICATION SYSTEM INDUSTRY GROUP	NUMBER OF EMPLOYING UNITS	EMPLOYMENT	EMPLOYMENT	EMPLOYMENT	TOTAL EARNINGS	AVERAGE
		JANUARY	FEBRUARY	MARCH	JANUARY - MARCH 2007	WEEKLY EARNINGS
CRAWFORD COUNTY - TOTAL	1,244	19,592	19,678	19,860	\$137,541,750	\$536.79
Natural Resources & Mining	24	437	476	525	\$4,209,095	\$675.47
Construction	185	1,366	1,394	1,455	\$11,827,638	\$647.56
Manufacturing	75	3,745	3,752	3,717	\$25,865,775	\$532.28
Trade, Transportation & Utilities	318	6,872	6,862	6,878	\$51,183,579	\$573.04
Wholesale Trade	83	674	678	672	\$6,117,579	\$697.50
Other Trade, Transportation & Utilities	235	6,198	6,184	6,206	\$45,066,000	\$559.49
Financial Activities	136	527	530	543	\$3,830,303	\$552.45
Professional & Business Services	153	934	974	992	\$6,777,775	\$539.35
Education & Health Services	131	1,352	1,333	1,341	\$9,250,423	\$530.23
Leisure & Hospitality	85	1,478	1,494	1,533	\$4,068,283	\$208.40
Local Government	41	2,158	2,134	2,134	\$15,329,049	\$550.49
State Government	11	168	171	172	\$1,383,153	\$624.64
Other	85	555	558	570	\$3,816,677	\$523.33
CRITTENDEN COUNTY - TOTAL	1,218	16,800	16,847	17,204	\$121,786,623	\$552.69
Natural Resources & Mining	43	215	236	291	\$1,375,263	\$427.72
Construction	75	479	478	507	\$3,901,236	\$614.95
Manufacturing	47	1,863	1,852	1,924	\$19,389,172	\$793.48
Trade, Transportation & Utilities	331	4,883	4,875	4,952	\$36,887,330	\$578.69
Wholesale Trade	75	779	797	792	\$7,875,349	\$767.48
Retail Trade	168	2,045	2,016	2,092	\$10,052,533	\$377.02
Transportation, Warehousing & Utilities	88	2,059	2,062	2,068	\$18,959,448	\$706.94
Information	10	90	89	89	\$842,120	\$725.13
Financial Activities	107	574	579	585	\$5,305,591	\$704.47
Professional & Business Services	130	987	1,018	1,046	\$6,117,537	\$462.71
Education & Health Services	213	1,970	1,966	1,988	\$15,242,264	\$593.76
Leisure & Hospitality	100	2,159	2,160	2,178	\$6,884,680	\$244.54
Other Services	101	581	578	595	\$3,382,514	\$445.03
Local Government	46	2,509	2,517	2,542	\$19,231,011	\$586.41
State Government	15	490	499	507	\$3,227,905	\$497.93

**TABLE 6. COUNTY SUMMARY
EMPLOYMENT AND TOTAL EARNINGS, BY INDUSTRY
FIRST QUARTER 2007**

NORTH AMERICAN INDUSTRY CLASSIFICATION SYSTEM INDUSTRY GROUP	NUMBER OF EMPLOYING UNITS	EMPLOYMENT	EMPLOYMENT	EMPLOYMENT	TOTAL EARNINGS	AVERAGE
		JANUARY	FEBRUARY	MARCH	JANUARY - MARCH 2007	WEEKLY EARNINGS
CROSS COUNTY - TOTAL	528	4,710	4,764	4,825	\$29,572,834	\$477.27
Natural Resources & Mining	44	142	171	181	\$739,106	\$345.27
Construction	36	140	133	150	\$801,855	\$437.45
Manufacturing	16	638	629	604	\$4,347,317	\$536.20
Trade, Transportation & Utilities	131	1,099	1,094	1,112	\$7,207,181	\$503.24
Wholesale Trade	30	257	264	274	\$2,101,951	\$610.15
Retail Trade	68	633	629	636	\$3,218,309	\$391.30
Transportation, Warehousing & Utilities	33	209	201	202	\$1,886,921	\$711.51
Information	6	65	65	66	\$455,076	\$535.80
Financial Activities	48	340	348	347	\$2,662,169	\$593.57
Professional & Business Services	43	176	181	180	\$1,180,822	\$507.44
Education & Health Services	103	654	665	669	\$4,020,306	\$466.68
Leisure & Hospitality	32	385	383	398	\$816,254	\$161.55
Other Services	41	77	75	79	\$340,031	\$339.69
Local Government	17	776	800	820	\$5,365,138	\$516.74
State Government	11	218	220	219	\$1,637,579	\$575.19
DALLAS COUNTY - TOTAL	274	3,265	3,210	3,219	\$21,629,726	\$514.90
Natural Resources & Mining	41	162	173	193	\$1,267,089	\$553.80
Construction	13	72	74	74	\$489,280	\$513.23
Manufacturing	17	892	890	887	\$8,431,429	\$729.01
Trade, Transportation & Utilities	73	444	435	440	\$2,335,059	\$408.54
Wholesale Trade	8	28	32	30	\$226,634	\$581.11
Retail Trade	46	361	349	357	\$1,734,892	\$375.22
Transportation, Warehousing & Utilities	19	55	54	53	\$373,533	\$532.10
Information	3	24	24	24	\$147,068	\$471.37
Financial Activities	19	97	99	101	\$710,238	\$551.86
Professional & Business Services	16	55	56	52	\$976,014	\$1,381.80
Education & Health Services	37	800	748	724	\$3,831,377	\$389.16
Leisure & Hospitality	16	112	110	112	\$257,098	\$177.64
Other Services	14	61	60	62	\$262,810	\$331.41
Local Government	16	478	474	483	\$2,439,987	\$392.39
State Government	9	68	67	67	\$482,277	\$550.96

**TABLE 6. COUNTY SUMMARY
EMPLOYMENT AND TOTAL EARNINGS, BY INDUSTRY
FIRST QUARTER 2007**

NORTH AMERICAN INDUSTRY CLASSIFICATION SYSTEM INDUSTRY GROUP	NUMBER OF EMPLOYING UNITS	EMPLOYMENT	EMPLOYMENT	EMPLOYMENT	TOTAL EARNINGS	AVERAGE WEEKLY EARNINGS
		JANUARY	FEBRUARY	MARCH	JANUARY - MARCH 2007	
DESHA COUNTY - TOTAL	472	4,588	4,553	4,604	\$32,211,362	\$540.81
Natural Resources & Mining	52	206	199	221	\$1,324,401	\$488.23
Construction	27	103	102	122	\$796,651	\$562.21
Manufacturing	16	1,186	1,179	1,137	\$11,754,782	\$774.60
Trade, Transportation & Utilities	130	875	860	890	\$5,396,125	\$474.38
Wholesale Trade	21	177	173	183	\$1,727,854	\$748.10
Retail Trade	78	534	525	541	\$2,436,757	\$351.46
Transportation, Warehousing & Utilities	31	164	162	166	\$1,231,514	\$577.63
Information	5	23	24	22	\$209,309	\$700.03
Financial Activities	43	216	209	210	\$1,341,001	\$487.34
Professional & Business Services	37	115	111	106	\$619,366	\$430.51
Education & Health Services	72	567	576	576	\$3,266,405	\$438.50
Leisure & Hospitality	33	278	284	283	\$618,394	\$168.88
Other Services	27	63	50	48	\$196,009	\$280.95
Local Government	19	789	788	816	\$5,464,376	\$526.96
State Government	11	167	171	173	\$1,224,543	\$553.01
DREW COUNTY - TOTAL	512	6,614	6,707	6,811	\$39,266,225	\$450.10
Natural Resources & Mining	38	281	282	289	\$1,887,611	\$511.27
Construction	25	90	87	97	\$547,157	\$460.83
Manufacturing	23	736	735	745	\$4,759,031	\$495.59
Trade, Transportation & Utilities	130	1,191	1,186	1,209	\$7,368,264	\$474.17
Wholesale Trade	22	233	232	225	\$1,844,630	\$616.93
Retail Trade	85	863	861	886	\$4,568,220	\$403.91
Transportation, Warehousing & Utilities	23	95	93	98	\$955,414	\$770.91
Information	9	78	76	77	\$695,466	\$694.77
Financial Activities	43	258	260	260	\$2,324,801	\$689.58
Professional & Business Services	45	314	332	325	\$2,119,334	\$503.68
Education & Health Services	86	795	802	816	\$4,142,367	\$396.16
Leisure & Hospitality	45	671	663	684	\$1,389,231	\$158.87
Other Services	28	93	94	92	\$423,738	\$350.49
Local Government	23	1,320	1,347	1,347	\$7,609,654	\$437.49
State Government	17	787	843	870	\$5,999,571	\$553.81

**TABLE 6. COUNTY SUMMARY
EMPLOYMENT AND TOTAL EARNINGS, BY INDUSTRY
FIRST QUARTER 2007**

NORTH AMERICAN INDUSTRY CLASSIFICATION SYSTEM INDUSTRY GROUP	NUMBER OF EMPLOYING UNITS	EMPLOYMENT	EMPLOYMENT	EMPLOYMENT	TOTAL EARNINGS	AVERAGE
		JANUARY	FEBRUARY	MARCH	JANUARY - MARCH 2007	WEEKLY EARNINGS
FAULKNER COUNTY - TOTAL	2,555	38,629	38,770	39,239	\$308,163,785	\$609.70
Natural Resources & Mining	23	504	500	564	\$8,038,305	\$1,183.03
Construction	364	2,856	2,836	2,896	\$21,573,571	\$579.71
Manufacturing	125	5,195	5,188	5,178	\$50,754,365	\$752.69
Trade, Transportation & Utilities	626	6,599	6,645	6,736	\$42,687,459	\$493.04
Wholesale Trade	160	776	797	789	\$8,795,990	\$859.38
Retail Trade	385	5,062	5,056	5,143	\$25,714,799	\$388.85
Transportation, Warehousing & Utilities	81	761	792	804	\$8,176,670	\$800.56
Information	41	379	378	381	\$3,518,129	\$713.42
Financial Activities	308	1,428	1,425	1,428	\$11,931,203	\$643.16
Professional & Business Services	346	5,359	5,369	5,377	\$64,613,774	\$925.85
Education & Health Services	328	5,395	5,462	5,522	\$38,313,327	\$539.81
Leisure & Hospitality	191	3,764	3,756	3,896	\$9,981,108	\$201.76
Other Services	143	581	591	608	\$3,056,049	\$396.20
Local Government	41	3,332	3,329	3,353	\$26,956,032	\$621.19
State Government	19	3,237	3,291	3,300	\$26,740,463	\$627.89
FRANKLIN COUNTY - TOTAL	333	4,160	4,145	4,227	\$29,103,526	\$535.92
Natural Resources & Mining	10	92	91	92	\$1,178,509	\$988.96
Construction	35	232	244	265	\$1,961,395	\$610.84
Manufacturing	23	918	891	911	\$7,479,038	\$634.53
Trade, Transportation & Utilities	89	865	854	863	\$6,185,675	\$552.85
Wholesale Trade	14	52	49	47	\$247,459	\$385.85
Retail Trade	52	470	461	467	\$2,093,845	\$345.63
Transportation, Warehousing & Utilities	23	343	344	349	\$3,844,371	\$856.33
Information	7	45	45	44	\$259,760	\$447.35
Financial Activities	29	222	222	223	\$1,550,948	\$536.60
Professional & Business Services	23	54	65	59	\$369,534	\$479.08
Education & Health Services	43	477	469	479	\$2,664,890	\$431.56
Leisure & Hospitality	25	288	286	309	\$674,526	\$176.29
Other Services	20	56	55	58	\$274,507	\$374.84
Local Government	19	779	782	784	\$5,437,035	\$535.05
State Government	10	132	141	140	\$1,067,709	\$596.60

**TABLE 6. COUNTY SUMMARY
EMPLOYMENT AND TOTAL EARNINGS, BY INDUSTRY
FIRST QUARTER 2007**

NORTH AMERICAN INDUSTRY CLASSIFICATION SYSTEM INDUSTRY GROUP	NUMBER OF EMPLOYING UNITS	EMPLOYMENT JANUARY	EMPLOYMENT FEBRUARY	EMPLOYMENT MARCH	TOTAL EARNINGS JANUARY - MARCH 2007	AVERAGE WEEKLY EARNINGS
FULTON COUNTY - TOTAL	238	1,833	1,841	1,880	\$9,676,745	\$402.07
Construction	17	23	23	28	\$152,802	\$476.51
Manufacturing	14	108	114	134	\$503,427	\$326.34
Trade, Transportation & Utilities	68	385	375	370	\$2,336,555	\$477.17
Retail Trade	43	208	201	191	\$711,582	\$273.69
Other Trade, Transportation & Utilities	25	177	174	179	\$1,624,973	\$707.54
Financial Activities	15	88	87	98	\$659,792	\$557.73
Professional & Business Services	17	44	47	56	\$318,363	\$499.78
Education & Health Services	53	380	378	373	\$1,640,942	\$334.82
Leisure & Hospitality	16	121	123	130	\$291,520	\$179.88
Local Government	13	510	517	511	\$2,837,306	\$425.72
State Government	11	102	106	107	\$658,502	\$482.42
Other	14	72	71	73	\$277,536	\$296.51
GARLAND COUNTY - TOTAL	3,290	36,647	36,455	37,190	\$252,664,649	\$528.66
Natural Resources & Mining	49	358	359	374	\$4,550,647	\$962.56
Construction	459	2,375	2,380	2,490	\$16,327,363	\$520.06
Manufacturing	132	3,298	2,909	2,911	\$27,761,576	\$702.62
Trade, Transportation & Utilities	720	7,234	7,234	7,411	\$45,479,487	\$479.70
Wholesale Trade	154	1,046	1,035	1,077	\$10,017,899	\$732.05
Retail Trade	495	5,540	5,547	5,662	\$29,253,445	\$403.06
Transportation, Warehousing & Utilities	71	648	652	672	\$6,208,143	\$726.50
Information	41	403	410	410	\$3,505,370	\$661.43
Financial Activities	379	1,505	1,482	1,518	\$12,968,542	\$664.32
Professional & Business Services	421	2,964	2,971	2,982	\$21,432,765	\$554.67
Education & Health Services	440	7,008	7,086	7,100	\$60,484,675	\$658.58
Leisure & Hospitality	370	6,421	6,503	6,731	\$21,858,324	\$256.64
Other Services	218	926	930	955	\$4,842,443	\$397.54
Local Government	34	3,106	3,113	3,185	\$24,459,152	\$600.21
State Government	27	1,049	1,078	1,123	\$8,994,305	\$638.65

**TABLE 6. COUNTY SUMMARY
EMPLOYMENT AND TOTAL EARNINGS, BY INDUSTRY
FIRST QUARTER 2007**

NORTH AMERICAN INDUSTRY CLASSIFICATION SYSTEM INDUSTRY GROUP	NUMBER OF EMPLOYING UNITS	EMPLOYMENT	EMPLOYMENT	EMPLOYMENT	TOTAL EARNINGS	AVERAGE
		JANUARY	FEBRUARY	MARCH	JANUARY - MARCH 2007	WEEKLY EARNINGS
GRANT COUNTY - TOTAL	304	3,769	3,815	3,877	\$24,445,070	\$492.21
Natural Resources & Mining	26	174	180	183	\$1,758,614	\$755.74
Construction	33	211	217	226	\$1,849,170	\$652.49
Manufacturing	19	923	933	934	\$6,571,335	\$543.53
Trade, Transportation & Utilities	84	590	605	600	\$3,107,773	\$399.54
Wholesale Trade	16	118	121	121	\$893,721	\$572.90
Retail Trade	39	423	426	423	\$1,797,750	\$326.15
Transportation, Warehousing & Utilities	29	49	58	56	\$416,302	\$589.38
Information	4	33	34	32	\$270,617	\$630.81
Financial Activities	23	99	98	98	\$787,028	\$615.67
Professional & Business Services	23	101	97	97	\$931,631	\$728.79
Education & Health Services	35	320	370	399	\$2,041,892	\$432.70
Leisure & Hospitality	22	281	273	275	\$715,267	\$199.11
Other Services	16	56	52	52	\$240,805	\$347.31
Local Government	10	924	899	924	\$5,775,723	\$485.21
State Government	9	57	57	57	\$395,215	\$533.35
GREENE COUNTY - TOTAL	912	15,018	15,185	15,061	\$105,698,375	\$538.88
Natural Resources & Mining	39	169	173	193	\$1,058,820	\$456.72
Construction	82	331	340	382	\$2,435,288	\$533.70
Manufacturing	56	5,501	5,448	5,351	\$49,292,122	\$697.86
Trade, Transportation & Utilities	243	2,164	2,208	2,302	\$13,024,974	\$450.37
Wholesale Trade	56	422	414	424	\$3,303,973	\$605.12
Retail Trade	157	1,524	1,576	1,659	\$7,872,212	\$381.73
Transportation, Warehousing & Utilities	30	218	218	219	\$1,848,789	\$651.36
Information	13	116	120	122	\$610,682	\$393.65
Financial Activities	91	504	504	508	\$3,809,806	\$579.94
Professional & Business Services	93	1,585	1,696	1,420	\$7,601,948	\$373.18
Education & Health Services	134	1,714	1,743	1,747	\$11,392,605	\$505.20
Leisure & Hospitality	71	944	959	1,006	\$2,479,427	\$196.69
Other Services	48	156	155	170	\$867,974	\$416.43
Local Government	31	1,578	1,581	1,600	\$11,125,812	\$539.50
State Government	11	256	258	260	\$1,998,917	\$595.98

**TABLE 6. COUNTY SUMMARY
EMPLOYMENT AND TOTAL EARNINGS, BY INDUSTRY
FIRST QUARTER 2007**

NORTH AMERICAN INDUSTRY CLASSIFICATION SYSTEM INDUSTRY GROUP	NUMBER OF EMPLOYING UNITS	EMPLOYMENT	EMPLOYMENT	EMPLOYMENT	TOTAL EARNINGS	AVERAGE WEEKLY EARNINGS
		JANUARY	FEBRUARY	MARCH	JANUARY - MARCH 2007	
HEMPSTEAD COUNTY - TOTAL	503	8,222	8,263	8,317	\$54,634,609	\$508.35
Natural Resources & Mining	19	215	212	209	\$1,553,872	\$563.81
Construction	32	127	134	142	\$872,929	\$499.86
Manufacturing	29	2,639	2,607	2,543	\$19,510,100	\$578.04
Trade, Transportation & Utilities	137	1,255	1,295	1,341	\$7,950,345	\$471.52
Wholesale Trade	27	218	232	250	\$1,524,746	\$502.66
Retail Trade	85	857	880	911	\$4,339,022	\$378.14
Transportation, Warehousing & Utilities	25	180	183	180	\$2,086,577	\$886.77
Information	11	75	76	79	\$649,055	\$651.23
Financial Activities	44	264	257	259	\$2,291,225	\$677.88
Professional & Business Services	33	220	232	240	\$1,038,348	\$346.27
Education & Health Services	71	986	980	996	\$6,138,951	\$478.29
Leisure & Hospitality	44	645	650	679	\$1,605,229	\$187.66
Other Services	37	212	216	217	\$1,549,852	\$554.51
Local Government	29	1,057	1,068	1,059	\$7,307,258	\$529.61
State Government	17	527	536	553	\$4,167,445	\$595.12
HOT SPRING COUNTY - TOTAL	592	8,063	8,147	8,180	\$61,980,745	\$586.44
Natural Resources & Mining	34	211	212	214	\$1,333,980	\$483.27
Construction	64	621	626	592	\$7,904,576	\$991.92
Manufacturing	39	1,693	1,710	1,707	\$17,279,048	\$780.33
Trade, Transportation & Utilities	155	1,420	1,416	1,440	\$10,186,099	\$549.73
Wholesale Trade	20	101	102	105	\$841,973	\$630.85
Retail Trade	94	915	917	936	\$4,944,858	\$412.25
Transportation, Warehousing & Utilities	41	404	397	399	\$4,399,268	\$846.01
Information	9	73	73	71	\$662,666	\$704.71
Financial Activities	61	344	333	334	\$2,633,764	\$601.18
Professional & Business Services	53	219	228	235	\$1,335,497	\$451.89
Education & Health Services	62	989	970	993	\$6,002,676	\$469.25
Leisure & Hospitality	39	526	527	551	\$1,271,390	\$182.92
Other Services	36	293	290	286	\$1,311,154	\$348.19
Local Government	26	1,085	1,120	1,111	\$7,534,908	\$524.37
State Government	14	589	642	646	\$4,524,987	\$556.33

**TABLE 6. COUNTY SUMMARY
EMPLOYMENT AND TOTAL EARNINGS, BY INDUSTRY
FIRST QUARTER 2007**

NORTH AMERICAN INDUSTRY CLASSIFICATION SYSTEM INDUSTRY GROUP	NUMBER OF EMPLOYING UNITS	EMPLOYMENT	EMPLOYMENT	EMPLOYMENT	TOTAL EARNINGS	AVERAGE WEEKLY EARNINGS
		JANUARY	FEBRUARY	MARCH	JANUARY - MARCH 2007	
HOWARD COUNTY - TOTAL	356	7,467	7,773	7,918	\$50,175,569	\$500.00
Natural Resources & Mining	22	236	230	236	\$1,860,987	\$611.76
Construction	25	87	89	89	\$568,731	\$495.27
Manufacturing	25	4,099	4,396	4,506	\$30,043,522	\$533.28
Trade, Transportation & Utilities	101	913	908	912	\$5,670,924	\$478.84
Wholesale Trade	17	100	95	90	\$909,775	\$736.66
Retail Trade	63	610	619	635	\$2,777,121	\$343.82
Transportation, Warehousing & Utilities	21	203	194	187	\$1,984,028	\$783.99
Information	6	38	38	37	\$233,387	\$476.62
Financial Activities	37	137	142	147	\$1,054,237	\$571.09
Professional & Business Services	27	146	142	133	\$844,985	\$463.17
Education & Health Services	43	570	583	583	\$3,293,593	\$437.82
Leisure & Hospitality	19	285	273	284	\$661,045	\$181.17
Other Services	21	121	127	143	\$590,968	\$348.79
Local Government	18	699	702	701	\$4,353,167	\$477.91
State Government	12	136	143	147	\$1,000,023	\$541.72
INDEPENDENCE COUNTY - TOTAL	923	15,883	15,893	16,055	\$109,267,450	\$527.18
Natural Resources & Mining	13	141	132	136	\$1,018,143	\$574.46
Construction	69	420	432	452	\$2,758,784	\$488.22
Manufacturing	54	4,683	4,634	4,572	\$36,685,454	\$609.54
Trade, Transportation & Utilities	267	2,966	2,918	3,024	\$20,766,554	\$537.98
Wholesale Trade	54	548	530	549	\$4,607,468	\$653.51
Retail Trade	157	1,621	1,606	1,673	\$7,862,812	\$370.31
Transportation, Warehousing & Utilities	56	797	782	802	\$8,296,274	\$804.08
Information	12	162	165	164	\$1,237,771	\$581.75
Financial Activities	83	468	467	470	\$3,963,653	\$651.02
Professional & Business Services	86	828	809	832	\$4,024,405	\$376.15
Education & Health Services	140	2,798	2,811	2,824	\$21,731,029	\$594.67
Leisure & Hospitality	68	1,025	1,024	1,063	\$2,552,017	\$189.24
Other Services	66	378	393	399	\$1,636,458	\$322.77
Local Government	48	1,604	1,623	1,639	\$9,278,905	\$440.05
State Government	17	410	485	480	\$3,614,277	\$606.59

**TABLE 6. COUNTY SUMMARY
EMPLOYMENT AND TOTAL EARNINGS, BY INDUSTRY
FIRST QUARTER 2007**

NORTH AMERICAN INDUSTRY CLASSIFICATION SYSTEM INDUSTRY GROUP	NUMBER OF EMPLOYING UNITS	EMPLOYMENT	EMPLOYMENT	EMPLOYMENT	TOTAL EARNINGS	AVERAGE
		JANUARY	FEBRUARY	MARCH	JANUARY - MARCH 2007	WEEKLY EARNINGS
IZARD COUNTY - TOTAL	278	2,952	3,012	3,045	\$16,736,773	\$428.72
Natural Resources & Mining	5	91	92	94	\$828,679	\$690.37
Construction	26	56	63	69	\$342,964	\$420.99
Trade, Transportation & Utilities	65	518	529	525	\$2,460,928	\$361.26
Retail Trade	48	404	411	412	\$1,721,067	\$323.69
Other Trade, Transportation & Utilities	17	114	118	113	\$739,861	\$494.89
Information	3	7	7	8	\$43,350	\$454.72
Financial Activities	33	155	153	153	\$964,301	\$482.71
Professional & Business Services	19	71	73	76	\$342,332	\$359.09
Education & Health Services	54	548	552	566	\$2,849,697	\$394.73
Leisure & Hospitality	20	163	162	185	\$383,071	\$173.34
Local Government	18	530	538	535	\$3,166,461	\$455.85
State Government	11	439	467	470	\$3,320,188	\$556.83
Other	24	374	376	364	\$2,034,802	\$421.52
JACKSON COUNTY - TOTAL	523	5,336	5,413	5,628	\$39,001,198	\$549.57
Natural Resources & Mining	47	164	181	224	\$1,054,448	\$427.65
Construction	26	107	107	135	\$935,341	\$618.48
Manufacturing	26	1,089	1,113	1,169	\$10,875,693	\$744.52
Trade, Transportation & Utilities	127	1,064	1,065	1,104	\$6,665,470	\$475.78
Wholesale Trade	35	196	206	218	\$1,820,760	\$677.70
Retail Trade	73	645	635	657	\$3,151,127	\$375.42
Transportation, Warehousing & Utilities	19	223	224	229	\$1,693,583	\$578.15
Information	6	39	38	39	\$293,975	\$584.83
Financial Activities	43	180	174	174	\$1,559,931	\$681.79
Professional & Business Services	37	139	148	155	\$1,020,255	\$532.68
Education & Health Services	94	809	820	829	\$5,824,777	\$546.86
Leisure & Hospitality	39	308	319	325	\$897,333	\$217.52
Other Services	32	91	91	92	\$394,893	\$332.59
Local Government	32	674	687	701	\$4,063,891	\$454.81
State Government	14	672	670	681	\$5,415,191	\$617.73

**TABLE 6. COUNTY SUMMARY
EMPLOYMENT AND TOTAL EARNINGS, BY INDUSTRY
FIRST QUARTER 2007**

NORTH AMERICAN INDUSTRY CLASSIFICATION SYSTEM INDUSTRY GROUP	NUMBER OF EMPLOYING UNITS	EMPLOYMENT	EMPLOYMENT	EMPLOYMENT	TOTAL EARNINGS	AVERAGE WEEKLY EARNINGS
		JANUARY	FEBRUARY	MARCH	JANUARY - MARCH 2007	
JEFFERSON COUNTY - TOTAL	1,913	31,188	31,324	31,828	\$246,955,367	\$604.09
Natural Resources & Mining	41	406	406	420	\$4,800,887	\$899.27
Construction	131	1,354	1,355	1,496	\$16,555,525	\$908.56
Manufacturing	74	5,920	5,901	5,921	\$58,283,272	\$758.09
Trade, Transportation & Utilities	470	5,714	5,699	5,817	\$41,852,406	\$560.55
Wholesale Trade	83	1,020	1,027	1,039	\$8,411,435	\$629.00
Retail Trade	320	3,843	3,819	3,911	\$19,666,170	\$392.15
Transportation, Warehousing & Utilities	67	851	853	867	\$13,774,801	\$1,236.41
Information	18	204	197	200	\$1,662,593	\$638.39
Financial Activities	159	1,200	1,179	1,195	\$11,474,187	\$740.88
Professional & Business Services	180	1,675	1,694	1,752	\$13,054,694	\$588.29
Education & Health Services	465	5,503	5,471	5,498	\$38,065,673	\$533.29
Leisure & Hospitality	145	2,120	2,122	2,165	\$5,774,419	\$207.98
Other Services	149	693	700	736	\$4,325,549	\$468.86
Local Government	41	3,258	3,292	3,303	\$23,709,321	\$555.30
State Government	40	3,141	3,308	3,325	\$27,396,841	\$646.85
JOHNSON COUNTY - TOTAL	477	8,447	8,515	8,598	\$54,078,293	\$488.25
Natural Resources & Mining	17	203	208	209	\$1,689,990	\$629.03
Construction	28	117	116	119	\$776,198	\$508.87
Manufacturing	45	2,942	2,928	2,950	\$20,286,875	\$530.79
Trade, Transportation & Utilities	125	1,878	1,908	1,965	\$11,578,059	\$464.59
Wholesale Trade	20	56	59	59	\$494,408	\$655.71
Other Trade, Transportation & Utilities	105	1,822	1,849	1,906	\$11,083,651	\$458.63
Information	6	33	33	33	\$231,455	\$539.52
Financial Activities	42	234	227	224	\$1,747,978	\$588.88
Professional & Business Services	50	177	182	186	\$1,136,416	\$481.19
Education & Health Services	77	1,152	1,165	1,164	\$7,287,655	\$483.13
Leisure & Hospitality	36	479	509	516	\$1,288,750	\$197.74
Other Services	27	86	88	89	\$414,432	\$363.64
Local Government	14	975	985	978	\$6,317,543	\$496.22
State Government	10	171	166	165	\$1,322,942	\$608.16

**TABLE 6. COUNTY SUMMARY
EMPLOYMENT AND TOTAL EARNINGS, BY INDUSTRY
FIRST QUARTER 2007**

NORTH AMERICAN INDUSTRY CLASSIFICATION SYSTEM INDUSTRY GROUP	NUMBER OF EMPLOYING UNITS	EMPLOYMENT JANUARY	EMPLOYMENT FEBRUARY	EMPLOYMENT MARCH	TOTAL EARNINGS JANUARY - MARCH 2007	AVERAGE WEEKLY EARNINGS
LAFAYETTE COUNTY - TOTAL	173	1,389	1,369	1,391	\$8,089,931	\$449.97
Natural Resources & Mining	36	165	169	173	\$1,260,326	\$573.66
Manufacturing	6	36	19	19	\$188,558	\$588.02
Trade, Transportation & Utilities	37	232	228	238	\$1,286,535	\$425.35
Retail Trade	22	162	159	164	\$598,027	\$284.55
Other Trade, Transportation & Utilities	15	70	69	74	\$688,508	\$745.95
Financial Activities	16	64	64	66	\$370,600	\$440.84
Professional & Business Services	9	55	63	63	\$496,551	\$633.09
Education & Health Services	23	227	221	223	\$1,027,551	\$353.39
Leisure & Hospitality	6	37	35	40	\$117,683	\$242.48
Other Services	7	69	69	72	\$324,470	\$356.56
Local Government	13	343	354	344	\$1,919,766	\$425.57
State Government	8	47	47	51	\$346,579	\$551.58
Other	12	114	100	102	\$751,312	\$548.67
LAWRENCE COUNTY - TOTAL	430	4,059	4,085	4,159	\$24,447,077	\$458.56
Natural Resources & Mining	35	152	157	173	\$1,141,673	\$546.60
Construction	24	63	62	67	\$363,508	\$436.91
Manufacturing	21	532	528	549	\$3,530,113	\$506.30
Trade, Transportation & Utilities	131	896	900	912	\$5,508,985	\$469.46
Wholesale Trade	22	179	173	182	\$1,404,327	\$606.88
Retail Trade	71	578	586	591	\$2,851,291	\$374.92
Transportation, Warehousing & Utilities	38	139	141	139	\$1,253,367	\$690.31
Information	4	20	21	18	\$158,876	\$621.42
Financial Activities	33	127	127	127	\$888,507	\$538.16
Professional & Business Services	23	126	125	127	\$1,073,090	\$655.12
Education & Health Services	68	449	457	459	\$2,841,115	\$480.32
Leisure & Hospitality	27	327	319	334	\$676,049	\$159.20
Other Services	25	62	64	66	\$246,314	\$296.05
Local Government	28	1,191	1,209	1,212	\$7,212,429	\$460.80
State Government	11	114	116	115	\$806,418	\$539.41

**TABLE 6. COUNTY SUMMARY
EMPLOYMENT AND TOTAL EARNINGS, BY INDUSTRY
FIRST QUARTER 2007**

NORTH AMERICAN INDUSTRY CLASSIFICATION SYSTEM INDUSTRY GROUP	NUMBER OF EMPLOYING UNITS	EMPLOYMENT JANUARY	EMPLOYMENT FEBRUARY	EMPLOYMENT MARCH	TOTAL EARNINGS JANUARY - MARCH 2007	AVERAGE WEEKLY EARNINGS
LEE COUNTY - TOTAL	261	1,997	2,041	2,116	\$13,518,639	\$506.94
Natural Resources & Mining	28	120	156	190	\$829,067	\$410.56
Construction	10	27	23	28	\$171,958	\$508.75
Trade, Transportation & Utilities	53	336	340	355	\$1,917,344	\$429.16
Wholesale Trade	9	64	65	72	\$492,861	\$565.86
Retail Trade	27	184	188	188	\$700,223	\$288.55
Transportation, Warehousing & Utilities	17	88	87	95	\$724,260	\$619.03
Financial Activities	16	74	75	74	\$669,035	\$692.34
Professional & Business Services	19	66	70	70	\$641,110	\$718.20
Education & Health Services	74	320	319	326	\$1,878,157	\$449.14
Leisure & Hospitality	10	84	82	84	\$187,427	\$173.01
Local Government	16	369	369	376	\$2,510,083	\$519.97
State Government	8	477	480	484	\$4,022,292	\$644.15
Other	27	124	127	129	\$692,166	\$420.34
LINCOLN COUNTY - TOTAL	227	2,956	2,993	3,024	\$20,973,445	\$539.40
Natural Resources & Mining	33	145	150	153	\$918,997	\$473.38
Construction	15	53	64	66	\$379,497	\$478.56
Manufacturing	9	437	438	439	\$3,915,568	\$687.67
Trade, Transportation & Utilities	46	349	346	353	\$2,515,491	\$553.91
Wholesale Trade	7	29	29	29	\$284,904	\$755.71
Retail Trade	24	187	186	194	\$647,406	\$263.49
Transportation, Warehousing & Utilities	15	133	131	130	\$1,583,181	\$927.28
Financial Activities	23	82	80	81	\$631,663	\$599.87
Professional & Business Services	13	21	19	20	\$108,309	\$416.57
Education & Health Services	36	313	322	321	\$1,730,730	\$417.78
Leisure & Hospitality	16	144	154	152	\$323,152	\$165.72
Local & State Government	22	1,374	1,384	1,402	\$10,262,000	\$569.27
Other	14	38	36	37	\$188,038	\$390.93

**TABLE 6. COUNTY SUMMARY
EMPLOYMENT AND TOTAL EARNINGS, BY INDUSTRY
FIRST QUARTER 2007**

NORTH AMERICAN INDUSTRY CLASSIFICATION SYSTEM INDUSTRY GROUP	NUMBER OF EMPLOYING UNITS	EMPLOYMENT	EMPLOYMENT	EMPLOYMENT	TOTAL EARNINGS	AVERAGE
		JANUARY	FEBRUARY	MARCH	JANUARY - MARCH 2007	WEEKLY EARNINGS
LITTLE RIVER COUNTY - TOTAL	261	4,559	4,630	4,722	\$55,735,400	\$924.59
Natural Resources & Mining	11	59	55	56	\$407,659	\$553.38
Manufacturing	18	1,410	1,388	1,393	\$31,969,706	\$1,760.35
Trade, Transportation & Utilities	68	1,301	1,377	1,410	\$12,748,431	\$719.65
Retail Trade	42	310	312	317	\$1,450,701	\$356.53
Other Trade, Transportation & Utilities	26	991	1,065	1,093	\$11,297,730	\$827.94
Financial Activities	24	102	99	102	\$641,704	\$488.73
Professional & Business Services	21	152	150	146	\$815,481	\$420.06
Education & Health Services	26	154	159	164	\$843,918	\$408.28
Leisure & Hospitality	19	216	209	222	\$528,755	\$188.59
Other Services	15	104	97	102	\$378,545	\$288.31
Local Government	20	765	765	790	\$5,031,851	\$500.52
State Government	12	79	85	84	\$556,652	\$517.98
Other	27	217	246	253	\$1,812,698	\$584.24
LOGAN COUNTY - TOTAL	472	5,927	5,934	6,016	\$36,787,975	\$474.89
Natural Resources & Mining	20	120	122	147	\$1,322,989	\$784.85
Construction	50	154	159	163	\$975,551	\$472.96
Manufacturing	28	1,788	1,803	1,822	\$13,048,541	\$556.29
Trade, Transportation & Utilities	112	835	830	858	\$4,337,913	\$396.77
Wholesale Trade	17	42	41	43	\$219,957	\$402.85
Retail Trade	72	716	711	733	\$3,333,972	\$356.19
Transportation, Warehousing & Utilities	23	77	78	82	\$783,984	\$763.37
Information	6	45	45	45	\$369,290	\$631.26
Financial Activities	43	239	240	244	\$2,140,087	\$683.08
Professional & Business Services	43	198	171	149	\$915,045	\$407.65
Education & Health Services	77	743	742	740	\$4,140,836	\$429.47
Leisure & Hospitality	30	305	305	323	\$704,303	\$174.20
Other Services	26	79	80	80	\$445,207	\$429.87
Local & State Government	37	1,421	1,437	1,445	\$8,388,213	\$449.86

**TABLE 6. COUNTY SUMMARY
EMPLOYMENT AND TOTAL EARNINGS, BY INDUSTRY
FIRST QUARTER 2007**

NORTH AMERICAN INDUSTRY CLASSIFICATION SYSTEM INDUSTRY GROUP	NUMBER OF EMPLOYING UNITS	EMPLOYMENT	EMPLOYMENT	EMPLOYMENT	TOTAL EARNINGS	AVERAGE
		JANUARY	FEBRUARY	MARCH	JANUARY - MARCH 2007	WEEKLY EARNINGS
LONOKE COUNTY - TOTAL	1,261	12,260	12,372	12,633	\$80,413,954	\$497.98
Natural Resources & Mining	74	347	356	413	\$2,724,421	\$563.36
Construction	178	999	999	1,041	\$7,900,073	\$599.90
Manufacturing	36	1,338	1,381	1,367	\$12,703,714	\$717.48
Trade, Transportation & Utilities	348	2,730	2,752	2,837	\$16,392,628	\$454.73
Wholesale Trade	89	474	498	523	\$4,714,125	\$727.68
Retail Trade	185	1,967	1,959	2,022	\$9,478,077	\$367.73
Transportation, Warehousing & Utilities	74	289	295	292	\$2,200,426	\$579.67
Information	15	102	108	114	\$930,194	\$662.53
Financial Activities	126	592	617	622	\$5,612,659	\$707.39
Professional & Business Services	142	599	598	601	\$3,986,954	\$511.72
Education & Health Services	143	1,409	1,401	1,418	\$8,332,711	\$454.81
Leisure & Hospitality	88	1,303	1,288	1,310	\$3,271,032	\$193.50
Other Services	67	182	180	182	\$1,071,983	\$454.74
Local Government	28	2,491	2,522	2,556	\$16,429,287	\$500.91
State Government	16	168	170	172	\$1,058,298	\$478.87
MADISON COUNTY - TOTAL	260	3,116	3,120	3,165	\$19,110,962	\$469.12
Natural Resources & Mining	10	54	52	58	\$351,163	\$494.13
Construction	45	128	131	138	\$804,872	\$467.86
Manufacturing	20	1,098	1,097	1,086	\$7,141,517	\$502.30
Trade, Transportation & Utilities	66	549	551	567	\$3,382,110	\$468.20
Wholesale Trade	14	37	37	38	\$474,347	\$977.36
Retail Trade	35	391	391	414	\$1,915,525	\$369.60
Transportation, Warehousing & Utilities	17	121	123	115	\$992,238	\$637.82
Financial Activities	16	68	69	68	\$568,207	\$639.63
Professional & Business Services	19	92	92	95	\$544,044	\$450.00
Education & Health Services	38	267	265	274	\$1,283,677	\$367.53
Leisure & Hospitality	14	131	130	138	\$259,099	\$149.85
Local Government	8	619	627	637	\$3,934,565	\$482.20
State Government	8	48	49	49	\$347,376	\$549.07
Other	16	62	57	55	\$494,332	\$655.61

**TABLE 6. COUNTY SUMMARY
EMPLOYMENT AND TOTAL EARNINGS, BY INDUSTRY
FIRST QUARTER 2007**

NORTH AMERICAN INDUSTRY CLASSIFICATION SYSTEM INDUSTRY GROUP	NUMBER OF EMPLOYING UNITS	EMPLOYMENT	EMPLOYMENT	EMPLOYMENT	TOTAL EARNINGS	AVERAGE
		JANUARY	FEBRUARY	MARCH	JANUARY - MARCH 2007	WEEKLY EARNINGS
MARION COUNTY - TOTAL	318	4,086	4,099	4,130	\$24,665,830	\$462.21
Natural Resources & Mining	6	40	39	47	\$227,981	\$417.55
Construction	27	80	80	85	\$410,370	\$386.53
Manufacturing	26	1,755	1,767	1,749	\$11,673,074	\$511.06
Trade, Transportation & Utilities	58	638	639	657	\$3,386,464	\$404.08
Retail Trade	39	465	462	477	\$2,273,295	\$373.65
Other Trade, Transportation & Utilities	19	173	177	180	\$1,113,169	\$484.69
Financial Activities	37	179	179	187	\$1,331,700	\$563.88
Professional & Business Services	28	64	66	72	\$440,895	\$503.69
Education & Health Services	53	374	359	358	\$1,947,230	\$411.88
Leisure & Hospitality	37	203	217	226	\$559,950	\$200.03
Local Government	20	545	549	547	\$3,285,715	\$462.06
State Government	8	117	115	114	\$687,176	\$458.32
Other	18	91	89	88	\$715,275	\$615.91
MILLER COUNTY - TOTAL	833	12,202	12,215	12,327	\$93,023,415	\$584.23
Natural Resources & Mining	28	127	125	126	\$890,497	\$543.65
Construction	95	767	764	771	\$5,360,464	\$537.37
Manufacturing	31	2,540	2,507	2,498	\$30,908,898	\$945.37
Trade, Transportation & Utilities	230	2,551	2,576	2,602	\$18,533,577	\$553.37
Wholesale Trade	64	613	601	607	\$6,600,301	\$836.43
Retail Trade	129	1,389	1,421	1,459	\$6,882,422	\$372.04
Transportation, Warehousing & Utilities	37	549	554	536	\$5,050,854	\$711.15
Information	9	98	100	99	\$1,652,766	\$1,284.20
Financial Activities	83	365	366	367	\$2,936,575	\$617.19
Professional & Business Services	81	880	896	926	\$4,737,870	\$404.65
Education & Health Services	91	1,041	1,042	1,063	\$6,319,965	\$463.59
Leisure & Hospitality	80	1,295	1,280	1,305	\$3,792,551	\$225.57
Other Services	62	334	336	336	\$1,477,173	\$338.85
Local Government	26	1,732	1,748	1,758	\$12,292,005	\$541.55
State Government	17	472	475	476	\$4,121,074	\$668.32

**TABLE 6. COUNTY SUMMARY
EMPLOYMENT AND TOTAL EARNINGS, BY INDUSTRY
FIRST QUARTER 2007**

NORTH AMERICAN INDUSTRY CLASSIFICATION SYSTEM INDUSTRY GROUP	NUMBER OF EMPLOYING UNITS	EMPLOYMENT	EMPLOYMENT	EMPLOYMENT	TOTAL EARNINGS	AVERAGE
		JANUARY	FEBRUARY	MARCH	JANUARY - MARCH 2007	WEEKLY EARNINGS
MISSISSIPPI COUNTY - TOTAL	1,175	18,875	18,910	19,315	\$171,753,766	\$694.14
Natural Resources & Mining	100	601	591	620	\$3,811,749	\$485.45
Construction	74	599	621	696	\$6,411,929	\$772.27
Manufacturing	57	5,737	5,688	5,754	\$83,194,080	\$1,117.56
Trade, Transportation & Utilities	296	2,886	2,877	2,960	\$18,891,212	\$499.77
Wholesale Trade	65	426	435	468	\$3,832,744	\$665.52
Retail Trade	181	1,838	1,822	1,858	\$8,786,066	\$367.44
Transportation, Warehousing & Utilities	50	622	620	634	\$6,272,402	\$771.58
Financial Activities	100	569	583	580	\$4,080,129	\$543.63
Professional & Business Services	94	1,113	1,091	1,236	\$11,163,951	\$748.92
Education & Health Services	212	1,691	1,697	1,715	\$11,201,859	\$506.57
Leisure & Hospitality	85	1,069	1,075	1,090	\$2,759,809	\$196.93
Local Government	46	2,450	2,474	2,483	\$15,567,149	\$485.00
State Government	24	600	650	658	\$4,460,370	\$539.47
Other	87	1,560	1,563	1,523	\$10,211,529	\$507.21
MONROE COUNTY - TOTAL	310	2,373	2,389	2,467	\$12,524,006	\$399.80
Natural Resources & Mining	38	111	118	140	\$662,497	\$414.32
Construction	12	35	41	33	\$211,914	\$448.65
Manufacturing	8	125	132	136	\$811,086	\$476.27
Trade, Transportation & Utilities	89	670	667	699	\$3,701,187	\$419.51
Wholesale Trade	22	189	191	208	\$1,411,882	\$554.11
Retail Trade	40	356	348	363	\$1,421,010	\$307.33
Transportation, Warehousing & Utilities	27	125	128	128	\$868,295	\$525.92
Financial Activities	16	97	93	96	\$796,326	\$642.54
Professional & Business Services	17	52	56	54	\$288,692	\$411.24
Education & Health Services	49	334	334	335	\$1,473,282	\$338.97
Leisure & Hospitality	25	236	238	241	\$576,028	\$185.92
Local Government	21	458	448	473	\$2,657,872	\$444.78
State Government	9	123	123	127	\$807,827	\$499.79
Other	26	132	139	133	\$537,295	\$306.91

**TABLE 6. COUNTY SUMMARY
EMPLOYMENT AND TOTAL EARNINGS, BY INDUSTRY
FIRST QUARTER 2007**

NORTH AMERICAN INDUSTRY CLASSIFICATION SYSTEM INDUSTRY GROUP	NUMBER OF EMPLOYING UNITS	EMPLOYMENT JANUARY	EMPLOYMENT FEBRUARY	EMPLOYMENT MARCH	TOTAL EARNINGS JANUARY - MARCH 2007	AVERAGE WEEKLY EARNINGS
MONTGOMERY COUNTY - TOTAL	181	1,501	1,541	1,592	\$8,110,880	\$403.91
Natural Resources & Mining	14	53	59	59	\$466,367	\$629.38
Construction	24	112	111	108	\$672,678	\$468.98
Trade, Transportation & Utilities	43	205	208	216	\$949,595	\$348.39
Wholesale Trade	9	56	55	56	\$345,461	\$477.38
Retail Trade	24	128	131	134	\$510,046	\$299.50
Transportation, Warehousing & Utilities	10	21	22	26	\$94,088	\$314.68
Financial Activities	9	74	72	72	\$552,152	\$584.49
Education & Health Services	16	46	46	46	\$264,215	\$441.83
Leisure & Hospitality	23	183	207	234	\$715,716	\$264.69
Other Services	11	79	80	80	\$336,206	\$324.63
Local Government	9	497	504	503	\$2,717,076	\$416.90
State Government	8	53	50	55	\$407,925	\$595.80
Other	24	199	204	219	\$1,028,950	\$381.75
NEVADA COUNTY - TOTAL	190	2,622	2,675	2,722	\$19,906,746	\$572.87
Natural Resources & Mining	15	58	59	58	\$557,861	\$735.64
Construction	10	58	82	108	\$339,402	\$315.82
Manufacturing	10	774	766	778	\$9,382,469	\$934.07
Trade, Transportation & Utilities	46	513	530	540	\$3,245,370	\$473.11
Retail Trade	30	279	288	292	\$1,158,831	\$311.32
Other Trade, Transportation & Utilities	16	234	242	248	\$2,086,539	\$665.07
Financial Activities	13	56	55	55	\$424,104	\$589.58
Education & Health Services	18	384	384	388	\$1,867,923	\$372.89
Leisure & Hospitality	14	93	99	108	\$265,560	\$204.28
Other Services	15	69	68	71	\$230,535	\$255.77
Local Government	28	481	496	490	\$2,614,811	\$411.33
State Government	11	85	87	86	\$612,317	\$547.69
Other	10	51	49	40	\$366,394	\$603.95

**TABLE 6. COUNTY SUMMARY
EMPLOYMENT AND TOTAL EARNINGS, BY INDUSTRY
FIRST QUARTER 2007**

NORTH AMERICAN INDUSTRY CLASSIFICATION SYSTEM INDUSTRY GROUP	NUMBER OF EMPLOYING UNITS	EMPLOYMENT JANUARY	EMPLOYMENT FEBRUARY	EMPLOYMENT MARCH	TOTAL EARNINGS JANUARY - MARCH 2007	AVERAGE WEEKLY EARNINGS
NEWTON COUNTY - TOTAL	141	1,040	1,045	1,069	\$5,204,775	\$380.82
Construction	9	18	13	14	\$56,325	\$288.85
Manufacturing	17	81	81	78	\$481,052	\$462.55
Trade, Transportation & Utilities	33	139	145	141	\$707,476	\$384.15
Retail Trade	15	90	91	89	\$324,313	\$277.19
Other Trade, Transportation & Utilities	18	49	54	52	\$383,163	\$570.47
Education & Health Services	23	223	226	229	\$861,377	\$293.18
Leisure & Hospitality	17	45	45	66	\$153,614	\$227.24
Other Services	4	9	9	11	\$28,912	\$230.07
Local Government	13	387	392	393	\$2,144,072	\$422.17
State Government	7	90	85	87	\$439,851	\$387.42
Other	18	48	49	50	\$332,096	\$521.34
OUACHITA COUNTY - TOTAL	659	7,531	7,617	7,733	\$48,562,259	\$489.78
Natural Resources & Mining	47	265	255	261	\$2,042,321	\$603.46
Construction	48	254	256	263	\$1,765,201	\$526.98
Manufacturing	31	818	840	861	\$7,054,294	\$646.25
Trade, Transportation & Utilities	177	1,728	1,685	1,729	\$10,858,183	\$487.31
Wholesale Trade	30	247	245	248	\$2,396,977	\$747.50
Retail Trade	119	1,060	1,036	1,054	\$4,530,066	\$331.87
Transportation, Warehousing & Utilities	28	421	404	427	\$3,931,140	\$724.59
Information	9	91	92	92	\$717,438	\$602.05
Financial Activities	64	369	367	369	\$2,710,626	\$566.09
Professional & Business Services	55	303	347	354	\$1,907,498	\$438.44
Education & Health Services	100	1,272	1,273	1,264	\$7,870,787	\$476.85
Leisure & Hospitality	39	460	465	482	\$1,103,752	\$181.03
Other Services	45	153	153	153	\$743,633	\$373.87
Local Government	30	1,307	1,319	1,326	\$7,848,698	\$458.31
State Government	14	511	565	579	\$3,939,828	\$549.36

**TABLE 6. COUNTY SUMMARY
EMPLOYMENT AND TOTAL EARNINGS, BY INDUSTRY
FIRST QUARTER 2007**

NORTH AMERICAN INDUSTRY CLASSIFICATION SYSTEM INDUSTRY GROUP	NUMBER OF EMPLOYING UNITS	EMPLOYMENT	EMPLOYMENT	EMPLOYMENT	TOTAL EARNINGS	AVERAGE WEEKLY EARNINGS
		JANUARY	FEBRUARY	MARCH	JANUARY - MARCH 2007	
PERRY COUNTY - TOTAL	164	1,234	1,244	1,280	\$7,151,262	\$439.14
Natural Resources & Mining	9	46	47	48	\$363,631	\$595.14
Construction	27	62	60	69	\$383,796	\$463.71
Manufacturing	7	77	71	74	\$430,971	\$447.99
Trade, Transportation & Utilities	29	190	194	197	\$928,275	\$368.70
Retail Trade	19	159	163	167	\$583,054	\$275.16
Other Trade, Transportation & Utilities	10	31	31	30	\$345,221	\$865.94
Financial Activities	15	69	72	74	\$655,182	\$703.24
Professional & Business Services	14	38	37	36	\$219,961	\$457.30
Education & Health Services	27	200	196	201	\$979,287	\$378.54
Local Government	12	404	419	424	\$2,367,484	\$438.13
State Government	9	57	56	57	\$364,170	\$494.35
Other	15	91	92	100	\$458,505	\$373.88
PHILLIPS COUNTY - TOTAL	784	6,372	6,486	6,633	\$38,953,290	\$461.20
Natural Resources & Mining	69	275	341	384	\$1,724,242	\$397.90
Construction	29	127	128	137	\$826,331	\$486.46
Manufacturing	12	402	401	396	\$2,951,153	\$568.00
Trade, Transportation & Utilities	178	1,602	1,601	1,647	\$9,894,158	\$470.78
Wholesale Trade	36	428	438	455	\$3,812,027	\$665.93
Retail Trade	103	870	854	878	\$3,932,160	\$348.74
Transportation, Warehousing & Utilities	39	304	309	314	\$2,149,971	\$535.22
Information	9	44	44	46	\$368,832	\$635.19
Financial Activities	54	269	266	259	\$2,105,593	\$611.97
Professional & Business Services	60	181	183	182	\$1,087,290	\$459.55
Education & Health Services	245	1,312	1,301	1,325	\$7,217,470	\$422.95
Leisure & Hospitality	38	439	437	463	\$1,096,650	\$189.00
Other Services	42	86	86	91	\$374,526	\$328.63
Local Government	31	1,124	1,132	1,157	\$7,876,885	\$532.59
State Government	17	511	566	546	\$3,430,160	\$487.72

**TABLE 6. COUNTY SUMMARY
EMPLOYMENT AND TOTAL EARNINGS, BY INDUSTRY
FIRST QUARTER 2007**

NORTH AMERICAN INDUSTRY CLASSIFICATION SYSTEM INDUSTRY GROUP	NUMBER OF EMPLOYING UNITS	EMPLOYMENT	EMPLOYMENT	EMPLOYMENT	TOTAL EARNINGS	AVERAGE WEEKLY EARNINGS
		JANUARY	FEBRUARY	MARCH	JANUARY - MARCH 2007	
PIKE COUNTY - TOTAL	274	2,794	2,823	2,882	\$16,328,689	\$443.36
Natural Resources & Mining	28	138	139	145	\$1,184,551	\$647.77
Construction	15	88	87	85	\$585,507	\$519.68
Manufacturing	15	471	494	501	\$2,952,429	\$464.75
Trade, Transportation & Utilities	93	598	569	579	\$3,325,199	\$439.49
Wholesale Trade	19	120	118	122	\$955,691	\$612.62
Retail Trade	44	364	340	348	\$1,549,444	\$339.89
Transportation, Warehousing & Utilities	30	114	111	109	\$820,064	\$566.60
Information	6	31	31	31	\$317,760	\$788.49
Financial Activities	27	171	178	180	\$1,290,185	\$562.83
Professional & Business Services	14	36	35	37	\$294,052	\$628.32
Education & Health Services	20	248	247	250	\$1,104,350	\$342.08
Leisure & Hospitality	18	194	207	214	\$513,159	\$192.55
Other Services	14	108	117	122	\$621,056	\$413.03
Local Government	13	606	615	634	\$3,526,256	\$438.68
State Government	11	105	104	104	\$614,185	\$452.83
POINSETT COUNTY - TOTAL	503	5,731	5,709	5,862	\$36,789,709	\$490.69
Natural Resources & Mining	52	274	282	315	\$2,088,304	\$553.29
Construction	25	60	67	69	\$288,889	\$340.14
Manufacturing	23	1,176	1,130	1,126	\$8,385,710	\$563.86
Trade, Transportation & Utilities	131	1,265	1,264	1,319	\$8,710,964	\$522.41
Wholesale Trade	33	462	456	488	\$4,938,333	\$810.54
Retail Trade	72	665	667	684	\$2,792,556	\$319.66
Transportation, Warehousing & Utilities	26	138	141	147	\$980,075	\$530.92
Information	6	49	48	45	\$566,502	\$920.64
Financial Activities	47	319	307	313	\$2,572,032	\$632.10
Professional & Business Services	32	178	176	177	\$1,268,732	\$551.38
Education & Health Services	68	572	574	596	\$3,084,655	\$408.64
Leisure & Hospitality	47	386	390	407	\$779,921	\$152.14
Other Services	29	62	62	63	\$339,425	\$418.87
Local Government	31	1,179	1,193	1,213	\$7,306,858	\$470.35
State Government	12	211	216	219	\$1,397,717	\$499.30

**TABLE 6. COUNTY SUMMARY
EMPLOYMENT AND TOTAL EARNINGS, BY INDUSTRY
FIRST QUARTER 2007**

NORTH AMERICAN INDUSTRY CLASSIFICATION SYSTEM INDUSTRY GROUP	NUMBER OF EMPLOYING UNITS	EMPLOYMENT	EMPLOYMENT	EMPLOYMENT	TOTAL EARNINGS	AVERAGE
		JANUARY	FEBRUARY	MARCH	JANUARY - MARCH 2007	WEEKLY EARNINGS
POLK COUNTY - TOTAL	549	6,318	6,351	6,453	\$35,901,014	\$433.26
Natural Resources & Mining	28	249	247	243	\$1,900,576	\$593.50
Construction	39	209	204	207	\$1,050,002	\$390.82
Manufacturing	44	1,322	1,349	1,364	\$8,226,909	\$470.51
Trade, Transportation & Utilities	149	1,302	1,288	1,320	\$6,926,739	\$408.82
Wholesale Trade	26	110	108	123	\$542,087	\$366.85
Retail Trade	79	809	804	812	\$3,741,335	\$356.04
Transportation, Warehousing & Utilities	44	383	376	385	\$2,643,317	\$533.21
Information	9	52	50	50	\$401,762	\$609.96
Financial Activities	40	236	239	242	\$1,622,594	\$522.24
Professional & Business Services	48	245	248	250	\$1,253,105	\$389.20
Education & Health Services	80	952	969	974	\$5,849,246	\$466.26
Leisure & Hospitality	41	449	432	463	\$965,164	\$165.72
Other Services	36	139	136	142	\$675,538	\$373.85
Local Government	21	832	846	841	\$5,201,042	\$476.47
State Government	14	331	343	357	\$1,828,337	\$409.24
POPE COUNTY - TOTAL	1,748	26,539	27,109	27,606	\$199,505,960	\$566.62
Natural Resources & Mining	24	551	757	767	\$4,523,797	\$503.11
Construction	180	1,208	1,209	1,299	\$9,110,076	\$565.75
Manufacturing	93	5,078	5,048	5,041	\$42,555,825	\$647.50
Trade, Transportation & Utilities	473	6,625	6,656	6,767	\$65,336,505	\$752.08
Wholesale Trade	106	731	735	734	\$5,982,558	\$627.54
Retail Trade	275	3,355	3,338	3,433	\$17,629,463	\$401.77
Transportation, Warehousing & Utilities	92	2,539	2,583	2,600	\$41,724,484	\$1,246.92
Information	21	244	243	258	\$2,541,594	\$787.28
Financial Activities	185	846	844	843	\$7,080,706	\$645.09
Professional & Business Services	227	2,529	2,580	2,670	\$12,900,718	\$382.71
Education & Health Services	244	2,921	2,983	2,980	\$20,669,181	\$536.90
Leisure & Hospitality	134	2,332	2,347	2,443	\$6,133,642	\$198.74
Other Services	111	464	470	490	\$2,575,470	\$417.37
Local Government	40	2,283	2,320	2,355	\$15,513,539	\$514.52
State Government	16	1,458	1,652	1,693	\$10,564,907	\$507.61

**TABLE 6. COUNTY SUMMARY
EMPLOYMENT AND TOTAL EARNINGS, BY INDUSTRY
FIRST QUARTER 2007**

NORTH AMERICAN INDUSTRY CLASSIFICATION SYSTEM INDUSTRY GROUP	NUMBER OF EMPLOYING UNITS	EMPLOYMENT JANUARY	EMPLOYMENT FEBRUARY	EMPLOYMENT MARCH	TOTAL EARNINGS JANUARY - MARCH 2007	AVERAGE WEEKLY EARNINGS
PRAIRIE COUNTY - TOTAL	244	1,380	1,413	1,428	\$8,831,175	\$482.82
Natural Resources & Mining	29	103	114	129	\$741,592	\$494.61
Trade, Transportation & Utilities	71	331	327	318	\$2,031,185	\$480.26
Wholesale Trade	11	53	54	61	\$445,707	\$612.23
Retail Trade	39	203	195	184	\$1,051,865	\$417.08
Transportation, Warehousing & Utilities	21	75	78	73	\$533,613	\$544.87
Information	4	8	8	8	\$102,633	\$986.86
Financial Activities	17	65	65	67	\$512,779	\$600.68
Professional & Business Services	17	50	48	52	\$314,599	\$484.00
Education & Health Services	29	153	159	161	\$994,257	\$485.08
Leisure & Hospitality	18	96	98	96	\$210,262	\$167.32
Other Services	14	38	40	42	\$166,150	\$319.52
Local Government	15	320	330	329	\$1,991,996	\$469.55
State Government	10	49	49	48	\$346,934	\$548.37
Other	20	167	175	178	\$1,418,788	\$629.64
PULASKI COUNTY - TOTAL	14,396	236,767	238,085	240,364	\$2,300,041,519	\$742.12
Natural Resources & Mining	52	665	656	675	\$9,212,473	\$1,065.11
Construction	1,162	10,281	10,274	10,754	\$103,358,736	\$761.83
Manufacturing	446	15,574	15,494	15,487	\$170,839,952	\$846.84
Trade, Transportation & Utilities	3,316	51,479	51,070	51,659	\$458,852,830	\$686.66
Wholesale Trade	1,157	13,344	13,358	13,385	\$173,634,325	\$999.56
Retail Trade	1,757	24,914	24,481	24,939	\$144,447,334	\$448.44
Transportation, Warehousing & Utilities	402	13,221	13,231	13,335	\$140,771,171	\$816.49
Information	243	8,444	8,486	8,475	\$133,921,571	\$1,216.49
Financial Activities	1,773	16,204	16,203	16,205	\$261,354,887	\$1,240.70
Professional & Business Services	2,783	33,902	34,118	34,277	\$299,204,245	\$674.97
Education & Health Services	2,053	33,458	33,769	34,028	\$319,657,796	\$728.53
Leisure & Hospitality	1,035	19,422	19,716	20,290	\$69,786,185	\$270.99
Other Services	1,225	6,804	6,857	6,930	\$48,967,465	\$548.79
Local Government	104	16,608	16,651	16,668	\$147,080,931	\$679.83
State Government	204	23,926	24,791	24,916	\$277,804,448	\$870.65

**TABLE 6. COUNTY SUMMARY
EMPLOYMENT AND TOTAL EARNINGS, BY INDUSTRY
FIRST QUARTER 2007**

NORTH AMERICAN INDUSTRY CLASSIFICATION SYSTEM INDUSTRY GROUP	NUMBER OF EMPLOYING UNITS	EMPLOYMENT	EMPLOYMENT	EMPLOYMENT	TOTAL EARNINGS	AVERAGE WEEKLY EARNINGS
		JANUARY	FEBRUARY	MARCH	JANUARY - MARCH 2007	
RANDOLPH COUNTY - TOTAL	409	4,917	5,021	5,109	\$30,580,514	\$469.00
Natural Resources & Mining	22	58	64	74	\$283,606	\$333.92
Construction	24	82	79	85	\$374,309	\$351.13
Manufacturing	39	1,017	1,005	999	\$7,928,913	\$605.68
Trade, Transportation & Utilities	98	960	950	973	\$5,070,729	\$405.89
Wholesale Trade	21	196	196	195	\$961,556	\$378.02
Retail Trade	60	647	638	649	\$2,962,749	\$353.52
Transportation, Warehousing & Utilities	17	117	116	129	\$1,146,424	\$730.83
Information	5	44	41	41	\$392,024	\$717.99
Financial Activities	28	164	160	164	\$1,458,123	\$689.53
Professional & Business Services	37	224	228	229	\$989,377	\$335.27
Education & Health Services	67	868	899	909	\$5,656,877	\$487.83
Leisure & Hospitality	29	342	366	419	\$788,867	\$161.53
Other Services	25	63	64	77	\$313,704	\$354.87
Local Government	23	854	849	868	\$5,196,979	\$466.47
State Government	12	241	316	271	\$2,127,006	\$592.81
SAINT FRANCIS COUNTY - TOTAL	685	8,027	8,092	7,982	\$49,900,773	\$477.80
Natural Resources & Mining	25	117	130	156	\$844,022	\$483.31
Construction	46	214	204	218	\$1,316,302	\$477.61
Manufacturing	16	1,303	1,320	1,115	\$8,466,850	\$522.71
Trade, Transportation & Utilities	185	2,009	2,044	2,079	\$12,673,345	\$476.94
Wholesale Trade	32	525	526	542	\$4,142,256	\$600.07
Retail Trade	124	1,189	1,231	1,256	\$5,824,118	\$365.62
Transportation, Warehousing & Utilities	29	295	287	281	\$2,706,971	\$723.85
Information	9	93	95	94	\$693,031	\$567.13
Financial Activities	55	306	311	313	\$1,982,664	\$491.98
Professional & Business Services	53	213	210	207	\$1,514,275	\$554.68
Education & Health Services	157	1,352	1,333	1,354	\$7,527,368	\$430.08
Leisure & Hospitality	52	657	664	662	\$1,812,014	\$210.87
Other Services	41	120	121	117	\$466,637	\$300.80
Local Government	29	1,130	1,139	1,142	\$8,287,971	\$560.72
State Government	17	513	521	525	\$4,316,294	\$638.91

**TABLE 6. COUNTY SUMMARY
EMPLOYMENT AND TOTAL EARNINGS, BY INDUSTRY
FIRST QUARTER 2007**

NORTH AMERICAN INDUSTRY CLASSIFICATION SYSTEM INDUSTRY GROUP	NUMBER OF EMPLOYING UNITS	EMPLOYMENT	EMPLOYMENT	EMPLOYMENT	TOTAL EARNINGS	AVERAGE
		JANUARY	FEBRUARY	MARCH	JANUARY - MARCH 2007	WEEKLY EARNINGS
SALINE COUNTY - TOTAL	1,779	20,368	20,446	20,876	\$140,797,304	\$526.69
Natural Resources & Mining	15	33	32	31	\$270,418	\$650.04
Construction	315	1,846	1,886	1,982	\$14,532,661	\$586.93
Manufacturing	88	1,869	1,856	1,890	\$19,266,648	\$791.83
Trade, Transportation & Utilities	435	4,539	4,512	4,618	\$29,899,677	\$504.79
Wholesale Trade	127	538	530	535	\$5,726,267	\$824.36
Retail Trade	250	3,725	3,711	3,799	\$21,881,339	\$449.45
Transportation, Warehousing & Utilities	58	276	271	284	\$2,292,071	\$636.51
Information	18	150	146	153	\$1,127,372	\$579.43
Financial Activities	168	756	739	757	\$6,116,586	\$626.79
Professional & Business Services	224	1,216	1,239	1,248	\$7,924,647	\$493.86
Education & Health Services	201	2,702	2,735	2,778	\$18,136,346	\$509.47
Leisure & Hospitality	133	2,399	2,432	2,470	\$7,147,439	\$225.92
Other Services	132	566	563	635	\$3,531,291	\$461.97
Local & State Government	50	4,292	4,306	4,314	\$32,844,219	\$587.01
SCOTT COUNTY - TOTAL	191	2,821	2,842	2,845	\$15,593,361	\$422.95
Natural Resources & Mining	16	175	178	180	\$1,389,191	\$601.47
Trade, Transportation & Utilities	41	462	461	458	\$2,297,432	\$383.91
Wholesale Trade	7	64	66	65	\$462,662	\$547.53
Retail Trade	27	326	323	322	\$1,228,229	\$291.90
Transportation, Warehousing & Utilities	7	72	72	71	\$606,541	\$651.03
Financial Activities	19	74	71	71	\$467,029	\$498.96
Professional & Business Services	12	20	21	22	\$118,268	\$433.22
Education & Health Services	30	302	305	304	\$1,689,681	\$428.02
Leisure & Hospitality	20	164	163	170	\$369,130	\$171.40
Other Services	10	40	41	40	\$271,196	\$517.22
Local Government	5	369	381	380	\$2,194,211	\$448.10
State Government	8	71	76	78	\$439,487	\$450.76
Other	30	1,144	1,145	1,142	\$6,357,736	\$425.54

**TABLE 6. COUNTY SUMMARY
EMPLOYMENT AND TOTAL EARNINGS, BY INDUSTRY
FIRST QUARTER 2007**

NORTH AMERICAN INDUSTRY CLASSIFICATION SYSTEM INDUSTRY GROUP	NUMBER OF EMPLOYING UNITS	EMPLOYMENT	EMPLOYMENT	EMPLOYMENT	TOTAL EARNINGS	AVERAGE
		JANUARY	FEBRUARY	MARCH	JANUARY - MARCH 2007	WEEKLY EARNINGS
SEARCY COUNTY - TOTAL	179	1,624	1,682	1,661	\$8,198,808	\$380.92
Construction	7	9	11	14	\$58,435	\$396.62
Manufacturing	16	276	266	247	\$1,229,041	\$359.47
Trade, Transportation & Utilities	37	254	284	279	\$1,115,991	\$315.22
Retail Trade	26	198	203	201	\$754,582	\$289.26
Other Trade, Transportation & Utilities	11	56	81	78	\$361,409	\$387.92
Financial Activities	14	82	81	88	\$570,962	\$524.94
Professional & Business Services	16	38	36	41	\$201,797	\$404.94
Education & Health Services	45	301	320	308	\$1,415,627	\$351.65
Leisure & Hospitality	11	85	94	94	\$213,258	\$180.27
Local Government	10	393	396	396	\$2,127,683	\$414.35
State Government	8	145	145	145	\$914,909	\$485.36
Other	15	41	49	49	\$351,105	\$582.91
SEBASTIAN COUNTY - TOTAL	3,690	72,265	72,417	73,413	\$612,026,338	\$647.59
Natural Resources & Mining	75	1,628	1,668	1,691	\$26,782,292	\$1,239.33
Construction	306	2,796	2,670	2,805	\$24,901,994	\$694.79
Manufacturing	240	19,764	19,528	19,493	\$173,700,186	\$681.89
Trade, Transportation & Utilities	946	12,866	12,751	13,058	\$94,417,657	\$563.38
Wholesale Trade	249	2,538	2,559	2,616	\$30,271,903	\$905.72
Retail Trade	565	8,046	7,902	8,135	\$42,104,114	\$403.45
Transportation, Warehousing & Utilities	132	2,282	2,290	2,307	\$22,041,640	\$739.43
Information	58	1,135	1,124	1,132	\$13,540,645	\$921.49
Financial Activities	409	2,471	2,481	2,495	\$25,197,787	\$780.83
Professional & Business Services	524	8,949	9,238	9,657	\$81,590,621	\$676.22
Education & Health Services	483	10,112	10,141	10,229	\$97,024,072	\$734.54
Leisure & Hospitality	309	5,313	5,373	5,458	\$16,029,141	\$229.13
Other Services	275	1,444	1,453	1,449	\$8,704,800	\$462.22
Local Government	43	4,472	4,492	4,447	\$38,400,685	\$660.78
State Government	22	1,315	1,498	1,499	\$11,736,458	\$628.11

**TABLE 6. COUNTY SUMMARY
EMPLOYMENT AND TOTAL EARNINGS, BY INDUSTRY
FIRST QUARTER 2007**

NORTH AMERICAN INDUSTRY CLASSIFICATION SYSTEM INDUSTRY GROUP	NUMBER OF EMPLOYING UNITS	EMPLOYMENT	EMPLOYMENT	EMPLOYMENT	TOTAL EARNINGS	AVERAGE
		JANUARY	FEBRUARY	MARCH	JANUARY - MARCH 2007	WEEKLY EARNINGS
SEVIER COUNTY - TOTAL	333	5,884	6,037	6,122	\$38,070,087	\$486.91
Natural Resources & Mining	17	250	253	256	\$1,553,600	\$472.36
Construction	21	141	133	152	\$1,198,747	\$649.38
Manufacturing	11	2,289	2,442	2,484	\$13,938,299	\$445.81
Trade, Transportation & Utilities	96	870	863	905	\$5,835,738	\$510.50
Wholesale Trade	14	146	145	152	\$1,905,445	\$992.59
Retail Trade	61	596	587	618	\$2,694,802	\$345.30
Transportation, Warehousing & Utilities	21	128	131	135	\$1,235,491	\$723.64
Information	6	40	39	39	\$312,217	\$610.59
Financial Activities	28	215	212	214	\$1,620,814	\$583.52
Professional & Business Services	30	102	104	107	\$2,808,557	\$2,070.70
Education & Health Services	51	540	530	512	\$3,014,572	\$439.74
Leisure & Hospitality	21	249	252	248	\$553,776	\$170.62
Other Services	32	145	140	147	\$648,585	\$346.47
Local Government	11	880	877	865	\$5,396,584	\$474.97
State Government	9	163	192	193	\$1,188,598	\$500.53
SHARP COUNTY - TOTAL	438	3,819	3,777	3,852	\$20,968,626	\$422.69
Construction	31	213	195	203	\$1,375,778	\$519.62
Manufacturing	21	171	181	188	\$839,377	\$358.71
Trade, Transportation & Utilities	102	1,000	968	1,000	\$6,068,165	\$471.81
Retail Trade	71	632	630	664	\$2,824,022	\$338.37
Other Trade, Transportation & Utilities	31	368	338	336	\$3,244,143	\$718.47
Information	7	48	48	58	\$789,516	\$1,183.09
Financial Activities	38	241	245	250	\$1,800,600	\$564.57
Professional & Business Services	39	169	156	169	\$1,083,346	\$506.08
Education & Health Services	94	595	594	595	\$2,950,484	\$381.66
Leisure & Hospitality	43	413	413	427	\$893,946	\$164.64
Local Government	24	785	792	776	\$4,154,831	\$407.48
State Government	9	111	110	108	\$677,681	\$475.34
Other	30	73	75	78	\$334,902	\$341.97

**TABLE 6. COUNTY SUMMARY
EMPLOYMENT AND TOTAL EARNINGS, BY INDUSTRY
FIRST QUARTER 2007**

NORTH AMERICAN INDUSTRY CLASSIFICATION SYSTEM INDUSTRY GROUP	NUMBER OF EMPLOYING UNITS	EMPLOYMENT JANUARY	EMPLOYMENT FEBRUARY	EMPLOYMENT MARCH	TOTAL EARNINGS JANUARY - MARCH 2007	AVERAGE WEEKLY EARNINGS
STONE COUNTY - TOTAL	285	2,784	2,799	2,879	\$14,381,485	\$392.20
Natural Resources & Mining	5	12	14	16	\$88,354	\$485.46
Construction	24	80	93	106	\$480,775	\$397.66
Manufacturing	24	436	435	432	\$2,380,777	\$421.65
Trade, Transportation & Utilities	79	695	696	712	\$3,373,879	\$370.23
Wholesale Trade	11	56	57	57	\$315,436	\$428.19
Retail Trade	56	592	592	605	\$2,637,210	\$340.18
Transportation, Warehousing & Utilities	12	47	47	50	\$421,233	\$675.05
Financial Activities	26	118	121	123	\$805,325	\$513.38
Professional & Business Services	10	33	32	29	\$235,008	\$576.94
Education & Health Services	49	459	451	448	\$2,803,422	\$476.39
Leisure & Hospitality	33	308	303	362	\$690,003	\$163.65
Local Government	10	407	417	417	\$2,456,274	\$456.75
State Government	9	179	180	177	\$739,084	\$318.20
Other	16	57	57	57	\$328,584	\$443.43
UNION COUNTY - TOTAL	1,397	19,389	19,426	19,739	\$179,190,278	\$706.21
Natural Resources & Mining	109	575	567	567	\$5,058,326	\$683.03
Construction	91	1,211	1,254	1,316	\$13,943,718	\$851.04
Manufacturing	65	4,944	4,855	4,852	\$50,186,756	\$790.50
Trade, Transportation & Utilities	356	3,533	3,506	3,633	\$28,499,978	\$616.28
Wholesale Trade	81	593	586	605	\$9,145,650	\$1,183.04
Retail Trade	217	2,179	2,155	2,251	\$10,592,627	\$371.22
Transportation, Warehousing & Utilities	58	761	765	777	\$8,761,701	\$877.96
Information	20	198	198	198	\$1,513,357	\$587.94
Financial Activities	119	739	731	733	\$5,943,067	\$622.55
Professional & Business Services	143	1,625	1,639	1,651	\$32,536,183	\$1,527.64
Education & Health Services	208	2,430	2,407	2,431	\$17,986,339	\$571.09
Leisure & Hospitality	88	1,047	1,137	1,170	\$3,096,758	\$213.07
Other Services	143	551	544	602	\$3,595,885	\$488.99
Local Government	37	2,032	2,048	2,040	\$12,854,705	\$484.72
State Government	18	504	540	546	\$3,975,206	\$576.95

**TABLE 6. COUNTY SUMMARY
EMPLOYMENT AND TOTAL EARNINGS, BY INDUSTRY
FIRST QUARTER 2007**

NORTH AMERICAN INDUSTRY CLASSIFICATION SYSTEM INDUSTRY GROUP	NUMBER OF EMPLOYING UNITS	EMPLOYMENT	EMPLOYMENT	EMPLOYMENT	TOTAL EARNINGS	AVERAGE
		JANUARY	FEBRUARY	MARCH	JANUARY - MARCH 2007	WEEKLY EARNINGS
VAN BUREN COUNTY - TOTAL	355	3,647	3,654	3,777	\$20,094,670	\$418.60
Natural Resources & Mining	12	24	24	36	\$270,112	\$742.07
Construction	43	184	177	197	\$1,190,008	\$492.15
Manufacturing	14	492	490	479	\$2,885,430	\$455.76
Trade, Transportation & Utilities	96	770	782	815	\$4,220,754	\$411.50
Wholesale Trade	15	44	46	48	\$355,214	\$594.00
Retail Trade	58	587	595	627	\$2,817,694	\$359.45
Transportation, Warehousing & Utilities	23	139	141	140	\$1,047,846	\$575.74
Information	10	54	54	52	\$417,570	\$602.26
Financial Activities	27	157	156	155	\$1,179,050	\$581.39
Professional & Business Services	26	96	97	107	\$499,885	\$384.53
Education & Health Services	51	608	605	622	\$3,252,509	\$409.03
Leisure & Hospitality	32	406	416	452	\$1,290,941	\$233.84
Other Services	25	71	74	76	\$422,141	\$440.80
Local Government	11	686	684	691	\$3,821,795	\$427.92
State Government	8	99	95	95	\$644,475	\$514.62
WASHINGTON COUNTY - TOTAL	5,615	90,058	90,029	90,989	\$762,563,642	\$649.18
Natural Resources & Mining	39	458	461	465	\$3,397,503	\$566.50
Construction	688	5,639	5,561	5,728	\$48,387,466	\$659.64
Manufacturing	240	15,288	15,223	15,228	\$127,069,389	\$641.11
Trade, Transportation & Utilities	1,363	20,549	20,583	20,924	\$177,265,416	\$659.20
Wholesale Trade	401	3,838	3,807	3,841	\$53,605,236	\$1,077.00
Retail Trade	765	11,393	11,343	11,553	\$64,446,636	\$433.73
Transportation, Warehousing & Utilities	197	5,318	5,433	5,530	\$59,213,544	\$839.30
Information	92	1,546	1,561	1,578	\$17,249,289	\$849.65
Financial Activities	663	3,984	3,966	3,950	\$41,256,917	\$800.07
Professional & Business Services	934	8,586	8,602	8,772	\$97,856,898	\$869.89
Education & Health Services	626	10,524	10,602	10,682	\$91,321,590	\$662.54
Leisure & Hospitality	502	8,896	8,910	9,060	\$28,492,397	\$244.74
Other Services	384	1,944	1,955	1,941	\$11,584,502	\$457.76
Local & State Government	84	12,644	12,605	12,661	\$118,682,275	\$722.45

**TABLE 6. COUNTY SUMMARY
EMPLOYMENT AND TOTAL EARNINGS, BY INDUSTRY
FIRST QUARTER 2007**

NORTH AMERICAN INDUSTRY CLASSIFICATION SYSTEM INDUSTRY GROUP	NUMBER OF EMPLOYING UNITS	EMPLOYMENT	EMPLOYMENT	EMPLOYMENT	TOTAL EARNINGS	AVERAGE WEEKLY EARNINGS
		JANUARY	FEBRUARY	MARCH	JANUARY - MARCH 2007	
WHITE COUNTY - TOTAL	1,672	22,867	22,924	23,200	\$165,332,879	\$553.02
Natural Resources & Mining	38	335	391	454	\$4,405,186	\$861.51
Construction	185	1,142	1,088	1,145	\$8,124,823	\$555.54
Manufacturing	86	2,955	2,625	2,714	\$31,211,666	\$868.42
Trade, Transportation & Utilities	479	5,774	5,781	5,890	\$39,803,403	\$526.53
Wholesale Trade	97	581	593	629	\$4,800,297	\$614.40
Retail Trade	296	3,087	3,087	3,172	\$15,566,733	\$384.37
Transportation, Warehousing & Utilities	86	2,106	2,101	2,089	\$19,436,373	\$712.41
Information	22	219	231	228	\$1,622,992	\$552.41
Financial Activities	180	947	926	917	\$6,939,026	\$573.95
Professional & Business Services	166	1,272	1,287	1,283	\$8,055,628	\$483.86
Education & Health Services	229	4,123	4,232	4,216	\$33,227,526	\$609.97
Leisure & Hospitality	117	2,214	2,249	2,260	\$5,445,410	\$186.92
Other Services	105	633	635	639	\$3,925,925	\$475.08
Local Government	46	2,655	2,694	2,683	\$17,197,369	\$494.10
State Government	19	598	785	771	\$5,373,925	\$575.74
WOODRUFF COUNTY - TOTAL	191	1,889	1,890	1,931	\$11,780,431	\$476.11
Natural Resources & Mining	19	104	99	118	\$654,711	\$470.68
Construction	7	60	62	66	\$361,658	\$443.93
Manufacturing	8	296	301	312	\$2,251,320	\$571.55
Trade, Transportation & Utilities	57	503	499	499	\$3,357,754	\$516.23
Wholesale Trade	13	189	177	183	\$1,637,782	\$688.43
Retail Trade	26	203	210	207	\$704,691	\$262.29
Transportation, Warehousing & Utilities	18	111	112	109	\$1,015,281	\$705.71
Financial Activities	15	64	62	62	\$415,003	\$509.41
Professional & Business Services	4	7	6	6	\$60,119	\$730.19
Education & Health Services	48	225	228	231	\$1,353,958	\$456.80
Leisure & Hospitality	7	49	53	50	\$95,266	\$144.63
Local Government	10	500	498	505	\$2,738,937	\$420.53
State Government	7	58	59	59	\$367,412	\$481.75
Other	9	23	23	23	\$124,293	\$415.70

**TABLE 6. COUNTY SUMMARY
EMPLOYMENT AND TOTAL EARNINGS, BY INDUSTRY
FIRST QUARTER 2007**

NORTH AMERICAN INDUSTRY CLASSIFICATION SYSTEM INDUSTRY GROUP	NUMBER OF EMPLOYING UNITS	EMPLOYMENT	EMPLOYMENT	EMPLOYMENT	TOTAL EARNINGS	AVERAGE
		JANUARY	FEBRUARY	MARCH	JANUARY - MARCH 2007	WEEKLY EARNINGS
YELL COUNTY - TOTAL	414	6,769	6,744	6,849	\$40,506,708	\$459.08
Natural Resources & Mining	23	226	225	223	\$1,413,352	\$483.91
Construction	45	305	268	298	\$1,970,970	\$522.20
Manufacturing	21	2,807	2,778	2,762	\$16,782,502	\$463.99
Trade, Transportation & Utilities	90	694	681	698	\$3,401,359	\$378.64
Wholesale Trade	13	20	21	22	\$123,746	\$453.28
Retail Trade	58	585	567	583	\$2,536,770	\$337.41
Transportation, Warehousing & Utilities	19	89	93	93	\$740,843	\$621.69
Information	3	73	73	74	\$641,279	\$672.67
Financial Activities	37	191	191	201	\$1,389,972	\$550.19
Professional & Business Services	39	253	249	252	\$2,601,411	\$796.19
Education & Health Services	68	479	487	492	\$2,489,183	\$393.98
Leisure & Hospitality	29	307	317	349	\$794,295	\$188.39
Other Services	18	73	74	74	\$289,880	\$302.69
Local Government	28	1,248	1,288	1,311	\$8,052,089	\$483.02
State Government	13	113	113	115	\$680,416	\$460.47
REST-OF-STATE-TOTAL	4,181	15,532	16,050	16,571	\$236,338,699	\$1,132.63
Natural Resources & Mining	71	434	534	629	\$6,588,298	\$952.02
Construction	547	2,564	2,683	3,021	\$26,865,400	\$749.84
Manufacturing	55	158	164	161	\$1,838,353	\$878.33
Trade, Transportation & Utilities	1,657	6,329	6,420	6,457	\$126,240,392	\$1,516.84
Wholesale Trade	1,408	5,164	5,267	5,276	\$113,941,594	\$1,674.04
Retail Trade	97	481	472	483	\$5,997,148	\$963.76
Transportation, Warehousing & Utilities	152	684	681	698	\$6,301,650	\$704.91
Information	98	230	232	241	\$3,641,022	\$1,195.21
Financial Activities	251	844	851	829	\$12,294,041	\$1,124.04
Professional & Business Services	1,224	3,776	3,981	4,064	\$45,992,332	\$897.86
Education & Health Services	109	542	537	518	\$6,575,875	\$950.23
Other	169	655	648	651	\$6,302,986	\$744.39

TABLE 7. FEDERAL GOVERNMENT EMPLOYMENT AND EARNINGS IN ARKANSAS

NORTH AMERICAN INDUSTRY CLASSIFICATION SYSTEM INDUSTRY GROUP	NUMBER OF EMPLOYING UNITS	EMPLOYMENT JANUARY	EMPLOYMENT FEBRUARY	EMPLOYMENT MARCH	TOTAL EARNINGS JAN. - MAR. 2007
Trade, Transportation & Utilities	453	6,790	6,768	6,782	\$82,807,238
Information	1	34	34	35	\$372,601
Financial Activities	23	175	173	172	\$2,640,241
Professional & Business Services	31	754	755	758	\$13,030,133
Education & Health Services	6	3,882	3,894	3,919	\$65,206,745
Leisure & Hospitality	15	209	200	211	\$2,356,172
Other Services	2	253	250	262	\$947,761
Public Administration	484	8,492	8,402	8,457	\$124,400,876
TOTAL	1,015	20,589	20,476	20,596	\$291,761,767

Note: Industries with employing units that have no employment or wages are not included in this table.

**TABLE 8. WORKFORCE INFORMATION AREA, SUMMARY
EMPLOYMENT AND TOTAL EARNINGS, BY INDUSTRY
FIRST QUARTER 2007**

NORTH AMERICAN INDUSTRY CLASSIFICATION SYSTEM INDUSTRY GROUP	NUMBER OF EMPLOYING UNITS	EMPLOYMENT JANUARY	EMPLOYMENT FEBRUARY	EMPLOYMENT MARCH	TOTAL EARNINGS JAN. - MAR. 2007	AVERAGE WEEKLY EARNINGS
CENTRAL WORKFORCE INFORMATION*	6,149	75,010	75,390	76,643	\$550,730,224	\$559.77
Natural Resources & Mining	179	1,098	1,120	1,277	\$12,437,233	\$821.21
Trade, Transportation & Utilities	1,569	14,869	14,903	15,208	\$94,712,136	\$485.92
Wholesale Trade	409	2,030	2,070	2,116	\$21,093,971	\$783.11
Retail Trade	899	11,313	11,269	11,511	\$59,547,090	\$403.06
Transportation, Warehousing & Utilities	261	1,526	1,564	1,581	\$14,071,075	\$695.18
Financial Activities	635	2,938	2,939	2,970	\$24,969,553	\$651.32
Professional & Business Services	746	7,276	7,310	7,332	\$77,128,666	\$812.07
Education & Health Services	750	9,993	10,091	10,214	\$67,249,923	\$512.22
Leisure & Hospitality	455	7,798	7,812	8,013	\$21,185,869	\$206.96
Local & State Government	209	14,470	14,568	14,672	\$109,832,928	\$579.87
Other	1,606	16,568	16,647	16,957	\$143,213,916	\$658.72
*Note: Pulaski County is not included in the Central Workforce Information. Please refer to Page 55 for information on Pulaski County.						
Central Workforce Includes these counties: Faulkner, Lonoke, Monroe, Prairie, and Saline.						
EASTERN WORKFORCE INFORMATION	3,476	37,906	38,230	38,760	\$253,732,159	\$509.62
Natural Resources & Mining	209	869	1,034	1,202	\$5,511,700	\$409.64
Construction	196	987	966	1,040	\$7,017,682	\$541.08
Trade, Transportation & Utilities	878	9,929	9,954	10,145	\$68,579,358	\$527.04
Wholesale Trade	182	2,053	2,090	2,135	\$18,424,444	\$677.25
Retail Trade	490	4,921	4,918	5,050	\$23,727,343	\$367.76
Transportation, Warehousing & Utilities	206	2,955	2,946	2,960	\$26,427,571	\$688.26
Financial Activities	280	1,563	1,579	1,578	\$12,725,052	\$622.15
Professional & Business Services	305	1,623	1,662	1,685	\$10,541,034	\$489.45
Education & Health Services	792	5,608	5,584	5,662	\$35,885,565	\$491.35
Leisure & Hospitality	232	3,724	3,726	3,785	\$10,797,025	\$221.77
Local Government	139	5,908	5,957	6,037	\$43,271,088	\$557.79
State Government	68	2,209	2,286	2,281	\$16,634,230	\$566.51
Other	377	5,486	5,482	5,345	\$42,769,425	\$605.03
Eastern Workforce Includes these counties: Crittenden, Cross, Lee, Phillips, and Saint Francis.						

**TABLE 8. WORKFORCE INFORMATION AREA, SUMMARY
EMPLOYMENT AND TOTAL EARNINGS, BY INDUSTRY
FIRST QUARTER 2007**

NORTH AMERICAN INDUSTRY CLASSIFICATION SYSTEM INDUSTRY GROUP	NUMBER OF EMPLOYING UNITS	EMPLOYMENT JANUARY	EMPLOYMENT FEBRUARY	EMPLOYMENT MARCH	TOTAL EARNINGS JAN. - MAR. 2007	AVERAGE WEEKLY EARNINGS
NORTH CENTRAL WORKFORCE INFORMATION	5,587	67,594	67,878	69,107	\$448,911,329	\$506.38
Construction	500	2,632	2,587	2,781	\$17,903,172	\$516.44
Trade, Transportation & Utilities	1,524	15,190	15,152	15,548	\$98,788,139	\$496.78
Retail Trade	938	8,983	8,971	9,245	\$43,088,827	\$365.59
Other Trade, Transportation & Utilities	586	6,207	6,181	6,303	\$55,699,312	\$687.69
Financial Activities	534	2,664	2,646	2,661	\$20,120,016	\$582.50
Professional & Business Services	461	2,880	2,881	2,938	\$17,016,672	\$451.42
Education & Health Services	890	11,337	11,439	11,482	\$80,193,636	\$540.20
Leisure & Hospitality	444	5,703	5,799	6,049	\$14,647,255	\$192.59
Local Government	231	9,164	9,268	9,272	\$54,752,836	\$456.08
State Government	115	2,784	3,083	3,069	\$21,637,371	\$558.78
Other	888	15,240	15,023	15,307	\$123,852,232	\$627.20
North Central Workforce Includes these counties: Cleburne, Fulton, Independence, Izard, Jackson, Sharp, Stone, Van Buren, White, and Woodruff						
NORTHEAST WORKFORCE INFORMATION	6,490	93,453	93,729	94,855	\$699,578,751	\$572.41
Natural Resources & Mining	370	1,620	1,623	1,813	\$10,327,660	\$471.38
Construction	503	2,787	2,815	3,065	\$21,837,543	\$581.45
Manufacturing	351	21,529	21,296	21,094	\$218,629,229	\$789.33
Trade, Transportation & Utilities	1,729	17,523	17,477	17,903	\$111,198,958	\$485.06
Wholesale Trade	399	3,565	3,507	3,612	\$32,417,477	\$700.20
Retail Trade	1,035	11,496	11,493	11,731	\$55,834,121	\$371.11
Transportation, Warehousing & Utilities	295	2,462	2,477	2,560	\$22,947,360	\$706.17
Financial Activities	594	3,351	3,353	3,373	\$32,592,814	\$746.39
Professional & Business Services	655	6,695	6,693	6,637	\$43,806,868	\$504.83
Education & Health Services	1,003	13,113	13,220	13,362	\$103,424,416	\$601.26
Leisure & Hospitality	479	7,249	7,307	7,558	\$19,083,885	\$199.15
Local Government	219	11,794	11,979	12,068	\$78,593,559	\$506.04
State Government	107	3,913	4,099	4,106	\$35,217,529	\$670.67
Other	480	3,879	3,867	3,876	\$24,866,290	\$493.75
Northeast Workforce Includes these counties: Clay, Craighead, Greene, Lawrence, Mississippi, Poinsett, and Randolph.						

**TABLE 8. WORKFORCE INFORMATION AREA, SUMMARY
EMPLOYMENT AND TOTAL EARNINGS, BY INDUSTRY
FIRST QUARTER 2007**

NORTH AMERICAN INDUSTRY CLASSIFICATION SYSTEM INDUSTRY GROUP	NUMBER OF EMPLOYING UNITS	EMPLOYMENT JANUARY	EMPLOYMENT FEBRUARY	EMPLOYMENT MARCH	TOTAL EARNINGS JAN. - MAR. 2007	AVERAGE WEEKLY EARNINGS
NORTHWEST WORKFORCE INFORMATION	15,115	231,880	232,475	235,650	\$2,112,011,770	\$696.26
Trade, Transportation & Utilities	3,744	54,807	54,897	56,000	\$479,623,772	\$667.95
Retail Trade	2,024	26,613	26,498	27,310	\$150,033,487	\$430.52
Other Trade, Transportation & Utilities	1,720	28,194	28,399	28,690	\$329,590,285	\$891.85
Education & Health Services	1,747	23,588	23,771	24,023	\$195,643,808	\$632.49
Leisure & Hospitality	1,373	20,407	20,411	21,074	\$64,357,931	\$239.96
Local & State Government	426	28,493	28,941	29,127	\$239,769,824	\$639.22
Other	7,825	104,585	104,455	105,426	\$1,132,616,435	\$831.16
Northwest Workforce Includes these counties: Baxter, Benton, Boone, Carroll, Madison, Marion, Newton, Searcy, and Washington.						
SOUTHEAST WORKFORCE INFORMATION	5,528	75,310	75,782	76,836	\$562,150,005	\$569.16
Natural Resources & Mining	404	2,683	2,834	2,832	\$20,143,264	\$556.77
Construction	379	2,973	2,919	3,216	\$28,081,318	\$711.50
Manufacturing	226	16,940	16,903	17,064	\$168,092,154	\$761.99
Trade, Transportation & Utilities	1,389	13,054	13,024	13,248	\$88,769,539	\$520.91
Retail Trade	840	8,501	8,461	8,616	\$41,397,591	\$373.50
Other Trade, Transportation & Utilities	549	4,553	4,563	4,632	\$47,371,948	\$795.17
Local & State Government	357	16,415	16,788	16,925	\$116,667,283	\$537.09
Other	2,773	23,245	23,314	23,551	\$140,396,447	\$462.12
Southeast Workforce Includes these counties: Arkansas, Ashley, Bradley, Chicot, Cleveland, Desha, Drew, Grant, Jefferson, and Lincoln						
SOUTHWEST WORKFORCE INFORMATION	5,805	84,875	85,682	86,810	\$671,395,846	\$602.01
Natural Resources & Mining	415	2,858	2,843	2,880	\$25,405,186	\$683.22
Manufacturing	295	25,205	25,479	25,594	\$251,606,476	\$761.20
Trade, Transportation & Utilities	1,525	15,061	15,151	15,584	\$106,964,449	\$539.00
Education & Health Services	791	9,313	9,240	9,280	\$56,958,297	\$472.25
Local Government	266	11,085	11,179	11,192	\$71,023,835	\$489.90
State Government	150	3,172	3,384	3,425	\$25,539,793	\$590.50
Other	2,363	18,181	18,406	18,855	\$133,897,810	\$557.33
Southwest Workforce Includes these counties: Calhoun, Columbia, Dallas, Hempstead, Howard, Lafayette, Little River, Miller, Nevada, Ouachita, Sevier, and Union						

**TABLE 8. WORKFORCE INFORMATION AREA, SUMMARY
EMPLOYMENT AND TOTAL EARNINGS, BY INDUSTRY
FIRST QUARTER 2007**

NORTH AMERICAN INDUSTRY CLASSIFICATION SYSTEM INDUSTRY GROUP	NUMBER OF EMPLOYING UNITS	EMPLOYMENT JANUARY	EMPLOYMENT FEBRUARY	EMPLOYMENT MARCH	TOTAL EARNINGS JAN. - MAR. 2007	AVERAGE WEEKLY EARNINGS
WEST CENTRAL WORKFORCE INFORMATION	8,310	108,050	109,156	110,932	\$755,190,986	\$531.10
Natural Resources & Mining	266	2,198	2,432	2,463	\$18,954,424	\$616.68
Construction	927	5,486	5,444	5,684	\$42,733,241	\$593.57
Trade, Transportation & Utilities	2,010	21,698	21,758	22,221	\$159,420,510	\$560.16
Financial Activities	875	4,016	3,976	4,046	\$32,933,703	\$631.34
Education & Health Services	1,155	15,297	15,489	15,549	\$114,177,250	\$568.65
Local Government	228	12,023	12,208	12,345	\$82,283,492	\$519.15
State Government	134	4,970	5,416	5,518	\$38,405,781	\$557.27
Other	2,715	42,362	42,433	43,106	\$266,282,585	\$480.45
West Central Workforce Includes these counties: Clark, Conway, Garland, Hot Spring, Johnson, Montgomery, Perry, Pike, Pope, and Yell						
WESTERN WORKFORCE INFORMATION	6,479	111,083	111,367	112,814	\$866,953,964	\$596.74
Natural Resources & Mining	173	2,701	2,782	2,878	\$36,782,652	\$1,015.23
Trade, Transportation & Utilities	1,655	23,202	23,046	23,435	\$165,348,995	\$547.59
Wholesale Trade	396	3,480	3,501	3,566	\$37,861,647	\$828.42
Other Trade, Transportation & Utilities	1,259	19,722	19,545	19,869	\$127,487,348	\$497.50
Financial Activities	676	3,769	3,783	3,818	\$34,808,748	\$706.49
Professional & Business Services	803	10,400	10,717	11,129	\$91,024,348	\$651.42
Education & Health Services	844	13,938	13,959	14,067	\$120,619,148	\$663.31
Leisure & Hospitality	510	7,997	8,053	8,256	\$22,810,547	\$216.57
Local & State Government	231	12,048	12,301	12,277	\$91,405,379	\$575.92
Other	1,587	37,028	36,726	36,954	\$304,154,147	\$634.00
Western Workforce Includes these counties: Crawford, Franklin, Logan, Polk, Scott, and Sebastian						