

Arkansas Covered Employment & Earnings

Jobs for People. People for Jobs.

DWS
Department of
WORKFORCE**Services**

Fourth Quarter
2006

**COVERED EMPLOYMENT AND EARNINGS
STATE OF ARKANSAS
FOURTH QUARTER 2006**

**MIKE BEEBE, GOVERNOR
STATE OF ARKANSAS**

**ARTEE WILLIAMS, DIRECTOR
DEPARTMENT OF WORKFORCE SERVICES**

**PUBLISHED BY
LABOR MARKET INFORMATION & ANALYSIS
BUREAU OF LABOR STATISTICS PROGRAMS
POST OFFICE BOX 2981
LITTLE ROCK, ARKANSAS 72203-2981
BERNADETTE COLEMAN, BLS PROGRAMS MANAGER
TELEPHONE: (501) 682-3159**

STATE OF ARKANSAS HOME PAGE: <http://www.arkansas.gov>

DEPARTMENT OF WORKFORCE SERVICES HOME PAGE: <http://www.arkansas.gov/esd/>

**INTERNET SITE FOR LABOR MARKET INFORMATION:
<http://www.discover.arkansas.gov>**

RELEASED: JUNE 2008

TABLE OF CONTENTS

Description of Data	1
Industry Classification	1
Definition of Covered Employment and Earnings	2
Federal Government Employment	2
County Classification	2
Significant Developments During Fourth Quarter 2006	3

LIST OF GRAPHS AND TABLES

Graph 1	Total Covered Employment for Selected Years, Arkansas	7
Graph 2	Total Covered Earnings, by Calendar Quarter for Selected Years, Arkansas	8
Table 1	Quarterly Comparison of Covered Employment and Wages, by Industry	5
Table 2	Total Covered Employment in Arkansas, 1999-2006	6
Table 3	Total Covered Earnings, 1999-2006	9
Table 4	Total Taxable Earnings, 1999-2006	10
Table 5	State Summary - Employment and Total Earnings, by Industry, Fourth Quarter 2006	11
Table 6	County Summary - Employment and Total Earnings, by Industry, Fourth Quarter 2006	24
Table 7	Federal Government Employment and Total Earnings in Arkansas, Fourth Quarter 2006	62
Table 8	Workforce Information Area – Employment and Total Earnings, by Industry, Fourth Quarter 2006	63

EMPLOYMENT AND EARNINGS
UNDER THE ARKANSAS EMPLOYMENT SECURITY LAW
FOURTH QUARTER 2006

DESCRIPTION OF DATA

This publication contains covered employment and payroll data by industry and county for the Fourth Quarter 2006. These data are compiled from quarterly contribution and wage reports submitted by employers subject to the Arkansas Employment Security Law. An employing unit is a single physical location where business is conducted, production takes place, or services are provided. Employment data have been tabulated for each month of the quarter by industry under the **North American Industry Classification System** (NAICS) (see "Industry Classification" below) on a statewide, county and workforce area basis. Payroll data represent the total wages paid during the quarter, and are also shown by

industry for the State and by publishable industry groups for each county and workforce area. The tabulation of this data is a joint effort in conjunction with the U.S. Bureau of Labor Statistics. In addition, there are tables included which set out total covered employment by months, quarterly payrolls, and average weekly earnings for the years 1999 through 2006. Data contained in this publication are subject to revision. These revisions will be reflected in the 2006 Annual Covered Employment and Earnings publication. Because of industry code changes between years, substantial employment and wage shifts among industries are anticipated.

INDUSTRY CLASSIFICATION

Previously published industry data **will not** be comparable in all instances with currently published data since industry codes have been revised according to the following Manuals: (a) between January 1, 1958 and December 31, 1967, industry codes were assigned under the 1957 Standard Industrial Classification (SIC) Manual; (b) between January 1, 1968 and December 31, 1974, industry codes were assigned under the 1967 Standard Industrial Classification (SIC) Manual; (c) between January 1, 1975 and December 31, 1987, industry codes were assigned under the 1972 Standard Industrial Classification (SIC) Manual; (d) between January 1, 1988 and December 31, 2000, industry codes were assigned under the 1987 Standard Industrial Classification (SIC) Manual; and (e) since January 1, 2001, industry codes have been assigned under the 2002 North American Industry Classification System (NAICS) Manual. **The NAICS Manual represents a significant change in coding methodology as compared to the**

SIC Manual. One of the most significant changes involves how NAICS treats auxiliary units. Auxiliary units are establishments primarily engaged in performing management or support services for other establishments of the same enterprise. The SIC code for these units was based on the activity of the enterprise served. The NAICS code is based on the actual activities that the establishment performs. Comparisons of many industries **should not be made** between this publication and previous Covered Employment and Earnings publications that were based on SIC. Even though some titles are the same or similar, in nature, NAICS and SIC could differ in the classification of employers. The implementation of NAICS represents a profound change for statistical programs, and will create significant benefits along with transition obstacles for both data collectors and data users. A summary is available on the NAICS home page at <http://www.census.gov/naics>.

DEFINITION OF COVERED EMPLOYMENT AND EARNINGS

Covered Employment is the number of workers employed by employers subject to the Arkansas Employment Security Law who worked or received pay for the payroll period including the 12th of the month. An employer is subject to the law when they employ one or more employees in each of ten days during the current or preceding calendar year.

Currently excluded from coverage is employment covered by the Railroad Unemployment Insurance Act, some domestic service workers, employees of small agricultural establishments, self-employed and unpaid family workers, insurance and real estate

agents who are on commission only, and employees of churches and religious organizations except separately incorporated schools. The payroll information in this publication includes all wages and salaries paid to any covered employees by their employers including bonuses, commissions, and cash values of remuneration received in any medium other than cash. These wages include both taxable and nontaxable wages. Only the first \$10,000 paid to each worker by an employer in the calendar year is taxable under the Arkansas Employment Security Law.

FEDERAL GOVERNMENT EMPLOYMENT

Table 7 on page 62 lists the total number of civilians employed by the Federal Government in Arkansas during the Fourth Quarter 2006. Employment and wage data are set out by industry divisions. These data are obtained from required reports submitted by various

government agencies having employment in the State. Civilian Federal workers are covered by the Unemployment Compensation for Federal Employees (UCFE) program.

COUNTY CLASSIFICATION

Employment and payroll data by county are classified according to the county where the workers are employed. Employers with operations in more than one county are requested to furnish this agency with a breakdown of employment and wages for at least one quarter of each year by the counties in which they operate. Many such employers submit county data with each regular contribution report. **Note:** This information is invaluable in the preparation of monthly employment and payroll data by county.

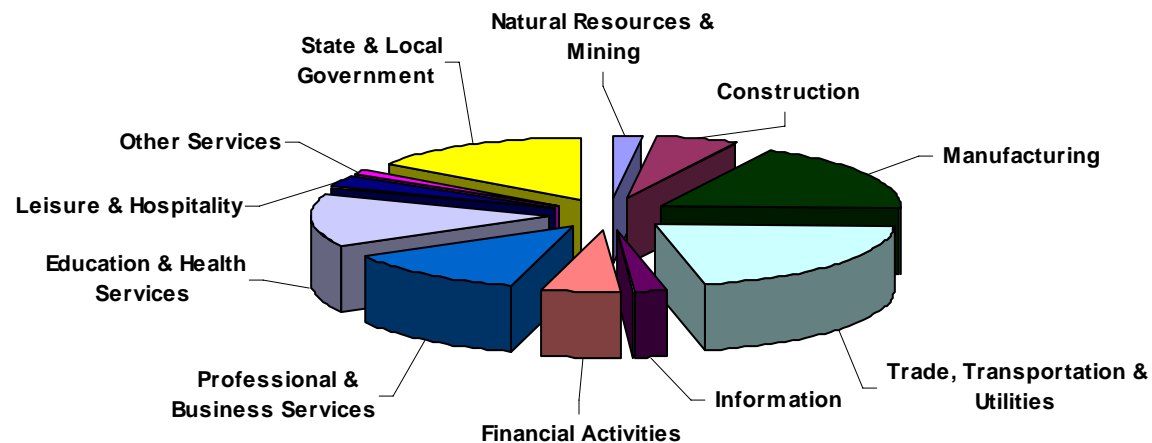
Employment and payroll data for multi - area employers, who do not furnish county data each quarter of the year, are prorated by county on the basis of one quarter of information. The "rest-of-state" table that appears on page 61 of this publication includes data on firms that **did not** provide a county breakdown of employment and payrolls. It also includes sales, and all other type of personnel with no permanent place of work, as well as employment of employers with no established place of business in Arkansas.

SIGNIFICANT DEVELOPMENTS DURING FOURTH QUARTER 2006

AVERAGE EMPLOYMENT CHANGES

Covered employment averaged 1,157,046 during the Fourth Quarter 2006 (see table 1), an increase of 21,794 (1.9%) from the previous quarter and 11,743 (1.0%) above the average recorded one-year ago. This *over-the-year* increase is more significant when used as an economic indicator. This *over-the-year* comparison allows for the disregarding of many seasonal factors that are evident when making an *over-the-quarter* comparison.

Average Covered Employment by NAICS Group

**EMPLOYMENT CHANGES FROM THIRD QUARTER 2006**

Over the quarter gains were recorded in six industry groups while five suffered losses (see Table 1). Employment in State and Local Government rose 27,213 or 17.6% from the previous quarter due to the start of school in local school districts. Trade, Transportation and Utilities gained 3,731 jobs. This boost in employment is primarily found in Retail Trade (3,626 jobs) because of the increase in seasonal workers for the holiday season. Education and Health Services saw a gain of 0.8%. The continuing natural gas boom in Arkansas led to an increase of 347 jobs in Natural Resources and

Mining. Financial Activities (+32) and Information (+12) also reported minimal gains.

Layoffs have led to a decrease of 4,335 jobs in Manufacturing. Leisure & Hospitality lost 3,223 jobs because of the end of the summer travel season. Construction (-1,783), Other Services (-637) and Professional and Business Services (-694) also reported losses.

EMPLOYMENT CHANGES FROM FOURTH QUARTER 2005

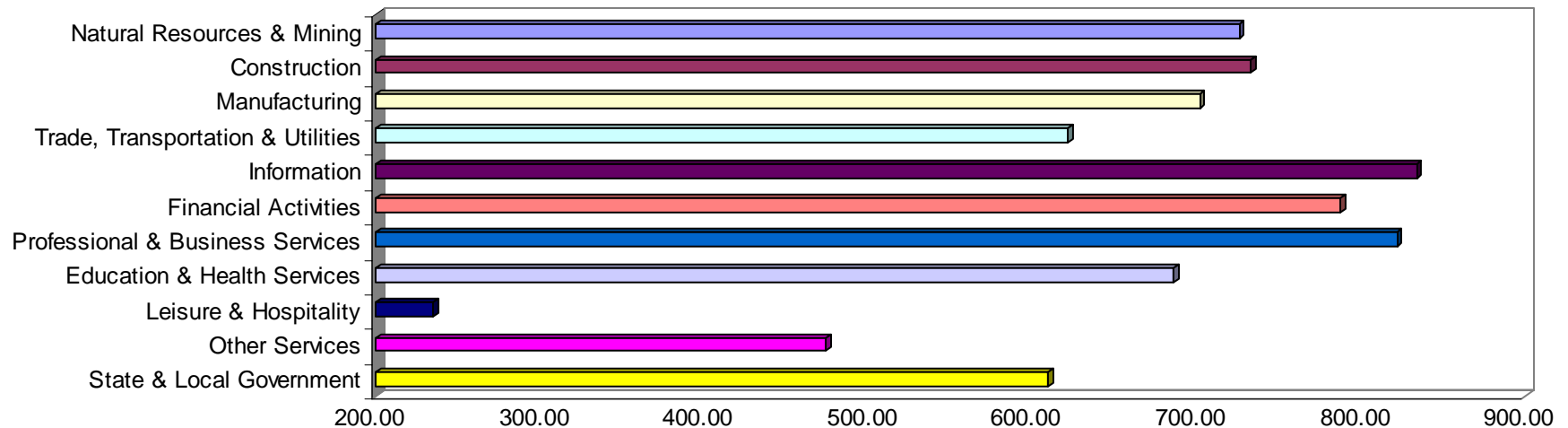
Over-the-year gains were recorded in ten industry groups while one recorded a loss (see table 1). Significant gains were posted in Educational & Health Services (+4,068), Leisure & Hospitality (+3,556), and State & Local Government (+3,436). The only loss occurred in Manufacturing (-6,332).

COVERED WAGES

Wages paid to covered workers totaled \$9,685,672,308 for the Fourth Quarter 2006 (see table 1), for an average weekly wage of \$643.93 (see table 5). Employees in Little River County recorded the highest average weekly wage (\$780.69), and workers in Newton County the lowest (\$373.53) (see table 6).

The Information sector recorded the highest average weekly wage for the State of Arkansas at \$833.80, while the Leisure & Hospitality sector recorded the lowest at \$235.09 for the State of Arkansas (see table 5).

Average Weekly Wages by Industry Group



Note: Because of industry code changes between years, substantial employment and wage shifts among industries are anticipated.

TABLE 1. QUARTERLY COMPARISON OF COVERED EMPLOYMENT AND WAGES, BY INDUSTRY

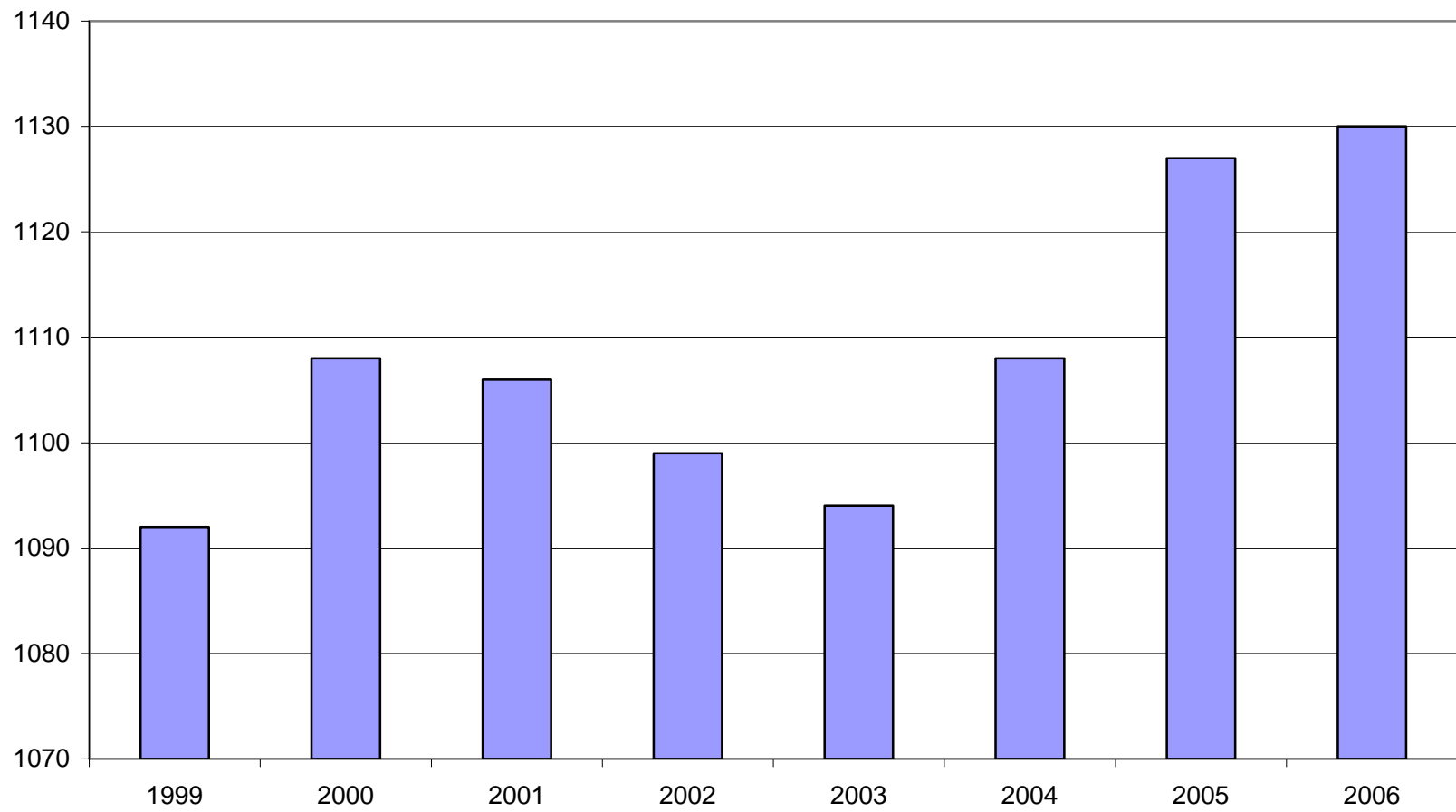
North American Industry Classification System Industry Group	Number of Employing Units	Average Covered Employment		Net Change From:		Total Wages Paid	
		Oct. – Dec. 2006	% of Total	Jul. – Sep. 2006	Oct. – Dec. 2005	Oct. – Dec. 2006	% of Total
Total	81,125	1,157,046	100.0	21,794	11,743	\$9,685,672,308	100.0
Natural Resources and Mining	2,390	19,468	1.7	347	646	183,680,093	1.9
Agriculture, Forestry, Fishing and Hunting	1,998	14,171	1.2	105	-350	112,038,374	1.2
Mining	392	5,297	0.5	241	996	71,641,719	0.7
Construction	8,059	56,757	4.9	-1,783	938	540,506,084	5.6
Manufacturing	3,602	194,737	16.8	-4,335	-6,332	1,776,767,133	18.3
Trade, Transportation, and Utilities	20,951	248,897	21.5	3,731	2,800	2,011,213,726	20.8
Wholesale Trade	6,352	48,158	4.2	-72	383	629,646,467	6.5
Retail Trade	11,253	135,625	11.7	2,626	738	726,110,971	7.5
Transportation and Warehousing	2,986	58,223	5.0	1,177	1,460	543,517,297	5.6
Utilities	360	6,891	0.6	1	218	111,938,991	1.2
Information	1,196	20,048	1.7	12	53	217,310,894	2.2
Financial Activities	8,116	51,583	4.5	32	1,252	528,157,696	5.5
Finance and Insurance	4,758	37,150	3.2	24	612	421,225,419	4.3
Real Estate and Rental and Leasing	3,358	14,433	1.2	8	640	106,932,277	1.1
Professional and Business Services	11,053	114,109	9.9	-694	602	1,219,262,232	12.6
Professional and Technical Services	6,975	37,545	3.2	1,014	1,953	495,157,286	5.1
Management of Companies and Enterprises	511	24,267	2.1	86	618	443,711,418	4.6
Administrative and Waste Services	3,567	52,297	4.5	-1,795	-1,969	280,393,528	2.9
Education and Health Services	10,923	147,407	12.7	1,131	4,068	1,314,640,527	13.6
Educational Services	553	9,407	0.8	626	54	63,172,932	0.7
Health Care and Social Assistance	10,370	138,000	11.9	505	4,015	1,251,467,595	12.9
Leisure and Hospitality	6,151	96,643	8.4	-3,223	3,556	295,352,438	3.0
Arts, Entertainment and Recreation	919	8,657	0.7	-1,722	275	37,700,661	0.4
Accommodation and Food Services	5,232	87,986	7.6	-1,501	3,281	257,651,777	2.7
Other Services	5,484	25,630	2.2	-637	724	157,863,678	1.6
State and Local Government	3,200	181,767	15.7	27,213	3,436	1,440,917,807	14.9
Local Government	2,001	118,093	10.2	25,463	379	881,155,952	9.1
State Government	1,199	63,674	5.5	1,751	3,057	559,761,855	5.8
Nonclassifiable Establishments	0	0	0.0	0	0	0	0.0

Note: Items do not necessarily add to totals because of rounding. Because of industry code changes between years, substantial employment and wage shifts among industries are anticipated.

TABLE 2. TOTAL COVERED EMPLOYMENT IN ARKANSAS

Period	1999	2000	2001	2002	2003	2004	2005	2006
Average	1,092,351	1,108,479	1,106,066	1,098,558	1,094,087	1,108,264	1,126,778	1,130,483
January	1,065,920	1,089,943	1,096,009	1,081,635	1,082,740	1,089,510	1,102,768	1,104,692
February	1,074,315	1,096,113	1,101,616	1,086,793	1,084,880	1,094,626	1,110,577	1,112,453
March	1,084,653	1,109,144	1,112,143	1,098,500	1,092,172	1,105,266	1,122,619	1,124,250
April	1,093,574	1,111,525	1,115,526	1,103,399	1,095,341	1,111,020	1,129,785	1,130,599
May	1,098,539	1,116,760	1,119,815	1,111,998	1,103,099	1,117,144	1,135,567	1,136,212
June	1,101,748	1,121,225	1,119,734	1,112,028	1,099,688	1,117,010	1,136,118	1,136,984
July	1,062,563	1,075,066	1,071,921	1,065,697	1,053,220	1,071,463	1,090,071	1,090,058
August	1,081,260	1,096,848	1,094,160	1,086,011	1,077,775	1,094,871	1,114,098	1,114,403
September	1,108,212	1,123,725	1,115,976	1,113,148	1,105,980	1,122,704	1,144,815	1,144,705
October	1,110,604	1,122,884	1,110,994	1,108,447	1,112,550	1,123,246	1,142,300	1,156,842
November	1,112,003	1,120,620	1,109,012	1,107,611	1,109,712	1,125,061	1,145,667	1,156,051
December	1,114,823	1,117,892	1,105,887	1,107,425	1,111,892	1,127,250	1,146,954	1,158,549

AVERAGE TOTAL COVERED EMPLOYMENT GRAPH 1
In Thousands



TOTAL COVERED EARNINGS BY CALENDAR QUARTER, GRAPH 2
In Thousands

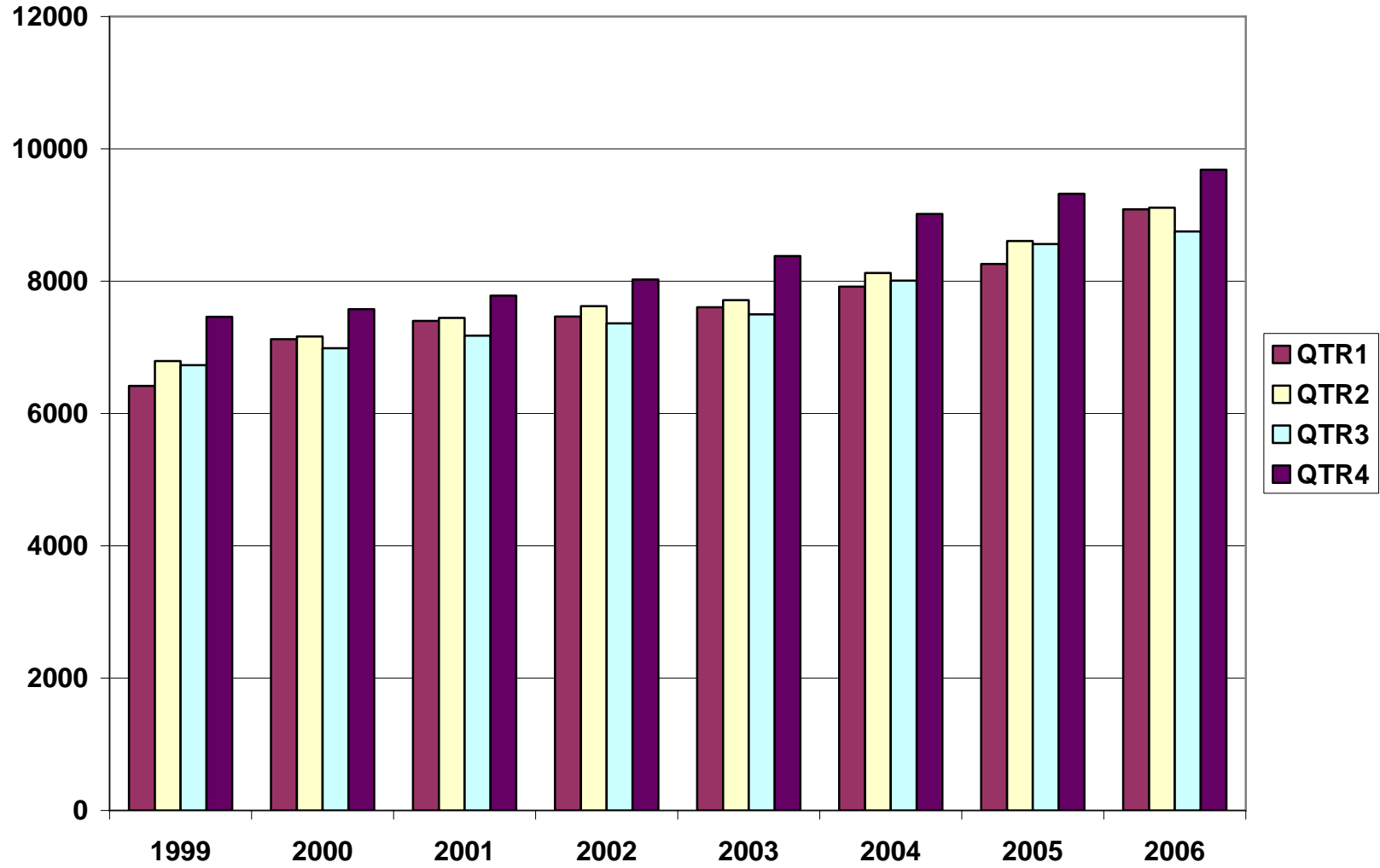


TABLE 3. TOTAL COVERED EARNINGS, 1999- 2006

Period	1999	2000	2001	2002
Total	\$27,407,925,462	\$28,853,716,151	\$29,807,669,666	\$30,472,854,103
January - March	6,418,456,638	7,122,636,896	7,398,887,532	7,465,250,305
April - June	6,791,960,679	7,166,049,182	7,448,023,298	7,621,878,775
July - September	6,733,480,079	6,986,085,106	7,177,293,061	7,361,666,511
October - December	7,464,028,066	7,578,944,967	7,783,465,775	8,024,058,512
Average Weekly Earnings	482.51	500.58	518.26	533.44

Period	2003	2004	2005	2006
Total	\$31,202,576,767	\$33,068,189,304	\$34,753,437,458	\$36,639,776,198
January - March	7,608,130,008	7,918,843,610	8,261,153,981	9,086,373,822
April - June	7,714,813,038	8,122,370,361	8,607,722,353	9,112,835,784
July - September	7,500,204,764	8,010,300,454	8,562,885,196	8,752,570,201
October - December	8,379,428,957	9,016,674,879	9,321,675,928	9,687,996,391
Average Weekly Earnings	548.45	573.80	593.14	623.28

TABLE 4. TOTAL TAXABLE EARNINGS, 1999 - 2006

Period	1999	2000	2001	2002
Total	\$8,807,445,422	\$9,047,924,530	\$9,003,189,480	\$8,887,270,978
January - March	4,203,067,856	4,560,783,991	4,670,296,360	4,668,534,587
April - June	2,325,649,764	2,260,680,255	2,219,485,263	2,162,971,435
July - September	1,267,562,743	1,250,832,297	1,190,098,737	1,158,197,858
October - December	1,011,165,059	975,627,987	923,309,120	897,567,098

Period	2003	2004	2005	2006
Total	\$9,154,938,743	\$9,731,247,501	\$9,991,618,726	\$10,239,377,155
January - March	4,737,918,796	4,931,559,230	5,062,670,306	5,422,414,259
April - June	2,270,519,362	2,451,454,749	2,506,505,721	2,385,187,226
July - September	1,188,681,170	1,318,017,835	1,353,673,932	1,355,673,606
October - December	957,819,415	1,030,215,687	1,068,768,767	1,076,102,064

**TABLE 5. STATEWIDE SUMMARY
EMPLOYMENT AND TOTAL EARNINGS, BY INDUSTRY**

FOURTH QUARTER 2006

NORTH AMERICAN INDUSTRY CLASSIFICATION SYSTEM INDUSTRY GROUPS		NUMBER OF EMPLOYING UNITS	EMPLOYMENT			TOTAL EARNINGS OCTOBER - DECEMBER	AVERAGE WEEKLY EARNINGS
			OCTOBER	NOVEMBER	DECEMBER		
TOTAL, ALL INDUSTRIES		81,125	1,156,725	1,156,046	1,158,366	\$9,685,672,308	\$643.93
NATURAL RESOURCES & MINING		2,390	20,056	19,402	18,946	\$183,680,093	\$725.77
11	AGRICULTURE, FORESTRY, FISHING & HUNTING	1,998	14,832	14,084	13,596	\$112,038,374	\$608.18
111	CROP PRODUCTION	725	4,236	3,796	3,549	\$24,845,477	\$495.08
1111	Oilseed and Grain Farming	424	2,186	1,978	1,880	12,303,048	469.75
1112	Vegetable and Melon Farming	12	119	103	99	482,057	346.55
1113	Fruit and Tree Nut Farming	9	63	61	59	371,467	468.43
1114	Greenhouse & Nursery Production	51	291	287	297	2,047,523	540.01
1119	Other Crop Farming	229	1,577	1,367	1,214	9,641,382	535.10
112	ANIMAL PRODUCTION	258	3,630	3,556	3,519	\$32,669,825	\$704.27
1121	Cattle Ranching and Farming	74	309	301	301	3,013,147	763.27
1122	Hog and Pig Farming	8	145	145	130	1,716,717	943.25
1123	Poultry and Egg Production	84	2,555	2,540	2,540	23,526,504	711.09
1125	Animal Aquaculture	60	535	482	464	3,949,616	615.43
	Other	32	86	88	84	463,841	414.88
113	FORESTRY AND LOGGING	557	2,964	2,935	3,001	\$22,426,081	\$581.49
1131	Timber Tract Operations	45	257	260	259	2,311,390	687.37
1132	Forest Nurseries & Gathering of Forest Products	6	34	34	34	304,954	689.94
1133	Logging	506	2,673	2,641	2,708	19,809,737	569.87
	OTHER	458	4,002	3,797	3,527	\$32,096,991	\$653.98
21	MINING	392	5,224	5,318	5,350	\$71,641,719	\$1,040.32
211	OIL AND GAS EXTRACTION	88	437	472	456	\$7,767,816	\$1,313.24
212	MINING (EXCEPT OIL AND GAS)	105	2,101	2,057	2,040	\$21,433,797	\$798.04
213	SUPPORT ACTIVITIES FOR MINING	199	2,686	2,789	2,854	\$42,440,106	\$1,175.88

**TABLE 5. STATEWIDE SUMMARY
EMPLOYMENT AND TOTAL EARNINGS, BY INDUSTRY**

FOURTH QUARTER 2006

NORTH AMERICAN INDUSTRY CLASSIFICATION SYSTEM INDUSTRY GROUPS		NUMBER OF EMPLOYING UNITS	EMPLOYMENT			TOTAL EARNINGS OCTOBER - DECEMBER	AVERAGE WEEKLY EARNINGS
			OCTOBER	NOVEMBER	DECEMBER		
CONSTRUCTION		8,059	57,445	56,291	56,534	\$540,506,084	\$732.56
236	CONSTRUCTION OF BUILDINGS	2,296	13,196	12,950	13,124	\$143,827,670	\$845.20
2361	Residential Building Construction	1,681	4,628	4,557	4,652	39,510,712	658.95
2362	Nonresidential Building Construction	615	8,568	8,393	8,472	104,316,958	946.53
237	HEAVY & CIVIL ENGINEERING CONSTRUCTION	911	10,998	10,373	10,246	\$108,745,044	\$793.72
2371	Utility System Construction	429	5,162	4,838	4,886	50,451,586	782.12
2372	Land Subdivision	143	544	534	533	7,183,395	1028.99
2373	Highway, Street & Bridge Construction	225	3,791	3,544	3,475	33,164,176	707.98
2379	Other Heavy Construction	114	1,501	1,457	1,352	17,945,887	960.87
238	SPECIALTY TRADE CONTRACTORS	4,852	33,251	32,968	33,164	\$287,933,370	\$668.59
2381	Building Foundation & Exterior Contractors	975	6,642	6,517	6,586	51,991,103	607.64
2382	Building Equipment Contractors	2,128	15,974	15,905	15,975	155,784,293	751.25
2383	Building Finishing Contractors	906	5,202	5,234	5,251	39,439,256	580.19
2389	Other Specialty Trade Contractors	843	5,433	5,312	5,352	40,718,718	583.75
MANUFACTURING		3,602	196,102	193,897	194,211	\$1,776,767,133	\$701.84
311	FOOD MANUFACTURING	326	50,808	50,897	50,855	\$356,136,165	\$538.71
3111	Animal Food Manufacturing	59	1,469	1,455	1,438	14,215,942	752.09
3112	Grain and Oilseed Milling	30	2,360	2,353	2,358	21,557,172	703.54
3114	Fruit, Vegetable & Specialty Food	35	6,930	6,949	6,927	58,391,872	647.65
3115	Dairy Product Manufacturing	13	715	706	706	6,396,125	693.95
3116	Animal Slaughtering & Processing	95	34,014	34,095	34,120	213,358,965	481.63
3118	Bakeries and Tortilla Manufacturing	53	3,339	3,349	3,330	26,438,238	609.02
3119	Other Food Manufacturing	27	1,725	1,733	1,718	14,668,033	653.97
	Other	14	256	257	258	1,109,818	332.18
312	BEVERAGE & TOBACCO PRODUCT MFG.	35	1,251	1,238	1,235	\$11,867,855	\$735.43
313	TEXTILE MILLS	20	424	406	410	\$4,473,624	\$832.56
3132	Fabric Mills	6	331	318	320	3,911,709	931.58
	Other	14	93	88	90	561,915	478.50

**TABLE 5. STATEWIDE SUMMARY
EMPLOYMENT AND TOTAL EARNINGS, BY INDUSTRY**

FOURTH QUARTER 2006

NORTH AMERICAN INDUSTRY CLASSIFICATION SYSTEM INDUSTRY GROUPS		NUMBER OF EMPLOYING UNITS	EMPLOYMENT			TOTAL EARNINGS OCTOBER - DECEMBER	AVERAGE WEEKLY EARNINGS
			OCTOBER	NOVEMBER	DECEMBER		
314	TEXTILE PRODUCT MILLS	55	1,276	1,273	1,257	\$11,572,176	\$701.66
3141	Textile Furnishing Mills	17	34	31	31	130,508	\$313.72
3149	Other Textile Product Mills	38	1,242	1,242	1,226	11,441,668	\$711.69
315	APPAREL MANUFACTURING	45	1,779	1,745	1,708	\$10,383,665	\$458.00
3152	Cut & Sew Apparel Manufacturing	36	840	803	764	4,262,901	408.70
	Other	9	939	942	944	6,120,764	499.99
316	LEATHER & ALLIED PRODUCT MANUFACTURING	20	1,898	1,823	1,814	\$11,066,280	\$461.38
3162	Footwear Manufacturing	10	1,689	1,615	1,603	8,722,290	410.20
3169	Other Leather Product Manufacturing	10	209	208	211	2,343,990	861.34
321	WOOD PRODUCT MANUFACTURING	390	13,286	13,240	12,938	\$107,128,138	\$626.44
3211	Sawmills and Wood Preservation	175	5,949	5,940	5,836	53,187,139	692.47
3212	Veneer & Engineered Wood Products	48	3,181	3,205	3,079	27,384,723	667.68
3219	Other Wood Product Manufacturing	167	4,156	4,095	4,023	26,556,276	499.30
322	PAPER MANUFACTURING	86	11,589	11,543	11,527	\$155,978,035	\$1,038.54
3221	Pulp, Paper & Paperboard Mills	12	4,537	4,507	4,463	80,080,445	1368.19
3222	Converted Paper Product Manufacturing	74	7,052	7,036	7,064	75,897,590	828.05
323	PRINTING & RELATED SUPPORT ACTIVITIES	301	4,589	4,589	4,610	\$46,204,010	\$773.31
324	PETROLEUM AND COAL PRODUCTS MFG.	20	900	898	909	\$13,665,546	\$1,164.98
325	CHEMICAL MANUFACTURING	111	4,611	4,595	4,636	61,931,709	\$1,032.50
3251	Basic Chemical Manufacturing	28	1,929	1,933	1,961	28,552,056	1131.54
3252	Resin, Rubber & Artificial Fibers	6	303	292	289	4,348,226	1135.11
3253	Agricultural Chemical Manufacturing	15	342	339	337	4,664,761	1057.45
3255	Paint, Coating & Adhesive Manufacturing	8	173	167	171	2,370,008	1070.30
3259	Other Chemical Preparation Manufacturing	26	953	956	960	11,145,843	896.52
	Other	28	911	908	918	10,850,815	914.88
326	PLASTICS & RUBBER PRODUCTS MFG.	169	12,825	12,800	12,654	\$125,264,151	\$755.17
3261	Plastics Product Manufacturing	126	7,895	7,888	7,747	68,173,580	668.61
3262	Rubber Product Manufacturing	43	4,930	4,912	4,907	57,090,571	893.26

**TABLE 5. STATEWIDE SUMMARY
EMPLOYMENT AND TOTAL EARNINGS, BY INDUSTRY**

FOURTH QUARTER 2006

NORTH AMERICAN INDUSTRY CLASSIFICATION SYSTEM INDUSTRY GROUPS		NUMBER OF EMPLOYING UNITS	EMPLOYMENT			TOTAL EARNINGS OCTOBER - DECEMBER	AVERAGE WEEKLY EARNINGS
			OCTOBER	NOVEMBER	DECEMBER		
327	NONMETALLIC MINERAL PRODUCT MFG.	248	4,502	4,443	4,438	\$42,329,534	\$729.91
3271	Clay Product & Refractory Manufacturing	16	432	438	441	4,045,397	712.09
3272	Glass & Glass Product Manufacturing	14	403	401	408	3,641,057	693.27
3273	Cement & Concrete Product Manufacturing	177	2,711	2,660	2,648	24,676,798	710.14
3274	Lime & Gypsum Product Manufacturing	4	430	424	430	4,929,206	885.91
3279	Other Nonmetallic Mineral Products	37	526	520	511	5,037,076	746.57
331	PRIMARY METAL MANUFACTURING	68	8,433	8,404	8,373	\$111,242,807	\$1,018.30
3311	Iron & Steel Mills and Ferroalloys	10	2,182	2,194	2,197	47,508,078	1667.95
3312	Purchased Steel Product Manufacturing	14	2,490	2,499	2,540	28,144,557	862.65
3313	Alumina & Aluminum Production	20	1,874	1,833	1,764	19,451,310	820.46
3314	Other Nonferrous Metal Production	10	588	584	577	4,362,922	575.66
3315	Foundries	14	1,299	1,294	1,295	11,775,940	698.95
332	FABRICATED METAL PRODUCT MANUFACTURING	580	17,793	17,822	17,486	\$175,697,459	\$763.56
3321	Forging & Stamping	14	952	971	717	7,827,513	684.22
3322	Cutlery & Hand Tool Manufacturing	16	1,406	1,431	1,406	14,660,693	797.37
3323	Architectural & Structural Metals	205	5,231	5,191	5,187	54,515,770	805.98
3324	Boilers, Tanks & Shipping Containers	20	1,090	1,081	1,078	11,614,392	824.94
3325	Hardware Manufacturing	9	274	273	274	2,066,986	580.99
3326	Spring & Wire Product Manufacturing	15	649	658	616	4,526,580	543.21
3327	Machine Shops & Threaded Products	198	1,846	1,859	1,897	17,136,373	705.92
3328	Coating, Engraving & Heat Treating Metals	38	771	739	726	5,726,557	591.02
3329	Other Fabricated Metal Product Manufacturing	65	5,574	5,619	5,585	57,622,595	792.56
333	MACHINERY MANUFACTURING	252	14,282	14,232	14,209	\$126,386,419	\$682.68
3331	Agri., Construction & Mining Machinery	37	2,571	2,574	2,583	15,641,347	467.07
3333	Commercial & Service Industry Machinery	27	973	960	983	10,125,268	801.30
3334	HVAC & Commercial Refrigeration Equipment	24	5,228	5,185	5,156	46,864,387	694.64
3335	Metalworking Machinery Manufacturing	74	1,302	1,297	1,302	13,775,815	814.93
3339	Other General Purpose Machinery Manufacturing	56	3,220	3,223	3,212	29,706,503	710.03
	Other	34	988	993	973	10,273,099	802.54
334	COMPUTER & ELECTRONIC PRODUCT MFG.	82	5,743	5,691	5,370	\$51,788,350	\$711.21
3343	Audio & Video Equipment Manufacturing	11	1,297	1,282	1,050	10,969,740	697.57
3344	Semiconductors & Electronic Components	25	2,361	2,356	2,355	20,758,435	677.38
3345	Electronic Instrument Manufacturing	30	1,219	1,214	1,227	9,469,290	597.05
	Other	16	866	839	738	10,590,885	1000.43

**TABLE 5. STATEWIDE SUMMARY
EMPLOYMENT AND TOTAL EARNINGS, BY INDUSTRY**

FOURTH QUARTER 2006

NORTH AMERICAN INDUSTRY CLASSIFICATION SYSTEM INDUSTRY GROUPS		NUMBER OF EMPLOYING UNITS	EMPLOYMENT			TOTAL EARNINGS OCTOBER - DECEMBER	AVERAGE WEEKLY EARNINGS
			OCTOBER	NOVEMBER	DECEMBER		
335	ELECTRICAL EQUIPMENT & APPLIANCES	72	11,462	9,583	10,991	\$104,360,707	\$751.76
3353	Electrical Equipment Manufacturing	23	4,903	4,920	4,964	47,100,233	735.06
	Other	49	6,559	4,663	6,027	57,260,474	766.07
336	TRANSPORTATION EQUIPMENT MANUFACTURING	173	16,642	16,721	16,932	\$156,417,094	\$717.69
3362	Motor Vehicle Body & Trailer Manufacturing	42	3,870	3,905	3,866	34,702,794	687.94
3363	Motor Vehicle Parts Manufacturing	60	6,241	6,254	6,415	50,301,603	613.86
3364	Aerospace Product & Parts Manufacturing	26	3,472	3,504	3,552	46,235,281	1013.46
3366	Ship & Boat Building	27	1,675	1,656	1,676	11,536,142	531.69
	Other	18	1,384	1,402	1,423	13,641,274	747.92
337	FURNITURE & RELATED PRODUCT MFG.	275	6,343	6,305	6,158	\$49,522,549	\$607.69
3371	Household & Institutional Furniture	225	4,198	4,178	4,115	33,127,079	612.02
3372	Office Furniture & Fixtures Manufacturing	42	2,007	1,989	1,905	15,507,424	606.45
3379	Other Furniture Related Product Manufacturing	8	138	138	138	888,046	495.01
339	MISCELLANEOUS MANUFACTURING	274	5,666	5,649	5,701	\$43,350,860	\$587.92
3391	Medical Equipment & Supplies Manufacturing	99	2,634	2,628	2,690	21,072,923	611.54
3399	Other Miscellaneous Manufacturing	175	3,032	3,021	3,011	22,277,937	567.20
TRADE, TRANSPORTATION & UTILITIES		20,951	246,099	249,070	251,522	\$2,011,213,726	\$621.58
42	WHOLESALE TRADE	6,352	48,025	48,029	48,421	\$629,646,467	\$1,005.73
423	MERCHANT WHOLESALERS, DURABLE GOODS	2,108	22,262	22,315	22,501	\$262,092,203	\$901.68
4231	Motor Vehicle & Part Merchant Wholesalers	234	2,669	2,661	2,657	25,680,579	741.99
4232	Furniture & Furnishing Merchant Wholesalers	70	450	442	441	4,907,147	849.53
4233	Lumber & Supply Merchant Wholesalers	181	1,846	1,891	1,893	19,442,817	796.95
4234	Commercial Goods Merchant Wholesalers	246	2,620	2,619	2,648	40,004,616	1170.51
4235	Metal & Mineral Merchant Wholesalers	49	816	831	841	9,179,698	851.44
4236	Electric Goods Merchant Wholesalers	175	2,180	2,174	2,196	29,058,813	1023.80
4237	Hardware & Plumbing Merchant Wholesalers	225	2,518	2,537	2,552	28,888,260	876.37
4238	Machinery & Supply Merchant Wholesalers	688	7,261	7,235	7,291	84,074,398	890.52
4239	Misc. Durable Goods Merchant Wholesalers	240	1,902	1,925	1,982	20,855,875	828.52

**TABLE 5. STATEWIDE SUMMARY
EMPLOYMENT AND TOTAL EARNINGS, BY INDUSTRY**

FOURTH QUARTER 2006

NORTH AMERICAN INDUSTRY CLASSIFICATION SYSTEM INDUSTRY GROUPS		NUMBER OF EMPLOYING UNITS	EMPLOYMENT			TOTAL EARNINGS OCTOBER - DECEMBER	AVERAGE WEEKLY EARNINGS
			OCTOBER	NOVEMBER	DECEMBER		
424	MERCHANT WHOLESALERS, NONDURABLE GOODS	1,293	16,478	16,388	16,403	\$176,135,433	\$824.99
4241	Paper & Paper Product Merchant Wholesalers	72	1,151	1,162	1,171	12,322,060	816.17
4242	Druggists' Goods Merchant Wholesalers	58	1,216	1,217	1,234	14,572,103	917.04
4243	Apparel & Piece Goods Merchant Wholesalers	41	455	479	492	4,720,958	763.99
4244	Grocery Product Merchant Wholesalers	341	5,252	5,232	5,254	59,988,564	879.62
4245	Farm Product Merchant Wholesalers	76	928	914	871	6,566,940	558.59
4246	Chemical Merchant Wholesalers	81	477	479	483	6,134,444	983.77
4247	Petroleum Merchant Wholesalers	155	1,531	1,527	1,539	18,873,204	947.43
4248	Alcoholic Beverage Merchant Wholesalers	38	1,112	1,109	1,109	13,345,256	924.83
4249	Misc. Nondurable Goods Merchant Wholesalers	431	4,356	4,269	4,250	39,611,904	710.00
425	ELECTRONIC MARKETS & AGENTS & BROKERS	2,951	9,285	9,326	9,517	\$191,418,831	\$1,570.45
44-45	RETAIL TRADE	11,253	133,227	136,050	137,598	\$726,110,971	\$411.83
441	MOTOR VEHICLE & PARTS DEALERS	1,727	17,901	17,812	17,885	\$154,406,215	\$664.80
4411	Automobile Dealers	743	10,652	10,606	10,691	104,459,616	754.52
4412	Other Motor Vehicle Dealers	196	1,580	1,558	1,533	13,526,226	668.26
4413	Automotive Parts, Accessories & Tire Stores	788	5,669	5,648	5,661	36,420,373	495.03
442	FURNITURE & HOME FURNISHINGS STORES	601	4,122	4,236	4,246	\$28,203,129	\$516.38
4421	Furniture Stores	322	2,543	2,568	2,585	17,447,694	523.18
4422	Home Furnishings Stores	279	1,579	1,668	1,661	10,755,435	505.71
443	ELECTRONICS & APPLIANCE STORES	446	3,034	3,325	3,341	\$19,741,784	\$469.67
444	BUILDING MATERIAL & GARDEN SUPPLY STORES	846	11,071	10,968	10,975	\$69,529,679	\$486.02
4441	Building Material & Supplies Dealers	673	10,217	10,129	10,171	64,545,826	488.09
4442	Lawn & Garden Equipment & Supplies Stores	173	854	839	804	4,983,853	460.60
445	FOOD & BEVERAGE STORES	1,099	18,341	18,633	18,691	\$76,039,478	\$315.24
4451	Grocery Stores	623	15,909	16,130	16,145	63,229,101	302.83
4452	Specialty Food Stores	165	957	1,004	1,050	6,297,883	482.68
4453	Beer, Wine & Liquor Stores	311	1,475	1,499	1,496	6,512,494	336.22
446	HEALTH & PERSONAL CARE STORES	810	7,033	7,136	7,336	\$52,812,542	\$566.73
447	GASOLINE STATIONS	1,593	12,453	12,338	12,229	\$44,780,360	\$279.14
44711	Gasoline Stations with Convenience Stores	1,433	11,211	11,103	11,022	38,635,837	267.46
44719	Other Gasoline Stations	160	1,242	1,235	1,207	6,144,523	384.90

**TABLE 5. STATEWIDE SUMMARY
EMPLOYMENT AND TOTAL EARNINGS, BY INDUSTRY**

FOURTH QUARTER 2006

NORTH AMERICAN INDUSTRY CLASSIFICATION SYSTEM INDUSTRY GROUPS		NUMBER OF EMPLOYING UNITS	EMPLOYMENT			TOTAL EARNINGS OCTOBER - DECEMBER	AVERAGE WEEKLY EARNINGS
			OCTOBER	NOVEMBER	DECEMBER		
448	CLOTHING & CLOTHING ACCESSORIES STORES	1,099	9,278	10,399	10,640	\$33,957,472	\$258.48
4481	Clothing Stores	742	7,136	8,108	8,248	22,699,048	222.98
4482	Shoe Stores	186	1,188	1,242	1,281	4,650,893	289.22
4483	Jewelry, Luggage & Leather Goods Stores	171	954	1,049	1,111	6,607,531	489.66
451	SPORTING GOODS, HOBBY, BOOK & MUSIC STORES	581	4,586	4,902	5,189	\$18,461,853	\$290.28
4511	Sporting Goods & Musical Instrument Stores	424	3,209	3,444	3,585	14,027,163	316.18
4512	Book, Periodical & Music Stores	157	1,377	1,458	1,604	4,434,690	230.55
452	GENERAL MERCHANDISE STORES	714	36,894	37,627	38,165	\$180,273,005	\$369.18
453	MISCELLANEOUS STORE RETAILERS	1,411	6,597	6,720	6,933	\$33,311,089	\$379.61
4531	Florists	265	978	980	1,024	3,793,029	293.53
4532	Office Supplies, Stationery & Gift Stores	385	2,460	2,538	2,636	12,570,541	380.00
4533	Used Merchandise Stores	218	763	791	811	3,963,399	386.74
4539	Other Miscellaneous Store Retailers	543	2,396	2,411	2,462	12,984,120	412.21
454	NONSTORE RETAILERS	326	1,917	1,954	1,968	\$14,594,365	\$576.80
4541	Electronic Shopping & Mail -Order Houses	69	373	399	417	4,056,774	787.37
4542	Vending Machine Operators	80	684	689	679	4,003,196	450.20
4543	Direct Selling Establishments	177	860	866	872	6,534,395	580.42
48-49	TRANSPORTATION & WAREHOUSING	2,986	57,970	58,109	58,590	\$543,517,297	\$718.08
481	AIR TRANSPORTATION	49	926	928	903	\$11,783,492	\$986.31
484	TRUCK TRANSPORTATION	1,996	36,506	36,831	36,907	\$350,133,303	\$732.92
4841	General Freight Trucking	1,269	31,387	31,733	31,722	302,578,390	736.23
4842	Specialized Freight Trucking	727	5,119	5,098	5,185	47,554,913	712.52
485	TRANSIT & GROUND PASSENGER TRANS.	58	1,100	1,106	1,102	\$4,776,745	\$333.23
4853	Taxi & Limousine Service	18	211	222	218	784,862	278.22
4854	School & Employee Bus Transportation	8	469	459	454	2,053,325	342.87
4855	Charter Bus Industry Service	9	91	89	91	426,326	363.04
4859	Other Ground Passenger Transportation	17	224	231	239	1,034,313	343.93
	Other	6	105	105	100	477,919	355.77
486	PIPELINE TRANSPORTATION	66	914	903	908	\$12,004,908	\$1,016.65

**TABLE 5. STATEWIDE SUMMARY
EMPLOYMENT AND TOTAL EARNINGS, BY INDUSTRY**

FOURTH QUARTER 2006

NORTH AMERICAN INDUSTRY CLASSIFICATION SYSTEM INDUSTRY GROUPS		NUMBER OF EMPLOYING UNITS	EMPLOYMENT			TOTAL EARNINGS OCTOBER - DECEMBER	AVERAGE WEEKLY EARNINGS
			OCTOBER	NOVEMBER	DECEMBER		
488	SUPPORT ACTIVITIES FOR TRANSPORTATION	432	4,990	5,009	5,051	\$52,190,079	\$800.26
4881	Support Activities for Air Transportation	108	1,670	1,689	1,714	15,312,682	696.57
4882	Support Activities for Rail Transportation	31	399	408	414	3,713,853	701.92
4883	Support Activities for Water Transportation	29	695	671	657	7,625,464	869.86
4884	Support Activities for Road Transportation	106	507	515	531	3,156,867	469.10
4885	Freight Transportation Arrangement	132	1,560	1,564	1,563	21,179,721	1042.81
4889	Other Support Activities for Transportation	26	159	162	172	1,201,492	562.41
492	COURIERS & MESSENGERS	146	3,267	3,350	3,790	\$32,668,237	\$724.40
4921	Couriers	88	3,002	3,086	3,541	31,009,298	743.17
4922	Local Messengers & Local Delivery	58	265	264	249	1,658,939	492.07
493	WAREHOUSING & STORAGE	213	10,018	9,756	9,709	\$77,893,482	\$609.69
	OTHER	26	249	226	220	\$2,067,051	\$686.35
22	UTILITIES	360	6,877	6,882	6,913	\$111,938,991	\$1,249.62
2211	Power Generation & Supply	159	5,029	5,033	5,050	88,782,016	1355.75
2212	Natural Gas Distribution	35	1,018	1,020	1,036	17,098,624	1283.62
2213	Water, Sewage and Other Systems	166	830	829	827	6,058,351	562.38
INFORMATION		1,196	20,008	20,043	20,094	\$217,310,894	\$833.80
511	PUBLISHING INDUSTRIES, EXCEPT INTERNET	245	6,394	6,366	6,353	\$51,317,735	\$619.61
5111	Newspaper, Book & Directory Publishers	217	6,126	6,088	6,076	47,520,872	599.58
5112	Software Publishers	28	268	278	277	3,796,863	1064.64
512	MOTION PICTURE & SOUND RECORDING INDUSTRY	137	1,153	1,171	1,184	\$5,365,053	\$352.93
5121	Motion Picture & Video Industries	122	1,116	1,135	1,148	4,929,930	334.71
5122	Sound Recording Industries	15	37	36	36	435,123	921.22
515	BROADCASTING, EXCEPT INTERNET	144	2,080	2,075	2,077	\$17,997,308	\$666.44
5151	Radio & Television Broadcasting	135	2,045	2,040	2,041	17,781,999	669.86
5152	Cable & Other Subscription Programming	9	35	35	36	215,309	468.74
517	TELECOMMUNICATIONS	478	8,982	9,025	9,065	\$123,274,095	\$1,050.82
5171	Wired Telecommunications Carriers	217	3,164	3,170	3,165	52,911,544	1285.44
5172	Wireless Telecommunications Carriers	117	4,037	4,065	4,101	53,201,596	1006.09
5175	Cable & Other Program Distribution	78	1,302	1,304	1,307	11,811,706	696.60
	Other	66	479	486	492	5,349,249	847.25

**TABLE 5. STATEWIDE SUMMARY
EMPLOYMENT AND TOTAL EARNINGS, BY INDUSTRY**

FOURTH QUARTER 2006

NORTH AMERICAN INDUSTRY CLASSIFICATION SYSTEM INDUSTRY GROUPS		NUMBER OF EMPLOYING UNITS	EMPLOYMENT			TOTAL EARNINGS OCTOBER - DECEMBER	AVERAGE WEEKLY EARNINGS
			OCTOBER	NOVEMBER	DECEMBER		
518	ISPS, SEARCH PORTALS, & DATA PROCESSING	154	1,101	1,104	1,112	\$16,794,989	\$1,168.46
5181	ISPs, & Web Search Portals	64	141	152	150	1,767,802	920.89
5182	Data Processing & Related Services	90	960	952	962	15,027,187	1206.62
	OTHER	38	298	302	303	\$2,561,714	\$654.67
FINANCIAL ACTIVITIES		8,116	51,350	51,575	51,824	\$528,157,696	\$787.61
52	FINANCE & INSURANCE	4,758	37,028	37,142	37,280	\$421,225,419	\$872.19
522	CREDIT INTERMEDIATION & RELATED ACTIVITIES	2,032	22,013	22,111	22,170	\$214,180,553	\$745.56
5221	Depository Credit Intermediation	1,326	18,306	18,375	18,404	171,494,255	718.45
5222	Nondepository Credit Intermediation	392	2,558	2,576	2,599	33,129,551	988.66
5223	Activities Related to Credit Intermediation	314	1,149	1,160	1,167	9,556,747	634.47
523	FINANCIAL INVESTMENT & RELATED ACTIVITIES	580	3,091	3,079	3,091	\$63,683,433	\$1,586.89
5231	Security & Commodity Investment Activities	322	2,287	2,297	2,300	48,864,433	1638.06
5239	Other Financial Investment Activities	258	804	782	791	14,819,000	1438.69
524	INSURANCE CARRIERS & RELATED ACTIVITIES	2,106	11,488	11,513	11,576	\$138,811,287	\$926.44
5241	Insurance Carriers	399	4,763	4,782	4,785	63,660,676	1025.19
5242	Insurance Agencies, Brokerages & Support	1,707	6,725	6,731	6,791	75,150,611	856.54
	OTHER	40	436	439	443	\$4,550,146	\$796.69
53	REAL ESTATE & RENTAL & LEASING	3,358	14,322	14,433	14,544	\$106,932,277	\$569.91
531	REAL ESTATE	2,548	9,063	9,142	9,261	\$70,746,721	\$594.41
5311	Lessors of Real Estate	1,034	4,357	4,409	4,482	30,511,985	531.49
5312	Offices of Real Estate Agents & Brokers	902	2,289	2,287	2,319	21,155,088	708.04
5313	Activities Related to Real Estate	612	2,417	2,446	2,460	19,079,648	601.26
532	RENTAL & LEASING SERVICES	785	5,175	5,209	5,201	\$34,629,002	\$512.76
5321	Automotive Equipment Rental & Leasing	127	1,003	1,024	1,020	7,027,044	532.20
5322	Consumer Goods Rental	477	3,104	3,108	3,086	16,311,905	404.85
5323	General Rental Centers	35	247	252	257	2,099,955	641.01
5324	Machinery & Equipment Rental & Leasing	146	821	825	838	9,190,098	853.78
533	LESSORS OF NONFINANCIAL INTANGIBLE ASSETS	25	84	82	82	\$1,556,554	\$1,448.41

**TABLE 5. STATEWIDE SUMMARY
EMPLOYMENT AND TOTAL EARNINGS, BY INDUSTRY**

FOURTH QUARTER 2006

NORTH AMERICAN INDUSTRY CLASSIFICATION SYSTEM INDUSTRY GROUPS		NUMBER OF EMPLOYING UNITS	EMPLOYMENT			TOTAL EARNINGS OCTOBER - DECEMBER	AVERAGE WEEKLY EARNINGS
			OCTOBER	NOVEMBER	DECEMBER		
PROFESSIONAL & BUSINESS SERVICES		11,053	114,536	114,019	113,773	\$1,219,262,232	\$821.93
54	PROFESSIONAL & TECHNICAL SERVICES	6,975	37,014	37,361	38,260	\$495,157,286	\$1,014.49
5411	Legal Services	1,669	6,657	6,663	6,738	103,303,466	1188.52
5412	Accounting & Bookkeeping Services	1,211	4,606	4,814	5,289	50,669,013	794.95
5413	Architectural & Engineering Services	952	6,610	6,651	6,707	92,665,130	1070.93
5414	Specialized Design Services	158	467	467	489	4,359,978	707.06
5415	Computer Systems Design & Related Services	852	7,710	7,742	7,809	133,479,143	1324.23
5416	Management & Technical Consulting Services	1,115	3,762	3,835	3,920	48,274,517	967.29
5417	Scientific Research & Development Services	113	1,121	1,131	1,159	15,368,734	1039.76
5418	Advertising & Related Services	318	2,118	2,145	2,111	24,388,345	882.97
5419	Other Professional & Technical Services	587	3,963	3,913	4,038	22,648,960	438.70
55	MANAGEMENT OF COMPANIES & ENTERPRISES	511	24,242	24,263	24,296	\$443,711,418	\$1,406.50
56	ADMINISTRATIVE & WASTE SERVICES	3,567	53,280	52,395	51,217	\$280,393,528	\$412.43
561	ADMINISTRATIVE & SUPPORT SERVICES	3,362	51,004	50,099	48,901	\$257,733,074	\$396.50
5611	Office Administrative Services	371	1,302	1,329	1,382	19,736,281	1134.94
5612	Facilities Support Services	16	141	143	150	1,193,657	634.70
5613	Employment Services	660	26,233	25,158	24,029	112,543,759	344.36
5614	Business Support Services	374	5,294	5,527	5,377	27,565,740	392.72
5615	Travel Arrangement & Reservation Services	103	426	423	427	2,854,163	516.19
5616	Investigation & Security Services	245	4,488	4,497	4,517	27,187,736	464.68
5617	Services to Buildings & Dwellings	1,311	11,633	11,559	11,520	54,476,184	362.16
5619	Other Support Services	282	1,487	1,463	1,499	12,175,554	631.54
562	WASTE MANAGEMENT & REMEDIATION SERVICES	205	2,276	2,296	2,316	\$22,660,454	\$759.20
5621	Waste Collection Services	97	1,058	1,073	1,077	10,182,154	732.46
5622	Waste Treatment & Disposal Services	39	673	682	680	7,962,968	903.00
5629	Remediation & Other Waste Services	69	545	541	559	4,515,332	633.43

**TABLE 5. STATEWIDE SUMMARY
EMPLOYMENT AND TOTAL EARNINGS, BY INDUSTRY**

FOURTH QUARTER 2006

NORTH AMERICAN INDUSTRY CLASSIFICATION SYSTEM INDUSTRY GROUPS		NUMBER OF EMPLOYING UNITS	EMPLOYMENT			TOTAL EARNINGS OCTOBER - DECEMBER	AVERAGE WEEKLY EARNINGS
			OCTOBER	NOVEMBER	DECEMBER		
EDUCATION & HEALTH SERVICES		10,923	147,135	147,342	147,744	\$1,314,640,527	\$686.03
61	EDUCATIONAL SERVICES	553	9,399	9,422	9,400	\$63,172,932	\$516.58
6111	Elementary & Secondary Schools	78	3,298	3,309	3,325	17,608,440	409.13
6112	Junior Colleges	7	256	257	275	1,859,475	544.56
6113	Colleges & Universities	25	3,308	3,308	3,240	24,869,601	582.30
6114	Business, Computer, & Management Training	45	165	170	167	3,542,087	1628.30
6115	Technical & Trade Schools	99	744	738	742	7,497,206	777.93
6116	Other Schools & Instruction	210	1,368	1,404	1,415	5,444,641	300.08
6117	Educational Support Services	89	260	236	236	2,351,482	741.32
62	HEALTH CARE & SOCIAL ASSISTANCE	10,370	137,736	137,920	138,344	\$1,251,467,595	\$697.59
621	AMBULATORY HEALTH CARE SERVICES	4,826	42,409	42,622	42,882	\$607,228,242	\$1,095.51
6211	Offices of Physicians	2,176	20,649	20,683	20,825	402,758,509	1495.31
6212	Offices of Dentists	916	6,020	6,044	6,125	69,054,320	876.11
6213	Offices of Other Health Practitioners	1,140	5,507	5,566	5,615	46,140,150	638.05
6214	Outpatient Care Centers	215	3,526	3,561	3,550	34,185,583	741.65
6215	Medical & Diagnostic Laboratories	97	803	816	807	12,078,710	1148.97
6216	Home Health Care Services	137	3,717	3,763	3,761	26,634,972	546.80
6219	Other Ambulatory Health Care Services	145	2,187	2,189	2,199	16,375,998	574.76
622	HOSPITALS	107	41,760	41,623	41,766	\$393,972,180	\$726.47
6221	General Medical & Surgical Hospitals	77	38,465	38,347	38,441	362,786,982	726.40
6222	Psychiatric & Substance Abuse Hospitals	10	1,542	1,516	1,515	13,081,810	660.15
6223	Other Hospitals	20	1,753	1,760	1,810	18,103,388	784.84
623	NURSING & RESIDENTIAL CARE FACILITIES	503	27,154	27,208	27,256	\$137,750,041	\$389.48
6231	Nursing Care Facilities	241	20,379	20,437	20,473	102,660,689	386.54
6232	Residential Mental Health Facilities	124	3,070	3,070	3,096	16,248,732	405.99
6233	Community Care Facilities for the Elderly	92	2,225	2,233	2,220	10,459,309	361.44
6239	Other Residential Care Facilities	46	1,480	1,468	1,467	8,381,311	438.09
624	SOCIAL ASSISTANCE	4,934	26,413	26,467	26,440	\$112,517,132	\$327.35
6241	Individual & Family Services	3,784	13,510	13,541	13,537	60,273,393	342.69
6242	Emergency & Other Relief Services	121	874	852	900	4,512,421	396.55
6243	Vocational Rehabilitation Services	129	3,423	3,395	3,394	16,517,789	373.27
6244	Child Day Care Services	900	8,606	8,679	8,609	31,213,529	278.18

**TABLE 5. STATEWIDE SUMMARY
EMPLOYMENT AND TOTAL EARNINGS, BY INDUSTRY**

FOURTH QUARTER 2006

NORTH AMERICAN INDUSTRY CLASSIFICATION SYSTEM INDUSTRY GROUPS		NUMBER OF EMPLOYING UNITS	EMPLOYMENT			TOTAL EARNINGS OCTOBER - DECEMBER	AVERAGE WEEKLY EARNINGS
			OCTOBER	NOVEMBER	DECEMBER		
LEISURE & HOSPITALITY		6,151	97,275	96,624	96,031	\$295,352,438	\$235.09
71	ARTS, ENTERTAINMENT & RECREATION	919	8,983	8,420	8,569	\$37,700,661	\$334.98
711	PERFORMING ARTS & SPECTATOR SPORTS	203	2,026	1,880	2,142	\$11,891,057	\$453.72
7111	Performing Arts Companies	35	611	437	398	1,914,866	305.60
7112	Spectator Sports	54	769	896	1,028	4,430,583	379.67
7113	Performing Arts & Sports Promoters	44	507	405	579	4,338,792	671.54
7114	Agents & Managers for Public Figures	11	19	18	18	153,898	645.73
7115	Independent Artists, Writers & Performers	59	120	124	119	1,052,918	669.37
712	MUSEUMS, PARKS & HISTORICAL SITES	47	220	214	218	\$1,013,099	\$358.58
713	GAMBLING, RECREATION & AMUSEMENT INDUSTRY	669	6,737	6,326	6,209	\$24,796,505	\$296.92
7139	Other Amusement & Recreation Industries	628	6,260	6,082	5,969	23,833,341	300.37
	Other	41	477	244	240	963,164	231.29
72	ACCOMMODATION & FOOD SERVICES	5,232	88,292	88,204	87,462	\$257,651,777	\$225.26
721	ACCOMMODATION	827	11,120	10,928	10,502	\$40,326,555	\$285.90
7211	Traveler Accommodation	750	10,810	10,630	10,203	38,742,666	282.55
7212	RV Parks & Recreational Camps	58	240	223	221	1,210,106	408.27
7213	Rooming & Boarding Houses	19	70	75	78	373,783	386.81
722	FOOD SERVICES & DRINKING PLACES	4,405	77,172	77,276	76,960	\$217,325,222	\$216.73
7221	Full -Service Restaurants	1,963	33,911	34,158	34,331	102,891,639	231.88
7222	Limited-Service Eating Places	2,139	40,143	40,044	39,574	104,203,891	200.79
7223	Special Food Services	157	2,240	2,223	2,206	7,736,039	267.69
7224	Drinking Places, Alcoholic Beverages	146	878	851	849	2,493,653	223.22
OTHER SERVICES		5,484	25,656	25,555	25,678	\$157,863,678	\$473.80
811	REPAIR & MAINTENANCE	2,214	9,664	9,621	9,601	\$69,827,397	\$557.85
8111	Automotive Repair & Maintenance	1,531	6,848	6,824	6,833	45,730,947	514.67
8112	Electronic Equipment Repair & Maintenance	161	686	694	688	6,439,622	718.60
8113	Commercial Machinery Repair & Maintenance	340	1,594	1,577	1,543	14,208,116	695.54
8114	Household Goods Repair & Maintenance	182	536	526	537	3,448,712	497.72

**TABLE 5. STATEWIDE SUMMARY
EMPLOYMENT AND TOTAL EARNINGS, BY INDUSTRY**

FOURTH QUARTER 2006

NORTH AMERICAN INDUSTRY CLASSIFICATION SYSTEM INDUSTRY GROUPS		NUMBER OF EMPLOYING UNITS	EMPLOYMENT			TOTAL EARNINGS OCTOBER - DECEMBER	AVERAGE WEEKLY EARNINGS
			OCTOBER	NOVEMBER	DECEMBER		
812	PERSONAL & LAUNDRY SERVICES	1,319	8,154	8,105	8,230	\$41,988,143	\$395.67
8121	Personal Care Services	565	2,546	2,523	2,569	9,984,530	301.67
8122	Death Care Services	246	1,668	1,646	1,656	11,677,879	542.23
8123	Drycleaning & Laundry Services	336	3,209	3,185	3,224	16,114,594	386.65
8129	Other Personal Services	172	731	751	781	4,211,140	429.43
813	MEMBERSHIP ASSOCIATIONS & ORGANIZATIONS	1,015	6,408	6,421	6,446	\$40,254,683	\$481.95
8131	Religious Organizations	40	218	221	222	1,300,670	454.09
8132	Grantmaking & Giving Services	95	444	445	441	4,291,266	744.58
8133	Social Advocacy Organizations	148	1,976	2,048	2,058	11,834,902	449.05
8134	Civic & Social Organizations	219	1,508	1,498	1,492	5,186,012	266.07
8139	Professional & Similar Organizations	513	2,262	2,209	2,233	17,641,833	607.28
814	PRIVATE HOUSEHOLDS	936	1,430	1,408	1,401	\$5,793,455	\$315.39
	LOCAL GOVERNMENT	2,001	117,508	118,298	118,472	\$881,155,952	\$573.97
	STATE GOVERNMENT	1,199	63,555	63,930	63,537	\$559,761,855	\$676.24
	NONCLASSIFIABLE ESTABLISHMENTS	0	0	0	0	\$0	

**TABLE 6. COUNTY SUMMARY
EMPLOYMENT AND TOTAL EARNINGS, BY INDUSTRY
FOURTH QUARTER 2006**

NORTH AMERICAN INDUSTRY CLASSIFICATION SYSTEM INDUSTRY GROUP	NUMBER OF EMPLOYING UNITS	EMPLOYMENT			TOTAL EARNINGS	AVERAGE
		OCTOBER	NOVEMBER	DECEMBER	OCTOBER - DECEMBER	WEEKLY EARNINGS
ARKANSAS COUNTY - TOTAL	681	9,868	9,793	9,849	\$75,673,944	\$591.77
Natural Resources & Mining	43	220	217	202	1,946,712	703.04
Construction	53	321	307	297	2,834,545	707.16
Manufacturing	32	3,413	3,361	3,373	28,578,077	649.94
Trade, Transportation & Utilities	200	2,133	2,108	2,119	17,110,389	620.84
Wholesale Trade	46	436	408	407	5,187,810	956.98
Retail Trade	101	1,090	1,103	1,128	5,705,569	396.47
Transportation, Warehousing & Utilities	53	607	597	584	6,217,010	802.40
Information	10	95	96	102	787,580	620.30
Financial Activities	42	319	317	322	3,493,308	841.49
Professional & Business Services	54	398	386	397	4,607,698	900.35
Education & Health Services	91	1,212	1,213	1,224	6,973,740	441.03
Leisure & Hospitality	59	516	542	534	1,374,000	199.17
Other Services	49	132	130	131	741,257	435.27
Local Government	32	876	883	918	5,862,940	505.41
State Government	16	233	233	230	1,363,698	452.15
ASHLEY COUNTY - TOTAL	541	8,285	8,280	8,099	\$76,687,267	\$717.80
Natural Resources & Mining	62	510	528	475	3,741,364	570.65
Construction	46	642	601	619	4,035,140	500.10
Manufacturing	29	2,922	2,897	2,750	42,113,492	1134.15
Trade, Transportation & Utilities	130	1,216	1,221	1,180	7,674,948	489.67
Wholesale Trade	23	184	182	149	1,754,532	786.20
Retail Trade	82	784	794	794	3,669,203	356.97
Transportation, Warehousing & Utilities	25	248	245	237	2,251,213	711.66
Information	9	46	49	51	340,528	538.24
Financial Activities	32	209	222	230	1,789,655	624.81
Professional & Business Services	50	338	337	335	1,807,471	412.98
Education & Health Services	66	602	600	596	4,676,089	600.17
Leisure & Hospitality	28	382	383	390	981,540	196.11
Other Services	44	181	182	193	1,091,577	453.06
Local Government	32	1,016	1,036	1,062	7,299,775	540.96
State Government	12	217	220	214	1,127,667	399.74

**TABLE 6. COUNTY SUMMARY
EMPLOYMENT AND TOTAL EARNINGS, BY INDUSTRY
FOURTH QUARTER 2006**

NORTH AMERICAN INDUSTRY CLASSIFICATION SYSTEM INDUSTRY GROUP	NUMBER OF EMPLOYING UNITS	EMPLOYMENT			TOTAL EARNINGS	AVERAGE
		OCTOBER	NOVEMBER	DECEMBER	OCTOBER - DECEMBER	WEEKLY EARNINGS
BAXTER COUNTY – TOTAL	1,273	14,895	14,952	15,019	\$107,757,197	\$554.25
Natural Resources & Mining	6	122	113	111	790,513	527.24
Construction	139	723	729	722	5,079,228	539.16
Manufacturing	62	2,524	2,546	2,534	20,843,518	632.57
Trade, Transportation & Utilities	282	2,769	2,776	2,771	15,899,460	441.21
Wholesale Trade	35	213	217	218	1,690,307	601.96
Retail Trade	213	2,317	2,313	2,303	12,355,359	411.26
Transportation, Warehousing & Utilities	34	239	246	250	1,853,794	582.04
Information	24	253	264	262	2,154,442	638.23
Financial Activities	117	738	733	738	7,153,732	747.33
Professional & Business Services	139	751	744	768	6,141,861	626.32
Education & Health Services	226	3,413	3,442	3,458	32,495,225	727.13
Leisure & Hospitality	123	1,560	1,542	1,616	4,361,001	213.31
Other Services	106	451	443	442	2,046,168	353.44
Local Government	36	1,279	1,310	1,288	8,767,746	521.88
State Government	13	312	310	309	2,024,303	501.77
BENTON COUNTY - TOTAL	5,338	94,530	94,967	95,102	\$926,584,338	\$751.33
Natural Resources & Mining	28	648	650	645	10,957,506	1301.42
Construction	806	5,289	5,172	5,218	48,562,446	714.76
Manufacturing	249	14,169	14,133	14,027	121,026,198	659.81
Trade, Transportation & Utilities	1,428	24,028	24,546	24,473	225,505,024	712.41
Wholesale Trade	645	3,576	3,633	3,662	63,188,584	1341.37
Retail Trade	611	8,594	8,827	8,906	50,007,011	438.34
Transportation, Warehousing & Utilities	172	11,858	12,086	11,905	112,309,429	722.96
Information	66	928	930	931	8,455,013	699.59
Financial Activities	586	3,935	3,926	3,921	39,467,823	773.04
Professional & Business Services	902	21,934	21,943	22,038	313,354,324	1097.06
Education & Health Services	454	6,454	6,448	6,507	56,643,216	673.48
Leisure & Hospitality	411	7,504	7,532	7,524	24,433,884	249.94
Other Services	314	1,756	1,774	1,803	11,613,199	502.53
Local Government	75	7,083	7,096	7,194	60,078,329	648.68
State Government	19	802	817	821	6,487,376	613.56

**TABLE 6. COUNTY SUMMARY
EMPLOYMENT AND TOTAL EARNINGS, BY INDUSTRY
FOURTH QUARTER 2006**

NORTH AMERICAN INDUSTRY CLASSIFICATION SYSTEM INDUSTRY GROUP	NUMBER OF EMPLOYING UNITS	EMPLOYMENT			TOTAL EARNINGS	AVERAGE
		OCTOBER	NOVEMBER	DECEMBER	OCTOBER - DECEMBER	WEEKLY EARNINGS
BOONE COUNTY - TOTAL	1,067	13,978	14,025	14,040	\$106,072,890	\$582.22
Construction	95	489	496	494	3,802,736	593.34
Manufacturing	74	2,022	2,001	1,975	16,819,636	647.12
Trade, Transportation & Utilities	261	4,463	4,471	4,536	38,098,843	652.71
Wholesale Trade	57	640	639	665	5,376,281	638.21
Retail Trade	152	1,944	1,952	1,951	10,994,955	433.95
Transportation, Warehousing & Utilities	52	1,879	1,880	1,920	21,727,607	882.91
Information	19	451	449	443	4,343,666	746.38
Financial Activities	94	640	641	640	5,381,203	646.44
Professional & Business Services	109	533	543	535	3,305,757	473.54
Education & Health Services	174	1,147	1,156	1,162	8,877,579	591.25
Leisure & Hospitality	86	1,193	1,175	1,151	3,209,212	210.45
Local Government	60	2,278	2,285	2,303	15,895,045	534.24
State Government	21	500	539	532	4,672,932	686.42
Other	74	262	269	269	1,666,281	480.66
BRADLEY COUNTY - TOTAL	389	4,134	4,065	4,136	\$26,254,663	\$491.19
Natural Resources & Mining	48	309	286	345	2,068,769	507.88
Construction	24	210	194	197	1,300,715	499.44
Manufacturing	9	1,080	1,079	1,031	7,752,798	560.85
Trade, Transportation & Utilities	91	537	518	551	2,856,575	410.47
Wholesale Trade	17	126	123	125	594,179	366.63
Retail Trade	49	331	317	328	1,594,982	377.12
Transportation, Warehousing & Utilities	25	80	78	98	667,414	601.64
Information	3	12	12	11	82,950	546.92
Financial Activities	25	176	176	173	1,346,370	591.81
Professional & Business Services	27	84	84	92	443,803	393.91
Education & Health Services	85	581	586	584	3,939,048	519.14
Leisure & Hospitality	17	170	166	173	399,490	181.12
Other Services	33	133	122	127	950,061	573.94
Local & State Government	27	842	842	852	5,114,084	465.37

**TABLE 6. COUNTY SUMMARY
EMPLOYMENT AND TOTAL EARNINGS, BY INDUSTRY
FOURTH QUARTER 2006**

NORTH AMERICAN INDUSTRY CLASSIFICATION SYSTEM INDUSTRY GROUP	NUMBER OF EMPLOYING UNITS	EMPLOYMENT			TOTAL EARNINGS	AVERAGE
		OCTOBER	NOVEMBER	DECEMBER	OCTOBER - DECEMBER	WEEKLY EARNINGS
CALHOUN COUNTY – TOTAL	113	3,075	3,079	3,087	\$29,427,252	\$734.87
Natural Resources & Mining	19	199	210	222	1,574,743	575.91
Construction	10	73	73	71	466,402	496.00
Manufacturing	11	2,054	2,041	2,030	21,803,775	821.49
Trade, Transportation & Utilities	26	214	211	221	1,336,345	477.38
Wholesale Trade & Retail Trade	18	69	68	70	235,855	262.94
Transportation, Warehousing & Utilities	8	145	143	151	1,100,490	578.49
Financial Activities	6	83	84	81	507,405	472.15
Education & Health Services	5	46	47	47	344,773	568.31
Local Government	11	214	221	223	1,222,363	428.70
State Government	9	82	80	82	544,177	514.67
Other	16	110	112	110	1,627,269	1131.10
CARROLL COUNTY - TOTAL	845	10,244	9,926	9,740	\$59,279,050	\$457.36
Natural Resources & Mining	17	273	271	276	1,863,838	524.53
Trade, Transportation & Utilities	207	1,682	1,661	1,640	9,930,111	459.88
Wholesale Trade	25	138	140	143	880,050	482.40
Retail Trade	160	1,256	1,261	1,235	6,492,619	399.33
Transportation, Warehousing & Utilities	22	288	260	262	2,557,442	728.62
Professional & Business Services	82	250	250	246	1,744,798	539.74
Education & Health Services	82	809	815	818	6,054,185	572.12
Leisure & Hospitality	171	1,886	1,614	1,427	4,642,971	217.47
Local Government	25	1,118	1,111	1,106	7,272,154	503.21
State Government	11	105	104	108	704,113	512.58
Other	250	4,121	4,100	4,119	27,066,880	506.18

**TABLE 6. COUNTY SUMMARY
EMPLOYMENT AND TOTAL EARNINGS, BY INDUSTRY
FOURTH QUARTER 2006**

NORTH AMERICAN INDUSTRY CLASSIFICATION SYSTEM INDUSTRY GROUP	NUMBER OF EMPLOYING UNITS	EMPLOYMENT			TOTAL EARNINGS	AVERAGE
		OCTOBER	NOVEMBER	DECEMBER	OCTOBER - DECEMBER	WEEKLY EARNINGS
CHICOT COUNTY – TOTAL	349	3,598	3,559	3,567	\$21,824,708	\$469.64
Natural Resources & Mining	45	343	290	248	2,006,825	525.67
Construction	18	136	120	115	908,737	565.25
Manufacturing	11	512	517	516	2,372,649	354.39
Trade, Transportation & Utilities	77	565	562	573	3,346,261	454.24
Wholesale Trade	15	100	100	99	952,475	735.12
Retail Trade	51	402	403	403	1,752,357	334.76
Transportation, Warehousing & Utilities	11	63	59	71	641,429	766.95
Information	6	17	17	17	86,704	392.33
Financial Activities	30	169	168	166	1,376,541	631.54
Professional & Business Services	26	88	86	87	673,507	595.50
Education & Health Services	71	510	541	545	3,287,005	475.28
Leisure & Hospitality	21	214	200	201	447,258	167.83
Other Services	16	51	50	51	274,284	416.42
Local Government	17	671	692	725	5,097,267	563.36
State Government	11	322	316	323	1,947,670	467.70
CLARK COUNTY - TOTAL	614	9,774	9,779	9,785	\$66,257,546	\$521.17
Natural Resources & Mining	41	247	250	257	1,860,225	569.34
Construction	29	147	144	150	890,358	465.91
Manufacturing	34	2,380	2,416	2,390	18,100,519	581.28
Trade, Transportation & Utilities	144	1,419	1,424	1,441	9,072,754	488.73
Wholesale Trade	18	66	65	64	616,831	729.98
Retail Trade	104	1,083	1,082	1,095	5,926,247	419.51
Transportation, Warehousing & Utilities	22	270	277	282	2,529,676	704.19
Information	10	30	27	27	210,467	578.21
Financial Activities	86	393	388	391	3,660,878	720.83
Professional & Business Services	49	350	361	388	4,116,217	864.33
Education & Health Services	76	1,473	1,467	1,453	10,478,509	550.45
Leisure & Hospitality	57	1,000	999	990	2,792,505	215.60
Other Services	47	209	207	209	1,127,626	416.35
Local Government	26	943	924	928	5,853,109	483.26
State Government	15	1,183	1,172	1,161	8,094,379	531.27

**TABLE 6. COUNTY SUMMARY
EMPLOYMENT AND TOTAL EARNINGS, BY INDUSTRY
FOURTH QUARTER 2006**

NORTH AMERICAN INDUSTRY CLASSIFICATION SYSTEM INDUSTRY GROUP	NUMBER OF EMPLOYING UNITS	EMPLOYMENT			TOTAL EARNINGS	AVERAGE
		OCTOBER	NOVEMBER	DECEMBER	OCTOBER - DECEMBER	WEEKLY EARNINGS
CLAY COUNTY - TOTAL	409	4,490	4,399	4,316	\$28,550,484	\$498.95
Natural Resources & Mining	59	241	235	206	1,519,869	514.28
Construction	36	182	177	166	896,392	394.02
Manufacturing	19	1,081	1,008	927	7,649,774	585.32
Trade, Transportation & Utilities	99	943	958	968	5,875,677	472.61
Wholesale Trade	22	312	346	366	2,248,110	506.64
Retail Trade	55	457	456	446	2,078,819	353.00
Transportation, Warehousing & Utilities	22	174	156	156	1,548,748	735.40
Information	7	77	78	80	1,138,417	1117.92
Financial Activities	35	154	156	157	1,230,099	607.86
Professional & Business Services	24	47	45	43	338,296	578.28
Education & Health Services	51	498	497	497	2,806,055	434.02
Leisure & Hospitality	21	198	203	202	463,136	177.24
Other Services	24	50	50	55	304,336	453.11
Local Government	22	939	912	936	5,852,314	484.58
State Government	12	80	80	79	476,119	459.72
CLEBURNE COUNTY - TOTAL	683	6,844	6,744	6,694	\$42,783,210	\$486.79
Natural Resources & Mining	14	82	65	70	540,887	575.21
Construction	76	349	337	333	2,235,825	506.34
Manufacturing	43	1,700	1,659	1,635	12,140,733	561.01
Trade, Transportation & Utilities	182	1,517	1,503	1,539	9,705,317	491.27
Wholesale Trade	41	187	191	192	1,475,350	597.31
Retail Trade	110	1,032	1,014	1,036	5,386,311	403.31
Transportation, Warehousing & Utilities	31	298	298	311	2,843,656	723.52
Information	8	63	61	61	464,843	579.85
Financial Activities	73	256	252	258	1,951,171	587.82
Professional & Business Services	54	186	188	191	1,345,770	549.67
Education & Health Services	75	796	797	801	5,366,969	517.35
Leisure & Hospitality	72	779	765	758	2,144,299	214.96
Other Services	57	161	158	161	914,170	439.50
Local Government	19	835	834	768	5,200,614	492.47
State Government	10	120	125	119	772,612	489.82

**TABLE 6. COUNTY SUMMARY
EMPLOYMENT AND TOTAL EARNINGS, BY INDUSTRY
FOURTH QUARTER 2006**

NORTH AMERICAN INDUSTRY CLASSIFICATION SYSTEM INDUSTRY GROUP	NUMBER OF EMPLOYING UNITS	EMPLOYMENT			TOTAL EARNINGS	AVERAGE
		OCTOBER	NOVEMBER	DECEMBER	OCTOBER - DECEMBER	WEEKLY EARNINGS
CLEVELAND COUNTY – TOTAL	111	1,084	1,085	1,099	\$6,836,042	\$482.73
Natural Resources & Mining	17	158	151	156	1,117,502	554.59
Construction	8	38	39	38	164,742	330.59
Manufacturing	4	91	91	91	516,159	436.31
Trade, Transportation & Utilities	29	178	182	181	958,857	409.01
Wholesale Trade	4	14	14	15	90,927	487.98
Retail Trade	13	79	80	79	194,467	188.56
Transportation, Warehousing & Utilities	12	85	88	87	673,463	597.75
Local Government	11	335	337	352	2,081,741	469.14
State Government	8	66	66	62	371,858	442.34
Other	34	218	219	219	1,625,183	571.71
COLUMBIA COUNTY - TOTAL	705	9,433	9,425	9,416	\$76,688,297	\$625.92
Natural Resources & Mining	50	532	527	527	8,407,711	1223.35
Construction	43	307	301	312	2,954,788	741.17
Manufacturing	41	2,779	2,791	2,765	28,093,972	777.83
Trade, Transportation & Utilities	177	1,545	1,499	1,499	9,183,464	466.49
Wholesale Trade	29	256	226	219	1,953,192	642.99
Retail Trade	109	1,021	1,015	1,019	4,705,547	355.45
Transportation, Warehousing & Utilities	39	268	258	261	2,524,725	740.32
Information	9	74	65	69	459,457	509.75
Financial Activities	73	524	526	528	5,624,412	822.52
Professional & Business Services	59	325	316	303	2,081,092	508.74
Education & Health Services	115	850	872	887	4,776,716	422.51
Leisure & Hospitality	47	643	648	640	1,854,509	221.63
Other Services	50	203	214	209	838,697	309.18
Local Government	27	1,113	1,110	1,132	7,807,885	537.06
State Government	14	538	556	545	4,605,594	648.46

**TABLE 6. COUNTY SUMMARY
EMPLOYMENT AND TOTAL EARNINGS, BY INDUSTRY
FOURTH QUARTER 2006**

NORTH AMERICAN INDUSTRY CLASSIFICATION SYSTEM INDUSTRY GROUP	NUMBER OF EMPLOYING UNITS	EMPLOYMENT			TOTAL EARNINGS	AVERAGE
		OCTOBER	NOVEMBER	DECEMBER	OCTOBER - DECEMBER	WEEKLY EARNINGS
CONWAY COUNTY – TOTAL	544	6,857	6,847	6,796	\$47,301,237	\$532.47
Natural Resources & Mining	21	135	141	160	1,448,217	766.52
Construction	57	533	528	516	5,124,676	749.92
Manufacturing	29	1,168	1,179	1,150	11,872,825	783.50
Trade, Transportation & Utilities	133	1,392	1,391	1,410	9,480,718	521.79
Wholesale Trade	25	225	220	223	2,119,453	732.19
Retail Trade	79	881	875	893	4,620,110	402.48
Transportation, Warehousing & Utilities	29	286	296	294	2,741,155	722.12
Information	5	12	12	13	131,269	818.73
Financial Activities	34	193	193	194	1,336,100	531.60
Professional & Business Services	47	674	672	635	2,637,379	307.23
Education & Health Services	116	895	886	876	5,406,626	469.58
Leisure & Hospitality	37	453	443	452	1,091,850	186.92
Other Services	27	93	96	92	711,184	584.05
Local Government	27	906	907	904	5,842,540	496.24
State Government	11	403	399	394	2,217,853	427.94
CRAIGHEAD COUNTY - TOTAL	2,680	41,878	41,971	41,886	\$325,934,870	\$598.21
Natural Resources & Mining	68	444	428	393	3,227,598	588.80
Construction	245	1,665	1,578	1,595	13,899,430	662.99
Manufacturing	135	6,738	6,705	6,694	60,129,098	689.08
Trade, Transportation & Utilities	742	8,595	8,733	8,893	56,923,959	500.98
Wholesale Trade	185	1,539	1,516	1,509	16,278,237	823.08
Retail Trade	440	5,909	6,112	6,241	30,327,565	383.24
Transportation, Warehousing & Utilities	117	1,147	1,105	1,143	10,318,157	701.36
Information	31	617	608	606	4,929,148	621.24
Financial Activities	258	1,582	1,595	1,611	16,313,398	786.26
Professional & Business Services	358	3,507	3,596	3,419	28,336,065	621.47
Education & Health Services	399	7,526	7,439	7,475	75,133,871	772.66
Leisure & Hospitality	201	4,101	4,117	4,037	11,480,761	216.19
Other Services	180	1,012	1,003	996	5,483,335	420.25
Local Government	38	3,729	3,763	3,761	27,168,588	557.16
State Government	25	2,362	2,406	2,406	22,909,619	736.94

**TABLE 6. COUNTY SUMMARY
EMPLOYMENT AND TOTAL EARNINGS, BY INDUSTRY
FOURTH QUARTER 2006**

NORTH AMERICAN INDUSTRY CLASSIFICATION SYSTEM INDUSTRY GROUP	NUMBER OF EMPLOYING UNITS	EMPLOYMENT			TOTAL EARNINGS	AVERAGE
		OCTOBER	NOVEMBER	DECEMBER	OCTOBER - DECEMBER	WEEKLY EARNINGS
CRAWFORD COUNTY - TOTAL	1,216	19,329	19,309	19,405	\$138,434,324	\$550.39
Natural Resources & Mining	26	380	388	400	3,866,610	763.95
Construction	181	1,443	1,425	1,465	12,249,392	652.38
Manufacturing	75	3,776	3,777	3,765	27,196,852	554.53
Trade, Transportation & Utilities	314	6,644	6,756	6,800	49,537,806	565.93
Wholesale Trade	83	687	685	689	6,374,456	713.74
Retail Trade	161	1,994	2,021	1,981	10,066,479	387.43
Transportation, Warehousing & Utilities	70	3,963	4,050	4,130	33,096,871	628.98
Financial Activities	127	507	504	514	3,881,046	587.30
Professional & Business Services	149	797	705	728	6,548,526	677.67
Education & Health Services	122	1,382	1,378	1,369	10,041,346	561.21
Leisure & Hospitality	82	1,549	1,528	1,495	4,065,253	205.19
Local Government	41	2,148	2,140	2,139	15,619,994	560.85
State Government	11	158	164	166	1,335,405	631.50
Other	88	545	544	564	4,092,094	571.28
CRITTENDEN COUNTY - TOTAL	1,212	16,869	17,023	17,166	\$129,189,907	\$583.91
Natural Resources & Mining	45	397	354	330	3,017,674	644.21
Construction	77	583	558	557	4,773,792	648.79
Manufacturing	47	1,800	1,864	1,896	19,972,334	828.96
Trade, Transportation & Utilities	329	4,942	4,951	4,965	39,451,639	612.75
Wholesale Trade	73	785	778	775	8,411,634	830.26
Retail Trade	168	2,039	2,037	2,077	10,405,748	390.27
Transportation, Warehousing & Utilities	88	2,118	2,136	2,113	20,634,257	747.88
Information	10	79	85	87	709,746	652.54
Financial Activities	107	570	589	582	4,861,320	644.37
Professional & Business Services	125	898	863	874	6,083,637	532.80
Education & Health Services	206	2,003	2,006	2,021	16,967,180	649.34
Leisure & Hospitality	102	1,945	2,025	2,185	6,690,844	250.86
Other Services	103	626	619	615	3,772,577	468.06
Local Government	46	2,529	2,612	2,645	19,850,325	588.34
State Government	15	497	497	409	3,038,839	499.84

**TABLE 6. COUNTY SUMMARY
EMPLOYMENT AND TOTAL EARNINGS, BY INDUSTRY
FOURTH QUARTER 2006**

NORTH AMERICAN INDUSTRY CLASSIFICATION SYSTEM INDUSTRY GROUP	NUMBER OF EMPLOYING UNITS	EMPLOYMENT			TOTAL EARNINGS	AVERAGE
		OCTOBER	NOVEMBER	DECEMBER	OCTOBER - DECEMBER	WEEKLY EARNINGS
CROSS COUNTY - TOTAL	518	5,046	4,988	4,942	\$33,282,140	\$512.85
Natural Resources & Mining	43	214	199	185	1,026,661	396.19
Construction	36	190	179	163	1,250,335	542.37
Manufacturing	16	685	641	642	4,548,125	533.32
Trade, Transportation & Utilities	126	1,190	1,156	1,159	8,783,062	578.28
Wholesale Trade	30	262	256	264	2,717,979	802.08
Retail Trade	64	641	641	644	3,528,281	422.75
Transportation, Warehousing & Utilities	32	287	259	251	2,536,802	734.52
Information	6	59	62	63	433,740	543.99
Financial Activities	48	400	412	402	3,294,455	626.24
Professional & Business Services	43	153	159	157	1,271,287	625.53
Education & Health Services	101	691	686	687	4,294,721	480.18
Leisure & Hospitality	32	393	391	384	876,605	173.20
Other Services	39	71	71	74	353,180	377.33
Local Government	17	788	818	811	5,399,892	515.57
State Government	11	212	214	215	1,750,077	630.05
DALLAS COUNTY - TOTAL	278	3,332	3,394	3,352	\$21,975,413	\$503.20
Natural Resources & Mining	40	204	205	200	1,532,792	580.82
Construction	14	75	74	79	477,281	483.08
Manufacturing	15	895	953	903	7,255,039	608.59
Trade, Transportation & Utilities	73	462	467	460	2,903,261	482.35
Wholesale Trade	10	41	43	40	457,896	852.16
Retail Trade	45	364	369	360	2,046,760	432.14
Transportation, Warehousing & Utilities	18	57	55	60	398,605	534.80
Information	3	29	29	29	165,427	438.80
Financial Activities	18	101	101	101	792,178	603.33
Professional & Business Services	18	30	29	31	201,487	516.63
Education & Health Services	38	810	811	811	4,766,091	452.25
Leisure & Hospitality	20	131	122	127	304,221	184.75
Other Services	14	63	65	63	291,821	352.58
Local Government	16	466	469	481	2,821,507	459.83
State Government	9	66	69	67	464,308	530.44

**TABLE 6. COUNTY SUMMARY
EMPLOYMENT AND TOTAL EARNINGS, BY INDUSTRY
FOURTH QUARTER 2006**

NORTH AMERICAN INDUSTRY CLASSIFICATION SYSTEM INDUSTRY GROUP	NUMBER OF EMPLOYING UNITS	EMPLOYMENT			TOTAL EARNINGS	AVERAGE
		OCTOBER	NOVEMBER	DECEMBER	OCTOBER - DECEMBER	WEEKLY EARNINGS
DESHA COUNTY – TOTAL	470	5,035	4,983	4,922	\$36,517,595	\$564.07
Natural Resources & Mining	50	393	338	296	2,607,646	585.94
Construction	26	114	117	119	941,230	620.59
Manufacturing	15	1,258	1,250	1,223	12,604,794	779.63
Trade, Transportation & Utilities	132	1,026	985	941	6,259,661	489.34
Wholesale Trade	22	183	182	184	1,959,997	823.87
Retail Trade	78	567	562	563	2,538,165	346.18
Transportation, Warehousing & Utilities	32	276	241	194	1,761,499	571.73
Information	5	24	24	24	174,335	558.77
Financial Activities	44	215	222	228	1,619,040	561.84
Professional & Business Services	35	99	103	110	727,397	538.02
Education & Health Services	70	580	598	602	3,770,592	488.84
Leisure & Hospitality	36	299	292	291	722,232	188.97
Other Services	27	63	66	69	228,474	266.29
Local Government	19	792	816	846	5,655,149	531.80
State Government	11	172	172	173	1,207,045	538.78
DREW COUNTY - TOTAL	520	6,883	6,885	6,807	\$42,513,202	\$476.83
Natural Resources & Mining	37	338	315	315	3,071,396	732.21
Construction	27	101	95	93	597,314	476.96
Manufacturing	23	773	762	757	5,014,772	504.91
Trade, Transportation & Utilities	134	1,226	1,239	1,224	7,825,410	489.53
Wholesale Trade	23	235	238	232	2,214,320	724.82
Retail Trade	87	880	891	885	4,487,665	389.92
Transportation, Warehousing & Utilities	24	111	110	107	1,123,425	790.40
Information	9	80	78	79	602,564	586.72
Financial Activities	43	262	263	262	2,261,243	663.06
Professional & Business Services	46	322	319	316	2,177,489	525.08
Education & Health Services	87	833	823	806	4,611,300	432.23
Leisure & Hospitality	45	648	632	622	1,574,728	191.06
Other Services	29	100	99	98	405,389	314.99
Local Government	23	1,348	1,384	1,363	8,540,120	481.27
State Government	17	852	876	872	5,831,477	517.59

**TABLE 6. COUNTY SUMMARY
EMPLOYMENT AND TOTAL EARNINGS, BY INDUSTRY
FOURTH QUARTER 2006**

NORTH AMERICAN INDUSTRY CLASSIFICATION SYSTEM INDUSTRY GROUP	NUMBER OF EMPLOYING UNITS	EMPLOYMENT			TOTAL EARNINGS	AVERAGE
		OCTOBER	NOVEMBER	DECEMBER	OCTOBER - DECEMBER	WEEKLY EARNINGS
FAULKNER COUNTY – TOTAL	2,509	38,568	38,759	39,028	\$317,306,500	\$629.32
Natural Resources & Mining	21	284	289	312	4,268,898	1113.14
Construction	366	2,968	2,971	3,018	27,254,656	702.19
Manufacturing	121	5,242	5,233	5,255	51,248,345	751.85
Trade, Transportation & Utilities	617	6,511	6,604	6,687	40,308,569	469.75
Wholesale Trade	159	795	791	829	7,903,525	755.23
Retail Trade	377	4,989	5,074	5,097	24,980,792	380.26
Transportation, Warehousing & Utilities	81	727	739	761	7,424,252	769.33
Information	38	356	361	368	3,039,386	646.45
Financial Activities	301	1,426	1,436	1,443	12,261,380	657.27
Professional & Business Services	336	5,315	5,346	5,394	67,050,332	963.76
Education & Health Services	321	5,345	5,391	5,427	45,616,601	651.30
Leisure & Hospitality	194	3,920	3,953	3,912	10,267,568	201.06
Other Services	134	595	575	583	3,213,437	423.02
Local Government	41	3,297	3,320	3,335	27,309,074	633.25
State Government	19	3,309	3,280	3,294	25,468,254	594.69
FRANKLIN COUNTY – TOTAL	329	4,278	4,249	4,218	\$29,740,504	\$538.50
Natural Resources & Mining	10	96	92	90	1,425,633	1183.43
Construction	31	235	237	243	2,055,678	663.48
Manufacturing	24	945	912	907	7,515,880	627.51
Trade, Transportation & Utilities	87	858	869	873	6,080,021	539.65
Wholesale Trade	14	51	50	49	243,748	375.00
Retail Trade	51	455	472	477	2,253,703	370.43
Transportation, Warehousing & Utilities	22	352	347	347	3,582,570	790.39
Information	7	49	48	45	244,611	397.53
Financial Activities	29	226	229	225	1,401,901	475.76
Professional & Business Services	22	60	57	60	390,806	509.53
Education & Health Services	44	487	480	487	2,832,253	449.52
Leisure & Hospitality	25	322	328	312	769,935	184.70
Other Services	21	65	64	61	338,085	410.63
Local Government	19	791	785	778	5,601,984	549.18
State Government	10	144	148	137	1,083,717	582.96

**TABLE 6. COUNTY SUMMARY
EMPLOYMENT AND TOTAL EARNINGS, BY INDUSTRY
FOURTH QUARTER 2006**

NORTH AMERICAN INDUSTRY CLASSIFICATION SYSTEM INDUSTRY GROUP	NUMBER OF EMPLOYING UNITS	EMPLOYMENT			TOTAL EARNINGS	AVERAGE
		OCTOBER	NOVEMBER	DECEMBER	OCTOBER - DECEMBER	WEEKLY EARNINGS
FULTON COUNTY - TOTAL	229	1,858	1,853	1,861	\$10,743,275	\$444.94
Construction	15	30	27	28	174,256	473.09
Manufacturing	14	114	113	112	491,254	334.41
Trade, Transportation & Utilities	65	381	381	385	2,275,909	457.90
Retail Trade	42	210	209	213	739,168	269.90
Other Trade, Transportation & Utilities	23	171	172	172	1,536,741	688.61
Financial Activities	15	93	89	90	656,820	557.26
Professional & Business Services	15	42	43	42	1,360,375	2471.91
Education & Health Services	52	375	381	385	1,620,941	327.84
Leisure & Hospitality	15	139	131	126	332,507	193.77
Local Government	13	519	521	522	2,958,274	437.05
State Government	11	98	102	104	598,013	453.96
Other	14	67	65	67	274,926	318.82
GARLAND COUNTY - TOTAL	3,289	36,776	36,543	36,903	\$261,461,885	\$547.42
Natural Resources & Mining	47	347	354	356	3,191,212	696.72
Construction	445	2,447	2,407	2,445	17,466,027	552.22
Manufacturing	133	3,428	3,391	3,361	27,435,515	621.93
Trade, Transportation & Utilities	722	7,475	7,530	7,649	47,972,805	488.68
Wholesale Trade	151	1,134	1,126	1,120	10,986,291	750.09
Retail Trade	496	5,648	5,702	5,796	30,567,756	411.41
Transportation, Warehousing & Utilities	75	693	702	733	6,418,758	696.08
Information	41	422	424	433	3,489,839	629.67
Financial Activities	375	1,561	1,547	1,566	13,351,360	659.20
Professional & Business Services	427	2,830	2,934	2,987	21,614,024	569.98
Education & Health Services	435	6,986	6,991	7,020	68,734,257	755.43
Leisure & Hospitality	377	6,130	5,806	5,830	20,440,972	265.52
Other Services	226	938	925	944	5,120,310	420.95
Local Government	34	3,133	3,145	3,215	24,380,153	592.67
State Government	27	1,079	1,089	1,097	8,265,411	584.20

**TABLE 6. COUNTY SUMMARY
EMPLOYMENT AND TOTAL EARNINGS, BY INDUSTRY
FOURTH QUARTER 2006**

NORTH AMERICAN INDUSTRY CLASSIFICATION SYSTEM INDUSTRY GROUP	NUMBER OF EMPLOYING UNITS	EMPLOYMENT			TOTAL EARNINGS	AVERAGE
		OCTOBER	NOVEMBER	DECEMBER	OCTOBER - DECEMBER	WEEKLY EARNINGS
GRANT COUNTY - TOTAL	296	3,605	3,599	3,654	\$24,033,853	\$510.80
Natural Resources & Mining	23	174	161	167	1,619,736	744.59
Construction	33	221	219	216	1,620,285	569.99
Manufacturing	19	884	877	918	6,610,084	569.39
Trade, Transportation & Utilities	82	583	577	594	3,597,624	473.33
Wholesale Trade	16	113	114	112	1,241,308	845.00
Retail Trade	37	416	410	425	1,931,469	356.29
Transportation, Warehousing & Utilities	29	54	53	57	424,847	597.81
Information	4	32	32	34	275,134	647.88
Financial Activities	22	105	104	101	887,330	660.54
Professional & Business Services	22	91	95	96	864,141	707.15
Education & Health Services	34	225	228	227	1,399,928	475.09
Leisure & Hospitality	22	280	286	273	785,317	216.00
Other Services	16	53	56	54	238,383	337.49
Local Government	10	896	904	915	5,749,291	488.68
State Government	9	61	60	59	386,600	495.64
GREENE COUNTY - TOTAL	912	15,350	15,466	15,465	\$108,923,898	\$543.12
Natural Resources & Mining	38	231	226	204	1,716,725	599.35
Construction	84	392	377	360	2,584,462	528.27
Manufacturing	56	5,503	5,536	5,551	49,544,240	689.17
Trade, Transportation & Utilities	246	2,166	2,187	2,204	13,153,556	462.93
Wholesale Trade	55	416	409	410	3,534,183	660.39
Retail Trade	159	1,541	1,567	1,574	7,754,550	382.21
Transportation, Warehousing & Utilities	32	209	211	220	1,864,823	672.41
Information	13	123	123	121	605,519	380.75
Financial Activities	90	493	495	497	4,057,074	630.47
Professional & Business Services	93	1,664	1,755	1,786	8,933,971	396.10
Education & Health Services	138	1,742	1,738	1,750	11,188,095	493.67
Leisure & Hospitality	66	1,020	1,002	971	2,765,176	213.20
Other Services	46	168	171	169	918,858	417.41
Local Government	31	1,597	1,606	1,598	11,379,494	546.98
State Government	11	251	250	254	2,076,728	634.76

**TABLE 6. COUNTY SUMMARY
EMPLOYMENT AND TOTAL EARNINGS, BY INDUSTRY
FOURTH QUARTER 2006**

NORTH AMERICAN INDUSTRY CLASSIFICATION SYSTEM INDUSTRY GROUP	NUMBER OF EMPLOYING UNITS	EMPLOYMENT			TOTAL EARNINGS	AVERAGE
		OCTOBER	NOVEMBER	DECEMBER	OCTOBER - DECEMBER	WEEKLY EARNINGS
HEMPSTEAD COUNTY - TOTAL	502	8,266	8,331	8,343	\$56,921,448	\$526.69
Natural Resources & Mining	18	209	212	217	1,788,678	646.98
Construction	35	159	162	162	1,002,842	479.14
Manufacturing	29	2,575	2,629	2,652	21,856,963	642.05
Trade, Transportation & Utilities	133	1,227	1,237	1,239	7,832,685	488.13
Wholesale Trade	25	191	187	186	1,308,116	535.24
Retail Trade	86	863	873	876	4,162,665	367.77
Transportation, Warehousing & Utilities	22	173	177	177	2,361,904	1034.26
Information	10	65	68	75	542,770	602.19
Financial Activities	44	258	253	251	2,212,702	670.11
Professional & Business Services	34	345	306	278	1,203,991	299.08
Education & Health Services	71	997	1,006	1,022	6,114,815	466.48
Leisure & Hospitality	44	607	612	613	1,585,383	199.70
Other Services	38	218	221	224	1,376,503	479.12
Local Government	29	1,058	1,077	1,069	7,351,540	529.50
State Government	17	548	548	541	4,052,576	571.29
HOT SPRING COUNTY - TOTAL	605	8,270	8,284	8,265	\$63,563,221	\$591.02
Natural Resources & Mining	37	209	204	215	1,434,606	527.17
Construction	65	627	650	642	7,283,232	875.84
Manufacturing	41	1,717	1,685	1,709	17,066,161	770.56
Trade, Transportation & Utilities	155	1,445	1,427	1,418	11,669,093	627.71
Wholesale Trade	20	100	98	99	2,360,388	1834.02
Retail Trade	92	928	919	907	4,746,950	397.77
Transportation, Warehousing & Utilities	43	417	410	412	4,561,755	849.65
Information	9	69	70	73	663,499	722.24
Financial Activities	63	349	353	349	2,725,054	598.34
Professional & Business Services	55	232	253	245	1,618,478	511.64
Education & Health Services	61	1,030	1,040	1,053	6,834,392	505.02
Leisure & Hospitality	41	559	564	530	1,262,089	176.20
Other Services	38	293	291	292	1,195,534	314.95
Local Government	26	1,115	1,121	1,106	7,899,319	545.46
State Government	14	625	626	633	3,911,764	479.15

**TABLE 6. COUNTY SUMMARY
EMPLOYMENT AND TOTAL EARNINGS, BY INDUSTRY
FOURTH QUARTER 2006**

NORTH AMERICAN INDUSTRY CLASSIFICATION SYSTEM INDUSTRY GROUP	NUMBER OF EMPLOYING UNITS	EMPLOYMENT			TOTAL EARNINGS	AVERAGE
		OCTOBER	NOVEMBER	DECEMBER	OCTOBER - DECEMBER	WEEKLY EARNINGS
HOWARD COUNTY - TOTAL	359	7,397	7,343	7,360	\$48,226,666	\$503.59
Natural Resources & Mining	22	240	248	244	1,975,536	622.80
Construction	26	102	98	92	672,835	531.75
Manufacturing	26	3,985	3,947	3,960	27,889,232	541.20
Trade, Transportation & Utilities	104	917	909	913	5,643,519	475.48
Wholesale Trade	20	110	107	105	1,080,495	774.36
Retail Trade	63	621	613	622	2,920,831	363.17
Transportation, Warehousing & Utilities	21	186	189	186	1,642,193	675.52
Information	6	37	38	38	227,314	464.22
Financial Activities	35	139	137	139	1,105,924	614.97
Professional & Business Services	28	118	122	146	766,930	458.51
Education & Health Services	43	602	591	596	3,102,034	400.14
Leisure & Hospitality	19	294	283	267	678,568	185.54
Other Services	20	113	115	119	609,640	405.44
Local Government	18	712	718	711	4,617,914	497.75
State Government	12	138	137	135	937,220	527.52
INDEPENDENCE COUNTY - TOTAL	928	16,308	16,265	16,387	\$117,547,606	\$554.05
Natural Resources & Mining	13	144	142	143	1,077,833	579.79
Construction	67	447	446	451	3,276,020	562.50
Manufacturing	57	4,704	4,693	4,776	39,286,276	639.67
Trade, Transportation & Utilities	272	2,960	3,003	3,037	21,668,340	555.60
Wholesale Trade	52	532	536	545	4,464,393	638.71
Retail Trade	163	1,641	1,681	1,687	8,377,026	385.94
Transportation, Warehousing & Utilities	57	787	786	805	8,826,921	856.59
Information	12	165	163	166	1,163,248	543.40
Financial Activities	85	460	467	467	3,678,302	608.92
Professional & Business Services	86	970	924	905	4,725,549	389.61
Education & Health Services	140	2,876	2,843	2,872	24,984,997	671.14
Leisure & Hospitality	65	1,107	1,097	1,080	2,560,068	179.90
Other Services	66	383	371	373	1,699,978	348.09
Local Government	48	1,606	1,640	1,635	9,772,917	462.05
State Government	17	486	476	482	3,654,078	583.97

**TABLE 6. COUNTY SUMMARY
EMPLOYMENT AND TOTAL EARNINGS, BY INDUSTRY
FOURTH QUARTER 2006**

NORTH AMERICAN INDUSTRY CLASSIFICATION SYSTEM INDUSTRY GROUP	NUMBER OF EMPLOYING UNITS	EMPLOYMENT			TOTAL EARNINGS	AVERAGE
		OCTOBER	NOVEMBER	DECEMBER	OCTOBER - DECEMBER	WEEKLY EARNINGS
IZARD COUNTY - TOTAL	279	3,024	3,050	3,045	17,386,488	\$439.99
Natural Resources & Mining	5	93	93	83	746,041	640.01
Construction	24	49	59	59	306,480	423.51
Manufacturing	11	350	353	347	2,148,879	472.28
Trade, Transportation & Utilities	66	525	541	545	2,880,285	412.59
Retail Trade	49	420	432	440	1,920,197	342.97
Other Trade, Transportation & Utilities	17	105	109	105	960,088	694.54
Information	3	8	8	7	36,780	369.03
Financial Activities	32	152	148	154	1,346,129	684.24
Professional & Business Services	20	77	81	79	373,088	363.28
Education & Health Services	52	541	541	552	2,947,412	416.26
Leisure & Hospitality	23	180	176	164	409,890	181.90
Other Services	14	33	35	33	165,048	377.11
Local Government	18	548	548	546	3,104,846	436.36
State Government	11	468	467	476	2,921,610	477.83
JACKSON COUNTY - TOTAL	524	5,727	5,649	5,575	\$40,269,683	\$548.23
Natural Resources & Mining	46	232	200	189	1,329,446	494.03
Construction	28	185	171	166	1,643,246	726.46
Manufacturing	25	1,159	1,142	1,127	9,808,535	660.30
Trade, Transportation & Utilities	124	1,104	1,094	1,077	7,515,388	529.56
Wholesale Trade	34	195	193	189	2,146,795	858.60
Retail Trade	72	659	669	660	3,483,803	404.40
Transportation, Warehousing & Utilities	18	250	232	228	1,884,790	612.61
Information	6	38	37	37	281,838	580.71
Financial Activities	44	191	195	189	1,362,732	546.92
Professional & Business Services	38	157	165	160	1,289,047	617.16
Education & Health Services	94	823	822	826	6,691,018	624.88
Leisure & Hospitality	39	330	330	324	885,787	207.74
Other Services	32	94	94	93	422,535	347.00
Local Government	34	731	719	734	4,322,809	456.76
State Government	14	683	680	653	4,717,302	539.98

**TABLE 6. COUNTY SUMMARY
EMPLOYMENT AND TOTAL EARNINGS, BY INDUSTRY
FOURTH QUARTER 2006**

NORTH AMERICAN INDUSTRY CLASSIFICATION SYSTEM INDUSTRY GROUP	NUMBER OF EMPLOYING UNITS	EMPLOYMENT			TOTAL EARNINGS	AVERAGE
		OCTOBER	NOVEMBER	DECEMBER	OCTOBER - DECEMBER	WEEKLY EARNINGS
JEFFERSON COUNTY - TOTAL	1,931	32,049	32,142	31,909	\$256,288,042	\$615.44
Natural Resources & Mining	42	515	506	454	4,334,607	678.17
Construction	137	1,491	1,484	1,461	15,993,691	832.02
Manufacturing	72	6,023	6,015	6,006	61,557,574	787.28
Trade, Transportation & Utilities	484	5,824	5,939	5,983	42,588,349	553.82
Wholesale Trade	84	1,017	1,028	1,023	10,190,833	766.54
Retail Trade	332	3,915	4,010	4,050	21,045,351	405.56
Transportation, Warehousing & Utilities	68	892	901	910	11,352,165	969.19
Information	18	203	207	207	1,623,187	607.10
Financial Activities	157	1,224	1,230	1,226	11,940,419	748.77
Professional & Business Services	181	1,706	1,712	1,696	13,954,839	629.71
Education & Health Services	451	5,491	5,472	5,433	44,435,612	625.42
Leisure & Hospitality	153	2,278	2,267	2,198	5,956,934	203.87
Other Services	155	733	723	725	4,648,386	491.84
Local Government	41	3,250	3,255	3,247	24,095,685	570.20
State Government	40	3,311	3,332	3,273	25,158,759	585.50
JOHNSON COUNTY - TOTAL	478	8,483	8,565	8,593	\$56,117,081	\$505.05
Natural Resources & Mining	15	194	197	198	1,645,248	644.61
Construction	29	115	118	118	773,085	508.27
Manufacturing	46	3,007	2,990	2,991	20,380,414	523.27
Trade, Transportation & Utilities	122	1,861	1,896	1,930	12,393,581	502.91
Retail Trade	86	917	914	937	4,534,898	
Other Trade, Transportation & Utilities	36	944	982	993	7,858,683	
Information	6	31	32	33	272,088	654.06
Financial Activities	41	232	228	230	1,627,059	544.17
Professional & Business Services	51	177	187	189	1,248,808	521.13
Education & Health Services	75	1,147	1,155	1,151	8,114,895	542.33
Leisure & Hospitality	39	513	522	504	1,386,800	207.95
Other Services	30	92	92	91	473,233	397.12
Local Government	14	956	986	993	6,599,594	518.90
State Government	10	158	162	165	1,202,276	572.06

**TABLE 6. COUNTY SUMMARY
EMPLOYMENT AND TOTAL EARNINGS, BY INDUSTRY
FOURTH QUARTER 2006**

NORTH AMERICAN INDUSTRY CLASSIFICATION SYSTEM INDUSTRY GROUP	NUMBER OF EMPLOYING UNITS	EMPLOYMENT			TOTAL EARNINGS	AVERAGE
		OCTOBER	NOVEMBER	DECEMBER	OCTOBER - DECEMBER	WEEKLY EARNINGS
LAFAYETTE COUNTY - TOTAL	171	1,415	1,435	1,399	\$9,550,896	\$518.72
Natural Resources & Mining	33	197	202	181	1,808,518	719.57
Trade, Transportation & Utilities	37	233	234	228	1,258,480	417.87
Retail Trade	22	147	150	147	574,731	298.72
Other Trade, Transportation & Utilities	15	86	84	81	683,749	628.64
Financial Activities	17	84	84	82	520,054	480.05
Professional & Business Services	8	53	55	50	465,475	679.86
Education & Health Services	24	229	233	231	1,141,844	380.23
Leisure & Hospitality	6	41	42	48	236,565	416.73
Other Services	8	74	78	78	325,900	326.99
Local Government	13	331	332	337	2,095,484	483.57
State Government	8	49	50	51	354,229	544.97
Other	17	124	125	113	1,344,347	857.00
LAWRENCE COUNTY - TOTAL	428	4,144	4,158	4,164	\$25,171,636	\$465.97
Natural Resources & Mining	35	171	179	169	1,441,461	640.93
Construction	25	61	59	63	372,292	469.47
Manufacturing	22	554	550	540	3,532,165	495.81
Trade, Transportation & Utilities	130	936	919	914	5,459,004	454.95
Wholesale Trade	24	202	201	201	1,531,085	584.98
Retail Trade	70	598	584	577	2,700,978	354.35
Transportation, Warehousing & Utilities	36	136	134	136	1,226,941	697.39
Information	6	21	19	18	152,802	607.97
Financial Activities	29	134	132	132	832,413	482.65
Professional & Business Services	24	120	125	119	1,023,720	649.02
Education & Health Services	66	462	461	455	2,840,515	475.69
Leisure & Hospitality	26	321	336	357	690,238	157.09
Other Services	26	75	71	73	294,528	310.36
Local Government	28	1,176	1,192	1,212	7,782,232	501.65
State Government	11	113	115	112	750,266	509.23

**TABLE 6. COUNTY SUMMARY
EMPLOYMENT AND TOTAL EARNINGS, BY INDUSTRY
FOURTH QUARTER 2006**

NORTH AMERICAN INDUSTRY CLASSIFICATION SYSTEM INDUSTRY GROUP	NUMBER OF EMPLOYING UNITS	EMPLOYMENT			TOTAL EARNINGS	AVERAGE
		OCTOBER	NOVEMBER	DECEMBER	OCTOBER - DECEMBER	WEEKLY EARNINGS
LEE COUNTY - TOTAL	253	2,210	2,147	2,142	\$14,170,596	\$503.18
Natural Resources & Mining	28	288	248	237	1,843,619	550.39
Construction	11	33	26	28	158,623	420.75
Trade, Transportation & Utilities	53	353	357	358	2,231,638	482.20
Wholesale Trade	9	75	73	72	608,322	638.10
Retail Trade	27	190	195	197	810,914	321.54
Transportation, Warehousing & Utilities	17	88	89	89	812,402	704.80
Financial Activities	15	79	77	75	673,811	673.14
Professional & Business Services	19	67	65	65	597,994	700.50
Education & Health Services	68	299	297	300	1,901,792	489.82
Leisure & Hospitality	9	101	101	98	179,073	137.75
Local Government	16	383	376	378	2,330,860	473.08
State Government	8	471	469	474	3,425,109	558.99
Other	26	136	131	129	828,077	482.56
LINCOLN COUNTY - TOTAL	222	3,072	3,055	2,991	\$20,663,896	\$522.99
Natural Resources & Mining	32	242	227	187	1,878,403	660.79
Construction	13	65	65	68	428,559	499.49
Manufacturing	9	435	436	422	3,348,551	597.64
Trade, Transportation & Utilities	47	372	374	363	2,692,054	560.18
Wholesale Trade	7	28	29	31	388,371	1018.46
Retail Trade	25	209	211	199	802,979	299.36
Transportation, Warehousing & Utilities	15	135	134	133	1,500,704	861.48
Financial Activities	22	76	77	76	568,749	573.14
Professional & Business Services	13	21	21	20	141,282	525.86
Education & Health Services	35	293	298	308	1,575,641	404.46
Leisure & Hospitality	15	145	147	149	318,440	166.64
Local & State Government	22	1,383	1,374	1,360	9,509,943	533.06
Other	14	40	36	38	202,274	409.46

**TABLE 6. COUNTY SUMMARY
EMPLOYMENT AND TOTAL EARNINGS, BY INDUSTRY
FOURTH QUARTER 2006**

NORTH AMERICAN INDUSTRY CLASSIFICATION SYSTEM INDUSTRY GROUP	NUMBER OF EMPLOYING UNITS	EMPLOYMENT			TOTAL EARNINGS	AVERAGE
		OCTOBER	NOVEMBER	DECEMBER	OCTOBER - DECEMBER	WEEKLY EARNINGS
LITTLE RIVER COUNTY - TOTAL	260	4,504	4,511	4,564	\$45,937,757	\$780.69
Natural Resources & Mining	12	69	69	77	508,378	545.67
Trade, Transportation & Utilities	68	1,223	1,215	1,263	11,592,706	722.84
Retail Trade	41	320	318	316	1,542,176	373.05
Other Trade, Transportation and Utilities	27	903	897	947	10,050,530	844.32
Information	3	11	10	10	74,802	556.84
Financial Activities	24	96	96	95	677,715	544.93
Professional & Business Services	20	129	132	127	723,852	430.52
Education & Health Services	26	162	163	155	873,132	419.78
Leisure & Hospitality	19	213	210	214	537,432	194.70
Other Services	14	102	100	100	351,840	268.85
Local Government	20	793	793	808	5,538,358	533.87
State Government	12	81	82	82	545,285	513.61
Other	42	1,625	1,641	1,633	24,514,257	1154.75
LOGAN COUNTY - TOTAL	483	5,915	5,911	5,935	\$37,097,712	\$482.01
Natural Resources & Mining	20	94	96	92	825,350	675.41
Construction	50	156	148	156	1,100,185	551.93
Manufacturing	28	1,785	1,798	1,812	12,475,544	533.64
Trade, Transportation & Utilities	117	859	862	857	4,481,238	401.14
Wholesale Trade	17	45	45	43	261,604	453.91
Retail Trade	75	737	737	736	3,505,641	366.06
Transportation, Warehousing & Utilities	25	77	80	78	713,993	701.14
Information	6	45	45	45	385,006	658.13
Financial Activities	43	246	249	248	2,730,890	848.19
Professional & Business Services	44	182	181	190	1,080,546	450.92
Education & Health Services	79	737	748	750	4,419,047	456.28
Leisure & Hospitality	31	321	305	304	819,670	203.39
Other Services	28	85	79	79	463,511	440.18
Local & State Government	37	1,405	1,400	1,402	8,316,725	456.20

**TABLE 6. COUNTY SUMMARY
EMPLOYMENT AND TOTAL EARNINGS, BY INDUSTRY
FOURTH QUARTER 2006**

NORTH AMERICAN INDUSTRY CLASSIFICATION SYSTEM INDUSTRY GROUP	NUMBER OF EMPLOYING UNITS	EMPLOYMENT			TOTAL EARNINGS	AVERAGE
		OCTOBER	NOVEMBER	DECEMBER	OCTOBER - DECEMBER	WEEKLY EARNINGS
LONOKE COUNTY - TOTAL	1,228	12,338	12,339	12,208	\$88,666,917	\$554.74
Natural Resources & Mining	70	493	424	376	4,380,726	781.85
Construction	167	946	942	940	10,270,004	838.05
Manufacturing	37	1,371	1,380	1,307	13,034,360	741.23
Trade, Transportation & Utilities	334	2,737	2,735	2,725	17,065,752	480.45
Wholesale Trade	82	449	449	446	4,582,171	786.77
Retail Trade	178	1,972	1,978	1,974	9,994,447	389.33
Transportation, Warehousing & Utilities	74	316	308	305	2,489,134	618.32
Information	16	111	105	104	1,263,650	911.29
Financial Activities	126	600	598	605	6,245,072	799.32
Professional & Business Services	140	573	575	593	4,476,111	593.31
Education & Health Services	139	1,368	1,398	1,394	8,958,369	496.95
Leisure & Hospitality	87	1,316	1,329	1,311	3,425,755	199.84
Other Services	68	197	197	195	1,186,174	464.74
Local Government	28	2,470	2,500	2,493	17,394,449	537.87
State Government	16	156	156	165	966,495	467.58
MADISON COUNTY - TOTAL	261	3,219	3,208	3,206	\$20,959,693	\$502.11
Natural Resources & Mining	11	57	52	54	349,480	494.78
Construction	44	151	150	150	921,042	471.28
Manufacturing	20	1,148	1,134	1,122	8,015,033	543.37
Trade, Transportation & Utilities	66	573	578	575	3,354,510	448.50
Wholesale Trade	16	43	39	39	415,415	792.27
Retail Trade	34	408	417	414	1,963,809	365.77
Transportation, Warehousing & Utilities	16	122	122	122	975,286	614.93
Information	4	34	35	34	483,677	1083.67
Financial Activities	15	88	90	93	733,559	624.66
Professional & Business Services	22	85	82	94	458,588	405.47
Education & Health Services	37	269	268	268	1,343,481	385.14
Leisure & Hospitality	14	131	129	119	248,876	151.54
Other Services	12	25	24	25	177,699	554.15
Local Government	8	609	618	625	4,539,554	565.65
State Government	8	49	48	47	334,194	535.57

**TABLE 6. COUNTY SUMMARY
EMPLOYMENT AND TOTAL EARNINGS, BY INDUSTRY
FOURTH QUARTER 2006**

NORTH AMERICAN INDUSTRY CLASSIFICATION SYSTEM INDUSTRY GROUP	NUMBER OF EMPLOYING UNITS	EMPLOYMENT			TOTAL EARNINGS	AVERAGE
		OCTOBER	NOVEMBER	DECEMBER	OCTOBER - DECEMBER	WEEKLY EARNINGS
MARION COUNTY – TOTAL	315	4,167	4,151	4,139	\$24,867,115	\$460.67
Natural Resources & Mining	5	57	55	55	257,402	355.69
Construction	25	70	71	78	392,951	414.07
Manufacturing	27	1,782	1,778	1,788	11,426,347	493.05
Trade, Transportation & Utilities	58	641	644	651	3,316,481	395.32
Retail Trade	38	461	466	465	1,967,839	326.23
Other Trade, Transportation & Utilities	20	180	178	186	1,348,642	572.10
Financial Activities	35	176	165	154	1,167,507	544.29
Professional & Business Services	28	71	70	69	527,693	579.88
Education & Health Services	51	376	385	374	2,027,010	412.13
Leisure & Hospitality	39	246	230	214	633,577	211.90
Local Government	20	557	556	561	3,435,434	473.59
State Government	8	104	109	107	700,350	505.06
Other	19	87	88	88	982,363	861.97
MILLER COUNTY - TOTAL	839	12,530	12,336	12,383	\$101,490,561	\$628.77
Natural Resources & Mining	28	149	136	143	1,086,889	586.03
Construction	91	859	775	796	6,083,273	577.71
Manufacturing	34	2,628	2,614	2,606	36,584,726	1075.77
Trade, Transportation & Utilities	229	2,581	2,592	2,624	19,227,389	569.08
Wholesale Trade	65	638	643	652	7,005,961	836.40
Retail Trade	127	1,383	1,388	1,389	6,829,205	378.84
Transportation, Warehousing & Utilities	37	560	561	583	5,392,223	730.26
Information	9	94	95	95	1,740,394	1414.19
Financial Activities	85	378	375	372	3,353,300	687.86
Professional & Business Services	83	853	779	805	4,745,916	449.41
Education & Health Services	90	1,106	1,091	1,068	7,322,838	517.58
Leisure & Hospitality	84	1,307	1,281	1,293	4,102,348	243.93
Other Services	63	342	343	349	1,328,060	296.40
Local Government	26	1,760	1,786	1,763	12,193,847	530.04
State Government	17	473	469	469	3,721,581	608.67

**TABLE 6. COUNTY SUMMARY
EMPLOYMENT AND TOTAL EARNINGS, BY INDUSTRY
FOURTH QUARTER 2006**

NORTH AMERICAN INDUSTRY CLASSIFICATION SYSTEM INDUSTRY GROUP	NUMBER OF EMPLOYING UNITS	EMPLOYMENT			TOTAL EARNINGS	AVERAGE
		OCTOBER	NOVEMBER	DECEMBER	OCTOBER - DECEMBER	WEEKLY EARNINGS
MISSISSIPPI COUNTY - TOTAL	1,173	19,789	19,552	19,454	\$175,039,918	\$687.03
Natural Resources & Mining	103	1,186	1,031	817	8,793,868	668.87
Construction	69	611	622	623	5,449,875	677.62
Manufacturing	55	5,520	5,601	5,698	79,650,240	1092.86
Trade, Transportation & Utilities	300	3,135	3,093	3,144	22,422,097	552.11
Wholesale Trade	63	553	548	563	5,849,771	811.27
Retail Trade	184	1,908	1,889	1,917	9,438,833	381.20
Transportation, Warehousing & Utilities	53	674	656	664	7,133,493	825.57
Financial Activities	100	553	551	566	4,155,404	574.22
Professional & Business Services	98	1,200	1,126	1,088	7,948,274	537.26
Education & Health Services	210	1,756	1,740	1,726	12,491,395	552.02
Leisure & Hospitality	79	1,088	1,067	1,069	3,190,747	228.39
Local Government	46	2,460	2,470	2,480	16,381,042	510.15
State Government	24	660	662	646	4,276,125	501.42
Other	89	1,620	1,589	1,597	10,280,851	493.65
MONROE COUNTY - TOTAL	310	2,381	2,363	2,350	\$13,991,534	\$455.15
Natural Resources & Mining	37	179	163	148	1,004,713	473.18
Construction	14	32	31	31	123,509	303.21
Manufacturing	8	100	107	118	819,346	581.78
Trade, Transportation & Utilities	90	685	673	667	4,670,686	532.27
Wholesale Trade	22	185	185	177	1,766,454	745.23
Retail Trade	41	337	346	351	1,652,359	368.78
Transportation, Warehousing & Utilities	27	163	142	139	1,251,873	650.66
Financial Activities	15	94	94	93	810,926	665.97
Professional & Business Services	17	38	41	41	246,813	474.64
Education & Health Services	46	313	320	317	1,375,451	334.12
Leisure & Hospitality	26	255	252	254	686,477	208.17
Local Government	22	451	453	454	2,978,461	506.14
State Government	9	120	118	117	762,844	495.89
Other	26	114	111	110	512,308	352.91

**TABLE 6. COUNTY SUMMARY
EMPLOYMENT AND TOTAL EARNINGS, BY INDUSTRY
FOURTH QUARTER 2006**

NORTH AMERICAN INDUSTRY CLASSIFICATION SYSTEM INDUSTRY GROUP	NUMBER OF EMPLOYING UNITS	EMPLOYMENT			TOTAL EARNINGS	AVERAGE
		OCTOBER	NOVEMBER	DECEMBER	OCTOBER - DECEMBER	WEEKLY EARNINGS
MONTGOMERY COUNTY - TOTAL	186	1,634	1,627	1,590	\$9,036,742	\$429.89
Natural Resources & Mining	14	59	59	59	506,724	660.66
Construction	24	130	127	121	1,016,538	620.60
Trade, Transportation & Utilities	46	207	204	202	1,023,868	385.44
Wholesale Trade	10	61	59	57	352,561	459.66
Retail Trade	25	124	123	124	552,483	343.66
Transportation, Warehousing & Utilities	11	22	22	21	118,824	421.86
Financial Activities	10	71	72	73	528,953	565.12
Education & Health Services	16	50	52	53	307,951	458.49
Leisure & Hospitality	22	218	212	190	888,661	330.77
Other Services	12	80	78	77	296,685	291.34
Local Government	9	494	503	508	2,945,560	451.66
State Government	8	57	56	53	408,005	567.20
Other	25	268	264	254	1,113,797	327.01
NEVADA COUNTY - TOTAL	189	2,604	2,635	2,612	\$18,029,989	\$529.97
Natural Resources & Mining	15	62	64	63	580,934	709.32
Construction	9	13	14	14	75,833	426.83
Manufacturing	9	785	774	787	6,967,973	685.42
Trade, Transportation & Utilities	46	518	530	509	3,531,453	523.41
Retail Trade	30	276	294	276	1,371,148	374.02
Other Trade, Transportation & Utilities	16	242	236	233	2,160,305	701.17
Financial Activities	14	63	64	63	596,637	724.66
Education & Health Services	17	384	380	379	2,134,724	431.00
Leisure & Hospitality	14	101	105	106	279,852	206.99
Other Services	14	75	81	75	247,300	247.05
Local Government	28	481	491	488	2,700,107	426.78
State Government	11	82	89	86	572,183	513.78
Other	12	40	43	42	342,993	633.22

**TABLE 6. COUNTY SUMMARY
EMPLOYMENT AND TOTAL EARNINGS, BY INDUSTRY
FOURTH QUARTER 2006**

NORTH AMERICAN INDUSTRY CLASSIFICATION SYSTEM INDUSTRY GROUP	NUMBER OF EMPLOYING UNITS	EMPLOYMENT			TOTAL EARNINGS	AVERAGE
		OCTOBER	NOVEMBER	DECEMBER	OCTOBER - DECEMBER	WEEKLY EARNINGS
NEWTON COUNTY - TOTAL	133	1,100	1,101	1,100	\$5,343,058	\$373.53
Natural Resources & Mining	4	2	2	2	7,000	269.23
Construction	8	14	13	10	51,624	321.98
Manufacturing	16	88	88	90	543,702	471.69
Trade, Transportation & Utilities	31	156	155	157	693,894	342.16
Retail Trade	15	103	102	103	357,481	267.84
Other Trade, Transportation & Utilities	16	53	53	54	336,413	485.21
Education & Health Services	21	226	223	226	914,710	312.72
Leisure & Hospitality	17	73	80	68	189,313	197.68
Other Services	4	8	8	8	25,693	247.05
Local Government	13	397	396	399	2,140,847	414.46
State Government	7	87	87	91	439,471	382.70
Other	12	49	49	49	336,804	528.73
OUACHITA COUNTY - TOTAL	659	7,631	7,672	7,690	\$52,135,126	\$523.25
Natural Resources & Mining	48	284	280	297	2,023,557	542.36
Construction	51	257	260	273	1,791,120	523.21
Manufacturing	30	787	797	788	7,330,889	713.21
Trade, Transportation & Utilities	180	1,762	1,775	1,797	12,097,833	523.40
Wholesale Trade	31	257	256	255	3,091,179	928.84
Retail Trade	121	1,084	1,097	1,106	4,954,857	347.86
Transportation, Warehousing & Utilities	28	421	422	436	4,051,797	731.06
Information	9	90	89	89	703,723	605.96
Financial Activities	64	367	364	373	3,064,382	640.55
Professional & Business Services	53	319	318	321	2,038,801	491.12
Education & Health Services	97	1,266	1,271	1,278	8,724,036	527.72
Leisure & Hospitality	40	510	497	491	1,208,619	186.19
Other Services	43	154	156	151	781,829	391.37
Local Government	30	1,291	1,303	1,292	8,320,674	494.12
State Government	14	544	562	540	4,049,663	567.76

**TABLE 6. COUNTY SUMMARY
EMPLOYMENT AND TOTAL EARNINGS, BY INDUSTRY
FOURTH QUARTER 2006**

NORTH AMERICAN INDUSTRY CLASSIFICATION SYSTEM INDUSTRY GROUP	NUMBER OF EMPLOYING UNITS	EMPLOYMENT			TOTAL EARNINGS	AVERAGE
		OCTOBER	NOVEMBER	DECEMBER	OCTOBER - DECEMBER	WEEKLY EARNINGS
PERRY COUNTY - TOTAL	161	1,220	1,233	1,243	\$7,453,911	\$465.40
Natural Resources & Mining	9	38	51	55	378,074	605.89
Construction	28	73	75	74	544,549	566.06
Manufacturing	7	82	80	74	479,801	469.17
Trade, Transportation & Utilities	26	177	180	185	919,623	391.55
Retail Trade	18	149	152	158	565,391	284.26
Other Trade, Transportation & Utilities	8	28	28	27	354,232	984.89
Financial Activities	14	48	50	49	543,835	853.74
Professional & Business Services	14	42	38	33	252,575	515.81
Education & Health Services	25	183	185	191	1,025,687	423.43
Local Government	12	416	418	423	2,485,929	456.38
State Government	9	55	53	55	354,468	501.84
Other	17	106	103	104	469,370	346.06
PHILLIPS COUNTY - TOTAL	777	6,845	6,797	6,714	\$43,307,500	\$490.96
Natural Resources & Mining	71	692	593	512	3,763,512	483.31
Construction	30	115	112	112	712,812	485.24
Manufacturing	11	384	394	391	2,924,047	577.23
Trade, Transportation & Utilities	173	1,578	1,599	1,603	10,166,838	490.84
Wholesale Trade	36	381	380	384	3,309,279	666.97
Retail Trade	102	876	900	898	4,417,573	381.24
Transportation, Warehousing & Utilities	35	321	319	321	2,439,986	585.92
Information	10	48	48	48	335,640	537.88
Financial Activities	54	268	273	273	1,945,759	551.62
Professional & Business Services	62	221	223	236	1,809,532	614.09
Education & Health Services	237	1,309	1,322	1,303	8,116,631	476.12
Leisure & Hospitality	38	434	433	431	1,016,856	180.79
Other Services	43	86	81	83	408,541	377.11
Local Government	31	1,119	1,125	1,131	8,721,371	596.33
State Government	17	591	594	591	3,385,961	439.96

**TABLE 6. COUNTY SUMMARY
EMPLOYMENT AND TOTAL EARNINGS, BY INDUSTRY
FOURTH QUARTER 2006**

NORTH AMERICAN INDUSTRY CLASSIFICATION SYSTEM INDUSTRY GROUP	NUMBER OF EMPLOYING UNITS	EMPLOYMENT			TOTAL EARNINGS	AVERAGE
		OCTOBER	NOVEMBER	DECEMBER	OCTOBER - DECEMBER	WEEKLY EARNINGS
PIKE COUNTY - TOTAL	267	2,869	2,828	2,843	\$16,698,676	\$451.23
Natural Resources & Mining	29	152	146	141	1,037,501	545.38
Construction	16	128	105	102	715,562	492.92
Manufacturing	14	502	494	479	2,714,170	424.64
Trade, Transportation & Utilities	90	582	580	594	3,402,264	447.12
Wholesale Trade	18	122	125	127	1,018,917	628.70
Retail Trade	42	339	337	344	1,510,538	341.75
Transportation, Warehousing & Utilities	30	121	118	123	872,809	556.40
Information	6	31	31	31	330,107	819.12
Financial Activities	26	173	176	173	1,714,963	758.16
Professional & Business Services	11	27	26	30	116,945	325.15
Education & Health Services	19	254	250	254	1,225,691	373.16
Leisure & Hospitality	18	199	200	210	501,366	189.98
Other Services	14	103	107	106	584,154	426.60
Local Government	13	610	610	620	3,766,411	472.38
State Government	11	108	103	103	589,542	433.27
POINSETT COUNTY - TOTAL	497	5,920	5,863	5,821	\$40,344,972	\$528.88
Natural Resources & Mining	51	431	403	337	3,027,302	596.59
Construction	26	59	60	62	550,704	702.13
Manufacturing	24	1,169	1,179	1,184	9,263,118	605.22
Trade, Transportation & Utilities	133	1,343	1,311	1,306	9,315,782	542.88
Wholesale Trade	33	522	496	489	5,230,811	801.00
Retail Trade	75	684	682	690	3,078,696	345.56
Transportation, Warehousing & Utilities	25	137	133	127	1,006,275	584.93
Information	6	55	55	53	688,649	974.96
Financial Activities	44	302	308	312	3,002,628	751.53
Professional & Business Services	31	147	152	165	941,922	468.46
Education & Health Services	65	566	563	555	3,316,534	454.49
Leisure & Hospitality	46	391	375	381	789,260	158.79
Other Services	28	61	61	62	409,687	513.82
Local Government	31	1,189	1,183	1,191	7,741,338	501.39
State Government	12	207	213	213	1,298,048	473.22

**TABLE 6. COUNTY SUMMARY
EMPLOYMENT AND TOTAL EARNINGS, BY INDUSTRY
FOURTH QUARTER 2006**

NORTH AMERICAN INDUSTRY CLASSIFICATION SYSTEM INDUSTRY GROUP	NUMBER OF EMPLOYING UNITS	EMPLOYMENT			TOTAL EARNINGS	AVERAGE
		OCTOBER	NOVEMBER	DECEMBER	OCTOBER - DECEMBER	WEEKLY EARNINGS
POLK COUNTY - TOTAL	545	6,261	6,295	6,348	\$36,768,224	\$448.85
Natural Resources & Mining	28	250	249	251	1,948,240	599.46
Construction	37	203	201	211	1,149,627	431.38
Manufacturing	45	1,347	1,351	1,350	8,964,606	511.06
Trade, Transportation & Utilities	149	1,358	1,362	1,380	7,286,769	410.14
Wholesale Trade	26	123	123	125	616,760	383.64
Retail Trade	80	820	813	826	3,934,784	369.27
Transportation, Warehousing & Utilities	43	415	426	429	2,735,225	497.01
Information	9	53	53	54	395,521	570.46
Financial Activities	39	225	233	232	1,769,454	591.79
Professional & Business Services	50	165	163	175	1,135,706	521.05
Education & Health Services	76	942	948	939	5,430,149	442.95
Leisure & Hospitality	42	446	446	452	970,513	166.64
Other Services	35	135	140	140	699,389	388.91
Local Government	21	797	810	828	5,239,294	496.54
State Government	14	340	339	336	1,778,956	404.46
POPE COUNTY - TOTAL	1,737	27,189	27,155	27,461	\$207,089,435	\$584.19
Natural Resources & Mining	22	312	419	662	2,590,130	429.09
Construction	180	1,437	1,224	1,261	13,923,048	819.23
Manufacturing	89	5,145	5,165	5,181	45,777,921	681.95
Trade, Transportation & Utilities	472	6,707	6,822	6,853	63,461,919	718.53
Wholesale Trade	101	711	729	747	6,991,639	737.75
Retail Trade	279	3,450	3,505	3,532	17,409,994	383.11
Transportation, Warehousing & Utilities	92	2,546	2,588	2,574	39,060,286	1169.42
Information	24	252	253	255	2,377,385	721.88
Financial Activities	179	871	858	865	7,314,762	650.74
Professional & Business Services	231	2,753	2,672	2,642	15,261,543	436.58
Education & Health Services	236	2,918	2,923	2,963	20,868,606	547.01
Leisure & Hospitality	139	2,439	2,441	2,394	6,490,966	205.93
Other Services	109	469	460	443	2,774,704	466.70
Local Government	40	2,266	2,289	2,300	15,701,961	528.60
State Government	16	1,620	1,629	1,642	10,546,490	497.61

**TABLE 6. COUNTY SUMMARY
EMPLOYMENT AND TOTAL EARNINGS, BY INDUSTRY
FOURTH QUARTER 2006**

NORTH AMERICAN INDUSTRY CLASSIFICATION SYSTEM INDUSTRY GROUP	NUMBER OF EMPLOYING UNITS	EMPLOYMENT			TOTAL EARNINGS	AVERAGE
		OCTOBER	NOVEMBER	DECEMBER	OCTOBER - DECEMBER	WEEKLY EARNINGS
PRAIRIE COUNTY - TOTAL	245	1,477	1,412	1,412	\$9,379,998	\$503.28
Natural Resources & Mining	32	133	118	123	962,188	593.70
Trade, Transportation & Utilities	70	384	346	340	2,034,490	438.78
Wholesale Trade	11	71	50	48	550,242	751.35
Retail Trade	39	205	207	210	708,348	262.81
Transportation, Warehousing & Utilities	20	108	89	82	775,900	641.77
Information	4	6	8	9	87,430	877.22
Financial Activities	16	65	64	65	631,709	751.44
Professional & Business Services	15	40	41	40	271,267	517.36
Education & Health Services	30	155	158	160	948,903	462.95
Leisure & Hospitality	19	90	82	85	260,754	234.14
Other Services	14	39	39	38	162,548	323.37
Local Government	15	336	331	332	2,060,400	475.95
State Government	10	46	47	49	350,422	569.48
Other	20	183	178	171	1,609,887	698.33
PULASKI COUNTY - TOTAL	14,300	238,653	239,278	240,895	\$2,387,860,397	\$766.59
Natural Resources & Mining	52	729	715	669	8,374,081	914.57
Construction	1,168	10,638	10,460	10,485	126,478,878	924.15
Manufacturing	446	15,810	15,766	15,676	176,227,892	860.66
Trade, Transportation & Utilities	3,276	51,921	53,011	53,854	483,417,323	702.57
Wholesale Trade	1,113	13,329	13,410	13,500	184,766,963	1059.63
Retail Trade	1,757	24,830	25,891	26,472	153,450,408	458.74
Transportation, Warehousing & Utilities	406	13,762	13,710	13,882	145,199,952	810.26
Information	238	8,840	8,898	8,912	115,808,565	1002.82
Financial Activities	1,752	16,283	16,428	16,475	207,121,306	971.76
Professional & Business Services	2,770	33,820	33,806	34,099	364,816,607	827.61
Education & Health Services	2,023	33,481	33,474	33,727	381,383,947	874.16
Leisure & Hospitality	1,033	19,651	19,488	19,714	72,162,476	282.96
Other Services	1,235	6,831	6,785	6,845	49,691,199	560.44
Local Government	104	16,240	16,067	16,104	148,895,288	709.77
State Government	203	24,409	24,380	24,335	253,482,835	799.96

**TABLE 6. COUNTY SUMMARY
EMPLOYMENT AND TOTAL EARNINGS, BY INDUSTRY
FOURTH QUARTER 2006**

NORTH AMERICAN INDUSTRY CLASSIFICATION SYSTEM INDUSTRY GROUP	NUMBER OF EMPLOYING UNITS	EMPLOYMENT			TOTAL EARNINGS	AVERAGE
		OCTOBER	NOVEMBER	DECEMBER	OCTOBER - DECEMBER	WEEKLY EARNINGS
RANDOLPH COUNTY - TOTAL	416	5,033	5,007	5,068	\$30,281,004	\$462.53
Natural Resources & Mining	22	85	78	78	404,264	387.10
Construction	27	113	103	97	479,115	353.24
Manufacturing	39	1,032	1,016	1,009	7,563,653	570.97
Trade, Transportation & Utilities	103	921	916	970	4,987,929	410.07
Wholesale Trade	21	213	208	208	1,058,726	388.43
Retail Trade	61	586	589	635	2,820,550	359.61
Transportation, Warehousing & Utilities	21	122	119	127	1,108,653	695.23
Information	5	41	40	42	415,963	780.42
Financial Activities	27	153	155	154	931,870	465.47
Professional & Business Services	36	225	222	233	1,051,442	356.82
Education & Health Services	69	876	894	897	6,110,842	528.76
Leisure & Hospitality	29	386	372	358	783,519	162.02
Other Services	24	71	73	75	324,126	341.54
Local Government	23	861	866	882	5,226,064	462.25
State Government	12	269	272	273	2,002,217	567.63
SAINT FRANCIS COUNTY - TOTAL	672	8,041	8,034	7,827	\$52,563,063	\$507.49
Natural Resources & Mining	23	209	192	186	1,348,593	530.18
Construction	45	236	228	233	1,807,221	598.35
Manufacturing	20	1,213	1,211	957	8,860,140	604.75
Trade, Transportation & Utilities	185	2,076	2,064	2,091	13,592,668	503.41
Wholesale Trade	32	514	516	509	4,465,565	669.60
Retail Trade	124	1,214	1,222	1,229	6,041,800	380.43
Transportation, Warehousing & Utilities	29	348	326	353	3,085,303	693.27
Information	9	94	94	94	651,103	532.82
Financial Activities	53	284	299	308	1,961,782	508.10
Professional & Business Services	49	161	171	172	1,741,976	797.61
Education & Health Services	154	1,314	1,308	1,351	7,974,870	463.22
Leisure & Hospitality	48	691	696	672	1,899,469	212.89
Other Services	40	115	115	116	452,080	301.52
Local Government	29	1,126	1,136	1,130	8,320,200	566.05
State Government	17	522	520	517	3,952,961	585.13

**TABLE 6. COUNTY SUMMARY
EMPLOYMENT AND TOTAL EARNINGS, BY INDUSTRY
FOURTH QUARTER 2006**

NORTH AMERICAN INDUSTRY CLASSIFICATION SYSTEM INDUSTRY GROUP	NUMBER OF EMPLOYING UNITS	EMPLOYMENT			TOTAL EARNINGS	AVERAGE WEEKLY EARNINGS
		OCTOBER	NOVEMBER	DECEMBER	OCTOBER - DECEMBER	
SALINE COUNTY - TOTAL	1,761	20,609	20,576	20,597	\$151,745,264	\$566.80
Natural Resources & Mining	12	34	34	37	407,008	894.52
Construction	312	1,962	1,926	1,934	17,592,879	697.34
Manufacturing	87	1,821	1,843	1,872	20,407,490	850.69
Trade, Transportation & Utilities	434	4,640	4,637	4,667	31,688,243	524.43
Wholesale Trade	126	559	548	551	6,823,382	949.71
Retail Trade	251	3,835	3,828	3,854	22,506,605	450.97
Transportation, Warehousing & Utilities	57	246	261	262	2,358,256	707.69
Information	16	145	146	148	1,004,992	528.29
Financial Activities	172	768	745	769	6,497,318	657.05
Professional & Business Services	218	1,169	1,136	1,142	8,543,439	571.96
Education & Health Services	190	2,689	2,700	2,722	18,703,334	532.14
Leisure & Hospitality	141	2,433	2,516	2,508	7,328,317	226.79
Other Services	129	582	581	565	3,562,201	475.72
Local & State Government	50	4,366	4,312	4,233	36,010,043	643.64
SCOTT COUNTY - TOTAL	190	2,892	2,874	2,878	16,764,152	\$447.55
Natural Resources & Mining	17	176	178	180	1,399,579	604.83
Trade, Transportation & Utilities	40	457	453	451	2,575,179	436.64
Wholesale Trade	7	63	64	64	495,103	598.19
Retail Trade	27	332	330	325	1,520,736	355.56
Transportation, Warehousing & Utilities	6	62	59	62	559,340	705.35
Financial Activities	19	70	70	73	472,534	511.95
Professional & Business Services	12	13	14	16	137,249	736.58
Education & Health Services	29	303	309	311	1,729,451	432.40
Leisure & Hospitality	19	183	176	170	365,208	159.32
Other Services	11	60	59	59	591,912	767.39
Local Government	5	367	374	378	2,323,003	479.07
State Government	8	73	75	71	434,211	457.55
Other	30	1,190	1,166	1,169	6,735,826	440.97

**TABLE 6. COUNTY SUMMARY
EMPLOYMENT AND TOTAL EARNINGS, BY INDUSTRY
FOURTH QUARTER 2006**

NORTH AMERICAN INDUSTRY CLASSIFICATION SYSTEM INDUSTRY GROUP	NUMBER OF EMPLOYING UNITS	EMPLOYMENT			TOTAL EARNINGS	AVERAGE
		OCTOBER	NOVEMBER	DECEMBER	OCTOBER - DECEMBER	WEEKLY EARNINGS
SEARCY COUNTY - TOTAL	180	1,710	1,689	1,681	\$8,952,124	\$406.67
Construction	7	13	24	17	84,627	361.65
Manufacturing	16	264	258	266	1,421,181	416.20
Trade, Transportation & Utilities	38	273	289	296	1,196,682	321.86
Retail Trade	27	202	213	220	802,917	291.79
Other Trade, Transportation & Utilities	11	71	76	76	393,765	407.48
Financial Activities	14	86	85	81	604,058	553.17
Professional & Business Services	16	36	36	36	165,516	353.67
Education & Health Services	45	298	307	304	1,618,908	410.99
Leisure & Hospitality	11	113	101	97	252,677	187.49
Local Government	10	393	398	393	2,187,545	426.37
State Government	8	137	142	143	912,017	498.73
Other	15	97	49	48	508,913	605.37
SEBASTIAN COUNTY - TOTAL	3,646	73,290	71,513	72,951	\$600,600,340	\$636.50
Natural Resources & Mining	69	1,477	1,494	1,518	23,645,327	1215.55
Construction	311	2,951	2,969	2,979	28,212,030	731.60
Manufacturing	228	20,159	18,241	19,867	179,713,858	711.77
Trade, Transportation & Utilities	929	12,882	13,257	13,434	95,085,980	554.49
Wholesale Trade	241	2,637	2,639	2,656	28,676,482	834.30
Retail Trade	562	7,977	8,357	8,484	44,738,420	416.00
Transportation, Warehousing & Utilities	126	2,268	2,261	2,294	21,671,078	732.96
Information	57	1,145	1,136	1,136	12,828,113	866.35
Financial Activities	410	2,525	2,533	2,541	24,405,751	741.16
Professional & Business Services	521	9,675	9,321	8,878	66,253,283	548.51
Education & Health Services	466	9,694	9,694	9,757	96,885,476	767.14
Leisure & Hospitality	315	5,317	5,392	5,441	16,517,533	236.02
Other Services	275	1,460	1,462	1,471	9,100,319	478.05
Local Government	43	4,529	4,505	4,438	36,697,075	628.60
State Government	22	1,476	1,509	1,491	11,255,595	580.30

**TABLE 6. COUNTY SUMMARY
EMPLOYMENT AND TOTAL EARNINGS, BY INDUSTRY
FOURTH QUARTER 2006**

NORTH AMERICAN INDUSTRY CLASSIFICATION SYSTEM INDUSTRY GROUP	NUMBER OF EMPLOYING UNITS	EMPLOYMENT			TOTAL EARNINGS	AVERAGE
		OCTOBER	NOVEMBER	DECEMBER	OCTOBER - DECEMBER	WEEKLY EARNINGS
SEVIER COUNTY - TOTAL	336	5,761	5,801	5,841	36,507,588	\$484.10
Natural Resources & Mining	18	227	227	227	1,538,222	521.25
Trade, Transportation & Utilities	95	857	868	852	5,471,477	489.97
Wholesale Trade	15	149	147	147	1,776,884	925.62
Retail Trade	60	594	605	589	2,691,188	347.34
Transportation, Warehousing & Utilities	20	114	116	116	1,003,405	669.23
Information	6	39	39	39	325,379	641.77
Financial Activities	28	204	207	216	1,568,130	577.15
Professional & Business Services	30	103	102	105	1,790,658	1333.00
Education & Health Services	54	526	545	554	3,403,660	483.36
Leisure & Hospitality	22	245	237	242	544,353	173.51
Other Services	31	133	148	148	673,509	362.30
Local Government	11	905	889	877	5,736,306	495.61
State Government	9	202	205	211	1,279,647	477.84
Other	32	2,320	2,334	2,370	14,176,247	465.75
SHARP COUNTY - TOTAL	442	3,997	3,938	3,897	\$21,914,752	\$427.42
Construction	34	245	232	227	1,647,501	540.05
Manufacturing	20	189	191	196	919,206	368.27
Trade, Transportation & Utilities	101	1,060	1,019	998	6,812,568	510.93
Retail Trade	70	636	630	619	2,873,177	351.75
Other Trade, Transportation & Utilities	31	424	389	379	3,939,391	762.66
Information	7	53	58	56	645,186	891.55
Financial Activities	41	268	269	269	1,832,903	524.79
Professional & Business Services	40	164	164	168	1,056,294	491.45
Education & Health Services	88	590	603	598	2,930,349	377.57
Leisure & Hospitality	42	459	440	420	966,527	169.10
Local Government	29	798	788	783	4,157,376	404.98
State Government	9	99	102	106	611,333	459.53
Other	31	72	72	76	335,509	351.93

**TABLE 6. COUNTY SUMMARY
EMPLOYMENT AND TOTAL EARNINGS, BY INDUSTRY
FOURTH QUARTER 2006**

NORTH AMERICAN INDUSTRY CLASSIFICATION SYSTEM INDUSTRY GROUP	NUMBER OF EMPLOYING UNITS	EMPLOYMENT			TOTAL EARNINGS	AVERAGE
		OCTOBER	NOVEMBER	DECEMBER	OCTOBER - DECEMBER	WEEKLY EARNINGS
STONE COUNTY - TOTAL	280	2,974	2,968	2,893	\$16,227,850	\$423.87
Construction	23	105	103	108	559,720	408.75
Manufacturing	25	493	476	480	2,382,586	379.45
Trade, Transportation & Utilities	78	716	722	719	4,541,600	485.89
Wholesale Trade	11	53	59	59	335,794	453.16
Retail Trade	54	610	612	607	3,779,826	476.91
Transportation, Warehousing & Utilities	13	53	51	53	425,980	626.13
Financial Activities	24	105	104	106	755,829	553.72
Professional & Business Services	9	18	19	16	156,930	683.29
Education & Health Services	47	462	462	459	3,171,683	529.23
Leisure & Hospitality	36	445	445	371	923,258	168.96
Other Services	13	27	26	27	156,739	452.13
Local Government	10	394	397	396	2,493,855	484.84
State Government	9	171	174	175	775,486	344.15
Other	6	38	40	36	310,164	627.86
UNION COUNTY - TOTAL	1,393	19,586	19,711	19,818	\$175,673,456	\$685.78
Natural Resources & Mining	111	517	552	553	5,461,444	777.02
Construction	94	1,254	1,268	1,270	13,732,691	835.73
Manufacturing	65	5,018	5,045	5,102	55,063,907	837.92
Trade, Transportation & Utilities	356	3,579	3,571	3,612	29,086,435	623.70
Wholesale Trade	79	591	577	585	8,418,511	1108.23
Retail Trade	218	2,205	2,232	2,239	11,204,059	387.29
Transportation, Warehousing & Utilities	59	783	762	788	9,463,865	936.12
Information	20	191	201	200	1,325,610	516.74
Financial Activities	118	716	725	727	5,944,647	632.77
Professional & Business Services	137	1,639	1,615	1,607	20,003,370	949.63
Education & Health Services	201	2,415	2,461	2,450	21,344,325	672.35
Leisure & Hospitality	89	1,021	1,025	1,025	3,113,753	233.98
Other Services	147	645	643	658	3,442,710	408.26
Local Government	37	2,047	2,063	2,052	13,335,720	499.43
State Government	18	544	542	562	3,818,844	534.75

**TABLE 6. COUNTY SUMMARY
EMPLOYMENT AND TOTAL EARNINGS, BY INDUSTRY
FOURTH QUARTER 2006**

NORTH AMERICAN INDUSTRY CLASSIFICATION SYSTEM INDUSTRY GROUP	NUMBER OF EMPLOYING UNITS	EMPLOYMENT			TOTAL EARNINGS	AVERAGE WEEKLY EARNINGS
		OCTOBER	NOVEMBER	DECEMBER	OCTOBER - DECEMBER	
VAN BUREN COUNTY - TOTAL	356	3,770	3,759	3,697	\$21,034,641	\$432.40
Natural Resources & Mining	10	26	19	18	71,915	263.42
Construction	44	194	197	193	1,248,596	493.39
Manufacturing	14	538	521	521	3,157,230	461.13
Trade, Transportation & Utilities	95	777	774	785	4,504,373	444.98
Wholesale Trade	16	48	46	47	483,607	791.50
Retail Trade	58	585	585	592	2,854,212	373.82
Transportation, Warehousing & Utilities	21	144	143	146	1,166,554	621.72
Information	10	56	57	59	513,865	689.44
Financial Activities	28	158	157	160	1,044,239	507.32
Professional & Business Services	29	91	94	88	487,208	411.84
Education & Health Services	49	596	614	592	3,696,614	473.40
Leisure & Hospitality	32	469	463	421	1,369,453	233.58
Other Services	26	79	76	81	407,119	398.10
Local Government	11	699	697	690	3,938,564	435.71
State Government	8	87	90	89	595,465	516.60
WASHINGTON COUNTY - TOTAL	5,575	91,574	92,470	92,252	\$842,785,726	\$703.92
Natural Resources & Mining	40	474	470	465	4,097,648	671.12
Construction	679	5,778	5,687	5,714	57,257,772	769.16
Manufacturing	239	15,258	15,246	15,323	128,981,323	649.51
Trade, Transportation & Utilities	1,362	20,610	21,067	21,367	177,971,083	651.45
Wholesale Trade	389	3,722	3,715	3,757	53,030,242	1093.24
Retail Trade	773	11,553	11,973	12,141	67,317,140	435.55
Transportation, Warehousing & Utilities	200	5,335	5,379	5,469	57,623,701	821.71
Information	91	1,527	1,508	1,504	16,200,684	823.67
Financial Activities	665	3,981	3,983	4,027	40,904,958	787.22
Professional & Business Services	924	9,231	9,189	9,037	138,807,294	1166.64
Education & Health Services	619	10,769	10,800	10,748	112,916,352	806.31
Leisure & Hospitality	500	9,522	9,450	9,253	29,991,312	245.21
Other Services	372	1,994	1,998	2,002	12,474,684	480.28
Local & State Government	84	12,430	13,072	12,812	123,182,616	741.94

**TABLE 6. COUNTY SUMMARY
EMPLOYMENT AND TOTAL EARNINGS, BY INDUSTRY
FOURTH QUARTER 2006**

NORTH AMERICAN INDUSTRY CLASSIFICATION SYSTEM INDUSTRY GROUP	NUMBER OF EMPLOYING UNITS	EMPLOYMENT			TOTAL EARNINGS	AVERAGE
		OCTOBER	NOVEMBER	DECEMBER	OCTOBER - DECEMBER	WEEKLY EARNINGS
WHITE COUNTY - TOTAL	1,649	23,955	24,148	23,394	\$177,432,669	\$572.70
Natural Resources & Mining	38	242	265	270	2,172,154	645.13
Construction	187	1,186	1,175	1,170	10,614,316	693.70
Manufacturing	85	3,499	3,459	2,775	31,965,255	757.90
Trade, Transportation & Utilities	470	5,832	5,885	5,973	42,755,565	557.75
Wholesale Trade	96	609	600	605	4,691,091	596.78
Retail Trade	290	3,094	3,128	3,203	16,037,443	392.67
Transportation, Warehousing & Utilities	84	2,129	2,157	2,165	22,027,031	787.96
Information	21	233	234	232	1,604,058	529.57
Financial Activities	176	941	950	967	7,761,742	626.72
Professional & Business Services	160	1,412	1,407	1,335	9,797,656	544.29
Education & Health Services	217	4,374	4,362	4,275	36,719,196	651.27
Leisure & Hospitality	121	2,193	2,331	2,298	5,684,250	192.28
Other Services	109	624	632	634	4,219,555	515.21
Local Government	46	2,668	2,693	2,713	18,810,688	537.64
State Government	19	751	755	752	5,328,234	544.55
WOODRUFF COUNTY - TOTAL	191	2,011	1,989	1,975	\$14,384,875	\$555.58
Natural Resources & Mining	19	110	104	108	899,245	644.47
Construction	6	75	73	71	494,570	521.15
Manufacturing	9	369	367	340	2,803,847	601.34
Trade, Transportation & Utilities	56	524	512	506	4,568,268	683.67
Wholesale Trade	13	210	198	181	2,655,806	1040.54
Retail Trade	26	208	207	210	794,806	293.47
Transportation, Warehousing & Utilities	17	106	107	115	1,117,656	786.34
Financial Activities	15	61	58	62	552,047	703.84
Professional & Business Services	4	6	6	6	61,590	789.62
Education & Health Services	48	226	227	228	1,464,839	496.39
Leisure & Hospitality	7	51	49	49	94,206	145.91
Local Government	10	503	505	520	2,923,871	441.58
State Government	7	58	60	57	369,170	486.82
Other	10	28	28	28	153,222	420.94

**TABLE 6. COUNTY SUMMARY
EMPLOYMENT AND TOTAL EARNINGS, BY INDUSTRY
FOURTH QUARTER 2006**

NORTH AMERICAN INDUSTRY CLASSIFICATION SYSTEM INDUSTRY GROUP	NUMBER OF EMPLOYING UNITS	EMPLOYMENT			TOTAL EARNINGS	AVERAGE
		OCTOBER	NOVEMBER	DECEMBER	OCTOBER - DECEMBER	WEEKLY EARNINGS
YELL COUNTY - TOTAL	407	6,893	6,883	6,887	\$42,569,105	\$475.42
Natural Resources & Mining	22	237	238	227	1,506,296	495.17
Construction	45	327	324	331	2,164,382	508.63
Manufacturing	22	2,878	2,855	2,836	17,533,185	472.18
Trade, Transportation & Utilities	84	692	681	692	3,272,536	365.71
Wholesale Trade	11	21	21	21	128,678	471.35
Retail Trade	54	582	571	580	2,359,623	314.21
Transportation, Warehousing & Utilities	19	89	89	91	784,235	672.78
Information	4	77	76	77	706,407	708.77
Financial Activities	37	203	203	206	1,358,937	512.42
Professional & Business Services	36	228	230	232	2,511,733	840.04
Education & Health Services	68	468	479	479	2,910,349	470.98
Leisure & Hospitality	29	320	325	316	826,960	198.58
Other Services	19	76	71	73	294,403	308.81
Local Government	28	1,276	1,292	1,311	8,826,807	525.12
State Government	13	111	109	107	657,110	463.73
REST-OF-STATE-TOTAL	4,267	16,126	16,052	16,219	230,831,735	\$1,100.66
Natural Resources & Mining	64	464	437	439	6,142,713	1057.87
Construction	559	2,975	2,890	2,875	30,142,746	795.88
Manufacturing	47	168	165	164	1,571,353	729.62
Trade, Transportation & Utilities	1,709	6,659	6,692	6,882	124,679,784	1422.05
Wholesale Trade	1,458	5,547	5,573	5,728	113,083,402	1548.92
Retail Trade	98	447	448	452	5,133,624	879.50
Transportation, Warehousing & Utilities	153	665	671	702	6,462,758	731.80
Information	100	212	222	215	3,162,906	1124.66
Financial Activities	262	662	679	684	10,265,507	1169.86
Professional & Business Services	1,238	3,760	3,759	3,808	43,202,189	880.17
Education & Health Services	111	564	547	527	5,681,815	800.48
Leisure & Hospitality	43	60	59	55	666,331	883.73
Other	134	602	602	570	5,316,391	691.58

TABLE 7. FEDERAL GOVERNMENT EMPLOYMENT AND EARNINGS IN ARKANSAS

NORTH AMERICAN INDUSTRY CLASSIFICATION SYSTEM INDUSTRY GROUP	NUMBER OF EMPLOYING UNITS	EMPLOYMENT			TOTAL
		OCTOBER	NOVEMBER	DECEMBER	EARNINGS OCT - DEC 2006
Manufacturing	2	3	3	0	\$17,518
Trade, Transportation & Utilities	453	6,817	6,812	6,935	70,083,397
Information	1	33	34	34	446,817
Financial Activities	23	176	174	175	2,997,340
Professional & Business Services	31	769	768	776	10,944,197
Education & Health Services	6	4,111	4,121	4,126	82,398,792
Leisure & Hospitality	15	206	199	211	2,126,661
Other Services	2	239	231	236	862,599
Public Administration	484	8,682	8,654	8,434	127,171,832
TOTAL	1,017	21,036	20,996	20,927	\$297,049,153

**TABLE 8. WORKFORCE INFORMATION AREA, SUMMARY
EMPLOYMENT AND TOTAL EARNINGS, BY INDUSTRY
FOURTH QUARTER 2006**

NORTH AMERICAN INDUSTRY CLASSIFICATION SYSTEM INDUSTRY GROUP	NUMBER OF EMPLOYING UNITS	EMPLOYMENT			TOTAL EARNINGS	AVERAGE
		OCTOBER	NOVEMBER	DECEMBER	OCT. - DEC. 2006	WEEKLY EARNINGS
CENTRAL WORKFORCE INFORMATION*	6,053	75,373	75,449	75,595	\$581,090,213	\$592.26
Natural Resources & Mining	172	1,123	1,028	996	11,023,533	808.35
Trade, Transportation & Utilities	1,545	14,957	14,995	15,086	95,767,740	490.70
Wholesale Trade	400	2,059	2,023	2,051	21,625,774	813.72
Retail Trade	886	11,338	11,433	11,486	59,842,551	403.12
Transportation, Warehousing & Utilities	259	1,560	1,539	1,549	14,299,415	709.95
Financial Activities	630	2,953	2,937	2,975	26,446,405	688.44
Professional & Business Services	726	7,135	7,139	7,210	80,587,962	865.63
Education & Health Services	726	9,870	9,967	10,020	75,602,658	584.34
Leisure & Hospitality	467	8,014	8,132	8,070	21,968,871	209.35
Local & State Government	210	14,551	14,517	14,472	113,300,442	600.51
Other	1,577	16,770	16,734	16,766	156,392,602	717.94

*Note: Pulaski County is not included in the Central Workforce Information. Please refer to Page 54 for information on Pulaski County.
Central Workforce Includes these counties: Faulkner, Lonoke, Monroe, Prairie, and Saline.

EASTERN WORKFORCE INFORMATION	3,432	39,011	38,989	38,791	\$272,513,206	\$538.46
Natural Resources & Mining	210	1,800	1,586	1,450	11,000,059	524.91
Construction	199	1,157	1,103	1,093	8,702,783	598.97
Trade, Transportation & Utilities	866	10,139	10,127	10,176	74,225,845	562.68
Wholesale Trade	180	2,017	2,003	2,004	19,512,779	747.50
Retail Trade	485	4,960	4,995	5,045	25,204,316	387.76
Transportation, Warehousing & Utilities	201	3,162	3,129	3,127	29,508,750	723.05
Financial Activities	277	1,601	1,650	1,640	12,737,127	600.97
Professional & Business Services	298	1,500	1,481	1,504	11,504,426	591.94
Education & Health Services	766	5,616	5,619	5,662	39,255,194	536.12
Leisure & Hospitality	229	3,564	3,646	3,770	10,662,847	224.10
Local Government	139	5,945	6,067	6,095	44,622,648	568.70
State Government	68	2,293	2,294	2,206	15,552,947	528.36
Other	380	5,396	5,416	5,195	44,249,330	637.93

Eastern Workforce Includes these counties: Crittenden, Cross, Lee, Phillips, and Saint Francis.

**TABLE 8. WORKFORCE INFORMATION AREA, SUMMARY
EMPLOYMENT AND TOTAL EARNINGS, BY INDUSTRY
FOURTH QUARTER 2006**

NORTH AMERICAN INDUSTRY CLASSIFICATION SYSTEM INDUSTRY GROUP	NUMBER OF EMPLOYING UNITS	EMPLOYMENT			TOTAL EARNINGS	AVERAGE
		OCTOBER	NOVEMBER	DECEMBER	OCT. - DEC. 2006	WEEKLY EARNINGS
NORTH CENTRAL WORKFORCE INFORMATION	5,561	70,468	70,363	69,418	\$479,725,049	\$526.55
Construction	504	2,865	2,820	2,806	22,200,530	603.37
Manufacturing	303	13,115	12,974	12,309	105,103,801	631.67
Trade, Transportation & Utilities	1,509	15,396	15,434	15,564	107,227,613	533.36
Retail Trade	934	9,095	9,167	9,267	46,245,969	387.67
Other Trade, Transportation & Utilities	575	6,301	6,267	6,297	60,981,644	745.97
Financial Activities	533	2,685	2,689	2,722	20,941,914	596.93
Professional & Business Services	455	3,123	3,091	2,990	20,653,507	517.84
Education & Health Services	862	11,659	11,652	11,588	89,594,018	592.44
Leisure & Hospitality	452	6,152	6,227	6,011	15,370,245	192.88
Local Government	238	9,301	9,342	9,307	57,683,814	476.27
State Government	115	3,021	3,031	3,013	20,343,303	517.88
Other	590	3,151	3,103	3,108	20,606,304	507.94

North Central Workforce Includes these counties: Cleburne, Fulton, Independence, Izard, Jackson, Sharp, Stone, Van Buren, White, and Woodruff

NORTHEAST WORKFORCE INFORMATION	6,515	96,604	96,416	96,174	\$734,246,782	\$585.91
Natural Resources & Mining	376	2,789	2,580	2,204	20,131,087	613.45
Construction	512	3,083	2,976	2,966	24,232,270	619.62
Manufacturing	350	21,597	21,595	21,603	217,332,288	774.04
Trade, Transportation & Utilities	1,753	18,039	18,117	18,399	118,138,004	499.73
Wholesale Trade	403	3,757	3,724	3,746	35,730,923	734.44
Retail Trade	1,044	11,683	11,879	12,080	58,199,991	376.82
Transportation, Warehousing & Utilities	306	2,599	2,514	2,573	24,207,090	726.81
Financial Activities	583	3,371	3,392	3,429	30,522,886	691.11
Professional & Business Services	664	6,910	7,021	6,853	48,573,690	539.32
Education & Health Services	998	13,426	13,332	13,355	113,887,307	655.19
Leisure & Hospitality	468	7,505	7,472	7,375	20,162,837	208.17
Local Government	219	11,951	11,992	12,060	81,531,072	522.59
State Government	107	3,942	3,998	3,983	33,789,122	653.99
Other	485	3,991	3,941	3,947	25,946,219	504.05

Northeast Workforce Includes these counties: Clay, Craighead, Greene, Lawrence, Mississippi, Poinsett, and Randolph.

**TABLE 8. WORKFORCE INFORMATION AREA, SUMMARY
EMPLOYMENT AND TOTAL EARNINGS, BY INDUSTRY
FOURTH QUARTER 2006**

NORTH AMERICAN INDUSTRY CLASSIFICATION SYSTEM INDUSTRY GROUP	NUMBER OF EMPLOYING UNITS	EMPLOYMENT			TOTAL EARNINGS	AVERAGE
		OCTOBER	NOVEMBER	DECEMBER	OCT. - DEC. 2006	WEEKLY EARNINGS

NORTHWEST WORKFORCE INFORMATION	14,987	235,417	236,489	236,279	\$2,102,601,191	\$685.15
Trade, Transportation & Utilities	3,733	55,195	56,187	56,466	475,966,088	654.39
Retail Trade	2,023	26,838	27,524	27,738	152,259,130	427.97
Other Trade, Transportation & Utilities	1,710	28,357	28,663	28,728	323,706,958	871.18
Education & Health Services	1,709	23,761	23,844	23,865	222,890,666	719.69
Leisure & Hospitality	1,372	22,228	21,853	21,469	67,962,823	239.26
Local & State Government	426	28,240	28,998	28,839	243,774,026	653.55
Other	7,747	105,993	105,607	105,640	1,092,007,588	794.36

Northwest Workforce Includes these counties: Baxter, Benton, Boone, Carroll, Madison, Marion, Newton, Searcy, and Washington.

SOUTHEAST WORKFORCE INFORMATION	5,509	77,609	77,442	77,029	\$587,285,191	\$583.97
Natural Resources & Mining	399	3,202	3,019	2,845	24,392,960	620.91
Construction	385	3,339	3,241	3,223	28,824,958	678.56
Manufacturing	223	17,391	17,285	17,087	170,468,950	759.98
Trade, Transportation & Utilities	1,406	13,660	13,705	13,709	94,910,128	533.24
Wholesale Trade	257	2,436	2,418	2,377	24,574,752	784.28
Retail Trade	855	8,673	8,781	8,854	43,722,207	383.52
Transportation, Warehousing & Utilities	294	2,551	2,506	2,478	26,613,169	815.06
Local & State Government	358	16,643	16,798	16,846	116,400,769	534.17
Other	2,738	23,374	23,394	23,319	152,287,426	501.42

Southeast Workforce Includes these counties: Arkansas, Ashley, Bradley, Chicot, Cleveland, Desha, Drew, Grant, Jefferson, and Lincoln

SOUTHWEST WORKFORCE INFORMATION	5,804	85,534	85,673	85,865	\$672,564,449	\$603.75
Natural Resources & Mining	414	2,889	2,932	2,951	28,287,402	744.17
Trade, Transportation & Utilities	1,524	15,118	15,108	15,217	109,165,047	554.36
Education & Health Services	781	9,393	9,471	9,478	64,048,988	521.51
Local Government	266	11,171	11,252	11,233	73,741,705	505.63
State Government	150	3,347	3,389	3,371	24,945,307	569.57
Other	2,669	43,616	43,521	43,615	372,376,000	657.22

Southwest Workforce Includes these counties: Calhoun, Columbia, Dallas, Hempstead, Howard, Lafayette, Little River, Miller, Nevada, Ouachita, Sevier, and Union

**TABLE 8. WORKFORCE INFORMATION AREA, SUMMARY
EMPLOYMENT AND TOTAL EARNINGS, BY INDUSTRY
FOURTH QUARTER 2006**

NORTH AMERICAN INDUSTRY CLASSIFICATION SYSTEM INDUSTRY GROUP	NUMBER OF EMPLOYING UNITS	EMPLOYMENT			TOTAL EARNINGS	AVERAGE
		OCTOBER	NOVEMBER	DECEMBER	OCT. - DEC. 2006	WEEKLY EARNINGS
WEST CENTRAL WORKFORCE INFORMATION	8,288	109,965	109,744	110,366	\$777,548,839	\$543.62
Natural Resources & Mining	257	1,930	2,059	2,330	15,598,233	569.65
Construction	918	5,964	5,702	5,760	49,901,457	660.84
Trade, Transportation & Utilities	1,994	21,957	22,135	22,374	162,669,161	564.79
Financial Activities	865	4,094	4,068	4,096	34,161,901	643.13
Education & Health Services	1,127	15,404	15,428	15,493	125,906,963	627.21
Local Government	229	12,115	12,195	12,308	84,301,383	531.27
State Government	134	5,399	5,398	5,410	36,247,298	516.12
Other	2,764	43,102	42,759	42,595	268,762,443	482.83

West Central Workforce Includes these counties: Clark, Conway, Garland, Hot Spring, Johnson, Montgomery, Perry, Pike, Pope, and Yell

WESTERN WORKFORCE INFORMATION	6,409	111,965	110,151	111,735	\$859,405,256	\$594.05
Natural Resources & Mining	170	2,473	2,497	2,531	33,110,739	1018.66
Trade, Transportation & Utilities	1,636	23,058	23,559	23,795	165,046,993	540.93
Wholesale Trade	388	3,606	3,606	3,626	36,668,153	780.76
Retail Trade	956	12,315	12,730	12,829	66,019,763	402.26
Transportation, Warehousing & Utilities	292	7,137	7,223	7,340	62,359,077	663.16
Financial Activities	667	3,799	3,818	3,833	34,661,576	698.59
Professional & Business Services	798	10,892	10,441	10,047	75,546,116	555.57
Education & Health Services	816	13,545	13,557	13,613	121,337,722	687.73
Leisure & Hospitality	514	8,138	8,175	8,174	23,508,112	221.54
Local & State Government	231	12,228	12,249	12,164	89,685,959	564.85
Other	1,577	37,832	35,855	37,578	316,508,039	656.45

Western Workforce Includes these counties: Crawford, Franklin, Logan, Polk, Scott, and Sebastian

