

Arkansas Covered Employment & Earnings

Jobs for People. People for Jobs.

DWS
Department of
WORKFORCE**Services**

Fourth Quarter
2006

**COVERED EMPLOYMENT AND EARNINGS
STATE OF ARKANSAS
FOURTH QUARTER 2006**

**MIKE BEEBE, GOVERNOR
STATE OF ARKANSAS**

**ARTEE WILLIAMS, DIRECTOR
DEPARTMENT OF WORKFORCE SERVICES**

**PUBLISHED BY
LABOR MARKET INFORMATION & ANALYSIS
BUREAU OF LABOR STATISTICS PROGRAMS
POST OFFICE BOX 2981
LITTLE ROCK, ARKANSAS 72203-2981
BERNADETTE COLEMAN, BLS PROGRAMS MANAGER
TELEPHONE: (501) 682-3159**

STATE OF ARKANSAS HOME PAGE: <http://www.arkansas.gov>

DEPARTMENT OF WORKFORCE SERVICES HOME PAGE: <http://www.arkansas.gov/esd/>

**INTERNET SITE FOR LABOR MARKET INFORMATION:
<http://www.discover.arkansas.gov>**

RELEASED: JUNE 2008

TABLE OF CONTENTS

Description of Data	Page 1
Industry Classification	Page 1
Definition of Covered Employment and Earnings	Page 2
Federal Government Employment	Page 2
County Classification	Page 2
Significant Developments During Third Quarter 2006	Page 3

LIST OF GRAPHS AND TABLES

Graph 1	Total Covered Employment for Selected Years, Arkansas	Page 7
Graph 2	Total Covered Earnings, by Calendar Quarter for Selected Years, Arkansas	Page 8
Table 1	Quarterly Comparison of Covered Employment and Wages, by Industry	Page 5
Table 2	Total Covered Employment in Arkansas, 1999-2006	Page 6
Table 3	Total Covered Earnings, 1999-2006	Page 9
Table 4	Total Taxable Earnings, 1999-2006	Page 10
Table 5	State Summary - Employment and Total Earnings, by Industry, Third Quarter 2006	Page 11
Table 6	County Summary - Employment and Total Earnings, by Industry, Third Quarter 2006	Page 23
Table 7	Federal Government Employment and Total Earnings in Arkansas, Third Quarter 2006	Page 61
Table 8	Workforce Information Area – Employment and Total Earnings, by Industry, Third Quarter 2006	Page 62

EMPLOYMENT AND EARNINGS
UNDER THE ARKANSAS EMPLOYMENT SECURITY LAW
FOURTH QUARTER 2006

DESCRIPTION OF DATA

This publication contains covered employment and payroll data by industry and county for the Fourth Quarter 2006. These data are compiled from quarterly contribution and wage reports submitted by employers subject to the Arkansas Employment Security Law. An employing unit is a single physical location where business is conducted, production takes place, or services are provided. Employment data have been tabulated for each month of the quarter by industry under the **North American Industry Classification System** (NAICS) (see "Industry Classification" below) on a statewide, county and workforce area basis. Payroll data represent the total wages paid during the quarter, and are also shown by

industry for the State and by publishable industry groups for each county and workforce area. The tabulation of this data is a joint effort in conjunction with the U.S. Bureau of Labor Statistics. In addition, there are tables included which set out total covered employment by months, quarterly payrolls, and average weekly earnings for the years 1999 through 2006. Data contained in this publication are subject to revision. These revisions will be reflected in the 2006 Annual Covered Employment and Earnings publication. Because of industry code changes between years, substantial employment and wage shifts among industries are anticipated.

INDUSTRY CLASSIFICATION

Previously published industry data **will not** be comparable in all instances with currently published data since industry codes have been revised according to the following Manuals: (a) between January 1, 1958 and December 31, 1967, industry codes were assigned under the 1957 Standard Industrial Classification (SIC) Manual; (b) between January 1, 1968 and December 31, 1974, industry codes were assigned under the 1967 Standard Industrial Classification (SIC) Manual; (c) between January 1, 1975 and December 31, 1987, industry codes were assigned under the 1972 Standard Industrial Classification (SIC) Manual; (d) between January 1, 1988 and December 31, 2000, industry codes were assigned under the 1987 Standard Industrial Classification (SIC) Manual; and (e) since January 1, 2001, industry codes have been assigned under the 2002 North American Industry Classification System (NAICS) Manual. **The NAICS Manual represents a significant change in coding methodology as compared to the**

SIC Manual. One of the most significant changes involves how NAICS treats auxiliary units. Auxiliary units are establishments primarily engaged in performing management or support services for other establishments of the same enterprise. The SIC code for these units was based on the activity of the enterprise served. The NAICS code is based on the actual activities that the establishment performs. Comparisons of many industries **should not be made** between this publication and previous Covered Employment and Earnings publications that were based on SIC. Even though some titles are the same or similar, in nature, NAICS and SIC could differ in the classification of employers. The implementation of NAICS represents a profound change for statistical programs, and will create significant benefits along with transition obstacles for both data collectors and data users. A summary is available on the NAICS home page at <http://www.census.gov/naics>.

DEFINITION OF COVERED EMPLOYMENT AND EARNINGS

Covered Employment is the number of workers employed by employers subject to the Arkansas Employment Security Law who worked or received pay for the payroll period including the 12th of the month. An employer is subject to the law when they employ one or more employees in each of ten days during the current or preceding calendar year.

Currently excluded from coverage is employment covered by the Railroad Unemployment Insurance Act, some domestic service workers, employees of small agricultural establishments, self-employed and unpaid family workers, insurance and real estate

agents who are on commission only, and employees of churches and religious organizations except separately incorporated schools. The payroll information in this publication includes all wages and salaries paid to any covered employees by their employers including bonuses, commissions, and cash values of remuneration received in any medium other than cash. These wages include both taxable and nontaxable wages. Only the first \$10,000 paid to each worker by an employer in the calendar year is taxable under the Arkansas Employment Security Law.

FEDERAL GOVERNMENT EMPLOYMENT

Table 7 on page 61 lists the total number of civilians employed by the Federal Government in Arkansas during the Fourth Quarter 2006. Employment and wage data are set out by industry divisions. These data are obtained from required reports submitted by various

government agencies having employment in the State. Civilian Federal workers are covered by the Unemployment Compensation for Federal Employees (UCFE) program.

COUNTY CLASSIFICATION

Employment and payroll data by county are classified according to the county where the workers are employed. Employers with operations in more than one county are requested to furnish this agency with a breakdown of employment and wages for at least one quarter of each year by the counties in which they operate. Many such employers submit county data with each regular contribution report. **Note:** This information is invaluable in the preparation of monthly employment and payroll data by county.

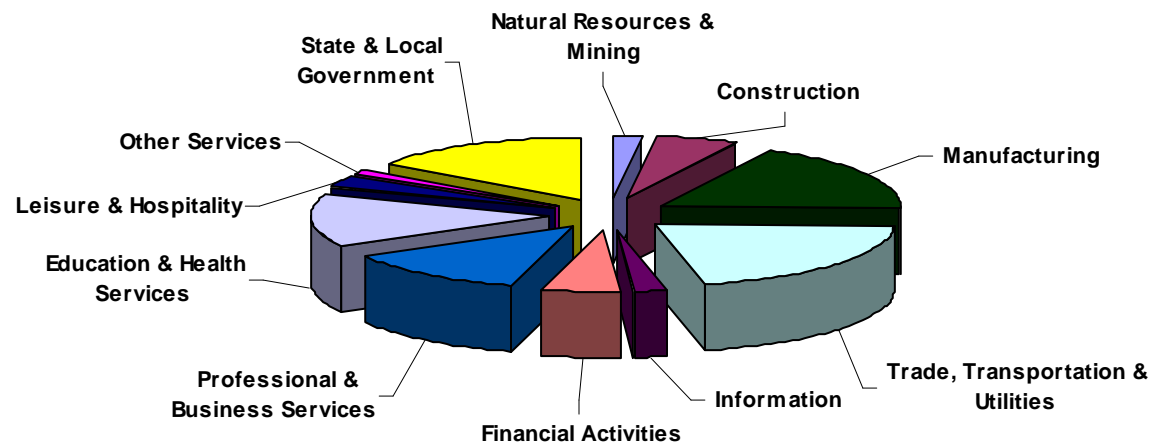
Employment and payroll data for multi - area employers, who do not furnish county data each quarter of the year, are prorated by county on the basis of one quarter of information. The "rest-of-state" table that appears on page 60 of this publication includes data on firms that **did not** provide a county breakdown of employment and payrolls. It also includes sales, and all other type of personnel with no permanent place of work, as well as employment of employers with no established place of business in Arkansas.

SIGNIFICANT DEVELOPMENTS DURING FOURTH QUARTER 2006

AVERAGE EMPLOYMENT CHANGES

Covered employment averaged 1,157,046 during the Fourth Quarter 2006 (see table 1), an increase of 21,794 (1.9%) from the previous quarter and 11,743 (1.0%) above the average recorded one-year ago. This *over-the-year* increase is more significant when used as an economic indicator. This *over-the-year* comparison allows for the disregarding of many seasonal factors that are evident when making an *over-the-quarter* comparison.

Average Covered Employment by NAICS Group

**EMPLOYMENT CHANGES FROM THIRD QUARTER 2006**

Over the quarter gains were recorded in six industry groups while five suffered losses (see Table 1). Employment in State and Local Government rose 27,213 or 17.6% from the previous quarter due to the start of school in local school districts. Trade, Transportation and Utilities gained 3,731 jobs. This boost in employment is primarily found in Retail Trade (3,626 jobs) because of the increase in seasonal workers for the holiday season. Education and Health Services saw a gain of 0.8%. The continuing natural gas boom in Arkansas led to an increase of 347 jobs in Natural Resources and

Mining. Financial Activities (+32) and Information (+12) also reported minimal gains.

Layoffs have led to a decrease of 4,335 jobs in Manufacturing. Leisure & Hospitality lost 3,223 jobs because of the end of the summer travel season. Construction (-1,783), Other Services (-637) and Professional and Business Services (-694) also reported losses.

EMPLOYMENT CHANGES FROM FOURTH QUARTER 2005

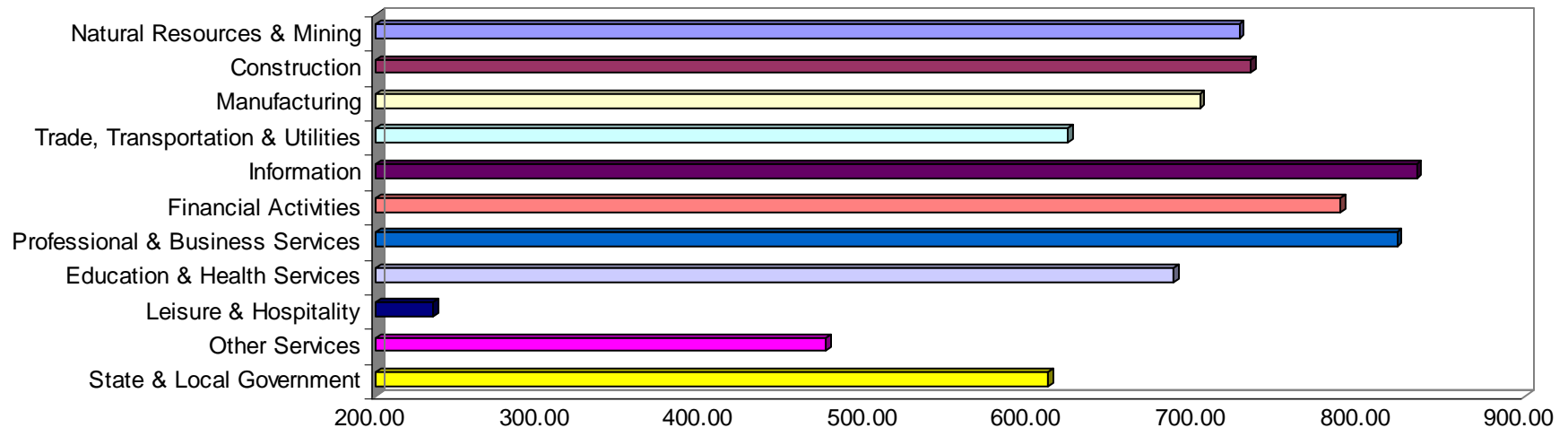
Over-the-year gains were recorded in ten industry groups while one recorded a loss (see table 1). Significant gains were posted in Educational & Health Services (+4,068), Leisure & Hospitality (+3,556), and State & Local Government (+3,436). The only loss occurred in Manufacturing (-6,332).

COVERED WAGES

Wages paid to covered workers totaled \$9,685,672,308 for the Fourth Quarter 2006 (see table 1), for an average weekly wage of \$643.93 (see table 5). Employees in Little River County recorded the highest average weekly wage (\$780.69), and workers in Newton County the lowest (\$373.53) (see table 6).

The Information sector recorded the highest average weekly wage for the State of Arkansas at \$833.80, while the Leisure & Hospitality sector recorded the lowest at \$235.09 for the State of Arkansas (see table 5).

Average Weekly Wages by Industry Group



Note: Because of industry code changes between years, substantial employment and wage shifts among industries are anticipated.

TABLE 1. QUARTERLY COMPARISON OF COVERED EMPLOYMENT AND WAGES, BY INDUSTRY

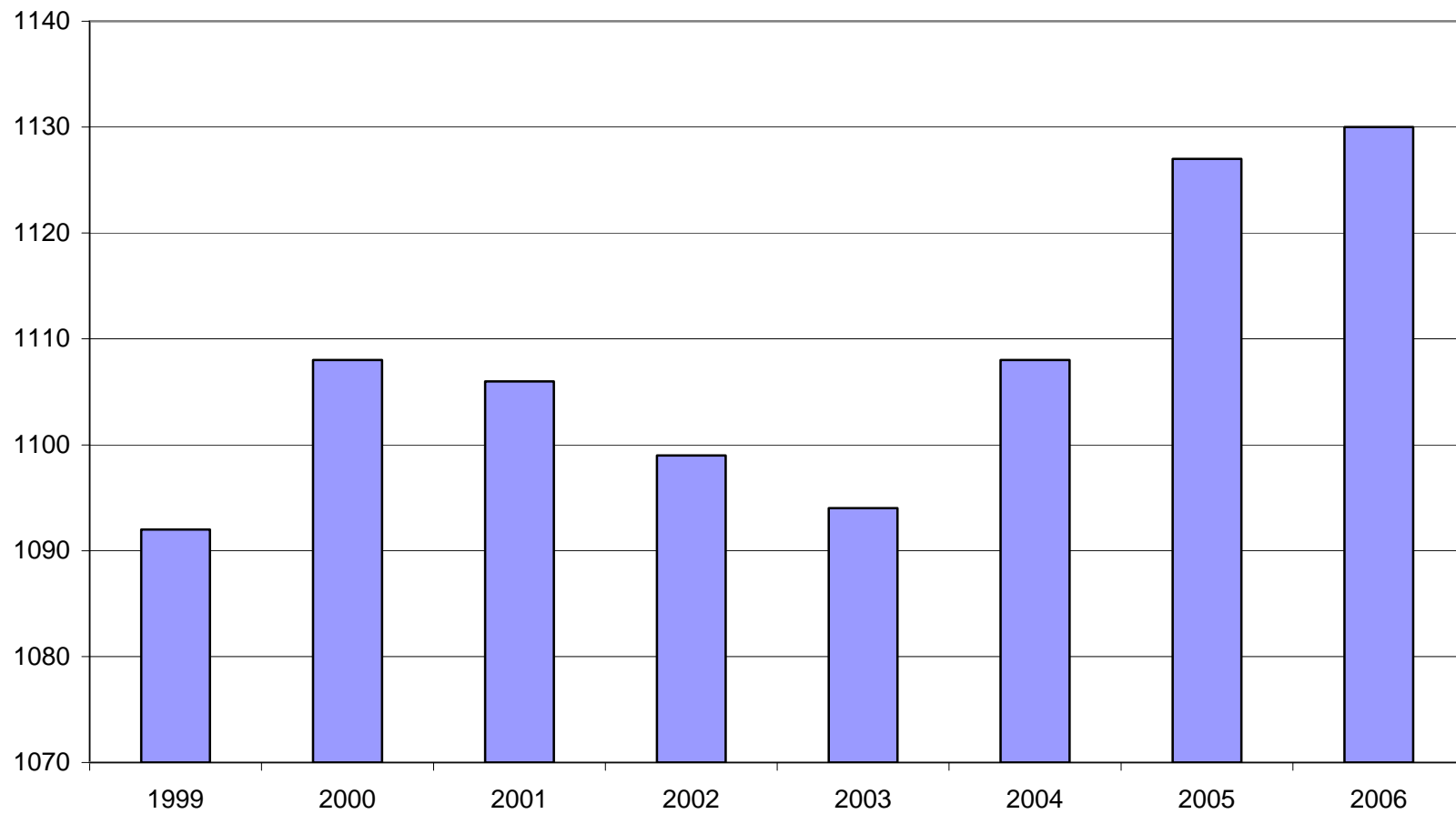
North American Industry Classification System Industry	Number of Employing Units	Average Monthly Employment	% of Employment Total	Net Change From July - Sept. 2006	Net Change From Oct. - Dec. 2005	Total Wages Paid Oct. - Dec. 2006	% of Total Wages Paid
Total	81,125	1,157,046	100.0%	21,794	11,743	\$9,685,672,308	100.0%
Natural Resources & Mining	2,390	19,468	1.7%	347	646	\$183,680,093	1.9%
Agriculture, Forestry, Fishing & Hunting	1,998	14,171	1.2%	105	-350	\$112,038,374	1.2%
Mining	392	5,297	0.5%	241	996	\$71,641,719	0.7%
Construction	8,059	56,757	4.9%	-1,783	938	\$540,506,084	5.6%
Manufacturing	3,602	194,737	16.8%	-4,335	-6,332	\$1,776,767,133	18.3%
Trade, Transportation & Utilities	20,951	248,897	21.5%	3,731	2,800	\$2,011,213,726	20.8%
Wholesale Trade	6,352	48,158	4.2%	-72	383	\$629,646,467	6.5%
Retail Trade	11,253	135,625	11.7%	2,626	738	\$726,110,971	7.5%
Transportation & Warehousing	2,986	58,223	5.0%	1,177	1,460	\$543,517,297	5.6%
Utilities	360	6,891	0.6%	1	218	\$111,938,991	1.2%
Information	1,196	20,048	1.7%	12	53	\$217,310,894	2.2%
Financial Activities	8,116	51,583	4.5%	32	1,252	\$528,157,696	5.5%
Finance & Insurance	4,758	37,150	3.2%	24	612	\$421,225,419	4.3%
Real Estate & Rental & Leasing	3,358	14,433	1.2%	8	640	\$106,932,277	1.1%
Professional & Business Services	11,053	114,109	9.9%	-694	602	\$1,219,262,232	12.6%
Professional & Technical Services	6,975	37,545	3.2%	1,014	1,953	\$495,157,286	5.1%
Management of Companies & Enterprises	511	24,267	2.1%	86	618	\$443,711,418	4.6%
Administrative & Waste Services	3,567	52,297	4.5%	-1,795	-1,969	\$280,393,528	2.9%
Education & Health Services	10,923	147,407	12.7%	1,131	4,068	\$1,314,640,527	13.6%
Educational Services	553	9,407	0.8%	626	54	\$63,172,932	0.7%
Health Care & Social Assistance	10,370	138,000	11.9%	505	4,015	\$1,251,467,595	12.9%
Leisure & Hospitality	6,151	96,643	8.4%	-3,223	3,556	\$295,352,438	3.0%
Arts, Entertainment & Recreation	919	8,657	0.7%	-1,722	275	\$37,700,661	0.4%
Accommodation & Food Services	5,232	87,986	7.6%	-1,501	3,281	\$257,651,777	2.7%
Other Services	5,484	25,630	2.2%	-637	724	\$157,863,678	1.6%
State & Local Government	3,200	181,767	15.7%	27,213	3,436	\$1,440,917,807	14.9%
Local Government	2,001	118,093	10.2%	25,463	379	\$881,155,952	9.1%
State Government	1,199	63,674	5.5%	1,751	3,057	\$559,761,855	5.8%
Nonclassifiable Establishments	0	0	0.0%	0	0	\$0	0.0%

Note: Items do not necessarily add to totals because of rounding. Because of industry code changes between years, substantial employment and wage shifts among industries are anticipated.

TABLE 2. TOTAL COVERED EMPLOYMENT IN ARKANSAS

Period	1999	2000	2001	2002	2003	2004	2005	2006
Average	1,092,351	1,108,479	1,106,066	1,098,558	1,094,087	1,108,264	1,126,778	1,130,458
January	1,065,920	1,089,943	1,096,009	1,081,635	1,082,740	1,089,510	1,102,768	1,104,692
February	1,074,315	1,096,113	1,101,616	1,086,793	1,084,880	1,094,626	1,110,577	1,112,453
March	1,084,653	1,109,144	1,112,143	1,098,500	1,092,172	1,105,266	1,122,619	1,124,250
April	1,093,574	1,111,525	1,115,526	1,103,399	1,095,341	1,111,020	1,129,785	1,130,599
May	1,098,539	1,116,760	1,119,815	1,111,998	1,103,099	1,117,144	1,135,567	1,136,212
June	1,101,748	1,121,225	1,119,734	1,112,028	1,099,688	1,117,010	1,136,118	1,136,984
July	1,062,563	1,075,066	1,071,921	1,065,697	1,053,220	1,071,463	1,090,071	1,090,058
August	1,081,260	1,096,848	1,094,160	1,086,011	1,077,775	1,094,871	1,114,098	1,114,403
September	1,108,212	1,123,725	1,115,976	1,113,148	1,105,980	1,122,704	1,144,815	1,144,705
October	1,110,604	1,122,884	1,110,994	1,108,447	1,112,550	1,123,246	1,142,300	1,156,725
November	1,112,003	1,120,620	1,109,012	1,107,611	1,109,712	1,125,061	1,145,667	1,156,046
December	1,114,823	1,117,892	1,105,887	1,107,425	1,111,892	1,127,250	1,146,954	1,158,366

AVERAGE TOTAL COVERED EMPLOYMENT GRAPH 1
In Thousands



TOTAL COVERED EARNINGS BY CALENDAR QUARTER, GRAPH 2
In Thousands

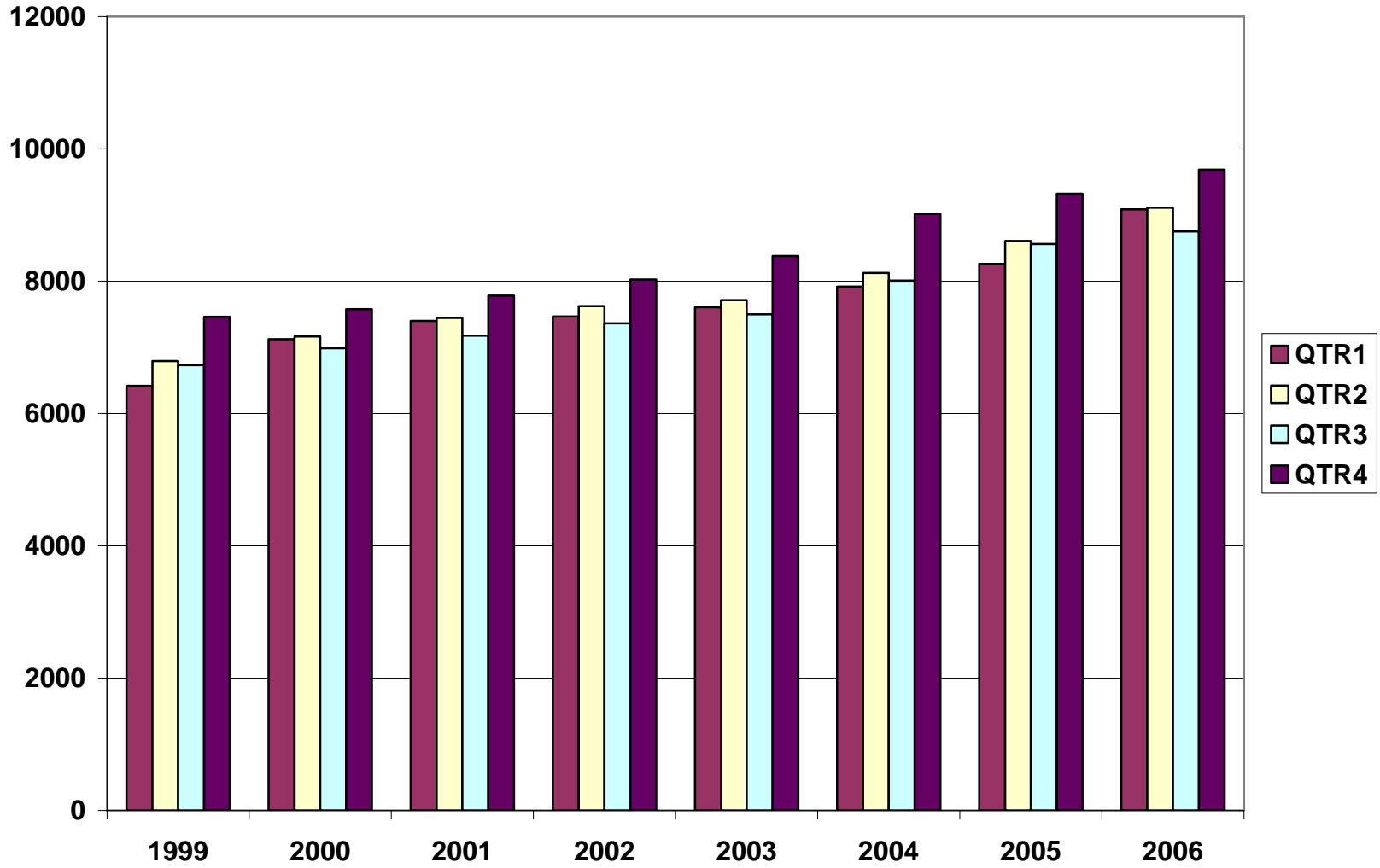


TABLE 3. TOTAL COVERED EARNINGS, 1999- 2006

Period	1999	2000	2001	2002
Total	\$27,407,925,462	\$28,853,716,151	\$29,807,669,666	\$30,472,854,103
January - March	\$6,418,456,638	\$7,122,636,896	\$7,398,887,532	\$7,465,250,305
April - June	\$6,791,960,679	\$7,166,049,182	\$7,448,023,298	\$7,621,878,775
July - September	\$6,733,480,079	\$6,986,085,106	\$7,177,293,061	\$7,361,666,511
October - December	\$7,464,028,066	\$7,578,944,967	\$7,783,465,775	\$8,024,058,512
Average Weekly Earnings	\$482.51	\$500.58	\$518.26	\$533.44

Period	2003	2004	2005	2006
Total	\$31,202,576,767	\$33,068,189,304	\$34,753,437,458	\$36,637,452,115
January - March	\$7,608,130,008	\$7,918,843,610	\$8,261,153,981	\$9,086,373,822
April - June	\$7,714,813,038	\$8,122,370,361	\$8,607,722,353	\$9,112,835,784
July - September	\$7,500,204,764	\$8,010,300,454	\$8,562,885,196	\$8,752,570,201
October - December	\$8,379,428,957	\$9,016,674,879	\$9,321,675,928	\$9,685,672,308
Average Weekly Earnings	\$548.45	\$573.80	\$593.14	\$623.26

TABLE 4. TOTAL TAXABLE EARNINGS, 1999 - 2006

Period	1999	2000	2001	2002
Total	\$8,807,445,422	\$9,047,924,530	\$9,003,189,480	\$8,887,270,978
January - March	\$4,203,067,856	\$4,560,783,991	\$4,670,296,360	\$4,668,534,587
April - June	\$2,325,649,764	\$2,260,680,255	\$2,219,485,263	\$2,162,971,435
July - September	\$1,267,562,743	\$1,250,832,297	\$1,190,098,737	\$1,158,197,858
October - December	\$1,011,165,059	\$975,627,987	\$923,309,120	\$897,567,098

Period	2003	2004	2005	2006
Total	\$9,154,938,743	\$9,731,247,501	\$9,991,618,726	\$10,239,377,155
January - March	\$4,737,918,796	\$4,931,559,230	\$5,062,670,306	\$5,422,414,259
April - June	\$2,270,519,362	\$2,451,454,749	\$2,506,505,721	\$2,385,187,226
July - September	\$1,188,681,170	\$1,318,017,835	\$1,353,673,932	\$1,355,673,606
October - December	\$957,819,415	\$1,030,215,687	\$1,068,768,767	\$1,076,102,064

**TABLE 5. STATEWIDE SUMMARY
EMPLOYMENT AND TOTAL EARNINGS, BY INDUSTRY
FOURTH QUARTER 2006**

NORTH AMERICAN INDUSTRY CLASSIFICATION SYSTEM INDUSTRY GROUPS	NUMBER OF EMPLOYING UNITS	EMPLOYMENT OCTOBER	EMPLOYMENT NOVEMBER	EMPLOYMENT DECEMBER	TOTAL EARNINGS OCTOBER - DECEMBER	AVERAGE WEEKLY EARNINGS
TOTAL, ALL INDUSTRIES	81,117	1,156,580	1,155,901	1,158,236	\$9,683,955,591	\$643.93
NATURAL RESOURCES AND MINING	2,382	19,911	19,257	18,816	\$181,963,376	\$724.19
AGRICULTURE, FORESTRY, FISHING AND HUNTING	1,990	14,687	13,939	13,466	\$110,321,657	\$604.84
CROP PRODUCTION	725	4,236	3,796	3,549	\$24,845,477	\$495.08
Oilseed and Grain Farming	424	2,186	1,978	1,880	\$12,303,048	\$469.75
Vegetable and Melon Farming	12	119	103	99	\$482,057	\$346.55
Fruit and Tree Nut Farming	9	63	61	59	\$371,467	\$468.43
Greenhouse and Nursery Production	51	291	287	297	\$2,047,523	\$540.01
Other Crop Farming	229	1,577	1,367	1,214	\$9,641,382	\$535.10
ANIMAL PRODUCTION	250	3,485	3,411	3,389	\$30,953,108	\$694.51
Cattle Ranching and Farming	74	309	301	301	\$3,013,147	\$763.27
Poultry and Egg Production	84	2,555	2,540	2,540	\$23,526,504	\$711.09
Animal Aquaculture	60	535	482	464	\$3,949,616	\$615.43
Other	32	86	88	84	\$463,841	\$414.88
FORESTRY AND LOGGING	557	2,964	2,935	3,001	\$22,426,081	\$581.49
Timber Tract Operations	45	257	260	259	\$2,311,390	\$687.37
Forest Nurseries & Gathering of Forest Products	6	34	34	34	\$304,954	\$689.94
Logging	506	2,673	2,641	2,708	\$19,809,737	\$569.87
OTHER	458	4,002	3,797	3,527	\$32,096,991	\$653.98
MINING	392	5,224	5,318	5,350	\$71,641,719	\$1,040.32
OIL AND GAS EXTRACTION	88	437	472	456	\$7,767,816	\$1,313.24
MINING (EXCEPT OIL AND GAS)	105	2,101	2,057	2,040	\$21,433,797	\$798.04
SUPPORT ACTIVITIES FOR MINING	199	2,686	2,789	2,854	\$42,440,106	\$1,175.88
CONSTRUCTION	8,059	57,445	56,291	56,534	\$540,506,084	\$732.56
CONSTRUCTION OF BUILDINGS	2,296	13,196	12,950	13,124	\$143,827,670	\$845.20
Residential Building Construction	1,681	4,628	4,557	4,652	\$39,510,712	\$658.95
Nonresidential Building Construction	615	8,568	8,393	8,472	\$104,316,958	\$946.53
HEAVY AND CIVIL ENGINEERING CONSTRUCTION	911	10,998	10,373	10,246	\$108,745,044	\$793.72
Utility System Construction	429	5,162	4,838	4,886	\$50,451,586	\$782.12
Land Subdivision	143	544	534	533	\$7,183,395	\$1,028.99
Highway, Street and Bridge Construction	225	3,791	3,544	3,475	\$33,164,176	\$707.98

**TABLE 5. STATEWIDE SUMMARY
EMPLOYMENT AND TOTAL EARNINGS, BY INDUSTRY
FOURTH QUARTER 2006**

NORTH AMERICAN INDUSTRY CLASSIFICATION SYSTEM INDUSTRY GROUPS	NUMBER OF EMPLOYING UNITS	EMPLOYMENT OCTOBER	EMPLOYMENT NOVEMBER	EMPLOYMENT DECEMBER	TOTAL EARNINGS OCTOBER - DECEMBER	AVERAGE WEEKLY EARNINGS
Other Heavy Construction	114	1,501	1,457	1,352	\$17,945,887	\$960.87
SPECIALTY TRADE CONTRACTORS	4,852	33,251	32,968	33,164	\$287,933,370	\$668.59
Building Foundation and Exterior Contractors	975	6,642	6,517	6,586	\$51,991,103	\$607.64
Building Equipment Contractors	2,128	15,974	15,905	15,975	\$155,784,293	\$751.25
Building Finishing Contractors	906	5,202	5,234	5,251	\$39,439,256	\$580.19
Other Specialty Trade Contractors	843	5,433	5,312	5,352	\$40,718,718	\$583.75
MANUFACTURING	3,602	196,102	193,897	194,211	\$1,776,767,133	\$701.84
FOOD MANUFACTURING	326	50,808	50,897	50,855	\$356,136,165	\$538.71
Animal Food Manufacturing	59	1,469	1,455	1,438	\$14,215,942	\$752.09
Grain and Oilseed Milling	30	2,360	2,353	2,358	\$21,557,172	\$703.54
Fruit, Vegetable and Specialty Food	35	6,930	6,949	6,927	\$58,391,872	\$647.65
Dairy Product Manufacturing	13	715	706	706	\$6,396,125	\$693.95
Animal Slaughtering and Processing	95	34,014	34,095	34,120	\$213,358,965	\$481.63
Bakeries and Tortilla Manufacturing	53	3,339	3,349	3,330	\$26,438,238	\$609.02
Other Food Manufacturing	27	1,725	1,733	1,718	\$14,668,033	\$653.97
Other	14	256	257	258	\$1,109,818	\$332.18
BEVERAGE AND TOBACCO PRODUCT MFG.	35	1,251	1,238	1,235	\$11,867,855	\$735.43
TEXTILE MILLS	20	424	406	410	\$4,473,624	\$832.56
Fabric Mills	6	331	318	320	\$3,911,709	\$931.58
Textile and Fabric Finishing Mills	14	93	88	90	\$561,915	\$478.50
TEXTILE PRODUCT MILLS	55	1,276	1,273	1,257	\$11,572,176	\$701.66
APPAREL MANUFACTURING	45	1,779	1,745	1,708	\$10,383,665	\$458.00
Cut and Sew Apparel Manufacturing	36	840	803	764	\$4,262,901	\$408.70
Other	9	939	942	944	\$6,120,764	\$499.99
LEATHER AND ALLIED PRODUCT MANUFACTURING	20	1,898	1,823	1,814	\$11,066,280	\$461.38
Footwear Manufacturing	10	1,689	1,615	1,603	\$8,722,290	\$410.20
Other Leather Product Manufacturing	10	209	208	211	\$2,343,990	\$861.34
WOOD PRODUCT MANUFACTURING	390	13,286	13,240	12,938	\$107,128,138	\$626.44
Sawmills and Wood Preservation	175	5,949	5,940	5,836	\$53,187,139	\$692.47
Veneer and Engineered Wood Products	48	3,181	3,205	3,079	\$27,384,723	\$667.68
Other Wood Product Manufacturing	167	4,156	4,095	4,023	\$26,556,276	\$499.30
PAPER MANUFACTURING	86	11,589	11,543	11,527	\$155,978,035	\$1,038.54

**TABLE 5. STATEWIDE SUMMARY
EMPLOYMENT AND TOTAL EARNINGS, BY INDUSTRY
FOURTH QUARTER 2006**

NORTH AMERICAN INDUSTRY CLASSIFICATION SYSTEM INDUSTRY GROUPS	NUMBER OF EMPLOYING UNITS	EMPLOYMENT OCTOBER	EMPLOYMENT NOVEMBER	EMPLOYMENT DECEMBER	TOTAL EARNINGS OCTOBER - DECEMBER	AVERAGE WEEKLY EARNINGS
Pulp, Paper and Paperboard Mills	12	4,537	4,507	4,463	\$80,080,445	\$1,368.19
Converted Paper Product Manufacturing	74	7,052	7,036	7,064	\$75,897,590	\$828.05
PRINTING AND RELATED SUPPORT ACTIVITIES	301	4,589	4,589	4,610	\$46,204,010	\$773.31
PETROLEUM AND COAL PRODUCTS MANUFACTURING	20	900	898	909	\$13,665,546	\$1,164.98
CHEMICAL MANUFACTURING	111	4,611	4,595	4,636	\$61,931,709	\$1,032.50
Basic Chemical Manufacturing	28	1,929	1,933	1,961	\$28,552,056	\$1,131.54
Resin, Rubber and Artificial Fibers	6	303	292	289	\$4,348,226	\$1,135.11
Agricultural Chemical Manufacturing	15	342	339	337	\$4,664,761	\$1,057.45
Paint, Coating and Adhesive Manufacturing	8	173	167	171	\$2,370,008	\$1,070.30
Other Chemical Preparation Manufacturing	26	953	956	960	\$11,145,843	\$896.52
Other	28	911	908	918	10,850,815	\$914.88
PLASTICS AND RUBBER PRODUCTS MANUFACTURING	169	12,825	12,800	12,654	\$125,264,151	\$755.17
Plastics Product Manufacturing	126	7,895	7,888	7,747	\$68,173,580	\$668.61
Rubber Product Manufacturing	43	4,930	4,912	4,907	\$57,090,571	\$893.26
NONMETALLIC MINERAL PRODUCT MANUFACTURING	248	4,502	4,443	4,438	\$42,329,534	\$729.91
Clay Product and Refractory Manufacturing	16	432	438	441	\$4,045,397	\$712.09
Glass and Glass Product Manufacturing	14	403	401	408	\$3,641,057	\$693.27
Cement and Concrete Product Manufacturing	177	2,711	2,660	2,648	\$24,676,798	\$710.14
Lime and Gypsum Product Manufacturing	4	430	424	430	\$4,929,206	\$885.91
Other Nonmetallic Mineral Products	37	526	520	511	\$5,037,076	\$746.57
PRIMARY METAL MANUFACTURING	68	8,433	8,404	8,373	\$111,242,807	\$1,018.30
Iron and Steel Mills and Ferroalloys	10	2,182	2,194	2,197	\$47,508,078	\$1,667.95
Purchased Steel Product Manufacturing	14	2,490	2,499	2,540	\$28,144,557	\$862.65
Alumina and Aluminum Production	20	1,874	1,833	1,764	\$19,451,310	\$820.46
Other Nonferrous Metal Production	10	588	584	577	\$4,362,922	\$575.66
Foundries	14	1,299	1,294	1,295	\$11,775,940	\$698.95
FABRICATED METAL PRODUCT MANUFACTURING	580	17,793	17,822	17,486	\$175,697,459	\$763.56
Forging and Stamping	14	952	971	717	\$7,827,513	\$684.22
Cutlery and Hand Tool Manufacturing	16	1,406	1,431	1,406	\$14,660,693	\$797.37
Architectural and Structural Metals	205	5,231	5,191	5,187	\$54,515,770	\$805.98
Boilers, Tanks and Shipping Containers	20	1,090	1,081	1,078	\$11,614,392	\$824.94
Hardware Manufacturing	9	274	273	274	\$2,066,986	\$580.99

**TABLE 5. STATEWIDE SUMMARY
EMPLOYMENT AND TOTAL EARNINGS, BY INDUSTRY
FOURTH QUARTER 2006**

NORTH AMERICAN INDUSTRY CLASSIFICATION SYSTEM INDUSTRY GROUPS	NUMBER OF EMPLOYING UNITS	EMPLOYMENT OCTOBER	EMPLOYMENT NOVEMBER	EMPLOYMENT DECEMBER	TOTAL EARNINGS OCTOBER - DECEMBER	AVERAGE WEEKLY EARNINGS
Spring and Wire Product Manufacturing	15	649	658	616	\$4,526,580	\$543.21
Machine Shops and Threaded Products	198	1,846	1,859	1,897	\$17,136,373	\$705.92
Coating, Engraving and Heat Treating Metals	38	771	739	726	\$5,726,557	\$591.02
Other Fabricated Metal Product Manufacturing	65	5,574	5,619	5,585	\$57,622,595	\$792.56
MACHINERY MANUFACTURING	252	14,282	14,232	14,209	\$126,386,419	\$682.68
Agricultural, Construction and Mining Machinery	37	2,571	2,574	2,583	\$15,641,347	\$467.07
Commercial and Service Industry Machinery	27	973	960	983	\$10,125,268	\$801.30
HVAC and Commercial Refrigeration Equipment	24	5,228	5,185	5,156	\$46,864,387	\$694.64
Metalworking Machinery Manufacturing	74	1,302	1,297	1,302	\$13,775,815	\$814.93
Other General Purpose Machinery Manufacturing	56	3,220	3,223	3,212	\$29,706,503	\$710.03
Other	34	988	993	973	\$10,273,099	\$802.54
COMPUTER AND ELECTRONIC PRODUCT MANUFACTURING	82	5,743	5,691	5,370	\$51,788,350	\$711.21
Audio and Video Equipment Manufacturing	11	1,297	1,282	1,050	\$10,969,740	\$697.57
Semiconductors and Electronic Components	25	2,361	2,356	2,355	\$20,758,435	\$677.38
Electronic Instrument Manufacturing	30	1,219	1,214	1,227	\$9,469,290	\$597.05
Other	16	866	839	738	\$10,590,885	\$1,000.43
ELECTRICAL EQUIPMENT AND APPLIANCES	72	11,462	9,583	10,991	\$104,360,707	\$751.76
Electrical Equipment Manufacturing	23	4,903	4,920	4,964	\$47,100,233	\$735.06
Other	49	6,559	4,663	6,027	\$57,260,474	\$766.07
TRANSPORTATION EQUIPMENT MANUFACTURING	173	16,642	16,721	16,932	\$156,417,094	\$717.69
Motor Vehicle Body and Trailer Manufacturing	42	3,870	3,905	3,866	\$34,702,794	\$687.94
Motor Vehicle Parts Manufacturing	60	6,241	6,254	6,415	\$50,301,603	\$613.86
Aerospace Product and Parts Manufacturing	26	3,472	3,504	3,552	\$46,235,281	\$1,013.46
Ship and Boat Building	27	1,675	1,656	1,676	\$11,536,142	\$531.69
Other	18	1,384	1,402	1,423	\$13,641,274	\$747.92
FURNITURE & RELATED PRODUCT MFG.	275	6,343	6,305	6,158	\$49,522,549	\$607.69
Household & Institutional Furniture	225	4,198	4,178	4,115	\$33,127,079	\$612.02
Office Furniture & Fixtures Manufacturing	42	2,007	1,989	1,905	\$15,507,424	\$606.45
Other Furniture Related Product Manufacturing	8	138	138	138	\$888,046	\$495.01
MISCELLANEOUS MANUFACTURING	274	5,666	5,649	5,701	\$43,350,860	\$587.92
Medical Equipment & Supplies Manufacturing	99	2,634	2,628	2,690	\$21,072,923	\$611.54

**TABLE 5. STATEWIDE SUMMARY
EMPLOYMENT AND TOTAL EARNINGS, BY INDUSTRY
FOURTH QUARTER 2006**

NORTH AMERICAN INDUSTRY CLASSIFICATION SYSTEM INDUSTRY GROUPS	NUMBER OF EMPLOYING UNITS	EMPLOYMENT OCTOBER	EMPLOYMENT NOVEMBER	EMPLOYMENT DECEMBER	TOTAL EARNINGS OCTOBER - DECEMBER	AVERAGE WEEKLY EARNINGS
Other Miscellaneous Manufacturing	175	3,032	3,021	3,011	\$22,277,937	\$567.20
TRADE, TRANSPORTATION AND UTILITIES	20,951	246,099	249,070	251,522	\$2,011,213,726	\$621.58
WHOLESALE TRADE	6,352	48,025	48,029	48,421	\$629,646,467	\$1,005.73
MERCHANT WHOLESALERS, DURABLE GOODS	2,108	22,262	22,315	22,501	\$262,092,203	\$901.68
Motor Vehicle & Part Merchant Wholesalers	234	2,669	2,661	2,657	\$25,680,579	\$741.99
Furniture & Furnishing Merchant Wholesalers	70	450	442	441	\$4,907,147	\$849.53
Lumber & Supply Merchant Wholesalers	181	1,846	1,891	1,893	\$19,442,817	\$796.95
Commercial Goods Merchant Wholesalers	246	2,620	2,619	2,648	\$40,004,616	\$1,170.51
Metal & Mineral Merchant Wholesalers	49	816	831	841	\$9,179,698	\$851.44
Electric Goods Merchant Wholesalers	175	2,180	2,174	2,196	\$29,058,813	\$1,023.80
Hardware & Plumbing Merchant Wholesalers	225	2,518	2,537	2,552	\$28,888,260	\$876.37
Machinery & Supply Merchant Wholesalers	688	7,261	7,235	7,291	\$84,074,398	\$890.52
Misc. Durable Goods Merchant Wholesalers	240	1,902	1,925	1,982	\$20,855,875	\$828.52
MERCHANT WHOLESALERS, NONDURABLE GOODS	1,293	16,478	16,388	16,403	\$176,135,433	\$824.99
Paper & Paper Product Merchant Wholesalers	72	1,151	1,162	1,171	\$12,322,060	\$816.17
Druggists' Goods Merchant Wholesalers	58	1,216	1,217	1,234	\$14,572,103	\$917.04
Apparel & Piece Goods Merchant Wholesalers	41	455	479	492	\$4,720,958	\$763.99
Grocery Product Merchant Wholesalers	341	5,252	5,232	5,254	\$59,988,564	\$879.62
Farm Product Merchant Wholesalers	76	928	914	871	\$6,566,940	\$558.59
Chemical Merchant Wholesalers	81	477	479	483	\$6,134,444	\$983.77
Petroleum Merchant Wholesalers	155	1,531	1,527	1,539	\$18,873,204	\$947.43
Alcoholic Beverage Merchant Wholesalers	38	1,112	1,109	1,109	\$13,345,256	\$924.83
Misc. Nondurable Goods Merchant Wholesalers	431	4,356	4,269	4,250	\$39,611,904	\$710.00
ELECTRONIC MARKETS & AGENTS & BROKERS	2,951	9,285	9,326	9,517	\$191,418,831	\$1,570.45
RETAIL TRADE	11,253	133,227	136,050	137,598	\$726,110,971	\$411.83
MOTOR VEHICLE & PARTS DEALERS	1,727	17,901	17,812	17,885	\$154,406,215	\$664.80
Automobile Dealers	743	10,652	10,606	10,691	\$104,459,616	\$754.52
Other Motor Vehicle Dealers	196	1,580	1,558	1,533	\$13,526,226	\$668.26
Automotive Parts, Accessories & Tire Stores	788	5,669	5,648	5,661	\$36,420,373	\$495.03
FURNITURE & HOME FURNISHINGS STORES	601	4,122	4,236	4,246	\$28,203,129	\$516.38
Furniture Stores	322	2,543	2,568	2,585	\$17,447,694	\$523.18
Home Furnishings Stores	279	1,579	1,668	1,661	\$10,755,435	\$505.71

**TABLE 5. STATEWIDE SUMMARY
EMPLOYMENT AND TOTAL EARNINGS, BY INDUSTRY
FOURTH QUARTER 2006**

NORTH AMERICAN INDUSTRY CLASSIFICATION SYSTEM INDUSTRY GROUPS	NUMBER OF EMPLOYING UNITS	EMPLOYMENT OCTOBER	EMPLOYMENT NOVEMBER	EMPLOYMENT DECEMBER	TOTAL EARNINGS OCTOBER - DECEMBER	AVERAGE WEEKLY EARNINGS
ELECTRONICS & APPLIANCE STORES	446	3,034	3,325	3,341	\$19,741,784	\$469.67
BUILDING MATERIAL & GARDEN SUPPLY STORES	846	11,071	10,968	10,975	\$69,529,679	\$486.02
Building Material & Supplies Dealers	673	10,217	10,129	10,171	\$64,545,826	\$488.09
Lawn & Garden Equipment & Supplies Stores	173	854	839	804	\$4,983,853	\$460.60
FOOD & BEVERAGE STORES	1,099	18,341	18,633	18,691	\$76,039,478	\$315.24
Grocery Stores	623	15,909	16,130	16,145	\$63,229,101	\$302.83
Specialty Food Stores	165	957	1,004	1,050	\$6,297,883	\$482.68
Beer, Wine & Liquor Stores	311	1,475	1,499	1,496	\$6,512,494	\$336.22
HEALTH & PERSONAL CARE STORES	810	7,033	7,136	7,336	\$52,812,542	\$566.73
GASOLINE STATIONS	1,593	12,453	12,338	12,229	\$44,780,360	\$279.14
Gasoline Stations with Convenience Stores	1,433	11,211	11,103	11,022	\$38,635,837	\$267.46
Other Gasoline Stations	160	1,242	1,235	1,207	\$6,144,523	\$384.90
CLOTHING & CLOTHING ACCESSORIES STORES	1,099	9,278	10,399	10,640	\$33,957,472	\$258.48
Clothing Stores	742	7,136	8,108	8,248	\$22,699,048	\$222.98
Shoe Stores	186	1,188	1,242	1,281	\$4,650,893	\$289.22
Jewelry, Luggage & Leather Goods Stores	171	954	1,049	1,111	\$6,607,531	\$489.66
SPORTING GOODS, HOBBY, BOOK & MUSIC STORES	581	4,586	4,902	5,189	\$18,461,853	\$290.28
Sporting Goods & Musical Instrument Stores	424	3,209	3,444	3,585	\$14,027,163	\$316.18
Book, Periodical & Music Stores	157	1,377	1,458	1,604	\$4,434,690	\$230.55
GENERAL MERCHANDISE STORES	714	36,894	37,627	38,165	\$180,273,005	\$369.18
MISCELLANEOUS STORE RETAILERS	1,411	6,597	6,720	6,933	\$33,311,089	\$379.61
Florists	265	978	980	1,024	\$3,793,029	\$293.53
Office Supplies, Stationery & Gift Stores	385	2,460	2,538	2,636	\$12,570,541	\$380.00
Used Merchandise Stores	218	763	791	811	\$3,963,399	\$386.74
Other Miscellaneous Store Retailers	543	2,396	2,411	2,462	\$12,984,120	\$412.21
NONSTORE RETAILERS	326	1,917	1,954	1,968	\$14,594,365	\$576.80
Electronic Shopping & Mail -Order Houses	69	373	399	417	\$4,056,774	\$787.37
Vending Machine Operators	80	684	689	679	\$4,003,196	\$450.20
Direct Selling Establishments	177	860	866	872	\$6,534,395	\$580.42
TRANSPORTATION & WAREHOUSING	2,986	57,970	58,109	58,590	\$543,517,297	\$718.08
AIR TRANSPORTATION	49	926	928	903	\$11,783,492	\$986.31
TRUCK TRANSPORTATION	1,996	36,506	36,831	36,907	\$350,133,303	\$732.92

**TABLE 5. STATEWIDE SUMMARY
EMPLOYMENT AND TOTAL EARNINGS, BY INDUSTRY
FOURTH QUARTER 2006**

NORTH AMERICAN INDUSTRY CLASSIFICATION SYSTEM INDUSTRY GROUPS	NUMBER OF EMPLOYING UNITS	EMPLOYMENT OCTOBER	EMPLOYMENT NOVEMBER	EMPLOYMENT DECEMBER	TOTAL EARNINGS OCTOBER - DECEMBER	AVERAGE WEEKLY EARNINGS
General Freight Trucking	1,269	31,387	31,733	31,722	\$302,578,390	\$736.23
Specialized Freight Trucking	727	5,119	5,098	5,185	\$47,554,913	\$712.52
TRANSIT & GROUND PASSENGER TRANSPORTATION	58	1,100	1,106	1,102	\$4,776,745	\$333.23
Taxi & Limousine Service	18	211	222	218	\$784,862	\$278.22
School & Employee Bus Transportation	8	469	459	454	\$2,053,325	\$342.87
Charter Bus Industry	9	91	89	91	\$426,326	\$363.04
Other Ground Passenger Transportation	17	224	231	239	\$1,034,313	\$343.93
Other	6	105	105	100	\$477,919	\$355.77
PIPELINE TRANSPORTATION	66	914	903	908	\$12,004,908	\$1,016.65
SUPPORT ACTIVITIES FOR TRANSPORTATION	432	4,990	5,009	5,051	\$52,190,079	\$800.26
Support Activities for Air Transportation	108	1,670	1,689	1,714	\$15,312,682	\$696.57
Support Activities for Rail Transportation	31	399	408	414	\$3,713,853	\$701.92
Support Activities for Water Transportation	29	695	671	657	\$7,625,464	\$869.86
Support Activities for Road Transportation	106	507	515	531	\$3,156,867	\$469.10
Freight Transportation Arrangement	132	1,560	1,564	1,563	\$21,179,721	\$1,042.81
Other Support Activities for Transportation	26	159	162	172	\$1,201,492	\$562.41
COURIERS & MESSENGERS	146	3,267	3,350	3,790	\$32,668,237	\$724.40
Couriers	88	3,002	3,086	3,541	\$31,009,298	\$743.17
Local Messengers & Local Delivery	58	265	264	249	\$1,658,939	\$492.07
WAREHOUSING & STORAGE	213	10,018	9,756	9,709	\$77,893,482	\$609.69
OTHER	26	249	226	220	\$2,067,051	\$686.35
UTILITIES	360	6,877	6,882	6,913	\$111,938,991	\$1,249.62
Power Generation & Supply	159	5,029	5,033	5,050	\$88,782,016	\$1,355.75
Natural Gas Distribution	35	1,018	1,020	1,036	\$17,098,624	\$1,283.62
Water, Sewage and Other Systems	166	830	829	827	\$6,058,351	\$562.38
INFORMATION	1,196	20,008	20,043	20,094	\$217,310,894	\$833.80
PUBLISHING INDUSTRIES, EXCEPT INTERNET	245	6,394	6,366	6,353	\$51,317,735	\$619.61
Newspaper, Book & Directory Publishers	217	6,126	6,088	6,076	\$47,520,872	\$599.58
Software Publishers	28	268	278	277	\$3,796,863	\$1,064.64
MOTION PICTURE & SOUND RECORDING INDUSTRY	137	1,153	1,171	1,184	\$5,365,053	\$352.93
Motion Picture & Video Industries	122	1,116	1,135	1,148	\$4,929,930	\$334.71
Sound Recording Industries	15	37	36	36	\$435,123	\$921.22

**TABLE 5. STATEWIDE SUMMARY
EMPLOYMENT AND TOTAL EARNINGS, BY INDUSTRY
FOURTH QUARTER 2006**

NORTH AMERICAN INDUSTRY CLASSIFICATION SYSTEM INDUSTRY GROUPS	NUMBER OF EMPLOYING UNITS	EMPLOYMENT OCTOBER	EMPLOYMENT NOVEMBER	EMPLOYMENT DECEMBER	TOTAL EARNINGS OCTOBER - DECEMBER	AVERAGE WEEKLY EARNINGS
BROADCASTING, EXCEPT INTERNET	144	2,080	2,075	2,077	\$17,997,308	\$666.44
Radio & Television Broadcasting	135	2,045	2,040	2,041	\$17,781,999	\$669.86
Cable & Other Subscription Programming	9	35	35	36	\$215,309	\$468.74
TELECOMMUNICATIONS	478	8,982	9,025	9,065	\$123,274,095	\$1,050.82
Wired Telecommunications Carriers	217	3,164	3,170	3,165	\$52,911,544	\$1,285.44
Wireless Telecommunications Carriers	117	4,037	4,065	4,101	\$53,201,596	\$1,006.09
Cable & Other Program Distribution	78	1,302	1,304	1,307	\$11,811,706	\$696.60
Other	66	479	486	492	\$5,349,249	\$847.25
ISPS, SEARCH PORTALS, & DATA PROCESSING	154	1,101	1,104	1,112	\$16,794,989	\$1,168.46
ISPs, & Web Search Portals	64	141	152	150	\$1,767,802	\$920.89
Data Processing & Related Services	90	960	952	962	\$15,027,187	\$1,206.62
OTHER	38	298	302	303	\$2,561,714	\$654.67
FINANCIAL ACTIVITIES	8,116	51,350	51,575	51,824	\$528,157,696	\$787.61
FINANCE & INSURANCE	4,758	37,028	37,142	37,280	\$421,225,419	\$872.19
CREDIT INTERMEDIATION & RELATED ACTIVITIES	2,032	22,013	22,111	22,170	\$214,180,553	\$745.56
Depository Credit Intermediation	1,326	18,306	18,375	18,404	\$171,494,255	\$718.45
Nondepository Credit Intermediation	392	2,558	2,576	2,599	\$33,129,551	\$988.66
Activities Related to Credit Intermediation	314	1,149	1,160	1,167	\$9,556,747	\$634.47
FINANCIAL INVESTMENT & RELATED ACTIVITIES	580	3,091	3,079	3,091	\$63,683,433	\$1,586.89
Security & Commodity Investment Activities	322	2,287	2,297	2,300	\$48,864,433	\$1,638.06
Other Financial Investment Activities	258	804	782	791	\$14,819,000	\$1,438.69
INSURANCE CARRIERS & RELATED ACTIVITIES	2,106	11,488	11,513	11,576	\$138,811,287	\$926.44
Insurance Carriers	399	4,763	4,782	4,785	\$63,660,676	\$1,025.19
Insurance Agencies, Brokerages & Support	1,707	6,725	6,731	6,791	\$75,150,611	\$856.54
OTHER	40	436	439	443	\$4,550,146	\$796.69
REAL ESTATE & RENTAL & LEASING	3,358	14,322	14,433	14,544	\$106,932,277	\$569.91
REAL ESTATE	2,548	9,063	9,142	9,261	\$70,746,721	\$594.41
Lessors of Real Estate	1,034	4,357	4,409	4,482	\$30,511,985	\$531.49
Offices of Real Estate Agents & Brokers	902	2,289	2,287	2,319	\$21,155,088	\$708.04
Activities Related to Real Estate	612	2,417	2,446	2,460	\$19,079,648	\$601.26
RENTAL & LEASING SERVICES	785	5,175	5,209	5,201	\$34,629,002	\$512.76
Automotive Equipment Rental & Leasing	127	1,003	1,024	1,020	\$7,027,044	\$532.20

**TABLE 5. STATEWIDE SUMMARY
EMPLOYMENT AND TOTAL EARNINGS, BY INDUSTRY
FOURTH QUARTER 2006**

NORTH AMERICAN INDUSTRY CLASSIFICATION SYSTEM INDUSTRY GROUPS	NUMBER OF EMPLOYING UNITS	EMPLOYMENT OCTOBER	EMPLOYMENT NOVEMBER	EMPLOYMENT DECEMBER	TOTAL EARNINGS OCTOBER - DECEMBER	AVERAGE WEEKLY EARNINGS
Consumer Goods Rental	477	3,104	3,108	3,086	\$16,311,905	\$404.85
General Rental Centers	35	247	252	257	\$2,099,955	\$641.01
Machinery & Equipment Rental & Leasing	146	821	825	838	\$9,190,098	\$853.78
LESSORS OF NONFINANCIAL INTANGIBLE ASSETS	25	84	82	82	\$1,556,554	\$1,448.41
PROFESSIONAL AND BUSINESS SERVICES	11,053	114,536	114,019	113,773	\$1,219,262,232	\$821.93
PROFESSIONAL & TECHNICAL SERVICES	6,975	37,014	37,361	38,260	\$495,157,286	\$1,014.49
Legal Services	1,669	6,657	6,663	6,738	\$103,303,466	\$1,188.52
Accounting & Bookkeeping Services	1,211	4,606	4,814	5,289	\$50,669,013	\$794.95
Architectural & Engineering Services	952	6,610	6,651	6,707	\$92,665,130	\$1,070.93
Specialized Design Services	158	467	467	489	\$4,359,978	\$707.06
Computer Systems Design & Related Services	852	7,710	7,742	7,809	\$133,479,143	\$1,324.23
Management & Technical Consulting Services	1,115	3,762	3,835	3,920	\$48,274,517	\$967.29
Scientific Research & Development Services	113	1,121	1,131	1,159	\$15,368,734	\$1,039.76
Advertising & Related Services	318	2,118	2,145	2,111	\$24,388,345	\$882.97
Other Professional & Technical Services	587	3,963	3,913	4,038	\$22,648,960	\$438.70
MANAGEMENT OF COMPANIES & ENTERPRISES	511	24,242	24,263	24,296	\$443,711,418	\$1,406.50
ADMINISTRATIVE & WASTE SERVICES	3,567	53,280	52,395	51,217	\$280,393,528	\$412.43
ADMINISTRATIVE & SUPPORT SERVICES	3,362	51,004	50,099	48,901	\$257,733,074	\$396.50
Office Administrative Services	371	1,302	1,329	1,382	\$19,736,281	\$1,134.94
Facilities Support Services	16	141	143	150	\$1,193,657	\$634.70
Employment Services	660	26,233	25,158	24,029	\$112,543,759	\$344.36
Business Support Services	374	5,294	5,527	5,377	\$27,565,740	\$392.72
Travel Arrangement & Reservation Services	103	426	423	427	\$2,854,163	\$516.19
Investigation & Security Services	245	4,488	4,497	4,517	\$27,187,736	\$464.68
Services to Buildings & Dwellings	1,311	11,633	11,559	11,520	\$54,476,184	\$362.16
Other Support Services	282	1,487	1,463	1,499	\$12,175,554	\$631.54
WASTE MANAGEMENT & REMEDIATION SERVICES	205	2,276	2,296	2,316	\$22,660,454	\$759.20
Waste Collection	97	1,058	1,073	1,077	\$10,182,154	\$732.46
Waste Treatment & Disposal	39	673	682	680	\$7,962,968	\$903.00
Remediation & Other Waste Services	69	545	541	559	\$4,515,332	\$633.43
EDUCATION AND HEALTH SERVICES	10,923	147,135	147,342	147,744	\$1,314,640,527	\$686.03
EDUCATIONAL SERVICES	553	9,399	9,422	9,400	\$63,172,932	\$516.58

**TABLE 5. STATEWIDE SUMMARY
EMPLOYMENT AND TOTAL EARNINGS, BY INDUSTRY
FOURTH QUARTER 2006**

NORTH AMERICAN INDUSTRY CLASSIFICATION SYSTEM INDUSTRY GROUPS	NUMBER OF EMPLOYING UNITS	EMPLOYMENT OCTOBER	EMPLOYMENT NOVEMBER	EMPLOYMENT DECEMBER	TOTAL EARNINGS OCTOBER - DECEMBER	AVERAGE WEEKLY EARNINGS
Elementary & Secondary Schools	78	3,298	3,309	3,325	\$17,608,440	\$409.13
Junior Colleges	7	256	257	275	\$1,859,475	\$544.56
Colleges & Universities	25	3,308	3,308	3,240	\$24,869,601	\$582.30
Business, Computer & Management Training	45	165	170	167	\$3,542,087	\$1,628.30
Technical & Trade Schools	99	744	738	742	\$7,497,206	\$777.93
Other Schools & Instruction	210	1,368	1,404	1,415	\$5,444,641	\$300.08
Educational Support Services	89	260	236	236	\$2,351,482	\$741.32
HEALTH CARE & SOCIAL ASSISTANCE	10,370	137,736	137,920	138,344	\$1,251,467,595	\$697.59
AMBULATORY HEALTH CARE SERVICES	4,826	42,409	42,622	42,882	\$607,228,242	\$1,095.51
Offices of Physicians	2,176	20,649	20,683	20,825	\$402,758,509	\$1,495.31
Offices of Dentists	916	6,020	6,044	6,125	\$69,054,320	\$876.11
Offices of Other Health Practitioners	1,140	5,507	5,566	5,615	\$46,140,150	\$638.05
Outpatient Care Centers	215	3,526	3,561	3,550	\$34,185,583	\$741.65
Medical & Diagnostic Laboratories	97	803	816	807	\$12,078,710	\$1,148.97
Home Health Care Services	137	3,717	3,763	3,761	\$26,634,972	\$546.80
Other Ambulatory Health Care Services	145	2,187	2,189	2,199	\$16,375,998	\$574.76
HOSPITALS	107	41,760	41,623	41,766	\$393,972,180	\$726.47
General Medical & Surgical Hospitals	77	38,465	38,347	38,441	\$362,786,982	\$726.40
Psychiatric & Substance Abuse Hospitals	10	1,542	1,516	1,515	\$13,081,810	\$660.15
Other Hospitals	20	1,753	1,760	1,810	\$18,103,388	\$784.84
NURSING & RESIDENTIAL CARE FACILITIES	503	27,154	27,208	27,256	\$137,750,041	\$389.48
Nursing Care Facilities	241	20,379	20,437	20,473	\$102,660,689	\$386.54
Residential Mental Health Facilities	124	3,070	3,070	3,096	\$16,248,732	\$405.99
Community Care Facilities for the Elderly	92	2,225	2,233	2,220	\$10,459,309	\$361.44
Other Residential Care Facilities	46	1,480	1,468	1,467	\$8,381,311	\$438.09
SOCIAL ASSISTANCE	4,934	26,413	26,467	26,440	\$112,517,132	\$327.35
Individual & Family Services	3,784	13,510	13,541	13,537	\$60,273,393	\$342.69
Emergency & Other Relief Services	121	874	852	900	\$4,512,421	\$396.55
Vocational Rehabilitation Services	129	3,423	3,395	3,394	\$16,517,789	\$373.27
Child Day Care Services	900	8,606	8,679	8,609	\$31,213,529	\$278.18
LEISURE AND HOSPITALITY	6,151	97,275	96,624	96,031	\$295,352,438	\$235.09
ARTS, ENTERTAINMENT & RECREATION	919	8,983	8,420	8,569	\$37,700,661	\$334.98

**TABLE 5. STATEWIDE SUMMARY
EMPLOYMENT AND TOTAL EARNINGS, BY INDUSTRY
FOURTH QUARTER 2006**

NORTH AMERICAN INDUSTRY CLASSIFICATION SYSTEM INDUSTRY GROUPS	NUMBER OF EMPLOYING UNITS	EMPLOYMENT OCTOBER	EMPLOYMENT NOVEMBER	EMPLOYMENT DECEMBER	TOTAL EARNINGS OCTOBER - DECEMBER	AVERAGE WEEKLY EARNINGS
PERFORMING ARTS & SPECTATOR SPORTS	203	2,026	1,880	2,142	\$11,891,057	\$453.72
Performing Arts Companies	35	611	437	398	\$1,914,866	\$305.60
Spectator Sports	54	769	896	1,028	\$4,430,583	\$379.67
Performing Arts & Sports Promoters	44	507	405	579	\$4,338,792	\$671.54
Agents & Managers for Public Figures	11	19	18	18	\$153,898	\$645.73
Independent Artists, Writers & Performers	59	120	124	119	\$1,052,918	\$669.37
MUSEUMS, PARKS & HISTORICAL SITES	47	220	214	218	\$1,013,099	\$358.58
GAMBLING, RECREATION & AMUSEMENT INDUSTRY	669	6,737	6,326	6,209	\$24,796,505	\$296.92
Other Amusement & Recreation Industries	628	6,260	6,082	5,969	\$23,833,341	\$300.37
Other	41	477	244	240	\$963,164	\$231.29
ACCOMMODATION & FOOD SERVICES	5,232	88,292	88,204	87,462	\$257,651,777	\$225.26
ACCOMMODATION	827	11,120	10,928	10,502	\$40,326,555	\$285.90
Traveler Accommodation	750	10,810	10,630	10,203	\$38,742,666	\$282.55
RV Parks & Recreational Camps	58	240	223	221	\$1,210,106	\$408.27
Rooming & Boarding Houses	19	70	75	78	\$373,783	\$386.81
FOOD SERVICES & DRINKING PLACES	4,405	77,172	77,276	76,960	\$217,325,222	\$216.73
Full -Service Restaurants	1,963	33,911	34,158	34,331	\$102,891,639	\$231.88
Limited-Service Eating Places	2,139	40,143	40,044	39,574	\$104,203,891	\$200.79
Special Food Services	157	2,240	2,223	2,206	\$7,736,039	\$267.69
Drinking Places, Alcoholic Beverages	146	878	851	849	\$2,493,653	\$223.22
OTHER SERVICES	5,484	25,656	25,555	25,678	\$157,863,678	\$473.80
REPAIR & MAINTENANCE	2,214	9,664	9,621	9,601	\$69,827,397	\$557.85
Automotive Repair & Maintenance	1,531	6,848	6,824	6,833	\$45,730,947	\$514.67
Electronic Equipment Repair & Maintenance	161	686	694	688	\$6,439,622	\$718.60
Commercial Machinery Repair & Maintenance	340	1,594	1,577	1,543	\$14,208,116	\$695.54
Household Goods Repair & Maintenance	182	536	526	537	\$3,448,712	\$497.72
PERSONAL & LAUNDRY SERVICES	1,319	8,154	8,105	8,230	\$41,988,143	\$395.67
Personal Care Services	565	2,546	2,523	2,569	\$9,984,530	\$301.67
Death Care Services	246	1,668	1,646	1,656	\$11,677,879	\$542.23
Drycleaning & Laundry Services	336	3,209	3,185	3,224	\$16,114,594	\$386.65
Other Personal Services	172	731	751	781	\$4,211,140	\$429.43
MEMBERSHIP ASSOCIATIONS & ORGANIZATIONS	1,015	6,408	6,421	6,446	\$40,254,683	\$481.95

**TABLE 5. STATEWIDE SUMMARY
EMPLOYMENT AND TOTAL EARNINGS, BY INDUSTRY
FOURTH QUARTER 2006**

NORTH AMERICAN INDUSTRY CLASSIFICATION SYSTEM INDUSTRY GROUPS	NUMBER OF EMPLOYING UNITS	EMPLOYMENT OCTOBER	EMPLOYMENT NOVEMBER	EMPLOYMENT DECEMBER	TOTAL EARNINGS OCTOBER - DECEMBER	AVERAGE WEEKLY EARNINGS
Religious Organizations	40	218	221	222	\$1,300,670	\$454.09
Grantmaking & Giving Services	95	444	445	441	\$4,291,266	\$744.58
Social Advocacy Organizations	148	1,976	2,048	2,058	\$11,834,902	\$449.05
Civic & Social Organizations	219	1,508	1,498	1,492	\$5,186,012	\$266.07
Professional & Similar Organizations	513	2,262	2,209	2,233	\$17,641,833	\$607.28
PRIVATE HOUSEHOLDS	936	1,430	1,408	1,401	\$5,793,455	\$315.39
LOCAL GOVERNMENT	2,001	117,508	118,298	118,472	\$881,155,952	\$573.97
STATE GOVERNMENT	1,199	63,555	63,930	63,537	\$559,761,855	\$676.24
NONCLASSIFIABLE ESTABLISHMENTS	0	0	0	0	\$0	

**TABLE 6. COUNTY SUMMARY
EMPLOYMENT AND TOTAL EARNINGS, BY INDUSTRY
FOURTH QUARTER 2006**

NORTH AMERICAN INDUSTRY CLASSIFICATION SYSTEM INDUSTRY GROUP	NUMBER OF EMPLOYING UNITS	EMPLOYMENT	EMPLOYMENT	EMPLOYMENT	TOTAL EARNINGS	AVERAGE WEEKLY EARNINGS
		OCTOBER	NOVEMBER	DECEMBER	OCTOBER - DECEMBER	
ARKANSAS COUNTY - TOTAL	681	9,868	9,793	9,849	\$75,673,944	\$591.77
Natural Resources & Mining	43	220	217	202	\$1,946,712	\$703.04
Construction	53	321	307	297	\$2,834,545	\$707.16
Manufacturing	32	3,413	3,361	3,373	\$28,578,077	\$649.94
Trade, Transportation & Utilities	200	2,133	2,108	2,119	\$17,110,389	\$620.84
Wholesale Trade	46	436	408	407	\$5,187,810	\$956.98
Retail Trade	101	1,090	1,103	1,128	\$5,705,569	\$396.47
Transportation, Warehousing & Utilities	53	607	597	584	\$6,217,010	\$802.40
Information	10	95	96	102	\$787,580	\$620.30
Financial Activities	42	319	317	322	\$3,493,308	\$841.49
Professional & Business Services	54	398	386	397	\$4,607,698	\$900.35
Education & Health Services	91	1,212	1,213	1,224	\$6,973,740	\$441.03
Leisure & Hospitality	59	516	542	534	\$1,374,000	\$199.17
Other Services	49	132	130	131	\$741,257	\$435.27
Local Government	32	876	883	918	\$5,862,940	\$505.41
State Government	16	233	233	230	\$1,363,698	\$452.15
ASHLEY COUNTY - TOTAL	540	8,281	8,276	8,095	\$76,679,246	\$717.80
Natural Resources & Mining	62	510	528	475	\$3,741,364	\$570.65
Construction	46	642	601	619	\$4,035,140	\$500.10
Manufacturing	29	2,922	2,897	2,750	\$42,113,492	\$1,134.15
Trade, Transportation & Utilities	130	1,216	1,221	1,180	\$7,674,948	\$489.67
Wholesale Trade	23	184	182	149	\$1,754,532	\$786.20
Retail Trade	82	784	794	794	\$3,669,203	\$356.97
Transportation, Warehousing & Utilities	25	248	245	237	\$2,251,213	\$711.66
Information	9	46	49	51	\$340,528	\$538.24
Financial Activities	32	209	222	230	\$1,789,655	\$624.81
Professional & Business Services	50	338	337	335	\$1,807,471	\$412.98
Education & Health Services	66	602	600	596	\$4,676,089	\$600.17
Leisure & Hospitality	28	382	383	390	\$981,540	\$196.11
Other Services	44	181	182	193	\$1,091,577	\$453.06
Local Government	32	1,016	1,036	1,062	\$7,299,775	\$540.96
State Government	12	217	220	214	\$1,127,667	\$399.74

**TABLE 6. COUNTY SUMMARY
EMPLOYMENT AND TOTAL EARNINGS, BY INDUSTRY
FOURTH QUARTER 2006**

NORTH AMERICAN INDUSTRY CLASSIFICATION SYSTEM INDUSTRY GROUP	NUMBER OF EMPLOYING UNITS	EMPLOYMENT	EMPLOYMENT	EMPLOYMENT	TOTAL EARNINGS	AVERAGE
		OCTOBER	NOVEMBER	DECEMBER	OCTOBER - DECEMBER	WEEKLY EARNINGS
BAXTER COUNTY - TOTAL	1,273	14,895	14,952	15,019	\$107,757,197	\$554.25
Natural Resources & Mining	6	122	113	111	\$790,513	\$527.24
Construction	139	723	729	722	\$5,079,228	\$539.16
Manufacturing	62	2,524	2,546	2,534	\$20,843,518	\$632.57
Trade, Transportation & Utilities	282	2,769	2,776	2,771	\$15,899,460	\$441.21
Wholesale Trade	35	213	217	218	\$1,690,307	\$601.96
Retail Trade	213	2,317	2,313	2,303	\$12,355,359	\$411.26
Transportation, Warehousing & Utilities	34	239	246	250	\$1,853,794	\$582.04
Information	24	253	264	262	\$2,154,442	\$638.23
Financial Activities	117	738	733	738	\$7,153,732	\$747.33
Professional & Business Services	139	751	744	768	\$6,141,861	\$626.32
Education & Health Services	226	3,413	3,442	3,458	\$32,495,225	\$727.13
Leisure & Hospitality	123	1,560	1,542	1,616	\$4,361,001	\$213.31
Other Services	106	451	443	442	\$2,046,168	\$353.44
Local Government	36	1,279	1,310	1,288	\$8,767,746	\$521.88
State Government	13	312	310	309	\$2,024,303	\$501.77
BENTON COUNTY - TOTAL	5,338	94,530	94,967	95,102	\$926,584,338	\$751.33
Natural Resources & Mining	28	648	650	645	\$10,957,506	\$1,301.42
Construction	806	5,289	5,172	5,218	\$48,562,446	\$714.76
Manufacturing	249	14,169	14,133	14,027	\$121,026,198	\$659.81
Trade, Transportation & Utilities	1,428	24,028	24,546	24,473	\$225,505,024	\$712.41
Wholesale Trade	645	3,576	3,633	3,662	\$63,188,584	\$1,341.37
Retail Trade	611	8,594	8,827	8,906	\$50,007,011	\$438.34
Transportation, Warehousing & Utilities	172	11,858	12,086	11,905	\$112,309,429	\$722.96
Information	66	928	930	931	\$8,455,013	\$699.59
Financial Activities	586	3,935	3,926	3,921	\$39,467,823	\$773.04
Professional & Business Services	902	21,934	21,943	22,038	\$313,354,324	\$1,097.06
Education & Health Services	454	6,454	6,448	6,507	\$56,643,216	\$673.48
Leisure & Hospitality	411	7,504	7,532	7,524	\$24,433,884	\$249.94
Other Services	314	1,756	1,774	1,803	\$11,613,199	\$502.53
Local Government	75	7,083	7,096	7,194	\$60,078,329	\$648.68
State Government	19	802	817	821	\$6,487,376	\$613.56

