

Arkansas Covered Employment & Earnings

Jobs for People. People for Jobs.

DWS
Department of
WORKFORCE**Services**

Second Quarter
2006

**COVERED EMPLOYMENT AND EARNINGS
STATE OF ARKANSAS
SECOND QUARTER 2006**

**MIKE BEEBE, GOVERNOR
STATE OF ARKANSAS**

**ARTEE WILLIAMS, DIRECTOR
DEPARTMENT OF WORKFORCE SERVICES**

**PUBLISHED BY
LABOR MARKET INFORMATION & ANALYSIS
BUREAU OF LABOR STATISTICS PROGRAMS
POST OFFICE BOX 2981
LITTLE ROCK, ARKANSAS 72203-2981
BERNADETTE COLEMAN, BLS PROGRAMS MANAGER
TELEPHONE: (501) 682-3159**

STATE OF ARKANSAS HOME PAGE: <http://www.arkansas.gov>

DEPARTMENT OF WORKFORCE SERVICES HOME PAGE: <http://www.arkansas.gov/esd/>

**INTERNET SITE FOR LABOR MARKET INFORMATION:
<http://www.discoverarkansas.net>**

**Equal Opportunity Employer/Program
Auxiliary aids and services are available upon request to individuals with disabilities.
TTD/TTY Voice: 1-800-285-1121 TDD: 1-800-285-1131**

RELEASED: AUGUST 2007

TABLE OF CONTENTS

DESCRIPTION OF DATA	Page
Industry Classification	1
Definition of Covered Employment and Earnings	2
Federal Government Employment	2
County Classification	2
Significant Developments During Second Quarter 2006	3

LIST OF GRAPHS AND TABLES

Graph 1	Total Covered Employment for Selected Years, Arkansas	7
Graph 2	Total Covered Earnings, by Calendar Quarter for Selected Years, Arkansas	8
Table 1	Quarterly Comparison of Covered Employment and Wages, by Industry	5
Table 2	Total Covered Employment in Arkansas, 1999-2006	6
Table 3	Total Covered Earnings, 1999-2006	9
Table 4	Total Taxable Earnings, 1999-2006	10
Table 5	State Summary - Employment and Total Earnings, by Industry, Second Quarter 2006	11
Table 6	County Summary - Employment and Total Earnings, by Industry, Second Quarter 2006	24
Table 7	Federal Government Employment and Total Earnings in Arkansas, Second Quarter 2006	62
Table 8	Workforce Information Area – Employment and Total Earnings, by Industry, Second Quarter 2006	63

EMPLOYMENT AND EARNINGS
UNDER THE ARKANSAS EMPLOYMENT SECURITY LAW
SECOND QUARTER 2006

DESCRIPTION OF DATA

This publication contains covered employment and payroll data by industry and county for the Second Quarter 2006. These data are compiled from quarterly contribution and wage reports submitted by employers subject to the Arkansas Employment Security Law. An employing unit is a single physical location where business is conducted, production takes place, or services are provided. Employment data have been tabulated for each month of the quarter by industry under the **North American Industry Classification System** (NAICS) (see "Industry Classification" below) on a statewide, county and workforce area basis. Payroll data represent the total wages paid during the quarter, and are also shown by

industry for the State and by publishable industry groups for each county and workforce area. The tabulation of this data is a joint effort in conjunction with the U.S. Bureau of Labor Statistics. In addition, there are tables included which set out total covered employment by months, quarterly payrolls, and average weekly earnings for the years 1999 through 2006. Data contained in this publication are subject to revision. These revisions will be reflected in the 2006 Annual Covered Employment and Earnings publication. Because of industry code changes between years, substantial employment and wage shifts among industries are anticipated.

INDUSTRY CLASSIFICATION

Previously published industry data **will not** be comparable in all instances with currently published data since industry codes have been revised according to the following Manuals: (a) between January 1, 1958 and December 31, 1967, industry codes were assigned under the 1957 Standard Industrial Classification (SIC) Manual; (b) between January 1, 1968 and December 31, 1974, industry codes were assigned under the 1967 Standard Industrial Classification (SIC) Manual; (c) between January 1, 1975 and December 31, 1987, industry codes were assigned under the 1972 Standard Industrial Classification (SIC) Manual; (d) between January 1, 1988 and December 31, 2000, industry codes were assigned under the 1987 Standard Industrial Classification (SIC) Manual; and (e) since January 1, 2001, industry codes have been assigned under the 2002 North American Industry Classification System (NAICS) Manual. **The NAICS Manual represents a significant change in coding methodology as compared to the**

SIC Manual. One of the most significant changes involves how NAICS treats auxiliary units. Auxiliary units are establishments primarily engaged in performing management or support services for other establishments of the same enterprise. The SIC code for these units was based on the activity of the enterprise served. The NAICS code is based on the actual activities that the establishment performs. Comparisons of many industries **should not be made** between this publication and previous Covered Employment and Earnings publications that were based on SIC. Even though some titles are the same or similar, in nature, NAICS and SIC could differ in the classification of employers. The implementation of NAICS represents a profound change for statistical programs, and will create significant benefits along with transition obstacles for both data collectors and data users. A summary is available on the NAICS home page at <http://www.census.gov/naics>.

DEFINITION OF COVERED EMPLOYMENT AND EARNINGS

Covered Employment is the number of workers employed by employers subject to the Arkansas Employment Security Law who worked or received pay for the payroll period including the 12th of the month. An employer is subject to the law when they employ one or more employees in each of ten days during the current or preceding calendar year.

Currently excluded from coverage is employment covered by the Railroad Unemployment Insurance Act, some domestic service workers, employees of small agricultural establishments, self-employed and unpaid family workers, insurance and real estate

agents who are on commission only, and employees of churches and religious organizations except separately incorporated schools. The payroll information in this publication includes all wages and salaries paid to any covered employees by their employers including bonuses, commissions, and cash values of remuneration received in any medium other than cash. These wages include both taxable and nontaxable wages. Only the first \$10,000 paid to each worker by an employer in the calendar year is taxable under the Arkansas Employment Security Law.

FEDERAL GOVERNMENT EMPLOYMENT

Table 7 on page 62 lists the total number of civilians employed by the Federal Government in Arkansas during the Second Quarter 2006. Employment and wage data are set out by industry divisions. These data are obtained from required reports submitted by various

government agencies having employment in the State. Civilian Federal workers are covered by the Unemployment Compensation for Federal Employees (UCFE) program.

COUNTY CLASSIFICATION

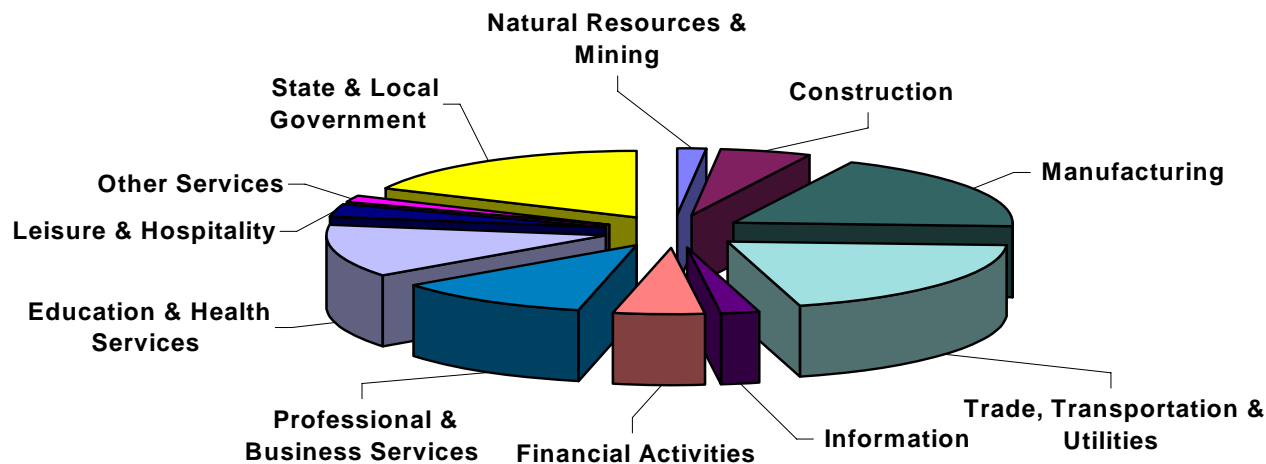
Employment and payroll data by county are classified according to the county where the workers are employed. Employers with operations in more than one county are requested to furnish this agency with a breakdown of employment and wages for at least one quarter of each year by the counties in which they operate. Many such employers submit county data with each regular contribution report. **Note:** This information is invaluable in the preparation of monthly employment and payroll data by county.

Employment and payroll data for multi - area employers, who do not furnish county data each quarter of the year, are prorated by county on the basis of one quarter's information. The "rest-of-state" table that appears on page 61 of this publication includes data on firms that **did not** provide a county breakdown of employment and payrolls. It also includes sales, and all other type of personnel with no permanent place of work, as well as employment of employers with no established place of business in Arkansas.

SIGNIFICANT DEVELOPMENTS DURING SECOND QUARTER 2006

AVERAGE EMPLOYMENT CHANGES

Covered employment averaged 1,159,163 during the Second Quarter 2006 (see table 1), an increase of 19,114 (1.7%) from the previous quarter and 24,565 (2.2%) above the average recorded one-year ago. This *over-the-year* increase is more significant when used as an economic indicator. This *over-the-year* comparison allows for the disregarding of many seasonal factors that are evident when making an *over-the-quarter* comparison.

Average Covered Employment by NAICS Group**EMPLOYMENT CHANGES FROM FIRST QUARTER 2006**

Over the quarter gains were recorded in nine industry groups while two experienced losses (see table 1). Seasonal increases in arts, entertainment & recreation as well as accommodation & food services resulted in a gain of 6,592 employees or 8.6 percent in Leisure & Hospitality. New projects and the expansion of existing projects resulted in an increase of 3,051 employees (5.0%) in Construction. Trade, Transportation & Utilities rose 2,808 jobs as hiring for the spring and summer season began. Other industries

posting over the quarter gains were: Education & Health Services (12.6%); Professional & Business Services (9.9%); Financial Activities (4.4%); Other Services (2.3%); Information (1.7%); and Natural Resources & Mining (1.6%).

Slight Losses were recorded in two industry groups; Manufacturing (-664) and State & Local Government (-123).

EMPLOYMENT CHANGES FROM SECOND QUARTER 2005

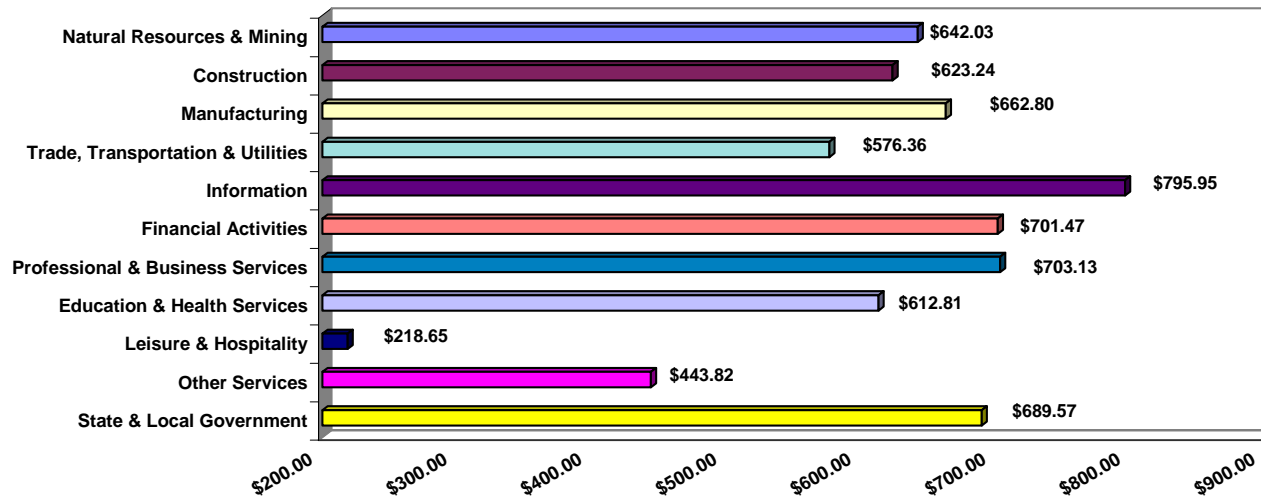
Over-the-year gains were recorded in nine industry groups while two recorded losses (see table 1). Significant gains were posted in Educational & Health Services (+5,521), State & Local Government (+4,327), and Professional & Business Services (+3,860). The only losses occurred in Manufacturing (-823) and Information (-205).

COVERED WAGES

Wages paid to covered workers totaled \$9,112,835,784 for the Second Quarter 2006 (see table 1), for an average weekly wage of \$604.74 (see table 5). Employees in Little River County recorded the highest average weekly wage (\$775.47), and workers in Searcy County the lowest (\$390.59) (see table 6).

The Information sector recorded the highest average weekly wage for the State of Arkansas at \$795.95, while the Leisure & Hospitality sector recorded the lowest at \$218.65 for the State of Arkansas (see table 5).

Average Weekly Wages by Industry Group



Note: Because of industry code changes between years, substantial employment and wage shifts among industries are anticipated.

TABLE 1. QUARTERLY COMPARISON OF COVERED EMPLOYMENT AND WAGES, BY INDUSTRY

North American Industry Classification System Industry Group	Number of Employing Units	Average Covered Employment April – June 2006		Net Change From:		Total Wages Paid April – June 2006	% of Total
		Monthly Average	% of Total	Jan. – Mar. 2006	Apr. – Jun. 2005		
Total	80,089	1,159,163	100.0	19,114	24,565	\$9,112,835,784	100.0
Natural Resources and Mining	2,353	18,502	1.6	1,336	185	154,426,591	1.7
Agriculture, Forestry, Fishing and Hunting	1,999	13,724	1.2	1,056	-482	93,589,803	1.0
Mining	354	4,778	0.4	279	667	60,836,788	0.7
Construction	7,907	57,947	5.0	3,051	2,956	469,490,514	5.2
Manufacturing	3,580	200,468	17.3	-664	-823	1,727,322,590	19.0
Trade, Transportation, and Utilities	20,869	244,582	21.1	2,808	3,213	1,832,581,380	20.1
Wholesale Trade	6,254	48,267	4.2	1,010	414	546,692,967	6.0
Retail Trade	11,301	133,069	11.5	1,098	1,289	681,750,753	7.5
Transportation and Warehousing	2,953	56,435	4.9	608	1,329	502,142,339	5.5
Utilities	361	6,812	0.6	93	181	101,995,321	1.1
Information	1,214	19,836	1.7	90	-205	205,249,466	2.3
Financial Activities	8,052	51,121	4.4	546	1,505	466,176,391	5.1
Finance and Insurance	4,736	36,873	3.2	132	1,031	374,334,525	4.1
Real Estate and Rental and Leasing	3,316	14,248	1.2	414	474	91,841,866	1.0
Professional and Business Services	10,765	114,939	9.9	1,695	3,860	1,050,621,877	11.5
Professional and Technical Services	6,791	36,968	3.2	-568	1,488	397,923,176	4.4
Management of Companies and Enterprises	507	24,075	2.1	201	648	385,452,132	4.2
Administrative and Waste Services	3,467	53,896	4.6	2,062	1,725	267,246,569	2.9
Education and Health Services	10,595	145,834	12.6	2,691	5,521	1,161,801,508	12.7
Educational Services	554	9,075	0.8	52	536	57,830,827	0.6
Health Care and Social Assistance	10,041	136,759	11.8	2,639	4,985	1,103,970,681	12.1
Leisure and Hospitality	6,071	100,210	8.6	6,592	3,376	284,835,780	3.1
Arts, Entertainment and Recreation	927	10,208	0.9	1,758	28	37,611,682	0.4
Accommodation and Food Services	5,144	90,001	7.8	4,834	3,347	247,224,098	2.7
Other Services	5,480	26,256	2.3	1,092	649	151,488,319	1.7
State and Local Government	3,203	179,469	15.5	-123	4,327	1,608,841,368	17.7
Local Government	2,005	117,129	10.1	-301	3,038	1,046,416,435	11.5
State Government	1,198	62,340	5.4	179	1,289	562,424,933	6.2
Nonclassifiable Establishments	0	0	0.0	0	0	0	0.0

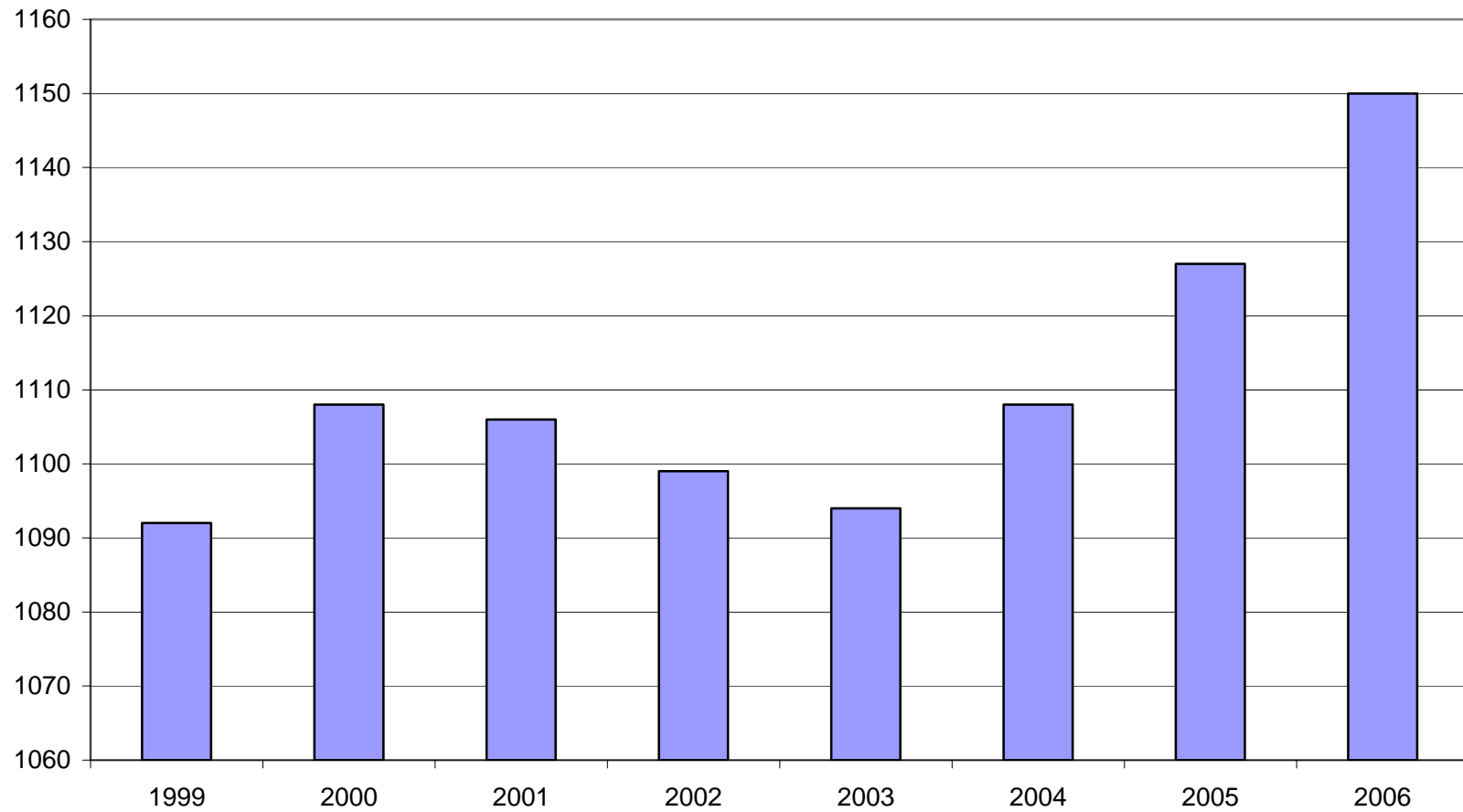
Note: Items do not necessarily add to totals because of rounding. Because of industry code changes between years, substantial employment and wage shifts among industries are anticipated.

TABLE 2. TOTAL COVERED EMPLOYMENT IN ARKANSAS

Period	1999	2000	2001	2002	2003	2004	2005	2006
Average	1,092,351	1,108,479	1,106,066	1,098,558	1,094,087	1,108,264	1,126,778	1,149,606
January	1,065,920	1,089,943	1,096,009	1,081,635	1,082,740	1,089,510	1,102,768	1,131,326
February	1,074,315	1,096,113	1,101,616	1,086,793	1,084,880	1,094,626	1,110,577	1,137,832
March	1,084,653	1,109,144	1,112,143	1,098,500	1,092,172	1,105,266	1,122,619	1,150,990
April	1,093,574	1,111,525	1,115,526	1,103,399	1,095,341	1,111,020	1,129,785	1,155,521
May	1,098,539	1,116,760	1,119,815	1,111,998	1,103,099	1,117,144	1,135,567	1,159,912
June	1,101,748	1,121,225	1,119,734	1,112,028	1,099,688	1,117,010	1,136,118	1,162,056
July	1,062,563	1,075,066	1,071,921	1,065,697	1,053,220	1,071,463	1,090,071	N/A
August	1,081,260	1,096,848	1,094,160	1,086,011	1,077,775	1,094,871	1,114,098	N/A
September	1,108,212	1,123,725	1,115,976	1,113,148	1,105,980	1,122,704	1,144,815	N/A
October	1,110,604	1,122,884	1,110,994	1,108,447	1,112,550	1,123,246	1,142,300	N/A
November	1,112,003	1,120,620	1,109,012	1,107,611	1,109,712	1,125,061	1,145,667	N/A
December	1,114,823	1,117,892	1,105,887	1,107,425	1,111,892	1,127,250	1,146,954	N/A

AVERAGE TOTAL COVERED EMPLOYMENT GRAPH 1

In Thousands



TOTAL COVERED EARNINGS BY CALENDAR QUARTER, GRAPH 2

In Thousands

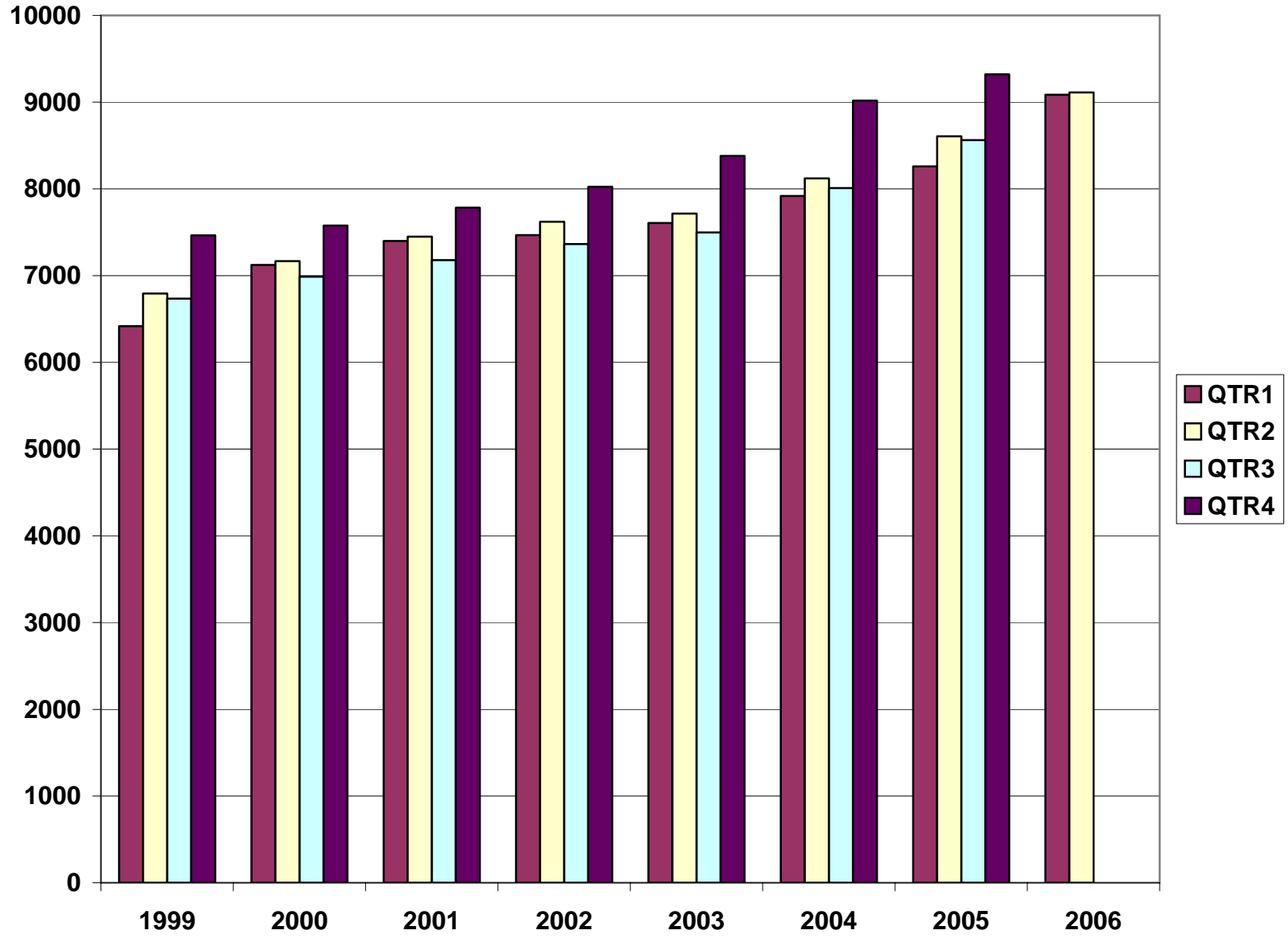


TABLE 3. TOTAL COVERED EARNINGS, 1999- 2006

Period	1999	2000	2001	2002
Total	\$27,407,925,462	\$28,853,716,151	\$29,807,669,666	\$30,472,854,103
January - March	6,418,456,638	7,122,636,896	7,398,887,532	7,465,250,305
April - June	6,791,960,679	7,166,049,182	7,448,023,298	7,621,878,775
July - September	6,733,480,079	6,986,085,106	7,177,293,061	7,361,666,511
October - December	7,464,028,066	7,578,944,967	7,783,465,775	8,024,058,512
Average Weekly Earnings	482.51	500.58	518.26	533.44

Period	2003	2004	2005	2006
Total	\$31,202,576,767	\$33,068,346,519	\$34,758,732,888	\$18,199,209,606
January - March	7,608,130,008	7,918,843,610	8,261,153,981	9,086,373,822
April - June	7,714,813,038	8,122,370,361	8,607,722,353	9,112,835,784
July - September	7,500,204,764	8,010,300,454	8,562,885,196	N/A
October - December	8,379,428,957	9,016,674,879	9,321,675,928	N/A
Average Weekly Earnings	548.45	573.81	593.23	608.88

TABLE 4. TOTAL TAXABLE EARNINGS, 1999 - 2006

Period	1999	2000	2001	2002
Total	\$8,807,445,422	\$9,047,924,530	\$9,003,189,480	\$8,887,270,978
January - March	4,203,067,856	4,560,783,991	4,670,296,360	4,668,534,587
April - June	2,325,649,764	2,260,680,255	2,219,485,263	2,162,971,435
July - September	1,267,562,743	1,250,832,297	1,190,098,737	1,158,197,858
October - December	1,011,165,059	975,627,987	923,309,120	897,567,098
Period	2003	2004	2005	2006
Total	\$9,154,938,743	\$9,731,247,501	\$9,991,605,239	\$7,807,601,485
January - March	4,737,918,796	4,931,559,230	5,062,670,306	5,422,414,259
April - June	2,270,519,362	2,451,454,749	2,506,505,721	2,385,187,226
July - September	1,188,681,170	1,318,017,835	1,353,660,445	N/A
October - December	957,819,415	1,030,215,687	1,068,768,767	N/A

**TABLE 5. STATEWIDE SUMMARY
EMPLOYMENT AND TOTAL EARNINGS, BY INDUSTRY
SECOND QUARTER 2006**

NORTH AMERICAN INDUSTRY CLASSIFICATION SYSTEM INDUSTRY GROUPS		NUMBER OF EMPLOYING UNITS	EMPLOYMENT			TOTAL EARNINGS	AVERAGE
			APRIL	MAY	JUNE	APRIL - JUNE 2006	WEEKLY EARNINGS
TOTAL, ALL INDUSTRIES		80,089	1,155,521	1,159,912	1,162,056	\$9,112,835,784	\$604.74
NATURAL RESOURCES & MINING		2,353	18,111	18,382	19,014	\$154,426,591	\$642.03
11	AGRICULTURE, FORESTRY, FISHING & HUNTING	1,999	13,476	13,601	14,095	\$93,589,803	\$524.57
111	CROP PRODUCTION	720	3,824	3,842	4,081	\$20,226,567	\$397.35
1111	Oilseed and Grain Farming	422	1,874	1,883	1,935	9,723,354	394.21
1112	Vegetable and Melon Farming	12	185	232	276	1,031,849	343.61
1113	Fruit and Tree Nut Farming	9	70	88	205	456,318	290.09
1114	Greenhouse & Nursery Production	49	495	402	363	2,656,244	486.49
1119	Other Crop Farming	228	1,200	1,237	1,302	6,358,802	392.46
112	ANIMAL PRODUCTION	254	3,737	3,747	3,774	\$28,741,583	\$589.15
1121	Cattle Ranching and Farming	74	326	328	338	2,120,192	493.22
1122	Hog and Pig Farming	7	147	152	148	1,300,135	
1123	Poultry and Egg Production	84	2,607	2,588	2,585	20,799,443	616.95
1125	Animal Aquaculture	61	580	602	624	4,044,056	516.75
	Other	28	77	77	79	477,757	473.18
113	FORESTRY AND LOGGING	566	3,027	3,033	3,103	\$21,607,784	\$544.19
1131	Timber Tract Operations	45	250	257	254	2,039,510	618.47
1132	Forest Nurseries & Gathering of Forest Products	6	30	30	31	254,505	645.41
1133	Logging	515	2,747	2,746	2,818	19,313,769	536.28
	OTHER	459	2,888	2,979	3,137	\$23,013,869	\$589.84
21	MINING	354	4,635	4,781	4,919	\$60,836,788	\$979.37
211	OIL AND GAS EXTRACTION	83	415	415	420	\$5,315,402	\$981.30
212	MINING (EXCEPT OIL AND GAS)	104	2,048	2,067	2,093	\$22,626,603	\$841.10
213	SUPPORT ACTIVITIES FOR MINING	167	2,172	2,299	2,406	\$32,894,783	\$1,103.84

**TABLE 5. STATEWIDE SUMMARY
EMPLOYMENT AND TOTAL EARNINGS, BY INDUSTRY
SECOND QUARTER 2006**

NORTH AMERICAN INDUSTRY CLASSIFICATION SYSTEM INDUSTRY GROUPS		NUMBER OF	EMPLOYMENT			TOTAL EARNINGS	AVERAGE
		EMPLOYING UNITS	APRIL	MAY	JUNE	APRIL - JUNE 2006	WEEKLY EARNINGS
CONSTRUCTION		7,907	56,762	58,058	59,020	\$469,490,514	\$623.24
236	CONSTRUCTION OF BUILDINGS	2,236	13,043	13,246	13,717	\$114,537,256	\$660.69
2361	Residential Building Construction	1,628	4,705	4,769	4,959	35,074,101	560.80
2362	Nonresidential Building Construction	608	8,338	8,477	8,758	79,463,155	717.07
237	HEAVY & CIVIL ENGINEERING CONSTRUCTION	887	10,711	10,887	10,800	\$95,982,341	\$683.68
2371	Utility System Construction	417	4,690	4,940	4,991	41,431,251	653.93
2372	Land Subdivision	137	483	477	505	4,559,763	718.26
2373	Highway, Street & Bridge Construction	221	3,750	3,673	3,834	32,656,076	669.45
2379	Other Heavy Construction	112	1,788	1,797	1,470	17,335,251	791.38
238	SPECIALTY TRADE CONTRACTORS	4,784	33,008	33,925	34,503	\$258,970,917	\$589.16
2381	Building Foundation & Exterior Contractors	950	6,642	6,825	6,913	48,059,526	544.19
2382	Building Equipment Contractors	2,095	15,835	16,166	16,305	132,285,295	631.96
2383	Building Finishing Contractors	895	5,250	5,441	5,572	39,241,398	556.83
2389	Other Specialty Trade Contractors	844	5,281	5,493	5,713	39,384,698	551.27
MANUFACTURING		3,580	200,527	199,874	201,003	\$1,727,322,590	\$662.80
311	FOOD MANUFACTURING	318	50,976	50,702	51,044	\$344,730,545	\$520.90
3111	Animal Food Manufacturing	59	1,393	1,399	1,418	14,539,667	796.99
3112	Grain and Oilseed Milling	30	2,432	2,413	2,398	19,388,837	617.75
3114	Fruit, Vegetable & Specialty Food	35	7,049	6,915	6,900	54,375,097	601.42
3115	Dairy Product Manufacturing	13	726	718	717	6,322,315	675.15
3116	Animal Slaughtering & Processing	91	34,028	33,920	34,247	208,702,226	471.28
3118	Bakeries and Tortilla Manufacturing	53	3,410	3,404	3,395	25,890,620	585.24
3119	Other Food Manufacturing	24	1,708	1,704	1,731	14,507,957	650.98
	Other	13	230	229	238	1,003,826	332.36
312	BEVERAGE & TOBACCO PRODUCT MFG.	36	1,215	1,241	1,274	\$12,123,621	\$750.07
313	TEXTILE MILLS	19	414	404	400	\$4,232,297	\$801.88
3132	Fabric Mills	6	330	319	314	3,744,324	897.27
3133	Textile & Fabric Finishing Mills	13	84	85	86	487,973	441.60
314	TEXTILE PRODUCT MILLS	57	1,333	1,309	1,302	\$11,646,761	\$681.47
3141	Textile Furnishing Mills	17	36	34	31	132,061	301.74
3133	Other Textile Product Mills	40	1,297	1,275	1,271	11,514,700	691.45

**TABLE 5. STATEWIDE SUMMARY
EMPLOYMENT AND TOTAL EARNINGS, BY INDUSTRY
SECOND QUARTER 2006**

NORTH AMERICAN INDUSTRY CLASSIFICATION SYSTEM INDUSTRY GROUPS		NUMBER OF	EMPLOYMENT			TOTAL EARNINGS	AVERAGE
		EMPLOYING UNITS	APRIL	MAY	JUNE	APRIL - JUNE 2006	WEEKLY EARNINGS
315	APPAREL MANUFACTURING	45	1,908	1,859	1,808	\$9,344,109	\$386.79
3152	Cut & Sew Apparel Manufacturing	37	913	843	843	4,166,464	369.95
	Other	8	995	1,016	965	5,177,645	401.49
316	LEATHER & ALLIED PRODUCT MANUFACTURING	20	2,229	2,138	2,081	\$13,069,909	\$467.76
3162	Footwear Manufacturing	10	2,009	1,917	1,870	11,522,465	458.77
3169	Other Leather Product Manufacturing	10	220	221	211	1,547,444	547.70
321	WOOD PRODUCT MANUFACTURING	392	14,003	13,963	14,054	\$108,792,106	\$597.47
3211	Sawmills and Wood Preservation	179	6,275	6,255	6,337	52,742,582	645.11
3212	Veneer & Engineered Wood Products	46	3,321	3,283	3,263	28,655,472	670.19
3219	Other Wood Product Manufacturing	167	4,407	4,425	4,454	27,394,052	475.82
322	PAPER MANUFACTURING	86	11,774	11,731	11,766	\$144,469,444	\$945.23
3221	Pulp, Paper & Paperboard Mills	12	4,619	4,608	4,637	73,991,100	1231.60
3222	Converted Paper Product Manufacturing	74	7,155	7,123	7,129	70,478,344	759.76
323	PRINTING & RELATED SUPPORT ACTIVITIES	298	4,641	4,609	4,640	\$38,350,646	\$637.16
324	PETROLEUM AND COAL PRODUCTS MFG.	19	886	924	941	\$12,974,121	\$1,088.34
325	CHEMICAL MANUFACTURING	109	4,634	4,662	4,680	\$56,373,065	\$930.82
3251	Basic Chemical Manufacturing	27	1,943	1,931	1,932	26,915,732	1069.81
3252	Resin, Rubber & Artificial Fibers	5	300	305	307	3,714,069	939.79
3253	Agricultural Chemical Manufacturing	16	349	351	357	4,292,101	937.07
3255	Paint, Coating & Adhesive Manufacturing	7	183	186	186	2,481,908	1031.98
3259	Other Chemical Preparation Manufacturing	26	910	927	923	9,888,316	826.78
	Other	28	949	962	975	9,080,939	726.13
326	PLASTICS & RUBBER PRODUCTS MFG.	170	13,233	13,269	13,174	\$125,920,059	\$732.39
3261	Plastics Product Manufacturing	127	7,870	7,924	7,854	63,999,039	624.54
3262	Rubber Product Manufacturing	43	5,363	5,345	5,320	61,921,020	891.53
327	NONMETALLIC MINERAL PRODUCT MFG.	252	4,729	4,750	4,760	\$42,817,166	\$693.93
3271	Clay Product & Refractory Manufacturing	16	460	457	454	3,979,383	669.82
3272	Glass & Glass Product Manufacturing	14	426	417	404	3,594,047	665.11
3273	Cement & Concrete Product Manufacturing	182	2,874	2,903	2,938	25,193,499	667.11
3274	Lime & Gypsum Product Manufacturing	4	426	422	431	5,032,636	908.04
3279	Other Nonmetallic Mineral Products	36	543	551	533	5,017,601	711.68

**TABLE 5. STATEWIDE SUMMARY
EMPLOYMENT AND TOTAL EARNINGS, BY INDUSTRY
SECOND QUARTER 2006**

NORTH AMERICAN INDUSTRY CLASSIFICATION SYSTEM INDUSTRY GROUPS		NUMBER OF EMPLOYING UNITS	EMPLOYMENT			TOTAL EARNINGS	AVERAGE
			APRIL	MAY	JUNE	APRIL - JUNE 2006	WEEKLY EARNINGS
331	PRIMARY METAL MANUFACTURING	65	8,286	8,274	8,299	\$101,445,938	\$941.74
3311	Iron & Steel Mills and Ferroalloys	8	2,104	2,113	2,125	40,463,877	1472.38
3312	Purchased Steel Product Manufacturing	13	2,404	2,400	2,416	23,028,138	736.04
3313	Alumina & Aluminum Production	19	1,790	1,779	1,785	19,801,138	853.47
3314	Other Nonferrous Metal Production	10	581	583	587	5,902,629	777.92
3315	Foundries	15	1,407	1,399	1,386	12,250,156	674.37
332	FABRICATED METAL PRODUCT MANUFACTURING	570	17,985	18,015	18,213	\$165,996,099	\$706.60
3321	Forging & Stamping	14	959	936	956	8,068,091	653.06
3322	Cutlery & Hand Tool Manufacturing	17	1,365	1,388	1,408	11,429,488	633.88
3323	Architectural & Structural Metals	199	5,077	5,119	5,230	47,852,716	715.87
3324	Boilers, Tanks & Shipping Containers	20	1,115	1,109	1,102	10,147,024	704.04
3325	Hardware Manufacturing	9	294	295	282	2,026,290	536.86
3326	Spring & Wire Product Manufacturing	16	803	810	783	5,740,326	552.88
3327	Machine Shops & Threaded Products	195	1,845	1,852	1,876	15,062,090	623.70
3328	Coating, Engraving & Heat Treating Metals	36	923	946	941	7,601,518	624.27
3329	Other Fabricated Metal Product Manufacturing	64	5,604	5,560	5,635	58,068,556	797.69
333	MACHINERY MANUFACTURING	253	14,723	14,765	14,862	125,837,762	\$654.78
3331	Agri., Construction & Mining Machinery	37	3,295	3,150	3,078	19,097,119	462.78
3333	Commercial & Service Industry Machinery	26	1,012	1,007	1,025	10,046,553	761.64
3334	HVAC & Commercial Refrigeration Equipment	24	4,995	5,090	5,194	47,331,983	714.89
3335	Metalworking Machinery Manufacturing	75	1,342	1,352	1,351	13,021,917	742.91
3339	Other General Purpose Machinery Manufacturing	56	3,158	3,177	3,197	27,336,503	661.82
	Other	35	921	989	1,017	9,003,687	709.86
334	COMPUTER & ELECTRONIC PRODUCT MFG.	82	5,669	5,717	5,822	47,121,146	\$631.92
3343	Audio & Video Equipment Manufacturing	10	1,366	1,426	1,453	10,788,727	586.50
3344	Semiconductors & Electronic Components	25	2,144	2,178	2,282	18,579,781	649.25
3345	Electronic Instrument Manufacturing	32	1,195	1,210	1,210	8,908,104	568.66
	Other	15	964	903	877	8,844,534	743.82
335	ELECTRICAL EQUIPMENT & APPLIANCES	72	12,528	12,563	12,571	\$121,244,926	\$742.91
3353	Electrical Equipment Manufacturing	24	4,868	4,866	4,903	48,008,945	756.92
	Other	48	7,660	7,697	7,668	73,235,981	734.01

**TABLE 5. STATEWIDE SUMMARY
EMPLOYMENT AND TOTAL EARNINGS, BY INDUSTRY
SECOND QUARTER 2006**

NORTH AMERICAN INDUSTRY CLASSIFICATION SYSTEM INDUSTRY GROUPS		NUMBER OF EMPLOYING UNITS	EMPLOYMENT			TOTAL EARNINGS	AVERAGE
			APRIL	MAY	JUNE	APRIL - JUNE 2006	WEEKLY EARNINGS
336	TRANSPORTATION EQUIPMENT MANUFACTURING	172	16,972	16,663	16,934	\$149,558,517	\$682.50
3362	Motor Vehicle Body & Trailer Manufacturing	43	3,826	3,824	4,012	32,243,518	638.04
3363	Motor Vehicle Parts Manufacturing	56	6,601	6,435	6,429	52,880,884	626.93
3364	Aerospace Product & Parts Manufacturing	29	3,415	3,328	3,389	40,590,936	924.51
3366	Ship & Boat Building	26	1,679	1,698	1,753	11,101,512	499.39
	Other	18	1,451	1,378	1,351	12,741,667	703.44
337	FURNITURE & RELATED PRODUCT MFG.	274	6,561	6,542	6,569	\$48,569,239	\$569.76
3371	Household & Institutional Furniture	227	4,370	4,324	4,321	30,095,155	533.62
3372	Office Furniture & Fixtures Manufacturing	39	2,046	2,072	2,106	17,619,879	653.30
3379	Other Furniture Related Product Manufacturing	8	145	146	142	854,205	455.25
339	MISCELLANEOUS MANUFACTURING	271	5,828	5,774	5,809	\$42,705,114	\$566.02
3391	Medical Equipment & Supplies Manufacturing	97	2,634	2,615	2,613	20,762,466	609.43
3399	Other Miscellaneous Manufacturing	174	3,194	3,159	3,196	21,942,648	530.28
TRADE, TRANSPORTATION & UTILITIES		20,869	243,463	245,084	245,198	\$1,832,581,380	\$576.36
42	WHOLESALE TRADE	6,254	47,944	48,287	48,569	\$546,692,967	\$871.27
423	MERCHANT WHOLESALERS, DURABLE GOODS	2,099	22,173	22,318	22,501	\$227,119,057	\$782.36
4231	Motor Vehicle & Part Merchant Wholesalers	239	2,804	2,824	2,843	24,440,756	665.82
4232	Furniture & Furnishing Merchant Wholesalers	65	431	436	436	4,864,062	861.45
4233	Lumber & Supply Merchant Wholesalers	172	1,855	1,828	1,867	18,772,139	780.55
4234	Commercial Goods Merchant Wholesalers	241	2,519	2,548	2,546	34,431,596	1043.71
4235	Metal & Mineral Merchant Wholesalers	51	761	773	775	8,725,613	872.07
4236	Electric Goods Merchant Wholesalers	177	2,150	2,155	2,187	22,575,397	802.48
4237	Hardware & Plumbing Merchant Wholesalers	222	2,469	2,507	2,543	25,142,499	771.66
4238	Machinery & Supply Merchant Wholesalers	691	7,342	7,374	7,383	72,792,604	760.14
4239	Misc. Durable Goods Merchant Wholesalers	241	1,842	1,873	1,921	15,374,391	629.51

**TABLE 5. STATEWIDE SUMMARY
EMPLOYMENT AND TOTAL EARNINGS, BY INDUSTRY
SECOND QUARTER 2006**

NORTH AMERICAN INDUSTRY CLASSIFICATION SYSTEM INDUSTRY GROUPS		NUMBER OF	EMPLOYMENT			TOTAL EARNINGS	AVERAGE
		EMPLOYING UNITS	APRIL	MAY	JUNE	APRIL - JUNE 2006	WEEKLY EARNINGS
424	MERCHANT WHOLESALERS, NONDURABLE GOODS	1,291	16,681	16,771	16,841	\$160,215,489	\$735.15
4241	Paper & Paper Product Merchant Wholesalers	74	1,176	1,176	1,162	11,315,965	743.14
4242	Druggists' Goods Merchant Wholesalers	54	1,211	1,201	1,196	11,745,818	751.27
4243	Apparel & Piece Goods Merchant Wholesalers	40	465	464	465	3,484,229	576.80
4244	Grocery Product Merchant Wholesalers	350	5,143	5,192	5,283	55,611,067	821.70
4245	Farm Product Merchant Wholesalers	79	839	826	830	5,167,261	477.93
4246	Chemical Merchant Wholesalers	81	470	484	482	5,546,116	891.28
4247	Petroleum Merchant Wholesalers	153	1,460	1,457	1,459	15,776,081	831.95
4248	Alcoholic Beverage Merchant Wholesalers	37	1,131	1,138	1,137	11,543,526	782.12
4249	Misc. Nondurable Goods Merchant Wholesalers	423	4,786	4,833	4,827	40,025,426	639.39
425	ELECTRONIC MARKETS & AGENTS & BROKERS	2,864	9,090	9,198	9,227	\$159,358,421	\$1,336.54
44-45	RETAIL TRADE	11,301	132,584	133,607	133,015	\$681,750,753	\$394.10
441	MOTOR VEHICLE & PARTS DEALERS	1,741	17,831	17,977	18,091	\$149,474,698	\$639.98
4411	Automobile Dealers	747	10,613	10,709	10,758	102,385,977	736.52
4412	Other Motor Vehicle Dealers	200	1,507	1,538	1,563	12,606,010	631.31
4413	Automotive Parts, Accessories & Tire Stores	794	5,711	5,730	5,770	34,482,711	462.35
442	FURNITURE & HOME FURNISHINGS STORES	605	4,179	4,169	4,147	\$26,017,260	\$480.51
4421	Furniture Stores	317	2,586	2,604	2,574	16,232,999	482.49
4422	Home Furnishings Stores	288	1,593	1,565	1,573	9,784,261	477.26
443	ELECTRONICS & APPLIANCE STORES	460	2,963	2,976	2,979	\$17,712,854	\$458.35
444	BUILDING MATERIAL & GARDEN SUPPLY STORES	839	11,670	11,839	11,726	\$71,581,004	\$468.81
4441	Building Material & Supplies Dealers	663	10,684	10,816	10,740	66,227,877	474.05
4442	Lawn & Garden Equipment & Supplies Stores	176	986	1,023	986	5,353,127	412.47
445	FOOD & BEVERAGE STORES	1,107	18,388	18,551	18,628	\$71,912,040	\$298.65
4451	Grocery Stores	631	16,002	16,116	16,191	60,538,825	289.19
4452	Specialty Food Stores	164	894	905	913	5,514,591	469.25
4453	Beer, Wine & Liquor Stores	312	1,492	1,530	1,524	5,858,624	297.40
446	HEALTH & PERSONAL CARE STORES	816	6,731	6,821	6,908	\$46,478,623	\$524.23
447	GASOLINE STATIONS	1,637	12,676	12,891	13,056	\$43,109,268	\$257.57
44711	Gasoline Stations with Convenience Stores	1,473	11,434	11,619	11,790	37,288,518	246.97
44719	Other Gasoline Stations	164	1,242	1,272	1,266	5,820,750	355.36

**TABLE 5. STATEWIDE SUMMARY
EMPLOYMENT AND TOTAL EARNINGS, BY INDUSTRY
SECOND QUARTER 2006**

NORTH AMERICAN INDUSTRY CLASSIFICATION SYSTEM INDUSTRY GROUPS		NUMBER OF EMPLOYING UNITS	EMPLOYMENT			TOTAL EARNINGS	AVERAGE
			APRIL	MAY	JUNE	APRIL - JUNE 2006	WEEKLY EARNINGS
448	CLOTHING & CLOTHING ACCESSORIES STORES	1,067	8,490	8,388	8,351	\$28,385,493	\$259.64
4481	Clothing Stores	714	6,364	6,263	6,243	19,143,967	234.12
4482	Shoe Stores	183	1,225	1,202	1,176	4,095,822	262.33
4483	Jewelry, Luggage & Leather Goods Stores	170	901	923	932	5,145,704	430.87
451	SPORTING GOODS, HOBBY, BOOK & MUSIC STORES	577	4,519	4,439	4,418	\$15,615,082	\$269.40
4511	Sporting Goods & Musical Instrument Stores	417	3,001	2,967	2,999	11,415,672	293.79
4512	Book, Periodical & Music Stores	160	1,518	1,472	1,419	4,199,410	219.80
452	GENERAL MERCHANDISE STORES	691	36,650	36,985	36,226	\$167,976,995	\$352.85
453	MISCELLANEOUS STORE RETAILERS	1,435	6,603	6,690	6,611	\$31,022,981	\$359.68
4531	Florists	275	1,012	1,089	1,011	3,858,884	286.15
4532	Office Supplies, Stationery & Gift Stores	390	2,431	2,409	2,403	11,504,406	366.54
4533	Used Merchandise Stores	217	783	786	769	3,905,076	385.45
4539	Other Miscellaneous Store Retailers	553	2,377	2,406	2,428	11,754,615	376.18
454	NONSTORE RETAILERS	326	1,884	1,881	1,874	\$12,464,455	\$510.09
4541	Electronic Shopping & Mail -Order Houses	64	348	358	352	2,790,855	608.74
4542	Vending Machine Operators	86	700	730	730	4,073,036	435.15
4543	Direct Selling Establishments	176	836	793	792	5,600,564	533.84
48-49	TRANSPORTATION & WAREHOUSING	2,953	56,189	56,371	56,744	\$502,142,339	\$684.44
481	AIR TRANSPORTATION	48	962	963	945	\$12,005,540	\$965.33
484	TRUCK TRANSPORTATION	1,978	35,445	35,474	35,928	\$324,764,677	\$701.43
4841	General Freight Trucking	1,235	30,463	30,501	30,764	283,777,131	713.93
4842	Specialized Freight Trucking	743	4,982	4,973	5,164	40,987,546	625.61
485	TRANSIT & GROUND PASSENGER TRANS.	57	997	1,007	855	\$3,989,632	\$322.03
4853	Taxi & Limousine Service	18	242	250	250	784,373	243.95
4854	School & Employee Bus Transportation	7	401	402	230	1,685,906	376.63
4855	Charter Bus Industry Service	8	100	95	95	500,067	397.93
4859	Other Ground Passenger Transportation	16	166	166	179	659,725	297.93
	Other	8	88	94	101	359,561	293.20
486	PIPELINE TRANSPORTATION	64	922	923	925	\$11,476,141	\$956.08

**TABLE 5. STATEWIDE SUMMARY
EMPLOYMENT AND TOTAL EARNINGS, BY INDUSTRY
SECOND QUARTER 2006**

NORTH AMERICAN INDUSTRY CLASSIFICATION SYSTEM INDUSTRY GROUPS		NUMBER OF EMPLOYING UNITS	EMPLOYMENT			TOTAL EARNINGS	AVERAGE
			APRIL	MAY	JUNE	APRIL - JUNE 2006	WEEKLY EARNINGS
488	SUPPORT ACTIVITIES FOR TRANSPORTATION	430	4,909	4,909	4,924	\$48,980,942	\$766.74
4881	Support Activities for Air Transportation	107	1,629	1,619	1,644	14,320,344	675.53
4882	Support Activities for Rail Transportation	31	414	408	432	3,086,051	567.92
4883	Support Activities for Water Transportation	28	693	677	648	7,141,573	816.68
4884	Support Activities for Road Transportation	104	496	519	514	3,041,436	459.04
4885	Freight Transportation Arrangement	136	1,524	1,529	1,527	20,216,886	1018.65
4889	Other Support Activities for Transportation	24	153	157	159	1,174,652	577.98
492	COURIERS & MESSENGERS	141	3,179	3,232	3,303	\$28,475,857	\$676.48
4921	Couriers	89	2,954	3,003	3,073	27,068,190	691.75
4922	Local Messengers & Local Delivery	52	225	229	230	1,407,667	474.92
493	WAREHOUSING & STORAGE	213	9,529	9,602	9,598	\$70,584,147	\$566.98
	OTHER	22	246	261	266	\$1,865,403	\$556.89
22	UTILITIES	361	6,746	6,819	6,870	\$101,995,321	\$1,151.82
2211	Power Generation & Supply	166	5,015	5,069	5,088	83,431,054	1269.00
2212	Natural Gas Distribution	32	909	927	945	12,948,650	1074.49
2213	Water, Sewage and Other Systems	163	822	823	837	5,615,617	522.12
INFORMATION		1,214	19,768	19,891	19,849	\$205,249,466	\$795.95
511	PUBLISHING INDUSTRIES, EXCEPT INTERNET	254	6,380	6,385	6,212	\$47,581,809	\$578.62
5111	Newspaper, Book & Directory Publishers	225	6,113	6,122	5,949	43,922,527	557.41
5112	Software Publishers	29	267	263	263	3,659,282	1064.88
512	MOTION PICTURE & SOUND RECORDING INDUSTRY	139	1,142	1,208	1,283	\$5,212,645	\$331.11
5121	Motion Picture & Video Industries	123	1,104	1,169	1,245	4,915,318	322.43
5122	Sound Recording Industries	16	38	39	38	297,327	596.64
515	BROADCASTING, EXCEPT INTERNET	140	2,070	2,076	2,086	\$16,925,640	\$626.75
5151	Radio & Television Broadcasting	132	2,027	2,043	2,051	16,699,337	629.59
5152	Cable & Other Subscription Programming	8	43	33	35	226,303	470.48
517	TELECOMMUNICATIONS	495	8,723	8,782	8,835	\$118,489,919	\$1,038.11
5171	Wired Telecommunications Carriers	211	3,101	3,101	3,119	48,130,796	1191.62
5172	Wireless Telecommunications Carriers	115	3,879	3,926	3,965	53,681,095	1052.50
5175	Cable & Other Program Distribution	101	1,249	1,251	1,248	11,198,763	689.52
	Other	68	494	504	503	5,479,265	842.40

**TABLE 5. STATEWIDE SUMMARY
EMPLOYMENT AND TOTAL EARNINGS, BY INDUSTRY
SECOND QUARTER 2006**

NORTH AMERICAN INDUSTRY CLASSIFICATION SYSTEM INDUSTRY GROUPS		NUMBER OF EMPLOYING UNITS	EMPLOYMENT			TOTAL EARNINGS	AVERAGE
			APRIL	MAY	JUNE	APRIL - JUNE 2006	WEEKLY EARNINGS
518	ISPS, SEARCH PORTALS, & DATA PROCESSING	149	1,162	1,142	1,137	\$14,572,838	\$977.32
5181	ISPs, & Web Search Portals	67	174	170	167	1,582,617	714.71
5182	Data Processing & Related Services	82	988	972	970	12,990,221	1023.12
	OTHER	37	291	298	296	\$2,466,615	\$643.19
FINANCIAL ACTIVITIES		8,052	50,803	51,066	51,494	\$466,176,391	\$701.47
52	FINANCE & INSURANCE	4,736	36,749	36,807	37,063	\$374,334,525	\$780.92
522	CREDIT INTERMEDIATION & RELATED ACTIVITIES	2,043	21,753	21,783	21,955	\$189,175,082	\$666.59
5221	Depository Credit Intermediation	1,327	18,171	18,211	18,370	152,638,918	643.34
5222	Nondepository Credit Intermediation	392	2,633	2,614	2,608	29,022,802	852.65
5223	Activities Related to Credit Intermediation	324	949	958	977	7,513,362	601.20
523	FINANCIAL INVESTMENT & RELATED ACTIVITIES	574	3,055	3,083	3,079	\$58,092,345	\$1,454.48
5231	Security & Commodity Investment Activities	322	2,329	2,332	2,327	48,842,760	1612.97
5239	Other Financial Investment Activities	252	726	751	752	9,249,585	957.61
524	INSURANCE CARRIERS & RELATED ACTIVITIES	2,081	11,489	11,492	11,584	\$122,974,879	\$821.03
5241	Insurance Carriers	406	4,694	4,725	4,756	55,413,809	902.14
5242	Insurance Agencies, Brokerages & Support	1,675	6,795	6,767	6,828	67,561,070	764.64
	OTHER	38	452	449	445	\$4,092,219	\$701.60
53	REAL ESTATE & RENTAL & LEASING	3,316	14,054	14,259	14,431	\$91,841,866	\$495.84
531	REAL ESTATE	2,504	8,779	8,907	9,038	\$58,448,511	\$504.72
5311	Lessors of Real Estate	1,070	4,326	4,341	4,381	26,302,296	465.19
5312	Offices of Real Estate Agents & Brokers	835	2,116	2,175	2,204	16,054,552	570.42
5313	Activities Related to Real Estate	599	2,337	2,391	2,453	16,091,663	517.12

**TABLE 5. STATEWIDE SUMMARY
EMPLOYMENT AND TOTAL EARNINGS, BY INDUSTRY
SECOND QUARTER 2006**

NORTH AMERICAN INDUSTRY CLASSIFICATION SYSTEM INDUSTRY GROUPS		NUMBER OF EMPLOYING UNITS	EMPLOYMENT			TOTAL EARNINGS	AVERAGE
			APRIL	MAY	JUNE	APRIL - JUNE 2006	WEEKLY EARNINGS
532	RENTAL & LEASING SERVICES	785	5,204	5,281	5,322	\$32,640,996	\$476.53
5321	Automotive Equipment Rental & Leasing	125	985	989	999	6,834,961	530.54
5322	Consumer Goods Rental	483	3,201	3,264	3,278	16,288,258	385.80
5323	General Rental Centers	35	252	256	266	1,930,066	575.45
5324	Machinery & Equipment Rental & Leasing	142	766	772	779	7,587,711	755.72
533	LESSORS OF NONFINANCIAL INTANGIBLE ASSETS	27	71	71	71	\$752,359	\$815.12
PROFESSIONAL & BUSINESS SERVICES		10,765	114,557	114,796	115,463	\$1,050,621,877	\$703.13
54	PROFESSIONAL & TECHNICAL SERVICES	6,791	37,580	36,476	36,848	\$397,923,176	\$828.00
5411	Legal Services	1,649	6,671	6,729	6,814	64,440,734	735.68
5412	Accounting & Bookkeeping Services	1,198	6,227	4,972	4,826	46,656,385	671.88
5413	Architectural & Engineering Services	914	6,504	6,563	6,700	70,842,179	827.04
5414	Specialized Design Services	154	434	452	458	3,222,856	553.38
5415	Computer Systems Design & Related Services	808	7,601	7,585	7,579	124,449,538	1261.55
5416	Management & Technical Consulting Services	1,057	3,198	3,255	3,347	36,903,413	869.00
5417	Scientific Research & Development Services	116	1,078	1,083	1,104	12,577,886	889.00
5418	Advertising & Related Services	320	2,066	2,054	2,099	19,901,636	738.49
5419	Other Professional & Technical Services	575	3,801	3,783	3,921	18,928,549	379.67
55	MANAGEMENT OF COMPANIES & ENTERPRISES	507	23,872	23,930	24,422	\$385,452,132	\$1,231.59
56	ADMINISTRATIVE & WASTE SERVICES	3,467	53,105	54,390	54,193	\$267,246,569	\$381.43
561	ADMINISTRATIVE & SUPPORT SERVICES	3,262	50,814	52,051	51,812	\$245,502,480	\$366.28
5611	Office Administrative Services	343	1,380	1,383	1,380	14,758,860	822.08
5612	Facilities Support Services	15	111	120	124	910,766	592.05
5613	Employment Services	631	26,056	26,877	26,375	112,997,884	328.80
5614	Business Support Services	355	5,124	5,144	5,264	24,815,694	368.70
5615	Travel Arrangement & Reservation Services	104	444	452	465	3,037,137	514.97
5616	Investigation & Security Services	231	4,386	4,392	4,428	24,669,406	431.09
5617	Services to Buildings & Dwellings	1,304	11,750	12,098	12,174	52,692,050	337.56
5619	Other Support Services	279	1,563	1,585	1,602	11,620,683	564.57
562	WASTE MANAGEMENT & REMEDIATION SERVICES	205	2,291	2,339	2,381	\$21,744,089	\$715.71
5621	Waste Collection Services	93	1,059	1,056	1,079	9,604,199	693.91
5622	Waste Treatment & Disposal Services	37	743	748	754	8,290,446	852.20
5629	Remediation & Other Waste Services	75	489	535	548	3,849,444	565.10

**TABLE 5. STATEWIDE SUMMARY
EMPLOYMENT AND TOTAL EARNINGS, BY INDUSTRY
SECOND QUARTER 2006**

NORTH AMERICAN INDUSTRY CLASSIFICATION SYSTEM INDUSTRY GROUPS		NUMBER OF	EMPLOYMENT			TOTAL EARNINGS	AVERAGE
		EMPLOYING UNITS	APRIL	MAY	JUNE	APRIL - JUNE 2006	WEEKLY EARNINGS
EDUCATION & HEALTH SERVICES		10,595	145,533	145,822	146,148	\$1,161,801,508	\$612.81
61	EDUCATIONAL SERVICES	554	9,299	9,158	8,768	\$57,830,827	\$490.20
6111	Elementary & Secondary Schools	82	3,233	3,241	3,087	16,781,283	405.04
6112	Junior Colleges	7	262	268	235	1,808,436	545.53
6113	Colleges & Universities	26	3,290	3,137	2,998	23,877,121	584.63
6114	Business, Computer, & Management Training	44	116	116	112	1,963,460	1317.17
6115	Technical & Trade Schools	99	700	695	680	6,778,306	753.84
6116	Other Schools & Instruction	212	1,494	1,490	1,403	4,589,202	241.41
6117	Educational Support Services	84	204	211	253	2,033,019	702.33
62	HEALTH CARE & SOCIAL ASSISTANCE	10,041	136,234	136,664	137,380	\$1,103,970,681	\$620.95
621	AMBULATORY HEALTH CARE SERVICES	4,754	42,139	42,328	42,734	\$491,360,827	\$891.43
6211	Offices of Physicians	2,133	20,448	20,485	20,634	313,399,603	1174.70
6212	Offices of Dentists	912	5,996	6,059	6,106	55,085,614	699.97
6213	Offices of Other Health Practitioners	1,123	5,575	5,615	5,690	40,724,665	556.75
6214	Outpatient Care Centers	210	3,460	3,463	3,500	31,334,968	693.77
6215	Medical & Diagnostic Laboratories	96	792	781	779	10,429,437	1023.30
6216	Home Health Care Services	133	3,714	3,751	3,814	25,451,590	520.74
6219	Other Ambulatory Health Care Services	147	2,154	2,174	2,211	14,934,950	527.07
622	HOSPITALS	111	41,271	41,342	41,644	\$377,073,575	\$700.30
6221	General Medical & Surgical Hospitals	81	38,002	38,053	38,358	347,075,458	700.05
6222	Psychiatric & Substance Abuse Hospitals	9	1,493	1,484	1,501	12,483,243	643.31
6223	Other Hospitals	21	1,776	1,805	1,785	17,514,874	753.24
623	NURSING & RESIDENTIAL CARE FACILITIES	501	26,683	26,822	27,050	\$129,870,200	\$372.04
6231	Nursing Care Facilities	241	20,088	20,145	20,294	97,107,358	370.24
6232	Residential Mental Health Facilities	125	2,957	2,989	3,015	15,230,722	392.23
6233	Community Care Facilities for the Elderly	88	2,211	2,219	2,261	9,669,488	333.50
6239	Other Residential Care Facilities	47	1,427	1,469	1,480	7,862,632	414.64
624	SOCIAL ASSISTANCE	4,675	26,141	26,172	25,952	\$105,666,079	\$311.56
6241	Individual & Family Services	3,527	13,257	13,314	13,419	56,855,425	328.09
6242	Emergency & Other Relief Services	120	845	856	853	4,144,424	374.47
6243	Vocational Rehabilitation Services	130	3,387	3,396	3,468	15,716,634	353.81
6244	Child Day Care Services	898	8,652	8,606	8,212	28,949,596	262.30

**TABLE 5. STATEWIDE SUMMARY
EMPLOYMENT AND TOTAL EARNINGS, BY INDUSTRY
SECOND QUARTER 2006**

NORTH AMERICAN INDUSTRY CLASSIFICATION SYSTEM INDUSTRY GROUPS		NUMBER OF	EMPLOYMENT			TOTAL EARNINGS	AVERAGE
		EMPLOYING UNITS	APRIL	MAY	JUNE	APRIL - JUNE 2006	WEEKLY EARNINGS
LEISURE & HOSPITALITY		6,071	99,043	99,837	101,749	\$284,835,780	\$218.65
71	ARTS, ENTERTAINMENT & RECREATION	927	9,500	9,939	11,186	\$37,611,682	\$283.42
711	PERFORMING ARTS & SPECTATOR SPORTS	201	2,434	2,204	2,137	\$10,201,116	\$347.47
7111	Performing Arts Companies	35	351	661	645	1,909,383	265.92
7112	Spectator Sports	54	1,416	833	815	3,961,572	298.37
7113	Performing Arts & Sports Promoters	41	519	558	521	3,492,109	504.30
7114	Agents & Managers for Public Figures	13	18	19	16	160,936	700.74
7115	Independent Artists, Writers & Performers	58	130	133	140	677,116	387.74
712	MUSEUMS, PARKS & HISTORICAL SITES	47	223	231	276	\$1,064,338	\$336.46
713	GAMBLING, RECREATION & AMUSEMENT INDUSTRY	679	6,843	7,504	8,773	\$26,346,228	\$262.97
7139	Other Amusement & Recreation Industries	638	6,363	6,924	7,728	24,784,911	272.17
	Other	41	480	580	1,045	1,561,317	171.17
72	ACCOMMODATION & FOOD SERVICES	5,144	89,543	89,898	90,563	\$247,224,098	\$211.30
721	ACCOMMODATION	811	11,181	11,452	12,000	\$39,784,298	\$265.09
7211	Traveler Accommodation	739	10,852	11,034	11,274	37,774,668	262.88
7212	RV Parks & Recreational Camps	53	256	347	678	1,762,905	317.58
7213	Rooming & Boarding Houses	19	73	71	48	246,725	296.54
722	FOOD SERVICES & DRINKING PLACES	4,333	78,362	78,446	78,563	\$207,439,800	\$203.38
7221	Full -Service Restaurants	1,898	34,737	34,876	35,113	98,481,489	217.01
7222	Limited-Service Eating Places	2,124	40,355	40,648	40,635	99,990,020	189.70
7223	Special Food Services	155	2,326	2,006	1,905	6,545,025	242.17
7224	Drinking Places, Alcoholic Beverages	156	944	916	910	2,423,266	201.88
OTHER SERVICES		5,480	25,839	26,190	26,739	\$151,488,319	\$443.82
811	REPAIR & MAINTENANCE	2,223	9,529	9,671	9,744	\$66,096,663	\$526.99
8111	Automotive Repair & Maintenance	1,545	6,738	6,854	6,953	43,820,838	492.21
8112	Electronic Equipment Repair & Maintenance	162	696	699	683	5,879,398	652.93
8113	Commercial Machinery Repair & Maintenance	334	1,531	1,538	1,524	12,835,046	644.88
8114	Household Goods Repair & Maintenance	182	564	580	584	3,561,381	475.61
812	PERSONAL & LAUNDRY SERVICES	1,317	8,464	8,527	8,569	\$41,542,045	\$375.06

**TABLE 5. STATEWIDE SUMMARY
EMPLOYMENT AND TOTAL EARNINGS, BY INDUSTRY
SECOND QUARTER 2006**

NORTH AMERICAN INDUSTRY CLASSIFICATION SYSTEM INDUSTRY GROUPS		NUMBER OF EMPLOYING UNITS	EMPLOYMENT			TOTAL EARNINGS	AVERAGE
			APRIL	MAY	JUNE	APRIL - JUNE 2006	WEEKLY EARNINGS
8121	Personal Care Services	562	2,775	2,803	2,766	10,704,045	296.04
8122	Death Care Services	246	1,691	1,711	1,719	10,860,354	489.40
8123	Drycleaning & Laundry Services	341	3,263	3,262	3,316	15,706,563	368.32
8129	Other Personal Services	168	735	751	768	4,271,083	437.28
813	MEMBERSHIP ASSOCIATIONS & ORGANIZATIONS	1,026	6,396	6,505	6,925	\$38,206,100	\$444.71
8131	Religious Organizations	40	223	233	239	1,225,177	406.81
8132	Grantmaking & Giving Services	97	442	446	452	4,107,336	707.35
8133	Social Advocacy Organizations	149	1,970	2,002	1,940	11,031,583	430.61
8134	Civic & Social Organizations	220	1,501	1,554	1,933	5,447,815	252.04
8139	Professional & Similar Organizations	520	2,260	2,270	2,361	16,394,189	549.02
814	PRIVATE HOUSEHOLDS	914	1,450	1,487	1,501	\$5,643,511	\$293.45
	LOCAL GOVERNMENT	2,005	118,135	118,227	115,024	\$1,046,416,435	\$687.22
	STATE GOVERNMENT	1,198	62,980	62,685	61,355	\$562,424,933	\$693.99
	NONCLASSIFIABLE ESTABLISHMENTS	0	0	0	0	\$0	

**TABLE 6. COUNTY SUMMARY
EMPLOYMENT AND TOTAL EARNINGS, BY INDUSTRY
SECOND QUARTER 2006**

NORTH AMERICAN INDUSTRY CLASSIFICATION SYSTEM INDUSTRY GROUP	NUMBER OF EMPLOYING UNITS	EMPLOYMENT			TOTAL EARNINGS	AVERAGE
		APRIL	MAY	JUNE	APRIL - JUNE 2006	WEEKLY EARNINGS
ARKANSAS COUNTY - TOTAL	690	10,002	10,007	9,973	\$72,597,041	\$558.77
Natural Resources & Mining	42	238	240	233	1,948,190	632.32
Construction	55	266	279	293	2,109,453	580.90
Manufacturing	32	3,657	3,625	3,608	30,209,647	640.17
Trade, Transportation & Utilities	201	1,984	1,993	1,991	15,061,872	582.41
Wholesale Trade	46	460	459	467	4,654,706	775.01
Retail Trade	102	1,032	1,041	1,023	4,990,303	371.97
Transportation, Warehousing & Utilities	53	492	493	501	5,416,863	841.21
Information	10	86	87	101	755,860	636.60
Financial Activities	43	326	321	331	2,518,153	594.18
Professional & Business Services	52	396	408	419	3,471,980	655.13
Education & Health Services	90	1,253	1,224	1,221	6,823,959	425.84
Leisure & Hospitality	61	538	552	562	1,301,382	181.79
Other Services	56	158	158	145	816,867	408.91
Local Government	32	879	895	863	6,053,903	529.79
State Government	16	221	225	206	1,525,775	540.03
ASHLEY COUNTY - TOTAL	541	8,332	8,369	8,478	\$70,521,806	\$646.34
Natural Resources & Mining	62	483	478	507	3,683,028	578.97
Construction	49	556	573	596	3,902,923	522.13
Manufacturing	30	2,914	2,901	2,940	35,291,580	930.24
Trade, Transportation & Utilities	133	1,266	1,245	1,243	7,309,055	449.31
Wholesale Trade	24	165	161	163	1,476,492	696.79
Retail Trade	87	893	869	858	3,873,832	341.21
Transportation, Warehousing & Utilities	22	208	215	222	1,958,731	700.80
Information	8	45	49	51	361,149	574.77
Financial Activities	32	221	217	223	1,440,424	502.88
Professional & Business Services	49	388	384	371	2,332,560	470.94
Education & Health Services	64	590	594	594	4,423,915	574.19
Leisure & Hospitality	28	394	421	417	917,346	171.83
Other Services	42	206	205	208	966,285	360.24
Local Government	32	1,050	1,082	1,110	8,722,317	620.86
State Government	12	219	220	218	1,171,224	411.39

**TABLE 6. COUNTY SUMMARY
EMPLOYMENT AND TOTAL EARNINGS, BY INDUSTRY
SECOND QUARTER 2006**

NORTH AMERICAN INDUSTRY CLASSIFICATION SYSTEM INDUSTRY GROUP	NUMBER OF EMPLOYING UNITS	EMPLOYMENT			TOTAL EARNINGS	AVERAGE
		APRIL	MAY	JUNE	APRIL - JUNE 2006	WEEKLY EARNINGS
BAXTER COUNTY - TOTAL	1,237	14,662	14,860	14,742	\$100,375,473	\$523.30
Natural Resources & Mining	6	119	121	124	884,430	560.71
Construction	134	703	736	742	4,312,651	456.32
Manufacturing	57	2,579	2,573	2,598	22,308,903	664.28
Trade, Transportation & Utilities	278	2,726	2,737	2,740	15,019,672	422.54
Wholesale Trade	35	208	208	206	1,522,053	564.70
Retail Trade	210	2,266	2,274	2,268	11,644,806	394.72
Transportation, Warehousing & Utilities	33	252	255	266	1,852,813	553.13
Information	25	242	255	260	1,935,038	589.89
Financial Activities	116	718	726	736	5,614,896	594.38
Professional & Business Services	139	790	783	788	5,058,215	494.40
Education & Health Services	206	3,273	3,325	3,350	26,843,099	622.69
Leisure & Hospitality	124	1,543	1,608	1,629	4,108,121	198.33
Other Services	103	436	455	457	1,879,072	321.69
Local Government	36	1,222	1,231	1,049	10,371,321	683.43
State Government	13	311	310	269	2,040,055	528.97
BENTON COUNTY - TOTAL	5,148	92,586	92,761	93,417	\$873,265,946	\$722.92
Natural Resources & Mining	26	662	667	668	6,818,263	787.90
Construction	788	5,368	5,418	5,551	47,147,244	665.98
Manufacturing	244	14,159	14,075	14,247	116,530,202	633.03
Trade, Transportation & Utilities	1,356	22,514	22,610	22,711	202,717,820	689.63
Wholesale Trade	618	3,446	3,474	3,479	51,620,766	1145.54
Retail Trade	573	7,650	7,772	7,755	44,945,713	447.52
Transportation, Warehousing & Utilities	165	11,418	11,364	11,477	106,151,341	715.04
Information	66	931	927	945	8,161,396	671.92
Financial Activities	581	3,637	3,637	3,693	34,615,599	728.39
Professional & Business Services	840	21,934	22,041	22,338	296,006,018	1030.10
Education & Health Services	449	6,538	6,467	6,420	52,097,590	618.92
Leisure & Hospitality	400	7,245	7,339	7,402	22,657,691	237.82
Other Services	304	1,755	1,780	1,801	11,469,018	496.01
Local Government	75	7,081	7,044	6,977	68,996,061	754.53
State Government	19	762	756	664	6,049,044	639.75

**TABLE 6. COUNTY SUMMARY
EMPLOYMENT AND TOTAL EARNINGS, BY INDUSTRY
SECOND QUARTER 2006**

NORTH AMERICAN INDUSTRY CLASSIFICATION SYSTEM INDUSTRY GROUP	NUMBER OF EMPLOYING UNITS	EMPLOYMENT			TOTAL EARNINGS	AVERAGE
		APRIL	MAY	JUNE	APRIL - JUNE 2006	WEEKLY EARNINGS
BOONE COUNTY - TOTAL	1,065	14,084	14,248	14,238	\$104,561,748	\$566.82
Construction	90	474	474	514	3,260,824	514.70
Manufacturing	71	2,171	2,171	2,152	17,553,313	623.77
Trade, Transportation & Utilities	267	4,360	4,469	4,535	34,735,718	599.82
Wholesale Trade	59	646	654	685	5,020,413	583.66
Retail Trade	154	1,943	2,011	1,992	10,381,057	402.90
Transportation, Warehousing & Utilities	54	1,771	1,804	1,858	19,334,248	821.23
Information	18	407	414	409	3,760,690	705.57
Financial Activities	97	635	640	638	4,924,092	594.00
Professional & Business Services	110	626	628	632	3,551,427	434.55
Education & Health Services	168	1,130	1,122	1,125	7,652,790	522.96
Leisure & Hospitality	85	1,151	1,184	1,200	3,045,119	198.79
Local Government	60	2,249	2,243	2,195	18,999,768	655.68
State Government	21	612	631	561	5,487,523	701.97
Other	78	269	272	277	1,590,484	448.70
BRADLEY COUNTY - TOTAL	386	4,058	4,124	4,126	\$26,985,136	\$505.96
Natural Resources & Mining	50	339	383	391	2,057,025	426.50
Construction	22	175	185	182	1,073,984	457.27
Manufacturing	9	1,076	1,081	1,103	8,882,279	628.76
Trade, Transportation & Utilities	86	496	491	503	2,498,067	386.90
Wholesale Trade	14	109	109	110	528,698	371.97
Retail Trade	48	314	312	321	1,458,706	355.46
Transportation, Warehousing & Utilities	24	73	70	72	510,663	548.12
Information	3	11	11	11	75,903	530.79
Financial Activities	23	176	176	175	1,023,593	448.22
Professional & Business Services	28	99	92	95	404,833	326.65
Education & Health Services	86	565	560	585	3,896,561	525.85
Leisure & Hospitality	17	168	165	169	393,297	180.80
Other Services	34	115	127	137	519,597	316.38
Local & State Government	28	838	853	775	6,159,997	576.45

**TABLE 6. COUNTY SUMMARY
EMPLOYMENT AND TOTAL EARNINGS, BY INDUSTRY
SECOND QUARTER 2006**

NORTH AMERICAN INDUSTRY CLASSIFICATION SYSTEM INDUSTRY GROUP	NUMBER OF EMPLOYING UNITS	EMPLOYMENT			TOTAL EARNINGS	AVERAGE
		APRIL	MAY	JUNE	APRIL - JUNE 2006	WEEKLY EARNINGS
CALHOUN COUNTY - TOTAL	113	3,110	3,109	3,083	\$27,656,462	\$686.12
Natural Resources & Mining	19	163	163	165	1,137,846	534.79
Construction	10	70	71	65	401,675	449.97
Manufacturing	11	2,147	2,130	2,108	20,972,289	757.99
Trade, Transportation & Utilities	26	212	217	218	1,348,913	481.12
Wholesale Trade & Retail Trade	18	68	69	68	224,288	252.48
Transportation, Warehousing & Utilities	8	144	148	150	1,124,625	587.17
Financial Activities	7	81	83	80	491,051	464.42
Education & Health Services	4	44	45	44	334,625	580.61
Leisure & Hospitality	6	23	23	24	49,328	162.62
Local Government	11	206	215	215	1,449,858	526.07
State Government	9	78	76	78	550,190	547.27
Other	10	86	86	86	920,687	823.51
CARROLL COUNTY - TOTAL	846	9,795	10,163	10,290	\$58,227,012	\$444.23
Natural Resources & Mining	16	266	264	266	1,818,286	527.14
Trade, Transportation & Utilities	210	1,598	1,646	1,674	9,125,040	428.18
Wholesale Trade	22	122	128	129	651,386	396.62
Retail Trade	167	1,209	1,244	1,261	6,072,281	377.30
Transportation, Warehousing & Utilities	21	267	274	284	2,401,373	671.71
Information	16	98	101	105	694,167	526.95
Professional & Business Services	80	265	261	273	1,655,595	478.17
Education & Health Services	81	779	782	798	5,530,682	541.04
Leisure & Hospitality	176	1,557	1,886	2,033	4,959,349	209.00
Local Government	25	1,102	1,107	948	8,159,768	596.46
State Government	11	106	104	107	732,624	533.33
Other	231	4,024	4,012	4,086	25,551,501	486.43

**TABLE 6. COUNTY SUMMARY
EMPLOYMENT AND TOTAL EARNINGS, BY INDUSTRY
SECOND QUARTER 2006**

NORTH AMERICAN INDUSTRY CLASSIFICATION SYSTEM INDUSTRY GROUP	NUMBER OF EMPLOYING UNITS	EMPLOYMENT			TOTAL EARNINGS	AVERAGE
		APRIL	MAY	JUNE	APRIL - JUNE 2006	WEEKLY EARNINGS
CHICOT COUNTY - TOTAL	341	3,619	3,621	3,606	\$21,502,472	\$457.51
Natural Resources & Mining	45	238	258	264	1,720,649	522.46
Construction	19	212	172	182	1,544,057	629.54
Manufacturing	12	507	499	475	2,163,738	337.15
Trade, Transportation & Utilities	80	561	586	591	3,072,950	408.02
Wholesale Trade	15	103	109	103	904,935	662.96
Retail Trade	53	396	415	425	1,577,668	294.56
Transportation, Warehousing & Utilities	12	62	62	63	590,347	728.52
Information	6	13	14	14	84,458	475.37
Financial Activities	30	166	167	169	1,227,010	564.06
Professional & Business Services	24	85	87	84	738,904	666.08
Education & Health Services	63	488	489	490	2,962,896	466.08
Leisure & Hospitality	21	217	229	226	460,027	157.98
Other Services	14	53	53	54	246,608	355.68
Local Government	16	768	756	737	5,325,394	543.54
State Government	11	311	311	320	1,955,781	479.12
CLARK COUNTY - TOTAL	605	9,721	9,825	9,449	\$62,977,095	\$501.23
Natural Resources & Mining	41	242	241	238	1,727,178	552.81
Construction	29	126	141	146	841,516	470.21
Manufacturing	34	2,245	2,284	2,319	17,366,801	585.24
Trade, Transportation & Utilities	143	1,494	1,492	1,483	9,431,654	487.03
Wholesale Trade	20	100	99	100	811,138	626.04
Retail Trade	100	1,103	1,099	1,082	6,057,326	425.65
Transportation, Warehousing & Utilities	23	291	294	301	2,563,190	667.61
Information	11	27	28	30	221,101	600.27
Financial Activities	84	359	388	394	2,500,491	505.73
Professional & Business Services	44	382	410	397	3,571,515	693.18
Education & Health Services	74	1,460	1,439	1,407	9,632,741	516.24
Leisure & Hospitality	56	1,033	1,079	1,082	2,619,141	189.24
Other Services	48	218	218	211	1,115,046	397.71
Local Government	26	968	975	768	6,381,157	543.19
State Government	15	1,167	1,130	974	7,568,754	533.98

**TABLE 6. COUNTY SUMMARY
EMPLOYMENT AND TOTAL EARNINGS, BY INDUSTRY
SECOND QUARTER 2006**

NORTH AMERICAN INDUSTRY CLASSIFICATION SYSTEM INDUSTRY GROUP	NUMBER OF EMPLOYING UNITS	EMPLOYMENT			TOTAL EARNINGS	AVERAGE
		APRIL	MAY	JUNE	APRIL - JUNE 2006	WEEKLY EARNINGS
CLAY COUNTY - TOTAL	409	4,489	4,540	4,552	\$26,724,534	\$454.11
Natural Resources & Mining	56	200	204	228	1,151,480	420.45
Construction	35	166	168	179	999,129	449.45
Manufacturing	19	1,130	1,156	1,149	6,780,730	455.54
Trade, Transportation & Utilities	97	917	933	923	6,075,736	505.62
Wholesale Trade	22	337	336	321	2,723,337	632.26
Retail Trade	54	434	451	455	2,013,820	346.81
Transportation, Warehousing & Utilities	21	146	146	147	1,338,579	703.65
Information	7	78	80	76	587,579	579.47
Financial Activities	37	156	154	151	958,598	479.86
Professional & Business Services	25	59	58	63	299,043	383.39
Education & Health Services	50	507	486	488	2,560,055	398.91
Leisure & Hospitality	25	243	235	218	469,963	155.82
Other Services	24	57	59	60	296,919	389.32
Local Government	22	897	929	940	6,045,739	504.40
State Government	12	79	78	77	499,563	492.67
CLEBURNE COUNTY - TOTAL	686	6,841	6,976	6,944	\$42,948,203	\$477.39
Natural Resources & Mining	15	79	83	67	506,865	510.78
Construction	74	333	344	357	1,870,068	417.36
Manufacturing	45	1,721	1,694	1,717	13,053,686	586.98
Trade, Transportation & Utilities	183	1,554	1,588	1,595	9,068,292	441.77
Wholesale Trade	38	202	208	205	1,341,617	503.42
Retail Trade	114	1,069	1,096	1,107	5,231,796	368.99
Transportation, Warehousing & Utilities	31	283	284	283	2,494,879	677.34
Information	10	57	57	58	328,105	440.21
Financial Activities	72	250	251	257	1,646,682	501.32
Professional & Business Services	54	202	196	186	1,262,543	498.90
Education & Health Services	74	759	776	770	4,866,488	487.22
Leisure & Hospitality	70	759	876	901	2,273,422	206.88
Other Services	58	167	163	171	740,429	341.05
Local Government	21	839	830	749	6,545,045	624.65
State Government	10	121	118	116	786,578	511.32

**TABLE 6. COUNTY SUMMARY
EMPLOYMENT AND TOTAL EARNINGS, BY INDUSTRY
SECOND QUARTER 2006**

NORTH AMERICAN INDUSTRY CLASSIFICATION SYSTEM INDUSTRY GROUP	NUMBER OF EMPLOYING UNITS	EMPLOYMENT			TOTAL EARNINGS	AVERAGE
		APRIL	MAY	JUNE	APRIL - JUNE 2006	WEEKLY EARNINGS
CLEVELAND COUNTY - TOTAL	109	1,099	1,113	1,093	\$6,838,756	\$477.51
Natural Resources & Mining	17	168	171	178	1,161,676	518.53
Construction	7	35	37	38	145,663	305.59
Manufacturing	5	96	97	102	532,696	416.71
Trade, Transportation & Utilities	28	188	189	192	849,322	344.46
Wholesale Trade	3	15	15	15	68,454	351.05
Retail Trade	13	81	81	81	196,900	186.99
Transportation, Warehousing & Utilities	12	92	93	96	583,968	479.58
Local Government	12	345	349	306	2,436,275	562.22
State Government	8	62	66	67	368,305	435.86
Other	32	205	204	210	1,344,819	501.36
COLUMBIA COUNTY - TOTAL	693	9,458	9,393	9,499	\$70,042,040	\$570.14
Natural Resources & Mining	50	480	484	511	5,954,046	931.53
Construction	44	298	297	301	2,341,406	603.04
Manufacturing	41	2,778	2,705	2,771	26,171,031	731.70
Trade, Transportation & Utilities	175	1,572	1,582	1,536	8,603,066	423.31
Wholesale Trade	29	293	298	283	2,025,181	534.72
Retail Trade	107	1,008	1,013	984	4,295,324	329.86
Transportation, Warehousing & Utilities	39	271	271	269	2,282,561	649.50
Information	11	73	78	76	477,717	485.65
Financial Activities	73	515	514	520	4,743,854	706.74
Professional & Business Services	58	340	337	341	1,734,644	393.22
Education & Health Services	105	890	877	858	4,479,536	393.81
Leisure & Hospitality	46	654	663	652	1,537,491	180.20
Other Services	47	202	207	212	823,217	305.91
Local Government	29	1,120	1,114	1,162	8,646,050	587.53
State Government	14	536	535	559	4,529,982	641.34

**TABLE 6. COUNTY SUMMARY
EMPLOYMENT AND TOTAL EARNINGS, BY INDUSTRY
SECOND QUARTER 2006**

NORTH AMERICAN INDUSTRY CLASSIFICATION SYSTEM INDUSTRY GROUP	NUMBER OF EMPLOYING UNITS	EMPLOYMENT			TOTAL EARNINGS	AVERAGE
		APRIL	MAY	JUNE	APRIL - JUNE 2006	WEEKLY EARNINGS
CONWAY COUNTY - TOTAL	532	6,714	6,686	6,710	\$46,046,073	\$528.39
Natural Resources & Mining	19	133	136	142	1,052,672	591.06
Construction	55	511	509	505	4,337,626	656.39
Manufacturing	28	1,122	1,118	1,177	11,305,289	763.51
Trade, Transportation & Utilities	129	1,342	1,381	1,373	8,144,515	458.86
Wholesale Trade	24	213	217	219	1,722,888	612.62
Retail Trade	80	849	890	880	4,236,263	373.27
Transportation, Warehousing & Utilities	25	280	274	274	2,185,364	609.08
Information	6	37	38	39	169,717	343.56
Financial Activities	34	193	191	194	1,347,075	537.83
Professional & Business Services	45	661	625	624	3,145,943	380.10
Education & Health Services	116	901	883	880	5,205,102	450.89
Leisure & Hospitality	36	457	447	490	1,023,185	169.38
Other Services	26	83	84	104	529,861	451.20
Local Government	27	896	903	847	7,776,884	678.26
State Government	11	378	371	335	2,008,204	427.52
CRAIGHEAD COUNTY - TOTAL	2,638	41,787	41,925	41,638	\$298,123,121	\$548.84
Natural Resources & Mining	67	287	311	332	1,835,544	455.47
Construction	237	1,754	1,789	1,827	13,114,871	563.60
Manufacturing	136	6,940	6,890	6,834	56,096,348	626.47
Trade, Transportation & Utilities	750	8,539	8,500	8,412	50,853,350	461.10
Wholesale Trade	179	1,519	1,566	1,567	13,010,110	645.39
Retail Trade	455	5,908	5,815	5,716	27,959,808	369.99
Transportation, Warehousing & Utilities	116	1,112	1,119	1,129	9,883,432	678.81
Information	32	570	589	601	4,905,964	643.26
Financial Activities	259	1,577	1,590	1,584	14,896,849	723.58
Professional & Business Services	341	3,759	3,714	3,598	22,001,606	458.61
Education & Health Services	380	7,400	7,438	7,406	67,006,685	695.16
Leisure & Hospitality	192	3,976	4,058	4,194	10,542,960	198.97
Other Services	181	1,070	1,049	1,062	5,041,521	365.74
Local Government	38	3,479	3,523	3,488	31,447,772	691.82
State Government	25	2,436	2,474	2,300	20,379,651	652.29

**TABLE 6. COUNTY SUMMARY
EMPLOYMENT AND TOTAL EARNINGS, BY INDUSTRY
SECOND QUARTER 2006**

NORTH AMERICAN INDUSTRY CLASSIFICATION SYSTEM INDUSTRY GROUP	NUMBER OF EMPLOYING UNITS	EMPLOYMENT			TOTAL EARNINGS	AVERAGE
		APRIL	MAY	JUNE	APRIL - JUNE 2006	WEEKLY EARNINGS
CRAWFORD COUNTY - TOTAL	1,206	19,129	19,175	19,049	\$134,372,826	\$540.67
Natural Resources & Mining	27	572	487	431	3,650,942	565.45
Construction	178	1,456	1,527	1,532	11,846,984	605.52
Manufacturing	76	3,622	3,628	3,687	26,506,025	559.27
Trade, Transportation & Utilities	311	6,703	6,664	6,639	46,112,255	531.90
Retail Trade	160	2,037	2,061	2,047	9,816,224	368.64
Other Trade, Transportation & Utilities	151	4,666	4,603	4,592	36,296,031	604.29
Information	14	184	189	197	1,544,203	625.18
Financial Activities	127	502	504	504	3,455,165	528.04
Professional & Business Services	145	752	753	781	5,656,295	571.00
Education & Health Services	119	1,338	1,381	1,360	9,284,005	525.24
Leisure & Hospitality	80	1,404	1,400	1,409	3,511,405	192.34
Other Services	77	340	345	351	2,241,165	499.22
Local Government	41	2,098	2,136	1,999	19,127,417	708.17
State Government	11	158	161	159	1,436,965	693.74
CRITTENDEN COUNTY - TOTAL	1,189	16,103	16,163	16,282	\$119,402,550	\$567.57
Natural Resources & Mining	45	284	279	288	1,537,600	416.96
Construction	79	520	545	565	4,385,592	620.90
Manufacturing	46	1,589	1,613	1,666	15,956,553	756.43
Trade, Transportation & Utilities	330	4,852	4,874	4,868	36,211,307	572.60
Wholesale Trade	75	781	794	814	7,804,990	753.94
Retail Trade	171	2,051	2,074	2,059	9,683,608	361.36
Transportation, Warehousing & Utilities	84	2,020	2,006	1,995	18,722,709	717.59
Information	8	94	96	95	744,989	603.23
Financial Activities	109	569	570	586	4,414,494	590.57
Professional & Business Services	116	782	752	790	4,731,547	469.83
Education & Health Services	187	1,908	1,919	1,939	14,621,011	585.17
Leisure & Hospitality	103	1,898	1,924	1,903	5,525,256	222.72
Other Services	104	614	633	635	3,375,386	413.89
Local Government	47	2,520	2,539	2,521	25,007,176	761.33
State Government	15	473	419	426	2,891,639	506.30

**TABLE 6. COUNTY SUMMARY
EMPLOYMENT AND TOTAL EARNINGS, BY INDUSTRY
SECOND QUARTER 2006**

NORTH AMERICAN INDUSTRY CLASSIFICATION SYSTEM INDUSTRY GROUP	NUMBER OF EMPLOYING UNITS	EMPLOYMENT			TOTAL EARNINGS	AVERAGE
		APRIL	MAY	JUNE	APRIL - JUNE 2006	WEEKLY EARNINGS
CROSS COUNTY - TOTAL	533	5,196	5,177	5,160	\$34,915,755	\$518.73
Natural Resources & Mining	45	208	220	219	1,124,024	400.91
Construction	40	201	193	212	1,202,654	457.98
Manufacturing	18	729	722	724	6,542,378	694.15
Trade, Transportation & Utilities	134	1,176	1,186	1,210	7,725,563	499.11
Wholesale Trade	32	276	281	283	2,223,717	610.91
Retail Trade	70	654	659	673	3,247,404	377.34
Transportation, Warehousing & Utilities	32	246	246	254	2,254,442	697.39
Information	6	59	57	57	372,465	496.84
Financial Activities	49	401	396	397	2,866,869	554.09
Professional & Business Services	43	179	165	171	1,246,884	558.72
Education & Health Services	99	691	689	652	3,781,253	429.43
Leisure & Hospitality	31	401	409	415	807,745	152.17
Other Services	40	74	76	78	328,917	332.91
Local Government	17	861	845	805	7,159,926	658.02
State Government	11	216	219	220	1,757,077	619.05
DALLAS COUNTY - TOTAL	275	3,424	3,437	3,473	\$21,824,092	\$487.36
Natural Resources & Mining	40	223	211	222	1,436,217	505.24
Construction	13	85	81	84	861,677	795.39
Manufacturing	15	952	945	947	7,285,969	591.20
Trade, Transportation & Utilities	73	473	482	476	2,386,348	384.83
Wholesale Trade	9	43	42	39	297,032	552.79
Retail Trade	45	373	381	375	1,702,118	347.92
Transportation, Warehousing & Utilities	19	57	59	62	387,198	501.99
Information	3	24	23	23	156,593	516.24
Financial Activities	20	101	104	108	697,126	513.98
Professional & Business Services	18	52	50	49	477,745	730.12
Education & Health Services	35	784	796	809	4,319,881	417.29
Leisure & Hospitality	18	145	147	145	307,259	162.26
Other Services	15	60	62	61	250,498	315.89
Local Government	16	461	469	481	3,137,826	513.19
State Government	9	64	67	68	506,953	587.89

**TABLE 6. COUNTY SUMMARY
EMPLOYMENT AND TOTAL EARNINGS, BY INDUSTRY
SECOND QUARTER 2006**

NORTH AMERICAN INDUSTRY CLASSIFICATION SYSTEM INDUSTRY GROUP	NUMBER OF EMPLOYING UNITS	EMPLOYMENT			TOTAL EARNINGS	AVERAGE
		APRIL	MAY	JUNE	APRIL - JUNE 2006	WEEKLY EARNINGS
DESHA COUNTY - TOTAL	465	4,893	4,950	5,016	\$34,714,525	\$539.14
Natural Resources & Mining	51	243	253	259	1,471,408	449.74
Construction	26	141	144	156	1,113,849	582.86
Manufacturing	15	1,315	1,286	1,293	12,709,903	753.22
Trade, Transportation & Utilities	131	919	956	941	5,292,077	433.68
Wholesale Trade	21	197	196	195	1,803,066	707.64
Retail Trade	79	552	593	579	2,340,916	313.35
Transportation, Warehousing & Utilities	31	170	167	167	1,148,095	525.68
Information	5	24	24	24	189,172	606.32
Financial Activities	43	224	228	231	1,380,579	466.46
Professional & Business Services	35	113	119	113	759,698	508.16
Education & Health Services	67	514	520	526	2,828,766	418.46
Leisure & Hospitality	34	287	299	326	659,245	166.81
Other Services	28	75	74	80	235,791	237.61
Local Government	19	864	871	896	6,840,894	600.03
State Government	11	174	176	171	1,233,143	546.20
DREW COUNTY - TOTAL	513	6,646	6,761	6,703	\$41,543,412	\$476.73
Natural Resources & Mining	37	267	305	301	2,293,299	606.21
Construction	26	124	154	155	1,078,827	574.97
Manufacturing	20	724	726	752	4,683,601	490.84
Trade, Transportation & Utilities	136	1,212	1,220	1,214	7,029,551	444.93
Wholesale Trade	25	229	234	232	1,973,694	655.35
Retail Trade	88	888	892	881	4,191,329	363.48
Transportation, Warehousing & Utilities	23	95	94	101	864,528	687.95
Information	9	77	79	79	575,178	564.82
Financial Activities	43	270	266	271	2,128,833	608.76
Professional & Business Services	45	325	351	337	2,231,261	508.30
Education & Health Services	87	839	836	849	4,297,434	392.91
Leisure & Hospitality	42	641	655	650	1,265,460	150.07
Other Services	28	91	93	94	378,601	314.28
Local Government	23	1,257	1,264	1,231	10,089,216	620.54
State Government	17	819	812	770	5,492,151	527.87

**TABLE 6. COUNTY SUMMARY
EMPLOYMENT AND TOTAL EARNINGS, BY INDUSTRY
SECOND QUARTER 2006**

NORTH AMERICAN INDUSTRY CLASSIFICATION SYSTEM INDUSTRY GROUP	NUMBER OF EMPLOYING UNITS	EMPLOYMENT			TOTAL EARNINGS	AVERAGE
		APRIL	MAY	JUNE	APRIL - JUNE 2006	WEEKLY EARNINGS
FAULKNER COUNTY - TOTAL	2,436	37,640	37,887	38,106	\$300,531,574	\$610.33
Natural Resources & Mining	17	125	144	170	1,904,274	1001.02
Construction	349	2,971	3,092	3,160	23,186,716	580.16
Manufacturing	120	5,211	5,203	5,313	49,084,073	720.23
Trade, Transportation & Utilities	597	6,473	6,479	6,477	37,934,152	450.57
Wholesale Trade	146	781	793	825	6,708,144	645.28
Retail Trade	378	5,020	5,010	4,984	24,421,199	375.36
Transportation, Warehousing & Utilities	73	672	676	668	6,804,809	778.94
Information	41	365	363	365	2,829,921	597.49
Financial Activities	295	1,387	1,400	1,412	10,530,313	578.73
Professional & Business Services	323	5,203	5,189	5,255	64,080,433	945.09
Education & Health Services	308	5,123	5,202	5,272	39,300,347	581.48
Leisure & Hospitality	189	3,877	3,840	3,855	9,654,229	192.52
Other Services	137	580	581	585	3,149,489	416.27
Local Government	41	3,152	3,190	3,133	34,809,772	847.81
State Government	19	3,173	3,204	3,109	24,067,855	585.51
FRANKLIN COUNTY - TOTAL	328	4,232	4,270	4,055	\$28,037,626	\$515.27
Natural Resources & Mining	10	85	95	99	979,659	810.31
Construction	29	203	203	215	1,674,701	622.33
Manufacturing	23	1,008	987	982	7,332,503	568.40
Trade, Transportation & Utilities	89	846	857	871	5,439,115	487.64
Wholesale Trade	14	52	45	45	196,425	319.22
Retail Trade	53	483	491	493	2,120,422	333.56
Transportation, Warehousing & Utilities	22	311	321	333	3,122,268	746.66
Information	7	54	54	54	266,993	380.33
Financial Activities	28	216	216	220	1,210,434	428.42
Professional & Business Services	22	60	54	58	311,635	418.11
Education & Health Services	46	470	468	471	2,711,329	444.07
Leisure & Hospitality	26	319	347	341	702,462	160.98
Other Services	19	53	60	62	282,932	373.10
Local Government	19	788	798	561	6,125,796	658.43
State Government	10	130	131	121	1,000,067	604.15

**TABLE 6. COUNTY SUMMARY
EMPLOYMENT AND TOTAL EARNINGS, BY INDUSTRY
SECOND QUARTER 2006**

NORTH AMERICAN INDUSTRY CLASSIFICATION SYSTEM INDUSTRY GROUP	NUMBER OF EMPLOYING UNITS	EMPLOYMENT			TOTAL EARNINGS	AVERAGE
		APRIL	MAY	JUNE	APRIL - JUNE 2006	WEEKLY EARNINGS
FULTON COUNTY - TOTAL	230	1,901	1,956	1,988	\$10,634,166	\$419.85
Construction	15	28	29	30	158,719	421.01
Manufacturing	14	137	134	136	656,305	372.13
Trade, Transportation & Utilities	68	404	426	440	2,182,741	396.62
Retail Trade	46	217	225	235	714,079	243.41
Other Trade, Transportation & Utilities	22	187	201	205	1,468,662	571.54
Financial Activities	17	110	129	124	743,289	472.53
Professional & Business Services	17	50	49	47	328,815	519.73
Education & Health Services	45	355	357	361	1,510,580	324.88
Leisure & Hospitality	16	138	147	160	378,201	196.13
Local Government	13	516	522	525	3,817,938	563.70
State Government	11	93	95	95	584,223	476.40
Other	14	70	68	70	273,355	303.28
GARLAND COUNTY - TOTAL	3,213	37,367	36,726	36,851	\$249,649,175	\$519.28
Natural Resources & Mining	50	353	362	357	3,474,770	748.01
Construction	428	2,311	2,352	2,399	14,922,486	487.63
Manufacturing	127	3,392	3,419	3,427	26,934,392	607.11
Trade, Transportation & Utilities	709	7,407	7,434	7,536	43,769,415	451.38
Wholesale Trade	145	1,116	1,126	1,133	9,493,523	649.13
Retail Trade	492	5,639	5,654	5,733	28,704,305	389.06
Transportation, Warehousing & Utilities	72	652	654	670	5,571,587	650.68
Information	41	439	429	437	3,269,877	578.23
Financial Activities	372	1,551	1,560	1,576	12,216,342	601.48
Professional & Business Services	407	2,684	2,635	2,644	17,939,824	519.90
Education & Health Services	421	6,942	6,973	6,995	60,478,846	667.46
Leisure & Hospitality	370	7,140	6,402	6,856	22,275,956	252.02
Other Services	227	949	959	974	4,863,250	389.41
Local Government	34	3,125	3,127	2,717	31,527,168	811.18
State Government	27	1,074	1,074	933	7,976,849	597.47

**TABLE 6. COUNTY SUMMARY
EMPLOYMENT AND TOTAL EARNINGS, BY INDUSTRY
SECOND QUARTER 2006**

NORTH AMERICAN INDUSTRY CLASSIFICATION SYSTEM INDUSTRY GROUP	NUMBER OF EMPLOYING UNITS	EMPLOYMENT			TOTAL EARNINGS	AVERAGE
		APRIL	MAY	JUNE	APRIL - JUNE 2006	WEEKLY EARNINGS
GRANT COUNTY - TOTAL	298	3,835	3,804	3,739	\$25,179,741	\$510.70
Natural Resources & Mining	23	193	190	204	2,069,029	813.40
Construction	34	257	265	256	1,636,613	485.45
Manufacturing	19	881	850	853	6,989,170	624.18
Trade, Transportation & Utilities	84	707	694	614	3,367,088	385.62
Wholesale Trade	16	157	143	107	904,955	513.11
Retail Trade	37	484	485	443	2,019,862	330.11
Transportation, Warehousing & Utilities	31	66	66	64	442,271	520.73
Information	3	36	30	16	207,569	584.15
Financial Activities	21	101	104	105	729,470	543.03
Professional & Business Services	21	90	79	78	720,424	673.08
Education & Health Services	36	246	229	236	1,408,082	457.02
Leisure & Hospitality	21	287	300	308	774,370	199.67
Other Services	17	56	58	60	228,345	302.84
Local Government	10	923	947	949	6,666,961	545.77
State Government	9	58	58	60	382,620	501.69
GREENE COUNTY - TOTAL	901	15,273	15,475	15,130	\$106,073,706	\$533.56
Natural Resources & Mining	38	204	223	233	1,450,198	507.06
Construction	84	394	397	420	2,652,270	505.42
Manufacturing	55	5,558	5,526	5,534	49,226,729	683.60
Trade, Transportation & Utilities	242	2,168	2,176	2,147	12,000,687	426.65
Wholesale Trade	51	396	384	391	3,148,398	620.46
Retail Trade	163	1,568	1,588	1,548	7,144,146	350.48
Transportation, Warehousing & Utilities	28	204	204	208	1,708,143	639.91
Information	14	124	124	131	613,004	373.25
Financial Activities	86	484	478	483	3,301,610	527.27
Professional & Business Services	90	1,474	1,608	1,277	7,553,707	399.90
Education & Health Services	135	1,712	1,749	1,760	10,183,862	450.13
Leisure & Hospitality	68	1,142	1,177	1,221	2,644,410	172.39
Other Services	47	174	173	170	908,894	405.70
Local Government	31	1,586	1,586	1,495	13,472,064	666.15
State Government	11	253	258	259	2,066,271	619.26

**TABLE 6. COUNTY SUMMARY
EMPLOYMENT AND TOTAL EARNINGS, BY INDUSTRY
SECOND QUARTER 2006**

NORTH AMERICAN INDUSTRY CLASSIFICATION SYSTEM INDUSTRY GROUP	NUMBER OF EMPLOYING UNITS	EMPLOYMENT			TOTAL EARNINGS	AVERAGE
		APRIL	MAY	JUNE	APRIL - JUNE 2006	WEEKLY EARNINGS
HEMPSTEAD COUNTY - TOTAL	502	8,425	8,415	8,297	\$55,593,434	\$510.37
Natural Resources & Mining	18	202	208	204	1,687,338	634.18
Construction	35	160	160	163	955,060	456.31
Manufacturing	29	2,775	2,785	2,721	20,209,301	563.18
Trade, Transportation & Utilities	134	1,273	1,279	1,292	7,383,199	443.24
Wholesale Trade	25	183	187	188	1,075,160	444.65
Retail Trade	85	898	903	913	4,236,411	360.22
Transportation, Warehousing & Utilities	24	192	189	191	2,071,628	835.78
Information	10	79	80	82	541,754	518.76
Financial Activities	43	246	252	251	2,045,960	630.37
Professional & Business Services	35	195	185	196	759,629	304.34
Education & Health Services	70	1,021	1,011	1,027	5,710,780	430.82
Leisure & Hospitality	44	657	654	672	1,653,466	192.42
Other Services	38	217	219	215	1,372,531	486.54
Local Government	29	1,078	1,075	965	9,086,307	672.50
State Government	17	522	507	509	4,188,109	628.40
HOT SPRING COUNTY - TOTAL	624	8,334	8,334	8,272	\$61,156,102	\$565.88
Natural Resources & Mining	39	214	215	217	1,555,851	555.79
Construction	69	561	624	628	5,917,890	753.26
Manufacturing	42	1,645	1,633	1,655	16,598,748	776.50
Trade, Transportation & Utilities	166	1,554	1,544	1,556	9,875,561	489.68
Wholesale Trade	22	110	100	98	959,978	719.26
Retail Trade	98	994	993	997	4,843,218	374.55
Transportation, Warehousing & Utilities	46	450	451	461	4,072,365	690.00
Information	10	72	74	73	651,856	686.89
Financial Activities	63	323	317	326	2,458,187	587.24
Professional & Business Services	56	293	273	281	1,457,645	397.14
Education & Health Services	60	1,023	1,022	1,000	6,677,275	506.05
Leisure & Hospitality	41	581	584	597	1,355,933	177.59
Other Services	38	323	319	278	1,106,889	277.65
Local & State Government	40	1,745	1,729	1,661	13,500,267	606.71

**TABLE 6. COUNTY SUMMARY
EMPLOYMENT AND TOTAL EARNINGS, BY INDUSTRY
SECOND QUARTER 2006**

NORTH AMERICAN INDUSTRY CLASSIFICATION SYSTEM INDUSTRY GROUP	NUMBER OF EMPLOYING UNITS	EMPLOYMENT			TOTAL EARNINGS	AVERAGE
		APRIL	MAY	JUNE	APRIL - JUNE 2006	WEEKLY EARNINGS
HOWARD COUNTY - TOTAL	365	7,940	7,876	7,804	\$52,484,177	\$512.77
Natural Resources & Mining	20	228	227	237	1,770,874	590.55
Construction	26	109	109	112	655,401	458.32
Manufacturing	26	4,506	4,431	4,390	31,514,340	545.70
Trade, Transportation & Utilities	111	944	961	967	5,428,346	436.18
Wholesale Trade	22	101	99	105	827,823	626.35
Retail Trade	65	644	662	661	2,969,805	348.42
Transportation, Warehousing & Utilities	24	199	200	201	1,630,718	627.20
Information	7	38	38	38	222,606	450.62
Financial Activities	37	125	131	144	960,831	554.33
Professional & Business Services	26	129	124	126	784,425	477.63
Education & Health Services	43	598	597	609	3,007,214	384.69
Leisure & Hospitality	19	314	310	325	683,637	166.24
Other Services	20	108	114	106	535,598	376.83
Local Government	18	707	702	617	5,971,059	680.13
State Government	12	134	132	133	949,846	549.36
INDEPENDENCE COUNTY - TOTAL	936	16,337	16,314	16,363	\$113,599,965	\$534.85
Natural Resources & Mining	14	145	144	148	1,024,522	541.03
Construction	66	437	438	476	2,985,177	509.91
Manufacturing	58	4,949	4,862	4,839	38,662,536	609.02
Trade, Transportation & Utilities	282	2,932	2,941	3,015	19,303,469	501.20
Wholesale Trade	55	561	565	558	4,388,570	601.39
Retail Trade	170	1,668	1,670	1,706	7,741,765	354.20
Transportation, Warehousing & Utilities	57	703	706	751	7,173,134	766.36
Information	13	158	165	167	1,129,001	531.71
Financial Activities	83	443	444	473	3,357,695	569.74
Professional & Business Services	89	900	884	907	4,337,700	371.98
Education & Health Services	137	2,808	2,817	2,860	22,822,893	620.72
Leisure & Hospitality	67	1,117	1,145	1,120	2,571,531	175.47
Other Services	67	372	383	382	1,697,181	344.47
Local Government	43	1,600	1,619	1,554	12,303,311	594.85
State Government	17	476	472	422	3,404,949	573.55

**TABLE 6. COUNTY SUMMARY
EMPLOYMENT AND TOTAL EARNINGS, BY INDUSTRY
SECOND QUARTER 2006**

NORTH AMERICAN INDUSTRY CLASSIFICATION SYSTEM INDUSTRY GROUP	NUMBER OF EMPLOYING UNITS	EMPLOYMENT			TOTAL EARNINGS	AVERAGE
		APRIL	MAY	JUNE	APRIL - JUNE 2006	WEEKLY EARNINGS
IZARD COUNTY - TOTAL	274	3,195	3,149	2,917	18,942,202	\$472.01
Natural Resources & Mining	4	89	87	89	674,943	587.76
Construction	20	40	40	42	209,148	395.61
Manufacturing	13	492	405	434	3,826,305	663.41
Trade, Transportation & Utilities	68	545	556	540	2,621,492	368.65
Retail Trade	51	436	447	429	1,824,399	320.90
Other Trade, Transportation & Utilities	17	109	109	111	797,093	559.10
Information	3	8	6	7	28,490	313.08
Financial Activities	29	152	149	153	965,549	490.79
Professional & Business Services	21	79	79	87	379,185	357.16
Education & Health Services	51	543	552	540	2,881,944	406.77
Leisure & Hospitality	23	193	201	197	428,902	167.47
Other Services	13	36	35	33	167,838	372.42
Local Government	18	551	566	399	3,941,992	600.06
State Government	11	467	473	396	2,816,414	486.48
JACKSON COUNTY - TOTAL	531	5,680	5,675	5,607	\$39,067,140	\$531.51
Natural Resources & Mining	45	201	208	221	1,230,265	450.65
Construction	29	184	198	204	1,395,547	549.57
Manufacturing	25	1,007	1,002	1,020	9,313,805	709.59
Trade, Transportation & Utilities	125	1,125	1,116	1,126	6,991,997	479.22
Wholesale Trade	34	238	234	237	2,009,367	654.02
Retail Trade	72	660	654	663	3,214,817	375.26
Transportation, Warehousing & Utilities	19	227	228	226	1,767,813	599.06
Information	7	38	38	38	330,345	668.71
Financial Activities	45	175	175	188	1,297,836	556.69
Professional & Business Services	39	275	258	241	1,677,746	500.22
Education & Health Services	93	839	832	829	6,292,247	580.82
Leisure & Hospitality	37	328	330	340	849,077	196.33
Other Services	37	103	104	103	427,036	317.89
Local Government	35	731	741	645	4,690,326	511.28
State Government	14	674	673	652	4,570,913	527.68

**TABLE 6. COUNTY SUMMARY
EMPLOYMENT AND TOTAL EARNINGS, BY INDUSTRY
SECOND QUARTER 2006**

NORTH AMERICAN INDUSTRY CLASSIFICATION SYSTEM INDUSTRY GROUP	NUMBER OF EMPLOYING UNITS	EMPLOYMENT			TOTAL EARNINGS	AVERAGE
		APRIL	MAY	JUNE	APRIL - JUNE 2006	WEEKLY EARNINGS
JEFFERSON COUNTY - TOTAL	1,918	32,693	32,665	32,055	\$252,227,752	\$597.52
Natural Resources & Mining	41	448	445	453	3,675,853	630.22
Construction	136	1,759	1,779	1,520	16,255,086	741.63
Manufacturing	72	6,222	6,218	6,227	59,571,281	736.44
Trade, Transportation & Utilities	494	5,879	5,881	5,849	40,133,885	525.96
Wholesale Trade	85	1,021	1,021	1,012	8,102,118	612.22
Retail Trade	343	3,986	3,994	3,965	19,556,302	377.81
Transportation, Warehousing & Utilities	66	872	866	872	12,475,465	1103.05
Information	20	216	215	214	1,627,603	582.33
Financial Activities	154	1,209	1,207	1,220	10,418,625	661.25
Professional & Business Services	175	1,747	1,703	1,720	13,815,485	616.67
Education & Health Services	438	5,473	5,476	5,477	39,244,075	551.34
Leisure & Hospitality	150	2,347	2,337	2,281	5,912,823	195.91
Other Services	157	795	780	791	4,702,963	458.71
Local Government	41	3,325	3,348	3,201	31,921,418	746.05
State Government	40	3,273	3,276	3,102	24,948,655	596.56
JOHNSON COUNTY - TOTAL	478	8,675	8,598	8,636	\$55,501,744	\$494.35
Natural Resources & Mining	14	199	199	210	1,566,563	594.60
Construction	30	131	132	129	813,499	478.90
Manufacturing	45	3,144	3,087	3,115	19,671,814	485.73
Trade, Transportation & Utilities	125	1,859	1,854	1,840	10,637,572	442.07
Information	6	35	33	32	229,171	528.86
Financial Activities	45	228	235	245	1,597,208	520.60
Professional & Business Services	49	202	186	181	1,235,265	500.99
Education & Health Services	73	1,160	1,131	1,135	7,816,130	526.48
Leisure & Hospitality	38	529	527	531	1,306,369	189.96
Other Services	29	85	92	93	445,630	380.88
Local Government	14	946	963	965	8,988,516	721.74
State Government	10	157	159	160	1,194,007	578.87

**TABLE 6. COUNTY SUMMARY
EMPLOYMENT AND TOTAL EARNINGS, BY INDUSTRY
SECOND QUARTER 2006**

NORTH AMERICAN INDUSTRY CLASSIFICATION SYSTEM INDUSTRY GROUP	NUMBER OF EMPLOYING UNITS	EMPLOYMENT			TOTAL EARNINGS	AVERAGE
		APRIL	MAY	JUNE	APRIL - JUNE 2006	WEEKLY EARNINGS
LAFAYETTE COUNTY - TOTAL	173	1,467	1,486	1,488	\$9,519,042	\$494.64
Natural Resources & Mining	34	181	184	188	1,193,981	498.25
Construction	12	98	101	108	864,694	649.98
Trade, Transportation & Utilities	37	220	220	226	1,252,663	434.05
Wholesale Trade	4	39	38	38	314,669	631.44
Retail Trade	22	148	150	154	590,194	301.32
Transportation, Warehousing & Utilities	11	33	32	34	347,800	810.72
Financial Activities	17	81	84	85	496,039	457.88
Professional & Business Services	9	72	66	67	464,847	523.28
Education & Health Services	23	217	220	227	1,099,322	382.06
Leisure & Hospitality	5	40	41	42	102,096	191.55
Other Services	8	86	92	92	332,697	284.36
Local Government	13	358	363	356	2,627,977	563.10
State Government	8	50	50	49	345,644	535.33
Other	7	64	65	48	739,082	963.60
LAWRENCE COUNTY - TOTAL	423	4,188	4,164	4,146	\$25,678,134	\$474.13
Natural Resources & Mining	35	185	190	189	1,366,353	559.06
Construction	25	68	70	69	399,155	444.99
Manufacturing	22	551	563	576	3,566,631	487.02
Trade, Transportation & Utilities	129	934	921	925	5,342,100	443.45
Wholesale Trade	24	218	218	215	1,676,974	594.46
Retail Trade	72	596	586	585	2,645,218	345.46
Transportation, Warehousing & Utilities	33	120	117	125	1,019,908	650.18
Information	6	20	18	20	151,767	603.85
Financial Activities	30	132	130	135	824,319	479.16
Professional & Business Services	23	135	129	131	1,018,328	594.93
Education & Health Services	64	450	446	444	2,707,013	466.19
Leisure & Hospitality	24	330	308	309	540,569	131.73
Other Services	26	91	92	88	300,601	255.98
Local Government	28	1,176	1,183	1,148	8,700,025	572.48
State Government	11	116	114	112	761,273	513.68

**TABLE 6. COUNTY SUMMARY
EMPLOYMENT AND TOTAL EARNINGS, BY INDUSTRY
SECOND QUARTER 2006**

NORTH AMERICAN INDUSTRY CLASSIFICATION SYSTEM INDUSTRY GROUP	NUMBER OF EMPLOYING UNITS	EMPLOYMENT			TOTAL EARNINGS	AVERAGE
		APRIL	MAY	JUNE	APRIL - JUNE 2006	WEEKLY EARNINGS
LEE COUNTY - TOTAL	250	2,085	2,093	2,070	\$13,533,945	\$499.87
Natural Resources & Mining	28	184	188	195	1,061,527	432.04
Construction	7	12	13	11	56,782	363.99
Trade, Transportation & Utilities	52	344	346	357	2,012,658	443.61
Wholesale Trade	8	68	70	73	562,579	615.29
Retail Trade	26	188	187	192	724,385	294.82
Transportation, Warehousing & Utilities	18	88	89	92	725,694	622.56
Financial Activities	15	82	82	79	682,036	647.71
Professional & Business Services	19	70	68	66	559,202	632.58
Education & Health Services	67	309	306	294	1,847,695	469.08
Leisure & Hospitality	10	88	93	91	176,784	149.99
Local Government	16	408	410	388	3,121,147	597.23
State Government	8	452	454	457	3,172,240	537.09
Other	28	136	133	132	843,874	485.64
LINCOLN COUNTY - TOTAL	224	2,911	2,929	2,819	\$19,812,140	\$528.01
Natural Resources & Mining	32	165	170	168	1,103,472	506.26
Construction	13	62	63	66	430,075	519.62
Manufacturing	9	428	442	441	3,123,314	549.78
Trade, Transportation & Utilities	47	367	385	398	2,599,090	521.56
Wholesale Trade	6	31	32	31	302,811	743.40
Retail Trade	26	204	215	224	786,215	282.17
Transportation, Warehousing & Utilities	15	132	138	143	1,510,064	843.77
Financial Activities	22	80	73	76	555,839	560.13
Professional & Business Services	13	22	23	22	163,106	561.79
Education & Health Services	35	295	283	282	1,500,770	402.71
Leisure & Hospitality	14	140	143	147	295,596	158.64
Local & State Government	22	1,298	1,296	1,170	9,834,479	602.95
Other	17	54	51	49	206,399	309.29

**TABLE 6. COUNTY SUMMARY
EMPLOYMENT AND TOTAL EARNINGS, BY INDUSTRY
SECOND QUARTER 2006**

NORTH AMERICAN INDUSTRY CLASSIFICATION SYSTEM INDUSTRY GROUP	NUMBER OF EMPLOYING UNITS	EMPLOYMENT			TOTAL EARNINGS	AVERAGE
		APRIL	MAY	JUNE	APRIL - JUNE 2006	WEEKLY EARNINGS
LITTLE RIVER COUNTY - TOTAL	256	4,456	4,455	4,511	\$45,103,041	\$775.47
Natural Resources & Mining	12	65	65	68	570,832	665.31
Trade, Transportation & Utilities	68	1,113	1,151	1,142	10,429,305	706.62
Retail Trade	41	313	318	323	1,465,222	354.43
Other Trade, Transportation & Utilities	27	800	833	819	8,964,083	843.65
Information	3	11	11	11	86,505	604.93
Financial Activities	24	108	106	107	715,531	514.40
Professional & Business Services	20	141	123	124	717,141	426.53
Education & Health Services	26	159	164	165	785,266	371.34
Leisure & Hospitality	19	240	248	262	555,461	170.91
Other Services	14	96	95	98	337,050	269.14
Local Government	20	776	779	800	5,855,070	573.75
State Government	12	79	79	78	560,231	547.81
Other	38	1,668	1,634	1,656	24,490,649	1139.91
LOGAN COUNTY - TOTAL	478	5,821	5,877	6,009	\$35,369,265	\$460.96
Natural Resources & Mining	19	104	93	91	764,167	612.31
Construction	49	157	164	158	948,055	456.75
Manufacturing	27	1,788	1,790	1,807	12,058,940	516.77
Trade, Transportation & Utilities	115	835	837	854	3,944,119	360.33
Wholesale Trade	18	42	44	46	231,624	404.94
Retail Trade	71	722	724	733	3,097,833	328.08
Transportation, Warehousing & Utilities	26	71	69	75	614,662	659.74
Information	6	46	45	45	382,687	649.36
Financial Activities	45	249	247	249	1,947,317	603.20
Professional & Business Services	42	160	178	221	807,795	333.48
Education & Health Services	77	774	766	759	4,291,945	430.82
Leisure & Hospitality	30	340	352	359	722,851	158.72
Other Services	30	78	80	79	425,308	414.13
Local & State Government	38	1,290	1,325	1,387	9,076,081	523.36

**TABLE 6. COUNTY SUMMARY
EMPLOYMENT AND TOTAL EARNINGS, BY INDUSTRY
SECOND QUARTER 2006**

NORTH AMERICAN INDUSTRY CLASSIFICATION SYSTEM INDUSTRY GROUP	NUMBER OF EMPLOYING UNITS	EMPLOYMENT			TOTAL EARNINGS	AVERAGE
		APRIL	MAY	JUNE	APRIL - JUNE 2006	WEEKLY EARNINGS
LONOKE COUNTY - TOTAL	1,207	12,236	12,352	12,141	\$80,356,763	\$504.88
Natural Resources & Mining	71	462	474	476	3,491,590	570.65
Construction	165	937	952	968	6,789,051	548.37
Manufacturing	37	1,383	1,406	1,389	12,278,034	678.17
Trade, Transportation & Utilities	333	2,626	2,671	2,695	15,120,673	436.61
Wholesale Trade	77	446	447	454	3,914,119	670.57
Retail Trade	180	1,894	1,939	1,956	9,077,502	361.86
Transportation, Warehousing & Utilities	76	286	285	285	2,129,052	573.97
Information	18	133	132	127	916,183	539.35
Financial Activities	119	576	578	582	4,727,495	628.43
Professional & Business Services	140	553	566	571	3,733,037	509.75
Education & Health Services	131	1,385	1,401	1,369	7,755,073	430.72
Leisure & Hospitality	83	1,305	1,311	1,312	3,316,440	194.84
Other Services	66	205	201	204	1,085,472	410.65
Local Government	28	2,528	2,517	2,308	20,179,581	633.32
State Government	16	143	143	140	964,134	522.28
MADISON COUNTY - TOTAL	256	3,198	3,202	3,185	\$20,174,344	\$485.72
Natural Resources & Mining	12	59	53	59	389,036	525.01
Construction	45	168	167	172	1,098,235	499.88
Manufacturing	19	1,083	1,071	1,100	7,086,343	502.55
Trade, Transportation & Utilities	63	593	616	595	3,202,989	409.73
Wholesale Trade	15	41	40	41	387,684	733.32
Retail Trade	34	442	461	441	1,963,793	337.19
Transportation, Warehousing & Utilities	14	110	115	113	851,512	581.37
Information	4	35	36	36	399,062	860.67
Financial Activities	15	91	94	93	640,515	531.69
Professional & Business Services	20	86	84	83	443,300	404.35
Education & Health Services	37	256	261	260	1,207,888	358.74
Leisure & Hospitality	13	131	133	131	216,393	126.42
Other Services	12	24	24	22	153,415	505.76
Local Government	8	628	617	586	4,951,416	624.05
State Government	8	44	46	48	385,752	645.07

**TABLE 6. COUNTY SUMMARY
EMPLOYMENT AND TOTAL EARNINGS, BY INDUSTRY
SECOND QUARTER 2006**

NORTH AMERICAN INDUSTRY CLASSIFICATION SYSTEM INDUSTRY GROUP	NUMBER OF EMPLOYING UNITS	EMPLOYMENT			TOTAL EARNINGS	AVERAGE
		APRIL	MAY	JUNE	APRIL - JUNE 2006	WEEKLY EARNINGS
MARION COUNTY - TOTAL	305	4,123	4,206	4,255	\$23,972,160	\$439.61
Natural Resources & Mining	5	66	63	60	251,041	306.52
Construction	23	65	63	65	318,899	381.31
Manufacturing	26	1,688	1,719	1,774	10,717,166	477.36
Trade, Transportation & Utilities	56	691	689	665	3,002,513	338.82
Retail Trade	37	520	524	509	1,969,272	292.63
Other Trade, Transportation & Utilities	19	171	165	156	1,033,241	484.63
Financial Activities	34	181	196	201	1,138,744	454.65
Professional & Business Services	26	50	44	46	343,802	566.71
Education & Health Services	46	366	361	380	1,850,811	385.83
Leisure & Hospitality	41	250	287	292	671,917	187.04
Local Government	20	569	584	575	4,264,794	569.55
State Government	8	106	106	107	669,045	484.00
Other	20	91	94	90	743,428	623.86
MILLER COUNTY - TOTAL	839	12,755	12,952	13,022	\$103,694,243	\$617.87
Natural Resources & Mining	28	142	142	151	1,044,228	553.97
Construction	91	791	839	847	6,076,790	566.14
Manufacturing	35	2,747	2,750	2,758	37,715,916	1054.35
Trade, Transportation & Utilities	231	2,728	2,801	2,796	18,450,143	511.44
Wholesale Trade	65	648	659	667	6,357,189	743.18
Retail Trade	126	1,467	1,518	1,517	6,800,489	348.59
Transportation, Warehousing & Utilities	40	613	624	612	5,292,465	660.54
Information	8	99	99	98	1,485,112	1157.83
Financial Activities	87	386	389	394	2,840,376	560.71
Professional & Business Services	83	962	969	1,023	5,182,364	404.85
Education & Health Services	89	1,071	1,104	1,107	6,913,810	486.13
Leisure & Hospitality	81	1,253	1,296	1,306	3,730,736	223.33
Other Services	63	333	338	420	1,302,157	275.43
Local Government	26	1,780	1,756	1,656	15,266,604	678.56
State Government	17	463	469	466	3,686,007	608.45

**TABLE 6. COUNTY SUMMARY
EMPLOYMENT AND TOTAL EARNINGS, BY INDUSTRY
SECOND QUARTER 2006**

NORTH AMERICAN INDUSTRY CLASSIFICATION SYSTEM INDUSTRY GROUP	NUMBER OF EMPLOYING UNITS	EMPLOYMENT			TOTAL EARNINGS	AVERAGE
		APRIL	MAY	JUNE	APRIL - JUNE 2006	WEEKLY EARNINGS
MISSISSIPPI COUNTY - TOTAL	1,162	18,890	19,057	18,782	\$153,804,903	\$625.67
Natural Resources & Mining	101	583	623	667	3,558,685	438.46
Construction	62	515	548	592	4,886,767	681.40
Manufacturing	52	5,346	5,350	5,339	66,191,960	952.61
Trade, Transportation & Utilities	300	3,144	3,191	3,192	20,818,406	504.28
Wholesale Trade	60	596	612	609	5,846,305	742.51
Retail Trade	186	1,932	1,964	1,970	9,116,094	358.63
Transportation, Warehousing & Utilities	54	616	615	613	5,856,007	732.86
Financial Activities	105	589	593	593	3,783,750	491.93
Professional & Business Services	98	1,127	1,145	1,268	6,773,251	441.54
Education & Health Services	205	1,755	1,760	1,749	10,857,936	476.00
Leisure & Hospitality	82	1,170	1,162	1,171	2,739,720	180.49
Local Government	46	2,426	2,449	2,223	19,737,827	641.71
State Government	24	658	653	597	4,547,962	550.07
Other	87	1,577	1,583	1,391	9,908,639	502.44
MONROE COUNTY - TOTAL	310	2,456	2,452	2,343	\$13,275,414	\$422.50
Natural Resources & Mining	35	146	152	157	879,902	446.27
Construction	14	37	43	41	215,695	411.37
Manufacturing	7	99	100	100	721,996	557.24
Trade, Transportation & Utilities	93	696	690	701	3,895,036	430.69
Wholesale Trade	23	207	204	209	1,546,782	575.73
Retail Trade	43	347	345	345	1,397,951	311.09
Transportation, Warehousing & Utilities	27	142	141	147	950,303	510.00
Financial Activities	16	101	100	102	716,890	545.99
Professional & Business Services	18	49	40	39	279,414	503.75
Education & Health Services	43	319	316	320	1,351,763	326.64
Leisure & Hospitality	27	286	286	285	667,897	179.85
Local Government	22	476	479	361	3,212,795	563.38
State Government	9	115	114	119	783,725	519.71
Other	26	132	132	118	550,301	332.44

**TABLE 6. COUNTY SUMMARY
EMPLOYMENT AND TOTAL EARNINGS, BY INDUSTRY
SECOND QUARTER 2006**

NORTH AMERICAN INDUSTRY CLASSIFICATION SYSTEM INDUSTRY GROUP	NUMBER OF EMPLOYING UNITS	EMPLOYMENT			TOTAL EARNINGS	AVERAGE
		APRIL	MAY	JUNE	APRIL - JUNE 2006	WEEKLY EARNINGS
MONTGOMERY COUNTY - TOTAL	189	1,669	1,711	1,933	\$9,589,596	\$416.52
Natural Resources & Mining	15	57	59	59	445,025	586.85
Construction	23	115	119	139	791,693	489.81
Trade, Transportation & Utilities	46	199	203	204	971,169	369.83
Wholesale Trade	9	61	63	65	353,068	431.10
Retail Trade	26	124	130	128	540,538	326.54
Transportation, Warehousing & Utilities	11	14	10	11	77,563	511.40
Financial Activities	10	75	77	81	487,058	482.39
Education & Health Services	17	52	50	51	219,612	331.24
Leisure & Hospitality	23	259	288	521	1,289,298	278.59
Other Services	12	73	76	69	273,854	289.89
Local Government	9	491	495	471	3,387,480	536.53
State Government	8	59	57	58	391,332	519.01
Other	26	289	287	280	1,333,075	359.38
NEVADA COUNTY - TOTAL	191	2,684	2,704	2,725	\$19,795,535	\$563.07
Natural Resources & Mining	15	63	63	63	455,587	556.27
Construction	12	14	14	15	85,209	457.29
Manufacturing	9	849	842	847	8,301,861	754.85
Trade, Transportation & Utilities	47	509	526	537	3,294,257	483.60
Retail Trade	31	289	302	303	1,317,966	340.21
Other Trade, Transportation & Utilities	16	220	224	234	1,976,291	672.67
Financial Activities	14	66	65	65	523,769	616.68
Education & Health Services	15	383	393	392	2,024,746	400.04
Leisure & Hospitality	14	105	104	120	240,883	168.96
Other Services	15	63	69	67	215,054	249.39
Local Government	27	512	509	501	3,688,642	559.28
State Government	11	76	76	78	567,099	569.00
Other	12	44	43	40	398,428	723.98

**TABLE 6. COUNTY SUMMARY
EMPLOYMENT AND TOTAL EARNINGS, BY INDUSTRY
SECOND QUARTER 2006**

NORTH AMERICAN INDUSTRY CLASSIFICATION SYSTEM INDUSTRY GROUP	NUMBER OF EMPLOYING UNITS	EMPLOYMENT			TOTAL EARNINGS	AVERAGE
		APRIL	MAY	JUNE	APRIL - JUNE 2006	WEEKLY EARNINGS
NEWTON COUNTY - TOTAL	135	1,103	1,126	1,092	\$5,639,269	\$391.86
Natural Resources & Mining	5	4	4	10	14,974	191.97
Construction	8	14	13	15	49,165	270.14
Manufacturing	17	100	103	99	518,872	396.49
Trade, Transportation & Utilities	29	163	170	167	652,419	301.12
Retail Trade	15	108	116	112	348,145	239.11
Other Trade, Transportation & Utilities	14	55	54	55	304,274	428.15
Education & Health Services	20	221	225	228	893,998	306.09
Leisure & Hospitality	17	67	71	77	212,364	227.94
Other Services	5	11	11	11	36,499	255.24
Local Government	13	385	386	347	2,525,993	521.40
State Government	7	86	92	87	432,634	376.75
Other	14	52	51	51	302,351	453.07
OUACHITA COUNTY - TOTAL	644	8,009	8,109	8,107	\$54,633,710	\$520.44
Natural Resources & Mining	44	272	275	286	1,942,457	538.13
Construction	49	291	300	302	1,866,471	482.33
Manufacturing	30	990	996	997	8,607,989	665.93
Trade, Transportation & Utilities	178	1,788	1,815	1,808	11,254,409	479.98
Wholesale Trade	31	250	251	253	2,536,177	776.22
Retail Trade	120	1,132	1,149	1,127	4,729,197	320.23
Transportation, Warehousing & Utilities	27	406	415	428	3,989,035	737.03
Information	8	95	95	94	665,154	540.48
Financial Activities	64	367	375	374	2,628,130	543.45
Professional & Business Services	51	344	357	384	2,019,770	429.59
Education & Health Services	94	1,266	1,268	1,254	8,321,233	506.94
Leisure & Hospitality	39	544	552	571	1,212,870	167.90
Other Services	43	160	164	167	1,021,441	480.08
Local Government	30	1,321	1,322	1,315	10,982,563	640.33
State Government	14	571	590	555	4,111,223	552.88

**TABLE 6. COUNTY SUMMARY
EMPLOYMENT AND TOTAL EARNINGS, BY INDUSTRY
SECOND QUARTER 2006**

NORTH AMERICAN INDUSTRY CLASSIFICATION SYSTEM INDUSTRY GROUP	NUMBER OF EMPLOYING UNITS	EMPLOYMENT			TOTAL EARNINGS	AVERAGE
		APRIL	MAY	JUNE	APRIL - JUNE 2006	WEEKLY EARNINGS
PERRY COUNTY - TOTAL	154	1,210	1,239	1,236	\$7,657,209	\$479.52
Natural Resources & Mining	8	34	35	36	287,903	632.75
Construction	25	88	91	80	609,243	542.84
Manufacturing	7	75	80	81	479,979	469.34
Trade, Transportation & Utilities	26	190	198	194	882,368	349.87
Retail Trade	17	162	169	165	521,864	242.80
Other Trade, Transportation & Utilities	9	28	29	29	360,504	967.36
Financial Activities	13	52	53	53	641,111	936.38
Professional & Business Services	13	35	36	39	228,220	478.78
Education & Health Services	23	172	174	178	905,546	398.80
Local Government	12	398	405	401	2,856,199	547.44
State Government	9	54	51	53	347,402	507.40
Other	18	112	116	121	419,238	277.21
PHILLIPS COUNTY - TOTAL	764	6,565	6,582	6,455	\$43,545,518	\$512.65
Natural Resources & Mining	71	418	434	458	2,298,537	404.91
Construction	30	105	116	114	628,627	433.04
Manufacturing	11	411	413	408	3,518,702	659.10
Trade, Transportation & Utilities	179	1,538	1,550	1,571	9,207,428	456.06
Wholesale Trade	35	407	378	390	3,122,646	613.29
Retail Trade	107	867	902	909	4,137,628	356.55
Transportation, Warehousing & Utilities	37	264	270	272	1,947,154	557.50
Information	12	52	50	51	372,485	561.82
Financial Activities	55	266	271	270	1,827,446	522.58
Professional & Business Services	60	235	223	231	1,559,290	522.26
Education & Health Services	218	1,298	1,287	1,278	7,316,601	437.08
Leisure & Hospitality	40	432	449	461	972,743	167.27
Other Services	41	79	79	80	408,170	395.77
Local Government	30	1,181	1,160	1,033	11,734,916	802.63
State Government	17	550	550	500	3,700,573	533.74

**TABLE 6. COUNTY SUMMARY
EMPLOYMENT AND TOTAL EARNINGS, BY INDUSTRY
SECOND QUARTER 2006**

NORTH AMERICAN INDUSTRY CLASSIFICATION SYSTEM INDUSTRY GROUP	NUMBER OF EMPLOYING UNITS	EMPLOYMENT			TOTAL EARNINGS	AVERAGE
		APRIL	MAY	JUNE	APRIL - JUNE 2006	WEEKLY EARNINGS
PIKE COUNTY - TOTAL	266	2,974	3,004	3,002	\$17,962,504	\$461.60
Natural Resources & Mining	33	148	150	156	1,112,287	565.38
Construction	13	131	112	123	906,388	571.49
Manufacturing	14	552	566	573	3,651,649	498.34
Trade, Transportation & Utilities	90	581	589	598	3,227,151	421.23
Wholesale Trade	18	124	124	126	887,200	547.43
Retail Trade	44	333	338	342	1,399,897	318.91
Transportation, Warehousing & Utilities	28	124	127	130	940,054	569.38
Information	5	30	30	30	316,847	812.43
Financial Activities	24	179	180	183	1,284,709	547.00
Professional & Business Services	10	31	31	29	127,986	324.56
Education & Health Services	19	242	243	249	1,078,504	339.08
Leisure & Hospitality	20	219	233	231	560,134	189.26
Other Services	14	134	139	139	639,118	357.98
Local Government	13	602	608	565	4,398,913	571.91
State Government	11	125	123	126	658,818	406.51
POINSETT COUNTY - TOTAL	502	5,967	6,071	6,098	\$40,387,161	\$513.90
Natural Resources & Mining	50	298	334	371	2,111,903	485.90
Construction	28	81	86	80	524,360	489.90
Manufacturing	25	1,205	1,230	1,237	9,069,985	570.01
Trade, Transportation & Utilities	137	1,432	1,436	1,429	9,402,430	504.95
Wholesale Trade	34	549	546	531	5,481,610	777.97
Retail Trade	76	748	752	753	2,972,547	304.47
Transportation, Warehousing & Utilities	27	135	138	145	948,273	523.52
Information	6	53	54	58	538,416	753.03
Financial Activities	44	334	341	341	2,858,481	649.26
Professional & Business Services	31	147	140	143	911,972	489.43
Education & Health Services	63	557	567	571	3,063,504	417.09
Leisure & Hospitality	43	405	422	424	837,404	154.47
Other Services	32	64	63	64	334,506	404.16
Local Government	31	1,179	1,187	1,176	9,531,984	621.03
State Government	12	212	211	204	1,202,216	442.48

**TABLE 6. COUNTY SUMMARY
EMPLOYMENT AND TOTAL EARNINGS, BY INDUSTRY
SECOND QUARTER 2006**

NORTH AMERICAN INDUSTRY CLASSIFICATION SYSTEM INDUSTRY GROUP	NUMBER OF EMPLOYING UNITS	EMPLOYMENT			TOTAL EARNINGS	AVERAGE
		APRIL	MAY	JUNE	APRIL - JUNE 2006	WEEKLY EARNINGS
POLK COUNTY - TOTAL	545	6,307	6,384	6,431	\$37,898,631	\$457.37
Natural Resources & Mining	26	252	256	256	2,015,210	608.70
Construction	36	191	209	227	1,010,642	371.97
Manufacturing	45	1,389	1,414	1,417	10,110,722	552.90
Trade, Transportation & Utilities	155	1,331	1,347	1,400	6,814,791	385.64
Wholesale Trade	27	108	108	114	530,852	371.23
Retail Trade	85	833	853	872	3,632,917	327.74
Transportation, Warehousing & Utilities	43	390	386	414	2,651,022	514.10
Information	9	57	58	59	368,711	489.01
Financial Activities	40	225	227	227	1,454,324	494.28
Professional & Business Services	50	151	156	157	1,025,841	510.20
Education & Health Services	76	958	928	960	5,395,392	437.49
Leisure & Hospitality	43	460	486	477	948,704	153.85
Other Services	30	138	139	140	592,598	327.95
Local Government	21	819	822	825	6,420,499	600.83
State Government	14	336	342	286	1,741,197	416.82
POPE COUNTY - TOTAL	1,721	27,150	27,279	26,947	\$192,931,584	\$547.12
Natural Resources & Mining	23	764	654	686	6,861,315	752.56
Construction	173	1,119	1,153	1,183	9,287,804	620.36
Manufacturing	91	5,184	5,172	5,168	40,878,055	607.67
Trade, Transportation & Utilities	471	6,547	6,580	6,527	55,141,886	647.45
Wholesale Trade	100	709	713	719	5,733,741	618.02
Retail Trade	280	3,359	3,383	3,326	16,179,762	370.86
Transportation, Warehousing & Utilities	91	2,479	2,484	2,482	33,228,383	1029.96
Information	24	268	275	266	2,287,878	652.62
Financial Activities	180	862	850	859	6,420,280	576.28
Professional & Business Services	225	2,591	2,677	2,654	12,755,911	371.58
Education & Health Services	239	2,986	2,939	2,945	19,744,913	513.70
Leisure & Hospitality	130	2,431	2,483	2,437	5,964,796	187.25
Other Services	109	484	487	473	2,463,429	393.69
Local Government	40	2,322	2,363	2,301	20,107,578	664.22
State Government	16	1,592	1,646	1,448	11,017,739	542.59

**TABLE 6. COUNTY SUMMARY
EMPLOYMENT AND TOTAL EARNINGS, BY INDUSTRY
SECOND QUARTER 2006**

NORTH AMERICAN INDUSTRY CLASSIFICATION SYSTEM INDUSTRY GROUP	NUMBER OF EMPLOYING UNITS	EMPLOYMENT			TOTAL EARNINGS	AVERAGE
		APRIL	MAY	JUNE	APRIL - JUNE 2006	WEEKLY EARNINGS
PRAIRIE COUNTY - TOTAL	243	1,590	1,609	1,578	\$9,785,675	\$472.73
Natural Resources & Mining	31	150	158	160	1,195,618	589.56
Trade, Transportation & Utilities	70	382	391	393	2,059,616	407.63
Wholesale Trade	11	78	82	80	649,814	624.82
Retail Trade	40	225	228	232	728,887	245.55
Transportation, Warehousing & Utilities	19	79	81	81	680,915	652.01
Information	4	9	9	9	96,979	828.88
Financial Activities	16	62	62	61	419,523	523.31
Professional & Business Services	16	58	58	57	318,146	424.38
Education & Health Services	30	178	180	170	982,777	429.54
Leisure & Hospitality	20	118	117	119	253,396	165.19
Other Services	12	42	41	41	173,620	323.11
Local Government	15	347	346	314	2,479,699	568.26
State Government	10	50	49	48	343,751	539.64
Other	19	194	198	206	1,462,550	564.40
PULASKI COUNTY - TOTAL	13,994	239,303	239,974	241,339	\$2,158,669,057	\$691.29
Natural Resources & Mining	46	710	719	724	8,494,394	910.47
Construction	1,137	10,350	10,566	10,830	97,020,033	705.26
Manufacturing	443	15,743	15,687	15,776	155,037,638	757.91
Trade, Transportation & Utilities	3,244	51,556	51,844	51,713	434,934,640	647.07
Wholesale Trade	1,089	13,322	13,395	13,491	155,165,967	890.56
Retail Trade	1,749	24,642	24,745	24,583	141,566,621	441.65
Transportation, Warehousing & Utilities	406	13,592	13,704	13,639	138,202,052	779.11
Information	235	8,671	8,733	8,822	109,128,670	960.25
Financial Activities	1,704	16,076	16,145	16,191	182,403,902	869.48
Professional & Business Services	2,678	34,397	34,321	34,157	290,417,880	651.47
Education & Health Services	1,956	33,111	33,202	33,364	325,697,298	754.04
Leisure & Hospitality	1,021	20,296	20,521	21,007	69,894,733	260.89
Other Services	1,224	6,780	6,896	7,210	46,984,051	519.13
Local Government	104	16,993	16,741	17,377	172,609,910	779.34
State Government	202	24,620	24,599	24,168	266,045,908	836.60

**TABLE 6. COUNTY SUMMARY
EMPLOYMENT AND TOTAL EARNINGS, BY INDUSTRY
SECOND QUARTER 2006**

NORTH AMERICAN INDUSTRY CLASSIFICATION SYSTEM INDUSTRY GROUP	NUMBER OF EMPLOYING UNITS	EMPLOYMENT			TOTAL EARNINGS	AVERAGE
		APRIL	MAY	JUNE	APRIL - JUNE 2006	WEEKLY EARNINGS
RANDOLPH COUNTY - TOTAL	417	5,212	5,188	5,192	\$30,359,850	\$449.34
Natural Resources & Mining	22	87	84	81	456,765	418.28
Construction	27	105	102	116	490,605	350.52
Manufacturing	41	1,102	1,094	1,082	7,282,624	512.69
Trade, Transportation & Utilities	103	973	973	997	5,183,767	406.47
Wholesale Trade	22	208	202	198	1,042,422	395.66
Retail Trade	64	618	623	635	2,744,836	337.65
Transportation, Warehousing & Utilities	17	147	148	164	1,396,509	702.12
Information	6	47	48	46	408,275	668.21
Financial Activities	28	151	149	153	813,363	414.35
Professional & Business Services	38	226	230	235	1,010,613	337.51
Education & Health Services	65	855	853	827	5,193,364	472.77
Leisure & Hospitality	28	490	463	461	875,275	142.85
Other Services	24	69	70	68	314,562	350.68
Local Government	23	845	864	873	6,430,083	574.70
State Government	12	262	258	253	1,900,554	567.39
SAINT FRANCIS COUNTY - TOTAL	674	8,120	8,258	8,365	\$52,274,148	\$487.54
Natural Resources & Mining	21	160	168	174	1,036,655	476.55
Construction	42	230	234	239	1,861,654	611.11
Manufacturing	22	1,224	1,366	1,430	9,399,932	539.61
Trade, Transportation & Utilities	191	2,124	2,130	2,119	12,863,202	465.78
Wholesale Trade	31	513	514	514	4,133,629	619.02
Retail Trade	128	1,289	1,288	1,284	5,933,181	354.62
Transportation, Warehousing & Utilities	32	322	328	321	2,796,392	664.59
Information	9	99	100	99	673,612	521.64
Financial Activities	49	257	261	272	1,761,490	514.55
Professional & Business Services	50	185	169	169	1,468,552	647.99
Education & Health Services	153	1,287	1,288	1,276	7,063,881	423.30
Leisure & Hospitality	50	747	733	764	1,872,222	192.54
Other Services	40	126	126	123	479,457	295.05
Local Government	30	1,183	1,179	1,203	10,033,284	649.47
State Government	17	498	504	497	3,760,207	578.88

**TABLE 6. COUNTY SUMMARY
EMPLOYMENT AND TOTAL EARNINGS, BY INDUSTRY
SECOND QUARTER 2006**

NORTH AMERICAN INDUSTRY CLASSIFICATION SYSTEM INDUSTRY GROUP	NUMBER OF EMPLOYING UNITS	EMPLOYMENT			TOTAL EARNINGS	AVERAGE
		APRIL	MAY	JUNE	APRIL - JUNE 2006	WEEKLY EARNINGS
SALINE COUNTY - TOTAL	1,688	19,927	20,118	20,304	\$140,766,321	\$538.28
Natural Resources & Mining	10	32	32	33	344,082	818.59
Construction	297	1,960	1,970	1,963	15,402,840	603.17
Manufacturing	86	1,865	1,861	1,878	17,808,733	733.35
Trade, Transportation & Utilities	419	4,270	4,316	4,302	28,153,027	504.10
Wholesale Trade	124	549	559	567	5,607,678	772.58
Retail Trade	243	3,465	3,496	3,479	20,401,371	450.96
Transportation, Warehousing & Utilities	52	256	261	256	2,143,978	640.06
Information	17	136	136	141	945,714	528.43
Financial Activities	161	740	753	756	5,593,111	573.91
Professional & Business Services	213	1,217	1,212	1,259	8,600,016	538.13
Education & Health Services	183	2,614	2,666	2,661	16,896,597	491.02
Leisure & Hospitality	128	2,307	2,367	2,480	6,926,993	223.45
Other Services	124	583	592	571	3,384,278	447.30
Local & State Government	50	4,203	4,213	4,260	36,710,930	668.33
SCOTT COUNTY - TOTAL	187	2,938	2,932	2,980	\$17,289,312	\$450.83
Natural Resources & Mining	18	174	168	178	1,373,089	609.36
Trade, Transportation & Utilities	41	463	456	463	2,317,279	386.94
Wholesale Trade	7	65	64	68	431,164	505.07
Retail Trade	27	329	324	334	1,295,570	302.92
Transportation, Warehousing & Utilities	7	69	68	61	590,545	688.28
Financial Activities	17	71	75	74	414,886	435.20
Professional & Business Services	8	11	8	8	42,681	364.79
Education & Health Services	30	304	290	317	1,707,863	432.63
Leisure & Hospitality	19	185	202	196	371,903	147.21
Other Services	10	61	62	62	519,850	648.46
Local Government	5	371	369	376	3,142,327	649.78
State Government	8	74	76	73	416,882	431.41
Other	31	1,224	1,226	1,233	6,982,552	437.51

**TABLE 6. COUNTY SUMMARY
EMPLOYMENT AND TOTAL EARNINGS, BY INDUSTRY
SECOND QUARTER 2006**

NORTH AMERICAN INDUSTRY CLASSIFICATION SYSTEM INDUSTRY GROUP	NUMBER OF EMPLOYING UNITS	EMPLOYMENT			TOTAL EARNINGS	AVERAGE
		APRIL	MAY	JUNE	APRIL - JUNE 2006	WEEKLY EARNINGS
SEARCY COUNTY - TOTAL	176	1,713	1,714	1,717	\$8,706,405	\$390.59
Construction	6	13	15	18	72,721	364.82
Manufacturing	17	261	262	272	1,118,779	324.75
Trade, Transportation & Utilities	38	299	296	294	1,162,517	301.77
Retail Trade	27	208	208	209	769,114	283.98
Other Trade, Transportation & Utilities	11	91	88	85	393,403	343.88
Financial Activities	14	93	107	108	609,033	456.32
Professional & Business Services	16	31	31	29	130,495	330.93
Education & Health Services	43	311	316	326	1,415,032	342.65
Leisure & Hospitality	10	114	116	137	271,116	170.48
Local Government	10	372	377	341	2,623,789	555.50
State Government	8	139	145	143	903,178	488.12
Other	14	80	49	49	399,745	518.25
SEBASTIAN COUNTY - TOTAL	3,624	73,563	74,005	74,449	\$592,155,494	\$615.50
Natural Resources & Mining	67	1,236	1,349	1,355	20,101,214	1177.35
Construction	311	2,842	2,881	2,972	24,822,513	658.80
Manufacturing	229	21,386	21,492	21,643	195,344,392	698.68
Trade, Transportation & Utilities	927	12,502	12,659	12,689	87,515,221	533.58
Wholesale Trade	239	2,499	2,520	2,573	24,880,849	756.29
Retail Trade	563	7,839	7,957	7,894	41,320,559	402.51
Transportation, Warehousing & Utilities	125	2,164	2,182	2,222	21,313,813	748.87
Information	57	1,164	1,171	1,176	12,434,521	817.29
Financial Activities	409	2,525	2,531	2,520	22,020,396	670.75
Professional & Business Services	514	9,342	9,399	9,658	62,479,781	507.71
Education & Health Services	454	9,643	9,644	9,653	85,865,526	684.70
Leisure & Hospitality	316	5,561	5,558	5,650	15,789,875	217.29
Other Services	275	1,483	1,463	1,488	8,944,136	465.50
Local Government	43	4,528	4,527	4,425	45,947,900	786.60
State Government	22	1,351	1,331	1,220	10,890,019	644.05

**TABLE 6. COUNTY SUMMARY
EMPLOYMENT AND TOTAL EARNINGS, BY INDUSTRY
SECOND QUARTER 2006**

NORTH AMERICAN INDUSTRY CLASSIFICATION SYSTEM INDUSTRY GROUP	NUMBER OF EMPLOYING UNITS	EMPLOYMENT			TOTAL EARNINGS	AVERAGE
		APRIL	MAY	JUNE	APRIL - JUNE 2006	WEEKLY EARNINGS
SEVIER COUNTY - TOTAL	337	5,997	6,001	5,912	39,245,169	\$505.67
Natural Resources & Mining	19	196	203	212	1,463,282	552.67
Trade, Transportation & Utilities	91	845	838	853	5,154,606	469.06
Wholesale Trade	15	146	142	137	1,533,340	832.58
Retail Trade	57	593	593	596	2,621,734	339.51
Transportation, Warehousing & Utilities	19	106	103	120	999,532	701.10
Information	6	42	41	41	333,121	619.95
Financial Activities	29	221	219	223	1,329,044	462.60
Professional & Business Services	30	102	105	102	1,270,071	948.52
Education & Health Services	56	557	560	552	3,048,819	421.55
Leisure & Hospitality	20	260	254	255	537,626	161.34
Other Services	33	146	157	146	627,899	322.72
Local Government	12	871	854	782	7,692,132	708.06
State Government	9	200	189	178	1,306,797	531.87
Other	32	2,557	2,581	2,568	16,481,772	493.57
SHARP COUNTY - TOTAL	432	3,999	3,992	4,062	\$21,993,283	\$421.09
Construction	35	220	226	232	1,432,243	487.49
Manufacturing	21	194	197	196	887,443	348.88
Trade, Transportation & Utilities	100	1,037	1,035	1,006	6,522,346	489.00
Wholesale Trade	12	58	58	61	454,442	592.49
Retail Trade	71	644	656	647	2,749,326	325.87
Transportation, Warehousing & Utilities	17	335	321	298	3,318,578	802.75
Information	7	55	54	52	668,573	958.30
Financial Activities	38	269	277	272	1,799,472	507.66
Professional & Business Services	39	186	172	186	1,027,424	435.84
Education & Health Services	84	563	572	565	2,685,967	364.61
Leisure & Hospitality	39	500	480	494	973,277	152.38
Local Government	29	801	803	803	5,013,876	480.70
State Government	9	95	95	96	608,590	491.06
Other	31	79	81	160	374,072	269.76

**TABLE 6. COUNTY SUMMARY
EMPLOYMENT AND TOTAL EARNINGS, BY INDUSTRY
SECOND QUARTER 2006**

NORTH AMERICAN INDUSTRY CLASSIFICATION SYSTEM INDUSTRY GROUP	NUMBER OF EMPLOYING UNITS	EMPLOYMENT			TOTAL EARNINGS	AVERAGE
		APRIL	MAY	JUNE	APRIL - JUNE 2006	WEEKLY EARNINGS
STONE COUNTY - TOTAL	270	2,968	3,023	3,157	\$15,645,072	\$394.67
Construction	23	106	108	108	568,711	407.58
Manufacturing	24	467	480	490	2,424,277	389.32
Trade, Transportation & Utilities	73	704	721	725	3,494,009	375.03
Wholesale Trade	9	52	52	53	247,797	364.23
Retail Trade	51	604	620	619	2,913,934	364.87
Transportation, Warehousing & Utilities	13	48	49	53	332,278	511.20
Financial Activities	23	95	101	99	660,723	516.86
Professional & Business Services	10	29	18	18	123,279	437.68
Education & Health Services	43	498	502	489	3,020,888	468.19
Leisure & Hospitality	34	427	443	454	931,142	162.30
Other Services	14	26	26	27	136,643	399.15
Local Government	10	396	405	391	3,163,390	612.43
State Government	9	167	164	166	794,889	369.09
Other	7	53	55	190	327,121	253.32
UNION COUNTY - TOTAL	1,368	20,018	20,111	20,102	\$164,926,420	\$631.90
Natural Resources & Mining	106	509	522	539	4,184,776	615.11
Construction	90	1,288	1,320	1,352	12,464,477	726.37
Manufacturing	65	5,212	5,209	5,260	50,932,589	749.55
Trade, Transportation & Utilities	354	3,667	3,667	3,632	27,480,206	578.30
Wholesale Trade	78	574	575	565	8,124,466	1093.86
Retail Trade	219	2,303	2,298	2,259	10,599,380	356.56
Transportation, Warehousing & Utilities	57	790	794	808	8,756,360	844.77
Information	21	188	187	194	1,260,767	511.33
Financial Activities	120	749	756	756	5,656,207	577.30
Professional & Business Services	133	1,778	1,779	1,769	18,312,436	793.46
Education & Health Services	192	2,363	2,350	2,343	17,973,957	587.85
Leisure & Hospitality	86	1,063	1,072	1,080	2,930,008	210.31
Other Services	146	620	621	659	3,134,476	380.71
Local Government	37	2,058	2,074	1,980	16,781,708	633.62
State Government	18	523	554	538	3,814,813	545.10

**TABLE 6. COUNTY SUMMARY
EMPLOYMENT AND TOTAL EARNINGS, BY INDUSTRY
SECOND QUARTER 2006**

NORTH AMERICAN INDUSTRY CLASSIFICATION SYSTEM INDUSTRY GROUP	NUMBER OF EMPLOYING UNITS	EMPLOYMENT			TOTAL EARNINGS	AVERAGE
		APRIL	MAY	JUNE	APRIL - JUNE 2006	WEEKLY EARNINGS
VAN BUREN COUNTY - TOTAL	360	3,788	3,845	3,884	\$21,980,368	\$440.43
Natural Resources & Mining	10	24	23	21	99,602	338.02
Construction	45	175	182	188	1,115,820	472.47
Manufacturing	14	575	569	540	3,358,140	460.19
Trade, Transportation & Utilities	98	810	814	822	4,256,780	401.61
Wholesale Trade	17	65	61	52	426,640	553.12
Retail Trade	60	613	623	639	2,814,819	346.44
Transportation, Warehousing & Utilities	21	132	130	131	1,015,321	596.20
Information	10	52	52	51	397,479	591.78
Financial Activities	27	137	136	145	889,724	491.20
Professional & Business Services	29	106	104	105	523,411	383.45
Education & Health Services	47	582	575	580	3,491,173	463.82
Leisure & Hospitality	32	488	519	558	1,478,619	218.03
Other Services	27	71	74	73	389,173	411.97
Local Government	13	682	709	713	5,368,319	588.80
State Government	8	86	88	88	612,128	539.16
WASHINGTON COUNTY - TOTAL	5,572	91,340	91,282	93,064	\$757,349,686	\$633.96
Natural Resources & Mining	40	452	453	463	3,534,481	596.23
Construction	680	5,961	6,079	6,134	51,793,458	657.66
Manufacturing	234	15,709	15,555	15,594	124,941,323	615.32
Trade, Transportation & Utilities	1,351	20,523	20,684	20,836	160,318,801	596.31
Wholesale Trade	374	3,576	3,660	3,774	43,826,440	918.60
Retail Trade	772	11,663	11,693	11,644	66,691,634	439.73
Transportation, Warehousing & Utilities	205	5,284	5,331	5,418	49,800,727	716.80
Information	95	1,486	1,478	1,482	14,656,024	760.72
Financial Activities	682	3,958	3,971	4,043	36,030,400	694.51
Professional & Business Services	920	8,996	9,079	9,346	100,583,001	846.48
Education & Health Services	619	10,504	10,584	10,672	96,975,419	704.63
Leisure & Hospitality	499	9,361	9,446	9,327	28,994,708	237.83
Other Services	369	1,968	2,014	2,001	12,356,464	476.60
Local & State Government	83	12,422	11,939	13,166	127,165,607	781.99

**TABLE 6. COUNTY SUMMARY
EMPLOYMENT AND TOTAL EARNINGS, BY INDUSTRY
SECOND QUARTER 2006**

NORTH AMERICAN INDUSTRY CLASSIFICATION SYSTEM INDUSTRY GROUP	NUMBER OF EMPLOYING UNITS	EMPLOYMENT			TOTAL EARNINGS	AVERAGE
		APRIL	MAY	JUNE	APRIL - JUNE 2006	WEEKLY EARNINGS
WHITE COUNTY - TOTAL	1,614	24,136	24,110	24,092	\$168,188,062	\$536.55
Natural Resources & Mining	32	239	246	261	1,710,700	529.19
Construction	174	1,178	1,204	1,274	8,496,546	536.31
Manufacturing	83	3,689	3,638	3,672	32,538,316	682.68
Trade, Transportation & Utilities	469	5,925	5,937	5,913	40,021,067	519.59
Wholesale Trade	99	616	615	610	4,707,659	590.10
Retail Trade	290	3,098	3,111	3,091	15,054,131	373.55
Transportation, Warehousing & Utilities	80	2,211	2,211	2,212	20,259,277	704.74
Information	21	216	223	221	1,618,311	565.84
Financial Activities	173	910	936	911	6,224,214	520.99
Professional & Business Services	158	1,366	1,341	1,440	8,761,180	487.54
Education & Health Services	212	4,235	4,239	4,273	34,857,915	631.06
Leisure & Hospitality	123	2,387	2,347	2,311	5,387,116	176.46
Other Services	104	606	610	641	4,067,048	505.41
Local Government	46	2,623	2,626	2,533	19,937,741	591.24
State Government	19	762	763	642	4,567,908	486.45
WOODRUFF COUNTY - TOTAL	187	2,028	2,028	2,009	\$12,772,501	\$485.99
Natural Resources & Mining	20	109	114	115	743,840	507.86
Construction	6	60	62	63	377,388	470.75
Manufacturing	9	383	360	353	2,641,801	556.25
Trade, Transportation & Utilities	55	526	531	535	3,529,982	511.69
Wholesale Trade	13	231	231	214	1,846,875	630.48
Retail Trade	26	197	200	213	686,293	259.63
Transportation, Warehousing & Utilities	16	98	100	108	996,814	751.75
Financial Activities	15	61	59	61	374,408	477.36
Professional & Business Services	4	7	7	7	68,027	747.55
Education & Health Services	45	239	244	234	1,349,121	434.22
Leisure & Hospitality	7	51	55	74	124,870	160.09
Local Government	10	510	512	479	3,072,712	472.41
State Government	7	55	56	58	353,599	482.84
Other	9	27	28	30	136,753	371.28

**TABLE 6. COUNTY SUMMARY
EMPLOYMENT AND TOTAL EARNINGS, BY INDUSTRY
SECOND QUARTER 2006**

NORTH AMERICAN INDUSTRY CLASSIFICATION SYSTEM INDUSTRY GROUP	NUMBER OF EMPLOYING UNITS	EMPLOYMENT			TOTAL EARNINGS	AVERAGE
		APRIL	MAY	JUNE	APRIL - JUNE 2006	WEEKLY EARNINGS
YELL COUNTY - TOTAL	407	7,075	7,069	7,075	\$43,408,051	\$472.09
Natural Resources & Mining	24	272	268	276	1,669,830	472.24
Construction	45	396	389	385	2,836,322	559.43
Manufacturing	21	2,901	2,889	2,902	17,598,842	467.24
Trade, Transportation & Utilities	87	714	703	681	3,198,388	351.81
Wholesale Trade	11	22	20	20	111,942	416.66
Retail Trade	56	595	588	565	2,303,784	304.14
Transportation, Warehousing & Utilities	20	97	95	96	782,662	627.13
Information	4	51	50	51	484,615	735.75
Financial Activities	36	202	200	207	1,226,018	464.58
Professional & Business Services	35	251	254	247	2,214,728	679.64
Education & Health Services	67	482	483	480	2,376,512	379.53
Leisure & Hospitality	28	344	353	356	958,387	210.03
Other Services	19	74	76	79	381,907	384.86
Local Government	28	1,273	1,289	1,295	9,771,633	584.65
State Government	13	115	115	116	690,869	460.78
REST-OF-STATE-TOTAL	4,291	16,307	16,692	16,637	218,142,217	\$1,014.19
Natural Resources & Mining	55	439	449	501	6,309,016	1048.18
Construction	575	2,829	2,883	2,868	24,964,110	671.44
Manufacturing	47	187	186	186	1,930,155	796.82
Trade, Transportation & Utilities	1,725	6,800	6,918	6,906	117,757,061	1317.63
Wholesale Trade	1,468	5,632	5,703	5,683	105,783,153	1434.45
Retail Trade	104	467	473	480	5,182,908	842.29
Transportation, Warehousing & Utilities	153	701	742	743	6,791,000	716.90
Information	98	228	235	238	5,007,920	1648.61
Financial Activities	265	834	818	837	12,175,646	1128.87
Professional & Business Services	1,225	3,598	3,793	3,688	37,340,540	777.78
Education & Health Services	115	662	656	669	6,220,632	722.46
Leisure & Hospitality	42	73	68	67	509,550	565.33
Other	144	657	686	677	5,927,587	677.18

TABLE 7. FEDERAL GOVERNMENT EMPLOYMENT AND EARNINGS IN ARKANSAS

NORTH AMERICAN INDUSTRY CLASSIFICATION SYSTEM INDUSTRY GROUP	NUMBER OF EMPLOYING UNITS	EMPLOYMENT			TOTAL
		APRIL	MAY	JUNE	APRIL - JUNE 2006
Manufacturing	2	3	3	3	\$77,555
Trade, Transportation & Utilities	441	6,710	6,770	6,770	68,750,151
Information	1	32	32	36	431,837
Financial Activities	23	177	174	180	3,082,789
Professional & Business Services	32	772	777	857	11,229,184
Education & Health Services	6	3,961	3,960	3,982	78,431,818
Leisure & Hospitality	14	216	234	261	2,247,625
Other Services	2	265	272	217	876,716
Public Administration	480	8,510	8,526	8,693	129,083,809
TOTAL	1,001	20,646	20,748	20,999	\$294,211,484

**TABLE 8. WORKFORCE INFORMATION AREA, SUMMARY
EMPLOYMENT AND TOTAL EARNINGS, BY INDUSTRY
SECOND QUARTER 2006**

NORTH AMERICAN INDUSTRY CLASSIFICATION SYSTEM INDUSTRY GROUP	NUMBER OF EMPLOYING UNITS	EMPLOYMENT			TOTAL EARNINGS	AVERAGE WEEKLY EARNINGS
		APRIL	MAY	JUNE	APRIL-JUNE 2006	
CENTRAL WORKFORCE INFORMATION*	5,884	73,849	74,418	74,472	\$544,715,747	\$564.35
Natural Resources & Mining	164	915	960	996	7,815,466	628.20
Trade, Transportation & Utilities	1,512	14,447	14,547	14,568	87,162,504	461.74
Wholesale Trade	381	2,061	2,085	2,135	18,426,537	677.01
Retail Trade	884	10,951	11,018	10,996	56,026,910	392.21
Transportation, Warehousing & Utilities	247	1,435	1,444	1,437	12,709,057	679.53
Financial Activities	607	2,866	2,893	2,913	21,987,332	585.10
Professional & Business Services	710	7,080	7,065	7,181	77,011,046	833.34
Education & Health Services	695	9,619	9,765	9,792	66,286,557	524.30
Leisure & Hospitality	447	7,893	7,921	8,051	20,818,955	201.31
Local & State Government	210	14,187	14,255	13,792	123,552,242	675.10
Other	1,539	16,842	17,012	17,179	140,081,645	633.44

*Note: Pulaski County is not included in the Central Workforce Information. Please refer to Page 53 for information on Pulaski County.
Central Workforce Includes these counties: Faulkner, Lonoke, Monroe, Prairie, and Saline.

EASTERN WORKFORCE INFORMATION	3,410	38,069	38,273	38,332	\$263,671,916	\$530.61
Natural Resources & Mining	210	1,254	1,289	1,334	7,058,343	420.13
Construction	198	1,068	1,101	1,141	8,135,309	567.18
Trade, Transportation & Utilities	886	10,034	10,086	10,125	68,020,158	518.99
Wholesale Trade	181	2,045	2,037	2,074	17,847,561	669.05
Retail Trade	502	5,049	5,110	5,117	23,726,206	358.42
Transportation, Warehousing & Utilities	203	2,940	2,939	2,934	26,446,391	692.50
Financial Activities	277	1,575	1,580	1,604	11,552,335	560.19
Professional & Business Services	288	1,451	1,377	1,427	9,565,475	518.78
Education & Health Services	724	5,493	5,489	5,439	34,630,441	486.67
Leisure & Hospitality	234	3,566	3,608	3,634	9,354,750	199.74
Local Government	140	6,153	6,133	5,950	57,056,449	722.03
State Government	68	2,189	2,146	2,100	15,281,736	548.03
Other	385	5,286	5,464	5,578	43,016,920	607.97

Eastern Workforce Includes these counties: Crittenden, Cross, Lee, Phillips, and Saint Francis.

**TABLE 8. WORKFORCE INFORMATION AREA, SUMMARY
EMPLOYMENT AND TOTAL EARNINGS, BY INDUSTRY
SECOND QUARTER 2006**

NORTH AMERICAN INDUSTRY CLASSIFICATION SYSTEM INDUSTRY GROUP	NUMBER OF EMPLOYING UNITS	EMPLOYMENT			TOTAL EARNINGS	AVERAGE WEEKLY EARNINGS
		APRIL	MAY	JUNE	APRIL-JUNE 2006	
NORTH CENTRAL WORKFORCE INFORMATION	5,520	70,873	71,068	71,023	\$465,770,962	\$504.71
Construction	487	2,761	2,831	2,974	18,609,367	501.34
Manufacturing	306	13,614	13,341	13,397	107,362,614	614.00
Trade, Transportation & Utilities	1,521	15,562	15,665	15,717	97,992,175	481.71
Retail Trade	951	9,206	9,302	9,349	42,945,359	355.76
Other Trade, Transportation & Utilities	570	6,356	6,363	6,368	55,046,816	665.54
Financial Activities	522	2,602	2,657	2,683	17,959,592	521.85
Professional & Business Services	460	3,200	3,108	3,224	18,489,310	447.63
Education & Health Services	831	11,421	11,466	11,501	83,779,216	562.22
Leisure & Hospitality	448	6,388	6,543	6,609	15,396,157	181.83
Local Government	238	9,249	9,333	8,791	67,854,650	572.05
State Government	115	2,996	2,997	2,731	19,100,191	505.24
Other	592	3,080	3,127	3,396	19,227,690	462.06

North Central Workforce Includes these counties: Cleburne, Fulton, Independence, Izard, Jackson, Sharp, Stone, Van Buren, White, and Woodruff

NORTHEAST WORKFORCE INFORMATION	6,452	95,806	96,420	95,538	\$681,151,409	\$546.24
Natural Resources & Mining	369	1,844	1,969	2,101	11,930,928	465.55
Construction	498	3,083	3,160	3,283	23,067,157	558.81
Manufacturing	350	21,832	21,809	21,751	198,215,007	699.50
Trade, Transportation & Utilities	1,758	18,107	18,130	18,025	109,676,476	466.44
Wholesale Trade	392	3,823	3,864	3,832	32,929,156	659.70
Retail Trade	1,070	11,804	11,779	11,662	54,596,469	357.47
Transportation, Warehousing & Utilities	296	2,480	2,487	2,531	22,150,851	681.75
Financial Activities	589	3,423	3,435	3,440	27,436,970	614.84
Professional & Business Services	646	6,927	7,024	6,715	39,568,520	441.85
Education & Health Services	962	13,236	13,299	13,245	101,572,419	589.24
Leisure & Hospitality	462	7,756	7,825	7,998	18,650,301	182.53
Local Government	219	11,588	11,721	11,343	95,365,494	635.10
State Government	107	4,016	4,046	3,802	31,357,490	609.94
Other	492	3,994	4,002	3,835	24,310,647	474.19

Northeast Workforce Includes these counties: Clay, Craighead, Greene, Lawrence, Mississippi, Poinsett, and Randolph.

**TABLE 8. WORKFORCE INFORMATION AREA, SUMMARY
EMPLOYMENT AND TOTAL EARNINGS, BY INDUSTRY
SECOND QUARTER 2006**

NORTH AMERICAN INDUSTRY CLASSIFICATION SYSTEM INDUSTRY GROUP	NUMBER OF EMPLOYING UNITS	EMPLOYMENT			TOTAL EARNINGS	AVERAGE WEEKLY EARNINGS
		APRIL	MAY	JUNE	APRIL-JUNE 2006	
NORTHWEST WORKFORCE INFORMATION	14,740	232,604	233,562	236,000	\$1,952,272,043	\$641.62
Trade, Transportation & Utilities	3,648	53,467	53,917	54,217	429,937,489	613.96
Retail Trade	1,989	26,009	26,303	26,191	144,785,815	425.62
Other Trade, Transportation & Utilities	1,659	27,458	27,614	28,026	285,151,674	791.89
Education & Health Services	1,669	23,378	23,443	23,559	194,467,309	637.64
Leisure & Hospitality	1,365	21,419	22,070	22,228	65,136,778	228.73
Local & State Government	425	28,196	27,718	28,170	264,758,372	726.63
Other	7,633	106,144	106,414	107,826	997,972,095	718.83
Northwest Workforce Includes these counties: Baxter, Benton, Boone, Carroll, Madison, Marion, Newton, Searcy, and Washington.						
SOUTHEAST WORKFORCE INFORMATION	5,485	78,088	78,343	77,608	\$571,922,781	\$563.93
Natural Resources & Mining	400	2,782	2,893	2,958	21,183,629	566.26
Construction	387	3,587	3,651	3,444	29,290,530	632.78
Manufacturing	223	17,820	17,725	17,794	164,157,209	710.22
Trade, Transportation & Utilities	1,420	13,579	13,640	13,536	87,212,957	493.83
Wholesale Trade	255	2,487	2,479	2,435	20,719,929	646.06
Retail Trade	876	8,830	8,897	8,800	40,992,033	356.61
Transportation, Warehousing & Utilities	289	2,262	2,264	2,301	25,500,995	862.00
Local & State Government	359	16,684	16,805	16,152	131,128,508	609.59
Other	2,696	23,636	23,629	23,724	138,949,948	451.69
Southeast Workforce Includes these counties: Arkansas, Ashley, Bradley, Chicot, Cleveland, Desha, Drew, Grant, Jefferson, and Lincoln						
SOUTHWEST WORKFORCE INFORMATION	5,756	87,743	88,048	88,023	\$664,517,365	\$581.28
Natural Resources & Mining	405	2,724	2,747	2,846	22,841,464	633.78
Trade, Transportation & Utilities	1,525	15,344	15,539	15,483	102,465,461	509.98
Education & Health Services	752	9,353	9,385	9,387	58,019,189	476.05
Leisure & Hospitality	397	5,298	5,364	5,454	13,540,861	193.90
Local Government	268	11,248	11,232	10,830	91,185,796	631.73
State Government	150	3,296	3,324	3,289	25,116,894	584.94
Other	2,259	40,480	40,457	40,734	351,347,700	666.39
Southwest Workforce Includes these counties: Calhoun, Columbia, Dallas, Hempstead, Howard, Lafayette, Little River, Miller, Nevada, Ouachita, Sevier, and Union						

**TABLE 8. WORKFORCE INFORMATION AREA, SUMMARY
EMPLOYMENT AND TOTAL EARNINGS, BY INDUSTRY
SECOND QUARTER 2006**

NORTH AMERICAN INDUSTRY CLASSIFICATION SYSTEM INDUSTRY GROUP	NUMBER OF EMPLOYING UNITS	EMPLOYMENT			TOTAL EARNINGS	AVERAGE WEEKLY EARNINGS
		APRIL	MAY	JUNE	APRIL-JUNE 2006	
WEST CENTRAL WORKFORCE INFORMATION	8,189	110,889	110,471	110,111	\$746,879,133	\$519.98
Natural Resources & Mining	266	2,416	2,319	2,377	19,753,394	640.96
Construction	890	5,489	5,622	5,717	41,264,467	565.88
Trade, Transportation & Utilities	1,992	21,887	21,978	21,992	145,279,679	509.07
Financial Activities	861	4,024	4,051	4,118	30,178,479	571.17
Education & Health Services	1,109	15,420	15,337	15,320	114,135,181	571.63
Local & State Government	363	17,487	17,583	16,194	140,549,769	632.70
Other	2,708	44,166	43,581	44,393	255,718,164	446.59

West Central Workforce Includes these counties: Clark, Conway, Garland, Hot Spring, Johnson, Montgomery, Perry, Pike, Pope, and Yell

WESTERN WORKFORCE INFORMATION	6,368	111,990	112,643	112,973	845,123,154	\$577.68
Natural Resources & Mining	167	2,423	2,448	2,410	28,884,281	915.48
Trade, Transportation & Utilities	1,638	22,680	22,820	22,916	152,142,780	513.18
Retail Trade	959	12,243	12,410	12,373	61,283,525	381.96
Other Trade, Transportation & Utilities	679	10,437	10,410	10,543	90,859,255	667.97
Financial Activities	666	3,788	3,800	3,794	30,502,522	618.44
Professional & Business Services	781	10,476	10,548	10,883	70,324,028	508.62
Education & Health Services	802	13,487	13,477	13,520	109,256,060	622.79
Leisure & Hospitality	514	8,269	8,345	8,432	22,047,200	203.14
Other Services	441	2,153	2,149	2,182	13,005,989	462.89
Local & State Government	232	11,943	12,018	11,432	105,325,150	686.74
Other	1,127	36,771	37,038	37,404	313,635,144	650.80

Western Workforce Includes these counties: Crawford, Franklin, Logan, Polk, Scott, and Sebastian

