

Arkansas Covered Employment & Earnings

Jobs for People. People for Jobs.

DWS
Department of
WORKFORCE**Services**

Second Quarter
2005

**COVERED EMPLOYMENT AND EARNINGS
STATE OF ARKANSAS
SECOND QUARTER 2005**

**MIKE HUCKABEE, GOVERNOR
STATE OF ARKANSAS**

**ARTEE WILLIAMS, DIRECTOR
DEPARTMENT OF WORKFORCE SERVICES**

**PUBLISHED BY
LABOR MARKET INFORMATION & ANALYSIS
BUREAU OF LABOR STATISTICS PROGRAMS
POST OFFICE BOX 2981
LITTLE ROCK, ARKANSAS 72203-2981
BERNADETTE COLEMAN, BLS PROGRAMS MANAGER
TELEPHONE: (501) 682-3159**

STATE OF ARKANSAS HOME PAGE: <http://www.arkansas.gov>

DEPARTMENT OF WORKFORCE SERVICES HOME PAGE: <http://www.arkansas.gov/esd/>

**INTERNET SITE FOR LABOR MARKET INFORMATION:
<http://www.discoverarkansas.net>**

RELEASED: DECEMBER 2005

TABLE OF CONTENTS

DESCRIPTION OF DATA	Page
Industry Classification	1
Definition of Covered Employment and Earnings	2
Federal Government Employment	2
County Classification	2
Significant Developments During Second Quarter 2005	3

LIST OF GRAPHS AND TABLES

Graph 1	Total Covered Employment for Selected Years, Arkansas	7
Graph 2	Total Covered Earnings, by Calendar Quarter for Selected Years, Arkansas	8
Table 1	Quarterly Comparison of Covered Employment and Wages, by Industry	5
Table 2	Total Covered Employment in Arkansas, 1998-2005	6
Table 3	Total Covered Earnings, 1998-2005	9
Table 4	Total Taxable Earnings, 1998-2005	10
Table 5	State Summary - Employment and Total Earnings, by Industry, Second Quarter 2005	11
Table 6	County Summary - Employment and Total Earnings, by Industry, Second Quarter 2005	25
Table 7	Federal Government Employment and Total Earnings in Arkansas, Second Quarter 2005	63
Table 8	Workforce Information Area – Employment and Total Earnings, by Industry, Second Quarter 2005	64

EMPLOYMENT AND EARNINGS UNDER THE ARKANSAS EMPLOYMENT SECURITY LAW SECOND QUARTER 2005

DESCRIPTION OF DATA

This publication contains covered employment and payroll data by industry and county for the Second Quarter 2005. These data are compiled from quarterly contribution and wage reports submitted by employers subject to the Arkansas Employment Security Law. An employing unit is a single physical location where business is conducted, production takes place, or services are provided. Employment data have been tabulated for each month of the quarter by industry under the **North American Industry Classification System** (NAICS) (see "Industry Classification" below) on a statewide, county and workforce area basis. Payroll data represent the total wages paid during the quarter, and are also shown by

industry for the State and by publishable industry groups for each county and workforce area. The tabulation of this data is a joint effort in conjunction with the U.S. Bureau of Labor Statistics. In addition, there are tables included which set out total covered employment by months, quarterly payrolls, and average weekly earnings for the years 1998 through 2005. Data contained in this publication are subject to revision. These revisions will be reflected in the 2005 Annual Covered Employment and Earnings publication. Because of industry code changes between years, substantial employment and wage shifts among industries are anticipated.

INDUSTRY CLASSIFICATION

Previously published industry data **will not** be comparable in all instances with currently published data since industry codes have been revised according to the following Manuals: (a) between January 1, 1958 and December 31, 1967, industry codes were assigned under the 1957 Standard Industrial Classification (SIC) Manual; (b) between January 1, 1968 and December 31, 1974, industry codes were assigned under the 1967 Standard Industrial Classification (SIC) Manual; (c) between January 1, 1975 and December 31, 1987, industry codes were assigned under the 1972 Standard Industrial Classification (SIC) Manual; (d) between January 1, 1988 and December 31, 2000, industry codes were assigned under the 1987 Standard Industrial Classification (SIC) Manual; and (e) since January 1, 2001, industry codes have been assigned under the 2002 North American Industry Classification System (NAICS) Manual. **The NAICS Manual represents a significant change in coding methodology as compared to the**

SIC Manual. One of the most significant changes involves how NAICS treats auxiliary units. Auxiliary units are establishments primarily engaged in performing management or support services for other establishments of the same enterprise. The SIC code for these units was based on the activity of the enterprise served. The NAICS code is based on the actual activities that the establishment performs. Comparisons of many industries **should not be made** between this publication and previous Covered Employment and Earnings publications that were based on SIC. Even though some titles are the same or similar, in nature, NAICS and SIC could differ in the classification of employers. The implementation of NAICS represents a profound change for statistical programs, and will create significant benefits along with transition obstacles for both data collectors and data users. A summary is available on the NAICS home page at <http://www.census.gov/naics>.

DEFINITION OF COVERED EMPLOYMENT AND EARNINGS

Covered Employment is the number of workers employed by employers subject to the Arkansas Employment Security Law who worked or received pay for the payroll period including the 12th of the month. An employer is subject to the law when they employ one or more employees in each of ten days during the current or preceding calendar year.

Currently excluded from coverage is employment covered by the Railroad Unemployment Insurance Act, some domestic service workers, employees of small agricultural establishments, self-employed and unpaid family workers, insurance and real estate

agents who are on commission only, and employees of churches and religious organizations except separately incorporated schools. The payroll information in this publication includes all wages and salaries paid to any covered employees by their employers including bonuses, commissions, and cash values of remuneration received in any medium other than cash. These wages include both taxable and nontaxable wages. Only the first \$10,000 paid to each worker by an employer in the calendar year is taxable under the Arkansas Employment Security Law.

FEDERAL GOVERNMENT EMPLOYMENT

Table 7 on page 63 lists the total number of civilians employed by the Federal Government in Arkansas during the Second Quarter 2005. Employment and wage data are set out by industry divisions. These data are obtained from required reports submitted by various

government agencies having employment in the State. Civilian Federal workers are covered by the Unemployment Compensation for Federal Employees (UCFE) program.

COUNTY CLASSIFICATION

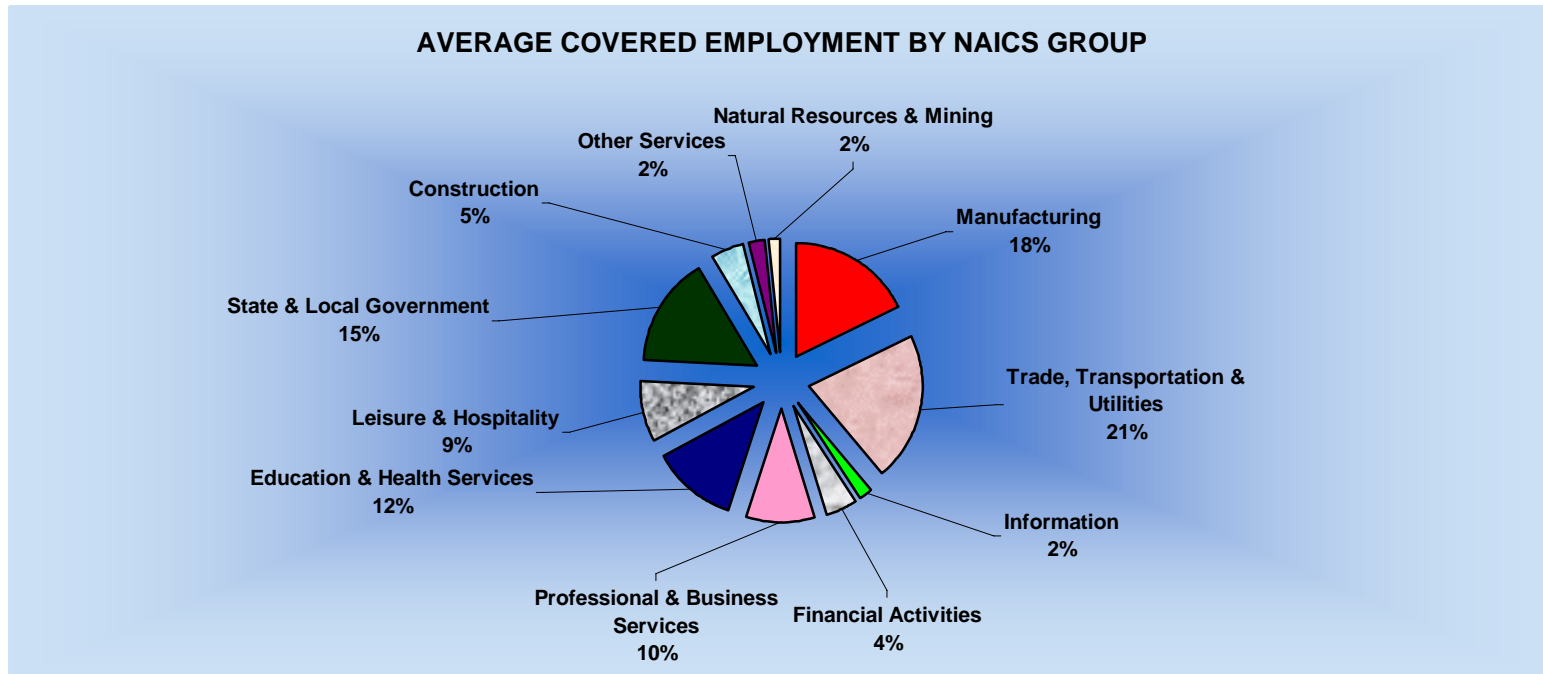
Employment and payroll data by county are classified according to the county where the workers are employed. Employers with operations in more than one county are requested to furnish this agency with a breakdown of employment and wages for at least one quarter of each year by the counties in which they operate. Many such employers submit county data with each regular contribution report. **Note:** This information is invaluable in the preparation of monthly employment and payroll data by county.

Employment and payroll data for multi - area employers, who do not furnish county data each quarter of the year, are prorated by county on the basis of one quarter's information. The "rest-of-state" table that appears on page 62 of this publication includes data on firms that **did not** provide a county breakdown of employment and payrolls. It also includes sales, and all other type of personnel with no permanent place of work, as well as employment of employers with no established place of business in Arkansas.

SIGNIFICANT DEVELOPMENTS DURING SECOND QUARTER 2005

AVERAGE EMPLOYMENT CHANGES

Covered employment averaged 1,134,598 during the Second Quarter 2005 (see table 1), an increase of 20,800 (1.9%) from the previous quarter and, 19,454 (1.7%) above the average recorded one-year ago. This *over-the-year* increase is more significant when used as an economic indicator. This *over-the-year* comparison allows for the disregarding of many seasonal factors that are evident when making an *over-the-quarter* comparison.



EMPLOYMENT CHANGES FROM FIRST QUARTER 2005

Over the quarter gains were recorded in ten of the eleven industry groups (see table 1). Leisure and Hospitality recorded the largest quarterly gain of 6,434 employees added. The driving factor for the increase was in Accommodation & Food Services as businesses added jobs for the upcoming season. Trade, Transportation & Utilities added 3,611 as the trade industry ramped up for spring and summer shopping. The Construction industry (+3,316) started new jobs as the weather improved. Professional & Business services

rose 2,481 additional jobs, Administrative & Waste Services was the driving factor for the increase. Education and Health Services (+1,660), Natural Resources and Mining (+1,414), State & Local Government (+765), Financial Activities (+714), Other Services (+608), and Manufacturing (+60) all recorded gains for the quarter.

The only loss occurred in the Information industry (-263).

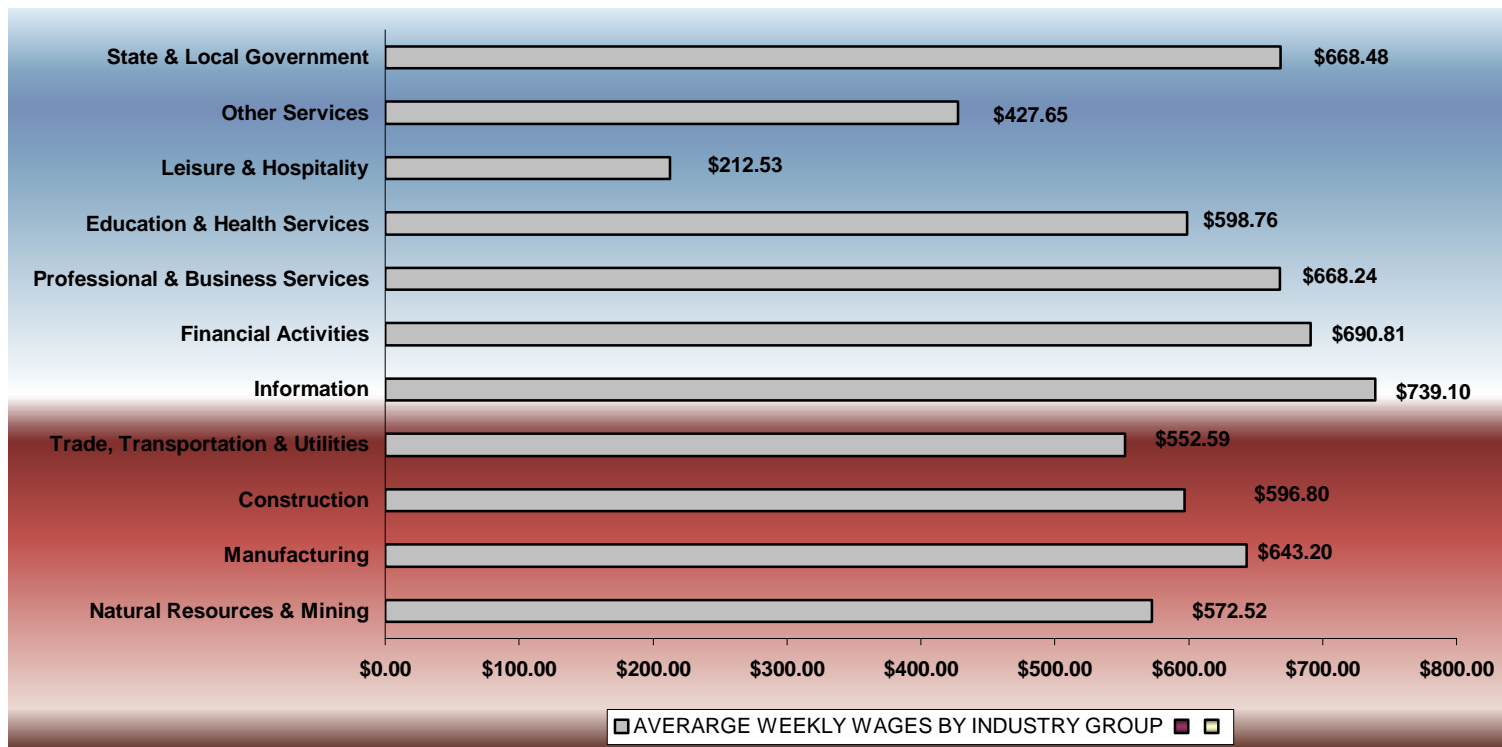
EMPLOYMENT CHANGES FROM FIRST QUARTER 2005

Over-the-year gains were recorded in seven industry groups while four recorded losses (see table 1). Significant gains were posted in State & Local Government (4,624), Leisure & Hospitality (4,066), and Educational & Health Services (4,057). Losses occurred in Manufacturing (-3,046), other services (-626) and Natural Resources & Mining (-400).

COVERED WAGES

Wages paid to covered workers totaled \$8,607,184,713 for the Second Quarter 2005 (see table 1), for an average weekly wage of \$583.55 (see table 5). Employees in Benton County recorded the highest average weekly wage (\$696.35), and workers in Newton County the lowest (\$357.70) (see table 6).

The Information sector recorded the highest average weekly wage for the State of Arkansas at \$739.10, while the Leisure & Hospitality sector recorded the lowest at \$212.53 for the State of Arkansas (see table 5).



Note: Because of industry code changes between years, substantial employment and wage shifts among industries are anticipated.

TABLE 1. QUARTERLY COMPARISON OF COVERED EMPLOYMENT AND WAGES, BY INDUSTRY

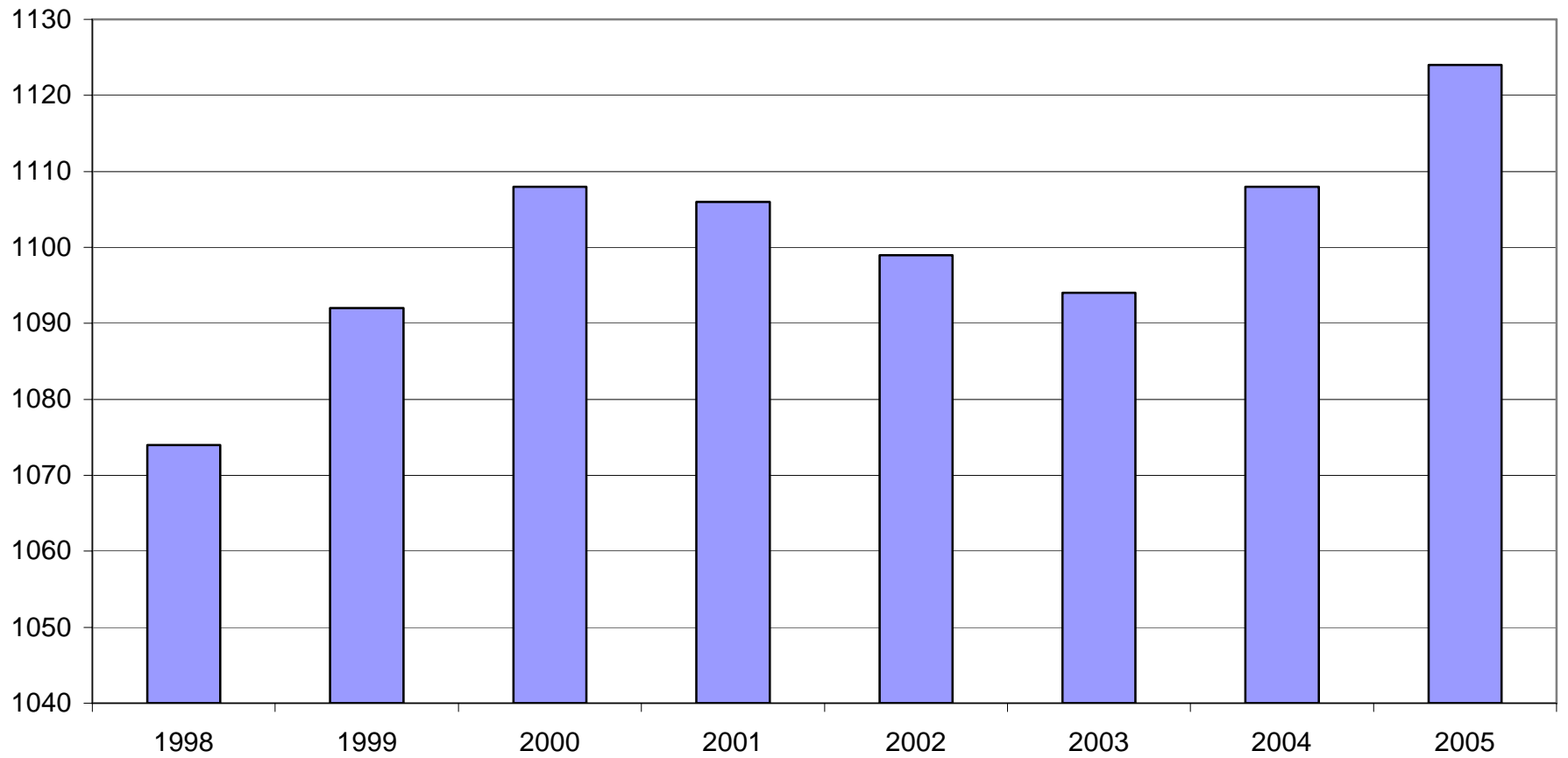
North American Industry Classification System Industry Group	Number of Employing Units	Average Covered Employment Apr. – Jun. 2005		Net Change From:		Total Wages Paid		% of Total
		Monthly Average	% of Total	Jan. – Mar. 2005	Apr. – Jun. 2004	Apr. – Jun. 2005		
Total	76,397	1,134,598	100.0	20,800	19,454	\$8,607,184,713	100.0	
Natural Resources and Mining	2,335	18,317	1.6	1,414	-400	136,331,919	1.6	
Agriculture, Forestry, Fishing and Hunting	2,015	14,206	1.3	1,118	-587	91,472,209	1.1	
Mining	320	4,111	0.4	296	187	44,859,710	0.5	
Construction	7,538	54,990	4.8	3,316	2,700	426,633,631	5.0	
Manufacturing	3,561	201,291	17.7	60	-3,046	1,683,120,614	19.6	
Trade, Transportation, and Utilities	20,902	241,369	21.3	3,611	4,019	1,733,909,972	20.1	
Wholesale Trade	6,232	47,852	4.2	1,302	1,556	507,446,269	5.9	
Retail Trade	11,364	131,780	11.6	1,775	1,418	655,105,859	7.6	
Transportation and Warehousing	2,950	55,106	4.9	379	969	479,421,238	5.6	
Utilities	356	6,631	0.6	155	77	91,936,606	1.1	
Information	1,214	20,041	1.8	-263	-205	192,563,553	2.2	
Financial Activities	7,720	49,616	4.4	714	395	445,572,456	5.2	
Finance and Insurance	4,562	35,842	3.2	153	18	360,024,043	4.2	
Real Estate and Rental and Leasing	3,158	13,774	1.2	560	377	85,548,413	1.0	
Professional and Business Services	10,307	111,078	9.8	2,481	3,871	964,953,274	11.2	
Professional and Technical Services	6,481	35,480	3.1	-536	1,957	370,432,895	4.3	
Management of Companies and Enterprises	482	23,427	2.1	-5	836	347,765,062	4.0	
Administrative and Waste Services	3,344	52,171	4.6	3,022	1,078	246,755,317	2.9	
Education and Health Services	8,204	140,314	12.4	1,660	4,057	1,092,181,340	12.7	
Educational Services	540	8,539	0.8	35	597	53,344,044	0.6	
Health Care and Social Assistance	7,664	131,774	11.6	1,625	3,459	1,038,837,296	12.1	
Leisure and Hospitality	5,913	96,834	8.5	6,434	4,066	267,542,642	3.1	
Arts, Entertainment and Recreation	903	10,180	0.9	2,036	178	34,831,791	0.4	
Accommodation and Food Services	5,010	86,654	7.6	4,398	3,888	232,710,851	2.7	
Other Services	5,531	25,607	2.3	608	-626	142,358,909	1.7	
State and Local Government	3,172	175,142	15.4	765	4,624	1,522,016,403	17.7	
Local Government	1,978	114,091	10.1	-629	2,750	979,477,953	11.4	
State Government	1,194	61,051	5.4	1,394	1,874	542,538,450	6.3	
Nonclassifiable Establishments	0	0	0.0	0	0	0	0.0	

Note: Items do not necessarily add to totals because of rounding. Because of industry code changes between years, substantial employment and wage shifts among industries are anticipated.

TABLE 2. TOTAL COVERED EMPLOYMENT IN ARKANSAS

Period	1998	1999	2000	2001	2002	2003	2004	2005
Average	1,073,732	1,092,351	1,108,490	1,106,053	1,098,558	1,094,087	1,108,276	1,124,198
January	1,050,970	1,065,920	1,089,956	1,096,009	1,081,635	1,082,740	1,089,510	1,104,692
February	1,057,593	1,074,315	1,096,126	1,101,616	1,086,793	1,084,880	1,094,626	1,112,453
March	1,066,099	1,084,653	1,109,157	1,112,143	1,098,500	1,092,172	1,105,269	1,124,250
April	1,074,416	1,093,574	1,111,543	1,115,526	1,103,399	1,095,341	1,111,023	1,130,599
May	1,083,133	1,098,539	1,116,779	1,119,815	1,111,998	1,103,099	1,117,154	1,136,212
June	1,086,125	1,101,748	1,121,245	1,119,734	1,112,028	1,099,688	1,117,021	1,136,984
July	1,046,396	1,062,563	1,075,096	1,071,830	1,065,697	1,053,220	1,071,474	NA
August	1,063,680	1,081,260	1,096,841	1,094,068	1,086,011	1,077,775	1,094,887	NA
September	1,088,772	1,108,212	1,123,735	1,115,996	1,113,148	1,105,980	1,122,725	NA
October	1,089,836	1,110,604	1,122,884	1,110,994	1,108,447	1,112,550	1,123,262	NA
November	1,087,855	1,112,003	1,120,620	1,109,012	1,107,611	1,109,712	1,125,083	NA
December	1,089,913	1,114,823	1,117,892	1,105,887	1,107,425	1,111,892	1,127,275	NA

AVERAGE TOTAL COVERED EMPLOYMENT GRAPH 1
In Thousands



TOTAL COVERED EARNINGS BY CALENDAR QUARTER, GRAPH 2

In Thousands

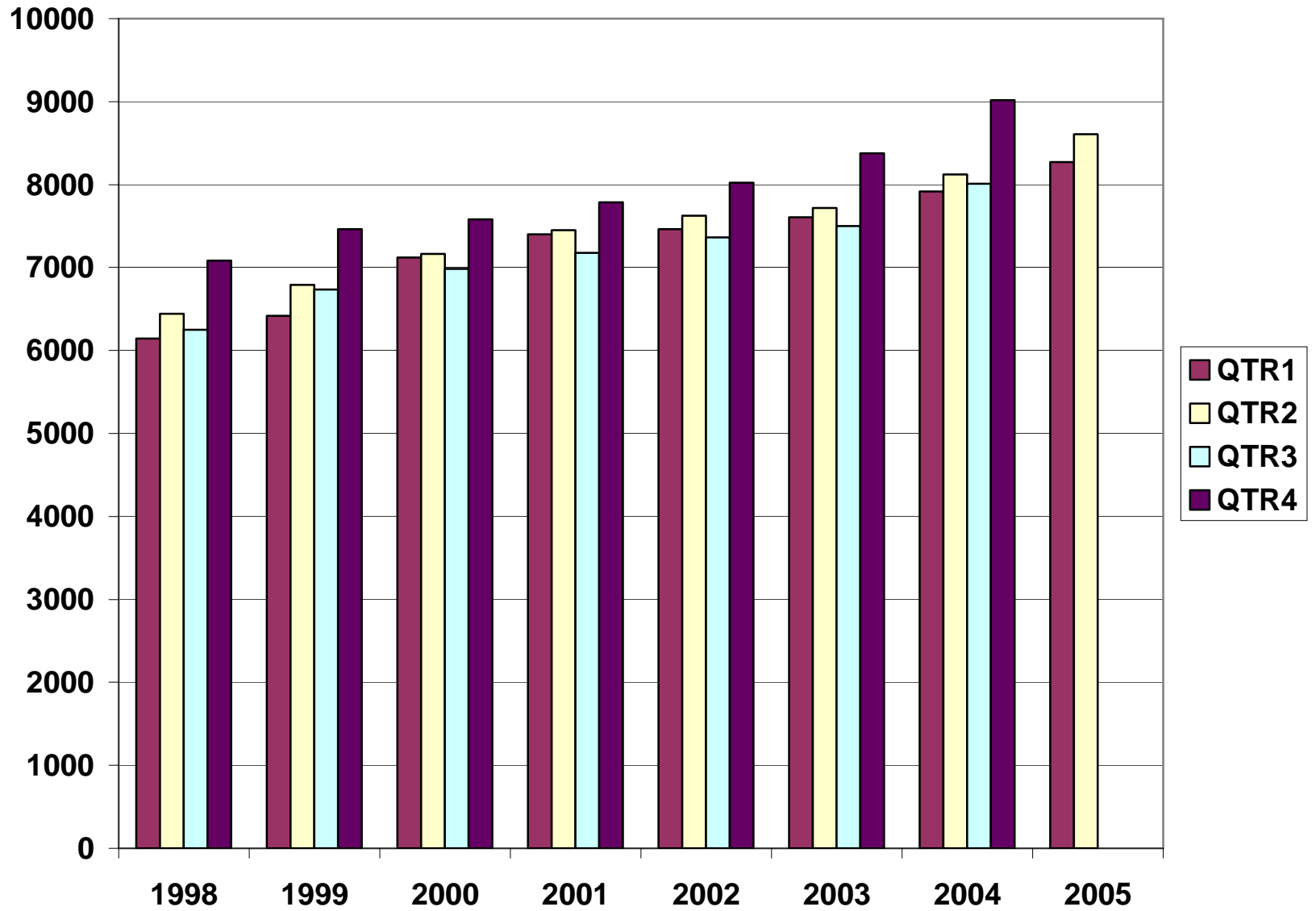


TABLE 3. TOTAL COVERED EARNINGS, 1998- 2005

Period	1998	1999	2000	2001
Total	\$25,914,345,060	\$27,407,925,462	\$28,853,825,155	\$29,807,669,666
January - March	6,145,178,755	6,418,456,638	7,122,666,917	7,398,887,532
April - June	6,441,129,069	6,791,960,679	7,166,110,114	7,448,023,298
July - September	6,246,775,598	6,733,480,079	6,986,103,157	7,177,293,061
October - December	7,081,261,638	7,464,028,066	7,578,944,967	7,783,465,775
Average Weekly Earnings	464.13	482.51	500.57	518.26

Period	2002	2003	2004	2005
Total	\$30,472,854,103	\$31,202,576,767	\$33,068,350,529	\$16,876,249,842
January - March	7,465,250,305	7,608,130,008	7,918,844,736	8,269,065,129
April - June	7,621,878,775	7,714,813,038	8,122,399,978	8,607,184,713
July - September	7,361,666,511	7,500,204,764	8,010,367,744	NA
October - December	8,024,058,512	8,379,428,957	9,016,738,071	NA
Average Weekly Earnings	533.44	548.45	573.80	577.38

TABLE 4. TOTAL TAXABLE EARNINGS, 1998 - 2005

Period	1998	1999	2000	2001
Total	\$8,554,973,370	\$8,807,445,422	\$9,048,033,534	\$9,003,189,480
January - March	4,063,795,529	4,203,067,856	4,560,814,012	4,670,296,360
April - June	2,271,303,325	2,325,649,764	2,260,741,187	2,219,485,263
July - September	1,236,054,184	1,267,562,743	1,250,850,348	1,190,098,737
October - December	983,820,332	1,011,165,059	975,627,987	923,309,120
Total	\$8,887,270,978	\$9,154,938,743	\$9,731,883,634	\$7,572,503,729
January - March	4,668,534,587	4,737,918,796	4,931,560,356	5,068,103,112
April - June	2,162,971,435	2,270,519,362	2,451,476,366	2,504,400,617
July - September	1,158,197,858	1,188,681,170	1,318,044,471	NA
October - December	897,567,098	957,819,415	1,030,802,441	NA

**TABLE 5. STATEWIDE SUMMARY
EMPLOYMENT AND TOTAL EARNINGS, BY INDUSTRY
SECOND QUARTER 2005**

NORTH AMERICAN INDUSTRY CLASSIFICATION SYSTEM INDUSTRY GROUPS	NUMBER OF EMPLOYING UNITS	EMPLOYMENT			TOTAL EARNINGS	AVERAGE
		APRIL	MAY	JUNE	APR. - JUN. 2005	WEEKLY EARNINGS
TOTAL, ALL INDUSTRIES	76,397	1,130,599	1,136,212	1,136,984	\$8,607,184,713	\$583.55
NATURAL RESOURCES & MINING	2,335	17,793	18,312	18,847	\$136,331,919	\$572.52
11 AGRICULTURE, FORESTRY, FISHING & HUNTING	2,015	13,765	14,242	14,612	\$91,472,209	\$495.29
111 CROP PRODUCTION	721	3,919	4,085	4,312	\$20,622,883	\$386.42
1111 Oilseed and Grain Farming	436	2,017	2,138	2,131	10,760,704	395.04
1112 Vegetable and Melon Farming	10	135	165	302	631,571	242.10
1113 Fruit and Tree Nut Farming	10	88	96	252	432,139	228.73
1114 Greenhouse & Nursery Production	49	482	419	355	2,612,588	480.02
1119 Other Crop Farming	216	1,197	1,267	1,272	6,185,881	382.10
112 ANIMAL PRODUCTION	253	3,701	3,704	3,776	\$27,637,361	\$570.42
1121 Cattle Ranching and Farming	75	341	350	352	1,938,604	428.93
1123 Poultry and Egg Production	87	2,538	2,522	2,558	19,928,153	603.68
1125 Animal Aquaculture	60	570	596	623	3,898,499	502.88
Other	31	252	236	243	1,872,105	591.00
113 FORESTRY AND LOGGING	578	3,174	3,253	3,292	\$22,347,827	\$530.63
1131 Timber Tract Operations	46	267	265	266	2,097,627	606.60
1132 Forest Nurseries & Gathering of Forest Products	6	30	29	30	247,221	641.02
1133 Logging	526	2,877	2,959	2,996	20,002,979	522.65
OTHER	463	2,971	3,200	3,232	\$20,864,138	\$512.05
21 MINING	320	4,028	4,070	4,235	\$44,859,710	\$839.39
211 OIL AND GAS EXTRACTION	74	378	380	389	\$4,916,811	\$989.23
212 MINING (EXCEPT OIL AND GAS)	101	1,889	1,920	1,990	\$20,432,168	\$813.09
213 SUPPORT ACTIVITIES FOR MINING	145	1,761	1,770	1,856	\$19,510,731	\$835.80

**TABLE 5. STATEWIDE SUMMARY
EMPLOYMENT AND TOTAL EARNINGS, BY INDUSTRY
SECOND QUARTER 2005**

NORTH AMERICAN INDUSTRY CLASSIFICATION SYSTEM INDUSTRY GROUPS		NUMBER OF EMPLOYING UNITS	EMPLOYMENT			TOTAL EARNINGS	AVERAGE
			APRIL	MAY	JUNE	APR. - JUN. 2005	WEEKLY EARNINGS
CONSTRUCTION		7,538	53,797	55,319	55,855	\$426,633,631	\$596.80
236	CONSTRUCTION OF BUILDINGS	2,060	12,289	12,507	12,708	\$101,434,287	\$624.14
2361	Residential Building Construction	1,467	4,464	4,454	4,635	30,904,437	526.22
2362	Nonresidential Building Construction	593	7,825	8,053	8,073	70,529,850	679.56
237	HEAVY & CIVIL ENGINEERING CONSTRUCTION	868	10,495	10,801	10,791	\$90,663,589	\$652.05
2371	Utility System Construction	412	4,822	4,987	4,918	38,011,873	595.64
2372	Land Subdivision	109	394	402	411	3,544,529	677.69
2373	Highway, Street & Bridge Construction	237	3,736	3,888	4,094	31,583,034	621.98
2379	Other Heavy Construction	110	1,543	1,524	1,368	17,524,153	911.85
238	SPECIALTY TRADE CONTRACTORS	4,610	31,013	32,011	32,356	\$234,535,755	\$567.45
2381	Building Foundation & Exterior Contractors	903	6,180	6,288	6,305	42,674,429	524.58
2382	Building Equipment Contractors	2,015	14,786	15,421	15,491	120,841,241	610.23
2383	Building Finishing Contractors	860	4,807	4,847	4,915	33,729,448	534.27
2389	Other Specialty Trade Contractors	832	5,240	5,455	5,645	37,290,637	526.65
MANUFACTURING		3,561	200,708	201,233	201,931	\$1,683,120,614	\$643.20
311	FOOD MANUFACTURING	289	50,892	50,897	51,118	\$342,729,970	\$517.25
3111	Animal Food Manufacturing	49	1,322	1,309	1,341	15,423,886	896.11
3112	Grain and Oilseed Milling	28	2,485	2,500	2,484	19,278,576	595.65
3114	Fruit, Vegetable & Specialty Food	37	6,862	6,855	6,951	52,846,684	590.06
3115	Dairy Product Manufacturing	10	731	728	726	6,069,468	641.03
3116	Animal Slaughtering & Processing	84	34,419	34,420	34,500	203,808,084	455.13
3118	Bakeries and Tortilla Manufacturing	53	3,354	3,378	3,402	26,633,561	606.49
3119	Other Food Manufacturing	19	1,606	1,590	1,595	17,981,942	866.14
	Other	9	113	117	119	687,769	454.77
312	BEVERAGE & TOBACCO PRODUCT MFG.	37	1,206	1,241	1,260	\$10,850,017	\$675.44
313	TEXTILE MILLS	19	391	393	386	\$4,049,716	\$798.76
3132	Fabric Mills	5	307	307	300	3,587,151	905.69
3133	Textile & Fabric Finishing Mills	14	84	86	86	462,565	416.98

**TABLE 5. STATEWIDE SUMMARY
EMPLOYMENT AND TOTAL EARNINGS, BY INDUSTRY
SECOND QUARTER 2005**

NORTH AMERICAN INDUSTRY CLASSIFICATION SYSTEM INDUSTRY GROUPS		NUMBER OF EMPLOYING UNITS	EMPLOYMENT			TOTAL EARNINGS	AVERAGE
			APRIL	MAY	JUNE	APR. - JUN. 2005	WEEKLY EARNINGS
314	TEXTILE PRODUCT MILLS	58	1,360	1,352	1,349	12,326,265	\$700.45
315	APPAREL MANUFACTURING	37	2,010	2,034	2,027	\$9,663,794	\$367.34
3152	Cut & Sew Apparel Manufacturing	30	915	930	930	4,402,489	366.11
	Other	7	1,095	1,104	1,097	5,261,305	368.37
316	LEATHER & ALLIED PRODUCT MANUFACTURING	23	2,433	2,317	2,279	\$13,617,123	\$447.06
3162	Footwear Manufacturing	12	2,234	2,112	2,068	12,273,082	441.57
3169	Other Leather Product Manufacturing	11	199	205	211	1,344,041	504.33
321	WOOD PRODUCT MANUFACTURING	396	13,407	13,537	13,727	\$107,399,806	\$609.39
3211	Sawmills and Wood Preservation	183	5,990	6,088	6,222	52,019,674	655.99
3212	Veneer & Engineered Wood Products	48	3,281	3,267	3,325	31,009,535	724.81
3219	Other Wood Product Manufacturing	165	4,136	4,182	4,180	24,370,597	449.99
322	PAPER MANUFACTURING	85	12,019	11,951	12,021	\$143,201,952	\$918.19
3221	Pulp, Paper & Paperboard Mills	11	4,807	4,774	4,809	74,110,515	1188.49
3222	Converted Paper Product Manufacturing	74	7,212	7,177	7,212	69,091,437	738.12
323	PRINTING & RELATED SUPPORT ACTIVITIES	306	4,697	4,680	4,753	\$36,082,665	\$589.30
324	PETROLEUM AND COAL PRODUCTS MFG.	19	888	908	881	\$10,901,384	\$939.75
325	CHEMICAL MANUFACTURING	115	5,056	5,124	5,167	\$60,789,571	\$914.08
3251	Basic Chemical Manufacturing	24	1,578	1,600	1,601	22,177,310	1070.90
3252	Resin, Rubber & Artificial Fibers	7	313	318	316	3,830,379	933.40
3253	Agricultural Chemical Manufacturing	21	405	412	422	4,461,054	830.89
3254	Pharmaceutical & Medicine Manufacturing	14	153	153	155	1,390,723	696.17
3255	Paint, Coating & Adhesive Manufacturing	7	175	175	188	2,274,938	975.81
3256	Cleaning Compound & Toiletry Manufacturing	17	1,066	1,075	1,090	11,114,711	793.85
3259	Other Chemical Preparation Manufacturing	25	1,366	1,391	1,395	15,540,456	863.74
326	PLASTICS & RUBBER PRODUCTS MFG.	171	12,975	13,045	13,065	\$116,626,729	\$688.60
3261	Plastics Product Manufacturing	127	7,640	7,600	7,573	58,666,832	593.46
3262	Rubber Product Manufacturing	44	5,335	5,445	5,492	57,959,897	821.99

**TABLE 5. STATEWIDE SUMMARY
EMPLOYMENT AND TOTAL EARNINGS, BY INDUSTRY
SECOND QUARTER 2005**

NORTH AMERICAN INDUSTRY CLASSIFICATION SYSTEM INDUSTRY GROUPS		NUMBER OF EMPLOYING UNITS	EMPLOYMENT			TOTAL EARNINGS	AVERAGE
			APRIL	MAY	JUNE	APR. - JUN. 2005	WEEKLY EARNINGS
327	NONMETALLIC MINERAL PRODUCT MFG.	249	4,545	4,622	4,672	\$42,012,145	\$700.56
3271	Clay Product & Refractory Manufacturing	14	492	492	491	4,158,507	650.61
3272	Glass & Glass Product Manufacturing	15	393	397	393	3,121,033	608.82
3273	Cement & Concrete Product Manufacturing	185	2,765	2,808	2,853	23,650,369	647.73
3274	Lime & Gypsum Product Manufacturing	3	397	418	414	6,589,139	1237.24
3279	Other Nonmetallic Mineral Products	32	498	507	521	4,493,097	679.47
331	PRIMARY METAL MANUFACTURING	65	7,920	7,934	8,023	\$92,716,973	\$896.10
3311	Iron & Steel Mills and Ferroalloys	7	2,085	2,078	2,110	36,876,320	1356.59
3312	Purchased Steel Product Manufacturing	13	2,116	2,067	2,133	20,090,887	734.07
3313	Alumina & Aluminum Production	19	1,686	1,751	1,765	18,050,736	800.76
3314	Other Nonferrous Metal Production	10	646	643	627	5,515,056	664.25
3315	Foundries	16	1,387	1,395	1,388	12,183,974	674.27
332	FABRICATED METAL PRODUCT MANUFACTURING	581	18,143	18,182	18,339	\$160,197,579	\$676.29
3321	Forging & Stamping	14	904	899	902	7,193,673	613.71
3322	Cutlery & Hand Tool Manufacturing	19	1,307	1,320	1,345	10,245,755	595.27
3323	Architectural & Structural Metals	190	5,046	5,074	5,152	44,925,419	678.85
3324	Boilers, Tanks & Shipping Containers	18	1,091	1,079	1,111	10,440,718	734.35
3325	Hardware Manufacturing	12	381	358	344	2,563,405	546.22
3326	Spring & Wire Product Manufacturing	18	870	892	869	6,028,264	528.75
3327	Machine Shops & Threaded Products	203	1,689	1,718	1,730	13,260,916	595.72
3328	Coating, Engraving & Heat Treating Metals	38	980	980	978	7,549,881	593.02
3329	Other Fabricated Metal Product Manufacturing	69	5,875	5,862	5,908	57,989,548	758.41
333	MACHINERY MANUFACTURING	256	14,253	14,359	14,275	117,987,689	\$634.88
3331	Agri., Construction & Mining Machinery	38	3,130	3,091	3,016	18,773,416	469.02
3333	Commercial & Service Industry Machinery	25	1,063	1,053	1,052	10,851,475	790.46
3334	HVAC & Commercial Refrigeration Equipment	26	4,612	4,736	4,706	40,355,834	662.65
3335	Metalworking Machinery Manufacturing	80	1,417	1,432	1,432	13,192,475	711.15
3339	Other General Purpose Machinery Manufacturing	54	3,225	3,222	3,216	26,585,964	634.92
	Other	33	806	825	853	8,228,525	764.45

**TABLE 5. STATEWIDE SUMMARY
EMPLOYMENT AND TOTAL EARNINGS, BY INDUSTRY
SECOND QUARTER 2005**

NORTH AMERICAN INDUSTRY CLASSIFICATION SYSTEM INDUSTRY GROUPS		NUMBER OF EMPLOYING UNITS	EMPLOYMENT			TOTAL EARNINGS	AVERAGE
			APRIL	MAY	JUNE	APR. - JUN. 2005	WEEKLY EARNINGS
334	COMPUTER & ELECTRONIC PRODUCT MFG.	76	5,967	5,889	5,919	\$45,888,655	\$595.76
3343	Audio & Video Equipment Manufacturing	10	1,540	1,532	1,526	10,655,408	534.78
3344	Semiconductors & Electronic Components	24	2,060	2,046	2,056	16,422,485	615.03
3345	Electronic Instrument Manufacturing	26	1,242	1,249	1,245	8,721,386	538.71
	Other	16	1,125	1,062	1,092	10,089,376	710.07
335	ELECTRICAL EQUIPMENT & APPLIANCES	69	12,983	13,203	12,980	\$124,058,621	\$730.96
3353	Electrical Equipment Manufacturing	27	4,945	4,950	4,927	45,378,941	706.52
	Other	42	8,038	8,253	8,053	78,679,680	745.84
336	TRANSPORTATION EQUIPMENT MANUFACTURING	175	16,299	16,397	16,559	\$139,064,233	\$651.54
3362	Motor Vehicle Body & Trailer Manufacturing	43	3,526	3,520	3,646	28,668,024	618.75
3363	Motor Vehicle Parts Manufacturing	63	6,659	6,701	6,789	52,905,294	605.93
3364	Aerospace Product & Parts Manufacturing	32	3,208	3,247	3,248	35,896,786	853.74
3366	Ship & Boat Building	23	1,643	1,660	1,664	11,191,954	519.98
	Other	14	1,263	1,269	1,212	10,402,175	641.16
337	FURNITURE & RELATED PRODUCT MFG.	265	7,368	7,318	7,292	\$50,785,214	\$533.25
3371	Household & Institutional Furniture	217	5,012	4,945	4,934	33,581,975	520.43
3372	Office Furniture & Fixtures Manufacturing	39	2,212	2,227	2,208	16,413,489	569.84
3379	Other Furniture Related Product Manufacturing	9	144	146	150	789,750	414.20
339	MISCELLANEOUS MANUFACTURING	270	5,896	5,850	5,839	\$42,170,513	\$553.41
3391	Medical Equipment & Supplies Manufacturing	99	2,566	2,566	2,504	20,672,043	624.73
3399	Other Miscellaneous Manufacturing	171	3,330	3,284	3,335	21,498,470	498.66

**TABLE 5. STATEWIDE SUMMARY
EMPLOYMENT AND TOTAL EARNINGS, BY INDUSTRY
SECOND QUARTER 2005**

NORTH AMERICAN INDUSTRY CLASSIFICATION SYSTEM INDUSTRY GROUPS		NUMBER OF EMPLOYING UNITS	EMPLOYMENT			TOTAL EARNINGS	AVERAGE
			APRIL	MAY	JUNE	APR. - JUN. 2005	WEEKLY EARNINGS
TRADE, TRANSPORTATION & UTILITIES		20,902	240,581	241,219	242,306	\$1,733,909,972	\$552.59
42	WHOLESALE TRADE	6,232	47,550	47,862	48,145	\$507,446,269	\$815.72
423	MERCHANT WHOLESALERS, DURABLE GOODS	2,089	21,506	21,579	21,793	\$211,783,891	\$753.31
4231	Motor Vehicle & Part Merchant Wholesalers	241	2,702	2,676	2,699	22,735,223	649.57
4232	Furniture & Furnishing Merchant Wholesalers	58	426	436	432	4,461,654	795.68
4233	Lumber & Supply Merchant Wholesalers	167	1,742	1,750	1,775	17,031,537	746.22
4234	Commercial Goods Merchant Wholesalers	239	2,361	2,374	2,412	33,526,557	1082.54
4235	Metal & Mineral Merchant Wholesalers	50	722	735	732	7,589,695	800.12
4236	Electric Goods Merchant Wholesalers	170	2,215	2,183	2,194	22,896,505	801.55
4237	Hardware & Plumbing Merchant Wholesalers	238	2,409	2,451	2,486	23,229,935	729.75
4238	Machinery & Supply Merchant Wholesalers	703	7,233	7,263	7,332	67,375,502	712.30
4239	Misc. Durable Goods Merchant Wholesalers	223	1,696	1,711	1,731	12,937,283	581.07
424	MERCHANT WHOLESALERS, NONDURABLE GOODS	1,308	17,500	17,685	17,635	\$152,761,768	\$667.41
4241	Paper & Paper Product Merchant Wholesalers	73	1,227	1,219	1,194	10,934,350	693.22
4242	Druggists' Goods Merchant Wholesalers	53	1,053	1,059	1,014	9,128,577	673.89
4243	Apparel & Piece Goods Merchant Wholesalers	37	432	435	432	3,310,373	588.09
4244	Grocery Product Merchant Wholesalers	363	5,958	6,010	6,099	57,609,273	735.84
4245	Farm Product Merchant Wholesalers	81	932	937	925	4,911,543	405.67
4246	Chemical Merchant Wholesalers	83	437	439	433	4,882,280	860.72
4247	Petroleum Merchant Wholesalers	159	1,429	1,438	1,439	12,307,112	659.57
4248	Alcoholic Beverage Merchant Wholesalers	37	1,134	1,148	1,147	11,407,884	767.74
4249	Misc. Nondurable Goods Merchant Wholesalers	422	4,898	5,000	4,952	38,270,376	594.72
425	ELECTRONIC MARKETS & AGENTS & BROKERS	2,835	8,544	8,598	8,717	\$142,900,610	\$1,275.26
44-45	RETAIL TRADE	11,364	131,491	131,650	132,198	\$655,105,859	\$382.40
441	MOTOR VEHICLE & PARTS DEALERS	1,722	17,732	17,720	17,965	\$141,575,728	\$611.63
4411	Automobile Dealers	742	10,756	10,724	10,864	97,649,715	696.71
4412	Other Motor Vehicle Dealers	196	1,432	1,482	1,508	11,241,395	586.65
4413	Automotive Parts, Accessories & Tire Stores	784	5,544	5,514	5,593	32,684,618	452.98

**TABLE 5. STATEWIDE SUMMARY
EMPLOYMENT AND TOTAL EARNINGS, BY INDUSTRY
SECOND QUARTER 2005**

NORTH AMERICAN INDUSTRY CLASSIFICATION SYSTEM INDUSTRY GROUPS		NUMBER OF EMPLOYING UNITS	EMPLOYMENT			TOTAL EARNINGS	AVERAGE
			APRIL	MAY	JUNE	APR. - JUN. 2005	WEEKLY EARNINGS
442	FURNITURE & HOME FURNISHINGS STORES	618	4,165	4,196	4,143	\$24,527,972	\$452.68
4421	Furniture Stores	314	2,569	2,575	2,517	14,899,808	448.82
4422	Home Furnishings Stores	304	1,596	1,621	1,626	9,628,164	458.78
443	ELECTRONICS & APPLIANCE STORES	488	2,980	2,960	2,953	\$17,116,072	\$444.15
444	BUILDING MATERIAL & GARDEN SUPPLY STORES	816	10,741	10,936	10,997	\$66,100,466	\$466.85
4441	Building Material & Supplies Dealers	642	9,792	9,959	10,069	61,380,320	475.01
4442	Lawn & Garden Equipment & Supplies Stores	174	949	977	928	4,720,146	381.66
445	FOOD & BEVERAGE STORES	1,157	18,881	18,857	19,084	\$70,941,162	\$288.11
4451	Grocery Stores	682	16,618	16,580	16,772	61,153,816	282.42
4452	Specialty Food Stores	159	836	830	853	4,312,195	395.05
4453	Beer, Wine & Liquor Stores	316	1,427	1,447	1,459	5,475,151	291.60
446	HEALTH & PERSONAL CARE STORES	791	6,584	6,593	6,569	\$43,433,609	\$507.60
447	GASOLINE STATIONS	1,670	12,993	13,127	13,410	\$42,232,825	\$246.55
44711	Gasoline Stations with Convenience Stores	1,491	11,669	11,813	12,073	36,700,256	238.20
44719	Other Gasoline Stations	179	1,324	1,314	1,337	5,532,569	321.19
448	CLOTHING & CLOTHING ACCESSORIES STORES	1,064	8,044	8,093	8,069	\$27,800,086	\$265.03
4481	Clothing Stores	701	5,894	5,937	5,944	18,605,969	241.56
4482	Shoe Stores	185	1,203	1,202	1,186	3,865,619	248.42
4483	Jewelry, Luggage & Leather Goods Stores	178	947	954	939	5,328,498	432.98
451	SPORTING GOODS, HOBBY, BOOK & MUSIC STORES	554	4,101	4,123	4,065	\$14,585,822	\$273.90
4511	Sporting Goods & Musical Instrument Stores	388	2,645	2,679	2,663	10,351,368	299.08
4512	Book, Periodical & Music Stores	166	1,456	1,444	1,402	4,234,454	227.15
452	GENERAL MERCHANDISE STORES	706	36,438	36,195	36,083	\$163,709,543	\$347.50
453	MISCELLANEOUS STORE RETAILERS	1,462	6,784	6,828	6,882	\$30,307,868	\$341.28
4531	Florists	279	1,096	1,130	1,060	4,123,772	289.60
4532	Office Supplies, Stationery & Gift Stores	415	2,493	2,500	2,537	11,310,915	346.64
4533	Used Merchandise Stores	222	773	770	783	3,550,802	352.29
4539	Other Miscellaneous Store Retailers	546	2,422	2,428	2,502	11,322,379	355.39

**TABLE 5. STATEWIDE SUMMARY
EMPLOYMENT AND TOTAL EARNINGS, BY INDUSTRY
SECOND QUARTER 2005**

NORTH AMERICAN INDUSTRY CLASSIFICATION SYSTEM INDUSTRY GROUPS		NUMBER OF EMPLOYING UNITS	EMPLOYMENT			TOTAL EARNINGS	AVERAGE
			APRIL	MAY	JUNE	APR. - JUN. 2005	WEEKLY EARNINGS
454	NONSTORE RETAILERS	316	2,048	2,022	1,978	\$12,774,706	\$487.44
4541	Electronic Shopping & Mail -Order Houses	67	388	385	379	2,875,136	575.95
4542	Vending Machine Operators	81	711	712	705	4,043,269	438.47
4543	Direct Selling Establishments	168	949	925	894	5,856,301	488.24
48-49	TRANSPORTATION & WAREHOUSING	2,950	54,942	55,075	55,300	\$479,421,238	\$669.23
481	AIR TRANSPORTATION	45	1,007	1,015	1,025	\$12,602,596	\$954.48
484	TRUCK TRANSPORTATION	1,979	34,402	34,468	34,741	\$310,716,321	\$692.05
4841	General Freight Trucking	1,219	29,067	29,045	29,223	272,212,709	719.28
4842	Specialized Freight Trucking	760	5,335	5,423	5,518	38,503,612	545.92
485	TRANSIT & GROUND PASSENGER TRANS.	56	1,015	1,056	842	\$3,847,606	\$304.81
4853	Taxi & Limousine Service	20	232	235	235	673,839	221.51
4854	School & Employee Bus Transportation	8	415	439	231	1,772,496	376.99
4855	Charter Bus Industry Service	8	92	94	92	498,242	413.59
4859	Other Ground Passenger Transportation	11	181	196	193	601,552	243.54
	Other	9	95	92	91	301,477	250.26
486	PIPELINE TRANSPORTATION	70	947	955	952	\$11,659,003	\$942.73
488	SUPPORT ACTIVITIES FOR TRANSPORTATION	434	4,755	4,750	4,844	\$43,825,296	\$704.82
4881	Support Activities for Air Transportation	102	1,554	1,589	1,619	13,131,385	636.35
4882	Support Activities for Rail Transportation	33	405	402	409	3,051,805	579.16
4883	Support Activities for Water Transportation	31	689	647	684	6,314,239	721.35
4884	Support Activities for Road Transportation	102	464	460	467	2,715,841	450.56
4885	Freight Transportation Arrangement	146	1,498	1,498	1,508	17,660,747	904.88
4889	Other Support Activities for Transportation	20	145	154	157	951,279	481.42
492	COURIERS & MESSENGERS	139	3,176	3,208	3,234	\$27,560,673	\$661.28
4921	Couriers	91	2,934	2,960	2,978	26,186,778	681.14
4922	Local Messengers & Local Delivery	48	242	248	256	1,373,895	425.00
493	WAREHOUSING & STORAGE	210	9,452	9,437	9,474	\$67,857,522	\$552.11

**TABLE 5. STATEWIDE SUMMARY
EMPLOYMENT AND TOTAL EARNINGS, BY INDUSTRY
SECOND QUARTER 2005**

NORTH AMERICAN INDUSTRY CLASSIFICATION SYSTEM INDUSTRY GROUPS	NUMBER OF EMPLOYING UNITS	EMPLOYMENT			TOTAL EARNINGS	AVERAGE
		APRIL	MAY	JUNE	APR. - JUN. 2005	WEEKLY EARNINGS
OTHER	17	188	186	188	\$1,352,221	\$555.25
22 UTILITIES	356	6,598	6,632	6,663	\$91,936,606	\$1,066.51
2211 Power Generation & Supply	160	4,967	5,006	5,012	75,426,979	1161.58
2212 Natural Gas Distribution	31	827	824	836	10,983,474	1019.16
2213 Water, Sewage and Other Systems	165	804	802	815	5,526,153	526.75
INFORMATION	1,214	19,959	20,107	20,058	\$192,563,553	\$739.10
511 PUBLISHING INDUSTRIES, EXCEPT INTERNET	249	6,449	6,469	6,310	\$46,924,041	\$563.17
5111 Newspaper, Book & Directory Publishers	218	6,193	6,211	6,050	43,248,833	540.83
5112 Software Publishers	31	256	258	260	3,675,208	1095.77
512 MOTION PICTURE & SOUND RECORDING INDUSTRY	136	1,126	1,246	1,313	\$4,838,267	\$302.99
5121 Motion Picture & Video Industries	123	1,101	1,221	1,285	4,634,635	296.52
5122 Sound Recording Industries	13	25	25	28	203,632	602.46
515 BROADCASTING, EXCEPT INTERNET	136	2,090	2,104	2,115	\$17,070,780	\$624.41
5151 Radio & Television Broadcasting	129	2,052	2,069	2,081	16,868,132	627.64
5152 Cable & Other Subscription Programming	7	38	35	34	202,648	437.06
517 TELECOMMUNICATIONS	503	8,756	8,760	8,780	\$106,700,543	\$936.39
5171 Wired Telecommunications Carriers	215	4,996	5,021	5,058	70,723,784	1082.64
5172 Wireless Telecommunications Carriers	125	1,938	1,922	1,940	18,415,357	732.71
5175 Cable & Other Program Distribution	83	1,266	1,259	1,223	11,488,389	707.36
Other	80	556	558	559	6,073,013	837.70
518 ISPS, SEARCH PORTALS, & DATA PROCESSING	155	1,222	1,205	1,215	\$14,801,689	\$937.88
5181 ISPs, & Web Search Portals	63	210	201	201	1,732,526	653.29
5182 Data Processing & Related Services	92	1,012	1,004	1,014	13,069,163	995.37
OTHER	35	316	323	325	\$2,228,233	\$533.41

**TABLE 5. STATEWIDE SUMMARY
EMPLOYMENT AND TOTAL EARNINGS, BY INDUSTRY
SECOND QUARTER 2005**

NORTH AMERICAN INDUSTRY CLASSIFICATION SYSTEM INDUSTRY GROUPS		NUMBER OF EMPLOYING UNITS	EMPLOYMENT			TOTAL EARNINGS APR. - JUN. 2005	AVERAGE WEEKLY EARNINGS
			APRIL	MAY	JUNE		
FINANCIAL ACTIVITIES		7,720	49,241	49,506	50,100	\$445,572,456	\$690.81
52	FINANCE & INSURANCE	4,562	35,659	35,747	36,119	\$360,024,043	\$772.68
522	CREDIT INTERMEDIATION & RELATED ACTIVITIES	1,957	21,123	21,195	21,440	\$181,929,901	\$658.49
5221	Depository Credit Intermediation	1,261	17,570	17,624	17,878	146,444,245	636.77
5222	Nondepository Credit Intermediation	407	2,696	2,711	2,706	28,880,102	821.48
5223	Activities Related to Credit Intermediation	289	857	860	856	6,605,554	592.44
523	FINANCIAL INVESTMENT & RELATED ACTIVITIES	565	3,060	3,085	3,113	\$57,116,332	\$1,423.71
5231	Security & Commodity Investment Activities	327	2,409	2,421	2,447	48,897,541	1550.65
5239	Other Financial Investment Activities	238	651	664	666	8,218,791	957.42
524	INSURANCE CARRIERS & RELATED ACTIVITIES	2,001	11,052	11,037	11,140	\$116,985,091	\$812.44
5241	Insurance Carriers	394	4,618	4,612	4,630	56,585,906	942.16
5242	Insurance Agencies, Brokerages & Support	1,607	6,434	6,425	6,510	60,399,185	719.62
	OTHER	39	424	430	426	\$3,992,719	\$719.84
53	REAL ESTATE & RENTAL & LEASING	3,158	13,582	13,759	13,981	\$85,548,413	\$477.76
531	REAL ESTATE	2,343	8,400	8,509	8,670	\$54,562,582	\$492.25
5311	Lessors of Real Estate	1,023	4,248	4,281	4,297	24,713,925	444.66
5312	Offices of Real Estate Agents & Brokers	753	1,884	1,924	1,986	14,158,187	563.91
5313	Activities Related to Real Estate	567	2,268	2,304	2,387	15,690,470	520.32
532	RENTAL & LEASING SERVICES	790	5,099	5,164	5,230	\$29,980,342	\$446.56
5321	Automotive Equipment Rental & Leasing	128	913	930	935	6,421,164	533.41
5322	Consumer Goods Rental	492	3,291	3,324	3,377	15,870,971	366.55
5323	General Rental Centers	36	191	195	194	1,324,455	526.97
5324	Machinery & Equipment Rental & Leasing	134	704	715	724	6,363,752	685.28
533	LESSORS OF NONFINANCIAL INTANGIBLE ASSETS	25	83	86	81	\$1,005,489	\$928.14

**TABLE 5. STATEWIDE SUMMARY
EMPLOYMENT AND TOTAL EARNINGS, BY INDUSTRY
SECOND QUARTER 2005**

NORTH AMERICAN INDUSTRY CLASSIFICATION SYSTEM INDUSTRY GROUPS		NUMBER OF EMPLOYING UNITS	EMPLOYMENT			TOTAL EARNINGS	AVERAGE
			APRIL	MAY	JUNE	APR. - JUN. 2005	WEEKLY EARNINGS
PROFESSIONAL & BUSINESS SERVICES		10,307	110,770	110,910	111,555	\$964,953,274	\$668.24
54	PROFESSIONAL & TECHNICAL SERVICES	6,481	36,023	35,009	35,409	\$370,432,895	\$803.12
5411	Legal Services	1,600	6,544	6,622	6,749	61,422,071	711.74
5412	Accounting & Bookkeeping Services	1,168	6,056	4,761	4,708	43,800,454	651.07
5413	Architectural & Engineering Services	866	6,185	6,246	6,396	65,695,927	805.26
5414	Specialized Design Services	156	464	481	498	3,132,337	500.93
5415	Computer Systems Design & Related Services	746	7,598	7,598	7,624	120,591,204	1219.49
5416	Management & Technical Consulting Services	971	2,444	2,510	2,566	28,864,979	885.79
5417	Scientific Research & Development Services	106	1,108	1,110	1,119	11,516,685	796.43
5418	Advertising & Related Services	303	1,948	1,975	1,972	17,854,789	698.95
5419	Other Professional & Technical Services	565	3,676	3,706	3,777	17,554,449	363.03
55	MANAGEMENT OF COMPANIES & ENTERPRISES	482	23,274	23,339	23,667	\$347,765,062	\$1,141.91
56	ADMINISTRATIVE & WASTE SERVICES	3,344	51,473	52,562	52,479	\$246,755,317	\$363.82
561	ADMINISTRATIVE & SUPPORT SERVICES	3,150	49,245	50,316	50,211	\$226,493,211	\$348.98
5611	Office Administrative Services	318	1,283	1,304	1,343	13,577,910	797.29
5612	Facilities Support Services	13	120	114	112	962,987	642.28
5613	Employment Services	590	25,514	26,239	25,710	104,701,261	311.91
5614	Business Support Services	356	4,439	4,490	4,689	21,678,726	367.37
5615	Travel Arrangement & Reservation Services	103	458	475	478	3,327,357	544.19
5616	Investigation & Security Services	222	4,482	4,543	4,719	23,130,082	388.37
5617	Services to Buildings & Dwellings	1,256	11,381	11,620	11,599	48,407,353	322.86
5619	Other Support Services	292	1,568	1,531	1,561	10,707,535	530.25
562	WASTE MANAGEMENT & REMEDIATION SERVICES	194	2,228	2,246	2,268	\$20,262,106	\$693.54
5621	Waste Collection Services	87	1,046	1,046	1,043	9,139,415	672.76
5622	Waste Treatment & Disposal Services	37	744	758	771	7,959,061	808.05
5629	Remediation & Other Waste Services	70	438	442	454	3,163,630	547.28

**TABLE 5. STATEWIDE SUMMARY
EMPLOYMENT AND TOTAL EARNINGS, BY INDUSTRY
SECOND QUARTER 2005**

NORTH AMERICAN INDUSTRY CLASSIFICATION SYSTEM INDUSTRY GROUPS	NUMBER OF EMPLOYING UNITS	EMPLOYMENT			TOTAL EARNINGS	AVERAGE
		APRIL	MAY	JUNE	APR. - JUN. 2005	WEEKLY EARNINGS
EDUCATION & HEALTH SERVICES	8,204	140,201	140,513	140,227	\$1,092,181,340	\$598.76
61 EDUCATIONAL SERVICES	540	8,689	8,656	8,273	\$53,344,044	\$480.53
6111 Elementary & Secondary Schools	82	3,121	3,085	2,926	15,773,198	398.59
6112 Junior Colleges	9	243	253	240	1,681,117	527.11
6113 Colleges & Universities	25	3,082	3,050	2,877	22,254,780	570.07
6114 Business, Computer, & Management Training	47	189	188	188	2,597,080	1060.75
6115 Technical & Trade Schools	95	680	692	661	6,030,073	684.48
6116 Other Schools & Instruction	217	1,186	1,201	1,196	3,759,531	242.14
6117 Educational Support Services	65	188	187	185	1,248,265	514.39
62 HEALTH CARE & SOCIAL ASSISTANCE	7,664	131,512	131,857	131,954	\$1,038,837,296	\$606.42
621 AMBULATORY HEALTH CARE SERVICES	4,656	40,919	41,139	41,302	\$468,369,561	\$876.18
6211 Offices of Physicians	2,068	19,949	19,990	20,003	306,585,798	1180.32
6212 Offices of Dentists	909	5,888	5,959	6,029	52,176,361	673.57
6213 Offices of Other Health Practitioners	1,119	5,211	5,273	5,333	37,535,156	547.64
6214 Outpatient Care Centers	203	3,387	3,413	3,426	28,746,413	648.72
6215 Medical & Diagnostic Laboratories	90	698	708	711	7,779,759	848.05
6216 Home Health Care Services	124	3,775	3,793	3,791	22,012,366	447.20
6219 Other Ambulatory Health Care Services	143	2,011	2,003	2,009	13,533,708	518.54
622 HOSPITALS	109	41,920	41,947	42,057	\$358,974,230	\$657.86
6221 General Medical & Surgical Hospitals	77	38,591	38,582	38,724	329,353,957	655.80
6222 Psychiatric & Substance Abuse Hospitals	10	1,391	1,438	1,430	12,643,926	685.10
6223 Other Hospitals	22	1,938	1,927	1,903	16,976,347	679.20
623 NURSING & RESIDENTIAL CARE FACILITIES	497	26,039	26,105	26,227	\$120,635,317	\$355.22
6231 Nursing Care Facilities	233	19,632	19,582	19,800	90,665,103	354.54
6232 Residential Mental Health Facilities	128	2,874	2,917	2,869	13,573,431	361.70
6233 Community Care Facilities for the Elderly	92	2,215	2,250	2,223	9,324,254	321.73
6239 Other Residential Care Facilities	44	1,318	1,356	1,335	7,072,529	407.11

**TABLE 5. STATEWIDE SUMMARY
EMPLOYMENT AND TOTAL EARNINGS, BY INDUSTRY
SECOND QUARTER 2005**

NORTH AMERICAN INDUSTRY CLASSIFICATION SYSTEM INDUSTRY GROUPS		NUMBER OF EMPLOYING UNITS	EMPLOYMENT			TOTAL EARNINGS	AVERAGE
			APRIL	MAY	JUNE	APR. - JUN. 2005	WEEKLY EARNINGS
624	SOCIAL ASSISTANCE	2,402	22,634	22,666	22,368	\$90,858,188	\$309.86
6241	Individual & Family Services	1,290	10,097	10,177	10,298	44,403,192	335.17
6242	Emergency & Other Relief Services	110	847	851	863	4,026,005	362.78
6243	Vocational Rehabilitation Services	127	3,359	3,373	3,430	15,834,216	359.58
6244	Child Day Care Services	875	8,331	8,265	7,777	26,594,775	251.81
LEISURE & HOSPITALITY		5,913	95,163	96,845	98,494	\$267,542,642	\$212.53
71	ARTS, ENTERTAINMENT & RECREATION	903	9,344	10,250	10,946	\$34,831,791	\$263.20
711	PERFORMING ARTS & SPECTATOR SPORTS	197	2,379	2,347	2,102	\$8,757,887	\$295.99
7111	Performing Arts Companies	41	387	670	704	1,846,356	241.95
7112	Spectator Sports	58	1,375	839	829	3,816,110	289.40
7113	Performing Arts & Sports Promoters	39	491	660	451	1,786,221	257.31
7114	Agents & Managers for Public Figures	11	18	17	18	127,384	554.65
7115	Independent Artists, Writers & Performers	48	108	161	100	1,181,816	739.10
712	MUSEUMS, PARKS & HISTORICAL SITES	46	225	228	251	\$875,872	\$287.11
713	GAMBLING, RECREATION & AMUSEMENT INDUSTRY	660	6,740	7,675	8,593	\$25,198,032	\$252.74
7139	Other Amusement & Recreation Industries	623	6,254	6,821	7,648	23,728,385	264.24
	Other	37	486	854	945	1,469,647	148.42
72	ACCOMMODATION & FOOD SERVICES	5,010	85,819	86,595	87,548	\$232,710,851	\$206.58
721	ACCOMMODATION	779	11,137	11,426	12,025	\$37,890,040	\$252.80
7211	Traveler Accommodation	712	10,833	11,054	11,355	36,364,524	252.45
7212	RV Parks & Recreational Camps	48	225	300	615	1,288,881	260.91
7213	Rooming & Boarding Houses	19	79	72	55	236,635	265.09
722	FOOD SERVICES & DRINKING PLACES	4,231	74,682	75,169	75,523	\$194,820,811	\$199.48
7221	Full -Service Restaurants	1,810	31,991	32,361	32,811	90,436,577	214.79
7222	Limited-Service Eating Places	2,106	39,474	39,843	39,888	96,075,384	185.99
7223	Special Food Services	155	2,229	1,932	1,807	5,949,985	230.07
7224	Drinking Places, Alcoholic Beverages	160	988	1,033	1,017	2,358,865	179.18

**TABLE 5. STATEWIDE SUMMARY
EMPLOYMENT AND TOTAL EARNINGS, BY INDUSTRY
SECOND QUARTER 2005**

NORTH AMERICAN INDUSTRY CLASSIFICATION SYSTEM INDUSTRY GROUPS	NUMBER OF EMPLOYING UNITS	EMPLOYMENT			TOTAL EARNINGS	AVERAGE
		APRIL	MAY	JUNE	APR. - JUN. 2005	WEEKLY EARNINGS
OTHER SERVICES	5,531	25,318	25,512	25,990	\$142,358,909	\$427.65
811 REPAIR & MAINTENANCE	2,243	9,281	9,352	9,342	\$60,792,645	\$501.49
8111 Automotive Repair & Maintenance	1,561	6,676	6,701	6,708	40,885,272	469.76
8112 Electronic Equipment Repair & Maintenance	155	562	575	573	4,384,194	591.66
8113 Commercial Machinery Repair & Maintenance	335	1,439	1,463	1,445	11,951,665	634.48
8114 Household Goods Repair & Maintenance	192	604	613	616	3,571,514	449.64
812 PERSONAL & LAUNDRY SERVICES	1,321	8,414	8,425	8,384	\$39,403,915	\$360.51
8121 Personal Care Services	570	2,600	2,612	2,520	9,507,827	283.77
8122 Death Care Services	247	1,680	1,678	1,709	10,272,788	467.86
8123 Drycleaning & Laundry Services	348	3,373	3,384	3,394	15,636,715	355.48
8129 Other Personal Services	156	761	751	761	3,986,585	404.74
813 MEMBERSHIP ASSOCIATIONS & ORGANIZATIONS	1,004	6,161	6,285	6,777	\$35,883,341	\$430.77
8131 Religious Organizations	36	194	201	208	1,013,598	387.91
8132 Grantmaking & Giving Services	97	421	423	414	3,699,029	678.55
8133 Social Advocacy Organizations	137	1,924	1,911	1,818	10,691,695	436.46
8134 Civic & Social Organizations	222	1,517	1,585	2,026	5,183,114	233.25
8139 Professional & Similar Organizations	512	2,105	2,165	2,311	15,295,905	536.37
814 PRIVATE HOUSEHOLDS	963	1,462	1,450	1,487	\$6,279,008	\$329.39
LOCAL GOVERNMENT	1,978	115,256	115,666	111,350	\$979,477,953	\$660.39
STATE GOVERNMENT	1,194	61,812	61,070	60,271	\$542,538,450	\$683.59
NONCLASSIFIABLE ESTABLISHMENTS	0	0	0	0	\$0	

**TABLE 6. COUNTY SUMMARY
EMPLOYMENT AND TOTAL EARNINGS, BY INDUSTRY
SECOND QUARTER 2005**

NORTH AMERICAN INDUSTRY CLASSIFICATION SYSTEM INDUSTRY GROUP	NUMBER OF EMPLOYING UNITS	EMPLOYMENT			TOTAL EARNINGS	AVERAGE WEEKLY EARNINGS
		APRIL	MAY	JUNE	APR. - JUN. 2005	
ARKANSAS COUNTY - TOTAL	649	9,801	9,915	9,862	\$69,135,913	\$539.40
Natural Resources & Mining	47	270	308	317	2,165,457	558.35
Construction	56	265	275	278	1,947,745	549.49
Manufacturing	30	3,582	3,615	3,596	27,989,590	598.46
Trade, Transportation & Utilities	197	2,029	2,050	2,068	14,802,788	555.72
Wholesale Trade	41	462	473	476	4,918,862	804.48
Retail Trade	103	1,104	1,107	1,116	5,114,155	354.73
Transportation, Warehousing & Utilities	53	463	470	476	4,769,771	781.20
Information	9	80	80	79	760,419	734.23
Financial Activities	44	320	321	323	2,335,861	559.18
Professional & Business Services	51	417	395	385	3,411,523	657.71
Education & Health Services	66	1,165	1,171	1,154	6,428,277	425.06
Leisure & Hospitality	53	474	498	501	1,174,717	184.04
Other Services	49	152	153	156	830,317	415.64
Local Government	31	823	835	805	5,658,002	530.12
State Government	16	224	214	200	1,631,217	590.02
ASHLEY COUNTY - TOTAL	522	8,289	8,353	8,401	\$71,985,727	\$663.34
Natural Resources & Mining	61	427	439	461	2,959,684	514.70
Construction	47	591	710	632	4,011,213	478.87
Manufacturing	27	2,994	2,927	2,987	39,331,013	1018.90
Trade, Transportation & Utilities	133	1,277	1,266	1,268	7,063,619	427.73
Wholesale Trade	25	176	175	174	1,511,142	664.24
Retail Trade	87	880	871	868	3,658,408	322.36
Transportation, Warehousing & Utilities	21	221	220	226	1,894,069	655.31
Information	10	51	55	56	321,227	457.59
Financial Activities	35	233	235	237	1,492,636	488.59
Professional & Business Services	46	333	337	356	1,882,747	423.47
Education & Health Services	49	565	565	576	4,171,134	564.23
Leisure & Hospitality	31	396	395	382	851,975	167.61
Other Services	39	164	166	178	762,395	346.33
Local Government	32	1,041	1,043	1,057	7,937,503	583.17
State Government	12	217	215	211	1,200,581	430.88

**TABLE 6. COUNTY SUMMARY
EMPLOYMENT AND TOTAL EARNINGS, BY INDUSTRY
SECOND QUARTER 2005**

NORTH AMERICAN INDUSTRY CLASSIFICATION SYSTEM INDUSTRY GROUP	NUMBER OF EMPLOYING UNITS	EMPLOYMENT			TOTAL EARNINGS	AVERAGE WEEKLY EARNINGS
		APRIL	MAY	JUNE	APR. - JUN. 2005	
BAXTER COUNTY - TOTAL	1,171	14,202	14,384	14,477	\$93,345,443	\$500.23
Natural Resources & Mining	8	99	102	112	650,820	479.84
Construction	124	599	620	650	3,381,470	417.52
Manufacturing	67	2,577	2,592	2,626	21,015,711	622.17
Trade, Transportation & Utilities	264	2,604	2,614	2,641	13,977,054	410.42
Wholesale Trade	30	179	179	183	1,303,089	555.85
Retail Trade	206	2,161	2,161	2,177	10,814,998	384.02
Transportation, Warehousing & Utilities	28	264	274	281	1,858,967	523.80
Information	24	282	289	290	2,106,284	564.54
Financial Activities	107	652	666	667	5,345,169	621.41
Professional & Business Services	129	796	774	782	4,973,846	488.01
Education & Health Services	175	3,105	3,105	3,100	25,001,390	619.72
Leisure & Hospitality	119	1,597	1,712	1,806	4,145,832	187.04
Other Services	106	393	407	419	1,788,764	338.63
Local Government	35	1,194	1,200	1,110	9,008,009	593.26
State Government	13	304	303	274	1,951,094	511.07
BENTON COUNTY - TOTAL	4,730	88,372	88,818	89,687	\$805,309,694	\$696.35
Natural Resources & Mining	26	607	608	618	6,205,784	781.29
Construction	719	4,832	4,869	5,028	40,139,032	628.89
Manufacturing	240	13,692	13,729	13,789	109,878,910	615.30
Trade, Transportation & Utilities	1,273	22,108	22,267	22,551	195,987,277	675.79
Wholesale Trade	545	3,648	3,649	3,750	47,943,845	1001.54
Retail Trade	566	7,185	7,340	7,393	39,883,541	419.92
Transportation, Warehousing & Utilities	162	11,275	11,278	11,408	108,159,891	734.96
Information	69	884	898	910	7,400,067	634.36
Financial Activities	525	3,253	3,301	3,342	29,229,802	681.62
Professional & Business Services	736	21,183	21,343	21,739	270,140,286	970.05
Education & Health Services	384	6,270	6,233	6,206	50,127,373	618.30
Leisure & Hospitality	354	6,508	6,528	6,569	19,958,678	234.93
Other Services	311	1,743	1,747	1,751	10,343,083	455.42
Local Government	74	6,547	6,565	6,553	60,557,993	710.65
State Government	19	745	730	631	5,341,409	585.30

**TABLE 6. COUNTY SUMMARY
EMPLOYMENT AND TOTAL EARNINGS, BY INDUSTRY
SECOND QUARTER 2005**

NORTH AMERICAN INDUSTRY CLASSIFICATION SYSTEM INDUSTRY GROUP	NUMBER OF EMPLOYING UNITS	EMPLOYMENT			TOTAL EARNINGS	AVERAGE WEEKLY EARNINGS
		APRIL	MAY	JUNE	APR. - JUN. 2005	
BOONE COUNTY - TOTAL	1,011	13,747	13,905	13,884	\$96,775,398	\$537.67
Natural Resources & Mining	6	7	6	6	78,812	957.23
Construction	90	472	484	505	3,090,510	488.16
Manufacturing	69	2,083	2,128	2,124	16,787,853	611.54
Trade, Transportation & Utilities	270	4,233	4,260	4,336	31,752,515	571.17
Wholesale Trade	56	677	678	675	4,605,030	523.50
Retail Trade	160	1,965	1,961	1,934	9,912,955	390.38
Transportation, Warehousing & Utilities	54	1,591	1,621	1,727	17,234,530	805.26
Information	18	422	420	429	3,198,589	580.75
Financial Activities	97	615	618	622	4,711,310	586.11
Professional & Business Services	104	536	548	498	2,792,792	407.39
Education & Health Services	127	1,122	1,139	1,131	7,762,816	528.13
Leisure & Hospitality	82	1,155	1,186	1,201	2,922,245	190.39
Other Services	70	260	263	265	1,458,804	427.22
Local Government	57	2,202	2,203	2,230	17,184,871	597.70
State Government	21	640	650	537	5,034,281	635.88
BRADLEY COUNTY - TOTAL	339	4,160	4,173	4,169	\$25,908,127	\$478.23
Natural Resources & Mining	52	462	403	494	1,997,702	339.23
Construction	22	166	167	195	1,093,534	477.94
Manufacturing	11	1,147	1,194	1,161	8,603,747	566.96
Trade, Transportation & Utilities	90	471	462	473	2,335,179	383.28
Wholesale Trade	13	100	94	89	466,833	380.67
Retail Trade	50	297	293	306	1,266,468	326.19
Transportation, Warehousing & Utilities	27	74	75	78	601,878	611.87
Information	3	13	13	13	77,971	461.37
Financial Activities	24	188	189	191	1,118,214	454.31
Professional & Business Services	25	82	79	79	338,766	325.74
Education & Health Services	35	514	520	535	3,535,199	519.96
Leisure & Hospitality	18	186	184	188	308,817	127.72
Other Services	31	101	97	94	397,416	314.08
Local & State Government	28	830	865	746	6,101,582	576.84

**TABLE 6. COUNTY SUMMARY
EMPLOYMENT AND TOTAL EARNINGS, BY INDUSTRY
SECOND QUARTER 2005**

NORTH AMERICAN INDUSTRY CLASSIFICATION SYSTEM INDUSTRY GROUP	NUMBER OF EMPLOYING UNITS	EMPLOYMENT			TOTAL EARNINGS	AVERAGE WEEKLY EARNINGS
		APRIL	MAY	JUNE	APR. - JUN. 2005	
CALHOUN COUNTY - TOTAL	120	3,827	3,846	3,867	\$33,414,844	\$668.21
Natural Resources & Mining	20	125	130	134	762,715	452.47
Construction	11	86	87	92	516,730	449.98
Manufacturing	15	2,598	2,606	2,649	25,571,770	751.46
Trade, Transportation & Utilities	26	202	203	212	1,198,302	448.19
Wholesale Trade & Retail Trade	17	76	77	82	249,781	245.28
Transportation, Warehousing & Utilities	9	126	126	130	948,521	573.01
Financial Activities	8	124	122	127	816,532	505.18
Education & Health Services	4	43	43	42	311,816	562.17
Local Government	11	191	201	202	1,353,808	525.95
State Government	10	359	355	307	2,077,478	469.56
Other	15	99	99	102	805,693	619.76
CARROLL COUNTY - TOTAL	793	9,630	10,013	9,970	\$54,758,039	\$426.72
Natural Resources & Mining	17	271	270	270	1,782,375	507.17
Trade, Transportation & Utilities	207	1,627	1,661	1,664	8,482,407	395.29
Wholesale Trade	22	113	112	113	504,078	344.16
Retail Trade	164	1,242	1,297	1,295	5,765,642	347.04
Transportation, Warehousing & Utilities	21	272	252	256	2,212,687	654.64
Professional & Business Services	65	230	229	231	1,423,588	476.12
Education & Health Services	57	757	743	722	5,260,413	546.33
Leisure & Hospitality	177	1,492	1,874	1,995	4,875,498	209.87
Local Government	24	1,048	1,043	874	7,424,326	577.84
State Government	11	107	104	109	758,210	546.79
Other	235	4,098	4,089	4,105	24,751,222	464.68

**TABLE 6. COUNTY SUMMARY
EMPLOYMENT AND TOTAL EARNINGS, BY INDUSTRY
SECOND QUARTER 2005**

NORTH AMERICAN INDUSTRY CLASSIFICATION SYSTEM INDUSTRY GROUP	NUMBER OF EMPLOYING UNITS	EMPLOYMENT			TOTAL EARNINGS	AVERAGE WEEKLY EARNINGS
		APRIL	MAY	JUNE	APR. - JUN. 2005	
CHICOT COUNTY - TOTAL	338	3,625	3,680	3,717	\$21,239,609	\$444.70
Natural Resources & Mining	47	251	257	261	1,620,950	486.43
Construction	21	288	297	307	2,315,517	599.05
Manufacturing	11	354	363	363	1,755,392	375.08
Trade, Transportation & Utilities	86	584	593	603	2,954,992	383.10
Wholesale Trade	16	103	106	111	880,721	635.14
Retail Trade	55	414	418	423	1,490,622	274.10
Transportation, Warehousing & Utilities	15	67	69	69	583,649	657.02
Information	6	9	13	14	93,543	599.63
Financial Activities	28	163	156	157	1,110,907	538.58
Professional & Business Services	26	86	89	90	730,300	635.97
Education & Health Services	46	453	471	470	2,597,806	430.05
Leisure & Hospitality	22	251	255	278	507,169	149.28
Other Services	18	59	56	60	266,018	350.79
Local Government	16	823	828	812	5,272,282	493.98
State Government	11	304	302	302	2,014,733	512.05
CLARK COUNTY - TOTAL	601	9,922	9,951	9,742	\$60,890,959	\$474.48
Natural Resources & Mining	41	262	268	279	1,862,925	531.40
Construction	35	133	131	134	648,564	376.05
Manufacturing	36	2,376	2,385	2,371	15,932,540	515.53
Trade, Transportation & Utilities	137	1,484	1,478	1,440	9,090,911	476.58
Wholesale Trade	21	72	72	74	564,430	597.49
Retail Trade	90	1,116	1,109	1,077	5,977,161	417.73
Transportation, Warehousing & Utilities	26	296	297	289	2,549,320	667.01
Information	10	39	38	40	314,419	620.16
Financial Activities	88	386	387	393	2,567,863	508.22
Professional & Business Services	45	412	423	417	3,302,514	608.72
Education & Health Services	65	1,477	1,445	1,416	9,209,611	489.93
Leisure & Hospitality	53	1,068	1,085	1,119	2,784,203	196.37
Other Services	50	220	227	209	1,172,077	412.32
Local Government	26	935	989	974	6,340,923	504.93
State Government	15	1,130	1,095	950	7,664,409	557.07

**TABLE 6. COUNTY SUMMARY
EMPLOYMENT AND TOTAL EARNINGS, BY INDUSTRY
SECOND QUARTER 2005**

NORTH AMERICAN INDUSTRY CLASSIFICATION SYSTEM INDUSTRY GROUP	NUMBER OF EMPLOYING UNITS	EMPLOYMENT			TOTAL EARNINGS	AVERAGE WEEKLY EARNINGS
		APRIL	MAY	JUNE	APR. - JUN. 2005	
CLAY COUNTY - TOTAL	406	4,917	4,921	4,924	\$26,990,371	\$421.93
Natural Resources & Mining	57	212	227	250	1,402,183	469.64
Construction	41	179	193	190	1,092,415	448.57
Manufacturing	19	1,449	1,406	1,411	7,196,909	389.32
Trade, Transportation & Utilities	99	976	989	952	6,020,396	476.28
Wholesale Trade	25	367	358	335	2,605,326	567.20
Retail Trade	54	452	471	462	2,088,437	347.98
Transportation, Warehousing & Utilities	20	157	160	155	1,326,633	648.61
Information	9	127	134	136	872,620	507.24
Financial Activities	36	156	155	157	905,422	446.46
Professional & Business Services	23	60	57	51	297,574	408.76
Education & Health Services	40	507	495	487	2,392,889	370.86
Leisure & Hospitality	23	227	221	231	446,177	151.64
Other Services	25	55	52	53	277,766	400.62
Local Government	22	885	910	920	5,562,506	472.80
State Government	12	84	82	86	523,514	479.41
CLEBURNE COUNTY - TOTAL	668	6,791	6,839	6,919	\$40,895,864	\$459.27
Natural Resources & Mining	15	33	32	36	262,273	599.25
Construction	66	283	285	302	1,497,461	397.20
Manufacturing	47	1,835	1,779	1,808	13,228,239	563.02
Trade, Transportation & Utilities	194	1,537	1,562	1,586	8,417,547	414.62
Wholesale Trade	41	167	178	179	1,050,699	462.73
Retail Trade	113	1,030	1,048	1,083	4,641,354	338.84
Transportation, Warehousing & Utilities	40	340	336	324	2,725,494	628.96
Information	8	61	63	62	361,722	448.79
Financial Activities	68	256	256	260	1,613,866	482.42
Professional & Business Services	59	203	193	205	1,229,015	471.91
Education & Health Services	58	748	755	763	4,625,632	471.07
Leisure & Hospitality	65	773	829	857	2,126,975	199.61
Other Services	58	146	156	158	646,233	324.20
Local Government	20	801	810	763	6,103,845	593.34
State Government	10	115	119	119	783,056	511.91

**TABLE 6. COUNTY SUMMARY
EMPLOYMENT AND TOTAL EARNINGS, BY INDUSTRY
SECOND QUARTER 2005**

NORTH AMERICAN INDUSTRY CLASSIFICATION SYSTEM INDUSTRY GROUP	NUMBER OF EMPLOYING UNITS	EMPLOYMENT			TOTAL EARNINGS	AVERAGE WEEKLY EARNINGS
		APRIL	MAY	JUNE	APR. - JUN. 2005	
CLEVELAND COUNTY - TOTAL	109	1,048	1,105	953	\$6,509,433	\$483.64
Natural Resources & Mining	20	159	174	173	1,117,864	509.82
Construction	6	34	34	36	118,324	262.55
Manufacturing	6	85	90	89	471,742	412.36
Trade, Transportation & Utilities	31	193	214	215	940,573	348.96
Wholesale Trade	5	22	25	23	113,405	373.86
Retail Trade	15	70	86	86	211,584	201.76
Transportation, Warehousing & Utilities	11	101	103	106	615,584	458.25
Financial Activities	4	49	55	61	496,026	693.74
Local Government	12	353	357	209	2,411,428	605.53
State Government	8	58	61	61	383,822	492.08
Other	22	117	120	109	569,654	379.94
COLUMBIA COUNTY - TOTAL	691	9,480	9,502	9,527	\$66,562,936	\$538.80
Natural Resources & Mining	47	462	466	481	4,933,264	807.98
Construction	45	372	365	324	2,890,870	628.77
Manufacturing	37	2,696	2,716	2,728	25,282,467	716.76
Trade, Transportation & Utilities	189	1,645	1,656	1,617	8,317,494	390.29
Wholesale Trade	30	338	332	309	1,859,558	438.33
Retail Trade	117	1,065	1,077	1,054	4,492,790	324.40
Transportation, Warehousing & Utilities	42	242	247	254	1,965,146	610.36
Information	10	83	84	82	535,457	496.25
Financial Activities	78	395	396	405	2,847,412	549.41
Professional & Business Services	65	338	325	333	1,737,939	402.67
Education & Health Services	78	873	878	889	4,391,258	383.85
Leisure & Hospitality	45	693	698	673	1,555,926	173.96
Other Services	53	220	217	212	1,046,301	372.04
Local Government	30	1,159	1,161	1,216	8,578,258	559.84
State Government	14	544	540	567	4,446,290	621.48

**TABLE 6. COUNTY SUMMARY
EMPLOYMENT AND TOTAL EARNINGS, BY INDUSTRY
SECOND QUARTER 2005**

NORTH AMERICAN INDUSTRY CLASSIFICATION SYSTEM INDUSTRY GROUP	NUMBER OF EMPLOYING UNITS	EMPLOYMENT			TOTAL EARNINGS	AVERAGE WEEKLY EARNINGS
		APRIL	MAY	JUNE	APR. - JUN. 2005	
CONWAY COUNTY - TOTAL	480	6,470	6,552	6,583	\$42,798,587	\$503.78
Natural Resources & Mining	17	125	125	129	967,470	589.08
Construction	49	480	533	563	4,224,210	618.54
Manufacturing	33	1,066	1,097	1,111	10,902,171	768.44
Trade, Transportation & Utilities	138	1,398	1,425	1,440	7,876,767	426.39
Wholesale Trade	30	259	269	266	1,794,498	521.56
Retail Trade	80	880	882	894	4,017,149	349.03
Transportation, Warehousing & Utilities	28	259	274	280	2,065,120	586.18
Information	6	41	41	43	170,581	314.92
Financial Activities	36	187	190	193	1,254,030	507.70
Professional & Business Services	44	660	624	585	2,276,206	281.05
Education & Health Services	54	712	729	727	4,580,047	487.52
Leisure & Hospitality	38	471	475	500	1,026,057	163.75
Other Services	27	73	72	88	493,965	489.24
Local Government	27	887	907	861	7,044,693	612.32
State Government	11	370	334	343	1,982,390	436.94
CRAIGHEAD COUNTY - TOTAL	2,501	39,846	39,944	39,875	\$276,330,750	\$532.89
Natural Resources & Mining	57	237	252	276	1,561,431	471.02
Construction	222	1,636	1,721	1,791	12,112,367	542.96
Manufacturing	140	6,936	6,925	6,878	54,001,535	600.89
Trade, Transportation & Utilities	725	7,988	7,945	7,931	47,618,824	460.48
Wholesale Trade	186	1,516	1,524	1,529	12,269,121	619.68
Retail Trade	425	5,406	5,342	5,322	26,508,450	380.67
Transportation, Warehousing & Utilities	114	1,066	1,079	1,080	8,841,253	632.65
Information	34	642	645	649	5,007,326	596.87
Financial Activities	252	1,528	1,538	1,568	14,259,814	710.13
Professional & Business Services	312	3,592	3,585	3,713	19,874,812	421.17
Education & Health Services	341	6,820	6,832	6,756	58,602,525	662.66
Leisure & Hospitality	175	3,559	3,548	3,604	9,399,272	202.51
Other Services	180	1,034	1,035	1,041	4,917,730	364.91
Local Government	39	3,479	3,492	3,376	28,634,222	638.63
State Government	24	2,395	2,426	2,292	20,340,892	659.93

**TABLE 6. COUNTY SUMMARY
EMPLOYMENT AND TOTAL EARNINGS, BY INDUSTRY
SECOND QUARTER 2005**

NORTH AMERICAN INDUSTRY CLASSIFICATION SYSTEM INDUSTRY GROUP	NUMBER OF EMPLOYING UNITS	EMPLOYMENT			TOTAL EARNINGS	AVERAGE WEEKLY EARNINGS
		APRIL	MAY	JUNE	APR. - JUN. 2005	
CRAWFORD COUNTY - TOTAL	1,145	18,495	18,466	18,418	\$125,672,134	\$523.69
Natural Resources & Mining	24	589	534	435	3,854,718	570.96
Construction	182	1,329	1,362	1,389	10,155,094	574.38
Manufacturing	74	3,439	3,450	3,488	23,819,591	529.71
Trade, Transportation & Utilities	307	6,349	6,347	6,401	43,510,461	525.78
Wholesale Trade	77	665	676	684	5,478,411	624.32
Retail Trade	164	1,888	1,909	1,932	9,172,269	369.47
Transportation, Warehousing & Utilities	66	3,796	3,762	3,785	28,859,781	587.14
Financial Activities	117	517	510	510	3,361,831	504.75
Professional & Business Services	130	691	672	680	4,494,079	507.63
Education & Health Services	92	1,453	1,428	1,409	10,555,667	567.81
Leisure & Hospitality	79	1,322	1,344	1,353	3,364,630	193.20
Local Government	41	2,071	2,076	2,015	17,508,779	655.71
State Government	11	169	175	170	1,363,063	611.97
Other	88	566	568	568	3,684,221	499.53
CRITTENDEN COUNTY - TOTAL	1,103	15,534	15,633	15,639	\$109,490,505	\$539.82
Natural Resources & Mining	48	299	348	327	1,809,042	428.62
Construction	70	551	579	595	4,316,642	577.48
Manufacturing	52	1,467	1,493	1,493	14,729,230	763.32
Trade, Transportation & Utilities	308	4,823	4,840	4,845	33,514,007	533.09
Wholesale Trade	60	786	800	802	6,929,540	669.65
Retail Trade	165	2,056	2,057	2,061	9,220,797	344.65
Transportation, Warehousing & Utilities	83	1,981	1,983	1,982	17,363,670	673.90
Information	10	92	91	96	838,001	693.14
Financial Activities	110	523	510	527	3,966,839	586.81
Professional & Business Services	113	666	654	667	4,247,247	493.27
Education & Health Services	137	1,806	1,824	1,806	13,365,365	567.39
Leisure & Hospitality	101	1,845	1,887	1,920	5,231,501	213.60
Other Services	99	586	603	596	3,149,671	407.20
Local Government	40	2,388	2,403	2,352	21,577,626	697.11
State Government	15	488	401	415	2,745,334	485.84

**TABLE 6. COUNTY SUMMARY
EMPLOYMENT AND TOTAL EARNINGS, BY INDUSTRY
SECOND QUARTER 2005**

NORTH AMERICAN INDUSTRY CLASSIFICATION SYSTEM INDUSTRY GROUP	NUMBER OF EMPLOYING UNITS	EMPLOYMENT			TOTAL EARNINGS	AVERAGE WEEKLY EARNINGS
		APRIL	MAY	JUNE	APR. - JUN. 2005	
CROSS COUNTY - TOTAL	495	5,320	5,214	5,140	\$33,920,837	\$499.42
Natural Resources & Mining	46	249	270	274	1,276,037	371.34
Construction	36	152	157	185	884,870	413.36
Manufacturing	20	897	786	744	6,378,445	606.49
Trade, Transportation & Utilities	135	1,230	1,214	1,223	7,596,708	478.07
Wholesale Trade	32	327	329	321	2,538,946	599.70
Retail Trade	69	660	645	662	2,957,600	346.99
Transportation, Warehousing & Utilities	34	243	240	240	2,100,162	670.34
Information	8	60	61	62	371,333	468.26
Financial Activities	47	380	380	381	2,536,080	512.93
Professional & Business Services	42	171	153	165	1,070,238	505.07
Education & Health Services	60	620	630	615	3,515,252	434.97
Leisure & Hospitality	32	386	393	404	875,482	170.78
Other Services	41	78	75	77	315,406	316.46
Local Government	17	875	872	783	7,331,454	668.72
State Government	11	222	223	227	1,769,532	607.67
DALLAS COUNTY - TOTAL	276	3,287	3,305	3,207	\$21,738,121	\$511.94
Natural Resources & Mining	42	215	219	220	1,457,565	514.31
Construction	13	80	82	83	662,083	623.63
Manufacturing	15	870	870	900	7,382,950	645.36
Trade, Transportation & Utilities	76	486	479	477	2,365,399	378.54
Wholesale Trade	10	44	44	44	307,308	537.25
Retail Trade	47	379	376	376	1,673,624	341.49
Transportation, Warehousing & Utilities	19	63	59	57	384,467	495.66
Information	3	26	26	26	143,689	425.12
Financial Activities	20	100	102	105	685,499	515.28
Professional & Business Services	17	53	57	55	887,929	1241.86
Education & Health Services	29	717	734	727	3,880,961	411.21
Leisure & Hospitality	20	139	133	139	285,968	160.57
Other Services	16	65	65	63	254,471	304.27
Local Government	16	473	476	350	3,265,741	580.16
State Government	9	63	62	62	465,866	574.91

**TABLE 6. COUNTY SUMMARY
EMPLOYMENT AND TOTAL EARNINGS, BY INDUSTRY
SECOND QUARTER 2005**

NORTH AMERICAN INDUSTRY CLASSIFICATION SYSTEM INDUSTRY GROUP	NUMBER OF EMPLOYING UNITS	EMPLOYMENT			TOTAL EARNINGS	AVERAGE WEEKLY EARNINGS
		APRIL	MAY	JUNE	APR. - JUN. 2005	
DESHA COUNTY - TOTAL	453	4,919	5,026	4,951	\$33,411,269	\$517.61
Natural Resources & Mining	52	258	265	278	1,522,629	438.67
Construction	27	132	140	142	1,055,403	588.30
Manufacturing	15	1,287	1,329	1,361	12,072,406	700.51
Trade, Transportation & Utilities	135	1,045	1,035	1,045	5,715,901	422.10
Wholesale Trade	20	199	199	197	1,711,975	663.99
Retail Trade	83	667	666	673	2,768,665	318.51
Transportation, Warehousing & Utilities	32	179	170	175	1,235,261	544.01
Information	6	22	22	22	198,161	692.87
Financial Activities	41	220	231	232	1,351,153	456.52
Professional & Business Services	36	88	98	103	495,435	395.61
Education & Health Services	45	490	513	531	2,618,733	393.95
Leisure & Hospitality	38	298	305	314	628,363	158.13
Other Services	28	67	75	80	261,907	272.25
Local Government	19	845	844	679	6,316,716	615.58
State Government	11	167	169	164	1,174,462	542.06
DREW COUNTY - TOTAL	482	6,952	6,905	6,828	\$41,906,786	\$467.53
Natural Resources & Mining	39	328	326	312	2,238,159	534.68
Construction	28	161	175	158	895,320	418.24
Manufacturing	21	967	954	927	5,949,560	482.08
Trade, Transportation & Utilities	136	1,286	1,258	1,242	7,196,155	438.63
Wholesale Trade	26	287	284	278	2,228,702	605.79
Retail Trade	90	901	878	869	4,103,699	357.63
Transportation, Warehousing & Utilities	20	98	96	95	863,754	689.72
Information	9	86	87	86	573,753	511.21
Financial Activities	41	264	267	273	2,176,932	624.84
Professional & Business Services	44	361	375	386	3,407,967	700.94
Education & Health Services	55	746	750	757	3,583,026	367.00
Leisure & Hospitality	43	603	597	589	1,078,593	139.13
Other Services	26	80	80	82	323,554	308.54
Local Government	23	1,235	1,210	1,231	9,130,538	573.19
State Government	17	835	826	785	5,353,229	505.05

**TABLE 6. COUNTY SUMMARY
EMPLOYMENT AND TOTAL EARNINGS, BY INDUSTRY
SECOND QUARTER 2005**

NORTH AMERICAN INDUSTRY CLASSIFICATION SYSTEM INDUSTRY GROUP	NUMBER OF EMPLOYING UNITS	EMPLOYMENT			TOTAL EARNINGS	AVERAGE WEEKLY EARNINGS
		APRIL	MAY	JUNE	APR. - JUN. 2005	
FAULKNER COUNTY - TOTAL	2,248	35,329	35,446	35,879	\$273,082,838	\$590.87
Natural Resources & Mining	10	52	54	55	540,476	774.69
Construction	307	2,539	2,729	2,697	19,593,726	567.69
Manufacturing	115	5,002	4,999	5,143	48,303,357	736.06
Trade, Transportation & Utilities	564	6,180	6,204	6,178	34,804,541	432.70
Wholesale Trade	128	714	728	744	6,042,808	637.92
Retail Trade	367	4,837	4,826	4,792	23,163,586	369.80
Transportation, Warehousing & Utilities	69	629	650	642	5,598,147	672.50
Information	39	353	359	354	2,797,395	605.58
Financial Activities	271	1,303	1,310	1,336	9,460,678	552.86
Professional & Business Services	300	5,182	5,214	5,402	60,226,540	879.76
Education & Health Services	269	4,469	4,551	4,629	32,334,553	546.69
Leisure & Hospitality	178	3,751	3,808	3,713	9,225,020	188.86
Other Services	140	584	584	580	2,837,423	374.59
Local Government	36	3,030	3,037	3,073	30,083,264	759.55
State Government	19	2,884	2,597	2,719	22,875,865	643.79
FRANKLIN COUNTY - TOTAL	310	4,247	4,274	4,097	\$26,728,725	\$488.84
Natural Resources & Mining	7	133	136	145	1,421,244	792.22
Construction	25	131	131	133	873,491	510.32
Manufacturing	21	997	1,018	1,035	6,403,892	484.53
Trade, Transportation & Utilities	94	830	822	833	5,283,955	490.69
Wholesale Trade	13	67	64	60	233,309	281.89
Retail Trade	58	460	454	460	1,905,528	320.04
Transportation, Warehousing & Utilities	23	303	304	313	3,145,118	788.91
Information	7	60	57	54	286,356	386.45
Financial Activities	24	178	179	179	1,082,432	466.03
Professional & Business Services	18	62	61	61	318,215	399.10
Education & Health Services	41	527	542	542	3,177,128	455.11
Leisure & Hospitality	26	322	322	340	701,376	164.49
Other Services	18	59	56	60	287,772	379.48
Local Government	19	809	803	581	5,880,783	618.83
State Government	10	139	147	134	1,012,081	556.09

**TABLE 6. COUNTY SUMMARY
EMPLOYMENT AND TOTAL EARNINGS, BY INDUSTRY
SECOND QUARTER 2005**

NORTH AMERICAN INDUSTRY CLASSIFICATION SYSTEM INDUSTRY GROUP	NUMBER OF EMPLOYING UNITS	EMPLOYMENT			TOTAL EARNINGS	AVERAGE WEEKLY EARNINGS
		APRIL	MAY	JUNE	APR. - JUN. 2005	
FULTON COUNTY - TOTAL	206	1,920	1,987	1,986	\$10,202,625	\$399.53
Construction	15	36	33	32	179,937	411.13
Manufacturing	12	140	141	141	593,881	324.76
Trade, Transportation & Utilities	59	349	374	385	1,931,913	402.37
Retail Trade	42	191	205	210	683,689	260.35
Other Trade, Transportation & Utilities	17	158	169	175	1,248,224	573.81
Financial Activities	18	98	125	123	740,988	494.21
Professional & Business Services	16	51	52	51	309,612	463.95
Education & Health Services	28	380	388	376	1,579,275	318.57
Leisure & Hospitality	18	168	181	185	415,678	179.64
Local Government	13	520	516	510	3,507,483	523.56
State Government	11	104	107	110	667,472	479.85
Other	16	74	70	73	276,386	293.92
GARLAND COUNTY - TOTAL	3,023	36,652	35,925	36,319	\$239,811,304	\$508.20
Natural Resources & Mining	49	362	352	362	3,121,134	669.39
Construction	411	2,329	2,344	2,397	15,844,701	517.18
Manufacturing	125	3,441	3,448	3,441	26,572,002	593.61
Trade, Transportation & Utilities	699	7,140	7,182	7,405	41,676,259	442.66
Wholesale Trade	142	1,050	1,057	1,064	8,497,368	618.40
Retail Trade	487	5,428	5,434	5,619	27,210,182	381.00
Transportation, Warehousing & Utilities	70	662	691	722	5,968,709	663.80
Information	36	445	434	429	3,366,217	593.90
Financial Activities	351	1,506	1,520	1,570	11,782,304	591.60
Professional & Business Services	384	2,613	2,593	2,591	18,360,402	543.42
Education & Health Services	320	6,862	6,875	6,944	56,511,689	630.59
Leisure & Hospitality	353	6,898	6,100	6,406	20,755,131	246.84
Other Services	232	971	970	980	4,703,298	371.58
Local Government	36	3,071	3,086	2,879	29,682,886	758.07
State Government	27	1,014	1,021	915	7,435,281	581.64

**TABLE 6. COUNTY SUMMARY
EMPLOYMENT AND TOTAL EARNINGS, BY INDUSTRY
SECOND QUARTER 2005**

NORTH AMERICAN INDUSTRY CLASSIFICATION SYSTEM INDUSTRY GROUP	NUMBER OF EMPLOYING UNITS	EMPLOYMENT			TOTAL EARNINGS	AVERAGE WEEKLY EARNINGS
		APRIL	MAY	JUNE	APR. - JUN. 2005	
GRANT COUNTY - TOTAL	281	3,548	3,569	3,654	\$23,238,292	\$497.88
Natural Resources & Mining	25	199	204	222	1,834,617	677.40
Construction	32	230	244	255	1,795,210	568.28
Manufacturing	20	844	831	841	6,077,699	557.45
Trade, Transportation & Utilities	86	571	578	558	3,136,295	424.00
Wholesale Trade	16	156	161	153	1,197,536	587.99
Retail Trade	40	357	357	350	1,537,034	333.36
Transportation, Warehousing & Utilities	30	58	60	55	401,725	535.87
Information	3	39	40	39	282,974	553.40
Financial Activities	20	103	102	101	742,564	560.00
Professional & Business Services	22	82	77	83	669,946	638.86
Education & Health Services	21	206	206	202	1,181,741	444.15
Leisure & Hospitality	20	251	261	280	635,868	185.28
Other Services	13	35	35	37	153,936	332.00
Local Government	10	928	932	976	6,317,615	514.07
State Government	9	60	59	60	409,827	528.35
GREENE COUNTY - TOTAL	861	14,998	15,150	14,746	\$100,552,584	\$516.87
Natural Resources & Mining	37	207	244	241	1,443,145	481.26
Construction	74	396	395	393	2,308,075	449.86
Manufacturing	54	5,450	5,488	5,472	44,674,346	628.24
Trade, Transportation & Utilities	247	2,200	2,190	2,142	12,070,620	426.44
Wholesale Trade	54	424	422	397	3,323,642	617.05
Retail Trade	162	1,589	1,583	1,560	7,279,223	354.99
Transportation, Warehousing & Utilities	31	187	185	185	1,467,755	608.10
Information	13	90	94	100	532,998	433.10
Financial Activities	87	467	459	478	3,255,611	535.11
Professional & Business Services	87	1,357	1,429	1,220	7,102,984	409.17
Education & Health Services	98	1,686	1,680	1,672	10,374,689	475.22
Leisure & Hospitality	65	1,146	1,182	1,217	2,634,897	171.52
Other Services	56	179	172	172	861,205	380.00
Local Government	32	1,564	1,558	1,376	13,206,977	677.58
State Government	11	256	259	263	2,087,037	619.05

**TABLE 6. COUNTY SUMMARY
EMPLOYMENT AND TOTAL EARNINGS, BY INDUSTRY
SECOND QUARTER 2005**

NORTH AMERICAN INDUSTRY CLASSIFICATION SYSTEM INDUSTRY GROUP	NUMBER OF EMPLOYING UNITS	EMPLOYMENT			TOTAL EARNINGS	AVERAGE
		APRIL	MAY	JUNE	APR. - JUN. 2005	WEEKLY EARNINGS
HEMPSTEAD COUNTY - TOTAL	501	8,279	8,316	8,368	\$54,352,249	\$502.46
Natural Resources & Mining	19	204	210	214	1,687,984	620.28
Construction	34	125	136	151	838,854	469.86
Manufacturing	32	2,759	2,808	2,841	20,595,431	565.27
Trade, Transportation & Utilities	136	1,241	1,212	1,232	6,281,448	393.37
Wholesale Trade	26	187	190	195	1,101,852	444.53
Retail Trade	87	897	878	884	3,755,620	325.94
Transportation, Warehousing & Utilities	23	157	144	153	1,423,976	723.81
Information	11	88	88	84	517,328	459.17
Financial Activities	45	267	270	273	1,970,956	561.53
Professional & Business Services	37	206	228	207	711,593	256.18
Education & Health Services	62	963	968	983	5,769,426	456.90
Leisure & Hospitality	43	605	604	613	1,541,079	195.19
Other Services	36	218	220	220	1,378,393	483.42
Local Government	29	1,050	1,038	1,015	8,705,862	647.45
State Government	17	553	534	535	4,353,895	619.45
HOT SPRING COUNTY - TOTAL	612	7,782	7,761	7,663	\$55,123,773	\$548.17
Natural Resources & Mining	40	171	179	178	1,382,865	604.40
Construction	69	382	398	399	3,141,348	614.87
Manufacturing	44	1,624	1,620	1,619	15,689,644	744.54
Trade, Transportation & Utilities	169	1,552	1,558	1,528	8,962,692	445.95
Wholesale Trade	22	111	110	107	967,501	680.70
Retail Trade	101	1,060	1,076	1,039	4,776,055	347.14
Transportation, Warehousing & Utilities	46	381	372	382	3,219,136	654.52
Information	9	65	64	70	602,442	698.62
Financial Activities	55	296	296	306	2,002,950	514.72
Professional & Business Services	55	199	194	216	1,308,469	495.82
Education & Health Services	46	987	975	978	6,300,818	494.57
Leisure & Hospitality	44	572	580	596	1,439,624	190.06
Other Services	41	296	294	239	1,085,288	302.11
Local Government	26	1,126	1,121	1,022	9,797,060	691.61
State Government	14	512	482	512	3,410,573	522.61

**TABLE 6. COUNTY SUMMARY
EMPLOYMENT AND TOTAL EARNINGS, BY INDUSTRY
SECOND QUARTER 2005**

NORTH AMERICAN INDUSTRY CLASSIFICATION SYSTEM INDUSTRY GROUP	NUMBER OF EMPLOYING UNITS	EMPLOYMENT			TOTAL EARNINGS	AVERAGE
		APRIL	MAY	JUNE	APR. - JUN. 2005	WEEKLY EARNINGS
HOWARD COUNTY - TOTAL	365	7,580	7,588	7,499	\$52,752,735	\$537.07
Natural Resources & Mining	22	240	234	238	1,753,642	568.38
Construction	23	73	80	91	448,315	424.01
Manufacturing	27	4,232	4,213	4,168	32,690,389	598.11
Trade, Transportation & Utilities	110	927	928	956	5,227,160	429.12
Wholesale Trade	20	105	102	106	829,773	611.78
Retail Trade	67	638	644	668	2,845,069	336.69
Transportation, Warehousing & Utilities	23	184	182	182	1,552,318	653.70
Information	8	38	38	37	228,950	467.56
Financial Activities	33	132	132	145	857,778	483.98
Professional & Business Services	28	117	109	116	686,300	463.09
Education & Health Services	40	597	591	607	2,846,560	365.96
Leisure & Hospitality	24	295	317	307	712,079	178.81
Other Services	20	98	108	110	493,177	360.16
Local Government	18	702	705	595	5,858,348	675.29
State Government	12	129	133	129	950,037	560.71
INDEPENDENCE COUNTY - TOTAL	904	16,394	16,561	16,507	\$109,332,119	\$510.10
Natural Resources & Mining	11	133	133	132	1,004,894	582.66
Construction	65	352	369	392	2,496,442	517.61
Manufacturing	55	5,013	5,026	5,021	38,226,748	585.76
Trade, Transportation & Utilities	291	3,039	3,047	3,056	19,167,652	483.84
Wholesale Trade	53	509	516	519	4,437,514	663.24
Retail Trade	181	1,742	1,736	1,742	7,658,693	338.58
Transportation, Warehousing & Utilities	57	788	795	795	7,071,445	686.24
Information	12	164	167	167	1,174,975	544.47
Financial Activities	84	446	458	469	3,228,060	542.56
Professional & Business Services	84	940	995	990	4,214,734	332.52
Education & Health Services	106	2,686	2,710	2,728	20,718,379	588.52
Leisure & Hospitality	72	1,159	1,206	1,180	2,717,778	176.92
Other Services	70	356	350	345	1,605,999	352.63
Local Government	37	1,607	1,610	1,594	11,464,887	549.94
State Government	17	499	490	433	3,311,571	537.42

**TABLE 6. COUNTY SUMMARY
EMPLOYMENT AND TOTAL EARNINGS, BY INDUSTRY
SECOND QUARTER 2005**

NORTH AMERICAN INDUSTRY CLASSIFICATION SYSTEM INDUSTRY GROUP	NUMBER OF EMPLOYING UNITS	EMPLOYMENT			TOTAL EARNINGS	AVERAGE WEEKLY EARNINGS
		APRIL	MAY	JUNE	APR. - JUN. 2005	
IZARD COUNTY - TOTAL	248	2,861	2,924	2,771	16,891,940	\$455.60
Natural Resources & Mining	5	82	83	85	613,301	566.12
Construction	23	54	55	67	337,505	442.53
Manufacturing	12	391	387	376	2,922,693	584.46
Trade, Transportation & Utilities	67	506	509	492	2,503,689	383.39
Retail Trade	51	397	394	386	1,759,730	345.02
Other Trade, Transportation & Utilities	16	109	115	106	743,959	520.25
Information	3	6	6	7	33,780	410.28
Financial Activities	25	141	140	149	874,180	469.15
Professional & Business Services	22	83	85	91	386,474	344.35
Education & Health Services	22	426	424	445	2,160,006	384.91
Leisure & Hospitality	25	181	196	202	394,033	157.05
Other Services	15	37	39	39	175,727	352.63
Local Government	18	542	548	404	3,708,476	572.83
State Government	11	412	452	414	2,782,076	502.36
JACKSON COUNTY - TOTAL	518	5,822	5,816	5,716	\$41,985,760	\$558.32
Natural Resources & Mining	46	240	279	239	1,435,969	437.17
Construction	28	173	185	198	1,235,718	512.89
Manufacturing	27	1,006	1,000	1,006	12,691,567	972.38
Trade, Transportation & Utilities	134	1,197	1,193	1,187	6,955,701	448.75
Wholesale Trade	38	237	235	238	2,037,764	662.33
Retail Trade	77	715	715	711	3,142,742	338.74
Transportation, Warehousing & Utilities	19	245	243	238	1,775,195	564.27
Information	4	36	35	36	298,009	642.72
Financial Activities	45	197	200	200	1,361,898	526.44
Professional & Business Services	38	131	124	124	866,562	527.64
Education & Health Services	67	1,000	998	978	6,896,356	534.77
Leisure & Hospitality	38	340	352	352	851,752	188.27
Other Services	42	109	108	114	445,265	310.43
Local Government	35	781	716	665	4,559,481	486.67
State Government	14	612	626	617	4,387,482	545.82

**TABLE 6. COUNTY SUMMARY
EMPLOYMENT AND TOTAL EARNINGS, BY INDUSTRY
SECOND QUARTER 2005**

NORTH AMERICAN INDUSTRY CLASSIFICATION SYSTEM INDUSTRY GROUP	NUMBER OF EMPLOYING UNITS	EMPLOYMENT			TOTAL EARNINGS	AVERAGE WEEKLY EARNINGS
		APRIL	MAY	JUNE	APR. - JUN. 2005	
JEFFERSON COUNTY - TOTAL	1,778	33,328	33,320	33,092	\$246,456,989	\$570.23
Natural Resources & Mining	40	474	477	478	3,848,261	621.46
Construction	122	1,457	1,483	1,443	16,110,329	848.22
Manufacturing	77	6,417	6,386	6,397	60,640,347	728.85
Trade, Transportation & Utilities	499	6,237	6,239	6,207	37,058,511	457.74
Wholesale Trade	88	1,094	1,109	1,093	8,128,141	569.09
Retail Trade	347	4,230	4,232	4,211	19,162,428	348.94
Transportation, Warehousing & Utilities	64	913	898	903	9,767,942	830.56
Information	19	214	228	237	1,577,443	536.12
Financial Activities	152	1,245	1,243	1,250	10,033,227	619.41
Professional & Business Services	180	1,997	1,910	1,993	14,351,775	561.35
Education & Health Services	302	5,473	5,422	5,400	36,531,217	517.35
Leisure & Hospitality	142	2,293	2,362	2,359	5,716,383	188.08
Other Services	164	842	845	841	4,590,572	419.05
Local Government	42	3,448	3,499	3,387	30,956,815	691.30
State Government	39	3,231	3,226	3,100	25,042,109	604.68
JOHNSON COUNTY - TOTAL	449	8,554	8,458	8,485	\$52,557,742	\$475.69
Natural Resources & Mining	15	213	214	228	1,569,881	553.10
Construction	32	150	155	158	881,237	439.23
Manufacturing	44	3,130	3,113	3,181	19,400,407	475.07
Trade, Transportation & Utilities	124	1,796	1,729	1,713	9,613,782	423.55
Information	6	31	31	32	215,076	528.01
Financial Activities	38	214	212	214	1,476,115	532.25
Professional & Business Services	46	182	170	163	1,170,462	524.48
Education & Health Services	51	1,096	1,086	1,065	7,291,732	518.23
Leisure & Hospitality	39	556	559	550	1,284,279	178.00
Other Services	30	84	82	84	441,048	407.12
Local Government	14	948	953	945	8,042,615	652.14
State Government	10	154	154	152	1,171,108	587.51

**TABLE 6. COUNTY SUMMARY
EMPLOYMENT AND TOTAL EARNINGS, BY INDUSTRY
SECOND QUARTER 2005**

NORTH AMERICAN INDUSTRY CLASSIFICATION SYSTEM INDUSTRY GROUP	NUMBER OF EMPLOYING UNITS	EMPLOYMENT			TOTAL EARNINGS	AVERAGE WEEKLY EARNINGS
		APRIL	MAY	JUNE	APR. - JUN. 2005	
LAFAYETTE COUNTY - TOTAL	160	1,669	1,674	1,679	\$10,502,005	\$482.58
Natural Resources & Mining	30	168	170	179	1,125,244	502.27
Trade, Transportation & Utilities	39	230	233	236	1,290,109	425.92
Retail Trade	23	156	158	162	716,339	347.29
Other Trade, Transportation & Utilities	16	74	75	74	573,770	593.76
Financial Activities	16	94	90	89	465,418	393.42
Professional & Business Services	11	58	53	54	448,238	626.91
Education & Health Services	12	201	205	200	958,445	364.98
Leisure & Hospitality	5	41	42	43	101,384	185.68
Other Services	8	78	75	72	298,294	305.94
Local Government	14	366	374	376	2,705,842	559.52
State Government	8	61	61	61	402,603	507.70
Other	17	372	371	369	2,706,428	561.65
LAWRENCE COUNTY - TOTAL	419	4,387	4,414	4,340	\$26,875,829	\$471.97
Natural Resources & Mining	33	150	159	160	1,107,639	545.01
Construction	28	104	105	110	722,290	522.52
Manufacturing	23	682	693	708	4,833,161	535.45
Trade, Transportation & Utilities	136	1,039	1,042	1,038	5,594,000	413.89
Wholesale Trade	26	224	230	225	1,671,561	568.11
Retail Trade	74	680	681	675	2,822,367	319.90
Transportation, Warehousing & Utilities	36	135	131	138	1,100,072	628.37
Information	7	24	24	25	182,357	576.47
Financial Activities	31	143	142	142	875,330	473.07
Professional & Business Services	24	125	117	118	943,521	604.82
Education & Health Services	46	426	406	400	2,728,001	510.99
Leisure & Hospitality	28	310	322	309	554,896	136.08
Other Services	24	71	71	69	291,031	318.30
Local Government	28	1,185	1,203	1,132	8,238,504	540.11
State Government	11	128	130	129	805,099	480.08

**TABLE 6. COUNTY SUMMARY
EMPLOYMENT AND TOTAL EARNINGS, BY INDUSTRY
SECOND QUARTER 2005**

NORTH AMERICAN INDUSTRY CLASSIFICATION SYSTEM INDUSTRY GROUP	NUMBER OF EMPLOYING UNITS	EMPLOYMENT			TOTAL EARNINGS	AVERAGE WEEKLY EARNINGS
		APRIL	MAY	JUNE	APR. - JUN. 2005	
LEE COUNTY - TOTAL	224	2,050	2,095	2,100	\$13,220,454	\$488.53
Natural Resources & Mining	32	195	201	223	1,136,810	423.81
Construction	7	12	11	12	48,108	317.20
Trade, Transportation & Utilities	58	354	360	369	2,018,885	430.19
Wholesale Trade	9	70	70	72	559,592	609.13
Retail Trade	32	193	203	210	749,050	285.24
Transportation, Warehousing & Utilities	17	91	87	87	710,243	618.50
Financial Activities	13	78	78	80	454,683	444.61
Professional & Business Services	20	72	72	74	528,358	559.31
Education & Health Services	32	291	292	279	1,733,888	464.19
Leisure & Hospitality	8	96	100	103	197,136	152.15
Local Government	16	384	388	364	2,933,115	595.84
State Government	8	439	439	435	3,108,108	546.27
Other	30	129	154	161	1,061,363	551.64
LINCOLN COUNTY - TOTAL	214	2,943	2,942	2,768	\$18,975,632	\$506.07
Natural Resources & Mining	33	189	198	202	1,222,196	478.85
Construction	15	67	67	65	401,487	465.58
Manufacturing	10	454	459	452	3,256,883	550.61
Trade, Transportation & Utilities	49	342	344	353	2,321,569	515.64
Wholesale Trade	7	33	36	36	262,765	577.51
Retail Trade	24	166	166	171	653,328	299.74
Transportation, Warehousing & Utilities	18	143	142	146	1,405,476	752.53
Financial Activities	22	72	71	68	496,458	542.97
Professional & Business Services	11	23	22	22	145,289	500.42
Education & Health Services	21	327	322	306	1,507,488	364.27
Leisure & Hospitality	17	110	112	136	260,607	167.99
Local & State Government	22	1,318	1,314	1,130	9,168,654	562.43
Other	14	41	33	34	195,001	416.67

**TABLE 6. COUNTY SUMMARY
EMPLOYMENT AND TOTAL EARNINGS, BY INDUSTRY
SECOND QUARTER 2005**

NORTH AMERICAN INDUSTRY CLASSIFICATION SYSTEM INDUSTRY GROUP	NUMBER OF EMPLOYING UNITS	EMPLOYMENT			TOTAL EARNINGS	AVERAGE WEEKLY EARNINGS
		APRIL	MAY	JUNE	APR. - JUN. 2005	
LITTLE RIVER COUNTY - TOTAL	253	4,515	4,575	4,577	\$40,481,731	\$683.54
Natural Resources & Mining	12	69	75	75	570,715	601.39
Trade, Transportation & Utilities	72	1,116	1,122	1,130	9,267,092	634.96
Wholesale Trade	9	34	31	32	227,288	540.73
Retail Trade	43	331	339	339	1,427,944	326.59
Transportation, Warehousing & Utilities	20	751	752	759	7,611,860	776.56
Information	4	12	11	11	84,666	574.66
Financial Activities	24	108	109	105	616,764	442.02
Professional & Business Services	21	158	157	151	697,013	345.17
Education & Health Services	17	162	158	163	775,134	370.35
Leisure & Hospitality	18	222	228	239	541,456	181.35
Other Services	15	100	97	100	311,834	242.30
Local Government	20	745	770	762	5,474,345	554.81
State Government	12	90	89	92	598,614	509.75
Other	38	1,733	1,759	1,749	21,544,098	948.62
LOGAN COUNTY - TOTAL	453	5,704	5,712	5,679	\$34,856,245	\$470.53
Natural Resources & Mining	14	87	86	78	682,393	627.39
Construction	47	155	158	154	884,736	437.19
Manufacturing	28	1,819	1,803	1,814	12,991,679	551.52
Trade, Transportation & Utilities	119	875	871	877	3,892,494	342.46
Wholesale Trade	19	54	56	56	237,169	329.71
Retail Trade	74	748	741	748	3,136,628	323.57
Transportation, Warehousing & Utilities	26	73	74	73	518,697	544.09
Information	8	42	42	43	351,691	639.05
Financial Activities	42	230	226	231	1,860,021	624.80
Professional & Business Services	40	95	111	119	586,709	416.60
Education & Health Services	53	725	715	717	4,055,234	433.85
Leisure & Hospitality	32	327	344	342	748,229	170.45
Other Services	32	96	102	90	437,457	350.53
Local & State Government	38	1,253	1,254	1,214	8,365,602	518.82

**TABLE 6. COUNTY SUMMARY
EMPLOYMENT AND TOTAL EARNINGS, BY INDUSTRY
SECOND QUARTER 2005**

NORTH AMERICAN INDUSTRY CLASSIFICATION SYSTEM INDUSTRY GROUP	NUMBER OF EMPLOYING UNITS	EMPLOYMENT			TOTAL EARNINGS	AVERAGE WEEKLY EARNINGS
		APRIL	MAY	JUNE	APR. - JUN. 2005	
LONOKE COUNTY - TOTAL	1,147	11,611	11,823	11,713	\$74,647,546	\$490.12
Natural Resources & Mining	73	489	501	512	3,407,267	523.50
Construction	158	951	942	967	6,395,014	516.00
Manufacturing	39	1,328	1,356	1,374	11,841,308	673.39
Trade, Transportation & Utilities	322	2,501	2,551	2,605	13,780,526	415.32
Wholesale Trade	77	431	442	440	3,665,627	644.26
Retail Trade	178	1,803	1,850	1,924	8,253,240	341.51
Transportation, Warehousing & Utilities	67	267	259	241	1,861,659	560.12
Information	16	111	112	112	1,026,462	707.09
Financial Activities	115	566	570	582	4,508,284	605.57
Professional & Business Services	136	487	468	462	2,965,555	482.96
Education & Health Services	102	1,274	1,255	1,251	6,925,695	422.81
Leisure & Hospitality	76	1,120	1,146	1,180	2,902,131	194.35
Other Services	66	201	209	198	1,061,895	403.05
Local Government	28	2,438	2,568	2,326	18,883,743	594.35
State Government	16	145	145	144	949,666	504.96
MADISON COUNTY - TOTAL	238	3,211	3,195	3,186	\$18,495,440	\$444.97
Natural Resources & Mining	13	67	66	64	408,731	478.79
Construction	44	112	115	126	667,675	436.48
Manufacturing	20	1,160	1,130	1,124	6,561,049	443.49
Trade, Transportation & Utilities	60	585	585	588	2,951,165	387.39
Wholesale Trade	13	41	40	40	261,053	497.88
Retail Trade	33	409	414	415	1,792,997	334.22
Transportation, Warehousing & Utilities	14	135	131	133	897,115	518.86
Information	4	37	39	41	355,841	701.86
Financial Activities	15	87	89	92	625,682	538.76
Professional & Business Services	19	111	115	108	611,067	422.20
Education & Health Services	21	241	237	229	1,100,341	359.16
Leisure & Hospitality	12	122	125	121	216,315	135.65
Other Services	14	25	24	25	147,390	459.64
Local Government	8	606	611	607	4,465,636	564.98
State Government	8	58	59	61	384,548	498.55

**TABLE 6. COUNTY SUMMARY
EMPLOYMENT AND TOTAL EARNINGS, BY INDUSTRY
SECOND QUARTER 2005**

NORTH AMERICAN INDUSTRY CLASSIFICATION SYSTEM INDUSTRY GROUP	NUMBER OF EMPLOYING UNITS	EMPLOYMENT			TOTAL EARNINGS	AVERAGE WEEKLY EARNINGS
		APRIL	MAY	JUNE	APR. - JUN. 2005	
MARION COUNTY - TOTAL	274	4,068	4,079	4,109	\$23,458,386	\$441.70
Natural Resources & Mining	5	36	29	38	201,371	451.17
Construction	15	41	45	44	178,334	316.57
Manufacturing	25	1,692	1,685	1,683	10,732,241	489.46
Trade, Transportation & Utilities	60	731	716	717	3,129,666	333.75
Retail Trade	39	578	560	555	2,129,583	290.28
Other Trade, Transportation & Utilities	21	153	156	162	1,000,083	490.00
Financial Activities	35	184	194	202	1,170,074	465.55
Professional & Business Services	24	41	37	36	260,985	528.31
Education & Health Services	23	320	333	338	1,600,194	372.63
Leisure & Hospitality	41	281	285	313	718,764	188.70
Local Government	20	543	551	537	4,069,363	575.77
State Government	8	110	114	109	703,271	487.37
Other	18	89	90	92	694,123	591.08
MILLER COUNTY - TOTAL	828	12,700	12,819	12,613	\$96,953,089	\$586.75
Natural Resources & Mining	29	153	154	150	1,164,475	588.02
Construction	84	803	821	812	5,712,209	541.13
Manufacturing	36	2,798	2,858	2,886	35,661,878	963.44
Trade, Transportation & Utilities	246	2,679	2,671	2,736	16,696,103	476.50
Wholesale Trade	65	610	626	630	5,244,688	648.61
Retail Trade	139	1,474	1,454	1,515	6,545,989	340.00
Transportation, Warehousing & Utilities	42	595	591	591	4,905,426	637.04
Information	8	91	93	92	992,230	829.62
Financial Activities	82	438	456	452	3,519,783	603.46
Professional & Business Services	83	908	902	860	4,481,662	387.35
Education & Health Services	78	1,004	1,003	1,004	6,143,557	470.85
Leisure & Hospitality	78	1,369	1,387	1,366	3,811,276	213.37
Other Services	65	345	339	420	1,268,641	265.18
Local Government	22	1,658	1,670	1,379	13,746,082	673.93
State Government	17	454	465	456	3,755,193	630.24

**TABLE 6. COUNTY SUMMARY
EMPLOYMENT AND TOTAL EARNINGS, BY INDUSTRY
SECOND QUARTER 2005**

NORTH AMERICAN INDUSTRY CLASSIFICATION SYSTEM INDUSTRY GROUP	NUMBER OF EMPLOYING UNITS	EMPLOYMENT			TOTAL EARNINGS	AVERAGE WEEKLY EARNINGS
		APRIL	MAY	JUNE	APR. - JUN. 2005	
MISSISSIPPI COUNTY - TOTAL	1,124	18,156	18,162	18,086	\$141,246,903	\$599.14
Natural Resources & Mining	107	602	674	776	3,658,491	411.44
Construction	54	400	405	421	3,403,604	640.66
Manufacturing	59	5,012	5,003	5,086	59,156,447	904.01
Trade, Transportation & Utilities	307	2,998	3,009	3,096	18,910,506	479.40
Wholesale Trade	64	595	608	618	5,262,977	666.96
Retail Trade	194	1,833	1,826	1,898	8,439,547	350.47
Transportation, Warehousing & Utilities	49	570	575	580	5,207,982	696.72
Financial Activities	102	602	591	619	3,771,533	480.33
Professional & Business Services	98	1,112	1,055	1,134	6,719,818	469.77
Education & Health Services	152	1,617	1,615	1,608	10,174,951	485.14
Leisure & Hospitality	80	1,138	1,150	1,144	2,818,261	189.50
Local Government	46	2,408	2,412	2,233	18,865,974	617.28
State Government	25	680	676	605	4,615,739	543.18
Other	94	1,587	1,572	1,364	9,151,579	466.93
MONROE COUNTY - TOTAL	293	2,663	2,681	2,599	\$13,942,280	\$405.07
Natural Resources & Mining	32	146	178	174	909,839	421.61
Construction	15	56	49	45	273,524	420.81
Manufacturing	9	163	170	169	940,807	432.49
Trade, Transportation & Utilities	90	698	693	701	3,941,909	434.83
Wholesale Trade	23	221	211	213	1,597,510	571.56
Retail Trade	40	324	326	341	1,320,220	307.43
Transportation, Warehousing & Utilities	27	153	156	147	1,024,179	518.31
Financial Activities	17	101	97	100	696,260	539.18
Professional & Business Services	15	41	39	40	256,629	493.52
Education & Health Services	29	357	346	358	1,570,805	341.65
Leisure & Hospitality	29	310	316	319	669,927	163.60
Local Government	22	502	508	396	3,211,073	527.04
State Government	9	133	137	139	865,813	488.52
Other	26	156	148	158	605,694	302.54

**TABLE 6. COUNTY SUMMARY
EMPLOYMENT AND TOTAL EARNINGS, BY INDUSTRY
SECOND QUARTER 2005**

NORTH AMERICAN INDUSTRY CLASSIFICATION SYSTEM INDUSTRY GROUP	NUMBER OF EMPLOYING UNITS	EMPLOYMENT			TOTAL EARNINGS	AVERAGE WEEKLY EARNINGS
		APRIL	MAY	JUNE	APR. - JUN. 2005	
MONTGOMERY COUNTY - TOTAL	172	1,677	1,731	1,950	\$9,392,087	\$404.52
Natural Resources & Mining	14	70	64	70	428,883	485.16
Construction	23	130	124	143	879,449	511.21
Trade, Transportation & Utilities	47	215	230	228	1,051,320	360.49
Wholesale Trade	12	77	80	79	415,481	406.27
Retail Trade	27	113	128	127	512,385	321.31
Transportation, Warehousing & Utilities	8	25	22	22	123,454	412.89
Financial Activities	10	67	73	70	448,751	493.13
Education & Health Services	12	58	57	56	230,186	310.64
Leisure & Hospitality	19	237	272	504	1,166,402	265.72
Other Services	10	69	69	60	265,483	309.42
Local Government	9	505	514	488	3,085,329	472.46
State Government	8	57	56	57	419,733	569.77
Other	20	269	272	274	1,416,551	401.10
NEVADA COUNTY - TOTAL	197	2,673	2,681	2,737	\$17,868,336	\$509.64
Natural Resources & Mining	15	60	58	59	366,384	477.68
Construction	12	36	39	41	228,925	455.42
Manufacturing	8	836	827	868	7,764,590	707.95
Trade, Transportation & Utilities	50	477	479	489	2,250,473	359.40
Retail Trade	33	305	306	314	923,005	230.27
Other Trade, Transportation & Utilities	17	172	173	175	1,327,468	589.11
Financial Activities	12	62	64	64	466,555	566.67
Education & Health Services	13	376	384	373	1,809,613	368.58
Leisure & Hospitality	19	100	112	122	234,134	161.77
Other Services	17	83	89	83	258,196	233.66
Local Government	27	507	503	509	3,532,678	536.69
State Government	11	87	86	87	619,394	549.76
Other	13	49	40	42	337,394	594.35

**TABLE 6. COUNTY SUMMARY
EMPLOYMENT AND TOTAL EARNINGS, BY INDUSTRY
SECOND QUARTER 2005**

NORTH AMERICAN INDUSTRY CLASSIFICATION SYSTEM INDUSTRY GROUP	NUMBER OF EMPLOYING UNITS	EMPLOYMENT			TOTAL EARNINGS	AVERAGE WEEKLY EARNINGS
		APRIL	MAY	JUNE	APR. - JUN. 2005	
NEWTON COUNTY - TOTAL	127	1,099	1,102	1,087	\$5,096,564	\$357.70
Natural Resources & Mining	6	12	10	10	23,981	172.94
Construction	8	12	9	14	20,786	137.05
Manufacturing	15	74	77	75	368,442	376.22
Trade, Transportation & Utilities	31	169	169	170	634,420	288.20
Wholesale Trade	3	6	3	6	27,226	418.86
Retail Trade	17	112	113	113	365,478	249.53
Transportation, Warehousing & Utilities	11	51	53	51	241,716	359.87
Education & Health Services	13	209	216	218	838,197	300.82
Leisure & Hospitality	19	93	93	88	245,246	206.55
Other Services	5	11	12	11	35,262	239.33
Local Government	11	376	377	354	2,193,247	457.21
State Government	7	92	87	94	444,363	375.62
Other	12	51	52	53	292,620	432.87
OUACHITA COUNTY - TOTAL	629	7,315	7,292	7,341	\$48,418,783	\$509.09
Natural Resources & Mining	45	273	288	292	1,963,727	531.26
Construction	47	204	212	235	1,250,583	443.31
Manufacturing	30	766	768	771	6,203,175	621.04
Trade, Transportation & Utilities	183	1,769	1,754	1,747	10,943,131	479.19
Wholesale Trade	32	260	260	255	2,393,982	712.85
Retail Trade	122	1,100	1,087	1,077	4,527,860	320.13
Transportation, Warehousing & Utilities	29	409	407	415	4,021,289	753.85
Information	8	93	96	98	625,023	502.56
Financial Activities	66	325	324	329	2,224,368	524.86
Professional & Business Services	48	302	309	347	1,712,326	412.48
Education & Health Services	69	1,265	1,241	1,228	8,081,958	499.48
Leisure & Hospitality	37	542	541	535	1,195,770	170.55
Other Services	53	165	163	173	1,025,489	472.36
Local Government	30	1,307	1,290	1,272	10,657,106	635.65
State Government	13	304	306	314	2,536,127	633.40

**TABLE 6. COUNTY SUMMARY
EMPLOYMENT AND TOTAL EARNINGS, BY INDUSTRY
SECOND QUARTER 2005**

NORTH AMERICAN INDUSTRY CLASSIFICATION SYSTEM INDUSTRY GROUP	NUMBER OF EMPLOYING UNITS	EMPLOYMENT			TOTAL EARNINGS	AVERAGE WEEKLY EARNINGS
		APRIL	MAY	JUNE	APR. - JUN. 2005	
PERRY COUNTY - TOTAL	153	1,194	1,200	1,206	\$7,068,132	\$453.09
Natural Resources & Mining	7	29	29	32	309,744	794.22
Construction	24	79	89	95	517,292	453.90
Manufacturing	6	71	69	69	480,987	531.09
Trade, Transportation & Utilities	31	192	187	189	901,684	366.34
Wholesale Trade	3	8	7	7	70,960	744.34
Retail Trade	20	163	159	162	600,231	286.19
Transportation, Warehousing & Utilities	8	21	21	20	230,493	857.91
Financial Activities	14	53	53	54	383,464	553.07
Professional & Business Services	15	40	43	47	230,554	
Education & Health Services	16	166	165	160	792,837	372.63
Local Government	12	400	399	394	2,658,423	514.23
State Government	9	58	55	58	361,681	488.10
Other	19	106	111	108	431,466	306.37
PHILLIPS COUNTY - TOTAL	683	6,762	6,731	6,631	\$43,189,767	\$495.27
Natural Resources & Mining	71	441	457	482	2,227,546	372.50
Construction	34	120	122	123	723,885	457.67
Manufacturing	13	450	449	450	3,295,788	563.80
Trade, Transportation & Utilities	184	1,586	1,596	1,592	10,315,939	498.66
Wholesale Trade	34	396	405	406	3,110,083	594.62
Retail Trade	112	926	922	918	4,011,099	334.65
Transportation, Warehousing & Utilities	38	264	269	268	3,194,757	920.41
Information	11	62	63	62	432,679	533.95
Financial Activities	55	293	289	294	1,994,409	525.40
Professional & Business Services	56	254	244	254	1,759,863	540.06
Education & Health Services	127	1,182	1,191	1,212	6,313,663	406.42
Leisure & Hospitality	39	427	444	464	936,748	161.93
Other Services	43	108	109	107	480,658	342.35
Local Government	34	1,264	1,245	1,093	10,748,729	688.64
State Government	16	575	522	498	3,959,860	572.92

**TABLE 6. COUNTY SUMMARY
EMPLOYMENT AND TOTAL EARNINGS, BY INDUSTRY
SECOND QUARTER 2005**

NORTH AMERICAN INDUSTRY CLASSIFICATION SYSTEM INDUSTRY GROUP	NUMBER OF EMPLOYING UNITS	EMPLOYMENT			TOTAL EARNINGS	AVERAGE WEEKLY EARNINGS
		APRIL	MAY	JUNE	APR. - JUN. 2005	
PIKE COUNTY - TOTAL	271	2,927	2,919	2,949	\$16,915,956	\$443.85
Natural Resources & Mining	33	190	182	180	1,234,367	516.04
Construction	13	125	98	103	866,052	613.06
Manufacturing	15	464	467	520	2,944,927	468.37
Trade, Transportation & Utilities	95	602	619	630	3,156,361	393.51
Wholesale Trade	17	120	123	132	769,808	473.73
Retail Trade	51	361	363	365	1,524,993	323.16
Transportation, Warehousing & Utilities	27	121	133	133	861,560	513.75
Information	5	33	33	33	283,533	660.92
Financial Activities	23	177	177	175	1,191,824	519.92
Professional & Business Services	9	44	42	40	180,883	331.29
Education & Health Services	16	234	226	226	963,743	324.20
Leisure & Hospitality	21	217	217	223	478,907	168.21
Other Services	17	147	147	140	683,197	363.27
Local Government	13	554	574	544	4,234,625	584.46
State Government	11	140	137	135	697,537	390.70
POINSETT COUNTY - TOTAL	499	6,275	6,321	6,159	\$41,061,092	\$505.23
Natural Resources & Mining	49	333	347	361	2,192,125	485.95
Construction	29	124	121	120	755,786	477.84
Manufacturing	29	1,454	1,446	1,452	10,892,991	577.61
Trade, Transportation & Utilities	139	1,432	1,477	1,448	9,086,260	481.26
Wholesale Trade	32	508	510	490	4,921,731	753.17
Retail Trade	76	765	814	808	3,064,929	296.31
Transportation, Warehousing & Utilities	31	159	153	150	1,099,600	549.25
Information	7	58	56	57	575,139	776.17
Financial Activities	45	343	347	343	2,798,224	625.12
Professional & Business Services	25	100	96	96	728,367	575.63
Education & Health Services	52	593	585	582	3,269,985	428.76
Leisure & Hospitality	48	410	422	419	822,076	151.65
Other Services	33	67	64	68	359,991	417.46
Local Government	30	1,109	1,109	970	8,127,245	588.31
State Government	13	252	251	243	1,452,903	449.44

**TABLE 6. COUNTY SUMMARY
EMPLOYMENT AND TOTAL EARNINGS, BY INDUSTRY
SECOND QUARTER 2005**

NORTH AMERICAN INDUSTRY CLASSIFICATION SYSTEM INDUSTRY GROUP	NUMBER OF EMPLOYING UNITS	EMPLOYMENT			TOTAL EARNINGS	AVERAGE
		APRIL	MAY	JUNE	APR. - JUN. 2005	WEEKLY EARNINGS
POLK COUNTY - TOTAL	534	6,271	6,365	6,374	\$36,310,607	\$440.79
Natural Resources & Mining	27	261	247	258	1,965,456	592.12
Construction	36	175	188	192	905,149	376.36
Manufacturing	45	1,407	1,441	1,429	9,517,920	513.55
Trade, Transportation & Utilities	154	1,368	1,386	1,419	7,106,812	393.01
Wholesale Trade	24	135	134	132	780,706	449.28
Retail Trade	86	860	865	877	3,760,818	333.54
Transportation, Warehousing & Utilities	44	373	387	410	2,565,288	505.97
Information	10	53	55	58	378,742	526.52
Financial Activities	41	219	218	220	1,330,326	467.27
Professional & Business Services	47	144	143	146	837,630	446.42
Education & Health Services	65	942	948	936	4,948,744	404.11
Leisure & Hospitality	44	423	427	447	912,085	162.28
Other Services	30	131	134	133	569,435	330.17
Local Government	21	813	830	844	6,067,489	563.00
State Government	14	335	348	292	1,770,819	419.13
POPE COUNTY - TOTAL	1,624	25,875	26,218	25,804	\$183,127,599	\$542.51
Natural Resources & Mining	22	638	750	633	5,814,932	663.98
Construction	165	1,310	1,335	1,367	10,449,965	601.08
Manufacturing	87	4,859	4,939	4,957	36,056,490	563.93
Trade, Transportation & Utilities	475	6,414	6,450	6,466	52,487,186	626.61
Wholesale Trade	103	750	750	768	5,952,500	605.67
Retail Trade	278	3,171	3,202	3,210	14,666,322	353.18
Transportation, Warehousing & Utilities	94	2,493	2,498	2,488	31,868,364	983.32
Information	22	297	294	299	2,519,985	653.41
Financial Activities	158	780	773	779	5,665,208	560.62
Professional & Business Services	211	2,450	2,508	2,497	13,524,499	418.65
Education & Health Services	183	2,797	2,800	2,764	19,094,371	527.02
Leisure & Hospitality	131	2,374	2,381	2,345	5,780,892	187.89
Other Services	114	478	481	484	2,827,851	452.24
Local Government	40	2,315	2,283	2,087	18,479,173	637.91
State Government	16	1,163	1,224	1,126	10,427,047	684.95

**TABLE 6. COUNTY SUMMARY
EMPLOYMENT AND TOTAL EARNINGS, BY INDUSTRY
SECOND QUARTER 2005**

NORTH AMERICAN INDUSTRY CLASSIFICATION SYSTEM INDUSTRY GROUP	NUMBER OF EMPLOYING UNITS	EMPLOYMENT			TOTAL EARNINGS	AVERAGE WEEKLY EARNINGS
		APRIL	MAY	JUNE	APR. - JUN. 2005	
PRAIRIE COUNTY - TOTAL	224	1,616	1,642	1,640	\$9,418,496	\$443.75
Natural Resources & Mining	25	159	173	190	1,264,482	559.01
Trade, Transportation & Utilities	65	391	395	408	1,914,910	370.10
Wholesale Trade	10	67	69	69	487,427	548.70
Retail Trade	35	237	238	248	690,991	220.55
Transportation, Warehousing & Utilities	20	87	88	91	736,492	638.95
Information	4	10	10	10	112,855	868.12
Financial Activities	16	64	63	61	399,677	490.60
Professional & Business Services	16	44	45	55	287,441	460.64
Education & Health Services	20	200	208	204	971,087	366.17
Leisure & Hospitality	19	104	99	106	233,867	174.66
Other Services	16	51	52	48	207,281	316.78
Local Government	15	346	347	302	2,354,829	546.15
State Government	10	52	52	52	363,028	537.02
Other	18	195	198	204	1,309,039	506.01
PULASKI COUNTY - TOTAL	13,359	234,989	236,139	236,737	\$2,061,415,094	\$672.04
Natural Resources & Mining	41	630	638	657	7,468,602	895.34
Construction	1,097	10,521	10,758	10,893	91,422,946	655.78
Manufacturing	428	16,106	15,983	16,104	155,104,192	742.71
Trade, Transportation & Utilities	3,197	50,909	50,894	50,759	411,572,353	622.55
Wholesale Trade	1,064	12,876	12,832	12,877	142,439,784	851.90
Retail Trade	1,737	24,735	24,698	24,755	139,559,959	434.12
Transportation, Warehousing & Utilities	396	13,298	13,364	13,127	129,572,610	751.50
Information	236	8,463	8,529	8,628	99,052,739	892.21
Financial Activities	1,649	15,949	16,040	16,121	181,684,904	871.49
Professional & Business Services	2,538	32,714	32,596	32,599	262,619,774	618.99
Education & Health Services	1,649	32,642	32,809	32,901	319,247,240	749.07
Leisure & Hospitality	996	19,631	20,567	20,983	64,820,694	244.50
Other Services	1,226	6,583	6,619	6,901	44,369,091	509.33
Local Government	103	16,387	16,348	16,367	171,362,485	805.37
State Government	199	24,454	24,358	23,824	252,690,074	802.81

**TABLE 6. COUNTY SUMMARY
EMPLOYMENT AND TOTAL EARNINGS, BY INDUSTRY
SECOND QUARTER 2005**

NORTH AMERICAN INDUSTRY CLASSIFICATION SYSTEM INDUSTRY GROUP	NUMBER OF EMPLOYING UNITS	EMPLOYMENT			TOTAL EARNINGS	AVERAGE WEEKLY EARNINGS
		APRIL	MAY	JUNE	APR. - JUN. 2005	
RANDOLPH COUNTY - TOTAL	394	4,916	5,013	5,033	\$28,606,315	\$441.21
Natural Resources & Mining	20	83	85	86	386,170	350.85
Construction	22	95	110	96	528,681	405.33
Manufacturing	34	1,063	1,087	1,107	7,166,774	507.79
Trade, Transportation & Utilities	105	939	958	977	4,964,136	398.60
Wholesale Trade	22	172	193	204	994,719	403.43
Retail Trade	63	617	607	609	2,614,251	329.13
Transportation, Warehousing & Utilities	20	150	158	164	1,355,166	662.56
Information	5	49	50	48	472,186	741.27
Financial Activities	27	151	145	147	821,560	427.97
Professional & Business Services	39	210	209	223	874,146	314.21
Education & Health Services	54	779	784	780	4,402,585	433.62
Leisure & Hospitality	30	380	398	405	805,129	157.06
Other Services	23	61	64	62	254,791	314.43
Local Government	23	837	859	841	6,107,211	555.52
State Government	12	269	264	261	1,822,946	529.82
SAINT FRANCIS COUNTY - TOTAL	606	8,596	8,680	8,621	\$51,497,988	\$458.90
Natural Resources & Mining	22	149	168	164	860,057	412.63
Construction	43	265	269	271	1,950,375	559.11
Manufacturing	22	1,470	1,458	1,437	9,414,702	497.74
Trade, Transportation & Utilities	189	2,154	2,216	2,234	12,922,064	451.55
Wholesale Trade	33	517	548	545	3,899,837	558.98
Retail Trade	124	1,304	1,321	1,342	6,143,458	357.38
Transportation, Warehousing & Utilities	32	333	347	347	2,878,769	646.87
Information	10	124	126	110	886,746	568.43
Financial Activities	49	289	290	295	1,847,085	487.70
Professional & Business Services	41	155	138	139	976,966	521.88
Education & Health Services	97	1,285	1,288	1,257	7,134,359	429.87
Leisure & Hospitality	50	764	756	791	1,914,247	191.15
Other Services	36	130	138	140	460,005	260.18
Local Government	30	1,212	1,226	1,226	9,182,794	578.36
State Government	17	599	607	557	3,948,588	516.85

**TABLE 6. COUNTY SUMMARY
EMPLOYMENT AND TOTAL EARNINGS, BY INDUSTRY
SECOND QUARTER 2005**

NORTH AMERICAN INDUSTRY CLASSIFICATION SYSTEM INDUSTRY GROUP	NUMBER OF EMPLOYING UNITS	EMPLOYMENT			TOTAL EARNINGS	AVERAGE
		APRIL	MAY	JUNE	APR. - JUN. 2005	WEEKLY EARNINGS
SALINE COUNTY - TOTAL	1,581	19,219	19,212	19,436	\$131,308,978	\$523.65
Natural Resources & Mining	12	38	41	43	382,164	722.88
Construction	284	1,732	1,760	1,828	13,205,625	572.83
Manufacturing	82	1,844	1,839	1,864	16,983,014	706.54
Trade, Transportation & Utilities	412	4,367	4,372	4,405	28,029,538	492.11
Wholesale Trade	114	518	521	564	5,006,762	720.78
Retail Trade	254	3,608	3,605	3,582	20,897,859	446.74
Transportation, Warehousing & Utilities	44	241	246	259	2,124,917	657.33
Information	13	102	105	108	672,678	492.80
Financial Activities	150	676	678	686	4,863,943	550.22
Professional & Business Services	194	1,222	1,204	1,228	7,510,102	474.30
Education & Health Services	144	2,479	2,495	2,509	16,020,483	494.06
Leisure & Hospitality	116	2,040	2,020	2,034	5,718,451	216.55
Other Services	123	598	580	575	3,350,690	441.09
Local & State Government	51	4,121	4,118	4,156	34,572,290	643.66
SCOTT COUNTY - TOTAL	179	2,929	2,887	2,912	16,372,013	\$432.88
Natural Resources & Mining	17	171	172	173	1,341,751	600.07
Trade, Transportation & Utilities	47	482	478	487	2,294,012	365.85
Wholesale Trade	9	65	66	66	437,919	512.99
Retail Trade	30	344	338	342	1,282,477	289.02
Transportation, Warehousing & Utilities	8	73	74	79	573,616	585.72
Information	4	13	13	13	92,398	546.73
Financial Activities	15	70	69	72	411,863	450.45
Professional & Business Services	8	14	11	11	53,566	343.37
Education & Health Services	20	331	312	312	1,533,497	370.56
Leisure & Hospitality	17	181	177	174	357,345	155.01
Other Services	10	56	56	55	457,929	632.79
Local Government	5	357	356	360	2,796,202	601.38
State Government	8	65	60	71	406,421	478.52
Other	28	1,189	1,183	1,184	6,627,029	430.07

**TABLE 6. COUNTY SUMMARY
EMPLOYMENT AND TOTAL EARNINGS, BY INDUSTRY
SECOND QUARTER 2005**

NORTH AMERICAN INDUSTRY CLASSIFICATION SYSTEM INDUSTRY GROUP	NUMBER OF EMPLOYING UNITS	EMPLOYMENT			TOTAL EARNINGS	AVERAGE WEEKLY EARNINGS
		APRIL	MAY	JUNE	APR. - JUN. 2005	
SEARCY COUNTY - TOTAL	147	1,633	1,658	1,641	\$8,035,517	\$375.98
Construction	5	12	17	14	65,138	349.58
Manufacturing	18	288	289	292	1,222,874	324.74
Trade, Transportation & Utilities	39	290	292	298	1,102,427	289.10
Retail Trade	28	214	214	221	737,097	262.09
Other Trade, Transportation & Utilities	11	76	78	77	365,330	364.97
Financial Activities	15	65	67	71	331,891	377.29
Professional & Business Services	16	35	34	33	159,667	361.24
Education & Health Services	13	262	266	266	1,102,217	320.35
Leisure & Hospitality	12	123	129	127	250,528	152.54
Local Government	9	323	329	299	2,271,872	551.29
State Government	9	190	190	190	1,235,556	500.23
Other	11	45	45	51	293,347	480.11
SEBASTIAN COUNTY - TOTAL	3,510	72,425	72,867	72,915	\$557,440,409	\$589.53
Natural Resources & Mining	59	1,100	1,097	1,187	12,729,043	868.05
Construction	291	2,939	3,049	3,066	24,949,626	635.92
Manufacturing	216	21,474	21,786	21,602	184,146,079	655.16
Trade, Transportation & Utilities	911	12,158	12,144	12,178	81,481,081	515.44
Wholesale Trade	231	2,354	2,360	2,382	21,762,268	707.73
Retail Trade	564	7,800	7,772	7,791	41,162,348	406.58
Transportation, Warehousing & Utilities	116	2,004	2,012	2,005	18,556,465	711.22
Information	57	1,179	1,178	1,186	12,284,007	800.10
Financial Activities	399	2,481	2,492	2,519	21,976,050	676.91
Professional & Business Services	502	9,437	9,445	9,332	58,221,479	476.21
Education & Health Services	417	9,105	9,093	9,072	82,531,541	698.41
Leisure & Hospitality	307	5,346	5,390	5,574	15,210,384	215.21
Other Services	286	1,456	1,468	1,553	8,445,583	435.33
Local Government	43	4,400	4,398	4,368	44,675,523	783.06
State Government	22	1,350	1,327	1,278	10,790,013	629.58

**TABLE 6. COUNTY SUMMARY
EMPLOYMENT AND TOTAL EARNINGS, BY INDUSTRY
SECOND QUARTER 2005**

NORTH AMERICAN INDUSTRY CLASSIFICATION SYSTEM INDUSTRY GROUP	NUMBER OF EMPLOYING UNITS	EMPLOYMENT			TOTAL EARNINGS	AVERAGE WEEKLY EARNINGS
		APRIL	MAY	JUNE	APR. - JUN. 2005	
SEVIER COUNTY - TOTAL	320	5,977	5,938	5,953	36,407,172	\$470.21
Natural Resources & Mining	20	196	197	203	1,315,573	509.39
Trade, Transportation & Utilities	92	848	837	858	4,809,881	436.48
Wholesale Trade	15	138	138	140	1,431,767	794.25
Retail Trade	59	609	599	614	2,512,419	318.22
Transportation, Warehousing & Utilities	18	101	100	104	865,695	655.00
Information	7	44	46	45	293,817	502.25
Financial Activities	27	207	201	218	1,317,378	485.64
Professional & Business Services	30	130	124	125	2,736,653	1666.32
Education & Health Services	34	518	516	522	2,734,504	405.55
Leisure & Hospitality	22	295	301	354	707,338	171.82
Other Services	33	160	154	156	655,668	321.93
Local Government	12	823	818	734	5,186,414	503.94
State Government	9	191	190	176	1,355,520	561.60
Other	34	2,565	2,554	2,562	15,294,426	459.51
SHARP COUNTY - TOTAL	386	3,923	3,954	4,116	\$21,170,283	\$407.36
Construction	33	197	212	223	1,519,096	554.68
Manufacturing	22	211	218	215	951,048	340.80
Trade, Transportation & Utilities	103	1,071	1,046	1,090	6,064,014	436.35
Retail Trade	73	677	683	694	2,725,260	306.19
Other Trade, Transportation & Utilities	30	394	363	396	3,338,754	668.24
Information	8	62	64	64	829,476	1007.46
Financial Activities	32	260	257	259	1,544,680	459.36
Professional & Business Services	37	143	136	140	854,740	470.76
Education & Health Services	50	557	566	580	2,677,817	362.86
Leisure & Hospitality	40	464	493	494	961,543	152.93
Local Government	25	766	772	792	4,787,932	474.21
State Government	9	108	109	106	632,896	452.18
Other	27	84	81	153	347,041	251.84

**TABLE 6. COUNTY SUMMARY
EMPLOYMENT AND TOTAL EARNINGS, BY INDUSTRY
SECOND QUARTER 2005**

NORTH AMERICAN INDUSTRY CLASSIFICATION SYSTEM INDUSTRY GROUP	NUMBER OF EMPLOYING UNITS	EMPLOYMENT			TOTAL EARNINGS	AVERAGE WEEKLY EARNINGS
		APRIL	MAY	JUNE	APR. - JUN. 2005	
STONE COUNTY - TOTAL	239	2,766	2,807	2,947	\$14,817,765	\$401.35
Construction	20	78	77	81	449,332	439.37
Manufacturing	20	464	463	462	2,587,168	429.83
Trade, Transportation & Utilities	76	583	591	612	3,223,557	416.52
Wholesale Trade	10	51	53	54	222,188	324.52
Retail Trade	51	485	492	512	2,647,113	410.26
Transportation, Warehousing & Utilities	15	47	46	46	354,256	588.14
Financial Activities	20	88	90	89	580,044	501.33
Professional & Business Services	10	31	23	24	158,881	470.06
Education & Health Services	24	423	426	423	2,599,775	471.66
Leisure & Hospitality	32	381	415	426	877,600	165.73
Other Services	12	29	30	30	120,743	313.08
Local Government	10	450	457	434	2,990,711	514.66
State Government	9	170	167	168	869,848	397.49
Other	6	69	68	198	360,106	248.06
UNION COUNTY - TOTAL	1,320	19,884	20,079	20,087	\$157,895,640	\$606.79
Natural Resources & Mining	105	497	512	526	4,027,844	605.54
Construction	97	1,479	1,470	1,432	13,309,146	701.06
Manufacturing	65	4,993	5,112	5,121	55,517,170	841.43
Trade, Transportation & Utilities	367	3,583	3,569	3,582	22,865,771	491.59
Wholesale Trade	81	533	521	539	5,346,328	774.49
Retail Trade	227	2,357	2,344	2,343	10,538,910	345.27
Transportation, Warehousing & Utilities	59	693	704	700	6,980,533	768.19
Information	20	218	227	234	1,386,660	471.28
Financial Activities	125	739	730	748	5,449,184	567.21
Professional & Business Services	130	1,781	1,770	1,715	15,729,122	689.29
Education & Health Services	129	2,172	2,212	2,216	14,749,323	515.71
Leisure & Hospitality	92	1,182	1,174	1,197	3,209,925	208.49
Other Services	135	632	678	678	3,076,762	357.15
Local Government	37	2,055	2,072	2,089	14,634,145	543.29
State Government	18	553	553	549	3,940,588	549.47

**TABLE 6. COUNTY SUMMARY
EMPLOYMENT AND TOTAL EARNINGS, BY INDUSTRY
SECOND QUARTER 2005**

NORTH AMERICAN INDUSTRY CLASSIFICATION SYSTEM INDUSTRY GROUP	NUMBER OF EMPLOYING UNITS	EMPLOYMENT			TOTAL EARNINGS	AVERAGE WEEKLY EARNINGS
		APRIL	MAY	JUNE	APR. - JUN. 2005	
VAN BUREN COUNTY - TOTAL	352	3,736	3,774	3,827	\$20,685,316	\$421.06
Natural Resources & Mining	10	51	58	49	255,029	372.49
Construction	43	113	115	122	729,749	481.15
Manufacturing	14	616	586	594	3,600,978	462.69
Trade, Transportation & Utilities	104	823	822	851	4,148,942	383.59
Wholesale Trade	15	54	52	52	378,350	552.60
Retail Trade	65	622	622	649	2,721,726	331.80
Transportation, Warehousing & Utilities	24	147	148	150	1,048,866	543.92
Information	9	47	47	51	350,392	557.65
Financial Activities	29	113	115	116	680,979	456.83
Professional & Business Services	29	91	86	84	431,920	381.89
Education & Health Services	36	593	607	607	3,081,325	393.51
Leisure & Hospitality	29	443	464	487	1,297,783	214.84
Other Services	28	70	71	74	313,214	336.19
Local Government	13	678	705	691	5,158,605	573.99
State Government	8	98	98	101	636,400	494.48
WASHINGTON COUNTY - TOTAL	5,221	87,451	87,734	88,973	\$697,118,917	\$609.01
Natural Resources & Mining	39	446	449	458	3,325,821	567.26
Construction	596	5,135	5,237	5,341	42,572,606	625.24
Manufacturing	228	15,497	15,505	15,623	121,827,716	602.98
Trade, Transportation & Utilities	1,330	20,276	20,418	20,498	149,693,165	564.53
Wholesale Trade	352	3,683	3,770	3,809	41,886,385	858.29
Retail Trade	778	11,395	11,406	11,408	62,569,036	422.08
Transportation, Warehousing & Utilities	200	5,198	5,242	5,281	45,237,744	664.05
Information	101	1,570	1,571	1,571	14,850,554	727.30
Financial Activities	622	3,845	3,874	3,930	37,488,548	742.66
Professional & Business Services	850	8,465	8,528	8,637	88,687,095	798.53
Education & Health Services	531	10,001	10,054	9,883	83,695,072	645.14
Leisure & Hospitality	486	8,820	8,906	8,903	25,930,232	224.71
Other Services	355	1,913	1,940	1,930	10,971,007	437.80
Local & State Government	83	11,483	11,252	12,199	118,077,101	780.00

**TABLE 6. COUNTY SUMMARY
EMPLOYMENT AND TOTAL EARNINGS, BY INDUSTRY
SECOND QUARTER 2005**

NORTH AMERICAN INDUSTRY CLASSIFICATION SYSTEM INDUSTRY GROUP	NUMBER OF EMPLOYING UNITS	EMPLOYMENT			TOTAL EARNINGS	AVERAGE WEEKLY EARNINGS
		APRIL	MAY	JUNE	APR. - JUN. 2005	
WHITE COUNTY - TOTAL	1,524	23,771	23,843	23,582	\$160,734,448	\$520.99
Natural Resources & Mining	33	256	272	295	1,806,210	506.46
Construction	168	1,087	1,141	1,151	7,909,216	540.16
Manufacturing	79	3,802	3,786	3,763	31,585,851	642.15
Trade, Transportation & Utilities	473	5,981	5,955	5,992	39,716,693	511.23
Wholesale Trade	96	578	579	586	4,381,867	580.15
Retail Trade	295	3,208	3,162	3,157	14,320,551	346.88
Transportation, Warehousing & Utilities	82	2,195	2,214	2,249	21,014,275	728.36
Information	22	232	237	255	1,466,996	467.59
Financial Activities	162	874	881	873	5,511,309	483.96
Professional & Business Services	139	1,198	1,207	1,263	7,501,690	471.96
Education & Health Services	170	4,331	4,307	4,241	33,735,037	604.47
Leisure & Hospitality	112	2,122	2,164	2,082	5,006,875	181.44
Other Services	101	601	609	607	3,646,799	463.16
Local Government	46	2,549	2,546	2,516	18,534,829	561.99
State Government	19	738	738	544	4,312,943	492.72
WOODRUFF COUNTY - TOTAL	172	2,056	2,076	2,079	\$12,740,676	\$473.38
Natural Resources & Mining	20	97	101	110	549,497	411.71
Construction	7	78	71	72	449,860	469.75
Manufacturing	9	462	476	490	3,345,628	540.66
Trade, Transportation & Utilities	59	534	541	539	3,303,930	472.39
Wholesale Trade	12	225	232	234	1,785,670	596.35
Retail Trade	30	211	223	220	707,324	249.59
Transportation, Warehousing & Utilities	17	98	86	85	810,936	695.68
Financial Activities	14	57	58	60	367,520	484.64
Professional & Business Services	3	6	7	7	42,351	488.67
Education & Health Services	26	160	160	155	1,015,267	493.25
Leisure & Hospitality	8	67	68	71	124,275	139.22
Local Government	10	513	510	489	3,065,986	467.95
State Government	7	55	58	58	351,173	473.92
Other	9	27	26	28	125,189	356.66

**TABLE 6. COUNTY SUMMARY
EMPLOYMENT AND TOTAL EARNINGS, BY INDUSTRY
SECOND QUARTER 2005**

NORTH AMERICAN INDUSTRY CLASSIFICATION SYSTEM INDUSTRY GROUP	NUMBER OF EMPLOYING UNITS	EMPLOYMENT			TOTAL EARNINGS	AVERAGE WEEKLY EARNINGS
		APRIL	MAY	JUNE	APR. - JUN. 2005	
YELL COUNTY - TOTAL	400	7,154	7,142	7,117	\$41,412,534	\$446.31
Natural Resources & Mining	26	318	318	317	1,773,404	429.43
Construction	51	512	484	453	3,056,587	486.80
Manufacturing	24	2,911	2,913	2,899	16,050,450	424.62
Trade, Transportation & Utilities	90	631	636	636	2,909,059	352.77
Wholesale Trade	13	27	29	29	160,844	436.68
Retail Trade	58	511	517	518	1,996,311	297.99
Transportation, Warehousing & Utilities	19	93	90	89	751,904	637.93
Information	5	51	51	51	481,074	725.60
Financial Activities	39	192	191	204	1,145,545	450.35
Professional & Business Services	34	230	224	246	2,103,121	693.34
Education & Health Services	43	466	476	466	2,241,440	367.37
Leisure & Hospitality	30	391	417	412	977,995	184.99
Other Services	17	65	63	65	257,681	308.11
Local Government	28	1,260	1,244	1,248	9,704,293	596.87
State Government	13	127	125	120	711,885	441.62
REST-OF-STATE-TOTAL	4,560	15,885	16,491	16,159	195,941,668	\$931.64
Natural Resources & Mining	58	230	223	229	2,300,320	778.36
Construction	597	2,452	2,645	2,384	20,857,368	643.40
Manufacturing	48	169	171	169	1,580,612	716.61
Trade, Transportation & Utilities	1,861	6,849	6,928	6,976	109,757,335	1220.48
Wholesale Trade	1,601	5,610	5,675	5,709	99,047,703	1345.01
Retail Trade	101	517	539	526	4,327,616	631.28
Transportation, Warehousing & Utilities	159	722	714	741	6,382,016	676.51
Information	102	245	264	245	3,419,423	1046.55
Financial Activities	266	592	596	607	7,534,255	968.62
Professional & Business Services	1,317	4,004	4,209	4,127	37,840,748	707.66
Education & Health Services	119	736	741	784	6,525,673	666.04
Leisure & Hospitality	43	80	157	86	1,074,729	767.85
Other	149	528	557	552	5,051,205	712.07

TABLE 7. FEDERAL GOVERNMENT EMPLOYMENT AND EARNINGS IN ARKANSAS

NORTH AMERICAN INDUSTRY CLASSIFICATION SYSTEM INDUSTRY GROUP	NUMBER OF EMPLOYING UNITS	EMPLOYMENT			TOTAL
		APRIL	MAY	JUNE	APR. - JUN. 2005
Manufacturing	2	9	9	9	\$98,193
Trade, Transportation & Utilities	451	6,763	6,754	6,771	78,832,044
Information	1	32	33	34	388,748
Financial Activities	24	182	178	180	2,957,471
Professional & Business Services	32	812	817	888	11,252,595
Education & Health Services	6	4,031	4,024	4,166	71,357,173
Leisure & Hospitality	16	211	232	284	2,139,057
Other Services	2	275	282	228	1,066,881
Public Administration	491	8,463	8,438	8,621	120,708,239
TOTAL	1,025	20,778	20,767	21,181	\$288,800,401

**TABLE 8. WORKFORCE INFORMATION AREA, SUMMARY
EMPLOYMENT AND TOTAL EARNINGS, BY INDUSTRY
SECOND QUARTER 2005**

NORTH AMERICAN INDUSTRY CLASSIFICATION SYSTEM INDUSTRY GROUP	NUMBER OF EMPLOYING UNITS	EMPLOYMENT			TOTAL EARNINGS	AVERAGE WEEKLY EARNINGS
		APRIL	MAY	JUNE	APR. - JUN. 2005	
CENTRAL WORKFORCE INFORMATION*	5,493	70,438	70,804	71,267	\$502,400,138	\$545.57
Natural Resources & Mining	152	884	947	974	6,504,228	535.11
Trade, Transportation & Utilities	1,453	14,137	14,215	14,297	82,471,424	446.24
Wholesale Trade	352	1,951	1,971	2,030	16,800,134	651.37
Retail Trade	874	10,809	10,845	10,887	54,325,896	385.26
Transportation, Warehousing & Utilities	227	1,377	1,399	1,380	11,345,394	629.97
Financial Activities	569	2,710	2,718	2,765	19,928,842	561.33
Professional & Business Services	661	6,976	6,970	7,187	71,246,267	778.00
Education & Health Services	564	8,779	8,855	8,951	57,822,623	501.93
Leisure & Hospitality	418	7,325	7,389	7,352	18,749,396	196.08
Local & State Government	206	13,651	13,509	13,307	114,159,571	651.01
Other	1,470	15,976	16,201	16,434	131,517,787	624.35

*Note: Pulaski County is not included in the Central Workforce Information. Please refer to Page 54 for information on Pulaski County.
Central Workforce Includes these counties: Faulkner, Lonoke, Monroe, Prairie, and Saline.

EASTERN WORKFORCE INFORMATION	3,111	38,262	38,353	38,131	\$251,319,551	\$505.44
Natural Resources & Mining	219	1,333	1,444	1,470	7,309,492	397.18
Construction	190	1,100	1,138	1,186	7,923,880	534.05
Trade, Transportation & Utilities	874	10,147	10,226	10,263	66,367,603	499.92
Wholesale Trade	168	2,096	2,152	2,146	17,037,998	614.93
Retail Trade	502	5,139	5,148	5,193	23,082,004	344.10
Transportation, Warehousing & Utilities	204	2,912	2,926	2,924	26,247,601	691.30
Financial Activities	274	1,563	1,547	1,577	10,799,096	531.70
Professional & Business Services	272	1,318	1,261	1,299	8,582,672	510.73
Education & Health Services	453	5,184	5,225	5,169	32,062,527	474.97
Leisure & Hospitality	230	3,518	3,580	3,682	9,155,114	195.99
Local Government	137	6,123	6,134	5,818	51,773,718	661.01
State Government	67	2,323	2,192	2,132	15,531,422	539.22
Other	395	5,653	5,606	5,535	41,814,027	574.57

Eastern Workforce Includes these counties: Crittenden, Cross, Lee, Phillips, and Saint Francis.

**TABLE 8. WORKFORCE INFORMATION AREA, SUMMARY
EMPLOYMENT AND TOTAL EARNINGS, BY INDUSTRY
SECOND QUARTER 2005**

NORTH AMERICAN INDUSTRY CLASSIFICATION SYSTEM INDUSTRY GROUP	NUMBER OF EMPLOYING UNITS	EMPLOYMENT			TOTAL EARNINGS	AVERAGE WEEKLY EARNINGS
		APRIL	MAY	JUNE	APR. - JUN. 2005	
NORTH CENTRAL WORKFORCE INFORMATION	5,217	70,040	70,581	70,450	\$449,456,796	\$491.40
Construction	468	2,451	2,543	2,640	16,804,316	507.98
Manufacturing	297	13,940	13,862	13,876	109,733,801	607.59
Trade, Transportation & Utilities	1,560	15,620	15,640	15,790	95,433,638	468.08
Retail Trade	978	9,278	9,280	9,364	41,008,182	338.92
Other Trade, Transportation & Utilities	582	6,342	6,360	6,426	54,425,456	656.61
Financial Activities	497	2,530	2,580	2,598	16,503,524	494.10
Professional & Business Services	437	2,877	2,908	2,979	15,995,979	421.20
Education & Health Services	587	11,304	11,341	11,296	79,088,869	537.74
Leisure & Hospitality	439	6,098	6,368	6,336	14,774,292	181.33
Local Government	227	9,207	9,190	8,858	63,882,235	540.89
State Government	115	2,911	2,964	2,670	18,734,917	505.96
Other	590	3,102	3,185	3,407	18,505,225	440.52

North Central Workforce Includes these counties: Cleburne, Fulton, Independence, Izard, Jackson, Sharp, Stone, Van Buren, White, and Woodruff

NORTHEAST WORKFORCE INFORMATION	6,204	93,495	93,925	93,163	\$641,663,844	\$527.74
Natural Resources & Mining	360	1,824	1,988	2,150	11,751,184	454.85
Construction	470	2,934	3,050	3,121	20,923,218	530.31
Manufacturing	358	22,046	22,048	22,114	187,922,163	655.01
Trade, Transportation & Utilities	1,758	17,572	17,610	17,584	104,264,742	456.00
Wholesale Trade	409	3,806	3,845	3,798	31,049,077	625.83
Retail Trade	1,048	11,342	11,324	11,334	52,817,204	358.49
Transportation, Warehousing & Utilities	301	2,424	2,441	2,452	20,398,461	643.34
Financial Activities	580	3,390	3,377	3,454	26,687,494	602.55
Professional & Business Services	608	6,556	6,548	6,555	36,541,222	428.94
Education & Health Services	783	12,428	12,397	12,285	91,945,625	571.77
Leisure & Hospitality	449	7,170	7,243	7,329	17,480,708	185.54
Local Government	220	11,467	11,543	10,848	88,742,639	604.85
State Government	108	4,064	4,088	3,879	31,648,130	607.05
Other	510	4,044	4,033	3,844	23,756,719	459.89

Northeast Workforce Includes these counties: Clay, Craighead, Greene, Lawrence, Mississippi, Poinsett, and Randolph.

**TABLE 8. WORKFORCE INFORMATION AREA, SUMMARY
EMPLOYMENT AND TOTAL EARNINGS, BY INDUSTRY
SECOND QUARTER 2005**

NORTH AMERICAN INDUSTRY CLASSIFICATION SYSTEM INDUSTRY GROUP	NUMBER OF EMPLOYING UNITS	EMPLOYMENT			TOTAL EARNINGS	AVERAGE WEEKLY EARNINGS
		APRIL	MAY	JUNE	APR. - JUN. 2005	
NORTHWEST WORKFORCE INFORMATION	13,712	223,413	224,888	227,014	\$1,802,393,398	\$615.92
Trade, Transportation & Utilities	3,534	52,623	52,982	53,463	407,710,096	591.49
Retail Trade	1,991	25,261	25,466	25,511	133,971,327	405.53
Other Trade, Transportation & Utilities	1,543	27,362	27,516	27,952	273,738,769	762.65
Education & Health Services	1,344	22,287	22,326	22,093	176,488,013	610.56
Leisure & Hospitality	1,302	20,191	20,838	21,123	59,263,338	220.04
Local & State Government	417	26,568	26,368	26,768	241,105,150	698.08
Other	7,115	101,744	102,374	103,567	917,826,801	688.39
SOUTHEAST WORKFORCE INFORMATION	5,165	78,613	78,988	78,395	\$558,767,777	\$546.39
Natural Resources & Mining	416	3,017	3,051	3,198	20,527,519	511.24
Construction	376	3,391	3,592	3,511	29,744,082	654.09
Manufacturing	228	18,131	18,148	18,174	166,148,379	704.13
Trade, Transportation & Utilities	1,442	14,035	14,039	14,032	83,525,582	457.78
Wholesale Trade	257	2,632	2,662	2,630	21,420,082	623.81
Retail Trade	894	9,086	9,074	9,073	39,966,391	338.67
Transportation, Warehousing & Utilities	291	2,317	2,303	2,329	22,139,109	735.22
Financial Activities	411	2,857	2,870	2,893	21,353,978	571.68
Local & State Government	358	16,740	16,799	15,915	126,481,115	590.20
Other	1,934	20,442	20,489	20,672	110,987,122	415.77
SOUTHWEST WORKFORCE INFORMATION	5,660	87,186	87,615	87,455	\$637,347,641	\$560.83
Natural Resources & Mining	406	2,662	2,713	2,771	21,129,132	598.57
Trade, Transportation & Utilities	1,586	15,203	15,143	15,272	91,512,363	462.94
Education & Health Services	565	8,891	8,933	8,954	52,452,555	452.03
Local Government	266	11,036	11,078	10,499	83,698,629	592.25
State Government	150	3,388	3,374	3,335	25,501,605	582.84
Other	2,687	46,006	46,374	46,624	363,053,357	602.73

Northwest Workforce Includes these counties: Baxter, Benton, Boone, Carroll, Madison, Marion, Newton, Searcy, and Washington.

Southeast Workforce Includes these counties: Arkansas, Ashley, Bradley, Chicot, Cleveland, Desha, Drew, Grant, Jefferson, and Lincoln

Southwest Workforce Includes these counties: Calhoun, Columbia, Dallas, Hempstead, Howard, Lafayette, Little River, Miller, Nevada, Ouachita, Sevier, and Union

**TABLE 8. WORKFORCE INFORMATION AREA, SUMMARY
EMPLOYMENT AND TOTAL EARNINGS, BY INDUSTRY
SECOND QUARTER 2005**

NORTH AMERICAN INDUSTRY CLASSIFICATION SYSTEM INDUSTRY GROUP	NUMBER OF EMPLOYING UNITS	EMPLOYMENT			TOTAL EARNINGS	AVERAGE WEEKLY EARNINGS
		APRIL	MAY	JUNE	APR. - JUN. 2005	
WEST CENTRAL WORKFORCE INFORMATION	7,785	108,207	107,857	107,818	\$709,098,673	\$505.24
Natural Resources & Mining	264	2,378	2,481	2,408	18,465,605	586.39
Construction	872	5,630	5,691	5,812	40,509,405	545.63
Trade, Transportation & Utilities	2,005	21,424	21,494	21,675	137,726,021	492.05
Financial Activities	812	3,858	3,872	3,958	27,918,054	551.22
Education & Health Services	806	14,855	14,834	14,802	107,216,474	556.12
Local Government	231	12,001	12,070	11,442	99,070,020	643.77
State Government	134	4,725	4,683	4,368	34,281,644	574.27
Other	2,661	43,336	42,732	43,353	243,911,450	434.92

West Central Workforce Includes these counties: Clark, Conway, Garland, Hot Spring, Johnson, Montgomery, Perry, Pike, Pope, and Yell

WESTERN WORKFORCE INFORMATION	6,131	110,071	110,571	110,395	\$797,380,133	\$555.86
Natural Resources & Mining	148	2,341	2,272	2,276	21,994,605	736.78
Trade, Transportation & Utilities	1,632	22,062	22,048	22,195	143,568,815	499.68
Wholesale Trade	373	3,340	3,356	3,380	28,929,782	662.57
Retail Trade	976	12,100	12,079	12,150	60,420,068	383.80
Transportation, Warehousing & Utilities	283	6,622	6,613	6,665	54,218,965	628.75
Financial Activities	638	3,695	3,694	3,731	30,022,523	623.05
Professional & Business Services	745	10,443	10,443	10,349	64,511,678	476.62
Education & Health Services	688	13,083	13,038	12,988	106,801,811	630.20
Leisure & Hospitality	505	7,921	8,004	8,230	21,294,049	203.44
Local & State Government	232	11,761	11,774	11,327	100,636,775	666.17
Other	1,543	38,765	39,298	39,299	308,549,877	606.70

Western Workforce Includes these counties: Crawford, Franklin, Logan, Polk, Scott, and Sebastian