

Arkansas Covered Employment & Earnings

Jobs for People. People for Jobs.

DWS
Department of
WORKFORCE**Services**

Second Quarter
2005

**COVERED EMPLOYMENT AND EARNINGS
STATE OF ARKANSAS
SECOND QUARTER 2005**

**MIKE HUCKABEE, GOVERNOR
STATE OF ARKANSAS**

**ARTEE WILLIAMS, DIRECTOR
DEPARTMENT OF WORKFORCE SERVICES**

**PUBLISHED BY
LABOR MARKET INFORMATION & ANALYSIS
BUREAU OF LABOR STATISTICS PROGRAMS
POST OFFICE BOX 2981
LITTLE ROCK, ARKANSAS 72203-2981
BERNADETTE COLEMAN, BLS PROGRAMS MANAGER
TELEPHONE: (501) 682-3159**

STATE OF ARKANSAS HOME PAGE: <http://www.arkansas.gov>

DEPARTMENT OF WORKFORCE SERVICES HOME PAGE: <http://www.arkansas.gov/esd/>

**INTERNET SITE FOR LABOR MARKET INFORMATION:
<http://www.discoverarkansas.net>**

RELEASED: DECEMBER 2005

TABLE OF CONTENTS

Description of Data	Page 1
Industry Classification	Page 1
Definition of Covered Employment and Earnings	Page 2
Federal Government Employment	Page 2
County Classification	Page 2
Significant Developments During First Quarter 2005	Page 3

Graph 1	Total Covered Employment for Selected Years, Arkansas	Page 7
Graph 2	Total Covered Earnings, by Calendar Quarter for Selected Years, Arkansas	Page 8
Table 1	Quarterly Comparison of Covered Employment and Wages, by Industry	Page 5
Table 2	Total Covered Employment in Arkansas, 1998-2005	Page 6
Table 3	Total Covered Earnings, 1998-2005	Page 9
Table 4	Total Taxable Earnings, 1998-2005	Page 10
Table 5	Statewide Summary - Employment and Total Earnings, by Industry, First Quarter 2005	Page 11
Table 6	County Summary - Employment and Total Earnings, by Industry, First Quarter 2005	Page 22
Table 7	Federal Government Employment and Total Earnings in Arkansas, First Quarter 2005	Page 60
Table 8	Workforce Information Area – Employment and Total Earnings, by Industry, First Quarter 2005	Page 61

EMPLOYMENT AND EARNINGS
UNDER THE ARKANSAS EMPLOYMENT SECURITY LAW
SECOND QUARTER 2005

DESCRIPTION OF DATA

This publication contains covered employment and payroll data by industry and county for the Second Quarter 2005. These data are compiled from quarterly contribution and wage reports submitted by employers subject to the Arkansas Employment Security Law. An employing unit is a single physical location where business is conducted, production takes place, or services are provided. Employment data have been tabulated for each month of the quarter by industry under the **North American Industry Classification System** (NAICS) (see "Industry Classification" below) on a statewide, county and workforce area basis. Payroll data represent the total wages paid during the quarter, and are also shown by

industry for the State and by publishable industry groups for each county and workforce area. The tabulation of this data is a joint effort in conjunction with the U.S. Bureau of Labor Statistics. In addition, there are tables included which set out total covered employment by months, quarterly payrolls, and average weekly earnings for the years 1998 through 2005. Data contained in this publication are subject to revision. These revisions will be reflected in the 2005 Annual Covered Employment and Earnings publication. Because of industry code changes between years, substantial employment and wage shifts among industries are anticipated.

INDUSTRY CLASSIFICATION

Previously published industry data **will not** be comparable in all instances with currently published data since industry codes have been revised according to the following Manuals: (a) between January 1, 1958 and December 31, 1967, industry codes were assigned under the 1957 Standard Industrial Classification (SIC) Manual; (b) between January 1, 1968 and December 31, 1974, industry codes were assigned under the 1967 Standard Industrial Classification (SIC) Manual; (c) between January 1, 1975 and December 31, 1987, industry codes were assigned under the 1972 Standard Industrial Classification (SIC) Manual; (d) between January 1, 1988 and December 31, 2000, industry codes were assigned under the 1987 Standard Industrial Classification (SIC) Manual; and (e) since January 1, 2001, industry codes have been assigned under the 2002 North American Industry Classification System (NAICS) Manual. **The NAICS Manual represents a significant change in coding methodology as compared to the**

SIC Manual. One of the most significant changes involves how NAICS treats auxiliary units. Auxiliary units are establishments primarily engaged in performing management or support services for other establishments of the same enterprise. The SIC code for these units was based on the activity of the enterprise served. The NAICS code is based on the actual activities that the establishment performs. Comparisons of many industries **should not be made** between this publication and previous Covered Employment and Earnings publications that were based on SIC. Even though some titles are the same or similar, in nature, NAICS and SIC could differ in the classification of employers. The implementation of NAICS represents a profound change for statistical programs, and will create significant benefits along with transition obstacles for both data collectors and data users. A summary is available on the NAICS home page at <http://www.census.gov/naics>.

DEFINITION OF COVERED EMPLOYMENT AND EARNINGS

Covered Employment is the number of workers employed by employers subject to the Arkansas Employment Security Law who worked or received pay for the payroll period including the 12th of the month. An employer is subject to the law when they employ one or more employees in each of ten days during the current or preceding calendar year.

Currently excluded from coverage is employment covered by the Railroad Unemployment Insurance Act, some domestic service workers, employees of small agricultural establishments, self-employed and unpaid family workers, insurance and real estate

agents who are on commission only, and employees of churches and religious organizations except separately incorporated schools. The payroll information in this publication includes all wages and salaries paid to any covered employees by their employers including bonuses, commissions, and cash values of remuneration received in any medium other than cash. These wages include both taxable and nontaxable wages. Only the first \$10,000 paid to each worker by an employer in the calendar year is taxable under the Arkansas Employment Security Law.

FEDERAL GOVERNMENT EMPLOYMENT

Table 7 on page 60 lists the total number of civilians employed by the Federal Government in Arkansas during the Second Quarter 2005. Employment and wage data are set out by industry divisions. These data are obtained from required reports submitted by various

government agencies having employment in the State. Civilian Federal workers are covered by the Unemployment Compensation for Federal Employees (UCFE) program.

COUNTY CLASSIFICATION

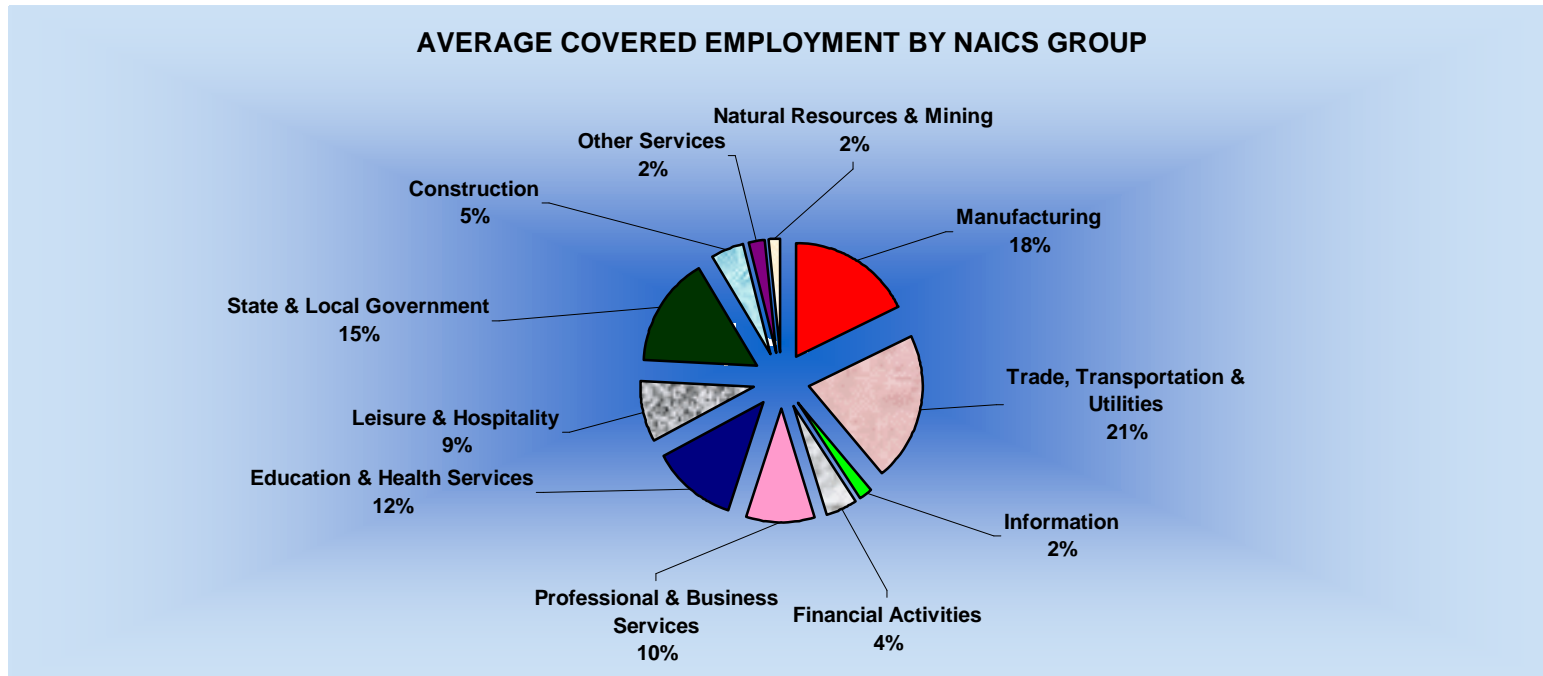
Employment and payroll data by county are classified according to the county where the workers are employed. Employers with operations in more than one county are requested to furnish this agency with a breakdown of employment and wages for at least one quarter of each year by the counties in which they operate. Many such employers submit county data with each regular contribution report. **Note:** This information is invaluable in the preparation of monthly employment and payroll data by county.

Employment and payroll data for multi - area employers, who do not furnish county data each quarter of the year, are prorated by county on the basis of one quarter's information. The "rest-of-state" table that appears on page 59 of this publication includes data on firms that **did not** provide a county breakdown of employment and payrolls. It also includes sales, and all other type of personnel with no permanent place of work, as well as employment of employers with no established place of business in Arkansas.

SIGNIFICANT DEVELOPMENTS DURING SECOND QUARTER 2005

AVERAGE EMPLOYMENT CHANGES

Covered employment averaged 1,134,598 during the Second Quarter 2005 (see table 1), an increase of 20,800 (1.9%) from the previous quarter and, 19,454 (1.7%) above the average recorded one-year ago. This *over-the-year* increase is more significant when used as an economic indicator. This *over-the-year* comparison allows for the disregarding of many seasonal factors that are evident when making an *over-the-quarter* comparison.



EMPLOYMENT CHANGES FROM FIRST QUARTER 2005

Over the quarter gains were recorded in ten of the eleven industry groups (see table 1). Leisure and Hospitality recorded the largest quarterly gain of 6,434 employees added. The driving factor for the increase was in Accommodation & Food Services as businesses added jobs for the upcoming season. Trade, Transportation & Utilities added 3,611 as the trade industry ramped up for spring and summer shopping. The Construction industry (+3,316) started new jobs as the weather improved. Professional & Business services

rose 2,481 additional jobs, Administrative & Waste Services was the driving factor for the increase. Education and Health Services (+1,660), Natural Resources and Mining (+1,414), State & Local Government (+765), Financial Activities (+714), Other Services (+608), and Manufacturing (+60) all recorded gains for the quarter.

The only loss occurred in the Information industry (-263).

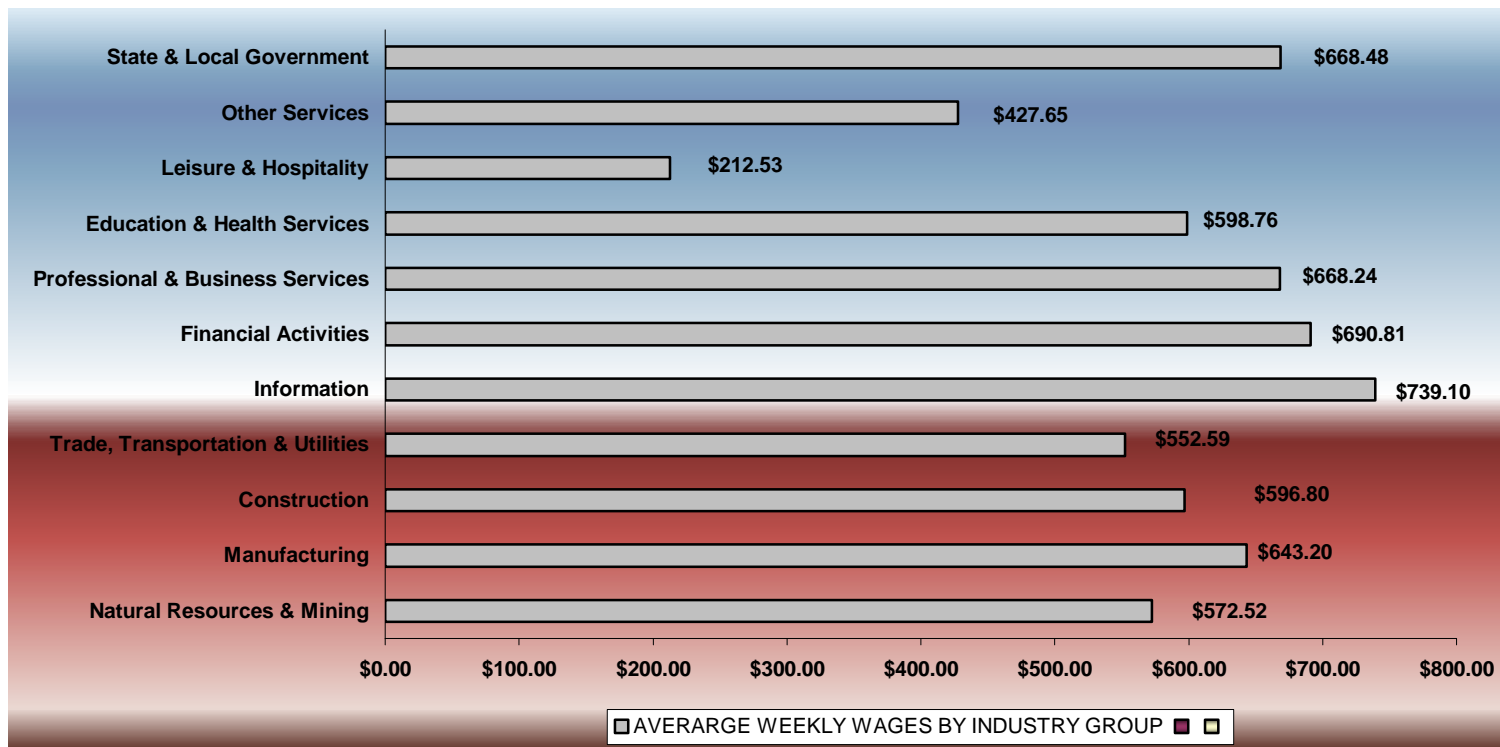
EMPLOYMENT CHANGES FROM FIRST QUARTER 2005

Over-the-year gains were recorded in seven industry groups while four recorded losses (see table 1). Significant gains were posted in State & Local Government (4,624), Leisure & Hospitality (4,066), and Educational & Health Services (4,057). Losses occurred in Manufacturing (-3,046), other services (-626) and Natural Resources & Mining (-400).

COVERED WAGES

Wages paid to covered workers totaled \$8,607,184,713 for the Second Quarter 2005 (see table 1), for an average weekly wage of \$583.55 (see table 5). Employees in Benton County recorded the highest average weekly wage (\$696.35), and workers in Newton County the lowest (\$357.70) (see table 6).

The Information sector recorded the highest average weekly wage for the State of Arkansas at \$739.10, while the Leisure & Hospitality sector recorded the lowest at \$212.53 for the State of Arkansas (see table 5).



Note: Because of industry code changes between years, substantial employment and wage shifts among industries are anticipated.

TABLE 1. QUARTERLY COMPARISON OF COVERED EMPLOYMENT AND WAGES, BY INDUSTRY

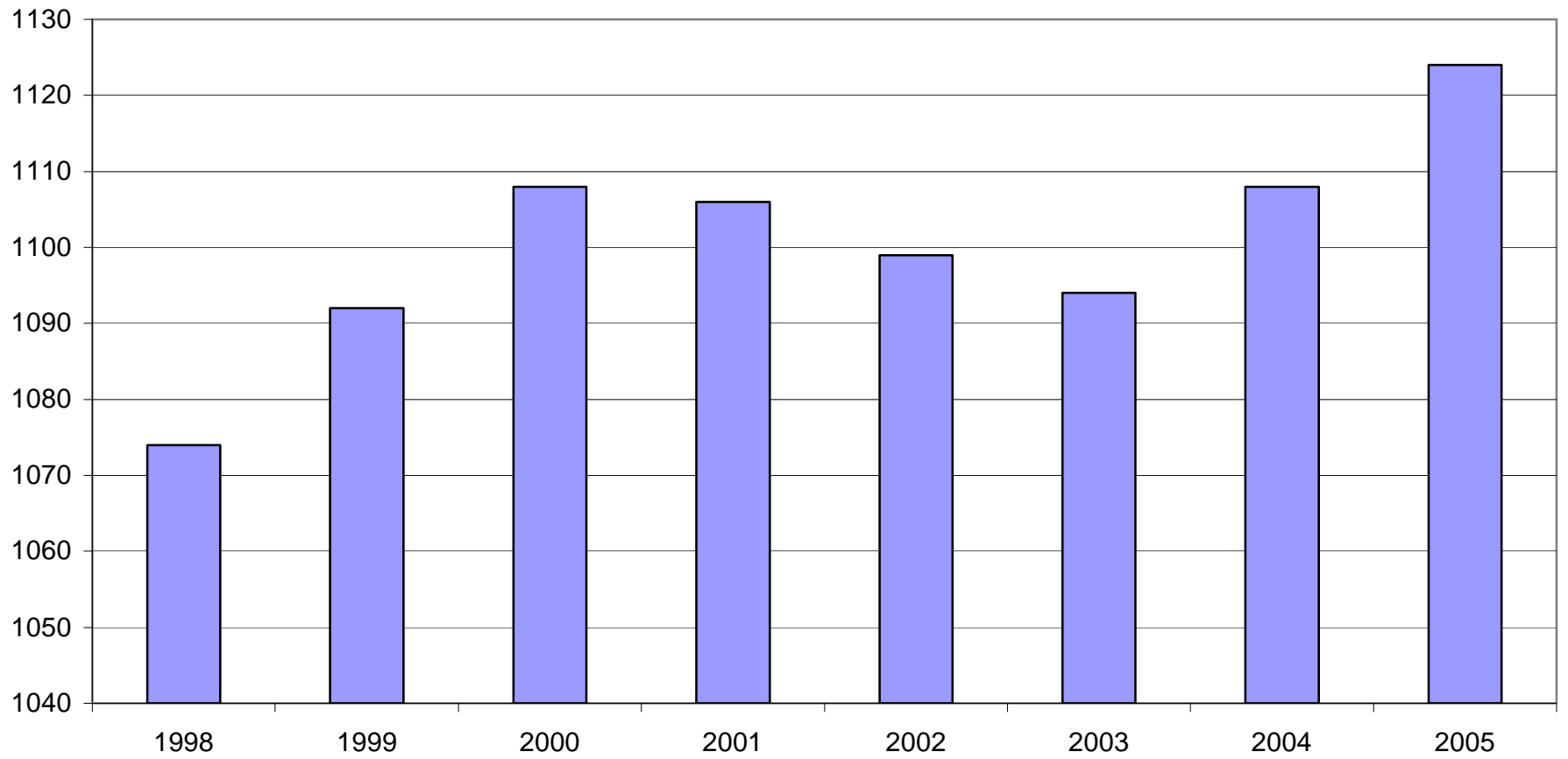
North American Industry Classification System Industry	Number of Employing Units	Monthly Employment Average	% of Employment Total	Net Change From Jan. – Mar. 2005	Net Change From Apr. – Jun. 2004	Total Wages Paid April – June 2005	% of Total Wages Paid
Total	76,397	1,134,598	100.0%	20,800	19,454	\$8,607,184,713	100.0%
Natural Resources & Mining	2,335	18,317	1.6%	1,414	-400	\$136,331,919	1.6%
Agriculture, Forestry, Fishing & Hunting	2,015	14,206	1.3%	1,118	-587	\$91,472,209	1.1%
Mining	320	4,111	0.4%	296	187	\$44,859,710	0.5%
Construction	7,538	54,990	4.8%	3,316	2,700	\$426,633,631	5.0%
Manufacturing	3,561	201,291	17.7%	60	-3,046	\$1,683,120,614	19.6%
Trade, Transportation & Utilities	20,902	241,369	21.3%	3,611	4,019	\$1,733,909,972	20.1%
Wholesale Trade	6,232	47,852	4.2%	1,302	1,556	\$507,446,269	5.9%
Retail Trade	11,364	131,780	11.6%	1,775	1,418	\$655,105,859	7.6%
Transportation & Warehousing	2,950	55,106	4.9%	379	969	\$479,421,238	5.6%
Utilities	356	6,631	0.6%	155	77	\$91,936,606	1.1%
Information	1,214	20,041	1.8%	-263	-205	\$192,563,553	2.2%
Financial Activities	7,720	49,616	4.4%	714	395	\$445,572,456	5.2%
Finance & Insurance	4,562	35,842	3.2%	153	18	\$360,024,043	4.2%
Real Estate & Rental & Leasing	3,158	13,774	1.2%	560	377	\$85,548,413	1.0%
Professional & Business Services	10,307	111,078	9.8%	2,481	3,871	\$964,953,274	11.2%
Professional & Technical Services	6,481	35,480	3.1%	-536	1,957	\$370,432,895	4.3%
Management of Companies & Enterprises	482	23,427	2.1%	-5	836	\$347,765,062	4.0%
Administrative & Waste Services	3,344	52,171	4.6%	3,022	1,078	\$246,755,317	2.9%
Education & Health Services	8,204	140,314	12.4%	1,660	4,057	\$1,092,181,340	12.7%
Educational Services	540	8,539	0.8%	35	597	\$53,344,044	0.6%
Health Care & Social Assistance	7,664	131,774	11.6%	1,625	3,459	\$1,038,837,296	12.1%
Leisure & Hospitality	5,913	96,834	8.5%	6,434	4,066	\$267,542,642	3.1%
Arts, Entertainment & Recreation	903	10,180	0.9%	2,036	178	\$34,831,791	0.4%
Accommodation & Food Services	5,010	86,654	7.6%	4,398	3,888	\$232,710,851	2.7%
Other Services	5,531	25,607	2.3%	608	-626	\$142,358,909	1.7%
State & Local Government	3,172	175,142	15.4%	765	4,624	\$1,522,016,403	17.7%
Local Government	1,978	114,091	10.1%	-629	2,750	\$979,477,953	11.4%
State Government	1,194	61,051	5.4%	1,394	1,874	\$542,538,450	6.3%
Nonclassifiable Establishments	0	0	0.0%	0	0	\$0	0.0%

Note: Items do not necessarily add to totals because of rounding. Because of industry code changes between years, substantial employment and wage shifts among industries are anticipated.

TABLE 2. TOTAL COVERED EMPLOYMENT IN ARKANSAS

Period	1998	1999	2000	2001	2002	2003	2004	2005
Average	1,073,732	1,092,351	1,108,490	1,106,053	1,098,558	1,094,087	1,108,276	1,124,198
January	1,050,970	1,065,920	1,089,956	1,096,009	1,081,635	1,082,740	1,089,510	1,104,692
February	1,057,593	1,074,315	1,096,126	1,101,616	1,086,793	1,084,880	1,094,626	1,112,453
March	1,066,099	1,084,653	1,109,157	1,112,143	1,098,500	1,092,172	1,105,269	1,124,250
April	1,074,416	1,093,574	1,111,543	1,115,526	1,103,399	1,095,341	1,111,023	1,130,599
May	1,083,133	1,098,539	1,116,779	1,119,815	1,111,998	1,103,099	1,117,154	1,136,212
June	1,086,125	1,101,748	1,121,245	1,119,734	1,112,028	1,099,688	1,117,021	1,136,984
July	1,046,396	1,062,563	1,075,096	1,071,830	1,065,697	1,053,220	1,071,474	NA
August	1,063,680	1,081,260	1,096,841	1,094,068	1,086,011	1,077,775	1,094,887	NA
September	1,088,772	1,108,212	1,123,735	1,115,996	1,113,148	1,105,980	1,122,725	NA
October	1,089,836	1,110,604	1,122,884	1,110,994	1,108,447	1,112,550	1,123,262	NA
November	1,087,855	1,112,003	1,120,620	1,109,012	1,107,611	1,109,712	1,125,083	NA
December	1,089,913	1,114,823	1,117,892	1,105,887	1,107,425	1,111,892	1,127,275	NA

AVERAGE TOTAL COVERED EMPLOYMENT GRAPH 1
In Thousands



TOTAL COVERED EARNINGS BY CALENDAR QUARTER, GRAPH 2
In Thousands

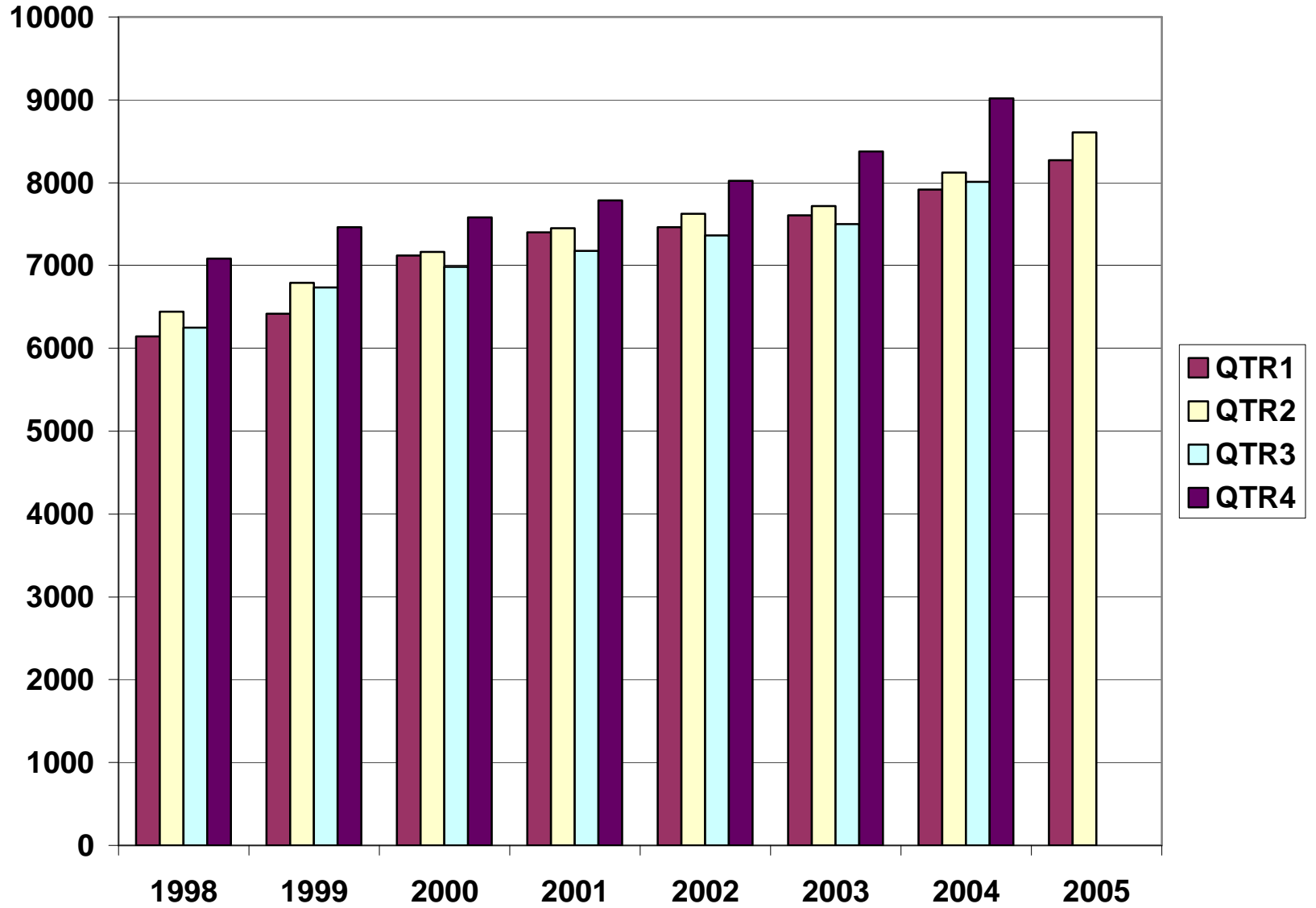


TABLE 3. TOTAL COVERED EARNINGS, 1998- 2005

Period	1998	1999	2000	2001
Total	\$25,914,345,060	\$27,407,925,462	\$28,853,825,155	\$29,807,669,666
January - March	\$6,145,178,755	\$6,418,456,638	\$7,122,666,917	\$7,398,887,532
April - June	\$6,441,129,069	\$6,791,960,679	\$7,166,110,114	\$7,448,023,298
July - September	\$6,246,775,598	\$6,733,480,079	\$6,986,103,157	\$7,177,293,061
October - December	\$7,081,261,638	\$7,464,028,066	\$7,578,944,967	\$7,783,465,775
Average Weekly Earnings	\$464.13	\$482.51	\$500.57	\$518.26

Period	2002	2003	2004	2005
Total	\$30,472,854,103	\$31,202,576,767	\$33,068,350,529	\$16,876,249,842
January - March	\$7,465,250,305	\$7,608,130,008	\$7,918,844,736	\$8,269,065,129
April - June	\$7,621,878,775	\$7,714,813,038	\$8,122,399,978	\$8,607,184,713
July - September	\$7,361,666,511	\$7,500,204,764	\$8,010,367,744	NA
October - December	\$8,024,058,512	\$8,379,428,957	\$9,016,738,071	NA
Average Weekly Earnings	\$533.44	\$548.45	\$573.80	\$577.38

TABLE 4. TOTAL TAXABLE EARNINGS, 1998 – 2005

Period	1998	1999	2000	2001
Total	\$8,554,973,370	\$8,807,445,422	\$9,048,033,534	\$9,003,189,480
January - March	\$4,063,795,529	\$4,203,067,856	\$4,560,814,012	\$4,670,296,360
April - June	\$2,271,303,325	\$2,325,649,764	\$2,260,741,187	\$2,219,485,263
July - September	\$1,236,054,184	\$1,267,562,743	\$1,250,850,348	\$1,190,098,737
October - December	\$983,820,332	\$1,011,165,059	\$975,627,987	\$923,309,120

Period	2002	2003	2004	2005
Total	\$8,887,270,978	\$9,154,938,743	\$9,731,883,634	\$7,572,503,729
January - March	\$4,668,534,587	\$4,737,918,796	\$4,931,560,356	\$5,068,103,112
April - June	\$2,162,971,435	\$2,270,519,362	\$2,451,476,366	\$2,504,400,617
July - September	\$1,158,197,858	\$1,188,681,170	\$1,318,044,471	NA
October - December	\$897,567,098	\$957,819,415	\$1,030,802,441	NA

**TABLE 5. STATEWIDE SUMMARY
EMPLOYMENT AND TOTAL EARNINGS, BY INDUSTRY
SECOND QUARTER 2005**

NORTH AMERICAN INDUSTRY CLASSIFICATION SYSTEM INDUSTRY GROUPS	NUMBER OF EMPLOYING UNITS	EMPLOYMENT APRIL	EMPLOYMENT MAY	EMPLOYMENT JUNE	TOTAL EARNINGS APR. - JUN. 2005	AVERAGE WEEKLY EARNINGS
TOTAL, ALL INDUSTRIES	76,397	1,130,599	1,136,212	1,136,984	\$8,607,184,713	\$583.55
NATURAL RESOURCES AND MINING	2,335	17,793	18,312	18,847	\$136,331,919	\$572.52
AGRICULTURE, FORESTRY, FISHING AND HUNTING	2,015	13,765	14,242	14,612	\$91,472,209	\$495.29
CROP PRODUCTION	721	3,919	4,085	4,312	\$20,622,883	\$386.42
Oilseed and Grain Farming	436	2,017	2,138	2,131	\$10,760,704	\$395.04
Vegetable and Melon Farming	10	135	165	302	\$631,571	\$242.10
Fruit and Tree Nut Farming	10	88	96	252	\$432,139	\$228.73
Greenhouse and Nursery Production	49	482	419	355	\$2,612,588	\$480.02
Other Crop Farming	216	1,197	1,267	1,272	\$6,185,881	\$382.10
ANIMAL PRODUCTION	253	3,701	3,704	3,776	\$27,637,361	\$570.42
Cattle Ranching and Farming	75	341	350	352	\$1,938,604	\$428.93
Poultry and Egg Production	87	2,538	2,522	2,558	\$19,928,153	\$603.68
Animal Aquaculture	60	570	596	623	\$3,898,499	\$502.88
Other	31	252	236	243	\$1,872,105	\$591.00
FORESTRY AND LOGGING	578	3,174	3,253	3,292	\$22,347,827	\$530.63
Timber Tract Operations	46	267	265	266	\$2,097,627	\$606.60
Forest Nurseries & Gathering of Forest Products	6	30	29	30	\$247,221	\$641.02
Logging	526	2,877	2,959	2,996	\$20,002,979	\$522.65
OTHER	463	2,971	3,200	3,232	\$20,864,138	\$512.05
MINING	320	4,028	4,070	4,235	\$44,859,710	\$839.39
OIL AND GAS EXTRACTION	74	378	380	389	\$4,916,811	\$989.23
MINING (EXCEPT OIL AND GAS)	101	1,889	1,920	1,990	\$20,432,168	\$813.09
SUPPORT ACTIVITIES FOR MINING	145	1,761	1,770	1,856	\$19,510,731	\$835.80
CONSTRUCTION	7,538	53,797	55,319	55,855	\$426,633,631	\$596.80
CONSTRUCTION OF BUILDINGS	2,060	12,289	12,507	12,708	\$101,434,287	\$624.14
Residential Building Construction	1,467	4,464	4,454	4,635	\$30,904,437	\$526.22
Nonresidential Building Construction	593	7,825	8,053	8,073	\$70,529,850	\$679.56
HEAVY AND CIVIL ENGINEERING CONSTRUCTION	868	10,495	10,801	10,791	\$90,663,589	\$652.05
Utility System Construction	412	4,822	4,987	4,918	\$38,011,873	\$595.64

NORTH AMERICAN INDUSTRY CLASSIFICATION SYSTEM INDUSTRY GROUPS	NUMBER OF EMPLOYING UNITS	EMPLOYMENT APRIL	EMPLOYMENT MAY	EMPLOYMENT JUNE	TOTAL EARNINGS APR. - JUN. 2005	AVERAGE WEEKLY EARNINGS
Land Subdivision	109	394	402	411	\$3,544,529	\$677.69
Highway, Street and Bridge Construction	237	3,736	3,888	4,094	\$31,583,034	\$621.98
Other Heavy Construction	110	1,543	1,524	1,368	\$17,524,153	\$911.85
SPECIALTY TRADE CONTRACTORS	4,610	31,013	32,011	32,356	\$234,535,755	\$567.45
Building Foundation and Exterior Contractors	903	6,180	6,288	6,305	\$42,674,429	\$524.58
Building Equipment Contractors	2,015	14,786	15,421	15,491	\$120,841,241	\$610.23
Building Finishing Contractors	860	4,807	4,847	4,915	\$33,729,448	\$534.27
Other Specialty Trade Contractors	832	5,240	5,455	5,645	\$37,290,637	\$526.65
MANUFACTURING	3,561	200,708	201,233	201,931	\$1,683,120,614	\$643.20
FOOD MANUFACTURING	289	50,892	50,897	51,118	\$342,729,970	\$517.25
Animal Food Manufacturing	49	1,322	1,309	1,341	\$15,423,886	\$896.11
Grain and Oilseed Milling	28	2,485	2,500	2,484	\$19,278,576	\$595.65
Fruit, Vegetable and Specialty Food	37	6,862	6,855	6,951	\$52,846,684	\$590.06
Dairy Product Manufacturing	10	731	728	726	\$6,069,468	\$641.03
Animal Slaughtering and Processing	84	34,419	34,420	34,500	\$203,808,084	\$455.13
Bakeries and Tortilla Manufacturing	53	3,354	3,378	3,402	\$26,633,561	\$606.49
Other Food Manufacturing	19	1,606	1,590	1,595	\$17,981,942	\$866.14
Other	9	113	117	119	\$687,769	\$454.77
BEVERAGE AND TOBACCO PRODUCT MFG.	37	1,206	1,241	1,260	\$10,850,017	\$675.44
TEXTILE MILLS	19	391	393	386	\$4,049,716	\$798.76
Fabric Mills	5	307	307	300	\$3,587,151	\$905.69
Textile and Fabric Finishing Mills	14	84	86	86	\$462,565	\$416.98
TEXTILE PRODUCT MILLS	58	1,360	1,352	1,349	\$12,326,265	\$700.45
APPAREL MANUFACTURING	37	2,010	2,034	2,027	\$9,663,794	\$367.34
Cut and Sew Apparel Manufacturing	30	915	930	930	\$4,402,489	\$366.11
Other	7	1,095	1,104	1,097	\$5,261,305	\$368.37
LEATHER AND ALLIED PRODUCT MANUFACTURING	23	2,433	2,317	2,279	\$13,617,123	\$447.06
Footwear Manufacturing	12	2,234	2,112	2,068	\$12,273,082	\$441.57
Other Leather Product Manufacturing	11	199	205	211	\$1,344,041	\$504.33
WOOD PRODUCT MANUFACTURING	396	13,407	13,537	13,727	\$107,399,806	\$609.39
Sawmills and Wood Preservation	183	5,990	6,088	6,222	\$52,019,674	\$655.99
Veneer and Engineered Wood Products	48	3,281	3,267	3,325	\$31,009,535	\$724.81
Other Wood Product Manufacturing	165	4,136	4,182	4,180	\$24,370,597	\$449.99
PAPER MANUFACTURING	85	12,019	11,951	12,021	\$143,201,952	\$918.19

NORTH AMERICAN INDUSTRY CLASSIFICATION SYSTEM INDUSTRY GROUPS	NUMBER OF EMPLOYING UNITS	EMPLOYMENT APRIL	EMPLOYMENT MAY	EMPLOYMENT JUNE	TOTAL EARNINGS APR. - JUN. 2005	AVERAGE WEEKLY EARNINGS
Pulp, Paper and Paperboard Mills	11	4,807	4,774	4,809	\$74,110,515	\$1,188.49
Converted Paper Product Manufacturing	74	7,212	7,177	7,212	\$69,091,437	\$738.12
PRINTING AND RELATED SUPPORT ACTIVITIES	306	4,697	4,680	4,753	\$36,082,665	\$589.30
PETROLEUM AND COAL PRODUCTS MANUFACTURING	19	888	908	881	\$10,901,384	\$939.75
CHEMICAL MANUFACTURING	115	5,056	5,124	5,167	\$60,789,571	\$914.08
Basic Chemical Manufacturing	24	1,578	1,600	1,601	\$22,177,310	\$1,070.90
Resin, Rubber and Artificial Fibers	7	313	318	316	\$3,830,379	\$933.40
Agricultural Chemical Manufacturing	21	405	412	422	\$4,461,054	\$830.89
Pharmaceutical and Medicine Manufacturing	14	153	153	155	\$1,390,723	\$696.17
Paint, Coating and Adhesive Manufacturing	7	175	175	188	\$2,274,938	\$975.81
Cleaning Compound and Toiletry Manufacturing	17	1,066	1,075	1,090	\$11,114,711	\$793.85
Other Chemical Preparation Manufacturing	25	1,366	1,391	1,395	\$15,540,456	\$863.74
PLASTICS AND RUBBER PRODUCTS MANUFACTURING	171	12,975	13,045	13,065	\$116,626,729	\$688.60
Plastics Product Manufacturing	127	7,640	7,600	7,573	\$58,666,832	\$593.46
Rubber Product Manufacturing	44	5,335	5,445	5,492	\$57,959,897	\$821.99
NONMETALLIC MINERAL PRODUCT MANUFACTURING	249	4,545	4,622	4,672	\$42,012,145	\$700.56
Clay Product and Refractory Manufacturing	14	492	492	491	\$4,158,507	\$650.61
Glass and Glass Product Manufacturing	15	393	397	393	\$3,121,033	\$608.82
Cement and Concrete Product Manufacturing	185	2,765	2,808	2,853	\$23,650,369	\$647.73
Lime and Gypsum Product Manufacturing	3	397	418	414	\$6,589,139	\$1,237.24
Other Nonmetallic Mineral Products	32	498	507	521	\$4,493,097	\$679.47
PRIMARY METAL MANUFACTURING	65	7,920	7,934	8,023	\$92,716,973	\$896.10
Iron and Steel Mills and Ferroalloys	7	2,085	2,078	2,110	\$36,876,320	\$1,356.59
Purchased Steel Product Manufacturing	13	2,116	2,067	2,133	\$20,090,887	\$734.07
Alumina and Aluminum Production	19	1,686	1,751	1,765	\$18,050,736	\$800.76
Other Nonferrous Metal Production	10	646	643	627	\$5,515,056	\$664.25
Foundries	16	1,387	1,395	1,388	\$12,183,974	\$674.27
FABRICATED METAL PRODUCT MANUFACTURING	581	18,143	18,182	18,339	\$160,197,579	\$676.29
Forging and Stamping	14	904	899	902	\$7,193,673	\$613.71
Cutlery and Hand Tool Manufacturing	19	1,307	1,320	1,345	\$10,245,755	\$595.27
Architectural and Structural Metals	190	5,046	5,074	5,152	\$44,925,419	\$678.85
Boilers, Tanks and Shipping Containers	18	1,091	1,079	1,111	\$10,440,718	\$734.35
Hardware Manufacturing	12	381	358	344	\$2,563,405	\$546.22
Spring and Wire Product Manufacturing	18	870	892	869	\$6,028,264	\$528.75

NORTH AMERICAN INDUSTRY CLASSIFICATION SYSTEM INDUSTRY GROUPS	NUMBER OF EMPLOYING UNITS	EMPLOYMENT APRIL	EMPLOYMENT MAY	EMPLOYMENT JUNE	TOTAL EARNINGS APR. - JUN. 2005	AVERAGE WEEKLY EARNINGS
Machine Shops and Threaded Products	203	1,689	1,718	1,730	\$13,260,916	\$595.72
Coating, Engraving and Heat Treating Metals	38	980	980	978	\$7,549,881	\$593.02
Other Fabricated Metal Product Manufacturing	69	5,875	5,862	5,908	\$57,989,548	\$758.41
MACHINERY MANUFACTURING	256	14,253	14,359	14,275	\$117,987,689	\$634.88
Agricultural, Construction and Mining Machinery	38	3,130	3,091	3,016	\$18,773,416	\$469.02
Commercial and Service Industry Machinery	25	1,063	1,053	1,052	\$10,851,475	\$790.46
HVAC and Commercial Refrigeration Equipment	26	4,612	4,736	4,706	\$40,355,834	\$662.65
Metalworking Machinery Manufacturing	80	1,417	1,432	1,432	\$13,192,475	\$711.15
Other General Purpose Machinery Manufacturing	54	3,225	3,222	3,216	\$26,585,964	\$634.92
Other	33	806	825	853	\$8,228,525	\$764.45
COMPUTER AND ELECTRONIC PRODUCT MANUFACTURING	76	5,967	5,889	5,919	\$45,888,655	\$595.76
Audio and Video Equipment Manufacturing	10	1,540	1,532	1,526	\$10,655,408	\$534.78
Semiconductors and Electronic Components	24	2,060	2,046	2,056	\$16,422,485	\$615.03
Electronic Instrument Manufacturing	26	1,242	1,249	1,245	\$8,721,386	\$538.71
Other	16	1,125	1,062	1,092	\$10,089,376	\$710.07
ELECTRICAL EQUIPMENT AND APPLIANCES	69	12,983	13,203	12,980	\$124,058,621	\$730.96
Electrical Equipment Manufacturing	27	4,945	4,950	4,927	\$45,378,941	\$706.52
Other	42	8,038	8,253	8,053	\$78,679,680	\$745.84
TRANSPORTATION EQUIPMENT MANUFACTURING	175	16,299	16,397	16,559	\$139,064,233	\$651.54
Motor Vehicle Body and Trailer Manufacturing	43	3,526	3,520	3,646	\$28,668,024	\$618.75
Motor Vehicle Parts Manufacturing	63	6,659	6,701	6,789	\$52,905,294	\$605.93
Aerospace Product and Parts Manufacturing	32	3,208	3,247	3,248	\$35,896,786	\$853.74
Ship and Boat Building	23	1,643	1,660	1,664	\$11,191,954	\$519.98
Other	14	1,263	1,269	1,212	\$10,402,175	\$641.16
FURNITURE & RELATED PRODUCT MFG.	265	7,368	7,318	7,292	\$50,785,214	\$533.25
Household & Institutional Furniture	217	5,012	4,945	4,934	\$33,581,975	\$520.43
Office Furniture & Fixtures Manufacturing	39	2,212	2,227	2,208	\$16,413,489	\$569.84
Other Furniture Related Product Manufacturing	9	144	146	150	\$789,750	\$414.20
MISCELLANEOUS MANUFACTURING	270	5,896	5,850	5,839	\$42,170,513	\$553.41
Medical Equipment & Supplies Manufacturing	99	2,566	2,566	2,504	\$20,672,043	\$624.73
Other Miscellaneous Manufacturing	171	3,330	3,284	3,335	\$21,498,470	\$498.66
TRADE, TRANSPORTATION AND UTILITIES	20,902	240,581	241,219	242,306	\$1,733,909,972	\$552.59
WHOLESALE TRADE	6,232	47,550	47,862	48,145	\$507,446,269	\$815.72
MERCHANT WHOLESALERS, DURABLE GOODS	2,089	21,506	21,579	21,793	\$211,783,891	\$753.31

NORTH AMERICAN INDUSTRY CLASSIFICATION SYSTEM INDUSTRY GROUPS	NUMBER OF EMPLOYING UNITS	EMPLOYMENT APRIL	EMPLOYMENT MAY	EMPLOYMENT JUNE	TOTAL EARNINGS APR. - JUN. 2005	AVERAGE WEEKLY EARNINGS
Motor Vehicle & Part Merchant Wholesalers	241	2,702	2,676	2,699	\$22,735,223	\$649.57
Furniture & Furnishing Merchant Wholesalers	58	426	436	432	\$4,461,654	\$795.68
Lumber & Supply Merchant Wholesalers	167	1,742	1,750	1,775	\$17,031,537	\$746.22
Commercial Goods Merchant Wholesalers	239	2,361	2,374	2,412	\$33,526,557	\$1,082.54
Metal & Mineral Merchant Wholesalers	50	722	735	732	\$7,589,695	\$800.12
Electric Goods Merchant Wholesalers	170	2,215	2,183	2,194	\$22,896,505	\$801.55
Hardware & Plumbing Merchant Wholesalers	238	2,409	2,451	2,486	\$23,229,935	\$729.75
Machinery & Supply Merchant Wholesalers	703	7,233	7,263	7,332	\$67,375,502	\$712.30
Misc. Durable Goods Merchant Wholesalers	223	1,696	1,711	1,731	\$12,937,283	\$581.07
MERCHANT WHOLESALERS, NONDURABLE GOODS	1,308	17,500	17,685	17,635	\$152,761,768	\$667.41
Paper & Paper Product Merchant Wholesalers	73	1,227	1,219	1,194	\$10,934,350	\$693.22
Druggists' Goods Merchant Wholesalers	53	1,053	1,059	1,014	\$9,128,577	\$673.89
Apparel & Piece Goods Merchant Wholesalers	37	432	435	432	\$3,310,373	\$588.09
Grocery Product Merchant Wholesalers	363	5,958	6,010	6,099	\$57,609,273	\$735.84
Farm Product Merchant Wholesalers	81	932	937	925	\$4,911,543	\$405.67
Chemical Merchant Wholesalers	83	437	439	433	\$4,882,280	\$860.72
Petroleum Merchant Wholesalers	159	1,429	1,438	1,439	\$12,307,112	\$659.57
Alcoholic Beverage Merchant Wholesalers	37	1,134	1,148	1,147	\$11,407,884	\$767.74
Misc. Nondurable Goods Merchant Wholesalers	422	4,898	5,000	4,952	\$38,270,376	\$594.72
ELECTRONIC MARKETS & AGENTS & BROKERS	2,835	8,544	8,598	8,717	\$142,900,610	\$1,275.26
RETAIL TRADE	11,364	131,491	131,650	132,198	\$655,105,859	\$382.40
MOTOR VEHICLE & PARTS DEALERS	1,722	17,732	17,720	17,965	\$141,575,728	\$611.63
Automobile Dealers	742	10,756	10,724	10,864	\$97,649,715	\$696.71
Other Motor Vehicle Dealers	196	1,432	1,482	1,508	\$11,241,395	\$586.65
Automotive Parts, Accessories & Tire Stores	784	5,544	5,514	5,593	\$32,684,618	\$452.98
FURNITURE & HOME FURNISHINGS STORES	618	4,165	4,196	4,143	\$24,527,972	\$452.68
Furniture Stores	314	2,569	2,575	2,517	\$14,899,808	\$448.82
Home Furnishings Stores	304	1,596	1,621	1,626	\$9,628,164	\$458.78
ELECTRONICS & APPLIANCE STORES	488	2,980	2,960	2,953	\$17,116,072	\$444.15
BUILDING MATERIAL & GARDEN SUPPLY STORES	816	10,741	10,936	10,997	\$66,100,466	\$466.85
Building Material & Supplies Dealers	642	9,792	9,959	10,069	\$61,380,320	\$475.01
Lawn & Garden Equipment & Supplies Stores	174	949	977	928	\$4,720,146	\$381.66
FOOD & BEVERAGE STORES	1,157	18,881	18,857	19,084	\$70,941,162	\$288.11
Grocery Stores	682	16,618	16,580	16,772	\$61,153,816	\$282.42

NORTH AMERICAN INDUSTRY CLASSIFICATION SYSTEM INDUSTRY GROUPS	NUMBER OF EMPLOYING UNITS	EMPLOYMENT APRIL	EMPLOYMENT MAY	EMPLOYMENT JUNE	TOTAL EARNINGS APR. - JUN. 2005	AVERAGE WEEKLY EARNINGS
Specialty Food Stores	159	836	830	853	\$4,312,195	\$395.05
Beer, Wine & Liquor Stores	316	1,427	1,447	1,459	\$5,475,151	\$291.60
HEALTH & PERSONAL CARE STORES	791	6,584	6,593	6,569	\$43,433,609	\$507.60
GASOLINE STATIONS	1,670	12,993	13,127	13,410	\$42,232,825	\$246.55
Gasoline Stations with Convenience Stores	1,491	11,669	11,813	12,073	\$36,700,256	\$238.20
Other Gasoline Stations	179	1,324	1,314	1,337	\$5,532,569	\$321.19
CLOTHING & CLOTHING ACCESSORIES STORES	1,064	8,044	8,093	8,069	\$27,800,086	\$265.03
Clothing Stores	701	5,894	5,937	5,944	\$18,605,969	\$241.56
Shoe Stores	185	1,203	1,202	1,186	\$3,865,619	\$248.42
Jewelry, Luggage & Leather Goods Stores	178	947	954	939	\$5,328,498	\$432.98
SPORTING GOODS, HOBBY, BOOK & MUSIC STORES	554	4,101	4,123	4,065	\$14,585,822	\$273.90
Sporting Goods & Musical Instrument Stores	388	2,645	2,679	2,663	\$10,351,368	\$299.08
Book, Periodical & Music Stores	166	1,456	1,444	1,402	\$4,234,454	\$227.15
GENERAL MERCHANDISE STORES	706	36,438	36,195	36,083	\$163,709,543	\$347.50
MISCELLANEOUS STORE RETAILERS	1,462	6,784	6,828	6,882	\$30,307,868	\$341.28
Florists	279	1,096	1,130	1,060	\$4,123,772	\$289.60
Office Supplies, Stationery & Gift Stores	415	2,493	2,500	2,537	\$11,310,915	\$346.64
Used Merchandise Stores	222	773	770	783	\$3,550,802	\$352.29
Other Miscellaneous Store Retailers	546	2,422	2,428	2,502	\$11,322,379	\$355.39
NONSTORE RETAILERS	316	2,048	2,022	1,978	\$12,774,706	\$487.44
Electronic Shopping & Mail -Order Houses	67	388	385	379	\$2,875,136	\$575.95
Vending Machine Operators	81	711	712	705	\$4,043,269	\$438.47
Direct Selling Establishments	168	949	925	894	\$5,856,301	\$488.24
TRANSPORTATION & WAREHOUSING	2,950	54,942	55,075	55,300	\$479,421,238	\$669.23
AIR TRANSPORTATION	45	1,007	1,015	1,025	\$12,602,596	\$954.48
TRUCK TRANSPORTATION	1,979	34,402	34,468	34,741	\$310,716,321	\$692.05
General Freight Trucking	1,219	29,067	29,045	29,223	\$272,212,709	\$719.28
Specialized Freight Trucking	760	5,335	5,423	5,518	\$38,503,612	\$545.92
TRANSIT & GROUND PASSENGER TRANSPORTATION	56	1,015	1,056	842	\$3,847,606	\$304.81
Taxi & Limousine Service	20	232	235	235	\$673,839	\$221.51
School & Employee Bus Transportation	8	415	439	231	\$1,772,496	\$376.99
Charter Bus Industry	8	92	94	92	\$498,242	\$413.59
Other Ground Passenger Transportation	11	181	196	193	\$601,552	\$243.54
Other	9	95	92	91	\$301,477	\$250.26

NORTH AMERICAN INDUSTRY CLASSIFICATION SYSTEM INDUSTRY GROUPS	NUMBER OF EMPLOYING UNITS	EMPLOYMENT APRIL	EMPLOYMENT MAY	EMPLOYMENT JUNE	TOTAL EARNINGS APR. - JUN. 2005	AVERAGE WEEKLY EARNINGS
PIPELINE TRANSPORTATION	70	947	955	952	\$11,659,003	\$942.73
SUPPORT ACTIVITIES FOR TRANSPORTATION	434	4,755	4,750	4,844	\$43,825,296	\$704.82
Support Activities for Air Transportation	102	1,554	1,589	1,619	\$13,131,385	\$636.35
Support Activities for Rail Transportation	33	405	402	409	\$3,051,805	\$579.16
Support Activities for Water Transportation	31	689	647	684	\$6,314,239	\$721.35
Support Activities for Road Transportation	102	464	460	467	\$2,715,841	\$450.56
Freight Transportation Arrangement	146	1,498	1,498	1,508	\$17,660,747	\$904.88
Other Support Activities for Transportation	20	145	154	157	\$951,279	\$481.42
COURIERS & MESSENGERS	139	3,176	3,208	3,234	\$27,560,673	\$661.28
Couriers	91	2,934	2,960	2,978	\$26,186,778	\$681.14
Local Messengers & Local Delivery	48	242	248	256	\$1,373,895	\$425.00
WAREHOUSING & STORAGE	210	9,452	9,437	9,474	\$67,857,522	\$552.11
OTHER	17	188	186	188	\$1,352,221	\$555.25
UTILITIES	356	6,598	6,632	6,663	\$91,936,606	\$1,066.51
Power Generation & Supply	160	4,967	5,006	5,012	\$75,426,979	\$1,161.58
Natural Gas Distribution	31	827	824	836	\$10,983,474	\$1,019.16
Water, Sewage and Other Systems	165	804	802	815	\$5,526,153	\$526.75
INFORMATION	1,214	19,959	20,107	20,058	\$192,563,553	\$739.10
PUBLISHING INDUSTRIES, EXCEPT INTERNET	249	6,449	6,469	6,310	\$46,924,041	\$563.17
Newspaper, Book & Directory Publishers	218	6,193	6,211	6,050	\$43,248,833	\$540.83
Software Publishers	31	256	258	260	\$3,675,208	\$1,095.77
MOTION PICTURE & SOUND RECORDING INDUSTRY	136	1,126	1,246	1,313	\$4,838,267	\$302.99
Motion Picture & Video Industries	123	1,101	1,221	1,285	\$4,634,635	\$296.52
Sound Recording Industries	13	25	25	28	\$203,632	\$602.46
BROADCASTING, EXCEPT INTERNET	136	2,090	2,104	2,115	\$17,070,780	\$624.41
Radio & Television Broadcasting	129	2,052	2,069	2,081	\$16,868,132	\$627.64
Cable & Other Subscription Programming	7	38	35	34	\$202,648	\$437.06
TELECOMMUNICATIONS	503	8,756	8,760	8,780	\$106,700,543	\$936.39
Wired Telecommunications Carriers	215	4,996	5,021	5,058	\$70,723,784	\$1,082.64
Wireless Telecommunications Carriers	125	1,938	1,922	1,940	\$18,415,357	\$732.71
Cable & Other Program Distribution	83	1,266	1,259	1,223	\$11,488,389	\$707.36
Other	80	556	558	559	\$6,073,013	\$837.70
ISPS, SEARCH PORTALS, & DATA PROCESSING	155	1,222	1,205	1,215	\$14,801,689	\$937.88
ISPs, & Web Search Portals	63	210	201	201	\$1,732,526	\$653.29

NORTH AMERICAN INDUSTRY CLASSIFICATION SYSTEM INDUSTRY GROUPS	NUMBER OF EMPLOYING UNITS	EMPLOYMENT APRIL	EMPLOYMENT MAY	EMPLOYMENT JUNE	TOTAL EARNINGS APR. - JUN. 2005	AVERAGE WEEKLY EARNINGS
Data Processing & Related Services	92	1,012	1,004	1,014	\$13,069,163	\$995.37
OTHER	35	316	323	325	\$2,228,233	\$533.41
FINANCIAL ACTIVITIES	7,720	49,241	49,506	50,100	\$445,572,456	\$690.81
FINANCE & INSURANCE	4,562	35,659	35,747	36,119	\$360,024,043	\$772.68
CREDIT INTERMEDIATION & RELATED ACTIVITIES	1,957	21,123	21,195	21,440	\$181,929,901	\$658.49
Depository Credit Intermediation	1,261	17,570	17,624	17,878	\$146,444,245	\$636.77
Nondepository Credit Intermediation	407	2,696	2,711	2,706	\$28,880,102	\$821.48
Activities Related to Credit Intermediation	289	857	860	856	\$6,605,554	\$592.44
FINANCIAL INVESTMENT & RELATED ACTIVITIES	565	3,060	3,085	3,113	\$57,116,332	\$1,423.71
Security & Commodity Investment Activities	327	2,409	2,421	2,447	\$48,897,541	\$1,550.65
Other Financial Investment Activities	238	651	664	666	\$8,218,791	\$957.42
INSURANCE CARRIERS & RELATED ACTIVITIES	2,001	11,052	11,037	11,140	\$116,985,091	\$812.44
Insurance Carriers	394	4,618	4,612	4,630	\$56,585,906	\$942.16
Insurance Agencies, Brokerages & Support	1,607	6,434	6,425	6,510	\$60,399,185	\$719.62
OTHER	39	424	430	426	\$3,992,719	\$719.84
REAL ESTATE & RENTAL & LEASING	3,158	13,582	13,759	13,981	\$85,548,413	\$477.76
REAL ESTATE	2,343	8,400	8,509	8,670	\$54,562,582	\$492.25
Lessors of Real Estate	1,023	4,248	4,281	4,297	\$24,713,925	\$444.66
Offices of Real Estate Agents & Brokers	753	1,884	1,924	1,986	\$14,158,187	\$563.91
Activities Related to Real Estate	567	2,268	2,304	2,387	\$15,690,470	\$520.32
RENTAL & LEASING SERVICES	790	5,099	5,164	5,230	\$29,980,342	\$446.56
Automotive Equipment Rental & Leasing	128	913	930	935	\$6,421,164	\$533.41
Consumer Goods Rental	492	3,291	3,324	3,377	\$15,870,971	\$366.55
General Rental Centers	36	191	195	194	\$1,324,455	\$526.97
Machinery & Equipment Rental & Leasing	134	704	715	724	\$6,363,752	\$685.28
LESSORS OF NONFINANCIAL INTANGIBLE ASSETS	25	83	86	81	\$1,005,489	\$928.14
PROFESSIONAL AND BUSINESS SERVICES	10,307	110,770	110,910	111,555	\$964,953,274	\$668.24
PROFESSIONAL & TECHNICAL SERVICES	6,481	36,023	35,009	35,409	\$370,432,895	\$803.12
Legal Services	1,600	6,544	6,622	6,749	\$61,422,071	\$711.74
Accounting & Bookkeeping Services	1,168	6,056	4,761	4,708	\$43,800,454	\$651.07
Architectural & Engineering Services	866	6,185	6,246	6,396	\$65,695,927	\$805.26
Specialized Design Services	156	464	481	498	\$3,132,337	\$500.93
Computer Systems Design & Related Services	746	7,598	7,598	7,624	\$120,591,204	\$1,219.49
Management & Technical Consulting Services	971	2,444	2,510	2,566	\$28,864,979	\$885.79

NORTH AMERICAN INDUSTRY CLASSIFICATION SYSTEM INDUSTRY GROUPS	NUMBER OF EMPLOYING UNITS	EMPLOYMENT APRIL	EMPLOYMENT MAY	EMPLOYMENT JUNE	TOTAL EARNINGS APR. - JUN. 2005	AVERAGE WEEKLY EARNINGS
Scientific Research & Development Services	106	1,108	1,110	1,119	\$11,516,685	\$796.43
Advertising & Related Services	303	1,948	1,975	1,972	\$17,854,789	\$698.95
Other Professional & Technical Services	565	3,676	3,706	3,777	\$17,554,449	\$363.03
MANAGEMENT OF COMPANIES & ENTERPRISES	482	23,274	23,339	23,667	\$347,765,062	\$1,141.91
ADMINISTRATIVE & WASTE SERVICES	3,344	51,473	52,562	52,479	\$246,755,317	\$363.82
ADMINISTRATIVE & SUPPORT SERVICES	3,150	49,245	50,316	50,211	\$226,493,211	\$348.98
Office Administrative Services	318	1,283	1,304	1,343	\$13,577,910	\$797.29
Facilities Support Services	13	120	114	112	\$962,987	\$642.28
Employment Services	590	25,514	26,239	25,710	\$104,701,261	\$311.91
Business Support Services	356	4,439	4,490	4,689	\$21,678,726	\$367.37
Travel Arrangement & Reservation Services	103	458	475	478	\$3,327,357	\$544.19
Investigation & Security Services	222	4,482	4,543	4,719	\$23,130,082	\$388.37
Services to Buildings & Dwellings	1,256	11,381	11,620	11,599	\$48,407,353	\$322.86
Other Support Services	292	1,568	1,531	1,561	\$10,707,535	\$530.25
WASTE MANAGEMENT & REMEDIATION SERVICES	194	2,228	2,246	2,268	\$20,262,106	\$693.54
Waste Collection	87	1,046	1,046	1,043	\$9,139,415	\$672.76
Waste Treatment & Disposal	37	744	758	771	\$7,959,061	\$808.05
Remediation & Other Waste Services	70	438	442	454	\$3,163,630	\$547.28
EDUCATION AND HEALTH SERVICES	8,204	140,201	140,513	140,227	\$1,092,181,340	\$598.76
EDUCATIONAL SERVICES	540	8,689	8,656	8,273	\$53,344,044	\$480.53
Elementary & Secondary Schools	82	3,121	3,085	2,926	\$15,773,198	\$398.59
Junior Colleges	9	243	253	240	\$1,681,117	\$527.11
Colleges & Universities	25	3,082	3,050	2,877	\$22,254,780	\$570.07
Business, Computer & Management Training	47	189	188	188	\$2,597,080	\$1,060.75
Technical & Trade Schools	95	680	692	661	\$6,030,073	\$684.48
Other Schools & Instruction	217	1,186	1,201	1,196	\$3,759,531	\$242.14
Educational Support Services	65	188	187	185	\$1,248,265	\$514.39
HEALTH CARE & SOCIAL ASSISTANCE	7,664	131,512	131,857	131,954	\$1,038,837,296	\$606.42
AMBULATORY HEALTH CARE SERVICES	4,656	40,919	41,139	41,302	\$468,369,561	\$876.18
Offices of Physicians	2,068	19,949	19,990	20,003	\$306,585,798	\$1,180.32
Offices of Dentists	909	5,888	5,959	6,029	\$52,176,361	\$673.57
Offices of Other Health Practitioners	1,119	5,211	5,273	5,333	\$37,535,156	\$547.64
Outpatient Care Centers	203	3,387	3,413	3,426	\$28,746,413	\$648.72
Medical & Diagnostic Laboratories	90	698	708	711	\$7,779,759	\$848.05

NORTH AMERICAN INDUSTRY CLASSIFICATION SYSTEM INDUSTRY GROUPS	NUMBER OF EMPLOYING UNITS	EMPLOYMENT APRIL	EMPLOYMENT MAY	EMPLOYMENT JUNE	TOTAL EARNINGS APR. - JUN. 2005	AVERAGE WEEKLY EARNINGS
Home Health Care Services	124	3,775	3,793	3,791	\$22,012,366	\$447.20
Other Ambulatory Health Care Services	143	2,011	2,003	2,009	\$13,533,708	\$518.54
HOSPITALS	109	41,920	41,947	42,057	\$358,974,230	\$657.86
General Medical & Surgical Hospitals	77	38,591	38,582	38,724	\$329,353,957	\$655.80
Psychiatric & Substance Abuse Hospitals	10	1,391	1,438	1,430	\$12,643,926	\$685.10
Other Hospitals	22	1,938	1,927	1,903	\$16,976,347	\$679.20
NURSING & RESIDENTIAL CARE FACILITIES	497	26,039	26,105	26,227	\$120,635,317	\$355.22
Nursing Care Facilities	233	19,632	19,582	19,800	\$90,665,103	\$354.54
Residential Mental Health Facilities	128	2,874	2,917	2,869	\$13,573,431	\$361.70
Community Care Facilities for the Elderly	92	2,215	2,250	2,223	\$9,324,254	\$321.73
Other Residential Care Facilities	44	1,318	1,356	1,335	\$7,072,529	\$407.11
SOCIAL ASSISTANCE	2,402	22,634	22,666	22,368	\$90,858,188	\$309.86
Individual & Family Services	1,290	10,097	10,177	10,298	\$44,403,192	\$335.17
Emergency & Other Relief Services	110	847	851	863	\$4,026,005	\$362.78
Vocational Rehabilitation Services	127	3,359	3,373	3,430	\$15,834,216	\$359.58
Child Day Care Services	875	8,331	8,265	7,777	\$26,594,775	\$251.81
LEISURE AND HOSPITALITY	5,913	95,163	96,845	98,494	\$267,542,642	\$212.53
ARTS, ENTERTAINMENT & RECREATION	903	9,344	10,250	10,946	\$34,831,791	\$263.20
PERFORMING ARTS & SPECTATOR SPORTS	197	2,379	2,347	2,102	\$8,757,887	\$295.99
Performing Arts Companies	41	387	670	704	\$1,846,356	\$241.95
Spectator Sports	58	1,375	839	829	\$3,816,110	\$289.40
Performing Arts & Sports Promoters	39	491	660	451	\$1,786,221	\$257.31
Agents & Managers for Public Figures	11	18	17	18	\$127,384	\$554.65
Independent Artists, Writers & Performers	48	108	161	100	\$1,181,816	\$739.10
MUSEUMS, PARKS & HISTORICAL SITES	46	225	228	251	\$875,872	\$287.11
GAMBLING, RECREATION & AMUSEMENT INDUSTRY	660	6,740	7,675	8,593	\$25,198,032	\$252.74
Other Amusement & Recreation Industries	623	6,254	6,821	7,648	\$23,728,385	\$264.24
Other	37	486	854	945	\$1,469,647	\$148.42
ACCOMMODATION & FOOD SERVICES	5,010	85,819	86,595	87,548	\$232,710,851	\$206.58
ACCOMMODATION	779	11,137	11,426	12,025	\$37,890,040	\$252.80
Traveler Accommodation	712	10,833	11,054	11,355	\$36,364,524	\$252.45
RV Parks & Recreational Camps	48	225	300	615	\$1,288,881	\$260.91
Rooming & Boarding Houses	19	79	72	55	\$236,635	\$265.09
FOOD SERVICES & DRINKING PLACES	4,231	74,682	75,169	75,523	\$194,820,811	\$199.48

NORTH AMERICAN INDUSTRY CLASSIFICATION SYSTEM INDUSTRY GROUPS	NUMBER OF EMPLOYING UNITS	EMPLOYMENT APRIL	EMPLOYMENT MAY	EMPLOYMENT JUNE	TOTAL EARNINGS APR. - JUN. 2005	AVERAGE WEEKLY EARNINGS
Full -Service Restaurants	1,810	31,991	32,361	32,811	\$90,436,577	\$214.79
Limited-Service Eating Places	2,106	39,474	39,843	39,888	\$96,075,384	\$185.99
Special Food Services	155	2,229	1,932	1,807	\$5,949,985	\$230.07
Drinking Places, Alcoholic Beverages	160	988	1,033	1,017	\$2,358,865	\$179.18
OTHER SERVICES	5,531	25,318	25,512	25,990	\$142,358,909	\$427.65
REPAIR & MAINTENANCE	2,243	9,281	9,352	9,342	\$60,792,645	\$501.49
Automotive Repair & Maintenance	1,561	6,676	6,701	6,708	\$40,885,272	\$469.76
Electronic Equipment Repair & Maintenance	155	562	575	573	\$4,384,194	\$591.66
Commercial Machinery Repair & Maintenance	335	1,439	1,463	1,445	\$11,951,665	\$634.48
Household Goods Repair & Maintenance	192	604	613	616	\$3,571,514	\$449.64
PERSONAL & LAUNDRY SERVICES	1,321	8,414	8,425	8,384	\$39,403,915	\$360.51
Personal Care Services	570	2,600	2,612	2,520	\$9,507,827	\$283.77
Death Care Services	247	1,680	1,678	1,709	\$10,272,788	\$467.86
Drycleaning & Laundry Services	348	3,373	3,384	3,394	\$15,636,715	\$355.48
Other Personal Services	156	761	751	761	\$3,986,585	\$404.74
MEMBERSHIP ASSOCIATIONS & ORGANIZATIONS	1,004	6,161	6,285	6,777	\$35,883,341	\$430.77
Religious Organizations	36	194	201	208	\$1,013,598	\$387.91
Grantmaking & Giving Services	97	421	423	414	\$3,699,029	\$678.55
Social Advocacy Organizations	137	1,924	1,911	1,818	\$10,691,695	\$436.46
Civic & Social Organizations	222	1,517	1,585	2,026	\$5,183,114	\$233.25
Professional & Similar Organizations	512	2,105	2,165	2,311	\$15,295,905	\$536.37
PRIVATE HOUSEHOLDS	963	1,462	1,450	1,487	\$6,279,008	\$329.39
LOCAL GOVERNMENT	1,978	115,256	115,666	111,350	\$979,477,953	\$660.39
STATE GOVERNMENT	1,194	61,812	61,070	60,271	\$542,538,450	\$683.59
NONCLASSIFIABLE ESTABLISHMENTS	0	0	0	0	\$0	

**TABLE 6. COUNTY SUMMARY
EMPLOYMENT AND TOTAL EARNINGS, BY INDUSTRY
SECOND QUARTER 2005**

NORTH AMERICAN INDUSTRY CLASSIFICATION SYSTEM INDUSTRY GROUP	NUMBER OF EMPLOYING UNITS	EMPLOYMENT APRIL	EMPLOYMENT MAY	EMPLOYMENT JUNE	TOTAL EARNINGS APR. - JUN. 2005	AVERAGE WEEKLY EARNINGS
ARKANSAS COUNTY - TOTAL	649	9,801	9,915	9,862	\$69,135,913	\$539.40
Natural Resources & Mining	47	270	308	317	\$2,165,457	\$558.35
Construction	56	265	275	278	\$1,947,745	\$549.49
Manufacturing	30	3,582	3,615	3,596	\$27,989,590	\$598.46
Trade, Transportation & Utilities	197	2,029	2,050	2,068	\$14,802,788	\$555.72
Wholesale Trade	41	462	473	476	\$4,918,862	\$804.48
Retail Trade	103	1,104	1,107	1,116	\$5,114,155	\$354.73
Transportation, Warehousing & Utilities	53	463	470	476	\$4,769,771	\$781.20
Information	9	80	80	79	\$760,419	\$734.23
Financial Activities	44	320	321	323	\$2,335,861	\$559.18
Professional & Business Services	51	417	395	385	\$3,411,523	\$657.71
Education & Health Services	66	1,165	1,171	1,154	\$6,428,277	\$425.06
Leisure & Hospitality	53	474	498	501	\$1,174,717	\$184.04
Other Services	49	152	153	156	\$830,317	\$415.64
Local Government	31	823	835	805	\$5,658,002	\$530.12
State Government	16	224	214	200	\$1,631,217	\$590.02
ASHLEY COUNTY - TOTAL	522	8,289	8,353	8,401	\$71,985,727	\$663.34
Natural Resources & Mining	61	427	439	461	\$2,959,684	\$514.70
Construction	47	591	710	632	\$4,011,213	\$478.87
Manufacturing	27	2,994	2,927	2,987	\$39,331,013	\$1,018.90
Trade, Transportation & Utilities	133	1,277	1,266	1,268	\$7,063,619	\$427.73
Wholesale Trade	25	176	175	174	\$1,511,142	\$664.24
Retail Trade	87	880	871	868	\$3,658,408	\$322.36
Transportation, Warehousing & Utilities	21	221	220	226	\$1,894,069	\$655.31
Information	10	51	55	56	\$321,227	\$457.59
Financial Activities	35	233	235	237	\$1,492,636	\$488.59
Professional & Business Services	46	333	337	356	\$1,882,747	\$423.47
Education & Health Services	49	565	565	576	\$4,171,134	\$564.23
Leisure & Hospitality	31	396	395	382	\$851,975	\$167.61
Other Services	39	164	166	178	\$762,395	\$346.33
Local Government	32	1,041	1,043	1,057	\$7,937,503	\$583.17
State Government	12	217	215	211	\$1,200,581	\$430.88

NORTH AMERICAN INDUSTRY CLASSIFICATION SYSTEM INDUSTRY GROUP	NUMBER OF EMPLOYING UNITS	EMPLOYMENT APRIL	EMPLOYMENT MAY	EMPLOYMENT JUNE	TOTAL EARNINGS APR. - JUN. 2005	AVERAGE WEEKLY EARNINGS
BAXTER COUNTY - TOTAL	1,171	14,202	14,384	14,477	\$93,345,443	\$500.23
Natural Resources & Mining	8	99	102	112	\$650,820	\$479.84
Construction	124	599	620	650	\$3,381,470	\$417.52
Manufacturing	67	2,577	2,592	2,626	\$21,015,711	\$622.17
Trade, Transportation & Utilities	264	2,604	2,614	2,641	\$13,977,054	\$410.42
Wholesale Trade	30	179	179	183	\$1,303,089	\$555.85
Retail Trade	206	2,161	2,161	2,177	\$10,814,998	\$384.02
Transportation, Warehousing & Utilities	28	264	274	281	\$1,858,967	\$523.80
Information	24	282	289	290	\$2,106,284	\$564.54
Financial Activities	107	652	666	667	\$5,345,169	\$621.41
Professional & Business Services	129	796	774	782	\$4,973,846	\$488.01
Education & Health Services	175	3,105	3,105	3,100	\$25,001,390	\$619.72
Leisure & Hospitality	119	1,597	1,712	1,806	\$4,145,832	\$187.04
Other Services	106	393	407	419	\$1,788,764	\$338.63
Local Government	35	1,194	1,200	1,110	\$9,008,009	\$593.26
State Government	13	304	303	274	\$1,951,094	\$511.07
BENTON COUNTY - TOTAL	4,730	88,372	88,818	89,687	\$805,309,694	\$696.35
Natural Resources & Mining	26	607	608	618	\$6,205,784	\$781.29
Construction	719	4,832	4,869	5,028	\$40,139,032	\$628.89
Manufacturing	240	13,692	13,729	13,789	\$109,878,910	\$615.30
Trade, Transportation & Utilities	1,273	22,108	22,267	22,551	\$195,987,277	\$675.79
Wholesale Trade	545	3,648	3,649	3,750	\$47,943,845	\$1,001.54
Retail Trade	566	7,185	7,340	7,393	\$39,883,541	\$419.92
Transportation, Warehousing & Utilities	162	11,275	11,278	11,408	\$108,159,891	\$734.96
Information	69	884	898	910	\$7,400,067	\$634.36
Financial Activities	525	3,253	3,301	3,342	\$29,229,802	\$681.62
Professional & Business Services	736	21,183	21,343	21,739	\$270,140,286	\$970.05
Education & Health Services	384	6,270	6,233	6,206	\$50,127,373	\$618.30
Leisure & Hospitality	354	6,508	6,528	6,569	\$19,958,678	\$234.93
Other Services	311	1,743	1,747	1,751	\$10,343,083	\$455.42
Local Government	74	6,547	6,565	6,553	\$60,557,993	\$710.65
State Government	19	745	730	631	\$5,341,409	\$585.30

NORTH AMERICAN INDUSTRY CLASSIFICATION SYSTEM INDUSTRY GROUP	NUMBER OF EMPLOYING UNITS	EMPLOYMENT APRIL	EMPLOYMENT MAY	EMPLOYMENT JUNE	TOTAL EARNINGS APR. - JUN. 2005	AVERAGE WEEKLY EARNINGS
BOONE COUNTY - TOTAL	1,011	13,747	13,905	13,884	\$96,775,398	\$537.67
Natural Resources & Mining	6	7	6	6	\$78,812	\$957.23
Construction	90	472	484	505	\$3,090,510	\$488.16
Manufacturing	69	2,083	2,128	2,124	\$16,787,853	\$611.54
Trade, Transportation & Utilities	270	4,233	4,260	4,336	\$31,752,515	\$571.17
Wholesale Trade	56	677	678	675	\$4,605,030	\$523.50
Retail Trade	160	1,965	1,961	1,934	\$9,912,955	\$390.38
Transportation, Warehousing & Utilities	54	1,591	1,621	1,727	\$17,234,530	\$805.26
Information	18	422	420	429	\$3,198,589	\$580.75
Financial Activities	97	615	618	622	\$4,711,310	\$586.11
Professional & Business Services	104	536	548	498	\$2,792,792	\$407.39
Education & Health Services	127	1,122	1,139	1,131	\$7,762,816	\$528.13
Leisure & Hospitality	82	1,155	1,186	1,201	\$2,922,245	\$190.39
Other Services	70	260	263	265	\$1,458,804	\$427.22
Local Government	57	2,202	2,203	2,230	\$17,184,871	\$597.70
State Government	21	640	650	537	\$5,034,281	\$635.88
BRADLEY COUNTY - TOTAL	339	4,160	4,173	4,169	\$25,908,127	\$478.23
Natural Resources & Mining	52	462	403	494	\$1,997,702	\$339.23
Construction	22	166	167	195	\$1,093,534	\$477.94
Manufacturing	11	1,147	1,194	1,161	\$8,603,747	\$566.96
Trade, Transportation & Utilities	90	471	462	473	\$2,335,179	\$383.28
Wholesale Trade	13	100	94	89	\$466,833	\$380.67
Retail Trade	50	297	293	306	\$1,266,468	\$326.19
Transportation, Warehousing & Utilities	27	74	75	78	\$601,878	\$611.87
Information	3	13	13	13	\$77,971	\$461.37
Financial Activities	24	188	189	191	\$1,118,214	\$454.31
Professional & Business Services	25	82	79	79	\$338,766	\$325.74
Education & Health Services	35	514	520	535	\$3,535,199	\$519.96
Leisure & Hospitality	18	186	184	188	\$308,817	\$127.72
Other Services	31	101	97	94	\$397,416	\$314.08
Local & State Government	28	830	865	746	\$6,101,582	\$576.84

NORTH AMERICAN INDUSTRY CLASSIFICATION SYSTEM INDUSTRY GROUP	NUMBER OF EMPLOYING UNITS	EMPLOYMENT APRIL	EMPLOYMENT MAY	EMPLOYMENT JUNE	TOTAL EARNINGS APR. - JUN. 2005	AVERAGE WEEKLY EARNINGS
CALHOUN COUNTY - TOTAL	120	3,827	3,846	3,867	\$33,414,844	\$668.21
Natural Resources & Mining	20	125	130	134	\$762,715	\$452.47
Construction	11	86	87	92	\$516,730	\$449.98
Manufacturing	15	2,598	2,606	2,649	\$25,571,770	\$751.46
Trade, Transportation & Utilities	26	202	203	212	\$1,198,302	\$448.19
Wholesale Trade & Retail Trade	17	76	77	82	\$249,781	\$245.28
Transportation, Warehousing & Utilities	9	126	126	130	\$948,521	\$573.01
Financial Activities	8	124	122	127	\$816,532	\$505.18
Education & Health Services	4	43	43	42	\$311,816	\$562.17
Local Government	11	191	201	202	\$1,353,808	\$525.95
State Government	10	359	355	307	\$2,077,478	\$469.56
Other	15	99	99	102	\$805,693	\$619.76
CARROLL COUNTY - TOTAL	793	9,630	10,013	9,970	\$54,758,039	\$426.72
Natural Resources & Mining	17	271	270	270	\$1,782,375	\$507.17
Trade, Transportation & Utilities	207	1,627	1,661	1,664	\$8,482,407	\$395.29
Wholesale Trade	22	113	112	113	\$504,078	\$344.16
Retail Trade	164	1,242	1,297	1,295	\$5,765,642	\$347.04
Transportation, Warehousing & Utilities	21	272	252	256	\$2,212,687	\$654.64
Professional & Business Services	65	230	229	231	\$1,423,588	\$476.12
Education & Health Services	57	757	743	722	\$5,260,413	\$546.33
Leisure & Hospitality	177	1,492	1,874	1,995	\$4,875,498	\$209.87
Local Government	24	1,048	1,043	874	\$7,424,326	\$577.84
State Government	11	107	104	109	\$758,210	\$546.79
Other	235	4,098	4,089	4,105	\$24,751,222	\$464.68

NORTH AMERICAN INDUSTRY CLASSIFICATION SYSTEM INDUSTRY GROUP	NUMBER OF EMPLOYING UNITS	EMPLOYMENT APRIL	EMPLOYMENT MAY	EMPLOYMENT JUNE	TOTAL EARNINGS APR. - JUN. 2005	AVERAGE WEEKLY EARNINGS
CHICOT COUNTY - TOTAL	338	3,625	3,680	3,717	\$21,239,609	\$444.70
Natural Resources & Mining	47	251	257	261	\$1,620,950	\$486.43
Construction	21	288	297	307	\$2,315,517	\$599.05
Manufacturing	11	354	363	363	\$1,755,392	\$375.08
Trade, Transportation & Utilities	86	584	593	603	\$2,954,992	\$383.10
Wholesale Trade	16	103	106	111	\$880,721	\$635.14
Retail Trade	55	414	418	423	\$1,490,622	\$274.10
Transportation, Warehousing & Utilities	15	67	69	69	\$583,649	\$657.02
Information	6	9	13	14	\$93,543	\$599.63
Financial Activities	28	163	156	157	\$1,110,907	\$538.58
Professional & Business Services	26	86	89	90	\$730,300	\$635.97
Education & Health Services	46	453	471	470	\$2,597,806	\$430.05
Leisure & Hospitality	22	251	255	278	\$507,169	\$149.28
Other Services	18	59	56	60	\$266,018	\$350.79
Local Government	16	823	828	812	\$5,272,282	\$493.98
State Government	11	304	302	302	\$2,014,733	\$512.05
CLARK COUNTY - TOTAL	601	9,922	9,951	9,742	\$60,890,959	\$474.48
Natural Resources & Mining	41	262	268	279	\$1,862,925	\$531.40
Construction	35	133	131	134	\$648,564	\$376.05
Manufacturing	36	2,376	2,385	2,371	\$15,932,540	\$515.53
Trade, Transportation & Utilities	137	1,484	1,478	1,440	\$9,090,911	\$476.58
Wholesale Trade	21	72	72	74	\$564,430	\$597.49
Retail Trade	90	1,116	1,109	1,077	\$5,977,161	\$417.73
Transportation, Warehousing & Utilities	26	296	297	289	\$2,549,320	\$667.01
Information	10	39	38	40	\$314,419	\$620.16
Financial Activities	88	386	387	393	\$2,567,863	\$508.22
Professional & Business Services	45	412	423	417	\$3,302,514	\$608.72
Education & Health Services	65	1,477	1,445	1,416	\$9,209,611	\$489.93
Leisure & Hospitality	53	1,068	1,085	1,119	\$2,784,203	\$196.37
Other Services	50	220	227	209	\$1,172,077	\$412.32
Local Government	26	935	989	974	\$6,340,923	\$504.93
State Government	15	1,130	1,095	950	\$7,664,409	\$557.07

NORTH AMERICAN INDUSTRY CLASSIFICATION SYSTEM INDUSTRY GROUP	NUMBER OF EMPLOYING UNITS	EMPLOYMENT APRIL	EMPLOYMENT MAY	EMPLOYMENT JUNE	TOTAL EARNINGS APR. - JUN. 2005	AVERAGE WEEKLY EARNINGS
CLAY COUNTY - TOTAL	406	4,917	4,921	4,924	\$26,990,371	\$421.93
Natural Resources & Mining	57	212	227	250	\$1,402,183	\$469.64
Construction	41	179	193	190	\$1,092,415	\$448.57
Manufacturing	19	1,449	1,406	1,411	\$7,196,909	\$389.32
Trade, Transportation & Utilities	99	976	989	952	\$6,020,396	\$476.28
Wholesale Trade	25	367	358	335	\$2,605,326	\$567.20
Retail Trade	54	452	471	462	\$2,088,437	\$347.98
Transportation, Warehousing & Utilities	20	157	160	155	\$1,326,633	\$648.61
Information	9	127	134	136	\$872,620	\$507.24
Financial Activities	36	156	155	157	\$905,422	\$446.46
Professional & Business Services	23	60	57	51	\$297,574	\$408.76
Education & Health Services	40	507	495	487	\$2,392,889	\$370.86
Leisure & Hospitality	23	227	221	231	\$446,177	\$151.64
Other Services	25	55	52	53	\$277,766	\$400.62
Local Government	22	885	910	920	\$5,562,506	\$472.80
State Government	12	84	82	86	\$523,514	\$479.41
CLEBURNE COUNTY - TOTAL	668	6,791	6,839	6,919	\$40,895,864	\$459.27
Natural Resources & Mining	15	33	32	36	\$262,273	\$599.25
Construction	66	283	285	302	\$1,497,461	\$397.20
Manufacturing	47	1,835	1,779	1,808	\$13,228,239	\$563.02
Trade, Transportation & Utilities	194	1,537	1,562	1,586	\$8,417,547	\$414.62
Wholesale Trade	41	167	178	179	\$1,050,699	\$462.73
Retail Trade	113	1,030	1,048	1,083	\$4,641,354	\$338.84
Transportation, Warehousing & Utilities	40	340	336	324	\$2,725,494	\$628.96
Information	8	61	63	62	\$361,722	\$448.79
Financial Activities	68	256	256	260	\$1,613,866	\$482.42
Professional & Business Services	59	203	193	205	\$1,229,015	\$471.91
Education & Health Services	58	748	755	763	\$4,625,632	\$471.07
Leisure & Hospitality	65	773	829	857	\$2,126,975	\$199.61
Other Services	58	146	156	158	\$646,233	\$324.20
Local Government	20	801	810	763	\$6,103,845	\$593.34
State Government	10	115	119	119	\$783,056	\$511.91

NORTH AMERICAN INDUSTRY CLASSIFICATION SYSTEM INDUSTRY GROUP	NUMBER OF EMPLOYING UNITS	EMPLOYMENT APRIL	EMPLOYMENT MAY	EMPLOYMENT JUNE	TOTAL EARNINGS APR. - JUN. 2005	AVERAGE WEEKLY EARNINGS
CLEVELAND COUNTY - TOTAL	109	1,048	1,105	953	\$6,509,433	\$483.64
Natural Resources & Mining	20	159	174	173	\$1,117,864	\$509.82
Construction	6	34	34	36	\$118,324	\$262.55
Manufacturing	6	85	90	89	\$471,742	\$412.36
Trade, Transportation & Utilities	31	193	214	215	\$940,573	\$348.96
Wholesale Trade	5	22	25	23	\$113,405	\$373.86
Retail Trade	15	70	86	86	\$211,584	\$201.76
Transportation, Warehousing & Utilities	11	101	103	106	\$615,584	\$458.25
Financial Activities	4	49	55	61	\$496,026	\$693.74
Local Government	12	353	357	209	\$2,411,428	\$605.53
State Government	8	58	61	61	\$383,822	\$492.08
Other	22	117	120	109	\$569,654	\$379.94
COLUMBIA COUNTY - TOTAL	691	9,480	9,502	9,527	\$66,562,936	\$538.80
Natural Resources & Mining	47	462	466	481	\$4,933,264	\$807.98
Construction	45	372	365	324	\$2,890,870	\$628.77
Manufacturing	37	2,696	2,716	2,728	\$25,282,467	\$716.76
Trade, Transportation & Utilities	189	1,645	1,656	1,617	\$8,317,494	\$390.29
Wholesale Trade	30	338	332	309	\$1,859,558	\$438.33
Retail Trade	117	1,065	1,077	1,054	\$4,492,790	\$324.40
Transportation, Warehousing & Utilities	42	242	247	254	\$1,965,146	\$610.36
Information	10	83	84	82	\$535,457	\$496.25
Financial Activities	78	395	396	405	\$2,847,412	\$549.41
Professional & Business Services	65	338	325	333	\$1,737,939	\$402.67
Education & Health Services	78	873	878	889	\$4,391,258	\$383.85
Leisure & Hospitality	45	693	698	673	\$1,555,926	\$173.96
Other Services	53	220	217	212	\$1,046,301	\$372.04
Local Government	30	1,159	1,161	1,216	\$8,578,258	\$559.84
State Government	14	544	540	567	\$4,446,290	\$621.48

NORTH AMERICAN INDUSTRY CLASSIFICATION SYSTEM INDUSTRY GROUP	NUMBER OF EMPLOYING UNITS	EMPLOYMENT APRIL	EMPLOYMENT MAY	EMPLOYMENT JUNE	TOTAL EARNINGS APR. - JUN. 2005	AVERAGE WEEKLY EARNINGS
CONWAY COUNTY - TOTAL	480	6,470	6,552	6,583	\$42,798,587	\$503.78
Natural Resources & Mining	17	125	125	129	\$967,470	\$589.08
Construction	49	480	533	563	\$4,224,210	\$618.54
Manufacturing	33	1,066	1,097	1,111	\$10,902,171	\$768.44
Trade, Transportation & Utilities	138	1,398	1,425	1,440	\$7,876,767	\$426.39
Wholesale Trade	30	259	269	266	\$1,794,498	\$521.56
Retail Trade	80	880	882	894	\$4,017,149	\$349.03
Transportation, Warehousing & Utilities	28	259	274	280	\$2,065,120	\$586.18
Information	6	41	41	43	\$170,581	\$314.92
Financial Activities	36	187	190	193	\$1,254,030	\$507.70
Professional & Business Services	44	660	624	585	\$2,276,206	\$281.05
Education & Health Services	54	712	729	727	\$4,580,047	\$487.52
Leisure & Hospitality	38	471	475	500	\$1,026,057	\$163.75
Other Services	27	73	72	88	\$493,965	\$489.24
Local Government	27	887	907	861	\$7,044,693	\$612.32
State Government	11	370	334	343	\$1,982,390	\$436.94
CRAIGHEAD COUNTY - TOTAL	2,501	39,846	39,944	39,875	\$276,330,750	\$532.89
Natural Resources & Mining	57	237	252	276	\$1,561,431	\$471.02
Construction	222	1,636	1,721	1,791	\$12,112,367	\$542.96
Manufacturing	140	6,936	6,925	6,878	\$54,001,535	\$600.89
Trade, Transportation & Utilities	725	7,988	7,945	7,931	\$47,618,824	\$460.48
Wholesale Trade	186	1,516	1,524	1,529	\$12,269,121	\$619.68
Retail Trade	425	5,406	5,342	5,322	\$26,508,450	\$380.67
Transportation, Warehousing & Utilities	114	1,066	1,079	1,080	\$8,841,253	\$632.65
Information	34	642	645	649	\$5,007,326	\$596.87
Financial Activities	252	1,528	1,538	1,568	\$14,259,814	\$710.13
Professional & Business Services	312	3,592	3,585	3,713	\$19,874,812	\$421.17
Education & Health Services	341	6,820	6,832	6,756	\$58,602,525	\$662.66
Leisure & Hospitality	175	3,559	3,548	3,604	\$9,399,272	\$202.51
Other Services	180	1,034	1,035	1,041	\$4,917,730	\$364.91
Local Government	39	3,479	3,492	3,376	\$28,634,222	\$638.63
State Government	24	2,395	2,426	2,292	\$20,340,892	\$659.93

NORTH AMERICAN INDUSTRY CLASSIFICATION SYSTEM INDUSTRY GROUP	NUMBER OF EMPLOYING UNITS	EMPLOYMENT APRIL	EMPLOYMENT MAY	EMPLOYMENT JUNE	TOTAL EARNINGS APR. - JUN. 2005	AVERAGE WEEKLY EARNINGS
CRAWFORD COUNTY - TOTAL	1,145	18,495	18,466	18,418	\$125,672,134	\$523.69
Natural Resources & Mining	24	589	534	435	\$3,854,718	\$570.96
Construction	182	1,329	1,362	1,389	\$10,155,094	\$574.38
Manufacturing	74	3,439	3,450	3,488	\$23,819,591	\$529.71
Trade, Transportation & Utilities	307	6,349	6,347	6,401	\$43,510,461	\$525.78
Wholesale Trade	77	665	676	684	\$5,478,411	\$624.32
Retail Trade	164	1,888	1,909	1,932	\$9,172,269	\$369.47
Transportation, Warehousing & Utilities	66	3,796	3,762	3,785	\$28,859,781	\$587.14
Financial Activities	117	517	510	510	\$3,361,831	\$504.75
Professional & Business Services	130	691	672	680	\$4,494,079	\$507.63
Education & Health Services	92	1,453	1,428	1,409	\$10,555,667	\$567.81
Leisure & Hospitality	79	1,322	1,344	1,353	\$3,364,630	\$193.20
Local Government	41	2,071	2,076	2,015	\$17,508,779	\$655.71
State Government	11	169	175	170	\$1,363,063	\$611.97
Other	88	566	568	568	\$3,684,221	\$499.53
CRITTENDEN COUNTY - TOTAL	1,103	15,534	15,633	15,639	\$109,490,505	\$539.82
Natural Resources & Mining	48	299	348	327	\$1,809,042	\$428.62
Construction	70	551	579	595	\$4,316,642	\$577.48
Manufacturing	52	1,467	1,493	1,493	\$14,729,230	\$763.32
Trade, Transportation & Utilities	308	4,823	4,840	4,845	\$33,514,007	\$533.09
Wholesale Trade	60	786	800	802	\$6,929,540	\$669.65
Retail Trade	165	2,056	2,057	2,061	\$9,220,797	\$344.65
Transportation, Warehousing & Utilities	83	1,981	1,983	1,982	\$17,363,670	\$673.90
Information	10	92	91	96	\$838,001	\$693.14
Financial Activities	110	523	510	527	\$3,966,839	\$586.81
Professional & Business Services	113	666	654	667	\$4,247,247	\$493.27
Education & Health Services	137	1,806	1,824	1,806	\$13,365,365	\$567.39
Leisure & Hospitality	101	1,845	1,887	1,920	\$5,231,501	\$213.60
Other Services	99	586	603	596	\$3,149,671	\$407.20
Local Government	40	2,388	2,403	2,352	\$21,577,626	\$697.11
State Government	15	488	401	415	\$2,745,334	\$485.84

NORTH AMERICAN INDUSTRY CLASSIFICATION SYSTEM INDUSTRY GROUP	NUMBER OF EMPLOYING UNITS	EMPLOYMENT APRIL	EMPLOYMENT MAY	EMPLOYMENT JUNE	TOTAL EARNINGS APR. - JUN. 2005	AVERAGE WEEKLY EARNINGS
CROSS COUNTY - TOTAL	495	5,320	5,214	5,140	\$33,920,837	\$499.42
Natural Resources & Mining	46	249	270	274	\$1,276,037	\$371.34
Construction	36	152	157	185	\$884,870	\$413.36
Manufacturing	20	897	786	744	\$6,378,445	\$606.49
Trade, Transportation & Utilities	135	1,230	1,214	1,223	\$7,596,708	\$478.07
Wholesale Trade	32	327	329	321	\$2,538,946	\$599.70
Retail Trade	69	660	645	662	\$2,957,600	\$346.99
Transportation, Warehousing & Utilities	34	243	240	240	\$2,100,162	\$670.34
Information	8	60	61	62	\$371,333	\$468.26
Financial Activities	47	380	380	381	\$2,536,080	\$512.93
Professional & Business Services	42	171	153	165	\$1,070,238	\$505.07
Education & Health Services	60	620	630	615	\$3,515,252	\$434.97
Leisure & Hospitality	32	386	393	404	\$875,482	\$170.78
Other Services	41	78	75	77	\$315,406	\$316.46
Local Government	17	875	872	783	\$7,331,454	\$668.72
State Government	11	222	223	227	\$1,769,532	\$607.67
DALLAS COUNTY - TOTAL	276	3,287	3,305	3,207	\$21,738,121	\$511.94
Natural Resources & Mining	42	215	219	220	\$1,457,565	\$514.31
Construction	13	80	82	83	\$662,083	\$623.63
Manufacturing	15	870	870	900	\$7,382,950	\$645.36
Trade, Transportation & Utilities	76	486	479	477	\$2,365,399	\$378.54
Wholesale Trade	10	44	44	44	\$307,308	\$537.25
Retail Trade	47	379	376	376	\$1,673,624	\$341.49
Transportation, Warehousing & Utilities	19	63	59	57	\$384,467	\$495.66
Information	3	26	26	26	\$143,689	\$425.12
Financial Activities	20	100	102	105	\$685,499	\$515.28
Professional & Business Services	17	53	57	55	\$887,929	\$1,241.86
Education & Health Services	29	717	734	727	\$3,880,961	\$411.21
Leisure & Hospitality	20	139	133	139	\$285,968	\$160.57
Other Services	16	65	65	63	\$254,471	\$304.27
Local Government	16	473	476	350	\$3,265,741	\$580.16
State Government	9	63	62	62	\$465,866	\$574.91

NORTH AMERICAN INDUSTRY CLASSIFICATION SYSTEM INDUSTRY GROUP	NUMBER OF EMPLOYING UNITS	EMPLOYMENT APRIL	EMPLOYMENT MAY	EMPLOYMENT JUNE	TOTAL EARNINGS APR. - JUN. 2005	AVERAGE WEEKLY EARNINGS
DESHA COUNTY - TOTAL	453	4,919	5,026	4,951	\$33,411,269	\$517.61
Natural Resources & Mining	52	258	265	278	\$1,522,629	\$438.67
Construction	27	132	140	142	\$1,055,403	\$588.30
Manufacturing	15	1,287	1,329	1,361	\$12,072,406	\$700.51
Trade, Transportation & Utilities	135	1,045	1,035	1,045	\$5,715,901	\$422.10
Wholesale Trade	20	199	199	197	\$1,711,975	\$663.99
Retail Trade	83	667	666	673	\$2,768,665	\$318.51
Transportation, Warehousing & Utilities	32	179	170	175	\$1,235,261	\$544.01
Information	6	22	22	22	\$198,161	\$692.87
Financial Activities	41	220	231	232	\$1,351,153	\$456.52
Professional & Business Services	36	88	98	103	\$495,435	\$395.61
Education & Health Services	45	490	513	531	\$2,618,733	\$393.95
Leisure & Hospitality	38	298	305	314	\$628,363	\$158.13
Other Services	28	67	75	80	\$261,907	\$272.25
Local Government	19	845	844	679	\$6,316,716	\$615.58
State Government	11	167	169	164	\$1,174,462	\$542.06
DREW COUNTY - TOTAL	482	6,952	6,905	6,828	\$41,906,786	\$467.53
Natural Resources & Mining	39	328	326	312	\$2,238,159	\$534.68
Construction	28	161	175	158	\$895,320	\$418.24
Manufacturing	21	967	954	927	\$5,949,560	\$482.08
Trade, Transportation & Utilities	136	1,286	1,258	1,242	\$7,196,155	\$438.63
Wholesale Trade	26	287	284	278	\$2,228,702	\$605.79
Retail Trade	90	901	878	869	\$4,103,699	\$357.63
Transportation, Warehousing & Utilities	20	98	96	95	\$863,754	\$689.72
Information	9	86	87	86	\$573,753	\$511.21
Financial Activities	41	264	267	273	\$2,176,932	\$624.84
Professional & Business Services	44	361	375	386	\$3,407,967	\$700.94
Education & Health Services	55	746	750	757	\$3,583,026	\$367.00
Leisure & Hospitality	43	603	597	589	\$1,078,593	\$139.13
Other Services	26	80	80	82	\$323,554	\$308.54
Local Government	23	1,235	1,210	1,231	\$9,130,538	\$573.19
State Government	17	835	826	785	\$5,353,229	\$505.05

NORTH AMERICAN INDUSTRY CLASSIFICATION SYSTEM INDUSTRY GROUP	NUMBER OF EMPLOYING UNITS	EMPLOYMENT APRIL	EMPLOYMENT MAY	EMPLOYMENT JUNE	TOTAL EARNINGS APR. - JUN. 2005	AVERAGE WEEKLY EARNINGS
FAULKNER COUNTY - TOTAL	2,248	35,329	35,446	35,879	\$273,082,838	\$590.87
Natural Resources & Mining	10	52	54	55	\$540,476	\$774.69
Construction	307	2,539	2,729	2,697	\$19,593,726	\$567.69
Manufacturing	115	5,002	4,999	5,143	\$48,303,357	\$736.06
Trade, Transportation & Utilities	564	6,180	6,204	6,178	\$34,804,541	\$432.70
Wholesale Trade	128	714	728	744	\$6,042,808	\$637.92
Retail Trade	367	4,837	4,826	4,792	\$23,163,586	\$369.80
Transportation, Warehousing & Utilities	69	629	650	642	\$5,598,147	\$672.50
Information	39	353	359	354	\$2,797,395	\$605.58
Financial Activities	271	1,303	1,310	1,336	\$9,460,678	\$552.86
Professional & Business Services	300	5,182	5,214	5,402	\$60,226,540	\$879.76
Education & Health Services	269	4,469	4,551	4,629	\$32,334,553	\$546.69
Leisure & Hospitality	178	3,751	3,808	3,713	\$9,225,020	\$188.86
Other Services	140	584	584	580	\$2,837,423	\$374.59
Local Government	36	3,030	3,037	3,073	\$30,083,264	\$759.55
State Government	19	2,884	2,597	2,719	\$22,875,865	\$643.79
FRANKLIN COUNTY - TOTAL	310	4,247	4,274	4,097	\$26,728,725	\$488.84
Natural Resources & Mining	7	133	136	145	\$1,421,244	\$792.22
Construction	25	131	131	133	\$873,491	\$510.32
Manufacturing	21	997	1,018	1,035	\$6,403,892	\$484.53
Trade, Transportation & Utilities	94	830	822	833	\$5,283,955	\$490.69
Wholesale Trade	13	67	64	60	\$233,309	\$281.89
Retail Trade	58	460	454	460	\$1,905,528	\$320.04
Transportation, Warehousing & Utilities	23	303	304	313	\$3,145,118	\$788.91
Information	7	60	57	54	\$286,356	\$386.45
Financial Activities	24	178	179	179	\$1,082,432	\$466.03
Professional & Business Services	18	62	61	61	\$318,215	\$399.10
Education & Health Services	41	527	542	542	\$3,177,128	\$455.11
Leisure & Hospitality	26	322	322	340	\$701,376	\$164.49
Other Services	18	59	56	60	\$287,772	\$379.48
Local Government	19	809	803	581	\$5,880,783	\$618.83
State Government	10	139	147	134	\$1,012,081	\$556.09

NORTH AMERICAN INDUSTRY CLASSIFICATION SYSTEM INDUSTRY GROUP	NUMBER OF EMPLOYING UNITS	EMPLOYMENT APRIL	EMPLOYMENT MAY	EMPLOYMENT JUNE	TOTAL EARNINGS APR. - JUN. 2005	AVERAGE WEEKLY EARNINGS
FULTON COUNTY - TOTAL	206	1,920	1,987	1,986	\$10,202,625	\$399.53
Construction	15	36	33	32	\$179,937	\$411.13
Manufacturing	12	140	141	141	\$593,881	\$324.76
Trade, Transportation & Utilities	59	349	374	385	\$1,931,913	\$402.37
Retail Trade	42	191	205	210	\$683,689	\$260.35
Other Trade, Transportation & Utilities	17	158	169	175	\$1,248,224	\$573.81
Financial Activities	18	98	125	123	\$740,988	\$494.21
Professional & Business Services	16	51	52	51	\$309,612	\$463.95
Education & Health Services	28	380	388	376	\$1,579,275	\$318.57
Leisure & Hospitality	18	168	181	185	\$415,678	\$179.64
Local Government	13	520	516	510	\$3,507,483	\$523.56
State Government	11	104	107	110	\$667,472	\$479.85
Other	16	74	70	73	\$276,386	\$293.92
GARLAND COUNTY - TOTAL	3,023	36,652	35,925	36,319	\$239,811,304	\$508.20
Natural Resources & Mining	49	362	352	362	\$3,121,134	\$669.39
Construction	411	2,329	2,344	2,397	\$15,844,701	\$517.18
Manufacturing	125	3,441	3,448	3,441	\$26,572,002	\$593.61
Trade, Transportation & Utilities	699	7,140	7,182	7,405	\$41,676,259	\$442.66
Wholesale Trade	142	1,050	1,057	1,064	\$8,497,368	\$618.40
Retail Trade	487	5,428	5,434	5,619	\$27,210,182	\$381.00
Transportation, Warehousing & Utilities	70	662	691	722	\$5,968,709	\$663.80
Information	36	445	434	429	\$3,366,217	\$593.90
Financial Activities	351	1,506	1,520	1,570	\$11,782,304	\$591.60
Professional & Business Services	384	2,613	2,593	2,591	\$18,360,402	\$543.42
Education & Health Services	320	6,862	6,875	6,944	\$56,511,689	\$630.59
Leisure & Hospitality	353	6,898	6,100	6,406	\$20,755,131	\$246.84
Other Services	232	971	970	980	\$4,703,298	\$371.58
Local Government	36	3,071	3,086	2,879	\$29,682,886	\$758.07
State Government	27	1,014	1,021	915	\$7,435,281	\$581.64

NORTH AMERICAN INDUSTRY CLASSIFICATION SYSTEM INDUSTRY GROUP	NUMBER OF EMPLOYING UNITS	EMPLOYMENT APRIL	EMPLOYMENT MAY	EMPLOYMENT JUNE	TOTAL EARNINGS APR. - JUN. 2005	AVERAGE WEEKLY EARNINGS
GRANT COUNTY - TOTAL	281	3,548	3,569	3,654	\$23,238,292	\$497.88
Natural Resources & Mining	25	199	204	222	\$1,834,617	\$677.40
Construction	32	230	244	255	\$1,795,210	\$568.28
Manufacturing	20	844	831	841	\$6,077,699	\$557.45
Trade, Transportation & Utilities	86	571	578	558	\$3,136,295	\$424.00
Wholesale Trade	16	156	161	153	\$1,197,536	\$587.99
Retail Trade	40	357	357	350	\$1,537,034	\$333.36
Transportation, Warehousing & Utilities	30	58	60	55	\$401,725	\$535.87
Information	3	39	40	39	\$282,974	\$553.40
Financial Activities	20	103	102	101	\$742,564	\$560.00
Professional & Business Services	22	82	77	83	\$669,946	\$638.86
Education & Health Services	21	206	206	202	\$1,181,741	\$444.15
Leisure & Hospitality	20	251	261	280	\$635,868	\$185.28
Other Services	13	35	35	37	\$153,936	\$332.00
Local Government	10	928	932	976	\$6,317,615	\$514.07
State Government	9	60	59	60	\$409,827	\$528.35
GREENE COUNTY - TOTAL	861	14,998	15,150	14,746	\$100,552,584	\$516.87
Natural Resources & Mining	37	207	244	241	\$1,443,145	\$481.26
Construction	74	396	395	393	\$2,308,075	\$449.86
Manufacturing	54	5,450	5,488	5,472	\$44,674,346	\$628.24
Trade, Transportation & Utilities	247	2,200	2,190	2,142	\$12,070,620	\$426.44
Wholesale Trade	54	424	422	397	\$3,323,642	\$617.05
Retail Trade	162	1,589	1,583	1,560	\$7,279,223	\$354.99
Transportation, Warehousing & Utilities	31	187	185	185	\$1,467,755	\$608.10
Information	13	90	94	100	\$532,998	\$433.10
Financial Activities	87	467	459	478	\$3,255,611	\$535.11
Professional & Business Services	87	1,357	1,429	1,220	\$7,102,984	\$409.17
Education & Health Services	98	1,686	1,680	1,672	\$10,374,689	\$475.22
Leisure & Hospitality	65	1,146	1,182	1,217	\$2,634,897	\$171.52
Other Services	56	179	172	172	\$861,205	\$380.00
Local Government	32	1,564	1,558	1,376	\$13,206,977	\$677.58
State Government	11	256	259	263	\$2,087,037	\$619.05

NORTH AMERICAN INDUSTRY CLASSIFICATION SYSTEM INDUSTRY GROUP	NUMBER OF EMPLOYING UNITS	EMPLOYMENT APRIL	EMPLOYMENT MAY	EMPLOYMENT JUNE	TOTAL EARNINGS APR. - JUN. 2005	AVERAGE WEEKLY EARNINGS
HEMPSTEAD COUNTY - TOTAL	501	8,279	8,316	8,368	\$54,352,249	\$502.46
Natural Resources & Mining	19	204	210	214	\$1,687,984	\$620.28
Construction	34	125	136	151	\$838,854	\$469.86
Manufacturing	32	2,759	2,808	2,841	\$20,595,431	\$565.27
Trade, Transportation & Utilities	136	1,241	1,212	1,232	\$6,281,448	\$393.37
Wholesale Trade	26	187	190	195	\$1,101,852	\$444.53
Retail Trade	87	897	878	884	\$3,755,620	\$325.94
Transportation, Warehousing & Utilities	23	157	144	153	\$1,423,976	\$723.81
Information	11	88	88	84	\$517,328	\$459.17
Financial Activities	45	267	270	273	\$1,970,956	\$561.53
Professional & Business Services	37	206	228	207	\$711,593	\$256.18
Education & Health Services	62	963	968	983	\$5,769,426	\$456.90
Leisure & Hospitality	43	605	604	613	\$1,541,079	\$195.19
Other Services	36	218	220	220	\$1,378,393	\$483.42
Local Government	29	1,050	1,038	1,015	\$8,705,862	\$647.45
State Government	17	553	534	535	\$4,353,895	\$619.45
HOT SPRING COUNTY - TOTAL	612	7,782	7,761	7,663	\$55,123,773	\$548.17
Natural Resources & Mining	40	171	179	178	\$1,382,865	\$604.40
Construction	69	382	398	399	\$3,141,348	\$614.87
Manufacturing	44	1,624	1,620	1,619	\$15,689,644	\$744.54
Trade, Transportation & Utilities	169	1,552	1,558	1,528	\$8,962,692	\$445.95
Wholesale Trade	22	111	110	107	\$967,501	\$680.70
Retail Trade	101	1,060	1,076	1,039	\$4,776,055	\$347.14
Transportation, Warehousing & Utilities	46	381	372	382	\$3,219,136	\$654.52
Information	9	65	64	70	\$602,442	\$698.62
Financial Activities	55	296	296	306	\$2,002,950	\$514.72
Professional & Business Services	55	199	194	216	\$1,308,469	\$495.82
Education & Health Services	46	987	975	978	\$6,300,818	\$494.57
Leisure & Hospitality	44	572	580	596	\$1,439,624	\$190.06
Other Services	41	296	294	239	\$1,085,288	\$302.11
Local Government	26	1,126	1,121	1,022	\$9,797,060	\$691.61
State Government	14	512	482	512	\$3,410,573	\$522.61

NORTH AMERICAN INDUSTRY CLASSIFICATION SYSTEM INDUSTRY GROUP	NUMBER OF EMPLOYING UNITS	EMPLOYMENT APRIL	EMPLOYMENT MAY	EMPLOYMENT JUNE	TOTAL EARNINGS APR. - JUN. 2005	AVERAGE WEEKLY EARNINGS
HOWARD COUNTY - TOTAL	365	7,580	7,588	7,499	\$52,752,735	\$537.07
Natural Resources & Mining	22	240	234	238	\$1,753,642	\$568.38
Construction	23	73	80	91	\$448,315	\$424.01
Manufacturing	27	4,232	4,213	4,168	\$32,690,389	\$598.11
Trade, Transportation & Utilities	110	927	928	956	\$5,227,160	\$429.12
Wholesale Trade	20	105	102	106	\$829,773	\$611.78
Retail Trade	67	638	644	668	\$2,845,069	\$336.69
Transportation, Warehousing & Utilities	23	184	182	182	\$1,552,318	\$653.70
Information	8	38	38	37	\$228,950	\$467.56
Financial Activities	33	132	132	145	\$857,778	\$483.98
Professional & Business Services	28	117	109	116	\$686,300	\$463.09
Education & Health Services	40	597	591	607	\$2,846,560	\$365.96
Leisure & Hospitality	24	295	317	307	\$712,079	\$178.81
Other Services	20	98	108	110	\$493,177	\$360.16
Local Government	18	702	705	595	\$5,858,348	\$675.29
State Government	12	129	133	129	\$950,037	\$560.71
INDEPENDENCE COUNTY - TOTAL	904	16,394	16,561	16,507	\$109,332,119	\$510.10
Natural Resources & Mining	11	133	133	132	\$1,004,894	\$582.66
Construction	65	352	369	392	\$2,496,442	\$517.61
Manufacturing	55	5,013	5,026	5,021	\$38,226,748	\$585.76
Trade, Transportation & Utilities	291	3,039	3,047	3,056	\$19,167,652	\$483.84
Wholesale Trade	53	509	516	519	\$4,437,514	\$663.24
Retail Trade	181	1,742	1,736	1,742	\$7,658,693	\$338.58
Transportation, Warehousing & Utilities	57	788	795	795	\$7,071,445	\$686.24
Information	12	164	167	167	\$1,174,975	\$544.47
Financial Activities	84	446	458	469	\$3,228,060	\$542.56
Professional & Business Services	84	940	995	990	\$4,214,734	\$332.52
Education & Health Services	106	2,686	2,710	2,728	\$20,718,379	\$588.52
Leisure & Hospitality	72	1,159	1,206	1,180	\$2,717,778	\$176.92
Other Services	70	356	350	345	\$1,605,999	\$352.63
Local Government	37	1,607	1,610	1,594	\$11,464,887	\$549.94
State Government	17	499	490	433	\$3,311,571	\$537.42

NORTH AMERICAN INDUSTRY CLASSIFICATION SYSTEM INDUSTRY GROUP	NUMBER OF EMPLOYING UNITS	EMPLOYMENT APRIL	EMPLOYMENT MAY	EMPLOYMENT JUNE	TOTAL EARNINGS APR. - JUN. 2005	AVERAGE WEEKLY EARNINGS
IZARD COUNTY - TOTAL	248	2,861	2,924	2,771	\$16,891,940	\$455.60
Natural Resources & Mining	5	82	83	85	\$613,301	\$566.12
Construction	23	54	55	67	\$337,505	\$442.53
Manufacturing	12	391	387	376	\$2,922,693	\$584.46
Trade, Transportation & Utilities	67	506	509	492	\$2,503,689	\$383.39
Retail Trade	51	397	394	386	\$1,759,730	\$345.02
Other Trade, Transportation & Utilities	16	109	115	106	\$743,959	\$520.25
Information	3	6	6	7	\$33,780	\$410.28
Financial Activities	25	141	140	149	\$874,180	\$469.15
Professional & Business Services	22	83	85	91	\$386,474	\$344.35
Education & Health Services	22	426	424	445	\$2,160,006	\$384.91
Leisure & Hospitality	25	181	196	202	\$394,033	\$157.05
Other Services	15	37	39	39	\$175,727	\$352.63
Local Government	18	542	548	404	\$3,708,476	\$572.83
State Government	11	412	452	414	\$2,782,076	\$502.36
JACKSON COUNTY - TOTAL	518	5,822	5,816	5,716	\$41,985,760	\$558.32
Natural Resources & Mining	46	240	279	239	\$1,435,969	\$437.17
Construction	28	173	185	198	\$1,235,718	\$512.89
Manufacturing	27	1,006	1,000	1,006	\$12,691,567	\$972.38
Trade, Transportation & Utilities	134	1,197	1,193	1,187	\$6,955,701	\$448.75
Wholesale Trade	38	237	235	238	\$2,037,764	\$662.33
Retail Trade	77	715	715	711	\$3,142,742	\$338.74
Transportation, Warehousing & Utilities	19	245	243	238	\$1,775,195	\$564.27
Information	4	36	35	36	\$298,009	\$642.72
Financial Activities	45	197	200	200	\$1,361,898	\$526.44
Professional & Business Services	38	131	124	124	\$866,562	\$527.64
Education & Health Services	67	1,000	998	978	\$6,896,356	\$534.77
Leisure & Hospitality	38	340	352	352	\$851,752	\$188.27
Other Services	42	109	108	114	\$445,265	\$310.43
Local Government	35	781	716	665	\$4,559,481	\$486.67
State Government	14	612	626	617	\$4,387,482	\$545.82

NORTH AMERICAN INDUSTRY CLASSIFICATION SYSTEM INDUSTRY GROUP	NUMBER OF EMPLOYING UNITS	EMPLOYMENT APRIL	EMPLOYMENT MAY	EMPLOYMENT JUNE	TOTAL EARNINGS APR. - JUN. 2005	AVERAGE WEEKLY EARNINGS
JEFFERSON COUNTY - TOTAL	1,778	33,328	33,320	33,092	\$246,456,989	\$570.23
Natural Resources & Mining	40	474	477	478	\$3,848,261	\$621.46
Construction	122	1,457	1,483	1,443	\$16,110,329	\$848.22
Manufacturing	77	6,417	6,386	6,397	\$60,640,347	\$728.85
Trade, Transportation & Utilities	499	6,237	6,239	6,207	\$37,058,511	\$457.74
Wholesale Trade	88	1,094	1,109	1,093	\$8,128,141	\$569.09
Retail Trade	347	4,230	4,232	4,211	\$19,162,428	\$348.94
Transportation, Warehousing & Utilities	64	913	898	903	\$9,767,942	\$830.56
Information	19	214	228	237	\$1,577,443	\$536.12
Financial Activities	152	1,245	1,243	1,250	\$10,033,227	\$619.41
Professional & Business Services	180	1,997	1,910	1,993	\$14,351,775	\$561.35
Education & Health Services	302	5,473	5,422	5,400	\$36,531,217	\$517.35
Leisure & Hospitality	142	2,293	2,362	2,359	\$5,716,383	\$188.08
Other Services	164	842	845	841	\$4,590,572	\$419.05
Local Government	42	3,448	3,499	3,387	\$30,956,815	\$691.30
State Government	39	3,231	3,226	3,100	\$25,042,109	\$604.68
JOHNSON COUNTY - TOTAL	449	8,554	8,458	8,485	\$52,557,742	\$475.69
Natural Resources & Mining	15	213	214	228	\$1,569,881	\$553.10
Construction	32	150	155	158	\$881,237	\$439.23
Manufacturing	44	3,130	3,113	3,181	\$19,400,407	\$475.07
Trade, Transportation & Utilities	124	1,796	1,729	1,713	\$9,613,782	\$423.55
Information	6	31	31	32	\$215,076	\$528.01
Financial Activities	38	214	212	214	\$1,476,115	\$532.25
Professional & Business Services	46	182	170	163	\$1,170,462	\$524.48
Education & Health Services	51	1,096	1,086	1,065	\$7,291,732	\$518.23
Leisure & Hospitality	39	556	559	550	\$1,284,279	\$178.00
Other Services	30	84	82	84	\$441,048	\$407.12
Local Government	14	948	953	945	\$8,042,615	\$652.14
State Government	10	154	154	152	\$1,171,108	\$587.51

NORTH AMERICAN INDUSTRY CLASSIFICATION SYSTEM INDUSTRY GROUP	NUMBER OF EMPLOYING UNITS	EMPLOYMENT APRIL	EMPLOYMENT MAY	EMPLOYMENT JUNE	TOTAL EARNINGS APR. - JUN. 2005	AVERAGE WEEKLY EARNINGS
LAFAYETTE COUNTY - TOTAL	160	1,669	1,674	1,679	\$10,502,005	\$482.58
Natural Resources & Mining	30	168	170	179	\$1,125,244	\$502.27
Trade, Transportation & Utilities	39	230	233	236	\$1,290,109	\$425.92
Retail Trade	23	156	158	162	\$716,339	\$347.29
Other Trade, Transportation & Utilities	16	74	75	74	\$573,770	\$593.76
Financial Activities	16	94	90	89	\$465,418	\$393.42
Professional & Business Services	11	58	53	54	\$448,238	\$626.91
Education & Health Services	12	201	205	200	\$958,445	\$364.98
Leisure & Hospitality	5	41	42	43	\$101,384	\$185.68
Other Services	8	78	75	72	\$298,294	\$305.94
Local Government	14	366	374	376	\$2,705,842	\$559.52
State Government	8	61	61	61	\$402,603	\$507.70
Other	17	372	371	369	\$2,706,428	\$561.65
LAWRENCE COUNTY - TOTAL	419	4,387	4,414	4,340	\$26,875,829	\$471.97
Natural Resources & Mining	33	150	159	160	\$1,107,639	\$545.01
Construction	28	104	105	110	\$722,290	\$522.52
Manufacturing	23	682	693	708	\$4,833,161	\$535.45
Trade, Transportation & Utilities	136	1,039	1,042	1,038	\$5,594,000	\$413.89
Wholesale Trade	26	224	230	225	\$1,671,561	\$568.11
Retail Trade	74	680	681	675	\$2,822,367	\$319.90
Transportation, Warehousing & Utilities	36	135	131	138	\$1,100,072	\$628.37
Information	7	24	24	25	\$182,357	\$576.47
Financial Activities	31	143	142	142	\$875,330	\$473.07
Professional & Business Services	24	125	117	118	\$943,521	\$604.82
Education & Health Services	46	426	406	400	\$2,728,001	\$510.99
Leisure & Hospitality	28	310	322	309	\$554,896	\$136.08
Other Services	24	71	71	69	\$291,031	\$318.30
Local Government	28	1,185	1,203	1,132	\$8,238,504	\$540.11
State Government	11	128	130	129	\$805,099	\$480.08

NORTH AMERICAN INDUSTRY CLASSIFICATION SYSTEM INDUSTRY GROUP	NUMBER OF EMPLOYING UNITS	EMPLOYMENT APRIL	EMPLOYMENT MAY	EMPLOYMENT JUNE	TOTAL EARNINGS APR. - JUN. 2005	AVERAGE WEEKLY EARNINGS
LEE COUNTY - TOTAL	224	2,050	2,095	2,100	\$13,220,454	\$488.53
Natural Resources & Mining	32	195	201	223	\$1,136,810	\$423.81
Construction	7	12	11	12	\$48,108	\$317.20
Trade, Transportation & Utilities	58	354	360	369	\$2,018,885	\$430.19
Wholesale Trade	9	70	70	72	\$559,592	\$609.13
Retail Trade	32	193	203	210	\$749,050	\$285.24
Transportation, Warehousing & Utilities	17	91	87	87	\$710,243	\$618.50
Financial Activities	13	78	78	80	\$454,683	\$444.61
Professional & Business Services	20	72	72	74	\$528,358	\$559.31
Education & Health Services	32	291	292	279	\$1,733,888	\$464.19
Leisure & Hospitality	8	96	100	103	\$197,136	\$152.15
Local Government	16	384	388	364	\$2,933,115	\$595.84
State Government	8	439	439	435	\$3,108,108	\$546.27
Other	30	129	154	161	\$1,061,363	\$551.64
LINCOLN COUNTY - TOTAL	214	2,943	2,942	2,768	\$18,975,632	\$506.07
Natural Resources & Mining	33	189	198	202	\$1,222,196	\$478.85
Construction	15	67	67	65	\$401,487	\$465.58
Manufacturing	10	454	459	452	\$3,256,883	\$550.61
Trade, Transportation & Utilities	49	342	344	353	\$2,321,569	\$515.64
Wholesale Trade	7	33	36	36	\$262,765	\$577.51
Retail Trade	24	166	166	171	\$653,328	\$299.74
Transportation, Warehousing & Utilities	18	143	142	146	\$1,405,476	\$752.53
Financial Activities	22	72	71	68	\$496,458	\$542.97
Professional & Business Services	11	23	22	22	\$145,289	\$500.42
Education & Health Services	21	327	322	306	\$1,507,488	\$364.27
Leisure & Hospitality	17	110	112	136	\$260,607	\$167.99
Local & State Government	22	1,318	1,314	1,130	\$9,168,654	\$562.43
Other	14	41	33	34	\$195,001	\$416.67

NORTH AMERICAN INDUSTRY CLASSIFICATION SYSTEM INDUSTRY GROUP	NUMBER OF EMPLOYING UNITS	EMPLOYMENT APRIL	EMPLOYMENT MAY	EMPLOYMENT JUNE	TOTAL EARNINGS APR. - JUN. 2005	AVERAGE WEEKLY EARNINGS
LITTLE RIVER COUNTY - TOTAL	253	4,515	4,575	4,577	\$40,481,731	\$683.54
Natural Resources & Mining	12	69	75	75	\$570,715	\$601.39
Trade, Transportation & Utilities	72	1,116	1,122	1,130	\$9,267,092	\$634.96
Wholesale Trade	9	34	31	32	\$227,288	\$540.73
Retail Trade	43	331	339	339	\$1,427,944	\$326.59
Transportation, Warehousing & Utilities	20	751	752	759	\$7,611,860	\$776.56
Information	4	12	11	11	\$84,666	\$574.66
Financial Activities	24	108	109	105	\$616,764	\$442.02
Professional & Business Services	21	158	157	151	\$697,013	\$345.17
Education & Health Services	17	162	158	163	\$775,134	\$370.35
Leisure & Hospitality	18	222	228	239	\$541,456	\$181.35
Other Services	15	100	97	100	\$311,834	\$242.30
Local Government	20	745	770	762	\$5,474,345	\$554.81
State Government	12	90	89	92	\$598,614	\$509.75
Other	38	1,733	1,759	1,749	\$21,544,098	\$948.62
LOGAN COUNTY - TOTAL	453	5,704	5,712	5,679	\$34,856,245	\$470.53
Natural Resources & Mining	14	87	86	78	\$682,393	\$627.39
Construction	47	155	158	154	\$884,736	\$437.19
Manufacturing	28	1,819	1,803	1,814	\$12,991,679	\$551.52
Trade, Transportation & Utilities	119	875	871	877	\$3,892,494	\$342.46
Wholesale Trade	19	54	56	56	\$237,169	\$329.71
Retail Trade	74	748	741	748	\$3,136,628	\$323.57
Transportation, Warehousing & Utilities	26	73	74	73	\$518,697	\$544.09
Information	8	42	42	43	\$351,691	\$639.05
Financial Activities	42	230	226	231	\$1,860,021	\$624.80
Professional & Business Services	40	95	111	119	\$586,709	\$416.60
Education & Health Services	53	725	715	717	\$4,055,234	\$433.85
Leisure & Hospitality	32	327	344	342	\$748,229	\$170.45
Other Services	32	96	102	90	\$437,457	\$350.53
Local & State Government	38	1,253	1,254	1,214	\$8,365,602	\$518.82

NORTH AMERICAN INDUSTRY CLASSIFICATION SYSTEM INDUSTRY GROUP	NUMBER OF EMPLOYING UNITS	EMPLOYMENT APRIL	EMPLOYMENT MAY	EMPLOYMENT JUNE	TOTAL EARNINGS APR. - JUN. 2005	AVERAGE WEEKLY EARNINGS
LONOKE COUNTY - TOTAL	1,147	11,611	11,823	11,713	\$74,647,546	\$490.12
Natural Resources & Mining	73	489	501	512	\$3,407,267	\$523.50
Construction	158	951	942	967	\$6,395,014	\$516.00
Manufacturing	39	1,328	1,356	1,374	\$11,841,308	\$673.39
Trade, Transportation & Utilities	322	2,501	2,551	2,605	\$13,780,526	\$415.32
Wholesale Trade	77	431	442	440	\$3,665,627	\$644.26
Retail Trade	178	1,803	1,850	1,924	\$8,253,240	\$341.51
Transportation, Warehousing & Utilities	67	267	259	241	\$1,861,659	\$560.12
Information	16	111	112	112	\$1,026,462	\$707.09
Financial Activities	115	566	570	582	\$4,508,284	\$605.57
Professional & Business Services	136	487	468	462	\$2,965,555	\$482.96
Education & Health Services	102	1,274	1,255	1,251	\$6,925,695	\$422.81
Leisure & Hospitality	76	1,120	1,146	1,180	\$2,902,131	\$194.35
Other Services	66	201	209	198	\$1,061,895	\$403.05
Local Government	28	2,438	2,568	2,326	\$18,883,743	\$594.35
State Government	16	145	145	144	\$949,666	\$504.96
MADISON COUNTY - TOTAL	238	3,211	3,195	3,186	\$18,495,440	\$444.97
Natural Resources & Mining	13	67	66	64	\$408,731	\$478.79
Construction	44	112	115	126	\$667,675	\$436.48
Manufacturing	20	1,160	1,130	1,124	\$6,561,049	\$443.49
Trade, Transportation & Utilities	60	585	585	588	\$2,951,165	\$387.39
Wholesale Trade	13	41	40	40	\$261,053	\$497.88
Retail Trade	33	409	414	415	\$1,792,997	\$334.22
Transportation, Warehousing & Utilities	14	135	131	133	\$897,115	\$518.86
Information	4	37	39	41	\$355,841	\$701.86
Financial Activities	15	87	89	92	\$625,682	\$538.76
Professional & Business Services	19	111	115	108	\$611,067	\$422.20
Education & Health Services	21	241	237	229	\$1,100,341	\$359.16
Leisure & Hospitality	12	122	125	121	\$216,315	\$135.65
Other Services	14	25	24	25	\$147,390	\$459.64
Local Government	8	606	611	607	\$4,465,636	\$564.98
State Government	8	58	59	61	\$384,548	\$498.55

NORTH AMERICAN INDUSTRY CLASSIFICATION SYSTEM INDUSTRY GROUP	NUMBER OF EMPLOYING UNITS	EMPLOYMENT APRIL	EMPLOYMENT MAY	EMPLOYMENT JUNE	TOTAL EARNINGS APR. - JUN. 2005	AVERAGE WEEKLY EARNINGS
MARION COUNTY - TOTAL	274	4,068	4,079	4,109	\$23,458,386	\$441.70
Natural Resources & Mining	5	36	29	38	\$201,371	\$451.17
Construction	15	41	45	44	\$178,334	\$316.57
Manufacturing	25	1,692	1,685	1,683	\$10,732,241	\$489.46
Trade, Transportation & Utilities	60	731	716	717	\$3,129,666	\$333.75
Retail Trade	39	578	560	555	\$2,129,583	\$290.28
Other Trade, Transportation & Utilities	21	153	156	162	\$1,000,083	\$490.00
Financial Activities	35	184	194	202	\$1,170,074	\$465.55
Professional & Business Services	24	41	37	36	\$260,985	\$528.31
Education & Health Services	23	320	333	338	\$1,600,194	\$372.63
Leisure & Hospitality	41	281	285	313	\$718,764	\$188.70
Local Government	20	543	551	537	\$4,069,363	\$575.77
State Government	8	110	114	109	\$703,271	\$487.37
Other	18	89	90	92	\$694,123	\$591.08
MILLER COUNTY - TOTAL	828	12,700	12,819	12,613	\$96,953,089	\$586.75
Natural Resources & Mining	29	153	154	150	\$1,164,475	\$588.02
Construction	84	803	821	812	\$5,712,209	\$541.13
Manufacturing	36	2,798	2,858	2,886	\$35,661,878	\$963.44
Trade, Transportation & Utilities	246	2,679	2,671	2,736	\$16,696,103	\$476.50
Wholesale Trade	65	610	626	630	\$5,244,688	\$648.61
Retail Trade	139	1,474	1,454	1,515	\$6,545,989	\$340.00
Transportation, Warehousing & Utilities	42	595	591	591	\$4,905,426	\$637.04
Information	8	91	93	92	\$992,230	\$829.62
Financial Activities	82	438	456	452	\$3,519,783	\$603.46
Professional & Business Services	83	908	902	860	\$4,481,662	\$387.35
Education & Health Services	78	1,004	1,003	1,004	\$6,143,557	\$470.85
Leisure & Hospitality	78	1,369	1,387	1,366	\$3,811,276	\$213.37
Other Services	65	345	339	420	\$1,268,641	\$265.18
Local Government	22	1,658	1,670	1,379	\$13,746,082	\$673.93
State Government	17	454	465	456	\$3,755,193	\$630.24

NORTH AMERICAN INDUSTRY CLASSIFICATION SYSTEM INDUSTRY GROUP	NUMBER OF EMPLOYING UNITS	EMPLOYMENT APRIL	EMPLOYMENT MAY	EMPLOYMENT JUNE	TOTAL EARNINGS APR. - JUN. 2005	AVERAGE WEEKLY EARNINGS
MISSISSIPPI COUNTY - TOTAL	1,124	18,156	18,162	18,086	\$141,246,903	\$599.14
Natural Resources & Mining	107	602	674	776	\$3,658,491	\$411.44
Construction	54	400	405	421	\$3,403,604	\$640.66
Manufacturing	59	5,012	5,003	5,086	\$59,156,447	\$904.01
Trade, Transportation & Utilities	307	2,998	3,009	3,096	\$18,910,506	\$479.40
Wholesale Trade	64	595	608	618	\$5,262,977	\$666.96
Retail Trade	194	1,833	1,826	1,898	\$8,439,547	\$350.47
Transportation, Warehousing & Utilities	49	570	575	580	\$5,207,982	\$696.72
Financial Activities	102	602	591	619	\$3,771,533	\$480.33
Professional & Business Services	98	1,112	1,055	1,134	\$6,719,818	\$469.77
Education & Health Services	152	1,617	1,615	1,608	\$10,174,951	\$485.14
Leisure & Hospitality	80	1,138	1,150	1,144	\$2,818,261	\$189.50
Local Government	46	2,408	2,412	2,233	\$18,865,974	\$617.28
State Government	25	680	676	605	\$4,615,739	\$543.18
Other	94	1,587	1,572	1,364	\$9,151,579	\$466.93
MONROE COUNTY - TOTAL	293	2,663	2,681	2,599	\$13,942,280	\$405.07
Natural Resources & Mining	32	146	178	174	\$909,839	\$421.61
Construction	15	56	49	45	\$273,524	\$420.81
Manufacturing	9	163	170	169	\$940,807	\$432.49
Trade, Transportation & Utilities	90	698	693	701	\$3,941,909	\$434.83
Wholesale Trade	23	221	211	213	\$1,597,510	\$571.56
Retail Trade	40	324	326	341	\$1,320,220	\$307.43
Transportation, Warehousing & Utilities	27	153	156	147	\$1,024,179	\$518.31
Financial Activities	17	101	97	100	\$696,260	\$539.18
Professional & Business Services	15	41	39	40	\$256,629	\$493.52
Education & Health Services	29	357	346	358	\$1,570,805	\$341.65
Leisure & Hospitality	29	310	316	319	\$669,927	\$163.60
Local Government	22	502	508	396	\$3,211,073	\$527.04
State Government	9	133	137	139	\$865,813	\$488.52
Other	26	156	148	158	\$605,694	\$302.54

NORTH AMERICAN INDUSTRY CLASSIFICATION SYSTEM INDUSTRY GROUP	NUMBER OF EMPLOYING UNITS	EMPLOYMENT APRIL	EMPLOYMENT MAY	EMPLOYMENT JUNE	TOTAL EARNINGS APR. - JUN. 2005	AVERAGE WEEKLY EARNINGS
MONTGOMERY COUNTY - TOTAL	172	1,677	1,731	1,950	\$9,392,087	\$404.52
Natural Resources & Mining	14	70	64	70	\$428,883	\$485.16
Construction	23	130	124	143	\$879,449	\$511.21
Trade, Transportation & Utilities	47	215	230	228	\$1,051,320	\$360.49
Wholesale Trade	12	77	80	79	\$415,481	\$406.27
Retail Trade	27	113	128	127	\$512,385	\$321.31
Transportation, Warehousing & Utilities	8	25	22	22	\$123,454	\$412.89
Financial Activities	10	67	73	70	\$448,751	\$493.13
Education & Health Services	12	58	57	56	\$230,186	\$310.64
Leisure & Hospitality	19	237	272	504	\$1,166,402	\$265.72
Other Services	10	69	69	60	\$265,483	\$309.42
Local Government	9	505	514	488	\$3,085,329	\$472.46
State Government	8	57	56	57	\$419,733	\$569.77
Other	20	269	272	274	\$1,416,551	\$401.10
NEVADA COUNTY - TOTAL	197	2,673	2,681	2,737	\$17,868,336	\$509.64
Natural Resources & Mining	15	60	58	59	\$366,384	\$477.68
Construction	12	36	39	41	\$228,925	\$455.42
Manufacturing	8	836	827	868	\$7,764,590	\$707.95
Trade, Transportation & Utilities	50	477	479	489	\$2,250,473	\$359.40
Retail Trade	33	305	306	314	\$923,005	\$230.27
Other Trade, Transportation & Utilities	17	172	173	175	\$1,327,468	\$589.11
Financial Activities	12	62	64	64	\$466,555	\$566.67
Education & Health Services	13	376	384	373	\$1,809,613	\$368.58
Leisure & Hospitality	19	100	112	122	\$234,134	\$161.77
Other Services	17	83	89	83	\$258,196	\$233.66
Local Government	27	507	503	509	\$3,532,678	\$536.69
State Government	11	87	86	87	\$619,394	\$549.76
Other	13	49	40	42	\$337,394	\$594.35

NORTH AMERICAN INDUSTRY CLASSIFICATION SYSTEM INDUSTRY GROUP	NUMBER OF EMPLOYING UNITS	EMPLOYMENT APRIL	EMPLOYMENT MAY	EMPLOYMENT JUNE	TOTAL EARNINGS APR. - JUN. 2005	AVERAGE WEEKLY EARNINGS
NEWTON COUNTY - TOTAL	127	1,099	1,102	1,087	\$5,096,564	\$357.70
Natural Resources & Mining	6	12	10	10	\$23,981	\$172.94
Construction	8	12	9	14	\$20,786	\$137.05
Manufacturing	15	74	77	75	\$368,442	\$376.22
Trade, Transportation & Utilities	31	169	169	170	\$634,420	\$288.20
Wholesale Trade	3	6	3	6	\$27,226	\$418.86
Retail Trade	17	112	113	113	\$365,478	\$249.53
Transportation, Warehousing & Utilities	11	51	53	51	\$241,716	\$359.87
Education & Health Services	13	209	216	218	\$838,197	\$300.82
Leisure & Hospitality	19	93	93	88	\$245,246	\$206.55
Other Services	5	11	12	11	\$35,262	\$239.33
Local Government	11	376	377	354	\$2,193,247	\$457.21
State Government	7	92	87	94	\$444,363	\$375.62
Other	12	51	52	53	\$292,620	\$432.87
OUACHITA COUNTY - TOTAL	629	7,315	7,292	7,341	\$48,418,783	\$509.09
Natural Resources & Mining	45	273	288	292	\$1,963,727	\$531.26
Construction	47	204	212	235	\$1,250,583	\$443.31
Manufacturing	30	766	768	771	\$6,203,175	\$621.04
Trade, Transportation & Utilities	183	1,769	1,754	1,747	\$10,943,131	\$479.19
Wholesale Trade	32	260	260	255	\$2,393,982	\$712.85
Retail Trade	122	1,100	1,087	1,077	\$4,527,860	\$320.13
Transportation, Warehousing & Utilities	29	409	407	415	\$4,021,289	\$753.85
Information	8	93	96	98	\$625,023	\$502.56
Financial Activities	66	325	324	329	\$2,224,368	\$524.86
Professional & Business Services	48	302	309	347	\$1,712,326	\$412.48
Education & Health Services	69	1,265	1,241	1,228	\$8,081,958	\$499.48
Leisure & Hospitality	37	542	541	535	\$1,195,770	\$170.55
Other Services	53	165	163	173	\$1,025,489	\$472.36
Local Government	30	1,307	1,290	1,272	\$10,657,106	\$635.65
State Government	13	304	306	314	\$2,536,127	\$633.40

NORTH AMERICAN INDUSTRY CLASSIFICATION SYSTEM INDUSTRY GROUP	NUMBER OF EMPLOYING UNITS	EMPLOYMENT APRIL	EMPLOYMENT MAY	EMPLOYMENT JUNE	TOTAL EARNINGS APR. - JUN. 2005	AVERAGE WEEKLY EARNINGS
PERRY COUNTY - TOTAL	153	1,194	1,200	1,206	\$7,068,132	\$453.09
Natural Resources & Mining	7	29	29	32	\$309,744	\$794.22
Construction	24	79	89	95	\$517,292	\$453.90
Manufacturing	6	71	69	69	\$480,987	\$531.09
Trade, Transportation & Utilities	31	192	187	189	\$901,684	\$366.34
Wholesale Trade	3	8	7	7	\$70,960	\$744.34
Retail Trade	20	163	159	162	\$600,231	\$286.19
Transportation, Warehousing & Utilities	8	21	21	20	\$230,493	\$857.91
Financial Activities	14	53	53	54	\$383,464	\$553.07
Professional & Business Services	15	40	43	47	\$230,554	\$409.27
Education & Health Services	16	166	165	160	\$792,837	\$372.63
Local Government	12	400	399	394	\$2,658,423	\$514.23
State Government	9	58	55	58	\$361,681	\$488.10
Other	19	106	111	108	\$431,466	\$306.37
PHILLIPS COUNTY - TOTAL	683	6,762	6,731	6,631	\$43,189,767	\$495.27
Natural Resources & Mining	71	441	457	482	\$2,227,546	\$372.50
Construction	34	120	122	123	\$723,885	\$457.67
Manufacturing	13	450	449	450	\$3,295,788	\$563.80
Trade, Transportation & Utilities	184	1,586	1,596	1,592	\$10,315,939	\$498.66
Wholesale Trade	34	396	405	406	\$3,110,083	\$594.62
Retail Trade	112	926	922	918	\$4,011,099	\$334.65
Transportation, Warehousing & Utilities	38	264	269	268	\$3,194,757	\$920.41
Information	11	62	63	62	\$432,679	\$533.95
Financial Activities	55	293	289	294	\$1,994,409	\$525.40
Professional & Business Services	56	254	244	254	\$1,759,863	\$540.06
Education & Health Services	127	1,182	1,191	1,212	\$6,313,663	\$406.42
Leisure & Hospitality	39	427	444	464	\$936,748	\$161.93
Other Services	43	108	109	107	\$480,658	\$342.35
Local Government	34	1,264	1,245	1,093	\$10,748,729	\$688.64
State Government	16	575	522	498	\$3,959,860	\$572.92

NORTH AMERICAN INDUSTRY CLASSIFICATION SYSTEM INDUSTRY GROUP	NUMBER OF EMPLOYING UNITS	EMPLOYMENT APRIL	EMPLOYMENT MAY	EMPLOYMENT JUNE	TOTAL EARNINGS APR. - JUN. 2005	AVERAGE WEEKLY EARNINGS
PIKE COUNTY - TOTAL	271	2,927	2,919	2,949	\$16,915,956	\$443.85
Natural Resources & Mining	33	190	182	180	\$1,234,367	\$516.04
Construction	13	125	98	103	\$866,052	\$613.06
Manufacturing	15	464	467	520	\$2,944,927	\$468.37
Trade, Transportation & Utilities	95	602	619	630	\$3,156,361	\$393.51
Wholesale Trade	17	120	123	132	\$769,808	\$473.73
Retail Trade	51	361	363	365	\$1,524,993	\$323.16
Transportation, Warehousing & Utilities	27	121	133	133	\$861,560	\$513.75
Information	5	33	33	33	\$283,533	\$660.92
Financial Activities	23	177	177	175	\$1,191,824	\$519.92
Professional & Business Services	9	44	42	40	\$180,883	\$331.29
Education & Health Services	16	234	226	226	\$963,743	\$324.20
Leisure & Hospitality	21	217	217	223	\$478,907	\$168.21
Other Services	17	147	147	140	\$683,197	\$363.27
Local Government	13	554	574	544	\$4,234,625	\$584.46
State Government	11	140	137	135	\$697,537	\$390.70
POINSETT COUNTY - TOTAL	499	6,275	6,321	6,159	\$41,061,092	\$505.23
Natural Resources & Mining	49	333	347	361	\$2,192,125	\$485.95
Construction	29	124	121	120	\$755,786	\$477.84
Manufacturing	29	1,454	1,446	1,452	\$10,892,991	\$577.61
Trade, Transportation & Utilities	139	1,432	1,477	1,448	\$9,086,260	\$481.26
Wholesale Trade	32	508	510	490	\$4,921,731	\$753.17
Retail Trade	76	765	814	808	\$3,064,929	\$296.31
Transportation, Warehousing & Utilities	31	159	153	150	\$1,099,600	\$549.25
Information	7	58	56	57	\$575,139	\$776.17
Financial Activities	45	343	347	343	\$2,798,224	\$625.12
Professional & Business Services	25	100	96	96	\$728,367	\$575.63
Education & Health Services	52	593	585	582	\$3,269,985	\$428.76
Leisure & Hospitality	48	410	422	419	\$822,076	\$151.65
Other Services	33	67	64	68	\$359,991	\$417.46
Local Government	30	1,109	1,109	970	\$8,127,245	\$588.31
State Government	13	252	251	243	\$1,452,903	\$449.44

NORTH AMERICAN INDUSTRY CLASSIFICATION SYSTEM INDUSTRY GROUP	NUMBER OF EMPLOYING UNITS	EMPLOYMENT APRIL	EMPLOYMENT MAY	EMPLOYMENT JUNE	TOTAL EARNINGS APR. - JUN. 2005	AVERAGE WEEKLY EARNINGS
POLK COUNTY - TOTAL	534	6,271	6,365	6,374	\$36,310,607	\$440.79
Natural Resources & Mining	27	261	247	258	\$1,965,456	\$592.12
Construction	36	175	188	192	\$905,149	\$376.36
Manufacturing	45	1,407	1,441	1,429	\$9,517,920	\$513.55
Trade, Transportation & Utilities	154	1,368	1,386	1,419	\$7,106,812	\$393.01
Wholesale Trade	24	135	134	132	\$780,706	\$449.28
Retail Trade	86	860	865	877	\$3,760,818	\$333.54
Transportation, Warehousing & Utilities	44	373	387	410	\$2,565,288	\$505.97
Information	10	53	55	58	\$378,742	\$526.52
Financial Activities	41	219	218	220	\$1,330,326	\$467.27
Professional & Business Services	47	144	143	146	\$837,630	\$446.42
Education & Health Services	65	942	948	936	\$4,948,744	\$404.11
Leisure & Hospitality	44	423	427	447	\$912,085	\$162.28
Other Services	30	131	134	133	\$569,435	\$330.17
Local Government	21	813	830	844	\$6,067,489	\$563.00
State Government	14	335	348	292	\$1,770,819	\$419.13
POPE COUNTY - TOTAL	1,624	25,875	26,218	25,804	\$183,127,599	\$542.51
Natural Resources & Mining	22	638	750	633	\$5,814,932	\$663.98
Construction	165	1,310	1,335	1,367	\$10,449,965	\$601.08
Manufacturing	87	4,859	4,939	4,957	\$36,056,490	\$563.93
Trade, Transportation & Utilities	475	6,414	6,450	6,466	\$52,487,186	\$626.61
Wholesale Trade	103	750	750	768	\$5,952,500	\$605.67
Retail Trade	278	3,171	3,202	3,210	\$14,666,322	\$353.18
Transportation, Warehousing & Utilities	94	2,493	2,498	2,488	\$31,868,364	\$983.32
Information	22	297	294	299	\$2,519,985	\$653.41
Financial Activities	158	780	773	779	\$5,665,208	\$560.62
Professional & Business Services	211	2,450	2,508	2,497	\$13,524,499	\$418.65
Education & Health Services	183	2,797	2,800	2,764	\$19,094,371	\$527.02
Leisure & Hospitality	131	2,374	2,381	2,345	\$5,780,892	\$187.89
Other Services	114	478	481	484	\$2,827,851	\$452.24
Local Government	40	2,315	2,283	2,087	\$18,479,173	\$637.91
State Government	16	1,163	1,224	1,126	\$10,427,047	\$684.95

NORTH AMERICAN INDUSTRY CLASSIFICATION SYSTEM INDUSTRY GROUP	NUMBER OF EMPLOYING UNITS	EMPLOYMENT APRIL	EMPLOYMENT MAY	EMPLOYMENT JUNE	TOTAL EARNINGS APR. - JUN. 2005	AVERAGE WEEKLY EARNINGS
PRAIRIE COUNTY - TOTAL	224	1,616	1,642	1,640	\$9,418,496	\$443.75
Natural Resources & Mining	25	159	173	190	\$1,264,482	\$559.01
Trade, Transportation & Utilities	65	391	395	408	\$1,914,910	\$370.10
Wholesale Trade	10	67	69	69	\$487,427	\$548.70
Retail Trade	35	237	238	248	\$690,991	\$220.55
Transportation, Warehousing & Utilities	20	87	88	91	\$736,492	\$638.95
Information	4	10	10	10	\$112,855	\$868.12
Financial Activities	16	64	63	61	\$399,677	\$490.60
Professional & Business Services	16	44	45	55	\$287,441	\$460.64
Education & Health Services	20	200	208	204	\$971,087	\$366.17
Leisure & Hospitality	19	104	99	106	\$233,867	\$174.66
Other Services	16	51	52	48	\$207,281	\$316.78
Local Government	15	346	347	302	\$2,354,829	\$546.15
State Government	10	52	52	52	\$363,028	\$537.02
Other	18	195	198	204	\$1,309,039	\$506.01
PULASKI COUNTY - TOTAL	13,359	234,989	236,139	236,737	\$2,061,415,094	\$672.04
Natural Resources & Mining	41	630	638	657	\$7,468,602	\$895.34
Construction	1,097	10,521	10,758	10,893	\$91,422,946	\$655.78
Manufacturing	428	16,106	15,983	16,104	\$155,104,192	\$742.71
Trade, Transportation & Utilities	3,197	50,909	50,894	50,759	\$411,572,353	\$622.55
Wholesale Trade	1,064	12,876	12,832	12,877	\$142,439,784	\$851.90
Retail Trade	1,737	24,735	24,698	24,755	\$139,559,959	\$434.12
Transportation, Warehousing & Utilities	396	13,298	13,364	13,127	\$129,572,610	\$751.50
Information	236	8,463	8,529	8,628	\$99,052,739	\$892.21
Financial Activities	1,649	15,949	16,040	16,121	\$181,684,904	\$871.49
Professional & Business Services	2,538	32,714	32,596	32,599	\$262,619,774	\$618.99
Education & Health Services	1,649	32,642	32,809	32,901	\$319,247,240	\$749.07
Leisure & Hospitality	996	19,631	20,567	20,983	\$64,820,694	\$244.50
Other Services	1,226	6,583	6,619	6,901	\$44,369,091	\$509.33
Local Government	103	16,387	16,348	16,367	\$171,362,485	\$805.37
State Government	199	24,454	24,358	23,824	\$252,690,074	\$802.81

NORTH AMERICAN INDUSTRY CLASSIFICATION SYSTEM INDUSTRY GROUP	NUMBER OF EMPLOYING UNITS	EMPLOYMENT APRIL	EMPLOYMENT MAY	EMPLOYMENT JUNE	TOTAL EARNINGS APR. - JUN. 2005	AVERAGE WEEKLY EARNINGS
RANDOLPH COUNTY - TOTAL	394	4,916	5,013	5,033	\$28,606,315	\$441.21
Natural Resources & Mining	20	83	85	86	\$386,170	\$350.85
Construction	22	95	110	96	\$528,681	\$405.33
Manufacturing	34	1,063	1,087	1,107	\$7,166,774	\$507.79
Trade, Transportation & Utilities	105	939	958	977	\$4,964,136	\$398.60
Wholesale Trade	22	172	193	204	\$994,719	\$403.43
Retail Trade	63	617	607	609	\$2,614,251	\$329.13
Transportation, Warehousing & Utilities	20	150	158	164	\$1,355,166	\$662.56
Information	5	49	50	48	\$472,186	\$741.27
Financial Activities	27	151	145	147	\$821,560	\$427.97
Professional & Business Services	39	210	209	223	\$874,146	\$314.21
Education & Health Services	54	779	784	780	\$4,402,585	\$433.62
Leisure & Hospitality	30	380	398	405	\$805,129	\$157.06
Other Services	23	61	64	62	\$254,791	\$314.43
Local Government	23	837	859	841	\$6,107,211	\$555.52
State Government	12	269	264	261	\$1,822,946	\$529.82
SAINT FRANCIS COUNTY - TOTAL	606	8,596	8,680	8,621	\$51,497,988	\$458.90
Natural Resources & Mining	22	149	168	164	\$860,057	\$412.63
Construction	43	265	269	271	\$1,950,375	\$559.11
Manufacturing	22	1,470	1,458	1,437	\$9,414,702	\$497.74
Trade, Transportation & Utilities	189	2,154	2,216	2,234	\$12,922,064	\$451.55
Wholesale Trade	33	517	548	545	\$3,899,837	\$558.98
Retail Trade	124	1,304	1,321	1,342	\$6,143,458	\$357.38
Transportation, Warehousing & Utilities	32	333	347	347	\$2,878,769	\$646.87
Information	10	124	126	110	\$886,746	\$568.43
Financial Activities	49	289	290	295	\$1,847,085	\$487.70
Professional & Business Services	41	155	138	139	\$976,966	\$521.88
Education & Health Services	97	1,285	1,288	1,257	\$7,134,359	\$429.87
Leisure & Hospitality	50	764	756	791	\$1,914,247	\$191.15
Other Services	36	130	138	140	\$460,005	\$260.18
Local Government	30	1,212	1,226	1,226	\$9,182,794	\$578.36
State Government	17	599	607	557	\$3,948,588	\$516.85

NORTH AMERICAN INDUSTRY CLASSIFICATION SYSTEM INDUSTRY GROUP	NUMBER OF EMPLOYING UNITS	EMPLOYMENT APRIL	EMPLOYMENT MAY	EMPLOYMENT JUNE	TOTAL EARNINGS APR. - JUN. 2005	AVERAGE WEEKLY EARNINGS
SALINE COUNTY - TOTAL	1,581	19,219	19,212	19,436	\$131,308,978	\$523.65
Natural Resources & Mining	12	38	41	43	\$382,164	\$722.88
Construction	284	1,732	1,760	1,828	\$13,205,625	\$572.83
Manufacturing	82	1,844	1,839	1,864	\$16,983,014	\$706.54
Trade, Transportation & Utilities	412	4,367	4,372	4,405	\$28,029,538	\$492.11
Wholesale Trade	114	518	521	564	\$5,006,762	\$720.78
Retail Trade	254	3,608	3,605	3,582	\$20,897,859	\$446.74
Transportation, Warehousing & Utilities	44	241	246	259	\$2,124,917	\$657.33
Information	13	102	105	108	\$672,678	\$492.80
Financial Activities	150	676	678	686	\$4,863,943	\$550.22
Professional & Business Services	194	1,222	1,204	1,228	\$7,510,102	\$474.30
Education & Health Services	144	2,479	2,495	2,509	\$16,020,483	\$494.06
Leisure & Hospitality	116	2,040	2,020	2,034	\$5,718,451	\$216.55
Other Services	123	598	580	575	\$3,350,690	\$441.09
Local & State Government	51	4,121	4,118	4,156	\$34,572,290	\$643.66
SCOTT COUNTY - TOTAL	179	2,929	2,887	2,912	\$16,372,013	\$432.88
Natural Resources & Mining	17	171	172	173	\$1,341,751	\$600.07
Trade, Transportation & Utilities	47	482	478	487	\$2,294,012	\$365.85
Wholesale Trade	9	65	66	66	\$437,919	\$512.99
Retail Trade	30	344	338	342	\$1,282,477	\$289.02
Transportation, Warehousing & Utilities	8	73	74	79	\$573,616	\$585.72
Information	4	13	13	13	\$92,398	\$546.73
Financial Activities	15	70	69	72	\$411,863	\$450.45
Professional & Business Services	8	14	11	11	\$53,566	\$343.37
Education & Health Services	20	331	312	312	\$1,533,497	\$370.56
Leisure & Hospitality	17	181	177	174	\$357,345	\$155.01
Other Services	10	56	56	55	\$457,929	\$632.79
Local Government	5	357	356	360	\$2,796,202	\$601.38
State Government	8	65	60	71	\$406,421	\$478.52
Other	28	1,189	1,183	1,184	\$6,627,029	\$430.07

NORTH AMERICAN INDUSTRY CLASSIFICATION SYSTEM INDUSTRY GROUP	NUMBER OF EMPLOYING UNITS	EMPLOYMENT APRIL	EMPLOYMENT MAY	EMPLOYMENT JUNE	TOTAL EARNINGS APR. - JUN. 2005	AVERAGE WEEKLY EARNINGS
SEARCY COUNTY - TOTAL	147	1,633	1,658	1,641	\$8,035,517	\$375.98
Construction	5	12	17	14	\$65,138	\$349.58
Manufacturing	18	288	289	292	\$1,222,874	\$324.74
Trade, Transportation & Utilities	39	290	292	298	\$1,102,427	\$289.10
Retail Trade	28	214	214	221	\$737,097	\$262.09
Other Trade, Transportation & Utilities	11	76	78	77	\$365,330	\$364.97
Financial Activities	15	65	67	71	\$331,891	\$377.29
Professional & Business Services	16	35	34	33	\$159,667	\$361.24
Education & Health Services	13	262	266	266	\$1,102,217	\$320.35
Leisure & Hospitality	12	123	129	127	\$250,528	\$152.54
Local Government	9	323	329	299	\$2,271,872	\$551.29
State Government	9	190	190	190	\$1,235,556	\$500.23
Other	11	45	45	51	\$293,347	\$480.11
SEBASTIAN COUNTY - TOTAL	3,510	72,425	72,867	72,915	\$557,440,409	\$589.53
Natural Resources & Mining	59	1,100	1,097	1,187	\$12,729,043	\$868.05
Construction	291	2,939	3,049	3,066	\$24,949,626	\$635.92
Manufacturing	216	21,474	21,786	21,602	\$184,146,079	\$655.16
Trade, Transportation & Utilities	911	12,158	12,144	12,178	\$81,481,081	\$515.44
Wholesale Trade	231	2,354	2,360	2,382	\$21,762,268	\$707.73
Retail Trade	564	7,800	7,772	7,791	\$41,162,348	\$406.58
Transportation, Warehousing & Utilities	116	2,004	2,012	2,005	\$18,556,465	\$711.22
Information	57	1,179	1,178	1,186	\$12,284,007	\$800.10
Financial Activities	399	2,481	2,492	2,519	\$21,976,050	\$676.91
Professional & Business Services	502	9,437	9,445	9,332	\$58,221,479	\$476.21
Education & Health Services	417	9,105	9,093	9,072	\$82,531,541	\$698.41
Leisure & Hospitality	307	5,346	5,390	5,574	\$15,210,384	\$215.21
Other Services	286	1,456	1,468	1,553	\$8,445,583	\$435.33
Local Government	43	4,400	4,398	4,368	\$44,675,523	\$783.06
State Government	22	1,350	1,327	1,278	\$10,790,013	\$629.58

NORTH AMERICAN INDUSTRY CLASSIFICATION SYSTEM INDUSTRY GROUP	NUMBER OF EMPLOYING UNITS	EMPLOYMENT APRIL	EMPLOYMENT MAY	EMPLOYMENT JUNE	TOTAL EARNINGS APR. - JUN. 2005	AVERAGE WEEKLY EARNINGS
SEVIER COUNTY - TOTAL	320	5,977	5,938	5,953	\$36,407,172	\$470.21
Natural Resources & Mining	20	196	197	203	\$1,315,573	\$509.39
Trade, Transportation & Utilities	92	848	837	858	\$4,809,881	\$436.48
Wholesale Trade	15	138	138	140	\$1,431,767	\$794.25
Retail Trade	59	609	599	614	\$2,512,419	\$318.22
Transportation, Warehousing & Utilities	18	101	100	104	\$865,695	\$655.00
Information	7	44	46	45	\$293,817	\$502.25
Financial Activities	27	207	201	218	\$1,317,378	\$485.64
Professional & Business Services	30	130	124	125	\$2,736,653	\$1,666.32
Education & Health Services	34	518	516	522	\$2,734,504	\$405.55
Leisure & Hospitality	22	295	301	354	\$707,338	\$171.82
Other Services	33	160	154	156	\$655,668	\$321.93
Local Government	12	823	818	734	\$5,186,414	\$503.94
State Government	9	191	190	176	\$1,355,520	\$561.60
Other	34	2,565	2,554	2,562	\$15,294,426	\$459.51
SHARP COUNTY - TOTAL	386	3,923	3,954	4,116	\$21,170,283	\$407.36
Construction	33	197	212	223	\$1,519,096	\$554.68
Manufacturing	22	211	218	215	\$951,048	\$340.80
Trade, Transportation & Utilities	103	1,071	1,046	1,090	\$6,064,014	\$436.35
Retail Trade	73	677	683	694	\$2,725,260	\$306.19
Other Trade, Transportation & Utilities	30	394	363	396	\$3,338,754	\$668.24
Information	8	62	64	64	\$829,476	\$1,007.46
Financial Activities	32	260	257	259	\$1,544,680	\$459.36
Professional & Business Services	37	143	136	140	\$854,740	\$470.76
Education & Health Services	50	557	566	580	\$2,677,817	\$362.86
Leisure & Hospitality	40	464	493	494	\$961,543	\$152.93
Local Government	25	766	772	792	\$4,787,932	\$474.21
State Government	9	108	109	106	\$632,896	\$452.18
Other	27	84	81	153	\$347,041	\$251.84

NORTH AMERICAN INDUSTRY CLASSIFICATION SYSTEM INDUSTRY GROUP	NUMBER OF EMPLOYING UNITS	EMPLOYMENT APRIL	EMPLOYMENT MAY	EMPLOYMENT JUNE	TOTAL EARNINGS APR. - JUN. 2005	AVERAGE WEEKLY EARNINGS
STONE COUNTY - TOTAL	239	2,766	2,807	2,947	\$14,817,765	\$401.35
Construction	20	78	77	81	\$449,332	\$439.37
Manufacturing	20	464	463	462	\$2,587,168	\$429.83
Trade, Transportation & Utilities	76	583	591	612	\$3,223,557	\$416.52
Wholesale Trade	10	51	53	54	\$222,188	\$324.52
Retail Trade	51	485	492	512	\$2,647,113	\$410.26
Transportation, Warehousing & Utilities	15	47	46	46	\$354,256	\$588.14
Financial Activities	20	88	90	89	\$580,044	\$501.33
Professional & Business Services	10	31	23	24	\$158,881	\$470.06
Education & Health Services	24	423	426	423	\$2,599,775	\$471.66
Leisure & Hospitality	32	381	415	426	\$877,600	\$165.73
Other Services	12	29	30	30	\$120,743	\$313.08
Local Government	10	450	457	434	\$2,990,711	\$514.66
State Government	9	170	167	168	\$869,848	\$397.49
Other	6	69	68	198	\$360,106	\$248.06
UNION COUNTY - TOTAL	1,320	19,884	20,079	20,087	\$157,895,640	\$606.79
Natural Resources & Mining	105	497	512	526	\$4,027,844	\$605.54
Construction	97	1,479	1,470	1,432	\$13,309,146	\$701.06
Manufacturing	65	4,993	5,112	5,121	\$55,517,170	\$841.43
Trade, Transportation & Utilities	367	3,583	3,569	3,582	\$22,865,771	\$491.59
Wholesale Trade	81	533	521	539	\$5,346,328	\$774.49
Retail Trade	227	2,357	2,344	2,343	\$10,538,910	\$345.27
Transportation, Warehousing & Utilities	59	693	704	700	\$6,980,533	\$768.19
Information	20	218	227	234	\$1,386,660	\$471.28
Financial Activities	125	739	730	748	\$5,449,184	\$567.21
Professional & Business Services	130	1,781	1,770	1,715	\$15,729,122	\$689.29
Education & Health Services	129	2,172	2,212	2,216	\$14,749,323	\$515.71
Leisure & Hospitality	92	1,182	1,174	1,197	\$3,209,925	\$208.49
Other Services	135	632	678	678	\$3,076,762	\$357.15
Local Government	37	2,055	2,072	2,089	\$14,634,145	\$543.29
State Government	18	553	553	549	\$3,940,588	\$549.47

NORTH AMERICAN INDUSTRY CLASSIFICATION SYSTEM INDUSTRY GROUP	NUMBER OF EMPLOYING UNITS	EMPLOYMENT APRIL	EMPLOYMENT MAY	EMPLOYMENT JUNE	TOTAL EARNINGS APR. - JUN. 2005	AVERAGE WEEKLY EARNINGS
VAN BUREN COUNTY - TOTAL	352	3,736	3,774	3,827	\$20,685,316	\$421.06
Natural Resources & Mining	10	51	58	49	\$255,029	\$372.49
Construction	43	113	115	122	\$729,749	\$481.15
Manufacturing	14	616	586	594	\$3,600,978	\$462.69
Trade, Transportation & Utilities	104	823	822	851	\$4,148,942	\$383.59
Wholesale Trade	15	54	52	52	\$378,350	\$552.60
Retail Trade	65	622	622	649	\$2,721,726	\$331.80
Transportation, Warehousing & Utilities	24	147	148	150	\$1,048,866	\$543.92
Information	9	47	47	51	\$350,392	\$557.65
Financial Activities	29	113	115	116	\$680,979	\$456.83
Professional & Business Services	29	91	86	84	\$431,920	\$381.89
Education & Health Services	36	593	607	607	\$3,081,325	\$393.51
Leisure & Hospitality	29	443	464	487	\$1,297,783	\$214.84
Other Services	28	70	71	74	\$313,214	\$336.19
Local Government	13	678	705	691	\$5,158,605	\$573.99
State Government	8	98	98	101	\$636,400	\$494.48
WASHINGTON COUNTY - TOTAL	5,221	87,451	87,734	88,973	\$697,118,917	\$609.01
Natural Resources & Mining	39	446	449	458	\$3,325,821	\$567.26
Construction	596	5,135	5,237	5,341	\$42,572,606	\$625.24
Manufacturing	228	15,497	15,505	15,623	\$121,827,716	\$602.98
Trade, Transportation & Utilities	1,330	20,276	20,418	20,498	\$149,693,165	\$564.53
Wholesale Trade	352	3,683	3,770	3,809	\$41,886,385	\$858.29
Retail Trade	778	11,395	11,406	11,408	\$62,569,036	\$422.08
Transportation, Warehousing & Utilities	200	5,198	5,242	5,281	\$45,237,744	\$664.05
Information	101	1,570	1,571	1,571	\$14,850,554	\$727.30
Financial Activities	622	3,845	3,874	3,930	\$37,488,548	\$742.66
Professional & Business Services	850	8,465	8,528	8,637	\$88,687,095	\$798.53
Education & Health Services	531	10,001	10,054	9,883	\$83,695,072	\$645.14
Leisure & Hospitality	486	8,820	8,906	8,903	\$25,930,232	\$224.71
Other Services	355	1,913	1,940	1,930	\$10,971,007	\$437.80
Local & State Government	83	11,483	11,252	12,199	\$118,077,101	\$780.00

NORTH AMERICAN INDUSTRY CLASSIFICATION SYSTEM INDUSTRY GROUP	NUMBER OF EMPLOYING UNITS	EMPLOYMENT APRIL	EMPLOYMENT MAY	EMPLOYMENT JUNE	TOTAL EARNINGS APR. - JUN. 2005	AVERAGE WEEKLY EARNINGS
WHITE COUNTY - TOTAL	1,524	23,771	23,843	23,582	\$160,734,448	\$520.99
Natural Resources & Mining	33	256	272	295	\$1,806,210	\$506.46
Construction	168	1,087	1,141	1,151	\$7,909,216	\$540.16
Manufacturing	79	3,802	3,786	3,763	\$31,585,851	\$642.15
Trade, Transportation & Utilities	473	5,981	5,955	5,992	\$39,716,693	\$511.23
Wholesale Trade	96	578	579	586	\$4,381,867	\$580.15
Retail Trade	295	3,208	3,162	3,157	\$14,320,551	\$346.88
Transportation, Warehousing & Utilities	82	2,195	2,214	2,249	\$21,014,275	\$728.36
Information	22	232	237	255	\$1,466,996	\$467.59
Financial Activities	162	874	881	873	\$5,511,309	\$483.96
Professional & Business Services	139	1,198	1,207	1,263	\$7,501,690	\$471.96
Education & Health Services	170	4,331	4,307	4,241	\$33,735,037	\$604.47
Leisure & Hospitality	112	2,122	2,164	2,082	\$5,006,875	\$181.44
Other Services	101	601	609	607	\$3,646,799	\$463.16
Local Government	46	2,549	2,546	2,516	\$18,534,829	\$561.99
State Government	19	738	738	544	\$4,312,943	\$492.72
WOODRUFF COUNTY - TOTAL	172	2,056	2,076	2,079	\$12,740,676	\$473.38
Natural Resources & Mining	20	97	101	110	\$549,497	\$411.71
Construction	7	78	71	72	\$449,860	\$469.75
Manufacturing	9	462	476	490	\$3,345,628	\$540.66
Trade, Transportation & Utilities	59	534	541	539	\$3,303,930	\$472.39
Wholesale Trade	12	225	232	234	\$1,785,670	\$596.35
Retail Trade	30	211	223	220	\$707,324	\$249.59
Transportation, Warehousing & Utilities	17	98	86	85	\$810,936	\$695.68
Financial Activities	14	57	58	60	\$367,520	\$484.64
Professional & Business Services	3	6	7	7	\$42,351	\$488.67
Education & Health Services	26	160	160	155	\$1,015,267	\$493.25
Leisure & Hospitality	8	67	68	71	\$124,275	\$139.22
Local Government	10	513	510	489	\$3,065,986	\$467.95
State Government	7	55	58	58	\$351,173	\$473.92
Other	9	27	26	28	\$125,189	\$356.66

NORTH AMERICAN INDUSTRY CLASSIFICATION SYSTEM INDUSTRY GROUP	NUMBER OF EMPLOYING UNITS	EMPLOYMENT APRIL	EMPLOYMENT MAY	EMPLOYMENT JUNE	TOTAL EARNINGS APR. - JUN. 2005	AVERAGE WEEKLY EARNINGS
YELL COUNTY - TOTAL	400	7,154	7,142	7,117	\$41,412,534	\$446.31
Natural Resources & Mining	26	318	318	317	\$1,773,404	\$429.43
Construction	51	512	484	453	\$3,056,587	\$486.80
Manufacturing	24	2,911	2,913	2,899	\$16,050,450	\$424.62
Trade, Transportation & Utilities	90	631	636	636	\$2,909,059	\$352.77
Wholesale Trade	13	27	29	29	\$160,844	\$436.68
Retail Trade	58	511	517	518	\$1,996,311	\$297.99
Transportation, Warehousing & Utilities	19	93	90	89	\$751,904	\$637.93
Information	5	51	51	51	\$481,074	\$725.60
Financial Activities	39	192	191	204	\$1,145,545	\$450.35
Professional & Business Services	34	230	224	246	\$2,103,121	\$693.34
Education & Health Services	43	466	476	466	\$2,241,440	\$367.37
Leisure & Hospitality	30	391	417	412	\$977,995	\$184.99
Other Services	17	65	63	65	\$257,681	\$308.11
Local Government	28	1,260	1,244	1,248	\$9,704,293	\$596.87
State Government	13	127	125	120	\$711,885	\$441.62
REST-OF-STATE-TOTAL	4,560	15,885	16,491	16,159	\$195,941,668	\$931.64
Natural Resources & Mining	58	230	223	229	\$2,300,320	\$778.36
Construction	597	2,452	2,645	2,384	\$20,857,368	\$643.40
Manufacturing	48	169	171	169	\$1,580,612	\$716.61
Trade, Transportation & Utilities	1,861	6,849	6,928	6,976	\$109,757,335	\$1,220.48
Wholesale Trade	1,601	5,610	5,675	5,709	\$99,047,703	\$1,345.01
Retail Trade	101	517	539	526	\$4,327,616	\$631.28
Transportation, Warehousing & Utilities	159	722	714	741	\$6,382,016	\$676.51
Information	102	245	264	245	\$3,419,423	\$1,046.55
Financial Activities	266	592	596	607	\$7,534,255	\$968.62
Professional & Business Services	1,317	4,004	4,209	4,127	\$37,840,748	\$707.66
Education & Health Services	119	736	741	784	\$6,525,673	\$666.04
Leisure & Hospitality	43	80	157	86	\$1,074,729	\$767.85
Other	149	528	557	552	\$5,051,205	\$712.07

TABLE 7. FEDERAL GOVERNMENT EMPLOYMENT AND EARNINGS IN ARKANSAS

NORTH AMERICAN INDUSTRY CLASSIFICATION SYSTEM INDUSTRY GROUP	NUMBER OF EMPLOYING UNITS	EMPLOYMENT APRIL	EMPLOYMENT MAY	EMPLOYMENT JUNE	TOTAL EARNINGS APR. – JUN. 2005
Manufacturing	2	5	13	25	\$236,060
Trade, Transportation & Utilities	449	6,869	6,819	6,932	\$77,698,633
Information	1	23	26	29	\$353,140
Financial Activities	24	194	193	191	\$2,603,618
Professional & Business Services	32	804	797	800	\$11,267,071
Education & Health Services	6	4,071	4,077	4,080	\$67,263,898
Leisure & Hospitality	16	206	193	200	\$1,795,569
Other Services	2	293	299	310	\$1,119,675
Public Administration	453	8,362	8,400	8,377	\$105,563,322
TOTAL	985	20,827	20,817	20,944	\$267,900,986

**TABLE 8. WORKFORCE INFORMATION AREA, SUMMARY
EMPLOYMENT AND TOTAL EARNINGS, BY INDUSTRY
SECOND QUARTER 2005**

NORTH AMERICAN INDUSTRY CLASSIFICATION SYSTEM INDUSTRY GROUP	NUMBER OF EMPLOYING UNITS	EMPLOYMENT APRIL	EMPLOYMENT MAY	EMPLOYMENT JUNE	TOTAL EARNINGS APR. - JUN. 2005	AVERAGE WEEKLY EARNINGS
CENTRAL WORKFORCE INFORMATION*	5,493	70,438	70,804	71,267	\$502,400,138	\$545.57
Natural Resources & Mining	152	884	947	974	\$6,504,228	\$535.11
Trade, Transportation & Utilities	1,453	14,137	14,215	14,297	\$82,471,424	\$446.24
Wholesale Trade	352	1,951	1,971	2,030	\$16,800,134	\$651.37
Retail Trade	874	10,809	10,845	10,887	\$54,325,896	\$385.26
Transportation, Warehousing & Utilities	227	1,377	1,399	1,380	\$11,345,394	\$629.97
Financial Activities	569	2,710	2,718	2,765	\$19,928,842	\$561.33
Professional & Business Services	661	6,976	6,970	7,187	\$71,246,267	\$778.00
Education & Health Services	564	8,779	8,855	8,951	\$57,822,623	\$501.93
Leisure & Hospitality	418	7,325	7,389	7,352	\$18,749,396	\$196.08
Local & State Government	206	13,651	13,509	13,307	\$114,159,571	\$651.01
Other	1,470	15,976	16,201	16,434	\$131,517,787	\$624.35
*Note: Pulaski County is not included in the Central Workforce Information. Please refer to Page 51 for information on Pulaski County.						
Central Workforce Includes these counties: Faulkner, Lonoke, Monroe, Prairie, and Saline.						
EASTERN WORKFORCE INFORMATION	3,111	38,262	38,353	38,131	\$251,319,551	\$505.44
Natural Resources & Mining	219	1,333	1,444	1,470	\$7,309,492	\$397.18
Construction	190	1,100	1,138	1,186	\$7,923,880	\$534.05
Trade, Transportation & Utilities	874	10,147	10,226	10,263	\$66,367,603	\$499.92
Wholesale Trade	168	2,096	2,152	2,146	\$17,037,998	\$614.93
Retail Trade	502	5,139	5,148	5,193	\$23,082,004	\$344.10
Transportation, Warehousing & Utilities	204	2,912	2,926	2,924	\$26,247,601	\$691.30
Financial Activities	274	1,563	1,547	1,577	\$10,799,096	\$531.70
Professional & Business Services	272	1,318	1,261	1,299	\$8,582,672	\$510.73
Education & Health Services	453	5,184	5,225	5,169	\$32,062,527	\$474.97
Leisure & Hospitality	230	3,518	3,580	3,682	\$9,155,114	\$195.99
Local Government	137	6,123	6,134	5,818	\$51,773,718	\$661.01
State Government	67	2,323	2,192	2,132	\$15,531,422	\$539.22
Other	395	5,653	5,606	5,535	\$41,814,027	\$574.57
Eastern Workforce Includes these counties: Crittenden, Cross, Lee, Phillips, and Saint Francis.						

NORTH AMERICAN INDUSTRY CLASSIFICATION SYSTEM INDUSTRY GROUP	NUMBER OF EMPLOYING UNITS	EMPLOYMENT APRIL	EMPLOYMENT MAY	EMPLOYMENT JUNE	TOTAL EARNINGS APR. - JUN. 2005	AVERAGE WEEKLY EARNINGS
NORTH CENTRAL WORKFORCE INFORMATION	5,217	70,040	70,581	70,450	\$449,456,796	\$491.40
Construction	468	2,451	2,543	2,640	\$16,804,316	\$507.98
Manufacturing	297	13,940	13,862	13,876	\$109,733,801	\$607.59
Trade, Transportation & Utilities	1,560	15,620	15,640	15,790	\$95,433,638	\$468.08
Retail Trade	978	9,278	9,280	9,364	\$41,008,182	\$338.92
Other Trade, Transportation & Utilities	582	6,342	6,360	6,426	\$54,425,456	\$656.61
Financial Activities	497	2,530	2,580	2,598	\$16,503,524	\$494.10
Professional & Business Services	437	2,877	2,908	2,979	\$15,995,979	\$421.20
Education & Health Services	587	11,304	11,341	11,296	\$79,088,869	\$537.74
Leisure & Hospitality	439	6,098	6,368	6,336	\$14,774,292	\$181.33
Local Government	227	9,207	9,190	8,858	\$63,882,235	\$540.89
State Government	115	2,911	2,964	2,670	\$18,734,917	\$505.96
Other	590	3,102	3,185	3,407	\$18,505,225	\$440.52
North Central Workforce Includes these counties: Cleburne, Fulton, Independence, Izard, Jackson, Sharp, Stone, Van Buren, White, and Woodruff						
NORTHEAST WORKFORCE INFORMATION	6,204	93,495	93,925	93,163	\$641,663,844	\$527.74
Natural Resources & Mining	360	1,824	1,988	2,150	\$11,751,184	\$454.85
Construction	470	2,934	3,050	3,121	\$20,923,218	\$530.31
Manufacturing	358	22,046	22,048	22,114	\$187,922,163	\$655.01
Trade, Transportation & Utilities	1,758	17,572	17,610	17,584	\$104,264,742	\$456.00
Wholesale Trade	409	3,806	3,845	3,798	\$31,049,077	\$625.83
Retail Trade	1,048	11,342	11,324	11,334	\$52,817,204	\$358.49
Transportation, Warehousing & Utilities	301	2,424	2,441	2,452	\$20,398,461	\$643.34
Financial Activities	580	3,390	3,377	3,454	\$26,687,494	\$602.55
Professional & Business Services	608	6,556	6,548	6,555	\$36,541,222	\$428.94
Education & Health Services	783	12,428	12,397	12,285	\$91,945,625	\$571.77
Leisure & Hospitality	449	7,170	7,243	7,329	\$17,480,708	\$185.54
Local Government	220	11,467	11,543	10,848	\$88,742,639	\$604.85
State Government	108	4,064	4,088	3,879	\$31,648,130	\$607.05
Other	510	4,044	4,033	3,844	\$23,756,719	\$459.89
Northeast Workforce Includes these counties: Clay, Craighead, Greene, Lawrence, Mississippi, Poinsett, and Randolph.						

NORTH AMERICAN INDUSTRY CLASSIFICATION SYSTEM INDUSTRY GROUP	NUMBER OF EMPLOYING UNITS	EMPLOYMENT APRIL	EMPLOYMENT MAY	EMPLOYMENT JUNE	TOTAL EARNINGS APR. - JUN. 2005	AVERAGE WEEKLY EARNINGS
NORTHWEST WORKFORCE INFORMATION	13,712	223,413	224,888	227,014	\$1,802,393,398	\$615.92
Trade, Transportation & Utilities	3,534	52,623	52,982	53,463	\$407,710,096	\$591.49
Retail Trade	1,991	25,261	25,466	25,511	\$133,971,327	\$405.53
Other Trade, Transportation & Utilities	1,543	27,362	27,516	27,952	\$273,738,769	\$762.65
Education & Health Services	1,344	22,287	22,326	22,093	\$176,488,013	\$610.56
Leisure & Hospitality	1,302	20,191	20,838	21,123	\$59,263,338	\$220.04
Local & State Government	417	26,568	26,368	26,768	\$241,105,150	\$698.08
Other	7,115	101,744	102,374	103,567	\$917,826,801	\$688.39
Northwest Workforce Includes these counties: Baxter, Benton, Boone, Carroll, Madison, Marion, Newton, Searcy, and Washington.						
SOUTHEAST WORKFORCE INFORMATION	5,165	78,613	78,988	78,395	\$558,767,777	\$546.39
Natural Resources & Mining	416	3,017	3,051	3,198	\$20,527,519	\$511.24
Construction	376	3,391	3,592	3,511	\$29,744,082	\$654.09
Manufacturing	228	18,131	18,148	18,174	\$166,148,379	\$704.13
Trade, Transportation & Utilities	1,442	14,035	14,039	14,032	\$83,525,582	\$457.78
Wholesale Trade	257	2,632	2,662	2,630	\$21,420,082	\$623.81
Retail Trade	894	9,086	9,074	9,073	\$39,966,391	\$338.67
Transportation, Warehousing & Utilities	291	2,317	2,303	2,329	\$22,139,109	\$735.22
Financial Activities	411	2,857	2,870	2,893	\$21,353,978	\$571.68
Local & State Government	358	16,740	16,799	15,915	\$126,481,115	\$590.20
Other	1,934	20,442	20,489	20,672	\$110,987,122	\$415.77
Southeast Workforce Includes these counties: Arkansas, Ashley, Bradley, Chicot, Cleveland, Desha, Drew, Grant, Jefferson, and Lincoln						
SOUTHWEST WORKFORCE INFORMATION	5,660	87,186	87,615	87,455	\$637,347,641	\$560.83
Natural Resources & Mining	406	2,662	2,713	2,771	\$21,129,132	\$598.57
Trade, Transportation & Utilities	1,586	15,203	15,143	15,272	\$91,512,363	\$462.94
Education & Health Services	565	8,891	8,933	8,954	\$52,452,555	\$452.03
Local Government	266	11,036	11,078	10,499	\$83,698,629	\$592.25
State Government	150	3,388	3,374	3,335	\$25,501,605	\$582.84
Other	2,687	46,006	46,374	46,624	\$363,053,357	\$602.73
Southwest Workforce Includes these counties: Calhoun, Columbia, Dallas, Hempstead, Howard, Lafayette, Little River, Miller, Nevada, Ouachita, Sevier, and Union						

NORTH AMERICAN INDUSTRY CLASSIFICATION SYSTEM INDUSTRY GROUP	NUMBER OF EMPLOYING UNITS	EMPLOYMENT APRIL	EMPLOYMENT MAY	EMPLOYMENT JUNE	TOTAL EARNINGS APR. - JUN. 2005	AVERAGE WEEKLY EARNINGS
WEST CENTRAL WORKFORCE INFORMATION	7,785	108,207	107,857	107,818	\$709,098,673	\$505.24
Natural Resources & Mining	264	2,378	2,481	2,408	\$18,465,605	\$586.39
Construction	872	5,630	5,691	5,812	\$40,509,405	\$545.63
Trade, Transportation & Utilities	2,005	21,424	21,494	21,675	\$137,726,021	\$492.05
Financial Activities	812	3,858	3,872	3,958	\$27,918,054	\$551.22
Education & Health Services	806	14,855	14,834	14,802	\$107,216,474	\$556.12
Local Government	231	12,001	12,070	11,442	\$99,070,020	\$643.77
State Government	134	4,725	4,683	4,368	\$34,281,644	\$574.27
Other	2,661	43,336	42,732	43,353	\$243,911,450	\$434.92
West Central Workforce Includes these counties: Clark, Conway, Garland, Hot Spring, Johnson, Montgomery, Perry, Pike, Pope, and Yell						
WESTERN WORKFORCE INFORMATION	6,131	110,071	110,571	110,395	\$797,380,133	\$555.86
Natural Resources & Mining	148	2,341	2,272	2,276	\$21,994,605	\$736.78
Trade, Transportation & Utilities	1,632	22,062	22,048	22,195	\$143,568,815	\$499.68
Wholesale Trade	373	3,340	3,356	3,380	\$28,929,782	\$662.57
Retail Trade	976	12,100	12,079	12,150	\$60,420,068	\$383.80
Transportation, Warehousing & Utilities	283	6,622	6,613	6,665	\$54,218,965	\$628.75
Financial Activities	638	3,695	3,694	3,731	\$30,022,523	\$623.05
Professional & Business Services	745	10,443	10,443	10,349	\$64,511,678	\$476.62
Education & Health Services	688	13,083	13,038	12,988	\$106,801,811	\$630.20
Leisure & Hospitality	505	7,921	8,004	8,230	\$21,294,049	\$203.44
Local & State Government	232	11,761	11,774	11,327	\$100,636,775	\$666.17
Other	1,543	38,765	39,298	39,299	\$308,549,877	\$606.70
Western Workforce Includes these counties: Crawford, Franklin, Logan, Polk, Scott, and Sebastian						