

Arkansas Covered Employment & Earnings

Jobs for People. People for Jobs.

DWS
Department of
WORKFORCE**Services**

Fourth Quarter
2005

**COVERED EMPLOYMENT AND EARNINGS
STATE OF ARKANSAS
FOURTH QUARTER 2005**

**MIKE HUCKABEE, GOVERNOR
STATE OF ARKANSAS**

**ARTEE WILLIAMS, DIRECTOR
DEPARTMENT OF WORKFORCE SERVICES**

**PUBLISHED BY
LABOR MARKET INFORMATION & ANALYSIS
BUREAU OF LABOR STATISTICS PROGRAMS
POST OFFICE BOX 2981
LITTLE ROCK, ARKANSAS 72203-2981
BERNADETTE COLEMAN, BLS PROGRAMS MANAGER
TELEPHONE: (501) 682-3159**

STATE OF ARKANSAS HOME PAGE: <http://www.arkansas.gov>

DEPARTMENT OF WORKFORCE SERVICES HOME PAGE: <http://www.arkansas.gov/esd/>

**INTERNET SITE FOR LABOR MARKET INFORMATION:
<http://www.discover.arkansas.gov>**

RELEASED: June 2006

TABLE OF CONTENTS

DESCRIPTION OF DATA	Page
Industry Classification	1
Definition of Covered Employment and Earnings	2
Federal Government Employment	2
County Classification	2
Significant Developments During Fourth Quarter 2005	3

LIST OF GRAPHS AND TABLES

Graph 1	Total Covered Employment for Selected Years, Arkansas	7
Graph 2	Total Covered Earnings, by Calendar Quarter for Selected Years, Arkansas	8
Table 1	Quarterly Comparison of Covered Employment and Wages, by Industry	5
Table 2	Total Covered Employment in Arkansas, 1998-2005	6
Table 3	Total Covered Earnings, 1998-2005	9
Table 4	Total Taxable Earnings, 1998-2005	10
Table 5	State Summary - Employment and Total Earnings, by Industry, Fourth Quarter 2005	11
Table 6	County Summary - Employment and Total Earnings, by Industry, Fourth Quarter 2005	24
Table 7	Federal Government Employment and Total Earnings in Arkansas, Fourth Quarter 2005	62
Table 8	Workforce Information Area – Employment and Total Earnings, by Industry, Fourth Quarter 2005	63

EMPLOYMENT AND EARNINGS
UNDER THE ARKANSAS EMPLOYMENT SECURITY LAW
FOURTH QUARTER 2005

DESCRIPTION OF DATA

This publication contains covered employment and payroll data by industry and county for the Fourth Quarter 2005. These data are compiled from quarterly contribution and wage reports submitted by employers subject to the Arkansas Employment Security Law. An employing unit is a single physical location where business is conducted, production takes place, or services are provided. Employment data have been tabulated for each month of the quarter by industry under the **North American Industry Classification System** (NAICS) (see "Industry Classification" below) on a statewide, county and workforce area basis. Payroll data represent the total wages paid during the quarter, and are also shown by

industry for the State and by publishable industry groups for each county and workforce area. The tabulation of this data is a joint effort in conjunction with the U.S. Bureau of Labor Statistics. In addition, there are tables included which set out total covered employment by months, quarterly payrolls, and average weekly earnings for the years 1998 through 2005. Data contained in this publication are subject to revision. These revisions will be reflected in the 2005 Annual Covered Employment and Earnings publication. Because of industry code changes between years, substantial employment and wage shifts among industries are anticipated.

INDUSTRY CLASSIFICATION

Previously published industry data **will not** be comparable in all instances with currently published data since industry codes have been revised according to the following Manuals: (a) between January 1, 1958 and December 31, 1967, industry codes were assigned under the 1957 Standard Industrial Classification (SIC) Manual; (b) between January 1, 1968 and December 31, 1974, industry codes were assigned under the 1967 Standard Industrial Classification (SIC) Manual; (c) between January 1, 1975 and December 31, 1987, industry codes were assigned under the 1972 Standard Industrial Classification (SIC) Manual; (d) between January 1, 1988 and December 31, 2000, industry codes were assigned under the 1987 Standard Industrial Classification (SIC) Manual; and (e) since January 1, 2001, industry codes have been assigned under the 2002 North American Industry Classification System (NAICS) Manual. **The NAICS Manual represents a significant change in coding methodology as compared to the**

SIC Manual. One of the most significant changes involves how NAICS treats auxiliary units. Auxiliary units are establishments primarily engaged in performing management or support services for other establishments of the same enterprise. The SIC code for these units was based on the activity of the enterprise served. The NAICS code is based on the actual activities that the establishment performs. Comparisons of many industries **should not be made** between this publication and previous Covered Employment and Earnings publications that were based on SIC. Even though some titles are the same or similar, in nature, NAICS and SIC could differ in the classification of employers. The implementation of NAICS represents a profound change for statistical programs, and will create significant benefits along with transition obstacles for both data collectors and data users. A summary is available on the NAICS home page at <http://www.census.gov/naics>.

DEFINITION OF COVERED EMPLOYMENT AND EARNINGS

Covered Employment is the number of workers employed by employers subject to the Arkansas Employment Security Law who worked or received pay for the payroll period including the 12th of the month. An employer is subject to the law when they employ one or more employees in each of ten days during the current or preceding calendar year.

Currently excluded from coverage is employment covered by the Railroad Unemployment Insurance Act, some domestic service workers, employees of small agricultural establishments, self-employed and unpaid family workers, insurance and real estate

agents who are on commission only, and employees of churches and religious organizations except separately incorporated schools. The payroll information in this publication includes all wages and salaries paid to any covered employees by their employers including bonuses, commissions, and cash values of remuneration received in any medium other than cash. These wages include both taxable and nontaxable wages. Only the first \$10,000 paid to each worker by an employer in the calendar year is taxable under the Arkansas Employment Security Law.

FEDERAL GOVERNMENT EMPLOYMENT

Table 7 on page 62 lists the total number of civilians employed by the Federal Government in Arkansas during the Fourth Quarter 2005. Employment and wage data are set out by industry divisions. These data are obtained from required reports submitted by various

government agencies having employment in the State. Civilian Federal workers are covered by the Unemployment Compensation for Federal Employees (UCFE) program.

COUNTY CLASSIFICATION

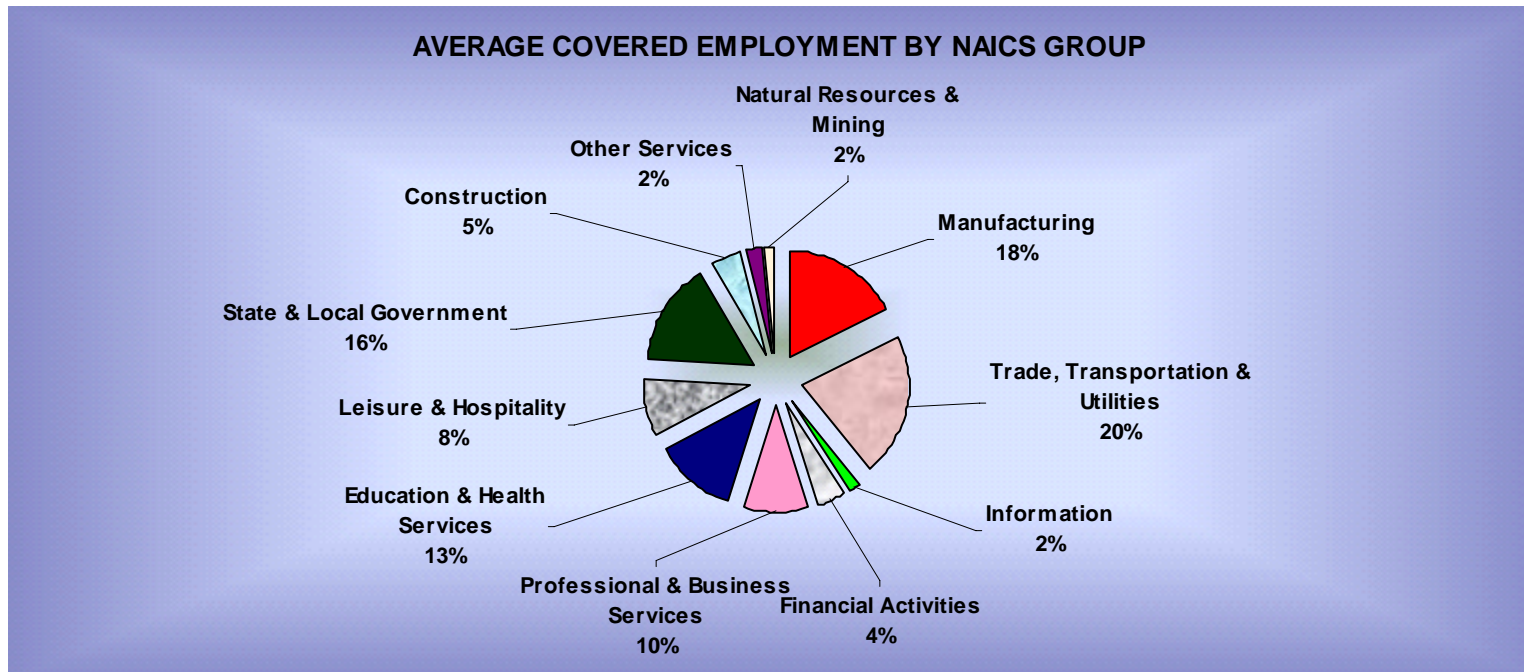
Employment and payroll data by county are classified according to the county where the workers are employed. Employers with operations in more than one county are requested to furnish this agency with a breakdown of employment and wages for at least one quarter of each year by the counties in which they operate. Many such employers submit county data with each regular contribution report. **Note:** This information is invaluable in the preparation of monthly employment and payroll data by county.

Employment and payroll data for multi - area employers, who do not furnish county data each quarter of the year, are prorated by county on the basis of one quarter's information. The "rest-of-state" table that appears on page 61 of this publication includes data on firms that **did not** provide a county breakdown of employment and payrolls. It also includes sales, and all other type of personnel with no permanent place of work, as well as employment of employers with no established place of business in Arkansas.

SIGNIFICANT DEVELOPMENTS DURING FOURTH QUARTER 2005

AVERAGE EMPLOYMENT CHANGES

Covered employment averaged 1,145,303 during the Fourth Quarter 2005 (see table 1), an increase of 28,914 (2.6%) from the previous quarter and 19,320 (1.7%) above the average recorded one-year ago. This *over-the-year* increase is more significant when used as an economic indicator. This *over-the-year* comparison allows for the disregarding of many seasonal factors that are evident when making an *over-the-quarter* comparison.



EMPLOYMENT CHANGES FROM THIRD QUARTER 2005

Over the quarter gains were recorded in six of the eleven industry groups (see table 1). State and Local Government recorded the single largest gain of 27,671 employees. This increase was mainly attributed to the return of educational facilities as employment returned to normal levels after the summer break. Trade, Transportation and Utilities rose 3,316 as many of the stores increased employment for the holiday season. Educational and Health Services expanded 1,907 jobs with the end of the summer

vacation. Other industry increases occurred in Professional and Business Services (+632), Manufacturing (+587) and Financial Activities (+67).

Losses were recorded in five industry groups. Leisure and Hospitality decreased 3,752 jobs as many employers released summer workers at the end of the school break. Employment drops occurred in Construction (-726), Other Services (-661), Natural Resources and Mining (-95) and Information (-32).

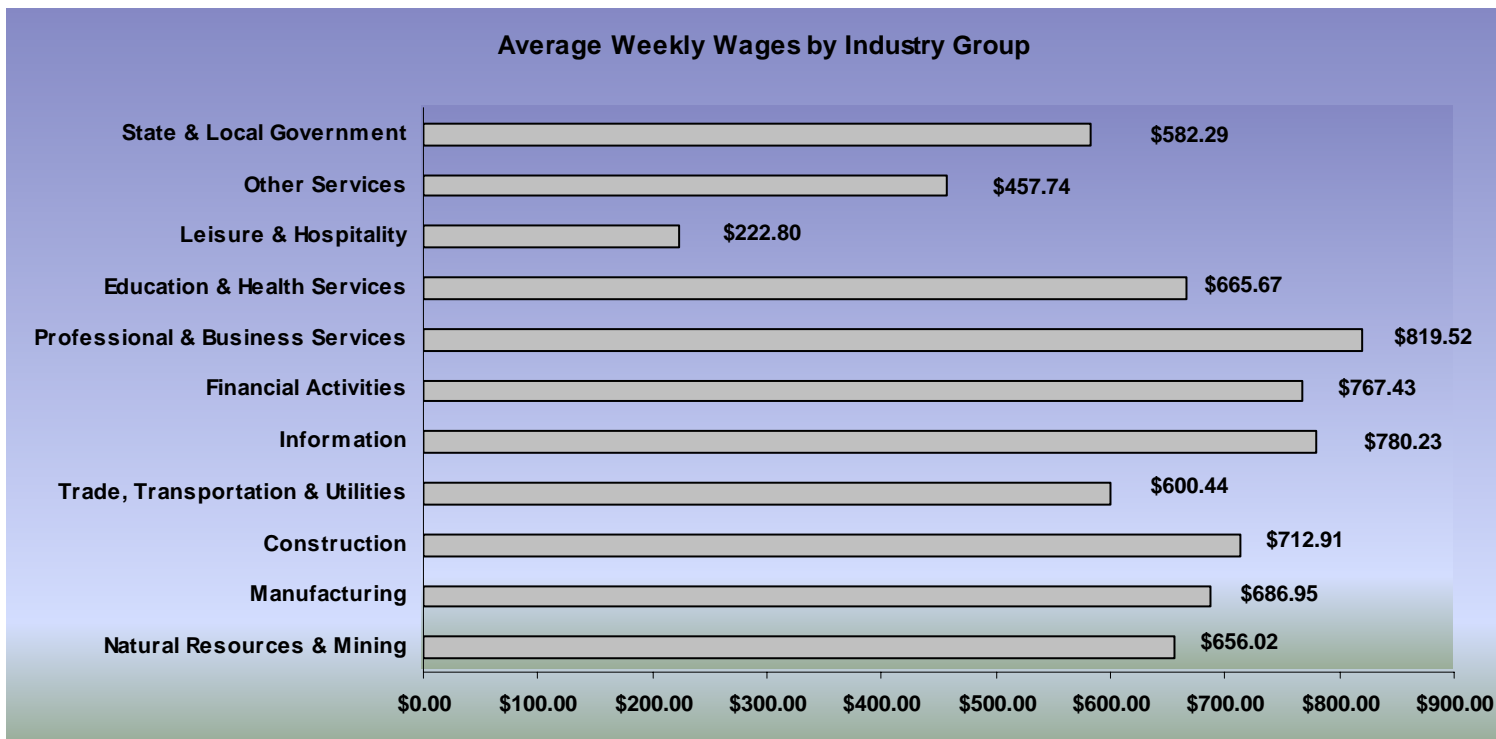
EMPLOYMENT CHANGES FROM FOURTH QUARTER 2004

Over-the-year gains were recorded in seven industry groups while four recorded losses (see table 1). Significant gains were posted in Educational & Health Services (+4,713), Trade, Transportation and Utilities (+4,569) and Construction (+4,106). Losses occurred in Manufacturing (-2,363), Other Services (-691) and Natural Resources & Mining (-355).

COVERED WAGES

Wages paid to covered workers totaled \$9,316,817,657 for the Fourth Quarter 2005 (see table 1), for an average weekly wage of \$625.75 (see table 5). Employees in Little River County recorded the highest average weekly wage (\$762.48), and workers in Newton County the lowest (\$344.07) (see table 6).

The Professional & Business Services sector recorded the highest average weekly wage for the State of Arkansas at \$780.23, while the Leisure & Hospitality sector recorded the lowest at \$222.80 for the State of Arkansas (see table 5).



Note: Because of industry code changes between years, substantial employment and wage shifts among industries are anticipated.

TABLE 1. QUARTERLY COMPARISON OF COVERED EMPLOYMENT AND WAGES, BY INDUSTRY

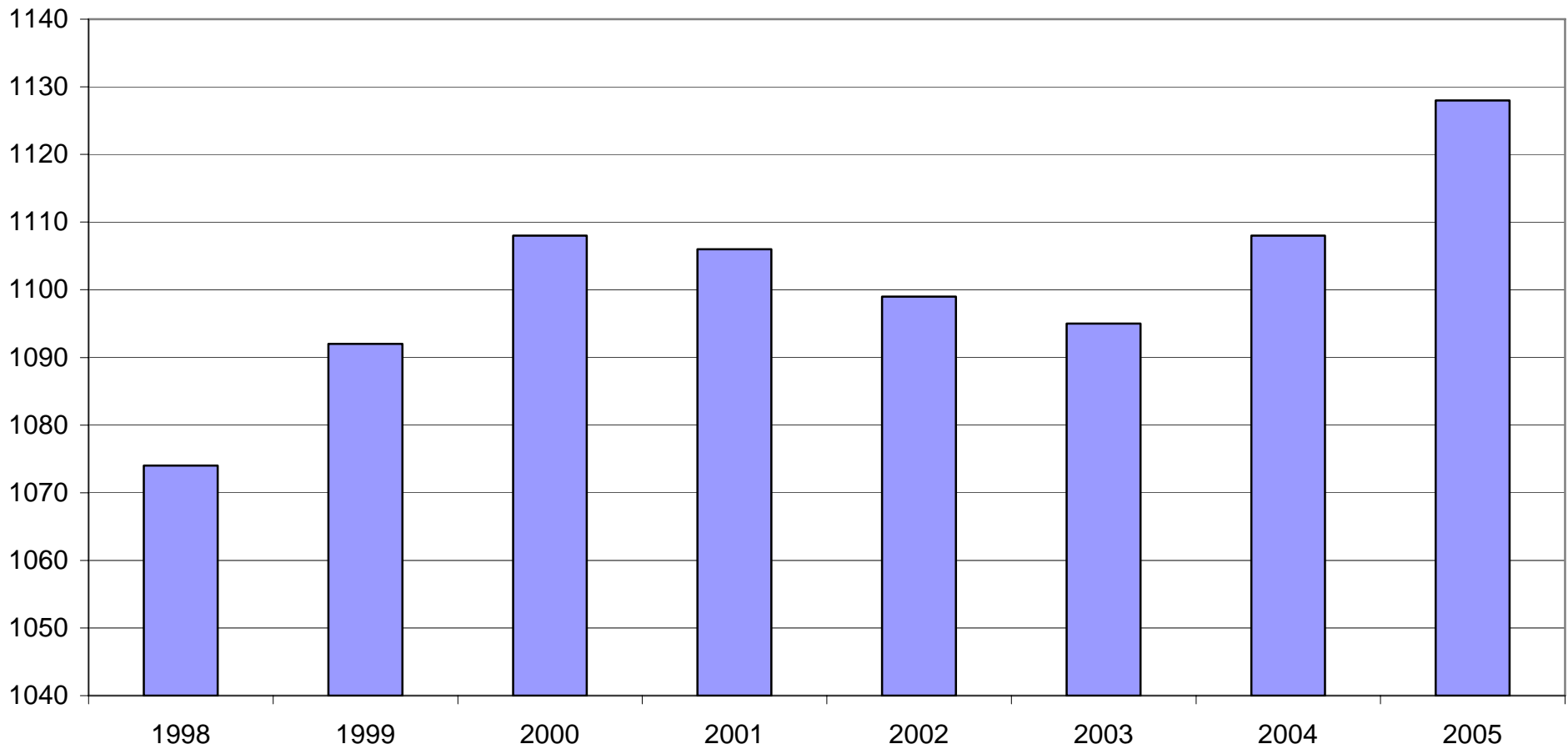
North American Industry Classification System Industry Group	Number of Employing Units	Average Covered Employment Oct. – Dec. 2005		Net Change From:		Total Wages Paid	
		Monthly Average	% of Total	Jul. – Sep. 2005	Oct. – Dec. 2004	Oct. – Dec. 2005	% of Total
Total	77,332	1,145,303	100.0	28,914	19,320	\$9,316,817,657	100.0
Natural Resources and Mining	2,348	18,822	1.6	-95	-355	160,521,061	1.7
Agriculture, Forestry, Fishing and Hunting	2,018	14,521	1.3	-191	-705	108,168,069	1.2
Mining	330	4,301	0.4	96	350	52,352,992	0.6
Construction	7,729	55,819	4.9	-726	4,106	517,326,412	5.6
Manufacturing	3,581	201,069	17.6	587	-2,363	1,795,621,336	19.3
Trade, Transportation, and Utilities	20,854	246,097	21.5	3,316	4,569	1,920,980,959	20.6
Wholesale Trade	6,257	47,775	4.2	-211	1,466	596,088,942	6.4
Retail Trade	11,307	134,887	11.8	3,053	1,223	692,788,401	7.4
Transportation and Warehousing	2,936	56,763	5.0	436	1,705	521,863,660	5.6
Utilities	354	6,673	0.6	39	176	110,239,956	1.2
Information	1,203	19,995	1.7	-32	-188	202,809,124	2.2
Financial Activities	7,863	50,331	4.4	67	722	502,132,379	5.4
Finance and Insurance	4,621	36,538	3.2	238	199	401,199,478	4.3
Real Estate and Rental and Leasing	3,242	13,793	1.2	-171	523	100,932,901	1.1
Professional and Business Services	10,571	113,507	9.9	632	3,443	1,209,276,557	13.0
Professional and Technical Services	6,668	35,592	3.1	355	1,194	468,481,354	5.0
Management of Companies and Enterprises	488	23,649	2.1	-27	729	456,438,084	4.9
Administrative and Waste Services	3,415	54,266	4.7	305	1,520	284,357,119	3.1
Education and Health Services	8,475	143,339	12.5	1,907	4,713	1,240,413,150	13.3
Educational Services	548	9,353	0.8	1,086	980	57,735,787	0.6
Health Care and Social Assistance	7,927	133,985	11.7	821	3,731	1,182,677,363	12.7
Leisure and Hospitality	5,968	93,087	8.1	-3,752	2,498	269,613,789	2.9
Arts, Entertainment and Recreation	916	8,382	0.7	-2,006	71	32,814,284	0.4
Accommodation and Food Services	5,052	84,705	7.4	-1,746	2,427	236,799,505	2.5
Other Services	5,546	24,906	2.2	-661	-691	148,203,028	1.6
State and Local Government	3,194	178,331	15.6	27,671	2,866	1,349,919,862	14.5
Local Government	1,999	117,714	10.3	26,865	2,394	818,861,278	8.8
State Government	1,195	60,617	5.3	806	472	531,058,584	5.7
Nonclassifiable Establishments	0	0	0.0	0	0	0	0.0

Note: Items do not necessarily add to totals because of rounding. Because of industry code changes between years, substantial employment and wage shifts among industries are anticipated.

TABLE 2. TOTAL COVERED EMPLOYMENT IN ARKANSAS

Period	1998	1999	2000	2001	2002	2003	2004	2005
Average	1,073,732	1,092,351	1,108,490	1,106,053	1,098,558	1,094,087	1,108,275	1,121,595
January	1,050,970	1,065,920	1,089,956	1,096,009	1,081,635	1,082,740	1,089,510	1,104,692
February	1,057,593	1,074,315	1,096,126	1,101,616	1,086,793	1,084,880	1,094,626	1,112,453
March	1,066,099	1,084,653	1,109,157	1,112,143	1,098,500	1,092,172	1,105,266	1,124,250
April	1,074,416	1,093,574	1,111,543	1,115,526	1,103,399	1,095,341	1,111,023	1,130,599
May	1,083,133	1,098,539	1,116,779	1,119,815	1,111,998	1,103,099	1,117,154	1,136,212
June	1,086,125	1,101,748	1,121,245	1,119,734	1,112,028	1,099,688	1,117,021	1,136,984
July	1,046,396	1,062,563	1,075,096	1,071,830	1,065,697	1,053,220	1,071,474	1,090,058
August	1,063,680	1,081,260	1,096,841	1,094,068	1,086,011	1,077,775	1,094,887	1,114,403
September	1,088,772	1,108,212	1,123,735	1,115,996	1,113,148	1,105,980	1,122,725	1,144,705
October	1,089,836	1,110,604	1,122,884	1,110,994	1,108,447	1,112,550	1,123,261	1,142,394
November	1,087,855	1,112,003	1,120,620	1,109,012	1,107,611	1,109,712	1,125,082	1,145,899
December	1,089,913	1,114,823	1,117,892	1,105,887	1,107,425	1,111,892	1,127,274	1,147,617

AVERAGE TOTAL COVERED EMPLOYMENT GRAPH 1
In Thousands



TOTAL COVERED EARNINGS BY CALENDAR QUARTER, GRAPH 2
In Thousands

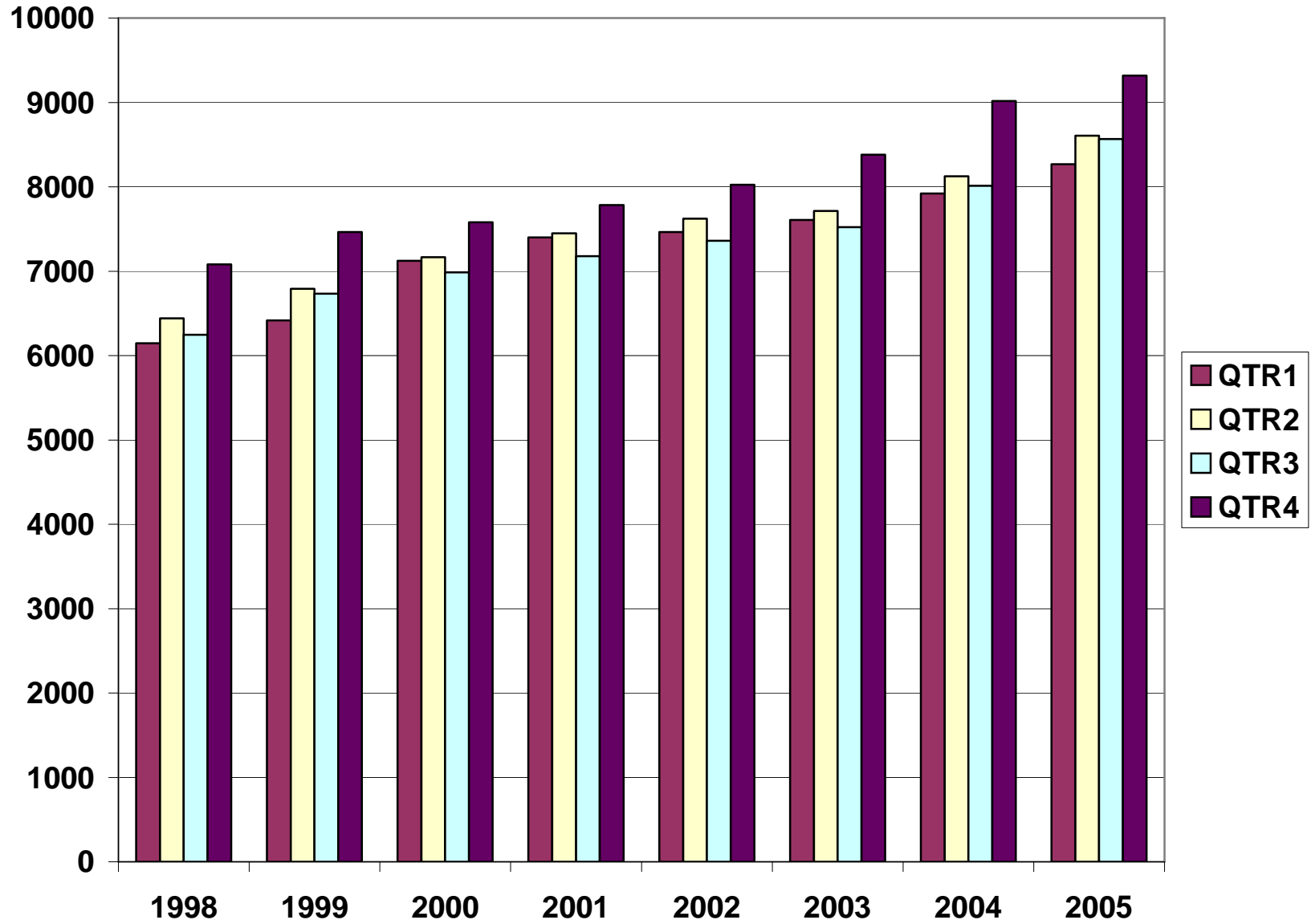


TABLE 3. TOTAL COVERED EARNINGS, 1998- 2005

Period	1998	1999	2000	2001
Total	\$25,914,345,060	\$27,407,925,462	\$28,853,825,155	\$29,807,669,666
January - March	6,145,178,755	6,418,456,638	7,122,666,917	7,398,887,532
April - June	6,441,129,069	6,791,960,679	7,166,110,114	7,448,023,298
July - September	6,246,775,598	6,733,480,079	6,986,103,157	7,177,293,061
October - December	7,081,261,638	7,464,028,066	7,578,944,967	7,783,465,775
Average Weekly Earnings	464.13	482.51	500.57	518.26

Period	2002	2003	2004	2005
Total	\$30,472,854,103	\$31,202,576,767	\$33,068,346,519	\$34,758,732,888
January - March	7,465,250,305	7,608,130,008	7,918,843,610	8,269,065,129
April - June	7,621,878,775	7,714,813,038	8,122,399,978	8,607,184,713
July - September	7,361,666,511	7,500,204,764	8,010,367,744	8,565,665,389
October - December	8,024,058,512	8,379,428,957	9,016,735,187	9,316,817,657
Average Weekly Earnings	533.44	548.45	573.80	595.97

TABLE 4. TOTAL TAXABLE EARNINGS, 1998 - 2005

Period	1998	1999	2000	2001
Total	\$8,554,973,370	\$8,807,445,422	\$9,048,033,534	\$9,003,189,480
January - March	4,063,795,529	4,203,067,856	4,560,814,012	4,670,296,360
April - June	2,271,303,325	2,325,649,764	2,260,741,187	2,219,485,263
July - September	1,236,054,184	1,267,562,743	1,250,850,348	1,190,098,737
October - December	983,820,332	1,011,165,059	975,627,987	923,309,120

Period	2002	2003	2004	2005
Total	\$8,887,270,978	\$9,154,938,743	\$9,731,879,624	\$9,993,877,064
January - March	4,668,534,587	4,737,918,796	4,931,559,230	5,068,103,112
April - June	2,162,971,435	2,270,519,362	2,451,476,366	2,504,400,617
July - September	1,158,197,858	1,188,681,170	1,318,044,471	1,355,673,606
October - December	897,567,098	957,819,415	1,030,799,557	1,065,699,729

**TABLE 5. STATEWIDE SUMMARY
EMPLOYMENT AND TOTAL EARNINGS, BY INDUSTRY
FOURTH QUARTER 2005**

NORTH AMERICAN INDUSTRY CLASSIFICATION SYSTEM INDUSTRY GROUPS	NUMBER OF EMPLOYING UNITS	EMPLOYMENT			TOTAL EARNINGS	AVERAGE
		OCTOBER	NOVEMBER	DECEMBER	OCT. - DEC. 2005	WEEKLY EARNINGS
TOTAL, ALL INDUSTRIES	77,332	1,142,394	1,145,899	1,147,617	\$9,316,817,657	\$625.75
NATURAL RESOURCES & MINING	2,348	19,613	18,788	18,066	\$160,521,061	\$656.02
11 AGRICULTURE, FORESTRY, FISHING & HUNTING	2,018	15,334	14,480	13,750	\$108,168,069	\$572.99
111 CROP PRODUCTION	725	4,375	3,858	3,593	\$23,994,144	\$468.21
1111 Oilseed and Grain Farming	435	2,276	2,035	1,897	12,570,961	467.30
1112 Vegetable and Melon Farming	10	101	104	101	369,333	278.53
1113 Fruit and Tree Nut Farming	10	71	77	77	410,120	420.64
1114 Greenhouse & Nursery Production	48	296	292	313	2,040,877	522.72
1119 Other Crop Farming	222	1,631	1,350	1,205	8,602,853	474.27
112 ANIMAL PRODUCTION	255	3,727	3,701	3,674	\$31,001,686	\$644.41
1121 Cattle Ranching and Farming	76	326	321	326	2,503,600	593.79
1123 Poultry and Egg Production	89	2,604	2,614	2,616	22,063,654	649.94
1125 Animal Aquaculture	60	577	547	523	4,563,220	639.38
Other	30	220	219	209	1,871,212	666.39
113 FORESTRY AND LOGGING	573	3,235	3,184	3,237	\$25,610,435	\$612.07
1131 Timber Tract Operations	45	262	260	261	2,181,955	643.08
1132 Forest Nurseries & Gathering of Forest Products	6	27	35	48	321,053	673.54
1133 Logging	522	2,946	2,889	2,928	23,107,427	608.52
OTHER	465	3,997	3,737	3,246	\$27,561,804	\$579.27
21 MINING	330	4,279	4,308	4,316	\$52,352,992	\$936.33
211 OIL AND GAS EXTRACTION	74	400	415	410	\$6,410,135	\$1,207.56
212 MINING (EXCEPT OIL AND GAS)	100	2,050	2,012	1,965	\$21,650,578	\$828.98
213 SUPPORT ACTIVITIES FOR MINING	156	1,829	1,881	1,941	\$24,292,279	\$992.02

**TABLE 5. STATEWIDE SUMMARY
EMPLOYMENT AND TOTAL EARNINGS, BY INDUSTRY
FOURTH QUARTER 2005**

NORTH AMERICAN INDUSTRY CLASSIFICATION SYSTEM INDUSTRY GROUPS		EMPLOYMENT			TOTAL EARNINGS	AVERAGE	
		NUMBER OF EMPLOYING UNITS	OCTOBER	NOVEMBER	DECEMBER	OCT. - DEC. 2005	WEEKLY EARNINGS
CONSTRUCTION		7,729	55,725	55,856	55,877	\$517,326,412	\$712.91
236	CONSTRUCTION OF BUILDINGS	2,169	12,550	12,678	12,604	\$138,077,979	\$842.25
2361	Residential Building Construction	1,578	4,653	4,610	4,750	41,278,566	679.78
2362	Nonresidential Building Construction	591	7,897	8,068	7,854	96,799,413	937.84
237	HEAVY & CIVIL ENGINEERING CONSTRUCTION	887	11,089	10,900	10,656	\$111,302,031	\$786.80
2371	Utility System Construction	413	4,995	4,903	4,868	46,905,920	733.07
2372	Land Subdivision	126	423	423	440	5,354,367	960.83
2373	Highway, Street & Bridge Construction	231	3,900	3,766	3,686	34,777,882	706.98
2379	Other Heavy Construction	117	1,771	1,808	1,662	24,263,862	1068.37
238	SPECIALTY TRADE CONTRACTORS	4,673	32,086	32,278	32,617	\$267,946,402	\$637.59
2381	Building Foundation & Exterior Contractors	916	6,368	6,411	6,415	46,885,564	563.70
2382	Building Equipment Contractors	2,046	15,402	15,548	15,655	143,192,316	709.03
2383	Building Finishing Contractors	873	4,909	4,992	5,170	37,177,474	569.27
2389	Other Specialty Trade Contractors	838	5,407	5,327	5,377	40,691,048	582.85
MANUFACTURING		3,581	201,028	201,203	200,975	\$1,795,621,336	\$686.95
311	FOOD MANUFACTURING	297	51,006	51,082	51,002	\$358,371,179	\$540.21
3111	Animal Food Manufacturing	48	1,346	1,355	1,374	16,811,236	952.03
3112	Grain and Oilseed Milling	30	2,442	2,416	2,407	21,697,896	689.22
3114	Fruit, Vegetable & Specialty Food	37	7,107	7,111	7,182	59,159,040	637.95
3115	Dairy Product Manufacturing	11	710	709	710	6,184,812	670.39
3116	Animal Slaughtering & Processing	86	34,322	34,331	34,186	212,727,109	477.36
3118	Bakeries and Tortilla Manufacturing	51	3,360	3,348	3,321	26,874,730	618.39
3119	Other Food Manufacturing	22	1,580	1,577	1,575	13,929,340	679.30
	Other	12	139	235	247	987,016	366.78
312	BEVERAGE & TOBACCO PRODUCT MFG.	37	1,248	1,241	1,249	\$12,706,275	\$784.43
313	TEXTILE MILLS	19	417	420	423	\$4,654,293	\$852.43
3132	Fabric Mills	5	328	328	333	4,170,325	973.09
3133	Textile & Fabric Finishing Mills	14	89	92	90	483,968	412.12
314	TEXTILE PRODUCT MILLS	60	1,355	1,352	1,341	13,193,182	\$752.12

**TABLE 5. STATEWIDE SUMMARY
EMPLOYMENT AND TOTAL EARNINGS, BY INDUSTRY
FOURTH QUARTER 2005**

NORTH AMERICAN INDUSTRY CLASSIFICATION SYSTEM INDUSTRY GROUPS		NUMBER OF	EMPLOYMENT			TOTAL EARNINGS	AVERAGE
		EMPLOYING UNITS	OCTOBER	NOVEMBER	DECEMBER	OCT. - DEC. 2005	WEEKLY EARNINGS
315	APPAREL MANUFACTURING	40	1,919	1,854	1,820	\$10,831,955	\$446.93
3152	Cut & Sew Apparel Manufacturing	33	845	784	842	4,542,033	424.19
	Other	7	1,074	1,070	978	6,289,922	464.93
316	LEATHER & ALLIED PRODUCT MANUFACTURING	23	2,391	2,399	2,399	\$13,984,584	\$448.91
3162	Footwear Manufacturing	12	2,186	2,193	2,197	12,051,698	422.93
3169	Other Leather Product Manufacturing	11	205	206	202	1,932,886	727.65
321	WOOD PRODUCT MANUFACTURING	394	13,767	13,669	13,750	\$111,044,171	\$622.19
3211	Sawmills and Wood Preservation	183	6,215	6,180	6,215	53,745,032	666.45
3212	Veneer & Engineered Wood Products	49	3,271	3,266	3,266	29,278,995	689.25
3219	Other Wood Product Manufacturing	162	4,281	4,223	4,269	28,020,144	506.24
322	PAPER MANUFACTURING	85	12,007	12,002	11,992	\$159,198,336	\$1,020.47
3221	Pulp, Paper & Paperboard Mills	12	4,778	4,727	4,722	85,057,730	1379.68
3222	Converted Paper Product Manufacturing	73	7,229	7,275	7,270	74,140,606	785.77
323	PRINTING & RELATED SUPPORT ACTIVITIES	306	4,683	4,643	4,704	\$43,598,905	\$717.13
324	PETROLEUM AND COAL PRODUCTS MFG.	21	892	891	869	\$13,055,595	\$1,136.06
325	CHEMICAL MANUFACTURING	112	5,099	5,053	4,992	\$65,726,130	\$1,001.56
3251	Basic Chemical Manufacturing	24	1,571	1,561	1,550	20,465,323	1008.71
3252	Resin, Rubber & Artificial Fibers	7	312	322	323	4,628,360	1116.07
3253	Agricultural Chemical Manufacturing	18	386	375	354	5,141,464	1064.12
3254	Pharmaceutical & Medicine Manufacturing	13	144	140	138	1,431,887	783.02
3255	Paint, Coating & Adhesive Manufacturing	7	183	180	181	2,471,682	1048.51
3256	Cleaning Compound & Toiletry Manufacturing	17	1,059	1,056	1,054	13,960,815	1016.64
3259	Other Chemical Preparation Manufacturing	26	1,444	1,419	1,392	17,626,599	955.98
326	PLASTICS & RUBBER PRODUCTS MFG.	171	12,984	13,018	13,118	\$124,521,782	\$734.56
3261	Plastics Product Manufacturing	126	7,535	7,597	7,719	63,298,720	639.25
3262	Rubber Product Manufacturing	45	5,449	5,421	5,399	61,223,062	868.42

**TABLE 5. STATEWIDE SUMMARY
EMPLOYMENT AND TOTAL EARNINGS, BY INDUSTRY
FOURTH QUARTER 2005**

NORTH AMERICAN INDUSTRY CLASSIFICATION SYSTEM INDUSTRY GROUPS		NUMBER OF EMPLOYING UNITS	EMPLOYMENT			TOTAL EARNINGS	AVERAGE
			OCTOBER	NOVEMBER	DECEMBER	OCT. - DEC. 2005	WEEKLY EARNINGS
327	NONMETALLIC MINERAL PRODUCT MFG.	254	4,695	4,716	4,752	\$43,740,521	\$712.70
3271	Clay Product & Refractory Manufacturing	16	465	471	500	4,224,298	678.86
3272	Glass & Glass Product Manufacturing	15	411	403	415	3,826,846	718.57
3273	Cement & Concrete Product Manufacturing	183	2,861	2,865	2,854	25,547,743	687.14
3274	Lime & Gypsum Product Manufacturing	3	411	420	421	5,076,399	935.68
3279	Other Nonmetallic Mineral Products	37	547	557	562	5,065,235	701.62
331	PRIMARY METAL MANUFACTURING	67	8,041	8,098	8,167	\$105,163,107	\$998.45
3311	Iron & Steel Mills and Ferroalloys	7	2,116	2,107	2,123	44,470,431	1617.15
3312	Purchased Steel Product Manufacturing	14	2,219	2,257	2,296	23,170,544	789.58
3313	Alumina & Aluminum Production	19	1,761	1,796	1,787	19,555,742	844.47
3314	Other Nonferrous Metal Production	11	598	593	598	5,624,039	725.46
3315	Foundries	16	1,347	1,345	1,363	12,342,351	702.40
332	FABRICATED METAL PRODUCT MANUFACTURING	580	18,178	18,181	18,052	\$169,691,374	\$719.70
3321	Forging & Stamping	14	910	914	920	7,569,695	636.61
3322	Cutlery & Hand Tool Manufacturing	20	1,405	1,402	1,384	12,771,806	703.25
3323	Architectural & Structural Metals	195	5,086	5,106	5,175	50,151,347	753.13
3324	Boilers, Tanks & Shipping Containers	18	1,084	1,087	1,092	9,950,127	703.70
3325	Hardware Manufacturing	12	300	298	294	2,329,634	602.70
3326	Spring & Wire Product Manufacturing	18	787	795	806	6,020,329	581.79
3327	Machine Shops & Threaded Products	198	1,695	1,691	1,711	15,533,346	703.28
3328	Coating, Engraving & Heat Treating Metals	38	987	988	970	6,457,257	505.99
3329	Other Fabricated Metal Product Manufacturing	67	5,924	5,900	5,700	58,907,833	775.74
333	MACHINERY MANUFACTURING	251	13,989	14,126	13,884	\$124,973,996	\$686.69
3331	Agri., Construction & Mining Machinery	38	2,642	2,657	2,779	15,621,321	446.26
3333	Commercial & Service Industry Machinery	25	1,004	1,005	1,005	9,795,310	749.99
3334	HVAC & Commercial Refrigeration Equipment	25	4,891	4,973	4,522	46,830,953	751.23
3335	Metalworking Machinery Manufacturing	76	1,373	1,385	1,383	14,181,918	790.33
3339	Other General Purpose Machinery Manufacturing	54	3,132	3,184	3,217	29,016,073	702.40
	Other	33	947	922	978	9,528,421	772.35
334	COMPUTER & ELECTRONIC PRODUCT MFG.	75	5,934	5,936	5,830	\$53,735,553	\$700.59
3343	Audio & Video Equipment Manufacturing	10	1,349	1,426	1,447	11,873,997	649.02
3344	Semiconductors & Electronic Components	23	2,070	2,057	2,067	18,946,211	705.88
3345	Electronic Instrument Manufacturing	26	1,217	1,206	1,210	11,496,534	730.26
	Other	16	1,298	1,247	1,106	11,418,811	721.75

**TABLE 5. STATEWIDE SUMMARY
EMPLOYMENT AND TOTAL EARNINGS, BY INDUSTRY
FOURTH QUARTER 2005**

NORTH AMERICAN INDUSTRY CLASSIFICATION SYSTEM INDUSTRY GROUPS		NUMBER OF EMPLOYING UNITS			EMPLOYMENT		TOTAL EARNINGS	AVERAGE
		OCTOBER	NOVEMBER	DECEMBER	OCT. - DEC. 2005	WEEKLY EARNINGS		
335	ELECTRICAL EQUIPMENT & APPLIANCES	74	13,064	13,058	13,145	\$120,167,046	\$706.21	
3353	Electrical Equipment Manufacturing	27	4,973	4,960	5,006	48,972,414	756.50	
	Other	47	8,091	8,098	8,139	71,194,632	675.33	
336	TRANSPORTATION EQUIPMENT MANUFACTURING	179	16,927	17,118	17,051	\$152,613,399	\$689.26	
3362	Motor Vehicle Body & Trailer Manufacturing	43	3,597	3,614	3,646	31,433,153	668.12	
3363	Motor Vehicle Parts Manufacturing	65	7,012	7,044	6,948	54,847,209	602.60	
3364	Aerospace Product & Parts Manufacturing	30	3,312	3,353	3,387	42,591,522	977.80	
3366	Ship & Boat Building	23	1,683	1,707	1,705	11,311,088	512.32	
	Other	18	1,323	1,400	1,365	12,430,427	701.70	
337	FURNITURE & RELATED PRODUCT MFG.	269	6,545	6,500	6,647	\$50,535,124	\$592.22	
3371	Household & Institutional Furniture	220	4,516	4,448	4,474	33,973,383	583.42	
3372	Office Furniture & Fixtures Manufacturing	40	1,881	1,902	2,028	15,656,969	621.78	
3379	Other Furniture Related Product Manufacturing	9	148	150	145	904,772	471.32	
339	MISCELLANEOUS MANUFACTURING	267	5,887	5,846	5,788	\$44,114,829	\$581.04	
3391	Medical Equipment & Supplies Manufacturing	97	2,544	2,539	2,525	19,717,886	598.09	
3399	Other Miscellaneous Manufacturing	170	3,343	3,307	3,263	24,396,943	567.95	
TRADE, TRANSPORTATION & UTILITIES		20,854	243,003	246,514	248,775	\$1,920,980,959	\$600.44	
42	WHOLESALE TRADE	6,257	47,639	47,665	48,020	\$596,088,942	\$959.78	
423	MERCHANT WHOLESALERS, DURABLE GOODS	2,094	21,685	21,803	21,886	\$250,122,642	\$882.93	
4231	Motor Vehicle & Part Merchant Wholesalers	230	2,701	2,700	2,707	25,210,614	717.54	
4232	Furniture & Furnishing Merchant Wholesalers	61	433	445	445	4,693,661	818.71	
4233	Lumber & Supply Merchant Wholesalers	168	1,777	1,805	1,798	19,550,930	838.62	
4234	Commercial Goods Merchant Wholesalers	238	2,388	2,398	2,417	35,285,725	1130.48	
4235	Metal & Mineral Merchant Wholesalers	47	726	742	740	8,194,805	856.48	
4236	Electric Goods Merchant Wholesalers	175	2,213	2,204	2,203	27,733,738	966.78	
4237	Hardware & Plumbing Merchant Wholesalers	239	2,441	2,494	2,501	28,232,490	876.17	
4238	Machinery & Supply Merchant Wholesalers	706	7,256	7,257	7,299	83,642,807	884.93	
4239	Misc. Durable Goods Merchant Wholesalers	230	1,750	1,758	1,776	17,577,872	767.68	

**TABLE 5. STATEWIDE SUMMARY
EMPLOYMENT AND TOTAL EARNINGS, BY INDUSTRY
FOURTH QUARTER 2005**

NORTH AMERICAN INDUSTRY CLASSIFICATION SYSTEM INDUSTRY GROUPS		NUMBER OF	EMPLOYMENT			TOTAL EARNINGS	AVERAGE
		EMPLOYING UNITS	OCTOBER	NOVEMBER	DECEMBER	OCT. - DEC. 2005	WEEKLY EARNINGS
424	MERCHANT WHOLESALERS, NONDURABLE GOODS	1,313	17,158	17,041	17,135	\$173,283,025	\$778.98
4241	Paper & Paper Product Merchant Wholesalers	73	1,194	1,212	1,245	12,419,904	785.03
4242	Druggists' Goods Merchant Wholesalers	54	993	1,007	1,036	10,715,436	814.49
4243	Apparel & Piece Goods Merchant Wholesalers	41	485	488	491	4,398,028	693.26
4244	Grocery Product Merchant Wholesalers	360	6,033	6,013	6,042	62,753,816	800.62
4245	Farm Product Merchant Wholesalers	82	991	975	944	6,786,836	538.21
4246	Chemical Merchant Wholesalers	81	441	435	435	5,396,465	949.91
4247	Petroleum Merchant Wholesalers	157	1,408	1,429	1,447	19,070,872	1027.30
4248	Alcoholic Beverage Merchant Wholesalers	37	1,127	1,134	1,168	14,158,465	952.85
4249	Misc. Nondurable Goods Merchant Wholesalers	428	4,486	4,348	4,327	37,583,203	659.00
425	ELECTRONIC MARKETS & AGENTS & BROKERS	2,850	8,796	8,821	8,999	\$172,683,275	\$1,497.22
44-45	RETAIL TRADE	11,307	132,198	135,503	136,959	\$692,788,401	\$395.08
441	MOTOR VEHICLE & PARTS DEALERS	1,733	17,863	17,677	17,780	\$147,124,887	\$636.76
4411	Automobile Dealers	743	10,705	10,568	10,602	100,097,501	724.69
4412	Other Motor Vehicle Dealers	198	1,496	1,466	1,470	12,578,567	654.95
4413	Automotive Parts, Accessories & Tire Stores	792	5,662	5,643	5,708	34,448,819	467.27
442	FURNITURE & HOME FURNISHINGS STORES	616	4,126	4,148	4,209	\$27,715,713	\$512.37
4421	Furniture Stores	317	2,477	2,482	2,507	17,222,245	532.33
4422	Home Furnishings Stores	299	1,649	1,666	1,702	10,493,468	482.67
443	ELECTRONICS & APPLIANCE STORES	472	2,961	3,148	3,147	\$18,310,807	\$456.52
444	BUILDING MATERIAL & GARDEN SUPPLY STORES	816	10,850	10,899	10,936	\$69,915,007	\$493.63
4441	Building Material & Supplies Dealers	642	9,999	10,058	10,138	65,117,945	497.67
4442	Lawn & Garden Equipment & Supplies Stores	174	851	841	798	4,797,062	444.58
445	FOOD & BEVERAGE STORES	1,130	18,889	18,938	19,124	\$74,127,137	\$300.37
4451	Grocery Stores	656	16,538	16,527	16,644	63,004,221	292.49
4452	Specialty Food Stores	159	869	909	935	4,698,968	399.70
4453	Beer, Wine & Liquor Stores	315	1,482	1,502	1,545	6,423,948	327.32
446	HEALTH & PERSONAL CARE STORES	796	6,671	6,774	6,870	\$47,596,542	\$540.68

**TABLE 5. STATEWIDE SUMMARY
EMPLOYMENT AND TOTAL EARNINGS, BY INDUSTRY
FOURTH QUARTER 2005**

NORTH AMERICAN INDUSTRY CLASSIFICATION SYSTEM INDUSTRY GROUPS		NUMBER OF EMPLOYING UNITS	EMPLOYMENT			TOTAL EARNINGS	AVERAGE
			OCTOBER	NOVEMBER	DECEMBER	OCT. - DEC. 2005	WEEKLY EARNINGS
447	GASOLINE STATIONS	1,651	12,532	12,582	12,630	\$43,880,901	\$268.29
44711	Gasoline Stations with Convenience Stores	1,475	11,265	11,311	11,331	37,656,045	256.29
44719	Other Gasoline Stations	176	1,267	1,271	1,299	6,224,856	374.38
448	CLOTHING & CLOTHING ACCESSORIES STORES	1,052	8,259	8,938	9,327	\$30,910,396	\$268.93
4481	Clothing Stores	691	6,104	6,666	6,962	20,036,484	234.33
4482	Shoe Stores	185	1,198	1,235	1,267	4,525,931	282.28
4483	Jewelry, Luggage & Leather Goods Stores	176	957	1,037	1,098	6,347,981	473.78
451	SPORTING GOODS, HOBBY, BOOK & MUSIC STORES	563	4,368	4,593	4,928	\$16,823,156	\$279.52
4511	Sporting Goods & Musical Instrument Stores	398	2,948	3,093	3,323	12,618,516	310.97
4512	Book, Periodical & Music Stores	165	1,420	1,500	1,605	4,204,640	214.43
452	GENERAL MERCHANDISE STORES	704	36,962	38,961	38,970	\$169,353,455	\$340.16
453	MISCELLANEOUS STORE RETAILERS	1,451	6,722	6,814	6,969	\$32,329,305	\$363.84
4531	Florists	272	1,008	1,031	1,054	3,867,476	288.55
4532	Office Supplies, Stationery & Gift Stores	409	2,541	2,603	2,694	12,221,460	359.83
4533	Used Merchandise Stores	213	803	811	821	3,796,630	359.81
4539	Other Miscellaneous Store Retailers	557	2,370	2,369	2,400	12,443,739	402.25
454	NONSTORE RETAILERS	323	1,995	2,031	2,069	\$14,701,095	\$556.61
4541	Electronic Shopping & Mail -Order Houses	69	392	397	387	3,761,253	738.08
4542	Vending Machine Operators	83	702	696	713	4,037,111	441.33
4543	Direct Selling Establishments	171	901	938	969	6,902,731	567.29
48-49	TRANSPORTATION & WAREHOUSING	2,936	56,528	56,677	57,085	\$521,863,660	\$707.21
481	AIR TRANSPORTATION	48	1,044	1,038	1,040	\$12,892,179	\$952.95
484	TRUCK TRANSPORTATION	1,962	35,108	35,449	35,584	\$336,246,407	\$731.06
4841	General Freight Trucking	1,233	29,742	30,463	30,615	293,074,058	744.69
4842	Specialized Freight Trucking	729	5,366	4,986	4,969	43,172,349	650.27

**TABLE 5. STATEWIDE SUMMARY
EMPLOYMENT AND TOTAL EARNINGS, BY INDUSTRY
FOURTH QUARTER 2005**

NORTH AMERICAN INDUSTRY CLASSIFICATION SYSTEM INDUSTRY GROUPS		NUMBER OF EMPLOYING UNITS	EMPLOYMENT			TOTAL EARNINGS	AVERAGE
			OCTOBER	NOVEMBER	DECEMBER	OCT. - DEC. 2005	WEEKLY EARNINGS
485	TRANSIT & GROUND PASSENGER TRANS.	55	1,021	1,029	1,025	\$3,901,099	\$292.77
4853	Taxi & Limousine Service	20	227	230	226	673,429	227.54
4854	School & Employee Bus Transportation	8	410	408	416	1,785,349	333.88
4855	Charter Bus Industry Service	8	93	96	90	459,331	379.93
4859	Other Ground Passenger Transportation	11	211	214	213	649,193	234.82
	Other	8	80	81	80	333,797	319.63
486	PIPELINE TRANSPORTATION	66	950	952	941	\$11,705,206	\$950.12
488	SUPPORT ACTIVITIES FOR TRANSPORTATION	438	4,840	4,746	4,805	\$47,129,435	\$755.75
4881	Support Activities for Air Transportation	106	1,673	1,646	1,672	15,124,316	699.30
4882	Support Activities for Rail Transportation	34	415	403	404	3,364,209	635.32
4883	Support Activities for Water Transportation	31	634	608	613	6,417,483	798.36
4884	Support Activities for Road Transportation	100	458	460	468	2,784,603	463.64
4885	Freight Transportation Arrangement	145	1,519	1,464	1,473	18,208,137	942.97
4889	Other Support Activities for Transportation	22	141	165	175	1,230,687	590.45
492	COURIERS & MESSENGERS	134	3,220	3,317	3,703	\$32,368,971	\$729.47
4921	Couriers	89	2,980	3,081	3,463	30,831,912	747.07
4922	Local Messengers & Local Delivery	45	240	236	240	1,537,059	495.40
493	WAREHOUSING & STORAGE	210	10,147	9,965	9,815	\$75,878,564	\$585.11
	OTHER	23	198	181	172	\$1,741,799	\$729.50
22	UTILITIES	354	6,638	6,669	6,711	\$110,239,956	\$1,270.86
2211	Power Generation & Supply	160	4,977	4,996	5,018	91,101,329	1402.40
2212	Natural Gas Distribution	31	857	869	880	13,426,246	1188.93
2213	Water, Sewage and Other Systems	163	804	804	813	5,712,381	544.50
INFORMATION		1,203	19,934	20,001	20,050	\$202,809,124	\$780.23
511	PUBLISHING INDUSTRIES, EXCEPT INTERNET	248	6,475	6,445	6,417	\$49,301,193	\$588.36
5111	Newspaper, Book & Directory Publishers	217	6,226	6,193	6,157	45,994,706	571.39
5112	Software Publishers	31	249	252	260	3,306,487	1002.67
512	MOTION PICTURE & SOUND RECORDING INDUSTRY	138	1,078	1,146	1,180	\$4,524,795	\$306.75
5121	Motion Picture & Video Industries	126	1,051	1,119	1,153	4,253,434	295.38
5122	Sound Recording Industries	12	27	27	27	271,361	773.11

**TABLE 5. STATEWIDE SUMMARY
EMPLOYMENT AND TOTAL EARNINGS, BY INDUSTRY
FOURTH QUARTER 2005**

NORTH AMERICAN INDUSTRY CLASSIFICATION SYSTEM INDUSTRY GROUPS		NUMBER OF	EMPLOYMENT			TOTAL EARNINGS	AVERAGE
		EMPLOYING UNITS	OCTOBER	NOVEMBER	DECEMBER	OCT. - DEC. 2005	WEEKLY EARNINGS
515	BROADCASTING, EXCEPT INTERNET	136	2,078	2,064	2,045	\$17,146,600	\$639.55
5151	Radio & Television Broadcasting	129	2,042	2,030	2,012	16,945,885	642.77
5152	Cable & Other Subscription Programming	7	36	34	33	200,715	449.70
517	TELECOMMUNICATIONS	493	8,811	8,884	8,932	\$113,041,719	\$979.70
5171	Wired Telecommunications Carriers	211	5,068	5,128	5,129	77,701,149	1170.05
5172	Wireless Telecommunications Carriers	123	1,963	1,953	1,986	18,295,490	715.36
5175	Cable & Other Program Distribution	83	1,244	1,260	1,255	10,747,863	659.82
	Other	76	536	543	562	6,297,217	885.56
518	ISPS, SEARCH PORTALS, & DATA PROCESSING	153	1,187	1,159	1,162	\$16,330,661	\$1,074.29
5181	ISPs, & Web Search Portals	66	202	191	194	1,815,116	713.58
5182	Data Processing & Related Services	87	985	968	968	14,515,545	1146.78
	OTHER	35	305	303	314	\$2,464,156	\$616.76
FINANCIAL ACTIVITIES		7,863	50,042	50,168	50,783	\$502,132,379	\$767.43
52	FINANCE & INSURANCE	4,621	36,335	36,475	36,803	\$401,199,478	\$844.65
522	CREDIT INTERMEDIATION & RELATED ACTIVITIES	1,984	21,484	21,577	21,720	\$202,243,511	\$720.45
5221	Depository Credit Intermediation	1,280	17,876	17,974	18,106	161,922,780	692.54
5222	Nondepository Credit Intermediation	402	2,689	2,687	2,692	32,515,455	930.04
5223	Activities Related to Credit Intermediation	302	919	916	922	7,805,276	653.33
523	FINANCIAL INVESTMENT & RELATED ACTIVITIES	578	3,115	3,077	3,110	\$60,069,685	\$1,490.24
5231	Security & Commodity Investment Activities	325	2,380	2,363	2,389	48,336,220	1564.01
5239	Other Financial Investment Activities	253	735	714	721	11,733,465	1247.80
524	INSURANCE CARRIERS & RELATED ACTIVITIES	2,020	11,315	11,397	11,520	\$133,830,224	\$902.19
5241	Insurance Carriers	382	4,650	4,713	4,758	60,039,880	981.19
5242	Insurance Agencies, Brokerages & Support	1,638	6,665	6,684	6,762	73,790,344	846.73
	OTHER	39	421	424	453	\$5,056,058	\$898.91
53	REAL ESTATE & RENTAL & LEASING	3,242	13,707	13,693	13,980	\$100,932,901	\$562.89

**TABLE 5. STATEWIDE SUMMARY
EMPLOYMENT AND TOTAL EARNINGS, BY INDUSTRY
FOURTH QUARTER 2005**

NORTH AMERICAN INDUSTRY CLASSIFICATION SYSTEM INDUSTRY GROUPS		NUMBER OF	EMPLOYMENT			TOTAL EARNINGS	AVERAGE
		EMPLOYING UNITS	OCTOBER	NOVEMBER	DECEMBER	OCT. - DEC. 2005	WEEKLY EARNINGS
531	REAL ESTATE	2,417	8,621	8,649	8,867	\$67,964,554	\$600.07
5311	Lessors of Real Estate	1,028	4,247	4,254	4,327	26,740,353	481.05
5312	Offices of Real Estate Agents & Brokers	808	2,051	2,065	2,164	21,460,002	788.58
5313	Activities Related to Real Estate	581	2,323	2,330	2,376	19,764,199	648.88
532	RENTAL & LEASING SERVICES	801	4,990	4,953	5,016	\$31,773,685	\$490.17
5321	Automotive Equipment Rental & Leasing	125	954	940	946	6,679,874	542.78
5322	Consumer Goods Rental	495	3,136	3,104	3,118	15,801,243	389.66
5323	General Rental Centers	35	192	194	202	1,746,128	685.29
5324	Machinery & Equipment Rental & Leasing	146	708	715	750	7,546,440	801.42
533	LESSORS OF NONFINANCIAL INTANGIBLE ASSETS	24	96	91	97	\$1,194,662	\$970.74
PROFESSIONAL & BUSINESS SERVICES		10,571	113,325	113,504	113,693	\$1,209,276,557	\$819.52
54	PROFESSIONAL & TECHNICAL SERVICES	6,668	35,200	35,492	36,085	\$468,481,354	\$1,012.49
5411	Legal Services	1,625	6,716	6,766	6,817	105,547,421	1199.92
5412	Accounting & Bookkeeping Services	1,186	4,578	4,593	4,906	48,983,565	803.00
5413	Architectural & Engineering Services	887	6,398	6,453	6,496	86,615,103	1033.14
5414	Specialized Design Services	154	478	478	481	3,751,632	602.48
5415	Computer Systems Design & Related Services	777	7,477	7,473	7,473	127,675,318	1313.99
5416	Management & Technical Consulting Services	1,040	2,737	2,716	2,830	38,227,779	1065.05
5417	Scientific Research & Development Services	111	1,101	1,102	1,106	13,400,940	934.58
5418	Advertising & Related Services	315	1,932	1,981	1,998	23,707,150	925.54
5419	Other Professional & Technical Services	573	3,783	3,930	3,978	20,572,446	406.08
55	MANAGEMENT OF COMPANIES & ENTERPRISES	488	23,531	23,673	23,744	\$456,438,084	\$1,484.63
56	ADMINISTRATIVE & WASTE SERVICES	3,415	54,594	54,339	53,864	\$284,357,119	\$403.08
561	ADMINISTRATIVE & SUPPORT SERVICES	3,217	52,204	51,954	51,480	\$261,494,136	\$387.73
5611	Office Administrative Services	324	1,355	1,324	1,351	18,363,909	1051.57
5612	Facilities Support Services	13	110	111	106	862,451	608.65
5613	Employment Services	619	28,054	27,942	26,978	123,962,279	344.77
5614	Business Support Services	352	4,759	4,739	5,292	24,768,247	386.46
5615	Travel Arrangement & Reservation Services	102	451	427	429	3,050,623	538.63
5616	Investigation & Security Services	232	4,383	4,418	4,434	25,369,703	442.35
5617	Services to Buildings & Dwellings	1,286	11,570	11,443	11,328	51,893,841	348.72
5619	Other Support Services	289	1,522	1,550	1,562	13,223,083	658.50

**TABLE 5. STATEWIDE SUMMARY
EMPLOYMENT AND TOTAL EARNINGS, BY INDUSTRY
FOURTH QUARTER 2005**

NORTH AMERICAN INDUSTRY CLASSIFICATION SYSTEM INDUSTRY GROUPS		EMPLOYMENT			TOTAL EARNINGS	AVERAGE	
		NUMBER OF EMPLOYING UNITS	OCTOBER	NOVEMBER	DECEMBER	OCT. - DEC. 2005	WEEKLY EARNINGS
562	WASTE MANAGEMENT & REMEDIATION SERVICES	198	2,390	2,385	2,384	\$22,862,983	\$736.98
5621	Waste Collection Services	89	1,126	1,119	1,106	10,606,736	730.44
5622	Waste Treatment & Disposal Services	38	766	774	777	8,525,523	849.13
5629	Remediation & Other Waste Services	71	498	492	501	3,730,724	577.42
EDUCATION & HEALTH SERVICES		8,475	143,540	143,244	143,232	\$1,240,413,150	\$665.67
61	EDUCATIONAL SERVICES	548	9,355	9,415	9,290	\$57,735,787	\$474.83
6111	Elementary & Secondary Schools	83	3,418	3,416	3,402	16,563,700	373.43
6112	Junior Colleges	8	272	263	267	1,791,089	515.37
6113	Colleges & Universities	25	3,246	3,281	3,216	23,226,687	550.14
6114	Business, Computer, & Management Training	46	127	127	128	1,900,014	1147.81
6115	Technical & Trade Schools	95	756	769	763	6,884,287	694.35
6116	Other Schools & Instruction	218	1,313	1,335	1,274	5,018,064	295.26
6117	Educational Support Services	73	223	224	240	2,351,946	790.04
62	HEALTH CARE & SOCIAL ASSISTANCE	7,927	134,185	133,829	133,942	\$1,182,677,363	\$678.99
621	AMBULATORY HEALTH CARE SERVICES	4,707	42,081	42,145	42,435	\$579,960,182	\$1,056.65
6211	Offices of Physicians	2,093	20,419	20,480	20,617	389,086,214	1459.61
6212	Offices of Dentists	913	5,940	5,918	6,010	63,732,209	823.12
6213	Offices of Other Health Practitioners	1,125	5,341	5,311	5,377	43,466,871	625.79
6214	Outpatient Care Centers	204	3,584	3,590	3,586	33,166,485	711.32
6215	Medical & Diagnostic Laboratories	95	739	747	763	10,319,020	1058.83
6216	Home Health Care Services	130	3,946	3,942	3,924	25,727,988	502.64
6219	Other Ambulatory Health Care Services	147	2,112	2,157	2,158	14,461,395	519.25
622	HOSPITALS	111	42,256	41,696	41,555	\$379,634,666	\$698.03
6221	General Medical & Surgical Hospitals	78	38,860	38,315	38,164	349,802,535	699.88
6222	Psychiatric & Substance Abuse Hospitals	10	1,494	1,496	1,509	12,082,801	619.77
6223	Other Hospitals	23	1,902	1,885	1,882	17,749,330	722.53
623	NURSING & RESIDENTIAL CARE FACILITIES	496	26,687	26,620	26,582	\$125,955,013	\$363.84
6231	Nursing Care Facilities	235	20,046	19,955	19,979	93,631,837	360.24
6232	Residential Mental Health Facilities	128	2,999	3,018	3,025	15,019,525	383.33
6233	Community Care Facilities for the Elderly	89	2,230	2,230	2,146	9,607,184	335.61
6239	Other Residential Care Facilities	44	1,412	1,417	1,432	7,696,467	416.83

**TABLE 5. STATEWIDE SUMMARY
EMPLOYMENT AND TOTAL EARNINGS, BY INDUSTRY
FOURTH QUARTER 2005**

NORTH AMERICAN INDUSTRY CLASSIFICATION SYSTEM INDUSTRY GROUPS		NUMBER OF	EMPLOYMENT			TOTAL EARNINGS	AVERAGE
		EMPLOYING UNITS	OCTOBER	NOVEMBER	DECEMBER	OCT. - DEC. 2005	WEEKLY EARNINGS
624	SOCIAL ASSISTANCE	2,613	23,161	23,368	23,370	\$97,127,502	\$320.66
6241	Individual & Family Services	1,485	10,494	10,635	10,698	47,938,679	347.59
6242	Emergency & Other Relief Services	115	891	895	871	4,377,890	380.23
6243	Vocational Rehabilitation Services	127	3,370	3,398	3,381	15,436,787	351.00
6244	Child Day Care Services	886	8,406	8,440	8,420	29,374,146	268.29
LEISURE & HOSPITALITY		5,968	93,397	93,173	92,691	\$269,613,789	\$222.80
71	ARTS, ENTERTAINMENT & RECREATION	916	8,847	8,042	8,258	\$32,814,284	\$301.13
711	PERFORMING ARTS & SPECTATOR SPORTS	199	1,989	1,706	1,970	\$8,520,655	\$347.10
7111	Performing Arts Companies	38	646	457	414	1,903,688	289.59
7112	Spectator Sports	57	643	642	803	3,207,879	354.54
7113	Performing Arts & Sports Promoters	40	589	489	625	2,589,462	350.89
7114	Agents & Managers for Public Figures	11	15	14	15	124,990	655.54
7115	Independent Artists, Writers & Performers	53	96	104	113	694,636	512.14
712	MUSEUMS, PARKS & HISTORICAL SITES	47	218	208	199	\$951,394	\$351.28
713	GAMBLING, RECREATION & AMUSEMENT INDUSTRY	670	6,640	6,128	6,089	\$23,342,235	\$285.66
7139	Other Amusement & Recreation Industries	632	6,228	5,960	5,896	22,452,632	286.52
	Other	38	412	168	193	889,603	265.58
72	ACCOMMODATION & FOOD SERVICES	5,052	84,550	85,131	84,433	\$236,799,505	\$215.05
721	ACCOMMODATION	797	11,102	10,810	10,406	\$38,421,988	\$274.36
7211	Traveler Accommodation	727	10,799	10,534	10,135	37,091,467	272.01
7212	RV Parks & Recreational Camps	50	220	201	190	992,644	374.91
7213	Rooming & Boarding Houses	20	83	75	81	337,877	326.24
722	FOOD SERVICES & DRINKING PLACES	4,255	73,448	74,321	74,027	\$198,377,517	\$206.40
7221	Full -Service Restaurants	1,844	31,955	32,325	32,340	93,510,390	223.34
7222	Limited-Service Eating Places	2,097	38,307	38,713	38,432	95,124,173	190.14
7223	Special Food Services	158	2,221	2,295	2,244	7,240,708	247.18
7224	Drinking Places, Alcoholic Beverages	156	965	988	1,011	2,502,246	194.82

**TABLE 5. STATEWIDE SUMMARY
EMPLOYMENT AND TOTAL EARNINGS, BY INDUSTRY
FOURTH QUARTER 2005**

NORTH AMERICAN INDUSTRY CLASSIFICATION SYSTEM INDUSTRY GROUPS		NUMBER OF EMPLOYING UNITS	EMPLOYMENT			TOTAL EARNINGS	AVERAGE
			OCTOBER	NOVEMBER	DECEMBER	OCT. - DEC. 2005	WEEKLY EARNINGS
OTHER SERVICES		5,546	24,758	24,865	25,094	\$148,203,028	\$457.74
811	REPAIR & MAINTENANCE	2,251	9,152	9,138	9,196	\$63,490,863	\$533.06
8111	Automotive Repair & Maintenance	1,559	6,530	6,508	6,543	41,625,442	490.57
8112	Electronic Equipment Repair & Maintenance	164	635	636	645	5,618,742	676.74
8113	Commercial Machinery Repair & Maintenance	337	1,412	1,439	1,442	12,748,269	685.28
8114	Household Goods Repair & Maintenance	191	575	555	566	3,498,410	476.02
812	PERSONAL & LAUNDRY SERVICES	1,323	7,919	8,006	8,116	\$41,359,635	\$397.01
8121	Personal Care Services	567	2,385	2,433	2,486	9,082,137	286.95
8122	Death Care Services	247	1,650	1,659	1,680	11,738,995	542.99
8123	Drycleaning & Laundry Services	344	3,139	3,140	3,171	15,864,951	387.42
8129	Other Personal Services	165	745	774	779	4,673,552	469.33
813	MEMBERSHIP ASSOCIATIONS & ORGANIZATIONS	1,017	6,222	6,257	6,289	\$37,435,659	\$460.30
8131	Religious Organizations	39	205	202	213	1,156,778	430.56
8132	Grantmaking & Giving Services	96	427	431	444	3,990,818	707.34
8133	Social Advocacy Organizations	137	1,887	1,899	1,931	10,654,838	430.09
8134	Civic & Social Organizations	225	1,566	1,569	1,551	5,018,139	247.13
8139	Professional & Similar Organizations	520	2,137	2,156	2,150	16,615,086	595.10
814	PRIVATE HOUSEHOLDS	955	1,465	1,464	1,493	\$5,916,871	\$308.78
	LOCAL GOVERNMENT	1,999	117,210	117,967	117,964	\$818,861,278	\$535.11
	STATE GOVERNMENT	1,195	60,819	60,616	60,417	\$531,058,584	\$673.91
	NONCLASSIFIABLE ESTABLISHMENTS	0	0	0	0	\$0	

**TABLE 6. COUNTY SUMMARY
EMPLOYMENT AND TOTAL EARNINGS, BY INDUSTRY
FOURTH QUARTER 2005**

NORTH AMERICAN INDUSTRY CLASSIFICATION SYSTEM INDUSTRY GROUP	NUMBER OF EMPLOYING UNITS	EMPLOYMENT			TOTAL EARNINGS	AVERAGE WEEKLY EARNINGS
		OCTOBER	NOVEMBER	DECEMBER	OCT. – DEC. 2005	
ARKANSAS COUNTY - TOTAL	654	9,951	9,901	10,003	\$72,909,640	\$563.57
Natural Resources & Mining	46	287	242	225	1,950,390	596.94
Construction	56	253	246	245	1,942,582	602.54
Manufacturing	32	3,642	3,653	3,676	28,911,767	608.14
Trade, Transportation & Utilities	201	2,077	2,043	2,117	16,501,001	610.54
Wholesale Trade	42	438	405	415	5,429,156	995.93
Retail Trade	105	1,052	1,062	1,122	5,453,757	388.92
Transportation, Warehousing & Utilities	54	587	576	580	5,618,088	743.82
Information	8	81	81	83	666,774	628.04
Financial Activities	42	327	327	330	3,233,579	758.34
Professional & Business Services	50	391	388	398	4,074,416	798.85
Education & Health Services	65	1,151	1,185	1,178	6,753,189	443.49
Leisure & Hospitality	54	521	525	519	1,260,266	185.83
Other Services	53	156	154	151	824,523	412.74
Local Government	31	864	859	874	5,316,517	472.43
State Government	16	201	198	207	1,474,636	561.55
ASHLEY COUNTY - TOTAL	527	8,479	8,446	8,450	\$81,690,971	\$742.93
Natural Resources & Mining	59	583	563	540	3,823,456	523.33
Construction	50	622	613	610	4,328,976	541.46
Manufacturing	28	2,957	2,948	2,944	46,692,526	1217.67
Trade, Transportation & Utilities	136	1,262	1,284	1,306	7,575,728	453.85
Wholesale Trade	26	171	164	180	1,685,989	755.48
Retail Trade	89	862	887	907	3,844,856	334.06
Transportation, Warehousing & Utilities	21	229	233	219	2,044,883	692.95
Information	10	50	53	53	342,592	506.79
Financial Activities	35	221	223	229	1,757,156	602.52
Professional & Business Services	47	364	352	337	3,445,032	754.99
Education & Health Services	49	582	582	585	4,453,448	587.60
Leisure & Hospitality	29	371	366	363	873,767	183.31
Other Services	40	184	171	182	906,038	389.36
Local Government	32	1,075	1,083	1,084	6,356,518	452.46
State Government	12	208	208	217	1,135,734	414.05

**TABLE 6. COUNTY SUMMARY
EMPLOYMENT AND TOTAL EARNINGS, BY INDUSTRY
FOURTH QUARTER 2005**

NORTH AMERICAN INDUSTRY CLASSIFICATION SYSTEM INDUSTRY GROUP	NUMBER OF EMPLOYING UNITS	EMPLOYMENT			TOTAL EARNINGS	AVERAGE WEEKLY EARNINGS
		OCTOBER	NOVEMBER	DECEMBER	OCT. – DEC. 2005	
BAXTER COUNTY - TOTAL	1,198	14,337	14,324	14,388	\$99,925,864	\$535.66
Natural Resources & Mining	7	140	132	129	910,243	523.83
Construction	139	685	677	701	4,397,205	491.88
Manufacturing	64	2,560	2,529	2,545	20,091,899	607.36
Trade, Transportation & Utilities	269	2,559	2,599	2,610	14,351,141	426.34
Wholesale Trade	32	180	179	180	1,511,791	647.26
Retail Trade	209	2,127	2,165	2,170	10,956,903	391.29
Transportation, Warehousing & Utilities	28	252	255	260	1,882,447	566.38
Information	23	277	284	284	2,201,311	601.18
Financial Activities	110	662	663	678	5,604,515	645.71
Professional & Business Services	133	799	803	813	6,014,683	574.74
Education & Health Services	177	3,214	3,235	3,254	30,591,189	727.56
Leisure & Hospitality	122	1,498	1,473	1,420	3,961,079	208.17
Other Services	105	404	402	411	1,569,176	297.55
Local Government	36	1,236	1,225	1,250	8,251,010	513.09
State Government	13	303	302	293	1,982,413	509.44
BENTON COUNTY - TOTAL	4,908	90,109	90,558	91,088	\$874,041,340	\$742.22
Natural Resources & Mining	25	672	670	665	7,866,981	904.56
Construction	752	4,908	4,939	5,019	45,476,516	705.95
Manufacturing	242	13,627	13,652	13,702	119,140,926	670.90
Trade, Transportation & Utilities	1,305	22,676	23,040	23,320	209,578,766	700.57
Wholesale Trade	581	3,847	3,901	3,983	55,812,013	1097.92
Retail Trade	559	7,325	7,492	7,590	43,514,166	448.15
Transportation, Warehousing & Utilities	165	11,504	11,647	11,747	110,252,587	729.06
Information	67	905	918	920	8,220,906	691.63
Financial Activities	545	3,378	3,407	3,498	32,427,614	727.73
Professional & Business Services	810	21,860	21,878	21,712	307,328,412	1083.60
Education & Health Services	392	6,492	6,479	6,542	52,260,447	618.05
Leisure & Hospitality	373	6,505	6,448	6,446	20,651,182	245.67
Other Services	303	1,730	1,723	1,745	11,577,003	513.97
Local Government	75	6,696	6,746	6,857	53,522,312	608.47
State Government	19	660	658	662	5,990,275	698.17

**TABLE 6. COUNTY SUMMARY
EMPLOYMENT AND TOTAL EARNINGS, BY INDUSTRY
FOURTH QUARTER 2005**

NORTH AMERICAN INDUSTRY CLASSIFICATION SYSTEM INDUSTRY GROUP	NUMBER OF EMPLOYING UNITS	EMPLOYMENT			TOTAL EARNINGS	AVERAGE WEEKLY EARNINGS
		OCTOBER	NOVEMBER	DECEMBER	OCT. – DEC. 2005	
BOONE COUNTY - TOTAL	1,018	13,797	13,858	14,066	\$102,310,078	\$565.90
Construction	93	474	456	471	3,217,827	530.03
Manufacturing	67	2,098	2,110	2,127	17,764,678	647.13
Trade, Transportation & Utilities	272	4,413	4,394	4,468	36,706,325	638.09
Wholesale Trade	59	641	633	640	4,962,056	598.27
Retail Trade	159	2,009	1,994	2,027	10,718,410	410.20
Transportation, Warehousing & Utilities	54	1,763	1,767	1,801	21,025,859	910.17
Information	18	408	412	410	3,599,968	675.42
Financial Activities	94	627	622	621	4,969,536	613.27
Professional & Business Services	105	520	570	598	3,164,368	432.61
Education & Health Services	127	1,083	1,100	1,097	8,521,874	599.57
Leisure & Hospitality	82	1,157	1,135	1,118	2,907,815	196.78
Local Government	60	2,250	2,286	2,279	14,918,395	505.17
State Government	21	514	523	628	4,776,774	662.06
Other	79	253	250	249	1,762,518	540.87
BRADLEY COUNTY - TOTAL	352	3,932	3,965	3,946	\$26,258,778	\$511.67
Natural Resources & Mining	51	253	247	249	1,680,797	517.86
Construction	21	151	151	151	970,464	494.38
Manufacturing	11	1,080	1,096	1,079	9,142,857	648.20
Trade, Transportation & Utilities	90	509	518	524	2,746,270	408.61
Wholesale Trade	14	110	110	110	551,227	385.47
Retail Trade	51	326	336	342	1,589,693	365.39
Transportation, Warehousing & Utilities	25	73	72	72	605,350	643.76
Information	3	14	14	14	91,639	503.51
Financial Activities	24	180	178	182	1,327,683	567.39
Professional & Business Services	26	98	96	99	433,884	341.73
Education & Health Services	48	541	544	541	3,859,295	547.73
Leisure & Hospitality	17	173	177	171	355,424	157.43
Other Services	33	100	99	97	645,040	502.89
Local & State Government	28	833	845	839	5,005,425	458.92

**TABLE 6. COUNTY SUMMARY
EMPLOYMENT AND TOTAL EARNINGS, BY INDUSTRY
FOURTH QUARTER 2005**

NORTH AMERICAN INDUSTRY CLASSIFICATION SYSTEM INDUSTRY GROUP	NUMBER OF EMPLOYING UNITS	EMPLOYMENT			TOTAL EARNINGS	AVERAGE WEEKLY EARNINGS
		OCTOBER	NOVEMBER	DECEMBER	OCT. – DEC. 2005	
CALHOUN COUNTY - TOTAL	120	3,959	3,937	3,891	\$34,724,885	\$679.85
Natural Resources & Mining	20	148	149	151	1,005,663	518.03
Construction	11	104	101	101	577,949	435.86
Manufacturing	14	2,694	2,652	2,623	25,726,500	745.00
Trade, Transportation & Utilities	26	202	207	200	1,293,251	490.05
Wholesale Trade & Retail Trade	18	67	68	69	239,487	270.91
Transportation, Warehousing & Utilities	8	135	139	131	1,053,764	600.44
Financial Activities	8	125	125	125	855,765	526.62
Education & Health Services	4	42	44	43	350,128	626.35
Local Government	11	209	214	216	1,213,894	438.39
State Government	10	326	339	326	2,115,353	492.59
Other	16	109	106	106	1,586,382	1140.46
CARROLL COUNTY - TOTAL	799	9,997	9,714	9,547	\$56,625,843	\$446.63
Natural Resources & Mining	17	276	276	279	2,017,148	560.16
Trade, Transportation & Utilities	207	1,635	1,643	1,629	9,010,189	423.74
Wholesale Trade	22	118	118	116	564,436	370.04
Retail Trade	168	1,263	1,286	1,278	6,140,914	370.30
Transportation, Warehousing & Utilities	17	254	239	235	2,304,839	730.61
Professional & Business Services	71	238	243	251	1,638,450	516.54
Education & Health Services	58	740	755	761	5,551,746	567.90
Leisure & Hospitality	174	1,818	1,520	1,343	4,351,445	214.52
Local Government	25	1,103	1,102	1,089	6,949,440	486.86
State Government	11	107	103	98	677,631	507.72
Other	236	4,080	4,072	4,097	26,429,794	497.93

**TABLE 6. COUNTY SUMMARY
EMPLOYMENT AND TOTAL EARNINGS, BY INDUSTRY
FOURTH QUARTER 2005**

NORTH AMERICAN INDUSTRY CLASSIFICATION SYSTEM INDUSTRY GROUP	NUMBER OF EMPLOYING UNITS	EMPLOYMENT			TOTAL EARNINGS	AVERAGE WEEKLY EARNINGS
		OCTOBER	NOVEMBER	DECEMBER	OCT. – DEC. 2005	
CHICOT COUNTY - TOTAL	330	3,665	3,766	3,757	\$22,450,479	\$463.07
Natural Resources & Mining	46	306	293	262	1,744,976	467.70
Construction	19	298	303	299	2,189,270	561.35
Manufacturing	12	375	468	477	2,097,818	366.75
Trade, Transportation & Utilities	85	586	587	614	3,391,725	438.00
Wholesale Trade	16	103	106	107	1,012,898	739.70
Retail Trade	57	407	409	424	1,652,130	307.47
Transportation, Warehousing & Utilities	12	76	72	83	726,697	725.97
Information	6	13	12	11	81,078	519.73
Financial Activities	28	165	165	168	1,276,803	591.66
Professional & Business Services	24	83	89	82	785,876	714.00
Education & Health Services	46	480	480	494	2,867,899	455.17
Leisure & Hospitality	21	226	223	221	469,289	161.64
Other Services	16	50	48	48	435,423	688.23
Local Government	16	783	801	794	5,262,191	510.66
State Government	11	300	297	287	1,848,131	482.46
CLARK COUNTY - TOTAL	605	9,774	9,802	9,857	\$63,322,590	\$496.48
Natural Resources & Mining	42	245	242	247	1,790,150	562.82
Construction	34	128	127	122	761,938	466.40
Manufacturing	35	2,335	2,353	2,356	17,616,583	577.14
Trade, Transportation & Utilities	140	1,431	1,452	1,485	9,010,745	476.05
Wholesale Trade	21	75	75	77	667,100	678.18
Retail Trade	93	1,081	1,105	1,122	5,769,452	402.48
Transportation, Warehousing & Utilities	26	275	272	286	2,574,193	713.14
Information	9	40	40	35	261,871	525.49
Financial Activities	91	401	398	390	2,734,650	530.76
Professional & Business Services	45	364	363	384	3,967,950	824.20
Education & Health Services	63	1,433	1,446	1,439	9,821,007	524.87
Leisure & Hospitality	57	1,077	1,079	1,104	2,779,523	196.76
Other Services	48	220	219	222	1,238,679	432.45
Local Government	26	954	957	945	5,567,684	449.88
State Government	15	1,146	1,126	1,128	7,771,810	527.50

**TABLE 6. COUNTY SUMMARY
EMPLOYMENT AND TOTAL EARNINGS, BY INDUSTRY
FOURTH QUARTER 2005**

NORTH AMERICAN INDUSTRY CLASSIFICATION SYSTEM INDUSTRY GROUP	NUMBER OF EMPLOYING UNITS	EMPLOYMENT			TOTAL EARNINGS	AVERAGE
		OCTOBER	NOVEMBER	DECEMBER	OCT. – DEC. 2005	WEEKLY EARNINGS
CLAY COUNTY - TOTAL	402	4,626	4,615	4,618	\$26,727,616	\$445.05
Natural Resources & Mining	57	266	236	202	1,527,088	500.58
Construction	38	182	182	176	1,063,608	454.53
Manufacturing	20	1,049	1,077	1,141	6,563,232	463.60
Trade, Transportation & Utilities	96	974	957	982	5,874,002	465.34
Wholesale Trade	23	341	335	363	2,306,138	512.21
Retail Trade	51	454	464	461	2,006,456	335.77
Transportation, Warehousing & Utilities	22	179	158	158	1,561,408	727.93
Information	9	129	131	131	867,189	511.82
Financial Activities	36	159	160	157	1,138,834	552.12
Professional & Business Services	24	59	57	59	338,852	446.84
Education & Health Services	41	534	533	519	2,458,727	357.75
Leisure & Hospitality	23	229	233	228	421,814	141.07
Other Services	24	51	46	49	275,445	435.37
Local Government	22	925	932	902	5,704,904	477.17
State Government	12	69	71	72	493,921	537.65
CLEBURNE COUNTY - TOTAL	657	6,803	6,795	6,738	\$40,514,286	\$459.75
Natural Resources & Mining	16	55	48	46	463,928	718.53
Construction	67	316	308	303	1,643,809	409.21
Manufacturing	44	1,786	1,816	1,809	13,244,066	564.84
Trade, Transportation & Utilities	183	1,540	1,498	1,485	8,748,255	446.35
Wholesale Trade	40	167	162	166	1,152,279	537.19
Retail Trade	109	1,062	1,017	998	4,702,459	352.68
Transportation, Warehousing & Utilities	34	311	319	321	2,893,517	702.14
Information	9	58	65	59	349,957	443.73
Financial Activities	73	261	258	263	1,929,922	569.52
Professional & Business Services	56	179	180	182	1,191,649	508.31
Education & Health Services	58	772	779	785	5,101,847	504.00
Leisure & Hospitality	66	720	720	686	1,855,602	201.42
Other Services	55	163	160	159	705,240	337.65
Local Government	20	838	848	857	4,589,759	416.51
State Government	10	115	115	104	690,252	476.91

**TABLE 6. COUNTY SUMMARY
EMPLOYMENT AND TOTAL EARNINGS, BY INDUSTRY
FOURTH QUARTER 2005**

NORTH AMERICAN INDUSTRY CLASSIFICATION SYSTEM INDUSTRY GROUP	NUMBER OF EMPLOYING UNITS	EMPLOYMENT			TOTAL EARNINGS	AVERAGE
		OCTOBER	NOVEMBER	DECEMBER	OCT. - DEC. 2005	WEEKLY EARNINGS
CLEVELAND COUNTY - TOTAL	112	1,135	1,117	1,115	\$6,530,266	\$447.57
Natural Resources & Mining	20	184	184	182	1,330,347	558.19
Construction	6	37	37	37	149,461	310.73
Manufacturing	5	93	92	92	468,304	390.14
Trade, Transportation & Utilities	33	208	193	193	990,368	384.76
Wholesale Trade	5	25	13	13	104,862	474.49
Retail Trade	16	88	86	84	217,585	194.62
Transportation, Warehousing & Utilities	12	95	94	96	667,921	540.83
Local Government	12	366	365	363	2,016,853	425.44
State Government	8	68	66	64	372,833	434.54
Other	28	179	180	184	1,202,100	510.88
COLUMBIA COUNTY - TOTAL	681	9,237	9,245	9,290	\$69,424,988	\$576.88
Natural Resources & Mining	51	490	496	489	6,815,233	1066.27
Construction	45	295	277	288	2,293,663	615.47
Manufacturing	40	2,748	2,751	2,793	27,355,386	761.31
Trade, Transportation & Utilities	179	1,525	1,562	1,547	8,667,798	431.65
Wholesale Trade	28	255	248	230	1,917,505	603.69
Retail Trade	113	1,020	1,058	1,069	4,637,134	340.04
Transportation, Warehousing & Utilities	38	250	256	248	2,113,159	646.75
Information	10	81	79	79	499,156	481.97
Financial Activities	79	409	411	418	3,610,905	673.09
Professional & Business Services	63	346	338	329	1,792,536	408.35
Education & Health Services	75	831	829	836	4,351,801	402.35
Leisure & Hospitality	45	636	624	625	1,499,225	183.54
Other Services	51	209	212	216	833,445	301.94
Local Government	29	1,126	1,128	1,142	7,275,817	494.42
State Government	14	541	538	528	4,430,023	636.16

**TABLE 6. COUNTY SUMMARY
EMPLOYMENT AND TOTAL EARNINGS, BY INDUSTRY
FOURTH QUARTER 2005**

NORTH AMERICAN INDUSTRY CLASSIFICATION SYSTEM INDUSTRY GROUP	NUMBER OF EMPLOYING UNITS	EMPLOYMENT			TOTAL EARNINGS	AVERAGE WEEKLY EARNINGS
		OCTOBER	NOVEMBER	DECEMBER	OCT. – DEC. 2005	
CONWAY COUNTY - TOTAL	482	6,571	6,666	6,641	\$44,029,812	\$511.15
Natural Resources & Mining	18	130	135	145	1,131,069	636.62
Construction	51	535	539	508	4,828,463	704.34
Manufacturing	30	1,066	1,074	1,072	10,805,379	776.32
Trade, Transportation & Utilities	135	1,425	1,413	1,409	8,798,497	478.08
Wholesale Trade	30	252	244	244	1,994,707	622.05
Retail Trade	79	891	889	887	4,474,164	387.14
Transportation, Warehousing & Utilities	26	282	280	278	2,329,626	640.01
Information	6	30	28	28	171,033	458.94
Financial Activities	35	183	183	183	1,372,377	576.87
Professional & Business Services	46	621	686	701	2,851,999	327.77
Education & Health Services	56	790	791	792	4,935,641	479.98
Leisure & Hospitality	38	449	456	441	978,651	167.79
Other Services	29	80	88	87	685,303	620.18
Local Government	27	895	899	902	5,467,366	467.99
State Government	11	367	374	373	2,004,034	415.14
CRAIGHEAD COUNTY - TOTAL	2,549	41,218	41,453	40,995	\$313,871,198	\$585.71
Natural Resources & Mining	61	436	403	302	2,604,397	526.74
Construction	223	1,748	1,851	1,677	13,959,701	610.59
Manufacturing	137	6,927	6,982	7,033	61,856,403	681.62
Trade, Transportation & Utilities	737	8,253	8,367	8,489	52,436,830	481.93
Wholesale Trade	189	1,501	1,491	1,483	15,187,056	783.17
Retail Trade	432	5,655	5,791	5,904	27,796,216	369.71
Transportation, Warehousing & Utilities	116	1,097	1,085	1,102	9,453,558	664.31
Information	33	648	654	659	5,222,711	614.61
Financial Activities	258	1,575	1,581	1,593	17,051,812	828.60
Professional & Business Services	327	3,929	4,041	3,708	28,589,368	564.96
Education & Health Services	346	7,265	7,131	7,133	71,648,776	768.00
Leisure & Hospitality	184	3,548	3,666	3,647	9,872,713	209.77
Other Services	181	1,008	992	1,002	5,341,873	410.64
Local Government	38	3,543	3,572	3,549	23,540,293	509.41
State Government	24	2,338	2,213	2,203	21,746,321	743.02

**TABLE 6. COUNTY SUMMARY
EMPLOYMENT AND TOTAL EARNINGS, BY INDUSTRY
FOURTH QUARTER 2005**

NORTH AMERICAN INDUSTRY CLASSIFICATION SYSTEM INDUSTRY GROUP	NUMBER OF EMPLOYING UNITS	EMPLOYMENT			TOTAL EARNINGS	AVERAGE
		OCTOBER	NOVEMBER	DECEMBER	OCT. - DEC. 2005	WEEKLY EARNINGS
CRAWFORD COUNTY - TOTAL	1,170	18,628	18,671	18,785	\$132,448,222	\$544.99
Natural Resources & Mining	26	440	435	447	3,872,424	675.97
Construction	180	1,400	1,381	1,400	11,588,995	639.65
Manufacturing	75	3,540	3,556	3,627	25,911,353	557.64
Trade, Transportation & Utilities	311	6,448	6,496	6,458	46,722,148	555.72
Wholesale Trade	79	676	689	690	6,152,477	690.90
Retail Trade	163	1,886	1,901	1,896	9,280,500	376.85
Transportation, Warehousing & Utilities	69	3,886	3,906	3,872	31,289,171	619.05
Financial Activities	120	503	504	513	3,729,623	566.24
Professional & Business Services	135	659	642	629	5,511,344	658.99
Education & Health Services	98	1,515	1,545	1,563	11,851,092	591.58
Leisure & Hospitality	81	1,323	1,327	1,337	3,438,533	199.02
Local Government	41	2,117	2,106	2,108	14,670,695	534.76
State Government	11	157	154	149	1,256,745	630.47
Other	92	526	525	554	3,895,270	560.07
CRITTENDEN COUNTY - TOTAL	1,133	16,212	16,255	16,079	\$120,290,048	\$571.81
Natural Resources & Mining	48	442	377	301	2,933,066	604.34
Construction	78	649	672	623	6,474,955	768.63
Manufacturing	52	1,495	1,536	1,539	16,956,495	856.24
Trade, Transportation & Utilities	320	4,804	4,868	4,902	37,942,679	600.80
Wholesale Trade	64	782	776	792	8,170,316	802.32
Retail Trade	172	2,017	2,055	2,089	10,221,083	382.85
Transportation, Warehousing & Utilities	84	2,005	2,037	2,021	19,551,280	744.16
Information	10	97	95	97	765,506	611.26
Financial Activities	112	545	550	556	4,683,618	654.65
Professional & Business Services	107	821	763	761	5,431,491	534.51
Education & Health Services	146	1,867	1,853	1,872	14,772,555	609.63
Leisure & Hospitality	100	1,866	1,917	1,844	5,355,687	219.64
Other Services	101	593	587	589	3,481,135	454.12
Local Government	44	2,574	2,585	2,633	18,866,760	558.76
State Government	15	459	452	362	2,626,101	476.06

**TABLE 6. COUNTY SUMMARY
EMPLOYMENT AND TOTAL EARNINGS, BY INDUSTRY
FOURTH QUARTER 2005**

NORTH AMERICAN INDUSTRY CLASSIFICATION SYSTEM INDUSTRY GROUP	NUMBER OF EMPLOYING UNITS	EMPLOYMENT			TOTAL EARNINGS	AVERAGE
		OCTOBER	NOVEMBER	DECEMBER	OCT. - DEC. 2005	WEEKLY EARNINGS
CROSS COUNTY - TOTAL	491	5,008	5,031	4,996	\$33,392,300	\$512.53
Natural Resources & Mining	46	235	214	204	1,141,194	403.30
Construction	34	169	165	172	1,062,245	484.45
Manufacturing	21	698	702	708	6,116,160	669.55
Trade, Transportation & Utilities	131	1,193	1,203	1,193	8,795,734	565.56
Wholesale Trade	33	282	279	285	2,811,943	767.03
Retail Trade	64	632	670	657	3,491,204	411.26
Transportation, Warehousing & Utilities	34	279	254	251	2,492,587	733.69
Information	7	59	61	60	368,616	472.58
Financial Activities	47	364	385	387	2,837,959	576.51
Professional & Business Services	42	141	141	137	1,043,269	574.59
Education & Health Services	60	631	637	633	3,799,433	461.23
Leisure & Hospitality	33	384	370	361	808,343	167.30
Other Services	42	84	81	80	359,794	338.90
Local Government	17	846	867	858	5,331,381	478.54
State Government	11	204	205	203	1,728,172	651.65
DALLAS COUNTY - TOTAL	273	3,282	3,268	3,295	\$21,744,950	\$509.71
Natural Resources & Mining	40	232	223	225	1,711,715	580.90
Construction	12	75	73	82	594,707	596.70
Manufacturing	15	853	838	816	6,496,571	598.01
Trade, Transportation & Utilities	74	478	477	481	2,862,741	460.05
Wholesale Trade	9	38	39	39	409,654	814.96
Retail Trade	46	376	376	376	2,017,407	412.73
Transportation, Warehousing & Utilities	19	64	62	66	435,680	523.65
Information	3	26	26	26	169,272	500.80
Financial Activities	21	101	101	104	1,251,706	943.97
Professional & Business Services	18	53	54	45	555,530	843.42
Education & Health Services	29	741	739	761	4,267,893	439.49
Leisure & Hospitality	20	138	135	144	279,605	154.73
Other Services	16	64	64	65	297,982	356.30
Local Government	16	465	484	491	2,820,941	452.07
State Government	9	56	54	55	436,287	610.19

**TABLE 6. COUNTY SUMMARY
EMPLOYMENT AND TOTAL EARNINGS, BY INDUSTRY
FOURTH QUARTER 2005**

NORTH AMERICAN INDUSTRY CLASSIFICATION SYSTEM INDUSTRY GROUP	NUMBER OF EMPLOYING UNITS	EMPLOYMENT			TOTAL EARNINGS	AVERAGE WEEKLY EARNINGS
		OCTOBER	NOVEMBER	DECEMBER	OCT. – DEC. 2005	
DESHA COUNTY - TOTAL	457	5,271	5,120	5,098	\$35,918,174	\$535.14
Natural Resources & Mining	50	434	372	294	2,578,088	540.86
Construction	26	120	117	126	998,387	634.70
Manufacturing	15	1,322	1,321	1,315	13,001,147	758.03
Trade, Transportation & Utilities	132	1,171	1,109	1,028	6,828,818	476.38
Wholesale Trade	20	186	185	181	1,967,369	822.48
Retail Trade	82	685	673	668	3,110,980	354.35
Transportation, Warehousing & Utilities	30	300	251	179	1,750,469	553.36
Information	6	22	22	22	168,470	589.06
Financial Activities	42	220	220	230	1,602,037	551.79
Professional & Business Services	37	186	193	201	975,593	388.17
Education & Health Services	53	514	505	517	2,947,567	442.84
Leisure & Hospitality	38	259	250	316	646,659	180.88
Other Services	28	69	71	70	222,896	244.94
Local Government	19	798	786	820	4,839,213	464.53
State Government	11	156	154	159	1,109,299	545.83
DREW COUNTY - TOTAL	488	6,925	6,927	6,872	\$42,933,786	\$478.08
Natural Resources & Mining	39	355	339	329	3,216,383	725.55
Construction	26	144	156	150	1,036,618	531.60
Manufacturing	21	914	884	888	6,151,545	528.51
Trade, Transportation & Utilities	139	1,275	1,297	1,297	7,929,339	472.95
Wholesale Trade	26	262	259	261	2,407,912	710.58
Retail Trade	90	900	925	927	4,361,660	365.75
Transportation, Warehousing & Utilities	23	113	113	109	1,159,767	798.92
Information	9	87	88	89	591,976	517.46
Financial Activities	42	275	281	274	2,460,877	684.21
Professional & Business Services	43	352	354	326	2,215,814	495.49
Education & Health Services	58	789	782	801	3,911,866	380.58
Leisure & Hospitality	44	560	576	548	1,271,781	174.28
Other Services	27	83	82	83	336,307	312.94
Local Government	23	1,247	1,258	1,264	8,126,307	497.56
State Government	17	844	830	823	5,684,973	525.40

**TABLE 6. COUNTY SUMMARY
EMPLOYMENT AND TOTAL EARNINGS, BY INDUSTRY
FOURTH QUARTER 2005**

NORTH AMERICAN INDUSTRY CLASSIFICATION SYSTEM INDUSTRY GROUP	NUMBER OF EMPLOYING UNITS	EMPLOYMENT			TOTAL EARNINGS	AVERAGE WEEKLY EARNINGS
		OCTOBER	NOVEMBER	DECEMBER	OCT. – DEC. 2005	
FAULKNER COUNTY - TOTAL	2,325	36,414	36,567	36,729	\$286,783,140	\$603.23
Natural Resources & Mining	10	41	40	42	425,816	798.90
Construction	325	2,711	2,780	2,850	24,164,635	668.56
Manufacturing	119	5,269	5,185	5,245	49,399,161	726.15
Trade, Transportation & Utilities	580	6,265	6,400	6,420	36,096,669	436.47
Wholesale Trade	138	752	739	752	6,471,753	665.84
Retail Trade	372	4,872	5,011	5,007	23,389,415	362.50
Transportation, Warehousing & Utilities	70	641	650	661	6,235,501	737.17
Information	39	339	336	343	2,588,307	586.74
Financial Activities	282	1,338	1,343	1,366	10,989,920	626.67
Professional & Business Services	318	5,047	5,094	5,147	62,151,192	938.16
Education & Health Services	274	4,820	4,821	4,881	40,329,951	640.88
Leisure & Hospitality	176	3,762	3,727	3,676	9,282,394	191.86
Other Services	142	566	568	577	2,937,007	396.13
Local Government	41	3,229	3,261	3,181	24,463,595	583.75
State Government	19	3,027	3,012	3,001	23,954,493	611.50
FRANKLIN COUNTY - TOTAL	319	4,272	4,237	4,255	\$28,068,349	\$507.47
Natural Resources & Mining	8	130	131	140	1,704,845	981.11
Construction	26	155	142	142	1,004,547	528.06
Manufacturing	22	1,043	998	996	7,448,185	565.96
Trade, Transportation & Utilities	93	840	839	848	5,372,952	490.67
Wholesale Trade	15	57	52	58	222,788	307.86
Retail Trade	56	478	478	479	2,075,172	333.72
Transportation, Warehousing & Utilities	22	305	309	311	3,074,992	767.15
Information	7	46	49	54	247,826	383.83
Financial Activities	27	194	199	207	1,153,496	443.65
Professional & Business Services	20	57	51	54	492,754	701.93
Education & Health Services	40	518	522	520	3,185,625	471.25
Leisure & Hospitality	27	329	333	325	748,407	174.98
Other Services	20	57	55	59	311,073	419.80
Local Government	19	789	794	795	5,503,670	534.09
State Government	10	114	124	115	894,969	585.07

**TABLE 6. COUNTY SUMMARY
EMPLOYMENT AND TOTAL EARNINGS, BY INDUSTRY
FOURTH QUARTER 2005**

NORTH AMERICAN INDUSTRY CLASSIFICATION SYSTEM INDUSTRY GROUP	NUMBER OF EMPLOYING UNITS	EMPLOYMENT			TOTAL EARNINGS	AVERAGE
		OCTOBER	NOVEMBER	DECEMBER	OCT. - DEC. 2005	WEEKLY EARNINGS
FULTON COUNTY - TOTAL	207	1,909	1,913	1,897	\$9,507,268	\$383.63
Construction	14	31	31	29	176,254	446.97
Manufacturing	12	137	138	139	604,002	336.68
Trade, Transportation & Utilities	61	374	368	360	2,062,706	431.95
Retail Trade	41	201	196	189	661,571	260.53
Other Trade, Transportation & Utilities	20	173	172	171	1,401,135	626.63
Financial Activities	18	104	97	99	683,622	525.86
Professional & Business Services	16	43	46	44	286,816	497.66
Education & Health Services	30	413	409	410	1,699,380	318.32
Leisure & Hospitality	17	145	155	147	350,181	180.79
Local Government	13	502	515	514	2,780,344	419.08
State Government	11	97	92	91	613,055	505.27
Other	15	63	62	64	250,908	306.36
GARLAND COUNTY - TOTAL	3,059	35,615	35,658	35,830	\$248,861,682	\$536.21
Natural Resources & Mining	49	337	347	356	3,218,590	714.18
Construction	418	2,357	2,349	2,359	16,686,619	545.05
Manufacturing	126	3,340	3,365	3,403	27,479,163	627.36
Trade, Transportation & Utilities	703	7,267	7,444	7,543	45,520,679	472.04
Wholesale Trade	140	1,073	1,077	1,078	9,383,772	670.84
Retail Trade	489	5,470	5,620	5,693	29,211,556	401.66
Transportation, Warehousing & Utilities	74	724	747	772	6,925,351	712.51
Information	38	422	433	439	3,244,988	578.70
Financial Activities	353	1,564	1,544	1,565	12,876,813	635.90
Professional & Business Services	394	2,663	2,612	2,624	19,164,454	559.89
Education & Health Services	335	6,905	6,852	6,820	65,339,903	732.78
Leisure & Hospitality	360	5,745	5,581	5,623	19,386,736	263.96
Other Services	222	942	952	937	4,772,680	389.05
Local Government	36	3,150	3,246	3,248	24,370,459	583.16
State Government	25	923	933	913	6,800,598	566.76

**TABLE 6. COUNTY SUMMARY
EMPLOYMENT AND TOTAL EARNINGS, BY INDUSTRY
FOURTH QUARTER 2005**

NORTH AMERICAN INDUSTRY CLASSIFICATION SYSTEM INDUSTRY GROUP	NUMBER OF EMPLOYING UNITS	EMPLOYMENT			TOTAL EARNINGS	AVERAGE WEEKLY EARNINGS
		OCTOBER	NOVEMBER	DECEMBER	OCT. – DEC. 2005	
GRANT COUNTY - TOTAL	288	3,538	3,536	3,564	\$24,286,383	\$526.84
Natural Resources & Mining	25	217	206	209	1,991,520	727.19
Construction	34	238	248	252	1,809,849	565.93
Manufacturing	20	851	835	831	6,456,659	591.97
Trade, Transportation & Utilities	86	562	561	571	3,903,190	531.72
Wholesale Trade	17	148	145	153	1,866,801	965.92
Retail Trade	39	352	355	354	1,576,231	342.83
Transportation, Warehousing & Utilities	30	62	61	64	460,158	567.86
Information	3	38	38	39	281,842	565.57
Financial Activities	19	101	100	104	808,582	611.79
Professional & Business Services	21	87	89	88	750,646	656.16
Education & Health Services	23	224	222	230	1,240,229	423.38
Leisure & Hospitality	23	286	305	296	776,673	202.07
Other Services	15	37	38	34	153,630	325.26
Local Government	10	843	837	851	5,715,384	521.11
State Government	9	54	57	59	398,179	540.51
GREENE COUNTY - TOTAL	861	15,024	15,109	15,150	\$102,899,478	\$524.39
Natural Resources & Mining	36	223	203	179	2,087,059	796.08
Construction	76	400	382	371	2,405,474	481.45
Manufacturing	57	5,334	5,428	5,505	46,563,092	660.56
Trade, Transportation & Utilities	236	2,181	2,188	2,179	12,303,039	433.59
Wholesale Trade	52	395	398	392	3,307,776	644.16
Retail Trade	156	1,587	1,586	1,594	7,331,462	354.91
Transportation, Warehousing & Utilities	28	199	204	193	1,663,801	644.22
Information	14	126	130	133	600,246	356.09
Financial Activities	87	470	466	468	3,895,859	640.35
Professional & Business Services	90	1,427	1,486	1,447	8,029,150	424.97
Education & Health Services	105	1,704	1,691	1,708	10,765,902	486.86
Leisure & Hospitality	65	1,138	1,155	1,137	2,603,497	175.16
Other Services	53	171	171	181	894,622	394.74
Local Government	31	1,603	1,564	1,603	10,702,678	517.79
State Government	11	247	245	239	2,048,860	646.80

**TABLE 6. COUNTY SUMMARY
EMPLOYMENT AND TOTAL EARNINGS, BY INDUSTRY
FOURTH QUARTER 2005**

NORTH AMERICAN INDUSTRY CLASSIFICATION SYSTEM INDUSTRY GROUP	NUMBER OF EMPLOYING UNITS	EMPLOYMENT			TOTAL EARNINGS	AVERAGE WEEKLY EARNINGS
		OCTOBER	NOVEMBER	DECEMBER	OCT. – DEC. 2005	
HEMPSTEAD COUNTY - TOTAL	501	8,358	8,348	8,413	\$56,669,805	\$520.63
Natural Resources & Mining	19	215	214	220	1,673,852	595.18
Construction	36	157	164	171	981,547	460.39
Manufacturing	31	2,741	2,765	2,757	22,789,501	636.47
Trade, Transportation & Utilities	138	1,266	1,268	1,270	7,292,996	442.43
Wholesale Trade	26	179	183	178	1,046,457	447.20
Retail Trade	87	892	893	896	3,864,094	332.60
Transportation, Warehousing & Utilities	25	195	192	196	2,382,445	943.04
Information	11	83	83	82	573,599	533.75
Financial Activities	44	265	265	263	2,091,672	608.69
Professional & Business Services	35	262	228	249	935,738	292.21
Education & Health Services	62	980	986	994	6,058,666	472.35
Leisure & Hospitality	42	596	591	605	1,504,930	193.80
Other Services	37	210	211	215	1,355,375	491.79
Local Government	29	1,052	1,057	1,075	7,413,549	537.32
State Government	17	531	516	512	3,998,380	591.86
HOT SPRING COUNTY - TOTAL	615	7,749	7,815	7,814	\$58,025,984	\$572.79
Natural Resources & Mining	38	173	182	176	1,460,573	634.76
Construction	68	349	350	332	2,531,522	566.63
Manufacturing	45	1,643	1,636	1,645	16,003,958	750.04
Trade, Transportation & Utilities	170	1,423	1,440	1,445	13,149,739	704.40
Wholesale Trade	20	96	98	100	4,905,865	3850.76
Retail Trade	102	946	955	963	4,656,258	375.18
Transportation, Warehousing & Utilities	48	381	387	382	3,587,616	719.92
Information	9	69	69	71	612,751	676.57
Financial Activities	56	300	305	303	2,174,237	552.58
Professional & Business Services	53	248	248	247	1,643,884	510.58
Education & Health Services	48	1,009	1,006	996	6,721,514	515.15
Leisure & Hospitality	46	544	571	623	1,346,086	178.73
Other Services	41	280	280	282	1,190,321	326.23
Local Government	26	1,112	1,138	1,136	7,562,667	515.43
State Government	15	599	590	558	3,628,732	479.34

**TABLE 6. COUNTY SUMMARY
EMPLOYMENT AND TOTAL EARNINGS, BY INDUSTRY
FOURTH QUARTER 2005**

NORTH AMERICAN INDUSTRY CLASSIFICATION SYSTEM INDUSTRY GROUP	NUMBER OF EMPLOYING UNITS	EMPLOYMENT			TOTAL EARNINGS	AVERAGE WEEKLY EARNINGS
		OCTOBER	NOVEMBER	DECEMBER	OCT. – DEC. 2005	
HOWARD COUNTY - TOTAL	356	7,367	7,421	7,523	\$48,593,956	\$502.62
Natural Resources & Mining	20	243	244	245	1,828,010	576.30
Construction	24	94	96	92	594,448	486.45
Manufacturing	24	3,965	3,977	4,074	29,205,375	560.89
Trade, Transportation & Utilities	110	935	941	963	5,547,488	450.93
Wholesale Trade	20	103	101	106	868,614	646.61
Retail Trade	66	637	647	664	2,938,114	348.06
Transportation, Warehousing & Utilities	24	195	193	193	1,740,760	691.42
Information	8	36	36	36	228,414	488.06
Financial Activities	33	136	141	140	913,988	505.80
Professional & Business Services	28	104	110	114	680,647	478.88
Education & Health Services	40	621	639	637	3,016,952	367.01
Leisure & Hospitality	20	287	285	277	652,163	177.27
Other Services	19	110	107	107	527,385	375.63
Local Government	18	712	716	706	4,495,732	486.17
State Government	12	124	129	132	903,354	541.47
INDEPENDENCE COUNTY - TOTAL	913	16,559	16,680	16,609	\$115,306,378	\$533.81
Natural Resources & Mining	12	129	133	129	1,049,896	619.65
Construction	72	420	411	420	3,018,701	556.85
Manufacturing	55	5,038	4,981	4,980	39,633,490	609.79
Trade, Transportation & Utilities	282	3,033	3,094	3,118	21,679,082	541.14
Wholesale Trade	54	513	521	522	4,347,521	644.78
Retail Trade	174	1,737	1,772	1,772	8,564,270	374.24
Transportation, Warehousing & Utilities	54	783	801	824	8,767,291	840.21
Information	12	161	158	160	1,069,901	515.45
Financial Activities	86	469	475	475	3,487,542	567.17
Professional & Business Services	90	1,070	1,099	1,003	4,859,459	353.54
Education & Health Services	110	2,713	2,732	2,759	22,789,876	641.05
Leisure & Hospitality	68	1,129	1,167	1,135	2,578,289	173.42
Other Services	66	333	340	346	1,658,095	375.50
Local Government	43	1,581	1,621	1,623	10,039,586	480.17
State Government	17	483	469	461	3,442,461	562.22

**TABLE 6. COUNTY SUMMARY
EMPLOYMENT AND TOTAL EARNINGS, BY INDUSTRY
FOURTH QUARTER 2005**

NORTH AMERICAN INDUSTRY CLASSIFICATION SYSTEM INDUSTRY GROUP	NUMBER OF EMPLOYING UNITS	EMPLOYMENT			TOTAL EARNINGS	AVERAGE WEEKLY EARNINGS
		OCTOBER	NOVEMBER	DECEMBER	OCT. – DEC. 2005	
IZARD COUNTY - TOTAL	245	2,893	2,903	2,893	17,548,919	\$466.08
Natural Resources & Mining	4	86	87	75	721,323	671.21
Construction	22	76	71	65	350,405	381.43
Manufacturing	13	346	359	378	3,073,534	654.92
Trade, Transportation & Utilities	66	514	513	519	3,012,078	449.61
Retail Trade	50	409	409	415	1,930,644	361.34
Other Trade, Transportation & Utilities	16	105	104	104	1,081,434	797.32
Information	3	8	8	8	39,089	375.86
Financial Activities	26	151	144	147	1,236,573	645.62
Professional & Business Services	22	82	80	75	352,344	343.08
Education & Health Services	22	427	433	426	2,376,687	426.49
Leisure & Hospitality	25	185	186	175	374,723	158.38
Other Services	13	43	43	47	182,857	317.28
Local Government	18	565	569	541	3,112,031	428.75
State Government	11	410	410	437	2,717,275	498.86
JACKSON COUNTY - TOTAL	521	5,821	5,638	5,656	\$39,211,792	\$528.71
Natural Resources & Mining	46	234	226	192	1,481,846	524.49
Construction	27	188	192	192	1,527,671	616.33
Manufacturing	26	998	985	1,003	8,642,974	667.96
Trade, Transportation & Utilities	136	1,145	1,175	1,174	7,714,468	509.52
Wholesale Trade	40	183	203	217	2,253,723	862.50
Retail Trade	77	707	740	724	3,420,229	363.56
Transportation, Warehousing & Utilities	19	255	232	233	2,040,516	654.01
Information	5	39	39	37	291,706	585.36
Financial Activities	45	192	194	197	1,335,703	528.71
Professional & Business Services	39	126	173	221	1,140,241	506.02
Education & Health Services	72	1,091	884	876	7,386,718	597.91
Leisure & Hospitality	37	326	312	312	826,633	200.80
Other Services	39	101	100	100	431,176	330.57
Local Government	35	753	747	741	4,272,460	439.96
State Government	14	628	611	611	4,160,196	518.94

**TABLE 6. COUNTY SUMMARY
EMPLOYMENT AND TOTAL EARNINGS, BY INDUSTRY
FOURTH QUARTER 2005**

NORTH AMERICAN INDUSTRY CLASSIFICATION SYSTEM INDUSTRY GROUP	NUMBER OF EMPLOYING UNITS	EMPLOYMENT			TOTAL EARNINGS	AVERAGE WEEKLY EARNINGS
		OCTOBER	NOVEMBER	DECEMBER	OCT. – DEC. 2005	
JEFFERSON COUNTY - TOTAL	1,784	32,714	32,828	32,770	\$253,741,667	\$595.61
Natural Resources & Mining	40	569	546	482	4,436,997	641.15
Construction	130	1,457	1,468	1,487	15,168,571	793.39
Manufacturing	72	6,237	6,265	6,253	63,268,004	778.48
Trade, Transportation & Utilities	493	5,956	6,040	6,093	41,218,294	525.84
Wholesale Trade	87	1,048	1,037	1,056	9,898,474	727.24
Retail Trade	339	3,978	4,073	4,077	20,274,934	385.79
Transportation, Warehousing & Utilities	67	930	930	960	11,044,886	903.84
Information	19	207	206	219	1,525,566	557.05
Financial Activities	154	1,232	1,218	1,232	10,671,474	668.83
Professional & Business Services	175	1,999	1,958	1,886	15,255,422	602.51
Education & Health Services	314	5,394	5,449	5,407	42,981,228	610.38
Leisure & Hospitality	142	2,193	2,208	2,176	5,684,389	199.45
Other Services	164	769	777	792	4,711,707	465.06
Local Government	42	3,481	3,524	3,525	24,557,839	538.20
State Government	39	3,220	3,169	3,218	24,262,176	582.80
JOHNSON COUNTY - TOTAL	455	8,471	8,551	8,662	\$54,030,440	\$485.46
Natural Resources & Mining	16	201	200	203	1,569,816	599.78
Construction	34	165	158	163	970,675	460.91
Manufacturing	41	3,191	3,210	3,246	21,129,146	505.44
Trade, Transportation & Utilities	127	1,712	1,741	1,765	10,479,317	463.45
Information	6	33	34	34	266,912	609.85
Financial Activities	38	217	218	221	1,571,057	552.67
Professional & Business Services	48	162	169	174	1,240,256	566.76
Education & Health Services	53	1,089	1,108	1,118	7,718,634	537.32
Leisure & Hospitality	39	520	531	525	1,309,690	191.77
Other Services	29	82	85	87	436,654	396.72
Local Government	14	950	952	986	6,264,552	500.58
State Government	10	149	145	140	1,073,731	570.93

**TABLE 6. COUNTY SUMMARY
EMPLOYMENT AND TOTAL EARNINGS, BY INDUSTRY
FOURTH QUARTER 2005**

NORTH AMERICAN INDUSTRY CLASSIFICATION SYSTEM INDUSTRY GROUP	NUMBER OF EMPLOYING UNITS	EMPLOYMENT			TOTAL EARNINGS	AVERAGE WEEKLY EARNINGS
		OCTOBER	NOVEMBER	DECEMBER	OCT. – DEC. 2005	
LAFAYETTE COUNTY - TOTAL	162	1,548	1,539	1,554	\$9,244,274	\$459.66
Natural Resources & Mining	32	209	204	202	1,409,068	528.73
Trade, Transportation & Utilities	39	234	236	240	1,197,040	389.07
Retail Trade	22	162	166	167	557,627	259.97
Other Trade, Transportation & Utilities	17	72	70	73	639,413	686.31
Financial Activities	17	83	88	88	537,240	478.68
Professional & Business Services	12	56	53	53	505,067	719.47
Education & Health Services	12	218	218	221	1,033,908	363.16
Leisure & Hospitality	5	49	53	56	163,142	238.28
Other Services	7	75	74	80	330,064	332.61
Local Government	13	382	383	387	2,061,500	412.96
State Government	8	57	54	52	381,240	539.75
Other	17	185	176	175	1,626,005	700.06
LAWRENCE COUNTY - TOTAL	413	4,272	4,277	4,252	\$25,024,700	\$451.13
Natural Resources & Mining	34	161	151	146	1,097,888	553.19
Construction	28	98	90	92	731,356	602.77
Manufacturing	24	651	631	604	4,024,732	492.46
Trade, Transportation & Utilities	132	991	985	989	5,598,069	435.70
Wholesale Trade	25	207	204	203	1,596,160	599.91
Retail Trade	71	657	655	660	2,817,379	329.70
Transportation, Warehousing & Utilities	36	127	126	126	1,184,530	721.25
Information	6	19	23	23	176,862	627.91
Financial Activities	30	140	140	141	868,223	475.91
Professional & Business Services	24	121	118	124	935,008	594.41
Education & Health Services	45	419	430	414	2,621,267	478.95
Leisure & Hospitality	25	299	318	312	571,835	142.05
Other Services	26	70	71	75	317,611	339.33
Local Government	28	1,189	1,210	1,216	7,328,247	467.81
State Government	11	114	110	116	753,602	511.49

**TABLE 6. COUNTY SUMMARY
EMPLOYMENT AND TOTAL EARNINGS, BY INDUSTRY
FOURTH QUARTER 2005**

NORTH AMERICAN INDUSTRY CLASSIFICATION SYSTEM INDUSTRY GROUP	NUMBER OF EMPLOYING UNITS	EMPLOYMENT			TOTAL EARNINGS	AVERAGE
		OCTOBER	NOVEMBER	DECEMBER	OCT. - DEC. 2005	WEEKLY EARNINGS
LEE COUNTY - TOTAL	229	2,185	2,121	2,103	\$13,566,425	\$488.49
Natural Resources & Mining	32	312	266	253	1,919,534	533.06
Construction	7	13	12	12	66,469	414.57
Trade, Transportation & Utilities	55	360	362	366	2,289,928	485.70
Wholesale Trade	9	73	73	72	658,836	697.43
Retail Trade	29	196	201	201	846,490	326.66
Transportation, Warehousing & Utilities	17	91	88	93	784,602	665.67
Financial Activities	13	80	82	83	580,594	546.87
Professional & Business Services	18	63	65	66	577,720	687.22
Education & Health Services	43	304	298	297	1,799,721	461.98
Leisure & Hospitality	8	83	83	72	155,223	150.51
Local Government	16	407	401	405	2,516,331	478.72
State Government	8	423	415	415	2,824,088	520.12
Other	29	140	137	134	836,817	469.86
LINCOLN COUNTY - TOTAL	211	2,996	2,936	2,818	\$19,040,846	\$502.18
Natural Resources & Mining	33	255	242	223	1,716,121	550.04
Construction	13	62	63	64	396,291	483.87
Manufacturing	9	445	443	342	3,235,354	607.01
Trade, Transportation & Utilities	45	321	321	317	2,384,082	573.69
Wholesale Trade	6	30	29	29	300,656	788.43
Retail Trade	23	154	154	153	614,004	307.36
Transportation, Warehousing & Utilities	16	137	138	135	1,469,422	827.07
Financial Activities	22	80	79	80	523,199	505.18
Professional & Business Services	13	25	24	23	167,491	536.83
Education & Health Services	23	302	302	300	1,564,979	399.50
Leisure & Hospitality	15	134	136	131	295,107	169.83
Local & State Government	22	1,323	1,278	1,291	8,518,567	505.09
Other	16	49	48	47	239,655	384.06

**TABLE 6. COUNTY SUMMARY
EMPLOYMENT AND TOTAL EARNINGS, BY INDUSTRY
FOURTH QUARTER 2005**

NORTH AMERICAN INDUSTRY CLASSIFICATION SYSTEM INDUSTRY GROUP	NUMBER OF EMPLOYING UNITS	EMPLOYMENT			TOTAL EARNINGS	AVERAGE
		OCTOBER	NOVEMBER	DECEMBER	OCT. - DEC. 2005	WEEKLY EARNINGS
LITTLE RIVER COUNTY - TOTAL	249	4,554	4,521	4,550	\$45,018,047	\$762.48
Natural Resources & Mining	12	73	73	73	595,088	627.07
Trade, Transportation & Utilities	70	1,148	1,149	1,166	10,105,487	673.41
Wholesale Trade	11	46	45	45	432,916	734.59
Retail Trade	41	339	349	347	1,592,575	355.09
Transportation, Warehousing & Utilities	18	763	755	774	8,079,996	813.53
Information	3	9	10	11	72,719	559.38
Financial Activities	23	102	106	107	785,237	575.27
Professional & Business Services	20	161	149	143	774,627	394.61
Education & Health Services	16	159	151	156	856,439	424.12
Leisure & Hospitality	21	224	213	209	525,230	187.63
Other Services	13	97	100	100	330,036	256.44
Local Government	20	778	791	783	5,023,516	492.89
State Government	12	79	79	80	542,923	526.43
Other	39	1,724	1,700	1,722	25,406,745	1139.35
LOGAN COUNTY - TOTAL	464	5,718	5,716	5,682	\$35,576,752	\$479.67
Natural Resources & Mining	14	90	93	89	780,197	661.93
Construction	51	157	159	163	1,015,497	489.24
Manufacturing	26	1,759	1,760	1,750	12,367,359	541.66
Trade, Transportation & Utilities	119	832	833	828	4,211,057	389.80
Wholesale Trade	19	43	42	44	235,576	421.42
Retail Trade	74	713	714	710	3,360,915	362.94
Transportation, Warehousing & Utilities	26	76	77	74	614,566	624.77
Information	8	43	41	45	444,197	794.63
Financial Activities	43	242	245	246	2,204,258	693.96
Professional & Business Services	45	147	139	131	816,560	451.89
Education & Health Services	57	771	774	759	4,393,254	440.03
Leisure & Hospitality	31	311	313	313	740,267	182.32
Other Services	32	91	86	85	430,487	379.17
Local & State Government	38	1,275	1,273	1,273	8,173,619	493.65

**TABLE 6. COUNTY SUMMARY
EMPLOYMENT AND TOTAL EARNINGS, BY INDUSTRY
FOURTH QUARTER 2005**

NORTH AMERICAN INDUSTRY CLASSIFICATION SYSTEM INDUSTRY GROUP	NUMBER OF EMPLOYING UNITS	EMPLOYMENT			TOTAL EARNINGS	AVERAGE WEEKLY EARNINGS
		OCTOBER	NOVEMBER	DECEMBER	OCT. – DEC. 2005	
LONOKE COUNTY - TOTAL	1,176	11,653	11,804	11,789	\$81,289,485	\$532.23
Natural Resources & Mining	74	499	456	402	4,569,002	777.00
Construction	163	843	822	856	8,313,457	761.00
Manufacturing	40	1,424	1,426	1,341	12,731,156	701.02
Trade, Transportation & Utilities	324	2,506	2,538	2,600	15,806,730	477.20
Wholesale Trade	74	422	411	420	4,277,923	787.88
Retail Trade	180	1,826	1,880	1,935	9,517,537	389.36
Transportation, Warehousing & Utilities	70	258	247	245	2,011,270	618.85
Information	16	110	109	105	1,271,638	905.73
Financial Activities	117	579	592	599	5,512,661	718.73
Professional & Business Services	149	456	461	468	3,686,119	614.18
Education & Health Services	104	1,292	1,312	1,318	8,141,363	479.04
Leisure & Hospitality	80	1,114	1,244	1,259	2,888,736	184.31
Other Services	65	199	192	189	1,102,709	438.74
Local Government	28	2,485	2,526	2,519	16,366,837	501.59
State Government	16	146	126	133	899,077	512.29
MADISON COUNTY - TOTAL	242	3,114	3,140	3,159	\$20,066,557	\$491.95
Natural Resources & Mining	12	59	57	64	388,052	497.50
Construction	46	152	149	153	959,691	487.81
Manufacturing	20	1,060	1,075	1,092	7,909,613	565.63
Trade, Transportation & Utilities	62	589	603	596	3,111,616	401.60
Wholesale Trade	13	42	40	41	328,351	616.04
Retail Trade	35	426	437	431	1,909,788	340.59
Transportation, Warehousing & Utilities	14	121	126	124	873,477	543.32
Information	4	36	35	35	491,974	1071.06
Financial Activities	15	92	95	94	686,254	563.58
Professional & Business Services	17	90	87	82	510,999	455.30
Education & Health Services	22	240	237	232	1,192,500	388.14
Leisure & Hospitality	13	122	122	124	213,344	133.79
Other Services	15	28	27	26	168,411	479.80
Local Government	8	597	606	616	4,081,613	517.82
State Government	8	49	47	45	352,490	576.91

**TABLE 6. COUNTY SUMMARY
EMPLOYMENT AND TOTAL EARNINGS, BY INDUSTRY
FOURTH QUARTER 2005**

NORTH AMERICAN INDUSTRY CLASSIFICATION SYSTEM INDUSTRY GROUP	NUMBER OF EMPLOYING UNITS	EMPLOYMENT			TOTAL EARNINGS	AVERAGE WEEKLY EARNINGS
		OCTOBER	NOVEMBER	DECEMBER	OCT. – DEC. 2005	
MARION COUNTY - TOTAL	282	4,047	4,081	4,059	\$23,097,374	\$437.36
Natural Resources & Mining	5	45	52	51	252,224	393.28
Construction	17	46	47	47	226,081	372.66
Manufacturing	25	1,695	1,714	1,706	10,599,284	478.20
Trade, Transportation & Utilities	60	676	692	688	3,094,429	347.32
Retail Trade	38	528	540	543	2,069,630	296.47
Other Trade, Transportation & Utilities	22	148	152	145	1,024,799	531.44
Financial Activities	34	182	178	175	1,190,130	513.36
Professional & Business Services	24	38	37	36	300,711	625.18
Education & Health Services	25	337	334	347	1,806,088	409.42
Leisure & Hospitality	44	290	269	262	657,839	184.91
Local Government	20	535	557	550	3,308,870	465.03
State Government	8	114	110	109	700,770	485.63
Other	20	89	91	88	960,948	827.45
MILLER COUNTY - TOTAL	823	12,869	12,776	12,930	\$100,154,377	\$599.16
Natural Resources & Mining	28	149	146	149	1,125,875	585.17
Construction	83	803	774	759	5,902,086	583.06
Manufacturing	38	2,841	2,836	2,813	37,781,745	1026.96
Trade, Transportation & Utilities	239	2,792	2,856	2,927	18,990,205	511.06
Wholesale Trade	65	621	613	623	6,305,959	783.64
Retail Trade	134	1,570	1,609	1,622	6,899,499	331.64
Transportation, Warehousing & Utilities	40	601	634	682	5,784,747	696.37
Information	8	94	92	94	1,858,014	1531.33
Financial Activities	84	407	380	379	3,572,033	706.96
Professional & Business Services	84	846	840	890	4,602,070	412.27
Education & Health Services	76	986	966	977	6,471,282	509.86
Leisure & Hospitality	81	1,372	1,367	1,389	3,904,345	218.27
Other Services	63	331	332	338	1,207,804	278.45
Local Government	22	1,811	1,768	1,792	11,246,139	483.20
State Government	17	437	419	423	3,492,779	630.20

**TABLE 6. COUNTY SUMMARY
EMPLOYMENT AND TOTAL EARNINGS, BY INDUSTRY
FOURTH QUARTER 2005**

NORTH AMERICAN INDUSTRY CLASSIFICATION SYSTEM INDUSTRY GROUP	NUMBER OF EMPLOYING UNITS	EMPLOYMENT			TOTAL EARNINGS	AVERAGE WEEKLY EARNINGS
		OCTOBER	NOVEMBER	DECEMBER	OCT. – DEC. 2005	
MISSISSIPPI COUNTY - TOTAL	1,116	19,089	18,810	18,638	\$155,848,425	\$636.13
Natural Resources & Mining	104	1,277	1,126	836	7,201,063	513.05
Construction	55	404	383	404	3,430,665	664.73
Manufacturing	59	5,195	5,224	5,284	70,594,759	1037.45
Trade, Transportation & Utilities	298	3,039	3,040	3,106	21,029,929	528.37
Wholesale Trade	65	580	590	597	6,019,914	786.20
Retail Trade	186	1,891	1,884	1,938	8,989,074	363.10
Transportation, Warehousing & Utilities	47	568	566	571	6,020,941	814.93
Financial Activities	104	590	593	601	4,157,212	537.76
Professional & Business Services	97	1,176	1,065	1,041	7,572,828	532.47
Education & Health Services	156	1,625	1,607	1,612	11,219,722	534.51
Leisure & Hospitality	80	1,142	1,155	1,128	2,853,879	192.29
Local Government	46	2,426	2,451	2,464	13,741,704	431.98
State Government	25	640	648	623	4,105,589	495.78
Other	92	1,575	1,518	1,539	9,941,075	495.27
MONROE COUNTY - TOTAL	301	2,610	2,523	2,486	\$14,195,145	\$429.95
Natural Resources & Mining	33	190	167	151	952,904	432.88
Construction	16	41	33	37	156,198	324.74
Manufacturing	9	155	100	101	818,417	530.52
Trade, Transportation & Utilities	92	707	685	674	4,707,877	525.86
Wholesale Trade	23	194	191	171	1,622,590	673.46
Retail Trade	41	336	336	344	1,737,145	394.57
Transportation, Warehousing & Utilities	28	177	158	159	1,348,142	629.78
Financial Activities	16	99	100	102	781,671	599.29
Professional & Business Services	15	34	39	36	229,564	486.02
Education & Health Services	35	387	392	389	1,712,928	338.43
Leisure & Hospitality	28	277	269	273	615,170	173.34
Local Government	22	471	487	485	2,928,658	468.36
State Government	9	119	122	111	752,554	493.37
Other	26	130	129	127	539,204	322.36

**TABLE 6. COUNTY SUMMARY
EMPLOYMENT AND TOTAL EARNINGS, BY INDUSTRY
FOURTH QUARTER 2005**

NORTH AMERICAN INDUSTRY CLASSIFICATION SYSTEM INDUSTRY GROUP	NUMBER OF EMPLOYING UNITS	EMPLOYMENT			TOTAL EARNINGS	AVERAGE WEEKLY EARNINGS
		OCTOBER	NOVEMBER	DECEMBER	OCT. – DEC. 2005	
MONTGOMERY COUNTY - TOTAL	180	1,687	1,648	1,617	\$8,819,429	\$411.00
Natural Resources & Mining	14	62	63	64	482,425	589.04
Construction	23	122	114	120	755,350	489.64
Trade, Transportation & Utilities	48	226	221	223	1,158,175	398.91
Wholesale Trade	12	72	73	69	399,885	431.22
Retail Trade	27	131	126	130	634,907	378.60
Transportation, Warehousing & Utilities	9	23	22	24	123,383	412.65
Financial Activities	10	75	67	66	553,118	613.67
Education & Health Services	12	58	58	59	240,754	317.48
Leisure & Hospitality	21	236	210	166	877,846	331.01
Other Services	12	74	76	74	309,794	319.16
Local Government	9	494	497	498	2,837,483	439.76
State Government	8	54	55	58	377,995	522.33
Other	23	286	287	289	1,226,489	328.35
NEVADA COUNTY - TOTAL	196	2,703	2,730	2,728	\$17,836,317	\$504.36
Natural Resources & Mining	15	57	57	59	435,203	580.53
Construction	15	43	36	44	248,459	466.15
Manufacturing	9	858	867	870	8,071,117	717.75
Trade, Transportation & Utilities	48	491	491	488	2,542,641	399.16
Retail Trade	31	295	302	303	976,825	250.47
Other Trade, Transportation & Utilities	17	196	189	185	1,565,816	633.93
Financial Activities	12	62	63	64	578,298	706.10
Education & Health Services	13	393	404	397	2,013,140	389.09
Leisure & Hospitality	16	93	94	98	225,108	182.27
Other Services	17	73	77	77	256,538	260.80
Local Government	27	518	529	520	2,478,433	364.99
State Government	11	75	75	71	540,249	564.13
Other	13	40	37	40	447,131	881.92

**TABLE 6. COUNTY SUMMARY
EMPLOYMENT AND TOTAL EARNINGS, BY INDUSTRY
FOURTH QUARTER 2005**

NORTH AMERICAN INDUSTRY CLASSIFICATION SYSTEM INDUSTRY GROUP	NUMBER OF EMPLOYING UNITS	EMPLOYMENT			TOTAL EARNINGS	AVERAGE WEEKLY EARNINGS
		OCTOBER	NOVEMBER	DECEMBER	OCT. – DEC. 2005	
NEWTON COUNTY - TOTAL	130	1,074	1,068	1,072	\$4,792,012	\$344.07
Natural Resources & Mining	5	13	11	13	30,848	192.40
Construction	7	11	8	8	26,632	227.62
Manufacturing	16	81	78	80	375,257	362.33
Trade, Transportation & Utilities	29	158	160	161	632,089	304.52
Retail Trade	17	107	107	108	352,339	252.51
Other Trade, Transportation & Utilities	12	51	53	53	279,750	411.20
Education & Health Services	14	214	216	223	879,111	310.68
Leisure & Hospitality	20	81	78	68	191,435	194.61
Other Services	5	11	12	11	27,833	188.91
Local Government	13	367	368	369	1,900,239	397.21
State Government	7	89	88	90	414,401	358.17
Other	14	49	49	49	314,167	493.20
OUACHITA COUNTY - TOTAL	626	7,459	7,483	7,549	\$50,830,821	\$521.55
Natural Resources & Mining	44	265	267	268	2,430,519	701.11
Construction	50	303	303	304	2,422,248	614.26
Manufacturing	32	847	848	863	7,778,832	701.77
Trade, Transportation & Utilities	181	1,759	1,771	1,788	11,924,184	517.44
Wholesale Trade	31	259	264	263	2,864,563	841.03
Retail Trade	122	1,086	1,096	1,107	4,869,500	341.66
Transportation, Warehousing & Utilities	28	414	411	418	4,190,121	777.92
Information	8	95	93	91	634,458	524.78
Financial Activities	63	338	331	333	2,543,604	585.81
Professional & Business Services	48	382	422	419	2,315,490	436.91
Education & Health Services	72	1,232	1,224	1,221	8,225,423	516.23
Leisure & Hospitality	35	478	471	479	1,124,730	181.76
Other Services	50	165	166	170	793,522	365.51
Local Government	30	1,311	1,307	1,334	8,200,222	478.84
State Government	13	284	280	279	2,437,589	667.28

**TABLE 6. COUNTY SUMMARY
EMPLOYMENT AND TOTAL EARNINGS, BY INDUSTRY
FOURTH QUARTER 2005**

NORTH AMERICAN INDUSTRY CLASSIFICATION SYSTEM INDUSTRY GROUP	NUMBER OF EMPLOYING UNITS	EMPLOYMENT			TOTAL EARNINGS	AVERAGE
		OCTOBER	NOVEMBER	DECEMBER	OCT. – DEC. 2005	WEEKLY EARNINGS
PERRY COUNTY - TOTAL	154	1,165	1,153	1,168	\$6,333,638	\$419.28
Natural Resources & Mining	8	30	30	30	258,285	662.27
Construction	25	85	79	87	551,750	507.28
Manufacturing	6	72	72	69	477,614	517.46
Trade, Transportation & Utilities	29	181	181	187	881,716	370.62
Retail Trade	18	154	154	159	530,292	262.05
Other Trade, Transportation & Utilities	11	27	27	28	351,424	989.00
Financial Activities	14	50	54	58	700,309	997.59
Professional & Business Services	14	40	34	29	221,019	495.19
Education & Health Services	18	163	162	165	815,407	384.02
Local Government	12	400	401	402	1,697,481	325.62
State Government	9	52	55	53	361,444	521.31
Other	19	92	85	88	368,613	321.00
PHILLIPS COUNTY - TOTAL	698	6,909	6,725	6,638	\$44,178,271	\$502.91
Natural Resources & Mining	71	728	600	509	3,724,830	467.92
Construction	32	112	112	106	745,703	521.47
Manufacturing	12	370	359	355	2,876,350	612.34
Trade, Transportation & Utilities	181	1,530	1,540	1,546	11,654,505	582.65
Wholesale Trade	35	391	380	387	3,278,990	653.45
Retail Trade	108	871	895	892	4,287,389	372.23
Transportation, Warehousing & Utilities	38	268	265	267	4,088,126	1179.27
Information	11	61	61	62	404,032	506.73
Financial Activities	53	290	276	290	1,936,015	521.93
Professional & Business Services	54	243	241	239	2,231,516	712.26
Education & Health Services	157	1,226	1,224	1,225	7,455,472	468.16
Leisure & Hospitality	37	429	392	389	958,492	182.80
Other Services	42	85	84	82	423,774	389.62
Local Government	32	1,331	1,343	1,336	8,217,468	472.90
State Government	16	504	493	499	3,550,114	547.63

**TABLE 6. COUNTY SUMMARY
EMPLOYMENT AND TOTAL EARNINGS, BY INDUSTRY
FOURTH QUARTER 2005**

NORTH AMERICAN INDUSTRY CLASSIFICATION SYSTEM INDUSTRY GROUP	NUMBER OF EMPLOYING UNITS	EMPLOYMENT			TOTAL EARNINGS	AVERAGE WEEKLY EARNINGS
		OCTOBER	NOVEMBER	DECEMBER	OCT. – DEC. 2005	
PIKE COUNTY - TOTAL	263	2,811	2,834	2,859	\$16,695,833	\$453.07
Natural Resources & Mining	33	182	185	192	1,362,175	562.34
Construction	13	102	128	105	1,097,035	755.71
Manufacturing	14	505	508	517	2,731,333	411.97
Trade, Transportation & Utilities	88	546	557	560	3,113,389	432.04
Wholesale Trade	15	94	93	92	731,053	604.68
Retail Trade	46	335	339	345	1,471,523	333.25
Transportation, Warehousing & Utilities	27	117	125	123	910,813	575.86
Information	5	31	31	30	322,275	808.38
Financial Activities	24	172	172	177	1,570,421	695.59
Professional & Business Services	9	35	29	29	142,722	354.15
Education & Health Services	16	226	228	224	1,038,196	353.37
Leisure & Hospitality	21	185	186	180	406,155	170.11
Other Services	16	136	135	136	696,544	394.94
Local Government	13	572	561	588	3,642,243	488.39
State Government	11	119	114	121	573,345	373.76
POINSETT COUNTY - TOTAL	498	6,381	6,391	6,166	\$42,285,769	\$515.27
Natural Resources & Mining	49	432	423	389	2,693,829	499.72
Construction	31	96	94	87	646,539	538.63
Manufacturing	30	1,487	1,463	1,307	12,046,232	653.02
Trade, Transportation & Utilities	137	1,431	1,446	1,430	9,334,361	500.14
Wholesale Trade	33	479	487	459	4,896,715	792.99
Retail Trade	75	799	812	821	3,240,522	307.49
Transportation, Warehousing & Utilities	29	153	147	150	1,197,124	613.91
Information	6	62	61	59	564,239	715.43
Financial Activities	44	338	340	334	2,501,263	570.37
Professional & Business Services	26	102	106	112	950,251	685.28
Education & Health Services	52	622	627	625	3,743,939	461.04
Leisure & Hospitality	48	402	415	400	819,012	155.30
Other Services	32	74	75	76	630,474	646.64
Local Government	30	1,093	1,104	1,113	6,889,085	480.30
State Government	13	242	237	234	1,466,545	474.66

**TABLE 6. COUNTY SUMMARY
EMPLOYMENT AND TOTAL EARNINGS, BY INDUSTRY
FOURTH QUARTER 2005**

NORTH AMERICAN INDUSTRY CLASSIFICATION SYSTEM INDUSTRY GROUP	NUMBER OF EMPLOYING UNITS	EMPLOYMENT			TOTAL EARNINGS	AVERAGE WEEKLY EARNINGS
		OCTOBER	NOVEMBER	DECEMBER	OCT. - DEC. 2005	
POLK COUNTY - TOTAL	534	6,330	6,352	6,386	\$36,348,372	\$439.90
Natural Resources & Mining	26	267	262	262	2,129,046	621.14
Construction	34	208	215	206	1,006,169	369.15
Manufacturing	45	1,373	1,379	1,375	9,203,473	514.63
Trade, Transportation & Utilities	154	1,402	1,436	1,420	7,399,447	401.03
Wholesale Trade	24	146	147	144	755,871	399.16
Retail Trade	87	867	891	879	3,940,587	344.85
Transportation, Warehousing & Utilities	43	389	398	397	2,702,989	526.83
Information	10	55	56	56	370,158	511.50
Financial Activities	40	216	214	216	1,743,632	622.87
Professional & Business Services	47	141	136	139	891,309	494.44
Education & Health Services	69	969	974	978	5,311,579	419.63
Leisure & Hospitality	43	430	425	445	930,344	165.15
Other Services	31	128	128	128	566,034	340.16
Local Government	21	820	812	843	5,105,281	476.02
State Government	14	321	315	318	1,691,900	409.26
POPE COUNTY - TOTAL	1,659	27,564	27,621	27,647	\$211,788,414	\$590.04
Natural Resources & Mining	22	319	289	498	2,563,888	534.96
Construction	174	2,020	2,097	1,917	24,755,452	946.77
Manufacturing	90	5,011	4,991	5,032	41,947,563	643.89
Trade, Transportation & Utilities	477	6,760	6,770	6,807	61,878,875	702.16
Wholesale Trade	104	736	740	752	6,430,315	666.03
Retail Trade	279	3,500	3,527	3,536	16,578,015	362.18
Transportation, Warehousing & Utilities	94	2,524	2,503	2,519	38,870,545	1188.73
Information	21	284	292	286	2,208,339	591.20
Financial Activities	172	796	801	820	6,763,590	645.77
Professional & Business Services	218	2,718	2,671	2,645	17,891,127	513.91
Education & Health Services	182	2,872	2,887	2,814	20,007,064	538.55
Leisure & Hospitality	132	2,415	2,430	2,405	6,012,011	191.36
Other Services	115	487	496	480	2,624,792	414.03
Local Government	40	2,325	2,345	2,341	15,042,902	495.14
State Government	16	1,557	1,552	1,602	10,092,811	494.40

**TABLE 6. COUNTY SUMMARY
EMPLOYMENT AND TOTAL EARNINGS, BY INDUSTRY
FOURTH QUARTER 2005**

NORTH AMERICAN INDUSTRY CLASSIFICATION SYSTEM INDUSTRY GROUP	NUMBER OF EMPLOYING UNITS	EMPLOYMENT			TOTAL EARNINGS	AVERAGE WEEKLY EARNINGS
		OCTOBER	NOVEMBER	DECEMBER	OCT. - DEC. 2005	
PRAIRIE COUNTY - TOTAL	230	1,563	1,510	1,530	\$9,312,415	\$466.87
Natural Resources & Mining	28	132	121	112	920,289	581.85
Trade, Transportation & Utilities	67	371	341	363	1,923,174	412.85
Wholesale Trade	10	54	48	45	378,253	593.80
Retail Trade	37	205	204	231	659,533	237.81
Transportation, Warehousing & Utilities	20	112	89	87	885,388	709.45
Information	4	9	9	9	89,979	769.05
Financial Activities	16	64	60	68	548,636	659.42
Professional & Business Services	16	49	48	50	284,484	446.60
Education & Health Services	21	205	196	199	997,158	383.52
Leisure & Hospitality	19	95	98	101	250,944	196.97
Other Services	14	48	48	49	201,138	320.11
Local Government	15	348	351	341	2,294,915	509.23
State Government	10	52	52	50	349,312	523.44
Other	20	190	186	188	1,452,386	594.27
PULASKI COUNTY - TOTAL	13,597	236,688	238,008	240,032	\$2,279,970,362	\$736.15
Natural Resources & Mining	43	684	677	675	8,631,502	978.33
Construction	1,122	10,382	10,452	10,480	121,378,689	894.50
Manufacturing	431	16,263	16,207	16,143	182,224,773	865.03
Trade, Transportation & Utilities	3,211	51,653	52,708	53,445	464,114,945	678.70
Wholesale Trade	1,078	13,057	13,078	13,112	169,890,983	998.95
Retail Trade	1,740	25,023	25,979	26,541	149,870,060	446.02
Transportation, Warehousing & Utilities	393	13,573	13,651	13,792	144,353,902	812.18
Information	241	8,673	8,705	8,758	105,063,788	927.67
Financial Activities	1,696	16,119	16,216	16,368	203,875,347	966.02
Professional & Business Services	2,618	33,246	33,614	34,474	339,047,890	772.12
Education & Health Services	1,689	33,424	33,386	33,349	366,587,946	844.63
Leisure & Hospitality	1,012	19,333	19,230	19,587	66,480,241	263.83
Other Services	1,231	6,377	6,390	6,441	44,688,917	536.90
Local Government	103	16,778	16,742	16,614	136,342,894	627.59
State Government	200	23,756	23,681	23,698	241,533,430	783.56

**TABLE 6. COUNTY SUMMARY
EMPLOYMENT AND TOTAL EARNINGS, BY INDUSTRY
FOURTH QUARTER 2005**

NORTH AMERICAN INDUSTRY CLASSIFICATION SYSTEM INDUSTRY GROUP	NUMBER OF EMPLOYING UNITS	EMPLOYMENT			TOTAL EARNINGS	AVERAGE WEEKLY EARNINGS
		OCTOBER	NOVEMBER	DECEMBER	OCT. – DEC. 2005	
RANDOLPH COUNTY - TOTAL	401	5,136	5,179	5,128	\$28,836,082	\$430.91
Natural Resources & Mining	21	89	75	71	455,009	446.82
Construction	23	119	117	112	507,350	336.44
Manufacturing	38	1,110	1,091	1,068	7,179,049	506.79
Trade, Transportation & Utilities	101	985	985	972	5,100,286	400.06
Wholesale Trade	22	240	221	200	1,077,302	376.11
Retail Trade	60	593	610	622	2,602,808	329.12
Transportation, Warehousing & Utilities	19	152	154	150	1,420,176	718.71
Information	5	43	44	45	408,199	713.63
Financial Activities	27	149	149	159	885,397	447.09
Professional & Business Services	38	230	228	223	1,096,766	371.66
Education & Health Services	54	800	820	830	5,259,087	495.36
Leisure & Hospitality	32	438	469	441	813,576	139.28
Other Services	27	65	67	69	368,860	423.49
Local Government	23	848	879	872	4,941,010	438.72
State Government	12	260	255	266	1,821,493	538.21
SAINT FRANCIS COUNTY - TOTAL	632	8,465	8,521	8,523	\$52,267,683	\$472.84
Natural Resources & Mining	22	190	170	178	1,267,031	543.48
Construction	41	237	237	229	2,021,405	663.55
Manufacturing	23	1,303	1,349	1,387	9,504,139	543.02
Trade, Transportation & Utilities	189	2,115	2,116	2,108	13,604,856	495.28
Wholesale Trade	33	507	511	496	4,107,643	626.10
Retail Trade	124	1,234	1,245	1,253	6,345,178	392.36
Transportation, Warehousing & Utilities	32	374	360	359	3,152,035	665.50
Information	10	123	123	119	855,867	541.12
Financial Activities	49	286	290	297	1,896,924	501.43
Professional & Business Services	45	166	167	174	1,496,160	681.00
Education & Health Services	111	1,321	1,332	1,322	7,267,658	421.92
Leisure & Hospitality	54	764	776	769	1,907,718	190.66
Other Services	41	131	137	137	489,080	278.68
Local Government	30	1,267	1,260	1,256	8,226,953	501.86
State Government	17	562	564	547	3,729,892	514.49

**TABLE 6. COUNTY SUMMARY
EMPLOYMENT AND TOTAL EARNINGS, BY INDUSTRY
FOURTH QUARTER 2005**

NORTH AMERICAN INDUSTRY CLASSIFICATION SYSTEM INDUSTRY GROUP	NUMBER OF EMPLOYING UNITS	EMPLOYMENT			TOTAL EARNINGS	AVERAGE WEEKLY EARNINGS
		OCTOBER	NOVEMBER	DECEMBER	OCT. – DEC. 2005	
SALINE COUNTY - TOTAL	1,598	19,408	19,474	19,479	\$139,069,762	\$549.91
Natural Resources & Mining	12	38	37	38	607,004	1239.63
Construction	287	1,845	1,844	1,860	15,781,697	656.32
Manufacturing	83	1,828	1,830	1,871	18,860,958	787.22
Trade, Transportation & Utilities	414	4,341	4,374	4,402	31,245,084	549.70
Wholesale Trade	122	548	541	549	8,056,925	1135.10
Retail Trade	248	3,546	3,585	3,604	21,005,801	451.56
Transportation, Warehousing & Utilities	44	247	248	249	2,182,358	676.91
Information	14	108	110	108	674,061	477.16
Financial Activities	148	695	701	706	5,531,353	607.26
Professional & Business Services	196	1,087	1,076	1,088	7,299,494	518.15
Education & Health Services	147	2,524	2,554	2,583	17,308,893	521.39
Leisure & Hospitality	118	2,180	2,167	2,089	6,100,707	218.75
Other Services	128	592	618	610	3,590,466	455.26
Local & State Government	51	4,170	4,163	4,124	32,070,045	594.11
SCOTT COUNTY - TOTAL	179	2,939	2,936	2,948	17,107,613	\$447.46
Natural Resources & Mining	17	178	176	180	1,455,731	629.10
Trade, Transportation & Utilities	43	465	476	477	2,507,714	408.11
Wholesale Trade	8	60	61	65	467,808	580.41
Retail Trade	28	330	337	332	1,415,254	326.92
Transportation, Warehousing & Utilities	7	75	78	80	624,652	618.67
Information	3	10	10	10	69,824	537.11
Financial Activities	15	68	68	68	445,772	504.27
Professional & Business Services	9	10	10	10	49,152	378.09
Education & Health Services	20	329	324	332	1,723,484	403.78
Leisure & Hospitality	18	161	156	159	326,288	158.19
Other Services	9	56	55	55	807,569	1122.66
Local Government	5	363	363	361	2,187,403	464.38
State Government	8	67	65	63	383,342	453.66
Other	32	1,232	1,233	1,233	7,151,334	446.27

**TABLE 6. COUNTY SUMMARY
EMPLOYMENT AND TOTAL EARNINGS, BY INDUSTRY
FOURTH QUARTER 2005**

NORTH AMERICAN INDUSTRY CLASSIFICATION SYSTEM INDUSTRY GROUP	NUMBER OF EMPLOYING UNITS	EMPLOYMENT			TOTAL EARNINGS	AVERAGE WEEKLY EARNINGS
		OCTOBER	NOVEMBER	DECEMBER	OCT. – DEC. 2005	
SEARCY COUNTY - TOTAL	148	1,639	1,620	1,629	\$8,571,786	\$404.69
Construction	5	17	22	22	87,335	330.40
Manufacturing	18	279	276	276	1,613,916	448.19
Trade, Transportation & Utilities	40	301	295	304	1,213,701	311.21
Retail Trade	29	215	212	219	802,548	286.69
Other Trade, Transportation & Utilities	11	86	83	85	411,153	373.55
Financial Activities	16	46	46	43	251,464	429.85
Professional & Business Services	16	33	34	36	171,798	384.91
Education & Health Services	13	268	267	272	1,369,269	391.56
Leisure & Hospitality	10	104	110	100	255,363	187.67
Local Government	9	341	339	337	2,066,936	469.01
State Government	9	188	185	192	1,196,461	488.68
Other	12	62	46	47	345,543	514.46
SEBASTIAN COUNTY - TOTAL	3,561	72,921	73,454	72,946	\$641,622,446	\$675.11
Natural Resources & Mining	63	1,098	1,154	1,202	15,658,738	1046.19
Construction	301	2,789	2,818	2,854	25,836,813	704.69
Manufacturing	220	21,683	21,777	21,212	197,580,599	705.03
Trade, Transportation & Utilities	925	12,402	12,814	12,893	88,441,455	535.56
Wholesale Trade	230	2,393	2,425	2,419	26,120,361	832.91
Retail Trade	575	7,970	8,349	8,401	42,192,798	393.88
Transportation, Warehousing & Utilities	120	2,039	2,040	2,073	20,128,296	755.04
Information	56	1,173	1,180	1,182	12,895,218	841.82
Financial Activities	404	2,454	2,475	2,531	23,962,653	741.27
Professional & Business Services	510	9,560	9,381	9,212	118,530,583	971.59
Education & Health Services	428	9,339	9,364	9,328	88,874,688	731.67
Leisure & Hospitality	304	5,188	5,213	5,277	15,569,277	229.17
Other Services	285	1,509	1,536	1,543	9,667,121	486.24
Local Government	43	4,389	4,403	4,420	34,418,397	601.17
State Government	22	1,337	1,339	1,292	10,186,904	592.45

**TABLE 6. COUNTY SUMMARY
EMPLOYMENT AND TOTAL EARNINGS, BY INDUSTRY
FOURTH QUARTER 2005**

NORTH AMERICAN INDUSTRY CLASSIFICATION SYSTEM INDUSTRY GROUP	NUMBER OF EMPLOYING UNITS	EMPLOYMENT			TOTAL EARNINGS	AVERAGE WEEKLY EARNINGS
		OCTOBER	NOVEMBER	DECEMBER	OCT. – DEC. 2005	
SEVIER COUNTY - TOTAL	315	5,861	5,843	5,809	35,071,932	\$462.14
Natural Resources & Mining	19	197	194	194	1,463,831	577.45
Trade, Transportation & Utilities	88	851	849	850	5,089,128	460.55
Wholesale Trade	15	139	140	145	1,576,041	857.79
Retail Trade	56	601	596	596	2,539,522	326.85
Transportation, Warehousing & Utilities	17	111	113	109	973,565	674.68
Information	7	43	41	40	320,272	596.04
Financial Activities	26	217	217	210	1,598,760	572.90
Professional & Business Services	31	99	92	92	1,788,584	1458.48
Education & Health Services	38	506	521	518	3,001,949	448.39
Leisure & Hospitality	20	243	222	215	554,478	188.17
Other Services	32	146	146	144	645,042	341.41
Local Government	12	857	853	818	5,187,845	473.57
State Government	9	187	184	185	1,239,326	514.39
Other	33	2,515	2,524	2,543	14,182,717	431.67
SHARP COUNTY - TOTAL	394	3,935	3,982	3,945	\$20,563,069	\$400.04
Construction	35	215	214	205	1,376,221	500.93
Manufacturing	23	213	217	215	1,003,452	359.02
Trade, Transportation & Utilities	103	1,030	1,041	1,021	5,999,649	447.78
Retail Trade	70	654	680	675	2,797,741	321.37
Other Trade, Transportation & Utilities	33	376	361	346	3,201,908	682.27
Information	8	60	61	58	765,569	986.98
Financial Activities	35	257	258	258	1,609,398	480.47
Professional & Business Services	36	160	160	174	960,969	448.91
Education & Health Services	49	573	586	579	2,986,012	396.48
Leisure & Hospitality	39	456	469	466	897,508	148.90
Local Government	29	798	809	798	4,071,074	390.64
State Government	9	98	93	95	592,333	477.94
Other	28	75	74	76	300,884	308.60

**TABLE 6. COUNTY SUMMARY
EMPLOYMENT AND TOTAL EARNINGS, BY INDUSTRY
FOURTH QUARTER 2005**

NORTH AMERICAN INDUSTRY CLASSIFICATION SYSTEM INDUSTRY GROUP	NUMBER OF EMPLOYING UNITS	EMPLOYMENT			TOTAL EARNINGS	AVERAGE WEEKLY EARNINGS
		OCTOBER	NOVEMBER	DECEMBER	OCT. - DEC. 2005	
STONE COUNTY - TOTAL	246	2,907	2,896	2,869	\$16,044,607	\$426.96
Construction	21	101	94	98	730,499	575.35
Manufacturing	22	458	447	454	2,339,953	397.34
Trade, Transportation & Utilities	77	723	769	745	4,647,416	479.43
Wholesale Trade	10	55	57	58	322,214	437.39
Retail Trade	54	626	668	643	3,905,911	465.34
Transportation, Warehousing & Utilities	13	42	44	44	419,291	744.30
Financial Activities	21	85	88	90	733,266	643.40
Professional & Business Services	11	22	22	23	225,468	776.58
Education & Health Services	25	439	441	442	2,880,621	502.84
Leisure & Hospitality	32	405	366	335	808,420	168.68
Other Services	12	27	26	28	128,515	366.14
Local Government	10	444	445	450	2,423,473	417.67
State Government	9	162	156	162	767,372	368.93
Other	6	41	42	42	359,604	663.88
UNION COUNTY - TOTAL	1,322	20,024	20,176	20,325	\$166,588,835	\$635.17
Natural Resources & Mining	105	511	511	530	5,024,529	747.10
Construction	92	1,332	1,384	1,409	14,026,987	784.73
Manufacturing	68	5,288	5,312	5,283	50,384,188	732.05
Trade, Transportation & Utilities	358	3,630	3,708	3,763	29,522,101	613.71
Wholesale Trade	78	554	569	582	9,964,116	1348.63
Retail Trade	223	2,298	2,349	2,380	10,763,939	353.49
Transportation, Warehousing & Utilities	57	778	790	801	8,794,046	856.65
Information	18	199	202	203	1,249,544	477.41
Financial Activities	122	758	759	781	5,963,828	598.90
Professional & Business Services	133	1,766	1,770	1,769	19,421,207	844.83
Education & Health Services	139	2,243	2,241	2,251	18,233,734	624.76
Leisure & Hospitality	88	1,058	1,048	1,068	3,187,215	231.73
Other Services	144	609	616	642	3,104,444	383.72
Local Government	37	2,083	2,098	2,091	12,773,095	469.97
State Government	18	547	527	535	3,697,963	530.38

**TABLE 6. COUNTY SUMMARY
EMPLOYMENT AND TOTAL EARNINGS, BY INDUSTRY
FOURTH QUARTER 2005**

NORTH AMERICAN INDUSTRY CLASSIFICATION SYSTEM INDUSTRY GROUP	NUMBER OF EMPLOYING UNITS	EMPLOYMENT			TOTAL EARNINGS	AVERAGE WEEKLY EARNINGS
		OCTOBER	NOVEMBER	DECEMBER	OCT. – DEC. 2005	
VAN BUREN COUNTY - TOTAL	351	3,765	3,780	3,691	\$20,311,227	\$417.16
Natural Resources & Mining	9	26	24	23	118,679	375.17
Construction	47	133	143	159	905,994	480.63
Manufacturing	14	610	617	623	3,538,349	441.37
Trade, Transportation & Utilities	103	788	794	802	4,374,616	423.46
Wholesale Trade	16	53	54	54	502,512	720.28
Retail Trade	66	603	606	617	2,770,703	350.16
Transportation, Warehousing & Utilities	21	132	134	131	1,101,401	640.23
Information	9	52	52	52	460,919	681.83
Financial Activities	27	127	127	130	770,976	463.33
Professional & Business Services	28	92	93	95	468,137	385.83
Education & Health Services	36	625	629	531	3,636,012	470.07
Leisure & Hospitality	30	450	442	428	1,265,115	221.17
Other Services	27	74	75	73	337,601	350.94
Local Government	13	703	694	690	3,880,748	429.11
State Government	8	85	90	85	554,081	491.79
WASHINGTON COUNTY - TOTAL	5,377	89,683	90,515	90,433	\$791,154,693	\$674.62
Natural Resources & Mining	42	455	453	464	3,790,727	637.60
Construction	646	5,686	5,613	5,729	59,192,904	802.20
Manufacturing	227	15,977	15,900	15,863	129,493,876	625.96
Trade, Transportation & Utilities	1,336	20,464	20,922	21,195	165,265,753	609.42
Wholesale Trade	358	3,720	3,723	3,795	49,301,432	1012.39
Retail Trade	777	11,499	11,915	12,036	63,945,693	416.27
Transportation, Warehousing & Utilities	201	5,245	5,284	5,364	52,018,628	755.32
Information	99	1,479	1,489	1,451	15,306,361	799.33
Financial Activities	634	3,972	3,943	3,977	41,670,003	808.62
Professional & Business Services	897	8,821	8,793	8,798	121,624,052	1062.66
Education & Health Services	552	10,325	10,309	10,359	103,596,579	771.36
Leisure & Hospitality	499	9,072	9,201	8,932	28,033,792	237.80
Other Services	362	1,788	1,802	1,837	10,732,407	456.37
Local & State Government	83	11,644	12,090	11,828	112,448,239	729.70

**TABLE 6. COUNTY SUMMARY
EMPLOYMENT AND TOTAL EARNINGS, BY INDUSTRY
FOURTH QUARTER 2005**

NORTH AMERICAN INDUSTRY CLASSIFICATION SYSTEM INDUSTRY GROUP	NUMBER OF EMPLOYING UNITS	EMPLOYMENT			TOTAL EARNINGS	AVERAGE WEEKLY EARNINGS
		OCTOBER	NOVEMBER	DECEMBER	OCT. – DEC. 2005	
WHITE COUNTY - TOTAL	1,547	24,031	23,802	24,019	\$171,678,845	\$551.39
Natural Resources & Mining	34	277	286	275	1,929,161	531.25
Construction	172	1,265	1,205	1,268	10,478,092	646.88
Manufacturing	80	3,776	3,757	3,786	32,495,599	662.51
Trade, Transportation & Utilities	470	5,912	5,989	6,007	41,613,802	536.25
Wholesale Trade	98	573	580	591	4,681,349	619.44
Retail Trade	291	3,086	3,158	3,161	15,257,439	374.37
Transportation, Warehousing & Utilities	81	2,253	2,251	2,255	21,675,014	740.04
Information	21	223	221	218	1,473,898	513.79
Financial Activities	172	900	911	907	6,807,888	578.02
Professional & Business Services	148	1,395	1,275	1,360	9,592,435	549.29
Education & Health Services	169	4,366	4,190	4,165	36,745,699	666.60
Leisure & Hospitality	113	2,031	2,065	2,087	4,877,960	182.06
Other Services	103	576	587	593	3,628,299	476.82
Local Government	46	2,552	2,562	2,613	17,114,835	511.14
State Government	19	758	754	740	4,921,177	504.29
WOODRUFF COUNTY - TOTAL	171	2,112	2,080	2,039	\$15,115,192	\$559.80
Natural Resources & Mining	22	118	112	94	849,654	605.17
Construction	7	65	63	64	403,137	484.54
Manufacturing	10	503	506	499	3,476,202	531.96
Trade, Transportation & Utilities	55	520	501	479	4,972,517	765.00
Wholesale Trade	12	218	206	185	3,244,967	1229.62
Retail Trade	28	198	195	191	689,984	272.65
Transportation, Warehousing & Utilities	15	104	100	103	1,037,566	779.93
Financial Activities	13	60	58	60	596,367	773.16
Professional & Business Services	3	6	7	6	49,473	600.89
Education & Health Services	29	180	176	178	1,328,021	573.91
Leisure & Hospitality	7	62	59	58	126,621	163.24
Local Government	10	515	516	515	2,828,018	422.13
State Government	7	54	52	56	344,290	490.44
Other	8	29	30	30	140,892	365.32

**TABLE 6. COUNTY SUMMARY
EMPLOYMENT AND TOTAL EARNINGS, BY INDUSTRY
FOURTH QUARTER 2005**

NORTH AMERICAN INDUSTRY CLASSIFICATION SYSTEM INDUSTRY GROUP	NUMBER OF EMPLOYING UNITS	EMPLOYMENT			TOTAL EARNINGS	AVERAGE WEEKLY EARNINGS
		OCTOBER	NOVEMBER	DECEMBER	OCT. – DEC. 2005	
YELL COUNTY - TOTAL	400	7,285	7,386	7,329	\$43,494,501	\$456.24
Natural Resources & Mining	26	290	307	312	1,770,240	449.41
Construction	50	448	449	450	2,975,924	509.84
Manufacturing	23	2,999	3,031	3,021	18,064,689	460.59
Trade, Transportation & Utilities	91	729	760	733	3,497,744	363.26
Wholesale Trade	13	31	29	29	180,236	467.34
Retail Trade	57	597	631	607	2,416,120	303.85
Transportation, Warehousing & Utilities	21	101	100	97	901,388	698.03
Information	4	49	49	48	602,765	952.74
Financial Activities	39	203	202	199	1,266,000	483.70
Professional & Business Services	35	253	253	252	2,419,843	736.71
Education & Health Services	44	480	481	466	2,674,088	432.44
Leisure & Hospitality	27	397	377	366	923,218	186.89
Other Services	20	71	72	73	300,834	321.40
Local Government	28	1,259	1,294	1,305	8,333,045	498.45
State Government	13	107	111	104	666,111	477.38
REST-OF-STATE-TOTAL	4,402	15,674	15,850	15,813	212,383,969	\$1,035.38
Natural Resources & Mining	60	198	201	198	2,409,256	931.29
Construction	571	2,380	2,385	2,299	20,937,125	683.98
Manufacturing	45	168	172	165	1,583,225	723.48
Trade, Transportation & Utilities	1,794	6,927	6,980	7,104	122,686,140	1347.49
Wholesale Trade	1,539	5,640	5,670	5,750	111,236,606	1504.69
Retail Trade	98	584	606	658	4,708,384	587.96
Transportation, Warehousing & Utilities	157	703	704	696	6,741,150	739.73
Information	98	232	247	239	3,094,350	994.54
Financial Activities	265	686	684	712	9,711,675	1076.44
Professional & Business Services	1,271	3,875	3,953	3,887	39,813,222	784.27
Education & Health Services	109	589	600	572	6,399,063	838.56
Leisure & Hospitality	37	73	68	69	483,225	531.02
Other	152	546	560	568	5,266,688	726.04

TABLE 7. FEDERAL GOVERNMENT EMPLOYMENT AND EARNINGS IN ARKANSAS

NORTH AMERICAN INDUSTRY CLASSIFICATION SYSTEM INDUSTRY GROUP	NUMBER OF EMPLOYING UNITS	EMPLOYMENT			TOTAL
		OCTOBER	NOVEMBER	DECEMBER	EARNINGS OCT. - DEC. 2005
Manufacturing	2	3	3	4	\$53,897
Trade, Transportation & Utilities	444	6,751	6,780	6,857	69,365,522
Information	1	34	34	31	422,560
Financial Activities	23	185	186	182	3,053,730
Professional & Business Services	32	774	766	768	11,783,396
Education & Health Services	6	3,950	3,958	3,959	66,530,219
Leisure & Hospitality	17	205	195	209	2,143,057
Other Services	2	279	285	295	1,274,730
Public Administration	484	8,572	8,662	8,450	125,519,020
TOTAL	1,011	20,753	20,869	20,755	\$280,146,131

**TABLE 8. WORKFORCE INFORMATION AREA, SUMMARY
EMPLOYMENT AND TOTAL EARNINGS, BY INDUSTRY
FOURTH QUARTER 2005**

NORTH AMERICAN INDUSTRY CLASSIFICATION SYSTEM INDUSTRY GROUP	NUMBER OF EMPLOYING UNITS	EMPLOYMENT			TOTAL EARNINGS	AVERAGE WEEKLY EARNINGS
		OCTOBER	NOVEMBER	DECEMBER	OCT. - DEC. 2005	
CENTRAL WORKFORCE INFORMATION*	5,630	71,648	71,878	72,013	\$530,649,947	\$568.15
Natural Resources & Mining	157	900	821	745	7,475,015	699.51
Trade, Transportation & Utilities	1,477	14,190	14,338	14,459	89,779,534	481.97
Wholesale Trade	367	1,970	1,930	1,937	20,807,444	822.63
Retail Trade	878	10,785	11,016	11,121	56,309,431	394.71
Transportation, Warehousing & Utilities	232	1,435	1,392	1,401	12,662,659	691.14
Financial Activities	579	2,775	2,796	2,841	23,364,241	640.96
Professional & Business Services	694	6,673	6,718	6,789	73,650,853	842.24
Education & Health Services	581	9,228	9,275	9,370	68,490,293	567.05
Leisure & Hospitality	421	7,428	7,505	7,398	19,137,951	197.77
Local & State Government	211	14,047	14,100	13,945	104,079,486	570.62
Other	1,510	16,407	16,325	16,466	144,672,574	678.60

*Note: Pulaski County is not included in the Central Workforce Information. Please refer to Page 53 for information on Pulaski County.
Central Workforce Includes these counties: Faulkner, Lonoke, Monroe, Prairie, and Saline.

EASTERN WORKFORCE INFORMATION	3,183	38,779	38,653	38,339	\$263,694,727	\$525.63
Natural Resources & Mining	219	1,907	1,627	1,445	10,985,655	509.17
Construction	192	1,180	1,198	1,142	10,370,777	679.90
Trade, Transportation & Utilities	876	10,002	10,089	10,115	74,287,702	567.55
Wholesale Trade	174	2,035	2,019	2,032	19,027,728	721.49
Retail Trade	497	4,950	5,066	5,092	25,191,344	384.79
Transportation, Warehousing & Utilities	205	3,017	3,004	2,991	30,068,630	769.96
Financial Activities	274	1,565	1,583	1,613	11,935,110	578.50
Professional & Business Services	266	1,434	1,377	1,377	10,780,156	594.01
Education & Health Services	517	5,349	5,344	5,349	35,094,839	504.85
Leisure & Hospitality	232	3,526	3,538	3,435	9,185,463	201.90
Local Government	139	6,425	6,456	6,488	43,158,893	514.21
State Government	67	2,152	2,129	2,026	14,458,367	529.02
Other	401	5,239	5,312	5,349	43,437,765	630.45

Eastern Workforce Includes these counties: Crittenden, Cross, Lee, Phillips, and Saint Francis.

**TABLE 8. WORKFORCE INFORMATION AREA, SUMMARY
EMPLOYMENT AND TOTAL EARNINGS, BY INDUSTRY
FOURTH QUARTER 2005**

NORTH AMERICAN INDUSTRY CLASSIFICATION SYSTEM INDUSTRY GROUP	NUMBER OF EMPLOYING UNITS	EMPLOYMENT			TOTAL EARNINGS	AVERAGE WEEKLY EARNINGS
		OCTOBER	NOVEMBER	DECEMBER	OCT. - DEC. 2005	
NORTH CENTRAL WORKFORCE INFORMATION	5,252	70,735	70,469	70,356	\$465,801,583	\$508.10
Construction	484	2,810	2,732	2,803	20,610,783	569.96
Manufacturing	299	13,865	13,823	13,886	108,051,621	599.77
Trade, Transportation & Utilities	1,536	15,579	15,742	15,710	104,824,589	514.35
Retail Trade	960	9,283	9,441	9,385	44,700,951	366.99
Other Trade, Transportation & Utilities	576	6,296	6,301	6,325	60,123,638	733.26
Financial Activities	516	2,606	2,610	2,626	19,191,257	564.75
Professional & Business Services	449	3,175	3,135	3,183	19,126,991	464.97
Education & Health Services	600	11,599	11,259	11,151	86,930,873	589.87
Leisure & Hospitality	434	5,909	5,941	5,829	13,961,052	182.24
Local Government	237	9,251	9,326	9,342	55,112,328	455.54
State Government	115	2,890	2,842	2,842	18,802,492	506.07
Other	582	3,051	3,059	2,984	19,189,597	486.95

North Central Workforce Includes these counties: Cleburne, Fulton, Independence, Izard, Jackson, Sharp, Stone, Van Buren, White, and Woodruff

NORTHEAST WORKFORCE INFORMATION	6,240	95,746	95,834	94,947	\$695,493,268	\$560.15
Natural Resources & Mining	362	2,884	2,617	2,125	17,666,333	534.60
Construction	474	3,047	3,099	2,919	22,744,693	579.02
Manufacturing	365	21,753	21,896	21,942	208,827,499	734.72
Trade, Transportation & Utilities	1,737	17,854	17,968	18,147	111,676,516	477.52
Wholesale Trade	409	3,743	3,726	3,697	34,391,061	710.76
Retail Trade	1,031	11,636	11,802	12,000	54,783,917	356.75
Transportation, Warehousing & Utilities	297	2,475	2,440	2,450	22,501,538	705.05
Financial Activities	586	3,421	3,429	3,453	30,498,600	683.12
Professional & Business Services	626	7,044	7,101	6,714	47,512,223	525.64
Education & Health Services	799	12,969	12,839	12,841	107,717,420	643.17
Leisure & Hospitality	457	7,196	7,411	7,293	17,956,326	189.21
Local Government	218	11,627	11,712	11,719	72,847,921	479.52
State Government	108	3,910	3,779	3,753	32,436,331	654.20
Other	508	4,041	3,983	4,041	25,609,406	489.84

Northeast Workforce Includes these counties: Clay, Craighead, Greene, Lawrence, Mississippi, Poinsett, and Randolph.

**TABLE 8. WORKFORCE INFORMATION AREA, SUMMARY
EMPLOYMENT AND TOTAL EARNINGS, BY INDUSTRY
FOURTH QUARTER 2005**

NORTH AMERICAN INDUSTRY CLASSIFICATION SYSTEM INDUSTRY GROUP	NUMBER OF EMPLOYING UNITS	EMPLOYMENT			TOTAL EARNINGS	AVERAGE WEEKLY EARNINGS
		OCTOBER	NOVEMBER	DECEMBER	OCT. - DEC. 2005	
NORTHWEST WORKFORCE INFORMATION	14,102	227,797	228,878	229,441	\$1,980,585,547	\$666.15
Trade, Transportation & Utilities	3,580	53,471	54,348	54,971	442,964,009	627.94
Retail Trade	1,991	25,499	26,148	26,402	140,410,391	415.15
Other Trade, Transportation & Utilities	1,589	27,972	28,200	28,569	302,553,618	823.92
Education & Health Services	1,380	22,913	22,932	23,087	205,768,803	688.87
Leisure & Hospitality	1,337	20,647	20,356	19,813	61,223,294	232.31
Local & State Government	425	26,793	27,335	27,292	223,538,269	633.58
Other	7,380	103,973	103,907	104,278	1,047,091,172	774.08
SOUTHEAST WORKFORCE INFORMATION	5,203	78,606	78,542	78,393	\$585,760,990	\$573.89
Natural Resources & Mining	409	3,443	3,234	2,995	24,469,075	583.82
Construction	381	3,382	3,402	3,421	28,990,469	655.57
Manufacturing	225	17,916	18,005	17,897	179,425,981	769.37
Trade, Transportation & Utilities	1,440	13,927	13,953	14,060	93,468,815	514.30
Wholesale Trade	259	2,521	2,453	2,505	25,225,344	778.34
Retail Trade	891	8,804	8,960	9,058	42,695,830	367.34
Transportation, Warehousing & Utilities	290	2,602	2,540	2,497	25,547,641	771.78
Local & State Government	358	16,664	16,615	16,739	112,000,775	516.74
Other	2,390	23,274	23,333	23,281	147,405,875	486.73
SOUTHWEST WORKFORCE INFORMATION	5,624	87,221	87,287	87,857	\$655,903,187	\$576.91
Natural Resources & Mining	405	2,789	2,778	2,805	25,518,586	703.40
Trade, Transportation & Utilities	1,550	15,311	15,515	15,683	105,035,060	521.16
Education & Health Services	576	8,952	8,962	9,012	57,881,315	496.07
Local Government	264	11,304	11,328	11,355	70,190,683	476.59
State Government	150	3,244	3,194	3,178	24,215,466	581.13
Other	2,679	45,621	45,510	45,824	373,062,077	628.61

Northwest Workforce Includes these counties: Baxter, Benton, Boone, Carroll, Madison, Marion, Newton, Searcy, and Washington.

Southeast Workforce Includes these counties: Arkansas, Ashley, Bradley, Chicot, Cleveland, Desha, Drew, Grant, Jefferson, and Lincoln

Southwest Workforce Includes these counties: Calhoun, Columbia, Dallas, Hempstead, Howard, Lafayette, Little River, Miller, Nevada, Ouachita, Sevier, and Union

**TABLE 8. WORKFORCE INFORMATION AREA, SUMMARY
EMPLOYMENT AND TOTAL EARNINGS, BY INDUSTRY
FOURTH QUARTER 2005**

NORTH AMERICAN INDUSTRY CLASSIFICATION SYSTEM INDUSTRY GROUP	NUMBER OF EMPLOYING UNITS	EMPLOYMENT			TOTAL EARNINGS	AVERAGE WEEKLY EARNINGS
		OCTOBER	NOVEMBER	DECEMBER	OCT. - DEC. 2005	
WEST CENTRAL WORKFORCE INFORMATION	7,872	108,692	109,134	109,424	\$755,402,323	\$532.69
Natural Resources & Mining	266	1,969	1,980	2,223	15,607,211	583.55
Construction	890	6,311	6,390	6,163	55,914,728	684.02
Trade, Transportation & Utilities	2,008	21,700	21,979	22,157	157,488,876	552.03
Financial Activities	832	3,961	3,944	3,982	31,582,572	613.13
Education & Health Services	827	15,025	15,019	14,893	119,312,208	612.72
Local Government	231	12,111	12,290	12,351	80,785,882	507.26
State Government	133	5,073	5,055	5,050	33,350,611	507.07
Other	2,685	42,542	42,477	42,605	261,360,235	472.59

West Central Workforce Includes these counties: Clark, Conway, Garland, Hot Spring, Johnson, Montgomery, Perry, Pike, Pope, and Yell

WESTERN WORKFORCE INFORMATION	6,227	110,808	111,366	111,002	\$891,171,754	\$617.26
Natural Resources & Mining	154	2,203	2,251	2,320	25,600,981	872.15
Trade, Transportation & Utilities	1,645	22,389	22,894	22,924	154,654,773	523.25
Wholesale Trade	375	3,375	3,416	3,420	33,954,881	767.38
Retail Trade	983	12,244	12,670	12,697	62,265,226	382.04
Transportation, Warehousing & Utilities	287	6,770	6,808	6,807	58,434,666	661.51
Financial Activities	649	3,677	3,705	3,781	33,239,434	687.15
Professional & Business Services	766	10,574	10,359	10,175	126,291,702	936.87
Education & Health Services	712	13,441	13,503	13,480	115,339,722	658.44
Leisure & Hospitality	504	7,742	7,767	7,856	21,753,116	214.85
Local & State Government	232	11,749	11,748	11,737	84,472,925	553.27
Other	1,565	39,033	39,139	38,729	329,819,101	651.08

Western Workforce Includes these counties: Crawford, Franklin, Logan, Polk, Scott, and Sebastian