

Arkansas Covered Employment & Earnings

Jobs for People. People for Jobs.

DWS
Department of
WORKFORCE**Services**

Third Quarter
2005

**COVERED EMPLOYMENT AND EARNINGS
STATE OF ARKANSAS
THIRD QUARTER 2005**

**MIKE HUCKABEE, GOVERNOR
STATE OF ARKANSAS**

**ARTEE WILLIAMS, DIRECTOR
DEPARTMENT OF WORKFORCE SERVICES**

**PUBLISHED BY
LABOR MARKET INFORMATION & ANALYSIS
BUREAU OF LABOR STATISTICS PROGRAMS
POST OFFICE BOX 2981
LITTLE ROCK, ARKANSAS 72203-2981
BERNADETTE COLEMAN, BLS PROGRAMS MANAGER
TELEPHONE: (501) 682-3159**

STATE OF ARKANSAS HOME PAGE: <http://www.arkansas.gov>

DEPARTMENT OF WORKFORCE SERVICES HOME PAGE: <http://www.arkansas.gov/esd/>

**INTERNET SITE FOR LABOR MARKET INFORMATION:
<http://www.discoverarkansas.net>**

RELEASED: March 2006

TABLE OF CONTENTS

Description of Data	Page 1
Industry Classification	Page 1
Definition of Covered Employment and Earnings	Page 2
Federal Government Employment	Page 2
County Classification	Page 2
Significant Developments During First Quarter 2005	Page 3

Graph 1	Total Covered Employment for Selected Years, Arkansas	Page 7
Graph 2	Total Covered Earnings, by Calendar Quarter for Selected Years, Arkansas	Page 8
Table 1	Quarterly Comparison of Covered Employment and Wages, by Industry	Page 5
Table 2	Total Covered Employment in Arkansas, 1998-2005	Page 6
Table 3	Total Covered Earnings, 1998-2005	Page 9
Table 4	Total Taxable Earnings, 1998-2005	Page 10
Table 5	Statewide Summary - Employment and Total Earnings, by Industry, First Quarter 2005	Page 11
Table 6	County Summary - Employment and Total Earnings, by Industry, First Quarter 2005	Page 23
Table 7	Federal Government Employment and Total Earnings in Arkansas, First Quarter 2005	Page 59
Table 8	Workforce Information Area – Employment and Total Earnings, by Industry, First Quarter 2005	Page 60

EMPLOYMENT AND EARNINGS
UNDER THE ARKANSAS EMPLOYMENT SECURITY LAW
THIRD QUARTER 2005

DESCRIPTION OF DATA

This publication contains covered employment and payroll data by industry and county for the Third Quarter 2005. These data are compiled from quarterly contribution and wage reports submitted by employers subject to the Arkansas Employment Security Law. An employing unit is a single physical location where business is conducted, production takes place, or services are provided. Employment data have been tabulated for each month of the quarter by industry under the **North American Industry Classification System** (NAICS) (see "Industry Classification" below) on a statewide, county and workforce area basis. Payroll data represent the total wages paid during the quarter, and are also shown by

industry for the State and by publishable industry groups for each county and workforce area. The tabulation of this data is a joint effort in conjunction with the U.S. Bureau of Labor Statistics. In addition, there are tables included which set out total covered employment by months, quarterly payrolls, and average weekly earnings for the years 1998 through 2005. Data contained in this publication are subject to revision. These revisions will be reflected in the 2005 Annual Covered Employment and Earnings publication. Because of industry code changes between years, substantial employment and wage shifts among industries are anticipated.

INDUSTRY CLASSIFICATION

Previously published industry data **will not** be comparable in all instances with currently published data since industry codes have been revised according to the following Manuals: (a) between January 1, 1958 and December 31, 1967, industry codes were assigned under the 1957 Standard Industrial Classification (SIC) Manual; (b) between January 1, 1968 and December 31, 1974, industry codes were assigned under the 1967 Standard Industrial Classification (SIC) Manual; (c) between January 1, 1975 and December 31, 1987, industry codes were assigned under the 1972 Standard Industrial Classification (SIC) Manual; (d) between January 1, 1988 and December 31, 2000, industry codes were assigned under the 1987 Standard Industrial Classification (SIC) Manual; and (e) since January 1, 2001, industry codes have been assigned under the 2002 North American Industry Classification System (NAICS) Manual. **The NAICS Manual represents a significant change in coding methodology as compared to the**

SIC Manual. One of the most significant changes involves how NAICS treats auxiliary units. Auxiliary units are establishments primarily engaged in performing management or support services for other establishments of the same enterprise. The SIC code for these units was based on the activity of the enterprise served. The NAICS code is based on the actual activities that the establishment performs. Comparisons of many industries **should not be made** between this publication and previous Covered Employment and Earnings publications that were based on SIC. Even though some titles are the same or similar, in nature, NAICS and SIC could differ in the classification of employers. The implementation of NAICS represents a profound change for statistical programs, and will create significant benefits along with transition obstacles for both data collectors and data users. A summary is available on the NAICS home page at <http://www.census.gov/naics>.

DEFINITION OF COVERED EMPLOYMENT AND EARNINGS

Covered Employment is the number of workers employed by employers subject to the Arkansas Employment Security Law who worked or received pay for the payroll period including the 12th of the month. An employer is subject to the law when they employ one or more employees in each of ten days during the current or preceding calendar year.

Currently excluded from coverage is employment covered by the Railroad Unemployment Insurance Act, some domestic service workers, employees of small agricultural establishments, self-employed and unpaid family workers, insurance and real estate

agents who are on commission only, and employees of churches and religious organizations except separately incorporated schools. The payroll information in this publication includes all wages and salaries paid to any covered employees by their employers including bonuses, commissions, and cash values of remuneration received in any medium other than cash. These wages include both taxable and nontaxable wages. Only the first \$10,000 paid to each worker by an employer in the calendar year is taxable under the Arkansas Employment Security Law.

FEDERAL GOVERNMENT EMPLOYMENT

Table 7 on page 63 lists the total number of civilians employed by the Federal Government in Arkansas during the Third Quarter 2005. Employment and wage data are set out by industry divisions. These data are obtained from required reports submitted by various

government agencies having employment in the State. Civilian Federal workers are covered by the Unemployment Compensation for Federal Employees (UCFE) program.

COUNTY CLASSIFICATION

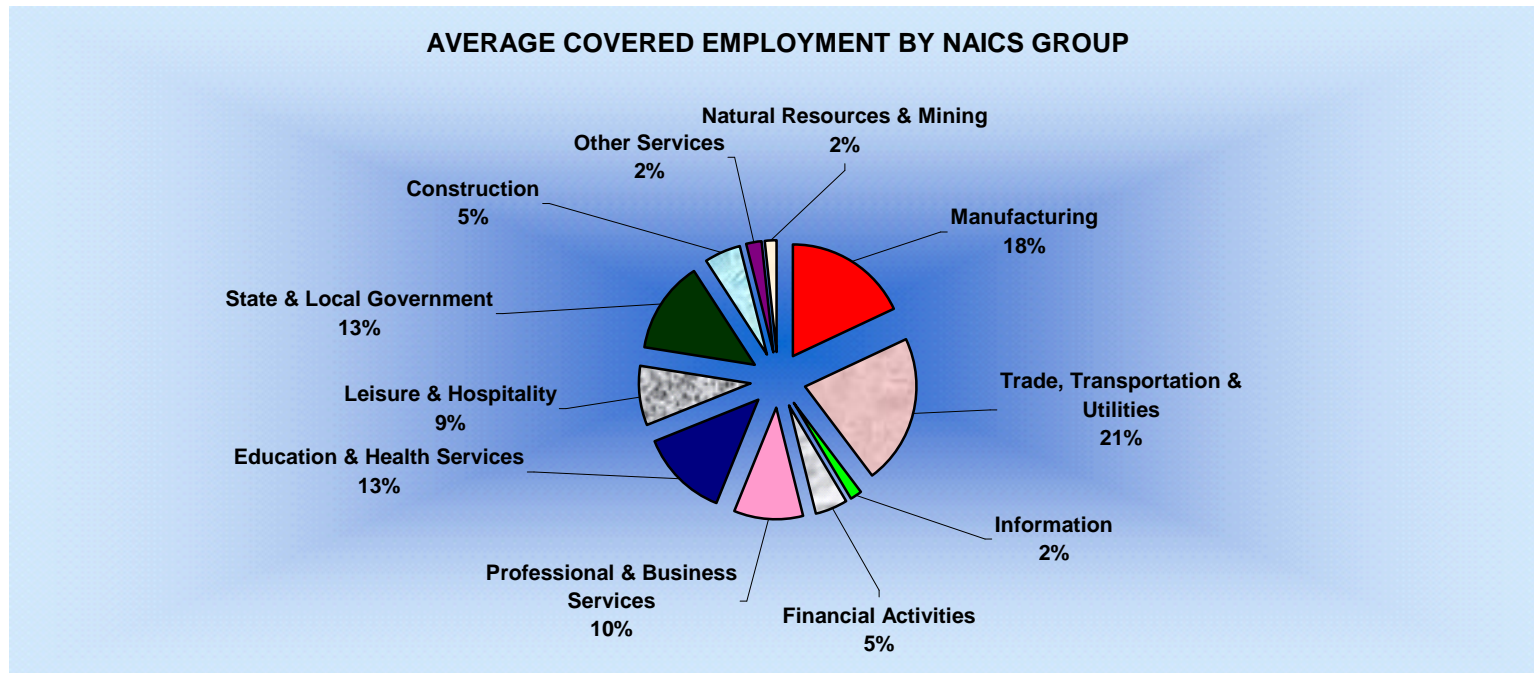
Employment and payroll data by county are classified according to the county where the workers are employed. Employers with operations in more than one county are requested to furnish this agency with a breakdown of employment and wages for at least one quarter of each year by the counties in which they operate. Many such employers submit county data with each regular contribution report. **Note:** This information is invaluable in the preparation of monthly employment and payroll data by county.

Employment and payroll data for multi - area employers, who do not furnish county data each quarter of the year, are prorated by county on the basis of one quarter's information. The "rest-of-state" table that appears on page 62 of this publication includes data on firms that **did not** provide a county breakdown of employment and payrolls. It also includes sales, and all other type of personnel with no permanent place of work, as well as employment of employers with no established place of business in Arkansas.

SIGNIFICANT DEVELOPMENTS DURING THIRD QUARTER 2005

AVERAGE EMPLOYMENT CHANGES

Covered employment averaged 1,116,389 during the Third Quarter 2005 (see table 1), a decrease of 18,209 (1.6%) from the previous quarter and 18,277 (1.7%) above the average recorded one-year ago. This *over-the-year* increase is more significant when used as an economic indicator. This *over-the-year* comparison allows for the disregarding of many seasonal factors that are evident when making an *over-the-quarter* comparison.

**EMPLOYMENT CHANGES FROM SECOND QUARTER 2005**

Over the quarter gains were recorded in seven of the eleven industry groups (see table 1). Professional and Business Services recorded the largest quarterly gain of 1,797 employees added. The driving factor for the increase was in Employment Services which includes temporary agencies. The Construction industry (+1,555) continued jobs through the summer season. Trade, Transportation and Utilities added 1,412 additional jobs. Trucking increased employment as companies started recruiting for new drivers. Education and Health

Services boosted employment to 141,432 employees; mainly focused within Health Care. Other industry increases occurred in Financial Activities (+648), Natural Resources and Mining (+600) and lastly, Leisure and Hospitality (+5).

Losses were recorded in four industry groups. The largest drop was attributed to seasonal occurrences in State and Local Government (-24,482) due to the release of students for the summer break.

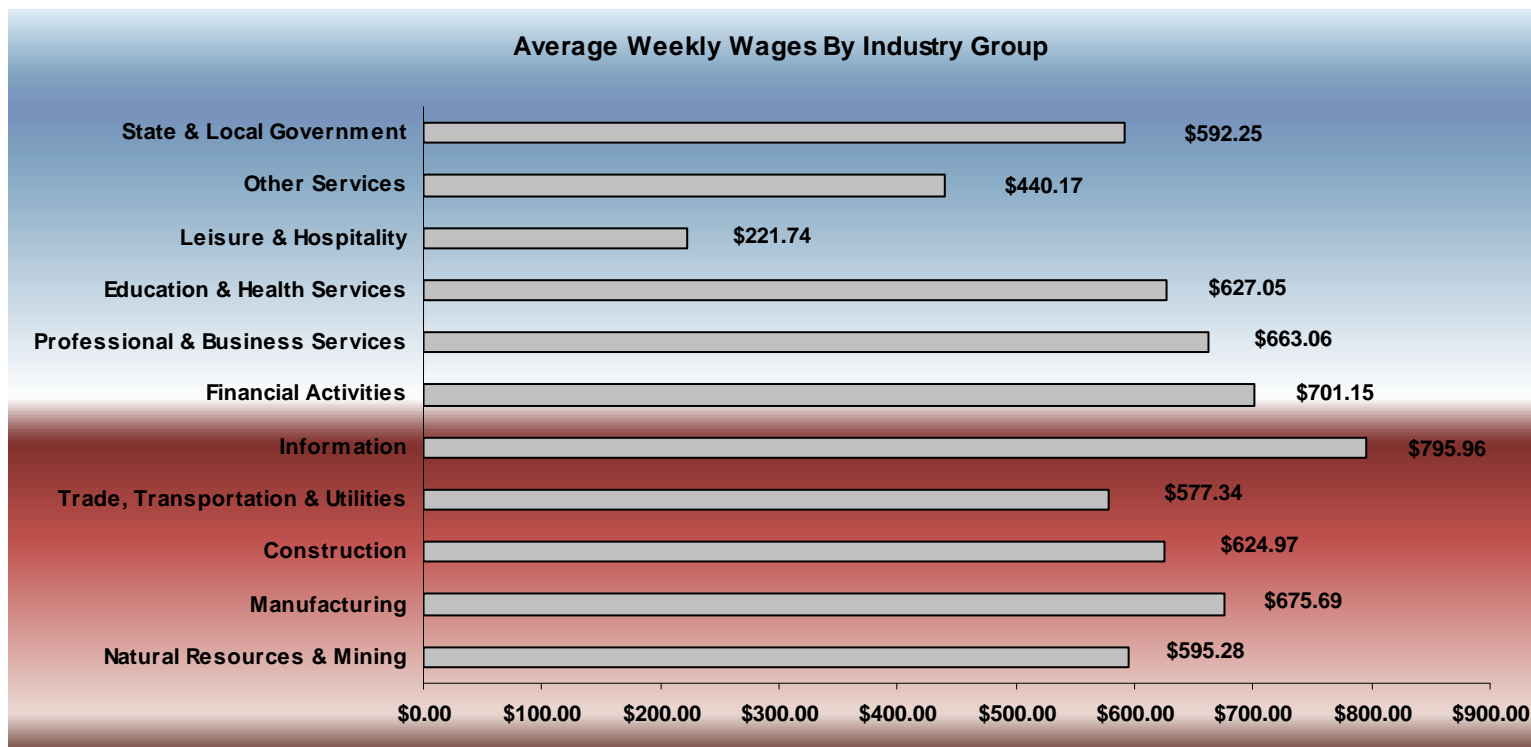
EMPLOYMENT CHANGES FROM FIRST QUARTER 2005

Over-the-year gains were recorded in seven industry groups while four recorded losses (see table 1). Significant gains were posted in State & Local Government (+4,769), Educational & Health Services (+4,540) and Trade, Transportation and Utilities (+4027). Losses occurred in Manufacturing (-4,093), other services (-533) and Natural Resources & Mining (-269).

COVERED WAGES

Wages paid to covered workers totaled \$8,565,665,389 for the Third Quarter 2005 (see table 1), for an average weekly wage of \$590.20 (see table 5). Employees in Little River County recorded the highest average weekly wage (\$764.50), and workers in Newton County the lowest (\$344.74) (see table 6).

The Information sector recorded the highest average weekly wage for the State of Arkansas at \$795.96, while the Leisure & Hospitality sector recorded the lowest at \$221.74 for the State of Arkansas (see table 5).



Note: Because of industry code changes between years, substantial employment and wage shifts among industries are anticipated.

TABLE 1. QUARTERLY COMPARISON OF COVERED EMPLOYMENT AND WAGES, BY INDUSTRY

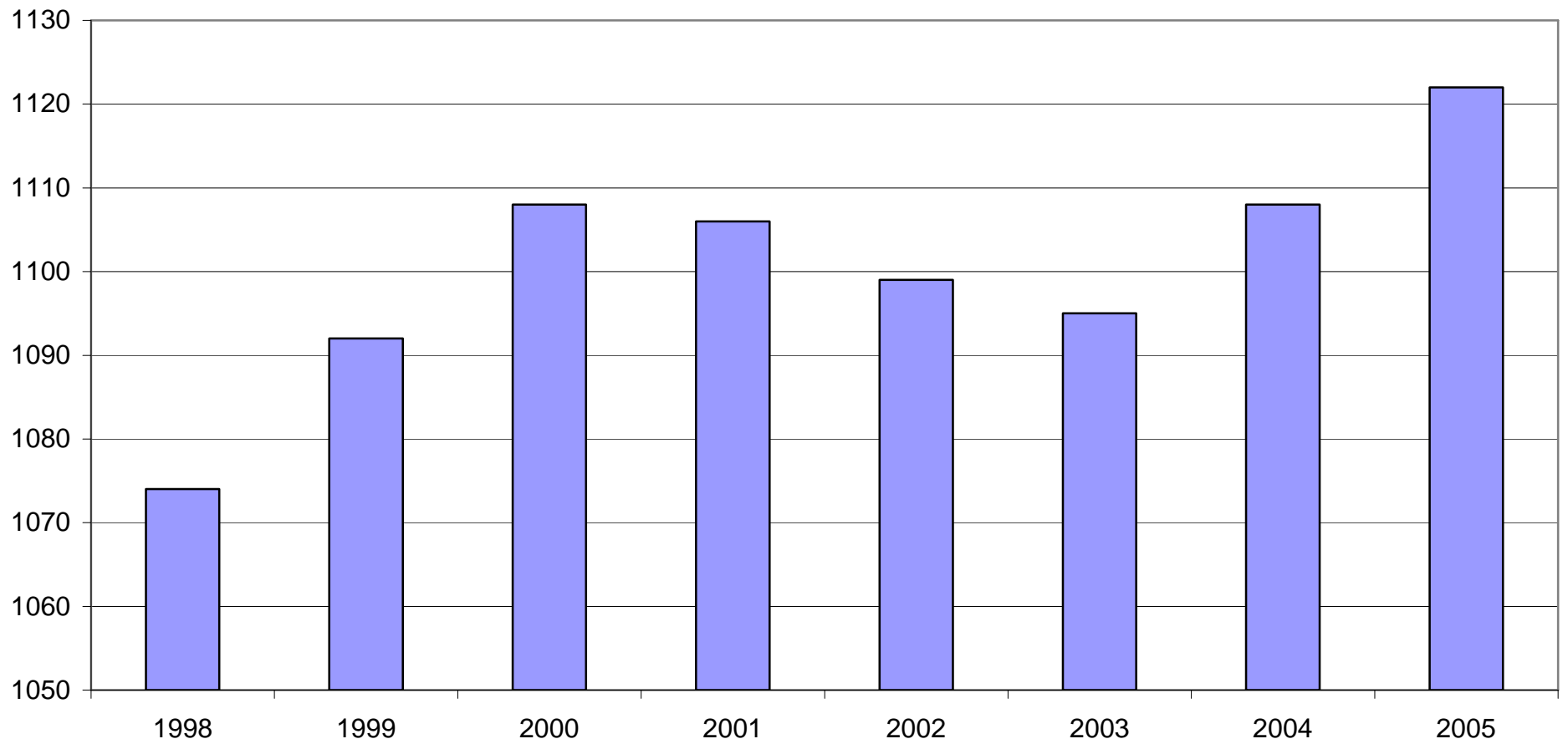
North American Industry Classification System Industry	Number of Employing Units	Average Monthly Employment	% of Employment Total	Net Change From Apr. - Jun. 2005	Net Change From Jul. - Sep. 2004	Total Wages Paid Jul. - Sep. 2005	% of Total Wages Paid
Total	76,872	1,116,389	100.0%	-18,209	18,277	\$8,565,665,389	100.0%
Natural Resources & Mining	2,338	18,917	1.7%	600	-269	\$146,391,693	1.7%
Agriculture, Forestry, Fishing & Hunting	2,014	14,712	1.3%	506	-439	\$97,761,505	1.1%
Mining	324	4,205	0.4%	94	170	\$48,630,188	0.6%
Construction	7,623	56,545	5.1%	1,555	2,969	\$459,412,386	5.4%
Manufacturing	3,574	200,482	18.0%	-809	-4,093	\$1,761,022,073	20.6%
Trade, Transportation & Utilities	20,903	242,781	21.7%	1,412	4,027	\$1,822,177,874	21.3%
Wholesale Trade	6,269	47,986	4.3%	134	1,544	\$543,052,988	6.3%
Retail Trade	11,324	131,834	11.8%	54	1,071	\$665,987,332	7.8%
Transportation & Warehousing	2,957	56,327	5.0%	1,221	1,335	\$508,354,874	5.9%
Utilities	353	6,634	0.6%	3	77	\$104,782,680	1.2%
Information	1,211	20,027	1.8%	-14	-158	\$207,226,373	2.4%
Financial Activities	7,782	50,264	4.5%	648	700	\$458,149,826	5.3%
Finance & Insurance	4,582	36,300	3.3%	458	244	\$368,058,104	4.3%
Real Estate & Rental & Leasing	3,200	13,964	1.3%	190	456	\$90,091,722	1.1%
Professional & Business Services	10,463	112,875	10.1%	1,797	3,673	\$972,958,620	11.4%
Professional & Technical Services	6,582	35,237	3.2%	-243	1,817	\$377,613,936	4.4%
Management of Companies & Enterprises	485	23,676	2.1%	249	828	\$328,463,847	3.8%
Administrative & Waste Services	3,396	53,961	4.8%	1,790	1,027	\$266,880,837	3.1%
Education & Health Services	8,323	141,432	12.7%	1,118	4,540	\$1,152,910,204	13.5%
Educational Services	543	8,267	0.7%	-272	502	\$53,559,866	0.6%
Health Care & Social Assistance	7,780	133,164	11.9%	1,390	4,037	\$1,099,350,338	12.8%
Leisure & Hospitality	5,923	96,839	8.7%	5	2,650	\$279,151,265	3.3%
Arts, Entertainment & Recreation	912	10,388	0.9%	208	102	\$36,454,501	0.4%
Accommodation & Food Services	5,011	86,451	7.7%	-203	2,548	\$242,696,764	2.8%
Other Services	5,543	25,567	2.3%	-40	-533	\$146,299,250	1.7%
State & Local Government	3,189	150,660	13.5%	-24,482	4,769	\$1,159,965,825	13.5%
Local Government	1,996	90,849	8.1%	-23,242	2,809	\$616,734,221	7.2%
State Government	1,193	59,811	5.4%	-1,240	1,961	\$543,231,604	6.3%
Nonclassifiable Establishments	0	0	0.0%	0	0	\$0	0.0%

Note: Items do not necessarily add to totals because of rounding. Because of industry code changes between years, substantial employment and wage shifts among industries are anticipated.

TABLE 2. TOTAL COVERED EMPLOYMENT IN ARKANSAS

Period	1998	1999	2000	2001	2002	2003	2004	2005
Average	1,073,732	1,092,351	1,108,490	1,106,053	1,098,558	1,094,087	1,108,275	1,121,595
January	1,050,970	1,065,920	1,089,956	1,096,009	1,081,635	1,082,740	1,089,510	1,104,692
February	1,057,593	1,074,315	1,096,126	1,101,616	1,086,793	1,084,880	1,094,626	1,112,453
March	1,066,099	1,084,653	1,109,157	1,112,143	1,098,500	1,092,172	1,105,266	1,124,250
April	1,074,416	1,093,574	1,111,543	1,115,526	1,103,399	1,095,341	1,111,023	1,130,599
May	1,083,133	1,098,539	1,116,779	1,119,815	1,111,998	1,103,099	1,117,154	1,136,212
June	1,086,125	1,101,748	1,121,245	1,119,734	1,112,028	1,099,688	1,117,021	1,136,984
July	1,046,396	1,062,563	1,075,096	1,071,830	1,065,697	1,053,220	1,071,474	1,090,058
August	1,063,680	1,081,260	1,096,841	1,094,068	1,086,011	1,077,775	1,094,887	1,114,403
September	1,088,772	1,108,212	1,123,735	1,115,996	1,113,148	1,105,980	1,122,725	1,144,705
October	1,089,836	1,110,604	1,122,884	1,110,994	1,108,447	1,112,550	1,123,261	NA
November	1,087,855	1,112,003	1,120,620	1,109,012	1,107,611	1,109,712	1,125,082	NA
December	1,089,913	1,114,823	1,117,892	1,105,887	1,107,425	1,111,892	1,127,274	NA

AVERAGE TOTAL COVERED EMPLOYMENT GRAPH 1
In Thousands



TOTAL COVERED EARNINGS BY CALENDAR QUARTER, GRAPH 2
In Thousands

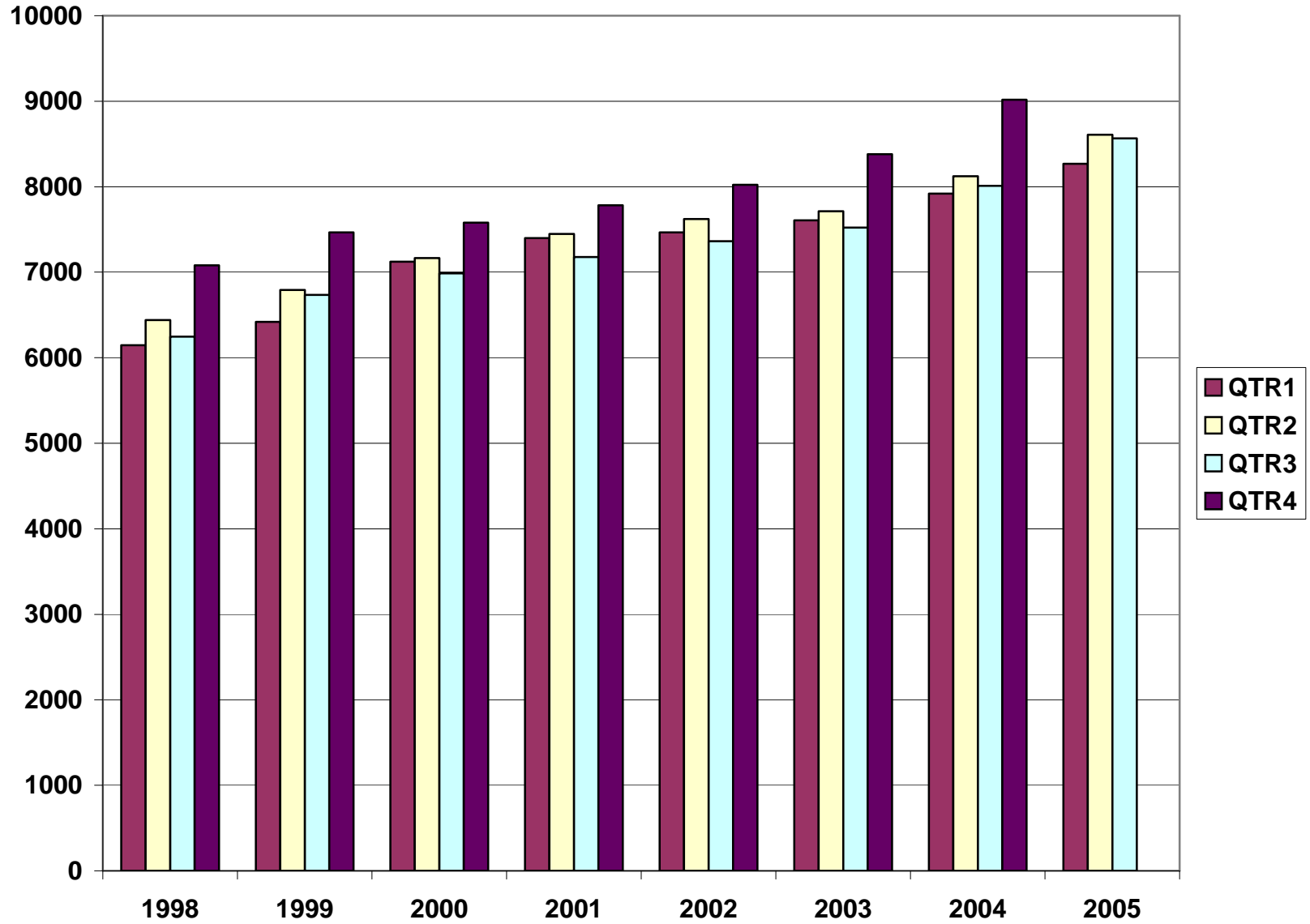


TABLE 3. TOTAL COVERED EARNINGS, 1998- 2005

Period	1998	1999	2000	2001
Total	\$25,914,345,060	\$27,407,925,462	\$28,853,825,155	\$29,807,669,666
January - March	\$6,145,178,755	\$6,418,456,638	\$7,122,666,917	\$7,398,887,532
April - June	\$6,441,129,069	\$6,791,960,679	\$7,166,110,114	\$7,448,023,298
July - September	\$6,246,775,598	\$6,733,480,079	\$6,986,103,157	\$7,177,293,061
October - December	\$7,081,261,638	\$7,464,028,066	\$7,578,944,967	\$7,783,465,775
Average Weekly Earnings	\$464.13	\$482.51	\$500.57	\$518.26

Period	2002	2003	2004	2,005
Total	\$30,472,854,103	\$31,202,576,767	\$33,068,346,519	\$25,441,915,231
January - March	\$7,465,250,305	\$7,608,130,008	\$7,918,843,610	\$8,269,065,129
April - June	\$7,621,878,775	\$7,714,813,038	\$8,122,399,978	\$8,607,184,713
July - September	\$7,361,666,511	\$7,500,204,764	\$8,010,367,744	\$8,565,665,389
October - December	\$8,024,058,512	\$8,379,428,957	\$9,016,735,187	NA
Average Weekly Earnings	\$533.44	\$548.45	\$573.80	\$581.63

TABLE 4. TOTAL TAXABLE EARNINGS, 1998 - 2005

Period	1998	1999	2000	2001
Total	\$8,554,973,370	\$8,807,445,422	\$9,048,033,534	\$9,003,189,480
January - March	\$4,063,795,529	\$4,203,067,856	\$4,560,814,012	\$4,670,296,360
April - June	\$2,271,303,325	\$2,325,649,764	\$2,260,741,187	\$2,219,485,263
July - September	\$1,236,054,184	\$1,267,562,743	\$1,250,850,348	\$1,190,098,737
October - December	\$983,820,332	\$1,011,165,059	\$975,627,987	\$923,309,120

Period	2002	2003	2004	2005
Total	\$8,887,270,978	\$9,154,938,743	\$9,731,879,624	\$8,928,177,335
January - March	\$4,668,534,587	\$4,737,918,796	\$4,931,559,230	\$5,068,103,112
April - June	\$2,162,971,435	\$2,270,519,362	\$2,451,476,366	\$2,504,400,617
July - September	\$1,158,197,858	\$1,188,681,170	\$1,318,044,471	\$1,355,673,606
October - December	\$897,567,098	\$957,819,415	\$1,030,799,557	NA

**TABLE 5. STATEWIDE SUMMARY
EMPLOYMENT AND TOTAL EARNINGS, BY INDUSTRY
THIRD QUARTER 2005**

NORTH AMERICAN INDUSTRY CLASSIFICATION SYSTEM INDUSTRY GROUPS	NUMBER OF EMPLOYING UNITS	EMPLOYMENT JULY	EMPLOYMENT AUGUST	EMPLOYMENT SEPTEMBER	TOTAL EARNINGS JUL. - SEP. 2005	AVERAGE WEEKLY EARNINGS
TOTAL, ALL INDUSTRIES	76,872	1,090,058	1,114,403	1,144,705	\$8,565,665,389	\$590.20
NATURAL RESOURCES AND MINING	2,338	18,454	18,603	19,694	\$146,391,693	\$595.28
AGRICULTURE, FORESTRY, FISHING AND HUNTING	2,014	14,423	14,314	15,399	\$97,761,505	\$511.16
CROP PRODUCTION	718	4,105	4,077	4,389	\$20,679,275	\$379.62
Oilseed and Grain Farming	435	2,112	2,133	2,245	\$10,785,014	\$383.49
Vegetable and Melon Farming	10	309	239	246	\$753,328	\$218.95
Fruit and Tree Nut Farming	10	102	102	89	\$415,795	\$327.48
Greenhouse and Nursery Production	48	321	308	317	\$2,060,403	\$502.62
Other Crop Farming	215	1,261	1,295	1,492	\$6,664,735	\$379.94
ANIMAL PRODUCTION	252	3,806	3,775	3,789	\$28,400,950	\$576.43
Cattle Ranching and Farming	73	361	359	348	\$2,002,192	\$432.63
Poultry and Egg Production	88	2,592	2,580	2,608	\$20,553,206	\$609.65
Animal Aquaculture	60	637	626	613	\$4,238,146	\$521.34
Other	31	216	210	220	\$1,607,406	\$574.21
FORESTRY AND LOGGING	577	3,301	3,317	3,328	\$24,731,896	\$573.83
Timber Tract Operations	45	262	261	260	\$2,142,157	\$631.35
Forest Nurseries & Gathering of Forest Products	6	30	30	30	\$238,341	\$611.13
Logging	526	3,009	3,026	3,038	\$22,351,398	\$568.50
OTHER	467	3,211	3,145	3,893	\$23,949,384	\$539.25
MINING	324	4,031	4,289	4,295	\$48,630,188	\$889.60
OIL AND GAS EXTRACTION	72	401	396	391	\$4,985,949	\$968.52
MINING (EXCEPT OIL AND GAS)	99	1,986	2,074	2,069	\$21,697,856	\$816.97
SUPPORT ACTIVITIES FOR MINING	153	1,644	1,819	1,835	\$21,946,383	\$955.94
CONSTRUCTION	7,623	56,107	56,564	56,965	\$459,412,386	\$624.97
CONSTRUCTION OF BUILDINGS	2,099	12,970	13,011	13,028	\$110,845,637	\$655.74
Residential Building Construction	1,508	4,739	4,763	4,722	\$34,294,234	\$556.39
Nonresidential Building Construction	591	8,231	8,248	8,306	\$76,551,403	\$712.76
HEAVY AND CIVIL ENGINEERING CONSTRUCTION	879	10,675	10,966	11,107	\$97,852,572	\$689.55
Utility System Construction	412	4,900	5,031	4,979	\$41,149,434	\$636.89
Land Subdivision	112	382	382	399	\$3,296,699	\$654.15
Highway, Street and Bridge Construction	236	4,008	4,018	4,041	\$35,695,050	\$682.63

NORTH AMERICAN INDUSTRY CLASSIFICATION SYSTEM INDUSTRY GROUPS	NUMBER OF EMPLOYING UNITS	EMPLOYMENT JULY	EMPLOYMENT AUGUST	EMPLOYMENT SEPTEMBER	TOTAL EARNINGS JUL. - SEP. 2005	AVERAGE WEEKLY EARNINGS
Other Heavy Construction	119	1,385	1,535	1,688	\$17,711,389	\$886.99
SPECIALTY TRADE CONTRACTORS	4,645	32,462	32,587	32,830	\$250,714,177	\$591.11
Building Foundation and Exterior Contractors	908	6,185	6,341	6,377	\$44,854,567	\$547.59
Building Equipment Contractors	2,027	15,674	15,579	15,758	\$131,194,004	\$644.01
Building Finishing Contractors	862	4,931	4,962	5,061	\$33,616,562	\$518.77
Other Specialty Trade Contractors	848	5,672	5,705	5,634	\$41,049,044	\$556.87
MANUFACTURING	3,574	199,904	200,414	201,129	\$1,761,022,073	\$675.69
FOOD MANUFACTURING	299	50,684	50,812	51,179	\$359,612,508	\$543.56
Animal Food Manufacturing	51	1,337	1,328	1,347	\$13,577,792	\$780.99
Grain and Oilseed Milling	30	2,394	2,405	2,462	\$22,582,527	\$717.72
Fruit, Vegetable and Specialty Food	37	6,963	7,073	7,249	\$58,108,840	\$630.01
Dairy Product Manufacturing	10	729	725	720	\$6,728,532	\$714.23
Animal Slaughtering and Processing	85	34,182	34,195	34,201	\$214,565,064	\$482.71
Bakeries and Tortilla Manufacturing	52	3,399	3,417	3,528	\$29,691,225	\$662.40
Other Food Manufacturing	23	1,567	1,557	1,553	\$13,687,941	\$675.38
Other	11	113	112	119	\$670,587	\$449.86
BEVERAGE AND TOBACCO PRODUCT MFG.	36	1,274	1,268	1,252	\$12,668,294	\$770.55
TEXTILE MILLS	19	398	405	426	\$4,144,780	\$778.27
Fabric Mills	5	310	315	327	\$3,673,865	\$890.56
Textile and Fabric Finishing Mills	14	88	90	99	\$470,915	\$392.32
TEXTILE PRODUCT MILLS	59	1,330	1,348	1,354	\$12,243,584	\$700.75
APPAREL MANUFACTURING	40	1,967	1,977	2,016	\$10,691,942	\$413.99
Cut and Sew Apparel Manufacturing	33	867	884	922	\$4,634,211	\$400.09
Other	7	1,100	1,093	1,094	\$6,057,731	\$425.29
LEATHER AND ALLIED PRODUCT MANUFACTURING	23	2,278	2,344	2,407	\$13,242,732	\$434.77
Footwear Manufacturing	12	2,074	2,128	2,199	\$11,856,558	\$427.45
Other Leather Product Manufacturing	11	204	216	208	\$1,386,174	\$509.37
WOOD PRODUCT MANUFACTURING	392	13,825	13,848	13,928	\$112,793,042	\$625.69
Sawmills and Wood Preservation	183	6,327	6,301	6,284	\$53,787,881	\$656.33
Veneer and Engineered Wood Products	49	3,376	3,368	3,397	\$32,195,423	\$732.64
Other Wood Product Manufacturing	160	4,122	4,179	4,247	\$26,809,738	\$493.06
PAPER MANUFACTURING	85	11,988	11,906	11,921	\$151,936,810	\$978.98
Pulp, Paper and Paperboard Mills	12	4,799	4,727	4,729	\$79,874,495	\$1,293.06
Converted Paper Product Manufacturing	73	7,189	7,179	7,192	\$72,062,315	\$771.32

NORTH AMERICAN INDUSTRY CLASSIFICATION SYSTEM INDUSTRY GROUPS	NUMBER OF EMPLOYING UNITS	EMPLOYMENT JULY	EMPLOYMENT AUGUST	EMPLOYMENT SEPTEMBER	TOTAL EARNINGS JUL. - SEP. 2005	AVERAGE WEEKLY EARNINGS
PRINTING AND RELATED SUPPORT ACTIVITIES	306	4,750	4,709	4,705	\$38,759,482	\$631.50
PETROLEUM AND COAL PRODUCTS MANUFACTURING	20	903	899	895	\$11,073,508	\$947.51
CHEMICAL MANUFACTURING	115	5,139	5,118	5,104	\$64,499,930	\$968.99
Basic Chemical Manufacturing	24	1,571	1,561	1,557	\$22,607,025	\$1,112.61
Resin, Rubber and Artificial Fibers	7	315	313	314	\$4,124,947	\$1,010.52
Agricultural Chemical Manufacturing	20	419	404	387	\$4,687,919	\$894.07
Pharmaceutical and Medicine Manufacturing	14	151	153	146	\$1,653,847	\$848.13
Paint, Coating and Adhesive Manufacturing	7	189	187	182	\$2,478,401	\$1,024.98
Cleaning Compound and Toiletry Manufacturing	17	1,085	1,088	1,077	\$11,490,456	\$815.89
Other Chemical Preparation Manufacturing	26	1,409	1,412	1,441	\$17,457,335	\$945.24
PLASTICS AND RUBBER PRODUCTS MANUFACTURING	170	12,744	12,876	12,897	\$121,134,315	\$725.76
Plastics Product Manufacturing	126	7,495	7,452	7,466	\$62,187,985	\$640.30
Rubber Product Manufacturing	44	5,249	5,424	5,431	\$58,946,330	\$844.70
NONMETALLIC MINERAL PRODUCT MANUFACTURING	251	4,595	4,582	4,611	\$43,058,120	\$720.66
Clay Product and Refractory Manufacturing	14	487	466	459	\$4,312,845	\$704.87
Glass and Glass Product Manufacturing	15	348	342	396	\$3,578,423	\$760.40
Cement and Concrete Product Manufacturing	185	2,833	2,840	2,825	\$25,715,085	\$698.31
Lime and Gypsum Product Manufacturing	3	394	400	398	\$4,509,187	\$872.97
Other Nonmetallic Mineral Products	34	533	534	533	\$4,942,580	\$712.87
PRIMARY METAL MANUFACTURING	65	7,979	8,000	7,949	\$95,437,945	\$920.43
Iron and Steel Mills and Ferroalloys	7	2,128	2,138	2,072	\$38,870,631	\$1,415.30
Purchased Steel Product Manufacturing	13	2,137	2,138	2,177	\$20,382,389	\$729.02
Alumina and Aluminum Production	19	1,731	1,759	1,761	\$18,231,709	\$801.24
Other Nonferrous Metal Production	10	606	616	610	\$5,686,709	\$716.33
Foundries	16	1,377	1,349	1,329	\$12,266,507	\$698.08
FABRICATED METAL PRODUCT MANUFACTURING	580	18,209	18,190	18,246	\$168,559,291	\$711.84
Forging and Stamping	14	898	896	902	\$7,738,402	\$662.38
Cutlery and Hand Tool Manufacturing	20	1,353	1,364	1,374	\$11,619,712	\$655.46
Architectural and Structural Metals	193	5,113	5,138	5,165	\$48,572,273	\$727.10
Boilers, Tanks and Shipping Containers	18	1,093	1,074	1,087	\$9,782,483	\$693.76
Hardware Manufacturing	12	345	306	301	\$2,386,800	\$578.57
Spring and Wire Product Manufacturing	18	823	787	794	\$5,896,465	\$566.02
Machine Shops and Threaded Products	199	1,714	1,724	1,730	\$14,088,697	\$629.11
Coating, Engraving and Heat Treating Metals	38	966	988	995	\$7,972,658	\$623.89

NORTH AMERICAN INDUSTRY CLASSIFICATION SYSTEM INDUSTRY GROUPS	NUMBER OF EMPLOYING UNITS	EMPLOYMENT JULY	EMPLOYMENT AUGUST	EMPLOYMENT SEPTEMBER	TOTAL EARNINGS JUL. - SEP. 2005	AVERAGE WEEKLY EARNINGS
Other Fabricated Metal Product Manufacturing	68	5,904	5,913	5,898	\$60,501,801	\$788.14
MACHINERY MANUFACTURING	251	14,080	13,980	14,039	\$121,135,142	\$664.01
Agricultural, Construction and Mining Machinery	38	2,897	2,820	2,736	\$16,738,968	\$456.98
Commercial and Service Industry Machinery	25	1,026	1,010	987	\$10,416,516	\$795.17
HVAC and Commercial Refrigeration Equipment	25	4,738	4,768	4,815	\$44,524,664	\$717.47
Metalworking Machinery Manufacturing	75	1,402	1,401	1,415	\$13,767,711	\$753.24
Other General Purpose Machinery Manufacturing	55	3,178	3,133	3,172	\$27,191,030	\$661.69
Other	33	839	848	914	\$8,496,253	\$753.82
COMPUTER AND ELECTRONIC PRODUCT MANUFACTURING	76	5,684	5,677	5,726	\$52,273,441	\$705.98
Audio and Video Equipment Manufacturing	10	1,336	1,367	1,384	\$11,071,921	\$625.17
Semiconductors and Electronic Components	24	2,044	2,036	2,062	\$19,179,651	\$720.62
Electronic Instrument Manufacturing	26	1,241	1,229	1,234	\$10,620,195	\$661.67
Other	16	1,063	1,045	1,046	\$11,401,674	\$834.23
ELECTRICAL EQUIPMENT AND APPLIANCES	71	12,998	13,047	13,032	\$123,273,130	\$727.99
Electrical Equipment Manufacturing	27	4,949	4,970	4,954	\$47,386,897	\$735.25
Other	44	8,049	8,077	8,078	\$75,886,233	\$723.53
TRANSPORTATION EQUIPMENT MANUFACTURING	177	16,464	16,732	16,832	\$149,790,581	\$690.95
Motor Vehicle Body and Trailer Manufacturing	43	3,645	3,632	3,701	\$30,763,274	\$646.68
Motor Vehicle Parts Manufacturing	62	6,666	6,792	6,839	\$54,811,793	\$623.19
Aerospace Product and Parts Manufacturing	31	3,254	3,282	3,313	\$40,216,204	\$942.29
Ship and Boat Building	23	1,625	1,650	1,668	\$12,680,137	\$591.99
Other	18	1,274	1,376	1,311	\$11,319,173	\$659.46
FURNITURE & RELATED PRODUCT MFG.	270	6,831	6,991	6,821	\$50,583,100	\$565.47
Household & Institutional Furniture	221	4,714	4,680	4,566	\$32,087,600	\$530.43
Office Furniture & Fixtures Manufacturing	40	1,973	2,158	2,105	\$17,658,580	\$653.47
Other Furniture Related Product Manufacturing	9	144	153	150	\$836,920	\$432.07
MISCELLANEOUS MANUFACTURING	269	5,784	5,705	5,789	\$44,110,396	\$589.15
Medical Equipment & Supplies Manufacturing	98	2,570	2,577	2,560	\$19,924,838	\$596.61
Other Miscellaneous Manufacturing	171	3,214	3,128	3,229	\$24,185,558	\$583.15
TRADE, TRANSPORTATION AND UTILITIES	20,903	242,329	242,103	243,911	\$1,822,177,874	\$577.34
WHOLESALE TRADE	6,269	48,040	47,907	48,010	\$543,052,988	\$870.54
MERCHANT WHOLESALERS, DURABLE GOODS	2,097	21,795	21,810	21,889	\$229,134,776	\$807.36
Motor Vehicle & Part Merchant Wholesalers	235	2,716	2,728	2,771	\$24,305,829	\$682.78

NORTH AMERICAN INDUSTRY CLASSIFICATION SYSTEM INDUSTRY GROUPS	NUMBER OF EMPLOYING UNITS	EMPLOYMENT JULY	EMPLOYMENT AUGUST	EMPLOYMENT SEPTEMBER	TOTAL EARNINGS JUL. - SEP. 2005	AVERAGE WEEKLY EARNINGS
Furniture & Furnishing Merchant Wholesalers	60	415	415	425	\$4,585,265	\$843.14
Lumber & Supply Merchant Wholesalers	166	1,770	1,784	1,790	\$17,705,387	\$764.57
Commercial Goods Merchant Wholesalers	239	2,357	2,378	2,399	\$33,123,514	\$1,071.47
Metal & Mineral Merchant Wholesalers	50	730	736	736	\$7,861,436	\$823.88
Electric Goods Merchant Wholesalers	174	2,205	2,192	2,182	\$27,987,035	\$981.69
Hardware & Plumbing Merchant Wholesalers	241	2,465	2,484	2,510	\$25,508,858	\$789.20
Machinery & Supply Merchant Wholesalers	703	7,368	7,321	7,308	\$73,477,406	\$770.85
Misc. Durable Goods Merchant Wholesalers	229	1,769	1,772	1,768	\$14,580,046	\$633.76
MERCHANT WHOLESALERS, NONDURABLE GOODS	1,313	17,478	17,317	17,293	\$159,005,047	\$704.45
Paper & Paper Product Merchant Wholesalers	72	1,209	1,242	1,247	\$11,638,927	\$726.31
Druggists' Goods Merchant Wholesalers	53	1,048	1,012	1,005	\$9,789,101	\$737.04
Apparel & Piece Goods Merchant Wholesalers	41	443	435	440	\$2,950,303	\$516.57
Grocery Product Merchant Wholesalers	363	6,106	6,070	6,019	\$63,208,820	\$801.68
Farm Product Merchant Wholesalers	81	918	908	989	\$5,446,404	\$446.49
Chemical Merchant Wholesalers	83	442	445	442	\$5,110,642	\$887.42
Petroleum Merchant Wholesalers	156	1,429	1,432	1,453	\$14,304,385	\$765.19
Alcoholic Beverage Merchant Wholesalers	37	1,122	1,140	1,155	\$11,621,628	\$784.87
Misc. Nondurable Goods Merchant Wholesalers	427	4,761	4,633	4,543	\$34,934,837	\$578.45
ELECTRONIC MARKETS & AGENTS & BROKERS	2,859	8,767	8,780	8,828	\$154,913,165	\$1,355.42
RETAIL TRADE	11,324	131,789	131,609	132,103	\$665,987,332	\$388.59
MOTOR VEHICLE & PARTS DEALERS	1,734	18,173	18,203	18,248	\$153,155,166	\$647.03
Automobile Dealers	748	10,982	11,004	11,027	\$105,658,473	\$738.58
Other Motor Vehicle Dealers	195	1,533	1,528	1,504	\$12,842,088	\$649.19
Automotive Parts, Accessories & Tire Stores	791	5,658	5,671	5,717	\$34,654,605	\$469.16
FURNITURE & HOME FURNISHINGS STORES	615	4,172	4,162	4,145	\$27,240,037	\$503.74
Furniture Stores	317	2,549	2,542	2,528	\$16,125,923	\$488.43
Home Furnishings Stores	298	1,623	1,620	1,617	\$11,114,114	\$527.74
ELECTRONICS & APPLIANCE STORES	477	2,870	2,892	2,931	\$17,664,268	\$468.93
BUILDING MATERIAL & GARDEN SUPPLY STORES	821	10,996	10,977	10,922	\$70,821,153	\$496.83
Building Material & Supplies Dealers	645	10,083	10,098	10,060	\$65,613,036	\$500.69
Lawn & Garden Equipment & Supplies Stores	176	913	879	862	\$5,208,117	\$452.85
FOOD & BEVERAGE STORES	1,144	18,818	18,595	18,960	\$74,328,144	\$304.27
Grocery Stores	677	16,484	16,252	16,645	\$64,163,253	\$299.85
Specialty Food Stores	157	853	842	815	\$4,450,060	\$409.14

NORTH AMERICAN INDUSTRY CLASSIFICATION SYSTEM INDUSTRY GROUPS	NUMBER OF EMPLOYING UNITS	EMPLOYMENT JULY	EMPLOYMENT AUGUST	EMPLOYMENT SEPTEMBER	TOTAL EARNINGS JUL. - SEP. 2005	AVERAGE WEEKLY EARNINGS
Beer, Wine & Liquor Stores	310	1,481	1,501	1,500	\$5,714,831	\$294.25
HEALTH & PERSONAL CARE STORES	790	6,521	6,575	6,652	\$44,828,948	\$523.86
GASOLINE STATIONS	1,666	13,101	13,037	12,994	\$44,845,950	\$264.47
Gasoline Stations with Convenience Stores	1,486	11,778	11,744	11,725	\$39,196,334	\$256.63
Other Gasoline Stations	180	1,323	1,293	1,269	\$5,649,616	\$335.59
CLOTHING & CLOTHING ACCESSORIES STORES	1,054	8,091	8,213	8,120	\$28,728,862	\$271.44
Clothing Stores	694	5,968	6,095	6,020	\$19,162,053	\$244.54
Shoe Stores	183	1,204	1,225	1,199	\$4,209,924	\$267.78
Jewelry, Luggage & Leather Goods Stores	177	919	893	901	\$5,356,885	\$455.66
SPORTING GOODS, HOBBY, BOOK & MUSIC STORES	552	4,095	4,186	4,156	\$15,592,605	\$289.32
Sporting Goods & Musical Instrument Stores	391	2,714	2,741	2,751	\$11,227,846	\$315.75
Book, Periodical & Music Stores	161	1,381	1,445	1,405	\$4,364,759	\$238.06
GENERAL MERCHANDISE STORES	701	35,927	35,988	36,213	\$145,082,148	\$309.64
MISCELLANEOUS STORE RETAILERS	1,452	7,099	6,845	6,794	\$30,725,775	\$341.91
Florists	273	1,022	1,010	1,019	\$3,540,140	\$267.77
Office Supplies, Stationery & Gift Stores	413	2,543	2,546	2,542	\$11,876,869	\$359.17
Used Merchandise Stores	219	805	830	793	\$3,320,605	\$315.61
Other Miscellaneous Store Retailers	547	2,729	2,459	2,440	\$11,988,161	\$362.68
NONSTORE RETAILERS	318	1,926	1,936	1,968	\$12,974,276	\$513.56
Electronic Shopping & Mail -Order Houses	68	338	340	374	\$2,795,532	\$613.23
Vending Machine Operators	82	690	697	706	\$4,137,931	\$456.24
Direct Selling Establishments	168	898	899	888	\$6,040,813	\$519.19
TRANSPORTATION & WAREHOUSING	2,957	55,860	55,945	57,177	\$508,354,874	\$694.23
AIR TRANSPORTATION	45	1,041	1,031	1,019	\$13,432,661	\$1,002.86
TRUCK TRANSPORTATION	1,990	35,204	35,123	35,662	\$332,367,958	\$723.66
General Freight Trucking	1,239	29,691	29,653	30,095	\$290,114,179	\$748.55
Specialized Freight Trucking	751	5,513	5,470	5,567	\$42,253,779	\$589.18
TRANSIT & GROUND PASSENGER TRANSPORTATION	56	834	885	1,056	\$3,672,080	\$305.37
Taxi & Limousine Service	20	233	234	229	\$628,525	\$208.40
School & Employee Bus Transportation	8	221	270	423	\$1,608,418	\$406.10
Charter Bus Industry	8	97	91	95	\$497,759	\$405.89
Other Ground Passenger Transportation	11	203	209	213	\$555,173	\$204.99
Other	9	80	81	96	\$382,205	\$343.20
PIPELINE TRANSPORTATION	66	959	955	954	\$13,422,326	\$1,080.01

NORTH AMERICAN INDUSTRY CLASSIFICATION SYSTEM INDUSTRY GROUPS	NUMBER OF EMPLOYING UNITS	EMPLOYMENT JULY	EMPLOYMENT AUGUST	EMPLOYMENT SEPTEMBER	TOTAL EARNINGS JUL. - SEP. 2005	AVERAGE WEEKLY EARNINGS
SUPPORT ACTIVITIES FOR TRANSPORTATION	434	4,784	4,823	4,808	\$44,440,114	\$711.44
Support Activities for Air Transportation	103	1,586	1,620	1,635	\$13,942,360	\$664.63
Support Activities for Rail Transportation	33	402	415	417	\$3,253,333	\$608.40
Support Activities for Water Transportation	31	676	658	627	\$6,317,457	\$743.43
Support Activities for Road Transportation	102	468	475	479	\$2,897,077	\$470.15
Freight Transportation Arrangement	145	1,508	1,505	1,493	\$16,993,460	\$870.30
Other Support Activities for Transportation	20	144	150	157	\$1,036,427	\$530.32
COURIERS & MESSENGERS	135	3,212	3,227	3,241	\$30,052,399	\$716.44
Couriers	88	2,950	2,967	2,987	\$28,531,978	\$739.48
Local Messengers & Local Delivery	47	262	260	254	\$1,520,421	\$452.15
WAREHOUSING & STORAGE	213	9,622	9,696	10,245	\$69,422,545	\$541.91
OTHER	18	204	205	192	\$1,544,791	\$593.16
UTILITIES	353	6,640	6,642	6,621	\$104,782,680	\$1,214.92
Power Generation & Supply	159	4,985	5,002	4,976	\$85,490,066	\$1,318.48
Natural Gas Distribution	31	838	827	836	\$13,508,968	\$1,246.48
Water, Sewage and Other Systems	163	817	813	809	\$5,783,646	\$547.23
INFORMATION	1,211	20,029	20,097	19,954	\$207,226,373	\$795.96
PUBLISHING INDUSTRIES, EXCEPT INTERNET	245	6,269	6,437	6,459	\$48,539,505	\$584.47
Newspaper, Book & Directory Publishers	214	6,022	6,190	6,214	\$45,065,949	\$564.41
Software Publishers	31	247	247	245	\$3,473,556	\$1,084.70
MOTION PICTURE & SOUND RECORDING INDUSTRY	138	1,286	1,219	1,130	\$4,756,170	\$301.95
Motion Picture & Video Industries	125	1,258	1,190	1,103	\$4,515,973	\$293.48
Sound Recording Industries	13	28	29	27	\$240,197	\$659.88
BROADCASTING, EXCEPT INTERNET	138	2,073	2,078	2,081	\$17,054,335	\$631.52
Radio & Television Broadcasting	131	2,041	2,046	2,052	\$16,836,634	\$632.90
Cable & Other Subscription Programming	7	32	32	29	\$217,701	\$540.20
TELECOMMUNICATIONS	499	8,867	8,837	8,767	\$119,547,949	\$1,042.20
Wired Telecommunications Carriers	211	5,083	5,075	5,060	\$81,931,553	\$1,242.43
Wireless Telecommunications Carriers	125	1,985	1,983	1,952	\$19,117,324	\$745.22
Cable & Other Program Distribution	84	1,253	1,237	1,216	\$11,583,252	\$721.28
Other	79	546	542	539	\$6,915,820	\$980.92
ISPS, SEARCH PORTALS, & DATA PROCESSING	156	1,200	1,187	1,197	\$14,914,170	\$960.30
ISPs, & Web Search Portals	65	203	191	195	\$1,828,451	\$716.38
Data Processing & Related Services	91	997	996	1,002	\$13,085,719	\$1,008.27

NORTH AMERICAN INDUSTRY CLASSIFICATION SYSTEM INDUSTRY GROUPS	NUMBER OF EMPLOYING UNITS	EMPLOYMENT JULY	EMPLOYMENT AUGUST	EMPLOYMENT SEPTEMBER	TOTAL EARNINGS JUL. - SEP. 2005	AVERAGE WEEKLY EARNINGS
OTHER	35	334	339	320	\$2,414,244	\$561.06
FINANCIAL ACTIVITIES	7,782	50,225	50,275	50,291	\$458,149,826	\$701.15
FINANCE & INSURANCE	4,582	36,180	36,296	36,424	\$368,058,104	\$779.95
CREDIT INTERMEDIATION & RELATED ACTIVITIES	1,967	21,433	21,452	21,543	\$186,318,176	\$667.36
Depository Credit Intermediation	1,270	17,871	17,866	17,947	\$147,325,589	\$633.30
Nondepository Credit Intermediation	401	2,696	2,700	2,691	\$31,297,338	\$893.10
Activities Related to Credit Intermediation	296	866	886	905	\$7,695,249	\$668.36
FINANCIAL INVESTMENT & RELATED ACTIVITIES	572	3,112	3,111	3,072	\$57,179,590	\$1,419.61
Security & Commodity Investment Activities	327	2,440	2,430	2,402	\$48,805,404	\$1,548.79
Other Financial Investment Activities	245	672	681	670	\$8,374,186	\$955.27
INSURANCE CARRIERS & RELATED ACTIVITIES	2,005	11,211	11,305	11,385	\$120,839,143	\$822.57
Insurance Carriers	382	4,660	4,691	4,702	\$55,796,209	\$916.25
Insurance Agencies, Brokerages & Support	1,623	6,551	6,614	6,683	\$65,042,934	\$756.24
OTHER	38	424	428	424	\$3,721,195	\$672.99
REAL ESTATE & RENTAL & LEASING	3,200	14,045	13,979	13,867	\$90,091,722	\$496.30
REAL ESTATE	2,379	8,733	8,689	8,640	\$56,503,684	\$500.32
Lessors of Real Estate	1,030	4,342	4,275	4,244	\$24,405,328	\$437.91
Offices of Real Estate Agents & Brokers	777	2,016	2,013	1,999	\$15,033,734	\$575.53
Activities Related to Real Estate	572	2,375	2,401	2,397	\$17,064,622	\$549.00
RENTAL & LEASING SERVICES	798	5,225	5,200	5,142	\$32,339,348	\$479.41
Automotive Equipment Rental & Leasing	126	937	954	973	\$6,755,728	\$544.35
Consumer Goods Rental	498	3,375	3,338	3,261	\$16,775,394	\$388.13
General Rental Centers	36	198	197	194	\$1,576,591	\$617.71
Machinery & Equipment Rental & Leasing	138	715	711	714	\$7,231,635	\$779.83
LESSORS OF NONFINANCIAL INTANGIBLE ASSETS	23	87	90	85	\$1,248,690	\$1,099.84
PROFESSIONAL AND BUSINESS SERVICES	10,463	112,042	113,126	113,456	\$972,958,620	\$663.06
PROFESSIONAL & TECHNICAL SERVICES	6,582	35,129	35,278	35,304	\$377,613,936	\$824.34
Legal Services	1,615	6,733	6,732	6,729	\$63,216,992	\$722.42
Accounting & Bookkeeping Services	1,174	4,523	4,562	4,589	\$39,152,833	\$660.76
Architectural & Engineering Services	886	6,381	6,435	6,413	\$71,108,366	\$853.38
Specialized Design Services	154	448	448	456	\$3,217,496	\$549.19
Computer Systems Design & Related Services	756	7,577	7,563	7,518	\$119,665,645	\$1,218.78
Management & Technical Consulting Services	1,003	2,605	2,686	2,711	\$31,474,847	\$907.70
Scientific Research & Development Services	108	1,148	1,119	1,123	\$12,141,461	\$826.51

NORTH AMERICAN INDUSTRY CLASSIFICATION SYSTEM INDUSTRY GROUPS	NUMBER OF EMPLOYING UNITS	EMPLOYMENT JULY	EMPLOYMENT AUGUST	EMPLOYMENT SEPTEMBER	TOTAL EARNINGS JUL. - SEP. 2005	AVERAGE WEEKLY EARNINGS
Advertising & Related Services	318	1,922	1,908	1,957	\$19,069,610	\$760.44
Other Professional & Technical Services	568	3,792	3,825	3,808	\$18,566,686	\$375.02
MANAGEMENT OF COMPANIES & ENTERPRISES	485	23,754	23,627	23,648	\$328,463,847	\$1,067.16
ADMINISTRATIVE & WASTE SERVICES	3,396	53,159	54,221	54,504	\$266,880,837	\$380.44
ADMINISTRATIVE & SUPPORT SERVICES	3,201	50,759	51,813	52,081	\$244,724,397	\$365.17
Office Administrative Services	321	1,311	1,299	1,337	\$14,055,355	\$821.77
Facilities Support Services	14	135	123	130	\$1,124,394	\$668.75
Employment Services	613	26,497	27,424	27,805	\$115,055,085	\$324.88
Business Support Services	354	4,566	4,679	4,621	\$22,529,398	\$374.95
Travel Arrangement & Reservation Services	103	472	463	461	\$3,533,519	\$584.12
Investigation & Security Services	226	4,319	4,362	4,383	\$24,488,183	\$432.57
Services to Buildings & Dwellings	1,280	11,911	11,915	11,815	\$53,153,036	\$344.16
Other Support Services	290	1,548	1,548	1,529	\$10,785,427	\$538.15
WASTE MANAGEMENT & REMEDIATION SERVICES	195	2,400	2,408	2,423	\$22,156,440	\$707.10
Waste Collection	90	1,113	1,116	1,140	\$10,188,885	\$697.92
Waste Treatment & Disposal	38	770	776	787	\$8,413,204	\$832.19
Remediation & Other Waste Services	67	517	516	496	\$3,554,351	\$536.45
EDUCATION AND HEALTH SERVICES	8,323	140,303	141,328	142,664	\$1,152,910,204	\$627.05
EDUCATIONAL SERVICES	543	8,009	8,013	8,780	\$53,559,866	\$498.35
Elementary & Secondary Schools	82	2,796	2,867	3,136	\$14,680,205	\$385.01
Junior Colleges	8	230	249	270	\$1,724,267	\$531.25
Colleges & Universities	25	2,919	2,806	3,091	\$22,593,495	\$591.41
Business, Computer & Management Training	47	138	133	133	\$1,824,814	\$1,042.35
Technical & Trade Schools	93	628	637	655	\$6,730,597	\$808.97
Other Schools & Instruction	218	1,071	1,089	1,274	\$4,021,450	\$270.25
Educational Support Services	70	227	232	221	\$1,985,038	\$673.66
HEALTH CARE & SOCIAL ASSISTANCE	7,780	132,294	133,315	133,884	\$1,099,350,338	\$635.05
AMBULATORY HEALTH CARE SERVICES	4,683	41,551	41,875	41,888	\$494,044,140	\$909.80
Offices of Physicians	2,084	20,149	20,215	20,189	\$318,511,535	\$1,213.86
Offices of Dentists	911	5,998	6,049	6,048	\$55,127,536	\$703.05
Offices of Other Health Practitioners	1,119	5,307	5,340	5,339	\$39,405,340	\$568.84
Outpatient Care Centers	207	3,484	3,540	3,558	\$32,746,383	\$714.12
Medical & Diagnostic Laboratories	88	709	719	716	\$9,191,078	\$989.28
Home Health Care Services	127	3,836	3,900	3,909	\$24,696,929	\$489.42

NORTH AMERICAN INDUSTRY CLASSIFICATION SYSTEM INDUSTRY GROUPS	NUMBER OF EMPLOYING UNITS	EMPLOYMENT JULY	EMPLOYMENT AUGUST	EMPLOYMENT SEPTEMBER	TOTAL EARNINGS JUL. - SEP. 2005	AVERAGE WEEKLY EARNINGS
Other Ambulatory Health Care Services	147	2,068	2,112	2,129	\$14,365,339	\$525.45
HOSPITALS	108	42,210	42,048	42,105	\$383,261,058	\$699.93
General Medical & Surgical Hospitals	76	38,864	38,732	38,775	\$353,493,649	\$700.99
Psychiatric & Substance Abuse Hospitals	10	1,431	1,466	1,492	\$12,123,258	\$637.43
Other Hospitals	22	1,915	1,850	1,838	\$17,644,151	\$726.70
NURSING & RESIDENTIAL CARE FACILITIES	496	26,565	26,734	26,851	\$127,654,061	\$367.54
Nursing Care Facilities	234	20,081	20,197	20,275	\$95,285,026	\$363.13
Residential Mental Health Facilities	128	2,852	2,896	2,936	\$15,041,649	\$399.72
Community Care Facilities for the Elderly	90	2,274	2,269	2,260	\$9,941,210	\$337.22
Other Residential Care Facilities	44	1,358	1,372	1,380	\$7,386,176	\$414.72
SOCIAL ASSISTANCE	2,493	21,968	22,658	23,040	\$94,391,079	\$321.91
Individual & Family Services	1,362	10,243	10,430	10,378	\$46,901,211	\$348.57
Emergency & Other Relief Services	114	858	894	899	\$4,436,759	\$386.22
Vocational Rehabilitation Services	129	3,318	3,329	3,322	\$16,190,574	\$374.79
Child Day Care Services	888	7,549	8,005	8,441	\$26,862,535	\$258.35
LEISURE AND HOSPITALITY	5,923	97,242	96,992	96,284	\$279,151,265	\$221.74
ARTS, ENTERTAINMENT & RECREATION	912	10,860	10,600	9,705	\$36,454,501	\$269.94
PERFORMING ARTS & SPECTATOR SPORTS	201	2,111	2,164	2,237	\$8,035,042	\$284.74
Performing Arts Companies	41	669	660	659	\$1,994,260	\$231.50
Spectator Sports	57	814	782	741	\$3,240,358	\$319.97
Performing Arts & Sports Promoters	38	512	609	705	\$2,030,671	\$256.64
Agents & Managers for Public Figures	11	14	14	15	\$126,322	\$677.94
Independent Artists, Writers & Performers	54	102	99	117	\$643,431	\$466.93
MUSEUMS, PARKS & HISTORICAL SITES	46	242	240	245	\$936,578	\$297.29
GAMBLING, RECREATION & AMUSEMENT INDUSTRY	665	8,507	8,196	7,223	\$27,482,881	\$265.08
Other Amusement & Recreation Industries	627	7,576	7,353	6,744	\$25,756,283	\$274.25
Other	38	931	843	479	\$1,726,598	\$176.85
ACCOMMODATION & FOOD SERVICES	5,011	86,382	86,392	86,579	\$242,696,764	\$215.95
ACCOMMODATION	785	12,105	11,769	11,460	\$41,092,565	\$268.38
Traveler Accommodation	715	11,475	11,379	11,132	\$39,318,424	\$266.98
RV Parks & Recreational Camps	50	585	315	244	\$1,519,215	\$306.46
Rooming & Boarding Houses	20	45	75	84	\$254,926	\$288.38
FOOD SERVICES & DRINKING PLACES	4,226	74,277	74,623	75,119	\$201,604,199	\$207.68
Full -Service Restaurants	1,826	32,347	32,633	32,535	\$93,718,800	\$221.79

NORTH AMERICAN INDUSTRY CLASSIFICATION SYSTEM INDUSTRY GROUPS	NUMBER OF EMPLOYING UNITS	EMPLOYMENT JULY	EMPLOYMENT AUGUST	EMPLOYMENT SEPTEMBER	TOTAL EARNINGS JUL. - SEP. 2005	AVERAGE WEEKLY EARNINGS
Limited-Service Eating Places	2,087	39,326	39,274	39,500	\$99,198,222	\$193.83
Special Food Services	157	1,681	1,748	2,109	\$6,202,089	\$258.44
Drinking Places, Alcoholic Beverages	156	923	968	975	\$2,485,088	\$200.10
OTHER SERVICES	5,543	25,729	25,496	25,475	\$146,299,250	\$440.17
REPAIR & MAINTENANCE	2,251	9,342	9,296	9,316	\$62,345,268	\$514.68
Automotive Repair & Maintenance	1,560	6,708	6,682	6,674	\$41,968,264	\$482.70
Electronic Equipment Repair & Maintenance	161	563	585	592	\$4,837,665	\$641.60
Commercial Machinery Repair & Maintenance	334	1,490	1,470	1,471	\$11,765,562	\$612.76
Household Goods Repair & Maintenance	196	581	559	579	\$3,773,777	\$506.62
PERSONAL & LAUNDRY SERVICES	1,323	8,163	8,199	8,159	\$39,881,124	\$375.32
Personal Care Services	569	2,476	2,534	2,464	\$9,174,994	\$283.29
Death Care Services	249	1,622	1,618	1,642	\$10,326,537	\$488.13
Drycleaning & Laundry Services	346	3,317	3,289	3,314	\$16,198,941	\$376.84
Other Personal Services	159	748	758	739	\$4,180,652	\$429.74
MEMBERSHIP ASSOCIATIONS & ORGANIZATIONS	1,012	6,769	6,556	6,534	\$38,359,001	\$445.75
Religious Organizations	39	216	203	205	\$1,081,872	\$400.10
Grantmaking & Giving Services	95	407	412	421	\$3,945,367	\$734.25
Social Advocacy Organizations	137	1,873	1,914	1,927	\$11,394,438	\$460.18
Civic & Social Organizations	228	1,987	1,742	1,649	\$5,729,975	\$245.87
Professional & Similar Organizations	513	2,286	2,285	2,332	\$16,207,349	\$541.82
PRIVATE HOUSEHOLDS	957	1,455	1,445	1,466	\$5,713,857	\$302.01
LOCAL GOVERNMENT	1,996	69,720	89,379	113,448	\$616,734,221	\$522.20
STATE GOVERNMENT	1,193	57,974	60,026	61,434	\$543,231,604	\$698.65
NONCLASSIFIABLE ESTABLISHMENTS	0	0	0	0	\$0	

**TABLE 6. COUNTY SUMMARY
EMPLOYMENT AND TOTAL EARNINGS, BY INDUSTRY
THIRD QUARTER 2005**

NORTH AMERICAN INDUSTRY CLASSIFICATION SYSTEM INDUSTRY GROUP	NUMBER OF EMPLOYING UNITS	EMPLOYMENT JULY	EMPLOYMENT AUGUST	EMPLOYMENT SEPTEMBER	TOTAL EARNINGS JUL. - SEP. 2005	AVERAGE WEEKLY EARNINGS
ARKANSAS COUNTY - TOTAL	644	9,717	9,799	10,025	\$70,217,591	\$548.53
Natural Resources & Mining	46	326	321	313	\$2,097,684	\$504.25
Construction	53	282	276	262	\$2,101,177	\$591.33
Manufacturing	32	3,547	3,593	3,678	\$29,842,953	\$636.61
Trade, Transportation & Utilities	198	2,117	2,099	2,152	\$14,955,035	\$541.95
Wholesale Trade	42	457	435	421	\$4,386,588	\$770.97
Retail Trade	102	1,079	1,073	1,113	\$5,145,907	\$363.71
Transportation, Warehousing & Utilities	54	581	591	618	\$5,422,540	\$699.08
Information	8	78	82	79	\$741,727	\$716.18
Financial Activities	42	333	331	334	\$2,446,749	\$565.77
Professional & Business Services	49	382	385	391	\$3,926,340	\$782.45
Education & Health Services	65	1,133	1,168	1,167	\$6,220,177	\$413.91
Leisure & Hospitality	52	489	489	482	\$1,188,378	\$187.84
Other Services	52	154	151	152	\$809,031	\$408.53
Local Government	31	699	696	805	\$4,515,948	\$473.70
State Government	16	177	208	210	\$1,372,392	\$532.28
ASHLEY COUNTY - TOTAL	526	7,815	7,949	8,448	\$70,549,202	\$672.42
Natural Resources & Mining	61	522	495	585	\$3,716,840	\$535.41
Construction	49	640	623	642	\$4,544,843	\$550.56
Manufacturing	28	2,990	2,997	2,997	\$39,801,287	\$1,022.36
Trade, Transportation & Utilities	134	1,224	1,223	1,258	\$7,187,335	\$447.67
Wholesale Trade	25	148	149	179	\$1,508,342	\$731.26
Retail Trade	88	849	848	846	\$3,629,850	\$329.40
Transportation, Warehousing & Utilities	21	227	226	233	\$2,049,143	\$689.33
Information	10	53	54	49	\$387,333	\$572.98
Financial Activities	35	231	233	230	\$1,552,531	\$516.25
Professional & Business Services	46	340	345	345	\$2,063,543	\$462.33
Education & Health Services	49	572	591	596	\$4,385,156	\$575.30
Leisure & Hospitality	30	353	366	370	\$914,855	\$193.87
Other Services	40	172	167	182	\$795,313	\$352.27
Local Government	32	514	638	977	\$4,004,787	\$434.09

NORTH AMERICAN INDUSTRY CLASSIFICATION SYSTEM INDUSTRY GROUP	NUMBER OF EMPLOYING UNITS	EMPLOYMENT JULY	EMPLOYMENT AUGUST	EMPLOYMENT SEPTEMBER	TOTAL EARNINGS JUL. - SEP. 2005	AVERAGE WEEKLY EARNINGS
State Government	12	204	217	217	\$1,195,379	\$432.38
BAXTER COUNTY - TOTAL	1,190	13,932	14,165	14,566	\$93,179,837	\$504.02
Natural Resources & Mining	7	122	127	139	\$919,139	\$546.67
Construction	130	665	672	656	\$3,789,541	\$438.79
Manufacturing	67	2,589	2,579	2,618	\$20,401,645	\$604.68
Trade, Transportation & Utilities	270	2,606	2,598	2,587	\$14,057,954	\$416.40
Wholesale Trade	32	178	178	182	\$1,419,179	\$608.74
Retail Trade	210	2,160	2,157	2,141	\$10,791,747	\$385.63
Transportation, Warehousing & Utilities	28	268	263	264	\$1,847,028	\$536.15
Information	24	293	288	283	\$2,191,163	\$585.25
Financial Activities	108	680	675	669	\$5,159,525	\$588.27
Professional & Business Services	128	773	798	798	\$5,107,648	\$497.55
Education & Health Services	176	3,182	3,207	3,222	\$27,714,768	\$665.46
Leisure & Hospitality	123	1,763	1,713	1,650	\$4,435,162	\$199.67
Other Services	108	421	413	430	\$1,619,655	\$295.70
Local Government	36	572	791	1,211	\$5,853,206	\$524.76
State Government	13	266	304	303	\$1,930,431	\$510.29
BENTON COUNTY - TOTAL	4,840	86,890	87,962	90,364	\$773,051,549	\$672.65
Natural Resources & Mining	26	674	676	674	\$6,248,381	\$712.42
Construction	733	5,117	5,090	5,157	\$41,675,290	\$625.97
Manufacturing	239	13,712	13,709	13,714	\$117,486,776	\$659.11
Trade, Transportation & Utilities	1,302	22,519	22,253	22,567	\$194,628,004	\$666.99
Wholesale Trade	573	3,813	3,754	3,755	\$51,309,461	\$1,045.81
Retail Trade	564	7,254	7,232	7,191	\$40,889,433	\$435.30
Transportation, Warehousing & Utilities	165	11,452	11,267	11,621	\$102,429,110	\$688.34
Information	70	901	889	885	\$8,363,540	\$721.51
Financial Activities	541	3,299	3,345	3,340	\$28,246,656	\$652.89
Professional & Business Services	776	21,791	21,765	21,835	\$242,304,973	\$855.11
Education & Health Services	392	6,268	6,375	6,508	\$52,807,728	\$636.33
Leisure & Hospitality	364	6,427	6,457	6,449	\$21,620,431	\$258.07
Other Services	303	1,718	1,742	1,693	\$10,552,876	\$472.59
Local Government	75	3,919	5,066	6,696	\$43,627,280	\$642.04
State Government	19	545	595	846	\$5,489,614	\$637.88
BOONE COUNTY - TOTAL	1,022	12,962	13,179	13,933	\$103,120,937	\$593.83
Natural Resources & Mining	6	4	4	4	\$65,315	\$1,256.06

NORTH AMERICAN INDUSTRY CLASSIFICATION SYSTEM INDUSTRY GROUP	NUMBER OF EMPLOYING UNITS	EMPLOYMENT JULY	EMPLOYMENT AUGUST	EMPLOYMENT SEPTEMBER	TOTAL EARNINGS JUL. - SEP. 2005	AVERAGE WEEKLY EARNINGS
Construction	93	461	449	471	\$3,786,266	\$632.70
Manufacturing	68	2,118	2,102	2,112	\$16,860,218	\$614.47
Trade, Transportation & Utilities	271	4,377	4,389	4,420	\$42,205,320	\$738.64
Wholesale Trade	58	666	669	661	\$5,126,676	\$592.72
Retail Trade	158	1,952	1,970	1,981	\$10,011,912	\$391.40
Transportation, Warehousing & Utilities	55	1,759	1,750	1,778	\$27,066,732	\$1,181.42
Information	18	415	407	398	\$3,591,776	\$679.40
Financial Activities	95	620	621	615	\$4,610,289	\$573.23
Professional & Business Services	105	536	531	566	\$3,010,804	\$425.48
Education & Health Services	128	1,088	1,138	1,147	\$7,697,831	\$526.66
Leisure & Hospitality	85	1,185	1,200	1,180	\$3,280,437	\$212.35
Other Services	72	269	266	263	\$1,590,134	\$459.84
Local Government	60	1,397	1,538	2,219	\$11,869,544	\$531.46
State Government	21	492	534	538	\$4,553,003	\$671.80
BRADLEY COUNTY - TOTAL	342	3,725	3,774	3,948	\$24,420,572	\$492.31
Natural Resources & Mining	50	398	395	388	\$1,908,512	\$372.93
Construction	23	155	165	156	\$1,131,249	\$548.44
Manufacturing	11	1,048	1,023	1,019	\$9,095,717	\$679.29
Trade, Transportation & Utilities	92	512	499	508	\$2,556,725	\$388.42
Wholesale Trade	13	104	104	109	\$484,076	\$352.40
Retail Trade	52	332	321	325	\$1,419,259	\$334.89
Transportation, Warehousing & Utilities	27	76	74	74	\$653,390	\$673.14
Information	3	13	13	13	\$80,904	\$478.72
Financial Activities	24	188	186	187	\$1,216,596	\$500.45
Professional & Business Services	25	86	87	83	\$349,624	\$315.17
Education & Health Services	36	529	534	525	\$3,200,851	\$465.15
Leisure & Hospitality	19	173	187	173	\$375,257	\$162.47
Other Services	31	92	95	91	\$427,594	\$354.95
Local Government	16	257	318	542	\$2,234,190	\$461.58
State Government	12	274	272	263	\$1,843,353	\$525.82
CALHOUN COUNTY - TOTAL	121	3,798	3,870	3,874	\$33,933,097	\$678.45
Natural Resources & Mining	20	130	138	135	\$832,204	\$476.54
Construction	11	93	95	100	\$581,712	\$466.12

NORTH AMERICAN INDUSTRY CLASSIFICATION SYSTEM INDUSTRY GROUP	NUMBER OF EMPLOYING UNITS	EMPLOYMENT JULY	EMPLOYMENT AUGUST	EMPLOYMENT SEPTEMBER	TOTAL EARNINGS JUL. - SEP. 2005	AVERAGE WEEKLY EARNINGS
Manufacturing	14	2,648	2,672	2,636	\$25,770,511	\$747.49
Trade, Transportation & Utilities	27	198	205	202	\$1,353,086	\$516.12
Wholesale Trade & Retail Trade	19	79	83	80	\$256,821	\$244.90
Transportation, Warehousing & Utilities	8	119	122	122	\$1,096,265	\$696.93
Professional & Business Services	8	127	125	127	\$928,943	\$565.62
Education & Health Services	4	43	44	47	\$329,641	\$567.69
Local Government	11	129	156	199	\$849,185	\$404.89
State Government	10	304	307	297	\$2,115,832	\$537.74
Other	16	126	128	131	\$1,171,983	\$702.49
CARROLL COUNTY - TOTAL	797	9,680	10,080	10,093	\$54,852,857	\$424.02
Natural Resources & Mining	17	268	273	274	\$1,855,768	\$525.47
Trade, Transportation & Utilities	207	1,682	1,673	1,661	\$9,188,143	\$422.72
Wholesale Trade	23	117	114	118	\$575,318	\$380.42
Retail Trade	166	1,310	1,304	1,294	\$6,160,840	\$363.80
Transportation, Warehousing & Utilities	18	255	255	249	\$2,451,985	\$745.51
Professional & Business Services	69	227	211	218	\$1,439,817	\$506.50
Education & Health Services	58	713	736	737	\$5,579,062	\$588.96
Leisure & Hospitality	175	1,984	1,983	1,920	\$5,507,150	\$215.88
Local Government	25	586	998	1,070	\$5,341,413	\$464.44
State Government	11	106	108	104	\$756,005	\$548.62
Other	235	4,114	4,098	4,109	\$25,185,499	\$471.72
CHICOT COUNTY - TOTAL	333	3,483	3,652	3,787	\$21,615,952	\$456.72
Natural Resources & Mining	46	267	268	313	\$1,984,840	\$540.14
Construction	19	322	319	326	\$2,441,312	\$582.61
Manufacturing	12	360	361	362	\$1,895,631	\$403.93
Trade, Transportation & Utilities	85	609	630	621	\$3,300,362	\$409.47
Wholesale Trade	16	111	108	106	\$900,279	\$639.25

NORTH AMERICAN INDUSTRY CLASSIFICATION SYSTEM INDUSTRY GROUP	NUMBER OF EMPLOYING UNITS	EMPLOYMENT JULY	EMPLOYMENT AUGUST	EMPLOYMENT SEPTEMBER	TOTAL EARNINGS JUL. - SEP. 2005	AVERAGE WEEKLY EARNINGS
Retail Trade	57	418	438	430	\$1,622,059	\$291.07
Transportation, Warehousing & Utilities	12	80	84	85	\$778,024	\$721.06
Information	6	14	14	14	\$98,523	\$541.34
Financial Activities	28	163	160	160	\$1,165,637	\$556.92
Professional & Business Services	26	92	92	89	\$982,848	\$830.81
Education & Health Services	45	484	491	497	\$2,613,051	\$409.65
Leisure & Hospitality	22	255	241	245	\$547,139	\$170.40
Other Services	17	56	60	57	\$328,839	\$438.65
Local Government	16	554	706	800	\$4,243,587	\$475.38
State Government	11	307	310	303	\$2,014,183	\$505.23
CLARK COUNTY - TOTAL	611	9,385	9,539	9,859	\$61,052,997	\$489.50
Natural Resources & Mining	42	266	268	271	\$1,937,729	\$555.49
Construction	35	128	137	135	\$925,184	\$533.76
Manufacturing	35	2,351	2,323	2,293	\$17,752,272	\$588.01
Trade, Transportation & Utilities	141	1,436	1,444	1,450	\$8,958,936	\$477.47
Wholesale Trade	20	69	74	74	\$574,783	\$611.25
Retail Trade	94	1,080	1,075	1,091	\$5,561,729	\$395.40
Transportation, Warehousing & Utilities	27	287	295	285	\$2,822,424	\$751.24
Information	10	47	45	47	\$300,953	\$499.65
Financial Activities	92	406	400	405	\$2,755,571	\$525.10
Professional & Business Services	45	422	448	457	\$3,529,760	\$613.84
Education & Health Services	66	1,389	1,397	1,430	\$8,699,265	\$476.17
Leisure & Hospitality	56	1,070	1,045	1,101	\$2,823,019	\$202.57
Other Services	48	205	218	218	\$1,189,386	\$428.20
Local Government	26	739	790	905	\$4,449,777	\$421.89
State Government	15	926	1,024	1,147	\$7,731,145	\$576.08
CLAY COUNTY - TOTAL	405	4,301	4,535	4,635	\$26,681,740	\$457.08
Natural Resources & Mining	57	237	246	239	\$1,284,281	\$410.49
Construction	39	182	194	200	\$1,096,280	\$439.21
Manufacturing	19	1,161	1,139	1,109	\$7,222,665	\$488.93
Trade, Transportation & Utilities	96	945	935	966	\$5,488,366	\$445.03
Wholesale Trade	23	321	310	316	\$1,988,822	\$484.65
Retail Trade	52	458	455	454	\$1,895,791	\$320.04
Transportation, Warehousing & Utilities	21	166	170	196	\$1,603,753	\$695.67
Information	9	136	129	121	\$852,946	\$509.93

NORTH AMERICAN INDUSTRY CLASSIFICATION SYSTEM INDUSTRY GROUP	NUMBER OF EMPLOYING UNITS	EMPLOYMENT JULY	EMPLOYMENT AUGUST	EMPLOYMENT SEPTEMBER	TOTAL EARNINGS JUL. - SEP. 2005	AVERAGE WEEKLY EARNINGS
Financial Activities	36	155	155	156	\$957,274	\$474.05
Professional & Business Services	26	55	54	57	\$291,039	\$404.60
Education & Health Services	40	493	501	522	\$2,626,145	\$399.76
Leisure & Hospitality	24	236	238	239	\$449,990	\$145.64
Other Services	25	52	49	52	\$271,975	\$410.22
Local Government	22	564	813	893	\$5,621,150	\$571.45
State Government	12	85	82	81	\$519,629	\$483.53
CLEBURNE COUNTY - TOTAL	661	6,500	6,693	6,966	\$38,816,009	\$444.34
Natural Resources & Mining	15	37	38	37	\$286,977	\$591.30
Construction	65	323	323	327	\$1,679,241	\$398.27
Manufacturing	46	1,817	1,825	1,857	\$13,513,511	\$567.10
Trade, Transportation & Utilities	189	1,574	1,576	1,594	\$8,664,214	\$421.47
Wholesale Trade	41	170	165	165	\$1,049,730	\$484.49
Retail Trade	109	1,086	1,089	1,112	\$4,706,444	\$330.42
Transportation, Warehousing & Utilities	39	318	322	317	\$2,908,040	\$701.24
Information	8	64	61	57	\$362,262	\$459.33
Financial Activities	68	256	254	256	\$1,774,338	\$534.55
Professional & Business Services	57	195	191	188	\$1,145,782	\$460.65
Education & Health Services	58	738	776	775	\$4,372,874	\$440.86
Leisure & Hospitality	67	895	896	825	\$2,288,867	\$201.91
Other Services	58	158	155	162	\$682,889	\$331.77
Local Government	20	328	483	770	\$3,312,861	\$483.56
State Government	10	115	115	118	\$732,193	\$485.54
CLEVELAND COUNTY - TOTAL	112	902	1,086	1,113	\$6,140,071	\$456.93
Natural Resources & Mining	20	194	197	195	\$1,326,613	\$522.43
Construction	6	40	40	39	\$165,060	\$320.09
Manufacturing	6	94	98	100	\$557,675	\$440.73
Trade, Transportation & Utilities	33	213	206	212	\$999,533	\$365.55
Wholesale Trade	5	30	28	27	\$136,207	\$369.79
Retail Trade	16	81	80	81	\$223,005	\$212.66
Transportation, Warehousing & Utilities	12	102	98	104	\$640,321	\$486.07
Local Government	12	123	303	338	\$1,500,215	\$453.15
State Government	8	64	67	66	\$375,638	\$440.03

NORTH AMERICAN INDUSTRY CLASSIFICATION SYSTEM INDUSTRY GROUP	NUMBER OF EMPLOYING UNITS	EMPLOYMENT JULY	EMPLOYMENT AUGUST	EMPLOYMENT SEPTEMBER	TOTAL EARNINGS JUL. - SEP. 2005	AVERAGE WEEKLY EARNINGS
Other	27	174	175	163	\$1,215,337	\$547.78
COLUMBIA COUNTY - TOTAL	682	8,967	9,114	9,365	\$66,033,226	\$555.22
Natural Resources & Mining	49	473	462	481	\$5,483,103	\$893.60
Construction	45	325	326	305	\$2,367,815	\$571.57
Manufacturing	38	2,703	2,710	2,752	\$27,488,429	\$776.91
Trade, Transportation & Utilities	184	1,571	1,573	1,570	\$8,437,270	\$413.04
Wholesale Trade	28	264	261	253	\$1,795,279	\$532.51
Retail Trade	115	1,054	1,063	1,067	\$4,441,299	\$321.90
Transportation, Warehousing & Utilities	41	253	249	250	\$2,200,692	\$675.34
Information	11	82	83	79	\$536,471	\$507.38
Financial Activities	75	414	414	407	\$2,971,967	\$555.33
Professional & Business Services	63	356	339	330	\$1,754,177	\$394.94
Education & Health Services	78	833	854	873	\$4,089,682	\$368.66
Leisure & Hospitality	44	680	663	657	\$1,538,575	\$177.53
Other Services	51	210	209	210	\$857,025	\$314.43
Local Government	30	700	901	1,137	\$5,979,004	\$503.93
State Government	14	620	580	564	\$4,529,708	\$592.58
CONWAY COUNTY - TOTAL	480	6,418	6,478	6,618	\$41,585,208	\$491.78
Natural Resources & Mining	18	125	123	122	\$1,032,046	\$643.69
Construction	50	550	545	559	\$4,624,720	\$645.25
Manufacturing	30	1,103	1,088	1,081	\$10,790,377	\$761.03
Trade, Transportation & Utilities	137	1,438	1,437	1,455	\$7,993,242	\$426.00
Wholesale Trade	30	273	261	252	\$1,904,368	\$559.12
Retail Trade	80	886	897	920	\$4,000,170	\$341.52
Transportation, Warehousing & Utilities	27	279	279	283	\$2,088,704	\$573.14
Information	6	37	37	37	\$173,447	\$360.60
Financial Activities	35	188	186	187	\$1,317,881	\$542.11
Professional & Business Services	45	608	618	606	\$2,945,818	\$371.07
Education & Health Services	54	764	765	779	\$5,213,376	\$521.27
Leisure & Hospitality	39	480	479	470	\$1,046,804	\$169.05
Other Services	28	86	90	78	\$553,109	\$502.52
Local Government	27	730	775	875	\$3,867,220	\$374.97
State Government	11	309	335	369	\$2,027,168	\$461.80

NORTH AMERICAN INDUSTRY CLASSIFICATION SYSTEM INDUSTRY GROUP	NUMBER OF EMPLOYING UNITS	EMPLOYMENT JULY	EMPLOYMENT AUGUST	EMPLOYMENT SEPTEMBER	TOTAL EARNINGS JUL. - SEP. 2005	AVERAGE WEEKLY EARNINGS
CRAIGHEAD COUNTY - TOTAL	2,528	38,162	39,745	40,682	\$287,962,823	\$560.36
Natural Resources & Mining	58	276	285	362	\$1,741,423	\$435.39
Construction	224	1,710	1,761	1,740	\$12,984,693	\$575.03
Manufacturing	139	6,765	6,752	6,884	\$66,035,585	\$746.97
Trade, Transportation & Utilities	732	7,973	8,007	8,118	\$49,080,165	\$470.01
Wholesale Trade	188	1,533	1,521	1,522	\$13,191,252	\$665.24
Retail Trade	429	5,365	5,404	5,462	\$26,342,542	\$374.53
Transportation, Warehousing & Utilities	115	1,075	1,082	1,134	\$9,546,371	\$669.40
Information	34	685	660	647	\$5,348,083	\$619.56
Financial Activities	259	1,583	1,582	1,574	\$13,660,488	\$665.21
Professional & Business Services	322	3,513	3,832	3,782	\$21,027,684	\$436.11
Education & Health Services	342	6,843	6,904	6,913	\$65,358,661	\$730.05
Leisure & Hospitality	174	3,572	3,614	3,694	\$9,813,727	\$208.15
Other Services	182	1,010	1,008	1,035	\$5,071,342	\$383.33
Local Government	38	2,200	3,053	3,544	\$18,087,426	\$474.48
State Government	24	2,032	2,287	2,389	\$19,753,546	\$679.56
CRAWFORD COUNTY - TOTAL	1,153	17,650	18,526	18,916	\$122,863,408	\$514.65
Natural Resources & Mining	24	411	444	430	\$3,533,930	\$634.65
Construction	178	1,418	1,406	1,443	\$11,035,577	\$596.83
Manufacturing	74	3,472	3,499	3,583	\$24,050,091	\$525.87
Trade, Transportation & Utilities	307	6,519	6,589	6,634	\$46,201,540	\$540.06
Wholesale Trade	80	684	670	686	\$5,903,515	\$667.82
Retail Trade	160	1,869	1,886	1,893	\$8,777,575	\$358.64
Transportation, Warehousing & Utilities	67	3,966	4,033	4,055	\$31,520,450	\$603.45
Financial Activities	117	514	513	503	\$3,426,529	\$516.82
Professional & Business Services	133	699	703	692	\$4,672,753	\$514.96
Education & Health Services	97	1,444	1,479	1,512	\$10,523,862	\$547.59
Leisure & Hospitality	81	1,353	1,360	1,379	\$3,525,882	\$198.84
Local Government	41	1,082	1,806	2,017	\$10,786,396	\$507.48
State Government	11	172	171	169	\$1,296,741	\$584.47
Other	90	566	556	554	\$3,810,107	\$524.62
CRITTENDEN COUNTY - TOTAL	1,114	14,879	15,765	16,097	\$106,097,636	\$523.82
Natural Resources & Mining	48	316	303	393	\$1,936,286	\$441.54
Construction	73	604	641	659	\$5,103,074	\$618.50

NORTH AMERICAN INDUSTRY CLASSIFICATION SYSTEM INDUSTRY GROUP	NUMBER OF EMPLOYING UNITS	EMPLOYMENT JULY	EMPLOYMENT AUGUST	EMPLOYMENT SEPTEMBER	TOTAL EARNINGS JUL. - SEP. 2005	AVERAGE WEEKLY EARNINGS
Manufacturing	52	1,477	1,490	1,539	\$15,833,892	\$810.91
Trade, Transportation & Utilities	308	5,076	4,867	4,817	\$36,134,268	\$564.95
Wholesale Trade	61	788	786	799	\$7,497,859	\$729.15
Retail Trade	167	2,280	2,064	2,013	\$9,631,288	\$349.63
Transportation, Warehousing & Utilities	80	2,008	2,017	2,005	\$19,005,121	\$727.33
Information	10	96	94	96	\$853,492	\$688.67
Financial Activities	113	525	528	558	\$4,199,646	\$601.58
Professional & Business Services	110	648	702	687	\$4,208,391	\$476.76
Education & Health Services	141	1,833	1,859	1,873	\$13,274,207	\$550.45
Leisure & Hospitality	99	1,918	1,955	1,919	\$5,502,508	\$219.24
Other Services	101	609	631	607	\$3,509,731	\$438.52
Local Government	44	1,330	2,294	2,489	\$12,794,432	\$483.00
State Government	15	447	401	460	\$2,747,709	\$484.78
CROSS COUNTY - TOTAL	490	4,692	4,998	5,209	\$31,909,369	\$494.24
Natural Resources & Mining	46	250	244	255	\$1,361,803	\$419.58
Construction	34	187	197	204	\$1,006,100	\$394.86
Manufacturing	21	735	736	734	\$5,994,965	\$627.42
Trade, Transportation & Utilities	132	1,228	1,220	1,229	\$8,352,992	\$524.24
Wholesale Trade	32	302	303	290	\$2,606,905	\$672.17
Retail Trade	66	656	650	649	\$3,191,530	\$376.73
Transportation, Warehousing & Utilities	34	270	267	290	\$2,554,557	\$712.83
Information	8	64	63	60	\$386,624	\$477.12
Financial Activities	47	379	380	372	\$2,733,401	\$557.72
Professional & Business Services	42	153	155	156	\$1,084,490	\$539.37
Education & Health Services	58	619	630	631	\$3,935,536	\$483.09
Leisure & Hospitality	32	404	404	393	\$859,799	\$165.21
Other Services	41	68	68	79	\$320,513	\$344.02
Local Government	18	378	674	884	\$4,202,123	\$500.89
State Government	11	227	227	212	\$1,671,023	\$579.01
DALLAS COUNTY - TOTAL	271	3,128	3,127	3,316	\$20,308,751	\$489.67
Natural Resources & Mining	40	233	236	234	\$1,704,862	\$559.64
Construction	13	73	74	78	\$535,349	\$549.08
Manufacturing	15	872	856	874	\$7,473,529	\$662.82
Trade, Transportation & Utilities	74	488	484	484	\$2,451,516	\$388.55

NORTH AMERICAN INDUSTRY CLASSIFICATION SYSTEM INDUSTRY GROUP	NUMBER OF EMPLOYING UNITS	EMPLOYMENT JULY	EMPLOYMENT AUGUST	EMPLOYMENT SEPTEMBER	TOTAL EARNINGS JUL. - SEP. 2005	AVERAGE WEEKLY EARNINGS
Wholesale Trade	8	38	37	40	\$265,382	\$532.54
Retail Trade	47	386	382	383	\$1,730,967	\$347.05
Transportation, Warehousing & Utilities	19	64	65	61	\$455,167	\$552.83
Information	3	24	24	24	\$161,271	\$516.89
Financial Activities	21	103	104	105	\$675,443	\$499.59
Professional & Business Services	17	53	47	48	\$545,438	\$850.48
Education & Health Services	28	739	738	758	\$4,165,164	\$430.06
Leisure & Hospitality	19	143	144	145	\$307,888	\$164.47
Other Services	16	67	64	64	\$263,703	\$312.07
Local Government	16	272	295	442	\$1,583,657	\$362.20
State Government	9	61	61	60	\$440,931	\$559.08
DESHA COUNTY - TOTAL	456	4,749	5,031	5,216	\$33,732,829	\$519.11
Natural Resources & Mining	51	324	325	394	\$1,854,292	\$410.27
Construction	27	156	154	162	\$1,224,633	\$598.74
Manufacturing	15	1,331	1,323	1,316	\$13,033,112	\$757.59
Trade, Transportation & Utilities	135	1,057	1,053	1,127	\$6,220,363	\$443.46
Wholesale Trade	20	195	186	182	\$1,776,477	\$728.16
Retail Trade	84	683	683	672	\$2,866,776	\$324.61
Transportation, Warehousing & Utilities	31	179	184	273	\$1,577,110	\$572.25
Information	6	23	23	23	\$194,263	\$649.71
Financial Activities	41	235	231	221	\$1,328,119	\$446.13
Professional & Business Services	35	94	98	92	\$509,051	\$413.64
Education & Health Services	50	530	525	546	\$2,965,873	\$427.50
Leisure & Hospitality	37	321	332	299	\$642,570	\$155.76
Other Services	29	74	74	69	\$233,988	\$248.84
Local Government	19	455	732	802	\$4,390,068	\$509.35
State Government	11	149	161	165	\$1,136,497	\$552.14
DREW COUNTY - TOTAL	484	6,109	6,287	6,858	\$37,939,567	\$454.73
Natural Resources & Mining	40	307	304	344	\$2,179,344	\$526.62
Construction	26	201	145	206	\$1,000,813	\$418.40
Manufacturing	21	913	905	875	\$6,378,118	\$546.56
Trade, Transportation & Utilities	137	1,271	1,263	1,272	\$7,371,088	\$446.93
Wholesale Trade	27	275	269	268	\$2,278,559	\$647.56
Retail Trade	89	895	894	900	\$4,017,878	\$344.81
Transportation, Warehousing & Utilities	21	101	100	104	\$1,074,651	\$813.10

NORTH AMERICAN INDUSTRY CLASSIFICATION SYSTEM INDUSTRY GROUP	NUMBER OF EMPLOYING UNITS	EMPLOYMENT JULY	EMPLOYMENT AUGUST	EMPLOYMENT SEPTEMBER	TOTAL EARNINGS JUL. - SEP. 2005	AVERAGE WEEKLY EARNINGS
Information	9	87	88	84	\$600,944	\$535.44
Financial Activities	41	278	277	276	\$2,255,977	\$626.49
Professional & Business Services	43	380	396	392	\$2,237,208	\$442.02
Education & Health Services	58	777	770	773	\$3,747,388	\$372.75
Leisure & Hospitality	43	568	582	588	\$1,184,246	\$157.24
Other Services	26	86	89	89	\$322,602	\$281.99
Local Government	23	635	740	1,167	\$5,445,862	\$494.39
State Government	17	606	728	792	\$5,215,977	\$566.17
FAULKNER COUNTY - TOTAL	2,286	34,012	35,278	36,157	\$272,084,379	\$595.45
Natural Resources & Mining	10	51	49	47	\$467,293	\$733.58
Construction	316	2,746	2,768	2,734	\$21,084,197	\$589.91
Manufacturing	116	5,297	5,314	5,314	\$50,836,390	\$736.67
Trade, Transportation & Utilities	565	6,141	6,202	6,288	\$36,526,189	\$452.42
Wholesale Trade	132	756	762	765	\$6,516,835	\$658.73
Retail Trade	362	4,757	4,795	4,876	\$23,646,581	\$378.22
Transportation, Warehousing & Utilities	71	628	645	647	\$6,362,773	\$764.76
Information	39	354	360	353	\$2,899,394	\$627.08
Financial Activities	275	1,314	1,331	1,328	\$10,155,523	\$589.88
Professional & Business Services	313	5,323	5,345	5,098	\$62,083,208	\$908.72
Education & Health Services	271	4,609	4,647	4,714	\$35,641,935	\$588.77
Leisure & Hospitality	180	3,704	3,702	3,810	\$9,449,393	\$194.42
Other Services	143	560	567	582	\$2,900,545	\$391.67
Local Government	39	1,594	2,011	2,856	\$16,642,116	\$594.41
State Government	19	2,319	2,982	3,033	\$23,398,196	\$647.90
FRANKLIN COUNTY - TOTAL	314	3,836	4,168	4,267	\$26,299,912	\$494.60
Natural Resources & Mining	7	147	143	146	\$1,406,315	\$744.34
Construction	27	154	150	162	\$1,139,531	\$564.31
Manufacturing	22	1,051	1,032	1,028	\$7,301,544	\$541.62
Trade, Transportation & Utilities	94	842	834	836	\$5,168,765	\$474.84
Wholesale Trade	15	60	60	57	\$242,414	\$316.05
Retail Trade	57	464	471	479	\$1,890,438	\$308.53
Transportation, Warehousing & Utilities	22	318	303	300	\$3,035,913	\$760.69
Information	7	53	50	52	\$269,876	\$401.80
Financial Activities	25	187	190	190	\$1,146,319	\$466.55
Professional & Business Services	19	59	59	59	\$308,232	\$401.87

NORTH AMERICAN INDUSTRY CLASSIFICATION SYSTEM INDUSTRY GROUP	NUMBER OF EMPLOYING UNITS	EMPLOYMENT JULY	EMPLOYMENT AUGUST	EMPLOYMENT SEPTEMBER	TOTAL EARNINGS JUL. - SEP. 2005	AVERAGE WEEKLY EARNINGS
Education & Health Services	39	520	535	538	\$3,228,793	\$467.74
Leisure & Hospitality	27	354	355	343	\$765,525	\$167.93
Other Services	18	52	52	50	\$287,285	\$430.50
Local Government	19	325	656	742	\$4,494,744	\$602.00
State Government	10	92	112	121	\$782,983	\$555.96
FULTON COUNTY - TOTAL	206	1,815	1,842	1,962	\$9,024,427	\$370.63
Construction	15	32	30	27	\$173,543	\$449.98
Manufacturing	12	151	157	151	\$661,658	\$332.66
Trade, Transportation & Utilities	61	394	395	401	\$2,251,800	\$436.68
Retail Trade	41	210	210	215	\$707,027	\$256.95
Other Trade, Transportation & Utilities	20	184	185	186	\$1,544,773	\$642.32
Financial Activities	18	122	117	111	\$750,593	\$494.90
Professional & Business Services	16	51	50	47	\$296,344	\$462.07
Education & Health Services	28	376	391	394	\$1,678,286	\$333.59
Leisure & Hospitality	16	178	175	169	\$428,693	\$189.52
Local Government	13	338	357	493	\$1,854,715	\$360.28
State Government	11	107	101	101	\$654,812	\$489.03
Other	16	66	69	68	\$273,983	\$311.46
GARLAND COUNTY - TOTAL	3,029	34,986	35,470	35,967	\$238,939,343	\$518.12
Natural Resources & Mining	49	350	351	348	\$2,995,902	\$659.07
Construction	411	2,380	2,380	2,366	\$16,246,101	\$526.12
Manufacturing	125	3,425	3,420	3,388	\$28,504,375	\$642.82
Trade, Transportation & Utilities	700	7,308	7,296	7,304	\$44,641,996	\$470.24
Wholesale Trade	142	1,086	1,089	1,093	\$9,396,750	\$663.55
Retail Trade	483	5,492	5,460	5,456	\$28,076,253	\$394.88
Transportation, Warehousing & Utilities	75	730	747	755	\$7,168,993	\$741.21
Information	36	436	441	437	\$3,389,549	\$595.28
Financial Activities	350	1,558	1,572	1,557	\$12,246,161	\$602.95
Professional & Business Services	390	2,566	2,595	2,647	\$17,881,073	\$528.48
Education & Health Services	327	6,920	6,919	6,873	\$62,573,601	\$697.18
Leisure & Hospitality	351	6,426	6,285	6,008	\$21,310,065	\$262.71

NORTH AMERICAN INDUSTRY CLASSIFICATION SYSTEM INDUSTRY GROUP	NUMBER OF EMPLOYING UNITS	EMPLOYMENT JULY	EMPLOYMENT AUGUST	EMPLOYMENT SEPTEMBER	TOTAL EARNINGS JUL. - SEP. 2005	AVERAGE WEEKLY EARNINGS
Other Services	229	971	974	977	\$4,861,279	\$383.93
Local Government	36	1,843	2,436	3,150	\$17,525,073	\$544.39
State Government	25	803	801	912	\$6,764,168	\$620.41
GRANT COUNTY - TOTAL	287	3,282	3,329	3,535	\$23,803,809	\$541.41
Natural Resources & Mining	25	232	228	222	\$2,700,969	\$913.93
Construction	34	264	273	263	\$2,097,241	\$604.97
Manufacturing	20	817	816	815	\$6,691,932	\$630.84
Trade, Transportation & Utilities	88	561	560	572	\$3,176,211	\$432.94
Wholesale Trade	16	159	155	162	\$1,224,944	\$593.86
Retail Trade	41	347	344	346	\$1,510,510	\$336.14
Transportation, Warehousing & Utilities	31	55	61	64	\$440,757	\$565.07
Information	3	40	41	40	\$324,104	\$618.13
Financial Activities	19	101	103	102	\$737,731	\$556.36
Professional & Business Services	22	86	86	86	\$719,533	\$643.59
Education & Health Services	23	224	219	215	\$1,232,723	\$432.33
Leisure & Hospitality	21	281	279	267	\$695,797	\$194.16
Other Services	13	37	38	38	\$166,736	\$340.51
Local Government	10	579	626	857	\$4,862,317	\$544.17
State Government	9	60	60	58	\$398,515	\$516.66
GREENE COUNTY - TOTAL	864	14,230	14,668	15,120	\$99,154,195	\$519.83
Natural Resources & Mining	37	232	220	228	\$1,334,090	\$452.75
Construction	74	418	403	397	\$2,550,221	\$483.18
Manufacturing	57	5,513	5,554	5,409	\$47,269,826	\$662.08
Trade, Transportation & Utilities	243	2,181	2,135	2,189	\$12,127,274	\$430.22
Wholesale Trade	53	413	400	423	\$3,516,288	\$656.51
Retail Trade	161	1,584	1,546	1,566	\$6,920,199	\$340.07
Transportation, Warehousing & Utilities	29	184	189	200	\$1,690,787	\$680.95
Information	14	108	117	120	\$593,126	\$396.74
Financial Activities	85	470	468	460	\$3,293,644	\$543.69
Professional & Business Services	86	1,214	1,260	1,403	\$7,129,830	\$424.39
Education & Health Services	101	1,650	1,682	1,714	\$10,631,943	\$486.23
Leisure & Hospitality	68	1,199	1,200	1,221	\$2,640,608	\$168.33
Other Services	57	167	171	175	\$895,126	\$402.67
Local Government	31	814	1,193	1,549	\$8,731,010	\$566.61

NORTH AMERICAN INDUSTRY CLASSIFICATION SYSTEM INDUSTRY GROUP	NUMBER OF EMPLOYING UNITS	EMPLOYMENT JULY	EMPLOYMENT AUGUST	EMPLOYMENT SEPTEMBER	TOTAL EARNINGS JUL. - SEP. 2005	AVERAGE WEEKLY EARNINGS
State Government	11	264	265	255	\$1,957,497	\$576.19
HEMPSTEAD COUNTY - TOTAL	498	7,817	7,972	8,457	\$54,006,564	\$514.03
Natural Resources & Mining	18	225	217	216	\$2,021,051	\$708.81
Construction	34	146	156	142	\$893,392	\$464.34
Manufacturing	32	2,823	2,805	2,902	\$22,214,361	\$600.98
Trade, Transportation & Utilities	138	1,244	1,253	1,262	\$6,947,677	\$426.53
Wholesale Trade	26	200	190	186	\$1,156,410	\$463.31
Retail Trade	87	866	877	881	\$3,668,484	\$322.63
Transportation, Warehousing & Utilities	25	178	186	195	\$2,122,783	\$876.34
Information	11	92	87	90	\$579,945	\$497.52
Financial Activities	44	272	276	276	\$2,065,299	\$578.41
Professional & Business Services	36	222	215	214	\$887,115	\$314.47
Education & Health Services	61	986	994	995	\$6,422,850	\$498.22
Leisure & Hospitality	42	631	625	603	\$1,583,771	\$196.60
Other Services	36	214	212	211	\$1,354,522	\$490.71
Local Government	29	468	599	1,010	\$5,081,466	\$564.59
State Government	17	494	533	536	\$3,955,115	\$583.95
HOT SPRING COUNTY - TOTAL	610	7,301	7,358	7,842	\$51,130,551	\$524.39
Natural Resources & Mining	40	173	171	174	\$1,387,332	\$618.06
Construction	67	378	382	359	\$2,646,451	\$545.77
Manufacturing	45	1,632	1,620	1,631	\$16,778,446	\$792.94
Trade, Transportation & Utilities	169	1,531	1,496	1,479	\$9,285,654	\$475.55
Wholesale Trade	22	105	104	107	\$1,146,269	\$837.10
Retail Trade	100	1,040	1,016	993	\$4,645,590	\$351.61
Transportation, Warehousing & Utilities	47	386	376	379	\$3,493,795	\$706.63
Information	9	67	67	69	\$581,040	\$660.52
Financial Activities	54	301	304	306	\$2,035,024	\$515.50
Professional & Business Services	53	218	241	266	\$1,424,596	\$453.45
Education & Health Services	47	981	984	985	\$5,889,079	\$460.68
Leisure & Hospitality	44	597	589	573	\$1,443,250	\$189.34
Other Services	41	247	298	301	\$1,173,872	\$320.21
Local Government	26	656	667	1,092	\$4,863,521	\$464.74
State Government	15	520	539	607	\$3,622,286	\$501.75
HOWARD COUNTY - TOTAL	359	7,180	7,305	7,442	\$47,477,379	\$499.67
Natural Resources & Mining	22	234	240	246	\$1,896,863	\$607.97

NORTH AMERICAN INDUSTRY CLASSIFICATION SYSTEM INDUSTRY GROUP	NUMBER OF EMPLOYING UNITS	EMPLOYMENT JULY	EMPLOYMENT AUGUST	EMPLOYMENT SEPTEMBER	TOTAL EARNINGS JUL. - SEP. 2005	AVERAGE WEEKLY EARNINGS
Construction	24	92	97	103	\$661,703	\$522.95
Manufacturing	26	4,139	4,093	4,019	\$29,597,798	\$557.53
Trade, Transportation & Utilities	106	945	962	947	\$5,367,391	\$434.00
Wholesale Trade	20	111	108	108	\$882,829	\$623.03
Retail Trade	63	646	662	648	\$2,838,419	\$334.88
Transportation, Warehousing & Utilities	23	188	192	191	\$1,646,143	\$665.29
Information	8	37	35	37	\$254,070	\$537.90
Financial Activities	33	144	139	136	\$883,219	\$486.44
Professional & Business Services	27	115	116	115	\$684,627	\$456.62
Education & Health Services	41	646	632	627	\$3,172,725	\$384.34
Leisure & Hospitality	21	290	291	283	\$668,816	\$178.64
Other Services	21	109	106	107	\$523,967	\$375.51
Local Government	18	304	467	691	\$2,853,170	\$450.36
State Government	12	125	127	131	\$913,030	\$550.13
INDEPENDENCE COUNTY - TOTAL	918	15,225	15,728	16,490	\$106,192,658	\$516.54
Natural Resources & Mining	11	135	134	134	\$1,038,906	\$594.91
Construction	70	386	399	397	\$2,667,169	\$520.73
Manufacturing	55	4,771	5,000	5,073	\$40,023,756	\$622.22
Trade, Transportation & Utilities	289	3,061	3,058	3,098	\$20,426,664	\$511.43
Wholesale Trade	53	511	511	514	\$4,257,257	\$639.61
Retail Trade	180	1,796	1,762	1,776	\$8,001,459	\$346.17
Transportation, Warehousing & Utilities	56	754	785	808	\$8,167,948	\$803.12
Information	12	168	166	163	\$1,190,795	\$552.92
Financial Activities	87	461	477	481	\$3,361,969	\$546.75
Professional & Business Services	88	901	955	954	\$4,442,764	\$364.86
Education & Health Services	106	2,721	2,715	2,684	\$19,529,945	\$555.04
Leisure & Hospitality	70	1,157	1,173	1,187	\$2,678,446	\$175.75
Other Services	70	346	347	334	\$1,622,121	\$364.49
Local Government	43	695	895	1,499	\$5,981,647	\$446.87
State Government	17	423	409	486	\$3,228,476	\$565.28
IZARD COUNTY - TOTAL	247	2,605	2,784	2,880	\$15,956,980	\$445.32
Natural Resources & Mining	4	87	85	84	\$694,904	\$626.42
Construction	24	90	88	91	\$408,128	\$350.12
Manufacturing	12	372	357	347	\$3,209,206	\$688.28

NORTH AMERICAN INDUSTRY CLASSIFICATION SYSTEM INDUSTRY GROUP	NUMBER OF EMPLOYING UNITS	EMPLOYMENT JULY	EMPLOYMENT AUGUST	EMPLOYMENT SEPTEMBER	TOTAL EARNINGS JUL. - SEP. 2005	AVERAGE WEEKLY EARNINGS
Trade, Transportation & Utilities	67	515	508	528	\$2,537,312	\$377.52
Retail Trade	51	407	403	418	\$1,735,773	\$326.19
Other Trade, Transportation & Utilities	16	108	105	110	\$801,539	\$572.66
Information	3	6	7	8	\$39,511	\$434.19
Financial Activities	26	145	153	148	\$947,618	\$490.32
Professional & Business Services	22	85	83	81	\$387,870	\$359.47
Education & Health Services	22	413	430	437	\$2,098,444	\$378.33
Leisure & Hospitality	25	180	181	184	\$383,446	\$162.36
Other Services	13	41	39	38	\$185,561	\$362.90
Local Government	18	279	446	531	\$2,241,990	\$411.93
State Government	11	392	407	403	\$2,822,990	\$541.98
JACKSON COUNTY - TOTAL	517	5,675	5,729	5,786	\$37,934,855	\$509.26
Natural Resources & Mining	46	242	241	257	\$1,526,189	\$475.94
Construction	28	217	209	196	\$1,287,479	\$477.67
Manufacturing	26	1,013	997	983	\$8,457,681	\$652.11
Trade, Transportation & Utilities	133	1,180	1,182	1,192	\$7,280,091	\$472.71
Wholesale Trade	37	230	223	214	\$1,974,578	\$683.17
Retail Trade	77	708	710	702	\$3,220,633	\$350.58
Transportation, Warehousing & Utilities	19	242	249	276	\$2,084,880	\$627.28
Information	4	37	38	37	\$316,709	\$652.56
Financial Activities	45	199	203	206	\$1,402,874	\$532.47
Professional & Business Services	38	125	119	123	\$829,471	\$521.57
Education & Health Services	69	999	1,009	1,004	\$7,790,599	\$596.89
Leisure & Hospitality	39	357	335	326	\$862,966	\$195.62
Other Services	40	99	96	105	\$447,551	\$344.27
Local Government	35	592	693	721	\$3,313,036	\$381.13
State Government	14	615	607	636	\$4,420,209	\$549.00
JEFFERSON COUNTY - TOTAL	1,778	30,844	31,224	32,839	\$241,452,074	\$587.10
Natural Resources & Mining	39	493	497	546	\$4,147,763	\$623.16
Construction	128	1,407	1,510	1,457	\$16,215,148	\$855.50
Manufacturing	74	6,341	6,359	6,326	\$64,569,315	\$783.17
Trade, Transportation & Utilities	499	6,002	6,027	6,007	\$38,592,683	\$493.79

NORTH AMERICAN INDUSTRY CLASSIFICATION SYSTEM INDUSTRY GROUP	NUMBER OF EMPLOYING UNITS	EMPLOYMENT JULY	EMPLOYMENT AUGUST	EMPLOYMENT SEPTEMBER	TOTAL EARNINGS JUL. - SEP. 2005	AVERAGE WEEKLY EARNINGS
Wholesale Trade	88	1,084	1,069	1,037	\$8,473,926	\$613.02
Retail Trade	344	4,033	4,061	4,044	\$19,209,296	\$365.21
Transportation, Warehousing & Utilities	67	885	897	926	\$10,909,461	\$929.68
Information	18	230	225	204	\$1,526,938	\$534.70
Financial Activities	154	1,270	1,261	1,258	\$10,511,064	\$640.18
Professional & Business Services	177	1,903	1,876	2,022	\$15,349,544	\$610.62
Education & Health Services	303	5,324	5,326	5,462	\$39,905,181	\$571.55
Leisure & Hospitality	143	2,352	2,343	2,358	\$5,921,266	\$193.74
Other Services	162	806	784	788	\$4,410,513	\$428.01
Local Government	42	1,786	2,101	3,272	\$15,824,319	\$510.09
State Government	39	2,930	2,915	3,139	\$24,478,340	\$628.77
JOHNSON COUNTY - TOTAL	448	7,883	7,974	8,507	\$48,110,756	\$455.69
Natural Resources & Mining	15	212	213	207	\$1,532,536	\$559.59
Construction	31	124	138	131	\$804,703	\$472.52
Manufacturing	42	3,177	3,164	3,205	\$20,292,338	\$490.56
Trade, Transportation & Utilities	125	1,704	1,689	1,718	\$9,069,502	\$409.50
Information	6	32	30	31	\$202,843	\$503.33
Financial Activities	38	224	218	219	\$1,523,915	\$532.03
Professional & Business Services	46	166	168	166	\$1,085,925	\$501.20
Education & Health Services	53	1,078	1,105	1,116	\$6,856,044	\$479.59
Leisure & Hospitality	39	530	549	541	\$1,305,247	\$185.93
Other Services	29	83	85	91	\$429,404	\$382.60
Local Government	14	399	458	924	\$3,848,879	\$498.71
State Government	10	154	157	158	\$1,159,420	\$570.49
LAFAYETTE COUNTY - TOTAL	162	1,375	1,410	1,478	\$8,226,056	\$445.30
Natural Resources & Mining	31	186	192	218	\$1,255,160	\$485.99
Trade, Transportation & Utilities	40	233	233	243	\$1,150,768	\$374.56
Retail Trade	23	158	161	164	\$552,440	\$263.95
Other Trade, Transportation & Utilities	17	75	72	79	\$598,328	\$610.95
Financial Activities	17	89	88	84	\$497,464	\$439.84
Professional & Business Services	11	55	54	54	\$442,817	\$626.92

NORTH AMERICAN INDUSTRY CLASSIFICATION SYSTEM INDUSTRY GROUP	NUMBER OF EMPLOYING UNITS	EMPLOYMENT JULY	EMPLOYMENT AUGUST	EMPLOYMENT SEPTEMBER	TOTAL EARNINGS JUL. - SEP. 2005	AVERAGE WEEKLY EARNINGS
Education & Health Services	13	222	222	222	\$1,073,566	\$371.99
Leisure & Hospitality	5	42	41	41	\$99,608	\$185.37
Other Services	7	80	72	70	\$315,787	\$328.26
Local Government	13	202	252	338	\$1,417,798	\$413.11
State Government	8	60	59	59	\$388,474	\$503.64
Other	17	206	197	149	\$1,584,614	\$662.46
LAWRENCE COUNTY - TOTAL	411	3,899	4,091	4,293	\$23,832,059	\$447.75
Natural Resources & Mining	33	167	168	160	\$1,360,464	\$634.25
Construction	27	112	110	103	\$747,622	\$530.86
Manufacturing	23	640	633	645	\$4,121,696	\$495.91
Trade, Transportation & Utilities	133	1,018	996	1,003	\$5,643,699	\$431.68
Wholesale Trade	26	222	216	208	\$1,599,992	\$571.56
Retail Trade	73	665	645	656	\$2,792,488	\$327.78
Transportation, Warehousing & Utilities	34	131	135	139	\$1,251,219	\$712.95
Information	7	23	22	22	\$181,795	\$626.16
Financial Activities	30	146	140	141	\$865,194	\$467.59
Professional & Business Services	23	128	122	125	\$982,637	\$604.70
Education & Health Services	45	411	416	419	\$2,805,033	\$519.51
Leisure & Hospitality	26	296	308	305	\$555,526	\$141.03
Other Services	25	63	67	67	\$294,784	\$345.32
Local Government	28	765	978	1,180	\$5,472,219	\$432.03
State Government	11	130	131	123	\$801,390	\$481.60
LEE COUNTY - TOTAL	219	1,770	2,031	2,156	\$12,329,466	\$477.63
Natural Resources & Mining	32	213	210	283	\$1,349,689	\$441.17
Construction	7	12	12	12	\$57,006	\$365.42
Trade, Transportation & Utilities	55	349	354	370	\$2,075,878	\$446.46
Wholesale Trade	9	68	66	66	\$554,555	\$639.87
Retail Trade	30	192	201	204	\$771,536	\$298.24
Transportation, Warehousing & Utilities	16	89	87	100	\$749,787	\$626.91
Financial Activities	13	79	78	78	\$439,291	\$431.38
Professional & Business Services	18	63	65	63	\$500,856	\$605.14

NORTH AMERICAN INDUSTRY CLASSIFICATION SYSTEM INDUSTRY GROUP	NUMBER OF EMPLOYING UNITS	EMPLOYMENT JULY	EMPLOYMENT AUGUST	EMPLOYMENT SEPTEMBER	TOTAL EARNINGS JUL. - SEP. 2005	AVERAGE WEEKLY EARNINGS
Education & Health Services	32	292	304	298	\$1,812,779	\$467.93
Leisure & Hospitality	8	91	89	86	\$174,209	\$151.14
Local Government	16	99	347	407	\$1,993,173	\$539.23
State Government	8	429	428	418	\$3,041,262	\$550.45
Other	30	143	144	141	\$885,323	\$477.35
LINCOLN COUNTY - TOTAL	213	2,724	2,750	2,955	\$18,023,411	\$493.45
Natural Resources & Mining	33	212	207	248	\$1,443,449	\$499.41
Construction	14	61	60	61	\$390,950	\$495.71
Manufacturing	9	461	426	437	\$3,064,876	\$534.20
Trade, Transportation & Utilities	48	355	340	330	\$2,473,277	\$556.84
Wholesale Trade	7	35	32	32	\$253,138	\$590.07
Retail Trade	24	173	161	159	\$630,372	\$295.07
Transportation, Warehousing & Utilities	17	147	147	139	\$1,589,767	\$847.27
Financial Activities	23	73	79	76	\$494,069	\$500.07
Professional & Business Services	12	23	24	22	\$164,002	\$548.50
Education & Health Services	22	290	301	309	\$1,518,345	\$389.32
Leisure & Hospitality	16	161	167	159	\$309,931	\$146.86
Local & State Government	22	1,045	1,106	1,272	\$7,964,141	\$536.92
Other	14	43	40	41	\$200,371	\$372.90
LITTLE RIVER COUNTY - TOTAL	252	4,299	4,281	4,434	\$43,113,400	\$764.50
Natural Resources & Mining	12	55	75	74	\$631,566	\$714.44
Trade, Transportation & Utilities	72	1,079	1,102	1,077	\$9,881,900	\$699.95
Wholesale Trade	10	32	32	32	\$238,030	\$572.19
Retail Trade	42	324	323	325	\$1,425,824	\$338.51
Transportation, Warehousing & Utilities	20	723	747	720	\$8,218,046	\$865.97
Information	3	10	10	9	\$87,153	\$693.53
Financial Activities	24	105	106	107	\$601,590	\$436.57
Professional & Business Services	20	157	158	150	\$781,313	\$387.75
Education & Health Services	17	160	158	163	\$835,512	\$400.85
Leisure & Hospitality	20	214	220	223	\$542,787	\$190.65
Other Services	15	103	88	89	\$318,668	\$262.64

NORTH AMERICAN INDUSTRY CLASSIFICATION SYSTEM INDUSTRY GROUP	NUMBER OF EMPLOYING UNITS	EMPLOYMENT JULY	EMPLOYMENT AUGUST	EMPLOYMENT SEPTEMBER	TOTAL EARNINGS JUL. - SEP. 2005	AVERAGE WEEKLY EARNINGS
Local Government	20	603	583	746	\$3,770,298	\$450.35
State Government	12	89	88	84	\$576,189	\$509.45
Other	37	1,724	1,693	1,712	\$25,086,424	\$1,128.71
LOGAN COUNTY - TOTAL	460	5,377	5,562	5,637	\$34,023,904	\$473.68
Natural Resources & Mining	14	77	80	77	\$618,805	\$610.26
Construction	49	168	173	175	\$938,359	\$419.66
Manufacturing	28	1,739	1,742	1,735	\$13,646,280	\$603.75
Trade, Transportation & Utilities	118	858	850	845	\$3,858,100	\$348.74
Wholesale Trade	18	43	43	42	\$219,899	\$396.45
Retail Trade	74	745	735	735	\$3,053,618	\$318.14
Transportation, Warehousing & Utilities	26	70	72	68	\$584,583	\$642.40
Information	8	43	43	43	\$347,440	\$621.54
Financial Activities	42	242	240	233	\$1,881,561	\$607.28
Professional & Business Services	44	122	128	126	\$698,048	\$428.43
Education & Health Services	57	737	731	755	\$4,080,803	\$423.63
Leisure & Hospitality	31	319	326	324	\$776,578	\$184.94
Other Services	31	89	86	89	\$429,641	\$375.56
Local Government	23	532	719	798	\$4,041,209	\$455.14
State Government	15	451	444	437	\$2,707,080	\$469.00
LONOKE COUNTY - TOTAL	1,171	11,122	11,556	11,813	\$72,844,707	\$487.38
Natural Resources & Mining	73	488	483	504	\$4,207,625	\$658.30
Construction	164	959	958	939	\$7,512,002	\$606.98
Manufacturing	38	1,379	1,416	1,440	\$12,712,353	\$692.71
Trade, Transportation & Utilities	327	2,531	2,561	2,562	\$14,509,064	\$437.45
Wholesale Trade	75	427	427	420	\$3,865,646	\$700.21
Retail Trade	184	1,866	1,886	1,882	\$8,628,856	\$353.44
Transportation, Warehousing & Utilities	68	238	248	260	\$2,014,562	\$623.19
Information	16	109	115	110	\$1,075,023	\$742.76
Financial Activities	115	585	599	610	\$5,038,243	\$648.09
Professional & Business Services	143	454	457	461	\$2,994,883	\$503.74
Education & Health Services	105	1,225	1,257	1,274	\$7,290,272	\$447.92
Leisure & Hospitality	80	1,220	1,190	1,184	\$2,944,183	\$189.04
Other Services	66	187	183	195	\$1,096,887	\$448.01
Local Government	28	1,837	2,185	2,389	\$12,481,978	\$449.30

NORTH AMERICAN INDUSTRY CLASSIFICATION SYSTEM INDUSTRY GROUP	NUMBER OF EMPLOYING UNITS	EMPLOYMENT JULY	EMPLOYMENT AUGUST	EMPLOYMENT SEPTEMBER	TOTAL EARNINGS JUL. - SEP. 2005	AVERAGE WEEKLY EARNINGS
State Government	16	148	152	145	\$982,194	\$509.35
MADISON COUNTY - TOTAL	246	3,075	3,170	3,155	\$19,467,433	\$477.92
Natural Resources & Mining	13	65	62	62	\$434,313	\$530.30
Construction	46	143	142	145	\$809,321	\$434.34
Manufacturing	20	1,076	1,062	1,061	\$7,845,748	\$565.98
Trade, Transportation & Utilities	63	611	613	609	\$3,594,145	\$452.49
Wholesale Trade	13	41	42	42	\$502,772	\$928.19
Retail Trade	36	437	439	431	\$2,111,205	\$372.76
Transportation, Warehousing & Utilities	14	133	132	136	\$980,168	\$564.07
Information	4	38	39	36	\$412,018	\$841.43
Financial Activities	15	92	92	94	\$614,365	\$509.99
Professional & Business Services	18	94	103	87	\$598,793	\$486.56
Education & Health Services	22	221	235	237	\$1,119,441	\$372.77
Leisure & Hospitality	13	130	122	121	\$236,369	\$146.24
Other Services	16	26	25	26	\$159,123	\$476.89
Local Government	8	516	610	623	\$3,260,970	\$430.26
State Government	8	63	65	54	\$382,827	\$485.41
MARION COUNTY - TOTAL	280	3,884	3,916	4,051	\$22,513,724	\$438.40
Natural Resources & Mining	5	44	43	47	\$188,759	\$325.07
Construction	16	44	43	45	\$188,181	\$328.99
Manufacturing	25	1,672	1,672	1,694	\$11,795,784	\$540.31
Trade, Transportation & Utilities	59	707	695	697	\$3,073,868	\$337.95
Retail Trade	38	554	538	546	\$2,097,963	\$295.57
Other Trade, Transportation & Utilities	21	153	157	151	\$975,905	\$488.52
Financial Activities	34	210	203	192	\$1,149,012	\$438.28
Professional & Business Services	25	38	36	38	\$275,218	\$567.07
Education & Health Services	24	319	324	341	\$1,664,731	\$390.42
Leisure & Hospitality	44	307	300	285	\$735,352	\$190.24
Local Government	20	344	396	507	\$2,026,831	\$375.08
State Government	8	112	117	115	\$668,713	\$448.60
Other	20	87	87	90	\$747,275	\$653.21
MILLER COUNTY - TOTAL	828	12,040	12,203	12,971	\$93,394,524	\$579.15
Natural Resources & Mining	29	157	153	146	\$1,152,293	\$583.14

NORTH AMERICAN INDUSTRY CLASSIFICATION SYSTEM INDUSTRY GROUP	NUMBER OF EMPLOYING UNITS	EMPLOYMENT JULY	EMPLOYMENT AUGUST	EMPLOYMENT SEPTEMBER	TOTAL EARNINGS JUL. - SEP. 2005	AVERAGE WEEKLY EARNINGS
Construction	84	814	788	802	\$6,084,157	\$584.04
Manufacturing	36	2,875	2,862	2,843	\$35,959,140	\$967.16
Trade, Transportation & Utilities	244	2,711	2,727	2,760	\$17,857,087	\$502.67
Wholesale Trade	66	626	624	628	\$5,645,819	\$693.76
Retail Trade	136	1,519	1,516	1,539	\$6,723,001	\$339.19
Transportation, Warehousing & Utilities	42	566	587	593	\$5,488,267	\$725.39
Information	8	92	92	89	\$1,160,211	\$980.74
Financial Activities	85	428	426	416	\$3,358,201	\$610.21
Professional & Business Services	83	935	961	918	\$4,877,830	\$400.02
Education & Health Services	77	1,070	1,067	1,074	\$6,124,424	\$440.15
Leisure & Hospitality	79	1,361	1,377	1,415	\$3,878,710	\$215.53
Other Services	64	409	335	342	\$1,281,938	\$272.41
Local Government	22	735	961	1,720	\$7,863,424	\$531.22
State Government	17	453	454	446	\$3,797,109	\$647.64
MISSISSIPPI COUNTY - TOTAL	1,123	17,831	18,110	18,795	\$139,004,186	\$586.05
Natural Resources & Mining	106	800	773	983	\$4,647,659	\$419.62
Construction	54	402	403	490	\$3,979,900	\$709.22
Manufacturing	59	5,114	5,087	5,172	\$62,335,909	\$935.75
Trade, Transportation & Utilities	308	3,172	3,132	3,094	\$19,476,039	\$478.24
Wholesale Trade	65	600	590	619	\$5,021,219	\$640.54
Retail Trade	193	2,008	1,979	1,910	\$8,799,926	\$344.37
Transportation, Warehousing & Utilities	50	564	563	565	\$5,654,894	\$771.26
Financial Activities	103	608	608	606	\$3,902,587	\$494.29
Professional & Business Services	97	1,093	1,168	1,109	\$7,276,628	\$498.29
Education & Health Services	158	1,588	1,575	1,605	\$10,621,402	\$514.07
Leisure & Hospitality	77	1,181	1,191	1,137	\$2,770,594	\$182.21
Local Government	46	1,912	2,061	2,391	\$10,345,218	\$375.13
State Government	25	586	585	646	\$4,032,750	\$512.18
Other	90	1,375	1,527	1,562	\$9,615,500	\$497.08
MONROE COUNTY - TOTAL	299	2,403	2,575	2,627	\$13,198,466	\$400.50
Natural Resources & Mining	32	168	162	176	\$1,046,057	\$477.07
Construction	16	45	44	43	\$238,735	\$417.37

NORTH AMERICAN INDUSTRY CLASSIFICATION SYSTEM INDUSTRY GROUP	NUMBER OF EMPLOYING UNITS	EMPLOYMENT JULY	EMPLOYMENT AUGUST	EMPLOYMENT SEPTEMBER	TOTAL EARNINGS JUL. - SEP. 2005	AVERAGE WEEKLY EARNINGS
Manufacturing	9	162	162	162	\$947,370	\$449.84
Trade, Transportation & Utilities	93	681	678	706	\$3,914,691	\$437.48
Wholesale Trade	23	196	195	195	\$1,377,995	\$542.66
Retail Trade	42	338	326	333	\$1,359,758	\$314.73
Transportation, Warehousing & Utilities	28	147	157	178	\$1,176,938	\$563.49
Financial Activities	16	102	99	97	\$707,659	\$548.01
Professional & Business Services	15	38	39	39	\$216,322	\$430.35
Education & Health Services	34	374	370	402	\$1,810,986	\$364.68
Leisure & Hospitality	28	331	321	302	\$711,454	\$172.10
Local Government	22	237	440	441	\$2,214,816	\$457.17
State Government	9	135	132	129	\$842,897	\$491.20
Other	25	130	128	130	\$547,479	\$325.62
MONTGOMERY COUNTY - TOTAL	176	1,749	1,601	1,690	\$8,186,209	\$374.83
Natural Resources & Mining	14	68	66	61	\$480,508	\$568.65
Construction	24	139	131	136	\$836,713	\$475.59
Trade, Transportation & Utilities	47	229	227	215	\$1,093,458	\$376.06
Wholesale Trade	12	78	78	74	\$423,660	\$425.08
Retail Trade	27	127	127	119	\$534,902	\$330.94
Transportation, Warehousing & Utilities	8	24	22	22	\$134,896	\$457.79
Financial Activities	10	77	76	76	\$459,329	\$462.88
Education & Health Services	12	61	61	61	\$245,885	\$310.07
Leisure & Hospitality	20	489	277	247	\$1,303,166	\$296.87
Other Services	11	65	74	76	\$310,788	\$333.58
Local Government	9	283	346	472	\$1,838,195	\$385.29
State Government	8	58	57	58	\$398,206	\$531.18
Other	21	280	286	288	\$1,219,961	\$329.66
NEVADA COUNTY - TOTAL	194	2,501	2,550	2,719	\$17,281,775	\$513.27
Natural Resources & Mining	14	56	56	55	\$384,596	\$531.45
Construction	14	56	54	51	\$397,212	\$569.34
Manufacturing	8	876	871	860	\$8,594,529	\$760.78
Trade, Transportation & Utilities	48	483	487	499	\$2,515,960	\$395.24

NORTH AMERICAN INDUSTRY CLASSIFICATION SYSTEM INDUSTRY GROUP	NUMBER OF EMPLOYING UNITS	EMPLOYMENT JULY	EMPLOYMENT AUGUST	EMPLOYMENT SEPTEMBER	TOTAL EARNINGS JUL. - SEP. 2005	AVERAGE WEEKLY EARNINGS
Retail Trade	31	298	300	304	\$919,837	\$235.33
Other Trade, Transportation & Utilities	17	185	187	195	\$1,596,123	\$649.62
Financial Activities	12	64	63	62	\$481,655	\$588.10
Education & Health Services	13	385	403	404	\$1,921,845	\$372.07
Leisure & Hospitality	17	115	120	110	\$223,343	\$149.39
Other Services	17	75	73	67	\$257,393	\$276.27
Local Government	27	264	300	484	\$1,593,665	\$350.92
State Government	11	84	80	81	\$588,369	\$554.19
Other	13	43	43	46	\$323,208	\$565.05
NEWTON COUNTY - TOTAL	135	853	1,028	1,074	\$4,414,397	\$344.74
Natural Resources & Mining	6	9	5	5	\$19,885	\$241.52
Construction	8	14	17	15	\$46,978	\$235.68
Manufacturing	16	67	72	71	\$378,261	\$415.67
Trade, Transportation & Utilities	31	164	162	165	\$670,318	\$315.05
Wholesale Trade	3	6	3	4	\$19,359	\$343.65
Retail Trade	17	104	105	107	\$342,346	\$250.01
Transportation, Warehousing & Utilities	11	54	54	54	\$308,613	\$439.62
Education & Health Services	14	211	211	212	\$793,755	\$288.92
Leisure & Hospitality	21	84	88	87	\$222,901	\$198.60
Other Services	5	10	10	11	\$31,930	\$237.69
Local Government	13	148	318	362	\$1,496,383	\$417.05
State Government	7	96	95	96	\$433,509	\$348.57
Other	14	50	50	50	\$320,477	\$493.04
OUACHITA COUNTY - TOTAL	625	7,098	7,158	7,424	\$44,466,390	\$473.32
Natural Resources & Mining	45	285	306	309	\$2,637,251	\$676.22
Construction	48	254	271	295	\$1,934,100	\$544.31
Manufacturing	31	763	766	808	\$6,841,646	\$675.58
Trade, Transportation & Utilities	181	1,755	1,736	1,764	\$11,559,948	\$507.65
Wholesale Trade	31	261	262	263	\$2,640,529	\$775.26
Retail Trade	122	1,075	1,066	1,094	\$4,550,963	\$324.64
Transportation, Warehousing & Utilities	28	419	408	407	\$4,368,456	\$816.94

NORTH AMERICAN INDUSTRY CLASSIFICATION SYSTEM INDUSTRY GROUP	NUMBER OF EMPLOYING UNITS	EMPLOYMENT JULY	EMPLOYMENT AUGUST	EMPLOYMENT SEPTEMBER	TOTAL EARNINGS JUL. - SEP. 2005	AVERAGE WEEKLY EARNINGS
Information	8	94	94	97	\$645,961	\$523.05
Financial Activities	63	334	331	340	\$2,099,804	\$482.16
Professional & Business Services	49	364	391	378	\$1,961,052	\$399.43
Education & Health Services	71	1,227	1,230	1,216	\$7,450,258	\$468.09
Leisure & Hospitality	35	538	529	516	\$1,173,260	\$171.04
Other Services	51	174	176	159	\$750,376	\$340.20
Local Government	30	1,002	1,023	1,237	\$5,023,286	\$355.37
State Government	13	308	305	305	\$2,389,448	\$600.67
PERRY COUNTY - TOTAL	149	1,058	1,159	1,175	\$6,195,983	\$421.53
Natural Resources & Mining	7	30	25	26	\$253,557	\$722.38
Construction	23	90	87	81	\$481,989	\$431.12
Manufacturing	6	78	77	79	\$465,912	\$459.48
Trade, Transportation & Utilities	29	182	181	188	\$842,431	\$352.83
Wholesale Trade	3	7	7	7	\$68,187	\$749.31
Retail Trade	18	155	154	162	\$553,614	\$271.25
Transportation, Warehousing & Utilities	8	20	20	19	\$220,630	\$862.96
Financial Activities	14	50	52	53	\$578,039	\$860.60
Professional & Business Services	15	56	53	44	\$268,277	\$404.64
Education & Health Services	15	161	161	167	\$787,080	\$371.44
Local Government	12	255	369	386	\$1,720,763	\$393.17
State Government	9	58	53	55	\$361,134	\$502.04
Other	19	98	101	96	\$436,801	\$341.70
PHILLIPS COUNTY - TOTAL	682	6,029	6,293	6,707	\$37,837,572	\$458.87
Natural Resources & Mining	71	457	494	721	\$2,674,543	\$369.14
Construction	34	122	120	117	\$713,231	\$458.47
Manufacturing	12	451	381	400	\$3,002,648	\$562.43
Trade, Transportation & Utilities	180	1,525	1,508	1,532	\$10,710,330	\$541.43
Wholesale Trade	34	400	391	398	\$3,119,352	\$605.43
Retail Trade	108	887	865	877	\$3,860,343	\$338.85
Transportation, Warehousing & Utilities	38	238	252	257	\$3,730,635	\$1,152.50
Information	11	59	60	61	\$458,390	\$587.68
Financial Activities	54	304	291	288	\$1,993,580	\$521.02

NORTH AMERICAN INDUSTRY CLASSIFICATION SYSTEM INDUSTRY GROUP	NUMBER OF EMPLOYING UNITS	EMPLOYMENT JULY	EMPLOYMENT AUGUST	EMPLOYMENT SEPTEMBER	TOTAL EARNINGS JUL. - SEP. 2005	AVERAGE WEEKLY EARNINGS
Professional & Business Services	55	243	247	236	\$1,578,626	\$501.79
Education & Health Services	135	1,154	1,171	1,189	\$7,096,500	\$466.04
Leisure & Hospitality	36	453	438	408	\$959,711	\$170.49
Other Services	45	89	92	88	\$467,792	\$401.31
Local Government	33	745	976	1,162	\$4,855,720	\$388.68
State Government	16	427	515	505	\$3,326,501	\$530.51
PIKE COUNTY - TOTAL	262	2,703	2,898	2,922	\$15,756,753	\$426.63
Natural Resources & Mining	32	169	194	187	\$1,315,631	\$552.01
Construction	10	96	115	115	\$896,096	\$634.33
Manufacturing	16	529	533	538	\$3,414,893	\$492.53
Trade, Transportation & Utilities	90	563	569	562	\$3,083,535	\$420.06
Wholesale Trade	15	96	93	91	\$719,012	\$592.59
Retail Trade	49	347	353	349	\$1,469,928	\$323.37
Transportation, Warehousing & Utilities	26	120	123	122	\$894,595	\$565.60
Information	5	31	31	31	\$334,728	\$830.59
Financial Activities	23	175	174	171	\$1,223,105	\$542.80
Professional & Business Services	9	43	45	45	\$182,099	\$315.96
Education & Health Services	16	218	216	226	\$923,615	\$322.94
Leisure & Hospitality	21	238	222	216	\$499,731	\$170.60
Other Services	16	120	131	130	\$716,060	\$433.71
Local Government	13	387	533	574	\$2,473,887	\$382.13
State Government	11	134	135	127	\$693,373	\$404.06
POINSETT COUNTY - TOTAL	501	5,983	6,241	6,414	\$38,701,895	\$479.19
Natural Resources & Mining	49	387	390	431	\$2,345,244	\$448.02
Construction	32	117	111	116	\$772,297	\$518.09
Manufacturing	29	1,426	1,419	1,456	\$12,105,908	\$649.54
Trade, Transportation & Utilities	137	1,449	1,443	1,466	\$8,813,188	\$466.68
Wholesale Trade	33	496	491	493	\$4,623,863	\$720.98
Retail Trade	75	802	808	812	\$3,053,620	\$290.95
Transportation, Warehousing & Utilities	29	151	144	161	\$1,135,705	\$574.75
Information	7	68	68	57	\$594,464	\$710.80
Financial Activities	45	342	340	338	\$2,676,046	\$605.44
Professional & Business Services	26	103	102	99	\$788,785	\$598.77
Education & Health Services	51	584	601	625	\$3,358,981	\$428.26

NORTH AMERICAN INDUSTRY CLASSIFICATION SYSTEM INDUSTRY GROUP	NUMBER OF EMPLOYING UNITS	EMPLOYMENT JULY	EMPLOYMENT AUGUST	EMPLOYMENT SEPTEMBER	TOTAL EARNINGS JUL. - SEP. 2005	AVERAGE WEEKLY EARNINGS
Leisure & Hospitality	50	411	412	432	\$818,895	\$150.58
Other Services	32	78	77	74	\$447,662	\$451.12
Local Government	30	789	1,026	1,066	\$4,520,006	\$362.05
State Government	13	229	252	254	\$1,460,419	\$458.53
POLK COUNTY - TOTAL	532	5,929	6,237	6,396	\$34,385,626	\$427.49
Natural Resources & Mining	27	260	263	262	\$2,120,330	\$623.32
Construction	36	198	217	220	\$1,020,190	\$370.75
Manufacturing	45	1,414	1,408	1,399	\$8,813,214	\$481.83
Trade, Transportation & Utilities	151	1,403	1,440	1,422	\$7,206,021	\$389.90
Wholesale Trade	24	150	149	151	\$798,868	\$409.68
Retail Trade	84	886	897	883	\$3,601,470	\$311.74
Transportation, Warehousing & Utilities	43	367	394	388	\$2,805,683	\$563.50
Information	10	54	56	58	\$394,794	\$542.30
Financial Activities	40	214	215	212	\$1,328,021	\$478.11
Professional & Business Services	50	145	144	148	\$851,206	\$449.50
Education & Health Services	66	932	963	975	\$5,510,144	\$443.06
Leisure & Hospitality	42	437	449	461	\$957,788	\$164.09
Other Services	30	144	138	136	\$658,219	\$363.39
Local Government	21	428	611	780	\$3,765,653	\$477.73
State Government	14	300	333	323	\$1,760,046	\$424.86
POPE COUNTY - TOTAL	1,648	24,912	25,460	27,044	\$180,193,451	\$537.14
Natural Resources & Mining	21	644	602	558	\$3,553,273	\$454.54
Construction	172	1,452	1,507	1,718	\$12,262,275	\$605.04
Manufacturing	88	4,951	4,955	5,072	\$38,699,160	\$596.25
Trade, Transportation & Utilities	481	6,509	6,548	6,644	\$55,402,073	\$648.96
Wholesale Trade	105	769	762	729	\$6,122,541	\$625.17
Retail Trade	282	3,236	3,254	3,408	\$16,068,856	\$374.64
Transportation, Warehousing & Utilities	94	2,504	2,532	2,507	\$33,210,676	\$1,016.04
Information	21	292	285	292	\$2,512,694	\$667.26
Financial Activities	166	774	774	784	\$5,608,376	\$554.99
Professional & Business Services	214	2,456	2,495	2,551	\$13,801,686	\$424.55
Education & Health Services	186	2,746	2,785	2,852	\$20,226,086	\$556.79
Leisure & Hospitality	131	2,317	2,346	2,426	\$5,888,718	\$191.70
Other Services	112	458	466	484	\$2,382,704	\$390.52
Local Government	40	1,142	1,426	2,203	\$10,733,392	\$519.17

NORTH AMERICAN INDUSTRY CLASSIFICATION SYSTEM INDUSTRY GROUP	NUMBER OF EMPLOYING UNITS	EMPLOYMENT JULY	EMPLOYMENT AUGUST	EMPLOYMENT SEPTEMBER	TOTAL EARNINGS JUL. - SEP. 2005	AVERAGE WEEKLY EARNINGS
State Government	16	1,171	1,271	1,460	\$9,123,014	\$539.55
PRAIRIE COUNTY - TOTAL	224	1,458	1,548	1,661	\$9,002,099	\$445.13
Natural Resources & Mining	27	172	163	158	\$1,188,215	\$556.19
Trade, Transportation & Utilities	66	381	380	412	\$2,014,153	\$396.25
Wholesale Trade	10	64	61	57	\$455,776	\$577.91
Retail Trade	37	225	226	225	\$750,990	\$256.37
Transportation, Warehousing & Utilities	19	92	93	130	\$807,387	\$591.49
Information	4	10	10	9	\$104,414	\$830.88
Financial Activities	16	61	63	63	\$414,432	\$511.43
Professional & Business Services	16	53	51	52	\$322,536	\$477.12
Education & Health Services	19	204	198	199	\$1,083,093	\$415.88
Leisure & Hospitality	18	104	104	102	\$237,864	\$177.07
Other Services	14	54	52	52	\$207,105	\$302.49
Local Government	15	161	267	360	\$1,634,889	\$478.78
State Government	10	52	53	50	\$348,114	\$518.28
Other	19	206	207	204	\$1,447,284	\$541.31
PULASKI COUNTY - TOTAL	13,443	231,642	234,066	237,046	\$2,107,369,686	\$692.01
Natural Resources & Mining	41	654	673	679	\$7,952,310	\$914.83
Construction	1,104	10,665	10,750	10,734	\$99,707,222	\$715.71
Manufacturing	434	15,988	15,963	15,920	\$166,292,936	\$801.64
Trade, Transportation & Utilities	3,200	51,151	51,273	51,596	\$442,177,081	\$662.52
Wholesale Trade	1,073	12,996	12,985	13,017	\$155,224,954	\$918.54
Retail Trade	1,734	24,824	24,883	24,883	\$144,679,485	\$447.61
Transportation, Warehousing & Utilities	393	13,331	13,405	13,696	\$142,272,642	\$812.03
Information	238	8,637	8,632	8,590	\$110,544,386	\$986.51
Financial Activities	1,663	16,212	16,244	16,193	\$189,303,808	\$897.97
Professional & Business Services	2,571	32,799	32,988	33,315	\$272,456,893	\$634.44
Education & Health Services	1,662	32,862	32,929	33,075	\$329,732,997	\$769.65
Leisure & Hospitality	999	20,432	20,394	19,925	\$67,616,048	\$256.85
Other Services	1,228	6,873	6,800	6,712	\$46,008,112	\$520.84
Local Government	103	12,190	13,981	16,439	\$117,815,622	\$638.07
State Government	200	23,179	23,439	23,868	\$257,762,271	\$843.91
RANDOLPH COUNTY - TOTAL	404	4,802	4,910	5,110	\$27,386,894	\$426.40

NORTH AMERICAN INDUSTRY CLASSIFICATION SYSTEM INDUSTRY GROUP	NUMBER OF EMPLOYING UNITS	EMPLOYMENT JULY	EMPLOYMENT AUGUST	EMPLOYMENT SEPTEMBER	TOTAL EARNINGS JUL. - SEP. 2005	AVERAGE WEEKLY EARNINGS
Natural Resources & Mining	21	76	75	82	\$488,095	\$483.42
Construction	24	133	132	126	\$594,649	\$350.96
Manufacturing	38	1,033	1,036	1,047	\$6,716,599	\$497.43
Trade, Transportation & Utilities	104	966	999	1,006	\$5,021,993	\$390.08
Wholesale Trade	22	219	231	236	\$1,079,681	\$363.20
Retail Trade	62	604	608	613	\$2,468,310	\$312.12
Transportation, Warehousing & Utilities	20	143	160	157	\$1,474,002	\$739.47
Information	5	53	52	54	\$447,792	\$649.92
Financial Activities	28	142	145	149	\$802,406	\$424.70
Professional & Business Services	38	240	242	248	\$1,306,257	\$412.94
Education & Health Services	54	763	805	805	\$5,162,445	\$502.04
Leisure & Hospitality	31	405	415	458	\$826,735	\$149.28
Other Services	26	63	67	69	\$280,933	\$325.78
Local Government	23	686	711	809	\$4,029,933	\$421.57
State Government	12	242	231	257	\$1,709,057	\$540.27
SAINT FRANCIS COUNTY - TOTAL	618	7,746	8,266	8,405	\$50,773,428	\$479.87
Natural Resources & Mining	22	164	164	173	\$1,152,495	\$530.86
Construction	41	251	249	253	\$1,743,594	\$534.35
Manufacturing	22	1,215	1,288	1,371	\$9,978,006	\$594.38
Trade, Transportation & Utilities	190	2,169	2,158	2,154	\$13,711,481	\$488.23
Wholesale Trade	33	549	535	532	\$4,194,524	\$598.99
Retail Trade	124	1,281	1,276	1,243	\$6,149,456	\$373.45
Transportation, Warehousing & Utilities	33	339	347	379	\$3,367,501	\$729.69
Information	10	128	111	111	\$991,315	\$653.61
Financial Activities	50	306	307	300	\$1,754,148	\$443.38
Professional & Business Services	44	137	153	160	\$1,031,104	\$528.77
Education & Health Services	101	1,301	1,316	1,293	\$7,254,360	\$428.15
Leisure & Hospitality	51	785	784	744	\$2,000,187	\$199.56
Other Services	40	126	127	128	\$459,518	\$278.33
Local Government	30	573	1,042	1,153	\$6,816,819	\$568.32
State Government	17	591	567	565	\$3,880,401	\$519.72
SALINE COUNTY - TOTAL	1,585	18,417	18,840	19,313	\$127,008,006	\$518.11
Natural Resources & Mining	12	40	41	39	\$386,735	\$743.72
Construction	285	1,852	1,907	1,866	\$14,672,902	\$601.97

NORTH AMERICAN INDUSTRY CLASSIFICATION SYSTEM INDUSTRY GROUP	NUMBER OF EMPLOYING UNITS	EMPLOYMENT JULY	EMPLOYMENT AUGUST	EMPLOYMENT SEPTEMBER	TOTAL EARNINGS JUL. - SEP. 2005	AVERAGE WEEKLY EARNINGS
Manufacturing	83	1,851	1,875	1,857	\$17,365,437	\$717.79
Trade, Transportation & Utilities	408	4,337	4,299	4,334	\$29,024,807	\$516.43
Wholesale Trade	115	556	553	549	\$5,663,986	\$788.34
Retail Trade	249	3,525	3,495	3,529	\$21,121,439	\$462.05
Transportation, Warehousing & Utilities	44	256	251	256	\$2,239,382	\$677.30
Information	14	108	111	107	\$667,852	\$472.76
Financial Activities	148	687	687	697	\$5,129,166	\$571.54
Professional & Business Services	198	1,260	1,100	1,118	\$7,114,111	\$472.03
Education & Health Services	145	2,515	2,543	2,570	\$16,981,825	\$513.75
Leisure & Hospitality	115	2,054	2,048	2,066	\$5,927,233	\$221.76
Other Services	126	554	568	571	\$3,313,906	\$451.71
Local & State Government	51	3,159	3,661	4,088	\$26,424,032	\$559.03
SCOTT COUNTY - TOTAL	180	2,774	2,788	2,924	\$15,482,733	\$421.04
Natural Resources & Mining	17	174	179	176	\$1,410,579	\$615.35
Trade, Transportation & Utilities	44	472	472	476	\$2,258,676	\$367.07
Wholesale Trade	8	63	66	64	\$439,705	\$525.75
Retail Trade	28	334	332	339	\$1,207,688	\$277.31
Transportation, Warehousing & Utilities	8	75	74	73	\$611,283	\$635.43
Information	3	10	10	11	\$78,511	\$584.45
Financial Activities	15	72	71	69	\$406,735	\$442.74
Professional & Business Services	9	12	12	12	\$51,408	\$329.54
Education & Health Services	20	321	319	329	\$1,859,922	\$442.94
Leisure & Hospitality	17	161	164	165	\$360,452	\$169.76
Other Services	11	59	60	60	\$486,118	\$626.71
Local Government	5	232	227	337	\$1,280,236	\$371.15
State Government	8	68	70	72	\$395,884	\$435.04
Other	31	1,193	1,204	1,217	\$6,894,212	\$440.22
SEARCY COUNTY - TOTAL	149	1,486	1,700	1,744	\$7,785,070	\$364.41
Construction	5	14	16	18	\$59,651	\$286.78
Manufacturing	18	301	305	301	\$1,322,980	\$336.61
Trade, Transportation & Utilities	40	290	295	295	\$1,137,451	\$298.28
Retail Trade	29	217	219	219	\$793,537	\$279.58

NORTH AMERICAN INDUSTRY CLASSIFICATION SYSTEM INDUSTRY GROUP	NUMBER OF EMPLOYING UNITS	EMPLOYMENT JULY	EMPLOYMENT AUGUST	EMPLOYMENT SEPTEMBER	TOTAL EARNINGS JUL. - SEP. 2005	AVERAGE WEEKLY EARNINGS
Other Trade, Transportation & Utilities	11	73	76	76	\$343,914	\$352.73
Financial Activities	15	69	64	58	\$325,515	\$393.29
Professional & Business Services	16	32	33	33	\$161,686	\$380.74
Education & Health Services	13	257	255	264	\$1,140,417	\$339.14
Leisure & Hospitality	12	133	131	123	\$288,150	\$171.82
Local Government	9	142	334	368	\$1,623,306	\$443.85
State Government	9	174	183	188	\$1,134,095	\$480.21
Other	12	74	84	96	\$591,819	\$537.69
SEBASTIAN COUNTY - TOTAL	3,535	70,961	71,845	73,120	\$554,169,957	\$592.26
Natural Resources & Mining	63	1,003	1,153	1,121	\$14,684,913	\$1,034.12
Construction	290	2,995	2,914	2,859	\$24,129,935	\$635.09
Manufacturing	217	21,185	21,449	21,600	\$186,785,900	\$671.05
Trade, Transportation & Utilities	915	12,365	12,232	12,276	\$85,085,391	\$532.51
Wholesale Trade	228	2,366	2,383	2,402	\$24,121,961	\$778.44
Retail Trade	568	7,939	7,846	7,854	\$40,865,133	\$398.93
Transportation, Warehousing & Utilities	119	2,060	2,003	2,020	\$20,098,297	\$762.46
Information	56	1,187	1,172	1,166	\$12,229,454	\$800.62
Financial Activities	402	2,508	2,423	2,448	\$21,789,097	\$681.43
Professional & Business Services	511	9,885	9,923	9,874	\$62,763,907	\$487.97
Education & Health Services	423	9,072	9,089	9,209	\$86,564,424	\$729.87
Leisure & Hospitality	308	5,357	5,372	5,344	\$15,378,095	\$220.79
Other Services	285	1,576	1,521	1,559	\$8,954,176	\$443.80
Local Government	43	2,549	3,336	4,295	\$25,958,224	\$588.44
State Government	22	1,279	1,261	1,369	\$9,846,441	\$581.29
SEVIER COUNTY - TOTAL	320	5,735	5,813	5,961	\$36,229,160	\$477.50
Natural Resources & Mining	20	210	209	214	\$1,488,900	\$542.80
Trade, Transportation & Utilities	90	865	887	877	\$4,993,811	\$438.35
Wholesale Trade	15	142	141	140	\$1,510,637	\$824.13
Retail Trade	57	615	636	630	\$2,482,352	\$304.55
Transportation, Warehousing & Utilities	18	108	110	107	\$1,000,822	\$710.64
Information	7	44	44	47	\$346,139	\$591.69

NORTH AMERICAN INDUSTRY CLASSIFICATION SYSTEM INDUSTRY GROUP	NUMBER OF EMPLOYING UNITS	EMPLOYMENT JULY	EMPLOYMENT AUGUST	EMPLOYMENT SEPTEMBER	TOTAL EARNINGS JUL. - SEP. 2005	AVERAGE WEEKLY EARNINGS
Financial Activities	27	223	220	214	\$1,385,553	\$486.67
Professional & Business Services	31	122	128	132	\$2,042,910	\$1,234.14
Education & Health Services	36	508	506	511	\$3,232,092	\$489.09
Leisure & Hospitality	21	290	273	267	\$682,490	\$189.76
Other Services	33	157	144	155	\$645,889	\$326.87
Local Government	12	572	685	838	\$4,369,916	\$481.36
State Government	9	165	157	182	\$1,123,020	\$514.20
Other	34	2,579	2,560	2,524	\$15,918,440	\$479.38
SHARP COUNTY - TOTAL	391	3,806	3,756	3,945	\$19,848,855	\$398.06
Construction	35	216	225	223	\$1,404,228	\$488.03
Manufacturing	23	217	212	207	\$1,031,225	\$374.17
Trade, Transportation & Utilities	101	1,078	1,046	1,006	\$5,744,761	\$423.55
Retail Trade	69	691	673	659	\$2,616,176	\$298.43
Other Trade, Transportation & Utilities	32	387	373	347	\$3,128,585	\$652.20
Information	8	62	60	60	\$822,175	\$1,042.49
Financial Activities	35	271	270	279	\$1,766,941	\$497.26
Professional & Business Services	36	157	157	156	\$998,154	\$490.09
Education & Health Services	49	557	566	565	\$3,018,399	\$412.65
Leisure & Hospitality	42	509	522	509	\$1,023,412	\$153.36
Local Government	25	503	509	760	\$3,106,027	\$404.50
State Government	9	106	109	101	\$621,527	\$453.89
Other	28	130	80	79	\$312,006	\$249.14
STONE COUNTY - TOTAL	242	2,622	2,813	2,859	\$13,806,568	\$384.15
Construction	21	86	94	93	\$488,424	\$412.87
Manufacturing	21	464	473	464	\$2,427,966	\$399.93
Trade, Transportation & Utilities	76	616	620	703	\$3,439,074	\$409.30
Wholesale Trade	10	52	55	55	\$246,552	\$351.21
Retail Trade	51	518	523	606	\$2,797,730	\$392.00
Transportation, Warehousing & Utilities	15	46	42	42	\$394,792	\$700.81
Financial Activities	20	86	88	88	\$593,021	\$522.33
Professional & Business Services	11	26	29	25	\$176,795	\$509.99
Education & Health Services	25	415	407	417	\$2,493,197	\$464.37

NORTH AMERICAN INDUSTRY CLASSIFICATION SYSTEM INDUSTRY GROUP	NUMBER OF EMPLOYING UNITS	EMPLOYMENT JULY	EMPLOYMENT AUGUST	EMPLOYMENT SEPTEMBER	TOTAL EARNINGS JUL. - SEP. 2005	AVERAGE WEEKLY EARNINGS
Leisure & Hospitality	32	463	439	427	\$974,530	\$169.22
Other Services	11	28	26	28	\$137,131	\$385.92
Local Government	10	207	405	403	\$1,906,283	\$433.41
State Government	9	177	179	162	\$865,395	\$385.53
Other	6	54	53	49	\$304,752	\$450.82
UNION COUNTY - TOTAL	1,311	19,035	19,670	19,948	\$165,082,242	\$649.51
Natural Resources & Mining	104	517	511	517	\$4,296,003	\$641.67
Construction	92	1,380	1,408	1,369	\$13,813,504	\$766.83
Manufacturing	67	5,283	5,251	5,282	\$54,117,631	\$789.62
Trade, Transportation & Utilities	364	3,596	3,600	3,644	\$25,651,544	\$546.09
Wholesale Trade	79	529	537	541	\$6,724,265	\$965.62
Retail Trade	228	2,324	2,325	2,336	\$10,686,346	\$353.05
Transportation, Warehousing & Utilities	57	743	738	767	\$8,240,933	\$845.98
Information	20	209	206	205	\$1,392,784	\$518.41
Financial Activities	122	741	739	751	\$5,645,435	\$583.95
Professional & Business Services	129	1,693	1,731	1,735	\$24,716,881	\$1,105.62
Education & Health Services	133	2,221	2,230	2,251	\$16,141,517	\$555.80
Leisure & Hospitality	88	1,106	1,118	1,116	\$3,190,706	\$220.45
Other Services	137	669	643	607	\$3,190,491	\$383.67
Local Government	37	1,084	1,722	1,924	\$9,026,879	\$440.41
State Government	18	536	511	547	\$3,898,867	\$564.45
VAN BUREN COUNTY - TOTAL	358	3,441	3,494	3,819	\$18,668,976	\$400.62
Natural Resources & Mining	11	50	48	44	\$248,148	\$403.27
Construction	46	119	119	122	\$815,538	\$522.78
Manufacturing	14	596	606	600	\$3,945,642	\$505.29
Trade, Transportation & Utilities	103	830	815	807	\$3,882,827	\$365.43
Wholesale Trade	15	55	53	53	\$391,097	\$560.58
Retail Trade	66	637	635	623	\$2,588,875	\$315.27
Transportation, Warehousing & Utilities	22	138	127	131	\$902,855	\$526.14
Information	9	51	50	51	\$371,127	\$563.45
Financial Activities	29	125	125	126	\$719,455	\$441.56
Professional & Business Services	29	89	92	92	\$631,171	\$533.53
Education & Health Services	37	633	637	619	\$3,242,697	\$396.14

NORTH AMERICAN INDUSTRY CLASSIFICATION SYSTEM INDUSTRY GROUP	NUMBER OF EMPLOYING UNITS	EMPLOYMENT JULY	EMPLOYMENT AUGUST	EMPLOYMENT SEPTEMBER	TOTAL EARNINGS JUL. - SEP. 2005	AVERAGE WEEKLY EARNINGS
Leisure & Hospitality	30	492	519	515	\$1,493,261	\$225.82
Other Services	29	78	75	79	\$357,226	\$355.33
Local Government	13	286	313	677	\$2,359,639	\$426.75
State Government	8	92	95	87	\$602,245	\$507.22
WASHINGTON COUNTY - TOTAL	5,298	85,791	87,874	89,846	\$710,566,236	\$622.28
Natural Resources & Mining	40	448	453	451	\$3,346,877	\$571.27
Construction	627	5,516	5,511	5,628	\$49,468,711	\$685.43
Manufacturing	227	15,668	15,791	15,804	\$128,722,885	\$628.51
Trade, Transportation & Utilities	1,339	20,313	20,506	20,542	\$160,517,511	\$603.68
Wholesale Trade	358	3,736	3,801	3,764	\$47,216,391	\$964.17
Retail Trade	781	11,294	11,421	11,467	\$63,963,639	\$431.83
Transportation, Warehousing & Utilities	200	5,283	5,284	5,311	\$49,337,481	\$717.07
Information	100	1,564	1,550	1,538	\$14,832,877	\$735.81
Financial Activities	623	3,946	3,982	4,042	\$37,494,686	\$722.86
Professional & Business Services	874	8,785	8,887	8,879	\$91,693,288	\$796.96
Education & Health Services	545	9,890	9,962	10,097	\$93,060,885	\$717.07
Leisure & Hospitality	486	9,046	9,090	9,277	\$28,690,081	\$241.52
Other Services	354	1,906	1,932	1,927	\$11,541,407	\$462.00
Local & State Government	83	8,709	10,210	11,661	\$91,197,028	\$688.21
WHITE COUNTY - TOTAL	1,527	22,626	23,359	24,023	\$160,399,950	\$528.73
Natural Resources & Mining	33	282	276	288	\$2,106,546	\$574.62
Construction	168	1,225	1,240	1,258	\$9,472,114	\$587.13
Manufacturing	79	3,767	3,779	3,774	\$33,759,842	\$688.23
Trade, Transportation & Utilities	469	5,946	5,912	5,934	\$37,046,792	\$480.51
Wholesale Trade	97	593	584	600	\$4,370,628	\$567.59
Retail Trade	288	3,113	3,108	3,081	\$14,476,780	\$359.15
Transportation, Warehousing & Utilities	84	2,240	2,220	2,253	\$18,199,384	\$625.63
Information	22	239	231	231	\$1,452,716	\$478.23
Financial Activities	166	873	871	888	\$6,017,887	\$527.64
Professional & Business Services	144	1,323	1,429	1,397	\$8,601,012	\$478.39
Education & Health Services	169	4,228	4,216	4,334	\$35,518,393	\$641.46
Leisure & Hospitality	110	1,980	1,990	2,053	\$4,823,368	\$184.81
Other Services	102	625	600	600	\$3,658,271	\$462.58

NORTH AMERICAN INDUSTRY CLASSIFICATION SYSTEM INDUSTRY GROUP	NUMBER OF EMPLOYING UNITS	EMPLOYMENT JULY	EMPLOYMENT AUGUST	EMPLOYMENT SEPTEMBER	TOTAL EARNINGS JUL. - SEP. 2005	AVERAGE WEEKLY EARNINGS
Local Government	46	1,579	2,252	2,509	\$13,573,542	\$494.06
State Government	19	559	563	757	\$4,369,467	\$536.64
WOODRUFF COUNTY - TOTAL	170	1,897	2,093	2,121	\$12,850,081	\$485.26
Natural Resources & Mining	20	101	97	95	\$554,345	\$436.61
Construction	7	76	71	70	\$387,404	\$411.99
Manufacturing	10	483	513	505	\$3,722,984	\$572.39
Trade, Transportation & Utilities	56	528	529	545	\$3,605,844	\$519.42
Wholesale Trade	12	226	217	229	\$2,006,947	\$689.20
Retail Trade	29	218	219	217	\$736,825	\$259.99
Transportation, Warehousing & Utilities	15	84	93	99	\$862,072	\$720.80
Financial Activities	14	57	55	55	\$366,923	\$507.03
Professional & Business Services	3	7	7	6	\$38,376	\$442.80
Education & Health Services	27	187	185	187	\$1,202,852	\$496.57
Leisure & Hospitality	7	67	68	62	\$145,499	\$170.44
Local Government	10	305	480	511	\$2,339,118	\$416.51
State Government	7	58	60	55	\$336,836	\$449.31
Other	9	28	28	30	\$149,900	\$402.24
YELL COUNTY - TOTAL	399	6,577	6,744	7,308	\$39,107,853	\$437.49
Natural Resources & Mining	25	309	304	317	\$1,825,149	\$452.89
Construction	50	423	448	440	\$2,871,001	\$505.37
Manufacturing	23	2,908	2,944	2,964	\$17,576,390	\$460.08
Trade, Transportation & Utilities	92	653	657	745	\$3,059,929	\$343.62
Wholesale Trade	13	29	28	27	\$155,356	\$426.80
Retail Trade	58	520	528	621	\$2,089,711	\$288.94
Transportation, Warehousing & Utilities	21	104	101	97	\$814,862	\$622.67
Information	4	50	52	51	\$562,620	\$848.60
Financial Activities	40	204	200	197	\$1,201,920	\$461.51
Professional & Business Services	34	249	246	259	\$2,113,130	\$646.74
Education & Health Services	45	478	469	483	\$2,336,824	\$377.11
Leisure & Hospitality	28	429	422	425	\$999,431	\$180.75
Other Services	17	67	65	69	\$267,233	\$306.81
Local Government	28	689	815	1,244	\$5,584,743	\$468.99
State Government	13	118	122	114	\$709,483	\$462.51
REST-OF-STATE-TOTAL	4,527	16,093	16,361	16,483	\$205,103,098	\$967.19

NORTH AMERICAN INDUSTRY CLASSIFICATION SYSTEM INDUSTRY GROUP	NUMBER OF EMPLOYING UNITS	EMPLOYMENT JULY	EMPLOYMENT AUGUST	EMPLOYMENT SEPTEMBER	TOTAL EARNINGS JUL. - SEP. 2005	AVERAGE WEEKLY EARNINGS
Natural Resources & Mining	62	214	208	222	\$2,233,889	\$800.49
Construction	583	2,482	2,626	2,649	\$20,881,498	\$621.22
Manufacturing	48	138	139	141	\$1,192,417	\$658.31
Trade, Transportation & Utilities	1,843	6,964	7,021	7,081	\$115,214,304	\$1,262.12
Wholesale Trade	1,584	5,709	5,760	5,817	\$104,006,290	\$1,388.49
Retail Trade	98	499	505	503	\$4,067,082	\$622.80
Transportation, Warehousing & Utilities	161	756	756	761	\$7,140,932	\$724.99
Information	101	237	254	252	\$3,363,347	\$1,044.63
Financial Activities	269	633	658	693	\$9,091,200	\$1,057.44
Professional & Business Services	1,310	3,991	4,024	4,034	\$39,804,040	\$762.35
Education & Health Services	115	772	791	771	\$7,270,103	\$718.82
Leisure & Hospitality	41	99	87	87	\$530,009	\$448.02
Other	155	563	553	553	\$5,522,291	\$763.56

TABLE 7. FEDERAL GOVERNMENT EMPLOYMENT AND EARNINGS IN ARKANSAS

NORTH AMERICAN INDUSTRY CLASSIFICATION SYSTEM INDUSTRY GROUP	NUMBER OF EMPLOYING UNITS	EMPLOYMENT JULY	EMPLOYMENT AUGUST	EMPLOYMENT SEPTEMBER	TOTAL EARNINGS JUL. – SEP. 2005
Manufacturing	2	5	13	25	\$236,060
Trade, Transportation & Utilities	449	6,869	6,819	6,932	\$77,698,633
Information	1	23	26	29	\$353,140
Financial Activities	24	194	193	191	\$2,603,618
Professional & Business Services	32	804	797	800	\$11,267,071
Education & Health Services	6	4,071	4,077	4,080	\$67,263,898
Leisure & Hospitality	16	206	193	200	\$1,795,569
Other Services	2	293	299	310	\$1,119,675
Public Administration	453	8,362	8,400	8,377	\$105,563,322
TOTAL	985	20,827	20,817	20,944	\$267,900,986

**TABLE 8. WORKFORCE INFORMATION AREA, SUMMARY
EMPLOYMENT AND TOTAL EARNINGS, BY INDUSTRY
THIRD QUARTER 2005**

NORTH AMERICAN INDUSTRY CLASSIFICATION SYSTEM INDUSTRY GROUP	NUMBER OF EMPLOYING UNITS	EMPLOYMENT JULY	EMPLOYMENT AUGUST	EMPLOYMENT SEPTEMBER	TOTAL EARNINGS JUL. - SEP. 2005	AVERAGE WEEKLY EARNINGS
CENTRAL WORKFORCE INFORMATION*	5,565	67,412	69,797	71,571	\$494,137,657	\$545.57
Natural Resources & Mining	154	919	898	924	\$7,295,925	\$535.11
Trade, Transportation & Utilities	1,459	14,071	14,120	14,302	\$85,988,904	\$446.24
Wholesale Trade	355	1,999	1,998	1,986	\$17,880,238	\$651.37
Retail Trade	874	10,711	10,728	10,845	\$55,507,624	\$385.26
Transportation, Warehousing & Utilities	230	1,361	1,394	1,471	\$12,601,042	\$629.97
Financial Activities	570	2,749	2,779	2,795	\$21,445,023	\$561.33
Professional & Business Services	685	7,128	6,992	6,768	\$72,731,060	\$778.00
Education & Health Services	574	8,927	9,015	9,159	\$62,808,111	\$501.93
Leisure & Hospitality	421	7,413	7,365	7,464	\$19,270,127	\$196.08
Local & State Government	209	9,642	11,883	13,491	\$84,969,232	\$651.01
Other	1,493	16,563	16,745	16,668	\$139,629,275	\$624.35
*Note: Pulaski County is not included in the Central Workforce Information. Please refer to Page 55 for information on Pulaski County.						
Central Workforce Includes these counties: Faulkner, Lonoke, Monroe, Prairie, and Saline.						
EASTERN WORKFORCE INFORMATION	3,123	35,116	37,353	38,574	\$238,947,471	\$505.44
Natural Resources & Mining	219	1,400	1,415	1,825	\$8,474,816	\$397.18
Construction	189	1,176	1,219	1,245	\$8,623,005	\$534.05
Trade, Transportation & Utilities	865	10,347	10,107	10,102	\$70,984,949	\$499.92
Wholesale Trade	169	2,107	2,081	2,085	\$17,973,195	\$614.93
Retail Trade	495	5,296	5,056	4,986	\$23,604,153	\$344.10
Transportation, Warehousing & Utilities	201	2,944	2,970	3,031	\$29,407,601	\$691.30
Financial Activities	277	1,593	1,584	1,596	\$11,120,066	\$531.70
Professional & Business Services	269	1,244	1,322	1,302	\$8,403,467	\$510.73
Education & Health Services	467	5,199	5,280	5,284	\$33,373,382	\$474.97
Leisure & Hospitality	226	3,651	3,670	3,550	\$9,496,414	\$195.99
Local Government	141	3,125	5,333	6,095	\$30,662,267	\$661.01
State Government	67	2,121	2,138	2,160	\$14,666,896	\$539.22
Other	403	5,260	5,285	5,415	\$43,142,209	\$574.57
Eastern Workforce Includes these counties: Crittenden, Cross, Lee, Phillips, and Saint Francis.						

NORTH AMERICAN INDUSTRY CLASSIFICATION SYSTEM INDUSTRY GROUP	NUMBER OF EMPLOYING UNITS	EMPLOYMENT JULY	EMPLOYMENT AUGUST	EMPLOYMENT SEPTEMBER	TOTAL EARNINGS JUL. - SEP. 2005	AVERAGE WEEKLY EARNINGS
NORTH CENTRAL WORKFORCE INFORMATION	5,237	66,212	68,291	70,851	\$433,499,359	\$491.40
Construction	479	2,770	2,798	2,804	\$18,783,268	\$507.98
Manufacturing	298	13,651	13,919	13,961	\$110,753,471	\$607.59
Trade, Transportation & Utilities	1,544	15,722	15,641	15,808	\$94,879,379	\$468.08
Retail Trade	961	9,384	9,332	9,409	\$41,587,722	\$338.92
Other Trade, Transportation & Utilities	583	6,338	6,309	6,399	\$53,291,657	\$656.61
Financial Activities	508	2,595	2,613	2,638	\$17,701,619	\$494.10
Professional & Business Services	444	2,959	3,112	3,069	\$17,547,739	\$421.20
Education & Health Services	590	11,267	11,332	11,416	\$80,945,686	\$537.74
Leisure & Hospitality	438	6,278	6,298	6,257	\$15,102,488	\$181.33
Local Government	233	5,112	6,833	8,874	\$39,988,858	\$540.89
State Government	115	2,644	2,645	2,906	\$18,654,150	\$505.96
Other	588	3,214	3,100	3,118	\$19,142,701	\$440.52
North Central Workforce Includes these counties: Cleburne, Fulton, Independence, IZard, Jackson, Sharp, Stone, Van Buren, White, and Woodruff						
NORTHEAST WORKFORCE INFORMATION	6,236	89,208	92,300	95,049	\$642,723,792	\$527.74
Natural Resources & Mining	361	2,175	2,157	2,485	\$13,201,256	\$454.85
Construction	474	3,074	3,114	3,172	\$22,725,662	\$530.31
Manufacturing	364	21,652	21,620	21,722	\$205,808,188	\$655.01
Trade, Transportation & Utilities	1,753	17,704	17,647	17,842	\$105,650,724	\$456.00
Wholesale Trade	410	3,804	3,759	3,817	\$31,021,117	\$625.83
Retail Trade	1,045	11,486	11,445	11,473	\$52,272,876	\$358.49
Transportation, Warehousing & Utilities	298	2,414	2,443	2,552	\$22,356,731	\$643.34
Financial Activities	586	3,446	3,438	3,424	\$26,157,639	\$602.55
Professional & Business Services	618	6,346	6,780	6,823	\$38,802,860	\$428.94
Education & Health Services	791	12,332	12,484	12,603	\$100,564,610	\$571.77
Leisure & Hospitality	450	7,300	7,378	7,486	\$17,876,075	\$185.54
Local Government	218	7,730	9,835	11,432	\$56,806,962	\$604.85
State Government	108	3,568	3,833	4,005	\$30,234,288	\$607.05
Other	513	3,881	4,014	4,055	\$24,895,528	\$459.89
Northeast Workforce Includes these counties: Clay, Craighead, Greene, Lawrence, Mississippi, Poinsett, and Randolph.						

NORTH AMERICAN INDUSTRY CLASSIFICATION SYSTEM INDUSTRY GROUP	NUMBER OF EMPLOYING UNITS	EMPLOYMENT JULY	EMPLOYMENT AUGUST	EMPLOYMENT SEPTEMBER	TOTAL EARNINGS JUL. - SEP. 2005	AVERAGE WEEKLY EARNINGS
NORTHWEST WORKFORCE INFORMATION	13,957	218,553	223,074	228,826	\$1,788,952,040	\$615.92
Trade, Transportation & Utilities	3,582	53,269	53,184	53,543	\$429,072,714	\$591.49
Retail Trade	1,999	25,282	25,385	25,377	\$137,162,622	\$405.53
Other Trade, Transportation & Utilities	1,583	27,987	27,799	28,166	\$291,910,092	\$762.65
Education & Health Services	1,372	22,149	22,443	22,765	\$191,578,618	\$610.56
Leisure & Hospitality	1,323	21,059	21,084	21,092	\$65,016,033	\$220.04
Local & State Government	425	18,187	22,262	26,961	\$181,644,158	\$698.08
Other	7,255	103,889	104,101	104,465	\$921,640,517	\$688.39
Northwest Workforce Includes these counties: Baxter, Benton, Boone, Carroll, Madison, Marion, Newton, Searcy, and Washington.						
SOUTHEAST WORKFORCE INFORMATION	5,175	73,350	74,881	78,724	\$547,895,078	\$546.39
Natural Resources & Mining	411	3,275	3,237	3,548	\$23,360,306	\$511.24
Construction	379	3,528	3,565	3,574	\$31,312,426	\$654.09
Manufacturing	228	17,902	17,901	17,925	\$174,930,616	\$704.13
Trade, Transportation & Utilities	1,449	13,921	13,900	14,059	\$86,832,612	\$457.78
Wholesale Trade	259	2,598	2,535	2,523	\$21,422,536	\$623.81
Retail Trade	897	8,890	8,903	8,916	\$40,274,912	\$338.67
Transportation, Warehousing & Utilities	293	2,433	2,462	2,620	\$25,135,164	\$735.22
Local & State Government	358	11,418	12,904	16,045	\$93,015,708	\$590.20
Other	2,350	23,306	23,374	23,573	\$138,443,410	\$415.77
Southeast Workforce Includes these counties: Arkansas, Ashley, Bradley, Chicot, Cleveland, Desha, Drew, Grant, Jefferson, and Lincoln						
SOUTHWEST WORKFORCE INFORMATION	5,623	82,973	84,473	87,389	\$629,552,564	\$560.83
Natural Resources & Mining	404	2,761	2,795	2,845	\$23,783,852	\$598.57
Trade, Transportation & Utilities	1,568	15,168	15,249	15,329	\$98,167,958	\$462.94
Education & Health Services	572	9,040	9,078	9,141	\$54,959,276	\$452.03
Local Government	265	6,335	7,944	10,766	\$49,411,748	\$592.25
State Government	150	3,299	3,262	3,292	\$24,716,092	\$582.84
Other	2,664	46,370	46,145	46,016	\$378,513,638	\$602.73
Southwest Workforce Includes these counties: Calhoun, Columbia, Dallas, Hempstead, Howard, Lafayette, Little River, Miller, Nevada, Ouachita, Sevier, and Union						

NORTH AMERICAN INDUSTRY CLASSIFICATION SYSTEM INDUSTRY GROUP	NUMBER OF EMPLOYING UNITS	EMPLOYMENT JULY	EMPLOYMENT AUGUST	EMPLOYMENT SEPTEMBER	TOTAL EARNINGS JUL. - SEP. 2005	AVERAGE WEEKLY EARNINGS
WEST CENTRAL WORKFORCE INFORMATION	7,812	102,972	104,681	108,932	\$690,259,104	\$505.24
Natural Resources & Mining	263	2,346	2,317	2,271	\$16,313,663	\$586.39
Construction	873	5,760	5,870	6,040	\$42,595,233	\$545.63
Trade, Transportation & Utilities	2,011	21,553	21,544	21,760	\$143,430,756	\$492.05
Financial Activities	822	3,957	3,956	3,955	\$28,949,321	\$551.22
Education & Health Services	821	14,796	14,862	14,972	\$113,750,855	\$556.12
Local Government	231	7,123	8,615	11,825	\$56,905,450	\$643.77
State Government	133	4,251	4,494	5,007	\$32,589,397	\$574.27
Other	2,658	43,186	43,023	43,102	\$255,724,429	\$434.92
West Central Workforce Includes these counties: Clark, Conway, Garland, Hot Spring, Johnson, Montgomery, Perry, Pike, Pope, and Yell						
WESTERN WORKFORCE INFORMATION	6,174	106,527	109,126	111,260	\$787,225,540	\$555.86
Natural Resources & Mining	152	2,072	2,262	2,212	\$23,774,872	\$736.78
Trade, Transportation & Utilities	1,629	22,459	22,417	22,489	\$149,778,493	\$499.68
Wholesale Trade	373	3,366	3,371	3,402	\$31,726,362	\$662.57
Retail Trade	971	12,237	12,167	12,183	\$59,395,922	\$383.80
Transportation, Warehousing & Utilities	285	6,856	6,879	6,904	\$58,656,209	\$628.75
Financial Activities	641	3,737	3,652	3,655	\$29,978,262	\$623.05
Professional & Business Services	766	10,922	10,969	10,911	\$69,345,554	\$476.62
Education & Health Services	702	13,026	13,116	13,318	\$111,767,948	\$630.20
Leisure & Hospitality	506	7,981	8,026	8,016	\$21,764,320	\$203.44
Local & State Government	232	7,510	9,746	11,460	\$67,115,637	\$666.17
Other	1,546	38,820	38,938	39,199	\$313,700,454	\$606.70
Western Workforce Includes these counties: Crawford, Franklin, Logan, Polk, Scott, and Sebastian						