

Arkansas Covered Employment & Earnings

Jobs for People. People for Jobs.

DWS
Department of
WORKFORCE**Services**

First Quarter
2005

**COVERED EMPLOYMENT AND EARNINGS
STATE OF ARKANSAS
FIRST QUARTER 2005**

**MIKE HUCKABEE, GOVERNOR
STATE OF ARKANSAS**

**ARTEE WILLIAMS, DIRECTOR
DEPARTMENT OF WORKFORCE SERVICES**

**PUBLISHED BY
BUREAU OF LABOR STATISTICS PROGRAMS
DEPARTMENT OF WORKFORCE SERVICES
POST OFFICE BOX 2981
LITTLE ROCK, ARKANSAS 72203-2981
BERNADETTE COLEMAN, BLS PROGRAMS MANAGER
TELEPHONE: (501) 682-3159**

STATE OF ARKANSAS HOME PAGE: <http://www.arkansas.gov>

DEPARTMENT OF WORKFORCE SERVICES HOME PAGE: <http://www.arkansas.gov/esd/>

**INTERNET SITE FOR LABOR MARKET INFORMATION:
<http://www.discoverarkansas.net>**

RELEASED: SEPTEMBER 2005

TABLE OF CONTENTS

DESCRIPTION OF DATA	Page
Industry Classification	1
Definition of Covered Employment and Earnings	2
Federal Government Employment	2
County Classification	2
Significant Developments During First Quarter 2005	3

LIST OF GRAPHS AND TABLES

Graph 1	Total Covered Employment for Selected Years, Arkansas	7
Graph 2	Total Covered Earnings, by Calendar Quarter for Selected Years, Arkansas	8
Table 1	Quarterly Comparison of Covered Employment and Wages, by Industry	5
Table 2	Total Covered Employment in Arkansas, 1998-2005	6
Table 3	Total Covered Earnings, 1998-2005	9
Table 4	Total Taxable Earnings, 1998-2005	10
Table 5	Statewide Summary - Employment and Total Earnings, by Industry, First Quarter 2005	11
Table 6	County Summary - Employment and Total Earnings, by Industry, First Quarter 2005	25
Table 7	Federal Government Employment and Total Earnings in Arkansas, First Quarter 2005	63
Table 8	Workforce Information Area – Employment and Total Earnings, by Industry, First Quarter 2005	64

EMPLOYMENT AND EARNINGS UNDER THE ARKANSAS EMPLOYMENT SECURITY LAW FIRST QUARTER 2005

DESCRIPTION OF DATA

This publication contains covered employment and payroll data by industry and county for the First Quarter 2005. These data are compiled from quarterly contribution and wage reports submitted by employers subject to the Arkansas Employment Security Law. An employing unit is a single physical location where business is conducted, production takes place, or services are provided. Employment data have been tabulated for each month of the quarter by industry under the **North American Industry Classification System** (NAICS) (see "Industry Classification" below) on a statewide, county and workforce area basis. Payroll data represent the total wages paid during the quarter, and are also shown by

industry for the State and by publishable industry groups for each county and workforce area. The tabulation of this data is a joint effort in conjunction with the U.S. Bureau of Labor Statistics. In addition, there are tables included which set out total covered employment by months, quarterly payrolls, and average weekly earnings for the years 1998 through 2005. Data contained in this publication are subject to revision. These revisions will be reflected in the 2005 Annual Covered Employment and Earnings publication. Because of industry code changes between years, substantial employment and wage shifts among industries are anticipated.

INDUSTRY CLASSIFICATION

Previously published industry data **will not** be comparable in all instances with currently published data since industry codes have been revised according to the following Manuals: (a) between January 1, 1958 and December 31, 1967, industry codes were assigned under the 1957 Standard Industrial Classification (SIC) Manual; (b) between January 1, 1968 and December 31, 1974, industry codes were assigned under the 1967 Standard Industrial Classification (SIC) Manual; (c) between January 1, 1975 and December 31, 1987, industry codes were assigned under the 1972 Standard Industrial Classification (SIC) Manual; (d) between January 1, 1988 and December 31, 2000, industry codes were assigned under the 1987 Standard Industrial Classification (SIC) Manual; and (e) since January 1, 2001, industry codes have been assigned under the 2002 North American Industry Classification System (NAICS) Manual. **The NAICS Manual represents a significant change in coding methodology as compared to the**

SIC Manual. One of the most significant changes involves how NAICS treats auxiliary units. Auxiliary units are establishments primarily engaged in performing management or support services for other establishments of the same enterprise. The SIC code for these units was based on the activity of the enterprise served. The NAICS code is based on the actual activities that the establishment performs. Comparisons of many industries **should not be made** between this publication and previous Covered Employment and Earnings publications that were based on SIC. Even though some titles are the same or similar, in nature, NAICS and SIC could differ in the classification of employers. The implementation of NAICS represents a profound change for statistical programs, and will create significant benefits along with transition obstacles for both data collectors and data users. A summary is available on the NAICS home page at <http://www.census.gov/naics>.

DEFINITION OF COVERED EMPLOYMENT AND EARNINGS

Covered Employment is the number of workers employed by employers subject to the Arkansas Employment Security Law who worked or received pay for the payroll period including the 12th of the month. An employer is subject to the law when they employ one or more employees in each of ten days during the current or preceding calendar year.

Currently excluded from coverage is employment covered by the Railroad Unemployment Insurance Act, some domestic service workers, employees of small agricultural establishments, self-employed and unpaid family workers, insurance and real estate

agents who are on commission only, and employees of churches and religious organizations except separately incorporated schools. The payroll information in this publication includes all wages and salaries paid to any covered employees by their employers including bonuses, commissions, and cash values of remuneration received in any medium other than cash. These wages include both taxable and nontaxable wages. Only the first \$10,000 paid to each worker by an employer in the calendar year is taxable under the Arkansas Employment Security Law.

FEDERAL GOVERNMENT EMPLOYMENT

Table 7 on page 63 lists the total number of civilians employed by the Federal Government in Arkansas during the First Quarter 2005. Employment and wage data are set out by industry divisions. These data are obtained from required reports submitted by various

government agencies having employment in the State. Civilian Federal workers are covered by the Unemployment Compensation for Federal Employees (UCFE) program.

COUNTY CLASSIFICATION

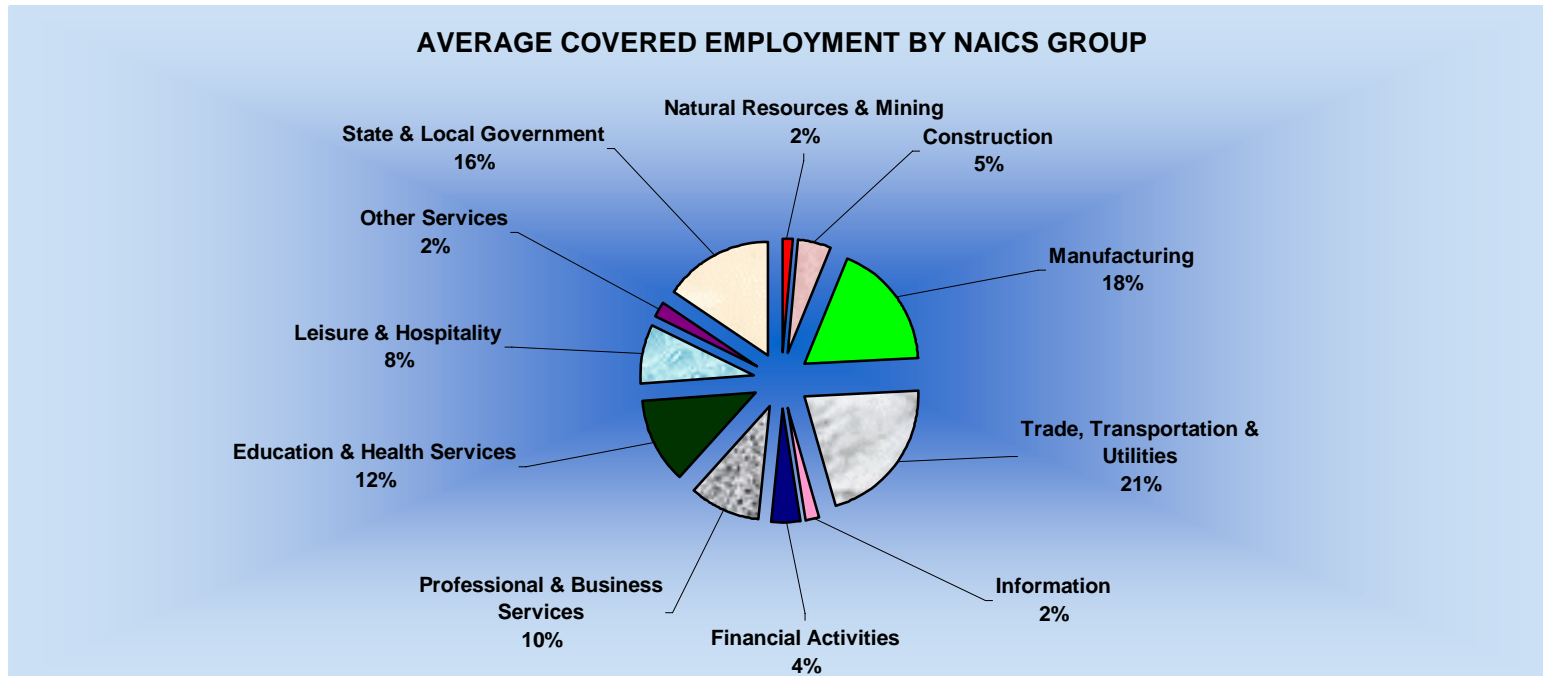
Employment and payroll data by county are classified according to the county where the workers are employed. Employers with operations in more than one county are requested to furnish this agency with a breakdown of employment and wages for at least one quarter of each year by the counties in which they operate. Many such employers submit county data with each regular contribution report. **Note:** This information is invaluable in the preparation of monthly employment and payroll data by county.

Employment and payroll data for multi - area employers who do not furnish county data each quarter of the year, are prorated by county on the basis of one quarter's information. The "rest-of-state" table that appears on page 62 of this publication includes data on firms that **did not** provide a county breakdown of employment and payrolls. It also includes sales, and all other type of personnel with no permanent place of work, as well as employment of employers with no established place of business in Arkansas.

SIGNIFICANT DEVELOPMENTS DURING FIRST QUARTER 2005

AVERAGE EMPLOYMENT CHANGES

Covered employment averaged 1,113,798 during the First Quarter 2005 (see table 1), a decrease of 11,435 (-1.0%) from the previous quarter and, 17,019 (1.6%) above the average recorded one-year ago. This *over-the-year* increase is more significant when used as an economic indicator. This *over-the-year* comparison allows for the disregarding of many seasonal factors that are evident when making an *over-the-quarter* comparison.



EMPLOYMENT CHANGES FROM FOURTH QUARTER 2004

Over the quarter gains were recorded in two industry groups (see table 1). Information and Education-Health Services each increased, respectively 121 and 28 jobs.

Nine industry groups experienced seasonal decreases with the end of the holidays and the start of winter. Trade, Transportation & Utilities had the largest seasonal decrease (-3,770) as temporary positions in the retail industry ended with the holidays. Natural

Resources & Mining reduced jobs (-2,274) due to Agriculture, Forestry, Fishing & Hunting as farming slows down during the winter months. The Manufacturing industry group is still declining in the state as companies are continuing to downsize. Professional & Business Services lost 1,467 jobs due to temporary staffing agencies reducing their workforce with the end of the holiday season. State & Local Government decreased 1,088, as educational facilities are not fully staffed for the upcoming spring semester.

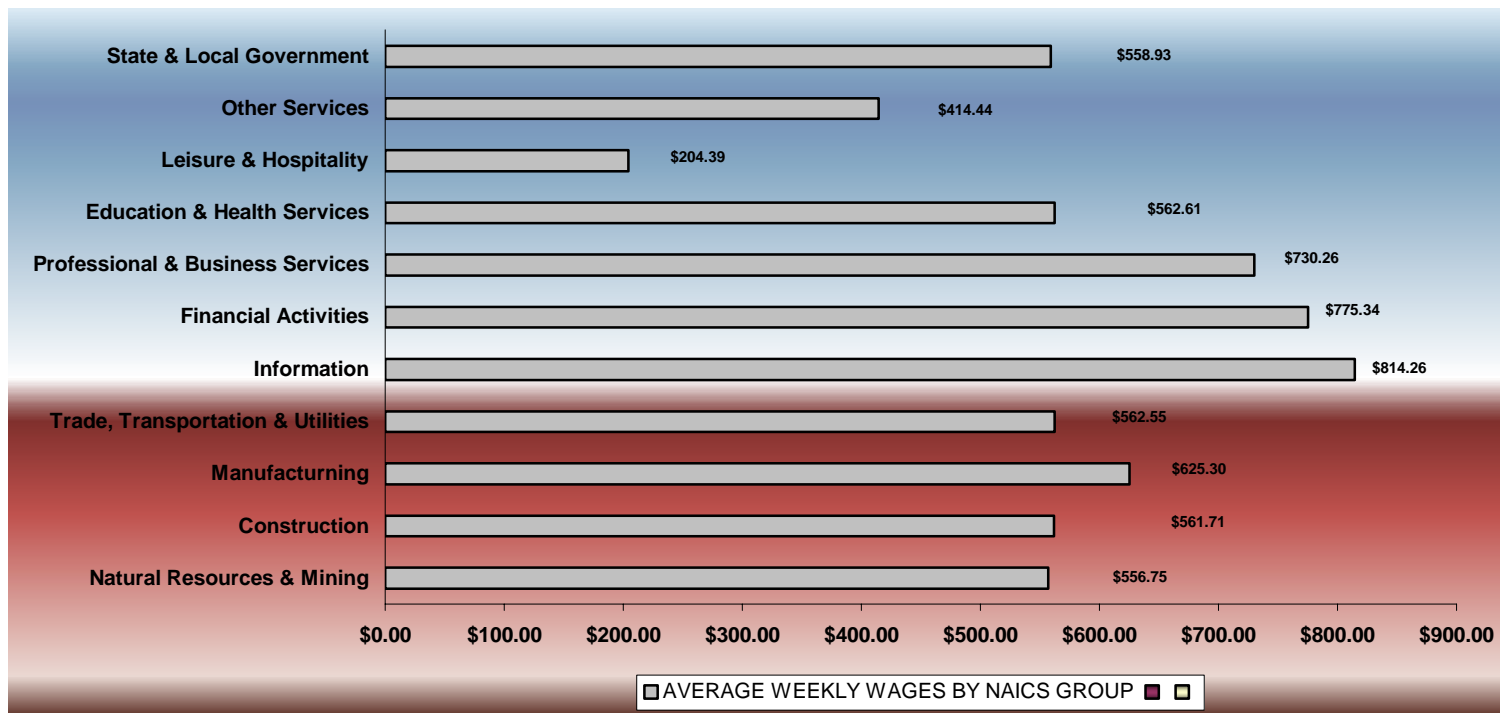
EMPLOYMENT CHANGES FROM FIRST QUARTER 2004

Over-the-year gains were recorded in seven industry groups while four recorded losses (see table 1). Significant gains were posted in Educational & Health Services (3,521), Leisure & Hospitality (3,319), and Construction (3,054). Losses occurred in Manufacturing (-1,707), Natural Resources & Mining (-668) and Other Services (-318).

COVERED WAGES

Wages paid to covered workers totaled \$8,269,065,129 for the First Quarter 2005 (see table 1), for an average weekly wage of \$571.09 (see table 5). Employees in Benton County recorded the highest average weekly wage (\$770.33), and workers in Newton County the lowest (\$323.40) (see table 6).

The Information sector recorded the highest average weekly wage for the State of Arkansas at \$814.26, while the Leisure & Hospitality sector recorded the lowest at \$204.39 for the State of Arkansas (see table 5).



Note: Because of industry code changes between years, substantial employment and wage shifts among industries are anticipated.

TABLE 1. QUARTERLY COMPARISON OF COVERED EMPLOYMENT AND WAGES, BY INDUSTRY

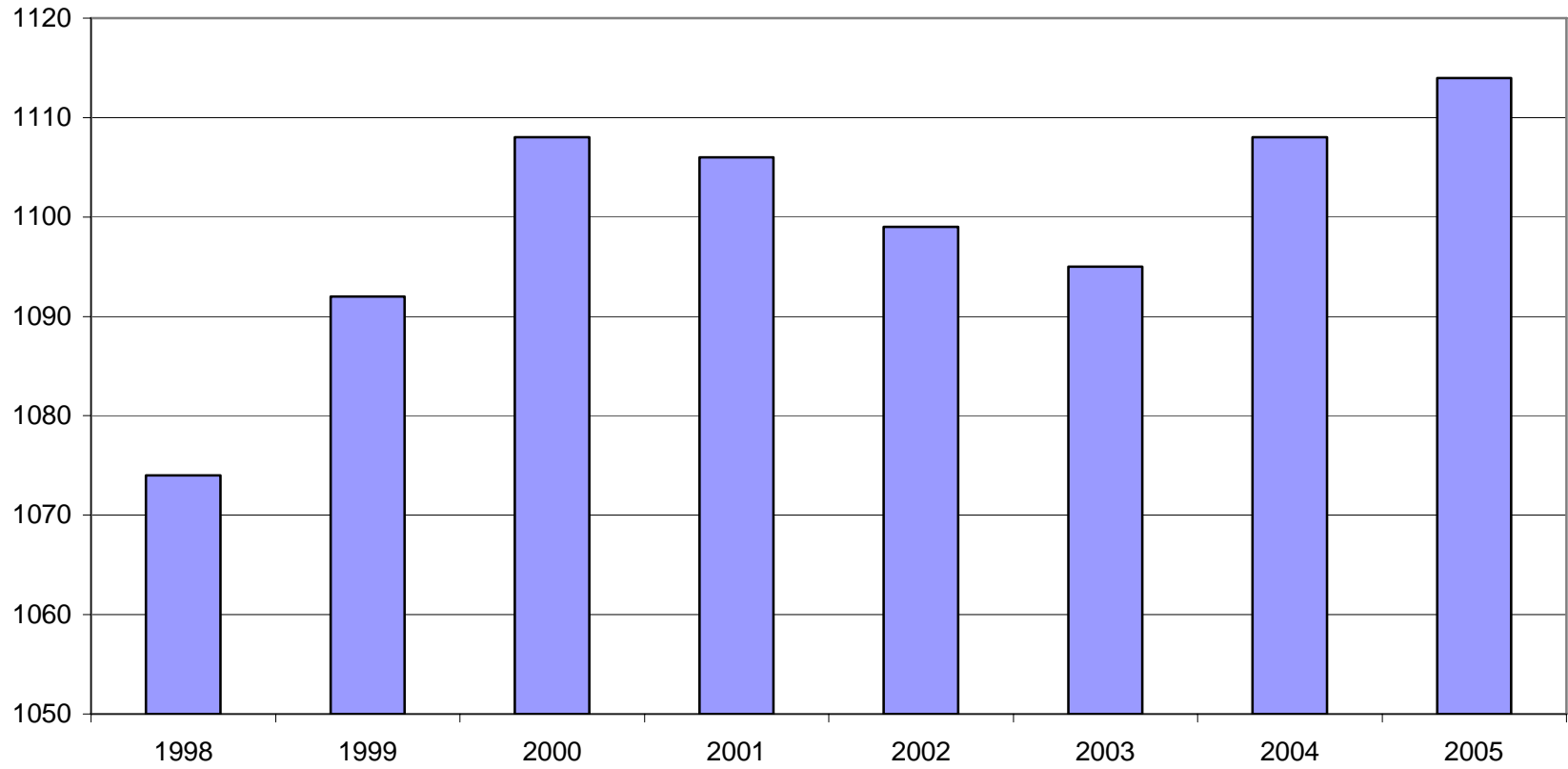
North American Industry Classification System Industry Group	Number of Employing Units	Average Covered Employment		Net Change From:		Total Wages Paid		% of Total
		Jan. – Mar. 2005 Monthly Average	% of Total	Oct. – Dec. 2004	Jan. – Mar. 2004	Jan. – Mar. 2005	% of Total	
Total	76,474	1,113,798	100.0	-11,435	17,019	\$8,269,065,129	100.0	
Natural Resources and Mining	2,371	16,903	1.5	-2,274	-668	122,337,321	1.5	
Agriculture, Forestry, Fishing and Hunting	2,049	13,088	1.2	-2,138	-645	78,339,696	0.9	
Mining	322	3,815	0.3	-136	-22	43,997,625	0.5	
Construction	7,535	51,674	4.6	-39	3,054	377,329,783	4.6	
Manufacturing	3,579	201,231	18.1	-2,201	-1,707	1,635,789,477	19.8	
Trade, Transportation, and Utilities	20,976	237,758	21.3	-3,770	2,635	1,738,776,416	21.0	
Wholesale Trade	6,240	46,550	4.2	241	1,518	515,840,200	6.2	
Retail Trade	11,432	130,005	11.7	-3,659	1,142	637,193,405	7.7	
Transportation and Warehousing	2,957	54,727	4.9	-331	7	473,544,976	5.7	
Utilities	347	6,476	0.6	-21	-32	112,197,835	1.4	
Information	1,219	20,304	1.8	121	-146	214,927,802	2.6	
Financial Activities	7,685	48,902	4.4	-707	376	492,909,482	6.0	
Finance and Insurance	4,550	35,689	3.2	-650	96	412,868,039	5.0	
Real Estate and Rental and Leasing	3,135	13,214	1.2	-56	281	80,041,443	1.0	
Professional and Business Services	10,350	108,597	9.8	-1,467	2,791	1,030,947,806	12.5	
Professional and Technical Services	6,499	36,016	3.2	1,618	2,486	372,968,759	4.5	
Management of Companies and Enterprises	485	23,432	2.1	512	539	433,929,461	5.2	
Administrative and Waste Services	3,366	49,149	4.4	-3,597	-234	224,049,586	2.7	
Education and Health Services	8,147	138,654	12.4	28	3,521	1,014,109,973	12.3	
Educational Services	542	8,504	0.8	131	513	51,139,489	0.6	
Health Care and Social Assistance	7,605	130,149	11.7	-105	3,008	962,970,484	11.6	
Leisure and Hospitality	5,886	90,400	8.1	-189	3,319	240,204,052	2.9	
Arts, Entertainment and Recreation	896	8,144	0.7	-167	155	28,748,490	0.3	
Accommodation and Food Services	4,990	82,256	7.4	-22	3,164	211,455,562	2.6	
Other Services	5,551	24,999	2.2	-598	-318	134,688,600	1.6	
State and Local Government	3,175	174,377	15.7	-1,088	1,938	1,267,044,417	15.3	
Local Government	1,975	114,720	10.3	-600	1,385	765,341,208	9.3	
State Government	1,200	59,657	5.4	-488	552	501,703,209	6.1	
Nonclassifiable Establishments	0	0	0.0	0	0	0	0.0	

Note: Items do not necessarily add to totals because of rounding. Because of industry code changes between years, substantial employment and wage shifts among industries are anticipated.

TABLE 2. TOTAL COVERED EMPLOYMENT IN ARKANSAS

Period	1998	1999	2000	2001	2002	2003	2004	2005
Average	1,073,732	1,092,351	1,108,490	1,106,053	1,098,558	1,094,904	1,108,467	1,113,798
January	1,050,970	1,065,920	1,089,956	1,096,009	1,081,635	1,082,740	1,089,798	1,104,692
February	1,057,593	1,074,315	1,096,126	1,101,616	1,086,793	1,084,880	1,094,946	1,112,453
March	1,066,099	1,084,653	1,109,157	1,112,143	1,098,500	1,092,172	1,105,592	1,124,250
April	1,074,416	1,093,574	1,111,543	1,115,526	1,103,399	1,095,341	1,111,410	NA
May	1,083,133	1,098,539	1,116,779	1,119,815	1,111,998	1,103,099	1,117,470	NA
June	1,086,125	1,101,748	1,121,245	1,119,734	1,112,028	1,099,688	1,117,324	NA
July	1,046,396	1,062,563	1,075,096	1,071,830	1,065,697	1,056,155	1,071,561	NA
August	1,063,680	1,081,260	1,096,841	1,094,068	1,086,011	1,080,681	1,094,977	NA
September	1,088,772	1,108,212	1,123,735	1,115,996	1,113,148	1,108,905	1,122,823	NA
October	1,089,836	1,110,604	1,122,884	1,110,994	1,108,447	1,112,900	1,123,286	NA
November	1,087,855	1,112,003	1,120,620	1,109,012	1,107,611	1,110,041	1,125,109	NA
December	1,089,913	1,114,823	1,117,892	1,105,887	1,107,425	1,112,243	1,127,303	NA

AVERAGE TOTAL COVERED EMPLOYMENT GRAPH 1
In Thousands



TOTAL COVERED EARNINGS BY CALENDAR QUARTER, GRAPH 2
In Thousands

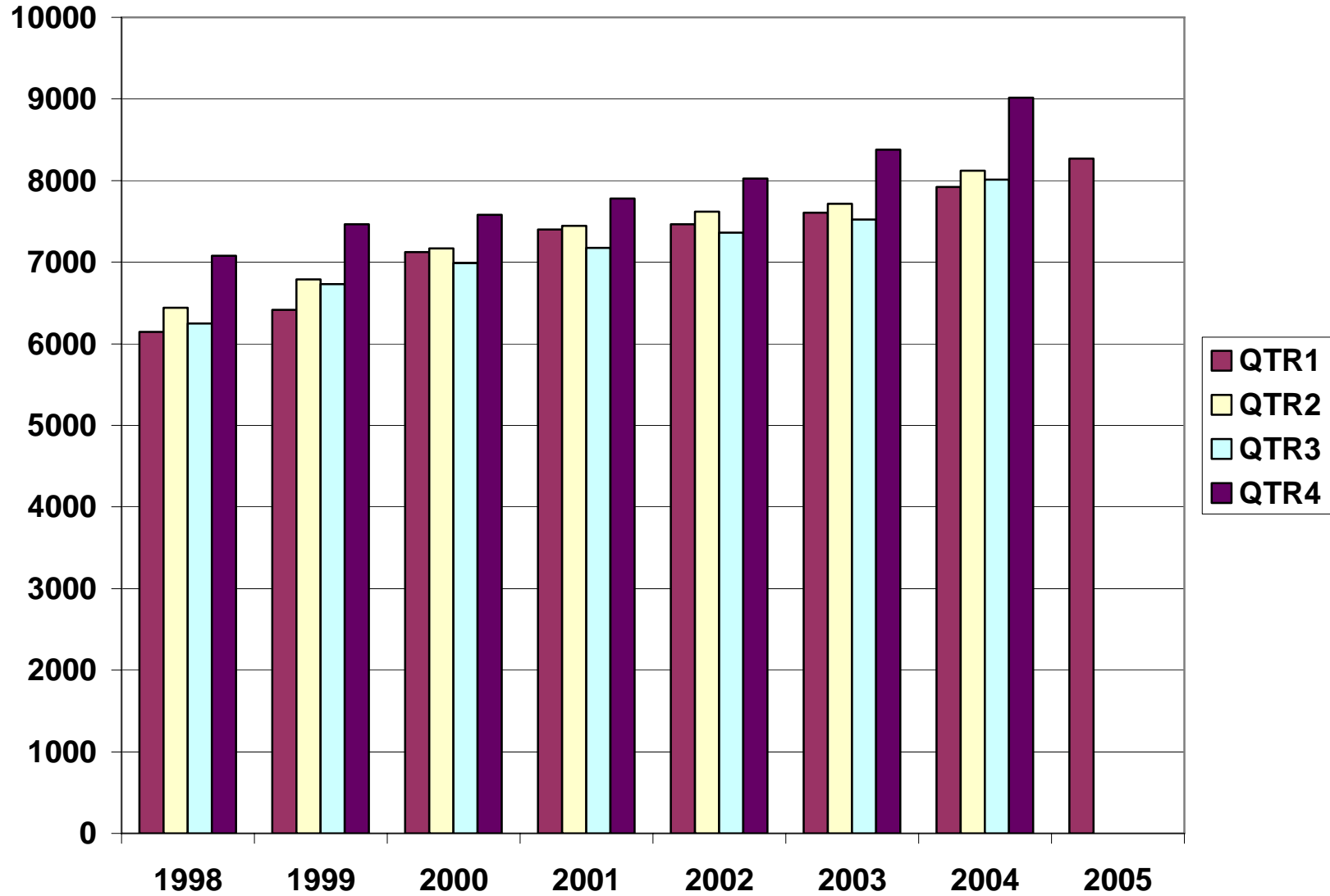


TABLE 3. TOTAL COVERED EARNINGS, 1998 - 2005

Period	1998	1999	2000	2001
Total	\$25,914,345,060	\$27,407,925,462	\$28,853,825,155	\$29,807,669,666
January - March	6,145,178,755	6,418,456,638	7,122,666,917	7,398,887,532
April - June	6,441,129,069	6,791,960,679	7,166,110,114	7,448,023,298
July - September	6,246,775,598	6,733,480,079	6,986,103,157	7,177,293,061
October - December	7,081,261,638	7,464,028,066	7,578,944,967	7,783,465,775
Average Weekly Earnings	464.13	482.51	500.57	518.26
Period	2002	2003	2004	2005
Total	\$30,472,854,103	\$31,226,612,657	\$33,071,589,963	\$8,269,065,129
January - March	7,465,250,305	7,608,130,008	7,920,073,954	8,269,065,129
April - June	7,621,878,775	7,714,813,038	8,123,965,587	NA
July - September	7,361,666,511	7,522,456,991	8,010,570,622	NA
October - December	8,024,058,512	8,381,212,620	9,016,979,800	NA
Average Weekly Earnings	533.44	548.46	573.76	571.09

TABLE 4. TOTAL TAXABLE EARNINGS, 1998 - 2005

Period	1998	1999	2000	2001
Total	\$8,554,973,370	\$8,807,445,422	\$9,048,033,534	\$9,003,189,480
Jan.-March	4,063,795,529	4,203,067,856	4,560,814,012	4,670,296,360
Apr.-June	2,271,303,325	2,325,649,764	2,260,741,187	2,219,485,263
July-Sept.	1,236,054,184	1,267,562,743	1,250,850,348	1,190,098,737
Oct.-Dec.	983,820,332	1,011,165,059	975,627,987	923,309,120

Period	2002	2003	2004	2005
Total	\$8,887,270,978	\$9,155,945,780	\$9,734,111,150	\$5,068,103,112
Jan.-March	4,668,534,587	4,737,918,796	4,932,839,735	5,068,103,112
Apr.-June	2,162,971,435	2,270,519,362	2,452,278,332	NA
July-Sept.	1,158,197,858	1,188,784,400	1,318,148,089	NA
Oct.-Dec.	897,567,098	958,723,222	1,030,844,994	NA

**TABLE 5. STATEWIDE SUMMARY
EMPLOYMENT AND TOTAL EARNINGS, BY INDUSTRY
FIRST QUARTER 2005**

NORTH AMERICAN INDUSTRY CLASSIFICATION SYSTEM INDUSTRY GROUPS	NUMBER OF EMPLOYING UNITS	EMPLOYMENT			TOTAL EARNINGS	AVERAGE
		JANUARY	FEBURARY	MARCH	JAN. - MAR. 2005	WEEKLY EARNINGS
TOTAL, ALL INDUSTRIES	76,474	1,104,692	1,112,453	1,124,250	\$8,269,065,129	\$571.09
NATURAL RESOURCES & MINING	2,371	16,457	16,860	17,391	\$122,337,321	\$556.75
11 AGRICULTURE, FORESTRY, FISHING & HUNTING	2,049	12,709	13,048	13,506	\$78,339,696	\$460.44
111 CROP PRODUCTION	725	2,969	3,128	3,570	\$15,237,973	\$363.76
1111 Oilseed and Grain Farming	442	1,591	1,639	1,882	7,893,303	356.32
1112 Vegetable and Melon Farming	11	80	89	90	278,230	247.90
1113 Fruit and Tree Nut Farming	9	64	62	70	249,210	293.42
1114 Greenhouse & Nursery Production	48	277	355	423	1,804,429	394.70
1119 Other Crop Farming	215	957	983	1,105	5,012,801	379.90
112 ANIMAL PRODUCTION	264	3,601	3,614	3,681	\$25,601,831	\$542.23
1121 Cattle Ranching and Farming	76	335	333	333	1,947,714	449.02
1123 Poultry and Egg Production	89	2,576	2,566	2,585	18,896,012	564.34
1125 Animal Aquaculture	65	454	477	515	3,107,032	495.86
Other	34	236	238	248	1,651,073	527.72
113 FORESTRY AND LOGGING	591	3,081	3,127	3,169	\$20,956,992	\$515.75
1131 Timber Tract Operations	46	266	258	259	2,973,978	876.50
1132 Forest Nurseries & Gathering of Forest Products	6	51	56	45	334,406	507.70
1133 Logging	539	2,764	2,813	2,865	17,648,608	482.44
OTHER	469	3,058	3,179	3,086	\$16,542,900	\$409.48
21 MINING	322	3,748	3,812	3,885	\$43,997,625	\$887.14
211 OIL AND GAS EXTRACTION	75	374	371	375	\$4,894,039	\$1,008.39
212 MINING (EXCEPT OIL AND GAS)	106	1,815	1,825	1,835	\$19,759,549	\$832.86
213 SUPPORT ACTIVITIES FOR MINING	141	1,559	1,616	1,675	\$19,344,037	\$920.41

**TABLE 5. STATEWIDE SUMMARY
EMPLOYMENT AND TOTAL EARNINGS, BY INDUSTRY
FIRST QUARTER 2005**

NORTH AMERICAN INDUSTRY CLASSIFICATION SYSTEM INDUSTRY GROUPS		NUMBER OF EMPLOYING UNITS	EMPLOYMENT			TOTAL EARNINGS	AVERAGE
			JANUARY	FEBURARY	MARCH	JAN. - MAR. 2005	WEEKLY EARNINGS
CONSTRUCTION		7,535	50,753	51,280	52,988	\$377,329,783	\$561.71
236	CONSTRUCTION OF BUILDINGS	2,039	11,525	11,578	11,919	\$91,153,557	\$600.63
2361	Residential Building Construction	1,432	4,120	4,155	4,294	27,040,605	496.47
2362	Nonresidential Building Construction	607	7,405	7,423	7,625	64,112,952	658.95
237	HEAVY & CIVIL ENGINEERING CONSTRUCTION	896	9,646	9,768	10,251	\$77,698,072	\$604.43
2371	Utility System Construction	423	4,785	4,870	4,982	36,394,584	573.80
2372	Land Subdivision	113	353	351	324	2,952,055	662.69
2373	Highway, Street & Bridge Construction	253	3,363	3,359	3,535	24,563,470	552.65
2379	Other Heavy Construction	107	1,145	1,188	1,410	13,787,963	850.08
238	SPECIALTY TRADE CONTRACTORS	4,600	29,582	29,934	30,818	\$208,478,154	\$532.58
2381	Building Foundation & Exterior Contractors	911	5,445	5,582	5,948	35,735,245	485.81
2382	Building Equipment Contractors	2,008	14,489	14,521	14,770	112,280,180	591.84
2383	Building Finishing Contractors	859	4,702	4,769	4,848	29,403,230	473.87
2389	Other Specialty Trade Contractors	822	4,946	5,062	5,252	31,059,499	469.70
MANUFACTURING		3,579	201,233	201,019	201,440	\$1,635,789,477	\$625.30
311	FOOD MANUFACTURING	294	51,444	51,177	51,163	\$329,075,858	\$493.81
3111	Animal Food Manufacturing	51	1,306	1,315	1,314	12,407,559	727.64
3112	Grain and Oilseed Milling	29	2,492	2,461	2,510	19,337,408	597.95
3114	Fruit, Vegetable & Specialty Food	37	6,795	6,762	6,847	51,817,311	586.05
3115	Dairy Product Manufacturing	10	678	702	718	6,177,035	679.44
3116	Animal Slaughtering & Processing	86	35,093	34,886	34,638	197,047,677	434.66
3118	Bakeries and Tortilla Manufacturing	54	3,355	3,353	3,390	26,220,430	599.21
3119	Other Food Manufacturing	19	1,623	1,592	1,638	15,594,870	741.57
	Other	8	102	106	108	473,568	345.84
312	BEVERAGE & TOBACCO PRODUCT MFG.	36	1,225	1,234	1,239	\$11,027,880	\$688.18
313	TEXTILE MILLS	18	379	380	377	\$3,875,131	\$787.20
3132	Fabric Mills	5	299	298	296	3,423,985	884.83
3133	Textile & Fabric Finishing Mills	13	80	82	81	451,146	428.44
314	TEXTILE PRODUCT MILLS	60	1,551	1,545	1,542	13,183,816	\$655.98

**TABLE 5. STATEWIDE SUMMARY
EMPLOYMENT AND TOTAL EARNINGS, BY INDUSTRY
FIRST QUARTER 2005**

NORTH AMERICAN INDUSTRY CLASSIFICATION SYSTEM INDUSTRY GROUPS		NUMBER OF EMPLOYING UNITS	EMPLOYMENT			TOTAL EARNINGS	AVERAGE
			JANUARY	FEBURARY	MARCH	JAN. - MAR. 2005	WEEKLY EARNINGS
315	APPAREL MANUFACTURING	40	2,047	1,953	2,007	\$9,616,206	\$369.42
3152	Cut & Sew Apparel Manufacturing	33	867	876	903	4,018,835	350.50
	Other	7	1,180	1,077	1,104	5,597,371	384.32
316	LEATHER & ALLIED PRODUCT MANUFACTURING	22	2,513	2,468	2,441	\$11,721,315	\$364.45
3162	Footwear Manufacturing	11	2,320	2,273	2,242	10,551,445	356.25
3169	Other Leather Product Manufacturing	11	193	195	199	1,169,870	459.91
321	WOOD PRODUCT MANUFACTURING	396	13,498	13,595	13,423	\$96,942,244	\$552.16
3211	Sawmills and Wood Preservation	185	5,841	5,994	5,995	44,458,291	575.41
3212	Veneer & Engineered Wood Products	49	3,271	3,247	3,275	27,213,723	641.28
3219	Other Wood Product Manufacturing	162	4,386	4,354	4,153	25,270,230	452.31
322	PAPER MANUFACTURING	88	12,196	12,005	11,980	\$149,868,529	\$955.89
3221	Pulp, Paper & Paperboard Mills	10	4,812	4,680	4,650	79,386,232	1295.42
3222	Converted Paper Product Manufacturing	78	7,384	7,325	7,330	70,482,297	738.02
323	PRINTING & RELATED SUPPORT ACTIVITIES	306	4,719	4,672	4,684	\$36,839,795	\$604.01
324	PETROLEUM AND COAL PRODUCTS MFG.	20	877	887	885	\$10,304,962	\$897.72
325	CHEMICAL MANUFACTURING	118	5,354	5,358	5,376	\$61,689,629	\$884.89
3251	Basic Chemical Manufacturing	24	1,581	1,586	1,583	20,957,036	1018.16
3252	Resin, Rubber & Artificial Fibers	7	312	311	311	4,135,939	1021.89
3253	Agricultural Chemical Manufacturing	21	382	390	398	4,635,989	914.40
3254	Pharmaceutical & Medicine Manufacturing	15	135	139	137	1,005,585	564.62
3255	Paint, Coating & Adhesive Manufacturing	7	174	173	175	1,892,586	836.69
3256	Cleaning Compound & Toiletry Manufacturing	17	1,063	1,065	1,063	10,916,690	789.48
3259	Other Chemical Preparation Manufacturing	27	1,707	1,694	1,709	18,145,804	819.47
326	PLASTICS & RUBBER PRODUCTS MFG.	173	13,132	13,051	13,064	\$113,164,679	\$665.40
3261	Plastics Product Manufacturing	131	7,676	7,677	7,647	58,808,150	590.05
3262	Rubber Product Manufacturing	42	5,456	5,374	5,417	54,356,529	772.07

**TABLE 5. STATEWIDE SUMMARY
EMPLOYMENT AND TOTAL EARNINGS, BY INDUSTRY
FIRST QUARTER 2005**

NORTH AMERICAN INDUSTRY CLASSIFICATION SYSTEM INDUSTRY GROUPS		NUMBER OF EMPLOYING UNITS	EMPLOYMENT			TOTAL EARNINGS	AVERAGE
			JANUARY	FEBURARY	MARCH	JAN. - MAR. 2005	WEEKLY EARNINGS
327	NONMETALLIC MINERAL PRODUCT MFG.	252	4,352	4,396	4,437	\$37,777,805	\$661.20
3271	Clay Product & Refractory Manufacturing	17	524	516	501	3,962,916	593.46
3272	Glass & Glass Product Manufacturing	15	357	350	345	2,940,788	645.10
3273	Cement & Concrete Product Manufacturing	187	2,581	2,656	2,694	21,257,658	618.54
3274	Lime & Gypsum Product Manufacturing	3	391	394	401	4,349,826	846.38
3279	Other Nonmetallic Mineral Products	30	499	480	496	5,266,617	823.98
331	PRIMARY METAL MANUFACTURING	67	7,983	8,054	8,058	\$99,843,828	\$956.25
3311	Iron & Steel Mills and Ferroalloys	7	2,077	2,094	2,097	41,591,784	1531.29
3312	Purchased Steel Product Manufacturing	13	2,100	2,104	2,114	20,564,512	751.13
3313	Alumina & Aluminum Production	20	1,723	1,755	1,741	20,185,080	892.53
3314	Other Nonferrous Metal Production	11	706	712	720	6,091,150	657.46
3315	Foundries	16	1,377	1,389	1,386	11,411,302	634.24
332	FABRICATED METAL PRODUCT MANUFACTURING	576	18,014	17,988	18,173	\$154,410,708	\$657.74
3321	Forging & Stamping	15	918	915	919	6,802,844	570.45
3322	Cutlery & Hand Tool Manufacturing	19	1,310	1,320	1,326	9,786,043	570.86
3323	Architectural & Structural Metals	187	4,850	4,873	5,006	43,750,043	685.46
3324	Boilers, Tanks & Shipping Containers	18	1,109	1,101	1,089	10,108,199	707.08
3325	Hardware Manufacturing	12	413	389	386	2,962,262	575.42
3326	Spring & Wire Product Manufacturing	17	907	899	897	5,974,827	510.10
3327	Machine Shops & Threaded Products	200	1,607	1,622	1,630	12,308,557	584.57
3328	Coating, Engraving & Heat Treating Metals	39	974	967	971	7,244,430	574.10
3329	Other Fabricated Metal Product Manufacturing	69	5,926	5,902	5,949	55,473,503	720.12
333	MACHINERY MANUFACTURING	253	13,713	14,023	14,086	119,208,119	\$657.78
3331	Agri., Construction & Mining Machinery	37	2,937	3,103	3,146	18,068,115	453.90
3333	Commercial & Service Industry Machinery	26	1,017	1,040	1,031	9,997,065	747.09
3334	HVAC & Commercial Refrigeration Equipment	26	4,377	4,479	4,509	43,306,873	747.77
3335	Metalworking Machinery Manufacturing	78	1,387	1,393	1,431	12,561,596	688.39
3339	Other General Purpose Machinery Manufacturing	55	3,166	3,179	3,173	26,889,270	651.95
	Other	31	829	829	796	8,385,200	788.53
334	COMPUTER & ELECTRONIC PRODUCT MFG.	74	6,021	5,891	5,883	\$46,108,290	\$597.94
3343	Audio & Video Equipment Manufacturing	10	1,508	1,429	1,454	11,120,653	584.45
3344	Semiconductors & Electronic Components	24	2,022	2,030	2,042	15,393,001	582.91
3345	Electronic Instrument Manufacturing	24	1,286	1,275	1,276	8,324,056	500.63
	Other	16	1,205	1,157	1,111	11,270,580	748.89

**TABLE 5. STATEWIDE SUMMARY
EMPLOYMENT AND TOTAL EARNINGS, BY INDUSTRY
FIRST QUARTER 2005**

NORTH AMERICAN INDUSTRY CLASSIFICATION SYSTEM INDUSTRY GROUPS		NUMBER OF EMPLOYING UNITS	EMPLOYMENT			TOTAL EARNINGS	AVERAGE
			JANUARY	FEBURARY	MARCH	JAN. - MAR. 2005	WEEKLY EARNINGS
335	ELECTRICAL EQUIPMENT & APPLIANCES	69	12,927	12,930	13,120	\$111,348,774	\$659.26
3353	Electrical Equipment Manufacturing	27	5,086	5,074	5,055	43,047,306	652.91
	Other	42	7,841	7,856	8,065	68,301,468	663.32
336	TRANSPORTATION EQUIPMENT MANUFACTURING	179	15,809	15,951	15,975	\$130,062,957	\$628.77
3362	Motor Vehicle Body & Trailer Manufacturing	44	3,415	3,436	3,463	27,537,437	616.13
3363	Motor Vehicle Parts Manufacturing	64	6,370	6,368	6,376	47,206,608	569.94
3364	Aerospace Product & Parts Manufacturing	32	3,153	3,162	3,148	34,826,250	849.29
3366	Ship & Boat Building	22	1,627	1,668	1,660	10,292,103	479.33
	Other	17	1,244	1,317	1,328	10,200,559	605.29
337	FURNITURE & RELATED PRODUCT MFG.	263	7,414	7,416	7,440	\$48,298,630	\$500.49
3371	Household & Institutional Furniture	213	5,015	5,012	5,018	30,636,447	469.92
3372	Office Furniture & Fixtures Manufacturing	40	2,256	2,263	2,275	16,647,858	565.47
3379	Other Furniture Related Product Manufacturing	10	143	141	147	1,014,325	543.10
339	MISCELLANEOUS MANUFACTURING	275	6,065	6,045	6,087	\$41,420,322	\$525.28
3391	Medical Equipment & Supplies Manufacturing	102	2,573	2,577	2,583	19,720,523	588.50
3399	Other Miscellaneous Manufacturing	173	3,492	3,468	3,504	21,699,799	478.56

**TABLE 5. STATEWIDE SUMMARY
EMPLOYMENT AND TOTAL EARNINGS, BY INDUSTRY
FIRST QUARTER 2005**

NORTH AMERICAN INDUSTRY CLASSIFICATION SYSTEM INDUSTRY GROUPS	NUMBER OF EMPLOYING UNITS	EMPLOYMENT			TOTAL EARNINGS	AVERAGE
		JANUARY	FEBURARY	MARCH	JAN. - MAR. 2005	WEEKLY EARNINGS
TRADE, TRANSPORTATION & UTILITIES	20,976	237,356	236,897	239,022	\$1,738,776,416	\$562.55
42 WHOLESALE TRADE	6,240	46,128	46,462	47,061	\$515,840,200	\$852.41
423 MERCHANT WHOLESALERS, DURABLE GOODS	2,084	21,229	21,286	21,447	\$213,110,986	\$768.89
4231 Motor Vehicle & Part Merchant Wholesalers	242	2,708	2,697	2,733	23,361,152	662.45
4232 Furniture & Furnishing Merchant Wholesalers	56	423	418	416	4,871,683	894.38
4233 Lumber & Supply Merchant Wholesalers	162	1,690	1,706	1,733	15,806,752	711.19
4234 Commercial Goods Merchant Wholesalers	238	2,374	2,375	2,405	32,512,840	1048.78
4235 Metal & Mineral Merchant Wholesalers	50	727	747	715	8,206,501	865.15
4236 Electric Goods Merchant Wholesalers	168	2,166	2,172	2,199	26,089,245	921.00
4237 Hardware & Plumbing Merchant Wholesalers	234	2,368	2,382	2,392	24,711,749	798.48
4238 Machinery & Supply Merchant Wholesalers	710	7,092	7,099	7,152	63,640,673	688.11
4239 Misc. Durable Goods Merchant Wholesalers	224	1,681	1,690	1,702	13,910,391	632.78
424 MERCHANT WHOLESALERS, NONDURABLE GOODS	1,298	16,639	16,751	17,103	\$149,626,653	\$683.84
4241 Paper & Paper Product Merchant Wholesalers	76	1,254	1,258	1,235	11,274,970	694.40
4242 Druggists' Goods Merchant Wholesalers	54	1,032	1,044	1,066	9,492,770	697.21
4243 Apparel & Piece Goods Merchant Wholesalers	37	426	430	432	3,145,523	563.58
4244 Grocery Product Merchant Wholesalers	360	5,932	5,913	5,982	58,853,650	761.86
4245 Farm Product Merchant Wholesalers	82	895	898	920	5,102,061	433.98
4246 Chemical Merchant Wholesalers	80	427	429	432	4,671,324	836.95
4247 Petroleum Merchant Wholesalers	157	1,400	1,402	1,412	14,023,685	767.97
4248 Alcoholic Beverage Merchant Wholesalers	39	1,188	1,189	1,195	12,527,086	809.31
4249 Misc. Nondurable Goods Merchant Wholesalers	413	4,085	4,188	4,429	30,535,584	554.77
425 ELECTRONIC MARKETS & AGENTS & BROKERS	2,858	8,260	8,425	8,511	\$153,102,561	\$1,402.26
44-45 RETAIL TRADE	11,432	130,270	129,172	130,573	\$637,193,405	\$377.02
441 MOTOR VEHICLE & PARTS DEALERS	1,733	17,434	17,458	17,616	\$134,020,579	\$589.01
4411 Automobile Dealers	746	10,743	10,728	10,801	94,146,548	673.22
4412 Other Motor Vehicle Dealers	195	1,316	1,346	1,376	9,001,356	514.42
4413 Automotive Parts, Accessories & Tire Stores	792	5,375	5,384	5,439	30,872,675	439.84

**TABLE 5. STATEWIDE SUMMARY
EMPLOYMENT AND TOTAL EARNINGS, BY INDUSTRY
FIRST QUARTER 2005**

NORTH AMERICAN INDUSTRY CLASSIFICATION SYSTEM INDUSTRY GROUPS		NUMBER OF EMPLOYING UNITS	EMPLOYMENT			TOTAL EARNINGS	AVERAGE
			JANUARY	FEBURARY	MARCH	JAN. - MAR. 2005	WEEKLY EARNINGS
442	FURNITURE & HOME FURNISHINGS STORES	631	4,089	4,048	4,083	\$23,638,727	\$446.41
4421	Furniture Stores	322	2,475	2,475	2,481	15,022,154	466.51
4422	Home Furnishings Stores	309	1,614	1,573	1,602	8,616,573	415.21
443	ELECTRONICS & APPLIANCE STORES	501	3,053	3,014	2,988	\$16,719,222	\$426.09
444	BUILDING MATERIAL & GARDEN SUPPLY STORES	813	9,737	9,884	10,307	\$59,077,475	\$455.54
4441	Building Material & Supplies Dealers	631	8,991	9,137	9,458	55,303,408	462.64
4442	Lawn & Garden Equipment & Supplies Stores	182	746	747	849	3,774,067	371.88
445	FOOD & BEVERAGE STORES	1,168	19,353	19,260	19,177	\$72,015,777	\$287.58
4451	Grocery Stores	694	16,733	16,679	16,573	60,251,511	278.17
4452	Specialty Food Stores	163	1,231	1,200	1,194	6,564,511	417.90
4453	Beer, Wine & Liquor Stores	311	1,389	1,381	1,410	5,199,755	287.07
446	HEALTH & PERSONAL CARE STORES	783	6,492	6,493	6,532	\$38,708,606	\$457.69
447	GASOLINE STATIONS	1,678	12,702	12,574	12,887	\$40,158,445	\$242.84
44711	Gasoline Stations with Convenience Stores	1,496	11,469	11,337	11,609	35,048,874	235.02
44719	Other Gasoline Stations	182	1,233	1,237	1,278	5,109,571	314.60
448	CLOTHING & CLOTHING ACCESSORIES STORES	1,065	8,200	7,909	8,011	\$27,094,656	\$259.23
4481	Clothing Stores	701	5,951	5,727	5,826	17,689,879	233.22
4482	Shoe Stores	185	1,247	1,257	1,266	3,945,528	241.51
4483	Jewelry, Luggage & Leather Goods Stores	179	1,002	925	919	5,459,249	442.67
451	SPORTING GOODS, HOBBY, BOOK & MUSIC STORES	548	4,247	4,075	4,114	\$14,055,624	\$260.82
4511	Sporting Goods & Musical Instrument Stores	386	2,642	2,602	2,624	9,827,183	288.23
4512	Book, Periodical & Music Stores	162	1,605	1,473	1,490	4,228,441	213.62
452	GENERAL MERCHANDISE STORES	703	35,965	35,522	36,000	\$170,332,792	\$365.70
453	MISCELLANEOUS STORE RETAILERS	1,489	6,853	6,831	6,770	\$28,204,154	\$318.21
4531	Florists	289	1,067	1,146	1,097	3,689,843	257.25
4532	Office Supplies, Stationery & Gift Stores	424	2,553	2,518	2,486	11,616,749	354.74
4533	Used Merchandise Stores	223	814	792	784	2,882,471	278.32
4539	Other Miscellaneous Store Retailers	553	2,419	2,375	2,403	10,015,091	321.13

**TABLE 5. STATEWIDE SUMMARY
EMPLOYMENT AND TOTAL EARNINGS, BY INDUSTRY
FIRST QUARTER 2005**

NORTH AMERICAN INDUSTRY CLASSIFICATION SYSTEM INDUSTRY GROUPS		NUMBER OF EMPLOYING UNITS	EMPLOYMENT			TOTAL EARNINGS	AVERAGE
			JANUARY	FEBURARY	MARCH	JAN. - MAR. 2005	WEEKLY EARNINGS
454	NONSTORE RETAILERS	320	2,145	2,104	2,088	\$13,167,348	\$479.50
4541	Electronic Shopping & Mail -Order Houses	68	484	434	423	2,866,782	493.34
4542	Vending Machine Operators	81	692	703	706	3,966,484	435.67
4543	Direct Selling Establishments	171	969	967	959	6,334,082	504.91
48-49	TRANSPORTATION & WAREHOUSING	2,957	54,461	54,819	54,901	\$473,544,976	\$665.60
481	AIR TRANSPORTATION	45	910	996	1,012	\$11,781,759	\$931.76
484	TRUCK TRANSPORTATION	1,983	34,298	34,537	34,534	\$312,377,863	\$697.38
4841	General Freight Trucking	1,221	29,081	29,303	29,260	278,254,281	732.65
4842	Specialized Freight Trucking	762	5,217	5,234	5,274	34,123,582	500.77
485	TRANSIT & GROUND PASSENGER TRANS.	56	983	985	1,008	\$3,583,212	\$277.85
4853	Taxi & Limousine Service	19	226	226	226	596,295	202.96
4854	School & Employee Bus Transportation	8	392	396	403	1,637,897	317.36
4855	Charter Bus Industry Service	9	86	84	91	401,940	355.38
4859	Other Ground Passenger Transportation	11	169	183	190	536,600	228.47
	Other	9	110	96	98	410,480	311.60
486	PIPELINE TRANSPORTATION	67	943	941	944	\$12,781,088	\$1,042.96
488	SUPPORT ACTIVITIES FOR TRANSPORTATION	441	4,670	4,745	4,684	\$41,139,502	\$673.36
4881	Support Activities for Air Transportation	107	1,568	1,587	1,596	12,552,336	609.70
4882	Support Activities for Rail Transportation	33	390	427	403	2,864,947	541.92
4883	Support Activities for Water Transportation	31	709	734	676	6,261,467	681.90
4884	Support Activities for Road Transportation	107	452	457	482	2,505,772	415.71
4885	Freight Transportation Arrangement	146	1,403	1,393	1,384	16,045,971	885.87
4889	Other Support Activities for Transportation	17	148	147	143	909,009	478.93
492	COURIERS & MESSENGERS	139	3,071	3,071	3,107	\$25,214,503	\$629.12
4921	Couriers	92	2,852	2,843	2,875	24,033,227	647.16
4922	Local Messengers & Local Delivery	47	219	228	232	1,181,276	401.48
493	WAREHOUSING & STORAGE	210	9,433	9,377	9,434	\$65,328,333	\$533.77
	OTHER	16	153	167	178	\$1,338,716	\$620.35

**TABLE 5. STATEWIDE SUMMARY
EMPLOYMENT AND TOTAL EARNINGS, BY INDUSTRY
FIRST QUARTER 2005**

NORTH AMERICAN INDUSTRY CLASSIFICATION SYSTEM INDUSTRY GROUPS		NUMBER OF EMPLOYING UNITS	EMPLOYMENT			TOTAL EARNINGS	AVERAGE
			JANUARY	FEBURARY	MARCH	JAN. - MAR. 2005	WEEKLY EARNINGS
22	UTILITIES	347	6,497	6,444	6,487	\$112,197,835	\$1,332.71
2211	Power Generation & Supply	152	4,898	4,869	4,903	95,258,415	1498.48
2212	Natural Gas Distribution	31	806	813	815	11,851,694	1123.67
2213	Water, Sewage and Other Systems	164	793	762	769	5,087,726	505.20
INFORMATION		1,219	20,244	20,370	20,299	\$214,927,802	\$814.26
511	PUBLISHING INDUSTRIES, EXCEPT INTERNET	252	6,676	6,743	6,693	\$48,736,369	\$559.21
5111	Newspaper, Book & Directory Publishers	221	6,428	6,494	6,443	45,323,611	540.11
5112	Software Publishers	31	248	249	250	3,412,758	1054.30
512	MOTION PICTURE & SOUND RECORDING INDUSTRY	134	1,124	1,153	1,148	\$4,153,616	\$279.86
5121	Motion Picture & Video Industries	120	1,099	1,129	1,123	3,971,479	273.50
5122	Sound Recording Industries	14	25	24	25	182,137	567.99
515	BROADCASTING, EXCEPT INTERNET	138	2,098	2,113	2,122	\$16,754,236	\$610.51
5151	Radio & Television Broadcasting	132	2,057	2,072	2,079	16,547,545	615.12
5152	Cable & Other Subscription Programming	6	41	41	43	206,691	381.58
517	TELECOMMUNICATIONS	509	8,804	8,832	8,799	\$126,988,977	\$1,108.57
5171	Wired Telecommunications Carriers	215	4,956	4,971	4,972	91,737,810	1420.92
5172	Wireless Telecommunications Carriers	123	2,048	2,049	2,007	18,439,998	697.15
5175	Cable & Other Program Distribution	84	1,241	1,250	1,254	10,403,629	641.08
	Other	87	559	562	566	6,407,540	876.50
518	ISPS, SEARCH PORTALS, & DATA PROCESSING	151	1,222	1,207	1,215	\$15,818,998	\$1,001.79
5181	ISPs, & Web Search Portals	58	219	216	204	1,659,208	599.21
5182	Data Processing & Related Services	93	1,003	991	1,011	14,159,790	1087.40
	OTHER	35	320	322	322	\$2,475,606	\$592.63

**TABLE 5. STATEWIDE SUMMARY
EMPLOYMENT AND TOTAL EARNINGS, BY INDUSTRY
FIRST QUARTER 2005**

NORTH AMERICAN INDUSTRY CLASSIFICATION SYSTEM INDUSTRY GROUPS		NUMBER OF EMPLOYING UNITS	EMPLOYMENT			TOTAL EARNINGS	AVERAGE
			JANUARY	FEBURARY	MARCH	JAN. - MAR. 2005	WEEKLY EARNINGS
FINANCIAL ACTIVITIES		7,685	48,916	48,773	49,018	\$492,909,482	\$775.34
52	FINANCE & INSURANCE	4,550	35,751	35,613	35,702	\$412,868,039	\$889.89
522	CREDIT INTERMEDIATION & RELATED ACTIVITIES	1,959	21,245	21,096	21,126	\$195,983,144	\$712.60
5221	Depository Credit Intermediation	1,249	17,687	17,567	17,605	158,079,296	690.13
5222	Nondepository Credit Intermediation	418	2,731	2,697	2,687	31,341,013	891.26
5223	Activities Related to Credit Intermediation	292	827	832	834	6,562,835	607.50
523	FINANCIAL INVESTMENT & RELATED ACTIVITIES	569	3,079	3,084	3,087	\$86,464,408	\$2,157.12
5231	Security & Commodity Investment Activities	323	2,418	2,422	2,430	77,836,139	2470.73
5239	Other Financial Investment Activities	246	661	662	657	8,628,269	1005.63
524	INSURANCE CARRIERS & RELATED ACTIVITIES	1,980	11,002	10,997	11,064	\$125,115,808	\$873.27
5241	Insurance Carriers	380	4,717	4,717	4,738	58,618,289	954.51
5242	Insurance Agencies, Brokerages & Support	1,600	6,285	6,280	6,326	66,497,519	812.32
	OTHER	42	425	436	425	\$5,304,679	\$951.91
53	REAL ESTATE & RENTAL & LEASING	3,135	13,165	13,160	13,316	\$80,041,443	\$465.96
531	REAL ESTATE	2,316	8,185	8,164	8,246	\$51,295,245	\$481.29
5311	Lessors of Real Estate	1,020	4,211	4,139	4,212	22,999,211	422.51
5312	Offices of Real Estate Agents & Brokers	732	1,797	1,823	1,839	13,574,847	573.85
5313	Activities Related to Real Estate	564	2,177	2,202	2,195	14,721,187	516.76
532	RENTAL & LEASING SERVICES	794	4,896	4,914	5,004	\$27,617,791	\$430.22
5321	Automotive Equipment Rental & Leasing	130	900	910	925	6,305,625	532.05
5322	Consumer Goods Rental	494	3,138	3,172	3,232	14,260,858	344.89
5323	General Rental Centers	35	180	164	173	1,300,575	580.53
5324	Machinery & Equipment Rental & Leasing	135	678	668	674	5,750,733	656.98
533	LESSORS OF NONFINANCIAL INTANGIBLE ASSETS	25	84	82	66	\$1,128,407	\$1,122.42

**TABLE 5. STATEWIDE SUMMARY
EMPLOYMENT AND TOTAL EARNINGS, BY INDUSTRY
FIRST QUARTER 2005**

NORTH AMERICAN INDUSTRY CLASSIFICATION SYSTEM INDUSTRY GROUPS	NUMBER OF EMPLOYING UNITS	EMPLOYMENT			TOTAL EARNINGS	AVERAGE
		JANUARY	FEBURARY	MARCH	JAN. - MAR. 2005	WEEKLY EARNINGS
PROFESSIONAL & BUSINESS SERVICES	10,350	106,920	108,545	110,326	\$1,030,947,806	\$730.26
54 PROFESSIONAL & TECHNICAL SERVICES	6,499	35,736	36,157	36,155	\$372,968,759	\$796.59
5411 Legal Services	1,594	6,548	6,465	6,513	60,433,461	714.24
5412 Accounting & Bookkeeping Services	1,174	6,300	6,620	6,235	44,102,746	531.33
5413 Architectural & Engineering Services	874	5,973	6,069	6,144	61,122,542	775.61
5414 Specialized Design Services	159	411	423	437	2,849,089	517.30
5415 Computer Systems Design & Related Services	755	7,446	7,492	7,584	131,026,604	1342.55
5416 Management & Technical Consulting Services	978	2,327	2,325	2,411	28,101,542	918.16
5417 Scientific Research & Development Services	107	1,141	1,132	1,138	11,213,894	758.67
5418 Advertising & Related Services	303	1,926	1,935	1,932	17,586,766	700.58
5419 Other Professional & Technical Services	555	3,664	3,696	3,761	16,532,115	343.05
55 MANAGEMENT OF COMPANIES & ENTERPRISES	485	23,497	23,471	23,329	\$433,929,461	\$1,424.49
56 ADMINISTRATIVE & WASTE SERVICES	3,366	47,687	48,917	50,842	\$224,049,586	\$350.66
561 ADMINISTRATIVE & SUPPORT SERVICES	3,171	45,461	46,726	48,599	\$204,445,253	\$335.12
5611 Office Administrative Services	324	1,236	1,258	1,269	13,479,932	826.67
5612 Facilities Support Services	13	126	130	129	901,114	540.13
5613 Employment Services	607	23,015	23,896	25,356	91,441,232	292.00
5614 Business Support Services	358	4,466	4,541	4,437	20,802,109	357.07
5615 Travel Arrangement & Reservation Services	105	429	443	443	3,056,737	536.43
5616 Investigation & Security Services	210	4,260	4,403	4,604	23,044,031	400.83
5617 Services to Buildings & Dwellings	1,258	10,331	10,458	10,743	39,838,955	291.56
5619 Other Support Services	296	1,598	1,597	1,618	11,881,143	569.67
562 WASTE MANAGEMENT & REMEDIATION SERVICES	195	2,226	2,191	2,243	\$19,604,333	\$679.29
5621 Waste Collection Services	89	1,051	1,028	1,036	8,834,017	654.45
5622 Waste Treatment & Disposal Services	37	749	745	764	7,704,455	787.40
5629 Remediation & Other Waste Services	69	426	418	443	3,065,861	549.73

**TABLE 5. STATEWIDE SUMMARY
EMPLOYMENT AND TOTAL EARNINGS, BY INDUSTRY
FIRST QUARTER 2005**

NORTH AMERICAN INDUSTRY CLASSIFICATION SYSTEM INDUSTRY GROUPS	NUMBER OF EMPLOYING UNITS	EMPLOYMENT			TOTAL EARNINGS	AVERAGE
		JANUARY	FEBURARY	MARCH	JAN. - MAR. 2005	WEEKLY EARNINGS
EDUCATION & HEALTH SERVICES	8,147	137,831	138,793	139,337	\$1,014,109,973	\$562.61
61 EDUCATIONAL SERVICES	542	8,265	8,655	8,593	\$51,139,489	\$462.56
6111 Elementary & Secondary Schools	83	3,056	3,155	3,138	15,066,111	371.89
6112 Junior Colleges	9	226	226	232	1,719,303	580.06
6113 Colleges & Universities	26	2,876	3,089	3,031	21,132,526	542.10
6114 Business, Computer, & Management Training	44	174	168	166	2,559,482	1162.70
6115 Technical & Trade Schools	98	658	679	682	5,744,728	656.62
6116 Other Schools & Instruction	219	1,116	1,175	1,162	3,626,442	242.36
6117 Educational Support Services	63	159	163	182	1,290,897	591.07
62 HEALTH CARE & SOCIAL ASSISTANCE	7,605	129,566	130,138	130,744	\$962,970,484	\$569.15
621 AMBULATORY HEALTH CARE SERVICES	4,648	40,075	40,163	40,458	\$415,391,875	\$794.22
6211 Offices of Physicians	2,067	19,629	19,634	19,741	262,405,882	1026.29
6212 Offices of Dentists	900	5,849	5,822	5,878	48,703,389	640.45
6213 Offices of Other Health Practitioners	1,113	5,079	5,138	5,185	35,651,170	534.16
6214 Outpatient Care Centers	209	3,305	3,308	3,358	28,496,761	659.53
6215 Medical & Diagnostic Laboratories	91	686	686	696	6,730,629	751.07
6216 Home Health Care Services	126	3,517	3,549	3,561	21,025,854	456.58
6219 Other Ambulatory Health Care Services	142	2,010	2,026	2,039	12,378,190	470.21
622 HOSPITALS	107	41,668	41,872	41,938	\$344,232,514	\$633.09
6221 General Medical & Surgical Hospitals	76	38,338	38,517	38,583	318,498,840	636.70
6222 Psychiatric & Substance Abuse Hospitals	10	1,394	1,397	1,391	10,316,015	569.25
6223 Other Hospitals	21	1,936	1,958	1,964	15,417,659	607.36
623 NURSING & RESIDENTIAL CARE FACILITIES	518	25,694	25,812	25,884	\$118,086,278	\$352.12
6231 Nursing Care Facilities	253	19,369	19,429	19,493	89,422,036	354.01
6232 Residential Mental Health Facilities	128	2,827	2,867	2,845	13,315,617	359.86
6233 Community Care Facilities for the Elderly	93	2,170	2,188	2,214	8,760,909	307.63
6239 Other Residential Care Facilities	44	1,328	1,328	1,332	6,587,716	381.20

**TABLE 5. STATEWIDE SUMMARY
EMPLOYMENT AND TOTAL EARNINGS, BY INDUSTRY
FIRST QUARTER 2005**

NORTH AMERICAN INDUSTRY CLASSIFICATION SYSTEM INDUSTRY GROUPS		NUMBER OF EMPLOYING UNITS	EMPLOYMENT			TOTAL EARNINGS	AVERAGE
			JANUARY	FEBURARY	MARCH	JAN. - MAR. 2005	WEEKLY EARNINGS
624	SOCIAL ASSISTANCE	2,332	22,129	22,291	22,464	\$85,259,817	\$294.17
6241	Individual & Family Services	1,218	9,902	9,953	10,045	41,143,863	317.55
6242	Emergency & Other Relief Services	109	807	821	832	4,030,522	378.10
6243	Vocational Rehabilitation Services	128	3,222	3,237	3,275	14,393,298	341.23
6244	Child Day Care Services	877	8,198	8,280	8,312	25,692,134	239.17
LEISURE & HOSPITALITY		5,886	87,601	90,152	93,446	\$240,204,052	\$204.39
71	ARTS, ENTERTAINMENT & RECREATION	896	7,514	8,241	8,677	\$28,748,490	\$271.54
711	PERFORMING ARTS & SPECTATOR SPORTS	194	1,700	2,301	2,377	\$8,416,436	\$304.52
7111	Performing Arts Companies	42	318	335	344	1,391,791	322.15
7112	Spectator Sports	59	832	1,311	1,365	4,482,898	294.90
7113	Performing Arts & Sports Promoters	36	455	558	545	1,878,107	278.18
7114	Agents & Managers for Public Figures	10	17	18	19	145,164	620.36
7115	Independent Artists, Writers & Performers	47	78	79	104	518,476	458.42
712	MUSEUMS, PARKS & HISTORICAL SITES	47	172	172	207	\$707,704	\$296.40
713	GAMBLING, RECREATION & AMUSEMENT INDUSTRY	655	5,642	5,768	6,093	\$19,624,350	\$258.74
7139	Other Amusement & Recreation Industries	623	5,491	5,598	5,851	18,994,441	258.76
	Other	32	151	170	242	629,909	258.19
72	ACCOMMODATION & FOOD SERVICES	4,990	80,087	81,911	84,769	\$211,455,562	\$197.75
721	ACCOMMODATION	774	9,938	10,241	10,700	\$32,830,526	\$245.35
7211	Traveler Accommodation	706	9,720	10,011	10,438	31,868,757	243.77
7212	RV Parks & Recreational Camps	48	149	154	187	696,132	327.85
7213	Rooming & Boarding Houses	20	69	76	75	265,637	278.64
722	FOOD SERVICES & DRINKING PLACES	4,216	70,149	71,670	74,069	\$178,625,036	\$190.94
7221	Full -Service Restaurants	1,776	30,353	31,054	31,905	83,017,202	205.31
7222	Limited-Service Eating Places	2,123	37,037	37,572	39,019	87,429,513	177.56
7223	Special Food Services	150	1,794	2,105	2,162	5,807,032	221.10
7224	Drinking Places, Alcoholic Beverages	167	965	939	983	2,371,289	189.55

**TABLE 5. STATEWIDE SUMMARY
EMPLOYMENT AND TOTAL EARNINGS, BY INDUSTRY
FIRST QUARTER 2005**

NORTH AMERICAN INDUSTRY CLASSIFICATION SYSTEM INDUSTRY GROUPS	NUMBER OF EMPLOYING UNITS	EMPLOYMENT			TOTAL EARNINGS	AVERAGE
		JANUARY	FEBURARY	MARCH	JAN. - MAR. 2005	WEEKLY EARNINGS
OTHER SERVICES	5,551	24,770	24,897	25,330	\$134,688,600	\$414.44
811 REPAIR & MAINTENANCE	2,270	9,128	9,186	9,301	\$55,373,273	\$462.74
8111 Automotive Repair & Maintenance	1,581	6,610	6,674	6,731	37,853,254	436.44
8112 Electronic Equipment Repair & Maintenance	159	559	555	553	3,945,987	546.26
8113 Commercial Machinery Repair & Maintenance	338	1,400	1,397	1,433	10,516,162	573.71
8114 Household Goods Repair & Maintenance	192	559	560	584	3,057,870	414.36
812 PERSONAL & LAUNDRY SERVICES	1,317	8,173	8,300	8,416	\$37,213,489	\$345.04
8121 Personal Care Services	557	2,388	2,505	2,561	8,670,913	268.44
8122 Death Care Services	247	1,668	1,708	1,722	9,493,501	429.74
8123 Drycleaning & Laundry Services	357	3,353	3,297	3,365	14,653,657	337.65
8129 Other Personal Services	156	764	790	768	4,395,418	436.83
813 MEMBERSHIP ASSOCIATIONS & ORGANIZATIONS	986	6,007	5,964	6,139	\$33,132,549	\$422.20
8131 Religious Organizations	37	187	185	190	1,030,752	423.25
8132 Grantmaking & Giving Services	92	407	400	418	3,529,748	664.94
8133 Social Advocacy Organizations	136	1,932	1,945	1,929	9,898,284	393.42
8134 Civic & Social Organizations	218	1,457	1,444	1,466	4,646,809	245.56
8139 Professional & Similar Organizations	503	2,024	1,990	2,136	14,026,956	526.34
814 PRIVATE HOUSEHOLDS	978	1,462	1,447	1,474	\$8,969,289	\$472.24
LOCAL GOVERNMENT	1,975	114,014	114,810	115,335	\$765,341,208	\$513.18
STATE GOVERNMENT	1,200	58,597	60,057	60,318	\$501,703,209	\$646.90
NONCLASSIFIABLE ESTABLISHMENTS	0	0	0	0	\$0	

**TABLE 6. COUNTY SUMMARY
EMPLOYMENT AND TOTAL EARNINGS, BY INDUSTRY
FIRST QUARTER 2005**

NORTH AMERICAN INDUSTRY CLASSIFICATION SYSTEM INDUSTRY GROUP	NUMBER OF EMPLOYING UNITS	EMPLOYMENT			TOTAL EARNINGS	AVERAGE WEEKLY EARNINGS
		JANUARY	FEBRUARY	MARCH	JAN. - MAR. 2005	
ARKANSAS COUNTY - TOTAL	646	9,642	9,670	9,795	\$64,424,462	\$510.78
Natural Resources & Mining	47	235	240	242	1,412,235	454.53
Construction	55	244	263	284	1,675,074	488.69
Manufacturing	30	3,545	3,558	3,571	26,665,128	576.49
Trade, Transportation & Utilities	196	1,988	1,965	2,017	14,383,499	555.99
Wholesale Trade	42	431	440	463	5,351,904	925.83
Retail Trade	104	1,086	1,052	1,079	4,924,852	353.28
Transportation, Warehousing & Utilities	50	471	473	475	4,106,743	667.87
Information	9	81	80	79	642,010	617.32
Financial Activities	45	290	290	296	2,067,531	544.66
Professional & Business Services	53	425	427	427	3,423,395	617.68
Education & Health Services	62	1,139	1,139	1,144	5,735,695	386.80
Leisure & Hospitality	53	520	521	533	1,158,332	169.83
Other Services	49	152	149	157	784,399	395.23
Local Government	31	810	816	821	5,210,633	491.40
State Government	16	213	222	224	1,266,531	443.51
ASHLEY COUNTY - TOTAL	531	8,276	8,146	8,273	\$67,629,522	\$631.98
Natural Resources & Mining	61	409	420	433	3,030,550	554.17
Construction	51	523	498	544	3,272,855	482.60
Manufacturing	27	3,083	2,953	2,968	37,384,471	958.15
Trade, Transportation & Utilities	137	1,276	1,277	1,286	6,883,517	413.78
Wholesale Trade	26	158	148	155	1,320,063	660.80
Retail Trade	90	894	892	904	3,729,401	319.94
Transportation, Warehousing & Utilities	21	224	237	227	1,834,053	615.18
Information	10	53	52	51	322,840	477.57
Financial Activities	36	227	221	222	1,527,348	526.07
Professional & Business Services	48	341	349	365	2,237,260	489.38
Education & Health Services	50	578	575	582	4,368,215	581.01
Leisure & Hospitality	31	392	392	402	897,571	174.65
Other Services	36	169	165	168	737,759	339.15
Local Government	32	1,021	1,036	1,044	5,935,315	441.69
State Government	12	204	208	208	1,031,821	384.05

**TABLE 6. COUNTY SUMMARY
EMPLOYMENT AND TOTAL EARNINGS, BY INDUSTRY
FIRST QUARTER 2005**

NORTH AMERICAN INDUSTRY CLASSIFICATION SYSTEM INDUSTRY GROUP	NUMBER OF EMPLOYING UNITS	EMPLOYMENT			TOTAL EARNINGS	AVERAGE WEEKLY EARNINGS
		JANUARY	FEBRUARY	MARCH	JAN. - MAR. 2005	
BAXTER COUNTY - TOTAL	1,168	13,765	13,905	14,201	\$86,840,478	\$478.62
Natural Resources & Mining	7	100	101	95	565,161	440.61
Construction	127	621	604	607	3,113,623	392.21
Manufacturing	65	2,540	2,573	2,581	19,356,899	580.58
Trade, Transportation & Utilities	265	2,589	2,545	2,597	13,444,090	401.30
Wholesale Trade	30	174	176	177	1,274,348	558.03
Retail Trade	207	2,158	2,111	2,157	10,421,679	374.26
Transportation, Warehousing & Utilities	28	257	258	263	1,748,063	518.51
Information	24	296	292	298	2,012,758	524.25
Financial Activities	107	643	643	664	5,155,634	610.13
Professional & Business Services	129	743	754	776	4,492,899	456.15
Education & Health Services	173	3,071	3,114	3,123	23,833,319	590.89
Leisure & Hospitality	120	1,340	1,401	1,524	3,396,335	183.77
Other Services	104	388	390	399	1,446,368	283.58
Local Government	35	1,171	1,215	1,273	8,331,078	525.43
State Government	12	263	273	264	1,692,314	488.17
BENTON COUNTY - TOTAL	4,666	86,315	86,960	87,916	\$871,886,379	\$770.33
Natural Resources & Mining	27	598	605	604	5,823,499	743.71
Construction	697	4,296	4,431	4,577	33,899,310	588.01
Manufacturing	240	13,785	13,778	13,896	110,366,026	614.32
Trade, Transportation & Utilities	1,253	21,598	21,698	21,896	207,926,262	736.03
Wholesale Trade	526	3,444	3,491	3,570	49,939,672	1097.05
Retail Trade	568	6,833	6,731	6,898	37,488,402	422.79
Transportation, Warehousing & Utilities	159	11,321	11,476	11,428	120,498,188	812.48
Information	67	895	897	891	8,636,442	742.83
Financial Activities	512	3,145	3,157	3,173	33,243,300	809.66
Professional & Business Services	728	20,704	20,826	21,020	342,955,797	1265.29
Education & Health Services	386	6,270	6,231	6,234	47,061,275	579.68
Leisure & Hospitality	360	6,084	6,285	6,546	18,425,422	224.80
Other Services	302	1,741	1,777	1,770	10,269,431	448.16
Local Government	75	6,466	6,484	6,506	48,396,350	574.03
State Government	19	733	791	803	4,883,265	484.27

**TABLE 6. COUNTY SUMMARY
EMPLOYMENT AND TOTAL EARNINGS, BY INDUSTRY
FIRST QUARTER 2005**

NORTH AMERICAN INDUSTRY CLASSIFICATION SYSTEM INDUSTRY GROUP	NUMBER OF EMPLOYING UNITS	EMPLOYMENT			TOTAL EARNINGS	AVERAGE WEEKLY EARNINGS
		JANUARY	FEBRUARY	MARCH	JAN. - MAR. 2005	
BOONE COUNTY - TOTAL	1,013	13,430	13,572	13,688	\$92,291,844	\$523.42
Natural Resources & Mining	6	7	7	8	83,153	872.23
Construction	90	417	438	458	2,472,922	434.63
Manufacturing	70	2,104	2,092	2,110	16,742,030	612.68
Trade, Transportation & Utilities	268	4,223	4,210	4,197	31,256,149	571.10
Wholesale Trade	54	335	339	343	2,234,528	507.04
Retail Trade	162	2,299	2,290	2,268	11,872,149	399.55
Transportation, Warehousing & Utilities	52	1,589	1,581	1,586	17,149,472	832.12
Information	19	419	415	422	3,268,329	600.50
Financial Activities	96	608	607	608	5,376,426	680.59
Professional & Business Services	105	498	535	524	2,636,211	390.72
Education & Health Services	128	1,093	1,119	1,140	7,650,185	526.68
Leisure & Hospitality	83	1,126	1,099	1,144	2,717,327	186.13
Other Services	71	234	238	241	1,314,357	425.40
Local Government	57	2,168	2,165	2,176	14,428,717	511.55
State Government	20	533	647	660	4,346,038	545.07
BRADLEY COUNTY - TOTAL	339	4,204	4,350	4,254	\$23,584,620	\$424.94
Natural Resources & Mining	57	495	645	581	1,775,388	238.06
Construction	21	170	171	155	1,031,730	480.02
Manufacturing	11	1,122	1,113	1,094	7,328,993	508.05
Trade, Transportation & Utilities	89	488	491	486	2,326,223	366.43
Wholesale Trade	13	113	115	112	448,976	304.73
Retail Trade	50	310	300	299	1,324,678	336.30
Transportation, Warehousing & Utilities	26	65	76	75	552,569	590.35
Information	3	13	13	13	94,494	559.14
Financial Activities	23	179	182	181	972,228	413.95
Professional & Business Services	25	148	144	144	1,734,253	917.92
Education & Health Services	34	516	518	521	2,981,325	442.44
Leisure & Hospitality	17	170	153	157	288,552	138.73
Other Services	31	95	96	95	370,508	298.96
Local Government	16	560	572	570	3,156,117	427.93
State Government	12	248	252	257	1,524,809	464.83

**TABLE 6. COUNTY SUMMARY
EMPLOYMENT AND TOTAL EARNINGS, BY INDUSTRY
FIRST QUARTER 2005**

NORTH AMERICAN INDUSTRY CLASSIFICATION SYSTEM INDUSTRY GROUP	NUMBER OF EMPLOYING UNITS	EMPLOYMENT			TOTAL EARNINGS	AVERAGE WEEKLY EARNINGS
		JANUARY	FEBRUARY	MARCH	JAN. - MAR. 2005	
CALHOUN COUNTY - TOTAL	124	3,838	3,815	3,872	\$30,676,441	\$614.25
Natural Resources & Mining	22	116	113	115	706,339	473.84
Construction	11	115	113	102	733,993	513.28
Manufacturing	15	2,590	2,573	2,609	23,132,655	686.86
Trade, Transportation & Utilities	27	200	201	202	1,047,415	400.85
Wholesale Trade & Retail Trade	17	67	66	68	270,623	310.70
Transportation, Warehousing & Utilities	10	133	135	134	776,792	445.92
Professional & Business Services	8	129	127	125	937,122	567.61
Education & Health Services	4	47	47	47	295,603	483.80
Local Government	11	199	196	196	1,035,079	404.17
State Government	10	331	330	354	1,903,527	432.78
Other	16	111	115	122	884,708	586.68
CARROLL COUNTY - TOTAL	793	8,914	8,993	9,368	\$49,406,573	\$418.02
Natural Resources & Mining	16	267	260	267	1,677,637	487.59
Trade, Transportation & Utilities	209	1,525	1,531	1,568	8,406,140	419.52
Wholesale Trade	23	112	117	119	516,566	342.55
Retail Trade	165	1,162	1,157	1,190	5,327,624	350.37
Transportation, Warehousing & Utilities	21	251	257	259	2,561,950	770.82
Professional & Business Services	67	214	222	231	1,427,530	493.90
Education & Health Services	57	731	752	743	4,838,567	501.61
Leisure & Hospitality	175	1,059	1,101	1,330	2,946,670	194.84
Local Government	24	1,010	1,006	1,038	5,866,040	443.26
State Government	11	99	98	101	644,313	498.95
Other	234	4,009	4,023	4,090	23,599,676	449.27

**TABLE 6. COUNTY SUMMARY
EMPLOYMENT AND TOTAL EARNINGS, BY INDUSTRY
FIRST QUARTER 2005**

NORTH AMERICAN INDUSTRY CLASSIFICATION SYSTEM INDUSTRY GROUP	NUMBER OF EMPLOYING UNITS	EMPLOYMENT			TOTAL EARNINGS	AVERAGE WEEKLY EARNINGS
		JANUARY	FEBRUARY	MARCH	JAN. - MAR. 2005	
CHICOT COUNTY - TOTAL	335	3,518	3,514	3,599	\$18,648,493	\$404.81
Natural Resources & Mining	50	211	211	228	1,043,291	370.40
Construction	22	250	242	265	1,657,754	505.36
Manufacturing	12	349	356	360	1,660,844	359.88
Trade, Transportation & Utilities	84	582	577	591	2,817,739	371.57
Wholesale Trade	15	103	104	107	682,959	501.93
Retail Trade	55	408	408	417	1,557,188	291.44
Transportation, Warehousing & Utilities	14	71	65	67	577,592	656.60
Information	6	12	12	13	94,810	591.33
Financial Activities	27	152	154	158	1,179,585	586.66
Professional & Business Services	25	97	95	91	688,801	561.68
Education & Health Services	43	463	459	463	2,374,269	395.60
Leisure & Hospitality	23	241	227	238	471,045	153.97
Other Services	17	41	51	54	181,972	287.63
Local Government	16	839	844	851	4,743,807	432.01
State Government	10	281	286	287	1,734,576	468.72
CLARK COUNTY - TOTAL	608	9,529	9,653	9,757	\$57,299,912	\$456.93
Natural Resources & Mining	44	246	250	257	1,671,327	512.21
Construction	40	119	115	113	570,692	379.53
Manufacturing	35	2,464	2,421	2,415	16,510,329	521.93
Trade, Transportation & Utilities	140	1,462	1,439	1,452	7,786,814	412.81
Wholesale Trade	22	72	73	72	570,103	606.28
Retail Trade	93	1,104	1,063	1,087	4,968,695	352.37
Transportation, Warehousing & Utilities	25	286	303	293	2,248,016	588.18
Information	10	42	43	44	328,696	588.01
Financial Activities	85	383	376	387	2,920,635	588.13
Professional & Business Services	45	328	366	377	3,199,660	689.43
Education & Health Services	66	1,372	1,424	1,425	8,269,949	452.13
Leisure & Hospitality	54	965	1,024	1,092	2,399,348	179.71
Other Services	49	225	223	221	1,225,057	422.58
Local Government	26	933	872	871	5,160,709	445.04
State Government	14	990	1,100	1,103	7,256,696	524.47

**TABLE 6. COUNTY SUMMARY
EMPLOYMENT AND TOTAL EARNINGS, BY INDUSTRY
FIRST QUARTER 2005**

NORTH AMERICAN INDUSTRY CLASSIFICATION SYSTEM INDUSTRY GROUP	NUMBER OF EMPLOYING UNITS	EMPLOYMENT			TOTAL EARNINGS	AVERAGE WEEKLY EARNINGS
		JANUARY	FEBRUARY	MARCH	JAN. - MAR. 2005	
CLAY COUNTY - TOTAL	413	4,833	4,831	4,962	\$24,083,443	\$379.99
Natural Resources & Mining	57	140	139	189	597,830	294.79
Construction	43	129	124	166	686,945	378.34
Manufacturing	19	1,503	1,517	1,506	7,529,234	383.90
Trade, Transportation & Utilities	102	974	947	990	5,020,209	397.98
Wholesale Trade	27	368	344	372	1,966,461	418.63
Retail Trade	55	456	454	462	1,822,075	306.47
Transportation, Warehousing & Utilities	20	150	149	156	1,231,673	624.69
Information	9	135	137	137	752,951	424.84
Financial Activities	36	157	156	159	1,016,704	497.08
Professional & Business Services	23	52	56	56	283,072	398.32
Education & Health Services	40	504	506	503	2,297,245	350.39
Leisure & Hospitality	24	211	212	220	367,729	131.98
Other Services	26	47	46	47	247,956	408.72
Local Government	22	905	913	912	4,852,736	410.21
State Government	12	76	78	77	430,832	430.40
CLEBURNE COUNTY - TOTAL	669	6,517	6,509	6,552	\$36,739,600	\$433.06
Natural Resources & Mining	14	34	34	34	259,283	586.61
Construction	64	236	219	234	1,100,690	368.66
Manufacturing	47	1,845	1,853	1,838	12,799,075	533.53
Trade, Transportation & Utilities	196	1,431	1,426	1,447	7,764,564	416.32
Wholesale Trade	40	154	159	161	952,430	463.70
Retail Trade	115	953	960	972	4,195,653	335.61
Transportation, Warehousing & Utilities	41	324	307	314	2,616,481	638.95
Information	8	62	61	60	341,061	430.09
Financial Activities	67	244	244	245	1,557,599	490.38
Professional & Business Services	62	206	205	209	1,232,308	458.68
Education & Health Services	62	732	735	745	4,248,018	443.18
Leisure & Hospitality	62	632	637	654	1,601,945	192.24
Other Services	57	153	150	151	601,693	305.84
Local Government	20	830	827	815	4,602,901	429.70
State Government	10	112	118	120	630,463	415.69

**TABLE 6. COUNTY SUMMARY
EMPLOYMENT AND TOTAL EARNINGS, BY INDUSTRY
FIRST QUARTER 2005**

NORTH AMERICAN INDUSTRY CLASSIFICATION SYSTEM INDUSTRY GROUP	NUMBER OF EMPLOYING UNITS	EMPLOYMENT			TOTAL EARNINGS	AVERAGE WEEKLY EARNINGS
		JANUARY	FEBRUARY	MARCH	JAN. - MAR. 2005	
CLEVELAND COUNTY - TOTAL	111	1,083	1,077	1,094	\$5,804,157	\$411.62
Natural Resources & Mining	20	167	158	163	1,015,341	480.14
Construction	7	35	35	36	123,183	268.18
Manufacturing	6	82	85	93	455,003	403.85
Trade, Transportation & Utilities	32	223	212	214	884,001	314.33
Wholesale Trade	5	47	43	43	128,619	223.17
Retail Trade	14	79	75	75	190,573	192.05
Transportation, Warehousing & Utilities	13	97	94	96	564,809	454.15
Financial Activities	4	47	47	48	445,018	723.21
Local Government	12	356	369	367	2,028,354	428.65
State Government	8	56	57	57	320,467	435.02
Other	22	117	114	116	532,790	354.33
COLUMBIA COUNTY - TOTAL	702	9,094	9,339	9,424	\$64,322,291	\$532.85
Natural Resources & Mining	47	429	430	449	5,102,715	900.27
Construction	48	318	341	385	2,807,648	620.61
Manufacturing	37	2,711	2,715	2,683	25,405,578	723.00
Trade, Transportation & Utilities	191	1,501	1,577	1,634	7,930,614	388.40
Wholesale Trade	29	219	288	313	1,595,597	449.04
Retail Trade	121	1,052	1,053	1,083	4,468,497	323.46
Transportation, Warehousing & Utilities	41	230	236	238	1,866,520	611.84
Information	9	79	81	81	484,744	464.17
Financial Activities	79	389	389	391	3,191,349	630.00
Professional & Business Services	65	315	319	329	1,537,642	368.47
Education & Health Services	79	847	850	827	3,997,739	365.51
Leisure & Hospitality	47	618	670	665	1,480,796	174.97
Other Services	55	228	229	228	873,315	294.21
Local Government	30	1,176	1,196	1,209	7,355,203	473.99
State Government	15	483	542	543	4,154,948	611.50

**TABLE 6. COUNTY SUMMARY
EMPLOYMENT AND TOTAL EARNINGS, BY INDUSTRY
FIRST QUARTER 2005**

NORTH AMERICAN INDUSTRY CLASSIFICATION SYSTEM INDUSTRY GROUP	NUMBER OF EMPLOYING UNITS	EMPLOYMENT			TOTAL EARNINGS	AVERAGE WEEKLY EARNINGS
		JANUARY	FEBRUARY	MARCH	JAN. - MAR. 2005	
CONWAY COUNTY - TOTAL	481	6,376	6,418	6,486	\$39,989,277	\$478.65
Natural Resources & Mining	18	131	124	128	939,573	566.12
Construction	50	439	444	467	3,456,247	590.81
Manufacturing	31	1,060	1,053	1,072	10,483,447	759.58
Trade, Transportation & Utilities	135	1,405	1,396	1,404	7,630,571	418.76
Wholesale Trade	29	251	263	268	1,743,964	514.65
Retail Trade	79	893	872	878	3,895,903	340.16
Transportation, Warehousing & Utilities	27	261	261	258	1,990,704	588.97
Information	6	42	40	39	194,945	371.80
Financial Activities	37	187	185	186	1,288,328	532.81
Professional & Business Services	46	718	737	726	2,805,146	296.81
Education & Health Services	56	690	696	702	4,543,091	502.11
Leisure & Hospitality	39	455	465	471	928,967	154.12
Other Services	25	72	75	79	479,181	489.29
Local Government	27	860	864	873	5,289,444	470.02
State Government	11	317	339	339	1,950,337	452.34
CRAIGHEAD COUNTY - TOTAL	2,523	39,227	39,701	40,073	\$273,239,645	\$529.87
Natural Resources & Mining	59	197	206	224	1,040,710	383.04
Construction	221	1,640	1,590	1,640	10,326,443	489.33
Manufacturing	143	7,056	6,937	6,894	57,222,952	632.23
Trade, Transportation & Utilities	730	8,015	7,962	7,992	48,590,657	467.82
Wholesale Trade	186	1,490	1,488	1,501	12,228,154	630.02
Retail Trade	428	5,491	5,449	5,451	27,917,300	393.05
Transportation, Warehousing & Utilities	116	1,034	1,025	1,040	8,445,203	628.88
Information	33	617	629	636	5,461,417	669.67
Financial Activities	250	1,591	1,597	1,611	14,929,458	717.91
Professional & Business Services	314	3,307	3,690	3,869	18,542,476	393.80
Education & Health Services	344	6,792	6,832	6,882	59,724,233	672.12
Leisure & Hospitality	177	3,351	3,455	3,489	9,019,346	202.17
Other Services	188	1,051	1,052	1,079	4,769,029	345.87
Local Government	39	3,330	3,455	3,445	22,548,600	508.65
State Government	25	2,280	2,296	2,312	21,064,324	705.72

**TABLE 6. COUNTY SUMMARY
EMPLOYMENT AND TOTAL EARNINGS, BY INDUSTRY
FIRST QUARTER 2005**

NORTH AMERICAN INDUSTRY CLASSIFICATION SYSTEM INDUSTRY GROUP	NUMBER OF EMPLOYING UNITS	EMPLOYMENT			TOTAL EARNINGS	AVERAGE WEEKLY EARNINGS
		JANUARY	FEBRUARY	MARCH	JAN. - MAR. 2005	
CRAWFORD COUNTY - TOTAL	1,148	17,868	18,123	18,272	\$114,808,859	\$488.26
Natural Resources & Mining	24	456	507	549	3,822,655	583.43
Construction	181	1,201	1,269	1,309	8,118,284	495.75
Manufacturing	76	3,362	3,382	3,439	22,766,392	515.94
Trade, Transportation & Utilities	309	6,166	6,218	6,198	40,973,297	508.85
Wholesale Trade	77	638	635	654	5,158,053	617.71
Retail Trade	165	1,717	1,723	1,784	8,225,467	363.36
Transportation, Warehousing & Utilities	67	3,811	3,860	3,760	27,589,777	556.98
Financial Activities	115	500	511	512	3,418,124	517.92
Professional & Business Services	134	724	725	724	4,261,140	452.53
Education & Health Services	93	1,480	1,486	1,496	9,653,776	499.28
Leisure & Hospitality	77	1,202	1,217	1,246	3,006,848	189.33
Local Government	41	2,042	2,077	2,071	13,973,944	520.96
State Government	11	165	164	158	1,116,183	528.91
Other	87	570	567	570	3,698,216	499.96
CRITTENDEN COUNTY - TOTAL	1,118	15,471	15,472	15,641	\$101,337,399	\$502.01
Natural Resources & Mining	50	250	238	284	1,394,026	416.71
Construction	75	563	574	592	3,806,795	508.09
Manufacturing	53	1,442	1,428	1,452	13,443,372	717.80
Trade, Transportation & Utilities	315	4,831	4,777	4,769	33,576,562	538.95
Wholesale Trade	63	765	761	760	6,779,780	684.41
Retail Trade	164	2,049	2,018	2,036	9,227,165	348.90
Transportation, Warehousing & Utilities	88	2,017	1,998	1,973	17,569,617	677.11
Information	9	90	88	87	802,700	699.01
Financial Activities	107	528	533	539	4,805,744	693.14
Professional & Business Services	114	726	693	667	3,823,140	422.94
Education & Health Services	135	1,800	1,811	1,811	12,201,456	519.31
Leisure & Hospitality	102	1,742	1,793	1,844	4,690,200	201.22
Other Services	101	562	573	582	2,903,424	390.23
Local Government	40	2,536	2,555	2,547	17,327,176	523.51
State Government	17	401	409	467	2,562,804	463.13

**TABLE 6. COUNTY SUMMARY
EMPLOYMENT AND TOTAL EARNINGS, BY INDUSTRY
FIRST QUARTER 2005**

NORTH AMERICAN INDUSTRY CLASSIFICATION SYSTEM INDUSTRY GROUP	NUMBER OF EMPLOYING UNITS	EMPLOYMENT			TOTAL EARNINGS	AVERAGE WEEKLY EARNINGS
		JANUARY	FEBRUARY	MARCH	JAN. - MAR. 2005	
CROSS COUNTY - TOTAL	486	5,177	5,247	5,300	\$30,619,235	\$449.38
Natural Resources & Mining	46	167	183	213	809,584	331.84
Construction	36	130	135	144	644,265	363.51
Manufacturing	18	949	957	946	6,443,440	521.37
Trade, Transportation & Utilities	133	1,179	1,185	1,219	7,098,139	457.17
Wholesale Trade	33	315	312	321	2,225,678	541.79
Retail Trade	67	632	637	650	2,852,986	343.09
Transportation, Warehousing & Utilities	33	232	236	248	2,019,475	650.88
Information	7	59	60	59	375,051	486.24
Financial Activities	45	379	374	374	2,769,283	567.05
Professional & Business Services	39	194	216	200	1,158,059	438.11
Education & Health Services	61	596	603	608	3,454,791	441.21
Leisure & Hospitality	30	366	356	364	789,939	167.86
Other Services	43	81	77	71	315,709	318.15
Local Government	17	866	889	890	5,284,039	461.02
State Government	11	211	212	212	1,476,936	536.74
DALLAS COUNTY - TOTAL	280	3,180	3,189	3,253	\$17,765,673	\$426.08
Natural Resources & Mining	42	194	206	213	1,455,540	547.95
Construction	14	71	64	67	412,333	471.06
Manufacturing	15	813	824	843	5,690,371	529.50
Trade, Transportation & Utilities	76	480	474	471	2,199,367	356.17
Wholesale Trade	10	46	46	48	259,198	427.25
Retail Trade	47	361	357	356	1,569,144	337.16
Transportation, Warehousing & Utilities	19	73	71	67	371,025	405.79
Information	3	26	26	25	140,863	422.17
Financial Activities	21	104	102	100	696,477	525.25
Professional & Business Services	17	62	62	56	508,347	651.73
Education & Health Services	31	694	703	711	3,416,660	374.03
Leisure & Hospitality	20	140	135	140	271,001	150.70
Other Services	16	53	53	66	239,739	321.65
Local Government	16	481	477	499	2,361,591	374.04
State Government	9	62	63	62	373,384	460.78

**TABLE 6. COUNTY SUMMARY
EMPLOYMENT AND TOTAL EARNINGS, BY INDUSTRY
FIRST QUARTER 2005**

NORTH AMERICAN INDUSTRY CLASSIFICATION SYSTEM INDUSTRY GROUP	NUMBER OF EMPLOYING UNITS	EMPLOYMENT			TOTAL EARNINGS	AVERAGE WEEKLY EARNINGS
		JANUARY	FEBRUARY	MARCH	JAN. - MAR. 2005	
DESHA COUNTY - TOTAL	455	4,811	4,853	4,953	\$31,358,277	\$495.08
Natural Resources & Mining	53	244	223	244	1,257,647	408.19
Construction	27	126	122	127	830,854	511.29
Manufacturing	17	1,111	1,141	1,177	9,784,425	658.48
Trade, Transportation & Utilities	137	1,067	1,070	1,067	5,580,080	401.91
Wholesale Trade	19	186	185	192	1,594,290	653.49
Retail Trade	87	691	693	686	2,680,727	298.85
Transportation, Warehousing & Utilities	31	190	192	189	1,305,063	527.44
Information	6	23	23	23	181,490	606.99
Financial Activities	41	233	233	231	1,341,070	444.01
Professional & Business Services	36	213	215	200	2,667,321	980.15
Education & Health Services	45	484	498	488	2,810,836	441.26
Leisure & Hospitality	35	255	259	265	536,607	158.96
Other Services	28	65	65	81	227,570	248.89
Local Government	19	835	846	886	5,120,204	460.30
State Government	11	155	158	164	1,020,173	493.55
DREW COUNTY - TOTAL	485	6,962	7,045	7,086	\$38,420,363	\$420.34
Natural Resources & Mining	40	334	330	331	1,908,000	442.52
Construction	30	105	121	119	655,169	438.24
Manufacturing	25	1,196	1,184	1,172	6,606,292	429.20
Trade, Transportation & Utilities	134	1,253	1,250	1,268	7,487,219	458.19
Wholesale Trade	26	279	276	282	2,387,442	658.24
Retail Trade	89	888	887	898	4,204,726	363.01
Transportation, Warehousing & Utilities	19	86	87	88	895,051	791.38
Information	9	86	87	86	594,364	529.58
Financial Activities	43	274	270	269	2,154,187	611.46
Professional & Business Services	41	341	339	349	2,003,476	449.31
Education & Health Services	54	769	766	764	3,657,725	367.16
Leisure & Hospitality	42	576	593	605	1,093,415	142.24
Other Services	27	79	83	83	299,644	282.24
Local Government	23	1,166	1,187	1,197	6,659,084	432.88
State Government	17	783	835	843	5,301,788	497.15

**TABLE 6. COUNTY SUMMARY
EMPLOYMENT AND TOTAL EARNINGS, BY INDUSTRY
FIRST QUARTER 2005**

NORTH AMERICAN INDUSTRY CLASSIFICATION SYSTEM INDUSTRY GROUP	NUMBER OF EMPLOYING UNITS	EMPLOYMENT			TOTAL EARNINGS	AVERAGE WEEKLY EARNINGS
		JANUARY	FEBRUARY	MARCH	JAN. - MAR. 2005	
FAULKNER COUNTY - TOTAL	2,216	34,292	34,786	35,117	\$251,912,384	\$557.93
Natural Resources & Mining	10	45	46	47	382,830	640.18
Construction	305	2,368	2,384	2,424	16,615,900	534.34
Manufacturing	115	5,004	5,027	5,069	47,461,927	725.35
Trade, Transportation & Utilities	551	6,067	6,055	6,119	33,053,431	418.16
Wholesale Trade	124	694	705	722	6,006,760	653.55
Retail Trade	366	4,767	4,743	4,783	21,367,078	344.98
Transportation, Warehousing & Utilities	61	606	607	614	5,679,593	717.39
Information	38	342	351	351	2,737,602	605.13
Financial Activities	265	1,221	1,234	1,238	9,678,517	604.79
Professional & Business Services	301	5,111	5,179	5,263	56,675,598	840.93
Education & Health Services	269	4,305	4,357	4,369	30,370,851	537.84
Leisure & Hospitality	174	3,452	3,639	3,697	8,174,148	174.86
Other Services	134	582	583	591	2,762,808	363.08
Local Government	35	3,020	3,024	3,041	22,056,497	560.26
State Government	19	2,775	2,907	2,908	21,942,275	589.48
FRANKLIN COUNTY - TOTAL	309	4,263	4,254	4,280	\$25,718,650	\$463.79
Natural Resources & Mining	8	146	146	143	1,318,720	699.59
Construction	25	147	135	138	827,786	454.83
Manufacturing	20	1,002	1,004	1,008	6,644,869	508.77
Trade, Transportation & Utilities	96	868	852	849	5,197,847	466.91
Wholesale Trade	14	62	61	62	228,499	285.03
Retail Trade	58	488	474	472	1,902,804	306.21
Transportation, Warehousing & Utilities	24	318	317	315	3,066,544	744.91
Information	7	56	59	57	247,614	332.22
Financial Activities	24	175	175	176	1,314,247	576.59
Professional & Business Services	18	50	53	58	276,908	396.91
Education & Health Services	38	515	513	516	3,040,084	454.38
Leisure & Hospitality	27	309	306	317	655,083	162.20
Other Services	18	55	60	59	269,369	357.25
Local Government	18	802	814	819	5,045,111	478.13
State Government	10	138	137	140	881,012	489.90

**TABLE 6. COUNTY SUMMARY
EMPLOYMENT AND TOTAL EARNINGS, BY INDUSTRY
FIRST QUARTER 2005**

NORTH AMERICAN INDUSTRY CLASSIFICATION SYSTEM INDUSTRY GROUP	NUMBER OF EMPLOYING UNITS	EMPLOYMENT			TOTAL EARNINGS	AVERAGE WEEKLY EARNINGS
		JANUARY	FEBRUARY	MARCH	JAN. - MAR. 2005	
FULTON COUNTY - TOTAL	211	1,852	1,854	1,881	\$8,736,873	\$360.87
Construction	15	33	32	34	171,588	399.97
Manufacturing	12	123	137	136	495,176	288.56
Trade, Transportation & Utilities	60	354	342	350	2,005,465	442.45
Retail Trade	44	193	189	195	646,695	258.64
Other Trade, Transportation & Utilities	16	161	153	155	1,358,770	668.58
Financial Activities	19	96	93	98	667,635	536.83
Professional & Business Services	17	51	50	49	308,669	474.88
Education & Health Services	28	371	378	374	1,389,687	285.57
Leisure & Hospitality	19	149	152	162	303,855	151.45
Local Government	13	507	501	504	2,571,302	392.45
State Government	11	97	98	102	547,380	425.31
Other	17	71	71	72	276,116	297.75
GARLAND COUNTY - TOTAL	3,014	34,835	35,809	36,340	\$224,521,899	\$484.30
Natural Resources & Mining	47	362	370	372	2,936,067	613.73
Construction	413	2,071	2,166	2,266	13,789,484	489.34
Manufacturing	125	3,451	3,456	3,424	24,272,188	542.18
Trade, Transportation & Utilities	691	7,107	7,069	7,170	40,232,179	434.95
Wholesale Trade	138	1,046	1,037	1,032	8,264,584	612.27
Retail Trade	483	5,415	5,361	5,453	25,870,971	367.87
Transportation, Warehousing & Utilities	70	646	671	685	6,096,624	702.75
Information	38	438	445	444	3,212,370	558.64
Financial Activities	352	1,517	1,516	1,517	12,010,217	609.14
Professional & Business Services	384	2,744	2,723	2,728	17,907,060	504.26
Education & Health Services	320	6,782	6,806	6,797	56,678,323	641.63
Leisure & Hospitality	349	5,468	6,291	6,597	19,186,958	241.22
Other Services	233	949	956	970	4,407,620	353.79
Local Government	36	3,042	3,062	3,095	23,284,989	584.14
State Government	26	904	949	960	6,604,444	541.81

**TABLE 6. COUNTY SUMMARY
EMPLOYMENT AND TOTAL EARNINGS, BY INDUSTRY
FIRST QUARTER 2005**

NORTH AMERICAN INDUSTRY CLASSIFICATION SYSTEM INDUSTRY GROUP	NUMBER OF EMPLOYING UNITS	EMPLOYMENT			TOTAL EARNINGS	AVERAGE WEEKLY EARNINGS
		JANUARY	FEBRUARY	MARCH	JAN. - MAR. 2005	
GRANT COUNTY - TOTAL	281	3,562	3,502	3,580	\$21,447,449	\$465.00
Natural Resources & Mining	25	186	179	182	1,708,570	720.81
Construction	30	229	225	227	1,488,859	504.53
Manufacturing	21	904	878	851	5,830,240	510.99
Trade, Transportation & Utilities	85	562	553	560	2,907,240	400.54
Wholesale Trade	16	147	151	153	1,080,707	552.98
Retail Trade	40	355	348	352	1,450,043	317.18
Transportation, Warehousing & Utilities	29	60	54	55	376,490	514.10
Information	3	37	39	39	247,794	497.25
Financial Activities	20	96	97	95	678,020	543.29
Professional & Business Services	22	90	91	94	702,542	589.55
Education & Health Services	21	215	207	211	1,171,788	427.19
Leisure & Hospitality	20	221	221	275	617,978	198.90
Other Services	14	41	38	38	156,171	308.03
Local Government	10	922	914	948	5,599,573	464.16
State Government	10	59	60	60	338,674	436.62
GREENE COUNTY - TOTAL	868	14,757	14,884	14,893	\$93,432,936	\$484.16
Natural Resources & Mining	38	169	178	188	1,112,789	480.00
Construction	76	339	355	347	1,905,556	422.42
Manufacturing	52	5,456	5,547	5,534	44,268,431	617.75
Trade, Transportation & Utilities	252	2,166	2,148	2,164	11,271,033	401.51
Wholesale Trade	55	432	421	421	3,094,640	560.56
Retail Trade	166	1,559	1,556	1,568	6,893,687	339.71
Transportation, Warehousing & Utilities	31	175	171	175	1,282,706	568.16
Information	13	95	99	98	520,368	411.25
Financial Activities	86	458	462	460	3,187,799	533.08
Professional & Business Services	87	1,423	1,428	1,358	7,011,300	384.41
Education & Health Services	101	1,666	1,645	1,662	9,471,062	439.50
Leisure & Hospitality	65	1,022	1,056	1,102	2,303,572	167.17
Other Services	55	159	165	169	711,503	333.05
Local Government	32	1,553	1,555	1,564	9,882,558	488.14
State Government	11	251	246	247	1,786,965	554.27

**TABLE 6. COUNTY SUMMARY
EMPLOYMENT AND TOTAL EARNINGS, BY INDUSTRY
FIRST QUARTER 2005**

NORTH AMERICAN INDUSTRY CLASSIFICATION SYSTEM INDUSTRY GROUP	NUMBER OF EMPLOYING UNITS	EMPLOYMENT			TOTAL EARNINGS	AVERAGE WEEKLY EARNINGS
		JANUARY	FEBRUARY	MARCH	JAN. - MAR. 2005	
HEMPSTEAD COUNTY - TOTAL	494	8,219	8,248	8,330	\$50,890,108	\$473.60
Natural Resources & Mining	19	235	226	219	1,471,666	499.43
Construction	35	104	105	112	672,439	483.42
Manufacturing	33	2,813	2,810	2,819	19,770,917	540.45
Trade, Transportation & Utilities	132	1,258	1,240	1,244	6,787,571	418.59
Wholesale Trade	26	181	183	189	1,010,905	421.85
Retail Trade	84	881	868	866	3,596,710	317.40
Transportation, Warehousing & Utilities	22	196	189	189	2,179,956	876.42
Information	11	89	90	88	539,049	465.90
Financial Activities	45	265	266	272	2,052,856	589.96
Professional & Business Services	35	178	190	206	785,092	315.64
Education & Health Services	60	960	967	977	5,329,720	423.53
Leisure & Hospitality	44	562	579	597	1,406,503	186.75
Other Services	35	202	201	214	1,313,283	491.19
Local Government	29	1,050	1,046	1,046	7,092,136	520.89
State Government	16	503	528	536	3,668,876	540.31
HOT SPRING COUNTY - TOTAL	611	7,419	7,472	7,623	\$49,069,277	\$502.96
Natural Resources & Mining	41	160	166	171	1,185,224	550.33
Construction	67	367	359	352	2,560,749	548.18
Manufacturing	47	1,669	1,662	1,662	15,589,595	720.53
Trade, Transportation & Utilities	173	1,350	1,356	1,462	8,329,990	461.21
Wholesale Trade	22	117	118	117	973,792	638.41
Retail Trade	106	884	880	989	4,364,434	365.85
Transportation, Warehousing & Utilities	45	349	358	356	2,991,764	649.49
Information	9	67	67	66	599,274	691.47
Financial Activities	54	302	301	304	2,000,928	509.10
Professional & Business Services	56	228	223	231	1,326,454	448.83
Education & Health Services	45	952	971	980	5,573,160	443.03
Leisure & Hospitality	41	551	546	561	1,273,981	177.32
Other Services	38	287	283	286	1,189,630	320.71
Local Government	26	1,128	1,129	1,134	7,151,679	486.70
State Government	14	358	409	414	2,288,613	447.20

**TABLE 6. COUNTY SUMMARY
EMPLOYMENT AND TOTAL EARNINGS, BY INDUSTRY
FIRST QUARTER 2005**

NORTH AMERICAN INDUSTRY CLASSIFICATION SYSTEM INDUSTRY GROUP	NUMBER OF EMPLOYING UNITS	EMPLOYMENT			TOTAL EARNINGS	AVERAGE
		JANUARY	FEBRUARY	MARCH	JAN. - MAR. 2005	WEEKLY EARNINGS
HOWARD COUNTY - TOTAL	368	8,064	8,122	7,700	\$46,595,904	\$450.18
Natural Resources & Mining	24	267	259	240	1,611,967	485.63
Construction	24	139	110	127	876,191	537.76
Manufacturing	26	4,610	4,683	4,267	28,704,922	488.51
Trade, Transportation & Utilities	108	941	946	954	4,799,700	389.87
Wholesale Trade	19	99	102	103	763,314	579.44
Retail Trade	67	660	658	667	2,584,584	300.47
Transportation, Warehousing & Utilities	22	182	186	184	1,451,802	606.94
Information	8	38	36	37	241,547	502.18
Financial Activities	36	167	141	141	858,232	441.10
Professional & Business Services	28	118	123	120	671,632	429.34
Education & Health Services	40	608	609	603	3,076,381	390.07
Leisure & Hospitality	23	264	279	287	585,911	162.90
Other Services	21	97	102	98	408,287	317.24
Local Government	18	697	714	698	3,975,091	434.96
State Government	12	118	120	128	786,043	495.61
INDEPENDENCE COUNTY - TOTAL	916	16,053	16,095	16,202	\$100,443,565	\$479.41
Natural Resources & Mining	11	116	123	121	1,040,285	666.85
Construction	64	334	331	327	1,933,528	449.80
Manufacturing	56	5,124	5,101	5,058	37,072,860	559.79
Trade, Transportation & Utilities	293	3,005	2,978	2,980	18,522,086	476.89
Wholesale Trade	53	474	491	507	3,586,552	562.27
Retail Trade	185	1,727	1,696	1,704	7,410,813	333.56
Transportation, Warehousing & Utilities	55	804	791	769	7,524,721	734.55
Information	12	162	157	162	1,219,779	585.21
Financial Activities	86	431	435	441	3,298,789	582.45
Professional & Business Services	89	839	828	893	3,710,280	334.46
Education & Health Services	103	2,606	2,602	2,629	18,025,287	530.77
Leisure & Hospitality	75	1,114	1,125	1,171	2,330,653	157.73
Other Services	71	331	343	351	1,502,174	338.20
Local Government	37	1,576	1,590	1,593	8,759,916	424.78
State Government	19	415	482	476	3,027,928	508.92

**TABLE 6. COUNTY SUMMARY
EMPLOYMENT AND TOTAL EARNINGS, BY INDUSTRY
FIRST QUARTER 2005**

NORTH AMERICAN INDUSTRY CLASSIFICATION SYSTEM INDUSTRY GROUP	NUMBER OF EMPLOYING UNITS	EMPLOYMENT			TOTAL EARNINGS	AVERAGE WEEKLY EARNINGS
		JANUARY	FEBRUARY	MARCH	JAN. - MAR. 2005	
IZARD COUNTY - TOTAL	250	2,823	2,858	2,850	15,509,677	\$419.55
Natural Resources & Mining	5	78	81	73	710,077	706.31
Construction	25	92	93	85	378,202	323.25
Manufacturing	12	399	398	386	3,027,729	590.62
Trade, Transportation & Utilities	68	480	490	492	2,204,135	347.91
Retail Trade	51	373	380	377	1,541,687	314.84
Other Trade, Transportation & Utilities	17	107	110	115	662,448	460.46
Information	3	5	5	5	27,346	420.71
Financial Activities	25	143	139	141	877,463	478.70
Professional & Business Services	22	82	84	86	353,021	323.28
Education & Health Services	22	412	414	413	1,881,725	350.48
Leisure & Hospitality	24	149	151	171	306,847	150.34
Other Services	15	44	33	37	160,890	325.69
Local Government	18	538	561	559	2,913,714	405.55
State Government	11	401	409	402	2,668,528	508.10
JACKSON COUNTY - TOTAL	517	5,507	5,635	5,777	\$35,551,066	\$484.90
Natural Resources & Mining	46	180	193	208	967,059	384.11
Construction	27	139	139	164	898,188	468.95
Manufacturing	27	1,034	1,021	1,038	8,783,129	655.31
Trade, Transportation & Utilities	137	1,173	1,166	1,185	6,374,319	417.42
Wholesale Trade	38	223	223	239	1,777,764	598.91
Retail Trade	80	703	695	694	2,939,467	324.25
Transportation, Warehousing & Utilities	19	247	248	252	1,657,088	511.92
Information	4	23	37	38	292,500	688.78
Financial Activities	45	201	203	203	1,407,207	534.99
Professional & Business Services	36	130	132	132	843,155	493.84
Education & Health Services	65	1,007	1,001	1,006	6,897,257	528.09
Leisure & Hospitality	40	309	344	347	815,910	188.29
Other Services	42	100	102	96	371,186	287.44
Local Government	34	689	749	802	4,050,373	417.28
State Government	14	522	548	558	3,850,783	545.85

**TABLE 6. COUNTY SUMMARY
EMPLOYMENT AND TOTAL EARNINGS, BY INDUSTRY
FIRST QUARTER 2005**

NORTH AMERICAN INDUSTRY CLASSIFICATION SYSTEM INDUSTRY GROUP	NUMBER OF EMPLOYING UNITS	EMPLOYMENT			TOTAL EARNINGS	AVERAGE WEEKLY EARNINGS
		JANUARY	FEBRUARY	MARCH	JAN. - MAR. 2005	
JEFFERSON COUNTY - TOTAL	1,759	32,543	32,635	32,920	\$233,020,110	\$548.16
Natural Resources & Mining	40	437	432	447	4,383,154	768.61
Construction	122	1,352	1,347	1,310	12,865,960	740.60
Manufacturing	79	6,360	6,355	6,469	59,640,697	717.43
Trade, Transportation & Utilities	499	6,122	6,108	6,157	38,939,374	488.72
Wholesale Trade	88	1,062	1,071	1,088	7,656,585	548.56
Retail Trade	347	4,197	4,157	4,191	19,261,094	354.31
Transportation, Warehousing & Utilities	64	863	880	878	12,021,695	1058.47
Information	19	249	246	235	1,600,940	506.09
Financial Activities	152	1,257	1,243	1,236	10,559,337	652.24
Professional & Business Services	174	1,777	1,776	1,872	13,810,231	587.46
Education & Health Services	288	5,539	5,562	5,553	35,248,192	488.42
Leisure & Hospitality	139	2,218	2,234	2,303	5,333,338	182.20
Other Services	165	816	808	834	4,297,888	403.51
Local Government	42	3,497	3,483	3,494	23,243,505	512.11
State Government	40	2,919	3,041	3,010	23,097,494	594.22
JOHNSON COUNTY - TOTAL	447	8,515	8,517	8,481	\$47,974,623	\$433.94
Natural Resources & Mining	16	208	211	216	1,487,505	540.58
Construction	31	168	164	163	953,880	444.70
Manufacturing	43	3,199	3,155	3,135	19,231,450	467.70
Trade, Transportation & Utilities	125	1,742	1,752	1,750	9,111,597	400.97
Information	6	30	31	30	180,842	458.60
Financial Activities	38	211	212	212	1,511,637	549.35
Professional & Business Services	45	171	181	177	883,968	385.62
Education & Health Services	52	1,096	1,103	1,096	6,412,163	449.08
Leisure & Hospitality	40	515	524	520	1,150,614	170.32
Other Services	27	82	82	81	345,481	325.41
Local Government	14	950	955	951	5,712,439	461.57
State Government	10	143	147	150	993,047	520.83

**TABLE 6. COUNTY SUMMARY
EMPLOYMENT AND TOTAL EARNINGS, BY INDUSTRY
FIRST QUARTER 2005**

NORTH AMERICAN INDUSTRY CLASSIFICATION SYSTEM INDUSTRY GROUP	NUMBER OF EMPLOYING UNITS	EMPLOYMENT			TOTAL EARNINGS	AVERAGE WEEKLY EARNINGS
		JANUARY	FEBRUARY	MARCH	JAN. - MAR. 2005	
LAFAYETTE COUNTY - TOTAL	160	1,667	1,634	1,636	\$8,949,991	\$418.35
Natural Resources & Mining	30	178	156	156	1,000,437	471.16
Trade, Transportation & Utilities	38	239	230	232	1,112,989	366.40
Retail Trade	23	167	159	157	545,606	260.68
Other Trade, Transportation & Utilities	15	72	71	75	567,383	600.62
Financial Activities	16	83	80	75	451,681	437.96
Professional & Business Services	11	56	57	58	415,361	560.54
Education & Health Services	12	196	192	194	886,401	351.47
Leisure & Hospitality	5	49	42	47	107,795	180.26
Other Services	8	84	85	85	328,461	298.42
Local Government	14	379	388	385	1,892,036	379.01
State Government	8	61	62	64	346,374	427.45
Other	18	342	342	340	2,408,456	542.77
LAWRENCE COUNTY - TOTAL	429	4,263	4,307	4,332	\$24,098,174	\$431.03
Natural Resources & Mining	34	155	140	140	900,606	477.78
Construction	29	86	95	108	631,689	504.41
Manufacturing	24	674	671	658	4,517,595	520.48
Trade, Transportation & Utilities	142	965	1,002	1,015	5,217,652	403.78
Wholesale Trade	26	207	205	210	1,538,660	570.86
Retail Trade	78	641	674	676	2,657,405	308.01
Transportation, Warehousing & Utilities	38	117	123	129	1,021,587	638.89
Information	6	21	22	21	177,008	638.25
Financial Activities	30	137	136	138	879,663	493.92
Professional & Business Services	24	120	125	126	886,940	551.69
Education & Health Services	48	422	429	434	2,638,695	473.88
Leisure & Hospitality	27	311	302	306	553,009	138.87
Other Services	25	68	70	73	261,223	285.70
Local Government	28	1,181	1,192	1,188	6,763,705	438.32
State Government	12	123	123	125	670,389	417.00

**TABLE 6. COUNTY SUMMARY
EMPLOYMENT AND TOTAL EARNINGS, BY INDUSTRY
FIRST QUARTER 2005**

NORTH AMERICAN INDUSTRY CLASSIFICATION SYSTEM INDUSTRY GROUP	NUMBER OF EMPLOYING UNITS	EMPLOYMENT			TOTAL EARNINGS	AVERAGE WEEKLY EARNINGS
		JANUARY	FEBRUARY	MARCH	JAN. - MAR. 2005	
LEE COUNTY - TOTAL	228	2,061	2,033	2,091	\$11,747,756	\$438.32
Natural Resources & Mining	32	149	166	196	829,285	374.51
Construction	7	7	7	7	24,267	266.67
Trade, Transportation & Utilities	62	355	363	362	1,781,209	380.60
Wholesale Trade	9	60	63	66	407,513	497.57
Retail Trade	36	206	208	204	714,230	266.70
Transportation, Warehousing & Utilities	17	89	92	92	659,466	557.45
Financial Activities	12	82	80	80	484,005	461.54
Professional & Business Services	19	73	75	73	522,612	545.71
Education & Health Services	33	300	289	289	1,686,311	443.22
Leisure & Hospitality	8	94	92	94	178,113	146.80
Local Government	16	402	406	401	2,626,077	501.26
State Government	8	440	442	439	2,832,202	494.77
Other	31	159	113	150	783,675	428.55
LINCOLN COUNTY - TOTAL	219	3,034	3,010	2,998	\$17,795,161	\$454.17
Natural Resources & Mining	35	188	182	181	1,062,117	444.83
Construction	17	96	90	70	470,844	424.44
Manufacturing	10	464	472	467	3,426,952	563.67
Trade, Transportation & Utilities	52	364	339	343	2,168,641	478.45
Wholesale Trade	7	30	31	31	258,239	647.76
Retail Trade	27	192	166	166	553,137	243.60
Transportation, Warehousing & Utilities	18	142	142	146	1,357,265	728.41
Financial Activities	22	78	75	76	472,318	475.97
Professional & Business Services	11	22	22	22	134,846	471.49
Education & Health Services	21	326	328	324	1,496,044	353.01
Leisure & Hospitality	15	103	104	102	216,590	161.76
Local & State Government	22	1,349	1,354	1,370	8,149,709	461.75
Other	14	44	44	43	197,100	347.21

**TABLE 6. COUNTY SUMMARY
EMPLOYMENT AND TOTAL EARNINGS, BY INDUSTRY
FIRST QUARTER 2005**

NORTH AMERICAN INDUSTRY CLASSIFICATION SYSTEM INDUSTRY GROUP	NUMBER OF EMPLOYING UNITS	EMPLOYMENT			TOTAL EARNINGS	AVERAGE WEEKLY EARNINGS
		JANUARY	FEBRUARY	MARCH	JAN. - MAR. 2005	
LITTLE RIVER COUNTY - TOTAL	257	4,514	4,511	4,512	\$44,884,001	\$765.15
Natural Resources & Mining	12	66	66	66	497,929	580.34
Trade, Transportation & Utilities	74	1,064	1,062	1,089	8,016,260	575.40
Wholesale Trade	10	32	33	32	208,907	497.00
Retail Trade	42	338	329	325	1,359,204	316.19
Transportation, Warehousing & Utilities	22	694	700	732	6,448,149	699.92
Information	4	11	11	10	76,604	552.43
Financial Activities	24	106	107	107	669,777	483.01
Professional & Business Services	22	163	176	178	1,144,757	510.98
Education & Health Services	17	163	158	153	701,864	341.71
Leisure & Hospitality	19	201	202	211	474,477	178.33
Other Services	16	109	99	108	295,293	215.65
Local Government	20	759	770	772	4,498,176	451.13
State Government	12	83	85	88	497,487	448.46
Other	37	1,789	1,775	1,730	28,011,377	1221.04
LOGAN COUNTY - TOTAL	451	5,657	5,637	5,702	\$31,150,256	\$422.95
Natural Resources & Mining	14	78	80	87	592,971	558.53
Construction	47	143	145	149	815,016	430.39
Manufacturing	26	1,888	1,862	1,873	11,655,474	478.34
Trade, Transportation & Utilities	122	854	836	853	3,600,661	326.75
Wholesale Trade	20	52	55	56	214,591	303.81
Retail Trade	76	743	725	736	2,913,797	305.09
Transportation, Warehousing & Utilities	26	59	56	61	472,273	619.24
Information	9	30	43	43	309,086	614.89
Financial Activities	43	247	245	249	1,917,433	597.15
Professional & Business Services	37	100	99	95	506,009	397.18
Education & Health Services	53	706	703	710	3,611,410	393.30
Leisure & Hospitality	29	303	306	313	698,123	174.73
Other Services	32	92	91	92	414,788	348.07
Local Government	23	781	799	807	4,769,340	461.09
State Government	16	435	428	431	2,259,945	403.03

**TABLE 6. COUNTY SUMMARY
EMPLOYMENT AND TOTAL EARNINGS, BY INDUSTRY
FIRST QUARTER 2005**

NORTH AMERICAN INDUSTRY CLASSIFICATION SYSTEM INDUSTRY GROUP	NUMBER OF EMPLOYING UNITS	EMPLOYMENT			TOTAL EARNINGS	AVERAGE WEEKLY EARNINGS
		JANUARY	FEBRUARY	MARCH	JAN. - MAR. 2005	
LONOKE COUNTY - TOTAL	1,142	11,273	11,313	11,460	\$67,693,487	\$458.84
Natural Resources & Mining	71	398	408	431	2,885,859	538.37
Construction	159	888	880	909	5,857,297	504.92
Manufacturing	40	1,361	1,360	1,370	11,682,132	658.98
Trade, Transportation & Utilities	318	2,390	2,402	2,423	13,085,240	418.53
Wholesale Trade	73	409	398	412	3,721,250	704.47
Retail Trade	174	1,716	1,742	1,743	7,521,422	333.73
Transportation, Warehousing & Utilities	71	265	262	268	1,842,568	534.85
Information	16	113	106	109	898,766	632.34
Financial Activities	122	552	541	548	4,473,488	629.09
Professional & Business Services	132	464	471	463	2,681,983	442.72
Education & Health Services	99	1,263	1,252	1,241	6,927,088	425.60
Leisure & Hospitality	75	1,072	1,089	1,147	2,546,480	177.64
Other Services	66	193	192	200	957,973	377.90
Local Government	28	2,436	2,467	2,479	14,878,948	465.13
State Government	16	143	145	140	818,233	441.18
MADISON COUNTY - TOTAL	235	3,139	3,134	3,147	\$16,828,269	\$412.26
Natural Resources & Mining	13	59	62	63	407,392	510.94
Construction	39	105	98	101	506,568	384.54
Manufacturing	20	1,159	1,166	1,143	6,333,052	421.42
Trade, Transportation & Utilities	60	557	554	571	2,687,836	368.77
Wholesale Trade	13	38	37	38	266,198	543.63
Retail Trade	33	397	395	404	1,581,536	305.16
Transportation, Warehousing & Utilities	14	122	122	129	840,102	519.76
Information	4	35	35	36	346,513	754.38
Financial Activities	17	91	91	91	701,543	593.02
Professional & Business Services	19	108	106	108	522,097	374.17
Education & Health Services	21	232	230	232	1,002,688	333.41
Leisure & Hospitality	12	121	118	120	205,280	131.96
Other Services	14	29	22	20	142,052	461.71
Local Government	8	591	600	608	3,665,587	470.21
State Government	8	52	52	54	307,661	449.36

**TABLE 6. COUNTY SUMMARY
EMPLOYMENT AND TOTAL EARNINGS, BY INDUSTRY
FIRST QUARTER 2005**

NORTH AMERICAN INDUSTRY CLASSIFICATION SYSTEM INDUSTRY GROUP	NUMBER OF EMPLOYING UNITS	EMPLOYMENT			TOTAL EARNINGS	AVERAGE WEEKLY EARNINGS
		JANUARY	FEBRUARY	MARCH	JAN. - MAR. 2005	
MARION COUNTY - TOTAL	281	3,856	3,981	4,043	\$20,803,133	\$404.10
Natural Resources & Mining	6	40	43	43	193,827	354.99
Construction	15	52	49	50	179,389	274.16
Manufacturing	25	1,701	1,704	1,707	9,886,221	446.29
Trade, Transportation & Utilities	58	582	715	740	2,658,366	301.16
Retail Trade	38	426	559	583	1,765,694	259.86
Other Trade, Transportation & Utilities	20	156	156	157	892,672	439.24
Financial Activities	35	162	163	173	1,205,374	558.56
Professional & Business Services	25	36	37	39	232,919	479.92
Education & Health Services	24	317	319	330	1,529,078	365.28
Leisure & Hospitality	45	231	222	238	569,353	190.14
Local Government	20	526	520	518	3,045,565	449.38
State Government	8	113	112	109	624,639	431.58
Other	20	96	97	96	678,402	541.71
MILLER COUNTY - TOTAL	838	12,568	12,563	12,701	\$85,812,899	\$523.45
Natural Resources & Mining	32	158	159	174	1,098,871	516.47
Construction	86	854	834	853	5,115,232	464.56
Manufacturing	36	2,821	2,824	2,789	29,475,323	806.50
Trade, Transportation & Utilities	248	2,642	2,615	2,668	17,481,419	509.04
Wholesale Trade	68	615	617	629	6,040,436	749.03
Retail Trade	136	1,431	1,405	1,445	6,486,536	349.66
Transportation, Warehousing & Utilities	44	596	593	594	4,954,447	641.24
Information	8	93	91	88	1,046,327	887.72
Financial Activities	85	460	460	454	3,662,333	615.10
Professional & Business Services	81	839	867	922	3,865,986	339.48
Education & Health Services	78	1,006	992	995	5,520,477	425.65
Leisure & Hospitality	78	1,290	1,287	1,314	3,517,931	208.64
Other Services	66	333	345	344	1,237,505	279.43
Local Government	22	1,655	1,667	1,674	10,489,100	484.50
State Government	18	417	422	426	3,302,395	602.44

**TABLE 6. COUNTY SUMMARY
EMPLOYMENT AND TOTAL EARNINGS, BY INDUSTRY
FIRST QUARTER 2005**

NORTH AMERICAN INDUSTRY CLASSIFICATION SYSTEM INDUSTRY GROUP	NUMBER OF EMPLOYING UNITS	EMPLOYMENT			TOTAL EARNINGS	AVERAGE WEEKLY EARNINGS
		JANUARY	FEBRUARY	MARCH	JAN. - MAR. 2005	
MISSISSIPPI COUNTY - TOTAL	1,128	17,842	18,010	18,328	\$143,471,183	\$611.09
Natural Resources & Mining	107	595	567	594	3,780,141	496.78
Construction	54	341	363	473	3,135,393	614.74
Manufacturing	56	4,907	4,922	4,985	65,224,110	1016.05
Trade, Transportation & Utilities	311	2,992	2,956	3,010	17,925,383	461.78
Wholesale Trade	66	574	579	597	4,934,444	650.70
Retail Trade	195	1,864	1,820	1,842	8,054,652	336.37
Transportation, Warehousing & Utilities	50	554	557	571	4,936,287	677.26
Financial Activities	104	595	584	588	3,849,536	502.75
Professional & Business Services	96	950	1,012	1,062	8,110,614	618.94
Education & Health Services	150	1,594	1,605	1,621	9,480,985	453.93
Leisure & Hospitality	80	1,062	1,100	1,127	2,511,342	176.21
Local Government	46	2,375	2,401	2,393	14,084,731	453.39
State Government	25	606	654	670	3,946,291	471.86
Other	99	1,825	1,846	1,805	11,422,657	481.37
MONROE COUNTY - TOTAL	295	2,478	2,490	2,575	\$12,058,901	\$370.75
Natural Resources & Mining	32	117	124	144	545,559	327.01
Construction	15	39	39	48	178,868	327.60
Manufacturing	9	168	160	161	870,495	410.80
Trade, Transportation & Utilities	90	669	666	689	3,612,575	411.89
Wholesale Trade	23	199	205	218	1,355,105	502.76
Retail Trade	40	322	312	319	1,279,816	309.91
Transportation, Warehousing & Utilities	27	148	149	152	977,654	502.48
Financial Activities	17	101	99	99	696,530	537.58
Professional & Business Services	15	43	40	45	248,641	448.27
Education & Health Services	29	344	346	352	1,470,870	325.75
Leisure & Hospitality	30	303	305	296	631,472	161.20
Local Government	22	464	471	471	2,574,863	422.62
State Government	10	135	134	136	750,406	427.58
Other	26	95	106	134	478,622	329.71

**TABLE 6. COUNTY SUMMARY
EMPLOYMENT AND TOTAL EARNINGS, BY INDUSTRY
FIRST QUARTER 2005**

NORTH AMERICAN INDUSTRY CLASSIFICATION SYSTEM INDUSTRY GROUP	NUMBER OF EMPLOYING UNITS	EMPLOYMENT			TOTAL EARNINGS	AVERAGE
		JANUARY	FEBRUARY	MARCH	JAN. - MAR. 2005	WEEKLY EARNINGS
MONTGOMERY COUNTY - TOTAL	171	1,497	1,540	1,592	\$7,209,773	\$359.43
Natural Resources & Mining	14	62	55	58	317,139	418.21
Construction	23	105	106	123	570,020	393.84
Trade, Transportation & Utilities	48	221	223	222	988,986	342.68
Wholesale Trade	12	85	85	85	397,791	359.99
Retail Trade	27	109	111	111	469,886	327.60
Transportation, Warehousing & Utilities	9	27	27	26	121,309	349.93
Financial Activities	8	65	68	68	448,958	515.45
Education & Health Services	11	54	55	54	232,257	328.82
Leisure & Hospitality	19	112	149	185	556,503	287.95
Other Services	10	65	69	68	271,133	309.75
Local Government	9	479	484	487	2,363,965	376.23
State Government	8	56	54	54	348,080	489.79
Other	21	278	277	273	1,112,732	310.13
NEVADA COUNTY - TOTAL	197	2,615	2,589	2,619	\$17,947,415	\$529.43
Natural Resources & Mining	15	55	55	54	334,405	470.55
Construction	12	37	34	40	200,901	417.67
Manufacturing	8	753	754	773	8,758,996	886.54
Trade, Transportation & Utilities	48	465	468	470	2,122,587	349.13
Retail Trade	32	305	303	305	870,255	219.97
Other Trade, Transportation & Utilities	16	160	165	165	1,252,332	589.80
Financial Activities	12	66	65	62	450,919	539.16
Education & Health Services	13	407	397	397	1,754,551	337.13
Leisure & Hospitality	18	96	92	99	205,544	165.27
Other Services	18	85	77	89	245,359	225.58
Local Government	27	500	484	477	2,581,928	407.82
State Government	11	82	84	84	509,283	470.11
Other	15	69	79	74	782,942	813.87

**TABLE 6. COUNTY SUMMARY
EMPLOYMENT AND TOTAL EARNINGS, BY INDUSTRY
FIRST QUARTER 2005**

NORTH AMERICAN INDUSTRY CLASSIFICATION SYSTEM INDUSTRY GROUP	NUMBER OF EMPLOYING UNITS	EMPLOYMENT			TOTAL EARNINGS	AVERAGE WEEKLY EARNINGS
		JANUARY	FEBRUARY	MARCH	JAN. - MAR. 2005	
NEWTON COUNTY - TOTAL	129	1,046	1,058	1,080	\$4,462,093	\$323.40
Natural Resources & Mining	9	14	16	9	35,733	211.44
Construction	8	8	9	14	20,374	151.67
Manufacturing	14	61	66	70	332,194	389.14
Trade, Transportation & Utilities	29	162	160	162	630,411	300.58
Wholesale Trade	3	7	7	7	38,399	421.97
Retail Trade	16	103	105	105	313,077	230.83
Transportation, Warehousing & Utilities	10	52	48	50	278,935	429.13
Education & Health Services	13	209	206	213	728,353	267.65
Leisure & Hospitality	20	67	68	80	161,621	173.48
Other Services	6	12	12	11	37,884	249.78
Local Government	11	374	379	378	1,820,873	371.53
State Government	7	88	89	91	370,771	319.26
Other	12	51	53	52	323,879	479.11
OUACHITA COUNTY - TOTAL	625	7,165	7,308	7,327	\$42,646,447	\$451.44
Natural Resources & Mining	43	262	262	265	1,842,999	539.05
Construction	43	174	175	176	991,340	435.75
Manufacturing	28	677	776	781	5,713,135	590.16
Trade, Transportation & Utilities	185	1,813	1,828	1,794	10,833,245	459.98
Wholesale Trade	31	283	268	264	2,549,401	721.87
Retail Trade	127	1,101	1,130	1,107	4,560,924	315.31
Transportation, Warehousing & Utilities	27	429	430	423	3,722,920	670.15
Information	8	98	97	96	649,484	515.05
Financial Activities	65	356	347	347	2,428,247	533.68
Professional & Business Services	47	285	268	306	1,378,284	370.27
Education & Health Services	71	1,244	1,243	1,256	7,455,537	459.66
Leisure & Hospitality	38	498	537	539	1,110,721	162.85
Other Services	54	169	172	168	688,861	312.31
Local Government	30	1,287	1,298	1,292	7,374,938	438.98
State Government	13	302	305	307	2,179,656	550.33

**TABLE 6. COUNTY SUMMARY
EMPLOYMENT AND TOTAL EARNINGS, BY INDUSTRY
FIRST QUARTER 2005**

NORTH AMERICAN INDUSTRY CLASSIFICATION SYSTEM INDUSTRY GROUP	NUMBER OF EMPLOYING UNITS	EMPLOYMENT			TOTAL EARNINGS	AVERAGE WEEKLY EARNINGS
		JANUARY	FEBRUARY	MARCH	JAN. - MAR. 2005	
PERRY COUNTY - TOTAL	149	1,135	1,173	1,186	\$5,923,327	\$391.22
Natural Resources & Mining	6	31	31	32	257,117	631.22
Construction	22	74	71	71	391,046	417.78
Manufacturing	6	68	74	75	382,171	406.42
Trade, Transportation & Utilities	31	183	189	191	819,587	335.94
Wholesale Trade	4	8	8	8	104,203	1001.95
Retail Trade	20	153	160	162	497,434	241.67
Transportation, Warehousing & Utilities	7	22	21	21	217,950	785.88
Financial Activities	15	54	51	53	379,524	554.32
Professional & Business Services	16	40	48	46	206,637	
Education & Health Services	15	160	164	167	719,664	338.24
Local Government	12	386	401	405	2,102,347	407.01
State Government	8	56	54	53	298,236	422.23
Other	18	83	90	93	366,998	318.39
PHILLIPS COUNTY - TOTAL	679	6,487	6,494	6,641	\$38,206,436	\$449.34
Natural Resources & Mining	74	288	301	362	1,478,364	358.74
Construction	34	114	106	110	628,981	439.85
Manufacturing	15	452	444	451	3,210,960	550.10
Trade, Transportation & Utilities	180	1,549	1,560	1,570	10,512,882	518.50
Wholesale Trade	35	382	390	398	3,238,580	638.77
Retail Trade	109	918	922	918	3,818,844	319.53
Transportation, Warehousing & Utilities	36	249	248	254	3,455,458	1061.80
Information	11	61	61	60	428,181	542.92
Financial Activities	55	294	291	299	2,159,580	563.76
Professional & Business Services	56	248	254	240	1,383,748	430.36
Education & Health Services	124	1,183	1,181	1,194	6,234,088	404.34
Leisure & Hospitality	37	341	327	370	704,363	156.59
Other Services	43	102	106	110	477,037	346.18
Local Government	34	1,314	1,302	1,313	7,824,177	459.55
State Government	16	541	561	562	3,164,075	438.80

**TABLE 6. COUNTY SUMMARY
EMPLOYMENT AND TOTAL EARNINGS, BY INDUSTRY
FIRST QUARTER 2005**

NORTH AMERICAN INDUSTRY CLASSIFICATION SYSTEM INDUSTRY GROUP	NUMBER OF EMPLOYING UNITS	EMPLOYMENT			TOTAL EARNINGS	AVERAGE WEEKLY EARNINGS
		JANUARY	FEBRUARY	MARCH	JAN. - MAR. 2005	
PIKE COUNTY - TOTAL	271	2,788	2,748	2,853	\$14,468,557	\$398.01
Natural Resources & Mining	36	186	181	200	1,340,509	545.59
Construction	13	62	58	63	290,282	366.06
Manufacturing	13	452	405	460	2,453,587	429.93
Trade, Transportation & Utilities	92	606	599	611	2,958,741	375.98
Wholesale Trade	16	114	116	122	671,750	440.40
Retail Trade	54	364	358	371	1,491,061	314.81
Transportation, Warehousing & Utilities	22	128	125	118	795,930	495.08
Information	5	32	32	32	284,060	682.84
Financial Activities	24	178	178	178	1,182,055	510.83
Professional & Business Services	10	42	43	43	165,761	298.85
Education & Health Services	15	218	225	222	833,455	289.23
Leisure & Hospitality	22	202	206	205	432,029	162.64
Other Services	17	124	128	134	687,353	410.93
Local Government	13	580	585	592	3,286,534	431.66
State Government	11	106	108	113	554,191	391.10
POINSETT COUNTY - TOTAL	503	6,118	6,185	6,229	\$36,735,238	\$457.44
Natural Resources & Mining	48	294	297	302	1,914,573	494.76
Construction	30	114	108	114	529,289	363.52
Manufacturing	31	1,511	1,533	1,504	10,108,680	512.92
Trade, Transportation & Utilities	142	1,376	1,394	1,409	8,611,070	475.51
Wholesale Trade	32	447	454	482	4,654,774	776.70
Retail Trade	79	767	775	761	2,881,940	288.78
Transportation, Warehousing & Utilities	31	162	165	166	1,074,356	502.90
Information	7	58	60	60	595,514	772.06
Financial Activities	46	334	338	340	2,271,828	518.05
Professional & Business Services	25	86	89	96	933,055	794.54
Education & Health Services	51	583	585	588	3,164,634	415.89
Leisure & Hospitality	46	380	388	421	752,679	146.09
Other Services	34	66	69	68	363,093	412.76
Local Government	30	1,083	1,088	1,092	6,146,675	434.71
State Government	13	233	236	235	1,344,148	440.61

**TABLE 6. COUNTY SUMMARY
EMPLOYMENT AND TOTAL EARNINGS, BY INDUSTRY
FIRST QUARTER 2005**

NORTH AMERICAN INDUSTRY CLASSIFICATION SYSTEM INDUSTRY GROUP	NUMBER OF EMPLOYING UNITS	EMPLOYMENT			TOTAL EARNINGS	AVERAGE WEEKLY EARNINGS
		JANUARY	FEBRUARY	MARCH	JAN. - MAR. 2005	
POLK COUNTY - TOTAL	526	6,110	6,127	6,233	\$32,905,527	\$411.13
Natural Resources & Mining	28	260	260	258	1,860,425	551.84
Construction	35	161	163	163	786,299	372.59
Manufacturing	46	1,402	1,399	1,401	8,017,624	440.32
Trade, Transportation & Utilities	158	1,344	1,357	1,397	6,708,082	377.75
Wholesale Trade	25	145	149	140	831,725	442.25
Retail Trade	86	820	826	857	3,519,256	324.47
Transportation, Warehousing & Utilities	47	379	382	400	2,357,101	468.52
Information	9	50	49	49	346,368	540.07
Financial Activities	36	213	212	215	1,455,224	524.72
Professional & Business Services	46	140	136	136	813,574	455.70
Education & Health Services	63	914	904	920	5,129,310	432.32
Leisure & Hospitality	40	381	376	406	796,607	158.07
Other Services	30	139	138	142	603,444	332.35
Local Government	21	814	819	824	4,855,569	456.05
State Government	14	292	314	322	1,533,001	381.22
POPE COUNTY - TOTAL	1,626	25,417	25,695	26,249	\$178,087,469	\$531.24
Natural Resources & Mining	19	645	684	675	3,425,349	394.44
Construction	166	1,433	1,474	1,526	11,229,889	584.60
Manufacturing	89	4,768	4,754	4,835	36,901,511	593.14
Trade, Transportation & Utilities	472	6,366	6,375	6,437	57,638,606	693.57
Wholesale Trade	104	763	752	745	5,442,919	555.78
Retail Trade	273	3,092	3,135	3,173	14,205,048	348.73
Transportation, Warehousing & Utilities	95	2,511	2,488	2,519	37,990,639	1166.14
Information	22	299	295	291	2,272,625	592.60
Financial Activities	158	776	771	775	5,853,423	581.74
Professional & Business Services	210	2,254	2,364	2,579	12,516,371	401.33
Education & Health Services	183	2,751	2,763	2,794	17,609,919	489.15
Leisure & Hospitality	132	2,259	2,332	2,390	5,285,203	174.71
Other Services	118	475	464	475	2,395,592	390.97
Local Government	40	2,271	2,312	2,326	13,913,998	464.74
State Government	17	1,120	1,107	1,146	9,044,983	618.83

**TABLE 6. COUNTY SUMMARY
EMPLOYMENT AND TOTAL EARNINGS, BY INDUSTRY
FIRST QUARTER 2005**

NORTH AMERICAN INDUSTRY CLASSIFICATION SYSTEM INDUSTRY GROUP	NUMBER OF EMPLOYING UNITS	EMPLOYMENT			TOTAL EARNINGS	AVERAGE WEEKLY EARNINGS
		JANUARY	FEBRUARY	MARCH	JAN. - MAR. 2005	
PRAIRIE COUNTY - TOTAL	227	1,546	1,549	1,601	\$8,684,199	\$426.76
Natural Resources & Mining	26	101	102	125	585,627	412.03
Trade, Transportation & Utilities	64	356	343	371	2,152,598	464.26
Wholesale Trade	10	47	52	57	305,035	451.24
Retail Trade	35	224	203	226	1,132,645	400.28
Transportation, Warehousing & Utilities	19	85	88	88	714,918	632.11
Information	4	10	10	10	89,147	685.75
Financial Activities	17	63	63	63	396,598	484.25
Professional & Business Services	17	44	44	43	236,399	416.44
Education & Health Services	20	204	206	212	1,051,415	390.09
Leisure & Hospitality	18	104	103	104	208,414	154.65
Other Services	15	53	53	52	197,595	288.60
Local Government	15	356	357	359	1,978,589	425.93
State Government	10	53	54	52	315,701	458.20
Other	21	202	214	210	1,472,116	542.68
PULASKI COUNTY - TOTAL	13,363	229,943	231,238	233,275	\$2,010,233,897	\$668.01
Natural Resources & Mining	43	596	609	616	7,607,519	964.08
Construction	1,113	10,471	10,609	10,828	87,241,554	630.96
Manufacturing	423	16,066	16,012	16,004	155,994,204	748.69
Trade, Transportation & Utilities	3,208	50,835	50,585	50,857	419,294,179	635.42
Wholesale Trade	1,066	12,827	12,849	12,930	145,671,176	870.76
Retail Trade	1,746	24,961	24,642	24,712	138,711,108	430.74
Transportation, Warehousing & Utilities	396	13,047	13,094	13,215	134,911,895	791.07
Information	237	8,577	8,589	8,564	119,125,616	1068.42
Financial Activities	1,654	15,888	15,837	15,856	217,655,783	1055.64
Professional & Business Services	2,542	31,837	32,164	32,607	253,933,455	606.58
Education & Health Services	1,641	31,659	32,040	32,261	281,247,798	676.36
Leisure & Hospitality	981	18,290	18,653	19,425	57,947,044	237.23
Other Services	1,221	6,339	6,395	6,478	43,034,741	516.92
Local Government	103	16,034	16,045	16,075	134,298,930	643.60
State Government	197	23,351	23,700	23,704	232,853,074	759.46

**TABLE 6. COUNTY SUMMARY
EMPLOYMENT AND TOTAL EARNINGS, BY INDUSTRY
FIRST QUARTER 2005**

NORTH AMERICAN INDUSTRY CLASSIFICATION SYSTEM INDUSTRY GROUP	NUMBER OF EMPLOYING UNITS	EMPLOYMENT			TOTAL EARNINGS	AVERAGE WEEKLY EARNINGS
		JANUARY	FEBRUARY	MARCH	JAN. - MAR. 2005	
RANDOLPH COUNTY - TOTAL	402	4,896	5,010	5,044	\$26,222,246	\$404.77
Natural Resources & Mining	20	63	67	70	262,136	302.46
Construction	21	103	108	118	450,908	316.28
Manufacturing	37	1,180	1,155	1,125	6,867,304	458.02
Trade, Transportation & Utilities	109	904	929	955	4,638,693	383.96
Wholesale Trade	22	168	168	177	824,157	370.74
Retail Trade	67	607	607	616	2,615,764	329.86
Transportation, Warehousing & Utilities	20	129	154	162	1,198,772	621.66
Information	7	49	49	47	385,561	613.62
Financial Activities	27	154	153	155	848,086	423.62
Professional & Business Services	39	201	185	186	780,179	314.76
Education & Health Services	54	790	820	806	4,565,852	436.12
Leisure & Hospitality	29	337	360	375	668,136	143.83
Other Services	24	59	65	68	266,986	320.90
Local Government	23	815	855	844	4,688,507	430.38
State Government	12	241	264	295	1,799,898	519.20
SAINT FRANCIS COUNTY - TOTAL	611	8,308	8,284	8,428	\$48,199,273	\$444.56
Natural Resources & Mining	24	145	123	138	561,747	319.30
Construction	43	238	241	266	1,335,372	413.64
Manufacturing	22	1,400	1,326	1,346	9,179,259	520.21
Trade, Transportation & Utilities	188	2,063	2,055	2,108	11,963,088	443.42
Wholesale Trade	33	528	542	553	3,719,699	528.89
Retail Trade	122	1,193	1,194	1,233	5,438,047	346.67
Transportation, Warehousing & Utilities	33	342	319	322	2,805,342	658.58
Information	11	130	129	125	898,943	540.23
Financial Activities	50	313	311	294	1,799,635	452.40
Professional & Business Services	44	154	157	158	875,825	430.95
Education & Health Services	95	1,285	1,291	1,294	6,752,334	402.64
Leisure & Hospitality	49	732	736	765	1,764,498	182.35
Other Services	38	129	133	135	429,439	249.63
Local Government	30	1,228	1,224	1,236	8,964,822	560.96
State Government	17	491	558	563	3,674,311	526.00

**TABLE 6. COUNTY SUMMARY
EMPLOYMENT AND TOTAL EARNINGS, BY INDUSTRY
FIRST QUARTER 2005**

NORTH AMERICAN INDUSTRY CLASSIFICATION SYSTEM INDUSTRY GROUP	NUMBER OF EMPLOYING UNITS	EMPLOYMENT			TOTAL EARNINGS	AVERAGE
		JANUARY	FEBRUARY	MARCH	JAN. - MAR. 2005	WEEKLY EARNINGS
SALINE COUNTY - TOTAL	1,576	18,909	18,951	19,150	\$120,467,692	\$487.64
Natural Resources & Mining	12	43	42	43	483,056	870.89
Construction	288	1,687	1,677	1,727	11,291,005	511.81
Manufacturing	82	1,811	1,822	1,818	17,381,215	735.84
Trade, Transportation & Utilities	410	4,380	4,365	4,385	27,075,544	475.87
Wholesale Trade	112	507	515	511	4,625,873	696.35
Retail Trade	256	3,627	3,609	3,632	20,614,054	437.72
Transportation, Warehousing & Utilities	42	246	241	242	1,835,617	581.08
Information	13	102	105	106	658,050	485.17
Financial Activities	150	676	663	660	4,817,059	556.09
Professional & Business Services	191	1,251	1,236	1,276	6,766,615	414.97
Education & Health Services	139	2,424	2,466	2,438	15,175,403	477.90
Leisure & Hospitality	117	1,944	1,968	2,026	5,280,797	205.23
Other Services	123	580	593	608	3,148,106	407.91
Local & State Government	51	4,011	4,014	4,063	28,390,842	542.00
SCOTT COUNTY - TOTAL	181	2,915	2,893	2,928	14,938,645	\$394.62
Natural Resources & Mining	18	165	172	174	1,284,941	580.28
Trade, Transportation & Utilities	49	472	469	476	2,119,727	345.21
Wholesale Trade	9	59	61	61	415,090	529.23
Retail Trade	30	335	333	339	1,164,844	266.94
Transportation, Warehousing & Utilities	10	78	75	76	539,793	543.96
Information	4	16	17	14	85,818	421.36
Financial Activities	15	73	71	71	436,827	468.87
Professional & Business Services	8	12	14	14	59,593	343.81
Education & Health Services	19	317	306	317	1,525,879	374.60
Leisure & Hospitality	17	185	172	176	338,758	146.67
Other Services	10	58	56	57	460,986	622.11
Local Government	5	354	356	356	1,975,892	427.74
State Government	8	65	62	64	321,135	388.00
Other	28	1,198	1,198	1,209	6,329,089	405.15

**TABLE 6. COUNTY SUMMARY
EMPLOYMENT AND TOTAL EARNINGS, BY INDUSTRY
FIRST QUARTER 2005**

NORTH AMERICAN INDUSTRY CLASSIFICATION SYSTEM INDUSTRY GROUP	NUMBER OF EMPLOYING UNITS	EMPLOYMENT			TOTAL EARNINGS	AVERAGE WEEKLY EARNINGS
		JANUARY	FEBRUARY	MARCH	JAN. - MAR. 2005	
SEARCY COUNTY - TOTAL	148	1,562	1,576	1,593	\$7,259,779	\$354.12
Construction	5	15	16	17	68,854	331.03
Manufacturing	18	282	287	284	1,187,394	321.24
Trade, Transportation & Utilities	39	289	284	287	1,019,938	273.69
Retail Trade	29	213	210	211	684,984	249.33
Other Trade, Transportation & Utilities	10	76	74	76	334,954	342.02
Financial Activities	15	48	49	51	327,445	510.57
Professional & Business Services	16	40	39	37	208,918	415.62
Education & Health Services	13	267	263	265	1,103,185	320.23
Leisure & Hospitality	13	82	106	115	184,243	140.32
Local Government	9	307	304	307	1,851,034	465.32
State Government	9	188	185	186	1,056,940	436.33
Other	11	44	43	44	251,828	443.62
SEBASTIAN COUNTY - TOTAL	3,505	70,262	70,556	71,629	\$545,654,297	\$592.71
Natural Resources & Mining	59	930	985	1,045	12,339,755	962.04
Construction	286	2,726	2,764	2,855	21,627,021	598.06
Manufacturing	216	21,004	21,119	21,373	176,932,945	643.04
Trade, Transportation & Utilities	914	12,194	12,027	12,150	83,481,466	529.68
Wholesale Trade	230	2,334	2,349	2,367	24,403,511	798.81
Retail Trade	567	7,811	7,655	7,772	41,161,152	408.76
Transportation, Warehousing & Utilities	117	2,049	2,023	2,011	17,916,803	679.71
Information	57	1,191	1,186	1,187	12,919,062	836.51
Financial Activities	392	2,529	2,497	2,508	23,488,517	719.46
Professional & Business Services	504	8,405	8,561	8,833	72,423,473	647.82
Education & Health Services	411	8,999	9,070	9,080	77,252,132	656.65
Leisure & Hospitality	311	5,049	5,140	5,294	13,966,157	208.16
Other Services	289	1,439	1,422	1,518	8,033,174	423.34
Local Government	43	4,425	4,398	4,397	33,307,687	581.42
State Government	23	1,371	1,387	1,389	9,882,908	549.96

**TABLE 6. COUNTY SUMMARY
EMPLOYMENT AND TOTAL EARNINGS, BY INDUSTRY
FIRST QUARTER 2005**

NORTH AMERICAN INDUSTRY CLASSIFICATION SYSTEM INDUSTRY GROUP	NUMBER OF EMPLOYING UNITS	EMPLOYMENT			TOTAL EARNINGS	AVERAGE WEEKLY EARNINGS
		JANUARY	FEBRUARY	MARCH	JAN. - MAR. 2005	
SEVIER COUNTY - TOTAL	326	5,744	5,817	5,937	34,365,500	\$453.22
Natural Resources & Mining	21	200	206	208	1,194,478	448.94
Trade, Transportation & Utilities	93	826	814	822	4,528,256	424.44
Wholesale Trade	15	136	137	140	1,460,966	816.33
Retail Trade	59	592	581	583	2,283,086	300.04
Transportation, Warehousing & Utilities	19	98	96	99	784,204	617.65
Information	7	44	44	44	288,280	503.99
Financial Activities	27	199	228	228	1,581,411	557.16
Professional & Business Services	30	141	142	136	3,795,375	2090.35
Education & Health Services	36	510	502	500	2,666,520	406.98
Leisure & Hospitality	21	257	244	271	602,835	180.20
Other Services	33	160	160	154	617,531	300.65
Local Government	12	800	780	792	4,417,593	429.78
State Government	9	166	184	197	1,136,974	479.67
Other	37	2,441	2,513	2,585	13,536,247	414.35
SHARP COUNTY - TOTAL	386	3,821	3,860	3,867	\$19,646,318	\$392.60
Construction	31	193	198	199	1,111,129	434.60
Manufacturing	22	174	183	207	797,517	326.32
Trade, Transportation & Utilities	105	1,083	1,086	1,042	6,074,504	436.56
Retail Trade	75	667	652	659	2,676,435	312.25
Other Trade, Transportation & Utilities	30	416	434	383	3,398,069	635.99
Information	8	70	69	66	767,485	863.96
Financial Activities	31	238	241	241	1,957,299	627.34
Professional & Business Services	38	136	131	138	858,402	489.12
Education & Health Services	50	562	567	572	2,672,210	362.53
Leisure & Hospitality	41	409	411	430	728,376	134.47
Local Government	24	777	794	791	3,848,271	375.98
State Government	9	97	97	103	529,450	411.38
Other	27	82	83	78	301,675	286.49

**TABLE 6. COUNTY SUMMARY
EMPLOYMENT AND TOTAL EARNINGS, BY INDUSTRY
FIRST QUARTER 2005**

NORTH AMERICAN INDUSTRY CLASSIFICATION SYSTEM INDUSTRY GROUP	NUMBER OF EMPLOYING UNITS	EMPLOYMENT			TOTAL EARNINGS	AVERAGE WEEKLY EARNINGS
		JANUARY	FEBRUARY	MARCH	JAN. - MAR. 2005	
STONE COUNTY - TOTAL	243	2,547	2,552	2,636	\$12,339,058	\$368.13
Construction	20	79	82	83	399,302	377.65
Manufacturing	22	452	453	456	2,090,269	354.42
Trade, Transportation & Utilities	76	557	551	571	2,730,155	375.24
Wholesale Trade	10	49	50	49	206,391	321.82
Retail Trade	52	459	454	476	2,131,967	354.21
Transportation, Warehousing & Utilities	14	49	47	46	391,797	636.72
Financial Activities	21	90	87	87	585,211	511.55
Professional & Business Services	9	29	33	30	214,251	537.42
Education & Health Services	23	411	410	418	2,230,490	415.44
Leisure & Hospitality	33	310	303	345	593,680	143.01
Other Services	13	26	27	25	115,067	340.43
Local Government	10	384	391	394	2,324,017	458.78
State Government	10	170	169	175	761,408	341.85
Other	6	39	46	52	295,208	497.26
UNION COUNTY - TOTAL	1,334	20,057	19,981	20,031	\$153,875,848	\$591.15
Natural Resources & Mining	104	503	510	504	4,068,080	618.84
Construction	101	1,580	1,563	1,519	14,810,262	733.11
Manufacturing	66	5,257	5,116	5,126	48,708,581	725.24
Trade, Transportation & Utilities	367	3,536	3,546	3,554	23,554,487	511.06
Wholesale Trade	82	517	508	514	6,695,820	1004.02
Retail Trade	228	2,346	2,353	2,353	10,326,567	337.93
Transportation, Warehousing & Utilities	57	673	685	687	6,532,100	737.12
Information	20	209	211	217	1,367,553	495.43
Financial Activities	126	757	754	757	5,543,540	564.06
Professional & Business Services	134	1,726	1,735	1,769	19,937,703	879.73
Education & Health Services	128	2,223	2,227	2,266	14,807,995	508.82
Leisure & Hospitality	94	1,115	1,107	1,123	2,991,665	206.39
Other Services	139	618	630	609	2,747,582	341.44
Local Government	37	2,024	2,041	2,044	11,809,007	446.09
State Government	18	509	541	543	3,529,393	511.28

**TABLE 6. COUNTY SUMMARY
EMPLOYMENT AND TOTAL EARNINGS, BY INDUSTRY
FIRST QUARTER 2005**

NORTH AMERICAN INDUSTRY CLASSIFICATION SYSTEM INDUSTRY GROUP	NUMBER OF EMPLOYING UNITS	EMPLOYMENT			TOTAL EARNINGS	AVERAGE WEEKLY EARNINGS
		JANUARY	FEBRUARY	MARCH	JAN. - MAR. 2005	
VAN BUREN COUNTY - TOTAL	352	3,590	3,607	3,709	\$18,059,369	\$382.13
Natural Resources & Mining	10	49	51	51	242,987	371.35
Construction	45	109	107	110	653,756	462.78
Manufacturing	14	570	590	615	3,136,132	407.73
Trade, Transportation & Utilities	103	809	794	805	3,811,119	365.24
Wholesale Trade	16	56	57	62	385,874	508.84
Retail Trade	64	606	590	599	2,504,221	321.95
Transportation, Warehousing & Utilities	23	147	147	144	921,024	485.26
Information	8	45	45	45	326,072	557.39
Financial Activities	31	116	113	114	766,830	515.92
Professional & Business Services	28	82	84	90	424,641	382.79
Education & Health Services	35	566	568	579	3,118,773	420.15
Leisure & Hospitality	29	373	393	425	1,104,097	213.93
Other Services	28	69	67	71	302,278	336.99
Local Government	13	707	701	706	3,640,948	397.45
State Government	8	95	94	98	531,736	427.56
WASHINGTON COUNTY - TOTAL	5,178	85,764	85,851	86,582	\$643,236,477	\$574.91
Natural Resources & Mining	37	437	438	450	3,023,363	526.57
Construction	579	4,839	4,865	4,949	37,781,113	595.01
Manufacturing	229	15,463	15,418	15,476	114,018,608	567.59
Trade, Transportation & Utilities	1,329	20,004	19,875	20,072	145,510,361	560.11
Wholesale Trade	345	3,678	3,655	3,684	42,663,847	893.66
Retail Trade	779	11,276	11,157	11,292	59,772,141	409.00
Transportation, Warehousing & Utilities	205	5,050	5,063	5,096	43,074,373	653.58
Information	102	1,536	1,553	1,560	13,970,580	693.48
Financial Activities	605	3,713	3,731	3,808	37,566,156	770.45
Professional & Business Services	843	7,979	8,084	8,175	81,385,016	774.86
Education & Health Services	523	9,706	9,774	9,822	74,687,303	588.20
Leisure & Hospitality	483	8,642	8,681	8,804	24,544,538	216.79
Other Services	364	1,895	1,892	1,930	10,059,262	406.05
Local & State Government	84	11,550	11,540	11,536	100,690,177	671.06

**TABLE 6. COUNTY SUMMARY
EMPLOYMENT AND TOTAL EARNINGS, BY INDUSTRY
FIRST QUARTER 2005**

NORTH AMERICAN INDUSTRY CLASSIFICATION SYSTEM INDUSTRY GROUP	NUMBER OF EMPLOYING UNITS	EMPLOYMENT			TOTAL EARNINGS	AVERAGE WEEKLY EARNINGS
		JANUARY	FEBRUARY	MARCH	JAN. - MAR. 2005	
WHITE COUNTY - TOTAL	1,513	23,404	23,664	23,601	\$151,583,370	\$494.99
Natural Resources & Mining	34	259	262	278	1,674,669	483.68
Construction	162	947	993	1,029	6,500,757	505.28
Manufacturing	80	3,995	3,960	3,827	33,047,672	647.29
Trade, Transportation & Utilities	477	5,843	5,856	5,910	36,205,952	474.49
Wholesale Trade	99	560	570	582	4,032,926	543.62
Retail Trade	295	3,125	3,116	3,151	13,917,745	341.97
Transportation, Warehousing & Utilities	83	2,158	2,170	2,177	18,255,281	647.62
Information	21	232	234	235	1,459,053	480.32
Financial Activities	159	869	856	859	5,657,642	505.27
Professional & Business Services	137	1,193	1,212	1,155	6,755,023	437.88
Education & Health Services	165	4,206	4,266	4,251	32,568,129	590.72
Leisure & Hospitality	112	1,979	2,102	2,128	4,620,030	171.71
Other Services	101	591	581	601	3,288,565	428.03
Local Government	46	2,558	2,587	2,576	15,325,924	458.07
State Government	19	732	755	752	4,479,954	461.74
WOODRUFF COUNTY - TOTAL	174	2,014	2,071	2,078	\$11,744,002	\$439.75
Natural Resources & Mining	20	71	78	85	356,347	351.43
Construction	7	59	67	67	312,482	373.63
Manufacturing	8	456	478	473	3,038,513	498.36
Trade, Transportation & Utilities	64	506	525	543	3,159,692	463.25
Wholesale Trade	12	201	215	222	1,662,915	601.49
Retail Trade	34	215	213	220	671,374	239.09
Transportation, Warehousing & Utilities	18	90	97	101	825,403	661.38
Financial Activities	14	62	58	59	359,757	463.80
Professional & Business Services	3	6	6	5	38,242	519.12
Education & Health Services	25	185	184	190	1,137,685	469.66
Leisure & Hospitality	8	64	61	60	104,437	130.27
Local Government	10	516	528	510	2,821,644	419.01
State Government	7	57	54	54	287,435	402.01
Other	8	32	32	32	127,768	307.13

**TABLE 6. COUNTY SUMMARY
EMPLOYMENT AND TOTAL EARNINGS, BY INDUSTRY
FIRST QUARTER 2005**

NORTH AMERICAN INDUSTRY CLASSIFICATION SYSTEM INDUSTRY GROUP	NUMBER OF EMPLOYING UNITS	EMPLOYMENT			TOTAL EARNINGS	AVERAGE WEEKLY EARNINGS
		JANUARY	FEBRUARY	MARCH	JAN. - MAR. 2005	
YELL COUNTY - TOTAL	400	6,998	7,057	7,133	\$38,508,305	\$419.41
Natural Resources & Mining	26	330	329	335	1,880,529	436.59
Construction	51	359	389	402	2,160,054	433.46
Manufacturing	25	2,951	2,960	3,005	16,738,966	433.25
Trade, Transportation & Utilities	91	621	623	624	2,752,213	340.00
Wholesale Trade	12	28	28	27	153,306	426.24
Retail Trade	59	500	502	504	1,872,495	286.93
Transportation, Warehousing & Utilities	20	93	93	93	726,412	600.84
Information	5	51	51	51	554,724	836.69
Financial Activities	38	192	193	196	1,223,312	485.89
Professional & Business Services	33	246	239	237	2,244,513	717.40
Education & Health Services	43	469	485	475	2,172,239	350.79
Leisure & Hospitality	30	362	375	386	822,206	168.96
Other Services	17	61	61	62	246,619	309.30
Local Government	28	1,248	1,246	1,250	7,140,348	440.11
State Government	13	108	106	110	572,582	407.82
REST-OF-STATE-TOTAL	4,661	14,948	15,343	15,701	194,159,897	\$974.22
Natural Resources & Mining	59	246	320	262	2,293,152	639.12
Construction	600	1,979	1,998	2,359	16,694,432	608.04
Manufacturing	50	171	171	178	1,588,378	704.90
Trade, Transportation & Utilities	1,902	6,669	6,794	6,831	116,782,921	1327.97
Wholesale Trade	1,631	5,421	5,556	5,571	106,189,504	1480.86
Retail Trade	103	524	512	513	4,364,406	650.21
Transportation, Warehousing & Utilities	168	724	726	747	6,229,011	654.28
Information	109	238	271	250	3,132,707	952.48
Financial Activities	266	564	561	572	7,610,307	1034.90
Professional & Business Services	1,369	3,867	3,987	4,024	35,125,329	682.43
Education & Health Services	121	677	707	689	6,256,154	696.44
Leisure & Hospitality	40	69	74	65	436,569	484.36
Other	145	468	460	471	4,239,948	699.39

TABLE 7. FEDERAL GOVERNMENT EMPLOYMENT AND EARNINGS IN ARKANSAS

NORTH AMERICAN INDUSTRY CLASSIFICATION SYSTEM INDUSTRY GROUP	NUMBER OF EMPLOYING UNITS	EMPLOYMENT			TOTAL
		JANUARY	FEBRUARY	MARCH	JAN. - MAR. 2005
Manufacturing	2	20	9	9	\$301,253
Trade, Transportation & Utilities	450	6,838	6,754	6,623	69,434,706
Information	1	28	29	31	316,922
Financial Activities	24	183	180	180	3,049,765
Professional & Business Services	32	795	799	802	13,061,787
Education & Health Services	6	4,057	4,070	4,048	64,376,892
Leisure & Hospitality	16	199	199	204	1,879,666
Other Services	2	286	287	233	969,568
Public Administration	453	8,362	8,358	8,374	120,361,531
TOTAL	986	20,768	20,685	20,504	\$273,752,090

**TABLE 8. WORKFORCE INFORMATION AREA, SUMMARY
EMPLOYMENT AND TOTAL EARNINGS, BY INDUSTRY
FIRST QUARTER 2005**

NORTH AMERICAN INDUSTRY CLASSIFICATION SYSTEM INDUSTRY GROUP	NUMBER OF EMPLOYING UNITS	EMPLOYMENT			TOTAL EARNINGS	AVERAGE WEEKLY EARNINGS
		JANUARY	FEBRUARY	MARCH	JAN. - MAR. 2004	
CENTRAL WORKFORCE INFORMATION*	5,456	68,498	69,089	69,903	\$460,816,663	\$512.52
Natural Resources & Mining	151	704	722	790	4,882,931	508.50
Construction	784	5,032	5,033	5,154	34,290,768	519.96
Manufacturing	250	8,496	8,530	8,582	78,520,187	707.59
Trade, Transportation & Utilities	1,433	13,862	13,831	13,987	78,979,388	437.28
Information	78	593	603	635	4,556,873	574.32
Financial Activities	571	2,613	2,600	2,608	20,062,192	591.96
Professional & Business Services	656	6,913	6,970	7,090	66,609,236	732.91
Education & Health Services	556	8,540	8,627	8,612	54,995,627	492.31
Leisure & Hospitality	414	6,875	7,104	7,270	16,841,311	182.90
Other Services	357	1,477	1,496	1,526	7,371,796	378.12
Local Government	134	9,360	9,406	9,478	64,167,377	524.28
State Government	72	4,033	4,167	4,171	29,538,977	551.02

*Note: Pulaski County is not included in the Central Workforce Information. Please refer to Page 54 for information on Pulaski County.
Central Workforce includes these counties: Faulkner, Lonoke Monroe, Prairie, and Saline.

EASTERN WORKFORCE INFORMATION	3,122	37,504	37,530	38,101	\$230,110,099	\$469.37
Natural Resources & Mining	226	999	1,011	1,193	5,073,006	365.50
Construction	195	1,052	1,063	1,119	6,439,680	459.52
Manufacturing	111	4,341	4,209	4,288	32,873,499	590.92
Trade, Transportation & Utilities	878	9,977	9,940	10,028	64,931,880	500.39
Information	40	347	345	338	2,542,092	569.55
Financial Activities	269	1,596	1,589	1,586	12,018,247	581.31
Professional & Business Services	272	1,395	1,395	1,338	7,763,384	434.00
Education & Health Services	448	5,164	5,175	5,196	30,328,980	450.53
Leisure & Hospitality	226	3,275	3,304	3,437	8,127,113	187.25
Other Services	251	928	941	948	4,275,599	350.26
Local Government	137	6,346	6,376	6,387	42,026,291	507.53
State Government	69	2,084	2,182	2,243	13,710,328	486.08

Eastern Workforce includes these counties: Crittenden, Cross, Lee, Phillips, and Saint Francis.

**TABLE 8. WORKFORCE INFORMATION AREA, SUMMARY
EMPLOYMENT AND TOTAL EARNINGS, BY INDUSTRY
FIRST QUARTER 2005**

NORTH AMERICAN INDUSTRY CLASSIFICATION SYSTEM INDUSTRY GROUP	NUMBER OF EMPLOYING UNITS	EMPLOYMENT			TOTAL EARNINGS	AVERAGE WEEKLY EARNINGS
		JANUARY	FEBRUARY	MARCH	JAN. - MAR. 2004	
NORTH CENTRAL WORKFORCE INFORMATION	5,231	68,128	68,705	69,153	\$410,352,898	\$459.72
Natural Resources & Mining	148	801	843	877	5,346,788	489.44
Construction	460	2,221	2,261	2,332	13,459,622	455.84
Manufacturing	300	14,172	14,174	14,034	104,288,072	567.87
Trade, Transportation & Utilities	1,579	15,241	15,214	15,325	88,851,991	447.89
Information	73	693	702	705	4,914,401	540.04
Financial Activities	498	2,490	2,469	2,488	17,135,432	531.00
Professional & Business Services	441	2,754	2,765	2,787	14,737,992	409.47
Education & Health Services	578	11,058	11,125	11,177	74,169,261	513.07
Leisure & Hospitality	443	5,488	5,679	5,893	12,509,830	169.22
Other Services	368	1,430	1,420	1,445	6,765,434	363.51
Local Government	225	9,082	9,229	9,250	50,859,010	425.84
State Government	118	2,698	2,824	2,840	17,315,065	477.85

North Central Workforce Includes these counties: Cleburne, Fulton, Independence, IZard, Jackson, Sharp, Stone, Van Buren, White, and Woodruff

NORTHEAST WORKFORCE INFORMATION	6,266	91,936	92,928	93,861	\$621,282,865	\$514.39
Natural Resources & Mining	363	1,613	1,594	1,707	9,608,785	451.24
Construction	474	2,752	2,743	2,966	17,666,223	481.84
Manufacturing	362	22,287	22,282	22,206	195,738,306	676.46
Trade, Transportation & Utilities	1,788	17,392	17,338	17,535	101,274,697	447.17
Information	88	2,535	2,567	2,532	18,228,085	551.02
Financial Activities	579	3,426	3,426	3,451	26,983,074	604.37
Professional & Business Services	608	6,139	6,585	6,753	36,547,636	433.03
Education & Health Services	788	12,351	12,422	12,496	91,342,706	565.59
Leisure & Hospitality	448	6,674	6,873	7,040	16,175,813	181.32
Other Services	438	1,715	1,742	1,776	7,707,181	339.88
Local Government	220	11,242	11,459	11,438	68,967,512	466.20
State Government	110	3,810	3,897	3,961	31,042,847	613.96

Northeast Workforce includes these counties: Clay, Craighead, Greene, Lawrence, Mississippi, Poinsett, and Randolph.

**TABLE 8. WORKFORCE INFORMATION AREA, SUMMARY
EMPLOYMENT AND TOTAL EARNINGS, BY INDUSTRY
FIRST QUARTER 2005**

NORTH AMERICAN INDUSTRY CLASSIFICATION SYSTEM INDUSTRY GROUP	NUMBER OF EMPLOYING UNITS	EMPLOYMENT			TOTAL EARNINGS	AVERAGE WEEKLY EARNINGS
		JANUARY	FEBRUARY	MARCH	JAN. - MAR. 2004	
NORTHWEST WORKFORCE INFORMATION	13,611	217,791	219,030	221,618	\$1,793,015,025	\$628.41
Natural Resources & Mining	124	1,533	1,542	1,551	11,883,615	592.82
Construction	1,635	10,626	10,781	11,051	79,528,917	565.43
Manufacturing	721	40,220	40,222	40,468	296,108,596	565.15
Trade, Transportation & Utilities	3,510	51,529	51,572	52,090	413,539,553	614.93
Information	239	3,364	3,385	3,392	29,588,422	673.32
Financial Activities	1,457	8,823	8,851	8,979	86,674,472	750.45
Professional & Business Services	1,938	30,349	30,630	30,937	434,010,373	1089.65
Education & Health Services	1,338	21,896	22,008	22,102	162,433,953	567.90
Leisure & Hospitality	1,311	18,752	19,081	19,901	53,150,789	212.45
Other Services	921	4,467	4,498	4,539	24,074,973	411.42
Local Government	298	19,414	19,567	19,745	136,829,836	537.69
State Government	119	6,818	6,893	6,863	65,191,526	731.22

Northwest Workforce includes these counties: Baxter, Benton, Boone, Carroll, Madison, Marion, Newton, Searcy, and Washington.

SOUTHEAST WORKFORCE INFORMATION	5,161	77,635	77,802	78,552	\$522,132,614	\$514.95
Natural Resources & Mining	428	2,906	3,020	3,032	18,596,293	479.06
Construction	382	3,130	3,114	3,137	24,072,282	592.17
Manufacturing	238	18,216	18,095	18,222	158,783,045	671.93
Trade, Transportation & Utilities	1,445	13,925	13,842	13,989	84,377,533	466.32
Information	69	567	565	551	3,903,657	535.26
Financial Activities	413	2,833	2,812	2,812	21,396,642	583.86
Professional & Business Services	437	3,455	3,459	3,567	27,407,225	603.45
Education & Health Services	625	10,106	10,128	10,127	60,169,235	457.34
Leisure & Hospitality	378	4,710	4,718	4,894	10,636,250	171.38
Other Services	387	1,514	1,509	1,563	7,307,818	367.73
Local Government	210	10,434	10,498	10,620	63,976,379	467.92
State Government	149	5,839	6,042	6,038	41,506,255	534.54

Southeast Workforce includes these counties: Arkansas, Ashley, Bradley, Chicot, Cleveland, Desha, Drew, Grant, Jefferson, and Lincoln.

**TABLE 8. WORKFORCE INFORMATION AREA, SUMMARY
EMPLOYMENT AND TOTAL EARNINGS, BY INDUSTRY
FIRST QUARTER 2005**

NORTH AMERICAN INDUSTRY CLASSIFICATION SYSTEM INDUSTRY GROUP	NUMBER OF EMPLOYING UNITS	EMPLOYMENT			TOTAL EARNINGS	AVERAGE WEEKLY EARNINGS
		JANUARY	FEBRUARY	MARCH	JAN. - MAR. 2004	
SOUTHWEST WORKFORCE INFORMATION	5,705	86,725	87,116	87,342	\$598,732,518	\$529.01
Natural Resources & Mining	411	2,663	2,648	2,663	20,385,426	589.96
Construction	432	3,882	3,821	3,844	29,622,197	592.01
Manufacturing	297	27,104	27,201	26,859	236,163,349	671.47
Trade, Transportation & Utilities	1,587	14,965	15,001	15,134	90,413,910	462.63
Information	84	741	740	740	5,489,067	570.33
Financial Activities	544	3,081	3,066	3,059	22,523,944	564.61
Professional & Business Services	486	3,989	4,058	4,200	35,103,957	661.46
Education & Health Services	569	8,905	8,887	8,926	49,909,448	431.08
Leisure & Hospitality	412	5,111	5,196	5,316	12,799,819	189.07
Other Services	466	2,160	2,175	2,185	9,051,183	320.36
Local Government	266	11,007	11,057	11,084	64,881,878	451.69
State Government	151	3,117	3,266	3,332	22,388,340	531.81

Southwest Workforce includes these counties: Calhoun, Columbia, Dallas, Hempstead, Howard, Lafayette, Little River, Miller, Nevada, Ouachita, Sevier, and Union.

WEST CENTRAL WORKFORCE INFORMATION	7,778	104,509	106,082	107,700	\$663,052,419	\$480.73
Construction	876	5,197	5,346	5,546	35,972,343	515.96
Manufacturing	425	20,337	20,194	20,334	143,552,807	544.28
Trade, Transportation & Utilities	1,998	21,063	21,021	21,323	138,249,284	503.16
Information	104	1,009	1,012	1,005	7,679,370	585.65
Financial Activities	809	3,865	3,851	3,876	28,819,017	573.72
Professional & Business Services	854	6,791	6,944	7,163	41,368,522	456.82
Education & Health Services	806	14,544	14,692	14,712	103,044,220	541.08
Leisure & Hospitality	732	10,928	11,953	12,453	32,117,938	209.76
Other Services	544	2,379	2,385	2,418	11,490,918	369.22
Local Government	231	11,877	11,910	11,984	75,406,452	486.47
State Government	132	4,158	4,373	4,442	29,911,209	532.07

West Central Workforce includes these counties: Clark, Conway, Garland, Hot Spring, Johnson, Montgomery, Perry, Pike, Pope, and Yell

**TABLE 8. WORKFORCE INFORMATION AREA, SUMMARY
EMPLOYMENT AND TOTAL EARNINGS, BY INDUSTRY
FIRST QUARTER 2005**

NORTH AMERICAN INDUSTRY CLASSIFICATION SYSTEM INDUSTRY GROUP	NUMBER OF EMPLOYING UNITS	EMPLOYMENT			TOTAL EARNINGS	AVERAGE
		JANUARY	FEBRUARY	MARCH	JAN. - MAR. 2004	WEEKLY EARNINGS
WESTERN WORKFORCE INFORMATION	6,120	107,075	107,590	109,044	\$765,176,234	\$545.49
Natural Resources & Mining	151	2,035	2,150	2,256	21,219,467	760.25
Construction	584	4,411	4,511	4,652	32,341,765	549.84
Manufacturing	402	29,823	29,929	30,265	232,179,034	595.22
Trade, Transportation & Utilities	1,648	21,898	21,759	21,923	142,081,080	499.97
Information	98	1,580	1,591	1,587	15,767,512	764.74
Financial Activities	625	3,737	3,711	3,731	32,030,372	661.21
Professional & Business Services	747	9,431	9,588	9,860	78,340,697	626.01
Education & Health Services	677	12,931	12,982	13,039	100,212,591	593.70
Leisure & Hospitality	501	7,429	7,517	7,752	19,461,576	197.86
Other Services	454	2,116	2,097	2,201	11,620,413	418.09
Local Government	151	9,218	9,263	9,274	63,927,543	531.53
State Government	82	2,466	2,492	2,504	15,994,184	494.63

Western Workforce includes these counties: Crawford, Franklin, Logan, Polk, Scott, and Sebastian.