

Arkansas Covered Employment & Earnings



Fourth Quarter
2004

**COVERED EMPLOYMENT AND EARNINGS
STATE OF ARKANSAS
FOURTH QUARTER 2004**

**MIKE HUCKABEE, GOVERNOR
STATE OF ARKANSAS**

**ARTEE WILLIAMS, DIRECTOR
ARKANSAS EMPLOYMENT SECURITY DEPARTMENT**

**PUBLISHED BY
BUREAU OF LABOR STATISTICS PROGRAMS
ARKANSAS EMPLOYMENT SECURITY DEPARTMENT
POST OFFICE BOX 2981
LITTLE ROCK, ARKANSAS 72203-2981
BERNADETTE COLEMAN, BLS PROGRAMS MANAGER
TELEPHONE: (501) 682-3159**

STATE OF ARKANSAS HOME PAGE: <http://www.arkansas.gov>

ARKANSAS EMPLOYMENT SECURITY DEPARTMENT HOME PAGE: <http://www.arkansas.gov/esd/>

**INTERNET SITE FOR LABOR MARKET INFORMATION:
<http://www.discoverarkansas.net>**

RELEASED: JUNE 2005

TABLE OF CONTENTS

DESCRIPTION OF DATA	Page
Industry Classification	1
Definition of Covered Employment and Earnings	2
Federal Government Employment	2
County Classification	2
Significant Developments During Fourth Quarter 2004	3

LIST OF GRAPHS AND TABLES

Graph 1	Total Covered Employment for Selected Years, Arkansas	7
Graph 2	Total Covered Earnings, by Calendar Quarter for Selected Years, Arkansas	8
Table 1	Quarterly Comparison of Covered Employment and Wages, by Industry	5
Table 2	Total Covered Employment in Arkansas, 1997-2004	6
Table 3	Total Covered Earnings, 1997-2004	9
Table 4	Total Taxable Earnings, 1997-2004	10
Table 5	State Summary - Employment and Total Earnings, by Industry, Fourth Quarter 2004	11
Table 6	County Summary - Employment and Total Earnings, by Industry, Fourth Quarter 2004	26
Table 7	Federal Government Employment and Total Earnings in Arkansas, Fourth Quarter 2004	64
Table 8	Workforce Information Area – Employment and Total Earnings, by Industry, Fourth Quarter 2004	65

EMPLOYMENT AND EARNINGS UNDER THE ARKANSAS EMPLOYMENT SECURITY LAW FOURTH QUARTER 2004

DESCRIPTION OF DATA

This publication contains covered employment and payroll data by industry and county for the Fourth Quarter 2004. These data are compiled from quarterly contribution and wage reports submitted by employers subject to the Arkansas Employment Security Law. An employing unit is a single physical location where business is conducted, production takes place, or services are provided. Employment data have been tabulated for each month of the quarter by industry under the **North American Industry Classification System** (NAICS) (see "Industry Classification" below) on a statewide, county and workforce area basis. Payroll data represent the total wages paid during the quarter, and are also shown by

industry for the State and by publishable industry groups for each county and workforce area. The tabulation of this data is a joint effort in conjunction with the U.S. Bureau of Labor Statistics. In addition, there are tables included which set out total covered employment by months, quarterly payrolls, and average weekly earnings for the years 1997 through 2004. Data contained in this publication are subject to revision. These revisions will be reflected in the 2004 Annual Covered Employment and Earnings publication. Because of industry code changes between years, substantial employment and wage shifts among industries are anticipated.

INDUSTRY CLASSIFICATION

Previously published industry data **will not** be comparable in all instances with currently published data since industry codes have been revised according to the following Manuals: (a) between January 1, 1958 and December 31, 1967, industry codes were assigned under the 1957 Standard Industrial Classification (SIC) Manual; (b) between January 1, 1968 and December 31, 1974, industry codes were assigned under the 1967 Standard Industrial Classification (SIC) Manual; (c) between January 1, 1975 and December 31, 1987, industry codes were assigned under the 1972 Standard Industrial Classification (SIC) Manual; (d) between January 1, 1988 and December 31, 2000, industry codes were assigned under the 1987 Standard Industrial Classification (SIC) Manual; and (e) since January 1, 2001, industry codes have been assigned under the 2002 North American Industry Classification System (NAICS) Manual. **The NAICS Manual represents a significant change in coding methodology as compared to the**

SIC Manual. One of the most significant changes involves how NAICS treats auxiliary units. Auxiliary units are establishments primarily engaged in performing management or support services for other establishments of the same enterprise. The SIC code for these units was based on the activity of the enterprise served. The NAICS code is based on the actual activities that the establishment performs. Comparisons of many industries **should not be made** between this publication and previous Covered Employment and Earnings publications that were based on SIC. Even though some titles are the same or similar, in nature, NAICS and SIC could differ in the classification of employers. The implementation of NAICS represents a profound change for statistical programs, and will create significant benefits along with transition obstacles for both data collectors and data users. A summary is available on the NAICS home page at <http://www.census.gov/naics>.

DEFINITION OF COVERED EMPLOYMENT AND EARNINGS

Covered Employment is the number of workers employed by employers subject to the Arkansas Employment Security Law who worked or received pay for the payroll period including the 12th of the month. An employer is subject to the law when they employ one or more employees in each of ten days during the current or preceding calendar year.

Currently excluded from coverage is employment covered by the Railroad Unemployment Insurance Act, some domestic service workers, employees of small agricultural establishments, self-employed and unpaid family workers, insurance and real estate

agents who are on commission only, and employees of churches and religious organizations except separately incorporated schools. The payroll information in this publication includes all wages and salaries paid to any covered employees by their employers including bonuses, commissions, and cash values of remuneration received in any medium other than cash. These wages include both taxable and nontaxable wages. Only the first \$10,000 paid to each worker by an employer in the calendar year is taxable under the Arkansas Employment Security Law.

FEDERAL GOVERNMENT EMPLOYMENT

Table 7 on page 64 lists the total number of civilians employed by the Federal Government in Arkansas during the Fourth Quarter 2004. Employment and wage data are set out by industry divisions. These data are obtained from required reports submitted by various

government agencies having employment in the State. Civilian Federal workers are covered by the Unemployment Compensation for Federal Employees (UCFE) program.

COUNTY CLASSIFICATION

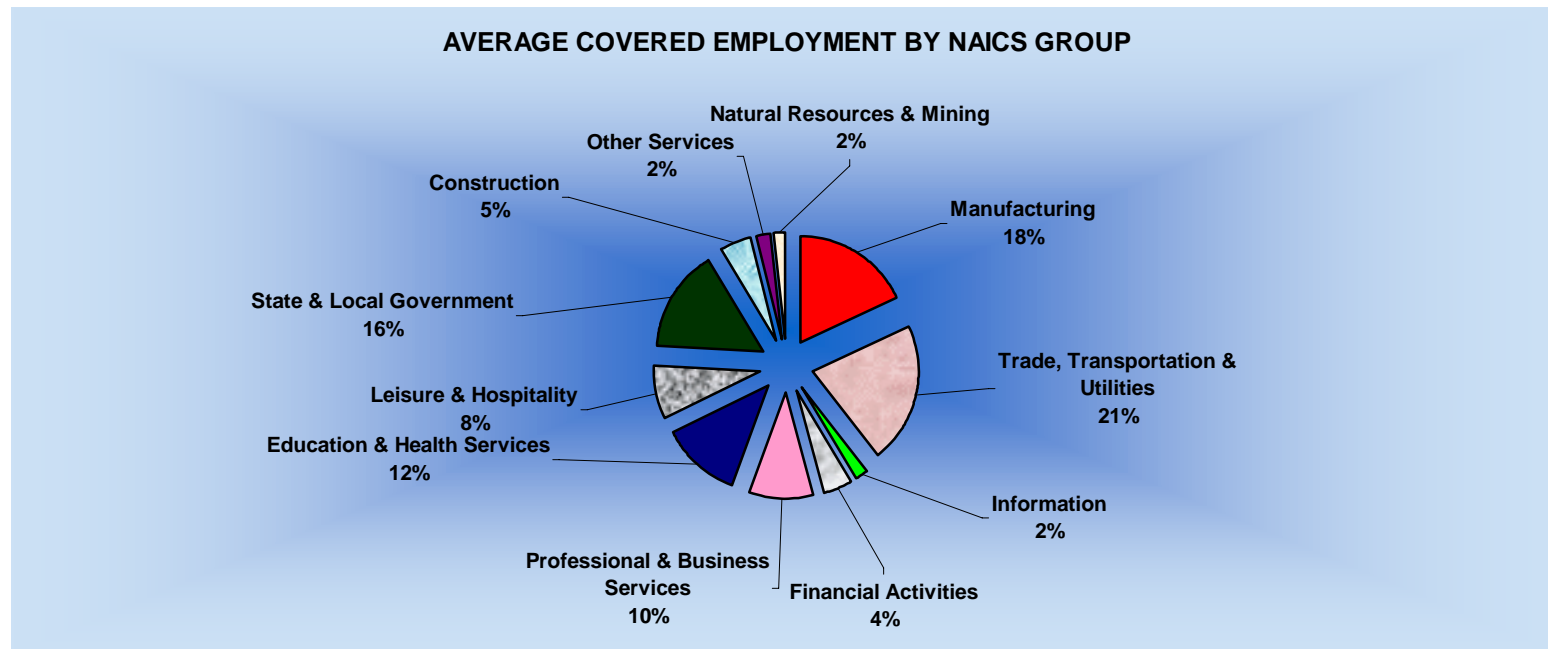
Employment and payroll data by county are classified according to the county where the workers are employed. Employers with operations in more than one county are requested to furnish this agency with a breakdown of employment and wages for at least one quarter of each year by the counties in which they operate. Many such employers submit county data with each regular contribution report. **Note:** This information is invaluable in the preparation of monthly employment and payroll data by county.

Employment and payroll data for multi - area employers who do not furnish county data each quarter of the year, are prorated by county on the basis of one quarter's information. The "rest-of-state" table that appears on page 63 of this publication includes data on firms that **did not** provide a county breakdown of employment and payrolls. It also includes sales, and all other type of personnel with no permanent place of work, as well as employment of employers with no established place of business in Arkansas.

SIGNIFICANT DEVELOPMENTS DURING FOURTH QUARTER 2004

AVERAGE EMPLOYMENT CHANGES

Covered employment averaged 1,125,983 during the Fourth Quarter 2004 (see table 1), an increase of 27,871 (+2.5%) from the previous quarter and, 14,132 (1.3%) above the average recorded one-year ago. This *over-the-year* increase is more significant when used as an economic indicator. This *over-the-year* comparison allows for the disregarding of many seasonal factors that are evident when making an *over-the-quarter* comparison.



EMPLOYMENT CHANGES FROM THIRD QUARTER 2004

Over the quarter gains were recorded in five industry groups (see table 1). State & Local Government recorded the largest quarterly gain of 29,574 employees. The increase is due to the educational facilities starting fall semester in local areas. Trade, Transportation, & Utilities increased 2,774 jobs. Retail merchants hiring temporary personnel for the upcoming holiday season was the major factor for the change in employment. Education & Health Services rose 1,734 as private schools increased employment for the on-going fall semester. Other factors for the increase included health care and

social assistance industries. Professional & Business Services (+862) and Financial Activities (+45) both recorded gains.

Losses occurred in six industry groups. Leisure & Hospitality experienced the largest drop of 3,600 employees. This was mainly due to the tourism season ending. Construction dropped 1,863 jobs as many companies have completed contracts over the summer months. Manufacturing (-1,143) continues to decline as companies downsize.

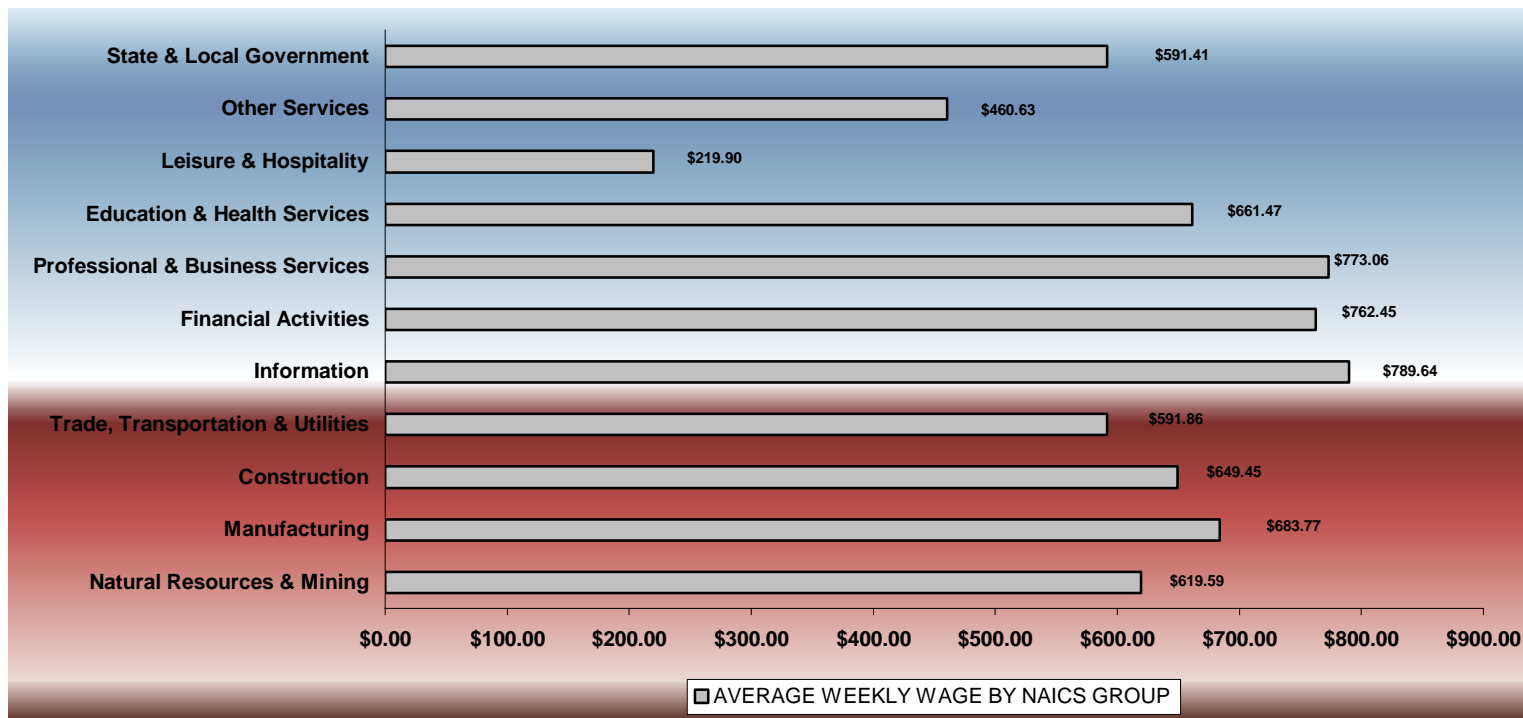
EMPLOYMENT CHANGES FROM FOURTH QUARTER 2003

Over-the-year gains were recorded in eight industry groups while three recorded losses (see table 1). Significant gains were posted in Professional & Business Services (4,040), Leisure & Hospitality (3,731) and Education & Health Services (3,241). Losses occurred in Manufacturing (-1,028), Information (-291) and Other Services (-4).

COVERED WAGES

Wages paid to covered workers totaled \$9,016,089,054 for the Fourth Quarter 2004 (see table 1), for an average weekly wage of \$615.95 (see table 5). Employees in Little River County recorded the highest average weekly wage (\$755.07), and workers in Newton County the lowest (\$337.22) (see table 6).

The Information sector recorded the highest average weekly wage for the State of Arkansas at \$789.64, while the Leisure & Hospitality sector recorded the lowest at \$219.90 (see table 5).



Note: Because of industry code changes between years, substantial employment and wage shifts among industries are anticipated.

TABLE 1. QUARTERLY COMPARISON OF COVERED EMPLOYMENT AND WAGES, BY INDUSTRY

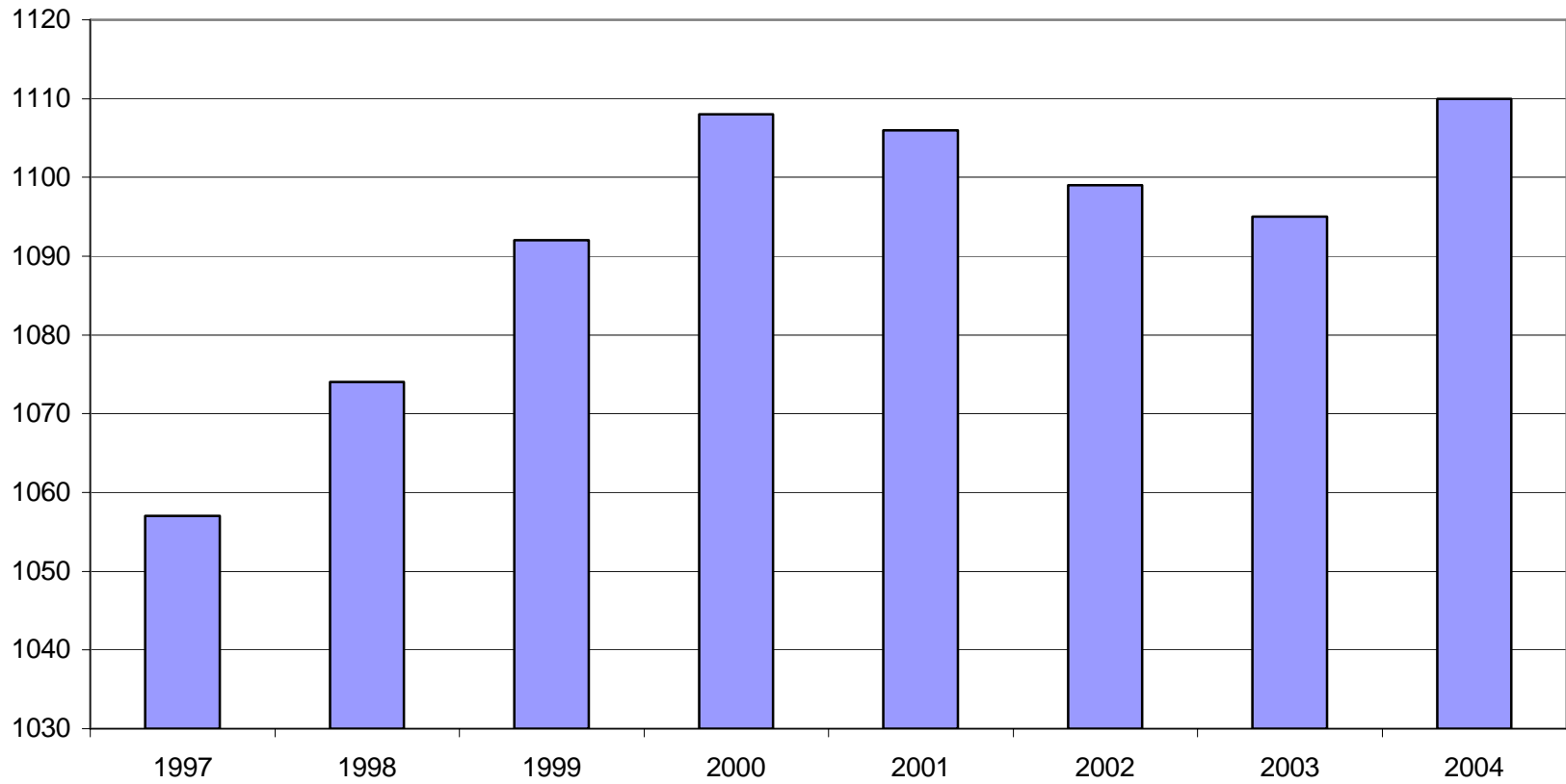
North American Industry Classification System Industry Group	Number of Employing Units	Average Covered Employment		Net Change From:		Total Wages Paid		% of Total
		October – December, 2004 Monthly Average	% of Total	Jul. – Sep. 2004	Oct. – Dec. 2003	Oct. – Dec. 2004		
Total	76,036	1,125,983	100.0	27,871	14,132	\$9,016,089,054	100.0	
Natural Resources and Mining	2,386	19,177	1.7	-9	35	154,464,745	1.7	
Agriculture, Forestry, Fishing and Hunting	2,063	15,226	1.4	75	-154	111,016,473	1.2	
Mining	323	3,951	0.4	-84	189	43,448,272	0.5	
Construction	7,484	51,713	4.6	-1,863	570	436,606,622	4.8	
Manufacturing	3,599	203,432	18.1	-1,143	-1,028	1,808,305,282	20.1	
Trade, Transportation, and Utilities	20,960	241,528	21.5	2,774	1,044	1,858,343,761	20.6	
Wholesale Trade	6,149	46,309	4.1	-133	1,608	565,622,099	6.3	
Retail Trade	11,527	133,664	11.9	2,901	812	691,722,648	7.7	
Transportation and Warehousing	2,959	55,058	4.9	66	-1,234	502,719,865	5.6	
Utilities	325	6,497	0.6	-60	-143	98,279,149	1.1	
Information	1,214	20,183	1.8	-2	-291	207,184,148	2.3	
Financial Activities	7,564	49,609	4.4	45	599	491,717,947	5.5	
Finance and Insurance	4,480	36,339	3.2	283	275	396,592,320	4.4	
Real Estate and Rental and Leasing	3,084	13,270	1.2	-238	324	95,125,627	1.1	
Professional and Business Services	10,229	110,064	9.8	862	4,040	1,106,122,671	12.3	
Professional and Technical Services	6,393	34,398	3.1	978	3,609	454,877,321	5.0	
Management of Companies and Enterprises	476	22,920	2.0	72	-1,002	387,136,292	4.3	
Administrative and Waste Services	3,360	52,746	4.7	-188	1,433	264,109,058	2.9	
Education and Health Services	8,021	138,626	12.3	1,734	3,241	1,192,054,271	13.2	
Educational Services	517	8,373	0.7	608	68	53,892,918	0.6	
Health Care and Social Assistance	7,504	130,254	11.6	1,127	3,174	1,138,161,353	12.6	
Leisure and Hospitality	5,875	90,589	8.0	-3,600	3,731	258,972,294	2.9	
Arts, Entertainment and Recreation	897	8,311	0.7	-1,975	202	31,901,684	0.4	
Accommodation and Food Services	4,978	82,278	7.3	-1,625	3,529	227,070,610	2.5	
Other Services	5,526	25,597	2.3	-503	-4	153,280,376	1.7	
State and Local Government	3,178	175,465	15.6	29,574	2,193	1,349,036,937	15.0	
Local Government	1,977	115,320	10.2	27,280	1,495	804,795,658	8.9	
State Government	1,201	60,145	5.3	2,295	698	544,241,279	6.0	
Nonclassifiable Establishments	0	0	0.0	0	0	0	0.0	

Note: Items do not necessarily add to totals because of rounding. Because of industry code changes between years, substantial employment and wage shifts among industries are anticipated.

TABLE 2. TOTAL COVERED EMPLOYMENT IN ARKANSAS

Period	1997	1998	1999	2000	2001	2002	2003	2004
Average	1,057,350	1,073,732	1,092,351	1,108,490	1,106,053	1,098,558	1,094,904	1,109,561
January	1,025,949	1,050,970	1,065,920	1,089,956	1,096,009	1,081,635	1,082,740	1,091,643
February	1,034,361	1,057,593	1,074,315	1,096,126	1,101,616	1,086,793	1,084,880	1,097,370
March	1,046,551	1,066,099	1,084,653	1,109,157	1,112,143	1,098,500	1,092,172	1,108,001
April	1,057,633	1,074,416	1,093,574	1,111,543	1,115,526	1,103,399	1,095,341	1,110,784
May	1,067,078	1,083,133	1,098,539	1,116,779	1,119,815	1,111,998	1,103,099	1,116,986
June	1,066,728	1,086,125	1,101,748	1,121,245	1,119,734	1,112,028	1,099,688	1,117,663
July	1,028,510	1,046,396	1,062,563	1,075,096	1,071,830	1,065,697	1,056,155	1,073,136
August	1,050,656	1,063,680	1,081,260	1,096,841	1,094,068	1,086,011	1,080,681	1,096,390
September	1,075,759	1,088,772	1,108,212	1,123,735	1,115,996	1,113,148	1,108,905	1,124,811
October	1,079,093	1,089,836	1,110,604	1,122,884	1,110,994	1,108,447	1,112,900	1,123,901
November	1,076,715	1,087,855	1,112,003	1,120,620	1,109,012	1,107,611	1,110,041	1,125,910
December	1,079,166	1,089,913	1,114,823	1,117,892	1,105,887	1,107,425	1,112,243	1,128,139

AVERAGE TOTAL COVERED EMPLOYMENT GRAPH 1
In Thousands



TOTAL COVERED EARNINGS BY CALENDAR QUARTER, GRAPH 2
In Thousands

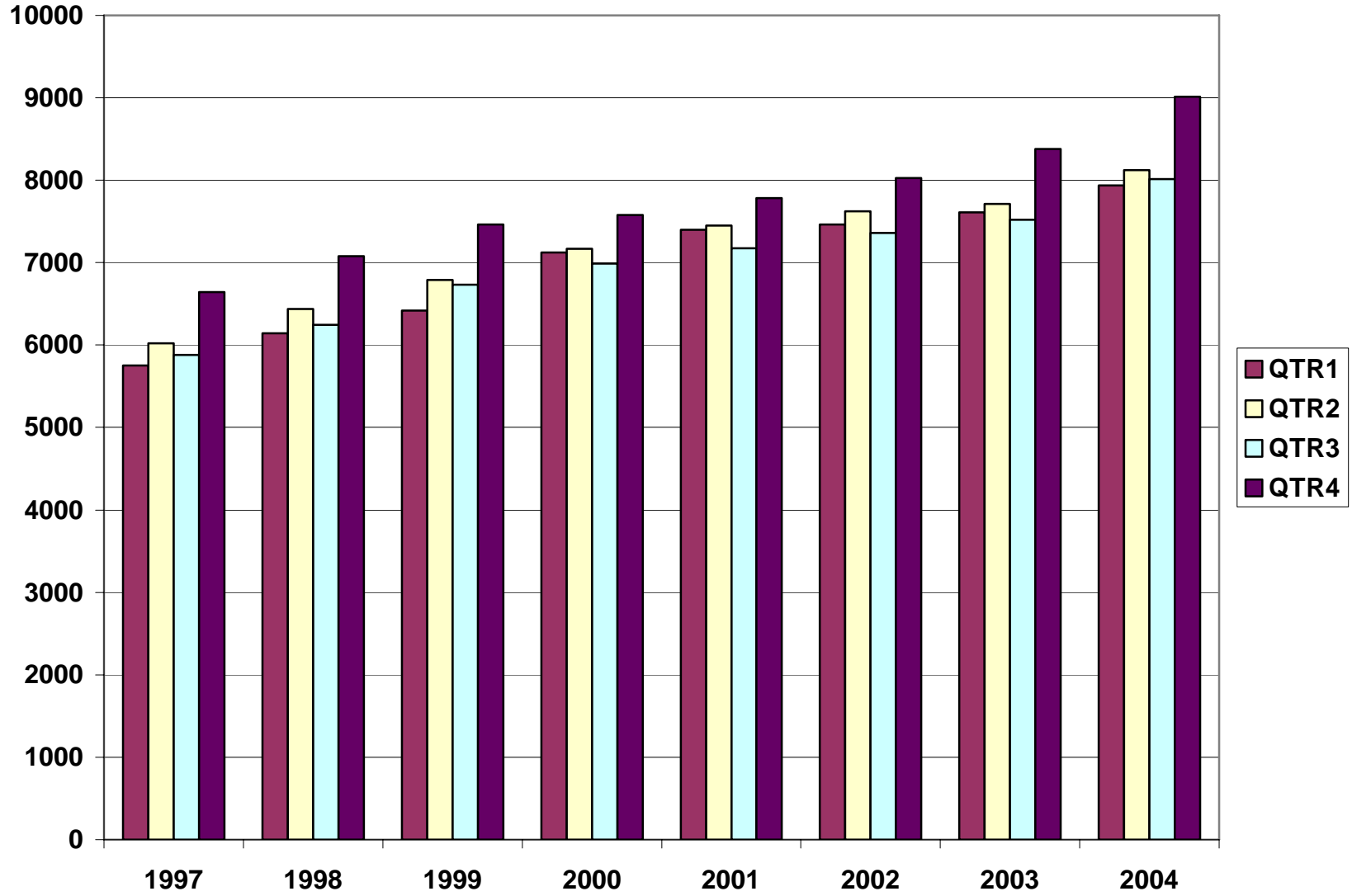


TABLE 3. TOTAL COVERED EARNINGS, 1997 - 2004

Period	1997	1998	1999	2000
Total	\$24,296,555,335	\$25,914,345,060	\$27,407,925,462	\$28,853,825,155
January - March	5,751,056,136	6,145,178,755	6,418,456,638	7,122,666,917
April - June	6,021,537,518	6,441,129,069	6,791,960,679	7,166,110,114
July - September	5,877,681,886	6,246,775,598	6,733,480,079	6,986,103,157
October - December	6,646,279,795	7,081,261,638	7,464,028,066	7,578,944,967
Average Weekly Earnings	441.90	464.13	482.51	500.57
Period	2001	2002	2003	2004
Total	\$29,807,669,666	\$30,472,854,103	\$31,226,612,657	\$33,087,725,734
January - March	7,398,887,532	7,465,250,305	7,608,130,008	7,935,999,703
April - June	7,448,023,298	7,621,878,775	7,714,813,038	8,122,682,674
July - September	7,177,293,061	7,361,666,511	7,522,456,991	8,012,954,303
October - December	7,783,465,775	8,024,058,512	8,381,212,620	9,016,089,054
Average Weekly Earnings	518.26	533.44	548.46	573.47

TABLE 4. TOTAL TAXABLE EARNINGS, 1997 - 2004

Period	1997	1998	1999	2000
Total	\$8,262,066,213	\$8,554,973,370	\$8,807,445,422	\$9,048,033,534
Jan.-March	3,871,667,342	4,063,795,529	4,203,067,856	4,560,814,012
Apr.-June	2,223,918,770	2,271,303,325	2,325,649,764	2,260,741,187
July-Sept.	1,208,701,615	1,236,054,184	1,267,562,743	1,250,850,348
Oct.-Dec.	957,778,486	983,820,332	1,011,165,059	975,627,987
Period	2001	2002	2003	2004
Total	\$9,003,189,480	\$8,887,270,978	\$9,155,945,780	\$9,754,357,724
Jan.-March	4,670,296,360	4,668,534,587	4,737,918,796	4,942,118,249
Apr.-June	2,219,485,263	2,162,971,435	2,270,519,362	2,459,193,434
July-Sept.	1,190,098,737	1,158,197,858	1,188,784,400	1,321,455,997
Oct.-Dec.	923,309,120	897,567,098	958,723,222	1,031,590,044

**TABLE 5. STATEWIDE SUMMARY
EMPLOYMENT AND TOTAL EARNINGS, BY INDUSTRY
FOURTH QUARTER 2004**

NORTH AMERICAN INDUSTRY CLASSIFICATION SYSTEM INDUSTRY GROUPS	NUMBER OF EMPLOYING UNITS	EMPLOYMENT			TOTAL EARNINGS	AVERAGE
		OCTOBER	NOVEMBER	DECEMBER	OCT. - DEC. 2004	WEEKLY EARNINGS
TOTAL, ALL INDUSTRIES	76,036	1,123,901	1,125,910	1,128,139	\$9,016,089,054	\$615.95
NATURAL RESOURCES & MINING	2,386	19,810	19,098	18,623	\$154,464,745	\$619.59
11 AGRICULTURE, FORESTRY, FISHING & HUNTING	2,063	15,839	15,165	14,674	\$111,016,473	\$560.86
111 CROP PRODUCTION	737	4,447	4,080	3,779	\$25,521,080	\$478.59
1111 Oilseed and Grain Farming	450	2,311	2,152	2,042	13,400,422	475.39
1112 Vegetable and Melon Farming	8	91	82	53	311,303	317.87
1113 Fruit and Tree Nut Farming	9	65	67	74	334,607	374.84
1114 Greenhouse & Nursery Production	48	303	273	286	2,122,531	568.23
1119 Other Crop Farming	222	1,677	1,506	1,324	9,352,217	478.86
112 ANIMAL PRODUCTION	269	3,826	3,802	3,769	\$32,483,324	\$657.73
1121 Cattle Ranching and Farming	76	398	396	394	3,452,548	670.66
1123 Poultry and Egg Production	94	2,638	2,639	2,634	22,686,309	661.78
1125 Animal Aquaculture	68	541	517	483	4,319,087	646.80
Other	31	249	250	258	2,025,380	617.43
113 FORESTRY AND LOGGING	593	3,521	3,437	3,369	\$24,540,534	\$548.39
1131 Timber Tract Operations	45	268	269	271	2,283,356	652.14
1132 Forest Nurseries & Gathering of Forest Products	6	31	31	31	268,123	665.32
1133 Logging	542	3,222	3,137	3,067	21,989,055	538.34
OTHER	464	4,045	3,846	3,757	\$28,471,535	\$564.08
21 MINING	323	3,971	3,933	3,949	\$43,448,272	\$845.91
211 OIL AND GAS EXTRACTION	74	367	367	376	\$5,231,877	\$1,087.71
212 MINING (EXCEPT OIL AND GAS)	109	1,989	1,977	1,980	\$20,092,484	\$779.81
213 SUPPORT ACTIVITIES FOR MINING	140	1,615	1,589	1,593	\$18,123,911	\$871.89

**TABLE 5. STATEWIDE SUMMARY
EMPLOYMENT AND TOTAL EARNINGS, BY INDUSTRY
FOURTH QUARTER 2004**

NORTH AMERICAN INDUSTRY CLASSIFICATION SYSTEM INDUSTRY GROUPS		NUMBER OF	EMPLOYMENT			TOTAL EARNINGS	AVERAGE
		EMPLOYING UNITS	OCTOBER	NOVEMBER	DECEMBER	OCT. - DEC. 2004	WEEKLY EARNINGS
CONSTRUCTION		7,484	52,191	51,688	51,261	\$436,606,622	\$649.45
236	CONSTRUCTION OF BUILDINGS	2,019	11,960	11,936	12,040	\$120,869,430	\$776.18
2361	Residential Building Construction	1,411	4,221	4,172	4,304	34,593,789	628.75
2362	Nonresidential Building Construction	608	7,739	7,764	7,736	86,275,641	856.74
237	HEAVY & CIVIL ENGINEERING CONSTRUCTION	895	9,953	9,557	9,178	\$81,779,086	\$657.84
2371	Utility System Construction	426	4,645	4,567	4,474	38,961,714	656.96
2372	Land Subdivision	120	391	400	420	4,250,297	809.94
2373	Highway, Street & Bridge Construction	244	3,997	3,836	3,657	32,236,491	647.45
2379	Other Heavy Construction	105	920	754	627	6,330,584	634.90
238	SPECIALTY TRADE CONTRACTORS	4,570	30,278	30,195	30,043	\$233,958,106	\$596.47
2381	Building Foundation & Exterior Contractors	916	5,945	5,792	5,674	39,121,620	518.53
2382	Building Equipment Contractors	1,991	14,341	14,450	14,594	127,717,545	679.34
2383	Building Finishing Contractors	846	4,932	5,016	4,965	33,694,422	521.40
2389	Other Specialty Trade Contractors	817	5,060	4,937	4,810	33,424,519	520.93
MANUFACTURING		3,599	203,728	203,404	203,164	\$1,808,305,282	\$683.77
311	FOOD MANUFACTURING	294	52,130	52,103	51,948	\$377,122,870	\$557.23
3111	Animal Food Manufacturing	49	1,394	1,401	1,407	25,167,701	1382.18
3112	Grain and Oilseed Milling	31	2,545	2,439	2,432	22,131,205	688.67
3114	Fruit, Vegetable & Specialty Food	39	6,565	6,579	6,697	59,255,804	689.20
3115	Dairy Product Manufacturing	10	722	715	711	6,285,065	675.23
3116	Animal Slaughtering & Processing	86	35,609	35,632	35,372	221,047,249	478.47
3118	Bakeries and Tortilla Manufacturing	52	3,402	3,388	3,372	26,967,238	612.40
3119	Other Food Manufacturing	19	1,768	1,815	1,821	15,633,465	667.60
	Other	8	125	134	136	635,143	371.07
312	BEVERAGE & TOBACCO PRODUCT MFG.	37	1,245	1,240	1,235	\$12,428,372	\$770.99
313	TEXTILE MILLS	14	367	369	367	\$3,926,159	\$821.43
3132	Fabric Mills	4	296	299	301	3,514,473	905.17
3133	Textile & Fabric Finishing Mills	10	71	70	66	411,686	458.96

**TABLE 5. STATEWIDE SUMMARY
EMPLOYMENT AND TOTAL EARNINGS, BY INDUSTRY
FOURTH QUARTER 2004**

NORTH AMERICAN INDUSTRY CLASSIFICATION SYSTEM INDUSTRY GROUPS		NUMBER OF EMPLOYING UNITS	EMPLOYMENT			TOTAL EARNINGS	AVERAGE
			OCTOBER	NOVEMBER	DECEMBER	OCT. - DEC. 2004	WEEKLY EARNINGS
314	TEXTILE PRODUCT MILLS	59	1,549	1,552	1,555	14,575,103	\$722.40
315	APPAREL MANUFACTURING	37	2,108	2,124	2,135	\$12,058,363	\$437.05
3152	Cut & Sew Apparel Manufacturing	30	893	887	875	4,747,721	412.67
	Other	7	1,215	1,237	1,260	7,310,642	454.49
316	LEATHER & ALLIED PRODUCT MANUFACTURING	21	2,559	2,561	2,589	\$14,920,991	\$446.66
3162	Footwear Manufacturing	10	2,358	2,364	2,395	13,300,603	431.27
3169	Other Leather Product Manufacturing	11	201	197	194	1,620,388	631.65
321	WOOD PRODUCT MANUFACTURING	399	13,834	13,708	13,670	\$112,451,049	\$629.68
3211	Sawmills and Wood Preservation	185	6,172	6,070	6,081	52,142,010	656.70
3212	Veneer & Engineered Wood Products	48	3,337	3,285	3,284	30,700,484	715.20
3219	Other Wood Product Manufacturing	166	4,325	4,353	4,305	29,608,555	526.28
322	PAPER MANUFACTURING	89	12,212	12,172	12,156	\$153,961,503	\$972.35
3221	Pulp, Paper & Paperboard Mills	12	4,756	4,714	4,693	77,612,692	1264.61
3222	Converted Paper Product Manufacturing	77	7,456	7,458	7,463	76,348,811	787.37
323	PRINTING & RELATED SUPPORT ACTIVITIES	309	4,822	4,823	4,816	\$44,729,150	\$713.79
324	PETROLEUM AND COAL PRODUCTS MFG.	21	928	935	936	\$12,864,679	\$1,060.65
325	CHEMICAL MANUFACTURING	121	5,137	5,140	5,177	\$68,366,476	\$1,020.89
3251	Basic Chemical Manufacturing	25	1,631	1,643	1,651	23,449,871	1098.78
3252	Resin, Rubber & Artificial Fibers	8	292	289	298	3,847,713	1010.16
3253	Agricultural Chemical Manufacturing	24	411	414	426	5,507,912	1016.03
3254	Pharmaceutical & Medicine Manufacturing	13	136	134	136	1,126,723	640.43
3255	Paint, Coating & Adhesive Manufacturing	7	211	209	207	2,628,543	967.44
3256	Cleaning Compound & Toiletry Manufacturing	19	1,073	1,069	1,066	14,493,502	1042.60
3259	Other Chemical Preparation Manufacturing	25	1,383	1,382	1,393	17,312,212	960.83
326	PLASTICS & RUBBER PRODUCTS MFG.	182	13,055	13,069	13,129	\$128,656,422	\$756.37
3261	Plastics Product Manufacturing	138	7,614	7,611	7,564	61,026,804	617.98
3262	Rubber Product Manufacturing	44	5,441	5,458	5,565	67,629,618	947.94

**TABLE 5. STATEWIDE SUMMARY
EMPLOYMENT AND TOTAL EARNINGS, BY INDUSTRY
FOURTH QUARTER 2004**

NORTH AMERICAN INDUSTRY CLASSIFICATION SYSTEM INDUSTRY GROUPS		NUMBER OF	EMPLOYMENT			TOTAL EARNINGS	AVERAGE
		EMPLOYING UNITS	OCTOBER	NOVEMBER	DECEMBER	OCT. - DEC. 2004	WEEKLY EARNINGS
327	NONMETALLIC MINERAL PRODUCT MFG.	257	4,437	4,406	4,452	\$40,270,826	\$699.00
3271	Clay Product & Refractory Manufacturing	19	544	529	523	4,932,213	713.16
3272	Glass & Glass Product Manufacturing	14	432	420	412	3,751,674	684.95
3273	Cement & Concrete Product Manufacturing	189	2,561	2,561	2,611	22,327,451	666.30
3274	Lime & Gypsum Product Manufacturing	3	397	389	394	4,686,257	916.48
3279	Other Nonmetallic Mineral Products	32	503	507	512	4,573,231	693.40
331	PRIMARY METAL MANUFACTURING	66	7,945	7,947	7,975	\$99,424,619	\$961.33
3311	Iron & Steel Mills and Ferroalloys	7	2,058	2,065	2,073	42,537,112	1584.29
3312	Purchased Steel Product Manufacturing	13	2,167	2,137	2,110	20,487,180	737.11
3313	Alumina & Aluminum Production	20	1,686	1,698	1,740	18,161,947	817.96
3314	Other Nonferrous Metal Production	10	696	701	701	5,735,507	630.88
3315	Foundries	16	1,338	1,346	1,351	12,502,873	715.06
332	FABRICATED METAL PRODUCT MANUFACTURING	572	17,838	17,878	17,857	\$167,009,182	\$719.40
3321	Forging & Stamping	16	837	841	839	6,996,111	641.43
3322	Cutlery & Hand Tool Manufacturing	17	1,303	1,299	1,294	12,920,557	765.31
3323	Architectural & Structural Metals	184	4,974	4,947	4,953	47,315,269	734.09
3324	Boilers, Tanks & Shipping Containers	19	1,104	1,103	1,103	10,320,680	719.55
3325	Hardware Manufacturing	11	437	438	439	3,201,895	562.33
3326	Spring & Wire Product Manufacturing	17	908	915	909	6,715,494	567.25
3327	Machine Shops & Threaded Products	201	1,634	1,645	1,652	14,664,045	686.27
3328	Coating, Engraving & Heat Treating Metals	36	988	980	987	8,046,461	628.38
3329	Other Fabricated Metal Product Manufacturing	71	5,653	5,710	5,681	56,828,670	769.44
333	MACHINERY MANUFACTURING	253	13,728	13,712	13,769	120,063,248	\$672.35
3331	Agri., Construction & Mining Machinery	37	2,754	2,790	2,840	18,860,870	519.14
3333	Commercial & Service Industry Machinery	25	1,050	1,052	1,046	10,917,642	800.34
3334	HVAC & Commercial Refrigeration Equipment	26	4,370	4,324	4,337	38,021,454	673.33
3335	Metalworking Machinery Manufacturing	80	1,489	1,497	1,503	14,634,022	752.30
3339	Other General Purpose Machinery Manufacturing	54	3,195	3,195	3,198	28,554,344	687.26
	Other	31	870	854	845	9,074,916	815.19

**TABLE 5. STATEWIDE SUMMARY
EMPLOYMENT AND TOTAL EARNINGS, BY INDUSTRY
FOURTH QUARTER 2004**

NORTH AMERICAN INDUSTRY CLASSIFICATION SYSTEM INDUSTRY GROUPS	NUMBER OF EMPLOYING UNITS	EMPLOYMENT			TOTAL EARNINGS	AVERAGE
		OCTOBER	NOVEMBER	DECEMBER	OCT. - DEC. 2004	WEEKLY EARNINGS
334 COMPUTER & ELECTRONIC PRODUCT MFG.	70	6,298	6,212	6,142	\$56,403,870	\$697.85
3343 Audio & Video Equipment Manufacturing	10	1,574	1,530	1,526	14,112,268	703.39
3344 Semiconductors & Electronic Components	24	1,997	2,000	1,997	17,774,069	684.30
3345 Electronic Instrument Manufacturing	22	1,257	1,257	1,267	9,954,643	607.57
Other	14	1,470	1,425	1,352	14,562,890	791.30
335 ELECTRICAL EQUIPMENT & APPLIANCES	68	13,157	13,148	12,976	\$120,892,353	\$710.22
3351 Electric Lighting Equipment Manufacturing	14	640	648	646	6,117,151	729.91
3353 Electrical Equipment Manufacturing	28	5,097	5,087	5,048	47,930,361	726.16
Other	26	7,420	7,413	7,282	66,844,841	697.52
336 TRANSPORTATION EQUIPMENT MANUFACTURING	186	16,382	16,467	16,579	\$143,544,425	\$670.18
3362 Motor Vehicle Body & Trailer Manufacturing	46	3,363	3,405	3,389	27,629,270	627.74
3363 Motor Vehicle Parts Manufacturing	68	7,121	7,132	7,137	55,027,119	593.67
3364 Aerospace Product & Parts Manufacturing	32	3,148	3,181	3,190	39,359,418	954.19
3366 Ship & Boat Building	22	1,656	1,671	1,667	11,749,108	542.92
Other	18	1,094	1,078	1,196	9,779,510	670.07
337 FURNITURE & RELATED PRODUCT MFG.	269	7,717	7,641	7,577	\$57,103,854	\$574.57
3371 Household & Institutional Furniture	221	5,101	5,104	5,111	38,142,259	574.70
3372 Office Furniture & Fixtures Manufacturing	38	2,465	2,387	2,313	18,081,052	582.35
3379 Other Furniture Related Product Manufacturing	10	151	150	153	880,543	447.58
339 MISCELLANEOUS MANUFACTURING	275	6,280	6,197	6,124	\$47,531,768	\$589.69
3391 Medical Equipment & Supplies Manufacturing	95	2,365	2,362	2,350	20,578,043	671.02
3399 Other Miscellaneous Manufacturing	180	3,915	3,835	3,774	26,953,725	539.75

**TABLE 5. STATEWIDE SUMMARY
EMPLOYMENT AND TOTAL EARNINGS, BY INDUSTRY
FOURTH QUARTER 2004**

NORTH AMERICAN INDUSTRY CLASSIFICATION SYSTEM INDUSTRY GROUPS		NUMBER OF	EMPLOYMENT			TOTAL EARNINGS	AVERAGE
		EMPLOYING UNITS	OCTOBER	NOVEMBER	DECEMBER	OCT. - DEC. 2004	WEEKLY EARNINGS
TRADE, TRANSPORTATION & UTILITIES		20,960	238,889	241,458	244,236	\$1,858,343,761	\$591.86
42	WHOLESALE TRADE	6,149	46,155	46,167	46,604	\$565,622,099	\$939.55
423	MERCHANT WHOLESALERS, DURABLE GOODS	2,078	21,317	21,291	21,504	\$245,667,679	\$884.27
4231	Motor Vehicle & Part Merchant Wholesalers	236	2,645	2,653	2,688	24,779,884	716.06
4232	Furniture & Furnishing Merchant Wholesalers	57	388	383	390	4,124,203	819.76
4233	Lumber & Supply Merchant Wholesalers	162	1,838	1,809	1,826	19,774,498	833.79
4234	Commercial Goods Merchant Wholesalers	245	2,302	2,329	2,381	33,642,444	1107.19
4235	Metal & Mineral Merchant Wholesalers	53	764	752	753	8,179,403	831.89
4236	Electric Goods Merchant Wholesalers	169	2,198	2,167	2,183	35,332,320	1245.21
4237	Hardware & Plumbing Merchant Wholesalers	231	2,261	2,293	2,286	23,771,029	801.99
4238	Machinery & Supply Merchant Wholesalers	709	7,197	7,204	7,283	77,893,015	828.97
4239	Misc. Durable Goods Merchant Wholesalers	216	1,724	1,701	1,714	18,170,883	815.97
424	MERCHANT WHOLESALERS, NONDURABLE GOODS	1,288	16,342	16,286	16,400	\$161,406,555	\$759.72
4241	Paper & Paper Product Merchant Wholesalers	79	1,308	1,287	1,297	12,965,857	768.79
4242	Druggists' Goods Merchant Wholesalers	53	962	981	990	9,307,562	732.32
4243	Apparel & Piece Goods Merchant Wholesalers	39	440	445	443	4,577,222	795.39
4244	Grocery Product Merchant Wholesalers	352	5,259	5,248	5,338	57,600,051	838.90
4245	Farm Product Merchant Wholesalers	81	999	951	940	6,304,628	503.43
4246	Chemical Merchant Wholesalers	80	429	431	421	5,022,269	904.75
4247	Petroleum Merchant Wholesalers	157	1,410	1,406	1,410	13,252,864	723.70
4248	Alcoholic Beverage Merchant Wholesalers	39	1,136	1,140	1,145	13,229,982	892.45
4249	Misc. Nondurable Goods Merchant Wholesalers	408	4,399	4,397	4,416	39,146,120	683.75
425	ELECTRONIC MARKETS & AGENTS & BROKERS	2,783	8,496	8,590	8,700	\$158,547,865	\$1,418.91
44-45	RETAIL TRADE	11,527	131,206	134,056	135,731	\$691,722,648	\$398.08
441	MOTOR VEHICLE & PARTS DEALERS	1,744	17,709	17,578	17,512	\$151,834,764	\$663.63
4411	Automobile Dealers	742	10,783	10,712	10,698	106,539,057	763.70
4412	Other Motor Vehicle Dealers	196	1,357	1,310	1,306	10,867,760	631.25
4413	Automotive Parts, Accessories & Tire Stores	806	5,569	5,556	5,508	34,427,947	477.66

**TABLE 5. STATEWIDE SUMMARY
EMPLOYMENT AND TOTAL EARNINGS, BY INDUSTRY
FOURTH QUARTER 2004**

NORTH AMERICAN INDUSTRY CLASSIFICATION SYSTEM INDUSTRY GROUPS		NUMBER OF EMPLOYING UNITS	EMPLOYMENT			TOTAL EARNINGS	AVERAGE
			OCTOBER	NOVEMBER	DECEMBER	OCT. - DEC. 2004	WEEKLY EARNINGS
442	FURNITURE & HOME FURNISHINGS STORES	631	4,114	4,249	4,269	\$27,307,994	\$498.88
4421	Furniture Stores	322	2,478	2,526	2,523	16,637,960	510.10
4422	Home Furnishings Stores	309	1,636	1,723	1,746	10,670,034	482.33
443	ELECTRONICS & APPLIANCE STORES	511	3,118	3,258	3,332	\$19,918,120	\$473.47
444	BUILDING MATERIAL & GARDEN SUPPLY STORES	804	10,062	9,963	9,962	\$65,318,604	\$502.67
4441	Building Material & Supplies Dealers	625	9,204	9,140	9,153	60,220,463	505.40
4442	Lawn & Garden Equipment & Supplies Stores	179	858	823	809	5,098,141	472.49
445	FOOD & BEVERAGE STORES	1,180	19,563	19,621	19,696	\$77,958,597	\$305.54
4451	Grocery Stores	704	17,157	17,210	17,213	66,504,134	297.54
4452	Specialty Food Stores	167	921	937	982	5,196,496	422.25
4453	Beer, Wine & Liquor Stores	309	1,485	1,474	1,501	6,257,967	323.80
446	HEALTH & PERSONAL CARE STORES	777	6,217	6,231	6,279	\$44,060,691	\$542.95
447	GASOLINE STATIONS	1,694	13,022	13,047	13,077	\$44,885,180	\$264.60
44711	Gasoline Stations with Convenience Stores	1,504	11,663	11,687	11,684	38,647,824	254.57
44719	Other Gasoline Stations	190	1,359	1,360	1,393	6,237,356	350.05
448	CLOTHING & CLOTHING ACCESSORIES STORES	1,088	8,237	8,911	9,356	\$31,427,136	\$273.63
4481	Clothing Stores	706	6,000	6,581	6,928	20,379,454	241.07
4482	Shoe Stores	188	1,239	1,260	1,285	4,311,441	262.94
4483	Jewelry, Luggage & Leather Goods Stores	194	998	1,070	1,143	6,736,241	484.12
451	SPORTING GOODS, HOBBY, BOOK & MUSIC STORES	567	4,201	4,476	4,651	\$16,233,195	\$281.07
4511	Sporting Goods & Musical Instrument Stores	404	2,704	2,892	3,005	11,788,334	316.29
4512	Book, Periodical & Music Stores	163	1,497	1,584	1,646	4,444,861	217.00
452	GENERAL MERCHANDISE STORES	698	35,629	37,315	37,902	\$163,303,456	\$339.98

**TABLE 5. STATEWIDE SUMMARY
EMPLOYMENT AND TOTAL EARNINGS, BY INDUSTRY
FOURTH QUARTER 2004**

NORTH AMERICAN INDUSTRY CLASSIFICATION SYSTEM INDUSTRY GROUPS		NUMBER OF EMPLOYING UNITS	EMPLOYMENT			TOTAL EARNINGS	AVERAGE
			OCTOBER	NOVEMBER	DECEMBER	OCT. - DEC. 2004	WEEKLY EARNINGS
453	MISCELLANEOUS STORE RETAILERS	1,510	7,096	7,174	7,444	\$33,388,054	\$354.84
4531	Florists	286	1,056	1,063	1,084	3,873,815	279.10
4532	Office Supplies, Stationery & Gift Stores	435	2,601	2,680	2,794	13,060,831	373.26
4533	Used Merchandise Stores	221	747	754	770	3,043,344	309.25
4539	Other Miscellaneous Store Retailers	568	2,692	2,677	2,796	13,410,064	379.01
454	NONSTORE RETAILERS	323	2,238	2,233	2,251	\$16,086,857	\$552.27
4541	Electronic Shopping & Mail -Order Houses	68	494	488	491	4,274,337	669.64
4542	Vending Machine Operators	87	740	745	757	4,354,806	448.24
4543	Direct Selling Establishments	168	1,004	1,000	1,003	7,457,714	572.33
48-49	TRANSPORTATION & WAREHOUSING	2,959	55,029	54,751	55,394	\$502,719,865	\$702.36
481	AIR TRANSPORTATION	45	971	981	967	\$12,925,298	\$1,021.84
484	TRUCK TRANSPORTATION	1,999	33,714	33,651	33,969	\$313,147,167	\$713.13
4841	General Freight Trucking	1,228	28,735	28,681	29,053	273,322,203	729.44
4842	Specialized Freight Trucking	771	4,979	4,970	4,916	39,824,964	618.26
485	TRANSIT & GROUND PASSENGER TRANS.	58	989	985	978	\$4,065,134	\$317.79
4853	Taxi & Limousine Service	17	203	203	209	603,880	226.60
4854	School & Employee Bus Transportation	8	385	385	384	1,756,366	351.23
4855	Charter Bus Industry Service	12	107	102	94	501,641	382.06
4859	Other Ground Passenger Transportation	12	166	169	169	684,080	313.22
	Other	9	128	126	122	519,167	318.64
486	PIPELINE TRANSPORTATION	67	943	943	944	\$12,783,411	\$1,042.41
488	SUPPORT ACTIVITIES FOR TRANSPORTATION	427	4,841	4,841	4,858	\$47,060,495	\$746.91
4881	Support Activities for Air Transportation	107	1,529	1,538	1,565	13,512,191	673.19
4882	Support Activities for Rail Transportation	27	505	503	505	4,930,210	751.98
4883	Support Activities for Water Transportation	28	725	735	734	6,559,683	689.96
4884	Support Activities for Road Transportation	106	470	473	480	2,815,629	456.61
4885	Freight Transportation Arrangement	141	1,454	1,437	1,421	18,074,261	967.30
4889	Other Support Activities for Transportation	18	158	155	153	1,168,521	578.67

**TABLE 5. STATEWIDE SUMMARY
EMPLOYMENT AND TOTAL EARNINGS, BY INDUSTRY
FOURTH QUARTER 2004**

NORTH AMERICAN INDUSTRY CLASSIFICATION SYSTEM INDUSTRY GROUPS		NUMBER OF EMPLOYING UNITS	EMPLOYMENT			TOTAL EARNINGS	AVERAGE
			OCTOBER	NOVEMBER	DECEMBER	OCT. - DEC. 2004	WEEKLY EARNINGS
492	COURIERS & MESSENGERS	135	3,125	3,167	3,607	\$34,253,996	\$798.54
4921	Couriers	88	2,911	2,947	3,394	32,928,160	821.31
4922	Local Messengers & Local Delivery	47	214	220	213	1,325,836	472.89
493	WAREHOUSING & STORAGE	211	10,244	10,003	9,905	\$76,968,407	\$589.08
	OTHER	17	202	180	166	\$1,515,957	\$638.39
22	UTILITIES	325	6,499	6,484	6,507	\$98,279,149	\$1,163.66
2211	Power Generation & Supply	128	4,879	4,879	4,895	81,313,683	1280.60
2212	Natural Gas Distribution	32	817	808	813	11,239,558	1063.88
2213	Water, Sewage and Other Systems	165	803	797	799	5,725,908	550.80
INFORMATION		1,214	20,041	20,203	20,305	\$207,184,148	\$789.64
511	PUBLISHING INDUSTRIES, EXCEPT INTERNET	254	6,539	6,579	6,575	\$52,288,396	\$612.73
5111	Newspaper, Book & Directory Publishers	220	6,299	6,333	6,324	48,748,777	593.46
5112	Software Publishers	34	240	246	251	3,539,619	1108.32
512	MOTION PICTURE & SOUND RECORDING INDUSTRY	130	1,108	1,171	1,220	\$4,609,064	\$303.98
5121	Motion Picture & Video Industries	116	1,082	1,144	1,193	4,383,810	295.89
5122	Sound Recording Industries	14	26	27	27	225,254	649.77
515	BROADCASTING, EXCEPT INTERNET	145	2,151	2,145	2,152	\$18,304,481	\$655.10
5151	Radio & Television Broadcasting	131	2,077	2,075	2,084	17,431,092	645.05
5152	Cable & Other Subscription Programming	14	74	70	68	873,389	950.71
517	TELECOMMUNICATIONS	503	8,631	8,702	8,735	\$112,070,629	\$992.11
5171	Wired Telecommunications Carriers	218	4,903	4,953	4,959	75,308,564	1173.06
5172	Wireless Telecommunications Carriers	127	1,978	2,021	2,026	19,400,884	743.09
5175	Cable & Other Program Distribution	68	1,151	1,144	1,151	10,612,109	710.66
	Other	90	599	584	599	6,749,072	874.01

**TABLE 5. STATEWIDE SUMMARY
EMPLOYMENT AND TOTAL EARNINGS, BY INDUSTRY
FOURTH QUARTER 2004**

NORTH AMERICAN INDUSTRY CLASSIFICATION SYSTEM INDUSTRY GROUPS		NUMBER OF EMPLOYING UNITS	EMPLOYMENT			TOTAL EARNINGS	AVERAGE
			OCTOBER	NOVEMBER	DECEMBER	OCT. - DEC. 2004	WEEKLY EARNINGS
518	ISPS, SEARCH PORTALS, & DATA PROCESSING	150	1,286	1,281	1,300	\$17,327,322	\$1,034.03
5181	ISPs, & Web Search Portals	58	217	208	220	1,899,514	679.61
5182	Data Processing & Related Services	92	1,069	1,073	1,080	15,427,808	1104.99
	OTHER	32	326	325	323	\$2,584,256	\$612.29
FINANCIAL ACTIVITIES		7,564	49,334	49,521	49,972	\$491,717,947	\$762.45
52	FINANCE & INSURANCE	4,480	36,156	36,346	36,516	\$396,592,320	\$839.51
522	CREDIT INTERMEDIATION & RELATED ACTIVITIES	1,898	21,032	21,220	21,265	\$195,183,403	\$709.14
5221	Depository Credit Intermediation	1,223	17,543	17,684	17,702	156,424,868	682.01
5222	Nondepository Credit Intermediation	406	2,741	2,786	2,801	32,724,711	906.80
5223	Activities Related to Credit Intermediation	269	748	750	762	6,033,824	616.12
523	FINANCIAL INVESTMENT & RELATED ACTIVITIES	577	3,136	3,111	3,147	\$58,630,558	\$1,440.29
5231	Security & Commodity Investment Activities	324	2,467	2,450	2,473	49,156,605	1535.02
5239	Other Financial Investment Activities	253	669	661	674	9,473,953	1090.97
524	INSURANCE CARRIERS & RELATED ACTIVITIES	1,970	11,551	11,607	11,700	\$137,991,150	\$913.54
5241	Insurance Carriers	372	5,016	5,084	5,083	66,621,269	1012.59
5242	Insurance Agencies, Brokerages & Support	1,598	6,535	6,523	6,617	71,369,881	837.10
	OTHER	35	437	408	404	\$4,787,209	\$884.50
53	REAL ESTATE & RENTAL & LEASING	3,084	13,178	13,175	13,456	\$95,125,627	\$551.43
531	REAL ESTATE	2,259	8,089	8,077	8,354	\$62,208,776	\$585.48
5311	Lessors of Real Estate	1,000	4,139	4,131	4,263	25,724,317	473.66
5312	Offices of Real Estate Agents & Brokers	707	1,830	1,848	1,943	18,326,300	752.38
5313	Activities Related to Real Estate	552	2,120	2,098	2,148	18,158,159	658.24

**TABLE 5. STATEWIDE SUMMARY
EMPLOYMENT AND TOTAL EARNINGS, BY INDUSTRY
FOURTH QUARTER 2004**

NORTH AMERICAN INDUSTRY CLASSIFICATION SYSTEM INDUSTRY GROUPS		NUMBER OF EMPLOYING UNITS	EMPLOYMENT			TOTAL EARNINGS	AVERAGE
			OCTOBER	NOVEMBER	DECEMBER	OCT. - DEC. 2004	WEEKLY EARNINGS
532	RENTAL & LEASING SERVICES	798	4,993	5,002	5,005	\$31,560,288	\$485.54
5321	Automotive Equipment Rental & Leasing	125	989	971	958	6,658,178	526.56
5322	Consumer Goods Rental	498	3,165	3,179	3,184	16,311,210	395.06
5323	General Rental Centers	39	211	216	207	1,775,418	646.23
5324	Machinery & Equipment Rental & Leasing	136	628	636	656	6,815,482	819.17
533	LESSORS OF NONFINANCIAL INTANGIBLE ASSETS	27	96	96	97	\$1,356,563	\$1,083.23
PROFESSIONAL & BUSINESS SERVICES		10,229	110,021	110,129	110,041	\$1,106,122,671	\$773.06
54	PROFESSIONAL & TECHNICAL SERVICES	6,393	33,918	34,305	34,970	\$454,877,321	\$1,017.24
5411	Legal Services	1,575	6,554	6,582	6,638	114,563,431	1336.99
5412	Accounting & Bookkeeping Services	1,163	4,371	4,584	4,764	47,276,610	795.25
5413	Architectural & Engineering Services	859	5,943	5,963	6,063	77,365,365	993.57
5414	Specialized Design Services	153	460	470	463	3,317,443	549.58
5415	Computer Systems Design & Related Services	732	7,493	7,505	7,558	125,513,378	1284.12
5416	Management & Technical Consulting Services	943	2,395	2,435	2,534	32,977,647	1033.44
5417	Scientific Research & Development Services	106	1,082	1,131	1,164	13,541,789	925.39
5418	Advertising & Related Services	303	1,948	1,942	1,980	21,047,961	827.47
5419	Other Professional & Technical Services	559	3,672	3,693	3,806	19,273,697	398.15
55	MANAGEMENT OF COMPANIES & ENTERPRISES	476	22,855	22,862	23,043	\$387,136,292	\$1,299.29
56	ADMINISTRATIVE & WASTE SERVICES	3,360	53,248	52,962	52,028	\$264,109,058	\$385.17
561	ADMINISTRATIVE & SUPPORT SERVICES	3,167	50,456	50,137	49,237	\$233,762,409	\$360.04
5611	Office Administrative Services	315	1,238	1,237	1,271	17,198,578	1059.50
5612	Facilities Support Services	14	125	127	134	1,040,150	621.85
5613	Employment Services	599	26,610	26,479	25,367	103,908,320	305.63
5614	Business Support Services	359	5,040	4,851	4,911	24,651,022	384.32
5615	Travel Arrangement & Reservation Services	105	434	425	417	3,387,512	612.64
5616	Investigation & Security Services	209	4,260	4,323	4,474	22,977,458	406.10
5617	Services to Buildings & Dwellings	1,254	11,181	11,139	11,080	48,375,370	334.24
5619	Other Support Services	312	1,568	1,556	1,583	12,223,999	599.30

**TABLE 5. STATEWIDE SUMMARY
EMPLOYMENT AND TOTAL EARNINGS, BY INDUSTRY
FOURTH QUARTER 2004**

NORTH AMERICAN INDUSTRY CLASSIFICATION SYSTEM INDUSTRY GROUPS		NUMBER OF EMPLOYING UNITS	EMPLOYMENT			TOTAL EARNINGS	AVERAGE
			OCTOBER	NOVEMBER	DECEMBER	OCT. - DEC. 2004	WEEKLY EARNINGS
562	WASTE MANAGEMENT & REMEDIATION SERVICES	193	2,792	2,825	2,791	\$30,346,649	\$832.91
5621	Waste Collection Services	85	1,069	1,079	1,048	9,624,506	694.94
5622	Waste Treatment & Disposal Services	40	1,258	1,273	1,282	17,049,798	1031.88
5629	Remediation & Other Waste Services	68	465	473	461	3,672,345	605.76
EDUCATION & HEALTH SERVICES		8,021	138,170	138,660	139,049	\$1,192,054,271	\$661.47
61	EDUCATIONAL SERVICES	517	8,319	8,371	8,428	\$53,892,918	\$495.14
6111	Elementary & Secondary Schools	79	2,927	2,944	2,938	14,672,364	384.37
6112	Junior Colleges	8	244	226	240	1,627,886	529.11
6113	Colleges & Universities	26	3,014	3,058	3,054	21,990,557	556.08
6114	Business, Computer, & Management Training	46	214	219	212	3,007,491	1076.03
6115	Technical & Trade Schools	99	623	616	631	6,507,318	803.04
6116	Other Schools & Instruction	210	1,139	1,147	1,188	4,685,111	311.22
6117	Educational Support Services	49	158	161	165	1,402,191	668.56
62	HEALTH CARE & SOCIAL ASSISTANCE	7,504	129,851	130,289	130,621	\$1,138,161,353	\$672.16
621	AMBULATORY HEALTH CARE SERVICES	4,612	40,107	40,320	40,751	\$549,476,974	\$1,046.41
6211	Offices of Physicians	2,056	19,866	19,895	20,042	371,219,879	1432.47
6212	Offices of Dentists	899	5,870	5,920	5,996	61,359,729	796.13
6213	Offices of Other Health Practitioners	1,106	5,088	5,137	5,226	42,189,797	630.13
6214	Outpatient Care Centers	203	3,161	3,221	3,258	29,251,688	700.25
6215	Medical & Diagnostic Laboratories	83	689	678	683	8,667,266	975.68
6216	Home Health Care Services	127	3,405	3,424	3,466	22,814,113	511.39
6219	Other Ambulatory Health Care Services	138	2,028	2,045	2,080	13,974,502	524.12
622	HOSPITALS	111	41,815	41,906	41,651	\$374,861,462	\$690.00
6221	General Medical & Surgical Hospitals	79	38,508	38,567	38,354	345,521,773	690.78
6222	Psychiatric & Substance Abuse Hospitals	11	1,391	1,433	1,412	11,463,120	624.49
6223	Other Hospitals	21	1,916	1,906	1,885	17,876,569	722.86

**TABLE 5. STATEWIDE SUMMARY
EMPLOYMENT AND TOTAL EARNINGS, BY INDUSTRY
FOURTH QUARTER 2004**

NORTH AMERICAN INDUSTRY CLASSIFICATION SYSTEM INDUSTRY GROUPS		NUMBER OF EMPLOYING UNITS	EMPLOYMENT			TOTAL EARNINGS	AVERAGE
			OCTOBER	NOVEMBER	DECEMBER	OCT. - DEC. 2004	WEEKLY EARNINGS
623	NURSING & RESIDENTIAL CARE FACILITIES	491	25,779	25,760	25,911	\$120,583,240	\$359.29
6231	Nursing Care Facilities	231	19,483	19,401	19,486	89,498,593	353.84
6232	Residential Mental Health Facilities	129	2,839	2,883	2,918	14,789,994	395.03
6233	Community Care Facilities for the Elderly	86	2,121	2,128	2,116	9,050,629	328.14
6239	Other Residential Care Facilities	45	1,336	1,348	1,391	7,244,024	410.23
624	SOCIAL ASSISTANCE	2,290	22,150	22,303	22,308	\$93,239,677	\$322.30
6241	Individual & Family Services	1,175	9,898	9,955	9,967	45,114,044	349.13
6242	Emergency & Other Relief Services	107	802	809	808	3,998,387	381.44
6243	Vocational Rehabilitation Services	130	3,173	3,182	3,192	15,880,488	383.86
6244	Child Day Care Services	878	8,277	8,357	8,341	28,246,758	261.00
LEISURE & HOSPITALITY		5,875	91,350	90,296	90,122	\$258,972,294	\$219.90
71	ARTS, ENTERTAINMENT & RECREATION	897	8,711	8,142	8,080	\$31,901,684	\$295.27
711	PERFORMING ARTS & SPECTATOR SPORTS	195	1,983	1,889	1,916	\$8,239,121	\$328.50
7111	Performing Arts Companies	44	682	652	445	2,312,103	299.92
7112	Spectator Sports	60	616	612	781	3,048,036	350.12
7113	Performing Arts & Sports Promoters	35	551	481	542	2,029,904	297.61
7114	Agents & Managers for Public Figures	10	18	19	18	140,718	590.43
7115	Independent Artists, Writers & Performers	46	116	125	130	708,360	440.61
712	MUSEUMS, PARKS & HISTORICAL SITES	46	221	204	198	\$790,745	\$292.90
713	GAMBLING, RECREATION & AMUSEMENT INDUSTRY	656	6,507	6,049	5,966	\$22,871,818	\$284.96
7139	Other Amusement & Recreation Industries	624	6,180	5,877	5,788	22,060,303	285.28
	Other	32	327	172	178	811,515	276.62

**TABLE 5. STATEWIDE SUMMARY
EMPLOYMENT AND TOTAL EARNINGS, BY INDUSTRY
FOURTH QUARTER 2004**

NORTH AMERICAN INDUSTRY CLASSIFICATION SYSTEM INDUSTRY GROUPS		NUMBER OF EMPLOYING UNITS	EMPLOYMENT			TOTAL EARNINGS	AVERAGE
			OCTOBER	NOVEMBER	DECEMBER	OCT. - DEC. 2004	WEEKLY EARNINGS
72	ACCOMMODATION & FOOD SERVICES	4,978	82,639	82,154	82,042	\$227,070,610	\$212.29
721	ACCOMMODATION	783	11,082	10,787	10,412	\$38,219,550	\$273.22
7211	Traveler Accommodation	715	10,805	10,532	10,160	37,153,529	272.21
7212	RV Parks & Recreational Camps	48	209	182	176	753,887	306.83
7213	Rooming & Boarding Houses	20	68	73	76	312,134	331.94
722	FOOD SERVICES & DRINKING PLACES	4,195	71,557	71,367	71,630	\$188,851,060	\$203.12
7221	Full -Service Restaurants	1,769	30,231	30,536	30,912	87,666,731	220.67
7222	Limited-Service Eating Places	2,113	38,376	37,915	37,831	92,237,668	186.52
7223	Special Food Services	145	1,950	1,906	1,879	6,418,822	258.29
7224	Drinking Places, Alcoholic Beverages	168	1,000	1,010	1,008	2,527,839	193.29
OTHER SERVICES		5,526	25,591	25,548	25,653	\$153,280,376	\$460.63
811	REPAIR & MAINTENANCE	2,256	9,617	9,590	9,623	\$67,230,885	\$538.15
8111	Automotive Repair & Maintenance	1,573	7,082	7,045	7,055	46,275,954	504.16
8112	Electronic Equipment Repair & Maintenance	157	514	507	513	4,762,587	716.47
8113	Commercial Machinery Repair & Maintenance	336	1,456	1,475	1,483	12,674,780	662.65
8114	Household Goods Repair & Maintenance	190	565	563	572	3,517,564	477.50
812	PERSONAL & LAUNDRY SERVICES	1,321	8,370	8,285	8,346	\$43,371,589	\$400.34
8121	Personal Care Services	562	2,416	2,401	2,430	8,747,522	278.55
8122	Death Care Services	245	1,718	1,679	1,722	13,711,364	618.12
8123	Drycleaning & Laundry Services	361	3,479	3,453	3,447	16,836,816	374.35
8129	Other Personal Services	153	757	752	747	4,075,887	416.93
813	MEMBERSHIP ASSOCIATIONS & ORGANIZATIONS	986	6,157	6,221	6,232	\$35,961,158	\$445.93
8131	Religious Organizations	39	222	217	219	1,164,656	408.46
8132	Grantmaking & Giving Services	92	401	407	413	3,741,081	707.07
8133	Social Advocacy Organizations	136	1,897	1,931	1,985	11,040,846	438.31
8134	Civic & Social Organizations	215	1,490	1,503	1,464	4,842,711	250.74
8139	Professional & Similar Organizations	504	2,147	2,163	2,151	15,171,864	541.90

**TABLE 5. STATEWIDE SUMMARY
EMPLOYMENT AND TOTAL EARNINGS, BY INDUSTRY
FOURTH QUARTER 2004**

NORTH AMERICAN INDUSTRY CLASSIFICATION SYSTEM INDUSTRY GROUPS		NUMBER OF EMPLOYING UNITS	EMPLOYMENT			TOTAL EARNINGS	AVERAGE
			OCTOBER	NOVEMBER	DECEMBER	OCT. - DEC. 2004	WEEKLY EARNINGS
814	PRIVATE HOUSEHOLDS	963	1,447	1,452	1,452	\$6,716,744	\$356.24
	LOCAL GOVERNMENT	1,977	114,696	115,643	115,620	\$804,795,658	\$536.83
	STATE GOVERNMENT	1,201	60,080	60,262	60,093	\$544,241,279	\$696.06
	NONCLASSIFIABLE ESTABLISHMENTS	0	0	0	0	\$0	

**TABLE 6. COUNTY SUMMARY
EMPLOYMENT AND TOTAL EARNINGS, BY INDUSTRY
FOURTH QUARTER 2004**

NORTH AMERICAN INDUSTRY CLASSIFICATION SYSTEM INDUSTRY GROUP	NUMBER OF EMPLOYING UNITS	EMPLOYMENT			TOTAL EARNINGS	AVERAGE
		OCTOBER	NOVEMBER	DECEMBER	OCT. - DEC. 2004	WEEKLY EARNINGS
ARKANSAS COUNTY - TOTAL	641	9,841	9,713	9,792	\$74,616,257	\$586.76
Natural Resources & Mining	43	290	260	262	2,111,450	600.07
Construction	55	291	279	271	2,169,886	595.41
Manufacturing	30	3,491	3,391	3,423	26,847,401	601.22
Trade, Transportation & Utilities	202	2,156	2,157	2,186	20,158,959	715.81
Wholesale Trade	46	489	479	481	9,490,958	1511.54
Retail Trade	106	1,079	1,103	1,115	5,642,042	394.91
Transportation, Warehousing & Utilities	50	588	575	590	5,025,959	661.63
Information	9	81	84	85	698,035	644.34
Financial Activities	46	323	320	324	3,326,835	793.93
Professional & Business Services	52	399	396	401	3,953,123	762.76
Education & Health Services	57	1,133	1,131	1,123	6,466,859	440.61
Leisure & Hospitality	54	524	530	534	1,226,271	178.20
Other Services	46	145	145	141	716,250	383.50
Local Government	31	804	818	840	5,454,352	511.25
State Government	16	204	202	202	1,486,836	564.34
ASHLEY COUNTY - TOTAL	537	8,545	8,514	8,507	\$75,635,176	\$682.71
Natural Resources & Mining	62	553	533	500	3,737,000	543.75
Construction	50	603	604	622	3,975,893	501.65
Manufacturing	28	3,044	3,001	2,943	41,472,211	1064.81
Trade, Transportation & Utilities	141	1,240	1,263	1,306	7,541,419	456.90
Wholesale Trade	26	172	171	152	1,691,873	788.75
Retail Trade	92	818	840	905	3,863,691	347.88
Transportation, Warehousing & Utilities	23	250	252	249	1,985,855	610.22
Information	11	61	54	56	439,153	592.65
Financial Activities	39	326	327	330	2,750,073	645.61
Professional & Business Services	46	326	332	346	2,370,874	544.94
Education & Health Services	45	545	549	565	4,279,425	595.27
Leisure & Hospitality	31	391	393	384	949,563	187.61
Other Services	40	195	193	192	821,076	326.69
Local Government	32	1,050	1,053	1,048	6,168,710	451.78
State Government	12	211	212	215	1,129,779	408.65

**TABLE 6. COUNTY SUMMARY
EMPLOYMENT AND TOTAL EARNINGS, BY INDUSTRY
FOURTH QUARTER 2004**

NORTH AMERICAN INDUSTRY CLASSIFICATION SYSTEM INDUSTRY GROUP	NUMBER OF EMPLOYING UNITS	EMPLOYMENT			TOTAL EARNINGS	AVERAGE
		OCTOBER	NOVEMBER	DECEMBER	OCT. - DEC. 2004	WEEKLY EARNINGS
BAXTER COUNTY - TOTAL	1,178	14,036	14,042	14,083	\$97,158,242	\$531.80
Natural Resources & Mining	6	107	105	105	677,527	493.23
Construction	121	636	624	636	3,992,567	485.95
Manufacturing	65	2,492	2,506	2,517	21,143,514	649.27
Trade, Transportation & Utilities	271	2,647	2,639	2,650	14,104,737	410.15
Wholesale Trade	31	179	176	178	1,404,752	608.21
Retail Trade	213	2,238	2,232	2,240	11,118,102	382.37
Transportation, Warehousing & Utilities	27	230	231	232	1,581,883	526.77
Information	24	288	285	292	2,312,196	616.86
Financial Activities	107	631	639	633	5,116,690	620.48
Professional & Business Services	133	801	820	817	7,160,063	677.74
Education & Health Services	171	2,984	3,018	3,098	26,941,145	683.21
Leisure & Hospitality	121	1,466	1,434	1,424	3,973,367	212.06
Other Services	111	417	425	420	1,843,477	337.10
Local Government	36	1,284	1,269	1,209	8,007,320	491.19
State Government	12	283	278	282	1,885,639	516.19
BENTON COUNTY - TOTAL	4,529	85,692	85,904	86,726	\$812,270,053	\$725.63
Natural Resources & Mining	29	612	607	620	8,829,852	1108.03
Construction	662	4,356	4,307	4,324	36,636,893	651.01
Manufacturing	234	14,340	14,402	14,413	120,088,757	642.17
Trade, Transportation & Utilities	1,234	20,907	20,985	21,236	191,889,569	701.47
Wholesale Trade	500	3,007	3,062	3,110	47,340,015	1190.18
Retail Trade	573	6,948	7,107	7,105	41,369,429	451.17
Transportation, Warehousing & Utilities	161	10,952	10,816	11,021	103,180,125	726.18
Information	69	903	929	931	8,064,657	673.57
Financial Activities	490	3,157	3,183	3,231	31,108,669	750.07
Professional & Business Services	712	20,393	20,520	20,771	280,649,566	1049.95
Education & Health Services	373	6,065	6,123	6,211	52,507,347	658.57
Leisure & Hospitality	341	6,169	6,019	6,060	19,315,739	244.27
Other Services	291	1,656	1,640	1,685	9,967,908	461.81
Local Government	75	6,355	6,401	6,455	47,955,564	576.06
State Government	19	779	788	789	5,255,532	514.78

**TABLE 6. COUNTY SUMMARY
EMPLOYMENT AND TOTAL EARNINGS, BY INDUSTRY
FOURTH QUARTER 2004**

NORTH AMERICAN INDUSTRY CLASSIFICATION SYSTEM INDUSTRY GROUP	NUMBER OF EMPLOYING UNITS	EMPLOYMENT			TOTAL EARNINGS	AVERAGE
		OCTOBER	NOVEMBER	DECEMBER	OCT. - DEC. 2004	WEEKLY EARNINGS
BOONE COUNTY - TOTAL	992	13,517	13,553	13,768	\$97,586,714	\$551.45
Construction	86	431	427	434	2,885,041	515.31
Manufacturing	68	2,134	2,112	2,123	17,527,767	635.09
Trade, Transportation & Utilities	265	4,198	4,273	4,311	33,959,068	613.10
Wholesale Trade	50	669	700	704	5,127,012	570.75
Retail Trade	166	1,986	2,013	2,012	10,881,838	417.77
Transportation, Warehousing & Utilities	49	1,543	1,560	1,595	17,950,218	881.73
Information	17	415	413	423	3,579,772	660.35
Financial Activities	96	603	601	615	5,321,688	675.14
Professional & Business Services	105	515	517	524	2,928,586	434.34
Education & Health Services	124	1,095	1,086	1,102	7,980,224	560.95
Leisure & Hospitality	86	1,193	1,184	1,173	2,929,009	190.40
Local Government	51	2,151	2,152	2,164	13,805,356	492.63
State Government	20	529	535	647	5,123,484	691.02
Other	74	253	253	252	1,546,719	470.89
BRADLEY COUNTY - TOTAL	339	4,088	4,103	4,116	\$27,274,417	\$511.42
Natural Resources & Mining	56	274	294	331	1,575,531	404.43
Construction	21	181	190	173	1,133,061	480.65
Manufacturing	10	1,044	1,035	1,044	8,693,379	642.38
Trade, Transportation & Utilities	92	613	620	607	3,371,521	422.85
Wholesale Trade	13	204	201	198	1,235,572	472.86
Retail Trade	50	320	326	319	1,416,324	338.70
Transportation, Warehousing & Utilities	29	89	93	90	719,625	610.54
Information	3	13	13	14	88,268	509.24
Financial Activities	22	181	183	181	1,164,533	493.10
Professional & Business Services	24	149	147	147	1,585,341	825.84
Education & Health Services	34	539	541	545	3,763,720	534.49
Leisure & Hospitality	18	196	182	176	366,660	152.73
Other Services	31	107	107	110	679,430	483.92
Local Government	16	552	549	546	3,147,999	441.08
State Government	12	239	242	242	1,704,974	544.20

**TABLE 6. COUNTY SUMMARY
EMPLOYMENT AND TOTAL EARNINGS, BY INDUSTRY
FOURTH QUARTER 2004**

NORTH AMERICAN INDUSTRY CLASSIFICATION SYSTEM INDUSTRY GROUP	NUMBER OF EMPLOYING UNITS	EMPLOYMENT			TOTAL EARNINGS	AVERAGE
		OCTOBER	NOVEMBER	DECEMBER	OCT. - DEC. 2004	WEEKLY EARNINGS
CALHOUN COUNTY - TOTAL	126	3,790	3,824	3,825	\$35,397,401	\$714.10
Natural Resources & Mining	24	137	143	136	830,015	460.44
Construction	10	84	84	82	512,896	473.44
Manufacturing	15	2,551	2,558	2,576	27,332,462	820.75
Trade, Transportation & Utilities	27	199	201	199	1,225,043	471.96
Wholesale Trade & Retail Trade	17	72	75	75	244,605	254.27
Transportation, Warehousing & Utilities	10	127	126	124	980,438	600.15
Professional & Business Services	8	130	129	128	884,945	527.70
Education & Health Services	4	43	43	42	299,089	539.22
Local Government	11	197	201	204	1,114,098	427.08
State Government	10	344	361	353	2,019,697	440.53
Other	17	105	104	105	1,179,156	866.60
CARROLL COUNTY - TOTAL	804	10,137	9,901	9,493	\$55,474,378	\$433.50
Natural Resources & Mining	15	273	276	275	2,011,907	563.45
Trade, Transportation & Utilities	217	1,676	1,662	1,643	8,983,581	416.21
Wholesale Trade	25	113	114	113	577,744	392.13
Retail Trade	172	1,285	1,288	1,269	6,021,099	361.66
Transportation, Warehousing & Utilities	20	278	260	261	2,384,738	688.77
Professional & Business Services	68	214	213	219	1,427,962	510.11
Education & Health Services	60	732	751	753	5,389,292	556.21
Leisure & Hospitality	177	1,916	1,773	1,360	4,496,738	205.53
Local Government	24	1,041	1,035	1,030	6,504,148	483.24
State Government	11	99	98	97	720,461	565.51
Other	232	4,186	4,093	4,116	25,940,289	482.95

**TABLE 6. COUNTY SUMMARY
EMPLOYMENT AND TOTAL EARNINGS, BY INDUSTRY
FOURTH QUARTER 2004**

NORTH AMERICAN INDUSTRY CLASSIFICATION SYSTEM INDUSTRY GROUP	NUMBER OF EMPLOYING UNITS	EMPLOYMENT			TOTAL EARNINGS	AVERAGE
		OCTOBER	NOVEMBER	DECEMBER	OCT. - DEC. 2004	WEEKLY EARNINGS
CHICOT COUNTY - TOTAL	333	3,735	3,710	3,662	\$22,443,316	\$466.30
Natural Resources & Mining	52	323	312	262	1,815,399	467.04
Construction	23	301	282	281	2,077,771	554.96
Manufacturing	11	319	322	322	1,702,914	408.08
Trade, Transportation & Utilities	82	611	611	623	3,390,485	424.08
Wholesale Trade	14	100	100	98	875,062	677.64
Retail Trade	53	419	422	430	1,674,114	303.96
Transportation, Warehousing & Utilities	15	92	89	95	841,309	703.44
Information	5	18	16	12	120,709	605.56
Financial Activities	28	151	151	152	1,167,055	593.22
Professional & Business Services	25	135	140	147	890,310	486.86
Education & Health Services	42	447	451	451	2,730,167	467.04
Leisure & Hospitality	22	246	234	218	464,995	153.73
Other Services	17	58	53	59	312,326	423.97
Local Government	16	829	845	838	5,708,375	524.41
State Government	10	297	293	297	2,062,810	536.68
CLARK COUNTY - TOTAL	609	9,930	9,876	9,802	\$62,616,867	\$488.05
Natural Resources & Mining	45	277	274	267	1,816,984	512.60
Construction	40	101	110	118	649,766	455.76
Manufacturing	36	2,481	2,451	2,395	17,299,358	544.86
Trade, Transportation & Utilities	140	1,503	1,495	1,504	9,171,872	470.14
Wholesale Trade	23	80	80	77	595,780	580.12
Retail Trade	94	1,131	1,128	1,134	6,006,901	408.55
Transportation, Warehousing & Utilities	23	292	287	293	2,569,191	679.92
Information	11	44	44	44	383,399	670.28
Financial Activities	85	392	380	394	2,726,003	539.52
Professional & Business Services	45	308	314	309	3,820,698	947.05
Education & Health Services	64	1,482	1,463	1,453	9,463,799	496.58
Leisure & Hospitality	53	1,067	1,044	1,043	2,528,738	185.02
Other Services	49	218	221	222	1,307,209	456.37
Local Government	27	942	964	936	5,422,273	440.29
State Government	14	1,115	1,116	1,117	8,026,768	553.26

**TABLE 6. COUNTY SUMMARY
EMPLOYMENT AND TOTAL EARNINGS, BY INDUSTRY
FOURTH QUARTER 2004**

NORTH AMERICAN INDUSTRY CLASSIFICATION SYSTEM INDUSTRY GROUP	NUMBER OF EMPLOYING UNITS	EMPLOYMENT			TOTAL EARNINGS	AVERAGE
		OCTOBER	NOVEMBER	DECEMBER	OCT. - DEC. 2004	WEEKLY EARNINGS
CLAY COUNTY - TOTAL	414	5,126	5,021	4,960	\$28,588,360	\$436.71
Natural Resources & Mining	57	253	242	228	1,349,770	430.82
Construction	44	188	164	154	890,629	406.19
Manufacturing	22	1,718	1,665	1,598	9,796,331	453.86
Trade, Transportation & Utilities	99	863	861	892	5,287,479	466.43
Wholesale Trade	25	214	241	260	1,606,063	518.36
Retail Trade	55	459	446	464	2,063,969	347.92
Transportation, Warehousing & Utilities	19	190	174	168	1,617,447	701.61
Information	8	142	139	137	1,067,546	589.37
Financial Activities	35	165	159	162	1,121,462	532.51
Professional & Business Services	23	56	57	44	305,951	449.71
Education & Health Services	40	499	498	492	2,157,557	334.38
Leisure & Hospitality	26	217	208	204	422,018	154.83
Other Services	26	51	47	47	282,461	449.54
Local Government	22	896	904	921	5,404,239	458.34
State Government	12	78	77	81	502,917	491.77
CLEBURNE COUNTY - TOTAL	662	6,546	6,564	6,613	\$40,081,419	\$468.97
Natural Resources & Mining	14	35	34	34	235,579	527.81
Construction	66	267	268	251	1,322,045	388.15
Manufacturing	48	1,769	1,810	1,854	13,519,575	574.25
Trade, Transportation & Utilities	193	1,465	1,474	1,492	8,733,940	454.87
Wholesale Trade	40	161	156	168	1,257,531	598.35
Retail Trade	112	979	983	989	4,568,286	357.24
Transportation, Warehousing & Utilities	41	325	335	335	2,908,123	674.48
Information	8	58	60	63	381,389	486.26
Financial Activities	65	252	254	255	1,803,213	546.81
Professional & Business Services	61	189	187	198	1,203,393	483.81
Education & Health Services	61	748	737	736	4,983,347	517.79
Leisure & Hospitality	61	689	658	640	1,774,905	206.14
Other Services	55	151	153	152	680,589	344.43
Local Government	20	811	817	827	4,736,315	445.21
State Government	10	112	112	111	707,129	487.12

**TABLE 6. COUNTY SUMMARY
EMPLOYMENT AND TOTAL EARNINGS, BY INDUSTRY
FOURTH QUARTER 2004**

NORTH AMERICAN INDUSTRY CLASSIFICATION SYSTEM INDUSTRY GROUP	NUMBER OF EMPLOYING UNITS	EMPLOYMENT			TOTAL EARNINGS	AVERAGE
		OCTOBER	NOVEMBER	DECEMBER	OCT. - DEC. 2004	WEEKLY EARNINGS
CLEVELAND COUNTY - TOTAL	112	1,069	1,064	1,072	\$6,193,929	\$445.98
Natural Resources & Mining	19	163	159	153	1,128,902	548.45
Construction	8	39	39	39	143,865	283.76
Manufacturing	6	87	86	88	475,346	420.29
Trade, Transportation & Utilities	33	229	217	223	1,155,001	398.41
Wholesale Trade	5	52	42	49	268,136	432.71
Retail Trade	15	81	84	83	206,735	192.37
Transportation, Warehousing & Utilities	13	96	91	91	680,130	564.58
Financial Activities	4	29	29	30	205,318	538.42
Local Government	13	352	360	362	2,131,174	457.92
State Government	8	54	53	52	364,006	528.31
Other	21	116	121	125	590,317	376.32
COLUMBIA COUNTY - TOTAL	698	9,242	9,240	9,354	\$69,171,075	\$573.45
Natural Resources & Mining	46	415	412	428	4,870,229	895.54
Construction	50	298	304	328	2,920,909	724.79
Manufacturing	38	2,775	2,764	2,827	27,712,219	764.42
Trade, Transportation & Utilities	192	1,559	1,556	1,571	8,938,515	440.19
Wholesale Trade	29	249	245	235	1,810,239	573.04
Retail Trade	118	1,081	1,086	1,109	5,040,795	355.09
Transportation, Warehousing & Utilities	45	229	225	227	2,087,481	707.38
Information	9	76	79	79	583,333	575.28
Financial Activities	79	389	386	397	3,419,392	673.29
Professional & Business Services	62	348	349	343	2,096,129	465.12
Education & Health Services	76	836	853	847	4,482,988	407.94
Leisure & Hospitality	46	576	571	561	1,422,146	192.15
Other Services	55	228	223	229	948,030	321.73
Local Government	30	1,203	1,202	1,205	7,493,603	479.03
State Government	15	539	541	539	4,283,582	610.57

**TABLE 6. COUNTY SUMMARY
EMPLOYMENT AND TOTAL EARNINGS, BY INDUSTRY
FOURTH QUARTER 2004**

NORTH AMERICAN INDUSTRY CLASSIFICATION SYSTEM INDUSTRY GROUP	NUMBER OF EMPLOYING UNITS	EMPLOYMENT			TOTAL EARNINGS	AVERAGE WEEKLY EARNINGS
		OCTOBER	NOVEMBER	DECEMBER	OCT. - DEC. 2004	
CONWAY COUNTY - TOTAL	468	6,583	6,569	6,574	\$43,577,002	\$509.80
Natural Resources & Mining	17	135	136	146	1,314,398	727.39
Construction	48	558	533	488	4,376,477	639.62
Manufacturing	29	1,080	1,078	1,081	11,214,242	798.98
Trade, Transportation & Utilities	133	1,382	1,401	1,396	8,293,608	457.98
Wholesale Trade	28	234	233	233	2,021,844	666.54
Retail Trade	80	894	918	917	4,342,401	367.20
Transportation, Warehousing & Utilities	25	254	250	246	1,929,363	593.65
Information	6	41	40	40	229,237	437.20
Financial Activities	38	182	181	188	1,270,370	532.06
Professional & Business Services	45	692	697	703	3,602,037	397.34
Education & Health Services	53	737	730	723	4,418,782	465.63
Leisure & Hospitality	38	477	469	483	972,694	157.08
Other Services	23	81	79	95	550,442	498.14
Local Government	27	865	868	872	5,350,281	473.97
State Government	11	353	357	359	1,984,434	428.39
CRAIGHEAD COUNTY - TOTAL	2,519	40,325	40,883	40,424	\$304,728,461	\$578.15
Natural Resources & Mining	59	398	387	323	2,625,989	546.93
Construction	222	1,847	1,839	1,776	13,415,138	566.79
Manufacturing	146	7,536	7,447	7,254	63,869,014	662.81
Trade, Transportation & Utilities	726	8,035	8,234	8,323	51,718,498	485.32
Wholesale Trade	180	1,478	1,491	1,493	14,657,741	758.08
Retail Trade	432	5,436	5,658	5,726	27,445,921	376.56
Transportation, Warehousing & Utilities	114	1,121	1,085	1,104	9,614,836	670.33
Information	34	605	621	627	5,370,529	668.84
Financial Activities	250	1,586	1,595	1,609	15,296,643	736.95
Professional & Business Services	305	3,312	3,737	3,536	25,984,298	566.50
Education & Health Services	349	6,635	6,734	6,817	66,428,415	759.42
Leisure & Hospitality	179	3,553	3,494	3,432	9,422,639	207.51
Other Services	185	1,101	1,065	1,034	5,618,006	405.14
Local Government	39	3,422	3,440	3,407	23,276,498	523.08
State Government	25	2,295	2,290	2,286	21,702,794	728.91

**TABLE 6. COUNTY SUMMARY
EMPLOYMENT AND TOTAL EARNINGS, BY INDUSTRY
FOURTH QUARTER 2004**

NORTH AMERICAN INDUSTRY CLASSIFICATION SYSTEM INDUSTRY GROUP	NUMBER OF EMPLOYING UNITS	EMPLOYMENT			TOTAL EARNINGS	AVERAGE
		OCTOBER	NOVEMBER	DECEMBER	OCT. - DEC. 2004	WEEKLY EARNINGS
CRAWFORD COUNTY - TOTAL	1,140	17,836	17,892	17,947	\$122,725,769	\$527.64
Natural Resources & Mining	24	481	489	484	3,865,797	613.55
Construction	182	1,242	1,206	1,206	9,145,559	577.59
Manufacturing	80	3,377	3,392	3,371	23,552,187	536.01
Trade, Transportation & Utilities	312	6,021	6,066	6,168	43,743,928	552.99
Wholesale Trade	73	625	624	634	5,620,612	688.83
Retail Trade	173	1,797	1,813	1,833	9,123,857	386.83
Transportation, Warehousing & Utilities	66	3,599	3,629	3,701	28,999,459	612.33
Financial Activities	111	498	504	505	3,723,466	570.18
Professional & Business Services	131	642	682	695	5,043,930	576.52
Education & Health Services	84	1,486	1,471	1,464	10,628,675	554.80
Leisure & Hospitality	75	1,279	1,263	1,246	3,247,495	197.84
Local Government	42	2,059	2,067	2,056	14,406,181	537.77
State Government	11	168	169	169	1,297,915	591.93
Other	88	583	583	583	4,070,636	537.09
CRITTENDEN COUNTY - TOTAL	1,119	16,013	15,976	15,950	\$113,536,566	\$546.54
Natural Resources & Mining	51	490	400	365	3,313,865	609.35
Construction	80	674	674	670	5,297,605	605.81
Manufacturing	56	1,529	1,521	1,536	14,853,492	747.43
Trade, Transportation & Utilities	313	4,891	4,941	5,003	38,203,013	594.28
Wholesale Trade	61	588	602	606	5,939,320	763.15
Retail Trade	167	2,013	2,068	2,092	10,239,174	382.78
Transportation, Warehousing & Utilities	85	2,290	2,271	2,305	22,024,519	740.25
Information	10	88	90	89	826,624	714.45
Financial Activities	105	469	468	481	3,971,175	646.28
Professional & Business Services	113	752	745	752	5,247,292	538.42
Education & Health Services	128	1,727	1,738	1,714	12,617,229	562.21
Leisure & Hospitality	104	1,834	1,811	1,811	5,289,817	223.74
Other Services	102	599	588	590	3,380,707	439.03
Local Government	40	2,478	2,512	2,543	17,775,289	544.54
State Government	17	482	488	396	2,760,458	466.35

**TABLE 6. COUNTY SUMMARY
EMPLOYMENT AND TOTAL EARNINGS, BY INDUSTRY
FOURTH QUARTER 2004**

NORTH AMERICAN INDUSTRY CLASSIFICATION SYSTEM INDUSTRY GROUP	NUMBER OF EMPLOYING UNITS	EMPLOYMENT			TOTAL EARNINGS	AVERAGE
		OCTOBER	NOVEMBER	DECEMBER	OCT. - DEC. 2004	WEEKLY EARNINGS
CROSS COUNTY - TOTAL	478	5,331	5,325	5,306	\$34,447,441	\$498.02
Natural Resources & Mining	47	243	221	196	1,494,462	522.54
Construction	33	151	145	142	947,805	499.37
Manufacturing	19	925	932	944	6,662,411	548.90
Trade, Transportation & Utilities	130	1,248	1,229	1,234	8,456,666	525.88
Wholesale Trade	33	314	307	312	2,900,276	717.36
Retail Trade	65	642	652	663	3,229,797	380.86
Transportation, Warehousing & Utilities	32	292	270	259	2,326,593	653.97
Information	8	57	59	59	388,509	512.32
Financial Activities	43	373	380	376	2,967,297	606.52
Professional & Business Services	40	170	185	182	1,330,387	571.72
Education & Health Services	57	616	619	612	3,448,390	430.85
Leisure & Hospitality	31	368	368	383	798,791	164.73
Other Services	42	80	82	73	341,560	335.41
Local Government	17	880	887	884	5,857,526	509.90
State Government	11	220	218	221	1,753,637	614.09
DALLAS COUNTY - TOTAL	277	3,287	3,280	3,309	\$20,659,935	\$482.75
Natural Resources & Mining	40	221	215	202	1,329,340	480.83
Construction	15	77	75	76	516,665	522.94
Manufacturing	15	905	889	914	7,029,005	598.99
Trade, Transportation & Utilities	78	499	497	494	2,722,871	421.71
Wholesale Trade	10	49	51	48	324,951	506.68
Retail Trade	48	371	371	372	1,927,507	399.29
Transportation, Warehousing & Utilities	20	79	75	74	470,413	476.13
Information	3	26	26	27	163,244	476.86
Financial Activities	21	100	102	104	845,140	637.36
Professional & Business Services	16	53	53	51	439,611	646.17
Education & Health Services	28	685	682	690	3,784,722	424.60
Leisure & Hospitality	19	134	134	130	288,297	167.16
Other Services	17	63	62	65	286,429	347.89
Local Government	16	459	481	490	2,812,348	453.85
State Government	9	65	64	66	442,263	523.39

**TABLE 6. COUNTY SUMMARY
EMPLOYMENT AND TOTAL EARNINGS, BY INDUSTRY
FOURTH QUARTER 2004**

NORTH AMERICAN INDUSTRY CLASSIFICATION SYSTEM INDUSTRY GROUP	NUMBER OF EMPLOYING UNITS	EMPLOYMENT			TOTAL EARNINGS	AVERAGE
		OCTOBER	NOVEMBER	DECEMBER	OCT. - DEC. 2004	WEEKLY EARNINGS
DESHA COUNTY - TOTAL	452	5,188	5,130	5,129	\$36,035,353	\$538.35
Natural Resources & Mining	55	412	399	366	2,959,971	580.35
Construction	25	135	128	129	1,088,349	640.71
Manufacturing	16	1,055	1,041	1,034	9,456,473	697.21
Trade, Transportation & Utilities	140	1,211	1,185	1,165	6,893,266	446.72
Wholesale Trade	20	187	197	191	1,974,914	792.61
Retail Trade	87	696	698	695	2,954,946	326.43
Transportation, Warehousing & Utilities	33	328	290	279	1,963,406	505.12
Information	6	24	23	23	210,171	692.87
Financial Activities	38	223	229	229	1,599,888	542.15
Professional & Business Services	37	311	307	291	3,080,992	782.18
Education & Health Services	40	504	501	502	3,018,275	462.19
Leisure & Hospitality	36	285	273	282	605,518	166.35
Other Services	29	70	69	77	238,043	254.32
Local Government	19	808	817	868	5,732,460	530.64
State Government	11	150	158	163	1,151,947	564.40
DREW COUNTY - TOTAL	492	6,963	7,022	7,035	\$43,617,570	\$478.86
Natural Resources & Mining	45	340	338	303	2,711,521	637.85
Construction	25	132	125	125	790,281	477.42
Manufacturing	25	1,302	1,288	1,319	8,551,829	504.86
Trade, Transportation & Utilities	141	1,311	1,329	1,324	7,641,928	444.88
Wholesale Trade	26	278	278	280	2,233,190	616.45
Retail Trade	93	939	956	948	4,520,681	366.95
Transportation, Warehousing & Utilities	22	94	95	96	888,057	719.07
Information	9	83	86	85	660,366	599.97
Financial Activities	44	274	278	282	2,141,535	592.57
Professional & Business Services	39	258	259	255	1,557,510	465.58
Education & Health Services	55	768	760	785	3,827,549	381.88
Leisure & Hospitality	41	618	603	598	1,323,467	167.90
Other Services	28	89	88	89	346,024	300.19
Local Government	23	1,198	1,214	1,206	8,439,056	538.27
State Government	17	590	654	664	5,626,504	680.52

**TABLE 6. COUNTY SUMMARY
EMPLOYMENT AND TOTAL EARNINGS, BY INDUSTRY
FOURTH QUARTER 2004**

NORTH AMERICAN INDUSTRY CLASSIFICATION SYSTEM INDUSTRY GROUP	NUMBER OF EMPLOYING UNITS	EMPLOYMENT			TOTAL EARNINGS	AVERAGE
		OCTOBER	NOVEMBER	DECEMBER	OCT. - DEC. 2004	WEEKLY EARNINGS
FAULKNER COUNTY - TOTAL	2,198	34,769	34,781	34,895	\$274,414,704	\$606.31
Natural Resources & Mining	9	44	42	44	407,766	723.84
Construction	311	2,574	2,535	2,495	19,971,338	606.10
Manufacturing	112	5,018	5,037	5,001	47,633,456	730.10
Trade, Transportation & Utilities	549	6,101	6,164	6,303	34,769,246	432.12
Wholesale Trade	120	688	677	698	6,022,457	673.68
Retail Trade	369	4,804	4,874	4,973	23,099,321	363.84
Transportation, Warehousing & Utilities	60	609	613	632	5,647,468	702.95
Information	39	399	397	411	3,200,670	611.94
Financial Activities	258	1,315	1,322	1,332	10,648,339	619.13
Professional & Business Services	296	5,262	5,173	5,235	63,450,063	934.42
Education & Health Services	264	4,379	4,356	4,370	36,234,296	638.06
Leisure & Hospitality	173	3,495	3,486	3,446	8,626,142	190.91
Other Services	133	601	595	608	3,020,397	386.37
Local Government	35	2,897	2,971	2,956	22,856,191	597.75
State Government	19	2,684	2,703	2,694	23,596,800	673.85
FRANKLIN COUNTY - TOTAL	315	4,382	4,396	4,418	\$28,163,299	\$492.51
Natural Resources & Mining	8	132	137	142	1,510,173	847.94
Construction	27	151	158	158	1,012,562	500.36
Manufacturing	20	1,056	1,066	1,068	7,421,839	536.91
Trade, Transportation & Utilities	99	900	891	892	5,590,880	480.88
Wholesale Trade	13	59	58	56	247,339	329.93
Retail Trade	60	524	518	520	2,179,957	322.07
Transportation, Warehousing & Utilities	26	317	315	316	3,163,584	770.10
Information	7	57	55	57	249,443	340.61
Financial Activities	25	174	177	179	1,273,550	554.52
Professional & Business Services	18	58	58	59	311,053	410.18
Education & Health Services	38	543	539	545	3,367,936	477.70
Leisure & Hospitality	27	329	323	315	707,547	168.85
Other Services	17	49	53	52	287,818	431.30
Local Government	19	800	806	818	5,452,892	519.13
State Government	10	133	133	133	977,606	565.42

**TABLE 6. COUNTY SUMMARY
EMPLOYMENT AND TOTAL EARNINGS, BY INDUSTRY
FOURTH QUARTER 2004**

NORTH AMERICAN INDUSTRY CLASSIFICATION SYSTEM INDUSTRY GROUP	NUMBER OF EMPLOYING UNITS	EMPLOYMENT			TOTAL EARNINGS	AVERAGE
		OCTOBER	NOVEMBER	DECEMBER	OCT. - DEC. 2004	WEEKLY EARNINGS
FULTON COUNTY - TOTAL	208	1,871	1,858	1,872	\$9,061,954	\$373.37
Construction	16	33	33	34	204,204	471.24
Manufacturing	11	131	123	119	568,466	351.70
Trade, Transportation & Utilities	60	361	365	364	1,838,826	389.31
Retail Trade	44	202	206	202	661,837	250.38
Other Trade, Transportation & Utilities	16	159	159	162	1,176,989	565.86
Financial Activities	19	109	104	103	694,431	507.13
Professional & Business Services	16	47	49	47	302,866	488.76
Education & Health Services	28	356	364	374	1,546,042	326.12
Leisure & Hospitality	19	163	151	156	356,659	175.12
Local Government	13	508	505	508	2,656,961	403.12
State Government	11	100	100	103	629,819	479.68
Other	15	63	64	64	263,680	318.58
GARLAND COUNTY - TOTAL	2,981	35,530	35,578	35,609	\$242,835,875	\$525.12
Natural Resources & Mining	47	336	333	327	2,895,065	670.78
Construction	411	2,115	2,130	2,138	14,211,553	513.80
Manufacturing	125	3,441	3,443	3,443	28,132,004	628.64
Trade, Transportation & Utilities	694	7,387	7,531	7,568	45,747,276	469.49
Wholesale Trade	142	1,108	1,101	1,107	9,315,089	648.26
Retail Trade	484	5,573	5,726	5,732	29,491,955	399.61
Transportation, Warehousing & Utilities	68	706	704	729	6,940,232	748.76
Information	38	433	431	424	3,603,619	645.66
Financial Activities	333	1,510	1,510	1,501	13,325,998	680.21
Professional & Business Services	376	2,679	2,712	2,691	18,910,034	539.95
Education & Health Services	317	6,897	6,854	6,897	62,278,462	696.05
Leisure & Hospitality	347	5,695	5,527	5,574	18,618,257	255.81
Other Services	231	994	996	986	4,948,380	383.71
Local Government	36	3,105	3,140	3,089	22,887,155	565.85
State Government	26	938	971	971	7,278,072	583.18

**TABLE 6. COUNTY SUMMARY
EMPLOYMENT AND TOTAL EARNINGS, BY INDUSTRY
FOURTH QUARTER 2004**

NORTH AMERICAN INDUSTRY CLASSIFICATION SYSTEM INDUSTRY GROUP	NUMBER OF EMPLOYING UNITS	EMPLOYMENT			TOTAL EARNINGS	AVERAGE
		OCTOBER	NOVEMBER	DECEMBER	OCT. - DEC. 2004	WEEKLY EARNINGS
GRANT COUNTY - TOTAL	288	3,583	3,626	3,608	\$24,281,316	\$518.02
Natural Resources & Mining	27	239	231	229	2,396,227	791.10
Construction	30	231	234	236	1,624,074	534.65
Manufacturing	21	885	886	892	7,307,070	633.21
Trade, Transportation & Utilities	86	560	556	576	3,439,926	469.17
Wholesale Trade	17	151	146	152	1,425,694	732.75
Retail Trade	39	346	349	363	1,561,096	340.50
Transportation, Warehousing & Utilities	30	63	61	61	453,136	565.24
Information	3	39	38	40	288,273	568.59
Financial Activities	20	94	98	93	681,414	551.75
Professional & Business Services	23	68	75	73	544,795	582.05
Education & Health Services	23	211	219	211	1,167,681	420.38
Leisure & Hospitality	21	272	269	252	656,833	191.14
Other Services	14	41	41	38	173,650	333.94
Local Government	10	881	918	907	5,587,440	476.50
State Government	10	62	61	61	413,933	519.15
GREENE COUNTY - TOTAL	857	14,775	14,877	15,058	\$101,556,809	\$524.18
Natural Resources & Mining	37	216	210	201	1,560,302	574.27
Construction	76	390	362	360	2,187,460	453.96
Manufacturing	55	5,265	5,249	5,386	45,015,658	653.35
Trade, Transportation & Utilities	252	2,233	2,267	2,297	13,034,583	442.55
Wholesale Trade	55	449	445	443	3,531,876	609.61
Retail Trade	164	1,594	1,641	1,662	7,891,652	371.89
Transportation, Warehousing & Utilities	33	190	181	192	1,611,055	660.36
Information	13	99	98	98	589,716	461.32
Financial Activities	86	461	455	453	3,115,229	525.13
Professional & Business Services	77	1,428	1,546	1,560	9,242,317	470.41
Education & Health Services	98	1,657	1,670	1,665	10,909,348	504.32
Leisure & Hospitality	64	1,075	1,049	1,065	2,388,764	172.86
Other Services	56	169	166	158	841,004	393.67
Local Government	32	1,533	1,552	1,562	10,583,404	525.57
State Government	11	249	253	253	2,089,024	638.52

**TABLE 6. COUNTY SUMMARY
EMPLOYMENT AND TOTAL EARNINGS, BY INDUSTRY
FOURTH QUARTER 2004**

NORTH AMERICAN INDUSTRY CLASSIFICATION SYSTEM INDUSTRY GROUP	NUMBER OF EMPLOYING UNITS	EMPLOYMENT			TOTAL EARNINGS	AVERAGE
		OCTOBER	NOVEMBER	DECEMBER	OCT. - DEC. 2004	WEEKLY EARNINGS
HEMPSTEAD COUNTY - TOTAL	499	8,432	8,390	8,419	\$55,764,153	\$509.83
Natural Resources & Mining	18	228	234	242	1,745,949	572.32
Construction	34	114	117	112	754,551	507.66
Manufacturing	34	2,855	2,802	2,804	22,292,526	608.02
Trade, Transportation & Utilities	137	1,302	1,308	1,315	7,819,496	459.74
Wholesale Trade	24	195	195	192	1,264,670	501.46
Retail Trade	88	909	918	930	3,899,768	326.42
Transportation, Warehousing & Utilities	25	198	195	193	2,655,058	1045.57
Information	11	79	82	86	626,197	585.05
Financial Activities	46	263	274	277	2,094,826	593.88
Professional & Business Services	35	264	256	220	1,054,256	328.77
Education & Health Services	62	951	959	974	6,229,288	498.45
Leisure & Hospitality	43	599	575	579	1,387,478	182.65
Other Services	34	212	207	215	1,390,558	506.15
Local Government	29	1,023	1,036	1,051	6,205,346	460.45
State Government	16	542	540	544	4,163,682	590.93
HOT SPRING COUNTY - TOTAL	617	7,672	7,744	7,720	\$56,886,205	\$567.41
Natural Resources & Mining	39	216	211	217	1,934,336	693.14
Construction	71	382	372	350	2,978,009	622.49
Manufacturing	51	1,907	1,896	1,880	18,507,705	751.54
Trade, Transportation & Utilities	169	1,320	1,333	1,342	9,637,988	556.73
Wholesale Trade	19	85	85	87	1,905,374	1710.90
Retail Trade	106	890	901	909	4,392,405	375.42
Transportation, Warehousing & Utilities	44	345	347	346	3,340,209	742.60
Information	9	68	67	67	724,300	827.46
Financial Activities	55	302	302	300	2,205,314	562.96
Professional & Business Services	58	266	280	279	1,813,526	507.28
Education & Health Services	44	922	911	937	6,388,579	532.23
Leisure & Hospitality	42	519	578	557	1,533,391	213.94
Other Services	38	259	266	274	1,080,602	312.10
Local Government	27	1,102	1,115	1,142	7,345,843	504.67
State Government	14	409	413	375	2,736,612	527.59

**TABLE 6. COUNTY SUMMARY
EMPLOYMENT AND TOTAL EARNINGS, BY INDUSTRY
FOURTH QUARTER 2004**

NORTH AMERICAN INDUSTRY CLASSIFICATION SYSTEM INDUSTRY GROUP	NUMBER OF EMPLOYING UNITS	EMPLOYMENT			TOTAL EARNINGS	AVERAGE
		OCTOBER	NOVEMBER	DECEMBER	OCT. - DEC. 2004	WEEKLY EARNINGS
HOWARD COUNTY - TOTAL	361	8,376	8,467	8,454	\$53,086,395	\$484.28
Natural Resources & Mining	23	264	254	267	1,976,525	581.05
Construction	25	116	114	119	725,231	479.54
Manufacturing	26	4,984	5,080	5,006	33,831,554	518.07
Trade, Transportation & Utilities	110	930	941	967	5,332,034	433.57
Wholesale Trade	17	96	96	102	841,344	660.40
Retail Trade	70	653	660	670	2,947,811	343.05
Transportation, Warehousing & Utilities	23	181	185	195	1,542,879	634.67
Information	7	35	35	37	228,157	492.07
Financial Activities	35	164	164	165	1,079,038	505.09
Professional & Business Services	26	100	103	108	676,126	501.70
Education & Health Services	37	600	605	604	2,972,765	379.23
Leisure & Hospitality	22	267	272	268	626,716	179.22
Other Services	20	101	100	108	473,356	353.51
Local Government	18	691	674	681	4,249,750	479.33
State Government	12	124	125	124	915,143	566.18
INDEPENDENCE COUNTY - TOTAL	922	16,173	16,269	16,234	\$112,676,015	\$534.19
Natural Resources & Mining	13	131	137	127	940,887	549.69
Construction	66	489	479	480	3,544,030	564.82
Manufacturing	53	4,866	4,916	4,896	40,831,330	641.95
Trade, Transportation & Utilities	298	2,976	3,043	3,086	20,823,304	527.77
Wholesale Trade	56	474	473	487	3,871,104	622.96
Retail Trade	186	1,683	1,749	1,772	8,159,113	361.81
Transportation, Warehousing & Utilities	56	819	821	827	8,793,087	822.53
Information	11	165	164	166	1,259,726	587.28
Financial Activities	85	425	425	428	3,016,021	544.60
Professional & Business Services	90	1,046	1,003	957	4,851,031	372.41
Education & Health Services	102	2,516	2,524	2,540	20,612,267	627.53
Leisure & Hospitality	80	1,143	1,148	1,142	2,572,840	172.95
Other Services	68	341	337	335	1,559,305	355.22
Local Government	37	1,590	1,610	1,597	9,064,188	436.05
State Government	19	485	483	480	3,601,086	573.91

**TABLE 6. COUNTY SUMMARY
EMPLOYMENT AND TOTAL EARNINGS, BY INDUSTRY
FOURTH QUARTER 2004**

NORTH AMERICAN INDUSTRY CLASSIFICATION SYSTEM INDUSTRY GROUP	NUMBER OF EMPLOYING UNITS	EMPLOYMENT			TOTAL EARNINGS	AVERAGE
		OCTOBER	NOVEMBER	DECEMBER	OCT. - DEC. 2004	WEEKLY EARNINGS
IZARD COUNTY - TOTAL	254	2,873	2,899	2,926	17,906,077	\$475.07
Natural Resources & Mining	5	79	79	76	647,870	638.93
Construction	27	61	63	65	277,002	338.22
Manufacturing	12	425	419	423	3,614,849	658.40
Trade, Transportation & Utilities	71	511	518	520	3,026,329	450.86
Retail Trade	53	394	402	402	1,840,428	354.52
Other Trade, Transportation & Utilities	18	117	116	118	1,185,901	779.69
Information	3	8	7	7	43,681	458.19
Financial Activities	25	143	146	146	1,229,931	652.48
Professional & Business Services	22	78	77	77	360,664	358.75
Education & Health Services	23	413	418	413	2,211,631	410.27
Leisure & Hospitality	23	150	163	157	343,116	168.47
Other Services	14	38	38	43	167,448	324.72
Local Government	18	555	556	539	3,062,652	428.34
State Government	11	412	415	460	2,920,904	523.74
JACKSON COUNTY - TOTAL	524	5,942	5,857	5,867	\$39,783,804	\$519.69
Natural Resources & Mining	47	263	242	224	1,402,237	443.89
Construction	30	184	180	175	1,255,373	537.48
Manufacturing	29	1,038	1,043	1,058	8,892,202	653.73
Trade, Transportation & Utilities	139	1,227	1,208	1,217	7,669,383	484.63
Wholesale Trade	37	228	222	227	2,130,739	726.31
Retail Trade	83	731	727	727	3,356,478	354.50
Transportation, Warehousing & Utilities	19	268	259	263	2,182,166	637.44
Information	4	38	38	37	342,414	699.28
Financial Activities	44	186	187	190	1,243,481	509.69
Professional & Business Services	38	128	131	133	1,003,719	590.89
Education & Health Services	66	1,043	1,027	1,017	7,999,429	598.00
Leisure & Hospitality	36	312	298	307	812,024	204.35
Other Services	43	133	116	120	573,223	358.49
Local Government	34	803	804	800	4,276,589	410.01
State Government	14	587	583	589	4,313,730	565.93

**TABLE 6. COUNTY SUMMARY
EMPLOYMENT AND TOTAL EARNINGS, BY INDUSTRY
FOURTH QUARTER 2004**

NORTH AMERICAN INDUSTRY CLASSIFICATION SYSTEM INDUSTRY GROUP	NUMBER OF EMPLOYING UNITS	EMPLOYMENT			TOTAL EARNINGS	AVERAGE WEEKLY EARNINGS
		OCTOBER	NOVEMBER	DECEMBER	OCT. - DEC. 2004	
JEFFERSON COUNTY - TOTAL	1,755	33,430	33,393	33,363	\$257,076,894	\$592.15
Natural Resources & Mining	42	534	527	511	4,521,904	663.81
Construction	120	1,129	954	931	7,557,542	578.65
Manufacturing	82	6,744	6,701	6,689	66,775,853	765.36
Trade, Transportation & Utilities	499	6,056	6,172	6,208	39,802,581	498.22
Wholesale Trade	89	1,073	1,093	1,101	9,944,786	702.46
Retail Trade	346	4,150	4,253	4,277	20,505,808	373.19
Transportation, Warehousing & Utilities	64	833	826	830	9,351,987	867.08
Information	18	214	221	226	1,725,436	602.39
Financial Activities	147	1,221	1,220	1,229	10,789,029	678.41
Professional & Business Services	179	2,437	2,478	2,431	23,285,070	731.48
Education & Health Services	280	5,537	5,535	5,515	42,872,523	596.47
Leisure & Hospitality	143	2,221	2,185	2,170	5,623,634	197.35
Other Services	163	787	776	788	4,463,130	438.09
Local Government	42	3,428	3,478	3,517	23,707,546	524.89
State Government	40	3,122	3,146	3,148	25,952,646	636.05
JOHNSON COUNTY - TOTAL	442	8,526	8,546	8,603	\$53,109,078	\$477.35
Natural Resources & Mining	13	202	209	210	1,585,311	589.12
Construction	29	189	191	184	1,029,051	421.05
Manufacturing	41	3,227	3,201	3,243	21,336,766	509.14
Trade, Transportation & Utilities	124	1,743	1,777	1,772	9,970,306	434.78
Information	6	29	28	28	244,455	663.68
Financial Activities	38	206	208	215	1,487,795	545.85
Professional & Business Services	44	152	155	154	1,036,950	519.08
Education & Health Services	53	1,066	1,073	1,084	7,132,802	510.71
Leisure & Hospitality	40	548	540	534	1,312,066	186.67
Other Services	30	78	76	77	402,874	402.47
Local Government	14	934	943	955	6,436,308	524.47
State Government	10	152	145	147	1,134,394	589.60

**TABLE 6. COUNTY SUMMARY
EMPLOYMENT AND TOTAL EARNINGS, BY INDUSTRY
FOURTH QUARTER 2004**

NORTH AMERICAN INDUSTRY CLASSIFICATION SYSTEM INDUSTRY GROUP	NUMBER OF EMPLOYING UNITS	EMPLOYMENT			TOTAL EARNINGS	AVERAGE
		OCTOBER	NOVEMBER	DECEMBER	OCT. - DEC. 2004	WEEKLY EARNINGS
LAFAYETTE COUNTY - TOTAL	161	1,755	1,770	1,779	\$10,753,365	\$467.86
Natural Resources & Mining	30	175	182	174	1,046,511	454.81
Trade, Transportation & Utilities	38	248	240	242	1,471,071	465.04
Retail Trade	23	158	154	153	554,258	275.07
Other Trade, Transportation & Utilities	15	90	86	89	916,813	798.39
Financial Activities	16	87	86	94	487,542	421.38
Professional & Business Services	10	50	51	54	495,919	738.34
Education & Health Services	11	212	213	209	996,836	362.84
Leisure & Hospitality	6	55	61	64	188,907	242.19
Other Services	8	89	87	88	350,206	306.12
Local Government	14	366	374	384	2,014,041	413.50
State Government	8	64	64	63	410,635	496.14
Other	20	409	412	407	3,291,697	618.59
LAWRENCE COUNTY - TOTAL	436	4,438	4,433	4,464	\$26,507,856	\$458.73
Natural Resources & Mining	33	168	169	169	1,331,878	607.42
Construction	29	103	98	105	769,323	580.18
Manufacturing	24	720	711	704	5,202,958	562.38
Trade, Transportation & Utilities	146	1,025	1,022	1,024	5,714,206	429.39
Wholesale Trade	25	219	214	212	1,713,178	612.94
Retail Trade	84	670	680	688	2,977,304	337.13
Transportation, Warehousing & Utilities	37	136	128	124	1,023,724	608.88
Information	6	26	23	25	195,603	609.99
Financial Activities	31	135	138	140	856,372	478.51
Professional & Business Services	24	116	113	113	973,394	656.81
Education & Health Services	49	451	450	440	2,610,280	449.20
Leisure & Hospitality	29	323	340	343	651,113	149.36
Other Services	25	66	67	72	346,512	390.07
Local Government	28	1,180	1,178	1,205	7,081,741	458.67
State Government	12	125	124	124	774,476	479.16

**TABLE 6. COUNTY SUMMARY
EMPLOYMENT AND TOTAL EARNINGS, BY INDUSTRY
FOURTH QUARTER 2004**

NORTH AMERICAN INDUSTRY CLASSIFICATION SYSTEM INDUSTRY GROUP	NUMBER OF EMPLOYING UNITS	EMPLOYMENT			TOTAL EARNINGS	AVERAGE WEEKLY EARNINGS
		OCTOBER	NOVEMBER	DECEMBER	OCT. - DEC. 2004	
LEE COUNTY - TOTAL	226	2,342	2,278	2,264	\$14,486,529	\$485.63
Natural Resources & Mining	32	332	313	287	2,027,651	502.06
Construction	7	13	11	9	39,358	275.23
Trade, Transportation & Utilities	62	379	365	378	2,345,785	482.47
Wholesale Trade	9	68	63	64	599,299	709.23
Retail Trade	36	214	210	223	923,259	329.30
Transportation, Warehousing & Utilities	17	97	92	91	823,227	678.48
Financial Activities	12	78	79	82	477,646	461.20
Professional & Business Services	18	74	74	73	498,974	521.03
Education & Health Services	32	306	304	303	2,047,898	517.63
Leisure & Hospitality	8	103	96	95	197,011	154.64
Local Government	17	408	404	406	2,417,403	458.01
State Government	8	460	463	469	3,348,785	555.17
Other	30	189	169	162	1,086,018	481.96
LINCOLN COUNTY - TOTAL	216	3,203	3,259	3,177	\$20,647,772	\$494.33
Natural Resources & Mining	31	255	247	192	1,723,746	573.18
Construction	16	91	95	90	498,159	416.52
Manufacturing	10	477	489	495	3,323,550	524.96
Trade, Transportation & Utilities	53	400	387	387	2,563,854	503.97
Wholesale Trade	8	34	33	33	327,607	756.02
Retail Trade	27	222	210	208	813,478	293.32
Transportation, Warehousing & Utilities	18	144	144	146	1,422,769	756.52
Financial Activities	22	95	95	95	561,785	454.89
Professional & Business Services	11	26	26	26	192,387	569.19
Education & Health Services	22	318	319	311	1,574,906	383.38
Leisure & Hospitality	16	117	167	134	313,541	173.10
Local & State Government	22	1,380	1,391	1,402	9,662,094	534.32
Other	13	44	43	45	233,750	408.65

**TABLE 6. COUNTY SUMMARY
EMPLOYMENT AND TOTAL EARNINGS, BY INDUSTRY
FOURTH QUARTER 2004**

NORTH AMERICAN INDUSTRY CLASSIFICATION SYSTEM INDUSTRY GROUP	NUMBER OF EMPLOYING UNITS	EMPLOYMENT			TOTAL EARNINGS	AVERAGE
		OCTOBER	NOVEMBER	DECEMBER	OCT. - DEC. 2004	WEEKLY EARNINGS
LITTLE RIVER COUNTY - TOTAL	252	4,466	4,520	4,524	\$44,204,402	\$755.07
Natural Resources & Mining	12	73	73	70	561,032	599.39
Trade, Transportation & Utilities	74	1,056	1,077	1,076	8,829,096	634.93
Wholesale Trade	9	32	32	32	245,862	591.01
Retail Trade	43	363	357	356	1,585,083	339.95
Transportation, Warehousing & Utilities	22	661	688	688	6,998,151	792.81
Information	4	9	10	10	79,571	633.19
Financial Activities	27	126	117	120	823,872	523.76
Professional & Business Services	21	159	162	152	990,191	483.10
Education & Health Services	14	161	155	158	875,623	426.30
Leisure & Hospitality	19	201	207	210	495,223	184.92
Other Services	16	98	96	98	293,733	232.14
Local Government	20	759	765	761	4,524,408	456.93
State Government	12	93	94	94	567,228	465.83
Other	33	1,731	1,764	1,775	26,164,425	1145.72
LOGAN COUNTY - TOTAL	452	5,777	5,796	5,865	\$36,294,571	\$480.31
Natural Resources & Mining	16	91	86	87	715,278	625.24
Construction	47	140	146	158	799,244	415.41
Manufacturing	26	1,912	1,921	1,948	14,728,546	587.94
Trade, Transportation & Utilities	122	879	894	899	4,040,736	348.98
Wholesale Trade	21	56	55	55	269,543	374.71
Retail Trade	76	761	778	783	3,264,780	324.47
Transportation, Warehousing & Utilities	25	62	61	61	506,413	635.13
Information	9	30	43	43	336,505	669.44
Financial Activities	43	230	235	234	2,119,861	699.86
Professional & Business Services	38	103	103	105	690,715	512.53
Education & Health Services	51	723	705	717	4,051,696	435.90
Leisure & Hospitality	29	345	335	333	786,286	179.12
Other Services	32	96	91	92	486,593	402.48
Local Government	23	794	804	811	4,853,083	464.90
State Government	16	434	433	438	2,686,028	474.98

**TABLE 6. COUNTY SUMMARY
EMPLOYMENT AND TOTAL EARNINGS, BY INDUSTRY
FOURTH QUARTER 2004**

NORTH AMERICAN INDUSTRY CLASSIFICATION SYSTEM INDUSTRY GROUP	NUMBER OF EMPLOYING UNITS	EMPLOYMENT			TOTAL EARNINGS	AVERAGE WEEKLY EARNINGS
		OCTOBER	NOVEMBER	DECEMBER	OCT. - DEC. 2004	
LONOKE COUNTY - TOTAL	1,151	11,565	11,585	11,459	\$77,209,924	\$514.83
Natural Resources & Mining	75	505	486	439	4,488,207	724.29
Construction	162	965	929	901	7,577,785	625.66
Manufacturing	37	1,373	1,390	1,371	12,330,175	688.30
Trade, Transportation & Utilities	314	2,402	2,464	2,483	15,421,322	484.25
Wholesale Trade	71	389	390	399	4,026,361	788.76
Retail Trade	175	1,712	1,788	1,806	9,170,790	398.86
Transportation, Warehousing & Utilities	68	301	286	278	2,224,171	593.38
Information	17	115	109	107	1,481,853	1033.13
Financial Activities	125	578	591	589	4,930,330	647.19
Professional & Business Services	135	447	445	456	3,288,618	562.99
Education & Health Services	101	1,320	1,322	1,291	7,559,273	443.54
Leisure & Hospitality	76	1,105	1,079	1,112	2,800,375	196.07
Other Services	65	177	175	180	1,006,333	436.52
Local Government	28	2,434	2,453	2,384	15,364,559	487.65
State Government	16	144	142	146	961,094	513.40
MADISON COUNTY - TOTAL	236	3,174	3,186	3,181	\$20,318,286	\$491.44
Natural Resources & Mining	14	64	64	61	359,455	438.89
Construction	38	103	104	104	639,280	474.36
Manufacturing	22	1,144	1,148	1,155	8,148,409	545.52
Trade, Transportation & Utilities	59	579	574	577	3,520,631	469.63
Wholesale Trade	13	40	38	41	786,388	1524.99
Retail Trade	34	412	402	413	1,859,091	349.65
Transportation, Warehousing & Utilities	12	127	134	123	875,152	525.93
Information	4	37	36	38	508,872	1057.95
Financial Activities	17	96	99	93	669,780	536.68
Professional & Business Services	20	112	113	114	741,028	504.44
Education & Health Services	21	235	238	240	1,157,870	374.76
Leisure & Hospitality	12	117	125	118	207,254	132.86
Other Services	13	29	28	27	143,295	393.67
Local Government	8	605	604	601	3,830,283	488.35
State Government	8	53	53	53	392,129	569.13

**TABLE 6. COUNTY SUMMARY
EMPLOYMENT AND TOTAL EARNINGS, BY INDUSTRY
FOURTH QUARTER 2004**

NORTH AMERICAN INDUSTRY CLASSIFICATION SYSTEM INDUSTRY GROUP	NUMBER OF EMPLOYING UNITS	EMPLOYMENT			TOTAL EARNINGS	AVERAGE
		OCTOBER	NOVEMBER	DECEMBER	OCT. - DEC. 2004	WEEKLY EARNINGS
MARION COUNTY - TOTAL	276	3,933	3,920	3,941	\$23,145,976	\$452.89
Natural Resources & Mining	6	44	40	44	232,965	420.01
Construction	14	46	42	47	209,897	358.80
Manufacturing	27	1,691	1,703	1,701	11,550,310	523.15
Trade, Transportation & Utilities	58	547	565	577	2,474,848	338.14
Financial Activities	34	188	172	172	1,120,100	485.87
Professional & Business Services	24	43	44	43	359,906	638.89
Education & Health Services	24	336	329	331	1,705,657	395.19
Leisure & Hospitality	42	264	251	249	706,311	213.34
Local Government	20	573	571	569	3,203,944	431.62
State Government	8	107	112	116	679,342	467.97
Other	19	94	91	92	902,696	752.04
MILLER COUNTY - TOTAL	839	12,897	12,829	12,955	\$106,239,573	\$633.82
Natural Resources & Mining	33	161	167	171	1,196,588	553.38
Construction	88	867	907	944	6,781,169	575.75
Manufacturing	37	2,782	2,783	2,810	42,264,460	1164.58
Trade, Transportation & Utilities	247	2,863	2,864	2,876	21,069,076	565.16
Wholesale Trade	67	626	619	629	6,410,158	789.36
Retail Trade	135	1,477	1,478	1,469	6,814,827	355.48
Transportation, Warehousing & Utilities	45	760	767	778	7,844,091	785.33
Information	9	86	89	94	1,391,764	1193.96
Financial Activities	80	435	441	443	3,857,637	674.92
Professional & Business Services	80	909	795	775	4,428,304	412.23
Education & Health Services	79	966	999	1,009	6,058,353	470.10
Leisure & Hospitality	78	1,379	1,342	1,377	3,736,767	210.43
Other Services	68	369	358	365	1,428,983	301.98
Local Government	22	1,650	1,653	1,662	10,273,245	477.49
State Government	18	430	431	429	3,753,227	671.42

**TABLE 6. COUNTY SUMMARY
EMPLOYMENT AND TOTAL EARNINGS, BY INDUSTRY
FOURTH QUARTER 2004**

NORTH AMERICAN INDUSTRY CLASSIFICATION SYSTEM INDUSTRY GROUP	NUMBER OF EMPLOYING UNITS	EMPLOYMENT			TOTAL EARNINGS	AVERAGE
		OCTOBER	NOVEMBER	DECEMBER	OCT. - DEC. 2004	WEEKLY EARNINGS
MISSISSIPPI COUNTY - TOTAL	1,128	18,366	18,325	17,937	\$149,788,085	\$632.76
Natural Resources & Mining	106	1,281	1,243	957	8,021,027	531.75
Construction	56	356	365	367	3,159,059	670.05
Manufacturing	56	4,687	4,704	4,708	63,412,703	1037.92
Trade, Transportation & Utilities	310	3,015	3,004	3,057	19,211,654	488.48
Wholesale Trade	63	554	540	556	5,051,095	706.45
Retail Trade	198	1,902	1,905	1,926	8,600,528	346.20
Transportation, Warehousing & Utilities	49	559	559	575	5,560,031	757.88
Financial Activities	104	607	603	602	4,294,979	546.99
Professional & Business Services	95	1,009	953	879	6,928,706	562.81
Education & Health Services	153	1,638	1,621	1,585	11,058,573	526.83
Leisure & Hospitality	79	1,084	1,087	1,048	2,763,699	198.13
Local Government	46	2,402	2,429	2,419	15,379,808	489.54
State Government	25	699	705	698	4,516,486	495.84
Other	98	1,588	1,611	1,617	11,041,391	529.07
MONROE COUNTY - TOTAL	298	2,618	2,571	2,572	\$14,606,967	\$434.33
Natural Resources & Mining	35	179	164	164	950,555	432.66
Construction	15	59	49	45	271,646	409.72
Manufacturing	8	202	188	181	1,186,292	479.44
Trade, Transportation & Utilities	92	673	666	654	4,502,595	521.35
Wholesale Trade	24	189	190	180	1,607,751	663.72
Retail Trade	42	329	337	330	1,707,827	395.70
Transportation, Warehousing & Utilities	26	155	139	144	1,187,017	625.40
Information	7	19	26	25	157,231	518.34
Financial Activities	16	102	99	104	806,976	610.57
Professional & Business Services	15	35	33	32	225,889	521.28
Education & Health Services	29	357	365	373	1,500,113	316.15
Leisure & Hospitality	31	319	312	316	655,947	159.84
Other Services	18	73	70	71	315,264	339.97
Local Government	22	463	462	470	3,155,759	522.04
State Government	10	137	137	137	878,700	493.37

**TABLE 6. COUNTY SUMMARY
EMPLOYMENT AND TOTAL EARNINGS, BY INDUSTRY
FOURTH QUARTER 2004**

NORTH AMERICAN INDUSTRY CLASSIFICATION SYSTEM INDUSTRY GROUP	NUMBER OF EMPLOYING UNITS	EMPLOYMENT			TOTAL EARNINGS	AVERAGE
		OCTOBER	NOVEMBER	DECEMBER	OCT. - DEC. 2004	WEEKLY EARNINGS
MONTGOMERY COUNTY - TOTAL	171	1,570	1,560	1,514	\$7,966,214	\$395.86
Natural Resources & Mining	13	56	55	60	340,455	459.45
Construction	23	125	129	114	676,859	424.45
Trade, Transportation & Utilities	45	223	218	219	1,019,514	356.47
Wholesale Trade	11	70	75	78	364,077	376.76
Retail Trade	26	124	117	114	538,181	349.85
Transportation, Warehousing & Utilities	8	29	26	27	117,256	329.99
Financial Activities	9	70	64	61	522,956	618.88
Education & Health Services	12	57	55	58	238,864	324.25
Leisure & Hospitality	20	168	161	115	577,489	300.15
Other Services	10	61	62	62	250,634	312.64
Local Government	9	488	488	488	2,587,096	407.80
State Government	8	57	56	57	392,850	533.28
Other	22	265	272	280	1,359,497	384.00
NEVADA COUNTY - TOTAL	200	2,614	2,622	2,668	\$18,286,680	\$533.91
Natural Resources & Mining	17	58	56	55	433,079	591.37
Construction	14	45	49	51	248,808	395.98
Manufacturing	7	721	732	757	7,833,542	817.98
Trade, Transportation & Utilities	49	465	459	463	2,531,610	421.21
Retail Trade	33	295	292	301	1,174,476	305.22
Other Trade, Transportation & Utilities	16	170	167	162	1,357,134	627.62
Financial Activities	12	63	63	66	543,240	652.93
Education & Health Services	13	391	401	412	1,944,969	372.79
Leisure & Hospitality	17	119	107	106	249,379	173.34
Other Services	18	91	88	88	264,631	228.72
Local Government	27	513	516	518	2,708,724	404.07
State Government	11	84	85	85	578,808	525.87
Other	15	64	66	67	949,890	1112.72

**TABLE 6. COUNTY SUMMARY
EMPLOYMENT AND TOTAL EARNINGS, BY INDUSTRY
FOURTH QUARTER 2004**

NORTH AMERICAN INDUSTRY CLASSIFICATION SYSTEM INDUSTRY GROUP	NUMBER OF EMPLOYING UNITS	EMPLOYMENT			TOTAL EARNINGS	AVERAGE
		OCTOBER	NOVEMBER	DECEMBER	OCT. - DEC. 2004	WEEKLY EARNINGS
NEWTON COUNTY - TOTAL	128	1,073	1,074	1,070	\$4,700,918	\$337.22
Natural Resources & Mining	8	15	14	15	43,808	229.76
Construction	8	5	7	6	17,501	224.37
Manufacturing	14	64	60	61	314,501	392.31
Trade, Transportation & Utilities	29	172	173	167	662,948	298.80
Wholesale Trade	3	10	8	7	58,556	540.52
Retail Trade	16	110	112	108	342,223	239.32
Transportation, Warehousing & Utilities	10	52	53	52	262,169	385.35
Education & Health Services	13	216	220	227	784,490	273.06
Leisure & Hospitality	19	68	66	61	170,886	202.23
Other Services	6	14	15	14	49,517	265.74
Local Government	11	367	367	368	1,789,319	374.70
State Government	7	97	98	95	428,329	340.85
Other	13	55	54	56	439,619	614.85
OUACHITA COUNTY - TOTAL	640	7,543	7,531	7,529	\$49,050,818	\$500.79
Natural Resources & Mining	48	435	434	437	3,666,799	647.92
Construction	46	209	205	195	1,197,162	453.64
Manufacturing	28	828	828	830	7,297,978	677.45
Trade, Transportation & Utilities	192	1,686	1,683	1,705	10,794,128	490.92
Wholesale Trade	33	281	282	281	2,841,151	776.84
Retail Trade	129	1,127	1,125	1,144	5,104,898	346.89
Transportation, Warehousing & Utilities	30	278	276	280	2,848,079	788.07
Information	9	93	90	91	735,698	619.62
Financial Activities	65	353	359	354	2,886,454	624.86
Professional & Business Services	46	383	373	357	1,986,936	411.97
Education & Health Services	68	1,262	1,251	1,246	8,121,216	498.57
Leisure & Hospitality	40	522	504	512	1,204,146	180.68
Other Services	55	170	167	172	817,196	370.50
Local Government	30	1,300	1,333	1,324	7,770,903	453.19
State Government	13	302	304	306	2,572,202	650.86

**TABLE 6. COUNTY SUMMARY
EMPLOYMENT AND TOTAL EARNINGS, BY INDUSTRY
FOURTH QUARTER 2004**

NORTH AMERICAN INDUSTRY CLASSIFICATION SYSTEM INDUSTRY GROUP	NUMBER OF EMPLOYING UNITS	EMPLOYMENT			TOTAL EARNINGS	AVERAGE
		OCTOBER	NOVEMBER	DECEMBER	OCT. - DEC. 2004	WEEKLY EARNINGS
PERRY COUNTY - TOTAL	152	1,192	1,181	1,180	\$6,907,650	\$448.66
Natural Resources & Mining	6	26	27	27	204,323	589.39
Construction	25	69	73	73	433,060	464.82
Manufacturing	6	76	72	71	462,841	487.71
Trade, Transportation & Utilities	31	191	187	183	945,423	388.90
Wholesale Trade	4	8	8	7	109,717	1100.84
Retail Trade	20	161	158	155	568,001	276.53
Transportation, Warehousing & Utilities	7	22	21	21	267,705	965.28
Financial Activities	15	50	53	59	890,559	1268.60
Education & Health Services	15	157	155	157	745,671	366.90
Local Government	12	410	415	415	2,158,975	401.79
State Government	8	55	54	56	374,128	523.26
Other	34	158	145	139	692,670	361.64
PHILLIPS COUNTY - TOTAL	674	7,106	7,007	6,867	\$44,094,290	\$485.01
Natural Resources & Mining	77	741	627	497	3,892,578	481.66
Construction	33	129	119	117	715,835	452.58
Manufacturing	14	463	475	460	3,562,803	588.12
Trade, Transportation & Utilities	178	1,644	1,677	1,652	10,600,105	491.89
Wholesale Trade	36	421	423	421	3,546,014	646.89
Retail Trade	107	891	915	903	4,324,742	368.41
Transportation, Warehousing & Utilities	35	332	339	328	2,729,349	630.48
Information	12	62	61	63	459,267	569.81
Financial Activities	55	302	303	301	2,042,568	520.27
Professional & Business Services	58	304	273	293	2,150,693	570.48
Education & Health Services	119	1,146	1,157	1,150	7,079,233	473.12
Leisure & Hospitality	36	366	354	368	866,481	183.78
Other Services	42	105	105	104	532,183	391.12
Local Government	34	1,327	1,333	1,332	8,582,722	496.15
State Government	16	517	523	530	3,609,822	530.60

**TABLE 6. COUNTY SUMMARY
EMPLOYMENT AND TOTAL EARNINGS, BY INDUSTRY
FOURTH QUARTER 2004**

NORTH AMERICAN INDUSTRY CLASSIFICATION SYSTEM INDUSTRY GROUP	NUMBER OF EMPLOYING UNITS	EMPLOYMENT			TOTAL EARNINGS	AVERAGE
		OCTOBER	NOVEMBER	DECEMBER	OCT. - DEC. 2004	WEEKLY EARNINGS
PIKE COUNTY - TOTAL	270	2,783	2,759	2,784	\$16,051,646	\$444.90
Natural Resources & Mining	36	179	172	188	1,294,666	554.30
Construction	12	65	58	69	470,328	565.30
Manufacturing	11	463	448	443	2,645,193	450.83
Trade, Transportation & Utilities	95	600	611	625	3,201,547	402.41
Wholesale Trade	18	129	135	135	866,342	501.07
Retail Trade	55	376	376	395	1,656,783	333.33
Transportation, Warehousing & Utilities	22	95	100	95	678,422	539.86
Information	6	41	40	40	347,716	663.16
Financial Activities	25	193	192	193	1,704,396	680.49
Professional & Business Services	11	46	45	45	195,127	331.10
Education & Health Services	12	176	180	182	873,750	374.79
Leisure & Hospitality	22	215	199	189	427,039	163.43
Other Services	16	123	124	124	624,490	388.44
Local Government	13	566	576	573	3,584,988	482.39
State Government	11	116	114	113	682,406	459.12
POINSETT COUNTY - TOTAL	500	6,419	6,372	6,277	\$43,401,826	\$525.27
Natural Resources & Mining	49	426	411	388	2,869,329	540.53
Construction	31	100	102	94	668,802	521.42
Manufacturing	27	1,496	1,504	1,511	11,812,594	604.30
Trade, Transportation & Utilities	141	1,424	1,408	1,398	9,008,378	491.46
Wholesale Trade	32	480	474	448	4,608,822	758.61
Retail Trade	78	768	780	791	3,149,652	310.75
Transportation, Warehousing & Utilities	31	176	154	159	1,249,904	589.86
Information	7	60	59	58	748,405	975.76
Financial Activities	45	331	330	329	2,369,909	552.43
Professional & Business Services	25	84	83	81	685,230	637.62
Education & Health Services	50	527	525	518	3,004,373	441.60
Leisure & Hospitality	48	470	437	403	865,729	152.51
Other Services	33	71	71	72	2,684,418	2894.77
Local Government	31	1,194	1,208	1,190	7,189,299	461.88
State Government	13	236	234	235	1,495,360	489.48

**TABLE 6. COUNTY SUMMARY
EMPLOYMENT AND TOTAL EARNINGS, BY INDUSTRY
FOURTH QUARTER 2004**

NORTH AMERICAN INDUSTRY CLASSIFICATION SYSTEM INDUSTRY GROUP	NUMBER OF EMPLOYING UNITS	EMPLOYMENT			TOTAL EARNINGS	AVERAGE
		OCTOBER	NOVEMBER	DECEMBER	OCT. - DEC. 2004	WEEKLY EARNINGS
POLK COUNTY - TOTAL	529	6,212	6,250	6,265	\$34,859,060	\$429.56
Natural Resources & Mining	26	253	251	248	1,893,536	581.08
Construction	35	167	153	160	791,065	380.32
Manufacturing	49	1,390	1,392	1,406	9,096,261	501.23
Trade, Transportation & Utilities	154	1,328	1,334	1,336	6,807,836	392.96
Wholesale Trade	24	143	146	144	764,943	407.68
Retail Trade	86	859	864	866	4,001,149	356.64
Transportation, Warehousing & Utilities	44	326	324	326	2,041,744	482.76
Information	9	55	55	55	418,295	585.03
Financial Activities	38	213	215	213	1,587,094	571.38
Professional & Business Services	45	178	183	180	1,223,531	521.91
Education & Health Services	65	918	945	943	5,086,865	418.35
Leisure & Hospitality	39	429	433	443	834,332	147.54
Other Services	33	138	137	137	595,495	333.55
Local Government	21	824	829	822	4,855,567	452.73
State Government	15	319	323	322	1,669,183	399.58
POPE COUNTY - TOTAL	1,624	24,577	24,516	24,915	\$178,705,362	\$557.23
Natural Resources & Mining	22	318	241	628	2,155,134	418.99
Construction	167	1,073	1,049	1,033	9,219,199	674.33
Manufacturing	89	4,624	4,623	4,686	40,137,406	664.79
Trade, Transportation & Utilities	475	6,374	6,411	6,429	54,331,354	652.55
Wholesale Trade	104	766	751	751	6,083,485	619.00
Retail Trade	277	3,143	3,200	3,203	15,181,305	367.00
Transportation, Warehousing & Utilities	94	2,465	2,460	2,475	33,066,564	1031.18
Information	22	295	302	313	2,319,338	588.17
Financial Activities	158	741	750	763	6,083,566	622.85
Professional & Business Services	206	2,299	2,249	2,239	13,273,566	451.32
Education & Health Services	181	2,729	2,754	2,742	18,558,265	520.69
Leisure & Hospitality	131	2,254	2,275	2,242	5,619,349	191.52
Other Services	117	486	469	456	2,693,214	440.48
Local Government	39	2,294	2,298	2,291	14,685,481	492.37
State Government	17	1,090	1,095	1,093	9,629,490	677.91

**TABLE 6. COUNTY SUMMARY
EMPLOYMENT AND TOTAL EARNINGS, BY INDUSTRY
FOURTH QUARTER 2004**

NORTH AMERICAN INDUSTRY CLASSIFICATION SYSTEM INDUSTRY GROUP	NUMBER OF EMPLOYING UNITS	EMPLOYMENT			TOTAL EARNINGS	AVERAGE
		OCTOBER	NOVEMBER	DECEMBER	OCT. - DEC. 2004	WEEKLY EARNINGS
PRAIRIE COUNTY - TOTAL	227	1,672	1,654	1,646	\$10,023,170	\$465.21
Natural Resources & Mining	24	128	121	114	791,350	503.08
Trade, Transportation & Utilities	69	408	386	383	2,134,537	418.51
Wholesale Trade	10	56	52	49	382,205	561.79
Retail Trade	37	238	243	244	740,915	235.84
Transportation, Warehousing & Utilities	22	114	91	90	1,011,417	791.20
Information	4	10	10	10	97,164	747.42
Financial Activities	17	67	67	71	582,296	655.49
Professional & Business Services	16	57	56	55	312,285	428.96
Education & Health Services	18	202	201	206	1,032,384	391.20
Leisure & Hospitality	18	96	96	101	228,017	179.59
Other Services	15	51	52	53	216,879	320.83
Local Government	15	359	362	363	2,092,517	445.47
State Government	10	51	52	52	345,827	514.88
Other	21	243	251	238	2,189,914	690.39
PULASKI COUNTY - TOTAL	13,361	234,374	235,256	236,855	\$2,282,997,565	\$745.73
Natural Resources & Mining	42	701	662	653	7,823,497	895.55
Construction	1,120	10,453	10,338	10,384	110,741,813	819.75
Manufacturing	433	16,404	16,441	16,438	187,424,902	877.62
Trade, Transportation & Utilities	3,218	51,261	51,995	52,813	472,080,747	698.04
Wholesale Trade	1,072	12,967	12,880	13,032	175,540,693	1041.93
Retail Trade	1,761	25,158	25,934	26,467	154,716,727	460.34
Transportation, Warehousing & Utilities	385	13,136	13,181	13,314	141,823,327	825.83
Information	223	8,611	8,664	8,664	104,951,308	933.71
Financial Activities	1,641	16,174	16,220	16,333	203,928,045	965.80
Professional & Business Services	2,539	33,098	33,040	33,291	331,755,445	769.99
Education & Health Services	1,632	31,860	31,902	31,951	352,154,167	849.06
Leisure & Hospitality	983	18,717	18,713	19,012	63,855,009	261.08
Other Services	1,230	6,955	7,019	7,013	51,175,796	562.72
Local Government	103	16,532	16,561	16,505	145,657,166	677.71
State Government	197	23,608	23,701	23,798	251,449,670	816.05

**TABLE 6. COUNTY SUMMARY
EMPLOYMENT AND TOTAL EARNINGS, BY INDUSTRY
FOURTH QUARTER 2004**

NORTH AMERICAN INDUSTRY CLASSIFICATION SYSTEM INDUSTRY GROUP	NUMBER OF EMPLOYING UNITS	EMPLOYMENT			TOTAL EARNINGS	AVERAGE WEEKLY EARNINGS
		OCTOBER	NOVEMBER	DECEMBER	OCT. - DEC. 2004	
RANDOLPH COUNTY - TOTAL	398	5,134	5,124	5,095	\$29,402,493	\$441.95
Natural Resources & Mining	20	79	73	69	350,235	365.72
Construction	21	105	108	102	517,935	379.44
Manufacturing	36	1,282	1,254	1,202	8,471,572	523.00
Trade, Transportation & Utilities	107	964	952	942	4,827,866	389.83
Wholesale Trade	21	164	161	161	853,422	405.23
Retail Trade	65	629	627	626	2,711,609	332.50
Transportation, Warehousing & Utilities	21	171	164	155	1,262,835	594.74
Information	7	48	47	47	444,635	722.59
Financial Activities	27	156	152	161	1,367,509	672.88
Professional & Business Services	40	209	224	227	950,573	332.37
Education & Health Services	53	751	777	789	5,101,591	508.11
Leisure & Hospitality	29	378	358	353	710,749	150.61
Other Services	23	56	58	60	279,670	370.92
Local Government	23	842	856	884	4,610,000	412.02
State Government	12	264	265	259	1,770,158	518.40
SAINT FRANCIS COUNTY - TOTAL	605	8,684	8,647	8,567	\$56,798,308	\$506.11
Natural Resources & Mining	24	211	204	190	1,294,442	493.75
Construction	46	268	264	252	2,041,690	600.97
Manufacturing	22	1,494	1,461	1,459	11,232,415	587.24
Trade, Transportation & Utilities	185	2,075	2,079	2,104	13,568,418	500.35
Wholesale Trade	33	530	521	509	4,266,550	631.15
Retail Trade	122	1,188	1,205	1,236	5,858,290	372.53
Transportation, Warehousing & Utilities	30	357	353	359	3,443,578	743.38
Information	12	101	101	102	786,675	597.17
Financial Activities	48	272	274	282	1,756,828	489.64
Professional & Business Services	42	136	140	139	964,164	536.14
Education & Health Services	89	1,424	1,427	1,411	9,500,540	514.41
Leisure & Hospitality	48	758	736	731	1,964,316	203.73
Other Services	42	143	149	140	542,983	290.06
Local Government	30	1,225	1,245	1,197	9,058,372	570.06
State Government	17	577	567	560	4,087,465	553.56

**TABLE 6. COUNTY SUMMARY
EMPLOYMENT AND TOTAL EARNINGS, BY INDUSTRY
FOURTH QUARTER 2004**

NORTH AMERICAN INDUSTRY CLASSIFICATION SYSTEM INDUSTRY GROUP	NUMBER OF EMPLOYING UNITS	EMPLOYMENT			TOTAL EARNINGS	AVERAGE
		OCTOBER	NOVEMBER	DECEMBER	OCT. - DEC. 2004	WEEKLY EARNINGS
SALINE COUNTY - TOTAL	1,538	18,968	19,034	19,171	\$133,315,555	\$538.11
Natural Resources & Mining	13	51	47	48	497,855	786.92
Construction	274	1,706	1,700	1,673	13,829,226	628.34
Manufacturing	81	1,786	1,808	1,800	18,456,421	789.61
Trade, Transportation & Utilities	402	4,401	4,357	4,467	29,574,841	516.07
Wholesale Trade	103	525	510	521	5,148,889	763.63
Retail Trade	254	3,607	3,602	3,693	22,127,827	468.39
Transportation, Warehousing & Utilities	45	269	245	253	2,298,125	691.44
Information	15	132	131	139	1,020,107	585.60
Financial Activities	146	668	688	690	4,923,476	555.32
Professional & Business Services	184	1,194	1,192	1,175	8,280,624	536.62
Education & Health Services	136	2,432	2,467	2,482	16,875,431	527.62
Leisure & Hospitality	113	2,031	2,024	2,035	5,474,647	207.45
Other Services	123	539	548	537	3,099,600	440.45
Local & State Government	51	4,028	4,072	4,125	31,283,327	590.53
SCOTT COUNTY - TOTAL	180	2,809	2,821	2,820	16,042,491	\$438.12
Natural Resources & Mining	17	172	168	166	1,323,823	603.75
Trade, Transportation & Utilities	48	479	483	482	2,386,305	381.36
Wholesale Trade	8	59	59	61	398,495	513.75
Retail Trade	30	341	343	344	1,385,670	311.06
Transportation, Warehousing & Utilities	10	79	81	77	602,140	586.31
Information	4	13	14	15	100,248	550.81
Financial Activities	15	74	77	74	408,733	419.21
Professional & Business Services	8	10	10	11	44,783	333.37
Education & Health Services	19	297	301	309	1,771,796	450.80
Leisure & Hospitality	17	146	138	138	296,210	161.98
Other Services	11	59	59	56	513,503	681.04
Local Government	5	359	358	364	2,091,325	446.45
State Government	8	63	64	65	390,185	468.97
Other	28	1,137	1,149	1,140	6,715,580	452.35

**TABLE 6. COUNTY SUMMARY
EMPLOYMENT AND TOTAL EARNINGS, BY INDUSTRY
FOURTH QUARTER 2004**

NORTH AMERICAN INDUSTRY CLASSIFICATION SYSTEM INDUSTRY GROUP	NUMBER OF EMPLOYING UNITS	EMPLOYMENT			TOTAL EARNINGS	AVERAGE
		OCTOBER	NOVEMBER	DECEMBER	OCT. - DEC. 2004	WEEKLY EARNINGS
SEARCY COUNTY - TOTAL	149	1,611	1,618	1,636	\$8,130,689	\$385.68
Construction	5	15	16	17	67,869	326.29
Manufacturing	18	307	311	311	1,511,732	375.52
Trade, Transportation & Utilities	40	280	281	295	1,151,651	310.47
Retail Trade	30	208	206	215	803,375	294.74
Other Trade, Transportation & Utilities	10	72	75	80	348,276	354.06
Financial Activities	14	57	52	51	313,006	451.45
Professional & Business Services	17	39	39	37	207,320	416.03
Education & Health Services	14	279	280	280	1,330,883	366.06
Leisure & Hospitality	13	101	100	100	221,842	170.08
Local Government	9	313	315	317	1,881,956	459.57
State Government	9	179	184	186	1,187,683	499.24
Other	10	41	40	42	256,747	481.70
SEBASTIAN COUNTY - TOTAL	3,531	72,414	72,169	72,039	\$571,012,175	\$608.30
Natural Resources & Mining	61	1,020	961	960	11,297,620	886.48
Construction	288	2,722	2,742	2,763	23,075,456	647.27
Manufacturing	220	21,396	21,308	21,248	189,592,730	684.14
Trade, Transportation & Utilities	916	12,216	12,552	12,773	87,271,296	536.47
Wholesale Trade	225	2,363	2,374	2,403	24,383,411	788.09
Retail Trade	570	7,766	8,091	8,252	41,802,831	400.13
Transportation, Warehousing & Utilities	121	2,087	2,087	2,118	21,085,054	773.33
Information	55	1,199	1,204	1,200	12,894,854	825.90
Financial Activities	391	2,530	2,524	2,539	23,307,047	708.36
Professional & Business Services	518	9,721	9,325	8,942	62,764,499	517.51
Education & Health Services	416	9,142	9,124	9,132	92,339,872	777.76
Leisure & Hospitality	306	5,281	5,218	5,330	15,090,521	220.00
Other Services	294	1,475	1,452	1,439	8,665,459	458.02
Local Government	43	4,370	4,417	4,412	34,316,353	599.98
State Government	23	1,342	1,342	1,301	10,396,468	602.05

**TABLE 6. COUNTY SUMMARY
EMPLOYMENT AND TOTAL EARNINGS, BY INDUSTRY
FOURTH QUARTER 2004**

NORTH AMERICAN INDUSTRY CLASSIFICATION SYSTEM INDUSTRY GROUP	NUMBER OF EMPLOYING UNITS	EMPLOYMENT			TOTAL EARNINGS	AVERAGE WEEKLY EARNINGS
		OCTOBER	NOVEMBER	DECEMBER	OCT. - DEC. 2004	
SEVIER COUNTY - TOTAL	326	5,179	5,221	5,202	33,498,770	\$495.48
Natural Resources & Mining	23	199	196	194	1,296,282	507.88
Trade, Transportation & Utilities	95	872	889	889	5,109,699	444.97
Wholesale Trade	16	132	137	137	1,506,592	856.34
Retail Trade	60	643	650	648	2,682,467	318.92
Transportation, Warehousing & Utilities	19	97	102	104	920,640	701.17
Information	7	43	43	44	365,334	648.52
Financial Activities	26	165	165	171	1,233,651	568.24
Professional & Business Services	29	127	129	135	2,330,659	1375.56
Education & Health Services	36	510	505	506	2,913,998	442.12
Leisure & Hospitality	19	271	283	268	638,071	179.13
Other Services	32	161	155	149	679,720	337.33
Local Government	12	785	796	788	4,925,672	479.82
State Government	9	178	183	191	1,217,405	508.95
Other	38	1,868	1,877	1,867	12,788,279	525.86
SHARP COUNTY - TOTAL	383	3,898	3,924	3,876	\$20,519,408	\$404.79
Construction	32	198	193	193	1,203,381	475.52
Manufacturing	22	157	158	161	820,564	397.82
Trade, Transportation & Utilities	105	1,063	1,068	1,078	6,350,947	456.72
Retail Trade	76	661	654	655	2,760,416	323.36
Other Trade, Transportation & Utilities	29	402	414	423	3,590,531	668.75
Information	10	62	66	67	728,480	862.11
Financial Activities	30	258	256	262	1,708,801	508.17
Professional & Business Services	38	132	130	130	898,353	528.86
Education & Health Services	46	622	645	600	3,133,949	387.37
Leisure & Hospitality	38	464	449	445	898,868	152.75
Local Government	25	764	776	759	3,859,366	387.40
State Government	9	94	97	97	587,220	470.53
Other	28	84	86	84	329,479	299.34

**TABLE 6. COUNTY SUMMARY
EMPLOYMENT AND TOTAL EARNINGS, BY INDUSTRY
FOURTH QUARTER 2004**

NORTH AMERICAN INDUSTRY CLASSIFICATION SYSTEM INDUSTRY GROUP	NUMBER OF EMPLOYING UNITS	EMPLOYMENT			TOTAL EARNINGS	AVERAGE
		OCTOBER	NOVEMBER	DECEMBER	OCT. - DEC. 2004	WEEKLY EARNINGS
STONE COUNTY - TOTAL	245	2,789	2,726	2,700	\$14,842,959	\$416.96
Construction	21	73	71	67	335,523	366.96
Manufacturing	24	521	489	496	2,826,438	433.10
Trade, Transportation & Utilities	76	568	563	572	3,624,952	491.21
Wholesale Trade	10	52	51	48	245,264	374.83
Retail Trade	52	472	470	482	3,023,810	490.03
Transportation, Warehousing & Utilities	14	44	42	42	355,878	641.61
Financial Activities	21	92	90	90	685,492	581.58
Professional & Business Services	9	23	23	27	160,482	507.32
Education & Health Services	22	423	418	423	2,537,928	463.35
Leisure & Hospitality	34	399	385	336	791,905	163.17
Other Services	12	23	23	23	123,681	413.65
Local Government	10	443	443	442	2,375,899	412.86
State Government	10	170	168	168	1,000,967	456.51
Other	6	54	53	56	379,692	537.55
UNION COUNTY - TOTAL	1,347	20,165	20,298	20,392	\$161,394,871	\$612.03
Natural Resources & Mining	105	552	547	539	4,640,281	653.74
Construction	102	1,542	1,588	1,559	15,453,664	760.55
Manufacturing	67	5,295	5,286	5,288	52,010,339	756.34
Trade, Transportation & Utilities	372	3,517	3,574	3,616	23,991,168	517.08
Wholesale Trade	82	513	512	528	5,847,920	868.98
Retail Trade	233	2,333	2,357	2,385	11,030,203	359.78
Transportation, Warehousing & Utilities	57	671	705	703	7,113,045	789.55
Information	21	220	224	223	1,521,455	526.39
Financial Activities	125	751	755	754	6,888,429	703.38
Professional & Business Services	137	1,795	1,764	1,780	16,550,381	715.36
Education & Health Services	128	2,178	2,209	2,208	17,114,299	598.86
Leisure & Hospitality	97	1,141	1,133	1,166	3,210,972	215.41
Other Services	138	614	654	677	3,177,938	377.05
Local Government	37	2,007	2,009	2,011	12,945,454	495.67
State Government	18	553	555	571	3,890,491	534.73

**TABLE 6. COUNTY SUMMARY
EMPLOYMENT AND TOTAL EARNINGS, BY INDUSTRY
FOURTH QUARTER 2004**

NORTH AMERICAN INDUSTRY CLASSIFICATION SYSTEM INDUSTRY GROUP	NUMBER OF EMPLOYING UNITS	EMPLOYMENT			TOTAL EARNINGS	AVERAGE
		OCTOBER	NOVEMBER	DECEMBER	OCT. - DEC. 2004	WEEKLY EARNINGS
VAN BUREN COUNTY - TOTAL	345	3,805	3,772	3,743	\$19,741,713	\$402.45
Natural Resources & Mining	9	49	52	49	265,620	408.65
Construction	44	143	137	134	774,299	431.60
Manufacturing	14	617	613	608	3,693,498	463.74
Trade, Transportation & Utilities	103	831	822	836	4,281,704	396.98
Wholesale Trade	16	62	63	60	502,337	626.62
Retail Trade	65	630	620	638	2,784,082	340.30
Transportation, Warehousing & Utilities	22	139	139	138	995,285	552.12
Information	8	48	46	46	432,234	712.47
Financial Activities	31	103	106	107	618,330	451.56
Professional & Business Services	26	77	77	84	495,498	480.44
Education & Health Services	34	593	593	594	3,250,588	421.42
Leisure & Hospitality	28	435	425	396	1,246,022	228.94
Other Services	27	71	71	70	307,512	334.74
Local Government	13	747	738	725	3,759,254	392.54
State Government	8	91	92	94	617,154	514.15
WASHINGTON COUNTY - TOTAL	5,120	85,700	86,260	86,529	\$736,954,588	\$657.93
Natural Resources & Mining	39	501	505	498	3,841,918	589.49
Construction	579	4,845	4,813	4,870	45,825,763	727.92
Manufacturing	233	15,483	15,515	15,521	130,302,109	646.40
Trade, Transportation & Utilities	1,317	19,940	20,247	20,543	152,564,087	579.73
Wholesale Trade	337	3,464	3,466	3,547	41,632,976	917.02
Retail Trade	778	11,367	11,705	11,888	63,442,833	418.78
Transportation, Warehousing & Utilities	202	5,109	5,076	5,108	47,488,278	716.59
Information	97	1,471	1,489	1,511	15,266,140	787.96
Financial Activities	583	3,644	3,703	3,759	36,844,950	765.59
Professional & Business Services	833	7,875	7,908	7,845	112,629,535	1100.03
Education & Health Services	514	9,748	9,853	9,875	97,546,275	763.70
Leisure & Hospitality	488	8,529	8,551	8,711	26,331,104	235.60
Other Services	353	1,885	1,883	1,910	11,009,401	447.45
Local & State Government	84	11,779	11,793	11,486	104,793,306	689.80

**TABLE 6. COUNTY SUMMARY
EMPLOYMENT AND TOTAL EARNINGS, BY INDUSTRY
FOURTH QUARTER 2004**

NORTH AMERICAN INDUSTRY CLASSIFICATION SYSTEM INDUSTRY GROUP	NUMBER OF EMPLOYING UNITS	EMPLOYMENT			TOTAL EARNINGS	AVERAGE
		OCTOBER	NOVEMBER	DECEMBER	OCT. - DEC. 2004	WEEKLY EARNINGS
WHITE COUNTY - TOTAL	1,526	23,733	23,750	23,840	\$166,969,103	\$540.24
Natural Resources & Mining	34	270	265	259	1,986,743	577.43
Construction	164	1,044	1,037	1,020	8,299,353	617.62
Manufacturing	83	4,036	4,066	4,048	34,339,641	652.22
Trade, Transportation & Utilities	480	5,864	5,909	5,952	40,364,638	525.52
Wholesale Trade	101	571	559	578	4,494,127	607.21
Retail Trade	297	3,084	3,159	3,203	14,686,149	358.79
Transportation, Warehousing & Utilities	82	2,209	2,191	2,171	21,184,362	743.98
Information	22	234	239	242	1,622,096	523.54
Financial Activities	159	884	860	888	6,379,076	559.31
Professional & Business Services	136	1,281	1,288	1,340	8,010,759	472.92
Education & Health Services	165	4,229	4,238	4,273	35,445,308	642.05
Leisure & Hospitality	116	2,010	1,972	1,929	4,618,295	180.30
Other Services	102	593	597	594	3,803,378	491.99
Local Government	46	2,598	2,592	2,603	17,293,454	512.10
State Government	19	690	687	692	4,806,362	536.09
WOODRUFF COUNTY - TOTAL	173	2,104	2,055	2,046	\$13,981,440	\$519.98
Natural Resources & Mining	20	96	89	80	674,861	587.69
Construction	7	96	75	70	498,221	477.07
Manufacturing	8	458	461	465	3,343,608	557.52
Trade, Transportation & Utilities	64	543	531	526	4,378,187	631.47
Wholesale Trade	12	220	210	201	2,575,145	941.78
Retail Trade	35	214	209	216	750,900	271.18
Transportation, Warehousing & Utilities	17	109	112	109	1,052,142	735.76
Financial Activities	14	62	64	63	621,505	758.86
Professional & Business Services	3	6	6	7	42,969	521.89
Education & Health Services	24	191	192	197	1,119,919	445.59
Leisure & Hospitality	8	53	47	45	105,355	167.67
Local Government	10	507	507	509	2,755,586	417.53
State Government	7	57	58	57	332,380	445.95
Other	8	35	25	27	108,849	288.72

**TABLE 6. COUNTY SUMMARY
EMPLOYMENT AND TOTAL EARNINGS, BY INDUSTRY
FOURTH QUARTER 2004**

NORTH AMERICAN INDUSTRY CLASSIFICATION SYSTEM INDUSTRY GROUP	NUMBER OF EMPLOYING UNITS	EMPLOYMENT			TOTAL EARNINGS	AVERAGE
		OCTOBER	NOVEMBER	DECEMBER	OCT. - DEC. 2004	WEEKLY EARNINGS
YELL COUNTY - TOTAL	395	7,168	7,122	6,924	\$41,946,827	\$456.30
Natural Resources & Mining	27	364	357	355	2,193,873	470.52
Construction	53	454	401	370	2,575,891	485.25
Manufacturing	23	2,979	2,957	2,794	17,849,568	471.84
Trade, Transportation & Utilities	90	628	618	613	2,920,357	362.52
Wholesale Trade	10	25	25	25	156,418	481.29
Retail Trade	60	512	505	497	2,007,117	305.93
Transportation, Warehousing & Utilities	20	91	88	91	756,822	646.86
Information	6	53	53	51	599,010	880.47
Financial Activities	35	203	205	207	1,283,246	481.52
Professional & Business Services	34	227	229	230	2,082,442	700.53
Education & Health Services	40	467	487	490	2,527,125	403.87
Leisure & Hospitality	27	360	361	360	894,078	190.87
Other Services	19	69	67	68	301,282	340.82
Local Government	28	1,244	1,264	1,264	8,013,692	490.27
State Government	13	120	123	122	706,263	446.53
REST-OF-STATE-TOTAL	4,488	14,917	15,328	15,378	199,850,880	\$1,010.88
Natural Resources & Mining	54	224	204	241	2,357,978	813.38
Construction	566	2,183	2,315	2,072	17,487,823	614.25
Manufacturing	43	165	163	169	2,171,976	1008.50
Trade, Transportation & Utilities	1,861	6,735	6,899	6,968	116,607,519	1306.16
Wholesale Trade	1,603	5,560	5,646	5,662	105,912,213	1448.97
Retail Trade	100	506	566	577	4,206,095	588.62
Transportation, Warehousing & Utilities	158	669	687	729	6,489,211	718.23
Information	112	264	270	273	3,167,345	905.73
Financial Activities	253	686	707	731	11,206,561	1217.58
Professional & Business Services	1,309	3,406	3,482	3,613	34,918,979	767.38
Education & Health Services	113	750	768	771	6,807,835	686.34
Leisure & Hospitality	43	77	82	89	534,667	497.52
Other	134	427	438	451	4,590,197	804.92

TABLE 7. FEDERAL GOVERNMENT EMPLOYMENT AND EARNINGS IN ARKANSAS

NORTH AMERICAN INDUSTRY CLASSIFICATION SYSTEM INDUSTRY GROUP	NUMBER OF EMPLOYING UNITS	EMPLOYMENT			TOTAL
		OCTOBER	NOVEMBER	DECEMBER	OCT. - DEC. 2004
Manufacturing	2	5	13	25	\$236,060
Trade, Transportation & Utilities	449	6,869	6,819	6,932	77,698,633
Information	1	23	26	29	353,140
Financial Activities	24	194	193	191	2,603,618
Professional & Business Services	32	804	797	800	11,267,071
Education & Health Services	6	4,071	4,077	4,080	67,263,898
Leisure & Hospitality	16	206	193	200	1,795,569
Other Services	2	293	299	310	1,119,675
Public Administration	453	8,362	8,400	8,377	105,563,322
TOTAL	985	20,827	20,817	20,944	\$267,900,986

**TABLE 8. WORKFORCE INFORMATION AREA, SUMMARY
EMPLOYMENT AND TOTAL EARNINGS, BY INDUSTRY
FOURTH QUARTER 2004**

NORTH AMERICAN INDUSTRY CLASSIFICATION SYSTEM INDUSTRY GROUP	NUMBER OF EMPLOYING UNITS	EMPLOYMENT			TOTAL EARNINGS	AVERAGE WEEKLY EARNINGS
		OCTOBER	NOVEMBER	DECEMBER	OCT. - DEC. 2004	
CENTRAL WORKFORCE INFORMATION*	5,412	69,592	69,625	69,743	\$509,570,320	\$562.75
Natural Resources & Mining	156	907	860	809	7,135,733	639.25
Construction	779	5,380	5,292	5,184	42,553,258	619.32
Manufacturing	242	8,546	8,595	8,521	80,892,995	727.44
Trade, Transportation & Utilities	1,426	13,985	14,037	14,290	86,402,541	471.24
Information	82	675	673	692	5,957,025	673.87
Financial Activities	562	2,730	2,767	2,786	21,891,417	609.91
Professional & Business Services	646	6,995	6,899	6,953	75,557,479	836.40
Education & Health Services	548	8,690	8,711	8,722	63,201,497	558.32
Leisure & Hospitality	411	7,046	6,997	7,010	17,785,128	194.95
Other Services	354	1,441	1,440	1,449	7,658,473	408.16
Local Government	134	9,231	9,359	9,331	67,909,854	561.28
State Government	72	3,966	3,995	3,996	32,624,920	629.66

*Note: Pulaski County is not included in the Central Workforce Information. Please refer to Page 55 for information on Pulaski County.
Central Workforce includes these counties: Faulkner, Lonoke, Monroe, Prairie, and Saline.

EASTERN WORKFORCE INFORMATION	3,102	39,476	39,233	38,954	\$263,363,134	\$516.53
Natural Resources & Mining	231	2,017	1,765	1,535	12,022,998	521.82
Construction	199	1,235	1,213	1,190	9,042,293	573.58
Manufacturing	115	4,538	4,497	4,500	37,146,574	633.34
Trade, Transportation & Utilities	868	10,237	10,291	10,371	73,173,987	546.50
Information	44	316	318	320	2,497,241	604.07
Financial Activities	263	1,494	1,504	1,522	11,215,514	572.61
Professional & Business Services	271	1,436	1,417	1,439	10,191,510	547.97
Education & Health Services	425	5,219	5,245	5,190	34,693,290	511.44
Leisure & Hospitality	227	3,429	3,365	3,388	9,116,416	206.62
Other Services	252	981	978	961	5,011,832	396.09
Local Government	138	107	105	105	677,527	493.23
State Government	69	636	624	636	3,992,567	485.95

Eastern Workforce includes these counties: Crittenden, Cross, Lee, Phillips, and Saint Francis.

**TABLE 8. WORKFORCE INFORMATION AREA, SUMMARY
EMPLOYMENT AND TOTAL EARNINGS, BY INDUSTRY
FOURTH QUARTER 2004**

NORTH AMERICAN INDUSTRY CLASSIFICATION SYSTEM INDUSTRY GROUP	NUMBER OF EMPLOYING UNITS	EMPLOYMENT			TOTAL EARNINGS OCT. - DEC. 2004	AVERAGE WEEKLY EARNINGS
		OCTOBER	NOVEMBER	DECEMBER		
NORTH CENTRAL WORKFORCE INFORMATION	5,242	69,734	69,674	69,717	\$455,563,892	\$502.71
Natural Resources & Mining	149	949	926	879	6,249,872	523.70
Construction	473	2,588	2,536	2,489	17,713,431	536.94
Manufacturing	304	14,018	14,098	14,128	112,450,171	614.29
Trade, Transportation & Utilities	1,589	15,409	15,501	15,643	101,092,210	501.13
Information	75	705	710	718	5,368,083	580.77
Financial Activities	493	2,514	2,492	2,532	18,000,281	551.06
Professional & Business Services	439	3,007	2,971	3,000	17,329,734	445.44
Education & Health Services	571	11,134	11,156	11,167	82,840,408	571.39
Leisure & Hospitality	443	5,818	5,696	5,553	13,519,989	182.81
Other Services	362	1,468	1,445	1,448	7,642,698	404.43
Local Government	226	9,326	9,348	9,309	53,840,264	444.01
State Government	118	2,798	2,795	2,851	19,516,751	533.38

North Central Workforce Includes these counties: Cleburne, Fulton, Independence, IZard, Jackson, Sharp, Stone, Van Buren, White, and Woodruff

NORTHEAST WORKFORCE INFORMATION	6,252	94,583	95,035	94,215	\$683,973,890	\$556.10
Natural Resources & Mining	361	2,821	2,735	2,335	18,108,530	529.58
Construction	479	3,089	3,038	2,958	21,608,346	548.88
Manufacturing	366	22,704	22,534	22,363	207,580,830	708.62
Trade, Transportation & Utilities	1,781	17,559	17,748	17,933	108,802,664	471.61
Information	88	2,290	2,320	2,328	18,275,696	607.88
Financial Activities	578	3,441	3,432	3,456	28,422,103	635.00
Professional & Business Services	589	6,214	6,713	6,440	45,070,469	537.04
Education & Health Services	792	12,158	12,275	12,306	101,270,137	636.11
Leisure & Hospitality	454	7,100	6,973	6,848	17,224,711	190.00
Other Services	433	1,792	1,752	1,724	11,234,200	492.12
Local Government	221	11,469	11,567	11,588	73,524,989	490.04
State Government	110	3,946	3,948	3,936	32,851,215	640.83

Northeast Workforce includes these counties: Clay, Craighead, Greene, Lawrence, Mississippi, Poinsett, and Randolph.

**TABLE 8. WORKFORCE INFORMATION AREA, SUMMARY
EMPLOYMENT AND TOTAL EARNINGS, BY INDUSTRY
FOURTH QUARTER 2004**

NORTH AMERICAN INDUSTRY CLASSIFICATION SYSTEM INDUSTRY GROUP	NUMBER OF EMPLOYING UNITS	EMPLOYMENT			TOTAL EARNINGS	AVERAGE WEEKLY EARNINGS
		OCTOBER	NOVEMBER	DECEMBER	OCT. - DEC. 2004	
NORTHWEST WORKFORCE INFORMATION	13,411	218,873	219,458	220,426	\$1,855,648,177	\$650.05
Natural Resources & Mining	125	1,632	1,626	1,635	16,151,084	761.74
Construction	1,586	10,715	10,614	10,719	92,008,934	662.53
Manufacturing	722	40,946	40,956	41,006	330,362,240	620.28
Trade, Transportation & Utilities	3,490	50,946	51,399	51,999	409,311,120	611.99
Information	234	3,301	3,338	3,383	31,338,121	721.60
Financial Activities	1,410	8,784	8,851	8,969	83,702,441	726.05
Professional & Business Services	1,919	30,024	30,205	30,402	406,384,094	1034.76
Education & Health Services	1,313	21,690	21,898	22,116	195,251,516	685.77
Leisure & Hospitality	1,299	19,823	19,503	19,256	58,352,250	229.86
Other Services	901	4,418	4,415	4,477	25,342,582	439.39
Local Government	293	19,387	19,558	19,576	139,896,538	551.66
State Government	119	7,207	7,095	6,888	67,547,257	735.62

Northwest Workforce includes these counties: Baxter, Benton, Boone, Carroll, Madison, Marion, Newton, Searcy, and Washington.

SOUTHEAST WORKFORCE INFORMATION	5,165	79,645	79,534	79,461	\$587,822,000	\$568.43
Natural Resources & Mining	432	3,383	3,300	3,109	24,681,651	581.68
Construction	373	3,133	2,930	2,897	21,058,881	542.38
Manufacturing	239	18,448	18,240	18,249	174,606,026	733.45
Trade, Transportation & Utilities	1,469	14,387	14,497	14,605	95,958,940	509.19
Information	68	547	549	555	4,352,620	608.39
Financial Activities	410	2,917	2,930	2,945	24,387,465	640.11
Professional & Business Services	437	4,110	4,161	4,118	37,464,002	697.84
Education & Health Services	606	10,075	10,083	10,087	70,076,669	534.68
Leisure & Hospitality	385	4,889	4,855	4,769	11,566,349	183.91
Other Services	386	1,545	1,525	1,549	8,036,756	401.52
Local Government	211	10,324	10,477	10,562	68,790,450	506.16
State Government	149	5,887	5,987	6,016	46,842,191	604.23

Southeast Workforce includes these counties: Arkansas, Ashley, Bradley, Chicot, Cleveland, Desha, Drew, Grant, Jefferson, and Lincoln.

**TABLE 8. WORKFORCE INFORMATION AREA, SUMMARY
EMPLOYMENT AND TOTAL EARNINGS, BY INDUSTRY
FOURTH QUARTER 2004**

NORTH AMERICAN INDUSTRY CLASSIFICATION SYSTEM INDUSTRY GROUP	NUMBER OF EMPLOYING UNITS	EMPLOYMENT			TOTAL EARNINGS OCT. - DEC. 2004	AVERAGE WEEKLY EARNINGS
		OCTOBER	NOVEMBER	DECEMBER		
SOUTHWEST WORKFORCE INFORMATION	5,726	87,746	87,992	88,410	\$657,507,438	\$574.42
Natural Resources & Mining	419	2,918	2,913	2,915	23,592,630	622.51
Construction	441	3,820	3,923	3,950	32,757,562	646.49
Manufacturing	299	27,212	27,271	27,352	266,004,558	750.12
Trade, Transportation & Utilities	1,611	15,196	15,289	15,413	99,833,807	501.95
Information	87	726	737	750	6,779,089	706.92
Financial Activities	540	3,026	3,041	3,073	25,044,166	632.32
Professional & Business Services	478	4,285	4,134	4,077	32,201,183	594.67
Education & Health Services	556	8,795	8,875	8,905	55,794,146	484.50
Leisure & Hospitality	411	5,277	5,201	5,253	13,475,753	197.69
Other Services	467	2,220	2,221	2,278	10,172,589	349.39
Local Government	266	10,953	11,040	11,079	67,037,592	467.77
State Government	151	3,318	3,347	3,365	24,814,363	570.93

Southwest Workforce includes these counties: Calhoun, Columbia, Dallas, Hempstead, Howard, Lafayette, Little River, Miller, Nevada, Ouachita, Sevier, and Union.

WEST CENTRAL WORKFORCE INFORMATION	7,729	105,531	105,451	105,625	\$710,602,726	\$517.95
Natural Resources & Mining	265	2,109	2,015	2,425	15,734,545	554.44
Construction	879	5,131	5,046	4,937	36,620,193	559.14
Manufacturing	423	20,521	20,419	20,293	158,748,069	598.27
Trade, Transportation & Utilities	1,996	21,351	21,582	21,651	145,239,245	518.96
Information	107	1,013	1,014	1,015	8,512,539	645.77
Financial Activities	791	3,849	3,845	3,881	31,500,203	628.02
Professional & Business Services	844	6,734	6,746	6,716	45,171,265	516.15
Education & Health Services	791	14,690	14,662	14,723	112,626,099	589.69
Leisure & Hospitality	726	11,365	11,201	11,139	32,579,631	223.06
Other Services	543	2,413	2,406	2,410	12,453,428	397.55
Local Government	232	11,950	12,071	12,025	78,472,092	502.38
State Government	132	4,405	4,444	4,410	32,945,417	573.41

West Central Workforce Includes these counties: Clark, Conway, Garland, Hot Spring, Johnson, Montgomery, Perry, Pike, Pope, and Yell

**TABLE 8. WORKFORCE INFORMATION AREA, SUMMARY
EMPLOYMENT AND TOTAL EARNINGS, BY INDUSTRY
FOURTH QUARTER 2004**

NORTH AMERICAN INDUSTRY CLASSIFICATION SYSTEM INDUSTRY GROUP	NUMBER OF EMPLOYING UNITS	EMPLOYMENT			TOTAL EARNINGS	AVERAGE WEEKLY EARNINGS
		OCTOBER	NOVEMBER	DECEMBER	OCT. - DEC. 2004	
WESTERN WORKFORCE INFORMATION	6,147	109,430	109,324	109,354	\$809,097,365	\$569.06
Natural Resources & Mining	152	2,149	2,092	2,087	20,606,227	751.47
Construction	589	4,464	4,443	4,481	35,014,088	603.54
Manufacturing	413	30,226	30,190	30,145	250,916,941	639.39
Trade, Transportation & Utilities	1,651	21,823	22,220	22,550	149,840,981	519.25
Information	94	1,593	1,610	1,607	15,985,081	766.92
Financial Activities	623	3,719	3,732	3,744	32,419,751	668.29
Professional & Business Services	758	10,712	10,361	9,992	70,078,511	520.58
Education & Health Services	673	13,109	13,085	13,110	117,246,840	688.40
Leisure & Hospitality	493	7,809	7,710	7,805	20,962,391	207.40
Other Services	465	2,161	2,136	2,122	12,633,768	454.20
Local Government	153	9,206	9,281	9,283	65,975,401	548.26
State Government	83	2,459	2,464	2,428	17,417,385	546.78

Western Workforce includes these counties: Crawford, Franklin, Logan, Polk, Scott, and Sebastian.