

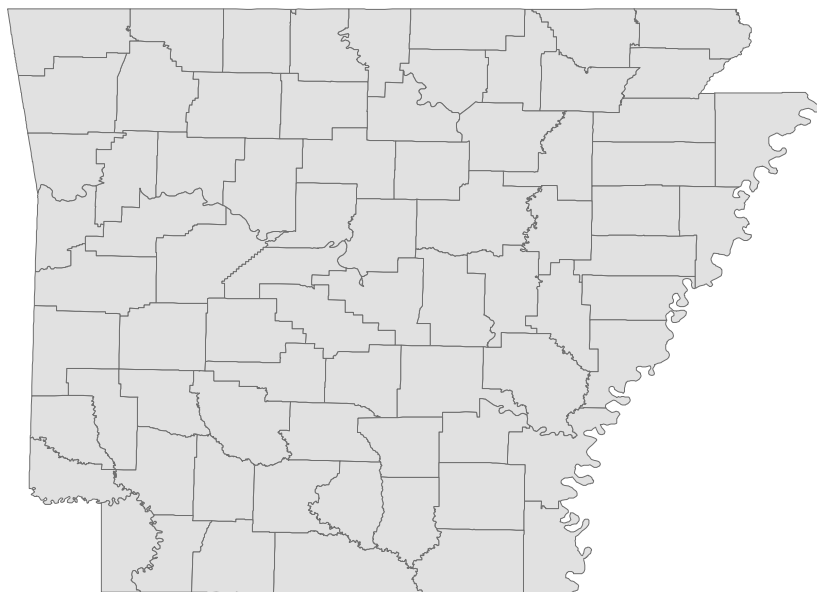
Arkansas Labor Market Report

July 2017



www.discover.arkansas.gov

Table of Contents



Monthly Spotlight.....	2
Arkansas Labor Force Summary.....	3
Arkansas Nonfarm Payroll Jobs.....	4
Arkansas Production Workers.....	6
Metropolitan Statistical Areas.....	7
Micropolitan Statistical Areas/Cities.....	14
County Labor Force Statistics.....	15
Local Workforce Development Areas.....	18

Technical Notes

The *Arkansas Labor Market* is prepared monthly in conjunction with the U.S. Department of Labor, Bureau of Labor Statistics (BLS). The current month's estimates are preliminary, while previous month's data is subject to revision.

Estimates of nonfarm payroll jobs show the number of jobs by industry and reflect employment by place of work. Hours and earnings estimates are based on payroll and worker-hour data collected for production workers in manufacturing industries.

Industries are classified according to the North American Industry Classification System (NAICS). All estimates are based on a first quarter 2016 benchmark.

Explanation of Terms and Concepts

Monthly Business Survey of Employers

A monthly sample survey designed to provide industry information on nonfarm payroll jobs. Data are compiled each month from mail surveys and telephone interviews conducted by the Bureau of Labor Statistics in cooperation with Department of Workforce Services. The data are based on establishment records and include all workers, full-or part-time, who received pay during the payroll period which includes the 12th of the

month. Approximately 5,000 Arkansas business establishments are surveyed.

Metropolitan Statistical Area (MSA)

A term applied by the U.S. Office of Management and Budget to counties that have one or more central cities and that meet specified criteria of population density, commuting patterns and social and economic integration.

Current Population Survey (CPS)

A monthly sample survey of the population 16 years of age and over, designed to provide data on the labor force, the employed and the unemployed. The survey is conducted each month by the Bureau of the Census for BLS. The information is collected by trained interviewers from a sample of about 60,000 households. The data collected are based on the activity reported for the calendar week including the 12th of the month. Approximately 800 Arkansas households are represented in the sample survey.

Civilian Labor Force

The sum of all employed and unemployed persons 16 years of age or older. Members of the Armed Forces are excluded.

Employment

An estimate of the number of persons who worked any time for pay or profit or worked 15 hours or more as unpaid workers in a family business during the calendar week which includes the 12th of the month. Also included are those who, although not working, had some job attachment and were not looking for work, and persons involved in labor management disputes.

Unemployment

An estimate of the number of persons who did not have a job, but were available for work and actively seeking work during the calendar week which includes the 12th of the month.

Unemployment Rate

The number of unemployed as a percentage of the civilian labor force. Unemployment rates are calculated from unrounded data.

Seasonal Adjustment

A statistical technique applied to monthly data to eliminate changes that normally occur during the year due to seasonal events such as weather, major holidays, schedule shifts, harvest times, and the opening/closing of schools.

July Spotlight

Alternative Measures of Labor Underutilization

In addition to the unemployment rate, the Bureau of Labor Statistics (BLS) also calculates five additional estimates based on various definitions of 'unemployment'. These are known as Alternative Measures of Labor Underutilization and are referred to as U1-U6, with U-3 as the official unemployment rate. These measures are calculated using data from the Current Population Survey (CPS), a monthly survey conducted by the U.S. Census Bureau. Approximately 800 Arkansas households are in the survey each month.

Alternative Measures of Labor Underutilization are available at the statewide level and are produced quarterly. Estimates are calculated using a four quarter moving average. The most recent data available represents the 3rd Quarter of 2016 through the 2nd Quarter of 2017.

The following definitions are used to calculate each measure of Labor Underutilization:

Alternative Measures of Labor Underutilization					
State of Arkansas					
3rd Q 2016 - 2nd Q 2017					
U-1	U-2	U-3	U-4	U-5	U-6
1.4%	1.8%	3.7%	4.0%	4.6%	6.8%

U-1 Measure: Persons unemployed for 15 weeks or longer, as a percent of the civilian labor force.

U-2 Measure: Job losers and persons who completed temporary jobs, as a percent of the civilian labor force.

U-3 Measure: Total number of unemployed persons, as a percent of the civilian labor force (this is the definition used for the official unemployment rate).

U-4 Measure: Total number of unemployed and discouraged workers, as a percent of the civilian labor force plus discouraged workers.

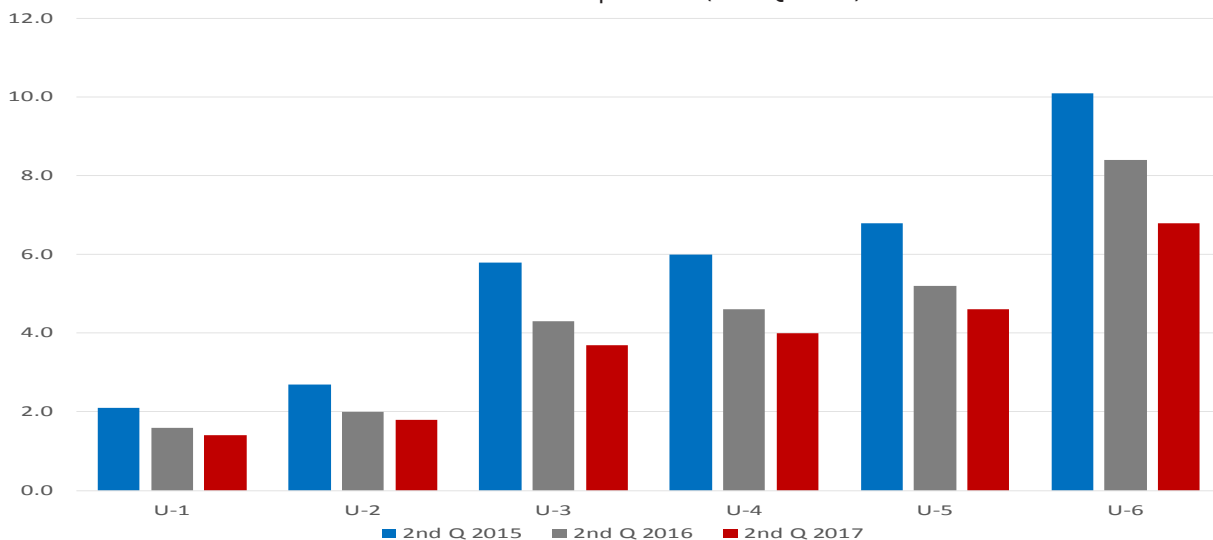
U-5 Measure: Total number of unemployed, discouraged workers, and all other marginally attached workers, as a percent of the civilian labor force plus marginally attached workers.

U-6 Measure: Total number of unemployed, discouraged workers, marginally attached workers, and those employed part-time for economic reasons (not by choice), as a percent of the civilian labor force plus marginally attached workers.

Alternative Measures of Labor Underutilization

State of Arkansas

Over-the-Year Comparisons (2nd Quarter)



State of Arkansas Civilian Labor Force Summary

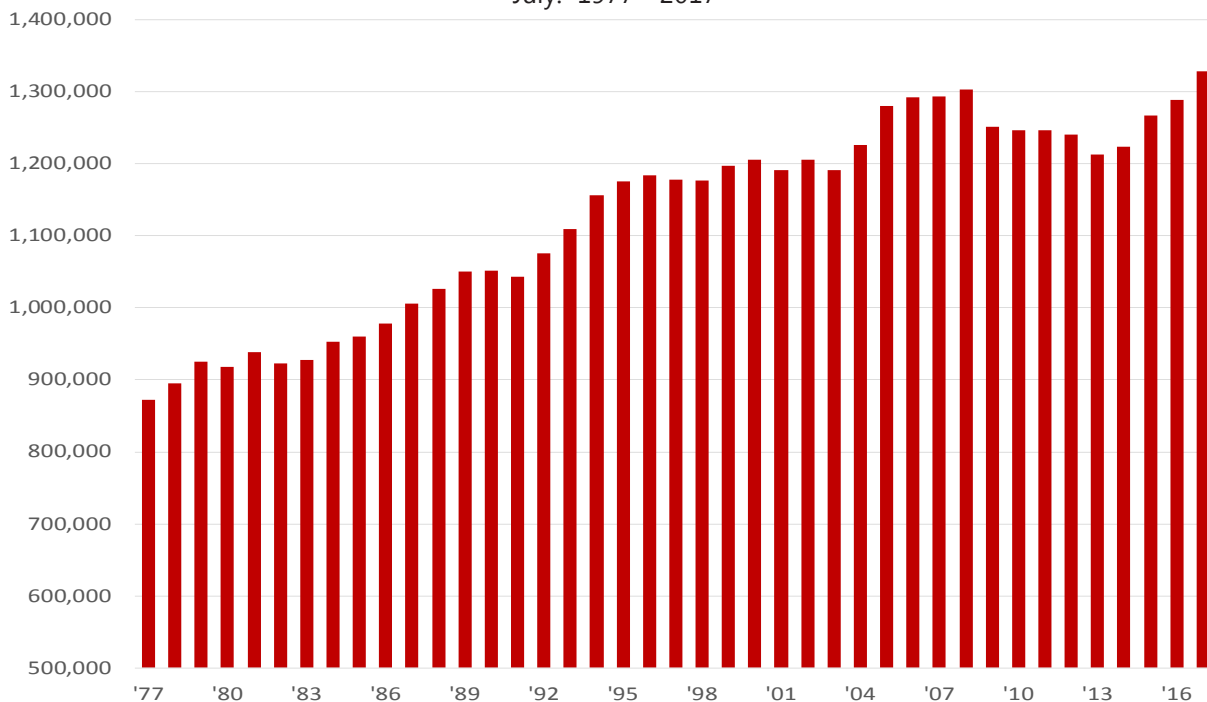
Labor force data, produced by the U.S. Department of Labor, Bureau of Labor Statistics and released by the Arkansas Department of Workforce Services, show Arkansas' seasonally adjusted unemployment rate remained unchanged at 3.4 percent between June and July. Arkansas' civilian labor force added 9,168, a result of 9,058 additional employed and 110 more unemployed Arkansans. The United States' jobless rate declined one-tenth of a percentage point, from 4.4 percent in June to 4.3 percent in July.

BLS Program Operations Manager Susan Price said, "Arkansas' unemployment rate has been stable since May, leveling out at 3.4 percent. The rate is down six-tenths of a percentage point compared to July 2016, with an additional 39,229 more employed in the State."

Civilian Labor Force Estimates

	Seasonally Adjusted			Not Seasonally Adjusted			
	Jul 17	Jun 17	Jul 16	Jul 17	Jun 17	Jul 16	
Civilian Labor Force	1,374,616	1,365,448	1,343,287	Civilian Labor Force	1,394,192	1,392,779	1,360,570
Employment	1,328,119	1,319,061	1,288,890	Employment	1,340,926	1,341,107	1,300,687
Unemployment	46,497	46,387	54,397	Unemployment	53,266	51,672	59,883
Unemployment Rate	3.4	3.4	4.0	Unemployment Rate	3.8	3.7	4.4
U.S. Unemployment	4.3	4.4	4.9	U.S. Unemployment	4.6	4.5	5.1

Number of Employed (Seasonally Adjusted)
July: 1977 - 2017



State of Arkansas

Nonfarm Payroll Jobs

Not Seasonally Adjusted

(In Thousands)

(NAICS)	<u>Jul 17</u>	<u>Jun 17</u>	<u>Jul 16</u>	<u>OTM</u>	<u>QTY</u>
Total Nonfarm	1244.5	1255.7	1211.6	-11.2	32.9
Goods Producing	217.7	216.0	212.8	1.7	4.9
Mining, Logging, and Construction	58.8	57.7	57.6	1.1	1.2
Mining & Logging	6.1	6.1	6.2	0.0	-0.1
Construction	52.7	51.6	51.4	1.1	1.3
Specialty Trade Contractors	34.3	33.2	32.9	1.1	1.4
Manufacturing	158.9	158.3	155.2	0.6	3.7
Durable Goods	73.1	73.6	74.6	-0.5	-1.5
Nondurable Goods	85.8	84.7	80.6	1.1	5.2
Service Providing	1026.8	1039.7	998.8	-12.9	28.0
Trade, Transportation & Utilities	257.7	256.2	252.3	1.5	5.4
Wholesale Trade	49.0	48.0	46.5	1.0	2.5
Retail Trade	143.1	142.4	142.4	0.7	0.7
Transport, Warehousing & Utilities	65.6	65.8	63.4	-0.2	2.2
Information	13.1	13.2	13.6	-0.1	-0.5
Financial Activities	51.9	52.4	51.5	-0.5	0.4
Finance & Insurance	38.6	39.1	38.0	-0.5	0.6
Real Estate & Rental & Leasing	13.3	13.3	13.5	0.0	-0.2
Professional & Business Services	146.7	147.4	140.0	-0.7	6.7
Professional, Scientific & Technical	43.9	44.1	42.3	-0.2	1.6
Management of Companies	33.7	34.0	35.3	-0.3	-1.6
Administrative & Support Services	69.1	69.3	62.4	-0.2	6.7
Educational & Health Services	186.3	185.8	178.1	0.5	8.2
Educational Services	14.4	14.9	11.4	-0.5	3.0
Health Care & Social Assistance	171.9	170.9	166.7	1.0	5.2
Ambulatory Health Care	57.7	57.2	53.8	0.5	3.9
Social Assistance	39.3	39.8	38.9	-0.5	0.4
Leisure & Hospitality	124.4	125.4	117.3	-1.0	7.1
Arts, Entertainment & Recreation	12.9	13.8	12.6	-0.9	0.3
Accommodation & Food Services	111.5	111.6	104.7	-0.1	6.8
Accommodation Services	13.2	13.5	12.1	-0.3	1.1
Food Services	98.3	98.1	92.6	0.2	5.7
Other Services	49.6	50.1	47.8	-0.5	1.8
Government	197.1	209.2	198.2	-12.1	-1.1
Federal Government	20.5	20.4	20.3	0.1	0.2
State Government	73.0	74.6	73.4	-1.6	-0.4
Local Government	103.6	114.2	104.5	-10.6	-0.9

State of Arkansas Nonfarm Payroll Job Summary

June 2017 - July 2017

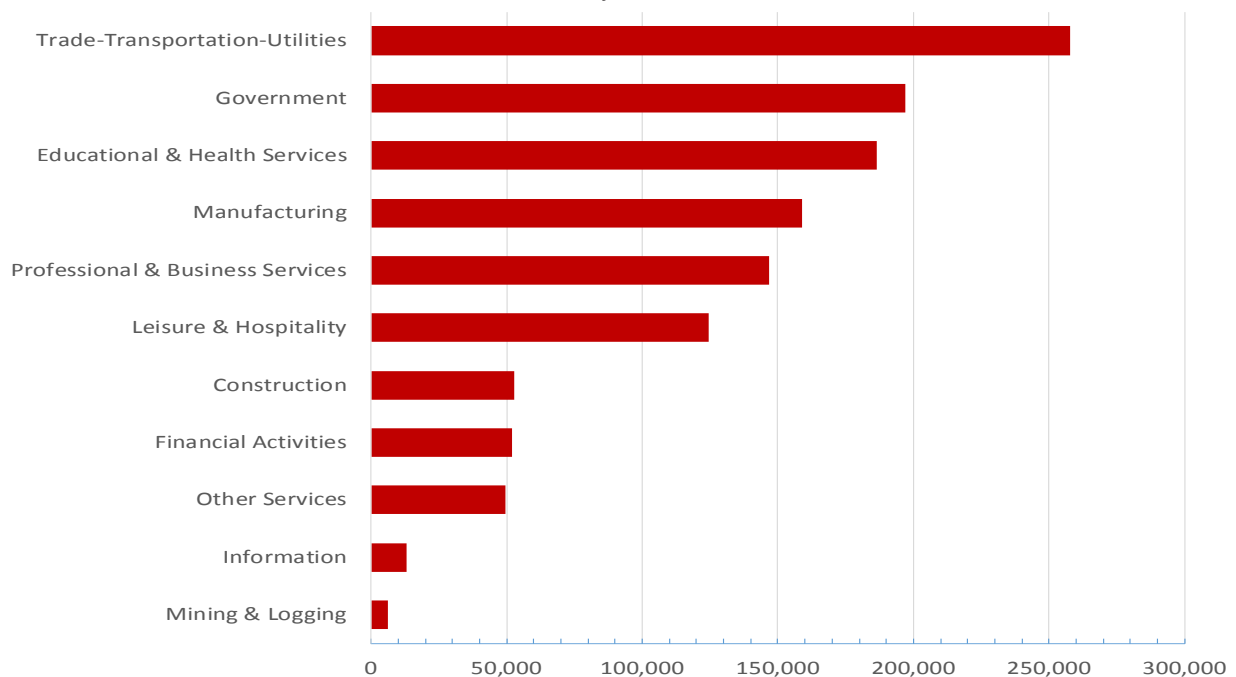
Nonfarm payroll jobs in Arkansas declined 11,200 in July to total 1,244,500. Employment dropped in six major industry sectors, while minor gains were posted in four sectors. The greatest loss occurred in **government** (-12,100). Employment fell in both local (-10,600) and state (-1,600) government, due to the summer break at public schools and universities. **Leisure and hospitality** decreased 1,000. Jobs in arts, entertainment, and recreation declined 900, due in part to reported losses in performing arts and spectator sports. The largest increase was posted in **trade, transportation, and utilities** (+1,500). Gains occurred in both wholesale (+1,000) and retail (+700) trade. Jobs in **construction** rose 1,100.

July 2016 - July 2017

Compared to July 2016, Arkansas' nonfarm payroll employment is up 32,900. Eight major industry sectors posted growth, with five adding 3,700 or more jobs, each. Employment in three sectors declined. **Educational and health services** increased 8,200. Gains occurred in health care and social assistance (+5,200) and in educational services (+3,000). Jobs in **leisure and hospitality** rose 7,100, mostly in accommodation and food services (+6,800). **Professional and business services** added 6,700 jobs. Growth was posted in administrative and support services (+6,700), a subsector which includes employment agencies. Jobs in **trade, transportation, and utilities** increased 5,400. Gains were seen across all three subsectors. **Manufacturing** rose 3,700, all in nondurable goods manufacturing (+5,200). **Government** reported the largest decline, down 1,100. Losses occurred in local (-900) and state (-400) government.

Nonfarm Payroll Jobs, Ranked by Sector (Not Seasonally Adjusted)

July 2017



State of Arkansas

Production Workers- Hours and Earnings

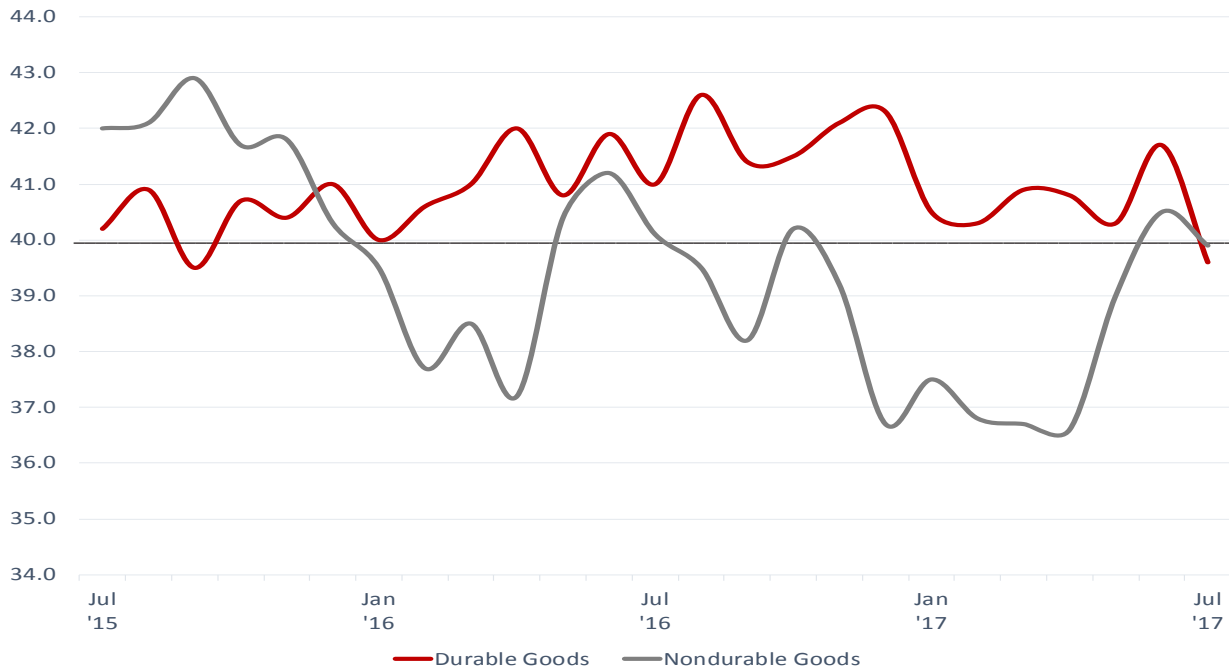
Manufacturing

	Jul 17	Jun 17	Jul 16
Average Weekly Hours	39.7	41.1	40.5
Average Hourly Earnings	16.07	15.90	15.77
Average Weekly Earnings	637.98	653.49	638.69

Durable Goods and Nondurable Goods Manufacturing

Durable Goods Manufacturing				Nondurable Goods Manufacturing			
	Jul 17	Jun 17	Jul 16		Jul 17	Jun 17	Jul 16
Average Weekly Hours	39.6	41.7	41.0	Average Weekly Hours	39.9	40.5	40.1
Average Hourly Earnings	18.15	17.64	17.68	Average Hourly Earnings	14.41	14.44	13.93
Average Weekly Earnings	718.74	735.59	724.88	Average Weekly Earnings	574.96	584.82	558.59

Average Weekly Hours Worked- Durable Goods vs. Nondurable Goods
July 2015 - July 2017



Labor Market Report

Metropolitan Statistical Areas

Little Rock-North Little Rock-Conway MSA

The Little Rock-North Little Rock-Conway MSA= Faulkner, Grant, Lonoke, Perry, Pulaski, & Saline counties.

Civilian Labor Force Estimates (Not Seasonally Adjusted)

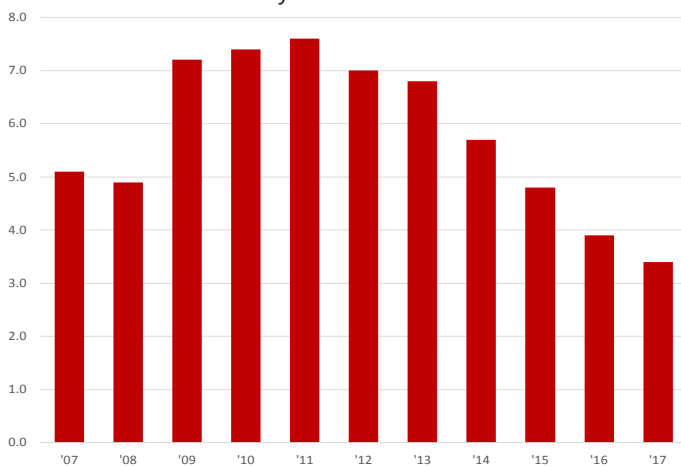
	Jul 17	Jun 17	Jul 16	OTM	QTY
Civilian Labor Force	367,935	361,484	360,153	6,451	7,782
Employment	355,562	349,549	346,260	6,013	9,302
Unemployment	12,373	11,935	13,893	438	-1,520
Unemployment Rate	3.4	3.3	3.9	0.1	-0.5

Nonfarm Payroll Jobs (Not Seasonally Adjusted)

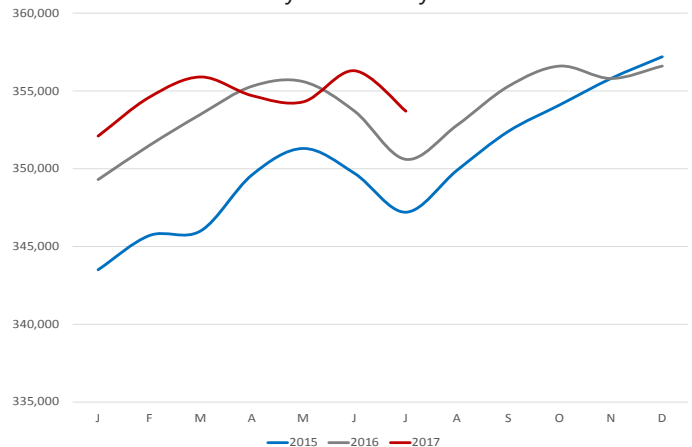
(In Thousands)

NAICS	Jul 17	Jun 17	Jul 16	OTM	QTY
Total Nonfarm	353.7	356.3	350.6	-2.6	3.1
Goods Producing	37.6	37.2	37.6	0.4	0.0
Mining, Logging & Construction	17.6	17.1	17.3	0.5	0.3
Manufacturing	20.0	20.1	20.3	-0.1	-0.3
Service Providing	316.1	319.1	313.0	-3.0	3.1
Trade, Transportation & Utilities	70.6	70.7	69.5	-0.1	1.1
Wholesale Trade	15.1	15.0	15.1	0.1	0.0
Retail Trade	39.4	39.5	39.0	-0.1	0.4
Trans., Warehousing & Utilities	16.1	16.2	15.4	-0.1	0.7
Information	6.1	6.1	6.4	0.0	-0.3
Financial Activities	20.6	20.6	20.5	0.0	0.1
Professional & Business Services	46.6	46.0	45.9	0.6	0.7
Educational & Health Services	56.1	56.0	53.8	0.1	2.3
Leisure & Hospitality	33.9	35.3	34.3	-1.4	-0.4
Other Services	15.1	15.1	14.9	0.0	0.2
Government	67.1	69.3	67.7	-2.2	-0.6
Federal Government	9.7	9.7	9.6	0.0	0.1
State Government	33.7	33.9	33.5	-0.2	0.2
Local Government	23.7	25.7	24.6	-2.0	-0.9

Unemployment Rates
July: 2007 - 2017



Nonfarm Payroll Jobs
January 2015 - July 2017



Labor Market Report

Metropolitan Statistical Areas Fayetteville-Springdale-Rogers MSA

The Fayetteville-Springdale-Rogers MSA= Benton, Madison, & Washington counties in Arkansas & McDonald county in Missouri.

Civilian Labor Force Estimates (Not Seasonally Adjusted)

	Jul 17	Jun 17	Jul 16	OTM	QTY
Civilian Labor Force	283,287	279,123	269,348	4,164	13,939
Employment	275,066	271,235	260,691	3,831	14,375
Unemployment	8,221	7,888	8,657	333	-436
Unemployment Rate	2.9	2.8	3.2	0.1	-0.3

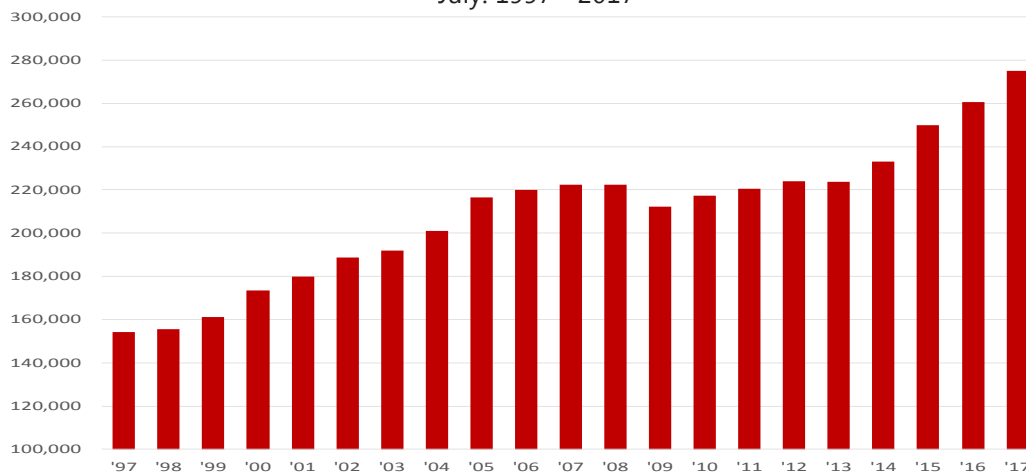
Nonfarm Payroll Jobs (Not Seasonally Adjusted)

(In Thousands)

NAICS	Jul 17	Jun 17	Jul 16	OTM	QTY
Total Nonfarm	251.2	253.8	242.0	-2.6	9.2
Goods Producing	39.4	39.2	38.3	0.2	1.1
Mining, Logging & Construction	11.2	11.1	10.6	0.1	0.6
Manufacturing	28.2	28.1	27.7	0.1	0.5
Service Providing	211.8	214.6	203.7	-2.8	8.1
Trade, Transportation & Utilities	56.6	56.7	56.1	-0.1	0.5
Wholesale Trade	12.9	12.8	12.4	0.1	0.5
Retail Trade	26.0	26.2	26.7	-0.2	-0.7
Trans., Warehousing & Utilities	17.7	17.7	17.0	0.0	0.7
Information	1.9	1.9	2.0	0.0	-0.1
Financial Activities	8.0	8.0	7.7	0.0	0.3
Professional & Business Services	52.0	52.7	48.9	-0.7	3.1
Educational & Health Services	27.5	27.5	26.4	0.0	1.1
Leisure & Hospitality	26.6	26.2	24.5	0.4	2.1
Other Services	7.8	7.8	7.6	0.0	0.2
Government	31.4	33.8	30.5	-2.4	0.9
Federal Government	2.6	2.6	2.5	0.0	0.1
State Government	11.8	12.2	11.2	-0.4	0.6
Local Government	17.0	19.0	16.8	-2.0	0.2

Number of Employed

July: 1997 - 2017



Labor Market Report

Metropolitan Statistical Areas Fort Smith MSA

The Fort Smith MSA= Crawford & Sebastian counties in Arkansas & LeFlore & Sequoyah counties in Oklahoma.

Civilian Labor Force Estimates (Not Seasonally Adjusted)

	<u>Jul 17</u>	<u>Jun 17</u>	<u>Jul 16</u>	<u>OTM</u>	<u>QTY</u>
Civilian Labor Force	123,141	122,857	123,014	284	127
Employment	117,924	117,581	116,907	343	1,017
Unemployment	5,217	5,276	6,107	-59	-890
Unemployment Rate	4.2	4.3	5.0	-0.1	-0.8

Nonfarm Payroll Jobs (Not Seasonally Adjusted)

(In Thousands)

<u>NAICS</u>	<u>Jul 17</u>	<u>Jun 17</u>	<u>Jul 16</u>	<u>OTM</u>	<u>QTY</u>
Total Nonfarm	111.2	113.7	111.7	-2.5	-0.5
Goods Producing	23.0	22.9	23.6	0.1	-0.6
Mining, Logging & Construction	5.4	5.4	5.6	0.0	-0.2
Manufacturing	17.6	17.5	18.0	0.1	-0.4
Service Providing	88.2	90.8	88.1	-2.6	0.1
Trade, Transportation & Utilities	23.1	23.2	23.6	-0.1	-0.5
Wholesale Trade	4.0	4.0	3.9	0.0	0.1
Retail Trade	12.7	12.7	13.0	0.0	-0.3
Trans., Warehousing & Utilities	6.4	6.5	6.7	-0.1	-0.3
Information	1.3	1.3	1.3	0.0	0.0
Financial Activities	3.8	3.8	3.8	0.0	0.0
Professional & Business Services	13.1	13.2	12.5	-0.1	0.6
Educational & Health Services	16.7	16.8	16.7	-0.1	0.0
Leisure & Hospitality	9.9	10.0	9.9	-0.1	0.0
Other Services	4.3	4.4	4.4	-0.1	-0.1
Government	16.0	18.1	15.9	-2.1	0.1
Federal Government	1.3	1.3	1.3	0.0	0.0
State Government	2.9	2.9	2.9	0.0	0.0
Local Government	11.8	13.9	11.7	-2.1	0.1

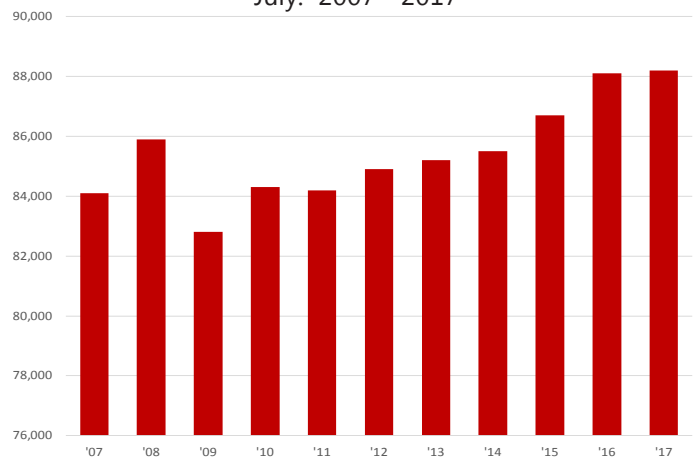
Employment

July 2014 - July 2017



Jobs in Service Providing Sectors

July: 2007 - 2017



Labor Market Report

Metropolitan Statistical Areas

Hot Springs MSA

The Hot Springs MSA= Garland County.

Civilian Labor Force Estimates (Not Seasonally Adjusted)

	Jul 17	Jun 17	Jul 16	OTM	QTY
Civilian Labor Force	43,080	42,374	41,430	706	1,650
Employment	41,309	40,680	39,489	629	1,820
Unemployment	1,771	1,694	1,941	77	-170
Unemployment Rate	4.1	4.0	4.7	0.1	-0.6

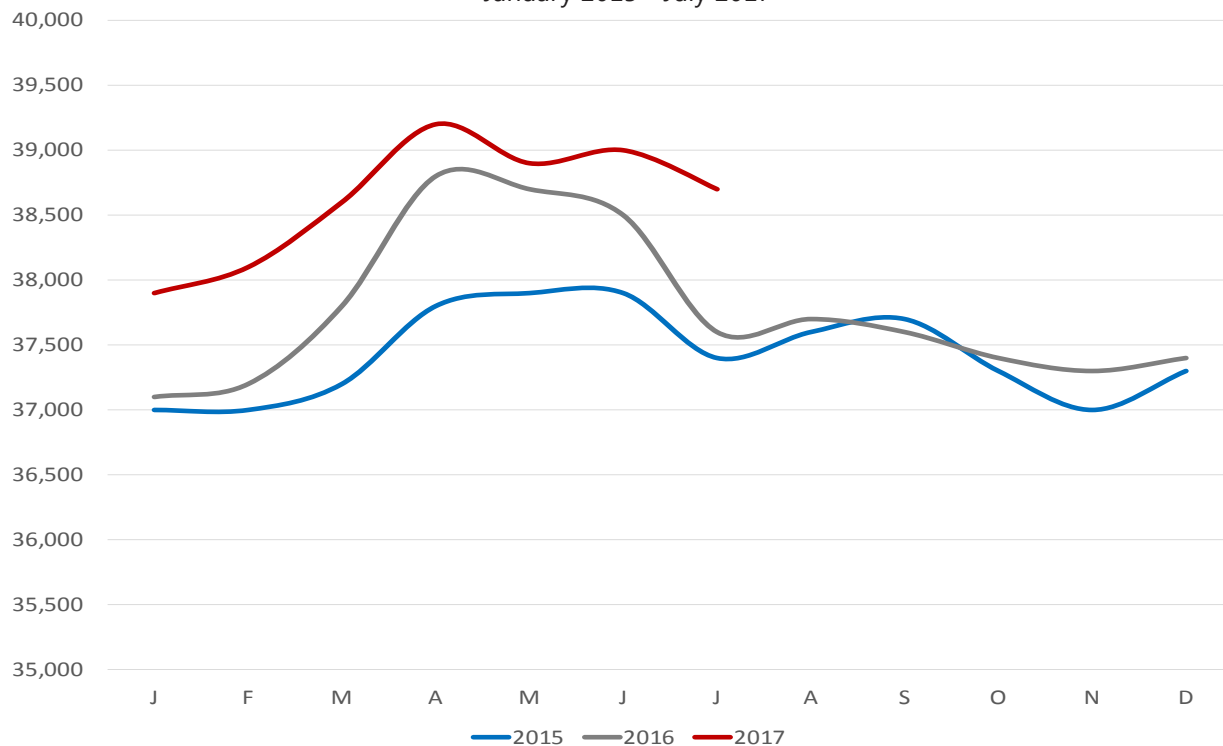
Nonfarm Payroll Jobs (Not Seasonally Adjusted)

(In Thousands)

NAICS	Jul 17	Jun 17	Jul 16	OTM	QTY
Total Nonfarm	38.7	39.0	37.6	-0.3	1.1
Goods Producing	4.7	4.7	4.4	0.0	0.3
Service Providing	34.0	34.3	33.2	-0.3	0.8
Government	4.0	4.3	4.1	-0.3	-0.1

Nonfarm Payroll Jobs

January 2015 - July 2017



Labor Market Report

Metropolitan Statistical Areas Jonesboro MSA

The Jonesboro MSA= Craighead & Poinsett counties.

Civilian Labor Force Estimates (Not Seasonally Adjusted)

	<u>Jul 17</u>	<u>Jun 17</u>	<u>Jul 16</u>	<u>OTM</u>	<u>QTY</u>
Civilian Labor Force	66,013	65,176	63,819	837	2,194
Employment	63,797	63,028	61,401	769	2,396
Unemployment	2,216	2,148	2,418	68	-202
Unemployment Rate	3.4	3.3	3.8	0.1	-0.4

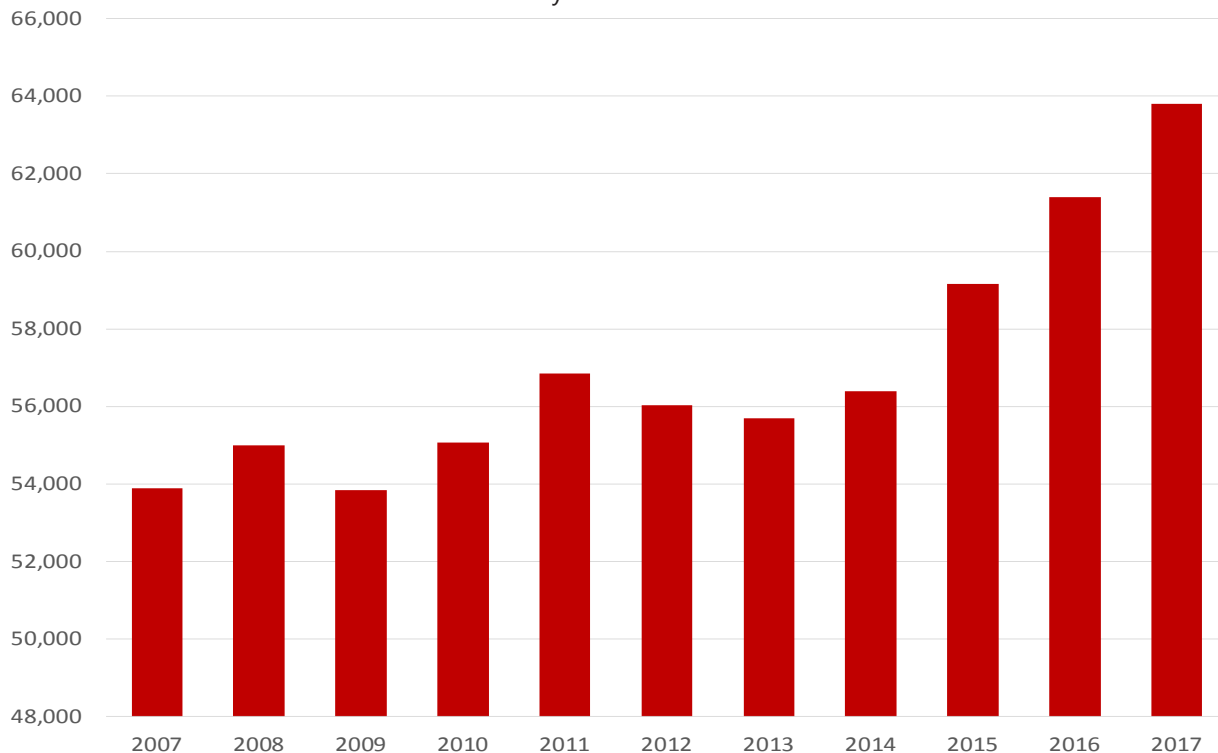
Nonfarm Payroll Jobs (Not Seasonally Adjusted)

(In Thousands)

<u>NAICS</u>	<u>Jul 17</u>	<u>Jun 17</u>	<u>Jul 16</u>	<u>OTM</u>	<u>QTY</u>
Total Nonfarm	56.4	56.9	55.2	-0.5	1.2
Goods Producing	9.6	9.6	9.3	0.0	0.3
Service Providing	46.8	47.3	45.9	-0.5	0.9
Government	8.6	9.0	8.5	-0.4	0.1

Number of Employed

July: 2007 - 2017



Labor Market Report

Metropolitan Statistical Areas

Pine Bluff MSA

The Pine Bluff MSA= Cleveland, Jefferson, & Lincoln counties.

Civilian Labor Force Estimates (Not Seasonally Adjusted)

	Jul 17	Jun 17	Jul 16	OTM	QTY
Civilian Labor Force	36,730	36,624	36,442	106	288
Employment	34,813	34,775	34,225	38	588
Unemployment	1,917	1,849	2,217	68	-300
Unemployment Rate	5.2	5.0	6.1	0.2	-0.9

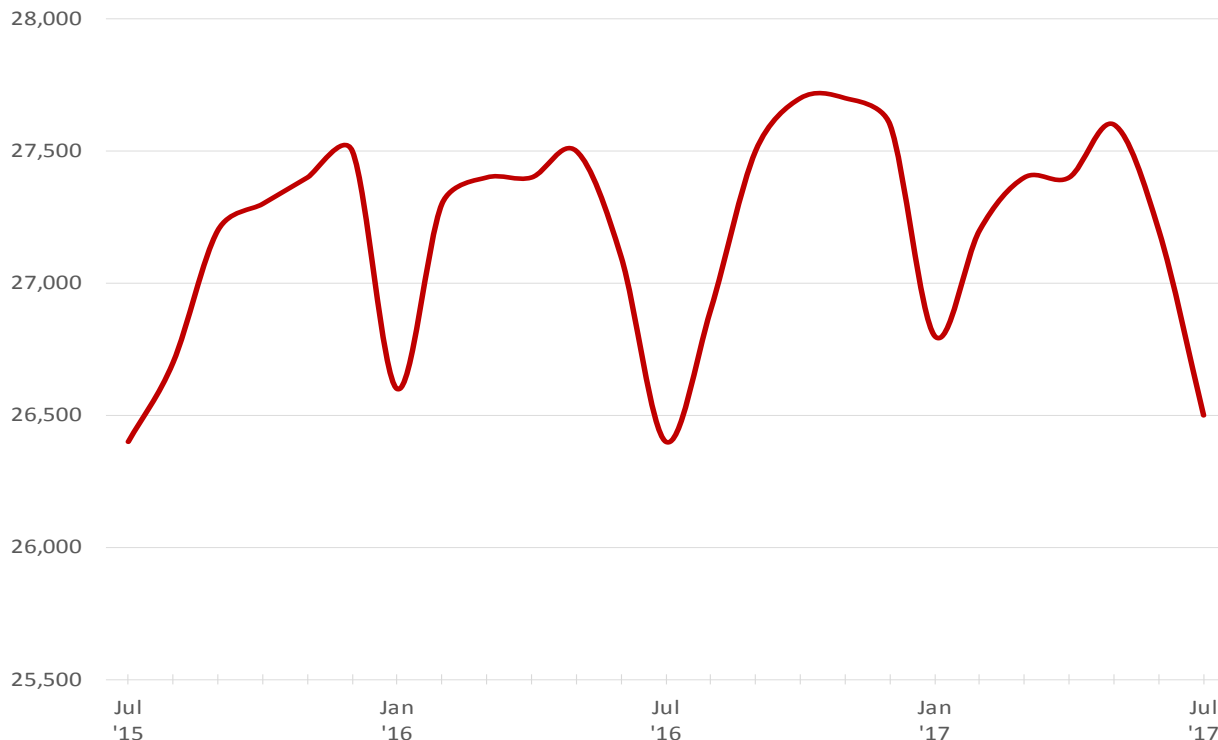
Nonfarm Payroll Jobs (Not Seasonally Adjusted)

(In Thousands)

NAICS	Jul 17	Jun 17	Jul 16	OTM	QTY
Total Nonfarm	32.4	33.1	32.5	-0.7	-0.1
Goods Producing	5.9	5.9	6.1	0.0	-0.2
Service Providing	26.5	27.2	26.4	-0.7	0.1
Government	8.9	9.5	9.0	-0.6	-0.1

Jobs in Service Providing Sectors

July 2015 - July 2017



Labor Market Report

Metropolitan Statistical Areas

Out-of-State MSA

Civilian Labor Force Estimates (Not Seasonally Adjusted)

Memphis, TN-MS-AR MSA

The Memphis, TN-MS-AR MSA= Fayette, Shelby, & Tipton counties in Tennessee; Benton, Desoto, Marshall, Tate, & Tunica counties in Mississippi; & Crittenden County in Arkansas.

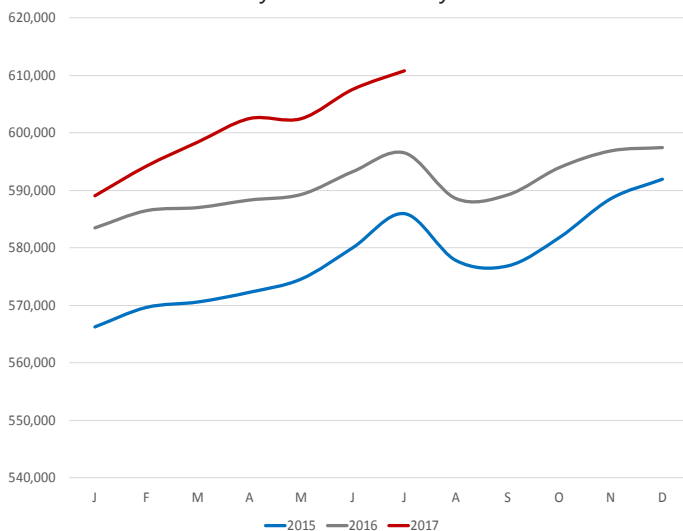
	<u>Jul 17</u>	<u>Jun 17</u>	<u>Jul 16</u>	<u>OTM</u>	<u>OTY</u>
Civilian Labor Force	641,376	638,604	632,236	2,772	9,140
Employment	610,785	607,565	596,510	3,220	14,275
Unemployment	30,591	31,039	35,726	-448	-5,135
Unemployment Rate	4.8	4.9	5.7	-0.1	-0.9

Texarkana MSA

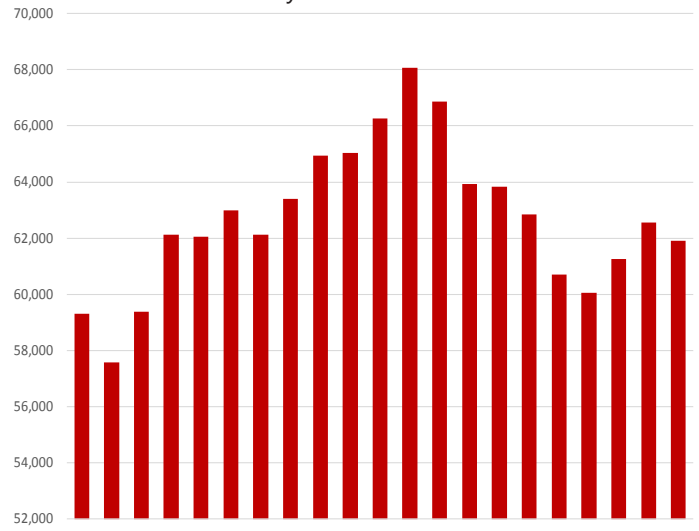
The Texarkana MSA= Bowie County in Texas & Little River & Miller counties in Arkansas.

	<u>Jul 17</u>	<u>Jun 17</u>	<u>Jul 16</u>	<u>OTM</u>	<u>OTY</u>
Civilian Labor Force	64,952	66,080	65,937	-1,128	-985
Employment	61,908	62,872	62,562	-964	-654
Unemployment	3,044	3,208	3,375	-164	-331
Unemployment Rate	4.7	4.9	5.1	-0.2	-0.4

Number of Employed - Memphis MSA
January 2015 - January 2017



Employment- Texarkana MSA
July: 1997 - 2017



Labor Market Report

Micropolitan Statistical Areas and Cities

Civilian Labor Force Estimates

Micropolitan Labor Force Estimates (Not Seasonally Adjusted)

Micro Area	July 2017				June 2017				July 2016			
	CLF	Emp	Unemp	Rate	CLF	Emp	Unemp	Rate	CLF	Emp	Unemp	Rate
Arkadelphia Micro	9,586	9,157	429	4.5	9,571	9,149	422	4.4	9,331	8,821	510	5.5
Batesville Micro	16,471	15,697	774	4.7	16,888	16,166	722	4.3	15,919	15,034	885	5.6
Blytheville Micro	18,295	17,082	1,213	6.6	18,394	16,933	1,461	7.9	18,304	16,968	1,336	7.3
Camden Micro	12,572	12,003	569	4.5	12,640	12,100	540	4.3	12,385	11,667	718	5.8
El Dorado Micro	16,394	15,459	935	5.7	16,598	15,656	942	5.7	16,288	15,236	1,052	6.5
Forrest City Micro	8,854	8,401	453	5.1	9,088	8,637	451	5.0	8,962	8,474	488	5.4
Harrison Micro	19,072	18,398	674	3.5	19,947	19,316	631	3.2	19,176	18,398	778	4.1
Helena-West Helena Micro	6,506	6,106	400	6.1	6,808	6,423	385	5.7	6,556	6,136	420	6.4
Hope Micro	13,745	13,238	507	3.7	14,276	13,780	496	3.5	13,475	12,897	578	4.3
Magnolia Micro	8,972	8,467	505	5.6	9,318	8,814	504	5.4	8,957	8,351	606	6.8
Malvern Micro	14,610	14,022	588	4.0	14,632	14,065	567	3.9	14,280	13,638	642	4.5
Mountain Home Micro	16,614	15,892	722	4.3	16,659	15,974	685	4.1	16,418	15,669	749	4.6
Paragould Micro	20,231	19,432	799	3.9	20,388	19,603	785	3.9	20,131	19,182	949	4.7
Russellville Micro	38,094	36,174	1,920	5.0	38,989	37,285	1,704	4.4	37,600	35,498	2,102	5.6
Searcy Micro	34,050	32,539	1,511	4.4	34,688	33,142	1,546	4.5	33,574	31,675	1,899	5.7

Arkadelphia Micro= Clark County

Batesville Micro= Independence County

Blytheville Micro= Mississippi County

Camden Micro= Calhoun & Ouachita counties

El Dorado Micro= Union County

Forrest City Micro= St. Francis County

Harrison Micro= Boone & Newton counties

Helena-West Helena Micro= Phillips County

Hope Micro= Hempstead & Nevada counties

Magnolia Micro= Columbia County

Malvern Micro= Hot Spring County

Mountain Home Micro= Baxter County

Paragould Micro= Greene County

Russellville Micro= Pope & Yell counties

Searcy Micro= White County

City Labor Force Statistics (Not Seasonally Adjusted)

City	July 2017				June 2017				July 2016			
	CLF	Emp	Unemp	Rate	CLF	Emp	Unemp	Rate	CLF	Emp	Unemp	Rate
Bella Vista	12,945	12,448	497	3.8	12,729	12,268	461	3.6	12,249	11,776	473	3.9
Benton	17,144	16,624	520	3.0	16,832	16,334	498	3.0	16,782	16,195	587	3.5
Bentonville	25,585	24,739	846	3.3	25,192	24,382	810	3.2	24,153	23,404	749	3.1
Blytheville	6,313	5,824	489	7.7	6,329	5,773	556	8.8	6,293	5,785	508	8.1
Cabot	12,268	11,882	386	3.1	12,095	11,714	381	3.2	11,981	11,552	429	3.6
Conway	34,742	33,559	1,183	3.4	34,149	33,003	1,146	3.4	33,997	32,680	1,317	3.9
El Dorado	7,114	6,692	422	5.9	7,222	6,777	445	6.2	7,128	6,595	533	7.5
Fayetteville	49,648	48,230	1,418	2.9	48,913	47,540	1,373	2.8	47,226	45,639	1,587	3.4
Fort Smith	41,563	40,053	1,510	3.6	41,287	39,853	1,434	3.5	40,999	39,421	1,578	3.8
Hot Springs	15,080	14,365	715	4.7	14,813	14,146	667	4.5	14,486	13,732	754	5.2
Jacksonville	12,316	11,793	523	4.2	12,085	11,586	499	4.1	12,083	11,489	594	4.9
Jonesboro	38,852	37,589	1,263	3.3	38,318	37,099	1,219	3.2	37,602	36,195	1,407	3.7
Little Rock	101,490	98,068	3,422	3.4	99,668	96,348	3,320	3.3	99,447	95,535	3,912	3.9
North Little Rock	31,464	30,241	1,223	3.9	30,861	29,711	1,150	3.7	30,754	29,460	1,294	4.2
Paragould	12,705	12,151	554	4.4	12,795	12,258	537	4.2	12,660	11,995	665	5.3
Pine Bluff	17,520	16,435	1,085	6.2	17,448	16,391	1,057	6.1	17,487	16,175	1,312	7.5
Rogers	36,132	35,145	987	2.7	35,598	34,639	959	2.7	34,210	33,249	961	2.8
Russellville	13,607	12,980	627	4.6	13,944	13,367	577	4.1	13,463	12,752	711	5.3
Searcy	10,491	10,043	448	4.3	10,679	10,229	450	4.2	10,300	9,777	523	5.1
Sherwood	16,366	15,858	508	3.1	16,062	15,580	482	3.0	15,990	15,448	542	3.4
Springdale	40,994	39,985	1,009	2.5	40,376	39,412	964	2.4	39,010	37,835	1,175	3.0
Texarkana, AR	14,338	13,646	692	4.8	14,438	13,729	709	4.9	14,328	13,591	737	5.1
Van Buren	10,725	10,354	371	3.5	10,673	10,315	358	3.4	10,599	10,179	420	4.0
West Memphis	11,312	10,725	587	5.2	11,085	10,515	570	5.1	10,984	10,338	646	5.9

Labor Market Report

County Labor Force Statistics

Civilian Labor Force Estimates

Not Seasonally Adjusted

County	July 2017				June 2017				July 2016			
	CLF	Emp	Unemp	Rate	CLF	Emp	Unemp	Rate	CLF	Emp	Unemp	Rate
Arkansas	9,563	9,268	295	3.1	9,538	9,247	291	3.1	9,391	9,043	348	3.7
Ashley	7,812	7,354	458	5.9	8,113	7,657	456	5.6	7,672	7,140	532	6.9
Baxter	16,614	15,892	722	4.3	16,659	15,974	685	4.1	16,418	15,669	749	4.6
Benton	136,075	131,945	4,130	3.0	134,009	130,042	3,967	3.0	128,896	124,825	4,071	3.2
Boone	15,704	15,156	548	3.5	16,425	15,909	516	3.1	15,802	15,168	634	4.0
Bradley	4,484	4,283	201	4.5	4,712	4,511	201	4.3	4,250	3,959	291	6.8
Calhoun	2,462	2,357	105	4.3	2,482	2,387	95	3.8	2,415	2,283	132	5.5
Carroll	13,422	13,029	393	2.9	13,594	13,206	388	2.9	13,089	12,654	435	3.3
Chicot	3,624	3,409	215	5.9	3,707	3,492	215	5.8	3,590	3,340	250	7.0
Clark	9,586	9,157	429	4.5	9,571	9,149	422	4.4	9,331	8,821	510	5.5
Clay	5,938	5,652	286	4.8	6,094	5,829	265	4.3	6,036	5,673	363	6.0
Cleburne	9,502	9,038	464	4.9	9,687	9,255	432	4.5	9,712	9,109	603	6.2
Cleveland	3,408	3,251	157	4.6	3,419	3,266	153	4.5	3,355	3,185	170	5.1
Columbia	8,972	8,467	505	5.6	9,318	8,814	504	5.4	8,957	8,351	606	6.8
Conway	8,584	8,172	412	4.8	8,613	8,211	402	4.7	8,584	8,024	560	6.5
Craighead	55,241	53,469	1,772	3.2	54,471	52,772	1,699	3.1	53,440	51,487	1,953	3.7
Crawford	27,604	26,601	1,003	3.6	27,483	26,502	981	3.6	27,332	26,153	1,179	4.3
Crittenden	22,826	21,793	1,033	4.5	22,372	21,366	1,006	4.5	22,115	21,007	1,108	5.0
Cross	7,768	7,468	300	3.9	8,154	7,842	312	3.8	7,770	7,417	353	4.5
Dallas	3,080	2,929	151	4.9	3,094	2,952	142	4.6	2,973	2,796	177	6.0
Desha	5,382	5,101	281	5.2	5,607	5,328	279	5.0	5,342	5,021	321	6.0
Drew	7,765	7,336	429	5.5	8,070	7,655	415	5.1	7,596	7,081	515	6.8
Faulkner	63,332	61,181	2,151	3.4	62,251	60,168	2,083	3.3	62,155	59,578	2,577	4.1
Franklin	7,505	7,209	296	3.9	7,602	7,335	267	3.5	7,362	7,028	334	4.5
Fulton	4,710	4,499	211	4.5	4,987	4,791	196	3.9	4,576	4,359	217	4.7
Garland	43,080	41,309	1,771	4.1	42,374	40,680	1,694	4.0	41,430	39,489	1,941	4.7
Grant	8,708	8,423	285	3.3	8,576	8,299	277	3.2	8,517	8,186	331	3.9
Greene	20,231	19,432	799	3.9	20,388	19,603	785	3.9	20,131	19,182	949	4.7
Hempstead	10,033	9,666	367	3.7	10,422	10,066	356	3.4	9,834	9,411	423	4.3
Hot Spring	14,610	14,022	588	4.0	14,632	14,065	567	3.9	14,280	13,638	642	4.5
Howard	6,155	5,955	200	3.2	6,326	6,124	202	3.2	5,983	5,760	223	3.7
Independence	16,471	15,697	774	4.7	16,888	16,166	722	4.3	15,919	15,034	885	5.6
Izard	4,925	4,639	286	5.8	5,083	4,814	269	5.3	4,844	4,516	328	6.8
Jackson	6,081	5,731	350	5.8	6,224	5,884	340	5.5	5,958	5,555	403	6.8
Jefferson	29,182	27,593	1,589	5.4	29,046	27,519	1,527	5.3	28,990	27,156	1,834	6.3
Johnson	10,657	10,145	512	4.8	11,019	10,560	459	4.2	10,429	9,842	587	5.6
Lafayette	2,531	2,393	138	5.5	2,677	2,539	138	5.2	2,468	2,303	165	6.7
Lawrence	6,681	6,399	282	4.2	6,965	6,698	267	3.8	6,556	6,208	348	5.3
Lee	3,135	2,978	157	5.0	3,260	3,113	147	4.5	3,109	2,944	165	5.3
Lincoln	4,140	3,969	171	4.1	4,159	3,990	169	4.1	4,097	3,884	213	5.2
Little River	5,805	5,524	281	4.8	5,833	5,555	278	4.8	5,820	5,503	317	5.4
Logan	9,259	8,859	400	4.3	9,413	9,050	363	3.9	9,274	8,770	504	5.4
Lonoke	34,882	33,766	1,116	3.2	34,386	33,289	1,097	3.2	34,073	32,827	1,246	3.7
Madison	7,752	7,532	220	2.8	7,705	7,496	209	2.7	7,364	7,110	254	3.4
Marion	6,637	6,378	259	3.9	6,780	6,528	252	3.7	6,604	6,318	286	4.3
Miller	20,668	19,752	916	4.4	20,800	19,872	928	4.5	20,638	19,672	966	4.7

(continued on Page 16)

County Labor Force Statistics

Civilian Labor Force Estimates

Not Seasonally Adjusted

(continued from Page 15)

County	July 2017				June 2017				July 2016			
	CLF	Emp	Unemp	Rate	CLF	Emp	Unemp	Rate	CLF	Emp	Unemp	Rate
Mississippi	18,295	17,082	1,213	6.6	18,394	16,933	1,461	7.9	18,304	16,968	1,336	7.3
Monroe	2,903	2,779	124	4.3	3,013	2,895	118	3.9	2,823	2,659	164	5.8
Montgomery	3,306	3,148	158	4.8	3,568	3,415	153	4.3	3,119	2,942	177	5.7
Nevada	3,712	3,572	140	3.8	3,854	3,714	140	3.6	3,641	3,486	155	4.3
Newton	3,368	3,242	126	3.7	3,522	3,407	115	3.3	3,374	3,230	144	4.3
Ouachita	10,110	9,646	464	4.6	10,158	9,713	445	4.4	9,970	9,384	586	5.9
Perry	4,377	4,206	171	3.9	4,319	4,151	168	3.9	4,297	4,089	208	4.8
Phillips	6,506	6,106	400	6.1	6,808	6,423	385	5.7	6,556	6,136	420	6.4
Pike	4,313	4,133	180	4.2	4,544	4,359	185	4.1	4,105	3,907	198	4.8
Poinsett	10,772	10,328	444	4.1	10,705	10,256	449	4.2	10,379	9,914	465	4.5
Polk	8,109	7,724	385	4.7	8,492	8,137	355	4.2	7,960	7,518	442	5.6
Pope	29,330	27,801	1,529	5.2	29,973	28,630	1,343	4.5	28,941	27,313	1,628	5.6
Prairie	3,707	3,554	153	4.1	3,855	3,705	150	3.9	3,569	3,422	147	4.1
Pulaski	197,221	190,397	6,824	3.5	193,605	187,057	6,548	3.4	193,030	185,478	7,552	3.9
Randolph	6,867	6,577	290	4.2	7,025	6,741	284	4.0	6,535	6,217	318	4.9
St. Francis	8,854	8,401	453	5.1	9,088	8,637	451	5.0	8,962	8,474	488	5.4
Saline	59,415	57,589	1,826	3.1	58,347	56,585	1,762	3.0	58,081	56,102	1,979	3.4
Scott	4,631	4,459	172	3.7	4,709	4,555	154	3.3	4,483	4,290	193	4.3
Searcy	2,916	2,769	147	5.0	3,159	3,025	134	4.2	3,035	2,891	144	4.7
Sebastian	59,675	57,502	2,173	3.6	59,328	57,215	2,113	3.6	58,944	56,595	2,349	4.0
Sevier	5,837	5,575	262	4.5	5,943	5,686	257	4.3	5,703	5,377	326	5.7
Sharp	6,173	5,873	300	4.9	6,397	6,099	298	4.7	6,000	5,645	355	5.9
Stone	4,777	4,553	224	4.7	4,995	4,768	227	4.5	4,714	4,452	262	5.6
Union	16,394	15,459	935	5.7	16,598	15,656	942	5.7	16,288	15,236	1,052	6.5
Van Buren	5,853	5,520	333	5.7	6,076	5,760	316	5.2	5,981	5,506	475	7.9
Washington	128,478	125,081	3,397	2.6	126,549	123,290	3,259	2.6	122,124	118,360	3,764	3.1
White	34,050	32,539	1,511	4.4	34,688	33,142	1,546	4.5	33,574	31,675	1,899	5.7
Woodruff	2,897	2,759	138	4.8	3,064	2,926	138	4.5	2,942	2,760	182	6.2
Yell	8,764	8,373	391	4.5	9,016	8,655	361	4.0	8,659	8,185	474	5.5

County Labor Force Summary

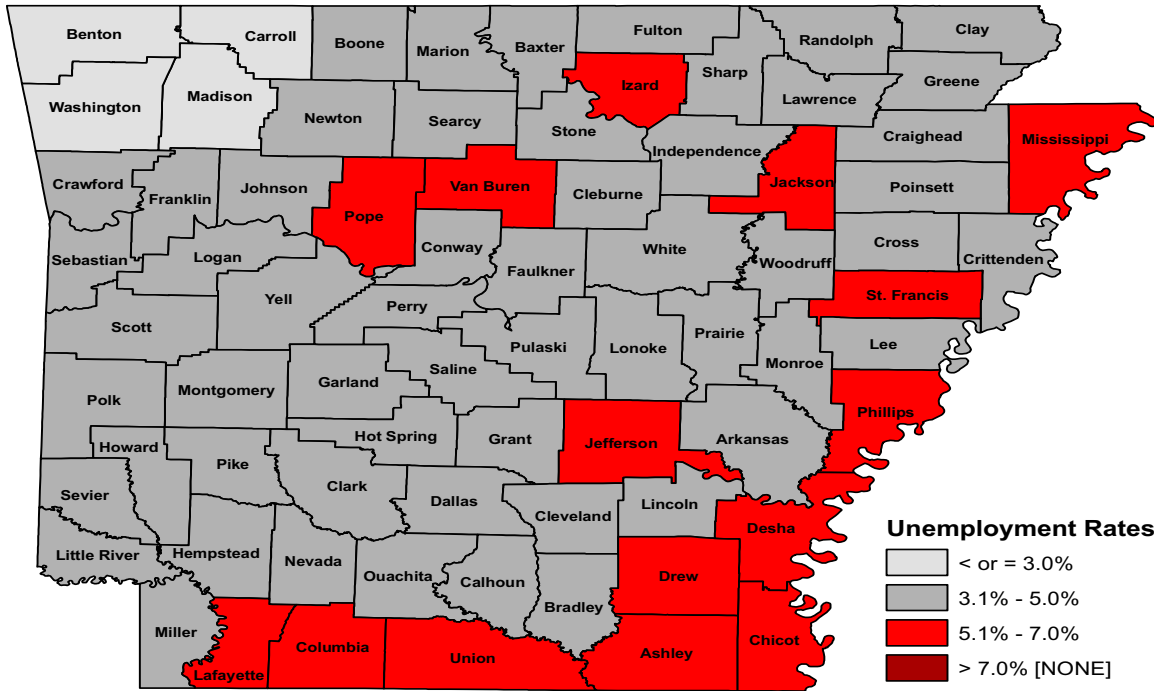
Between June and July, unemployment rates increased in 57 of Arkansas' 75 counties. Fourteen counties remained stable over-the-month, while rates in four counties declined. Jobless rates ranged from a low of 2.6 percent in Washington County to a high of 6.6 percent in Mississippi County.

In July, twenty-five counties posted jobless rates at or below four percent. That is down from 34 counties at or below four percent last month. For the fifth month in a row, no county reported a rate above eight percent.

Compared to July 2016, unemployment rates are down in 73 Arkansas counties. Prairie County was the same as last year, while the rate in Searcy County increased.

Labor Market Report

County Labor Force Statistics



Ranked by Unemployment Rates

July 2017- Not Seasonally Adjusted

Rank	County	Rate	Rank	County	Rate	Rank	County	Rate
1	Washington	2.6	26	Garland	4.1	50	Conway	4.8
2	Madison	2.8	26	Lincoln	4.1	50	Johnson	4.8
3	Carroll	2.9	26	Poinsett	4.1	50	Little River	4.8
4	Benton	3.0	26	Prairie	4.1	50	Montgomery	4.8
5	Arkansas	3.1	30	Lawrence	4.2	50	Woodruff	4.8
5	Saline	3.1	30	Pike	4.2	56	Cleburne	4.9
7	Craighead	3.2	30	Randolph	4.2	56	Dallas	4.9
7	Howard	3.2	33	Baxter	4.3	56	Sharp	4.9
7	Lonoke	3.2	33	Calhoun	4.3	59	Lee	5.0
10	Grant	3.3	33	Logan	4.3	59	Searcy	5.0
11	Faulkner	3.4	33	Monroe	4.3	61	St. Francis	5.1
12	Boone	3.5	37	Miller	4.4	62	Desha	5.2
12	Pulaski	3.5	37	White	4.4	62	Pope	5.2
14	Crawford	3.6	39	Bradley	4.5	64	Jefferson	5.4
14	Sebastian	3.6	39	Clark	4.5	65	Drew	5.5
16	Hempstead	3.7	39	Crittenden	4.5	65	Lafayette	5.5
16	Newton	3.7	39	Fulton	4.5	67	Columbia	5.6
16	Scott	3.7	39	Sevier	4.5	68	Union	5.7
19	Nevada	3.8	39	Yell	4.5	68	Van Buren	5.7
20	Cross	3.9	45	Cleveland	4.6	70	Izard	5.8
20	Franklin	3.9	45	Ouachita	4.6	70	Jackson	5.8
20	Greene	3.9	47	Independence	4.7	72	Ashley	5.9
20	Marion	3.9	47	Polk	4.7	72	Chicot	5.9
20	Perry	3.9	47	Stone	4.7	74	Phillips	6.1
25	Hot Spring	4.0	50	Clay	4.8	75	Mississippi	6.6

Labor Market Report

Local Workforce Development Areas Civilian Labor Force Estimates

LWDA Labor Force Estimates (Not Seasonally Adjusted)

LWDA	July 2017				June 2017				July 2016			
	CLF	Emp	Unemp	Rate	CLF	Emp	Unemp	Rate	CLF	Emp	Unemp	Rate
Central (minus LR)	259,970	251,198	8,772	3.4	255,789	247,351	8,438	3.3	254,284	244,531	9,753	3.8
City of Little Rock	101,490	98,068	3,422	3.4	99,668	96,348	3,320	3.3	99,447	95,535	3,912	3.9
Eastern	49,089	46,746	2,343	4.8	49,682	47,381	2,301	4.6	48,512	45,978	2,534	5.2
North Central	95,439	90,848	4,591	4.8	98,089	93,605	4,484	4.6	94,220	88,611	5,609	6.0
Northeast	124,025	118,939	5,086	4.1	124,042	118,832	5,210	4.2	121,381	115,649	5,732	4.7
Northwest	330,966	321,024	9,942	3.0	328,402	318,877	9,525	2.9	316,706	306,225	10,481	3.3
Southeast	84,068	79,987	4,081	4.9	84,947	80,964	3,983	4.7	82,800	77,995	4,805	5.8
Southwest	95,759	91,295	4,464	4.7	97,505	93,078	4,427	4.5	94,690	89,562	5,128	5.4
West Central	136,607	130,466	6,141	4.5	137,629	131,875	5,754	4.2	133,175	126,250	6,925	5.2
Western	116,783	112,354	4,429	3.8	117,027	112,794	4,233	3.6	115,355	110,354	5,001	4.3

