

Arkansas Labor Market Report

April 2017



www.discover.arkansas.gov

Table of Contents



Monthly Spotlight.....	2
Arkansas Labor Force Summary.....	3
Arkansas Nonfarm Payroll Jobs.....	4
Arkansas Production Workers.....	6
Metropolitan Statistical Areas.....	7
Micropolitan Statistical Areas/Cities.....	14
County Labor Force Statistics.....	15
Local Workforce Development Areas.....	18

Technical Notes

The *Arkansas Labor Market* is prepared monthly in conjunction with the U.S. Department of Labor, Bureau of Labor Statistics (BLS). The current month's estimates are preliminary, while previous month's data is subject to revision.

Estimates of nonfarm payroll jobs show the number of jobs by industry and reflect employment by place of work. Hours and earnings estimates are based on payroll and worker-hour data collected for production workers in manufacturing industries.

Industries are classified according to the North American Industry Classification System (NAICS). All estimates are based on a first quarter 2016 benchmark.

Explanation of Terms and Concepts

Monthly Business Survey of Employers

A monthly sample survey designed to provide industry information on nonfarm payroll jobs. Data are compiled each month from mail surveys and telephone interviews conducted by the Bureau of Labor Statistics in cooperation with Department of Workforce Services. The data are based on establishment records and include all workers, full-or part-time, who received pay during the payroll period which includes the 12th of the

month. Approximately 5,000 Arkansas business establishments are surveyed.

Metropolitan Statistical Area (MSA)

A term applied by the U.S. Office of Management and Budget to counties that have one or more central cities and that meet specified criteria of population density, commuting patterns and social and economic integration.

Current Population Survey (CPS)

A monthly sample survey of the population 16 years of age and over, designed to provide data on the labor force, the employed and the unemployed. The survey is conducted each month by the Bureau of the Census for BLS. The information is collected by trained interviewers from a sample of about 60,000 households. The data collected are based on the activity reported for the calendar week including the 12th of the month. Approximately 800 Arkansas households are represented in the sample survey.

Civilian Labor Force

The sum of all employed and unemployed persons 16 years of age or older. Members of the Armed Forces are excluded.

Employment

An estimate of the number of persons who worked any time for pay or profit or worked 15 hours or more as unpaid workers in a family business during the calendar week which includes the 12th of the month. Also included are those who, although not working, had some job attachment and were not looking for work, and persons involved in labor management disputes.

Unemployment

An estimate of the number of persons who did not have a job, but were available for work and actively seeking work during the calendar week which includes the 12th of the month.

Unemployment Rate

The number of unemployed as a percentage of the civilian labor force. Unemployment rates are calculated from unrounded data.

Seasonal Adjustment

A statistical technique applied to monthly data to eliminate changes that normally occur during the year due to seasonal events such as weather, major holidays, schedule shifts, harvest times, and the opening/closing of schools.

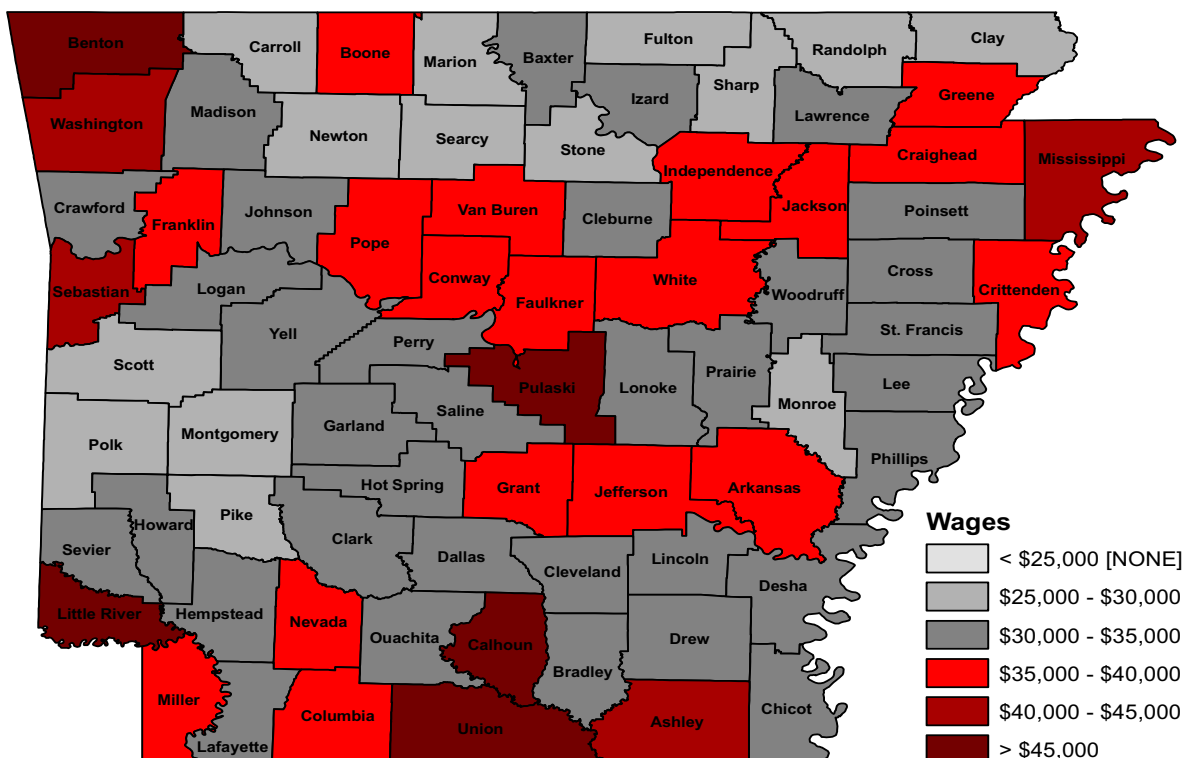
April Spotlight Wages in Arkansas

The Quarterly Census of Employment and Wages (QCEW) is the most comprehensive data collection program utilized by the Bureau of Labor Statistics (BLS). The program is based on each state's Unemployment Insurance (UI) program, which enables BLS to produce data using every business that is covered under UI tax law. In addition to calculating covered employment, the program also tracks the wages paid to employees. Due to the comprehensive nature of the information, data can be produced at any level-- national, statewide, counties, and cities.

The information below comes from the QCEW program and provides annual average wage data for each county in Arkansas. Annual average wages are calculated using the total wages earned during the calendar year, divided by annual average employment. The wages are compiled using all industries and includes both private and government jobs, for all workers included under UI tax law. It is important to note that QCEW data is based on county of employment, not county of residency. So if an individual works in a different county than where they live, their wages are counted in the county where they work.

In 2016, average annual wages ranged from a high of \$54,637, for those employed in Benton County, to a low of \$25,242 in Newton County. Compared to 2015, annual average wages increased in 60 of Arkansas' 75 counties. Fifteen counties posted a decline in wages from last year.

Wages in Arkansas by County
2016 Annual Average



State of Arkansas Civilian Labor Force Summary

Labor force data, produced by the U.S. Department of Labor, Bureau of Labor Statistics and released by the Arkansas Department of Workforce Services, show Arkansas' seasonally adjusted unemployment rate declined one-tenth of a percentage point, from 3.6 percent in March to 3.5 percent in April. Arkansas' civilian labor force rose 6,782, a result of 7,693 more employed and 911 fewer unemployed Arkansans. At 4.4 percent, the United States' jobless rate also declined one-tenth of a percentage point between March and April.

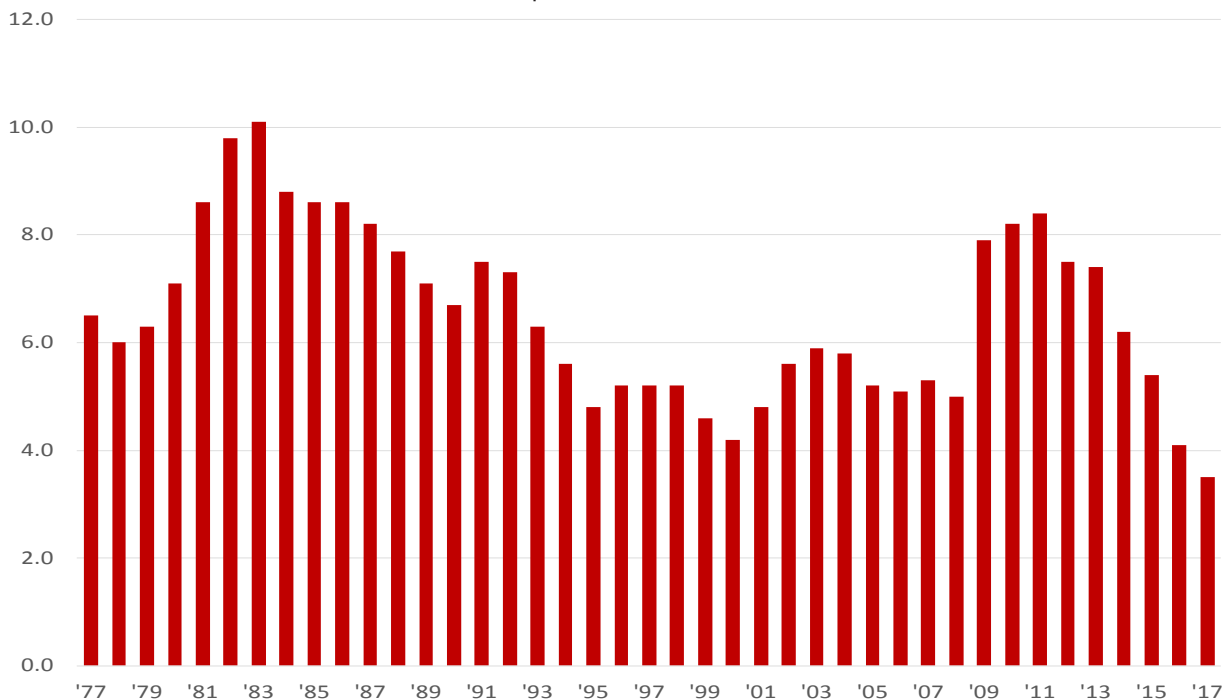
BLS Program Operations Manager Susan Price said, "For the fourth month in a row, Arkansas' unemployment rate has declined to record setting lows. Starting the year at 3.8 percent, the rate has decreased one-tenth of a percentage point each month to 3.5 percent in April."

Civilian Labor Force Estimates

	Seasonally Adjusted			Not Seasonally Adjusted		
	Apr 17	Mar 17	Apr 16	Apr 17	Mar 17	Apr 16
Civilian Labor Force	1,347,934	1,341,152	1,345,119	Civilian Labor Force	1,353,270	1,343,003
Employment	1,300,237	1,292,544	1,290,523	Employment	1,311,919	1,295,170
Unemployment	47,697	48,608	54,596	Unemployment	41,351	47,833
Unemployment Rate	3.5	3.6	4.1	Unemployment Rate	3.1	3.6
U.S. Unemployment	4.4	4.5	5.0	U.S. Unemployment	4.1	4.6

Unemployment Rates (Seasonally Adjusted)

April: 1977 - 2017



State of Arkansas Nonfarm Payroll Jobs

Not Seasonally Adjusted

(In Thousands)

(NAICS)	<u>Apr 17</u>	<u>Mar 17</u>	<u>Apr 16</u>	<u>OTM</u>	<u>QTY</u>
Total Nonfarm	1251.6	1240.6	1231.9	11.0	19.7
Goods Producing	213.3	211.3	210.3	2.0	3.0
Mining, Logging, and Construction	56.1	54.8	56.6	1.3	-0.5
Mining & Logging	6.0	6.0	6.3	0.0	-0.3
Construction	50.1	48.8	50.3	1.3	-0.2
Specialty Trade Contractors	31.5	31.3	32.1	0.2	-0.6
Manufacturing	157.2	156.5	153.7	0.7	3.5
Durable Goods	73.5	73.6	74.5	-0.1	-1.0
Nondurable Goods	83.7	82.9	79.2	0.8	4.5
Service Providing	1038.3	1029.3	1021.6	9.0	16.7
Trade, Transportation & Utilities	253.7	251.5	251.3	2.2	2.4
Wholesale Trade	47.5	46.6	46.4	0.9	1.1
Retail Trade	141.6	140.5	142.0	1.1	-0.4
Transport, Warehousing & Utilities	64.6	64.4	62.9	0.2	1.7
Information	13.1	13.1	13.6	0.0	-0.5
Financial Activities	51.4	50.9	51.2	0.5	0.2
Finance & Insurance	38.3	37.9	38.0	0.4	0.3
Real Estate & Rental & Leasing	13.1	13.0	13.2	0.1	-0.1
Professional & Business Services	149.6	148.0	143.9	1.6	5.7
Professional, Scientific & Technical	44.6	44.1	43.2	0.5	1.4
Management of Companies	34.3	34.7	34.4	-0.4	-0.1
Administrative & Support Services	70.7	69.2	66.3	1.5	4.4
Educational & Health Services	187.4	186.7	180.4	0.7	7.0
Educational Services	17.1	17.0	15.3	0.1	1.8
Health Care & Social Assistance	170.3	169.7	165.1	0.6	5.2
Ambulatory Health Care	56.5	56.0	52.9	0.5	3.6
Social Assistance	40.5	40.1	39.8	0.4	0.7
Leisure & Hospitality	119.2	115.1	116.7	4.1	2.5
Arts, Entertainment & Recreation	11.5	10.2	11.5	1.3	0.0
Accommodation & Food Services	107.7	104.9	105.2	2.8	2.5
Accommodation Services	11.3	10.9	11.1	0.4	0.2
Food Services	96.4	94.0	94.1	2.4	2.3
Other Services	48.3	48.2	47.0	0.1	1.3
Government	215.6	215.8	217.5	-0.2	-1.9
Federal Government	20.1	20.3	20.2	-0.2	-0.1
State Government	80.5	80.2	81.0	0.3	-0.5
Local Government	115.0	115.3	116.3	-0.3	-1.3

State of Arkansas Nonfarm Payroll Job Summary

March 2017 - April 2017

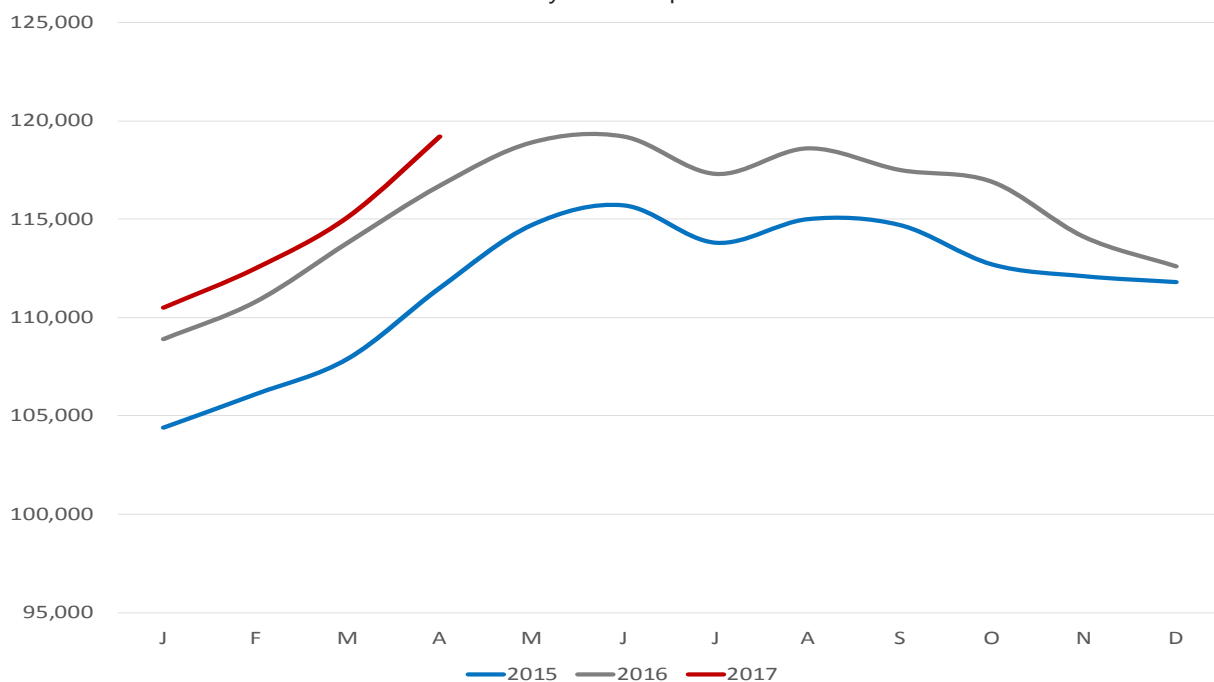
Arkansas' nonfarm payroll jobs rose 11,000 in April to total 1,251,600. Increases were posted in eight major industry sectors. Employment in one industry sector declined, while two remained stable. **Leisure and hospitality** added 4,100 jobs. Seasonal gains occurred in both accommodation and food services (+2,800) and in arts, entertainment, and recreation (+1,300). Jobs in **trade, transportation, and utilities** rose 2,200, attributed in part to seasonal hiring in retail trade (+1,100). Employment in **professional and business services** increased 1,600. A majority of the growth occurred in administrative and support services (+1,500), a subsector which includes employment agencies. **Construction** added 1,300 jobs, a typical seasonal expansion.

April 2016 - April 2017

Compared to April 2016, nonfarm payroll jobs in Arkansas increased 19,700. Seven major industry sectors added jobs, while employment in four sectors declined slightly. Jobs in **educational and health services** rose 7,000, mostly in health care and social assistance (+5,200). Employment in **professional and business services** increased 5,700. Administrative and support services posted a majority of the growth (+4,400). **Manufacturing** added 3,500 jobs, with expansions in nondurable goods (+4,500) more than offsetting losses in durable goods (-1,000). Moderate gains were reported in **leisure and hospitality** (+2,500), **trade-transportation-utilities** (+2,400) and **other services** (+1,300). Jobs in **government** decreased 1,900. Most of the decline was in local government (-1,300), attributed in part to reported staff reductions at various public school districts across the state.

Jobs in Leisure and Hospitality (Not Seasonally Adjusted)

January 2015 - April 2017



State of Arkansas

Production Workers- Hours and Earnings

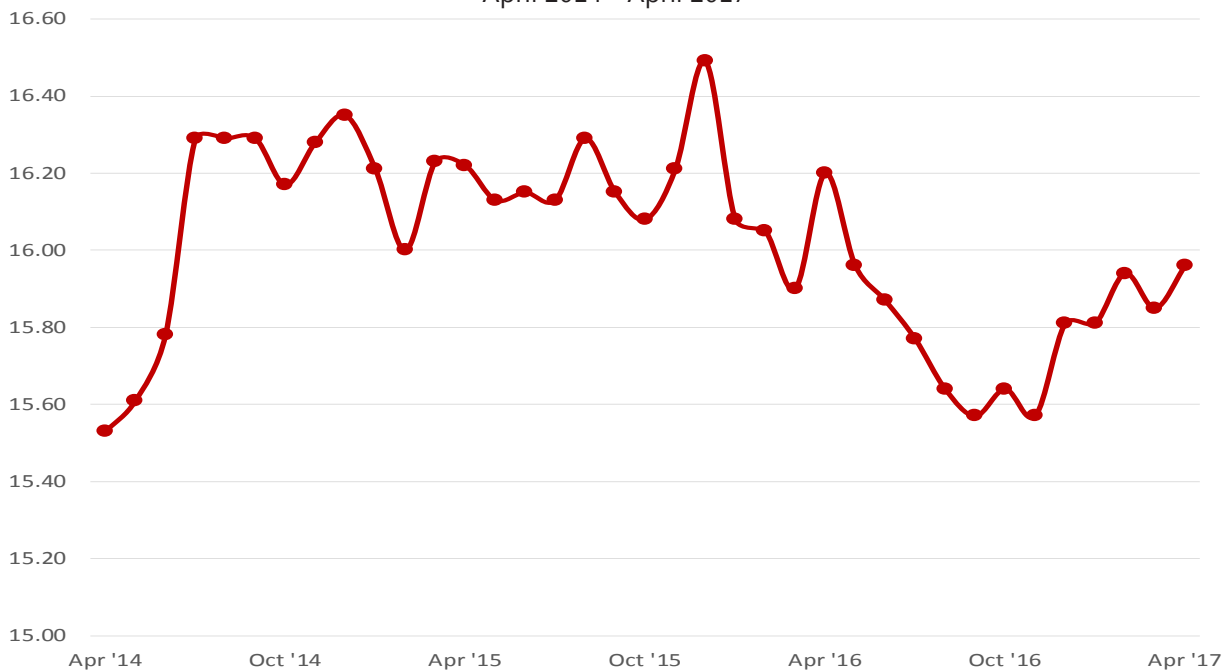
Manufacturing

	<u>Apr 17</u>	<u>Mar 17</u>	<u>Apr 16</u>
Average Weekly Hours	38.6	38.6	39.5
Average Hourly Earnings	15.96	15.85	16.20
Average Weekly Earnings	616.06	611.81	639.90

Durable Goods and Nondurable Goods Manufacturing

Durable Goods Manufacturing				Nondurable Goods Manufacturing			
	<u>Apr 17</u>	<u>Mar 17</u>	<u>Apr 16</u>		<u>Apr 17</u>	<u>Mar 17</u>	<u>Apr 16</u>
Average Weekly Hours	40.9	40.9	42.0	Average Weekly Hours	36.6	36.7	37.2
Average Hourly Earnings	17.56	17.47	17.81	Average Hourly Earnings	14.44	14.28	14.48
Average Weekly Earnings	718.20	714.52	748.02	Average Weekly Earnings	528.50	524.08	538.66

Manufacturing: Average Hourly Earnings
April 2014 - April 2017



Labor Market Report

Metropolitan Statistical Areas

Little Rock-North Little Rock-Conway MSA

The Little Rock-North Little Rock-Conway MSA= Faulkner, Grant, Lonoke, Perry, Pulaski, & Saline counties.

Civilian Labor Force Estimates (Not Seasonally Adjusted)

	<u>Apr 17</u>	<u>Mar 17</u>	<u>Apr 16</u>	<u>OTM</u>	<u>QTY</u>
Civilian Labor Force	350,055	349,365	350,366	690	-311
Employment	340,234	338,087	339,132	2,147	1,102
Unemployment	9,821	11,278	11,234	-1,457	-1,413
Unemployment Rate	2.8	3.2	3.2	-0.4	-0.4

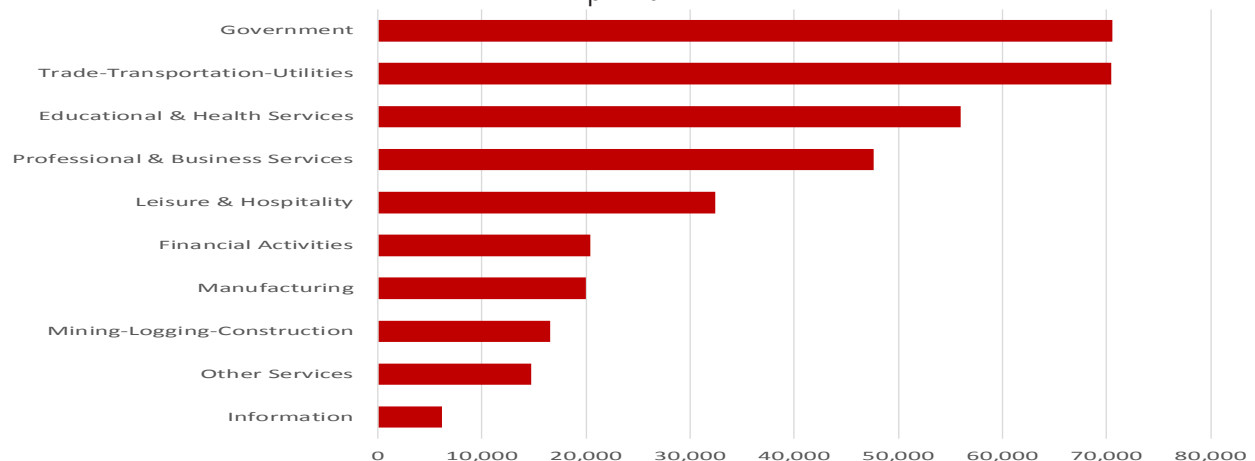
Nonfarm Payroll Jobs (Not Seasonally Adjusted)

(In Thousands)

<u>NAICS</u>	<u>Apr 17</u>	<u>Mar 17</u>	<u>Apr 16</u>	<u>OTM</u>	<u>QTY</u>
Total Nonfarm	354.6	355.9	355.3	-1.3	-0.7
Goods Producing	36.5	36.5	37.4	0.0	-0.9
Mining, Logging & Construction	16.5	16.5	17.2	0.0	-0.7
Manufacturing	20.0	20.0	20.2	0.0	-0.2
Service Providing	318.1	319.4	317.9	-1.3	0.2
Trade, Transportation & Utilities	70.4	70.5	69.9	-0.1	0.5
Wholesale Trade	15.0	14.9	15.2	0.1	-0.2
Retail Trade	39.5	39.7	39.2	-0.2	0.3
Trans., Warehousing & Utilities	15.9	15.9	15.5	0.0	0.4
Information	6.1	6.1	6.4	0.0	-0.3
Financial Activities	20.4	20.4	20.4	0.0	0.0
Professional & Business Services	47.6	47.9	47.8	-0.3	-0.2
Educational & Health Services	56.0	56.2	53.6	-0.2	2.4
Leisure & Hospitality	32.4	32.7	33.8	-0.3	-1.4
Other Services	14.7	14.7	14.4	0.0	0.3
Government	70.5	70.9	71.6	-0.4	-1.1
Federal Government	9.6	9.8	9.6	-0.2	0.0
State Government	35.2	35.3	35.0	-0.1	0.2
Local Government	25.7	25.8	27.0	-0.1	-1.3

Nonfarm Payroll Jobs by Sector (Ranked)

April 2017



Labor Market Report

Metropolitan Statistical Areas Fayetteville-Springdale-Rogers MSA

The Fayetteville-Springdale-Rogers MSA= Benton, Madison, & Washington counties in Arkansas & McDonald county in Missouri.

Civilian Labor Force Estimates (Not Seasonally Adjusted)

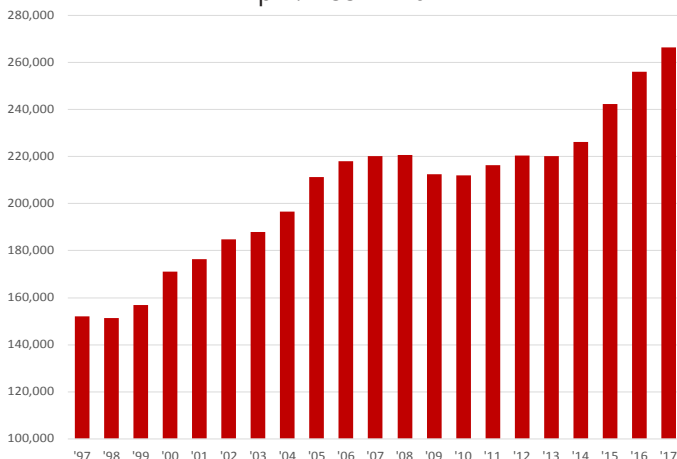
	<u>Apr 17</u>	<u>Mar 17</u>	<u>Apr 16</u>	<u>OTM</u>	<u>QTY</u>
Civilian Labor Force	272,410	269,245	262,936	3,165	9,474
Employment	266,350	262,405	256,087	3,945	10,263
Unemployment	6,060	6,840	6,849	-780	-789
Unemployment Rate	2.2	2.5	2.6	-0.3	-0.4

Nonfarm Payroll Jobs (Not Seasonally Adjusted)

(In Thousands)

<u>NAICS</u>	<u>Apr 17</u>	<u>Mar 17</u>	<u>Apr 16</u>	<u>OTM</u>	<u>QTY</u>
Total Nonfarm	254.5	253.2	245.2	1.3	9.3
Goods Producing	38.1	38.1	37.5	0.0	0.6
Mining, Logging & Construction	10.7	10.6	10.4	0.1	0.3
Manufacturing	27.4	27.5	27.1	-0.1	0.3
Service Providing	216.4	215.1	207.7	1.3	8.7
Trade, Transportation & Utilities	56.2	55.9	55.4	0.3	0.8
Wholesale Trade	12.7	12.6	12.1	0.1	0.6
Retail Trade	26.1	25.9	26.6	0.2	-0.5
Trans., Warehousing & Utilities	17.4	17.4	16.7	0.0	0.7
Information	1.9	1.9	2.0	0.0	-0.1
Financial Activities	7.8	7.8	7.6	0.0	0.2
Professional & Business Services	53.3	53.1	48.6	0.2	4.7
Educational & Health Services	28.2	28.0	27.2	0.2	1.0
Leisure & Hospitality	25.7	24.9	24.7	0.8	1.0
Other Services	7.7	7.7	7.5	0.0	0.2
Government	35.6	35.8	34.7	-0.2	0.9
Federal Government	2.5	2.5	2.6	0.0	-0.1
State Government	14.2	14.3	13.4	-0.1	0.8
Local Government	18.9	19.0	18.7	-0.1	0.2

Number of Employed
April: 1997 - 2017



Nonfarm Payroll Jobs
April 2015 - April 2017



Labor Market Report

Metropolitan Statistical Areas Fort Smith MSA

The Fort Smith MSA= Crawford & Sebastian counties in Arkansas & LeFlore & Sequoyah counties in Oklahoma.

Civilian Labor Force Estimates (Not Seasonally Adjusted)

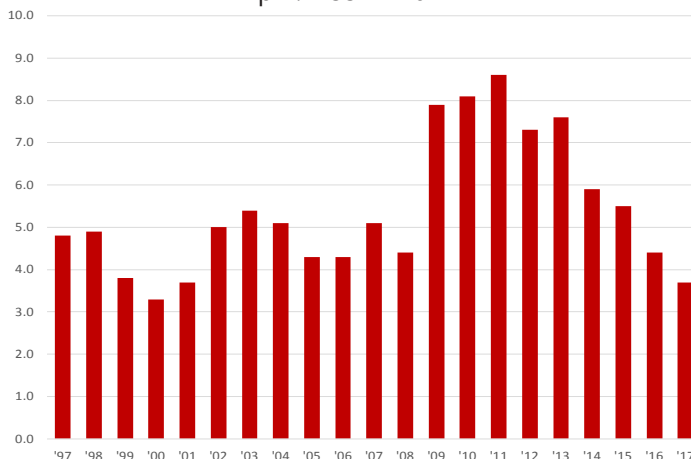
	<u>Apr 17</u>	<u>Mar 17</u>	<u>Apr 16</u>	<u>OTM</u>	<u>QTY</u>
Civilian Labor Force	119,871	119,931	121,475	-60	-1,604
Employment	115,483	115,076	116,189	407	-706
Unemployment	4,388	4,855	5,286	-467	-898
Unemployment Rate	3.7	4.0	4.4	-0.3	-0.7

Nonfarm Payroll Jobs (Not Seasonally Adjusted)

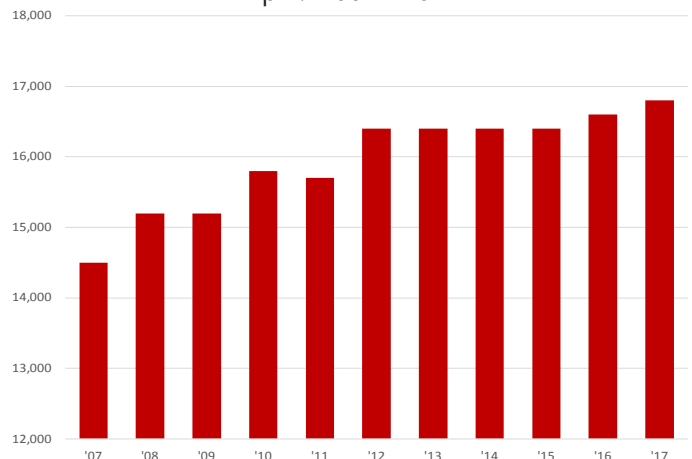
(In Thousands)

<u>NAICS</u>	<u>Apr 17</u>	<u>Mar 17</u>	<u>Apr 16</u>	<u>OTM</u>	<u>QTY</u>
Total Nonfarm	113.0	113.2	114.3	-0.2	-1.3
Goods Producing	22.7	22.7	23.6	0.0	-0.9
Mining, Logging & Construction	5.3	5.2	5.6	0.1	-0.3
Manufacturing	17.4	17.5	18.0	-0.1	-0.6
Service Providing	90.3	90.5	90.7	-0.2	-0.4
Trade, Transportation & Utilities	22.9	23.1	23.6	-0.2	-0.7
Wholesale Trade	3.9	3.9	3.9	0.0	0.0
Retail Trade	12.5	12.7	13.0	-0.2	-0.5
Trans., Warehousing & Utilities	6.5	6.5	6.7	0.0	-0.2
Information	1.3	1.3	1.2	0.0	0.1
Financial Activities	3.8	3.8	3.7	0.0	0.1
Professional & Business Services	12.8	12.9	13.1	-0.1	-0.3
Educational & Health Services	16.8	16.9	16.6	-0.1	0.2
Leisure & Hospitality	9.7	9.5	9.6	0.2	0.1
Other Services	4.3	4.3	4.3	0.0	0.0
Government	18.7	18.7	18.6	0.0	0.1
Federal Government	1.3	1.3	1.3	0.0	0.0
State Government	3.2	3.2	3.2	0.0	0.0
Local Government	14.2	14.2	14.1	0.0	0.1

Unemployment Rates
April: 1997 - 2017



Jobs in Educational and Health Services
April: 2007 - 2017



Labor Market Report

Metropolitan Statistical Areas

Hot Springs MSA

The Hot Springs MSA= Garland County.

Civilian Labor Force Estimates (Not Seasonally Adjusted)

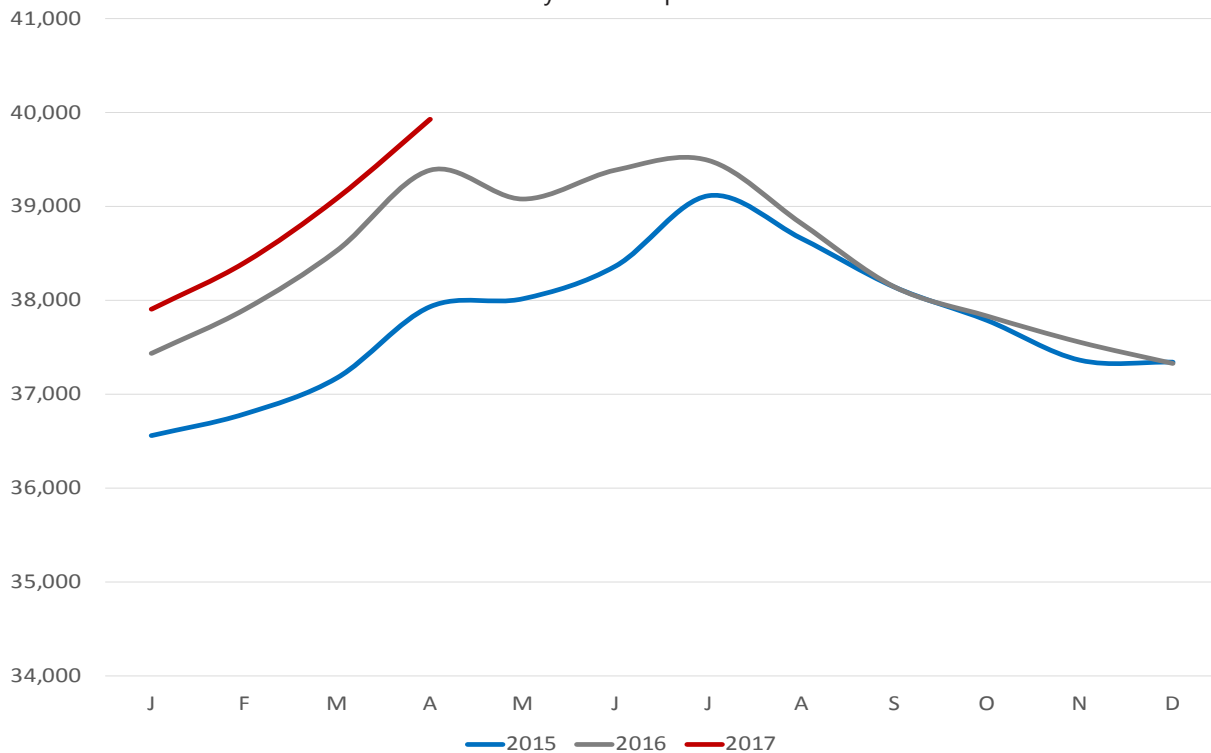
	Apr 17	Mar 17	Apr 16	OTM	QTY
Civilian Labor Force	41,261	40,617	40,927	644	334
Employment	39,928	39,088	39,385	840	543
Unemployment	1,333	1,529	1,542	-196	-209
Unemployment Rate	3.2	3.8	3.8	-0.6	-0.6

Nonfarm Payroll Jobs (Not Seasonally Adjusted)

(In Thousands)

NAICS	Apr 17	Mar 17	Apr 16	OTM	QTY
Total Nonfarm	39.2	38.6	38.8	0.6	0.4
Goods Producing	4.5	4.5	4.4	0.0	0.1
Service Providing	34.7	34.1	34.4	0.6	0.3
Government	4.6	4.5	4.8	0.1	-0.2

Number of Employed
January 2015 - April 2017



Labor Market Report

Metropolitan Statistical Areas Jonesboro MSA

The Jonesboro MSA= Craighead & Poinsett counties.

Civilian Labor Force Estimates (Not Seasonally Adjusted)

	Apr 17	Mar 17	Apr 16	OTM	QTY
Civilian Labor Force	63,398	62,491	62,375	907	1,023
Employment	61,734	60,594	60,495	1,140	1,239
Unemployment	1,664	1,897	1,880	-233	-216
Unemployment Rate	2.6	3.0	3.0	-0.4	-0.4

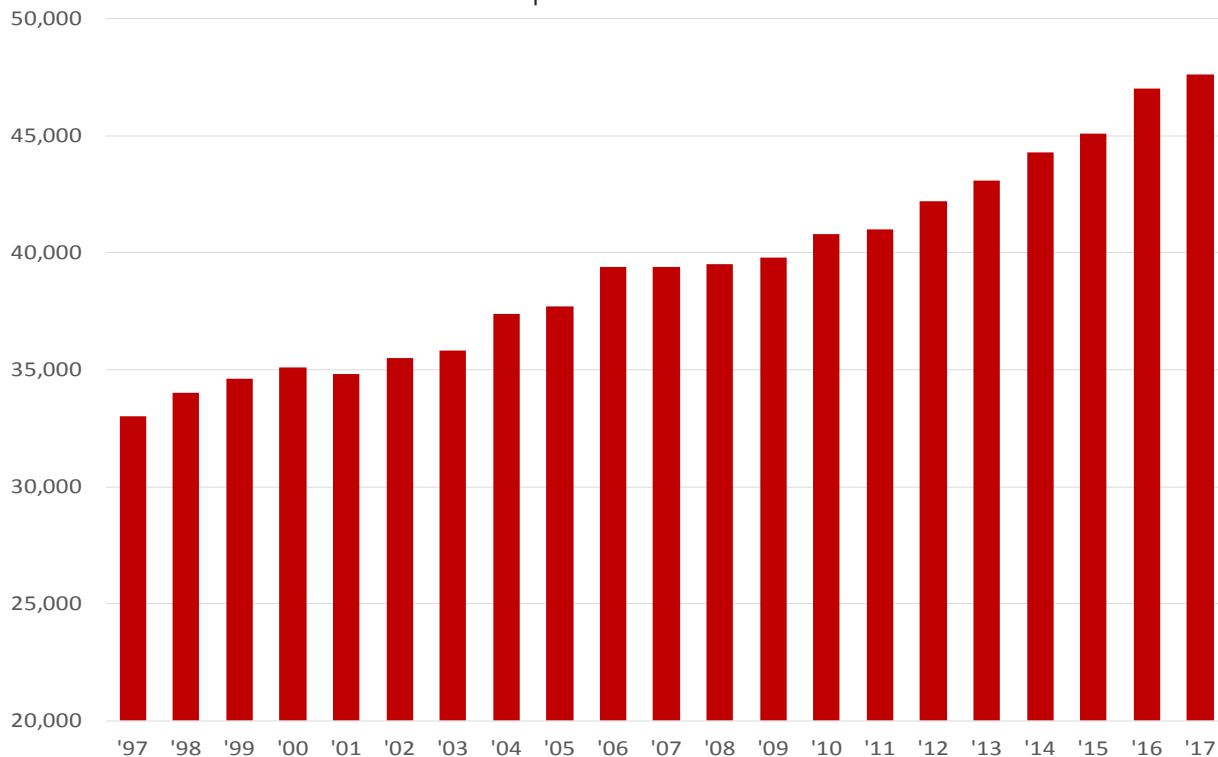
Nonfarm Payroll Jobs (Not Seasonally Adjusted)

(In Thousands)

NAICS	Apr 17	Mar 17	Apr 16	OTM	QTY
Total Nonfarm	57.0	56.5	56.0	0.5	1.0
Goods Producing	9.4	9.4	9.0	0.0	0.4
Service Providing	47.6	47.1	47.0	0.5	0.6
Government	9.2	9.1	9.1	0.1	0.1

Jobs in Service Providing Industries

April: 1997 - 2017



Labor Market Report

Metropolitan Statistical Areas

Pine Bluff MSA

The Pine Bluff MSA= Cleveland, Jefferson, & Lincoln counties.

Civilian Labor Force Estimates (Not Seasonally Adjusted)

	Apr 17	Mar 17	Apr 16	OTM	QTY
Civilian Labor Force	35,770	35,683	35,938	87	-168
Employment	34,261	33,922	34,179	339	82
Unemployment	1,509	1,761	1,759	-252	-250
Unemployment Rate	4.2	4.9	4.9	-0.7	-0.7

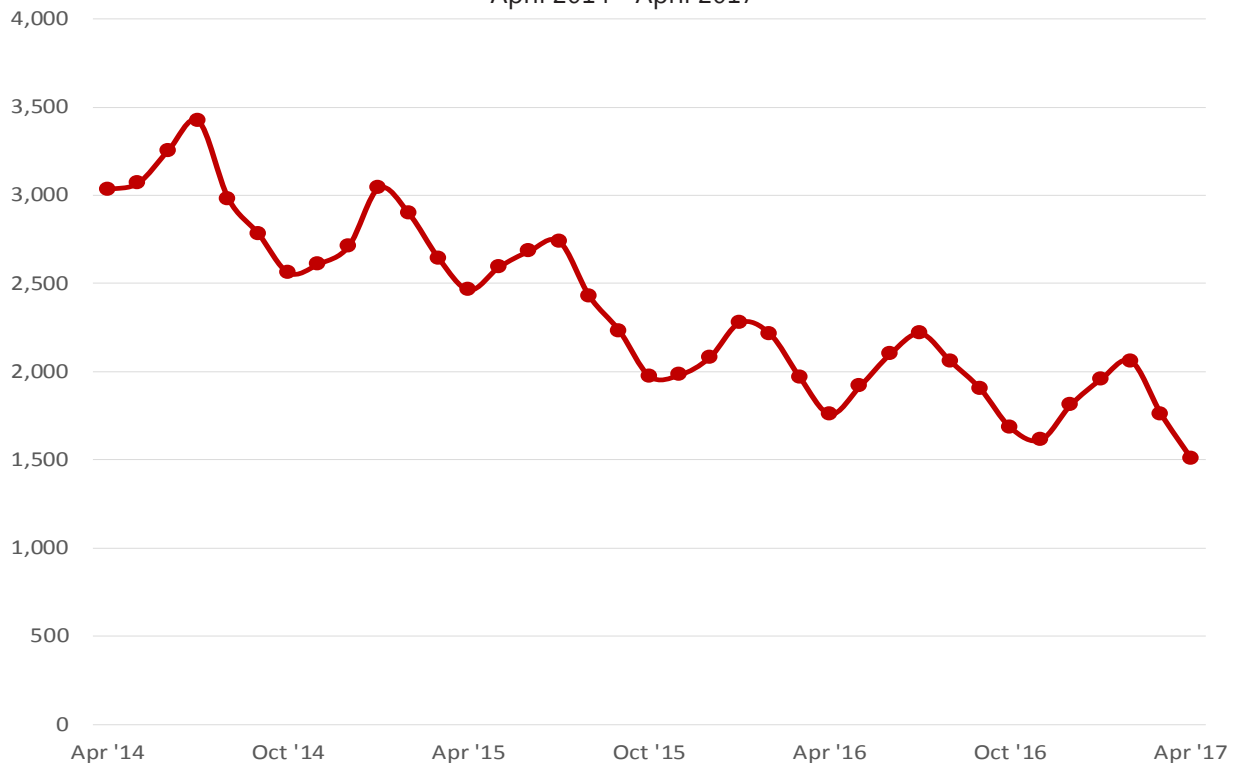
Nonfarm Payroll Jobs (Not Seasonally Adjusted)

(In Thousands)

NAICS	Apr 17	Mar 17	Apr 16	OTM	QTY
Total Nonfarm	33.3	33.4	33.5	-0.1	-0.2
Goods Producing	5.9	6.0	6.1	-0.1	-0.2
Service Providing	27.4	27.4	27.4	0.0	0.0
Government	9.6	9.6	9.7	0.0	-0.1

Number of Unemployed

April 2014 - April 2017



Labor Market Report

Metropolitan Statistical Areas Out-of-State MSA

Civilian Labor Force Estimates (Not Seasonally Adjusted)

Memphis, TN-MS-AR MSA

The Memphis, TN-MS-AR MSA= Fayette, Shelby, & Tipton counties in Tennessee; Benton, Desoto, Marshall, Tate, & Tunica counties in Mississippi; & Crittenden County in Arkansas.

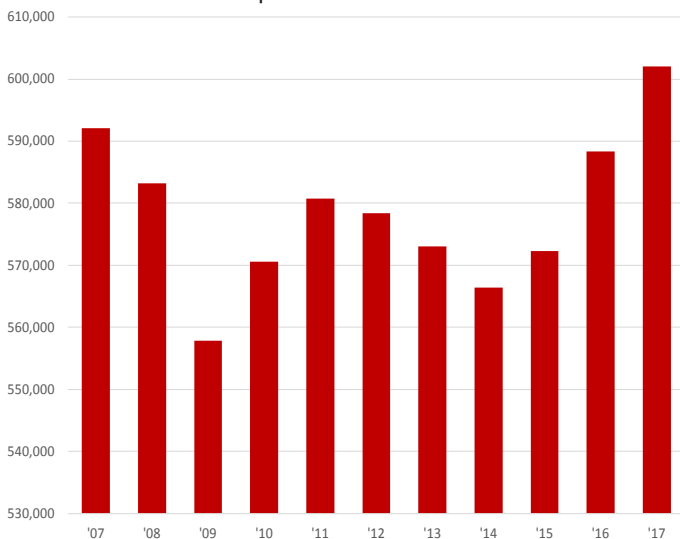
	Apr 17	Mar 17	Apr 16	OTM	OTY
Civilian Labor Force	628,392	629,914	617,423	-1,522	10,969
Employment	602,062	598,408	588,307	3,654	13,755
Unemployment	26,330	31,506	29,116	-5,176	-2,786
Unemployment Rate	4.2	5.0	4.7	-0.8	-0.5

Texarkana MSA

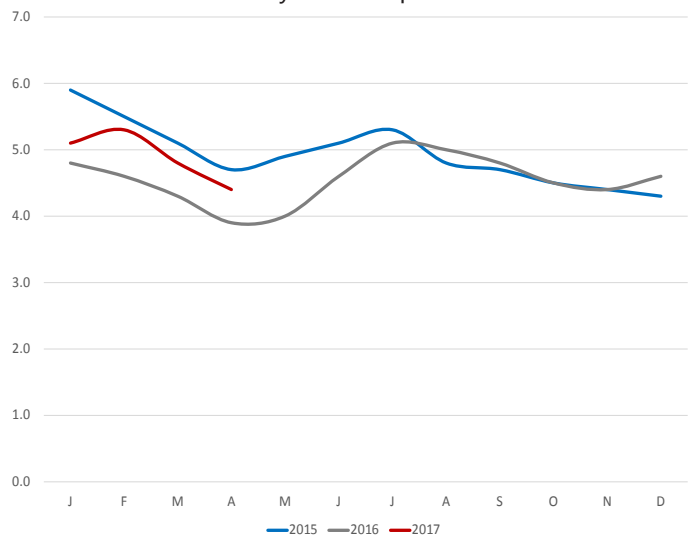
The Texarkana MSA= Bowie County in Texas & Little River & Miller counties in Arkansas.

	Apr 17	Mar 17	Apr 16	OTM	OTY
Civilian Labor Force	64,988	65,229	65,387	-241	-399
Employment	62,136	62,071	62,858	65	-722
Unemployment	2,852	3,158	2,529	-306	323
Unemployment Rate	4.4	4.8	3.9	-0.4	0.5

Employment- Memphis MSA
April: 2007 - 2017



Unemployment Rates- Texarkana MSA
January 2015 - April 2017



Labor Market Report

Micropolitan Statistical Areas and Cities

Civilian Labor Force Estimates

Micropolitan Labor Force Estimates (Not Seasonally Adjusted)

Micro Area	April 2017				March 2017				April 2016			
	CLF	Emp	Unemp	Rate	CLF	Emp	Unemp	Rate	CLF	Emp	Unemp	Rate
Arkadelphia Micro	9,613	9,301	312	3.2	9,539	9,194	345	3.6	9,491	9,120	371	3.9
Batesville Micro	16,245	15,700	545	3.4	16,128	15,473	655	4.1	16,089	15,370	719	4.5
Blytheville Micro	18,085	17,202	883	4.9	17,986	16,935	1,051	5.8	17,902	16,812	1,090	6.1
Camden Micro	12,315	11,834	481	3.9	12,159	11,640	519	4.3	12,231	11,690	541	4.4
El Dorado Micro	16,287	15,529	758	4.7	16,284	15,413	871	5.3	16,464	15,644	820	5.0
Forrest City Micro	8,979	8,628	351	3.9	8,896	8,467	429	4.8	8,867	8,447	420	4.7
Harrison Micro	19,704	19,158	546	2.8	19,461	18,822	639	3.3	19,688	19,028	660	3.4
Helena-West Helena Micro	6,595	6,284	311	4.7	6,564	6,194	370	5.6	6,799	6,433	366	5.4
Hope Micro	13,815	13,400	415	3.0	13,628	13,184	444	3.3	13,651	13,200	451	3.3
Magnolia Micro	9,116	8,740	376	4.1	9,095	8,641	454	5.0	9,400	8,913	487	5.2
Malvern Micro	14,176	13,762	414	2.9	14,049	13,568	481	3.4	14,321	13,805	516	3.6
Mountain Home Micro	16,404	15,836	568	3.5	16,240	15,585	655	4.0	16,154	15,548	606	3.8
Paragould Micro	19,887	19,308	579	2.9	19,637	18,919	718	3.7	19,883	19,140	743	3.7
Russellville Micro	38,519	37,290	1,229	3.2	38,204	36,716	1,488	3.9	38,431	36,888	1,543	4.0
Searcy Micro	33,497	32,115	1,382	4.1	33,291	31,725	1,566	4.7	34,457	32,718	1,739	5.0

Arkadelphia Micro= Clark County
 Batesville Micro= Independence County
 Blytheville Micro= Mississippi County
 Camden Micro= Calhoun & Ouachita counties
 El Dorado Micro= Union County

Forrest City Micro= St. Francis County
 Harrison Micro= Boone & Newton counties
 Helena-West Helena Micro= Phillips County
 Hope Micro= Hempstead & Nevada counties
 Magnolia Micro= Columbia County

Malvern Micro= Hot Spring County
 Mountain Home Micro= Baxter County
 Paragould Micro= Greene County
 Russellville Micro= Pope & Yell counties
 Searcy Micro= White County

City Labor Force Statistics (Not Seasonally Adjusted)

City	April 2017				March 2017				April 2016			
	CLF	Emp	Unemp	Rate	CLF	Emp	Unemp	Rate	CLF	Emp	Unemp	Rate
Bella Vista	12,404	12,036	368	3.0	12,257	11,855	402	3.3	11,958	11,559	399	3.3
Benton	16,320	15,901	419	2.6	16,281	15,806	475	2.9	16,313	15,849	464	2.8
Bentonville	24,529	23,920	609	2.5	24,198	23,561	637	2.6	23,555	22,973	582	2.5
Blytheville	6,165	5,864	301	4.9	6,137	5,773	364	5.9	6,152	5,732	420	6.8
Cabot	11,693	11,394	299	2.6	11,659	11,305	354	3.0	11,685	11,358	327	2.8
Conway	33,019	32,122	897	2.7	32,953	31,920	1,033	3.1	33,084	32,020	1,064	3.2
El Dorado	7,105	6,722	383	5.4	7,117	6,672	445	6.3	7,182	6,772	410	5.7
Fayetteville	47,623	46,638	985	2.1	47,130	45,947	1,183	2.5	45,910	44,799	1,111	2.4
Fort Smith	40,011	38,787	1,224	3.1	39,793	38,429	1,364	3.4	40,400	39,019	1,381	3.4
Hot Springs	14,402	13,885	517	3.6	14,182	13,593	589	4.2	14,259	13,696	563	3.9
Jacksonville	11,685	11,279	406	3.5	11,698	11,211	487	4.2	11,697	11,242	455	3.9
Jonesboro	37,285	36,349	936	2.5	36,729	35,693	1,036	2.8	36,666	35,611	1,055	2.9
Little Rock	96,535	93,793	2,742	2.8	96,389	93,228	3,161	3.3	96,545	93,486	3,059	3.2
North Little Rock	29,856	28,923	933	3.1	29,765	28,748	1,017	3.4	29,838	28,828	1,010	3.4
Paragould	12,481	12,073	408	3.3	12,339	11,830	509	4.1	12,481	11,968	513	4.1
Pine Bluff	16,931	16,160	771	4.6	16,933	16,011	922	5.4	17,108	16,120	988	5.8
Rogers	34,707	33,982	725	2.1	34,331	33,472	859	2.5	33,504	32,636	868	2.6
Russellville	13,768	13,380	388	2.8	13,657	13,184	473	3.5	13,717	13,233	484	3.5
Searcy	10,292	9,912	380	3.7	10,211	9,792	419	4.1	10,499	10,099	400	3.8
Sherwood	15,557	15,167	390	2.5	15,535	15,075	460	3.0	15,550	15,117	433	2.8
Springdale	39,456	38,664	792	2.0	38,979	38,090	889	2.3	38,075	37,139	936	2.5
Texarkana, AR	13,857	13,299	558	4.0	13,861	13,225	636	4.6	13,905	13,417	488	3.5
Van Buren	10,329	10,036	293	2.8	10,275	9,935	340	3.3	10,450	10,095	355	3.4
West Memphis	10,768	10,289	479	4.4	10,669	10,127	542	5.1	10,613	10,110	503	4.7

Labor Market Report

County Labor Force Statistics

Civilian Labor Force Estimates

Not Seasonally Adjusted

County	April 2017				March 2017				April 2016			
	CLF	Emp	Unemp	Rate	CLF	Emp	Unemp	Rate	CLF	Emp	Unemp	Rate
Arkansas	9,304	9,062	242	2.6	9,195	8,908	287	3.1	9,261	8,968	293	3.2
Ashley	7,783	7,394	389	5.0	7,765	7,313	452	5.8	7,792	7,363	429	5.5
Baxter	16,404	15,836	568	3.5	16,240	15,585	655	4.0	16,154	15,548	606	3.8
Benton	130,624	127,578	3,046	2.3	129,045	125,661	3,384	2.6	125,827	122,524	3,303	2.6
Boone	16,236	15,786	450	2.8	16,033	15,512	521	3.2	16,223	15,678	545	3.4
Bradley	4,552	4,367	185	4.1	4,515	4,291	224	5.0	4,304	4,132	172	4.0
Calhoun	2,413	2,331	82	3.4	2,376	2,287	89	3.7	2,410	2,304	106	4.4
Carroll	13,321	12,959	362	2.7	13,085	12,658	427	3.3	12,839	12,431	408	3.2
Chicot	3,545	3,351	194	5.5	3,495	3,252	243	7.0	3,617	3,408	209	5.8
Clark	9,613	9,301	312	3.2	9,539	9,194	345	3.6	9,491	9,120	371	3.9
Clay	5,976	5,761	215	3.6	5,896	5,619	277	4.7	6,136	5,820	316	5.1
Cleburne	9,354	8,961	393	4.2	9,292	8,829	463	5.0	9,530	8,968	562	5.9
Cleveland	3,338	3,208	130	3.9	3,322	3,171	151	4.5	3,340	3,203	137	4.1
Columbia	9,116	8,740	376	4.1	9,095	8,641	454	5.0	9,400	8,913	487	5.2
Conway	8,271	7,949	322	3.9	8,289	7,883	406	4.9	8,488	7,986	502	5.9
Craighead	53,010	51,705	1,305	2.5	52,255	50,772	1,483	2.8	52,159	50,656	1,503	2.9
Crawford	26,546	25,784	762	2.9	26,411	25,525	886	3.4	26,926	25,935	991	3.7
Crittenden	21,710	20,906	804	3.7	21,505	20,577	928	4.3	21,431	20,543	888	4.1
Cross	7,971	7,716	255	3.2	7,888	7,580	308	3.9	8,007	7,683	324	4.0
Dallas	3,024	2,915	109	3.6	3,010	2,892	118	3.9	2,875	2,746	129	4.5
Desha	5,411	5,183	228	4.2	5,359	5,092	267	5.0	5,480	5,196	284	5.2
Drew	8,055	7,698	357	4.4	7,960	7,542	418	5.3	7,909	7,485	424	5.4
Faulkner	60,262	58,562	1,700	2.8	60,185	58,193	1,992	3.3	60,565	58,376	2,189	3.6
Franklin	7,415	7,200	215	2.9	7,354	7,111	243	3.3	7,396	7,112	284	3.8
Fulton	4,736	4,566	170	3.6	4,643	4,455	188	4.0	4,753	4,563	190	4.0
Garland	41,261	39,928	1,333	3.2	40,617	39,088	1,529	3.8	40,927	39,385	1,542	3.8
Grant	8,290	8,073	217	2.6	8,257	8,006	251	3.0	8,325	8,047	278	3.3
Greene	19,887	19,308	579	2.9	19,637	18,919	718	3.7	19,883	19,140	743	3.7
Hempstead	10,081	9,786	295	2.9	9,946	9,624	322	3.2	9,974	9,642	332	3.3
Hot Spring	14,176	13,762	414	2.9	14,049	13,568	481	3.4	14,321	13,805	516	3.6
Howard	6,082	5,932	150	2.5	6,028	5,856	172	2.9	5,951	5,777	174	2.9
Independence	16,245	15,700	545	3.4	16,128	15,473	655	4.1	16,089	15,370	719	4.5
Izard	5,075	4,853	222	4.4	4,996	4,755	241	4.8	5,039	4,800	239	4.7
Jackson	6,014	5,724	290	4.8	5,983	5,621	362	6.1	6,143	5,784	359	5.8
Jefferson	28,352	27,131	1,221	4.3	28,315	26,880	1,435	5.1	28,514	27,063	1,451	5.1
Johnson	10,599	10,261	338	3.2	10,548	10,147	401	3.8	10,497	10,047	450	4.3
Lafayette	2,573	2,472	101	3.9	2,550	2,426	124	4.9	2,607	2,465	142	5.4
Lawrence	7,030	6,814	216	3.1	6,960	6,714	246	3.5	7,038	6,773	265	3.8
Lee	3,198	3,081	117	3.7	3,145	2,998	147	4.7	3,141	3,013	128	4.1
Lincoln	4,080	3,922	158	3.9	4,046	3,871	175	4.3	4,084	3,913	171	4.2
Little River	5,599	5,381	218	3.9	5,598	5,348	250	4.5	5,655	5,430	225	4.0
Logan	9,129	8,854	275	3.0	9,055	8,731	324	3.6	9,200	8,790	410	4.5
Lonoke	33,269	32,380	889	2.7	33,145	32,126	1,019	3.1	33,264	32,278	986	3.0
Madison	7,493	7,330	163	2.2	7,383	7,195	188	2.5	7,293	7,073	220	3.0
Marion	6,564	6,352	212	3.2	6,477	6,235	242	3.7	6,624	6,399	225	3.4
Miller	19,971	19,249	722	3.6	19,972	19,142	830	4.2	20,123	19,420	703	3.5

(continued on Page 16)

County Labor Force Statistics

Civilian Labor Force Estimates

Not Seasonally Adjusted

(continued from Page 15)

County	April 2017				March 2017				April 2016			
	CLF	Emp	Unemp	Rate	CLF	Emp	Unemp	Rate	CLF	Emp	Unemp	Rate
Mississippi	18,085	17,202	883	4.9	17,986	16,935	1,051	5.8	17,902	16,812	1,090	6.1
Monroe	2,899	2,800	99	3.4	2,859	2,735	124	4.3	2,931	2,813	118	4.0
Montgomery	3,146	3,024	122	3.9	3,051	2,902	149	4.9	3,170	3,023	147	4.6
Nevada	3,734	3,614	120	3.2	3,682	3,560	122	3.3	3,677	3,558	119	3.2
Newton	3,468	3,372	96	2.8	3,428	3,310	118	3.4	3,465	3,350	115	3.3
Ouachita	9,902	9,503	399	4.0	9,783	9,353	430	4.4	9,821	9,386	435	4.4
Perry	4,192	4,037	155	3.7	4,189	4,008	181	4.3	4,222	4,026	196	4.6
Phillips	6,595	6,284	311	4.7	6,564	6,194	370	5.6	6,799	6,433	366	5.4
Pike	4,278	4,143	135	3.2	4,197	4,034	163	3.9	4,224	4,056	168	4.0
Poinsett	10,388	10,029	359	3.5	10,236	9,822	414	4.0	10,216	9,839	377	3.7
Polk	7,896	7,584	312	4.0	7,859	7,475	384	4.9	8,249	7,878	371	4.5
Pope	29,619	28,659	960	3.2	29,400	28,239	1,161	3.9	29,539	28,344	1,195	4.0
Prairie	3,681	3,555	126	3.4	3,634	3,489	145	4.0	3,674	3,546	128	3.5
Pulaski	187,512	182,097	5,415	2.9	187,180	180,999	6,181	3.3	187,469	181,501	5,968	3.2
Randolph	6,780	6,549	231	3.4	6,752	6,472	280	4.1	6,285	6,019	266	4.2
St. Francis	8,979	8,628	351	3.9	8,896	8,467	429	4.8	8,867	8,447	420	4.7
Saline	56,530	55,085	1,445	2.6	56,409	54,755	1,654	2.9	56,521	54,904	1,617	2.9
Scott	4,535	4,416	119	2.6	4,488	4,356	132	2.9	4,471	4,307	164	3.7
Searcy	2,991	2,888	103	3.4	2,954	2,834	120	4.1	2,965	2,849	116	3.9
Sebastian	57,461	55,684	1,777	3.1	57,136	55,171	1,965	3.4	58,016	56,017	1,999	3.4
Sevier	5,763	5,554	209	3.6	5,725	5,476	249	4.3	5,648	5,399	249	4.4
Sharp	6,175	5,909	266	4.3	6,079	5,769	310	5.1	6,106	5,813	293	4.8
Stone	4,755	4,564	191	4.0	4,659	4,420	239	5.1	4,692	4,467	225	4.8
Union	16,287	15,529	758	4.7	16,284	15,413	871	5.3	16,464	15,644	820	5.0
Van Buren	5,826	5,535	291	5.0	5,907	5,556	351	5.9	6,123	5,686	437	7.1
Washington	123,441	120,952	2,489	2.0	122,031	119,159	2,872	2.4	119,078	116,183	2,895	2.4
White	33,497	32,115	1,382	4.1	33,291	31,725	1,566	4.7	34,457	32,718	1,739	5.0
Woodruff	2,997	2,864	133	4.4	2,949	2,798	151	5.1	3,016	2,856	160	5.3
Yell	8,900	8,631	269	3.0	8,804	8,477	327	3.7	8,892	8,544	348	3.9

County Labor Force Summary

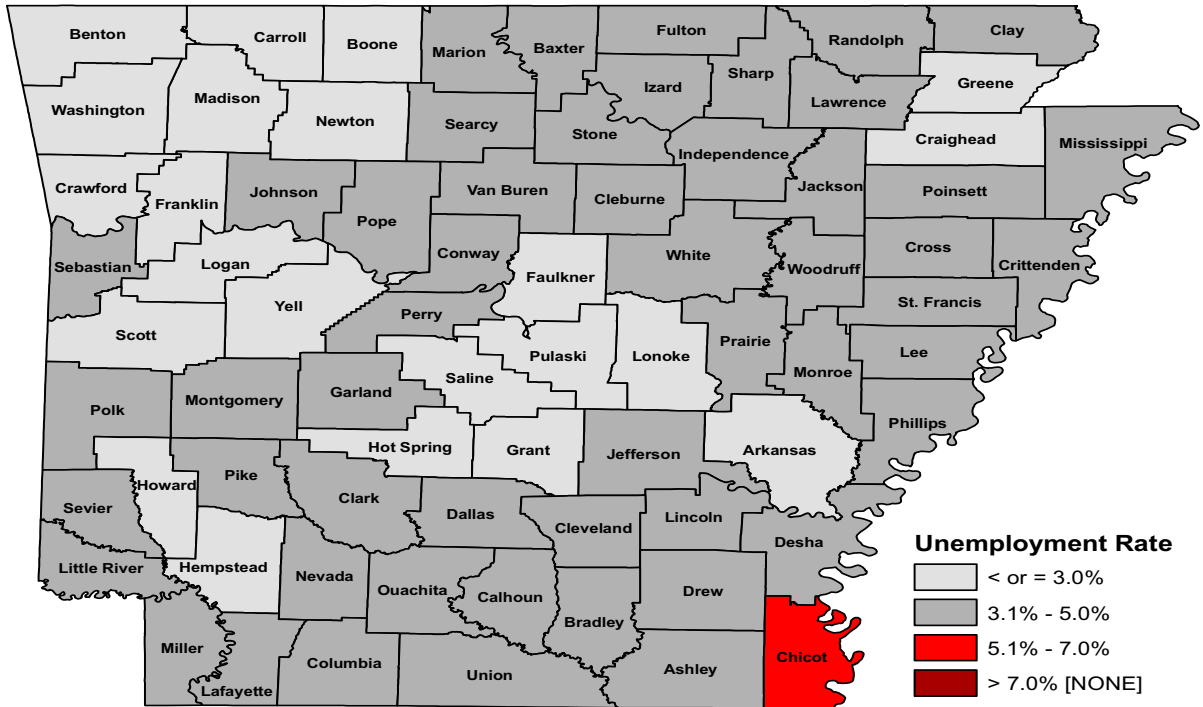
Between March and April, unemployment rates declined in all 75 Arkansas counties. Jobless rates ranged from a low of 2.0 percent in Washington County to a high of 5.5 percent in Chicot County.

In April, fifty-eight counties posted unemployment rates at or below four percent. That is up from thirty-seven counties at or below four percent last month.

Compared to April 2016, unemployment rates are down in 72 of Arkansas' 75 counties. Two counties-- Bradley and Miller-- rose slightly, while Nevada County was stable from last year.

Labor Market Report

County Labor Force Statistics



Ranked by Unemployment Rates

April 2017- Not Seasonally Adjusted

Rank	County	Rate	Rank	County	Rate	Rank	County	Rate
1	Washington	2.0	25	Cross	3.2	49	Lafayette	3.9
2	Madison	2.2	25	Garland	3.2	49	Lincoln	3.9
3	Benton	2.3	25	Johnson	3.2	49	Little River	3.9
4	Craighead	2.5	25	Marion	3.2	49	Montgomery	3.9
4	Howard	2.5	25	Nevada	3.2	49	St. Francis	3.9
6	Arkansas	2.6	25	Pike	3.2	56	Ouachita	4.0
6	Grant	2.6	25	Pope	3.2	56	Polk	4.0
6	Saline	2.6	33	Calhoun	3.4	56	Stone	4.0
6	Scott	2.6	33	Independence	3.4	59	Bradley	4.1
10	Carroll	2.7	33	Monroe	3.4	59	Columbia	4.1
10	Lonoke	2.7	33	Prairie	3.4	59	White	4.1
12	Boone	2.8	33	Randolph	3.4	62	Cleburne	4.2
12	Faulkner	2.8	33	Searcy	3.4	62	Desha	4.2
12	Newton	2.8	39	Baxter	3.5	64	Jefferson	4.3
15	Crawford	2.9	39	Poinsett	3.5	64	Sharp	4.3
15	Franklin	2.9	41	Clay	3.6	66	Drew	4.4
15	Greene	2.9	41	Dallas	3.6	66	Izard	4.4
15	Hempstead	2.9	41	Fulton	3.6	66	Woodruff	4.4
15	Hot Spring	2.9	41	Miller	3.6	69	Phillips	4.7
15	Pulaski	2.9	41	Sevier	3.6	69	Union	4.7
21	Logan	3.0	46	Crittenden	3.7	71	Jackson	4.8
21	Yell	3.0	46	Lee	3.7	72	Mississippi	4.9
23	Lawrence	3.1	46	Perry	3.7	73	Ashley	5.0
23	Sebastian	3.1	49	Cleveland	3.9	73	Van Buren	5.0
25	Clark	3.2	49	Conway	3.9	75	Chicot	5.5

Labor Market Report

Local Workforce Development Areas Civilian Labor Force Estimates

LWDA Labor Force Estimates (Not Seasonally Adjusted)

LWDA	April 2017				March 2017				April 2016			
	CLF	Emp	Unemp	Rate	CLF	Emp	Unemp	Rate	CLF	Emp	Unemp	Rate
Central (minus LR)	247,618	240,686	6,932	2.8	247,023	239,069	7,954	3.2	247,879	239,932	7,947	3.2
City of Little Rock	96,535	93,793	2,742	2.8	96,389	93,228	3,161	3.3	96,545	93,486	3,059	3.2
Eastern	48,453	46,615	1,838	3.8	47,998	45,816	2,182	4.5	48,245	46,119	2,126	4.4
North Central	94,674	90,791	3,883	4.1	93,927	89,401	4,526	4.8	95,948	91,025	4,923	5.1
Northeast	121,156	117,368	3,788	3.1	119,722	115,253	4,469	3.7	119,619	115,059	4,560	3.8
Northwest	320,542	313,053	7,489	2.3	316,676	308,149	8,527	2.7	310,468	302,035	8,433	2.7
Southeast	82,710	79,389	3,321	4.0	82,229	78,326	3,903	4.7	82,626	78,778	3,848	4.7
Southwest	94,545	91,006	3,539	3.7	94,049	90,018	4,031	4.3	94,605	90,684	3,921	4.1
West Central	134,055	129,695	4,360	3.3	132,683	127,540	5,143	3.9	133,771	128,336	5,435	4.1
Western	112,982	109,522	3,460	3.1	112,303	108,369	3,934	3.5	114,258	110,039	4,219	3.7

