

Arkansas

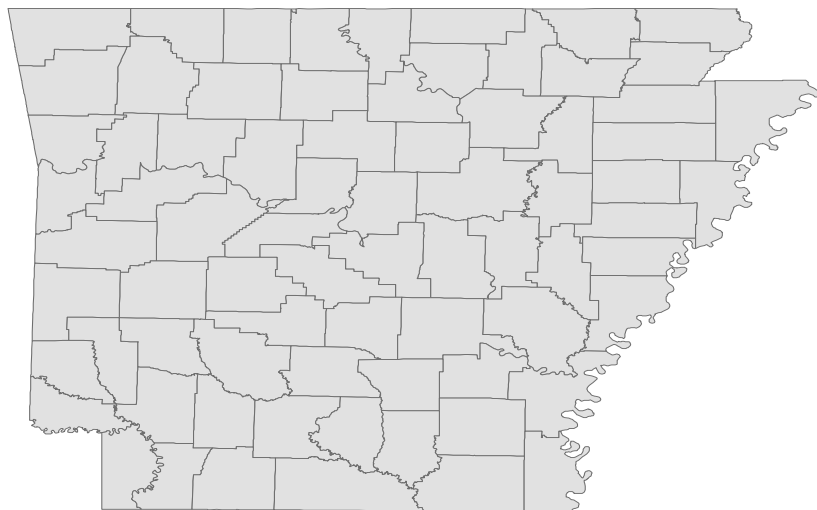
Labor Market Report

October 2016



www.discover.arkansas.gov

Table of Contents



Monthly Spotlight.....	2
Arkansas Labor Force Summary.....	3
Arkansas Nonfarm Payroll Jobs.....	4
Arkansas Production Workers.....	6
Metropolitan Statistical Areas.....	7
Micropolitan Statistical Areas/Cities.....	14
County Labor Force Statistics.....	15
Local Workforce Development Areas.....	18

Technical Notes

The *Arkansas Labor Market* is prepared monthly in conjunction with the U.S. Department of Labor, Bureau of Labor Statistics (BLS). The current month's estimates are preliminary, while previous data are subject to revision.

Estimates of nonfarm payroll jobs show the number of jobs by industry and reflect employment by place of work. Hours and earnings estimates are based on payroll and worker-hour data collected for production workers in manufacturing industries.

Industries are classified according to the North American Industry Classification System (NAICS). All estimates are based on a first quarter 2015 benchmark.

Explanation of Terms and Concepts

Monthly Business Survey of Employers

A monthly sample survey designed to provide industry information on nonfarm payroll jobs. Data are compiled each month from mail surveys and telephone interviews conducted by the Bureau of Labor Statistics in cooperation with Department of Workforce Services. The data are based on establishment records and include all workers, full-or part-time, who received pay during the payroll period which includes the 12th of the

month. Approximately 5,000 Arkansas business establishments are surveyed.

Metropolitan Statistical Area (MSA)

A term applied by the U.S. Office of Management and Budget to counties that have one or more central cities and that meet specified criteria of population density, commuting patterns and social and economic integration.

Current Population Survey (CPS)

A monthly sample survey of the population 16 years of age and over, designed to provide data on the labor force, the employed and the unemployed. The survey is conducted each month by the Bureau of the Census for BLS. The information is collected by trained interviewers from a sample of about 60,000 households. The data collected are based on the activity reported for the calendar week including the 12th of the month. Approximately 800 Arkansas households are represented in the sample survey.

Civilian Labor Force

The sum of all employed and unemployed persons 16 years of age or older. Members of the Armed Forces are excluded.

Employment

An estimate of the number of persons who worked any time for pay or profit or worked 15 hours or more as unpaid workers in a family business during the calendar week which includes the 12th of the month. Also included are those who, although not working, had some job attachment and were not looking for work, and persons involved in labor management disputes.

Unemployment

An estimate of the number of persons who did not have a job, but were available for work and actively seeking work during the calendar week which includes the 12th of the month.

Unemployment Rate

The number of unemployed as a percentage of the civilian labor force. Unemployment rates are calculated from unrounded data.

Seasonal Adjustment

A statistical technique applied to monthly data to eliminate changes that normally occur during the year due to seasonal events such as weather, major holidays, schedule shifts, harvest times, and the opening/closing of schools.

October Spotlight

Business Employment Dynamics (BED)

Business Employment Dynamics, also known as BED, tracks employment gains and losses at individual business locations. BED statistics are calculated from quarterly reports provided by employers to the Quarterly Census of Employment and Wages (QCEW) Program. Like QCEW data, BED statistics are produced and published on a quarterly basis. BED data is produced at both the national and statewide levels.

Gross Job Gains and Losses by Quarter (Private Sector)

State of Arkansas
(Seasonally Adjusted)

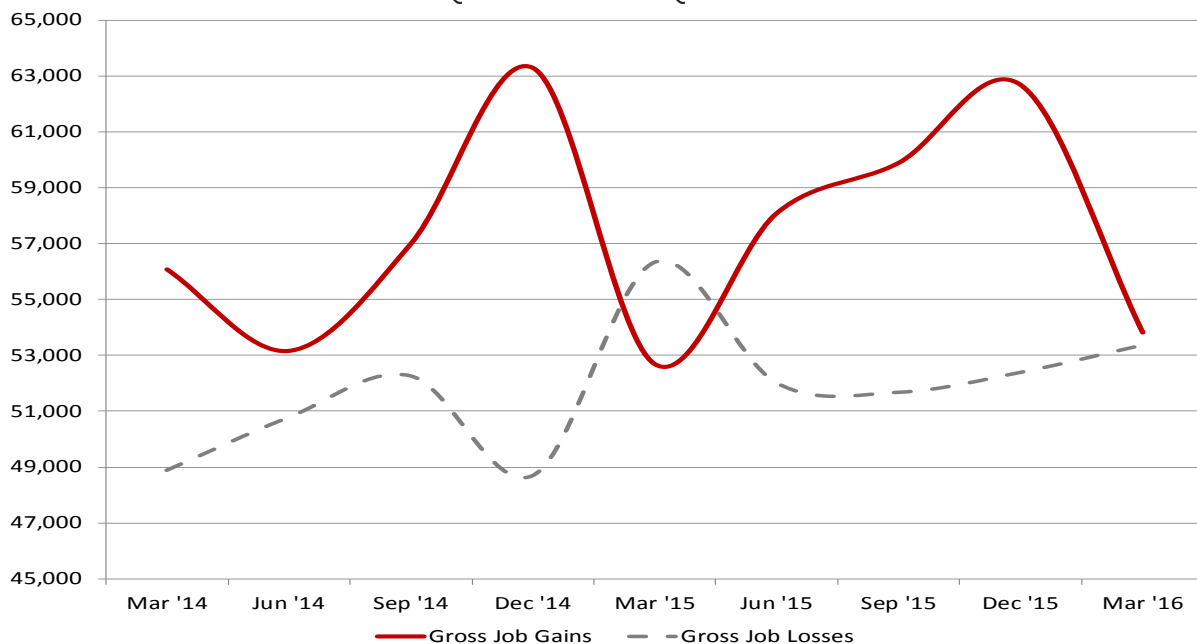
3 months ended

Category	Mar 15	Jun 15	Sep 15	Dec 15	Mar 16*
Employment Levels					
Gross job gains.....	52,685	58,092	59,893	62,679	53,819
Gross job losses....	56,348	52,024	51,688	52,402	53,379
Net Change.....	-3,663	6,068	8,205	10,277	440

*Most recent BED data available is for 1st Quarter 2016

The information produced from BED statistics includes gross job gains and losses at establishments with changes in employment. These employment changes occur when establishments open/expand or close/contract. Gross job gains are a combination of jobs created from both openings of new businesses and expansions at existing businesses. Gross job losses are a combination of jobs lost from both existing businesses that close and those that reduce their number of employees. The net change is the difference between gross job gains and gross job losses.

Arkansas' Gross Job Gains vs. Gross Job Losses (Private Sector/Seasonally Adjusted)
1st Quarter 2014 - 1st Quarter 2016



State of Arkansas Civilian Labor Force Summary

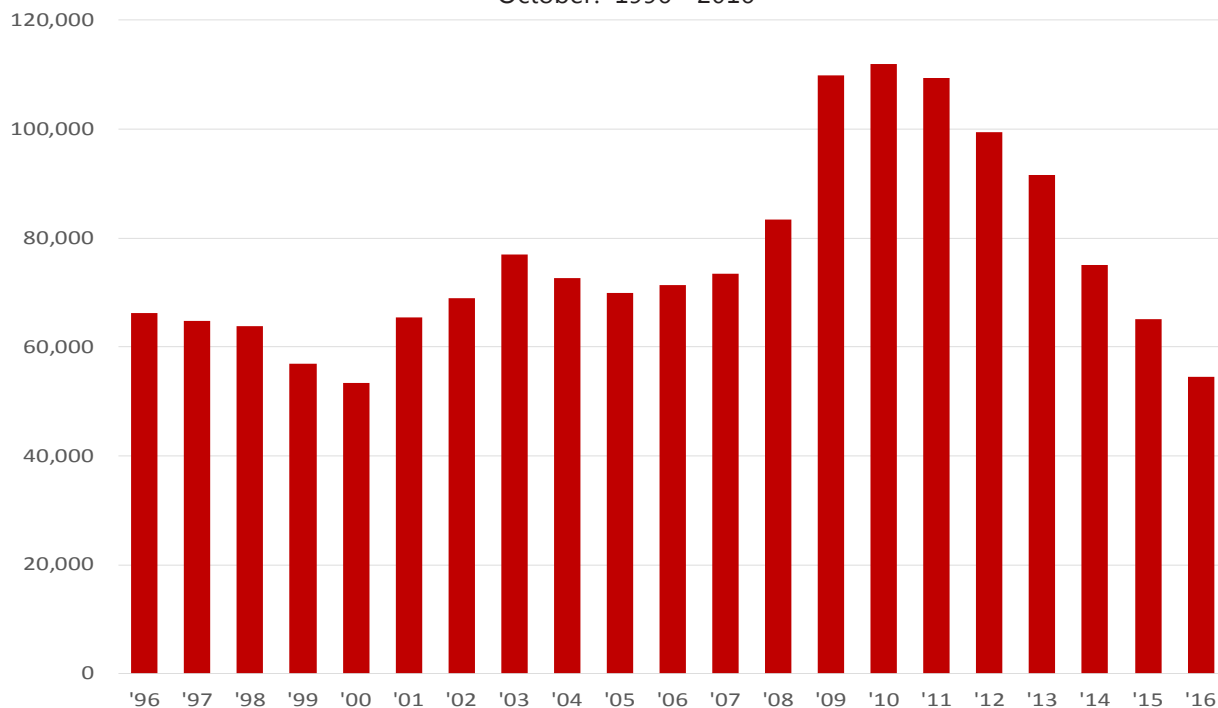
Labor force data, produced by the U.S. Department of Labor, Bureau of Labor Statistics and released by the Arkansas Department of Workforce Services, show Arkansas' seasonally adjusted unemployment rate remained stable at 4.0 percent between September and October. Arkansas' civilian labor force declined 2,173, a result of 1,805 fewer employed and 368 less unemployed Arkansans. The United States' jobless rate decreased one-tenth of a percentage point, from 5.0 percent in September to 4.9 percent in October.

BLS Program Operations Manager Susan Price said, "Arkansas' unemployment rate remained unchanged at four percent in October, as the fluctuations in employment and unemployment were not significant enough to impact the rate. Arkansas' jobless rate is down nine-tenths of a percentage point over the year."

Civilian Labor Force Estimates

	Seasonally Adjusted				Not Seasonally Adjusted		
	Oct 16	Sep 16	Oct 15		Oct 16	Sep 16	Oct 15
Civilian Labor Force	1,354,538	1,356,711	1,334,668	Civilian Labor Force	1,348,580	1,355,110	1,335,461
Employment	1,299,979	1,301,784	1,269,557	Employment	1,302,347	1,301,625	1,277,477
Unemployment	54,559	54,927	65,111	Unemployment	46,233	53,485	57,984
Unemployment Rate	4.0	4.0	4.9	Unemployment Rate	3.4	3.9	4.3
U.S. Unemployment	4.9	5.0	5.0	U.S. Unemployment	4.8	4.8	4.7

Number of Unemployed (Seasonally Adjusted)
October: 1996 - 2016



State of Arkansas

Nonfarm Payroll Jobs

Not Seasonally Adjusted

(In Thousands)

(NAICS)	<u>Oct 16</u>	<u>Sep 16</u>	<u>Oct 15</u>	<u>OTM</u>	<u>OTY</u>
Total Nonfarm	1237.8	1233.5	1226.1	4.3	11.7
Goods Producing	211.1	210.5	214.3	0.6	-3.2
Mining, Logging, and Construction	57.4	56.6	59.1	0.8	-1.7
Mining & Logging	6.4	6.5	7.7	-0.1	-1.3
Construction	51.0	50.1	51.4	0.9	-0.4
Specialty Trade Contractors	32.7	32.9	32.5	-0.2	0.2
Manufacturing	153.7	153.9	155.2	-0.2	-1.5
Durable Goods	72.4	73.6	75.7	-1.2	-3.3
Nondurable Goods	81.3	80.3	79.5	1.0	1.8
Service Providing	1026.7	1023.0	1011.8	3.7	14.9
Trade, Transportation & Utilities	254.2	254.9	254.3	-0.7	-0.1
Wholesale Trade	47.0	47.6	47.0	-0.6	0.0
Retail Trade	143.0	143.3	142.7	-0.3	0.3
Transport, Warehousing & Utilities	64.2	64.0	64.6	0.2	-0.4
Information	13.6	13.5	13.5	0.1	0.1
Financial Activities	50.6	50.0	49.5	0.6	1.1
Finance & Insurance	37.4	36.8	36.3	0.6	1.1
Real Estate & Rental & Leasing	13.2	13.2	13.2	0.0	0.0
Professional & Business Services	145.9	144.4	141.3	1.5	4.6
Professional, Scientific & Technical	43.1	42.8	41.4	0.3	1.7
Management of Companies	34.9	35.0	34.4	-0.1	0.5
Administrative & Support Services	67.9	66.6	65.5	1.3	2.4
Educational & Health Services	186.0	184.3	178.5	1.7	7.5
Educational Services	15.8	15.4	15.5	0.4	0.3
Health Care & Social Assistance	170.2	168.9	163.0	1.3	7.2
Ambulatory Health Care	53.5	53.0	51.6	0.5	1.9
Social Assistance	41.2	40.3	39.7	0.9	1.5
Leisure & Hospitality	114.5	116.0	112.9	-1.5	1.6
Arts, Entertainment & Recreation	10.2	11.2	10.0	-1.0	0.2
Accommodation & Food Services	104.3	104.8	102.9	-0.5	1.4
Accommodation Services	11.5	11.7	11.4	-0.2	0.1
Food Services	92.8	93.1	91.5	-0.3	1.3
Other Services	44.8	44.7	44.7	0.1	0.1
Government	217.1	215.2	217.1	1.9	0.0
Federal Government	20.5	20.5	20.2	0.0	0.3
State Government	81.0	80.2	80.4	0.8	0.6
Local Government	115.6	114.5	116.5	1.1	-0.9

State of Arkansas Nonfarm Payroll Job Summary

September 2016 - October 2016

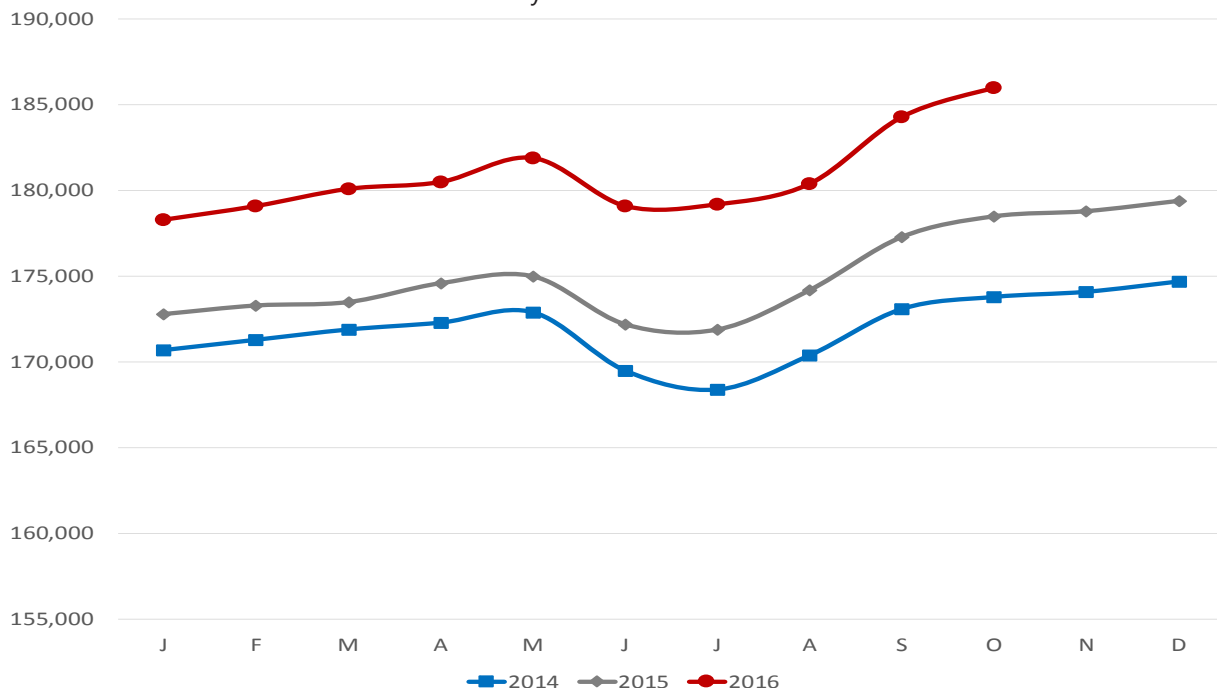
Arkansas' nonfarm payroll jobs increased 4,300 in October to total 1,237,800. Seven major industry sectors posted gains, while four sectors declined. **Government** added 1,900 jobs. Expansions occurred in both local (+1,100) and state (+800) government, as public school employment reaches full capacity. Jobs in **educational and health services** rose 1,700, mostly in health care and social assistance (+1,300). **Professional and business services** increased 1,500. Most of the gains were posted in administrative and support services (+1,300), a subsector which includes employment agencies. **Leisure and hospitality** declined 1,500. A majority of the loss occurred in arts, entertainment, and recreation (-1,000), a typical seasonal decrease.

October 2015 - October 2016

Compared to October 2015, nonfarm payroll employment in Arkansas is up 11,700. Growth was posted in six major industry sectors, while employment in four sectors decreased. **Educational and health services** rose 7,500. A majority of the increase occurred in health care and social assistance (+7,200). **Professional and business services** added 4,600 jobs, spread throughout all three subsectors. Jobs in **leisure and hospitality** rose 1,600, mostly in food services (+1,300). Employment in **financial activities** is up 1,100. All additions were posted in finance and insurance. **Manufacturing** declined 1,500. Losses in durable goods (-3,300) more than offset gains in nondurable goods (+1,800). Jobs in **mining and logging** decreased 1,300.

Jobs in Educational and Health Services (Not Seasonally Adjusted)

January 2014 - October 2016



Labor Market Report

State of Arkansas

Production Workers- Hours and Earnings

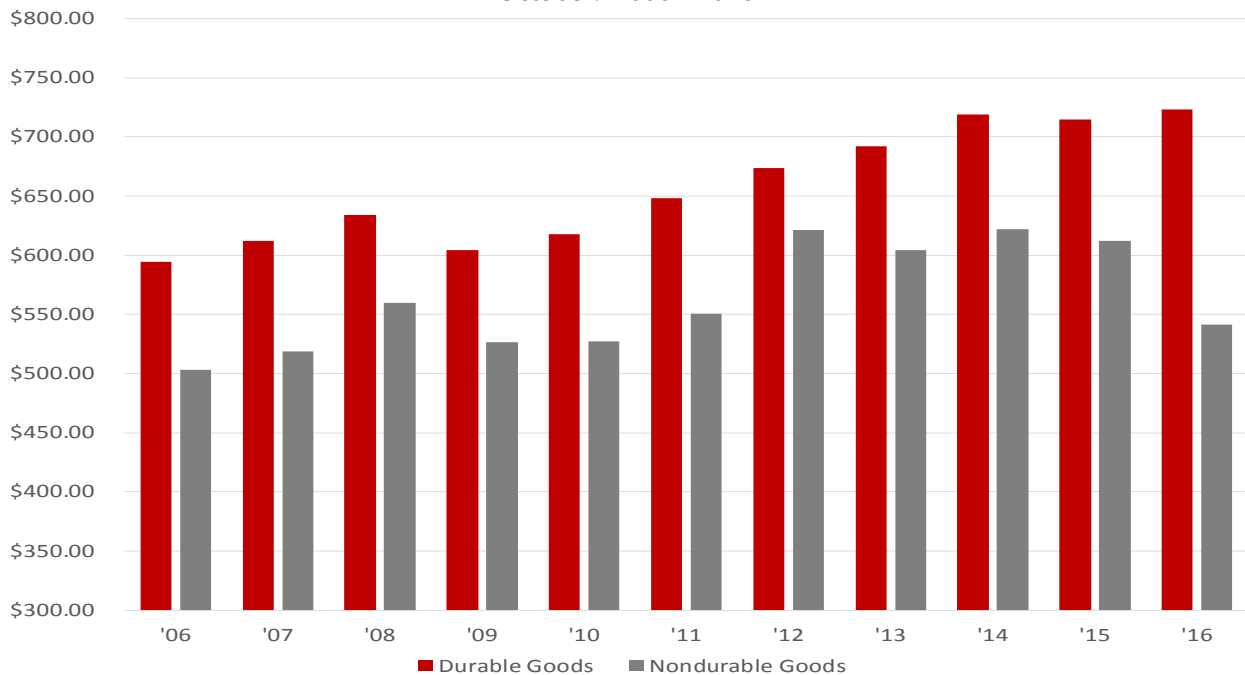
Manufacturing

	Oct 16	Sep 16	Oct 15
Average Weekly Hours	40.1	39.7	41.2
Average Hourly Earnings	15.62	15.58	16.08
Average Weekly Earnings	626.36	618.53	662.50

Durable Goods and Nondurable Goods Manufacturing

Durable Goods Manufacturing				Nondurable Goods Manufacturing			
	Oct 16	Sep 16	Oct 15		Oct 16	Sep 16	Oct 15
Average Weekly Hours	41.2	41.4	40.7	Average Weekly Hours	39.1	38.2	41.7
Average Hourly Earnings	17.56	17.57	17.57	Average Hourly Earnings	13.84	13.62	14.69
Average Weekly Earnings	723.47	727.40	715.10	Average Weekly Earnings	541.14	520.28	612.57

Average Weekly Earnings: Durable Goods vs. Nondurable Goods
October: 2006 - 2016



Labor Market Report

Metropolitan Statistical Areas

Little Rock-North Little Rock-Conway MSA

The Little Rock-North Little Rock-Conway MSA= Faulkner, Grant, Lonoke, Perry, Pulaski, & Saline counties.

Civilian Labor Force Estimates (Not Seasonally Adjusted)

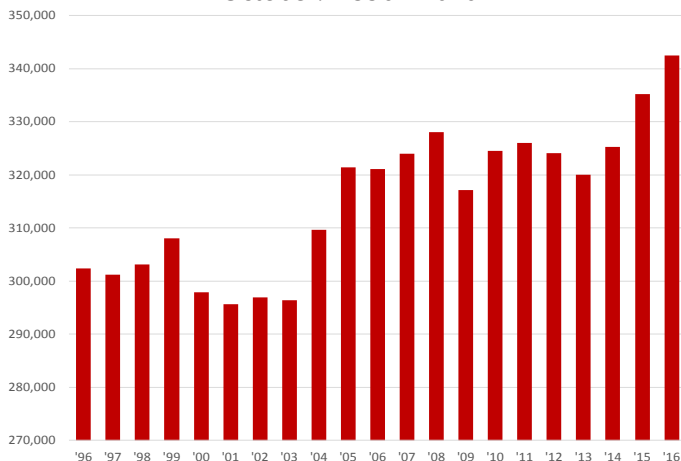
	Oct 16	Sep 16	Oct 15	OTM	QTY
Civilian Labor Force	353,399	354,086	348,912	-687	4,487
Employment	342,420	341,349	335,160	1,071	7,260
Unemployment	10,979	12,737	13,752	-1,758	-2,773
Unemployment Rate	3.1	3.6	3.9	-0.5	-0.8

Nonfarm Payroll Jobs (Not Seasonally Adjusted)

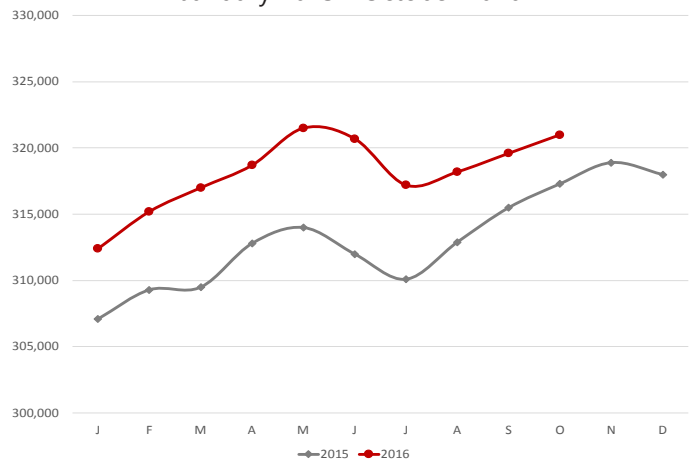
(In Thousands)

NAICS	Oct 16	Sep 16	Oct 15	OTM	QTY
Total Nonfarm	357.1	355.8	355.2	1.3	1.9
Goods Producing	36.1	36.2	37.9	-0.1	-1.8
Mining, Logging & Construction	15.8	15.8	17.6	0.0	-1.8
Manufacturing	20.3	20.4	20.3	-0.1	0.0
Service Providing	321.0	319.6	317.3	1.4	3.7
Trade, Transportation & Utilities	70.1	69.8	70.3	0.3	-0.2
Wholesale Trade	15.2	15.2	15.3	0.0	-0.1
Retail Trade	39.9	39.7	40.4	0.2	-0.5
Trans., Warehousing & Utilities	15.0	14.9	14.6	0.1	0.4
Information	6.1	6.0	6.4	0.1	-0.3
Financial Activities	20.7	20.6	20.6	0.1	0.1
Professional & Business Services	49.5	48.4	47.6	1.1	1.9
Educational & Health Services	53.6	53.7	52.9	-0.1	0.7
Leisure & Hospitality	34.2	34.6	33.1	-0.4	1.1
Other Services	15.2	15.3	15.1	-0.1	0.1
Government	71.6	71.2	71.3	0.4	0.3
Federal Government	9.9	9.8	9.6	0.1	0.3
State Government	35.3	35.1	34.9	0.2	0.4
Local Government	26.4	26.3	26.8	0.1	-0.4

Number of Employed
October: 1996 - 2016



Jobs in Service Providing Industries
January 2015 - October 2016



Labor Market Report

Metropolitan Statistical Areas Fayetteville-Springdale-Rogers MSA

The Fayetteville-Springdale-Rogers MSA= Benton, Madison, & Washington counties in Arkansas & McDonald county in Missouri.

Civilian Labor Force Estimates (Not Seasonally Adjusted)

	Oct 16	Sep 16	Oct 15	OTM	QTY
Civilian Labor Force	263,046	263,762	257,197	-716	5,849
Employment	256,377	256,048	249,162	329	7,215
Unemployment	6,669	7,714	8,035	-1,045	-1,366
Unemployment Rate	2.5	2.9	3.1	-0.4	-0.6

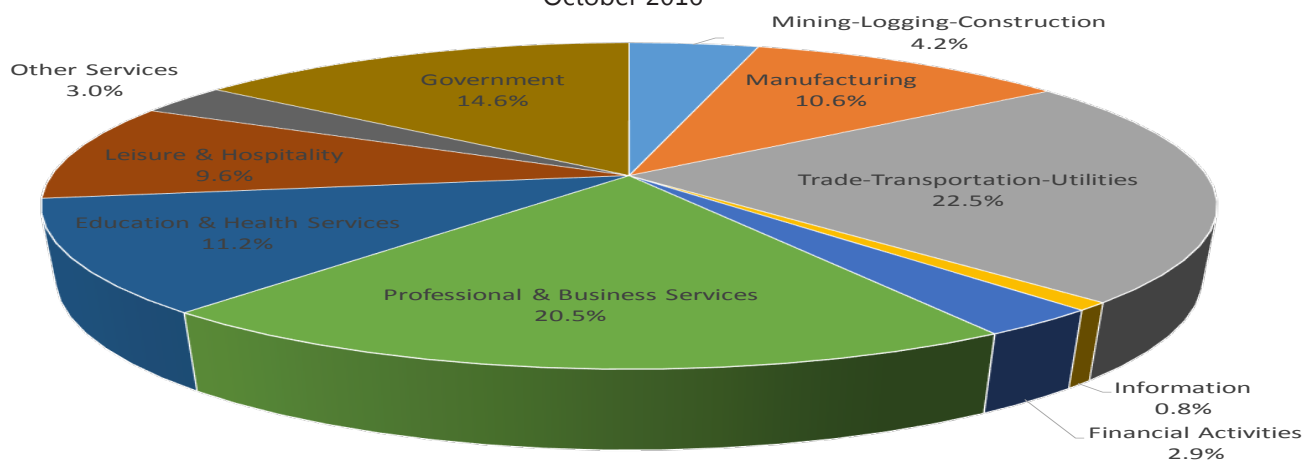
Nonfarm Payroll Jobs (Not Seasonally Adjusted)

(In Thousands)

NAICS	Oct 16	Sep 16	Oct 15	OTM	QTY
Total Nonfarm	244.8	244.3	241.0	0.5	3.8
Goods Producing	36.4	36.6	36.7	-0.2	-0.3
Mining, Logging & Construction	10.4	10.5	10.0	-0.1	0.4
Manufacturing	26.0	26.1	26.7	-0.1	-0.7
Service Providing	208.4	207.7	204.3	0.7	4.1
Trade, Transportation & Utilities	55.1	55.4	54.5	-0.3	0.6
Wholesale Trade	12.2	12.2	11.9	0.0	0.3
Retail Trade	26.4	26.7	26.1	-0.3	0.3
Trans., Warehousing & Utilities	16.5	16.5	16.5	0.0	0.0
Information	2.0	2.0	2.0	0.0	0.0
Financial Activities	7.0	7.0	6.9	0.0	0.1
Professional & Business Services	50.1	49.7	48.3	0.4	1.8
Educational & Health Services	27.5	27.2	26.3	0.3	1.2
Leisure & Hospitality	23.5	24.2	24.5	-0.7	-1.0
Other Services	7.4	7.4	7.2	0.0	0.2
Government	35.8	34.8	34.6	1.0	1.2
Federal Government	2.6	2.6	2.5	0.0	0.1
State Government	14.4	14.1	13.6	0.3	0.8
Local Government	18.8	18.1	18.5	0.7	0.3

Nonfarm Payroll Jobs by Industry (Percent of Total)

October 2016



Labor Market Report

Metropolitan Statistical Areas Fort Smith MSA

The Fort Smith MSA= Crawford & Sebastian counties in Arkansas & LeFlore & Sequoyah counties in Oklahoma.

Civilian Labor Force Estimates (Not Seasonally Adjusted)

	Oct 16	Sep 16	Oct 15	OTM	QTY
Civilian Labor Force	121,873	122,043	121,602	-170	271
Employment	116,704	116,152	115,652	552	1,052
Unemployment	5,169	5,891	5,950	-722	-781
Unemployment Rate	4.2	4.8	4.9	-0.6	-0.7

Nonfarm Payroll Jobs (Not Seasonally Adjusted)

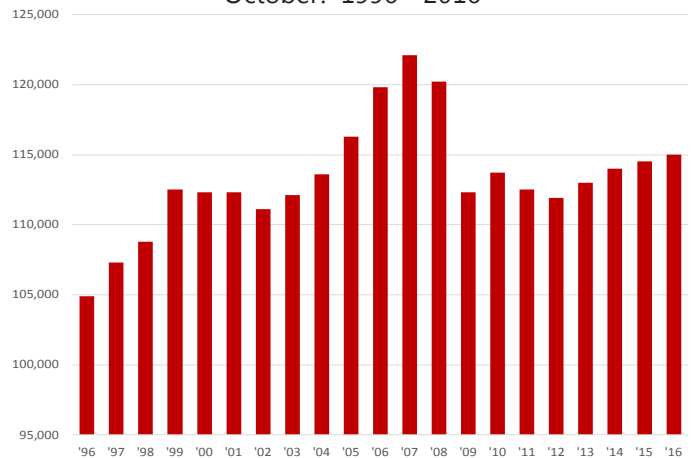
(In Thousands)

NAICS	Oct 16	Sep 16	Oct 15	OTM	QTY
Total Nonfarm	115.0	114.4	114.5	0.6	0.5
Goods Producing	23.7	23.7	23.7	0.0	0.0
Mining, Logging & Construction	5.7	5.7	6.0	0.0	-0.3
Manufacturing	18.0	18.0	17.7	0.0	0.3
Service Providing	91.3	90.7	90.8	0.6	0.5
Trade, Transportation & Utilities	24.2	23.9	24.0	0.3	0.2
Wholesale Trade	4.2	4.2	4.1	0.0	0.1
Retail Trade	13.5	13.2	13.0	0.3	0.5
Trans., Warehousing & Utilities	6.5	6.5	6.9	0.0	-0.4
Information	1.2	1.2	1.2	0.0	0.0
Financial Activities	3.7	3.7	3.7	0.0	0.0
Professional & Business Services	12.3	12.3	12.5	0.0	-0.2
Educational & Health Services	16.7	16.7	16.8	0.0	-0.1
Leisure & Hospitality	9.6	9.7	9.4	-0.1	0.2
Other Services	4.3	4.3	4.3	0.0	0.0
Government	19.3	18.9	18.9	0.4	0.4
Federal Government	1.4	1.4	1.3	0.0	0.1
State Government	3.2	3.1	3.2	0.1	0.0
Local Government	14.7	14.4	14.4	0.3	0.3

Number of Employed
October 2013 - October 2016



Nonfarm Payroll Jobs
October: 1996 - 2016



Labor Market Report

Metropolitan Statistical Areas

Hot Springs MSA

The Hot Springs MSA= Garland County.

Civilian Labor Force Estimates (Not Seasonally Adjusted)

	Oct 16	Sep 16	Oct 15	OTM	QTY
Civilian Labor Force	40,275	40,796	39,705	-521	570
Employment	38,688	39,047	37,728	-359	960
Unemployment	1,587	1,749	1,977	-162	-390
Unemployment Rate	3.9	4.3	5.0	-0.4	-1.1

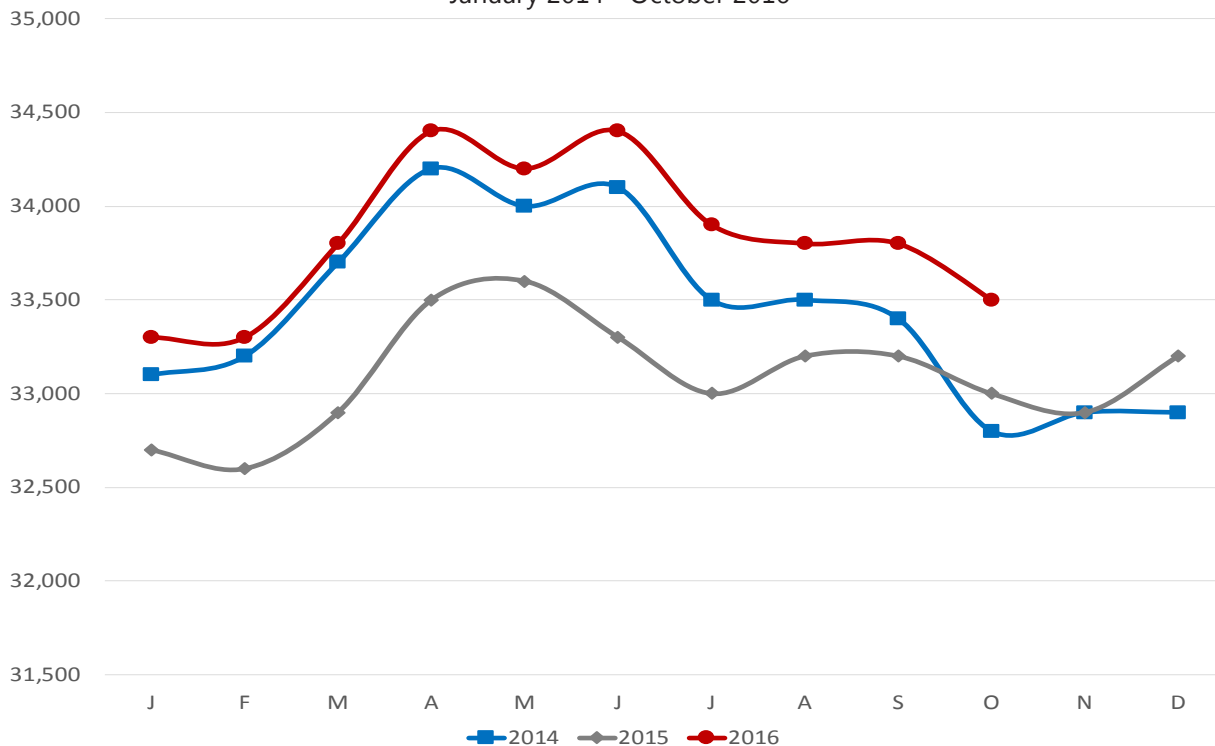
Nonfarm Payroll Jobs (Not Seasonally Adjusted)

(In Thousands)

NAICS	Oct 16	Sep 16	Oct 15	OTM	QTY
Total Nonfarm	38.0	38.3	37.5	-0.3	0.5
Goods Producing	4.5	4.5	4.5	0.0	0.0
Service Providing	33.5	33.8	33.0	-0.3	0.5
Government	4.7	4.8	4.8	-0.1	-0.1

Jobs in Service Providing Industries

January 2014 - October 2016



Labor Market Report

Metropolitan Statistical Areas Jonesboro MSA

The Jonesboro MSA= Craighead & Poinsett counties.

Civilian Labor Force Estimates (Not Seasonally Adjusted)

	Oct 16	Sep 16	Oct 15	OTM	QTY
Civilian Labor Force	63,218	63,360	61,354	-142	1,864
Employment	61,391	61,271	58,969	120	2,422
Unemployment	1,827	2,089	2,385	-262	-558
Unemployment Rate	2.9	3.3	3.9	-0.4	-1.0

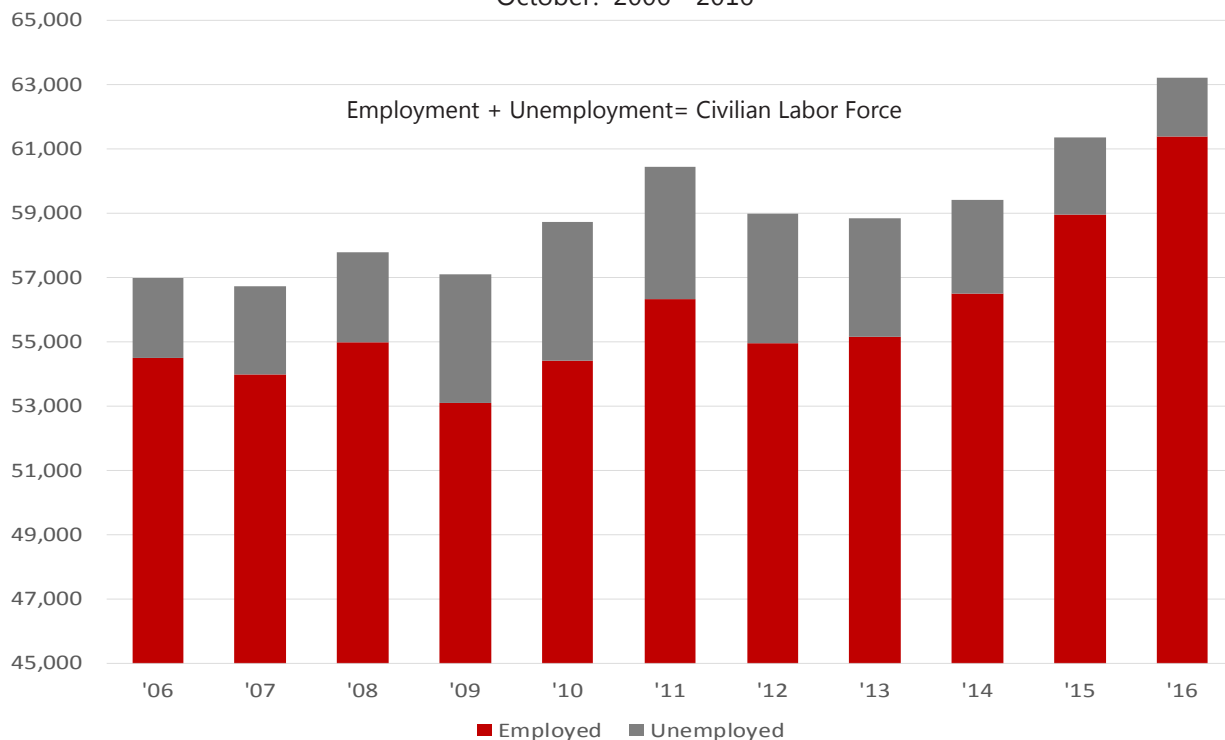
Nonfarm Payroll Jobs (Not Seasonally Adjusted)

(In Thousands)

NAICS	Oct 16	Sep 16	Oct 15	OTM	QTY
Total Nonfarm	56.9	56.8	55.3	0.1	1.6
Goods Producing	9.2	9.2	9.0	0.0	0.2
Service Providing	47.7	47.6	46.3	0.1	1.4
Government	9.1	9.0	9.0	0.1	0.1

Number of Employed and Unemployed

October: 2006 - 2016



Labor Market Report

Metropolitan Statistical Areas

Pine Bluff MSA

The Pine Bluff MSA= Cleveland, Jefferson, & Lincoln counties.

Civilian Labor Force Estimates (Not Seasonally Adjusted)

	Oct 16	Sep 16	Oct 15	OTM	QTY
Civilian Labor Force	36,054	36,106	36,564	-52	-510
Employment	34,358	34,140	34,441	218	-83
Unemployment	1,696	1,966	2,123	-270	-427
Unemployment Rate	4.7	5.4	5.8	-0.7	-1.1

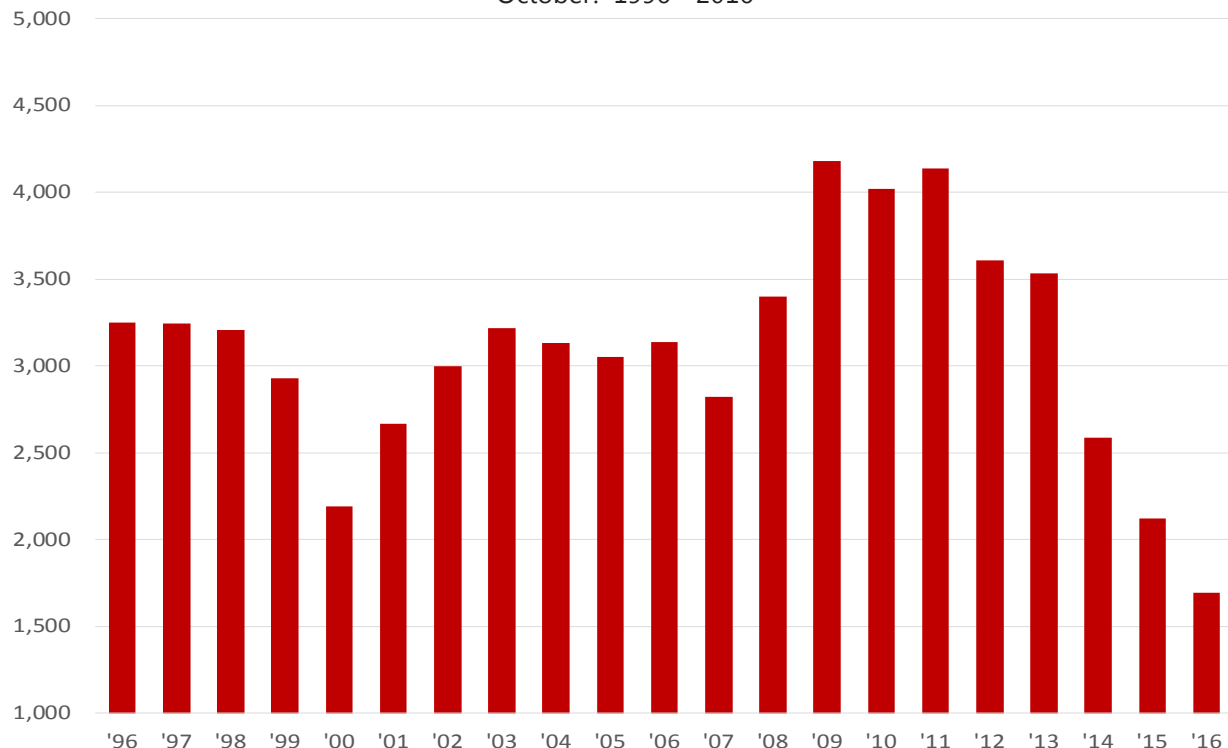
Nonfarm Payroll Jobs (Not Seasonally Adjusted)

(In Thousands)

NAICS	Oct 16	Sep 16	Oct 15	OTM	QTY
Total Nonfarm	33.5	33.2	34.1	0.3	-0.6
Goods Producing	6.0	5.9	6.3	0.1	-0.3
Service Providing	27.5	27.3	27.8	0.2	-0.3
Government	9.5	9.3	9.7	0.2	-0.2

Number of Unemployed

October: 1996 - 2016



Labor Market Report

Metropolitan Statistical Areas Out-of-State MSA

Civilian Labor Force Estimates (Not Seasonally Adjusted)

Memphis, TN-MS-AR MSA

The Memphis, TN-MS-AR MSA= Fayette, Shelby, & Tipton counties in Tennessee; Benton, Desoto, Marshall, Tate, & Tunica counties in Mississippi; & Crittenden County in Arkansas.

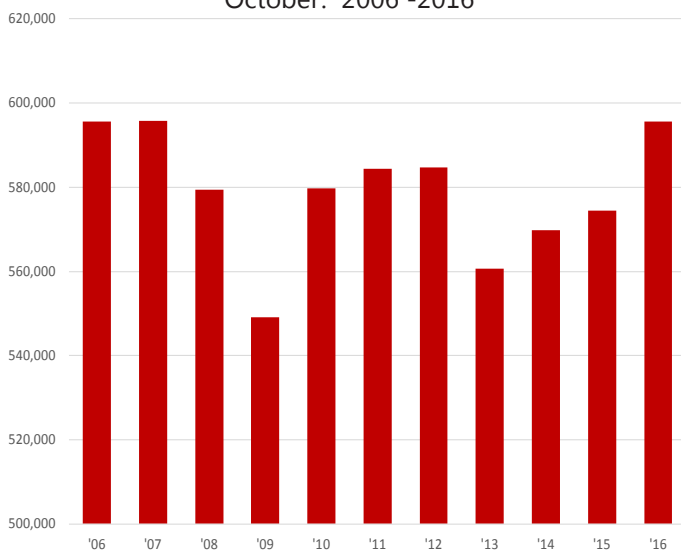
	Oct 16	Sep 16	Oct 15	OTM	QTY
Civilian Labor Force	629,705	625,143	611,841	4,562	17,864
Employment	595,601	590,454	574,438	5,147	21,163
Unemployment	34,104	34,689	37,403	-585	-3,299
Unemployment Rate	5.4	5.5	6.1	-0.1	-0.7

Texarkana MSA

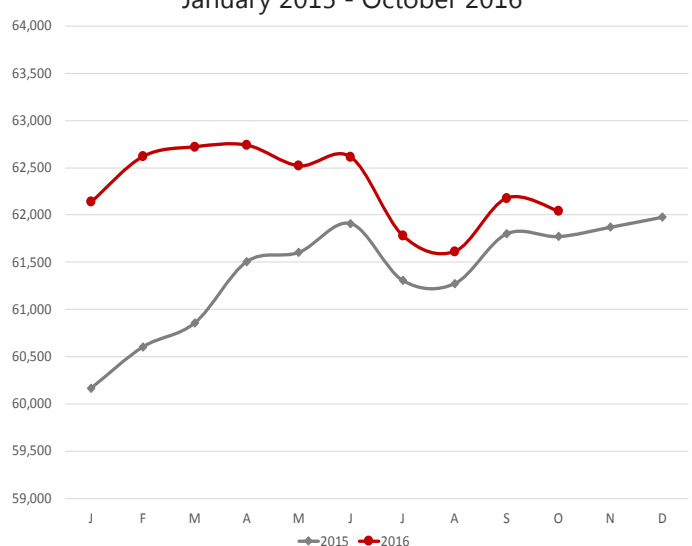
The Texarkana MSA= Bowie County in Texas & Little River & Miller counties in Arkansas.

	Oct 16	Sep 16	Oct 15	OTM	QTY
Civilian Labor Force	64,884	65,447	64,787	-563	97
Employment	62,041	62,179	61,771	-138	270
Unemployment	2,843	3,268	3,016	-425	-173
Unemployment Rate	4.4	5.0	4.7	-0.6	-0.3

Number of Employed- Memphis MSA
October: 2006 -2016



Number of Employed- Texarkana MSA
January 2015 - October 2016



Labor Market Report

Micropolitan Statistical Areas and Cities

Civilian Labor Force Estimates

Micropolitan Labor Force Estimates (Not Seasonally Adjusted)

Micro Area	October 2016				September 2016				October 2015			
	CLF	Emp	Unemp	Rate	CLF	Emp	Unemp	Rate	CLF	Emp	Unemp	Rate
Arkadelphia Micro	9,732	9,365	367	3.8	9,842	9,417	425	4.3	9,662	9,181	481	5.0
Batesville Micro	15,982	15,321	661	4.1	16,206	15,440	766	4.7	15,595	14,649	946	6.1
Blytheville Micro	17,907	16,915	992	5.5	18,114	16,903	1,211	6.7	18,075	16,720	1,355	7.5
Camden Micro	12,269	11,731	538	4.4	12,381	11,752	629	5.1	12,124	11,475	649	5.4
El Dorado Micro	16,903	16,115	788	4.7	17,014	16,092	922	5.4	16,619	15,725	894	5.4
Forrest City Micro	8,882	8,494	388	4.4	8,946	8,512	434	4.9	8,867	8,319	548	6.2
Harrison Micro	19,392	18,787	605	3.1	19,501	18,793	708	3.6	19,015	18,238	777	4.1
Helena-West Helena Micro	6,692	6,356	336	5.0	6,790	6,405	385	5.7	6,785	6,346	439	6.5
Magnolia Micro	9,508	9,046	462	4.9	9,587	9,067	520	5.4	9,530	8,983	547	5.7
Malvern Micro	14,401	13,916	485	3.4	14,502	13,942	560	3.9	14,286	13,636	650	4.5
Mountain Home Micro	16,175	15,543	632	3.9	16,381	15,669	712	4.3	16,285	15,517	768	4.7
Paragould Micro	19,938	19,145	793	4.0	20,054	19,186	868	4.3	20,034	19,141	893	4.5
Russellville Micro	38,647	37,191	1,456	3.8	38,556	36,874	1,682	4.4	38,746	37,044	1,702	4.4
Searcy Micro	34,463	33,032	1,431	4.2	34,750	33,067	1,683	4.8	34,450	32,627	1,823	5.3

Arkadelphia Micro= Clark County

Batesville Micro= Independence County

Blytheville Micro= Mississippi County

Camden Micro= Calhoun & Ouachita counties

El Dorado Micro= Union County

Forrest City Micro= St. Francis County

Harrison Micro= Boone & Newton counties

Helena-West Helena Micro= Phillips County

Magnolia Micro= Columbia County

Malvern Micro= Hot Spring County

Mountain Home Micro= Baxter County

Paragould Micro= Greene County

Russellville Micro= Pope & Yell counties

Searcy Micro= White County

City Labor Force Statistics (Not Seasonally Adjusted)

City	October 2016				September 2016				October 2015			
	CLF	Emp	Unemp	Rate	CLF	Emp	Unemp	Rate	CLF	Emp	Unemp	Rate
Bella Vista	12,085	11,723	362	3.0	12,131	11,707	424	3.5	11,811	11,376	435	3.7
Benton	16,273	15,807	466	2.9	16,322	15,758	564	3.5	16,069	15,466	603	3.8
Bentonville	22,546	22,034	512	2.3	22,621	22,003	618	2.7	22,040	21,381	659	3.0
Blytheville	6,159	5,775	384	6.2	6,268	5,771	497	7.9	6,271	5,709	562	9.0
Cabot	11,806	11,494	312	2.6	11,831	11,460	371	3.1	11,671	11,276	395	3.4
Conway	33,226	32,177	1,049	3.2	33,257	32,081	1,176	3.5	32,800	31,514	1,286	3.9
El Dorado	7,330	6,949	381	5.2	7,387	6,939	448	6.1	7,245	6,781	464	6.4
Fayetteville	45,814	44,698	1,116	2.4	45,940	44,644	1,296	2.8	44,781	43,396	1,385	3.1
Fort Smith	40,331	39,066	1,265	3.1	40,437	38,924	1,513	3.7	40,038	38,331	1,707	4.3
Hot Springs	14,070	13,448	622	4.4	14,261	13,573	688	4.8	13,901	13,114	787	5.7
Jacksonville	11,953	11,465	488	4.1	11,986	11,428	558	4.7	11,797	11,215	582	4.9
Jonesboro	36,874	35,830	1,044	2.8	36,939	35,757	1,182	3.2	35,731	34,378	1,353	3.8
Little Rock	97,672	94,654	3,018	3.1	97,797	94,350	3,447	3.5	96,432	92,588	3,844	4.0
North Little Rock	30,394	29,365	1,029	3.4	30,487	29,270	1,217	4.0	30,064	28,724	1,340	4.5
Paragould	12,444	11,920	524	4.2	12,528	11,946	582	4.6	12,512	11,918	594	4.7
Pine Bluff	17,204	16,259	945	5.5	17,261	16,149	1,112	6.4	17,480	16,274	1,206	6.9
Rogers	33,401	32,574	827	2.5	33,420	32,528	892	2.7	32,624	31,609	1,015	3.1
Russellville	13,787	13,281	506	3.7	13,749	13,165	584	4.2	13,840	13,214	626	4.5
Searcy	10,558	10,180	378	3.6	10,639	10,190	449	4.2	10,557	10,055	502	4.8
Sherwood	15,688	15,272	416	2.7	15,706	15,223	483	3.1	15,423	14,939	484	3.1
Springdale	38,344	37,440	904	2.4	38,465	37,393	1,072	2.8	37,460	36,348	1,112	3.0
Texarkana, AR	13,724	13,180	544	4.0	13,840	13,175	665	4.8	13,697	13,044	653	4.8
Van Buren	10,502	10,187	315	3.0	10,528	10,151	377	3.6	10,483	10,005	478	4.6
West Memphis	10,869	10,334	535	4.9	10,824	10,244	580	5.4	10,613	10,046	567	5.3

Labor Market Report

County Labor Force Statistics

Civilian Labor Force Estimates

Not Seasonally Adjusted

County	October 2016				September 2016				October 2015			
	CLF	Emp	Unemp	Rate	CLF	Emp	Unemp	Rate	CLF	Emp	Unemp	Rate
Arkansas	9,374	9,093	281	3.0	9,370	9,056	314	3.4	9,398	9,047	351	3.7
Ashley	8,001	7,554	447	5.6	8,150	7,643	507	6.2	8,288	7,751	537	6.5
Baxter	16,175	15,543	632	3.9	16,381	15,669	712	4.3	16,285	15,517	768	4.7
Benton	125,193	121,964	3,229	2.6	125,498	121,794	3,704	3.0	122,283	118,353	3,930	3.2
Boone	15,987	15,495	492	3.1	16,075	15,496	579	3.6	15,667	15,022	645	4.1
Bradley	4,529	4,316	213	4.7	4,614	4,361	253	5.5	4,551	4,329	222	4.9
Calhoun	2,356	2,257	99	4.2	2,381	2,262	119	5.0	2,328	2,219	109	4.7
Carroll	13,221	12,867	354	2.7	13,259	12,835	424	3.2	12,695	12,248	447	3.5
Chicot	3,549	3,346	203	5.7	3,607	3,385	222	6.2	3,651	3,382	269	7.4
Clark	9,732	9,365	367	3.8	9,842	9,417	425	4.3	9,662	9,181	481	5.0
Clay	6,034	5,756	278	4.6	6,130	5,814	316	5.2	6,225	5,882	343	5.5
Cleburne	9,440	8,989	451	4.8	9,625	9,097	528	5.5	9,600	9,015	585	6.1
Cleveland	3,343	3,219	124	3.7	3,349	3,202	147	4.4	3,396	3,241	155	4.6
Columbia	9,508	9,046	462	4.9	9,587	9,067	520	5.4	9,530	8,983	547	5.7
Conway	8,641	8,223	418	4.8	8,700	8,230	470	5.4	8,637	8,147	490	5.7
Craighead	52,700	51,247	1,453	2.8	52,797	51,143	1,654	3.1	51,078	49,170	1,908	3.7
Crawford	27,077	26,182	895	3.3	27,128	26,089	1,039	3.8	26,936	25,715	1,221	4.5
Crittenden	21,836	20,939	897	4.1	21,747	20,758	989	4.5	21,405	20,355	1,050	4.9
Cross	7,918	7,616	302	3.8	8,004	7,669	335	4.2	7,971	7,593	378	4.7
Dallas	3,024	2,905	119	3.9	3,025	2,886	139	4.6	2,899	2,730	169	5.8
Desha	5,613	5,374	239	4.3	5,588	5,315	273	4.9	5,614	5,278	336	6.0
Drew	8,049	7,676	373	4.6	8,160	7,739	421	5.2	8,017	7,565	452	5.6
Faulkner	60,672	58,725	1,947	3.2	60,806	58,551	2,255	3.7	59,976	57,516	2,460	4.1
Franklin	7,372	7,121	251	3.4	7,426	7,132	294	4.0	7,430	7,097	333	4.5
Fulton	4,672	4,508	164	3.5	4,754	4,562	192	4.0	4,830	4,619	211	4.4
Garland	40,275	38,688	1,587	3.9	40,796	39,047	1,749	4.3	39,705	37,728	1,977	5.0
Grant	8,419	8,161	258	3.1	8,431	8,132	299	3.5	8,322	7,994	328	3.9
Greene	19,938	19,145	793	4.0	20,054	19,186	868	4.3	20,034	19,141	893	4.5
Hempstead	9,982	9,643	339	3.4	10,114	9,718	396	3.9	9,819	9,412	407	4.1
Hot Spring	14,401	13,916	485	3.4	14,502	13,942	560	3.9	14,286	13,636	650	4.5
Howard	5,801	5,629	172	3.0	5,855	5,660	195	3.3	5,934	5,714	220	3.7
Independence	15,982	15,321	661	4.1	16,206	15,440	766	4.7	15,595	14,649	946	6.1
Izard	4,992	4,786	206	4.1	5,098	4,835	263	5.2	5,003	4,732	271	5.4
Jackson	6,127	5,802	325	5.3	6,156	5,791	365	5.9	6,117	5,757	360	5.9
Jefferson	28,630	27,237	1,393	4.9	28,667	27,053	1,614	5.6	29,022	27,263	1,759	6.1
Johnson	10,457	10,053	404	3.9	10,529	10,042	487	4.6	10,447	9,948	499	4.8
Lafayette	2,569	2,435	134	5.2	2,597	2,440	157	6.0	2,617	2,447	170	6.5
Lawrence	7,128	6,883	245	3.4	7,167	6,868	299	4.2	7,050	6,713	337	4.8
Lee	3,077	2,952	125	4.1	3,077	2,927	150	4.9	3,192	3,015	177	5.5
Lincoln	4,081	3,902	179	4.4	4,090	3,885	205	5.0	4,146	3,937	209	5.0
Little River	5,679	5,431	248	4.4	5,703	5,425	278	4.9	5,650	5,364	286	5.1
Logan	9,164	8,804	360	3.9	9,220	8,795	425	4.6	9,228	8,751	477	5.2
Lonoke	33,576	32,575	1,001	3.0	33,643	32,478	1,165	3.5	33,183	31,957	1,226	3.7
Madison	7,346	7,151	195	2.7	7,378	7,150	228	3.1	7,250	7,015	235	3.2
Marion	6,604	6,369	235	3.6	6,696	6,425	271	4.0	6,534	6,233	301	4.6
Miller	19,810	19,083	727	3.7	19,951	19,075	876	4.4	19,778	18,886	892	4.5

(continued on Page 16)

County Labor Force Statistics

Civilian Labor Force Estimates

Not Seasonally Adjusted

(continued from Page 15)

County	October 2016				September 2016				October 2015			
	CLF	Emp	Unemp	Rate	CLF	Emp	Unemp	Rate	CLF	Emp	Unemp	Rate
Mississippi	17,907	16,915	992	5.5	18,114	16,903	1,211	6.7	18,075	16,720	1,355	7.5
Monroe	2,890	2,767	123	4.3	2,948	2,812	136	4.6	2,925	2,754	171	5.8
Montgomery	3,075	2,943	132	4.3	3,154	2,996	158	5.0	3,213	3,023	190	5.9
Nevada	3,710	3,597	113	3.0	3,769	3,626	143	3.8	3,659	3,501	158	4.3
Newton	3,405	3,292	113	3.3	3,426	3,297	129	3.8	3,348	3,216	132	3.9
Ouachita	9,913	9,474	439	4.4	10,000	9,490	510	5.1	9,796	9,256	540	5.5
Perry	4,250	4,078	172	4.0	4,265	4,071	194	4.5	4,238	4,013	225	5.3
Phillips	6,692	6,356	336	5.0	6,790	6,405	385	5.7	6,785	6,346	439	6.5
Pike	4,214	4,053	161	3.8	4,269	4,085	184	4.3	4,151	3,936	215	5.2
Poinsett	10,518	10,144	374	3.6	10,563	10,128	435	4.1	10,276	9,799	477	4.6
Polk	8,055	7,711	344	4.3	8,176	7,772	404	4.9	8,277	7,862	415	5.0
Pope	29,659	28,533	1,126	3.8	29,589	28,284	1,305	4.4	29,712	28,388	1,324	4.5
Prairie	3,653	3,531	122	3.3	3,690	3,555	135	3.7	3,777	3,621	156	4.1
Pulaski	190,078	184,050	6,028	3.2	190,427	183,458	6,969	3.7	187,571	180,032	7,539	4.0
Randolph	6,227	5,986	241	3.9	6,276	5,986	290	4.6	6,106	5,763	343	5.6
St. Francis	8,882	8,494	388	4.4	8,946	8,512	434	4.9	8,867	8,319	548	6.2
Saline	56,404	54,831	1,573	2.8	56,514	54,659	1,855	3.3	55,622	53,648	1,974	3.5
Scott	4,470	4,326	144	3.2	4,496	4,330	166	3.7	4,525	4,337	188	4.2
Searcy	2,933	2,816	117	4.0	3,040	2,895	145	4.8	3,104	2,969	135	4.3
Sebastian	58,041	56,183	1,858	3.2	58,177	55,978	2,199	3.8	57,571	55,125	2,446	4.2
Sevier	5,662	5,413	249	4.4	5,697	5,416	281	4.9	5,602	5,315	287	5.1
Sharp	6,057	5,780	277	4.6	6,125	5,810	315	5.1	6,003	5,649	354	5.9
Stone	4,702	4,496	206	4.4	4,763	4,530	233	4.9	4,634	4,399	235	5.1
Union	16,903	16,115	788	4.7	17,014	16,092	922	5.4	16,619	15,725	894	5.4
Van Buren	6,395	6,048	347	5.4	6,499	6,099	400	6.2	6,540	6,159	381	5.8
Washington	119,434	116,625	2,809	2.4	119,771	116,483	3,288	2.7	116,706	113,228	3,478	3.0
White	34,463	33,032	1,431	4.2	34,750	33,067	1,683	4.8	34,450	32,627	1,823	5.3
Woodruff	2,946	2,808	138	4.7	2,961	2,810	151	5.1	3,011	2,842	169	5.6
Yell	8,988	8,658	330	3.7	8,967	8,590	377	4.2	9,034	8,656	378	4.2

County Labor Force Summary

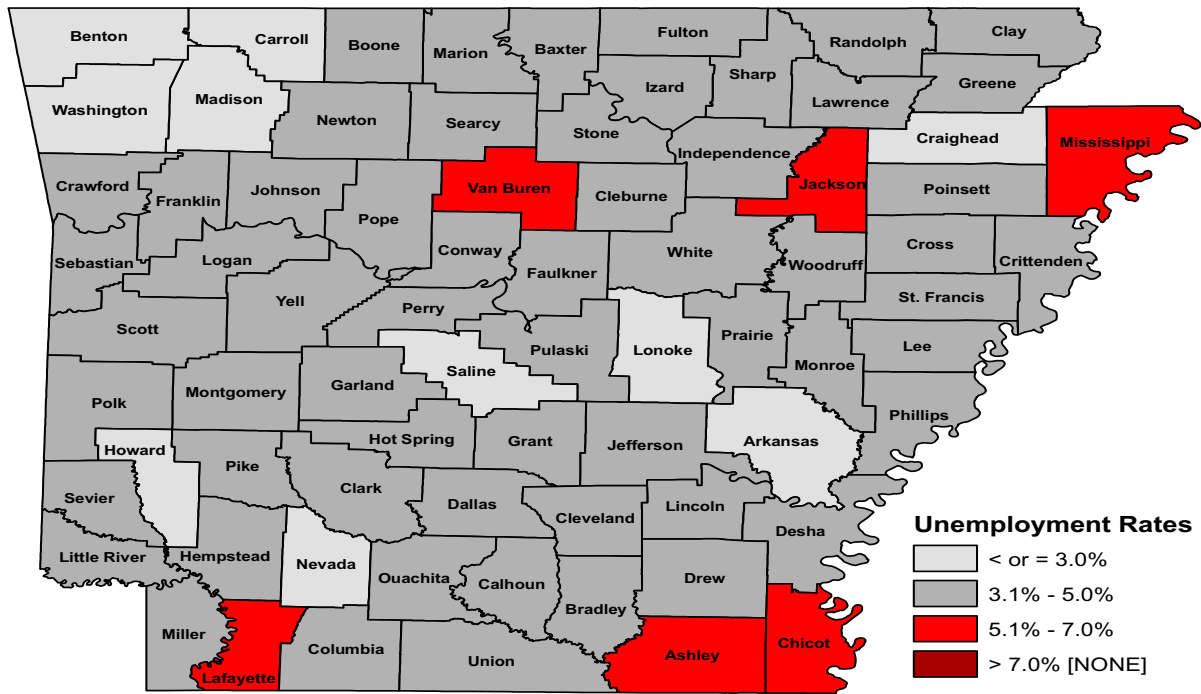
Between September and October, unemployment rates declined in all 75 Arkansas counties. Rates ranged from a low of 2.4 percent in Washington County to a high of 5.7 percent in Chicot County.

Forty-two counties posted unemployment rates at or below four percent in October, compared to twenty-four counties at or below four percent last month. For the fourth month in a row, no county reported a jobless rate above eight percent.

Compared to October 2015, jobless rates are down in every Arkansas county.

Labor Market Report

County Labor Force Statistics



Ranked by Unemployment Rates

October 2016- Not Seasonally Adjusted

Rank	County	Rate	Rank	County	Rate	Rank	County	Rate
1	Washington	2.4	25	Poinsett	3.6	49	Montgomery	4.3
2	Benton	2.6	27	Cleveland	3.7	49	Polk	4.3
3	Carroll	2.7	27	Miller	3.7	53	Lincoln	4.4
3	Madison	2.7	27	Yell	3.7	53	Little River	4.4
5	Craighead	2.8	30	Clark	3.8	53	Ouachita	4.4
5	Saline	2.8	30	Cross	3.8	53	St. Francis	4.4
7	Arkansas	3.0	30	Pike	3.8	53	Sevier	4.4
7	Howard	3.0	30	Pope	3.8	53	Stone	4.4
7	Lonoke	3.0	34	Baxter	3.9	59	Clay	4.6
7	Nevada	3.0	34	Dallas	3.9	59	Drew	4.6
11	Boone	3.1	34	Garland	3.9	59	Sharp	4.6
11	Grant	3.1	34	Johnson	3.9	62	Bradley	4.7
13	Faulkner	3.2	34	Logan	3.9	62	Union	4.7
13	Pulaski	3.2	34	Randolph	3.9	62	Woodruff	4.7
13	Scott	3.2	40	Greene	4.0	65	Cleburne	4.8
13	Sebastian	3.2	40	Perry	4.0	65	Conway	4.8
17	Crawford	3.3	40	Searcy	4.0	67	Columbia	4.9
17	Newton	3.3	43	Crittenden	4.1	67	Jefferson	4.9
17	Prairie	3.3	43	Independence	4.1	69	Phillips	5.0
20	Franklin	3.4	43	Izard	4.1	70	Lafayette	5.2
20	Hempstead	3.4	43	Lee	4.1	71	Jackson	5.3
20	Hot Spring	3.4	47	Calhoun	4.2	72	Van Buren	5.4
20	Lawrence	3.4	47	White	4.2	73	Mississippi	5.5
24	Fulton	3.5	49	Desha	4.3	74	Ashley	5.6
25	Marion	3.6	49	Monroe	4.3	75	Chicot	5.7

Labor Market Report

Local Workforce Development Areas Civilian Labor Force Estimates

LWDA Labor Force Estimates (Not Seasonally Adjusted)

LWDA	October 2016				September 2016				October 2015			
	CLF	Emp	Unemp	Rate	CLF	Emp	Unemp	Rate	CLF	Emp	Unemp	Rate
Central (minus LR)	249,601	241,825	7,776	3.1	250,231	241,163	9,068	3.6	246,622	236,940	9,682	3.9
City of Little Rock	97,672	94,654	3,018	3.1	97,797	94,350	3,447	3.5	96,432	92,588	3,844	4.0
Eastern	48,405	46,357	2,048	4.2	48,564	46,271	2,293	4.7	48,220	45,628	2,592	5.4
North Central	95,776	91,570	4,206	4.4	96,937	92,041	4,896	5.1	95,783	90,448	5,335	5.6
Northeast	120,452	116,076	4,376	3.6	121,101	116,028	5,073	4.2	118,844	113,188	5,656	4.8
Northwest	310,298	302,122	8,176	2.6	311,524	302,044	9,480	3.0	303,872	293,801	10,071	3.3
Southeast	83,588	79,878	3,710	4.4	84,026	79,771	4,255	5.1	84,405	79,787	4,618	5.5
Southwest	94,917	91,028	3,889	4.1	95,693	91,157	4,536	4.7	94,231	89,552	4,679	5.0
West Central	133,692	128,510	5,182	3.9	134,613	128,704	5,909	4.4	133,085	126,656	6,429	4.8
Western	114,179	110,327	3,852	3.4	114,623	110,096	4,527	3.9	113,967	108,887	5,080	4.5

