

Arkansas Labor Market

September 2014

Employment Headlines

Arkansas' Unemployment Rate Declines to 6.2 Percent

Nonfarm Payroll Jobs Increase 15,200 in September

Employment Quick Facts

Unemployment Rates

Seasonally Adjusted

	Sep 14	Aug 14	Sep 13
AR Unemployment Rate	6.2	6.3	7.7
US Unemployment Rate	5.9	6.1	7.2

Nonfarm Payroll Summary

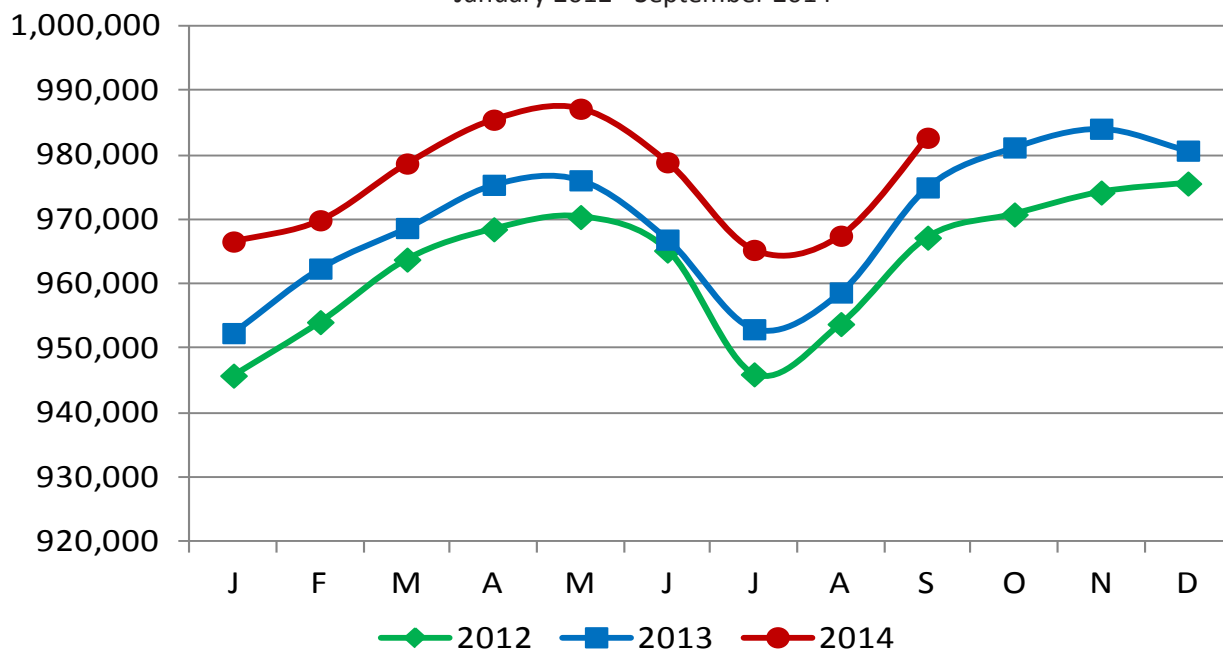
State of Arkansas

	Sep 14	Aug 14	Sep 13
Total Nonfarm	1,198,600	1,183,400	1,183,300
Goods Producing	215,900	215,900	208,300
Service Providing	982,700	967,500	975,000

Jobs in Service Providing Industries

State of Arkansas

January 2012 - September 2014



Nonfarm Payroll Employment

State of Arkansas

August 2014 - September 2014

Arkansas' nonfarm payroll jobs increased 15,200 in September to total 1,198,600. Five major industry sectors added employment, more than offsetting declines in five sectors. Jobs in **government** rose 13,100. Additions in local (+7,900) and state (+5,200) government reflected typical seasonal hiring at public educational facilities. **Educational and health services** increased 2,300. The majority of the gains were in educational services (+2,100), related to seasonal hiring at private schools and colleges. Jobs in **professional and business services** rose 2,000. This subsector includes employment agencies and business support services. **Leisure and hospitality** declined 1,100. Most of the losses were in arts-entertainment-recreation (-1,000), as summer-related businesses closed. Jobs in **other services** decreased 1,000.

September 2013 - September 2014

Since September 2013, nonfarm payroll employment in Arkansas rose 15,300. Eight major industry sectors reported gains, while two sectors declined slightly. **Construction** posted the largest increase (+4,700). A majority of the growth occurred in specialty trade contractors (+2,700). **Leisure and hospitality** added 3,300 jobs. Most of the gains were in food services (+3,100). Jobs in **educational and health services** rose 2,900. Posting most of the growth, social assistance (+2,800) reported hiring. Employment in **manufacturing** is up 2,600. **Professional and business services** increased 1,600.

Nonfarm Payroll Jobs

(NAICS)	Sep 14	Aug 14	Sep 13
Total Nonfarm	1,198,600	1,183,400	1,183,300
Goods Producing	215,900	215,900	208,300
Mining & Logging	10,000	10,000	9,700
Construction	50,700	50,300	46,000
Specialty Trade Contractors	31,700	31,100	29,000
Manufacturing	155,200	155,600	152,600
Durable Goods	78,900	78,700	75,700
Nondurable Goods	76,300	76,900	76,900
Service Providing	982,700	967,500	975,000
Trade, Transportation & Utilities	242,400	242,600	241,600
Wholesale Trade	47,900	48,200	46,900
Retail Trade	132,900	132,900	133,200
Transport, Warehousing & Utilities	61,600	61,500	61,500
Information	13,500	13,600	14,100
Financial Activities	49,500	49,300	49,500
Finance & Insurance	36,300	36,000	36,200
Real Estate & Rental & Leasing	13,200	13,300	13,300
Professional & Business Services	131,700	129,700	130,100
Professional, Scientific & Technical	38,700	38,600	39,400
Management of Companies	31,600	31,800	31,100
Administrative & Support Services	61,400	59,300	59,600
Educational & Health Services	175,900	173,600	173,000
Educational Services	14,700	12,600	14,600
Health Care & Social Assistance	161,200	161,000	158,400
Ambulatory Health Care	49,300	49,000	48,900
Social Assistance	39,200	38,900	36,400
Leisure & Hospitality	110,400	111,500	107,100
Arts, Entertainment & Recreation	10,500	11,500	10,400
Accommodation & Food Services	99,900	100,000	96,700
Accommodation Services	11,400	11,900	11,300
Food Services	88,500	88,100	85,400
Other Services	43,200	44,200	43,100
Government	216,100	203,000	216,500
Federal Government	20,000	20,000	20,300
State Government	79,000	73,800	78,500
Local Government	117,100	109,200	117,700

Hours and Earnings of Arkansas Production Workers

(Manufacturing Industries)

	Average Weekly Earnings			Average Weekly Hours			Average Hourly Earnings		
	Sep 14	Aug 14	Sep 13	Sep 14	Aug 14	Sep 13	Sep 14	Aug 14	Sep 13
Manufacturing	\$682.86	\$670.75	\$642.72	42.1	41.1	41.2	\$16.22	\$16.32	\$15.60
Durable Goods	725.01	713.61	695.54	41.5	40.5	41.9	17.47	17.62	16.60
Nondurable Goods	640.50	626.91	593.73	42.7	41.6	40.5	15.00	15.07	14.66

Spotlight

A Comparative Look at Unemployment Rates

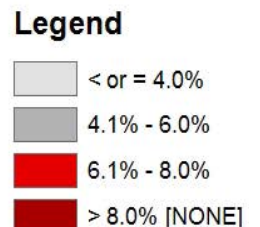
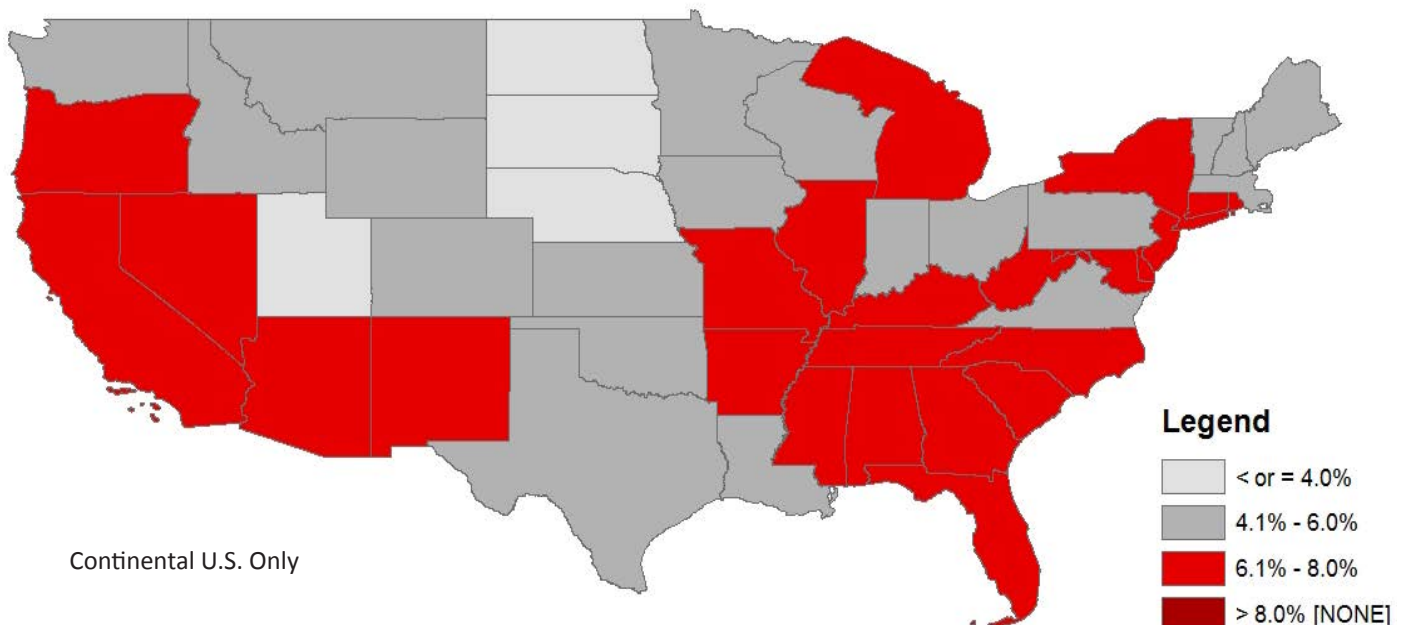
Due to differing economies and labor force conditions in various parts of the country, unemployment rates vary greatly from state to state. In September 2014, state jobless rates ranged from a low of 2.8 percent in North Dakota to a high of 7.9 percent in Georgia. The unemployment rate in Arkansas in September declined to 6.2 percent, a ranking of 27 out of 51 states. By looking at the map below, it becomes apparent that trends exist among states that are located within the same region. While there are some exceptions, western states tend to have higher jobless rates than states located in the midwest. Similarly, states located in the northeast generally experience lower unemployment rates than states located in the southeast. These regional trends occur because states often experience economic similarities based on shared industries, work forces, and climates.

Unemployment Rates, Ranked by State (Seasonally Adjusted) September 2014

<u>Rank</u>	<u>State</u>	<u>Rate</u>	<u>Rank</u>	<u>State</u>	<u>Rate</u>	<u>Rank</u>	<u>State</u>	<u>Rate</u>
1	North Dakota	2.8	20	Pennsylvania	5.7	41	Alaska	6.8
2	South Dakota	3.4	20	Washington	5.7	42	Arizona	6.9
3	Utah	3.5	23	Maine	5.8	43	Oregon	7.1
4	Nebraska	3.6	24	Louisiana	6.0	44	Michigan	7.2
5	Minnesota	4.1	24	Massachusetts	6.0	45	California	7.3
6	Hawaii	4.2	26	Florida	6.1	45	Nevada	7.3
7	New Hampshire	4.3	27	Arkansas	6.2	45	Tennessee	7.3
8	Vermont	4.4	27	New York	6.2	48	Rhode Island	7.6
9	Idaho	4.5	29	Maryland	6.3	49	District of Columbia	7.7
10	Iowa	4.6	29	Missouri	6.3	49	Mississippi	7.7
10	Montana	4.6	31	Connecticut	6.4	51	Georgia	7.9
12	Colorado	4.7	32	Delaware	6.5			
12	Oklahoma	4.7	32	New Jersey	6.5			
12	Wyoming	4.7	34	Alabama	6.6			
15	Kansas	4.8	34	Illinois	6.6			
16	Texas	5.2	34	New Mexico	6.6			
17	Virginia	5.5	34	South Carolina	6.6			
17	Wisconsin	5.5	34	West Virginia	6.6			
19	Ohio	5.6	39	Kentucky	6.7			
20	Indiana	5.7	39	North Carolina	6.7			

U.S. Unemployment Rate = 5.9 Percent

Unemployment Rates by State (Seasonally Adjusted) September 2014



Metropolitan Statistical Areas

Little Rock-North Little Rock-Conway MSA

Nonfarm Payroll Jobs

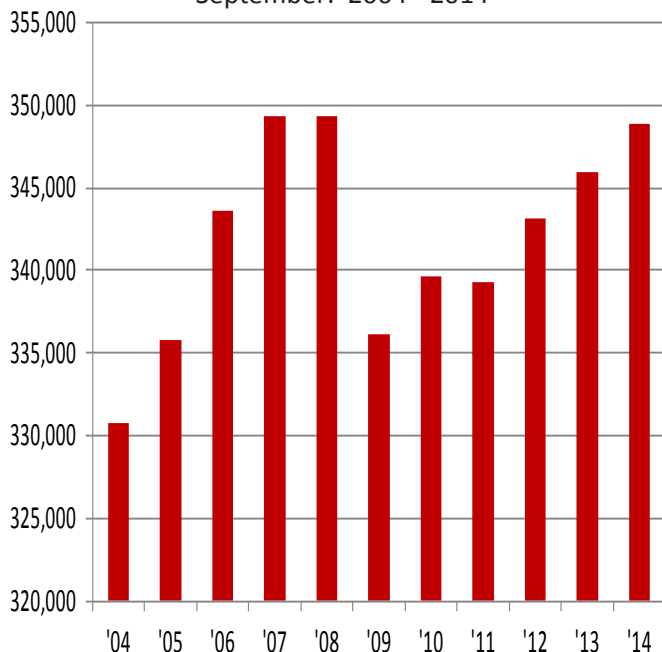
NAICS	Sep 14	Aug 14	Sep 13
Total Nonfarm	348,900	346,900	345,900
Goods Producing	38,400	38,400	36,300
Mining, Logging & Construction	18,500	18,400	16,600
Manufacturing	19,900	20,000	19,700
Service Providing	310,500	308,500	309,600
Trade, Transportation & Utilities	66,200	66,100	66,600
Wholesale Trade	15,500	15,600	15,700
Retail Trade	36,300	36,300	36,600
Trans., Warehousing & Utilities	14,400	14,200	14,300
Information	6,900	6,900	7,200
Financial Activities	20,200	20,200	20,100
Professional & Business Services	45,100	45,100	45,400
Educational & Health Services	51,900	51,600	51,900
Leisure & Hospitality	32,800	33,200	31,600
Other Services	16,000	16,100	15,800
Government	71,400	69,300	71,000
Federal Government	9,500	9,500	9,500
State Government	34,500	33,400	34,200
Local Government	27,400	26,400	27,300

The LR-NLR-Conway MSA consists of the following counties:
Faulkner, Grant, Lonoke, Perry, Pulaski, and Saline

Civilian Labor Force Estimates

	Sep 14	Aug 14	Sep 13
Civilian Labor Force	333,725	335,900	341,250
Employment	315,975	316,625	318,650
Unemployment	17,750	19,275	22,600
Unemployment Rate	5.3	5.7	6.6

Nonfarm Payroll Jobs September: 2004 - 2014



Fayetteville-Springdale-Rogers MSA

Nonfarm Payroll Jobs

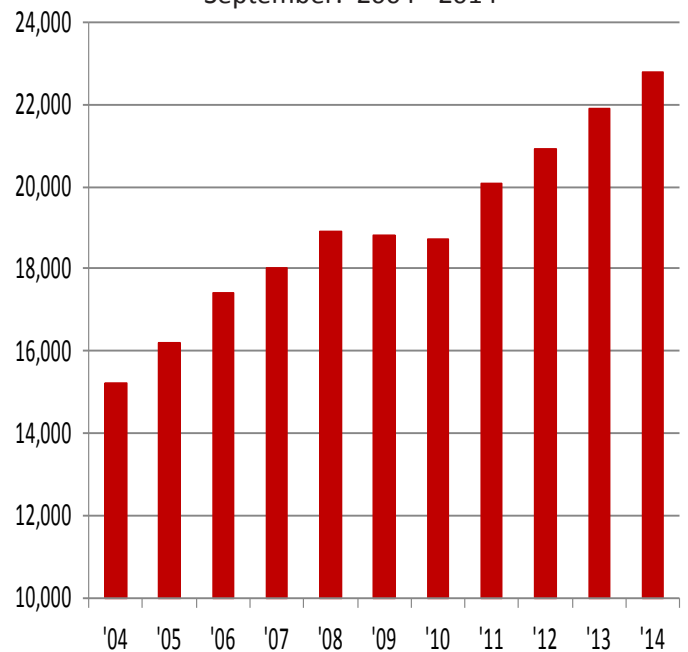
NAICS	Sep 14	Aug 14	Sep 13
Total Nonfarm	219,800	215,500	216,800
Goods Producing	35,200	35,200	34,800
Mining, Logging & Construction	9,100	9,000	8,300
Manufacturing	26,100	26,200	26,500
Service Providing	184,600	180,300	182,000
Trade, Transportation & Utilities	47,100	46,700	47,900
Wholesale Trade	10,300	10,200	10,300
Retail Trade	22,600	22,500	22,900
Trans., Warehousing & Utilities	14,200	14,000	14,700
Information	1,800	1,800	1,800
Financial Activities	6,900	6,900	6,700
Professional & Business Services	41,700	41,600	40,900
Educational & Health Services	25,200	24,700	24,600
Leisure & Hospitality	22,800	22,700	21,900
Other Services	6,400	6,400	6,300
Government	32,700	29,500	31,900
Federal Government	2,500	2,500	2,500
State Government	12,600	10,600	11,900
Local Government	17,600	16,400	17,500

The FSR MSA consists of the following counties:
Benton, Madison, Washington, and McDonald (in Missouri)

Civilian Labor Force Estimates

	Sep 14	Aug 14	Sep 13
Civilian Labor Force	233,950	232,075	236,525
Employment	223,675	220,800	223,625
Unemployment	10,275	11,275	12,900
Unemployment Rate	4.4	4.9	5.5

Jobs in Leisure and Hospitality September: 2004 - 2014



Metropolitan Statistical Areas

Fort Smith MSA

Nonfarm Payroll Jobs

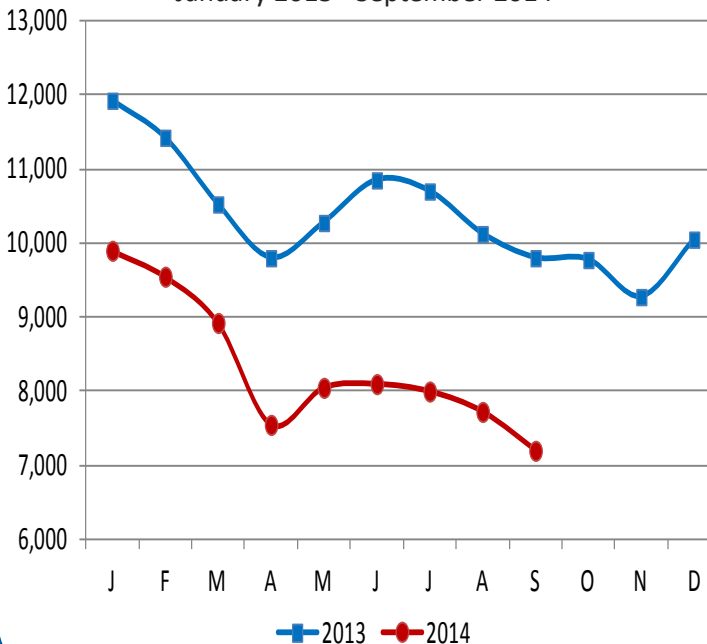
<u>NAICS</u>	<u>Sep 14</u>	<u>Aug 14</u>	<u>Sep 13</u>
Total Nonfarm	116,600	115,400	116,500
Goods Producing	24,400	24,600	25,500
Mining, Logging & Construction	6,500	6,600	7,100
Manufacturing	17,900	18,000	18,400
Service Providing	92,200	90,800	91,000
Trade, Transportation & Utilities	24,400	24,500	23,700
Wholesale Trade	4,100	4,100	4,000
Retail Trade	13,000	13,100	12,900
Trans., Warehousing & Utilities	7,300	7,300	6,800
Information	1,300	1,300	1,300
Financial Activities	4,100	4,200	4,200
Professional & Business Services	12,500	12,700	12,300
Educational & Health Services	16,500	16,300	16,800
Leisure & Hospitality	10,100	9,900	9,400
Other Services	4,100	4,100	4,200
Government	19,200	17,800	19,100
Federal Government	1,400	1,400	1,500
State Government	3,100	2,900	3,100
Local Government	14,700	13,500	14,500

The FS MSA consists of the following counties: Crawford, Franklin, Sebastian, and LeFlore and Sequoyah (in Oklahoma)

Civilian Labor Force Estimates

	<u>Sep 14</u>	<u>Aug 14</u>	<u>Sep 13</u>
Civilian Labor Force	126,100	125,750	130,700
Employment	118,900	118,025	120,900
Unemployment	7,200	7,725	9,800
Unemployment Rate	5.7	6.1	7.5

Number of Unemployed
January 2013 - September 2014



Hot Springs MSA

Nonfarm Payroll Jobs

<u>NAICS</u>	<u>Sep 14</u>	<u>Aug 14</u>	<u>Sep 13</u>
Total Nonfarm	37,600	37,900	37,200
Goods Producing	4,700	4,700	4,500
Service Providing	32,900	33,200	32,700
Government	4,700	4,500	4,800

The HS MSA consists of the following county: Garland

Civilian Labor Force Estimates

	<u>Sep 14</u>	<u>Aug 14</u>	<u>Sep 13</u>
Civilian Labor Force	39,975	40,650	40,850
Employment	37,525	38,025	37,700
Unemployment	2,450	2,625	3,150
Unemployment Rate	6.1	6.4	7.7

Jonesboro MSA

Nonfarm Payroll Jobs

<u>NAICS</u>	<u>Sep 14</u>	<u>Aug 14</u>	<u>Sep 13</u>
Total Nonfarm	53,500	52,800	52,400
Goods Producing	9,000	8,900	8,600
Service Providing	44,500	43,900	43,800
Government	8,900	8,500	8,800

The Jonesboro MSA consists of the following counties:

Craighead and Poinsett

Civilian Labor Force Estimates

	<u>Sep 14</u>	<u>Aug 14</u>	<u>Sep 13</u>
Civilian Labor Force	59,325	59,075	59,775
Employment	56,225	55,700	55,800
Unemployment	3,100	3,375	3,975
Unemployment Rate	5.3	5.7	6.7

Pine Bluff MSA

Nonfarm Payroll Jobs

<u>NAICS</u>	<u>Sep 14</u>	<u>Aug 14</u>	<u>Sep 13</u>
Total Nonfarm	34,500	34,300	35,100
Goods Producing	7,000	6,900	7,100
Service Providing	27,500	27,400	28,000
Government	9,600	9,300	9,800

The PB MSA consists of the following counties: Cleveland, Jefferson, and Lincoln

Civilian Labor Force Estimates

	<u>Sep 14</u>	<u>Aug 14</u>	<u>Sep 13</u>
Civilian Labor Force	39,100	39,325	41,025
Employment	36,175	36,050	37,075
Unemployment	2,925	3,275	3,950
Unemployment Rate	7.6	8.4	9.6

Civilian Labor Force Statistics

State of Arkansas

(Seasonally Adjusted)

(Not Seasonally Adjusted)

	<u>Sep 14</u>	<u>Aug 14</u>	<u>Sep 13</u>	<u>OTM</u>	<u>OTY</u>	<u>Sep 14</u>	<u>Aug 14</u>	<u>Sep 13</u>	<u>OTM</u>	<u>OTY</u>
Civilian Labor Force	1,299,900	1,296,300	1,325,100	3,600	-25,200	1,310,400	1,307,900	1,331,000	2,500	-20,600
Employment	1,218,900	1,214,400	1,223,600	4,500	-4,700	1,235,800	1,226,600	1,235,600	9,200	200
Unemployment	81,000	81,900	101,500	-900	-20,500	74,600	81,300	95,400	-6,700	-20,800
Unemployment Rate	6.2	6.3	7.7	-0.1	-1.5	5.7	6.2	7.2	-0.5	-1.5
U.S. Unemployment Rate	5.9	6.1	7.2	-0.2	-1.3	5.7	6.3	7.0	-0.6	-1.3

Out-of-State MSAs

Memphis, Tennessee

	<u>Sep 14</u>	<u>Aug 14</u>	<u>Sep 13</u>
Civilian Labor Force	581,050	585,300	597,250
Employment	534,950	535,550	542,050
Unemployment	46,100	49,750	55,200
Unemployment Rate	7.9	8.5	9.2

Texarkana, Texas

	<u>Sep 14</u>	<u>Aug 14</u>	<u>Sep 13</u>
Civilian Labor Force	61,400	61,125	62,200
Employment	57,875	57,175	57,575
Unemployment	3,525	3,950	4,625
Unemployment Rate	5.8	6.4	7.4

Unemployment Rates by County

Between August and September, unemployment rates declined in 73 of Arkansas' 75 counties. One county increased while one county remained the same.

In September, thirty-eight counties posted jobless rates at or below six percent. For the second consecutive month, no county had an unemployment rate higher than ten percent.

Compared to September 2013, unemployment rates are down in all 75 counties.

<u>Rank</u>	<u>County</u>	<u>Sep 14</u>	<u>Aug 14</u>	<u>Sep 13</u>	<u>Rank</u>	<u>County</u>	<u>Sep 14</u>	<u>Aug 14</u>	<u>Sep 13</u>
4	Arkansas	4.3	4.7	6.0	72	Lee	8.6	9.0	10.7
72	Ashley	8.6	9.5	10.8	64	Lincoln	7.7	8.1	8.5
35	Baxter	6.0	6.4	7.6	42	Little River	6.3	7.0	8.0
6	Benton	4.7	5.1	5.5	21	Logan	5.4	6.1	7.4
20	Boone	5.3	5.8	6.7	8	Lonoke	5.0	5.4	6.1
51	Bradley	6.8	7.8	8.2	1	Madison	3.9	4.3	5.3
28	Calhoun	5.7	6.9	8.6	33	Marion	5.9	6.7	8.0
2	Carroll	4.0	4.0	4.9	31	Miller	5.8	7.0	7.1
74	Chicot	8.9	9.6	9.5	60	Mississippi	7.4	8.5	10.2
44	Clark	6.4	7.1	8.1	35	Monroe	6.0	6.5	7.4
64	Clay	7.7	8.7	10.0	54	Montgomery	6.9	7.0	7.5
42	Cleburne	6.3	6.9	7.2	22	Nevada	5.5	6.1	7.2
28	Cleveland	5.7	6.1	7.6	28	Newton	5.7	6.7	7.3
49	Columbia	6.6	7.5	8.7	55	Ouachita	7.0	7.5	9.0
22	Conway	5.5	5.9	7.8	39	Perry	6.1	6.3	8.2
11	Craighead	5.1	5.6	6.4	71	Phillips	8.3	9.1	10.6
22	Crawford	5.5	6.0	7.5	44	Pike	6.4	6.9	8.1
75	Crittenden	9.8	9.1	10.4	33	Poinsett	5.9	6.4	8.0
46	Cross	6.5	6.6	7.5	39	Polk	6.1	6.8	7.4
62	Dallas	7.5	8.4	9.5	35	Pope	6.0	6.9	7.6
66	Desha	7.8	8.2	9.0	7	Prairie	4.9	5.6	6.3
66	Drew	7.8	9.0	9.5	22	Pulaski	5.5	6.0	6.7
11	Faulkner	5.1	5.4	6.8	49	Randolph	6.6	7.2	8.3
8	Franklin	5.0	5.4	6.3	70	St. Francis	8.1	9.1	10.5
11	Fulton	5.1	6.0	6.9	11	Saline	5.1	5.3	6.1
39	Garland	6.1	6.4	7.7	5	Scott	4.6	5.1	6.1
17	Grant	5.2	5.4	6.7	22	Searcy	5.5	5.8	7.0
35	Greene	6.0	6.7	8.4	17	Sebastian	5.2	5.6	7.1
8	Hempstead	5.0	5.8	7.1	22	Sevier	5.5	6.2	7.1
11	Hot Spring	5.1	5.5	7.0	60	Sharp	7.4	8.4	9.4
17	Howard	5.2	5.9	6.8	69	Stone	8.0	8.9	10.1
57	Independence	7.2	8.0	8.6	55	Union	7.0	7.6	8.3
51	Izard	6.8	7.4	8.2	46	Van Buren	6.5	7.1	8.3
57	Jackson	7.2	8.0	9.5	3	Washington	4.1	4.6	5.3
66	Jefferson	7.8	8.7	10.0	51	White	6.8	7.4	8.1
31	Johnson	5.8	6.9	7.1	57	Woodruff	7.2	7.6	9.4
63	Lafayette	7.6	8.3	10.0	11	Yell	5.1	5.6	5.8
46	Lawrence	6.5	7.6	8.2					

Lowest Rates

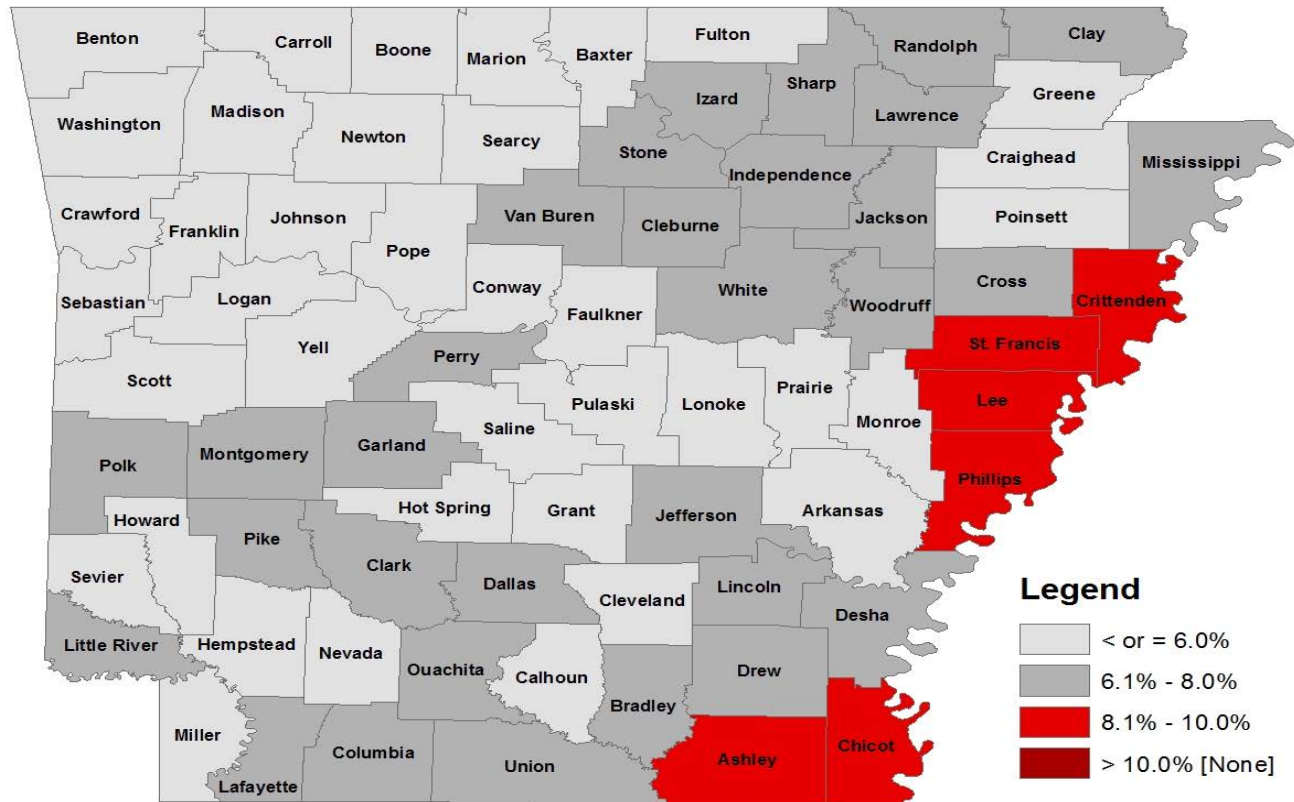
<u>Rank</u>	<u>County</u>	<u>Rate</u>
1	Madison	3.9
2	Carroll	4.0
3	Washington	4.1
4	Arkansas	4.3
5	Scott	4.6

Highest Rates

<u>Rank</u>	<u>County</u>	<u>Rate</u>
72	Ashley	8.6
72	Lee	8.6
74	Chicot	8.9
75	Crittenden	9.8

Civilian Labor Force Statistics

For complete County Labor Force Statistics, please visit our website at www.discover.arkansas.gov



Technical Notes

The *Arkansas Labor Market* is prepared monthly in conjunction with the U.S. Department of Labor, Bureau of Labor Statistics (BLS). The current month's estimates are preliminary, while previous data are subject to revision.

Estimates of nonfarm payroll jobs show the number of jobs by industry and reflect employment by place of work. Hours and earnings estimates are based on payroll and worker-hour data collected for production workers in manufacturing industries.

Industries are classified according to the North American Industry Classification System (NAICS). All estimates are based on a first quarter 2013 benchmark.

Explanation of Terms and Concepts

Monthly Business Survey of Employers

A monthly sample survey designed to provide industry information on nonfarm payroll jobs. Data are compiled each month from mail surveys and telephone interviews conducted by the Bureau of Labor Statistics in cooperation with Department of Workforce Services. The data are based on establishment records and include all workers, full- or part-time, who received pay during the payroll period which includes the 12th

of the month. Approximately 5,000 Arkansas business establishments are surveyed.

Metropolitan Statistical Area (MSA)

A term applied by the U.S. Office of Management and Budget to counties that have one or more central cities and that meet specified criteria of population density, commuting patterns and social and economic integration.

Current Population Survey (CPS)

A monthly sample survey of the population 16 years of age and over, designed to provide data on the labor force, the employed and the unemployed. The survey is conducted each month by the Bureau of the Census for BLS. The information is collected by trained interviewers from a sample of about 60,000 households. The data collected are based on the activity reported for the calendar week including the 12th of the month. Approximately 800 Arkansas households are represented in the sample survey.

Civilian Labor Force

The sum of all employed and unemployed persons 16 years of age or older. Members of the Armed Forces are excluded.

Employment

An estimate of the number of persons who worked any time for pay or profit or worked 15 hours or more as unpaid workers in a family business during the calendar week which includes the 12th of the month. Also included are those who, although not working, had some job attachment and were not looking for work, and persons involved in labor management disputes.

Unemployment

An estimate of the number of persons who did not have a job, but were available for work and actively seeking work during the calendar week which includes the 12th of the month.

Unemployment Rate

The number of unemployed as a percentage of the civilian labor force. Unemployment rates are calculated from unrounded data.

Seasonal Adjustment

A statistical technique applied to monthly data to eliminate changes that normally occur during the year due to seasonal events such as weather, major holidays, schedule shifts, harvest times, and the opening/closing of schools.

Arkansas Labor Market

September 2014

The *Arkansas Labor Market* is produced by the Department of Workforce Services, Bureau of Labor Statistics. All Statistics are published in cooperation with the United States Department of Labor, Bureau of Labor Statistics.

Auxiliary aids and services are available upon request to individuals with disabilities.

Voice: 1-800-285-1121

TDD: 1-800-285-1131

Mike Beebe- Governor

Artee Williams- DWS Director



Department of Workforce Services
Bureau of Labor Statistics
P.O. Box 2981
Little Rock, AR 72203-2981