

# Arkansas Labor Market

## November 2013

### Employment Headlines

Arkansas' Unemployment Rate Remains Stable at 7.5 Percent

Nonfarm Payroll Jobs Increase 1,700 in November

### Employment Quick Facts

#### Unemployment Rates

Seasonally Adjusted

	<u>Nov 13</u>	<u>Oct 13</u>	<u>Nov 12</u>
AR Unemployment Rate	7.5	7.5	7.2
US Unemployment Rate	7.0	7.3	7.8

#### Nonfarm Payroll Summary

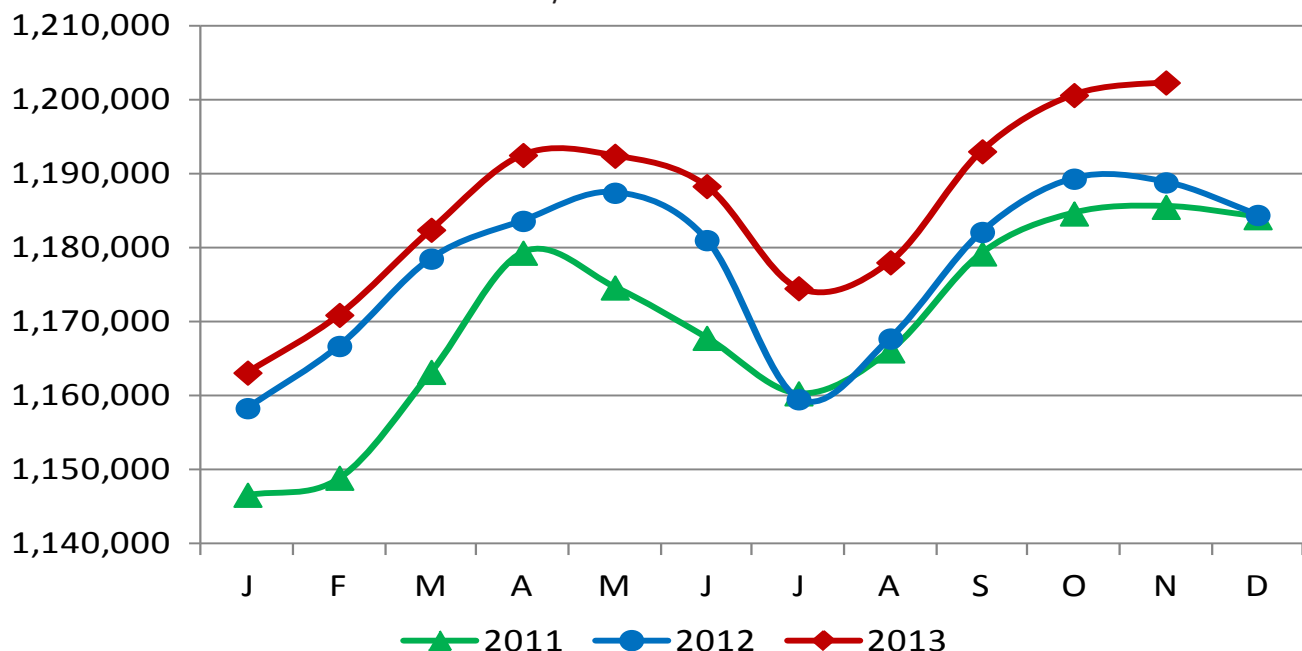
State of Arkansas

	<u>Nov 13</u>	<u>Oct 13</u>	<u>Nov 12</u>
Total Nonfarm	1,202,400	1,200,700	1,188,900
Goods Producing	213,400	214,000	211,200
Service Providing	989,000	986,700	977,700

#### Nonfarm Payroll Jobs

State of Arkansas

January 2011 - November 2013



# Nonfarm Payroll Employment

## State of Arkansas

October 2013 - November 2013

Nonfarm payroll jobs in Arkansas increased 1,700 in November to total 1,202,400. Five major industry sectors posted gains, more than offsetting declines in six sectors. Jobs in **trade, transportation, and utilities** rose 1,600. A majority of the increase occurred in retail trade (+1,500), reflecting the start of the holiday shopping season. **Professional and business services** added 1,200 jobs. Most of these gains were in professional, scientific, and technical services (+900), due to reported hiring in architectural-engineering services and in advertising-public relations services. Jobs in **leisure and hospitality** decreased 1,400. Typical seasonal losses were posted throughout all subsectors.

November 2012 - November 2013

Since November 2012, Arkansas' nonfarm payroll jobs increased 13,500. Seven major industry sectors reported growth, with five adding 1,000 or more jobs, each. **Professional and business services** enjoyed the largest increase (+5,900). Gains were reported throughout all subsectors. **Trade, transportation, and utilities** added 3,900 jobs. Most of the increase occurred in transportation, warehousing, and utilities (+3,700). Employment in **educational and health services** rose 3,400. Health care and social assistance posted the majority of the gains (+2,500). Jobs in **construction** rose by 2,500, related in part to ongoing large projects throughout the state. Employment in **government** decreased (-1,000), largely at the federal level.

### Nonfarm Payroll Jobs

(NAICS)	Nov 13	Oct 13	Nov 12
Total Nonfarm	1,202,400	1,200,700	1,188,900
Goods Producing	213,400	214,000	211,200
<b>Mining &amp; Logging</b>	<b>10,300</b>	<b>10,400</b>	<b>10,100</b>
<b>Construction</b>	<b>48,200</b>	<b>48,400</b>	<b>45,700</b>
Specialty Trade Contractors	30,700	31,300	29,600
<b>Manufacturing</b>	<b>154,900</b>	<b>155,200</b>	<b>155,400</b>
Durable Goods	78,500	78,800	77,400
Nondurable Goods	76,400	76,400	78,000
Service Providing	989,000	986,700	977,700
<b>Trade, Transportation &amp; Utilities</b>	<b>255,500</b>	<b>253,900</b>	<b>251,600</b>
Wholesale Trade	45,500	45,400	48,000
Retail Trade	142,900	141,400	140,200
Transport, Warehousing & Utilities	67,100	67,100	63,400
<b>Information</b>	<b>14,400</b>	<b>14,200</b>	<b>14,500</b>
<b>Financial Activities</b>	<b>50,500</b>	<b>50,600</b>	<b>49,500</b>
Finance & Insurance	37,100	37,300	36,100
Real Estate & Rental & Leasing	13,400	13,300	13,400
<b>Professional &amp; Business Services</b>	<b>126,800</b>	<b>125,600</b>	<b>120,900</b>
Professional, Scientific & Technical	40,700	39,800	38,500
Management of Companies	32,500	32,100	31,600
Administrative & Support Services	53,600	53,700	50,800
<b>Educational &amp; Health Services</b>	<b>178,400</b>	<b>178,200</b>	<b>175,000</b>
Educational Services	16,900	16,900	16,000
Health Care & Social Assistance	161,500	161,300	159,000
Ambulatory Health Care	49,400	50,000	47,300
Social Assistance	39,500	38,500	36,400
<b>Leisure &amp; Hospitality</b>	<b>102,200</b>	<b>103,600</b>	<b>101,800</b>
Arts, Entertainment & Recreation	8,200	9,000	8,400
Accommodation & Food Services	94,000	94,600	93,400
Accommodation Services	10,600	10,800	10,700
Food Services	83,400	83,800	82,700
<b>Other Services</b>	<b>41,200</b>	<b>41,500</b>	<b>43,400</b>
<b>Government</b>	<b>220,000</b>	<b>219,100</b>	<b>221,000</b>
Federal Government	19,600	19,700	20,600
State Government	79,300	79,100	78,700
Local Government	121,100	120,300	121,700

## Hours and Earnings of Arkansas Production Workers

(Manufacturing Industries)

	Average Weekly Earnings			Average Weekly Hours			Average Hourly Earnings		
	Nov 13	Oct 13	Nov 12	Nov 13	Oct 13	Nov 12	Nov 13	Oct 13	Nov 12
<b>Manufacturing</b>	\$640.25	\$646.57	\$635.71	41.2	41.5	42.1	\$15.54	\$15.58	\$15.10
Durable Goods	693.00	692.03	687.58	42.0	42.3	41.9	16.50	16.36	16.41
Nondurable Goods	590.65	604.25	586.16	40.4	40.8	42.2	14.62	14.81	13.89

# Spotlight

## Alternative Measures of Labor Underutilization

In addition to the unemployment rate, the Bureau of Labor Statistics (BLS) also calculates five additional estimates based on various definitions of 'unemployment'. These are known as Alternative Measures of Labor Underutilization and are referred to as U1-U6, with U-3 being the definition used to calculate the official unemployment rate. These measures are calculated using data from the Current Population Survey (CPS), a monthly survey of households (roughly 800 Arkansas households are surveyed each month).

Alternative Measures of Labor Underutilization are available at the statewide level, but they are not produced on a monthly basis. Estimates are calculated using a four quarter moving average. The most recent data represents an average of 4th Quarter 2012 through 3rd Quarter 2013.

### Alternative Measures of Labor Underutilization

State of Arkansas

4 Quarter Average: 4th Q 2012 - 3rd Q 2013

U-1	U-2	U-3	U-4	U-5	U-6
3.8%	3.8%	7.7%	8.3%	9.6%	13.5%

The following are the definitions used to calculate each measure of labor underutilization:

**U-1 Measure:** Persons unemployed for 15 weeks or longer, as a percent of the civilian labor force.

**U-2 Measure:** Job losers and persons who completed temporary jobs, as a percent of the civilian labor force.

**U-3 Measure:** Total number of unemployed persons, as a percent of the civilian labor force (this is the definition used for the official unemployment rate).

**U-4 Measure:** Total number of unemployed and discouraged workers, as a percent of the civilian labor force plus discouraged workers.

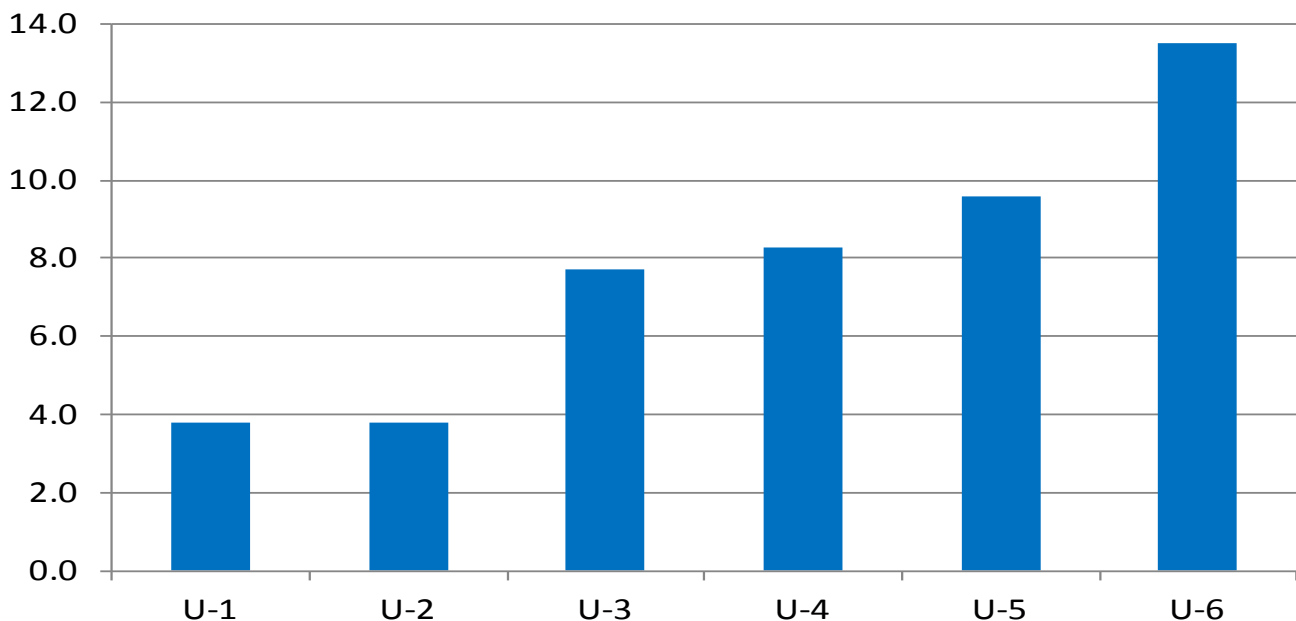
**U-5 Measure:** Total number of unemployed, discouraged workers, and all other marginally attached workers, as a percent of the civilian labor force plus marginally attached workers.

**U-6 Measure:** Total number of unemployed, discouraged workers, marginally attached workers, and those employed part-time for economic reasons (not by choice), as a percent of the civilian labor force plus marginally attached workers.

### Alternative Measures of Labor Underutilization

State of Arkansas

4 Quarter Average: 4th Q 2012 - 3rd Q 2013



# Metropolitan Statistical Areas

## Little Rock-North Little Rock-Conway MSA

### Nonfarm Payroll Jobs

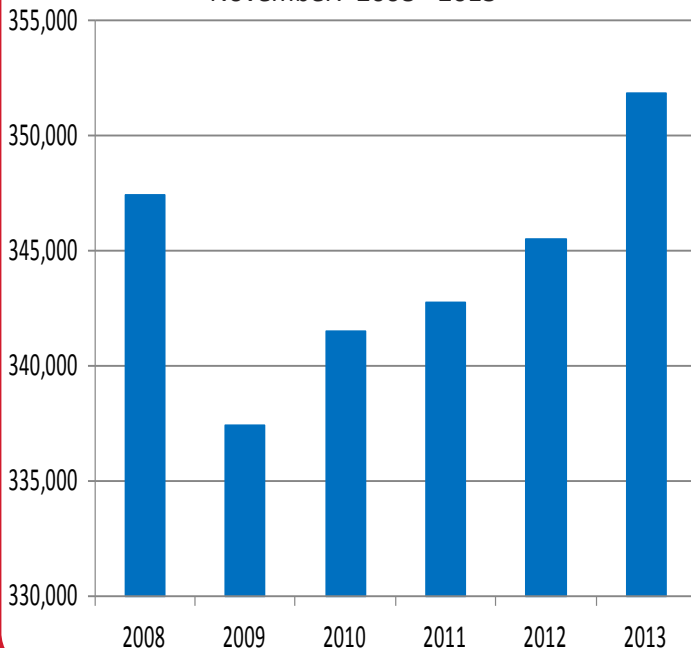
NAICS	Nov 13	Oct 13	Nov 12
Total Nonfarm	351,800	350,700	345,500
Goods Producing	36,300	37,000	36,600
Mining, Logging & Construction	16,400	17,100	16,600
Manufacturing	19,900	19,900	20,000
Service Providing	315,500	313,700	308,900
Trade, Transportation & Utilities	72,000	70,800	70,200
Wholesale Trade	15,600	15,600	15,800
Retail Trade	41,800	40,600	40,300
Trans., Warehousing & Utilities	14,600	14,600	14,100
Information	7,100	7,000	7,300
Financial Activities	19,900	19,900	19,800
Professional & Business Services	46,700	46,100	42,200
Educational & Health Services	53,400	53,500	52,500
Leisure & Hospitality	30,300	30,400	30,500
Other Services	15,500	15,500	15,400
Government	70,600	70,500	71,000
Federal Government	9,200	9,300	9,500
State Government	33,200	33,100	33,400
Local Government	28,200	28,100	28,100

The LR-NLR-Conway MSA consists of the following counties:  
Faulkner, Grant, Lonoke, Perry, Pulaski, and Saline

### Civilian Labor Force Estimates

	Nov 13	Oct 13	Nov 12
Civilian Labor Force	342,325	341,125	342,000
Employment	321,325	319,125	322,175
Unemployment	21,000	22,000	19,825
Unemployment Rate	6.1	6.5	5.8

### Nonfarm Payroll Jobs November: 2008 - 2013



## Fayetteville-Springdale-Rogers MSA

### Nonfarm Payroll Jobs

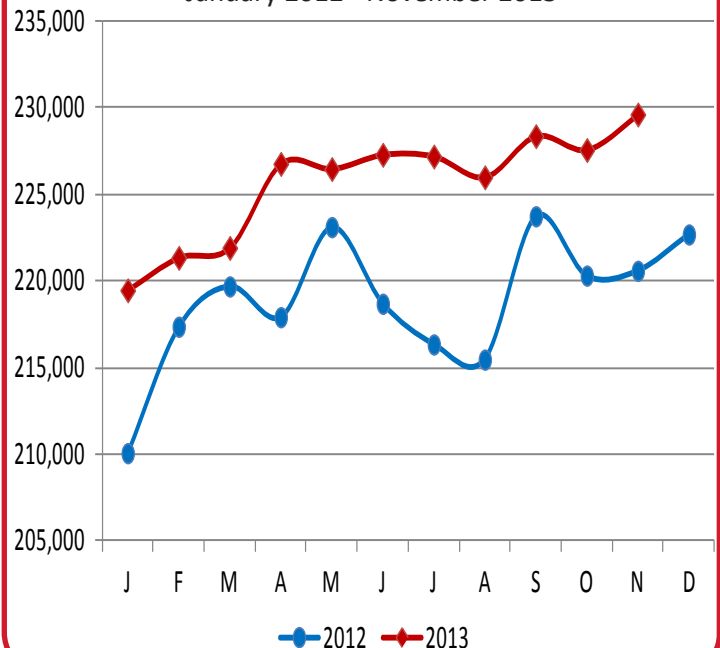
NAICS	Nov 13	Oct 13	Nov 12
Total Nonfarm	225,800	224,300	216,400
Goods Producing	36,000	35,600	35,100
Mining, Logging & Construction	8,900	8,800	8,200
Manufacturing	27,100	26,800	26,900
Service Providing	189,800	188,700	181,300
Trade, Transportation & Utilities	52,100	51,300	49,500
Wholesale Trade	11,200	11,100	10,600
Retail Trade	24,700	24,100	23,600
Trans., Warehousing & Utilities	16,200	16,100	15,300
Information	2,000	1,900	1,900
Financial Activities	6,700	6,700	6,500
Professional & Business Services	42,300	42,300	39,900
Educational & Health Services	26,200	26,000	24,800
Leisure & Hospitality	21,900	22,100	20,800
Other Services	7,100	7,100	6,800
Government	31,500	31,300	31,100
Federal Government	2,300	2,400	2,400
State Government	11,200	11,100	10,900
Local Government	18,000	17,800	17,800

The FSR MSA consists of the following counties:  
Benton, Madison, Washington, and McDonald (in Missouri)

### Civilian Labor Force Estimates

	Nov 13	Oct 13	Nov 12
Civilian Labor Force	241,350	239,925	236,825
Employment	229,625	227,575	225,775
Unemployment	11,725	12,350	11,050
Unemployment Rate	4.8	5.1	4.7

### Number of Employed January 2012 - November 2013



# Metropolitan Statistical Areas

## Fort Smith MSA

### Nonfarm Payroll Jobs

<u>NAICS</u>	<u>Nov 13</u>	<u>Oct 13</u>	<u>Nov 12</u>
Total Nonfarm	119,700	120,700	117,200
Goods Producing	25,400	25,600	25,300
<b>Mining, Logging &amp; Construction</b>	<b>7,000</b>	<b>7,100</b>	<b>6,500</b>
<b>Manufacturing</b>	<b>18,400</b>	<b>18,500</b>	<b>18,800</b>
Service Providing	94,300	95,100	91,900
<b>Trade, Transportation &amp; Utilities</b>	<b>25,800</b>	<b>26,000</b>	<b>25,000</b>
Wholesale Trade	4,200	4,300	4,100
Retail Trade	13,700	13,700	13,400
Trans., Warehousing & Utilities	7,900	8,000	7,500
<b>Information</b>	<b>1,400</b>	<b>1,400</b>	<b>1,400</b>
<b>Financial Activities</b>	<b>4,400</b>	<b>4,400</b>	<b>4,300</b>
<b>Professional &amp; Business Services</b>	<b>11,500</b>	<b>11,700</b>	<b>10,800</b>
<b>Educational &amp; Health Services</b>	<b>17,900</b>	<b>18,100</b>	<b>17,300</b>
<b>Leisure &amp; Hospitality</b>	<b>9,100</b>	<b>9,300</b>	<b>8,900</b>
<b>Other Services</b>	<b>4,400</b>	<b>4,500</b>	<b>4,400</b>
<b>Government</b>	<b>19,800</b>	<b>19,700</b>	<b>19,800</b>
Federal Government	1,500	1,500	1,600
State Government	3,200	3,200	3,300
Local Government	15,100	15,000	14,900

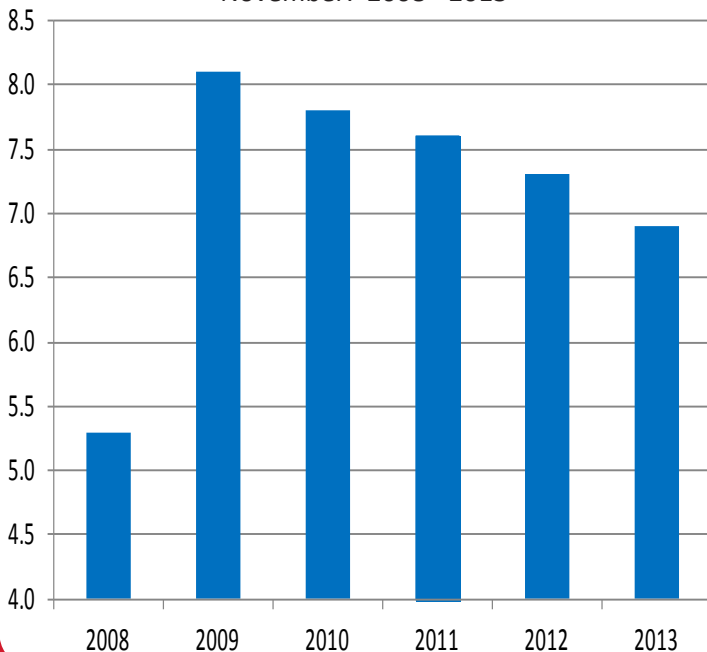
The FS MSA consists of the following counties: Crawford, Franklin, Sebastian, and LeFlore and Sequoyah (in Oklahoma)

### Civilian Labor Force Estimates

	<u>Nov 13</u>	<u>Oct 13</u>	<u>Nov 12</u>
Civilian Labor Force	132,125	132,875	132,375
Employment	122,975	123,150	122,675
Unemployment	9,150	9,725	9,700
Unemployment Rate	6.9	7.3	7.3

### Unemployment Rates

November: 2008 - 2013



## Hot Springs MSA

### Nonfarm Payroll Jobs

<u>NAICS</u>	<u>Nov 13</u>	<u>Oct 13</u>	<u>Nov 12</u>
Total Nonfarm	37,200	37,200	37,400
Goods Producing	4,200	4,200	4,100
Service Providing	33,000	33,000	33,300
Government	5,200	5,200	5,200

The HS MSA consists of the following county: Garland

### Civilian Labor Force Estimates

	<u>Nov 13</u>	<u>Oct 13</u>	<u>Nov 12</u>
Civilian Labor Force	40,450	40,250	41,300
Employment	37,425	37,125	38,475
Unemployment	3,025	3,125	2,825
Unemployment Rate	7.5	7.8	6.8

## Jonesboro MSA

### Nonfarm Payroll Jobs

<u>NAICS</u>	<u>Nov 13</u>	<u>Oct 13</u>	<u>Nov 12</u>
Total Nonfarm	54,400	54,100	52,100
Goods Producing	9,600	9,600	9,100
Service Providing	44,800	44,500	43,000
Government	9,100	9,100	9,000

The Jonesboro MSA consists of the following counties:

Craighead and Poinsett

### Civilian Labor Force Estimates

	<u>Nov 13</u>	<u>Oct 13</u>	<u>Nov 12</u>
Civilian Labor Force	60,725	60,225	59,925
Employment	56,900	56,350	56,200
Unemployment	3,825	3,875	3,725
Unemployment Rate	6.3	6.4	6.2

## Pine Bluff MSA

### Nonfarm Payroll Jobs

<u>NAICS</u>	<u>Nov 13</u>	<u>Oct 13</u>	<u>Nov 12</u>
Total Nonfarm	36,000	36,000	36,500
Goods Producing	7,000	7,100	7,100
Service Providing	29,000	28,900	29,400
Government	10,600	10,600	10,700

The PB MSA consists of the following counties: Cleveland, Jefferson, and Lincoln

### Civilian Labor Force Estimates

	<u>Nov 13</u>	<u>Oct 13</u>	<u>Nov 12</u>
Civilian Labor Force	41,375	41,100	42,200
Employment	37,475	37,125	38,625
Unemployment	3,900	3,975	3,575
Unemployment Rate	9.5	9.6	8.4

# Civilian Labor Force Statistics

## State of Arkansas

(Seasonally Adjusted)

(Not Seasonally Adjusted)

	<u>Nov 13</u>	<u>Oct 13</u>	<u>Nov 12</u>	<u>OTM</u>	<u>OTY</u>	<u>Nov 13</u>	<u>Oct 13</u>	<u>Nov 12</u>	<u>OTM</u>	<u>OTY</u>
Civilian Labor Force	1,325,300	1,321,600	1,348,100	3,700	-22,800	1,326,600	1,323,000	1,342,600	3,600	-16,000
Employment	1,226,200	1,221,800	1,251,600	4,400	-25,400	1,235,600	1,230,000	1,254,900	5,600	-19,300
Unemployment	99,100	99,800	96,500	-700	2,600	91,000	93,000	87,700	-2,000	3,300
Unemployment Rate	7.5	7.5	7.2	0.0	0.3	6.9	7.0	6.5	-0.1	0.4
U.S. Unemployment Rate	7.0	7.3	7.8	-0.3	-0.8	6.6	7.0	7.4	-0.4	-0.8

## Out-of-State MSAs

### Memphis, Tennessee

	<u>Nov 13</u>	<u>Oct 13</u>	<u>Nov 12</u>
Civilian Labor Force	602,600	598,725	617,150
Employment	549,825	541,975	566,975
Unemployment	52,775	56,750	50,175
Unemployment Rate	8.8	9.5	8.1

### Texarkana, Texas

	<u>Nov 13</u>	<u>Oct 13</u>	<u>Nov 12</u>
Civilian Labor Force	63,575	63,150	64,675
Employment	59,400	58,800	60,825
Unemployment	4,175	4,350	3,850
Unemployment Rate	6.6	6.9	6.0

Between October and November, unemployment rates declined in 38 of Arkansas' 75 counties. Twenty-three counties posted rate increases, while 14 remained the same.

In November, eleven counties enjoyed jobless rates at or below six percent. Twelve counties posted rates at or above ten percent, up from ten counties in October.

Compared to November 2012, unemployment rates are up in 64 counties. Rates are down in six counties, while five remained the same.

## Unemployment Rates by County

<u>Rank</u>	<u>County</u>	<u>Nov 13</u>	<u>Oct 13</u>	<u>Nov 12</u>	<u>Rank</u>	<u>County</u>	<u>Nov 13</u>	<u>Oct 13</u>	<u>Nov 12</u>
9	Arkansas	6.0	6.0	7.1	73	Lee	11.0	11.0	9.9
71	Ashley	10.7	10.4	11.0	57	Lincoln	9.4	9.4	8.2
32	Baxter	7.4	7.5	6.8	36	Little River	7.6	7.9	6.2
2	Benton	5.0	5.2	4.8	26	Logan	7.1	7.5	6.7
15	Boone	6.5	6.7	6.1	5	Lonoke	5.7	5.8	5.5
56	Bradley	9.1	8.6	8.4	3	Madison	5.1	5.2	4.5
54	Calhoun	8.8	8.9	7.2	34	Marion	7.5	7.7	7.4
4	Carroll	5.3	5.0	4.5	23	Miller	6.9	6.5	6.8
74	Chicot	11.3	10.8	9.5	68	Mississippi	10.4	10.3	9.1
32	Clark	7.4	8.1	8.0	50	Monroe	8.7	8.2	7.9
74	Clay	11.3	10.6	11.0	55	Montgomery	8.9	7.5	7.1
23	Cleburne	6.9	6.9	6.6	18	Nevada	6.7	7.4	6.4
41	Cleveland	7.8	7.7	6.8	36	Newton	7.6	7.4	7.0
40	Columbia	7.7	8.2	7.3	50	Ouachita	8.7	8.7	8.7
36	Conway	7.6	7.8	7.0	44	Perry	8.2	8.1	8.3
9	Craighead	6.0	6.2	6.0	72	Phillips	10.8	10.7	9.9
25	Crawford	7.0	7.0	7.0	49	Pike	8.5	9.1	7.6
59	Crittenden	9.6	9.5	10.4	36	Poinsett	7.6	7.7	7.3
42	Cross	7.9	7.9	7.7	29	Polk	7.3	7.7	6.5
62	Dallas	9.8	9.8	9.1	29	Pope	7.3	7.5	6.2
65	Desha	10.2	9.4	9.8	26	Prairie	7.1	7.2	6.7
60	Drew	9.7	9.5	9.4	12	Pulaski	6.1	6.5	5.9
21	Faulkner	6.8	6.8	6.0	50	Randolph	8.7	8.5	8.7
8	Franklin	5.9	7.0	5.9	66	St. Francis	10.3	10.6	9.8
18	Fulton	6.7	6.7	6.1	5	Saline	5.7	6.1	5.1
34	Garland	7.5	7.8	6.8	9	Scott	6.0	6.5	5.5
12	Grant	6.1	6.5	5.7	29	Searcy	7.3	7.7	6.6
48	Greene	8.4	8.4	8.1	16	Sebastian	6.6	6.8	7.3
26	Hempstead	7.1	7.3	6.4	21	Sevier	6.8	7.3	6.7
14	Hot Spring	6.4	6.7	5.8	64	Sharp	10.0	9.3	9.1
16	Howard	6.6	7.1	6.4	68	Stone	10.4	10.4	8.6
57	Independence	9.4	8.6	8.1	44	Union	8.2	8.2	7.6
44	Izard	8.2	8.0	7.1	50	Van Buren	8.7	8.5	8.3
66	Jackson	10.3	9.8	8.9	1	Washington	4.7	5.1	4.5
60	Jefferson	9.7	9.9	8.7	42	White	7.9	7.9	7.1
18	Johnson	6.7	6.8	5.7	70	Woodruff	10.6	10.2	10.0
62	Lafayette	9.8	10.1	9.7	5	Yell	5.7	5.8	5.0
47	Lawrence	8.3	8.4	7.8					

### Lowest Rates

<u>Rank</u>	<u>County</u>	<u>Rate</u>
1	Washington	4.7
2	Benton	5.0
3	Madison	5.1
4	Carroll	5.3

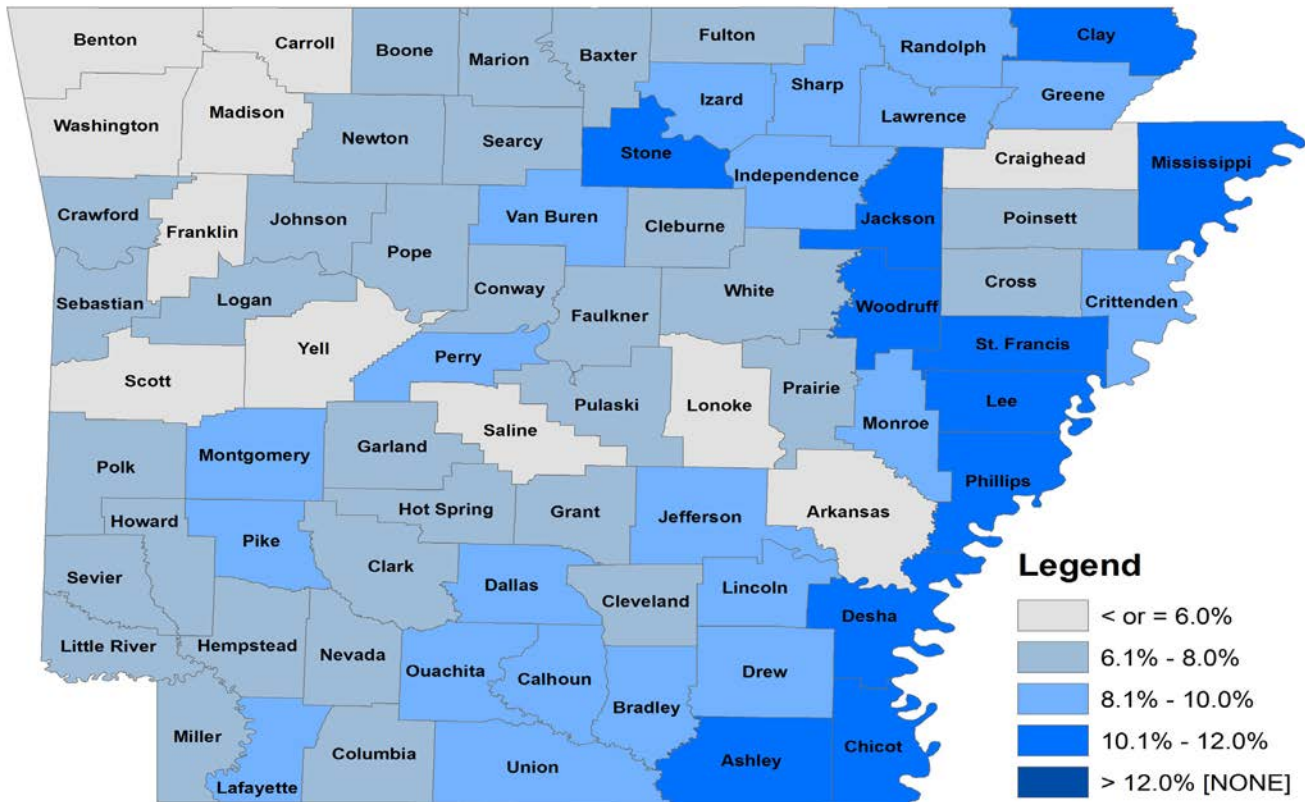
### Highest Rates

<u>Rank</u>	<u>County</u>	<u>Rate</u>
71	Ashley	10.7
72	Phillips	10.8
73	Lee	11.0
74	Chicot	11.3
74	Clay	11.3



# Civilian Labor Force Statistics

For complete County Labor Force Statistics, please visit our website at [www.discover.arkansas.gov](http://www.discover.arkansas.gov)



## Technical Notes

The *Arkansas Labor Market* is prepared monthly in conjunction with the U.S. Department of Labor, Bureau of Labor Statistics (BLS). The current month's estimates are preliminary, while previous data are subject to revision.

Estimates of nonfarm payroll jobs show the number of jobs by industry and reflect employment by place of work. Hours and earnings estimates are based on payroll and worker-hour data collected for production workers in manufacturing industries.

Industries are classified according to the North American Industry Classification System (NAICS). All estimates are based on a first quarter 2012 benchmark.

### Explanation of Terms and Concepts

#### Monthly Business Survey of Employers

A monthly sample survey designed to provide industry information on nonfarm payroll jobs. Data are compiled each month from mail surveys and telephone interviews conducted by the Bureau of Labor Statistics in cooperation with Department of Workforce Services. The data are based on establishment records and include all workers, full- or part-time, who received pay during the payroll period which includes the 12th

of the month. Approximately 5,500 Arkansas business establishments are surveyed.

#### Metropolitan Statistical Area (MSA)

A term applied by the U.S. Office of Management and Budget to counties that have one or more central cities and that meet specified criteria of population density, commuting patterns and social and economic integration.

#### Current Population Survey (CPS)

A monthly sample survey of the population 16 years of age and over, designed to provide data on the labor force, the employed and the unemployed. The survey is conducted each month by the Bureau of the Census for BLS. The information is collected by trained interviewers from a sample of about 60,000 households. The data collected are based on the activity reported for the calendar week including the 12th of the month. Approximately 800 Arkansas households are represented in the sample survey.

#### Civilian Labor Force

The sum of all employed and unemployed persons 16 years of age or older. Members of the Armed Forces are excluded.

#### Employment

An estimate of the number of persons who worked any time for pay or profit or worked 15 hours or more as unpaid workers in a family business during the calendar week which includes the 12th of the month. Also included are those who, although not working, had some job attachment and were not looking for work, and persons involved in labor management disputes.

#### Unemployment

An estimate of the number of persons who did not have a job, but were available for work and actively seeking work during the calendar week which includes the 12th of the month.

#### Unemployment Rate

The number of unemployed as a percentage of the civilian labor force. Unemployment rates are calculated from unrounded data.

#### Seasonal Adjustment

A statistical technique applied to monthly data to eliminate changes that normally occur during the year due to seasonal events such as weather, major holidays, schedule shifts, harvest times, and the opening/closing of schools.

# Arkansas Labor Market

## November 2013

The *Arkansas Labor Market* is produced by the Department of Workforce Services, Bureau of Labor Statistics. All Statistics are published in cooperation with the United States Department of Labor, Bureau of Labor Statistics.

Auxiliary aids and services are available upon request to individuals with disabilities.

Voice: 1-800-285-1121

TDD: 1-800-285-1131

Mike Beebe- Governor

Artee Williams- DWS Director



Department of Workforce Services  
Bureau of Labor Statistics  
P.O. Box 2981  
Little Rock, AR 72203-2981