

Arkansas Labor Market

October 2012

Employment Headlines

Arkansas' Unemployment Rate Increases to 7.2 Percent

Nonfarm Payroll Jobs Up 4,200 in October

Employment Quick Facts

Unemployment Rates

Seasonally Adjusted

	<u>Oct 12</u>	<u>Sep 12</u>	<u>Oct 11</u>
AR Unemployment Rate	7.2	7.1	8.0
US Unemployment Rate	7.9	7.8	8.9

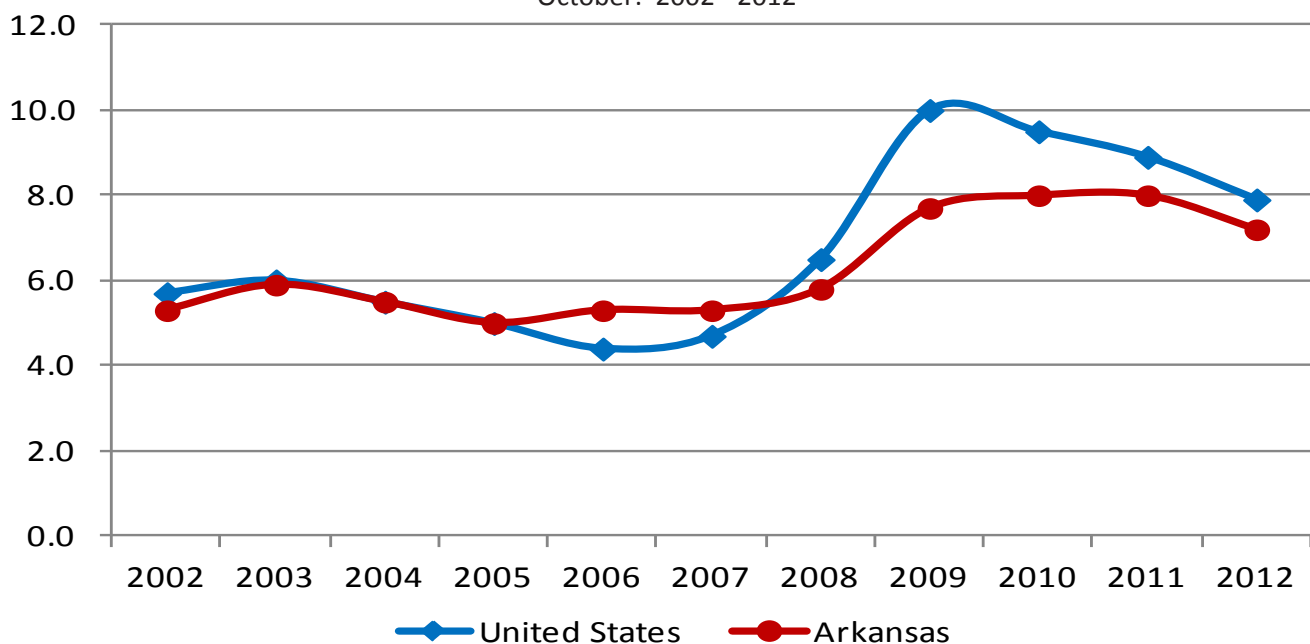
Nonfarm Payroll Summary

State of Arkansas

	<u>Oct 12</u>	<u>Sep 12</u>	<u>Oct 11</u>
Total Nonfarm	1,178,400	1,174,200	1,164,900
Goods Producing	211,600	214,100	215,100
Service Providing	966,800	960,100	949,800

Unemployment Rates (Seasonally Adjusted)

United States vs. Arkansas
October: 2002 - 2012



Nonfarm Payroll Employment

State of Arkansas

September 2012 - October 2012

Nonfarm payroll jobs in Arkansas increased 4,200 in October to total 1,178,400. Five industry sectors posted gains, more than offsetting the declines in five sectors. **Trade, transportation, and utilities** added 3,500 jobs. A majority of the growth occurred in retail trade (+2,500). Jobs in **government** rose 3,200. Local government (+2,300) posted most of the gain, a result of continued public school hiring. **Educational and health services** added 1,400 jobs. Health care and social assistance posted a majority of the increase (+1,000), attributed largely to reported expansions at hospitals and in ambulatory health care services. Jobs in **construction** dropped 2,100, a typical weather-related decline.

October 2011 - October 2012

Arkansas' nonfarm payroll employment increased 13,500 since October 2011. Six major industry sectors posted growth. **Leisure and hospitality** reported the greatest increase (+5,500). A majority of the gain occurred in food services (+4,200). **Trade, transportation, and utilities** added 5,200 jobs. Gains were seen in all three sub-sectors. Jobs in **educational and health services** rose 4,900. Health care and social assistance posted most of the growth, attributed in part to on-going hospital expansions. **Government** added 1,900 jobs. Increases in local government (+1,900) were mostly related to public school employment. Jobs in **construction** declined 3,900. Losses continue to be reported in building equipment contracting.

Nonfarm Payroll Jobs				
(NAICS)	Oct 12	Sep 12	Oct 11	
Total Nonfarm	1,178,400	1,174,200	1,164,900	
Goods Producing	211,600	214,100	215,100	
Mining & Logging	11,000	11,300	11,000	
Construction	44,400	46,500	48,300	
Specialty Trade Contractors	26,300	27,100	28,900	
Manufacturing	156,200	156,300	155,800	
Durable Goods	81,200	81,200	78,700	
Nondurable Goods	75,000	75,100	77,100	
Service Providing	966,800	960,100	949,800	
Trade, Transportation & Utilities	237,400	233,900	232,200	
Wholesale Trade	47,100	46,000	45,800	
Retail Trade	129,500	127,000	127,500	
Transport, Warehousing & Utilities	60,800	60,900	58,900	
Information	14,000	14,000	14,300	
Financial Activities	47,200	46,900	48,000	
Finance & Insurance	34,800	34,500	35,200	
Real Estate & Rental & Leasing	12,400	12,400	12,800	
Professional & Business Services	117,700	118,800	118,000	
Professional, Scientific & Technical	37,200	36,700	36,500	
Management of Companies	27,100	27,000	26,400	
Administrative & Support Services	53,400	55,100	55,100	
Educational & Health Services	173,900	172,500	169,000	
Health Care & Social Assistance	157,800	156,800	153,300	
Ambulatory Health Care	47,700	47,600	46,800	
Social Assistance	35,700	35,400	33,500	
Leisure & Hospitality	104,600	105,400	99,100	
Arts, Entertainment & Recreation	9,700	10,200	8,800	
Accommodation & Food Services	94,900	95,200	90,300	
Accommodation Services	11,500	11,700	11,100	
Food Services	83,400	83,500	79,200	
Other Services	44,400	44,200	43,500	
Government	227,600	224,400	225,700	
Federal Government	20,300	20,200	20,800	
State Government	79,100	78,300	78,600	
Local Government	128,200	125,900	126,300	

Hours & Earnings of Arkansas Production Workers

(Manufacturing Industries)

	Average Weekly Earnings			Average Weekly Hours			Average Hourly Earnings		
	Oct 12	Sep 12	Oct 11	Oct 12	Sep 12	Oct 11	Oct 12	Sep 12	Oct 11
Manufacturing	\$652.37	\$651.13	\$599.83	42.3	41.9	41.0	\$15.42	\$15.54	\$14.63
Durable Goods	683.34	709.67	649.64	42.0	42.7	40.3	16.27	16.62	16.12
Nondurable Goods	622.14	591.43	550.78	42.7	41.1	41.6	14.57	14.39	13.24

Spotlight

Business Employment Dynamics (BED)

Business Employment Dynamics, also known as BED statistics, are a relatively new employment statistic. BED is primarily concerned with tracking employment changes at the establishment level, meaning each individual business location.

BED statistics are linked closely to the Quarterly Census of Employment and Wages (QCEW) Program and are calculated from quarterly reports provided by individual employers. Like QCEW data, BED statistics are produced on a quarterly basis, with longitudinal data dating back to 1992. At this time, BED data are only published at the national and state level. No statistics currently exist to provide data at the county or city level in Arkansas.

The information produced from BED statistics includes gross job gains and losses at establishments with changes in employment. These employment changes occur when establishments open/expand or close/contract. Gross job gains are a combination of jobs created from both openings of new businesses and expansions at existing businesses. Gross job losses are a combination of jobs lost from both existing businesses that close and those that reduce their number of employees. The net change is the difference between gross job gains and gross job losses.

Gross Job Gains and Losses by Quarter (Private Sector)

State of Arkansas
(Seasonally Adjusted)

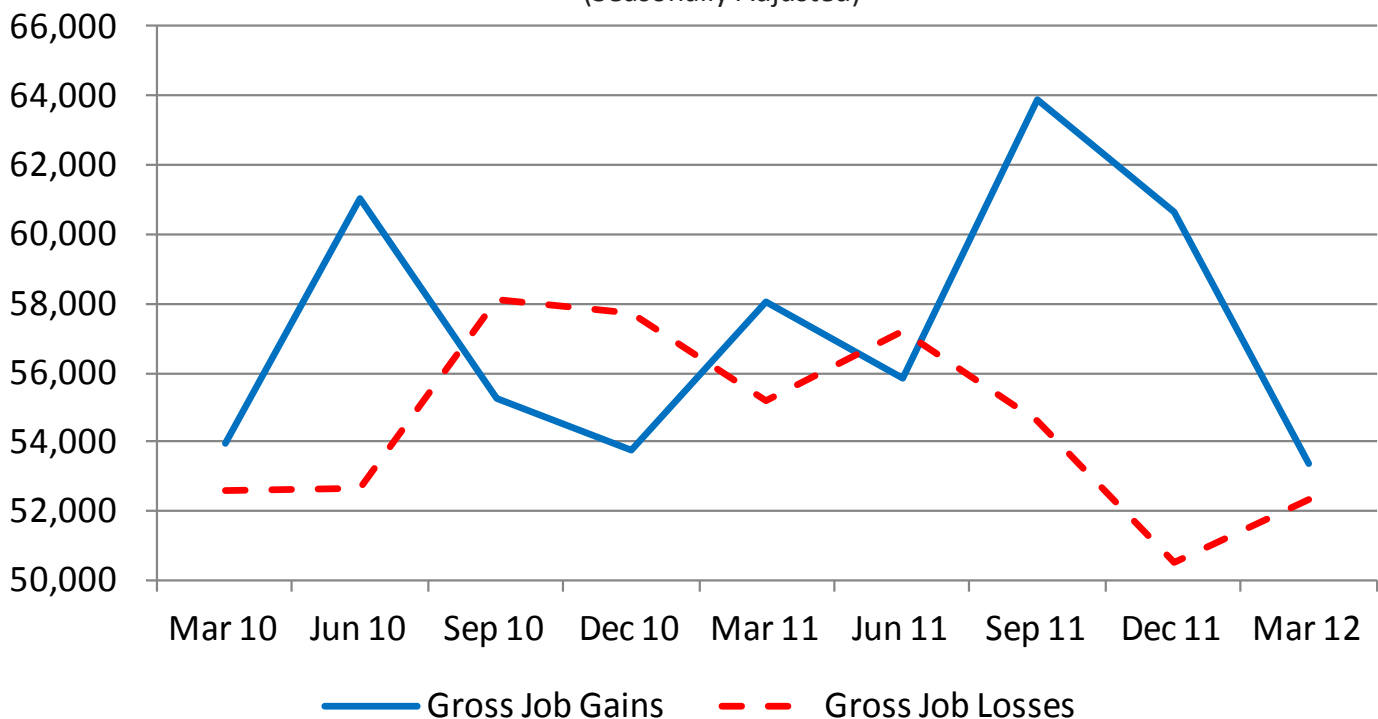
3 months ended					
Category	Mar 11	Jun 11	Sep 11	Dec 11	Mar 12*
Employment Levels					
Gross job gains.....	58,079	55,855	63,861	60,670	53,381
Gross job losses....	55,199	57,197	54,625	50,505	52,324
Net Change.....	2,880	-1,342	9,236	10,165	1,057

*Most recent BED data available is for 1st Quarter 2012

The chart below shows gross job gains versus gross job losses for a nine quarter period (1st Q 2010- 1st Q 2012).

Gross Job Gains vs. Gross Job Losses (Private Sector)

State of Arkansas
(Seasonally Adjusted)



Metropolitan Statistical Areas

Little Rock-North Little Rock-Conway MSA

Nonfarm Payroll Jobs

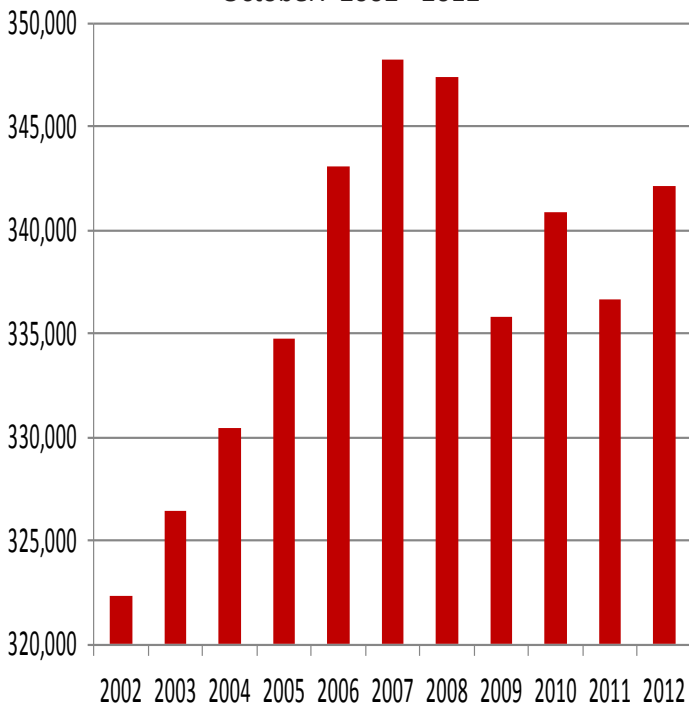
(NAICS)	Oct 12	Sep 12	Oct 11
Total Nonfarm	342,100	338,400	336,700
Goods Producing	35,200	35,400	36,000
Mining, Logging & Construction	16,200	16,400	16,700
Manufacturing	19,000	19,000	19,300
Service Providing	306,900	303,000	300,700
Trade, Transportation & Utilities	67,400	65,300	63,300
Wholesale Trade	16,800	16,300	15,900
Retail Trade	37,100	35,600	34,700
Trans., Warehousing & Utilities	13,500	13,400	12,700
Information	7,200	7,200	7,500
Financial Activities	18,700	18,700	18,900
Professional & Business Services	44,100	44,100	44,200
Educational & Health Services	51,500	50,900	50,000
Leisure & Hospitality	31,300	30,700	30,100
Other Services	15,100	15,300	15,000
Government	71,600	70,800	71,700
Federal Government	9,500	9,400	9,400
State Government	34,100	34,000	34,100
Local Government	28,000	27,400	28,200

(The following counties make up the LR-NLR-Conway MSA: Faulkner, Grant, Lonoke, Perry, Pulaski, and Saline.)

Civilian Labor Force Statistics

	Oct 12	Sep 12	Oct 11
Civilian Labor Force	347,300	349,125	346,075
Employment	326,550	328,425	323,325
Unemployment	20,750	20,700	22,750
Unemployment Rate	6.0	5.9	6.6

Nonfarm Payroll Jobs October: 2002 - 2012



Fayetteville-Springdale-Rogers MSA

Nonfarm Payroll Jobs

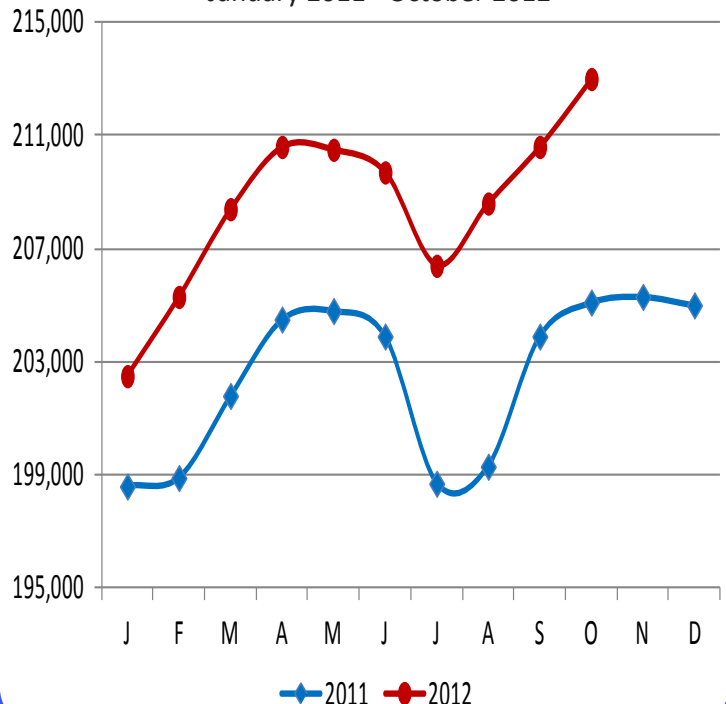
(NAICS)	Oct 12	Sep 12	Oct 11
Total Nonfarm	213,000	210,600	205,100
Goods Producing	35,700	36,000	35,100
Mining, Logging & Construction	7,800	8,000	7,700
Manufacturing	27,900	28,000	27,400
Service Providing	177,300	174,600	170,000
Trade, Transportation & Utilities	47,600	46,700	45,500
Wholesale Trade	10,300	10,100	9,700
Retail Trade	22,400	21,800	21,000
Trans., Warehousing & Utilities	14,900	14,800	14,800
Information	1,900	1,900	1,900
Financial Activities	7,200	7,000	7,000
Professional & Business Services	37,000	36,700	36,000
Educational & Health Services	24,600	24,000	23,000
Leisure & Hospitality	20,500	20,600	19,000
Other Services	7,300	7,300	7,000
Government	31,200	30,400	30,600
Federal Government	2,300	2,300	2,400
State Government	10,900	10,700	10,400
Local Government	18,000	17,400	17,800

(The following counties make up the FSR MSA: Benton, Madison, and Washington in Arkansas and McDonald in Missouri.)

Civilian Labor Force Statistics

	Oct 12	Sep 12	Oct 11
Civilian Labor Force	238,800	239,425	233,600
Employment	226,950	227,725	220,325
Unemployment	11,850	11,700	13,275
Unemployment Rate	5.0	4.9	5.7

Nonfarm Payroll Jobs January 2011 - October 2012



Metropolitan Statistical Areas

Fort Smith MSA

Nonfarm Payroll Jobs

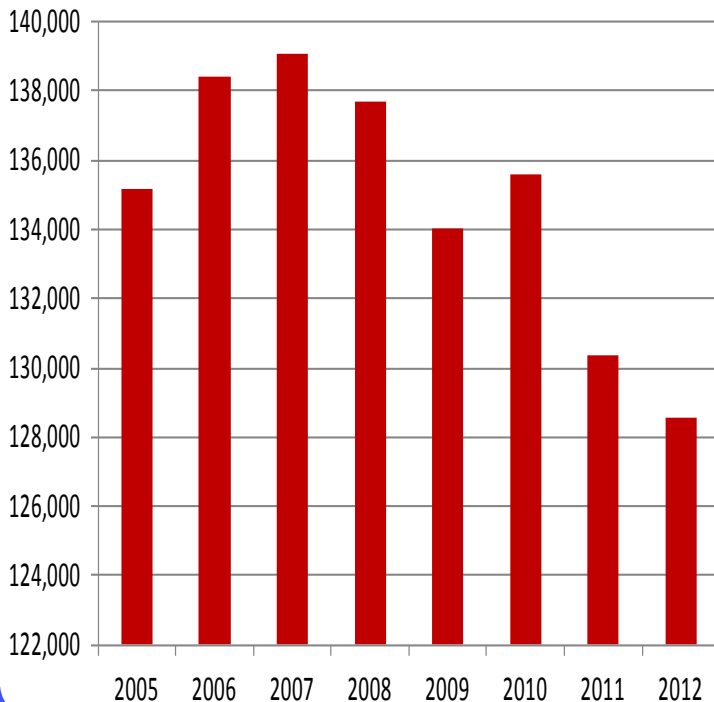
(NAICS)	Oct 12	Sep 12	Oct 11
Total Nonfarm	110,900	111,300	111,700
Goods Producing	26,000	26,500	25,600
Mining, Logging & Construction	6,800	7,000	6,900
Manufacturing	19,200	19,500	18,700
Service Providing	84,900	84,800	86,100
Trade, Transportation & Utilities	23,700	23,600	23,600
Wholesale Trade	4,000	4,000	3,900
Retail Trade	12,600	12,500	12,700
Trans., Warehousing & Utilities	7,100	7,100	7,000
Information	1,100	1,100	1,100
Financial Activities	3,600	3,600	3,900
Professional & Business Services	9,600	9,800	9,900
Educational & Health Services	15,300	15,300	15,900
Leisure & Hospitality	8,500	8,600	8,300
Other Services	4,300	4,300	4,300
Government	18,800	18,500	19,100
Federal Government	1,500	1,600	1,600
State Government	3,400	3,300	3,400
Local Government	13,900	13,600	14,100

(The following counties make up the Fort Smith MSA: Crawford, Franklin, and Sebastian in Arkansas and LeFlore and Sequoyah in Oklahoma.)

Civilian Labor Force Statistics

	Oct 12	Sep 12	Oct 11
Civilian Labor Force	128,575	130,350	130,400
Employment	118,375	120,400	119,625
Unemployment	10,200	9,950	10,775
Unemployment Rate	7.9	7.6	8.3

Civilian Labor Force October: 2005 - 2012



Hot Springs MSA

Nonfarm Payroll Jobs

(NAICS)	Oct 12	Sep 12	Oct 11
Total Nonfarm	36,500	36,500	37,300
Goods Producing	3,900	4,000	4,000
Service Providing	32,600	32,500	33,300
Government	5,600	5,600	5,700

(The following county makes up the Hot Springs MSA: Garland.)

Civilian Labor Force Statistics

	Oct 12	Sep 12	Oct 11
Civilian Labor Force	41,375	41,950	42,900
Employment	38,450	39,075	39,675
Unemployment	2,925	2,875	3,225
Unemployment Rate	7.1	6.9	7.5

Jonesboro MSA

Nonfarm Payroll Jobs

(NAICS)	Oct 12	Sep 12	Oct 11
Total Nonfarm	50,200	49,800	49,200
Goods Producing	8,500	8,500	8,600
Service Providing	41,700	41,300	40,600
Government	8,700	8,500	8,700

(The following counties make up the Jonesboro MSA: Craighead and Poinsett.)

Civilian Labor Force Statistics

	Oct 12	Sep 12	Oct 11
Civilian Labor Force	59,350	59,700	58,850
Employment	55,475	55,875	54,850
Unemployment	3,875	3,825	4,000
Unemployment Rate	6.5	6.4	6.8

Pine Bluff MSA

Nonfarm Payroll Jobs

(NAICS)	Oct 12	Sep 12	Oct 11
Total Nonfarm	37,100	36,600	36,700
Goods Producing	7,300	7,300	7,400
Service Providing	29,800	29,300	29,300
Government	10,100	10,000	10,900

(The following counties make up the Pine Bluff MSA: Cleveland, Jefferson, and Lincoln.)

Civilian Labor Force Statistics

	Oct 12	Sep 12	Oct 11
Civilian Labor Force	43,675	43,775	44,400
Employment	40,000	40,150	40,275
Unemployment	3,675	3,625	4,125
Unemployment Rate	8.5	8.3	9.3

Civilian Labor Force Statistics

State of Arkansas

(Seasonally Adjusted)

(Not Seasonally Adjusted)

	<u>Oct 12</u>	<u>Sep 12</u>	<u>Oct 11</u>	<u>OTM</u>	<u>QTY</u>	<u>Oct 12</u>	<u>Sep 12</u>	<u>Oct 11</u>	<u>OTM</u>	<u>QTY</u>
Civilian Labor Force	1,372,100	1,376,800	1,372,800	-4,700	-700	1,364,600	1,378,000	1,373,100	-13,400	-8,500
Employment	1,273,800	1,278,500	1,263,500	-4,700	10,300	1,274,000	1,287,800	1,273,000	-13,800	1,000
Unemployment	98,300	98,300	109,300	0	-11,000	90,600	90,200	100,100	400	-9,500
Unemployment Rate	7.2	7.1	8.0	0.1	-0.8	6.6	6.5	7.3	0.1	-0.7
U.S. Unemployment Rate	7.9	7.8	8.9	0.1	-1.0	7.5	7.6	8.5	0.1	-1.0

Out-of-State MSAs

Memphis, Tennessee

	<u>Oct 12</u>	<u>Sep 12</u>	<u>Oct 11</u>
Civilian Labor Force	625,550	620,950	630,175
Employment	571,575	568,650	568,625
Unemployment	53,975	52,300	61,550
Unemployment Rate	8.6	8.4	9.8

Texarkana, Texas

	<u>Oct 12</u>	<u>Sep 12</u>	<u>Oct 11</u>
Civilian Labor Force	68,200	67,825	66,500
Employment	64,150	63,675	61,725
Unemployment	4,050	4,150	4,775
Unemployment Rate	5.9	6.1	7.2

Unemployment Rates by County

Between September and October, unemployment rates increased in 46 of Arkansas' 75 counties. Fourteen counties posted rate declines, while fifteen counties remained stable. Jobless rates ranged from a low of 4.2 percent in Carroll County to a high of 11.1 percent in Clay County.

In October, eleven counties enjoyed unemployment rates at or below six percent. Four counties posted rates above ten percent, up from three counties in September.

Since October 2011, jobless rates are down in 67 Arkansas counties. Rates were up in five counties, while three were stable over the year.

<u>Rank</u>	<u>County</u>	<u>Oct 12</u>	<u>Sep 12</u>	<u>Oct 11</u>	<u>Rank</u>	<u>County</u>	<u>Oct 12</u>	<u>Sep 12</u>	<u>Oct 11</u>
26	Arkansas	6.8	6.6	9.1	73	Lee	10.4	10.3	9.9
74	Ashley	10.7	10.6	9.2	54	Lincoln	8.1	8.6	8.7
26	Baxter	6.8	6.6	7.8	12	Little River	6.1	6.2	7.1
4	Benton	5.1	5.1	5.8	37	Logan	7.2	7.1	7.5
12	Boone	6.1	6.0	6.8	7	Lonoke	5.5	5.6	6.3
57	Bradley	8.5	8.5	9.3	2	Madison	4.6	4.7	5.2
29	Calhoun	7.0	7.8	8.0	41	Marion	7.3	6.9	8.5
1	Carroll	4.2	4.2	4.8	8	Miller	5.7	6.2	6.4
66	Chicot	9.1	9.2	10.2	60	Mississippi	8.7	8.7	9.3
52	Clark	8.0	7.8	10.0	49	Monroe	7.8	7.5	8.3
75	Clay	11.1	10.7	12.6	29	Montgomery	7.0	6.6	7.4
22	Cleburne	6.6	6.5	6.9	29	Nevada	7.0	5.7	8.6
19	Cleveland	6.3	6.0	7.5	41	Newton	7.3	6.5	7.5
45	Columbia	7.6	7.6	8.5	58	Ouachita	8.6	8.3	8.6
33	Conway	7.1	6.9	7.6	37	Perry	7.2	7.1	8.8
20	Craighead	6.4	6.3	6.6	71	Phillips	9.8	9.9	10.5
41	Crawford	7.3	6.8	8.3	44	Pike	7.5	7.3	8.2
64	Crittenden	9.0	9.8	10.6	33	Poinsett	7.1	6.9	7.6
46	Cross	7.7	7.2	7.5	26	Polk	6.8	6.7	7.6
64	Dallas	9.0	9.2	9.7	17	Pope	6.2	6.2	6.6
67	Desha	9.2	9.1	9.9	24	Prairie	6.7	6.5	8.0
68	Drew	9.3	9.3	10.2	12	Pulaski	6.1	6.1	6.6
17	Faulkner	6.2	6.1	7.2	58	Randolph	8.6	8.6	9.2
22	Franklin	6.6	6.1	7.5	72	St. Francis	10.1	9.8	10.1
12	Fulton	6.1	6.0	6.7	6	Saline	5.4	5.4	6.0
33	Garland	7.1	6.9	7.5	10	Scott	5.9	6.0	6.2
9	Grant	5.8	5.6	6.3	29	Searcy	7.0	6.6	7.4
51	Greene	7.9	7.6	9.1	46	Sebastian	7.7	7.2	8.1
21	Hempstead	6.5	6.5	7.4	37	Sevier	7.2	7.2	7.4
12	Hot Spring	6.1	6.0	6.8	62	Sharp	8.9	8.7	9.4
24	Howard	6.7	6.4	7.6	56	Stone	8.4	8.0	8.5
54	Independence	8.1	8.1	8.0	49	Union	7.8	7.6	8.8
33	Izard	7.1	7.3	8.0	52	Van Buren	8.0	7.9	8.8
62	Jackson	8.9	8.9	9.1	3	Washington	4.8	4.7	5.4
61	Jefferson	8.8	8.5	9.6	37	White	7.2	7.1	7.8
10	Johnson	5.9	6.0	6.0	70	Woodruff	9.6	9.6	9.6
69	Lafayette	9.5	9.6	8.6	4	Yell	5.1	5.0	5.7
46	Lawrence	7.7	7.6	8.3					

Lowest Rates

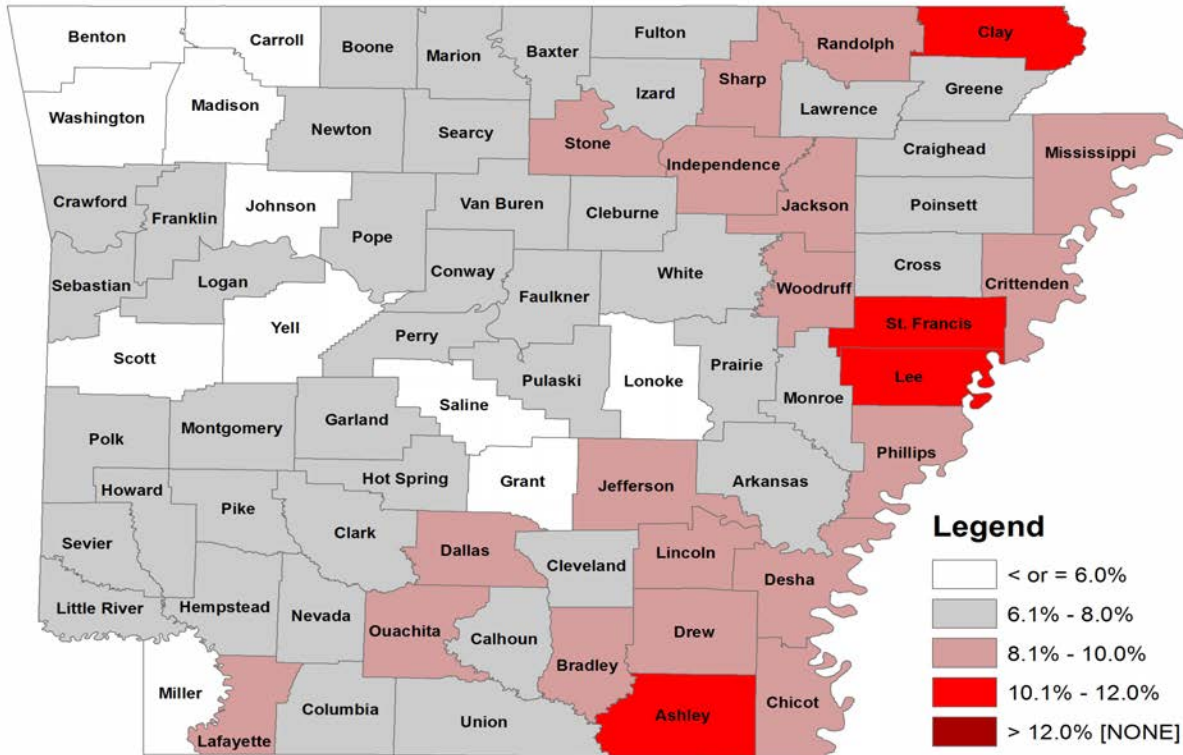
<u>Rank</u>	<u>County</u>	<u>Rate</u>
1	Carroll	4.2
2	Madison	4.6
3	Washington	4.8
4	Benton	5.1
4	Yell	5.1

Highest Rates

<u>Rank</u>	<u>County</u>	<u>Rate</u>
72	St. Francis	10.1
73	Lee	10.4
74	Ashley	10.7
75	Clay	11.1

Civilian Labor Force Statistics

For complete County Labor Force Statistics, please visit our website at www.discover.arkansas.gov



Technical Notes

The *Arkansas Labor Market* is prepared monthly in conjunction with the U.S. Department of Labor, Bureau of Labor Statistics (BLS). The current month's estimates are preliminary, while previous data are subject to revision.

Estimates of nonfarm payroll jobs show the number of jobs by industry and reflect employment by place of work. Hours and earnings estimates are based on payroll and worker-hour data collected for production workers in manufacturing industries.

Industries are classified according to the North American Industry Classification System (NAICS). All estimates are based on a first quarter 2011 benchmark.

Explanation of Terms and Concepts

Monthly Business Survey of Employers

A monthly sample survey designed to provide industry information on nonfarm payroll jobs. Data are compiled each month from mail surveys and telephone interviews conducted by the Bureau of Labor Statistics in cooperation with Department of Workforce Services. The data are based on establishment records and include all workers, full-or part-time, who received pay during the payroll period which includes the 12th of the

month. Approximately 3,000 Arkansas business establishments are surveyed.

Metropolitan Statistical Area (MSA)

A term applied by the U.S. Office of Management and Budget to counties that have one or more central cities and that meet specified criteria of population density, commuting patterns and social and economic integration.

Current Population Survey (CPS)

A monthly sample survey of the population 16 years of age and over, designed to provide data on the labor force, the employed and the unemployed. The survey is conducted each month by the Bureau of the Census for BLS. The information is collected by trained interviewers from a sample of about 60,000 households. The data collected are based on the activity reported for the calendar week including the 12th of the month. Approximately 800 Arkansas households are represented in the sample survey.

Civilian Labor Force

The sum of all employed and unemployed persons 16 years of age or older. Members of the Armed Forces are excluded.

Employment

An estimate of the number of persons who worked any time for pay or profit or worked 15 hours or more as unpaid workers in a family business during the calendar week which includes the 12th of the month. Also included are those who, although not working, had some job attachment and were not looking for work, and persons involved in labor management disputes.

Unemployment

An estimate of the number of persons who did not have a job, but were available for work and actively seeking work during the calendar week which includes the 12th of the month.

Unemployment Rate

The number of unemployed as a percentage of the civilian labor force. Unemployment rates in this publication are calculated from unrounded data.

Seasonal Adjustment

A statistical technique applied to monthly data to eliminate changes that normally occur during the year due to seasonal events such as weather, major holidays, shifts in schedules, harvest times, and the opening/closing of schools.

Arkansas Labor Market

October 2012

The *Arkansas Labor Market* is produced by the Department of Workforce Services, Bureau of Labor Statistics. All Statistics are published in cooperation with the United States Department of Labor, Bureau of Labor Statistics.

Equal Opportunity Employer/Program

Auxiliary aids and services are available upon request to individuals with disabilities.



Voice: 1-800-285-1121

TDD: 1-800-285-1131

Mike Beebe- Governor
Artee Williams- DWS Director



Department of Workforce Services
Bureau of Labor Statistics
P.O. Box 2981
Little Rock, AR 72203-2981