

Arkansas Labor Market

December 2012

Employment Headlines

Arkansas' Unemployment Rate Increases to 7.1 Percent

Nonfarm Payroll Jobs Down 5,400 in December

Employment Quick Facts

Unemployment Rates

Seasonally Adjusted

	<u>Dec 12</u>	<u>Nov 12</u>	<u>Dec 11</u>
AR Unemployment Rate	7.1	7.0	7.8
US Unemployment Rate	7.8	7.8	8.5

Nonfarm Payroll Summary

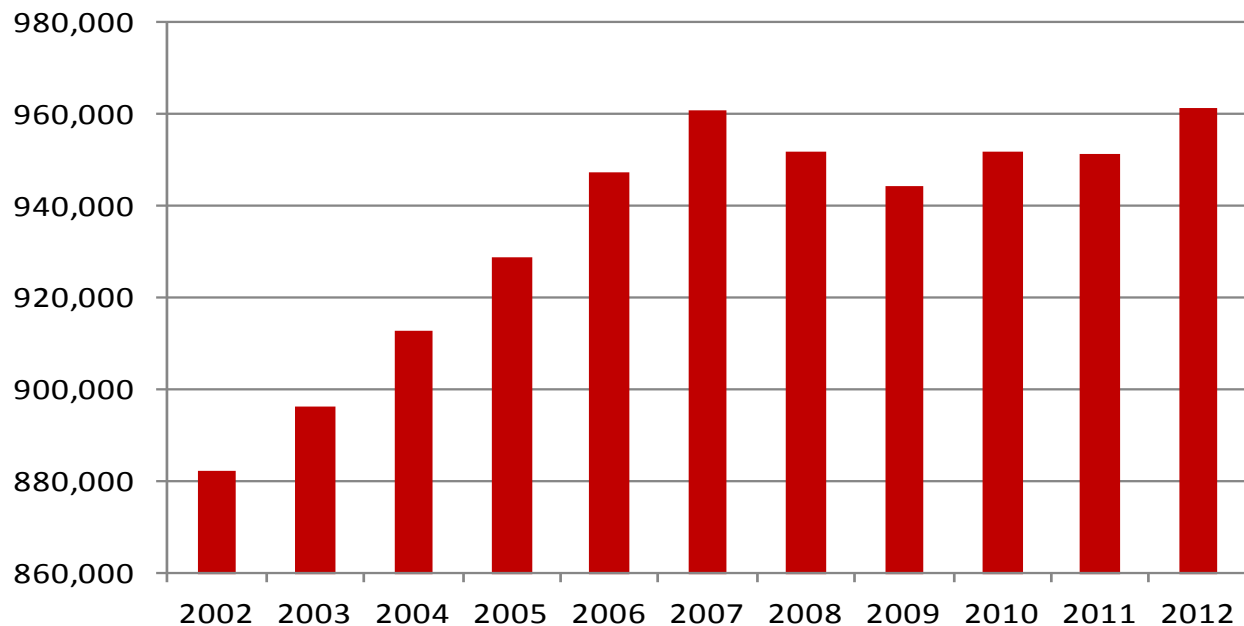
State of Arkansas

	<u>Dec 12</u>	<u>Nov 12</u>	<u>Dec 11</u>
Total Nonfarm	1,171,800	1,177,200	1,164,100
Goods Producing	210,600	210,400	212,800
Service Providing	961,200	966,800	951,300

Jobs in Service Providing Industries

State of Arkansas

December: 2002 - 2012



Nonfarm Payroll Employment

State of Arkansas

November 2012 - December 2012

Nonfarm payroll jobs in Arkansas declined 5,400 to total 1,171,800. Seven major industry sectors posted job losses, more than offsetting slight gains in two sectors. Jobs in **leisure and hospitality** fell 3,000. A majority of the loss occurred in accommodation and food services (-2,800), a typical seasonal trend. **Government** employment dropped 900. State government posted the largest decline (-700), which was related to the start of winter break at public universities. Jobs in **educational and health services** decreased 800. Most of the loss occurred in social assistance (-1,000), related in part to reported employment declines in child day care services and child-youth services.

December 2011 - December 2012

Arkansas' nonfarm payroll employment rose 7,700 since December 2011. Seven major industry sectors posted growth, with four adding 1,400 or more jobs, each. **Educational and health services** increased 3,600. Health care and social assistance posted a majority of the expansion (+2,500), with gains reported in general medical and surgical hospitals. **Leisure and hospitality** also added 3,600 jobs. Most of the increase occurred in food services (+3,100). Jobs in **government** rose 2,500. Local government captured a majority of the additions (+1,700), as public education experienced growth. Employment in **other services** increased 1,400. Gains were reported in personal and laundry services, which includes businesses such as beauty salons and drycleaners. Jobs in **construction** dropped 2,700.

Nonfarm Payroll Jobs				
(NAICS)	Dec 12	Nov 12	Dec 11	
Total Nonfarm	1,171,800	1,177,200	1,164,100	
Goods Producing	210,600	210,400	212,800	
Mining & Logging	11,100	11,100	10,900	
Construction	43,100	43,200	45,800	
Specialty Trade Contractors	27,100	26,600	27,800	
Manufacturing	156,400	156,100	156,100	
Durable Goods	81,500	81,400	79,000	
Nondurable Goods	74,900	74,700	77,100	
Service Providing	961,200	966,800	951,300	
Trade, Transportation & Utilities	241,600	242,200	240,700	
Wholesale Trade	45,900	46,600	45,000	
Retail Trade	134,400	133,600	135,100	
Transport, Warehousing & Utilities	61,300	62,000	60,600	
Information	14,100	14,100	14,200	
Financial Activities	46,900	47,200	48,200	
Finance & Insurance	34,900	34,900	35,300	
Real Estate & Rental & Leasing	12,000	12,300	12,900	
Professional & Business Services	115,400	115,600	116,100	
Professional, Scientific & Technical	38,000	37,200	36,000	
Management of Companies	27,600	27,300	26,600	
Administrative & Support Services	49,800	51,100	53,500	
Educational & Health Services	172,800	173,600	169,200	
Health Care & Social Assistance	156,900	157,500	154,400	
Ambulatory Health Care	47,400	46,800	47,100	
Social Assistance	34,700	35,700	35,000	
Leisure & Hospitality	99,000	102,000	95,400	
Arts, Entertainment & Recreation	8,300	8,500	7,900	
Accommodation & Food Services	90,700	93,500	87,500	
Accommodation Services	10,600	11,100	10,500	
Food Services	80,100	82,400	77,000	
Other Services	44,300	44,100	42,900	
Government	227,100	228,000	224,600	
Federal Government	20,500	20,200	20,600	
State Government	78,700	79,400	77,800	
Local Government	127,900	128,400	126,200	

Hours & Earnings of Arkansas Production Workers

(Manufacturing Industries)

	Average Weekly Earnings			Average Weekly Hours			Average Hourly Earnings		
	Dec 12	Nov 12	Dec 11	Dec 12	Nov 12	Dec 11	Dec 12	Nov 12	Dec 11
Manufacturing	\$639.24	\$636.72	\$633.13	42.0	42.0	41.3	\$15.22	\$15.16	\$15.33
Durable Goods	677.63	687.58	724.62	41.7	41.9	42.7	16.25	16.41	16.97
Nondurable Goods	599.39	586.16	543.84	42.3	42.2	39.9	14.17	13.89	13.63

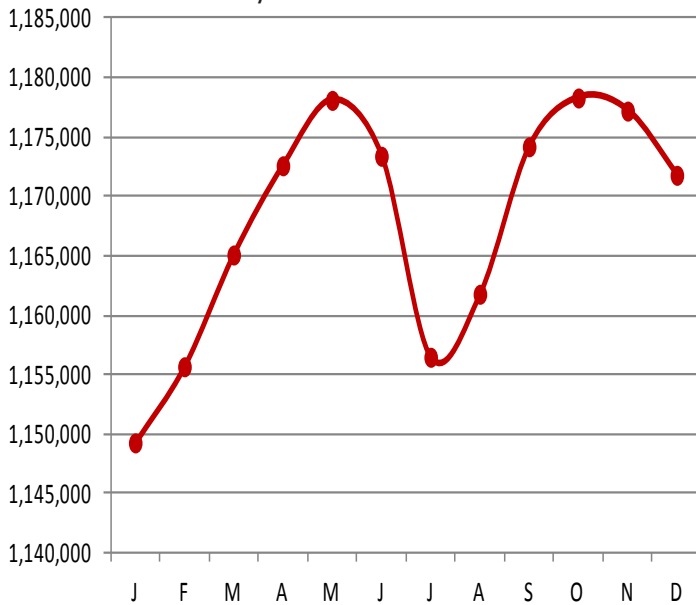
Spotlight

The Year in Review

In 2012, nonfarm payroll employment in Arkansas ranged from a high of 1,178,300 in October to a low of 1,149,300 in January. Arkansas' preliminary annual average nonfarm employment for 2012 is 1,167,800, slightly higher than the 2011 average of 1,160,000. There were 172 mass layoff events in 2012, compared to 154 mass layoff events in 2011.

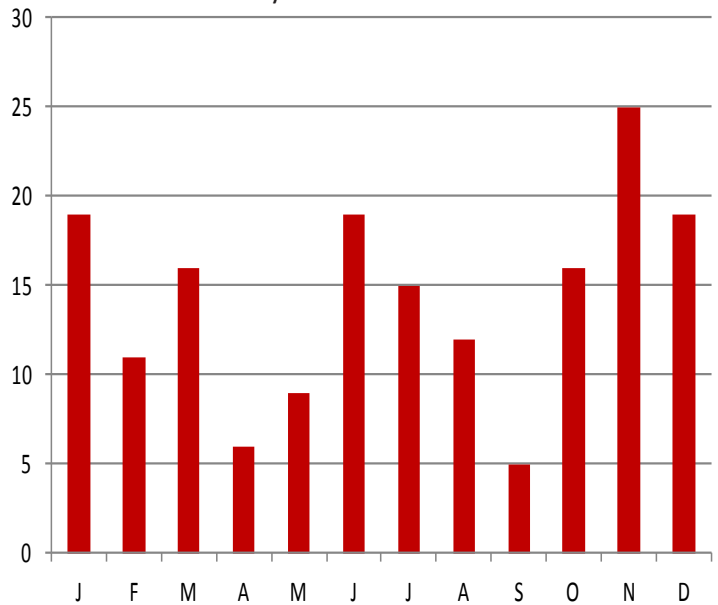
Nonfarm Payroll Jobs

January 2012 - December 2012



Mass Layoff Events

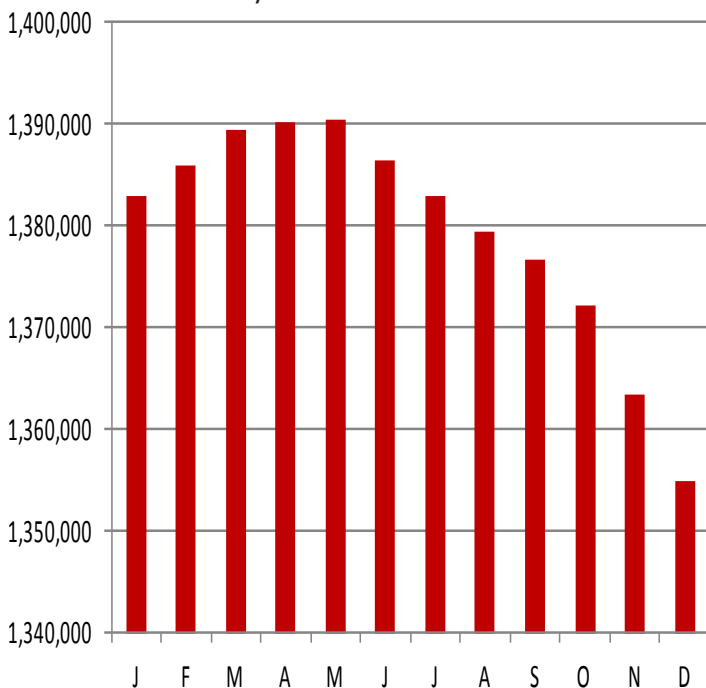
January 2012 - December 2012



In 2012, Arkansas' civilian labor force ranged from a high of 1,390,500 in May to a low of 1,355,000 in December. The civilian labor force steadily declined from May to December. The unemployment rates in Arkansas ranged from a high of 7.6 percent in January and February to a low of 7.0 percent in November.

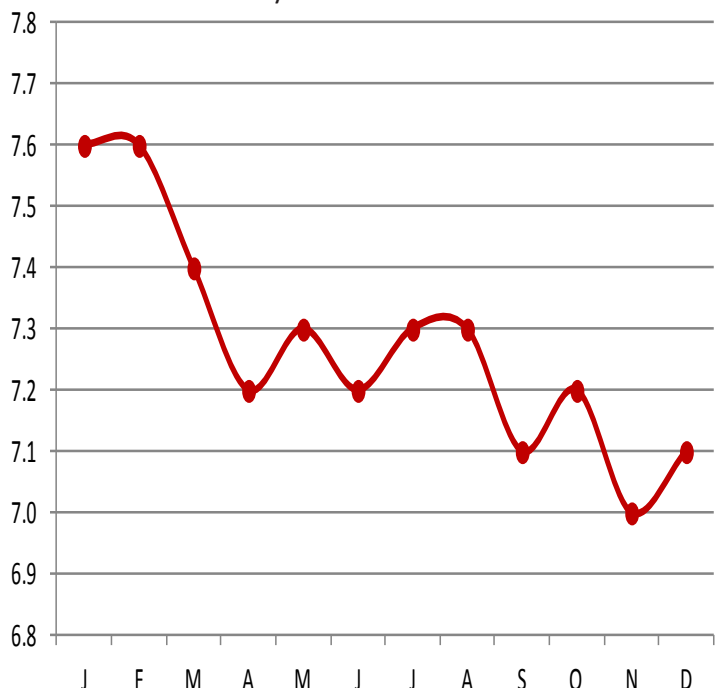
Civilian Labor Force (seasonally adjusted)

January 2012 - December 2012



Unemployment Rates (seasonally adjusted)

January 2012 - December 2012



Metropolitan Statistical Areas

Little Rock-North Little Rock-Conway MSA

Nonfarm Payroll Jobs

(NAICS)	Dec 12	Nov 12	Dec 11
Total Nonfarm	340,500	340,800	341,600
Goods Producing	35,000	34,900	36,000
Mining, Logging & Construction	16,100	15,900	16,700
Manufacturing	18,900	19,000	19,300
Service Providing	305,500	305,900	305,600
Trade, Transportation & Utilities	70,000	69,300	68,800
Wholesale Trade	16,500	16,700	16,300
Retail Trade	40,000	38,900	39,300
Trans., Warehousing & Utilities	13,500	13,700	13,200
Information	7,200	7,200	7,400
Financial Activities	18,700	18,700	19,000
Professional & Business Services	42,600	42,600	43,100
Educational & Health Services	50,400	50,700	50,200
Leisure & Hospitality	30,000	30,800	29,800
Other Services	15,200	15,100	15,000
Government	71,400	71,500	72,300
Federal Government	9,600	9,400	9,400
State Government	34,000	34,200	34,000
Local Government	27,800	27,900	28,900

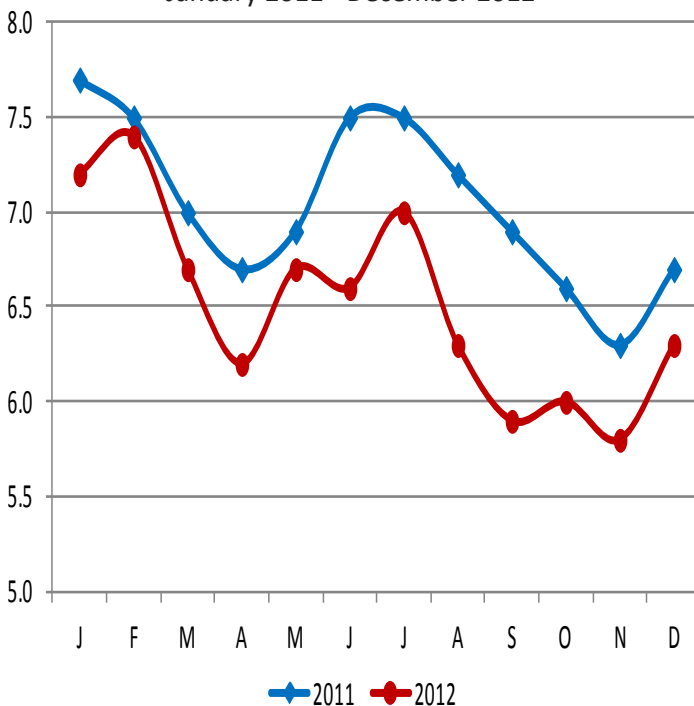
(The following counties make up the LR-NLR-Conway MSA: Faulkner, Grant, Lonoke, Perry, Pulaski, and Saline.)

Civilian Labor Force Statistics

	Dec 12	Nov 12	Dec 11
Civilian Labor Force	338,200	341,375	346,275
Employment	317,050	321,675	323,200
Unemployment	21,150	19,700	23,075
Unemployment Rate	6.3	5.8	6.7

Unemployment Rates

January 2011 - December 2012



Fayetteville-Springdale-Rogers MSA

Nonfarm Payroll Jobs

(NAICS)	Dec 12	Nov 12	Dec 11
Total Nonfarm	213,900	214,600	205,000
Goods Producing	35,900	35,900	35,000
Mining, Logging & Construction	7,800	7,800	7,600
Manufacturing	28,100	28,100	27,400
Service Providing	178,000	178,700	170,000
Trade, Transportation & Utilities	48,300	48,400	46,800
Wholesale Trade	10,300	10,300	9,800
Retail Trade	23,100	23,000	22,000
Trans., Warehousing & Utilities	14,900	15,100	15,000
Information	1,900	1,900	1,900
Financial Activities	7,000	7,100	7,000
Professional & Business Services	38,100	37,700	36,000
Educational & Health Services	24,500	24,600	23,000
Leisure & Hospitality	19,800	20,200	18,500
Other Services	7,400	7,300	6,900
Government	31,000	31,500	29,900
Federal Government	2,300	2,300	2,300
State Government	10,500	11,000	9,900
Local Government	18,200	18,200	17,700

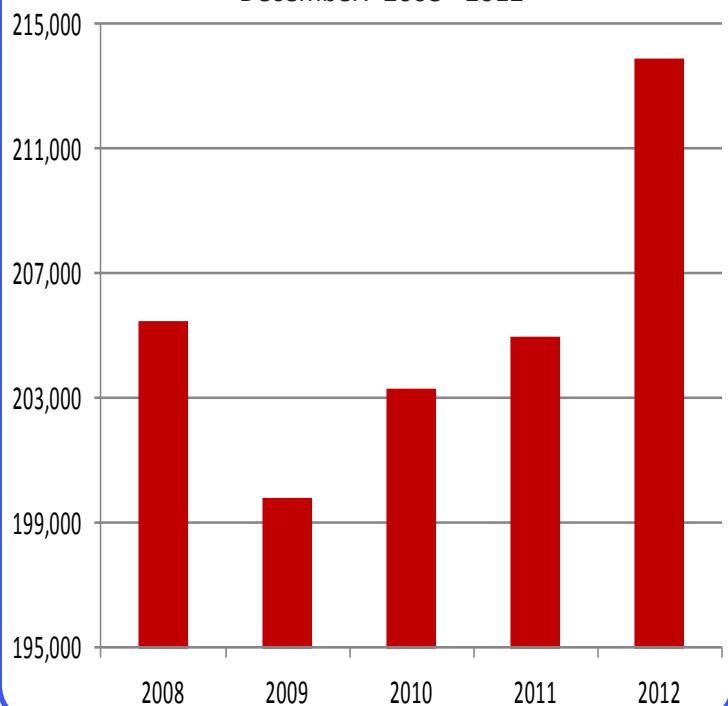
(The following counties make up the FSR MSA: Benton, Madison, and Washington in Arkansas and McDonald in Missouri.)

Civilian Labor Force Statistics

	Dec 12	Nov 12	Dec 11
Civilian Labor Force	235,150	237,875	231,725
Employment	223,225	226,900	218,475
Unemployment	11,925	10,975	13,250
Unemployment Rate	5.1	4.6	5.7

Nonfarm Payroll Jobs

December: 2008 - 2012



Metropolitan Statistical Areas

Fort Smith MSA

Nonfarm Payroll Jobs

(NAICS)	Dec 12	Nov 12	Dec 11
Total Nonfarm	110,200	110,800	109,900
Goods Producing	25,700	25,800	25,500
Mining, Logging & Construction	6,700	6,700	6,800
Manufacturing	19,000	19,100	18,700
Service Providing	84,500	85,000	84,400
Trade, Transportation & Utilities	24,100	24,000	23,600
Wholesale Trade	4,000	4,000	3,800
Retail Trade	13,000	12,900	12,900
Trans., Warehousing & Utilities	7,100	7,100	6,900
Information	1,100	1,100	1,100
Financial Activities	3,600	3,600	3,700
Professional & Business Services	9,200	9,300	9,300
Educational & Health Services	15,100	15,200	15,500
Leisure & Hospitality	8,100	8,300	8,000
Other Services	4,300	4,300	4,200
Government	19,000	19,200	19,000
Federal Government	1,600	1,600	1,600
State Government	3,500	3,600	3,400
Local Government	13,900	14,000	14,000

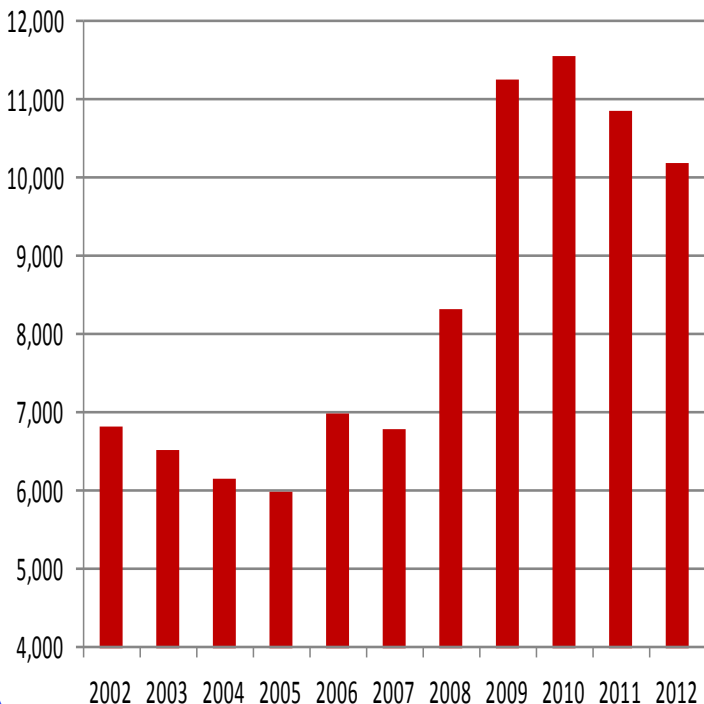
(The following counties make up the Fort Smith MSA: Crawford, Franklin, and Sebastian in Arkansas and LeFlore and Sequoyah in Oklahoma.)

Civilian Labor Force Statistics

	Dec 12	Nov 12	Dec 11
Civilian Labor Force	126,000	127,450	127,750
Employment	115,800	117,775	116,875
Unemployment	10,200	9,675	10,875
Unemployment Rate	8.1	7.6	8.5

Number of Unemployed

December: 2002 - 2012



Hot Springs MSA

Nonfarm Payroll Jobs

(NAICS)	Dec 12	Nov 12	Dec 11
Total Nonfarm	36,500	36,600	36,800
Goods Producing	3,900	3,900	4,000
Service Providing	32,600	32,700	32,800
Government	5,500	5,600	5,600

(The following county makes up the Hot Springs MSA: Garland.)

Civilian Labor Force Statistics

	Dec 12	Nov 12	Dec 11
Civilian Labor Force	40,575	40,950	42,150
Employment	37,525	38,150	38,750
Unemployment	3,050	2,800	3,400
Unemployment Rate	7.5	6.9	8.1

Jonesboro MSA

Nonfarm Payroll Jobs

(NAICS)	Dec 12	Nov 12	Dec 11
Total Nonfarm	51,300	51,100	49,200
Goods Producing	8,400	8,400	8,500
Service Providing	42,900	42,700	40,700
Government	8,800	8,700	8,700

(The following counties make up the Jonesboro MSA: Craighead and Poinsett.)

Civilian Labor Force Statistics

	Dec 12	Nov 12	Dec 11
Civilian Labor Force	59,525	59,725	58,725
Employment	55,475	56,025	54,500
Unemployment	4,050	3,700	4,225
Unemployment Rate	6.8	6.2	7.2

Pine Bluff MSA

Nonfarm Payroll Jobs

(NAICS)	Dec 12	Nov 12	Dec 11
Total Nonfarm	37,200	37,500	36,500
Goods Producing	7,200	7,200	7,300
Service Providing	30,000	30,300	29,200
Government	10,100	10,100	10,900

(The following counties make up the Pine Bluff MSA: Cleveland, Jefferson, and Lincoln.)

Civilian Labor Force Statistics

	Dec 12	Nov 12	Dec 11
Civilian Labor Force	43,100	43,625	44,050
Employment	39,225	40,050	39,775
Unemployment	3,875	3,575	4,275
Unemployment Rate	9.0	8.2	9.7

Civilian Labor Force Statistics

State of Arkansas

(Seasonally Adjusted)

(Not Seasonally Adjusted)

	<u>Dec 12</u>	<u>Nov 12</u>	<u>Dec 11</u>	<u>OTM</u>	<u>QTY</u>	<u>Dec 12</u>	<u>Nov 12</u>	<u>Dec 11</u>	<u>OTM</u>	<u>QTY</u>
Civilian Labor Force	1,355,000	1,363,500	1,378,500	-8,500	-23,500	1,337,100	1,351,300	1,367,100	-14,200	-30,000
Employment	1,258,800	1,267,500	1,271,400	-8,700	-12,600	1,242,000	1,263,900	1,262,200	-21,900	-20,200
Unemployment	96,200	96,000	107,100	200	-10,900	95,100	87,400	104,900	7,700	-9,800
Unemployment Rate	7.1	7.0	7.8	0.1	-0.7	7.1	6.5	7.7	0.6	-0.6
U.S. Unemployment Rate	7.8	7.8	8.5	0.0	-0.7	7.6	7.4	8.3	0.2	-0.7

Out-of-State MSAs

Memphis, Tennessee

	<u>Dec 12</u>	<u>Nov 12</u>	<u>Dec 11</u>
Civilian Labor Force	627,225	621,375	633,925
Employment	573,350	573,800	577,600
Unemployment	53,875	47,575	56,325
Unemployment Rate	8.6	7.7	8.9

Texarkana, Texas

	<u>Dec 12</u>	<u>Nov 12</u>	<u>Dec 11</u>
Civilian Labor Force	67,600	68,125	67,325
Employment	63,725	64,425	62,675
Unemployment	3,875	3,700	4,650
Unemployment Rate	5.7	5.4	6.9

Unemployment Rates by County

Between November and December, unemployment rates increased in 74 of Arkansas' 75 counties. One county (Lincoln County) remained stable over-the-month. Jobless rates ranged from a low of 4.4 percent in Madison County to a high of 11.8 percent in Clay County.

In December, eight counties enjoyed unemployment rates below six percent. Twelve counties posted rates at or above ten percent, up from three counties in November.

Since December 2011, jobless rates are down in 66 counties. Nine counties posted over the year rate declines. No county remained stable.

<u>Rank</u>	<u>County</u>	<u>Dec 12</u>	<u>Nov 12</u>	<u>Dec 11</u>	<u>Rank</u>	<u>County</u>	<u>Dec 12</u>	<u>Nov 12</u>	<u>Dec 11</u>
31	Arkansas	7.5	7.0	9.1	72	Lee	11.1	9.7	10.9
74	Ashley	11.6	10.7	13.6	36	Lincoln	7.9	7.9	9.6
30	Baxter	7.4	6.7	8.7	19	Little River	6.8	6.1	7.2
3	Benton	5.3	4.8	6.1	23	Logan	7.1	6.6	7.5
16	Boone	6.6	6.0	7.3	6	Lonoke	5.8	5.4	6.6
55	Bradley	8.8	8.2	10.3	1	Madison	4.4	4.3	5.9
46	Calhoun	8.2	7.1	8.5	33	Marion	7.6	7.2	9.1
5	Carroll	5.6	4.3	6.2	23	Miller	7.1	6.7	6.9
67	Chicot	10.4	9.1	11.1	59	Mississippi	9.6	8.9	9.8
47	Clark	8.3	7.8	10.0	51	Monroe	8.7	7.7	8.8
75	Clay	11.8	10.9	14.5	36	Montgomery	7.9	6.9	8.0
26	Cleburne	7.2	6.5	7.3	14	Nevada	6.5	6.3	7.9
18	Cleveland	6.7	6.6	7.4	36	Newton	7.9	6.9	8.1
36	Columbia	7.9	7.2	8.4	56	Ouachita	9.3	8.6	9.9
33	Conway	7.6	6.9	7.7	51	Perry	8.7	8.2	8.3
12	Craighead	6.4	6.0	6.7	71	Phillips	11.0	9.7	11.5
43	Crawford	8.1	7.2	8.5	41	Pike	8.0	7.4	8.7
69	Crittenden	10.9	10.2	11.7	47	Poinsett	8.3	7.3	9.3
49	Cross	8.4	7.5	8.2	27	Polk	7.3	6.3	7.7
59	Dallas	9.6	8.9	10.6	21	Pope	6.9	6.0	7.4
73	Desha	11.2	9.4	10.8	23	Prairie	7.1	6.6	8.3
66	Drew	10.3	9.2	11.5	10	Pulaski	6.3	5.9	6.7
16	Faulkner	6.6	6.0	6.8	61	Randolph	9.8	8.5	10.6
27	Franklin	7.3	6.1	7.8	68	St. Francis	10.6	9.7	10.7
14	Fulton	6.5	6.0	6.7	6	Saline	5.8	5.1	6.1
31	Garland	7.5	6.9	8.1	6	Scott	5.8	5.3	6.2
9	Grant	6.2	5.6	6.8	33	Searcy	7.6	6.6	7.9
50	Greene	8.5	7.9	9.7	43	Sebastian	8.1	7.6	8.4
22	Hempstead	7.0	6.2	7.8	27	Sevier	7.3	6.5	7.8
12	Hot Spring	6.4	5.7	7.1	61	Sharp	9.8	8.9	10.0
19	Howard	6.8	6.3	7.6	63	Stone	9.9	8.2	10.0
51	Independence	8.7	7.9	8.6	43	Union	8.1	7.5	9.3
41	Izard	8.0	7.0	9.3	57	Van Buren	9.4	8.2	9.2
64	Jackson	10.0	8.7	10.2	2	Washington	4.9	4.5	5.3
57	Jefferson	9.4	8.4	10.0	36	White	7.9	7.0	8.4
10	Johnson	6.3	5.7	6.4	69	Woodruff	10.9	9.5	10.4
65	Lafayette	10.2	9.6	8.7	4	Yell	5.4	4.8	6.0
51	Lawrence	8.7	7.5	9.3					

Lowest Rates

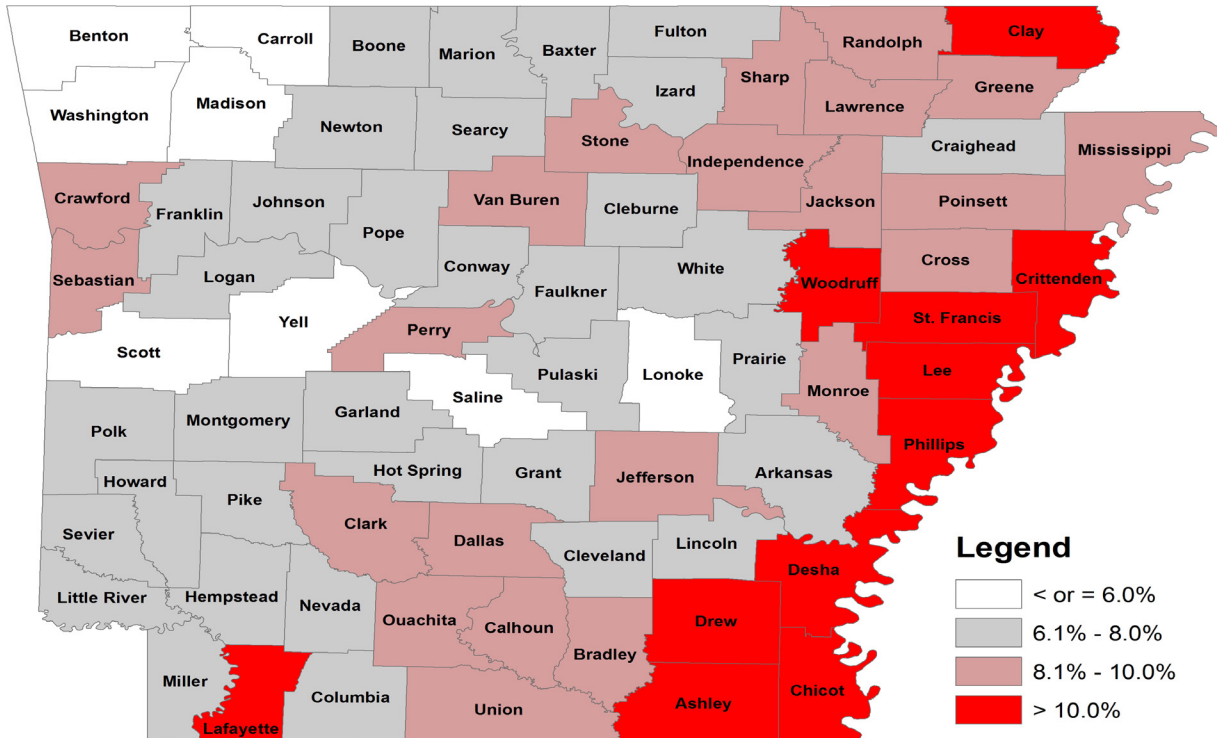
<u>Rank</u>	<u>County</u>	<u>Rate</u>
1	Madison	4.4
2	Washington	4.9
3	Benton	5.3
4	Yell	5.4
5	Carroll	5.6

Highest Rates

<u>Rank</u>	<u>County</u>	<u>Rate</u>
72	Lee	11.1
73	Desha	11.2
74	Ashley	11.6
75	Clay	11.8

Civilian Labor Force Statistics

For complete County Labor Force Statistics, please visit our website at www.discover.arkansas.gov



Technical Notes

The *Arkansas Labor Market* is prepared monthly in conjunction with the U.S. Department of Labor, Bureau of Labor Statistics (BLS). The current month's estimates are preliminary, while previous data are subject to revision.

Estimates of nonfarm payroll jobs show the number of jobs by industry and reflect employment by place of work. Hours and earnings estimates are based on payroll and worker-hour data collected for production workers in manufacturing industries.

Industries are classified according to the North American Industry Classification System (NAICS). All estimates are based on a first quarter 2011 benchmark.

Explanation of Terms and Concepts

Monthly Business Survey of Employers

A monthly sample survey designed to provide industry information on nonfarm payroll jobs. Data are compiled each month from mail surveys and telephone interviews conducted by the Bureau of Labor Statistics in cooperation with Department of Workforce Services. The data are based on establishment records and include all workers, full-or part-time, who received pay during the payroll period which includes the 12th of the

month. Approximately 3,000 Arkansas business establishments are surveyed.

Metropolitan Statistical Area (MSA)

A term applied by the U.S. Office of Management and Budget to counties that have one or more central cities and that meet specified criteria of population density, commuting patterns and social and economic integration.

Current Population Survey (CPS)

A monthly sample survey of the population 16 years of age and over, designed to provide data on the labor force, the employed and the unemployed. The survey is conducted each month by the Bureau of the Census for BLS. The information is collected by trained interviewers from a sample of about 60,000 households. The data collected are based on the activity reported for the calendar week including the 12th of the month. Approximately 800 Arkansas households are represented in the sample survey.

Civilian Labor Force

The sum of all employed and unemployed persons 16 years of age or older. Members of the Armed Forces are excluded.

Employment

An estimate of the number of persons who worked any time for pay or profit or worked 15 hours or more as unpaid workers in a family business during the calendar week which includes the 12th of the month. Also included are those who, although not working, had some job attachment and were not looking for work, and persons involved in labor management disputes.

Unemployment

An estimate of the number of persons who did not have a job, but were available for work and actively seeking work during the calendar week which includes the 12th of the month.

Unemployment Rate

The number of unemployed as a percentage of the civilian labor force. Unemployment rates in this publication are calculated from unrounded data.

Seasonal Adjustment

A statistical technique applied to monthly data to eliminate changes that normally occur during the year due to seasonal events such as weather, major holidays, shifts in schedules, harvest times, and the opening/closing of schools.

Arkansas Labor Market

December 2012

The *Arkansas Labor Market* is produced by the Department of Workforce Services, Bureau of Labor Statistics. All Statistics are published in cooperation with the United States Department of Labor, Bureau of Labor Statistics.

Equal Opportunity Employer/Program

Auxiliary aids and services are available upon request to individuals with disabilities.



Voice: 1-800-285-1121

TDD: 1-800-285-1131

Mike Beebe- Governor
Artee Williams- DWS Director



Department of Workforce Services
Bureau of Labor Statistics
P.O. Box 2981
Little Rock, AR 72203-2981