

Arkansas Labor Market

July 2011

Employment Headlines

Arkansas' Unemployment Rate Rises to 8.2 Percent

Nonfarm Payroll Jobs Drop 15,600 in July

Employment Quick Facts

Unemployment Rates

Seasonally Adjusted

	<u>Jul 11</u>	<u>Jun 11</u>	<u>Jul 10</u>
AR Unemployment Rate	8.2	8.1	7.8
US Unemployment Rate	9.1	9.2	9.5

Nonfarm Payroll Summary

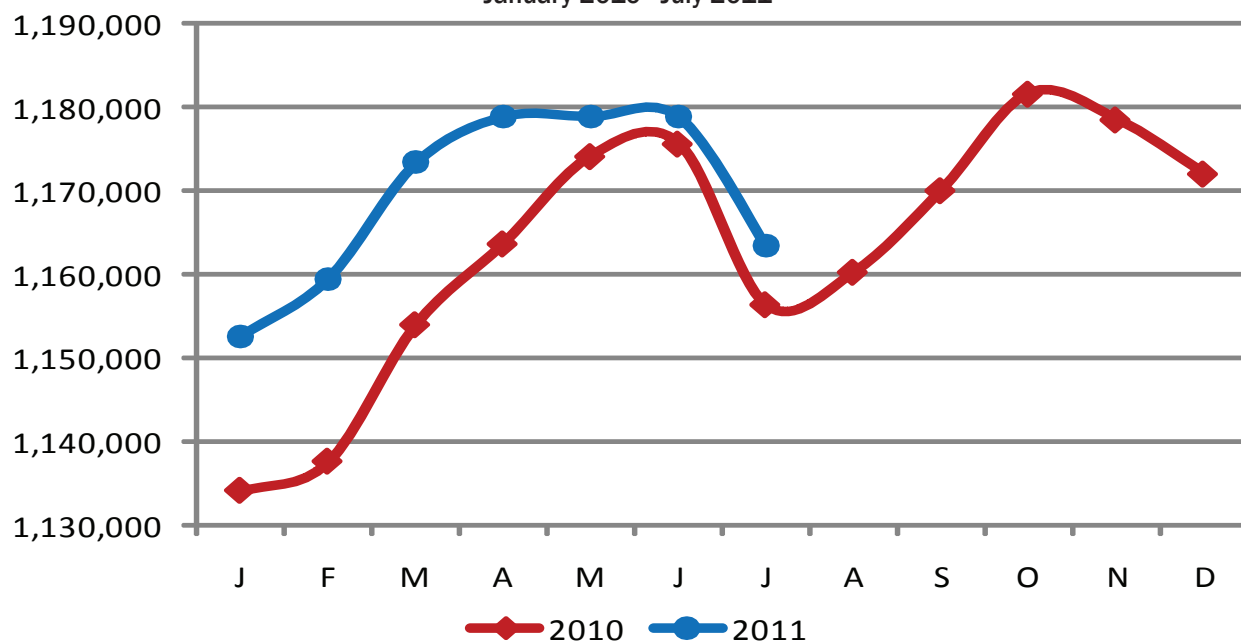
State of Arkansas

	<u>Jul 11</u>	<u>Jun 11</u>	<u>Jul 10</u>
Total Nonfarm	1,163,400	1,179,000	1,156,400
Goods Producing	217,800	216,600	223,000
Service Providing	945,600	962,400	933,400

Nonfarm Payroll Jobs

State of Arkansas

January 2010 - July 2011



Nonfarm Payroll Employment

State of Arkansas

June 2011 - July 2011

Nonfarm payroll jobs in Arkansas declined 15,600 in July to total 1,163,400. Seven major industry sectors posted job losses, more than offsetting gains in four sectors. The largest decrease occurred in **government** (-14,400). Local government (-13,200) experienced most of the loss, a result of the seasonal summer break at public schools. Employment in **professional and business services** declined 2,200. The largest drop occurred in professional, scientific, and technical services (-1,400), related in part to reported decreases in computer systems design services and marketing consulting. **Trade, transportation, and utilities** experienced a reduction of 1,300 jobs. Following a typical seasonal trend, both wholesale trade (-800) and retail trade (-600) experienced losses. **Construction** added 2,000 seasonal jobs, all in specialty trade contractors.

July 2010 - July 2011

Since July 2010, Arkansas' nonfarm payroll employment increased 7,000. Eight major industry sectors posted growth, with four sectors showing gains of 2,000 or more jobs, each. **Leisure and hospitality** enjoyed the largest expansion (+7,600), as accommodation and food services posted a majority of the increase (+6,700). **Professional and business services** added 3,000 jobs. The growth occurred in administrative and support services, which includes business support services and services to buildings and dwellings. Employment in **educational and health services** rose 2,200, and **other services** increased 2,000.

Nonfarm Payroll Jobs

(NAICS)	Jul 11	Jun 11	Jul 10
Total Nonfarm	1,163,400	1,179,000	1,156,400
Goods Producing	217,800	216,600	223,000
Mining & Logging	10,900	10,800	10,700
Construction	50,300	48,300	50,900
Specialty Trade Contractors	30,300	28,300	29,200
Manufacturing	156,600	157,500	161,400
Durable Goods	76,200	76,300	79,000
Nondurable Goods	80,400	81,200	82,400
Service Providing	945,600	962,400	933,400
Trade, Transportation & Utilities	236,700	238,000	235,900
Wholesale Trade	45,500	46,300	46,900
Retail Trade	130,400	131,000	130,000
Transportation, Warehousing & Utilities	60,800	60,700	59,000
Information	15,900	16,000	15,500
Financial Activities	50,400	50,700	48,800
Finance & Insurance	36,500	36,700	35,100
Real Estate & Rental & Leasing	13,900	14,000	13,700
Professional & Business Services	121,300	123,500	118,300
Professional, Scientific & Technical	37,600	39,000	38,100
Management of Companies	26,300	26,200	26,400
Administrative & Support Services	57,400	58,300	53,800
Educational & Health Services	165,200	165,400	163,000
Health Care & Social Assistance	152,600	153,000	152,200
Ambulatory Health Care	45,300	44,900	45,900
Social Assistance	33,800	34,800	33,400
Leisure & Hospitality	109,500	108,100	101,900
Arts, Entertainment & Recreation	12,500	12,200	11,600
Accommodation & Food Services	97,000	95,900	90,300
Accommodation Services	12,700	12,400	12,400
Food Services	84,300	83,500	77,900
Other Services	45,600	45,300	43,600
Government	201,000	215,400	206,400
Federal Government	21,000	20,800	24,900
State Government	71,000	72,400	69,900
Local Government	109,000	122,200	111,600

Hours & Earnings of Arkansas Production Workers

(Manufacturing Industries)

	Average Weekly Earnings			Average Weekly Hours			Average Hourly Earnings		
	Jul 11	Jun 11	Jul 10	Jul 11	Jun 11	Jul 10	Jul 11	Jun 11	Jul 10
Manufacturing	\$592.76	\$580.80	\$567.46	40.6	40.0	41.3	\$14.60	\$14.52	\$13.74
Durable Goods	655.18	661.35	621.64	41.0	40.9	39.9	15.98	16.17	15.58
Nondurable Goods	536.67	510.38	521.42	40.2	39.2	42.6	13.35	13.02	12.24

Spotlight

Local Employment Dynamics

Local Employment Dynamics (LED) is a cooperative program between state labor market information agencies and the United States Census Bureau. The program combines statistical information from the Quarterly Census of Employment and Wages (QCEW) program with existing census data to produce quarterly information on employment trends. The program's most popular output, the Quarterly Workforce Indicators (QWI), provides information on employment activities such as hiring, job creation, job separation and turnover.

Because of the connection to QCEW statistics, data produced by the LED program is particularly detailed. QWI are not only produced at the statewide level, but are also available for each county, metropolitan area, Workforce Investment Area, and many cities (based on population). Additionally, these employment indicators are produced and published by gender, age range, and industry sector. All LED program information and statistics are available at www.discover.arkansas.gov.

LED Terms and Definitions

Total Employment- Total number of workers who were employed by the same employer in both the current and previous quarter.

Net Job Flows- Difference between current and previous quarter employment at each business.

Job Creation- The number of new jobs created, either by new area businesses or by the expansion of existing businesses.

New Hires- Total number of accessions* that were also not employed by the particular business during the previous four quarters.

Separations- Total number of workers employed by a particular business during the current quarter, but not during the subsequent quarter.

Turnover Rate- Turnover rate = $(1/2) \times (\text{accessions}^* + \text{separations})$, divided by total employment for all full quarter measures.

Average Monthly Earnings- Total quarterly earnings of all full-quarter employees, divided by the number of full-quarter employees, divided by three.

Average New Hire Earnings- Total quarterly earnings of all full-quarter new hires, divided by the number of full-quarter new hires, divided by three.

*Accessions are the total number of workers who were employed by a business during the current quarter, but not the previous quarter.

Local Employment Dynamics

State of Arkansas

2nd Quarter 2009 - 2nd Quarter 2010

<u>Indicator</u>	<u>2nd Qtr 09</u>	<u>3rd Qtr 09</u>	<u>4th Qtr 09</u>	<u>1st Qtr 10</u>	<u>2nd Qtr 10</u>
Total Employment	1,120,402	1,091,609	1,110,308	1,091,236	1,112,407
Net Job Flows	+1,507	-3,455	-9,864	+16,356	+8,782
Job Creation	57,395	48,740	41,217	52,239	64,972
New Hires	165,596	171,182	145,576	144,635	193,154
Separations	195,938	195,642	181,809	149,209	212,379
Turnover Rate	8.8%	8.4%	8.5%	7.4%	9.1%
Avg Monthly Earnings	\$2,972.00	\$2,894.00	\$3,220.00	\$2,980.00	\$3,098.00
Avg New Hire Earnings	\$1,981.00	\$1,837.00	\$1,972.00	\$1,692.00	\$2,060.00

Metropolitan Statistical Areas

Little Rock-North Little Rock-Conway MSA

Nonfarm Payroll Jobs

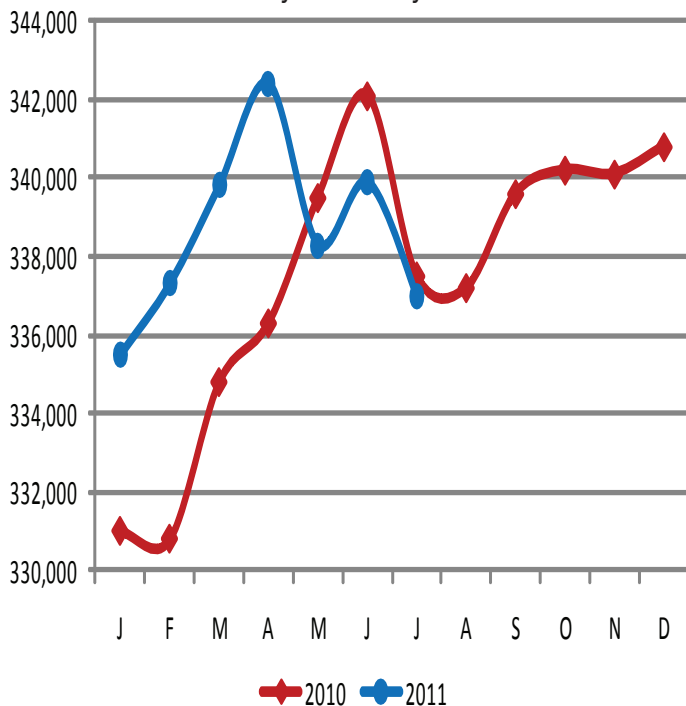
(NAICS)	Jul 11	Jun 11	Jul 10
Total Nonfarm	337,000	339,900	337,500
Goods Producing	38,600	38,200	38,000
Mining, Logging & Construction	18,700	18,200	17,700
Manufacturing	19,900	20,000	20,300
Service Providing	298,400	301,700	299,500
Trade, Transportation & Utilities	63,800	64,000	64,500
Wholesale Trade	16,700	16,700	17,100
Retail Trade	35,500	35,700	35,500
Trans., Warehousing & Utilities	11,600	11,600	11,900
Information	7,700	7,800	8,000
Financial Activities	18,700	18,700	18,700
Professional & Business Services	45,200	45,600	44,100
Educational & Health Services	48,900	49,000	49,900
Leisure & Hospitality	31,600	31,300	30,400
Other Services	15,200	15,200	15,100
Government	67,300	70,100	68,800
Federal Government	9,500	9,400	10,100
State Government	32,200	32,600	32,300
Local Government	25,600	28,100	26,400

(The following counties make up the LR-NLR-Conway MSA:
Faulkner, Grant, Lonoke, Perry, Pulaski, and Saline.)

Civilian Labor Force Statistics

	Jul 11	Jun 11	Jul 10
Civilian Labor Force	349,675	347,325	346,675
Employment	323,400	320,750	320,900
Unemployment	26,275	26,575	25,775
Unemployment Rate	7.5	7.7	7.4

Nonfarm Payroll Jobs January 2010 - July 2011



Fayetteville-Springdale-Rogers MSA

Nonfarm Payroll Jobs

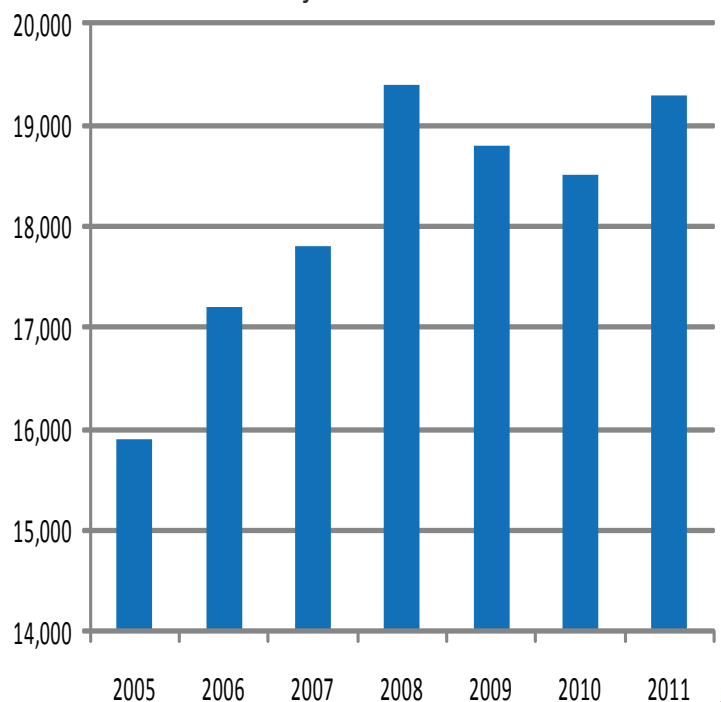
(NAICS)	Jul 11	Jun 11	Jul 10
Total Nonfarm	197,900	202,100	198,500
Goods Producing	36,100	36,600	37,400
Mining, Logging & Construction	8,200	8,200	8,300
Manufacturing	27,900	28,400	29,100
Service Providing	161,800	165,500	161,100
Trade, Transportation & Utilities	44,400	44,800	44,600
Wholesale Trade	8,900	9,000	8,900
Retail Trade	20,400	20,700	20,700
Trans., Warehousing & Utilities	15,100	15,100	15,000
Information	2,100	2,100	2,100
Financial Activities	7,100	7,300	7,300
Professional & Business Services	34,800	35,100	34,500
Educational & Health Services	21,800	22,100	21,200
Leisure & Hospitality	19,300	19,500	18,500
Other Services	6,900	6,900	6,700
Government	25,400	27,700	26,200
Federal Government	2,400	2,400	3,000
State Government	7,900	8,100	8,100
Local Government	15,100	17,200	15,100

(The following counties make up the FSR MSA:
Benton, Madison, and Washington in Arkansas and McDonald in Missouri.)

Civilian Labor Force Statistics

	Jul 11	Jun 11	Jul 10
Civilian Labor Force	227,250	228,050	228,325
Employment	211,700	212,200	212,675
Unemployment	15,550	15,850	15,650
Unemployment Rate	6.9	7.0	6.9

Jobs in Leisure and Hospitality July: 2005 - 2011



Metropolitan Statistical Areas

Fort Smith MSA

Nonfarm Payroll Jobs

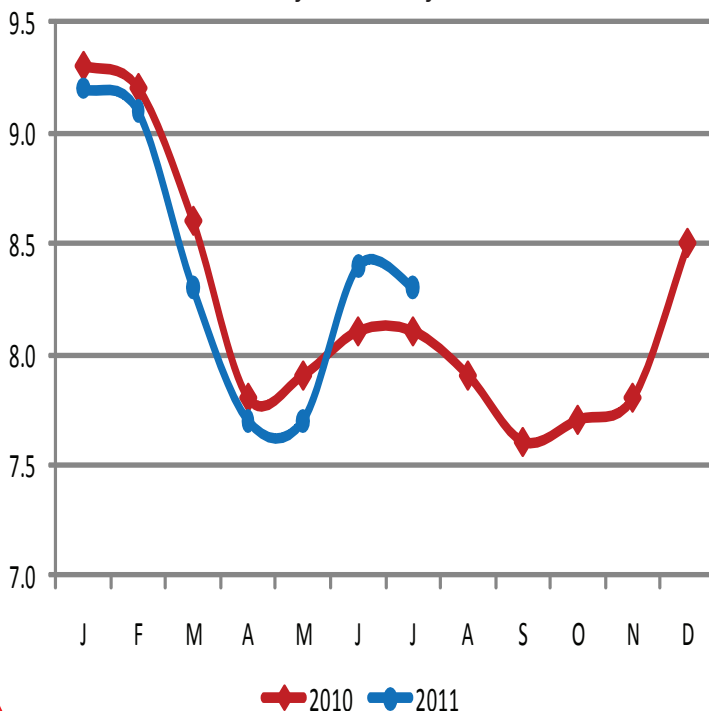
(NAICS)	Jul 11	Jun 11	Jul 10
Total Nonfarm	116,100	118,200	115,600
Goods Producing	29,100	29,400	29,300
Mining, Logging & Construction	8,000	8,000	7,500
Manufacturing	21,100	21,400	21,800
Service Providing	87,000	88,800	86,300
Trade, Transportation & Utilities	24,200	24,200	24,100
Wholesale Trade	4,000	4,000	4,000
Retail Trade	12,900	13,000	12,900
Trans., Warehousing & Utilities	7,300	7,200	7,200
Information	1,200	1,200	1,200
Financial Activities	4,200	4,200	4,100
Professional & Business Services	12,100	12,100	11,900
Educational & Health Services	16,300	16,200	16,100
Leisure & Hospitality	9,500	9,500	8,900
Other Services	3,800	3,700	3,700
Government	15,700	17,700	16,300
Federal Government	1,600	1,600	2,000
State Government	3,300	3,400	3,000
Local Government	10,800	12,700	11,300

(The following counties make up the Fort Smith MSA: Crawford, Franklin, and Sebastian in Arkansas and LeFlore and Sequoyah in Oklahoma.)

Civilian Labor Force Statistics

	Jul 11	Jun 11	Jul 10
Civilian Labor Force	133,850	134,500	134,000
Employment	122,725	123,175	123,125
Unemployment	11,125	11,325	10,875
Unemployment Rate	8.3	8.4	8.1

Unemployment Rates January 2010 - July 2011



Hot Springs MSA

Nonfarm Payroll Jobs

(NAICS)	Jul 11	Jun 11	Jul 10
Total Nonfarm	40,300	39,000	37,300
Goods Producing	4,200	4,200	4,200
Service Providing	36,100	34,800	33,100
Government	4,100	4,500	4,600

(The following county makes up the Hot Springs MSA: Garland.)

Civilian Labor Force Statistics

	Jul 11	Jun 11	Jul 10
Civilian Labor Force	46,025	44,275	42,625
Employment	42,325	40,575	39,025
Unemployment	3,700	3,700	3,600
Unemployment Rate	8.1	8.4	8.4

Jonesboro MSA

Nonfarm Payroll Jobs

(NAICS)	Jul 11	Jun 11	Jul 10
Total Nonfarm	48,600	49,500	48,500
Goods Producing	8,600	8,600	8,700
Service Providing	40,000	40,900	39,800
Government	8,400	9,000	8,300

(The following counties make up the Jonesboro MSA: Craighead and Poinsett.)

Civilian Labor Force Statistics

	Jul 11	Jun 11	Jul 10
Civilian Labor Force	58,350	58,325	58,400
Employment	53,650	53,550	53,800
Unemployment	4,700	4,775	4,600
Unemployment Rate	8.0	8.2	7.9

Pine Bluff MSA

Nonfarm Payroll Jobs

(NAICS)	Jul 11	Jun 11	Jul 10
Total Nonfarm	36,000	36,400	36,800
Goods Producing	7,600	7,600	7,600
Service Providing	28,400	28,800	29,200
Government	9,900	10,600	10,500

(The following counties make up the PB MSA: Cleveland, Jefferson, and Lincoln.)

Civilian Labor Force Statistics

	Jul 11	Jun 11	Jul 10
Civilian Labor Force	43,875	43,675	44,300
Employment	39,075	38,825	39,800
Unemployment	4,800	4,850	4,500
Unemployment Rate	10.9	11.1	10.2

Civilian Labor Force Statistics

State of Arkansas

(Seasonally Adjusted)

(Not Seasonally Adjusted)

	<u>Jul 11</u>	<u>Jun 11</u>	<u>Jul 10</u>	<u>OTM</u>	<u>OTY</u>	<u>Jul 11</u>	<u>Jun 11</u>	<u>Jul 10</u>	<u>OTM</u>	<u>OTY</u>
Civilian Labor Force	1,349,800	1,355,800	1,349,800	-6,000	0	1,371,400	1,368,700	1,368,500	2,700	2,900
Employment	1,239,000	1,246,400	1,244,700	-7,400	-5,700	1,255,300	1,251,400	1,257,000	3,900	-1,700
Unemployment	110,800	109,400	105,100	1,400	5,700	116,100	117,300	111,500	-1,200	4,600
Unemployment Rate	8.2	8.1	7.8	0.1	0.4	8.5	8.6	8.1	-0.1	0.4
U.S. Unemployment Rate	9.1	9.2	9.5	-0.1	-0.4	9.3	9.3	9.7	0.0	-0.4

Out-of-State MSAs

Memphis, Tennessee

Texarkana, Texas

	<u>Jul 11</u>	<u>Jun 11</u>	<u>Jul 10</u>		<u>Jul 11</u>	<u>Jun 11</u>	<u>Jul 10</u>
Civilian Labor Force	630,700	630,375	613,200	Civilian Labor Force	64,250	65,775	64,800
Employment	564,850	561,800	552,000	Employment	58,975	60,450	59,675
Unemployment	65,850	68,575	61,200	Unemployment	5,275	5,325	5,125
Unemployment Rate	10.4	10.9	10.0	Unemployment Rate	8.2	8.1	7.9

Unemployment Rates by County

Between June and July, unemployment rates declined in 38 of Arkansas' 75 counties. Twenty-four counties posted jobless rate increases, while 13 remained the same. Rates ranged from a low of 6.2 percent in Carroll County to a high of 17.7 percent in Arkansas County.

In July, no county in Arkansas had an unemployment rate at or below six percent. Twenty-nine counties had rates at or above ten percent, up from 28 counties in June.

Since July 2010, jobless rates are up in 59 Arkansas counties. Eleven counties enjoy lower rates than this time last year, while five are the same.

<u>Rank</u>	<u>County</u>	<u>Jul 11</u>	<u>Jun 11</u>	<u>Jul 10</u>	<u>Rank</u>	<u>County</u>	<u>Jul 11</u>	<u>Jun 11</u>	<u>Jul 10</u>
75	Arkansas	17.7	17.4	16.3	67	Lee	11.9	11.9	9.4
58	Ashley	10.8	11.1	10.1	53	Lincoln	10.2	10.0	9.3
33	Baxter	8.8	8.8	8.9	13	Little River	7.7	7.6	8.1
5	Benton	6.8	6.7	6.8	35	Logan	9.0	9.2	8.5
8	Boone	7.2	7.3	7.2	6	Lonoke	6.9	7.2	7.1
60	Bradley	11.1	11.0	10.0	3	Madison	6.6	7.2	6.4
47	Calhoun	10.0	9.8	7.9	44	Marion	9.3	9.4	10.4
1	Carroll	6.2	6.6	6.1	2	Miller	6.5	6.1	6.1
71	Chicot	12.7	12.7	10.8	68	Mississippi	12.0	13.2	11.8
57	Clark	10.6	10.9	9.0	40	Monroe	9.2	9.2	8.3
74	Clay	15.1	14.1	11.4	11	Montgomery	7.5	7.8	6.7
13	Cleburne	7.7	7.8	7.2	46	Nevada	9.9	10.6	8.8
24	Cleveland	8.2	8.9	7.5	26	Newton	8.3	8.1	7.0
47	Columbia	10.0	10.4	9.9	38	Ouachita	9.1	9.1	9.1
31	Conway	8.7	8.6	8.4	29	Perry	8.6	8.9	8.0
19	Craighead	7.9	7.9	7.5	64	Phillips	11.5	11.4	9.6
26	Crawford	8.3	8.6	7.9	40	Pike	9.2	9.6	8.2
70	Crittenden	12.5	12.0	11.8	34	Poinsett	8.9	9.5	9.4
40	Cross	9.2	9.3	8.7	28	Polk	8.4	8.5	7.5
62	Dallas	11.2	11.7	11.6	31	Pope	8.7	8.9	8.5
73	Desha	13.5	13.4	11.4	35	Prairie	9.0	9.0	8.1
72	Drew	12.8	12.6	10.8	12	Pulaski	7.6	7.8	7.4
19	Faulkner	7.9	7.9	7.8	59	Randolph	10.9	10.9	9.8
13	Franklin	7.7	7.6	7.5	64	St. Francis	11.5	11.0	10.6
13	Fulton	7.7	7.6	7.5	7	Saline	7.1	7.2	7.2
23	Garland	8.1	8.4	8.4	18	Scott	7.8	8.0	7.1
8	Grant	7.2	7.6	7.2	29	Searcy	8.6	8.6	8.3
60	Greene	11.1	10.5	9.9	19	Sebastian	7.9	8.0	7.1
44	Hempstead	9.3	9.2	9.1	19	Sevier	7.9	7.9	6.5
13	Hot Spring	7.7	8.1	7.8	50	Sharp	10.1	10.3	9.9
35	Howard	9.0	9.1	8.5	54	Stone	10.3	10.2	8.1
40	Independence	9.2	8.7	8.5	50	Union	10.1	10.2	10.7
55	Izard	10.5	10.2	9.6	47	Van Buren	10.0	9.9	9.5
66	Jackson	11.6	11.6	10.5	3	Washington	6.6	6.9	6.6
63	Jefferson	11.3	11.5	10.6	38	White	9.1	9.2	8.6
24	Johnson	8.2	7.9	8.4	68	Woodruff	12.0	13.8	9.7
50	Lafayette	10.1	10.2	9.8	10	Yell	7.3	7.5	6.6
55	Lawrence	10.5	10.5	9.8					

Lowest Rates

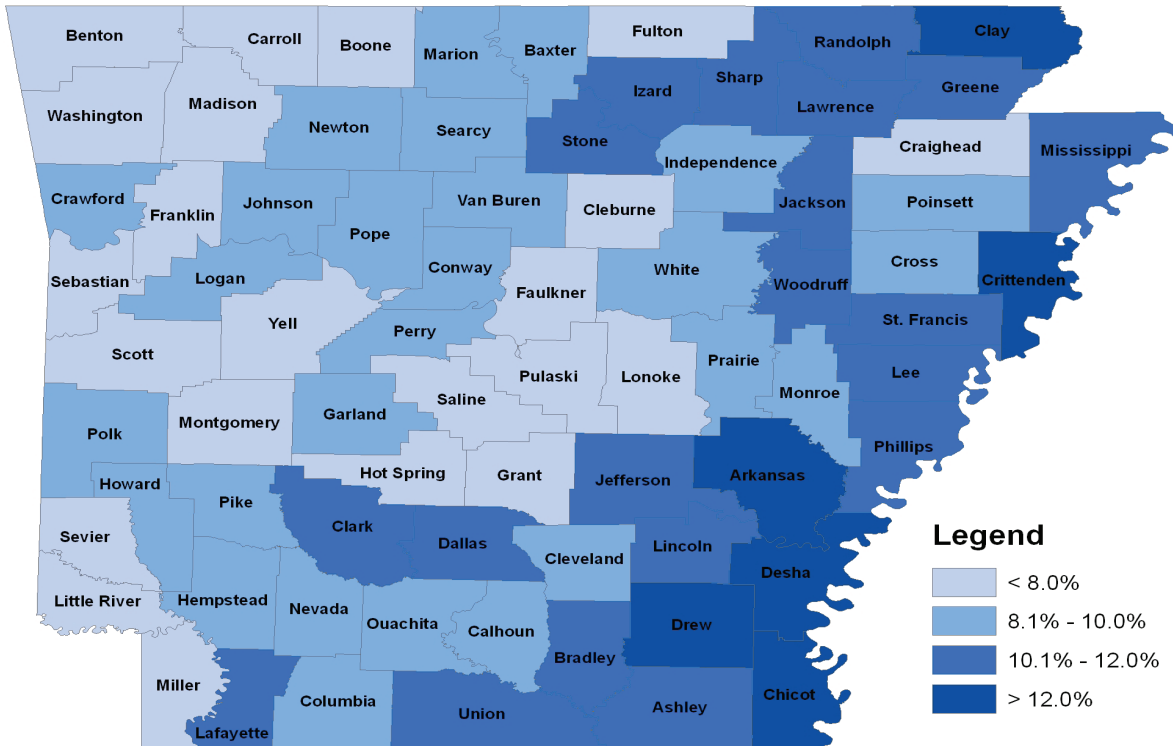
<u>Rank</u>	<u>County</u>	<u>Rate</u>
1	Carroll	6.2
2	Miller	6.5
3	Madison	6.6
3	Washington	6.6
5	Benton	6.8

Highest Rates

<u>Rank</u>	<u>County</u>	<u>Rate</u>
71	Chicot	12.7
72	Drew	12.8
73	Desha	13.5
74	Clay	15.1
75	Arkansas	17.7

Civilian Labor Force Statistics

For complete County Labor Force Statistics, please visit our website at www.discover.arkansas.gov



Technical Notes

The *Arkansas Labor Market* is prepared monthly in conjunction with the U.S. Department of Labor, Bureau of Labor Statistics (BLS). The current month's estimates are preliminary, while previous data are subject to revision.

Estimates of nonfarm payroll jobs show the number of jobs by industry and reflect employment by place of work. Hours and earnings estimates are based on payroll and worker-hour data collected for production workers in manufacturing industries.

Industries are classified according to the North American Industry Classification System (NAICS). All estimates are based on a first quarter 2010 benchmark.

Explanation of Terms and Concepts

Monthly Business Survey of Employers

A monthly sample survey designed to provide industry information on nonfarm payroll jobs. Data are compiled each month from mail surveys and telephone interviews conducted by the Bureau of Labor Statistics in cooperation with Department of Workforce Services. The data are based on establishment records and include all workers, full-or part-time, who received pay during the payroll period which includes the 12th of the

month. Approximately 3,000 Arkansas business establishments are surveyed.

Metropolitan Statistical Area (MSA)

A term applied by the U.S. Office of Management and Budget to counties that have one or more central cities and that meet specified criteria of population density, commuting patterns and social and economic integration.

Current Population Survey (CPS)

A monthly sample survey of the population 16 years of age and over, designed to provide data on the labor force, the employed and the unemployed. The survey is conducted each month by the Bureau of the Census for BLS. The information is collected by trained interviewers from a sample of about 60,000 households. The data collected are based on the activity reported for the calendar week including the 12th of the month. Approximately 800 Arkansas households are represented in the sample survey.

Civilian Labor Force

The sum of all employed and unemployed persons 16 years of age or older. Members of the Armed Forces are excluded.

Employment

An estimate of the number of persons who worked any time for pay or profit or worked 15 hours or more as unpaid workers in a family business during the calendar week which includes the 12th of the month. Also included are those who, although not working, had some job attachment and were not looking for work, and persons involved in labor management disputes.

Unemployment

An estimate of the number of persons who did not have a job, but were available for work and actively seeking work during the calendar week which includes the 12th of the month.

Unemployment Rate

The number of unemployed as a percentage of the civilian labor force. Unemployment rates in this publication are calculated from unrounded data.

Seasonal Adjustment

A statistical technique applied to monthly data to eliminate changes that normally occur during the year due to seasonal events such as weather, major holidays, shifts in schedules, harvest times, and the opening/closing of schools.

Arkansas Labor Market

July 2011

The *Arkansas Labor Market* is produced by the Department of Workforce Services, Bureau of Labor Statistics. All Statistics are published in cooperation with the United States Department of Labor, Bureau of Labor Statistics.

Equal Opportunity Employer/Program

Auxiliary aids and services are available upon request to individuals with disabilities.



Voice: 1-800-285-1121

TDD: 1-800-285-1131

Mike Beebe- Governor
Artee Williams- DWS Director

Jobs for People. People for Jobs.

DWS
Department of
WORKFORCE Services

Department of Workforce Services
Bureau of Labor Statistics
P.O. Box 2981
Little Rock, AR 72203-2981