

Arkansas Labor Market

December 2011

Employment Headlines

Arkansas' Unemployment Rate Declines to 7.7 Percent

Nonfarm Payroll Jobs Down 4,600 in December

Employment Quick Facts

Unemployment Rates

Seasonally Adjusted

	<u>Dec 11</u>	<u>Nov 11</u>	<u>Dec 10</u>
AR Unemployment Rate	7.7	7.9	7.9
US Unemployment Rate	8.5	8.7	9.4

Nonfarm Payroll Summary

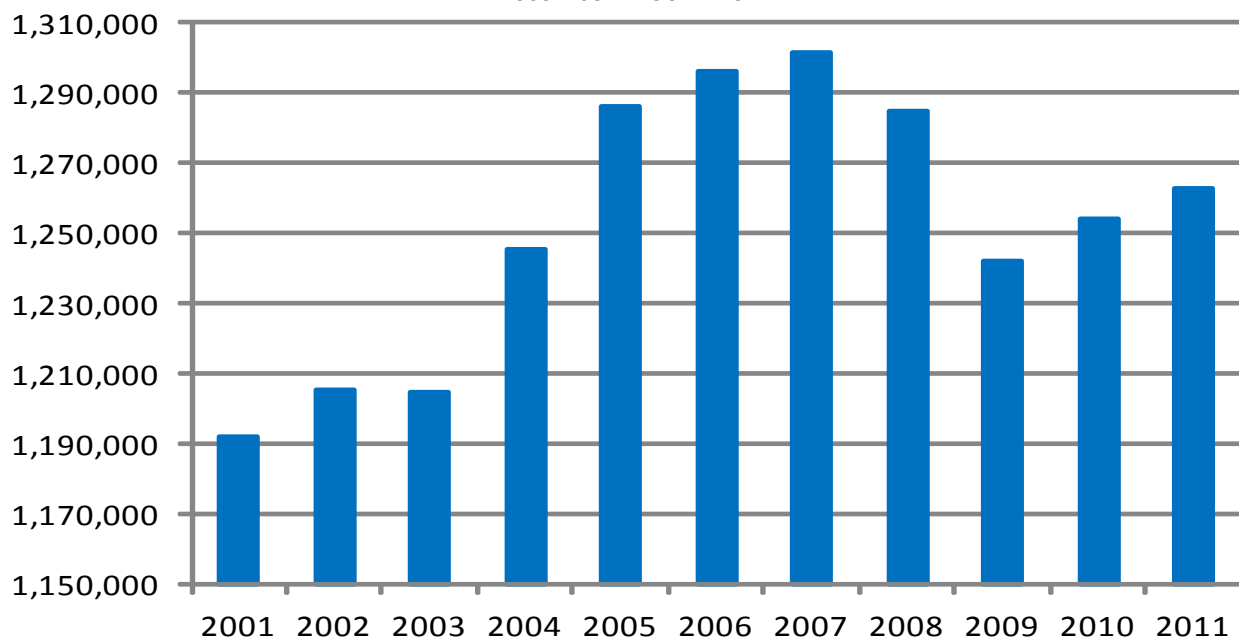
State of Arkansas

	<u>Dec 11</u>	<u>Nov 11</u>	<u>Dec 10</u>
Total Nonfarm	1,179,800	1,184,400	1,172,100
Goods Producing	212,800	213,900	216,400
Service Providing	967,000	970,500	955,700

Number of Employed

State of Arkansas

December: 2001 - 2011



Nonfarm Payroll Employment

State of Arkansas

November 2011 - December 2011

Arkansas' nonfarm payroll jobs decreased 4,600 in December to total 1,179,800. Employment declined in eight major industry sectors. **Leisure and hospitality** posted the largest drop (-2,600). Losses were mostly seasonal, with a majority of the decrease occurring in food services (-2,000). Jobs in **government** fell 1,300. Both state and local government declined 700 each, a result of winter break at public education facilities. **Construction** lost 1,000 jobs, a typical weather-related fluctuation. The largest increase occurred in **trade, transportation, and utilities** (+2,600). Most of the gain occurred in retail trade (+2,300), caused by seasonal hiring for the holidays.

December 2010 - December 2011

Since December 2010, nonfarm payroll employment in Arkansas rose 7,700. Nine major industry sectors added jobs, with four sectors gaining 1,400 or more jobs, each. **Educational and health services** posted the largest increase (+3,500), mostly in health care and social assistance (+2,200). Employment in **government** rose 3,200. Most of the gain occurred in local government (+3,900), related to expansions at public schools. **Other services** added 1,800 jobs, as growth was reported throughout all subsectors. **Leisure and hospitality** increased 1,400. A majority of the increase occurred in food services (+1,200). Jobs in **manufacturing** decreased 4,100. Losses were seen in both nondurable (-3,000) and durable (-1,100) goods manufacturing.

Nonfarm Payroll Jobs

(NAICS)	Dec 11	Nov 11	Dec 10
Total Nonfarm	1,179,800	1,184,400	1,172,100
Goods Producing	212,800	213,900	216,400
Mining & Logging	11,000	10,800	10,800
Construction	46,800	47,800	46,500
Specialty Trade Contractors	28,000	28,400	27,700
Manufacturing	155,000	155,300	159,100
Durable Goods	76,300	76,300	77,400
Nondurable Goods	78,700	79,000	81,700
Service Providing	967,000	970,500	955,700
Trade, Transportation & Utilities	239,500	236,900	239,200
Wholesale Trade	44,900	45,800	44,700
Retail Trade	133,600	131,300	134,100
Transportation, Warehousing & Utilities	61,000	59,800	60,400
Information	15,400	15,600	15,600
Financial Activities	50,600	50,300	49,400
Finance & Insurance	36,800	36,700	35,700
Real Estate & Rental & Leasing	13,800	13,600	13,700
Professional & Business Services	120,400	121,000	120,300
Professional, Scientific & Technical	37,500	37,600	37,500
Management of Companies	26,900	26,600	26,500
Administrative & Support Services	56,000	56,800	56,300
Educational & Health Services	171,700	172,400	168,200
Health Care & Social Assistance	156,200	156,600	154,000
Ambulatory Health Care	46,400	46,600	45,700
Social Assistance	36,100	35,500	35,100
Leisure & Hospitality	101,300	103,900	99,900
Arts, Entertainment & Recreation	8,800	8,900	8,600
Accommodation & Food Services	92,500	95,000	91,300
Accommodation Services	10,800	11,300	10,800
Food Services	81,700	83,700	80,500
Other Services	44,600	45,600	42,800
Government	223,500	224,800	220,300
Federal Government	20,200	20,100	21,200
State Government	77,200	77,900	76,900
Local Government	126,100	126,800	122,200

Hours & Earnings of Arkansas Production Workers

(Manufacturing Industries)

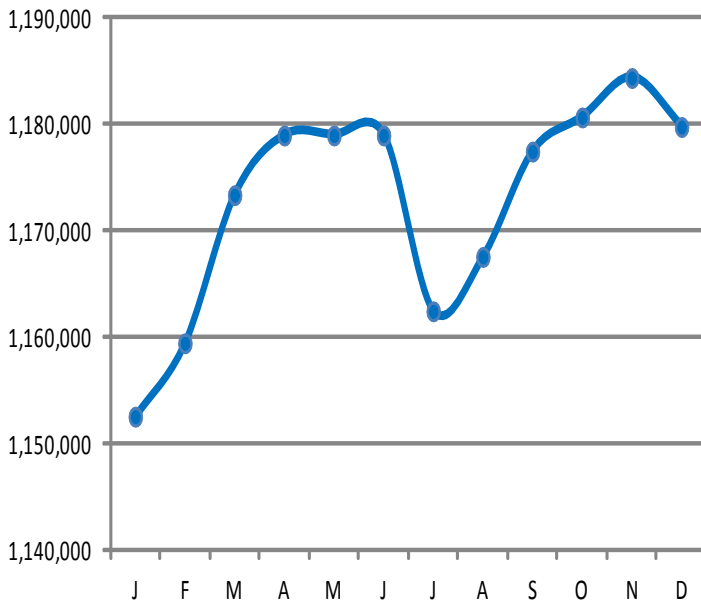
	Average Weekly Earnings			Average Weekly Hours			Average Hourly Earnings		
	Dec 11	Nov 11	Dec 10	Dec 11	Nov 11	Dec 10	Dec 11	Nov 11	Dec 10
Manufacturing	\$617.12	\$596.30	\$581.74	40.6	40.4	41.2	\$15.20	\$14.76	\$14.12
Durable Goods	708.95	677.66	644.32	41.9	41.6	40.6	16.92	16.29	15.87
Nondurable Goods	532.29	520.18	527.92	39.4	39.2	41.7	13.51	13.27	12.66

Spotlight

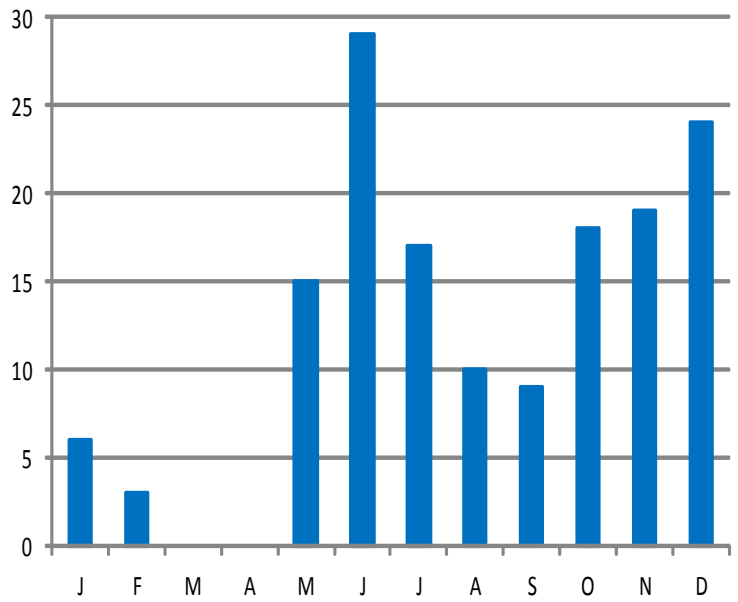
The Year in Review

In 2011, nonfarm payroll employment in Arkansas ranged from a high of 1,184,400 in November to a low of 1,152,600 in January. Arkansas' preliminary annual average employment for 2011 is 1,172,900, notably higher than the 2010 annual average of 1,163,200. There were 154 mass layoff events in 2011, compared to 71 mass layoff events in 2010.

Nonfarm Payroll Jobs
January 2011 - December 2011



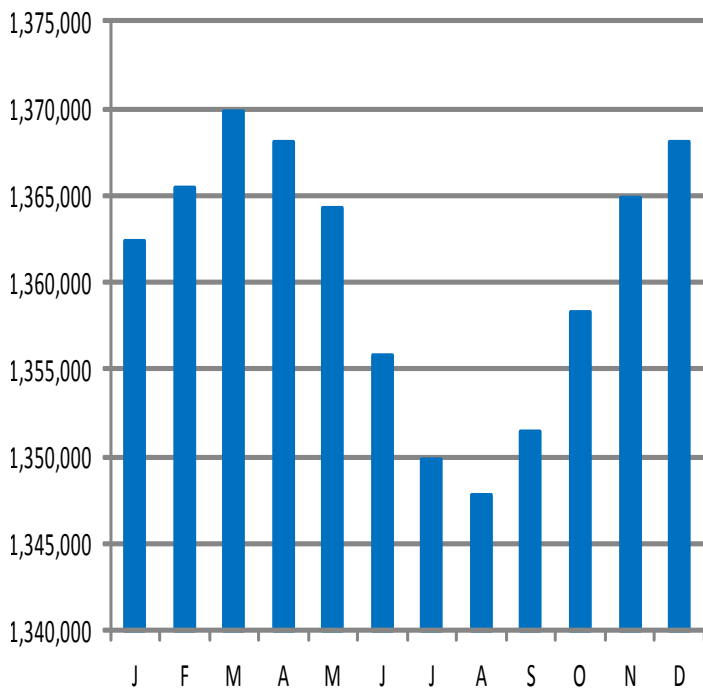
Mass Layoff Events
January 2011 - December 2011



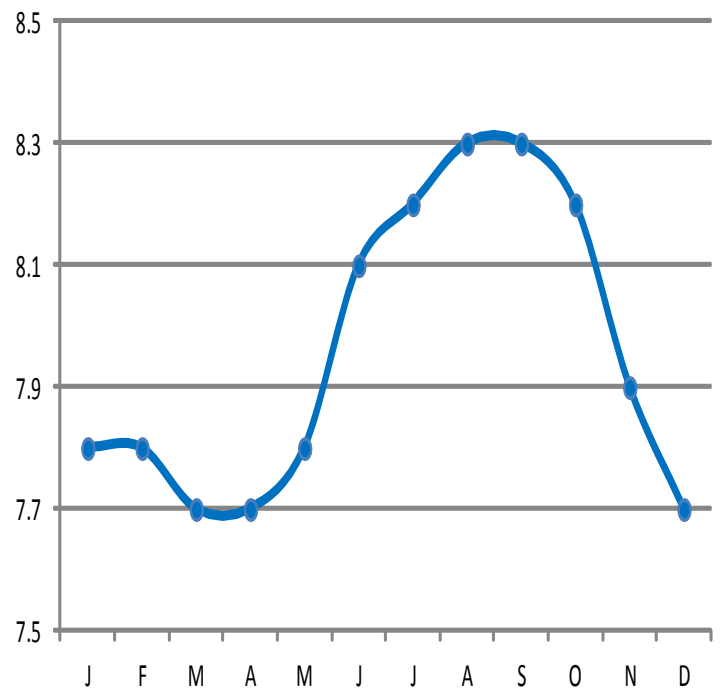
Note- March and April data did not meet standards for disclosure

In 2011, Arkansas' civilian labor force ranged from a high of 1,369,800 in March to a low of 1,347,800 in August. The civilian labor force steadily increased from August to December. The unemployment rate in Arkansas ranged from a high of 8.3 percent in August and September to a low of 7.7 percent in March, April, and December.

Civilian Labor Force (Seasonally Adjusted)
January 2011 - December 2011



Unemployment Rates (Seasonally Adjusted)
January 2011 - December 2011



Metropolitan Statistical Areas

Little Rock-North Little Rock-Conway MSA

Nonfarm Payroll Jobs

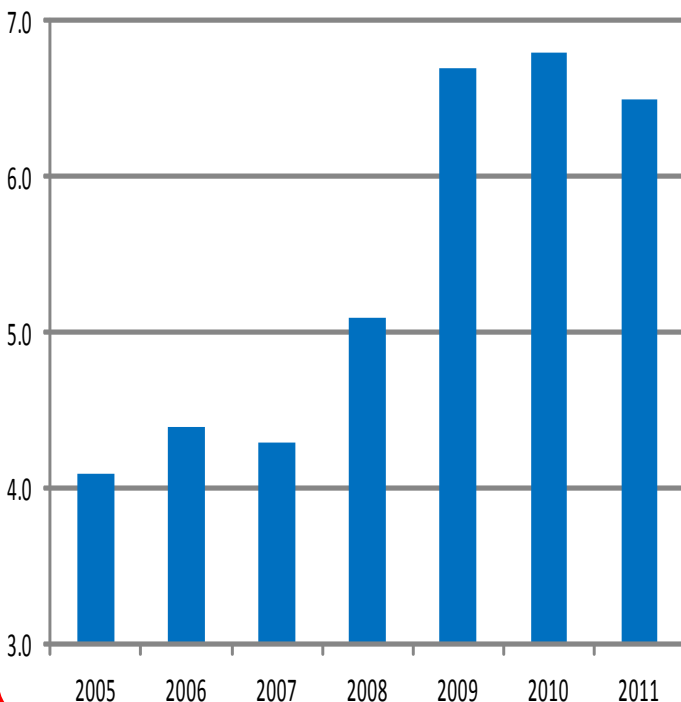
(NAICS)	Dec 11	Nov 11	Dec 10
Total Nonfarm	341,900	340,500	340,800
Goods Producing	37,300	37,100	36,300
Mining, Logging & Construction	17,900	17,600	16,400
Manufacturing	19,400	19,500	19,900
Service Providing	304,600	303,400	304,500
Trade, Transportation & Utilities	67,200	64,600	65,500
Wholesale Trade	17,100	16,700	16,700
Retail Trade	38,100	36,300	36,600
Trans., Warehousing & Utilities	12,000	11,600	12,200
Information	7,600	7,600	7,800
Financial Activities	18,600	18,600	18,600
Professional & Business Services	44,100	44,400	44,400
Educational & Health Services	49,900	50,200	51,900
Leisure & Hospitality	30,900	31,600	30,000
Other Services	14,800	14,900	14,700
Government	71,500	71,500	71,600
Federal Government	9,400	9,300	9,700
State Government	34,100	34,200	33,900
Local Government	28,000	28,000	28,000

(The following counties make up the LR-NLR-Conway MSA:
Faulkner, Grant, Lonoke, Perry, Pulaski, and Saline.)

Civilian Labor Force Statistics

	Dec 11	Nov 11	Dec 10
Civilian Labor Force	342,775	344,050	343,275
Employment	320,575	322,300	320,100
Unemployment	22,200	21,750	23,175
Unemployment Rate	6.5	6.3	6.8

Unemployment Rates December: 2005 - 2011



Fayetteville-Springdale-Rogers MSA

Nonfarm Payroll Jobs

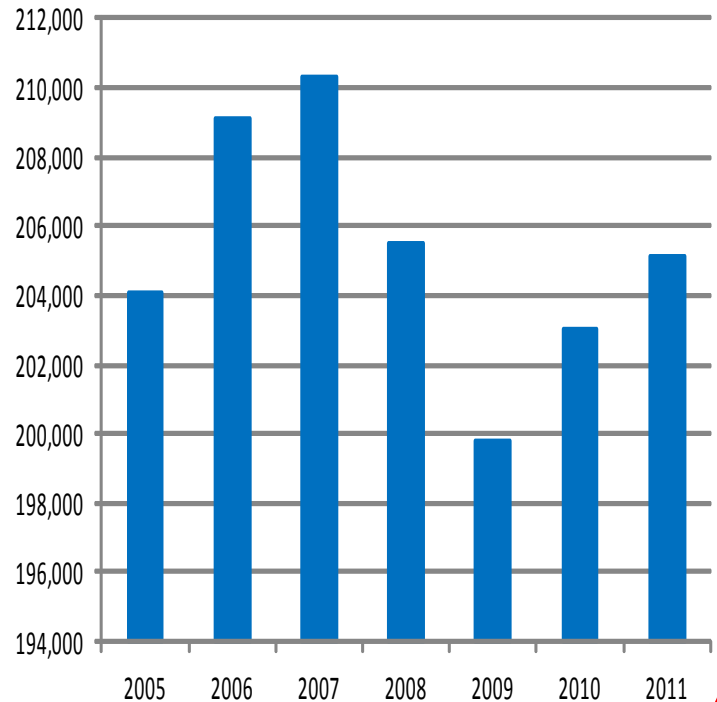
(NAICS)	Dec 11	Nov 11	Dec 10
Total Nonfarm	205,100	204,300	203,000
Goods Producing	35,800	35,900	36,900
Mining, Logging & Construction	7,900	8,000	7,900
Manufacturing	27,900	27,900	29,000
Service Providing	169,300	168,400	166,100
Trade, Transportation & Utilities	45,500	44,700	45,300
Wholesale Trade	8,900	8,800	8,800
Retail Trade	21,300	20,800	21,300
Trans., Warehousing & Utilities	15,300	15,100	15,200
Information	2,100	2,100	2,100
Financial Activities	7,200	7,100	7,300
Professional & Business Services	35,400	35,300	34,700
Educational & Health Services	23,100	22,900	22,500
Leisure & Hospitality	18,900	19,100	18,300
Other Services	6,900	6,900	6,800
Government	30,200	30,300	29,100
Federal Government	2,400	2,300	2,400
State Government	10,400	10,400	9,400
Local Government	17,400	17,600	17,300

(The following counties make up the FSR MSA:
Benton, Madison, and Washington in Arkansas and McDonald in Missouri.)

Civilian Labor Force Statistics

	Dec 11	Nov 11	Dec 10
Civilian Labor Force	227,750	228,325	227,075
Employment	214,925	215,850	213,150
Unemployment	12,825	12,475	13,925
Unemployment Rate	5.6	5.5	6.1

Nonfarm Payroll Jobs December: 2005 - 2011



Metropolitan Statistical Areas

Fort Smith MSA

Nonfarm Payroll Jobs

(NAICS)	Dec 11	Nov 11	Dec 10
Total Nonfarm	115,000	116,300	116,700
Goods Producing	28,200	28,300	28,100
Mining, Logging & Construction	7,500	7,600	7,100
Manufacturing	20,700	20,700	21,000
Service Providing	86,800	88,000	88,600
Trade, Transportation & Utilities	23,800	24,000	24,300
Wholesale Trade	3,900	4,000	4,000
Retail Trade	12,800	12,900	13,100
Trans., Warehousing & Utilities	7,100	7,100	7,200
Information	1,100	1,100	1,200
Financial Activities	4,100	4,100	4,200
Professional & Business Services	11,400	11,800	11,700
Educational & Health Services	15,900	16,100	16,200
Leisure & Hospitality	8,700	8,900	8,600
Other Services	3,500	3,600	3,600
Government	18,300	18,400	18,800
Federal Government	1,600	1,600	1,600
State Government	3,700	3,700	3,700
Local Government	13,000	13,100	13,500

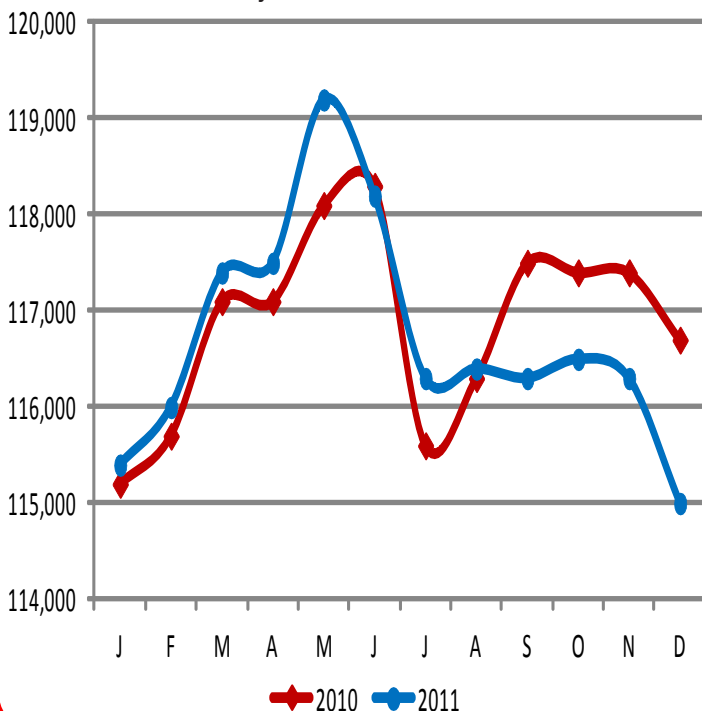
(The following counties make up the Fort Smith MSA: Crawford, Franklin, and Sebastian in Arkansas and LeFlore and Sequoyah in Oklahoma.)

Civilian Labor Force Statistics

	Dec 11	Nov 11	Dec 10
Civilian Labor Force	130,075	132,400	133,325
Employment	119,750	122,100	121,975
Unemployment	10,325	10,300	11,350
Unemployment Rate	8.0	7.8	8.5

Nonfarm Payroll Jobs

January 2010 - December 2011



Hot Springs MSA

Nonfarm Payroll Jobs

(NAICS)	Dec 11	Nov 11	Dec 10
Total Nonfarm	38,900	39,500	37,400
Goods Producing	4,100	4,100	4,100
Service Providing	34,800	35,400	33,300
Government	5,400	5,500	4,900

(The following county makes up the Hot Springs MSA: Garland.)

Civilian Labor Force Statistics

	Dec 11	Nov 11	Dec 10
Civilian Labor Force	43,450	44,175	42,225
Employment	40,250	41,075	38,825
Unemployment	3,200	3,100	3,400
Unemployment Rate	7.4	7.0	8.0

Jonesboro MSA

Nonfarm Payroll Jobs

(NAICS)	Dec 11	Nov 11	Dec 10
Total Nonfarm	48,900	49,400	49,300
Goods Producing	8,400	8,400	8,500
Service Providing	40,500	41,000	40,800
Government	9,000	9,100	9,000

(The following counties make up the Jonesboro MSA: Craighead and Poinsett.)

Civilian Labor Force Statistics

	Dec 11	Nov 11	Dec 10
Civilian Labor Force	57,075	57,775	57,900
Employment	53,150	54,050	53,625
Unemployment	3,925	3,725	4,275
Unemployment Rate	6.9	6.4	7.4

Pine Bluff MSA

Nonfarm Payroll Jobs

(NAICS)	Dec 11	Nov 11	Dec 10
Total Nonfarm	36,400	36,400	36,600
Goods Producing	7,400	7,400	7,400
Service Providing	29,000	29,000	29,200
Government	11,000	10,900	11,000

(The following counties make up the PB MSA: Cleveland, Jefferson, and Lincoln.)

Civilian Labor Force Statistics

	Dec 11	Nov 11	Dec 10
Civilian Labor Force	43,000	43,250	43,350
Employment	38,975	39,250	39,125
Unemployment	4,025	4,000	4,225
Unemployment Rate	9.4	9.2	9.8

Civilian Labor Force Statistics

State of Arkansas

(Seasonally Adjusted)

(Not Seasonally Adjusted)

	<u>Dec 11</u>	<u>Nov 11</u>	<u>Dec 10</u>	<u>OTM</u>	<u>OTY</u>	<u>Dec 11</u>	<u>Nov 11</u>	<u>Dec 10</u>	<u>OTM</u>	<u>OTY</u>
Civilian Labor Force	1,368,000	1,364,900	1,361,100	3,100	6,900	1,354,600	1,365,700	1,350,600	-11,100	4,000
Employment	1,262,700	1,256,400	1,253,900	6,300	8,800	1,253,900	1,267,700	1,245,500	-13,800	8,400
Unemployment	105,300	108,500	107,200	-3,200	-1,900	100,700	98,000	105,100	2,700	-4,400
Unemployment Rate	7.7	7.9	7.9	-0.2	-0.2	7.4	7.2	7.8	0.2	-0.4
U.S. Unemployment Rate	8.5	8.7	9.4	-0.2	-0.9	8.3	8.2	9.1	0.1	-0.8

Out-of-State MSAs

Memphis, Tennessee

Texarkana, Texas

	<u>Dec 11</u>	<u>Nov 11</u>	<u>Dec 10</u>		<u>Dec 11</u>	<u>Nov 11</u>	<u>Dec 10</u>
Civilian Labor Force	631,450	631,125	609,800	Civilian Labor Force	66,175	66,025	65,500
Employment	575,850	573,150	552,325	Employment	61,650	61,500	60,875
Unemployment	55,600	57,975	57,475	Unemployment	4,525	4,525	4,625
Unemployment Rate	8.8	9.2	9.4	Unemployment Rate	6.8	6.9	7.1

Unemployment Rates by County

Between November and December, unemployment rates increased in 65 of Arkansas' 75 counties. Seven counties posted rate declines, while three remained the same. Jobless rates ranged from a low of 5.3 percent in Washington County to a high of 15.4 percent in Arkansas County.

In December, seven counties enjoyed unemployment rates at or below six percent. Sixteen counties posted rates at or above ten percent, up from ten counties in November.

Compared to December 2010, jobless rates are down in 59 counties. Sixteen counties posted rates higher than this time last year.

<u>Rank</u>	<u>County</u>	<u>Dec 11</u>	<u>Nov 11</u>	<u>Dec 10</u>	<u>Rank</u>	<u>County</u>	<u>Dec 11</u>	<u>Nov 11</u>	<u>Dec 10</u>
75	Arkansas	15.4	16.1	17.5	64	Lee	10.4	9.5	10.9
73	Ashley	13.1	12.8	10.6	59	Lincoln	9.9	9.2	9.1
41	Baxter	8.3	7.5	8.6	14	Little River	6.6	6.2	7.8
4	Benton	5.9	5.7	6.0	21	Logan	7.2	7.0	7.7
21	Boone	7.2	6.9	6.8	10	Lonoke	6.4	6.0	6.9
61	Bradley	10.1	9.6	9.9	4	Madison	5.9	5.6	6.8
47	Calhoun	8.8	7.6	10.1	44	Marion	8.5	7.8	9.5
8	Carroll	6.1	5.1	7.1	2	Miller	5.6	5.8	5.3
72	Chicot	11.4	10.6	11.9	54	Mississippi	9.4	9.3	11.0
61	Clark	10.1	9.6	7.9	44	Monroe	8.5	7.8	8.7
74	Clay	14.6	13.2	13.1	28	Montgomery	7.5	7.6	9.0
17	Cleburne	6.9	6.4	7.2	34	Nevada	7.8	8.1	9.1
37	Cleveland	7.9	7.6	7.9	31	Newton	7.7	7.3	7.5
34	Columbia	7.8	7.6	8.5	53	Ouachita	9.2	9.0	7.9
24	Conway	7.4	7.0	7.9	24	Perry	7.4	7.5	7.7
10	Craighead	6.4	6.2	6.9	69	Phillips	11.1	10.2	10.1
34	Crawford	7.8	7.7	8.3	42	Pike	8.4	7.7	9.5
69	Crittenden	11.1	11.2	11.6	48	Poinsett	8.9	7.6	9.4
39	Cross	8.0	7.8	8.5	24	Polk	7.4	7.4	7.5
64	Dallas	10.4	10.2	10.3	18	Pope	7.0	6.4	7.3
68	Desha	10.7	10.2	12.3	46	Prairie	8.7	7.9	9.2
69	Drew	11.1	10.4	11.1	10	Pulaski	6.4	6.3	6.7
19	Faulkner	7.1	6.9	6.7	63	Randolph	10.3	10.0	9.4
19	Franklin	7.1	6.8	6.7	60	St. Francis	10.0	9.4	10.1
14	Fulton	6.6	6.4	7.0	7	Saline	6.0	6.0	6.6
24	Garland	7.4	7.0	8.0	9	Scott	6.2	6.0	6.7
13	Grant	6.5	6.3	7.1	31	Searcy	7.7	7.2	8.6
54	Greene	9.4	9.1	9.7	31	Sebastian	7.7	7.9	8.4
30	Hempstead	7.6	7.6	9.0	23	Sevier	7.3	7.0	6.3
16	Hot Spring	6.7	6.5	7.3	54	Sharp	9.4	8.9	9.6
28	Howard	7.5	7.3	8.3	58	Stone	9.7	8.1	9.2
37	Independence	7.9	7.3	7.9	48	Union	8.9	8.8	9.9
48	Izard	8.9	7.8	9.3	48	Van Buren	8.9	8.2	10.0
67	Jackson	10.6	9.7	10.9	1	Washington	5.3	5.1	5.9
57	Jefferson	9.5	9.4	10.1	40	White	8.1	7.6	8.2
4	Johnson	5.9	5.5	7.0	64	Woodruff	10.4	9.8	11.3
42	Lafayette	8.4	7.9	9.6	3	Yell	5.8	5.1	6.5
52	Lawrence	9.0	8.3	9.5					

Lowest Rates

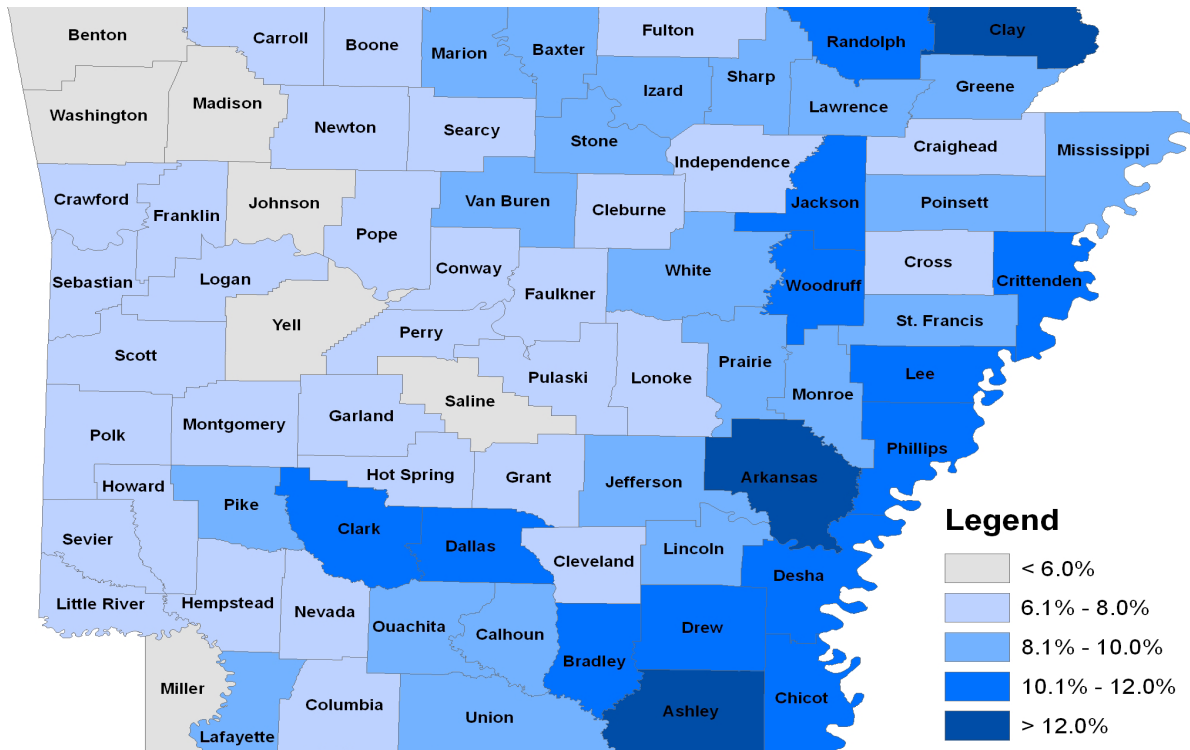
<u>Rank</u>	<u>County</u>	<u>Rate</u>
1	Washington	5.3
2	Miller	5.6
3	Yell	5.8
4	Benton	5.9
4	Johnson	5.9
4	Madison	5.9

Highest Rates

<u>Rank</u>	<u>County</u>	<u>Rate</u>
72	Chicot	11.4
73	Ashley	13.1
74	Clay	14.6
75	Arkansas	15.4

Civilian Labor Force Statistics

For complete County Labor Force Statistics, please visit our website at www.discover.arkansas.gov



Technical Notes

The *Arkansas Labor Market* is prepared monthly in conjunction with the U.S. Department of Labor, Bureau of Labor Statistics (BLS). The current month's estimates are preliminary, while previous data are subject to revision.

Estimates of nonfarm payroll jobs show the number of jobs by industry and reflect employment by place of work. Hours and earnings estimates are based on payroll and worker-hour data collected for production workers in manufacturing industries.

Industries are classified according to the North American Industry Classification System (NAICS). All estimates are based on a first quarter 2010 benchmark.

Explanation of Terms and Concepts

Monthly Business Survey of Employers

A monthly sample survey designed to provide industry information on nonfarm payroll jobs. Data are compiled each month from mail surveys and telephone interviews conducted by the Bureau of Labor Statistics in cooperation with Department of Workforce Services. The data are based on establishment records and include all workers, full-or part-time, who received pay during the payroll period which includes the 12th of the

month. Approximately 3,000 Arkansas business establishments are surveyed.

Metropolitan Statistical Area (MSA)

A term applied by the U.S. Office of Management and Budget to counties that have one or more central cities and that meet specified criteria of population density, commuting patterns and social and economic integration.

Current Population Survey (CPS)

A monthly sample survey of the population 16 years of age and over, designed to provide data on the labor force, the employed and the unemployed. The survey is conducted each month by the Bureau of the Census for BLS. The information is collected by trained interviewers from a sample of about 60,000 households. The data collected are based on the activity reported for the calendar week including the 12th of the month. Approximately 800 Arkansas households are represented in the sample survey.

Civilian Labor Force

The sum of all employed and unemployed persons 16 years of age or older. Members of the Armed Forces are excluded.

Employment

An estimate of the number of persons who worked any time for pay or profit or worked 15 hours or more as unpaid workers in a family business during the calendar week which includes the 12th of the month. Also included are those who, although not working, had some job attachment and were not looking for work, and persons involved in labor management disputes.

Unemployment

An estimate of the number of persons who did not have a job, but were available for work and actively seeking work during the calendar week which includes the 12th of the month.

Unemployment Rate

The number of unemployed as a percentage of the civilian labor force. Unemployment rates in this publication are calculated from unrounded data.

Seasonal Adjustment

A statistical technique applied to monthly data to eliminate changes that normally occur during the year due to seasonal events such as weather, major holidays, shifts in schedules, harvest times, and the opening/closing of schools.

Arkansas Labor Market

December 2011

The *Arkansas Labor Market* is produced by the Department of Workforce Services, Bureau of Labor Statistics. All Statistics are published in cooperation with the United States Department of Labor, Bureau of Labor Statistics.

Equal Opportunity Employer/Program

Auxiliary aids and services are available upon request to individuals with disabilities.



Voice: 1-800-285-1121

TDD: 1-800-285-1131

Mike Beebe- Governor
Artee Williams- DWS Director



Department of Workforce Services
Bureau of Labor Statistics
P.O. Box 2981
Little Rock, AR 72203-2981